



# MAROON & GOLD

CAMPUS NEWS AND VIEWS

Volume XLIV Bloomsburg State College, Bloomsburg, Pa. — Friday, December 10, 1965 Number 11

## Tentative Courses Posted For Fall

Students will be requested to indicate the courses which they want to schedule for the Fall Semester of 1966-67 when they complete advance scheduling on December 15. Selections may be recorded on the back cover of the Master Schedule Booklet or another sheet of paper.

Completion of this prior to entering the Gym will greatly expedite one's passage through the Girls' Small Gym where this final phase of advanced scheduling will be completed.

Following is the list of courses being considered for next fall:

- 10 - Business Education**
- 10-101 - Introduction to Business Organization and Finance
  - 10-201 - Elementary Typing I
  - 10-211 - Elementary Shorthand I
  - 10-221 - Principles of Accounting I
  - 10-222 - Principles of Accounting II
  - 10-241 - Salesmanship
  - 10-301 - Advanced Typing
  - 10-311 - Advanced Shorthand
  - 10-321 - Intermediate Accounting I
  - 10-322 - Intermediate Accounting II
  - 10-331 - Business Law I
  - 10-334 - Advanced Math (Business Math)
  - 10-351 - Methods of Teaching Business Ed.
  - 10-361 - Problems of Business Education
  - 10-401 - Clerical Practice & Office Machines
  - 10-421 - Cost Accounting
  - 10-423 - Federal Tax Accounting
  - 10-441 - Marketing
  - 10-450 - Introduction to Data Processing

- 40 - Economics**
- 40-211 - Principles of Economics I

- 11 - Education**
- 11-101 - Introduction to Education
  - 11-202 - Methods and Materials in Elementary School Science
  - 11-301 - Audio-Visual Education
  - 11-321 - Early Childhood Education
  - 11-351 - Teaching of English in the Secondary School
  - 11-352 - Teaching of Mathematics in the Secondary School
  - 11-353 - Teaching of Biological Science in the Secondary School
  - 11-354 - Teaching of Physical Science in the Secondary School
  - 11-355 - Teaching of Social Studies in the Secondary School
  - 11-361 - Problems of Secondary Education
  - 11-371 - Teaching of Reading in the Elementary Grades
  - 11-373 - Diagnostic and Remedial Reading
  - 11-374 - Teaching of Reading in Academic Subjects
  - 11-381 - Seminar in Elementary Education
  - 11-401 - Student Teaching in the Elementary School
  - 11-402 - Student Teaching in the Secondary School
  - 11-411 - Professional Practicum

- 12 - Psychology**
- 12-201 - General Psychology I
  - 12-202 - General Psychology II
  - 12-301 - Educational Psychology
  - 12-311 - Child Growth and Development
  - 12-321 - Mental Tests (Group)
  - 12-322 - Mental Tests (Individual)
  - 12-331 - Mental Hygiene
  - 12-401 - Abnormal Psychology
  - 12-431 - Personality
  - 12-441 - Social Psychology
  - 12-461 - Experimental Psychology

- 20 - English**
- 20-101 - English Composition I
  - 20-102 - English Composition II
  - 20-201 - World Literature I
  - 20-202 - World Literature II
  - 20-231 - British Writers II
  - 20-249 - Shakespeare
  - 20-301 - Journalism
  - 20-312 - Ideas in Literature
  - 20-316 - Children's Literature
  - 20-322 - Modern Drama
  - 20-326 - Modern Poetry
  - 20-342 - Early English Drama
  - 20-343 - Chaucer
  - 20-344 - Milton
  - 20-358 - 18th Century Novel
  - 20-381 - American Literature I
  - 20-385 - American Novel

- 20-386 - Later American Prose
  - 20-401 - Structure of English
  - 20-405 - Criticism
- 30 - Art**
- 30-101 - Introduction to Art
  - 30-201 - Methods and Materials in Elementary School Art
  - 30-303 - Crafts for the Elementary Grades
  - 30-399 - Drawing
  - 30-401 - Painting I
  - 30-402 - Painting II
  - 30-403 - Painting III
  - 30-404 - Sculpture
  - 30-311 - European Art History

- 31 - Music**
- 31-101 - Introduction to Music
  - 31-122 - Keyboard Music
  - 31-201 - Methods and Materials of Teaching Elementary Music
  - 31-330 - Concepts for Music Listening
  - 31-332 - American Music
  - 31-431 - Music of the Romantic Era

- 40 - Economics**
- 40-211 - Principles of Economics I
  - 40-212 - Principles of Economics II
  - 40-311 - Intermediate Economics
  - 40-313 - Industrial Relations
  - 40-413 - Money and Banking
  - 40-423 - History of Economic Thought

- 41 - Geography**
- 41-101 - World Geography
  - 41-121 - Economic Geography
  - 41-223 - Geography of U.S. and Pa.
  - 41-243 - Geography of Asia
  - 41-245 - Geography of Africa
  - 41-247 - Geography of the Pacific Realm
  - 41-323 - Political Geography
  - 41-324 - Geographic Influences in American History
  - 41-333 - Geography
  - 41-336 - Meteorology
  - 41-357 - Physical Geography
  - 41-361 - Historical Geography

- 42 - History**
- 42-211 - History of Civilization I
  - 42-212 - History of Civilization II
  - 42-221 - History of U.S. and Pa. I
  - 42-222 - History of U.S. and Pa. II
  - 42-223 - Economic History of the U.S.
  - 42-231 - History of Europe I
  - 42-232 - History of Europe II
  - 42-244 - History of Russia
  - 42-323 - History of Colonial America
  - 42-326 - Diplomatic History of the U.S.
  - 42-333 - Social and Cultural History of Modern Europe
  - 42-343 - History of the Far East
  - 42-353 - Latin America and the United States
  - 42-423 - Problems in United States History
  - 42-443 - Selected Contemporary Cultures

- 43 - Philosophy**
- 43-211 - Introduction to Philosophy
  - 43-301 - Ethics
  - 43-302 - Logic
  - 43-311 - History of Ancient Philosophy

- 44 - Political Science**
- 44-211 - United States Government
  - 44-212 - Principles of Sociology
  - 44-313 - State and Local Government
  - 44-314 - Political Parties and Elections
  - 44-316 - Public Opinion and Propaganda
  - 44-323 - Comparative Governments
  - 44-324 - International Relations
  - 44-433 - History of Political Thought
  - 44-441 - Public Administration
  - 44-451 - Constitutional Law

- 45 - Sociology**
- 45-211 - Principles of Sociology
  - 45-313 - Contemporary Social Problems
  - 45-315 - Racial and National Minority Groups
  - 45-323 - Introduction to Anthropology
  - 45-331 - Marriage and the Family
  - 45-351 - Sociological Theory

- 50 - Biology**
- 50-103 - General Biology
  - 50-211 - Invertebrate Zoology
  - 50-212 - General Botany
  - 50-241 - Plant Anatomy
  - 50-252 - Parasitology
  - 50-321 - Vertebrate Anatomy
  - 50-332 - Microbiology
  - 50-341 - Genetics
  - 50-351 - Microbiology
  - 50-401 - Radiation Biology
  - 50-431 - Biology of the Arthropods
  - 50-441 - Biochemistry
  - 50-492 - Research Topics in Biology

- 52 - Chemistry**
- 52-111 - General Inorganic Chemistry I

## Outcome Maroon & Gold Editorials Discussed With Administration

The Dean of Instruction, the Comptroller of Student Funds, the Dean of Students, the Head Librarian, and the Assembly Committee Chairman, were interviewed by reporters of the M&G this week in regard to problems raised in recent editorials. Cuts, Magazine binding, card playing in the Husky, and assembly policies are all discussed and clarified in the following interviews.

### Library

Recent editorial comment in the M&G concerning difficulty in getting magazines resulted in an interview recently with Miss Eleanor Keefer, head librarian. The editorial had raised the question, "Why can't the volumes be bound during the summer months?" Miss Keefer, during the course of the interview, answered the question by citing various problems involved in having magazines bound.

### State Regulation

To begin with, the librarians are under state regulations concerning the binding of magazines. The state tells them when and where they may bind their magazines, and then Harrisburg proceeds to notify the binders. After this notification, the binders send someone to pick up the magazines with the promise to return them within a few weeks. But, unfortunately, this promise is seldom fulfilled.

### Complete Volumes Needed

Secondly, all issues must be available before the magazines can be sent to the binders. Thus, if a faculty member requests that a particular issue be put on reserve for his summer sessions the magazine

cannot be bound until the issue is no longer required. The problem of mutilation and theft of magazines also hinders prompt binding of volumes. Then, too, even after the bound volumes are completed and on the shelves, students often tear issues from these volumes. As a result, the volume must be returned to the binders for replacement of the missing issue at ten to fifteen times the cost of the original.

### Problem Recognized

There is no concrete solution to the magazine problem, but the College Librarians recognize the situation and are doing their best to remedy it. Whenever possible, magazines are sent to the binders during the summer months. The fact still remains that if today's magazines are going to be available to tomorrow's students they must be bound. Unfortunately, this is going to inconvenience some students now, but it cannot be avoided.

Miss Keefer concluded by seeking all students' cooperation and patience with regard to this problem.

### Cut Policy

During a recent interview with Dean Hoch, Dean of Instruction, the recent editorial about "cuts" was discussed. Dean Hoch stated that actually there is no set "cut policy" at BSC — the effect of absence on a grade is the responsibility of the individual class instructor. The policy of attendance stated in the Faculty Handbook and in the Pilot is as follows:

### Faculty Responsibility

"Instructors are responsible for checking attendance in all classes.

Following each absence, the student must hand in a signed absence report form secured at the college store to the instructor, who in turn is required to file this report with the Dean of Instruction.

"If a student has been absent from class three consecutive times, or shows a considerable irregularity of attendance, these absences are to be reported on a special absence report form and filed with the Dean of Instruction.

"Absences and their effect on scholarship are evaluated by the individual instructor; however, authorized group trips or activities are evidenced by lists of students sent by the Dean of Instruction to all faculty members."

### Instructors Are Liberal

Dean Hoch noted that most instructors are rather liberal in adhering to this policy. He based this observation upon the number of absence reports which are filed in his office. These have decreased in quantity. A decade ago there were ten times as many reports filed for one-third as many students. He also noted that the College Book Store's sales of absence slips has decreased.

### Approved Absences

Approved absences for school-sponsored activities come from the Dean's office, as the policy quoted above states. These absent students will be given every chance to make up any missed work, provided they take the initiative. The Dean's Office will support any legally excused student if they take the initiative. On the other hand, Dean Hoch said, "If you cut classes, have

(Continued on page 4)

## MRA Toy Dance To Help Children

The approaching Christmas season will be brighter for nearly 500 children in eleven regional hospitals this year because of the interest of the Bloomsburg State College community and particularly the Men's Resident Council.

### "Toys For Tots"

Larry Gloeckler, a senior from Rockledge, Pennsylvania, and President of the Men's Resident Council, has announced that a "Toys for Tots Dance" will be held in Centennial Gymnasium on Thursday, December 16, from 8:00 to 11:30 p.m. The price of admission for members of the college will be a toy. Students and faculty members who cannot attend the dance are asked to bring toys to the Dean of Men's office before Friday, December 17.

### Distribution

The toys will be delivered on Dec. 17 by Mr. Gloeckler, Elton Hunsinger, Dean of Men, and Santa Claus in the person of William Troutman, a senior from Llewellyn, Pennsylvania. Santa and his helpers will forsake the traditional reindeer and sleigh for the space, convenience, and speed of a station wagon.

### Children Will Be Visited In The Following Hospitals:

- Bloomsburg, Berwick, Geisinger Medical Center (Danville), Sunbury Community Hospital, Selinsgrove State School, Shamokin State Hospital, Ashland State Hospital, Ashland Heart Hospital, Shenandoah State Hospital, Pottsville General Hospital, and Good Samaritan Hospital (Pottsville).

## Concert Choir Presents "Messiah," Assembly Programs; Tours Schools



Sue Harper, Mr. and Mrs. Decker, Ralph Miller, Mrs. Lois Sturgeon at the organ, in practice session.

The BSC Concert Choir will present Part I of Handel's great oratorio, the Messiah, Tuesday night, Dec. 14, at 8:30 in Carver Auditorium. Student soloists include Susan Harper, Jan Space, Ralph Miller and Tim Hoffman, with Mr. William Decker conducting. Two wives of faculty members will also participate in this performance. Mrs. Thomas Sturgeon will be the organist and Mrs. Decker will be the soprano soloist.

All of Part I will be performed, with the exception that the "Hallelujah" Chorus will end the concert instead of the lesser-known chorus, "His Yoke Is Easy."

### Assemblies Planned

The Concert Choir will also present both assemblies next week, but the program for these concerts will be varied and will include popular Christmas pieces as well as classics by Palestrina and Gibbons.

### Singers On Tour

The Concert Choir is performing concerts at Southern Area and Danville High Schools today. Joining them are the Men's Glee Club and the Madrigal Singers. The Madrigal Singers have been busy presenting concerts off campus during December for various groups in the community. The Men's Glee Club will join the Harmonettes in an evening program Thursday, December 16.

## Houk Named To Olympic Committees



Coach Houk

Russell Houk, Director of Athletics and Head Coach of varsity football and wrestling at BSC, has been named to serve on the United States Olympic Games Committees, according to word received recently by Dr. Andruss, College President.

### "Coach Of The Year"

This announcement was sent to Dr. Andruss by A. O. Duer, execu-

tive secretary-treasurer of the NAIA. Coach Houk is a member of the NAIA Wrestling Coaches Association, and during three of the past four years, has been named "Wrestling Coach of the Year" by the NAIA.

### Committee's Function

The function of the Games Committee is that of cooperating with representatives from other national organizations to select the athletes and administer the program in their respective sports for participation in the Olympics and Pan-American Games.

### On Fifteen Committees

Coach Houk is one of thirty-seven individuals representing the NAIA on fifteen Olympic Games Committees. His appointment will continue through the 1968 Olympic Games. Houk attended the meeting of the Games Committees which were held concurrently with the U.S. Quadrennial Olympic meeting in Washington, D.C.

The name of Ann Sharretts, Bloomsburg, was inadvertently omitted from the list of those seniors elected to Who's Who which appeared in the last edition of the M&G.

# EDITORIALS

## Topic: Interviews

We would like to take this opportunity to thank all those who took the time to cooperate with this newspaper in a series of interviews which we conducted this past week. The people interviewed did not owe it to anyone to give up their time and energy, but they did, and we appreciate it.

### Purpose of Interview

We conducted these interviews because we felt we owed it to our readers to follow up on some of the things we have sounded off about this past fall. As can be readily seen in the articles, not much change in the status quo is about to occur. But now we, and we hope you, can see why some of the present policies are in effect and will remain in effect.

### Cooperation Given

As we conducted these interviews, we received the impression that these people were glad to answer any questions concerning policies and to review any suggestions presented to them. This is a healthy atmosphere of free exchange of ideas between students and administration and we hope that it will continue.

As always, we welcome comments from all members of the College Community on any campus issues, and we shall be glad to direct questions concerning policies to the proper individuals.

## Topic: Decorations

What is the first thing one notices about the BSC campus around this time of the year? The Christmas decorations, of course. These decorations can be observed all over campus; in both the men's and women's residence halls, in the various buildings, the Commons, and especially in the Husky Lounge.

### Decorators To Be Commended

We feel that all those who took part in any way in the brightening of our campus for this holiday season are to be commended for their time, effort and artistic skill. We are sorry that we cannot name everyone who had a part in this activity, but the list is certainly a long one. Special thanks go out to those who decorated the Husky Lounge, the Commons, and the lobbies of the dorms, for these are the places most frequented by students. These decorations are indicative of spirit, both holiday and school, and are certainly appreciated by all members of the BSC college community.

## Topic: Injured Players

It has come to our attention that a number of people on campus, notably Dr. Rabb, may have misinterpreted an article we ran on last week's sports page. We received a note from Dr. Rabb concerning the article which listed and pictured a number of Husky football players who were injured during this fall's football season. He felt that the article was in poor taste as it might dissuade future aspirants to the sport. He felt that we should instead single out those who played the sport faithfully for four years, even though their achievements may not have been spectacular, and give them recognition for their service to the college.

### M&G Feels Recognition Has Been Given

In the November 19 issue of the M&G both of the staff's sports columnists, Ray Buckno and Irv Zablocky, mentioned and gave recognition to the BSC seniors who closed their grid careers this season. Secondly, the purpose of the article was not to discourage anyone from going out for a sport, rather it was to give recognition to a group of our fellow students who received injuries while representing our school on the athletic field. These men never received the chance to show their full capabilities and consequently never received the headlines that others of the team did. We apologize for any confusion or misinterpretation we may have caused with this article.

## Changes For Spring Semester Listed

Changes in the Master Schedule Booklet for the Spring Semester 1966 according to Mr. Bunge, Registrar are as follows:

- p. 6 — change Business Education (10-101-4) to T 4 in Room G 211.
- p. 6 — change Business Education (10-101-5) to T 1
- p. 6 — change Business Education (10-202-2) to M W Th F 2.
- p. 6 — change Business Education (10-221-3) to M W Th F.
- p. 17 — change Biology (50-411-1) Embryology to T Th 5, 6 F 4 in G 102.
- p. 21 — change French (70-316) to M W F 2 in F 2.
- p. 23 — change Speech (80-101-14) to T Th 8 in D 22.
- p. 23 — change Speech (80-101-19) to M F 6 in F 6.

### ERRORS IN THE BOOKLET INCLUDE:

- p. 9 — Psychology (12-201-E2) should read Room G 213
- p. 23 — Speech (80-101-5) should read M F 4.
- p. 23 — Speech (80-101-17) should read T Th 4.

Freshmen are reminded not to schedule any classes during period 6 on Thursday with the exception of foreign language laboratory classes where adjustments will be made "Y" period classes may be scheduled (especially mathematics courses) since class meeting time can be rearranged.

## Hours Announced For Registration

There will be a change of time in scheduling for certain students on December 15. All students (A through Z) who have 90 or more credits are to report for advance scheduling between 8:00 and 8:30 a.m. Then beginning at 8:30 all student employees of the college, students who are participating in winter athletic activities, cheerleaders, and members of musical organizations whose last names begin with the letters "A" through "H" inclusive are to schedule. They will be followed by persons in the "I" through "Q" category at 9:00 and "R" through "Z" at 9:30.

### Schedule Booklet

Starting at 10:00 a.m., the time schedule will be as listed in the green Master Schedule booklet; i.e., any student with 70 to 89 credits (as of September 2) will be allowed to prepare his schedule between 10:00 and 10:30.

Students in these particular groups must take their red-topped schedule choice cards to the Registrar's Office to be countersigned sometime between 8:30 a.m. on Tuesday, December 7, and 5:00 p.m. on Monday, December 13. This can only be accomplished if their names are on the approved lists previously sent to the Registrar's Office. No additional names will be added to these rosters.

### Restrictions

Students are advised that they may not enter Centennial Gymnasium except at their scheduled hour, and further, may not return at a later time. Also, they may enter and leave the building only through the one entrance or exit to which they will be directed. All other doors will be closed.

Anyone (especially freshmen) who has not paid the \$25.00 Activities Fee for the second semester will be required to pay that fee before he will be permitted to schedule.

Students are reminded that no classes will be held on December 15 with the exception that all students enrolled in Education 101 will take a test in Carver Auditorium at 8:00 a.m.

## Play Rescheduled; Jan. Deadline for "Twelfth Night"

by R. D. Richey

The Bloomsburg Players hope that the change of scheduling has not caused too much confusion among the students at Bloomsburg State College. *Twelfth Night*, by William Shakespeare, was originally placed on the calendar for this weekend, but due to the complexities of production, has been moved into the January 10th, 11th, and 12th, 1966, dates. Please mark the new dates on your college calendar.

### Rehearsals Broken Up

The Thanksgiving vacation, coming between the first and second major productions, cut the rehearsal time short, and at least six weeks of rehearsals are necessary for a production of this size. The scenic, musical, and numerous other technical requirements further complicate the staging of a Shakespearean production.

### Production At Full-Throttle

Mr. Michael James McHale, Director, and Mr. James McCubbin, Technical Director, and their respective personnel have been working full-steam to get the show ready for the January deadlines.

And please note that the performances will fall on Monday, Tuesday, and Wednesday nights, instead of the customary weekend. Posters and future announcements will clarify the ticket procedure for all students, faculty and staff personnel.

Our readers have probably noticed the somewhat unusual (?) makeup of this week's issue of the M&G. A word of explanation is necessary. We have included several lengthy articles which concern administrative announcements about scheduling. We felt that it was necessary to forego some of our regular material in order to present these announcements.

Deadline for next week's M&G is Monday, December 13, at 4:00 in the M&G office or in Box 58.

## Student Poetry

Editor's Note: Students who wish to contribute to this column should contact Luton Houtz, P.O. Box #440.

### ON THE BANKS OF THE HELLENT TORRENT

by Tom Curtis

An eerie darkness  
Fell over the riverbank,  
Barring the sun's life-giving  
warmth;  
Yet a true love flourished  
As though spring's most fragrant  
blossoms  
Shown brilliantly forth.

Her hair was like silken fibers  
With its buttercup-colored hue  
Radiantly glistening from the  
depths of her heart;  
And as we stood there in entranc-  
ing solitude,  
I dreamed of a love so strong and  
eternal  
That all earthly forces, even the  
wild current of the mighty  
river,  
Seemed as calm as the stillness and  
serenity of a fresh mountain  
brook.

Yet through the peaceful simplic-  
ity of this priceless moment,  
I detected an air of apprehension  
in her touch.  
Her lips became cold and tasteless;  
Her eyes bright and tearful as she  
turned and majestically  
Strode toward the banks of the  
hellsent trent.

As I rushed toward her in over-  
whelming desperation,  
The rain-swept lawn fought me in  
my vain attempts for her  
grasp;  
And as I fell she whispered my  
name.  
Inches from my outstretched, beck-  
oning fingers.  
The earth gave way to the rushing  
waters;  
No sound passed her lips and, as  
the surge consumed her,  
I wept insanely and bitterly, and  
cursed God.

## Rooks Victorious Against Lafayette

The Husky Rooks defeated Lafayette College on December 2 by a one game margin. It was a College Chess League match and the final score was 3 to 2.

Joe Kressler beat Mike Davis in a close game. Reggie Berlin resigned to Richard Spitalnek. Leonard Thomas was defeated by his opponent, Jim Schrader. Bob Scott won his game against Charley Gordon. Bob Lataha won an easy victory over Bob Rothgeber. In an unofficial sixth board game Leonard Latchford defeated Rick Smith. The team was coached by Dr. Gil G. Selders.

Today the BSC Chess Team travels to Edinboro State College to defend its title in the State College Chess Championship. The team will probably consist of Joe Kressler, Reggie Berlin, Roy Depew, and Leonard Thomas.

Attention: All freshmen, transfer students and returning students. The Community Activities fee of \$25 for the second semester must be paid at the gym on December 15, 1965 before you will be allowed to complete your advanced scheduling.

Due to a printing error the pictures of injured football players appearing in last week's issue were out of order. They should be identified in the following order: left column top to bottom, Mike Bonnacl, Jerry Robinson, John Watto; right column top to bottom, Barry Denes, Tom Vargo, John Whiteloch, and Paul Zenyuh.

The dictionary is the only place success comes before work!

## Letters To the Editor



Sir:  
"Who's Who is a national directory of distinguished students throughout the nation . . ." the individuals selected for the honor being chosen . . . on the basis of actual ability, scholastic achievement, personal traits, leadership, potential usefulness to society and professional promise."

I contend that on the foundation of the qualifications presented, the word "distinguished," as it applies to students in the preceding definition of Who's Who, be stricken from said definition on the grounds that: (1) the minimum cumulative average to be eligible for the 1966 publication of Who's Who, as decided by this year's Who's Who Committee at Bloomsburg State College, was 2.5; (2) as indicated on page 79 of *The Pilot*, 1965, a 2.0 cumulative average is denoted as a "C," and, thus, "average," which signifies that a 2.5 cumulative average is middle "C" and, consequently, still "medium" or "average"; (3) as stated on page 76 of *The Pilot*, a grade of "B" is

considered "high," hence a cumulative average of at least a 3.0 would be regarded as "high"; (4) distinguished implies a stance apart from those of the mean, and, in this case, it connotes outstanding scholastic and social achievement; and (5) although there are no published statistics available, this year's group of Bloomsburg seniors selected for Who's Who had a cumulative average norm of approximately 3.2, as related to the undersigned by Dean Reigel, Chairman of the Who's Who Committee.

The preceding would indicate that there are some, and possibly almost half, of the 32 students selected maintaining less than what is considered high scholastic achievement. Since the other qualifications listed for Who's Who are of a subjective nature, based on the decision of seven individuals who compose the Who's Who Committee, membership being limited to deans and faculty, I hold that at least scholastic achievement be preserved at a high level, as indicated by a cumulative average of 3.0 plus. A truly "distinguished" individual hardly needs a crutch; unless the definition is revised, or all of the qualifications adhered to in a manner associated with outstanding achievement, the honor will be meaningless, and public citation of such ineptness, a disservice.

Respectfully,  
Cheryl A. Furey

(Letters to the Editor are an expression of the individual writer's opinion and do not necessarily reflect the views of this newspaper.)

**MAROON & GOLD**

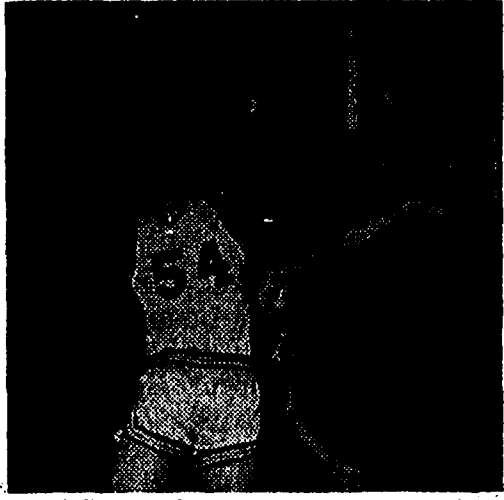
Vol. XLIV      FRIDAY, DECEMBER 10, 1965      No. 11

Editor — WILLIAM J. HOWELLS

Advisor — MR. RICHARD SAVAGE Junior Advisors: Luton Houtz, Len Lawrence, Marshall Siegel, Nancy Smith. Managing Editor: Doug Hippenstiel Reporters: Alana Matter, Sharon Avery, Mary Lou Cavallini, Bonnie Brandau, Alice Chapman, Toni Matulis, Jan Pios, Bruce Hopkins, Tim Lavelle, Vince Marlon, Janice Feinster, Pat Conwell, Jean Dunn, Martha Siemins, Barbara Kiner, Margie Matuella, Scott Clarke. Feature Editor: Judy Gers. Feature Writers: Frank Garrigan, Ted Aff, Harry Swank, Larry Remley, Bill Winch, Howie Kearns, Stevonn Fecher, Richie Benyo, Jon Ackley, Luton Houtz. Sports Editor: George Yacina. Sports Staff: Irwin Zablocky, Michael Christina, Gregory Schrim, Bill Darricott, Harry Hamilton, Darlene Wroblewski, Ray Buckno, Paul Allen, John Zaraki, Larry Swisher. Photography Editor: Marshall Siegel. Photography Staff: Dale Carmody, Jerry McBride.	Business Manager — RONALD JACKSON Art Director: Richie Benyo Art Staff: Edward Rhoades Copy Editor: Alice Chapman Copy Staff: Cheryl Berninger, Monika Vizachero, Nancy Smith, Pat Conwell, Judy Prowant, Bonnie Brandau, Alana Matter, Celia Flaherty, Harry Swank, Mary Lou Cavallini, Darla Woll. Typing Coordinator: Jon Ackley Typing Staff: Elizabeth Beck, Carolyn Fox, Kaye Kisenwether, Kathy Elliott, Gail Morris, Diane Maliniak, Lynn Wesley, Pam Bixler, John Ondish. Advertising Manager: Bonnie Hileman Advertising Staff: Lynn Segin Circulation Manager: Kenneth Brown Circulation Staff: Marlene Laughlin, George Durilla, Len Lawrence, John Falatovich, Paul Walters, Richard Hartman, Denny Byrne. Business Staff: Mark Moyer, Dottie Hamilton, Ken Adams.
---	--

The Maroon and Gold is published weekly by the students of Bloomsburg State College, Bloomsburg, Pa. The paper is a member of the Columbia Scholastic Press Association and the Collegiate Press Service. All opinions expressed by columnists and feature writers including letters-to-the-editor are not necessarily those of this publication but those of the individuals.

## BSC Cagers Lose 1965-66 Openers



BSC's Jack Garity pumps in two points against Indiana in 85-82 defeat.

BSC's Varsity basketball team opened their 1965-66 season in Centennial Gym with an 85-82 loss to visiting Indiana State College.

The Huskies quickly jumped into the lead as the game began and completely overran Indiana's awkward man-to-man defense with Gene Miller leading the BSC offense. The Huskies managed to control the game throughout the first half and went into the locker room with a 39-31 lead. **Indiana Comes To Life**

The second half proved to be quite different, however, as the Huskies found themselves in serious trouble. The Indiana defense found themselves and with 8:00 remaining the visitors managed to tie the score.

Still the Huskies managed to hold a one point advantage until with 1:15 left Gene Miller was injured, leaving the BSC defense one man short and Indiana pulled ahead by a single point.

BSC couldn't regain the lead and as the final gun sounded Indiana held a three point margin.

### Second Defeat In a Row

The Bloomsburg Huskies traveled to Cheyney State College last Saturday night and absorbed their second loss of the season, losing by a score of 92-76. As the game began it looked as though the Huskies might pull off a major upset as they jumped off to an 18-7 lead. The Wolverines were just too tall for the Huskies as four of their starters were over 6' 4". The Husky trio of Mike Morrow, By Hopkins and Gene Miller got into early foul trouble and had to sit out much of the game. Although they sat out for quite a while, this same trio led the Bloomsburg scoring attack. Morrow dumped in 28 points, Hopkins got 20 and Miller contributed 10. The Wolverines were led by Kunye, who had 20 points, Mims with 17, Washington had 14 and 6' 10" Booker had 13.

The Bloomsburg Freshmen won a close game by a score of 73-69. The Huskies were led by Jack Carney with 21, Bob Matuza with 18 and Palmer Toto had 11. Steele for the Wolverines had 23 in a losing cause.

This upcoming Monday evening, the freshman basketball team of BSC will meet the freshman basketball team of Bucknell. Immediately following this game, a game between the faculties of BSC and of Berwick High School will be played.

The faculty of Berwick will be led by Jim Davis, head basketball coach and former Eastern League player for the Wilkes-Barre Barons, Adam Sieminski, head football coach and Jerry Hittle, Berwick backfield coach. **Faculty All-Stars**

The BSC Faculty All-Stars will be loaded with talent. The team consists of 15 members of the faculty. They are Robert Norton, Tom Davies, Earl Voss, former West Chester basketball captain, John Walker, former center for Westminster, Robert Bender, Doug Boelhower, graduate of Rutgers, Robert Davenport, Gerry Maurey, Mike Herbert, Nick Dietterick, Eli McLaughlin and Walter Blair.

## ..Highlights.. from the ... SIDELINES

by Ray Buckno

They went. They saw. But they didn't conquer. That was the story of the HUSKIES this past weekend. All the talk about the unbeatable Cheyney College basketball team is but to be spoken of this year. True, last year Cheyney was the unbeatable team of the State Conference, but this season things are a little different.

For those who were not at the game here is a fast run down of what happened. Bloom held an 18-6 lead early in the game and things looked mighty good for the HUSKIES. But there the roof came down, for Gene Miller had to be taken out of the game with 15 minutes remaining in the first half with three fouls to his name and as if that wasn't enough, the same thing happened with Mike Morrow with about 10 minutes remaining in the first half.

Now any good sport fan knows that without height at team just can't win for they can't control the boards. As Coach Norton put it, "Without Miller (6' 3") and Morrow (6' 4"), Cheyney played volleyball underneath the offensive boards." To put it bluntly, we couldn't buy a rebound after our two big men left the game.

Now if things go our way against Cheyney at Bloom, we should be able to stop the unbeatables. For after the second half, Bloom played even up ball and was in the game all the way except for being on the short end of the "cave-in" in the first half. And this columnist will go out on a limb and venture to say that not only will Cheyney be beaten by Bloom but also that Millersville will also do a job against the so-called "unbeatables."

By the way, for those who are not informed about the happenings of Saturday night, Bloom lost 75-91 to Cheyney State.

As for the winter sports scene the score stands no wins (0) for Bloom, three wins for the opposition. Two of those losses coming in

By Irwin Zablocky

Clarion wrestlers are very optimistic this year because they have been undefeated in dual competition for three seasons, were state champions last year, and have practically the same team as last year. Of course, they haven't wrestled Bloomsburg or Lock Haven individually and they were lucky not to have wrestled the Huskies or Bald Eagles earlier in last year's states. Had that been the case, I'm sure they wouldn't have had so many boys in the finals — which is most important.

"By" Hopkins' .94 E.R.A. placed him 20th in the NAIA and 12th in the NCAA listing of "Individual Pitching Leaders." In the same category Bill Hunter was 45th NAIA with a 1.56 E.R.A.

(Continued on page 4)

basketball and the other loss came in swimming, to a mighty fine Temple team. By the way, Derr, this columnist understands that you were asked to kindly control your emotions of hate against Temple and your buddy, John Lillenfild who did a nice job for Temple, swimming, that is. Looks as if he got the best of you, but then there is always wrestling and the Wilkes Tournament.

Tomorrow, Bloom wrestling fans will see just what Coach Houk has come up with this season. For Saturday our Matmen will wrestle three different teams within eight hours. This is eight hours well worth sitting through to see just how great your College is in wrestling. And the answer to all those students from Lycoming College will be given by 8:30 that evening because the Bloom-Lycoming match won't have to go down to the wire, it will be settled after the first five weights. Like the saying goes at Bloom, Lycoming + 1 = 1. That's all for today, the rest happens tomorrow.

## BSC Swimmers Lose To Temple; Biggs Captures Two Pool Marks

The swimmers from Temple University handed BSC's varsity swimmers a 56-39 loss in the first meet of the season for the inexperienced Huskies.

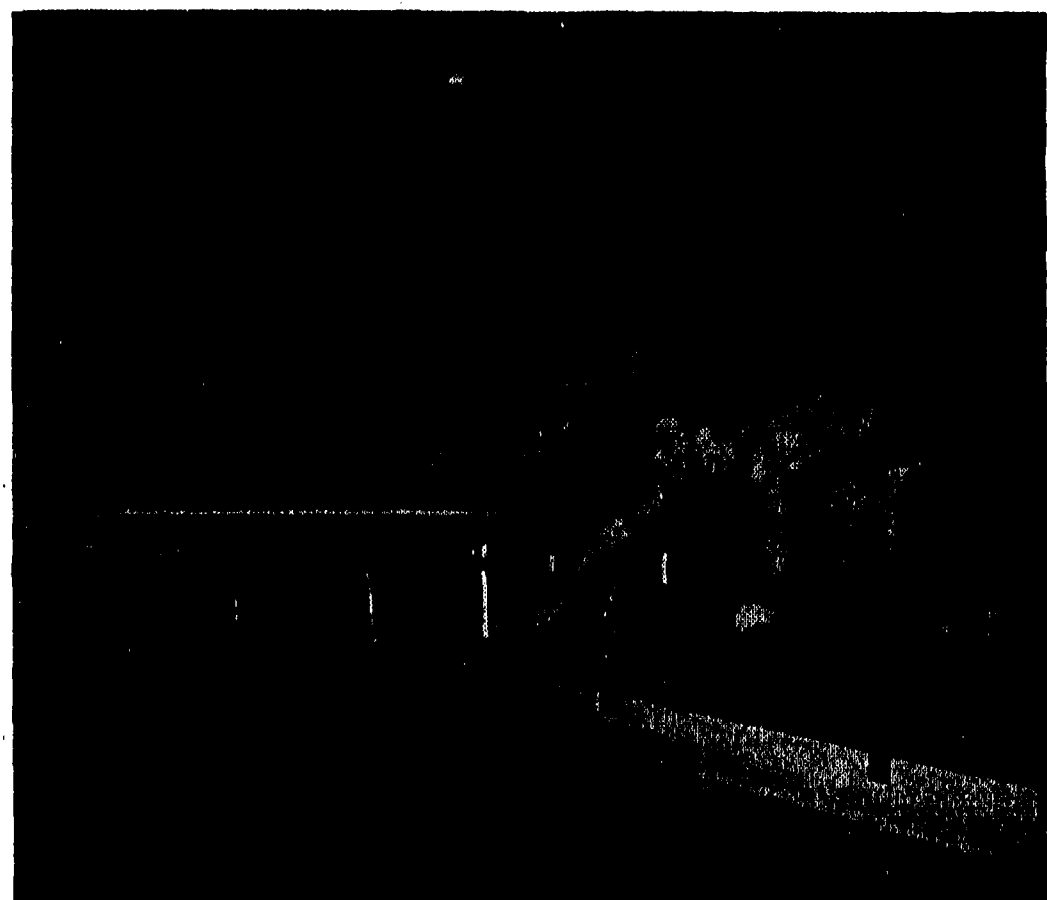
### Biggs Sets Records

Sophomore John Biggs led the BSC effort by winning the 50 yard free style in 23.4 seconds for a new pool and team record. He then went on to win the 100 yard free style in 52.2 seconds for another pool and team record. Co-Captain Dick Steidel also scored a victory in the diving competition showing his usual excellent form.

Another bright spot for the Huskies was Walt Fischel's performance in the 200 yard individual medley relay. Though finishing second Walt lowered the BSC team mark in this event to 2:33.7.

### Other Tankmen

Other tankmen that placed were Jim Poehman who placed third in both the 200 yard free style, and the 500 yard free-style; Pete Wilde placed second in the 500 yard free style; Fred Bauch placed third in the 200 yard breast-stroke; Don Beltz took a second in the 200 yard back-stroke; and Ray Fox took a third in the 200 yard back-stroke.



Husky Tankmen Pete Wilde and Fred Bauch take-off in the 200 yard breaststroke, Bauch placed third, Huskies lost 56-39.

Here's the excitement and great music from Ferrante and Teicher's concert tours that have broken box office records all over the country. It's a great one...

on **UNITED ARTISTS** of course

STEREO UAS 6444 MONO UAL 3444 Available wherever albums are sold

Our smart "go-together"

**FALL SEPARATES**

make good Fashion

Sense on campus!

**ARCUS'**

Bloomsburg - Danville

**Harry Logan**

FINE JEWELRY and REPAIRING

Your Jeweler away from home.

BSC CLASS RINGS

5 W. Main St. Bloomsburg

**JOHNNY'S DINER**

New Berwick Highway - Bloomsburg

Phone 784-9892

EVERY THURSDAY

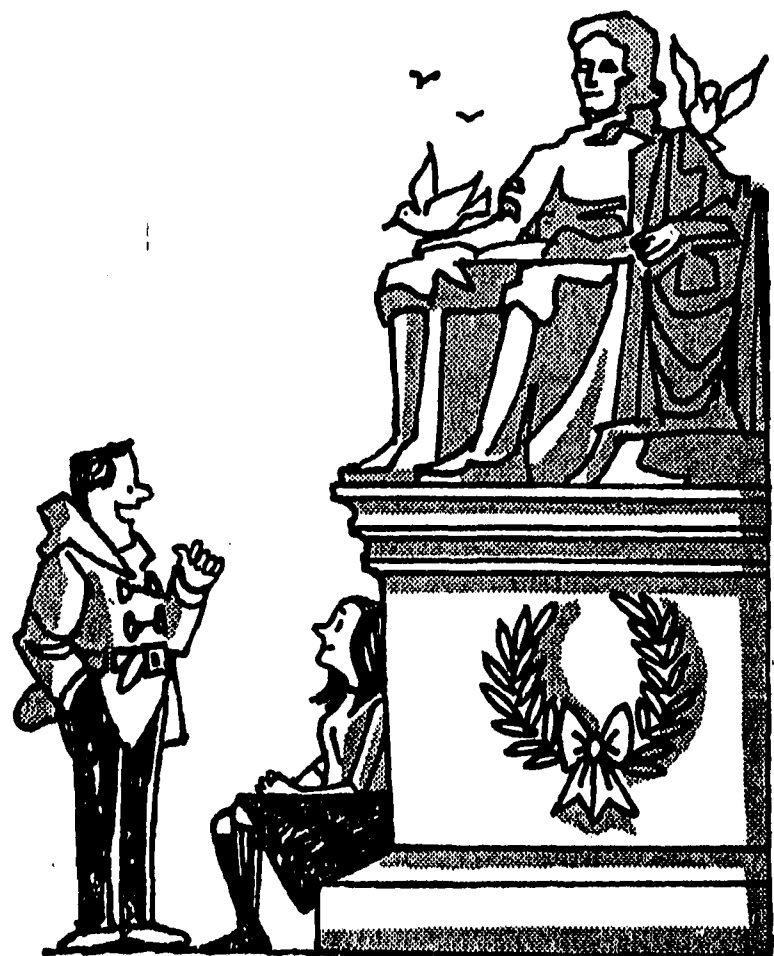
OUR FAMOUS SPAGHETTI & MEAT BALLS — \$1.00

All You Can Eat!

— Made To Order —

HOT SAUSAGE • CHIP STEAK w/Peppers and Onions

HOAGIES — HOME MADE SOUPS



HE: First time I ever made the Dean's List.  
SHE: You gonna call your folks?  
HE: The shock might kill them.

Risk it. Good news—however startling—is always welcome. Besides, your parents look forward to hearing from you. Call home often.

The Bell Telephone Company of Pennsylvania



Sidelines

(Continued from page 3)

Finally, we had two more placings among NAIA "Individual Bating Leaders." They were Ron Kirk with a .400 and 52nd and Ray Emma with a .382 and 72nd.

Our basketball team is working much more like a unit this year. Coach Norton feels that four of our starters: "By" Hopkins, Mike Morrow, John Gara, and Jack Garrity, lack experience and should develop with the season.

I'm sure everyone had their eyes on Palmer Toto on December 1st. He was a one-man show against Lackawana Junior College in both ball-handling and shooting.

Tonight we play one of our biggest basketball rivals, Mansfield. The student body is going to have to be out in full force to make the Huskies play their best.

Then, on Saturday, we meet three of our strongest wrestling rivals: Southern Illinois, Indiana State (Ind.), and Lycoming. We beat Southern Ill. two years ago when they were ranked third in the nation and then again last year.

The Huskies meet this foe right off the bat on Saturday at 1:00. So let's have the gym packed by then! Indiana State is reputed to be the best team in their state this year and we go against them right after Southern Illinois.

Only 12 shopping days left till Christmas.

Fall Courses

continued from p. 1

- 52-112 - General Inorganic Chemistry II
52-322 - Organic Qualitative Analysis
52-331 - Organic Chemistry I
52-332 - Organic Chemistry II
52-411 - Physical Chemistry I
52-431 - Industrial Chemistry
52-441 - Biochemistry
52-492 - Research Topics in Chemistry

53 - Mathematics

- 53-101 - Fundamentals of Mathematics I
53-111 - College Algebra
53-112 - Trigonometry
53-116 - Introductory Statistics
53-211 - Analytic Geometry
53-212 - Differential Calculus
53-216 - Statistics
53-224 - College Geometry
53-311 - Integral Calculus
53-312 - Differential Equations
53-321 - Introduction to Modern Algebra
53-324 - Modern Geometry
53-411 - Advanced Calculus
53-421 - Linear Algebra

54 - Physics

- 54-101 - Basic Physical Science
54-111 - General Physics I
54-112 - General Physics II
54-225 - Demonstrations in Physics
54-315 - Electronics and Solid State
54-321 - Atomic Physics
54-412 - Optics
54-413 - Wave Motion, Sound, and Heat

63 - Health

- 63-101 - Principles of Hygiene
63-302 - Elementary Health Education Curriculum
63-321 - Safety Education

64 - Nursing Education

- 64-307 - Modern Communicable Diseases

65 - Physical Education

- 65-101 - Physical Education I
65-102 - Aquatics
65-201 - Recreational
65-300 - Foundations of Health and Physical Education
65-301 - Elementary Physical Activity
65-311 - Methods and Materials in Elementary Health and Physical Education
65-331 - Recreation Education
65-341 - Adapted Physical Education

66 - Special Education

- 66-201 - Education of Exceptional Children
66-303 - Crafts for Primary and Intermediate Levels of Mental Retardation
66-304 - Advanced Arts and Crafts
66-321 - Mental Tests (Group)
66-322 - Mental Tests (Individual)
66-351 - Special Class Methods
66-352 - Language Arts for Special Classes
66-361 - Problems in Special Education
66-401 - Student Teaching of Mentally Retarded
66-411 - Professional Practicum
66-416 - Psychology of Exceptional Children

67 - Speech Correction

- 67-251 - Phonetics
67-276 - Hearing Problems
67-351 - Clinical Methods in Speech Correction
67-352 - Speech Clinic (Practicum) or Clinical Practicum I
67-353 - Speech Clinic, or Clinical Practicum II

- 67-354 - Articulation Problems in Public Schools
67-402 - Student Teaching in Speech Correction
67-452 - Anatomy of Speech and Hearing Mechanisms
67-467 - Psychology of Speech and Hearing

70 - French

- 70-101 - Beginning French I
70-103 - Intermediate French I
70-210 - Contemporary Literature of France
70-301 - Advanced Conversation and Composition
70-310 - The Culture and Civilization of France
70-315 - The French Short Story
70-316 - The French Novel
70-321 - The History of French Literature
70-401 - French Linguistics
70-402 - The Methods and Materials of Teaching French
70-417 - French Lyric Poetry
70 - Fine Arts of France
70 - French Philosophical Thought
70 - French Drama to 1830

71 - German

- 71-101 - Beginning German I
71-103 - Intermediate German I
71-210 - Contemporary Literature I
71-301 - Advanced Conversation and Composition I
71-310 - The Culture and Civilization of Germany I
71-315 - The German Short Story
71-321 - The History of German Literature
71-401 - German Linguistics
71-402 - Methods and Materials for Teaching German

72 - Spanish

- 72-101 - Beginning Spanish
72-103 - Intermediate Spanish
72-210 - Contemporary Literature
72-301 - Advanced Conversation and Composition
72-310 - The Culture and Civilization of Spain
72-315 - The Spanish Short Story
72-321 - The History of Spanish Literature
72-401 - Spanish Linguistics
72-402 - The Methods and Materials of Teaching Spanish

73 - Russian

- 73-101 - Beginning Russian I
73-103 - Intermediate Russian I

80 - Speech

- 80-101 - Fundamentals of Speech
80-103 - Basic Speech (A/S)
80-206 - Oral Interpretation of Literature
80-208 - Introduction to Theatre Arts
80-211 - Theatre Production
80-221 - Argumentation
80-231 - Introduction to Radio and Television
80-301 - Advanced Speech
80-311 - Diction
80-312 - Fundamentals of Acting
80-314 - Costuming for the Stage
80-315 - History of the Theatre
80-318 - Discussion
80-319 - Children's Theatre
80-325 - Extempore Speech

M&G Editorials

(Continued from page 1)

a solid B and receive a C - that's tough! It's the professor's privilege. He determines your class grade upon class performance and attendance!

Cut Per Credit

"A cut policy of one per credit hour is not a good policy because it turns instructors into bookkeepers. However, any change in the attendance policy will have to come from the faculty," Dean Hoch continued. "I, for one, will not recommend it, for what we have at BSC is a good policy - the individual instructor must decide what to do about student absences."

Card Playing

The M&G interviewed Mr. Horace Williams, Comptroller, and Mr. Paul Reigel, Dean of Students, in conjunction with an editorial printed on November 5, 1965 concerning card playing in the Husky Lounge before 4:00. The editorial had made the suggestion that card playing be eliminated between the hours of 11 and 1:30 instead of all hours until 4:00.

Used Heavily

Both Dean Reigel and Mr. Williams realized the problems of making the Lounge available to the student body to use as it wishes at all times during the day. They also admitted that most of the congestion occurs between 11:00 and 1:30. But both men pointed out that the Lounge is used heavily at all hours of the day, at least until around 4:00, when most classes are over and commuting students have left for the day.

It was noted that the present policy was put into operation when Dr. McCauslin was the Dean of Students. However, both Mr. Williams and Dean Reigel have reviewed the situation in the Lounge this year and it is their feeling that in order for the Lounge to be made available to the largest number of students possible, the card playing rule must stay in force.

Limited Space

They took a number of factors into consideration in making this evaluation, chief among which was the limitations of space in the Lounge and the largest enrollment in BSC history. Dean Reigel gave the example of a group of four card players taking up the space that eight or more other students could be using if they were not playing cards. Mr. Williams added

that while it is true that card players have the same rights to use the Lounge as others, the person who stops between classes for a "smoke and a coke" also has these rights and should have a place to sit down if he wishes. Another factor considered by both men was the fact that some accommodations be made for commuting students also, since the areas provided for them are lacking in space. It was noted that these students have the same rights to the Lounge as resident students. It was also pointed out that other space is available for use by the students who wish to play cards, including the day lounges, New North Hall and Walser Lounges.

Conclusion

In summing the situation up, Dean Reigel thanked the M&G for its concern with this problem, but stated that because of the limitations of space in the Lounge, available space must be used in the best way possible. It is the feeling of the administration that until BSC gets more lounge space, card players will have to make this sacrifice in order for more of their fellow students to use the space that BSC does have.

Assemblies

"No policy exists as such at the present time with regard to faculty authority over students during assemblies and to overtime programs," said Mrs. Mary Lou John, Chairman of the Assembly Committee. Mrs. John was contacted in regard to an editorial appearing in the M&G, Number 8.

A meeting of the committee was scheduled for this week at which time it was to consider the problem and arrive at a decision. As soon as a policy is formulated, it shall be announced in these pages.

Back The Huskies

The Executive Board of the local Miss Eastern Pennsylvania Pageant requests that any BSC student, male or female, who knows an attractive, personable, and talented young lady, suggest her name to the Jaycees as a possible contestant. Nominations may be made by completing an entry blank, found on this page, and mailing it to Miss Eastern Pennsylvania Pageant, PO Box 101, Bloomsburg, Pa.

HOTEL MAGEE

The Most Convenient Location for Your Parents and Friends

Our Rooms have Air-conditioning and Television and are Newly Decorated.

Single Rooms - \$4.00 - \$5.25 - \$5.50 - \$6.00
Double Rooms - \$8.00 - \$9.00 - \$10.00

784-3200

STUDENTS!

Of course you can get a cash loan!

Our new LOANS TO STUDENTS SERVICE is designed especially for you.

Monthly repayments will be arranged to suit your particular circumstances.

Stop in or 'phone... We'll be glad to serve you.

Ritter Finance

118 Market St. (Ground Floor, Masonic Bldg.)

BERWICK, PA.

Phone 752-4535

ROCKS Steak House

CORNER EAST & FIFTH STS.

Home Cooked Foods

PRIME WESTERN BEEF - SEAFOOD SPAGHETTI

Private Parties

BETTY and BILL HASSERT Proprietors

7:30 A.M. - 12:00 A.M.

784-9895

Say "Merry Christmas" with...



GUARANTEED WORLDWIDE DELIVERY

WALKER'S

14 W. MAIN ST., BLOOMSBURG

Authorized Agency in Bloomsburg for

OMEGA

Finest Quality Watches

Artcarved

DIAMONDS and WEDDING RINGS

Budget Terms Arranged

Let's Go Grapplers

The DIXIE SHOP Bloomsburg's Fashion Corner

VARSITY GRILL

Eat Dance Recreation Pocket Billiards

OVER HOUSENICK'S SHOWROOMS

HOURS 10:00 'til 9 Mon. thru Sat.

Telephone 784-9877

BRING YOUR DATE or MEET AT THE GRILL

MISS EASTERN PENNSYLVANIA PAGEANT

Entry Blank

Name

Address

City Telephone No.

Parents Name & Address

Mail to: MISS EASTERN PENNSYLVANIA PAGEANT, P.O. BOX 101, BLOOMSBURG, PA.

An Official Miss America Preliminary Pageant