



MAROON & GOLD

1839 125th ANNIVERSARY - BSC 1964

CAMPUS NEWS AND VIEWS

Volume XLIII

Bloomsburg State College, Bloomsburg, Pa. — Friday, December 11, 1964

Number 9

Council Gives Final Approval Community Activities Budget

The final Community Activities Budget has been approved by College Council, governing body of Community Government Association. This budget is the final product of many hours of preparation and as such deserves the examination of each student to see just what the \$50 activities fee does for you.

This budget was created by the Joint Student-Faculty Committee on Budget, chaired by the Dean of Student Affairs. Prior to meetings of this committee, budget forms were sent to all organizations requesting an audit of income and expenditures for the college year 1963-64. In addition, estimates of income and expenditures for 1964-1965 were submitted by each organization. The submitted data was used as the criterion for establishing these budgeted allocations. Where increases or decreases existed in the estimated budget for said organizations over the last year, a statement was requested justifying the requested differences. In most cases, the amounts proposed have been equal to or in excess of the allocations requested.

PROPOSED INCOME ESTIMATES OF COMMUNITY ACTIVITIES

| | Estimated Income 1963-64 | Actual Income 1963-64 | Estimated Income 1964-65 |
|--|--------------------------------|-----------------------------|--------------------------------|
| Fees from Faculty and Students | \$106,725 | \$107,836.23 | \$124,400 |
| Athletic Admissions | 4,900 | 6,251.28 | 4,800 |
| Admissions and Other Receipts | 200 | 74.50 | 100 |
| Football Programs | 1,250 | 1,185.75 | 1,250 |
| Guarantees Received for Away Athletic Events | 520 | 445.00 | 500 |
| Station Wagon Use | 300 | 396.35 | 500 |
| Homecoming Dance | 200 | 176.00 | 200 |
| Fashion Show | 200 | | |
| Big Name Entertainment Receipts | 4,000 | 11,370.87 | 8,000 |
| Student Scholarship Fund | 2,000 | | 1,400 |
| College Desk Blotters | | | 400 |
| 1964 Summer Session Income | | | |
| Transfer | | | 3,000 |
| Miscellaneous | 500 | 16.60 | 500 |
| TOTALS | \$120,795 | \$127,752.58 | \$145,050 |

PROPOSED EXPENDITURES BUDGET OF COMMUNITY ACTIVITIES

| | Proposed Budget 1963-64 | Actual Budget 1963-64 | Proposed Budget 1964-65 |
|--------------------------------------|-------------------------------|-----------------------------|-------------------------------|
| Athletics and Recreation | \$ 33,250 | \$ 34,210.84 | \$ 38,600 |
| Cultural Programs | 8,500 | 8,454.85 | 8,400 |
| College and Community Service | 52,800 | 46,409.22 | 63,325 |
| Music | 5,200 | 5,200.00 | 5,800 |
| Publicity | 2,100 | 1,483.64 | 2,550 |
| Organizations | 13,500 | 13,516.50 | 16,580 |
| Furniture and Equipment | 2,000 | 2,274.94 | 3,000 |
| Reserve for Refunds and New Projects | 3,445 | 3,747.78 | 6,795 |
| GRAND TOTALS | \$120,795 | \$115,297.77 | \$145,050 |

Civic Music Association Begins Series Of Programs In Carver Next Week



William Warfield here on Jan. 6.

William Warfield To Appear Jan. 6

William Warfield, a noted bass-baritone, will appear in Carver Hall, January 6, at 8:15 p.m. He will be appearing as the second feature in this year's Civic Music Association Series.

Warfield has toured the world extensively, visiting every continent. Because of the reception he has received abroad, the State Department has chosen him to represent the United States six times as a cultural ambassador.

Warfield has been outstanding in every field open to the singer's art. As a concert artist he has toured abroad as cultural ambassador, as an orchestral soloist, he has appeared with a number of leading orchestras including the New York Philharmonic. As a festival singer he has appeared in such famous festivals as the Brussels International Fair and the Casals Festival. He has achieved success in the musical theater in the role of the crippled beggar in "Porgy and Bess." His straight dramatic talents have been exhibited in "The Green Pastures." He has made a number of television and radio programs. He has also appeared in the movies. His latest role was that of Joe in "Show Boat." Students are urged to attend this program.

Faculty members and students will be admitted free if they secure a ticket in advance from the Dean of Students. These tickets are available to the college community in return for CGA's contribution to the Bloomsburg Civic Music Organization.

Kaleidoscope Is First Presentation

KALEIDOSCOPE, the first number of the Civic Music Association Series, will be presented in Carver Auditorium on Tuesday, December 15, at 8:15 p.m. Featuring four Negro singers plus a pianist, the production will offer a program of vocal masterworks, from Baroque to Broadway, in dazzling solo, duet, trio, and quartet arrangements.

Martha Flowers, recently returned from her third season of guest appearances at the world-famous La Scala Opera in Milan, and Irving Barnes, who recently concluded an engagement with the New York City Light Opera Company in the title role of Gershwin's "Porgy and Bess," will share the spotlight with Elizabeth Brown and Donald Coleman on this tour. Miss Flowers and Mr. Barnes won lavish press and public acclaim abroad several seasons ago when they co-starred in the successful Russian and European tour production of "Porgy and Bess."

Vocal Variety

In addition to the operatic and Broadway musical highlights, the **KALEIDOSCOPE** program will also feature a variety of other vocal masterworks, including those by Passereau, Bach, Handel, and Toth.

BSC Students View Art Masterpieces In New York City

The Guggenheim Museum and the Museum of Modern Art were the highlights of a field trip to New York City for 124 art students last Friday.

Frank Lloyd Wright, designer of the Guggenheim, instead of following the conventional style of stacking floor upon floor, designed the interior in a continuous descending ramp. When starting a tour of the Museum, an elevator is taken to the top and observers walk down the sloped ramps viewing the works of art on the side walls. Alexander Calder's work was being exhibited the day of the Art Trip.

The bold, contemporary work of Picasso was featured in the Museum of Modern Art. Schools of surrealism, expressionism and regionalism, among several other forms of contemporary art, were represented.

Thirteen Seniors To Be Included In 1965 Publication Of Who's Who, National Directory Of Noted Students

Thirteen BSC students have been nominated and selected for inclusion in the 1965 publication of Who's Who Among Students in American Universities and Colleges, according to a recent announcement by that publication. The seniors selected for this honor are:

† **Louis Joseph Ciocca** who is a Business Education major from Glenside, Pa. and will be a May graduate. Lou's activities at BSC included male representative to CGA; Alpha Phi Omega member; president of Pi Omega Pi; varsity club secretary; and a member of the varsity football team.

Robert Michael Farina, a May graduate, is a Business Education major from Philadelphia. His activities include president of Men's Resident Council; dormitory counselor; varsity club; and a member of the varsity basketball team.

Roberta Caroline Kitzler, a January graduate, is a major from Meyerstown, Pa. Roberta's activities at BSC include vice-president of Waller Hall Governing Board and member of CGA committees.

Alexander Mahlon Kozlowski, a May graduate, is from Mt. Carmel and is in the Business Education curriculum. His activities include Business Education Club, CGA

committees, and Men's resident association.

Irene Martha Manning is a May graduate and is from Dalton, Pa. Irene is an elementary major specializing in Spanish. Her activities include being a Junior Resident Advisor and treasurer, vice-president, and president of B Club.

Thomas John Miller, an August graduate, is in the secondary curriculum, and is from Centuria, Pa. Tom's activities include freshman class president, CGA treasurer, and president of CGA.

Carol Ann Neel is from Milton, Pa., and is in the secondary curriculum. Graduating in January, Carol's activities included Waller Hall proctor, the Harmonettes as treasurer and president.

Ann Carol Raynook is also a January graduate and is from Weatherly, Pa., majoring in the secondary curriculum. Carol was active in Phi Kappa Delta as secretary and treasurer, B Club president, a Junior Resident Advisor, debating club secretary, and women's intramurals.

Patricia Ann Rugh is a May graduate from Milton, Pa., and is enrolled in the secondary curriculum. Pat's activities include a counselor in Waller Hall, member of Kappa Delta Pi, and the German Club.

Marilyn Ann Sheerer is from Port Royal, Pa., and will graduate in May. She is enrolled in the secondary education curriculum. Her activities include president of Waller Hall Association, B Club and Kappa Delta Pi.

Carl Peter Sheran from Metuchen, N.J., is a May graduate studying in the secondary curriculum. His activities at BSC include senior class president, CGA member, Kappa Delta Pi, and Sigma Pi.

Elizabeth Ann Winter is a May graduate enrolled in the elementary curriculum specializing in French and is from Jermy, Pa. Her activities include CGA secretary, Junior Resident Advisor, Women's Representative to CGA.

Carolyn Ann Wood, is a January graduate from Bloomsburg, Pa., enrolled in the elementary curriculum. Her activities include CGA committees, Day Women's president, Harmonettes and the **MAROON & GOLD**.

Who's Who is a national directory of distinguished students throughout the nation. Choice is made by the Deans and Directors on the basis of actual ability, scholastic achievement, personal traits, leadership, potential usefulness to society, and professional promise.

Special Education Student Teachers Meet Specialist

Thirty-two seniors in the mental retardation and speech correction curriculums of Special Education visited Harrisburg, Washington and Baltimore for their professional practicum trip last week. The faculty chaperones were Mr. Samuel P. Shilling, Assistant Professor of Speech Correction, and Dr. Evabelle Valney, Associate Professor of Special Education.

Harrisburg
In Harrisburg on December 2, the group visited the Department of Public Instruction, the Pennsylvania State Education Association, and a state library. They also had an opportunity to hear Governor Scranton explain Pennsylvania's role in national legislation for the poverty program.

Washington
In Washington on December 3, the group received a tour of the National Education Association and attended a convention of the Council for Exceptional Children in the Hotel Shoreham where they spoke with various persons in the field of special education and attended presentations of professional papers. A tour was made of the White House, and visits were made to John F. Kennedy's grave.

Baltimore
On December 4, the students and faculty visited the Baltimore Schools. At the William S. Baer School, demonstrations were given with a severely hard of hearing child and with children receiving speech therapy for organic problems. They toured the facilities of

Olympian Seeking Literary Material

The **Olympian**, BSC's student literary magazine, is anxious to receive poems, stories, essays, and plays from undergraduate and graduate students. An annual publication that appears in the spring, the **Olympian** is being edited this year by Randy Romig, a senior English major. Manuscripts should be sent to him at Box 696.

Special Art Section

In addition to the literary work printed in the 1965 **Olympian**, there will be a special section of reproduction of student art work, including paintings and sculptures. This feature is being prepared in cooperation with the Art Department.

Another **Olympian** feature will be a section devoted to the writing of guests, well-known professional writers who have been asked to submit previously unpublished work to the **Olympian**. In the past two years fifteen prominent young British and American poets published new works in the magazine.

Romig has described the editorial process by which manuscripts are accepted or rejected as being less imposing than it seems. All manuscripts are read by members of an editorial board, whose chairman is Latrice Sunaoka. These first readers advise the acceptance or rejection of the copy, with each submission read by at least three board members.

The material judged acceptable

(Continued on page 2)

the Venable Junior High School, which is a school for educable and trainable mentally retarded girls.

Season's Best To All Of You!

The Maroon and Gold staff would like to take this opportunity to wish you the best for the season to come and may your New Year be full and prosperous.

December 16th everyone will be packed up and singing "Home For The Holidays" but remember the spirit of the season, have fun, make your resolutions and come back to BSC full of the warmth of the holiday, to renew old friendships and make new ones. See you next year!

Future of Holiday: Christmas Or Merry Xmas

by Luton Houtz

And the light shone round about them, reflected from the gay metallic wrappings of packages. "Jingle Bells" blared out of the loudspeakers, alternating with announcement of bargains galore at counter "c" on the third floor. It was the night before Xmas and everybody was in the large halls making last minute purchases before the biggest event of the year.

Luckless People

Those luckless people who had spent their last dollar were wandering around looking at the huge metal Xmas tree and the big fake green wreaths.

They had a chance to rest by colored fountains and be refreshed by the free cups of lime and cherry soda given, in goodwill, by the management. The high stainless steel ceilings were gay with motorized planes and reindeer and sleighs carrying elves whose taped brains repeated Merry Xmas — Merry Xmas — Merry Xmas . . .

There were so very many things to see. No one could possibly see them all, so they just crowded around the big motorized tableaux of sleigh rides and skating parties and dancing. They were beautiful! By the time anyone got near the smaller displays in the back, the lights went out, trumpets blared and the big moment arrived.

Brilliant in a bright green suit with silver trim, the father of Xmas, Sindy Moneygrabber appeared. Everybody flocked around him and parents held their children up to him that they might be touched. Who cared about those small displays now? No one. But then, no one ever did. After all, it was only a shabby barn with animals and a baby in a feed trough. Now who would put a baby in a feed trough. But then, who cares? For Sindy was singing in a great metallic voice, Merry Xmas — Merry Xmas, 2564.

At National Meeting

Sam Bashore and Gerald Lanuti, will be delegates to the 18th National Convention of Alpha Phi Omega to be held December 27-29 at the Brown Palace Hotel, Denver, Colorado.

Delegates from approximately 300 chapters will meet to discuss business and elect national officers.

by E. Ellsworth Claspely

(Taken from a newspaper, 1898)
It was Christmas in a mansion,
There were gold and silver there;
Like queens of royal lineage,
The little ones did fare.
On rugs of silky velvet,
The children, they were spread.
There were gifts of gold and ivory,
Costly toys where'er you'd tread.

There were little, smiling faces,
There were sounds of joy and mirth;
Every wish fulfilled with good things,
All the luxuries of the earth.
What a contrast to the manger,
Where the saintly Christ child lay,
When the Shepherds they were guided,
By a star upon the way.

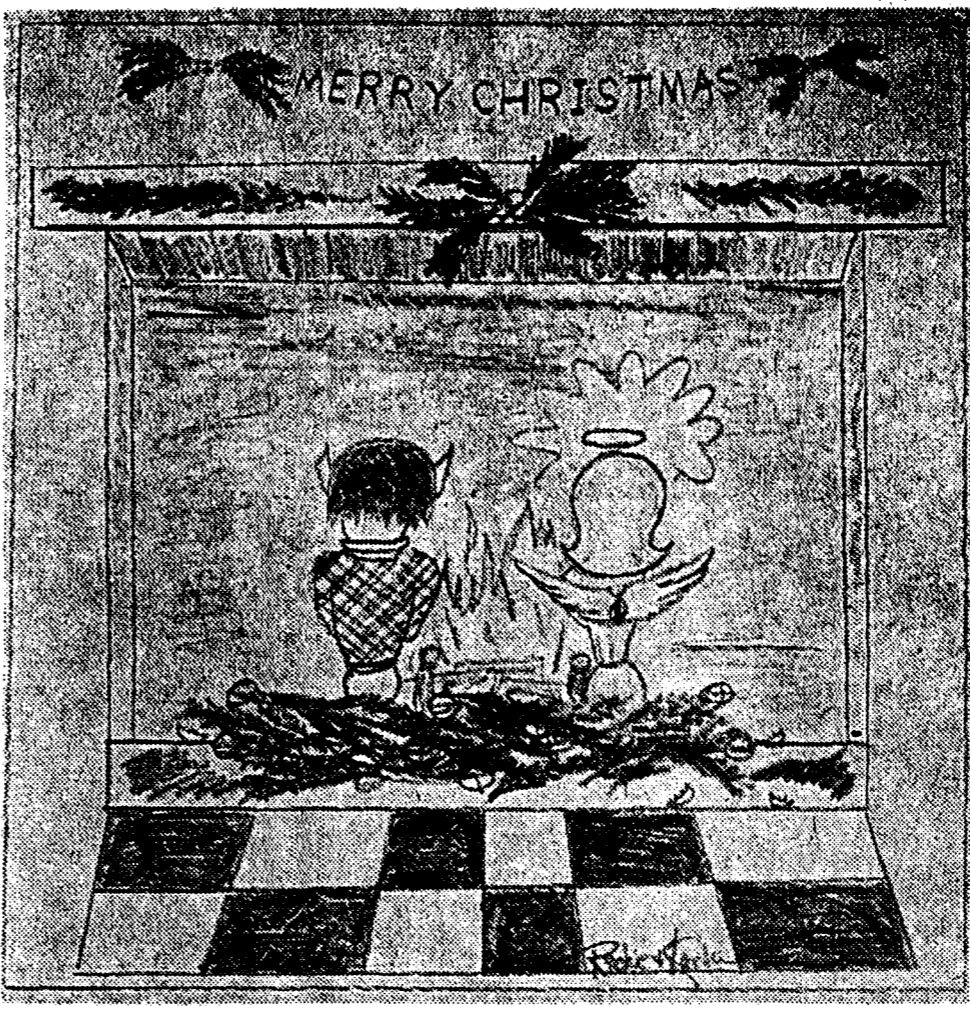
On this chill December evening,
Came a rap upon the door;
A little tot with basket,
'Twas one of God's own poor.
The little face was haggard,
A rag about the head,
In a voice weak and trembling,
A request 'twas, "Give me bread."

The lady dressed in satin,
Gazed into the little face;
In her voice and her manner
Of sympathy not a trace.
She replied, "We can't be bothered,
On this, the Christmas night."
And she closed the door right snappy,
Shut the picture out of sight.

Next morning on the sidewalk,
Not very far away,
The little form lay frozen,
Hands clasped as though to pray —
The little one she slighted,
Now sleeps beneath the sod —
"Vengeance is Mine, I will repay!"
What will she say to God?

Olympian Seeking Material

(Continued from page 1)
by this board is then reviewed by the editor and Barbara Gass, assistant editor, who make the final decisions. Romig said that in the past several years about one-third of the material submitted was accepted for publication.



Holiday Hallucinations Harass Herk; Haphazard Happenings Help Husky

by Judy Gers

Late one night, after a hectic day I fell asleep without locking my door. When I awoke later that night, I discovered that my mischievous leprechaun was missing from my shoulder.

I began an almost automatic search. Then I recalled the funny, devilish gleam Herk had in his eyes when he saw the newly decorated tree in the Husky Lounge. As I was dressing, I imagined what he was doing to the Christmas tree. Oh no! I could just picture him attacking the tree with a saw in hand and destruction in his mischievous heart. The more I thought the faster I dressed.

When I arrived at the lounge, much to my dismay, I saw Herk sitting before the fireplace. He looked almost angelic as he sat there on a pile of broken pine bows, fragments of Christmas tree balls and tinsel. Even though I knew what he was going to do, I stood there shocked and disbelieving.

Then, as though awakening from a nightmare and going into a dream, I saw that that naughty little sprite had a companion. At first, I thought it was quite strange, him sitting there talking to a Christmas ornament. But, as I looked more closely, I realized that the figure was not as I first thought. It was, in fact, a small angel. The pair of them sitting there in a mist — the discord looked comical. The leprechaun green was covered with tinsel. For a hat, he had a broken Christmas tree ball and his tiny shoes were all covered with the fragments of balls he had crushed. On the other hand, the angel was a heavenly picture. There she sat with her gossamer gown as white as a cloud. Her small wings were golden and sparkled like her hair. She was the most perfect creature in all creation. There they sat and talked quietly.

I couldn't hear very well so I moved up closer. While I was doing this, I was hoping that they wouldn't hear me. When I did, I heard one of the most beautiful and serene Christmas stories.

The little angel told of that first Christmas long ago, when the choir of angels assembled in heaven. All of the other angels had been prac-

ting their singing and speeches for weeks. But the littlest angel went to earth during this practice period. There she had much to do for the preparation of the birth of the King. She flitted here and there spreading and aura of hope where there was always despair. Then she remembered the star. Everyone else had forgotten it. So onward she flew, looking at each star in the heavens. Finally, she found a baby one that was just about 1,000 years old. This was the only star that would be fit for the King. So she bounded it with gossamer threads and pulled it to where it shown like the largest star. She drew it to the attention of the three oriental kings. By this time, it was the night of December 24 and she had to get to Bethlehem.

When she arrived, all of the others were resplendent in their radiant garments and each sang praises to the new-born King. She had nothing to give. Her garments were torn and dirtied and her voice cracked. The littlest angel was so embarrassed; she had nothing at all to give. So she flew behind a cloud to cry. When all of a sudden a gust of wind blew her right out in front of all the angels. There she stood, not aware of what had happened to her appearance. Now she had golden wings to match her hair and her garments were the most beautiful. A small voice in her said, "You have given the most unselfish gift; from this day forth and every Christmas to come, you will have the highest honor. You are the Christmas Angel."

As the littlest angel finished her story, I felt joy and peace as never before. Suddenly Herk raised his finger and put everything back where it was and it was more beautiful than before. As he went to replace the angel on the tree, she disappeared into a ray of light. As she went away, a red glow appeared on top of the tree and we heard her say, "I have work to do. There are stars to polish, and hymns to practice so I leave this symbol of the littlest Christmas star as my replacement."

Herk and I looked up to the top of the tree and there for the crowning glory was a brilliant crimson ornament.

Student Poetry

Ed's. Note: Students who wish to contribute to this column should contact Luton Houtz, P.O. # 263.

THE MANSION OF TRUTH

by Dave Rudisill

As I sit in my room, the mood of suppression haunts the maze of my inner thoughts;
The hours slip into a reverie of days full of wonder and loneliness,
Oh happiness, that I might find in fleeting moments of yesterday and tomorrow;
Night dwindles on like a burning candle not stopping to see the road ahead,
My dream, the dream of love and happiness, surpasses the realm of reality;
The dawn of truth approaches with a mystery of desire, a desire lost in the infinity of thought,
The birth of morning light illuminates a new pathway of life, a clearer understanding of the old and the new.

Women Serve Years of Service

by Donna Bogard



Photo by Sizoz.
Miss Wilson, Mrs. Knight, Miss Eyerly.

This year at BSC has been a year for celebrating the accumulation of time and the accomplishments made during this time. The three ladies in the above picture have the distinction of having served this institution for a total of one hundred and eight years. This record deserves some attention.

Miss "Bea" Beatrice Eyerly is the senior member of the group. She has worked in the book store since 1926. For the last eight years she has done all of the bookkeeping for the store as well as her other duties.

Mrs. Anna M. Knight entered the service of the College September 1, 1927. For two years she served as Secretary to the Business Manager, ten years as Secretary to Dr. Francis B. Haas, President (who then went to Harrisburg as Superintendent of Public Instruction), and since 1939 has been Secretary to Dr. Harvey A. Andruss, President.

Miss Ethel M. Wilson is responsible for the general operation of the Business Office Administration and has been in the business office since 1931. During the years, 1941-1945, Miss Wilson handled business administration and billings for the Navy operations on campus. The business office staff has grown from two persons to ten since Miss Wilson began working here.

These three ladies should be congratulated for valuable service to the college as a whole and to individual members of the college community.

MAROON & GOLD

VOL. XLIII FRIDAY, DECEMBER 11, 1964 NO. 9

Editor — C. BLAIR HARTMAN

Advisor — MR. RICHARD SAVAGE
Business Manager — MICHAEL KASANDER
Managing Editors: Bill Howells, Carol McClure
Art Editor: Karen Healy
Art Staff: James Knorr, Carol Slusser, Edward Rhoades, Sandra Scanzoni, Cecelia Flaherty, Mary Schaffer, Debora Machamu.
Copy Editor: Nancy Smith.
Copy Staff: Cheryl Berninger, Anna Marie Soley, Monika Vizachero, Mary Merluzzi, Sandy Lunsy, Lillie Gibbons.
Typing Staff: Elizabeth Beck, Carolyn Fox, Kaye Kisenwether, B. J. Klein, Carole Miles, Mary Sulewski, Lynn Wesley, Kathleen Elliott, Diane Malinski.
Advertising Manager: Lynn Segin.
Advertising Staff: Bonnie Hilleman, Ric Skinner.
Circulation Manager: Len Lawrence.
Circulation Staff: Marlene Laughlin, Jade Snyder, Kenneth Brown, George Durilla, Constance Mills.
Staff Secretary: Doreen Wright.
Business Staff: Doug Hippenstiel, JoAnn McGinnis.

The Maroon and Gold is published weekly by the students of Bloomsburg State College, Bloomsburg, Pa. The paper is a member of the Columbia Scholastic Press Association and the Collegiate Press Service. All opinions expressed by columnists and feature writers including letters-to-the-editor are not necessarily those of this publication but those of the individuals.





Students' Childish Traits Continue; Line-Cutting A Threat To Privileges

Notices have been posted. Articles have been written. Warnings have been issued. Still the efforts of line-cutters go on increasingly. Admittedly, this is a college of lines. Lines have been the target of jokes, criticism, anger, and frustration. But it still holds true that these lines exist and as the student population continues to rise, the facilities of the college will continue to be strained until the new facilities are completed. Until then and even then, the lines will not be completely eliminated.

Lines Are Everywhere

Actually, no matter where you go, there are going to be lines, at the theatre, at the department store, at the neighborhood grocery store, even in your own home when mother, father, brother and sister run to get into the bathroom at once.

It is impossible to have people watching lines at every moment just to insure that no one will cut line. That practice might be seen in a high school cafeteria. Do we need that at college? The only practical solution at the moment is the often tried, but seldom successful "honor system."

Why hasn't this system worked? Has our society become so used to rules that we can no longer trust ourselves, if there are none? The students often complain that there are too many rules at BSC. We contend that we are mature human beings and should be allowed to govern ourselves.

If we cannot be considerate enough of others by taking our appropriate place in a line, how can we ever expect the administration to believe that we will not create chaos on campus if given more freedom. We have to start somewhere. Why not at the end of the line?

Inflation is what turns a nest egg into chicken feed.

Fifth Regular Meeting Of College Council Acts On Many Items Of Importance To BSC Student Body

As a public service, the MAROON & GOLD will begin publishing a summary of the items discussed at the regular meetings of College Council. At this point students are reminded that the official and complete minutes of each meeting are posted outside the Husky Lounge after each meeting.

The following are the items discussed in the fifth regular meeting of the Council held November 23. The minutes of the previous meeting were approved as written.

Civic Music

A report that the Civic Music Association had raised enough money to support another season

of the concert series was heard first. Upon receiving this report the Council approved the usual allocation of \$1500 which has been donated each year in support of the concert series. The series will consist of four programs this year: Kaleidoscope (Mixed Quarter); William Warfield (bass-baritone); Stecker and Harowitz (duo-pianists); and the National Ballet Company, Washington, D.C.

Council then approved a financial report of the Brothers Four concert held last October. The receipts from the sale of tickets were \$5,065.50. The list of expenditures includes a contract agreement of \$3,750.00, personnel for \$40.44, tickets for \$69.74, junior class (contribution for Spring Weekend 1964) \$39.72, and coffee for \$9.00. Thus the total expenses were \$3,908.90 giving a total profit of \$1,156.60.

Other items discussed at the meeting included recognition and approval of the Women's Service Society as an official campus organization; a television committee report for TV's in the new women's dorms; an appointment of a new committee to secure bids for hot plates to be used in the new dorms; a discussion of the use of the lounges in the new dorms; and a motion for securing vending machines for the new dorms. Dean McCauslin answered this last item by stating that the machines were expected in the near future.

Council then heard a report that problems were arising in the Commons because of the increase in the number of students eating in the Commons. The Council decided that the encouragement of students to be gracious and hospitable to other persons when organizing tables would be of the greatest benefit to all.

In the last item of business Dean Hoch explained the new system of registration for the second semester which is discussed in length in this issue of the MAROON & GOLD.

Innovations In Registration Process To Be Introduced Second Semester

John A. Hoch, Dean of Instruction has announced a new registration procedure which will begin with registration for the second semester. Registration will be held on February 2, 1965, beginning at 8:00 a.m.

Students will register February 2, 1965, in alphabetical "blocks" according to the schedule listed below. Registration groups will form in the corridor of the Centennial Gymnasium, at the rear of the building. All students should report for registration one-half hour before the time they are scheduled to register. In other words, the 8:30 group should report to the gymnasium no later than 8:00. Please be prompt.

| | | |
|---------------|-------------|-----------|
| 8:30 - 9:00 | Arron | Boyle |
| 9:00 - 9:30 | Bracken | Cox |
| 9:30 - 10:00 | Cranford | Eyster |
| 10:00 - 10:30 | Fabian | Guzik |
| 10:30 - 11:00 | Habermacher | Ingram |
| 11:00 - 11:30 | Jackson | Kwasnoski |
| 11:30 - 12:00 | Labar | Mayer |
| 12:00 - 12:30 | May | Owens |
| 12:30 - 1:00 | Pacini | Rowett |
| 1:00 - 1:30 | Ruckle | Slusser |
| 1:30 - 2:00 | Smail | Tyson |
| 2:00 - 2:30 | Ulrich | Wynings |
| 2:30 - 3:00 | Yachna | Z |

Placement Office Lists Interviews For Prospective Teaching Positions

Additional placement interviews have been listed by the Placement Office and Dean Hunsinger who is in charge. They are as follows:

| | | |
|-----------------------------|--|--|
| Dec. 14, 1964 10:00 A.M. | Mr. James W. Davies, Dept. Head Business Education Bridgeton High School West Avenue Bridgeton, New Jersey | Shorthand I-Typing I; Typing I-Briefhand; (2nd Semester) |
| Dec. 15, 1964 10:00 A.M. | Mr. Glenn A. Good, Supv. Prin. Northumberland Area Joint Schools Northumberland, Pa. | Jr. Hi Math; JAN. 65 |
| Jan. 11, 1965 10:00 A.M. | Mr. Martin K. Ferrier, Personnel Ass't. for Professional Personnel School District of Philadelphia Parkway at 21 Street Philadelphia, Pennsylvania | September 65 in most teaching fields. |
| Jan. 12, 1965 10:00 A.M. | Mr. W. Edward Sheely, Supv. Prin. Millersburg-Upper Paxton Union School Dist. Millersburg, Pennsylvania | 2nd grade; Jan. 65 Jr. Hi Math-girl's basketball coach (female preferred) Jan. 65. |
| Jan. 13, 1965 10:00 A.M. | Mr. Robert Loose, Elem. Supv. Dr. Charles Wilson, Supv. Prin. Kutztown Area Schools Kutztown, Pennsylvania | Kind: 2nd; 3rd; 5th; 6th; JAN. 65 \$4,600 |
| Jan. 14, 1965 10:30 A.M. | Mr. Richard Hoover, Prin. Bestal Central School Dist. Bestal, New York | Kind: 6th; (SEPT. 65) \$5,100 |
| Jan. 19, 1965 9:00 A.M. | Mr. Forrest G. Shearin, Supv. of Personnel Montgomery County Public Schools 850 N. Washington Street Rockville, Maryland | Vacancies in all areas with special needs in: Kind-6th; French; Math; Gen. Sci.; Special Ed; |
| Feb. 22, 1965 10:00 A.M. | Mr. Robert H. Brown, Supt. of Schools Board of Education Madison, Connecticut | Kind-6th; Business Ed; Jr. Hi Eng; Sr. Hi Eng; Jr. Hi or Elem. Spanish; |

Fraternity Holds Christmas Party

Sigma Alpha Eta, the BSC Speech and Hearing Fraternity, held their annual Christmas party for handicapped children in the Bloomsburg Memorial Elementary School on Thursday, December 10, from 7:00 to 9:00 p.m. Miss Ellen Czjkowski, a Junior majoring in speech correction was chairman of the event.

"Best Wishes from All of Us at..."



ARCUS'

"For A Prettier You"

Bloomsburg - Danville

JOHN'S CAFETERIA



For Home Cooked Food
784-1893

FREE DELIVERY SERVICE TO THE DORMITORIES

212 IRON ST.

Serve Yourself or Be Served



"HAVE A HAPPY AND JOYOUS CHRISTMAS"

BERRIGAN SUBS

"Makers of the Best Hoagies in town."

Conveniently located at the bottom of College Hill



Free Prescription Delivery

TOILET GOODS
COSMETICS
RUSSELL STOVER CANDIES
GREETING CARDS

1 West Main St., Bloomsburg

RITTERS OFFICE SUPPLIES

112 E. Main St.
BLOOMSBURG, PA.

Phone 784-4323

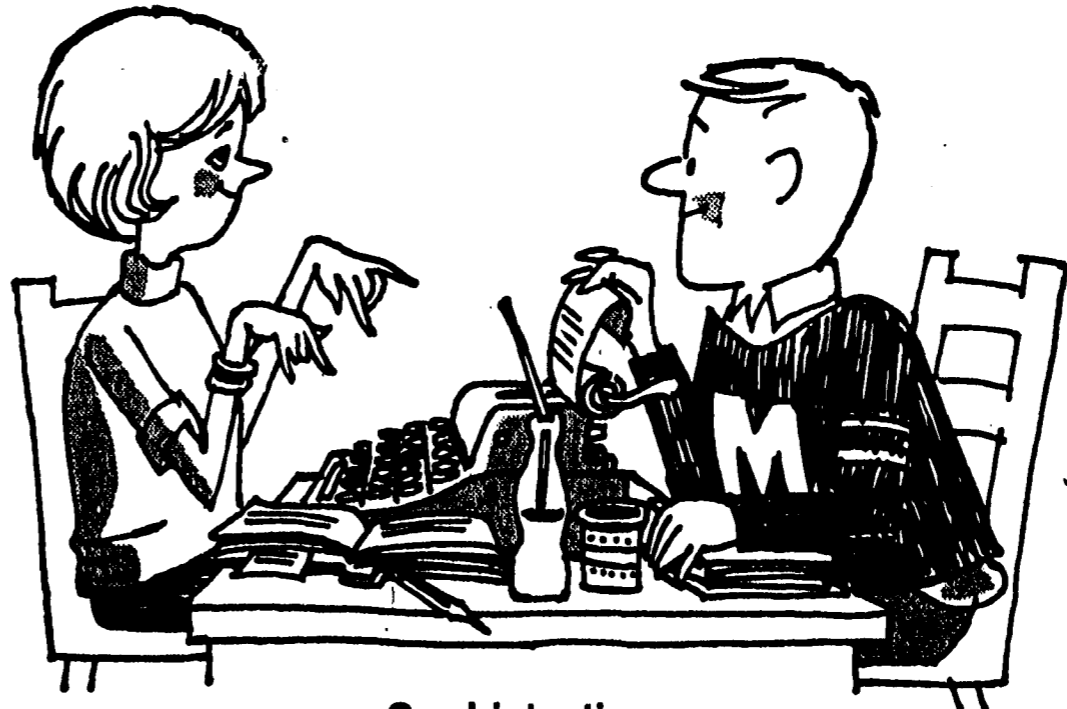
HOTEL MAGEE

The Most Convenient Location for Your Parents and Friends

Our rooms have Air-conditioning and Television and are Newly Decorated.

Single Rooms — \$4.00 - \$5.25 - \$5.50 - \$6.00
Double Rooms — \$8.00 - \$9.00 - \$10.00

784-3200



Good intentions

Once you've finished typing that term paper, you mean to write home. But be honest—will you do it? We recommend a phone call. It's quick and inexpensive... and the folks would dearly love to hear your voice.

The Bell Telephone Company of Pennsylvania



Dean of Instruction Announces Final Examination Schedule

The final examination schedule has been compiled and released by Dean of Instruction, John A. Hoch. Final week will begin at 8:00 a.m. Wednesday, January 20, 1965 and end at noon Wednesday, January 27, 1965. If a student has more than one exam scheduled for the same hour, he should arrange through his instructor for a make-up and a conflict period either on Saturday, January 24, or Wednesday, January 27. Both periods are from 12:00 to 1:40.

The announced schedule is as follows:

Wednesday, January 20, 1965

NOTE - Section numbers appear in parenthesis

| | | | | |
|-------------|----------|-----|--|-------|
| 8:00-9:40 | Econ. | 211 | Principles of Economics (1, 2, 3, 4) | C 22 |
| | Econ. | 211 | Principles of Economics (5, 6) | C 8 |
| | Ed. | 351 | Teaching of English in the Secondary School | B 12 |
| | Ed. | 381 | Seminar in Elementary Education | F 6 |
| | Eng. | 101 | English Composition (1-16) | A 1 |
| | Eng. | 101 | English Composition (17-32) | H 24 |
| | French | 316 | The French Short Story | D 23 |
| | Math. | 112 | Trigonometry | B 10 |
| | Math. | 116 | Introductory Statistics | C 43 |
| | Span. | 303 | Advanced Grammar and Composition | B 24 |
| | Bus. Ed. | 201 | Elementary Typewriting (2) | G 210 |
| | Bus. Ed. | 201 | Elementary Typewriting (3) | G 214 |
| | Bus. Ed. | 201 | Elementary Typewriting (5) | G 205 |
| 10:00-11:40 | Biol. | 332 | Histology | G 101 |
| | Phys. | 411 | Mechanics | G 106 |
| | Psy. | 201 | General Psychology | A 1 |
| | Bus. Ed. | 401 | Clerical Practice and Office Machines | G 205 |
| 12:00-1:40 | Ed. | 371 | Teaching of Reading in the Elementary Grades | F 6 |
| | Ed. | 374 | Teaching of Reading in Academic Subjects | Gym |
| | French | 210 | Contemporary French Literature I | D 23 |
| | Ger. | 210 | Contemporary German Literature I | D 24 |
| | Span. | 210 | Contemporary Spanish Literature | D 25 |
| | Bus. Ed. | 201 | Elementary Typewriting (4) | G 210 |
| | Bus. Ed. | 201 | Elementary Typewriting (1) | G 214 |
| | Sp. Cor. | 354 | Articulation Problems in Public Schools | E 14 |
| 2:00-3:40 | Chem. | 331 | Organic Chemistry | C 36 |
| | Ed. | 101 | Introduction to Education (1-7) | H 24 |
| | Ed. | 101 | Introduction to Education (8-15) | A 1 |
| | Hist. | 232 | History of Europe since 1815 | C 8 |
| | P.E. | 311 | Methods and Materials in Health and Physical Education for the Elementary Grades | F 6 |
| | Bus. Ed. | 222 | Principles of Accounting (1, 2) | G 204 |
| | Bus. Ed. | 222 | Principles of Accounting (3, 4) | G 205 |
| 4:00-5:40 | Art | 201 | Methods and Materials for Teaching Art in the Elementary School | C 8 |
| | Ed. | 355 | Teaching of Social Studies in the Secondary School | B 12 |
| | Ed. | 361 | Problems of Secondary Education Including Guidance | C 22 |
| | Eng. | 381 | American Literature | C 43 |
| | Fr. | 313 | French Drama to 1830 | D 23 |
| | Geog. | 247 | Geography of the Pacific Realm | G 104 |
| | Ger. | 247 | German Culture and Civilization | D 24 |
| | Hist. | 443 | Selected Contemporary Cultures | D 20 |
| | Psy. | 322 | Mental Tests (Individual) | D 2 |
| | Sp. Cor. | 276 | Hearing Problems | E 14 |
| | Bus. Ed. | 441 | Principles of Marketing | G 211 |

Thursday, January 21, 1965

| | | | | |
|-------------|----------|-----|--|-------|
| 8:00-9:40 | French | 101 | Beginning French (Conversation) | D 23 |
| | French | 102 | Beginning French (Conversation) | D 24 |
| | Hist. | 222 | History of U.S. and Pa. II | A 1 |
| | Zoo. | 321 | Vertebrate Anatomy | G 104 |
| | Bus. Ed. | 351 | Teaching Business Subjects in the Secondary School | G 205 |
| | Bus. Ed. | 211 | Elementary Shorthand (1) | G 214 |
| | Bus. Ed. | 211 | Elementary Shorthand (2) | G 210 |
| 10:00-11:40 | Eng. | 361 | Romantic Movement in England | B 10 |
| | Geog. | 353 | Physiography | G 104 |
| | Hist. | 344 | Twentieth Century World History | G 43 |
| | Math. | 211 | Analytic Geometry | A 1 |
| | Pol. Sc. | 433 | History of Political Thought | B 12 |
| | Span. | 201 | Intermediate Spanish I | C 8 |
| | Span. | 202 | Intermediate Spanish II | C 22 |
| | Span. | 315 | The Spanish Novel | D 23 |
| 12:00-1:40 | Biol. | 341 | Genetics | C 24 |
| | Ed. | 202 | Methods and Materials in Elementary Science | C 8 |
| | Sp. | 103 | Fundamentals of Speech | A 1 |
| | Bus. Ed. | 331 | Business Law I | F 6 |
| 4:00-5:40 | Hist. | 211 | History of Civilization I | A 1 |
| | Pol. Sc. | 211 | U.S. Government (2, 6, 7) | C 8 |
| | Pol. Sc. | 211 | U.S. Government (1, 3, 4, 5) | F 6 |
| | Bus. Ed. | 241 | Salesmanship | G 212 |

Friday, January 22, 1965

| | | | | |
|-------------|----------|-----|---------------------------------------|-------|
| 8:00-9:40 | Eng. | 207 | Survey of World Literature I | A 1 |
| | Geog. | 355 | Cartography | G 104 |
| | Hist. | 244 | History of Russia | B 10 |
| | Sp. Cor. | 351 | Clinical Methods in Speech Correction | E 4 |
| | Bus. Ed. | 322 | Intermediate Accounting II | F 6 |
| 10:00-11:40 | Biol. | 351 | Microbiology | G 104 |
| | Math. | 121 | Principles of Mathematics I | A 1 |
| | Math. | 111 | College Algebra | H 24 |
| | Phys. | 314 | Electricity and Magnetism | G 106 |
| | Sp. Ed. | 361 | Problems in Special Education | E 14 |
| | Bus. Ed. | 334 | Business Mathematics | G 212 |
| 12:00-1:40 | Ed. | 301 | Audio-Visual Education | A 1 |
| | Eng. | 351 | 18th Century Literature | B 10 |
| | Geog. | 121 | Economic Geography | G 104 |

| | | | |
|-----------|----------|----------------------|-----------------------------------|
| Hist. | 345 | History of England | C 43 |
| Math. | 411 | Advanced Calculus | D 27 |
| Psych. | 301 | Education Psychology | H 24 |
| 2:00-3:40 | Eng. | 102 | English Composition II |
| | Eng. | 309 | Children's Literature |
| | Chem. | 332 | Organic Chemistry II |
| 4:00-5:40 | Econ. | 423 | History of Economic Thought |
| | Eng. | 401 | Structure of English |
| | Geog. | 101 | World Geography (1-7) |
| | Geog. | 101 | World Geography (8-14) |
| | Geog. | 223 | Geography of U.S. and Pa. |
| | Pol. Sc. | 224 | International Relations |
| | Span. | 313 | Spanish Culture and Civilization |
| | Sp. Ed. | 352 | Language Arts for Special Classes |

Saturday, January 23, 1965

| | | | | |
|-------------|----------|-----|--|-------|
| 8:00-9:40 | Chem | 112 | Inorganic Chemistry II | C 36 |
| | Phys. | 202 | Science in Modern Civilization | A 1 |
| | Soc. | 211 | Principles of Sociology | C 8 |
| | Zool. | 222 | Entomology | G 101 |
| 10:00-11:40 | Art | 303 | Elementary Arts and Crafts | D 2 |
| | Health | 101 | Hygiene | A 1 |
| | Speech | 211 | Theatre Production | B 10 |
| | Speech | 221 | Argumentation and Debate | C 43 |
| | Bus. Ed. | 361 | Problems of Business Education in the Secondary School | G 205 |
| | Bus. Ed. | 221 | Principles of Accounting I | G 212 |

Monday, January 25, 1965

| | | | | |
|-------------|----------|---------|--|-------|
| 8:00-9:40 | Econ. | 313 | Industrial Relations | C 43 |
| | Eng. | 307 | Poetry | B 10 |
| | French | 315 | French Novel | D 25 |
| | For. Lg. | 401 | Linguistics | D 24 |
| | Hist. | 231 | History of Europe to 1815 | C 8 |
| | Bus. Ed. | 311 | Advanced Shorthand (Section 1) | G 214 |
| | Bus. Ed. | 311 | Advanced Shorthand (Section 2) | G 210 |
| | Sp. Cor. | 353 | Speech Clinic I & II | D 27 |
| 10:00-11:40 | Hist. | 221 | History of U.S. and Pa. I | A 1 |
| | Span. | 101/102 | Elementary Spanish I and II | F 6 |
| | Bus. Ed. | 301-3 | Advanced Typewriting | G 214 |
| | Bus. Ed. | 301-4 | Advanced Typewriting | G 210 |
| 12:00-1:40 | Sp. Ed. | 351 | Special Class Methods | D 26 |
| | Art | 101 | Introduction to Art | A 1 |
| | Eng. | 321 | Early and Middle English Literature | D 22 |
| | For. Lg. | 402 | Methods and Materials of Foreign Language Teaching | D 24 |
| | Math. | 421 | Linear Algebra | D 25 |
| | Music | 201 | Methods and Materials in Elementary Music | C 8 |
| | Pol. Sc. | 313 | State and Local Government | C 43 |
| | Psy. | 321 | Mental Tests (Group) | D 27 |
| | Soc. | 313 | Contemporary Social Problems | B 10 |
| | Span. | 381 | Survey of Spanish-American Literature I | D 23 |
| 2:00-3:40 | Biol. | 452 | Evolution | C 24 |
| | Chem. | 221 | Qualitative Analysis | C 36 |
| | French | 201/202 | Intermediate French I and II | F 6 |
| | Bus. Ed. | 301-2 | Advanced Typewriting | G 210 |
| 4:00-5:40 | Bus. Ed. | 301-2 | Advanced Typewriting | C 43 |
| | Math. | 202 | Intermediate Calculus I and II | B 10 |
| | Math. | 212 | Differential Calculus | C 43 |
| | Math. | 311 | Integral Calculus | C 8 |

Tuesday, January 26, 1965

| | | | | |
|-------------|----------|-----|-----------------------------------|-----------------|
| 8:00-9:40 | Biol. | 103 | General Biology I | A 1 |
| | Bot. | 111 | General Botany I | D 4 |
| | Chem. | 111 | Inorganic Chemistry I | C 8 |
| | Phys. | 111 | General Physics I | G 105 |
| | Phys. | 402 | General Physics II | G 106 |
| | Zool. | 111 | Zoology I | C 22 |
| | Bus. Ed. | 423 | Federal Tax Accounting | G 204 |
| 10:00-11:40 | Eng. | 208 | Survey of World Literature II | C 8 |
| | Fr. | 303 | Advanced Grammar and Composition | B 10 |
| | Math. | 216 | Statistics | C 43 |
| | Phil. | 211 | Introduction to Philosophy | A 1 |
| 12:00-1:40 | Math. | 224 | College Geometry | F 6 |
| | Music | 101 | Introduction to Music | A 1 |
| | Sp. | 301 | Advanced Speech (Sec. 1-4) CB | (Sec. 5-7) C 22 |
| | Bus. Ed. | 321 | Intermediate Accounting I | G 204 |
| 4:00-5:40 | Eng. | 343 | Chaucer | B 10 |
| | Ger. | 211 | Contemporary German Literature II | D 23 |
| | Hist. | 326 | Diplomatic History of U.S. | D 25 |
| | Hist. | 312 | Trigonometry | C 26 |
| | Math. | 321 | Modern Algebra | C 43 |
| | Sp. Ed. | 411 | Professional Practicum | D 27 |
| | Sp. Cor. | 251 | Phonetics | E 14 |

Wednesday, January 27, 1965

| | | | | |
|-------------|-------|-----|--------------------------------------|-------|
| 8:00-9:40 | Ed. | 353 | Teaching of Mathematics | C 24 |
| | Eng. | 354 | Teaching of Secondary School Science | G 105 |
| | Eng. | 233 | Shakespeare | D 25 |
| | Eng. | 395 | Modern Novel | D 24 |
| | Geog. | 246 | Geography of Soviet Realm | G 104 |
| | Geol. | 357 | Physical Geology | C 43 |
| | Ger. | 101 | Elementary German I | D 23 |
| | Ger. | 102 | Elementary German II | D 23 |
| | Hist. | 212 | History of Civilization II | A 1 |
| | Hist. | 322 | Social and Cultural History of U.S. | D 26 |
| | Psy. | 331 | Mental Hygiene | F 6 |
| | Soc. | 323 | Introduction to Anthropology | B 10 |
| | Sp. | 319 | Children's Theatre | H 2 |
| 10:00-11:40 | Phys. | 101 | Basic Physical Science | A 1 |
| | Eng. | 212 | British Writers II | C 8 |
| | Biol. | 401 | Radiation Biology | C 24 |
| | Ger. | 303 | Advanced Conversation & Composition | D 23 |

Choral Ensemble Presents Concert

Choral groups from BSC presented a Christmas concert last night. The concert, which featured a number of Christmas carols and folk songs, was the highlight of an active season for the Choraleers, Men's Glee Club, Madrigals, and Harmonettes.

The various choral groups are giving nine programs during this year's holiday season. The Choraleers, Madrigals and Men's Glee Club, under the direction of Mr. William Decker, have given concerts for civic groups of Bloomsburg, have appeared in the annual Christmas assemblies, and today are traveling to give concerts in four area high schools. The Harmonettes, under the direction of Miss Sylvia Cronin, appeared in last night's concert, and are appearing in the annual Christmas assemblies.

Toys For Tots Dance

Many children in hospitals in the Central Pennsylvania Area will have a Merry Christmas, thanks to the efforts of the Men's Resident Association and to several hundred BSC students. The association recently sponsored a Toy Dance where admission was a new or used toy. The dance was successful in that several hundred toys, mostly new, were received for distribution to children who must spend their Christmas away from home and in the hospital. Prior to the Christmas vacation a group of men from the college will accompany Santa Claus (to be played by a BSC student) to hospitals of the area to deliver the toys.



Alpha Phi Omega has a fraternity member willing to play Santa Claus for any student organization planning a Christmas activity. The suit is also available free of charge for any group wishing it. This service can be procured at no cost by contacting any member of the fraternity. Donations will be accepted to help defray the cost of the suit.

New in the College Town of Bloomsburg!

SPEZI'S Italian Bakery and Pizzeria

517 East Street
Phone 784-7585

- We invite students and faculty of BSC to try our OVEN-FRESH PIZZA, baked while you wait... Delicious, delectable, delightful... Also, Hard Rolls & Hoagies.
- A full tray (sheet), 24 pieces for only \$1.75... Pizza by individual pieces — 10¢
- Hours: Monday through Saturday, 8 a.m. to 10 p.m. Sundays, 8 a.m. to 9 p.m.

Best Wishes For New Year From

Harry Logan

FINE JEWELRY and REPAIRING

Your Jeweler away from home.

BSC CLASS RINGS

5 W. Main St. Bloomsburg

FETTERMAN'S BARBER SHOP

• QUALITY •

FOOT OF COLLEGE HILL
Bloomsburg, Pa.

Help Wanted

Student coordinator for scholastic employment program. Must be about to receive degree in 1965 and in upper fifth of class. Requires 3 hours per week. Very remunerative position.

CHARLES BEAUTY SALON

345 W. MAIN ST. 784-0877

Eppley's Pharmacy

Main and Iron Streets
Prescription Specialist

LOFT CANDIES
COSMETICS
SUNDRIES
and
TOBACCOS

GREEN STAMPS
Phone 784-3055

VARSAITY GRILL

Eat Dance Recreation Pocket Billiards

OVER HOUSENICK'S SHOWROOMS

— HOURS —
10:00 'til ?
Mon. thru Sat.

Telephone 784-9877

BRING YOUR DATE or MEET AT THE GRILL

Get Your Perfect Christmas Gift at

Nespoli Jewelers

25 E. Main St.
BLOOMSBURG

Gertrude Harter

136 WEST FRONT STREET
BERWICK'S NEWEST DRESS SHOP

MIDWAY LANES

16 Lanes — Automatic Pin Setters

Fully Air-Conditioned

Bloomsburg-Danville Highway

Huskies Defeat WCSC, 81-70; Lose 100-90 To Shippensburg

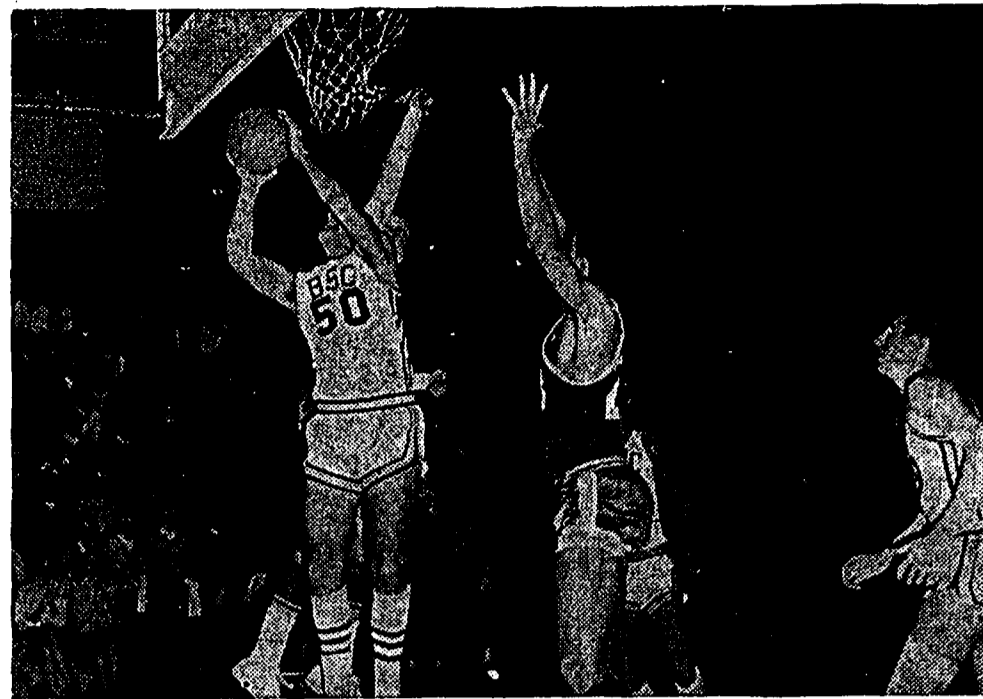


Photo by SIZOEL

Beck scores two for BSC in victory over West Chester, 81-70.

The Huskies under the direction of Coach Norton opened their pursuit of the Pennsylvania State College Conference basketball championship on a successful note by taming the Rams of West Chester 81-70 in a hotly contested contest played on the Centennial Gym floor.

Husky center "Big Ed" Beck paced the Husky attack with 27 points on 9 field goals and 9 for 11 from the foul line. Ed teamed with Herzig to control the boards. Herzig also chipped in with 19 points on 9 field goals and 1 for 1 from the foul line. Herzig, favored a bad left knee that was heavily taped, still he managed to play an outstanding game. By Hopkins chipped in with 14 points on 6 field goals and 2 for 3 from the charity line. The remaining 21 points scored by the Huskies were shared by Gene Miller, Bobby Farina, "Cousin" Gara and "Ben" Blue.

Both teams got off to a slow start with the Rams of West Chester getting out in front at the half by 6 points, 36-30. The Purple and Gold was led by its All-East Conference star of last season Dick Kratz.

Kratz dumped in 37 points with phenomenal shooting from all over the court. He sank 13 field goals and 11 of 15 from the charity line, for a game high of 37 points.

The combination of Herzig and Beck on the boards overcame Kratz's phenomenal shooting and put win No. 1 into the books.

The cagers of BSC ran into a red hot Shippensburg team Saturday night as they were unended in a free scoring affair 100-90.

... SIDELINES

by John Murtin

Last week our swimming team journeyed to Temple University for a duel meet and ended up losing 60-35 only one point better than last year's 59-36 loss. Still Bloomsburg was a much changed and improved team from last year's. Temple swimmers set three new pool records in their pool and looked much better than last year. Bloom was also hampered by a number of conditions. First, the Huskies had to cope with a much smaller pool. Actually Temple's pool was 20 feet in width while BSC's is 30. Second, Dick Steidel, our top diver, was hampered by a low board which was too close to the water. This prevented Dick from performing to the peak of his ability.

One bright spot in future BSC's swimming efforts was the top performance turned in by our Freshmen team who took their part of the meet by the score of 51-34. Britt Jones from Mountaintop, Pa., looked good as a freestyle man. Likewise did John Biggs from Bethlehem stand out in Freestyle competition. Steve Johnson from Allentown showed record time in the 200 yard individual and Don Beauliev from Levittown had no competition in diving. Other swimmers also stood out, and this promises to make this year and the others to follow exciting to Bloom tank followers.

Tomorrow, the teams will be travelling to West Chester to meet the champions of the Pennsylvania State College conference. After this coach has announced that there will be change and additions made to the published schedule. On January 12, the teams will appear at home for the first time against Millersville. This is both a Freshman and Varsity meet. The Freshmen will then have two meets. One on January 15 with Glassboro and then one on January 21 with Elizabethtown not Elizabeth as listed on the schedule. On January 24 the teams will move to East Stroudsburg for their last January meet.

A whisper is one way to make believe what they otherwise wouldn't.

The Raid Raiders, who hit on 67 percent of their shots from the floor. Shippensburg led all the way, most of the time by only a few points but an 8 point splurge shortly after intermission put the game out of reach for BSC. The lead was steadily increased to 16 points before the Huskies came alive but by then it was too late.

The Bloomsburg attack was led by Ed Beck, Gene Miller, and Bob Herzig, the latter still hobbled by a knee injury incurred in practice a few weeks ago. Miller came off the bench for the Huskies and wound up third high with 20 points.

Skiers Plan Trip; Ski Films Offered

Plans for a trip to the Highland Ski Area were discussed at the meeting of the ski club last week. The group is attempting to obtain group facilities and reduced admission prices. All persons interested in joining the club and participating in this trip will be welcomed at a meeting on December 14 in room 3 of Ben Franklin.

In future meetings the club plans to show films on skiing to discuss the basic skiing steps.

Hard work is nothing more than the accumulation of easy things you didn't do when you should have.

Mat Season Opens Tonight Keen Competition Expected

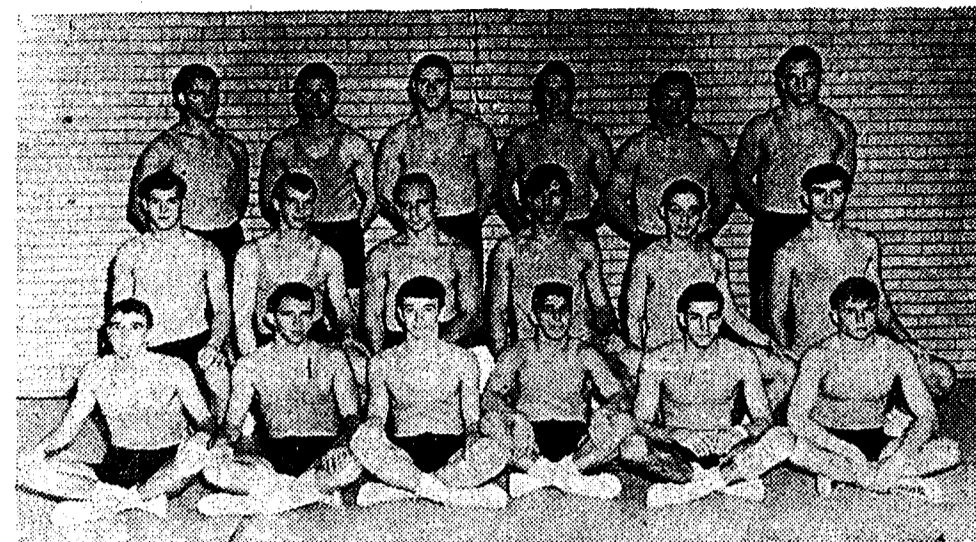


Photo by SIZOEL

First row, l. to r.: Grant Stevens, Rege Berlin, Don Sholley, Fran Decimbrino, Bill Robb, Bob Gibble. 2nd row: Jim Rolley, Ed Taylor, Bocco Forte, Mike Mellinger, Don Smith, Dave Evans. 3rd row: Tom Vargo, Bob Pierce, Jim Lewis, Jim Cambell, Bill Paule, Lee Viard.

With the swimming and basketball seasons now underway, wrestling again appears in the spotlight on the BSC campus. The season officially opens tonight as the Husky team takes on a highly rated Southern Illinois University team at Carbondale, Ill. Tomorrow, the Huskies will travel to Terre Haute, Indiana where they meet Purdue, Miami of Ohio, and Indiana State in a quadrangular meet.

LHSC And BSC Top Ranked

Wrestling fans can look forward to a season that promises to provide a fine quality of wrestling exhibition. No other sport in the PSCA conference can boast of the keen competition that is found in the wrestling conference. The strength is shown by the fact that two schools, Lock Haven State and Bloomsburg have both been ranked among the top ten wrestling schools in the NAIA for a number of years. East Stroudsburg State College also promises to increase the competition this year due to its increased strength. Winning the PSCAC championship is truly an accomplishment due to the strong competition and the Husky team who are defending champions, will

surely make their presence known when the championship meet is held in Lock Haven on March 11, 12, and 13.

Lack Heavyweights

The Husky team this year is one that is quite strong in the lightweights. This is where most of the team reserve can be found. The middleweights are moderately strong, but there is a lack of reserve strength in the heavyweight positions. The heavyweights, therefore, are the team's most vulnerable positions.

BSC Just As Strong

Since this is the first year that freshmen may not participate in varsity sports, the Husky wrestling team looks about the same as last year's team with the exception of last year's seniors. Familiar faces that will be returning to give the team a big push are Bill Robb, Ed Taylor, Bill Paule, Tom Vargo, and Lee Viard. Others who should see quite a bit of mat action this year include Bob Pierce, Rocko Forte, Fran Decimbrino, Grant Stevens, and Jim Rolley.

The Husky team makes its first home appearance against Millersville on January 9.

REA and DERICK
"The Stores of Service"
Compounding of prescriptions
is our most important duty.

House of Fabrics
FASHION FABRICS
by the yard
SLIPCOVERS - DRAPERIES
BED SPREADS
MARKET SQUARE BLOOMSBURG

Charlie's
Pizza
&
Hoagies

Regular & King Size Hoagies
King Size Soft Drinks
FREE DELIVERY
Open 'til 12:30 a.m.
137 W. Main Phone 784-4292
BLOOMSBURG

"Best Wishes for
The Holidays and
The Coming Year"

**HENRIE'S CARD
AND
BOOK NOOK**

Phone 784-0332

COLLINS MUSIC
262 Iron St., Bloomsburg
MUSICAL INSTRUMENTS - SUPPLIES
REPAIRING
Open 'til 9:00 Every Night
Wed. 'til 12:00 Sat. 'til 5:30

**L. R. LETTERMAN'S
BAKERY**

For CAKES, PIES,
COOKIES, BUNS —
All Your Pastry Needs
Conveniently Located
BOTTOM COLLEGE HILL

RACUSIN'S

Conveniently located to "Suit the Campus"...

MOLLY'S BEAUTY SALON
Molly (Shaffer) Hileman
"Specializing in hair coloring."
220 E. Fifth St. Ph. 784-0305

Compliments of
**The Waffle
Grille**

Say
MERRY CHRISTMAS
the most personal way
with a gift from

BONDED F.T.D. SERVICE
Phone 784-4406
Cor. of East and Third Sts.

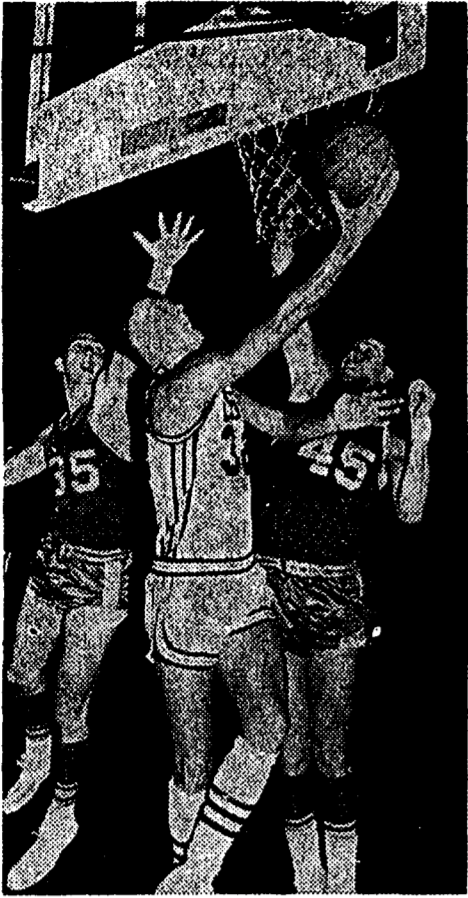


Photo by SIOBEL

Miller tries for 2 against WCSC.

Husky Rooks Tie Haz'ton PSU Ext.

The Husky Rooks played host to the Hazleton Extension of Penn State University on December 3 at 7:30 in New North Hall. The outcome of the match was a draw with both BSC and Hazleton winning two games. On first board Dan Marks (Jr. BSC, Hatboro, Pa.) defeated Charlie Rudwick of Hazleton Extension with a variation of Queen's pawn opening. Marks gained a two pawn lead and Rudewick conceded after 34 moves. Jim Sahaida (Jr. BSC, Hazleton, Pa.) was defeated on second board by Mike Jemo who employed a Queen's Gambit opening. Sahaida ahead two pawns made a blunder and Jemo took advantage to win. Fred Mashack of the Hazleton Extension of PSU gained victory over Ray Depew (Fr. BSC, Levittown, Pa.) in third board play. Mashack used an unorthodox opening. Depew foolishly attempted to play his opponent's type of game and

BSC Cager Team Eyeing a '65 PSCAC Championship

The Bloomsburg State basketball team has already begun its '64-'65 season. Their record of 1-1 is a win against West Chester and a loss to Shippensburg. This loss, however, could be attributed to the fact that five Huskies were hampered with injuries.

Five Returning Lettermen

The one loss means little because the Huskies have an especially good team. The five lettermen Bob Herzig, Ed Beck, Bob Farina, Gene Miller seniors and Byron Hopkins have been playing together for three years. Bob Herzig has been on the state college first team for the past two years and Ed Beck last year. Herzig last year was also tenth in the nation for rebounds among small college players. These five Huskies played a big part in last year's 13-6 record. Because coach Robert Norton is more acquainted with his boys, this second year as head coach, the team should be working together a little better than last year.

Coaches

Mr. Norton is a graduate of Slipper Rock State and is from the Pittsburgh area. Assistant coach,

Mr. Thomas Davies, is from the same area and graduated from Waynesburg with graduate work from Duquesne.

Other team members include: Jack Garrity, Tony Tezik, and John Foster, juniors; Bob White, John Montgomery, and Frank Rishel, sophomores. These men constitute the strongest group of reserves in the league.

Bob Herzig and Ed Beck have already started off the year with being key men in both games. Gene Miller has shown himself to be a standout performer already and we hope he can keep it up.

Even though they have lost one game, the state championship is not out of sight. The team is one of the toughest in the state.

2nd Annual Chess Tourney at BSC

The second annual Chess Championship of the Pennsylvania State Colleges will be held at Bloomsburg State College on Saturday and Sunday December 12 and 13. The tournament will be held as part of the 125th Anniversary celebration of the Bloomsburg State College and will take place in the Day Men's Lounge in Science Hall. The winning team will be awarded one year's custody of the Donato Giangiulio Memorial Trophy and

of tournament participation is continuing, with four contests scheduled and one played to date. The members of the Varsity Swimming Team are officiating these matches, and it is a waste of their time and the time of the Intramural Department to schedule a contest and have it forfeited by one or two disinterested teams. These schedules are out in plenty of time, and if this poor participation continues, no participating points will be given to teams who do not appear for contests.

The participants in table tennis and shuffleboard should also take notice of the above paragraph, because it applies to them as well as the water polo participants.

The swimming meet was held on Wednesday, December 9 and Thursday, December 10. Check the bulletin boards for the results of this tournament.

Due to other activities scheduled on that night, men's intramurals are conceded on Tuesday, December 15, 1964.

Swimmers Lose; Frosh Victorious

The tankmen of BSC dropped the opener of their 1964-1965 season to the Owls of Temple by a score of 60-35. The meet was held in the Centennial Gymnasium pool.

First Place In Relay

The Huskies were able to take first place in the 400 yard freestyle relay. The members of this team were Jim Young, Regis Stirling, Don Beltz, and Jerry Lomis. The rest of the first place varsity events were controlled by the Owls. However, the Huskies did attain 7 second place finishes and 7 third places.

Some men had to participate in three events due to the lack of depth which may have been a determining factor of the meet.

Freshmen Win

BSC's freshmen tankmen were able to turn in a victory for their debut. They downed the Owl's freshmen by a score of 51-39 and in doing so well, they were able to beat several varsity records. These were in the 50 yard freestyle, 200-yard individual medley and the 400-yard freestyle relay.

The next meet for the Tankmen will be held December 12 at West Chester College.

individual winners will receive chess books as prizes. Registration will take place in Science Hall at 10:30 on Saturday morning with the first round scheduled to begin at 11:30. Players will be paired as individuals with team scores to be determined by adding individual scores. This method allows and encourages State Colleges which cannot send a full team of four men to send individual representatives to play in the tournament.

Last Year's Tourney

Last year the State College Chess Championship was held at Shippensburg State College with arrangements handled by Chester Klinger and Professor Andrew Kasarda as faculty advisor. The event was won by Bloomsburg State with Shippensburg State second and Edinboro State third. High scorers were Gary Deets (4-0) and Gordon Clapp (3½-½) for Bloomsburg; for Shippensburg Gary Tressler (3-1) and Bernard Bronczyk (2½-1½); for Edinboro William Nelson (2-2) and Dean Lenz (2-2).

Alpha Psi Omega Initiates Pledges

Ten new members were initiated at a recent meeting of Gamma Theta Upsilon, the professional geography fraternity. The new members include Linda Bartish, Alan Bartlett, Barbara Bensinger, Sandra Berkoski, Janet Constantine, Boyd Keiser, John Murtin, Suzanne Reiff, Connie Rohr, and Joseph Schein.

Mr. Harold Miller, a geography teacher at Bloomsburg Junior High School, was elected to honorary membership in the chapter. Refreshments were served following the meeting.

Initiate 10 In Geog. Fraternity

The Alpha Omicron Cast of Alpha Psi Omega, national honorary fraternity for dramatics, last week initiated seven new members with official services held in Carver Auditorium. The seven neophytes initiated were Donna Bogard, senior English major from Nescopeck; Douglas Caldwell, elementary major from Levittown; Jan Felmster, English major from Ringtown; Luton Houtz, English major from Pottsville; Lynda Maul, social studies major from Milton; Ann Shepherd, English major from Berwick; and Martha Siemsen, English major from Northumberland.

This year these three teams are expected to compete along with new entrants. Bloomsburg State will field a team composed of Gary Deets, captain (Sr., Northumberland), Dan Marks (Jr., Hatboro), Gordon Clapp (Jr., Light Street) and Danny Storaska (Sr. Bloomsburg). Spectators are welcome at the tournament.

Where Dad Took His Girl
The TEXAS
Bloomsburg

BART PURSEL'S
MEN & BOYS STORE
Clothing for the College Boy

ROCKS Steak House
CORNER EAST & FIFTH STS.
Home Cooked Foods
PRIME WESTERN BEEF - SEAFOOD
SPAGHETTI
Private Parties
BETTY and BILL HASSERT
Proprietors
7:30 A.M. - 1:00 A.M.
784-9895

MUSIC - RECORDS - GIFTS

59 E. Main St. 784-2818

BISSET and FRITZ
Barber Shop
316 EAST ST., BLOOMSBURG

"Merry Christmas
and
Happy New Year"

The
DIXIE SHOP
Bloomsburg's Fashion Corner

WALKER'S
OMEGA
Official Agency

THE WATCH FOR A LIFETIME
OF PROUD POSSESSION...

Art-Carved
DIAMONDS-WEDDING RINGS

BELOVED BY BRIDES FOR
OVER 100 YEARS.....

BUDGET TERMS ARRANGED
14 W. Main St., Bloomsburg

LEE - PAT'S

MEN'S and BOYS' CLOTHING

- McGregor Sportswear
- Manhattan Shirts
- Haggard Slacks
- Brentwood Sweaters
- MacGregor Sportswear

"Formal Wear
Rental Service"

20 E. Main St. 784-5766

CHAR BAR

Shakes - Steaks - Steerburgers
Flavor Crisp Chicken
6:30 A.M. - 10:00 P.M.
MARKET STREET SHOPPING CENTER
By A&P

For the Best in
OFFICE SUPPLIES

Miller's
Office Supply
Co.

HALLMARK Greeting Cards

18 W. Main St.
BLOOMSBURG, PA.

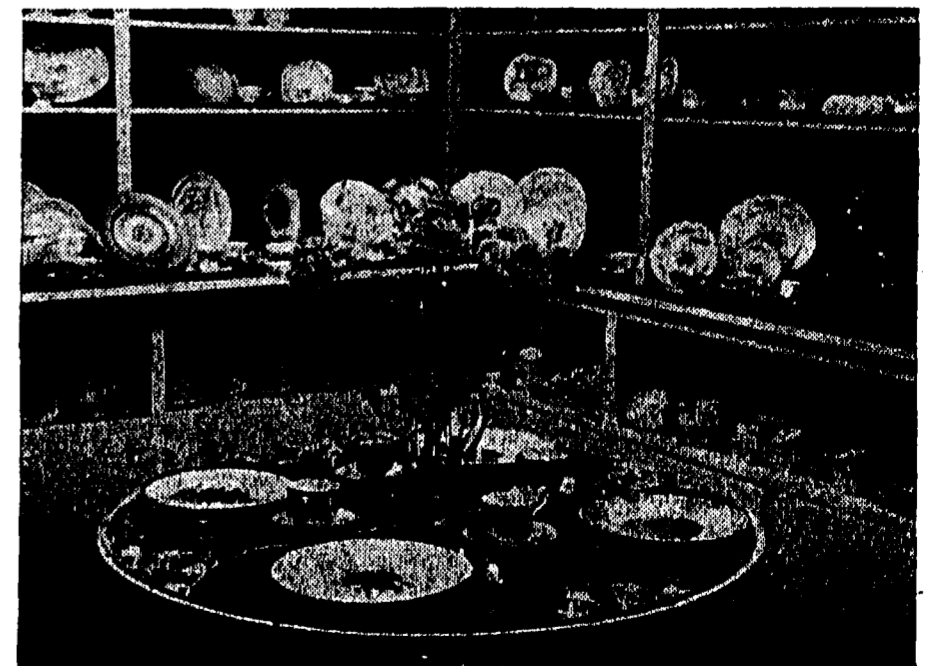


The APPLE KART

807 Market St.
Bloomsburg

"We Wish You Deepest Joy at
Christmas — Lasting Happiness in the
New Year"

Delicious Food for Eating or Carry Out
OPEN TUESDAY THROUGH SUNDAY
11:30 A.M. - 9:00 P.M. — Closed Every Monday



"Beautiful Bride's Room" at...

SNEIDMAN'S JEWELERS
130 EAST MAIN STREET - BLOOMSBURG