

# RETRENCHMENT

Over the course of the summer, BSC was faced with dealing with the problem of retrenchment and loss of various services or a cut in services at the least. The budget has to be stretched to try to keep the college running smoothly, and yet there will be a layoff in order to meet the budgetary demands.

After accepting then rejecting various plans, PLAN C is the one that will probably be in

effect unless something unforeseen occurs. This plan is printed in full below and deals with the least needed services first and works down to the most-needed services:

## Retrenchment Plan C (Including Alternatives to Retrenchment)

1. **Food service economies**- This item will reduce drastically those College-supported and work-related functions such as semi-annual faculty orien-

tations, candidate luncheons, and presidential dinners vital to faculty recruitment and communication.

2. **Recalculation of retirement contributions**- Currently, the College is paying into the State Employee's Retirement Fund on behalf of all its employees an amount equal to 12.6% of the total payroll. Since four employees are members of the Public School Employees Retirement System and two

others are members of the TIAA-CREF plan, whose rates are 7.6%, the amount paid into the State Employees Retirement Fund from the College's budget should be reduced by \$6,056. This represents a savings of five percent of the total salaries of \$121,122 earned by these six employees.

This is a positive opportunity to reduce expenditures to a more precise and equitable amount without harming the operation of the College.

3. **Reduce expenditures on buildings and structures**- This will have serious implications in Suttiff and Hartline Halls with regard to laboratories on which major work must be done to up-date in order to provide facilities necessary to the new Health Science programs. Impact on educational programs is most severe in gearing up to support changing missions in order to meet student needs and retain our enrollments.

4. **Increase room fee for resident students by \$72-year per student**- This decision is made most reluctantly since it may well have a serious long term effect on our enrollment. Charging an additional room fee of \$72 per year and at the same time increasing the basic fee as well as passing on additional costs to students (see impact statement no. 18 infra) must be judged to be intolerable. The continued passing of financial burdens of this nature to our students will undoubtedly have a direct effect on student enrollment.

5. **Alter college printing and publication schedule**- The proposal to publish undergraduate catalogues every two years instead of annually is made

reluctantly because of mixed reactions from institutions where two-year editions have been published. The catalogue is a contract with the students and it is vital that information concerning policies, curricula and program requirements be as up-to-date as possible. A two-year printing schedule would require a drastic and difficult adjustment in procedures for revising policies and implementing new programs. Thus, the work of the Long-Range Planning Commission would be seriously impaired.

6. **Abolish one management position (Associate Vice President for Academic Affairs)**- The loss of this academic management position will mean that the important academic support services of admissions, records, and the library will lose a high degree of coordination with the teaching units of the College. In addition, since this executive dean's duties cut across all academic organizational lines, instructional programs will suffer the loss of the efficiency which proper coordination and supervision can bring.

This position retrenchment reduces still further one of the smallest management staffs among the Pennsylvania State Colleges and University.

7. **Reduce contracted maintenance expenditures**- A reduction in this objective will defer cleaning and routine inspections on costly equipment. Over the years, this will result in breakdown and higher equipment replacement costs.

Most air handling equipment and office machines are too specialized for our campus maintenance employees to

cont'd on page 6

Bloomsburg State College, Bloomsburg, Pa. 17815

# The CAMPUS VOICE

VOL. LIV

No. 1

A Publication of the Maroon and Gold News

## PHEAA-BEOG

### Act now on special aid requirement

Ninety thousand Pennsylvanians going to colleges, trade, business and nursing schools this fall will know in the next few days how they stand as far as financial aid from the state is concerned. Their state higher education assistance grants, worth approximately \$64 million, have been processed and award notices are being sent to the recipients.

But, another 13,000 state student aid hopefuls who haven't fulfilled special filing requirements could be hurting themselves for second-half-year help if they don't act soon.

The Pennsylvania Higher Education Assistance Agency, which administers student aid for the Commonwealth, have this explanation: For the first-half year, 103,000 awards valued at about \$33.4 million had been processed by the Agency. Because of unused federal funds last year, the Agency made half-year awards in order to best match up both state and federal funds with applicants.

In order to utilize federal funds fully, the Agency made it mandatory for PHEAA applicants to also apply for aid through a federal program — the Basic Educational Opportunity Grant Program (BEOG). Ninety thousand complied, 13,000 didn't. The ninety thousand currently are receiving awards notices.

"Those 13,000 who should have filed for BEOG help but

didn't will get a final notification that they should do so," said Kenneth R. Reeher, Executive Director of PHEAA. "If they don't, they will lose their eligibility for state aid for the final term of 1975-76."

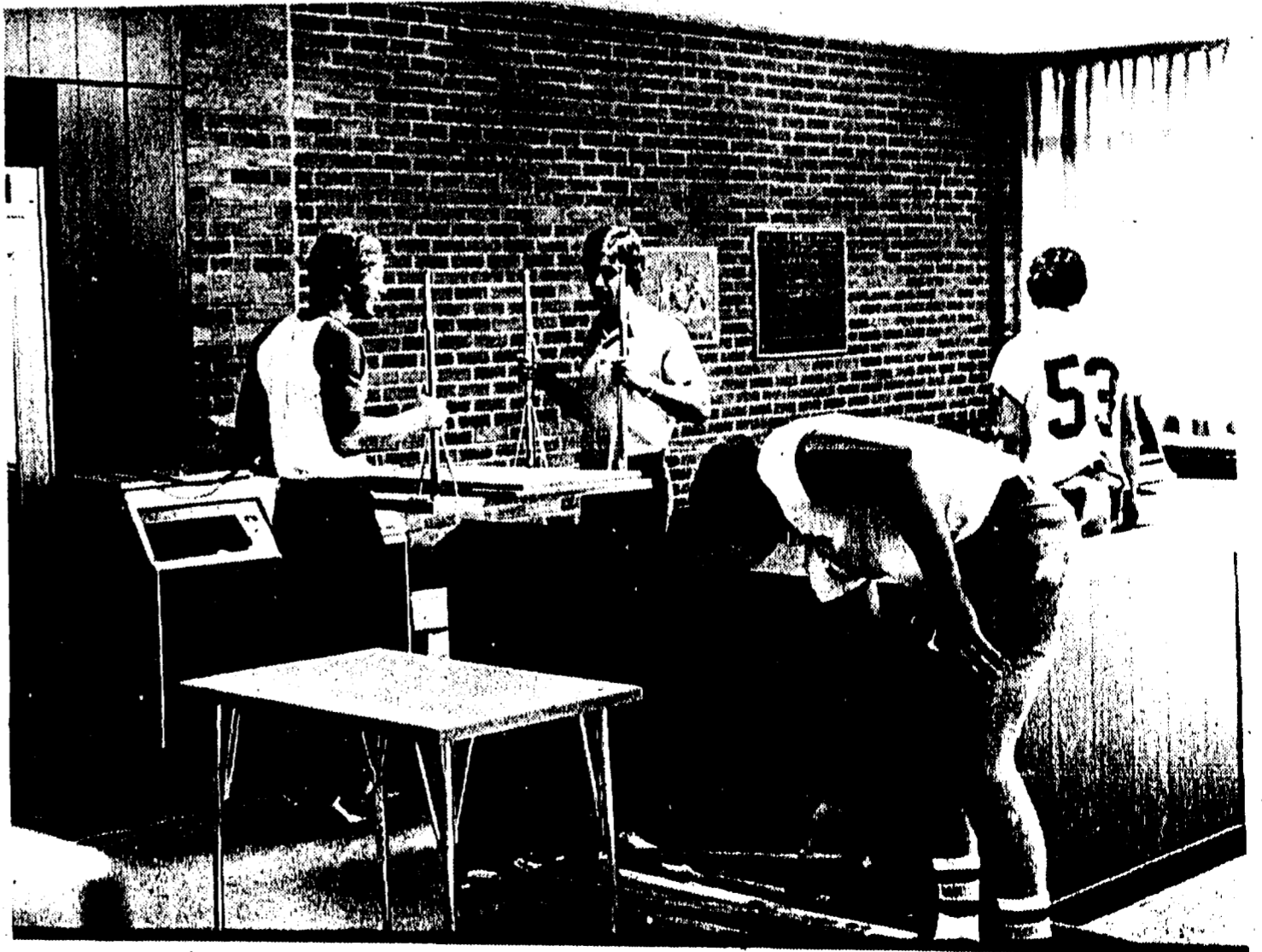
The notification will be sent soon to those who didn't apply for BEOG aid. Either way, said Reeher, students will know within a short time what their status will be or what they must do if they have not filed, and should hold their questions until they either have gotten a grant notice or instructions on how to proceed to obtain BEOG eligibility.

Because of the expanded number of applicants and the anticipated increase in the total award amount with no increase in state funding, the Agency had to make it mandatory for the majority of students to seek federal BEOG help as well. By doing so, the students, for the most part, could receive more aid through combined federal state aid even though they would receive less state aid alone.

The 13,000 state grant applicants who previously were notified by PHEAA that they were required to file for BEOG and have failed to do so will have until October 15, 1975 to take that action. If they fail to do so by that date, eligibility for a state grant for the final term of the current academic year will be denied.

### Campus Voice wants you!

The Campus Voice needs you! If you're interested in photography, writing stories, typing or otherwise working on a newspaper, come to the organizational meeting this Tuesday night, September 9 at 7:00 pm on the second floor coffeehouse in the Union. If you are unable to attend, call the Voice offices at 389-3101 or drop by



RA's in Elwell (now known as the Hilton) get ready for the mob of students returning from summer vacations.

# EDITORIAL

## Calendar Controversy Over

The students have been heard!  
You have returned this fall to some good news, which is a welcome change compared to some of last year's events.

Last semester there was a great turbulence of student dissatisfaction concerning the shape of the '76-'77 academic calendar. If you can remember, the calendar was set up such that final exams would be awaiting the students soon after Christmas vacation. This dragging-out of the first semester was met with much student unrest.

I'm sure you are able to recall the numerous letters and editorial comments that appeared within the pages of the *Campus Voice*. Some were nasty and some were suggestive of alternate ideas. But, more importantly, all were fighting what had been accepted to be instituted for '76-'77.

Dr. Pickett's name was one frequently-used as the one responsible for the poorly-outlined calendar, and justly so. However, over the course of the summer, Dr. Pickett realized his error and has changed the calendar plan.

Dr. Pickett recently stated to a group of students, "One thing came through loud and clear and that was your deep concern." And he further noted that all future calendars would begin around September 1 and end about May 15 with Christmas vacation uninterrupted.

I think that we have to take a moment and realize something here. We students do have the power to change things if we voice our concerns to those in charge of the policy making.

President McCormick has tried to impress upon students that we can work within the system to get what we want, and this calendar change is surely indicative of his point.

Another point that must be shown is that any governing body ideally should realize when it has erred in judgment in the interests of its people. And when this has been determined, a change must be instituted or the people will lose faith. Since in our case the mistake has been rectified, it shows that the administrative staff is interested enough to take our concerns as important.

Just as you and I rebuked Dr. Pickett for his decision last semester, now he is entitled to our lauds.

Welcome back, everyone—I'm glad we could be welcomed with such good news.  
Barb Wanchisen

## The Lighter Side

by Peggy Moran

### A summer place?

Tired of that same old summer vacation that never seems to change from year to year? Are you bored with working to earn enough money to come back to school? Has the family style vacation and the "at the shore" scene lost its appeal? Then, maybe next year, you should try Bloomsburg.

For the interested student, willing to put up with a few minor inconveniences, Bloom offers a wealth of both educational and social activities.

As far as the summer social scene is concerned, the Union is where the action is. On weeknights, mainly during orientation, tuned in students may be found bumping to the beat of live music, or on a less active night, taking in a flick in the comfort of the air-conditioned Multipurpose Room.

But for those two months when the only people to be found on campus are those stooges taking summer courses, the "soc" (as in social scene) is not quite up to par.

During the week the Union Games Room is the place for the busy student to take a break from their harried schedules. The Union is open for business until midnight during the week; but the weekend finds the campus hot spot an impenetrable fortress after 10 p.m.

Situations like this definitely leave something to be desired as far as social activities are concerned. With no other alternatives, students are forced to seek entertainment elsewhere; off-campus for instance. Wild fraternity parties and other sundry downtown activities were the last resort for entertainment of most students who chose to weekend here in Bloom.

But taking all of this into consideration, things could have been worse: they could have had the pin ball machines removed from the Games Room, or the parties might not have been quite so wild.

Considering that vacation has just ended, it might be a little soon to be making plans for that next extended hiatus, but when May rolls around, and you're faced with the prospect of yet another summer doing what you've done for the past five years, give Bloomsburg a chance, it might surprise you. (Then again, it might not).

### Yearbook!

There will be an organizational meeting for the *Obiter* (college yearbook) Tuesday, Sept. 9 at 3:30 and 7:30 p.m. All those interested in joining the staff should attend the meetings to be held in the *Obiter* office, top floor, Kehr Union.



## The Spotlight

by K. A. Chiodo

### "Pittenger's paradoxes"

Welcome back, and welcome back to a few grand controversies, the grandest of which is the budget deficit problem and what BSC is going to have to do about it next year.

According to the state Department of Education, we will have to hit our "Target Deficit" (such a cute phrase) of \$1,002,063 for that fiscal year. Cutting that much money isn't a matter of trimming off the excess; it's a stab in the heart for almost every department and curriculum on campus. (Read the facts on page one.)

#### Paradox paradise

Here's the thing, the real thing: BSC is about the fifth largest state-owned college

when it comes to enrollment; but the commonwealth figures us to be College Number 9 when it comes to dishing out money. Does this make sense? Feed a fat baby and ignore the starving one...

The Secretary of Education, John Pittenger, expects us to stop spending that "extra" million dollars a year. What will we have to do? Cut costs. Cut programs, cut services, cut people; cut the students, faculty, staff and administration. Raise costs. Raise tuition, raise housing, raise food costs. But we will lose money simultaneously with a rapid decrease in enrollment.

#### Students in "hot water"

To get specific, one of the major things to be chopped off is the campus laundry. All on-campus students will start to wash their own bed linens next year. The Commons won't be likely to have freshly washed and ironed tablecloths either. The real tragedy though, is the loss of jobs for the 12 people employed at the laundry now. "Salary savings" sounds good; "Depriving people of their income" sounds more realistic.

Many departments will become short-staffed, creating overcrowded classes and poor quality education. Some staff reductions may prove dangerous; the security staff will lose one guard, and the Student Life staff will lose a resident dean, meaning one dorm will be without a professional administrator. Public Relations will be chpped down by one staff member and a serious cut-back in printing; Bloomsburg State won't be able to promote itself efficiently and will lose even more enrollment possibilities.

## Thinking Allowed

by Mark Mullen

### Getting It Going

College-time is here again and Bloomsburg State College is throwing the collegiate machine into gear once more. There's a lot happening to the campus, on the outside and on the inside.

The external changes are most evident, and are affecting us in various ways. The rubble of Old Waller Hall has yielded to a bustling mass of steel and concrete, making the walk up Second Street interesting and the driving difficult. Campus Security has some new wheels (a new station wagon and a new International Scout) to get around on, and Elwell lobby has had a face lift.

The visual changes are impressive, but the real improvement is more difficult to see. I've observed a change in the administration that perhaps many will not notice for some time. The administration, so far, has been putting a great emphasis on involvement and good communication. I sense that Dr. McCormick and Company are improving internal and external communications. As a result, we'll be seeing a lot more of our

administrators, and we'll be asked for feedback to aid in improving our campus situation. I hope we'll have answers.

Another happy change made of late, is that Dr. Pickett (you remember him) has decided to recommend to President McCormick that the '76-'77 calendar be "revised" to a more viable plan. Apparently, someone was listening last year.

But as the semester starts rolling along, we've all got some common problems to keep us occupied. Such as remembering our roommate's name(s), standing in line for course changes (and meals too), locating classrooms and buildings and profs, and keeping your mind off of the summer you just left.

So as another semester begins to happen along, we all venture forth with our number-two pencils in our hands and our social security numbers in our hearts, and we proceed to print legibly, keep our keys straight, remember our roommate's name, and persevere.

## Music Department information

**Free Recital:** John Couch, BSC resident pianist, will give a recital in Haas Auditorium at 8:15 next Thursday evening. The new Baldwin SD10 Concert Grand Piano he will be performing on is the largest made, and was specifically chosen for Haas acoustics. Mr. Couch has selected an interesting variety of classical music for Thursday's presentation.

**Musical Groups:** The Music Department is looking for new people for their various organizations. The groups include the Concert Choir, Maroon and Gold Band, the Women's Choral Ensemble, the Men's Glee Club, the Madrigal Singers, and the College Community Orchestra. All interested people, please call 7389-3107, or see the secretary, Shirley Pahls, in the Haas Center office, located at the side entrance first floor.

## THE CAMPUS VOICE

Editor-in-Chief	Barb Wanchisen	Feature Editor	Peggy Moran
Production Manager	Vickie Mears	Sports Editor	Dale Myers
Business Manager	John Charosky	Asst. News Editor	Ed Hauck
News Editor	Joe Sylvester	Copy Editor	K.A. Chiodo
Asst. News Editor	Steve Sizers	Photo Editor	Randy Mason

Mr. Ken Hoffman, Director of Public Relations and Publications is the Advisor

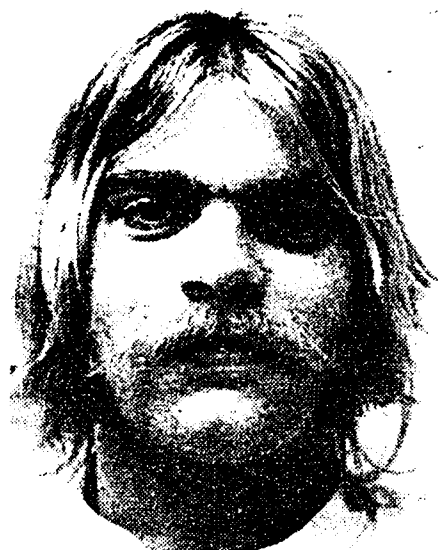
The Campus Voice is the official student publication of Bloomsburg State College and is printed on a weekly basis during the academic year except during vacations and final exam week. The Campus Voice is a member of the Pennsylvania Newspapers Publishers Association under the name of the Maroon and Gold News. The Campus Voice offices are located on the second floor of the Kehr Union. The phone number is 389-3101. All copy and advertising should be submitted by 4 pm on Sunday nights for Thursday's edition. News releases must be typed, double spaced and with a 60 character line. The Campus Voice is governed by the Editorial Board, with final responsibility for all material resting with the Editor-in-Chief, as stated in the Joint Statement on Rights, Freedoms, and Responsibilities of Students of Bloomsburg State College. The Campus Voice reserves the right to edit all letters and copy submitted. A maximum of 400 words will be placed on all letters to the Editor, with an allowance for special exceptions. All letters to the Editor must be signed and have a telephone number and address attached. Names will be withheld upon request. NOTE: The opinions voiced in the columns, feature articles and editorials of the Campus Voice are not necessarily shared by the entire staff.



# Photo Forum

compiled by Randy Mason

## What would you like to see changed at BSC?



**Ed Hauck** - I would like to see the STUDENTS change. For starters, I wish they would show a little more interest in the school rather than run out every weekend. I hope they will do something-anything.

**Bob Gould** - I'd like to see a change in school policy pertaining to the drinking rights of 21 year olds on campus. Also, there should be some facilities open 24 hours a day where the students could meet to study or talk.

**Mark Mullen** - The vandalism problem on campus...improved of course!



# Record Review

by Mike Bower

## 'Mighty Oaks' - poor imitation of Moodies

In "From Mighty Oaks", Thomas tried to straddle the line between making a moody Blues orientated album like his predecessor "Blue Jays" by Justin Hayward and John Lodge and a commercially successful album. As this album proves, the mix does not work.

Thomas did put together a band that sounds fairly good but this is where his roots in the Moody Blues begin to show through. By choosing John Jones on guitar, he picked a musician capable of, and succeeding at, mimicing Justin Hayward.

Richard Hewson as orchestral arranger and conductor shows little departure from arrangements common to past Moody Blues albums. Thomas tried to put the Moodies sound into the album even with the background vocals, seemingly chosen to practically duplicate those of the Moodies.

All of this might have been allowable if not for the material Thomas chose for the album. Stranded somewhere between

pop and country, Thomas cannot fit the Moodies sound to the material. Many of the lyrics seem far distant from the sounds going on around them. Thomas' voice only aggravates matters. Often much too piercing and out of place, his voice works against a song instead of flowing with it.

These factors combine to make the album full of songs that seem to have been pieced together. With only one good rocker ("High Above My Head") the album consists mostly of ballads on which Thomas cannot control his voice. There is a country influence in some of the songs which only serves to intensify the suspicion that Thomas had no direction to go with when the album was created.

Thomas should have followed the example of Hayward and Lodge and stuck to material the Moody Blues are best at - Moody Blues material. The group should never have been disbanded because this left Thomas in a sea afloat with nowhere to go.



**Chyrlie Hamilton** - I suppose it was necessary, but they went and changed the study rooms in Luzerne into freshmen triple rooms. Those study rooms were the only place where I could study seriously, with the least interruption and noise. I'd really like them back. I guess now I'll have to find myself a quiet closet someplace.



**Diane O'Rourke** - I would like to see better housing accommodations so tripling of rooms could be excluded.



**Shawn Burke** - I would like to see the money in Elwell spent on better things. Although the new lobby is very attractive, it will probably get very little use. The money could have been used for the rooms.



**Barb Wanchisen** - I wish we could be more selective about choosing professors. It seems to be the exception rather than the rule to get a good prof who is truly interested in his subject. This is unfortunate since educators should be stimulating rather than boring.



**Chuck Thomas** - I'd like to see an improvement in the programming of social events at BSC. Hopefully, this would encourage students to come on campus.

## Music Lovers!!

The Earl Scruggs Revue will present a concert in Haas Auditorium on Sunday, September 14, at 8 p.m. Tickets are now on sale at the Union Info Desk-\$3 with a valid BSC I.D., \$4 without.

The Earl Scruggs Revue deals with one thing-simply music. It's an unusual mixture

of rock, spiritual, and country, all of which fuse together to give a distinct and unusual sound. When you listen to what they do to a crowd, how they rip them up and put them back together, you will understand why the Earl Scruggs revue is one of the most influential forces in Music today.

# BSC campus comes to life again!



"Is this lease for life?"



"Check out time? Not 'til next May."



"Gettin' in tune...to tune in on you."



"First day back...let's party!"



"Just like home; Tweety and me."



"Our problems can be solved."



"Ready to fill up the house."



"So much work ahead..."

# Retrenchment casts shadow on coming year at BSC

service. 8. Reduce the number of graduate assistantships by 50%— Since the graduate students displaying the greatest promise are awarded assistantships, this reduction hits hardest at the quality of our graduate education. The decision also will result in lower quality undergraduate instruction in those departments where graduated students have been assigned, since the assistants directly support that instruction. 9. Reduce sabbatical replacements by 50%— Sabbatical leave recipients are presently replaced only on a highly selective basis (about 35% of those recipients were replaced in the 1974-75 academic year. Further reduction will require the postponement of high demand classes. 10. Reduce German language staff by one 11. Reduce staff of Educational Studies and Services by one 12. Reduce Secondary Education Staff by one 13. Reduce Forensics staff by one 14. Reduce Elementary Education staff by one 15. Reduce Art staff by one 16. Reduce History staff by one 17. Reduce French language staff by one 18. Close the college laundry— This will place the total responsibility for the cost of supplying and laundering bed linens directly upon the students. The present food service contract also dictates that the college launder the table linens. Closing the laundry facility will require the food service vendor to absorb this cost. This in turn will mean renegotiating or signing any

contract or agreement which involves providing the laundering of bed linens for the food service vendor. No matter what the arrangement, these added costs plus the basic fee increase and the proposed room fee increase would put further financial burdens on the students. 19. Reduce History staff by second person 20. Reduce Geography Cultural Affairs staff by one 21. Reduce Public Relations staff by one— Retrenching this position would reduce the staff of the Office of Public Relations and Publications by one-third at a time when the demands in the office are increasing. It would require drastic curtailment of College plans for publicizing and promoting new missions and programs. The Office currently combines responsibilities which are distributed over two or more offices at many institutions, including academic support for the Journalism program. 22. Reduce History staff by third person 23. Reduce French language staff by second person 24. Reduce Student Life staff by one (Unit IISCUA resident dean)— This will require a resident hall to operate without a professional administrator at a time when all residence halls are overcrowded. This will adversely affect the maintenance of the physical facility. Further, the safety and security procedures involving approximately 300 students, and the judicial and disciplinary procedures so important in maintaining a positive living atmosphere will

be similarly affected. The absence of a resident dean will mean that non-traditional educational programming in the hall, normal at Bloomsburg State College at present, will be eliminated and the identification of problem areas prior to trouble will be greatly diminished. 25. Reduce Business Education staff by one 26. Reduce Physics staff by one (1 UPGW person)— With the security staff to cover three shifts already at a minimum, retrenchment of one security officer will result in diminished protection of our students and of Commonwealth property. The student health services program will also be adversely affected in terms of transporting students to the Bloomsburg Hospital Dispensary.

Reduction in this staff will also deprive the College of the opportunity to serve as a cultural center for this region. 28. Abolish the remainder of the graduate assistantships— The College's masters-level programs in special education, speech pathology, audiology, teaching of the hearing impaired, and reading are among the strongest in the eastern United States. Retention of half of the graduate assistantships normally available to the institution would have permitted a marginal level of incentive and support to these important programs. With the abolition of the remainder of these support funds, even that support is removed. 29. Abolish all remaining sabbatical replacements— The impact of this decision will affect most adversely those programs of

highest student demand. Since the College is now legally committed to the award of sabbatical plans at College option is not possible.

**Federal Grants**— If any faculty member has a particular area of interest for possible funding for a federal program, please call the Office of Campus Services, Ext. 3710, and let us research the subject in the Federal Grants library which has been established in our center. Information on the interest area will also be forwarded to our program associate in the Office of Federal Programs, AASCU, for further study. Faculty interest in federal programs continues to play an integral part in the survival of various areas of the college. **Food Service**— Would you be interested in having a specific area of one of the dining rooms screened off to be used as a faculty dining room? Meals could be offered with waiter service or cafeteria style. Your ideas and comments will be appreciated by the Office of Campus Services. The future of this project will depend on the number of faculty members showing an interest. In the past, satisfaction was indicated with our trial luncheons. **Seminars on Conferences and Clinics**— Representatives from eight Pennsylvania State Colleges attended an all-day seminar on conferences and clinics hosted by Bloomsburg State College and held at Shippensburg State College on Thursday, August 14.

The seminar was organized by the BSC Office of Campus Services and was designed to

stress the use of conferences at the state colleges for academic involvement with resort aspects given minor consideration. Elton Hunsinger, administrator of Campus Services, chaired the seminar while Frank Hare, director of conferences at Shippensburg State College, acted as moderator. Alva Frank, assistant vice president for Admn Shippensburg was present to field questions on fiscal involvement.

A number of phases covered at the seminar included: how to generate conferences and clinics; planning and procedure of conferences; publicizing conferences; importance of athletic clinics; and insurance liability of conferences. It was agreed by all present that the summer months offered the best opportunity for attracting conferences to state college campuses as more campus dormitory space is available for overnight housing. In addition to Bloomsburg and Shippensburg, other representatives were present from the state colleges of California, Slippery Rock, East Stroudsburg, D Edinboro, Lock Haven, and West Chester.

Along with Hunsinger, Robert Norton, da Bailey, secretary, Office of Campus Services, were present from Bo Hunsinger indicated that facilities at BSC are available for conferences, clinics, seminars, etc. for area organizations as long as plans are made well in advance.

**Your ticket to TRAVEL, LOVE, EXCITEMENT and all nighters.**

**Come to the CAMPUS VOICE meeting this Tuesday night at 7:00 in the coffee house in the Union**

# Huskies tune up for season opener

This year Coach Sproule faces one of his toughest challenges in recent years as he tries to bring the BSC football fortunes back to respectability.

One of the things that make this task look extremely difficult, is the lack of a proven offense. Last year's offensive unit showed only occasional glimpses of effectiveness as it sputtered throughout the season.

To improve on their offensive outlook, the Huskies will have to cut down on mistakes that last year cost them several games, and also on injuries which hindered the development of the young offensive unit. The Huskies suffered several key injuries last season and this had to hurt their

development, particularly serious being injuries to running backs and starting quarterback Stan Guerecki, since lost to graduation, so that it seemed as though the team never had the same starting backfield two weeks in a row.

Coach Sproule will be looking for a replacement for Guerecki and his choice could be either Ken Haynie or Gene Markowski, both of whom started some of the time last year while Guerecki was injured. Who ever gets the nod, he will have to be able to get a decent running attack. The offensive line could be a much better aid here than it was last year due to the fact that they will have to work together for a season. Last year they were

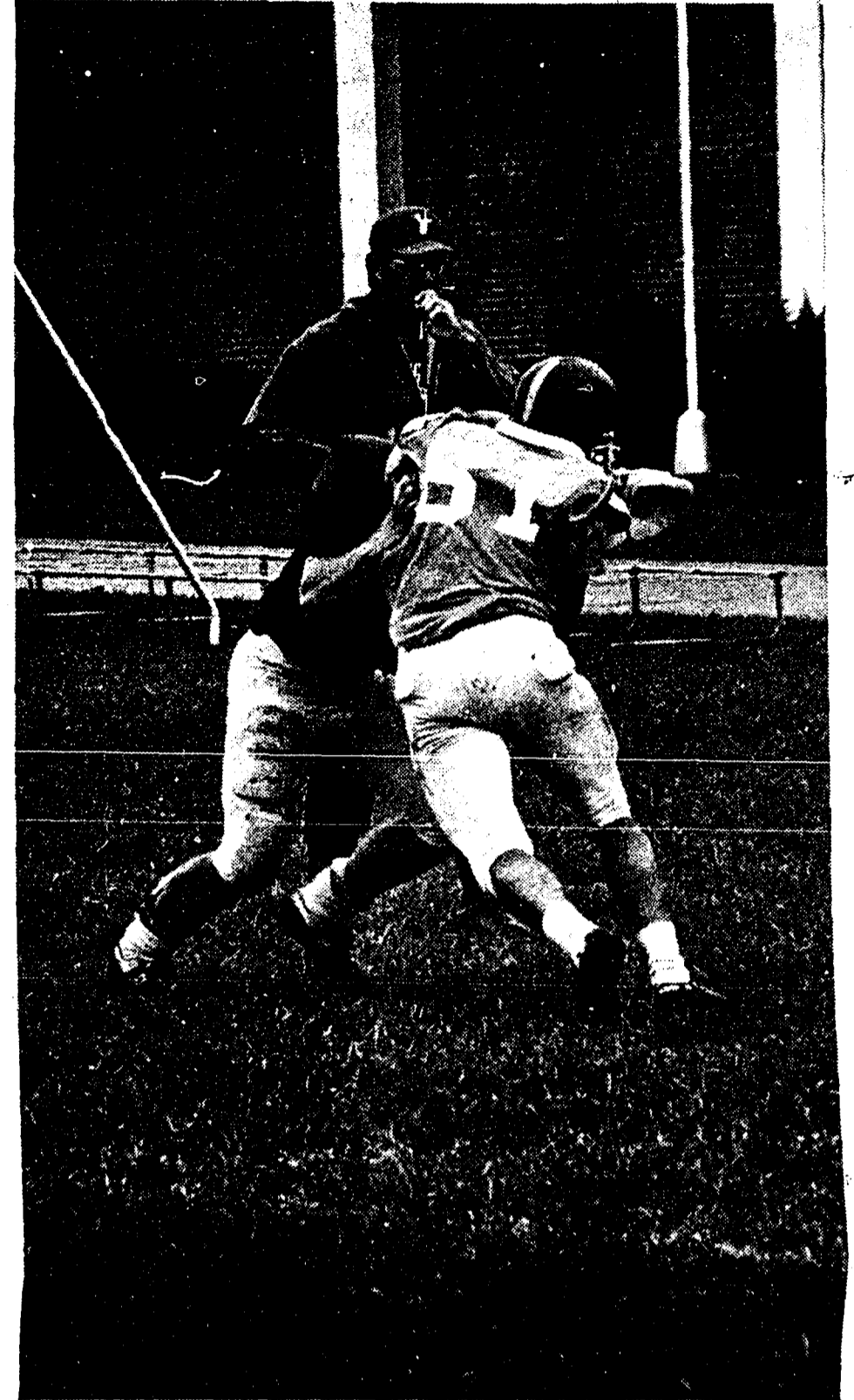
unused to working as a unit and their inexperience was a major factor in the hinderance of the running attack.

The defense comes back in slightly better shape than the offense, but graduation has made its claim here also. The team lost most of their backfield through graduation but there are replacements waiting in the wings. The most important loss could be the graduation of Linc Welles. Welles, an outstanding defensive back and the teams punter, will be missed more,

however for his punting skills which landed him a job with the WFL. The defensive line suffered a loss in Gene Rejent but again there is adequate support in the ranks.

Two keys to the Huskies improvement have to be the two backfields, both offensive and defensive. The Huskies will have to get some potency out of their offensive team to be able to compete with the rest of the conference. On defense, the linebackers and defensive backs will probably feel much of the pressure of coming up with the key play to keep the team in a close game.

Last year's last minute loss to Millersville was probably the best effort the Huskies got from both offense and defense. For the Huskies to win this year it will take that kind of performance again.



## Mermaids look to successful season

The women's swimming and diving team of BSC will compete against ten teams this coming season. This compares to six in the recently completed season. Last year, BSC defeated Lehigh (58-28), Mansfield (87-41), and Lycoming (87-30) but lost to Penn State (97-34), Bucknell (76-55), and Lock Haven (78-53).

In preparing for this schedule, Head Coach Mary Gardner stated, "There are several strong, promising freshman coming for next

season who will definitely add to the team's depth and strength in various events where we were lacking somewhat for our first season."

She added, "This season we hope to have all the girls back since the team was comprised of all freshman and sophomores."

The tentative schedule lists meets against West Virginia, Glassboro State, Temple, East Stroudsburg, Lock Haven, Mansfield, Lycoming, Binghamton, Lehigh and Bucknell..



## Riding the Pine

by Dale Myers

### Fall sports in action

This year's fall sports program at Bsc will be looking to improve on what proved to be a somewhat dismal season last year. In the spotlight of autumn sports stands football. In last season the Husky gridgers could only muster one win in 10 outings. Hopefully, Coach Sproule can get his offense moving and put points on the board. The defense, which held up quite well last year will have a tough job as they will have to replace the likes of Linc Welles, Charlie Bender and G Gene Rejent.

#### SOCCER'S SOPHOMORE SEASON

BSC's new sport, soccer, will also be looking for improvement. Last season (their first) a young, inexperienced team made several fine showings. Coach Lou Mingrone will be looking to take some good individual talent and mold it into a winning team

effort. The Huskies second season should be better than their

#### LESSER KNOWN SPORTS'

In a sport that doesn't draw much attention the women's field hockey team sported an excellent 7-1-1 record last season. With eight returning letterwomen, their prospects of equalling or improving this mark looks promising. Coach Gardner will be in her second year at the helm.

In another little known sport the BSC cross-country team also made a good showing last year season. The harriers have several returning lettermen who performed impressively. Coach Ron Puhl, head track mentor at BSC, takes over the reigns as last year's headman Clyde Noble has departed. Puhl has had much success as coach of the Husky track team which finished third at the State

Conference meet last season. Hopefully he can carry this through to the cross country team and produce a winner.

Avid followers of the Husky sports program will be provided with an interesting range of sports.

Men's and women's tennis also pervade the fall sports. In the men's bracket Coach Burt Reese will lead his netmen in search of a winning season. Reese will have his ace Drew H Hostetter back along with several other lettermen.

The Huskies are becoming progressively stronger and will provide extremely tough competition for their opponents.

The women will be led by Coach Wray who also has some returning letterwomen. Their experience should help them as they tackle one of their toughest schedules since the initiation of this sport at comment



# Borrowed Space

by Bill Sieder

The first column of this year's college sports season is my annual massacre of football predictions.

My top ten in the college ranks starts off with Oklahoma in the number oneslot followed by Alabama, U.S.C., Michigan, Notre Dame, L.S.U., Ohio State, U.C.L.A., Penn State and Texas in the last spot.

### NFL Picks

In the NFL, the closest races should be in the Eastern Divisions of the N.F.C. and A.F.C. where four teams are probably going to finish in the playoffs. In the AFC east, Miami, Buffalo, New England, and the New York Jets should fight it out for the top two slots and a playoff berth. Miami and Buffalo have to be considered the two favorites, although the Jets or Patriots could slip in to a playoff berth.

Over in the sister division of the NFC, things look a little more hectic. St. Louis, Dallas, Philadelphia, Washington and the New York Giants all have a mathematical chance of ending up in the playoffs. Dallas has lost its starting running game, bringing them down into a battle for a playoff bid. From the outside though, it looks as though Dallas will win the division and either St. Louis, Washington or Philadelphia will pick up the wildcard berth.

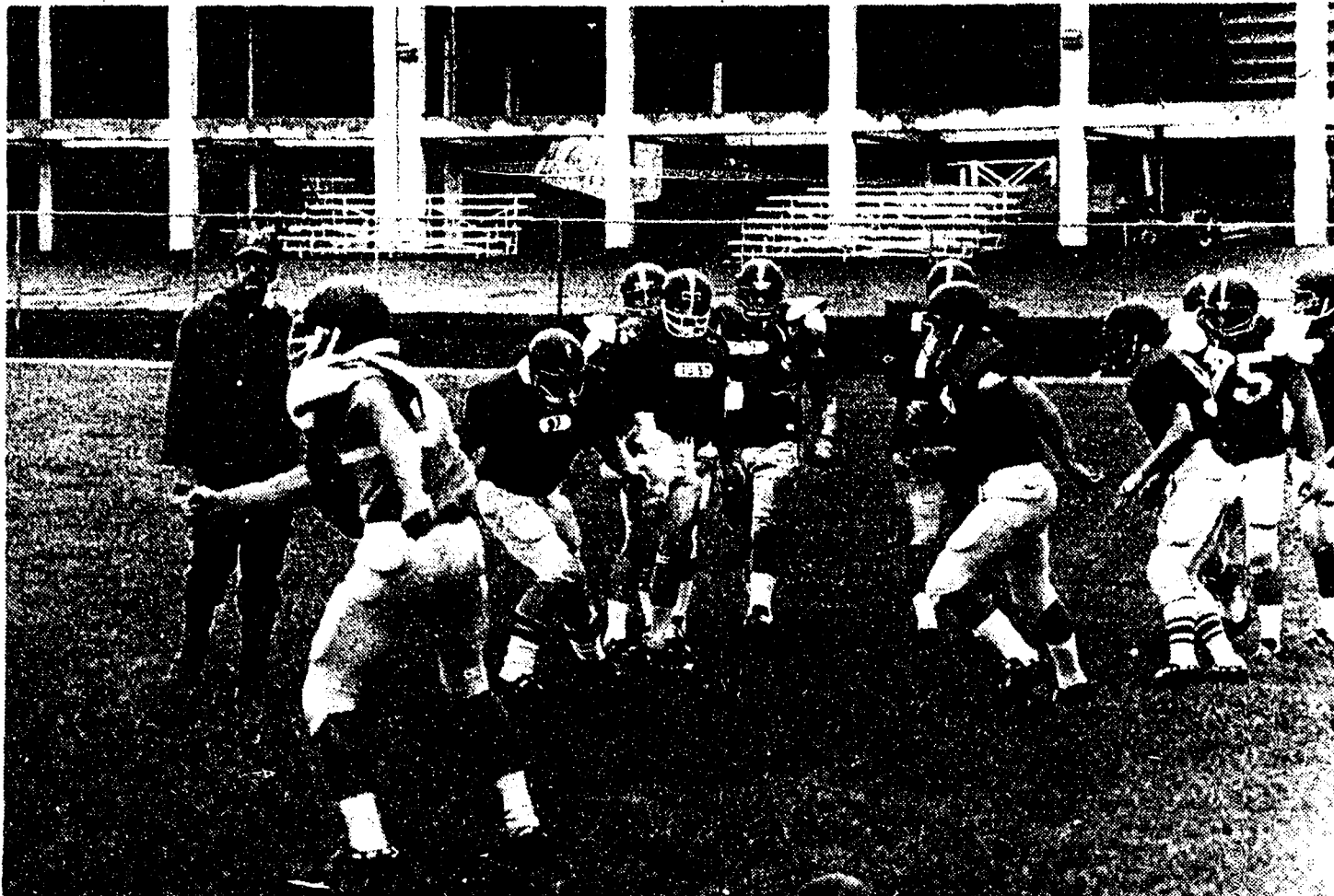
In the other divisions, picking winners is much, much easier as the field narrows. The most interesting race will be in the NFC Central Division where Minnesota might be pushed to retain their conference title. The Vikings will get some competition from Green Bay, Detroit, and Chicago but should still retain their championship form. In the west, Los Angeles is head and shoulders over everyone in their division and should have an easy lock on the division.

In the AFC, Pittsburgh and Oakland should easily reclaim their division crowns of a year ago.

BSC will be trying to improve on their football fortunes of a year ago but it could be a long road if they don't get an offensive show going.

### Baseball Rundown

This summer a surprise developed in baseball. The New York Yankees, with Catfish Hunter, were heavily favored to win the American League East. To date, the Yanks are in third behind Baltimore and a distant thirteen games off the pace set by front running Boston. In the National League, the Philadelphia Phillies are trying to catch Pittsburgh who leads them by 3-1/2 games.



Huskies work on offensive maneuvers.



Defensive back snags a misfired aerial.

## "GONE WITH THE WIND"



STARRING

**CLARK GABLE**  
**VIVIEN LEIGH**  
**LESLIE HOWARD**  
**OLIVIA de HAVILLAND**

Winner  
of Ten  
Academy  
Awards

*Both nights at 8 p.m.*

Friday - September 5 - Haas Aud.

Sunday - September 7 - Union