

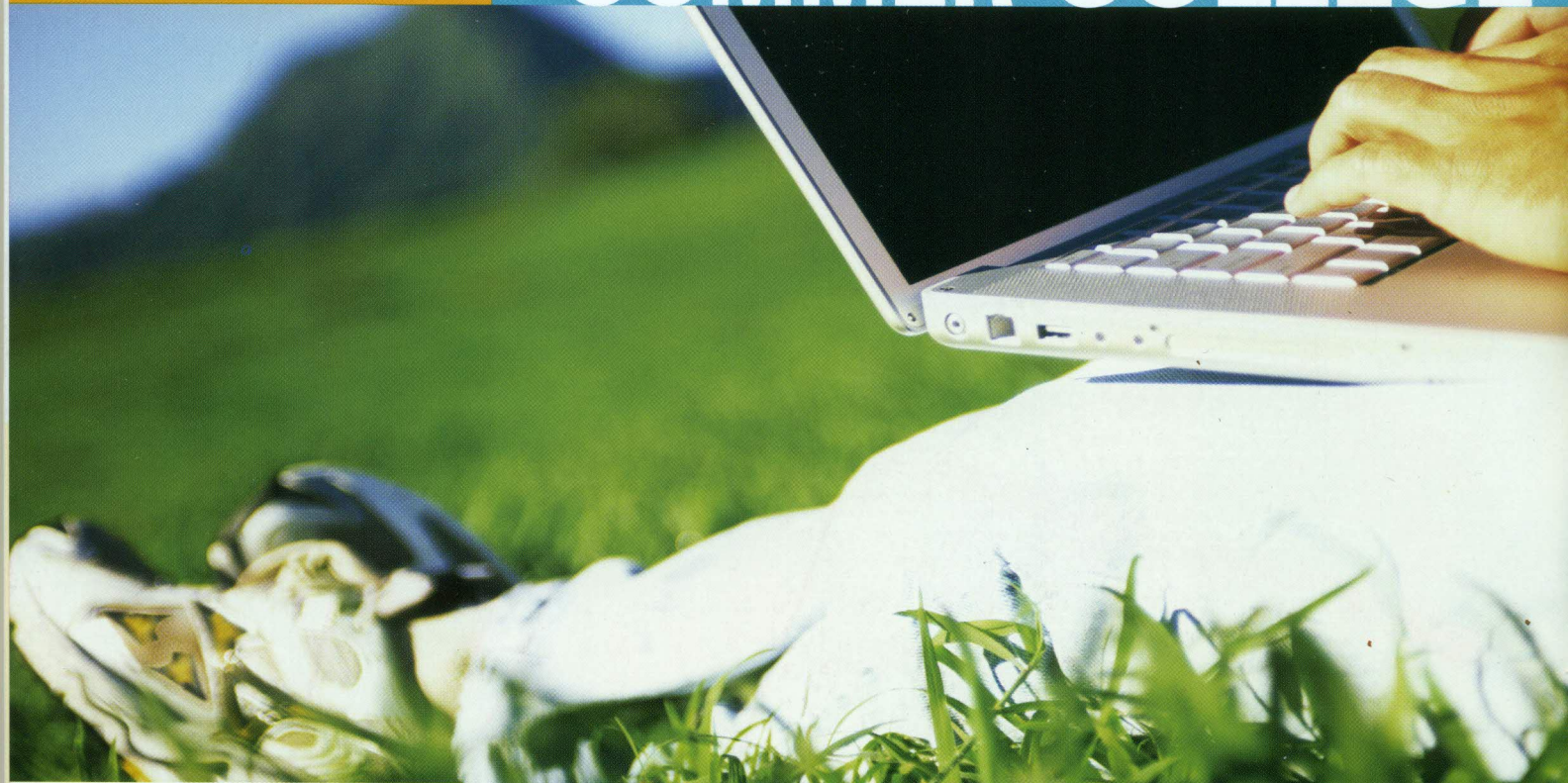
CALU

2006 SUMMER COLLEGE

SUMMER COURSES TO
ADVANCE YOUR EDUCATION
AND YOUR CAREER.

California University of Pennsylvania
Building Character. Building Careers.

WELCOME TO SUMMER COLLEGE



SMALL CLASSES

DEDICATED FACULTY

**UP TO THE MINUTE
TECHNOLOGY**

HOUSING AVAILABLE

**EASY TRANSFER
OF CREDITS**

**OVER 160
UNDERGRADUATE
COURSES**

**APPROXIMATELY 119
GRADUATE COURSES**

BEGINNING FEBRUARY 21

Cal U offers the perfect fit for students looking to gain additional credits. To make the most of your summer classes, be certain to take the following steps. >



> REGISTER ON-LINE

Go to sisweb.cup.edu. Or walk, fax, or mail your course registration card to the Office of Lifelong Learning, 202 Eberly Science and Technology Center, beginning February 21, 2005. Registration will continue until course cancellations are made. See the calendar on page 6 for more information. You must be registered and paid before you can attend class(es).

> APPLY FOR FINANCIAL AID

Refer to page 55. For questions regarding financial aid call 724-938-4415.

> PAY YOUR BILL ON TIME

Refer to page 50. For questions regarding your bill call 724-938-4431.

> OBTAIN A CAL CARD

The CAL Card is your University identification and library access. CAL Cards are obtained at the information desk in the Natali Student Center. This card also allows you access to the fitness center, Vulcan Theatre, and various university activities and services. You may also add shop dollars to this card for food services and other purchases. For more information, call 724-938-4300.

> OBTAIN A PARKING TAG

Anyone parking on campus between 8 am and 4 pm Monday through Friday must register their vehicle at the Public Safety Office and display a parking tag on their vehicle when it is parked on campus. For more information on parking rules and regulations contact Public Safety at 724-938-4299.

Summer Registration is now on-line. If you do not have Internet access, you may still register with the registration card on the inside back cover of this brochure by fax, mail, or in person at the Office of Lifelong Learning.

For more information, refer to page 64.

Questions? Comments? Don't guess at the answer. Give our Lifelong Learning team a call and we will give you the information you need to know.

Call toll free at 1-866-268-9154 or office number 724-938-5840 or e-mail us at summer@cup.edu.

Withdraw from your class(es) if you decide not to attend California University of PA. Failure to submit written notice of withdrawal will result in a failing grade and a financial liability. Although you should check with your instructor, academic advisor, or academic department before you withdraw from a course, a discussion with them will not get your course dropped. If you register for class(es) and then decide not to attend California University of PA it is your responsibility to initiate the proper paperwork. Do not assume that you will be dropped from the class(es) for nonpayment or because your financial aid was not approved. Withdrawals are processed based on the date they are received. Please come to the Office of Lifelong Learning in 202 Eberly Science and Technology Center to complete the appropriate paperwork or fax your signed request to 724-938-5963. Begin the process as soon as possible, it may save you money (refer to refund policy on page 51).



Building Directory

- A Maintenance Shop
- B Morgan Hall
- C Gallagher Hall
- D Hamer Hall (Pool & Gymnasium)
- E Longanecker Hall (Men's Residence)
- F Residence Hall C
- G Pollack Maintenance Building/Public Safety
- H Helsel Hall
- I Steele Hall
- J Natali Student Center
- K Keystone Hall
- L Heating Plant
- M Coover Hall
- N Noss Hall
- O Residence Hall B & Residence Life Offices
- P New Science Hall
- Q Paint Shop
- R Ceramics Lab
- S Herron Hall
- T Azorsky Hall
- U Downey-Garofalo Health Services
- V Residence Hall A & Honors Hall
- W Carter House
- X Watkins Hall
- Y Vulcan Hall
- Z Binns Hall
- AA Frich Hall
- BB Old Main
- CC South Hall
- DD Dixon Hall
- EE Duda Hall
- FF Manderino Library
- GG Eberly Hall
- HH Kara Alumni House
- * Construction/Renovation Sites

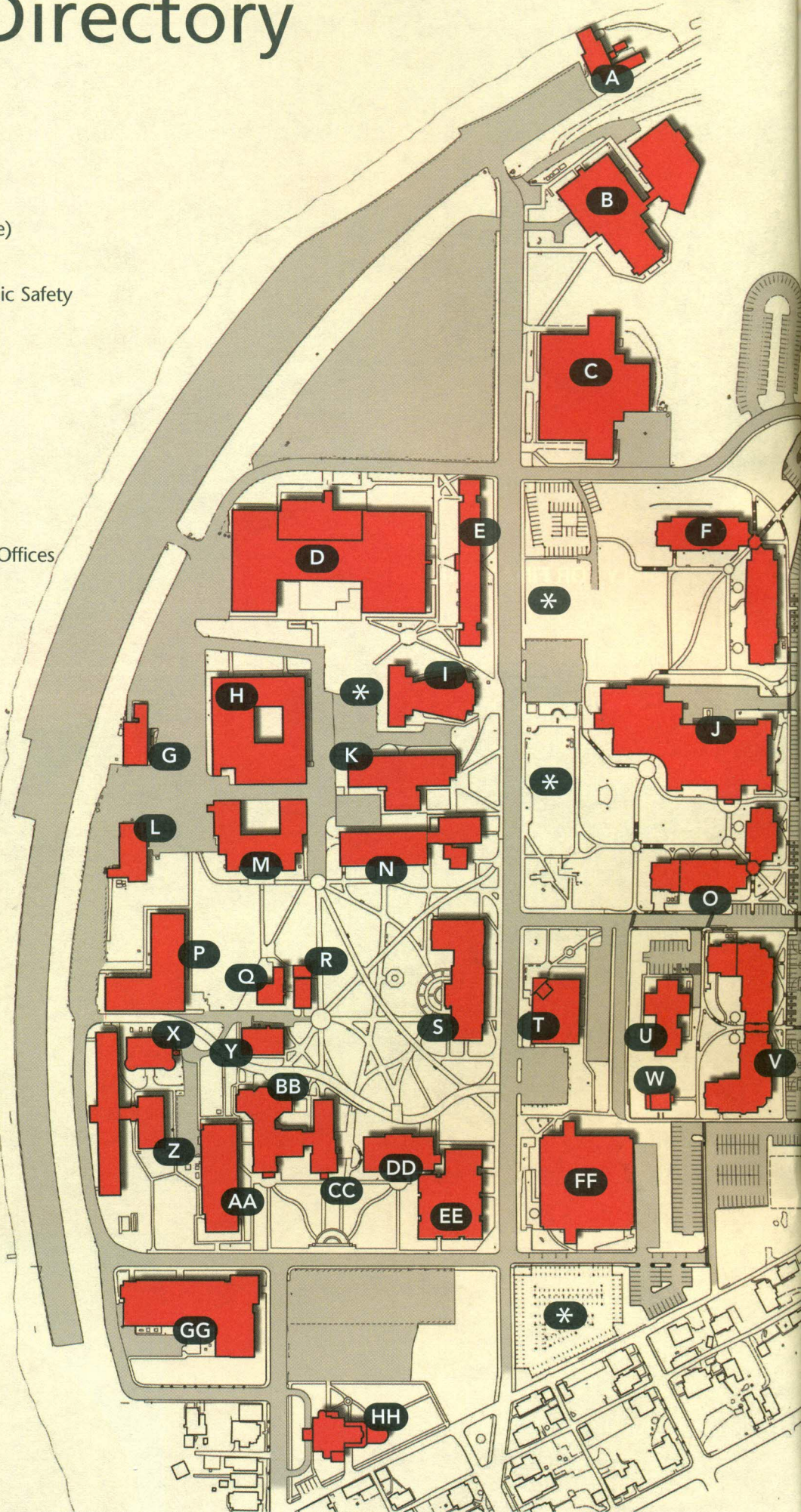


Table of Contents

HELPFUL INFORMATION

Welcome.....	2 – 3
University Map.....	4
Summer 2006 Academic Calendar	6
Student Services and Activities.....	7
Frequently Asked Questions	9 – 11
Important Telephone Numbers.....	56
General Education Information	43 – 45
Withdrawal Dates.....	55

COURSE INFORMATION

DISTANCE EDUCATION	12
WEB BASED COURSE INFORMATION	13
MAIN CAMPUS – UNDERGRADUATE COURSES (12-23)	
Internships.....	15
Field Trips	16
Special Session Courses	17 – 18
First Five Week Courses.....	19
Second Five Week Courses.....	20
Ten Week Courses	21
MAIN CAMPUS – GRADUATE COURSES (25-29)	
Special Session Courses	26 – 27
First Five Week Courses.....	28
Second Five Week Courses	28
Ten Week Courses	28-29
OFF-CAMPUS SITES (22-24)	
Southpointe	22 – 24

COURSE DESCRIPTIONS

Undergraduate Course Descriptions	30 – 36
Graduate Course Descriptions	37 – 42

PAYMENT INFORMATION

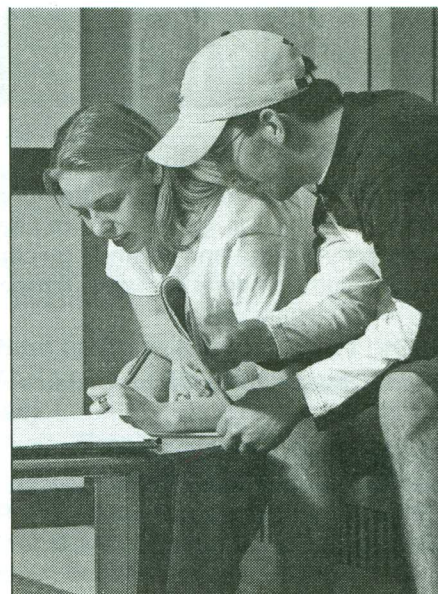
Billing Dates and Information	47
Refund Information.....	48
Tuition and Fee Chart.....	49 – 51
Financial Aid Information	52

ADMISSION INFORMATION

Undergraduate Admission Procedure	57
Undergraduate Admission Application.....	61 – 62

REGISTRATION PROCEDURES

Registration Form	61
-------------------------	----



Descriptions for all courses,
including special session
topics start on page 30.

Changes to this Summer
2006 Schedule will be made
on California University
of Pennsylvania's website,
sisweb.cup.edu

Summer 2006 Academic Calendar

February 20, 2006

Summer College 2006 Registration Begins
On-line, by mail or in the Office of Lifelong Learning,
202 Eberly Science and Technology Center
(Registration procedures are listed on page 64.)

May 17 – 19* 2006

Special Session Cancellation Decisions

May 22, 2006

Special Session Classes Begin: *May 22, 2006 and run at various times throughout May, June, July, and August 2006.*
(Undergraduate special session courses start on page 17:
Graduate special session courses start on page 28.)
Last date to withdrawal from a special session is listed under each course.

May 29, 2006

Memorial Day – No classes will be held.

June 7 – 9, 2006*

First Five-Week, Ten-Week and June Special Session
Cancellation Decisions

June 12, 2006

First Five-Week and Ten-Week Sessions Begin (Undergraduate first 5-week classes start on page 19, 10-week classes are on page 22: Graduate first 5-week classes are on page 30, 10-week classes are on page 31.)
Last date to withdrawal from 1st five week class is 4:00 PM on July 7, 2006.
Last date to withdrawal from 10 week class is 4:00 PM on August 4, 2006.

July 4, 2006

Independence Day – No classes will be held on

July 12 – 14, 2006*

Second Five-Week and July Special Session
Cancellation Decisions

July 15, 2006

First Five-Week Session Ends

July 17, 2006

Second Five-Week Session Begins
(Undergraduate second 5-week classes start on page 20:
Graduate second 5-week are on page 30.)
Last date to withdrawal from 2nd five week class is 4:00 PM on August 11, 2006.

August 19, 2004

Ten-Week and Second Five-Week Session Classes End

* Cancellation decisions will be made the week before every session starts. If your class is cancelled you will be contacted. (phone numbers in the student information system are used to make calls). You can check your phone number and billing address by logging onto sisweb.cup.edu and clicking on Student Services. Type in ID and PIN numbers. Click on Personal Information. Click on Personal Phone numbers or Addresses to make changes.

Grade Reports may be viewed on-line at sisweb.cup.edu by following the steps listed below:

- Login to Student Services
- Enter your Social Security Number and your PIN
(your PIN is your birth date - example: 020399)
- Click the "Login" button
- Choose "Grades" and select the term (Summer 2006)

If you do not have access to the web, please contact the Office of Academic Records at 724-938-4434 to request your grade report. They will mail you a copy.

Note: your grade report is not an official transcript. An official transcript may be requested for a fee of \$3.00 from the Office of Academic Records.

Student Services and Activities

Billiards Allegheny Recreation Rooms

First level of Student Center
Mon – Thur 10 am – 10 pm
724-938-4320

Bookstore

Natali Student Center
1st week of each session:
Mon – Tues 8 am – 6 pm
Wed – Fri 8 am – 4 pm

Regular hours:

Mon – Fri 8 am – 4 pm
Subject to change call: 724-938-4324

California Times

Student Center, Room 180
Mon – Fri 8 am – 4 pm
724-938-4321

Campus Ministry

Student Center, Room 143
Please call for more information
724-938-4573

Campus Visits/Campus Tours

Office of Admissions
Dixon Hall, Second Floor
Mon – Thur by appointment
724-938-4404, 888-412-0479

Career Services

Eberly Science & Technology Center,
Room 230
Mon – Fri 8 am – 4 pm
Evenings by appointment
724-938-4413

Commuter Center and Services

First level of Student Center
Mon – Thur 7:30 am – 10 pm
Fri 7:30 am – 4 pm
724-938-4553

CUTV (California University Television)

Student Center, Media Suite,
Room 155
Call for more information
724-938-4303 J.R. Wheeler
e-mail: wheeler@cup.edu

Herron Rec and Fitness Center

Herron Hall
May 17 – August 14
Mon – Fri 12 noon – 8 pm
No weekend hours
Pool hours: Mon – Fri 4 pm – 7 pm
724-938-5907

Information Desk

Lobby of Natali Student Center
Mon – Fri 8 am – 4 pm
724-938-5669

Instructions Computing Facility (ICF)

World Cultures Building Basement

May

Mon – Thur 8 am – 4 pm
May 17 – August 19
Mon – Thur 8 am – 10 pm
Friday 8 am – 4 pm
724-938-4335

Library

Louis L. Manderino Library
Call or check the library home page:
www.library.cup.edu
724-938-4091

Mathematics Lab

Noss 115
Closed during May
Reopens in June
Mon – Thur 8 am – 4 pm
724-938-5893

Office for Students With Disabilities (OSD)

Azorsky Building
Summer office hours may vary.
Please call for more information
724-938-5781

Student Center Arcade/Allegheny Recreation Room

First level of Student Center
Mon – Thur 10 am – 10 pm
724-938-4320

Study Around the World & National Student Exchange

First level of Student Center at the
Commuter Center
Mon – Fri 8 am – 4 pm
724-938-4553

Veterans Affairs

Azorsky 105
Mon – Fri 8 am – 4 pm
Evening hours by appointment
724-938-4076

Vulcan Theatre

First level of Student Center
Mon – Thur, Noon, 4 pm, 9 pm
Fridays at Noon
724-938-4320

Women's Center

Natali Student Center
Mon – Fri 8 am – 4 pm
sai.cup.edu/womenscenter
724-938-5857

Word Processing Lab

World Culture Building, Room 203

May

Mon – Thur 8 am – 4 pm
May 17 – August 19
Mon – Thur 8 am – 10 pm
Friday 8 am – 4 pm
724-938-4335

Writing Center

Provides free writing assistance to all
Cal U Students
Noss 110
Mon – Fri 9 am – 1 pm
Kurt Kearcher
724-938-4336

WVCS 91.9 FM (California Radio Station)

Student Center, Media Suite Room 155
Call for more information
724-938-4303 J.R. Wheeler
e-mail: wheeler@cup.edu

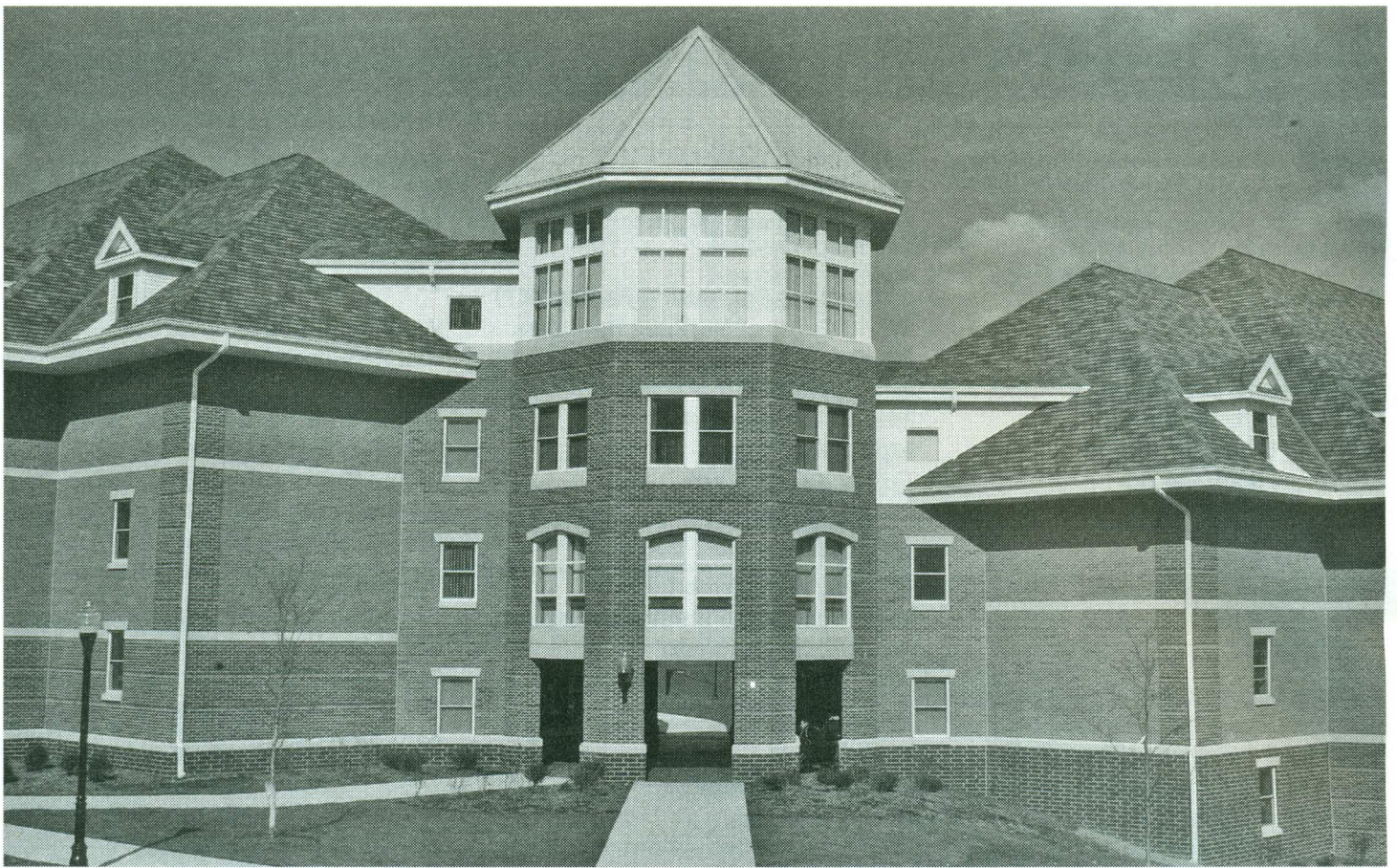
Don't forget to get your CalCard!

The CalCard Office is located at
the Information Desk in the
Natali Student Center
Mon – Fri 8 am – 4 pm
Phone: 724-938-4300
Email: calcard@cup.edu
Website: sai.cup.edu/calcard/

Your CalCard can be used for
a variety of services:

- ATM/Debit
- Transit
- Library
- Meals
- Event Admission
- Fitness Center
- Entertainment
- Building Access
- Shop Dollars
- Deposits
- Lost/Stolen/Temporary cards

See website or CalCard brochure
for complete details.



The Suite Life

Cal U has taken the lead in responding to the needs of today's student and we've completely redesigned our concept of residence life. Gone are the long hallways, cramped shared bedrooms and group bathrooms. All of our students live in fully furnished suites of 2 or 4 students, sharing a bathroom with no more than one other person. All new residence halls are air conditioned and have state-of-the-art sprinkler systems. Although the new halls are co-educational by floor or by wing, all suites are same sex. Cal U provides a nonsmoking environment in all residence halls on campus. The three new on-campus residence halls for men and women feature a variety of suite options.

YOU CAN CHOOSE FROM:

- a two-person suite with a shared bedroom and bath
- a four-person suite with private bedrooms, shared bath and central living room area
- a four-person suite with private bedrooms, two shared baths and central living room area
- a four-person suite with two shared bedrooms and one shared bath

EVERY RESIDENCE HALL PROVIDES:

- Recreation room
- Kitchen
- Vending area

- TV room with big screen television
- TV cable – free Beyond Basic
- Free local phone, caller ID, distinctive ringing, 3-way calling
- CAT-6 internet connection
- Microwave
- Laundry facilities
- Computer lab
- CalCard usage
- Carpeting throughout
- 24-hour digital video cameras at entrances and exits
- Controlled access through CalCard and key
- All residence halls are non-smoking
- Emergency phones at front entrances

Frequently Asked Questions

How do I read a course description? The course listings are arranged to correspond to the information requested on the registration form. Simply follow across the page from left to right and record the data on the registration form.

What does TBA mean? TBA means to be announced. For courses with a TBA listing contact the professor or the department office for further information.

How do I cancel my registration? To cancel a course registration you must notify the Office of Lifelong Learning in person, in writing by mail, fax, on-line at sisweb.cup.edu if it is one working day before the course begins. The amount of your refund will be determined by the date that the notice is received (see refund information on page 51). Leaving a course, or not attending, without written notification does not constitute an official cancellation/withdrawal and will result in the assignment of an F grade and financial liability for tuition and fees.

To drop a course on-line at sisweb.cup.edu, follow the steps listed below:

- Login to Student Services
- Enter your Social Security Number and your PIN (your PIN is your birth date - example: 020399)
- Click the "Login" button
- Choose "Registration and Schedule"
- Choose "Drop/Add Classes"
- Choose the Summer 2006 term from the drop down menu
- Read the information regarding academic advising and the review of your schedule. Click the appropriate button to continue to the registration screen.

How do I drop a class? Students wishing to drop a course may do so on line at sisweb.cup.edu until midnight the day before a class begins by following the steps listed above. This process can also be done by completing a schedule adjustment form and returning it to the Office of Lifelong Learning (by mail, fax, or in person). You may drop a class **up to one working day prior to the first day** of that class without financial or academic penalty. The official drop date, for refund purposes, is determined by the date the schedule adjustment form is received. If you decide you don't want to remain registered for a class **after the first day of that class** you must follow the procedure for withdrawing from a course (refer to page 56). There is a financial, and possibly an academic penalty, for withdrawals. The official Drop/Add Period is the first day of each session.

If I don't pay my bill by the due date, will I be dropped from my classes? Don't assume you have been dropped from your classes for nonpayment! Once you are registered for a class, you have incurred a financial obligation. If you choose not to attend, you must officially withdraw in writing (see page 51 for more information on the refund policy). **You will be responsible for the bill if you do not officially cancel your registration.**

Am I eligible for a refund if I withdraw from a class? Depending on the date of the withdrawal, you may or may not be eligible for a partial refund. Please see the chart on page 51. For more specific information contact the Office of the Bursar at 724-938-4431.

How do I add a class? To add a class you must complete an Add Form at the Office of Lifelong Learning, 202 Eberly Science and Technology Center; fax a signed form to 724-938-5963; or go on-line at sisweb.cup.edu. On-line registration will be daily 7 am to 11:30 pm (note: times may vary due to occasional system upgrades). If you are adding on-line, follow the steps listed below:

- Login to Student Services
- Enter your Social Security Number and your PIN (your PIN is your birth date - example: 020399)
- Click the "Login" button
- Choose "Registration and Schedule"
- Choose "Drop/Add Classes"
- Choose the Summer 2006 term from the drop down menu
- Read the information regarding academic advising and the review of your schedule. Click the appropriate button to continue to the registration screen.
- Enter the key numbers of the sections you have selected
- Click on the "Submit" button to enter your selections into the system.

How do I get into a closed section? If the course you wish to add is closed, contact the Office of Lifelong Learning at 724-938-5840 or at summer@cup.edu, with the information on the course and request permission to register.

How long do I have to withdrawal from class? Once 80% of class time has elapsed you may no longer withdraw.

Are there any restrictions on courses I may take during Summer College? Some courses have prerequisites. These are listed in the course descriptions found at the end of the brochure.

Are there a maximum number of credits I can take during the summer? The maximum number of undergraduate credits you can take in the summer is 18 without a signed overload form. However, you will also need an overload form if you would like to take more than 9 credits at any one time (or in overlapping sessions). You may obtain this form from the Office of Lifelong Learning or any of the undergraduate college Deans' offices.

How do I challenge a course for credit?

- Obtain a course challenge form from the Academic Records Office, room 122 Dixon Hall.
- Obtain written permission from the chairperson of the department that offers the course.
- Register for the course and pay tuition and fees for the course.
- Only grades of P (Pass) or F (Fail) will be recorded.
- For more information, contact the Academic Records Office at 724-938-4434

How do I audit a class? Auditing a class means that you will receive no grade or credit for the course being audited. To audit a course you need to complete the Authorization to Audit Form, which can be obtained from the Office of Academic Records by calling 724-938-4434. This must be done prior to the start of the class.

Can I repeat a course? Yes, any course taken at California University may be repeated. Only the later grade will be counted in the student's Q.P.A. The original grade will remain on the transcript.

How do I register or apply for admission?

See pages 59 – 63 for specific information on registration and admission procedures.

Additional policies and procedures can be found in the University catalog. For more information contact the Office of Lifelong Learning at 724-938-5840 or email us at summer@cup.edu.

I am a student at another university. Are there special arrangements I need to make to take a class at California University of Pennsylvania? Yes, in order to take classes at CAL U you must apply through the Office of Lifelong Learning as a visiting student. A completed application and \$25 nonrefundable fee are required before a course registration can be processed. This fee is waived if you have taken classes at CAL U or have paid the fee within the past three years. An application for undergraduate admission can be found on pages 61 – 62. An application for graduate school admission can be found on their website at www.cup.edu/graduate.

May I attend Summer College if I am a high school student?

If you have completed the sophomore year of high school and are enrolled in a college preparatory curriculum you may be eligible for admission to CAL U. You must have a cumulative grade point average of 3.00 for the past two years and have scored at least 800 on the PSAT or SAT or 23 on the ACT. If you meet the qualifications listed, you need to complete the admission application form, pay the \$25 nonrefundable fee, and submit your high school transcript and completed early admission clearance form to the Office of Lifelong Learning.

How can I arrange for a campus tour? Contact the Office of Admissions at 724-938-4404 Monday through Friday from 8 am to 4 pm.

Where do I purchase my textbooks for classes? The CAL U Student Bookstore, located on the second level of the Natali Student Center, offers a variety of services. You can purchase new or used texts and you may even pre-order books before the first week of class. The CAL U Student Bookstore also offers a variety of other items for purchase. Call them at 724-938-4324 for more information.

What is the grade appeal process? The grade appeal process can be found on pages 56 – 57 of the University catalog.

How do I appeal a nonacademic decision related to Summer College? To appeal a nonacademic decision regarding Summer College enrollment, you must submit your appeal **in writing within 30 days** after the start date of the course (dated & signed) to the Office of Lifelong Learning. Appeals received after August 19, 2004 classes, will not be accepted. All appeals will be forwarded to the Provost & Vice President for Academic Affairs who will make the final decision on the appeal. The student will be notified of the final decision by the Office of Lifelong Learning.

Can I register for Summer classes if I have been academically dismissed from Cal U? Any student who has been academically dismissed and wishes to attend Summer College at California University of Pennsylvania must be readmitted by the Office of Student Retention, 103 Noss Hall (724-938-1523). Attach a copy of your readmission letter to your registration card and bring, mail, or fax it to the Office of Lifelong Learning, 202 Eberly Science & Technology Center.

How do I arrange for housing? Housing is available by contacting the Office of Student Housing at 724-938-4444. A housing contract will need to be completed. Food service options are also available.

How do I get a transcript? To obtain a transcript of academic activity at California University of PA you need to contact the Office of Academic Records, room 122 Dixon Hall, 724-938-4434, between 8 am and 4 pm, Monday through Friday. The fee for a transcript is \$3.00.

Are recreational facilities available? Yes! Your student fees give you access to a wide variety of University recreational facilities. Contact the Recreational Center at 724-938-5907 for more information.

What do I need to do if I am graduating in August? Undergraduate and Graduate students eligible to graduate in August, 2006 must apply for graduation at the office of their dean before Friday, June 30, 2006. Graduation is not automatic, and eligible students must apply in order to graduate. Failure to apply by June 30, 2006 may result in a delay in graduation.

Is there a specific process that I should follow if I am registering for an internship? Yes! Students wishing to register for an internship in any session of the summer (May 22 through July 28, 2006) must do so **before May 15, 2006**. An internship approval form must be completed, signed by your college dean, and attached to your registration form. You should send or deliver your registration form to the Office of Lifelong Learning, 202 Eberly Science and Technology Center, where you will be registered.

What is a distance learning course? Distance learning classes are offered in two ways. They can be web-based or offered as live, interactive, and site-to-site using full-motion compressed video-conferencing equipment. The instructor varies their presentation point throughout the course. You may register for either site location for the video-conferencing classes. Web-based classes are identified by a W in the section code of the course.

Are additions or changes made to the summer schedule?

The University reserves the right to postpone, limit enrollment, cancel, split, or combine classes and change instructors and class locations when necessary. Information on courses that have been added to or deleted from the schedule after publication can be obtained from the Office of Lifelong Learning (724-938-5840), or check the website at sisweb.cup.edu.

What happens when a course I registered for is cancelled?

Summer College classes are *not* guaranteed to run. If a course does not have sufficient enrollment, it is cancelled during the week prior to the first class meeting. Registered students will be contacted by phone between 8 am and 6 pm and given the option of choosing another class or receiving a refund. Phone numbers in the student information system will be used to make cancellation calls. Please make sure that your phone number in this system is correct. You can check your information on the web at sisweb.cup.edu.

- Login to Student Services
- Enter your Social Security Number and your PIN (your PIN is your birth date - example: 020399)
- Click the "Login" button
- Choose "View Addresses"
- Select "Local" or "Permanent"
- Click the "Select" button

Where can I obtain information about disability accommodations?

California University of PA welcomes otherwise qualified students with disabilities. The University recognizes its responsibility to these students and is committed to providing reasonable accommodations to insure access and participation as guided by Section 504 of the Rehabilitation Act of 1973, as amended, and the Americans with Disabilities Act (ADA). Requests for accommodation should be submitted directly to the Office for Students with Disabilities (OSD). Students requesting accommodations must provide OSD with documentation to substantiate the request. Students with disabilities follow the same admission procedures and standards as required by California University of PA's Admissions office for all students. Questions regarding admission procedures and acceptance status should be directed to the Admissions Office at (724) 938-4404. For information regarding OSD and reasonable accommodations, visit the OSD Web site, <http://sai.cup.edu/osd>, or contact OSD at (724) 938-5781.

Undergraduate and Graduate Distance Education Courses

These courses utilize VTEL Technology in which the course is delivered live at one site and on video conference equipment at the other site. For more information regarding distance education courses, refer to the course listing for the session the class is to be held.

Code/Code #/Title	Section	Crs	Session	Days	Start	End	Bldg	Rm	Instructor	Call #
FIN 711 Financial Mgt	.01	.3	.2nd	.MW	.5:30 PM	.9:30 PM	.EST	.130	.Chawdhry	.10137
FIN 711 Financial Mgt	.S1	.3	.2nd	.MW	.5:30 PM	.9:30 PM	.SPT	.TBA	.Chawdhry	.10138
MGT 352 Human	.01	.3	.1st	.TR	.5:30 PM	.9:30 PM	.EST	.130	.Brown	.10173
MGT 352 Human	.S1	.3	.1st	.TR	.5:30 PM	.9:30 PM	.SPT	.TBA	.Brown	.10174
MGT 742 Human	.01	.3	.1st	.SAT	.8:30AM	.4:30 PM	.EST	.260	.Brown	.10180
MGT 742 Human	.S1	.3	.1st	.SAT	.8:30AM	.4:30 PM	.SPT	.TBA	.Brown	.10181
MKT 751 Advertising	.01	.3	.1st	.T/R	.5:30 PM	.9:30 PM	.EST	.260	.Lazorchak	.10288
MKT 751 Advertising	.S1	.3	.1st	.T/R	.5:30 PM	.9:30 PM	.SPT	.TBA	.Lazorchak	.10289
MMT 703 Digital	.01	.3	.10wk	.M	.5:30 PM	.10:00 PM	.HLH	.204	.Schickel	.10185
MMT 703 Digital	.S1	.3	.10wk	.M	.5:30 PM	.10:00 PM	.SPT	.TBA	.Schickel	.10186
MMT 704 Web	.01	.3	.10wk	.W	.5:30 PM	.10:00 PM	.HLH	.204	.Kallis	.10187
MMT 704 Web	.S1	.3	.10wk	.W	.5:30 PM	.10:00 PM	.SPT	.TBA	.Kallis	.10188
PSY 305 Psych	.01	.3	.10wk	.M	.5:30 PM	.10:00 PM	.EST	.260	.Cavasina	.10239
PSY 305 Psych	.S1	.3	.10wk	.M	.5:30 PM	.10:00 PM	.SPT	.TBA	.Cavasina	.10240

More online classes this summer than ever before!

Over 120 online courses are offered on the Summer 2006 schedule. All web classes are designated with a "W" in the section code. General Education classes that are offered online can be found below:

Code/Code #/Title	Section	Crs	Call #	Code/Code #/Title	Section	Crs	Call #
Critical Thinking				Multicultural Awareness			
MAT 191 College Trig	.W1	.3	.10168	WST 200 Introduction to Women's Studies	.W1	.3	.10287
MAT 110 Applications of Math	.W1	.3	.10164	HIS 111 Dev Maj Wld Civil	.W1	.3	.10149
Math				SOC 315 Social Minorities	.W1	.3	.10265
MAT 191 College Trig	.W1	.3	.10168	GEO 325 Geography Europe	.W1	.3	.10146
MAT 110 Applications of Math	.W1	.3	.10164	GEO 205 Wld Cities/Geo Tour	.W1	.3	.10145
MAT 181 College Algebra	.W1	.3	.10167	HIS 347 Race & Ethnicity in US	.W1	.3	.10152
MAT 225 Business Statistics	.W1	.3	.10169	CRJ 429 Terrorism	.W1	.3	.10069
Natural Science				Values			
EAS 163 Intro Oceanography	.W1	.3	.10080	WST 200 Introduction to Women's Studies	.W1	.3	.10287
EAS 150 Intro to Geology	.W1	.4	.10079	HIS 111 Dev Maj Wld Civil	.W1	.3	.10149
EAS 131 Intro Envir Geology	.W1	.3	.10078	SOC 315 Social Minorities	.W1	.3	.10265
EAS 100 Intro to Earth Sci	.W1	.3	.10077	PHI 200 World Religions	.W1	.3	.10194
Social Science				EAS 131 Intro Envir Geology	.W1	.3	.10078
POS 105 American Politics	.W1	.3	.10199	PSY 211 Social Psychology	.W1	.3	.10237
SOC 100 Prin of Sociology	.W1	.3	.10264	Technical Literacy			
HIS 111 Dev Maj Wld Civil	.W1	.3	.10149	ENG 217 Sci & Tech Writ	.W1	.3	.10123
GEO 100 Intro to Geography	.W1	.3	.10144	ITE 341 Quality Control	.W1	.3	.10291
SOC 315 Social Minorities	.W1	.3	.10265	CSC 101 Personal Productivity Software	.W1	.3	.10072
Fine Arts				CSC 201 Windows and Internet	.W1	.3	.10074
MUS 100 Intro to Music	.W1	.3	.10193	CSC 201 Windows and Internet	.W2	.3	.10075
Humanities				Health and Wellness			
MUS 100 Intro to Music	.W1	.3	.10193	HPE 105 Current Health Iss	.W1	.3	.10153
THE 100 Intr to the Theatre	.W1	.3	.10286	HSC 120 Human Anatomy & Phys II	.W1	.4	.10154
PHI 200 World Religions	.W1	.3	.10194				
WST 200 Introduction	.W1	.3	.10287				

Undergraduate Web Courses

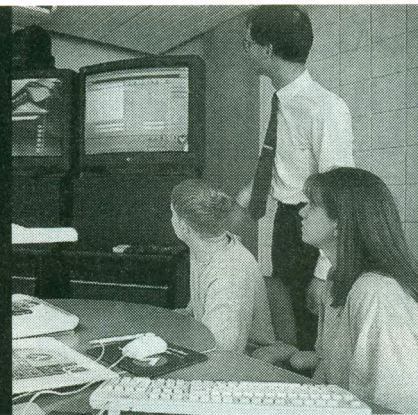
The following courses will be offered on-line. For course requirements, contact the Instructor via email/phone. Contact the Office of Lifelong Learning for general questions at 724-938-5840 or 1-866-268-9154. Contact the Graduate School at 724-938-4187 for questions on web courses through Keystone Virtual University.

Billing Dates/Refunds for Web-Based Courses: The published start/end dates will be used to calculate billing dates and refund amounts for all web-base courses, regardless of when the actual class work was begun or finished.

Code/Code #/Title	Section	Crs	Session	Session Dates	Instructor	E-mail	Call #
ACC 218 Fed Income Tax I	W1	3	1st	June 12 - July 15	Mendola	mendola_e@cup.edu	10002
ACC 321 Managerial Account	W1	3	2nd	July 17 - August 19	Jones	jones_DT@cup.edu	10290
ATE 105 Current Issues Athl	W1	3	1st	June 12 - July 15	Hjerpe	hjerpe@cup.edu	10029
ATE 301 Adm Intercollegiate Ath Pgm	W1	3	2nd	July 17 - August 19	Hjerpe	hjerpe@cup.edu	10030
BUS 242 Business Law I	W1	3	10wk	June 12 - August 19	Schwerha	schwerha@cup.edu	10040
CRJ 429 Terrorism	W1	3	2nd	July 17 - August 19	Al-khattar	alkhattar@cup.edu	10069
CRJ 495 Legal & Justice Research Methods	W1	3	2nd	July 17 - August 19	Al-khattar	alkhattar@cup.edu	10070
CSC 101 Personal Productivity Software	W1	3	1st	June 12 - July 15	Kovalchick	kovalchick@cup.edu	0072
CSC 201 Windows and Internet	W1	3	1st	June 12 - July 15	Kholief	kholief@cup.edu	10074
CSC 201 Windows and Internet	W2	3	2nd	July 17 - August 19	Kholief	kholief@cup.edu	10075
EAS 100 Intro to Earth Sci	W1	3	10wk	June 12 - August 19	Moses	moses@cup.edu	10077
EAS 131 Intro Envir Geology	W1	3	10wk	June 12 - August 19	Nikitina	nikitina@cup.edu	10078
EAS 150 Intro to Geology	W1	4	10wk	June 12 - August 19	Mitchem	mitchem@cup.edu	10079
EAS 163 Intro Oceanography	W1	3	10wk	June 12 - August 19	Kauffman	Kauffman@cup.edu	10080
ECO 100 Elem of Econ	W1	3	10wk	June 12 - August 19	Cole	cole@cup.edu	10084
ECO 201 Intro Micro	W1	3	10wk	June 12 - August 19	Hettler	hettler@cup.edu	10085
ENG 217 Sci & Tech Writ	W1	3	10wk	June 12 - August 19	Pathak	pathak@cup.edu	10123
FIT 100 Intro to Fitness	W1	3	1st	June 12 - July 15	Hatton	hatton@cup.edu	10139
GEO 100 Intro to Geography	W1	3	10wk	June 12 - August 19	Mueller	Mueller@cup.edu	10144
GEO 205 Wld Cities/Geo Tour	W1	3	10wk	June 12 - August 19	Ryan	ryan@cup.edu	10145
GEO 325 Geography Europe	W1	3	10wk	June 12 - August 19	Staff		10146
HIS 111 Dev Maj Wld Civil	W1	3	10wk	June 12 - August 19	Marak	marak@cup.edu	10149
HIS 347 Race & Ethnicity in US	W1	3	10wk	June 12 - August 19	Marak	marak@cup.edu	0152
HPE 105 Current Health Iss	W1	3	2nd	July 17 - August 19	Biddington	biddington@cup.edu	10153
HSC 120 Human Anatomy & Phys II	W1	4	1st	June 12 - July 15	Staff		10154
ITE 315 CAD II	W1	3	10wk	June 12 - August 19	Thompson	Thompson_jm@cup.edu	10292
ITE 341 Quality Control	W1	3	10wk	June 12 - August 19	Thompson	Thompson_jm@cup.edu	10291
MAT 110 Applications of Math	W1	3	2nd	July 17 - August 19	Hess	hess@cup.edu	10164
MAT 181 College Algebra	W1	3	1st	June 12 - July 15	Boukaabar	boukaabar@cup.edu	10167
MAT 191 College Trig	W1	3	2nd	July 17 - August 19	Benbourenane	benbourenane@cup.edu	10168
MAT 225 Business Statistics	W1	3	1st	June 12 - July 15	Khoujmane	khoujmane@cup.edu	10169
MGT 300 Principles of Management	W1	3	10wk	June 12 - August 19	Clingerman	clingerman@cup.edu	10171
MGT 301 Organiz Behavior	W1	3	2nd	July 17 - August 19	Michaels	Michaels@cup.edu	10172
MGT 402 Strategic Mgt	W1	3	10wk	June 12 - August 19	Serafin	serafin@cup.edu	10177
MGT 452 Hum Res Str & Plng	W1	3	10wk	June 12 - August 19	Serafin	serafin@cup.edu	10178
MUS 100 Intro to Music	W1	3	10wk	June 12 - August 19	Ikach	ikach@cup.edu	0193
PHI 200 World Religions	W1	3	10wk	June 12 - August 19	Hudson	Hudson_n@cup.edu	10194
POS 105 American Politics	W1	3	1st	June 12 - July 15	Yamba	yamba@cup.edu	10199
PSY 211 Social Psychology	W1	3	2nd	July 17 - August 19	Sweitzer	sweitzer@cup.edu	10237
SOC 100 Prin of Sociology	W1	3	10wk	June 12 - August 19	Jones	jones_ea@cup.edu	10264
SOC 315 Social Minorities	W1	3	1st	June 12 - July 15	Jones	jones_ea@cup.edu	10265
THE 100 Intr to the Theatre	W1	3	10wk	June 12 - August 19	O'Donnell	odonnell@cup.edu	10286
WST 200 Introduction	W1	3	10wk	June 12 - August 19	Marak	marak@cup.edu	10287

Undergraduate

Course Information



Summer College 2006

Special Sessions

See pages 17 through 18 for Undergraduate dates.

First Five

June 12 to July 15, 2006

Last day to withdrawal from a 1st five week class is 4 PM on July 7, 2006.

Ten Week

June 12 to August 19, 2006

Last day to withdrawal from a ten week class is 4 PM on August 4, 2006.

Second Five

July 17 to August 19, 2006

Last day to withdrawal from a 2nd five week class is 4:00 PM on August 11, 2006.

Register on-line at sisweb.cup.edu

Daily 7 AM – 11:30 PM

(Note: Times may vary due to occasional system upgrades)

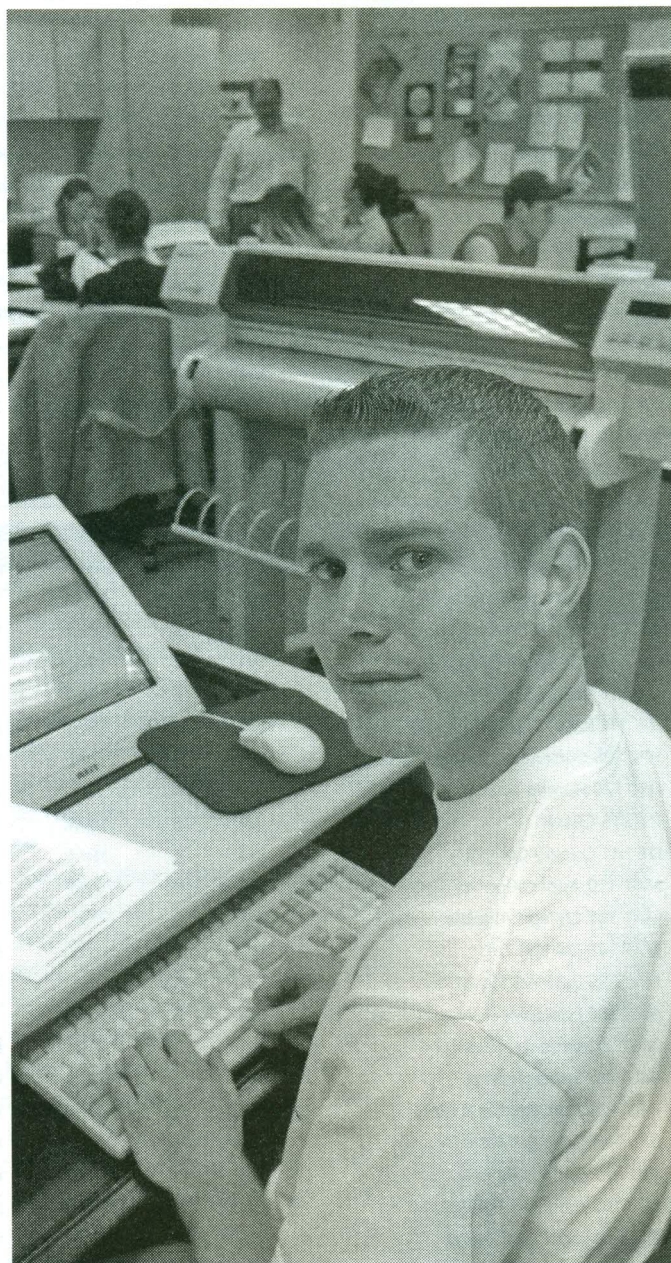
OR

Register at the Office of Lifelong Learning
202 Eberly Science and Technology Center
Monday through Thursday 8 AM to 6 PM
Friday 8 AM to 4 PM

Toll Free Number: 1-866-268-9154

Phone: 724-938-5840

Fax: 724-938-5963



Internship and Practicum Classes

You must have a completed admit-to-close section form to register for an internship or practicum. The registration and the payment due dates are May 15, 2006 for internships beginning May 22, 2006; May 29, 2006 for internships beginning June 3, 2006; June 5, 2006; for internships beginning June 12, 2006; June 26, 2006 for internships beginning July 3, 2006; . You may not register on-line for internships or practicum classes.

Code/Code #/Title	Section	Session	Instructor	Special Dates	Call #
ACC 491 Accounting Intern	X1	Intern	Jones	May 22 - July 28	10003
ADP 670 Internship	X1	Intern	London	July 3 - Aug 12	10019
ADP 670 Internship	X2	Intern	Vollrath	July 3 - Aug 12	10020
ADP 670 Internship	X3	Intern	Braidic	July 3 - Aug 12	10021
ADP 670 Internship	X4	Intern	London	July 3 - Aug 12	10022
BIO 492 Bio & Env Sci Intern	X1	Intern	Staff	May 22 - July 28	10039
BUS 492 Business Internship	X1	Intern	Jones	May 22 - July 28	10042
CED 790 Counseling Internship	X1	Intern	Gruber	May 22 - July 28	10048
CET 495 CET Internship	X1	Intern	Salim	May 22 - July 28	10049
CMD 716 Applied Neurogenics	X1	Intern	Skwarecki	June 12 - July 21	10056
CMD 716 Applied Neurogenics	X2	Intern	Carlino	June 12 - July 21	10057
COM 459 Comm Stud Intrnshp	X1	Intern	Cumings	May 22 - July 28	10063
CSC 199 Field Exp Comp Sci	X1	Intern	Novak	May 22 - July 28	10073
CSC 419 Math & Comp Sci Int	X1	Intern	Novak	May 22 - July 28	10076
EET 495 EET Internship	X1	Intern	Loney	May 22 - July 28	10116
EET 495 EET Internship	X2	Intern	Sumey	May 22 - July 28	10117
EET 495 EET Internship	X3	Intern	Salim	May 22 - July 28	10118
EET 495 EET Internship	X4	Intern	Means	May 22 - July 28	10119
ESP 720 Sp Ed Tchg Pract	X1	Intern	Staff	May 22 - July 28	10133
FIN 492 Finance Internship	X1	Intern	Chawdhry	May 22 - July 28	10136
GCT 495 Graph Comm Intern	X1	Intern	Schickel	May 22 - July 28	10141
GCT 495 Graph Comm Intern	X2	Intern	Urbine	May 22 - July 28	10142
GCT 495 Graph Comm Intern	X3	Intern	Whitehead	May 22 - July 28	10143
GEO 479 Internship	X1	Intern	Wickham	May 22 - July 28	10147
HIS 329 Internship History	X1	Intern	Tuennerman-kaplan	May 22 - July 28	10151
ITE 495 Ind Tech Internship	X1	Intern	Thompson	May 22 - July 28	10155
ITE 495 Ind Tech Internship	X2	Intern	Vaverka	May 22 - July 28	10156
MGT 492 Management Internship	X1	Intern	Serafin	May 22 - July 28	10179
MKT 492 Marketing Internship	X1	Intern	Lazorchak	May 22 - July 28	10184
MSE 606 Internship/Pract	01	Intern	Zisk	May 22 - July 28	10189
MSE 606 Internship/Pract	01	Intern	Hepner	May 22 - July 28	10189
POS 329 Intern Poli Sci	X1	Intern	Staff	May 22 - July 28	10200
PSY 469 Psych Internship	X1	Intern	Sweeney	May 22 - July 28	10242
PSY 774 Intern School Psych	X1	Intern	Mason	May 22 - July 28	10250
PTA 150 Clinical Intern I	X1	Intern	DeBlassio	June 5 - July 5	10252
SPT 499 Internship in Sport	X1	Intern	Kreis	May 22 - July 28	10267
SPT 499 Internship in Sport	X2	Intern	Wood	May 22 - July 28	10268
SPT 499 Internship in Sport	X3	Intern	Yarbrough	May 22 - July 28	10269
SPT 799 Internship	X1	Intern	Staff	May 22 - July 28	10275
SWK 730 First Yr Pract	X1	Intern	Smiley	May 22 - Aug 11	10278
TED 795 Tech Education	X1	Intern	Komacek	May 22 - July 28	10285

Special Offerings Summer 2006

CRJ 400 Foreign Study in Criminal Justice:

Scotland Yard and Belgium - 6 credits
Course Director: Professor John R. Cencich
Dates: June 1 – 13, 2006 Call #10068
For more information and additional cost contact Professor Cencich at cencich@cup.edu

Join Professor Cencich as he takes a small group of students to visit Scotland Yard. But first, a stop in Belgium is in order. There, the students will be introduced to federal prosecutors and police officers, particularly in the area of counterterrorism. Next, the group will travel across the English Channel to London where they will visit several places to include the Bow Street Magistrate's Court, Scotland Yard, Old Bailey, and the site of Jack the Ripper. Other visits will include seeing the Magna Carta, Stonehenge, and museums containing pieces relating to law and justice. The student will gain an in-depth knowledge of the Common Law of England, learn how our system of policing originated, and study modern comparative criminal justice and law. Participants will have the opportunity to be get a true "inside look" at policing from a perspective that is rarely made available to students. Please note that it may be possible to pursue these studies and receive credit without having undertaken the trip by way of an alternative, in-depth research project. All students will be required to complete a journal, write a research paper, and give a presentation on what they saw and learned.

Tentative Itinerary:

June 1 and 2: Classroom at Cal U. (EDU 205L) 10 am - 2 pm.
June 3: Depart Pittsburgh June 4: Arrive Belgium,
June 5 – 6: Belgium, June 7th: Depart for London,
June 8 – 12: London, June 13: Depart for Pittsburgh

CRJ 399 and POS 379 Field Trip

Dates: May 22 – 26, 2006 Call #10067 and Call #10201
For more information and additional cost contact Professor Cencich at cencich@cup.edu or Dr. Wood at wood@cup.edu

What is the truth behind the Lincoln assassination? Did Lee Harvey Oswald act alone in the assassination of President Kennedy? To explore these related questions you are invited to join Dr. James Wood (History and Political Science) and Professor John Cencich (Justice Studies) on a week-long field trip and adventure to Washington D.C. Students will conduct field research for forensic data, and speculate on the historical consequences of two of the most significant events in the annals of America. Students may register for CRJ 399 and/or POS 379.

Undergrad Field Trips

EAS 492 Field Course In Geology

Sec 1, 3 Credits, MTWRFSS,
May 30-June 10, 2006, Kauffman

Comment: This course provides Earth Science & Geography students with opportunities to study Physical Geography & Geology in situ. An extensive trip to the classic and lesser known National Parks of the Southwestern U.S. will be undertaken (e.g., Arizona & Utah). The trip will be supplemented with preliminary studies and learning modules online prior to departure. During the trip itself, short on-site lectures and scientific reporting will be stressed. The final assessment will include a scientific analysis of the Geographic features observed. The specific physiographic features of the Southwest will be the major focus of the course, but additional aspects of the physical and cultural Geography will be incorporated. Cost of the course is normal tuition, plus an additional special fee to be determined two weeks prior to departure. However, on-site, overnight campsites will be utilized to reduce supplemental costs. Prerequisite: Permission from Instructor

CRJ 399 and ANT 379 – Fertile Ground

Second Five Week Session
Dates/Times July 17 – August 19, 2:45 pm - to 4:50 pm
Location: EDU 205L
Instructors: Dr. Raymond Hsieh- hsieh@cup.edu
and Dr. John Nass - nass@cup.edu

An Interdisciplinary Approach to the Forensic investigation and Prosecution of Homicide Cases Course Description:

This special course links together CRJ 399 Criminal Investigation call #10066 and ANT 399 Special Topics in Anthropology call #10024 to create an interdisciplinary venue for the investigation of criminal behavior using forensic anthropology and archaeology.

The course is designed to provide criminal justice students with an unique opportunity to learn how to apply forensic studies to the study of individual and multiple murders through the following activities:

Lecture, problem solving exercises (the discovery and recovery of skeletal remains from a mock homicide site), a mock-trial, field trips, and guest lectures

CRJ 399 S1 Leadership and Ethics in Justice Studies

At Southpointe Instructor: Hummel. Hummel@cup.edu
Dates/Times: June 19 – June 23, 8:00 AM to 5:00 PM Call #10065

Course Description: Learn the individual principles and theories of effective leadership. It is common for unit members in the First Responder, Law Enforcement, Corrections, Security, or any professional field to unexpectedly be placed in a temporary or permanent leadership position; or, be promoted to a supervisory position---with little or no leadership education or preparation.

During this leadership course we will explore and discuss Ethics and Value-Based Leadership, the definition of leadership and its key components. Theories of leadership and leadership styles will be examined. The leadership framework will be discussed: What a leader must be, which includes values, ethics, and attributes such as loyalty, duty, respect, selflessness, honor, integrity personal courage, and mental, physical, and emotional attributes. What a leader must know, which includes skills such as interpersonal, conceptual, technical and tactical. What a leader must do, which includes a leader's influencing, operating, and improving actions. The challenge of initially taking charge of a unit will also be emphasized. The class will include situational critical thinking exercises and conclude with an in-class capstone exercise.

(space is limited). For course requirements, contact the Instructor via e-mail at kauffman@cup.edu or at 724-938-5760.

EAS 491 Field Course in Earth Science.

Sec 1, 3 Credits, UMTWRFSS,
May 16-27, 2006, Mitchem

Comment: An organized, two-week storm-chase through the Great Plains of the United States. This course provides the student with opportunities to study meteorological, and especially severe weather phenomena and characteristics, on site. Students will learn to apply the scientific method, and to acquire critical thinking skills by examining atmospheric features and processes associated with severe weather development. Cost of the course is normal tuition and fees, plus an additional special fee to be determined two weeks prior to departure. Prerequisite: EAS 241, Meteorology & permission from Instructor (space is limited). For course requirements, contact the Instructor via e-mail at mitchem@cup.edu or at 724-938-5969.

Undergraduate Special Session Classes Beginning in May 2006

BIO 226 Basic Micro Biology

May 22 - June 22
Section: 1A, Crs: 4 Call #10037
MTWR 8:00 AM-10:10 AM
Boehm BSC 100
Billing Date: 4/24/2006 Due Date: 5/8/2006

BIO 226 Basic Micro Biology

May 22 - June 22
Section: 1B, Crs: 0 Call # 10038
MTWR 10:15 AM-12:20 PM
Sylvester BSC 407
Billing Date: 4/24/2006 Due Date: 5/8/2006

EAS 492 Field Course Geology

May 30 - June 10
Section: X1, Crs: 3 Call # 10082
SMTWRF TBA TBA
Kauffman TBA TBA
Billing Date: 5/2/2006 Due Date: 5/16/2006

ESP 349 Field Experience: Low Incidence

May 15 - June 2
Section: X1, Crs: 3 Call # 10296
MTWRF 9:00 AM - 1:00 PM
Staff TBA TBA
Billing Date: 4/17/2006 Due Date: 5/1/2006

MGT 371 Mgt Information System

May 22 - June 2
Section: 01, Crs: 3 Call # 10175
MTWRF 8:00 AM-12:20 PM
Clingerman WCU 200
Billing Date: 4/24/2006 Due Date: 5/8/2006

PTA 110 Intro to Pathology

May 22 - June 2
Section: 01, Crs: 2 Call # 10251
MTWRF 9:00 AM-11:45 PM
DeBlassio HAM 148
Billing Date: 4/24/2006 Due Date: 5/8/2006

EDE 320 Intermed Field Experience 4-6

May 15 - May 19
Section: X2, Crs: 3 Call # 10093
MTWRF 8:00 AM-5:00 PM
Shimkanin TBA TBA
Billing Date: 4/17/2006 Due Date: 5/1/2006

EDE 320 Intermed Field Experience 4-6

May 15 - May 23
Section: X1, Crs: 3 Call # 10092
MTWRF 8:00 AM-5:00 PM
Shimkanin TBA TBA
Billing Date: 4/17/2006 Due Date: 5/1/2006
EDE 321 Primary

Field Experience K-3

May 15 - June 9
Section: X2 Crs: 3 Call # 10095
MTWRF 8:00 AM-5:00 PM
Farrer EDU 300A
Billing Date: 4/17/2006 Due Date: 5/1/2006

EDE 321 Primary Field Experience K-3

May 15 - June 9
Section: X1, Crs: 3 Call # 10094
MTWRF 8:00 AM-5:00 PM
Melenyzer EDU 300B
Billing Date: 4/17/2006 Due Date: 5/1/2006

ESP 339 Field Experience: High Incidence

May 15 - June 9
Section: X1, Crs: 3 Call # 10124
MW TBA TBA
Staff EDU 211
Billing Date: 4/17/2006 Due Date: 5/1/2006

CRJ 399 Selected Topics:

Political Assassinations
May 22 - May 26
Section: X1, Crs: 3 Call # 10067
MTWRF TBA TBA
Cencich EDU 205L
Billing Date: 4/24/2006 Due Date: 5/8/2006

EAS 491 Field Course In Earth Science

May 16 - May 27
Section: X1, Crs: 3 Call # 10081
TBA TBA TBA
Mitchem TBA TBA
Billing Date: 4/17/2006 Due Date: 5/1/2006

POS 379 Sp Prob Poli Sci

May 22 - May 26
Section: X1, Crs: 3 Call # 10201
TBA TBA TBA
Wood TBA TBA
Billing Date: 4/24/2006 Due Date: 5/8/2006

Undergraduate Special Session Classes Beginning in June 2006

CRJ 400 Foreign Study Criminal Justice

June 1 - June 13

Section: 01, Crs: 6

SMTWRF

Cencich

Billing Date: 5/4/2006

Call # 10068

TBA TBA

EDU 205L

Due Date: 5/18/2006

PHY 121 General Physics I

June 5 - June 30

Section: 01, Crs: 4

MTWRF

Yasmin

Billing Date: 5/8/2006

Call # 10197

8:30 AM-12:00 PM

NSC 135

Due Date: 5/22/2006

PHS 137 Intro to Environ Chem

June 5 - June 30

Section: 01, Crs: 3

MTWRF

Hangun

Billing Date: 5/8/2006

Call # 10196

9:00 AM-11:05 AM

NSC 206

Due Date: 5/22/2006

TED 210 Design & Appropriate Technology

June 5 - June 16

Section: 01, Crs: 3

MTWR

Kruse

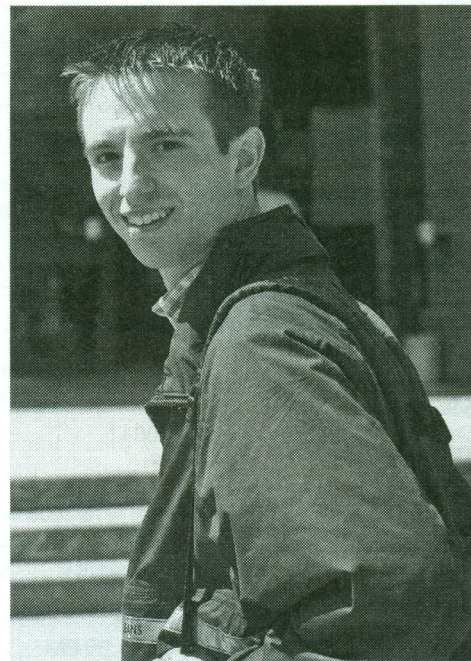
Billing Date: 5/8/2006

Call # 10282

8:00 AM-1:00 PM

IAR 126

Due Date: 5/22/2006



Undergraduate Special Session Classes Beginning in July 2006



ART 466 Selected Topics

July 10 - July 15

Section: 01, Crs: 3

MTWRFS

Defazio

Billing Date: 6/12/2006

Call # 10027

11:30 AM-7:00 PM

COO 209

Due Date: 6/28/2006

This course is Drawing and Sculpting the Figure. It includes daily a 2 1/2 hour session of figure drawing with a model, a 2 1/2 hour session of figure modeling (sculpting) with a model, an anatomy lesson, technique lessons, and critiques.

First Five Weeks - Undergraduate

Code/Code #/Title	Section	Crs	Days	Start	End	Bldg	Rm	Instructor	Call #
BIOLOGICAL & ENVIRONMENTAL SCIENCES									724 938 4200
BIO 103 Cont Issues in Bio	01	3	MTWR	8:00 AM	10:05 AM	BSC	202	Miller	10036
BUSINESS & ECONOMICS									724 938 4371
ACC 218 Fed Income Tax I	W1	3	TBA	TBA	TBA	TBA	TBA	Mendola	10002
BUS 371 Analytical Methods	01	3	MTWR	10:15 AM	12:20 PM	WCU	113	Park	10041
FIN 301 Financial Mgmt	01	3	MW	5:30 PM	9:30 PM	WCU	111	Chawdhry	10135
MGT 352 Human Resource Mgmt	01	3	TR	5:30 PM	9:30 PM	EST	130	Brown	10173
CHEMISTRY & PHYSICS									724 938 4147
CHE 101 Gen Chemistry I	1A	4	MTWR	8:00 AM	10:05 AM	NSC	206	Woznack	10050
CHE 101 Gen Chemistry I	1B	0	MTWR	10:15 AM	12:20 PM	NSC	206	Gould	10051
CHE 331 Organ Chemistry I	1A	4	MTWR	8:00 AM	10:05 AM	NSC	127	Price	10052
CHE 331 Organ Chemistry I	1B	0	MTWR	10:15 AM	12:20 PM	NSC	127	Price	10053
PHS 120 Basic Physical Science	01	3	MTWR	2:45 PM	4:50 PM	NSC	236	Cignetti	10195
COMMUNICATION STUDIES									724 938 4170
COM 101 Oral Communication	01	3	MTWR	10:15 AM	12:20 PM	WAC	110	Kale	10061
ELEMENTARY EDUCATION									724 938 4135
ECE 319 Parent/Community	01	3	TR	5:00 PM	9:30 PM	EDU	300B	Farrer	10083
EDE 305 Math Cont Meth Elem	01	3	MTWR	8:00 AM	10:05 AM	EDU	300B	Bonari	10089
EDE 340 Lang & Literacy II	01	3	MTWR	2:45 PM	4:50 PM	EDU	327	Staff	10096
ENGLISH									724 938 4070
ENG 101 English Comp I	01	3	MW	5:30 PM	10:00 PM	WCU	315	Kearcher	10120
FOREIGN LANGUAGES									724 938 4246
FRE 101 Elem French I	01	3	MTWR	10:15 AM	12:20 PM	Ham	146	Randall	10140
HEALTH SCIENCE AND SPORTS STUDIES									724 938 4562
FIT 100 Intro to Fitness	W1	3	TBA	TBA	TBA	TBA	TBA	Hatton	10139
HISTORY & POLITICAL SCIENCE									724 938 4054
HIS 102 US Hist Since 1877	01	3	MW	5:30 PM	10:00 PM	WCU	215	Slaven	10148
HIS 240 Hist the Cold War	01	3	MTWR	2:45 PM	4:50 PM	HAM	136B	Slaven	10150
POS 100 Intro Poli Sci	01	3	MTWR	12:30 PM	2:35 PM	WCU	215	Wood	10198
POS 105 American Politics	W1	3	TBA	TBA	TBA	TBA	TBA	Yamba	10199
MATH & COMPUTER SCIENCE									724 938 4078
CSC 101 Personal Productivity	W1	3	TBA	TBA	TBA	TBA	TBA	Kovalchick	10072
CSC 201 Windows and Internet	W1	3	TBA	TBA	TBA	TBA	TBA	Kholief	10074
MAT 100 Fund of Math	01	3	MTWR	10:15 AM	12:20 PM	EST	251	Williams	10163
MAT 120 Elementary Topics in Math	01	3	MTWR	8:00 AM	10:05 AM	EST	360	Kamina	10165
MAT 181 College Algebra	W1	3	TBA	TBA	TBA	TBA	TBA	Boukaabar	10167
MAT 225 Business Statistics	W1	3	TBA	TBA	TBA	TBA	TBA	Khoujmane	10169
MAT 281 Calculus I	01	3	MTWR	12:30 PM	2:35 PM	EST	255	Ford	10170
PSYCHOLOGY									724 938 4100
PSY 100 General Psychology	01	3	MTWR	10:15 AM	12:20 PM	LRC	329	John	10234
PSY 208 Ed Psychology	01	3	MTWR	10:15 AM	12:20 PM	LRC	240	Ditkoff	10236
SECONDARY EDUCATION									724 938 4140
EDF 333 Educational Technology	01	3	MTWR	8:00 AM	10:05 AM	EDU	402	Edwards	10107
EDS 200 Instructional Strategies	01	3	MTWR	12:30 PM	2:35 PM	EDU	419	Hepner	10111
SPECIAL EDUCATION									724 938 4142
EDU 340 Main Excep Learners	01	3	MW	5:00 PM	9:30 PM	EDU	209	Koury	10113

Second Five Weeks - Undergraduate

Code/Code #/Title	Section	Crs	Days	Start	End	Bldg	Rm	Instructor	Call #
APPLIED ENGINEERING & TECHNOLOGY									724 938 4085
TED 105 Communicating Technical	.01	3	MTWR	8:00 AM	1:00 PM	HLH	141	Weber	10281
TED 436 Engineering Design & Devlp	.01	3	MTWR	1:30 PM	6:30 PM	COO	126	Hider	10283
ART & DESIGN									724 938 4182
ART 106 Art Appreciation	.01	3	MTWR	8:00 AM	10:05 AM	BSC	228	Lloyd	10025
ART 382 Ceramics Studio	.01	3	MTWR	10:15 AM	12:20 PM	CST	100	Miecznikow	10026
BUSINESS & ECONOMICS									724 938 4371
ACC 321 Managerial Account	W1	3	TBA	TBA	TBA	TBA	TBA	Jones	10290
MGT 301 Organiz Behavior	W1	3	TBA	TBA	TBA	TBA	TBA	Michaels	10172
MKT 300 Principles of Marketing	.01	3	TR	5:30 PM	9:30 PM	WCU	113	Lazorchak	10183
ELEMENTARY EDUCATION									724 938 4135
EDE 307 Science Elem Grades	.01	3	MTWR	10:15 AM	12:20 PM	EDU	329	Shimkanin	10091
EDE 450 Assess Child Perfor	.01	3	MTWR	8:00 AM	10:05 AM	EDU	329	Shimkanin	10097
ENGLISH									724 938 4070
ENG 102 English Comp II	.01	3	TR	5:30 PM	10:00 PM	WCU	311	McVey	10121
ENG 107 Intro to Fiction	.01	3	MTWR	8:00 AM	10:05 AM	WCU	307	Natali	10122
FOREIGN LANGUAGES									724 938 4246
SPN 101 Elem Spanish I	.01	3	MTWR	12:30 PM	2:35 PM	HAM	146	Gonzalez	10266
JUSTICE STUDIES									724 938 4424
ANT 379 Sp Prob Anth	.01	3	MTWR	2:45 PM	4:50 PM	EDU	205L	Nass	10024
CRJ 399 Selected Topics	.02	3	MTWR	12:30 PM	2:35 PM	EDU	205L	Hsieh	10066
CRJ 429 Terrorism	W1	3	TBA	TBA	TBA	EDU	205L	Al-khattar	10069
CRJ 495 Legal & Justice Research	W1	3	TBA	TBA	TBA	EDU	205L	Al-khattar	10070
MATH & COMPUTER SCIENCE									724 938 4078
CSC 201 Windows and Internet	W2	3	TBA	TBA	TBA	TBA	TBA	Kholief	10075
MAT 110 Applications of Math	W1	3	TBA	TBA	TBA	TBA	TBA	Hess	10164
MAT 130 Elementary Topics in Math	.01	3	MTWR	8:00 AM	10:05 AM	EST	360	Kamina	10166
MAT 191 College Trig	W1	3	TBA	TBA	TBA	TBA	TBA	Benbourena	10168
PSYCHOLOGY									724 938 4100
PSY 205 Child Psychology	.01	3	MTWR	10:15 AM	12:20 PM	LRC	240	Rosengart	10235
PSY 211 Social Psychology	W1	3	MTWR	10:15 AM	12:20 PM	TBA	TBA	Sweitzer	10237

Ten Weeks - Undergraduate

Code/Code #/Title	Section	Crs	Days	Start	End	Bldg	Rm	Instructor	Call #
APPLIED ENGINEERING & TECHNOLOGY									724 938 4085
ITE 315 CAD II	W1	3	TBA	TBA	TBA	TBA	TBA	Thompson	10292
ITE 341 Quality Control	W1	3	TBA	TBA	TBA	TBA	TBA	Thompson	10291
BUSINESS & ECONOMICS									724 938 4371
BUS 242 Business Law I	W1	3	TBA	TBA	TBA	TBA	TBA	Schwerha	10040
ECO 100 Elem of Econ	W1	3	TBA	TBA	TBA	TBA	TBA	Cole	10084
ECO 201 Intro Micro	W1	3	TBA	TBA	TBA	TBA	TBA	Hettler	10085
MGT 300 Principles of Management	W1	3	TBA	TBA	TBA	TBA	TBA	Clingerman	10171
MGT 402 Strategic Mgt	W1	3	TBA	TBA	TBA	TBA	TBA	Serafin	10177
MGT 452 Hum Res Str & Plng	W1	3	TBA	TBA	TBA	TBA	TBA	Serafin	10178
COMMUNICATION STUDIES									724 938 4170
OM 250 Oral Comm Management	01	3	T/R	5:30 PM	7:45 PM	WAC	110	McGukin	10062
ELEMENTARY EDUCATION									724 938 4135
EDE 306 Teach Soc St Elem	01	3	M	5:00 PM	9:30 PM	EDU	300B	Wyman	10090
ENGLISH									724 938 4070
ENG 217 Sci & Tech Writ	W1	3	TBA	TBA	TBA	TBA	TBA	Pathak	10123
HISTORY & POLITICAL SCIENCE									724 938 4054
HIS 111 Dev Maj Wld Civil	W1	3	TBA	TBA	TBA	TBA	TBA	Marak	10149
HIS 347 Race & Ethnicity in US	W1	3	TBA	TBA	TBA	TBA	TBA	Marak	10152
MUSIC									724 938 4242
MUS 100 Intro to Music	W1	3	TBA	TBA	TBA	TBA	TBA	Ikach	10193
PHILOSOPHY									724 938 4250
PHI 200 World Religions	W1	3	TBA	TBA	TBA	TBA	TBA	Hudson	10194
PSYCHOLOGY									724 938 4100
PSY 215 Psych Except Child	01	3	T	5:30 PM	10:00 PM	LRC	204	Toth	10238
PSY 305 Psych Personality	01	3	M	5:30 PM	10:00 PM	EST	260	Cavasina	10239
PSY 310 Psych of Adjustment	01	3	W	5:30 PM	10:00 PM	LRC	240	Cavasina	10241
SECONDARY EDUCATION									724 938 4140
EDF 333 Educational Technology	02	3	W	5:00 PM	9:30 PM	EDU	402	Hepner	10108
EDU 310 Teaching Multicultural	01	3	T	4:00 PM	8:30 PM	EDU	300B	Sheffield	10112
SOCIOLOGY									724 938 4042
SOC 100 Prin of Sociology	W1	3	TBA	TBA	TBA	TBA	TBA	Jones	10264
THEATRE & DANCE									724 938 4220
THE 100 Intr to the Theatre	W1	3	TBA	TBA	TBA	TBA	TBA	O'Donnell	10286
WOMEN'S STUDIES									724 938 4082
WST 200 Introduction	W1	3	TBA	TBA	TBA	TBA	TBA	Marak	1028

Off-campus Centers

Course Information Summer 2006

Students may register on-line at sisweb.cup.edu, fax or mail their registration, or register in person at each site.

Southpointe Registration

Southpointe courses are offered at California University Southpointe Center, 135 Technology Drive, Southpointe Industrial Park, Canonsburg, PA. For additional information, please call the California University Southpointe Office at 1-888-333-CALU (toll free) or 724-873-2760



Current Southpointe Students

Current Southpointe students may register for Summer College beginning February 20, 2006, in person at the Southpointe Center, 135 Technology Drive, Baily Center II, Canonsburg, PA.

New Students Planning to Attend Southpointe

New students must first apply for admission to California University. Please contact the Southpointe Center office at 1-888-333-CALU or 724-873-2760 for more information. Applications for Summer College are now being accepted.

Undergraduate Classes at Southpointe

Special Session Classes beginning in June at Southpointe

CRJ 399 Selected Topics Leadership in Ethics in Justice Studies

June 19 - June 23

Section: S1 Crs: 3 Call Number: 10065

MTWRF 8:00 AM 5:00 PM

Hummel SPT TBA

Billing Date: 5/22/2006 Due Date: 6/5/2006

First Five Weeks

Code/Code #/Title	Section	Crs	Days	Start	End	Bldg	Rm	Instructor	Call #
BUSINESS & ECONOMICS									724 938 4371
MGT 352 Human Resource Mgmt	S1	3	TR	5:30 PM	9:30 PM	SPT	TBA	Brown	10174
JUSTICE STUDIES									724 938 4424
CRJ 103 Correctional Systems	S1	3	T/R	5:00 PM	9:00 PM	SPT	TBA	Hummel	10064

Second Five Weeks

Code/Code #/Title	Section	Crs	Days	Start	End	Bldg	Rm	Instructor	Call #
BUSINESS & ECONOMICS									724 938 4371
ACC 200 Financial Accounting	S1	3	TR	5:30 PM	9:30 PM	SPT	TBA	Roberts	10001

Ten Weeks

Code/Code #/Title	Section	Crs	Days	Start	End	Bldg	Rm	Instructor	Call #
BUSINESS & ECONOMICS									724 938 4371
MGT 371 Mgt Informat System	S1	3	M	5:30 PM	9:30 PM	WCU	200	Skroupa	10176
COMMUNICATION STUDIES									724 938 4170
COM 250 Oral Comm Managemnt	S1	3	W	5:30 PM	9:30 PM	SPT	TBA	Cummings	10293
MATH & COMPUTER SCIENCE									724 938 4078
CSC 101 Personal Productivity	S1	3	T	5:00 PM	9:30 PM	SPT	TBA	Ford	10071
PSYCHOLOGY									724 938 4100
PSY 305 Psych Personality	S1	3	M	5:30 PM	10:00 PM	SPT	TBA	Cavasina	10240

Graduate Classes at Southpointe

May Special - graduate

ESP 501 Intro to Except

May 22 - June 8

Section: S1, Crs: 3

Call Number: 10294

MTWR

5:30 PM-9:30 PM

Staff

SPT TBA

Billing Date: 4/24/2006

Due Date: 5/8/2006

First Five Weeks

Code/Code #/Title	Section	Crs	Days	Start	End	Bldg	Rm	Instructor	Call #
BUSINESS & ECONOMICS									724 938 4371
MGT 742 Human Resource Mgt	S1	3	SAT	8:30 AM	4:30 PM	SPT	TBA	Brown	10181
MKT 751 Advertising Mgt	S1	3	T/R	5:30 PM	9:30 PM	SPT	TBA	Lazorchak	10289

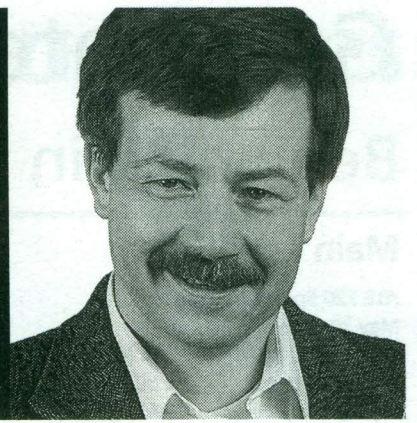
Second Five Weeks

Code/Code #/Title	Section	Crs	Days	Start	End	Bldg	Rm	Instructor	Call #
BUSINESS & ECONOMICS									724 938 4371
FIN 711 Financial Mgt	S1	3	MW	5:30 PM	9:30 PM	SPT	TBA	Chawdhry	10138

Ten Weeks

Code/Code #/Title	Section	Crs	Days	Start	End	Bldg	Rm	Instructor	Call #
APPLIED ENGINEERING & TECHNOLOGY									724 938 4085
MMT 703 Digital Editing	S1	3	M	5:30 PM	10:00 PM	SPT	TBA	Schickel	10186
MMT 704 Web Publishing	S1	3	W	5:30 PM	10:00 PM	SPT	TBA	Kallis	10188
ELEMENTARY EDUCATION									724 938 4135
EDE 701 Dev Organiz Curric	S1	3	T	5:30 PM	10:00 PM	SPT	TBA	Melenyzer	10100
EDE 702 Instructional Strategies	S1	3	M	5:30 PM	10:00 PM	SPT	TBA	Melenyzer	10101

Graduate School Course Information



Summer College 2006

Register on-line at sisweb.cup.edu

Daily 7 am – 11:30 pm

(Note: Times may vary due to occasional system upgrades)

Office of Lifelong Learning:

Toll Free Number: 1-866-268-9154

Phone: 724-938-5840

Fax: 724-938-5963

Graduate School Office:

724-938-4187

You must be an admitted graduate student in good standing to be eligible to register for Summer 2006 classes. Prospective students who need information about programs, admission requirements, or application procedures should consult the Graduate Webpage at www.cup.edu/graduate.

Current Graduate students who need information about candidacy, comprehensive exams, graduation checkout, or any other academic matters should refer to the Graduate Webpage at www.cup.edu/graduate. Call the Graduate Office at 724-938-4187 for more information.



Graduate Special Session Classes

Beginning in May 2006

Main Campus

ATE 720 Sports Therapy

May 30 - June 30
Section: 1C, Crs: 0 Call Number: 10034
MTWRF 2:00 PM-3:25 PM
Kane HAM 103
Billing Date: 5/2/2006 Due Date: 5/16/2006

ATE 720 Sports Therapy

May 30 - June 30
Section: 1B, Crs: 0 Call Number: 10033
MTWRF 12:30 PM-1:55 PM
Kane TBA TBA
Billing Date: 5/2/2006 Due Date: 5/16/2006

ATE 720 Sports Therapy

May 30 - June 30
Section: 1A, Crs: 4 Call Number: 10032
MTWRF 10:15 AM-12:20 PM
Kane TBA TBA
Billing Date: 5/2/2006 Due Date: 5/16/2006

ATE 800 Meth Res Health Science

May 30 - June 30
Section: 01, Crs: 3 Call Number: 10035
MTWRF 8:00 AM-10:05 AM
Biddington TBA TBA
Billing Date: 5/2/2006 Due Date: 5/16/2006

CMG 714 Mass Media & Soc

May 22 - June 8
Section: 01, Crs: 3 Call Number: 10060
MTWRF 5:30 PM-9:35 PM
Spicer TBA TBA
Billing Date: 4/24/2006 Due Date: 5/8/2006

EDE 701 Dev Organiz Curriculum

May 15 - June 3
Section: 01, Crs: 3 Call Number: 10099
TR 4:15 PM-8:45 PM
Melenzyer EDU 209
Billing Date: 4/17/2006 Due Date: 5/1/2006

SWK 803 Assess Diff Cl Func

May 22 - Aug 11
Section: 01, Crs: 3 Call Number: 10295
R 6:00 PM-9:30 PM
Christopher WCU 315
Billing Date: 4/24/2006 Due Date: 5/8/2006

SWK 806 Rural Fam/Co Policy

May 23 - Aug 11
Section: 01, Crs: 3 Call Number: 10279
T 2:30 PM-6:00 PM
Hayden WCU 313
Billing Date: 4/24/2006 Due Date: 5/8/2006

SWK 814 Prac MH/MR

May 23 - Aug 11
Section: 01, Crs: 3 Call Number: 10280
T 6:00 PM-9:00 PM
Smiley WCU 309
Billing Date: 4/24/2006 Due Date: 5/8/2006

EDU 501 Urban Center

May 15 - June 2
Section: X1, Crs: 3 Call Number: 10114
MTWRF 8:00 AM-5:00 PM
Staff TBA TBA
Billing Date: 4/17/2006 Due Date: 5/1/2006

EDU 501 Urban Center

May 15 - June 9
Section: X2, Crs: 3 Call Number: 10115
MTWRF 8:00 AM-5:00 PM
Sheffield TBA TBA
Billing Date: 4/17/2006 Due Date: 5/1/2006

AST 700 US Homeland Security

May 22 - July 15
Section: W4, Crs: 3 Call Number: 10028
Magers TBA TBA
Billing Date: 4/24/2006 Due Date: 5/8/2006

LAW 602 Law/Civil Libert/Constitution

May 22 - July 15
Section: W1, Crs: 3 Call Number: 10157
Blume TBA TBA
Billing Date: 4/24/2006 Due Date: 5/8/2006

LAW 605 Law and Police Process

May 22 - July 15
Section: W1, Crs: 3 Call Number: 10158
Burkart-Uva TBA TBA
Billing Date: 4/24/2006 Due Date: 5/8/2006

LAW 608 Law and Civil Litigation

May 22 - July 15
Section: W1, Crs: 3 Call Number: 10159
Toras TBA TBA
Billing Date: 4/24/2006 Due Date: 5/8/2006

LAW 702 Law/Science/Forensic App

May 22 - July 15
Section: W1, Crs: 3 Call Number: 10160
Erickson TBA TBA
Billing Date: 4/24/2006 Due Date: 5/8/2006

LAW 703 Law and the Environment

May 22 - July 15
Section: W1, Crs: 3 Call Number: 10161
Dawida TBA TBA
Billing Date: 4/24/2006 Due Date: 5/8/2006

LAW 704 Law/Business & the Workplace

May 22 - July 15
Section: W3, Crs: 3 Call Number: 10162
Staff TBA TBA
Billing Date: 4/24/2006 Due Date: 5/8/2006

Graduate Special Session Classes

Beginning in June 2006

Main Campus

CMD 712 Appl Rx-Op Setting

June 12 - July 21

Section: 01, Crs: 2

MTWR

Carlino

Billing Date: 5/11/2006

Call Number: 10055

1:00 PM-5:00 PM

LRC 269

Due Date: 5/26/2006

CMD 765 Spec Prob Dysphagia

June 12 - June 30

Section: 01, Crs: 3

MTWR

Bonfanti

Billing Date: 5/11/2006

Call Number: 10059

8:00 AM-12:30 PM

LRC 276C

Due Date: 5/26/2006

CMD 732 Counsel Communicatively Disabled

June 5 - June 9

Section: 01, Crs: 3

MTWRF

Bonfanti

Billing Date: 5/8/2006

Call Number: 10058

8:00 AM-5:00 PM

LRC 276C

Due Date: 5/22/2006

ESP 504 Curr Meth I: Read & LangArts

May 22 - June 28

Section: 01, Crs: 3

MW

Seman

Billing Date: 4/24/2006

Call Number: 10128

5:00 PM-9:30 PM

EDU 104

Due Date: 5/8/2006

Graduate Special Session Classes

Beginning in July 2006

Main Campus

ATE 700 Human Gross Anatomy

July 3 - August 4

Section: 01, Crs: 4

MTWR

Zuchelkowski

Billing Date: 6/5/2006

Call Number: 10031

8:00 AM-12:25 PM

HAM 142

Due Date: 6/19/2006



First Five Weeks - Graduate

Code/Code #/Title	Section	Crs	Days	Start	End	Bldg	Rm	Instructor	Call #
BUSINESS & ECONOMICS									724 938 4371
MGT 742 Human Resource Mgt	.01	3	SAT	8:30 AM	4:30 PM	EST	260	Brown	10180
MKT 751 Advertising Mgt	.01	3	T/R	5:30 PM	9:30 PM	EST	260	Lazorchak	10288
ELEMENTARY EDUCATION - EDE									724 938 4135
EDE 700 Foundation/History	.01	3	MTWR	12:30 PM	2:35 PM	EDU	327	Vargo	10098

Second Five Weeks - Graduate

Code/Code #/Title	Section	Crs	Days	Start	End	Bldg	Rm	Instructor	Call #
BUSINESS & ECONOMICS									724 938 4371
FIN 711 Financial Mgt	.01	3	MW	5:30 PM	9:30 PM	EST	130	Chawdhry	10137
ELEMENTARY EDUCATION - EDE									724 938 4135
EDE 737 Lit and Literacy	.01	3	MTWR	12:30 PM	2:35 PM	EDU	327	Vargo	10106
RSP 703 Pract Diag Case St	.01	3	MTWR	8:00 AM	10:05 AM	EDU	300 A	Peterson	10255
RSP 704 Pr Remedial Cs Stud	.01	3	MTWR	10:15 AM	12:20 PM	EDU	300 A	Peterson	10256

Ten Weeks - Graduate

Code/Code #/Title	Section	Crs	Days	Start	End	Bldg	Rm	Instructor	Call #
APPLIED ENGINEERING & TECHNOLOGY									724 938 4085
MMT 703 Digital Editing	.01	3	M	5:30 PM	10:00 PM	HLH	204	Schickel	10185
MMT 704 Web Publishing	.01	3	W	5:30 PM	10:00 PM	HLH	204	Kallis	10187
BUSINESS & ECONOMICS									724 938 4371
ECO 716 Applied Economic Analysis	.W1	3	TBA	TBA	TBA	TBA	TBA	Park	10086
MGT 751 Internat Bus Mgt	.W1	3	TBA	TBA	TBA	TBA	TBA	Dehainaut	10182
COUNSELOR EDUCATION & SERVICES									724 938 4123
CED 702 Counseling Theory	.01	3	M	5:00 PM	9:30 PM	LRC	276D	Eliason	10043
CED 703 Consulting Theory	.01	3	W	5:00 PM	9:30 PM	LRC	204	Samide	10044
CED 720 Cross Cultural Coun	.01	3	M	5:00 PM	9:30 PM	EDU	400A	Walsh	10045
CED 786 Sem Career Info	.01	3	R	5:00 PM	9:30 PM	LRC	204	Patrick	10046
CED 787 Integrated Seminar	.01	3	T	6:00 PM	10:30 PM	LRC	276D	Brusoski	10047

Ten Weeks - Graduate

Code/Code #/Title	Section	Crs	Days	Start	End	Bldg	Rm	Instructor	Call #
ELEMENTARY EDUCATION									724 938 4135
EDE 708 Teaching Reading.....	.01	3	T	5:00 PM	9:30 PM	EDU	327	Cignetti	10102
EDE 715 Teaching Language Arts.....	.01	3	W	5:00 PM	9:30 PM	EDU	327	Vargo	10103
EDE 718 Teaching Mathematics.....	.01	3	R	5:00 PM	9:30 PM	EDU	327	Bonari	10104
EDE 731 Expressive Arts.....	.01	3	M	5:00 PM	9:30 PM	EDU	327	Vargo	10105
EDP 663 Computer Assist Ins.....	W1	3	TBA	TBA	TBA	TBA	TBA	Peterson	10110
RSP 700 Fnd Lit Theory Inst.....	.01	3	M	5:00 PM	9:30 PM	EDU	304	Cignetti	10254
RSP 706 Tch Rdg Adu Litercy.....	.01	3	W	5:00 PM	9:30 PM	EDU	300B	Farrer	10257
MATH & COMPUTER SCIENCE									724 938 4078
EDP 600 Stat Methods.....	W1	3	TBA	TBA	TBA	TBA	TBA	Khoujmane	10109
PSYCHOLOGY									724 938 4100
PSY 702 Psychopathology.....	.01	3	T	5:30 PM	10:00 PM	LRC	329	Lonich	10243
PSY 711 Adv Educational Psy.....	.01	3	T	5:30 PM	10:00 PM	LRC	240	Scott	10244
PSY 712 Adv Psych Learning.....	.01	3	M	5:30 PM	10:00 PM	LRC	204	Scott	10245
PSY 713 Psy Growth Develop.....	.01	3	R	5:30 PM	10:00 PM	LRC	204	Cavasina	10246
PSY 720 Neuropsychology.....	.01	3	M	5:30 PM	10:00 PM	LRC	329	Mason	10247
PSY 721 Tests Measurements.....	.01	3	R	5:30 PM	10:00 PM	LRC	240	Scott	10248
PSY 752 Fundamental Sch Psy.....	.01	3	W	5:30 PM	10:00 PM	LRC	204	John	10249
RES 800 Methods in Research.....	.03	3	M	5:30 PM	10:00 PM	LRC	240	Sweeney	10253
SECONDARY EDUCATION									724 938 4140
MSE 715 Inst Tech in Education.....	.01	3	R	6:00 PM	10:30 PM	EDU	402	Zisk	10190
MSE 715 Inst Tech in Education.....	.01	0	R	6:00 PM	10:30 PM	EDU	402	Hepner	10190
MSE 725 Meth of Action Res in Sec.....	W1	3	TBA	TBA	TBA	TBA	TBA	Zisk	10191
MSE 790 Thesis in Secondary.....	.01	3	TBA	TBA	TBA	TBA	TBA	Staff	10192
SPECIAL EDUCATION									724 938 4142
ESP 501 Intro to Except.....	.01	3	T	5:00 PM	9:30 PM	EDU	205L	Lazor	10125
ESP 502 Life Skills Planning &.....	.01	3	M	5:00 PM	9:30 PM	EDU	106	Staff	10126
ESP 503 Access & Prespective.....	.01	3	T	5:00 PM	9:30 PM	EDU	209	Koury	10127
ESP 505 Curr & Meth II:.....	.01	3	R	5:00 PM	9:30 PM	EDU	106	Staff	10129
ESP 506 Transition Planning &.....	.01	3	W	5:00 PM	9:30 PM	EDU	205L	Lazor	10130
ESP 701 Intro to Behav Anal.....	.01	3	M	5:00 PM	9:30 PM	EDU	205L	Lazor	10131
ESP 712 Tr & Iss Except Pop.....	.01	3	R	5:00 PM	9:30 PM	EDU	104	Staff	10132

Undergraduate Course Descriptions

ACCOUNTING – ACC

ACC 200. FINANCIAL ACCOUNTING

The fundamentals of accounting concepts and procedures for sole proprietors, partnerships, and corporations. The interpretation and use of financial statements and other relevant accounting information will be emphasized. (3 crs.)

ACC 218. FEDERAL INCOME TAX I

An introduction to individual federal income tax accounting. (3 crs.)

ANTHROPOLOGY - ANT

ANT 379. SPECIAL PROBLEMS IN ANTHROPOLOGY. (Variable crs.)

ART - ART

ART 106. ART APPRECIATION

An introduction to the major movements in art which helped shape western civilization. This course is a survey of historical and contemporary approaches to painting, sculpture, and architecture. (3 crs.) Fall & spring.

ART 382. CERAMICS STUDIO

An introductory exploration of clay through hand building techniques and the potter's wheel. Students examine the various forms and functions of the ceramic vessel. The course focuses on forming processes and the glazing and firing of pieces made in the studio. (3 crs.) Fall & spring.

ATHLETIC TRAINING - ATE

ATE 105. CURRENT ISSUES IN ATHLETICS

A comprehensive overview of life skills that provide educational experience and services in order to develop well balanced life styles for the student athletes and other interested students. The course examines decision making, planning and fulfillment of life goals, as well as contemporary issues, problems and controversies within the intercollegiate athletic setting. (3 crs.) Fall & spring.

ATE 301. ADM INTERCOLLEGETE ATH PGM

BIOLOGY - BIO

BIO 103. CONTEMPORARY ISSUES IN BIOLOGY

Basic biological principles are applied to the understanding of current social-biological problems and how these relate to an individual's personal life. Topics included are human sexuality, nutrition, health and disease, evolution, behavior, and the diversity of life. Three lecture hours weekly. For students not majoring in Biology. (3 crs.) Fall & spring.

BIO 226. BASIC MICROBIOLOGY

This course provides a survey of the prokaryotic and the medically important concepts of microbiology including microbial control, acquisition of disease, disease prevention and control.

Prerequisites: This course is for students who are enrolled in a nursing program, or have obtained permission of the Instructor. Three lecture hours and three laboratory hours weekly. (4 crs.) Summer.

BUSINESS - BUS

BUS 242. BUSINESS LAW I

A study of commercial law as it relates to contracts, agency and criminal and constitutional law pertaining to business. Prerequisites: ECO 100 and at least sophomore standing. (3 crs.)

BUS 371. ANALYTICAL METHODS

This is a course designed to teach mathematical methods of solving business problems. This will be especially useful to anyone who has opted not to take any calculus. Prerequisite: MAT 181. (3 crs.)

CHEMISTRY - CHE

CHE 101. GENERAL CHEMISTRY I

An introductory course for majors and non-majors. Topics covered include atomic structure, bonding, stoichiometry, chemical reactions (including redox reactions), solutions, and the liquid state. Three class hours and three laboratory hours each week. (4 crs.) Every semester.

CHE 331. ORGANIC CHEMISTRY I

An introduction to the basic principles which govern the reactions of carbon compounds. Particular emphasis is placed on the structure and stereochemistry of organic molecules, acid-base theory, reaction mechanisms, and an introduction to the reactions and synthesis of alkanes, alkenes, alkynes, alicyclics, alkyl halides and aromatic compounds. Three hours lecture and three hours laboratory. Prerequisites: CHE 101 & CHE 102. (4 crs.) Summer & fall.

COMMUNICATION STUDIES - COM

COM 101. ORAL COMMUNICATION

This course is designed to develop the knowledge and skill necessary for preparing and presenting extemporaneous speeches to accomplish informative and persuasive goals on issues of civil, political, or cultural importance. Course topics include audience analysis, research, organization, language use, and delivery that facilitate effective communication with audiences. (3 crs.)

COM 250. ORAL COMMUNICATION: MANAGEMENT.

Develop an awareness of, and an appreciation for communication in the business world; preparing and presenting oral reports and speeches designed especially for persons who function in organizations, businesses, or industries. (3 crs.)

COMPUTER INFORMATION SYSTEMS - CIS

CIS 150 INTRODUCTION TO DATABASE APPLICATION SOFTWARE

This course is an introductory study of database application software as it is used on a microcomputer. The more commonly used operations of a selected database applications software package will be presented. Introductory database design techniques, queries, forms, and reports will be presented. Laboratory assignments and projects will be used to combine database theory and database software to solve information management problems. Prerequisite: CSC 101 Recommended or equivalent. (3 crs.)

CIS 215 TELECOMMUNICATIONS AND LOCAL AREA NETWORKS

An introduction to telecommunications and networks. Topics include data transmission, communication protocols and layered standards, network hardware, network management, security, and privacy. Both LAN and WAN implementations are addressed. Prerequisite: IST 121 (3 crs.)

COMPUTER SCIENCE - CSC

CSC 101 MICROCOMPUTER APPLICATION SOFTWARE

This course provides a structured laboratory experience designed to develop and enhance a student's proficiency in using selected Windows microcomputer application software packages. (3 crs.)

CSC 199 FIELD EXPERIENCE IN COMPUTER SCIENCE

Designed for the Associate Degree person majoring in computer science, this course will enable the student to apply her/his knowledge of computers to the real world of computer technology. The field experience will provide the student with an opportunity to see and work with the many aspects of computers in the work place and should enhance the student's job opportunities when the student graduates. Prerequisites: Students should have completed 32 credits with a good QPA and permission of the Instructor. (3 crs)

CSC 201 WINDOWS AND THE INTERNET

This course provides a structured laboratory

experience designed to enhance a student's proficiency in a Windows operating environment and in using the Internet, and to develop a student's proficiency in designing and publishing web pages. (3 crs.)

CRIMINAL JUSTICE (BACHELOR OF SCIENCE PROGRAM) - CRJ

CRJ 103 CORRECTIONAL SYSTEMS

Course examines the management, structure and organizational design of correctional institutions. Correctional planning, construction, program evaluation and community interaction will be considered and improvement strategies for correctional operations will be debated and critiqued. Course provides a broad based overview of the correctional system which incarcerates and confines, treats and reclaims criminal personalities and protects and serves the state and the community by removing threats to the social order. (3 crs.)

CRJ 399 SELECTED TOPICS IN LAW AND JUSTICE

Offered at Southpointe - See Special Offerings page for description.

CRJ 400 FOREIGN STUDY IN CRIMINAL JUSTICE

A semester or summer based experience in a foreign nation, e.g. Ireland, Hungary, London or Germany, by enrolling in actual classes at a foreign host institution for purposes of credit. Class instruction relates to the study of law and justice and affords a comparative critique of foreign justice models. The experience consists of not only study, but also visitations to justice agencies, research, travel to historical and cultural locations and social activities. Credits awarded will vary according to course offerings, time and length of experience. (Variable crs. to a maximum of 12 crs.)

CRJ 429 TERRORISM

Examines current terrorism, its origins and ideological bases, with particular attention to its relation to political institutions and the criminal justice process. Specific attention is given methods and means of the terrorist, motivations and modus operandi trends and predictability and law enforcement's multi-faceted reactions to its many devious forms. Legislative efforts to curb the scourge of terrorism are also highlighted. (3 crs.)

CRJ 495 LEGAL AND JUSTICE RESEARCH METHODS

A criminal justice exploration of the specialized methods and sources of legal and justice research in these areas: Justice publications and resources, case collections, computer-assisted research, constitutional materials, legal history, legal periodicals, legislative history, practice and procedure, and social science materials related to law. Application of legal research strategies will

be required. (3 crs.)

EARTH SCIENCE - EAS

EAS 100. INTRODUCTION TO EARTH SCIENCE

This introductory course is designed to acquaint the student with the four general areas of earth science: astronomy, geology, meteorology, and oceanography. The course consists of two hours of lecture and one hour of lab work. (3 crs.)

EAS 131. INTRODUCTION TO ENVIRONMENTAL GEOLOGY

This course deals with the interaction between man and his geologic environment. Emphasis is placed on the understanding of basic geologic principles and case studies of some of the classic examples of environmental problems. Laboratory exercises and problems are an integral part of the course. This is intended as a survey course and a student needs only a limited background in geology. (3 crs.)

EAS 150. INTRODUCTION TO GEOLOGY

A survey course intended primarily for the non-science major. Topics considered include the make-up of the earth, internal and external processes that occur within or on the earth, rocks and minerals, fossils, earth's origin and evolution, and the origin and evolution of life on this planet. Laboratory work is an integral part of the course. (4 crs.)

EAS 163. INTRODUCTION TO OCEANOGRAPHY

An introductory course in the study of the four main branches of oceanography: (1) geology of the oceanic basins (origins of the oceans, structure and geomorphology of the ocean's floor, methods of investigation); (2) chemistry of the ocean waters; (3) physics of the oceans (currents, waves, tides, etc.); (4) biology of the oceans (marine plants and animals). No preliminary studies required but previous course work in EAS 100 or EAS 150 recommended. (3 crs.)

EAS 491. FIELD COURSE IN EARTH SCIENCE

This course is designed for Earth Science students who desire to apply their classroom knowledge to specific sites and earth science field problems. Each semester will include trips to various sites at which geologic, meteorological, or oceanographic processes, principles, and phenomena can be studied. (Variable crs.)

EAS 492. FIELD COURSE IN GEOLOGY

This course provides advanced geology students with opportunities to study geology in situ. Field trips to classic and less well known sites will be incorporated with lectures, data collection, and scientific reporting. Laboratory exercises will reflect field experiences. (Variable crs.)

EARLY CHILDHOOD EDUCATION - ECE

ECE 319. PARENT AND COMMUNITY INVOLVEMENT IN EDUCATION.

This course emphasizes the role of parents and community in the framework of educational planning for young children. The student will demonstrate skills in planning education workshops. Students will use interview and conferencing techniques to learn from parents and community people actively involved in programs for children. Prerequisite: 2.5 GPA, EDE 211. (3 crs.) Fall and spring.

ECONOMICS - ECO

ECO 100. ELEMENTS OF ECONOMICS

An introduction to the elements of economic analysis, structured particularly for the nonmajor. The student is exposed to the mechanics of the market system and a survey of modern macroeconomic theory and policy. (3 crs.)

ECO 201. INTRODUCTORY MICROECONOMICS

An introduction to the market mechanism in a modern mixed economy; supply and demand analysis is applied to consumer markets as well as resource markets. (3 crs.)

EDUCATION - EDU

EDU 110. CRITICAL THINKING AND READING

Focuses on development of an understanding and ability to apply critical thinking and reading skills as effective tools for academic, career and personal growth. Students explore issues from multiple perspectives, generate and organize ideas, apply knowledge to situations, critically evaluate the logic and validity of information, analyze real life situations, recognize how attitudes and values shape opinions, and evaluate their own learning. (3 crs.) Fall & Spring

EDU 310. TEACHING IN A MULTI-CULTURAL SOCIETY

The development of intergroup-interpersonal awareness to promote a better understanding of different races, sexes, religious beliefs, national origins, and socioeconomic backgrounds found in our multicultural society. Emphasis on developing the awareness, knowledge skill and competency needed for positive human relationships. (3crs.)

EDU 340. MAINSTREAMING EXCEPTIONAL LEARNERS

This course is designed to prepare educational personnel with the information and skills necessary for accommodating exceptional learners in a variety of school arrangements. Focus is on assessment and remediation of learning problems, classroom organization and management, teaching resources, legal issues, curriculum considerations, parent involvement, condition of professional services, and many other issues pertinent to the

education of exceptional learners in the "mainstream" of education. (3 crs.)

EDUCATIONAL FOUNDATIONS - EDF

EDF 333 EDUCATIONAL TECHNOLOGY

This course in educational technology provides the learner with fundamental concepts and skills that build a foundation for applying computers, hardware and software in educational settings. The course focuses on the computer as an object of instruction, a productivity tool, and an adjunct to instruction in the classroom. (3 crs)

EDUCATIONAL STUDIES - EDS

EDS 200. INSTRUCTIONAL STRATEGIES

This course will allow the Secondary Education major to explore and develop the many types of instructional strategies/methodologies that are accepted as valid in the teaching of 7-12 students in differing content areas. Students will explore the principles underlying the construction of valid and reliable tests along with simple statistical measurement with stress on the application to classroom work. (3 crs)

ELEMENTARY EDUCATION - EDE

EDE 305. MATHEMATICAL CONTENT AND METHOD IN THE ELEMENTARY SCHOOL

Emphasis is on understanding children's cognitive development and perception and their work with mathematics. To accomplish this it is suggested that students work with children. The professor demonstrates learning activities appropriate to the developmental and academic levels of children. As time permits, and on the basis of the experiences gained through observing and working with children, critical analyses of commercial arithmetic materials and texts, as well as recent trends and current projects in arithmetic, will be considered. Prerequisites: 32 college credits, 9 natural science credits. Prerequisite: 2.5 GPA, EDE 211. (3 crs.) Fall & spring.

EDE 306. TEACHING OF SOCIAL STUDIES FOR ELEMENTARY GRADES

The foundations of the social studies are examined. Instructional strategies for the constructivist classroom will be emphasized. Attention will be given to current trends and the present status of social studies. Prerequisites: 32 college credits, 9 social science credits. Prerequisite: 2.5 GPA, EDE 211. (3 crs.) Fall & spring.

EDE 307. SCIENCE FOR THE ELEMENTARY SCHOOL

This course is designed to acquaint students with the history of science curricula, the content of science, and the process of science teaching. The Instructor will generate enthusiasm for science, encourage scientific inquiry, demonstrate positive attitudes, enhance appreciation for science

and science interests, and model effective science teaching consistent with the Elementary/Early Childhood Department's Constructivist Model for Teaching. Prerequisites: 32 college credits; 9 natural science credits. Prerequisite: 2.5 GPA, EDE 211. (3 crs.) Fall & spring.

EDE 320. INTERMEDIATE FIELD EXPERIENCES 4-6

The student receives background and experience in working with intermediate grade children in the classroom. Lectures and classroom teaching experiences are combined to give the student an opportunity to discover an aptitude and interest in working with children. Prerequisite: Admission to Teacher Education. (3 crs.) Fall & spring.

EDE 321. PRIMARY FIELD EXPERIENCES K-3

The students receive background and experience in working with elementary grade children in the classroom. Lectures and classroom teaching experiences are combined to give students an opportunity to discover their aptitude and interest in working with young children. Prerequisite: Admission to Teacher Education. (3 crs.) Fall & spring.

EDE 340. LANGUAGE AND LITERACY IN THE ELEMENTARY SCHOOL II

This is the second in a series of two required courses that examine the development of literacy in elementary-age children. Students review the theoretical bases of an integrated approach to teaching the language arts. Specific strategies that reflect these theories are then investigated, demonstrated, and practiced. Such strategies teach children necessary literacy skills through a meaning-centered approach, and emphasize the integration of all subject areas, as well as the connection between the language arts modes. Students are expected to demonstrate their abilities to connect theory to practice in field work. Prerequisite: 2.5 GPA, EDE 211. (3 crs.) Fall & spring.

EDE 450. ASSESSING CHILDREN'S PERFORMANCE

This course presents practical methods and techniques for planning, construction and use of oral, performance, essay, and objective tests with an assumption that evaluation's role in the teaching/learning process is both active and fundamental. Prerequisite: Admission to Teacher Education. (3 crs.) Fall & spring.

ENGLISH - ENG

ENG 101. ENGLISH COMPOSITION I

Composition I is a sequel to English Language Skills. It provides guided practice in writing, with emphasis on thoughtful analysis of subject matter, clear understanding of the writing situation, flexible use of rhetorical strategies, and development of

stylistic options, particularly those related to an understanding of a variety of purposes and voices. ENG 101 continues the development of the essential writing, reading and thinking skills stressed in ENG 100. (3 crs.) Fall & spring.

ENG 102. ENGLISH COMPOSITION II

The sequence of Composition I - Composition II provides guided practice in writing, with an emphasis on more demanding writing situations. It continues the work begun in Composition I with more complicated rhetorical strategies and stylistic options, especially audience-centered considerations. ENG 102 introduces research and research writing at the undergraduate level. Prerequisite ENG. 101 (3 crs.) Fall & spring.

ENG 107. INTRODUCTION TO FICTION

An introduction to the elements of fiction through the close reading of selected short stories and novels by a variety of authors. (3 crs.) Fall & spring.

ENG 217. SCIENTIFIC AND TECHNICAL WRITING I

An introduction to the specific techniques used in the preparation of reports and other scientific documents. Recommended for Science and Technology majors. Prerequisite ENG 101. (3 crs.) Fall & spring.

FINANCE - FIN

FIN 301. FINANCIAL MANAGEMENT

The study of financial analysis, planning and control, including working capital management, capital budgeting, cost of capital, and other selected subjects. Advanced techniques of financial analysis are employed. (3 crs.)

FRENCH - FRE

FRE 101. ELEMENTARY FRENCH I

For the student without previous knowledge of French. The development of the fundamentals of correct idiomatic French. Instruction in basic audio-lingual comprehension, sentence structure, reading, writing, and speaking. Classroom instruction is supplemented by laboratory study and practice. Three class hours each week and one hour language laboratory per week. (3 crs.)

GEOGRAPHY - GEO

GEO 100. INTRODUCTION TO GEOGRAPHY

Introduces students to regional differences throughout the world in terms of landforms, climates, soils and vegetation as well as population characteristics and economic activities. Representative areas such as Western Europe, Russia, Japan and Latin America are developed. (3 crs.)

GEO 205. WORLD CITIES/ GEOGRAPHY OF TOURISM

The geography of tourism in selected cities

of the world with an emphasis on form and function. Topics include an analysis of resources for tourism, the organization of related land use patterns, and developmental processes. (3 crs.)

GEO 325. GEOGRAPHY OF EUROPE

A study of forces which have shaped the human landscape of Western Europe. National and regional disparities ranging from land relief and climate to social and economic phenomena are studied. (3 crs.)

HEALTH AND PHYSICAL EDUCATION - HPE

HPE 105. CURRENT HEALTH ISSUES

This course is designed to convey information concerning the individual's role in establishing a healthful lifestyle as well as encouraging a sense of responsibility about that role. The current health framework encompasses topics such as basic fitness and nutrition, the prevention of disease, as well as a focus on healthful living. Topics will be covered in lecture and interactive sessions by the Instructor and the health student. (3 crs.) Fall & spring.

HEALTH SCIENCE AND SPORT STUDIES - HSC

HSC 120. HUMAN ANATOMY AND PHYSIOLOGY II WITH LABORATORY

The organization, structures and functions of the human body: the development and function of the skeletal system, ligament and joint structure, muscular system, and the nervous system. Prerequisite: a grade of C or better in HSC 110. (4 crs.) Spring.

HISTORY - HIS

HIS 102. HISTORY OF THE U.S. SINCE 1877

The emergence of modern America, its achievements and its problems; prosperity and depression, war and social unrest, World War I through the Vietnam era and beyond, the computer age and its challenges. (3 crs.) Fall & Spring.

HIS 111. DEVELOPMENT OF MAJOR WORLD CIVILIZATIONS

The process and interplay of the major world cultures in their evolution: Indian, Moslem, East Asian (China, Korea, Japan), Slavic, Western European, Latin American, and African. (3 crs.)

HIS 240. HISTORY OF THE COLD WAR

The origins and continuance of Soviet-American rivalry since World War II. Confrontation in Europe; NATO; the Warsaw Pact; the growing nuclear arsenal; regional conflict in Africa, Latin America and Asia; the Congo, Angola, Cuba, Iran, China, Vietnam; the politics and leadership of both nations; the emergence of Russia as a global power. (3 crs.) Spring.

HIS 347. RACE AND ETHNICITY IN THE UNITED STATES

The immigrant in United States history from the eighteenth century through the

contemporary period. (3 crs.) Spring.

ITE - INDUSTRIAL TECHNOLOGY

ITE 315. COMPUTER AIDED DRAFTING (CAD) II

This course is an extension of Computer Aided Drafting (CAD) I and will include more complex problems and procedures in the development of graphic solutions. The use of extended geometry will comprise an important part of the course. Students will gain additional experiences on PC based computer drafting systems. Two hours of lecture and three laboratory hours per week. Prerequisite: ITE 215. (3 crs.)

ITE 341. QUALITY CONTROL

An introduction to the methods used in analyzing quality control. Topics include a study of the fundamentals of statistics and probability, the construction and use of control and attribute charts, the definition and use of acceptance criteria and the use of computers in modern quality control operations. An overview of the role of quality control department of a manufacturing facility will be presented. (3 crs.)

MANAGEMENT - MGT

MGT 300. PRINCIPLES OF MANAGEMENT

An introduction to the field of management and the managerial functions of planning, organizing, influencing, and controlling. The course examines models, processes, and techniques used in managing an organization and improving its performance along with current challenges and future trends in the field. (3 crs.)

MGT 301. ORGANIZATIONAL BEHAVIOR

A study of the theory, research, and practice of individual and group behavior in organizations to better understand and manage people at work. The course focuses on describing, understanding, and explaining individual and group behavior in organizations with emphasis given to managing or influencing that behavior to increase organizational effectiveness. Prerequisite: MGT 201. (3 crs.)

MGT 352. HUMAN RESOURCE MANAGEMENT

Decision-making and analyses of major management problems that arise in manpower planning, recruitment, selection, development, compensation, and appraisal of employees in various organizations. Prerequisite: MGT 201. (3 crs.)

MGT 371. MANAGEMENT INFORMATION SYSTEMS

An introduction to management control systems, which include control of production costs, standard costs, flexible budgets, managed costs, profit centers and capital acquisitions. Prerequisite: MGT 201, CSC 101, & MGT 271. (3 crs.)

MGT 402. STRATEGIC MANAGEMENT

A capstone course for all business majors

requiring students to integrate and apply multidisciplinary knowledge and skills in formulating, implementing, and evaluating organizational strategies. Case analysis method predominates. Prerequisite: Prior completion of all core business courses and senior standing. (3 crs.)

MGT 452. HUMAN RESOURCE STRATEGY AND PLANNING

This course examines organizational human resources management from a strategic perspective. The key focus is on exploring HR planning and strategy concepts, developing an understanding of the related analytical tools, and determining how these concepts and tools can be used to enhance an organization's competitive position. (3 crs.)

MARKETING - MKT

MKT 300. PRINCIPLES OF MARKETING

An introduction to basic principles of marketing management. Other topics covered are selecting target markets, developing marketing mixes, functions of marketing management. Prerequisite: BUS 100. (3 crs.)

MATHEMATICS - MAT & DMA

MAT 100. FUNDAMENTALS OF MATHEMATICS

Sets and their language; numeration systems and their properties; topics in elementary number theory; mathematical systems and their properties; logic; topics in plane geometry; topics in descriptive statistics. This course is presented from a problem-solving, critical thinking perspective. No prerequisites. (3 crs.)

MAT 110. APPLICATIONS OF MATH

This course will provide the student with an application-oriented mathematics curriculum. Students will use cooperative learning to solve real world problems using technology and multimedia resources. The course will be taught from a student discovery and investigative standpoint incorporating the use of the National Council of Teachers of Mathematics Principles and Standards for School Mathematics. The topics covered include statistics, circuits, probability, linear programming and dynamic programming. No prerequisites.

MAT 120. ELEMENTARY TOPICS IN MATHEMATICS I.

This is the first course in a sequence designed for prospective elementary education majors. The content covered includes problem-solving, sets, concepts of logic, binary operations, systems of numeration, number theory, rational numbers, real numbers, measurement, and use of calculators and computers. Prerequisite: DMA 092 or high school algebra. (3 crs.)

MAT 130. ELEMENTARY TOPICS IN MATHEMATICS II

This is the second course of a sequence

of two mathematics courses specifically designed for prospective elementary education majors. The content covered includes basic algebraic work with equations and inequalities in one unknown, systems of equations, metric and nonmetric geometry, coordinate geometry, introduction of statistics and probability, problem-solving, and computer use. Prerequisite: 100 or higher level math course. (3 crs.)

MAT 181. COLLEGE ALGEBRA

Fundamental operations; factoring and fractions, exponents and radicals; functions and graphs; equations and inequalities; systems of equations. Prerequisite: DMA 092 or pass math proficiency test. (3 crs.)

MAT 191. COLLEGE TRIGONOMETRY

A thorough development of trigonometry. This course includes both circular and right triangle geometry, evaluation of trigonometric functions, graphing trigonometric and inverse trigonometric functions, analyses of trigonometric graphs, verifying trigonometric identities, solutions of trigonometric equations, and applications of trigonometry. Prerequisite: MAT 181 or MAT 182 or passing score on part C of the university mathematics placement exam. (3 crs.)

MAT 225. BUSINESS STATISTICS

Statistical techniques relevant to business applications. Primary emphasis is placed upon identification of appropriate statistical methods to use, proper interpretation and appropriate presentation of results. Topics include descriptive statistics, probability concepts, the normal probability distribution, estimation techniques, tests of hypotheses, simple and multiple linear regression. Statistical software is used to implement many of the statistical methods. Prerequisite: MAT 181 or MAT 182. (3 crs.)

MAT 281. CALCULUS I

A review of absolute value and inequalities; an introduction to analytic geometry; functions, limits, and continuity; the derivative; applications of the derivative. Prerequisite: MAT 199 or four years of high school mathematics. (3 crs.)

MUSIC - MUS

MUS 100. INTRODUCTION TO MUSIC

Exposes the student to the various historical, analytical and aesthetic elements of music, thereby providing an opportunity to broaden and enrich personal enjoyment. This exposure to music is made through the use of visual aids, audio and video recordings, and concerts. (3 crs.)

PHILOSOPHY - PHI

PHI 200. WORLD RELIGIONS

The study of the seven world religions, including their origins and doctrines. (3 crs.)

PHS 120. BASIC PHYSICAL SCIENCE WITH LABORATORY

Basic Physical Science (L) is a laboratory oriented course in physical science for non-science majors. Laboratory activities/experiments are assigned, providing a "hands on" introduction to experimental methods of scientific investigation. Each activity provides opportunities for the student to discover the practical knowledge necessary for a well-rounded understanding of physical science. (3 crs.) Spring & fall.

PHS 137 INTRODUCTION TO ENVIRONMENTAL CHEMISTRY

This course provides a brief overview of basic chemistry and then examines the environment from a chemical viewpoint. It offers certified GLOBE Training (WWW.GLOBE.GOV.) to current and future primary and secondary grade teachers. It is a lab-component course and is on the natural science, critical thinking, and technology literacy general education menus. No Prerequisites. Three class hours per week. (3 crs.) Spring, summer & fall.

PHYSICAL THERAPIST ASSISTANT - PTA

PTA 110. INTRO TO PATHOLOGY

This course examines the disease process on the cellular, histological and systemic levels. Particular emphasis is placed upon those pathologies commonly encountered by the physical therapist assistant in pediatric, geriatric, orthopedic and neurologic patient populations. (2 crs.) Summer.

PHYSICS - PHY

PHY 121. GENERAL PHYSICS I

An introductory non-calculus course dealing with mechanics and heat. Three class hours and three laboratory hours each week. Functional knowledge of algebra and elementary trigonometry is assumed. (4 crs.) Spring, Summer & Fall.

POLITICAL SCIENCE - POS

POS 100. INTRODUCTION TO POLITICAL SCIENCE

This course is designed to introduce students to key ideas, institutions, processes, and actors in the political world. It is intended to be a general, not detailed, examination, and attempts to encourage understanding, reflection and critical thinking. (3 crs.) Fall & Spring

POS 105. AMERICAN POLITICS

This is an introductory course in American government, focusing on the major institutions and processes in the American political system. Topics discussed in the course include separation of powers, checks and balances, civil liberties, political parties, the Congress, the President, the Supreme Court, federalism, and policy-making processes. (3 crs.) Fall & Spring

POS 379. SPECIAL PROBLEMS IN POLITICAL SCIENCE

(Variable crs.) Fall, Spring & Summer

PSYCHOLOGY - PSY

PSY 100. GENERAL PSYCHOLOGY

This course is a general introduction to the scientific study of behavior and mental processes. It explores topics such as methods of research, physiological development of the individual, learning, motivation, emotions, cognitive processes, sensation, perception, testing, personality, mental disorders and their treatments and individual differences. Research as well as practical application is stressed. (3 crs.)

PSY 205. CHILD PSYCHOLOGY

Age-related changes in social, cognitive, emotional, and physical characteristics. Development from prenatal stages through later childhood is included. Socialization of the child is examined. Prerequisite: PSY 100. (3 crs.)

PSY 208. EDUCATIONAL PSYCHOLOGY

The learning process is examined, with emphasis on learning in school settings. The application of current theories and research findings to classroom situations is stressed. This course examines cognitive development, intelligence, motivation, discipline, behavioral objectives, and measurement and evaluation. Prerequisite: PSY 100. (3 crs.)

PSY 211. SOCIAL PSYCHOLOGY

The interaction between the individual and social groups within a cultural context: the individual in a social role, social groups, and social institutions. The course will cover such topics as aggression, interpersonal attraction, group behavior, persuasion, and helping behavior. Prerequisite: PSY 100. (3 crs.)

PSY 215. PSYCHOLOGY OF EXCEPTIONAL CHILDREN

The psychological problems of children who have hearing, speech, mental and personality deficits, and of children who are culturally disadvantaged are explored, as well as characteristics of children of superior ability. A major purpose is to gain a functional understanding of these problems and of the procedures for helping to cope with them. The student is given the opportunity to gain firsthand experience with exceptional children in an observation of a special class in the public schools. Prerequisites: PSY 100; PSY 205 for Psychology Majors; PSY 205 or PSY 207 for non-psychology Majors. (3 crs.)

PSY 305. PSYCHOLOGY OF PERSONALITY

This course explores the essential factors that result in creating individual differences of human behavior and mental processes. Current theories and classical theories are

studied to increase understanding of the development and structure of personality. The characteristics of the normal and the maladjusted personality are identified, with special concern for developmental patterns. Prerequisite: PSY 100. (3 crs.)

PSY 310. MENTAL HEALTH/ PSYCHOLOGY OF ADJUSTMENT

Problems of personality and mechanisms of adjustment, including a study of the origin and resolution of conflicts, and the role of emotion in the patterns of behavior. Prerequisite: PSY 100. (3 crs.)

SOCIOLOGY - SOC

OC 100. PRINCIPLES OF SOCIOLOGY

This survey course permits students to explore the rich variety of topics studied by sociologists. Central to all the topics are the structures and processes of human interaction. Emphasis is placed on the relationship of natural and social factors in human behavior. Attention also is given to topics such as the meaning and function of culture; the origin, function and characteristics of social institutions; and the genesis and nature of social pathology. (3 crs.) Fall & Spring.

SOC 315. SOCIAL MINORITIES.

This course analyzes the dynamics of social minority status specific to ethnicity, racial classification and sexual orientation and how minority status is socially constructed. Students will also examine societal responses to minority status and attempts to change this status. Finally students will select one minority group in another country and compare it to one in the United States. 3 credits. Prerequisite: SOC100 or permission of the Instructor. Alternate fall.

SPANISH - SPN

SPN 101. ELEMENTARY SPANISH I

For the student without previous knowledge of Spanish who wishes to achieve a command of language fundamentals. Acquisition of speech skills in the classroom is reinforced in the language laboratory. Progressively greater emphasis is placed on reading and writing. Three class hours and one hour language laboratory per week. (3 crs.)

SPECIAL EDUCATION - ESP

ESP 501. INTRODUCTION TO EXCEPTIONALITY

This course introduces the student to the physical, social, emotional and educational characteristics; incidence; prevalence and educational intervention for the major categories of exceptionality enrolled in public and private educational facilities in the K-12 grade range. In addition, the course will identify ancillary services and agencies frequently impacting special populations including the major professional

organizations and those concerned with residential programming and vocational training. The course will also identify the major litigation and legislation that have significantly influenced the nature of service to exceptional populations. (3 crs.)

ESP 502. EDUCATION OF THE SEVERELY/PROFOUNDLY HANDICAPPED

This course prepares students to work with children and/or adults who possess severely or profoundly handicapping conditions. Students are required to do tutoring at facilities for this population. Prerequisite: Admission to teacher education. (Variable crs.)

ESP 503. DIAGNOSTIC TESTING AND PRESCRIPTIVE TEACHING

This course teaches students how to administer, score, and interpret both norm-referenced and criterion-referenced assessment devices and how to prescribe programs of remediation based on the results of these devices. Prerequisite: Admission to teacher education. (Variable crs.)

ESP 504. CURRICULUM PLANNING AND METHODS I.

This course is offered to Special Education majors the semester prior to their student teaching experience. Curriculum Planning and Methods I is a materials and methodology course for pre-service special education teachers. An emphasis is placed on assessment, instructional techniques, and materials necessary to teach reading and language arts skills and concepts to children with disabilities. The course stresses a behavioral diagnosis of communication strengths and weaknesses, the development and implementation of intervention strategies for various populations of exceptional children, the selection and/or development of appropriate materials for instruction, and the procedures and techniques for continuous evaluation of the instructional process. Prerequisite: Admission to teacher education. (Variable crs.)

ESP 505. CURRICULUM PLANNING AND METHODS II

This course is offered to Special Education majors the semester prior to their student teaching experience. Curriculum Planning and Methods II is a methods course for Special Education teachers in training which emphasizes the assessment, instructional skills and materials necessary to teach arithmetic concepts to children with disabilities. The course stresses a behavioral diagnosis of arithmetic strengths and weaknesses, the development and implementation of intervention strategies for various populations of exceptional children, the selection and/or development of appropriate materials for instruction, and the procedures and techniques for continuous

evaluation of the instructional process. Prerequisite: Admission to teacher education. (Variable crs.)

ESP 506. HABILITATION TRAINING

This course deals with special education programs for senior high school students as well as those persons who reside in the community. Emphasis is placed on vocational preparation and training. Specific techniques for task analysis of jobs, daily living skills, and social adaptation constitute a major portion of this course. Emphasis is placed on the development of functional skills that contribute to normalized development. Prerequisite: Admission to teacher education. (Variable crs.)

TED TECHNOLOGY EDUCATION

TED 105. COMMUNICATING TECHNICAL DESIGNS.

This course is intended to promote the competencies, skills, and sensibilities needed for the successful development and realization of contemporary products. A design/problem-solving model will include elements of design and appearance, ergonomics, idea modeling, anthropometrics, form, function, and visualization. These elements will be coupled with basic engineering drawing skills including freehand drawing, orthographic projection and basic descriptive geometry, axonometric drawings, and developments. Emphasis will be placed on documentation of design work using manual drafting, CAD, and freehand sketching. Two hours of lecture and three hours of lab per week. (3 crs.) Fall & Spring

TED 210. DESIGN AND APPROPRIATE TECHNOLOGY

This course focuses on developing a basic understanding of design and appropriate technology. Students engage in design and problem-solving activities to develop, produce, test and analyze technological systems while assessing the multiple interactions between such systems and their impacts on peoples' societies, values, economics, environments, and basic human needs. Two hours of lecture and three hours of lab per week. Prerequisite: TD 126 or permission of Instructor (3 crs.) Fall & Spring

TED 436. ENGINEERING DESIGN AND DEVELOPMENT

This course provides individual and/or small groups of students within a laboratory class the opportunity to conduct a focused investigation of a particular technological system or subsystem. The nature of this investigation requires direct contact by the student with corporate, university, and governmental libraries, laboratories, and associations. The scope of the research and development problem could relate to local, national, as well as international topics.

The time frame of the research could be historical, contemporary, or futuristic. Each student and/or group is required to design, build, operate, and analyze some type of technological model, prototype, or simulation that demonstrates with precision the essence of the research problem. Portfolio documentation of the progress of the research and development problem is required. Two lecture hours and three lab hours per week. Prerequisite: TED 105, TED 111, TED 126, TED 226 (3 crs.) Fall & Spring

THEATRE - THE

THE100. INTRODUCTION TO THEATRE

A study of the art and craft of theatre from play script to play production. The course surveys theatre history, literature, architecture, acting, directing, and design for the student who wants to know what goes on in theatre and what it means. Students can expect to participate in classroom performances. Fall and Spring (3 crs.)

WOMEN'S STUDIES - WST

WST 200. INTRODUCTION TO WOMEN'S STUDIES

An overview of a fast growing multi-disciplinary field, focusing on the effect of gender on human lives, including cultural beliefs about women's nature, abilities, and role; the realities of women's personal family, economic and political lives; and the dynamics of change. Western and especially US materials predominate, but diverse situations of women internationally will be considered. (3 crs.)



Graduate Course Descriptions

ACCOUNTING – ACC

ACC 321. MANAGERIAL ACCOUNTING.

For non-accounting majors; emphasizes the use of accounting data in the decision-making process of a business enterprise. Topics covered are cost-volume relationships; manufacturing costs and analysis; relevant cost analysis; budgeting and variance analysis; responsibility accounting and cost allocation; job and process product costing. Prerequisite: ACC 200. (3 crs.)

ADP – ADMINISTRATION PROGRAM FOR PRINCIPALS

ADP 612. SUPERVISED FIELD PROJECT/ CHILD GROWTH THEORY

Problem-solving activities and field experiences planned cooperatively with university and school district personnel are designed in the area of Child Growth Theory. This practice-centered approach requires students to apply their knowledge and demonstrate proficiency in those skills that contribute to effective performance as an administrator. (3 crs.)

ADP 621. CURRICULUM LEADERSHIP

Among the many leadership roles and responsibilities for the principalship, none is more important than educational program development, administration and evaluation. The purpose of this course is to develop the student's understanding of the curriculum development process, the leadership necessary for the process, and the structure needed to provide appropriate staff development. (3 crs.)

ADP 622. SUPERVISED FIELD PROJECT/ CURRICULUM

Problem-solving activities and field experiences planned cooperatively with university and school district personnel are designed in the area of Curriculum Theory. This practice-centered approach requires students to apply their knowledge, and demonstrate proficiency in those skills that contribute to effective performance as an administrator. (3 crs.)

ADP 626. INSTRUCTIONAL STRATEGIES

This course is intended to provide prospective principals with a practical and theoretical framework to aid them in directing teachers toward more effective instruction including Standards-based Instruction; differentiated instructional strategies; brain-based learning; Bloom's Taxonomy of Educational Objectives for the cognitive domain; Gardner's multiple intelligences, adapting curriculum and instruction in the inclusion classrooms; and writing across the curriculum. Students culminate learning activities

by designing and implementing models replicating effective instructional strategies that respond to the needs of a variety of learners. (3 crs.)

ADP 641. SCHOOL COMMUNITY RELATIONS SEMINAR

This course is for educators who hope to become principals or teachers who wish to assume a greater leadership role in the school where they teach. The course will include the information principals and teachers need to understand and maintain school, family and community partnerships. (3 crs.)

ADP 647. ORIENTATION AND ASSESSMENT SEMINAR

The orientation seminar, required for all students in the program, provides an introduction to the theory and practice of educational administration. Included are such topics as ethics and moral leadership, problem analysis, judgment, stress management, time management and oral and written communications. (3 crs.)

ADP 661. EDUCATIONAL LEADERSHIP

This course provides an introduction to the theory and practice of educational administration. The course progresses from an overview of leadership and leadership style to a review of the structures and management systems that can make good educational leadership possible and finally, focuses on leadership skills needed by administrators to be effective leaders in education today. Included are such topics as organizational culture, power in and around schools and the resolution of conflict, motivation and ethics and moral leadership. (3 crs.)

ADP 664. SUPERVISED FIELD PROJECT/ ADMINISTRATION LEADERSHIP

Problem-solving activities and field experiences planned cooperatively with university and school district personnel are designed in the area of Administration Leadership. This practice-centered approach requires students to apply their knowledge and demonstrate proficiency in those skills that contribute to effective performance as an administrator. (3 crs.)

ADP 673. SUPERVISED FIELD PROJECT/RESEARCH AND EVALUATION.

Problem-solving activities and field experiences planned cooperatively with university and school district personnel are designed in the area of Research and Evaluation. This practice-centered approach requires students to apply their knowledge, and demonstrate proficiency in those skills that contribute to effective performance

as an administrator. (3 crs.)

AST – HOMELAND SECURITY

AST 700. U.S.HOMELAND SECURITY

The goal of this course is to provide students with a thorough understanding of the strategic, political, legal, and organizational challenges associated with the defense of the U.S. homeland, the efforts that are under way to meet these challenges, and possible policy options. The course starts by examining the range of potential threats to the U.S. homeland, focusing on potential terrorist acts. The course then examines strategies and means for addressing these threats, including both military and non-military options. The course goes on to analyze organizational issues and impediments to effective policy coordination. Finally, the course addresses the implications of homeland security challenges and policies for constitutional rights, legal protections, and civil liberties.

ATE – ATHLETIC TRAINING

ATE 700. GROSS ANATOMY OF THE EXTREMITIES

The study of anatomical structures in the extremities of the human body, coupled with laboratory dissection of human cadavers. (4 crs.)

ATE 720. SPORTS THERAPY

Lecture and laboratory exercises that explain the theoretical and practical implementations of physical therapy modalities in the care of athletic injuries. The use of therapeutic exercise and testing in the rehabilitation of sports injuries comprises an equal portion of this course. (4 crs.)

ATE 800. RESEARCH METHODS FOR ALLIED HEALTH SCIENCES.

The course studies the basic tenets of scientific research as they apply to the allied health fields. Topical discussions include development and limitation of a research problem, research methodology, basic principles of tests and measurements, the review of literature and library utilization, and writing the research document. (3 crs.)

CED – COUNSELOR EDUCATION

CED 702. COUNSELING THEORY

This course deals with theories, objectives, principles, and practices of counseling individuals, including children and the family. These theories are applicable in schools and other human-service institutions. (3 crs.)

CED 703. CONSULTING THEORY

This course is an advanced level course and has theoretical and practical components. In

the theoretical component process consultation is highlighted as an applied behavioral science. Emphasis is placed on the levels of environmental quality within an organization. Specific human processes of inclusion, membership, leadership, control, communication and problem-solving are stressed. The practical component deals with initial contact, organizational diagnosis, process intervention, evaluating progress and closure. Prerequisites: CED 701, 702, 710, 714. (3 crs.)

CEC 720. CROSS-CULTURAL COUNSELING
Students will explore the cognitive, affective, and behavioral considerations of culturally diverse client groups. Accordingly, counseling theories and programmatic approaches relevant to the mental health needs and concerns of these groups will be introduced. This will include an examination of how cultural attributes, strategies, and coping skills can be effectively synthesized into the counseling process. (3 crs.)

CEC 786. SEMINAR IN CAREER INFORMATION

This course reviews the theory and process of giving career information and of counseling in school and agency settings. Topics include: sources of career information; appraisal; classification of careers; career resources; career and vocational education; systems of career guidance; and theories of career development. (3 crs.)

CEC 787. INTEGRATED SEMINAR

Intended for students who are near the end of their programs. The purpose is to integrate the materials learned, and to discuss the professional topics and practices of agency and school counselors. This is done by focusing on the counselor as an ethical practitioner. (3 crs.)

CMD – COMMUNICATION DISORDERS

CMD 705. VOICE DISORDERS

This course provides comprehensive academic and clinical training in the etiological factors, description, diagnostic and management of organic voice disorders. The teaching of esophageal speech, the use of the artificial larynx, and the study of tracheo-esophageal practice are covered in detail. (3 crs.)

CMD 712. APPLIED THERAPEUTIC PROCEDURES IN OUT-PATIENT SETTING

The student participates in "hands-on" work with clients in the University Speech and Hearing Clinic. Under supervision, the student will provide therapy for one or more clients presenting with one of the following disorders: speech or language, stuttering, voice, delayed development, stroke, or others. (1-3 crs.)

CMD 716. APPLIED NEUROGENIC PROCEDURES IN HEALTHCARE FACILITIES
Externship in a healthcare setting. (1-3 crs.)

CMD 732. COUNSELING THE COMMUNICATIVELY DISABLED

This course teaches students to use evidenced-based counseling techniques during their work with clients. They learn to choose and use techniques for specific purposes: to change attitudes, to help clients accept their disorders, to motivate and change client behaviors, and to increase understanding. The graduate student learns to use general counseling techniques through role play and guided client contact. He also investigates the special counseling issues related to the pathologies commonly treated by the SLP. (3 crs.)

CMD 765. DYSPHAGIA

This course addresses the evaluation and management of children and adults with disordered swallowing secondary to neurologic, structural, and psychogenic abnormalities. The relationship of dysphasia to speech disorders is discussed. (3 crs.)

CMG - COMMUNICATION

CMG 714. MASS MEDIA AND SOCIETY

An examination of the ways current mass media systems enhance and undermine the kinds of communication necessary for an open and democratic society. It provides an advanced orientation to the history, theory and process of mass communication. Particular emphasis is given to the relationships among various media and their audiences, media law and ethics, media and politics, media effects, and emerging trends and their implications for society. Prerequisite: COM 105 or consent of the Instructor. Dual listed with: COM 445
RADIO AND TELEVISION IN A FREE SOCIETY. (3 crs.)

ECO - ECONOMICS

ECO 716. APPLIED ECONOMIC ANALYSIS

This course gives students practical skills in the application of economic principles to a variety of problems confronting business and government. The first half of the course reviews certain microeconomic principles which are then applied to real situations in which a private or public official must make a specific decision. This includes a diagnosis of the problem, analysis of the economic choices, and development of a plan of action to help the enterprise or government agency reach a reasonable strategy or decision. The second section reviews macroeconomic principles which are used to gain understanding of the forces determining current business conditions, make macroeconomic forecasts, and evaluate the effects on the economic and business environment of various macroeconomic and regulatory policies. (3 crs.)

EDE 700. HISTORICAL BACKGROUND OF THE ELEMENTARY SCHOOL

An historical review of elementary education from the distant to the very recent past, designed to develop interplay between past and current educational controversies by contrasting and comparing various personalities and issues. (3 crs.)

EDE 701. DEVELOPMENT AND ORGANIZATION OF THE CURRICULUM.

Provides a complete understanding of the history, organizational patterns and resources available for the development of the school curriculum. Special emphasis is given to recent trends in elementary curriculum development. Students receive an introduction to the many facets of curriculum development. Varied opportunities are provided for the students to acquire comprehensive knowledge through papers and readings. (3 crs.)

EDE 702. INSTRUCTIONAL STRATEGIES.

Topics in this course include: Research on effective teaching, written behavioral objectives, Bloom's taxonomy of cognition, questioning and discussing behaviors, utilization of thinking skills, integration of subject areas, inductive and deductive teaching, observation and assessment of children, cognitive, psychomotor and affective concerns of children, content presentation skills, conflict resolution, values, and problem solving as classroom management strategies, portfolio development for children and professionals, use of technology for students and teachers and strategies for teaching special learners in the regular classroom. Through class discussions, practice sessions, role-playing, and microteaching, students will learn how to plan for and utilize strategies and effectively teach elementary and early childhood children. (3 crs.)

EDE 708. TEACHING READING

Emphasis is placed on reading trends and various procedures for teaching reading. Through research findings, current literature and discussions, the student will be able to organize, administer, and evaluate a developmental reading program. (2 crs.)

EDE 715. TEACHING LANGUAGE ARTS

Research findings and current classroom practices in the teaching of language arts. Methods of updating past teaching practices are considered and evaluated. (3 crs.)

EDE 718. TEACHING MATHEMATICS

Understanding the child's perceptions and cognitive development as they relate to mathematics. Activities appropriate to the developmental and academic levels of elementary school children are demonstrated. (2 crs.)

EDE 731. EXPRESSIVE ARTS

This course explores artistic expression in the early childhood, elementary, and middle school classroom. Content focuses on the teaching of art, music, and physical education and the integration of these expressive arts into the elementary and middle school curriculum.

EDE 737. LITERATURE AND LITERACY K-12

This course presents future teachers and in-service teachers with approaches and strategies for using children's and adolescents' literature as a basis for the reading program and as a framework throughout the curriculum. The course uses the constructivist model to accomplish its objectives. (3 crs.)

EDP – PROFESSIONAL EDUCATION**EDP 600. STATISTICAL METHODS**

This course introduces the student to statistical concepts and techniques that are essential for valid and reliable educational research. Emphasis is placed upon understanding the logic of various statistical inference procedures, their correct use and proper interpretation. Numerous descriptive and inferential statistical methods are covered including; box plots, stem and leaf displays, scatter diagrams, single sample test, independent samples t test, related samples t test, Wilcoxon signed rank test, Mann Whitney U test, confidence intervals, correlations, multiple regression, one-way and two-way analysis of variance, analysis of variance for repeated measures designs, analysis of covariance and multivariate analysis of variance. At the conclusion of the course, the student is expected to be able to describe and critique the statistical methods used in published research studies and correctly apply the appropriate statistical methods in his or her own research. The SPSS statistical package is extensively referenced throughout the course. (3 crs)

EDP 663. COMPUTER-ASSISTED INSTRUCTION

The development of computer applications in education provides a significant new resource in teacher education. This course is designed to include both theory and practice. This course serves to acquaint the learners with computers and their uses as instructional tools. Laboratory assignments are designed to provide generalizable and transferable competencies. No previous computer related knowledge is assumed. (3 crs.)

ESP – SPECIAL EDUCATION**SP501. INTRODUCTION TO EXCEPTIONALITY**

This course introduces the student to the physical, social, emotional and educational characteristics, incidence, prevalence, and educational intervention for the major categories of exceptionality enrolled in public

and private educational facilities in the K-12 grade range. In addition, the course will identify ancillary services and agencies frequently impacting special populations including the major professional organizations and those concerned with residential programming and vocational training. The course will also identify the major litigation and legislation that have significantly influenced the nature of service to exceptional populations. (3 crs.)

ESP502. EDUCATION OF THE SEVERELY/PROFOUNDLY HANDICAPPED

This course teaches/prepares students to work with children and/or adults who possess severely or profoundly handicapping conditions. Students are required to do tutoring at facilities for this population. (Variable crs.)

ESP503. DIAGNOSTIC TESTING AND PRESCRIPTIVE TEACHING

This course teaches students how to administer, score, and interpret both norm-referenced and criterion-referenced assessment devices and how to prescribe programs of remediation based on the results of these devices. (Variable crs.)

ESP504. CURRICULUM PLANNING AND METHODS I

This course is offered to Special Education majors the semester prior to their student teaching experience. Curriculum Planning and Methods I is a materials and methodology course for pre-service special education teachers. An emphasis is placed on assessment, instructional techniques, and materials necessary to teach reading and language arts skills and concepts to children with disabilities. The course stresses: (1) a behavioral diagnosis of communication strengths and weaknesses, (2) the development and implementation of intervention strategies for various populations of exceptional children, (3) the selection and/or development of appropriate materials for instruction, and (4) the procedures and techniques for continuous evaluation for the instructional process. (Variable crs.)

ESP505. CURRICULUM PLANNING AND METHODS II

This course is offered to Special Education majors the semester prior to their student teaching experience. Curriculum Planning and Methods II is a methods course for Special Education teachers in training which emphasizes the assessment, instructional skills and materials necessary to teach arithmetic concepts to children with disabilities. The course stresses: (1) a behavioral diagnosis of arithmetic strengths and weaknesses, (2) the development and implementation of intervention strategies for various populations of exceptional children, (3) the selection and/or development of appropriate materials for instruction, and

(4) the procedures and techniques for continuous evaluation for the instructional process. (Variable crs.)

ESP506. HABILITATION TRAINING/TRANSITION

This course deals with special education programs for senior high school students as well as those persons who reside in the community. Emphasis is placed on vocational preparation and training. Specific techniques for task analysis of jobs, daily living skills, and social adaptation constitute a major portion of this course. Emphasis is placed on the development of functional skills that contribute to normalized development. (Variable crs.)

ESP 701. INTRODUCTION TO BEHAVIOR ANALYSIS

The basic learning principles of operant and classical conditioning, with the application of these principles with handicapped individuals. (3 crs.)

ESP 712. SEMINAR ON CONTEMPORARY TRENDS AND ISSUES IN SPECIAL EDUCATION

Recent developments in all areas of special education. Sample topics are inclusion, block scheduling, interactive teaming, alternative assessment, deinstitutionalization and curriculum issues. (3 crs.)

ESP 720. SPECIAL EDUCATION TEACHING PRACTICUM/INTERNSHIP

Required of all graduate students. Educational work with handicapped children or adults in a variety of settings, including special public school classes and classes in residential treatment centers, special schools, and hospitals. Opportunities for case conferences, learning seminars, and teaching critiques are offered, as well as numerous field experiences to observe successful programs. (3-9 crs.)

ESP 739. FIELD EXPERIENCE SEMINAR IN SPECIAL EDUCATION

A means for graduate students to obtain needed experiences with various groups of handicapped children, in such settings as an institution, a sheltered workshop, an activity center, a summer camp, a community MH/MR facility, or by doing a specific piece of research with a particular population of students. Specific requirements for individual graduate students are developed by those students and the supervising professor. (3 crs.)

FIN – FINANCE**FIN 711. FINANCIAL MANAGEMENT**

An introduction to the role of financial manager in executive decision-making. Topics include valuation models, financial planning, analysis and control, capital budgeting, cost of capital, capital structure, and dividend policy. (3 crs.)

LAW 602. LAW, CIVIL LIBERTIES AND THE CONSTITUTION

The place of the Constitution and Supreme Court in American policy, using both empirical and case materials is the primary content of this course. Focus also includes the structure and powers of national government, with special emphasis on the Supreme Court as a policy-making institution. Civil liberties and corresponding constitutional protections will be examined in depth including a close up of the Bill of Rights and Civil War Amendments. Issues of jurisdiction, search and seizure, police powers, free speech, privacy and its penumbras, state action, eminent domain, states rights, and other constitutional issues will be fully analyzed. Even more attention will be given to questions involving discrimination whether based on race, disability or gender.

LAW 605. LAW AND POLICE PROCESS

A comprehensive examination of the role of police as gatekeepers in the justice system with particular attention given to their role, function and responsibilities inside the legal system commences the course analysis. How police and law enforcement carry out their duties in a free society will be the subject of debate and advocacy as will the perennial issues surrounding police behavior - police misconduct, police abuse of discretion and police alienation from communities. An equally important aspect of the course will relate to the legal issues that surround police practice on a day-to-day basis. Police search and seizure, confessions and witness cooperation, identification and investigative field practices, and the law of arrest and detention will be assessed from a professional, statutory and constitutional perspective. Attention will be given to the efficacy of judicially ordered remedies in the conduct of police and whether other methods of intervention may generate better results. A comprehensive view of litigation tactics and strategies in police misconduct cases from initial investigation to appeals, receive significant coverage.

LAW 608. LAW AND CIVIL LITIGATION

A comprehensive review of civil action and remedies that are part and parcel of the American legal system is the central focus of this course. Civil actions, in the law of torts and contracts, and in the arena of administrative process, impact the justice system in varied ways. From litigation to court docketing, to enforcement and fines, as well as other legal responses, civil litigation consumes the resources of the justice model. In the law of torts and damages, the civil system provides intentional causes of action, from assault to defamation, from invasion of privacy to false imprisonment, to injured

parties. Negligence delivers remedies to those injured by a lack of due caution and expected behavior from the reasonable person. Covered too will be the principles of strict, product and vicarious liability in particular relationships such as employer/employee, parent/child or product manufacturer and consumer. Methods and issues of damage awards will be fully critiqued as well as the current debate over reform in the law of torts, workers compensation and other no-fault claim processes.

LAW 702. LAW, SCIENCE AND FORENSIC APPLICATIONS

An interdisciplinary course covering law, criminal justice and technology in the evidentiary arena. Coverage in the course provides a broad-based assessment of expert witnesses, microanalysis, pathological evidence, admissibility and investigatory practice, ballistics, fingerprints, VASCAR/radar, and photographic techniques. Contrasted with criminalistics, subject matter of this course is primarily evidentiary. More particularly, the course will delve into the rules of evidence that guide the admissibility of forensic evidence in a court of law. Examination includes: threshold tests for reliability and admissibility; qualification of witnesses competent to testify; scientific rigor required for admission; and case law determinations on the use and abuse of scientific evidence.

LAW 703. LAW AND THE ENVIRONMENT

Surveys the major Federal statutes and regulatory schemes relating to environmental quality and analyzes and compares the contrasting approaches to regulation that have been used in judicial settings. Focuses on the interaction of law and policy and considers the role of Congress, the regulatory agencies, and the courts in defining and implementing environmental mandates. Focused attention is given to air quality and its regulation, water and pollutants, the control and dissemination of toxic substances, management of hazardous materials and the debate around the government's role as protector of the environment.

LAW 704. LAW, BUSINESS AND THE WORKPLACE

Course content includes the various business entities and the steps necessary for creation and operation, from initial and amended articles of incorporation, state filing requirements, stock certificates and securities, stock ledgers and books, resolutions, dividends and stock splits, employment agreements, as well as introducing other business forms from partnerships to limited liability corporations. In the employment sector, coverage will examine constitutional and statutory protection related to employee rights from benefits and pensions

to discrimination remedies. Collective bargaining and other labor questions will be keenly assessed as well as emerging workplace questions involving maternity and family leave, wages and compensation, COBRA, free expression and religious rights and novel forms of disability claims.

MGT - MANAGEMENT**MGT 742. HUMAN RESOURCE MANAGEMENT**

Theory and practice of personnel management and analysis of personnel problems for managers. Topics include human resource planning, selection, training and development, performance appraisal, compensation administration and equal employment opportunity. (3 crs.)

MGT 751. INTERNATIONAL BUSINESS MANAGEMENT

The problems and policies of international business enterprise at the management level. Cases in comparative management are utilized. Includes strategies of the firm in international business, structure of the firm in international business, the international environment, restraints on international competition, multinational enterprises, and national institutions. (3 crs.)

MMT – MULTIMEDIA TECHNOLOGY**MMT 703. DIGITAL EDITING**

Presents techniques of achieving strong components in: audio, imaging and video, generation/acquisition, enhancement, storage and retrieval of these components in the digital realm are major topics. Through a series of laboratory and collaborative site activities, the student will gain experience using hardware and software tools to achieve effective digital editing of audio/video clips and images. Prerequisites: MMT 701, MMT 702 (3 crs.)

MMT 704. WEB PUBLISHING

The course delves into the intricacies of publishing on the web and what makes a proficient webmaster by examining areas such as client-server computing network operation, intranets and the Internet, advanced HTML and server-based support. End-user interaction using web page elements such as animations sounds and videos emphasized. Java/JavaScript, Active-X and Afterburner are highlighted. A collaborative site will be used as a real world examination of its mode of operation, performance and maintenance of that published web site. Prerequisites: MMT 701, MMT 702. (3 crs.)

MSE – MASTER OF ARTS IN TEACHING**MSE 715 TECHNOLOGY IN EDUCATION**

This course in educational technology provides the learner with fundamental concepts and skills that build a foundation for applying computers, hardware and software in educational settings. The course focuses on

instruction for those needs in a case study format. Prerequisite: RSP 700 & RSP 702. (3 crs.)

RSP 704. PRACTICUM: REMEDIAL CASE STUDIES

This course must be taken the semester immediately following the completion of RSP 703. The student applies knowledge of materials and methods gained in prerequisite classes to plan and implement a program of instructional intervention for a remedial reader. The course contains a seminar component in which the student utilizes modeling and communication skills to discuss and demonstrate plans for reading instruction with other students as well as with the practicing teacher. Prerequisites: RSP 700, RSP 702 & RSP 703. (3 crs.)

RSP 706. ADULT LITERACY

This course will expose the students to the point of view that the adult learner is a complex individual and has diverse needs, most of which have some bearing on any reading difficulties. Theories of the causes of adult illiteracy will be presented and diagnostic and remedial techniques will be given. (3 crs.)

SLE – SUPERINTENDENTS LETTER OF ELIGIBILITY

SLE 702. CONTRACT LAW: SCHOOL DISTRICT LEGAL ISSUES

This course is designed to familiarize aspiring superintendents with the legal bases for the administration of public schools. In this course emphasis will be placed on Pennsylvania School Law. Course activities will include lectures, class discussions, student research, oral and written reports, examinations and a related field episode. (3 crs.)

SLE 705. CURRICULUM AND INSTRUCTION, LEADERSHIP/ SUPERVISION

This course offers the participant opportunities to gain an understanding of and skills related to the district level administration of curriculum and instruction, leadership, and supervision. The core emphasis is on current practice in the field, state level requirements, and national trends that are shifting theory and practice in their regard. The required field experience is deeply woven into the course content. (3 crs.)

SLE 712. UNIVERSITY SEMINAR: CONTRACT LAW, SCHOOL DISTRICT LEGAL ISSUES

This seminar is designed to expand and enhance course activities covered in Contract Law: School District Legal Issues (SLE 702). (1 cr.)

SLE 715. UNIVERSITY SEMINAR: CURRICULUM AND INSTRUCTION, LEADERSHIP/SUPERVISION

This seminar is designed to expand and enhance course activities covered in

Curriculum and Instruction, Leadership/ Supervision (SLE 705). (1 cr.)

SLE 731. BUSINESS/INDUSTRY/MANAGEMENT PARTNERSHIP. I

This course will offer students the opportunity to interact with business leaders from the for-profit sector. Students will discover what practitioners and theorists say about applying leadership attributes from the corporate world to the school arena. (Profit) (2 crs.)

SLE 741. BUSINESS/INDUSTRY/MANAGEMENT PARTNERSHIP II

This course will offer students the opportunity to interact with leaders from the non-profit sector and to explore the leadership role of the superintendent through the lens of the business and general leadership literature. (Non Profit) (2 crs.)

SPT – SPORTS MANAGEMENT

SPT 700 Research Methods in Sport.

This course is intended to introduce students to methods and design problems specific to research in sport management. It is designed to promote an understanding of the theory, tools, and processes involved in designing sport management research studies. Course emphasis will be placed on differentiating between qualitative and quantitative data, data collection, data analysis, data interpretation, and sources of data specific to the sport industry.

SPT 710 SOCIO-CULTURAL ASPECTS OF SPORT

This course will analyze the sport industry as a social institution, using critical thinking skills to solve controversies and issues related to the sport culture. Discussion will center around the social, political, and economic significance of sport in society. Emphasis will also be placed on understanding the positive and negative social effects of sport and physical activity on society.

SPT 799 SPORT MENTORSHIP

The sport mentorship allows the student to practice sport management theory in the practical setting while under the direct supervision of a recognized leader in the student's chosen area of specialty in the sport industry. Course requirements dictate that students complete a minimum of 300 contact hours. Students may not enroll in SPT 799 until all other coursework has been completed.

SWK – SOCIAL WORK

SWK 730. FIRST YEAR PRACTICUM

MSW supervised placement in a social agency that provides opportunities for generalist social work practice with individuals, families, and groups of all ages from rural and small communities, including advocacy skills to enhance social justice. The mini-

um hours requires in a field agency is 240. (4 -6 varied) Prerequisite: SWK 701, SWK 705

SWK 803. ASSESSMENT OF DIFFERENTIAL CLIENT FUNCTIONING

Students in this course learn how to work with clients and client systems to help them identify needs and assess problems as well as strengths. A number of different assessment methods are explored with particular emphasis on those appropriate for diverse populations across the lifespan from local, national, and international rural and small communities. (3 crs.) Prerequisite: Program Admission, SWK 705 and SWK 707, or Director Approval

SWK 806. RURAL FAMILY AND COMMUNITY POLICY

Explores the design, function and impact of community and family policies. Historical development of specific policies and the effects of policy on rural family and community institutions and organizations. Skills in analyzing and synthesizing policy are applied to rural situations and change strategies. (3 crs.)

Prerequisite: SWK 705, 709, 710 and 713 or Advanced Standing Admission to MSW Program

SWK 814. PRACTICE IN MH/MR

Overview of MH/MR policies and services; issues of rehabilitation, advocacy and case management; and treatment approaches (crisis behavioral and chemical) are related to social work roles and values in the context of community needs. (3 crs.) Prerequisite: SWK 701, SWK 702 or Permission of the MSW Program Director

TED – TECHNOLOGY EDUCATION

TED 701. ISSUES IN TECHNOLOGY EDUCATION CURRICULUM AND INSTRUCTION

The focus of this course is two-fold. First, students will use state and national standards to develop a technology education curriculum by using various curriculum design processes. The second phase of the class is designed to improve the student ability to use appropriate standards-based instructional methods. These include cooperative learning, problem-based learning, discovery learning, constructivism, reflection, meta-cognition, and others those students research and demonstrate to the class. (3 crs.)

Social Sciences

Code	Code #	Title	Session	Location
CRJ	429	Terrorism	2nd	Web
ECO	100	Elem of Econ	10wk	Main
GEO	100	Intro to Geography	10wk	Web
GEO	205	Wld Cities/Geo Tour	10wk	Web
HIS	102	US Hist Since 1877	1st	Main
HIS	111	Dev Maj Wld Civil	10wk	Web
HIS	240	Hist the Cold War	1st	Main
POS	100	Intro Poli Sci	1st	Main
POS	105	American Politics	1st	Web
SOC	100	Prin of Sociology	10wk	Web
SOC	315	Social Minorities	1st	Web
WST	200	Introduction	10wk	Web

Humanities

Code	Code #	Title	Session	Location
ENG	107	Intro to Fiction	2nd	Main
FRE	101	Elem French I	1st	Main
MUS	100	Intro to Music	10wk	Web
PHI	200	World Religions	10wk	Web
SPN	101	Elem Spanish I	2nd	Main
THE	100	Intr to the Theatre	10wk	Main

Fine Arts

Code	Code #	Title	Session	Location
ART	106	Art Appreciation	2nd	Main
ART	382	Ceramics Studio	2nd	Main
MUS	100	Intro to Music	10wk	Web

Multi-cultural Awareness

Code	Code #	Title	Session	Location
CRJ	429	Terrorism	2nd	Web
EDU	310	Teaching Multicultural Society	10wk	Main
FRE	101	Elem French I	1st	Main
GEO	205	Wld Cities/Geo Tour	10wk	Web
GEO	325	Geography Europe	10wk	Web
HIS	347	Race & Ethnicity in US	10wk	Web
SOC	315	Social Minorities	1st	Web
SPN	101	Elem Spanish I	2nd	Main
WST	200	Introduction	10wk	Web

Values

Code	Code #	Title	Session	Location
EAS	131	Intro Envir Geology	10wk	Web
PHI	200	World Religions	10wk	Web
PSY	211	Social Psychology	2nd	Web
SOC	315	Social Minorities	1st	Web
TED	210	Design & Appropriate Technology	June	Main
WST	200	Introduction	10wk	Web

Technological Literacy

Code	Code #	Title	Session	Location
CSC	101	Personal Productivity Software	1st	Web
CSC	101	Personal Productivity Software	10wk	Southpointe
CSC	201	Windows and Internet	1st	Web
CSC	201	Windows and Internet	2nd	Web
ENG	217	Sci & Tech Writ	10wk	Web
ITE	341	Quality Control	10wk	Web
PHS	137	Intro to Environ Chem	June	Main

Health & Wellness

Code	Code #	Title	Session	Location
BIO.....	103	Cont Issues in Bio	1st	Main
HPE.....	105	Current Health Iss	2nd	Web

Upper Division Writing Courses

Code	Code #	Title	Session	Location
EDE.....	320	Intermed Field Experience 4-6	May.....	Field Experience
EDE.....	320	Intermed Field Experience 4-6	May.....	Field Experience
EDE.....	321	Primary Field Experience K-3	May.....	Field Experience
EDE.....	321	Primary Field Experience K-3	May.....	Field Experience
GEO.....	325	Geography Europe.....	10wk	Web
PSY.....	310	Psych of Adjustment	10wk	Main

Laboratory Courses

Code	Code #	Title	Session	Location
CHE.....	101	Gen Chemistry I	1st	Main
CHE.....	101	Gen Chemistry I	1st	Main
EAS.....	100	Intro to Earth Sci	10wk	Web
EAS.....	150	Intro to Geology.....	10wk	Web
HSC.....	120	Human Anatomy & Phys II	1st	Web
PHS.....	120	Basic Physical Science with Lab.....	1st	Main
PHS.....	137	Intro to Environ Chem	June	Main
PHY.....	121	General Physics I	June	Main



Steps to Success

1. Application to California University of PA with payment of \$25 application fee (first semester)
2. Complete and submit the “Free Application for Federal Student Aid” (FAFSA) at www.fafsa.ed.gov each year. California University of PA Federal School Code Number is 003316. Listed below are the FAFSA forms you must file if you are attending the following semesters and wish to apply for federal financial aid:

Semester	FAFSA Form	Tax Year
Fall 2005 & Spring 2006	2005-06 FAFSA	2004
Summer 2006:		
{first class begins before 7/1}	2005-06 FAFSA	2004
{first class begins after 7/1}	2006-07 FAFSA	2005
Fall 2006 & Spring 2007	2006-07 FAFSA	2005

Please Note: All students should complete the required FAFSA form at least two months prior to the start of the semester you are applying for financial aid assistance.

3. Acceptance notification from California University of PA (first semester)
4. Register for courses on-line (each semester)
5. Complete the “Summer Enrollment Intent Form” at www.cup.edu/financial_aid/faforms/jsp (each summer semester).
6. Complete Federal Stafford Loan Entrance Interview on-line at www.aessuccess.org (first-time Stafford Loan borrower at Cal U) by clicking on “entrance and exit counseling”
7. Complete Federal Stafford Loan Master Promissory Note (MPN) www.aessuccess.org (first-time Stafford Loan borrower only) by clicking on “applying for a Stafford Loan”
8. Check Billing On-Line at <http://sisweb.cup.edu> (each semester)
9. If financial aid award is not sufficient to cover charges, payment of the difference must be made by the tuition due date. (each semester)
10. Payments can be made via the web at <http://sisweb.cup.edu/>
11. Refund checks for overpayment by financial aid are mailed via USPS within 14 days of credit balance (each semester)

Payment Information Summer 2006

Payment methods: For your convenience, payments can be made with MasterCard, Visa or Discover Card. If you are paying by charge card, you may fax the information to (724) 938-5983, call the Bursar's Office at (724) 938-4431 or pay on-line at <http://sisweb.cup.edu/>. Log in to Student Services, Enter Student Services or Parent or Guest Payment, Enter the Student ID# and PIN; go to the Student Records dropdown and select Account Summary and Payment by Credit Card and select the correct term. Please make sure that your payment is received in the Bursar's Office by the due date. Failure to finalize your registration by making payment for any session, by the due date may result in an administrative withdrawal from your classes. **If you are administratively withdrawn, you may not be permitted to re-register for the same class. Additionally, you will be assessed a late registration and late payment fees.**

To finalize your registration, one of the following must occur:

- Payment is received for the total amount due.
- The first payment of an approved payment plan is received by the due date. If there is a previous balance, the amount remitted must include the previous balance owed in addition to the first installment.
- If you will be receiving financing from an outside source (not listed on your billing statement), you will need to submit official documentation of the award to the Bursar's Office. This award can be deducted from the total balance due; then pay any outstanding balance or apply for a payment plan.
- If you have filed for financial aid and waiting on the processing completion, you should contact the Bursar's Office and arrange for a deferred promissory note to insure you will not be dropped from your class(es) during this processing time.

Late Registration Fee

Students who register after the first class meets will be charged a late registration fee of \$25.

Late Payment Fee

A late payment fee (mandated by the Council of Trustees) of \$25 will be assessed when a student fails to pay the required fees by the due date or when a student fails to pay according to an approved payment plan.

Summer 2006 Billing Schedule

Course Start Dates	Billing Date	Due Date	Nonpayment Cancel Date*
1st 5 Weeks (6/12 – 7/15)	5/11/06	5/26/06	6/16/06
10 Weeks (6/12 – 8/19)	5/11/06	5/26/06	6/16/06
2nd 5 Weeks (7/17 – 8/19)	6/19/06	7/3/06	7/21/06

The Special Session billing schedule is listed with the course descriptions.

Students registering after the billing date are expected to make payment at the time of registration either through the California University of PA website, <http://sisweb.cup.edu/> or by contacting the Bursar's Office between the hours of 8:00 a.m. – 4:00 p.m., Monday, Wednesday, Thursday and Friday and 9:00 a.m. – 4:00 p.m. on Tuesdays.

**The "Cancellation Date" is the date the Bursar's Office will use to withdraw the student's class when payment has not been made. It does not mean the cancellation date of the actual "Class". The Office of Lifelong Learning determines if a class will be held or cancelled (See the calendar in this brochure for more information on cancellation for each session.*

If you have registered for a summer 2006 class and do not plan to attend, you must officially withdraw. This can be done on the university website or by contacting the Office of Lifelong Learning at (724) 938-5840.

Failure to officially withdraw/drop a class will result in a financial penalty.

Students cannot withdraw from classes via the California University of PA website after the first class date.

All drops and withdrawals must be done in writing or online before first class begins.

Do not assume you will be dropped for non-payment.

Summer 2006 Tuition Refund Schedule

Withdrawal Date	Refund
First 10% (in time) of the enrollment period	90%
11% to 25% of the enrollment period	50%
26% to 50% of the enrollment period	25%
after 50% of the enrollment period	0%

To determine the tuition refund you may be eligible for, you need to know the total number of times your class meets during the session (total number of sessions column). You will also need to determine how many times your class has already met (number 1-11). Using the chart below you would begin with the Total Number of Sessions column and follow that line straight across to the number of times your class has met. Look at the top of this column to determine the percentage of tuition refund. For example, if your class meets 10 times in the session and you withdraw after the third class, but **at least one working day** before the day that the fourth class is scheduled to meet, your refund would be 25%. **The first class meeting is always at the 100% refund.**

For Web-based courses, use session times of 8 a.m. Monday and 8 a.m. Friday (two sessions per week) to calculate the refund.

Total # of Sessions	Enrolled 10% = 90% Tuition Refund	Enrolled 11% to 25% = 50% Tuition Refund	Enrolled 26% to 50% = 25% Tuition Refund	Enrolled > 50% = No Tuition Refund
two	N/A	N/A	N/A	2
three	N/A	N/A	2	3
four	N/A	N/A	2	3
five	N/A	2	3	4
six	N/A	2	3	4
seven	N/A	2	3 & 4	5
eight	N/A	2	3 & 4	5
nine	N/A	2 & 3	4 & 5	6
ten	N/A	2 & 3	4 & 5	6
eleven	2	3	4, 5, & 6	7
twelve	2	3	4, 5, & 6	7
thirteen	2	3 & 4	5, 6, & 7	8
fourteen	2	3 & 4	5, 6, & 7	8
fifteen	2	3 & 4	5, 6, 7, & 8	9
sixteen	2	3 & 4	5, 6, 7, & 8	9
seventeen	2	3, 4, & 5	6, 7, 8, & 9	10
eighteen	2	3, 4, & 5	6, 7, 8, & 9	10
nineteen	2	3, 4, & 5	6, 7, 8, 9, & 10	11
twenty	2	3, 4, & 5	6, 7, 8, 9, & 10	11

Tuition & Fee Summary* Summer 2006

Undergraduate Main Campus

In-State Credits	In-State			Out-State		
	Tuition	Fees	Total	Tuition	Fees	Total
1	\$204.00	\$203.75	\$407.75	\$307.00	\$219.75	\$526.75
2	\$408.00	\$210.50	\$618.50	\$614.00	\$226.50	\$840.50
3	\$612.00	\$217.25	\$829.25	\$921.00	\$233.25	\$1,154.25
4	\$816.00	\$224.00	\$1,040.00	\$1,228.00	\$240.00	\$1,468.00
5	\$1,020.00	\$230.75	\$1,250.75	\$1,535.00	\$246.75	\$1,781.75
6	\$1,224.00	\$324.50	\$1,548.50	\$1,842.00	\$340.50	\$2,182.50
7	\$1,428.00	\$331.25	\$1,759.25	\$2,149.00	\$347.25	\$2,496.25
8	\$1,632.00	\$338.00	\$1,970.00	\$2,456.00	\$354.00	\$2,810.00
9	\$1,836.00	\$379.75	\$2,215.75	\$2,763.00	\$395.75	\$3,158.75
10	\$2,040.00	\$386.50	\$2,426.50	\$3,070.00	\$402.50	\$3,472.50
11	\$2,244.00	\$393.25	\$2,637.25	\$3,377.00	\$409.25	\$3,786.25
12	\$2,448.00	\$598.50	\$3,046.50	\$3,684.00	\$630.00	\$4,314.00
13	\$2,652.00	\$605.25	\$3,257.25	\$3,991.00	\$636.75	\$4,627.75
14	\$2,856.00	\$612.00	\$3,468.00	\$4,298.00	\$643.50	\$4,941.50
15	\$3,060.00	\$618.75	\$3,678.75	\$4,605.00	\$650.25	\$5,255.25

Graduate Main Campus

In-State Credits	In-State			Out-State		
	Tuition	Fees	Total	Tuition	Fees	Total
1	\$327.00	\$207.90	\$534.90	\$523.00	\$223.90	\$746.90
2	\$654.00	\$218.80	\$872.80	\$1,046.00	\$234.80	\$1,280.80
3	\$981.00	\$229.70	\$1,210.70	\$1,569.00	\$245.70	\$1,814.70
4	\$1,308.00	\$240.60	\$1,548.60	\$2,092.00	\$256.60	\$2,348.60
5	\$1,635.00	\$251.50	\$1,886.50	\$2,615.00	\$267.50	\$2,882.50
6	\$1,962.00	\$368.40	\$2,330.40	\$3,138.00	\$384.40	\$3,522.40
7	\$2,289.00	\$379.30	\$2,668.30	\$3,661.00	\$395.30	\$4,056.30
8	\$2,616.00	\$390.20	\$3,006.20	\$4,184.00	\$406.20	\$4,590.20
9	\$2,943.00	\$537.60	\$3,480.60	\$4,707.00	\$569.10	\$5,276.10
10	\$3,270.00	\$548.50	\$3,818.50	\$5,230.00	\$580.00	\$5,810.00
11	\$3,597.00	\$559.40	\$4,156.40	\$5,753.00	\$590.90	\$6,343.90
12	\$3,924.00	\$570.30	\$4,494.30	\$6,276.00	\$601.80	\$6,877.80
13	\$4,251.00	\$581.20	\$4,832.20	\$6,799.00	\$612.70	\$7,411.70
14	\$4,578.00	\$592.10	\$5,170.10	\$7,322.00	\$623.60	\$7,945.60
15	\$4,905.00	\$603.00	\$5,508.00	\$7,845.00	\$634.50	\$8,479.50

*All tuition is assessed per credit, there is no flat tuition fee during the summer. Fee assessment is based on the total number of credits. All tuition and fees are subject to change without notice to student upon proper approval of the Council of Trustees and/or Board of Governors.

Tuition & Fee Summary* Summer 2006

Undergraduate Southpointe

In-State Credits	In-State			Out-State		
	Tuition	Fees	Total	Tuition	Fees	Total
1	\$204.00	\$51.25	\$255.25	\$307.00	\$67.25	\$374.25
2	\$408.00	\$71.50	\$479.50	\$614.00	\$87.50	\$701.50
3	\$612.00	\$91.75	\$703.75	\$921.00	\$107.75	\$1,028.75
4	\$816.00	\$112.00	\$928.00	\$1,228.00	\$128.00	\$1,356.00
5	\$1,020.00	\$132.25	\$1,152.25	\$1,535.00	\$148.25	\$1,683.25
6	\$1,224.00	\$152.50	\$1,376.50	\$1,842.00	\$168.50	\$2,010.50
7	\$1,428.00	\$172.75	\$1,600.75	\$2,149.00	\$188.75	\$2,337.75
8	\$1,632.00	\$193.00	\$1,825.00	\$2,456.00	\$209.00	\$2,665.00
9	\$1,836.00	\$213.25	\$2,049.25	\$2,763.00	\$229.25	\$2,992.25
10	\$2,040.00	\$213.25	\$2,253.25	\$3,070.00	\$229.25	\$3,299.25
11	\$2,244.00	\$213.25	\$2,457.25	\$3,377.00	\$229.25	\$3,606.25
12	\$2,448.00	\$244.75	\$2,692.75	\$3,684.00	\$276.25	\$3,960.25
13	\$2,652.00	\$244.75	\$2,896.75	\$3,991.00	\$276.25	\$4,267.25
14	\$2,856.00	\$244.75	\$3,100.75	\$4,298.00	\$276.25	\$4,574.25
15	\$3,060.00	\$244.75	\$3,304.75	\$4,605.00	\$276.25	\$4,881.25

Graduate Southpointe

In-State Credits	In-State			Out-State		
	Tuition	Fees	Total	Tuition	Fees	Total
1	\$327.00	\$51.25	\$378.25	\$523.00	\$67.25	\$590.25
2	\$654.00	\$71.50	\$725.50	\$1,046.00	\$87.50	\$1,133.50
3	\$981.00	\$91.75	\$1,072.75	\$1,569.00	\$107.75	\$1,676.75
4	\$1,308.00	\$112.00	\$1,420.00	\$2,092.00	\$128.00	\$2,220.00
5	\$1,635.00	\$132.25	\$1,767.25	\$2,615.00	\$148.25	\$2,763.25
6	\$1,962.00	\$152.50	\$2,114.50	\$3,138.00	\$168.50	\$3,306.50
7	\$2,289.00	\$172.75	\$2,461.75	\$3,661.00	\$188.75	\$3,849.75
8	\$2,616.00	\$193.00	\$2,809.00	\$4,184.00	\$209.00	\$4,393.00
9	\$2,943.00	\$244.75	\$3,187.75	\$4,707.00	\$276.25	\$4,983.25
10	\$3,270.00	\$244.75	\$3,514.75	\$5,230.00	\$276.25	\$5,506.25
11	\$3,597.00	\$244.75	\$3,841.75	\$5,753.00	\$276.25	\$6,029.25
12	\$3,924.00	\$244.75	\$4,168.75	\$6,276.00	\$276.25	\$6,552.25
13	\$4,251.00	\$244.75	\$4,495.75	\$6,799.00	\$276.25	\$7,075.25
14	\$4,578.00	\$244.75	\$4,822.75	\$7,322.00	\$276.25	\$7,598.25
15	\$4,905.00	\$244.75	\$5,149.75	\$7,845.00	\$276.25	\$8,121.25

*All tuition is assessed per credit, there is no flat tuition fee during the summer. Fee assessment is based on the total number of credits. All tuition and fees are subject to change without notice to student upon proper approval of the Council of Trustees and/or Board of Governors.

Tuition & Fee Summary* Summer 2006

For more information on tuition and fees for cohort global online courses contact the Office of Web-based Programs at 1-866-595-6348

Undergraduate Off Campus/WEB Courses

In-State Credits	Tuition	Fees	Total	Out-State Tuition	Fees	Total
1	\$204.00	\$46.00	\$250.00	\$307.00	\$62.00	\$369.00
2	\$408.00	\$61.00	\$469.00	\$614.00	\$77.00	\$691.00
3	\$612.00	\$76.00	\$688.00	\$921.00	\$92.00	\$1,013.00
4	\$816.00	\$91.00	\$907.00	\$1,228.00	\$107.00	\$1,335.00
5	\$1,020.00	\$106.00	\$1,126.00	\$1,535.00	\$122.00	\$1,657.00
6	\$1,224.00	\$121.00	\$1,345.00	\$1,842.00	\$137.00	\$1,979.00
7	\$1,428.00	\$136.00	\$1,564.00	\$2,149.00	\$152.00	\$2,301.00
8	\$1,632.00	\$151.00	\$1,783.00	\$2,456.00	\$167.00	\$2,623.00
9	\$1,836.00	\$166.00	\$2,002.00	\$2,763.00	\$182.00	\$2,945.00
10	\$2,040.00	\$166.00	\$2,206.00	\$3,070.00	\$182.00	\$3,252.00
11	\$2,244.00	\$166.00	\$2,410.00	\$3,377.00	\$182.00	\$3,559.00
12	\$2,448.00	\$197.50	\$2,645.50	\$3,684.00	\$229.00	\$3,913.00
13	\$2,652.00	\$197.50	\$2,849.50	\$3,991.00	\$229.00	\$4,220.00
14	\$2,856.00	\$197.50	\$3,053.50	\$4,298.00	\$229.00	\$4,527.00
15	\$3,060.00	\$197.50	\$3,257.50	\$4,605.00	\$229.00	\$4,834.00

Graduate Off Campus/WEB Courses

In-State Credits	Tuition	Fees	Total	Out-State Tuition	Fees	Total
1	\$327.00	\$46.00	\$373.00	\$523.00	\$62.00	\$585.00
2	\$654.00	\$61.00	\$715.00	\$1,046.00	\$77.00	\$1,123.00
3	\$981.00	\$76.00	\$1,057.00	\$1,569.00	\$92.00	\$1,661.00
4	\$1,308.00	\$91.00	\$1,399.00	\$2,092.00	\$107.00	\$2,199.00
5	\$1,635.00	\$106.00	\$1,741.00	\$2,615.00	\$122.00	\$2,737.00
6	\$1,962.00	\$121.00	\$2,083.00	\$3,138.00	\$137.00	\$3,275.00
7	\$2,289.00	\$136.00	\$2,425.00	\$3,661.00	\$152.00	\$3,813.00
8	\$2,616.00	\$151.00	\$2,767.00	\$4,184.00	\$167.00	\$4,351.00
9	\$2,943.00	\$197.50	\$3,140.50	\$4,707.00	\$229.00	\$4,936.00
10	\$3,270.00	\$197.50	\$3,467.50	\$5,230.00	\$229.00	\$5,459.00
11	\$3,597.00	\$197.50	\$3,794.50	\$5,753.00	\$229.00	\$5,982.00
12	\$3,924.00	\$197.50	\$4,121.50	\$6,276.00	\$229.00	\$6,505.00
13	\$4,251.00	\$197.50	\$4,448.50	\$6,799.00	\$229.00	\$7,028.00
14	\$4,578.00	\$197.50	\$4,775.50	\$7,322.00	\$229.00	\$7,551.00
15	\$4,905.00	\$197.50	\$5,102.50	\$7,845.00	\$229.00	\$8,074.00

*All tuition is assessed per credit, there is no flat tuition fee during the summer. Fee assessment is based on the total number of credits. All tuition and fees are subject to change without notice to student upon proper approval of the Council of Trustees and/or Board of Governors.

Financial Aid Information

Application Process

In order to apply for federal and institutional financial aid assistance for the Summer 2006 Semester, a student must complete a Free Application for Federal Student Aid (FAFSA). Please use the chart below to determine which FAFSA form a student must file for the Summer 2006 Semester.

Student's first summer session starts:	Financial aid program the student is requesting assistance from:	The FAFSA Form the student must file is:
May or June 2006	Federal Stafford, PLUS, or Alternative Loans	2005-06 FAFSA
May, June or July 2006	Federal Pell Grant and/or student employment	2006-07 FAFSA
July 2006	Federal Stafford, PLUS or Alternative Loans	2006-07 FAFSA

Please Note: Students who are enrolled in the summer semester and plan on enrolling for the fall 2006 and/or spring 2007 semester **must complete a 2006-07 FAFSA** in order to apply for federal, state and institutional financial aid assistance for the 2006-07 academic year.

Loans

Federal Stafford Loan

Any student wishing to apply for a Federal Stafford must complete a "Summer 2006 Enrollment Intent Form" (this form is listed on page 57 or can be downloaded from the Financial Aid Office homepage at www.cup.edu/financial_aid) and submit it to the Financial Aid Office. This form provides student information on planned enrollment, the session or sessions attending, and the amount of Stafford Loan assistance the student wishes to borrow for the summer session. Information contained on the Summer 2006 Enrollment Intent Form and the FAFSA are then used to determine the student's Federal Stafford Loan eligibility for the Summer 2006 Semester. The student's Stafford Loan eligibility is then transmitted to AES/PHEAA Loan Division. AES/PHEAA will mail either a pre-printed Federal Stafford Loan Master Promissory Note (MPN) (new borrowers only) or a loan approval notice (prior Stafford borrowers) to the student. Students who receive the MPN must complete and return the MPN to PHEAA in order to finalize the loan (see Stafford Loan MPN Process for additional information). Students can complete the MPN electronically by logging on to AES/PHEAA's website (www.aessuccess.org), and click on the "Apply for a Stafford Loan" button under "Apply For a Loan." With a student's Department of Education Personal Identification Number (PIN), a student can even sign the MPN electronically.

Federal PLUS Loan

Any dependent student wishing to apply for a Federal PLUS Loan (parent loan) must have a completed 2005-2006 FAFSA on file. In addition, a Federal PLUS Loan Master Promissory Note (MPN) must be completed (new PLUS Loan borrowers only) by the parent borrower. To expedite the PLUS Loan application process, we strongly recommend that interested parents utilize the American Education Services/Pennsylvania Higher Education Assistance Agency's (AES/PHEAA) automated PLUS Loan Pre-Approval Program at www.aessuccess.org. This program enables the borrower to receive responses within seconds of PLUS pre-approval requests submitted through this secure Internet site. The parent borrower must have a good credit history in order to borrow a PLUS Loan. If approved by AES/PHEAA, AES/PHEAA will transmit the PLUS Loan application information to California University in order to determine your eligibility and approved loan amount. In addition, all new PLUS Loan borrowers must either complete an electronic version of the PLUS MPN or request AES/PHEAA to mail the borrower a pre-printed paper version of PLUS Loan MPN for completion and return to AES/PHEAA. AES/PHEAA also offers PLUS pre-approvals over the telephone by calling 1-800-692-7392 between 7:30 a.m. and 7:30 p.m. on weekdays and between 8:00 a.m. and 1:00 p.m. on weekends. A student whose parent(s) is denied PLUS Loan eligibility may be eligible for additional Federal Unsubsidized Stafford Loan. Students must, however, complete a Stafford Loan Adjustment Form (SLAF) and submit it along with a copy of the PLUS denial letter from the lender to the Financial Aid Office.

- Stafford Loan monies borrowed during the Summer 2006 term will reduce the student's loan eligibility for Fall 2006 and/or Spring 2007 semester(s).
- Undergraduate students must enroll for at least six credits during the summer (one or combined sessions). Graduate students must

enroll for at least five credits. (See Loan Disbursement Chart on the next page for more details).

- Students cannot exceed the aggregate (total loan amounts) loan limits of \$23,000 (dependent students) or \$46,000 (independent students) as specified by federal law.

Grants

All grants will be considered as the beginning of the financial aid award year; therefore, students must complete the 2006-2007 FAFSA Form for Summer 2005 Pell Grant consideration. Only undergraduate students are eligible to receive grants.

PHEAA Grant

A Summer PHEAA Grant Application is required. Applications are available in the Financial Aid Office. Deadline for submission is August 15, 2006. Students must register for at least 12 credits in order to be eligible for the maximum PHEAA Grant. Students who were enrolled full-time (12 credits) during the Spring 2006 semester and will be graduating in August or December must register for at least 9 credits in order to be eligible for the maximum PHEAA Grant award. Some students may be eligible for a reduced PHEAA Grant award if they are enrolled less than full-time, but at least half-time, and meet certain income restrictions determined by AES/PHEAA. Students must also meet AES/PHEAA academic progress requirements. This is a reimbursement program. Refunds usually are available in mid-August.

Federal Pell Grant

A Pell Grant award will automatically be disbursed for any eligible Pell Grant recipient who is enrolled during the summer semester. A student's total 2006-2007 Pell Grant award will be reduced by the amount or percentage of Pell Grant funds used during Summer 2006 term. This will result in a reduction of the student's Spring 2007 Pell Grant if the student is enrolled full-time during the fall semester. Summer Pell Grant funds will be disbursed starting July 17th.

Student Employment

A student seeking summer work-study employment must formally apply to the Financial Aid Office by completing the Summer 2006 Work-Study Application and the 2006-2007 FAFSA. In addition, students must meet all federal Title IV eligibility requirements.

A student will be considered for full-time employment if enrolled 0 - 5 credits during the summer. Students may work a total of 300 hours under this program (beginning May 15).

A student will be considered for part-time employment if attempting a minimum of 6 credits during the summer. Students employed part-time will be permitted to work a maximum of 10 hours a week for 10 weeks (beginning June 12).

Students eligible for summer work-study employment will be notified in writing. However, because of limited funds, not all eligible students who apply for a work-study position will receive one.

Stafford Loan Disbursement

The chart below illustrates the earliest date that Stafford Loan funds would be available for your use based upon your enrollment patterns in Summer I and Summer II sessions. If you register for less than 6 credits during Summer I, loan funds will not be available during Summer I for your use, and you will have to pay your bill with your own funds.

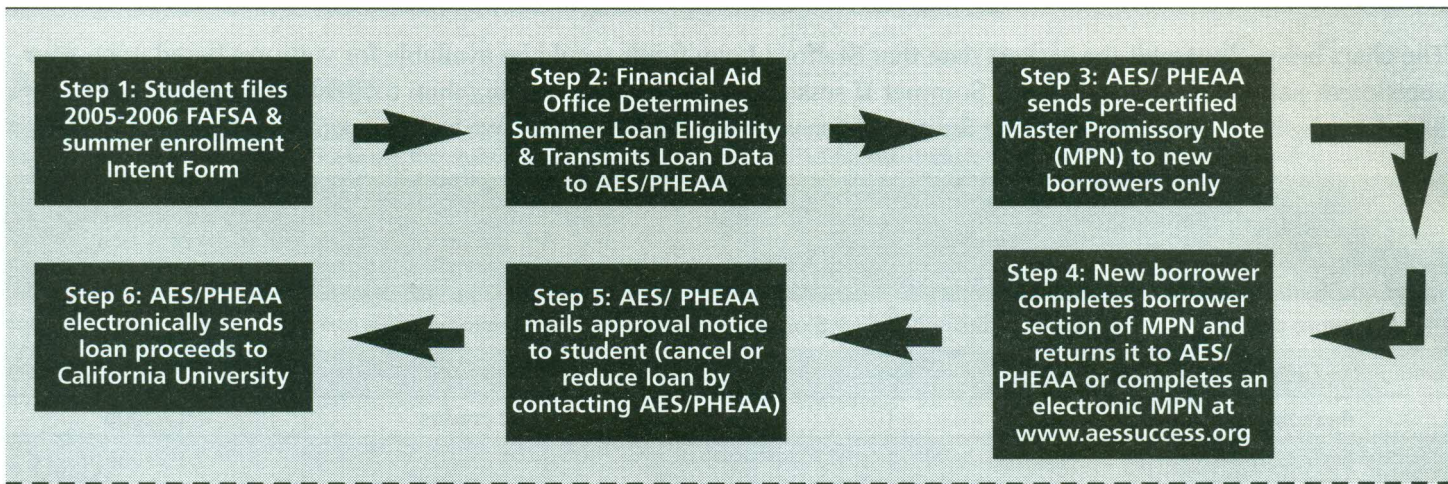
Undergraduate		Graduate		Earliest Date Funds Are Available
1st Five-Week Credits	2nd Five-Week Credits	1st Five-Week Credits	2nd Five-Week Credits	Date
6 or more credits	0 or more credits	5 or more credits	0 or more credits	6/12/2006
5 credits	1 credit	4 credits	1 credit	7/17/2006
4 credits	2 credits	3 credits	2 credits	7/17/2006
3 credits	3 credits	2 credits	3 credits	7/17/2006
2 credits	4 credits	1 credit	4 credits	7/17/2006
1 credit	5 credits	0 credit	5 credits	7/17/2006
0 credit	6 credits			7/17/2006

***Please Note: Federal Regulations require that summer loan funds be given to a student in two disbursements.**

Students enrolled in any of the "special sessions", e.g., one-week, Saturdays, weekends, etc., will be eligible to receive Stafford Loan and/or PLUS Loan proceeds once the student is enrolled at least half-time (undergraduate 6 credits – graduate 5 credits).

Please Note: Students attending at least half-time during the May Special Session will not receive their Stafford and/or PLUS Loan proceeds until June 12, 2006. Therefore, students attending this session must be prepared to cover all non-University charges without the assistance of financial aid funds. In addition, Federal Title IV Regulations require that all Stafford and PLUS Loans certified for the summer semester be disbursed in two equal disbursements (see disbursement chart for additional information). Contact the Financial Aid Office at 724-938-4415 if you have any questions on special session financial aid or if you have any other Financial Aid questions. In addition, Summer Financial Aid information and forms can be found at the Financial Aid Office web page at www.cup.edu/financial_aid

Stafford Loan Process



Enrollment Intent Form summer 2006

Students applying for a Stafford Loan for the Summer 2006 term must complete and return this form to the Financial Aid Office as soon as possible. Your loan **WILL NOT** be processed until this form is on file. The 2005-2006 FAFSA form will be used to determine eligibility for your summer loan.

NAME: (PLEASE PRINT) _____

SOCIAL SECURITY # _____

REQUESTED AMOUNT: \$ _____

*Please remember that any money borrowed through the Stafford Loan Program for the summer semester **will reduce loan eligibility** for fall/spring semesters.

Housing Status: On-campus _____ Off-campus _____
Commuting from parents' home _____

Please indicate the degree you are pursuing:

___ Undergraduate ___ Graduate ___ Certification Only

Expected date of graduation: _____

Total credits to be scheduled for all sessions during Summer 2004

_____ credits (You must schedule 6 undergraduate or 5 graduate credits to be eligible for this loan.)

These credits will be scheduled as follows:

First 5-week session _____ credits

Second 5-week session _____ credits

Regular summer session (10 weeks) _____ credits

Intersession courses _____ credits

Saturday/Evening courses (10 weeks) _____ credits

Distance Learning _____ credits

I will take classes at: ___ Southpointe/Off-campus ___ CUP campus

___ Distance Learning (Keystone University)

SIGNATURE _____

DATE _____

Return to: California University of PA, Financial Aid Office,
250 University Avenue, California, PA 15419

Please Note: Independent students, and dependent students whose parents cannot obtain a PLUS Loan, may increase their "Unsubsidized" Stafford Loan limit by the following amounts:

Unsubsidized

Grade Level Annual Loan Amount *

Freshman/sophomore Up to \$4,000

Junior/senior Up to \$5,000

Graduate Up to \$10,000

Subsidized Borrowing Table

Grade Level	Annual Loan Amount *
Freshman	\$2,625
Sophomore	\$3,500
Junior/senior	\$5,500
Graduate	\$8,500

*annual loan limit is the combined total of Subsidized & Unsubsidized



Last Day to Withdraw

Without Academic Penalty

Students may not withdraw from a class after 80% of the class has elapsed

Last day to withdraw from a first five-week course:

July 7, 2006

4:00 pm

Last day to withdraw from a ten-week course:

August 4, 2006

4:00 pm

Last day to withdraw from a 2nd five week course

August 11, 2006

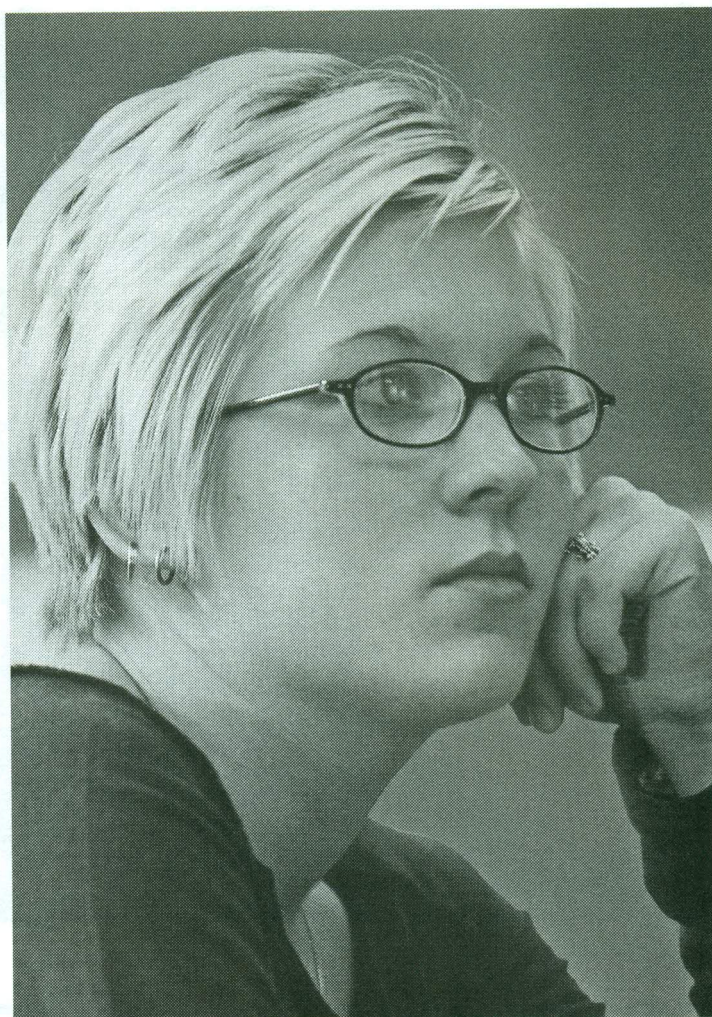
4:00 pm

Special Session classes are calculated separately. Contact the Office of Lifelong Learning at 724-938-5840 for more information.

Important Telephone Numbers

Academic Affairs	724-938-4407
Academic Records	724-938-4434
Admissions	724-938-4404
Bookstore	724-938-4324
Bursar's Office	724-938-4431
College of Education & Human Services	724-938-4125
College of Liberal Arts	724-938-4240
Counseling Center	724-938-4191
Daycare	724-938-7588
Eberly College of Science & Technology	724-938-4169
Financial Aid	724-938-4415
Graduate School	724-938-4187
Housing Office	724-938-4444
Library Services	724-938-4091
Public Safety	724-938-4299
Southpointe Center	724-873-2760
Bedford Site	814-444-8680
Somerset Site	814-444-8680
Office for Students with Disabilities (OSD)	724-938-5781

Lifelong Learning/Summer College
724-938-5840 Toll Free Number 1-866-268-9154



Did you change your mind about taking classes?

Failure to submit written notice of withdrawal will result in a failing grade and a financial liability. Although you should check with your instructor, academic advisor, or academic department before you withdraw from a course, a discussion with them will not get your course dropped. If you register for class(es) and then decide not to attend California University of PA, it is **your** responsibility to initiate the proper paperwork. Do not assume that you will be dropped from the class(es) because you have not made payment or because your financial aid was not approved. Please come to the Office of Lifelong Learning in 202 Eberly Science & Technology Center to complete the appropriate paperwork. The sooner you do, the more money you may save (refer to the refund policy on page 51).

You may also fax your signed request to drop a course to 724-938-5963

Undergraduate Admission Procedure

Visiting Student Applicants

Visiting students (those students enrolled at another college or university) may enroll for credit classes at California University of PA for one semester only. Complete the application form in this brochure, attach a completed Registration Form from this brochure, and mail both of these, with a \$25 nonrefundable application fee*, to the Office of Lifelong Learning, California University of PA, 250 University Avenue Box 12, California, PA 15419. Once your application has been processed and accepted you will be registered for courses and a billing statement with your schedule will be sent to you. If you have any questions contact the Office of Lifelong Learning at 724-938-5840

Early Admit High School Students

If you have completed the sophomore year of high school and are enrolled in a college preparatory curriculum you may be eligible for admission to CAL U. You must have a cumulative grade point average of 3.00 for the past two years and have scored at least a 840 on the PSAT or SAT or 23 on the ACT. If you meet the qualifications listed, you need to complete the admission application form in this brochure, pay the \$25 nonrefundable fee*, and submit your high school transcript and completed early admission clearance form to the Office of Lifelong Learning.

New Degree Students

If you are interested in applying for undergraduate admission to California University of PA, you need to complete the application form in this brochure and mail it with a \$25 nonrefundable application fee* to the Office of Admissions, California University of PA, 250 University Avenue, California, PA 15419. Please note the requirement on this form for transcripts. Once you have received a letter of acceptance you may register for Summer 2004 classes through the Office of Lifelong Learning or on-line at sisweb.cup.edu. See pages 64 & 67 in this brochure for a registration form and information on how to register for classes. If you have any questions on becoming a new degree-seeking student at California University of PA, please contact the Office of Admissions at 724-938-4404.

Evening/Weekend College Students

If you are interested in applying for undergraduate admission to the Evening/Weekend College at California University of PA, you need to complete the application form in this brochure and mail it with a \$25 nonrefundable application fee* to the Office of Lifelong Learning, California University of PA, 250 University Avenue Box 12, California, PA 15419. Please note the requirement on the application form for transcripts. Once you have been notified that you are accepted, you may register for classes on-line at sisweb.cup.edu or through the Office of Lifelong Learning. See pages 64 & 67 in this brochure for a registration form and information on how to register for classes. If you have any questions, contact the Office of Lifelong Learning at 724-938-5840

Non-degree Seeking Students

If you are interested in taking undergraduate credit courses for personal enrichment you may apply to become a non-degree seeking student through the Office of Lifelong Learning. Complete the application form in this brochure and mail it with

a \$25 nonrefundable application fee* to the Office of Lifelong Learning, California University of PA, 250 University Avenue Box 12, California, PA 15419. Please note the requirement on the application form for transcripts.

Readmission/Reinstatement Students

If you previously attended California University of PA and would like to be readmitted, you need to contact the dean's office for the college into which you would like to be readmitted. If you were academically dismissed, or left the university in poor academic standing, you need to contact the Office of Student Retention at 724-938-1523.

Students at Off-Campus Sites/Centers

If you are interested in applying for undergraduate admission at one of the off-campus sites/centers of California University of PA, you need to complete the application form in this brochure and mail it with a \$25 nonrefundable application fee* to the site/center to which you are applying. Please note the requirement on the application form for transcripts. Once you have been notified that you have been accepted, you may register for classes. For information on the Southpointe Center call 724-873-2760 or 1-888-333-CALU (2258). For information on the Somerset and Bedford Sites call 814-444-8680. For information on the Workforce Development Center call 412-565-2207.

Nondiscrimination Policy

California University of Pennsylvania admits students of any sex, race, color, national and ethnic origin to all rights, privileges, programs and activities generally accorded or made available to students at the university. The same policy is followed with respect to all employees, regardless of rank or classification. California University of Pennsylvania does not discriminate on the basis of sex, race, color, religion, ethnic and national origin in the administration of its educational policies, admissions processes, scholarship and loan programs, employment practices and athletic and other University administration programs. California University of Pennsylvania does not discriminate on the basis of handicap in admission or access to its programs. Inquiries regarding Title IX compliance and Section 504 of the Rehabilitation Act of 1973 may be directed to Title IX Coordinator (724) 938-4351, Affirmative Action Officer (724) 938-4014, or the Director of the Office of Civil Rights, Department of Health, Education and Welfare, Washington, D.C.

**No application fee is due if you have paid this fee and taken classes at California University of PA within the past three years.*

You may apply online also by doing the following steps:

- Log onto www.cup.edu
- Quick Links
- Log to Student Services
- Apply for Admission
- Login ID
- Identify Verification
- Lifelong Learning

4 Ways to Register

Beginning February 20, 2006

In Person:

Bring your completed registration card to the Office of Lifelong Learning, 202 Eberly Science and Technology Center, on the California University of PA campus from 8 am to 6 pm Monday through Thursday, and 8 am to 4 pm on Friday. (except when the university is closed for holidays).

Note: If you are registering for a course at an off-campus location (such as Southpointe, Bedford, Somerset, etc.) you may take your registration card directly to the office at that location.

By Mail:

Mail your completed and signed registration card to the Office of Lifelong Learning, California University of PA, Box 12, California, PA 15419-1394. Registration cards need to be mailed in sufficient time in order to arrive prior to the start of the scheduled class(es).

By Fax:

Fax your completed and signed registration card to the Office of Lifelong Learning at 724-938-5963 at any time prior to the start of the scheduled class(es).

On-line:

If you are a current student at California University of PA, you may register on-line at sisweb.cup.edu from 7 am to 10 pm, Monday through Friday, and all day on Saturday and Sunday (note: times may vary due to occasional system upgrades) until midnight the day before a class begins. In order to register on-line, your internet browser must be either Internet Explorer or Netscape v6 (or higher). Follow the steps listed below to register:

- Click "Login to Student Services"
- Enter your Social Security Number and your PIN (your PIN is your birth date unless you have changed you PIN – example: 020399)
Note: If you are unable to login after five attempts, your user account will be locked. On the following day, it will be reset so that you may reattempt access.
- Click the "Login" button
- Choose "Registration and Schedule"
- Choose "Drop/Add Classes"
- Choose the Summer 2006 term from the drop down menu
- Read the information regarding academic advising and the review of your schedule. Click the appropriate button to continue to the registration screen.

Follow the rest of these steps to register:

- Enter the key numbers of the sections you have selected
- Click on the "Submit" button to enter your selections into the system

If there are any closed classes, time conflicts, missing prerequisites or other problems with your registration, you will be given a message showing the problem. If you have any questions, please contact the Office of Lifelong Learning at 724-938-5840 for more information.

Once you have registered, you may view or print a copy of your schedule by clicking on "Student Schedule" or "Detailed Schedule" at the bottom of the screen.

Note: If you have a registration hold, you will need to contact the office that placed the hold on your registration to make arrangements to clear it. You may obtain more information regarding your hold by clicking on the Student Services link at the bottom of the Registration Status screen and then clicking on HOLDS.

If you have any problems logging into the system, please contact the Computing Services Help Desk at 724-938-5911, Monday through Friday, 8 am to 4 pm.

If you wish to register for a closed section class, please contact the Office of Lifelong Learning at 724-938-5840 for more information.

You may register up to the first day of classes in each of the sessions for those classes that have not been cancelled, however early registration is highly recommended since classes fill quickly. Courses that do not meet the minimum enrollment, prior to the first class session, will be cancelled and students will be notified by phone (see the cancellation schedule on page 6). Undergraduate students are strongly advised to meet with their advisor prior to registering for Summer 2006 classes. Visiting students should get approval from their home institution prior to registering for classes at California University of PA. Graduate students must contact their advisor or department chair, prior to registration, to discuss their summer session schedule. Undergraduate students registering for more than 18 credits for the entire summer, or more than 9 credits at any one time, must complete an Overload Form and it must be signed by their College Dean. This form must be submitted with your registration to the Office of Lifelong Learning. Visiting and Non-degree students must have the form signed by the Executive Director of Lifelong Learning. Overload Forms may be obtained from the undergraduate dean's offices or the Office of Lifelong Learning.

Payment must accompany all registrations that are received after the listed billing dates on page 50.

If you have any questions or need additional information on Summer 2006 registration procedures, please contact the Office of Lifelong Learning at 724-938-5840.

Application for Admission

Please return the application and \$25 NONREFUNDABLE application fee (make check or money order payable to California University of Pennsylvania or complete the lower portion of this application with your credit card information) to: California University of Pennsylvania, Office of Lifelong Learning, 250 University Avenue, Box 12, California, PA 15419-1394. If you have applied to California University of PA within the last three years and have paid the \$25 application fee, you do not need to submit this fee again.

SOCIAL SECURITY NUMBER _____

PLEASE CHECK ONE: MS. MISS MRS. MR.

NAME _____

E-MAIL ADDRESS: _____

STREET ADDRESS _____

CITY _____

STATE _____

ZIP CODE _____

HOME TELEPHONE _____

ALTERNATE TELEPHONE _____

BIRTH DATE _____

Sex: M F

Race* _____

Religion* _____

Are you a US citizen? Yes No County of Residence _____ Years of Residency _____

Are you a veteran? Yes No

Semester you wish to attend:

Summer 2006 Fall 2006 Full Time (12+ credits/semester) Part Time (less than 12 credits/semester)

Location you wish to attend: Main Campus Southpointe Other _____

Name of High School Attended: _____ Year of Graduation _____

College(s) Attended

NAME/ADDRESS OF COLLEGE	START/END DATE	NUMBER OF CREDITS	DEGREE COMPLETED (YES/NO)

over →

Undergraduate Admission

Program of Study _____

If you are transferring from another institution, are you in good academic standing? Yes No

(If no, please explain on a separate sheet of paper.)

To be considered for admission the applicant must submit the following:

1. Completed application form
2. Application fee (\$25). This fee is waived if you have taken classes at CAL U within the last three years.
3. Official high school transcript which includes class rank or GED certificate
4. Scholastic Assessment Test (SAT) or American College Testing (ACT) scores (may be waived for applicants who have been out of high school for at least three years or have an Associate, R.N., or Baccalaureate degree)

* *Transfer students must submit college transcripts from all institutions attended.*

Evening/Weekend and Non-degree Admission

Program of Study: Humanities Social Science Natural Science Non-degree

Prospective level of entry: Transfer Student Evening/Weekend Other (please specify _____)

Social Science, Liberal Arts or Natural Science Majors must submit official high school transcripts and official college transcripts from all institutions where you previously attended.

Non-degree seeking students who have not completed a degree must submit official high school transcripts.

Non-degree seeking students who have completed a degree should submit official college transcripts.

Visiting Students

Which post secondary institution do you currently attend? _____

If you have applied to California University of PA within the last three years and have paid the \$25 application fee, you do not need to submit this fee again.

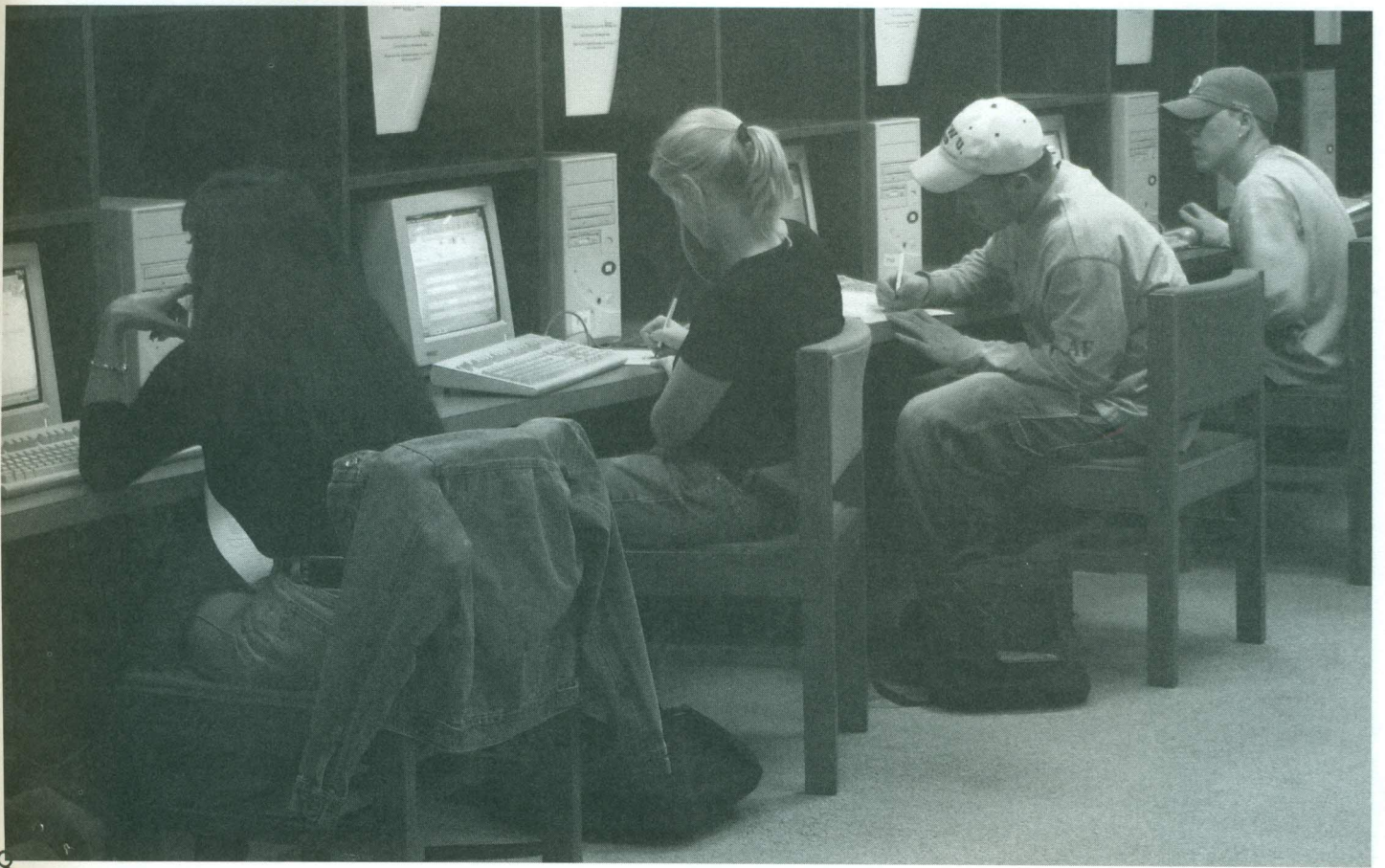
**Optional: These questions have no bearing on the application. They are information questions which will help us to better serve you. Please refer to the Nondiscrimination Policy in the University Catalog.*

I understand that the above statements are true to the best of my knowledge. Any false information may be used as grounds for denial or dismissal. I also realize that credentials filed in support of this application become the final property of California University of Pennsylvania.

SIGNATURE _____

DATE _____

NAME ON CARD _____	EXPIRATION DATE _____
CARD ACCOUNT NUMBER _____	
<input type="checkbox"/> MasterCard <input type="checkbox"/> VISA <input type="checkbox"/> Discover <input type="checkbox"/> Expiration Date I authorize a charge of \$ _____	
CARDHOLDER SIGNATURE _____	DATE _____
Office Use _____	



Summer Course Registration Card

Grad	Undergrad	Social Security Number	Student's Last Name	First Name	M.I.	Year
E-mail Address			Home Phone Number	Alternate Phone Number		

Course Title	Dept Code	Course No	Cr Hrs	Sec No	Days and Times							Building Code	Room No	Instructor	Key No	Location
					Sun	M	T	W	H	F	Sat					
Total Credits Scheduled																

Advisor's Signature

Date

Students who register will be mailed a billing statement that includes their schedule. If you register after the billing dates (indicated on page 57) you will need to be prepared to make payment at the time of registration. Telephone registrations, cancellations, or withdrawals are not accepted. By signing the line below, you are acknowledging that changes may occur in the printed schedule due to circumstances beyond the control of the University and that not attending or making payment for a class does not constitute official withdrawal. Your registration will not be processed without your signature.

STUDENT'S SIGNATURE _____

DATE _____

WILL THIS COURSE BE USED FOR ACT 48 CREDITS _____ YES _____ NO

SCHOOL DISTRICT _____



California University of Pennsylvania

250 University Avenue
California, PA 15419

NONPROFIT ORG
U.S. POSTAGE
PAID
CALIFORNIA
UNIVERSITY OF
PENNSYLVANIA

FOR MORE INFORMATION

Office of Lifelong Learning
202 Eberly Science and Technology Center
California, PA 15419
phone: 724.938.5840
toll free 1.866.268.9154
fax: 724.938.5963
E-mail: summer@cup.edu

Website: www.cup.edu
Student services/schedule information:
sisweb.cup.edu

A member of the Pennsylvania
State System of Higher Education

Integrity, Civility, Responsibility



California University of Pennsylvania is an academic community dedicated to the ideals of justice, fairness and equal opportunity for all. In compliance with federal and state laws, the university is committed to providing equal educational and employment opportunities for all persons without regard to race, color, sex, religion, national origin, age, disability, ancestry, sexual orientation, or status as a disabled or Vietnam-era veteran. The university will not tolerate racial, ethnic or sexual discrimination. Sexual harassment is considered by law to be a form of sexual discrimination and is, therefore, unacceptable. Direct equal opportunity and affirmative action inquiries or complaints to the Special Assistant to the President for EEO/University Ombudsperson, Office of Social Equity, South Hall 112, 724-938-4014. Direct inquiries regarding services or facilities accessibility to the ADA/504 Compliance Officer, Office of Student Development and Services, Azosky Hall 105, 724-938-4076. Direct Title IX inquiries to the Senior Women's Administrator/Title IX Coordinator, Department of Athletics, Hamer Hall 248, 724-938-4351.

www.cup.edu

Classes offered at:

- California Campus
- Southpointe Center
- World Wide Web

CALIFORNIA UNIVERSITY OF PENNSYLVANIA