

1999

MONOCAL



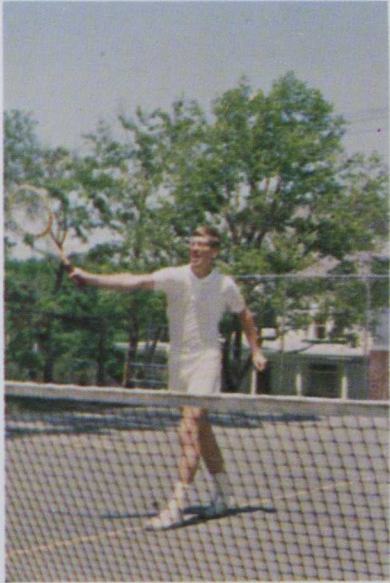
WELCOME TO



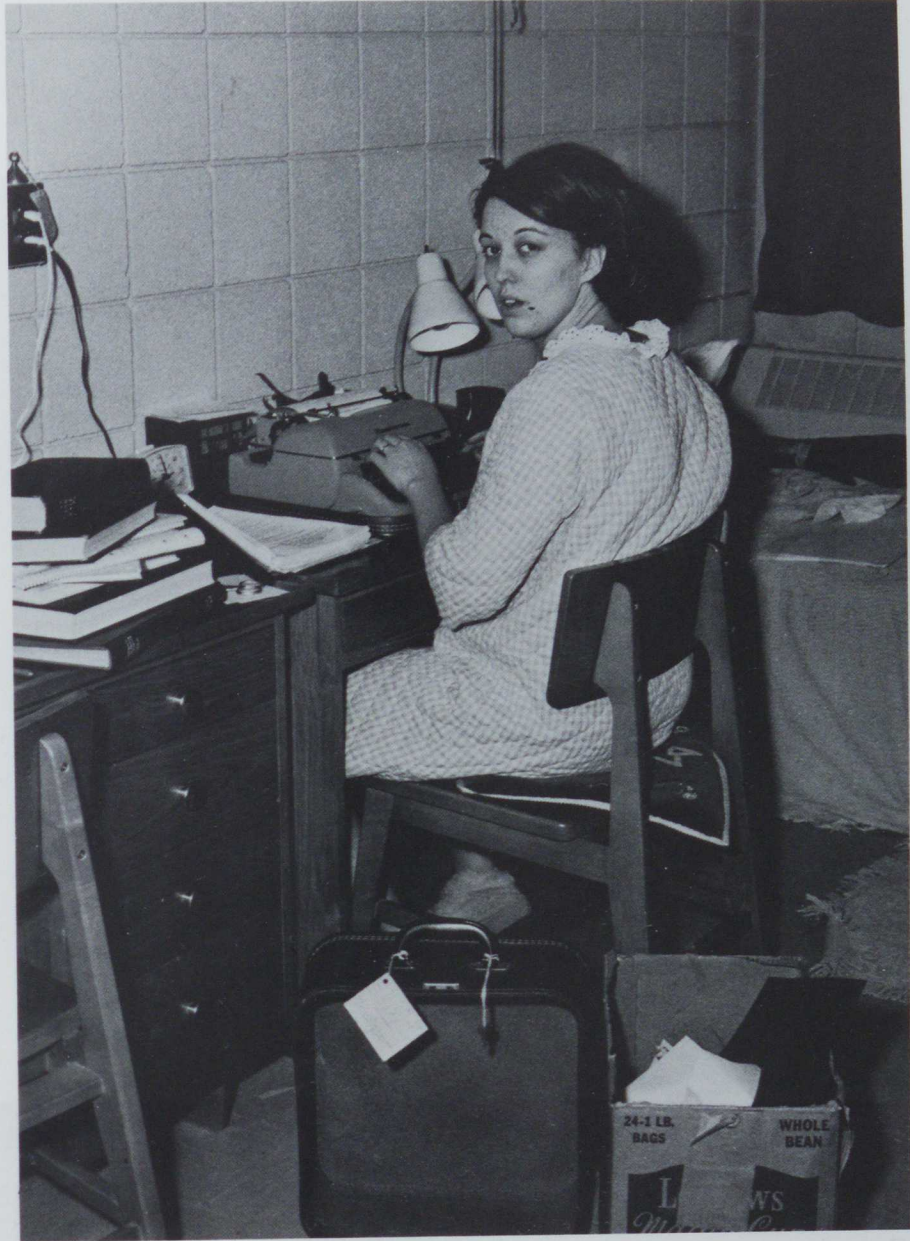


CALIFORNIA STATE COLLEGE













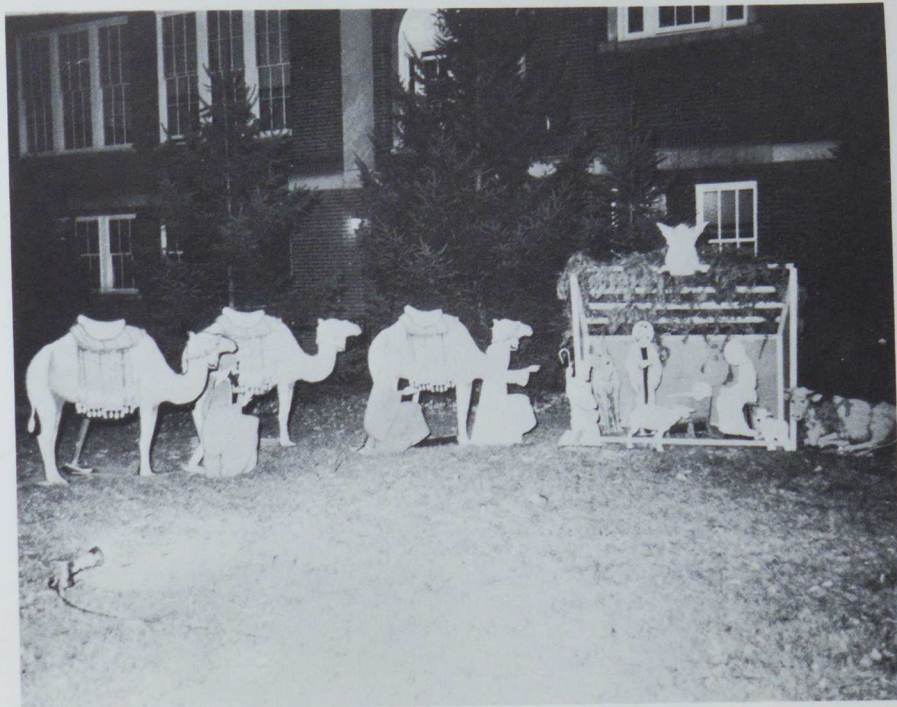


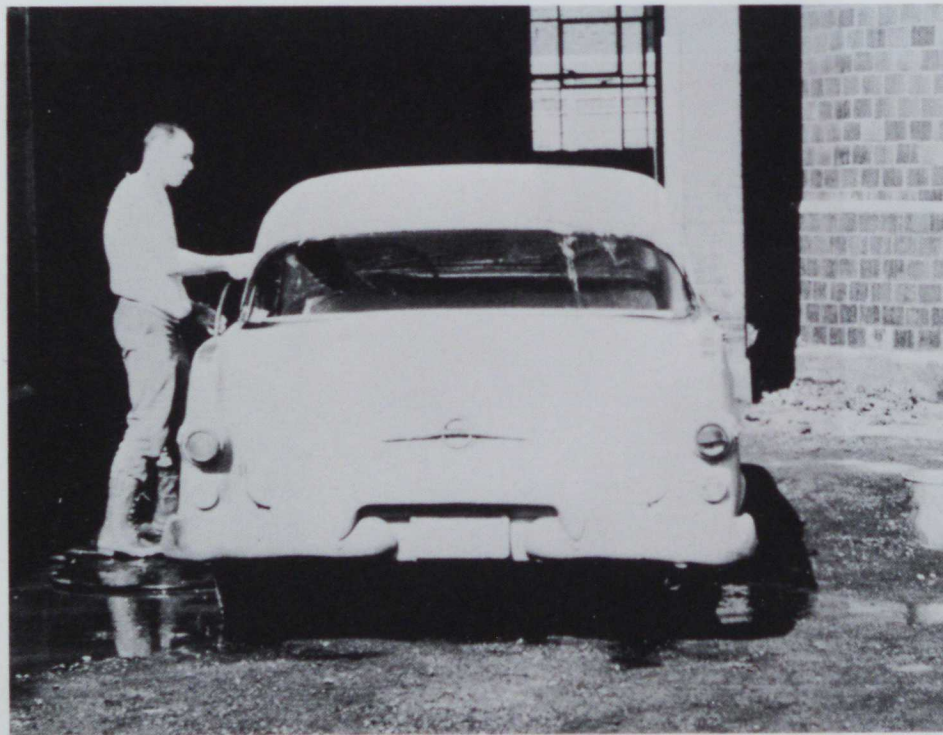


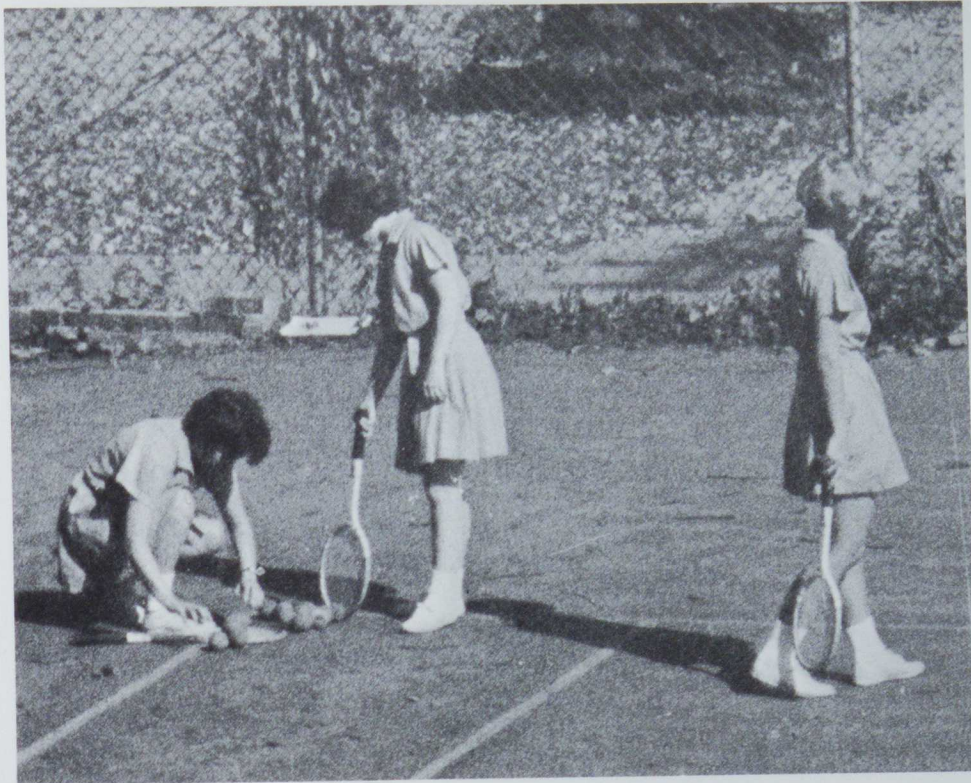




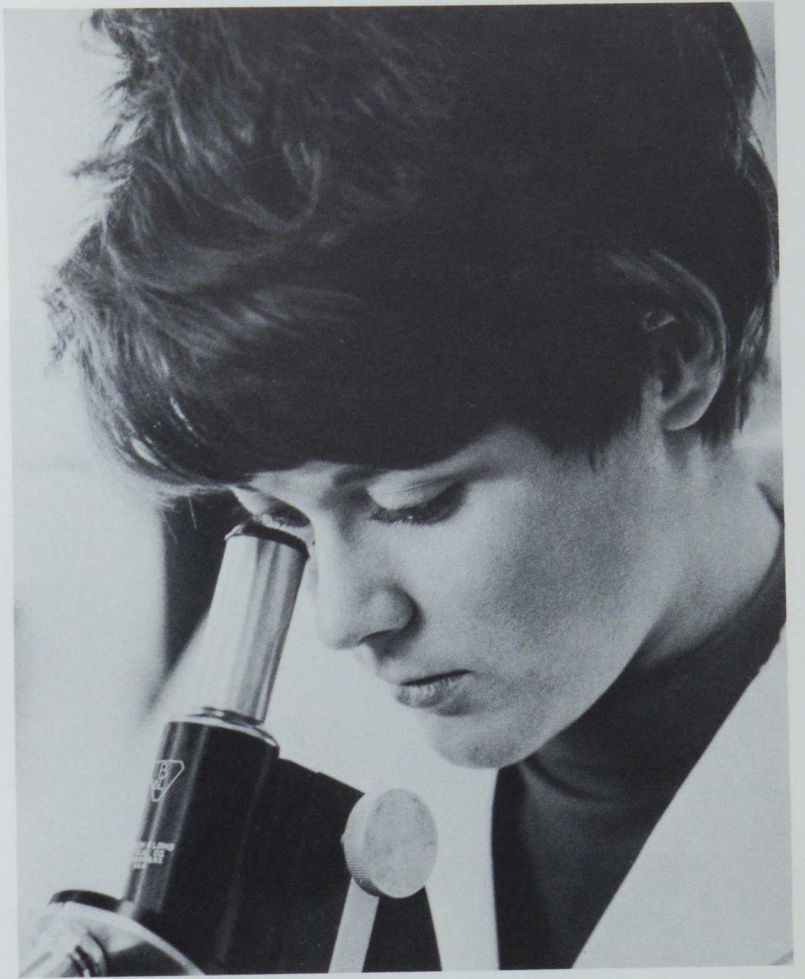












DR. MICHAEL DUDA

PRESIDENT OF THE COLLEGE



PRESIDENT'S MESSAGE

This has been an exciting year at the California State College, a year when the efforts of the entire college have been directed to greater academic ends. We believe California has found a distinctive and significant place in the academic world. Our students are succeeding in many endeavors. Every effort is made to help each student develop his academic potential. Each student has progressed as well as he desired to, at the same time acquiring mastery of his academic interests.

It is the objective at California to give a student exposure to various studies and develop competency in a chosen discipline along with the necessary collateral studies. Here academic achievement is commended and intellectual curiosity encouraged.

The purposes of California are not limited to academic. The college believes the student must prepare not only to earn a living but also to have a life of service to humanity, to his country, state and his God. The administration and faculty are always for more original and significant ways of relating the experiences of college to the great issues and decisions of life.

This has been a year of achievement and greater planning. All segments of the college community have participated. It is thrilling to be a member of such a good educational team of trustees, faculty, students and friends of California. We have confidence that the college will continue to emerge as a college of greater academic distinction.

To you students we bid you good health, happiness and enduring satisfaction through your educational accomplishments.



Nevin E. Andre



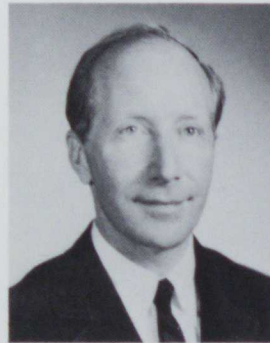
Arthur L. Ball



Robert Aldstadt



James T. Anthony



Robert Bander



Dorothy Bell



Lottie Alto



Mitchell Bailey



Ruth Barry



William Benedetti



Olga Andersen



Nellie Baliker



Sydney C. Bausor



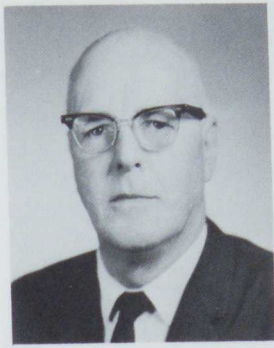
August Bethem



Asa Anderson



Gabriel Betz



Hershel Bowlen



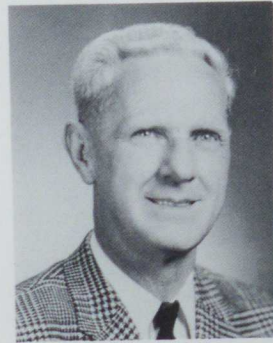
Charles Butler



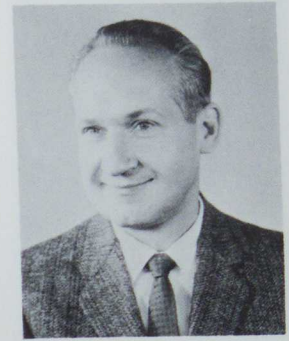
Richard Birch



Willa A. Brigham



Arthur Cairns



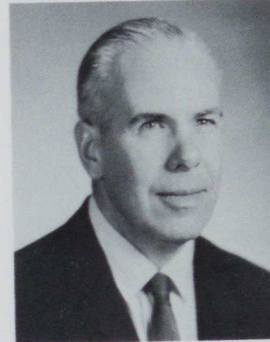
Ralph Charney



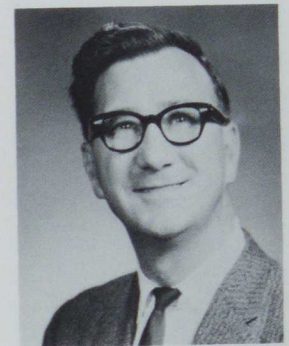
John Bitoni Jr.



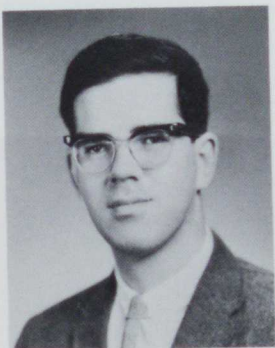
Ralph C. Brown



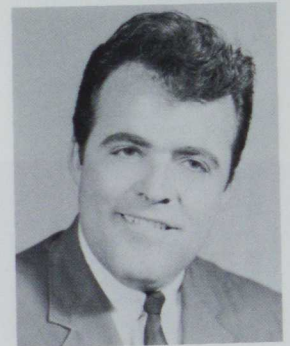
Merrill Campbell



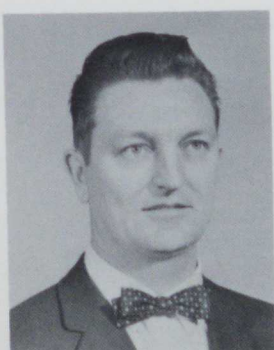
Leonard Colelli



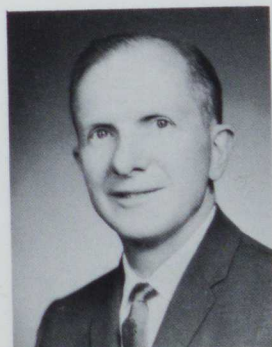
William Blank



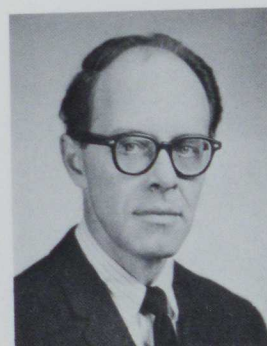
Thomas H. Coode



Vernon L. Bloemaker



William Buell



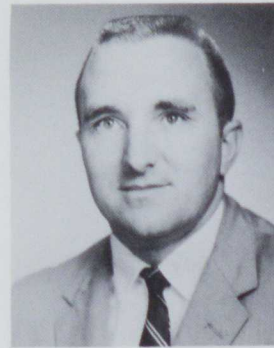
Edward Cassidy



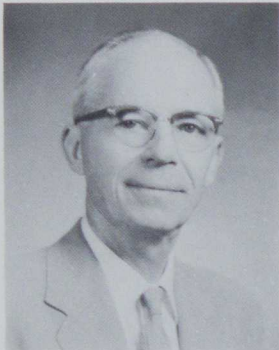
Arthur M. Coon



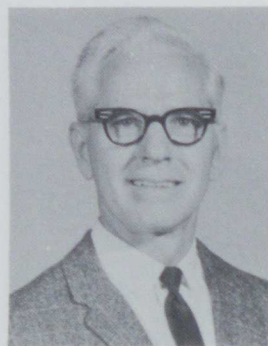
Robert J. Craig



Charles W. Cutshall



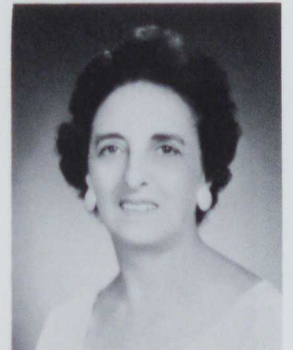
Shriver L. Coover



Harold Crockett



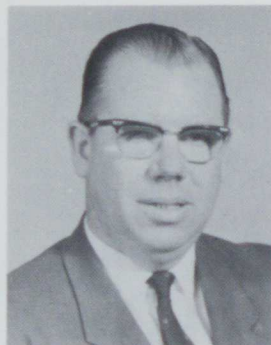
Rose Dalaidi



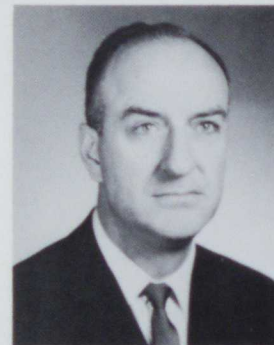
Mary R. De Carlo



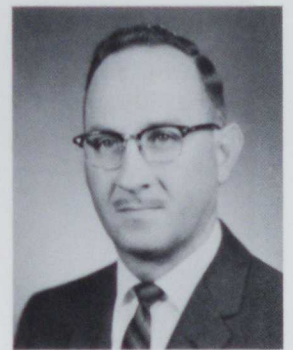
Edward Coursey



Leslie Crowley



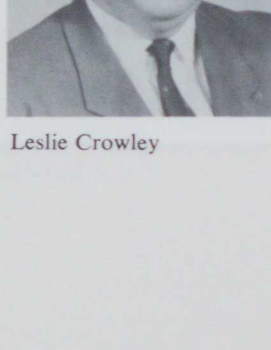
William Daniels



Berlie E. Dishong



Merle Covell



Joseph Dochinez



Robert Cowels



Ned Culler



Gertrude Davis



Angus H. Double



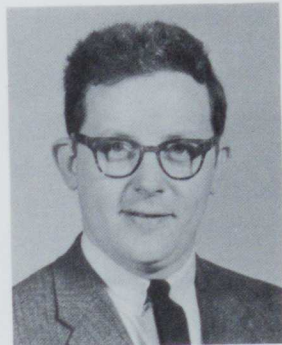
Antonio Fernandes



Harold Friedman



William L. Dovenspike



Sumner Ferris



Alan Furbush



Karl Gamble



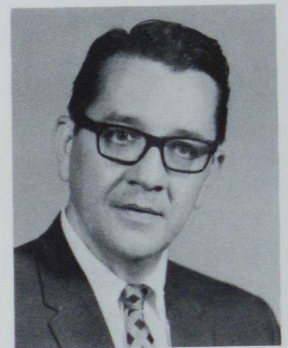
David L. Dunbar



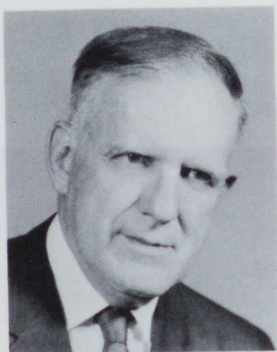
Burt Fettig



William Gabor



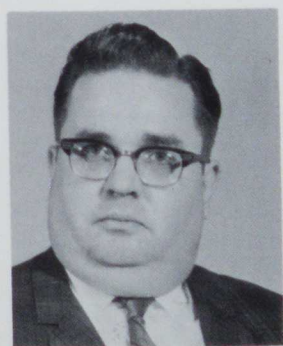
Henry R. George



Ralph W. Edwards



Pauline Glod



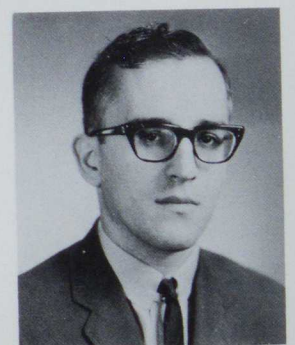
Edward E. Fear



J. C. Fleming



Elias Gabriel



Stanley Gogoj



Clyde Hartman



Eugene Hester



Robert Grimes



George Helfinstine



Merrell Holman



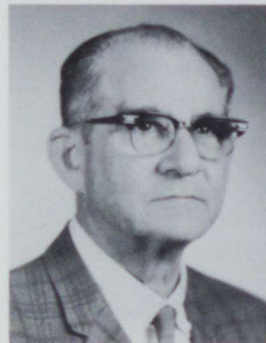
Rose Hughes



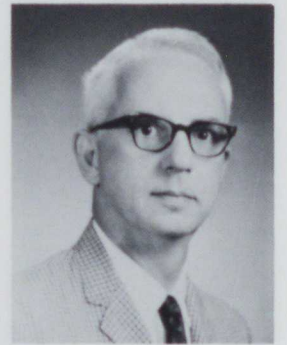
Lela Hamilton



Arthur Henry



A. J. Hoover



Philip Jack



Edward Harris



Francis Herron



Jack Hoyes



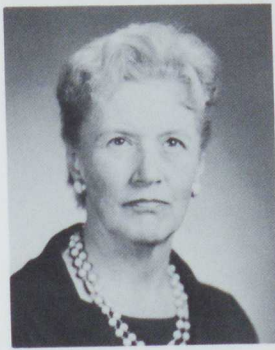
T. W. Johnson



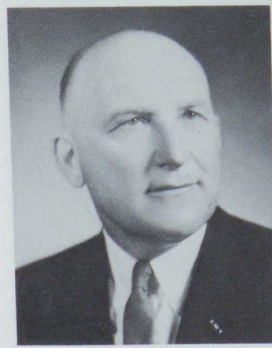
George Hart



Harold Jones



Isabella King



Joseph Kulikowski



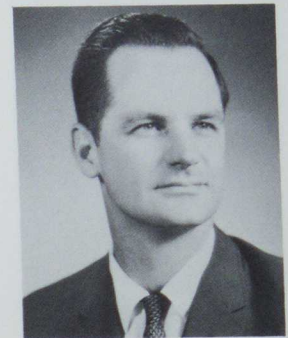
Roger Keightley



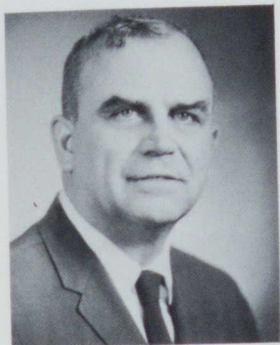
Walter Kipp



Vincent Lachner



Gaston Lebois



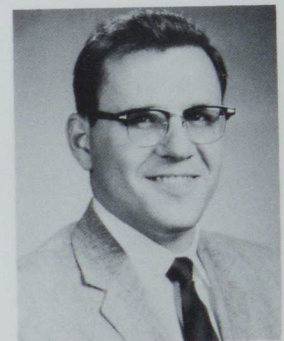
John Keller



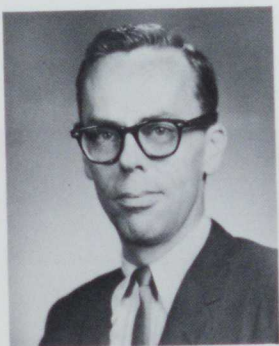
Alek Krill



Norma Langham



Steven Levendos



Paul Kendall



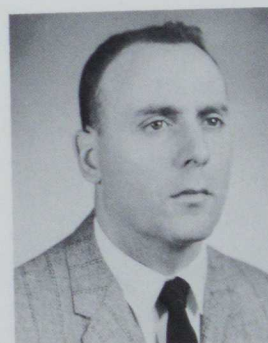
John Lewis



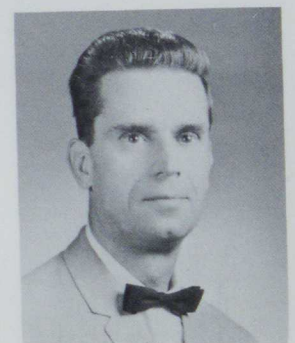
Gary Kennedy



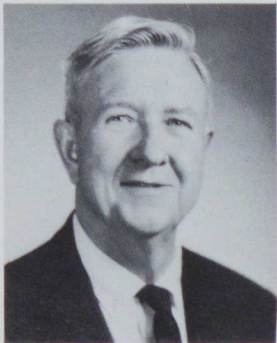
Josephine Krishnappa



Thomas Leavy



William Lister



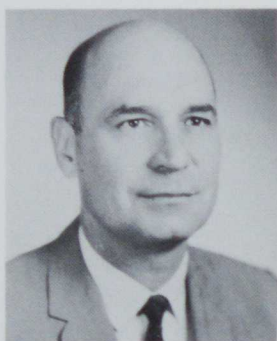
Minor Major



Robert Matzen



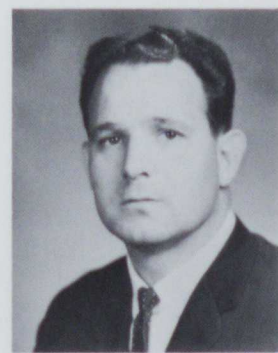
Arthur Long



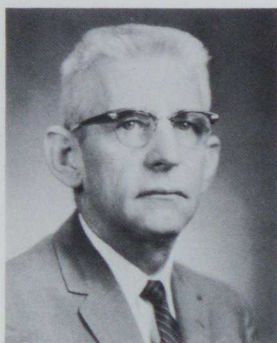
Wilbur Marisa



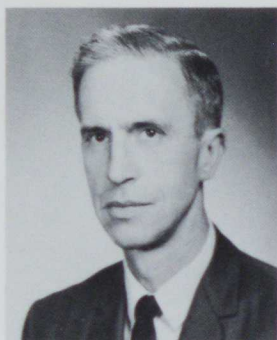
Harold B. Miller



Elmo Natali



John Long



S. C. Marshall



Robert F. Minnick



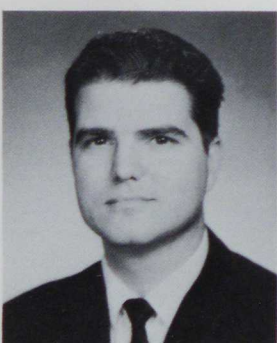
Frank Naylor



Janice McConnell



Joann Nelson



Donald McFeely



Anthony J. Mattee



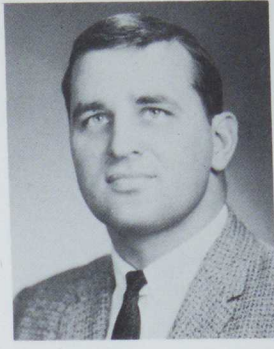
Harold Monroe



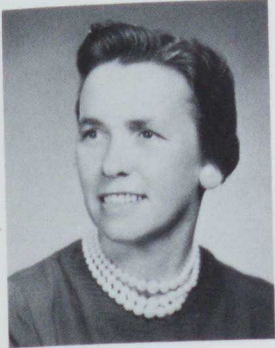
Theodore Nemeth



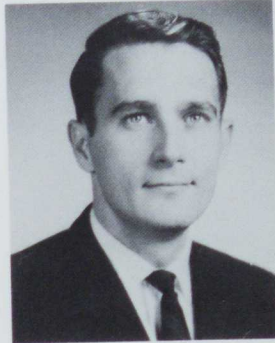
Mary O'Brien



William Procasky



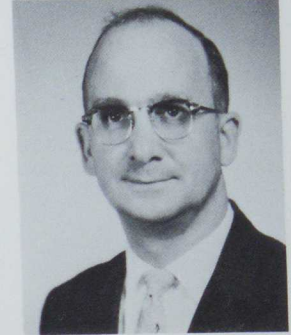
Doris Nevin



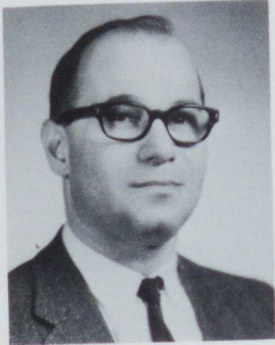
H. R. Pankey



Arthur Proud



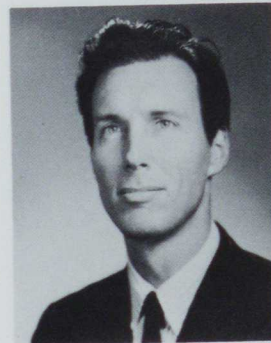
John Riggle



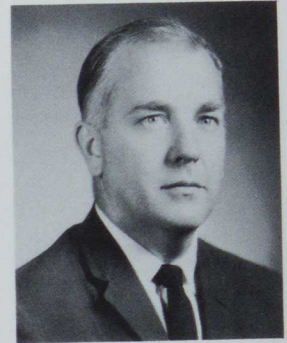
Alex Newell



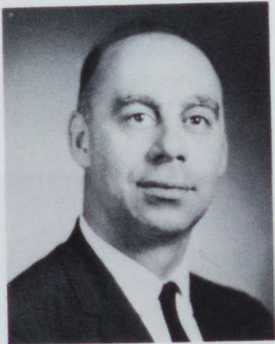
George Papacostas



Connie Mack Rae



George Roadman



James Norman



Luis Romero



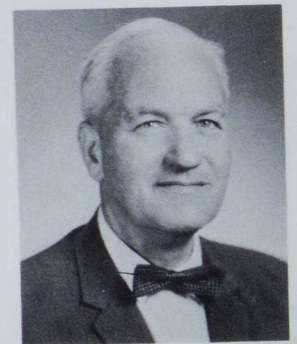
George Novak



Stephen Pavlak



K. W. Richards



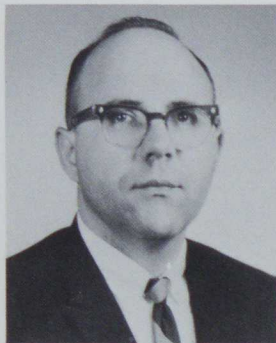
Paul Ross



Regis Serinko



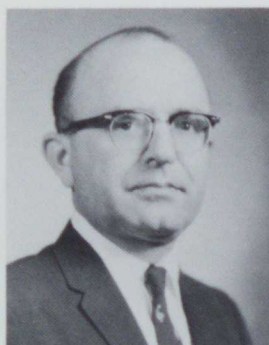
Alexander Smoyer



Donald Sapko



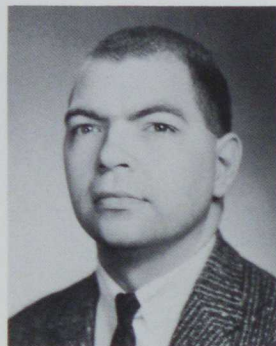
Irvin Shutsy



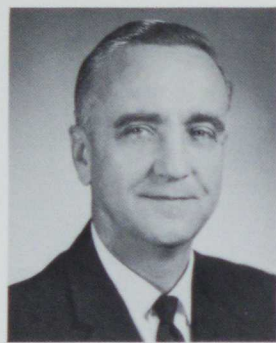
Hubert Snyder



Shirley Sutton



John Schickling



Charles Slick



Vetold Sporny



John Swearington



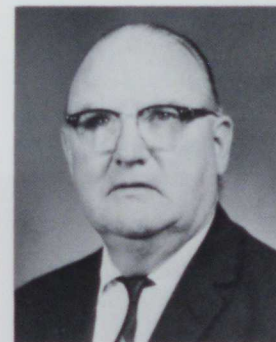
Andrew Sepsi



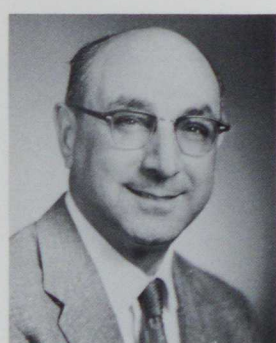
Ralph Smith II



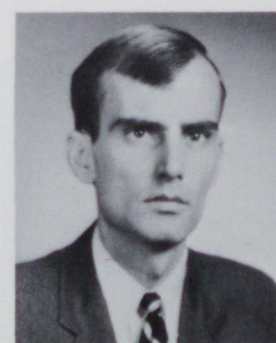
Anthony Stavaski



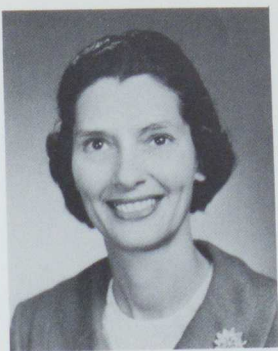
Raymond Sweeney



Michael Serene



Charles Thomas



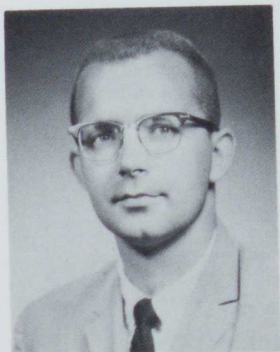
Yvonne Weber



Lola Willet



John Tomikel



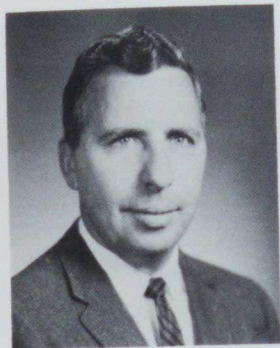
Allen Welsh



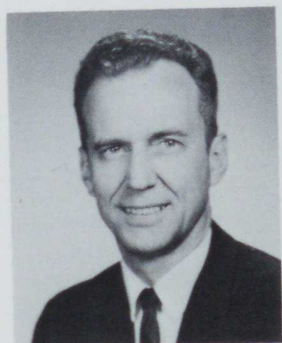
Jack Wise



Henrietta Wood



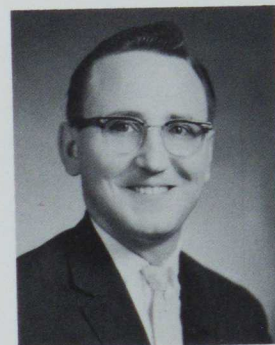
John Walsh



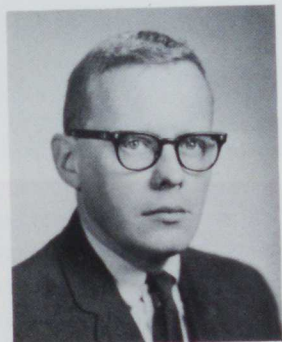
Paul Wickerham



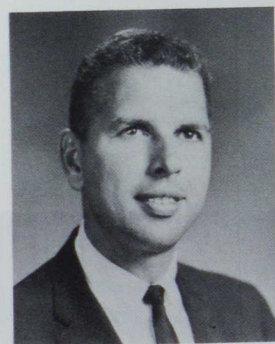
Myles Withey



Edward Zadorozny



John Watkins



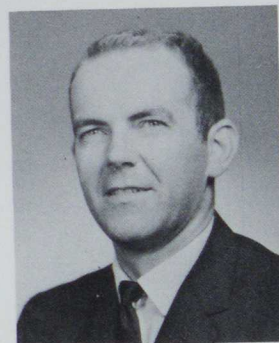
George Zemo



Marian Weaver



Paul Wighaman



Robert Zoppetti



SPECIAL RECOGNITION

Mr. John F. Lewis, chairman of the Biology Department at California State College and a member of the faculty for the past 20 years, an extremely devoted educator, humanitarian and a true friend of the students. Mr. Lewis, a native of Pennsylvania will retire in Sunbury. His plans are to travel extensively throughout the United States to fulfill a lifelong ambition.

Mr. Lewis' service to California State College has been long and faithful. The students, the faculty, and the administration of the college express their sincerest appreciation for his service to the school and their best wishes for a fruitful and enjoyable retirement, full aware of the fact that the college is what it is today because of dedicated professors such as he who have labored so nobly in its behalf.

BOARD OF DIRECTORS

Mr. James H. Adamson
Dr. Joseph M. Dudas, Sr.
Mr. John C. Frich
Mr. D. C. Longanecker

Mrs. Grace H. Clyde
Mr. Peter T. Dumbauld
Mr. James E. Hamer
Mr. J. Albert Reed
Mr. T. Gerald Stanley



CLUBS

AND

ORGANIZATIONS



Honor Societies	37
Clubs and Organizations	41



Seated: J. Leibowitz, J. Chalfant, R. Michaels. *Row 1:* K. Blackburn, C. Lytle, K. Rich, A. Ciferno, G. Stublarac, M. Thomson, C. Carte, B. Bruce, P. Kovach, J. Chauvel, D. Yankin, D. Alexovich, L. Bonito, K. Pace, J. Cole, K. Shan-

ner, B. Gasper. *Row 2:* L. Covell, J. Hill, K. Shutte, M. Serene, B. Ercoline, P. Hartsek, R. McPherson, R. Gratz, E. Weiss, J. Brey.

STUDENT CONGRESS

The Student Congress is the legislative body of the Student Activities Association, Incorporated. It is the duty of the Student Congress to consider such matters of student interest as presented by the students through their recognized organizations. Student Congress, through the election committee, shall organize, supervise the elections involving the student body, and Congress also makes recommendations and suggestions to be administration concerning matters of student interest.



CHI BETA PSI

Chi Beta Psi is an honorary fraternity dedicated to high scholarship, interests, and ideals in the field of science. The purposes of the organization are threefold: the stimulation of further interests in the field of science, the recognition of outstanding students in the field of science and the promotion of social and professional efficiency.



EPSILON PI TAU

Epsilon Pi Tau is an international honor society in Industrial Arts and Industrial Vocational Education.

The purposes of the Organization are threefold: to recognize the place of skill; to promote social and professional efficiency; to foster and reward research, and to publish and use its results. The local organization is the Psi Chapter, and holds at least one meeting a month.



GAMMA BETA PSI

Gamma Beta Psi was organized in 1964 for the benefit of all interested girls in the field of science, including chemistry, biology, math, and physics. The organization recognizes scholastic achievement in science and endeavors to promote further interest in science and related fields. The encouragement of high ideals of character, professional ethics, and good leadership are its goals.



KAPPA DELTA PI

The purpose of Kappa Delta Pi is to encourage high professional, intellectual, and personal standards and to recognize outstanding contributions to education. To this end it invites to membership such persons as exhibit commendable personal qualities, worthy educational ideals and sound scholarship.



A.R.C.

The purpose of the Association for Retarded Children, open to all students, is to promote interest in mentally handicapped children as well as to maintain efficiency in methods of education, to sponsor programs which will inform the student body of present and future methods concerning special education, and to develop in students a recognition of a program that was made possible by the Association for Retarded Children representing California State College.



CIRCLE K

Circle "K" Club received its charter in January, 1962, and its main objective is to render service to the campus, community, and the nation, as well as to the individual. Membership is open to all male students of California State College who have a sincere interest in service. Circle "K" must be distinguished as a service organization under the name of a club and not a fraternity. The motto of the club is "WE BUILD" with the adopted motto, "You can count on me!" In its brief history the Circle "K" Club has rendered a great number of services to the faculty as well as to the campus and the community.



HISTORY AND INTERNATIONAL RELATIONS CLUB

The History and International Relations Club provides weekly forums of the discussion of current international problems. Membership is open to all students interested in understanding the complex problems of international policies. Each problem is presented in the form of a policy paper and during the question period the speaker endeavors to defend his thesis. The club also sponsors films and invites eminent authorities to our campus to discuss the problems of world policies.



INTER-COLLEGIATE CONFERENCE ON GOVERNMENT

The Intercollegiate Conference on Government, organized on campus in 1934, is a member of the state organization of the same name. The group numbers twelve students chosen on the basis of their interest and ability in the field of government and includes membership from the entire college curriculum. Founded on the principles of: "Our purpose is to provide a means whereby students may learn together how the government operates." The group discusses current state and national legislation, draws up sample bills, amendments, and party platforms, and then the members debate their proposed legislation in committees and in a general assembly at their annual convention in Harrisburg. Regional meetings are held four times a year to discuss organizational and legislative problems at various colleges in the southwest region of Pennsylvania.



INDUSTRIAL ARTS LEADER

The Industrial Arts Leader is a newspaper published by the students of the Industrial Arts Department twice a year. It is circulated in fifty states plus a few foreign countries, thus publicizing California State College nationally.

The aims of The Leader are to provide for students experiences in writing, editing, printing, and preparing for the mailing of this department newspaper. It also serves as a direct means of local public relations with copies being sent out to the administration, faculty, and Industrial Arts Alumni.



MONOCAL STAFF

P. Provenzano, K. Smith, S. Nyswanner, A. Matta.

Advisor	Dr. Minor Major
Editor in Chief	Miss Adele Matta
Literary Editor	Miss Kathy Smith
Senior Editor	Miss Nancy Baldrige
Typing Editor	Miss Sharon Nyswanner
Secretary	Miss Peggy Provenzano



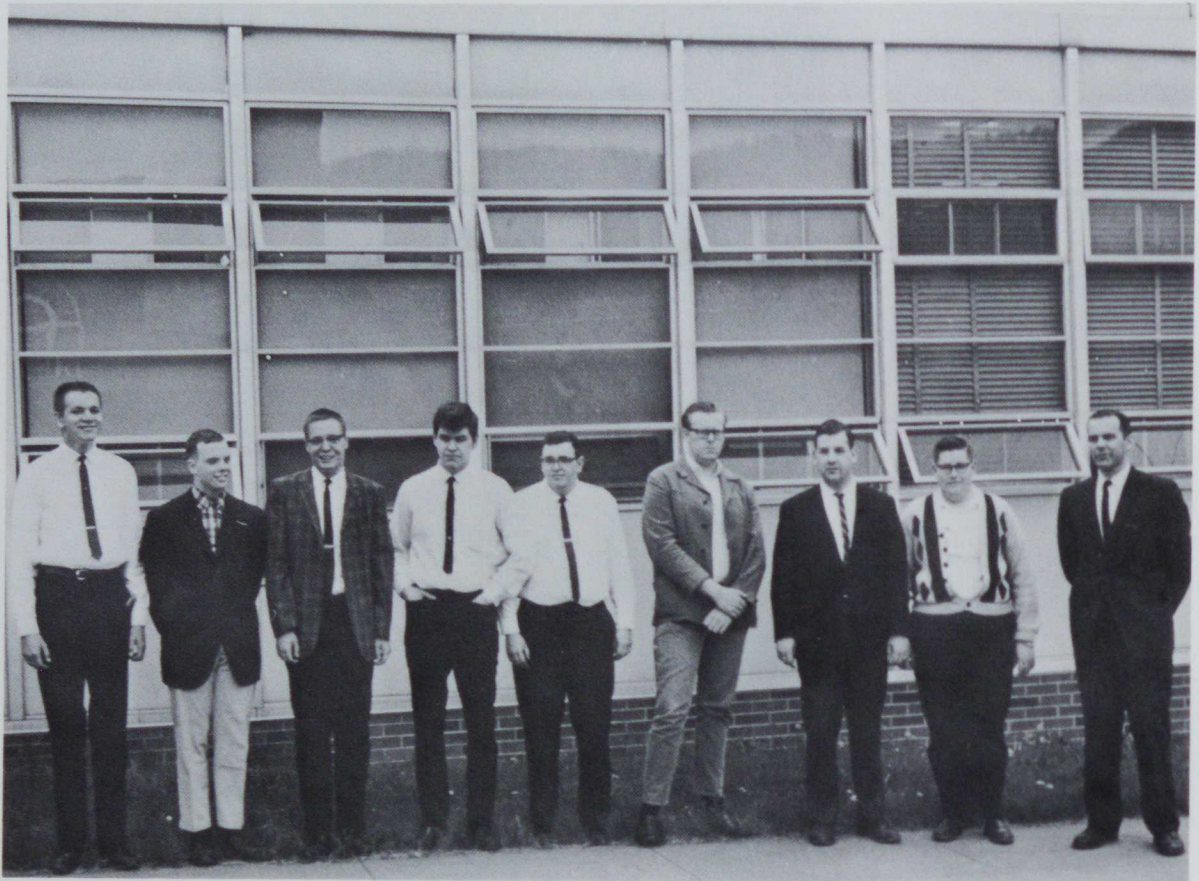
Dr. Minor Major



Too often we fail to realize those responsible for making a yearbook possible. At this time I would like to thank the many people involved in making the 1966 Monocal a reality. Much valuable time and effort were spent in publishing this edition of the yearbook, not only by the staff but by such people as Mr. Johnston of Merin Studios who took most of the candid and group shots. (Our own staff lacking properly organized photographers.)

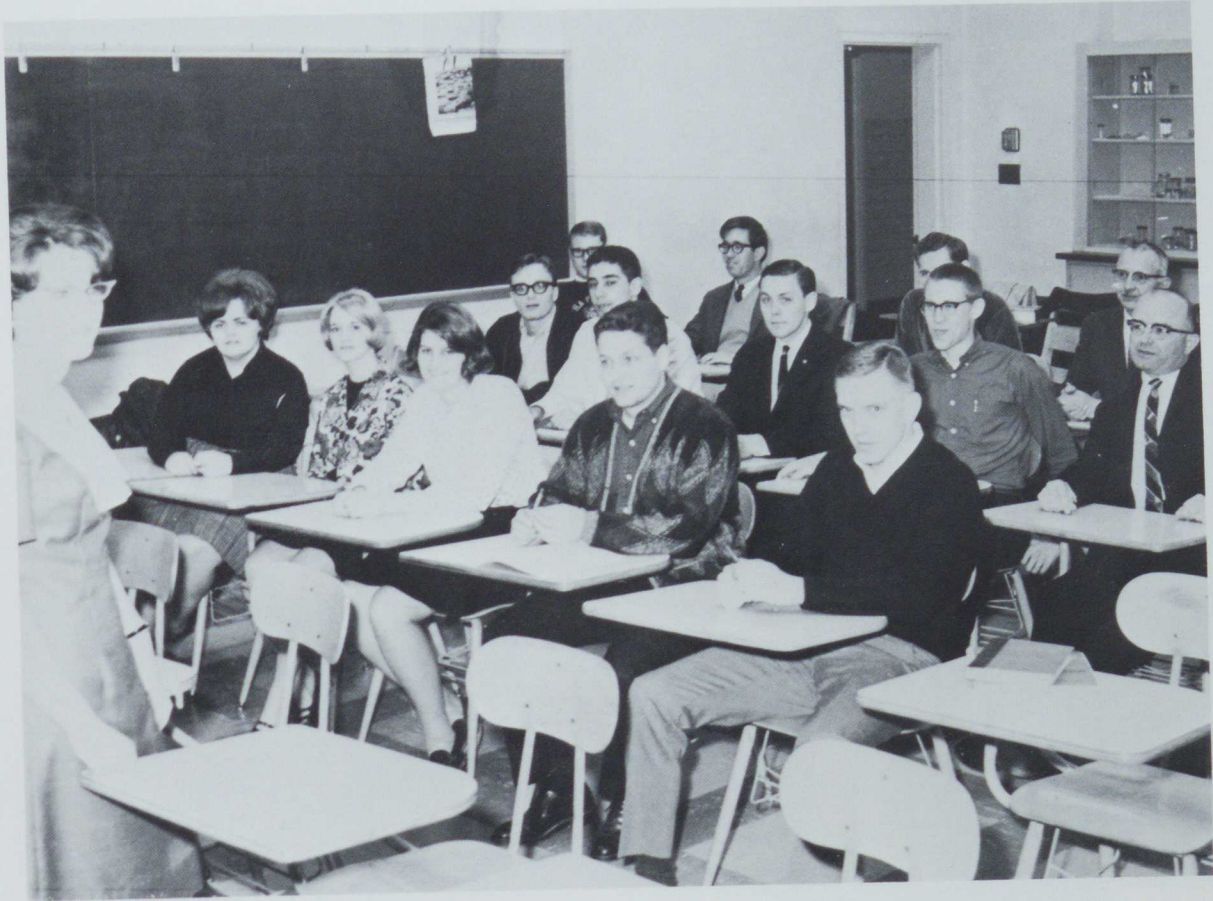
I hope that this will be one of the best annuals ever produced at California State College, for it is a lasting record of the moments we shared during the 1965-66 school year.

ADELE MATTA
Monocal Editor



RADIO CLUB

California's Amateur Radio Club is open to all those whose interests lie in learning or advancing the field of radio communications and electronics as a study or a hobby. The club has a station, W3SUS, which is in operation during the club meetings, or in the case of national emergencies or Civil Defense alerts.



SCI-Q CLUB

The Sci-Q club, under the direction of Mr. Herbert Snyder, is designed to help its members understand the importance of science to the elementary school child; to give service to elementary science teachers and pupils; to increase our knowledge of science; to better prepare its members for teaching science in the elementary grades; and to be of service to the college and community.



STUDENT UNION BUILDING COMMITTEE

The College Union Building Committee is a standing committee whose primary purpose is to gather information dealing with the proposed College Union Building to be built at the college.

The Committee consists of the President of the College, the Dean of Men, Superintendent of Buildings and Grounds, Business Manager, a member of the Alumni Association, the Director of Student Activities and six members of the student body.



GIRL'S DORM COUNCIL

The Girls Dorm Council, under the direction of Miss Isabella King, is responsible for the conduct of girls living in the dorm. Floor councils hold regular meetings as well as regular meetings with their advisor. The Council takes charge of such matters as parties, house meetings, and enforcement of regulations. The girls also provide desk service and deliver the mail.



MEN'S DORM COUNCIL

The Dormitory councils of McCloskey Hall and Johnson Hall meet regularly with the resident managers to discuss and analyze living conditions within the dorm. In addition to improving dormitory life, the councils provide entertainment by sponsoring an annual Christmas Party, which has become one of the big events on campus. During the Homecoming Celebration, the council has provided for an annual open house at McCloskey hall and a welcome to all who wish to visit.

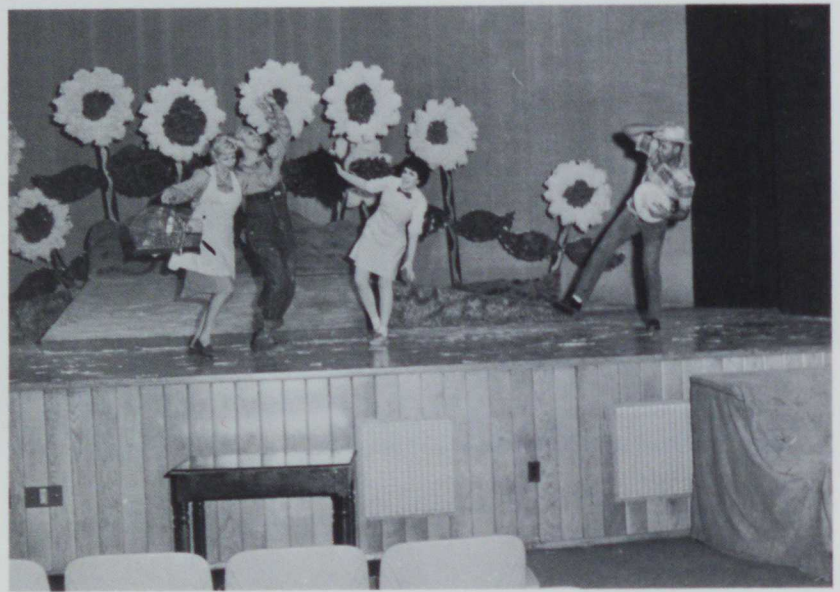
An enthusiastic athletic program highlights another creative effort by the councils. At present, the program consists of: an interdorm softball league, competitive table-tennis matches, touch-football games, and other seasonal activities.

These important organizations, often unrecognized by the student body, work diligently to provide the best possible environment for study and recreational activities for their residents.

CHILDREN'S THEATER

The Children's Theater of California State College, a service organization to the campus, was formed to promote the cultural growth of the children of the area by presenting plays for children with college performers. The purpose is to give the college students an opportunity to develop vocational skills and abilities in the academic theaters of the secondary, elementary, community, and summer camp areas and to develop personal self-expression and artistic creativity in acting, directing, and stage production.









COLLEGE PLAYERS

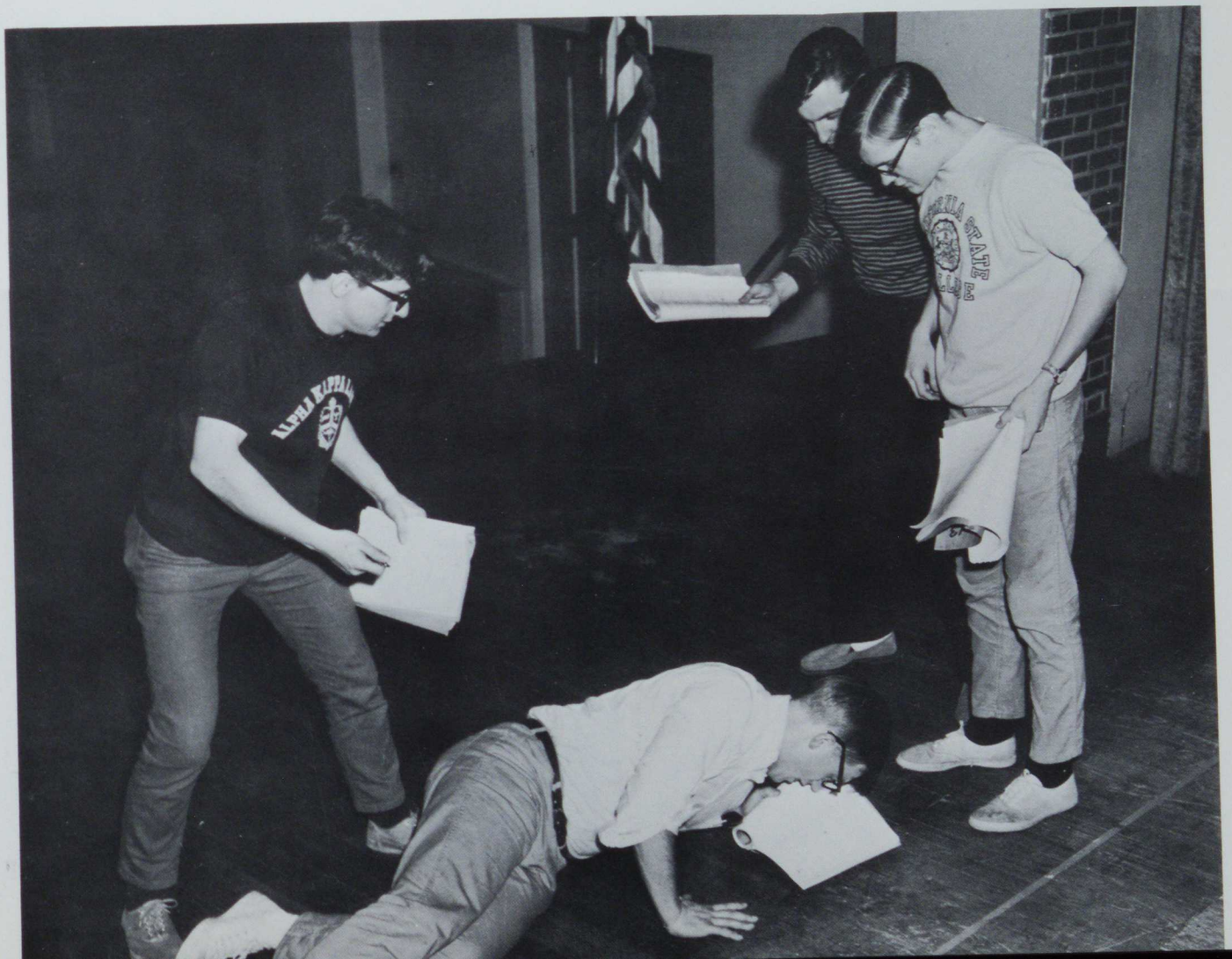
The purpose of College Players is to provide the student body and community with a high level of theatrical entertainment, while affording members the ample opportunity to learn the various aspects of a theatrical production; acting, make-up, lighting, sound, etc.

The College Players present two major productions each year as well as two experimental groups of one-act plays which are presented in the style of theater-in-the-round.

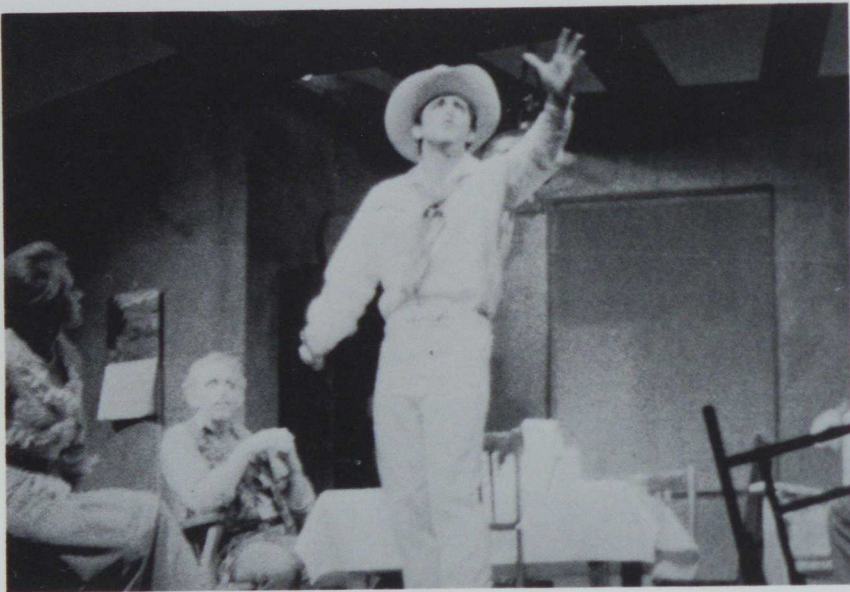




Scenes from . . .
Finian's Rainbow



The Rainmaker.





OUR
CHEERLEADERS



GREEKS



Panhellenic Council	62
Sororities	64
Fraternities	76



PANHELLENIC COUNCIL

Panhellenic Council has the responsibility for setting and maintaining high social and academic standards for sorority women. Three delegates from each of the five social sororities form the College Panhellenic Council, which is responsible for local Panhellenic operation in accord with National Panhellenic Conference policies and procedures.





ALPHA PHI OMEGA

Alpha Phi Omega is a national service fraternity, with a definite program of activities in which the chapter directs its energy and talent toward the benefit of its fellow men.

The purpose of Alpha Phi Omega is "to assemble college men in the fellowship of the Scout Oath and Law, to develop friendship, and to promote service to humanity." This imposing objective includes four major fields of activity in which the program is directed. These four fields include: service to the student body and faculty, service to youth and community, service to the members of the fraternity, and service to the nation as participating citizens. Alpha Phi Omega has a strong desire to help others and this is one of their requirements for membership.

ALPHA XI DELTA



This year California's Alpha Xi's made the big move into a sorority house on Second Street, and anyone who has done any remodeling can tell you how busy the sisters have been this year. The Fuzzies have been painting, pounding, and plastering their house into tip-top shape, and all was done with only the best in decorating taste.

Just to keep the girls busy in odd moments, the Alpha Xi Delta's have a long list of activities and accomplishments for 1965, including a formal at the Jacktown Hotel in Irwin, singing Christmas Carols at the Fayette County Home for the Aged, holding a homecoming tea for parents, having mixers with several campus fraternities and a lengthy one with a Duquesne University fraternity, holding a spring fashion show, and visiting their own Christmas tree while it was in jail.

Fuzzie honors include winning the second place scholarship trophy, having a representative in the homecoming court, having presidents and other officers in several campus activities, and just being a great bunch of girls with a bright future.





DELTA ZETA

Unlike most California Greeks, Delta Zeta did not get a new house this year since they have had one for quite awhile. Not to be outdone, however, the D.Z. house was painted dark green outside, new wall-to-wall carpeting was installed inside, and a diamond ring was added to the new trophy case. Other trophies were for winning Greek Sing, first place in scholarship, and first place in their class for their Homecoming float, "My Favorite Martian." Again this year the Homecoming queen was a Delta Zeta. Two sisters are listed in *Who's Who in American Colleges and Universities*, four D.Z.'s are cheerleaders, and they hold many club offices.





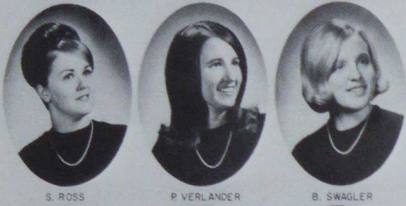
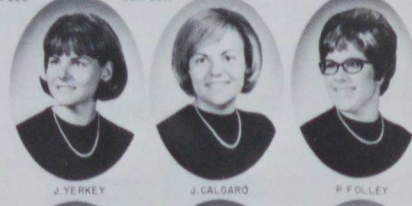
The Delta Zeta social activities have certainly been many and varied, including a Christmas formal, the D.Z. Man Dinner, and Easter Party and egg hunt, mixers with four fraternities, a Christmas tea for the Pittsburgh alumni chapter, and a mad wasp nest hunt on campus. In addition, California's chapter has been visited by sisters from three different chapters.

With all this activity it is easy to see why the D.Z. rush quota has been filled every semester for the past five years.





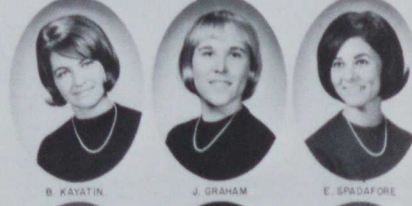
Sigma Kappa



19



66



SIGMA KAPPA

Again this year the Sigma Kappa's swept through Greek Week, capturing the indoor, outdoor, and overall trophies, but these three honors are only a few of the many. Individual Sig Kaps were cheerleaders, majorettes, fraternity sweethearts, Greek Goddess, and Homecoming court members. The sorority also built the second prize winning float, "The Twentieth Century."

The Sig Kaps have certainly kept themselves busy (and out of trouble?) with a variety of projects and activities, including the sponsorship of a ten year old girl from the Netherlands, collecting over \$145 for Children's Hospital in cooperation with KDKA, attending the national convention in Puerto Rico, buying new furniture, curtains, and a television, paneling the upstairs of their house, and planting a Christmas tree. On the more social side, they held mixers with four fraternities, held a faculty tea at Christmas, held a dinner-dance at Linden Hall—home of the Coke Commercial—and visited the Waynesburg and Indiana Chapters of Sigma Keppa.

Living, eating, working and playing together has enabled Sigma Kappa to take its place as one of the leading sororities at California, with a future that seems to be every bit as promising.





Row 1: A. Wagner, B. Svkosky, P. Kovach, M. Cyphec.
 Row 2: B. Bruce, V. Frye, K. Cowan, K. Cindru, M.
 McSweigan, S. Pompiselli, B. Norr. Row 3: M. Engle, J.
 Smith, M. Darr, N. Hughes, J. Janosik, D. Buckingham,

J. Whitlock. Row 4: S. Rosenburger, L. Kondrella, C.
 Spadoni, J. Hodge, C. Goodish, J. Kabuchka, L. Poli, J.
 Nason, E. Gutosky, M. McFerman, B. Ralieggh, L. Til-
 man, M. Kader.

SIGMA SIGMA SIGMA

This was a big year for the Tri-Sigma Sorority, for not only did our local chapter get a new house—the biggest at California—but the national sorority moved into all new headquarters and held a national convention in New York.

The girls of the purple and white have kept their new house lively with an open house, fraternity mixers, a tea for parents, an alumnae day at homecoming, and a party for the T.K.E. and Delt dogs. Other Tri-Sigma celebrations include the annual founder's day banquet, which was held at Paci's in Malden this year, a formal at the Mansion House in Old Concord, and a picnic at Luserne Park near Brownsville.

To continue their support for the Robbie Page Memorial Fund, the sisters raised money by raffling off a radio this year. The national representative visited California's chapter this year, and I am sure she was proud of their winning third prize in float building for their homecoming entry, "Popeye," of their having perfect initiation all year, of their winning Greek Week indoor events, and of their being active as president of P.S.E.A., on Student Congress, as class officers, and in many campus activities. California's Tri-Sigmas have plenty to be proud of.





Row 1: S. Wilkins, D. Baer, J. Ansell, S. Caliguri, N. Kutuska, M. Jeffries. Row 2: C. Sheffield, K. Coffman, J. Ansell, P. Cumberland, J. Ames, K. Houlihan, I. Geter, A. Koks, C. Solly, Miss King.

PHI ALPHA PSI

Phi Alpha Psi is California's newest and only local sorority on campus. However, being new hasn't stopped the sisters, they have been quite busy with a number of projects. You can usually find them running around Binns Hall, ushering at various college events, and making money by having bake sales or candy sales. The sisters have also sponsored a tea for their mothers after the formal initiation of their pledge class. On the fun side of things the sisters held a spring formal this year at the Stone Castle Inn. Looks like the Phi Alpha Psi's are going to be a big success!





ZETA TAU ALPHA

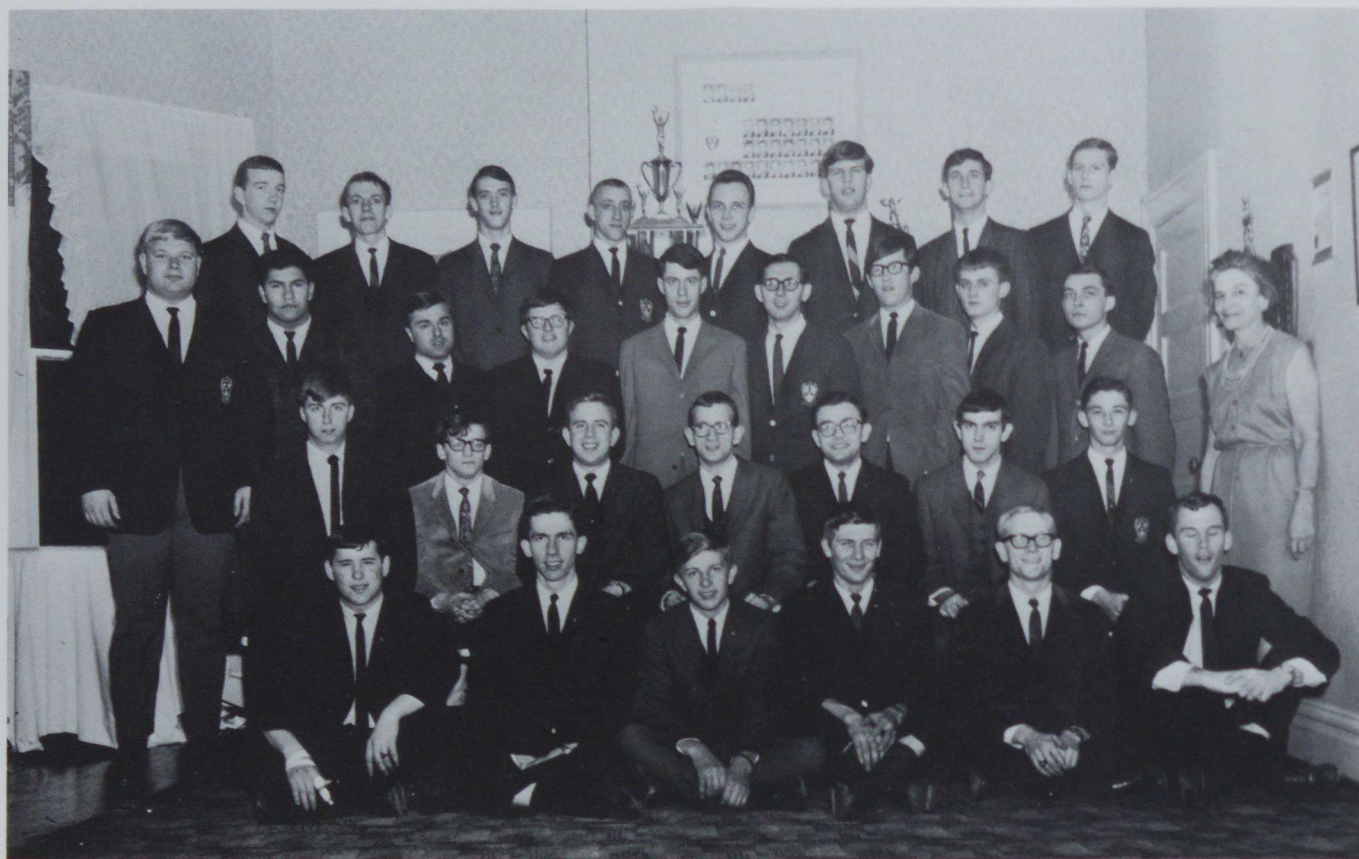
The sisters of Zeta Tau Alpha sorority have been keeping themselves busy this year by doing everything from selling popcorn to holding a formal banquet and dance, and all this hard work has enabled them to receive the national sorority's award for making the most progress in their province.

Zeta Tau Alpha's activities and awards include having a bake sale, candy apple sale, and popcorn sale, sending a representative to the province workshop at Davis and Elkins College in West Virginia, winning second place in Greek Week indoor events, holding a tea for parents, holding a founder's day program, visiting the Zeta Tau Alpha chapter at Clarion State College, and holding a formal dinner dance at Paci's in honor of the newly initiated pledges.

In addition to the activities mentioned, Zeta Tau Alpha has held the usual ribbonings, rush parties, and initiations that are so much a part of sorority life. All these combine to make Zeta Tau Alpha an active sorority that has and will continue to accomplish much.



ALPHA KAPPA LAMBDA



Row 1: J. Berenbrok, D. Johnston, John Grinarm, C. Chopp, W. Crowe, T. Cromie. Row 2: W. DiRito, J. Torchia, A. Koltiska, J. Bertoty, A. Kubyako, M. Mignogna, T. Mlatnik. Row 3: W. Stowasser, M. Caruso, D. DeLiberto, T. McBride,

D. Furlong, W. Woods, L. Miller, W. Hufnagel, D. Boyer, Mrs. Lutes. Row 4: J. Bish, T. Blake, J. Blazin, S. Bingner, R. Rohrer, W. Korn, J. Miksch, J. Virtue.

One of the A.K.L.'s most notable achievements this year was moving into their new house which holds twenty-two men and is the only one at California with a full time housemother. This enables a brother to bring a girl in at any time, and the brothers have certainly taken advantage of this fact, as shown by the large number now pinned.

This year's homecoming float must certainly be mentioned. The theme was "Voyage to the Bottom of the Sea," and the judges awarded it the first perfect score ever at C.S.C. This enabled A.K.L. to win Class C and the overall prize the second year in a row.

Always receptive to social events, A.K.L. holds two formals each year. The spring banquet this year was held at the Jacktown Hotel in Irwin, and the fall one was held at the George Washington Hotel in Washington, Pa. At the latter the brothers regretfully helped prove the Sigma Kappa theory that things do not go better with Coke, and of course there was a huge Homecoming party and the weekend parties to help back this finding up. To help the brothers from one weekend to the next, a mixer was held with every sorority on campus.

In the honors department A.K.L. is no piker either, with brothers in *Who's Who in American Colleges and Universities*, as Co-chairman of C.S.A., Vice President of the Freshman class, on Student Congress, and in various campus activities. Altogether, A.K.L. is men working together and building together—individual men with a common goal.





DELTA SIGMA PHI

Along with several other Greeks, the Delts managed to get a new house this year, and they have busied themselves with moving, painting, and digging a tunnel to the D.Z. house next store.

Probably the biggest achievement by the Delts this year has been staying off social probation for the whole year at a time. Other notable achievements include winning first place in the Greek Sing, second place in softball and football, and second place in Class C homecoming competition for their float, "The Addams Family."

The Delts Sigma Phi social life has included many weekend parties at the house, mixers with three sororities, mixers with other Delt chapters, the traditional Sailor's Ball, and the Carnation Ball, which was held at the St. James Country Club this year. One of the highlights of the year is the traditional Christmas Party for underprivileged children, which was held at the Delt house this year.

Altogether, the Delts have completed another successful year of providing "Engineered Leadership" for its brothers through a balanced program of various activities.



PHI KAPPA THETA



Row 1: D. Gerogvich, D. Hughes, M. Daly, B. Renk, J. Galie, J. Latella. Row 2: R. Drylie, J. Spak, P. Rupnik, B. Alberta.

The prospective brothers of CSC's newest fraternity, Phi Kappa Theta, made a trip to Leigh-Hi for the National Convention last November, 1964, to discover the workings of the fraternity. The ten brothers then organized into the now existing fraternity. Phi Kappa Theta was recognized on campus in April, 1965. After one year on campus, they now have a total of 29 active brothers. At the National Convention in Canada in 1965, the fraternity voted to become international with chapters in Greece and Canada. The brothers were proud to have Mr. Krishner, the national vice-president, as a guest, giving them assistance in their future plans for the fraternity.

They have been quite active socially in their first year on campus. Many parties were held with instrumental groups playing. They are currently in the process of searching for a new house. Construction is now underway for a direct tap to Dominic's Lucky Bar. Sportswise, the fraternity did not end up in last place in the volleyball playoffs. A remarkable accomplishment!



SIGMA TAU GAMMA

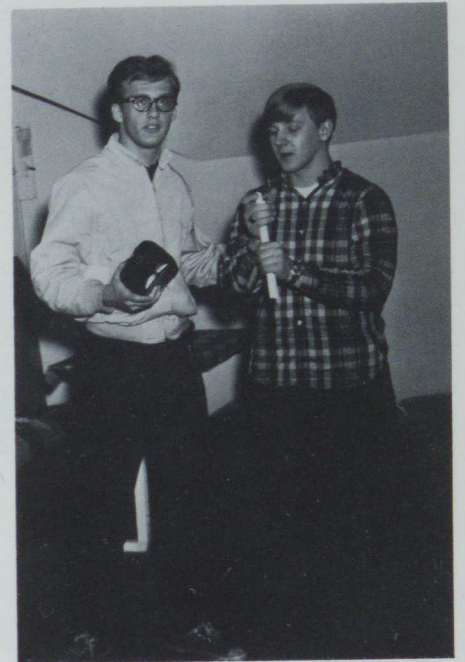


As California's biggest fraternity and best athletes, Sigma Tau Gamma has managed to come out first in I.F.C. basketball, volleyball, football, softball, and Greek Week outdoor events. California's Beta Iota chapter was also the Sig Tau province ten basketball champs last year and held the regional Sig Tau tournament here as a result. A pretty impressive record, isn't it?

But athletics are only a small part of the Sig Tau's success at California. They may be found in *Who's Who in American Colleges and Universities*, as president of the Junior Class, as co-chairman of C.S.A. and very active in college activities in general.

Socially we find the Sig Tau's active also. Their annual White Rose Ball was held at the Adams House this year. A quiet, closed Homecoming party was held at the Garabaldi's in Dunlevy, and the weekends have certainly not been neglected, with parties at their house in Brownsville held quite frequently.

On the work side, the brothers have painted the entire upstairs of their house, had the outside painted, and have made many other improvements. All this activity, both work and play, has brought the brothers to "an even fuller realization of fraternity life."





TAU KAPPA EPSILON

In the past year Tau Kappa Epsilon has made great progress toward the goals advocated by the fraternity. They have tried to foster self-improvement toward social, athletic, and educational goals.

In the social area the fraternity engaged in both parties and mixers. Last spring the TKE's hosted mixers with three sororities. Their "Red Carnation Ball", held at the Trocadero engulfed the TEKES in a sophisticated atmosphere. The homecoming activities were highlighted by a dinner and dance at the Holiday Inn and by the success of our float "The Wonderful World of Color." In addition to the formal parties a number of informal parties were held at the house.





Our athletic season was initiated with the skillful quarterbacking of fraters Dorman and Lancaster. Under the leadership of captains Sulewski and McGlumphy our basketball team thrilled the fraters with their exciting performances. Anticipation is high for repeat success in both volleyball and softball. The TEKES exhibited both the attributes of the good sportsman the the victor in the 1965 Greek Week competition.

Because the hope of the nation is in the hands of our youth, Tau Kappa Epsilon maintains the importance of, and stresses the attainment of educational progress among the fraters. Their sponsor, Dr. J. W. Keller, has encouraged the fraters with the desires for industry and scholarly achievement. Winning the scholarship plaque has rewarded our quest for advancement and has provided the incentive for a repeated performance.



THETA XI

This was a very big year for Theta Xi at California State College, for the colony officially became Beta Sigma chapter of Theta Xi Fraternity on May 28, 1965, and is now C.S.C.'s newest national fraternity. At that time thirty four brothers from California were installed by Kappa Eta Chapter from Glennville, West Virginia.

Besides going national, the Theta Xi's have been busy improving their house. The brothers built a party room in the attic, painted several rooms, and added a beautiful new console television. They have been very active in all I.F.C. sports and have been honored by winning second place in volleyball. Also, two brothers from this chapter attended the National Leadership School in St. Louis, and a national representative visited this chapter.

On the more social side, big Homecoming and Christmas parties were held at the Trocadero, brothers have visited chapters at Clarion and Youngstown, brothers from Indiana and Clarion visited the California chapter, and the new party room at the house has been thoroughly tried out and has not been found lacking.

Altogether, the Theta Xi's have had a big year and hav plans for an even bigger ones in the future as a leading fraternity on the California Campus.





SPORTS



Football	90
Basketball	94
Wrestling	98
Baseball	102
Men's Intramurals	106
Women's Intramurals	107

FOOTBALL

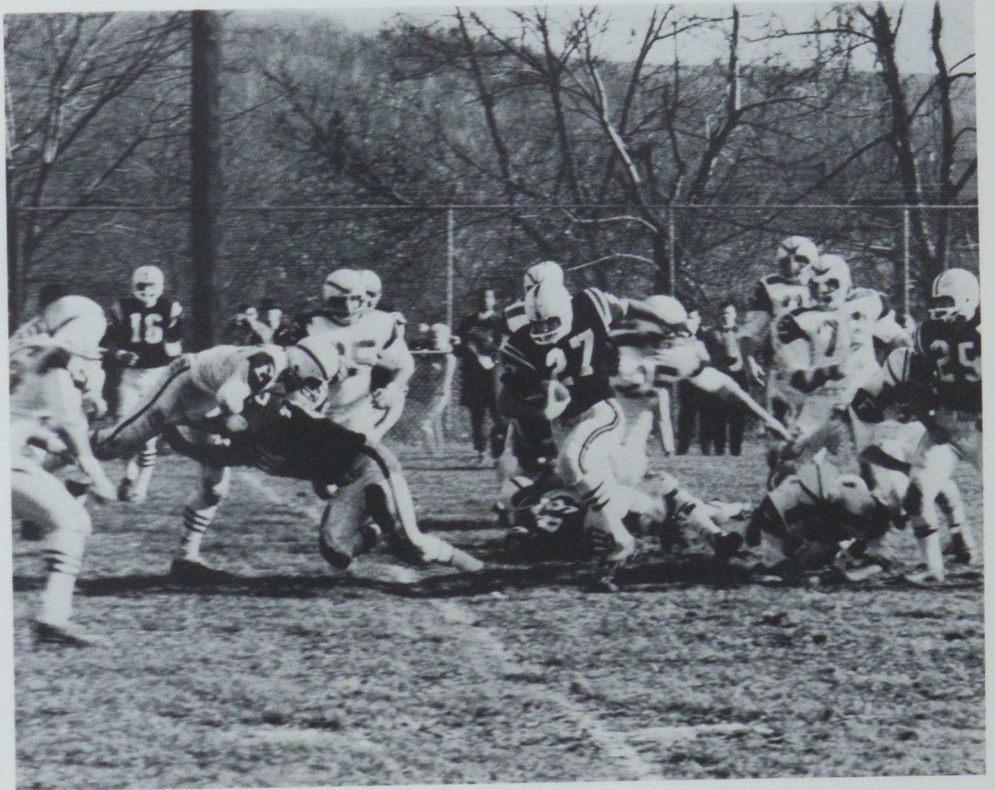


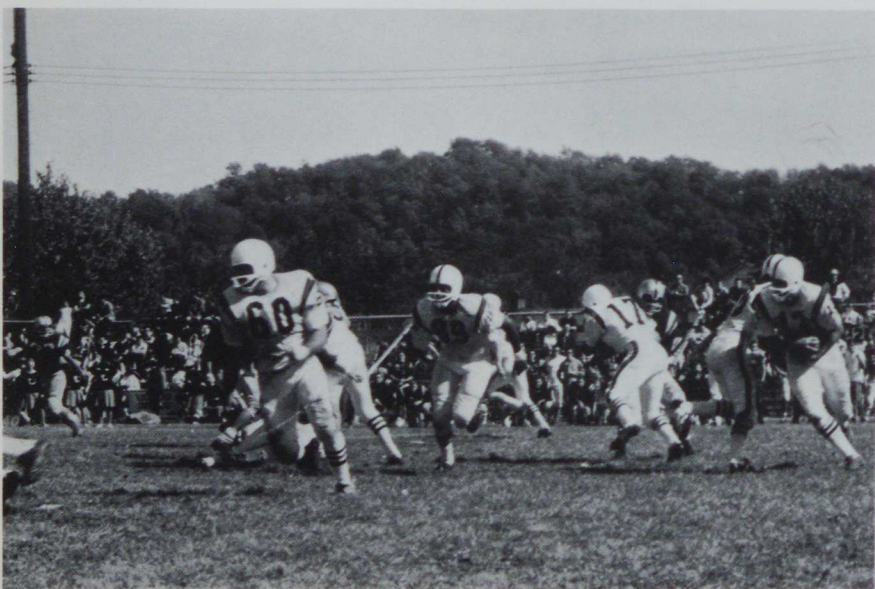
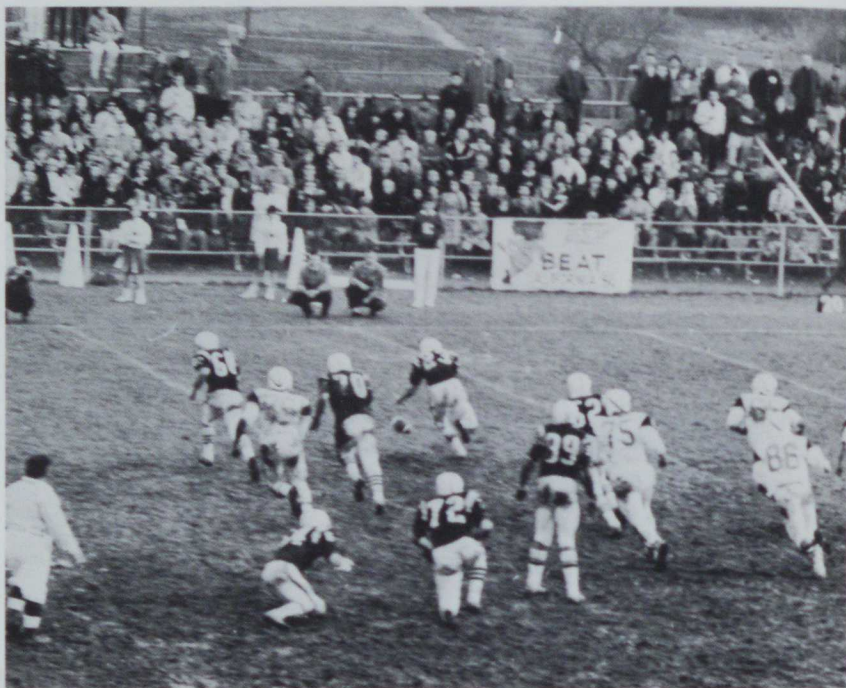
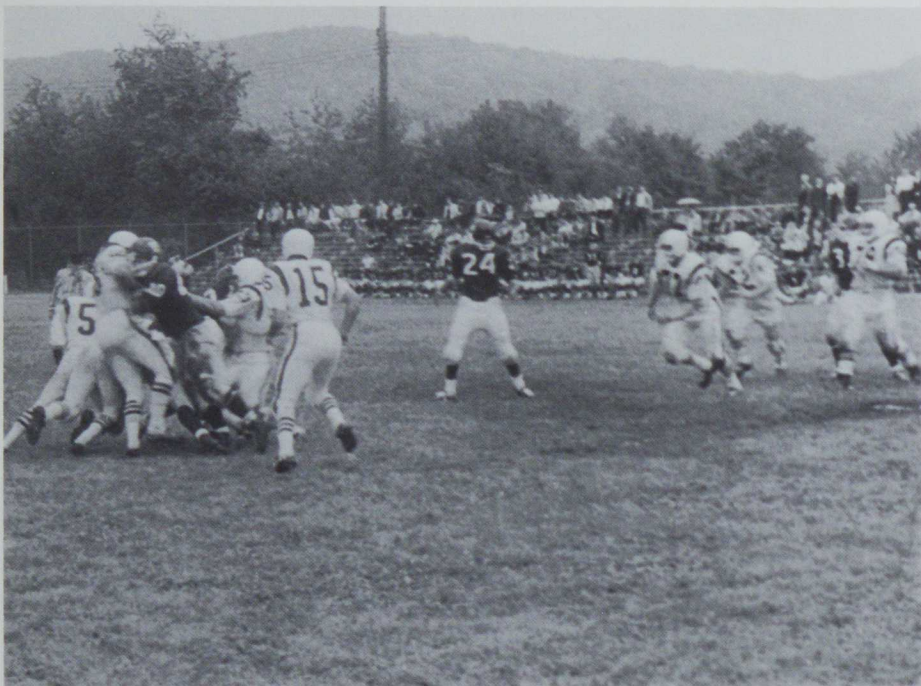
FOOTBALL 1965

California

14	West Virginia Wesleyan	7
13	Lock Haven	38
13	Waynesburg	21
14	Slippery Rock	12
28	Shippensburg	7
34	Clarion	33
27	Indiana	43
21	Edinboro	38

4 wins—4 losses







BASKETBALL



BASKETBALL 1965

California

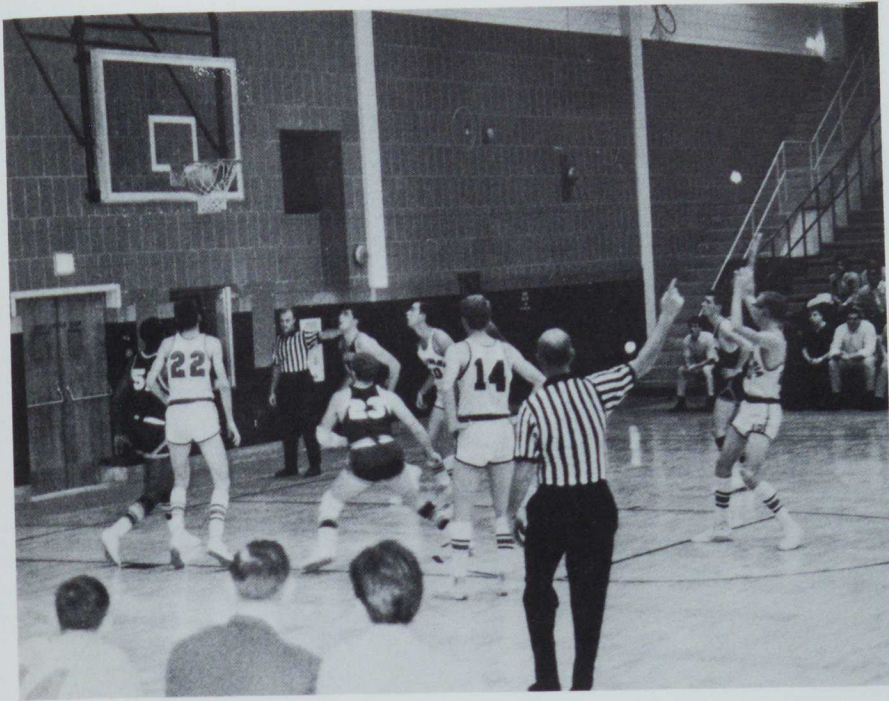
86	Waynesburg	71
90	Theil	87
96	Lock Haven	61
85	Indiana	81
90	Clarion	89
155	Bliss	84
84	Washington & Jefferson	77
68	Slippery Rock	88
82	Lock Haven	65
83	St. Vincent	61
102	Edinboro	78
68	Fairmont	71
84	West Liberty	69
80	Marietta	88
75	Mount Union	87
69	Indiana	64
69	Clarion	88
84	Waynesburg	78
89	Slippery Rock	84
58	Edinboro	71

15 wins—7 losses









WRESTLING



A very successful season for the Vulcan matmen was highlighted by scoring an 18-16 win over West Virginia University. This was the second match won by California in eight years of competition with W.V.U.

"One of the best all round teams I have worked with;" says Coach Paul Ross. He feels the team improved in wrestling abilities as the season went on, and that many of the close matches could have been won by C.S.C. with a little more effort and luck.

Four of California's matmen were in the semi-finals at the wrestling tournament, with Glenn Powell and Jerry Simon taking fourth place in the state.

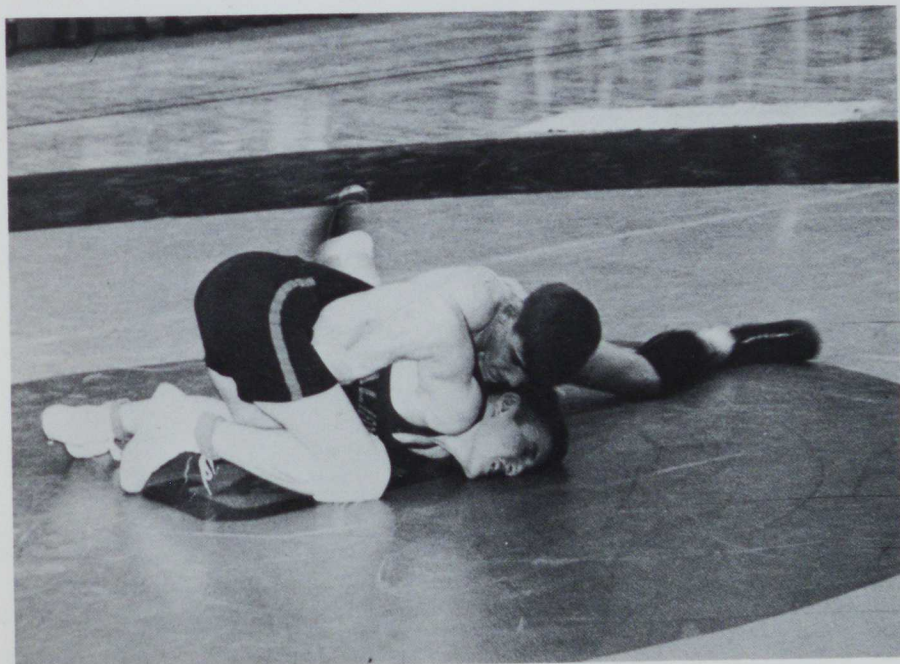
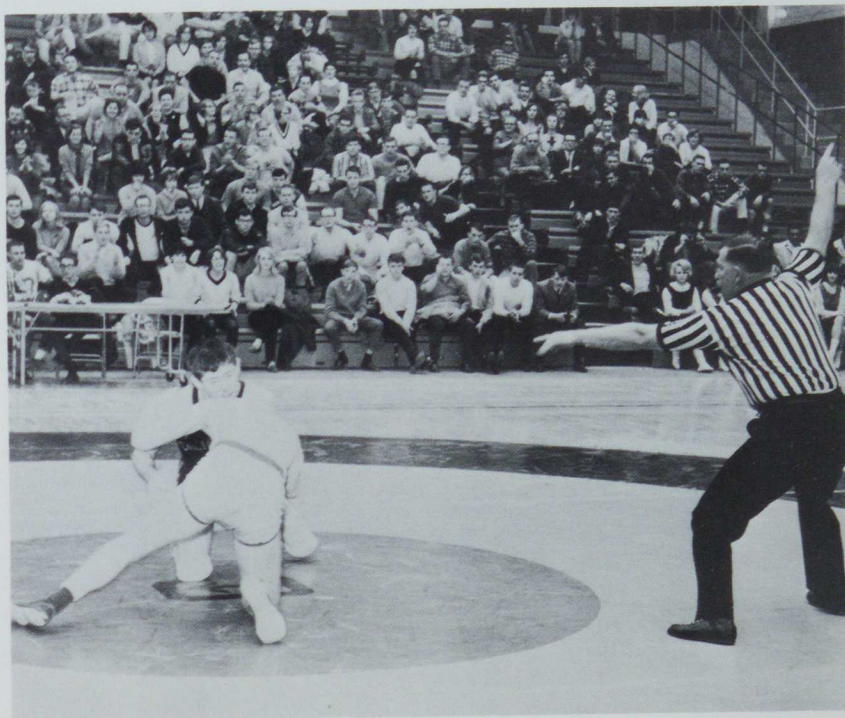
Coach Ross attributes much of this season's success to his new assistant Coach, Frank Vucano, to the untiring effort of the team, and to the new wrestling room that provides more effective practice.

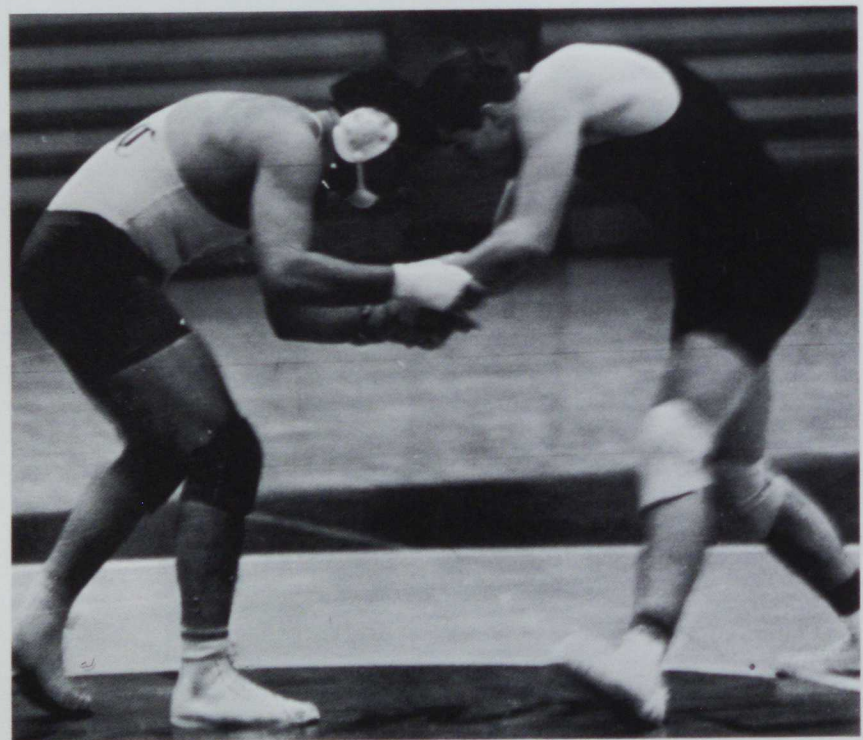
The coach has high hopes for next years team, since most of his mat-men will be returning next season; however, two valuable seniors, Paul Machak and Roger Riner, finished their last season at C.S.C. this year. Several freshmen gained experience on California's mats this year, among them are Dick Lawrence, Bill Gergy, Richard Mascovic, and Jack Pavella.

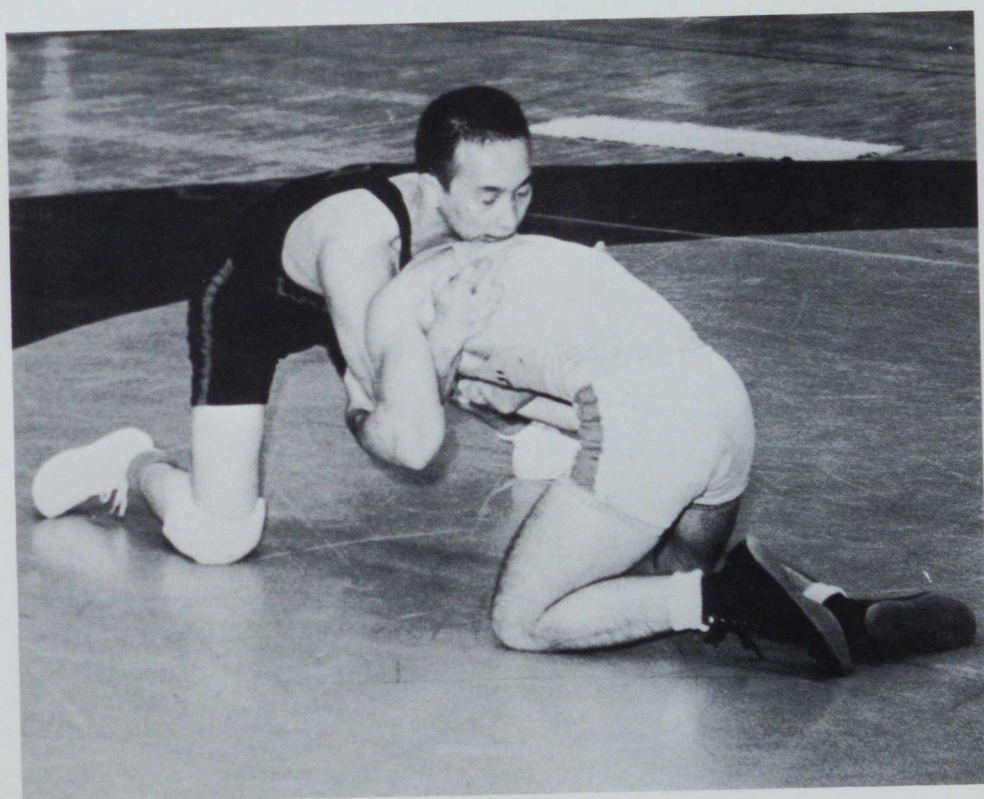
WRESTLING

California

27	Frostburg	5
15	Edinboro	19
15	Indiana	17
24	Slippery Rock	14
18	West Virginia U.	16
13	Waynesburg	18
14	W. & J.	17
19	St. Francis	12
26	Fairmont	10
19	West Liberty	16
35	St. Vincent	5
5	Clarion	35







BASEBALL

The first game of the 1965 season was won by California. The second game of the doubleheader was lost by a score of 14-3. The batsmen of West Virginia Bombed the Vulcan pitchers for 13 hits.

The first conference game of the year was played against Clarion State. Cott suffered his first loss of the year, losing 3-2 in extra innings. California was led by Mike Leson, who had his first home run of the year, and by Ron Andrulonis, who had two hits, including a triple.

The second game was another close one with California coming from behind with four runs in the last inning for a 6-5 win. Den sollen was the winning pitcher in relief of Kalocay. The hitting of Ted Barnett, Joe Lechner, Mike Baran, Ron Paterline, and Ron Andrulonis, all of whom had two hits, proved to be too much for Clarion State and Kalocay by a 605 score. Bill Valalik and Joe Lechner led the Cal sluggers with two hits apiece, one of Lechner's being a long triple.





In the doubleheader at Slippery Rock, Coach Bailey threw his two aces, Cott and Kalocay. Cott lost the first game by a 2-0 score. Razor pitched a fine ballgame, allowing only three hits and striking out eight batters.

In the second game, Kalocay pitched a one-hitter in regulation play but lost the game on a 3-hitter in extra innings. Bernie had twelve strikeouts for the game. The inability of the Vulcan "strikers" to hit safely was the cause of the double loss. This double defeat cost the Vulcans a chance for the conference crown.

California and Indiana State split a doubleheader by identical 1-0 scores. California State won the first game behind Cott. "Razor" did not allow a man to move past first base for another fine pitching performance.

In the Second game, Kalocay lost another heart-breaker. Indiana pulled the game out of the fire with a run in the bottom of the 9 inning. California lost its only chance to score on a missed squeezed bunt.

The last game of the season was played against The University of Pittsburgh. Pitt defeated Cal.





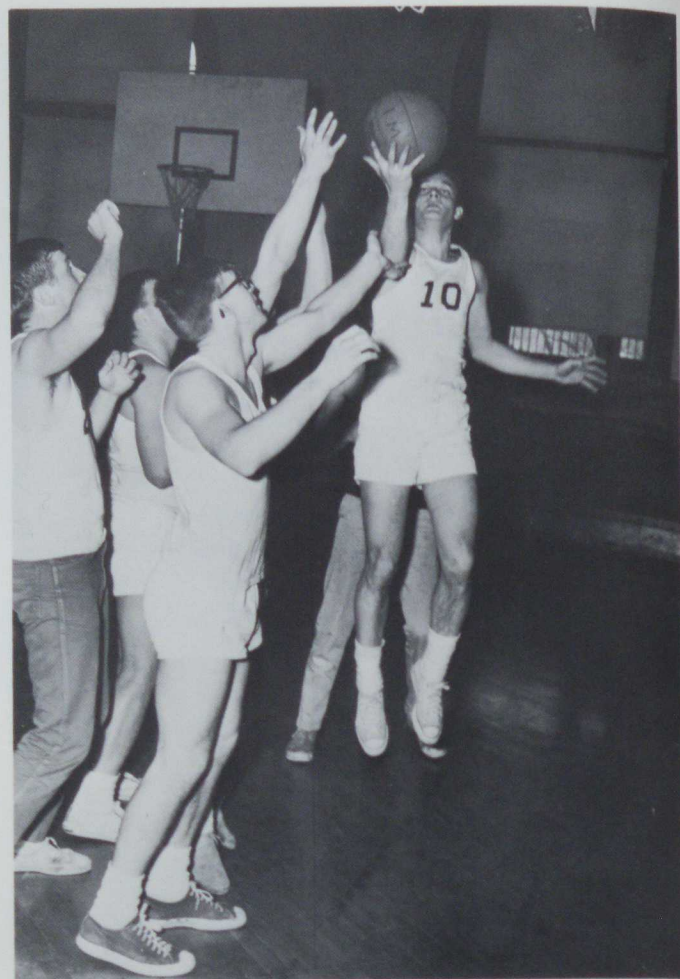
California

3	West Virginia	1
3	West Virginia	14
6	Clarion	5
2	Clarion	3
6	St. Vincent	5
5	St. Vincent	2
0	Slippery Rock	1
0	Slippery Rock	2
5	West Virginia	1
5	Frostburg	1
0	Frostburg	2
1	Indiana	0
0	Indiana	1
0	West Liberty	2
3	West Liberty	4
3	Waynesburg	2
1	Waynesburg	10
5	Gannon	1
0	Gannon	1
5	Pittsburgh	6

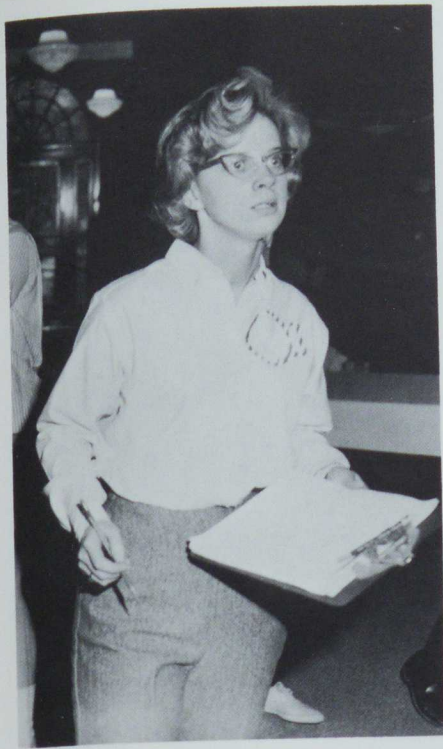




MEN'S INTRAMURALS



WOMEN'S INTRAMURALS





FEATURES



Homecoming	110
Johnny Mathis	114
The Back Porch Majority	116
Count Basey	118
The Band	119
The Orchestra	120

HOMECOMING QUEEN

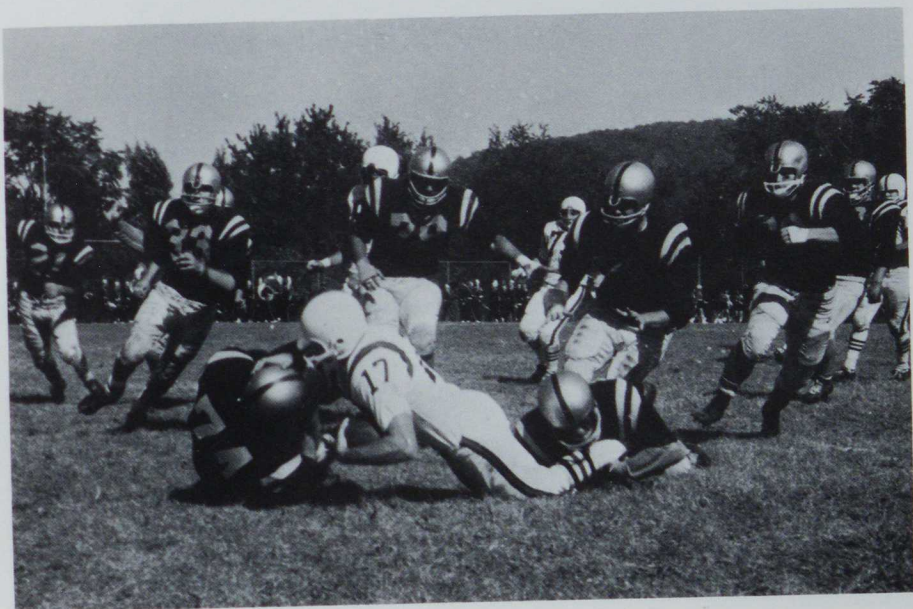
Miss Linda Enstrom

THE COURT

Miss Tina Krajack
Miss Carol Lucostic
Miss Sherry Lytle
Miss Elaine Spadafore
Miss Diane Woolslayer



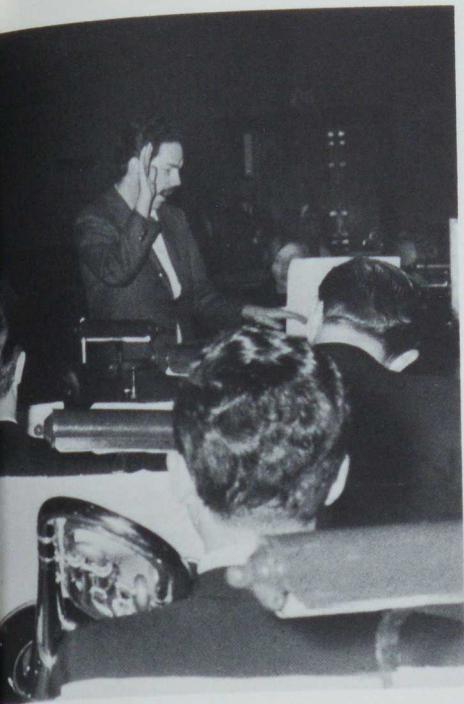




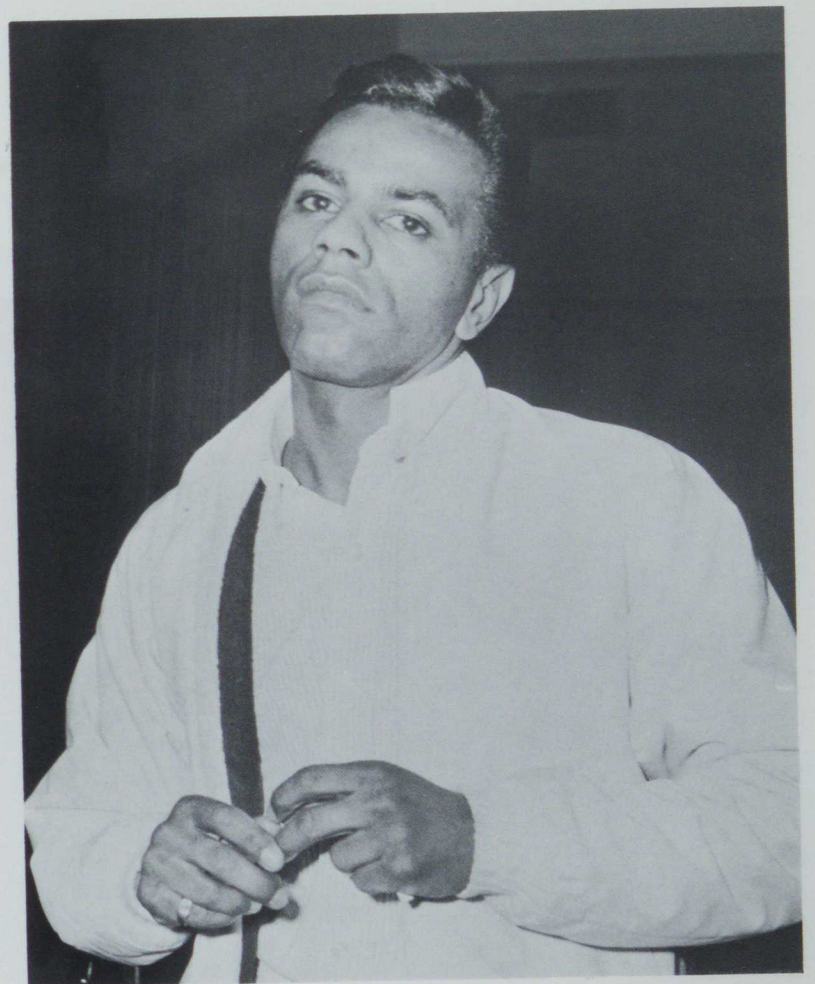


JOHNNY

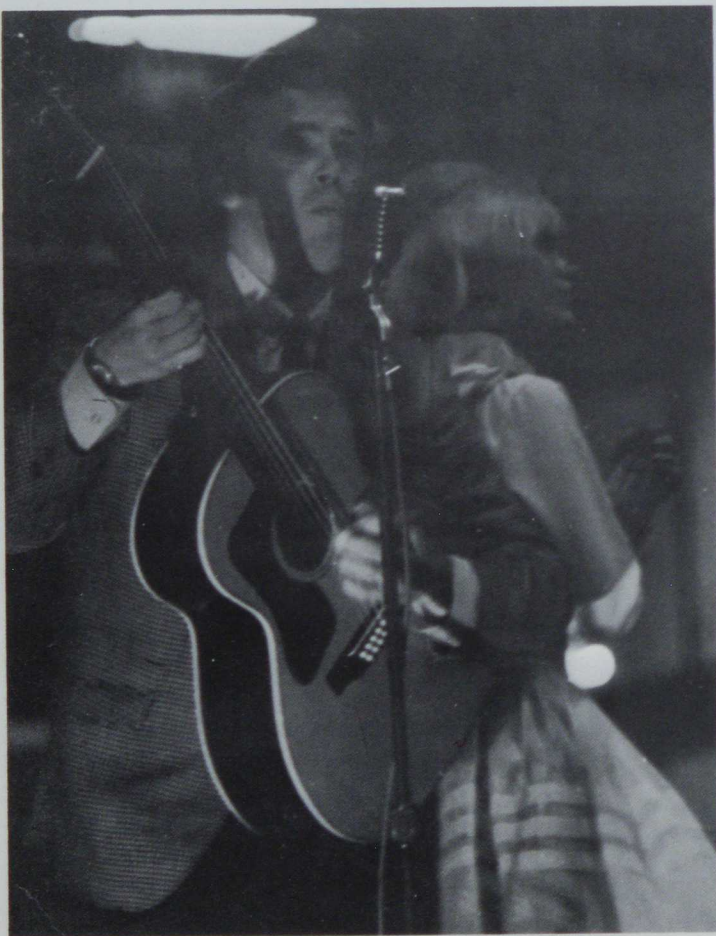




MATHIS



THE
BACK



PORCH
MAJORITY





COUNT BASIE





THE BAND

The California State College Band is composed of students who have had some musical background. The organization, under the direction of Mr. Vetold Sporny, participates in a variety of events including athletic contests, homecoming activities, concerts, and inter-collegiate band programs. The band is transported to away football games, and provides the heart of the loyal followers of the college.





THE CALIFORNIA COMMUNITY COLLEGE ORCHESTRA

The California State College Community Symphony Orchestra is directed by Professor Leonard M. Colelli. The Orchestra formed in 1963 has many goals in mind and is trying to fulfill the aims and purposes of a Symphony Orchestra.

The Orchestra is composed of many talented musicians from the ranks of doctors, business people, teachers, as well as students from a surrounding fifty mile radius. The orchestra was formed because of a sincere love of music and for the purpose of providing symphony music for the community. Rehearsals are held weekly and each trimester they present a program with selections from the great masters.





SENIORS





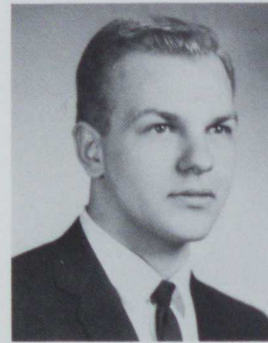
Martin Ackerman



John R. Andrews



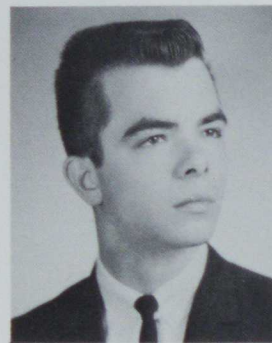
Janet V. Albenze



Kenneth Amrick



Alfred T. Adams



James Albert II



Ralph Anderson Jr.



Michael Angelo



Allan L. Agamedi



Abraham Allende



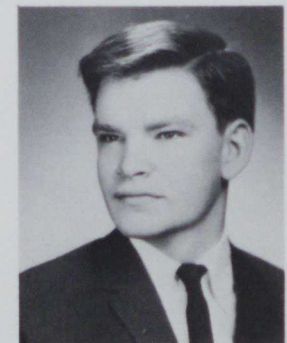
Wesley C. Anderson



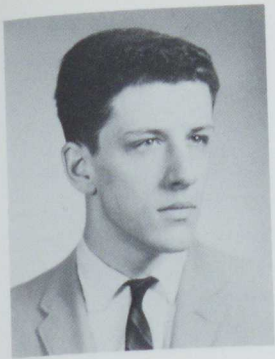
Ronald Ansell



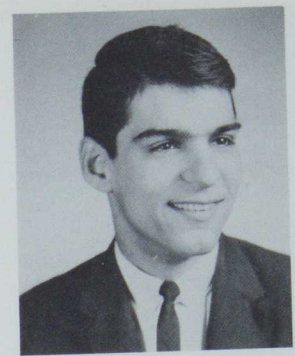
Margaret Louise Alben



Charles Antell



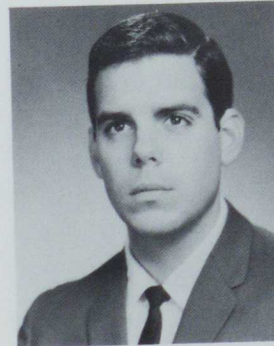
William J. Antonio



Michael T. Baran



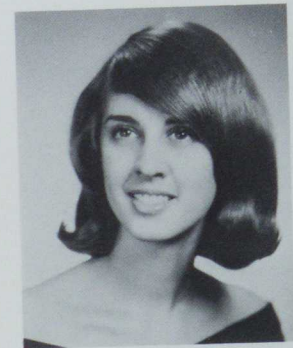
Mary Jo Bannsen



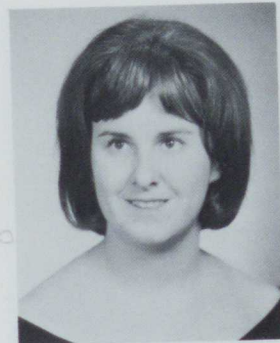
Thomas Batiste



Carole Ashcraft



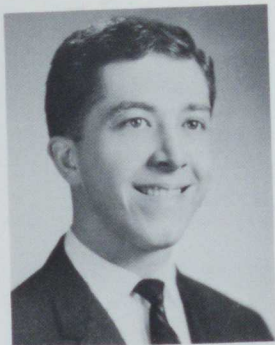
Joann Barantovich



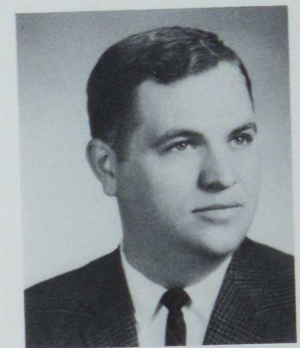
Carol Bakewell



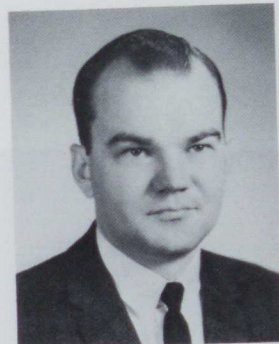
John Battaglia



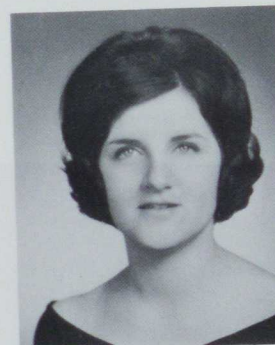
Carmen Augustine



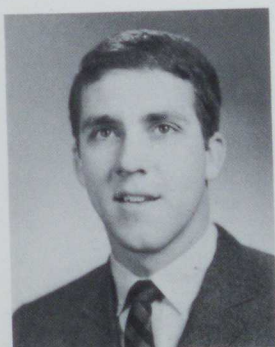
William K. Barbar



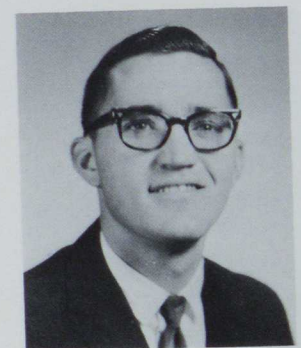
George Balaz



Nancy Baltilana



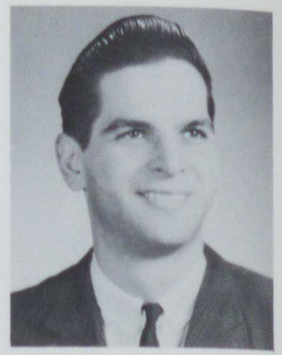
John Ashoff



Paul Barclay



Charles F. Barley



Michael A. Beresh



James D. Bedillion



Paula Belch



John Barnot



Richard Berger



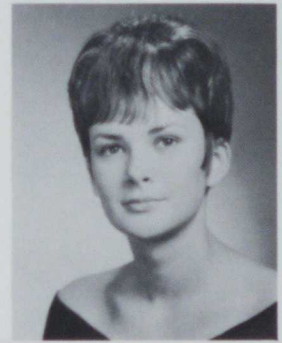
Joseph Bedies



Donald Bell



James B. Barron



Beverly Berlinsky



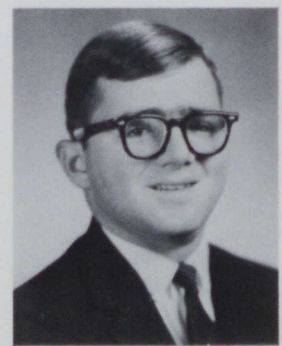
Eileen G. Behanna



Albert A. Bennetta



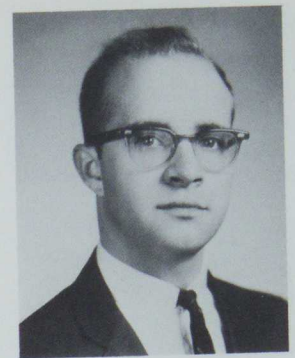
George Beckey



Robert Berrett



Anna Bewsizka



Richard E. Bowness



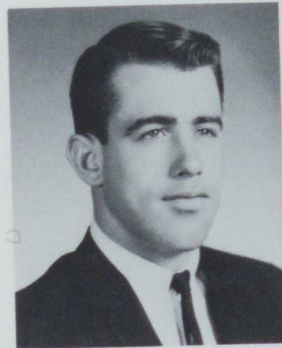
Thomas M. Blachford



Janet Bonitati



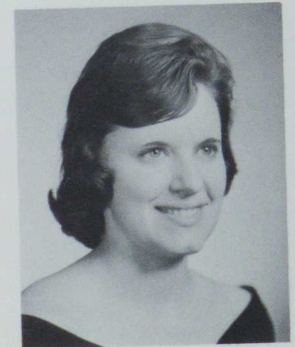
Donna Bierer



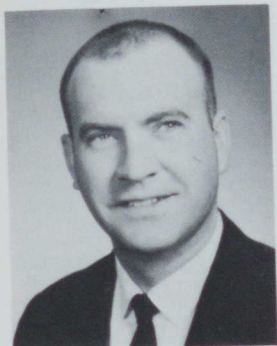
John Blair Jr.



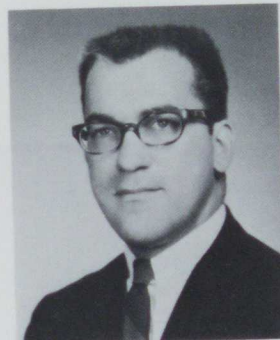
Norman A. Bortz



Janet M. Bradley



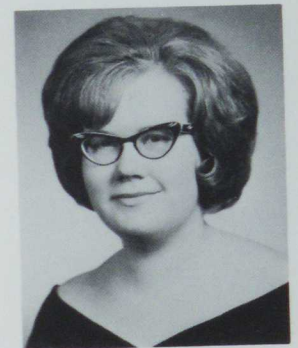
Paul M. Bierer



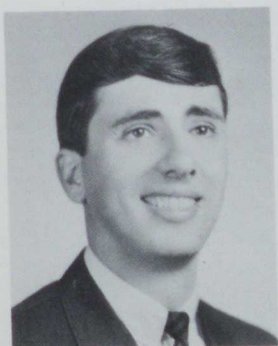
Donald E. Bobincheck



Patsy John Botti



Romona Brant



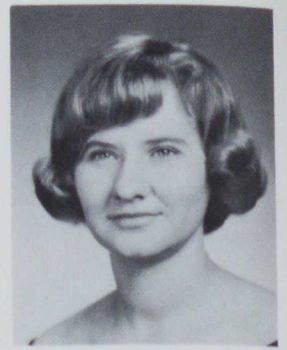
Arthur J. Bittner



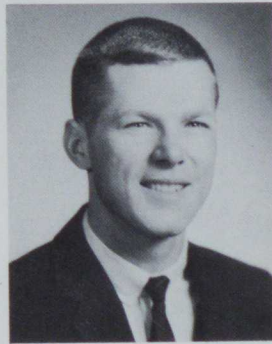
Janice Brown



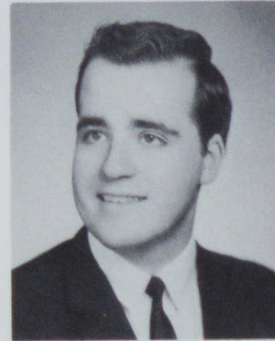
Larry M. Brown



Patrica Burzawa



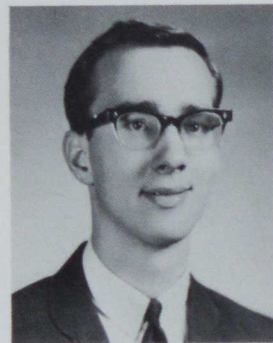
Gary Brownfield



Patrick J. Buckos



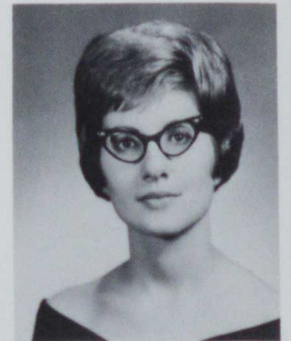
Rose Brown



Victor J. Brutout



Anna Lee M. Buk



Joanne Burkus



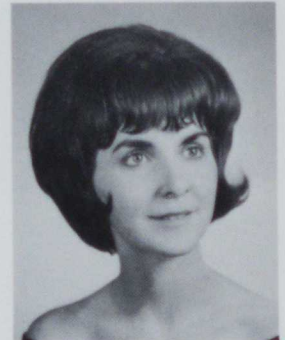
Toni Brown



Robert Brytus



M. M. Buntak



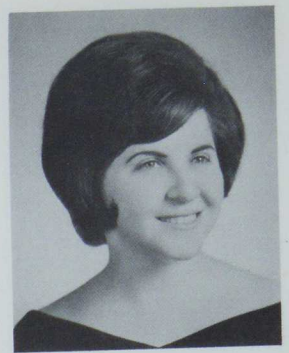
Mary Louise Bussard



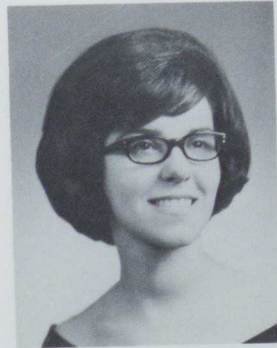
Richard Caccani



Charles Robert Cadman



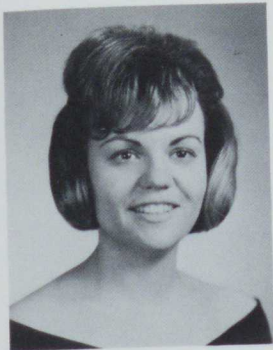
Marguerite L. Caruso



Patricia A. Caporella



Roberta Carter



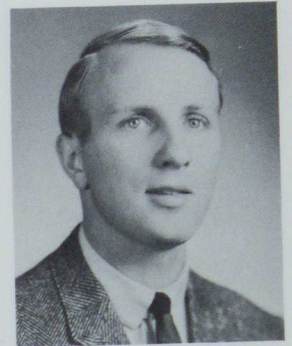
Judith A. Calgaro



Michael Carmosino



Thomas L. Carter Jr.



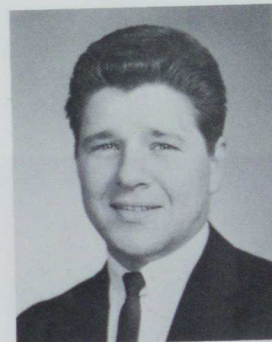
Glenn Cerra



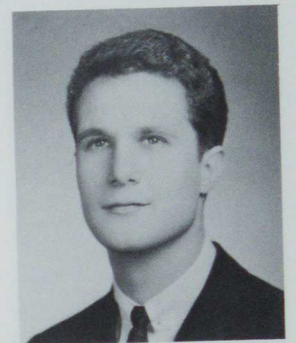
Robert Calvert



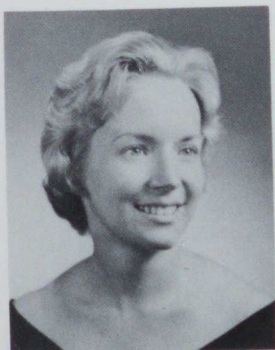
Barry E. Carr



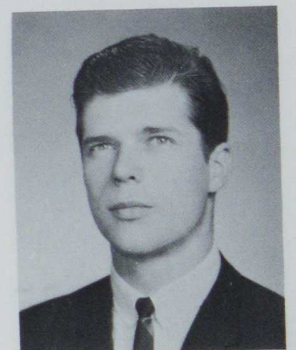
Fred D. Caruso



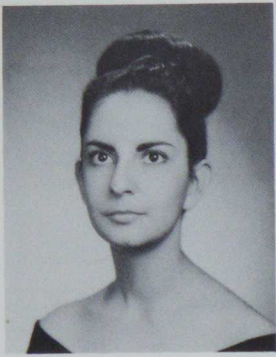
James J. Chacko



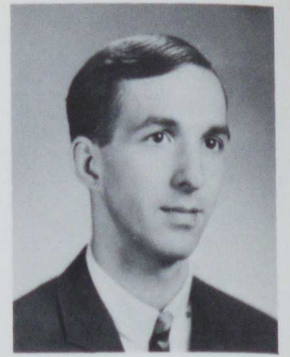
Mary L. Cantone



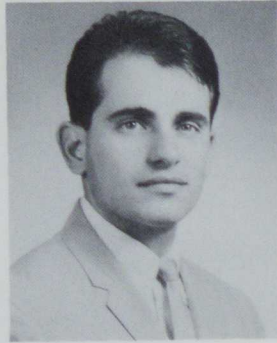
John L. Chalfant



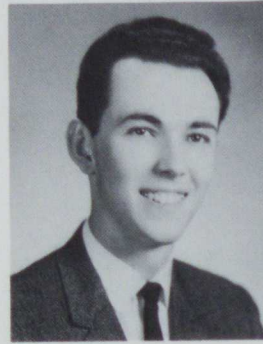
Grace Chaveriat



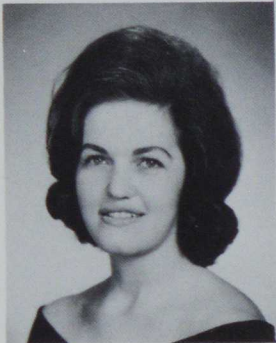
Richard Cole



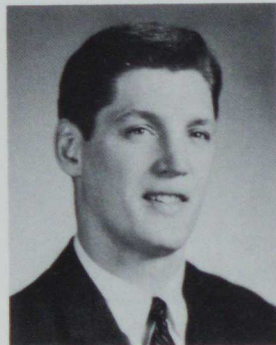
Gerald P. Chicone



Lonny R. Clark



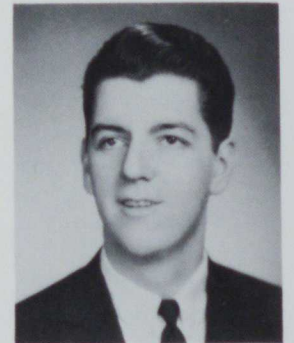
Vivian Chelli



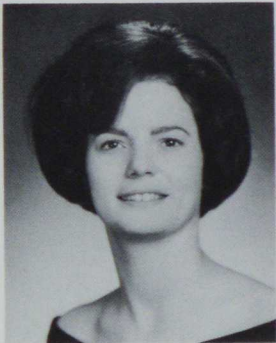
Mark Ciganovie



Aileen Clay



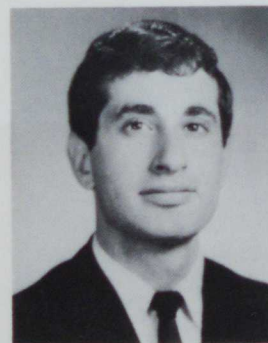
Phillip J. Collins



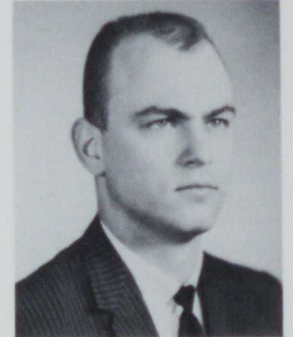
Erleen Chellman



Eugene Cirinelli



Earl Cohen



Steven Comadena



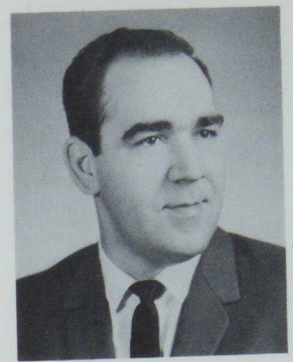
Bernadine I. Chuska



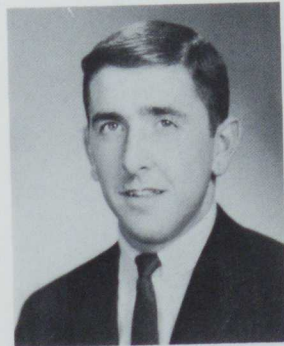
Antonetta A. Como



Lois Conboy



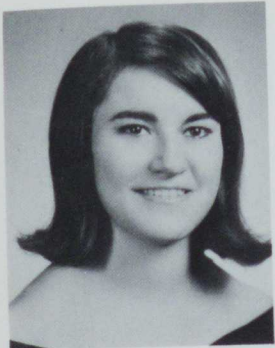
Valentine Cullen



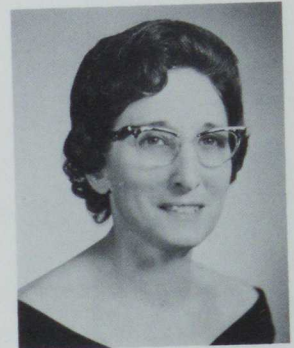
Lynn Cranye



Ruthann Cropp



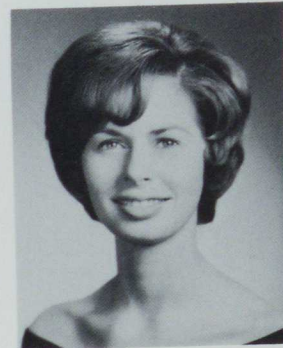
V. De Cook



Marjorie Cumpson



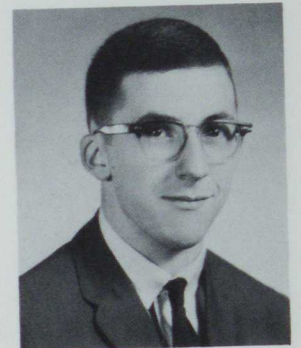
Gary Creighton



Pamela Crowe



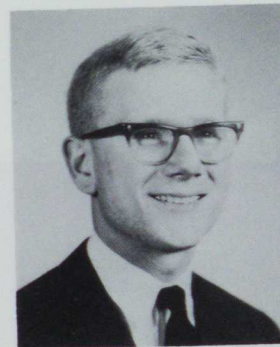
Judith I. Cooper



Robert J. Currie



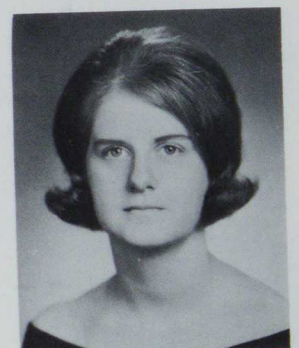
Robert L. Critchlow



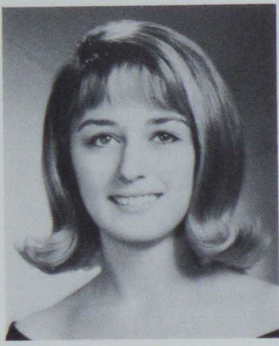
William T. Crowe, Jr.



Lewis L. Corell



Audrey Cuthbero



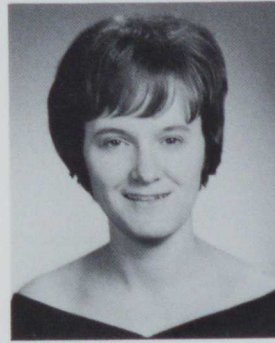
Cynthia Cseko



Barry Diehl



Mary Day



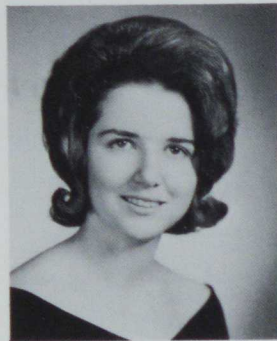
Maryann Demagall



L. Dalvesco



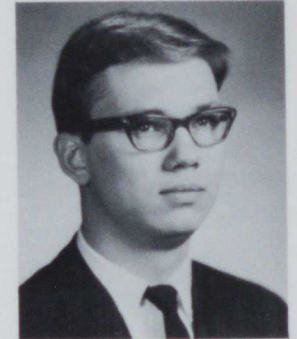
Elaine Diperna



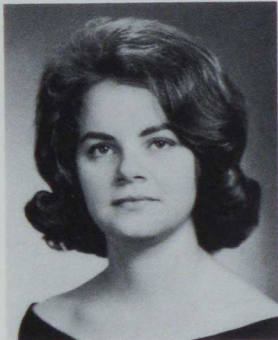
Charlene M. Delmastro



Curtis A. Detar



Philip J. Disclafni



Elaine Darazio



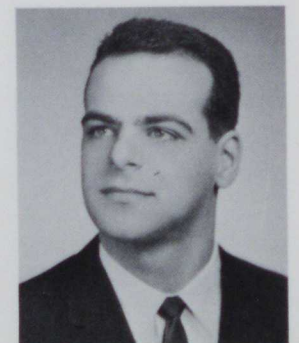
Marcelin Delzangle



Anella Deware



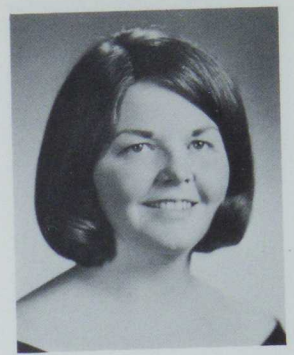
Deborah G. Davis



Donald Dustolfo



Carl L. Dyer



Mary Karen Faix



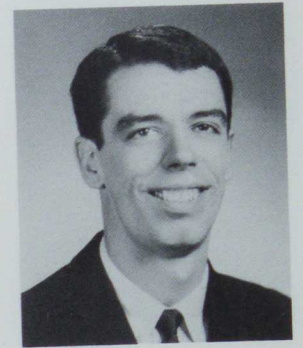
Toni Elder



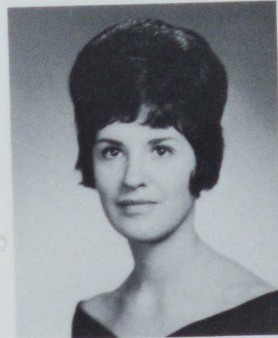
Carole Ann Eustis



Charles Dzel



H. M. Farrell



Linda Enstrom



Barbara Evans



Victorm Egidi



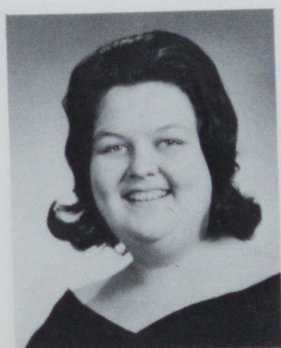
Paul H. Farrow



Dana Esposito



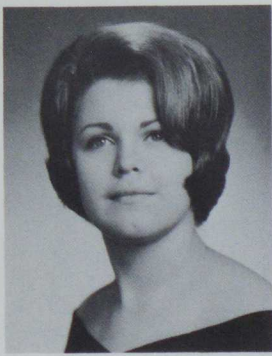
George Fagan



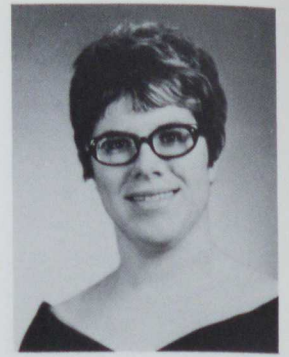
Beverly Eichler



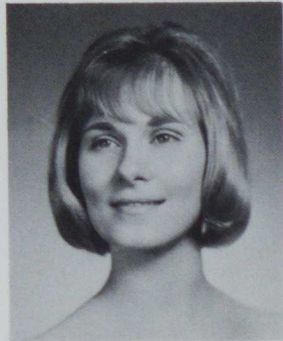
Michael J. Fedak



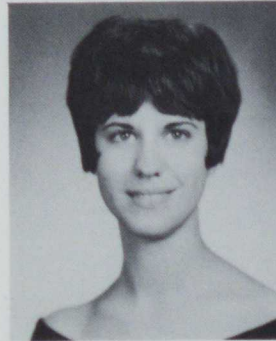
G. Ferens



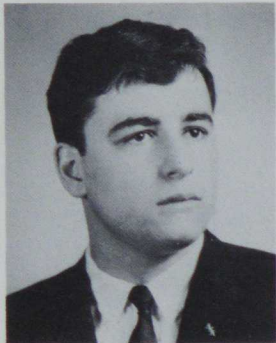
Patricia B. Foley



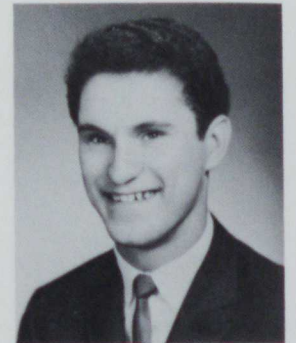
Adaria Fesh



Marilyn Fierer



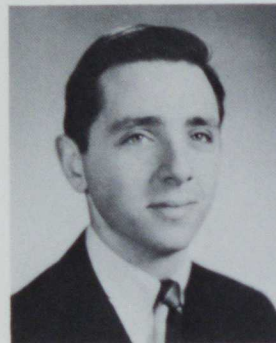
Joseph E. Ferrari, Jr.



Robert Folman



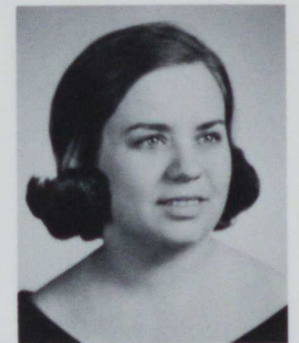
George J. Fichter



John Figola



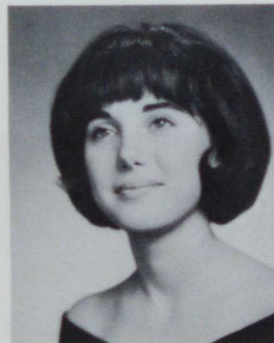
Janet Ferry



Ellen Forrest



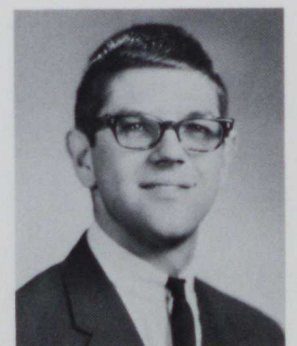
David Field



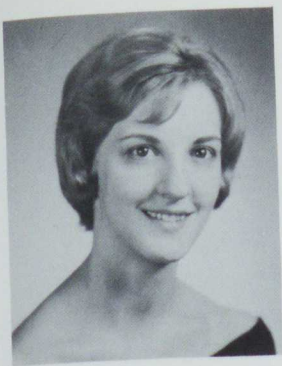
Lois Foehringer



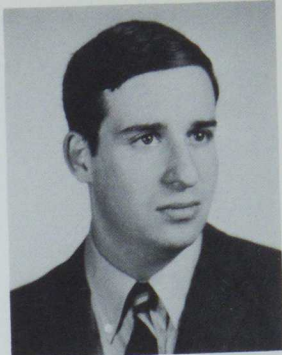
David C. Ferree



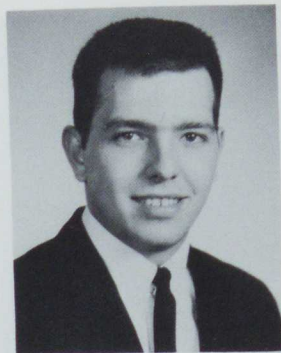
Robert G. Forsythe



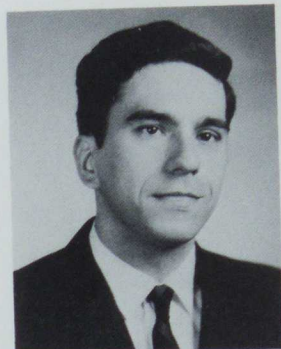
Donna K. Foster



Gerald A. Gardner



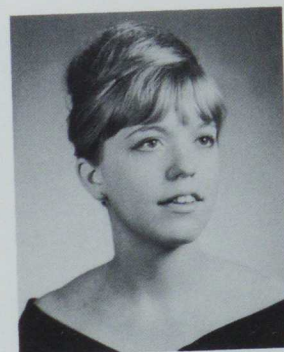
Joseph F. Frichtel



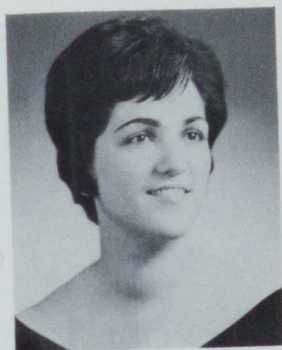
Remo Galie



Donna Frank



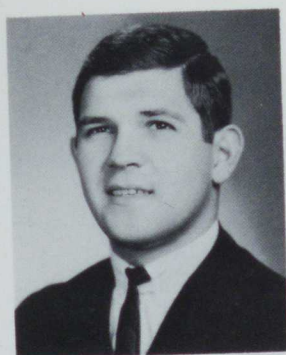
Barbara Gasper



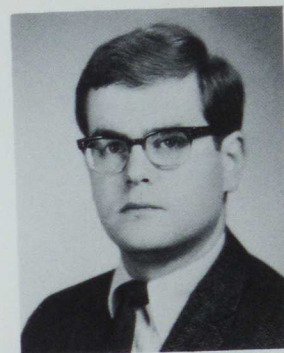
Margaret A. Frye



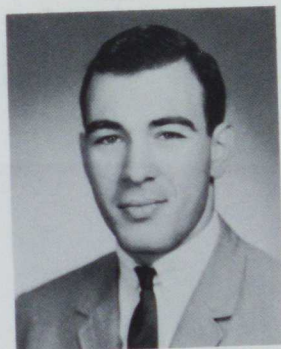
Ida Gallaway



Mark R. Franko



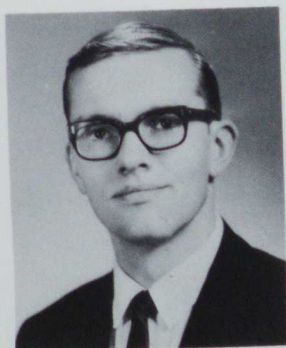
Alan L. Gazen



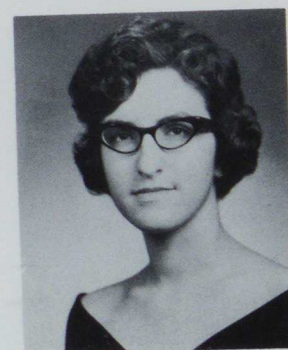
Dennis Gaal



Mary Ann Gallo



William P. Frey



Judith Gera



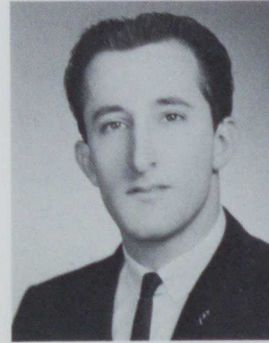
Edward Ghetian



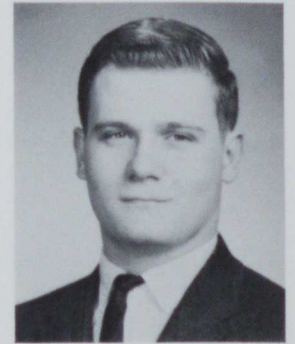
Mary Gray



Beverly Gondol



Robert Grandinetti



Raymond B. Greer



David Gilmore



Barbara Goodwin



Geraldine Grant



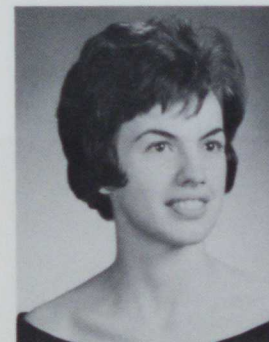
Eugene Gregory



Peter Giovenco



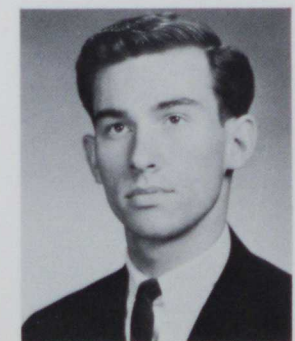
Judith Ann Gostner



Linda Gray



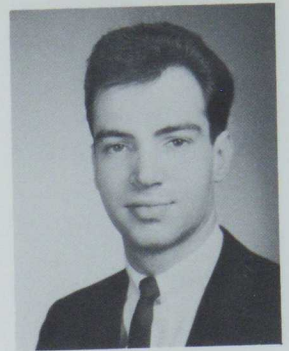
Edward L. Gnoth



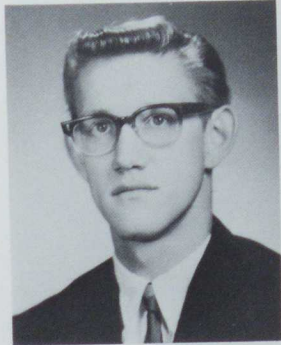
John R. Griffith



John R. Griffith



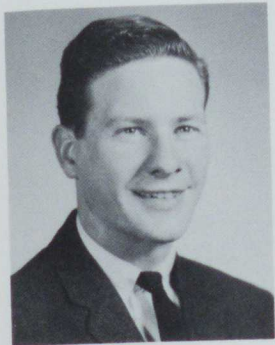
Francis Haradin



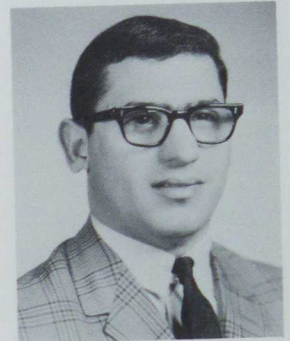
R. J. Gust



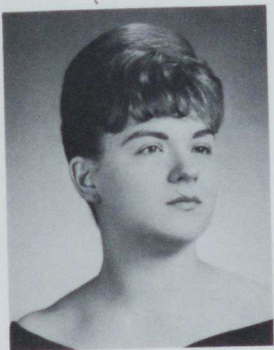
Mary Handloser



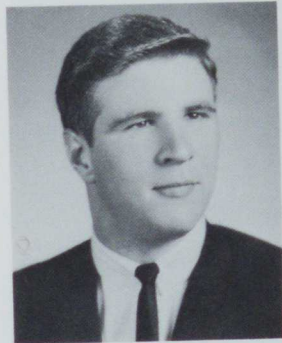
Thomas Gross



Charles Hardway



Agnes M. Gubasko



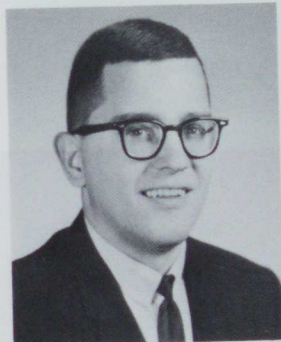
Peter P. Haluska



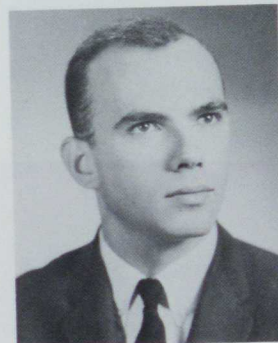
Susan Hanlin



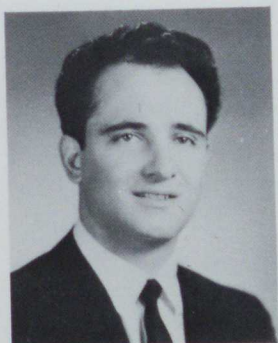
Nancy Harford



Richard S. Hamistek



Daniel Hara



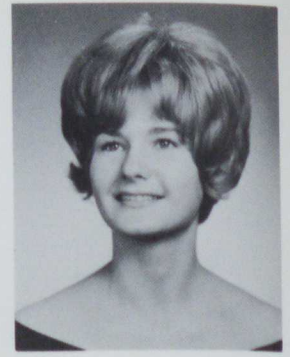
Ronald Gusipe



Richard B. Harkins



William J. Harley



Karen Heil



Lee Haurilesko



Beverly Headley



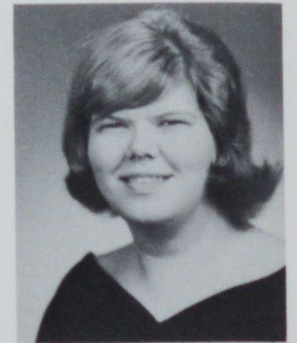
David Harris



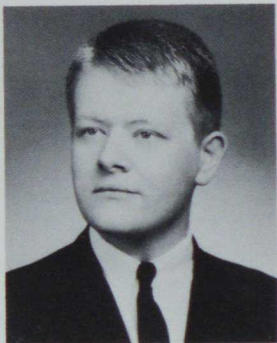
Elizabeth Hawk



Gary J. Heasley



Mary Ann Helmick



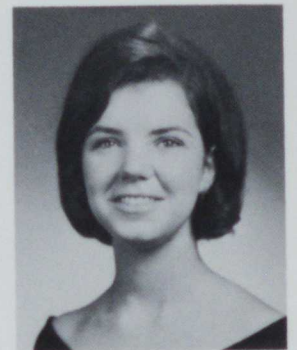
Paul J. Hartsek



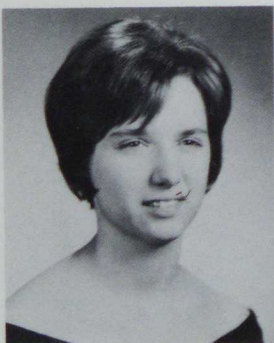
Mary Haywood



James Heil



Margaret Ann Henry



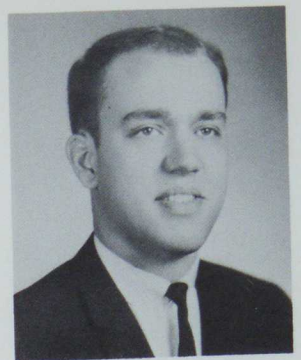
Charlene Hatalsky



Harold Hess



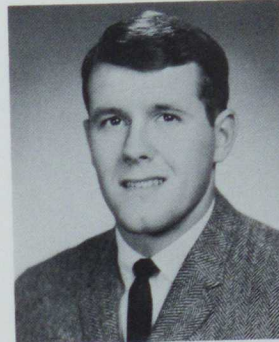
Madeline Marie Hill



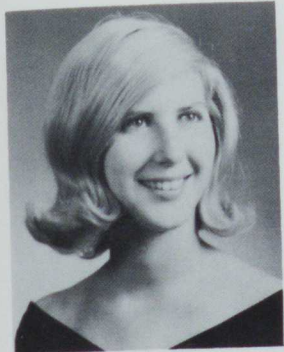
Warren L. Huggins



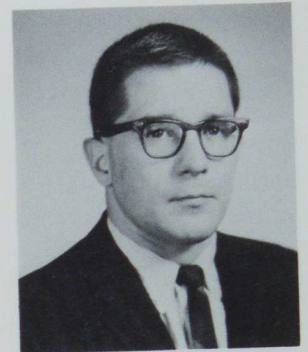
Edward Hopko



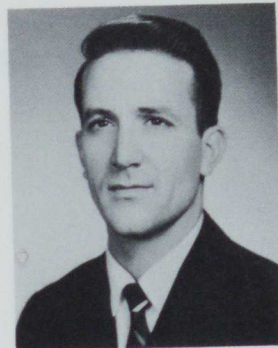
Joseph Howard



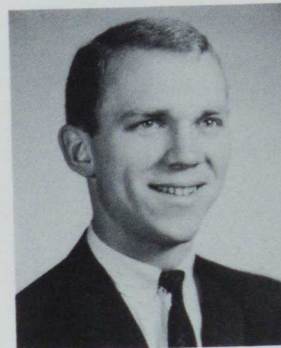
Phyllis Hogben



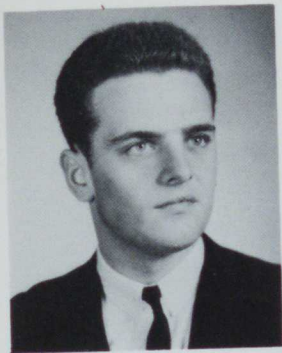
Ronald Hughes



Lawrence Hornbake



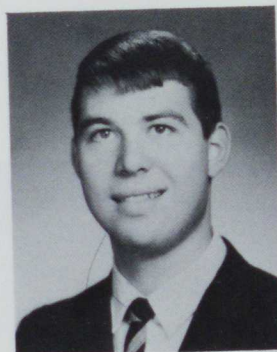
Herbert Hoyack



Thomas L. Holder



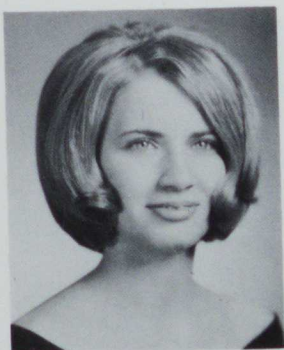
A. Jane Humphrey



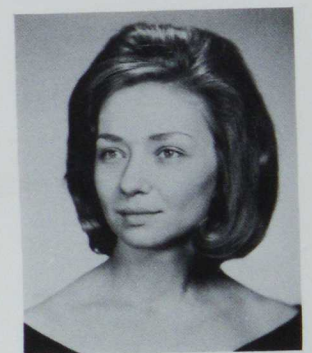
Keith Hossler



Paul Hudale



Janet S. Hoover



Marjorie Jakubovics



Charlotte Jarzynka



Jane Karabin



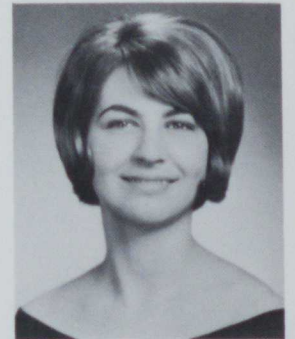
Robert G. Jubin



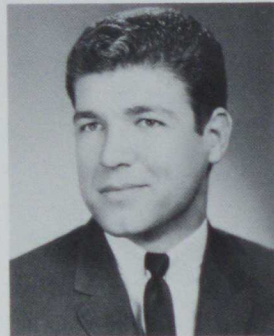
John T. Kaiser



Donald Jeffers



Brenda Kayatin



Frederick M. Junko



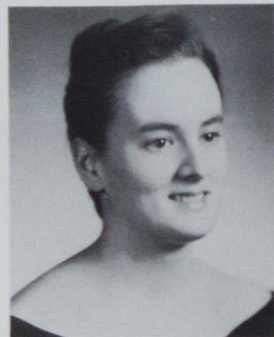
Joseph J. Kappel



Constance Jenkins



Danyele Kegel



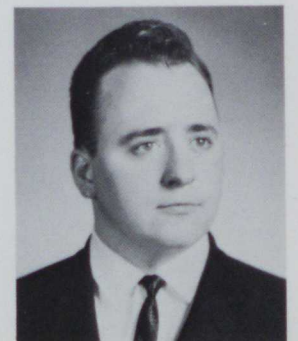
Elaine Kagle



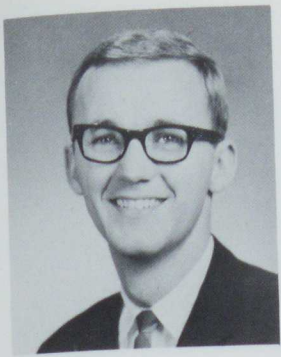
Marion C. Karl



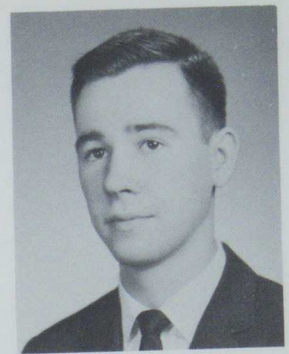
Arlene Johnson



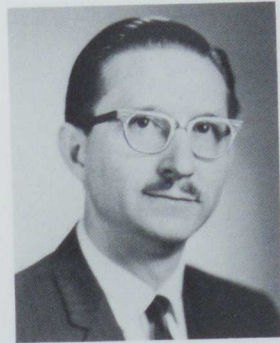
Lang T. Kelly



Gerhart Kellner



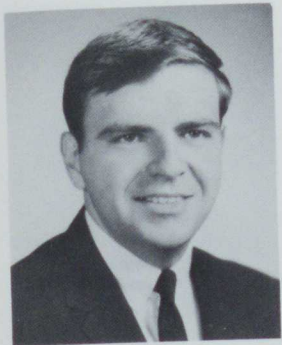
Eugene Kosovac



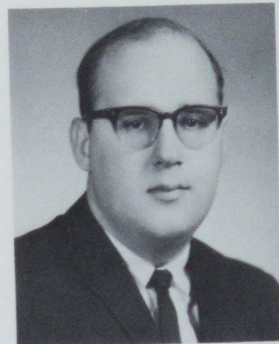
Clarence Kiggins Jr.



Elizabeth M. Koos



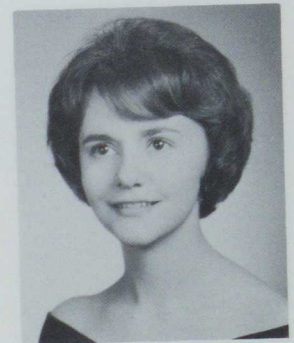
Carl Kempa



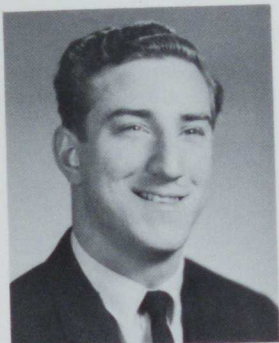
Robert E. Kiliany



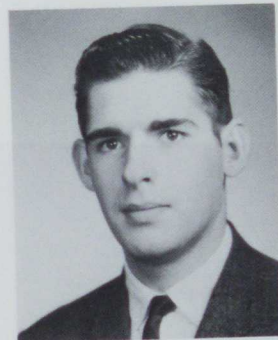
Mary Lou Kosick



Joan M. Kovach



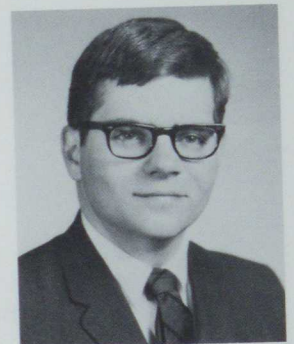
Carl Kerestesi



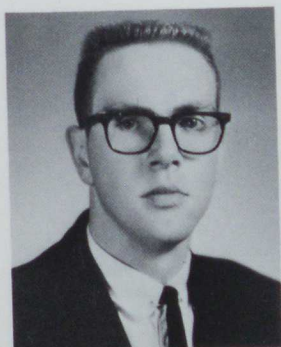
Jan E. Knupp



Patti A. Kosick



David R. Kovalcik



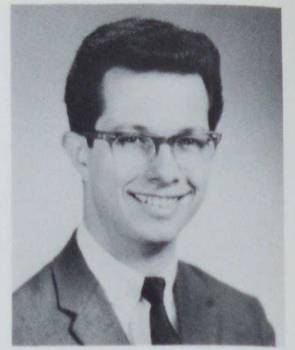
Ralph J. Kern



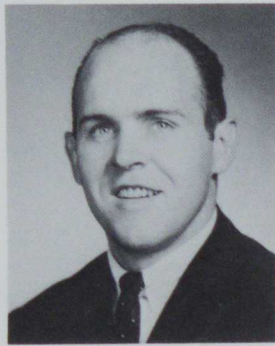
Robert Kovalik



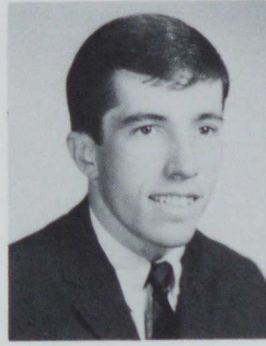
Nellie Koziak



Thomas Kustron



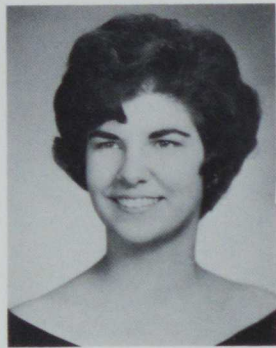
Ronald Krivitsky



James C. Kughn



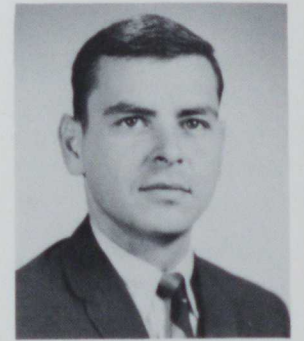
Charles J. Kraft



Bonita L. Krivoski



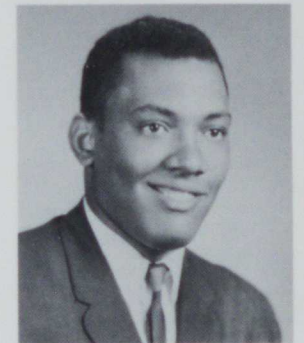
Thomas Kupchella



Glenn Lamison



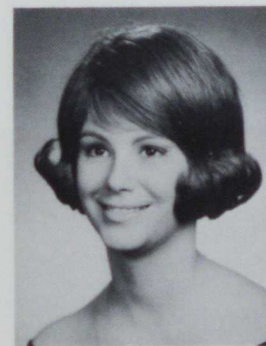
James Kratofile



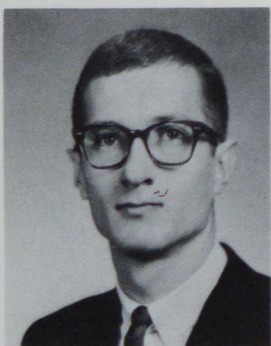
Paul Lancaster



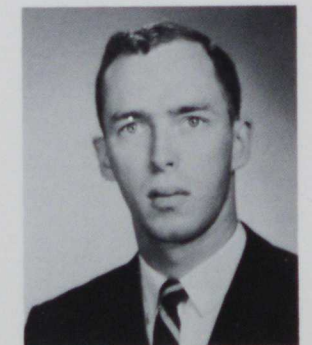
Fred Krzysiak



Janet Kurylo



Fred Krazusiak



William Lancaster



Tim Landers



Stephen A. Letavec



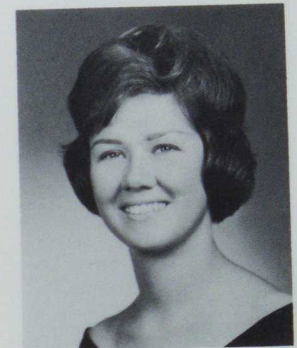
Floyd A. Laubham



Joyce Legg



Claire Lane



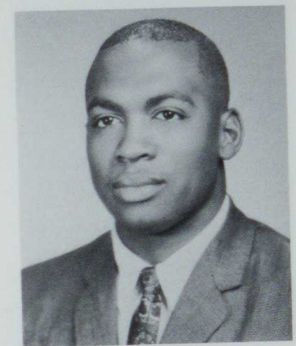
Diane Lewis



Betty M. Lazzari



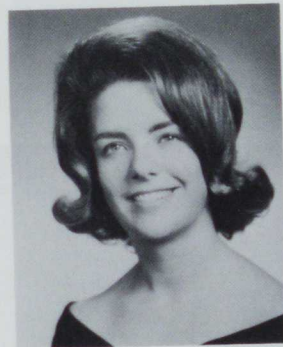
Edmund Leiding



Robert Lewis



Kathleen L. Langford



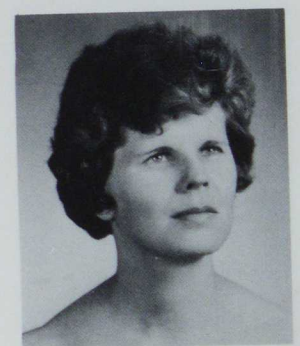
Karen Leanard



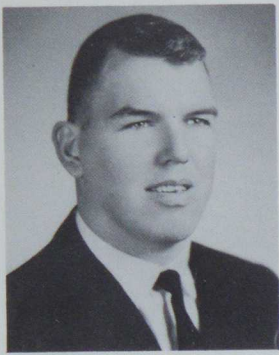
Marie E. Lengyel



Shirley Latsnic



Margie Lippencott



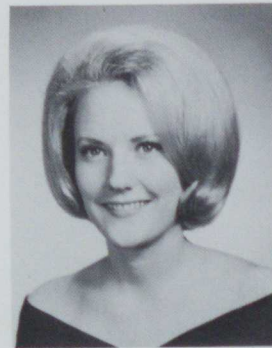
Robert Lippencott



Nicholas Lovich



Carol Locostic



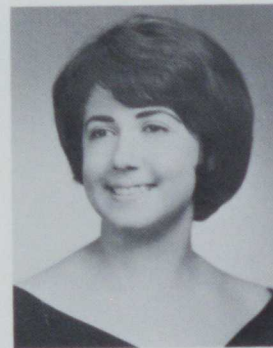
Joyce Long



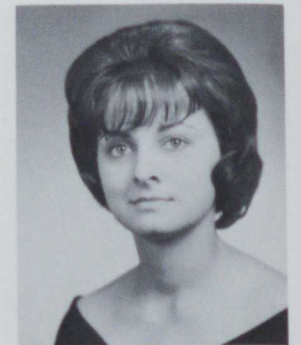
Thomas Lisiadek



Robert W. Lohr, III



Susan Lorenzo



Dolores Lubozynski



Robert Little



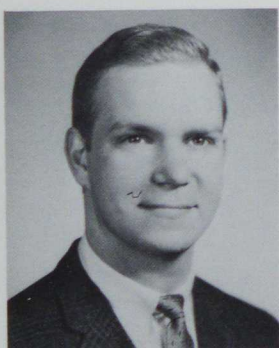
Allan Londou



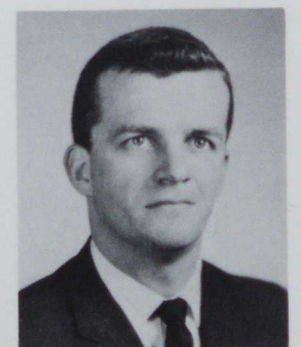
Sharon Lotzbire



Wilmer E. Lucas III



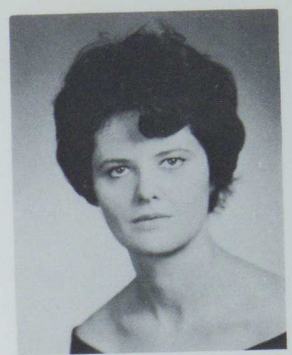
John H. Livingston, Jr.



Ernest Lundel



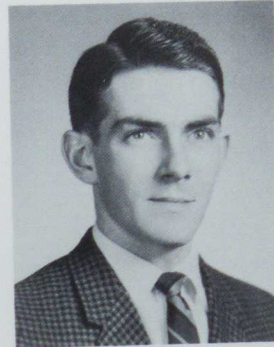
Irving Luzer



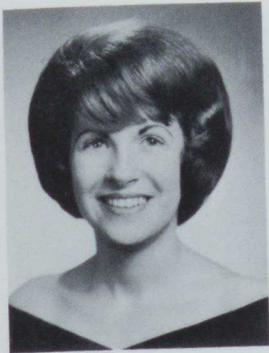
Eileen McManus



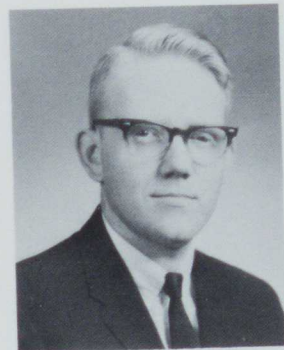
John McClellan



John W. McIntosh



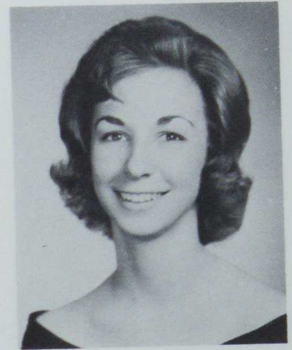
Charlotte McCarrell



David A. McCoy, Jr.



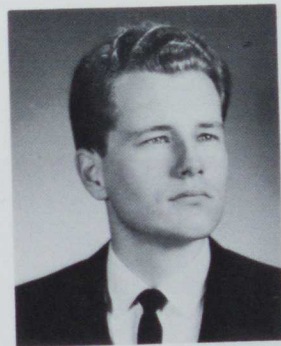
Thomas F. McKee



Gayle McNary



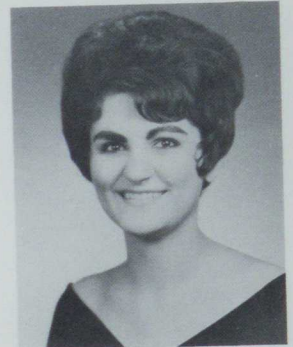
John McCausland



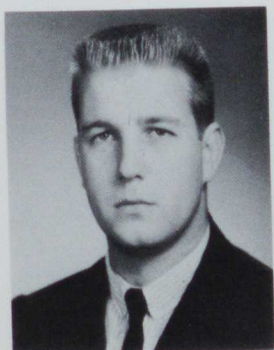
Jay E. McElravy



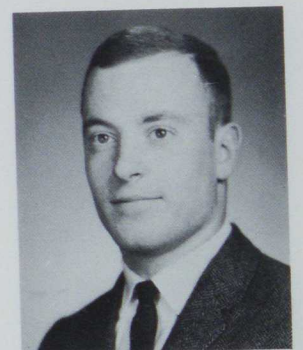
Linda K. McLaughlin



Andre A. Maccrone



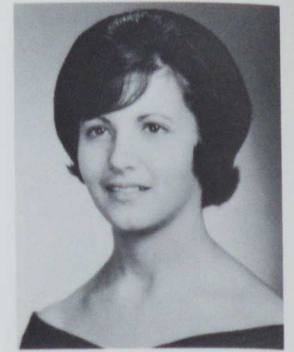
Asa McCian Jr.



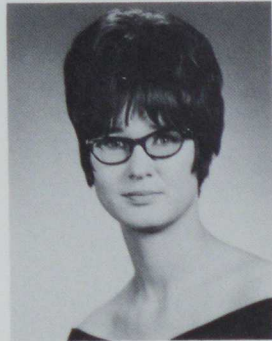
Paul F. Machak



Richard Maddas



JoAnne Mastandrea



Kathleen Matty



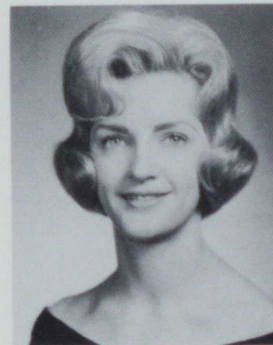
Joseph A. Martin



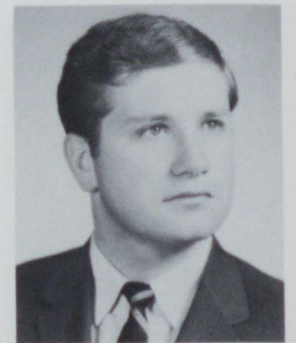
Vincent Madorma



Charles M. Markovitz



Evelyn Masney



Harold E. Matthews



Louis P. Majoris



Edward J. Martin



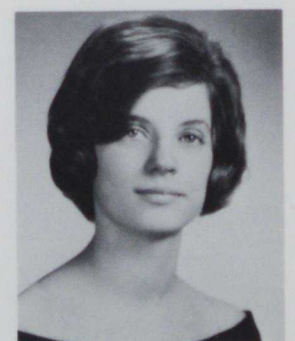
Louise Mason



Mary Matyi



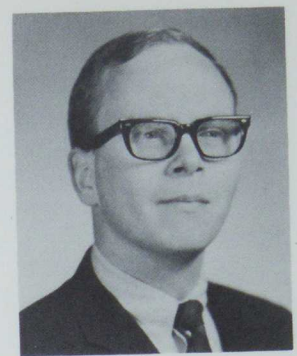
Leo E. Makorsky



Jean Maugard



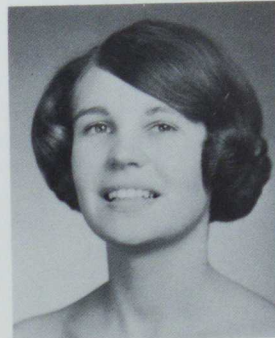
RoseMary Maybury



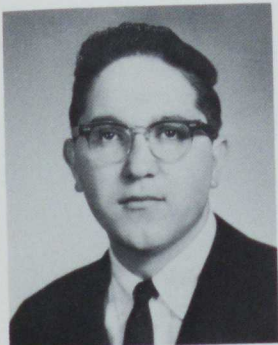
Robert E. Michdels



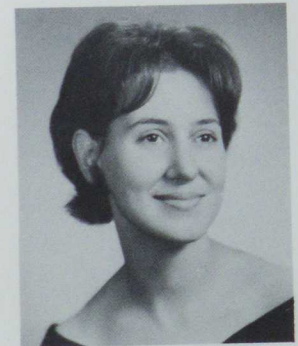
Jennie Melissas



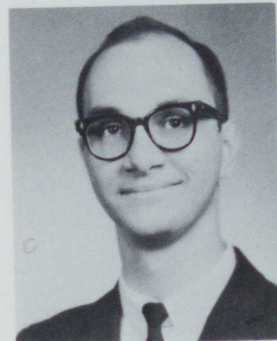
Marian Meszaros



Joseph R. Mayersky



Anna Mignogna



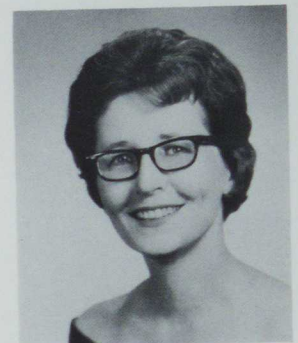
R. Melnick



Dennis John Messaros



Carl Della Mea



N. Mihalik



Marlene Mendicino



Kath Meyers



Regis Meenihan



Patricia Miklos



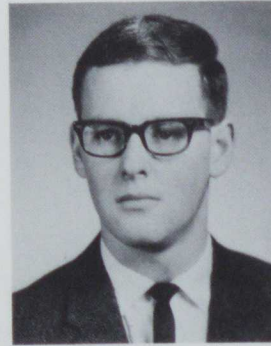
Anthony Milinaro



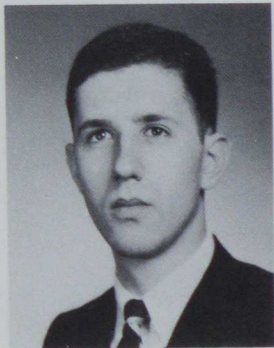
Noel M. Mohn



Henry A. Millon



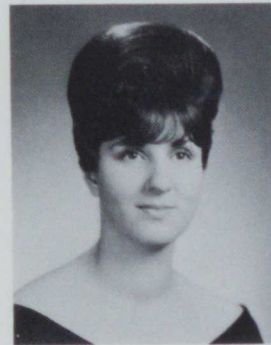
Keith H. Mink



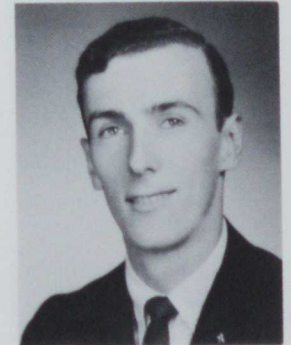
Evan Miller



Randall L. Mills



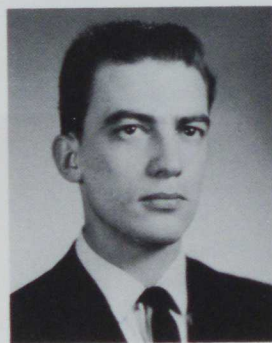
Carole Ann Mitry



William B. Moore



Jonathan R. Miller



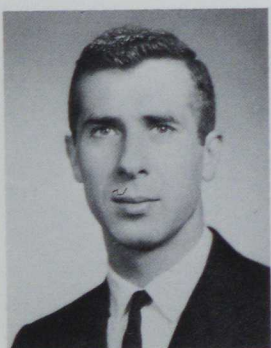
John E. Miner



Elizabeth Moats



Richard J. Moran



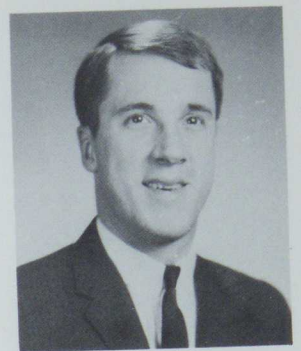
Melvin E. Miller



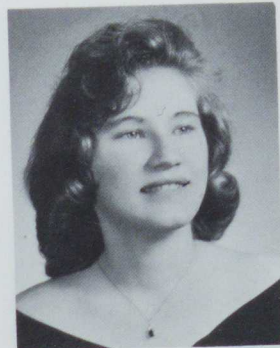
John W. Morgan



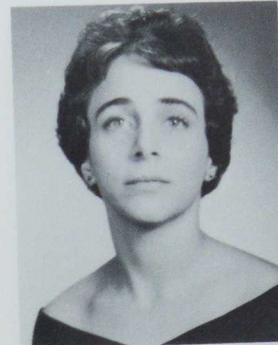
Margorie Moritz



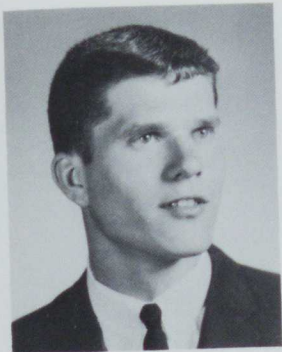
James Nehls



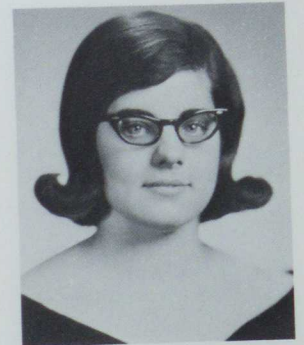
Carol Mundell



M. Napolillo



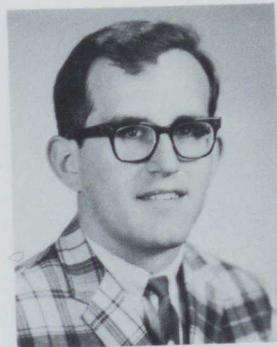
Milton Morozowich



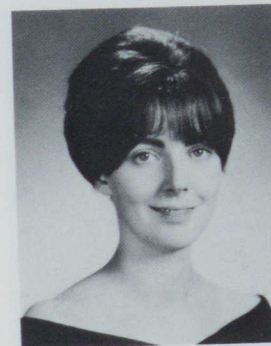
Anna Nelson



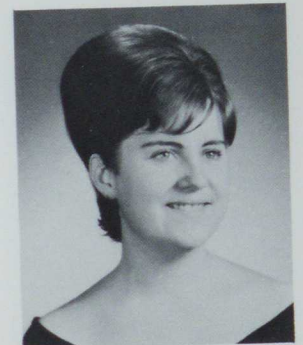
Hugh Mullen



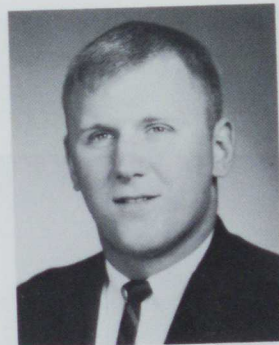
Bernard K. Murray



Kathleen Naponic



Betty J. Nelson



Ronald Naida



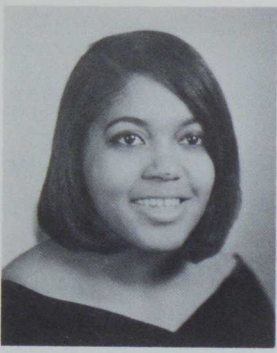
Louise Nason



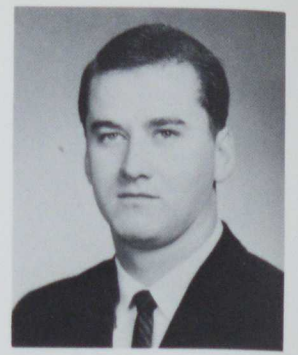
M. Mullen



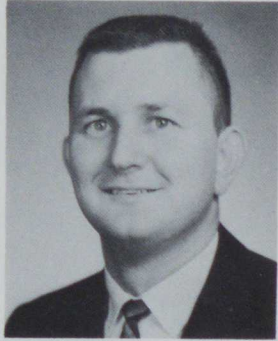
Lawrence Nemeč



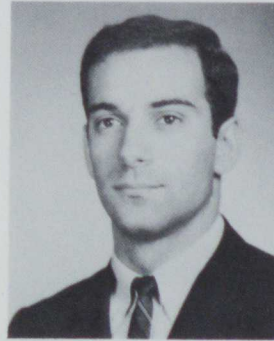
Patricia J. Nesmith



James O'Neil



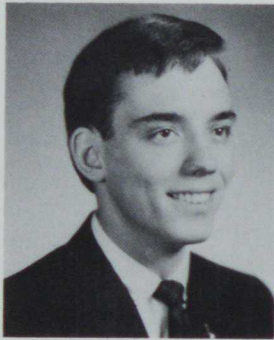
Richard Novsek



Ronald Oliver



Linda Nichols



Dennis Nystrom



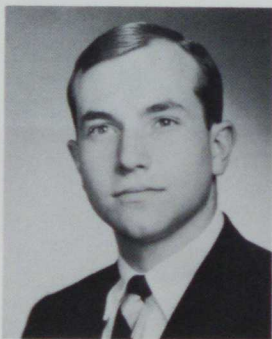
Ken Omlor



Mary Ornach



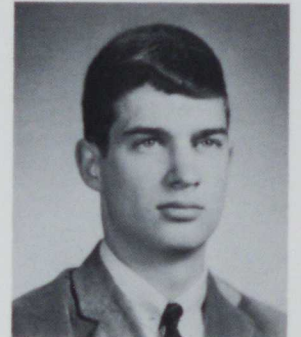
Mary E. Noel



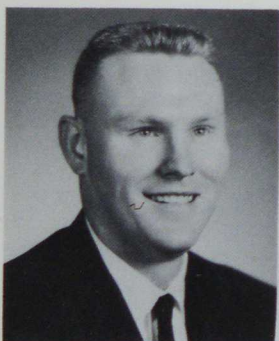
Robert Obrosky



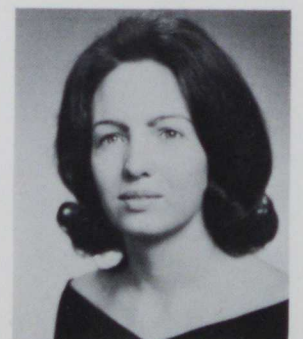
Grace Ondrako



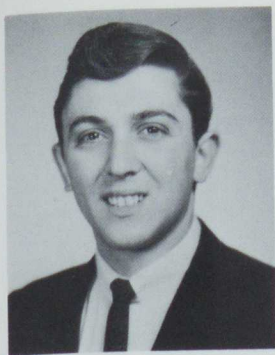
Theodore R. Orr



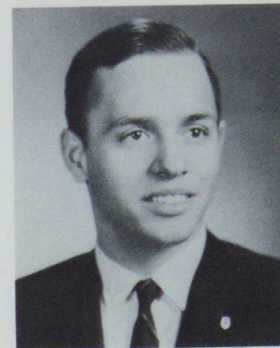
Richard G. Noll



Lenda Oshey



Albert D. Packan



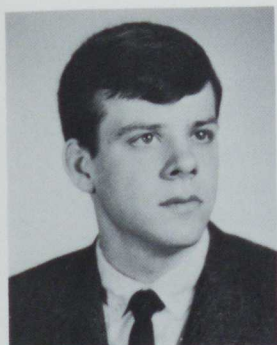
John Pavesi



Donna Pansmo



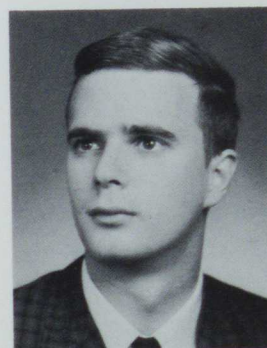
Judy Paterlini



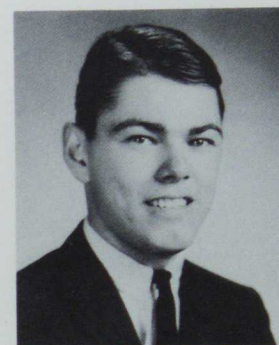
Norbert Paga



Walter Parks



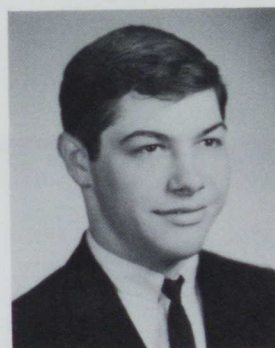
Bruce Paul



Robert Pepper



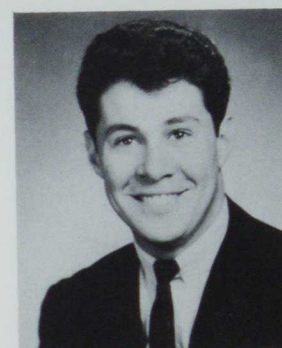
Judith Pagano



Charles Paroda



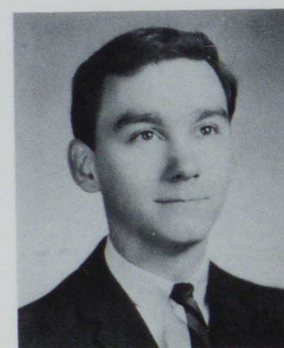
Wayne Paulos



Thomas Persico



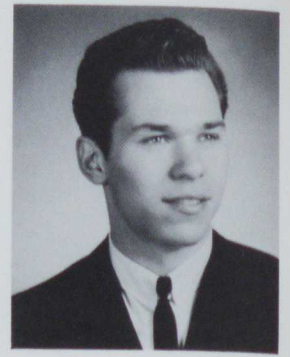
Judy Panseri



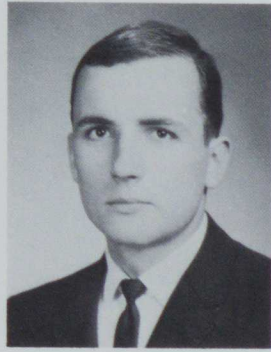
William L. Petcovie Jr.



Karen Petenbrink



Kenneth Price



James B. Pidcock



Steve Polish



Karl Petrich



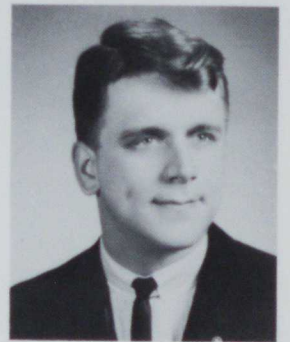
Eva Priesta



Frank Pilsitz



Cheryl Powell



Glen E. Queer



John P. Petrisko



Bernard Plisko



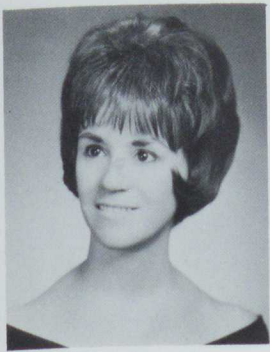
Charlotte Presti



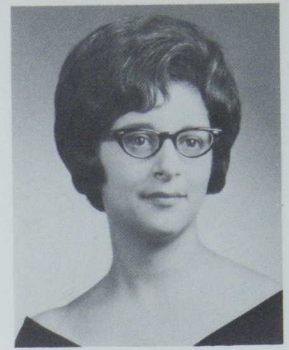
Patricia Petters



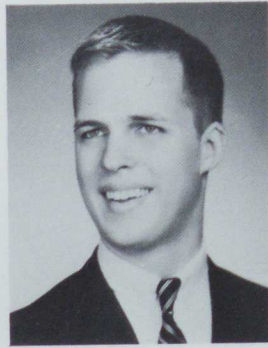
Robert E. Quinlivan



Susan Razola



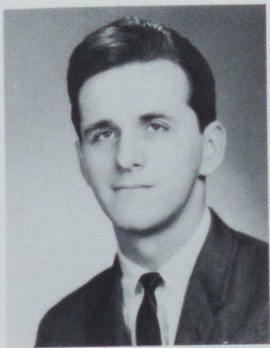
Frieda A. Riedel



James K. Reeves



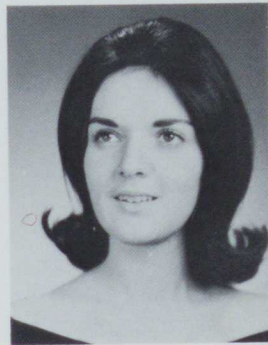
Sharon R. Relich



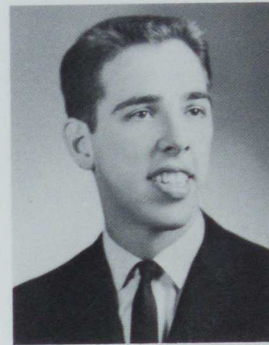
Albert R. Randolph



Sandra Riggart



Susan Regola



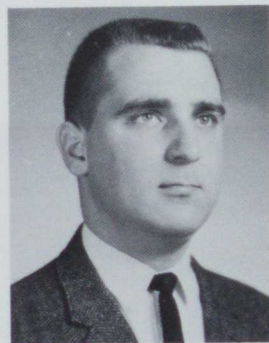
Lewis Rembold



Mary Ann Ratica



Karen Lee Ritz



Glen L. Reiner



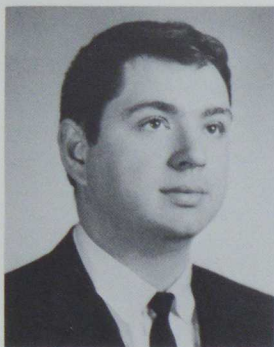
Thomas A. Ridge



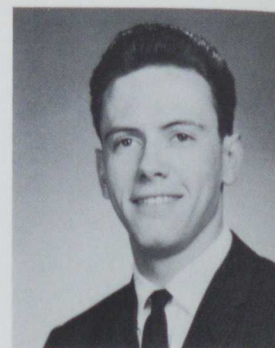
Judith Reed



Beverly Roberts



Ralph T. Roberts



David Roule



Robert Rode



Robert W. Rohrer



Frank Rousseau Jr.



Myrtle A. Robinson



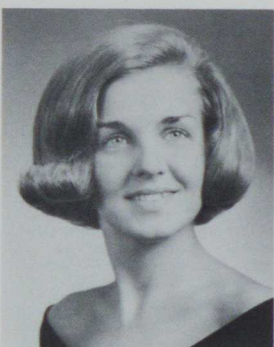
William Rodgers



Paul A. Roman



Mary Runciman



Lillian Rocco



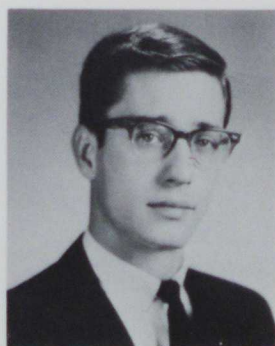
Janet Rogel



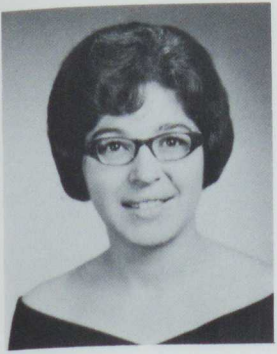
James Rosenberger



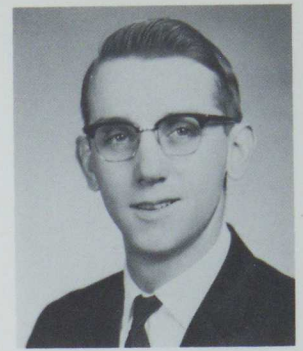
Robert J. Rockinson



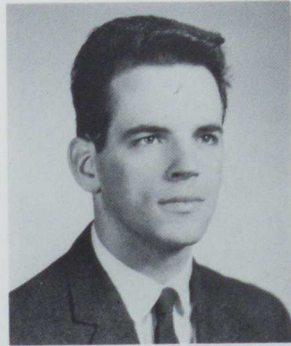
William Rusievicz



Bernice Russell



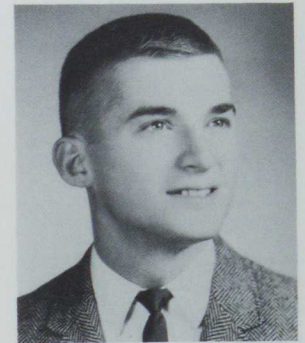
Alexander Scufra



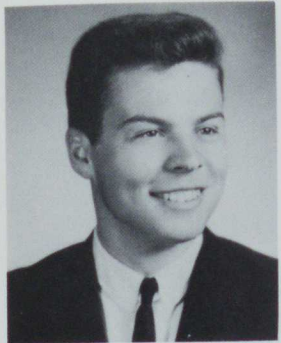
Ronald Sanford



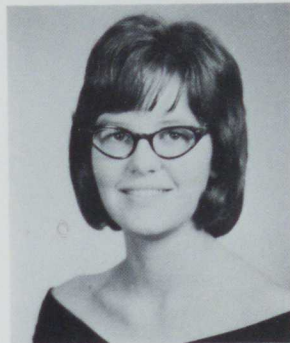
Robert Schniders



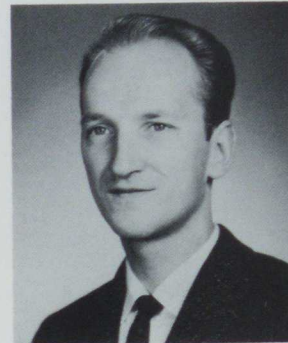
Robert K. Seabury



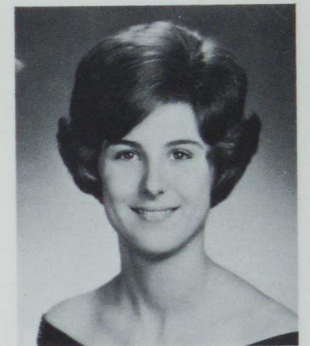
Richard Saccani



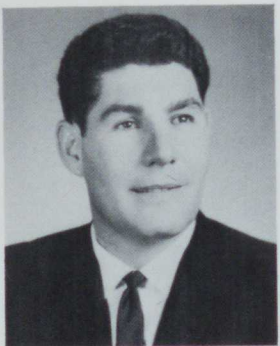
Karen Schimpf



Richard W. Schohn



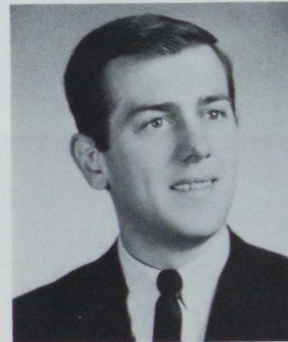
Mary Seppi



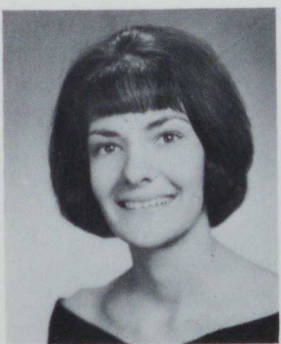
Frederick Sala



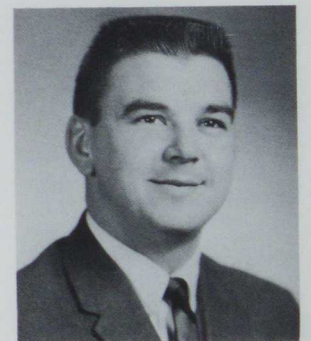
Mark Schivley



Lawrence Schroll



Dorothy Salapa



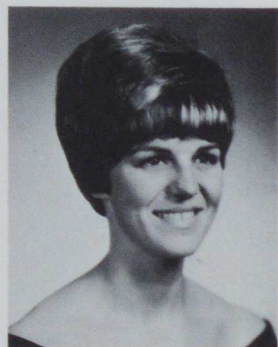
Paul Setto



Barbara Shady



Donald M. Shufren



Patricia Shannon



Janet E. Shipley



Herbert Shaffer



Jack Shunk



Maureen Shanahan



Gregory Shaporka



Joseph Paul Shott



Philip D. Shusnar



Charlotte Sheffield



Richard Shimshock



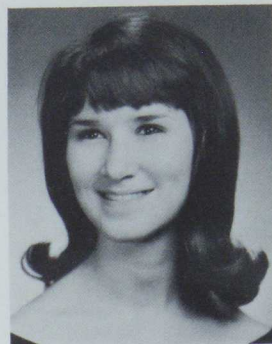
Robert L. Shank



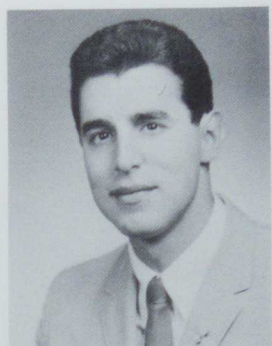
William Simanovich



Judith Simpson



Susan Smith



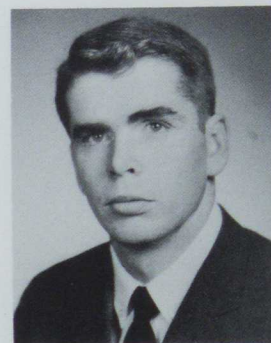
John J. Sliman



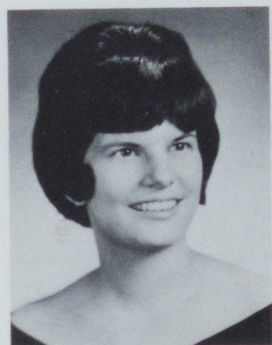
David W. Smith



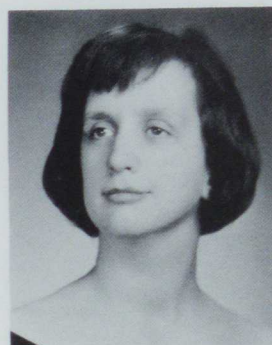
William Robert Simpson



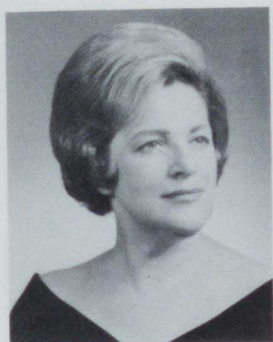
Ronald W. Snee



Barbara Smith



Judith Smith



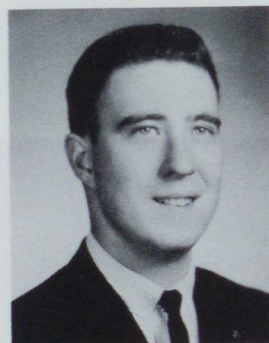
Pearl Sinaikin



Cheryl Snow



David Smith



Ralph A. Smith



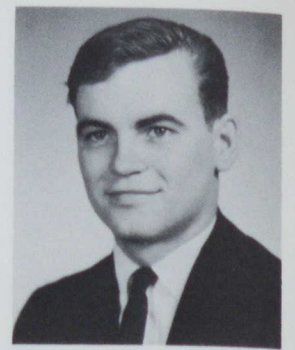
Ronald M. Sitterley



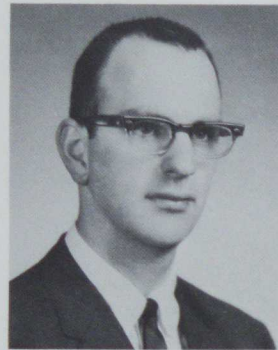
Esther Snow



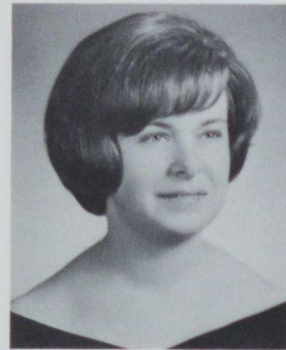
Georgi Snyder



Edward Steele



Raymond Spoonhoward



Mary Stares



Robert Snyder



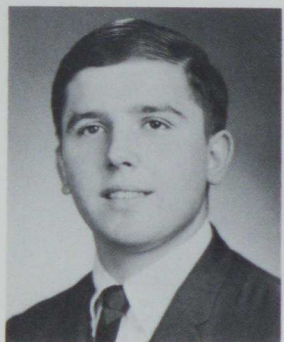
Dennis E. Stahl



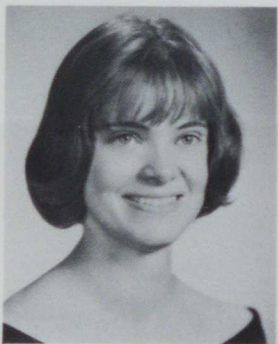
Carol Staso



John W. Steinmiller



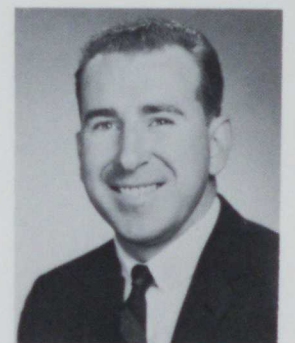
Dennes Spinella



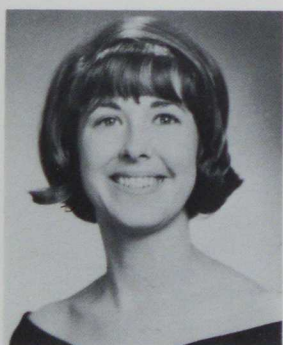
Cynthia E. Stapleton



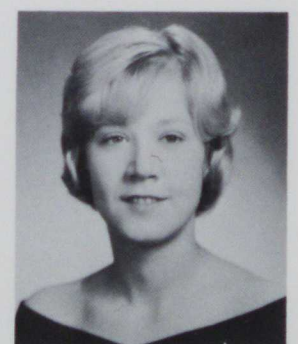
Thomas Stedina



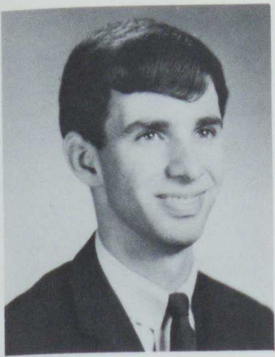
Sam Steinmiller



Alice Spisak



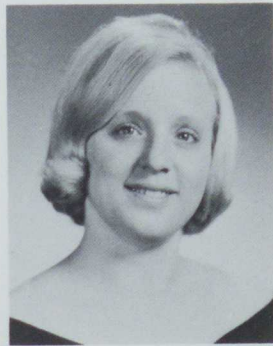
Maureen Stewart



Jay M. Straub



Darlene M. Tempest



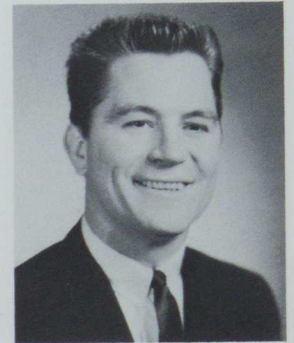
Bonnie Swagler



Joyce Taylor



Joseph R. Stumpf



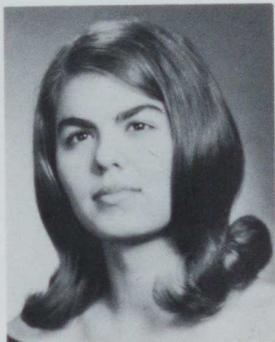
Lester Thayer



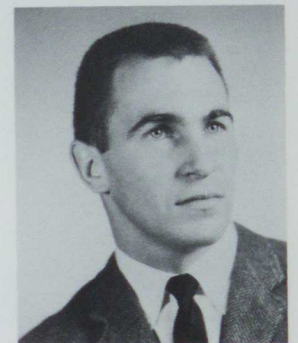
John Sweitzer



Rema Teberi



Roberta Sulkowski



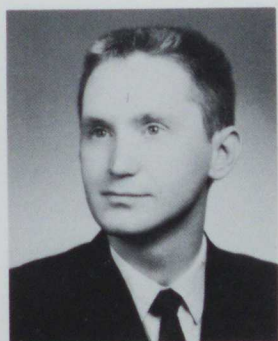
Charles Thomas



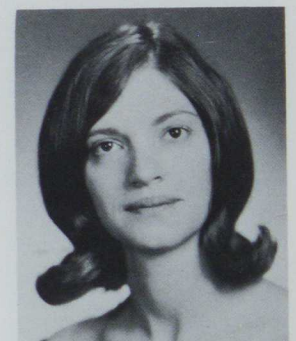
Irene Taffoni



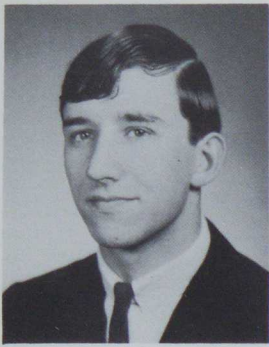
Marlene R. Tamar



Edward T. Surkasky



Sandra Thomas



George J. Thuransky



Janet G. Trozzi



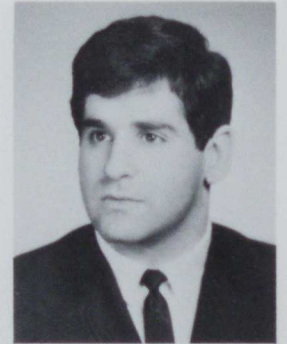
Fran Tokar



Mary Trainor



Rema Tiberi



Mike Tsangaris



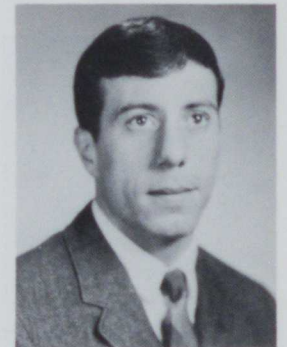
Edward M. Tolkach



Bonnie Treater



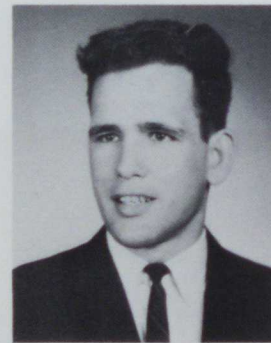
Mary Ellen Tirpak



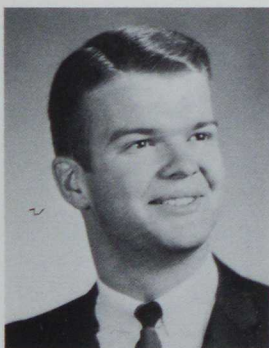
Larry Tuscano



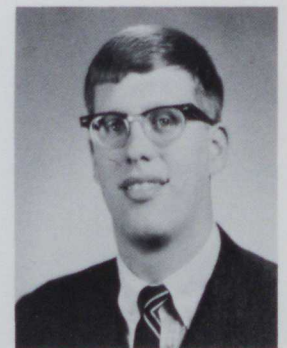
Neil F. Toth



Ronald Trick



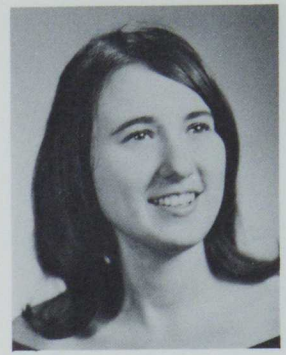
Arthur L. Titus



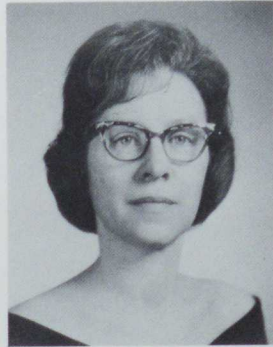
John Tweardy



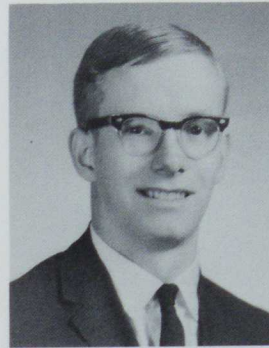
Judith Tylka



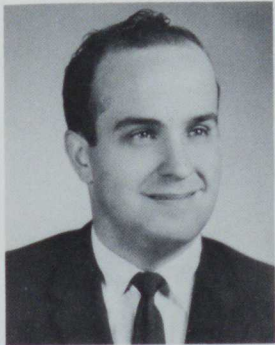
Patricia Verlander



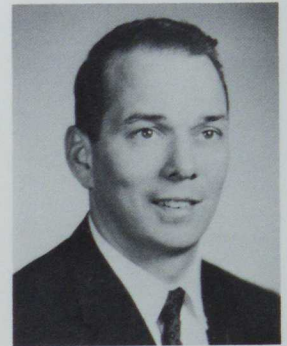
Mary Jo Uphold



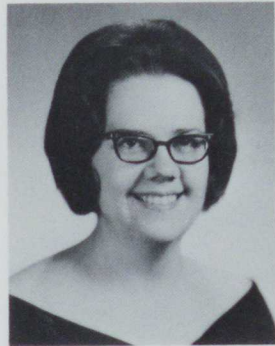
James Vandermer



Francis B. Ulishnek



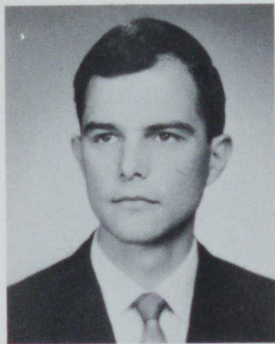
John Videlaney, Jr.



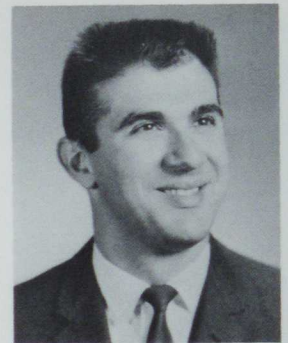
Barbara Vance



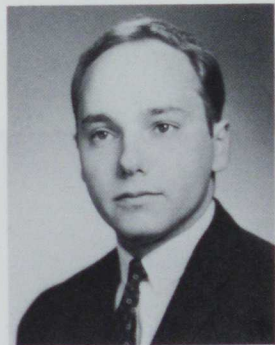
Sulynn Veltry



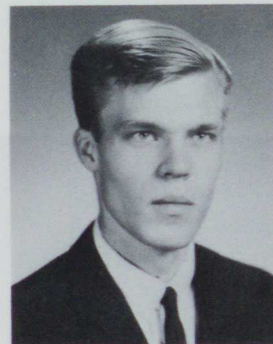
Thomas Uislosky



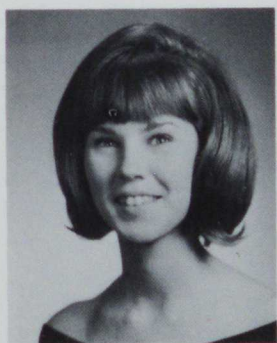
Louis Vitale



Wayne A. Vanderaar



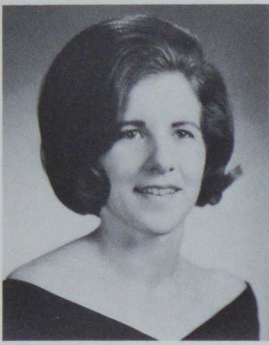
Harry Verakis



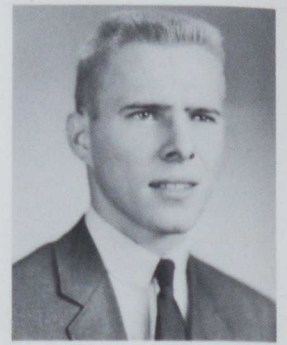
Marilyn Ukash



Arthur G. Wall, Jr.



Esther Wallz



John Weltz



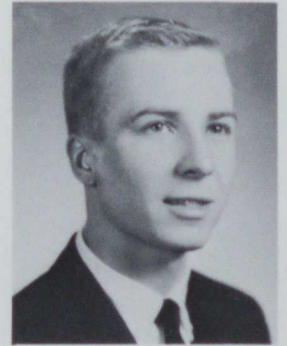
Astrid Ware



Richard Jay Wasson



Jacqueline Walsh



George Wesolosky



Harold O. Warnock



Charles Weidner



Nancy Wagner



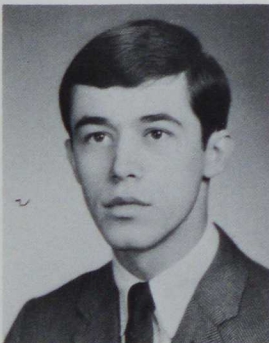
Nancy Whitlatch



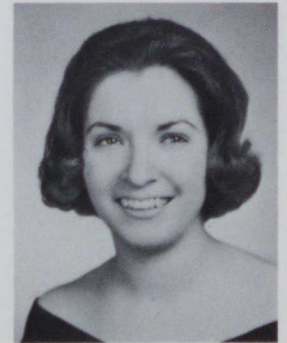
Victor S. Warych



W. James Welling



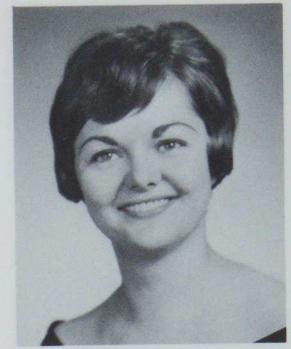
Michael Warcola



Fay Louise Wilkinson



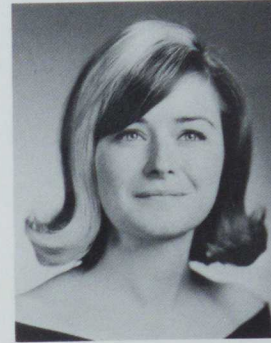
Paul David Williams



Lynda Wright



Paolmer Wise



Diane Woolslayer



George Wilson



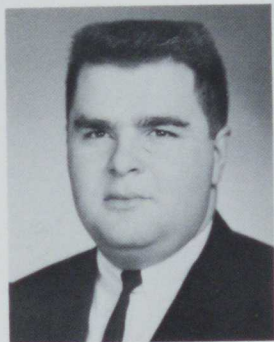
Helen Wycoff



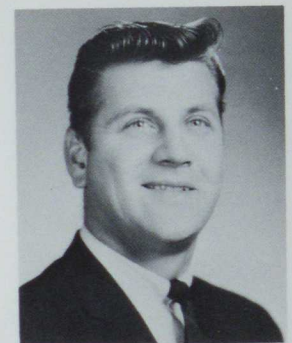
Verna Wise



Edward T. Wozolek



John Lawrence Wilson



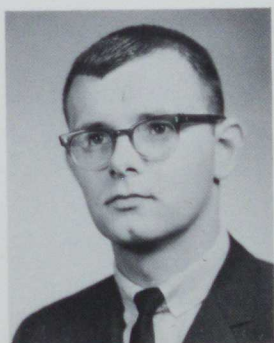
James Yackmack



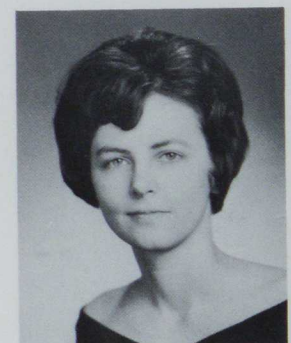
Joeine Wojnar



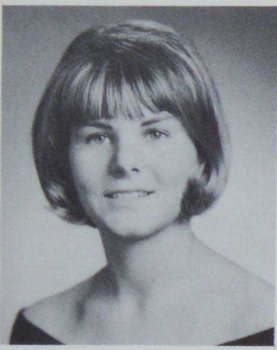
David Wright



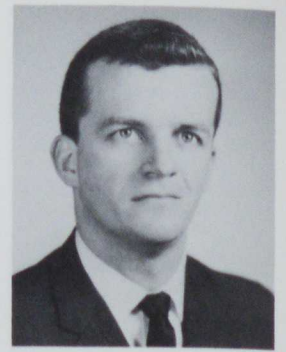
Richard K. Winters



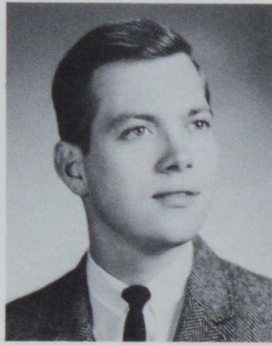
Stephanie Yeash



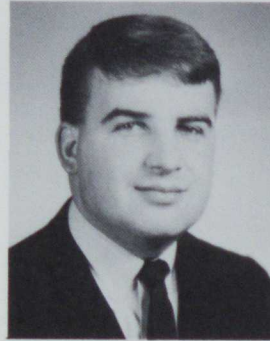
Janet Yerke



Ernest Zundel



Robert J. Yuhas



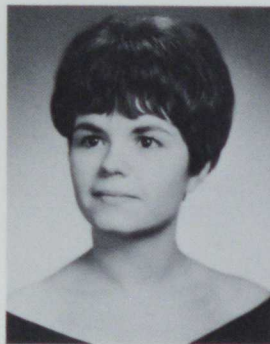
Joseph A. Zahorchak



Paula Yewisiak



Joseph F. Yurish, Jr.



S. A. Zajicek



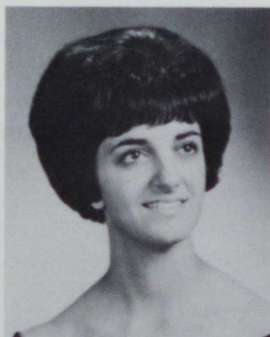
John D. Zavage



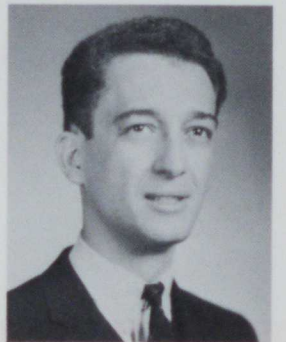
James Yohe



Gloria Yuschak



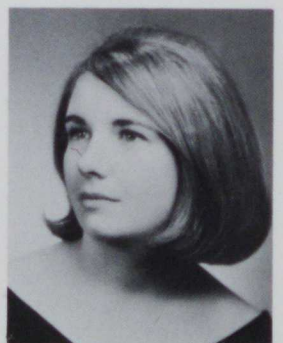
Patricia Zampetta



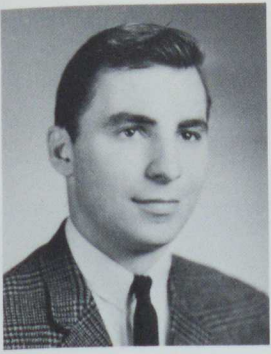
Dennis Zdrale



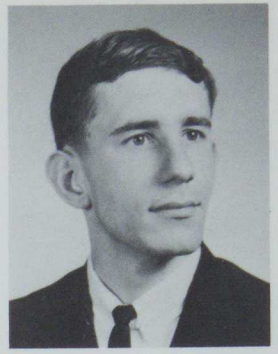
Karen Yohe



Judith C. Zerrey



Myron Zewan



Richard P. Zisek





