

The 1956

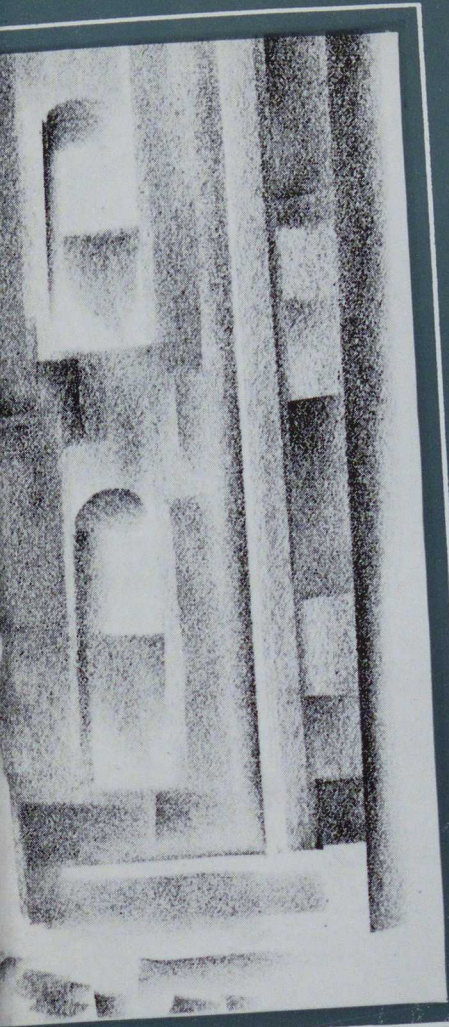
MONOCAL

1956

EX LIBRIS



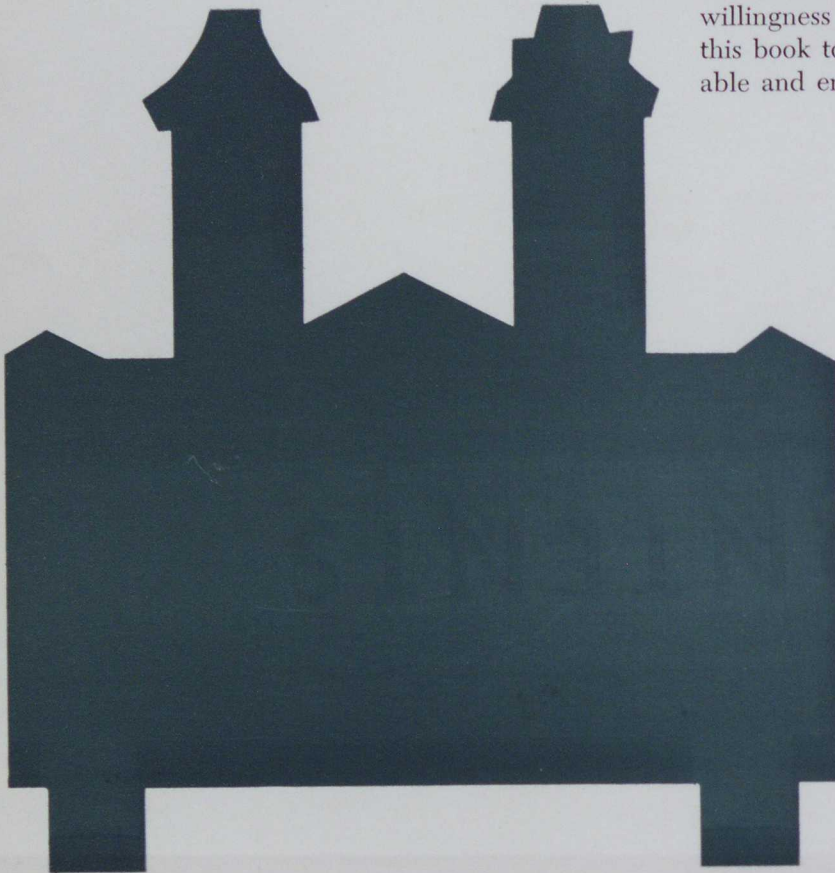
The **1956**
MONOCAL



FOREWORD

The symbol of the Keystone State has been used in our annual to unify our pictorial presentation of the 1956 Monocal of the State Teachers College at California, Pennsylvania. It has also been used to emphasize our indebtedness to the Commonwealth of Pennsylvania for the opportunities that we have had in participating in the scholastic, social, and extra curricular life of our college. It is with humble recognition of our willingness to serve that we, the staff, present this book to you in memory of our many enjoyable and enriching experiences at California.

Editor-in-chief
Bernadine Fabriziani



CONTENTS



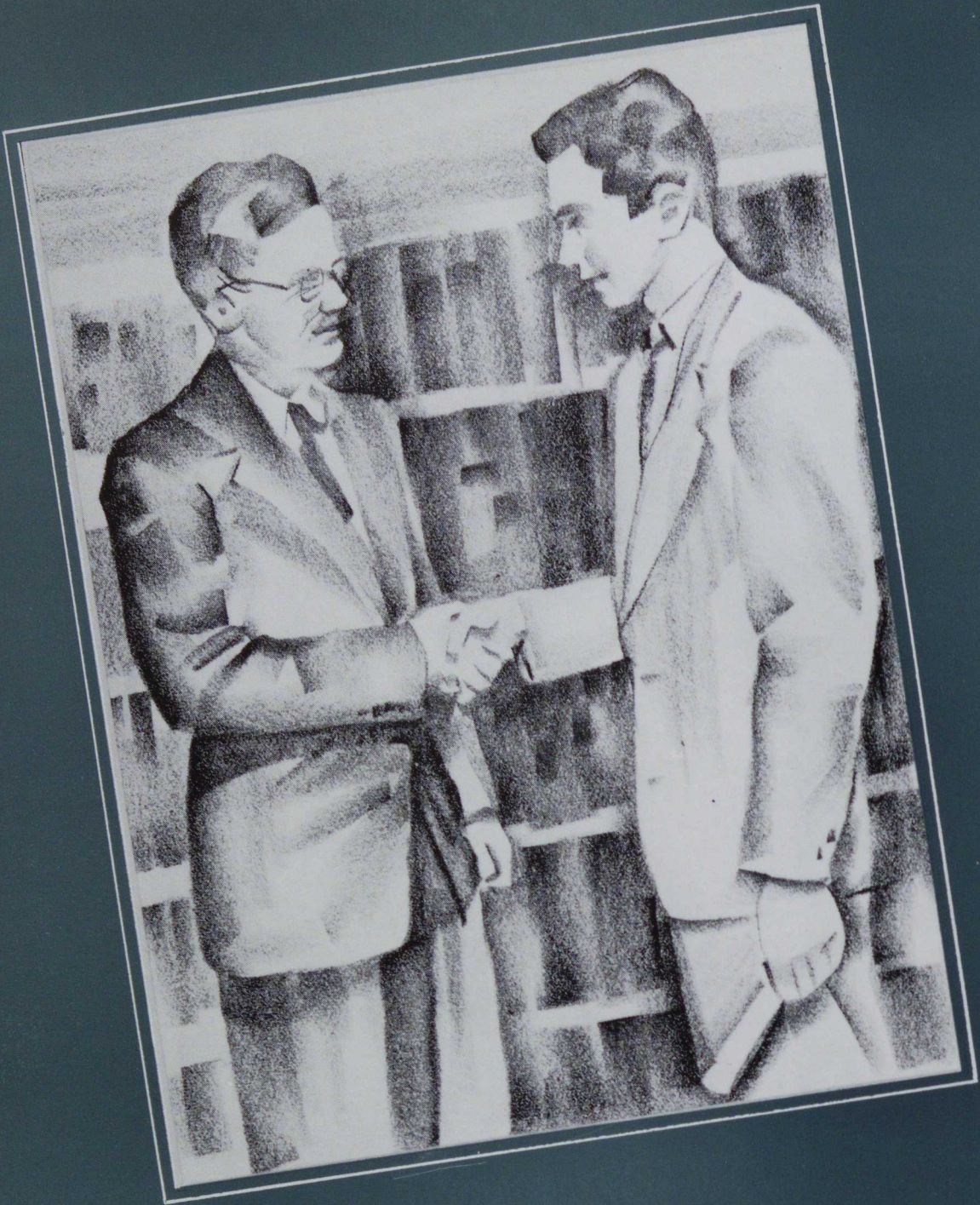
THE COLLEGE . . . Page 6

THE STUDENTS . . Page 30

THE ACTIVITIES . . Page 62

ATHLETICS Page 88

THE FEATURES . . Page 108



the COLLEGE





The Fountain

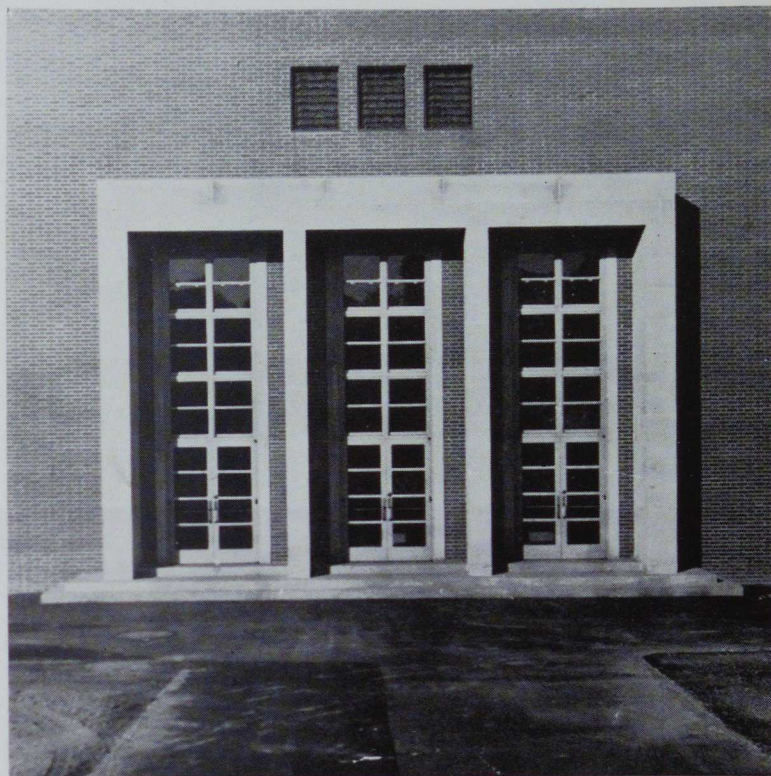
Main Hall





**Dixon Hall
Flower Gardens**

Steele Auditorium





Herron Hall



Snow Scenes

Dixon Hall



**The Tulip Gardens
In Full Bloom**

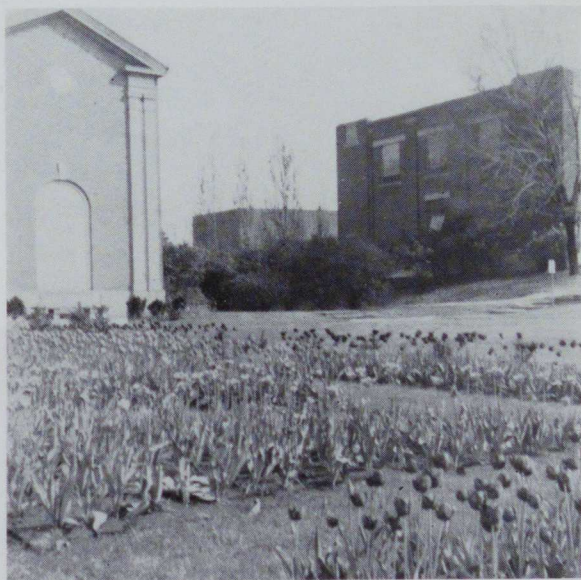


**Industrial
Arts
Building**

Science Hall



Front Campus In Winter



The Flower Gardens

Our President



Dr. C. Herman Grose

President's Message

Four years ago the 1956 Senior Class and the present administration came as strangers to the campus of the State Teachers College maintained by the Commonwealth of Pennsylvania at California for the education of teachers. Since then the members of the class have witnessed and participated in a period of expansion and growth in which college officials, faculty, students, and employees have worked together as friends devoted to the common cause of creating a better institution to remember as we go our separate ways at graduation time.

The college enrollment has doubled in the four-year period. The buildings and grounds have been renovated, repaired, furnished, and adapted to meet the needs of an increasing student body. The faculty has been expanded in number and enriched by a wider range of contributing colleges and universities and by higher standards of qualification. The student body has been admitted on an elevated selective basis.

This metamorphosis has resulted from a single objective to prepare the best possible teachers for service in Pennsylvania schools. More teachers are needed annually to supply the demands made by school districts to provide instruction for steadily increased enrollments. But the need is not merely for more teachers; it is for better teaching too.

May the future years hold pleasant memories of the hard work, relaxing activities, personal associations, and the exacting experiences of learning to be a teacher, an artist who moulds the shape of the world to be.

C. HERMAN GROSE
PRESIDENT

Board of Trustees

MR. D. C. LONGANECKER
154 West Lincoln Street
Waynesburg, Pennsylvania

MRS. FRANK M. ROBB
412 Depot Street
Latrobe, Pennsylvania

MR. S. RAY SHELBY
Apartment A
Fayette Title & Trust Building
Uniontown, Pennsylvania

MR. CHARLES A. GALLAGHER
5th and Wood Streets
California, Pennsylvania

MR. JAMES E. HAMER
212 Second Street
Fayette City, Pennsylvania

MR. JOHN E. KUHN
203 Wood Street
Belle Vernon, Pennsylvania

MRS. D. ROY CLYDE
514 Hutchinson Street
Canonsburg, Pennsylvania

MR. OLEN S. E. CONRAD
317½ — 4th Street
California, Pennsylvania



Dr. Grose
and his secretary,
Mrs. Irene Oldham

Administrative Officers



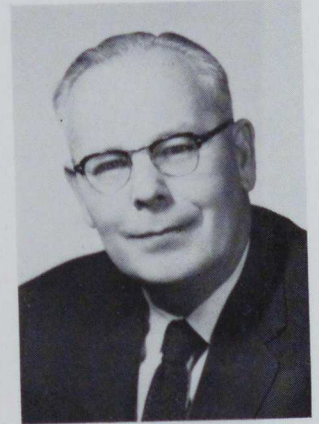
LELA M. HAMILTON

Dean of Women



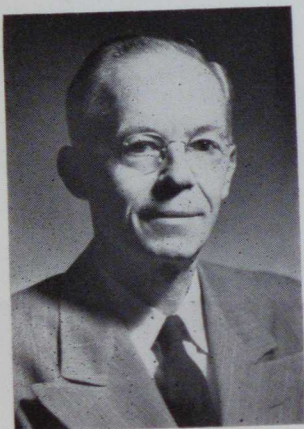
PAUL N. WALKER

Dean of Instruction



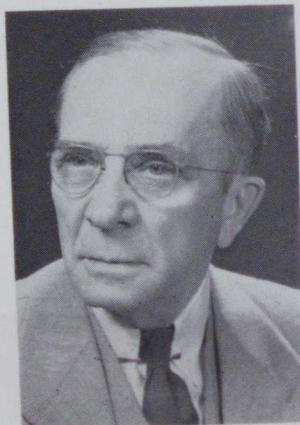
FRANK W. LENOX

Dean of Men



SHRIVER L. COOVER

Director of Industrial Arts



THOMAS M. GILLAND

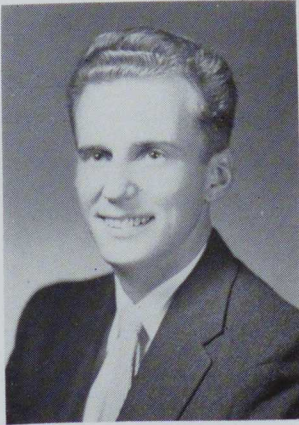
Director of Laboratory
School and Student Teaching



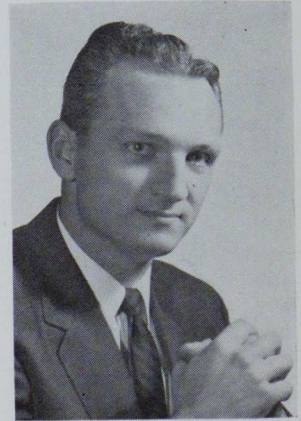
WILLIAM HORMELL

Superintendent of Buildings
and Grounds

Administrative Officers



PAUL WICKERHAM
Bursar



JAMES S. PORTER
Director of Admissions

Administrative Staff



ARLENE KERSTETTER
Dietitian



LINNEA V. ECKEL
Nurse



KATHERINE BURGER
Manager of Book Store



SARAH L. HALL
Housekeeper



DOROTHY M. REICHARD
Librarian



Book Store

RUTHANN BAGSHAW
Laboratory School

GABRIEL BETZ
Geography

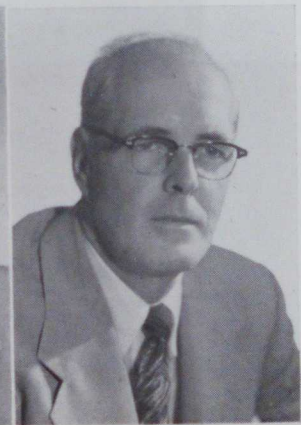
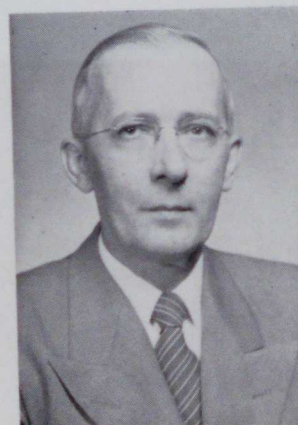
O. RAY BONTRAGER
Education

J. HERSCHEL BOWLEN
Speech

Faculty



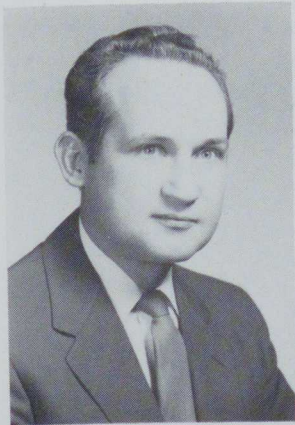
FREDERICK ATKINS
Mathematics





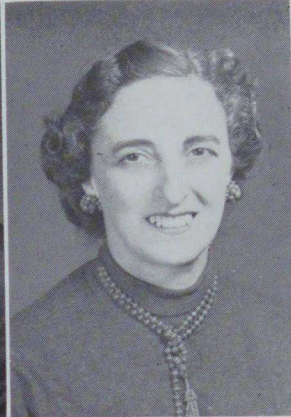
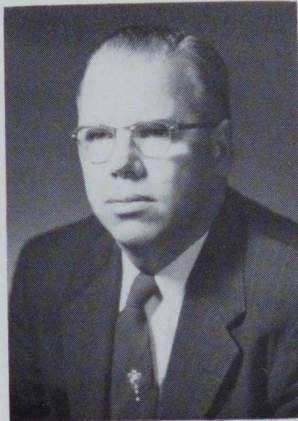
MERRILL G. CAMPBELL
Industrial Arts

HENRIETTA CARROLL
English and German



RALPH CHARNEY
Industrial Arts

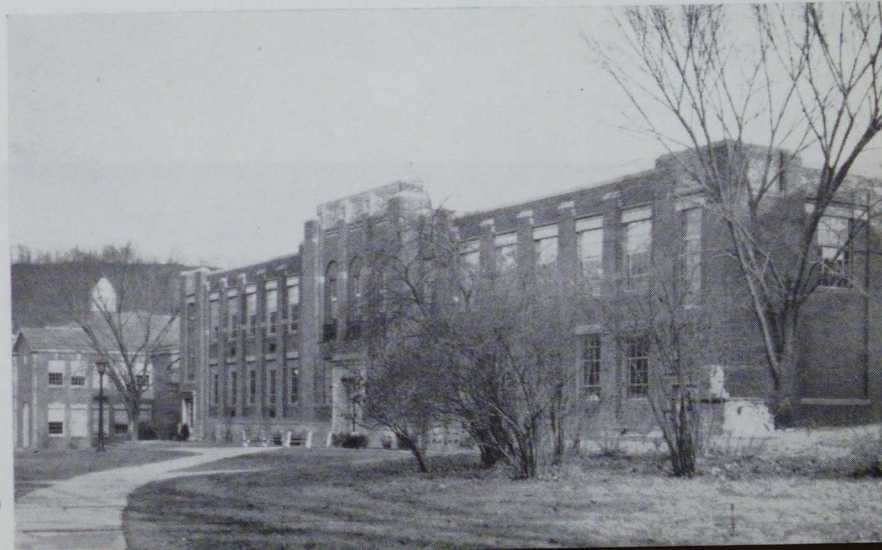
CORA B. COOVER
Speech



LESLIE E. CROWLEY
Education

MARY R. DeCARLO
Laboratory School

**The Noss
Laboratory School**



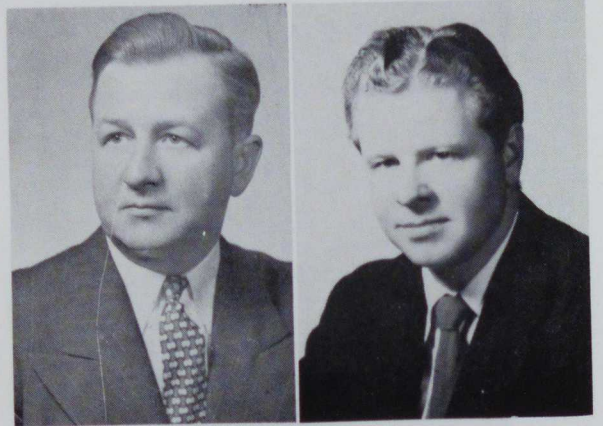


Faculty

Herron Hall

ANGUS DOUPLE
Industrial Arts

WILLIAM L. DOVENSPIKE
Music



J. CALVIN FLEMING
Physical Science

NANCY W. GRIMES
Geography



EDWIN E. HALSTEAD
Chairman of Fine Arts
Division

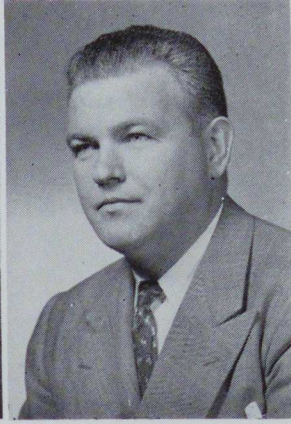
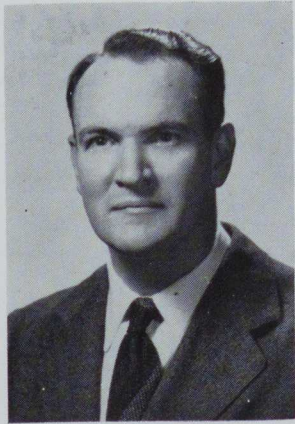
GEORGE E. HARDING
Chairman of Science
Division





GEORGE S. HART
Chairman of Social Studies
Division

CLYDE M. HARTMAN
Chemistry and Physical
Science



WAYNE C. HAYWARD
English

EUGENE J. HESTER
Chairman of Health and
Physical Education Division

Alumni Room



LOUISE A. HILDRETH
Physical Education

MERRELL HOLMAN
Laboratory School



AARON J. HOOVER
Industrial Arts

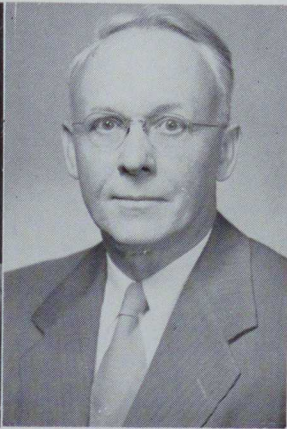
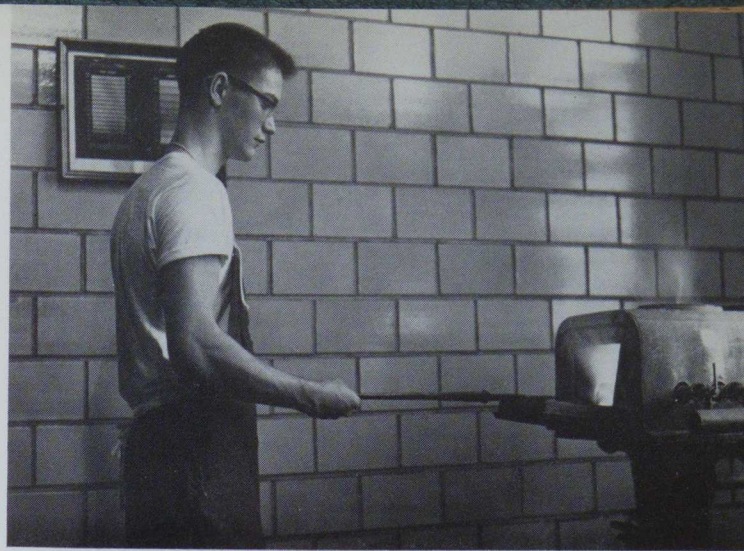
JACK F. HOYES
English
Visual Education



Ceramics Class

Faculty

Forging

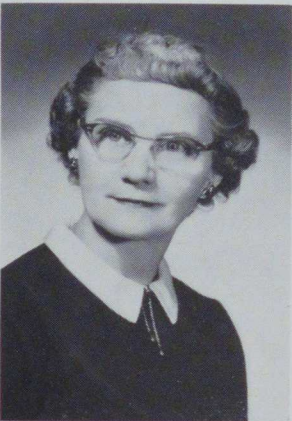


ROSE G. HUGHES

Laboratory School

C. M. HUGHEY

Chairman of Language
Division

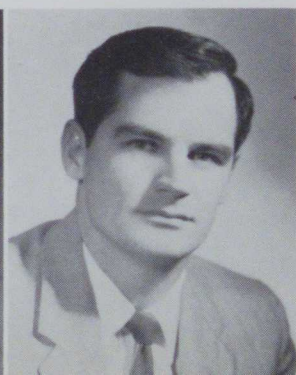


ROXANA IRWIN

Laboratory School

PHIL JACK

History



HAROLD E. KEMPER
Mathematics and Science

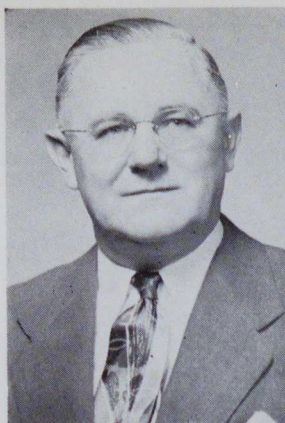
GASTON LEBOIS
Industrial Arts

JOHN F. LEWIS

Biology

VIRGINIA LUCKHARDT

Librarian



LAWRENCE H. MADDOCK

English

ADA K. MARSH

Laboratory School

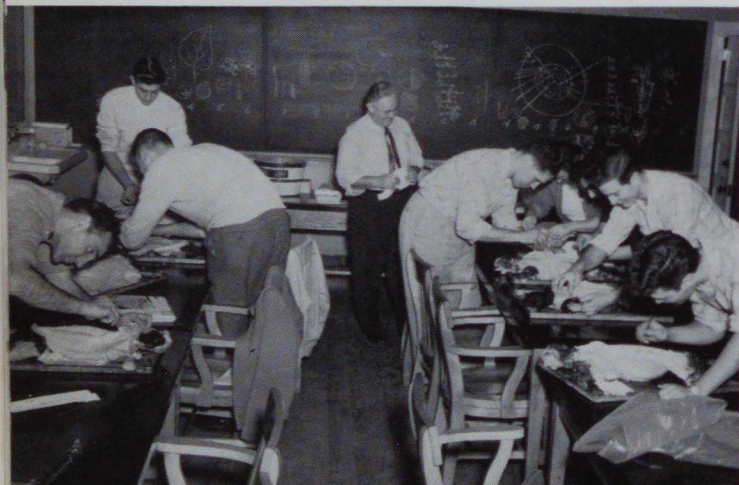


KATHRYNE J. MOELLER

Laboratory School

HARRY L. MONROE

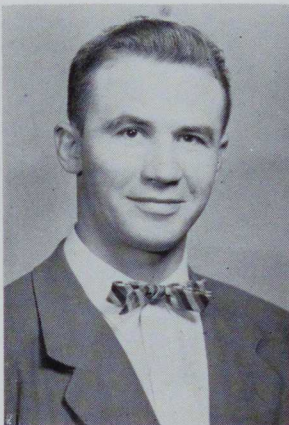
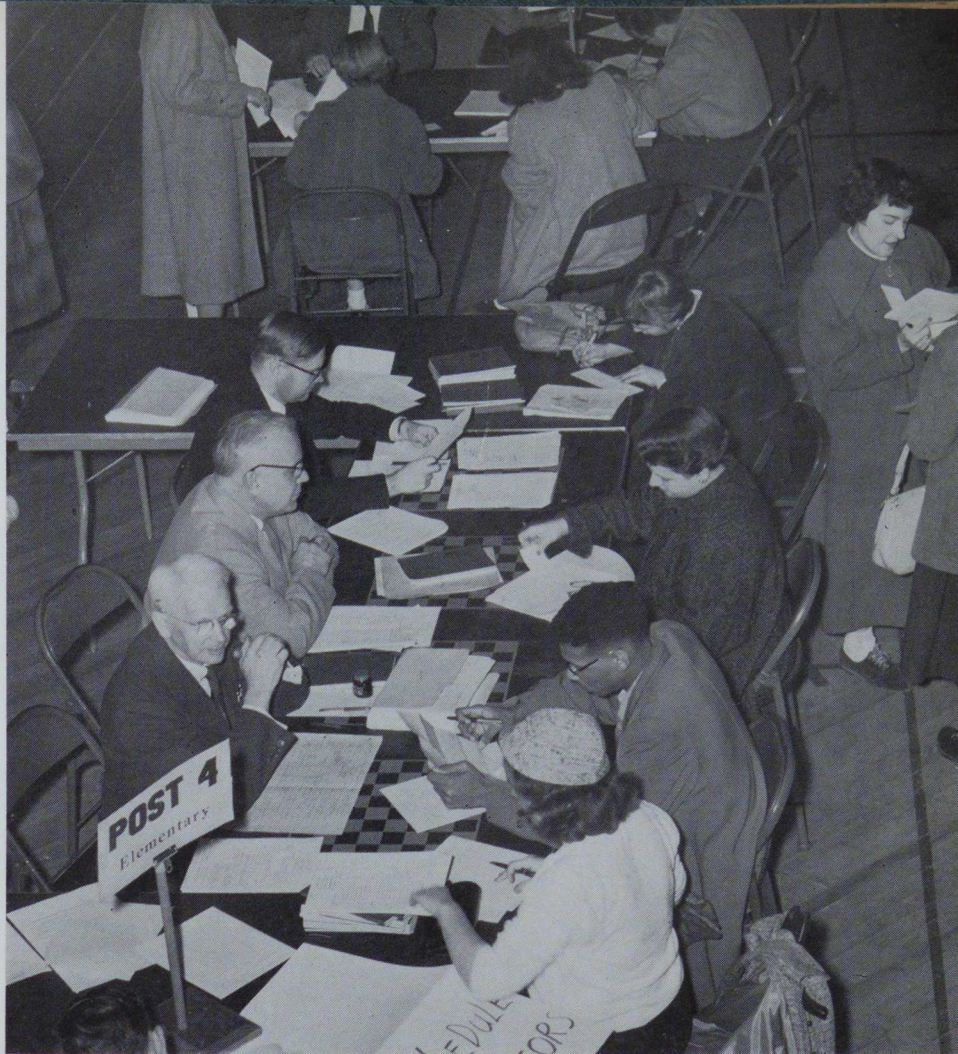
Physical Science and Mathematics



Cat Anatomy Class

Faculty

Registration



THEODORE J. NEMETH
Physical Education

LOUISE RAKESTRAW
English



GEORGE H. ROADMAN
Social Studies

EMMA SACCO
Social Studies



Machine Drawing Class

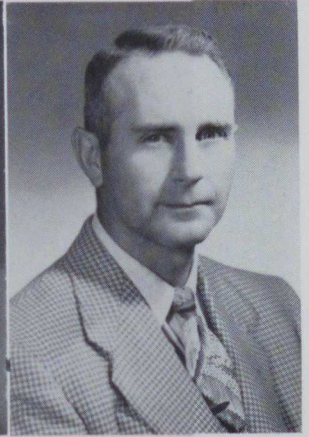
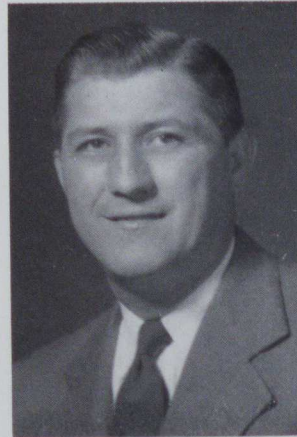
Faculty

ANDREW SEPSI

Biology

RICHARD SHACKLEFORD

Industrial Arts

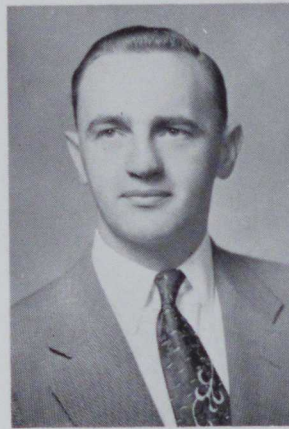


IRVIN SHUTSEY

Industrial Arts

ALEXANDER R. SMOYER

Industrial Arts

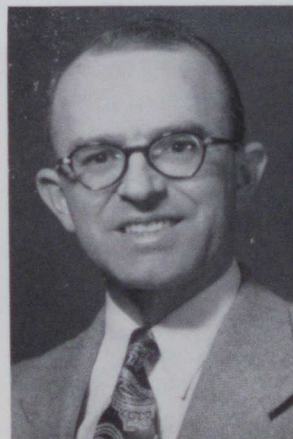


HUBERT SNYDER

Biology

ANTHONY T. STAVASKI

Industrial Arts





K. FIFE STERRETT

Education

JOHN R. SWEARINGEN

Industrial Arts



HAROLD W. TRAISTER

Education

LUCY A. VALERO

Laboratory School



MARIAN WEAVER

Speech

CLAIR B. WILSON

Chairman of Education
Division

The True Test



MALVERNE WOLFE

History



Secretarial Staff

Business Office



Left to right: Miss Sacco, Miss Piribek, Miss Underwood.



Row one, left to right: Miss Dorothy Valla, Miss Anne Litavec, Miss Bonnie Wehousie, Miss Lucille Coursin, Mrs. Marjorie Junker.
Row two: Mrs. Marcella Scaramucci, Miss Dorothy Young, Miss Melva Pocky, Mrs. Nancy Hyman.

General Office





the **STUDENTS**



Seniors



Row one, left to right: Darlene Destefano
Row two: Elaine Vilscek, Elizabeth Shultz
Row three: Dean Bowman, Joan Kray, Jack Young

OFFICERS

President	Jack Young
Vice President	Dean Bowman
Secretary	Elizabeth Shultz
Treasurer	Darlene Destefano
Representatives to Congress	
	Edward Smith
	Elaine Vilscek
	Joan Kray
	Betty Ellenberger
	Robert Springer

Bewitching Hour



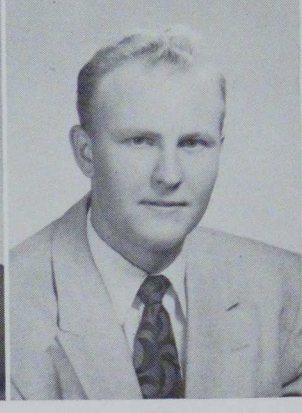
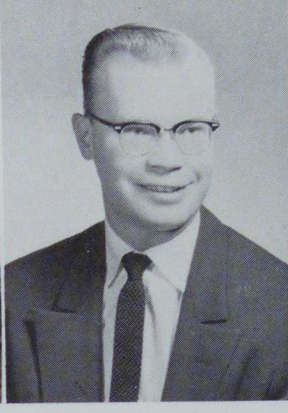
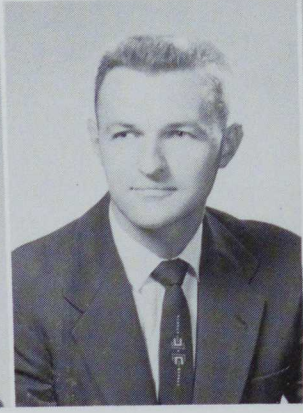
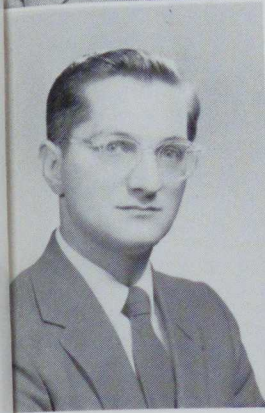
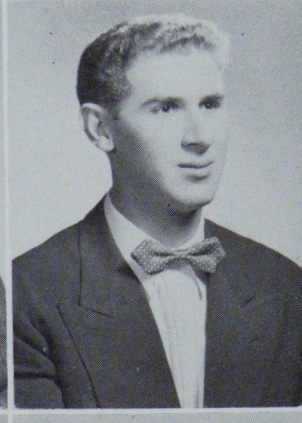
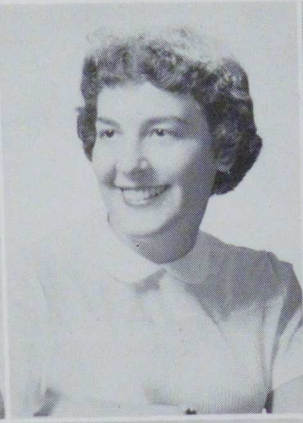
ADAMSON, ALVERA
Elementary
East Bethlehem High
School

AMBROSE, M.
Elementary
Bellmar High School

ANSELL, EDGAR
Secondary
South Union High
School

BAGIATIS, S.
Industrial Arts
Charleroi High School

BAKEWELL, BYRON
Industrial Arts
Brownsville High
School



BENNESE, JOSEPH
Industrial Arts
Johnstown High
School

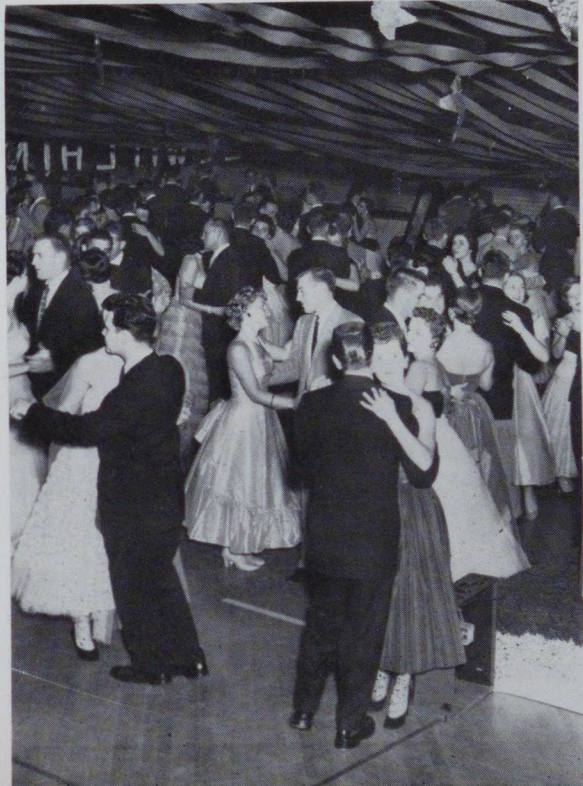
BISHOP, WILLIAM
Industrial Arts
Clearfield High
School

BLACKA, ALLAN
Secondary
Marion High School

BOARDLEY, A.
Industrial Arts
Washington High
School

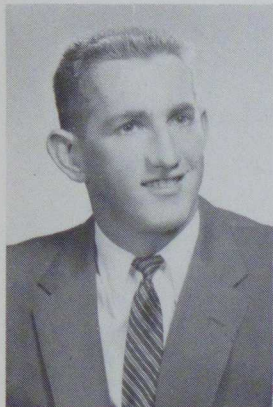
BONGIANINO, A.
Elementary
Blairsville High
School

Seniors



Bewitching Hour

BOWMAN, DEAN
Secondary
Somerset High
School



BUCHER, ROY
Industrial Arts
McKees Rocks High
School



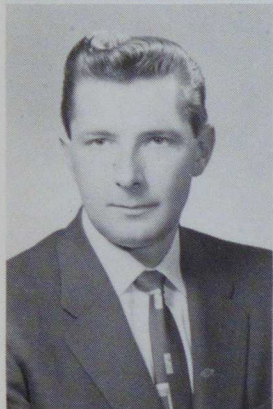
CAMPBELL, INA M.
Elementary
California Community
High School



CAMPBELL, H.
Industrial Arts
Erie Technical High
School



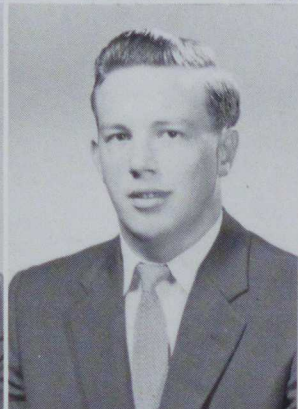
CITRO, LUCILLE
Nursing
Brownsville High
School



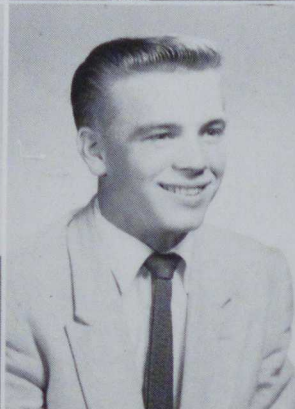
CONAWAY, R.
Secondary
California High
School



CONWAY, SAMUEL
Industrial Arts
Avonworth High
School



CRAVEN, RUSSELL
Secondary
Brownsville High
School

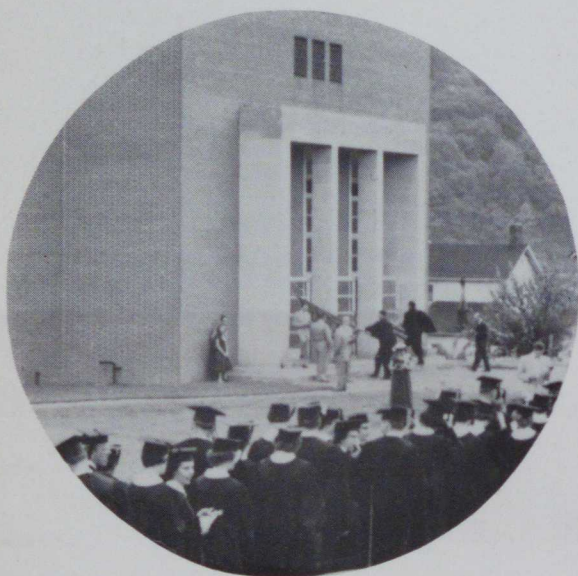


CUSIC, JOSEPH
Industrial Arts
Snowden High School



DALSON, VIOLET
Elementary
Brownsville High
School

Seniors



Graduation

Seniors

Graduation In Steele Auditorium



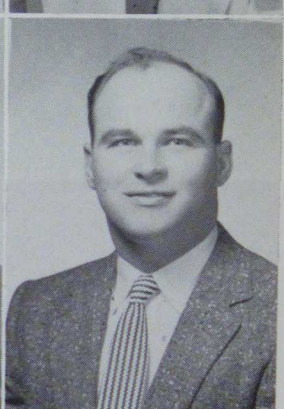
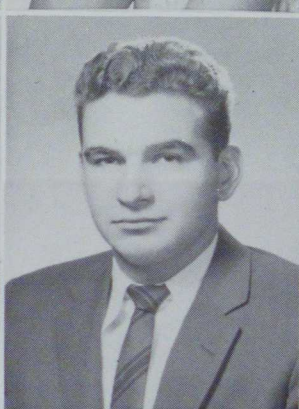
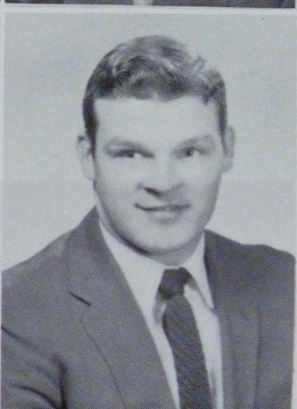
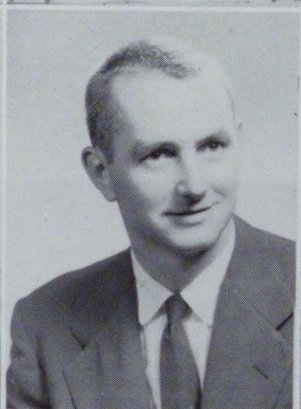
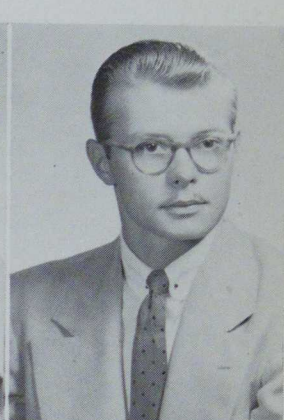
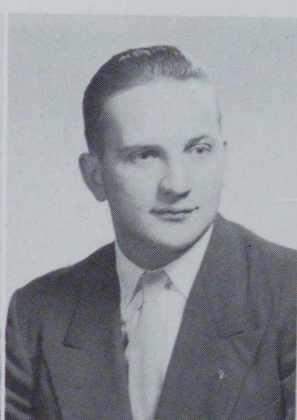
DeROSA, C.
Elementary
Monogahela High School

DESTEFANO, D.
Elementary
Monessen High School

DOLAN, ROBERT
Secondary
Charleroi High School

DURNELL, R.
Elementary
Connellsville High School

DZIAK, WILLIAM
Industrial Arts
Ellsworth High School



ELLENBERGER, B.
Secondary
Connellsville High School

EVERSOLE, W.
Industrial Arts
Union High School

FEATH, ROBERT
Industrial Arts
Ebensburg-Cambria High School

FRANSKO, DONALD
Secondary
Monongahela High School

FURLONG, D.
Industrial Arts
California High School

Seniors

Student Teachers At The Costume Ball



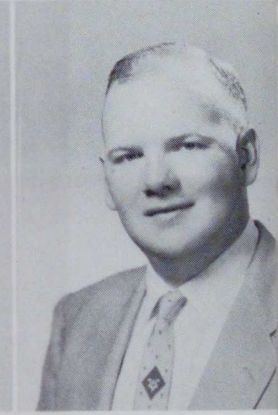
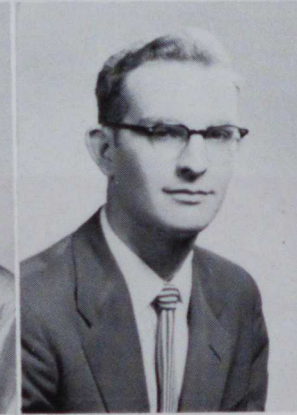
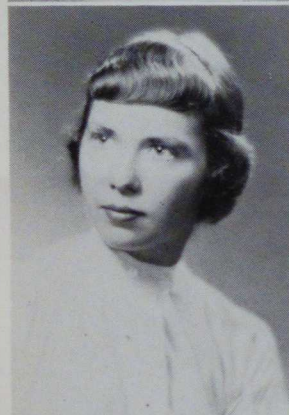
GALLATIN, MARY
Secondary
Monogahela High School

GAROFALO, M.
Elementary
Monessen High School

GIBBONS,
CHARLES
Industrial Arts
Lincoln High School

GORECKI, JOE
Industrial Arts
Charleroi High School

GOUGER, PATRICIA
Elementary
Monessen High School



HICKS, LEAH
Elementary
Brownsville High School

HILL, RAYMOND
Industrial Arts
Altoona High School

HODINKO, MARY L.
Elementary
Claysville High School

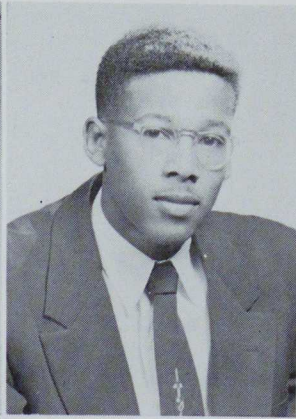
HOLTZ, RALPH
Industrial Arts
Hastings High School

HORMELL, D.
Elementary
East Pike Run High School

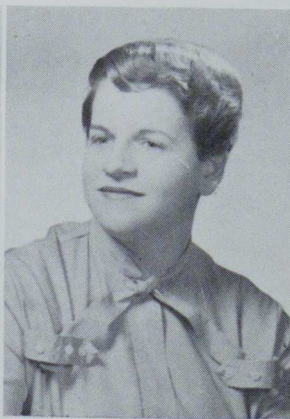
HUGHES, NANCY
Secondary
East Bethlehem High
School



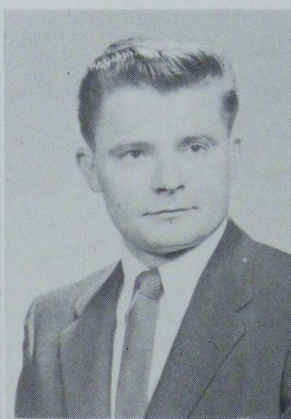
JACKSON, DRUCE
Secondary
Brownsville High
School



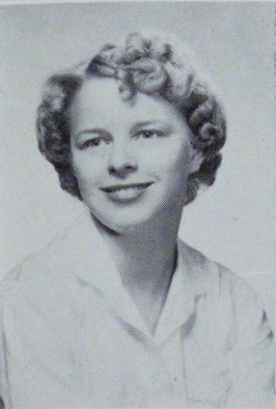
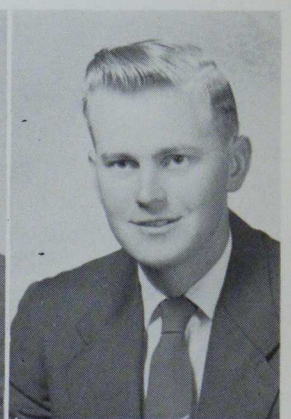
JACOBS, JOANNE
Elementary
Charleroi High School



KANUK, JOHN
Secondary
Shade Township High
School



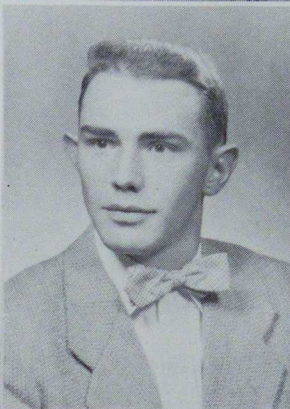
KELLER, ROBERT
Secondary
Rostraver High School



KENNEDY, JANET
Elementary
Connellsville



KERMES, JOHN
Industrial Arts
Crafton High School



KERR, ELWIN
Industrial Arts
Titusville High School



KIGER, AUDREY
Elementary
Waynesburg High
School



KRAY, JOAN S.
Secondary
Monessen High
School

Seniors

**Our Prexy Congratulating
A Senior**



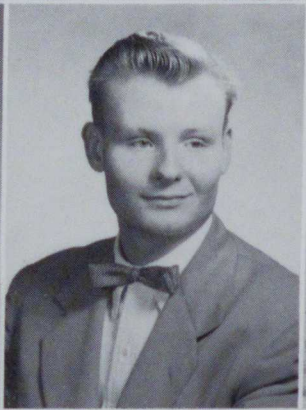
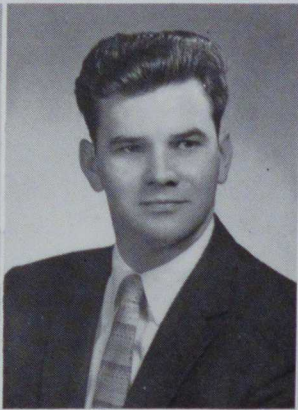
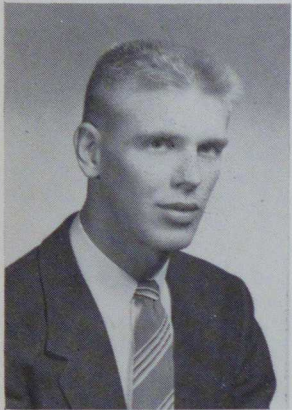
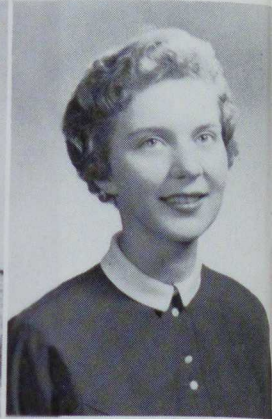
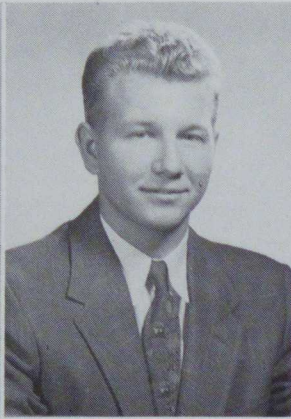
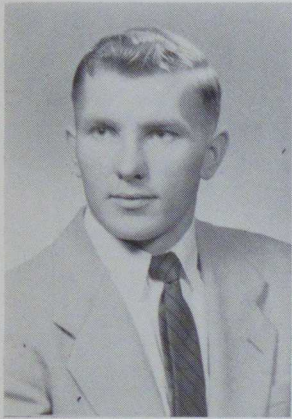
KUHLMAN, W.
Secondary
Somerset High School

KURTZ, WILLIAM
Secondary
Bentleyville High School

LANGE, GEORGE
Industrial Arts
Harbrach Union High School

LEJOHN AUDREY
Secondary
California Community High School

LESNOCH, RUTH
Elementary
Washington High School



LUCKEY, IVAN
Industrial Arts
Dunbar High School

MANETTI, ANGELA
Secondary
Monessen High School

McKEVITT, C.
Industrial Arts
Marion High School

MOATS, WILLIAM
Secondary
Rostraver High School

MOCK, WALTER
Industrial Arts
Butler High School

Seniors



Homecoming Decorations

Seniors

Homecoming Dance



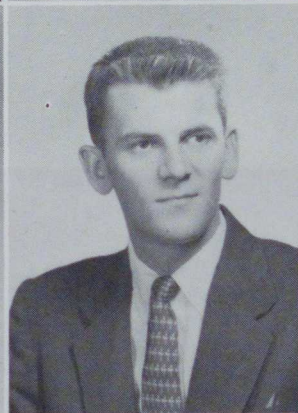
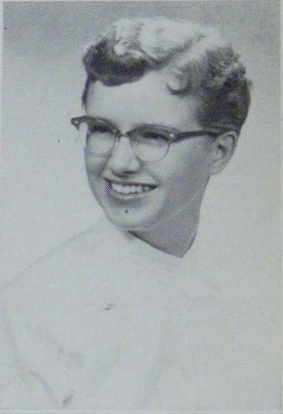
MOORHOUSE, J.
Elementary
Brownsville High School

NEWMAN, JAMES
Industrial Arts
Stowe High School

NINCHAK, STELLA
Secondary
Vernon High School

NIZINSKI, HOWARD
Secondary
Charleroi High School

O'BRIEN, COLLEEN
Elementary
California Community High School



ONUSCHECK, D.
Elementary
Jefferson High School

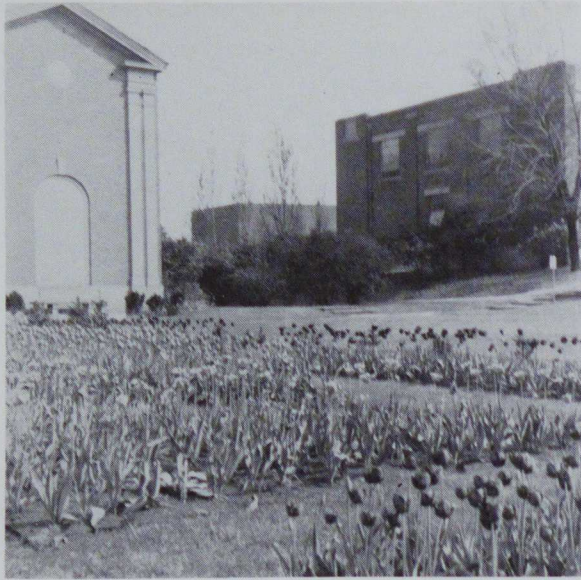
OTTENGA, E.
Industrial Arts
Independence High School

PATTERSON, A.
Secondary
Brownsville High School

PAULICK, MARY A.
Elementary
Charleroi High School

PAULSON, R.
Industrial Arts
Donora High School

Seniors



Tulip Gardens

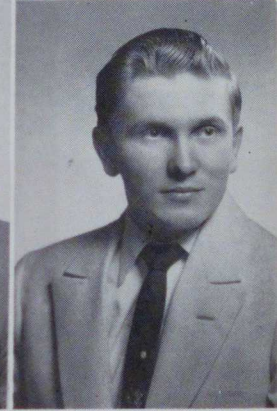
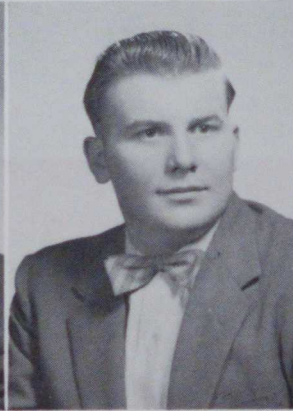
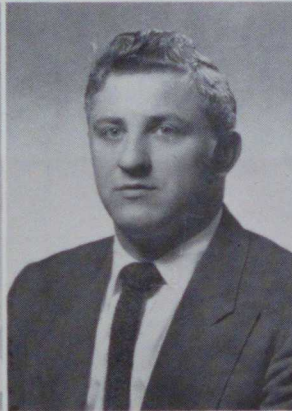
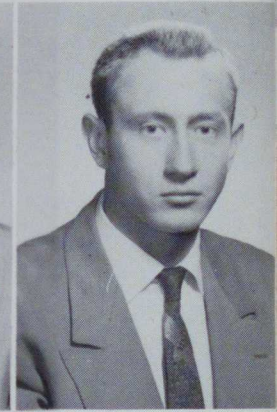
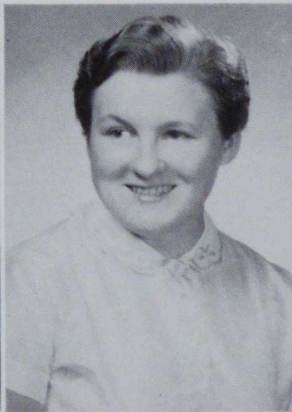
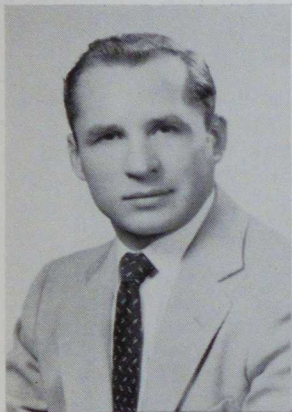
PETON, WALTER
Secondary
Redstone High School

PIERALLINI, D.
Elementary
Belmar High School

POPOVICH, C.
Secondary
California Community
High School

RAINEY, JAMES
Industrial Arts
Lilly-Washington
High School

REGAL, PETER
Secondary
Redstone High School



RISKU, MARVELLE
Elementary
Rostraver High School

RITZO, BEATRICE
Secondary
Brownsville High
School

RUBY, JOHN
Industrial Arts
McKeesport High
School

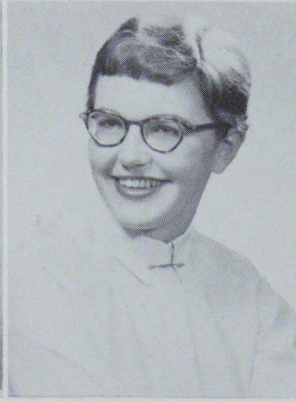
RUMMELL, G.
Industrial Arts
California Community
High School

SEDORY, EDWARD
Secondary
Monessen High
School

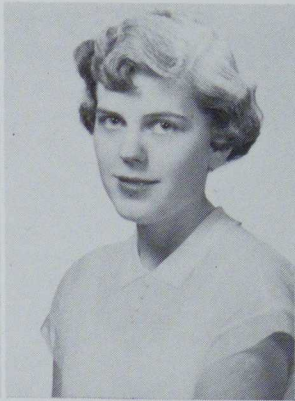
SHAL, CAROLYN
Elementary
Connellsville High
School



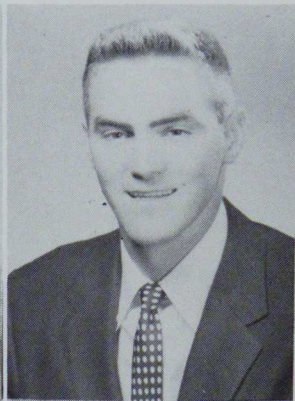
SHIELDS, ELISSA
Secondary
Brownsville High
School



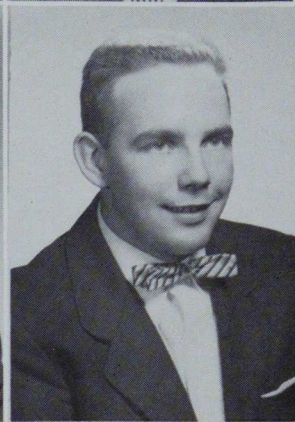
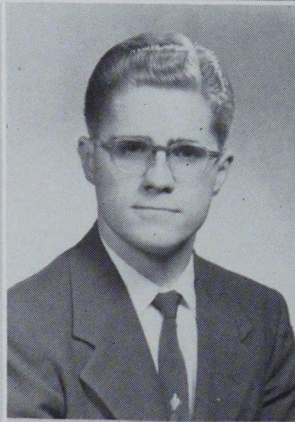
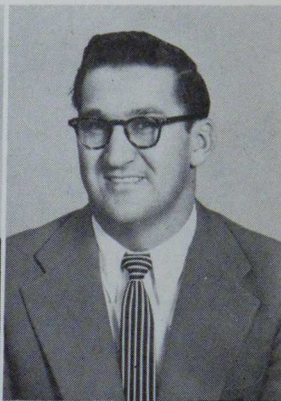
SHULTZ, E.
Elementary
Rostraver High School



SICKLES, WALTER
Elementary
Rostraver High School



SKERO, ANDREW
Industrial Arts
Shade Township High
School



SMITH, MILDRED
Secondary
California Community
High School

SPEICHER, M.
Elementary
Jefferson High School

SPRINGER, ROBERT
Secondary
Point Marion High
School

STECH, JOHN
Elementary
Charleroi High School

STEWART,
CLINTON
Industrial Arts
Union High School

Seniors

Sophomore Dance

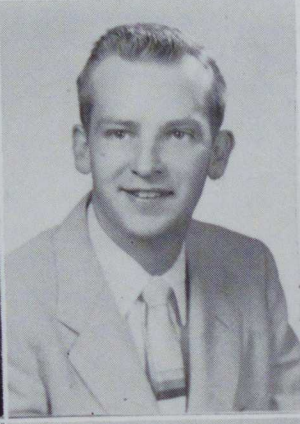


Seniors

SUTHERLAND, G.
Elementary
Brownsville High
School



SUTTIE, WILLIAM
Secondary
Donora High School



SWEENEY, LEE
Secondary
Baldwin Township
High School



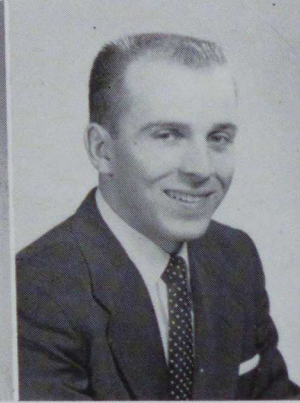
TAYLOR, ALWILDA
Elementary
Clairton High School



TAYLOR, PATRICIA
Secondary
Brownsville High
School



UNDERWOOD, A.
Elementary
Uniontown High
School



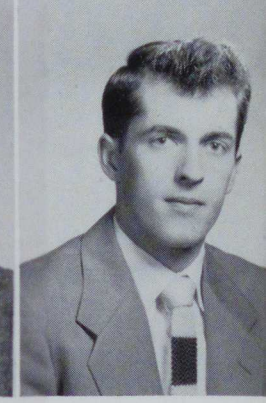
VENTURA, JACK
Industrial Arts
Bellmar High School



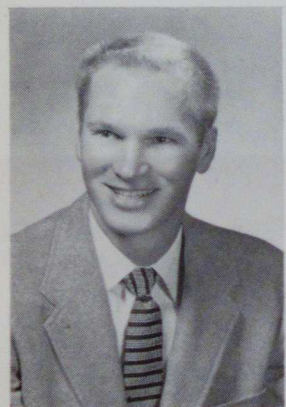
VILSCEK, ELAINE
Elementary
German Township
High School



VLASIC, GEORGE
Secondary
Monessen High School



WALTERS, ROBERT
Secondary
Charleroi High
School



WEITZEL, CARL
Industrial Arts
East Bethlehem High
School



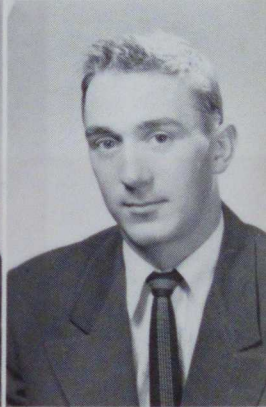
WESTCOAT, D.
Secondary
California Community
High School



WHITE, PAUL
Industrial Arts
McKeesport High
School



WHITLATCH, A.
Elementary
California Community
High School



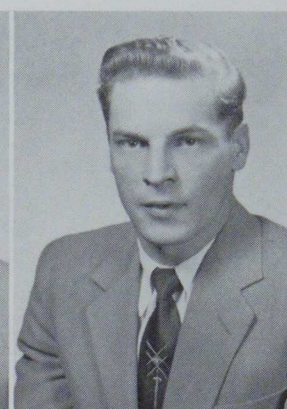
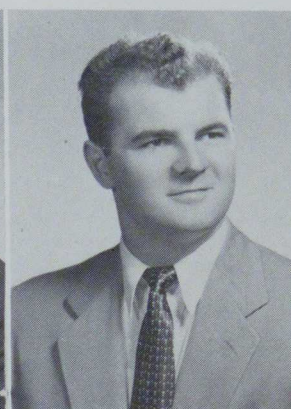
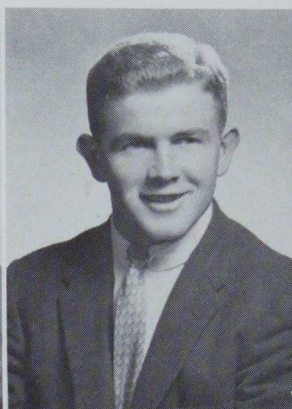
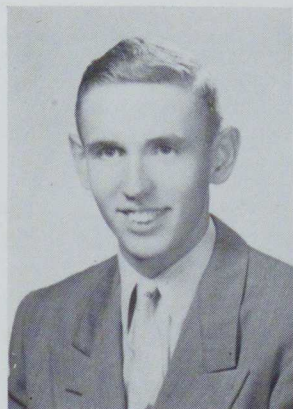
WORST, DALE
Industrial Arts
Shaler High School

YOUNG, CHARLES
Industrial Arts
Neville High School

YOUNG, JACK
Secondary
Charleroi High School

ZOPPETTI, M.
Industrial Arts
California High School

ZWEINER, HENRY
Industrial Arts
Beccarria Township High School



Seniors Not Pictured

AMALONG, RUSSELL
Industrial Arts
Penn High School

ARMENTROUT, VELMA
Elementary
Dunbar Township High School

BITTNER, CHARLES
Secondary
West Newton High School

CARLSON, RAYMOND
Secondary
Charleroi High School

CLARKE, ROBERT
Industrial Arts
Avonworth High School

CRISMAN, JAMES
Industrial Arts
Union Joint High School

EMMEL, DAVID
Industrial Arts
Dale High School

FIRESTONE, GERALD
Elementary
Connellsville High School

FLEMING, JAMES
Elementary
McKeesport Vocational School

FRANKS, GENE
Elementary
Masontown High School

GASKEY, ROSE
Secondary
California Community High School

HERRON, MARGARET
Elementary
West Bethlehem High School

HIBBS, MARY
Elementary
Confluence High School

HUMBERT, HAZEL
Elementary
Uniontown High School

KEMMLER, CHARLES
Industrial Arts
Mount Union High School

KETELES, KATHLEEN
Elementary High School
All Hallows Convent

KING, BARBARA
Elementary
Camp Hill High School

KORNICK, MARY
Elementary
East Bethlehem High School

KUBIS, MARGARET
Elementary
East Pike Run High School

KUTSKA, NICHOLAS
Industrial Arts
Monessen High School

LEE, HELEN
Elementary
Charleroi High School

LUCY, ADELINE
Elementary
Uniontown High School

MALONE, JEAN
Elementary
East Bethlehem High School

MITCHELL, NELLIE
Elementary
Beallsville High School

OSLER, HAZEL
Elementary
High School Equivalent

PARKINSON, MABEL
Elementary
California Community High School

PARQUETTE, EDNA
School Nurse
Donora High School

SCOTT, WARREN
Secondary
Charleroi High School

SCURSATONE, CLYDE
Secondary
California Community High School

SHOW, JAN
Secondary
Connellsville High School

SMITH, RICHARD
Secondary
Turkeyfoot High School

STERANKO, JOHN
Secondary
Donora High School

STERBENZ, THOMAS
Elementary
East Pike Run High School

TISSUE, VERNETTE
Elementary
Redstone High School

TOWNLEY, JAMES
Industrial Arts
Brownsville High School

WEIMER, REID
Elementary
Somerset High School

WILSON, CHARLES
Elementary
Uniontown High School

YARTIN, ANDREW
Elementary
Monessen High School

ZARISHANSKY, THEODORE
Industrial Arts
Wilmerding High School

Juniors

OFFICERS

President Bruce Rice
Vice President Charles King
Secretary Janet Treese
Treasurer Frank Fazio
Representatives to Congress
 Don Shockey
 Mary Jane Krause



Left to right: Frank Fazio, Bruce Rice, Charles King, Donald Shockey.

Tulip Beds



Junior Elementary



Row one, left to right: Mary K. Corfont, Margot Zoppetti, Carmelina Riffle, Joyce DuShaw, Jean Bodoia, Anna Jean Soliani, June Koontz, Mary Anne Cooley, Anna Mae Wray, Marcia Lynn Horn, Miriam Lewis, Shirley Paul.
Row two: Annamarie Zubic, Lorraine Behrendt, Janice Ballenger, Jean Cordis, Nancy Lomagno, Ina Jean Hall, Pat Lubits, Ruth Ann Farquhar, Joyce Papini, Gustina Jackman.
Row three: Janet Nizinski, Lon Trembach, Mike Rocca, Connie Karpus, Carol Troutman, Lillian Shoemaker, Joann Everly, Wade Reynolds, Harrietta McCraw, Betty Brown.
Row four: Stephen August, Alvy C. Paul, John Ward, Paul Bittner, Horace Pierce, Neil Faust, Wilbur Barber, Leonard Barcelona.

Gathering Flower Seeds





Junior Secondary

Cat Anatomy Class



Row one, left to right: Rose Ripepi, Eleanor Troy, Connie Bercik, Mary Lou Kruppa, Meredith Fink, Janet Treese, Jackie Staney, Sandra Nobel, Loretta Hudler, Martha Manandise, Rita Parola, Shirley Hayward, Patricia McKee, Toni Blozik.
 Row two: Doug Morgan, Ron LeFevre, Wesley B. Boyle, Rudy S. Kalasky, Jerry DuJordan, Gene Manetta, Mario DeLeonibus, Frank Fazio, Herbert Retcofsky, Herman Keith, Kenneth Rosnack, Don Williams.
 Row three: Jim Hoffman, Art Hayes, Edward Szymczyk, Bob Huffman, Carmen Putorti, Richard Orlandi, Richard Medve, Marvin Pierro, Leroy Holman.
 Row four: Sebastian LoNigro, James Phillips, Bob Menarcheck, Wayne Lash, Andy Timko, James Danna, Mike Chuey, Ronald Backos, Howard Jones, Tom Cox, Regis Toprani, Don Shockey.

Junior Industrial Arts



Row one, left to right: John Wilhelm, Tom Glasgow, John Panyko, Ossie Santacroce, Nick Druash, Paul Hricks, Carmen Ricco, David Walker, Donald Walker, John Romanchock, William Young.
Row two: Howard Dunmire, William Kinter, Dan Piesik, Lee Dinneen, Leo Patterson, Bruce Rice, Charles King, Lewis Indof, Dean Girts, Frank Kirsopp.
Row three: Eugene Hudock, Clarence Brown, Val Nicholl, Albert Sakach, Floyd Reynolds, Jack Nelson, Carl Miller, Joseph Bunecicky.
Row four: James Coulson, Charles Carl, Max Palmo, Olan Sterback, Delbert Byers, Kenneth Maurer, Harry Farrar, Charles Messner, William Stahl.

Electricity Class



Sophomores

OFFICERS

President	Ronald Novak
Vice President	Robert Jozzik
Secretary	Betty Potsklan
Treasurer	Ronald Remy
Representative to Congress	Edith Kilroy
Sponsor	Dr. Betz



Seated, left to right: Dr. Betz, Edith Kilroy, Ronald Novak, Betty Potsklan, Ronald Remy.



Flower Garden

Sophomore Elementary

Row one, left to right: Dolores Busch, Nancy Pore, Harriet Ruoff, Anita Polach, Ruth Beck, Doris Sanders.
 Row two: Donna Shultz, Carol Hogan, Dottie Jo Gabler, Martha Kridle, Bill Utterback.
 Row three: Dolores Smerigan, Ruth Colvin.



Row one, left to right: Annie Lunnen, Mary Catherine Bradley, Patsy Patrick, Mary Puskar, Janet Duncan, Cynthia Sinosky, Pat McClellan, Mercedes Suarez, Lena Nuccetelli.
 Row two: Anna Haas, Joanne Huber, Shirley Turney, Gail Seneff, Nancy Underwood, Mary Jo McWreath, Mary Jane Crayton, Patricia Murphy.
 Row three: Shirley Miller, Margaret Janice Shultz, Irene Jeney, Walter Rice, Betty Sampsey, Helen Joseph, Mary Lee Everett.



Between Classes

Sophomore Secondary



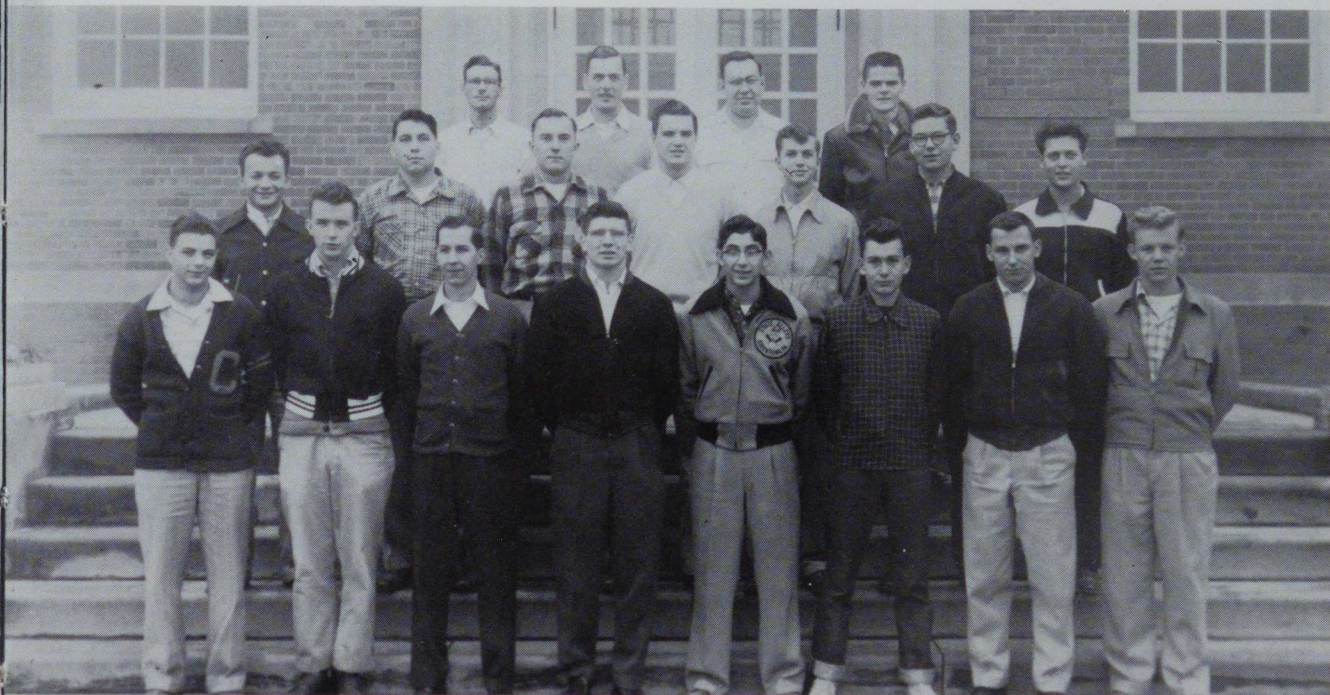
Row one, left to right: Dena Morris, Dorothy Paulochik, Phyllis Bodnar, Sally Kornick, Martha Spernak, Rita Parola, Shirl Walther, Sally Story, Adrienne Ferguson.
Row two: Carolyn Ghrist, Pat Tippet, Alice Dukich, Elaine M. Telega, Patricia Buchta, Janet Lukey, Nancy Hall, Beverly Herbert.
Row three: Ella Stanko, Betty Potsklan, Betty Pashkevich, Kathleen Kirk.



Sophomores Relax

Sophomore Secondary

Time Out



Row one, left to right: Leroy Thomas, Irvin Roesch, Michael Pickno, Ronald Novak, Robert Ricco, Gary DeMarchi, Paul Harenski, William Pamell.

Row two: John Celani, Russell Cuddy, William Schuman, Andy Timko, David Sproul, Walter Strycula, Harold Reynolds.

Row three: Howard Richards, James Phillips, Donald Stoicovy, Robert MacDougall.

Sophomore Industrial Arts



Row one, left to right: Bernard Snyder, Marlin McClintock, Joseph Chilia, Rudy Gietl, Robert Donnini, Arthur Ferguson, Dick Krotzer, Burnett Roberts, Vergil Taylor, William Leehan.

Row two: Walter Slapnik, John Pero, Gerald Leighty, Donald Sale, Bruce Junker, Joseph Batterby, Walter Wohler, Richard Silvis, Edward Bedner.

Row three: Richard Mallison, Ray King, Max Palmo, Eugene Hudock, Merle Barger, William North, Bob Noble, Daniel Gallagher.

Row four: James Barnes, Pat Reilly.



Students Hurry To Class

Industrial Arts



Row one, left to right: Roland Chachick, Charles Anderson, Rodger Hammond, Frank Krupa, Richard Vickroy, Kenneth Maurer, Alex Umshares, Richard McHenry, Tom Carter.
Row two: D. W. Stiles, Joseph Serwinski, Alex Osleger, Ernest Cadwell, Karl Wilhelm, Robert Brougher, Al Myers, Harrold Ames.
Row three: Kenny Husher, Alfred Troth, John Beck, Len Petrus, Ed Kallock, Thomas Pecosh, Harry Buell, Joseph Pecosh.

“Daisies Won’t Tell”



Freshmen

OFFICERS

President George Kupets
Vice President Tom Anderson
Secretary Donna Mandarino
Treasurer Elaine Cutler
Representative to Congress
Rita Willis
Sponsor Dr. Jack



Seated, left to right: Elaine Cutler, Donna Mandarino.
Standing: George Kupets, Tom Anderson.



The Library

Divided Concentration

Freshman Elementary



Row one, left to right: Linda Durinzi, Kay Reitz, Rita Willis, Frances Zampan, Amelia Razzando, Donna Skruber, Jacqueline Price, Janet Gabrik, Rita Remish, Eleanor Roule, Carole Kreinbrook, Wilma Grace Richardson, Sandra Platts, Janet Beck, Janet Bristor.
Row two: Gwendolyn Zoretic, Renelda Sich, Judith Wolfe, Suzanne Rice, Lorraine Prati, Mary Lou Skeddle, Donna Schmitt, Jan Smith, Shirley Sutherland, Joan Shillings, Emma Lee Chew, Drauga Cseko.
Row three: Peggy Probst, Marlene Snyder, Jeanette Vohar, Janice Weaver, Mary Sesler, Nancy Stafford, Joan Paul, Loretta Wilson, Alice Wilson, Suzanne Vacheresse, Alicia Laughead.
Row four: George Vranjes, Clare Tkachik, Jean Watson, Kay Watson, Joyce Zanardini, William Wallace.

The Book Store Line



Freshman Elementary



Row one, left to right: Marywynn Bishop, Judy Brazack, Barbara Bulger, Christine DiFilippo, Alice Barclay, Beth Duke, Donna Campbell, Martha Gouger, Alexia Delopitro, Lois Bailey, Fran Giannetti, Elizabeth Gallik.

Row two: Gloria King, Charlotte Miller, Marianne Coffman, Lois Barney, Joanne Bungard, Dominic Costa, Reita Brewer, Betty Fedor, Iris Coates Thomas, Mary Grace Battaglia.



Row one, left to right: Elaine Litvak, Alma Hunter, Marlene McKay, Lynne Johnson, Marlene Hamilton, Barbara McCorkle, Audrey Hindman, Esther Heckler, Elaine Kanitra, Mildred Maruschak.

Row two: Nancy Hurst, Patricia Nandor, Donna Mandarin, Wesley Luckey, Clarence Lofstead, Rosalie Nocenti, Lucille Musial, Vivian Jarvis, Joanna Kruppa.

Freshman Secondary



Row one, left to right: Frank Norman, Terrell Hosler, Albert Lucarini, Judy Lebowitz, Carole Leonard, Wilma Lundy, Patty Mele, Dave Hillhouse, Robert Luxner, Joe Martinelli, Tony Frameli.
Row two: John Laughead, James Hake, James Nyswaner, Robert Murphy, Thomas Marinkovich, David McAlpine, Ronald Mariani, Jack Thomas.
Row three: Phil Koury, Denny Kuremsky, Bob Kucher, Richard McGuire, Charles Mihealsick, Harold Huber, Clyde Jarvis, John Horates.
Row four: Roger Hotz, Dave Lemley.

Freshman Initiation Week



Freshman Secondary

Marks of a Freshman



Row one, left to right: Herman Stark, Jack McKay, Dick Webb, Mary Cabell Taylor, Mary D. Welch, Betty Van-Voorhis, Stephanie Yuratovich, Mary Ann Sweda, Eleanor Staranko, Dick Strojjan, Butch Roberts, Jim Gibbs, Alex Bezjak.
Row two: George Stoicovy, Jim Farrell, Richard Ross, Eugene Hall, Dan Sorenson, William Weisgerber, John Smarto, Lewis Jacobstein, Marc Packer, John Tedorski, William Mizerak, Joe Hartman.
Row three: John R. Ondulick, Paul Oliver, Don Wohler, George Razum, Leslie Wood, Steve Stofko, John Hooper, William Lytle, Dick Hay, Jay Oppenheim, Karl Wendelin, Bernard Micozzi.
Row four: Dominic Paluti, Kenneth Smitley, Michael Twardy, Ronald Souply, William Surovchak, William Wilson, John Winnett, Enoch Wootton, William Morris, Francis Toth, George Vitteck, Glenn Thomas, Tom Patterson, William Price.

Freshman Secondary

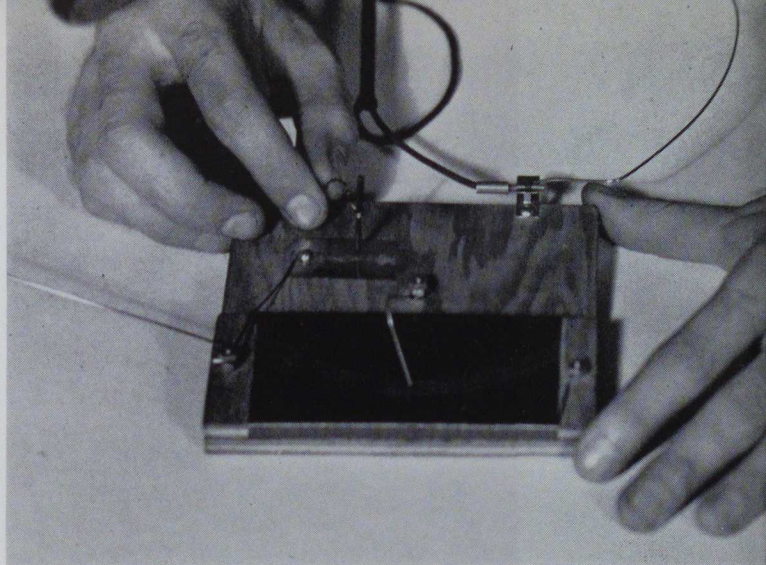


Row one, left to right: Helen Hagan, Mary Ann Dimperio, Deanna Burchianti, Mary Ruth Gillis, Judith Ann Coleman, Madge George, Lois Frederick, Beverly, Donley, Iva Boyer, Loretta Delbarre, Joanne Brewer, Marilee Ceccarelli, Helen Grados.
Row two: Jim Deiley, Norman Essey, Edward Blacka, Franklin Davis, James Bisi, Ralph Dayner, Richard DiNardo, Howard Finney, Bill Glenn, Edward Garrison, Joy Gossie.
Row three: Elaine Cutler, Tom Anderson, Ralph Arrigo, Joseph Buchak, Curtis Calamari, Carole Carnack.

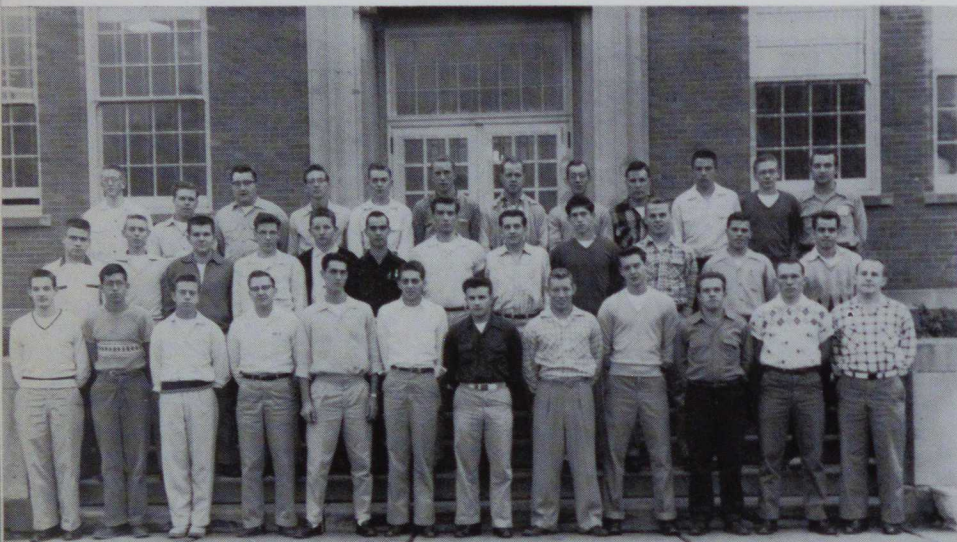
Freshmen At Work



Radio Receiver



Freshman Industrial Arts



Row one, left to right: Jack Hughes, Carl Moore, Lowell Newman, Terence Keegan, Grant McDonald, Carl McGary, John Mariscotti, Robert Mulvin, John Bickerton, Jay Helse, Kenneth Clever, Arthur Mack.

Row two: Richard Matovich, Eugene Lukan, Bernard Koslosky, Charles Milier, Dan Kraft, Benjamin Aebi, Ronald Curtis, Gerald Leppold, Ronald Kasper, Robert Laird, Jim Belcher, Burke Hill.

Row three: Anthony Moravec, George Richmond, Robert Lavelly, Cornelius A. Jankosky, Blaine Baker, George Mesher, Raymond Kloock, Clarence Chirdon, Craig Hankey, Don Chapman, Bernard Kensky, Albert Komacek.



Row one: Glenn Adams, James DeBolt, Clarence Anderson, Carl Andresky, Paul Danko, Robert Zoppetti, Dave Chip, Harold Fuge, Robert Barthels, Joe Durfee.

Row two: James Adams, James Caputo, Raymond Bloom, Ted Bauer, Donald Ford, Owen Weldon, Dean Shaver, Herman Cushey, Michael Blazosky, Bob Bortner.

Row three: Ed Bono, Roy Aikens, Richard Bloom, Donald Detts, Carlo Chiappelli, Mike Danko, Mack Suder, Ronald Brougner, Jack Egan.

Freshman Industrial Arts



Row one, left to right: Gene Mori, Charles Philp, Bernard Westrick, Edward Scheiber, James Pudlo, William Shipple, John Hrisak, Dick Pfaff, Joseph Wirth, Harold Wilson, Paul Zedack, Scott Winder.
Row two: Kelly Timashenka, Alex Tuday, Don Tretchick, John Patten, Paul Querry, Jim Rhoads, Tom Stake, Raymond Petrus, Charles Orlandi, Robert Rheam, Dennis Stoffa, Jens Sorensen.
Row three: John Wilson, James Rosendale, Charles Radek, Jim Kennedy, Frank Ptak, Donald Steff, Joseph Price, Roy Shaffer, Ronald Wenslow, James Paul, Tom Salopek.
Row four: Ronald Kallenborn, Curtis Shore, David Rubbo.

The End Of The Day





the **ACTIVITIES**



Monocal Staff



Seated, left to right: Miss Rakestraw, Donna Shultz, Christine Popovich, Harrietta McCraw, Rose Rippi.

Standing, Bernadine Fabrizani.

Seated, left to right: Dena Morris, Carol Hogan, Martha Spernak, Janet Lukey, Sally Kornick.

Standing, left to right: Mary Ann Demperio, Dorothy Paulochoick, Emma Lee Chew.



Tower Times

STAFF

Editor.....Eleanor Troy
 Student Advisor.....Pat Kowall
 News Editor.....Beverly Herbert
 Sports Editors..Frank Fazio and Mike Chuey
 Feature Editor.....Mary Lou Kruppa
 Business Manager.....Betty Brown
 Circulation Manager.....Mary Martin
 Chief Photographer.....Tom Patterson



REPORTERS

Reporters Connie Maxon, Sandy Platt, George Kupets, Loretta Delbarre, Elizabeth Gallik, Helen Grados, Jan Rae Smith, Janet Sickles, Richard Vickroy, Dick Malena, Ron Curtis, Richard Maguire.

Sponsor.....Mr. C. M. Hughey

Vulcan Staff

Co-editors Ralph Holtz, James Perrin
 Associate Editors..... Patricia Gouger, Charles
 King, Jean Cordis, Richard Silvis, Nancy
 Lomagno
 Sponsor.....Mr. Harding



Seated left to right: Jean Cordis, Charles King, Nancy Lomagno.

Industrial Arts Leader



Editor Ken Maurer

Sponsor.....Mr. Stavaski

Row one, left to right: Rodger Hammond, Kenneth Maurer, Joseph Lehosky, Joseph Bennesse.
 Row two: Carl Miller, Richard Viskroy, Elwin Kerr, Bob Noble.



Student Activities Association

OFFICERS

President Jack Young
 Vice President Steve Staruch
 Secretary Mary J. Krause
 Sponsor Mr. Lenox

Committee for Social Activities

OFFICERS

Co-Chairmen Janice Ballenger, Wayne Pierce
 Secretary Janet Treese
 Treasurer Marcia Horn
 Representative to Congress Charles King
 Sponsors Mr. Lenox, Mrs. Hamilton

Row one, left to right: Velma Schrock, Berda Durnell, Janice Ballenger, Mary Jo McWreath.

Row two: Janet Treese, Marcia Horn, Angie Bongianino, Annie Lunnen, Marlene Speicher, Betty Brown, Anita Polach.

Row three: Bill Bishop, Charles King, John Celani, L. Miles Everard, Dennis Pierallini.

Row four: Paul Bittner, Lewis Indof, Horace Pierce, Joseph Serwinski, Carl Miller, Gary DeMarchi.



Student Congress

OFFICERS

President.....Dean Bowman
 Vice President.....Joan Kray
 Secretary.....Dolores Westcoat
 Sponsors.....Mr. Harding, Mr. Lenox



Row one, left to right: Mike Rocca, Donnis Pierallini, Rita Willis, Edith Kilroy, Beatrice Ritzo, Joan Kray, Dolores Westcoat, Marlene Speicher, Toni Blozik, Kenneth Maurer.
 Row two: Mr. Lenox, Robert Springer, Gene Manetta, Mike Chuey, Ronald Backos, Dean Bowman, Steve Staruch, Richard Medve.
 Row three: William Stahl, Donald Shockey, Bill Bishop, Bob Noble, Charles King.

Student Cabinet

Row one, left to right: Toni Blozik, Joan Kray, Marlene Speicher, Dolores Westcoat.
 Row two: Ronald Backos, Dean Bowman, Mike Rocca.



OFFICERS

ChairmanJoan Kray
 Secretary.....Mary Jane Krause
 Sponsors.....Mr. Hartman, Mr. Lenox

Intercollegiate Conference On Government

OFFICERS

Chairman.....Joan Kray
Sponsors.....Dr. Hart, Miss Sacco

OFFICERS

PresidentDolores Onuscheck
Vice President.....Anna Jean Soliani
Secretary.....Robert Sarver
Treasurer.....Mary Anne Cooley
Representative to Congress..... Richard Silvis



Row one, left to right: Meredith Fink, Marcia Horn, Joan Kray, Mike Rocca, Mary Ann Cooley.
Row two: Jerry DuJordan, Gene Manetta, Pat Kowall, Ria Lawall, Andy Bryner, Jack France, Dean Bowman.

Student Fellowship



Row one, left to right: Shirley Turney, Judith Ann Coleman, Marywynn Bishop, Nancy Hurer, Mary Jane Crayton, Miriam Lewis, Mary Puskar, Marlenen McKay, Nancy Lomagno, Jean Cordis, Anna Jean Soliani, Mr. Lewis.
Row two: Paul Bittner, Joanne Huber, Rita Willis, Reita Brewer, Joann Bungard, Fran Giannetti, Martha Gouger, Beth Duke, Betty Fedor, Bob Noble.
Row three: Carl Miller, Andrew Timko, David Sproul, Howard Finney, Bill Bishop, Jim Rainey, Dean Girls.

General Safety Council



OFFICER

Chairman.....Mr. Francis Coatsworth

Row one, left to right: Betty Brown,
Mr. Coatsworth, Toni Blozik.

Row two: Robert Clarke, Mr. Hester,
Mike Rocca.

Landscape Committee

OFFICER

Chairman.....Mr. John F. Lewis

Row one, left to right: Anmarie Zubic,
Janet Duncan, Velma Schrock, Con-
nie Karpus, Ruth Ann Farquhar.

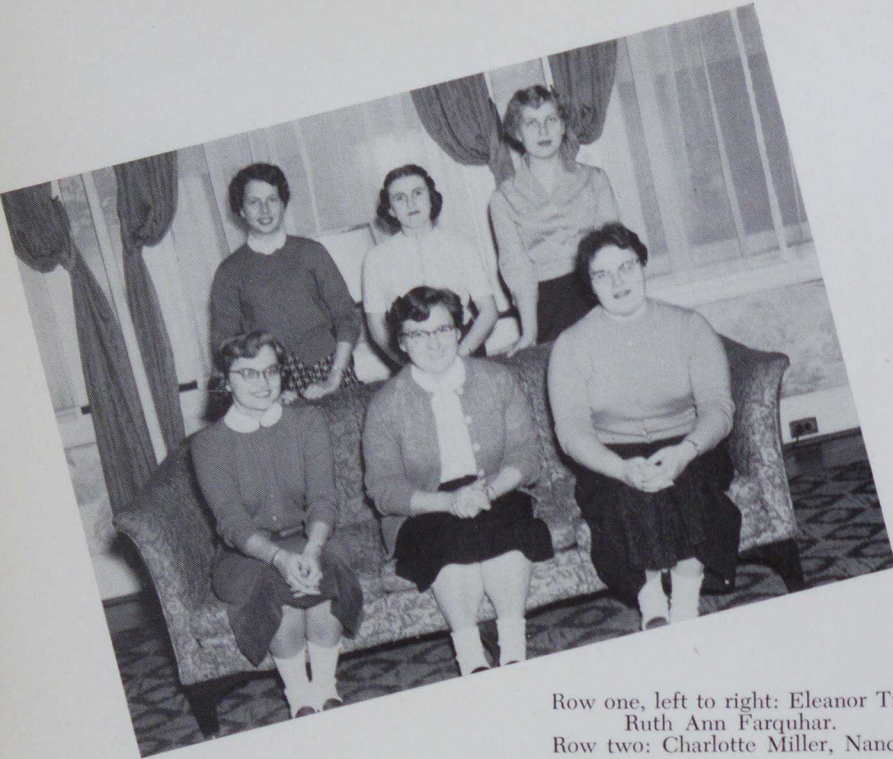
Row two: Fred Brassart, Dr. Betz, Tom
Glasgow.



Women's Traveling Council

OFFICERS

President Annmarie Zubie
 Vice President Eleanor Troy
 Secretary-Treasurer Ruth Ann Farquhar
 Sponsor Mrs. Hamilton



Row one, left to right: Eleanor Troy, Christine Popovich,
 Ruth Ann Farquhar.
 Row two: Charlotte Miller, Nancy Pore, Meredith Fink.

Men's Traveling Council

OFFICERS

President John Fransko
 Vice President Michael Rocca
 Secretary-Treasurer Joe Hahn
 Sponsor Mr. Lenox



Standing, left to right: Dean Cheeseborough, Michael
 Rocca, Henry Studnicki, Regis Toprani, Joe
 Hahn, Ed Szymczk, Mr. Lenox.

Women's Dormitory Council

OFFICERS

President..... Mary Lee Hodinko
 Vice President.....Connie Karpus
 Secretary.....Ina Jean Hall
 Sponsor.....Mrs. Hamilton



Row one, left to right: Ina Hall, Pat Lubits, Mary Lee Hodinko, Mrs. Hamilton.
 Row two: Elaine Telega, Carol Troutman, Connie Karpus.

Men's Dormitory Council

OFFICERS

President..... Kenneth Maurer
 Vice President.....Frank Fazio
 SecretarySteve August
 SponsorMr. Lenox



Row one, left to right: Mr. Lenox, Frank Fazio, Kenneth Maurer, Joseph Bennese, David Walker.
 Row two: Bruce Rice, Dean Bowman, Stephen August, Steve Staruch.

Alpha Phi Omega

Row one, left to right: Robert Mac-Dougall, Howard Jones, Merrill Campbell, Joseph Bunecicky, Al Meyers.

Row two: Bob Leeper, Joseph Serwinski, Ron Remy, Roy Bucher, Richard Medve, Jay Oppenheim, Tony Frameli.



Sigma Alpha Eta

Row one, left to right: Charlotte Miller, Sandra Platts, Judy Coleman, Donnis Pierallini, Edith Kilroy, Connie Bercik, Colleen O'Brien, Miriam Lewis, Mary Jo McWreath, Mercedes Suarez, Gwendolyn Zoretic, Rita Willis, Mr. Bowlen.



OFFICERS

Alpha Phi Omega

President.....	Joseph Bunecicky
Vice President.....	Howard Jones
Secretary.....	Paul Fike
Corresponding Secretary.....	Al Meyers
Treasurer.....	John Barlow
Historian.....	Donald Brady
Sponsor.....	Mr. Campbell

Sigma Alpha Eta

President.....	Wade Reynolds
Vice President.....	Michael Bodnar
Secretary.....	Miriam Lewis, Colleen O'Brien
Treasurer.....	Connie Bercik
Representative to Congress.....	Violet Dalson
Sponsor.....	Mr. Bowlen

Gamma Pi Chi

Row one, left to right: Gustina Jackman, Ferne Borof, Mary Martin, Ange Bongianino, Marlene Speicher, Janet Treese, Anna May Wray, Anne Lunnen, Harriet Ruff, Janice Ballenger.

Row two: Lorraine Behrendt, Joanne Huber, Kathleen Kirk, Joann Everly, Mary Anne Cooley, June Koontz, Joyce DuShaw, Anna Jean Soliani, Margaret Shultz.

Row three: Pat Lubits, Connie Karpus, Karen Schiffbauer, Ina Jean Hall, Marcia Horn, Maria Lawall, Dolores Smerigan.



Epsilon Pi Tau

Row one, left to right: Mr. Shutsy, Mr. Stavaski, Mr. Campbell, Earl Hayes, George Lange, Ossie Santacroce, Henry Zweiner, Mr. Charney, Mr. Swearingen.

Row two: John Kanuk, Charles McKevitt, Melvin Founds, John Skrypak, Walter Eversole, Elwin Kerr, Ralph Holtz.

Row three: Mr. Smoyer, Dr. Coover, Mr. Hoover.



OFFICERS

Gamma Pi Chi

President	Emma Jean Pettito
Vice President	Ange Bongianino
Secretary	Elaine Vilscek
Treasurer	Marlene Ambrose
Sponsor	Miss Carroll

Epsilon Pi Tau

President	John Kanuk
Vice President	Franklin Simmen
Secretary	Ralph Keller
Treasurer	Ralph Holtz
Sponsors	Mr. Campbell, Mr. Charney



Kappa Delta Pi

OFFICERS

President Joan Kray
 Vice President Elaine Vilscek
 Secretary Christine Popovich
 Sponsor Miss Carroll

Row one, left to right: Bernadine Fabrizziani, Regina Francis, Martha Manandise, Elissa Shields, Beatrice Ritzo, Pat McKee.

Row two: June Koontz, Pat Kowall, Rose Ripepi, Eleanor Troy, Meredith Fink, Joan Kray, Miriam Lewis, Harrietta McCraw, Christine Popovich.



Phi Sigma Pi

OFFICERS

President Neil Faust
 Vice President Carl Miller
 Secretary-Treasurer Leon Trembach
 Historian George Lange
 Sponsor Mr. Wilson

Row one, left to right: Leroy Holman, Mike Rocca, Michael Peckyno, Mickey Bodnar, Neil Faust, Lon Trembach, Carl Miller, Ronald A. Backos, David Kipp.

Row two: John Celani, Russell Cuddy, Harry Farrar, Paul Bittner, John Ward, Herbert Retcofsky, Samuel Coughenour.

Row three: Frank Fazio, Romeo Fabrizziani, David Walker, Wade Reynolds, Donald Rotell, Roddy Popovich, Donald Walker.



Alpha Psi Omega

OFFICERS

President Delores Westcoat
 Vice President Mary Sue Gallatin
 Secretary Pat Lubits
 Treasurer Betty Brown
 Sergeant-at-arms Nancy Hughes
 Sponsor Mrs. Weaver

Row one, left to right: Betty Brown, Mary Sue Gallatin, Nancy Hughes, Delores Westcoat, Mrs. Weaver.

Row two: Jim Coulson, Pat Lubits, Edward Mottle, Andrew Skero.

Geography Club

OFFICERS

President John Ward
 Vice President Ronald Backos
 Secretary-Treasurer. Mary Ann Paulick
 Representative to Congress....
 Michael Chuey
 Sponsor Mr. Harding



Row one, left to right: John Ward, Mary Ann Paulick, Joann Coatsworth, Margaret Shultz, Alice Dukich, Nancy Hall, Joan Kissler, Ronald Backos.
 Row two: Samuel Conway, Michael Chuey, Terrell Hosler, John Hooper, Paul Bittner, Tony Frameli, William Mizerak.

Astronomy Club

OFFICERS

President Phyliss Bodnar
 Vice President..... Frank Fazio
 Secretary..... Martha Manandise
 Treasurer Jack Flinn
 Sponsor Mr. Fleming



Row one, left to right: James Holman, Leroy Thomas, Martha Manandise, Phyliss Bodnar, Ottis Baer, Ronald Backos.
 Row two: Mr. Fleming, Louis Checci, William Kurtz, Marvin Pierro, Darwin King, Frank Fazio.

Art Club



OFFICERS

President John Koval
 Vice President..... Iva Boyer
 Secretary..... Mary Lee Everett
 Representative to Congress Douglas Morgan
 Sponsor Mr. Douple

Standing, left to right: Mary Puskar, Mr. Douple, Sebastian LoNigro, Iva Boyer.
 Seated, left to right: Marywynn Bishop, Shirley Turney, Mary Lee Everett, William Surovchak, Jean Cordis, John Koval.

Photography Club

OFFICERS

President..... Al Toth
 Vice President..... Al Myers
 Secretary..... Martha Manandise
 Treasurer..... Mary Lou Krupa
 Representative to Congress....
 Bob Noble
 Sponsor Mr. Hoyes



Row one, left to right: Marlin McClintock, Suzanne Rice, Marlene Speicher, Mary Lou Kruppa, Martha Manandise, Patricia McKee, Howard Dunmire.
 Row two: George Richmond, Ruby Kalasky, Doug Morgan, Dean Girls.
 Row three: Waino Pekkanen, Al Myers, Bob Noble.

College Players



Row one, left to right: Pat Lubits, Elaine Telega, Frances Zampan, Mona Jean Moore, Mary Ruth Gillis, Betty Van Voorhis, Patty Mele, Marlene McKay, Gary DeMarchi, Phyllis Mock, Loretta Hudler, Marc Packer, Beatrice Ritzo, Delores Westcoat, James Coulson.
 Row two: Dena Morris, Sally Kornick, Linda Durinzi, Judy Coleman, Rosalie Nocenti, Mary Lou Skeddle, Carole Kreinbrook, Donna Schmitt, Madge George, Joyce Zanardini, Carolyn Ghrist, Jackie Staney, Karl Wendelin.
 Row three: Martha Gouger, Anna Haas, Alma Hunter, Joy Gossie, Shirley Sutherland, Joan Paul, Mary Taylor, Alexia Delopitro, Kay Watson, Jim Rainey, Harry Myrga, Roy Bucher.
 Row four: William Surovchak, Harold Huber, Don Wohler, Tom Anderson, Lucy Ackman, Mike Danko, Charles Mayer, Jay Helsel, Benjamin Aebi.

OFFICERS

President.....	Delores Westcoat
Vice President.....	James Coulson
Secretary.....	Patricia Lubits
Treasurer.....	Elaine Telega
Representative to Congress.....	Beatrice Ritzo
Sponsor.....	Dr. Hayward



Row one, left to right: Mary Welch, Dorothy Paulochik, Phyllis Bodnar, Martha Kridle, Nancy McCallum, Mary Jo McWreath, Marlene Hamilton, Joanne Bungard, Shirl Walther, Betty Brown, Joyce DuShaw, Shirley Paul.
 Row two: Sandra Booher, Elaine Cutler, Kay Reitz, Dottie Jo Gabler, Lillian Schoenmaker, Sally Story, Pat Tippet, Helen Joseph, Mary Jane Crayton, Alwilda Taylor, Ester Heckler.
 Row three: Beverly Shultz, Charlotte Miller, Judy Lebowitz, Alicia Laughead, Betty Pashkevich, Irene Jeney, Joan Shellings, Vivian Jarvis, Betty Fedor, Pat Nandor.
 Row four: Janice Weaver, Janet Bristor, Rita Willis, Beth Duke, Tom Turachak, Carole Carnack, Robert Mulvin, Rita Remish, David Sproul.

Veterans Club

OFFICERS

President Leonard Barcelona
 Vice President Owen Burns
 Secretary Robert Joczik
 Treasurer Edward Szymczyk
 Representative to Congress Mike Rocca
 Sponsor Dr. Bontrager



Row one, left to right: Dominic Paluti, Edward Biacka, Clarence Anderson, Leonard Barcelona, Mike Rocca, Tony Cattone, Tom Glasgow, David Fabian.

Row two: John R. Ondulick, Phil Koury, Mickey Bodnar, Mario DeLeonibus, Andy Dulick, Harrold Ames, Robert Brougher.

Row three: Charles Cadwell, Joseph Bennese, Joseph Pajak, Romeo Fabrizioani, Joe Gorecki, Daniel Gallagher, Donald Ford.

Row four: Robert Joczik.



Row one: Dennis Staffa, William Kinter, Charles Neighbors, Donald Stoicovy, Paul Hrics, Owen Weldon, David Kipp, John Romanchock, Donald Hormell.

Row two: Paul Danko, Harold Huber, Alex Drozeck, Rudy Kalasky, Bernard Koslosky, David McAlpine, Arthur Mack, Michael Blazosky.

Row three: Rudy Gietl, Bob Huffman, Frank Krupa, James Nyswaner, Joe Hahn, George Mesher, Sebastian Lonigro.

Row four: Joe Haddad, Dwayne Furlong, Eugene Hudock, James Danna, Warner Roberts, Howard Sokoloff, Thomas Pecosh.



Row one: Charles Orlandi, Edward Simchak, Irvin Roesch, Wilmer Mountain, Robert Zoppetti, John Pero, Constantine Vassilaros, Joseph Wirth, Thomas O'Hughes, Paul Zedack, Joe Durfee, Dan Sorenson, Charles Palmer.

Row two: Bernard Smigovsky, Carl Marucci, Carmen Ricco, Daniel Kubitsky, Steve Staruch, Karl Wilhelm, James Adams, Michael Peckno, Roddy Popovich, Walter Rice, August Zumpetta.

Row three: Jack Thomas, Carl McGary, George Richmond, Walter Peton, Albert Sakach, John Ckrypak, William Weiserber, Ronald Wenslow, Robert Rheam, Howard Richards.

Row four: Robert Neil, Stephen Kouach, John Wilhelm, Andrew Timko, John Winnett, Mark Sucevich, Bill Utterback, James Phillips, Curtis Shore.



Radio Club

OFFICERS

President Ken Beal
 Vice-President Jerry Leighty
 Secretary-
 Treasurer John Patten
 Representative
 to Congress William Stahl
 Sponsors Mr. Campbell,
 Mr. Smoyer

Row one, left to right: Mr. Campbell, Roy Bucher, John Patten, Kenneth Beal, William Stahl, Mr. Smoyer
 Row two: Donald Ford, Frank Krupa, Joseph Wirth, Ronald Morgan, Robert Clarke.

Rifle Club

OFFICERS

President Harry Theackston
 Vice-President Edward Smith
 Secretary Wendell Gower
 Treasurer Richard Vickroy
 Representative
 to Congress Kenneth Maurer
 Sponsor Mr. Monroe



Row one, left to right: Joseph Hartman, Dick Yankura, Gene Mori, Frank Krupa, Richard Vickroy, Charles Anderson, Roger Hammond, Kenneth Maurer, Joseph Bennese, Robert Barthels, Ronald Kallenshorn.
 Row two: Ronald Chackick, Ronald Kasper, Charles Philip, Bob Bortner, James Adams, Robert Luxner, Thomas Hughes, Paul Zedack, Jim Kennedy.
 Row three: Clarence Anderson, Bob Leeper, Frank Ptak, Clarence Lofstead, Bernard Kensky, Raymond Bloom, Don Siagle, Jim Belcher.
 Row four: Richard Medve, Howard Jones, Paul Quarry, Dave Lemley, Ron Remy, John Bickerton, Nill Glenn, Roy Shaffer.

Mixed Chorus



Row one, left to right: June Koontz, Nancy Hurst, Ella Stanko, Janet Treese, Marcia Horn, Janice Ballenger, Jean Bedoia, Rita Brewer, Mr. Dovenspike, Frances Genetti, Lucille Musial, Alice Wilson, Ina Hall, Sally Kornick, Patricia McClellan, Deanna Burchianti, Marlene DuShaw.

Row two: Mary Bradley, Mary Cabell Taylor, Rita Willis, Anna Mae Wray, Donna Mandarine, Lois Bailey, Sylvia Humphreys, Gail Seneff, Mary Ruth Gillis, Mary Grace Battaglia, Barbara Bulger, Kay Kirk, Kay Schiffbauer, Donnis Pierallini, Carol Troutman, Lorraine Behrendt, Anna Marie Zubic.

Row three: Irene Jeney, Janet Beck, Mona Jean Moore, Ruth Beck, Phyllis Bodnar, Marywynn Bishop, Joyce Papini, Mary Ann Cooley, Sylvia Bellora, Anita Polach, Harriet Rouff, Iva Womer, Marilyn Pivarnik, Martha Gouger, Doris Saunders.

Row four: Morris Hyman, Scott Winder, Don Scandrol, Dick Silvas, Fred Randolph, Richard Long, Miles Everard, Paul Corliss, Norman Essey, Dallas Lea, Tom Stake, Jim Piedlo.

Row five: Roy Aikens, Bob Zoppetti, Gene Leonard, Carl McGary, James White, Gordon Schuckers, Arthur Hayes, Dale Osborne, Dick Hay, Howard Richards, Alvy Paul, Steve August, George Bonari, Bob Donnine.

OFFICERS

President Arthur Hayes
 Vice President James McGinnis
 Secretary Connie Karpus
 Treasurer June Koontz
 Representative to Congress Dean Bowman
 Sponsors Mr. Halstead, Mr. Dovenspike

Musical Comedy Club

OFFICERS

President Lon Tremback
 Vice President Arthur Hayes
 Secretary John Celani
 Treasurer Janice Ballinger
 Representative
 to Congress Mary Grace Battaglia
 Sponsor Mr. Dovenspike

Row one, left to right: Gary DeMarchi, Don Rotell, John Celani, Lucille Musial.
 Row two: Irene Jeney, Rita Willis, Mary Pushkar, Betty Brown, Carol Troutman.
 Row three: Judy Lebowitz, Sally Kornick, Jean Bedoia, Marlene DuShaw, Dena Morris, Janet Duncan, Anna Mae Wray, Lena Nucetelli, Mr. Dovenspike, Lon Tremback.



Men and Women's Glee Clubs



Row one, left to right: June Koontz, Nancy Hurst, Ella Stanko, Janet Treese, Marcia Horn, Janice Ballenger, Jean Bodoia, Rita Brewer, Mr. Dovenspike, Frances Gianetti, Lucille Musial, Alice Wilson, Ina Hall, Sally Kornick, Patricia McClellan, Deanna Burchianti, Marlene DuShaw.

Row two: Mary Bradley, Mary Cabell Taylor, Rita Willis, Anna Mae Wray, Donna Mandarino, Lois Bailey, Sylvia Humphries, Gail Seneff, Mary Ruth Gillis, Mary Grace Battaglia, Barbara Bulger, Kay Kirk, Kay Schiffbauer, Donnis Pieralini, Carol Troutman, Lorraine Behrendt, Annamarie Zubic.

Row three: Irene Jeney, Janet Beck, Mona Jean Moore, Ruth Beck, Phyllis Bodnar, Marywynn Bishop, Joyce Papini, Mary Ann Cooley, Sylvia Bellora, Anita Polach, Harriet Rouff, Iva Womer, Marilyn Pivarnik, Martha Gouger, Doris Sanders.

Row one: Richard Long, Fred Randolph, Miles Everard, Mr. Dovenspike, Paul Corless, Dale Osborne, Tom Stake, Don Tretchick.

Row two: Carl McGary, Scott Winder, Bob Zoppetti, Morris Hyman, Richard Silvis, Jim Pudlo, Bob Donnini, Norman Essey, Howard Richards.

Row three: Roy Aikens, Leon Trembach, Gene Leonard, James White, Gordon Schuckers, Arthur Hayes, Dick Hay, Alvy Paul, Steve August, George Bonari.

Women's Glee Club

OFFICERS

President.....Janice Ballenger
 Vice President.....Ina Jean Hall
 Secretary.....Joyce Papini
 Treasurer.....Miriam Lewis
 Representative to Congress Delores Onsucheck
 Sponsors.....Mr. Halstead, Mr. Dovenspike

Men's Glee Club

OFFICERS

President.....Dale Carson
 Vice President.....Neil Faust
 Secretary.....Romeo Fabriziani
 Treasurer.....Dick Long
 Representative to Congress.....John Simons
 Sponsors.....Mr. Halstead, Mr. Dovenspike

Dance Band



Row one, left to right: Pete Regal, Larry Marraccini, Toni Blozik, Richard Orlandi.

Row two: Frank Blankenbuehler, Jim Barnes, John Celani, Howard Logan.

Row three: Don Chapman.

College Band



Row one, left to right: Cynthia Sinosky, Loretta Hudler, Connie Bercik, Sylvia Humphries, Mary Jane Krause, Renelda Sich, Janet Duncan, Betty Potsklan, Aleen Adams, Carol Wooton.

Row two: Frank Norman, Carl Moore, Herbert Retcofsky, Richard Orlandi, Alex Balla, Tom Stake, John Celani, Stephanie Yuratovich, Toni Blozik, Dave Hillhouse, Ken Beal, Howard Logan, Larry Marraccini.

Row three: Joseph Price, Roy Bucher, Don Chapman, George Vranjes, Charles Chilp, Ed Scheiber, Donald Betts, Pete Regal, Frank Blankenbuehler, Robert Springer, Lon Trembach, Russell Craven.

Discussion Club

OFFICERS

President Andy Bryner
 Vice President Mike Chuey
 Secretary Catherine Sherbondy
 Representative to Congress Mike Rocca
 Sponsors Dr. Hart, Dr. Wolfe



Row one, left to right: Iva Boyer, Judith Wolfe, Andy Bryner, Mildred Maruschak, Elaine Kanitra.
 Row two: Gene Manetta, Jack Thomas, John Ward, Mike Chuey, Mike Rocca, Dr. Wolfe.

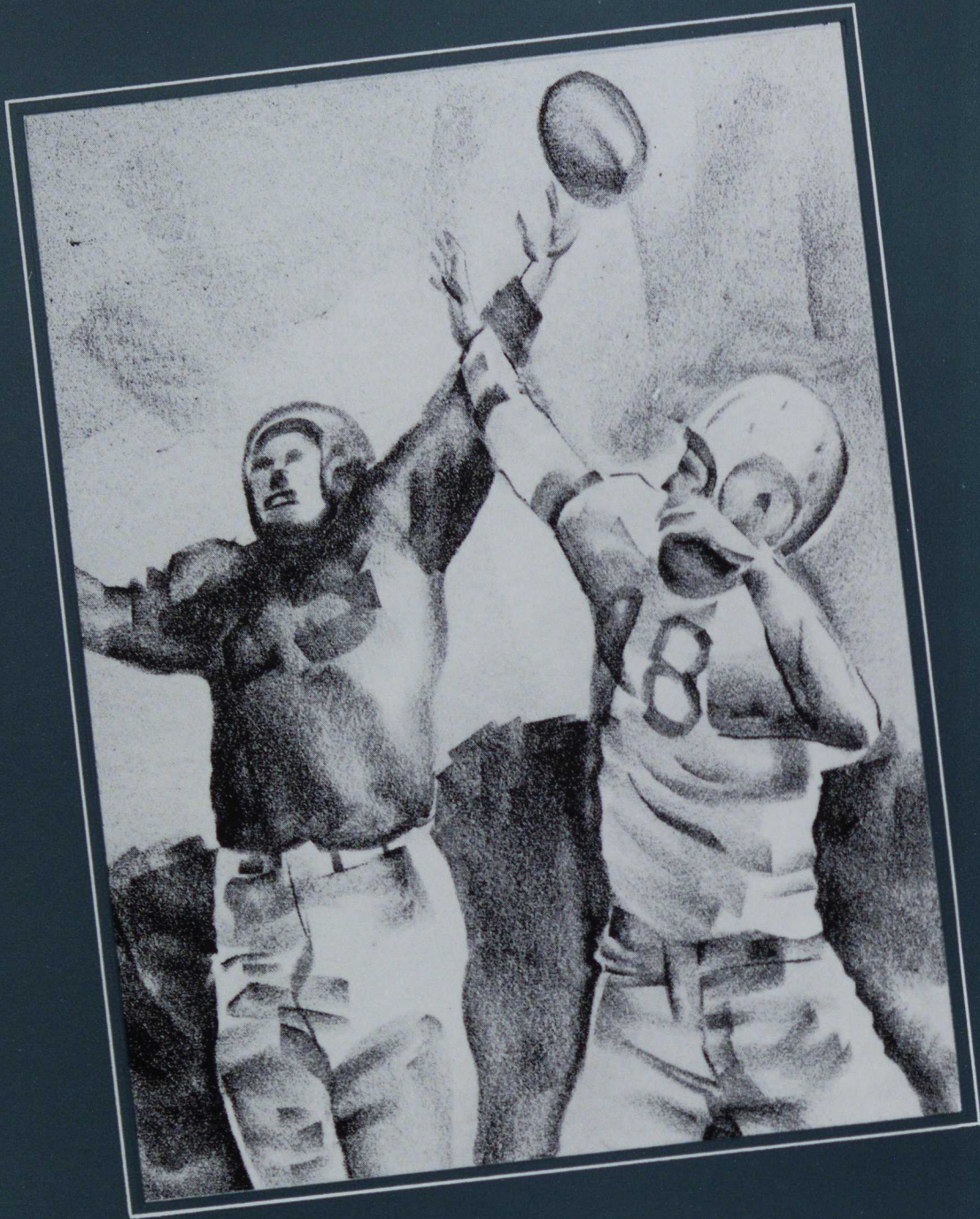
Debate Club

OFFICERS

President Connie Maxon
 Secretary Beatrice Ritzo
 Representative to Congress Donnis Pierillini
 Sponsor Mr. Roadman



Row one, left to right: Donnis Pierillini, Donna Manderino, Beatrice Ritzo, Karl Wendelin.
 Row two: Donald Rotell, Donald Scandrol, Lon Trembach.



the **ATHLETICS**



Vulcan



Row one, left to right: Mr. Sepsi, Steve Staruch, John Masneri, Dean Bowman, Barney Bakewell.
Row two: Mr Bailey, George Scott, Carl Wilhelm, John Trivonovich, Al Barnicle.
Row three: Jim White, Bill Leehan, Charles Chepes, Alex Osleger, Delmar Mosely.
Row four: Mr. Nemeth, Bob Feath, John Clark, George Polonoli.

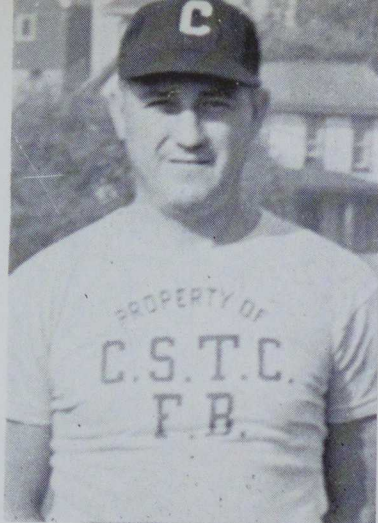
Football Team



Row one, left to right: Clyde Scursatone, Mike Panich, Paul Maley, Donald Shockey, Ronald Le Fevre, Burnett Roberts.
Row two: Patrick Reilly, James Mendola, Jack Flinn, Bruce Rice, Ron Novak, George Stoicovy, John Fecik.
Row three: Dick Ross, George Kupets, Milton Holt, Ralph Arrigo, Al Myers, Dick Smith.
Row four: Horace Rooney, John Froman, Dick Wiita, Joe Gimalva, Gene Gorman, Don Dinardo.



MR. THEODORE NEMETH
Head Coach



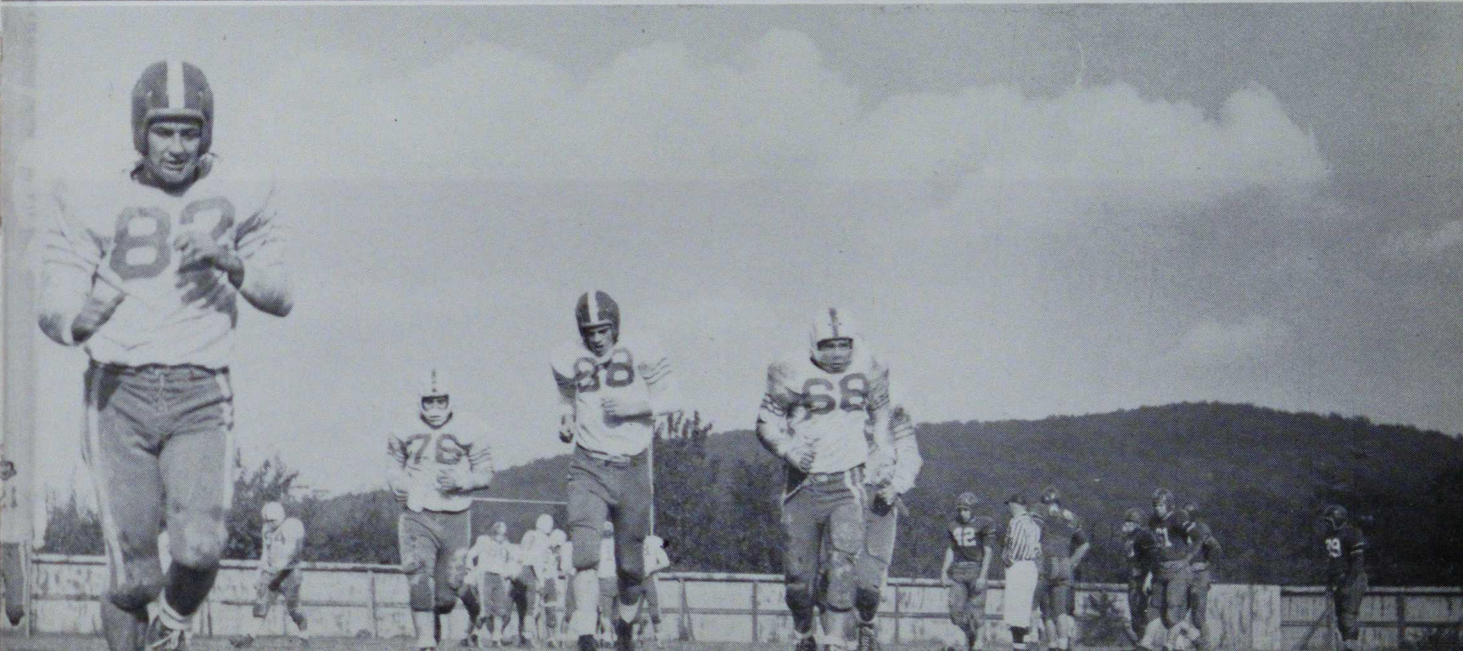
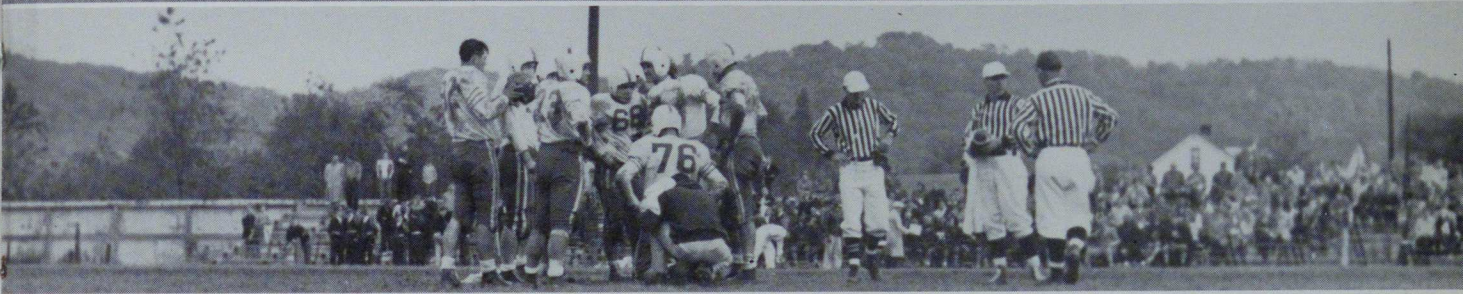
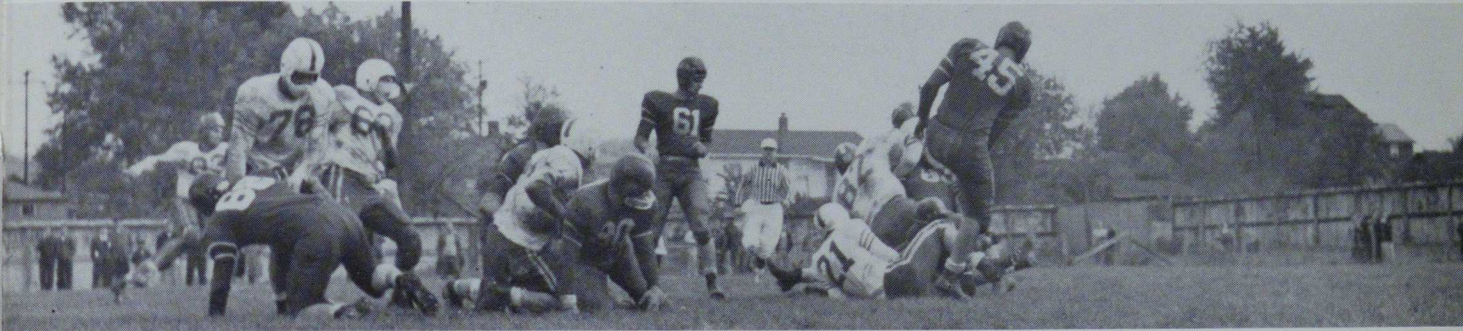
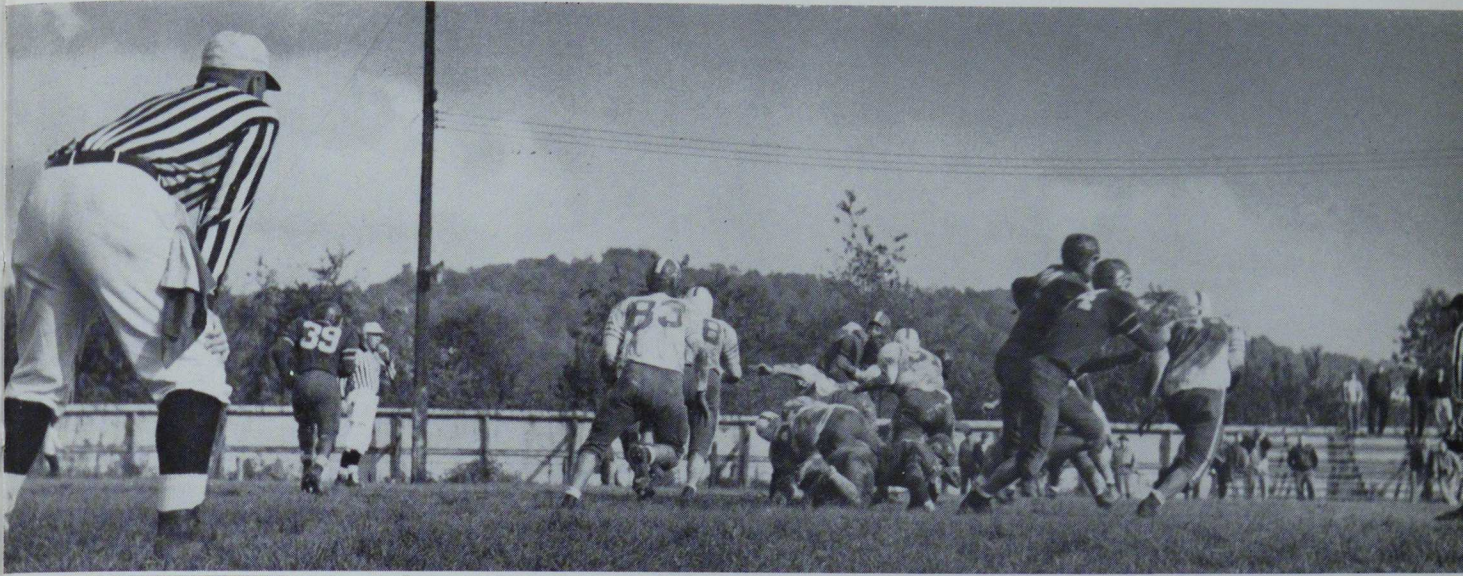
MR. ANDREW SEPSI
Assistant Coach

FOOTBALL SCORES

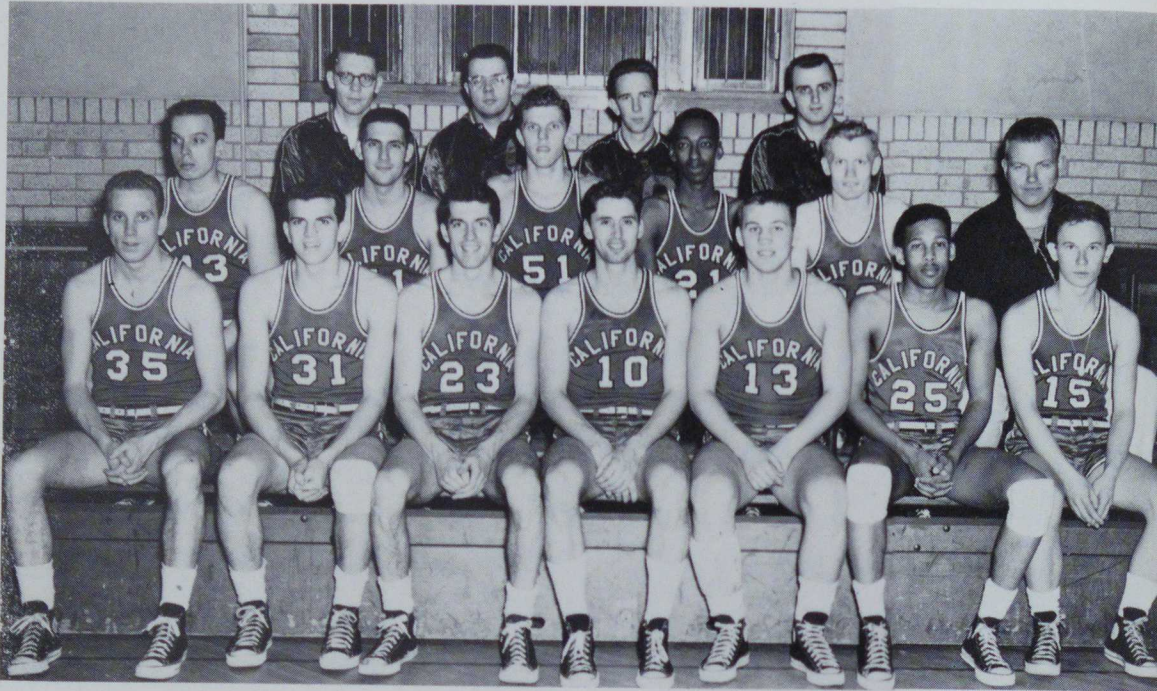
Indiana	14	California	7
Lock Haven	20	California	7
Shippensburg	13	California	19
Clarion	6	California	19
Slippery Rock	0	California	7
Bloomsburg	7	California	6
Baldwin Wallace	20	California	14
Edinboro	0	California	20



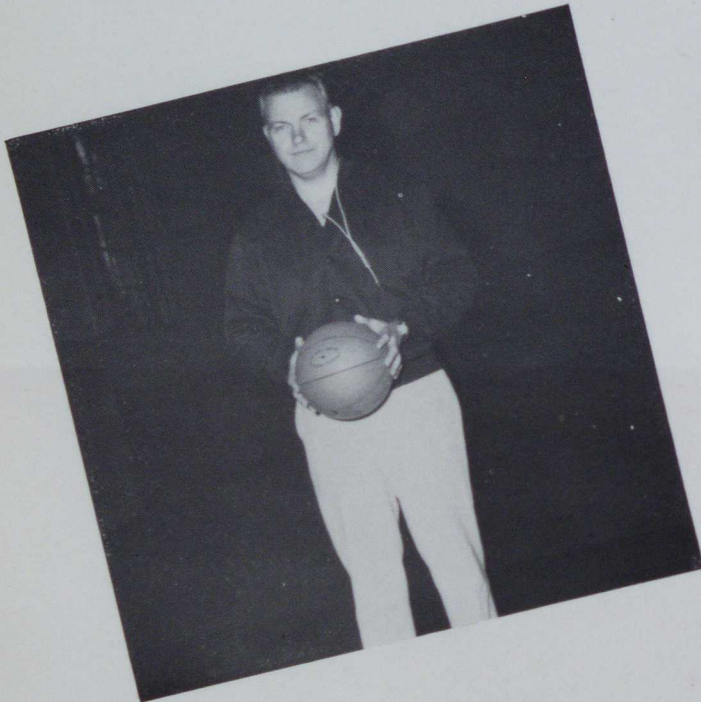
Vulcans In Action



Basketball



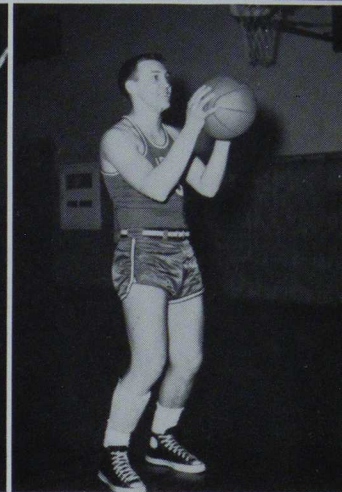
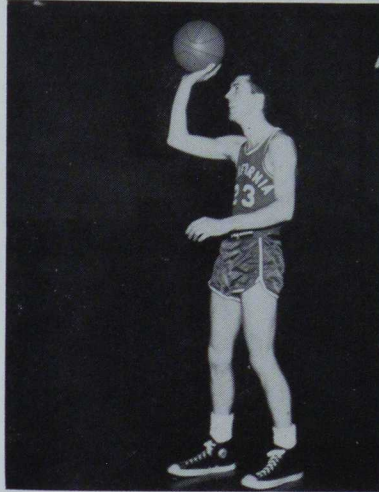
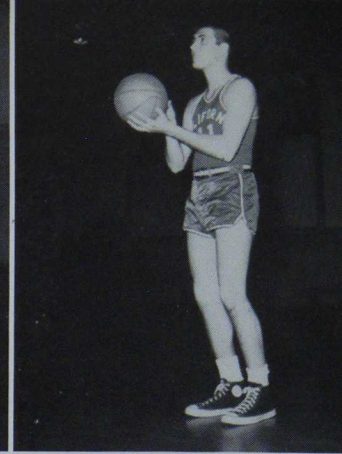
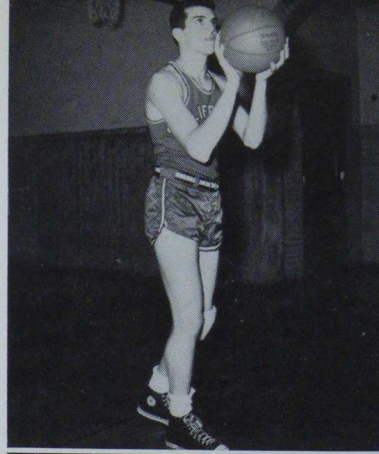
Row one, left to right: George Meshner, Sebastian LoNigro, Robert Walters, Lloyd Gilmore, Stanley Milchovich, Druce Jackson, Denny Kremsky.
Row two: Jim Protin, Joe Giamalva, Ralph Holtz, James Cheatham, Ronald Morgan, Mr. Hester.
Row three: William Stahl, Val Nichol, Gene Leonard, Richard Majernik.



MR. EUGENE HESTER
Coach

BASKETBALL SCORES

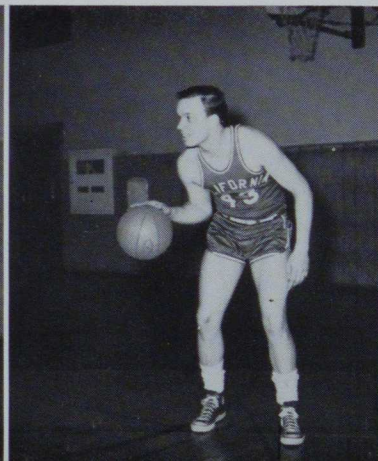
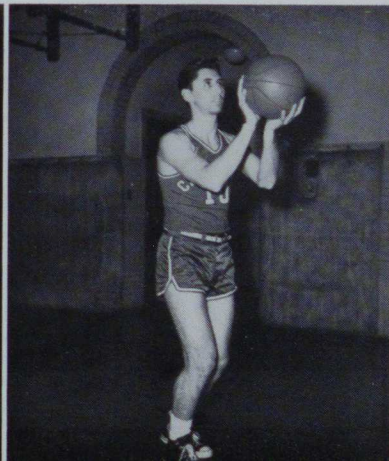
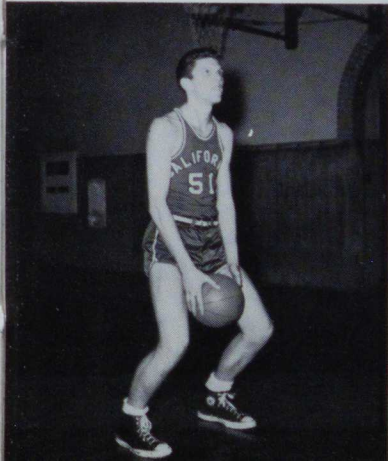
Fairmont	75.....	California	61
Waynesburg	42.....	California	63
Clarion	67.....	California	73
Indiana	85.....	California	64
St. Vincent	101.....	California	63
St. Vincent	79.....	California	69
West Liberty	94.....	California	83
Slippery Rock	85.....	California	73
Fairmont	88.....	California	77
Millersville	91.....	California	69
Shippensburg	68.....	California	72
Gannon	79.....	California	69
Edinboro	61.....	California	65
West Liberty	82.....	California	71
Clarion	80.....	California	86
Indiana	85.....	California	62
Edinboro	64.....	California	86
Waynesburg	89.....	California	90



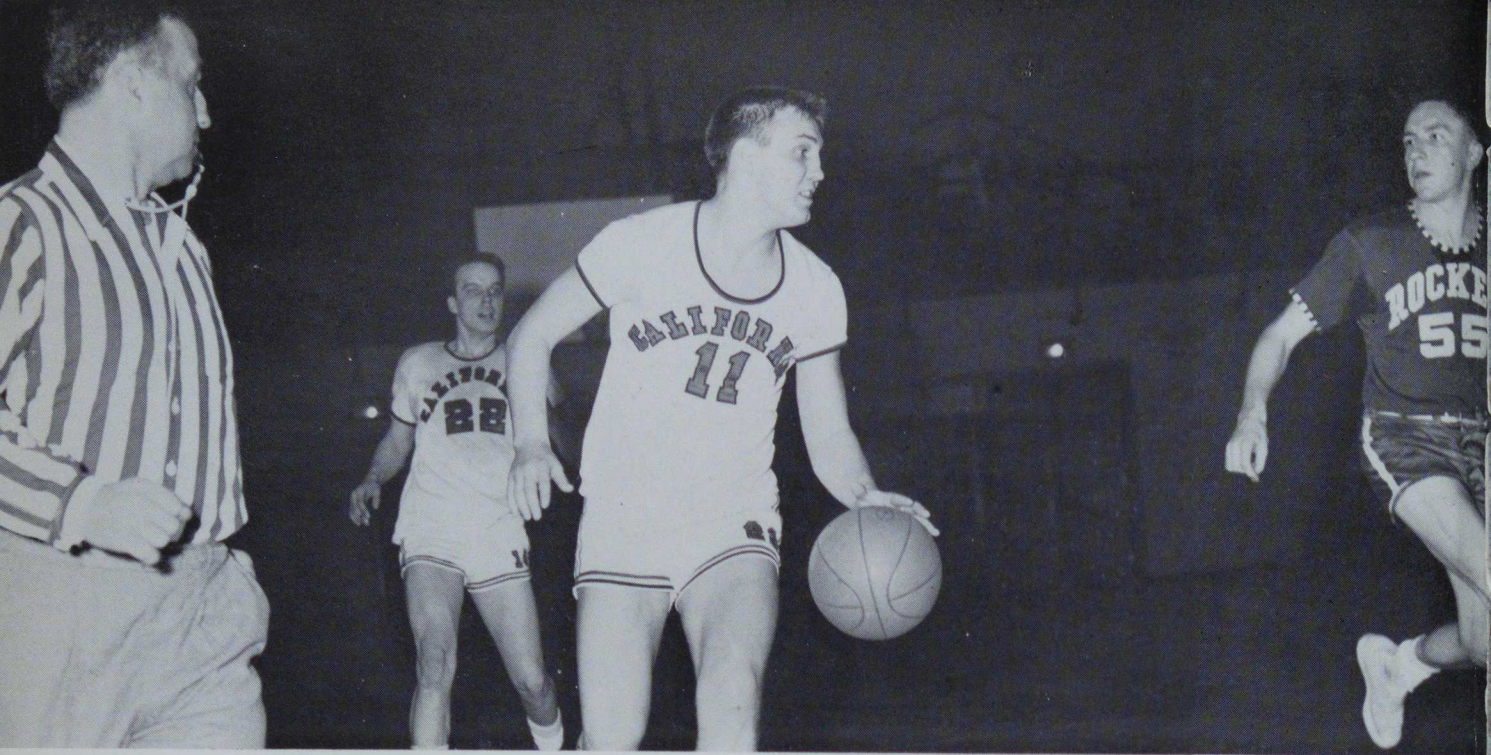
Sebastian LoNigro
Robert Walters

Joe Giamalva
Stanley Milchovich

Varsity Team

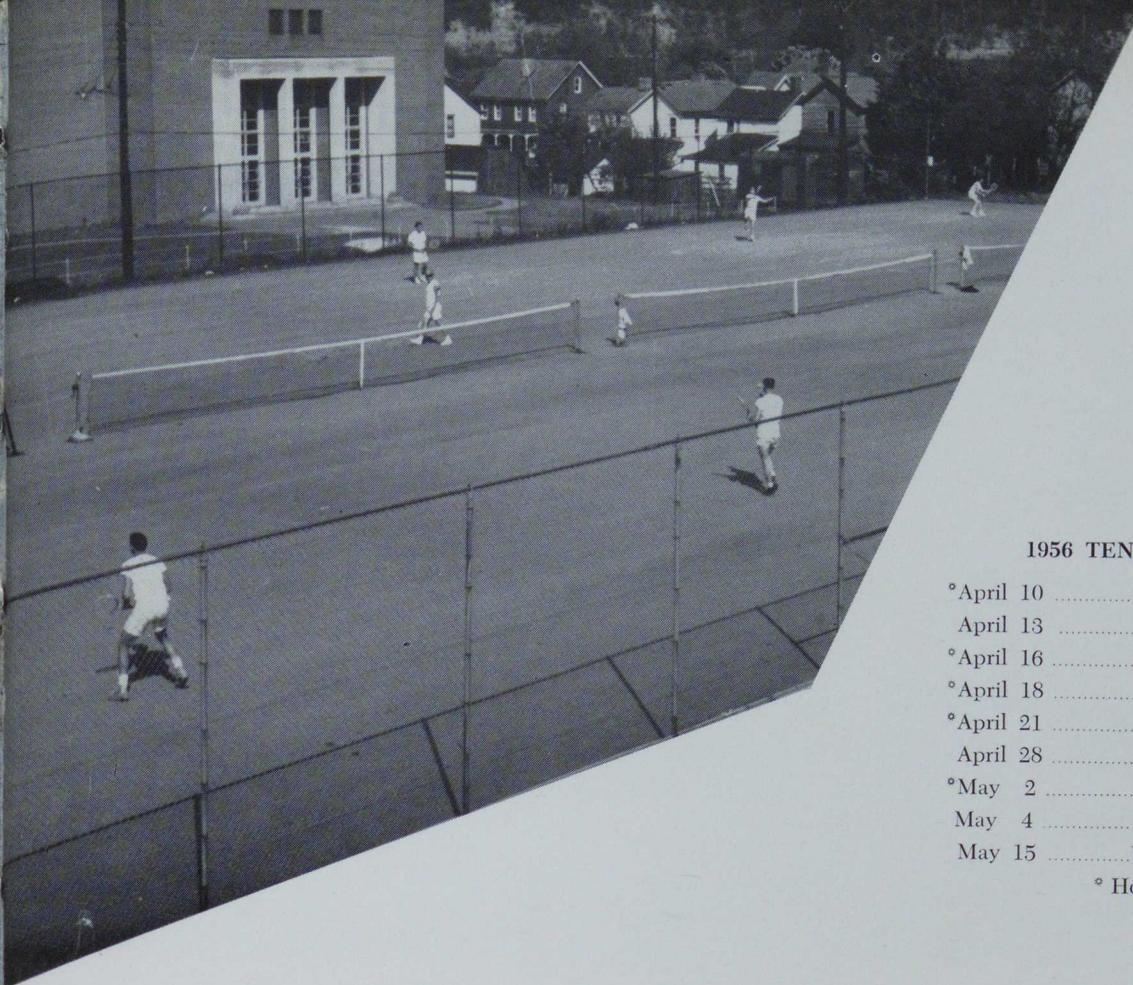


Ralph Holtz
Lloyd Gilmore
Jim Protin



Varsity Basketeters In Action





1956 TENNIS SCHEDULE

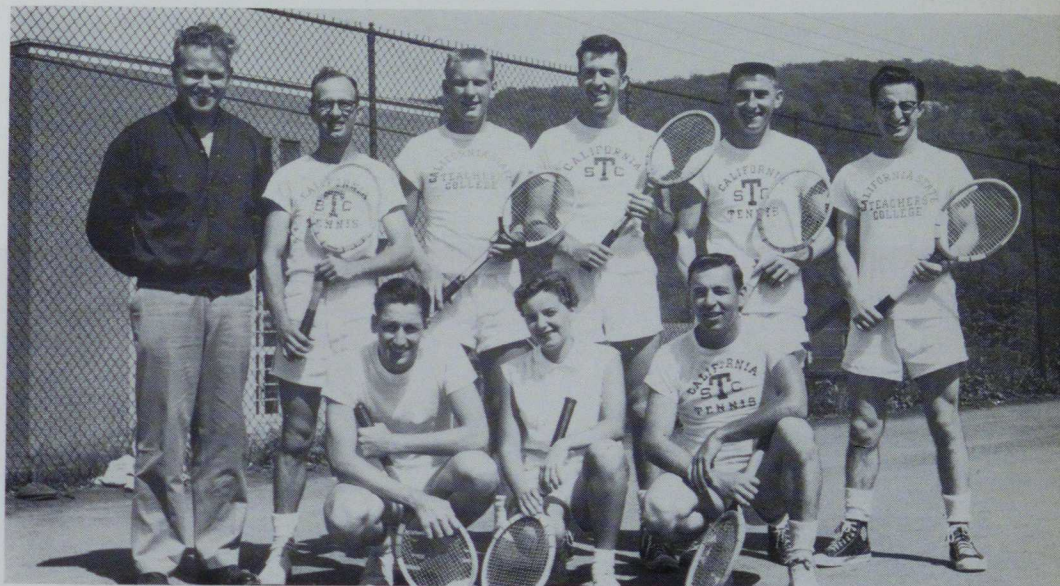
°April 10	Fairmont
April 13	Indiana
°April 16	Bethany
°April 18	Washington and Jefferson
°April 21	Slippery Rock
April 28	Bethany
°May 2	Indiana
May 4	Fairmont
May 15	Washington and Jefferson

° Home Games

Tennis Team

Kneeling, left to right: Howard Nizinski, Joan Kray, Francis LaMendola.

Standing: Mr. Hester, Edward Szymczyk, Ron Remy, Bob Waiters, Ed Kallok.



Baseball



Baseball Team



Row one, left to right: Delbert Byers, Joe Cusic, Mickey Bodnar, Walter Sickles, Ed Szymczyk, Fran La Mendola, Frank King, Jack Young, Phil Stout.

Row two: Mr. Sepsi, Frank Fazio, Dick Sabo, Bruce Rice, Bob Walters, Richard Babish, Bill Merryman, Vergil Taylor, Floyd Reynolds.



1956 BASEBALL SCHEDULE

° April 12	Steubenville
April 14	West Liberty
April 14	Bethany
April 17	Washington and Jefferson
° April 23	Waynesburg
° April 27	Bethany
° May 1	West Liberty
May 5	Waynesburg
May 8	Steubenville
° May 12	Indiana
° May 17	Washington and Jefferson

°Home Games



Cheerleaders

Left to right: Dena Morris,
Sylvia Bellora, Ina Hall,
Anita Polach, Nancy Hughes,
Roberta Durnell.



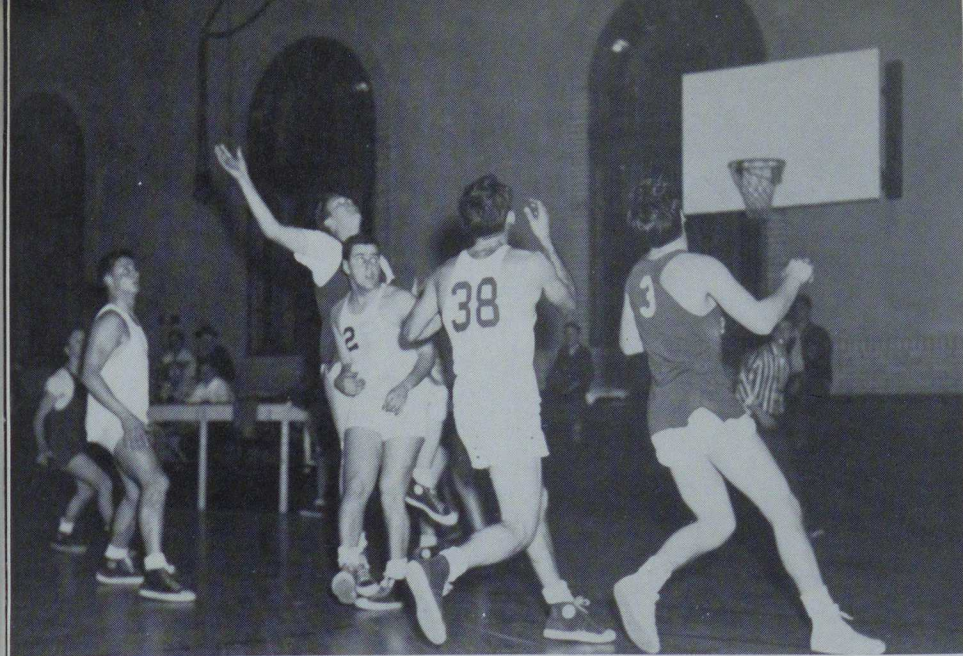
Cheerleaders Lead The Parade



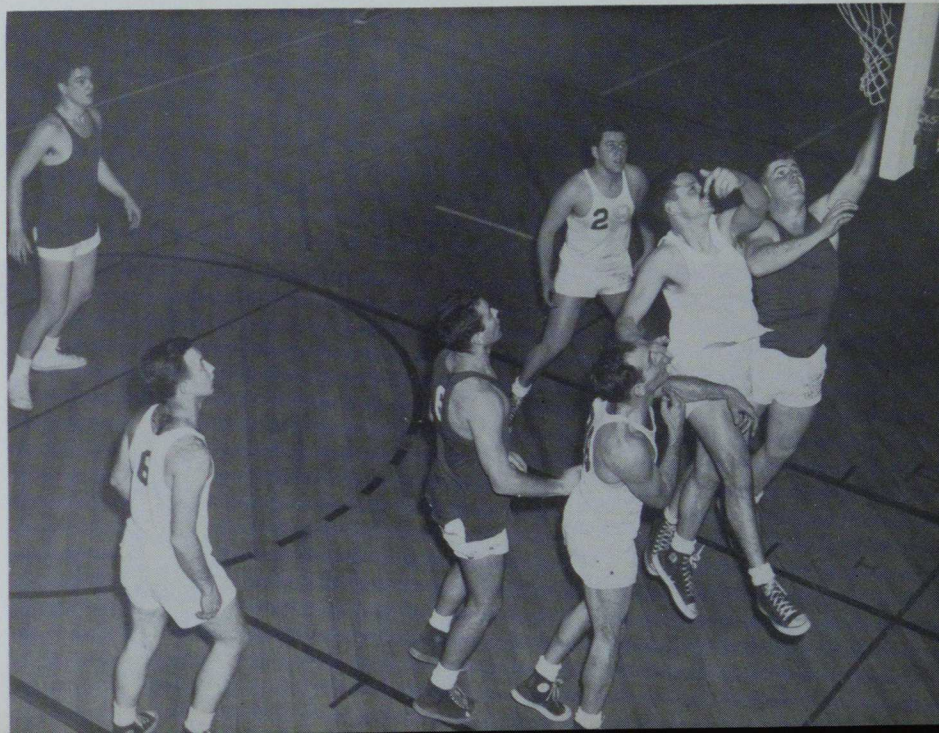


Men's Intramurals





Men's Intramurals



Women's Athletic Association



Row one, left to right: Marlene McKay, Donnis Pierallini, Miriam Lewis, Ina Hall, Roberta Durnell.

Row two: Kay Kirk, Connie Karpus, Mary Lee Everett, Elizabeth Gallik.

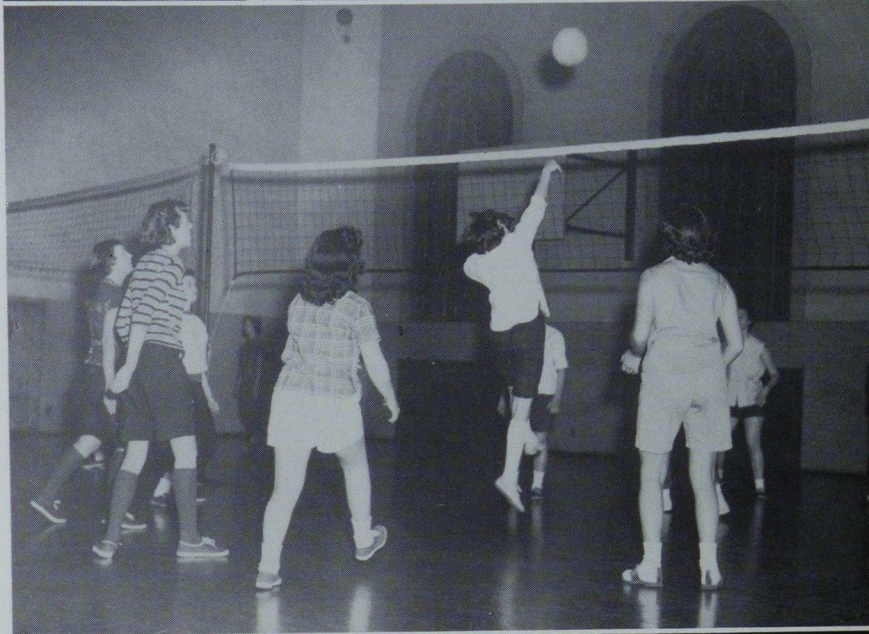
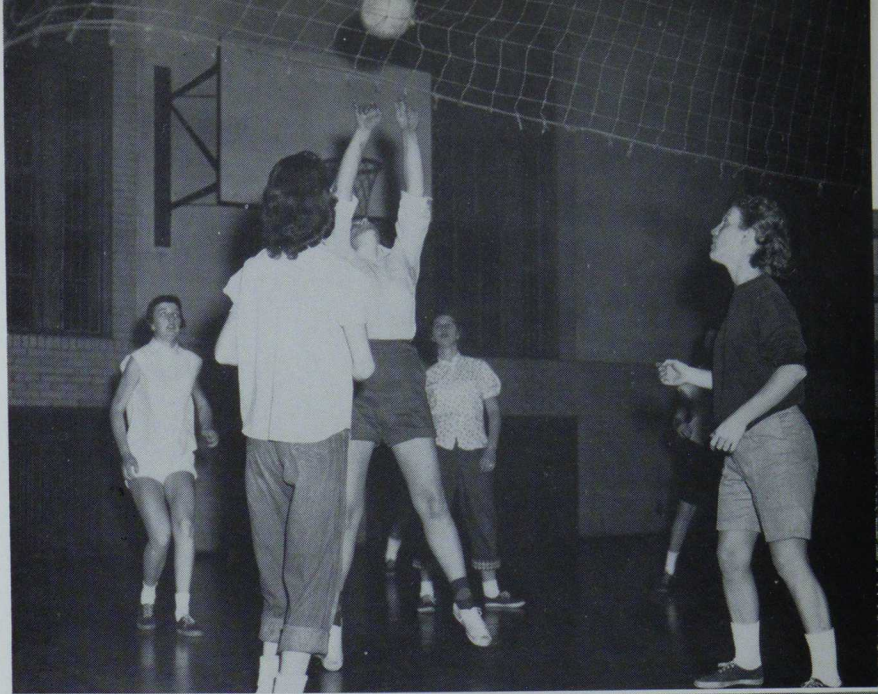
Row three: Kay Schiffbauer, Carol Troutman.

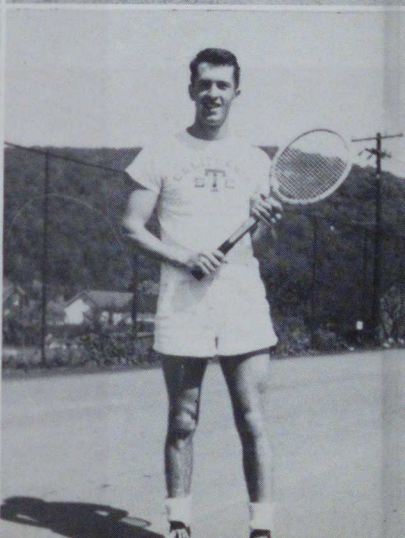
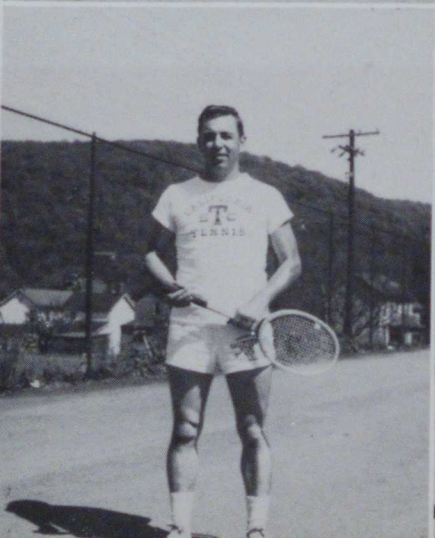
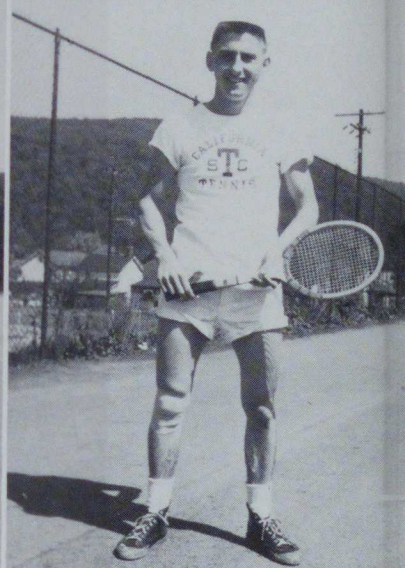
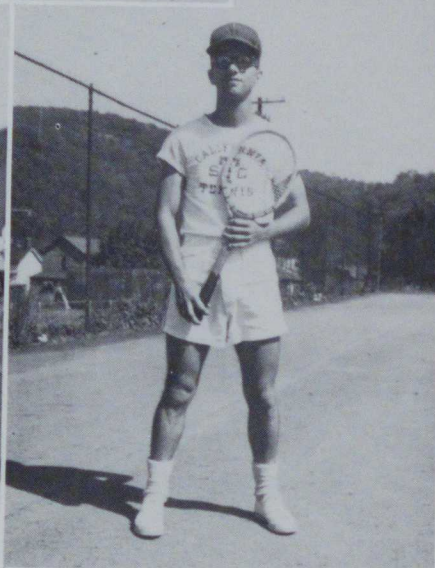
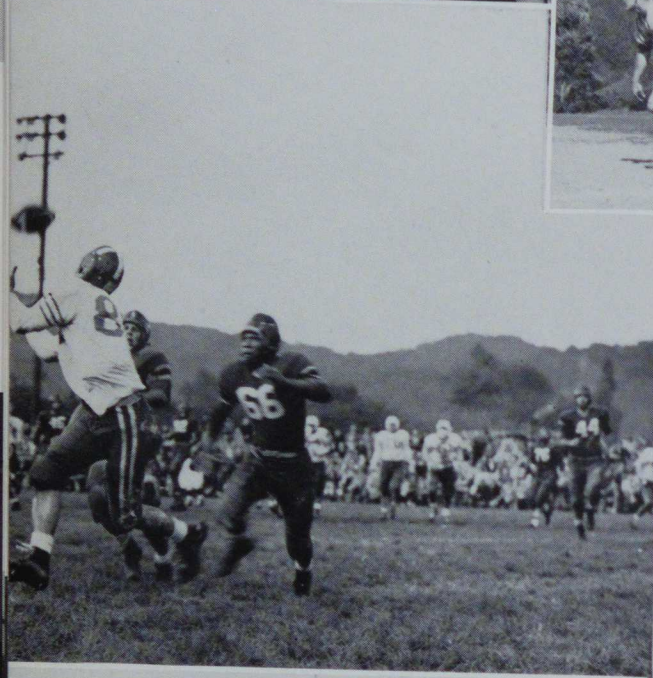
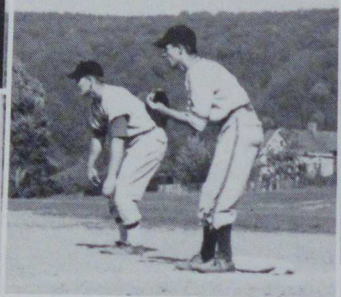
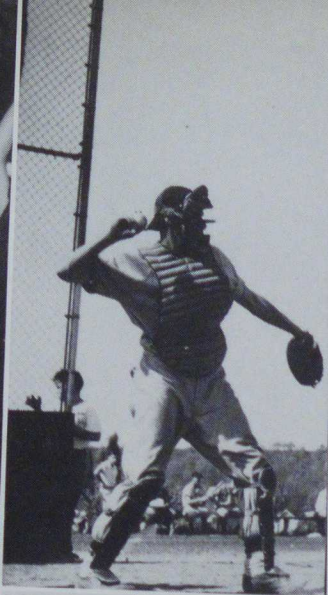
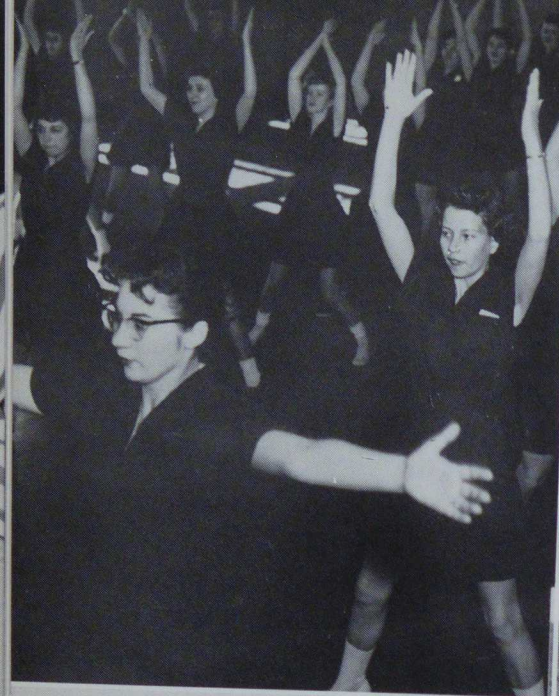
OFFICERS

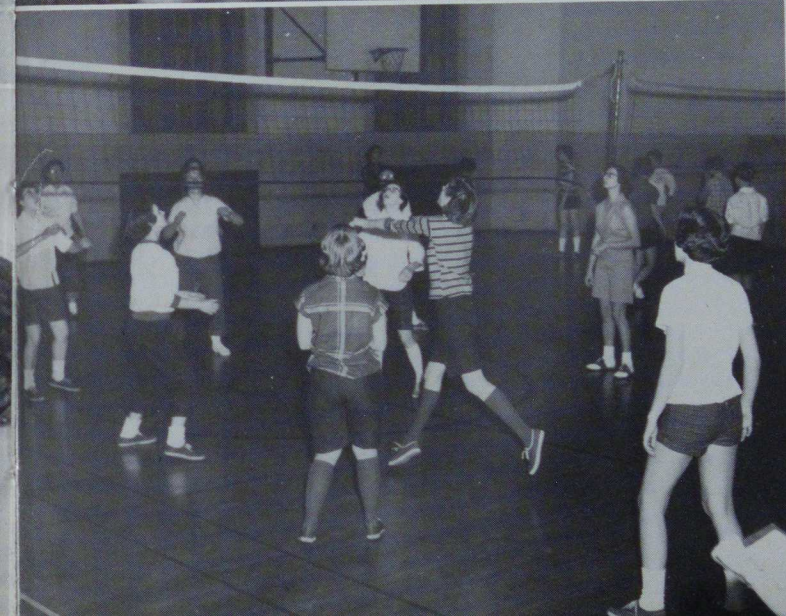
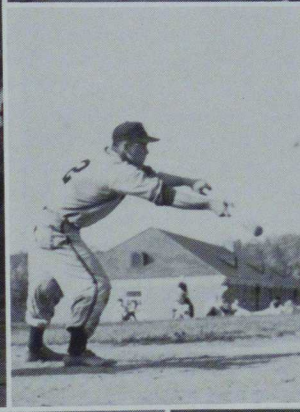
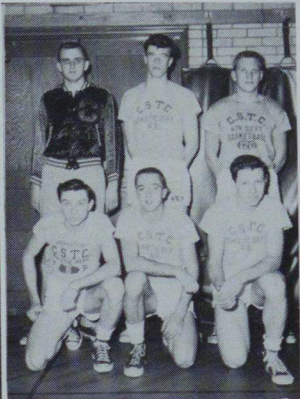
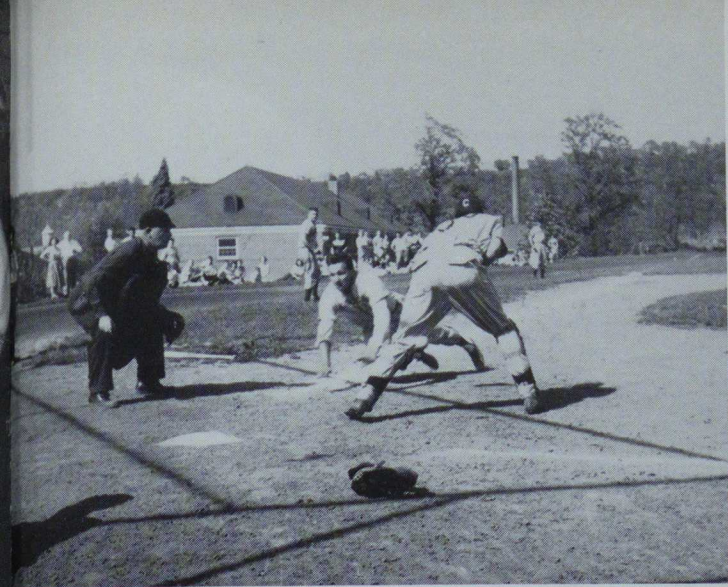
President	Connie Karpus
Vice President	Mary Lee Everett
Secretary	Carol Troutman
Treasurer	Kay Schiffbauer
Representative to Congress	Roberta Durnell
Sponsor	Miss Hildreth



V
O
L
L
E
Y
B
A
L
L









the **FEATURES**





Homecoming Day

October 15, 1955

QUEEN

Miss Janet Treese

Queen's Float



Nancy Hughes, Emmilou Roadman, Janis Ballinger, Janet Treese, Connie Bercik, Mary Jane Krause.



**College
Players
Presents**

**She
Stoops
To
Conquer**





Student Library Workers



Row one, left to right: Angeline Bongianino, Nancy Lomagno, Beverly Herbert, Suzanne Vacheresse, Carmelina Riffle, Aleen Adams, Jean Cordis, Mary Jo McWreath, Anna Jean Soliani, Sally Story.
Row two: Miss Luckhardt, Miss Reichard.



Waiters and Waitresses

Row one, left to right: Miss Kerstetter, Frances Giannetti, Peggy Probst, Mary Pushkar, Sylvia Humphries, Ruth Beck, Sylvia Bellora, Shirley Turney, Martha Gouger, Doris Sanders, Connie Karpus, Phylis Mock, Carol Troutman, Shirley Paul, Anne Lunnen, Lena Nuccetelli, Pat McClennan, Robert Clarke.

Row two: Virgil Taylor, Larry Stetler, Carmen Putorti, John Shavel, Harry Farrar, John Patton, Paul Bittner, Roy Bucher, Neil Faust, John Fecik.



Snack Bar Workers



Seated, left to right: Helen Joseph, Ina Hall, Regis Toprani, Martha Kridle, Shirley Miller.



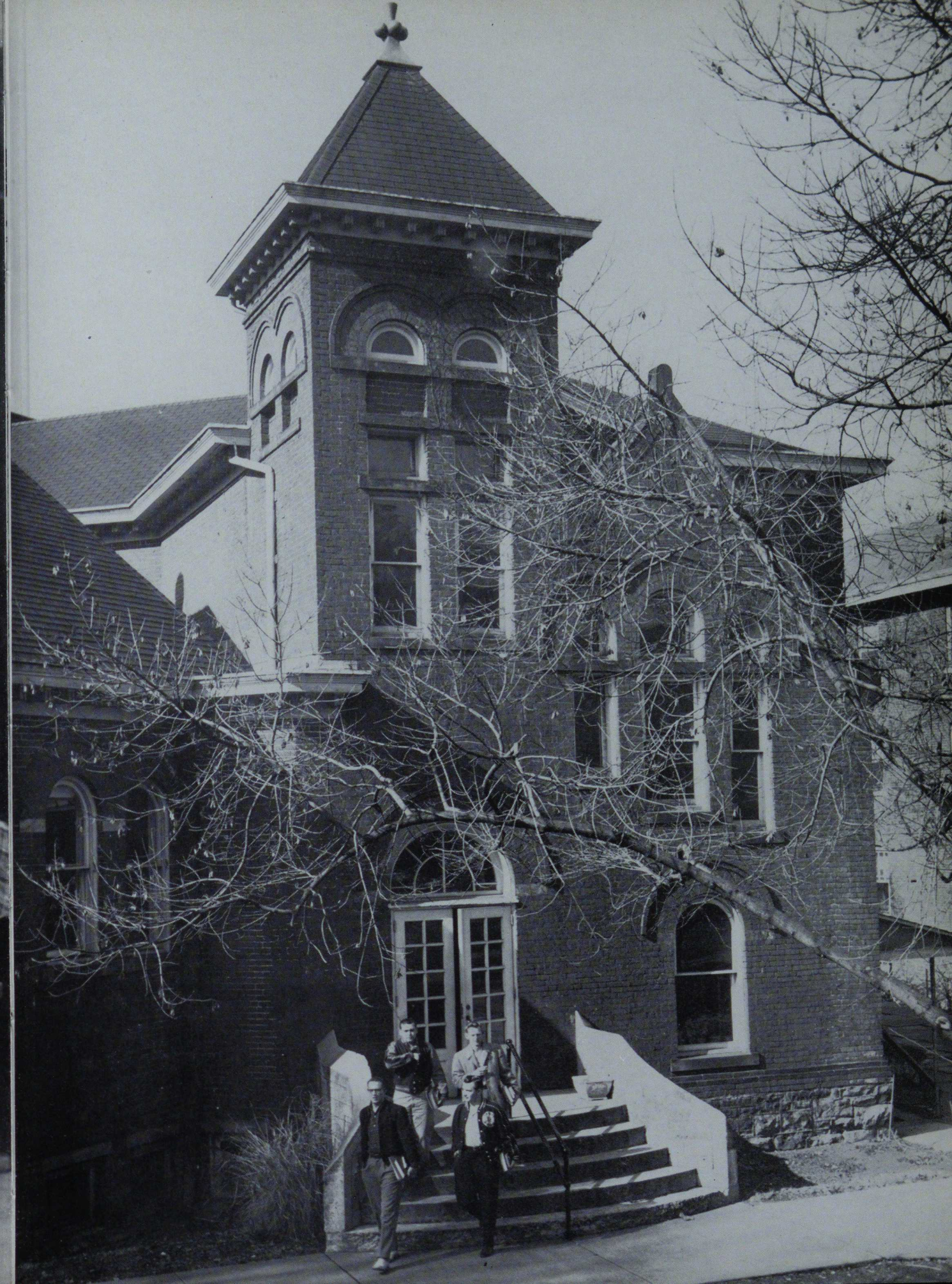
Halloween Dance



Halloween Dance

LIBRARY















Winter

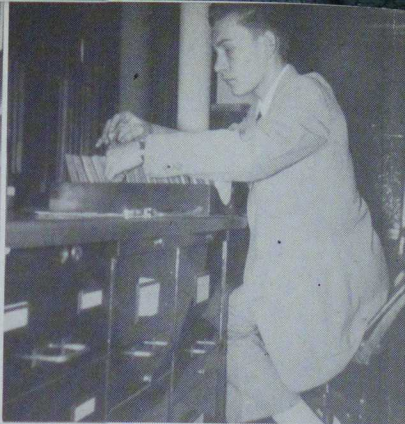


Scenes



The Campus At Night





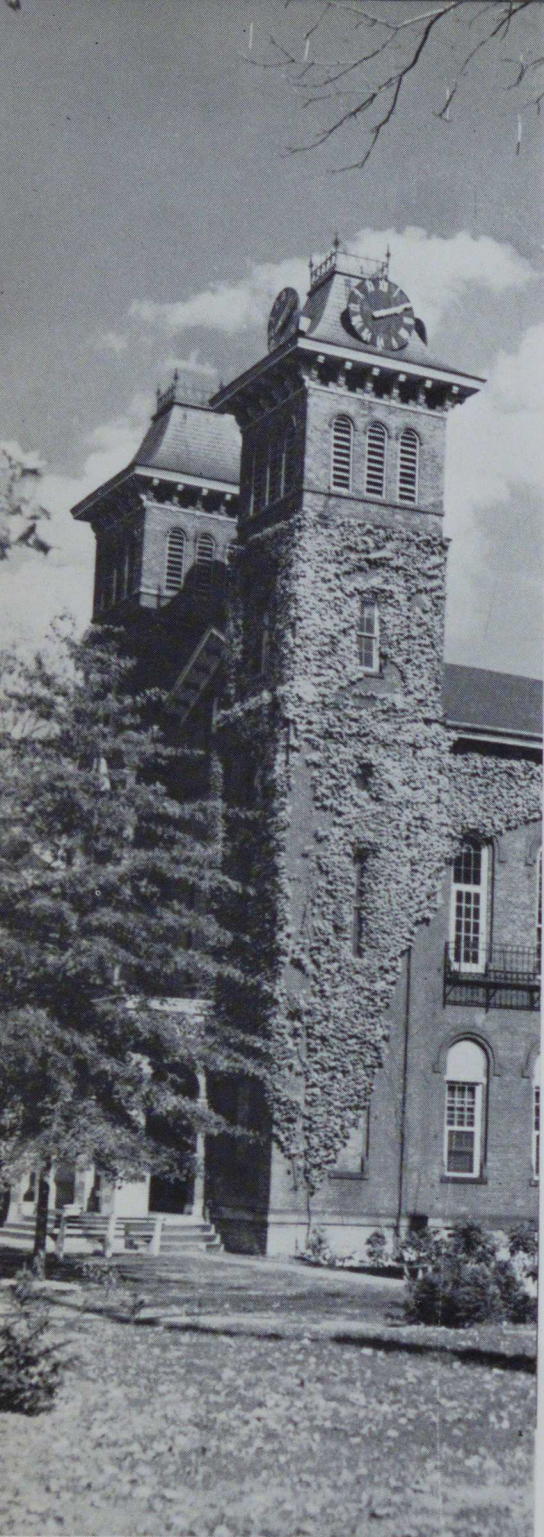












The Pledge

I do solemnly pledge:

That I will never consciously or willfully bring discredit to this college;

That I will faithfully perform any task entrusted to me;

That I will do my utmost to raise the academic, social, and civic standards of this College;

That I will obey its laws and customs, respect its ideals, and honor its traditions;

That I will continually endeavor to prepare myself for the noblest of all professions — that of teaching;

And in all these ways I will strive to transmit to my successors a greater, better, and more beautiful California than was inherited by me.

Alma Mater

California, Alma Mater,
Now we sing to thee
California, dear forever
In our memory.
With our voices loudly ringing
Of thy fame we're ever singing
California, Alma Mater,
Hail! All Hail! to thee.

For the friends and joys you gave us,
We give thanks to thee
All thy knowledge we'll make worthy
For posterity.
May thy reign be ever prosperous
And thy name forever glorious
California, Alma Mater,
Hail! All Hail! to thee.

— Philip Rossi, Class of '37

Autographs

DIRECTORY

FRESHMAN

Ackman, Lucy, Monongahela	Elementary	Campbell, Elaine, California	Elementary
Adams, Glenn, Karns City	Industrial Arts	Campbell, George, California	Industrial Arts
Adams, James, Marianna	Industrial Arts	Caputo, James, Monessen	Industrial Arts
Aebi, Benjamin, Coal Center	Industrial Arts	Carnack, Carole, McClellandtown	Secondary
Aikens, Roy, Edman	Industrial Arts	Ceccarelli, Marilee, Belle Vernon	Elementary
Anderson, Clarence, Tarentum	Industrial Arts	Chachick, Roland, California	Industrial Arts
Anderson, Thomas, New Salem	Secondary	Chalfant, James, Brownsville	Secondary
Andresky, Carl, Glassport	Industrial Arts	Chapman, Donald, Creekside	Industrial Arts
Arrigo, Ralph, Charleroi	Secondary	Chasko, Paul, Charleroi	Secondary
Austin, Robert, Meyersdale	Industrial Arts	Chew, Emma, Brownsville	Elementary
Bailey, Lois, California	Elementary	Chiappelli, Carlo, Mentcle	Industrial Arts
Bailing, Robert, New Kensington	Secondary	Chilia, Joseph, Arnold	Industrial Arts
Baker, Blaine, Salisburg	Industrial Arts	Chirdon, Clarence, E. Brownsville	Industrial Arts
Balla, Alexander, Richeyville	Elementary	Churella, George, Patton	Industrial Arts
Ballant, Joseph, W. Brownsville	Secondary	Ciarrocchi, John, Vestaburg	Secondary
Barclay, Alice, Somerset	Elementary	Clever, Kenneth, Leechburg	Industrial Arts
Barney, Lois, Washington	Elementary	Coates, Iris, Fayette City	Elementary
Barnickel, Norman, Meadow Lands	Secondary	Coffman, Marianne, New Salem	Elementary
Barry, William, Uniontown	Industrial Arts	Coleman, Judith, Somerset	Elementary
Barthels, Robert, Smithton	Industrial Arts	Colvin, Ruth, Charleroi	Elementary
Bates, Albert, W. Brownsville	Elementary	Corless, Paul, Bridgeville	Industrial Arts
Battaglia, Mary, California	Elementary	Costa, Dominic, Bentleyville	Elementary
Bauer, Louis, Riverdale, Md.	Industrial Arts	Cottone, Anthony, Clairton	Industrial Arts
Beal, Kenneth, Connellsville	Secondary	Cowen, Gerald, California	Secondary
Beall, Alan, Belle Vernon	Secondary	Cseko, Drauga, Isabella	Elementary
Beals, William, Republic	Secondary	Curtis, Ronald, Donora	Industrial Arts
Beck, Janet, Donora	Elementary	Cushey, Herman, Finleyville	Industrial Arts
Belcher, James, Meyersdale	Industrial Arts	Cutler, Elaine, Uniontown	Secondary
Berg, Leslie, Wilksburg	Elementary	Danko, Michael, Johnstown	Industrial Arts
Bezjak, Alex, Martin	Secondary	Danko, Paul, Daisytown	Industrial Arts
Bickerton, John, W. Elizabeth	Industrial Arts	Davis, Franklin, Richeyville	Secondary
Bishop, Marywynn, Clearfield	Elementary	Dayner, Ralph, Belle Vernon	Secondary
Bisi, James, Latrobe	Secondary	DeBolt, James, Charleroi	Industrial Arts
Bitonti, Paul, Belle Vernon	Secondary	Deiley, James, Clairton	Secondary
Blacka, Edward, Belle Vernon	Secondary	Delbarre, Loretta, California	Secondary
Blankenbuehler, Frank, Monongahela	Secondary	Delopitro, Alexia, Eighty-four	Elementary
Blazosky, Michael, St. Michael	Industrial Arts	Detts, Donald, Marianna	Industrial Arts
Bloom, Raymond, Curwensville	Industrial Arts	DiFelippo, Christine, Charleroi	Elementary
Bloom, Richard, Curwensville	Industrial Arts	Dimperio, Mary, Brownsville	Secondary
Bono, Edward, Leechburg	Industrial Arts	DiNardo, Patsy, Ellsworth	Secondary
Booher, Sandra, Pitcairn	Elementary	Donley, Beverly, Greensboro	Secondary
Bortner, Robert, Sharpsville	Industrial Arts	Donnini, Robert, Jeannette	Industrial Arts
Boyer, Iva, W. Newton	Secondary	Duke, Elizabeth, Pitcairn	Elementary
Brashear, Marlene, New Salem	Elementary	Durfee, Joseph, Townville	Industrial Arts
Brazack, Judith, Belle Vernon	Elementary	Durinzi, Linda, Burgettstown	Elementary
Brewer, Joanne, Brownsville	Secondary	Dury, Stephen, Charleroi	Industrial Arts
Brewer, Reita, Washington	Elementary	Ebbert, Etta, California	Elementary
Bristor, Janet, Washington	Elementary	Egan, John, Brentwood	Industrial Arts
Brougher, Ronald, Boswell	Industrial Arts	Ercegovic, Edward, Brownsville	Secondary
Buchak, Joseph, Donora	Secondary	Essey, Norman, Monessen	Secondary
Buchta, Patricia, Charleroi	Secondary	Fairman, Ronald, Creekside	Industrial Arts
Bulger, Barbara, Belle Vernon	Elementary	Farkas, Johanna, Monessen	Elementary
Bungard, Wilma, Washington	Elementary	Farrell, James, Mt. Pleasant	Secondary
Burchianti, Deanna, Bulger	Secondary	Fedor, Elizabeth, Charleroi	Elementary
Burns, Owen, Monongahela	Secondary	Fennell, Francis, Greensburg	Elementary
Burwell, Joseph, Uniontown	Elementary	Ferguson, Adrienne, California	Secondary
Cadwell, Charles, Brownsville	Industrial Arts	Ferguson, Robert, Scottdale	Secondary
Cahill, James, Charleroi	Secondary	Fetty, Fred, Brownsville	Secondary
Calamari, Curtis, Charleroi	Secondary	Finnecey, Howard, Homestead Park	Secondary
Campbell, Donna, California	Elementary	Flynn, Keith, California	Secondary

DIRECTORY

Ford, Donald, Diamond	Industrial Arts	Johnson, Lynne, Library	Elementary
Forman, John, Elizabeth	Secondary	Kallnborn, Ronald, W. Newton	Industrial Arts
Forsythe, Ronald, W. Brownsville	Secondary	Kanitra, Elaine, California	Elementary
Frameli, Anthony, Clarksville	Secondary	Kanitra, John, California	Industrial Arts
France, Jack, Donora	Secondary	Kasper, Ronald, Pittsburgh	Industrial Arts
Franks, Donald, Masontown	Secondary	Keegan, Terence, W. Newton	Industrial Arts
Frederick, Lois, Glenshaw	Elementary	Kennedy, James, Uniontown	Industrial Arts
Fuge, Harold, Johnstown	Secondary	Kensky, Bernard, Clairton	Industrial Arts
Furiga, Victor, New Eagle	Secondary	King, Gloria, Hopwood	Elementary
Gabrik, Janet, Elco	Elementary	Kinnick, Fred, Isabella	Industrial Arts
Gallik, Elizabeth, California	Elementary	Klein, William, California	Secondary
Garrison, Charles, Dilliner	Secondary	Kloock, Raymond, Ronco	Industrial Arts
Geletei, James, California	Industrial Arts	Kniska, James, Monongahela	Secondary
George, Madge, Bentleyville	Elementary	Komacek, Albert, Isabella	Industrial Arts
Christ, Carolyn, Claysville	Elementary	Konick, George, Belle Vernon	Secondary
Giannetti, Frances, Monessen	Elementary	Koslosky, Bernard, Wyano	Industrial Arts
Gibbs, James, Conneaut Lake	Industrial Arts	Koury, Phillip, Uniontown	Secondary
Gillis, Mary, Masontown	Secondary	Kovach, Stephen, Brownsville	Secondary
Glenn, William, Rimersburg	Secondary	Koval, Bernard, Connellsville	Industrial Arts
Glott, Anthony, McKeesport	Industrial Arts	Kraffe, Danielle, California	Secondary
Gossie, La Verne, Charleroi	Secondary	Kraft, Dan Robert, Belle Vernon	Industrial Arts
Gouger, Martha, Monessen	Elementary	Kreinbrook, Carole Ann, Mt. Pleasant	Elementary
Grados, Helen, Fayette City	Elementary	Krohe, Joseph Edward, McKeesport	Secondary
Gray, Jack, California	Industrial Arts	Kruppa, Joanna, Charleroi	Elementary
Greenlee, John, Bentleyville	Secondary	Kubitsky, Daniel D., Smock	Secondary
Greiner, Neil, Pittsburgh	Industrial Arts	Kucher, Robert Joseph, Johnstown	Secondary
Grove, Reid, Uniontown	Secondary	Kunder, Arthur Michael, Monessen	Secondary
Gunter, Alfred, Clarksville	Elementary	Kupets, George Albert, Republic	Secondary
Haddad, Joed, Bentleyville	Secondary	Kuremsky, Dennis Paul, McKeesport	Secondary
Hagan, Helen, Uniontown	Elementary	Laird, Robert Edwin, West Newton	Industrial Arts
Hahn, Joseph, Donora	Industrial Arts	Laughead, Alicia, Middletown	Elementary
Hake, James, Greensburg	Secondary	Laughead, John Wesley, Jr, Fairchance	Secondary
Hall, Eugene, Brownsville	Secondary	Lavelly, Robert Eugene, Johnstown	Industrial Arts
Hamilton, Marlene, Large	Elementary	Lebowitz, Judith Fay, Uniontown	Secondary
Hankey, Walter, California	Industrial Arts	Lemley, David Allan, Mt. Morris	Secondary
Hanna, James, Washington	Elementary	Leonard, Carole Eileen, California	Secondary
Hartman, Joseph, Mt. Pleasant	Secondary	Leppold, Gerald Leonard, Verona	Industrial Arts
Hay, Richard, Uniontown	Secondary	Little, June VanEman, Greensburg	Secondary
Heckler, Ester, Daisytown	Elementary	Litvak, Elaine Lee, Cuddy	Elementary
Helsey, Jay, Portage	Industrial Arts	Livingston, Terry Michael, Charleroi	Secondary
Hill, Burke, Hopwood	Industrial Arts	Lucarini, Albert F., McDonald	Secondary
Hillhouse, David, Ellsworth	Secondary	Lofstead, Clarence F., Masontown	Elementary
Hindman, Audrey, Finleyville	Elementary	Long, Richard Adams, Gibsonia	Industrial Arts
Hoak, Thomas, Hopwood	Secondary	Luckey, Wesley Lee, Dawson	Elementary
Hooper, John, Munhall	Secondary	Lukan, Eugene Robert, Midway	Industrial Arts
Horates, John, Monessen	Secondary	Lundy, Wilma, Stockdale	Secondary
Hosler, Terrell, Fayette City	Secondary	Luxner, Robert Lawrence, Carmichaels	Secondary
Holtz, Ernest, California	Secondary	Lyle, William Louis, Roscoe	Secondary
Hrisak, John, Pittsburgh	Industrial Arts	Machusko, Andrew Joseph, Hiller	Secondary
Huber, Harold, Butler	Secondary	Mack, Arthur Leroy, Johnstown	Industrial Arts
Hughes, Jack, Belle Vernon	Industrial Arts	Malena, Richard Philip, Monongahela	Secondary
Hunter, Alma, Charleroi	Elementary	ManDarino, Donna Lee, Monessen	Elementary
Hurst, Nancy, Pitcairn	Elementary	Mariani, Peter Ronald, Smithton	Secondary
Ilko, James, Richeyville	Secondary	Marinkovich, Thomas Carl, Monessen	Secondary
Jacobstein, Lewis, Creem Lynne	Secondary	Mariscotti, John Nicola, California	Industrial Arts
Jankosky, Cornelius, California	Industrial Arts	Martinelli, Joseph John, California	Secondary
Jarvis, Clyde, Finleyville	Secondary	Maruschak, Mildred Ann, California	Elementary
Jarvis, Vivian, Finleyville	Elementary	Matola, Martha Jane, California	Elementary
Jeffrey, Robert, Denbo	Secondary	Matovich, Richard Mark, McKees Rocks	Industrial Arts
Jeney, Richard, Richeyville	Secondary	McAlpine, David Samuel, Belle Vernon	Secondary

DIRECTORY

McClatchey, William D., Pittsburgh	Secondary	Prati, Lorraine P., LaBelle	Elementary
McCorkle, Barbara Jean, McKeesport	Elementary	Presock, Leonard, Fayette City	Secondary
McDonald, Grant Charles, California	Industrial Arts	Price, Jacqueline Ann, Stockdale	Elementary
McGary, Hugh Carl, Smithton	Industrial Arts	Price, Joseph B. Jr., Pittsburgh	Industrial Arts
McGowan, Ronald Roosevelt, Ebensburg	Industrial Arts	Price, William D., Van Voorhis	Secondary
McGuire, Richard Bernard, Monongahela	Secondary	Probst, Margaret Jeanne, Washington	Elementary
McKay, John Alexander Jr., California	Secondary	Ptak, Frank Stephen, Uniontown	Industrial Arts
McKay, Marlene T., Washington	Elementary	Pudlo, James Edward, Stump Creek	Industrial Arts
Mele, Patricia C., Monongahela	Secondary	Putt, Gordon Eugene, Charleroi	Industrial Arts
Merritt, Keith Lorain, Canonsburg	Industrial Arts	Querry, Paul Lester, Calvin	Industrial Arts
Meshner, George Edward, Donora	Industrial Arts	Quinn, Edward D., Greensburg	Secondary
Metzner, Albert, California	Industrial Arts	Radek, Charles F., Pricedale	Industrial Arts
Micozzi, Bernard Anthony, Masontown	Secondary	Randolph, Frederick Donald, Indiana	Industrial Arts
Mihallik, Robert Michael, McClellandtown	Elementary	Razum, Ernest Daniel, Van Voorhis	Secondary
Mihaly, Robert John, Connellsville	Industrial Arts	Razum, George August, Van Voorhis	Secondary
Mihealsick, Charles, Allenport	Secondary	Razzando, Amelia, Belle Vernon	Elementary
Miller, Antonio Craig, Chambersburg	Industrial Arts	Reitz, Alice Kay, Fairchance	Elementary
Miller, Charles Patterson, Belle Vernon	Industrial Arts	Remish, Rita Marie, Monessen	Elementary
Miller, Charlotte Louetta, Belle Vernon	Elementary	Retus Mike, Bentleyville	Secondary
Mizerak, William Joseph, Fredericktown	Secondary	Rheam, Robert Edward, Yeagertown	Industrial Arts
Moore, Carl R., Hydetown	Industrial Arts	Rhoads, James Mervin, Ligonier	Industrial Arts
Moore, Mona Jean, New Eagle	Elementary	Rice, Suzanne Sparks, Charleroi	Elementary
Moravec, Anthony Edward, Leechburg	Industrial Arts	Richardson, Robert Cole, Canonsburg	Secondary
Mori, Gene Aldo, Sutersville	Industrial Arts	Richardson, Wilma Grace, Elizabeth	Elementary
Morris, William G., Star Junction	Secondary	Richmond, George Allen, California	Industrial Arts
Mosely, Delmer John, Monessen	Industrial Arts	Roberts, Howard Joseph, Connellsville	Secondary
Moss, Thomas Jerome, Lock No. 4	Secondary	Rooks, James Clark, Butler	Industrial Arts
Mulvin, Robert Dale, Corry	Industrial Arts	Rooney, Horace Reed, Philadelphia	Industrial Arts
Murphy, Robert Edward, Belle Vernon	Secondary	Rosendale, James Anthony, Connellsville	Industrial Arts
Musial, Lucille Ann, Monessen	Elementary	Ross, Richard Alva, Aliquippa	Secondary
Mysliwiec, Leonard, Keisterville	Industrial Arts	Roule, Eleanor Helen, Marianna	Elementary
Nandor, Patricia Jean, Charleroi	Elementary	Roule, Richard Timothy, Marianna	Secondary
Nauman, George Edward, Middlesex	Industrial Arts	Rozzi, William Louis, Masontown	Elementary
Neidermeyer, Richard Arnold, Charleroi	Secondary	Rubbo, Myron David, Johnstown	Industrial Arts
Neil, Robert Henry, Charleroi	Secondary	Salopek, Thomas F. Jr., Pittsburgh	Industrial Arts
Newman, Lowell Curtis, McClellandtown	Industrial Arts	Scheiber, Edward Joseph, Elizabeth	Industrial Arts
Norman, Franklin Roosevelt, Brownsville	Secondary	Schmitt, Donna Jean, Broughton	Elementary
North, William Russell, Apollo	Industrial Arts	Schultz, Beverly Ann, Canonsburg	Secondary
Nocenti, Rosalie, Masontown	Elementary	Sesler, Mary Catherine, Uniontown	Elementary
Nyswaner, James M., Washington	Secondary	Shaffer, Roy Martin, Johnstown	Industrial Arts
Ochner, Edward M., Pittsburgh	Industrial Arts	Shaver, Dean Martin, Hooversville	Industrial Arts
Oliver, Paul Roland, Belle Vernon	Secondary	Shaw, John G., McKees Rocks	Industrial Arts
Ondulick, John Robert, Monessen	Secondary	Shenk, William Walter, Canonsburg	Industrial Arts
Oppenheim, Jay Beal, Monongahela	Secondary	Sheppard, David Davis, Smithton	Industrial Arts
Orlandi, Charles Randolph, Richeyville	Industrial Arts	Shillings, Joan Rosella, Isabella	Elementary
Osborne, Dale Charles, Sharpsville	Industrial Arts	Shirley, James Wendell, Harrison City	Elementary
Packer, Marc Alan, Ft. Belvoir, Va.	Secondary	Shore, Curtis H., Coalport	Industrial Arts
Paluti, Dominic John, Clairton	Secondary	Sich, Renelda Rose, Isabella	Elementary
Patrick, Patricia Ann, Roseoe	Elementary	Sickels, Janet Rosalie, Webster	Secondary
Patten, John L., Butler	Industrial Arts	Skeddle, Mary Louise, Clairton	Elementary
Patterson, Thomas Bryan, Brownsville	Secondary	Skruber, Donna Amelia, Belle Vernon	Elementary
Paul, James Stuart, Centerville	Industrial Arts	Slagle, Donald R., Rimersburg	Industrial Arts
Paul, Joan Marie, Meyersdale	Elementary	Sloan, John W., Fredericktown	Secondary
Pero, John William, Meadville	Industrial Arts	Smarto, John Anthony, Connellsville	Secondary
Perry, Robert Raymond, Brownsville	Secondary	Smigousky, Bernard Daniel, California	Industrial Arts
Petros, Raymond Anthony, Ford City	Industrial Arts	Smith, Jan Rae, Charleroi	Secondary
Pfaff, Richard Lee, Johnstown	Industrial Arts	Smithley, Kenneth Wilbert, Mt. Pleasant	Secondary
Philip, Charles Merritte	Industrial Arts	Snyder, H. Marlene, Uniontown	Elementary
Platts, Sandra Diane, Charleroi	Elementary	Snyder, James Paul, Edinboro	Industrial Arts
Powell, Don Duane, Coal Center	Secondary	Sorenson, Dan W., Brownsville	Secondary

DIRECTORY

Sorensen, Jens Erick, Kingston Industrial Arts
 Souply, Ronald Robert, Charleroi Secondary
 Stafford, Nancy Beal, Uniontown Elementary
 Stake, Thomas Farrow, Carlisle Industrial Arts
 Staranko, Eleanor, Charleroi Secondary
 Stark, Herman Earle, Elco Secondary
 Stefanick, John Edward, Colver Industrial Arts
 Steff, Donald Lee, Hiller Industrial Arts
 Stetser, Charles, Donora Secondary
 Stoffa, Dennis, Clairton Industrial Arts
 Stofko, Stephen Ronald, Donora Secondary
 Stoicovy, George Christopher, Burnham Secondary
 Stover, LeRoy, Monessen Secondary
 Strojan, Richard Franklin, Irwin Secondary
 Stuart, Robert Ewing, Brownsville Secondary
 Suchko, Andrew F., Lowber Secondary
 Suder, Mack Edmund, Meyersdale Industrial Arts
 Surovchak, William Allen, Monessen Secondary
 Sutherland, Shirley Ruth, Alexander Elementary
 Sweda, Mary Ann, Dunbar Secondary
 Taylor, Mary C., Monongahela Secondary
 Tedorski, John Chester, Arnold Secondary
 Thomas, Glenn Arthur, Duquesne Secondary
 Thomas, Jackson B., Markleysburg Secondary
 Timashenka, K. Kelly, Springdale Industrial Arts
 Tkachik, Clare Ann, Monessen Elementary
 Todaro, Donald Anthony, Newell Secondary
 Toth, Francis Paul, Perryopolis Secondary
 Tretchick, Donald Marshall, Avonmore Industrial Arts
 Trivonovich, John, Masontown Secondary
 Tудay, Sergi Alex, California Industrial Arts
 Twardy, Michael Thomas, Monessen Secondary
 Ursinyi, Edward John, Monessen Secondary
 Vacheresse, Suzanne, Washington Elementary
 Van Voorhis, Elizabeth Ann, Finleyville Secondary
 Vassilaros, Constatine George, California Secondary
 Vincentich, Jordan Paul, Stockdale Secondary
 Vitteck, George William Jr., Washington Secondary
 Vlanich, Adam, Charleroi Secondary
 Vohar, Jeanette Faye, California Elementary
 Vranjes, George, Slovan Elementary
 Wallace, William Earl, Ebenborn Elementary
 Watson, Lorraine Jean, Bentleyville Elementary
 Watson, Meredith Kay, Grindstone Elementary
 Weaver, Janice E., Washington Elementary
 Webb, Richard Henry, Roscoe Secondary
 Weisgerber, William Jacob Jr., Connellsville Secondary
 Welch, Mary Dempster, Belle Vernon Secondary
 Weldon, Owen Dale, Fayette City Secondary
 Wendelin, Karl Edward, Monessen Secondary
 Wenslow, Ronald Robert, Kane Industrial Arts
 Westrick, Bernard T., Ebensburg Industrial Arts
 Whipple, William Clair, Falls Creek Industrial Arts
 White, James Warren, Markleton Secondary
 Witta, Richard Alvin, Monessen Secondary
 Willis, Rita Carole, Carmichaels Elementary
 Wilson, Alice Faye, Johnstown Elementary
 Wilson, Harold M. Jr., Johnstown Industrial Arts
 Wilson, John Eugene, Dunbar Industrial Arts
 Wilson, Kenneth Ronald, California Secondary
 Wilson, Loretta Rae, Waltersburg Elementary

Wilson, William Victor, Monessen Secondary
 Winder, Robert Scott, Mercer Industrial Arts
 Winnett, John Richard Jr., Monessen Secondary
 Wirth, Joseph Edgar, Coraopolis Industrial Arts
 Wohler, Donald, Uniontown Secondary
 Wokaly, George Jr., Fayette City Secondary
 Wolfe, Judith Ann, California Elementary
 Wolford, James Daniel, Ligonier Industrial Arts
 Wood, Leblie M., Charleroi Secondary
 Wooton, Enoch August, Washington Secondary
 Yankura, J. Richard, Uniontown Secondary
 Yeziro, Frank W., Keisterville Elementary
 Yobuck, Andrew Jr., Brownsville Secondary
 Yuratovich, Stephanie Ann, Brownsville Secondary
 Zampan, Frances Patricia, Canonsburg Elementary
 Zanardelli, Theadore Charles, Monongahela Secondary
 Zanardini, Joyce Fay, Coal Center Elementary
 Zedack, Paul Dennis, Cherry Tree Industrial Arts
 Zeglen, Joseph M., Chestnut Ridge Secondary
 Zippay, Albert Roy, Charleroi Secondary
 Zoppetti, Robert Louis, Roscoe Secondary
 Zoretic, Gwendolyn Sue, Merrittstown Elementary
 Zumpetta, August O., Cokeburg Industrial Arts
 Zuraw, Charles Larry, Charleroi Secondary
 Zuraw, George James Jr., Charleroi Secondary

PART TIME

Derry, Nancy Jane, Millsboro Secondary
 Jones, Raymond Lee, Monessen Elementary
 Karpen, Judy Reneo, Brownsville Elementary
 Landay, Shirley Ann, Charleroi Elementary
 Motycki, John, Charleroi Industrial Arts

SOPHOMORES

Ames, Harrold G., Bentleyville Industrial Arts
 Anderson, Charles McCredie, Pittsburgh Industrial Arts
 Anderson, David R., California Industrial Arts
 Baer, Ottis Devon, Meyersdale Secondary
 Barger, Merle Allen, Kittanning Industrial Arts
 Barnes, James W. H., California Industrial Arts
 Batterby, Joseph Howard, Fredericktown Industrial Arts
 Beck, John Nicholas, Monessen Industrial Arts
 Beck, Ruth Ellen, Rockwood Elementary
 Bedner, Edward John, Perryopolis Industrial Arts
 Bellora, Sylvia Ann, Monessen Elementary
 Bickel, Alan Gay, Parker Industrial Arts
 Bitonti, Joseph Paul, Belle Vernon Elementary
 Blozik, Toni Yvonne, Daisytown Secondary
 Bodnar, Phyllis E., Vestaburg Secondary
 Bonari, C. George, Monessen Industrial Arts
 Bradley, Mary Catherine, Coulter Elementary
 Brougher, J. Robert, Somerset Industrial Arts
 Brown, James Howard, California Secondary
 Bryner, Andy Melvin, California Secondary
 Buchta, Clyde Joseph, Charleroi Secondary
 Buell, Harry Lee, Monongahela Industrial Arts
 Burdette, James R., Charleroi Secondary
 Busch, Dolores, Monessen Elementary
 Cadwell, Ernest D., W. Brownsville Industrial Arts
 Carter, Thomas A., White Haven Industrial Arts
 Celani, John, Greensboro Secondary
 Checchi, Louis James, Allenport Secondary

DIRECTORY

Climoric, Thomas Frederick, Farrell	Industrial Arts
Clark, John Kirk, Charleroi	Secondary
Cochenour, Robert Harry, California	Secondary
Crayton, Mary Jane, Uniontown	Elementary
Creasy, C. Maxwell, California	Industrial Arts
Cuddy, Russell Dale, Floreffe	Secondary
Cumashot, John Ronald, Brownsville	Industrial Arts
Curran, Jack Louis, Webster	Secondary
DeFigio, Nicholas Francis, Republic	Elementary
Delduca, Vincent James, West Newton	Secondary
DeMarchi, Gary, Jeannette	Secondary
DiNardo, Donald Paul, Ellsworth	Secondary
Dinneen, Clayton Lee, Uniontown	Industrial Arts
Donaldson, Thomas Moore, Washington	Industrial Arts
Drozeck, Alex W., Grindstone	Elementary
Dukich, Alice Helen, Elizabeth	Secondary
Dulick, Andrew Paul, Ellsworth	Industrial Arts
Duncan, Janet Marie, Freedom	Elementary
Everard, Louis Miles, Ingram	Industrial Arts
Everett, Mary Lee, Pittsburgh	Elementary
Fabian, David Warren, Stockdale	Secondary
Ferguson, Arthur Earl, Hyndman	Industrial Arts
Gabler, Dorothy Joan, Greensboro	Elementary
Gallagher, Daniel C., Johnstown	Industrial Arts
Giamalva, Joseph Clement, Charleroi	Secondary
Geitl, Rudy Edwin, McKeesport	Industrial Arts
Gilchrist, Thomas Austin, Belle Vernon	Industrial Arts
Govern, Joseph F., Canonsburg	Industrial Arts
Gray, Charles Morgan, Uniontown	Elementary
Haas, Anna H. Hanson, Belle Vernon	Elementary
Hall, Nancy Faye, Confluence	Secondary
Halter, Donald Lincoln, California	Secondary
Hammond, Rodger Kahl, Johnstown	Industrial Arts
Harenski, Paul John, Herminie	Secondary
Hedman, James Edward, Sheffield	Industrial Arts
Herbert, Beverly Jean, Vanderbilt	Secondary
Hicks, Wilma Jean, Uniontown	Elementary
Hodgson, Thomas Earl, Charleroi	Secondary
Hogan, Carol Ann, Belle Vernon	Elementary
Hollis, Neddie Christopher, New Kensington	Secondary
Holt, Milton, Pittsburgh	Industrial Arts
Hrotkay, Edward C., Bentleyville	Industrial Arts
Huber, Joanne Beverly, Monongahela	Elementary
Hudock, Eugene George, Connellsville	Industrial Arts
Hughes, Thomas Robert, California	Secondary
Humphries, Sylvia Louise, Charleroi	Elementary
Husher, Lee K., Monessen	Industrial Arts
Hyman, Morris W., California	Elementary
Jameson, Claire Louise Rose, Brownsville	Elementary
Jeney, Irene Martha, Coal Center	Elementary
Jesick, James F., Belle Vernon	Secondary
Jozsik, Robert Louis, Uniontown	Secondary
Joseph, Helen Mae, Newell	Elementary
Junker, Bruce C., California	Industrial Arts
Kalasky, Rudolph S., Republic	Secondary
Kaleita, Joseph Michael, California	Industrial Arts
Kallok, Edward Michael, Donora	Industrial Arts
Keightley, Roger Ray, Connellsville	Industrial Arts
Kennedy, Gary Wayne, California	Secondary
Kilroy, Edith Sue, Brownsville	Elementary
King, Ray E., Mt. Pleasant	Industrial Arts
Kinsey, Harold Franklin, Ligonier	Industrial Arts
Kipp, David F., California	Secondary
Kirk, Kathleen Marie, Hopwood	Secondary
Kornick, Sarah Anne, Vestaburg	Secondary
Kostich, Helen Marie, Allenport	Secondary
Koval, John Carl, Duquesne	Elementary
Kridle, Martha Elizabeth, Greensboro	Elementary
Krisko, Victor John, Greensburg	Secondary
Krotzer, Richard M., Pittsburgh	Industrial Arts
Krupa, Frank Foster, Johnstown	Industrial Arts
Labin, Lewis Edward, Brownsville	Secondary
Lea, Dallas Alexander, Monessen	Secondary
Leehan, William T., Albion	Industrial Arts
Lehosky, Joseph Paul, Tarentum	Industrial Arts
Leighty, Gerald T., California	Industrial Arts
Leonard, Eugene Stanley, Farrell	Industrial Arts
Leonard, John Broden, California	Secondary
Logan, Howard Cecil, Elco	Secondary
Long, Radar, Smithton	Secondary
Lonigro, Sebastian F., Cokesburg	Secondary
Luciani, Richard L., Monessen	Secondary
Lukey, Janet, New Salem	Secondary
Lunnen, Anna Ruth, Connellsville	Elementary
MacDougall, Robert L., Monongahela	Secondary
Mallinger, William Frank, Elco	Secondary
Mallison, Richard, St. Mary's	Industrial Arts
Martin, Mary Frances, Midway	Secondary
Marucci, Carol, Republic	Secondary
Maxon, Connie Mae, Uniontown	Elementary
Mayer, Charles W., Homestead	Industrial Arts
McCallum, Nancy Jane, California	Elementary
McClellan, Patricia Ann, Fredericktown	Elementary
McClintock, Marlin R, Berlin	Industrial Arts
McCune, Jack L., Brownsville	Secondary
McGinnis, Jimmie Robert, McClellandtown	Elementary
McHenry, Richard Gilbert, Johnstown	Industrial Arts
McWreath, Mary Jo, Washington	Elementary
Mendola, James Joseph, Monongahela	Secondary
Merti, Edward Jr., Masontown	Secondary
Miller, Shirley Lee, Stoystown	Elementary
Mitchell, Roy Arthur, Monongahela	Secondary
Morgan, Ronald Edmond, McKeesport	Industrial Arts
Morris, Dena Blanche, Waynesburg	Secondary
Mountain, Wilmer James, Brownsville	Secondary
Murphy, Patricia Anne, Scottdale	Elementary
Myers, Allan Baker, Wayne	Industrial Arts
Myers, William R., Ford City	Industrial Arts
Myrga, Harry, Monessen	Secondary
Nagg, Leslie E., Brownsville	Secondary
Neighbors, Charles Robert, Dunbar	Secondary
Nazinski, Janet, Bentleyville	Elementary
Nobel, Sandra L., Brownsville	Secondary
Noble, Robert William, Freeport	Industrial Arts
Novak, Ronald William, Brownsville	Secondary
Nuccetelli, Lena, Cokeburg	Elementary
Oliver, Theodore, Belle Vernon	Secondary
Orlandi, Richard D., Richeyville	Secondary
Osleger, Alex Francis, Donora	Industrial Arts
Palmo, Maxwell Powell, W. Brownsville	Industrial Arts

DIRECTORY

Andrews, Mildred Avis, California	Elementary	Girhiny, Julius, Pricedale	Industrial Arts
August, Stephen F., McClellandtown	Elementary	Girts, H. Dean, Johnsonburg	Industrial Arts
Bakos, Ronald Anthony, West Brownsville	Secondary	Glasgow, Thomas William, United	Industrial Arts
Ballinger, Janice Isabel, Pitcairn	Elementary	Gorman, Charles F., California	Elementary
Barber, Wilbur Lee, Uniontown	Elementary	Gower, Wendel B., Confluence	Industrial Arts
Barcelona, Leonard Arthur, Charleroi	Elementary	Gray, Robert Lee, California	Secondary
Baron, Martha Jean, New Salem	Secondary	Hall, Ina Jean, Pittsburgh	Elementary
Behrendt, Lorraine Teresa, Charleroi	Elementary	Hayes, Arthur Thomson, Donora	Secondary
Bendick, Frank Joseph, Johnstown	Industrial Arts	Hayes, Earl A., Erie	Industrial Arts
Bercik, Connie L., Donora	Secondary	Haywood, Mary Alice, Washington	Elementary
Bittner, Paul Eugene, Send Patch	Elementary	Haywood, Shirley Ann, Brownsville	Secondary
Bodnar, Joseph Mickey, California	Elementary	Higinbotham, Dale Hadden, Grindstone	Industrial Arts
Bodoia, Jean Rosemarie, Monessen	Elementary	Hoffman, James Vincent, Belle Vernon	Secondary
Borof, Ferne Charlette, Monessen	Elementary	Holman, Leroy James, Allenport	Secondary
Boyle, Wesley Bruce, California	Secondary	Horn, Marcia Lynn, Washington	Elementary
Brassart, Fred A., Fayette City	Secondary	Hrics, Paul D., Uniontown	Industrial Arts
Brown, Betty L., Library	Elementary	Hudler, Loretta Elizabeth, Erie	Secondary
Brown, Clarence D., Carmichaels	Industrial Arts	Huffman, John Robert, California	Secondary
Bukosky, Bernice A., Donora	Secondary	Hunter, Charles Ray, Connellsville	Secondary
Buncicky, Joseph M., Munhall	Industrial Arts	Indof, Lewis T., Belle Vernon	Industrial Arts
Byers, A. Delbert, Beaver	Industrial Arts	Jackman, Gustina Jane, North Charleroi	Elementary
Carl, Charles M., Vestaburg	Industrial Arts	Johnson, Richard, Republic	Secondary
Carson, Dale Bernard, California	Secondary	Jones, Howard Linley Jr., Uniontown	Secondary
Cheatman, James P., Charleroi	Secondary	Karpus, Constance Y., Uniontown	Elementary
Cheesebrough, Dean Lewis, Monessen	Elementary	Keith, Herman, Belle Vernon	Secondary
Chepes, Charles E., Masontown	Secondary	Kilroy, Patricia Lee, Brownsville	Elementary
Chuey, Michael Rupert, Brownsville	Secondary	King, Charles Ernest, Oakmont	Industrial Arts
Coatsworth, JoAnn Louise, California	Elementary	Kinter, William Paul, Uniontown	Industrial Arts
Cooley, Mary Anne, Mather	Elementary	Kirsopp, Frank Reed, Mt. Lebanon	Industrial Arts
Cordis, Jean, McKeesport	Elementary	Kissler, Joan Lucille, Monessen	Elementary
Corfont, Mary Kathryn, Brownsville	Elementary	Kobuchi, Carmeline, Meadowlands	Elementary
Coughenour, Samuel Gerald, Belle Vernon	Secondary	Kollar, Mary Kay, Uniontown	Secondary
Coulson, James William, Donora	Industrial Arts	Koontz, June E., Washington	Elementary
Cox, Tom Eugene, Monongahela	Secondary	Kowalozyk, Patricia Ann, Donora	Secondary
Croftcheck, Betty Jane, Merrittstown	Elementary	Krause, Mary Jane, Charleroi	Secondary
Curnow, Constance V., Belle Vernon	Elementary	Kruppa, Mary Lou, North Charleroi	Secondary
Danna, James William, Brownsville	Secondary	Lange, George Lloyd, New Kensington	Industrial Arts
DeBlassio, Filomena, Coal Center	Elementary	Lash, Wayne A., West Newton	Secondary
DeLeonibus, Mario S., Brownsville	Secondary	Lawall, Maria Anne, Greensboro	Secondary
Dreibelbis, William Henry, Snow Shoe	Industrial Arts	Leeper, Robert Edward, Coal Center	Secondary
Druash, Nicholas, Monessen	Industrial Arts	LeFevre, Ronald William, Point Marion	Secondary
Dujordan, Jerome Robert, Charleroi	Secondary	Letrick, Bertha Singer, California	Elementary
Dunmire, Howard Dennis, Monongahela	Industrial Arts	Lewis, Miriam Anne, California	Elementary
DuShaw, Marlene Joyce, Connellsville	Elementary	Lombagno, Nancy Ann, Perryopolis	Elementary
Everly, Joanne Lee, Lake Lynn	Elementary	Lubits, Dorthy Patricia, Masontown	Elementary
Fabriziani, Bernadine, Newell	Secondary	Maley, Paul James, Cokeburg	Secondary
Fabriziani, Romeo S., Newell	Industrial Arts	Manandise, Martha Ann, Charleroi	Secondary
Farquhar, Ruth Ann, Allenport	Elementary	Manetta, Gene, Monessen	Secondary
Farrar, Harry, Mapleton Depot	Industrial Arts	Masneri, John Anthony, California	Industrial Arts
Faust, R. Neil, Irwin	Elementary	Maurer, Kenneth Oliver, Oil City	Industrial Arts
Fazio, Frank, Coraopolis	Secondary	McCraw, Harrietta E., Monessen	Elementary
Fecik, John Thomas, West Middlesex	Industrial Arts	McGraw, Jimmy Mack, Stroudsburg	Industrial Arts
Fink, Meredith Ann, North Charleroi	Secondary	McKee, Patricia Louise, Dickerson Run	Secondary
Flinn, John David, Connellsville	Secondary	McLaine, John E., Miola	Industrial Arts
Foulds, Melvin Louis, California	Industrial Arts	McVey, Fred Gene, Uniontown	Secondary
Fraucis, Regina Guza, Brownsville	Elementary	Medve, Richard John, California	Secondary
Galie, Nick, Smock	Secondary	Menarcheck, Robert Regis, Filbert	Secondary
Grant, Alfred, Republic	Elementary	Messner, Charles Groves, Leechburg	Industrial Arts
Gerbin, Leonard, Monessen	Elementary	Milchovich, Stanley, Stockdale	Secondary
Gilmore, Lloyd Wayne, Belle Vernon	Secondary	Miller, Carl L., Meyersdale	Industrial Arts

DIRECTORY

Mock, Phyllis LaVerne, Jeannette	Secondary
Monath, Lewis Ramon, East Brownsville	Industrial Arts
Morgan, Douglas, Duquesne	Secondary
Mottle, Edward F., New Salem	Secondary
Nelson, Jack B., Johnsonburg	Industrial Arts
Nicholl, Val Gene, Bentleyville	Industrial Arts
Olson, Jerry Carl, Brookville	Industrial Arts
Oris, John L., Uniontown	Secondary
Pajak, Joseph Thomas, Aliquippa	Industrial Arts
Palmer, Charles Richard, Uniontown	Secondary
Panak, Sylvia, Daisytown	Elementary
Panyko, John, Coraopolis	Industrial Arts
Papini, Larry Ray, California	Secondary
Patterson, Leo Anthony, Munhall	Industrial Arts
Paul, Alvy C., Belle Vernon	Elementary
Paul, Shirley Ann, Meyersdale	Elementary
Pekkanen, Waino Ralph, Coal Center	Secondary
Pierce, Hoarce Wayne, Versailles	Elementary
Pierro, Marvin Bryce, Hiller	Secondary
Piesik, Daniel F., McKeesport	Industrial Arts
Pittavino, Robert Gaston, Smithton	Industrial Arts
Polonoli, George Wayne, Donora	Secondary
Protin, James Edward, Charleroi	Secondary
Putorti, Carmen, Canonsburg	Secondary
Ranshaw, Richard Wayne, California	Industrial Arts
Reed, Donald Daniel, Sharon	Industrial Arts
Reese, Norman W., Belle Vernon	Secondary
Retcofsky, Herbert L., Brownsville	Secondary
Reynolds, Floyd F., Utica	Industrial Arts
Reynolds, Wade, California	Elementary
Ricco, Carmen N., Brownsville	Industrial Arts
Rice, Bruce Alyne, Kane	Industrial Arts
Ripepi, Rose, Monongahela	Secondary
Rocca, Michael Angelo, Fayette City	Elementary
Ronancheck, John, California	Industrial Arts
Rosnack, Kenneth John, Fairbank	Secondary
Ruschak, Andrew Donald, Charleroi	Secondary
Sakach, Albert, Daisytown	Industrial Arts
Santacroce, Ossie, Creighton	Industrial Arts
Schoenmaker, Lillian, Pittsburgh	Elementary
Schrock, Velma Jean, Stoystown	Elementary
Scoville, Charles Howard, Donora	Secondary
Shimko, Bernard William, Uniontown	Secondary
Shoaf, Joseph Bernard, Brownsville	Secondary
Shockey, Donald C., Meyersdale	Secondary
Skrypak, John, Bentleyville	Industrial Arts
Sloan, Isabelle Gray, Elco	Elementary
Slosky, Marilyn Jean, California	Elementary
Smatlak, Joseph, Johnstown	Industrial Arts
Soliani, Anna Jean, Blythedale	Elementary
Stahl, William Earnest, Alexandria	Industrial Arts
Staruch, Steve, Colver	Secondary
Sterback, Olan W., California	Industrial Arts
Studnicki, Henry T., Belle Vernon	Secondary
Sucevich, Mark, Monessen	Industrial Arts
Symons, John Paul, Belle Vernon	Elementary
Szymczyk, Edward, Donora	Secondary
Taylor, Richard K., Albion	Industrial Arts
Toprani, Regis C., Monongahela	Secondary
Treese, Janet Louise, Point Marion	Secondary
Trembach, Leon Carl, Pricedale	Elementary
Troutman, Carol E., Wellersburg	Elementary
Troy, Eleanor Anna, California	Secondary
Verbanic, Mary Ida, Merrittstown	Secondary
Vescio, Francis S., Webster	Elementary
Walker, Donald Philip, Meyersdale	Industrial Arts
Walker, David Edward, Meyersdale	Industrial Arts
Ward, John, Denbo	Elementary
Wilhelm, John Lester, Berlin	Industrial Arts
Williams, Donald Glenn, Pricedale	Secondary
Wray, Anna Mae, Clinton	Elementary
Young, William Harold, Cranesville	Industrial Arts
Zema, Albert William, Belle Vernon	Secondary
Zubic, Annmarie Margaret, Monessen	Elementary

PART TIME

Atkins, Thelma L., Brownsville	Elementary
Barlow, Mary T. Openshaw, Elizabeth	Elementary
Bauer, Lelah Foster, West Brownsville	Elementary
Bryner, Mary M., California	Nurse
Carlson, E. Louise, Madison	Nurse
Chellman, Mildred Mary, New Stanton	Elementary
Clendaniel, Jean, Coal Center	Elementary
Conrad, Ruth, Belle Vernon	Nurse
DeBard, Loretta, Republic	Nurse
Dumbauld, Lillian, Uniontown	Nurse
Eichler, Janet, Finletville	Elementary
Elder, Alice, Washington	Elementary
Elrick, Sylvia, Hopwood	Elementary
Fullem, Alice, Rockwood	Elementary
Gadd, Elizabeth, Lemont Furnace	Nurse
Guesman, Mary, Hopwood	Nurse
Harkins, Helen, Scenery Hill	Elementary
Harris, Elizabeth, Millsboro	Elementary
Johnson, Sarah, Monongahela	Elementary
Keene, Alvida, Finleyville	Elementary
Kennedy, Trudy, Mount Morris	Nurse
Kubincanck, Mildred, Daisytown	Elementary
Landis, Melda, Monongahela	Elementary
Lesnock, Violet, Washington	Elementary
Louttit, Thelma, Monongahela	Elementary
Martin, Jane, Scenery Hill	Elementary
Massari, Caroline, Finleyville	Elementary
McNeil, Wilda, California	Elementary
Moore, Harriet, Monongahela	Elementary
Morgan, Ruth, Mt. Pleasant	Elementary
Morton, Virginia, Washington	Nurse
Oates, Clara, Elizabeth	Elementary
Robertson, Kathleen, Newell	Elementary
Wargo, Frances, Brownsville	Nurse

DIRECTORY

Williams, Ruth, Mt. Pleasant Nurse
 Wilson, Margaret, West Brownsville Elementary
 Woodring, Harold, Daisytown Elementary

PART TIME SENIORS

Allen, Virginia, Roscoe Elementary
 Barney, Mildred, Richeyville Elementary
 Bostleman, Catharine, Monongahela
 Burkholder, Helen, Mt. Pleasant
 Buto, Angelo, Erie Industrial Arts
 Celestine, Blanche, California Elementary
 Covalessky, Petronella, Ellsworth Elementary
 Crowe, Novella, Frostburg Elementary
 Dawson, Gladys, Madison Elementary
 Folman, Anne Louise, Brownsville Nurse
 Gabler, Ellen, Greensboro Elementary
 Gollick, Bessie, Roscoe Elementary
 Gottheld, Marguerite, Charleroi Nurse
 Grim, Kathryn, Beallsville Secondary
 Humphreys, Dorothy, Millsboro Elementary
 Kennedy, Geraldine, Mt. Pleasant Nurse
 Kornick, Christine, Vestaburg Elementary

Leap, Evelyn, Ellsworth Elementary
 Leckie, Anna, Daisytown Elementary
 Lemak, Catherine, Duquesne Elementary
 Lockard, Priscella, Pt. Marion Elementary
 Mancuso, Alene, Waynesburg Elementary
 Morris, Ruth, Smithfield Elementary
 Mowry, Edna, White Elementary
 Murphy, Doris, Carmichaels Elementary
 Parkinson, Blanche, Monongahela Elementary
 Phillips, Jessie, Marianna Nurse
 Piersol, Ruth, Perryopolis Elementary
 Priselac, Mary, California Elementary
 Robinson, Emma Lu, Washington Elementary
 Roschy, Bertha, Hampton Elementary
 Ruby, John, McKeesport Industrial Arts
 Sanner, Roy, Rockwood Industrial Arts
 Silbert, Grace, Brownsville Elementary
 Silbaugh, Evelyn, Coal Center Elementary
 Simpson, Janet, California Elementary
 Vilscek, Christine, Masontown Elementary
 Weber, Sara, Pittsburgh Elementary
 Young, Margaret, Jefferson Elementary

Acknowledgments

The Canton Engraving and Electrotype Company
Canton, Ohio

Kurtz Bros.
Clearfield, Pennsylvania

The Lambert Studio
California, Pennsylvania