

MONOCAL

presenting...





The Monoc



al

1955

california state

teachers college

Foreword

"Where is the heart that doth not keep,
Within its inmost core
Some fond remembrance hidden deep
Of days that are no more."

We give you the 1955 Monocal of the State Teachers College at California. We have used the Vulcan as a symbol to unify our efforts to depict every phase of college life. We of the staff have endeavored to make this yearbook a pictorial presentation of the "new look" era at our beloved college. In assembling our book, we have subscribed to the philosophy that "one picture is worth a thousand words." Those of us who have worked to bring about this publication hope and trust that you who peruse this book will receive pleasure both now and in the years to come in recapturing the memories of your college life.

Bernadine Grebb
Co-Editor



Contents

THE COLLEGE

The Faculty - - - - Page 13

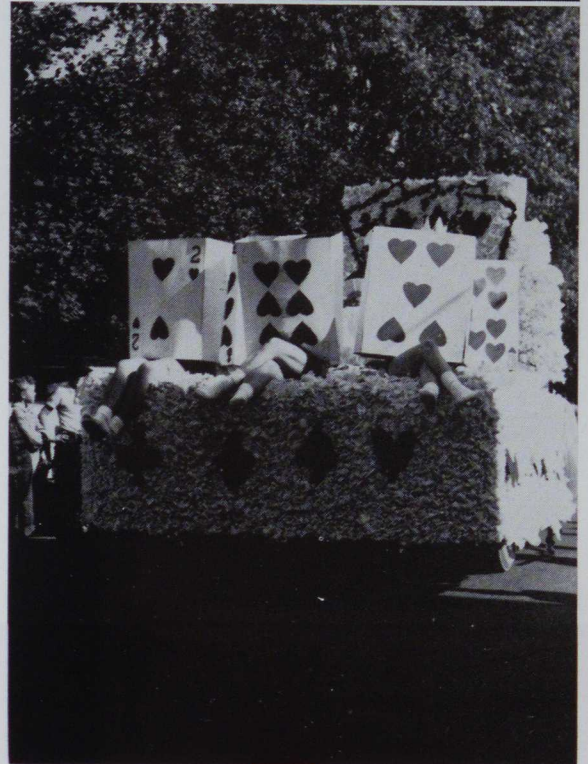
The Students - - - Page 29



THE ACTIVITIES

Sports - - - - - Page 73

College Life - - - - Page 93

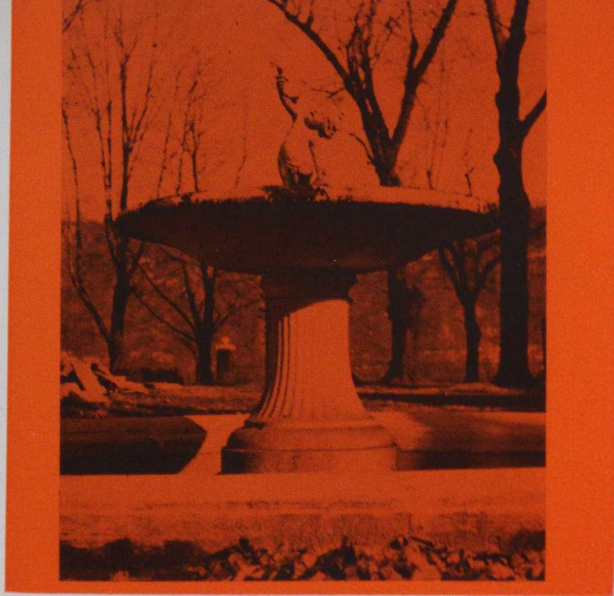




THE COLLEGE







THE FOUNTAIN

The Library



THE FLOWER GARDENS IN FRONT OF THE

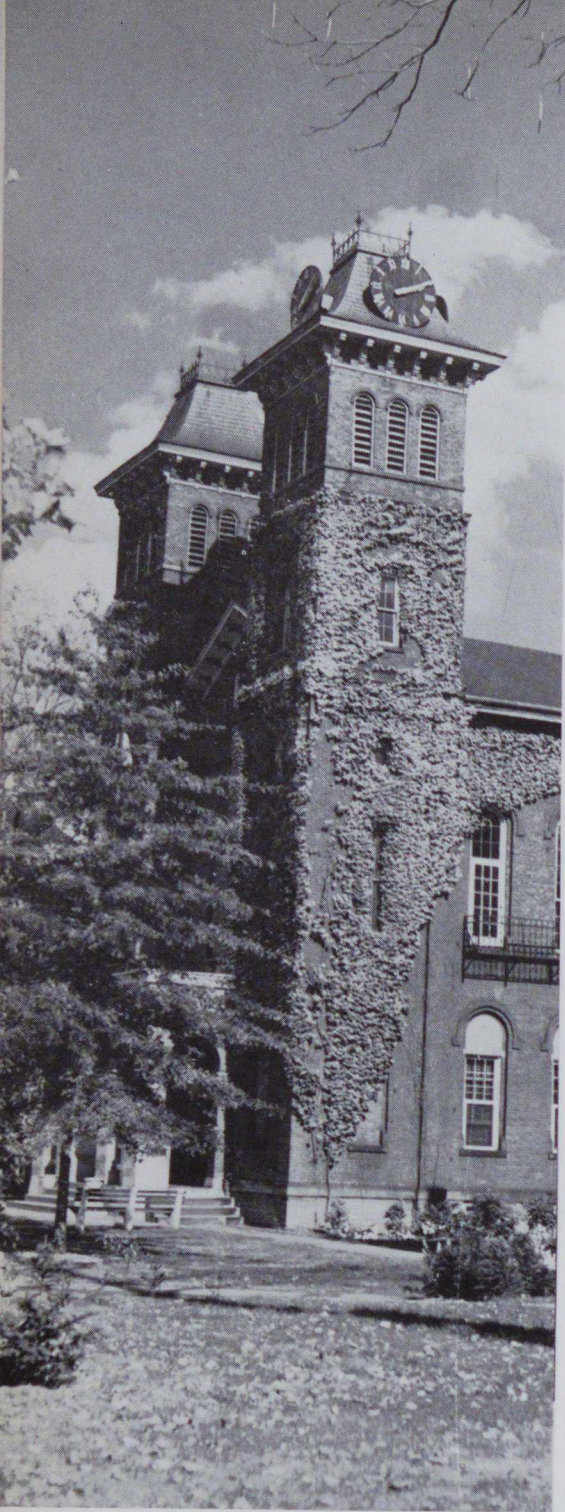


THE TREE-SHADED WALK
BETWEEN SOUTH HALL AND NOSS



INDUSTRIAL ARTS BUILDING





The Twin Towers

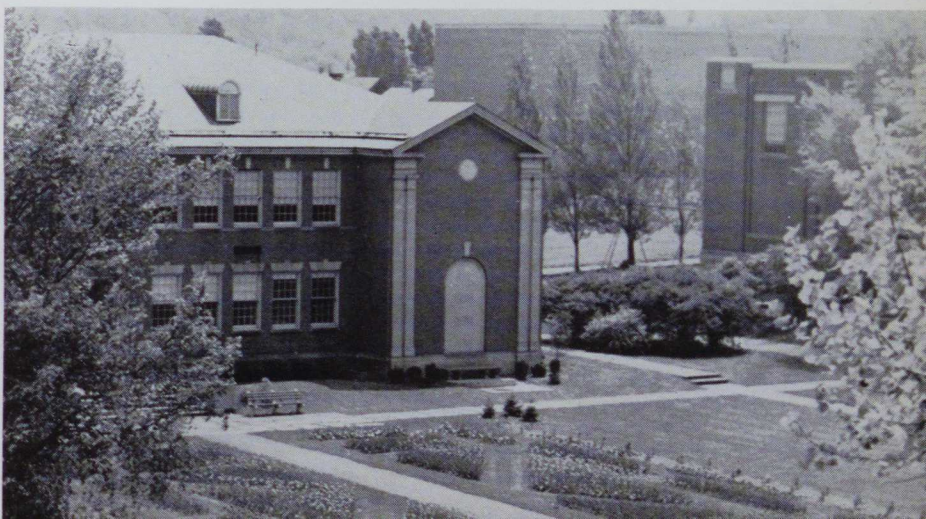
THE FIRST SNOW FALL
COVERS THE CAMPUS





THE NORTHEAST VIEW OF HERRON HALL

THE TULIP GARDENS IN
FULL BLOOM





South Hall



THE NOSS LABORATORY SCHOOL OCCUPIES THE
FAVORED SPOT ON CAMPUS



THE FACULTY



Our President
Dr. C. Herman Grose





Dr. Grose
and his secretary,
Mrs. Irene Oldham

Dr. and Mrs. Grose and Karen Jean



*Administrative
Officers*



Main Hall



FRANK W. LENOX
Dean of Men



PAUL N. WALKER
Dean of Instruction



LELA M. HAMILTON
Dean of Women

Board of Trustees

MR. D. C. LONGANECKER
154 West Lincoln Street
Waynesburg, Pennsylvania

MRS. FRANK M. ROBB
412 Depot Street
Latrobe, Pennsylvania

MR. S. RAY SHELBY
Apartment A
Fayette Title & Trust Building
Uniontown, Pennsylvania

MR. CHARLES A. GALLAGHER
5th and Wood Streets
California, Pennsylvania

MR. JAMES E. HAMER
212 Second Street
Fayette City, Pennsylvania

MR. JOHN E. KUHN
203 Wood Street
Belle Vernon, Pennsylvania

MRS. D. ROY CLYDE
514 Hutchinson Street
Canonsburg, Pennsylvania

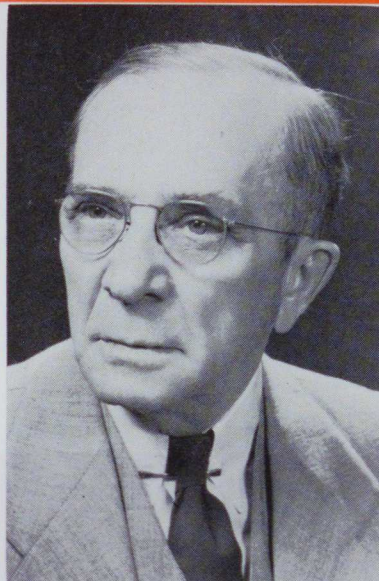
MR. OLEN S. E. CONRAD
317½ - 4th Street
California, Pennsylvania



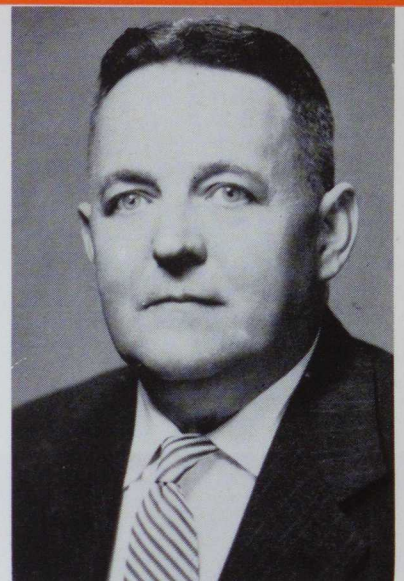
LILLIAN J. STEWART
Bursar



SHRIVER L. COOVER
Director of Industrial Arts



THOMAS M. GILLAND
Director of Laboratory School
and Student Teaching



WILLIAM HORMELL
Superintendent of Buildings
and Grounds

Faculty



Lillian Piribek
Registrar



Linnea V. Eckel
Nurse



Sarah L. Hall
Housekeeper



Arlene Kerstetter
Dietitian



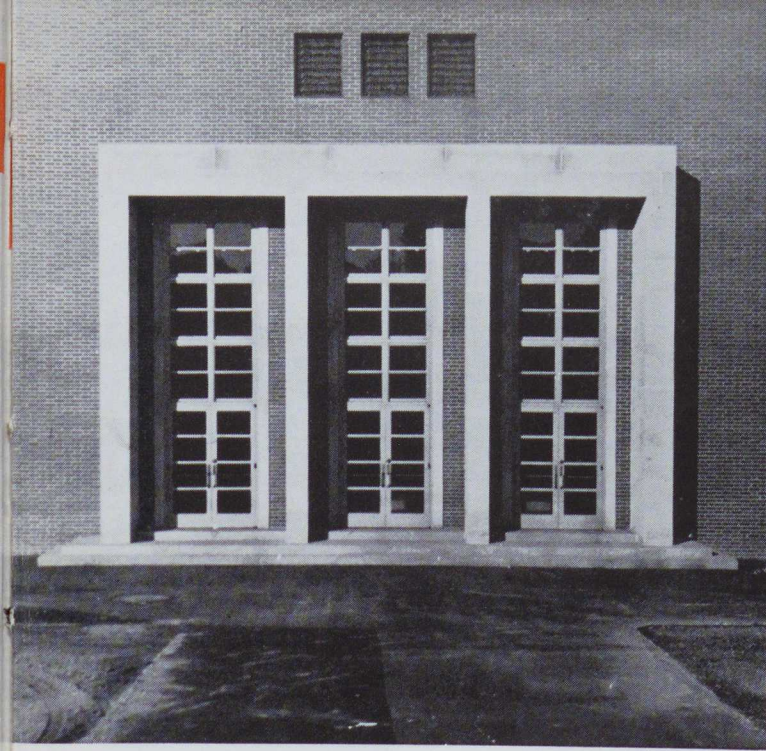
Virginia Luckhardt
Librarian



Dorothy M. Reichard
Librarian



Katherine Burger
Manager of Book Store



Steele Auditorium



Frederick Atkins
Mathematics



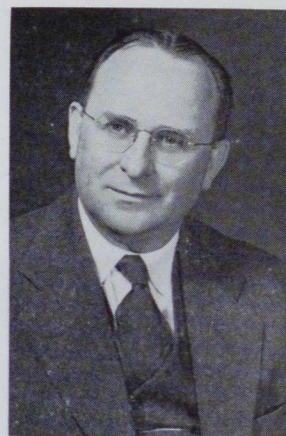
Ruthann Bagshaw
Laboratory School



O. Ray Bontrager
Education



J. Herschel Bowlen
Speech

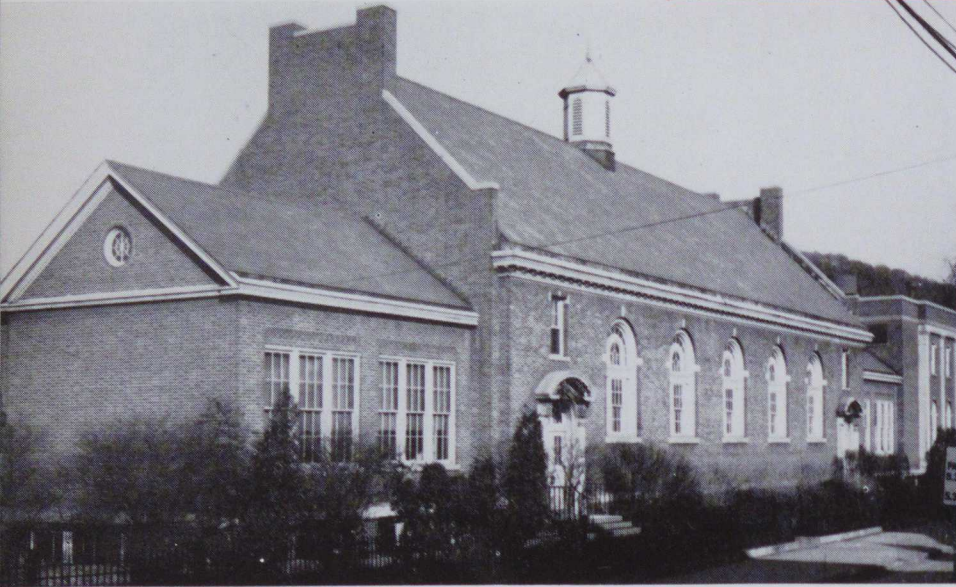


David H. Bruce
Education



Merrill G. Campbell
Industrial Arts

Faculty

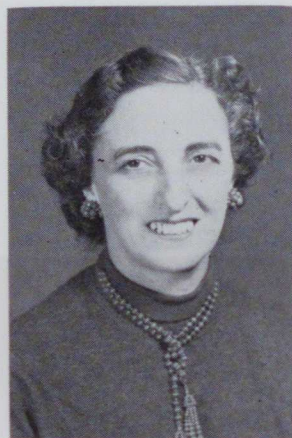


Herron Hall

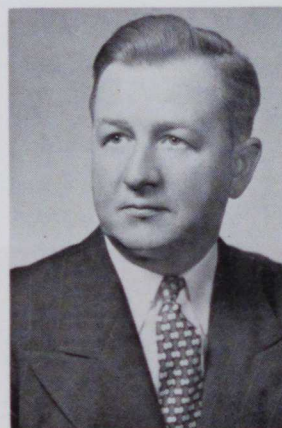
Henrietta Carroll
English and German



Ralph Charney
Industrial Arts



Mary R. DeCarlo
Laboratory School



Angus Douple
Industrial Arts



J. Calvin Fleming
Physical Science



Nancy W. Grimes
Geography



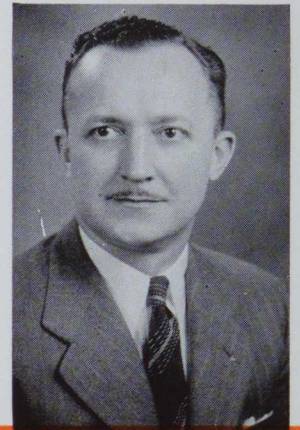
Edwin E. Halstead
Chairman of Fine Arts
Division



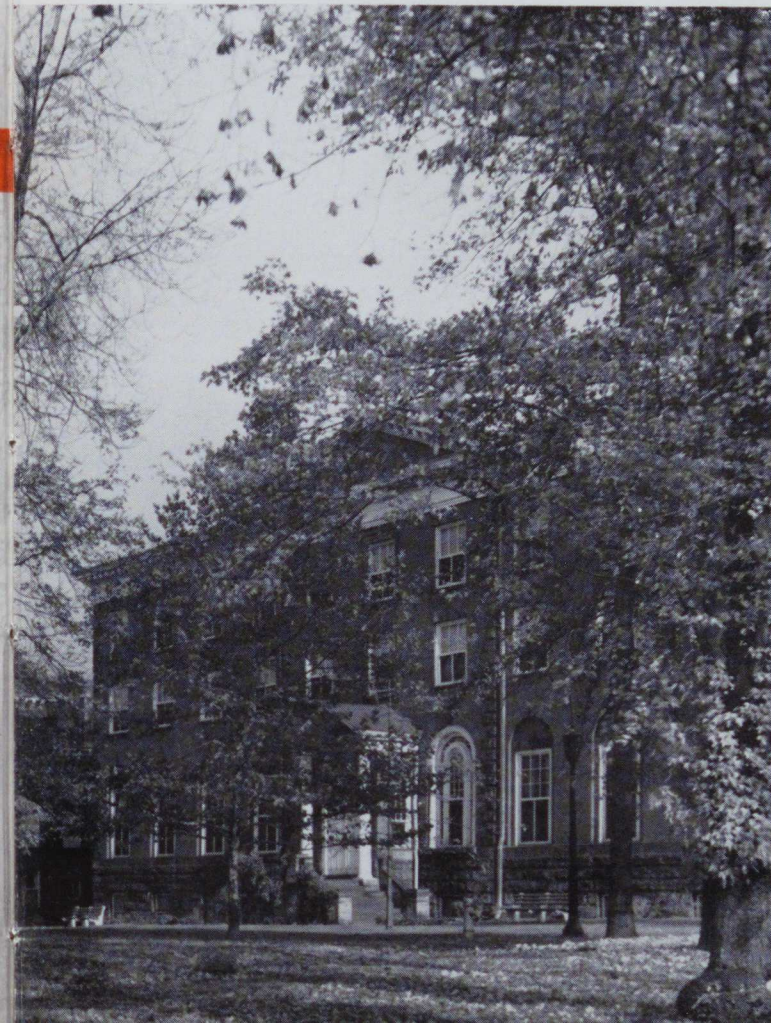
George E. Harding
Chairman of Science
Division



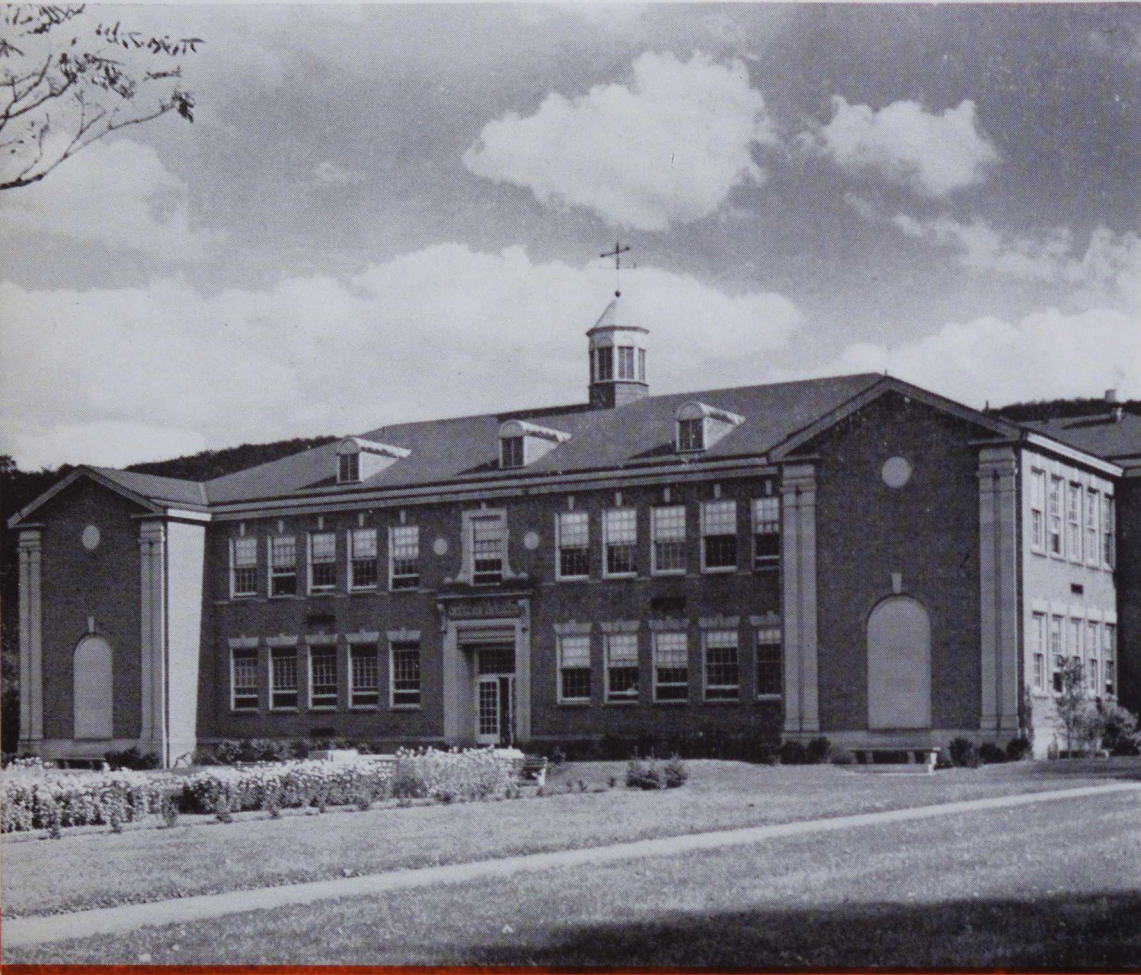
George S. Hart
Chairman of Social Studies
Division



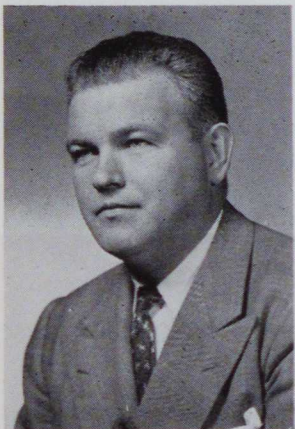
Clyde M. Hartman
Chemistry and Physical
Science



Dixon Hall



*Industrial
Arts
Building*



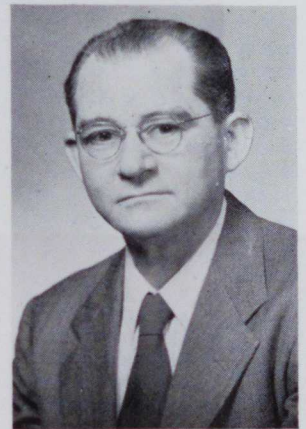
Eugene J. Hester
Chairman of Health and
Physical Education Division



Louise A. Hildreth
Physical Education



Merrell Holman
Laboratory School



Aaron J. Hoover
Industrial Arts



JACK F. HOYES
English
Visual Education



ROSE G. HUGHES
Laboratory School



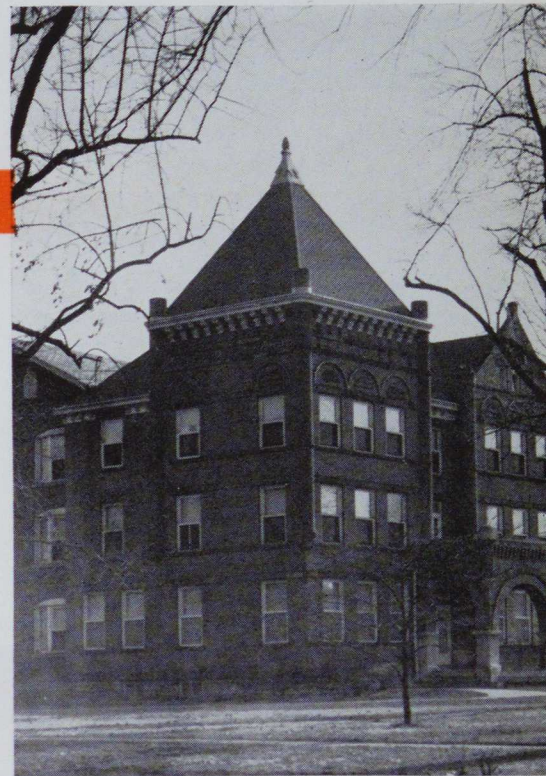
C. M. HUGHEY
Chairman of Language
Division



ELIZABETH JOHNSTON
English



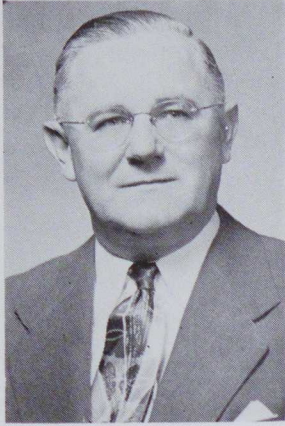
MARY C. KING
Laboratory School



South Hall



Faculty



John F. Lewis
Biology



Ada K. Marsh
Laboratory School



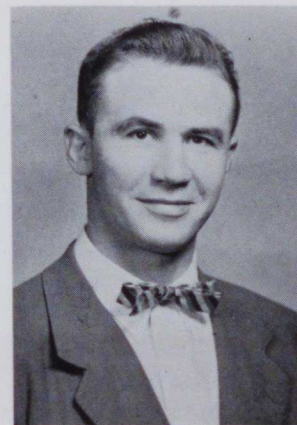
Kathyne J. Moeller
Laboratory School



Harry L. Monroe
Physical Science and
Mathematics



Dixon Hall in Winter



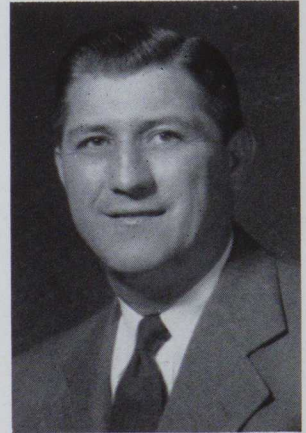
Theodore J. Nemeth
Physical Education

LOUISE RAKESTRAW
English

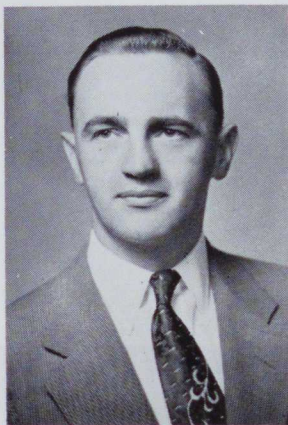


GEORGE H. ROADMAN
Social Studies

EMMA SACCO
Social Studies



ANDREW SEPSI
Biology



IRVIN SHUTSEY
Industrial Arts

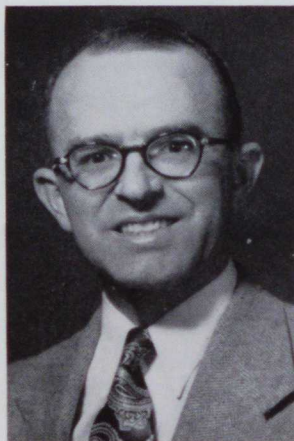


Noss Laboratory School

Science Hall



Alexander R. Smoyer
Industrial Arts



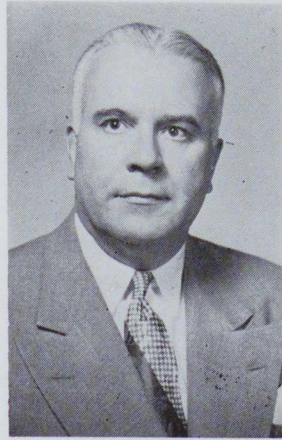
Hubert Snyder
Biology



Anthony T. Stavaski
Industrial Arts



Virginia Steele
Art



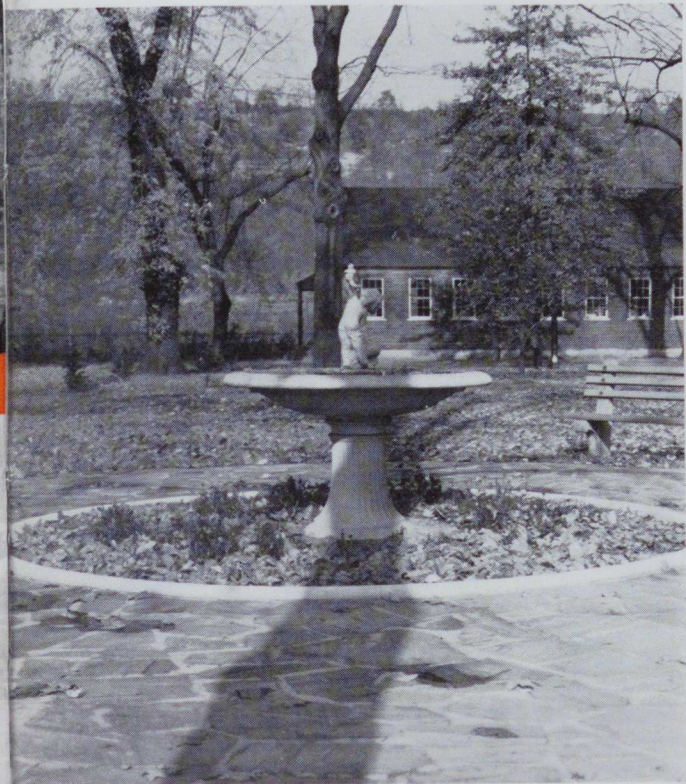
Harold W. Traister
Education



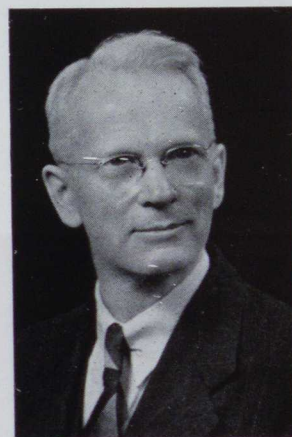
Lucy A. Valero
Laboratory School



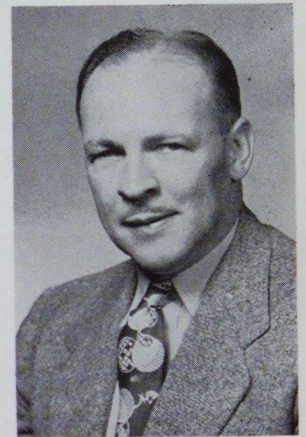
Marian Weaver
Speech



The Fountain



Clair B. Wilson
Chairman of Education
Division



Malverne Wolfe
History

Secretarial Staff

GENERAL OFFICE

Seated: Miss Lillian Piribek

Standing: Miss Dorothy Valla, Miss Lois
Jean Dubarr, Miss Dorothy Young, Mrs.
Irene Oldham, Miss Mary Elaine Script.



Bottom Row, left to right: Miss Lois Jean Dubarr, Miss Dorothy Young, Miss Rose Mary Liko, Mrs. Yvonne Lutes, Miss Melva Pocky.
Second Row: Miss Virginia Sacco, Miss Ruth Underwood, Mrs. Irene Oldham, Miss Mary Elaine Script, Mrs. Zana Kennedy, Miss Sara Steele.



THE STUDENTS

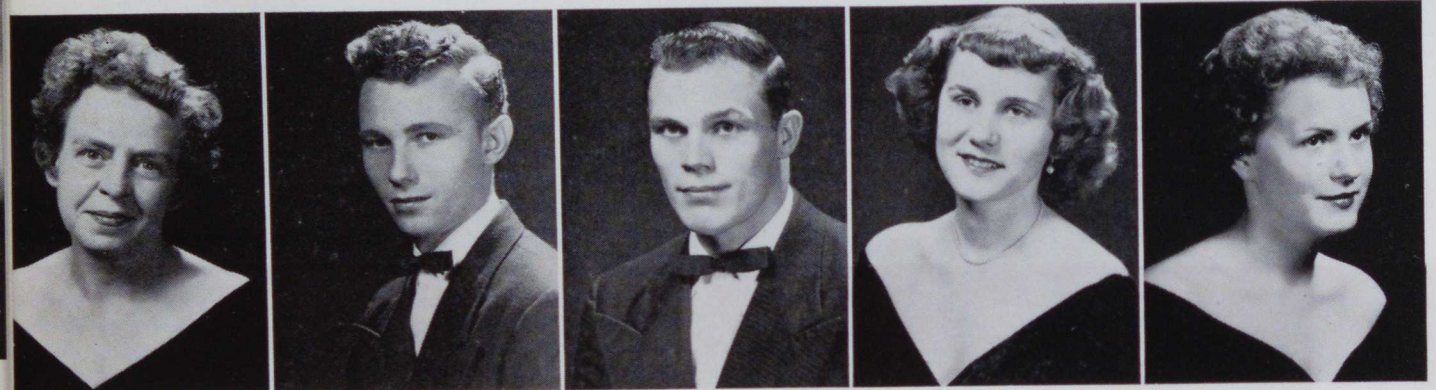
Seniors



Bottom Row, left to right: John Miner, Sally Brahm, Phillip Marella, Cindy Minor, John Moreschi.
 Second Row: Emery Breniman, Jack Maykuth.

OFFICERS

- President Phillip Marella
 Vice President John Moreschi
 Secretary JoAnn Runfola
 Treasurer JoAnn Mitchell
 Rep. to Congress Sally Brahm
 Lucinda Minor
 John Miner
 Donald DiMarco



GLADYS C. AMES
 Elementary
 Bentleyville High
 School

JAMES W. ASSAD
 Secondary
 Centerville High
 School

**RICHARD L.
 BAILEY**
 Secondary
 Big Run High School

**BRIDGET J.
 BALAWENDER**
 Elementary
 Uniontown High
 School

**MARILYN M.
 BARBIC**
 Elementary
 California Community
 High School

Seniors



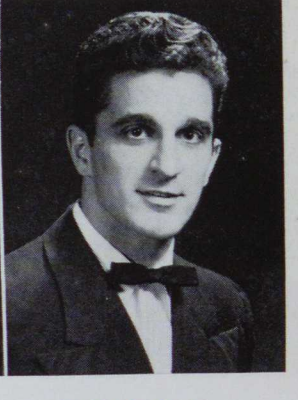
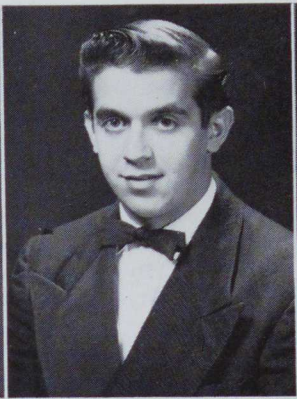
JAMES BAREFOOT
Industrial Arts
Altoona High School

JOHN A. BARTYCZAK
Secondary
Redstone High School

LA VERNE BAZILWICH
Secondary
Bellmar High School

CHARLES M. BITTNER
Industrial Arts
West Newton High School

JANET E. BLACK
Secondary
Centerville High School



CHARLES L. BOWMAN
Secondary
Somerset High School

SALLY J. BRAHM
Secondary
Dormont High School

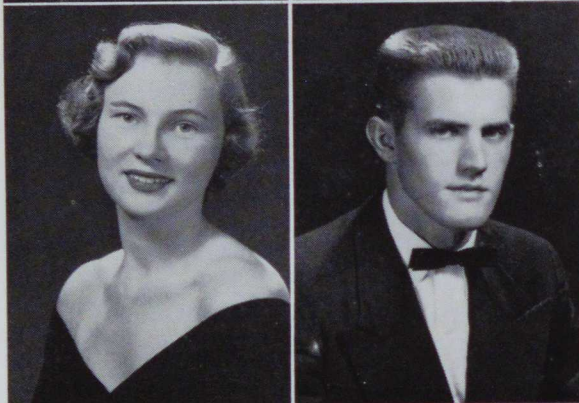
EMERY R. BRENNIMAN
Secondary
Monessen High School

QUENTIN D. CAPOZZOLI
Secondary
Burgettstown High School

WILLIAM N. CAPOZZOLI
Secondary
Burgettstown High School



Seniors



RAYMOND E. CARLSON
Secondary
Charleroi High School

NICHOLAS C. CARUSO
Secondary
California High School

WILLIAM H. CLARK, JR.
Industrial Arts
Oil City High School

PAUL J. COLEMAN
Elementary
Berlin-Brothersvalley High School

JOSEPH E. CONAWAY
Secondary
California High School

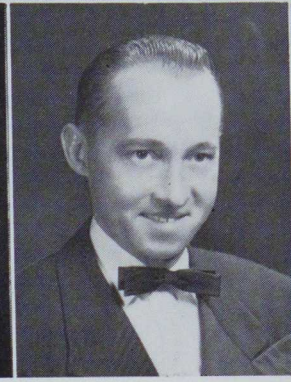
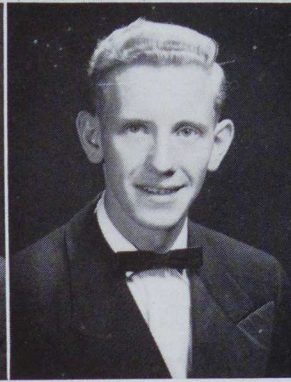
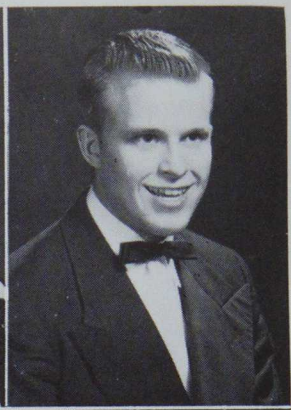
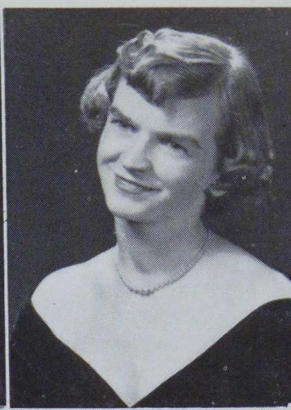
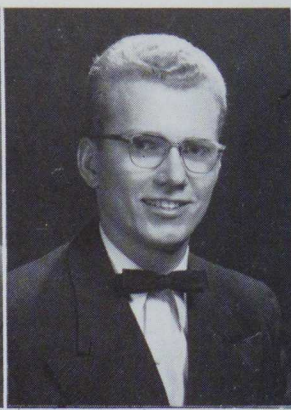
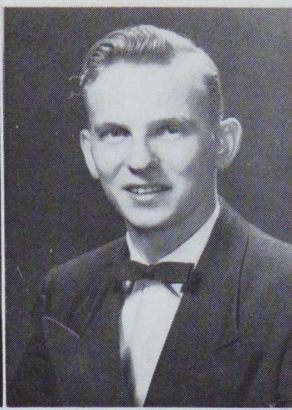
VINCE P. COPPOLINO
Industrial Arts
Ramsay High School

MYRNA J. COX
Elementary
California High School

RONALD N. DAVIS
Secondary
California High School

DON F. DIMARCO
Industrial Arts
Aspinwall High School

ELIZABETH P. DOCHINEZ
Elementary
California Community High School



BETTY J. DORMISH
Secondary
Rockwood High
School

THOMAS K. DUNSEATH
Secondary
Clairton High School

DONALD G. EMERY
Industrial Arts
Washington High
School

KATHLEEN EVERLEY
Elementary
West Newton High
School

ANDY E. FABIAN
Secondary
Monessen High School

CHARLES M. FISCHER
Industrial Arts
West Newton High
School

JOSEPH A. GLOTFELTY
Secondary
Marion High School

LEO M. GOODMAN
Industrial Arts
St. Vincent
Preparatory School

HUGH B. GRAHAM
Industrial Arts
Oil City High School

ANNA MAE GREENE
Elementary
South Huntingdon
High School





Seniors

ARTHUR J. GREGG
Secondary
California Community
High School

NIKOLAJ HALAMA
Industrial Arts
Aliquippa High
School

**ELEANOR L.
HENSHAW**
Elementary
Uniontown High
School

**JAMES H.
HOLLERAN**
Secondary
East Bethlehem High
School

**DONALD T.
JOHNSON**
Industrial Arts
Youngsville High
School

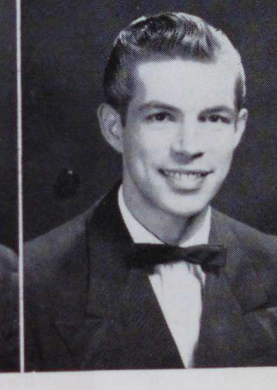
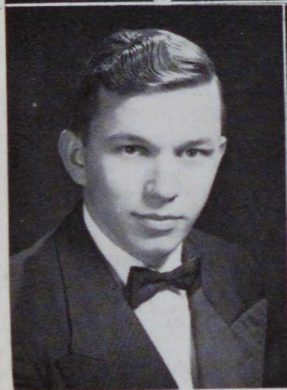
RALPH L. KELLER
Industrial Arts
California High School

FRANK KING
Secondary
California High School

**HELEN MARIE
KOMACEK**
Elementary
Brownsville High
School

**WILLIAM F.
KOSLICK**
Industrial Arts
Uniontown Joint High
School

JACK E. KOSUH
Secondary
Redstone High School



FRANCIS J.
LaMENDOLA
Secondary
Donora High School

MARY E. LASH
Elementary
Centerville High
School



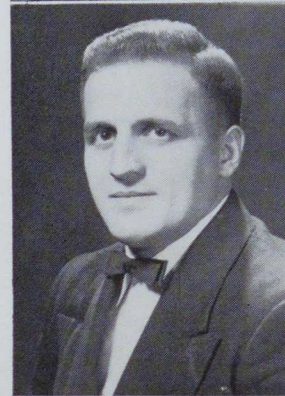
LEAH C. LEMMON
Elementary
Ramsey-Mt. Pleasant
High School

ALVERA M. LITSKY
Elementary
Donora High School



JAMES A.
LOPRESTI
Secondary
Monongahela High
School

KENNETH A.
MAGRUDA
Elementary
Monongahela High
School

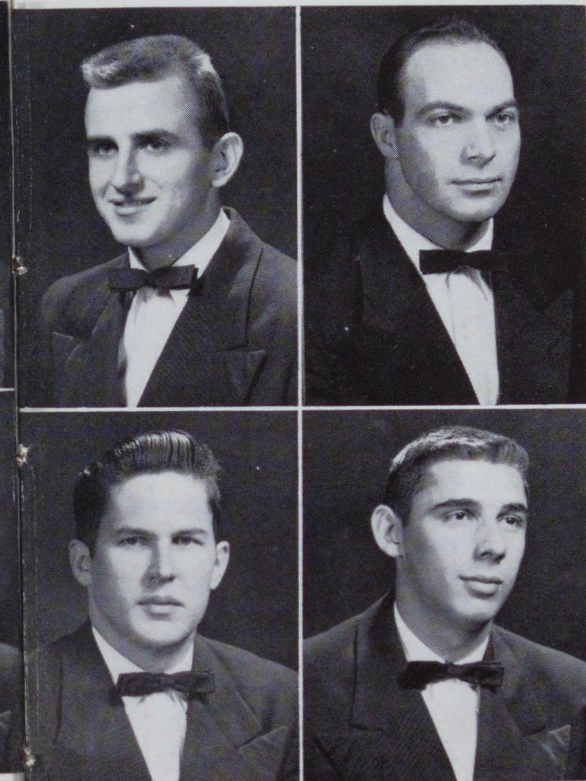


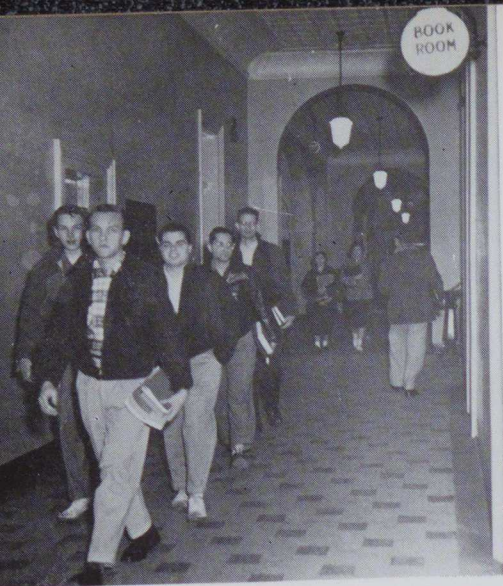
RICHARD
MAJERNIK
Secondary
Burgettstown High
School

PHILIP D.
MARELLA
Secondary
Redstone High School

ARNOLD
MAUERSBURG
Industrial Arts
Sigel High School

JOHN S.
MAYKUTH, JR.
Secondary
California Community
High School





Seniors

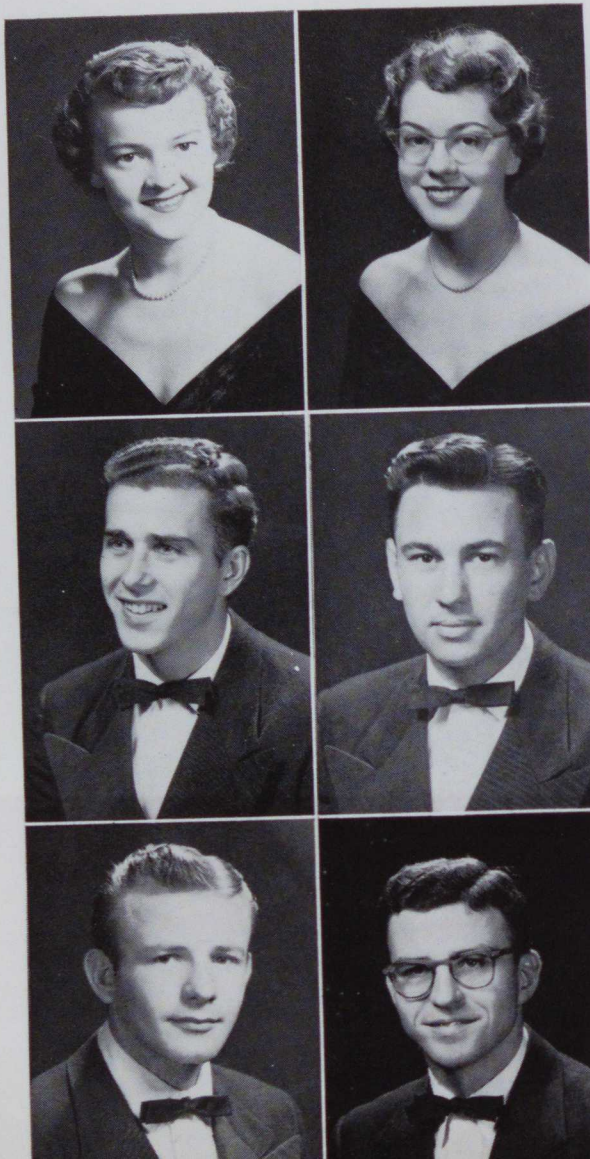


MARILYN E.
McCRAW
Elementary
Monessen High
School

JANET M. McCUNE
Elementary
Sewickley Township
High School

BETTY JANE
MERENIC
Elementary
Snowden High School

JOHN M. MINERD
Secondary
Redstone High School



LUCINDA MINOR
Elementary
Jefferson High School

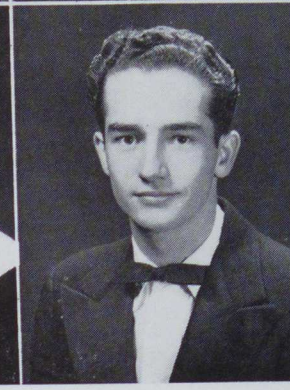
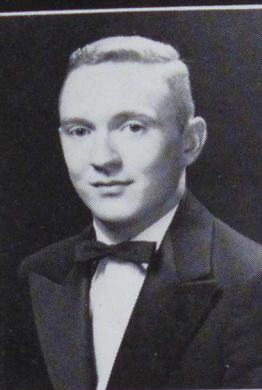
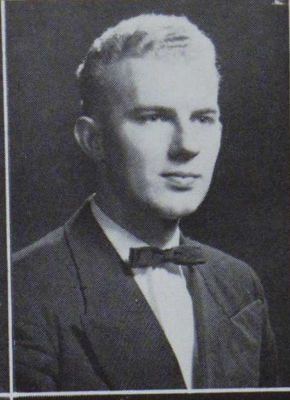
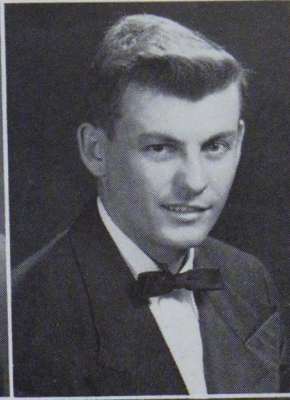
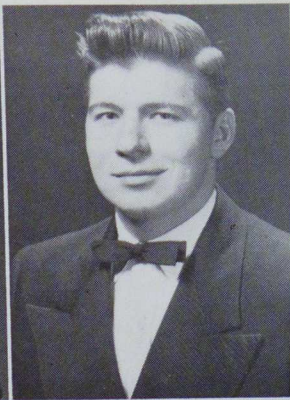
JOANN MARIE
MITCHELL
Industrial Arts
Dunbar Township
High School

MICHAEL J.
MIZERAK
Secondary
Centerville High
School

JOHN MORESCHI
Secondary
Monongahela High
School

RAYMOND E.
MULLEN
Industrial Arts
South Hills High
School

JAMES L.
MUELLER
Secondary
Dearborn High School



EDITH A. MYERS
Secondary
Ellsworth High School

FLORENCE E. NATALINI
Elementary
Vernon High School

GEORGE D. NOVAK
Secondary
West Brownsville
High School

ANDREW M. PECUCH
Elementary
Old Forge High
School

ROBERT T. PERKOWSKI
Industrial Arts
McKeesport
Vocational
High School

JAMES W. PERRIN
Elementary
Coraopolis High
School

EMMA JEAN PETITTO
Elementary
Bellmar High School

SYLVAN M. PINTO
Secondary
Centerville High
School

JOSEPH E. POPE
Industrial Arts
East Deer Frazer
High School

WALTER RADOSH
Elementary
Monessen High School





Seniors

FRANCES L. REGEC
Elementary
West Bethlehem
High School

JOHN RESETAR, JR
Secondary
Monessen High School

JOSEPHINE J. RUNFOLA
Elementary
Monessen High School

RICHARD S. SABO
Industrial Arts
California High School

RICHARD SALATINE
Industrial Arts
Sharon High School

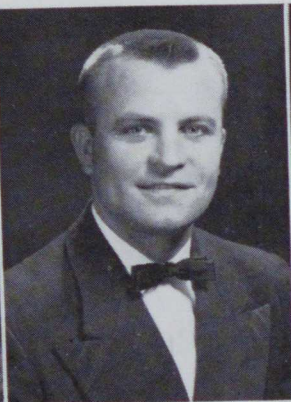
MARLENE M. SELEPCHAK
Elementary
Monessen High School

ROY B. SHIELDS
Secondary
Latrobe High School

EDWARD D. SHOWALTER
Industrial Arts
Latrobe High School

FRANKLIN C. SIMMEN
Industrial Arts
Monongahela High
School

BERNARD S. SIMON
Secondary
East Bethlehem High
School



PAUL G. SIMPSON
Industrial Arts
Irwin High School

MICHAEL H. SINCEVICH
Secondary
Brownsville High School



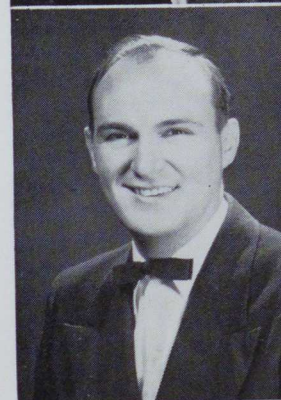
P. DALE SKLENAR
Industrial Arts
Donora High School

JOAN VAN DAM STEENBURN
Elementary
New Rochelle High School



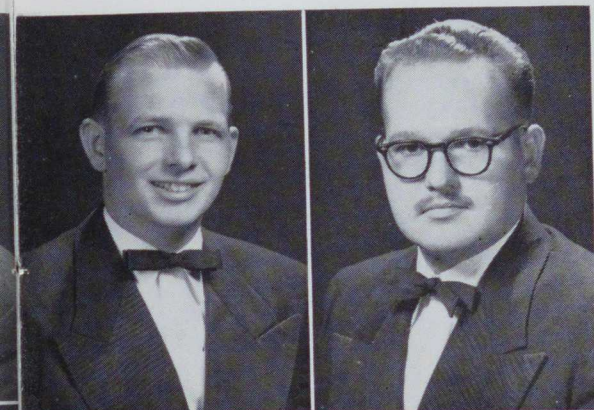
DONALD L. SWIFT
Secondary
Redstone High School

JEAN N. DUNBAR SWIFT
Elementary
Carrick High School



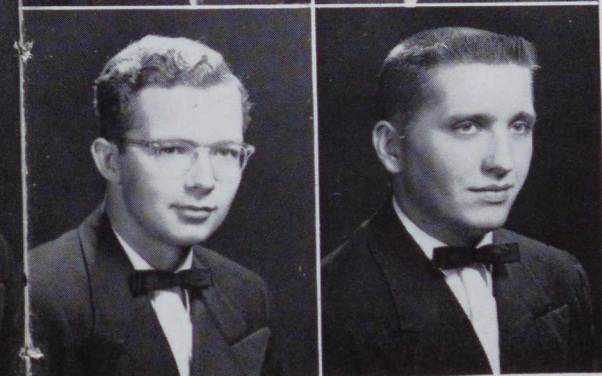
JOHN W. WALTERS
Secondary
Pittsburgh Academy High School

EDWARD J. WELD
Industrial Arts
Aquata Military

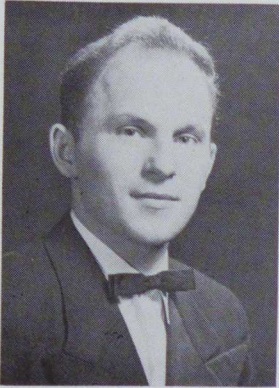


ALLEN G. WELSH
Secondary
North Union High School

MICHAEL JAMES WILKS
Elementary
Glassport High School



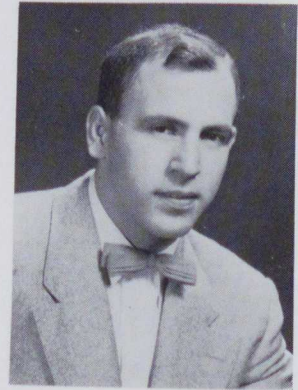
Seniors



JOSEPH E. ZEDAR
Secondary
Ellsworth High School



OLIVE GUESS
HENDERSHOT
Elementary
Tridelphia District
High School



JOSEPH D.
SCARMAZZI
Elementary
Redstone High School



Seniors Not Pictured

TOM BONGIORNO
Secondary
Marion High School

PETER NAPOLI
Industrial Arts
Rochester High School

JOHN COLWELL
Industrial Arts
Apollo High School

LUCRETIA C. NICHOLSON
Elementary
Point Marion High School

WALTER ECKBRETH
Secondary
Monongahela High School

MARY E. PATTON
Elementary
Central High School

JOHN FENWICK
Elementary
Brownsville High School

JACK SABO
Secondary
Brownsville High School

VESTA HOLLAND
Elementary
North Union High School

WARREN SCOTT
Secondary
Charleroi High School

JAMES HOUSEMAN
Elementary
Belle Vernon High School

RUBY E. SHIMKO
Elementary
Dormont High School

JAMES KANTOR
Industrial Arts
Pleasantville High School

DONALD SMITH
Industrial Arts
Rostraver High School

ANTHONY LAZZARO
Secondary
Centerville High School

RUTH L. SMITH
Elementary
Elizabeth High School

DONALD MANKAMYER
Industrial Arts
Meyersdale High School

SARA G. SYKES
Secondary
New Cumberland High School

KATHRYN MAZUREK
Elementary
Redstone High School

JAMES TOWNSEND
Secondary
Perryopolis High School

SARA McAFEE
Elementary
Perry Township High School

THELMA VENTURI
Elementary
East Pike Run Township High School

CHARLES McKEVITT
Industrial Arts
Marion High School

PAUL L. WERTZ
Secondary
Johnstown High School

BLANCHE B. MELI
Elementary
Charleroi High School

ALBERT WINGROVE
Secondary
Connellsville High School

ROBERT MILLER
Secondary
Clairton High School

NINA F. YINGST
Elementary
North Union High School

MARY E. MOLYNEAUX
Dental Hygienist
Swissvale High School

EDWARD ZIELINSKI
Secondary
Braddock High School



Juniors

OFFICERS

President Jack Young
 Vice President James Barefoot
 Secretary Elizabeth Shultz
 Treasurer Mary Ann Lardin
 Representatives to Congress Joan Kray
 Elaine Vilseck
 Henry Studnicki
 Faculty Sponsor Mr. Jack Hoyes

Bottom Row, left to right: Mary Ann Lardin, James Barefoot, Jack Young, Elizabeth Shultz, Mr. Jack Hoyes.
 Second Row: Elaine Vilsock, Henry Studnicki, Joan Kray.



Bottom Row, left to right: Janet Kennedy, Ruth Lesnock, Dolores Onuscheck, Marlene Ambrose, Elaine Vilseck, Michaelene Garofalo, Ange Bonianino, Audrey Kiger, Adeline Lucy, Roberta Durnell.
 Second Row: Barbara Tough, Donnis Pierallini, Alice Louise Underwood, Catherine DeRosa, Marlene Speicher, Mary Lee Carl, Marvelle Risku, Darlene Destefano, Leah Hicks.
 Third Row: Evelyn Golomb, Eleanor Henshaw, Carol Jane Lardin, Jean Malone, Joanne Jacobs, Ina Mae Campbell, Violet Dalson, Elizabeth Shultz.
 Fourth Row: Gene Franks, James Flemming, Marilyn Slosky, Shirley Zimmerman, Carolyn Shal, Paul Coleman, Albert Whitlatch.

*Junior
 Elementary*

Junior Secondary

Bottom Row, left to right: Betty Ellenberger, Delores Westcoat, Patty Taylor, Mildred Smith, Elissa Shields, Joan Kray, Nancy Hughes, Mary Sue Gallatin, Angela Manetti.
 Second Row: Edward Sedory, Lee Sweeny, Henry Studnicki, Howard Nizinski, Larry Papini, Russell Craven, Jack Young, Lloyd Gilmore.
 Third Row: Robert Springer, Walter S. Peton, Pete Regal, Druce Jackson, Jimmy Protin, Robert Walters, Robert Keller.
 Fourth Row: William Kullman, Dean Bowman.



Junior Industrial Arts

Bottom Row, left to right: George Rummell, James Kermes, James Rainey, Joseph Cusic, John Kancik, William Dziak, Jimmy McGraw.
 Second Row: William Bishop, James Barefoot, Ralph Holtz, Andrew Skero, Dale Worst, Charles Young.
 Third Row: Charles Smith, Walter Eversole, Howard Campbell, Charles Gibbons, Walter Mock.
 Fourth Row: David Emmel, Stephen Bagiatis, Carl E. Weitzel, Wendel Gower.
 Fifth Row: Ivan Luckey, Robert L. Clark, Russell Amalong.

Sophomores

OFFICERS

President Bruce Rice
 Vice President Donald Shockey
 Secretary Janet Treese
 Treasurer Charles King
 Representatives to Congress
 Mary Jane Krause
 Thomas Vaughan
 Faculty Sponsor Mr. Ralph Charney



Left to right: Mr. Ralph Charney, Donald Shockey, Thomas Vaughan, Mary Jane Krause, Janet Treese, Bruce Rice, Charles King.



Bottom Row, left to right: Marcia Horn, June Koontz, Anna Mae Wray, Sylvia Panak, Miriam Lewis, Mary Cooley, Carmelina Kobuchi, Joyce Soisson, Anna Jean Soliani, Nancy Lomagno, Shirley Haywood.
 Second Row: Pat Lubits, Janice Ballinger, Colleen O'Brien, Gustina Jackman, Mary Ann Paulick, Aleen Adams, Alwilda Taylor, Harrietta McCraw, Martha McGinty, Filomena DeBlassio, Mike Rocca.
 Third Row: Velma Schrock, Joann Everly, Connie Karpus, Ina Jean Hall, JoAnn Coatsworth, Jean Cordis, Shirley Paul, Patty Kilroy, Mary K. Corfont, John Ward.
 Fourth Row: Horace Wayne Pierce, Leonard Gerbin, Mickey Bodnar, Carol Troutman, Stephen August, Alvy Paul.
 Fifth Row: Paul Bittner, Neil Faust, Lon Trembach.

Sophomore Elementary



Sophomore Secondary

Bottom Row, left to right: Diana Alexander, Christine Popovich, Rose Ripepi, Martha Mandise, Mary Lou Kruppa, Mary Lou Platt, Phyllis Mock, Beatrice Ritzo, Pat Kowalzyk, Bernadine Grebb, Eleanor Troy.

Second Row: Janet Treese, Douglas Morgan, Leroy Holman, Richard Medve, Bob Leeper, Docile Durigon, Jerry DuJordan, Jim McGinnis, Regis Toprani, Albert Zema.

Third Row: Mary Jane Krause, Arnold Adams, Charles Chepes, Paul Maley, George Polonoli, Donald Shockey, Frank Fazio, Ronald Backos, Gene Manetta.

Fourth Row: James Boyle, Donald Brady, Dick Johnson, Jack Flinn, Bill Merryman, Tom Vaughn, Art Hayes.

Fifth Row: Ron LeFevre, Bob Huffman, Matthew J. Blair, Steve Staruch, Wayne Lash.

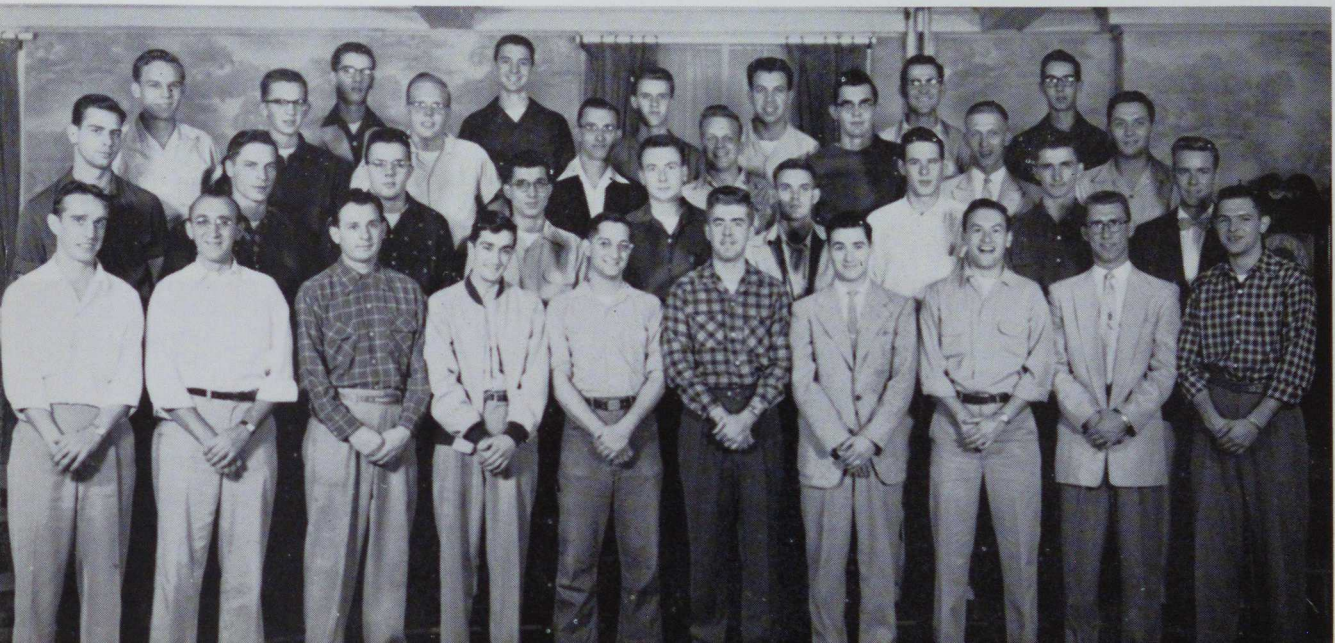
Sophomore Industrial Arts

Bottom Row, left to right: John Panyko, Ted Zarichansky, Ossie Santacroce, Michael Glows, Joseph Bennese, Kenneth Maurer, Romeo S. Fabriziani, Darrell Harris, Dean Girts, Charles King.

Second Row: Don Reed, Henry Zwiener, Val Michall, Joe Pajak, George Lange, William Burton, Frank Kirsopp, Olan Sterback, Dick Taylor.

Third Row: Delbert Byers, Clarence Brown, James Coulson, Carl Miller, Joseph Bunecicky, Lewis Indof, Bruce Rice, Fred McVey.

Fourth Row: Donald Walker, Charles Messner, John Fecik, Joseph Smatlak, John Skrypak, David Walker.





Freshman

OFFICERS

President Norman Smith
 Vice President Dick Wiita
 Secretary RoseMarie DelBene
 Treasurer Jack Bartos
 Representative to Congress
 George E. Petrisek

Bottom Row, left to right: Norman Smith, RoseMarie DelBene,
 Dick Wiita.
 Second Row: Jack Bartos, George E. Petrisek.



Bottom Row, left to right: Iris Coates, Mary Jo McWreath, Doris Halter, Lena Nuccetelli,
 Mary Catherine Bradley, Mary Martin, Harriet Ruoff, Mary Puskar, Lucia DeRocco,
 Suzie Allen.
 Second Row: Margaret Shultz, Anna Haas, Imogene Woodard, Hazel Johnston, Gail Seneff,
 Pat McClellan, Janet Marie Duncan, Betty Mickle, Nanciann Tanner.
 Third Row: Thelma Wright, Connie Maxon, Irene Jeney, Louise Jameson, Jeanne Ashcraft,
 Carolyn Ross, Donna Shultz.
 Fourth Row: Edith Kilroy, Ann Lunnen, Carol Hogan, Ruth Beck, Joanne Huber, Dolores
 Smerigan.
 Fifth Row: Jackie Staney, Betty Pashkevich.

Freshman Elementary



*Freshman
Elementary*

Bottom Row, left to right: RoseMarie DelBene, Cynthia Ann Sinosky, Agnes Canova, Arlene Bruno, George E. Petrisek, Mary Jane Crayton, Nancy Pore, Janet Watson, Patsy Patrick.
 Second Row: Jan Nizenski, Sylvia Bellora Sylvia Humphries, Doris Sanders, Anita Polach, Dottie Jo Gabler, Nancy Underwood, Joyce Papini.
 Third Row: Marilyn Pivarnik, Jean Hicks, Shirley Miller, Donna L. Cerullo, Martha E. Reed, Shirley Childress, Ruth Colvin.
 Fourth Row: Betty Sampey, Nancy Sethman June Gibbons, Shirley Turney, Helen Joseph.
 Fifth Row: Dolores Busch, Genevieve Kime, Mary Lee Everett.

*Freshman
Secondary*

Bottom Row, left to right: Joan Bangiorne, Martha Spernak, Helen Kostich, Beverly Herbert, Elaine Telega, Adrienne Ferguson, Shirl Walther, Alice Dukich.
 Second Row: Janet Lukey, Sally Story, Kathleen Kirk, Phyllis Bodnar, Dorothy Paulochik Dena Morris, Pat Murphy.
 Third Row: Toni Blozik, Nancy Hall, Mary Leyda, Carol Panik, Joyce Penn, Pat Tippet.
 Fourth Row: Elizabeth Clementson, Karen Schiffbauer, Ella Stanko, Sandra Nobel, Joann Alonso, Mercedes Suarez.
 Fifth Row: Betty Potsklan, JoAnn Alexander.





Freshman Initiation

Freshman



First Row, left to right: John Leonard, John Celani, Ray Brady, Walter Rice, John Preston, Paul Harenski, David F. Kipp, Norman Smith, Richard Orlandi, Leroy L. Thomas, Howard Richards.

Second Row: Thomas Mountain, Angelo J. Zilli, Victor J. Krisko, Neddie C. Hollis, Ronald Novak, Walter Strycula, Charles Trenk, Warner Roberts, Michael Peckyno, Mario DeLeonibus, Raymond Shaffer.

Third Row: Gerald Taylor, Edmund Elder, Robert Dreibelbis, Janes Cenedella, Andy Timko, Gary DeMarchi, Andy Bryner, Russell Cuddy, Stewart Miller, Bill Utterback.

Fourth Row: Ronald Souply, Jim Mendola, Jim White, Ken Sacharov, David Sproul, John Bell Shavel, Sabastian LoNigro, Jr., George Shargots, Robert J. Ricco, Jack Bartos.

Fifth Row: Don Pepe, Tom Turachak, Howard Logan, Tom Hodgson, Ryan Ballant, Harry Myrnga, Ronald Forsythe, Dale Obade, James Phillips, Bill Mallinger, Doug Reynolds, Jack McCune.

Freshman Secondary



Freshman Industrial Arts

Bottom Row, left to right: Emery St. Cyr, Alan Beoll, William Walcutt, Joe Chilia, Alan Karlosky, George Bonari.
 Second Row: Eugene Leonard, Howard Parry, Stanley White, Tom Cimoric, Paul Fike, John Barlow, Harold Theakston, Howard Dunmire, Alfred Troth, Dick Mallison, Don Rotell, Bill Woodhead, Vince Rizzo.
 Third Row: Joe Kaleita, Richard Silvis, Bernard Snyder, William Myers, Merle Barron, Robert Sarver, Clare Dal Thompson, Walter Slapnik, Edward Kallok, Bob Shuler, Harold Kinsey, Eugene Hudock.
 Fourth Row: Alan Cogley, Miles Everard, Charles Anderson, Marlin McClintock, Dale Kurtz, Keith Merritt, Doug Latkanich, Howard Sofoloff, Arthur Ferguson, Roger Lewis, Larry Stetler.
 Fifth Row: David Stiles Ernest Calwell, Vergil Taylor, Richard Long, William Schuman, Joe Gower, Paul Hrics, Carmen Ricco, Alex Umshares, Joe Pecosh, John Cumashat, Ed Bedner.
 Sixth Row: Max Palmo, Dick Vickroy, Rodger Hammond, Frank Krupa, Tom Carter, Edward Peak, Duane Lowe, John Beck, Albert J. Stay, Ken Husher, Tom Fonner.

Freshman Industrial Arts

Bottom Row, left to right: Jack Nelson, Hurst Mitten, Glen R. Rimbey, Joe Lehosky, David Smith, James Barnes, Kenneth Gifford, Chuck Mayer, John Wilhelm, Thomas W. Glasgow.
 Second Row: Tom Pecosh, Charles Sparrow, Burton Riffle, Harold Ames, Lauere Heddleston, Pat Reilly, Dick Krotzer, Burnett Roberts, Alan Bickel.
 Third Row: William Guzick, Edward Hurtkay, John Snyder, Ronald Morgan, James Brown, James Weaver, Alex Osleger, James Wharton, William Shenk.
 Fourth Row: James Moderelli, John Waterman, Harry Buell, Joseph Serwinski, Glen Patten, Jim Hedman, Bob Perry, Merle Barger, Robert Brougher, Len Petrush.
 Fifth Row: Donald Dolan, Robert Noble, Richard G. McHenry, William North, William T. Leehan, William Ritz.





THE ACTIVITIES







Student Cabinet

OFFICERS

Chairman Philip Marella
 Vice-Chairman James Miller
 Secretary Mary Jane Krause
 Faculty Sponsor Mr. Lenox

Bottom Row, left to right: Philip Marella, Mary Jane Krause, John Miner, Cindy Minor, Mr. Frank Lenox.
 Second Row: Lee Sweeney, Sally Brahm, George E. Petrisek, Michael Wilks, Joan Kray, Leo Goodman, Tom Vaughn, Thomas Dunseath.



Student Congress

OFFICERS

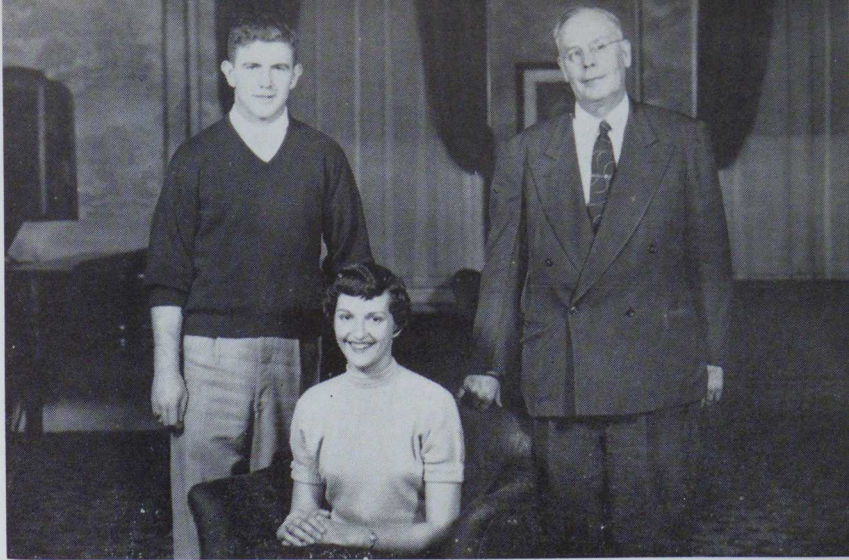
President Philip Marella
 Vice President Andrew Pecuch
 Secretary Lucinda Minor
 Sponsor Mr. Lenox

Bottom Row, left to right: Leo Goodman, John Miner, William Clark, Cindy Minor, Philip D. Marella, Joan Kray, Andy Pecuch, Russell Amalong, Mr. Frank Lenox.
 Second Row: Michael Wilks, George E. Petrisek, Tom Vaughn, Thomas Dunseath, Lee Sweeney.
 Third Row: Mary Jane Krause, Jack Young, Dean Bowman, Ronald Backos.
 Fourth Row: Delores Westcoat, Elaine Vilscek, Dolores Onuscheck, Betty Ellenberger.

Student Activities

OFFICERS

President Donald DiMarco
 Vice President Jack L. Young
 Secretary Mary Jane Krause
 Sponsor Mr. Lenox



Left to right: Jack Young, Mary Jane Krause, Mr. Frank Lenox.



Committee for Social Activities

Seated, left to right: James Barefoot, Roberta Durnell.
 First Row: Mr. Frank W. Lenox, Janice Ballinger, Janet McCune, Ange Bongianino, Audry Kiger, Joyce Soisson, Betty Jane Merenic, Barbara Tough, Mrs. Hamilton.
 Second Row: Fran Regeg, Betty Ellenberger, Carolyn Shal, Marlene Speicher, Janet Treese, Donnis Pierallini.
 Third Row: Andy Pecuch, Myrna Cox, Shirley Zimmerman, Evelyn Golomb, Pat Gouger, Ralph Holtz.
 Fourth Row: William Bishop, Chuck Bittner, Russell Amalong, Lee Sweeney, Horace Pierce, Steve Staruch, Chuck King.

OFFICERS

Co-Chairmen James Barefoot
 Roberta Durnell
 Secretary Patricia Gouger
 Treasurer Myrna Cox
 Rep. to Student Congress
 Andrew Pecuch
 Faculty Sponsors Mr. Lenox
 Mrs. Hamilton

Women's Traveling Council

OFFICERS

President Marilyn McCraw
 Vice-President Josephine Runfola
 Secretary-Treasurer Annamarie Zubic



First Row, left to right: Annamarie Zubic, Marilyn McCraw, Mrs. Lela Hamilton.
 Second Row: Nancy Pore, Elizabeth Shultz, Ruth Ann Farquhar.

Men's Traveling Council

OFFICERS

President Vernon Behanna
 Vice President Emery Breniman
 Secretary John Moreschi
 Treasurer Ray Wattras
 Faculty Sponsor Mr. Frank Lenox



Seated, left to right: Mike Rocco, Dean Cheesebrough.
 Standing: Regis Toprani, Edward Szymezyk, Mark Sucevich.

Women's Dormitory Council

OFFICERS

President Leah Lemmon
 Vice President Joan Kray
 Secretary Connie Karpus
 Sponsor Mrs. Hamilton



Bottom Row, left to right: Frances Regec, Joan Kray, Leah Lemmon, Connie Karpus.
 Second Row: Rose Marie DelBene, Mary Lee Carl, Mrs. Lela Hamilton, Ruth Lesnock, Pat Lubits.



Bottom Row, left to right: Mr. Frank W. Lenox, Lee Sweeney, Ray Carlson, Russell Amalong.
 Second Row: William Bishop, Dean Bowman, Walter Eversole, Raymond Hill, Jim Barefoot.

Men's Dormitory Council

OFFICERS

President Raymond Carlson
 Vice President Richard Majernik
 Secretary Russell Amalong
 Faculty Sponsor Mr. Frank Lenox



General Safety Committee

OFFICERS

Chairman Mr. Paul Walker

Seated, left to right: Dolores Onuscheck, Mrs. Lela Hamilton, Mrs. Sarah Hall, Betty Jane Merenic.
Standing, Mr. Frank Lenox, Mr. Francis Coatsworth, Mr. Paul Walker.

Landscape Committee

OFFICERS

Chairman Mr. John F. Lewis



Seated, left to right: Mr. Aaron Hoover, Mr. John Lewis, Thomas Glasgow.
Standing: Connie Karpus, Ruth Ann Farquhar, Mrs. Linnea Eckel, Andy Pecuch.

Monocal



Seated, left to right: RoseMarie DelBene, Violet Dalson, Elizabeth Shultz, Leah Hicks, Bernadine Grebb, Barbara Tough, Joyce Soisson, Dolores Onuscheck, Marlene Speicher.
 Standing, Row I: Helen Kostich, Marvelle Risku, Marlene Ambrose, Janet Watson, Miss Louise Rakestraw, Christine Popovich, Mary Puskar, Audrey Kiger, Rose Ripepi, Darlene Destefano.
 Row II: Harrietta McCraw, Kathleen Kirk, Dena Morris, Emery St. Cyr.

OFFICERS

| | | | |
|------------------------|---------------------------------------|----------------------|--|
| Co-Editors | Bernadine Grebb Barbara Tough King | Typists | RoseMarie DelBene Darlene Destefano Mary Puskar Kathleen Kirk |
| Literary Editors | Leah Hicks Violet Dalson | Literary Staff | Christine Popovich Rose Ripepi, Marlene Ambrose, Joyce Soisson, Marvelle Risku Elizabeth Shultz, Harrietta McCraw |
| Business Manager | Dolores Onuscheck | Sponsor | Miss Louise Rakestraw |
| Photographers | Charles Bittner Emery St. Cyr | | |

THE STAFF AT WORK



Vulcan

OFFICERS

Editor Hugh Taylor
 Associate Editors – Franklin L. Silko, Elise Capuano, Ralph J. Holtz, James W. Perrin, Patricia Gouger, Charles King
 Faculty Sponsor Mr. George E. Harding



Left to right: Charles King, Pat Gouger, Ralph Holtz, Mr. George E. Harding, James Perrin.



Industrial Arts Leader

Bottom Row, left to right: Mr. Anthony T. Stavaski, William Clark, Raymond Hill, Delbert Byers, Joseph Bennese, Kenneth Maurer, Rosemary Liko, Elwin Kerr, Charles Bittner, Ralph Holtz, Shriver Coover.

Second Row: James Coulson, Joseph Smatlak, Romeo S. Fabriziani, Edward, T. Peake, George L. Lange, Joseph V. Serwinski, Edward J. Bedner, Jimmy McGraw.

Third Row: Floyd Reynolds, Robert Noble, William North, Vergil Taylor.

OFFICERS

Editor Kenneth O. Maurer
 Sponsors Dr. Shriver L. Coover
 Mr. Anthony Stavaski

Tower Times

The Staff
Preparing copy



STAFF

| | | | |
|------------------------|------------------|----------------------------|-------------------------------------|
| Editor | Pat Kowalczyk | Typists | Mary Lash |
| Managing Editor | Eleanor Troy | | Roy Bucher |
| Student Advisor | Dolores Westcoat | | Mary Martin |
| News Editor | Mary Lou Platt | Cartoonist | Delores Onuscheck |
| | Angela Manetti | Circulation Managers | Roy Bucher |
| Feature Editor | Beatrice Ritzo | | Mary Martin |
| Sports Editor | Frank Fazio | Reporters | Lon Trembach |
| | Ralph Holtz | | Tom Dunseath, Marilyn Bruno, |
| Business Manager | Betty Brown | | Gustina Jackman, Fred Brassart, |
| Photographers | Charles Bittner | | Donna Shultz, Marilyn Pivarnik, |
| | Bill Bishop | Sponsor | Sylvia Humphries, Marlene Speicher. |
| | | | Mr. C. M. Hughey |



Bottom Row, left to right: Ralph Holtz, Frank Fazio, Mary Lou Platt, Betty Brown, Pat Kowalczyk, Eleanor Troy, Chuck Bittner.
 Second Row: Lon Trembach, Mary Lash, Dolores Onuscheck, Sylvia Humphries, Doris Sanders, Janet Watson.
 Third Row: Marilyn Bruno, Gustina Jackman, Marlene Speicher, Kathleen Kirk, Donna Jesso, Shirley Turney.
 Fourth Row: Beverly Herbert, Mary Puskar, Helen Kostich, Donna Shultz, Mary Martin, Betty Jane Merenic.

Mixed Chorus



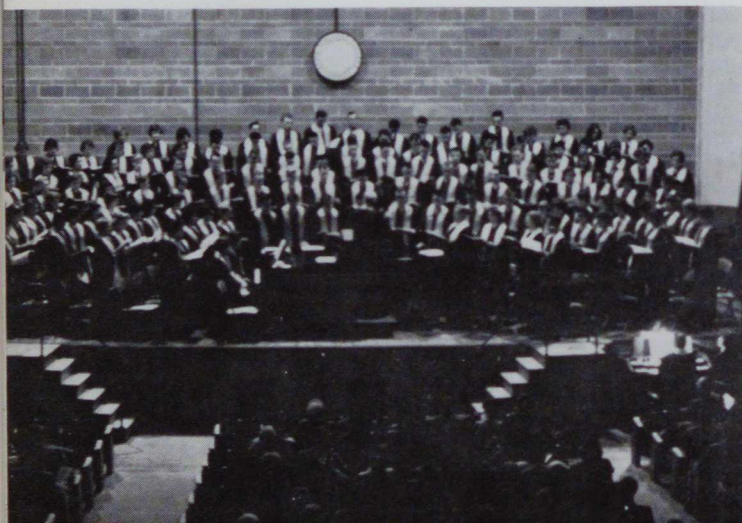
Bottom Row, left to right: Michaelene Garofola, Philomena De Blassio, Ina Hall, Ruth Beck, Jean Cordis, Nancy Lomagno, Harriet Ruoff, Joyce Soisson, June Koontz, Mary Ann Cooley, Joan Kray, Nancy Hughes, Roberta Durnell, Angela Manetti, Shirley Walther, Doris Halter, Emma Jean Pettito, Audrey Kiger, Nancy Pore.
 Second Row: Anna Marie Zubic, Pat Gouger, Ralph Holtz, Richard Silvis, Don Walker, David Walker, Russell Amalong, Don Reed, Charles Messner, Dale Carson, Neil Faust, Mr. E. E. Halstead.
 Third Row: Marilyn Pivarnik, Harrietta McCraw, Mary Corfont, Janet Treese, Karen Schiffbauer, Connie Karpus, Kay Kirk, Aleen Adams, Lon Trembach.
 Fourth Row: Phyllis Bodnar, Velma Schrock, Anna Mae Wray, Joann Mitchell, Pat Tippets, Burton Riffle.
 Fifth Row: Betty Pashkevich, Gail Seneff, Evelyn Golomb, Joan Everly, Carol Hogan, Sally Kornick, Pat McClellan.
 Sixth Row: Marsha Horn, Sylvia Bellora, Lena Nucetelli, Shirley Zimmerman, Donnis Pierallini, Howard Richards.
 Seventh Row: Richard Long, Eddie Labin, Jim McGinnis, Steve August, Elaine Vilseck, Russell Craven, Dolores Onuscheck, Robert Hoffman, Jack Nelson, Jerry DuJordan, Robert Sarver, George Bonari.

OFFICERS Mixed Chorus

| | |
|--------------------------------|--------------------|
| President | Joann Mitchell |
| Vice-President | Arthur Hayes |
| Secretary | Connie Karpus |
| Treasurer | Miriam Lewis |
| Rep. to Student Congress | Leo Goodman |
| Faculty Sponsor | Mr. E. E. Halstead |

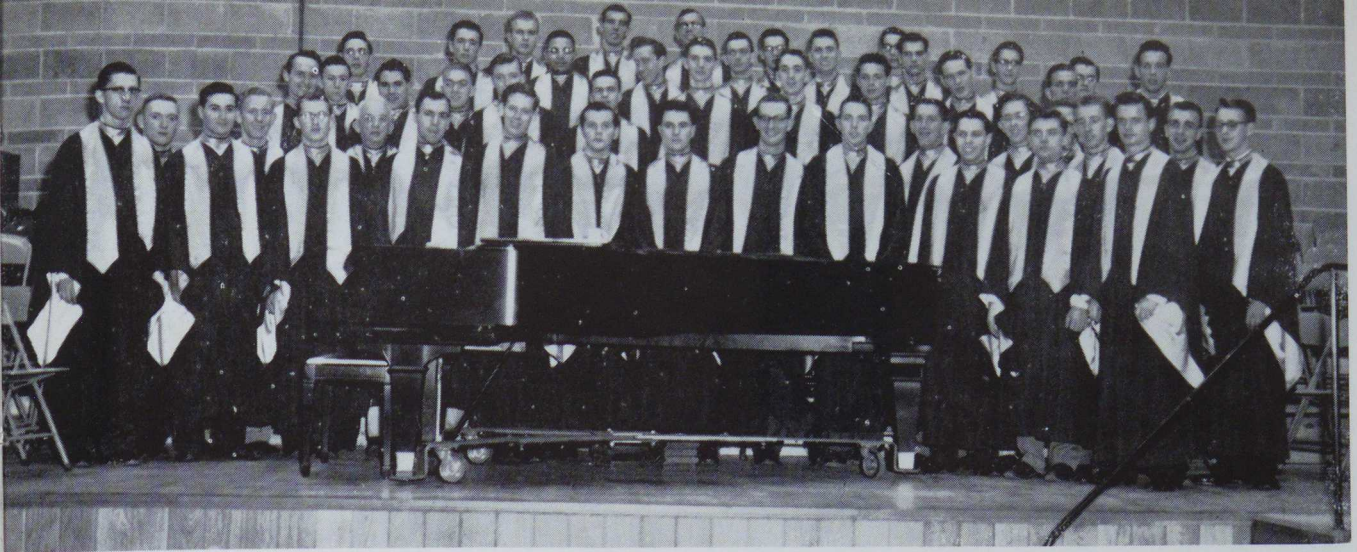
OFFICERS Women's Glee

| | |
|--------------------------------|--------------------|
| President | Myrna Cox |
| First V. Pres. | Jean Dunbar |
| Second V. Pres. | Janice Ballenger |
| Secretary | Evelyn Golomb |
| Treasurer | Elaine Vilseck |
| Rep. to Student Congress | Dolores Onuscheck |
| Faculty Sponsor | Mr. E. E. Halstead |



OFFICERS Men's Glee

| | |
|--------------------------------|--------------------|
| President | Donald DiMarco |
| Vice-President | Leo Goodman |
| Secretary | Jim McGinnis |
| Treasurer | Russell Amalong |
| Rep. to Student Congress | Dean Bowman |
| Faculty Sponsor | Mr. E. E. Halstead |



Bottom Row, left to right: Jim McGinnis, Romeo Fabriziani, Robert Sarver, Joe Scarmazzi, Robert Clark, Steve August, Alvy Paul, Ralph Holtz, Neil Faust, Burton Riffle, Richard Long.
 Second Row: James Perrin, Leo Goodman, Mr. E. E. Halstead, Arthur Hayes, George Bonari, Dean Bowman, Gene Leonard, Jack Blair, Alan Cogley, Jim Meagher, Miles Everard.
 Third Row: Michael Sincevich, Robert Stuart, Alfred Grant, Stewart Miller, Dallas Lea, Pete Regal, Charles Messner, Dale Worst, Edward Labin, Frank Kersop, Jack Nelson, Russell Craven.
 Fourth Row: Robert Hoffman, Jim Hedman, Robert Perkowski, Jack Fenwick, Jim Fleming, Russell Amalong, Don Walker, Dale Carson, Dave Walker, Donald Reed, Richard Silvis, Lon Trembach.

Men's and Women's Glee Clubs

Bottom Row, left to right: Michaelene Garofola, Philomena De Blassio, Ruth Beck, Jean Cordis, Nancy Lomagno, Harriet Ruoff, Joyce Soisson, June Koontz, Mary Ann Cooley, Joan Kray, Nancy Hughes, Roberta Durnell, Angela Manetti, Shirley Walther, Doris Halter, Emma Jean Petitto, Audrey Kiger, Nancy Pore.
 Second Row: Anna Marie Zubic, Pat Couger, Marilyn Pivarnik, Janet Treese, Karen Schiffbauer, Connie Karpus, Kay Kirk.
 Third Row: Ina Hall, Harietta McCraw, Mary Corfont, Joann Mitchell, Pat Tippets, Aleen Adams.
 Fourth Row: Phyllis Bodnar, Velma Schrock, Anna Mae Wray, Joann Everly, Carol Hogan, Sally Kornick, Pat McClellan.
 Fifth Row: Betty Pashkevich, Gail Seneff, Evelyn Golomb, Shirley Zimmerman, Donnis Pierallini, Dolores Onuscheck.
 Sixth Row: Sylvia Bellora, Lena Nucetelli, Marcia Horn, Elaine Vilscek.



Majorettes



Kneeling, left to right: Connie Bercik, La Verne Bazilwich, Loretta Hudler.
Standing: Aleen Adams, Mary Kathryn Corfont, Mary Jane Krause, Carol Wootton.

Dance Band

Front Row, left to right: Pete Regal, Bill Dean, Richard Orlandi, Toni Blozik, Russell Craven.
Back Row: Iris Coates, John Celani, John Skrypak, Larry Stetler, Jim Barnes, Phil Stout.





Bottom Row, left to right: Catherine Sherbondy, Mike Mizerak, Ray Mullen, Dr. George Hart.
 Second Row: Mike Rocca, Jack Maykuth, Waino Pekkanen, James Holleran, Mike Chuey, John Ward.

Discussion Club

OFFICERS

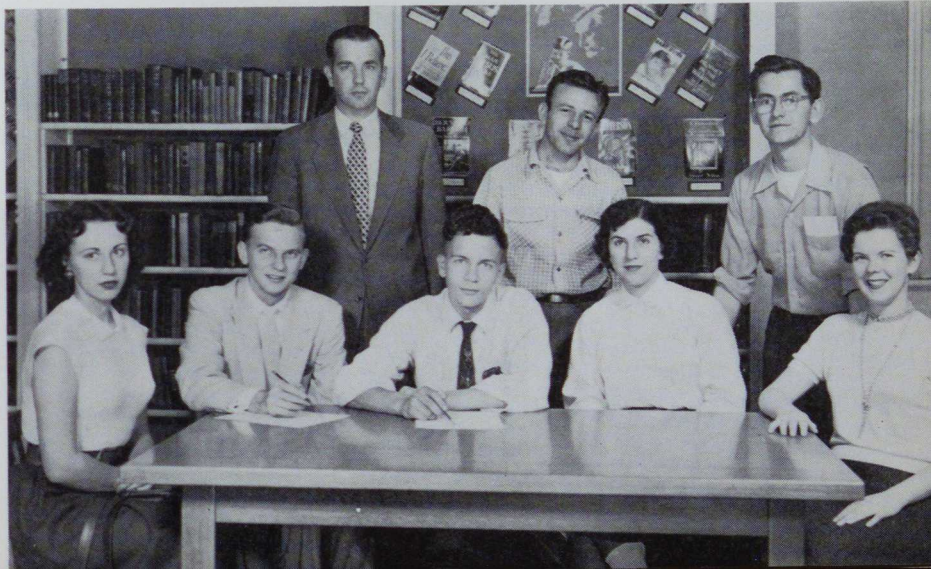
President Ray Mullen
 Vice-President Mike Mizerak
 Secretary-Treasurer Carl Bontrager
 Rep. to Student Congress Lee Sweeney
 Faculty Sponsor Dr. Hart

Debate Club

OFFICERS

President Donnis Pierileni
 Vice-President Ray Mullen
 Secretary-Treasurer Sally Brahm
 Representative to Congress .. Tom Dunseath
 Faculty Sponsor Mr. Roadman

Bottom Row, left to right: Connie Maxon, Thomas Dunseath, George E. Petrisek, Beatrice Ritzo, Sally Brahm.
 Second Row: Mr. George Roadman, Ray Mullen, Leon Trembach.





Bottom Row, left to right: Elizabeth Shultz, Darlene Destefano, Joan Kray, Marvelle Risku, Myrna Cox, Elaine Vilscek.
 Second Row: Marlene Selepchak, Kathleen Everly, Ruth Lesnock, Pat Gouger, Elissa Shields.

Kappa Delta Pi

OFFICERS

President Myrna Cox
 Vice-President Ruth Lesnock
 Secretary Kathleen Everly
 Treasurer Joan Kray
 Sponsor Miss Carroll

Phi Sigma Pi

OFFICERS

President Mike Mizerak
 Secretary-Treasurer James Perrin
 Historian Thomas Dunseath
 Sponsor Mr. Wilson

Bottom Row, left to right:
 George L. Lange, Charles M. Bittner, James W. Perrin, Mike Mizerak, Thomas Dunseath, Emery R. Breniman, Frank Fazio.
 Second Row: Lee Sweeney, Ralph Holtz, Leon Trembach, Dale Carson, Allan Blacko, Donald Fransko, Leroy Holman, Mickey Bodnar.



Epsilon Pi Tau

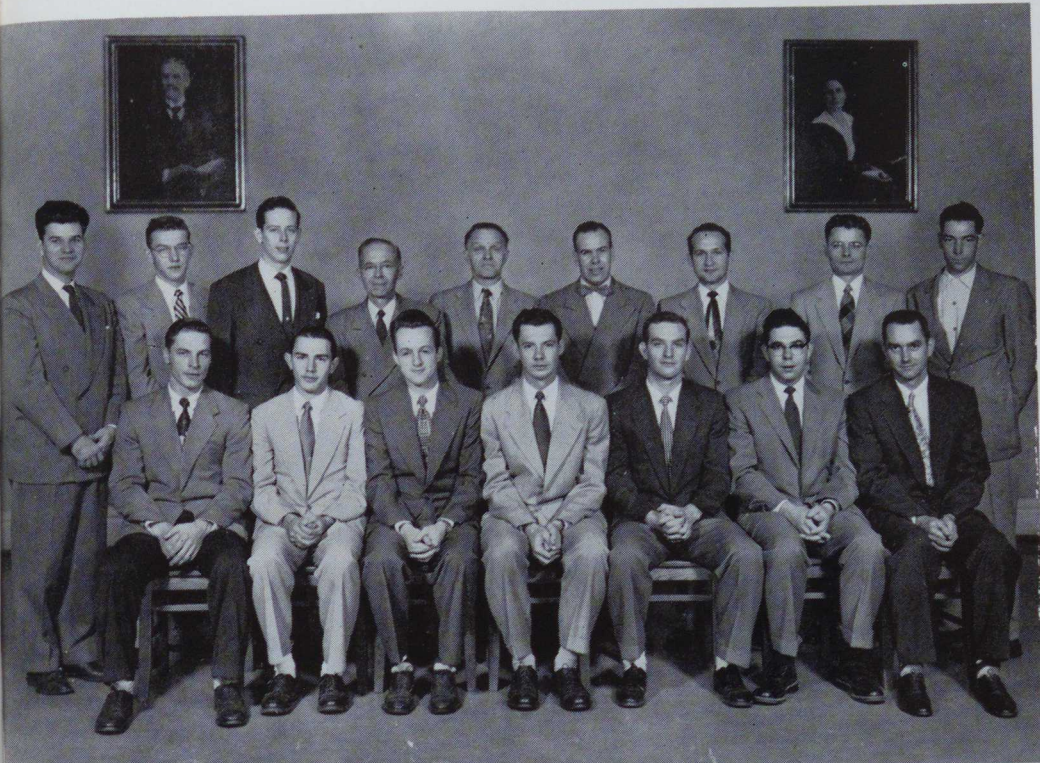
Gamma Pi Chi

OFFICERS

President William Clark
 Vice President Lenin Waitkus
 Secretary Charles Bittner
 Treasurer Joann Mitchell
 Sponsors Mr. Merrill G. Campbell,
 Mr. Ralph Charney

OFFICERS

President Betty Jane Merenic
 Vice President Roberta Durnell
 Secretary Elaine Vilscek
 Treasurer Darlene Destefano
 Sponsor Miss Henrietta Carroll



Bottom Row, left to right:
 Henry Zwiener, Elwin Kerr, David Emmel, Charles Bittner, Ralph Holtz, William Clark, Walter Eversole.

Second Row: Charles McKevitt, James Kantor, Robert L. Clarke, Mr. Shriver Coover, Mr. Anthony T. Stavaski, Mr. Merrill G. Campbell, Mr. Ralph Charney, John Kanuk, James Crisman.



Bottom Row, left to right:
 Mary Lou Platt, Janet McCune, Jean D. Swift, Darlene Destefano, Elaine Vilscek, Betty Jane Merenic, Roberta Durnell, Ruth Lesnock, Angie Bongianino, Betty Dormish.

Second Row: Pat Gouger, Marlene Speicher, Carol Lardin, Dolores Onuscheck, Eleanor Henshaw, Cindy Minor, Elizabeth Shultz, Marlene Ambrose, Marvelle Risku, Janice Ballinger, Audrey LeJohn.

Third Row: Helen Komacek, Mary Lee Carl, Marilynn Brunc, Betty Ellenberger, Frances Regeg, Evelyn Golomb, Connie Karpus, Leah Lemmon, Alice Louise Underwood, Anna Mae Wray, Janet Kennedy, Ina Jean Hall, Janet Treese, Myrna Cox.



Bottom Row, left to right: Mary Jane Krause, Thomas Dunseath, Sally Brahm, Joan Kray.
 Second Row: Miss Emma Sacco, Lee Sweeney, George E. Petrisek, Mike Mizerak.

Student Fellowship

OFFICERS

President Delores Onuscheck
 Vice President Anna Jean Soliani
 Secretary Robert Sarver
 Treasurer Mary Ann Cooley
 Representative to Congress Richard Silvis

Intercollegiate Conference on Government

OFFICERS

President Thomas Dunseath
 Vice President Joe Conaway
 Secretary-Treasurer Sally Brahm



Bottom Row, left to right: Harriet Ruoff, Doris Halter, Mary Puskar, Joyce Soisson, James Perrin, Evelyn Golumb, Mr. John F. Lewis, Dolores Onuscheck, Mary Lash, Mary Martin, Betty Brown.
 Second Row: RoseMarie DelBene, Patty Lubits, Janet Lukey, Martha Spernak, Lena Nuccetelli, Shirley Miller, Shirl Walther, Janet Watson, Betty Sampey, Pat Murphy, Mary Jo McWreath.
 Third Row: Kathleen Kirk, Phyllis Bodnar, Diane Alexander, Mary Anne Cooley, Marlene Speicher, Jean Cordis, June Koontz, Ange Bongianino, Dena Morris, Joann Huber, Lon Trembach.
 Fourth Row: Gary DeMarchi, Richard G. McHenry, Carolyn Ross, Dolores Smerigan, Mary Lee Everett, Eleanor Troy, Andy Timko, Pat Reilly, Jim McGinnis, Dale Worst, Robert Springer, Merle Barger, Eugene Leonard.
 Fifth Row: Robert Noble, William North, Richard Silvis.

College Players



Bottom Row, left to right: Arnold Adams, Patty Lubits, Ray Mullen, Delores Westcoat.
 Second Row: Beatrice Ritzo, Eleanor Troy, Sylvia Panak, Ina Mae Campbell, Joyce Soisson, Harriet Ruoff, Nancy J. Hughes, Mary Sue Gallatin, Mildred Smith, RoseMarie DelBene.
 Third Row: Elaine Telega, Rose Ripepi, Janet Kennedy, Phyllis Bodnar, Irene Jeney, Shirley Childress, Patty Tippet, Shirl Walther, Diana Alexander.
 Fourth Row: Emery St. Cyr, Jean Hicks, Anna Haas, Alwilda Taylor, Shirley Paul, Martha Spemak, Filomena DeBlassio, Shirley Haywood, Vince Rizzo, James Coulson, Bernadine Grebb.
 Fifth Row: David Sproul, John Waterman, Lon Trembach, Norman Smith, Tom Turachak, Robert L. Clarke, Andrew Skero, Thomas K. Dunseath.
 Sixth Row: Tom Fonner, Ted Zarichansky, Joe Pajak, Nick Halama, Phyllis Mock, Jackie Stanley, Mike Wilks, John Panyko.

OFFICERS

President Ray Mullen
 Vice President Arnold Adams
 Secretary Patty Lubits

Treasurer Delores Westcoat
 Faculty Sponsor, Mrs. Marian Weaver

Alpha Psi Omega

OFFICERS

President Joseph Conaway
 Vice President Michael Wilks
 Secretary-Treasurer Thomas Dunseath
 Corresponding Secretary Robert Clarke
 Faculty Sponsor Mrs. Marian Weaver



Bottom Row, left to right: Mrs. Marian H. Weaver, Joe Conaway, Michael Wilks, Thomas Dunseath.
 Second Row: Andrew Skero, Nancy J. Hughes, James W. Assad, Robert L. Clark.



Bottom Row, left to right:
 Jeane Malone, Anna Haas,
 Mary Lash, Kenneth Ros-
 nack, Darlene Destefano,
 Douglas Morgan, Marlene
 Ambrose, Marvelle Risku,
 Joanne Jacobs.

Second Row: Mr. George
 Harding, Neddie C. Hal-
 lis, Howard Nizinski, Paul
 D. Hrics, Richard Medve,
 Bob Leeper, Ronald Back-
 os, George Shargots.

Third Row: Philip D. Mar-
 ella, John Moorhouse,
 Herman Keith, Mike Miz-
 erak, Leonard Gerbin,
 Russell Cuddy.

Fourth Row: Leroy Holman.

Bottom Row, left to right:
 Leah Hicks, Delores West-
 coat, Alice Louise Under-
 wood, Janet Kennedy,
 Jean Malone, Eleanor
 Henshaw, Rose Ripepi,
 Darlene Destefano, Mrs.
 Lillian Stewart, Marlene
 Ambrose.

Second Row: Violet Dalson,
 Sally Story, Joanne Ja-
 cobs, Beatrice Ritzo, An-
 na Haas, Marvelle Risku,
 Christine Popovich,
 Jeanne Ashcraft, Gustina
 Jackman, Beverly Her-
 bert, Harrietta McCraw.

Third Row: Shirley Paul,
 Marilynn Bruno, Elissa
 Shields.



Geography Club

OFFICERS

| | |
|------------------------------------|-------------------|
| President | Kenneth Rosnack |
| Vice-President | Douglas Morgan |
| Secretary-Treasurer | Darlene Destefano |
| Representative to Student Congress | |
| | George Vlastic |
| Faculty Sponsor | Mr. G. E. Harding |

Monivalea

OFFICERS

| | |
|----------------------------|------------------|
| President | Eleanor Henshaw |
| Vice-President | Jean Malone |
| Secretary | Rose Ripepi |
| Treasurer | Janet Kennedy |
| Representative to Congress | |
| | Delores Westcoat |
| Faculty Sponsor | Mrs. Stewart |

Math Club

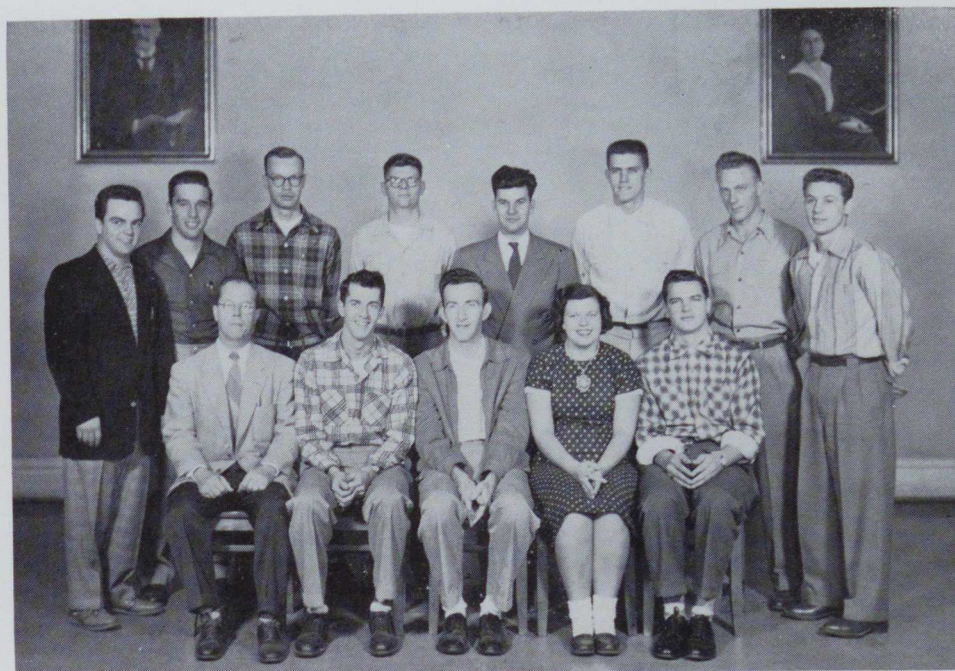
OFFICERS

President Bob Walters
 Vice President Andy Timko
 Secretary Pat Taylor
 Representative to Congress Bill Utterback
 Faculty Sponsor Mr. Atkins

Chemistry Club

OFFICERS

President Arthur Gregg
 Vice-President Edward Sedory
 Secretary Stella Ninchak
 Treasurer Betty Dormish
 Rep. to Student Congress Anthony Lazzaro
 Program Chairman Herbert Retcofsky
 Faculty Sponsor Mr. Clyde Hartman

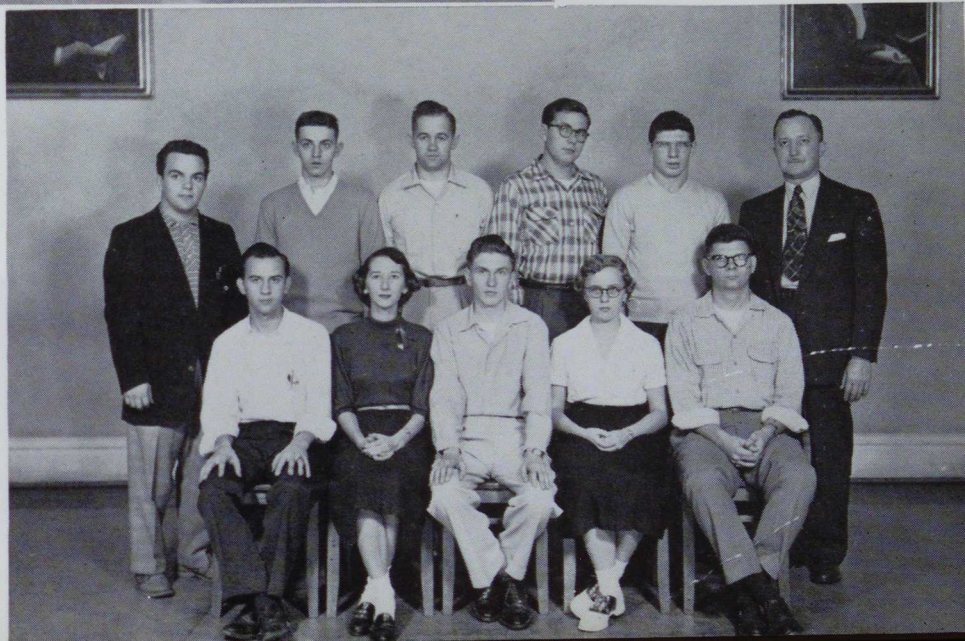


Bottom Row, left to right: Mr. Frederick Atkins, Bob Walters, Bill Utterback, Pat Taylor, Andy Timko.

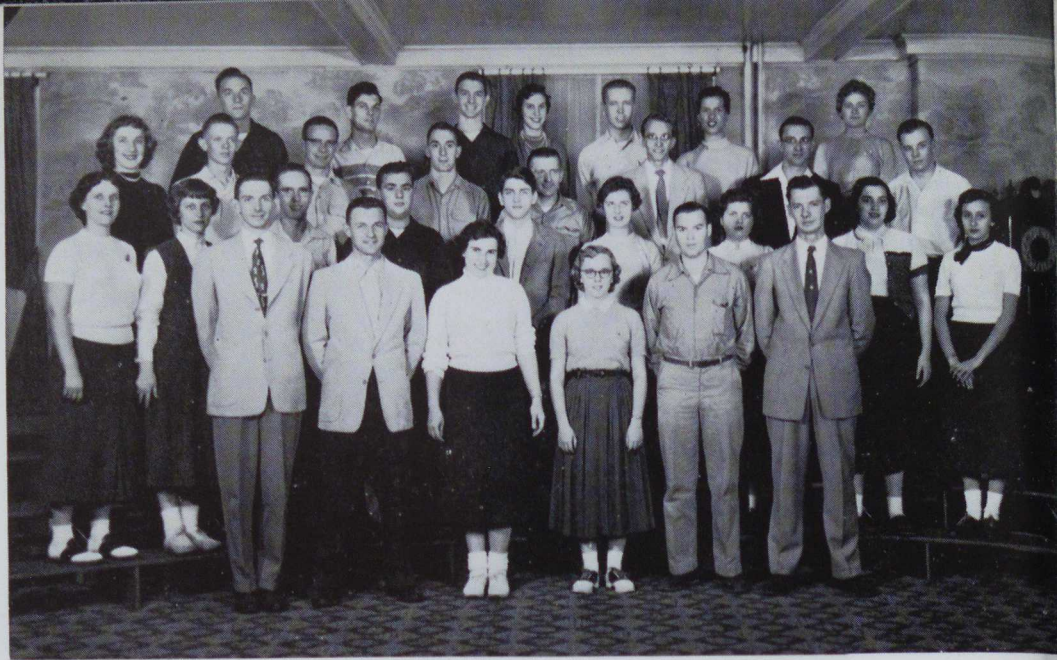
Second Row: Docile Durigon, Richard Medve, Allan Blacka, Ronald Backos, Charles McKevitt, Ronald Davis, Carl VanSherra, Bob Leeper.

Bottom Row, left to right: Herbert Retcofsky, Stella Ninchak, Edward Sidory, Betty Dormish, Ronald Backos.

Second Row: Docile Durigon, William Henck, Raymond Shaffer, Walter Strycula, Ronald Novak, Mr. Clyde Hartman.



Bottom Row, left to right: Russell Amalong, Bill Bishop, Marlene Speicher, Betty Dormish, James R. Rainey, Charles Bittner.
 Second Row: Martha Manandise, Mary Lou Kruppa, Bernard Snyder, Paul Fike, Emery St. Cyr, Shirley Paul, Alwilda Taylor, Diana Alexander, Carmelina Kobuchi.
 Third Row: Ruth Colvin, Marlin McClintock, Howard Dumire, Dale Worst, Merle Barron, Paul Bittner, Carl Miller, Charles Smith.
 Fourth Row: William Schuman, Donald Brady, Charles Messner, Len Petrush, Joann Alonso.
 Fifth Row: Mercedes Suarez, Nancy Sethman.



Photography Club

OFFICERS

President William Bishop
 Vice-President Charles Bittner
 Secretary Betty Dormish
 Treasurer Marlene Speicher
 Rep. to Student Congress Russell Amalong
 Film Chairman James Rainey
 Faculty Sponsor Mr. Jack Hoyes

Men's Rifle Club

OFFICERS

President Charles Fischer
 Vice President Donald Emery
 Secretary Fred Brassart
 Treasurer Mike Sincevich
 Faculty Sponsor Mr. Harry Monroe
 Rep. to Student Congress Edward Showalter



Bottom Row, left to right: Richard Long, Darrell Harris, John Barlow, Joseph Benese, Kenneth Maurer, Jim Kantor, Fred Brassart, Michael Sincevich, Pat Reilly, Floyd Reynolds.
 Second Row: Val Michall, Charles Smith, Charles Anderson, Alfred Troth, Ray Brady, Bob Leeper, Walter Slapnik, Alan Karlosky, Alan Beall.
 Third Row: Mickey Bodnar, Clarence Brown, Don Reed, Delbert Byers, Olan Sterback, Charles Messner, Richard Medve, Ronald Remy, Tom Cimoric.
 Fourth Row: Ronald Morgan, Alex Umshares, Bob Shuler, Arthur Ferguson, Russell Cuddy, Frank Krupa, John Beck, Ray Hill.

Veterans' Club



Seated, left to right: Joe Gorecki, Joe Pajok, Ted Zarishansky, Warner Roberts, Leonard Gerbin, John Wilhelm, Francis Vescio, Raymond Shaffer, Rudy Kalasky, Philip Marella.
 Second Row: John Skrypak, Mike Mizerak, Romeo Fabriziani, Paul Hrics, Dr. O. R. Bontrager, Mike Rocco, James Rainey, Howard Richards, Norman Smith, David Kipp, Andy Timko.
 Third Row: John Romanchock, Emery Breniman, Robert Brougher, Dick Johnson, Harold Ames, Chuck Gray, Walter Rice, Ray Brady, Andy Pecuch, Mike Peckyno, Richard McHenry, Jack Nelson.
 Fourth Row: Thomas Glasgow, Don Brady, James Brown, Jim Boyle, Mickey Bodnar, Joe Bennese, Ken Maurer, Mario DeLeonibus, Andy Skero, Len Petrush, Jim Phillips, William Burton, Walter Radish.
 Fifth Row: Henry Zwiener, Carl Vanshura, Harry Buell, Wilmer Mountain, Ray Mullen, David Emmel, Jim Barefoot, Steve Staruch, Joe Bunecicky, David Gallagher, Howard Niziniski.
 Sixth Row: Jim Cristman, Tom Fonner, Walter Peton, Bob Jozcik, Chuck Scoville, Ray Carlson, John Huffman, Walter Eversole, John Colwell, Dale Obade, Roddy Popovich, Chuck McKevitt, Andy Bryner, Arnold Adams, Jim Wharton, Jim Fleming.

OFFICERS

| | | | |
|----------------------|----------------------|--------------------------------|----------------------|
| President | Michael A. Rocca Jr. | Treasurer | Francis J. Lamendola |
| Vice-President | Howard Nizinski | Rep. to Student Congress | Philip Marella |
| Secretary | James R. Rainey | Faculty Sponsor | O. R. Bontrager |

Radio Club

OFFICERS

| | |
|---------------------------|-----------------|
| President | Charles Bittner |
| Vice President | Elwin Kerr |
| Secretary-Treasurer | Robert Clark |

Bottom Row, left to right: Mr. A. R. Smoyer, Charles Young, Roy Bucher.
 Second Row: Ralph Keller, Charles Bittner, Robert Clark.



Alpha Phi Omega

OFFICERS

President Joseph Bunecicky
 Vice President Linley Jones
 Treasurer John Barlow
 Recording Secretary Paul Fike
 Corresponding Secretary Allan Myers
 Historian Donald Brady
 Faculty Sponsor Mr. Merrill G. Campbell



Bottom Row, left to right: Mr. Merrill G. Campbell, Joseph Bunecicky, Howard L. Jones, Jr., Allan Myers, Paul Fike, John Barlow, Don Brady.
 Second Row: George Rummell, Bob Leeper, Richard Medve, Ronald Novak, William Walcutt, Ray Carlson, Bill Woodhead, Charles Riffle, John Walters.

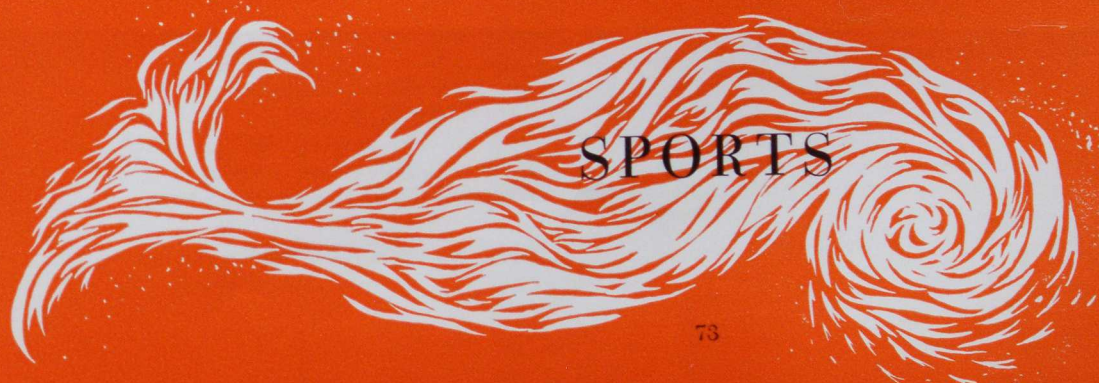
Sigma Alpha Eta

OFFICERS

President
 Leah Lemmon
 Recording Secretary
 Betty Jane Merenic
 Cor. Sec.-Treas.
 Myrna Cox
 Faculty Sponsor
 Mr. Herschel Bowlen

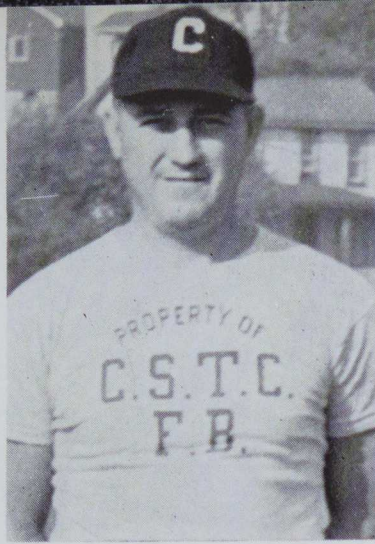


Bottom Row, left to right: Lucia DeRocco, Ray Carlson, Roy Shields, Rose Gaskey, Leah Lemmon, Betty Jane Merenic, Myrna Jean Cox, Mary Ann Lardin, Emery R. Breniman, James H. Holleran, Thelma Wright.
 Second Row: Mr. J. Herschel Bowlen, Rosemarie DelBene, Jan Nizenski, Marlene Ambrose, Ruth S. Morris, Kathleen Keteles, Colleen O'Brien, Mary Sue Gallatin, Betty Jane Croftcheck, Nanciann Tanner, Shirley Zimmerman, Connie Bercik, Miriam Lewis, Jean Wertz, Edith Kilroy, Mary Jo McWreath, Violet Dalson.
 Third Row: Elizabeth Clementson, Agnes Canova, Andy Fabian, Douglas Morgan, Wade Reynolds, George E. Petrisek, J. Mickey Bodnar, Steve Staruch, Alvy Paul, Bob Huffman, Art Hayes, Irene Jeney, Nancy Jane McCallum, Donnis Pierallini.



SPORTS

Football

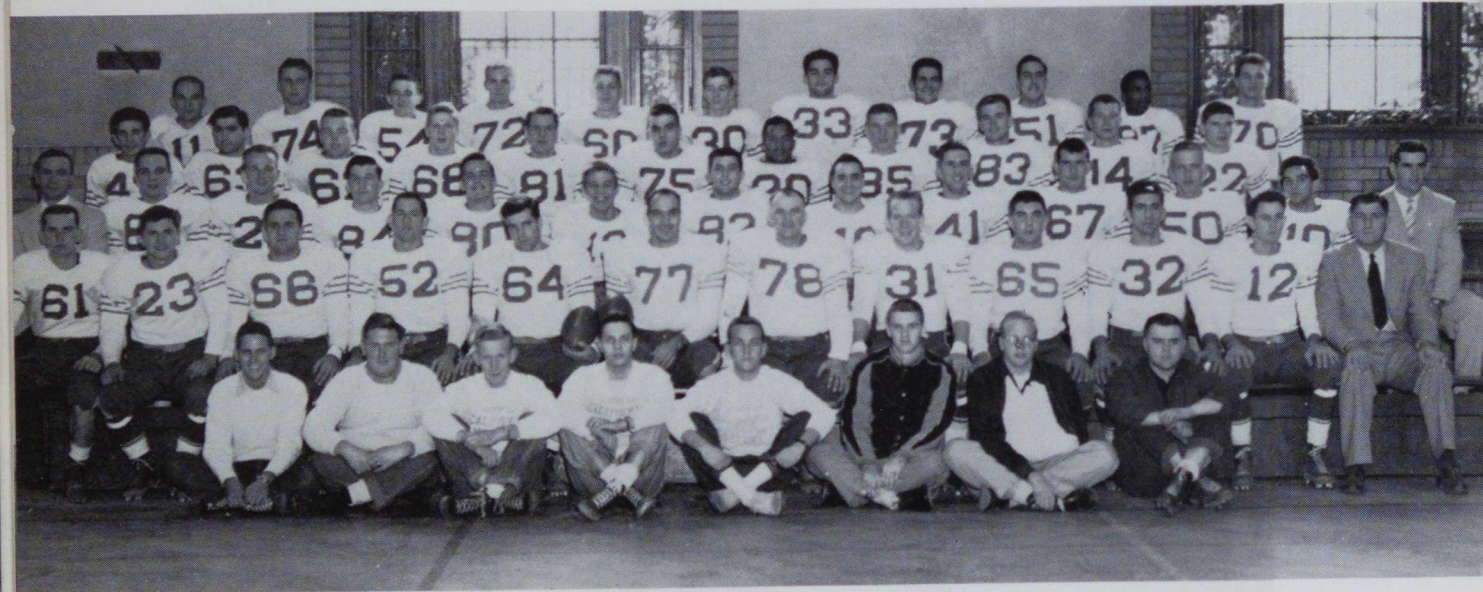


MR. THEODORE
NEMETH
Head Coach

MR. ANDREW SEPSI
Assistant Coach

SCORES

| | | | |
|---------------------|----|------------------|----|
| Edinboro | 6 | California | 20 |
| Indiana | 6 | California | 18 |
| Lock Haven | 26 | California | 20 |
| Shippensburg | 7 | California | 13 |
| Slippery Rock | 13 | California | 34 |
| Clarion | 20 | California | 0 |
| Bloomsburg | 24 | California | 13 |



Seated, left to right: Managers Doug Reynolds, Tom Mountain, Leo Goodman, James White, Doug Morgan, John Fecik, James Coulson, Trainer William Koslick.
 Bottom Row: Wendell Gower, Paul Maley, James Lopresti, Dean Bowman, John Miner, Philip Marella, Barney Bakewell, Warren Scott, Clyde Scursatone, Robert Keddal, Gary Kennedy, Mr. Sepsi.
 Second Row: Mr. Nemeth, Alex Osleger, Steve Staruch, Oscar Tentler, Ron LeFevre, Stan Milchovich, Mike Panich, George Polonoli, Don Shockey, Jack Flinn, Bruce Rice, Don DiNardo, Fred Fleming.
 Third Row: Regis Toprani, Carmen Ricco, Jim Weaver, Stanley White, Richard Krotzer, Donald Pepe, Milton Holt, James Mendola, Bernie Roberts, Richard Wiita, Ronald Novak.
 Fourth Row: Harold Theakstone, Thomas Pecosh, John Zwiebel, Edward Blake, Leo Patterson, John Preston.

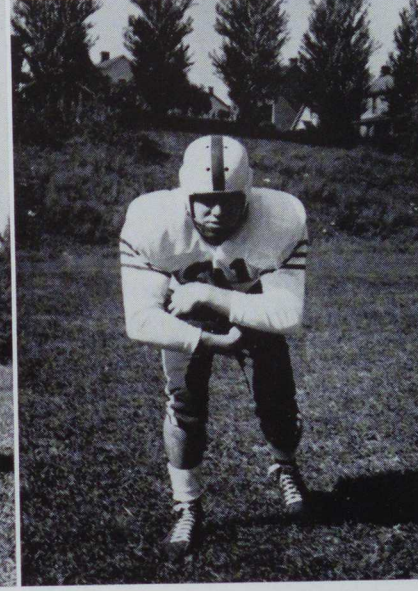
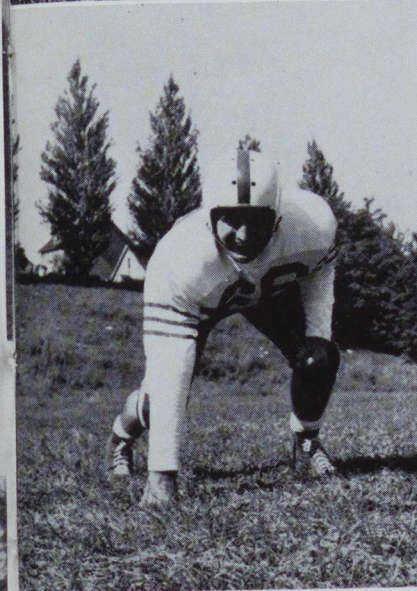
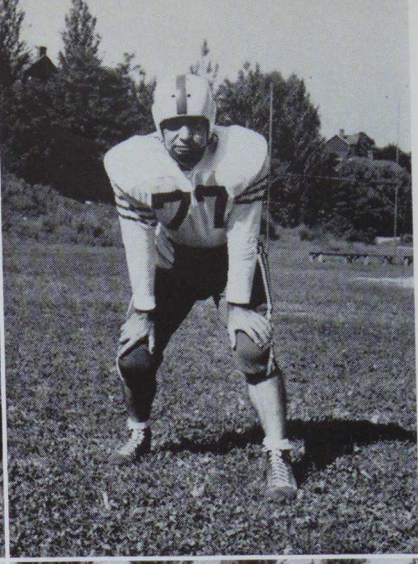
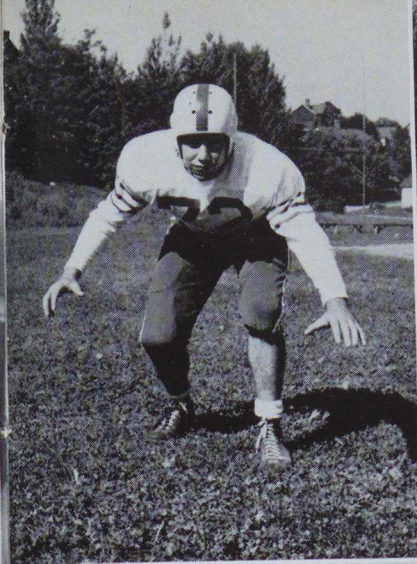
Seniors

John Minerd
Guard

Phillip Marella
Guard

James Lopresti
Tackle

Warren Scott
Fullback



H
O
L
D
T
H
A
T
L
I
N
E

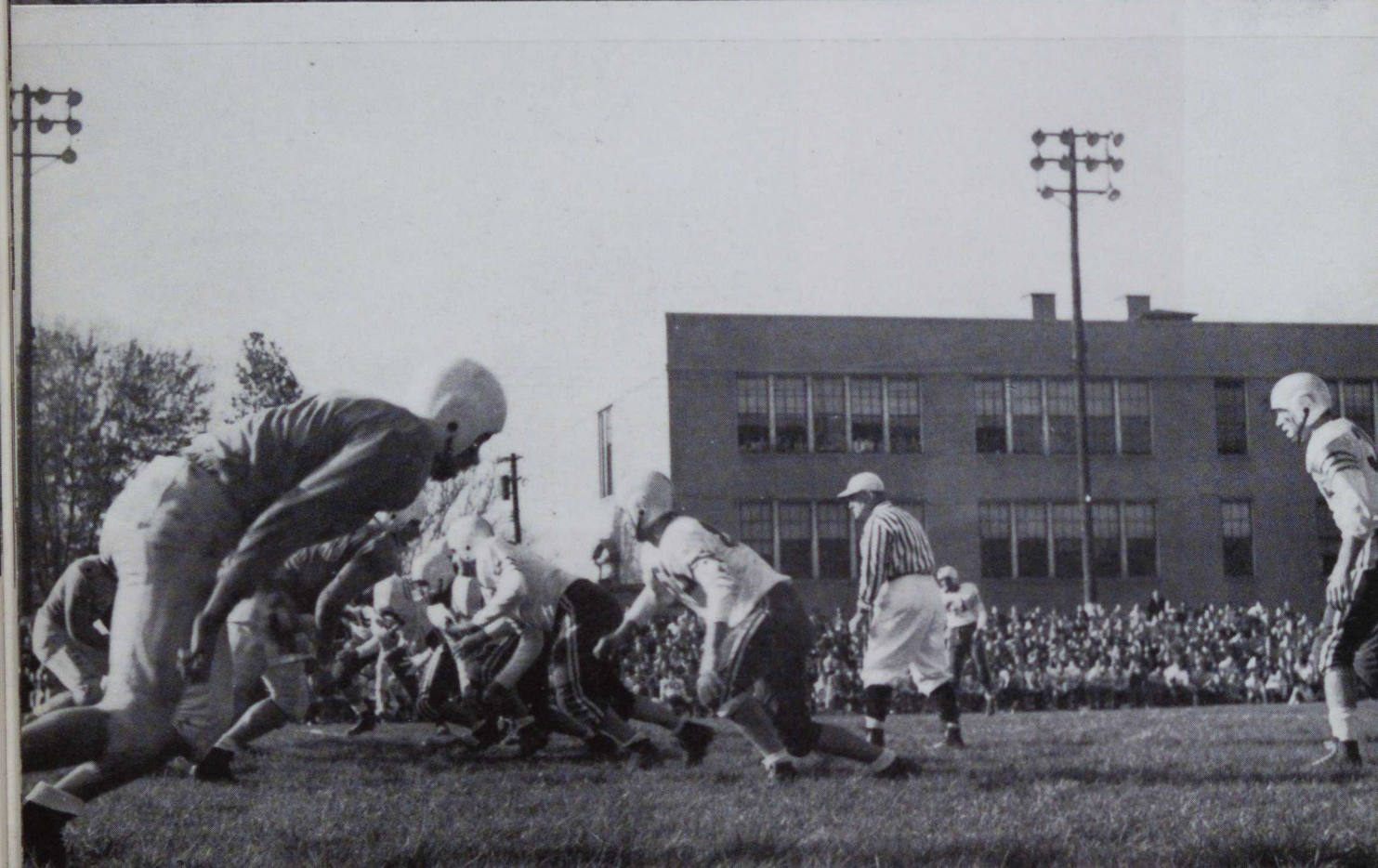


M
A
K
E

T
H
A
T

P
O
I
N
T

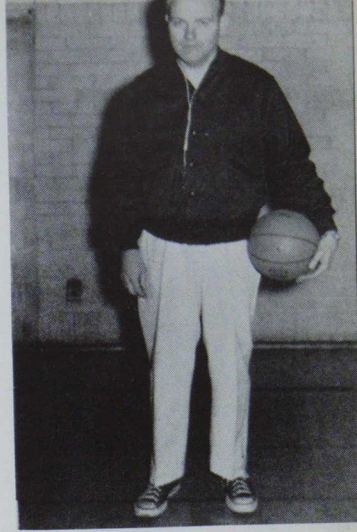




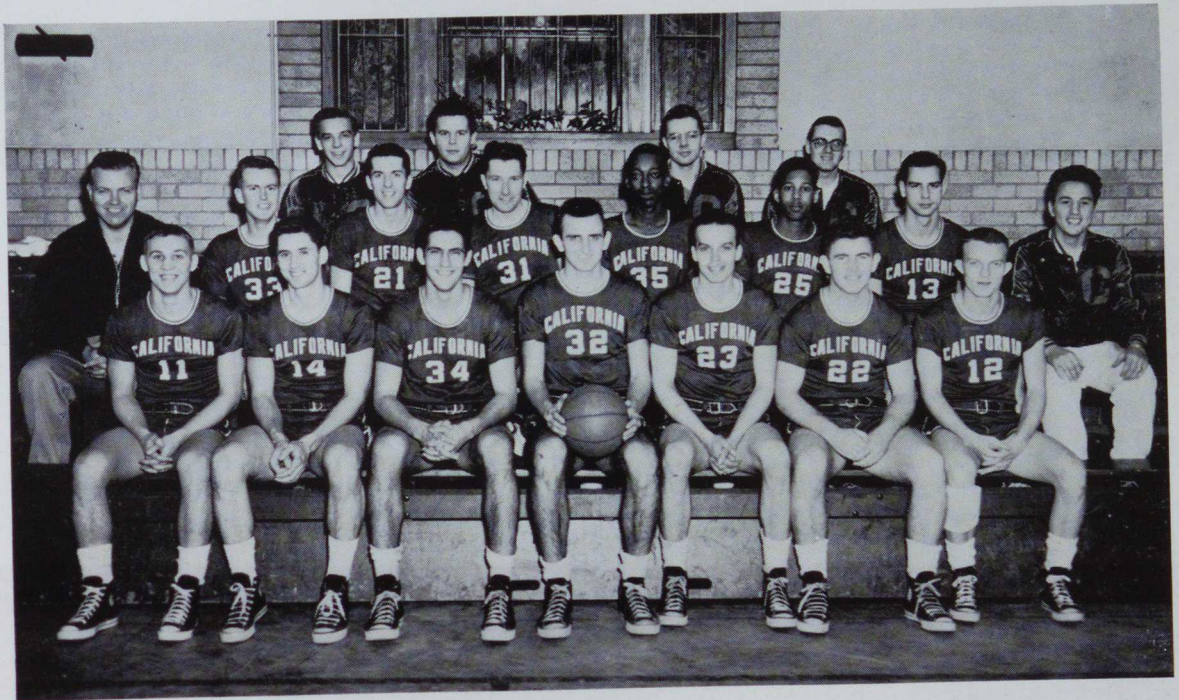
Basketball

SCORES

| | | | |
|--------------------|-----|-----------------|-----|
| St. Vincent | 80 | California | 93 |
| Waynesburg | 71 | California | 88 |
| Clarion | 76 | California | 72 |
| Indiana | 61 | California | 65 |
| Steubenville | 79 | California | 38 |
| Fairmont | 87 | California | 75 |
| West Liberty | 91 | California | 101 |
| Edinboro | 66 | California | 81 |
| Slippery Rock .. | 71 | California | 76 |
| St. Vincent | 66 | California | 86 |
| Millersville | 87 | California | 80 |
| Shippensburg | 78 | California | 79 |
| West Liberty | 83 | California | 100 |
| Edinboro | 70 | California | 85 |
| Waynesburg | 69 | California | 67 |
| Fairmont | 82 | California | 85 |
| Clarion | 82 | California | 92 |
| Indiana | 102 | California | 76 |
| Gannon | 86 | California | 71 |



Coach
Mr. Eugene Hester



Bottom Row, left to right: Stanley Milchovich, Lloyd Gilmore, Joseph Giamalva, Richard Majernik, James Pro-
tin, Jack Young, William Merryman.
Second Row: Mr. Hester, Robert Keller, Robert Walters, Robert Conaway, James Cheatham, Durce Jackson,
Donald Reed, Manager Edward Zielinski.
Third Row: Managers Joseph Cusic, Harry Campbell, Val Nichol, Roy Shields.



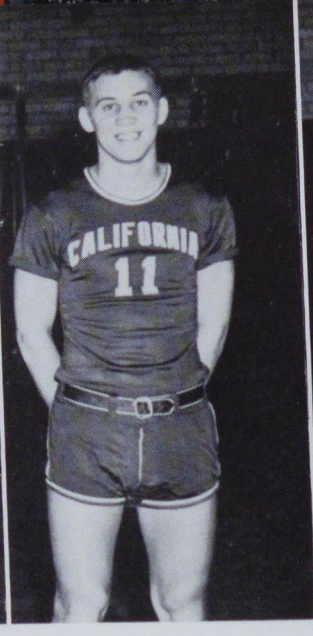
James Protin



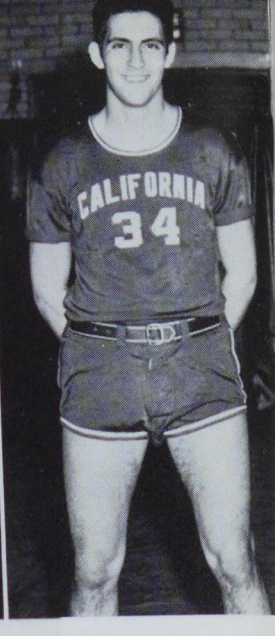
Lloyd Gilmore



Richard Majernik



Stanley Milchovich



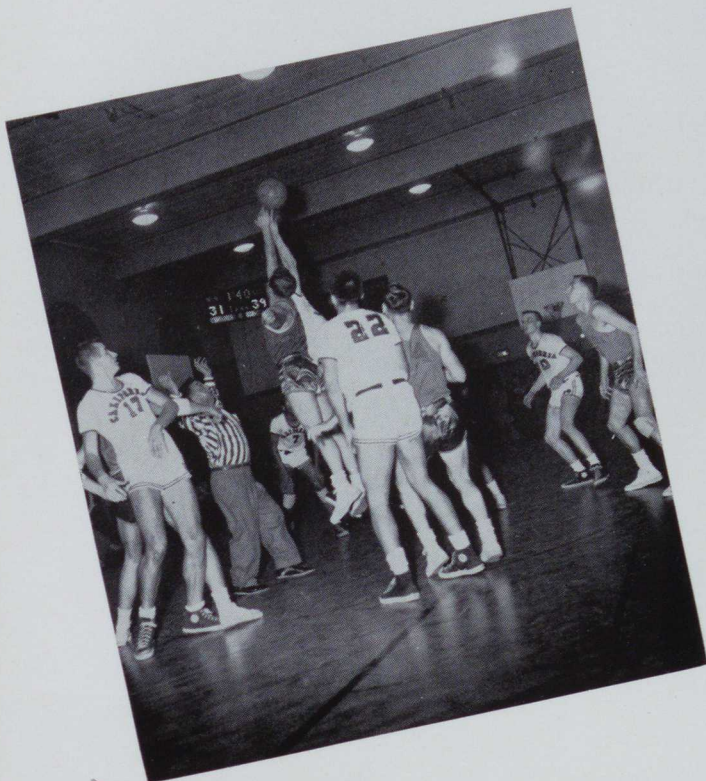
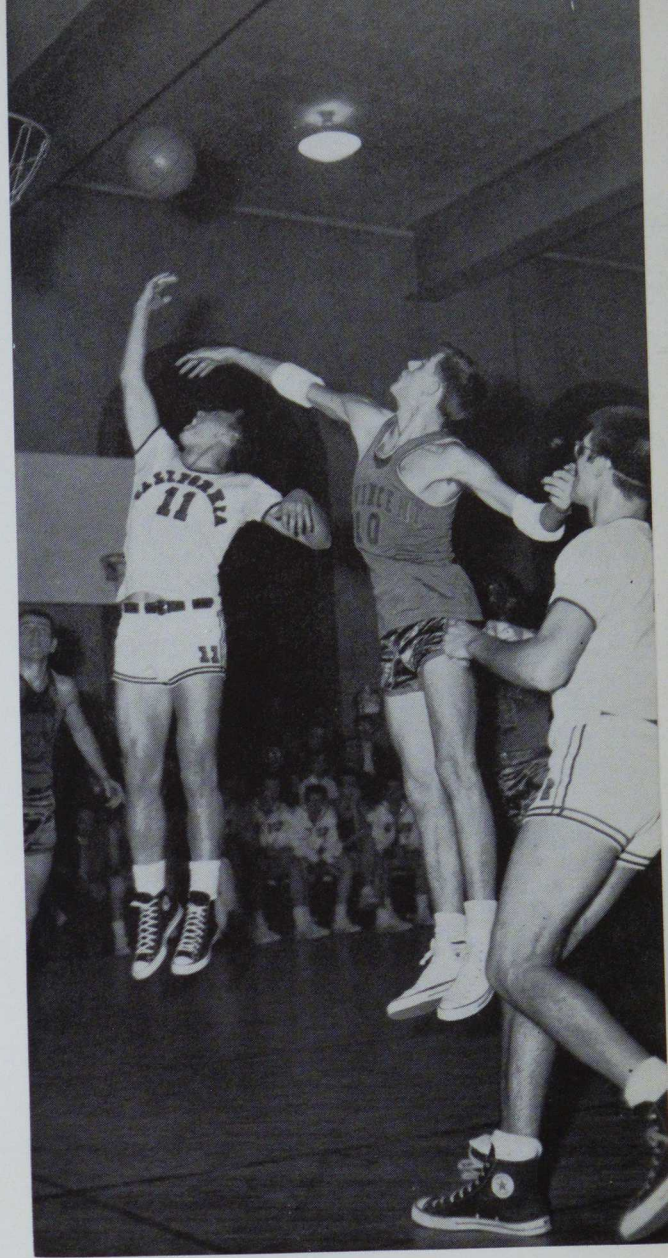
Joe Giamalva

1955 Varsity Squad



Total Points for Each Player — 1954-1955 Season

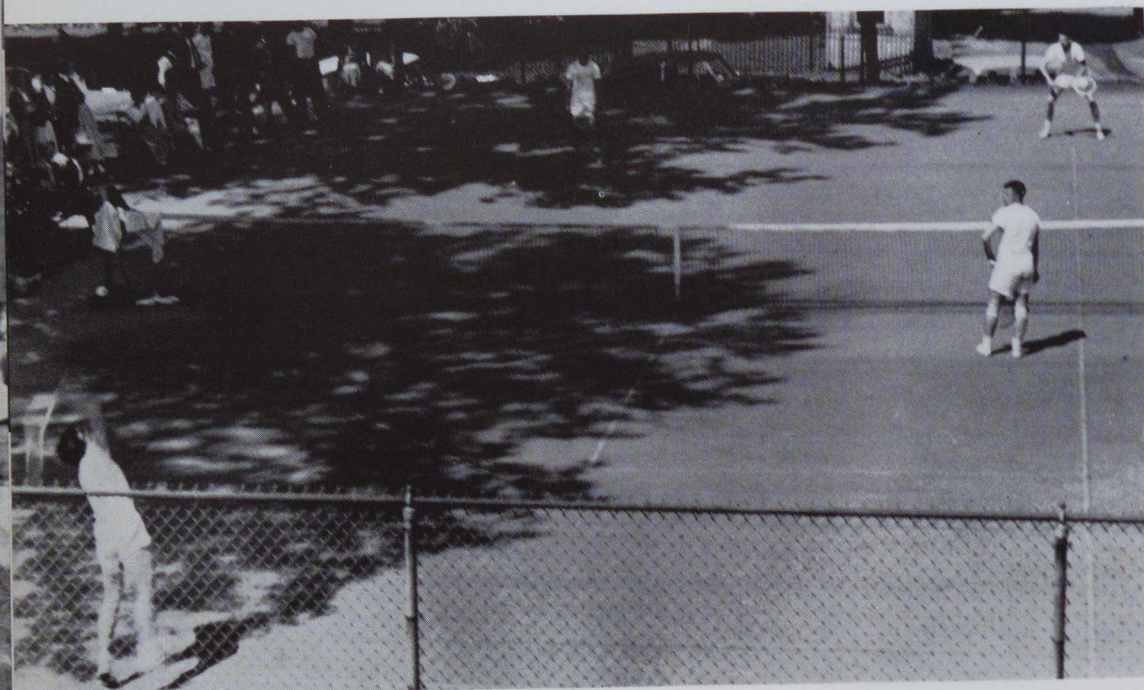
| | |
|-----------------------|-----|
| Dick Majernik | 407 |
| Lloyd Gilmore | 336 |
| Stan Milchovich | 215 |
| Joe Giamalva | 156 |
| Bob Walters | 150 |
| Jim Protin | 57 |
| Bob Gray | 44 |
| Druce Jackson | 17 |
| Bill Merryman | 12 |



RECORDS:

| | |
|---|--------------------------------|
| All-Time High Career Scoring Record | Dick Majernik 1951-1955 (1315) |
| Greatest Number of Wins in One Season | 1954-1955 Season (12) |

Tennis



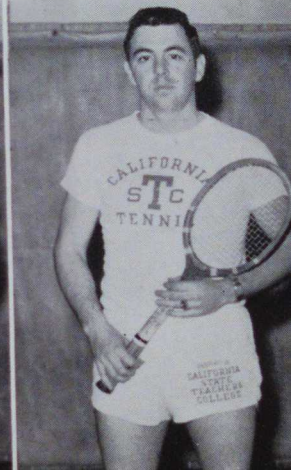
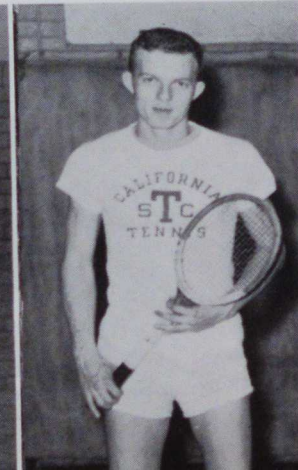
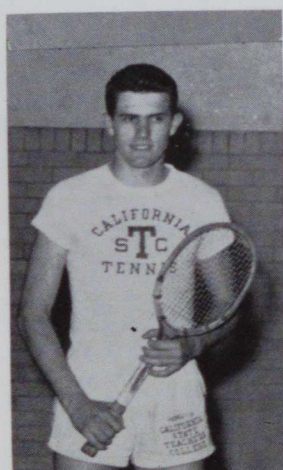
SCHEDULE

| | |
|------------------|--------------------------|
| ° April 13 | Washington and Jefferson |
| ° April 15 | Fairmont |
| ° April 20 | Indiana |
| April 23 | Slippery Rock |
| April 27 | Washington and Jefferson |
| April 29 | Bethany |
| May 3 | Indiana |
| May 5 | Fairmont |
| ° May 6 | Bethany |

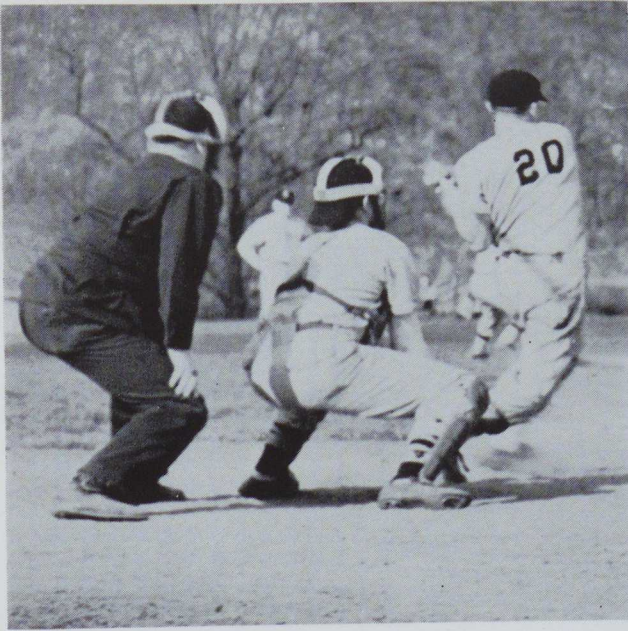
° Home Games

1955 Tennis Team

Joan Kray
 Fran Lamendola
 Andy Pecuch
 Ed Szymczyk
 Bob Walters
 Howard Nizinski
 Ron Remy
 Mike Rocca
 Mike Wilks
 Ed Kallok



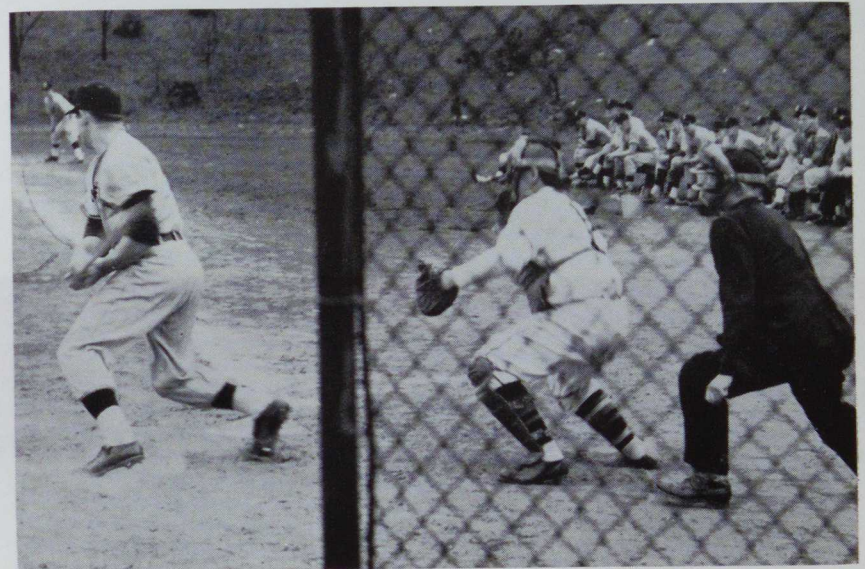
Baseball



SCHEDULE

| | |
|-----------------|--------------------------|
| April 16 | Bethany |
| April 16 | West Liberty |
| April 19 | Waynesburg |
| *April 21 | Washington and Jefferson |
| *April 26 | Bethany |
| April 28 | Washington and Jefferson |
| *April 30 | West Liberty |
| *May 4 | Waynesburg |
| May 7 | Indiana |

*Home Games



Cheerleaders



Left to right: Nancy Hughes, Roberta Durnell, Betty Jane Merenic, Marlin Barbic, Carolyn Shal.

Our Cheerleaders in action!



Varsity Club



OFFICERS

President Byron Bakewell
 Vice-Pres. Charles Bowman
 Sec.-Treas. Roberta Durnell
 Faculty Sponsor .. Mr. Nemeth

Bottom Row, left to right: Carolyn Shal, Betty Jane Merenic, Roberta Durnell, Nancy J. Hughes, Joan Kray.
 Second Row: Leo Goodman, Andy Pecuch, Roy Shields, John Miner, Dick Majernik, Philip D. Marella, Charles Bowman, Ed Zielinski.
 Third Row: James Bricker, Ronald Novak, Dean Bowman, Larry Papini, Bob Walters, Paul Maley, Don DiNardo, Lloyd Gilmore, Jack Young.
 Fourth Row: Bill Merryman, John Fecik, Oscar Tentler, Gene Gorman, James Coulson, Howard Campbell, Warren Scott, Donald Schockey, Leo Patterson, Mr. Ted Nemeth.

Athletic Council

OFFICERS

Chairman Dr. Harold Traister
 Secretary Joan Kray



Bottom Row, left to right: Mr. Clyde Hartman, Mr. Eugene Hester, Joan Kray, Mr. William Hormell.
 Second Row: Roy Shields, Philip Marella, John Miner.



Intramurals



Women's Athletic Association

OFFICERS

President Joan Kray
Vice-President Carol Troutman
Secretary Angela Manetti
Treasurer Angeline Bongianino
Rep. to Student Congress, Betty Ellenberger
Faculty Sponsor Miss Louise Hildreth



Seated, left to right: Carol Troutman, Joan Kray, Angela Manetti, Ange Bongianino.
Standing: Janet McCune, Donnis Pierallini, LaVerne Bazelwich, Bernadine Grebb, Ina Jean Hall, Irene Jeney.

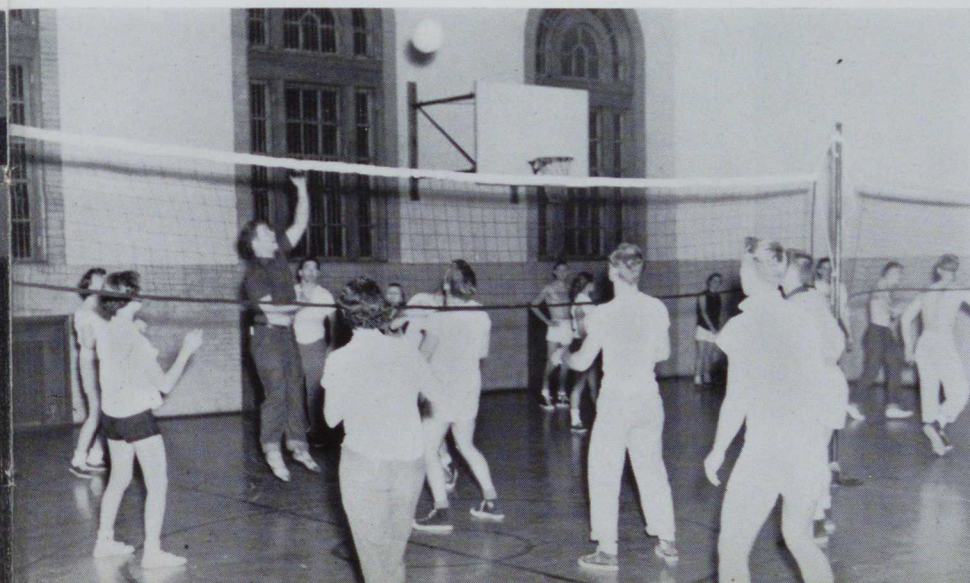




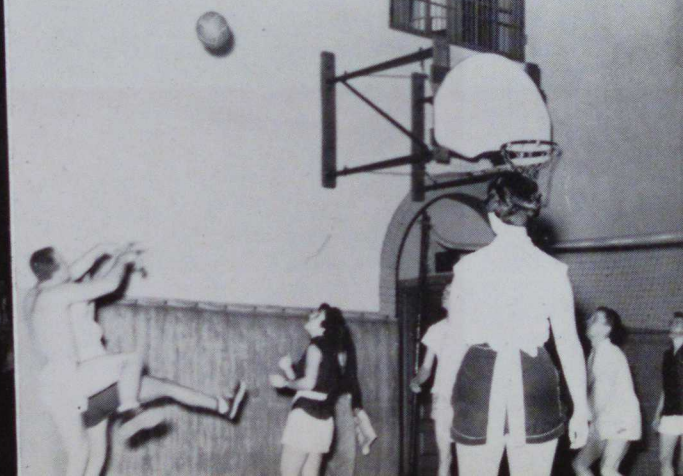
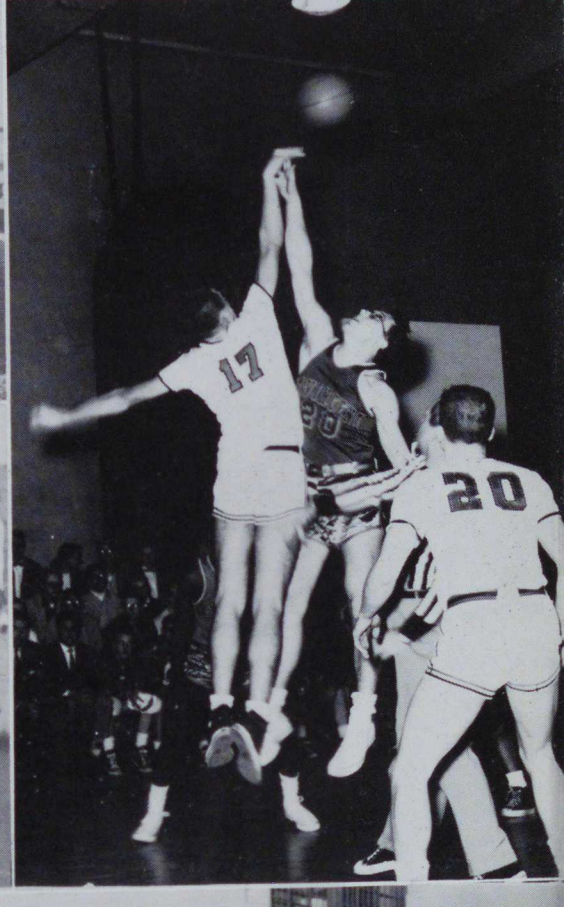
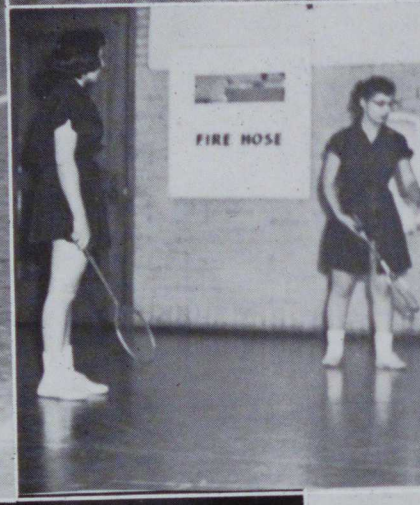
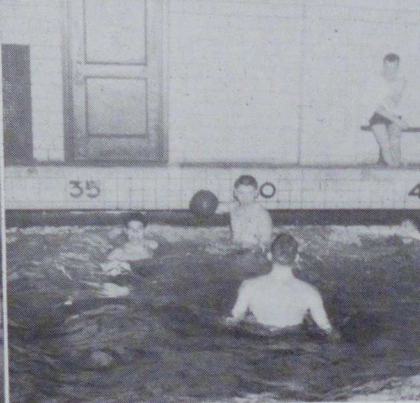
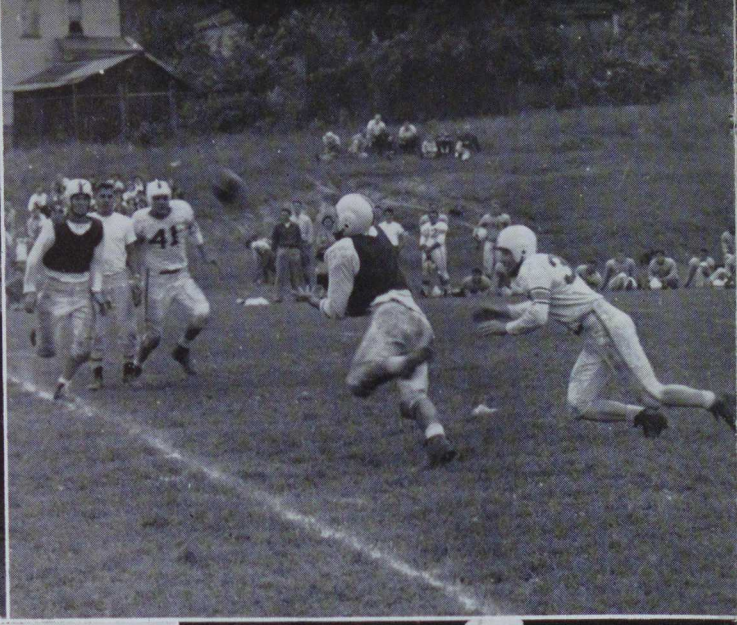
SHUFFLEBOARD

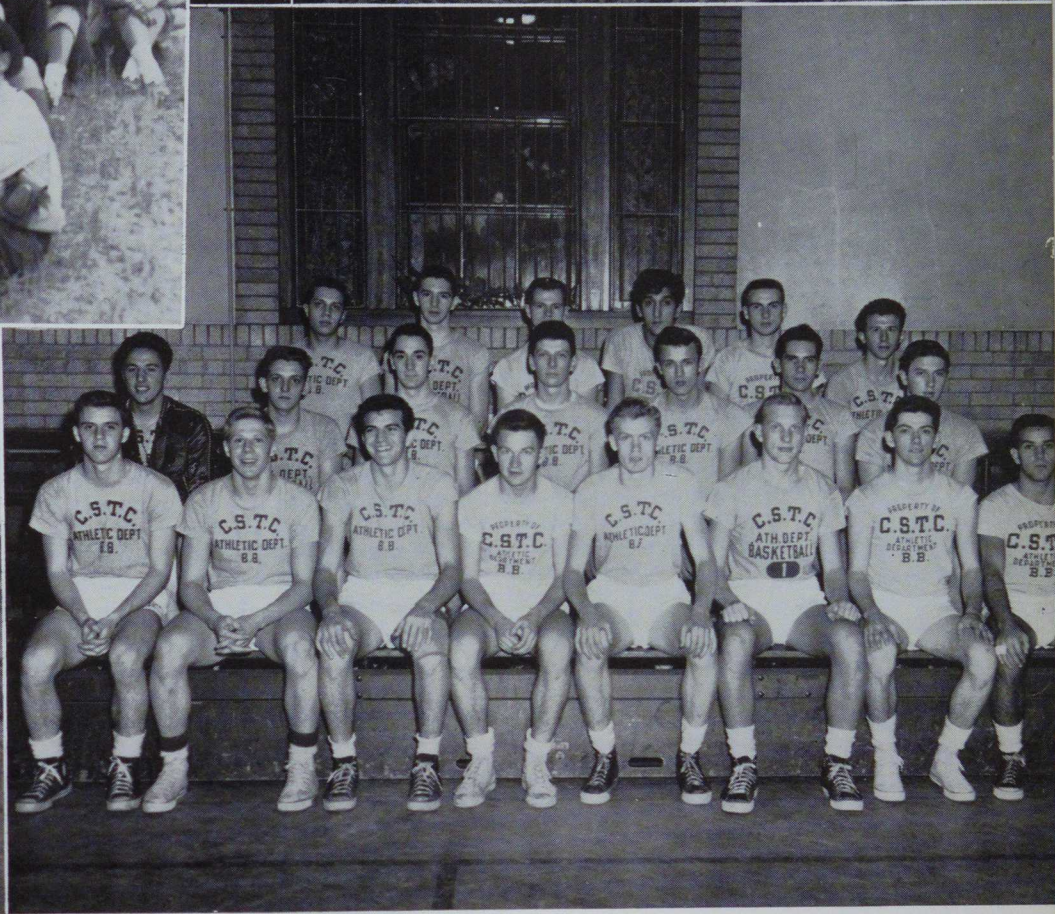
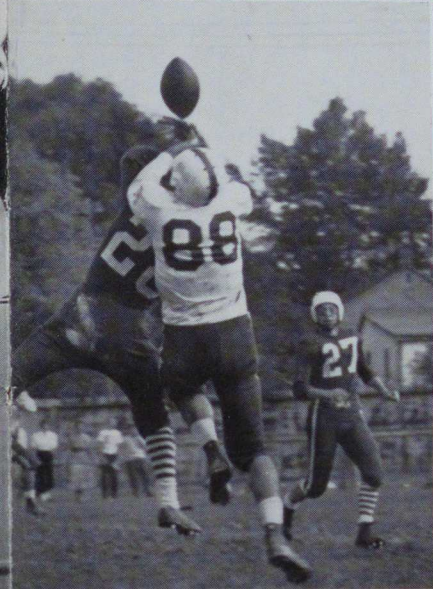
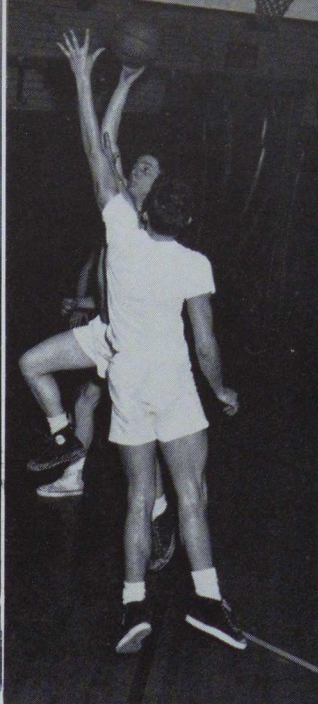


BADMINTON

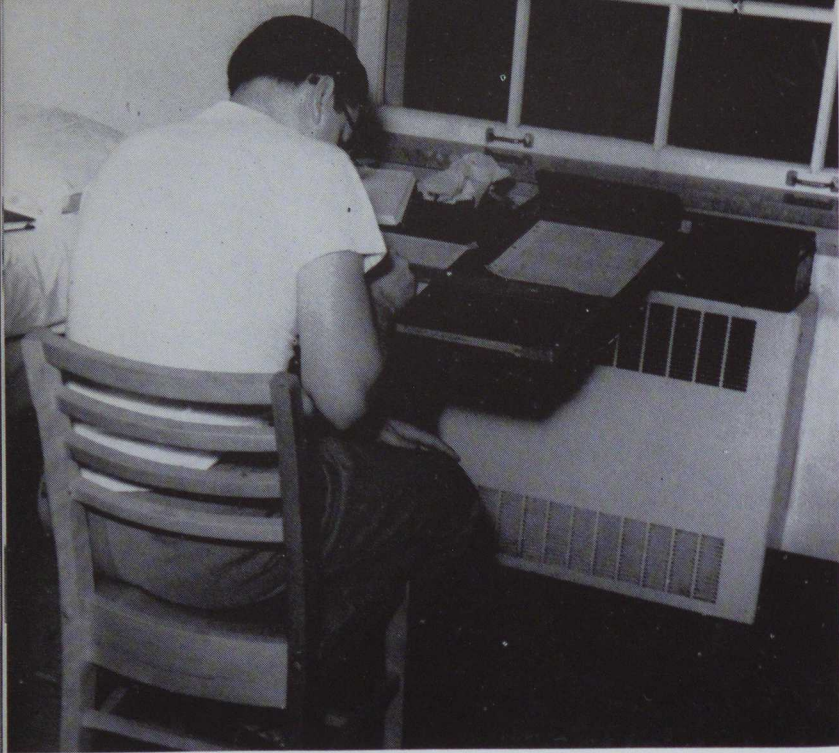


MIXED
VOLLEYBALL



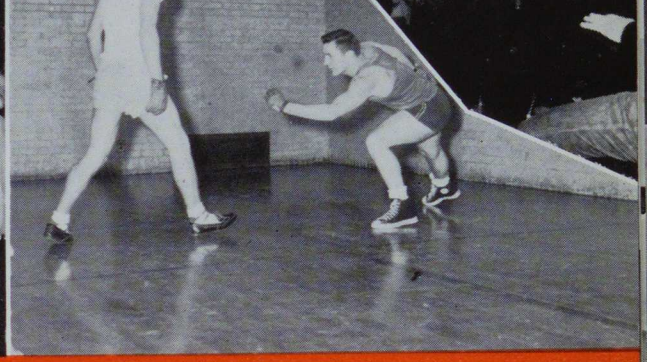
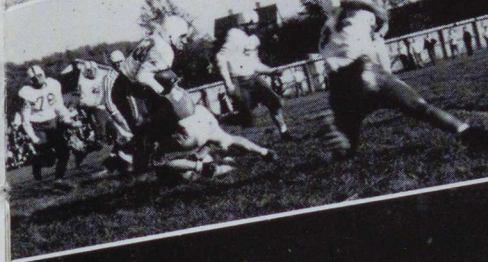
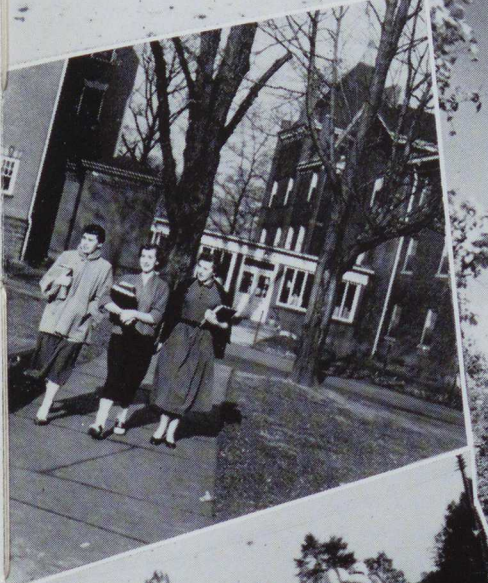


Athletics



Study Hours



A large, stylized white graphic consisting of swirling, flame-like or wave-like patterns. The graphic is set against a solid red background and frames the text 'COLLEGE LIFE'.

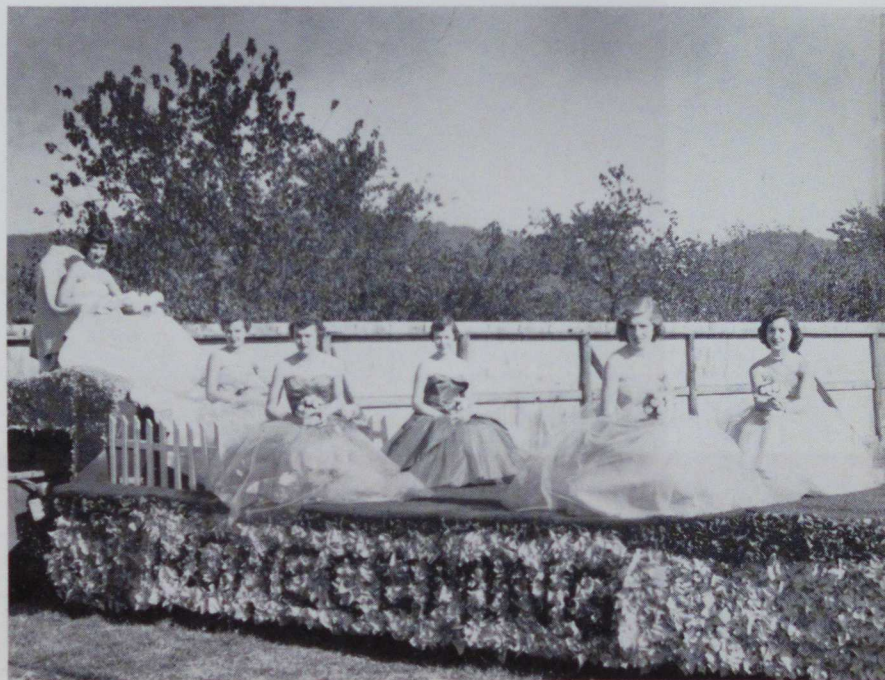
COLLEGE LIFE

Homecoming Queen



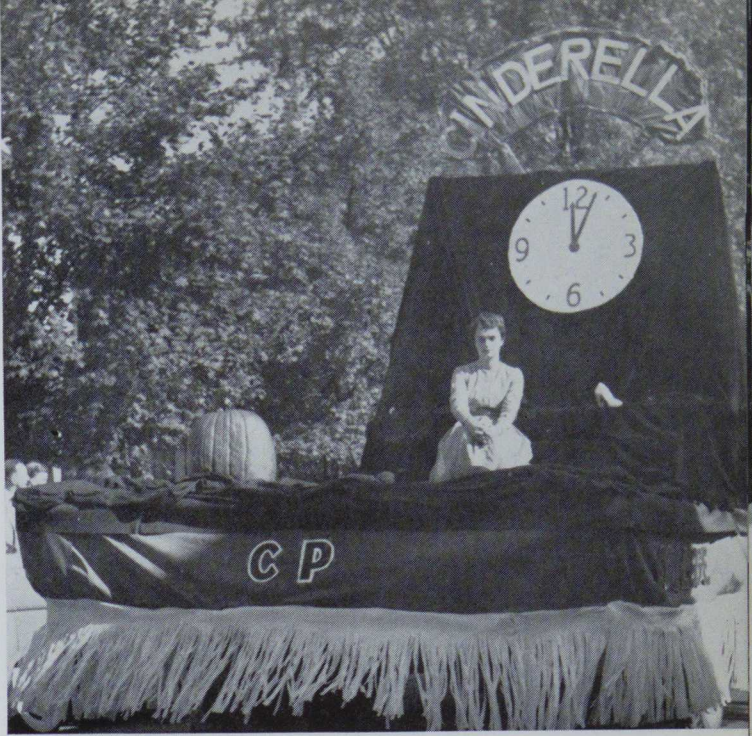
MISS LaVERNE BAZILWICH

RIFLE CLUB FLOAT



THE QUEEN AND HER ATTENDANTS
WOMEN'S ATHLETIC ASSOCIATION FLOAT

*Alumni
Homecoming
Day
October 23, 1954*



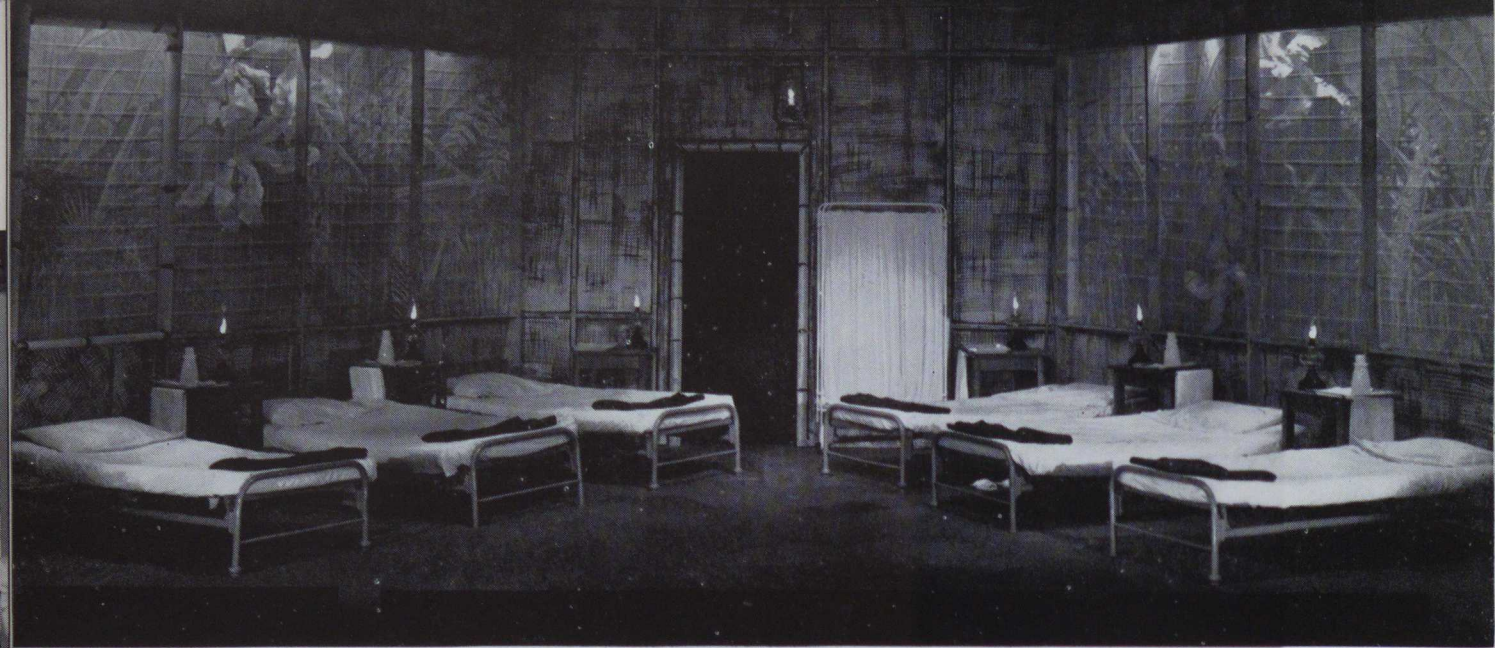
COLLEGE PLAYERS FLOAT



FRESHMAN FLOAT

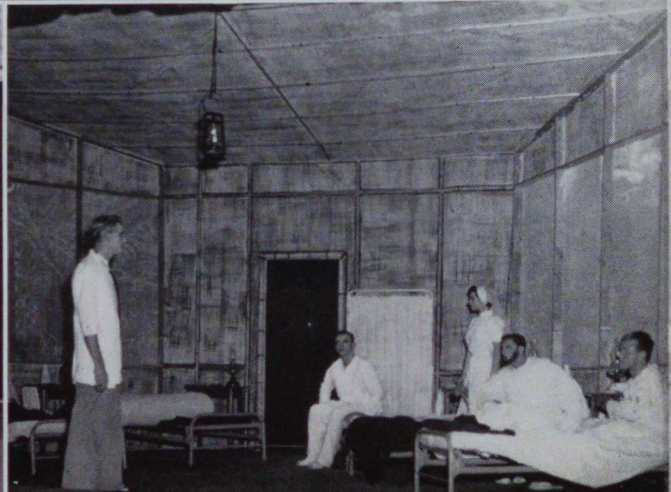


ALPHA PHI OMEGA FLOAT



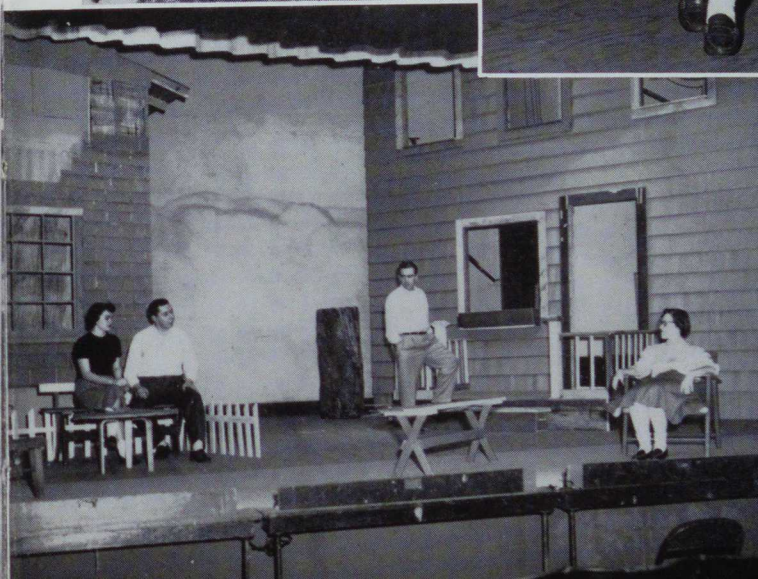
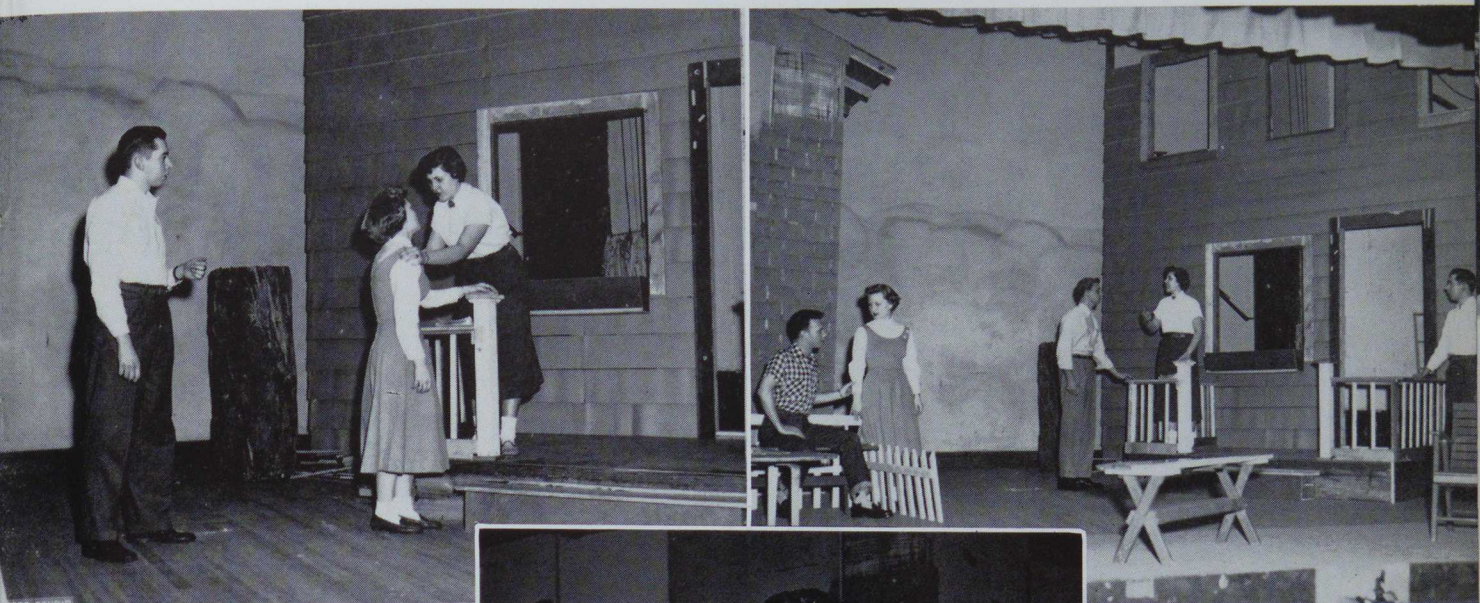
COLLEGE PLAYERS PRESENTS

The Hasty Heart



College Players Presents

ALL MY SONS





PITTSBURGH SYMPHONETTE

Winter Music Festival

MESSIAH



Student Workers

WAITERS AND WAITRESSES

Bottom Row, left to right: Miss Arlene Kerstetter, Joyce Soisson, Rose Marie DelBene, Phyllis Mock, Pat Dochinez, Pat Gouger, Carol Troutman, Shirley Paul, Joan Kray, Angie Manetti.

Second Row: Leo Goodman, Joe Cusic, Bob Springer, Lee Sweeney, Charles Bowman, Steve Staruch, Andy Skero, Ralph Holtz.

Third Row: Howard Mason, Russell Amalong, Robert Clark, Howard Campbell, Joe Buncicky, Paul Coleman.



SNACK BAR STAFF

Kneeling: Donald Shockey.
 Standing, left to right: Mrs. Ann Rush, Mrs. Ann Grimes, Lena Nuccetelli, Ina Hall, Mary Lou Platt, Mary Jo McWreath, Helen Joseph, Mrs. Mary N. Crockett, Mrs. Henrietta Sileski.



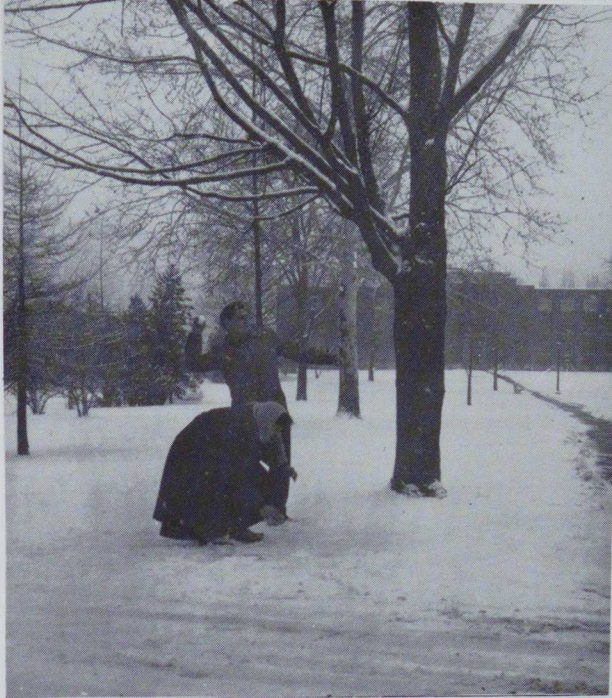


WINTER



SCENES





"C.S.T.C." Students in the Snow



THE JUNIOR DANCE





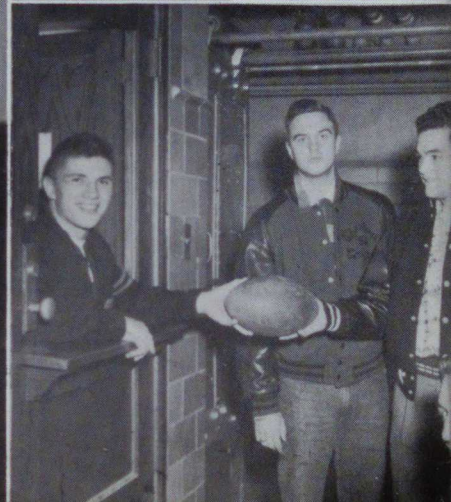
THE STUDENT
FELLOWSHIP
HALLOWEEN DANCE

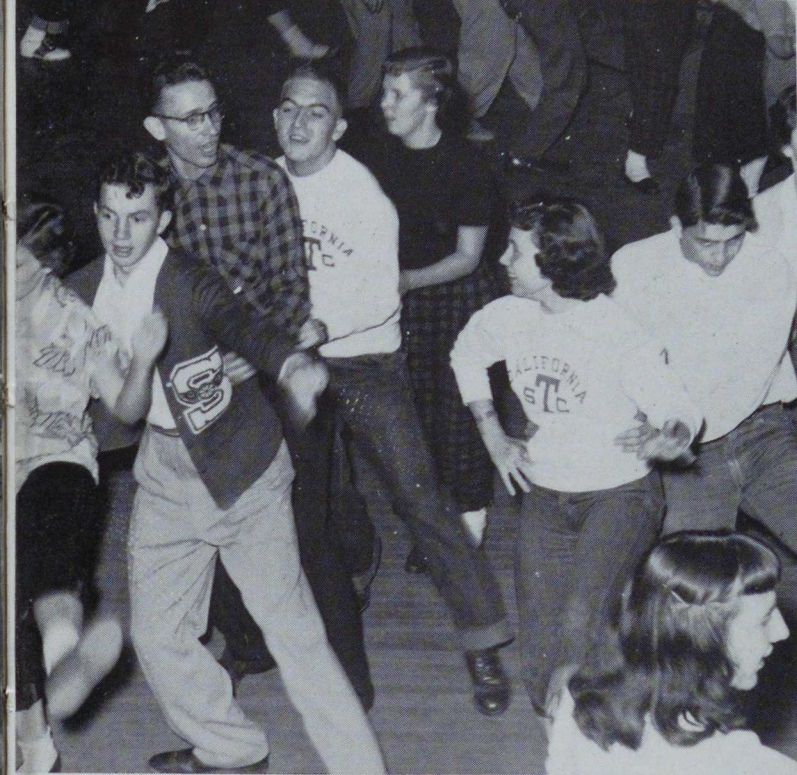


The Campus At Night

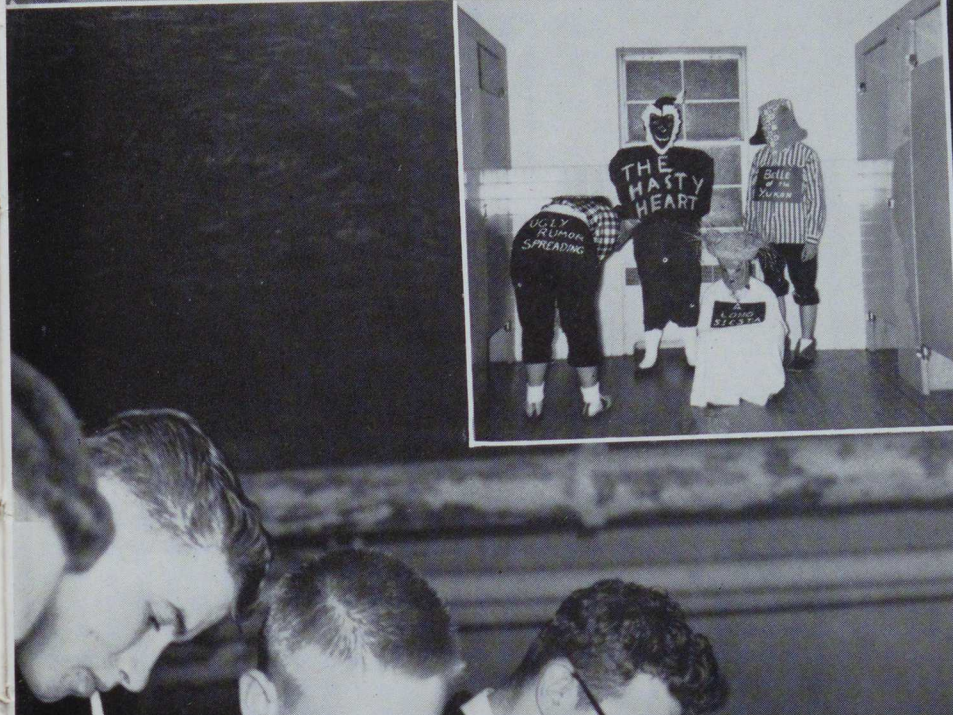




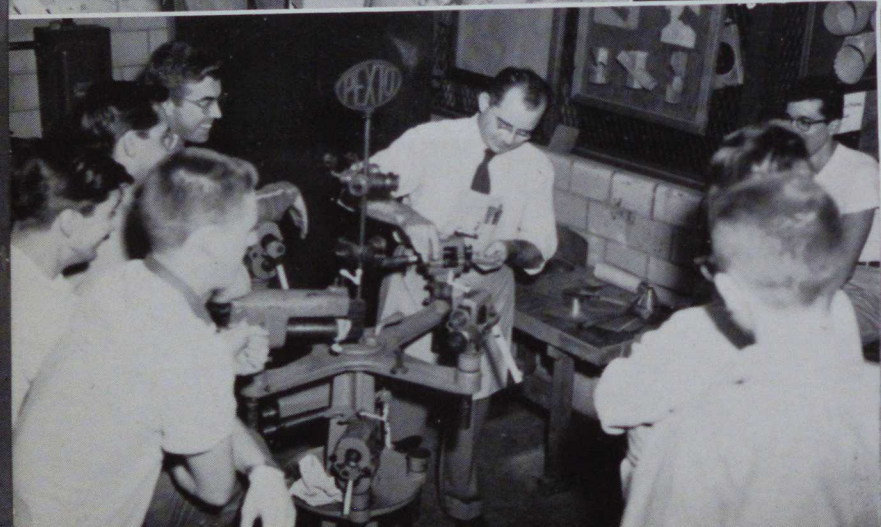
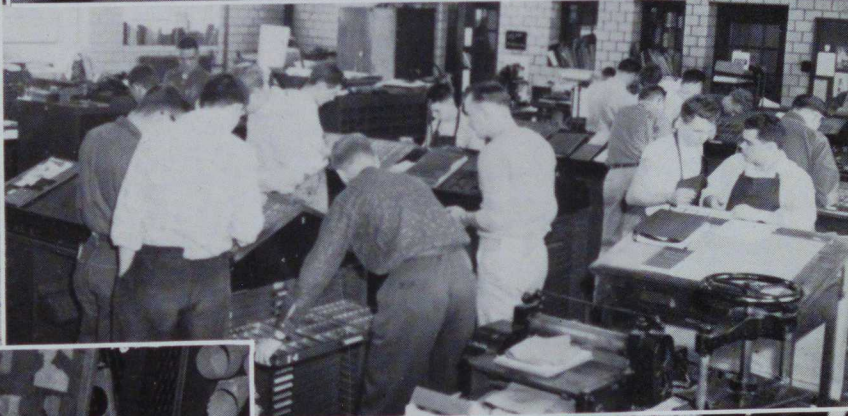
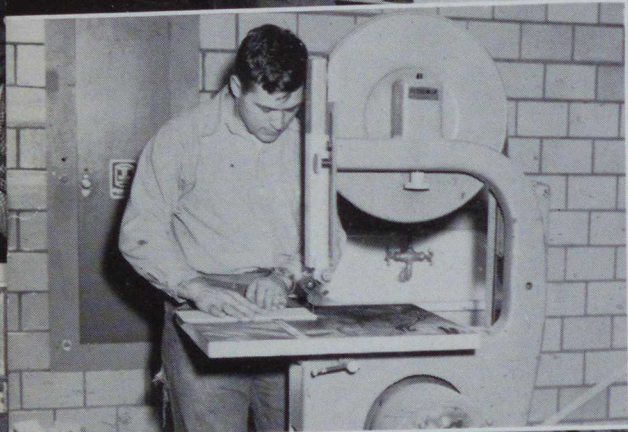
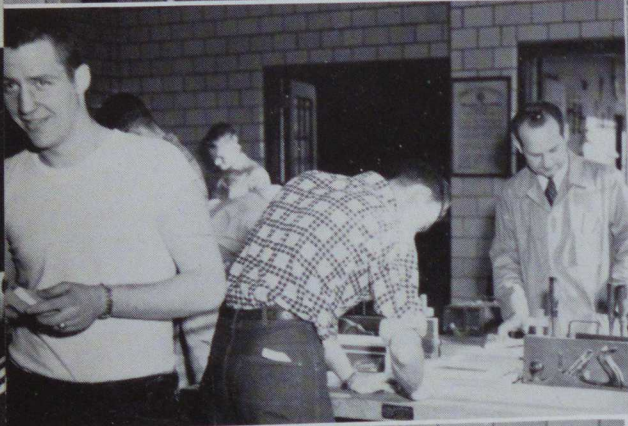








Industrial Arts Department







Alma Mater

California, Alma Mater,
Now we sing to thee
California, dear forever
In our memory.

With our voices loudly ringing
Of thy fame we're ever singing
California, Alma Mater,
Hail! All Hail! to thee.

For the friends and joys you gave us,
We give thanks to thee
All thy knowledge we'll make worthy
For posterity.

May thy reign be ever prosperous
And thy name forever glorious
California, Alma Mater,
Hail! All Hail! to thee

— Philip Rossi, Class of '37

The Pledge

I do solemnly pledge:

That I will never consciously or willfully bring discredit to this college;

That I will faithfully perform any task entrusted to me;

That I will do my utmost to raise the academic, social, and civic standards of this College;

That I will obey its laws and customs, respect its ideals, and honor its traditions;

That I will continually endeavor to prepare myself for the noblest of all professions — that of teaching;

And in all these ways I will strive to transmit to my successors a greater, better, and more beautiful California than was inherited by me.



Directory

FRESHMEN

| | | | |
|--|-----------------|--|-----------------|
| Adams, Virginiann Jean, Brownsville | Secondary | DeRocco, Lucia, Monessen | Atypical |
| Alexander, Jo Ann, Aliquippa | Secondary | DiNardo, Donald Paul, Ellsworth | Secondary |
| Allen, Mary Susan, Belle Vernon | Elementary | Dolan, Donald Kenneth, Charleroi | Industrial Arts |
| Alonso, E. Joann, Donora | Secondary | Dreibelbis, Robert Morgan, Snow Shoe | Secondary |
| Ames, Harold Grant, Bentleyville | Industrial Arts | Dreibelbis, William Henry, Snow Shoe | Industrial Arts |
| Anderson, Charles M., Emsworth, Pittsburgh | Industrial Arts | Drozeck, Alex William, Grindstone | Elementary |
| Ashcraft, Helen Jeanne, Monongahela | Elementary | Dukich, Alice Helen, Elizabeth | Secondary |
| Babish, Stephen Michael, Denbo | Industrial Arts | Dulick, Andrew Paul, Ellsworth | Industrial Arts |
| Ballant, Joseph Ryan, West Brownsville | Secondary | Duncan, Janet Marie, Freedom | Elementary |
| Barber, Wilbur Lee, Uniontown | Elementary | Dunmire, Howard Dennis, Monongahela | Industrial Arts |
| Barger, Merle Allen, Kittanning | Industrial Arts | Elder, Edmund Joseph, Charleroi | Secondary |
| Barlow, John William, Elizabeth | Industrial Arts | Ercegovic, Edward E., Brier Hill | Secondary |
| Barnes, James William, Petrolia | Industrial Arts | Everard, Louis Miles, Ingram | Industrial Arts |
| Barron, Jr., Merle V., Somerset | Industrial Arts | Everett, Mary Lee, Pittsburgh | Elementary |
| Bartos, Jack Marvin, Uniontown | Secondary | Fabian, David Warren, Stockdale | Secondary |
| Bashour, Henry A., Republic | Secondary | Ferguson, Adrienne Arlene, California | Secondary |
| Beall, Alan Patrick, Belle Vernon | Industrial Arts | Ferguson, Arthur Earl, Hyndman | Industrial Arts |
| Beck, John Nicholas, Monessen | Industrial Arts | Fike, Jr., Paul Stanton, Uniontown | Industrial Arts |
| Beck, Ruth Ellen, Rockwood | Elementary | Fonner, Thomas Scott, New Castle | Industrial Arts |
| Bedner, Edward John, Perryopolis | Industrial Arts | Forsythe, Ronald Louis, West Brownsville | Secondary |
| Bellora, Sylvia Ann, Monessen | Elementary | Francis, Albert John, Brownsville | Secondary |
| Bickel, Alan Gay, Parker | Industrial Arts | Frederick, Ronald Stanley, Bentleyville | Secondary |
| Bitonti, Joe Paul, Belle Vernon | Elementary | Gabler, Dorothy Joan, Greensboro | Elementary |
| Blozik, Toni Yvonne, Daisytown | Secondary | Gallagher, Daniel Charles, Johnstown | Industrial Arts |
| Bodnar, Phyllis Elaine, Vestaburg | Secondary | Giamalva, Joseph Clement, Charleroi | Secondary |
| Bonari, C. George, Monessen | Industrial Arts | Gibbons, June Noreen, Washington | Elementary |
| Bongiorno, Joan Marie, Charleroi | Secondary | Gifford, Kenneth M., Petrolia | Industrial Arts |
| Bradley, Mary Catherine, Coulter | Elementary | Gilchrist, Thomas A., Belle Vernon | Industrial Arts |
| Brady, Raymond George, Pittsburgh | Secondary | Girts, H. Dean, Johnsonburg | Industrial Arts |
| Brougher, J. Robert, Somerset | Industrial Arts | Gladish, John Matthew, Bentleyville | Secondary |
| Brown, James Howard, Washington | Industrial Arts | Glasgow, Thomas William, United | Industrial Arts |
| Brown, John Ira, California | Secondary | Gowern, Joe Frederick, Canonsburg | Industrial Arts |
| Bruno, Arlene Yvonne, Uniontown | Elementary | Grant, Alfred, Republic | Elementary |
| Bryner, Andy Melvin, California | Secondary | Gray, Charles Morgan, Uniontown | Elementary |
| Buchta, Clyde Joseph, Charleroi | Secondary | Gregg, J. Warren, Charleroi | Secondary |
| Buell, Harry Lee, Monongahela | Industrial Arts | Guzick, William Nicholas, Monongahela | Industrial Arts |
| Burdette, James Roy, Charleroi | Secondary | Haas, Anna H., Belle Vernon | Elementary |
| Busch, Dolores Marie, Monessen | Elementary | Hall, Nancy Faye, Confluence | Secondary |
| Buzzi, Mary Claire P., Monongahela | Elementary | Halter, Doris H., East McKeesport | Elementary |
| Cadwell, Ernest D., West Brownsville | Industrial Arts | Hammond, Rodger Kahl, Johnstown | Industrial Arts |
| Canova, Agnes Elizi, Monessen | Atypical | Harenski, Paul John, Herminie | Secondary |
| Carter, Thomas Albert, White Haven | Industrial Arts | Heddleston, Lauerne H., Uniontown | Industrial Arts |
| Celani, John, Greensboro | Secondary | Hedman, James Edward, Sheffield | Industrial Arts |
| Cenedella, James Anthony, Uniontown | Secondary | Henck, William Edward, Greensboro | Secondary |
| Chacko, Richard George, Charleroi | Secondary | Herbert, Beverly Jean, Vanderbilt | Secondary |
| Checchi, Louis James, Allenport | Secondary | Hicks, Wilma Jean, Uniontown | Elementary |
| Childress, Shirley Anne, Charleroi | Elementary | Hodgson, Thomas Earl, Charleroi | Secondary |
| Chilia, Joseph Mario, Arnold | Industrial Arts | Hoffman, James Vincent, Belle Vernon | Secondary |
| Cimoric, Thomas Frederick, Farrell | Industrial Arts | Hoffman, Robert Owen, Brownsville | Secondary |
| Clark, Jr., John Kirk, Charleroi | Secondary | Hogan, Carol Ann, Belle Vernon | Elementary |
| Clementson, Elizabeth R., Harrisburg | Secondary | Hollis, Neddie Christopher, New Kensington | Secondary |
| Coates, Iris Kathleen, Fayette City | Elementary | Holt, Milton, Pittsburgh | Industrial Arts |
| Cogley, Alan Lee, Sarver | Industrial Arts | Hrics, Paul D., Uniontown | Industrial Arts |
| Colvin, Ruth Arlene, Charleroi | Elementary | Hrutkay, Edward Charles, Bentleyville | Industrial Arts |
| Courtly, Mark Blaine, Charleroi | Secondary | Huber, Joanne Beverly, Monongahela | Elementary |
| Crayton, Mary Jane, Uniontown | Elementary | Hudock, Eugene George, Connellsville | Industrial Arts |
| Crutchman, Dolores Elaine, Keisterville | Elementary | Humphries, Sylvia Louise, Charleroi | Elementary |
| Cuddy, Russell Dale, Floreffe | Secondary | Husher, Lee Kenneth, Monessen | Industrial Arts |
| Cumashot, John Ronald, Brownsville | Industrial Arts | Ivanco, Theodore, Pittsburgh | Secondary |
| Del Bene, Rose Marie, Jeanette | Elementary | Jameson, Claire Louise, Brownsville | Elementary |
| Deleonibus, Mario S., Brownsville | Secondary | Jeney, Irene Martha, California | Atypical |
| Della Penna, Sophia M., Grindstone | Elementary | Jesick, James F., Belle Vernon | Secondary |
| De Marchi, Gary, Jeannette | Industrial Arts | Jesso, Donna L., Masontown | Elementary |
| | | Joczik, Robert Louis, McKeesport | Secondary |

Directory

| | | | |
|--|-----------------|---|-----------------|
| Johnston, Hazel Elizabeth, McDonald | Elementary | Mendola, James Joseph, Monongahela | Secondary |
| Jones, Robert Lee, Apollo | Secondary | Merritt, Keith Lorain, Canonsburg | Industrial Arts |
| Joseph, Helen Mae, Newell | Elementary | Mickle, Betty Lou, Windber | Elementary |
| Kalasky, Rudolph Stephen, Republic | Secondary | Miller, Shirley Lee, Stoystown | Elementary |
| Kaleita, Joseph Michael, California | Industrial Arts | Miller, Stewart F., Masontown | Secondary |
| Kallok, Edward Michael, Donora | Industrial Arts | Mitchell, Jr., Roy Arthur, Monongahela | Secondary |
| Kallok, Jerome Thomas, Perryopolis | Secondary | Mitten, Hurst Landon, Camptown | Industrial Arts |
| Karlosky, Alan Edward, Monessen | Industrial Arts | Moderelli, James Anthony, Sharpsville | Industrial Arts |
| Keddal, Robert Martin, Scenery Hill | Secondary | Morgan, Ronald Edmond, McKeesport | Industrial Arts |
| Kennedy, Gary Wayne, California | Secondary | Morris, Dena Blanche, Waynesburg | Secondary |
| Kennedy, Robert H., California | Secondary | Mountain, Thomas William, New Eagle | Secondary |
| Kermes, David Lee, Masontown | Secondary | Mountain, Wilmer James, Brownsville | Secondary |
| Kibelbek, Dolores, Bentleyville | Elementary | Murphy, Patricia Anne, Scottsdale | Secondary |
| Kilroy, Edith Sue, Brownsville | Elementary | Muti, Anthony Samuel, Brownsville | Secondary |
| Kime, Geneviene Ann, Daisytown | Elementary | Myers, Allan, Wayne, Pa. | Industrial Arts |
| King, Ray E., Mt. Pleasant | Industrial Arts | Myers, William R., Kelly Station | Industrial Arts |
| Kinsey, Harold Franklin, Ligonier | Industrial Arts | Myrga, Harry Myron, Monessen | Secondary |
| Kipp, David F., Coal Center | Secondary | Nelson, Duane Scott, Monongahela | Secondary |
| Kirk, Kathleen M., Hopwood | Secondary | Nelson, Jack Begy, Johnsonburg | Industrial Arts |
| Kornick, Sarah Anne, Vestaburg | Secondary | Nicolai, Robert Vernon, Belle Vernon | Secondary |
| Kostich, Helen Marie, Allenport | Secondary | Nizinski, Janet, Bentleyville | Elementary |
| Kridle, Martha Elizabeth, Greensboro | Elementary | Nobel, Sandra L., Brownsville | Secondary |
| Krisko, Victor John, Greensburg | Secondary | Noble, Robert William, Freeport | Industrial Arts |
| Krotzer, Richard Martin, Pittsburgh | Industrial Arts | North, William Russell, Apollo | Industrial Arts |
| Krupa, Frank Foster, Johnstown | Industrial Arts | Notaurangelo, Vincent John, Monessen | Industrial Arts |
| Kurtz, Dale Victor, Bentleyville | Industrial Arts | Novak, Ronald William, West Brownsville | Secondary |
| Labin, Lewis Edward, Brownsville | Secondary | Nuccetelli, Lena, Cokeburg | Elementary |
| Lambert, Harold, Charleroi | Industrial Arts | Obade, Dale Eugene, Monessen | Secondary |
| Latkanich, Douglas Paul, Monessen | Industrial Arts | Orlandi, Richard Donald, Richeyville | Secondary |
| Latsko, Richard Joseph, Bobtown | Secondary | Osleger, Alex Francis, Donora | Industrial Arts |
| Lea, Dallas Alexander, Monessen | Secondary | Palmó, Maxwell Powell, W. Brownsville | Industrial Arts |
| Leech, John P., Kittanning | Industrial Arts | Panik, Carol Ann, Uniontown | Secondary |
| Leehan, William, Albion | Industrial Arts | Papini, Joyce Mary, California | Elementary |
| Lehosky, Joseph Paul, Tarentum | Industrial Arts | Parnell, William Grayson, Monongahela | Secondary |
| Leonard, Eugene Stanley, Farrell | Industrial Arts | Parola, Rita Ann, W. Brownsville | Secondary |
| Leonard, John Braden, California | Secondary | Parry, Howard W., Washington | Industrial Arts |
| Lewis, Roger David, Sharon | Industrial Arts | Pashkevich, Elizabeth Marie, Canonsburg | Elementary |
| Leyda, Mary Virginia, Charleroi | Secondary | Patrick, Patricia Ann, Roscoe | Elementary |
| Liggett, Martha, California | Elementary | Patten, William Glen, Albion | Industrial Arts |
| Logan, Howard Cecil, Elco | Secondary | Paulochik, Dorothy J., Windber | Secondary |
| Long, Radar, Smithton | Secondary | Peake, Edward Thomas, Pittsburgh | Industrial Arts |
| Long, Richard Adams, Gibsonia | Industrial Arts | Peckyno, Michael, Monessen | Secondary |
| LoNigro, Sebastiano Frank, Cokeburg | Secondary | Pecosh, Joseph Edward, Hiller | Industrial Arts |
| Lowe, Duane Earl, Belle Vernon | Industrial Arts | Pecosh, Thomas, Hiller | Industrial Arts |
| Luce, Paul Donald, Perryopolis | Secondary | Penn, Anita Joyce, E. Millsboro | Secondary |
| Lukey, Janet, New Salem | Secondary | Pepe, Donald Peter, Bridgeville | Secondary |
| Lunnen, Anna Ruth, Connellsville | Elementary | Perry, Robert Raymond, Brownsville | Industrial Arts |
| Mallinger, Bill Frank, Elco | Secondary | Perry, Samuel Albert, Donora | Secondary |
| Mallison, Richard Francis, St. Marys | Industrial Arts | Petrisek, George Edward, Bentleyville | Atypical |
| Manspeaker, Bonnell Rae, Brownsville | Elementary | Petroske, Michael, Donora | Secondary |
| Marmie, William P., Monessen | Secondary | Petrush, Leonard Joseph, Monessen | Industrial Arts |
| Martin, Giacomo Phillip, California | Industrial Arts | Phillips, James Howard, Clairton | Secondary |
| Martin, Mary Frances, Midway | Elementary | Pittavino, Robert Gaston, Smithton | Industrial Arts |
| Marucci, Carlo, Republic | Secondary | Pivarnik, Marilyn Susanne, Monessen | Elementary |
| Maxon, Connie Mae, Uniontown | Elementary | Polach, Anita Louise, Uniontown | Elementary |
| Mayer, Charles Wilbert, Homestead | Industrial Arts | Popovich, Roddy Jr., Republic | Secondary |
| McCallum, Nancy Jane, California | Atypical | Pore, Nancy, Belle Vernon | Elementary |
| McClellan, Patricia Ann, Fredericktown | Elementary | Potsklan, Betty Jane, Hiller | Secondary |
| McClintock, Marlin R., Berlin | Industrial Arts | Preston, John Howard, Washington | Secondary |
| McCune, Jack L., Brownsville | Secondary | Puskar, Mary Ellen, Pittsburgh | Elementary |
| McElfresh, Robert Louis, Monessen | Secondary | Putorti, Carmen, Canonsburg | Secondary |
| McElroy, William Robert, Parker | Industrial Arts | Quinn, Charles Edward, Belle Vernon | Industrial Arts |
| McHenry, Richard Gilbert, Johnstown | Industrial Arts | | |
| McWreath, Mary Jo, Washington | Elementary | | |

Directory

| | | | |
|---|-----------------|---|-----------------|
| Ranshaw, Richard W., California | Industrial Arts | Stout, Thomas Philip, Bentleyville | Secondary |
| Reilly, Patrick John, Gallitzin | Industrial Arts | Strycula, Walter Andrew, W. Brownsville | Secondary |
| Remy, Ronald Edwin, California | Secondary | Stuart, Robert E., Brownsville | Secondary |
| Reynolds, Floyd F., Utica | Industrial Arts | Suarez, Mercedes, Monongahela | Elementary |
| Reynolds, Harold Lee, Monongahela | Secondary | Tanner, Nanciann, Pittsburgh | Elementary |
| Rhoads, Raymond Edward, California | Secondary | Taylor, Vergil, Albion | Industrial Arts |
| Rice, Walter Glenn, Charleroi | Secondary | Taylor, William G., Charleroi | Secondary |
| Ricco, Carmen Nicholi, Brownsville | Industrial Arts | Telega, Elaine Marie, Clairton | Secondary |
| Ricco, Robert James, Brownsville | Secondary | Theakston, Harold E., W. Brownsville | Industrial Arts |
| Richards, Howard Francis, Bentleyville | Secondary | Thomas, Leroy Lewis, Coal Center | Secondary |
| Riffle, Burton Edgar, Burgettstown | Industrial Arts | Thompson, Clare Dale, Blythedale | Industrial Arts |
| Riffle, Charles Huston, Greensboro | Secondary | Timko, Andrew Francis, Daisytown | Secondary |
| Rimbey, Glen R., Carnegie | Industrial Arts | Tippet, Patricia Ann, McClellandtown | Secondary |
| Ritz, William Louis, Uniontown | Industrial Arts | Trenk, Charles Edward, Belle Vernon | Secondary |
| Rizzo, Vincent D., Pittsburgh | Industrial Arts | Troth, Alfred Carl, Monessen | Industrial Arts |
| Roberts, Burnett Lee, Monongahela | Industrial Arts | Turachak, Thomas Michael, California | Secondary |
| Roberts, James Warner, Monogahela | Secondary | Turney, Shirley Faye, Addison | Elementary |
| Ross, Carolyn Sprowls, Washington | Elementary | Umshares, Alexander A., Washington | Industrial Arts |
| Rost, Susan Carole, McKeesport | Secondary | Underwood, Nancy Jane, California | Elementary |
| Rotell, Donald Francis, Sharon | Industrial Arts | Utterback, Billie, Speers Hill | Secondary |
| Ruoff, Harriet Marie, Point Marion | Elementary | Vanshura, Carl Francis, Charleroi | Secondary |
| Ruschak, Andrew Donald, Charleroi | Secondary | Vickroy, Richard Lee, Johnstown | Industrial Arts |
| Sacharov, Kenneth Michael, Monessen | Secondary | Walcutt, William, New Kensington | Industrial Arts |
| Sampey, Betty Lee, Uniontown | Elementary | Walther, Shirley Ann, Warrendale | Secondary |
| Sanders, Doris Mae, Monongahela | Elementary | Waterman, John William, Pittsburgh | Industrial Arts |
| Sarver, Robert Clare, Allison Park | Industrial Arts | Watson, Janet Evelyn, Cameron, W. Va. | Elementary |
| Schiffbauer, Karen Rae, Hopwood | Secondary | Weaver, James Paul, Washington | Industrial Arts |
| Schuman, William, Clarksville | Industrial Arts | Weir, Frank, Donora | Secondary |
| Scott, George R., Roscoe | Secondary | Wharton, James Edward, Beaver Falls | Industrial Arts |
| Seneff, Gail Maxine, Irwin | Elementary | White, James Warren, Markleton | Secondary |
| Serwinski, Joseph Vincent, Scottdale | Industrial Arts | White, Stanley Anthony, Farrell | Industrial Arts |
| Sethman, Nancy Lee, Belle Vernon | Elementary | Wiita, Richard Alvin, Monessen | Secondary |
| Shaffer, Raymond E., Webster | Secondary | Wilhelm, John, Berlin | Industrial Arts |
| Shargots, George William, Marianna | Secondary | Woodard, Imogene, Uniontown | Atypical |
| Shavel, John Bernard, Star Junction | Secondary | Woodhead, William, Cheltenham | Industrial Arts |
| Shenk, William Walter, Canonsburg | Industrial Arts | Wootton, Carol Ann, Washington | Secondary |
| Sherbondy, Catherine G., Ruffsdale | Secondary | Wright, Thelma Fay, Belle Vernon | Elementary |
| Shuler, Robert O., Enola | Industrial Arts | Yonosik, Edward Anthony, Marianna | Secondary |
| Shultz, Donna Lee, Charleroi | Elementary | Zilli, Angelo John, Greensburg | Secondary |
| Shultz, Margaret Janice, Mt. Pleasant | Elementary | Zorek, Edward Stanton, Sharon | Secondary |
| Silvis, Richard Raymond, Kittanning | Industrial Arts | Zwiebel, John Joseph, Wilkes Barre | Industrial Arts |
| Sinosky, Cynthia Ann, Elco | Elementary | | |
| Slapnik, Walter John, Grindstone | Industrial Arts | | |
| Smeloski, Bernard Andrew, Charleroi | Secondary | | |
| Smerigan, Dolores Ann, Clairton | Elementary | | |
| Smith, David, Pittsburgh | Industrial Arts | | |
| Smith, Norman Carlyle, Trafford | Secondary | | |
| Snyder, Bernard N., Springboro | Industrial Arts | | |
| Snyder, John N., Bentleyville | Industrial Arts | | |
| Sokoloff, Howard Richard, Bentleyville | Industrial Arts | | |
| Souply, Ronald Robert, Charleroi | Secondary | | |
| Sowden, John Willard, N. Charleroi | Secondary | | |
| Sparrow, Charles Howard, Smock | Industrial Arts | | |
| Spernak, Martha June, Monongahela | Secondary | | |
| Sproul, David Carl, Ohiopele | Secondary | | |
| Staley, Shirley LaVonne, West Brownsville | Elementary | | |
| Staney, Jacqueline Ann, Jeannette | Elementary | | |
| Stanko, Ella Mae, W. Brownsville | Secondary | | |
| Stay, Albert Jerome, Fredericktown | Industrial Arts | | |
| St. Cyr, Emery Arthur, North Adams | Industrial Arts | | |
| Stetler, Larry G., Snow Shoe | Industrial Arts | | |
| Stiles, David Wayne, E. Millsboro | Industrial Arts | | |
| Story, Sally Sue, Greensburg | Secondary | | |

PART TIME

| | |
|------------------------------|------------|
| Bell, Mary Martha, Uniontown | Elementary |
| Bury, Andrew George, Roscoe | Secondary |
| Shoup, Mary E., Jefferson | S.N. |

SOPHOMORES

| | |
|--|-----------------|
| Adams, Arnold Andrew, Connellsville | Secondary |
| Adams, Grace Aleen, Scenery Hill | Atypical |
| Aitken, Ralph C., Belle Vernon | Industrial Arts |
| Alexander, Diana Marie, Masontown | Secondary |
| August, Stephen F., McClellandtown | Elementary |
| Backos, Ronald Anthony, W. Brownsville | Secondary |
| Ballinger, Janice Isabel, Pitcairn | Elementary |
| Barcelona, Leonard Arthur, Charleroi | Elementary |
| Behrendt, Lorraine Theresa, Charleroi | Elementary |
| Bendick, Frank Joseph, Johnstown | Industrial Arts |
| Bennese, Joseph John, Johnstown | Industrial Arts |
| Bercik, Connie L., Donora | Secondary |
| Bittner, Paul E., Sand Patch | Elementary |
| Blair, Matthew J., Richeyville | Secondary |
| Bodnar, Joseph Mickey, California | Atypical |

Directory

| | | | |
|---------------------------------------|-----------------|---|-----------------|
| Bodoia, Jean Rosemarie, Monessen | Elementary | Indof, Lewis Thomas, Belle Vernon | Industrial Arts |
| Boyle, James A., Republic | Secondary | Jackman, Gustina Jane, N. Charleroi | Elementary |
| Boyle, Wesley Bruce, California | Secondary | Johnson, Richard, Republic | Secondary |
| Brady, Charles Donald, Connellsville | Secondary | Jones, Howard Linley Jr., Uniontown | Secondary |
| Brassart, Fred A., Fayette City | Secondary | Karpus, Constance Y., Uniontown | Elementary |
| Bricker, James Rendle, Monessen | Secondary | Keith, Jr., Herman, Belle Vernon | Secondary |
| Brown, Betty L., Library | Elementary | Kilroy, Patricia Lee, Brownsville | Elementary |
| Brown, Clarence D., Carmichaels | Industrial Arts | King, Jr., Charles Ernest, Oakmont | Industrial Arts |
| Bruno, Marilyn Grace, Brownsville | Elementary | Kirsopp, Frank Reid, Mt. Lebanon | Industrial Arts |
| Bukosky, Bernice A., Donora | Secondary | Kissler, Joan Lucille, Monessen | Elementary |
| Bunecicky, Joseph M., Munhall | Industrial Arts | Kobuchi, Carmelina, Meadowlands | Elementary |
| Burton, William Thomas, Coal Center | Industrial Arts | Koontz, June Evelyn, Washington | Elementary |
| Byers, A. Delbert, Beaver | Industrial Arts | Kowalczyk, Patricia Ann, Donora | Secondary |
| Carl, Charles M., Vestaburg | Industrial Arts | Krause, Mary Jane, Charleroi | Secondary |
| Carson, Dale Bernard, California | Secondary | Krett, Jr., Michael J., Pricedale | Industrial Arts |
| Cheatham, James P., Charleroi | Secondary | Kruppa, Mary Lou, N. Charleroi | Secondary |
| Cheesebrough, Dean Lewis, Monessen | Elementary | Kurtz, William R., Bentleyville | Secondary |
| Chepes, Charles, Masontown | Secondary | Lash, Wayne R., West Newton | Secondary |
| Chuey, Michael R., Brownsville | Secondary | Lawall, Maria Anne, Greensboro | Secondary |
| Coatesworth, JoAnn Gorman, California | Elementary | Leeper, Robert Edward, Coal Center | Secondary |
| Cooley, Mary Anne, Mather | Elementary | LeFevre, Ronald William, Point Marion | Secondary |
| Cordis, Jean, McKeesport | Elementary | Lewis, Miriam Anne, California | Elementary |
| Corfont, Mary Kathryn, Brownsville | Elementary | Lomagno, Nancy Ann, Perryopolis | Elementary |
| Coulson, James William, Donora | Industrial Arts | Lubits, Dorothy Patricia, Masontown | Elementary |
| Cox, Tom Eugene, Monongahela | Secondary | Maley, Paul James, Cokeburg | Secondary |
| Croftcheck, Betty Jane, Merrittstown | Elementary | Manandise, Martha Ann, Charleroi | Secondary |
| Danna, James William, Brownsville | Secondary | Manetta, Gene, Monessen | Secondary |
| DeBlassio, Filomena, Coal Center | Elementary | Mason, Howard Merritt, Bridgeville | Secondary |
| Druash, Nicholas, Monessen | Industrial Arts | Maurer, Kenneth Oliver, Oil City | Industrial Arts |
| DuJordan, Jerome Robert, Charleroi | Secondary | Mazzocco, Rita Marie, Republic | Secondary |
| Durigon, Docile Doran, Republic | Secondary | McGraw, Harrietta E., Monessen | Elementary |
| Everyly, JoAnn Lee, Lake Lynn | Elementary | McGinnis, Jimmie Robert, McClellandtown | Secondary |
| Fabriziani, Romeo S., Newell | Industrial Arts | McGinty, Martha Jane, Uniontown | Elementary |
| Farquhar, Ruth Ann, Allenport | Elementary | McKee, Patricia Louise, Coal Center | Secondary |
| Faust, R. Neil, Irwin | Elementary | McVey, Fred Gene, Uniontown | Industrial Arts |
| Fazio, Frank, Coraopolis | Secondary | Medve, Richard John, California | Secondary |
| Fecik, John Thomas, West Middlesex | Industrial Arts | Menarcheck, Robert Regis, Fairbank | Secondary |
| Flinn, John David, Connellsville | Secondary | Merryman, Jr., William Lewis, Uniontown | Secondary |
| Foulds, Melvin Louis, Belle Vernon | Industrial Arts | Messner, Charles Groves, Leechburg | Industrial Arts |
| Francis, Regina Guza, Brownsville | Elementary | Milchovich, Stanley, Stockdale | Secondary |
| Furlong, Dwayne Charles, California | Industrial Arts | Miller, Carl L., Meyersdale | Industrial Arts |
| Galie, E. Nick, Smock | Secondary | Mock, Phyllis LaVerne, Jeannette | Secondary |
| Gazdick, Margot Lillian, Stockdale | Elementary | Moorhouse, John Nelson, Republic | Elementary |
| Gerbin, Leonard, Monessen | Elementary | Moraitis, Marino Vassilios, Verona | Industrial Arts |
| Gesler, Jacqueline Elaine, Charleroi | Secondary | Morgan, Douglas P., Duquesne | Secondary |
| Gilmore, Lloyd Wayne, Belle Vernon | Secondary | Nicholl, Val Gene, Bentleyville | Industrial Arts |
| Girhiny, Julius, Pricedale | Industrial Arts | O'Brien, Colleen Ann, California | Elementary |
| Glowa, Michael, Conemaugh | Industrial Arts | Pajak, Joseph Thomas, Aliquippa | Industrial Arts |
| Gorecki, Joe Edward, Charleroi | Industrial Arts | Panak, Sylvia Ann, Daisytown | Elementary |
| Gorman, Charles J., California | Atypical | Panich, Michael M., Stockdale | Secondary |
| Grebb, Bernadine, California | Secondary | Panyko, John, McKees Rocks | Industrial Arts |
| Hall, Ina Jean, Pittsburgh | Elementary | Patterson, Leo Anthony, Munhall | Industrial Arts |
| Harris, A. Kenneth, California | Secondary | Paul, Alvy C., Belle Vernon | Elementary |
| Harris, Darrell Edwin, California | Industrial Arts | Paul, Shirley Ann, Meyersdale | Elementary |
| Hayes, Arthur Thomson, Donora | Secondary | Paulick, Mary Ann Sophia, Charleroi | Elementary |
| Hayes, Earl A., Erie | Industrial Arts | Pekkanen, Waino Ralph, Coal Center | Secondary |
| Haywood, Shirley Ann, Brownsville | Elementary | Perkowski, Patricia Ann, California | Elementary |
| Holman, Leroy James, Allenport | Secondary | Pierce, Horace Wayne, McKeesport | Elementary |
| Hormell, Donald Ivan, California | Elementary | Pierro, Marvin Bryce, Hiller | Secondary |
| Horn, Marcia Lynn, Washington | Elementary | Platt, Mary Lou, Titusville | Secondary |
| Hudler, Loretta E., Charleroi | Secondary | Polonoli, George Wayne, Donora | Secondary |
| Huffman, John R., California | Secondary | Popovich, Christine, California | Secondary |
| | | Protin, James Edward, Charleroi | Secondary |

Directory

| | |
|--|-----------------|
| Reed, Donald Daniel, Sharon | Industrial Arts |
| Retcofsky, Herbert Leroy, Brownsville | Secondary |
| Reynolds, Wade, California | Elementary |
| Rice, Bruce Alyne, Kane | Industrial Arts |
| Ripepi, Rose, Gallatin | Secondary |
| Ritzo, Beatrice Mary, Hiller | Secondary |
| Rocca, Jr., Michael Angelo, Fayette City | Elementary |
| Romanchock, John Jr., California | Industrial Arts |
| Rosnack, Kenneth John, Fairbank | Secondary |
| Sakach, Albert, Daisytown | Industrial Arts |
| Santacroce, Ossie, Creighton | Industrial Arts |
| Schrock, Velma Jean, Stoystown | Elementary |
| Scoville, Charles Howard, Donora | Secondary |
| Seighman, Walters, Webster | Secondary |
| Shimko, Bernard William, Uniontown | Secondary |
| Shockey, Donald C., Meyersdale | Secondary |
| Skrypak, John Jr., Bentleyville | Industrial Arts |
| Slosky, Marilyn Jean, California | Elementary |
| Smatlak, Joseph, Johnstown | Industrial Arts |
| Soisson, Marlene Joyce, Connellsville | Elementary |
| Soliani, Anna Jean, Blythedale | Elementary |
| Staruch, Stephen, Colver | Secondary |
| Sterback, Olan William, California | Industrial Arts |
| Sucevich, Mark, Monessen | Industrial Arts |
| Symons, John Paul, Belle Vernon | Elementary |
| Szymczyk, Edward, Donora | Secondary |
| Taylor, Richard Kay, Albion | Industrial Arts |
| Tentler, Oscar N., California | Industrial Arts |
| Toprani, Regis C., Monongahela | Secondary |
| Treese, Janet Louise, Point Marion | Secondary |
| Trembach, Leon, Pricedale | Elementary |
| Troutman, Carol E., Wellersburg | Elementary |
| Troy, Eleanor Anne, California | Secondary |
| Vaughn, Thomas Michael, McKeesport | Secondary |
| Verbanic, Mary Ida, Merrittstown | Secondary |
| Vescio, Francis S., Webster | Elementary |
| Walker, David Edward, Meyersdale | Industrial Arts |
| Walker, Donald Philip, Meyersdale | Industrial Arts |
| Ward, John Denbo | Elementary |
| Weitzel, Carl Eugene, Fredericktown | Industrial Arts |
| Wertz, Jean Bittner, Meyersdale | Elementary |
| Williams, Donald Glenn, Pricedale | Industrial Arts |
| Winge, Martha Jean, New Salem | Secondary |
| Wray, Anna Mae, Clinton | Elementary |
| Zarichansky, Theodore, Wall | Industrial Arts |
| Zema, Albert William, Belle Vernon | Secondary |
| Zoppetti, Matthew, Roscoe | Industrial Arts |
| Zubic, Annmarie Margaret, Monessen | Elementary |
| Zwiener, Henry R., Coalport | Industrial Arts |
| Bazilwich, LaVerne, Belle Vernon | Secondary |
| Bishop, William A., Clearfield | Industrial Arts |
| Blacka, Allan Wells, Belle Vernon | Secondary |
| Boardley, Alfred Tl., Jr., Washington | Industrial Arts |
| Bongianino, Angeline Marie, Blairsville | Elementary |
| Bowman, Dean Austin, Somerset | Secondary |
| Bucher, Roy C., McKees Rocks | Industrial Arts |
| Campbell, Howard P., Erie | Industrial Arts |
| Campbell, Ina Mae, California | Elementary |
| Carl, Mary Lee, Claysville | Elementary |
| Carlson, Raymond Emil, Somerset | Secondary |
| Clarke, Robert Lewis, Ben Avon | Industrial Arts |
| Coleman, Paul Jackson, Meyersdale | Elementary |
| Conaway, Robert J., California | Secondary |
| Craven, Russell M., Brownsville | Secondary |
| Crisman, James A., Mahoning | Industrial Arts |
| Cusic, Joseph James, Broughton | Industrial Arts |
| Dalson, Violet Luis, Brownsville | Elementary |
| DeRosa, Catherine M., Gallatin | Elementary |
| Destefano, Darlene A., Monessen | Elementary |
| Dolan, Robert D., Roscoe | Secondary |
| Durnell, Roberta Irene, Connellsville | Atypical |
| Dziak, William Michael, Ellsworth | Industrial Arts |
| Ellenberger, Betty Jean, Connellsville | Secondary |
| Emmel, David Marlin, California | Industrial Arts |
| Eversole, Walter Edward, New Brighton | Industrial Arts |
| Firestone, Gerald Neill, Mill Run | Elementary |
| Fleming, James Franklin, Jr., California | Elementary |
| Franks, Gene R., Masontown | Elementary |
| Fransko, Donald, Gallatin | Secondary |
| Gallatin, Mary Sue, Monongahela | Secondary |
| Garofalo, Michaelene G., Monessen | Elementary |
| Gaskey, Rose Ann, Coal Center | Secondary |
| Gibbons, Charles Edgar, California | Industrial Arts |
| Golomb, Evelyn Louise, Ellsworth | Elementary |
| Gouger, Patricia Anne, Monessen | Elementary |
| Gower, Wendel B., Confluence | Industrial Arts |
| Henshaw, Eleanor Louise, Uniontown | Elementary |
| Herron, Margaret Louise, Scenery Hill | Elementary |
| Hicks, Leah Grace, Brownsville | Elementary |
| Hill, Raymond Ellsworth, Altoona | Industrial Arts |
| Holtz, Ralph Jerome, Hastings | Industrial Arts |
| Hughes, Nancy Jean, Fredericktown | Secondary |
| Jackson Durce A., Brownsville | Secondary |
| Jacobs, E. Joanne, Allenport | Elementary |
| Kanuk, John, Central City | Industrial Arts |
| Keller, Ralph L., W. Brownsville | Industrial Arts |
| Keller, Robert Dale, Donora | Secondary |
| Kemmler, Charles William, California | Industrial Arts |
| Kennedy, Janet Lea, Uniontown | Elementary |
| Kermes, James John, Crafton | Industrial Arts |
| Kerr, Elwin Leroy, Titusville | Industrial Arts |
| Keteles, Kathleen Byrnes, Republic | Elementary |
| Kiger, Audrey Ruth, Waynesburg | Elementary |
| Koslick, William Francis, Uniontown | Industrial Arts |
| Kray, Joan L., Monessen | Secondary |
| Kuhlman, William Howard, Somerset | Secondary |
| LaMendola, Francis John, Donora | Secondary |
| Lange, George Lloyd, Natrona Heights | Industrial Arts |
| Lardin, Carol Jane, Fredericktown | Elementary |
| Lardin, Mary Ann, Fredericktown | Elementary |
| LeJohn, Audrey Jean, California | Secondary |
| Lesnock, Ruth Roslyn, Washington | Elementary |
| Litsky, Alvera Marie, Donora | Elementary |
| Luckey, Ivan Ray, Dawson | Industrial Arts |

PART TIME

| | |
|---|------------|
| Abbadini, Jerry O. Jr., Fairbank | Elementary |
| Benedict, Yolanda Marie, California | Elementary |
| Folman, Anne Louise Zulik, W. Brownsville | Nurse |

JUNIORS

| | |
|--|-----------------|
| Amalong, Russell Miller, State College | Industrial Arts |
| Ambrose, Marlene M., Belle Vernon | Elementary |
| Armentrout, Velma Piper, Roscoe | Elementary |
| Bagiatis, Stephen Nick, Stockdale | Industrial Arts |
| Bailey, Richard Lee, California | Secondary |
| Bakewell, Byron, California | Industrial Arts |
| Barefoot, James, Jr., Altoona | Industrial Arts |

Directory

| | | | |
|---|-----------------|--|-----------------|
| Lucy, Adeline Sullivan, Farmington | Elementary | Barricklow, Mildred Loudin, Connellsville | Nurse |
| Malone, Jean Ward, Clarksville | Elementary | Bedsworth, Barbara Letrick, Belle Vernon | Nurse |
| Manetti, Angelo M., Monessen | Secondary | Berkley, Betty Hanning, Somerset | Nurse |
| McClain, Donald A., Richeyville | Secondary | Bill, Samuel Joseph, Republic | Elementary |
| McGraw, Jimmy Mack, W. Pittston | Industrial Arts | Carter, Martha Smith, Washington | Nurse |
| Mizerak, Michael J., Fredericktown | Secondary | Cathers, Helen McClelland, Waynesburg | Nurse |
| Moats, C. William, Pricedale | Secondary | Clark, Marjorie Joyce, Coal Center | Nurse |
| Mock, Walter L., Jr., Butler | Industrial Arts | Clendaniel, Jean R., Coal Center | Elementary |
| Morris, Ruth Stevenson, Smithfield | Elementary | Cooley, Anna Derflinger, Elizabeth | Nurse |
| Newman, James Raymond, McKees Rocks | Industrial Arts | Dahlmann, Mary Jane, Greensburg | Nurse |
| Ninchak, Stella Antonia, Belle Vernon | Secondary | Dawson, Gladys Frye, Madison | Elementary |
| Nizinski, Howard, Bentleyville | Secondary | Digon, Stella Komer, Coal Center | Elementary |
| Onuscheck, Dolores Ethel, Clarksville | Elementary | Downer, Vona Weamer, Greensboro | Elementary |
| Ottenga, Edward Louis, Charleroi | Industrial Arts | Francechi, Louise Jefferies, Monongahela | Nurse |
| Papini, Larry Ray, California | Secondary | Haut, Elizabeth Beamer, Star Junction | Elementary |
| Peton, Walter Stanley, Chestnut Ridge | Secondary | Hill, Helen E., Charleroi | Elementary |
| Pierallini, Donniss Corrine, Belle Vernon | Elementary | Hodinko, Robert George, Uniontown | Secondary |
| Rainey, James Robert, Wilkinsburg | Industrial Arts | Hooten, Hazel Dolan, Charleroi | Nurse |
| Regal, Peter Anthony, Grindstone | Secondary | Huey, Margaret Hoover, Denbo | Atypical |
| Regeg, Frances Louise, Marianna | Elementary | Humphreys, Dorothy Virgin, Millsboro | Elementary |
| Risku, Marvelle Shannon, West Newton | Elementary | John, Sarah Davis, Monongahela | Elementary |
| Rummell, George A., California | Industrial Arts | Kennedy, Geraldine Levergood, Mt. Pleasant | Nurse |
| Scursatone, Clyde, California | Secondary | Kennedy, Louise Miller, California | Elementary |
| Sedory, Edward Thomas, Monessen | Secondary | Kornick, Christine Williams, Vestaburg | Elementary |
| Shal, Carolyn, Connellsville | Elementary | Keene, Alvida Coates, Finleyville | Elementary |
| Shields, Elissa Marie, Brownsville | Secondary | Leckie, Anna C., Daisytown | Elementary |
| Show, Jan Leigh, Mill Run | Secondary | McClearn, E. Ellsworth, Stoneboro | Industrial Arts |
| Shultz, Elizabeth Ann, Webster | Elementary | Moore, Harriett Barkby, Monongahela | Elementary |
| Sickles, Walter Lee, Webster | Elementary | Morgan, Ruth Rupert, Mt. Pleasant | Elementary |
| Skero, Andrew, Central City | Industrial Arts | Myers, Albert Franklin, Charleroi | Secondary |
| Smith, Charles Edward, Tarentum | Industrial Arts | Orr, Irvin Grant, Sharpsville | Industrial Arts |
| Smith, Mildred Virginia, California | Secondary | Parkinson, Blanche Clara, Monongahela | Elementary |
| Springer, Robert C., Point Marion | Secondary | Parkinson, C. Mabel Edwards, California | Elementary |
| Stech, John Charles, Monongahela | Elementary | Paulson, Richard, Library | Industrial Arts |
| Steranko, John William, Donora | Secondary | Peiersol, Ruth A., Perryopolis | Elementary |
| Sterbenz, Thomas, California | Elementary | Priselac, Mary Dixon, California | Elementary |
| Studnicki, Henry T., Belle Vernon | Secondary | Robinson, Jean M., Greensburg | Nurse |
| Sutherland, Gladys Ebbert, Brownsville | Elementary | Sibert, Grace Burkey, Brownsville | Elementary |
| Suttie, William R, Donora | Secondary | Silbaugh, Evelyn Winnett, Coal Center | Elementary |
| Sweeney, Lee F., Dormont | Secondary | Simpson, Janet Forbes, California | Elementary |
| Swift, Don Lewis, Republic | Secondary | Snowdon, Grace S., Roscoe | Elementary |
| Taylor, Alwilda Mary, Elizabeth | Elementary | Tordy, Eleanore Patricia, Pricedale | Nurse |
| Taylor, Patricia Louise, Brownsville | Secondary | Ullom, Margaret Brown, W. Brownsville | Elementary |
| Todora, Lucille Evelyn, Donora | Elementary | Brauns, Edith H. Hefke, Washington | Elementary |
| Tough, Barbara Ann, Camp Hill | Elementary | Brown, Margaret Ruth Kuzma, Monessen | Nurse |
| Underwood, Alice Louise, Fairchance | Elementary | Buto, Angelo Frank, Erie | Industrial Arts |
| Ventura, John M., Belle Vernon | Industrial Arts | Celestine, Blanche, California | Elementary |
| Vilscek, Elaine Catherine, Masontown | Elementary | Gottheld, Marguerite Moyer, Charleroi | Nurse |
| Vlasic, George Joseph, Monessen | Secondary | Greene, Anna Mae McKitta, West Newton | Elementary |
| Walters, Robert Roy, Belle Vernon | Secondary | Humbert, Hazil, Gans | Elementary |
| Westcoat, Delores June, W. Brownsville | Secondary | Kubis, Margaret W. Newman, Brownsville | Elementary |
| Whitlatch, Albert M., Roscoe | Elementary | Lee, Helen S. Sharpneck, Roscoe | Elementary |
| Worst, Dale Richard, Millvale | Industrial Arts | Lemak, Catherine P. Yednock, Duquesne | Elementary |
| Yartin, Andy, Monessen | Elementary | Maffet, Margaret Edge, Canonsburg | Nurse |
| Young, Charles Joel, Coraopolis | Industrial Arts | Mancuso, Alene, Waynesburg | Elementary |
| Young, Jack L., Fayette City | Secondary | Merryman, Helen, W. Brownsville | Elementary |
| Zimmerman, Shirley, Connellsville | Secondary | Mowry, Edna Marie Blackburn, White | Elementary |

PART TIME

| | | | |
|---|------------|---|------------|
| Allen, Hazel Lewin, Uniontown | Elementary | Parquette, Edna Carlson, Donora | Nurse |
| Allen, Virginia Nicoletto, Roscoe | Elementary | Pepper, Mary, W. Brownsville | Elementary |
| Andrews, Mildred Orr, California | Elementary | Phillips, Jessie Lenore, Marianna | Nurse |
| Baird, Sarah Phoebe, Brownsville | Nurse | Weimer, Reid, Somerset | Elementary |

Acknowledgments

The Canton Engraving and Electrotype Company
Canton, Ohio

Kurtz Bros.
Clearfield, Pennsylvania

The Lambert Studio
California, Pennsylvania