

About the college . . .

The educational program at California State College has come full cycle in the 120-year history of the institution. Having opened as a multi-purpose academy in 1852, the school was chartered as Southwest Normal School in 1865 and continued exclusively as a teacher-preparation institution until 1959 when it again became a multi-purpose college. Today the college continues its leadership in the preparation of Pennsylvania teachers, provides a solid background in Arts and Sciences for students planning professional careers, and affords extensive post-baccalaureate research and study programs in both the Teacher Education and Arts and Sciences divisions.

▲ LOCATION

California State College campus, located in the Borough of California, Pennsylvania, is on State Route 88, three miles north of U.S. Route 40, and nine miles south of Interstate 70.

▲ DEGREE PROGRAMS

A.B., B.S., M.Ed., M.A., M.S.

▲ FACULTY

395 faculty members including 145 holding doctorates.

▲ ENROLLMENT

Coeducational. 6,353 including 4,781 full time, 1,572 part time; 3,254 men, 3,099 women; 5,428 undergraduates and 925 graduate students.

▲ LIBRARY

Holdings, 162,083 volumes; 12,898 reels of microfilm; 211,082 units of microtext; 2,207 periodical titles, 14 professional and 14 non-professional staff members.

▲ TRIMESTER SYSTEM

Continuous trimester system supplemented by two six-week, one twelve-week summer and special sessions.

▲ ACCREDITATION

Middle States Association of Secondary Schools and Colleges.

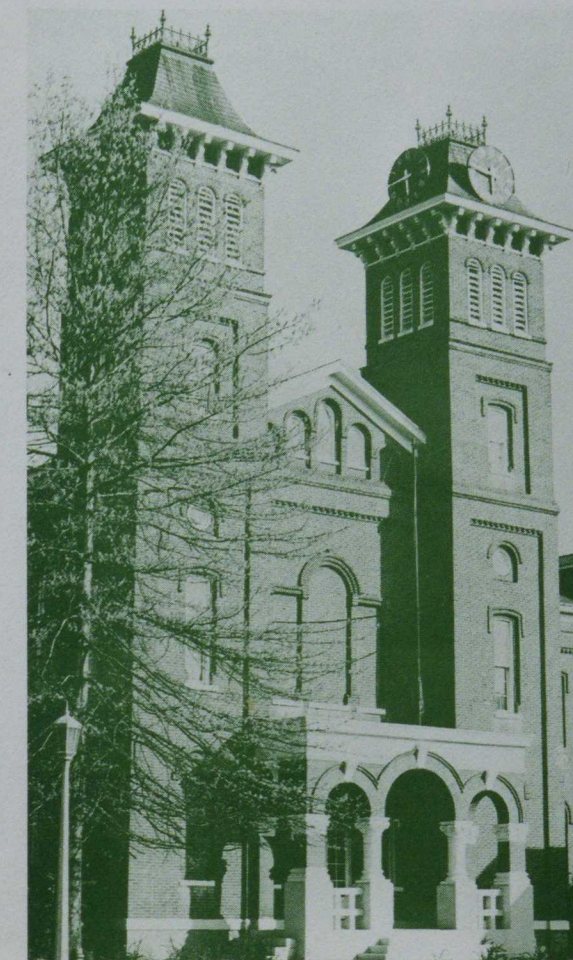
CALIFORNIA STATE COLLEGE
CALIFORNIA, PENNSYLVANIA 15419
(412 AREA CODE) 938-2281

GEORGE H. ROADMAN, PRESIDENT

CAMPUS GUIDE

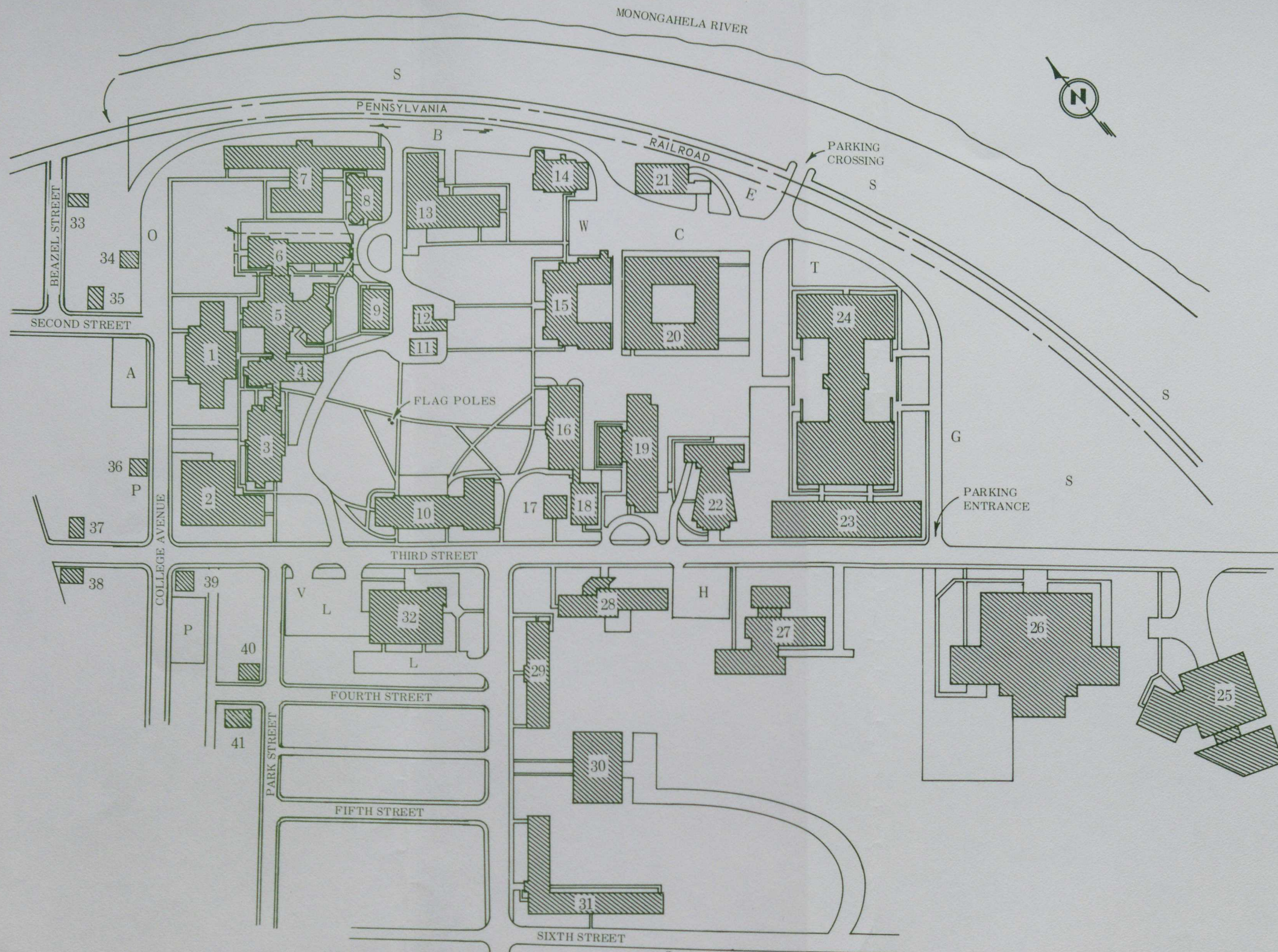
California State College

CALIFORNIA, PENNSYLVANIA



Old Main Hall

California State College
Archives Collection



BUILDING DIRECTORY

1. Reed Library
2. World Culture
3. Dixon Hall
4. South Hall
5. Main Hall
6. Biological Science
7. Binns Dormitory
8. Old Science Hall
9. Vulcan Hall
10. Herron Hall
11. Maintenance Annex
12. Maintenance Annex
13. New Science Hall
14. Power Plant
15. Industrial Arts
16. Noss School
17. Infirmary
18. Noss Annex
19. Education Building
20. Coover Hall
21. Maintenance Building
22. Steele Auditorium
23. Longanecker Dormitory
24. Hamer Hall
25. Learning Research Center
26. Gallagher Dining Hall
27. Stanley Dormitory
28. Clyde Dormitory
29. Johnson Dormitory
30. Student Union
31. McCloskey Dormitory
32. Administration Building
33. Arts and Sciences Office
34. Philosophy Department Office
35. Educational Development Center
36. Data Center Offices
37. Alumni Center
38. Campus Ministry
39. Faculty Lounge
40. Modern Language Department Offices
41. Music Department Office

PARKING AREAS

- A - Faculty and Staff
- B - Faculty and Staff
- C - Faculty and Staff
- E - Faculty and Staff
- G - Faculty and Staff
- H - Faculty and Staff
- O - Faculty and Staff
- T - Faculty and Staff
- P - Open Parking
- W - Special Purpose
- S - Student Parking