

• LOCATION

California State College campus, located in the Borough of California, Pa., is on Penn'a. Route 88, three miles north of U.S. Route 40, and nine miles south of Interstate 70.

• DEGREE PROGRAMS

B.S. in EDUCATION
B.A., M.Ed., M.A., M.S.

• FACULTY

378 faculty members including 114 holding doctorates.

• ENROLLMENT

Coeducational. 6,704 including 5,104 full time, 1,564 part time; 3,685 men, 3,019 women; 5,906 undergraduates and 798 graduate students.

• LIBRARY

Holdings, 129,184 volumes; 7,791 reels of microfilm; 146,670 units of microtext; 1,459 periodical titles, 602 other serial titles; 15 professional and 14 non-professional staff members.

• TRIMESTER SYSTEM

Continuous trimester system supplemented by two six-week and one-twelve week summer sessions.

CALIFORNIA STATE COLLEGE
CALIFORNIA, PA. 15419
(412 AREA CODE) 938-2281

GEORGE H. ROADMAN, President

About the college . . .

The educational program at California State College has come full cycle in the 118-year history of the institution. Having opened as a multi-purpose academy in 1852, the school was chartered as Southwest Normal School in 1865 and continued exclusively as a teacher-preparation institution until 1959 when it again became a multi-purpose college. Today the college continues its leadership in the preparation of Pennsylvania teachers, provides a solid background in Arts and Sciences for students planning professional careers, and affords extensive post-baccalaureate research and study programs in both the Teacher Education and Arts and Sciences divisions.

The Roots . . .

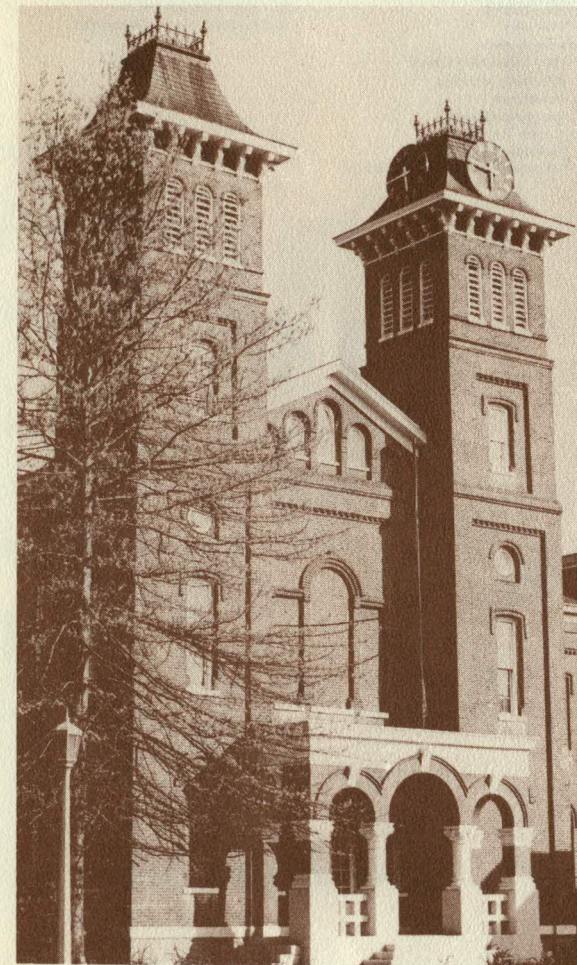
- 1852 CALIFORNIA ACADEMY
 - 1867 CALIFORNIA NORMAL SCHOOL
 - 1874 SOUTH WESTERN STATE NORMAL SCHOOL
 - 1914 CALIFORNIA STATE NORMAL SCHOOL
 - 1929 CALIFORNIA STATE TEACHERS COLLEGE
 - 1959 CALIFORNIA STATE COLLEGE
 - 1961 GRADUATE DIVISION
- Approved by Dep't. of Public Instruction



CAMPUS GUIDE

California State College

CALIFORNIA, PENNSYLVANIA



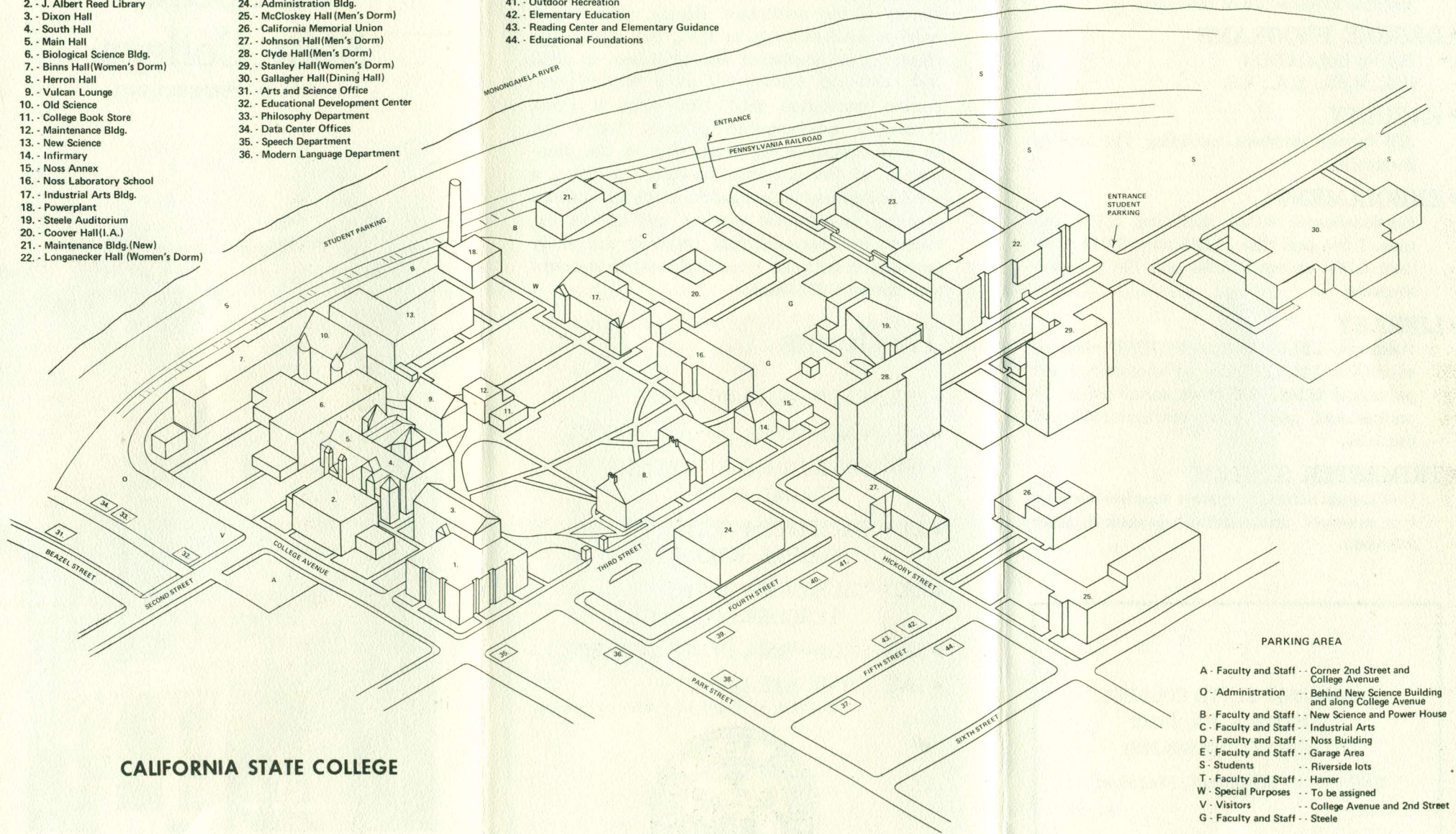
Old Main Hall

BUILDING DIRECTORY

- 1. - Michael Duda World Culture Bldg.
- 2. - J. Albert Reed Library
- 3. - Dixon Hall
- 4. - South Hall
- 5. - Main Hall
- 6. - Biological Science Bldg.
- 7. - Binns Hall(Women's Dorm)
- 8. - Herron Hall
- 9. - Vulcan Lounge
- 10. - Old Science
- 11. - College Book Store
- 12. - Maintenance Bldg.
- 13. - New Science
- 14. - Infirmary
- 15. - Noss Annex
- 16. - Noss Laboratory School
- 17. - Industrial Arts Bldg.
- 18. - Powerplant
- 19. - Steele Auditorium
- 20. - Coover Hall(I. A.)
- 21. - Maintenance Bldg. (New)
- 22. - Longanecker Hall (Women's Dorm)

- 23. - Hamer Gymnasium
- 24. - Administration Bldg.
- 25. - McCloskey Hall (Men's Dorm)
- 26. - California Memorial Union
- 27. - Johnson Hall(Men's Dorm)
- 28. - Clyde Hall(Men's Dorm)
- 29. - Stanley Hall(Women's Dorm)
- 30. - Gallagher Hall(Dining Hall)
- 31. - Arts and Science Office
- 32. - Educational Development Center
- 33. - Philosophy Department
- 34. - Data Center Offices
- 35. - Speech Department
- 36. - Modern Language Department

- 37. - Regional Headstart and Elementary Education
- 38. - Secondary Education
- 39. - Music Department
- 40. - Student Personnel Office
- 41. - Outdoor Recreation
- 42. - Elementary Education
- 43. - Reading Center and Elementary Guidance
- 44. - Educational Foundations



PARKING AREA

- A - Faculty and Staff - Corner 2nd Street and College Avenue
- O - Administration - Behind New Science Building and along College Avenue
- B - Faculty and Staff - New Science and Power House
- C - Faculty and Staff - Industrial Arts
- D - Faculty and Staff - Noss Building
- E - Faculty and Staff - Garage Area
- S - Students - Riverside lots
- T - Faculty and Staff - Hamer
- W - Special Purposes - To be assigned
- V - Visitors - College Avenue and 2nd Street
- G - Faculty and Staff - Steele

CALIFORNIA STATE COLLEGE

D. W. KAISER