



1942

MONOCAL



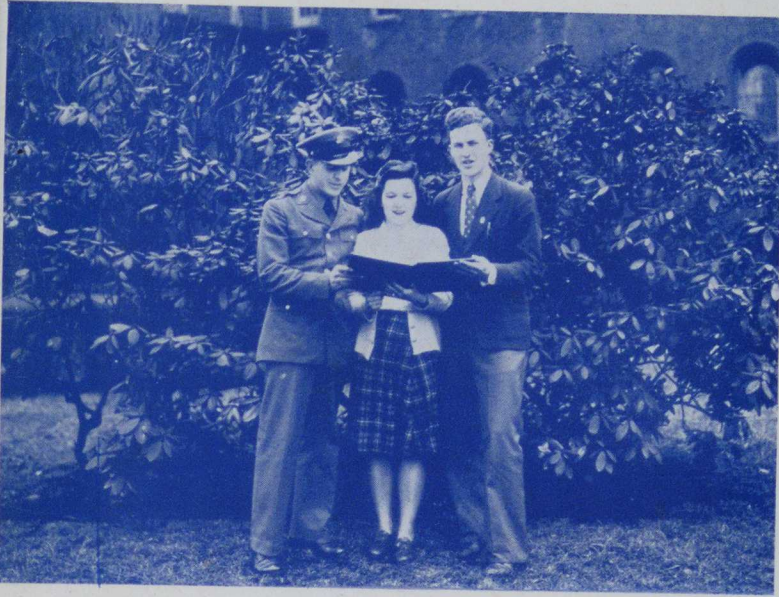
California State College
Archives Collection

MONOCAL

1942

STATE
TEACHERS
COLLEGE

CALIFORNIA, PENNSYLVANIA



Melvin Peterson and Kathryn Rudez,
Co-Editors

Cletus Nestlerode, Business Manager
and Photographer

CONTENTS



INTRODUCTION



ADMINISTRATION



CLASSES



ORGANIZATIONS



ATHLETICS

California State College
Archives Collection

PUBLISHED BY THE JUNIOR CLASS

Pa 370.737

P41c2

[V. 30] [C. 3]

FOREWORD

THE AMERICAN WAY is a pattern for living . . . Within this pattern, we have placed the rights and responsibilities of the individual above those of the state, at the same time, providing protection for the general welfare. Our accepted means of adjusting controversies has been through compromise, for we believe in human equality rather than the maintenance of fixed differentiations of hereditary castes. Above all, the principles of popular sovereignty and civil liberties serve as a basis for our government.

Oposing forces are at work in the world today which claim to be theoretical formulations of a "new order." In actuality, they have proven to be no more than a recurrence of what has variously been known as tyranny, dictatorship, or absolute monarchy—a prototype of divine right.

Our task is to preserve the fundamental values and assumptions in which we believe, and to substantiate our inference of being capable of mapping out our own destiny.





We Dedicate

to

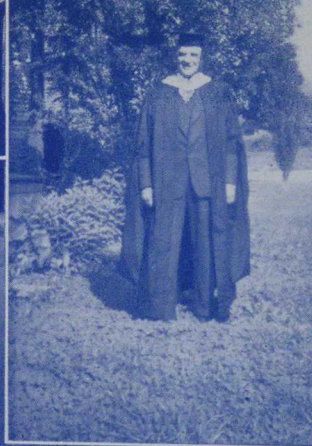
JOSEPH H. HURST this 1942 Monocal, for his has been the guiding hand behind many of these editions. The knowledge concerning publications he possesses led to the chairmanship of the Publications Board, in which capacity he has served since its origination.

We, who have worked with Mr. Hurst, appreciate the deep understanding, sympathy, sincerity and patience evidenced at all times. We also realize that the idealism he professes will continue making its contribution through the philosophy of those who were once his students.



1939

3 8



a

L

4
A

1941

5

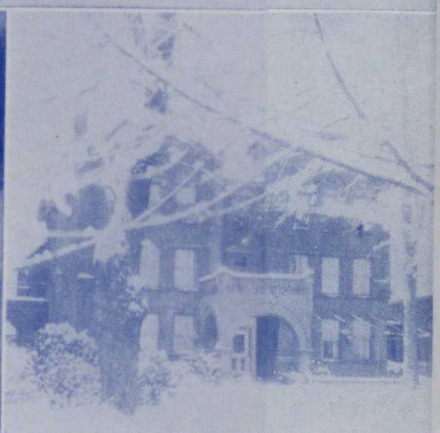


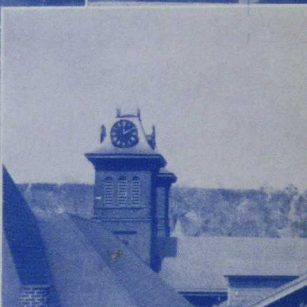
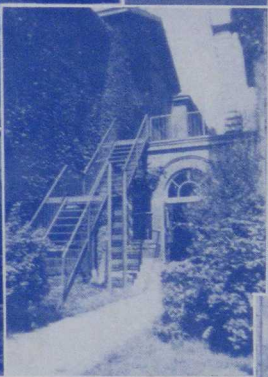
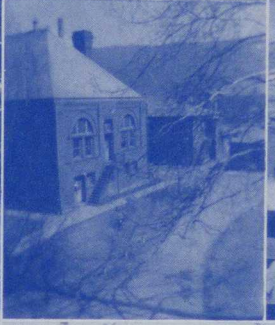
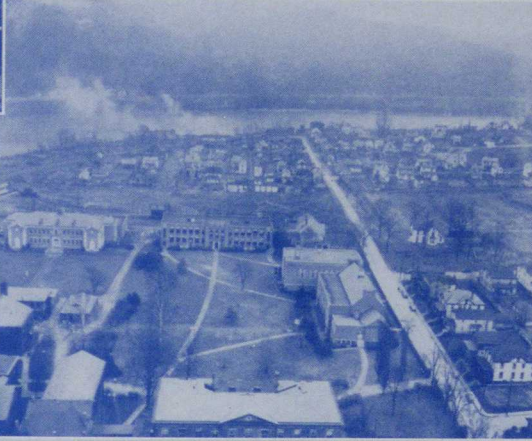
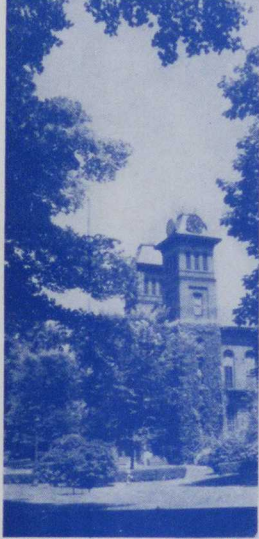
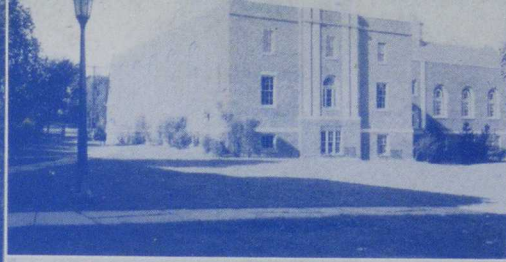
THE
MONOCAL
1936

MONOCAL
1942

THE
MONOC
1937







A Message from the President

The Californian who faithfully keeps the pledge he has taken will contribute his all to the winning of the war, and establishing and maintaining the peace which will follow. California is represented in every branch of the service, and soon will have her students on every front. Let teachers never for a moment forget that in the homes, the churches, and the school rooms of the free nations an essential service is being rendered which in the long run will be more effective than the battlefield. Armies can win the war when supported by the entire nation, but the schools, the homes, and the churches must preserve the values of civilization and maintain the peace when won.

America seeks domination over no nation. She covets no colonies. She seeks a world in which a free and peaceful life is guaranteed to every man regardless of race, creed, or color. She seeks a world where the good things of life may be shared by all, regardless of wealth, position, or social status. The California pledge implies all these things if broadened to include the world and might be paraphrased to include America.

"In all these ways I will strive to transmit to generations following me a greater, better, and more beautiful America than was inherited by me."

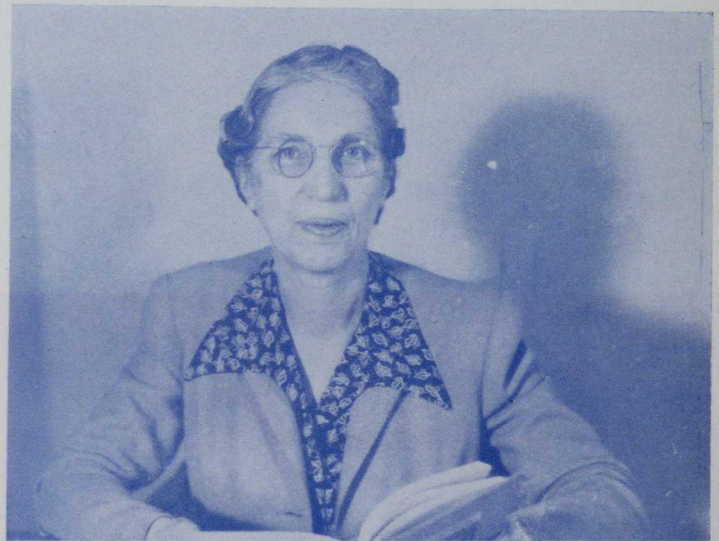
—ROBERT M. STEELE





A thinker and a doer characterizes DR. THEODORE A. SIEDLE, Dean of Instruction, for he possesses the philosophy of a mature educator and the vigor of youth. His genuine understanding and sense of humor contribute to solving the problems entailed in curriculum construction. Exceptional ability and dignified bearing mark him as the capable administrator he has proven to be.

ELLA E. BERNSTORF, Dean of Women, teaches both day and night classes in mathematics, sponsors the Y.W.C.A. and chaperons all social affairs. She also acts as guiding counselor particularly to North Hall women, and willingly, at any time, helps or assists anyone about the college.



PAUL N. "POP" WALKER, Dean of Men, directs and coordinates all student activities. His time is occupied by classes in Nature Study, science and the sponsorship of the Nature Lore Club besides heading the Defense Council which helps make a heavy schedule heavier.





ADMINISTRATIVE OFFICERS

- THOMAS M. GILLAND, Ph.D.**
Director of Laboratory School and
Student Teaching
- LILLIAN J. CONLON**
Bursar
- FRANCES PLAVA HOON, B.S.**
Registrar
- ARTHUR POLLOCK**
Superintendent of Buildings and
Grounds
- RUTH DORSEY, A.B., B.S. in L.A.**
Librarian
- ELIZABETH F. SMITH, B.S.**
Dietitian
- HARRIET BALLENTINE, R.N.**
Resident Nurse
- MARY BROWN**
Matron
- LOUISE M. WARD**
Manager of Book Store

NOSS LABORATORY SCHOOL

- MARIE T. ESHER, M.A.**
First Grade
- SARA CORNELIUS, M.A.**
Second Grade
- ALPHA GRAHAM, M.A.**
Third Grade
- MARY C. KING, Ed.M.**
Fourth Grade
- NEVA W. MONTGOMERY, M.A.**
Fifth Grade
- VIOLET VIRGINIA CLAYBOUR, M.A.**
Sixth Grade
- ROSE G. GRECO, B.S.**
Special Education

EDUCATION

- LETHAL G. KIESLING, M.A.**
Reading
- O. RAY BONTRAGER, Ph.D.**
Assistant Director of Student Teaching
- DR. SAMUEL NEAGLEY, Ph.D.**
Ethics, Measurements
- NEWTON KERSTETTER, M.A.**
Psychology
- CLAIR B. WILSON, M.A.**
Testing

INDUSTRIAL ARTS

- SHRIVER L. COOVER, Ph.D.**
Head of Industrial Arts Department
- ARTHUR W. BAUER, M.A.**
Wood Shop
- AARON J. HOOVER, Ed.M.**
Sheet Metal
- ROBERT M. KECK, M.A.**
Electricity
- ANTHONY T. STAVASKI, Ed.M.**
Printing

SOCIAL STUDIES

- GEORGE S. HART, Ph.D.**
Economics, Government
- WILBUR R. LECRON, Ed.M.**
History
- EMMA SACCO, M.A.**
Sociology
- HORACE MONTGOMERY, Ph.D.**
History

FACULTY





ENGLISH

HENRIETTA CARROLL, M.A.

Modern Languages

CLAIR MARTEL HUGHEY, M.A.

Literature

ISAAC CLAYTON KELLER, Ph.D.

Literature

E. CLAYTON McCARTY, M.A.

Creative Writing

NELLIE E. PARDOE, M.A.

English, Handwriting

ART AND MUSIC

ROSE A. LEACOCK, M.A.

Art

BESS M. HAZEN, M.A.

Art

EDWIN E. HALSTEAD, M.A.

Music

RUTH L. MYERS, M.A.

Music

CHARLES VEON, Mus.D.

Piano

SCIENCE AND MATHEMATICS

JOSEPH H. HURST, M.A.

Biological Science

RALPH W. McCOY, Ph.D.

Biological Science

KARL F. OERLEIN, Ph.D.

Physical Science

ELON G. SALISBURY, Ph.D.

Mathematics

KARL H. STAHL, Ph.D.

Mathematics; Physical Science

Health and Physical Education

LOUISE A. HILDRETH, M.A.

Women's Health and Gym

EDWARD H. CUBBON, M.A.

Men's Health and Gym

CLARENCE L. GROVE, M.A.

Intramurals

GEOGRAPHY

GEORGE E. HARDING, M.A.

Geography; Chemistry

J. RILEY STAATS, Ph.D.

Geography

SPEECH

LEON CONNELL, M.A.

Dramatics

DOUROSSOFF E. MORLEY, M.A.

Speech Correction

SECRETERIAL STAFF

HARRIET R. COPENHAVER, B.S.

Secretary to the President

MADELINE KIRBY

Secretary to Dean of Instruction

SARA E. STEELE

Secretary to Director of Laboratory School

MARY HORNBAKE WILSON

Secretary to Bursar

SALMA S. JOHNSON, A.B.

Assistant in the Library

DOROTHY M. REICHARD, B.S.

Assistant in the Library

RUTH UNDERWOOD

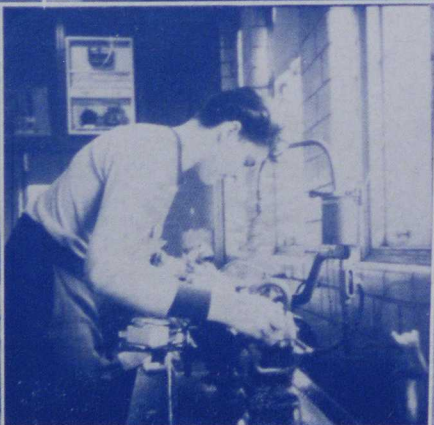
Clerical Assistant

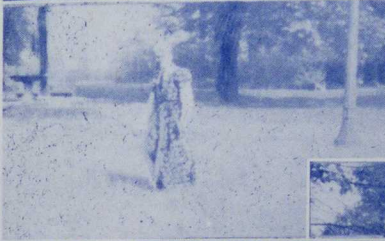
BETTY L. SMITH

Clerical Assistant

FACULTY







DISTINGUISHED SERVICE



Selected on the basis of activities, character, citizenship, leadership, personality, and scholarship, Margaret Ruth Bodis of Vanderbilt and Walter Glod of Donora receive at Commencement the Distinguished Service Award for 1942.

Each year, one outstanding man and one outstanding woman of the graduating class are the recipients of the award for they exemplify the model California student. The deans of men and women, the president of the college, the dean of instruction, the director of teacher training, the sponsor of the senior class, and three additional members of the faculty appointed by the president comprise the selection committee.

In recognition of their accomplishments at California; these students will be presented with special certificates as well as their diplomas at graduation.



CLASSES

1942



1943



1944



1945

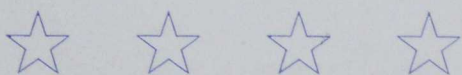


BARKLEY
HOUGH
ROBY
GLOD



SENIORS

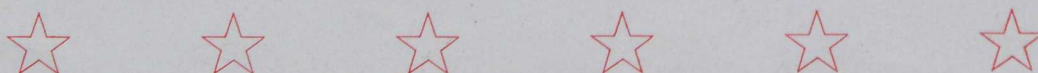
CLASS OF 1942

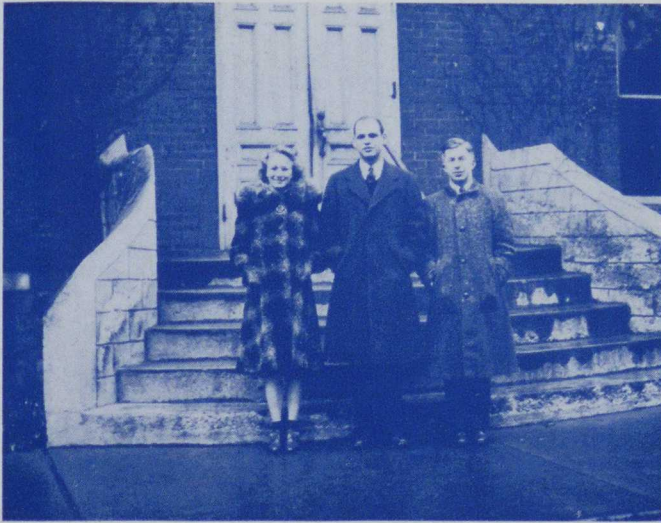


Four stars . . . one for each step of a college career.

Walter Glod, president; Leon Huttner, vice president, and Frances Sharpnack DeShields, secretary, pictured on the opposite page, together with treasurer, Hilda Levin, and sponsor, Dr. Horace Montgomery, guided the Senior Class over the last hurdles. In Student Congress, the class was represented by John Utterback, John Strickler, James Clutter, and DeLellis Gallagher.

Commencement in 1942 is significant, more than ever before, as a severing of ties and parting of ways. These happy faces and congenial personalities go forth to meet much uncertainty, but may their courage and initiative, in the future, add a fifth star to those acquired at California.





DESHIELDS
HUTTNER
GLOD

"It's the set of the sails and not the gales, that determines where you go."

The sails have been set and the good ship Senior Class of 1942 is ready to weather the gales of its selected profession—teaching. Members of the crew face this turbulent future with the confidence and idealism developed during their preparation for educational work. Theirs will be the task to help mold future democratic thought and action in the minds of the youth entrusted to them. Matriculation at California has prepared them for achieving this goal, because more than developing mentally, they have learned to work, play, and live together. It is their aim to carry these ideals of a good democratic life into the schools in which they will teach.

The Senior year has been full of campus leadership, chairmanship, and student teaching. Aiming at service for the school, members of the class have distinguished themselves in sports, dramatics, journalism, student government, and scholarship. From registration, with its humorous perseverance of the Tribunal regarding freshmen pledglings, to the decorum and dignity of Baccalaureate and Commencement exercises, the Seniors have taken an active part in making this final year a most memorable one.

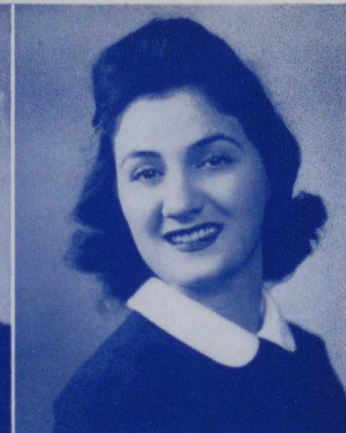
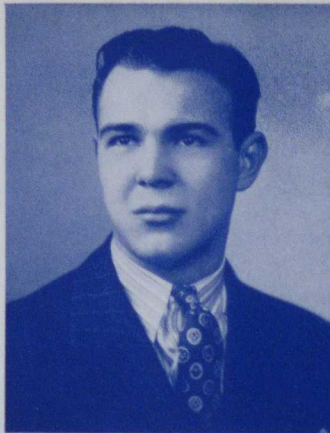
WALTER GLOD
President, Class of 1942



HAROLD ALBRIGHT

Somerset, Pa.
Industrial Arts

Athletic Council; Varsity Club; Rep. to Congress; Provincial Room Committee; Tennis Team.



AMELIA EILEEN ASTORINA

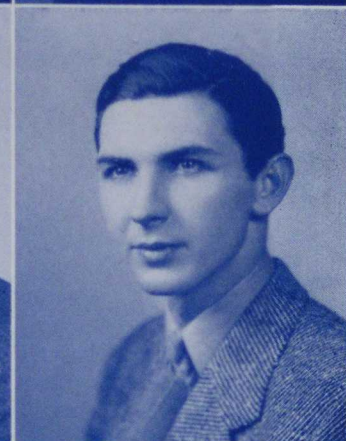
Slovan, Pa.
Elementary

College Players; Junior Players; Music Appreciation Club; Women's Glee Club; Monvalea; Monocal; Provincial Room Committee; Alpha Psi Omega; W.A.A.; North Hall Council.

JOHN LOUIS BALDORI

Fairbank, Pa.
Elementary

Geography Club; Music Appreciation Club; Rifle Club.



JAMES BALOG

Monessen, Pa.
Industrial Arts
Varsity Club; Tennis Team.

MARIAN P. BENNETT

Tarentum, Pa.
Secondary

Editor - in - Chief of "Hammer and Tongs"; Sec.-Treas. of John A. Brashear Society; Council of School Newspaper Advisors; Women's Glee Club; Rep. to Congress; Publications Board; Monocal; Kappa Delta Pi; Pi Gamma Mu.



DAVID AUGUSTUS BLACK

California, Pa.
Industrial Arts

Men's Glee Club; Mother's Day Committee.

ADELE LOUISA BLAYNEY

Pittsburgh, Pa.
Elementary

Women's Glee Club; Treas. of Y.W.C.A.; Monvalea; Gamma Pi Chi; Junior Players; Elusium Vice Pres.

MARGARET RUTH BODIS

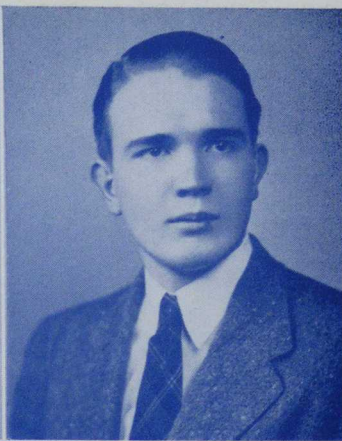
Vanderbilt, Pa.
Elementary

President of North Hall; North Hall Council; Sec. of Publications Board; Women's Glee Club; Program Chairman, and Conference Chairman of Y.W.C.A.; Monvalea; Pres. of Kappa Delta Pi; Sec.-Treas. of John A. Brashear Society.



SENIORS





DOLLY MAE BOWNESS

Monessen, Pa.
Elementary
Women's Glee Club.

CHARLES BREAKWELL

Masontown, Pa.
Industrial Arts
Nature Lore Club; Student Congress;
Pres., Y.M.C.A.; Phi Sigma Pi; Provin-
cial Room Committee.



JOSEPHINE PATRICIA BUGLAK

California, Pa.
Elementary
W.A.A.; Geography Club; Kappa
Delta Pi.

CATHERINE BURNS

Uniontown, Pa.
Elementary
College Players; W.A.A.



CLARK CONLIN CAMPBELL

Elizabeth, Pa.
Industrial Arts
Y.M.C.A.

FRANK CANNISTRA

Dormont, Pa.
Industrial Arts
Y.M.C.A.; Camera Club; Varsity
Club; Provincial Room Committee.



IRENE ANTOINETTE CEGLARZ

Monessen, Pa.
Secondary
Sec., Student Congress; Women's
Glee Club; Sec., Senior Class; Rep. to
Indiana Student Congress; Junior Play-
ers; Treas., College Players; "Hammer
and Tongs"; Pi Gamma Mu; Gamma Pi
Chi; Monvalea; Traveling Women's
Council; Kappa Delta Pi; New York
Conference.

RALPH CHARNEY

Fayette City, Pa.
Industrial Arts
Pres., Rifle Club; Phi Sigma Pi.

SENIORS



JAMES HENRY CLUTTER

Monongahela, Pa.

Secondary

Rep. to Congress; Student Cabinet; Rep. to Indiana Student Congress; Men's Tribunal; Monocal; "Hammer and Tongs"; Varsity Club; Who's Who in American Universities and Colleges; Provincial Room Committee; Athletic Council; Varsity Basketball; Jay-Vee Football; Junior Players; Customs Committee; New York Conference.



MARY ELIZABETH ANN COLLINS

Vanderbilt, Pa.

Elementary

Women's Glee Club; Y.W.C.A.; North Hall Council; Dad's Day Chairman; Monvalea.



PHYLLIS HANEY COMET

California, Pa.

Elementary

Treas., Junior Players; Sec., College Players; Alpha Psi Omega; Women's Glee Club; Monocal; Chairman, Harrisburg Conference; Pi Gamma Mu.

FLORENCE MAUREEN CONCILUIS

Uniontown, Pa.

Elementary

Y.W.C.A.



NORBERT ROGER CONNAIR

Donora, Pa.

Secondary

Geography Club; "Hammer and Tongs"; Tennis.

LOUISE M. COYLE

Beallsville, Pa.

Elementary

Y.W.C.A.

JAMES CRISWELL

Pittsburgh, Pa.

Industrial Arts

Business Manager, Monocal; Men's Glee Club President; Phi Sigma Pi; Varsity Club; President, South Hall; Customs Committee; Mother's Day Committee; Tennis Team.



DON CHESTER CROUSHORE

Fayette City, Pa.

Secondary

Student Congress

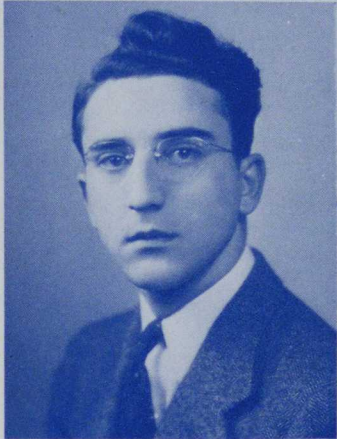
SENIORS





RUTH E. CUNNINGHAM
 Chiopyle, Pa.
 Elementary
 W.A.A.; Y.W.C.A.; Geography

ACHILLIO JOHN DeMEDIO
 Donora, Pa.
 Secondary
 Student Congress; College Players;
 Music Appreciation Club; Pi Gamma
 Mu; Phi Sigma Pi.



JOSEPH PAUL DeMICHELA
 Rillton, Pa.
 Industrial Arts
 Y.M.C.A.; Sec.-Treas., Varsity Club;
 Rifle Club; South Hall Council.

FRANCES SHARPBACK DeSHIELDS
 California, Pa.
 Secondary
 Y.W.C.A.; Student Congress; Gamma
 Pi Chi; Kappa Delta Pi; "Hammer and
 Tongs".



BETTY JAYNE DeVORE
 Pleasant Hills, Pa.
 Elementary
 Sec., Camera Club; Provincial Room
 Committee; W.A.A.; Junior Players.

EILEEN ELIZABETH DIEDRICH
 Fayette City, Pa.
 Elementary
 W.A.A.



VIOLET DOBOSH
 Monessen, Pa.
 Secondary
 Junior Players

RITA MARIE DONOVAN
 Uniontown, Pa.
 Elementary
 W.A.A.; Junior Players; Traveling
 Women's Council; Gamma Pi Chi.

SENIORS



IRVIN DOWNS

Kittanning, Pa.
Industrial Arts
Y.M.C.A.; Rifle Club



ANNA DEANE DUCAR

Stockdale, Pa.
Elementary
W.A.A.; Monvlea; Pi Gamma Mu

MARION C. DUFFY

Erie, Pa.
Elementary
Y.W.C.A.



FRANCES MERRELL EDWARDS

California, Pa.
Elementary
Pres., Y.W.C.A.; Gamma Pi Chi;
W.A.A.; Women's Glee Club.

RUTH ANN EDWARDS

Brownsville, Pa.
Elementary

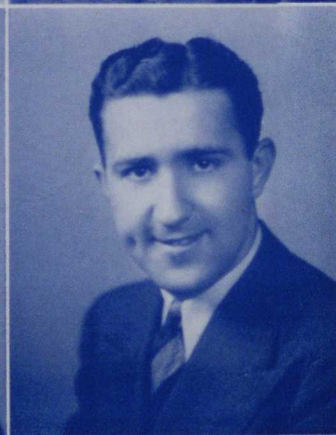


RALPH ENGELMEIER

Pittsburgh, Pa.
Industrial Arts
Phi Sigma Pi; Y.M.C.A.; Varsity Club;
Chairman, Provincial Room Committee;
Pres., Dixon Hall; Customs Committee.

WILLIAM ETSWEILER

Millersburg, Pa.
Industrial Arts
Sec., Men's Glee Club; Mother's Day
Committee.

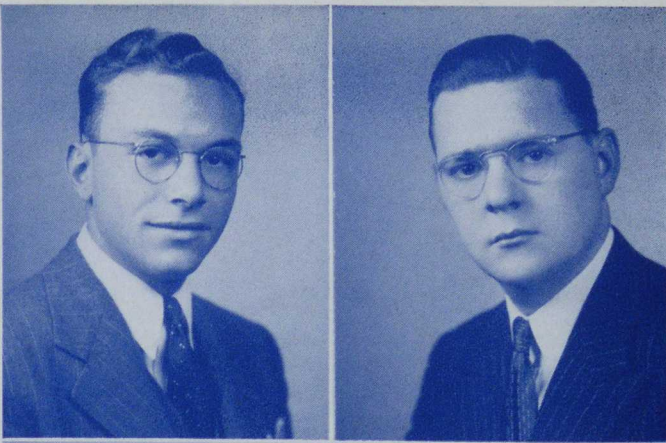


HARRY R. FAULK

Yukon, Pa.
Secondary
John A. Brashear Society; Rifle Club

SENIORS



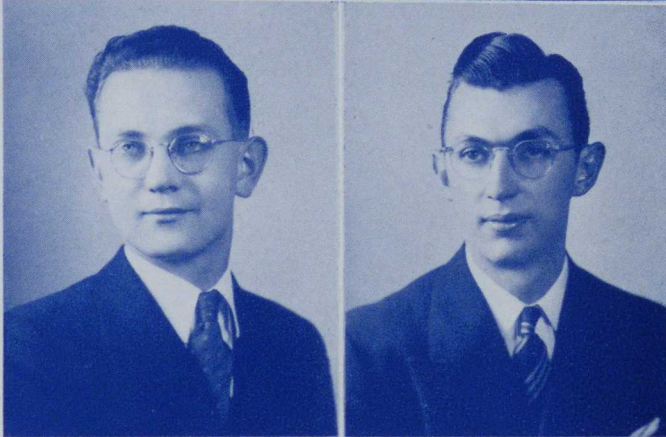


LOUIS J. FERRARI

Charleroi, Pa.
Industrial Arts
John A. Brashear Society; I. A. Leader

ROBERT C. FIKE

Connellsville, Pa.
Secondary
Pres., Camera Club; Y.M.C.A.; Student Congress; Student Cabinet.

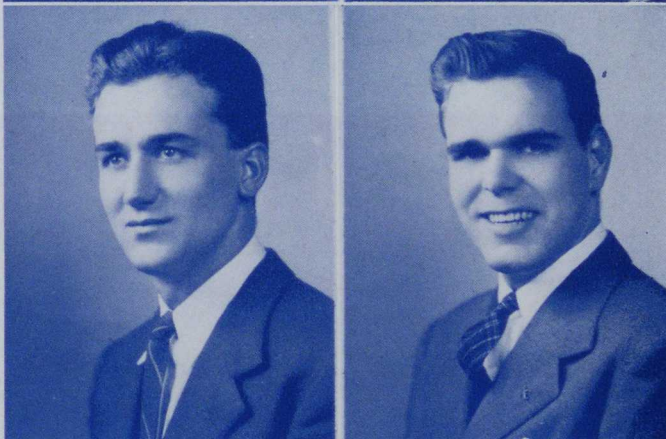


ROBERT FISHER

West Leisenring, Pa.
Industrial Arts
Men's Glee Club

ROBERT H. FLEMING

Monessen, Pa.
Secondary
Vice Pres., Senior Class; College Players; Men's Glee Club; Junior Players.



PAUL WILLIAM FLORIANO

Sutersville, Pa.
Industrial Arts
Y.M.C.A.; Men's Glee Club; Printer's Guild.

ROBERT FRYE

California, Pa.
Secondary
Y.M.C.A.; Varsity Club; Provincial Room Committee.



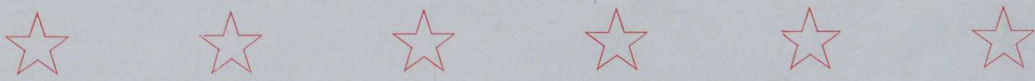
OLIVE MARY FURLONG

West Elizabeth, Pa.
Elementary
Associate Editor, "Hammer and Tongs"; Sec., Class '43; College Players; Gamma Pi Chi; Women's Glee Club.

DELELLIS FRANCES GALLAGHER

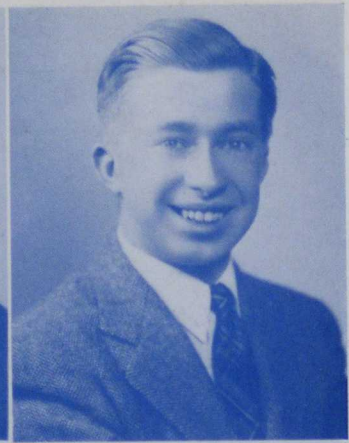
Brownsville, Pa.
Secondary
News Editor, "Hammer and Tongs"; College Players; Monocal; C.S.N.A.; Mother's Day Committee.

SENIORS



THOMAS J. GILMER

Webster, Pa.
Secondary
Rifle Club; Football; Geography Club;
Junior Players.



WALTER GLOD

Donora, Pa.
Elementary
Editor, Monocal; Student Advisor,
"Hammer and Tongs"; Vice Pres., Col-
lege Players; Sec., Council of School
Newspaper Advisors; Publications
Board; Alpha Psi Omega; Phi Sigma
Pi; Harrisburg Conference; Pi Gamma
Mu; New York Conference.



KATHRYN LOUISE GREENAWALT

Elizabeth, Pa.
Elementary
Junior Players; College Players; Na-
ture Lore Club; Elusium Club; W.A.A.;
Cooking Club; Y.W.C.A.

ROBERT LINWOOD GRIMM

Hermanie, Pa.
Elementary
John A. Brashear Society; Music Ap-
preciation Club; Junior Players; College
Players.



GLADYS MARIE HAGERSTRAND

Monessen, Pa.
Elementary
Pres., Sec., Monvalea; Treas., College
Players; Women's Glee Club; Junior
Players; Penny Black; Traveling Girls'
Council.

LEORA DEE HANEY

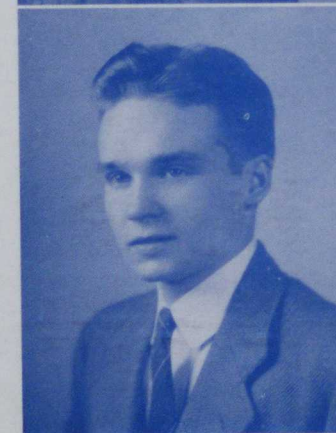
West Brownsville, Pa.
Elementary
Monocal; College Players; Alpha Psi
Omega.

GILBERT SEESE

Scottsdale, Pa.
Secondary
John A. Brashear Society; Men's Glee
Club.

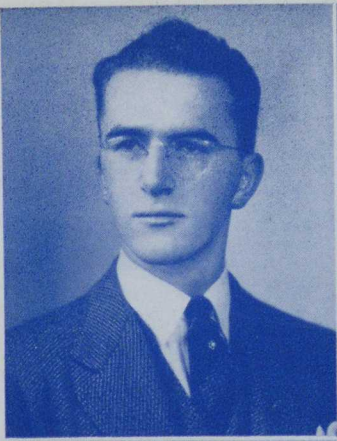
LEON HARRY HUTTNER

Charleroi, Pa.
Secondary
Geography Club; Monocal; Varsity
Club; "Hammer and Tongs"; Varsity
Basketball; Jay-Vee Basketball; Who's
Who in American Universities and Col-
leges.



SENIORS





FREDERICK HENRY JARRET

Hallowell, Pa.
Industrial Arts
Y.M.C.A.; Mother's Day Committee;
I.A. Leader; Tumbling.



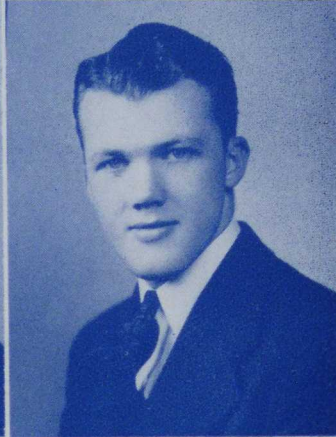
AGNES KATHRYN JENKINS

Stockdale, Pa.
Elementary
W.A.A.



MARY JANE JONES

Donora, Pa.
Elementary
Women's Glee Club; Monocal; Junior
Players.



JAMES JORDAN

Rankin, Pa.
Industrial Arts
Varsity Club, Football



PAUL WILLIAM KAPALKA

Calumet, Pa.
Industrial Arts
Y.M.C.A.; Camera Club; Football;
John A. Brashear.



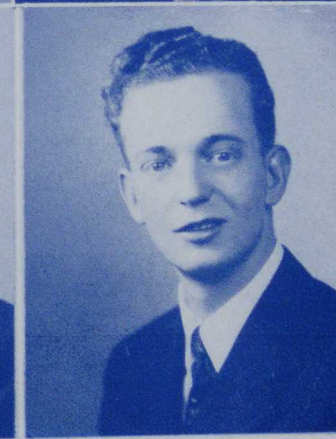
FRANK JOSEPH KENTON

Republic, Pa.
Industrial Arts
Vice Pres., Camera Club



JAMES KNARR

Luthersburg, Pa.
Industrial Arts
Sec., Phi Sigma Pi; Men's Glee Club,
Treas.; Vice Pres., Y.M.C.A.; Mother's
Day Committee.



WILLIAM JOSEPH KOOP

California, Pa.
Secondary

SENIORS



DANIEL KORNICK

Allison, Pa.
Industrial Arts
Y.M.C.A.; Nature Study Club



MICHAEL KUZMA

Leetsdale, Pa.
Industrial Arts
Fire Chief, Dixon Hall; Pres., Printers' Guild.

JAMES M. LAING

Uniontown, Pa.
Secondary
Executive Officer, Rifle Club; "Hammer and Tongs"; Y.M.C.A.

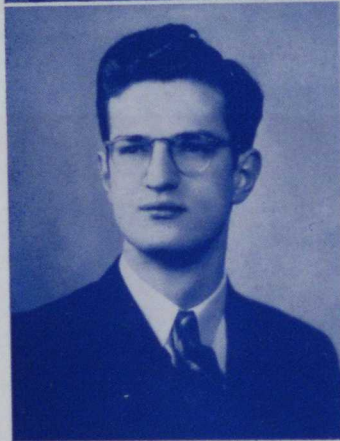


ROY E. LANDIS

York, Pa.
Industrial Arts
College Players; Mother's Day Committee; Band; Orchestra; Y.M.C.A.; Alpha Psi Omega; Junior Players; Printers Guild.

WALTER LAUXEN

Leetsdale, Pa.
Industrial Arts
Y.M.C.A.



FRED LEO LEBDER

Uniontown, Pa.
Secondary
John A. Brashear; Penny Black; Rifle Club.

DENNISE LeJOHN

California, Pa.
Secondary

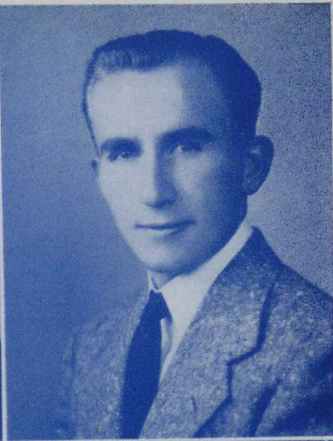


EVELYN RUTH LEMON

Brownsville, Pa.
Elementary
College Players; Women's Glee Club; Monocal; Gamma Pi Chi; Harrisburg Conference.

SENIORS





HILDA GERTRUDE LEVIN

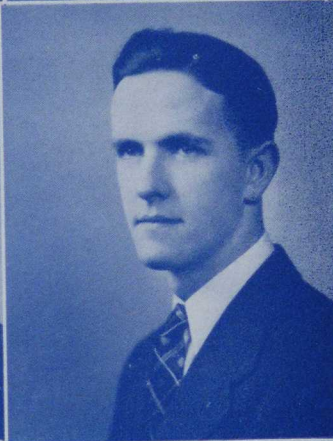
Rices Landing, Pa.
Elementary
College Players; Monocal; Kappa
Delta Pi; Pi Gamma Mu.

STEPHEN GEORGE LIPCHIK

Erie, Pa.
Industrial Arts
Phi Sigma Pi; Basketball; Intramural

MARGARET V. LOMAGNO

Perryopolis, Pa.
Elementary
Sec.-Treas., Geography Club; Music
Appreciation Club; Debating; Y.W.C.A.;
Junior Players; Penny Black Club; Mon-
valea.



KENNETH IRWIN LUTZ

Perryopolis, Pa.
Industrial Arts
Treas., Phi Sigma Pi; Rifle Club; Stu-
dent Congress; Student Cabinet; I.A.
Leader; Rep. Student; New York Con-
ference.

LETA JUNE MACHOGAN

Erie, Pa.
Secondary
Y.W.C.A.



BETTY LOU MAIZE

California, Pa.
Elementary
College Players; Monvalea; Gamma
Pi Chi; Women's Glee Club; Y.W.C.A.;
W.A.A.

EDWARD MARTON

Rankin, Pa.
Industrial Arts
John A. Brashear Society; College
Players; Y.M.C.A.; Penny Black Club.



HARRY CHAMBERS McCABE

Pittsburgh, Pa.
Industrial Arts
Y.M.C.A.

SENIORS



DONALD E. MOON

Connellsville, Pa.

Industrial Arts

Phi Sigma Pi; Monocal; Tribunal; I.A. Leader; Photography Club; Representative Student; Farm Day Committee.



JAMES RUSSELL MOONEY

Monessen, Pa.

Secondary

Men's Traveling Council; Student Congress; I.A. News Letter, Editor; Junior Class President; Vice Pres., Men's Glee Club; Varsity Club; "Hammer and Tongs"; Monocal; Phi Sigma Pi; College Players; Council of School Newspaper Advisors; Assembly Committee; Junior Players; Varsity Basketball; Student Congress; Student Cabinet; Pi Gamma Mu; Who's Who in American Universities and Colleges.



JEAN ESTHER MOORHOUSE

Brownsville, Pa.

Elementary

Women's Glee Club; Pres., Gamma Pi Chi; Mother's Day Committee.

ELSIE VIRGINIA MUSSANO

Monessen, Pa.

Elementary

Monvalea; W.A.A.



MARTIN JOHN NICKLAS

Nixon, Pa.

Industrial Arts

Phi Sigma Pi; Y.M.C.A.; Provincial Room Committee; Printer's Guild.

GEORGE G. NICKOVICZ

California, Pa.

Industrial Arts

FLORENCE IRENE NOBLE

Fayette City, Pa.

Elementary

Treas., Monvalea; W.A.A.; Gamma Pi Chi.



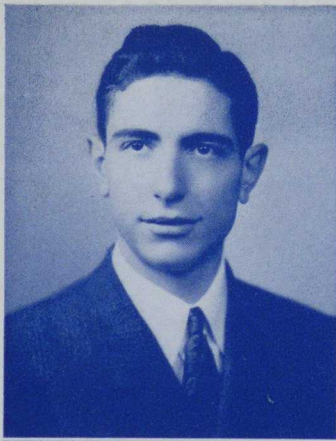
ANDREW ONDERKO

Monessen, Pa.

Industrial Arts

SENIORS





SPIRITO C. OVIAL

California, Pa.

Industrial Arts

Varsity Club; Football Manager; John A. Brashear Society; Y.M.C.A.

CHOYCE ELIZABETH OWENS

Coal Center, Pa.

Secondary

College Players; Y.W.C.A.; Gamma Pi Chi; W.A.A.; Monvalea; Pi Gamma Mu; Who's Who in American Universities and Colleges.



EVERETT PANCOOK

Monessen, Pa.

Industrial Arts

ROBERT SYL PETRIELLO

Brownsville, Pa.

Secondary

"Hammer and Tongs"; JayVee Basketball; Monocal.



ALEXANDER GEORGE PRINGLE

Merrittstown, Pa.

Secondary

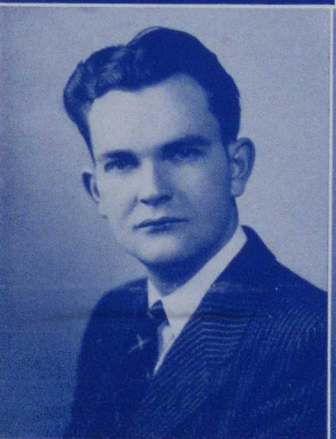
Y.M.C.A.

LORRAINE NAOMI ROSE

Elizabeth, Pa.

Elementary

Geography Club



PHILLIP J. SAUTER

Uniontown, Pa.

Industrial Arts

Camera Club; Y.M.C.A.; Penny Black Club.

ROBERT WEITZEL SCHAUM

Donora, Pa.

Industrial Arts

John A. Brashear Society; Printer's Guild; JayVee Football.

SENIORS



ELSIE BERTHA SCHULTZ

Wilson, Pa.
Secondary
Geography Club

DORIS FAYE SESLER

Perryopolis, Pa.
Elementary
Sec., Y.W.C.A.; W.A.A.; Nature Lore
Club; Monvalea.

RALPH V. STEEB

Pittsburgh, Pa.
Industrial Arts
Y.M.C.A. Sec., Vice Pres.; Phi Sigma
Pi; I.A. Leader; Nature Lore Club;
Mother's Day Committee; Intramurals;
Junior Players; Dad's Day Committee.

HENRY STEFANICK

California, Pa.
Industrial Arts
Pres., John A. Brashear Society;
Men's Glee Club.

DOROTHY WARFEL STRICKLER

Fayette City
Elementary
Monvalea; Y.W.C.A.; Women's Glee
Club.

JOHN FRANKLIN STRICKLER

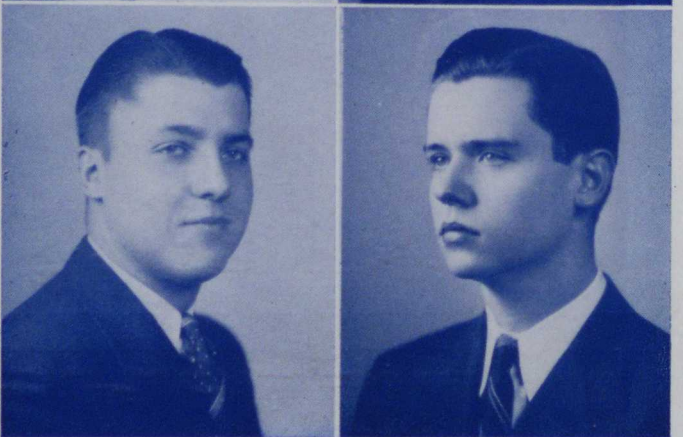
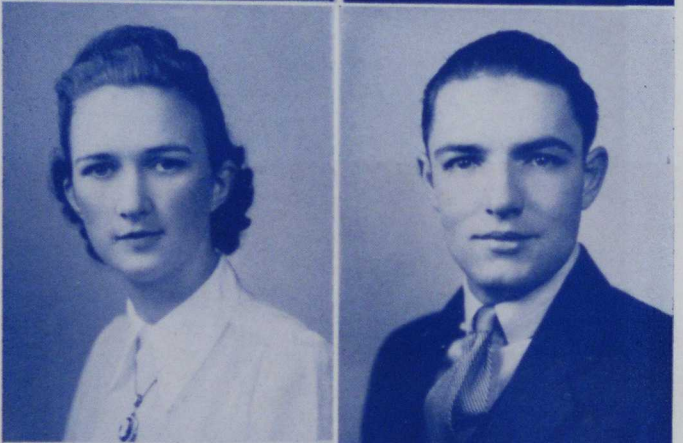
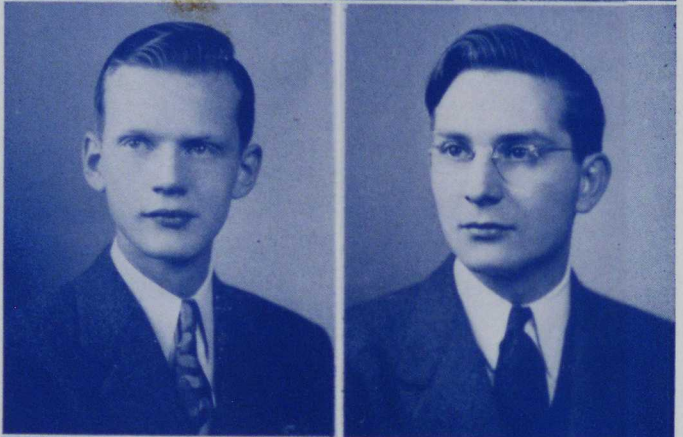
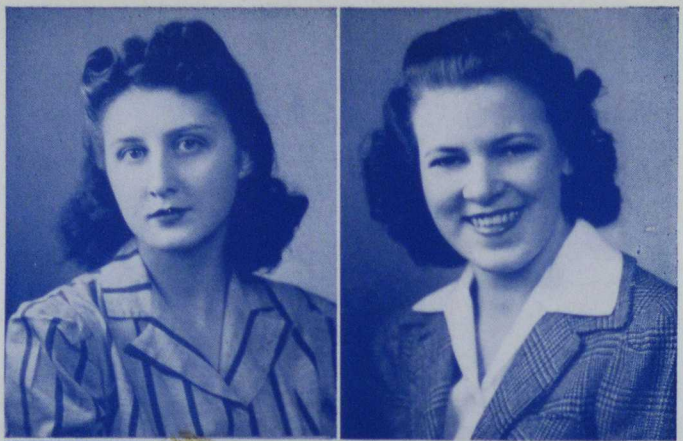
Fayette City
Secondary
Geography Club; Student Congress;
Student Cabinet; Rifle Club; JayVee
Basketball; Treas., Freshmen Class.

WILLIAM STUCKRATH

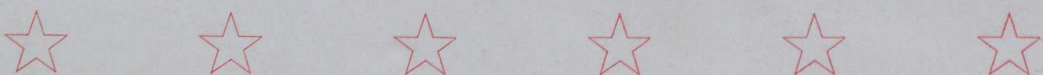
Pittsburgh, Pa.
Industrial Arts
I.A. News Letter; Monocal; Mother's
Day Committee.

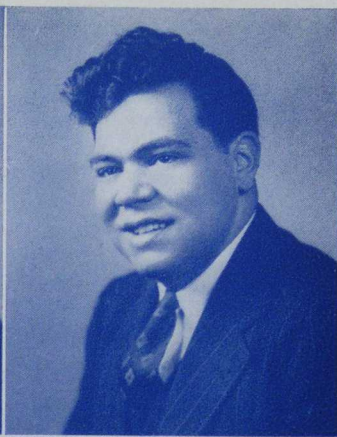
ARTHUR J. SUDDABY

Pittsburgh, Pa.
Industrial Arts
Y.M.C.A.; Football; Printer's Guild;
Varsity Club; Dad's Day Committee;
Basketball Manager; Intramural Bas-
ketball.



SENIORS





ANDREW JAMES SUPRIC

Monessen, Pa.
Industrial Arts
Junior Players; Printer's Guild; College
Players.

JOSEPH LOUIS TEDESCO

Donora, Pa.
Industrial Arts
Junior Players; College Players; Tri-
bunal.

FRANK BERNARD TRUNN

LaBelle, Pa.
Elementary



LUCY ANN VALERO

Slickville, Pa.
Elementary
Y.W.C.A.; Junior Players; College
Players.

HELEN BOHN UTTERBACK

California, Pa.
Elementary
W.A.A., Pres.; College Players; Gam-
ma Pi Chi, Pres.; Farm Committee;
Junior Players; Sec., Freshman and
Sophomore Class.



JOHN DAVIS UTTERBACK

California, Pa.
Secondary
Traveling Men's Council; Pres., Stu-
dent Congress; Student Cabinet; Rep.
to Indiana Student Congress; Athletic
Council; Treas., Phi Sigma Pi; Varsity
Club, Pres.; Tribunal; Farm Day Com-
mittee; Who's Who in American Uni-
versities and Colleges; Customs Com-
mittee; Varsity Basketball, New York
Conference.

ROBERT WEBER

Donora, Pa.
Secondary
Co-editor, Monocal; Traveling Men's
Council; Student Congress; Pres., Col-
lege Players; Publications Board;
"Hammer and Tongs"; Alpha Psi Om-
ega; Provincial Room Committee;
C.S.N.A.



RUTH ELVERNA WEBSTER

California, Pa.
Elementary
Junior Players; Women's Glee Club;
Monvalea.

SENIORS



CRYSTAL F. WELSH

Beallsville, Pa.

Secondary

W.A.A.; Y.W.C.A.; Poetry Club; Traveling Women's Council.

JOHN B. WOOD

Utica, Pa.

Secondary

John A. Brashear Society; Debate Club; Harrisburg Convention; Rifle Club; Student Congress; Student Cabinet.

ESTHER MILDRED YOUNKIN

Mill Run, Pa.

Elementary

JOSEPH BUFFINGTON YOUNT

Vandergrift, Pa.

Industrial Arts

Men's Glee Club; Y.M.C.A.; Mother's Day Committee.



SENIORS



ADDITIONAL SENIORS COMPLETING DEGREE REQUIREMENTS

IN MAY, 1942

Elementary

Sophia Mae Belsar, Belle Vernon; Mike Stanley Belski, California; Neva Bardella Bertamini, Studa; Milton Michael Bush, Upper Middletown; Helen Nelson Clutter, Charleroi; Eleanor Cooley Cole, Fairchance; Barbara Crockett, Denbo; Marguerite D. Dalverny, Joffre; Roger M. Garofola, East Millsboro; Daniel A. Goss, Hiller; Lucille P. Hann, Brownsville; Marion M. Huseman, California; Margaret Miriam Johnson, McClellandtown; Steve Michael Labutta, Uniontown; Ila Jane Lewis, Clairton; Gertrude Cecelia Madigan, Fredericktown; Helen Joyce Nagy, Elrama; Margaret M. Nelson, Fayette City; Thelma O'Berg,

Irwin; Dorthea Erbe Peach, Pittsburgh; Christine Elizabeth Podboy, Washington; Helen Lavina Soles, Monessen; Anna Gough Sutton, Republic; Annette Patricia Webster, Newell; Jeanne Evelyn Welsh, Millsboro; Margaret Virginia White, Millsboro.

Secondary

Harold Morgan Martin, Charleroi; Josephine Melber, Terrace.

Industrial Arts

Edmund B. Robertson, Clairton.



JUNIORS

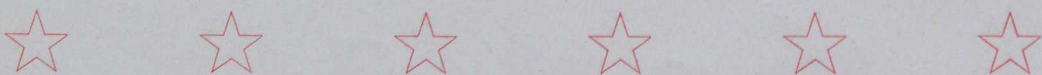
CLASS OF 1943

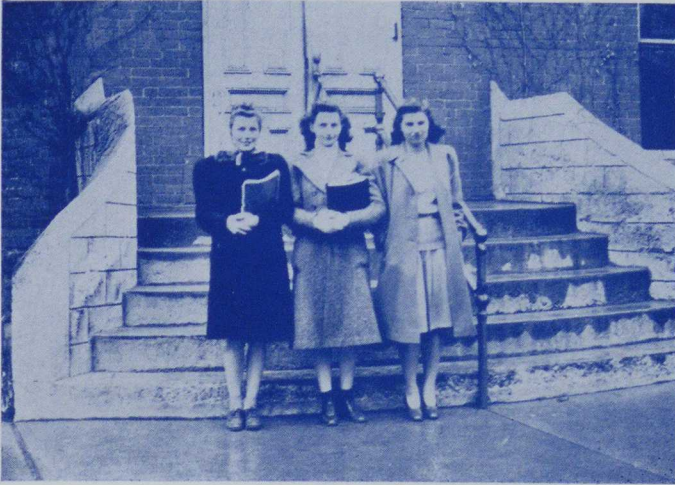


One remaining year in which to complete the required work and add the final star to those already earned awaits the Junior Class.

Heading this year's Juniors were George Roby, president, and Alberta Girman, vice president, Dorothy Lowman, secretary, and Lois Edwards, treasurer, who are pictured on the opposite page. Dr. Ralph W. McCoy is the class sponsor.

Through the publication of the Monocal and the successful presentation of the Junior Prom, members of the class have earned the responsibilities of Seniors and have proven their right to that status.





EDWARDS

LOWMAN

GIRMAN

In September, 1939, a new crop of freshmen, destined to become the Class of 1943 enrolled at C.S.T.C. Since that date, these freshmen have aged not only chronologically, but intellectually and spiritually, until now we feel prepared to assume the dignified status of Seniors.

During these uncannily short years, much has occurred to upset the normal pattern of college life. We as well as those in other classes are attempting to make the necessary adjustments, in order that ultimately, we may make our mark in the teaching profession.

Ours has been an active class, and through this book we hope to provide a constant reminder of the activities and programs in which we have participated. Then, too, it will serve as an agent of reminiscence to recall the faces of those who are fated to give their lives in the fight to preserve our way of life, which we are sworn to perpetuate in the minds of American youth.

GEORGE ROBY,
President, Class of 1943



IRMA GAIL ABERCROMBIE

Quiet . . . town girl . . . has large blue eyes.

DONALD LYMAN ADAMS

One of the men in white . . . sets the pace in shop . . . making bracelets—for Vilma.

RUBY CAROLINE ADAMS

Sweet . . . goes about sniffing (perfume) bottles . . . socializes with "Gib" exclusively . . . has a charming smile.

ISABELLE ADAMS

Drama enthusiast . . . has a keen sense of comedy . . . likes to make noise when she walks . . . prefers the unusual . . . a heart interest in the army.

GEORGE PAUL ALBERTS

Always willing . . . to argue a point . . . prefers red heads . . . a government enthusiast . . . aggressive.

JOSEPH RICHARD ARCADI

Don Juan type . . . flashy eyes . . . chooses a brunette dancing partner.

JESSIE MARY ASA

Town girl . . . a good student . . . dependable . . . able aid . . . has a jolly disposition.

ELIZABETH MAE BAILEY

Talkative . . . has infectious giggle . . . dates the Deacon . . . notice those big brown eyes and long silky tresses.

GENE ARDEL BAKER

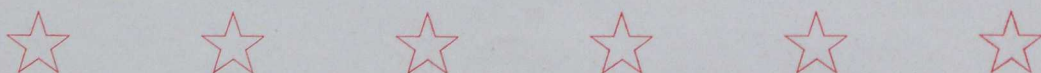
Scintillating . . . No. 1 glamour girl . . . the answer to those who prefer blondes . . . makes excellent tea for dormers.

ALFONS S. BARCZUK

Tall and neat . . . takes the pro if you take the con . . . serious.



JUNIORS



JUNIORS



JOHN A. BARNEY

Retiring . . . cooperates with College Players . . . asks no praise . . . efficient.

MARGARET LOIS BARRON

Transfer from Otterbein . . . whiz with history . . . basketball and poetry enthusiast.

EDNA RAE BELL

Throws a mean bowling ball . . . tall . . . attractive . . . represents Monvalea in Congress.

ROSADELE MARY BONARI

Warbles in Glee Club . . . likes to play bridge . . . pleasant . . . unassuming.

MAUVIS MINERVA BYERS

Demure . . . there is serenity where she goes . . . conscientious student . . . quiet modesty.

DAVID FORSYTHE CHESTER

Personality plus . . . Orbell's No. 1 escort . . . "the man most likely to succeed" type . . . member of basketball squad . . . blushes.

CHARLOTTE DIANA CHOTTINER

Will walk a mile to do a favor . . . one of the train mob . . . endlessly talks about her niece . . . sees sunny side.

MARGARET LOUISE CONNORS

Tall traveler . . . well poised . . . takes things with a stride.

LENORA MAE DAGGER

Choo-choos from down the river . . . pal of D. Williams . . . ready smile.

ROBERT SHOAF DAVIS

Joined U. S. forces . . . industrious . . . I.A. man.



EDNA EVELYN DAYTON

Boards down street . . . trim prospective teacher . . . likes to walk.

MARCELLA ANN DeORE

One of a sister team . . . good scout . . . does her bit for Thespians . . . always the glass of fashion.

ERMAND G. DiBARTOLOMAY

Jitterbug extraordinary . . . likely candidate for "tall stories" club . . . recent army recruit.

TONY JAMES DONATELLI

Sunny disposition . . . resides in Dixon Hall . . . enjoys swimming . . . well-known provinciator.

ELMA GENE DOWNER

Diminutive . . . sweet coquette . . . prefers Varsity Men—past and present . . . stylish . . . seen much with "Snooky".

WILLIAM RAYMOND DUDZAK

Has the drama bug—talented . . . reserved . . . possesses beautiful voice . . . thinks most girls frivolous.

LOIS MARIE EDWARDS

Lovely to look at . . . has wealth of admirers . . . her smile lends itself well to equally spirited chatter.

WILLIAM EVANS EDWARDS

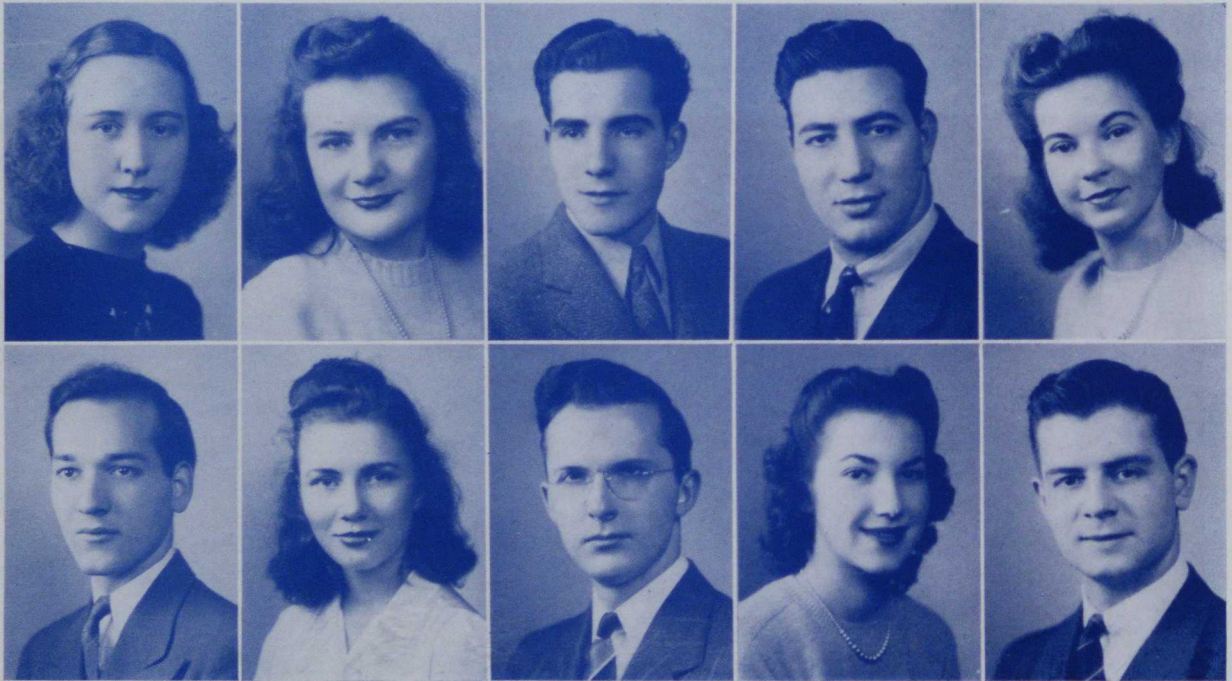
Serious . . . one of the Phi Sigs . . . hails from Brownsville . . . sings, too.

FAITH ESTELLE FEARER

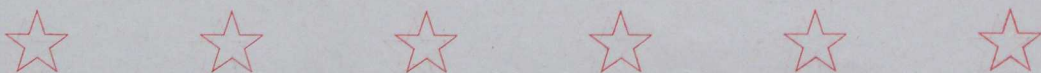
Peaches and cream complexion . . . sedate . . . new addition to campus, but good!

FRANK ALEXANDER FERENS

Waiter with the water . . . frequents provincial room.



JUNIORS



JUNIORS



MARGARET ELAINE FITZGERALD

Sincere and studious . . . carries an armload of books.

ALLEN WARREN FITZGERALD

Likes to take long walks . . . whistles while he works . . . journalistically inclined.

LEWIS MAHLON FOLLETT

From across the state line . . . as pleasant as tall . . . complacent . . . Glee Club prexy.

JEANNE LOUISE FRANKS

Short, brunette . . . pleasant disposition . . . Brownsvillite.

WILLIAM ROLAND GASS

Friendly smile for everyone . . . bow ties, flashy colors, saddle shoes . . . prefers sophisticated ladies . . . vitality plus . . . Dapper Dan.

FRANK JOSEPH GAVLAK

Quiet . . . dreamy eyes . . . plays accordion . . . writes "Disc Dope".

BILLIE JANE GILLINGHAM

Irish lass with turned up nose . . . answers to "Bill" . . . peppy . . . lovely mermaid.

ALBERTA MARGARET GIRMAN

Has an irium smile . . . takes a lot of teasing . . . good sport . . . always has an answer . . . blushes prettily and easily.

VERNA MARIE GLOD

Athletic . . . no relation to Walter . . . sunny smile.

JUNE ELIZABETH GUESMAN

Distinctive features . . . good scout . . . shares a suite with Scott.



WILBUR THOMAS HAIGHT

One of the first to answer Uncle Sam- my's call . . . led a local Scout troop . . . conscientious.

LORRAINE S. HAILS

Dependable . . . calls Monvalea to order . . . calm and collected.

MINOR CLYDE HAWK

Imaginative . . . good politician . . . divulges "Travelin' Chatter" . . . keen sense of humor.

CATHERINE MARIE HESTER

Immaculate . . . exotic type . . . scorns C.S.T.C. swains . . . possesses a keen mind . . . very candid.

ELLEN HORNE

Timid . . . smiles easily, and prettily . . . dotes on history . . . writes for H. & T. . . . tranquil.

H. D. HOUGH

Effervescent personality . . . a "Bonnie" lad . . . can be heard when not seen . . . curly locks and big smile . . . nice to know.

JAMES JENKINS

Good at hitting the bullseye . . . nice crop of freckles . . . wholesome.

WILLIAM PAUL KASOVICH

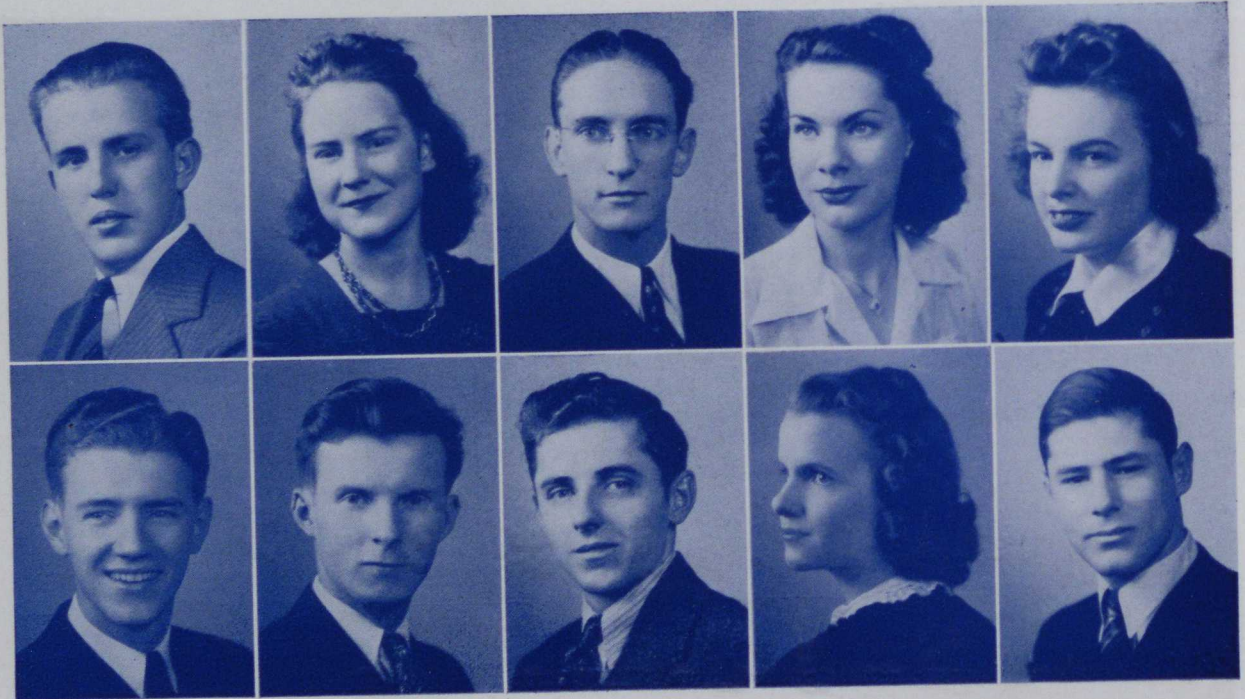
Likes to talk . . . breezy . . . made a hit with the students.

EDNA RUTH KELLER

Has executive ability . . . charming . . . "Lux" complexion . . . zealous worker . . . tinkles the ivory keys.

HAROLD CECIL KINGAN

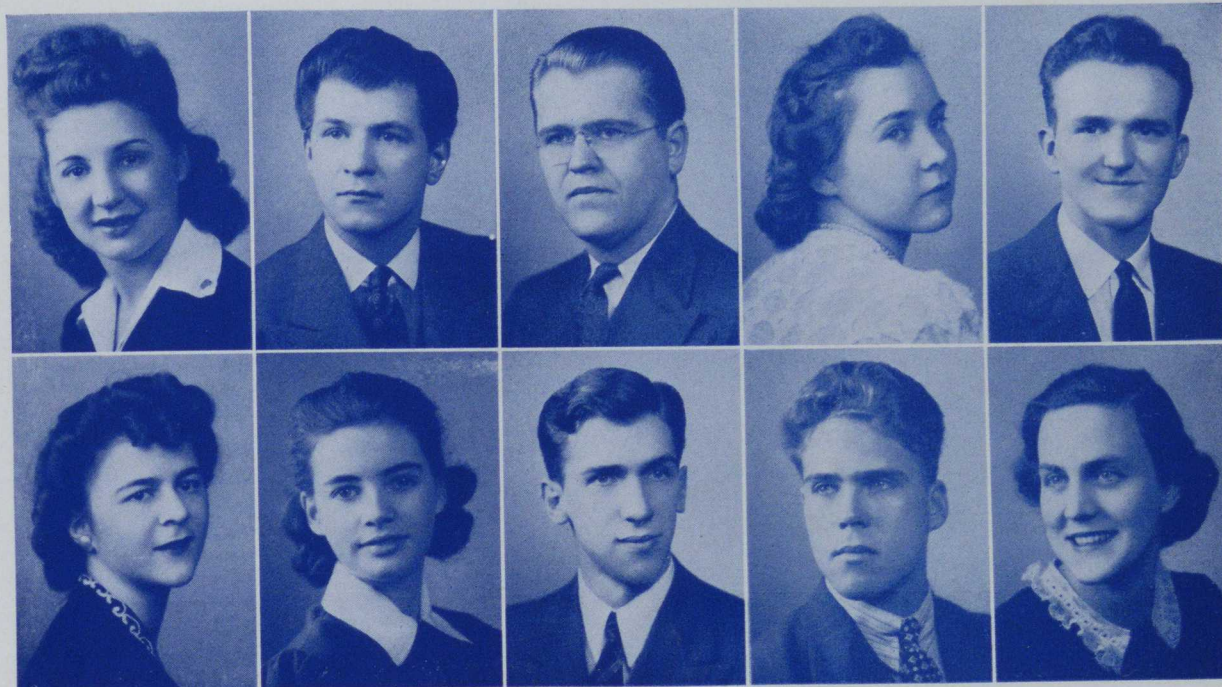
An Isabella man . . . prefers a dark room—for photography, of course.



JUNIORS



JUNIORS



MARY KONDRALA

Nicknamed "cutie" . . . lots of nice brown hair . . . belongs W.A.A.

HENRY PAUL KORCZYNISKI

Adept at argumentation . . . up-to-minute on news . . . government.

NICHOLAS JOSEPH KOSTE

Congenial night watchman . . . Dixon Hall's proud "Daddy" . . . droll fellow with a quip for every occasion . . . identified by his battered hat.

MARGARET ALLOISE KRAUSE

Composed . . . refreshing . . . one of the Kappa Delta's.

JOHN NESTER LABEKA

Valuable varsity man . . . answers to name of "Boss" . . . a Phi Sig . . . pleasant and obliging.

ESTHER LATINI

Model student . . . competent . . . wins prizes for Debating . . . inseparable from Lomagno . . . likely to succeed.

HELEN KATHLEEN LIEB

Tiny . . . a dormer . . . comes from Connellsville . . . spends time behind the library desk.

EARL A. LILLEY

"Nurse" of Men's Glee Club . . . always ready for a hearty laugh . . . took to the clouds.

GEORGE WILLIAM LOEFFLER

A willing and capable worker . . . I.A. major . . . interested in science and math.

LENA L. LOMAGNO

Excellent student . . . the teacher's choice . . . debate talent . . . commands the classroom.



MARTHA FERN LOOS

Usually found in library . . . willing to help . . . wears a diamond, the right finger.

DOROTHY MAE LOWMAN

Prefers Phi Sig by name of Lutz . . . comely . . . able College Player.

CARL LUTZ

.. Bashful groom . . . tall and blond . . . reserved Dixon Haller.

SARA JANE MAXWELL

Vivacious, attractive blonde . . . provincial . . . striking personality . . . original.

BERNARD FRANCIS McCAVITT

Tall, dark and handsome . . . aim in life to make Mimi happy . . . C.A.A.

ANN E. McGILL

Dainty, neat . . . patriotic for personal reasons . . . ardent rifle.

LORENZO L. MENDICINO

Industrial Arts . . . questioning . . . likes math and shooting.

MARY JANE MILLER

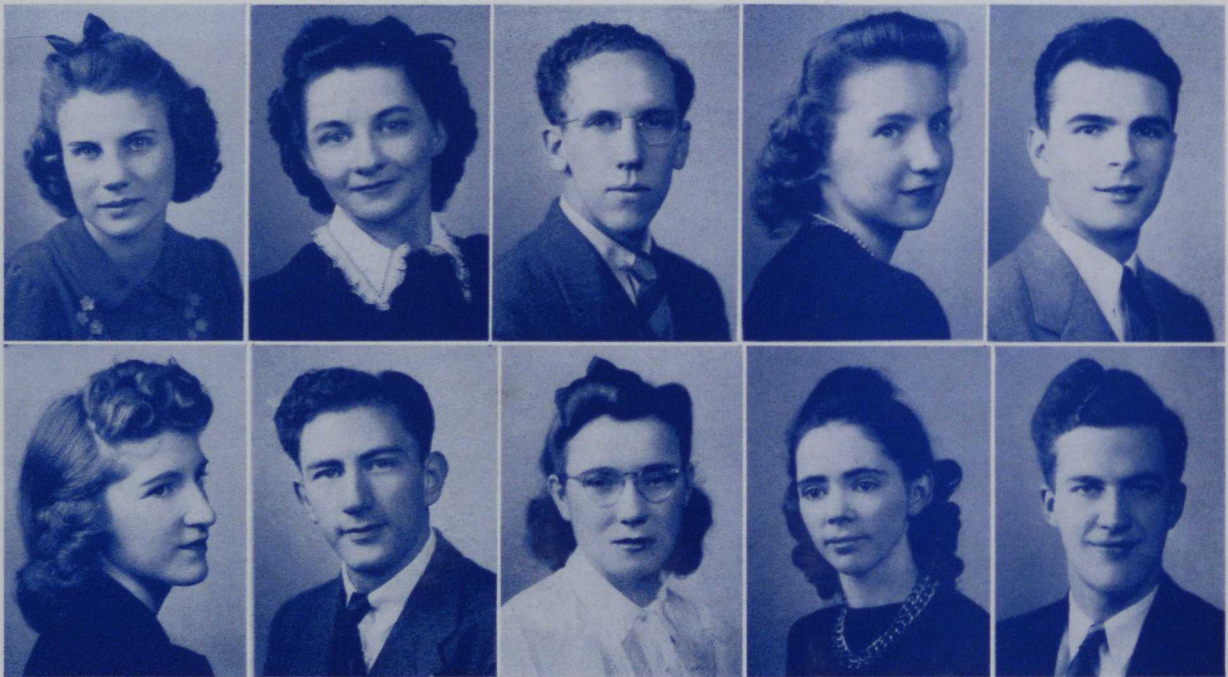
Makes many trips to Charleroi . . . one of W.A.A.'ers . . . calm and complacent.

RUTH ANN MORGAN

Handles a car efficiently . . . also her basketball . . . one-half of Morgan-Parkins duo.

CLETUS CLEMENT NESTLERODE

Persevering and efficient . . . science flash . . . assumes burdensome share of obligations.



JUNIORS



JUNIORS



VIRGINIA MAE NICCOLAI

Infectious giggle, one of the train bugs . . . good sport . . . has fun.

DORA ELAINE PARKINS

Sparkling eyes . . . Morgan's indispensable . . . W.A.A.'er.

NORMA PATRICIA ODISIO

Saucy . . . clicks with Clark . . . spirited . . . shuffle board champ.

BETTY MAE PATTERSON

Versatile Thespian . . . voice of silky smoothness . . . original . . . Pat and Gordon—rare team.

JEAN AGNES ORBELL

Super-sweet . . . Kappa Delta Pi . . . delicate and demure.

CORA B. PATTERSON

Gentle . . . unassuming . . . geography clubber.

PAULINE ADELE PAULING

Auburn tresses . . . she vulcanizes . . . a home town interest.

MELVIN VERNER PETERSON

Easy going . . . shutter bug . . . a \$21 a month man . . . co-ed of Monocal.

THOMAS PALMER

Breezy . . . aspires to be a high flyer . . . hall haunter.

MILDRED AMELIA PIVARNICK

"Mim" . . . from Monessen . . . blonde with creamy complexion . . . enjoys athletics.



HARRIETT JANE POLLOCK

Willowy . . . fashion plate . . . ardent
Sigma Tau Lambda girl.

PHYLLIS ELIZABETH POLLOCK

Luscious . . . adept interpretive reader
. . . wears a frat pin . . . "Gamma girl".

GEORGE J. REHE

A sharp-shooter . . . under the clock
every morning at eight . . . pretty waves.

THOMAS J. REID

Enviably locks . . . unassuming . . .
Allenport lad.

JAMES JOSEPH REVETTA

Beau Brummel of the choo-choo troupe
. . . lively bridge player.

GEORGE WARREN ROBY

Energetic . . . philosophical . . . Junior
class prexy . . . jitterbug.

VIRGINIA ELIZABETH ROMESBURG

Rifle whiz . . . flirtatious eyes . . . ami-
able . . . carefree.

ROMONA A. ROSS

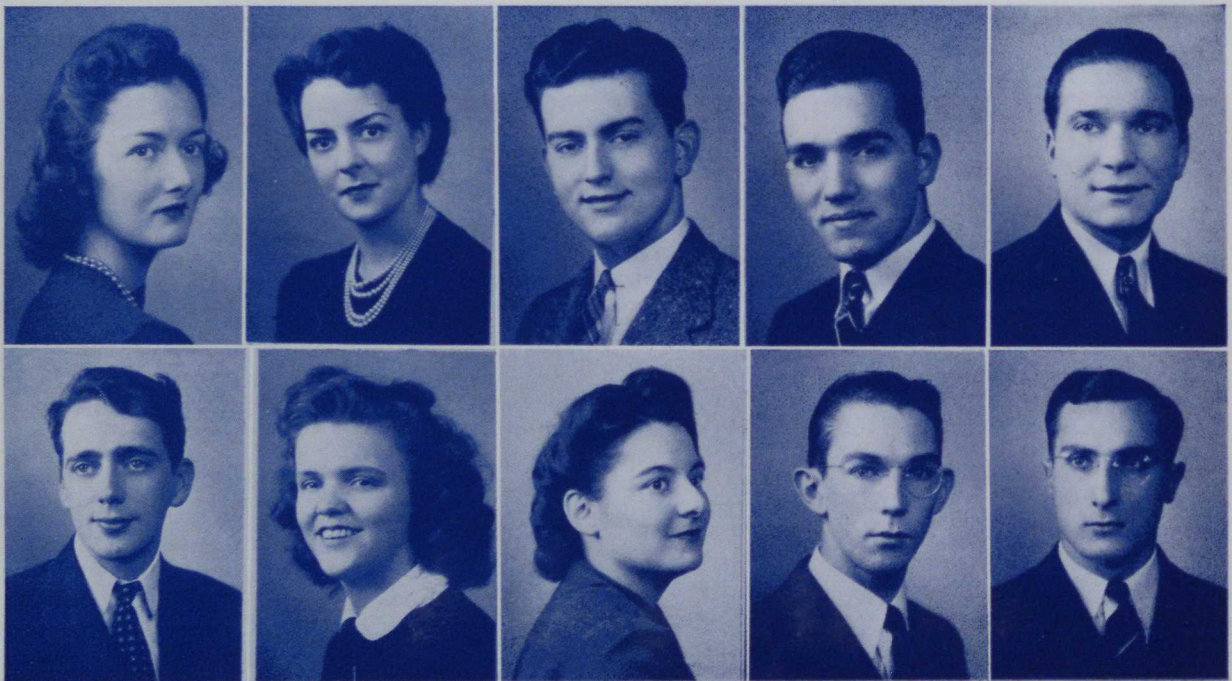
Friendly . . . voluble . . . smiles willing-
ly . . . Glee Club member.

CHARLES A. ROSS

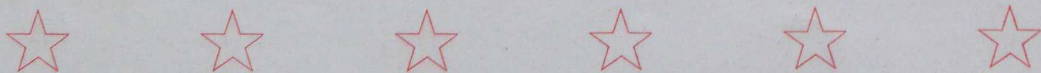
Dorm Winchell . . . tumbling cheer-
leader . . . versatile . . . serious gaze is
deceiving.

DOMINIC LAURENCE ROTUNNO

Poet laureate of C.S.T.C. . . . idealistic
. . . "Hammer and Tongs" . . . poetry
corner.



JUNIORS



JUNIORS



ROBERT F. ROZAK

Just "Bob" . . . a year at Lock Haven . . . smooth in the P. Room . . . bowls.

THOMAS H. SCHENCK

Reserved . . . consistent friend . . . football physique used on shop machines.

KATHRYN M. RUDEZ

Sincere and understanding . . . Monocal Co-ed . . . varied activities . . . Kappa Delta.

MARGARET ANNE SCHMITT

Eager to help . . . easy to know and nice to have around . . . manages girl riflers.

WILLIAM RUSSELL SANDMEYER

"Sandy" hair . . . enjoys life . . . Alpha Psi Omega . . . good hand on the stage.

JACOB SCHOEPLER

Conscientious . . . head waiter . . . tumbles . . . handy with gloves . . . straight thinker and "shooter" . . . adept in affairs of the heart.

ELEANOR JANE SANTELL

Trim and neat . . . moves gracefully . . . brunette with flashy eyes . . . Monessenite.

VERA J. SCOTT

Ernest . . . gives her all for College Players . . . very friendly . . . town dweller.

BETTY SAWHILL

Tiny . . . witty . . . easily bored . . . prove it to me "attitude".

BERYL G. SHELLEY

Cute . . . and saucy . . . rolls tantalizing eyes . . . warbles for Women's Glee Club . . . did you say red hair?



VERA MAE SHERBONDY

A little package . . . delightful and refreshing . . . Jimmie would verify this . . . a high I.Q. plus originality . . . creative.

EDWARD T. SHUMA

Nimble mind . . . but slow of speech . . . "Monessenite" . . . subtle sense of humor to entertain friends.

EUGENE FRANCIS SHEPLY

Dignified and reserved . . . in his brain lodge profound thoughts . . . seclusive . . . prefers "Denny".

ALBERTA MAE SMITH

Daydodger . . . helps keep the party alive . . . always wears a smile . . . athletic.

EWING ELROY SMITH

Carefree . . . takes time out to study music . . . precise.

MAYNARD RALPH SNYDER

"Bud" . . . the one "gal" man . . . always ready for tennis . . . proud carriage . . . rich voice.

DOROTHY MARIE SPROUL

Home at Ohiopyle . . . likes geography . . . has a sister freshman . . . knows her own mind.

WILLIAM D. SURGEON

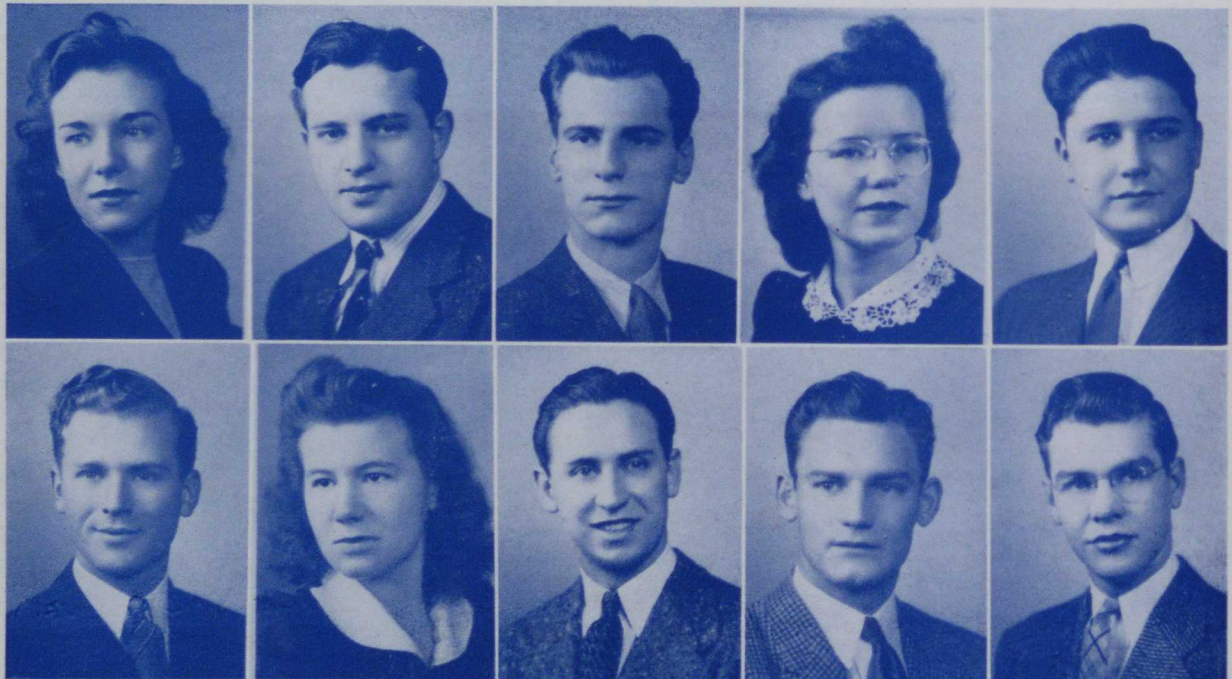
Campus Romeo . . . blues chaser . . . aspires to see world via the navy . . . smooth jiver and flashes in the pool.

MICHAEL ANTHONY TROYAN

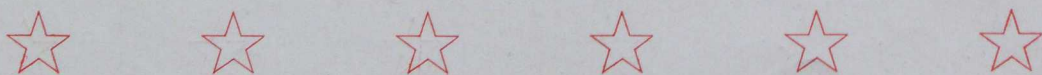
Determined . . . does well in I.A. . . . science second choice . . . day man.

THOMAS ALLEN UNDERWOOD

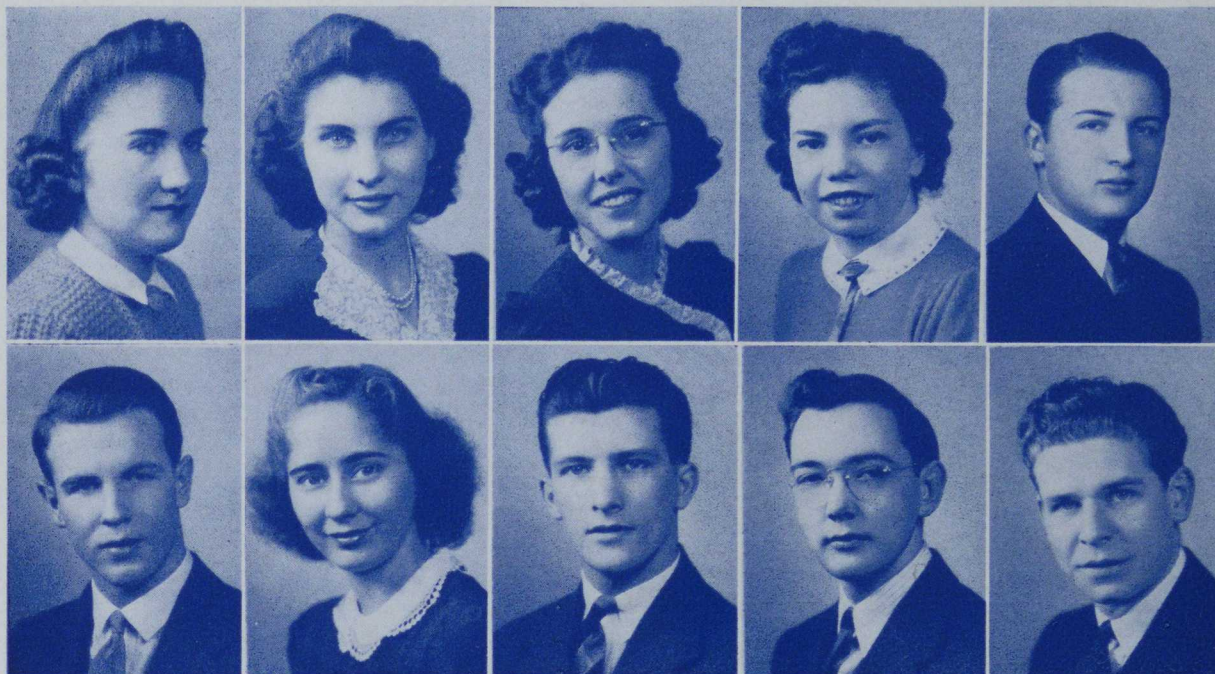
Has big grin . . . does well by basketball . . . responds to "Emily" . . . likes to heckle.



JUNIORS



JUNIORS



MARY LOUISE VANDEN BOSCHE

A bridge whiz for all that . . . new to Sigma Tau . . . short and fair.

WARREN FRANCIS WILLIAMS

Speaks his piece . . . debater . . . made the Glee Club . . . drives a convertible.

DOROTHY GRACE VERDERBER

Unusually interesting eyes . . . wears clothes nicely . . . crack rifle shot . . . daughter of police chief.

BESSIE JANE WILSON

Petit . . . full of fun . . . good hand at bridge . . . silky blonde hair.

ELSIE IRENE WHITMOYER

Wide awake . . . ultra neat . . . heads Y.W.C.A. . . . takes to hiking.

MICHAEL A. YACKO

Tall, etc. . . . scientifically inclined . . . secondary commuter.

DOROTHY EMMA WILLIAMS

"Dotty" . . . pleasant smile . . . dainty stride . . . on call for John A. Brashear Society.

IRVING SHULZ ZORB

Looks studious . . . "rounds up" for Y.M.C.A. . . . helps in dramatic productions.

JOHN C. WILLIAMS

Rooms with "Sandy" . . . changes records and slides . . . handy electrician.

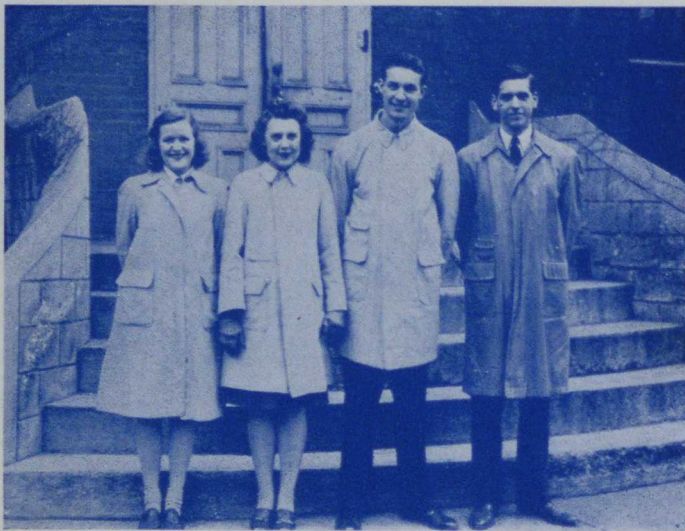
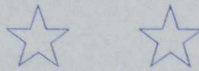
LAMONT TAYLOR

"Blond and wavy is his hair" . . . ready with a smile . . . from smoky city.



SOPHOMORES

CLASS OF 1944



It seems a long-time ago, perhaps even before our Fathers made their pilgrimage to the new world, that the present Sophomore Class entered the portals of California, for the furtherance of education.

As blushing, inexperienced freshmen, they began timidly at first, and then boldly to make themselves known around the campus, and by the end of the school year they were thoroughly assimilated. Thus, it was no wonder when the class of '44 returned to its Alma Mater in September, 1941, a decided change in attitude could be seen. They were

no longer carefree, happy-go-lucky freshmen; they had changed to carefree, happy-go-lucky sophomores.

Confronting them was the problem of the freshmen, who were a "sad lot." In keeping with their policy of helping all unfortunates, the Sophomores extended a firm hand (and we do mean firm) to the newcomers, initiating them in the customs and traditions of C.S.T.C.

Early in the year, the class faced the business of staging the annual Soph Hop. After days of thoughtful planning, the committees emerged with the final blueprints for this great affair, and to the satisfaction of all the dance was a success, financially as well as socially.

The Sophomore Class earned its second star and now awaits patiently to tackle whatever problems the future presents.

CARL HOUGH,
President, Class of 1944.

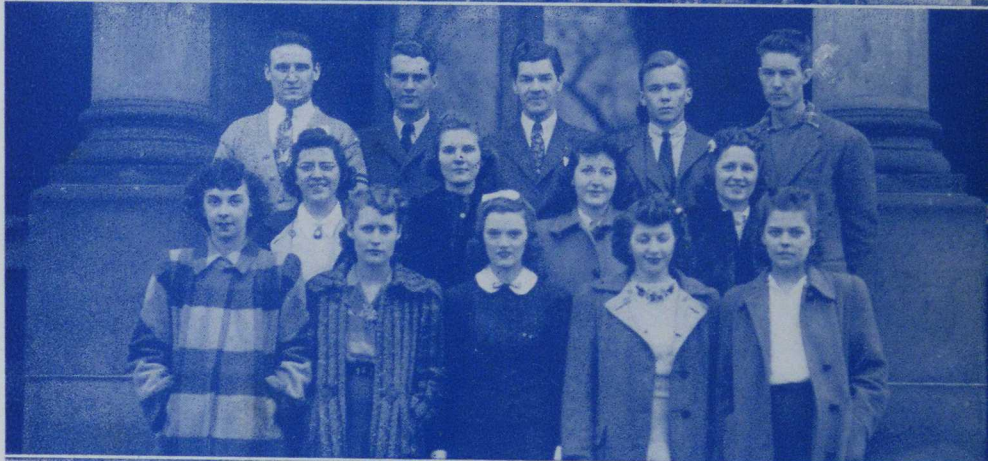
Carl Hough, president; William Terney, vice president; Olga Komora, secretary; Zella Wilkinson, treasurer. Mr. D. E. Morley is the sponsor.



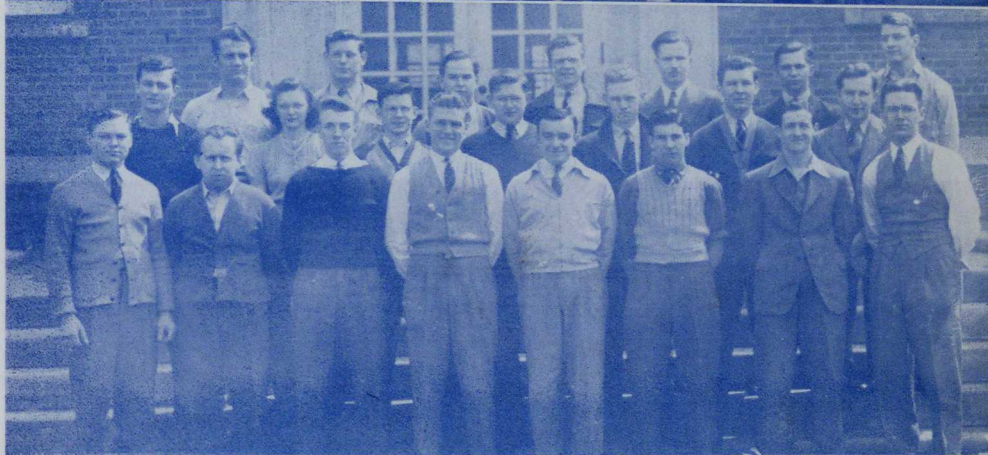
ELEMENTARY—1st Row, Chew, Holland, Kreitner, Bailey, Frye, Stofcheck, Vlastic, Gass, Owens; 2nd Row, Breeza, Ottenga, Bryson, Breakiron, Newcomer, Budd, Coleman, Zoretic, Bohna; 3rd Row, Baker, DeOre, Kefover, Roman, Dev-ers, Sime, Wilkinson, Dillon, Rossi; 4th Row, Hoehl, Allen, Budd, Leslie, Montgomery, Rottler, Cunningham, Michener, Kennedy.



SECONDARY—1st Row, Colvin, Curnow, Carson, Glasser, Smith; 2nd Row, John, Wascznick, Cope, Eneix; 3rd Row, Lczar, Nocht, Hardy, Roadman, Terney.

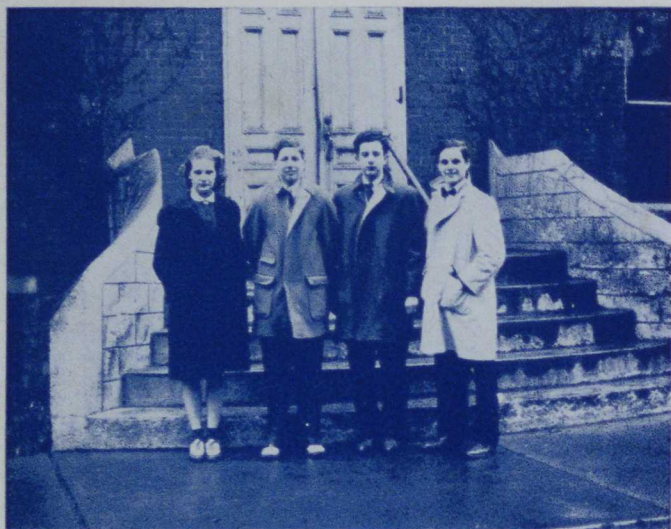


INDUSTRIAL ARTS — 1st Row, Bohince, Maskaly, Bernhardy, Siljander, Dugoni, Dickson, Washek, Protheroe; 2nd Row, Spivak, Rollins, Snyder, Maser, Elliott, Leshner, Cressman; 3rd Row, Nadolen, Uhl, Bennett, Turnbull, Riffle, Susko, Gano.



FRESHMEN

CLASS OF 1945



We, who have just this year entered California, extend our congratulations and best wishes to those who have completed their college careers and are embarking for uncertain destinations.

The Class of 1945 is sponsored by Mr. Edward Cubbon, a freshman on the faculty, together with whom the new class has progressed and gradually become orientated.

After initiation, we began worrying afresh when the night of February sixth approached. All was in order, however, for striking decorations and an emphatic victory theme helped raise morale and at the same time made the Frosh Frolic a huge success.

We anticipate the opportunity to earn additional stars to accompany the lone one accredited to us.

RUFUS BARKLEY,
President, Class of 1945

Rufus Barkley, president; Nicholas Caruso, vice president; William Bohn, secretary; Vilma Slavkosky, treasurer.



ELEMENTARY—1st Row, Henck, H. Costella, Grefost, Deter, Wright; 2nd Row, Sebben, E. Costella, Edwards, Monack, Fiedler; 3rd Row, Barsick, Williams, Risker, Harrington, Leighliter, McKnight, Flower; 4th Row, Howe, Lint, Schwartz, German Miller, Sarada.



SECONDARY—1st Row, Simpson, Head, Plava, Anderson, Sproul; 2nd Row, Trevorrow, Slavkosky, Galich, Jobuck; 3rd Row, McAlpine, Laight, Wycoff, Morris, Kaufman; 4th Row, Welty, Keller, Musser, Bradley, Wall; 5th Row, Reed, Cooley, Walfish, Hormell, Fisher.

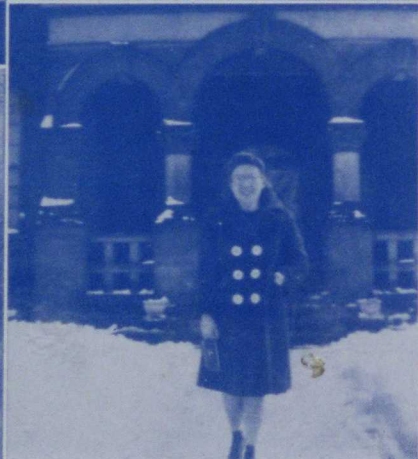
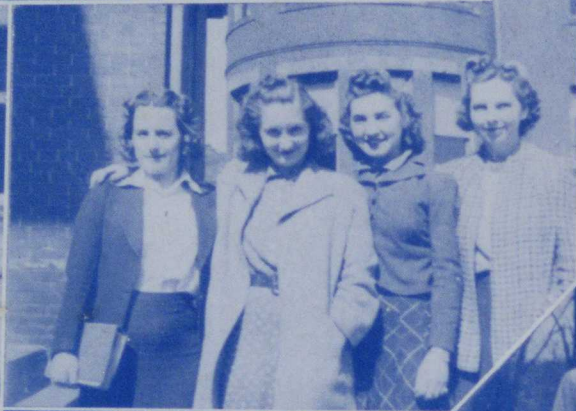


INDUSTRIAL ARTS — 1st Row, Evans, Conrad; 2nd Row, Golembiewski, Moore, Stahlman, Wilson, Eister, Bohn, Barkley, Dowden; 3rd Row, Baceski, Hill, Wiegel, Edwards, Caruso, Lynn, Meikle, Ondrei; 4th Row, Eland, Yarnall, Budnick, McGibbeny; 5th Row, Phillips, Knepshield, Niceling, Turnbull; 6th Row, Fecsen, Hamill, Sloan, Marks, Stilly, Fallier, Johnston, Hillgartner, Slagle.



FRESHMEN







We Salute

those noble Californians who have dedicated their lives to the preservation of our democratic ideals.

Inspired by a vision of a world order in which liberty, peace, and happiness shall prevail, they are contributing in the effort to eradicate the insidious forces of dictatorship. Our students and alumni have rallied to the call of their country for men, serving not only patriotically but joyfully as well.

These truly are showing their full devotion to the American way of life by their pledge that "that government of the people, by the people, and for the people shall not perish from this earth."



1930
Joseph Kulikowski

1931
Frank Cappalonga
Oran Holman

1933
Mervin Holman

1935
Olan Williams

1938
David Ficks
Eugene McDonald

1939
William Fisher
Ray Hagerty
Henry Keller
Robert Todd

1940
Edward Bergstein
John Drake
Burnett Grine
George Harkness
Richard Herod
Byron Holman
Byron Hoon
William Jacobs
Daniel Mazzocco

1940
George McCloskey
Gerald McGeachie
Michael Uriniak
Stanley Zingle

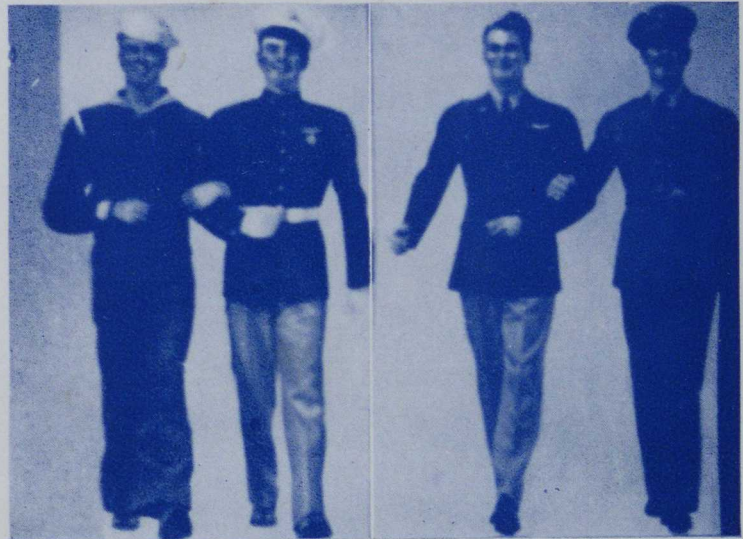
1941
Graham Bleiler
Jack Bradley
James Butler
James Button
James Clark
Frank Connelly

1942
Arthur Bakewell
Edward Baceski
Norbert Connair
James Criswell
Achillio De Medio
William Dudzak
Howard Elliott
Robert Frye
Thomas Keefe
James Kelley
James Laing
Donald Lang
Daniel McCormick
Mason Milliken
James Mooney
John Rankin
Benson Riley
Ralph Stefanik
James Sterner
John Utterback
Rea Van Fossen

1943
Earl Abbott
Clarence Benton
Thomas Benton
Harry Ford
Gail Gee
Kenneth Grines
Wilbur Haight
Ralph Hulings
Andrew Kulik
John Elder
Ivan Guesman
Raymond Kuhar
Vincent McDonnell
James Norman
James O'Brien
Frank Sharpnack
Louis Shutsy
Brandt Smith
Lloyd Lloyd
Lorenzo Mendicino
Melvin Peterson

1944
Ermand Di Bartolomay
Ward Leap
David Thomas

1945
Charles Mangus
Dale Sloan
Robert Turnbull, Jr.



ORGANIZATIONS

A democratic society recognizes the fact that all people do not find happiness in the same beliefs, fancies, or zest for living. California, being a democratic institution, has provided a means of organization for those of similar interests in order that they may be given the necessary power and prestige. Many of the local units have become affiliated with national organizations, consequently extending their spheres of influence.

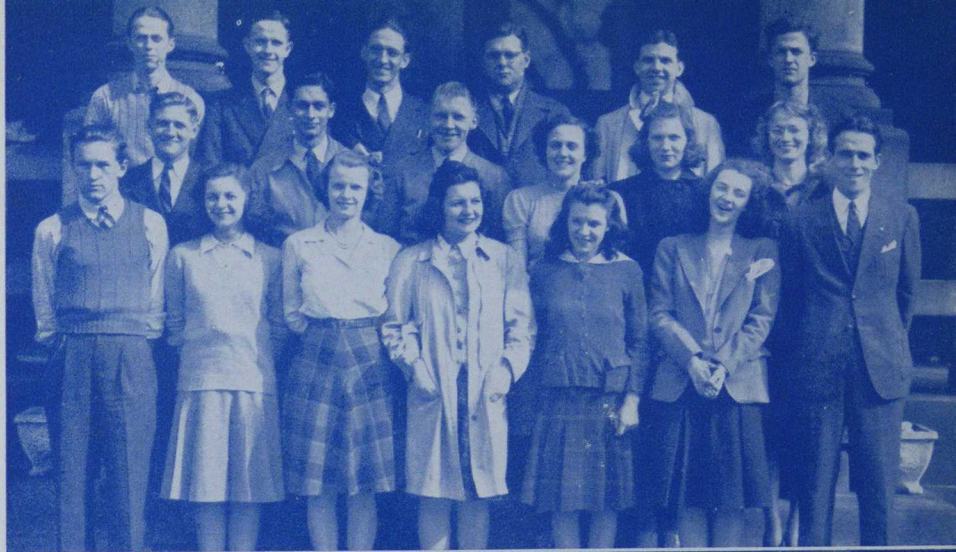
Group organizations play prominent roles under the present conditions, for they attempt to raise morale by striving toward and maintaining high standards and greater goals.



1st Row — Welty, Patterson, E. R. Keller, Rudez, Sherbondy, Gallagher, Utterback

2nd Row — Gordon, Oelschlager, C. Keller, Lomagno, Bell, DeShields.

3rd Row—Wood, Lutz, Hawk, Fike, Gass, Nestlerode.



1st Row—Oelschlager, Gordon, Sherbondy, Utterback, Lutz.

2nd Row—Wood, Fike, Gordan, Gass.



Enacting necessary legislation for the Student Activities Association as well as the distribution of money is the chief duty of Student Congress. Dr. Steele and Mr. Walker are the advisers to these representatives of the various clubs and classes. Meetings are conducted by John Utterback.

Student Cabinet, acting upon recommendation of Student Congress must also receive its approval. Allocations receive the attention of this smaller group advised by Dr. Neagley and presided over by James Clutter.

GOVERNMENT





1st Row—Miss Bernstorf, Holland, Ottenga, Sherbondy, Bodis.

2nd Row—Howe, Blaney, Astorino, Wilkinson, Adams.

3rd Row—Rudez, Slavkosky.



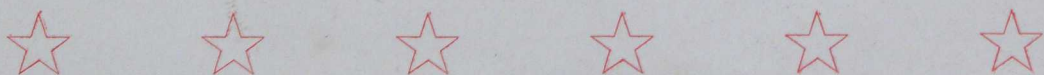
Koste, Follette, Schoepfer, Dugoni, Lutz.

North Hall Council consists of the officers of the women's dormitory and two elected representatives of each class. It acts as a judicial and advisory group to promote good fellowship and harmonious living.

The president of the men's dormitory and the fire proctors make up the Dixon Hall Council. Its members, elected each year, are delegated the responsibility to guide the affairs of all men students in the dormitory.

Miss Bernstorf and Mr. Walker put the official "O. K." on the policies formulated by these groups.

GOVERNMENT



GOVERNMENT

Officers of the Women Day Students and representative from each class make up the Women Day Student's Council. Attempting to uphold existing standards the council meets with Miss Bernstorf to plan social and constructive activities. Frances Sharpnak DeShields is the president.

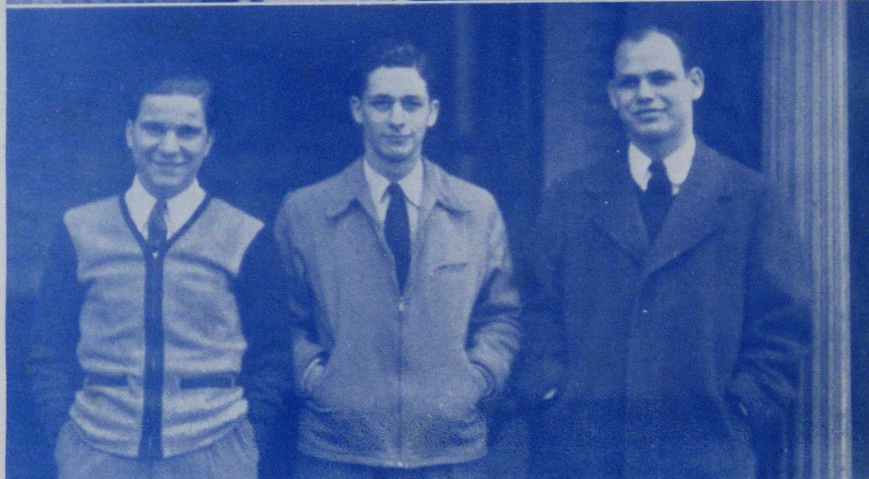
The Men Day Student's Council cares for the Traveling room; and assists Mr. Walker in adjusting certain conditions here on the campus. Representatives from each class help decide the policies when Leon Huttner calls the meeting to order.

1st Row—Miss Bernstorf, Catrino, Stofcheck, DeShields.

2nd Row — Michener, Welch, Scott, Lowman.



Revetta, Oelschlager, Huttner.





1st Row — Miss Kiesling, Miss Myers, Mrs. Steele, M. Bennett, V. Sherbondy, DeShields, Bodis.

2nd Row—Mr. Morley, Krause, Byers, Lemon, Rudez, Orbell, Mrs. Staats.

3rd Row — Miss Leacock, Lomagno, Latini, Buglak, Lowman, Paling, Dr. Bontrauger.



1st Row—Roby, Charney, Bennett, Nicklas, Hardy, Moon.

2nd Row—Oelschlager, Bush, Schoeppler, Lutz, Alberts, Shuma.

3rd Row — Steeb, Follett, Labeka, Hough.

Epsilon Delta Chapter of Kappa Delta Pi recently established on our campus recognizes prospective teachers possessing worthy educational ideals, sound scholarship, and commendable personal qualities. Miss Kiesling and Miss Myers help promote these intellectual standards as does Margaret Bodis, President.

High ideals and interest in the work of education comprise the aim of Kappa Chapter of Phi Sigma Pi. Professional and social meetings are planned by President, Donald Moon under the direction of Mr. Wilson, also president of the national organization.

HONORARY



HONORARY

Those social graces in prerequisite to reaching the top rung of the social ladder are acquired in Gamma Pi Chi under the sponsorship of Miss Carroll. Just as important, however, are the service projects and Red Cross aid rendered by the organization. Helen Bohn Utterback and Ruth Lemon led the group's activities.

After earning a varsity letter and meeting scholastic requirements, members are voted into the Varsity Club. The annual dinner-dance promotes good fellowship. John Utterback called the meetings to order, while Mr. Grove sponsored.

1st Row—Noble, Catri-
no, Downer, Schmitt,
Baker, M. L. DeOre, Gir-
man, M. DeOre, Lemon,
Utterback.

2nd Row—Sime, Mont-
gomery, DeShields,
Ceglarz, Hester, Paling,
Moorhouse, Fearer,
Furlong.

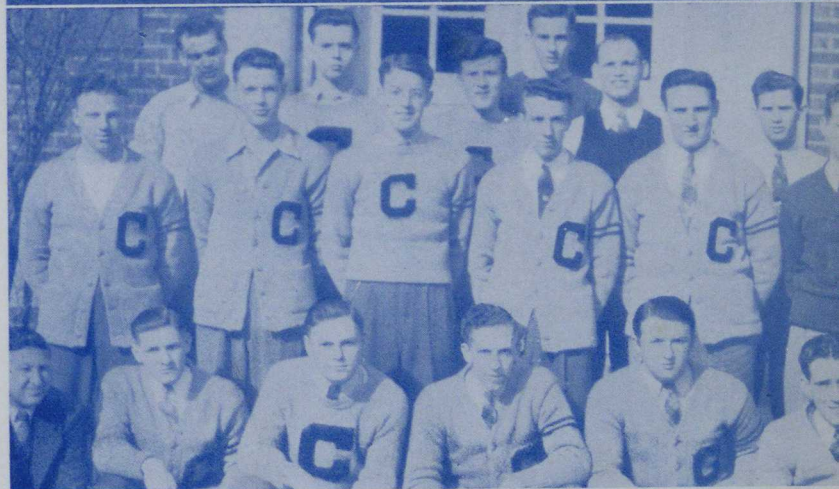
3rd Row — Edwards,
Pollock, Lowman, Ru-
dez, Shelley, Patterson,
Adams, Verderber,
Donovan.



1st Row — Mr. Grove,
Gordon, Bohince, Lutz,
Williams, Utterback.

2nd Row— Zimmerman,
Underwood, Clutter,
Bernhardy, Lozer, Sil-
jander.

3rd Row— McGibbeny,
Suddaby, Chester, Fish-
er, Huttner, Barney.



HONORARY

Sponsored by Miss Sacco and Dr. Hart, Pi Gamma Mu meets to discuss world problems. It is a national honorary society to which members are elected after meeting the scholastic requirements in social studies and giving evidence of campus leadership.

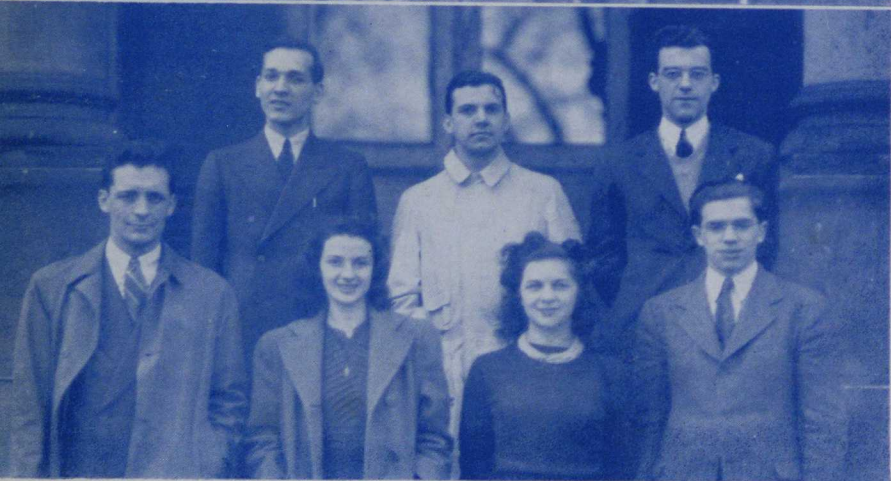
Alpha Psi Omega is the ultimate goal of College Players who must begin their dramatic careers as Junior Players. It, too, is a national fraternity, but the exacting qualifications limit membership to those who are talented or extremely interested in dramatics. Mr. Connell is the sponsor.



1st Row—Miss Sacco, DeShields, Hester, Lemon.

2nd Row—Alberts, Dr. Staats, Byers, Wood.

3rd Row—Shuma, Ceglarz, Glod.



1st Row—Mr. Morley, Gallagher, Patterson, Landis.

2nd Row — Dudzak, Gass, Weber.



First Row—Utterback, Sherbondy, Clutter.

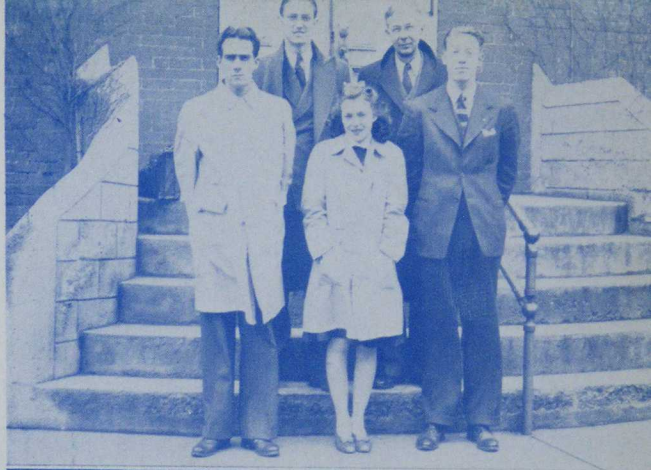
Second Row—Hawk, Neagley.

First Row—Hart, Sacco, Gallagher, Lemon, Comet.

Second Row—Hester, Hawk, Wood, Alberts.

First Row—Utterback, Sherbondy, Glod.

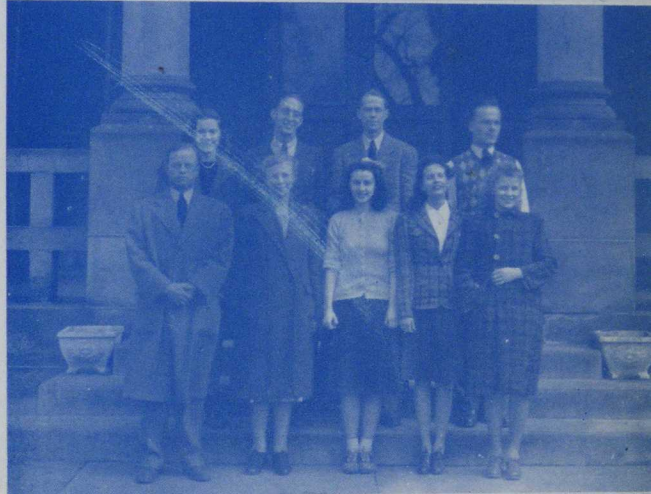
Second Row—Rudez, Bodis, Ceglaz.



Student activities, their problems, regulations, and government were discussed at Millersville by representatives of Student Congress under the direction of Dr. Neagley.

The State Capitol buildings at Harrisburg provided the setting for the Intercollegiate Conference on Government. Delegates, chosen on the basis of activities and knowledge of government, participated with students from other colleges. Miss Sacco, Dr. Hart, and Dr. Montgomery sponsored the trip.

Subways, skyscrapers, elevators, the Great White Way, all became part of Manhattan life for delegates attending the annual meeting of the Eastern States Association of Professional Schools for Teachers. Selected by the student body, the California delegation was led by Mr. Connell.



TRIPS



PUBLICATIONS

Coordinating the various publications on the campus into a working harmony is the policy of the PUBLICATIONS' COUNCIL. Editors and sponsors of the publications as well as additional faculty and student representatives, selected by Student Congress, meet once a month, when Chairman Mr. Hurst calls the meetings to order.

An attempt is being made to install a progressive system of training for editors in order that the quality of publications may be further improved.

The second annual dinner with good food, entertaining program, and danceable recordings climaxed the social calendar for members of the council and assisting staffs.



1st row: Bennett, Rudez, Paling,
Hurst

2nd row: Pardoe, Bodis, Gass

3rd row: Staats, Hughex, Weber



1st Row—Petriello,
Bennett, Gallagher,
Glod.

2nd Row—Weber, Fur-
long, Gass, Nestlerode.

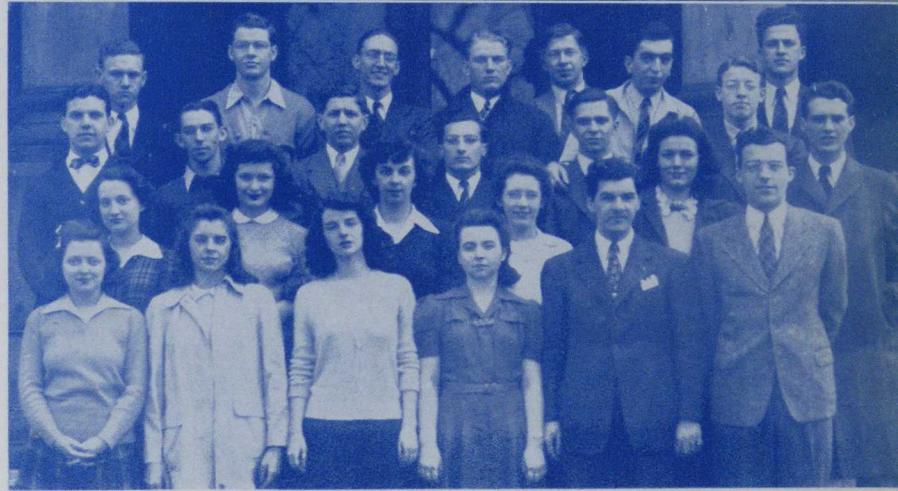


1st Row—B. Gass, Fur-
long, Gallagher, Ben-
nett, Hardy Weber.

2nd Row—Deter, Gar-
man, Colvin, Bailey,
Allen, Nochta.

3rd Row — W. Gass,
Ross, Bohn, Rotunno,
Susko, Clutter.

4th Row—Elliott, Under-
wood, Hawk, Hormell,
Glod, Petriello, Nestle-
rode.



The COUNCIL OF SCHOOL NEWSPAPER ADVISORS acts in an advisory capacity for "Hammer and Tongs". The goal for all ambitious reporters who merit recognition through four semesters qualifies members to sponsor high school newspapers.

Dashing reporters make up the "HAMMER AND TONGS" staff which presents the news each Friday. "Deadline" confusions result in widely read issues which serve as a medium for the expression of student opinion. Bob Weber, editor-in-chief, oversees all copy, while Mr. Hughey sponsors.

PUBLICATIONS





1st Row—Odisio, Shelley, Galich, Bailey, Barron, Rudez.

2nd Row—Allen, Chew, Maxwell, Schmitt, Patterson.

3rd Row—Furlong, Ross, Loeffler, Snyder.

4th Row — Gass, Stuckrath, Adams, Ondrei, Nestlerode.



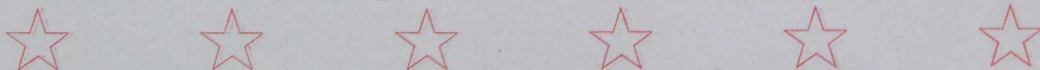
1st Row — Dr. Staats, Eneix, Paling.

2nd Row — Hamilton, VanDyke, Oelschlager.

The MONOCAL STAFF strives to present a written and pictorial account of campus life and the year's activities. It is the major publication of the Junior Class, co-edited by Kathryn Rudez and Melvin Peterson, while Cletus Nestlerode serves as Business Manager. Advised by Mr. Hurst, the staff arranges for and supervise photography, printing, and all textual material.

Also known as the "Freshman Bible" the VULCAN is the dictionary of information concerning activities, regulations, and life here on the campus. This "handy" little book is prepared during the spring and summer and distributed at registration in the fall. Pauline Paling is the editor and Dr. Staats the advisor.

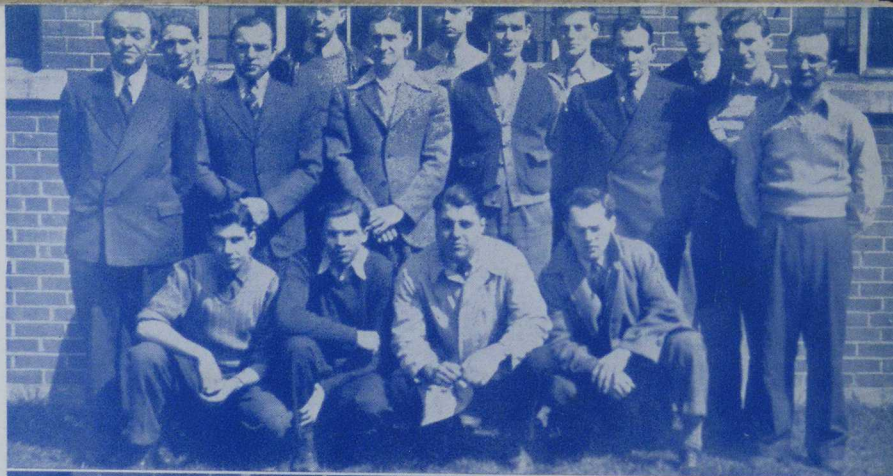
PUBLICATIONS



1st Row — Dickson, Landis,
Stuckrath, Schoeppler.

2nd Row—Mr. Stavaski,
Smoyer, Washek, Leshner,
Moon, Nicklas, Kuzma.

3rd Row—Maley, Zorb, Sud-
daby, Uhl, Siljander.



1st Row — Maley, Maskaly,
Ross, Smoyer.

2nd Row—Mr. Stavaski,
Hawk, Kuzma, Eister,
Marks, Schoeppler, Zorb.

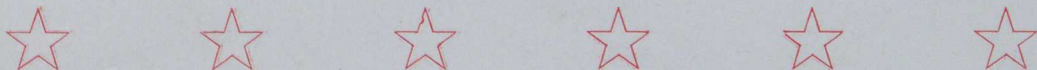
3rd Row — Mr. Keck, Heath,
Fallier, Ganyu, Gano.

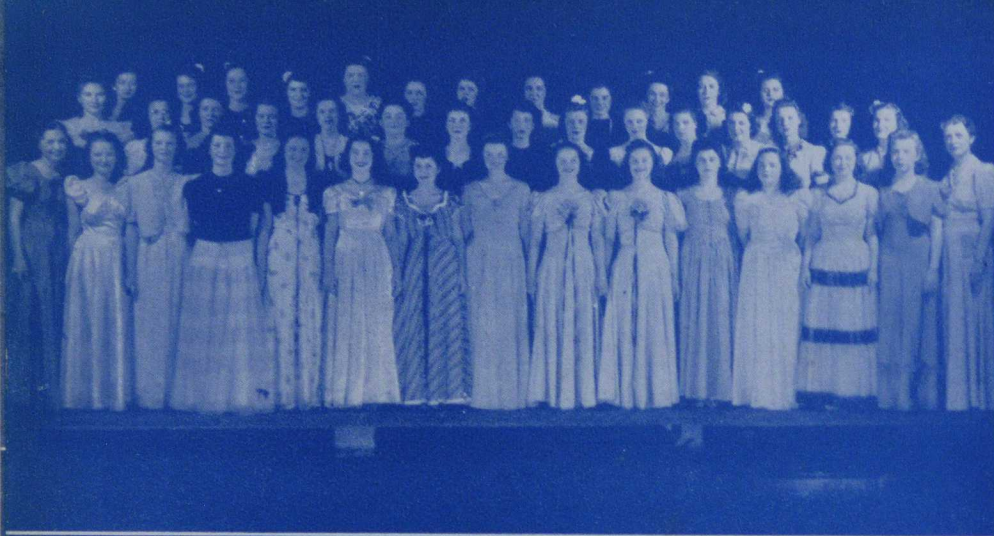


Membership in the BENJAMIN FRANKLIN PRINTERS' GUILD is the reward for extra hours spent in print shop. Awards of silver or gold keys for additional hours help maintain the aim of developing a greater interest in printing. Michael Kuzma leads discussions, while Mr. Stavaski keeps the press rolling.

Keeping those interested in Industrial Arts informed of new developments, the INDUSTRIAL ARTS LEADER staff issues the publication several times each year. Having risen from the ranks of reporter to editor, Irving Zorb heads the staff, but takes orders from sponsor, Mr. Stavaski.

PUBLICATIONS

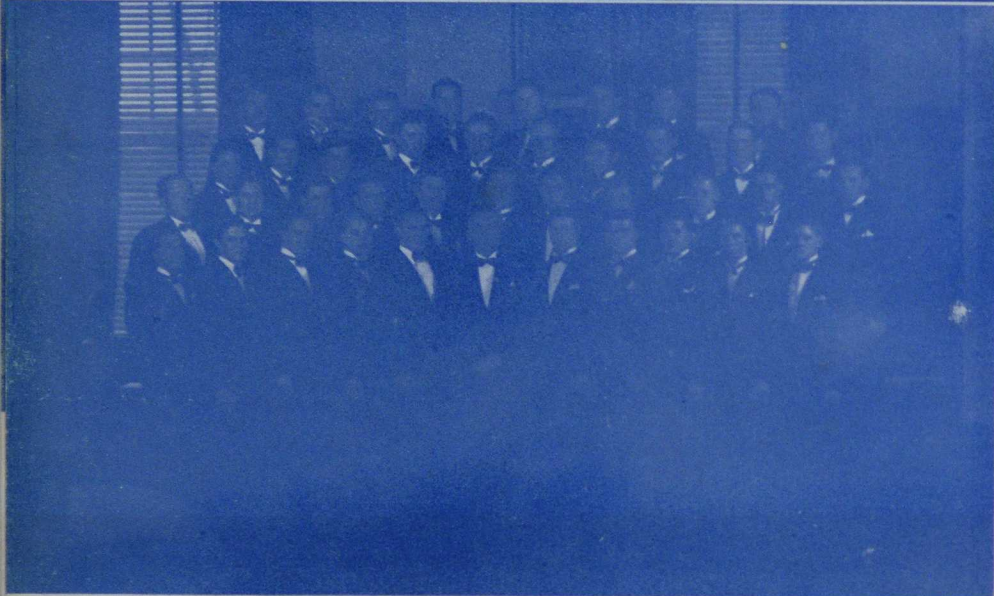




1st Row—Adams, Shelley, Keller, Cope, Ennix, Breza, Rossi, Carson, H. Costello, E. Costello, Bonari, Bailey, Gass, Laight, Miss Myers.

2nd Row — Vanden Borsche, Buglak, Blayney, Wilkinson, Leslie, Ross, L. Edwards, Bowness, Baker, H. Edwards, Trevarroro, John, Maxwell, Leichter, Moorhouse.

3rd Row — Pollock, Sime, Scott, Kefover, Howe, Wycoff, Stahlman, Evans, Furlong, Monack, Lint, Jones.



1st Row — Rotunno, Barkley, Siebart, Gass, Summerville, Mr. Halstead, Wilson, Townley, A. Snyder, Ross Gordon.

2nd Row—Kisick, Stefaniak, Williams, Seese, Lesher, M. Snyder, Oelschlager, Anderson, Keller, Hough, Ondrei.

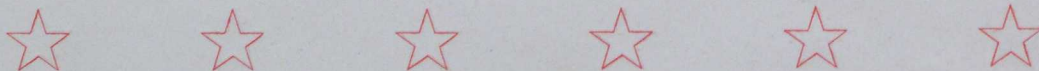
3rd Row—Knarr, Terney, Saeli, Rehe, Follett, Labeka, Nadolan, Walfish, Lutz, Etsweiler.

4th Row—Prothero, W. Edwards, Lilley, Hartley, Lozar, Saulak, Jamison.

Sigma Tau Lambda, better known as the **WOMEN'S GLEE CLUB**, was successfully piloted through the year by President Edna Ruth Keller. Under the direction of Miss Myers, an Easter Cantata, "St. Mary Magdalene", was presented at the annual concert. "A Dormitory in Words and Music", a delightful, original skit depicting dormitory life, concluded the program.

The **MEN'S GLEE CLUB**, Phi Sigma Mu, in their usual splendid manner, presented "Continuous Performances". These "tuxedoed gentlemen of song" climaxed many an institute and chapel program with their tuneful renditions. Lewis Follett wielded the gavel while Mr. Halstead waved the baton.

INTEREST CLUBS



INTEREST CLUBS

These talented Thespians, COLLEGE PLAYERS, brilliantly presented three major productions during the past year. "Remember Tomorrow", written by the sponsor and director, Mr. Connell, gave us an insight into the future, while "Nobody Much" pictured life in the Middle West. Our Mothers were given an opportunity to enjoy "The Enchanted Cottage". William Dudzak and Robert Weber each led the activities one semester.

Exceeding their amateur rating, JUNIOR PLAYERS disregarded precedents and produced "Bomber Overhead", an original three act play by the sponsor, Mr. McCarty. As usual, they also presented a program of three one-act plays written by members of the club. This organization is the training ground for future College Players. During the first semester Lester Patton piloted the group, then, Jimmy Stahlman took over.

1st Row—Mr. Connell;
Lemon; Gallagher;
Dillon; Dobosh; Glod.

2nd Row — Scott;
Breza; Chew; Komora;
Vlasic; Stofcheck;
Terney.

3rd Row — Hough;
Dowden; Schmitt;
Levin; Girman.

4th Row — Dudzak;
Bailey; Edwards;
Michener; Haney;
Weber.

5th Row — Cressman;
Zimmerman; Ross;
Hardy; Chester; Gav-
lak.



1st Row—Stahlman; E.
Costello; H. Costello;
Grefost; Henck; Seb-
ben; Stahlman.

2nd Row—Fiedler;
Morris; Conrad;
Evans; Trevorrow;
Simpson; Rollins.

3rd Row—Budnick;
Barkley; Hillgartner;
Ganyu; Eister; Marks.

4th Row—Walfish;
Musser; Ondrei; Hor-
mell.



INTEREST CLUBS

Shooting is one sport in line with Uncle Sam's policy of building potential army power. The RIFLE CLUB, co-sponsored by Mr. Kerstetter and Dr. Neagley, meets several afternoons each week at the indoor range. President James Jenkins conducts the monthly meetings.

While the lads on the range aim for bulls' eyes, the lasses at the bridge table aim for grand slams.

The MONVALEA group gathers in the Colonial Room every Tuesday to play bridge, and receive instruction in leadership for Girl Scout work. President Lorraine Hails calls the meetings to order, while Miss Pardoe instructs the newcomers.



1st Row—Smith; Riffle; Stahlman; Dickson; Heath.

2nd Row—Hutson; Charney; Lutz; Walfish; Donatelli; Ferens.



1st Row—Miss Pardoe; Holland; Ottenga; Sebben; Wilson; Downer; Vanden Boshe; Bonari; Hails.

2nd Row—Lejohn; Carson; Bodis; Chottiner; Marutiak; Latini; Lomagno; Montgomery.

3rd Row—Catrino; Grefost; Deter; Budd; Carnow; Komora; Pollock.

4th Row—Ross; Loos; Latini; Fiedler; Allen; McAlpine.



INTEREST CLUBS

THE YOUNG MEN'S CHRISTIAN ASSOCIATION is non-sectarian in nature, but aims to enrich the religious life of men students on the campus. Discussions and lectures comprise the weekly meetings, for men only, while socials, Christmas Caroling, and Sunrise services are carried on in conjunction with the Women's organization. Irving Zorb is the president and Dr. Hart and Dr. Salisbury sponsor.

THE YOUNG WOMEN'S CHRISTIAN ASSOCIATION serves the incoming freshman as it does every woman at California by the Big Sister-Little Sister Movement. To facilitate both Traveling and Dormitory students, meetings are held on Tuesday afternoons as well as Wednesday evenings. Miss Bernstorf, Miss Graham and Miss Leacock help the club to attain its aim by providing Christian experiences to aid in growing spiritually, intellectually, and culturally. Elsie Whitmoyer and Tillie Stofcheck are the presidents.

1st Row — Miss Bern-
Carson; Sebben; Mil-
ler; Whitmoyer; Stof-
check.

2nd Row—Sawhill;
Bailey; Anderson;
Riska; Frye; Vlasic;
Holland.

3rd Row — Slavkosky;
Dayton; Schwarz;
Newcomer; FitzGer-
ald; Anselmi; Trevor-
row; Kreitner.

4th Row — VanDyke;
Clendenich; Zorelich;
Breakiron; Bryson;
Schmitt.

5th Row—Adams; Lint;
Leslie; Keller.



1st Row — Dr. Salis-
bury; Siljander; Du-
goni; Stahlman; Bo-
hince; Zorb.

2nd Row — Rozak;
Sandmeyer; Bennett;
Dickson; Uhl.

3rd Row — Campbell;
Schoeppler; Suddaby;
Adams.

4th Row—Knarr; Kuz-
ma; Ferens; Donatelli;
Bradley.





1st Row—Dr. Oerlein;
Reid; Breza; Bonari;
Kuhar; Loeffler.

2nd Row — Eneix;
Schenck; Heath; Lot-
tus; Cope.

3rd Row — Nestlerode;
Stilley; Yacko; Linc-
oln.



1st Row—Mr. Harding;
Barsick; D. Sproul; J.
Sproul; Schwartz; La-
tini; Alberts.

2nd Row—Sepac; Pat-
terson; Cunningham;
Curnow; Komora;
Catrino; Revetta; Cic-
carelli.

3rd Row—Barczuk;
Coven; Budd; Harris;
Finley; Robbins;
Hawk.



1st Row—Mr. Walker;
Whitmoyer; Holland;
Chew; Kreitner; Nest-
lerode.

2nd Row—Glasser;
Bryson; Keller, Miche-
ner; Leslie; Bern-
hardy.

"Science when well digested is nothing but good common sense and reason", say Dr. Oerlein and Dr. Stahl, sponsors of the science-math organization. The JOHN A. BRASHEAR SOCIETY works to stimulate interest in these fields. President George Loeffler presides at meetings in Science Hall.

Sponsor Mr. Harding and President George Alberts conduct the monthly meetings of the GEOGRAPHY CLUB. Membership is limited to those interested in geography and related classroom activities.

Week-end camping, outdoor sports, supper hikes, and nature study lure the interest of members of Mr. Walker's NATURE LORE CLUB, while preparation of nature counselors is the club's chief aim. Regular monthly meetings held in the Nature Laboratory are conducted by President Cletus Nestlerode.

INTEREST CLUBS



INTEREST CLUBS

Mr. McCarty, sponsor, believes in individual creativeness of members of the **WRITERS GUILD**. An attempt for publication of commendable compositions is made by President Dominic Rotunno. Pictures on stamps hold the interest of the **PENNY BLACK CLUB**. Sponsor Mr. Kerstetter matches his collection, stamps and stories, against even Alexander Smoyer, President.

Shutterburgs who delight in "off guard" shots comprise the roster of the **CAMERA CLUB**, headed by Robert Fike. Suggestions and instructions on the use and care of a camera are given by Mr. Hurst.

"E'en though vanquished, he argues still" typifies those selected for the **DEBATE TEAM**. Ability, however, superceded persistence in attaining the laurels worthily bestowed on several members. Coach Kller advises and Minor Hawk presides.

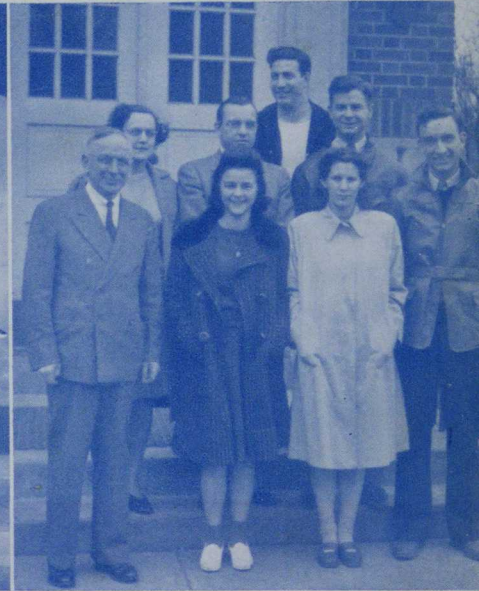
Front Row — Rotunno,
Anderson, Barron.

Second Row — Pollock,
Joseph, Basarab.

First Row — Kerstetter,
Latini, Montgomery,
Gavlak.

Second Row — Lomagno,
Smoyer, Ferens.

Third Row—Donatelli.



Front Row — Allan
Connors.

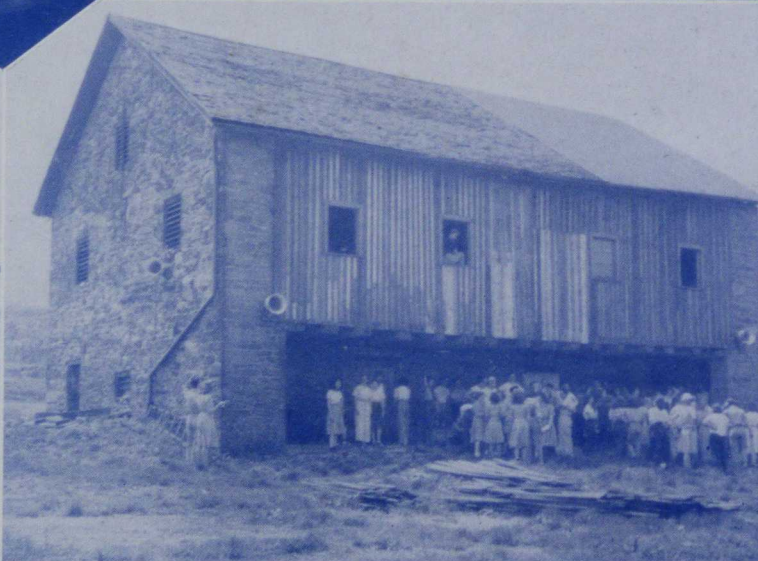
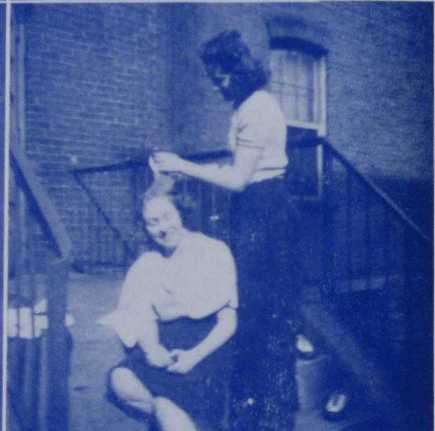
Back Row — Fike, Kin-
gan.

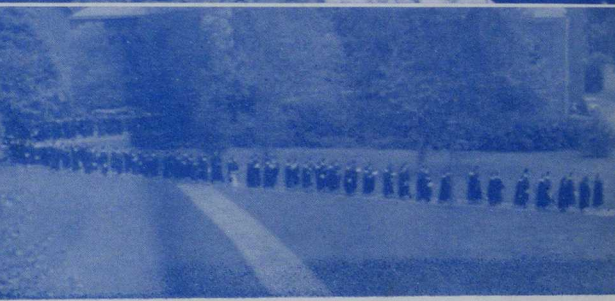
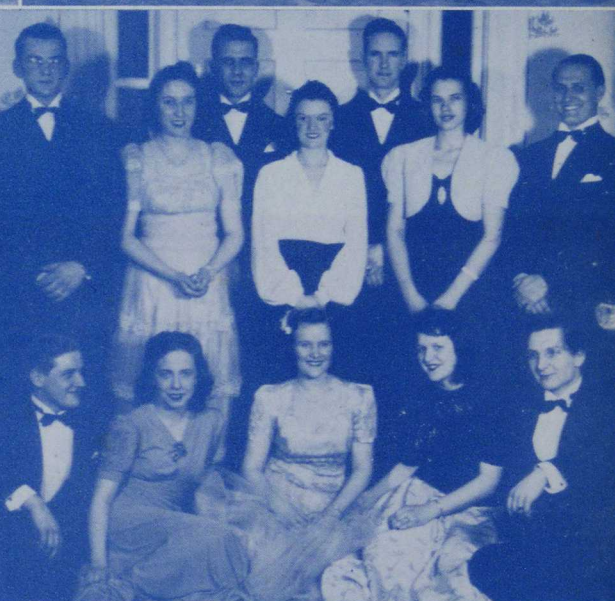
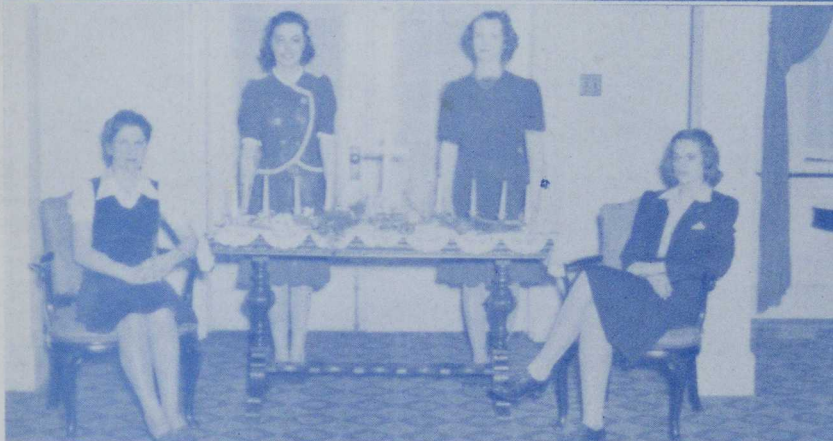
First Row — Dr. Keller,
Lomagno, Latini.

Second Row — Bohn,
Williams, C. Keller.

Third Row — Hormell,
Wood, Caruso.







ATHLETICS

The Athletic program for the 1941-42 season can be labeled "successful". Considering the fact that California follows a policy of non-subsidization of players we can proudly say that those who participated in the athletic program, did so for the pleasure derived from it. Participants must devote many hours to practice in order to attain a certain degree of perfection, and as this time must eventually be made up, they carry a double burden. Those who receive varsity letters or numerals deserve the respect and admiration of fellow students for they have willingly given their time in order that the name of California might be glorified.

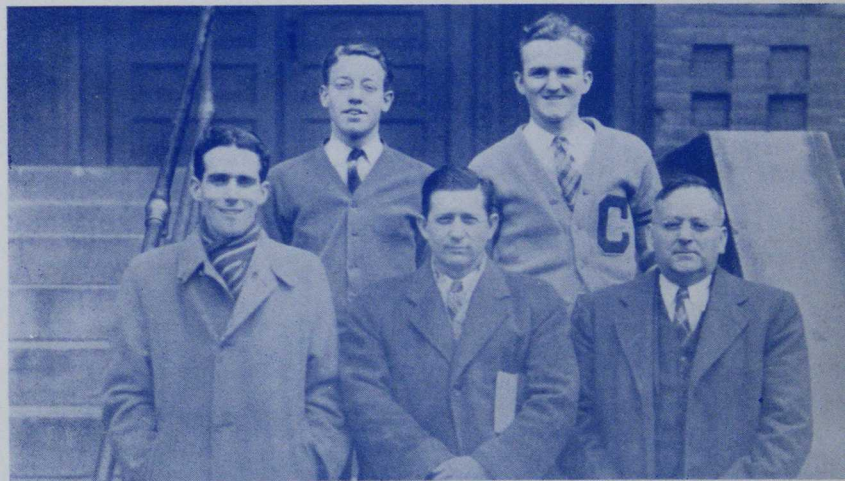


Going into the sixth year as supervising agency of the athletic program for the college the Athletic Council has proven itself quite capable of coping with the difficulties that arise in the midst of an emergency. The responsibility of arranging schedules, buying equipment and supplies, contacting officials, granting awards, and providing for a well rounded athletic program for the school rests with this group.

This year the council was forced to devote many extra hours to solving problems such as shortage of players for football, injuries of members of the team, and cancellation of games. They came through, however, with a balanced budget and a satisfactory program.

First Row — Utterback, Dr.
Montgomery, Dr. Staats.

Second Row—Clutter, Labeka.



CHEER LEADERS

Who's making all that noise? Leading the cheers of the football and basketball games, were "Bill" Terney and 'PeeWee' Devers, voices of experience, while Ruth Eneix and Charlie Ross made noteworthy contributions . . . Flipping, flopping, lone ranger, Ross came forth with 'Deep in the Heart of Texas' on a memorable occasion.



FOOTBALL

A few years ago, Bill Watkins was training on the California team like every other fellow out for football. He came back as coach this year, taking what men were available and jockeying them from position to position to build a fighting team. These commendable efforts have proven Coach Watkins a true Californian.



1st Row — Englemeir;
Jordan; Barney, manager.

2nd Row—Chester;
Koste; Williams; Lutz.

3rd Row — Guesman;
A. Bernhardt; G.
Bernhardt; Zimmerman.

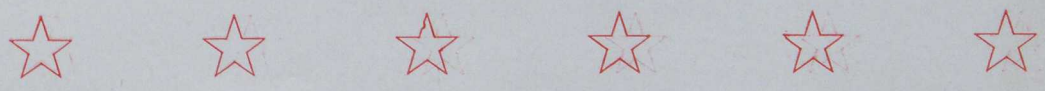
4th Row — Lozar; Gordon;
Stahlman.



Grim courage and a dauntless spirit marked the shortened gridiron season at California. Defeat was never admitted until the final whistle had blown, and even after many injuries had reduced the team to little more than one line of defense, the boys were still determined to fight—and fight hard.

Before the schedule was well under way, we suffered the loss of such strong men as Ansel because of a broken hand, G. Bernhardt due to concussion, and Guesman out with an injured leg and back. The others remained undaunted. Remember Koste going strong, even with a sprained ankle, Volkavich forging through on line plunges, Gordon pounding out the miles on end runs, bucking on the line by Jordan and Bentley, the steady drive of Zimmerman, Lutz, Fawcett and Williams, then the ends Al Bernhardt and Lozar dashing in for a tackle, and never-failing passes from center by "iron-man" Englemeir. Did we forget "Doc" Surgeon and John Barney running around with rolled-up pant legs? Quoting Coach Watkins, "We were building a team of character last season." No man on the team will ever forget the discouragements, the thrills, and the determination of his fellow players.

FOOTBALL



BASKETBALL



Dr. Siedle; Utterback;
Clutter; Labeka; Under-
wood; Huttner; Zimmer-
man; Wilson; Siljander;
Chester; Spivak; Gordan;
Edwards.

This basketball season will go down in the annals of California history as one of their greatest. Spectators at the games were well repaid with excitement, thrills, and displays of good sportsmanship. No better example can be given than the foul incident during the West Liberty game.

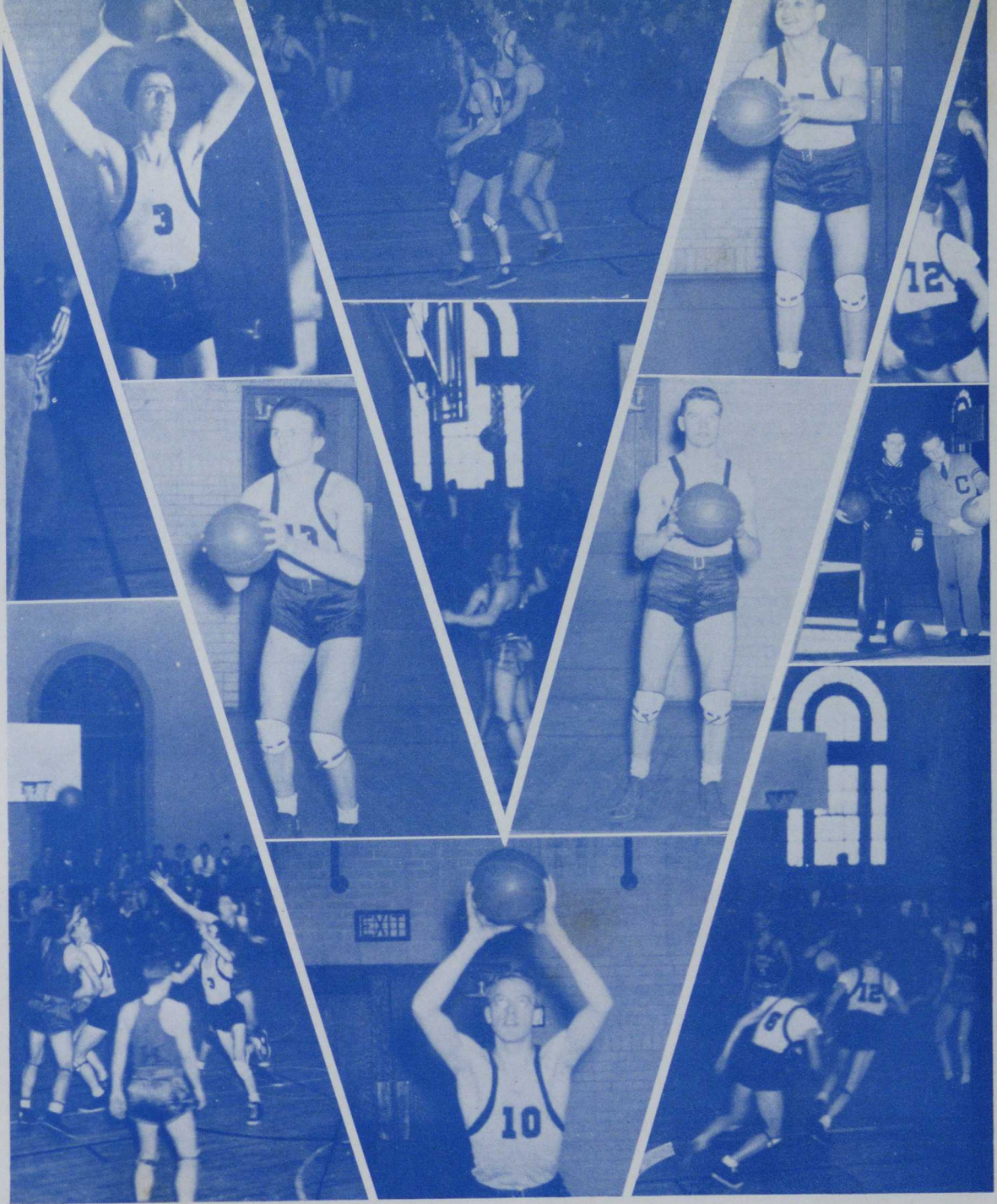
The season will be remembered for some of its lighter moments. "I will always remember the incessant chatter of 'Johnny' Utterback, the stories of 'Maxie' Huttner, the book-carrying and post card writing to 'a certain party' of 'Johnny' Labeka, the soldier-face stunt by 'Tommy' Underwood, the 'hot-footing' by 'Frankie' Fisher, the silent suffering by 'Marty' Siljander, and 'Let's make it a dime', by Dave Chester, the songs by 'Tommy' Edwards, and the always welcome clowning by 'Barney' Gordon."

Continuing Dean Siedle's description, the managers of the team must also be commended. "The 'always-on-the job' manner of Earl Zimmerman, the freshness of 'Jimmie' Wilson, and the collegiate hat worn by Arthur Suddaby."

Next year's team will have to do some high stepping to keep up with the pace set this season because the members of the team not only rank high in athletics but are also "tops" as individuals and students.

"Conscientious and capable" describes the coach who remains a good sport and true friend throughout the ups and downs of the season. The necessary respect and cooperation for good teamwork were evidenced in the audience as well as the team itself. As a former "first string" basketball player, Dean Siedle takes it in his stride to be a "first string" coach.





JOHN UTTERBACK

LEON HUTTNER

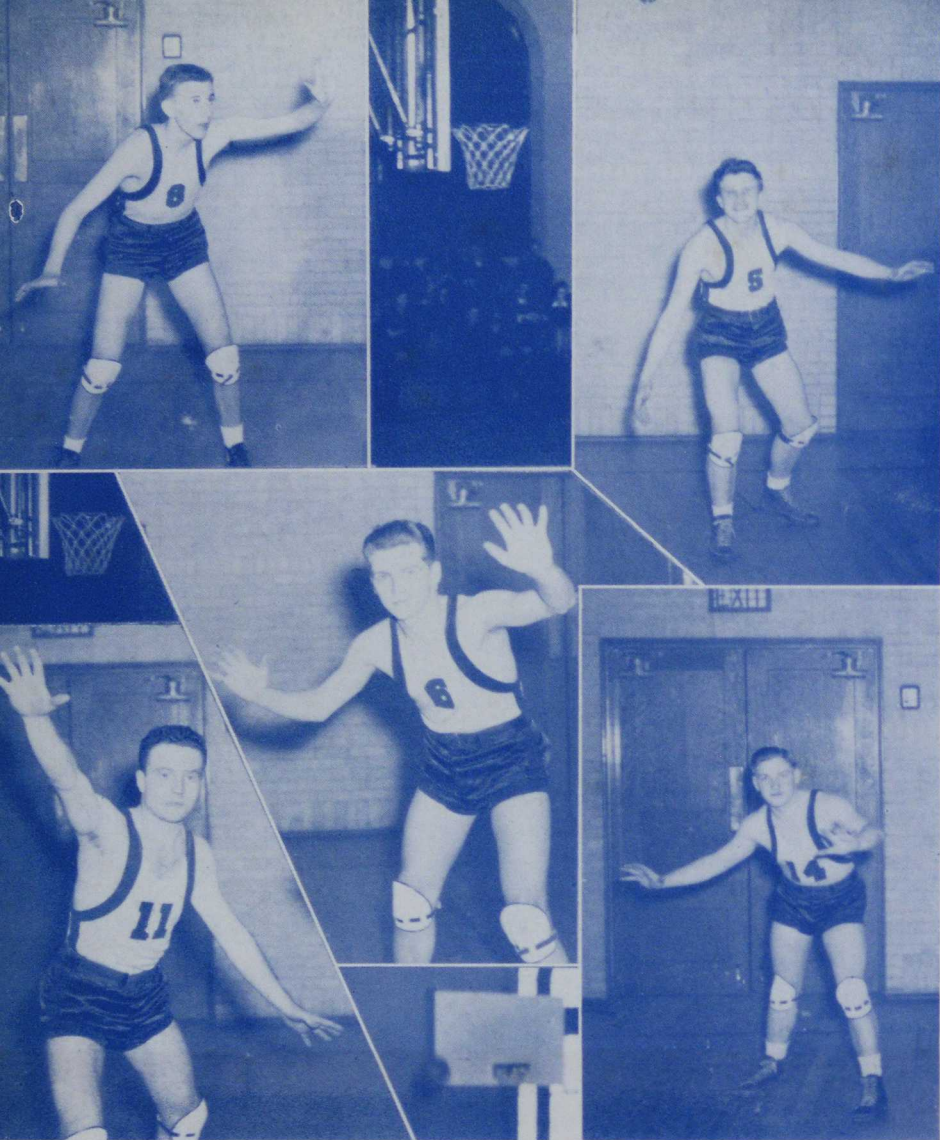
JOHN LABEKA

THOMAS UNDERWOOD

JAMES CLUTTER

BASKETBALL





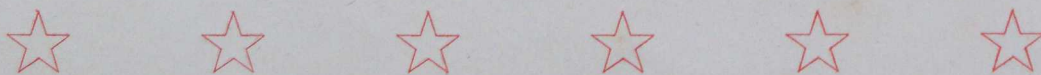
Top—Frank Fisher,
David Chester.

Bottom — Thomas Ed-
wards, Martin Siljan-
der, Byron Gordan.

SEASON'S RECORD

C.S.T.C.	Opp.	C.S.T.C.	Opp.		
39	Fairmont, H.	40	43	St. Vincent, A.	33
54	West Liberty, A.	63	61	Frostburg, H.	42
34	Indiana, H.	43	49	Edinboro, H.	39
48	Thiel, H.	42	48	West Liberty, H.	50
33	Pitt, A.	45	50	Thiel, A.	40
40	Clarion, A.	49	39	Millersville, A.	37
36	Indiana, A.	37	45	Shippensburg, A. ...	43
40	Edinboro, A.	36	48	Slippery Rock, H.	44
30	Slippery Rock, A.	65	49	Frostburg, A.	50
58	Clarion, H.	55	51	St. Vincent, H.	45
54	Fairmont, A.	58	47	Alumni, H.	33

BASKETBALL



JAY-VEE

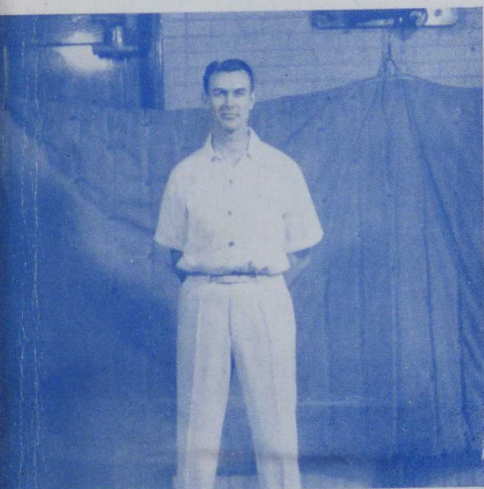
1st Row — Noeta; Bohn; Dugoni; Dixon; Washek.

2nd Row — Coach Cubbons; Hill; Turnbull; Ondrei; Lutz; Adams; Spivak; Wilson.



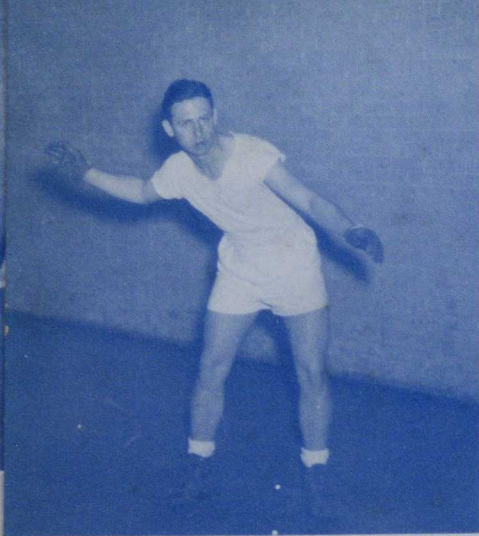
The Jay-Vees were revived this year to become a permanent fixture in basketball, for they show great possibilities as potential material for next year's varsity. Playing a preliminary to practically every evening home game with such teams as the California Diaper Bar, Brownsville Independents, Brownsville Alumni, Charleroi Independents, Pittsburgh Boys' Club, California Independents and Monongahela Ex-high, they provided nip and tuck battles to the final whistle.

After serving as "cannon fodder" for the varsity, several of the players made at least one varsity trip. The Jay-Vees received numerals for their efforts proving they have the dependence necessary for good basketball players.



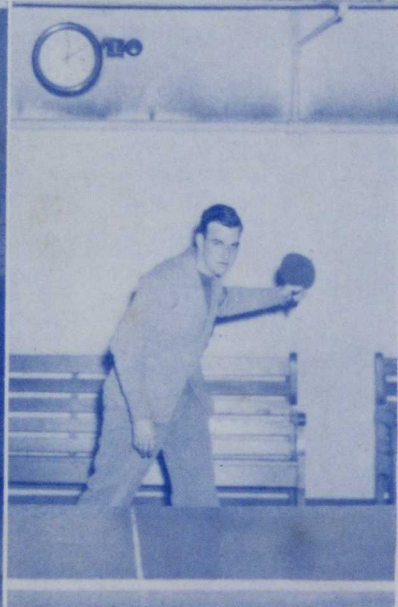
New to California this year, Mr. Cubbon took time out from his First Aid Classes and other activities to coach the Jay-Vee team. His task of regulating all physical activities on the campus is a demanding one, but he is ever ready to help solve your problem. Possessing high understanding and genuine friendliness the Jay-Vee coach is a valuable addition to our faculty.





Surgeon

Keller, Walfish, Yarnall
Musser, Bohn



Dowden, Carpenter,
Budnick
Snyder, Marks, Maser

Hepler

In keeping with the plea of national defense for an increased athletic program, an intra-mural program of volleyball, basketball, swimming, horseshoe pitching, and ping pong, was set up by Mr. Grove and Mr. Cubbon. Inaugurating the season the volleyball pennant was won by the "Town Bums" who played good volleyball and created no little interest in the game. Winning eight games and losing only one, the well-known Second-floor Dixon team, spotlighted the basketball program, largest group of the series. By constantly practicing together the boys had built up a smooth working combination that was obviously hard to beat. Upholding a good record, Hepler came through with flying colors by defeating Leap in the finals of the ping-pong tournament, while "Bill" Surgeon with his uncanny ability to pick the little black pill off the walls, walked away with the handball honors.

Variety keyed the intra-mural program affording every person in school the facilities for physical development.

INTRAMURAL



WOMEN'S ATHLETIC ASSOCIATION

The Women's Athletic Association is the largest and one of the most active women's organizations on the campus. Bettering the health of the college women by creating a well-rounded athletic program, is its aim and reason for including hiking, basketball, volleyball, swimming, archery, rifle shooting, bowling, tennis, badminton, ping pong, and shuffle board, among its activities. The officers and a board of eleven women, each of whom takes charge of one particular function is the controlling body, and meets with Miss Hildreth to make plans for the club.

In addition to maintaining opportunity for physical activities, the Association provides for play days and conventions at the college, and also sends representatives to other schools. In October, the California W.A.A. was host to the Athletic Federation of College Women for its eighth annual convention, and was represented at Edinboro in March. Representatives from many of the high schools in Western Pennsylvania spent a day on the campus in May to take part in the annual high school play day.

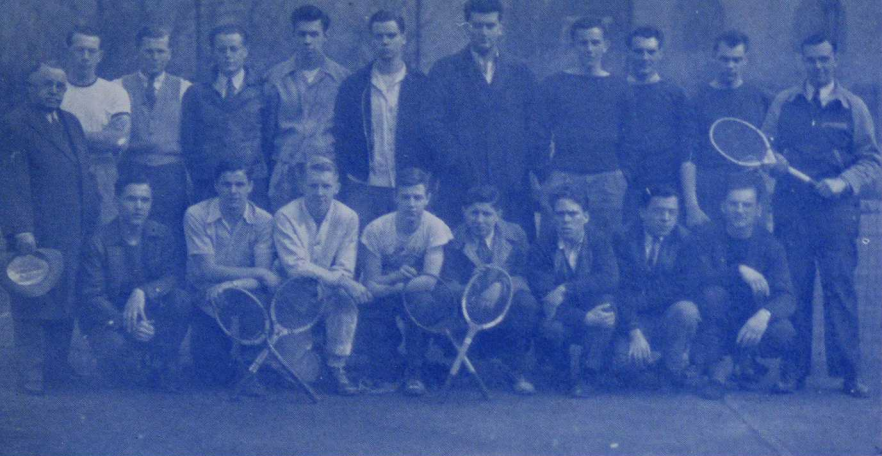
Ruby Adams ascended to the presidency when student teaching demanded the attention of Mauvis Byers.

1st Row — Miller; Galich; Parkins; Morgan; Wilson; Niccolai; Loos; Sprowl; A. Smith.

2nd Row — Miss Hildreth; H. Costello; E. Costello; Lieb; Glod; J. Smith; Schmitt; Barsick; Lint.

3rd Row — Bailey; Dillon; Conrad; Slavkosky; Simpson; Kaufman; Newcomer; Sepac; Howe; Breakiron; Sarada.





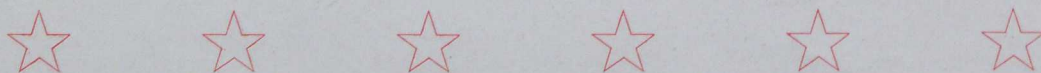
1st Row — Coach Keller;
Sachs; C. Keller; Wilson;
Bohn; Loeffler; Downs;
Ondrei.

2nd Row — Bradley; Snyder;
Adams; Etsweiler; Sud-
daby; Rehe; Fisher; Nocta;
McGibbney; Hepler.

Snow was falling and basketball scores were yet lingering but the tennis team started its spring training in the gym. The loss of several top players from last year's team, and the difficulty of purchasing tennis balls were but a few of the problems encountered. Dr. Keller, however, coached the newcomers and brought the squad through with another successful season. Clenching their rackets with a determined grip, the team faced a more difficult schedule than that of previous years and upheld the record of California's ever-faithful tennis team.

Congratulations are in order for individual efforts and also excellent co-operation with the coach and fellow racketeers.

Dr. Keller has served as the tennis coach for a number of years and renders additional proof of his ability each successive season. With intense interest he moves about carrying his little bag of tennis balls on the days of the matches and watches his boys' actions. Just as he is every ready with a quotation in his classes, he is ever ready to compliment a good game.





Fisher; Surgeon; Hepler
 Musser; Fisher; Sachs
 Koste; Underwood; Keller



MONOCAL

1942



AFTER THOUGHTS . . .

Those who worked on this year's Monocal felt that no other staff faced such grave and serious problems. There were even a few hectic weeks during which the fate of this publication depended on whether or not the activity fee was increased. "Then came the war" and co-Editor Melvin Peterson took off for the Army Air Corps.

Very early, we found that the building of a Monocal is a "yearly" proposition. It was last spring when we first met and decided on the general theme and layouts. The idea was originated by Melvin and was further developed during our summer get-togethers. Fall brought a bevy of representatives from engraving and printing concerns with the resultant signing of contracts and inauguration of actual work—arranging sittings for portraits (trimming, the smell of rubber cement, white cardboard, and mounting), choosing the cover and design, scheduling group pictures (developing, printing, identifying, mounting), and writing (re-writing, typing and checking) the text material.

We also learned that it takes more than a few people to complete a year-book. To these we express our gratitude with many "Thanks"; Mr. Hurst for counsel and advice; the Publications Board which helped solve many of our problems; Miss Bernstorf for the Monocal room and Mr. Walker for use of the Nature Study Laboratory, a most convenient workshop; last year's editors, Walter Glod and Robert Weber, for advice and the use of last year's faculty pictures; and Mrs. Frances Plava Hoon for the class lists and other information.

Due consideration should be given to Elsie Allen, Betty Bailey, Margaret Barron, Mary Louise Chew, Olive Furlong, Sally Maxwell, Margaret Schmitt, Beryl Shelley, and Vera Sherbondy for research and valuable suggestions; Donald Adams and George Loeffler for layout work; Bill Stuckrath for lettering, and Rose Galich for the eagle design and tower sketch; Andrew Ondrei and Arthur Snyder, for photographic aid, and Betty Mae Patterson and Charles Ross for editorial assistance. We acknowledge those professional services rendered by Mr. Weller of the Weller Studio, Washington, Pa.; Mr. Weaver and Mr. Wise of Stevenson and Foster Company, Pittsburgh, Pa.; and Mr. Haddock of John and Ollier Engraving Company, Chicago, Ill.

Deserving of special recognition are Norma Odisio, staff typist, who spent many long hours—well into the morning—pounding the keys, and Cletus Nestlerode, whose duties as Business Manager expanded to those of photographer and included editorial obligations. Their untiring efforts made this publication possible.

We also wish to thank those students who donated snapshots of campus scenes and personalities which contributed toward making this Monocal a personal record of the year's activities.

KATHRYN RUDEZ,
Editor



JAHN & OLLIER AGAIN



LOYAL

always, to the
cause of better
Yearbooks

JAHN & OLLIER
ENGRAVING CO.

Makers of Fine Printing
Plates for Black and Color
Artists - Photographers

817 W. WASHINGTON BLVD.
CHICAGO

The Stevenson & Foster Co.

PRINTERS - LITHOGRAPHERS - STATIONERS

421 Seventh Avenue

-

Pittsburgh, Penna.



COLLEGE ANNUALS
HIGH SCHOOL YEAR BOOKS
MONTHLY PUBLICATIONS



Our representative will be
pleased to assist you when
compiling your next Publication.

... Telephone GRant 1551 ...

PRINTERS SINCE 1812

AUTOGRAPHS