

MOVING IN...at BSC was a hectic experience for the undergraduates last week as the student above settles into his residence hall on campus.

(Photo by Patrick Murphy)

The CAMPUS VOICE

Friday, September 11, 1981

Telecourses available through Extended Programs

Persons who are too busy to attend classes on campus can now take telecourses for college credit through Extended Programs at Bloomsburg State College. This simply means that some selected regular college courses are being made available through WVIA Television (Channel 44), a member of the Pennsylvania Public Network.

Bloomsburg as a participant in a local consortium, will be offering two courses this fall.

Fitzwilliam String Quartet leads off CAC season

Six cultural events have been planned by the Community Arts Council for 1981-2, according to Dr. Ted Shanoski, cultural affairs director.

The program will include the Fitzwilliam String Quartet on September 23; A Pavlova Celebration on October 12, the McClain Family Band on October 25, the Branko Krsmanovich Chorus on January 20, "Grease" (the musical play) on March 3 and "The Canterbury Tales," a one-man show by Bob Inglis on April 1.

For brochures giving times and additional information, contact the Alumni Office.

The Arts Council begins its selection process each fall, working in separate committees for music, dance, and theater, lectures and art. By January or February, the entire council meets to negotiate the final choices.

The council includes 20 elected members from the student body, and the faculty.

"The American Story: The Beginning Through 1876" will be taught by Dr. Craig Newton with the televised portion to be shown on Saturdays at 7:00 a.m. starting on September 12.

"Understanding Human Behavior" will be instructed by Dr. Calvin Walker with its TV component to be broadcast by WVIA on Sundays at 7:00 a.m. beginning September 13.

The American story follows American progress from its prehistoric beginnings to the

first Centennial in 1876. It is a balanced view of the events and courses, personalities, and people which have contributed to the rich fabric of American Life.

Understanding Human Behavior is an introduction to psychology that reviews the major theories and methodologies of the scientific approach to studying human behavior. The course study units are varied, ranging from research perspectives on human thought and behavior to psychotherapy and social

(Continued on Page 3)

There are two representatives from the community. The council's budget is about \$40,000 a year, with much of it coming from community activities fees paid by students, faculty and staff.

The Fitzwilliam String Quartet, favorably reviewed in the New York Times after a Carnegie Hall concert this year, will be at BSC and Bucknell University for several days on a shared basis.

In "A Pavlova Celebration," ballerina Starr Danias, who danced in the film, "The Turning Point," will evoke the era of the famous dancer Anna Pavlova, in the 100th anniversary year of her birth and the 50th anniversary year of her death.

Her presentation includes restagings — which she calls interpretations rather than imitations — of ballets such as "Dragonfly," "The Dying Swan," "Polka Pizzicato," "Idylle," and "Autumn Bac-

(Continued on Page 2)

'I am Music' highlights 1981 Homecoming festivities

Once again homecoming arrives at BSC. Homecoming weekend, October 8-11, promises to be an exciting and motivating experience for everyone involved in the college community. There may even be something just right for you!

The following includes the rules and information for everyone interested in participating:

I. Theme - "I Am Music" is the theme of the 1981 Homecoming Celebration at B.S.C. Float entrants and residence halls may decorate in commemoration of a great musical performer, composer, group or type of music. (Example: Barry Manilow, Beethoven, The Beatles, Punk Rock)

II. Registration Deadline - Friday, September 18 - Float themes, Homecoming Sweetheart Contestants and residence hall themes must be submitted to the Information Desk on the enclosed registration form no later than 5

p.m. on Friday, September 18. If an organization does not register a theme for each event, it will not be permitted to participate in the particular event. If two organizations submit similar themes, the first one received will take precedence over the other. Other organizations are permitted to look at registration forms.

IV. Requirements for Nominating Homecoming Sweetheart Candidates

1. Any student organization, residence hall, club, class, sorority or fraternity may nominate a Homecoming Sweetheart.

2. Nominations for Sweetheart Candidates must be received at the Information Desk no later than 5 p.m. on Friday, September 18, 1981.

3. Any group, which enters a candidate, must pay a \$6.00 registration fee, payable to Community Activities. The money will be used to purchase flowers for all candidates and to

take their pictures.

4. Primary elections for the top ten Homecoming Sweetheart finalists will be conducted on Monday, September 28 and Tuesday, September 29 in the Kehr Union. Elections for Freshman Sweetheart will be Wednesday, September 30. Final elections will occur on Monday, October 5 and Tuesday, October 6.

5. The five finalists and the Freshman Sweetheart will be announced at the Pep Rally on Friday, October 9.

6. All organizations, which nominate candidates for Homecoming Sweetheart, must provide cars for their candidates. These cars do not have to be convertibles. Signs must be made by the sponsoring organization and attached to the car signifying the name of the candidate and the name of the sponsoring organization.

7. Candidates for Homecoming Sweetheart must be B.S.C. students enrolled in

(Continued on Page 2)

Graduate exams to be administered on campus

Students completing teacher preparation programs and advanced degree candidates in specific fields may take the National Teacher Examinations on any of three different test dates in 1981-82. Educational Testing Service, the nonprofit, educational organization that administers this testing program, said today that the tests will be given November 14, 1981, February 20, 1982, and April 17, 1982, at test centers throughout the United States.

Results of the National Teacher Examinations are considered by many large school districts as one of several factors in the selection of new teachers and used by several

states for the credentialing of teachers or licensing of advanced candidates. Some colleges require all seniors preparing to teach to take the examinations.

On each full day of testing, registrants may take the Common Examinations, which measure their professional preparation and general educational background, and/or an Area Examination that measures their mastery of the subject they expect to teach.

Prospective registrants should contact the school districts in which they seek employment, state agencies in which they seek certification or licensing, their colleges, or the

(Continued on Page 3)



BADGE AT BSC...formerly known as Jet, the rock group Badge makes its first performance at the KUB last week in an event sponsored by the BSC Program Board.

(Photo by Patrick Murphy)

Back to School



Letters to the Editor

Archives preserves

I am writing this note to all departments, offices, sections, organizations, clubs, committees, etc. in the Bloomsburg State College community to enlist again their aid in preserving the record of our institution.

First, I would ask that ANY information for distribution that is printed in ANY format - size using ANY type of printing - copying be considered fair game for Archives. This refers to campus-wide and to a rather narrow distribution such as to students of a course, to faculty members in professional studies, or to members of a club. For example, it could be a

course description, a test given, a football program, the large BSC Activities Calendar, or minutes of a meeting. I would appreciate it if you would take steps to earmark all such materials for the archival record. The Archives, at least,

"Any information is fair game for archives."

should be on your "all" distribution list. If it is not evident on the information itself as to which specific office, organization, committee, etc. was responsible for the item, please indicate such responsibility.

Second, I would ask that you not dispose of any non-current office files before contacting the Archives and/or the Records Coordinator, Dr. William G.

Williams. The Archives at this stage is still in no position to collect everything nor would it be wise to do so if it were possible, but we want the opportunity to appraise files to determine their possible archival value.

Third, we are also interested in collecting faculty-staff publications or other evidence of productive work. Reprints of periodical articles are welcome.

Finally, we would like to solicit photographic records of the college to add to our collection of still photos and slides. Identification as to year, subject, and people would be helpful.

Material of small enough volume to be sent via campus mail can be addressed to:

R. W. Fromm
College Archives
AL

Please call me about larger quantities to be sent or examined; my numbers are as follows:

College Archives 3210
Andruss Library 2900

Answers



Fitzwilliams Quartet to perform

(Continued from Page 1)

chanale." The second half of the program, as danced in New York, was devoted to a concert version of "Giselle."

The McClain Family Band, a bluegrass group, will appear in a matinee performance in conjunction with Parents' Weekend.

The Branko Krsmanovich Chorus is a group from Yugoslavia which first presents a formal concert and then a folk song - folk - dance presentation.

"Grease," the popular musical, will be presented by a 21 member cast from Daedalus Productions.

"The Canterbury Tales" satisfies the literary portion of the cultural schedule. Don Inglis comes from England and somehow manages to switch gears often enough to enact many of Chaucer's characters in costume.

"It's the council's goal to make Bloomsburg the cultural center for the region," says Shanoski.

The Community Arts Council kicks-off its 1981 Artist Lecture Series with an exciting and energetic performance by a famous international string quartet, The Fitzwilliam String Quartet. These four young Englishmen are enjoying a world-wide reputation as the

foremost interpreters of Shostakovich. This group received enthusiastic praise at home and abroad. Locally, they have had several memorable residences at Bucknell University, where they have thrilled chamber music fans. Bucknell University is holding a special convocation on Sunday, Sept. 13, in Rooke Chapel on the Bucknell campus. They will present the members of the Fitzwilliam Quartet with honorary doctoral degrees. This event will begin at 8 p.m. and is open to the public.

The Quartet will visit BSC on Sept. 23, at 8:15 p.m., in Carver Hall. Don't miss this remarkable event. Be sure to get your tickets early. They will be made available two weeks prior to the Fitzwilliam appearance, and can be obtained by calling the Kehr Union Information Desk at 389-3902 between 10:00 a.m. and 4:00 p.m. BSC students and persons with a Community Activity - Patron Card receive FREE tickets to the event. General admission tickets will be available for distribution to the public one week before the concert. All individual tickets are \$6.00. The box office will open at 7:30 on the evening of the performance.

Homecoming Activities announced

(Continued from Page 1)

the Sophomore, Junior, or Senior Class.

Pictures for all contestants will be taken on Thursday, September 24 between 2 and 5 p.m. in the Kehr Union Coffeehouse.

VI. Homecoming Floats - Good news for organizations entering floats. CGA has agreed to pay your organization 80 percent of the construction materials purchased for your float with the understanding that maximum reimbursement will not exceed \$150. Bills for construction materials must be submitted to the Office of Community Activities (Top Floor - Kehr Union).

1. Floats must not exceed the following dimensions: Height - 14 ft.; Width - 8 ft. - Length - 50 ft.

2. Prizes Awarded: 1st Place - \$200 + Rotating Trophy; 2nd Place - \$150; 3rd Place - \$100; 4th Place - \$50.

3. Criteria for Judging Floats: Adherence to theme, Construction, Overall Appearance.

Member of BSC forensic team places second in Nationals

The Women's Christian Temperance Union held its 107th Annual National Convention at Calvin College, Grand Rapids, Mich. in Aug. A BSC junior, Harry A. Strausser III from Elysburg, PA., represented the State of Pennsylvania in the national

oratorical competition. Strausser placed second in the competition with his speech which was entitled "Alcohol Abuse - Growing and on the Loose". At BSC, Strausser is beginning his second term as president of the Forensic Society.

THE CAMPUS VOICE

Bloomsburg State College, Bloomsburg, PA 17815 Box 97 KUB 389-3101
VOL. LX No. 2

Executive Editor..... Roberta Clemens
Ad Manager..... Brian Duart
News Editor..... Brenda Friday
Feature Editor..... Virginia Reed
Sports Editor..... Kevin Kodish
Sports Asst..... Jeff Brown
Photo Supervisor..... Pat Murphy
Business Manager..... Karen Troy
Advisor..... Richard Savage

The Voice is governed by the Editorial Board with the final responsibility for all material resting with the executive editor as stated in the Joint Statement of Freedom, Rights and Responsibilities of students at BSC.

The Voice reserves the right to edit all letters and copy submitted. A maximum of 400 words will be placed on all letters to the editor with an allowance for exceptions. All letters must be signed and have an address and phone number. Names will be withheld upon request.

The opinions voiced in the columns, articles and notices are not necessarily shared by the entire staff. An unsigned staff editorial denotes a major consensus of the editorial board.

BMI Awards Student Composers

The 30th annual BMI Awards to Student Composers competition will award \$15,000 to young composers, James G. Roy, Jr., BMI assistant vice president, Concert Music Administration, has announced. He added that the deadline for entering the 1981-82 competition will be February 16, 1982.

Established in 1951 in cooperation with music educators and composers, the awards program is sponsored by Broadcast Music, Inc., the world's largest music licensing organization. The contest is designed to encourage the creation of concert music by young composers and to aid in their musical education through cash awards. Prizes ranging from \$500 to \$2,500 are awarded at the discretion of the judges. To date, 261 students, ranging in age from 8 to 25, have received BMI Awards.

Roy noted that the 1981-82 competition is open to students who are citizens or permanent residents of the Western Hemisphere and who are enrolled in accredited secondary schools, colleges or conservatories, or are engaged in private study with recognized and established teachers anywhere in the world. Contestants must be under 26 years of age on December 31, 1981.

There are no limitations as to instrumentation, stylistic consideration or length of work submitted. Students may enter no more than one composition, which need not have been composed during the year of entry.

Compositions, which are entered under pseudonyms, are considered by a preliminary panel of judges before going to a final panel.

Last year's Preliminary Judges were George

Costinesco, Gerald Warfield and Frank Wigglesworth, with Ulysses Kay serving as Consultant. The Final Judges were David N. Baker, Arthur Cohn, Marc-Antonio Consoli, Brian Fennelly, William Hibbard, Henri Lazarof, Gunther Schuller, Jose Serebrier, David Stock, Robert Ward and Ellen Taafe Zwillich, with William Schuman as Presiding Judge and Permanent Chairman of the judging panel. The amount

(continued on page 5)

Telecourse offered

(Continued from Page 1)

psychology.

The telecourse program is designed for busy people who want to continue, or begin their college education. Courses are genuine college courses carefully developed by educators and media specialists and include weekly video lessons, required readings, and periodic examinations.

"The courses are no easier than courses on campus, but they are more convenient," states Dr. Daniel Pantaleo, dean of extended programs. "These televised courses for credit are really an exciting way for the busy person to get a

college education."

Other members of the consortium participating on Channel 44, under the recently announced Public Broadcasting Service Adult Learning Program, are College Misericordia, King's College, University of Scranton, and Wilkes College. Additional courses in the initial offering include: "It's Everybody's Business" — an introductory to business, and "Cosmos" — descriptive astronomy.

Interested persons can contact the School of Extended Programs in Waller Administration Building at BSC by calling 717-389-3300.

Graduate exams

(Continued from Page 1)

appropriate educational association for advice about which examinations to take and when to take them.

The NTE Bulletin of Information contains a list of test centers and general information about the examinations, as well as a registration form. Copies may be obtained from Bloomsburg State Col. Center for Counseling and Human Development (Ben Franklin Bldg. Rm. No. 17)

GRADUATE MANAGEMENT ADMISSION TEST (GMAT)

Examination Dates:
Oct. 24, 1981
Jan. 23, 1982
March 20, 1982
June 23, 1982 (Wednesday evening)

LAW SCHOOL

ADMISSION TEST (LSAT)

Examination Dates:
June 20, 1981
Oct. 3, 1981
Dec. 5, 1981
Feb. 20, 1982

NATIONAL TEACHERS EXAMINATION (NTE)

Examination Dates:
+ Nov. 14, 1981
+ Feb. 20, 1982
+ April 17, 1982

GRADUATE RECORD EXAMINATIONS (GRE)

Examination Dates:
Oct. 17, 1981
+ Dec. 12, 1981
Feb. 6, 1982
+ April 24, 1982
June 12, 1982

COLLEGE-LEVEL EXAMINATION PROGRAM (CLEP)

Examination Dates:
+ Nov. 21, 1981
+ March 20, 1982

MILLER ANALOGY TEST (MAT)

Examination Dates:
+ Oct. 3, 1981
+ Feb. 6, 1982
+ June 5, 1982

STATE AND FEDERAL CIVIL SERVICE TESTS

For applications and additional information:

Career Development & Placement Center

Room 12, Ben Franklin Hall Bloomsburg State College

+ These tests are being given at Bloomsburg State College.

Registration forms available: Center for Counseling and Human Development

Room 17, Ben Franklin Hall Bloomsburg State College

— If applicant to BSC Graduate School, obtain application from:

Graduate Office
Waller Administration Bldg.
Bloomsburg State College

— If applicant to Graduate Schools NOT including BSC Graduate School, obtain application from:

Center for Counseling and Human Development
Room 17; Ben Franklin Hall
Bloomsburg State College

Kwik Shop Market

Groceries - Meats - Produce

Chips - Soda - Milk

Fresh Hoagies

made daily.



Hot Meatball Sandwiches

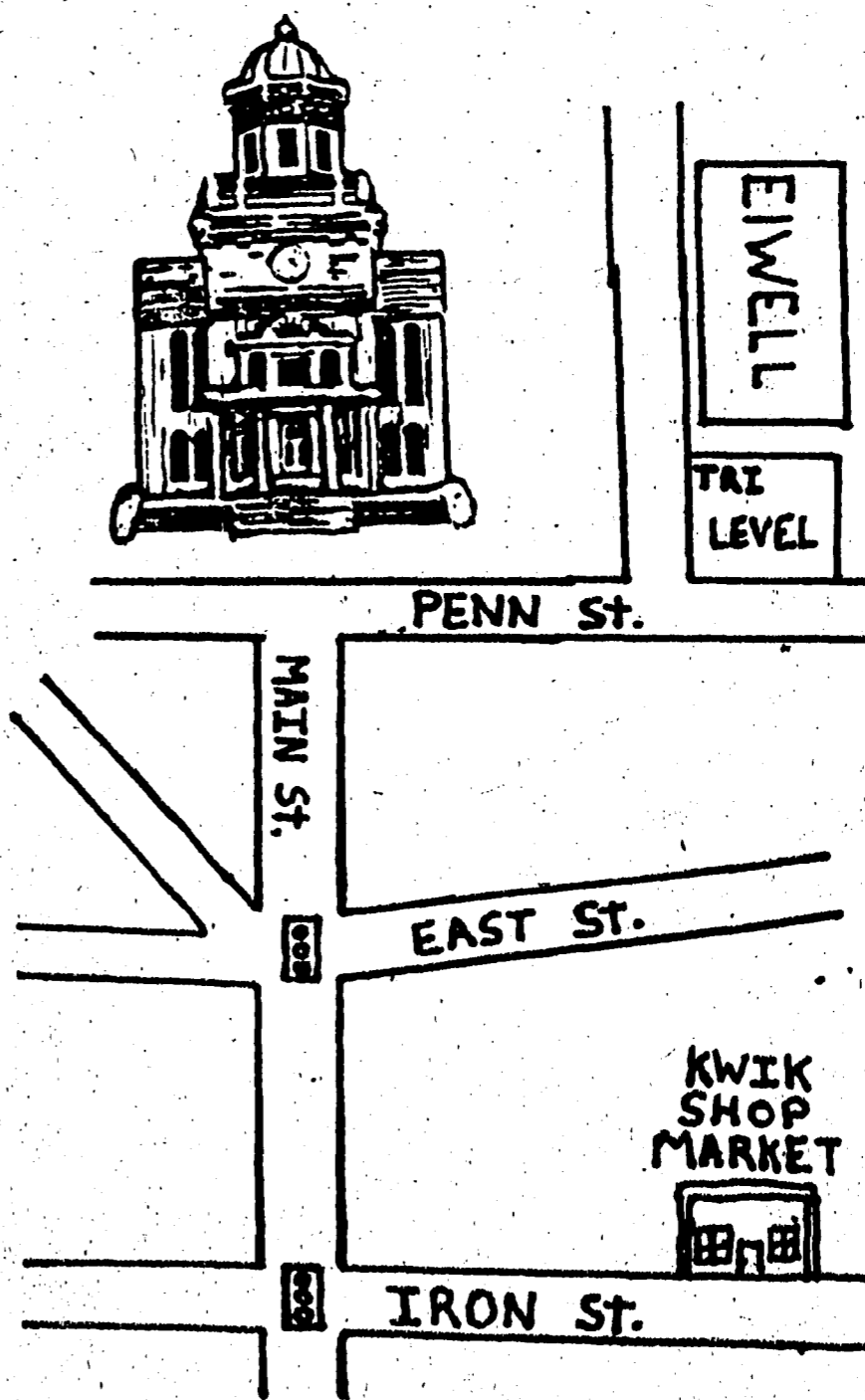
Hot Ham Bar-B-Que

Hours: Mon.-Fri. 8 a.m. - 9 p.m.

Sat. 9 a.m. - 6 p.m.

Sun. 8:30 a.m. - 9 p.m.

223 Iron St.





Pres. McCormick Addresses College Community

By JAMES H. McCORMICK
PRESIDENT
BLOOMSBURG STATE
COLLEGE

Maintaining uninterrupted academic growth and steady improvement in the educational delivery system requires a long-term commitment and unceasing vigilance by all who have helped move Bloomsburg State College into its position of leadership in public higher education in the Commonwealth.

Eight years ago we began a **One of the foremost concerns is the construction of the Human Services Center.**

planning process that continues with as much interest, enthusiasm, and concern today as in 1973. An implementation procedure was developed to provide the appropriate follow-up action for transforming plans into reality, and, more recently, a review and evaluation program has added yet another dimension to that on-going effort.

We are now preparing to complete the cycle by setting specific goals for correcting the problems we have identified and for building on the successes we have achieved. This represents still another

challenge for an institution that plans to do more than survive in the 1980s.

One of the foremost concerns of students, faculty, staff, alumni, and the community at large during the next few years will be the construction of the human Services Center, renovation of Hartline Science Center and Sutliff Hall, and the repair projects involving electrical, water and steam distribution systems. Detailed and intensive planning for the new building began as soon as the capital budget was passed by the legislature and signed by Governor Thornburgh late last year. A primary goal of my administration is to complete the planning with the expectation that specifications for the bidding procedure will be prepared in cooperation with the Pennsylvania Department of Education and the Department of General Services and approved by June 30, 1982.

The Human Services Center is the first new building to be approved for Bloomsburg State College since work was started on Lycoming Hall, completed in

Another concern is the distribution of the undergraduate enrollment across the major areas of study.

1975, and we are anxious for construction to be started. It is a need we share with the community; it will provide jobs for area workers, and it will provide desperately needed new facilities for the college.

We are concerned, also, about the distribution of our undergraduate enrollment across the major areas of study, and the implications that distribution might have for future years when career opportunities may change. Bloomsburg State College has a responsibility, and an established reputation, for meeting the educational needs of the people of a large area of the state. We constantly remind ourselves of the importance of studying trends and anticipating changes in needs, just as we did when our Bachelor of Science in Nursing degree program was planned and implemented in anticipation of a growing need for nurses in this region.

Our present enrollment distribution resulted, in part, from a dramatic change that resulted from our planning effort. While our total full-time undergraduate enrollment has increased at a controlled rate of two percent per year, enrollment in teacher education programs has declined from 70 percent in 1973 to the current 30 percent while there was growth in other program areas. A goal this year will be to begin a study

(continued on page 6)

COLLEGE BOWL AGAINST TRUSTEES Last year's winning College Bowl team played the Board of Trustees in an exhibition game in Kehr Union. The Board of Trustees won the match by a close score.

(Photo by Patrick Murphy)

Students Opt for Foreign Study

Thirteen years ago, "a Spanish professor at the University of Michigan took a tour of Europe," recalls Louise Wright.

Today, the professor's trip and taste for foreign study have become an annual flow of American students enrolling at accredited colleges and universities in Switzerland, Mexico, France,

Spain, Austria, Italy, and the U.S.S.R. for fall, spring, summer or year-round programs.

The programs, moreover, are diverse, according to Wright, whose Center for Foreign Study helps students, graduates and teachers arrange for overseas courses, housing and travels. "Most of the programs require

some sort of language experience," she says, "but there are some fine arts courses that have no language requirements."

Wright advises that many American schools offer loans and scholarships for foreign study.

Her Center helps make the (continued on page eight)

SIGMA IOTA OMEGA

'Add
Excitement
to Your
Life.'

ΣΙΩ

Rush Meeting

September 15

9:00 P.M.

Multipurpose Room A

"Get Out And Rush"



Campus Shorts

Graduation just a game at Tulane U.

NEW ORLEANS, La. (CH) — Tulane University business graduates not only stay awake during lengthy commencement services, many of them also listen intently to the ceremony — at least until someone else yells "Bingo."

Thanks to a Tulane business professor, the students pick up Commencement Bingo cards on their way into the ceremony, and can win a prize for matching words in the commencement speech with the Bingo words listed on their cards. Dr. Irving H. LaValle invented the game and uses a computer program to produce cards bearing words likely to show up in a commencement speech. Typical choices include ladies, gentlemen, ideals, university, goals and career.

Words can be checked off any time they are used in the formal ceremony. Winning students then have to summon up the courage to yell "Bingo!" in order to claim their prize, which this year was two bottles of liquor.

For the two years the game has been conducted, commencement speakers have been agreeable and even cooperative. This year's speaker, John J. Phelan Jr., president and chief operating officer of the New York Stock Exchange, even re-wrote portions of his speech to include words LaValle had put on the cards.

French offered at night

The Department of Languages and cultures at BSC plans to offer a course in beginning French in the early evening this fall. The course is for the convenience of area residents who may have wanted to take some French courses, but are not free to attend any of the other courses offered during the regular working day.

Dr. Ariane Foureman, professor of French and Russian, will be conducting the

Public wo men's colleges face near-extinction

NEW ORLEANS, LA (CH) — Public women's colleges,

already an endangered species, are on the verge of extinction following a recent federal appeals court ruling.

The 5th U.S. Circuit Court of Appeals ruled that a Mississippi man has the right to attend the Mississippi University for Women, one of the only two remaining all-female public colleges. Joe Hogan filed suit against MUW last July, after he was denied admission to the school's nursing program. The court ruled that discrimination on the basis of gender is unconstitutional unless it promotes "an important governmental interest."

The Mississippi school, the first public all-women's college established in this country, will appeal the decision. If that appeal fails, Texas Woman's University will be the sole surviving all-female public college.

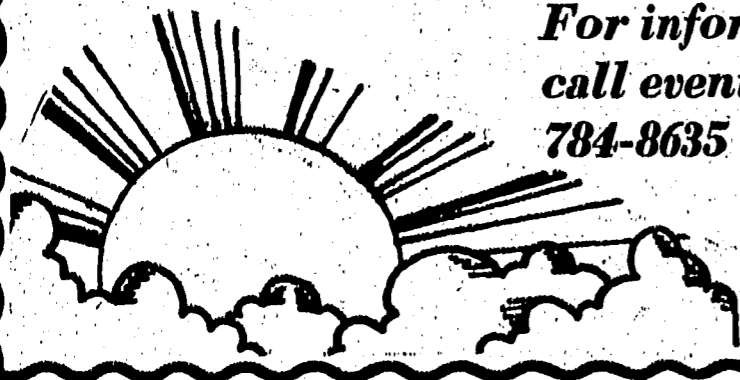
Admitting men will destroy more than a tradition, claims Marcy Sanders, who is writing a history of MUW for its centennial celebration. "It will absolutely ruin this institution," she says. "It will destroy its unique contribution. The girls will powder their noses and think about nothing but impressing the guys; their books will go out the window like they have at all the other coed schools."

course French 1A, particularly designed for the beginner with little or no background in French, from 5:30 to 6:20 Monday through Thursday evenings, beginning Sept. 1.

For information about this or other courses in French, Spanish, German, Italian or Latin contact the School of Extended Programs at 389-3300 or the Department of Languages and Cultures at 389-2507.

We have rooms for up to 7 more female students left in a beautiful new solar house. Away from nosey neighbors. Just 13 minutes from campus. Entire house occupied by tenants only.

For information call evenings: 784-8635



Collegiate crossword

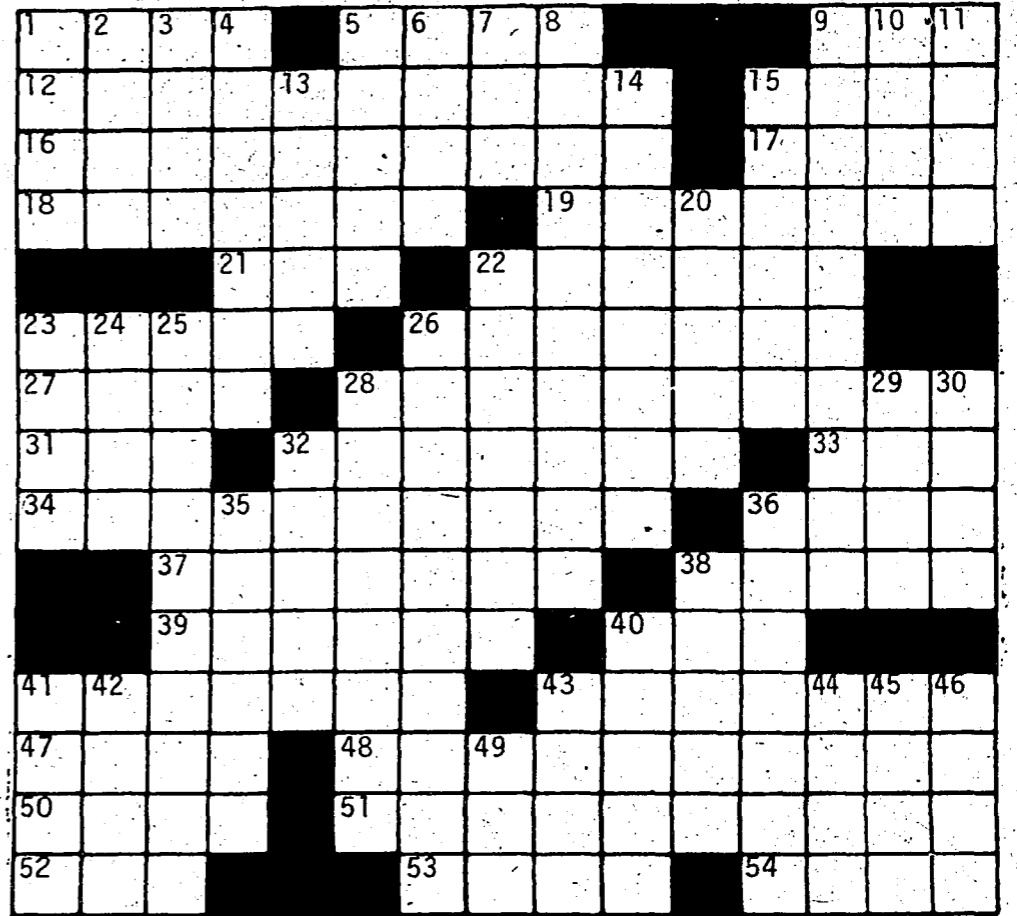
ACROSS

1. Movie mogul Marcus
5. Heroic tale
9. Song syllable
12. The state of being undamaged
15. Pal
16. Its capital is Dacca
17. Nobel chemist
18. The art of putting on plays
19. Pearson and Maddox
21. — Vegas
22. Drink to excess
23. — Hiss
26. Italian painter
27. Screenwriter Anita
28. Devilishly sly
31. Decline
32. Devices for refining flour
33. Teachers organization
34. Shore protectors (2 wds.)
36. Machine part
37. Type of music
38. Doesn't eat
39. The Sunflower State
40. Part of APB, to police
41. All-too common excuse (2 wds.)
43. Short opera solo
47. Grotto
48. Part of the hand
50. Made do
51. Prevents
52. — Alte
53. U.S. caricaturist
54. Farm storage place

DOWN

1. Conservatives' foes, for short

2. Go — length (ramble)
3. Famous volcano
4. Moves jerkily
5. Hollywood populace
6. Sheriff Taylor
7. "Golly"
8. — as an eel
9. Size of some want-ads (2 wds.)
10. Regretful one
11. Vanderbilt and Lowell
13. Acquit
14. "The Lord is My —"
15. Veal —
20. Extends across
22. Turkic tribesmen
23. Mr. Guinness
24. Spanish for wolf
25. Retrace (3 wds.)
26. Disproof
28. Ends, as a broadcast (2 wds.)
29. Like Felix Unger
30. Head inventory
32. Hurt or cheated
35. Glided
36. Lead minerals
38. Coquette
40. Take — (pause)
41. Finished a cake
42. Football trick
43. "Rock of —"
44. Anklebones
45. Work with soil
46. Too
49. New Deal organization



© Edward Julius

Collegiate CW77-2

Student Composers are awarded

(continued from page 3)

of each prize and the number of prizes awarded are at the discretion of the final judging panel. In the 1980-81 competition nine winners ranging in age from 14-25 were presented awards at a reception at the St. Regis-Sheraton Hotel in New York City on May 14, 1981.

Five previous winners of BMI Awards to Student Composers have won coveted Pulitzer

Prizes in Music. They are George Crumb, Mario Davidovsky, Donald Martino, Joseph C. Schwantner and Charles Wuorinen.

The 1981-82 competition closes February 16, 1982. Official rules and entry blanks are available from James G. Roy, Jr., Director, BMI Awards to Student Composers, Broadcast Music, Inc., 320 West 57th St., New York, NY 10019.

Answers on Pg. 2

PREGNANT? NEED HELP?

Pregnancy Testing, Birth Control, Confidential Counseling, Abortion, Gynecological Services

ALLENTOWN WOMEN'S CENTER
215-264-5657

CONSIDERING RUSHING

A FRATERNITY?

...then

"THINK TKE!"

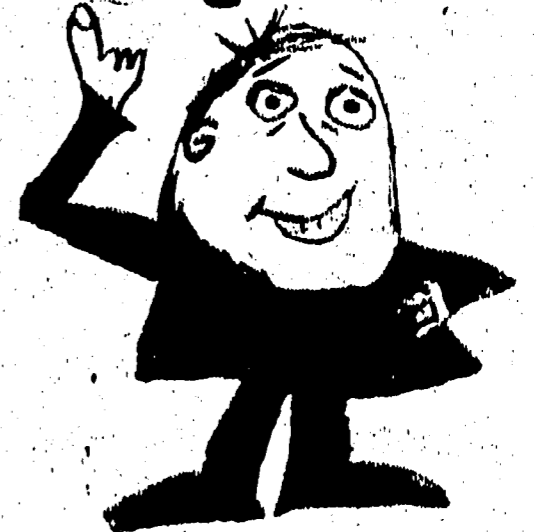


TAU KAPPA EPSILON

Rush Meeting:

Kuster Auditorium HSC
Monday, Sept. 14
9:00 - 10:00 p.m.

Come to the TKE RUSH and meet the fraternity.



President Addresses BSC

(continued from page four)

of the implications for future years of our current distribution, to begin considering changes that might be deemed appropriate, and to begin developing and implementing a four-year plan for achieving any redistribution that might be recommended and approved.

Another goal will be to make the 12 faculty appointments currently authorized and needed in critical areas, and to reduce faculty overload.

Review and evaluation of departments and program offerings will be continued. Five written evaluations, to be completed by June 30, 1982, will determine which programs will be continued, discontinued, or strengthened, based on criteria reflecting the college's mission and resources.

In fiscal management, it is expected that the recently-developed formula for allocation of Commonwealth appropriations will be implemented and that this will generate funds reflecting the college's proportion of students within the system. A plan to replace equipment and to eliminate deferred main-

tenance will be developed and implemented to project actions over a five-year period and to project expenditures as a part of a balanced budget. The college will continue to operate this year within a balanced budget.

Opportunities for job exchange will be introduced, with at least one job and - or management internship to be implemented. This program can include faculty, management, administration, or non-instructional staff.

Internally, a revised plan for the college's organizational structure will be implemented for the purpose of increasing the efficiency of college administration and functions.

Goals relating to external relations include off-campus visitations and meetings with alumni, legislators, school district personnel, student interns, allied health sponsors, corporations, and housing sites. Invitations will be extended to regional senators and representatives to visit campus and their participation in campus events will be encouraged. There will be an effort directed toward increasing alumni participation and contributions.

These specific objectives are

being discussed openly because I believe strongly that students, college employees at all levels of responsibility, and taxpayers alike should know what our major concerns are and what

Goals will be aimed towards improving external relations.

we intend to do about them. Each of the major administrative divisions will be working on achieving objectives in our important support programs, and obviously, there will be other concerns that will require attention during the year ahead.

The support I have had from the college community and the community at large has made it possible for me to commit my administration to meeting these goals with the confidence such a commitment requires. I assure you that Bloomsburg State College has never been stronger, or better prepared to make such a commitment.

I extend greetings to all students who are beginning a new year of their educational experience, to those who have completed their years of formal education, and perhaps, above all, to those who have helped make it all possible.



JIM LYMAN performed on Friday during the going away festivities for Marianne Montague-past Program Coordinator for Kehr Union.



MARIANN MONTAGUE serves pieces of the cake prepared for her by Tony the Baker. The cake measured 6 ft. by 2 ft. From left to right are Mariann Mantague, John Heller, Norm Balchunas and Butch Snyder.

Students Taste test Beer

Normally, the last thing any college student on a break wants to do is take a test, but many of them at a recent College Expo in Daytona Beach, Florida, lined up for one.

It was a beer taste test featuring Schlitz, Budweiser, Miller High Life and Michelob. As in the live television commercials run during the 1981 NFL playoffs and the Super Bowl, it was Schlitz vs. the other brands.

Schlitz Chief Executive Officer Frank J. Sellinger, himself a familiar figure after appearing in national TV commercials for his beer, was on hand to kick off the five-day event. He also met and talked with hundreds of students.

"I enjoyed meeting these people and hearing their comments about our taste test. Even after 45 years in the beer business I can learn by listening to beer drinkers," he said.

Students were seated at one of five testing stations where two beers—one of them Schlitz—were poured into identical cups for sampling.

After tasting, the students used an electronic switch to indicate their preference. The results were flashed on a scoreboard. A lot of the tasters were surprised to learn they preferred Schlitz, which prompted a happy response from Sellinger.

"I'm not surprised," he said. "Through these types of tests, people are learning more about beer."



BEER TASTERS

New York Now

Saturday, September 26

Departure Times:
 Elwell 8:00 a.m.
 N.Y.C. 7:00 p.m.

Trip cost \$10 Limited seats available

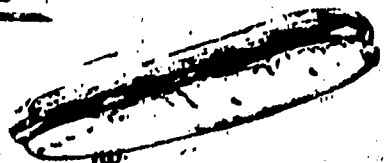
Sign up at info. desk
by Sept. 13

Questions? Call Connie, Dori, or Denise at 3305

Sponsored by Kehr Recreation and leisure service

International Dogs

General Hospital
Hour 3-4



Watch it with us!
Open: Thurs., Fri. & Sat. Nights
'til 1:30 a.m.

Tennis team...

Huskies to host tourney this week

The Pirates of Hampton Institute will assume the favorites role when eight of the East's finest teams gather to compete in the Seventh Annual Bloomsburg State College Invitational Men's Tennis Tournament on Saturday and Sunday, Sept. 12-13, 1981.

Dr. Robert Screen's netters finished in a tie for second place with Penn State a year ago, each scoring 14 points to finish just behind Navy, which tallied 15 points in the closely contested

event. Hampton went on to place fourth in the NCAA Division II Championships, an event which saw two other teams entered in this year's invitational, Mercyhurst and the host Huskies, finish sixth and 13th respectively.

Strong challenges for top honors can be expected from the defending champion Mid-dies under veteran coach Bob Bayliss, the Nittany Lions of Penn State and the only newcomer to the tournament,

West Virginia. Perennial East Coast Conference power Temple and rapidly improving Ivy League entrant Cornell round out the strongest field in the history of the event.

Mercyhurst's Ravinder Saberwal will return to defend his 1980 Flight No. 1 title. An NCAA Division II quarterfinalist last spring, he should be hard pressed to retain his crown by Hampton's Godwin Emeh, who reached the semi-finals in the NCAA event and

Cornell freshman Dave Merritt, the No. 3 ranked player in the Middle States Tennis Association.

John Dace, Navy, and Bill Pilardi, Penn State, the Flight No. 2 and No. 3 winners a year ago, will also be entered in this year's tourney.

BSC coach Burt Reese will depend on a lineup including senior captain Craig Diehl, juniors Marty Coyne and Dave Superdock, and sophomore Brett Briscoe, in addition to

three freshmen vying for spots. They are Rob Lario, Chris Antipas, and Neil Eisenberg.

Play begins at 11:30 a.m. on Saturday and continues throughout the day with semi-final action set for 9:00 a.m. Sunday to be followed by the finals.

The public is invited to take this opportunity to view some of the country's top collegiate players at no charge.

Bloomsburg athletic teams successful

When BSC athletic teams begin their 1981-82 seasons, they're going to have a tough act to follow. The 1980-81 school year turned out to be a fine overall one in athletics at BSC.

Several of the institution's teams had banner years and allowed the Huskies to maintain their reputation for athletic excellence in a conference which is known nationally for producing high calibre teams as well as individuals. BSC, despite the fact that a physical education major does not appear among its curriculum, has been able to hold a high profile among its peers in the Pennsylvania State Athletic Conference.

The women's tennis team under coaches Burt Reese and "Doc" Herbert battled Slippery Rock to the wire before

finishing second in the PSAC Championships held on BSC's 18 lower campus courts in October. The Huskies captured individual titles in four of the nine flights.

Early in the second semester the men's basketball team and wrestling team combined for what has been termed as BSC's most successful athletic weekend ever! On Saturday, Feb. 27, coach Charlie Chronister's cagers won the school's first ever PSAC title by downing Indiana University of Pennsylvania before 3,000 people and a regional television audience in the Nelson Fieldhouse. The following day, Sunday, Feb. 28, the wrestlers under coach Roger Sanders topped off the weekend by nailing down the Eastern Wrestling League crown nosing

out Clarion, which had edged the Huskies in the PSAC meet two weeks prior, for the top honors.

The basketball team placed two players in the PSAC eastern division All-Conference Team and the wrestling team boasted one individual PSAC champion along with four EWL champions. Both teams finished high in the final national rankings - the basketball squad rating sixth among Division II schools and the grapplers 17th in NCAA Division I.

In March, the women's swimming team capped an outstanding year by placing seventh in the AIAW Division III National Championships following a second place win with Shippensburg in the PS-AC meet. Six of Mary Gardner's swimmers gained All-American

recognition and one captured a title at the conference meet.

The spring sports season brought with it more championships and outstanding performances. Coach Burt Reese's men netters won their third straight PSAC crown by sweeping all nine flights and a perfect 36 team points; only the second time the feat was accomplished in the history of the PSAC. A trip to the NCAA Division II Tournament followed and the Huskies finished 13th in the country.

In women's track, the Huskies were declared PSAC champions when Slippery Rock was disqualified for using an ineligible performer. Carolyn Wernstedt's charges, only in their third year of varsity competition, had turned in a

solid team performance to finish second before the Rockets' error was discovered.

Coach Jan Hutchinson's softball team posted a fine 23-9 mark while finishing second to Trenton State in the EAIWA Regional Tournament and earning a berth in the AIAW Division III National Tournament. BSC did not compete in the Conference playoffs, where it was seeded second, due to its participation in the regional competition.

During 1980-81 BSC teams won 55 percent of all the events in which they competed posting a respectable 144-116-4 record. Less than 50 of the over 500 athletes on the 18 teams were lost to graduation so the 1981-82 year could possibly be even better!

CLASSIFIEDS

ANNOUNCEMENTS

COME TO THE TKE Rush meeting. First one is Monday, Sept. 14 at 9:00 p.m., Kuster Auditorium, HSC. Come and meet the fraternity.

Alpha Sigma Alpha Sorority will be having a pre-rush gathering on Sept. 9, 8:00 p.m. at the ASA House, 69 Sesame Street.

One male needs a place to live immediately! Contact Joe, Box 3592 KUB.

THERE WILL BE an organizational meeting for anyone interested in ACEI on September 22 at 7 p.m. in the Presidents' Lounge, KUB. Everyone is invited to attend.

CHECK OUT OUR SELECTION of Quality Pre-Owned HI-FI Equipment. Ther Stereo House, 1001 Old Berwick Road, Bloom.

ATTN: SOCIAL CHAIRPERSONS. Have Stereo House Portable Sound at your next party. The Music you want at the volume you want it. Call 784-9643 for Dates and Rates.

PERSONALS

RISA are you ready to bust this popsicle joint? Let's try a RENDEZ VOUS instead. Guess who?

Diane and Jerry, Happy 2 1/2 year anniversary...better late than never.

Julie, someday our prince will come. I sure hope you're willing to share him with me. Hang in there.

M and S, who will be the wimp of the year...only the management knows. Sure hope you both are ready for the big reunion.

Part-time work on campus, stapling posters to bulletin boards. Choose your own schedule, 4-15 hours weekly. No selling — your pay is based on the amount of material distributed. Our average campus rep earns \$4- \$7 per hour. This position requires the ability to work without supervision. For information, contact Jeanne Swenson, 500-3rd Ave. W., Seattle, Washington, 98119, (206) 282-8111.

RAGING BULL MOVIE hours changed! The film will be shown Today and Sunday, 7 & 9 p.m. in Carver Hall.

Classified

I wish to place a classified ad under the heading:


- Announcements
- Lost and Found
- For Sale
- Personals
- Services
- Wanted
- Other _____

I enclose \$ _____ for _____ letters (At 2¢ a letter)

Send to: Box 97 KUB or drop in the Campus Voice mail slot, 3rd floor Univ., before 5 p.m. on Sunday or before 5 p.m. on Tuesday. All classifieds must be pre-paid.

BLANK TAPE SALE

Friday, Sept. 11 to Wednesday, Sept. 16



3 MAXWELL UDXLII C-90 \$10.99
 3 TDK SA-C-90 \$9.99
 3 AMPEX GMII-C90 \$8.99

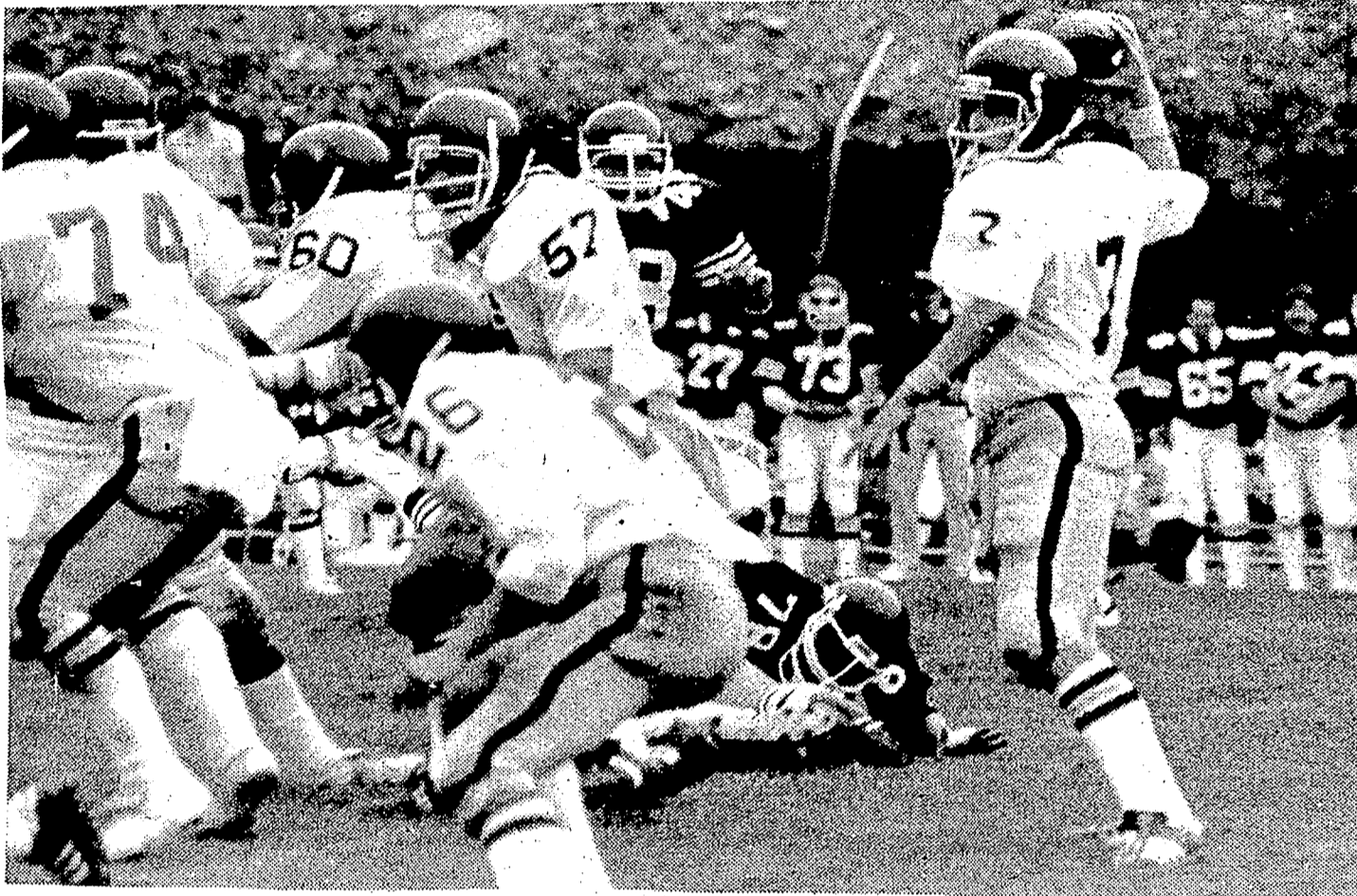
Old Berwick Rd.
 Bloomsburg
 784-9643

Hours:
 M.-T.-W.-Th. 10:30-5:30
 Friday 10:30-9:00
 Sat. 10:30-5:30

THE STEREO HOUSE

THE VOICE

SPORTS



SET TO PASS. BSC Quarterback Kurt Werkheiser gets good protection as he sets to pass in the season opener against Division III rival Ithaca.

(Photo by Pat Murphy)

BSC wrestling...

Invitational to open year

The defending Eastern Wrestling League champion BSC Huskies will be seeking their ninth straight winning season when they open the 1981-82 campaign on Nov. 20 and 21 by hosting the 5th Annual BSC Invitational.

In addition to hosting its own tournament, which will include Bucknell, Clarion, Duke, Hampton Institute (VA), Penn State, Southern Connecticut and Virginia, BSC will compete in tournaments at Lehigh, Lock Haven, Wilkes, and Delaware, as well as the Pennsylvania State Athletic Conference Championships and the Eastern Wrestling League Tournament.

Seven EWL matches, highlighted by home bouts with Millersville (Dec. 10), Clarion (Jan. 23), and Pittsburgh (Feb. 5), appear on the schedule along with a tough four match swing through the Midwest. A return battle with the Cyclones of Iowa State (Jan. 4) followed by Drake (Jan. 5), Minnesota (Jan. 6) and Mankato State (Jan. 7) will be part of seven straight road events before the Huskies return home to host Indiana University of PA on Jan. 15.

Traditional PSAC rivals, Shippensburg, East Stroudsburg, West Chester, are on the slate once again along with Slippery Rock, which returned to the schedule a year ago and Kutztown, returning after a two year absence.

Commenting on the schedule, head coach Roger Sanders stated, "It is very well balanced and will definitely get us ready for the post season tour-

naments.

"We've added some new opponents this year and I'm really pleased to be able to wrestle Iowa State again. We

made a commitment to our guys that we would provide the best schedule possible each year and I think we've definitely accomplished that."

Foreign Study

(continued from page four)
rest of the arrangements. Students can get applications for foreign study programs from the Center for Foreign Study, P.O. Box 1901, Merritt Island, Florida, 32952. (305) 459-0058.

Wright contends that students get a lot more than college credit. "We believe that each student we send abroad is an important investment in creating mutual understanding and world peace."

See the Jostens' Display at
The College Store
Rebate Offered
Sept. 21-25 only

Jostens

Gridders 'bombed'

By BRUCE GEISLER

A well balanced offensive unit led the Ithaca College Bombers to a 35-0 victory over the Huskies Saturday in the season opener played at the winners' home field.

Ithaca's offense compiled 313 yards and four touchdowns on the ground and added another 169 yards and one touchdown via their passing game.

In sharp contrast to those figures, BSC's running game accounted for just 100 yards while the net yards passing amounted to only 108 yards.

The first quarter of the game was characterized by numerous turnovers committed by both teams. After an impressive 41 yard drive which began on their own 28 yard line, the Bombers fumbled away the football on the Bloomsburg 31. The Huskies then took over but were unable to get a first down and punted.

On their second series the Bombers moved 29 yards but turned the ball over on an interception. On the very next play, BSC's Kurt Werkheiser threw his first of six interceptions. Again the Bombers began a drive and again were stopped when they lost a fumble. Werkheiser waited just

two plays before throwing his second interception of the afternoon.

The interception at the BSC 41 led to Ithaca's first touchdown three plays later when running back Gerry Cooper broke several tackles and scampered 34 yards for the score.

Other Ithaca touchdowns came on runs of 22 yards, three yards, and one yard and on a three yard pass.

In spite of the fact that his team was badly mauled, head coach Clark Boler was impressed with the progress the Huskies have made and he feels that "the team is better now than at anytime last season." He is confident that his "pack" will win some games this year.

Another bright spot was the performance turned in by freshman running back Lewis Hurd. Hurd saw limited action in the game due to a dental operation the week before the game but Boler felt he "ran the ball well and will get increased attention in weeks to come due to the performance he gave in the game."

The Huskies host Shippensburg tomorrow at Redman Stadium.



DELTA PI RUSH MEETINGS

Wed., Sept. 16, 10:00 p.m.
KUB MULTI PURPOSE ROOMS

&

Tues., Sept. 29, 8:00 p.m.
KUB COFFEE HOUSE
Rides provided to the house