



DANCERS FROM THE Freedom Theatre display a scene from the musical production "Hot Molasses" to be performed at Haas on March 18 at 8:15 p.m. Performance is free for students.

The **CAMPUS VOICE**

Wednesday, February 25, 1981

BSC Nursing program receives accreditation

Bloomsburg State College's four-year degree program in nursing has been given full approval by the State Board of Nurse Examiners, BSC President James H. McCormick announced today.

The college's first class of nurses was graduated in May, 1979. During the current academic year, a total of 277 full-time and 87 part-time students are enrolled in the program. There are 17 full-time faculty in the Department of Nursing.

Bloomsburg received initial approval for the Bachelor of Science in nursing degree program in 1975 following a year of organizational planning by Dr. Gertrude Flynn, now chairperson of the Department of Nursing. The program received the State Board's provisional approval following a review in September, 1979. The granting of full approval status followed a return review visit last fall.

Bloomsburg's nursing and other health sciences programs

were proposed in 1974 by the BSC Planning Commission after studies revealed a growing need for trained health service professionals. The accuracy of the needs studies is reflected in the 100 percent placement rate for BSC's nursing program graduates. The first class of 75 students, selected from a pool of nearly 300 applicants, began studies in the fall 1975 and during the past two years 115 students have received degrees.

"When Dr. Flynn accepted the assignment in 1974 to establish our nursing degree program, she assured me that Bloomsburg would have a quality program," President McCormick commented. "The approval by the State Board is evidence that her efforts have been successful. It is a credit to her, to Dean Howard Maculey and his predecessor, C. Stuart Edwards, to the many faculty members, both in the Department of Nursing and in the supporting departments of the School of Arts and Sciences and

to the nurses and directors of hospitals, health agencies, and nursing facilities where our students have received their clinical experiences.

"Two recent developments undoubtedly were given favorable consideration by the state board. One was the action by the legislature and the governor in approving capital budget funding for projects that include construction of a Human Services Center on the campus. The classroom, laboratory and office facilities being planned for that building will include accommodations for the nursing program.

"The other factor was the cooperation extended by the Bloomsburg Hospital board of directors and administration in leasing space to the college for nursing classrooms and offices. The facilities provided in their new hospital addition will enable the nursing department to function effectively while our new campus building is being designed and constructed. We

(Continued on Page 3)

Deadline expires for missionary hostage

BY DAN CAMPBELL

Feb. 19, was the deadline for Chester Bitterman, the missionary held hostage in Columbia by a guerrilla group called M-19. As of this writing, the groups demands have not been met and it is not known if Bitterman is alive or not.

The terrorist group, who abducted Bitterman on Jan. 19, is demanding that Bitterman's mission group - Wycliffe Bible Translators - leave the country. They had to do so by Feb. 19 or else they threatened to kill the missionary from Lancaster

According to Newsweek magazine, the guerrillas are against Christianity and claim that Wycliffe serves as a CIA front. Newsweek also sees this abduction as a small test to President Ronald Reagan's policy of not negotiating with terrorists. The kidnapping also seems to be a kickoff of sorts for M-19's leader, Jaime Cayon, who has announced that he plans to run for president of Colombia in 1982.

Bitterman has been corresponding in the past with the Bloomsburg Christian

Fellowship group here on campus. In this correspondence he had expressed concern about guerrilla attacks. The Fellowship sponsored a campus wide prayer vigil on Wednesday at 3:30 p.m. when all were asked to pray for Bitterman and that God would take care of him.

If God does, and the guerrillas extend the deadline - and if the Reagan administration continue to urge Colombia not to negotiate - we may be in for another long ordeal.

Occupancy & Renovation of HSC discussed

By C. L. ULRICH

Faculty members expressed comments and concerns about the preliminary "Occupancy and Renovation Plan" for the new Human Service Center, Hartline Science Center, and Sutliff Hall at a hearing Wednesday and during individual interviews.

One major concern dealt with the distribution of office space.

At Wednesday's hearing, Robert Rosholt, chairman of the Political Science Department, said, "The Political Science Department can get by with general purpose facilities. However, we do need office space. In Bakeless there are wall-to-wall people."

According to the preliminary plan, all faculty offices for the Nursing, Psychology, Sociology, and the Education Departments will be in the new

building. Also, approximately 1,100 square footage of the new building will be used for additional faculty offices and administration areas.

According to the preliminary renovation plan for Hartline Science Center, the Math Department offices will be relocated to the basement, with the Biology Department taking over the Math Department offices on the first floor.

Paul Cochrane, associate professor in the Math Department, expressed his opposition for this relocation on the basis that the offices would offer "no privacy and no security."

At Wednesday's hearing, Dr. Cochrane claimed that the approved decision to relocate Math Department offices was made by Dr. Stephen Beck, Chairman of the Math Department. Dr. Beck received

(Continued on Page 2)

Writing conference scheduled for March

Writers and teachers of writers from central and northeastern Pennsylvania will converge on BSC Saturday, March 21, for The Written Word: A Festival 2. The day-long conference is sponsored by the college's Department of English and Arts Council.

Highlighting the program will be an afternoon presentation by J. Saunders Redding, an author, critic and scholar, known for his writing on the American Black experience. Redding, a professor emeritus at Cornell University, is also a consultant for the National Endowment for the Humanities, a member of the Board of Fellows of Brown University, and a director of the American Council of Learned Societies. His appearance is co-sponsored by the BSC Human Relations Planning Committee.

Following Redding, the Bloomsburg Theatre Ensemble will present "Shakespeare's Clowns," a program of excerpts from both tragedies and comedies directed by Martin Shell and featuring Ron Ensel and Rand Whipple. This production is currently touring schools in the region.

Writers from several colleges will be lending morning workshops. Robert Taylor, an editor of "West Branch" and a member of the English Department at Bucknell University, will discuss fiction writing. Also discussing fiction will be Don Skiles, an essayist, poet and fiction writer currently affiliated with Williamsport Area Community College.

Leaders of poetry workshops include Gary Fincke, director of the writing center at Susquehanna University, and Richard O'Keefe and Harold Ackerman, both of the BSC

English Department. All three have published widely.

Advisors of secondary school magazines will have several workshops to choose from. Sandra Smith, an educational consultant and former English teacher, will lead a workshop on "Distinguishing Between Self-Expression and Art."

William Gallagher, advisor of the award-winning literary magazine at Shikellamy High School, Sunbury, will share his experiences in "Organizing the High School Literary Magazine."

Teachers of creative writing will work with William Eisenberg of the BSC English Department who regularly teaches courses in this subject and is himself a poet.

Styuart Nagel of the BSC Art Department and Walter Brasch of the English Department will address practical matters of publishing. Nagel, who recently devoted a sabbatical leave to the art of book-binding, will lead a session on "Graphics and Literary Publications." Brasch, a widely published free-lance writer and former newspaper, magazine and book editor, will share his knowledge in the "Nuts and Bolts of Free-lance Writing."

Registration for the Written Word: A Festival 2 is \$4.00 per participant. Luncheon is available at the Scranton Commons for \$1.45. There is no charge for BSC students, and those with a valid meal ticket may attend the luncheon free of charge.

Margaret R. Lauer and Lawrence B. Fuller of the BSC English Department are coordinating the festival. For

(Continued on Page 3)

March Interviews

INTERVIEWS

March 11+ Strawbridge & Clothier, Philadelphia, PA Retail Management Any major with preference given to Retailing - Marketing - Business majors (Sign-up begins 2-11)

March 11+ Sperry Univac, Blue Bell, Pa Programmer Trainee - Computer Science - Math majors (Sign-up begins 2-11)

March 16+ Singer, Link Division, Binghamton, NY Finance Trainee - Acctg. majors (30 Hrs.) (Sign up begins 2-16)

March 17+ Leeds & Northrup, North Wales, PA Sales Engineer - Systems Engineer - Programmer - Computer Science majors (Sign-up begins 2-17)

March 17 Lower Dauphin, S.D., Hummelstown, PA Elementary & Secondary (Sign-up Begins 2-17) (May be prescreened)

March 17 & 18 U.S. Navy, Information Table Snack Bar, Kehr Union

March 18 Calvert Co. Board of Education, Prince Frederick, MD Teacher Candidates (Sign-up begins 2-18)

March 19+ Perdue, Inc., Salisbury, MD Acctg. - Finance majors (Heavy Concentration in Acctg.) (Sign-up begins 2-19)

March 20+ Brodart, Williamsport, PA Computer Data Processing & Accounting

March 23+ Prudential Ins. Co. Newark, N.J. Comptrollers Dept. entry level positions in Accounting, Auditing, Tax Divisions

March 25+ Frederick Co. Board of Education, Frederick, MD. All positions except Early Childhood, P.E. & Social Studies (Sign-up begins 2-23)

March 26+ Prudential Ins. Co., York, PA District Agent - Sales, willingness to relocate

March 27 CAPITAL S.D., Dover DE Special Ed. - English - Sciences - Business Ed. (Sign-up begins 2-23) May be Prescreened

+ Prescreening necessary

Occupancy & Renovation of HSC discussed

(Continued from Page 1)

"no input or planning from other members of the Math Department," charged Dr. Cochrane.

Dr. Beck refused to comment when approached about the issue.

Raymond Babineau, professor in the Department of Secondary Education who is working as facilities consultant of the project, commented that the major problem with the project (now only in its planning stage) is concern for the Math Department offices. However, Dr. Babineau said this problem should be solved by today when the plan should be complete.

The preliminary plan for the renovation of Sutliff Hall will result in all spaces being

assigned to the School of Business. General purpose classrooms will still be assigned by the Registrar with priority given to business courses. "We

"One major concern dealt with the distribution of office space."

Department. We are anxious to see the program developed," Pietrzykoski said.

The Communications Departments should be quite satisfied with the generous portion of the building allotted to the Technology - Media Complex, said Richard

(Continued on Page 6)

Forensics wins 3 awards

Members of the BSC Forensic Society traveled to York College of PA Feb. 13-14 to compete in the 4th Annual Beginner's Novice Tournament. There were over 90 students and coaches in attendance from 13 colleges and universities representing four states. The Huskies did well by returning to campus with three awards.

Leading a strong team showing was the Dramatic Duo team of Cheryl Woodring, a freshman and Debbie Lisi, a sophomore, who captured the first place trophy in the event. Freshman Tim Talarico, earned the third place trophy in Informative Sepaking and sophomore Lucy Capozzolo, won the fourth place trophy in Extemporaneous speaking.

Other Huskies who did well in their respective events were

Steve Crimmel, a freshman, Bob Lightcap, a sophomore, and Tim Keller, a freshman, in Extemporaneous Speaking; Lightcap, Woodring, Talarico, and Bonita Hull, a junior, in Poetry Interpretation; Capozzolo - Talarico and Lightcap - Maria DeMatteo, a freshman, in Dramatic Duo.

Lori Getty, a junior and Faith Petrovich, a junior were entered in Informative Speaking. Impromptu Speakers were Capozzolo, Crimmel, Lightcap, Keller, Talarico, freshman Bob Jones, Getty and Petrovich. Entered in Persuasive Speaking were Capozzolo, Hull, Getty and Petrovich; and Prose Interpretation entrants were Lightcap, Woodring, Lisi, DeMatteo, Talarico, Hull and Getty.

Jobs open for Career People

BY MICHAEL A. GOC

Until March 20, the Career Development & Placement Center, 3rd floor Ben Franklin Building, is accepting applications for Career People for the 1981-1982 school year.

What is a Career Person (C.P.)? A C.P. is a paraprofessional peer counselor and student employee who assists other students in all aspects of careers. A C.P. is trained in counseling skills, career awareness and development, graduate schools, civil service and several other areas. A C.P. is the primary outreach of the career center to the college community. Practically, a C.P. can help a freshman decide on a career; aid all students in planning for the best use of college courses, internships, and summer employment to be the best possible candidate for a chosen career; and assist those graduating in writing resumes and cover letters and preparing for interviews.

If you are interested in becoming a C.P. you can pick up an application at the Career Development & Placement Center. Also, pick up applications for BEOG-PHEAA and student employment in the Financial Aid Office. (These MUST be turned in at the designated times for you to be considered for student employment.)

When you return your C.P. application you must sign up to be interviewed by two present Career People by March 20. If you satisfactorily complete these interviews you will be asked to come back for a group interview between March 31 and April 6. If selected as a finalist from the group interview you will be asked to take one final interview with either JoAnne Day, assistant director, or Tom Davies, director of the career center. By April 16, the list of C.P.'s chosen will be posted.

The reasons for such a long, investigative interview process

that a Career Person needs to be well-adjusted and to be involved in school and its activities in order to counsel and assist fellow students in the various career areas. Other attributes that are sought for in a C.P. are abilities to learn, to be responsible, to be enthusiastic, to get along with people and a desire to help people.

Being a Career Person is a valuable experience for whatever you are majoring in, whatever career you have chosen and for you as a person. If you are interested in becoming a C.P. pick up an application today. The Career Development & Placement Center is open Monday - Friday, 8 a.m. - 4:30 p.m. and Tuesdays and Wednesdays until 8 p.m.

Walk-In Counseling

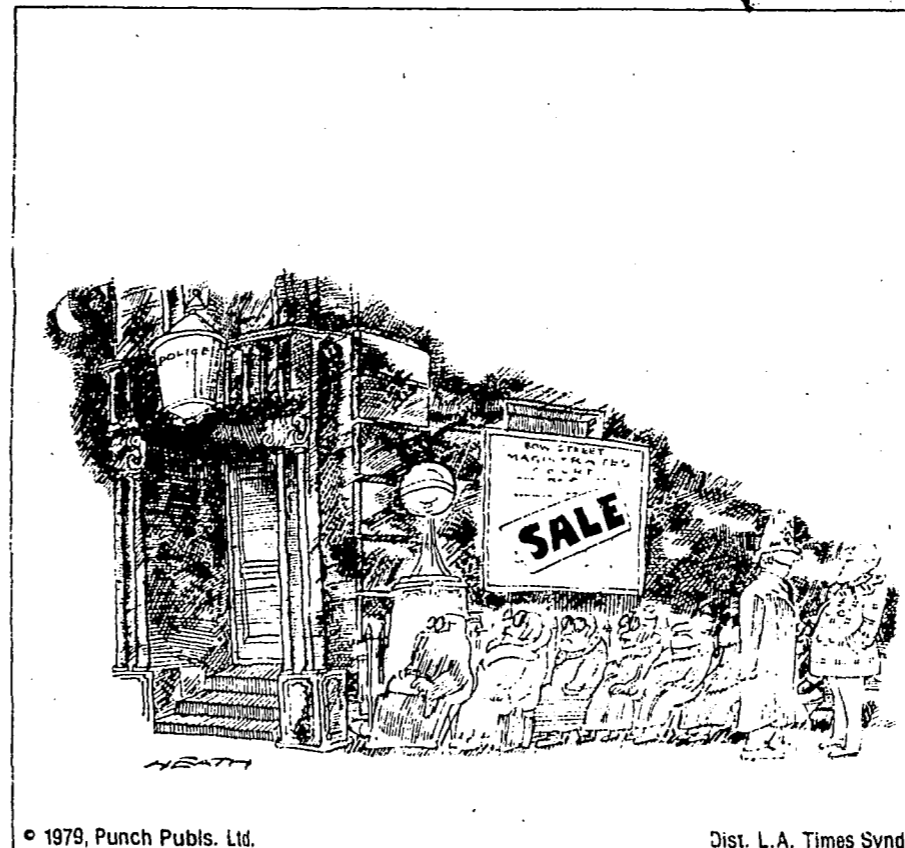
Columbia-Montour Family Planning began a walk-in service for BSC students this week. Family Planning representatives will now be present from 11 a.m. to 1 p.m. in Montour Hall every second and fourth Wednesday of each month and in Columbia Hall's project room every Wednesday.

Family Planning located at 168 E. Fifth Street, provides the community with low cost services including gynecological exams, birth control methods counseling and supplies, pregnancy testing, community education and referrals.

The campus walk-in service may be utilized by any students. Representatives are prepared to provide information or make referrals on health care, contraceptives, sexuality and V.D. All discussions are strictly confidential.

Representatives will be available throughout the entire spring semester.

Punch



© 1979, Punch Pubs. Ltd.

Dist. L.A. Times Synd.

"It's just that once a year we do a reduction in shoplifting fines."

Concert Choir tours Fla.

The BSC Concert Choir has made final arrangements for March 2 in their eight day tour of Florida.

In the Feb. 18 issue of the Campus Voice, the front page article indicated March 2 as 'still open'. Fortunately the choir was able to work out a concert and get a place to stay.

The choir will leave St. Petersburg Monday morning and will give a performance at Robinson High School in Pampa. Afterwards the group will go to Clearwater.

In Florida, the concert choir will also perform in Disney World and then travel to Raleigh, North Carolina for a performance in St. Raphael's Church.

The concert will return to Bloomsburg on March 7.

THE CAMPUS VOICE

Bloomsburg, PA 17815 Vol. 11, No. 32

Executive Editor Roberta Clemens
 News Editor Brenda Friday
 Feature Editor Joan Kraus
 Sports Editor Kevin Kodish
 Sports Asst Jeff Brown
 Photo Supervisor Larry Buola
 Photo Assts. Pat Murphy, Jeff Neitz

Copy Editors Carol Shelhamer, Karen Troy
 Business Manager Mark Hawk

Advisor Richard Savage

The Voice is governed by the Editorial Board with the final responsibility for all material resting with the executive editor as stated in the Joint Statement of Freedom, Rights and Responsibilities of students at BSC.

The Voice reserves the right to edit all letters and copy submitted. A maximum of 400 words will be placed on all letters to the editor with an allowance for exceptions. All letters must be signed and have an address and phone number. Names will be withheld upon request.

The opinions voiced in the columns, articles and notices are not necessarily shared by the entire staff. An unsigned staff editorial denotes a major consensus of the editorial board.

Nursing program receives accreditation

(Continued from Page 1)

are indeed grateful for the splendid cooperation and support we have received."

Bloomsburg's nursing and other health sciences programs were approved by the BSC Planning Commission in response to growing needs for health service professionals. The Pennsylvania Department of Education gave initial approval of the Bachelor of Science in nursing degree program in 1975. The first class of 75 students, selected from a pool of nearly 300 applicants, began studies in the fall, 1976. One-hundred fifteen nurses have received BSC degrees from BSC and placement of these graduates has been 100 percent.

After a year of classes on campus, the students begin clinical laboratories at the Berwick and Bloomsburg hospitals, the Maria Joseph Manor, and the Evangelical Community Hospital, Lewisburg. During the junior and senior years, clinical experience is provided at the Divine Providence Hospital in

Williamsport, Danville State Hospital, Harrisburg Hospital, Polyclinic Medical Center in Harrisburg, and Williamsport Hospital, as well as state and community health agencies and industrial programs.

"Health care is an expanding field that will require more and more personnel with better education," Flynn said. "Our goal is to have Bloomsburg State College in the forefront of the effort to meet this need, and State Board approval of the BSC baccalaureate nursing program moves us a step closer toward achieving that goal. The challenge of the future will be to increase the number of health service personnel available and to place more emphasis on preventive measures."

"State Board approval is welcome news, indeed, for our faculty, our graduates, and our students, and for everyone in the college community and in the cooperating hospitals and health agencies who have had faith in us and confidence in our program," commented Macauley.

Pennsylvania senator to speak at Columbia-Montour women's conference

The Honorable Jeanette Reibman, Pennsylvania Senate, will be the keynote speaker at the Columbia-Montour Counties Women's Conference, Saturday, March 28, 1981, on BSC campus.

Senator Reibman, a state senator for 14 years and a member of the General Assembly for 10 years prior, will speak on "Women as Agents of Change" at the conference's opening session.

Senator Reibman presently is minority chairman of the Senate Education Committee, and serves on the Judiciary, Labor and Industry and local government committees. She is the only woman in the history of Pennsylvania to be elected to a full term in the Pennsylvania Senate. In 1974, she received more votes than any other candidate in Pennsylvania for the Senate, and was nominated and re-elected to a third term on both the Democratic and Republican tickets.

Senator Reibman has sponsored, among others, legislation which established or developed: area vocational-technical schools; community college system; Pennsylvania

Higher Education Assistance Agency; better working conditions for Pennsylvania's workers, and improved benefits; Pennsylvania Industrial Development Authority (PIDA); property tax relief for elderly homeowners and renters; local mental health centers throughout the state; Pennsylvania Human Relations Commission; Bureau of Consumer Protection; laws to eliminate discrimination on the basis of race, color, creed, sex or national origin and a code of ethics for members of the state's legislature.

Among her many honors are Senator Reibman's being the only person to have served on both major commissions on the future of public education in Pennsylvania; Pennsylvania delegate to the White House Conference on Children and Youth; Pennsylvania Commissioner to the Education Commission of the States, and member of its executive committee; Honorary Doctor of Laws degrees from Lafayette College, Wilson College, Cedar Crest College; elected member of Hunter College Alumni Hall of Fame; and named

Distinguished Daughter of Pennsylvania.

The Senator attended Fort Wayne, IN, public schools, holds an A.B. from Hunter College, NY, and a J.D. from Indiana University Law School. Reibman is married to Nathan L. Reibman, Esq., and is the mother of three sons, two who are lawyers and one who is a graduate student in English.

The Women's Conference, sponsored by 30 area organizations and agencies, will run from 8 a.m. to 4 p.m., and will feature workshops on areas of concern to women; films; and health screenings. For more information, contact Bonnie Blakeslee, 784-3033, or Florence Thompson, 784-2203.

Writing Conference

(Continued from Page 1)

further information call (717) 389-2412.

"We think the festival will provide an exciting experience for anyone interested in writing," Dr. Fuller said.

Campus shorts

TAMPA, Fla. (CH) — University of South Florida students can now earn academic credit for throwing Frisbees.

That doesn't mean, however, that tossing the brightly colored discs on the dorm lawn three days a week will earn a student an easy 'A.' Frisbee students at USF have to tackle written assignments and exams and devise their own Frisbee game and nine-hole golf course in order to obtain their two hours of physical education credit.

Acquiring the basic skills and strategies of disc throwing is a part of the class and those entering will be divided into three categories — beginning, intermediate and advanced. The class has its own textbook — the Frisbee Player's Handbook by Mark Danna and Dan Poynter — and is taught by two graduate students who hold Frisbee Masters rankings.

The instructors say Frisbee is now viewed as a sport, not a fad and one points out that Frisbee helps develop "cardiovascular fitness, kinesthetic awareness and body coordination."

And to think it was once just a game.

the soap opera, "General Hospital."

But there is one University of California-Los Angeles student who can be found hovering over his TV set at almost any time.

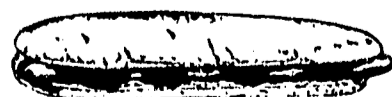
Robert Boden is a genuine television freak. The walls of his dormitory room are covered with 1100 tickets to television tapings, along with autographed pictures of the best known hosts of game shows, Boden's particular passion. A dresser drawer hides his full television ticket collection, now over 11,000. His autograph book bears the signatures of about 300 stars, many of whom met Boden when he worked holding cue cards for various studios. Those cue cards are also part of the Boden collection, as are TV Guide covers and scripts.

But Boden recently got his biggest thrill to date as a television aficionado — the chance to appear on TV himself. Thanks to a friend with connections and some pictures of his unusual dorm decorations, Boden was chosen to appear on "Real People" in a four-minute segment that detailed his mania.

"Boden is a TV fanatic"

LOS ANGELES, Calif. (CH) — It's no longer unusual to find college students clustered around a television set watching

Laubach's West Subs



Come See Sandy Best Subs in Town

784-7465

JEANS & THINGS

208 East St.

Winter Clearance Sale

Jordache
Sassoon
Calvin Klein

15% off
Reg. \$37.99
Sale Price \$32.29

Sergio Valente \$29.99

*Chic
*Gloria Vanderbilt
*Bill Blass
*Levi's

*Wild Oats
*Ratcatcher
*Wrangler
*Lee

and others

Many items marked down

Shirts
Blazers

Belts
Buckles

Dress Slacks

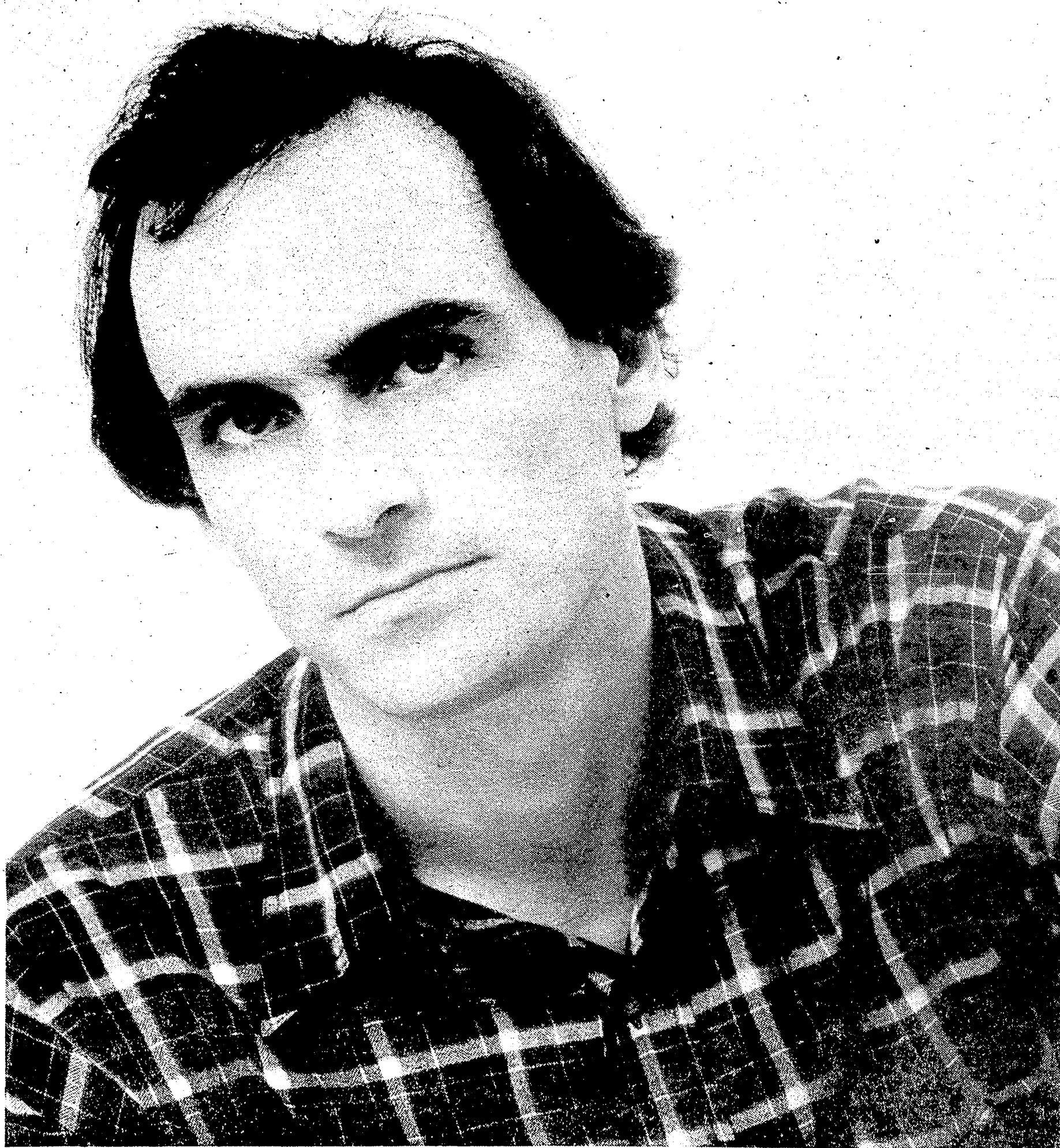


Layaway plan Available

J
a
m
e
s

T
a
y
l
o
r

E
n
t
e
r
t
a
i
n
s
B
S
C



Taylor creates mixed emotions

great.

Performing a 26 song set that encompassed his entire career, Taylor showed himself to be the epitome of the multi-dimensional singer. Whether it was folk, pop, rock, jazz, blues, or soul, he was conducive and convincing in each style. His strong point is in being seductive and sensual, and this was evident most clearly during "Secret O' Life", "Handy Man", and "How Sweet It Is."

Backed by a three piece band that included top session players Dan Dugmore, Rick Marotta, and Leland Sklary, and on two occasions respectively, Ed Polokowski and a harmony singing reel to reel tape deck, this simple approach helped to bring about an intimate atmosphere.

The majority of the songs relied mainly on Taylor's excellent acoustic guitar playing, which was as soothing and relaxing as his voice. When the band played as an ensemble, it

gave the singer a chance to let loose, as with Dugmore's steel guitar playing in "Sweet Baby James", and Marotta's drumming, which pushed Taylor to the limit at the end of "Country Road."

Aided also by Taylor's storytelling between songs, and the fact that Nelson Fieldhouse never sounded so good for a concert, it made the crowd forget for a while that they were in a gym. Through the entire show there was a constant banter between audience and performer which cut down the barriers that usually exist between the two.

In the end though, this seemed to be what upset Taylor the most. During intermission, he was visibly upset. His thin, gaunt body, pale complexion and fidgety behavior all served notice to his uneasiness. And after performing one encore, he bolted off the stage to a waiting car and was gone.

No one was available for

official comment after the show, but there were two possible explanations given. One was obtained from various members of the crew who stated that Taylor was unhappy with his band for some reason. The other was that he was upset because of the comments and calls from the crowd.

Near the beginning of the show, and a number of times after that, Taylor made reference to the set song list he had prepared. Saying that he felt it was a good set and that he'd play just about everything (all of his hits), he simply asked the crowd to be patient, and that he'd get to them all.

The audience, however, persisted on crying out for individual songs, and wanted to know where Taylor's wife, Carly Simon, was. This seemed to irritate him because it was "An Evening With James Taylor", and not with Carly Simon, and also because he had the pre-prepared song list.

Surely, the crowd did call out, but this is only natural and is something that he must experience wherever he goes. It is the price of fame and is something that should be dealt with in a professional and polite manner.

Unfortunately though, when travelling on the road and being away from your family much of the time, the pressures do become great and one can not be friendly all of the time. Being the professional that he is, however, he succeeded in coming through with a commendable performance, and was able to keep his tensions from interrupting his show for the most part.

As stated previously, Nelson Fieldhouse sounded great for a change, and while it was not a flawless performance, Taylor did put on a very fine show. It is unfortunate that the singer himself was not able to enjoy the show as much as those in attendance did.

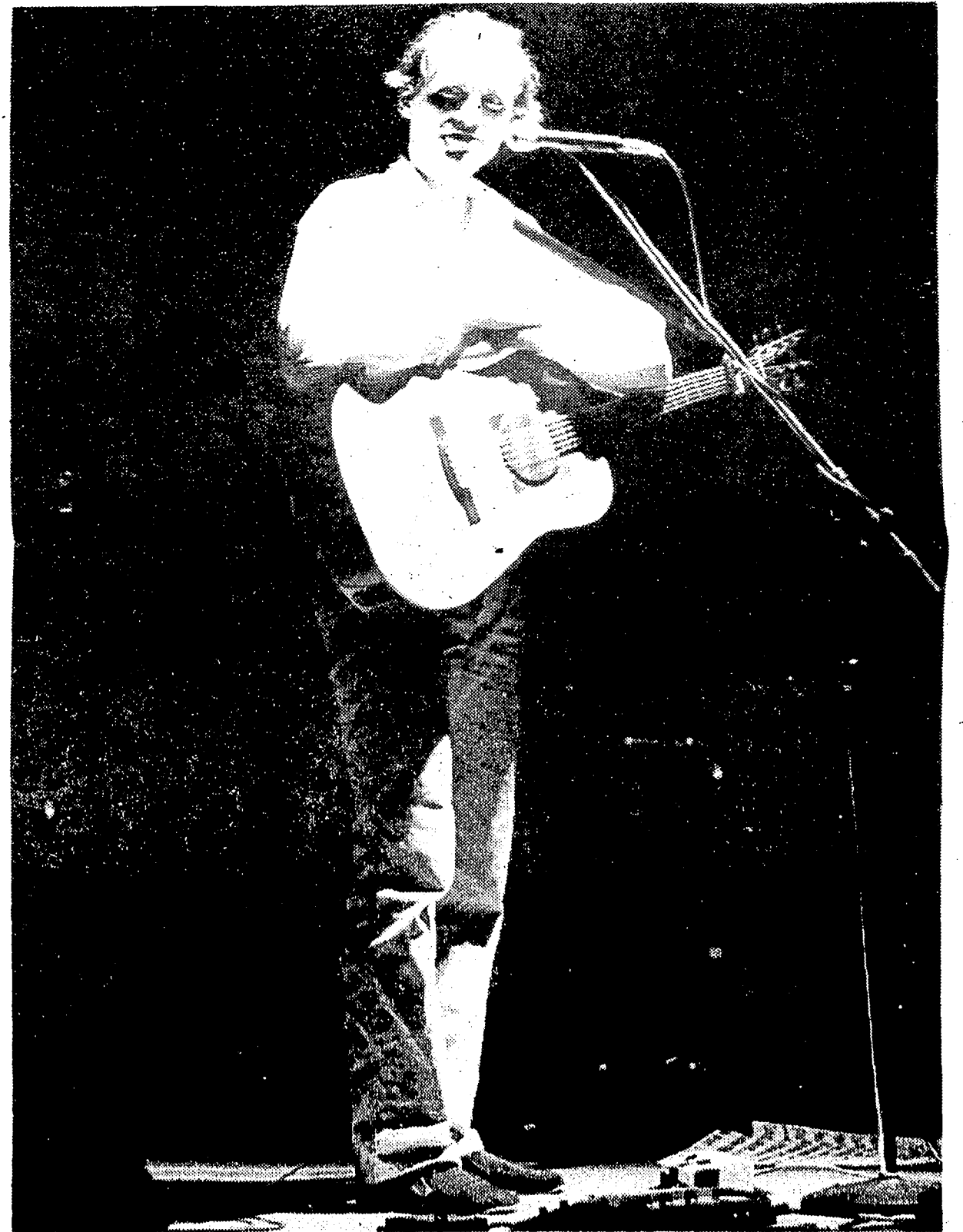
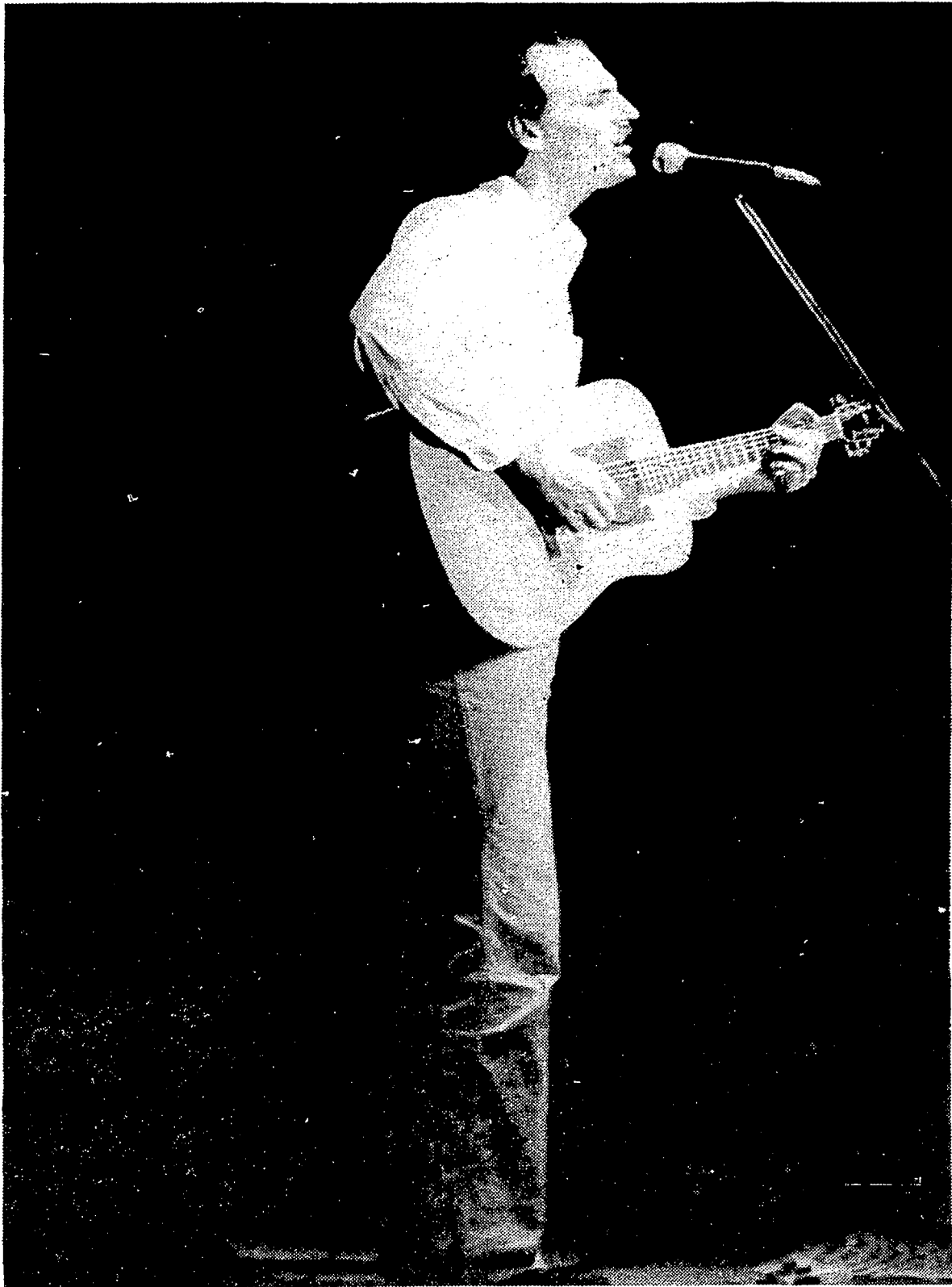
By J. MAYNARD LYMAN

I'm writing this review with mixed emotions about the James Taylor concert held this past Sunday night in Nelson Fieldhouse.

On the one hand, it was an evening of soulful, seductive singing by one of contemporary music's finest singer-songwriters. On the other hand, it showed what can happen to a performer, when the pressures of being on the road become too

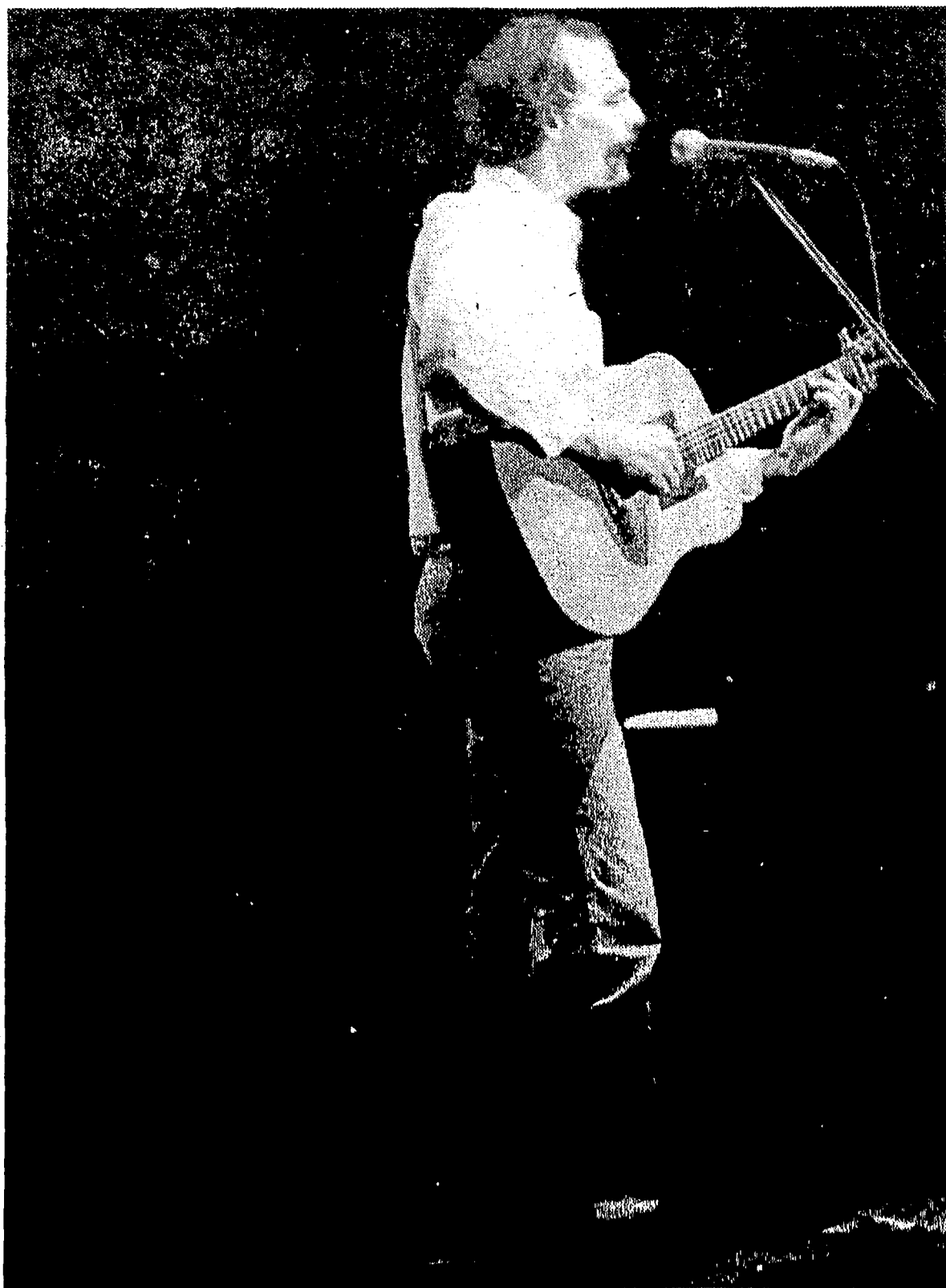
Concert a sellout

A few selections from a JT upcoming album were performed.



Taylor's concert consisted of many of his familiar hits.

Photos by Pat Murphy



Faculty members voice opinions concerning Human Service Center

(Continued from Page 2)

Alderfer, associate professor of Speech, Mass Communications, and Theater.

"We have the building because of the coordinated efforts of students, faculty, and administration in planning for it and justifying the need for it to

the legislators," said Dr. Alderfer.

Although the "Occupancy and Renovation Plan" for the Human Services Center, Hartline Science Center, and Sutliff Hall is not complete, progress is being made on this project.

haven't run into any problems with this plan," Babineau said.

There is generally a good feeling about the project as a whole. "The new building will meet a lot of unmet needs for the Mass Communications and Nursing Departments in particular," Babineau said.

Gertrude Flynn, chairperson of the Nursing Department, is pleased with the appropriations the department received. "The first hurdle is over. We got the appropriation. Everyone pulled together to get this," Flynn said.

Lee Ann Pietrzykoski, vice president of the Mass Communications Club, is glad that facilities to help the Mass Communications Department grow are finally being provided. "BSC has the potential for a strong Mass Communications

Excon, poet b.f. Maiz to appear in Haas

By BETSY WOLLOM

The art of poetry will expand and come alive March 11-12 when BSC welcomes b.f. Maiz to its campus. The combination poet-teacher-philosopher will visit several classes, as well as present "May I Poet With You?", a 70-minute lecture, in Kehr Union.

Although Maiz is a well-developed poet, his talks will not be restricted to poetry alone. His past experiences have taken him in and out of prisons and universities, and will prove to make interesting and enlightening discussion material.

Maiz' tentative schedule for his BSC residency will be to attend class sessions, particularly in the areas of criminal justice, psychology, english and literature, sociology and philosophy. These discussions will be based upon four main themes: prison life, ghetto life, poetry and therapy and drug addiction.

Maiz recites interprets

As for his lecture, Maiz shows promise of giving a prize-winning performance. Based solely on his own works of poetry, Maiz recites and interprets without the use of notes or a podium, which allows him to become totally involved with his audience.

"This program is an 'energetic and vibrant recitation' of my own poetry," states Maiz. "They are like 'ancient chants' which I play with my voice and feel in my

heart ... (It) is a program of contrasts - raw pain and quiet pleasure."

Obviously, poetry is something Maiz cherishes deeply, but it has not always been as such. Not until Maiz' second entry into prison did he realize the major role it played in his life.

He became "Man on Streets"

After dropping out of the eleventh-grade level of high school at age 13, he entered the life of the Chicago ghetto. There, he became a man of the streets, and eventually landed a five-year prison sentence for possession of marijuana.

While in prison, he rapidly resumed his education, studying as much and as often as he could, concentrating on philosophy, psychology, and literature. Upon his release, Maiz attended three colleges and universities, where he continued his interests and received high honors.

By this time, the civil rights movement was developing. Maiz joined the Student Non-Violent Coordinating Committee (S.N.C.C.) in attempts to voice his and other Blacks' views for equality.

He returned to jail

However, he soon broke from the S.N.C.C., but continued to lecture on a moderate level, which brought him little attention from the more popular militant strugglers. Disillusioned, he returned to his street life of drugs and crime. In 1966, he received a 13-year jail term for a narcotics violation.

It was during this sentence that Maiz discovered the importance of poetry to his life. Although it was a slow and trying process, Maiz found a genuine salvation through his own writing of poems.

Past the midpoint of his jail term, Maiz became involved in psychotherapy at the correctional institution where he was admitted, working with alcoholics and drug addicts. Upon his release, Maiz got a position at a Texan university, teaching and working with students and professors in several academic areas.

Maiz' class appearances will be March 11-12, and his lecture will take place March 12 in Kehr Union Room A at 8 p.m.

THE KEHR LEISURE AND TRAVEL SERVICE IS SPONSORING A TRIP TO NEW YORK CITY

Saturday, MARCH 28 - Departs Elwell 7 a.m. Departs NYC 7 p.m.

Price \$9

Sign Up At KUB info. Desk by March 18 For Questions Call 389-3305

"IF YOU THINK THE CINCINNATI REDS AND THE CLEVELAND ORCHESTRA ARE OHIO'S ONLY TOP-NOTCH EXPORTS, YOU'LL THINK AGAIN WHEN YOU SEE THE OHIO BALLET."

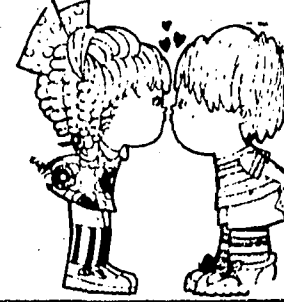
The Boston Globe

OHIO BALLET



March 9, 8:15 P.M. HAAS AUDITORIUM Tickets free with I.D. Call 389-3902

Ritter's Office Supplies
112 Main St., Bloomsburg



THE CAMPUS VOICE

needs interested people to be:

Reporters Copy Readers Photographers Ad Designers and Typists

Stop by our office 3rd floor KUB Sunday or Tuesday nights

Say **HAPPY BIRTHDAY** With

Ralph DeLeon's FLOWERS

Corner of East and Third Sts.
784-4406
World Wide Delivery

THE VOICE

SPORTS

Casey, Wenrich lead Huskies over Maryland...

By DANIEL W. LOUGHLIN
Behind a strong inside game from Ken Casey, the Huskies rolled to a 15 point lead at intermission and went on to rout visiting University of Maryland-Baltimore County 80-66 Saturday afternoon.

Casey and Mike Wenrich paced BSC with 18 each as the two combined for 21 points in the first half. Both players used their physical strength to muscle their way inside on countless occasions.

The opening minutes of the contest were somewhat tight as the teams traded baskets until Casey powered his way inside

for two and was fouled, converting a three-point play. Maryland never lead after that point.

An added highlight came at the 10:31 mark, when Casey tapped in a Bill Tillman miss, pushing him over 1000 points in his career. A large portion of Casey's 1000 were scored at King's College in Wilkes-Barre before coming to Bloomsburg.

The points by Casey were the beginning of the end for Maryland as the Huskies went on a 19-2 scoring assault that sent BSC to a 33-17 lead with 6:15 left in the half.

The start of the second half

brought quick scoring bursts by the Huskies. They scored the first four as freshman Barry Francisco nailed a long jumper from the corner and Jon Bardsley made a nice steal that resulted in a Casey bucket and a 19 point bulge.

The Huskies had their biggest lead, 57-34, when Ron Zynel hit two consecutive layups. The second resulted from a beautiful fast break consisting of a pass from Terry Conrad to Dave Ogden to Zynel for the layup.

Bloomsburg dominated for the most part and the closest Maryland came was 70-59 with a

little under four minutes remaining. However, Wenrich's second ferocious slam dunk ignited the crowd and the Huskies never looked back.

Casey and Wenrich were backed in the scoring column by Bardsley with 13 and Tillman with 11. Hollcomb lead the losers with 18 followed by Nance (14), Elliot (12) and Mong (10).

The victory closed the regular season and pushed Bloomsburg's overall record to an impressive 20 wins against five losses. The Huskies begin playoff action on Wednesday, Feb. 25 at home against East Stroudsburg State College. The game is in the preliminary round of the Pennsylvania Conference Tournament.

...but fall to mighty Mounties

By DANIEL W. LOUGHLIN
In a showdown between two top-ten teams, the No. 1 ranked Mounties of Mount St. Mary's used good shooting and strong rebounding to subdue No. 6 Bloomsburg State, 86-73, last Wednesday night on the Mounties home court.

The visiting Huskies missed their first seven shots from the field but fought back to tie the game at 6-6. However, this was the closest the Huskies would get for the rest of the evening as "The Mount" went on a 13-2 scoring binge to take a 19-8 lead.

Bloomsburg hurt themselves as Doug Greenholt, Bill Tillman and Mike Wenrich got into early foul trouble. More coal was added to the fire when the Husky's coach Chronister and Tillman were both hit with technical fouls in the first half

after questioning the official's calls.

Mount St. Mary's built their lead to 13 and were up by 12, 45-33 at halftime, thanks to their strong board work. The rebounding was like two sides of a coin. The Mounties limited Bloomsburg to one shot each time down court, while getting second, and often third shots at their own end. The Mounties shot 53 percent from the floor on 19 of 36 field goal attempts.

After the Mounties hit their first two shots to open the second half to take a commanding 49-33 lead, the Huskies mounted a furious comeback. They sliced the lead down to a mere six points three different times, only to let it slip away as the Mounties ran off eight straight for a 72-58 bulge.

Bloomsburg had many opportunities but failed to take advantage of them by missing numerous short-range jumpshots. Jay Bruchak was responsible for the rally that sent BSC down to defeat. The Mountie forward's slam dunk with 6:25 left ignited the partisan crowd to a standing ovation that shook the gym.

Mount St. Mary's shot 35 of 71 from the floor while the Huskies weren't far behind with 33 of 71. However, in the long run, foul shooting gave the Mounties the edge as they went 16 for 23.

Jon Bardsley paced BSC with 22 points. Wenrich had 20 and Ken Casey threw in 11. The Mounties were led by Jim Rowe with 22, Bruchak had 19, and Steve Rossignoli finished with 18.

Darbenzio best lifter

The months and months of vigorous training finally paid off for Dino Darbenzio, when he was crowned Pennsylvania State Champion and Best Lifter at the Pennsylvania Powerlifting Championships at Villanova University, Feb. 8.

Darbenzio, a 217 lb., 5' 11", senior from Old Forge, PA, powered his way to breaking a state overall record with a finishing total of 1675 lbs.

Darbenzio also set a new state record for the squat by lifting a total of 629¼ lbs. on his third attempt. On his second attempt, he matched the old state record with a total of 600¼ lbs.

In a powerlifting meet, each contestant must go through an inspection of their equipment and a strict weigh-in. If the lifter passes the inspection, he is then assigned to the perspective weight class.

The competition is divided into three main events: the squat, the bench press, the deadlift.

The winner is decided by who

has the highest sum total of the three main events. First second and third place trophies are given out for the three top lifters in each weight class.

The best lifter is decided by the Myers co-efficient formula. With this formula, each body weight is assigned a number. The number that matches the body weight as the lifter is multiplied by the total weight lifted. Whoever has the highest number of all the weight classes is the winner.

Darbenzio said he is proud of his accomplishment, but wants to make an even better showing at the National Collegiate Powerlifting Championships to be held at Kutztown State College on March 20 and 21.

The qualifying total for nationals is 1399 lbs., which Darbenzio has already achieved.

Powerlifting is not recognized as a sport at BSC, but with high achievers such as Dino Darbenzio representing BSC, it deserves recognition.

Campus Information Line:
Call 389-3123

CLASSIFIEDS

Campus Weather Station:
Call 389-3624

ANNOUNCEMENTS:

THE EASTER SEAL SOCIETY is in need of individuals to work with handicapped men and boys from June 16 to Aug. 14. Salary, Room, Board, and Laundry included. For Details contact: Director of Recreation and Camping, The Pennsylvania Easter Seal Society, P.O. Box 497, Fulling Mill Road Middletown, PA 17057. Phone 939-7801.

PEOPLE WITH GOOD UNDERSTANDING OF BASKETBALL FOR USE BY SPORTS INFORMATION OFFICE TO KEEP STATISTICS FOR PENNSYLVANIA CONFERENCE TOURNAMENT ON FEBRUARY 27-28. CALL 3411. Note: This event will be held during Bloomsburg State College spring break. Statistical crew will be reimbursed for their efforts.

REMEMBER second-half semester physical education classes begin the week of March 16. Please report to the room that appears on your official class schedule card.

AMBULANCE Attendants and Drivers needed. The Bloomsburg Volunteer Ambulance Association is currently looking for college students, who are EMTs or who hold a current ARC advance first aide card, to run ambulance calls as attendants and/or drivers. Anyone interested contact Bill at 389-2330.

"DEADLINE EXTENDED TO 4:30 P.M. on MARCH 9, 1981, for submission of 1981-82 B.S.C. Scholarship Applications. Forms are available in the Financial Aid Office, Room 19 Ben Franklin Building, as well as in the offices of department chairpersons/dpans.

WHAT ARE YOU DOING that is exciting this year? Come sailing on the high seas of Lake Ontario in an old fashioned square rigger sailing ship. Canoe the wild (and lazy) rivers of PA and N.Y. No experience needed, optional gym credit available.

INTEREST MEETING: Tuesday Feb. 17 Hartline 28. Canoeing 7:30 P.M. Sailing 8:00 P.M. Questions - call the Quest Office 2204.

COPIES OF THE 1981 INTERNSHIPS book by Writer's Digest Books mentioned in the Campus Voice are now available in the College Store.

ANYONE INTERESTED in becoming a member of the Planning Committee should contact Jeff Ringhoffer, at 389-2520.

PERSONALS:

JOHN & MIKE, Thanks so much for the nice Valentine's Day message and flowers. You guys are too nice!! Love, Mary Jane

"SUCH IF LIFE"

HAPPY BELATED Birthday to John Muth from someone who didn't mean to blow you off.

K.O. you've got to stop ordering pizzas at 4:30 a.m.!!

D. It's amazing what you'll find in the bathroom isn't it?

LAURA, Congratulations on getting RA. You'll be the best. Love, your wing.

A.H. Was the hallway comfortable or did you have more fun with your B-buddy? Can you remember that far back? By the way how is George? Does he have a hang over?

THE GHETTO, Have you guys recovered yet? Try and make it till at least 11 next time Lucy.

AB, CD Goldfish? LMNO GOLDfish!!! SAR, CM?

FOR SALE:

1 COFFEE TABLE 59" x 19½" pecan wood \$60. 2 white plastic parson lamp tables 16" square \$30. call 275-5465

YAMAHA FG - 75 GUITAR. Good condition. Asking \$85. Case included. Call 2749

Wrestlers hold on to defeat Penn State

By DAN CAMPBELL

The Penn State Nittany Lions visited the Nelson Fieldhouse last Thursday night, to take on the Husky wrestlers. What started as a cake walk for the Huskies turned out to be anything but.

Behind incredibly exciting wins by Todd Cummings, Ed Fiorvanti and Don Reese - and manslaughters by Al McCollum, Tom Fiorvanti, and Gibbes Johnson - the Huskies had mounted a 20-0 lead with only four weight classes to go. But the final score ended up a close 20-18.

Todd Cummings started the match with a seesaw battle against Carl DeStefanis who was 12-2. Going into the third period, Todd was behind 4-3. But he was able to escape, only to be taken down again. Cummings was able to escape

again and this time it was he who did the taking down, with less than a minute left in the match. DeStefanis did everything he could to try to escape and Cummings did everything he could to keep him down. Todd was able to hold out the longest and with 1:12 in riding time he was the winner 8-6.

Ed Fiorvanti was ahead 6-1 after the first periods of his bout. But I guess he wanted to make it exciting as his opponent was able to score four points in the third period to cut Ed's margin of victory to 6-5.

Don Reese also was a victor by a mere 1 point. Reese is so quick and aggressive that he often gets himself into more trouble than he deserves. It was in the second period when he seemed to be in total control when, going for a pin, first his

victim, then Donnie were almost the victim of nearfalls. But the moves happened so fast that the referee missed them both. Reese ended up winning 7-6.

Al McCollum came next and he had little trouble with Bernie Fritz who was 13-6-1. Fritz could only manage two escapes as Al won 8-2.

Tom Fiorvanti wrestled next, "riding" his opponent for over seven minutes, winning easily 4-0.

Gibbes Johnson had no trouble either but was looking to add to the team score. So he let his opponent escape and then took him down in order to get a 17-5 major decision.

But then the roof fell in.

Al Mabus wrestled tough in trying not to lose a major decision. But his opponent, John Hanrahan, was 21-4 and knew

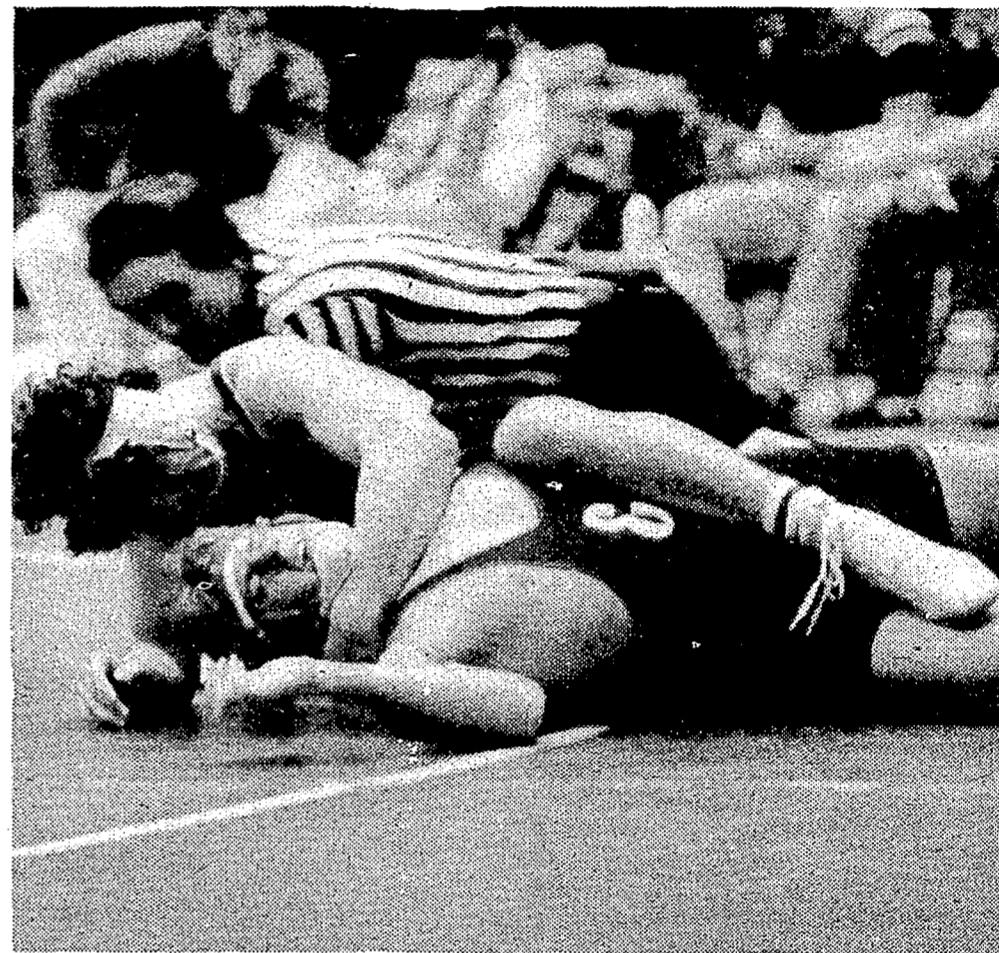
exactly what to do on his way to winning 22-8.

Butch Snyder added to the excitement. After two periods, Butch was ahead 6-3. His opponent was awarded a point for stalling then managed a nearfall on Butch when Butch tried to escape - with less than five seconds remaining in the bout. Butch lost the match 7-6 on riding time.

Because BSC didn't suit up a heavyweight, the match came

down to the 190 lb. bout. If Greg Sacavage got pinned the match would be tied - because of the forfeit at heavyweight.

Greg wrestled with a heavily taped shoulder and his opponent worked diligently on it. Twice the bout had to be stopped because of the pain. And more than once was Greg close to being flat on his back. He ended up losing 11-0 but his effort was as important as anyone's in the 20-18 team victory.



HUSKIES DECK LIONS. The Penn State Nittany Lions came to town last week and the Huskies were ready. Here a Husky wrestler handles his opponent during an early season match.

Lacrosse team to have new look

BY PAM PECKMANN

With spring around the corner, the BSC women's lacrosse team and their new coach have begun to prepare for the busy season ahead.

Along with having a new coach, the team has new players, a more rigorous pre-season training program and a competitive schedule. Hopefully, all of these changes will bring about a fun and winning season.

The team will be under the direction of a new coach this season, Lisa Hand. She is taking the place of B.J. Rost, the original head coach of the lacrosse team when it first began six years ago, who has donated a lot to the emergency of lacrosse at BSC.

Hand graduated from Lock Haven State College and has 11 years of playing experience in lacrosse. Not only will Hand be the new lacrosse coach, but she is also a coach for the junior

varsity women's Basketball and hockey teams.

"I think she'll be a good coach. As a former player, she has the great knowledge of the game. This will be very beneficial to the team," said Jane Seislove, a sophomore hockey and lacrosse player at BSC.

A new conditioning and training program has now been added to the players lives. Nautilus, a weight program for the improvement of tone and flexibility, is required at least twice a week. Once the actual games begin, nautilus will be required once a week.

More time will be spent running and expanding the cardiovascular systems of the players. "From speaking with Miss Hand," said Seislove, "I anticipate a great deal more distance runs and sprints."

Another aspect of any sports team is their ranking or competitive category. BSC's

women's lacrosse team is in Division III. The schedule for the team will be competitive, and the games are sure to be exciting.

Lacrosse may be a rough sport to play, but that doesn't stop some women at BSC from joining the team. Experienced and unexperienced players are welcome to try the sport.

If you've never seen a lacrosse game, you might wonder what it is like to play the difficult sport that originated from the Indians some 200 years ago. It might be difficult to understand at first because there are no boundaries and there appear to be some strange rules, but lacrosse is an action packed game and very exciting.

The first home game is April 3 at 3:00 p.m. against Shipensburg.

Come on out and watch! Support the team this spring and back the women players of BSC.

Volleyball club in tourney

BY JOHN FERGUSON

The Bloomsburg State volleyball club traveled to Penn State - Schuylkill Campus for the Schuylkill Haven Invitational 'B' Tournament February 15.

With stiff competition, Bloomsburg could only muster a 1-7 record in their first tournament play. The only win came on a 15-13 decision over Arbor Fence which knocked them out of any playoff hopes. The eventual winner was Mt.

Gretna.

"We played surprisingly well as a team in our first tournament. Basic fundamental mistakes are what hurt the team," stated Jim Innerst volleyball club member.

The club is advised by Phillip Krause. "They played well throughout the tournament. As the day went on they became confident and stronger. I think a setback in our play was inexperience. People are not brought through school learning

the correct way to play power volleyball."

Bloomsburg is holding a volleyball tournament March 15 at Nelson Field House. Two other tournaments are also scheduled for March at Schuylkill Haven for men and women's teams.

Trail's End Camp

has positions available for:

- Specialists in all athletic areas (male or female)
- Assistants to tennis pro
- Science (general & electronics)
- Gymnastics
- Swimming (WSI)
- Small craft (sailing & Canoeing)
- Riftery
- Archery
- Arts & Crafts (general shop & woodworking)
- General Counselors, 20 plus
- Golf
- Ceramics
- Sewing
- Photography
- Pioneering
- Music
- Dramatics
- Tripping

Camp located in Northeastern Pennsylvania (Poconos)

For further information write to:
Trail's End Camp, % Beach Lake, Inc.
215 Adams Street, Brooklyn NY
11201


**September 81 Vacancy—
Riverview Apartments**



4 person — 2 bedroom unit

6 persons - 3 bedroom unit

784-0816 - evenings



**Welcome
James Taylor
to Bloomsburg**

This week only:

"Sweet Baby James"	\$3.99
"Mud Slide Slim & The Blue Horizon"	\$3.99
"Greatest Hits"	\$4.99
"Flag"	\$5.49

**Bloomsburg's Largest Selection of Lee,
Wrangler and Levi Jeans at the lowest prices!**

Record Revue Main St., Bloomsburg