

50 hrs. for M.S.

By ROBERTA CLEMENS

One hundred and seventy-five people have signed up for this year's dance marathon which will be held this weekend, January 30 - February 1 in Centennial Gym. The proceeds will benefit the Multiple Sclerosis Fund.

The marathon, which will run for 50 hours (8 p.m. Friday - 10 p.m. Sunday) is being sponsored by the Kehr Union Program Board. Music will be provided by WBSG and local bands.

Here is a list of events that will take place during the marathon, which, according to Carol Hermes, president of the Program Board, are scheduled to keep the dancers going and keep the spectators interested. On Saturday they are: 1-2 a.m. - Beatles Music Hour - "The Twist" Dance Contest No. 1; 4-5 a.m. - Pajama Party Costume

Hour; 6 - 7 a.m. 30 minute break; 9 a.m. 12 hour Mini Marathon begins; 3 - 4 p.m. "The Rock" Dance Contest; 4 - 5 p.m. - 30 minute break; 7 - 8 p.m. - Punk Rock Music Hour - Punk Rock Dance Contest; - 9 p.m. - 12 hour Mini Marathon ends; 11 p.m. - midnight - Beach Party Costume Hour.

On Sunday the events are: 1-2 a.m. - Disco Music Hour - Disco Dance Contest; 2 - 3 a.m. - one hour and ten minute break; 5 - 6 a.m. - Bunny Hop Dance Contest; 9 - 10 a.m. - Oldies Music Hour; Noon - 1 p.m. - 30 minute break; 2 - 3 p.m. - Country Western Music Hour; 5-6 p.m. Toga Party Costume Hour; 7-8 p.m. - New Year's Party Hour; 9-10 p.m. - Dance Marathon ends.

Last year, 53 out of 177 dancers finished. The Program Board urges every one to come up and support the dancers, and the Multiple Sclerosis Fund.

BSCC presents James Taylor

The Bloomsburg Student Concert Committee announces its first production of this semester: on Sunday, February 22, at 8:00 p.m. in the Nelson Fieldhouse, "An Evening with James Taylor," will be featured.

Taylor, whose career dates back to 1969, with the release of his debut classic, "Sweet Baby James," has had a long and illustrious string of albums which is highlighted by "Gorilla" and "JT".

Stephen Holdren, writing for

One hostage crisis ends another begins

By DAN CAMPBELL

On Jan. 20, 1981, at 11:57 EST, Ronald Reagan took the oath of office of the President of the United States. About 36 minutes later, 52 Americans were taken off in an Algerian Airline 727 Jetliner. They had been held by Iranian terrorists for 444 days against their will. Everyone thanked God, ex-President Carter and the Algerians - all of our hostages were finally coming home.

But not quite. As the long

ordeal of the Iranian hostages was finally coming to an end, a new one was just beginning. On Monday, Jan. 19, Chester A. Bitterman III was kidnapped and taken hostage in Bogota, Colombia. At the time it was believed - and later confirmed - to be the work of the same leftist guerrilla group that had occupied the Dominican Republic's embassy for 61 days last year, holding as one of its hostages the American am-

(Continued on Page 3)

Tuition increase possible, bank may close

By JEAN KRAUS

Plans to fight a possible tuition increase for Fall '81 were proposed by BSC's Commonwealth Association of Students (CAS) at a recent Community Government Association (CGA) meeting.

Options to keep the Bloomsburg Columbia Trust bank open through May of this year were also discussed.

A tuition increase to effect all state colleges in Pennsylvania will not be known until the governor's budget is released early next week. "But a tuition increase is almost definite,"

said Bob Klein, state coordinator of CAS. "And there is lots we can and should do to fight it down." (Klein, former BSC coordinator of CAS was recently elected chairperson to the Board of Coordinators at the January leadership conference in Harrisburg.)

Klein stated that CAS members plan to distribute pamphlets concerning tuition effects to students and off-campus organizations to gain their support in the battle against tuition increases.

"Students will receive a



RAIDER FANS, Kevin Moore, Kent Steiger, and Mike Gitt celebrate Oakland's victory over Eagles. (Photo by Patrick J. Murphy)

The CAMPUS VOICE

Friday, January 30, 1981

Sperry Univac picks BSC computer system for brochure

By PATRICK J. MURPHY

The Sperry Univac Co. has chosen BSC and nine other institutions of higher learning to display their computer systems in a brochure that will be published internationally. These ten schools were selected

from over 350 other colleges and universities throughout the U.S. which have Sperry Univac Systems.

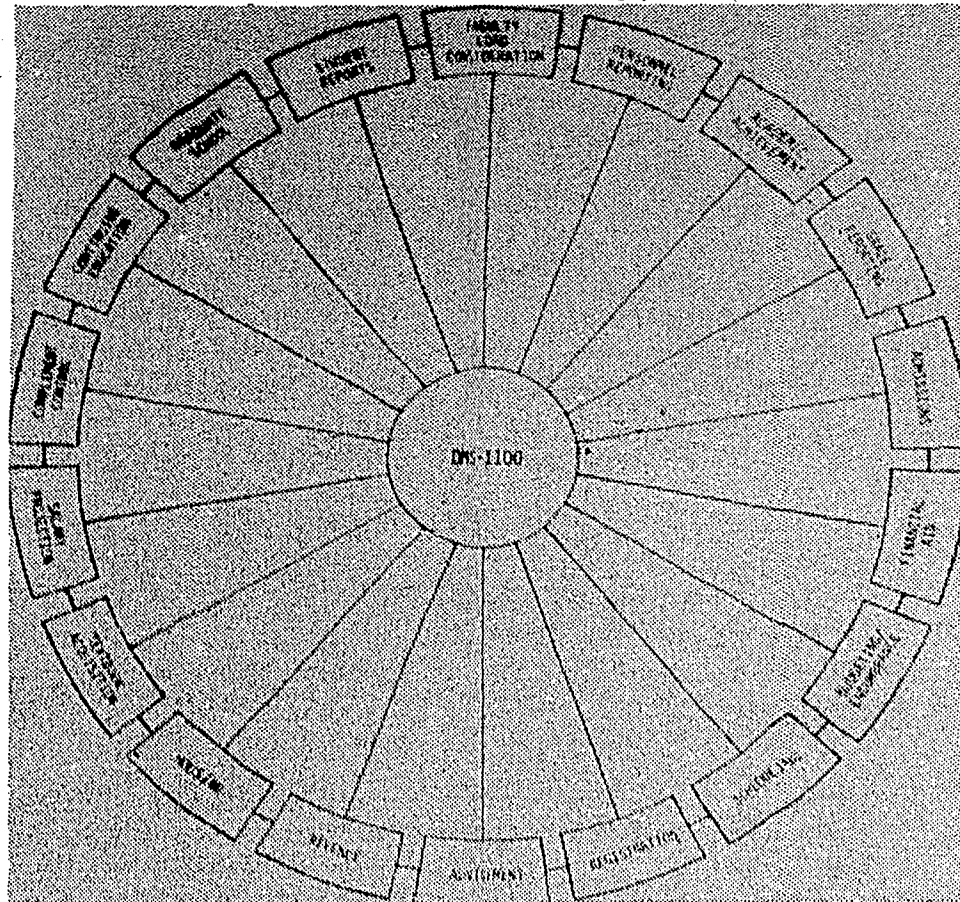
BSC was chosen because of its data base and the application and use it has on simplifying the tremendous load of information

the college has each year. The data base stores, processes and collects information that is vital to the operation of BSC.

Mr. Robert H. Rankin, systems and programing manager, headed an eight member team that designed the data base. Charles E. Ross, systems programmer, and Terry W. Fry, computer programmer, also took part in the data base design here at Bloomsburg.

Ross explains, "The data base is what can be called an integrated system. Its easy adaptability to the various needs of the college make it

(cont. on pg. 6)



THE DMS-1100 is the central computer from which all data is received and stored. Note that it encompasses the entire business of the college, both administrative and student information are stored here.

(Photo by Patrick J. Murphy)

Health services surveyed

By ROBERTA CLEMENS

How efficient are the Health Services at Bloomsburg State College? The BSC Student Life Administration intends to find out.

The student Life Administration, under the direction of Dean Robert Norton will conduct a survey of the Health Services at BSC, including the Infirmary in the Kehr Union and the Bloomsburg Hospital.

The survey, will be answered by BSC students and according to Norton will take less than a minute to complete.

Norton wished to make a few facts clear to students about their use of the Bloomsburg Hospital. He stressed that doctors are on duty every day at the hospital specifically for BSC student use. They are Dr. Reese and Dr. Cortez and their hours are Monday through Friday 8:30 a.m. through 12 noon.

Norton stressed that in order for a student to get prompt

(Continued on Page 2)

tuition target report containing statistics on the effects of tuition increases," said Klein. "Off-campus groups like churches, and labor groups will be given economic impact statement." Students were asked to participate in the state-wide citizen press conference with the governor which was broadcast on television last Monday at 7 p.m.

Another tactic would be a phone-in similar to last year's phone-in prior to the boycott of classes.

If the Bloomsburg Columbia

Trust bank does not make a profit before May, the bank will close and be up for bids to banks within the community said John Trathen, assistant director of student activities. To assure a profit, the Bloomsburg Columbia Trust has proposed a 25 cent fee to be charged for cashing personal checks and the bank be relieved of their monthly rental of \$250.

"We've looked into Federal and First Eastern (banks) to see if we could find a better

(cont. on pg. 2)

CGA informs groups of new budget policies

The Community Government Association, in its initial review of budgeted income and expenditures for the July 1, 1981 - June 30, 1982 fiscal year, would like to inform student organizations of the following:

(1) Only those organizations whose financial needs for 1981-82 are of a concrete nature (and can be accompanied by specific details and cost figures) will be considered for budgeted allocations. This also includes any activities which require periodic requisitioning of materials and supplies, i.e. a theatrical production. If your organization's activities can be categorized as such, please contact me as soon as possible (ext. 2104). All budget forms must be submitted no later than February 16, 1981.

(2) If your plans for next year are still in the initial stages of development, or if items

requested are general in nature, CGA will require that you make your requests via the Finance Committee. Provided that appropriate information is submitted at least three (3) weeks before the scheduled event, you will be considered for financial support. I will be happy to assist you in your presentation if you choose to do so. Such a procedure is not only preferable, but advisable if your organization is to make an effective attempt at acquiring CGA funds. (Note: The Finance Committee meets once a week during the fall and spring semester.)

Note: Upon approval from CGA, the meals allowance for 1981-82 will be \$11.00 a day (\$2.50 for breakfast, \$3.50 for lunch, and \$5.00 for dinner). Also, the transportation allowance will be 20 cents a mile. Please use these figures in your budget calculations.

Letters to the Editor

EDITOR'S NOTE: Letters must be typed on a 60-character line and be in the Voice Office no later than 6 p.m. Tuesdays to be included in Friday's edition. All letters must be signed, with a phone number enclosed. Names will be withheld upon request, at the discretion of the editor.

Join PSEA

As future educators there is a professional organization on campus you should be aware of. Better than that, you should become actively involved in Student PSEA. Many students are under the impression that you join this organization only when you begin to student teach. Although liability insurance while you student teach is one of the major benefits of PSEA, as an undergraduate

there is much to gain towards your professional growth by participating in PSEA. Freshman, sophomores, juniors - now is the time to see what PSEA offers. By the time you become a senior, it's almost too late to take full advantage of Student PSEA.

Howard MaCauley, the dean of Professional Studies will be speaking on the State Education Improvement Program that is presently being put into affect in schools throughout the state, and within the next few years will affect all schools in Pennsylvania. Therefore, it will affect you if you plan on teaching in Pennsylvania within the next few years. The meeting will be held Thursday, Feb. 5 at 6:30 p.m. in Multi-purpose Room B, Kehr Union. We're looking forward to seeing you there. Get involved now!



"Would you like to wait? Mr. Brindsley is still being abducted by the first group of terrorists."

BSC hosts women's conference

Members of the Women's Conference Steering Committee agreed, at their recent planning meeting, to hold their conference on Saturday, March 28, 1981, from 8 a.m. to 4 p.m., in Kehr Union and Bakeless Center for the Humanities, or BSC campus.

The committee members, representing organizations and agencies in Columbia and

Montour counties, set the following agenda for the day-long forum:

- 8 - 9 a.m. — Registration, coffee, Films, Health Screenings
- 9 - 9:50 — Opening Session, Keynote Speaker, Introduction of Sponsors
- 9:50 - 11:00; 11:10 - 12:20; 12:30 - 1:40; 1:50 - 3:00 — Workshops — Series I-IV:25-30

separate subjects, Films and Health Screenings, Box Lunch (series II and III)

3:00 - 4:00 — Wrapup Session
4:00 — Adjournment

In order to provide the greatest scheduling flexibility, as many workshops as possible will be presented twice.

Also, the Steering Committee agreed to offer, to Columbia and (cont. onpg. 5)

Health services surveyed

service at the hospital, he - she should go there during these hours. After these hours, the doctors in the hospital take patients in according to who arrives first, and more importantly, the severity of the complaint.

Norton explained, "A student may decide to go to the hospital at 2 a.m. This could be the same time that there has just been a bad accident on Route 80. So if you come in during the morning, there will be less wait."

The follow up treatment of your case may take less time if you come in the morning, according to Norton. That is because lab treatment and X-

rays can be completed later on that afternoon and the results will be available early the next day.

Other facts Norton believes the student should know concerning hospital billing are: There is no charge for a student for the use of the emergency room, but it is up to the individual student to pay for the doctor bills; there is no charge for allergy shots that are given; there is a free V.D. clinic in the hospital whose services are confidential.

When you first go over to the hospital you will enter a reception room where you will describe your problem to a

receptionist, tell her you are a college student, Norton emphasized. For female students who have gynecological problems, they are dealt with privately on a one to one basis, Norton said.

The survey, according to the student life personnel, aims to help solve some student problems and complaints concerning the health services at BSC.

Forms are available at the Infirmary in the KUB and at the Bloomsburg Hospital. Norton asked that although the survey will take little time to complete, they would appreciate it if students took the time to give comments.

CGA meeting

Summer activities fee increased

(Continued from Page 1)

deal," said Trathen. "First Eastern does have a checking account but charges \$5 per month for accounts under \$500. However, we haven't checked United Penn yet."

Because of the lower checking costs and difficulty of cashing checks downtown, CGA does not want Bloomsburg Columbia Trust to close. However, to keep the bank open the students may have to pay the annual rent of \$3,000 to keep the bank open.

"We will first look into United Penn before making a decision," said Jeff Ringfeller, CGA president. "If they are not interested, we will renegotiate with Bloomsburg Columbia Trust."

A .50 increase in the summer community activities fee for undergraduate students has been approved by CGA due to inflationary trends. Because of the increase cost and demand on swimming tickets and picnics, the fee will increase to \$1.50 per week.

"There hasn't been an increase in the fee since I was at BSC 14 years ago," said John Trethen.

To the opposite extreme, the mandatory \$1.00 a week graduate fee for summer sessions has been dropped to an optional fee. This means graduate students now have a choice to participate in campus activities. If they wish to do so, they must pay the fee at the beginning of their class session.

"Many graduate students who previously paid the fee only did so because it was required," said Mike Azar, comptroller. "Those who paid did not even pick up receipts for it."

Fifty-four graduate students still have not paid their fees for summer of 1980. Their record and transcripts will be held until they do so.

A mandatory fee for children attending the Child Care Center has been established due to a need for funds. Students must now pay .75 per hour for the first

child and .50 for the second. CGA will be matching the fees with .50 an hour and .20 an hour respectively.

"We made the fees low as possible so CGA can help out with the allotment of money," said Robert Norton, dean of Student Life.

This is the first year a fee has been charged since the Center opened in 1979. Approximately 35 students use the Child Care Center.

In other news: The ice-skating rink located on the tennis courts is now completed and open to students. Hours are Monday - Friday, 6 - 11 p.m.; Saturdays and Sundays, 1 - 11 p.m.

Dot Iltis has been elected as Vice-president of CGA due to the resignation of Chris McPhillips.

Elections for CGA offices will be held Feb. 16 - 17 in the Commons and Union. Anyone seeking office must hand a petition at the Information Desk.

THE CAMPUS VOICE

Bloomsburg, PA 17815 Vol LIX No. 28

- Executive Editor Ron Jaworski
- News Editor Brenda Friday
- Feature Editor Jean Kraus
- Sports Editor Kevin Kodish
- Sports Asst Jeff Brown
- Photo Supervisor Larry Buola
- Photo Assts Pat Murphy, Jeff Neitz
- Ad Manager Dave Stout
- Ad Asst Brian Duart
- Copy Editors Carol Shelhamer, Karen Troy
- Business Manager Mark Hauk
- Circulation Managers Jeanne Klewiak, Winnie Kogut
- Advisor Richard Savage

The Voice is governed by the Editorial Board with the final responsibility for all material resting with the executive editor as stated in the Joint Statement of Freedom, Rights and Responsibilities of students at BSC.

The Voice reserves the right to edit all letters and copy submitted. A maximum of 400 words will be placed on all letters to the editor with an allowance for exceptions. All letters must be signed and have an address and phone number. Names will be withheld upon request.

The opinions voiced in the columns, articles and notices are not necessarily shared by the entire staff. An unsigned staff editorial denotes a major consensus of the editorial board.

One hostage crisis ends, another begins

(cont. from pg. 1)

bassador to Colombia.

Bitterman has been in Colombia with his family for the past 18 months. He works for the Wycliffe Institute, based in California. His job is one of translating the Bible into native Indian languages. The institute is under contract with the Colombian government.

Bitterman is originally from Lancaster County in Pennsylvania. At the time of his kidnapping, he was in Bogota preparing for gall bladder surgery and is in poor health. He was mistaken for his boss at the time of abduction. His boss, the target of the guerrillas, was not at his office at the time and Bitterman being the only male on the scene at the time, was taken.

The guerrilla's demands were published a few days later in Colombian newspapers. The demands were published as an open letter to President Ronald Reagan - the Colombian government have taken the stand of not negotiating under any circumstances. Seeing how that the communist philosophy is dogmatic anti-religion, the main demand was that Bitterman's missionary group be

expelled from the country by 6 p.m., Feb. 19.

Before his abduction, Bitterman had been in active correspondence with the Bloomsburg Christian Fellowship (BCF) group. Bitterman had been writing in particular to Lois Thompson, a member of the group. The Fellowship, as a whole is praying daily for Chester and urges all Christians campus wide to do so also.

The kidnapers have threatened to kill their hostage if their deadline is not met. Bitterman is married and has two children, who are still in Colombia, under government protection.

Thompson was in BCF's mission action group (she's a special - education major here at Bloom) when she began corresponding with Bitterman. He would keep her and the group informed as to his work in Colombia. In his latest letter that arrived around Christmas time, Chester had asked specifically for prayer for the various Wycliffe missions in Colombia that had come under attack by leftist guerrillas. He also asked that the group pray that it wouldn't happen to him.

Alumni association compiles scholarship list for 1981-82

The Bloomsburg State Scholarship Program offers several thousand dollars in scholarships which are, for the most part, based on academic excellence rather than financial need.

Here is a list of the current scholarships:

ACADEMIC SCHOLARSHIPS: In the absence of specific criteria provided by a donor, all academic scholarships will be awarded on the basis of 1) academic excellence, and 2) financial need, in that order. Financial need will only be considered in making a choice among two or more students with comparable academic records. These scholarships are available to current students who were enrolled Fall 1980 at BSC and who plan to be enrolled during 1981-82 at BSC. The Alumni Scholarships are as follows:

1. R. Bruce Albert Alumni Scholarship (\$3000) - for student enrolled in School of Professional Studies.

2. O. H. & S. H. Bakeless Alumni Scholarship (\$300) - for student enrolled in School of Arts and Sciences.

3. Walter S. Rygiel Alumni Scholarship (\$300) - for student enrolled in School of Business.

4. Howard F. Fenstemaker Alumni Scholarship (\$300) - for student participating in BSC Marching Band.

5. Kimber Kuster Alumni Scholarship (\$300) - for general academic excellence.

6. Ercel D. Bidleman Alumni Scholarship (\$300) - for general academic excellence.

7. Margaret Bittner Parke Alumni Scholarship (\$300) - for student recommended by Department of English.

8. James Bryden Alumni Scholarship (\$300) - for student enrolled in Communication Disorders, teaching of the deaf, teaching of the blind, or special education in general, in that order.

9. Mary L. Frymire Kirk Alumni Scholarship (\$300) - for a worthy student as determined by the Financial Aid Subcommittee, with concurrence by the College President.

10. Class of 1924 Alumni Scholarship (\$300) - for student enrolled in Special Education or teaching of the deaf, blind, handicapped, or the gifted.

11. William Teitworth Alumni Scholarship (\$300) - for student recommended by the Journalism faculty.

ATHLETIC SCHOLARSHIPS: A total of \$2,500 will be available for athletic scholarships: \$1,500 for men athletes, and \$1,000 for women athletes (reflecting the 60-40 percent participation rate as determined by the Department of Health, Physical Education

(Continued on Page 5)

Do nations aid care in helping needy people overseas

CARE delivered more than \$198 million in aid to needy people overseas during fiscal 1980, which means \$6.73 in assistance for every dollar donated by the public, according to the organization's 34th annual report.

Released recently by Dr. Philip Johnston, executive director of the international aid and development organization, the report stated that CARE had operations in 38 Third and Fourth World countries during the year which closed on June 30.

The organization provided over 640 million pounds of nourishing food for approximately 30 million impoverished people, mostly malnourished children, in Africa, Asia, Latin America and the Middle East.

However, Johnston emphasized in the report that, "Providing food, and thereby helping hungry people to survive ... is not enough. CARE helps people help themselves so that they themselves are involved in the process of combating poverty." Toward that end CARE also emphasizes self-help development programs, as well as health care through MEDICO, the organization's

medical arm.

Development projects included construction of water systems, schools, health clinics and farm-to-market roads, training in improved agricultural methods and teaching marketable skills, particularly to help women supplement meager family income. In addition, CARE delivered vast quantities of emergency supplies to Kampuchea (Cambodia), Thailand, Pakistan, Nicaragua, the Dominican Republic and Uganda.

Explaining how \$6.73 in aid was provided for every dollar donated, Johnston said, "This was accomplished by stringent economy measures and by combining donations from private individuals and companies - which are the base of CARE - with U.S. PL 480 Food-for-Peace commodities; domestic and foreign government grants; host government support; such contributions - in-kind as merchandise and equipment from food processors, medical supply firms and others, plus training and treating by volunteer medical specialists. In addition, beneficiary communities donated labor and available materials for various projects."

He also pointed out that "... out of every dollar of support, based on both contributions in cash and in-kind, 95 cents is spent directly on development, disaster and emergency aid overseas. Only three cents out of every dollar goes for fundraising, while two cents is spent on management and general administration."

The annual report highlighted efforts to include international partners to help raise funds and administer relief programs. A CARE Norge (Norway) office was established in Oslo and CARE's Chairman Edwin J. Wesely and President Wallace J. Campbell said in their joint message, "A new organization to be known as CARE International is now being born. It will be directed jointly by CARE USA, CARE Canada, CARE Deutschland, CARE Norge and other organizations as they mature to independence. It will be the responsibility of CARE International to implement and oversee the programs in less-developed countries for the member organizations."

The chairman, president, and executive director all extended special thanks to donors who make these CARE programs possible.

THE BLOOMSBURG STATE COLLEGE ARTS COUNCIL

BLOOMSBURG, PENNSYLVANIA

presents

Pittsburgh Chamber Opera Theater

MILDRED MILLER POSVAR

Artistic Director

in

Wolfgang Amadeus Mozart's

Così fan tutte

with the

Susquehanna Valley Symphony

Donald Beckie
conductor

Saturday, Feb. 7, 1981

8:15 PM

Haas Center

Tickets are free at KUB INFO Desk

James Taylor at BSC

(Continued from Page 1)

played a major part in the Musicians United for Safe Energy (MUSE), with anti-nuclear concerts held in New York's Madison Square Garden.

His concert here in Bloomsburg promises to be a strong blend of rock and acoustic ballads, and it is surely not one to be missed.

Tickets will go on sale Tuesday, February 3 at 9:30 A.M. in the Kehr Union Multipurpose Room. The cost is \$8 with a BSC I.D. with a current Community Activities

sticker and \$10 without. Ticket buyers will only be able to purchase two \$8 tickets on an I.D. and must pay \$10 for other tickets purchased.

After the initial opening day sales tickets can also be purchased at the Kehr Union Information Desk and Record Revue.

The concert is being presented by the Bloomsburg Student Concert Committee of the Community Government Association. Bill Shannon and Mark Trauma are co-chairpersons.



PICTURED HERE is a sample setting that will be used by the Pittsburgh Chamber Orchestra, who will perform at BSC in early February.

Campus Shorts

Dolls, dope and porn become classroom fare

(CH) — The study of ancient civilizations has long been part of the college curriculum, but at several schools modern culture is under scrutiny as well.

At Arizona State U., the Health Sciences department is offering "Marijuana and Man," a course which examines the history of the popular drug and its sociological and

psychological impact. The purpose of the course, says instructor Dr. Lee B. Croft, is to provide students with the facts needed to make a "sound, intelligent judgment" about marijuana use. Croft, who will also be examining the role of the media in marijuana use, expects the new course to be immediately popular with ASU students.

(Continued on page six)

Cosi Fan Tutte at BSC

By DICK DiLIBERTO and FAITH PETROVICH

The Pittsburgh Chamber Opera Theater (PCOT), a group of artists directed by Mildred Miller, an internationally known figure in the areas of opera and concert, will grace Bloomsburg with their presence from Feb. 4 - 7.

The appearance has been arranged by the BSC Arts Council.

The visit to BSC will culminate in a performance of COSI FAN TUTTE on Feb. 7, at 8:15 p.m. in Haas Auditorium. The Susquehanna Valley Orchestra will join with the PCOT for the story of love and dare.

An impressive success story follows the director of the group. Miller is a teacher of voice at Pittsburgh University, a member of the board of the

Pittsburgh Opera and has completed 23 seasons at the

Metropolitan Opera. She is a star of film, radio and television, and is an internationally acclaimed recording artist. She is the winner of the Grand Prix du Disque for Bruno Walter's only recording of Mahler's "Songs of a Wayfarer."

Students wishing to take advantage of this unique visit may do so at various times during the week. On Feb. 4, there will be a "Brown Bag Luncheon Concert" at 12 p.m. in Room A of the KUB. At 1 p.m. on the same day, the film Myth Concertions will be shown, followed by a discussion, also in Room A.

At 10 a.m. on Thursday, the children from the Memorial Elementary School will be

treated to COSI FAN TUTTE in the Union.

At 8:15 p.m., later that day, there will be an Operalogue of COSI FAN TUTTE in the Coffeehouse. A reception will follow.

Friday finds a full day of activity beginning with a "Meet the Artist" luncheon in the Coffeehouse. A Vocal Master Class will follow at 1:30 p.m. in the Haas rehearsal room, as well as a Career in Opera seminar at 3 p.m.

The dress rehearsal of COSI FAN TUTTE, with the Susquehanna Valley Orchestra, will take place at 7 p.m. at Haas.

On Saturday evening, the final performance of COSI FAN TUTTE will be at 8:15 p.m.

BSC students, faculty, staff and the public are invited to participate in all activities. All are free, with the exception of COSI FAN TUTTE on Saturday night, with a community activities card. Tickets may be picked up at the KUP Information Desk.

WBSC PLAYLIST AND ALBUM HOURS

- Bus Boys - Minimum Wage Rock and Roll
- Rory Gallagher - Stage Struck
- City Boy - Heads Are Rolling
- XTC - Black Sea
- Talking Heads - Remain In Light
- Rockpile - Seconds of Pleasure
- Yes - Yesshows
- Utopia - Deface The Music
- Pat Benatar - Crimes of Passion
- Bruce Springsteen - The River
- Dire Straits - Making Movies
- The Blues Brothers - Made in America

- John Lennon and Yoko Ono - Double Fantasy
- Fleetwood Mac - Fleetwood Mac Live
- Thin Lizzy - Chinatown
- David Bowie - Scary Monsters
- The Police - Zenyatta Mondatta
- Warren Zevon - Stand In The Fire
- RED Speedwagon - Hi Infidelity
- Steely Dan - Gaucho
- The Alan Parsons Project - The Turn Of A Friendly Card
- UFO - The Wild, The Willing and The Innocent
- Michael Stanley Band - Heartland
- April Wine - The Maturity of the Beast
- The Romantics - National Breakout

Pro Audio Album Hour 9:30 to 10:30 p.m.

Tuesday, February 3 Dire Straits - Making Movies

Thursday, February 5 The Blues Brothers - Made In America

Sundays are set aside for special programming starting at 4 o'clock:

4:00 to 6:00 Mellow Rock with Ginny Reed

6:00 to 9:00 Hard Rock with Jim Yostrum

9:00 to 12:00 Jazz with Chris McPhillips

AXA

LAMBDA CHI ALPHA RUSH MEETING

on Thursday, Feb. 5

Blue Room KUB at 7:30 PM



September 81 Vacancy— Riverview Apartments



4 person — 2 bedroom unit

6 persons - 3 bedroom unit

784-0816 - evenings

ADVERTISING CLUB MEETING

C'mon Bloomsburg, you've been taste-testing long enough!! Help us with our B.S.C. taste-testing campaign for Coor's Beer.

Feb. 4 7 PM Green Room

Everyone is welcome.

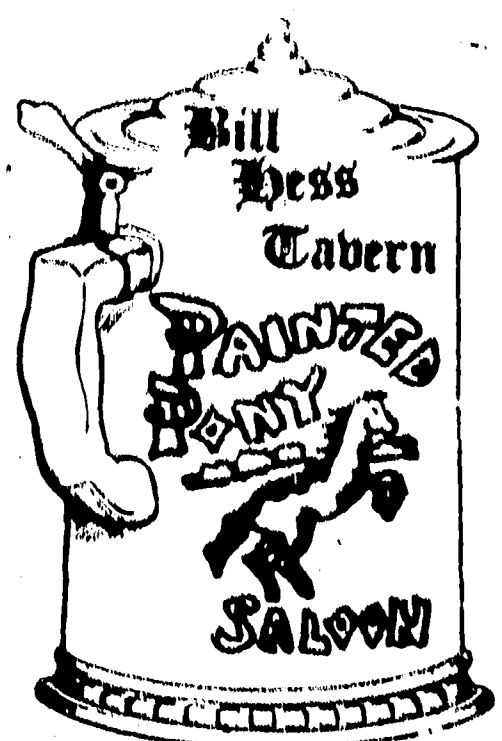


You'll find the Spring Things at... 

Ralph Dillon's FLOWERS

Corner of East and Third Sts. 784-4406

 World Wide Delivery



Alumni association compiles scholarship

list for 1981-82

(Continued from Page 3)

and Athletics). It is the wish of the Alumni Board of Directors that the HPEA men faculty determine the number of scholarships into which the \$1,500 will be divided. They will also recommend the recipients to the Scholarship Committee. The HPEA women faculty will do likewise. The scholarships to men will be called E. H. Nelson Alumni Scholarships, while those to women will be called Lucy McCammon Alumni Scholarships.

Additional scholarships funded through sources other than the Alumni Association also will be awarded to current students who were enrolled Fall 1980 at Bloomsburg State College and who plan to be enrolled during 1981-82 at BSC. Those awards, totaling \$1,100, are as follows:

1. **Early Childhood Education Scholarship (\$200)** - for a student majoring in Early Childhood Education with at least a "B" average or higher, who has financial need, and who is active in ACEI.

2. **"Cotton" Franklin V-12 Scholarship (100)** - for a deserving full-time BSC student (preferably a sophomore in 1981-82) who is a direct descendent of the sponsor of this fund (the members of the Navy V-12 unit at BSC during July 1, 1943, to September 30, 1944, are the sponsors), OR, secondly, direct descendents of any U. S. Navy service veteran. In the event no sophomore student qualifies, eligibility will be opened to any student who meets this criteria. Also, the student must submit a personally prepared statement in his or her own handwriting evidencing the descendency described above and describing the reasons she or he feels deserving of this award.

3. **Mount Carmel Scholarship (\$300)** - for a graduate of Mount Carmel High School who has been enrolled at Bloomsburg State College during Fall '80.

4. **Clyde S. Shuman Sportsmanship Award (\$200)** - for an outstanding freshman, sophomore, or junior male athlete. The candidates must have a 2.3 quality point average for the previous semester and a 2.0 cumulative average. Also, the candidates must be of good moral and ethical character, show emotional stability, and indicate that they will be reliable members of the

teaching profession. This scholarship is available to current students who were enrolled Fall '80 at BSC.

5. **Sharon Trapuzanno Memorial Scholarship (\$300)** - for a student having financial need according to the information provided by the student on the State Grant - Basic Grant Application. The student must have a 3.0 cumulative average and must be a freshman, having successfully completed 15 credits during the fall semester of the current school year. Also, the student must have at least one recommendation from any of the following individuals: 1) administrator, 2) faculty member, 3) resident dean, 4) resident advisor; and the student must submit a paragraph explaining why she or her feels deserving of this scholarship.

Application forms and instructions are available from the Deans or Chairpersons of the academic areas specified for each award as well as from the Financial Aid Office, Room 19, Benjamin Franklin Building. Interested students must submit completed applications by Feb. 27, 1981, to the appropriate office noted in the application instructions.

Announcement of award recipients will be made in late April at BSC's Annual Awards Convocation.

Please contact Mrs. Kishbaugh (389-3908) in the Financial Aid Office if you have any questions.



SURE BEATS FRUIT OF THE LOOM!!!! That's probably what these guys were thinking as they hungrily reached for a souvenir from the girl's dorm during a recent panty raid.

BSC host women's conference

(cont. from pg. 2)

Montour school districts, any suitable workshops whose participants are able to present the workshops in the schools on Friday, March 27.

Approximately 25 organizations have agreed to co-sponsor the event. About 30 workshops are already being planned, with several more being considered.

Area organizations, governmental agencies, or businesses wishing to become sponsors may do so by meeting at least one of the following requirements:

- be responsible for a workshop
- assist in planning through membership on the Steering Committee
- provide relevant handouts in numbers sufficient for conference needs
- provide personnel to staff

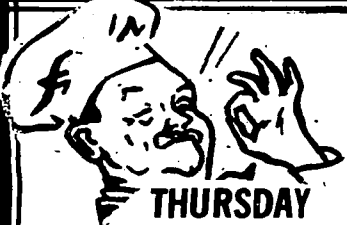
registration desk, etc., the day of the conference

- contribute a minimum monetary donation, for use to cover registration mailings, etc.

The Steering Committee members, noting the enthusiastic response of many individuals and organizations, believe the planned conference will provide an unusual opportunity for women of the two

counties to share ideas and concerns; to learn about local resources available to them; to cooperate towards common goals and to gain new perspectives on areas of interest to women.

For more information about becoming a sponsor, or about the conference itself, contact Bonnie Blakeslee, 784-3033, or Florence Thompson, 784-2203.



Sal's Place
134 E. Main St.
784-3385

THURSDAY	FRIDAY	SATURDAY
B-B-Q spare ribs spaghetti or french fries garlic bread and salad \$3.99	Lasagna manicotti & canolini with salad and garlic bread \$3.75	Stuffed Flounder spaghetti and french fries salad and garlic bread \$4.55

SIGMA IOTA OMEGA

(First Social Fraternity at BSC)

RUSH MEETINGS

**February
1 and 11
7:00 PM**

Kuster Auditorium

Hartline Science Center

Refreshments to follow





for all your school supply needs!

Ritter's Office Supplies
112 Main St., Bloomsburg.

Directory lists summer jobs

Want an exciting job this summer? How about teaching French to children on a private island? Picking strawberries in Utah? Working as a research assistant for the U.S. government? Herding cattle on a ranch in Wyoming? You'll find these among the 50,000 fascinating summer jobs listed in the 1981 Summer Employment Directory of the United States (Writer's Digest Books, \$6.95-paper, \$10.95-cloth).

For thirty years the Summer Employment Directory has been helping students, teachers, and others, by providing detailed information on summer positions. Each listing contains a brief description of the place of work, the number of jobs available, working conditions, hours, salary, names and addresses of contacts, and the duration of the job.

This year, a new feature has been added to the listings — a "fringe benefits" paragraph which lists the "hidden assets" of the job — everything from travel allowances to home-cooked meals. There is even an indication of whether college credit is available or can be arranged for a job.

Also, for the first time, the

1981 edition of the Summer Employment Directory has listings of jobs with farm labor contractors who plant, harvest, and, in some cases, process crops, plus a brand new job category — Government — which lists federal jobs located in Washington, D.C. as well as in regional offices.

The listings are checked and completely updated each year, and the information in each listing is furnished by the employer. The 1981 edition contains more than 225 completely new listings, and virtually all of the repeat listings contain some new information, including many salary increases!

No matter what a person is looking for in a summer job — income, travel, college credit, a unique experience, or any combination of these — there's something for everyone in the 1981 Summer Employment Directory of the United States.

The 1981 Summer Employment Directory of the United States is available at most bookstores, or send \$6.95 for paperback, \$10.95 for cloth, plus \$1.25 for postage and handling to: Writer's Digest Books, 9933 Alliance Road, Cincinnati, Ohio 45242.

Campus Shorts

(continued from Page 4)

Another study of a controversial aspect of modern society isn't proving too popular with some officials at MacAlester College in St. Paul, Minn. A number of female professors and administrators there are objecting to a psychology class that will focus on pornography, because they believe pornography is degrading to women. Professor Gerald Weiss isn't discussing the controversy publicly, but told the student newspaper that pornography has gotten a bum rap. "I like pornography, but I don't like violence in pornography," said Weiss.

No one has objected, as yet, to one Yale student's final thesis subject, but a lot of people are giggling. Art history major Ella King Torrey says she will use her thesis to explore the history and phenomenal success of the Barbie Doll. Torrey says she is intrigued by the changes the popular doll has undergone since her introduction in 1959. "Barbie has met time head-on, coming through with flying colors," she says. "She is an amazing and intriguing subject."

The great Yale moose mystery

NEW HAVEN, Conn. (CH) — Some Yale University students, who are just "moosing" around recently, found out the school president is a man who takes his mousse seriously.

The students, who called themselves the Moose Liberation Army, stole a stuffed moose head from the dining hall of Yale's Ezra Stiles College. The moose had been named in honor of Yale President A. Bartlett Giamatti, a former master of Stiles.

The MLA demanded in a

ransom note that Giamatti cancel midterm exams in order to save his namesake from being eaten. Replied the president, who refused to cancel any tests, "Let them eat mousse!"

But while Giamatti was joking, the present master of Stiles College, Dr. Heinrich von Staden, was taking the theft more seriously and warned the MLA that both city and university police had been called in on the moose-napping. That apparently discouraged the culprits, as the moose head was returned. "We are joyfully staggering back out of our dark valley of despair," said von Staden, while Giamatti said he hoped the dining hall would serve mousse for dessert to commemorate the moose head's safe return.

Nice guys can finish in jail

TAMPA, Fla. (ch) — A get-well card has done little to improve the health of a University of South Florida student.

Ray McCranie sent the card, which he got 31 friends to sign, to a female university police officer who was assaulted at

police headquarters. He says the card was intended only to cheer up the woman while she was in the hospital.

USF police apparently suspected a more sinister motivation. They promptly made McCranie a suspect in the assault case and launched an investigation in which McCranie claims he has been harassed. The student says officers tried to get him to confess that he was the assailant and had sent the card out of guilt.

McCranie says the police have questioned his mother, his landlady and a former employer, who says police told him McCranie was an alcoholic. McCranie also claims the police description of the suspect was changed to fit him.

Police officials deny those charges and say the investigation of McCranie is a routine matter in a case such as this.

McCranie would like to sue the USF police for harassment and mental anguish, but his attorney says he won't have a case unless arrested and acquitted. No arrests have been made in the case.

Sperry Univac picks BSC

(continued from page one)

unique in this respect. It encompasses or integrates, the entire business of the college."

Both Ross and Fry traveled to Minneapolis, Minn. to the World Research Center of the Sperry Univac Co. to display the data base to representatives of Univac and prospective buyers from Ithaca were equally impressed by what the data base could do. Ithaca decided to consider purchasing a similar base.

Mr. Doyle Dodson, director of computer services said "the people from Ithaca came here to Bloomsburg during class scheduling and were impressed by the way our people handled the process." Dodson also added, "Scheduling is the one time of the year that we have the most difficulty with our system and still the people from Ithaca were impressed. I think that proved the efficiency of our system and the data base from which it is programmed to run." Thus, the sale of the data base to Ithaca.

This sale proves the excellence of the integrated system here at BSC. The staff and faculty who were involved in the design of the system should be congratulated. The student body, as well as the entire college, benefits from this accomplishment.

TKE
TAU KAPPA EPSILON
INTERNATIONAL SOCIAL FRATERNITY

**MADE ME AN OFFER
NO ONE ELSE COULD**



Come hear our offer at the next
Rush Meeting
Sunday, Feb. 8, 8 PM
Kuster Aud.
(Social Gathering Will Follow)

Direct from Hollywood
The Back Doors
Electrifying Live DOORS show
Featuring Playgirl centerfold lead singer
"he's cool, serious, bold"
WABC TV N.Y., N.Y.
at Romeo's 212 W. 11th St., Berwick
Sunday, Feb. 1 starting PM
One appearance only!
Be there Early!

To all the students at B.S.C.
Neil is back at
TWO BOY'S FROM ITALY
784-1680

THURSDAY
Any hoagie or
cheese steak for
\$1.35
pick-up or delivery

FRIDAY
20% off Stromboli
or calzone
pick-up or
delivery

SATURDAY
Lasagna manicotti
salad and garlic
bread \$2.75
pick-up or
delivery

Specials served at restaurant only

LIVE SOUND SYSTEMS

Entertainment for your
DATE PARTY, PICNIC, ETC.

- Your Favorite Music
- by Original Artist
- Fantastic Sound
- Much Lower Cost than Band

For Information Call: 387-0454

THE VOICE

SPORTS

Women hoopsters post win

By KEVIN KODISH

It's a good thing for the Bloomsburg women's basketball team that Maureen McDonald suited up for Monday night's game with Luzerne County Community College (LCCC).

McDonald, normally a spot playing guard, came off the bench to score 16 points and lead the Huskies to a 55-50 win.

McDonald got her chance because of the BSC "guard injury epidemic." Starters Cheryl Sedlak and Mindy Lerit are sidelined for at least a week, and that leaves Sue Hicks the only other guard with varsity experience.

The scoring column wasn't dented by either team until the 17:26 mark of the first half. Ruth Kruger nailed an outside bomb for a 2-0 LCCC lead.

After another Luzerne bucket, center Hilarie Runyon hit two buckets to even things up at 4-4.

A free throw by Diane Alfonsi and a field goal by Kathy Palubinsky gave the Huskies a 7-4 lead with 12:50 left in the half.

PSC then surrendered two

buckets before unleashing a ten point barrage. Trina Knittel started it off and Runyon finished it. In between, McDonald tallied six points on fast breaks.

The two squads played on even terms the rest of the half, and the Huskies held a 27-17 lead at intermission.

Bloomsburg held a 51-39 advantage with 6:18 remaining, but the Huskies went cold and were outscored 11-4 the rest of the game.

Runyon finished the contest with 13 points, and Palubinsky netted nine markers.

The ladies will now visit LaSalle College tomorrow at 2:00 p.m. Monday night they play host to the University of Scranton at 6 p.m.

HOOP SCOOPS

The win followed a tough 75-53 loss to ESSC on Saturday. The leading scorers will be published in the feature story on the team in next Wednesday's edition...

Head coach Sue Hibbs felt the team could have been a bit tired in the contest...

McDonald played the game despite a broken finger.

Men defeat Bucknell Bisons

By KEVIN KODISH

Mike Wenrich tossed in 18 points Saturday night to lead the BSC men's basketball team to a 73-72 victory over the Bucknell Bisons.

The triumph was the seventh straight for the Huskies, and

their 13th in 15 starts.

The maroon and gold jumped out to a 35-27 halftime lead and held on for the win. Terry Conrad clinched the game with two free throws when just eight seconds remained.

Backing up Wenrich in the scoring column were Jon Bardsley, Bill Tillman and Doug Greenholt. Bardsley fired in seven field goals and foul shot for 15 points. Tri-captain Tillman sank five free throws along with four shots from the field for 13, and Greenholt hit five buckets for 10 markers.

Bucknell was led by Al Leslie's game-high 24 point effort. Mike Page and Deb Okorodudu tallied 13 and 10 points, respectively.

The difference in the score resulted from free throws made, as both clubs hit 30 shots from the field. Bloomsburg hit 13 of 21 foul shots, while the Bisons connected on 12 of 18 charity stripe attempts.

The victory was a great one for the locals to pick up because the Bisons are a Division I team, plus the Huskies downed them on their own court.

The Huskies will now host the Kutztown Golden Bears tomorrow night at 8 p.m. The University of Scranton will make a visit to Nelson Fieldhouse on Monday at 8 p.m.



MAUREEN MCDONALD came off the bench to become the top scorer in Monday night's game against Luzerne County Community College.

(Photo by Douglas M. Long)

CLASSIFIEDS

ANNOUNCEMENTS:

SUSQUEHANNA RIVER and Blues Band is now available for booking for Spring Banquets...They have the sound for you. 784-0714

LAMBDA CHI ALPHA rush meetings will be held Thursday Feb. 5 at 7:30 PM in the Blue Room of the KUB.

THE NURSING STUDENT ASSOC. 2nd Annual Jump-Rope-A-Thon will take place February 21st from 1-6 PM. Information at the info. desk or call Sue at 784-3083. Sponsor a friend and help the American Heart Association fight heart disease.

INTERESTED IN RETAILING? Mike Drydale of Clover, a division of Strawbridge and Clothier, will present an information session on Thursday, Feb. 5, in Hartline 115, 7:00-8:30 PM.

CONTINUING ED., Non-degree, or any other NON-TRADITIONAL student! A program for non-traditional students on Career Planning Services will be held by the Career Development and Placement Center, Third Floor Ben Franklin Bldg., on Wed., Feb. 4 at 7:00 PM and Thurs., Feb. 5, at 5 PM.

THE DELTA PI Fraternity invites you to our Spring Rush Meeting. Thurs. Jan. 29 and Tues. Feb. 10. At 7:30 in KUB Coffeehouse. Rides provided to the house afterwards for entertainment.

BLOOMSBURG STATE COLLEGE has been requested to nominate two students for a paid summer internship in the U.S. Penitentiary at Lewisburg. Any interested student should contact Dr. Brian Johnson, Coordinator of Internships, 230 Hartline Science Center.

THE BLOOMSBURG STATE COLLEGE Music Department presents a High School Choral Festival with ten schools and over 400 students participating on Tuesday, February 10th. Free concert at 7:00 p.m. in Haas Center for the Arts. For information call 389-3107.

THE SPRING RECESS begins at 10 p.m. on Wednesday, February 25, 1981 and ends when classes resume at 8 a.m. on Monday, March 9, 1981. The following library hours are recommended:

Thursday-Friday, February 26-27 8 a.m. - 4:30 p.m.
Saturday-Sunday, February 28-March 1 CLOSED
Monday-Friday, March 2-6; 8 a.m. - 4:30 p.m.
Saturday-Sunday, March 7-8; CLOSED
Monday, March 9; RESUME NORMAL SCHEDULE.

JOHN WADE - Quinton Sanders, drawings and paintings, Haas Gallery of Art, Jan. 22 - Feb. 20.

STUDENT DISCOUNT Cards available at Information Desk. Pick one up now!

TWO PEOPLE needed to share apt. in Wildwood for summer. Reasonable Rent. Call 784-3401.

THERE WILL BE a Society for Collegiate Journalists meeting, Thursday, February 5 at 6:30 p.m. in the Campus Voice office. Present and prospective members are welcome.

SIGMA IOTA OMEGA rush meetings will be held in Kuster Auditorium, Hartline Science Center, February 1 and 11 at 7:00 PM. Refreshments to follow!

A NEEDLECRAFTER'S DREAM! Demonstrate needlecrafts part-time with Creative Expressions. Call 275-2446.

JAN. 30 - FEB. 1, 50 hour dance marathon begins for M.S., sponsor one of your friends.

SUMMER CAMP COUNSELORS. Overnight camp for girls in New York State's Adirondack Mountains has opening for counselor-instructors in tennis, waterfront (WSI, sailing, skiing, small crafts), gymnastics, arts/crafts, pioneering, music (piano), photography, drama, general counselors. Information available in Placement Office or write: Andrew Rosen, Director, Point O'Pines Camp, 221 Harvard Avenue Swarthmore, PA. 19081.

TYPING, ARTWORK, Sewing, Lettering, Crafts, Cards 784-6310.

WANTED
TRAVEL REPRESENTATIVE
High Earnings
Free Travel Benefits
National Travel and Marketing Company seeks Assertive, highly motivated individual to represent its collegiate travel vacation programs on campus.

For Sale:
CONCERT PICTURES OF: America, Steve Forbert, Dave Mason, Todd Rundgren, Yes, Maynard Ferguson, and Bruce Springsteen from his concerts at the Spectrum. If interested call: 389-2155

PERSONALS:

DEAR JOB HUNTER at Large, Thanks for the great weekend and the awesome picture! Love, A Lust W. at Large

LARRY - Make sure you take good care of Cheryl's pictures. Why don't you take care of mine sometime? Love, Your Circulation Manager

PAM, We're going to the Magee. Mike

CELTIC FANS, The time is now, the cream has risen to the top. Bird's Boosters

DEE, Hope you have a great weekend. Lets make this one, one for the books.

Classified

I wish to place a classified ad under the heading:

Announcements
Lost and Found
For Sale
Personals
Services
Wanted
Other _____

I enclose \$ _____ for _____ letters
(At 2' a letter)

Send to: Box 97 KUB or drop in the Campus Voice mail slot, 3rd floor Univ., before 5 p.m. on Sunday or before 5 p.m. on Tuesday. All classifieds must be pre-paid.

Huskies bow to Clarion St.

By DAN CAMPBELL

On Saturday past, the Husky wrestlers traveled to Clarion State to take on the 17th ranked Golden Eagles. The final score was 31-16 in favor of Clarion but that score doesn't tell the whole story.

In the 118 lbs. bout, Todd Cummings had the task of wrestling Jan Clark, who was going for an Eastern Wrestling League record eleventh straight win. But Jan had to settle for tying the record as Cummings managed a 4-4 draw.

At 126 lbs. an ill Ed Fiorvanti wrestled well but lost 4-0.

Don Reese continued to terrorize 134 pounders across the nation. In Clarion he had the task of taking on the 7th ranked Randy Miller. Reese not only won, but pinned Miller in five minutes and forty-nine seconds.

Al McCollum also wrestled well in a win at 142 lbs. He managed to pin his opponent in three minutes.

The 150 lb. match was seen as the turning point in the meet by coach Roger Sanders. "Tom Fiorvanti wrestled well for six and a half minutes but didn't have enough in the end." Tom was beaten in a close bout 9-7 by Todd Housel.

Clarion added to their lead when Rob Albert won a major decision over Al Mabus.

But the Huskies were not through yet. Bucky McCollum beat Brian Kesneck 6-3 to cut the Eagle lead to 19-17. But the Huskies forfeited at 177 lbs. to probably the best Clarion wrestler Charlie Heller, a

national place winner. BSC's hopes were further dashed when Butch Snyder, wrestling with a bad ankle, was pinned by another top Clarion wrestler, Mark Downing.

BSC also forfeited the heavy weight match. "Butch was aggressive — but he just got pinned," said Sanders, "It was one of those things." If Butch could have won, the Huskies would have been ahead by a point and Tyroone Johnson would have moved up a weight class, to wrestle heavy weight. But they decided to forfeit heavyweight when the match was out of reach.

"They're in a different league." That's what coach Sanders had to say about Iowa State. The Cyclones beat the Huskies 38-2 last Friday. So when asked why he put them on the schedule he replied "Why not?"

Sanders continued on, stating how that the team's goal is always to get into the NCAA tournament and win. To do that you have to wrestle the best.

Despite the shellacking his team took, he was still proud of all his guys. They all did their best and all tried their hardest. And because the Cyclones are the top ranked team, all of his wrestlers can say they wrestled against the best. Also, this gave the BSC students and faculty the opportunity to see the best. And, it gave the Bloomsburg community the chance to see the premier wrestling team in the country.

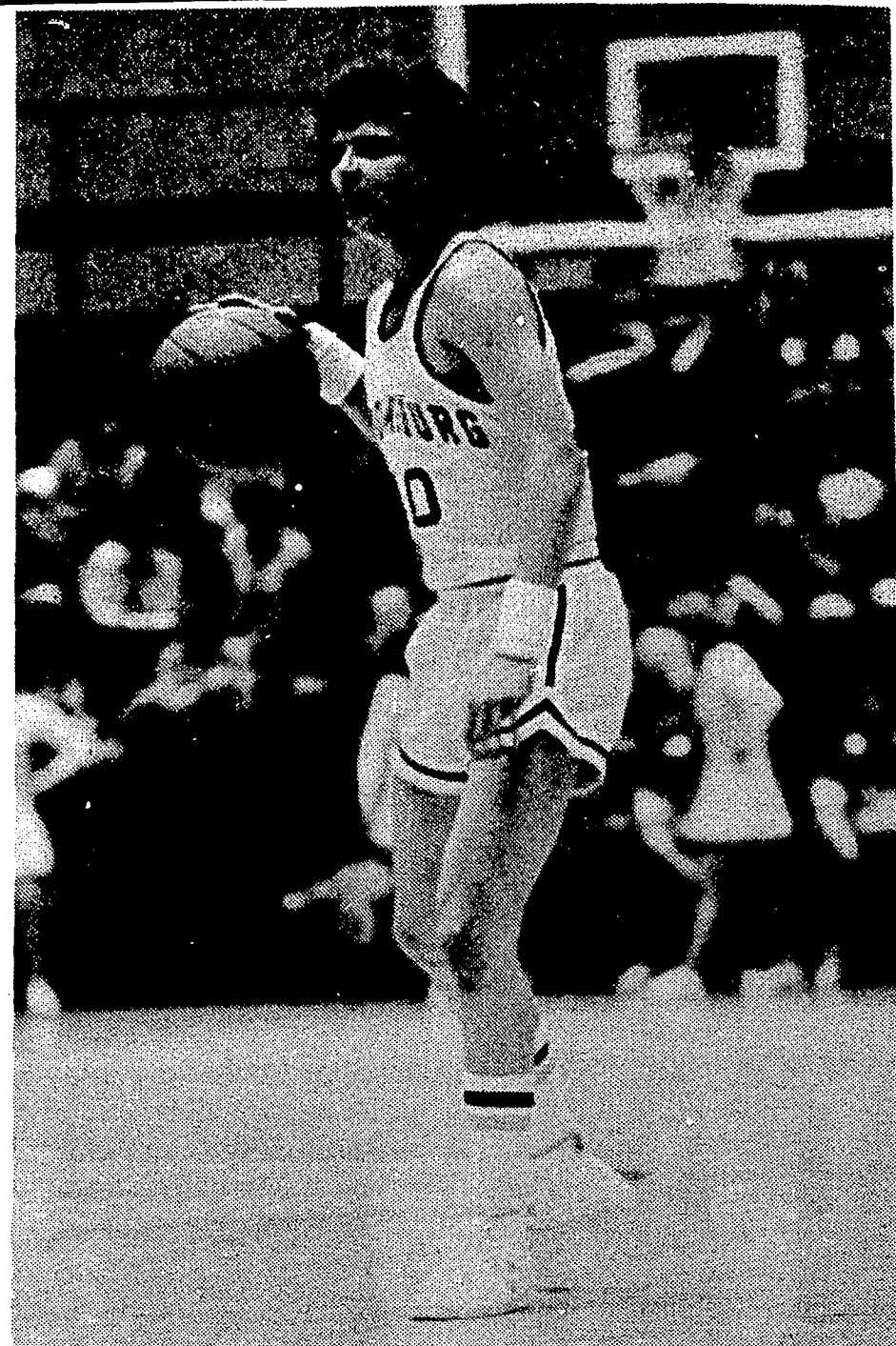
Admission was charged to get into the dual meet because the Cyclones travelling expenses had to be guaranteed. But this nicety will be returned to the Huskies next year when the team travels to not only Iowa State but also to Iowa University.

Iowa University was the top ranked team earlier this season-until the Hawkeyes were beaten by the Cyclones a week or so before they, the Cyclones, came to Bloomsburg. However, Sanders stressed that if this practice of bringing top quality teams to Bloomsburg was to continue, more student support would be needed.

Despite having one of its' worse starts ever, the team still expects to battle Clarion in the PA Conference and Eastern Wrestling League tournaments.

There were many reasons for the bad start pointed out Sanders. "All the weird and crazy things that could happen-did." Injuries to outstanding wrestlers Bucky McCollum, Gibbes Johnson and Snyder as well as sickness and lack of participation are among the things that the team had to deal with so far this season.

Despite all these adversities, the team was ranked at 20th at one time this season and they expect to be ranked again before season end. As the season enters its last month only time will tell.



HUSKY PLAYMAKER JON BARDSLEY, a key component in the Husky scoring machine, brings the ball up court to set up a play. The Junior from Lansdowne scored 17 points against Bucknell last Saturday.

(Photo by Pat Murphy)

Reese ranked sixth in nation

Don Reese is a name to remember. The 134 lb. BSC wrestler has been a terror on the mat all season long. Now he can add to his list of accomplishments the honor of being ranked by Amateur Wrestling News as the sixth best 134 lber in the nation at this time. The rankings at 134 lbs. according to the latest issue of Amateur Wrestling News are:

No. 1 - Darryl Burley, Lehigh University.

No. 2 - Tom Landrum, Oklahoma St.

No. 3 - Jim Gibbens, Iowa St.

No. 4 - Khris Whalen, Mississippi.

No. 5 - Jesse Reyes, Cal. St. Bakersfield.

No. 6 - Don Reese, Bloomsburg St. (Pa.).

In dual meet action, Reese wrestled Gibbens of Iowa State to a 4-4 draw - the only score for the Huskies in the meet. He is a sophomore in the school of pre-professional studies.

**Bill Wise Pro Shop Inc. is featuring:
a Ground Hog Day Sale. Thurs. Jan. 29**

•Selected models of athletic shoes at low low prices

•Fisher cross country skis
•and misc. items ranging from tennis rackets to running suits



Bill Wise Pro Shop, Inc.

146 E. Main St.,
Bloomsburg, Pa.
(717) 784-4976

138 E. Main St.,
Lock Haven, Pa.



Delta Pi

Rush Meetings:

Thursday, Jan. 29

Tuesday, Feb. 10

7:30 KUB Coffeehouse