

# The CAMPUS VOICE

VOL. LV  
No. 18

A Publication of the Maroon and Gold News

## Wayne selected as CGA lawyer

by SANDY MYERS

Have you been wondering whatever happened to the proposal that CGA appoint a lawyer to represent the students? Well, you can stop worrying; he's been appointed, and he'll be on campus within the next week.

A few weeks ago, bids were submitted to the college, and one firm was selected to

represent the students. Beginning on November 10, the firm of Elion, Lyons and Wayne from Williamsport will be on campus to discuss legal problems and take action for any student who desires their services.

Mr. Wayne and his associates will be located in the Community Activities office on the second floor of Kehr Union every Tuesday night from 7:00 pm until 10:00 pm for the next five weeks.

The firm will offer advice in the areas of housing, leases, contracts, and rentals. All students must present their college I.D.'s and must be logged in as to what the problem may involve. The students will not be required to leave names in the log.

All fees will be taken from the Community Activities Fee that students are required to pay. Wayne offers a \$15 an hour charge for the advisory role and \$25 an hour for any action that is to be brought to court.

We urge you to take advantage of this service provided for you.

## CAS works against time for the passage of House Bill 1833

HARRISBURG — The Commonwealth Association of Students (CAS) is working against time for the passage of a bill that will garner \$30 million in repairs and projects for its member institutions.

The House and Senate of Pennsylvania will be in session for three days on November 8, 9 and 10. Letters from students at the colleges have been coming into the state capitol for several weeks, and CAS has called for student leaders in public higher education to meet with their local legislators in Harrisburg on the first day of session.

Every institution of public higher education in the state is involved with the House Bill 1833, with the exception of Clarion State College, which received \$324,000 in furniture and equipment for a classroom building in a previously-approved bill.

### \$98 MILLION DISTRIBUTED

The remaining \$98 million is distributed among projects for state hospitals, airports, prison, state office buildings and flood control projects throughout the state. Included in H. B. 1833 is \$1.9 million in improvement projects for the Pennsylvania State University, and approximately \$4 million for the three other state-related institutions of higher education in Pennsylvania.

The statewide CAS leadership are convinced that the bill will be passed, but are worried about the short time element.

Since its introduction last fall,

it was lost in the last minute shuffle of legislation enacted by the House of Representatives before it recessed for the summer. Despite an attempt by CAS to have the bill brought to the floor during the four-day sessions in September, H.B. 1833 remained in the Appropriations Committee.

Various capitol sources indicate that many legislators were reluctant to spend money prior to an election. The bill is also held up due to a reported squabble between Governor Milton J. Shapp and the legislature. H.B. 1833 includes a "Poconos Arts Center" that the Governor is reportedly favoring that some legislators do not feel necessary.

### HEAT PROBLEM

Only recently, according to Associate Director Michael Sommers, several thousand students at Shippensburg State College went without heat in their dormitories directly because of the non-passage of H.B. 1833.

"The boiler system had to be repaired," says Sommers, "Consequently, they were shut down and the dormitories got awfully cold. The bill is supposed to give Shippensburg, among other things, a back-up boiler for just such emergencies. But there wasn't any passed bill, and there wasn't any back-up boiler, and the students had to live in cold rooms for over a week. That's not healthy and that's not right."

In a strongly-worded recent communication to House legislators, the CAS leadership called for passage of the bill, saying, "As the guardians of public higher education, the General Assembly of Pennsylvania must allow this construction and repair work to begin. We are the students of the Commonwealth, and the Commonwealth must not allow us to further exist with these inadequate facilities that affect

our lives and our education."

A temporary coalition of interest groups has been brought together by CAS to work for the quick passage of the bill. This coalition will meet in a planning and strategy session shortly before the General Assembly convenes on November 8.

If the bill is not passed in November, it will have to wait until the newly-elected General Assembly convenes next year.

## CGA takes lawyer bid; gives \$200 to Bike Hike

by JACK FURNISS

Highlights of the CGA meeting Monday night included the ratification of a BSC lawyer proposal, elections for Executive Council and Union Governing Board, and the failure of a request by the International Club for a trip to New York City.

The general council accepted a bid amounting to \$311 from Robert B. Wayne, Esq., of the Elion, Lyons, and Wayne law firm, to serve BSC students in an advisory capacity. The funds will be used to cover Mr. Wayne's fees, promotional expenses, and the cost of incidentals. He will be available for consultation on five consecutive Tuesday nights between the hours of 7:00 p.m. and 10:00 p.m. in the latter part of November and into December.

### ELECTIONS & AN APPEAL

Election results for Executive Council declared Joe Surdov and Paul Jansen as the majority favorites. The voting

tabulations for the two positions on the Union Governing Board revealed a decisive victory for Pam Moore and a stalemate between Cindi Edwards and John Eichenlaub. A run-off election will take place to determine which of the two will fill the open position.

Pedro Garcia, president of the International Club, made an appeal to the general council to allocate \$378 from the Reserve for Refunds and New Projects Account to enable 16 members of the club to visit New York City. The excursion was tentatively set-up for November 19, 20, and 21, during which time the club would take in some of New York City's worthwhile sites. The voting body was skeptical of the necessity of the trip to cover an entire weekend and defeated the motion. It was suggested that the club consider a fund raiser or investigate the possibilities of another trip on a smaller scale.

### FUNDS TO ATHLETICS

In other business, the Athletic Department received funds to send the Cross Country Team to the ICAAAA Championships, Steve Eachus to the Division II, NCAA Cross Country Championships, and the Field Hockey Team to the Mideast Field Hockey Tournament at Rochester, New York.

The Columbia Association for Retarded Children, (CARC), put forward a motion for CGA to assign \$200 for the purchase of two 10-speed bicycles for Bike Hike prizes. One of these is to be awarded to last Springs' winner and the other for the winner of this year's contest to be held Saturday, April 16.

The organization of two important ad hoc committees was deemed necessary because of two imposing, student related problems. The recent accident on Lightstreet Road inspired Matthew Legge, an interested council member, to form a committee to further look into the stagnated overpass proposal.

### FACULTY EVALUATION PROCEDURES

CGA members also questioned the productiveness of the Faculty Evaluation procedure. It was brought to attention that even if an adequate evaluation form existed, which incidently is not the case, the procedure is still meaningless because the results are not used in determining whether or not a faculty member is rehired.

Here again an ad hoc committee was formed to study the situation and look into the possibility of students conducting their own evaluation.

## Coed injured at Lightstreet Rd.

by BILL TROXELL

A BSC coed was seriously injured Sunday night while attempting to cross Lightstreet road at Penn Street and the campus steps.

Ms. Julie Gaumer was walking home from the campus at 7:45 pm when she was stranded in the center of the road and struck by a car driven by Gary C. Swank of Stillwater, Pa.

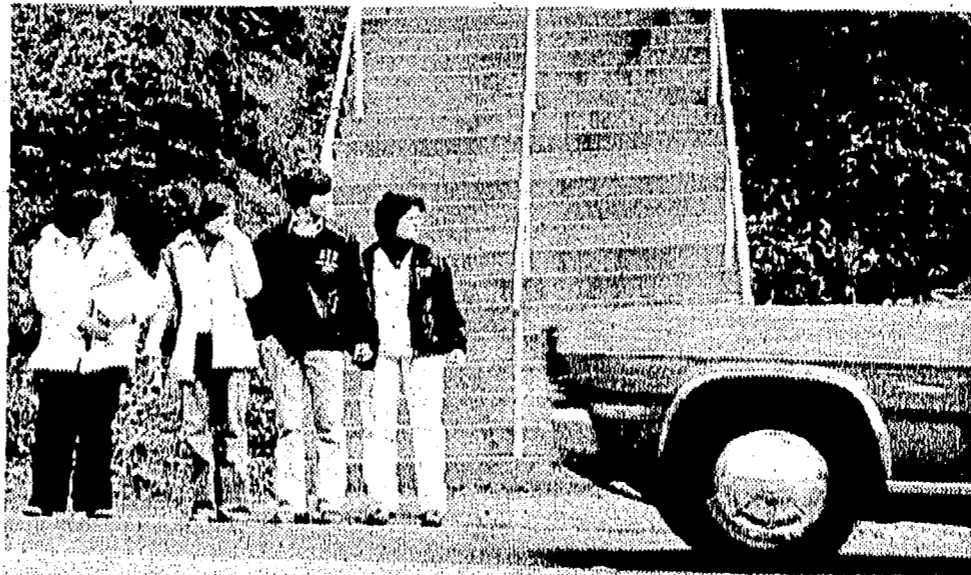
Ms. Gaumer was taken to the Bloomsburg Hospital by the town ambulance and was later transferred to the Gelsinger Medical Center where she was listed in "serious" condition and was placed in the intensive care

unit.

As of Tuesday evening, Gaumer's condition had not changed from serious, as reported by the Berwick Enterprise. She did sustain severe head injuries. No other information was available for this edition.

Ms. Gaumer, 20, a college student and a sister of Theta Tau Omega resides at 73 Sesame Street in Bloomsburg and in New Cumberland, Pa.

Starting November 10th the bank will be open from 9:30 a.m. until 11:30 a.m. and from 1 p.m. until 4 p.m. on Wednesday. On Thursday, the bank will close at 4 p.m.



How long will it take for county and state officials to realize that we need an overpass?

(Photo by Hough)

# EDITORIAL

## Facing the issues

### On housing

And in those days, there went out a decree from the Bloomsburg "slumlords" that a reasonable number of students from BSC should receive only sub-standard housing.

The days are now, and the eight students whose house was recently condemned and the undeterminable number of additional students who are forced to live in poor conditions, it's time for the college to take some type of action to eliminate the atrocious off-campus housing situation.

Admittedly, the eight students have received some restitution by having one-half of their rent returned, but the damage has been done. The fact is, they never should have moved into the house until the repairs to "uncondemn" the house were made, however with the scarcity of housing they didn't have much of a choice.

Why did the students move into the house? Was it because they hated the dorm life? Was it because the college has a rule requiring students to move off once they accumulate 59 credits? Or, was it because the landlord saw that the students had no realization of the building code regulations and felt that they would never question the condition of the house?

These questions should be answered in the minds of all students, because one cannot live in the dorm for the duration of his or her stay at Bloomsburg. The eight students who were forced to vacate their home should be congratulated for their high sense of integrity. They have gone so far as to give up their home to set a possible precedent for those who live off-campus now and will have to in the future. They have set an example for us to follow, to show the landlords who rent this appalling type of housing, that they should not be able to get away with it!

We feel that Mr. John Abell, the off-campus housing director, has made a noticeable improvement in the situation, but more needs to be done. If the college is going to stick by its 59 credit rule, then the college should begin to explore all types of avenues to provide students with decent off-campus housing; specifically, apartments which would be owned by the college and rented to students. Also the college or CGA must hire a lawyer in order to better protect themselves against unethical landlords, and inform students about the legal implications of leases and contracts.

We can give all the warnings and write all the news letters that we want, but until some forceful action is taken by the college, the tragedy of the disgusting off-campus living conditions can never be fully resolved.

### On the overpass

How long will it take before some officials of this county and the federal government realize that the overpass at Lightstreet is desperately needed by the students? Sunday night's tragedy involving Julie Gaumer should be the last straw for the students. We have got to form some type of potent demonstration to have the overpass constructed, before someone else is either seriously injured or killed.

The members of the Columbia County Planning Commission are undecided concerning the necessity of the project. It would seem that the great number of students who must cross Lightstreet should necessitate the overpass, but apparently that is not enough.

It must take the serious injury of a student, perhaps maybe that won't be enough either. This is how students must address the situation. Mr. Robert Beischline, director of the planning commission, indicates that the college must attempt a more in depth study to assert solid proof before the commission will even act on the proposed overpass and we seriously doubt that the serious injury of one student will be enough evidence for the commission, even though it should be more than enough rationale for the overpass.

In other words, nothing has been done about the overpass and nothing will be done until students make a concerted effort to have the overpass moved up to number one on the planning commission's priority list. Students cannot depend on college administrators to get the project underway. Students cannot depend on the planning commission. Students cannot depend on federal legislators to advocate the overpass unless students launch a massive campaign to get the overpass constructed and eliminate the tragedies which will occur on that road if the project isn't initiated.

Some have suggested that students sit in the middle of Lightstreet road until the commission decides to build the overpass, however this is not very pragmatic. Instead we must go to the planning commission and demand that the overpass is installed. We must write thousands of letters to our federal government representatives urging them to act on this imperative issue.

Otherwise, the accidents will continue and the students will continue to be snubbed by the officials who are ultimately responsible for the overpass.



by DUANE LONG

The Cessna's response to my evasive maneuver took us over the heads of the primitive throng. We had not gained sufficient lift to maintain altitude, so we merely hopped over our attackers coming to rest several yards behind them.

With another 100 yards of beach, we lifted off and began our flight to Kate and Jeff's settlement. Two minutes later we were flying over the abandoned runway; its length was barely adequate for the safe landing which we somehow managed.

Jeff and Kate led us to a nearby mountain. At the summit we came upon a wall of adobe covered with sharp sticks; the pitted scorch marks of past Keelo assaults lining the battlements. After a few shouts from Brown, a ladder was lowered and we climbed over the barrier to find another series of fortifications. Our guide, Joseph Broda, led us through the earthworks to where a group of adobe huts stood.

A large gathering of fellow castaways crowded around, bombarding us with questions and praise. They were quite concerned about their friends' absence. A young man, Henry Gant, stepped out of the crowd and asked us into his hut. His account of Akelos left little hope in our hearts of ever returning to Earth.

According to Gant, we were all prisoners of Akleos in a sense which hadn't occurred to our party. The negative movement of time made this place a hell to all those of our

# The devil's sea

DUANE LONG

## The prisoners of Akleas

dimension. The same backward movement which caused our watches to run in reverse and accounted for the discrepancy of my brother's entry, also sealed our fates. He led us to a small structure at the perimeter of the settlement.

The floor of the fetid building was littered with the bones of countless human fetuses. Gant elaborated, "This, gentlemen, is the collective resting place of many of those who have come here before you."

"But these are just kids," Steve corrected.

"They were once men like yourselves!" Gant emphasized. "Have you not seen your watches? Are you not aware of what is happening to you? You're getting younger damn it, and when you become as young as these poor bastards have, you'll be dead!"

"I can't believe this shit," Evans stated incredulously. "There's no way in hell you can stand there and tell me that those bones belong to men like us."

"It's bullshit," Steve added.

"It fits the rest of our information about this place, but I still can't imagine it." Clyde Burke commented.

"Goddammit, you don't have to imagine it! See for yourselves!" Gant shrieked.

With his outburst Gant yanked a ragged cloth away from its hooks and revealed a dark alcove which he illuminated with a flashlight. Within lay a silent, sullen infant with dark, pleading eyes. The child made not a whimper, but merely turned her head to face us as we approached her. She was bound to the floor by ropes

made of animal hair.

We watched in horror and amazement as the child began writhing and gasping in agony. Thick red blood began to seep from the infant's navel as a glistening umbilical cord started to grow outward. A gurgling rattel bubbled from the tiny mouth. With the shrill, hoarse gasp of an embryonic voice, the child pleaded: "Please Hank, for God's sake kill me."

Stunned by this sudden burst of unnatural speech, we fully realized its impact when Gant fired a single shot from his .45 and splattered the tiny brains of the poor woman who lay before us.

"She was my wife," Gant said coldly.

Something of Gant's demeanour crept into our souls. He was a man who had been here for years. If he could not find any means of escape, what chance had we? Gant kindly sent some of his men out to protect the plane that afternoon. In the evening we sat and listened to the village musicians who performed a splendid concert featuring drums, guitars, flutes, and harmonicas. We would offer our services in any way possible, and assist in scouting of new settlements, farmland, and water supplies. We would spend time helping the trapped of the Devil's Sea survive in the strange world of Akleos, and if the time came, we would try to return to the world where the sun does not shine a pale violet hue, and where the rolling hills are not of bloody red.

—to be continued—



# Off on a tangent

JOE SYLVESTER

## "A hunting we will go..."

forced me to think about why I hunted and if it was right.

I thought about it and came to the conclusion that there are more good reasons to hunt than I had ever thought of when I was fourteen.

There is an old argument about hunting that I think everyone has heard at one time or another. The argument states that hunting keeps the animal population in balance.

With our woods decreasing in size all the time and at the same

time animals constantly reproducing, the balance is bound to be thrown off a bit. That's what wildlife management is for—to keep a balance by deciding what can be hunted and what must be preserved.

Hunting is not a sport where animals are slaughtered with no way available for them to defend themselves. They have various defenses which make it quite difficult to catch them, as any hunter knows. The whitetail

(continued on page seven)

## Bloomsburg Student Concert Committee

### Third World Cultural Society Present

# B.T. Express and the Striders

Sat., Nov. 20 Haas Aud.

Tickets \$5 with I.D. \$6 without

# Letters to the editor... Letters to t

Letters to the editor must be typed on a 60 space line and be in the Voice Office no later than 7:30 p.m. on Sunday or Tuesday Night. There is a 400 word limit. All letters must be signed and names will be withheld on request.

## Gold mine \$

Dear Editor;  
I read Dale Myers' editorial about the Husky Contingency Fund with interest. I've only been at BSC two years, but I never knew we, the students, had such money sitting in "a gold mine" untouched. Paul Reardon's idea about buying a student resort camp for \$125,000 is good, but to what use will the \$125,000 remaining be put? Here is my suggestion:

For my "Anthro" class last semester I interviewed a few students, including three foreign students, for a paper on kinship. Two of the foreigners were very concerned about not being able to go home even on holidays. Their reason? Because they did not have enough money. Won't it be a GREAT idea if BSC, as a body, could send at least one of them, if not both, home for Christmas? You and I know what it feels like to be away from home for even a month! The money that will be involved in this venture will be very minimal, (maybe \$1000 for both). True this will not be an investment from which we expect some cash return in the future, but I did gain, and I'm sure you will too, a lot of knowledge about their countries from talking with them.

Kathy Moyer

Ed. note:  
This is certainly a valid suggestion however, it is envisioned that some of the remaining money would be used to maintain and winterize the proposed resort.

## Writing Prof. Exam

To the editor:  
On behalf of my fellow undergraduate students who either had or are presently enrolled in Writing Proficiency Exam 102. Allow me to add my comment to the proverbial pile of peeved protest pertaining to Writing Proficiency Exam 102: I damn and denounce the English Department's narrow-mindedness and its determination and perseverance in discouraging self-expression, thus stunting an individual's intellectual growth.

May I offer a suggestion so it cannot be said that this comment is devoid of any attempt

whatsoever toward constructive criticism? First, to expel all doubts that naive students such as myself may have as to the nature of the course, change the title Writing Proficiency Exam to Writing Insufficiency Exam. Secondly, strike the newly-named course from the curriculum of general education requirements.

After these alternations have been adopted observe how many students enroll in the newly-named course. It would not greatly amaze me if no one availed himself of the opportunity to learn how to please professors while at the same time stifling one's own need to express oneself dynamically and without undue restriction.

I make no apologies to anyone regarding my feelings concerning a person's need to create freely and express his (her) ideas reasonably using accountable means to arrive at accountable ends.

Signed,  
A concerned communications major

## Where are the parties?

Dear Editor:  
I have an idea. One that might be a good fund-raiser for an interested sorority or fraternity. The idea is to get a road map of Bloomsburg and imprint on it the location and phone numbers of all of the Greek population that occasionally host parties. This would allow people who have dry throats to locate the source to satisfy their needs.

At the present time there is no way of people knowing about a party unless it's through the grapevine which isn't always accurate. Another possible is to follow the crowd of people emerging from Elwell Hall with beer mugs in their hands.

One night out of pure desperation, I walked into the Bloomsburg Police Headquarters and asked the officer on duty if he knew where there were any parties. Believe me, this is not the proper course to take.

I've often wondered why the parties were not advertised in BSC today. After careful consideration I arrived at the conclusion that if this were done, some of the faculty might

start showing up at the parties. This is alright if you can respect your Prof after he told you that you shouldn't be here but home studying.

Of course, there's always the possibility of drowning one of your favorite Profs in beer and

## Symposium

# Good profs, why college scheduled for workshops

by BONNIE EPLETT

Symposium workshops and discussion groups will be held Wednesday morning, beginning at 10:30. Both the students and faculty will have ample opportunity to voice their opinions and challenge any system they feel is in need of improvement. These workshops will be held until 11:45.

Dr. James Huber, working with Kathy Hotchkiss and Garry Lausch will be examining the makings of a good prof during the workshop, "What is a Good College Professor?" Conversation will center around what the students and faculty feel are relevant qualities of a worthy professor and how to attain them.

## CAMPUS CULTURAL CLIMATE

How the cultural climate relates to student experiences on campus, will be debated during "The Cultural Climate" workshop in Haas Gallery. Headed by Dr. Percival Roberts III, a syllabus will be presented in respect to the cultural climate of many schools in Pennsylvania and a direct look at BSC life.

Another workshop, "Desirable traits in College Students," with John Mulka as Moderator, will analyze the BSC student personality and discuss the traits found by the students and faculty to gain further insight to their reaction within the college itself.

"Why a College Education?" workshop will host the controversial subject of the relevance of higher education. Mrs. Caroline Bird, author of The Case Against College, will speak on her research and consequently her book which denies the need for a college

getting away with it. Needless to say, President McCormick probably doesn't want his faculty coming in with hangovers the next day, even though they do it now without attending a Greek party.

So how about it? A map that I

can use to locate the answer to my endless thirst of intoxicating beverages. If it turns out to be a good idea, they might even put it in the Freshman (Transfer) orientation package.

David F. Jones

education. Heading the discussion period after her talk in Carver Auditorium will be Dr. Gene Taylor.

## BORING CLASS LECTURES

The problems concerning uninteresting class lectures will also be examined. Creative Solutions and their approach in the Classroom will be contemplated with an emphasis on the flexibility of delivery. A discussion will be conducted by Mr. Richard Donald during the workshop "Creativity in Teaching" in Andross Library. Cindy Lewis and Stewart Waldman will lecture on student self modification of study habits. After this, faculty and institutional support will be given. Most of this session "Self Motivation of Study Habits", held in Kehr Multipurpose room A, will encompass an optional system of self study and self discipline for the students.

Dr. James Sperry chairing the session on "Establishing an Honors Program at BSC" in Bakeless 106, will examine ten different types of honors programs, established by the National Collegiate Honors Program and combinations thereof. Sperry feels this an opportune way to "enhance the academic climate here at Bloomsburg," and "better chances for post-graduate employment." This program has been student initiated and if there is a lack of interest on the part of the student body, any hoped-for Academic Honors program shall fold.

Having a considerable effect on classroom performances are certain legal decisions concerning students rights and obligations, as well as teachers. These laws and regulations will be dealt with and debated in room 86 Hartline, during the "Legal Moral and Contractual Obligations in the Classroom", moderated by Mr. William Acierno and William Cluley.

During the "Technology Based Education" workshop, headed by Dr. Matthew Zopetti, the usages of technology in Biology, Art, English and Audio Visual Education will be examined. Also discussion on the proposal of media-based learning and its influence on the public will be tied in during this session.

Mr. Eric Frohman reveals one of the major problems in college today is the lack of preparation in the communication skills of writing and speech. During the Workshop "Communication Com-

petencies" in Bakeless 107, this problem shall be discussed and possible answers explored by some of the faculty of Bloomsburg.

## MINORITIES ON CAMPUS

Many of the minorities on campus will recite their views both personal and collective about the college. Mr. John Cook, Genevieve Gabacar, and twelve panel members will help with the discussion. A film "What's a Minority" will also be shown. This shop "Minority Group Education" has not yet been designated.

Dr. Author Lysiak and Mr. Chuck Thomas, co-chair the "Academic Advisement and Counseling" workshop, Hartline 79. Here the process of assigning major study areas and advisors to students, along with the problems will be discussed, then the topic will shift to the offices supporting this action and its impact on the student, followed by a general discussion.

Reverend Jay Rochelle is hosting a workshop "Dialogue Between the Students" in the Bakeless Faculty Lounge hoping to encourage a better communication regarding the academic and intellectual climate on campus. Causes and cures will be determined, and possibly a suggestion will start and campaign against the negativism here.

## GRIPE SESSION

A gripe session will be staged in Hartline 83, with Mr. Tony Sylvester presiding as moderator. Topics dealing with anything other than the academic and intellectual climate, such as housing and tuition are suitable topics to bring into the workshop "Open Discussion".

"Making Transitions in the Real World" workshop with Ms. Charlotte M. Hess chairwoman is an attempt to help students acquire the right information on adjusting to the working world. There will be a large variety of consultants to speak with, all discussion is informal. Any questions or advice shall be duly answered concerning the

(continued on page seven)

## THE CAMPUS VOICE

Executive Editor .....	Dale Myers
Business Manager .....	Jerry Eisenhart
Managing Editor .....	Peggy Moran
News Editors .....	Diane Abruzzese, Bill Troxell
Feature Editor .....	Barb Hagan
Sports Editor .....	Ed Hauck
Photography Editors .....	Wayne Palmer, Al Paglioluogo
Copy Editor .....	Vickie Mears
Circulation Manager .....	Bill Dennis
Advertising Manager .....	Craig Winters
Advisor .....	Mr. Richard Savage

Reporters: Jack Furniss, Tim O'Leary, Stuart Dunbar, George Sheloka, Rob Schlecter, Laurie Pollock, Duane Long, Tom Yuracka, Jay Jones, Lou Hunsinger, Jim Paffley, Ann Jeffers, Eric Yamoah, George Baschini, Joe Sylvester, Denise Rath, Kerry Hickey, Sandy Myers, Mary Sanford, Rick Stiller, Al Schoch, Bonnie Eplett, Mark Mullen, Holly Miller, Eileen Callahan, Lenora Firsching, Julie Stamels  
Photography: Bob Shields, Alan Pedersen, Pamela Morse, Albert Oussoren, Alan Musser, Ron Troy, Jo Willard, Bonnie Eplett, Craig Reese, Kathy Piszinski  
Darkroom Assistant: Tim Hough  
Cartoonist: Steve Wetzel  
Copyreaders and Typists: Pam Vacina, Terry Sweeney, Sue Wright, Stephanie Snyder.

The Campus Voice offices are located on the second floor of the Kehr Union. The phone number is 389-3101. The Voice is governed by the Editorial Board, with the final responsibility for all material resting with the executive editor as stated in the Joint Statement of Freedoms, Rights and Responsibilities of students at Bloomsburg State College. The Campus Voice reserves the right to edit all letters and copy submitted. A maximum of 400 words will be placed on all letters to the editor with an allowance for special exceptions. All letters to the editor must be signed and have a telephone number and address attached. Names will be withheld upon request. NOTE: The opinions voiced in the columns, feature articles and editorials of the Campus Voice are not necessarily shared by the entire staff.

The Campus Voice would like to acknowledge that the appearance of the name of Joe Surdovel in connection with the letter signed "Worried voter, was an error. His name should have appeared under the letter concerning Bill Green.



Campus Voice photo editor Wayne Palmer displays impeccable sprinting form on the way to lunch.

(Photo by Hough)

## Campus Beautification continues to plan recreation area, plaza

by JACK FURNISS

The BSC Landscaping and Beautification Committee is finalizing plans and in some cases beginning work on a number of projects designed to enhance the external character of our college.

The proposed student recreation area, backed by student funds, will soon be bid, for the first time by itself. It was decided that this was the most effective way to use what money is available, rather than bidding a number of projects together.

### AUMILLER PLAZA

The Aumiller Plaza, a project in memory of Lee Aumiller a

former BSC professor who died unexpectedly, is under construction now. This area is located between the Union, the Scranton Commons and Lycoming Hall. The plan includes approximately three benches, some concrete work and tree planting. The funds are controlled by Mrs. Aumiller, supplemented in part by the Alumni Association.

### TREES AND FLAG POLES

Tree planting on the town side of Schuylkill Hall is due to begin this week. This work is being done by funds donated by Kawneer Inc. There are approximately \$1,500 worth of trees being purchased for this project

and some design work is tentatively scheduled to begin in the next couple of weeks around Lycoming Hall. The Committee must approve the contractors suggestions on particular items.

The Beautification Committee is also working on purchasing three flagpoles to be placed on the parking lot in front of the Administration Building. The total cost of two 25 foot poles and one 30 foot in length will be about \$2,200, including the purchase price and installation. The money for this project is being offered by the Class of 1976.

Two other projects primarily attributable to the Committee, are being organized.

### CONTRIBUTIONS

The family of Gertrude Follmer Lowry, a BSC alumni who died in August, in lieu of flowers, asked friends to make contributions to the Alumni Association, specifically for campus beautification. Donald Watts, Executive Director of the Alumni Association, has received \$315 and is confident that more will be coming in.

The project involves the planting of four trees around the corner of Carver Hall. The actual implementation has been hampered by the construction work being done on the building and the work crews' equipment.

**SNEIDMAN'S**  
Jewelry Store  
130 East Main St.  
784-2747

Watches, trophies,  
and greek items  
a specialty

**FURNISHED APARTMENT**  
Available for Spring 2 blocks from campus \$15 weekly per person. Includes heat and garbage collection. Call 784-1044, evenings.

**SNEIDMAN'S**  
Jewelry Store  
130 East Main St.  
784-2747

Watches, trophies,  
and greek items  
a specialty

**SNEIDMAN'S**  
Jewelry Store  
130 East Main St.  
784-2747

Watches, trophies,  
and greek items  
a specialty

**SNEIDMAN'S**  
Jewelry Store  
130 East Main St.  
784-2747

Watches, trophies,  
and greek items  
a specialty

**SNEIDMAN'S**  
Jewelry Store  
130 East Main St.  
784-2747

Watches, trophies,  
and greek items  
a specialty

**SNEIDMAN'S**  
Jewelry Store  
130 East Main St.  
784-2747

Watches, trophies,  
and greek items  
a specialty

**SNEIDMAN'S**  
Jewelry Store  
130 East Main St.  
784-2747

Watches, trophies,  
and greek items  
a specialty

**SNEIDMAN'S**  
Jewelry Store  
130 East Main St.  
784-2747

Watches, trophies,  
and greek items  
a specialty

**SNEIDMAN'S**  
Jewelry Store  
130 East Main St.  
784-2747

Watches, trophies,  
and greek items  
a specialty

**SNEIDMAN'S**  
Jewelry Store  
130 East Main St.  
784-2747

Watches, trophies,  
and greek items  
a specialty

**SNEIDMAN'S**  
Jewelry Store  
130 East Main St.  
784-2747

Watches, trophies,  
and greek items  
a specialty

**SNEIDMAN'S**  
Jewelry Store  
130 East Main St.  
784-2747

Watches, trophies,  
and greek items  
a specialty

**SNEIDMAN'S**  
Jewelry Store  
130 East Main St.  
784-2747

Watches, trophies,  
and greek items  
a specialty

**SNEIDMAN'S**  
Jewelry Store  
130 East Main St.  
784-2747

Watches, trophies,  
and greek items  
a specialty

**SNEIDMAN'S**  
Jewelry Store  
130 East Main St.  
784-2747

Watches, trophies,  
and greek items  
a specialty

**SNEIDMAN'S**  
Jewelry Store  
130 East Main St.  
784-2747

Watches, trophies,  
and greek items  
a specialty

**SNEIDMAN'S**  
Jewelry Store  
130 East Main St.  
784-2747

Watches, trophies,  
and greek items  
a specialty

**SNEIDMAN'S**  
Jewelry Store  
130 East Main St.  
784-2747

Watches, trophies,  
and greek items  
a specialty

**SNEIDMAN'S**  
Jewelry Store  
130 East Main St.  
784-2747

Watches, trophies,  
and greek items  
a specialty

**SNEIDMAN'S**  
Jewelry Store  
130 East Main St.  
784-2747

Watches, trophies,  
and greek items  
a specialty

**SNEIDMAN'S**  
Jewelry Store  
130 East Main St.  
784-2747

Watches, trophies,  
and greek items  
a specialty

**SNEIDMAN'S**  
Jewelry Store  
130 East Main St.  
784-2747

Watches, trophies,  
and greek items  
a specialty

**SNEIDMAN'S**  
Jewelry Store  
130 East Main St.  
784-2747

Watches, trophies,  
and greek items  
a specialty

**SNEIDMAN'S**  
Jewelry Store  
130 East Main St.  
784-2747

Watches, trophies,  
and greek items  
a specialty

**SNEIDMAN'S**  
Jewelry Store  
130 East Main St.  
784-2747

Watches, trophies,  
and greek items  
a specialty

**SNEIDMAN'S**  
Jewelry Store  
130 East Main St.  
784-2747

Watches, trophies,  
and greek items  
a specialty

**SNEIDMAN'S**  
Jewelry Store  
130 East Main St.  
784-2747

Watches, trophies,  
and greek items  
a specialty

**SNEIDMAN'S**  
Jewelry Store  
130 East Main St.  
784-2747

Watches, trophies,  
and greek items  
a specialty

**SNEIDMAN'S**  
Jewelry Store  
130 East Main St.  
784-2747

Watches, trophies,  
and greek items  
a specialty

**SNEIDMAN'S**  
Jewelry Store  
130 East Main St.  
784-2747

Watches, trophies,  
and greek items  
a specialty

**SNEIDMAN'S**  
Jewelry Store  
130 East Main St.  
784-2747

Watches, trophies,  
and greek items  
a specialty

**SNEIDMAN'S**  
Jewelry Store  
130 East Main St.  
784-2747

Watches, trophies,  
and greek items  
a specialty

**SNEIDMAN'S**  
Jewelry Store  
130 East Main St.  
784-2747

Watches, trophies,  
and greek items  
a specialty

**SNEIDMAN'S**  
Jewelry Store  
130 East Main St.  
784-2747

Watches, trophies,  
and greek items  
a specialty

**SNEIDMAN'S**  
Jewelry Store  
130 East Main St.  
784-2747

Watches, trophies,  
and greek items  
a specialty

**SNEIDMAN'S**  
Jewelry Store  
130 East Main St.  
784-2747

Watches, trophies,  
and greek items  
a specialty

**SNEIDMAN'S**  
Jewelry Store  
130 East Main St.  
784-2747

Watches, trophies,  
and greek items  
a specialty

**SNEIDMAN'S**  
Jewelry Store  
130 East Main St.  
784-2747

Watches, trophies,  
and greek items  
a specialty

**SNEIDMAN'S**  
Jewelry Store  
130 East Main St.  
784-2747

Watches, trophies,  
and greek items  
a specialty

**SNEIDMAN'S**  
Jewelry Store  
130 East Main St.  
784-2747

Watches, trophies,  
and greek items  
a specialty

**SNEIDMAN'S**  
Jewelry Store  
130 East Main St.  
784-2747

Watches, trophies,  
and greek items  
a specialty

**SNEIDMAN'S**  
Jewelry Store  
130 East Main St.  
784-2747

Watches, trophies,  
and greek items  
a specialty

**SNEIDMAN'S**  
Jewelry Store  
130 East Main St.  
784-2747

Watches, trophies,  
and greek items  
a specialty

**SNEIDMAN'S**  
Jewelry Store  
130 East Main St.  
784-2747

Watches, trophies,  
and greek items  
a specialty

**SNEIDMAN'S**  
Jewelry Store  
130 East Main St.  
784-2747

Watches, trophies,  
and greek items  
a specialty

**SNEIDMAN'S**  
Jewelry Store  
130 East Main St.  
784-2747

Watches, trophies,  
and greek items  
a specialty

**SNEIDMAN'S**  
Jewelry Store  
130 East Main St.  
784-2747

Watches, trophies,  
and greek items  
a specialty

**SNEIDMAN'S**  
Jewelry Store  
130 East Main St.  
784-2747

Watches, trophies,  
and greek items  
a specialty

**SNEIDMAN'S**  
Jewelry Store  
130 East Main St.  
784-2747

Watches, trophies,  
and greek items  
a specialty

**SNEIDMAN'S**  
Jewelry Store  
130 East Main St.  
784-2747

Watches, trophies,  
and greek items  
a specialty

**SNEIDMAN'S**  
Jewelry Store  
130 East Main St.  
784-2747

Watches, trophies,  
and greek items  
a specialty

**SNEIDMAN'S**  
Jewelry Store  
130 East Main St.  
784-2747

Watches, trophies,  
and greek items  
a specialty

**SNEIDMAN'S**  
Jewelry Store  
130 East Main St.  
784-2747

Watches, trophies,  
and greek items  
a specialty

**SNEIDMAN'S**  
Jewelry Store  
130 East Main St.  
784-2747

Watches, trophies,  
and greek items  
a specialty

**SNEIDMAN'S**  
Jewelry Store  
130 East Main St.  
784-2747

Watches, trophies,  
and greek items  
a specialty

**SNEIDMAN'S**  
Jewelry Store  
130 East Main St.  
784-2747

Watches, trophies,  
and greek items  
a specialty

**SNEIDMAN'S**  
Jewelry Store  
130 East Main St.  
784-2747

Watches, trophies,  
and greek items  
a specialty

**SNEIDMAN'S**  
Jewelry Store  
130 East Main St.  
784-2747

Watches, trophies,  
and greek items  
a specialty

**SNEIDMAN'S**  
Jewelry Store  
130 East Main St.  
784-2747

Watches, trophies,  
and greek items  
a specialty

**SNEIDMAN'S**  
Jewelry Store  
130 East Main St.  
784-2747

Watches, trophies,  
and greek items  
a specialty

**SNEIDMAN'S**  
Jewelry Store  
130 East Main St.  
784-2747

Watches, trophies,  
and greek items  
a specialty

**SNEIDMAN'S**  
Jewelry Store  
130 East Main St.  
784-2747

Watches, trophies,  
and greek items  
a specialty

**SNEIDMAN'S**  
Jewelry Store  
130 East Main St.  
784-2747

Watches, trophies,  
and greek items  
a specialty

**SNEIDMAN'S**  
Jewelry Store  
130 East Main St.  
784-2747

Watches, trophies,  
and greek items  
a specialty

**SNEIDMAN'S**  
Jewelry Store  
130 East Main St.  
784-2747

Watches, trophies,  
and greek items  
a specialty

**SNEIDMAN'S**  
Jewelry Store  
130 East Main St.  
784-2747

Watches, trophies,  
and greek items  
a specialty

**SNEIDMAN'S**  
Jewelry Store  
130 East Main St.  
784-2747

Watches, trophies,  
and greek items  
a specialty

**SNEIDMAN'S**  
Jewelry Store  
130 East Main St.  
784-2747

Watches, trophies,  
and greek items  
a specialty

**SNEIDMAN'S**  
Jewelry Store  
130 East Main St.  
784-2747

Watches, trophies,  
and greek items  
a specialty

**SNEIDMAN'S**  
Jewelry Store  
130 East Main St.  
784-2747

Watches, trophies,  
and greek items  
a specialty

**SNEIDMAN'S**  
Jewelry Store  
130 East Main St.  
784-2747

Watches, trophies,  
and greek items  
a specialty

**SNEIDMAN'S**  
Jewelry Store  
130 East Main St.  
784-2747

Watches, trophies,  
and greek items  
a specialty

**SNEIDMAN'S**  
Jewelry Store  
130 East Main St.  
784-2747

Watches, trophies,  
and greek items  
a specialty

**SNEIDMAN'S**  
Jewelry Store  
130 East Main St.  
784-2747

Watches, trophies,  
and greek items  
a specialty

**SNEIDMAN'S**  
Jewelry Store  
130 East Main St.  
784-2747

Watches, trophies,  
and greek items  
a specialty

**SNEIDMAN'S**  
Jewelry Store  
130 East Main St.  
784-2747

Watches, trophies,  
and greek items  
a specialty

**SNEIDMAN'S**  
Jewelry Store  
130 East Main St.  
784-2747

Watches, trophies,  
and greek items  
a specialty

**SNEIDMAN'S**  
Jewelry Store  
130 East Main St.  
784-2747

Watches, trophies,  
and greek items  
a specialty

**SNEIDMAN'S**  
Jewelry Store  
130 East Main St.  
784-2747

Watches, trophies,  
and greek items  
a specialty

**SNEIDMAN'S**  
Jewelry Store  
130 East Main St.  
784-2747

Watches, trophies,  
and greek items  
a specialty

**SNEIDMAN'S**  
Jewelry Store  
130 East Main St.  
784-2747

Watches, trophies,  
and greek items  
a specialty

**SNEIDMAN'S**  
Jewelry Store  
130 East Main St.  
784-2747

Watches, trophies,  
and greek items  
a specialty

**SNEIDMAN'S**  
Jewelry Store  
130 East Main St.  
784-2747

Watches, trophies,  
and greek items  
a specialty

**SNEIDMAN'S**  
Jewelry Store  
130 East Main St.  
784-2747

Watches, trophies,  
and greek items  
a specialty

**SNEIDMAN'S**  
Jewelry Store  
130 East Main St.  
784-2747

Watches, trophies,  
and greek items  
a specialty

**SNEIDMAN'S**  
Jewelry Store  
130 East Main St.  
784-2747

Watches, trophies,  
and greek items  
a specialty

**SNEIDMAN'S**  
Jewelry Store  
130 East Main St.  
784-2747

Watches, trophies,  
and greek items  
a specialty

**SNEIDMAN'S**  
Jewelry Store  
130 East Main St.  
784-2747

Watches, trophies,  
and greek items  
a specialty

**SNEIDMAN'S**  
Jewelry Store  
130 East Main St.  
784-2747

Watches, trophies,  
and greek items  
a specialty

**SNEIDMAN'S**

# Area center focuses on answering women's needs

by JULIE STAMETS

The interests and needs of women in society today is the main priority of the Women's Center in downtown Bloomsburg. While focusing its emphasis on emotional support and emergency refuge for abused women, the Women's Center is constantly expanding and offers much more to area women.

On Thursday, October 28, 1976, a meeting of the Women's Awareness Alliance presented Cindy Rochelle, from the Women's Center as guest speaker. Ms. Rochelle centered her speech around the growing accommodations that are now available to women in Columbia County and surrounding areas.

Since its official birth on September 1, 1975, the Center has continually offered programs such as Assertiveness Training and Consciousness-raising groups to help women share their ideas and talents with others. The Consciousness-raising groups deal with women and related topics such as Sexuality, while the Assertiveness training involves both the sexes and how they relate to themselves and to each other. The Center offers Family Planning services to

women and to students, and also gives women access to a complete Women's Library, housing many excellent readings. There are workshops highlighting self-defense, child care, rape, and legal rights, to benefit women in learning more about themselves and their social role.

Perhaps the most important aspect of the Center is the Emergency refuge and the 24-hour telephone coverage to aid mentally and physically abused women. The physical and emotional abuse to women is a very dominant problem in Columbia County. The main cause for such a high percentage of physical abuse is the intense rate of unemployment. Many men are out of work and tend to take their frustrations out on the persons closest to them—their wives.

The 24-hour telephone coverage is available to any woman who needs refuge, medical assistance, or just someone to talk to. If the woman has been physically or sexually abused, the phone line is there for her to get help.

Many of the women who seek help from the Center and who have been ruthlessly abused,

are described by Ms. Rochelle as "Bizarre....unrecognizable" due to the extent of their injuries.

Most of the Center's connections are by telephone. All the people at the Center are volunteers who wish to help the abused women that call for aid. Listening is the greatest aid for as Ms. Rochelle states, "Many women don't have a friend in the world."

The Women's Center is the only area center of its kind. It is a place to make friends, and to bring together similar people and thoughts. The Center allows women to discover themselves, their strengths and weaknesses, in coping with their lives.

**There will be a student evaluation of those faculty members who are not tenured, in their fifth year of tenure, or who wish to be evaluated, the week of November 15 to 19. Only those faculty in the above categories will be evaluated at this time.**

## Upcoming ASPA conference discusses personnel admin.

Dr. William D. Buel, Jack B. Collage, and Paul M. Wallenhorst are among the nineteen distinguished leaders in the personnel field featured at the American Society for Personnel Administration, Region 3 Conference to be held November fifth-sixth, 1976 on the campus of BSC.

Dr. Buel's subject, "Validating Interviews, Biographical Forms, and Tests," is very topical and should prove of considerable interest. He will discuss proven techniques for structuring interview questions, biographical forms and employee selection tests to be used in predicting employee performance and length of service. Considerable emphasis will be given to methods that insure compliance

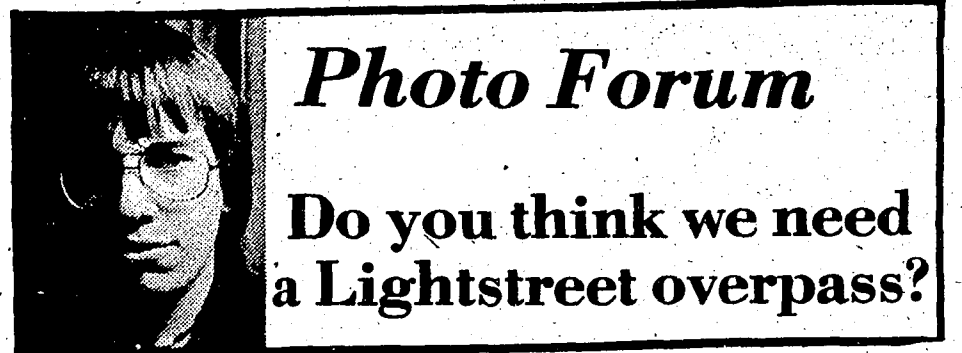
with current fair employment and discrimination legislation regulating the use of these pre-employment tools.

Messrs. Collage and Wallenhorst, the president and executive vice-president, respectively, of Personnel Consulting Services, Inc. of Erie, PA., will jointly lead three workshops. Two of these, "Effectively Counseling Employees and Handling Employee Complaints," and "Personnel Management for Line Managers," will be of interest to supervisors and managers at any organizational level, as well as the personnel specialist. Collage and Wallenhorst will present methods by which an operating manager can increase his subordinates' motivation and

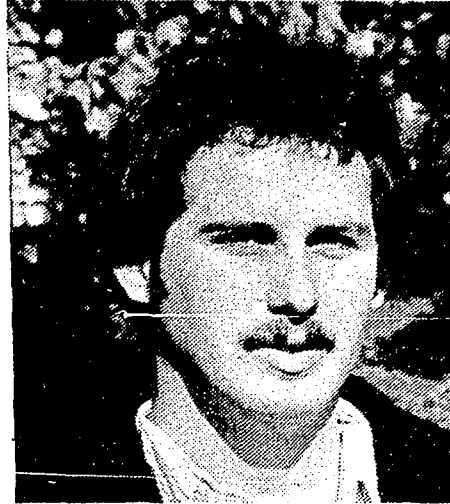
will explain how the operations line managers and the staff personnel manager can work together to utilize the personnel resources of the firm.

The third workshop, "Management by Objectives for Personnel," will show how the professional personnel can utilize the established management by objective principles in the varied functional activities of the typical personnel department.

The conference is open to any interested person. Full details regarding the nominal registration cost and procedure can be obtained from any member of the Susquehanna Personnel Management Association or from Professor Robert Hutchison, School of Business, Bloomsburg State College.



compiled by Wayne Palmer



Robert Albrecht Jr. — After last weekend's accident, I feel we need the overpass to eliminate future occurrences.



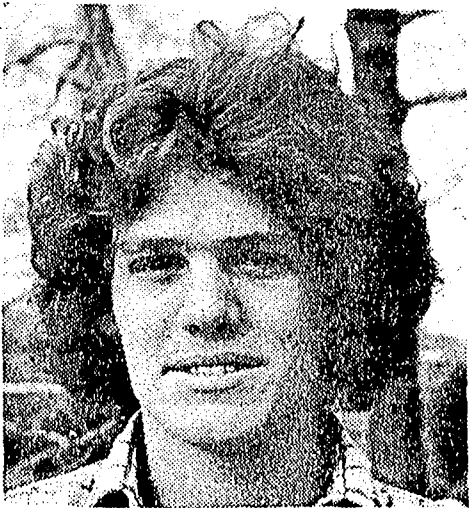
Robin Buchler — Definitely yes, I can just see someone this winter slipping and falling down the steps into the road.



Jane Bowie — Yes, because a lot of times you have to wait awhile to cross the street. A lot of bad accidents have happened there, and I'd like to see them prevented.



Joe Adcroft — I feel that an overpass would be a good idea. In the winter, it could be most convenient to a lot of people off campus, and it would make jobs for those building it.



Dennis Mills — I think there are better and cheaper ways to prevent accidents. Maybe better lighting and more law enforcement as far as speed control. A flashing light that would flash 24 hours a day might help also.



Debbit Krigor — Yes I do. This street is crazy. I have to walk across here at least five times a day. I'd hate to count all the times I almost got hit. This should have been done a long time ago!



Joanne Cronrath — Yes, I feel the overpass should be built. Not only will it avoid further accidents it will be extremely convenient for the students.



Norman Rentschler — Only on my first impression, I think that if the students and others are sensible enough and look both ways before crossing, no overpass is needed to the hospital parking lot.



**CLASS OF 1980 ELECTS OFFICERS** — There were many young students at BSC eager to fill the freshman class offices. After the final tabulations were made, the winners were announced: Vinco LaRuffa, President, Jane Gabriel, Vice President, Heidi Custer, Secretary and Ronee Greenburg, Treasurer.

(Photo by Palmer)



Use me, abuse me, throw me away - Halloween's over. (Photo by Hough)

# Bloom artist displays talent

by Mary Sanford

Culture is a happening at BSC. While we have yet to produce a great such as Picasso, the work of Kenneth Wilson is definitely something to see. The college community and public are invited to view his one man exhibit in Haas Gallery from October 31 to November 26.

Wilson, Associate Professor of Painting, has been on the BSC campus for fourteen years and really enjoys doing what he does best...painting. Says Wilson, "I've been painting all my life. The desire to paint has always been there." It is certainly evident he is skilled at his work. The show consists of paintings and drawings compiled over the past four years. The majority of the work is done in watercolor with some excellent charcoal sketches and oils as well.

The work of this artist is no ordinary endeavor. It reflects both an artistic and literary message mingled within the blurred images and ironic symbolism.

In one group of pictures is the image of a king that reappears as a central unifying figure. Others such as his landscapes show the face of the environment through the artist's eyes.

Much of Wilson's inspiration comes from his studio at Moosehead, Maine, and here at Bloomsburg. He commented, "Bloomsburg moves me with its beauty. It's a very special area."

Although there were many pictures that were favorites,

one of the most striking was called "Ice Out." Done in watercolor, it is a striking image of sunlight slowly melting ice on a pond and the mottled colors as the ice disappears.

The college community and public are invited to view Kenneth Wilson's work. The exhibition may be seen during normal visiting hours, 8 am til 5 pm on weekdays and during evening events in Haas Auditorium.

## John Abell

# Addressing the housing problem

by EILEEN CALLAHAN

The man in charge of room assignments, RA selection, and the various other chores which involve the housing office is John Abell.

Director of Housing since 1973, Abell was formerly the Director for six years at a small private Swedish Lutheran College in Minnesota.

A graduate and former resident dean at St. Lawrence University in upstate New York, he has his masters in College Administration.

The move from a small private college to the large campus of a state school has added "a breadth" to his experience. Abell added that "the sheer number of students has brought a new dimension to the job."

Many students are familiar with the off-campus housing problems. Abell explained that he has launched a "one man campaign to beef up off-campus

housing."

"It is an overwhelming job that has to be taken one step at a time." He realizes that even with the improvement he himself can effect problems will still persist.

As part of his campaign, it is his hope to make students aware of where they can go with off-campus housing problems. He is also trying to make them aware of their responsibilities as citizens of the off-campus community.

Although at present time the school has enough accommodations without "too much" overcrowding he feels that the problem will become more complex as time goes on. Abell is currently "attempting to keep pace with students needs."

Although Abell is putting an all out effort towards redirecting energies to the off-campus housing problems, he believes it is a problem faced by all institutions of this size. "(They) tend

to lag behind students needs, (it is) a constant struggle to run a housing office." Yet he feels that he is responding to those needs as quickly as possible.

As a member of the administration, Abell feels he has made a small contribution in making Bloomsburg a more personable and human directed institution.

He has found the whole atmosphere at BSC to be a balance between the needs of the institution and students. He explained that on the whole such a balance is not easy to reach.

Abell agrees wholeheartedly with the philosophy of the Student Life Department; he cares about the needs of the students and through his job he is trying to do everything possible to show that concern.

**Campus Voice Staff Meeting Monday Nov. 8 in the Voice office. Be there!**

## Discritique

# Heart gets right to it

by STUART DUNBAR

Before writing this next critique, I'd like to point out a mistake made in a previous article I wrote. In the critique on Jefferson Starships Spitfire, I wrote that it was the second Starship album produced, when in actuality it was their fourth... my apologies.

## HEART

### DREAMBOAT ANNIE-MUSHROOM RECORDS

Heart, a relatively big new group in the recording business, came out with the album mentioned above six months ago. This album, according to Billboard Magazine, is now the number six album selling in America.

The group features four members, who are Ann Wilson, Nancy Wilson, Steve Fossen, and Roger Fisher. Ann plays the flute and acoustic guitar, but her main role is handling all lead vocal and does background vocals, Nancy controls the electric guitar, both 12 and six string acoustic guitars and backing vocals. Steve plays the bass, while Roger does his bit with the lap steel and electric guitar. Others appear on the album such as Mike Derosier, Kat Henrikse, Duris Maxwell,

all doing drum parts on different songs. Helping to make this album are Howard Leese, Rob Deans, Geoff Foubert, Brian Newcombe, Mike Flicker, Tessie Bensussen, Jim Hall, and Roy Ayotte. I'd like to thank Ed Hauck's friend, Ed Silva, for letting me borrow this album to review.

Side One begins with "Magic Man" a semi-electric song about a girl being baited by a magic man on one hand and a mother asking her to come on home on the other. This song features a semi-lengthy instrumental with some good synthesizing to complete a well rounded song.

"Dreamboat Annie" (Fantasy) makes its first appearance as the second cut on this side. It is a soft easy floating song about a girl loved by the wind and the sea. This song seems to lead into "Crazy On You", a very popular song on many radio stations. Opening with guitar playing similar to Yes, it then moves into heavier material. The lyrics are both soft and hard. The girls world is falling apart except for one thing, her lover or her husband. There appears a short instrumental, then once

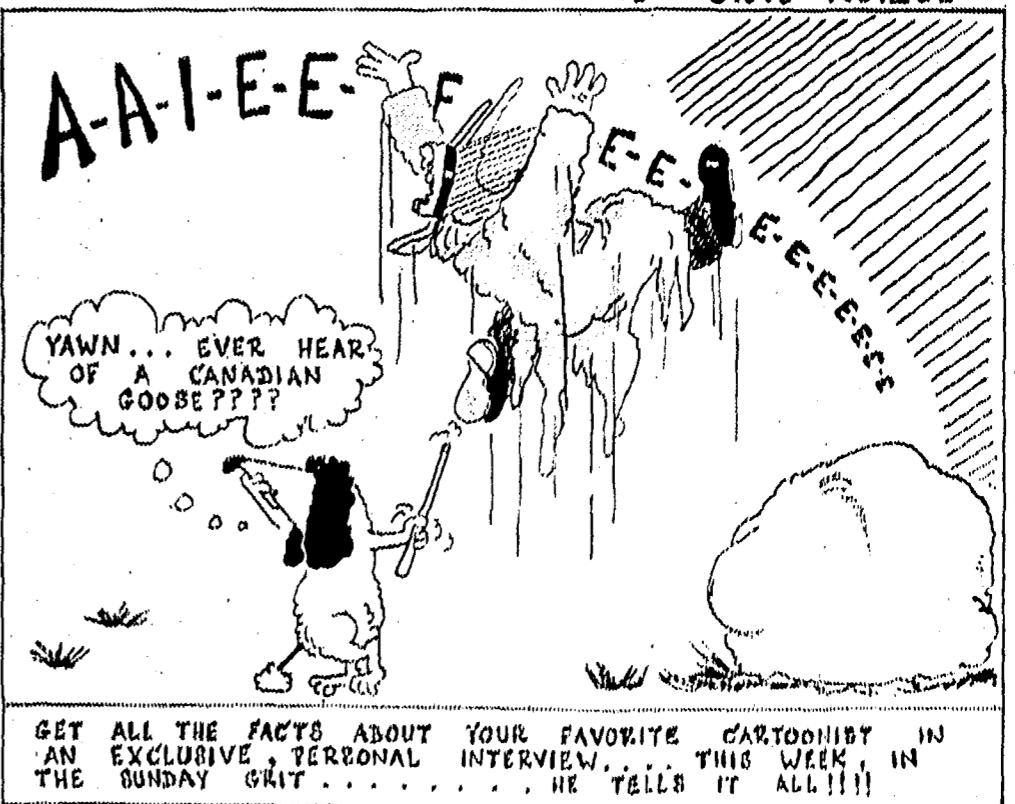
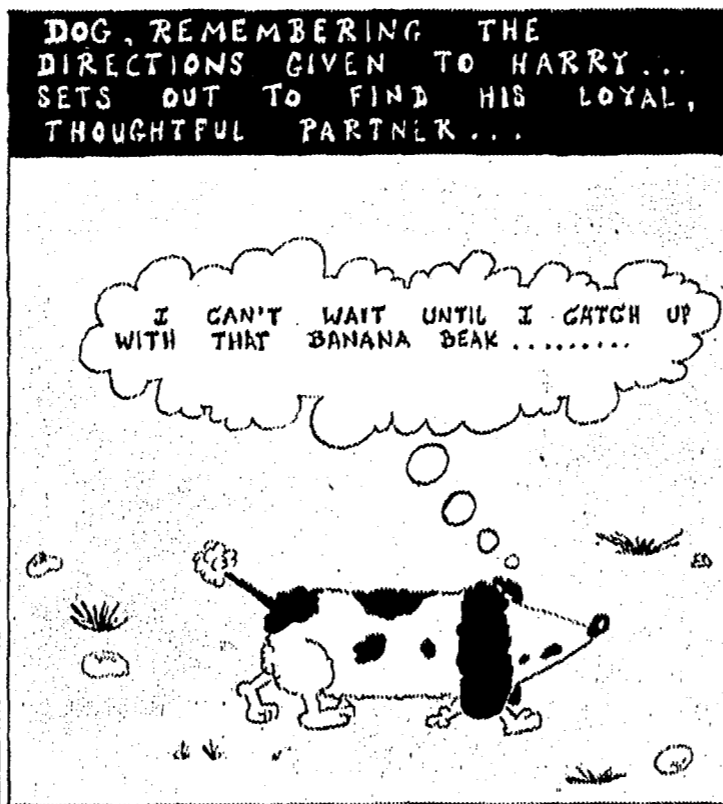
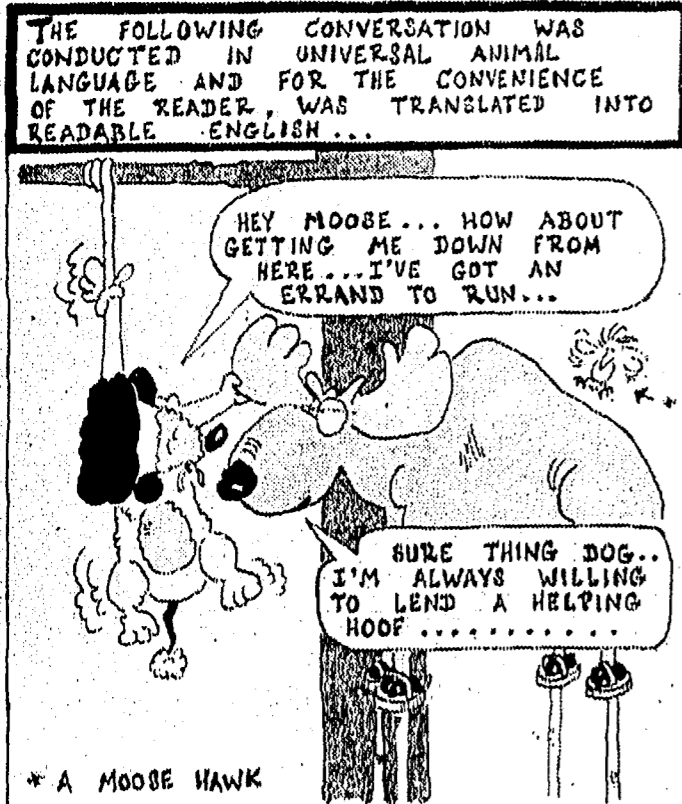
again back to the powerful lyrics "Crazy On You".

Seashore sound affects sets the stage for "Soul of the Sea". Seagulls in the distant background and crashing waves lead into this once again soft and meaningful song concerned about time, love, and the sea, then the subject changes to the coldness the world has to offer, then suddenly the song stops. All is quiet, then the soft voice returns talking about the ocean. The final cut is "Dreamboat Annie" (this is not a mistake). This version is longer than the first one but sung in the same tone and lyrics.

With a voice similar to both Christine McVie and Kiki Dee, Ann sings about meeting a man and they experience some extra curricular activities, but in the morning she feels different. "In the morning light you didn't look so nice, Guess you better hitch hike home!" "Love Me Like Music (I'll be Your Song)" is a soft love song about how much this woman loves her man. "We got love, we've got to feel it, and fall in love again, and fall in love again, we've got to be friends".

"Sing Child" opens with a harder electric guitar than previously heard on the album. This song is also being sung by Fossen and Fisher the two male members in the group. A flute like Jethro Tull playing adds flavor to this song and a guitar solo by Fisher is done very well. The message the song is trying to convey is the idea of how important it is to sing. "Sooner or later you've gotta get down and sing, Sing Child". "How Deep It Goes" another love song about a lover going away and the empty feeling it produces and the idea that once this love is over you gotta start over even though the old love still hurts. "Dreamboat Annie" (Reprise) is also the last cut on this side. The words are the same but the lyrics are slower and sung in a different tune. There is also a piano playing in the background this time around and there is an orchestra arrangement which did not exist in the two previous versions of this song.

## HARRY AND DOG



# Scuttlebutt...Scuttlebut...Scuttlebi

## UPCOMING CONCERT

BSCC (Bloomsburg Student Concert Committee), formerly known as BNE, in conjunction with the Third World Cultural Society is presenting BT Express with the Striders in Haas Auditorium at 9:00 p.m. on Saturday, November 20. Tickets are \$5 with I.D. and \$6 without.

## OLYMPIAN SHORT STORY AND POETRY CONTEST

The deadline for submissions to the Olympian has been extended to November 20. Prizes of \$10 for the best short story and \$5 for the best poem will be awarded. Send in your finest literary efforts. Become the center of attention of your friends who might otherwise have only the weather to talk about. Remember, we are also looking for good drawings and photos, too.

## FRIENDS OF WORLD TEACHING

FRIENDS OF WORLD TEACHING is an independent teachers' information agency dedicated entirely to assisting American and Canadian educators in securing teaching and administrative positions in English language-oriented schools and colleges overseas.

FRIENDS OF WORLD TEACHING is pleased to announce that hundreds of teachers and administrators are still needed to fill existing vacancies with overseas American Community schools, international, private, church-related, and industry-supported schools and colleges in over 120 countries around the world. They will supply applicants

with updated lists of these schools and colleges overseas, vacancies exist in almost all fields - at almost all levels. Foreign language knowledge is not required. Qualification requirements, salaries, and length of service vary from school to school, but in most cases are similar to those in the U.S. For further information, prospective applicants should contact:

## FRIENDS OF WORLD TEACHING

P.O. Box 6454

Cleveland, Ohio 44101

## RECITAL SLATED

A recital of American organ music will be held on November 7 at 8:15 pm at the St. Matthew Lutheran Church. The recital, by William Decker, is open to all and free.

## PLEDGE CLASS ACCEPTED

The brothers of Sigma Iota Omega are proud to introduce the acceptance of their new brothers of the 20th pledge class: Scott Young, Paul Griegz, Scott Barner, Jeff Deutch, Tom Calverio, Ted Avil, Mike Burkhardt, Dan Lechner, and Vince Romano.

## PA. MATH CLUB MEETS

The first annual meeting of the Pennsylvania Students in Math (PSIM) was held on October 23 at the University of Pittsburgh at Johnstown. Highlights of the meeting were the approval of a constitution and the election of officers. David Espe, a senior math major at BSC, was elected president; Rich Styer, former president of BSC's Math Club, was appointed chairman of the

Nominations and Elections Committee. Other BSC students attending the meeting were Leo Lulewicz, Patricia Cyganowski, and Nancy Wyshinski.

Interested in math? Join the Math Club! Contact president Vickie Engel for information.

## COFFEEHOUSE PERFORMANCE

Friday night, November 5, at 9:00 pm will witness the return of Sandy Zerby to BSC. Her music is reminiscent of the Peter, Paul, and Mary era of the mid-50's, sprinkled with the likes of such contemporary performers as Linda Ronstadt. All this will happen in the Union Multipurpose Room.

If you like original folk-rock tunes and if you remember "Luke's Buying", a good-time band who played BSC's 1975

Folk Festival, come on out and listen to "Palm Tree", the 1976 edition of "Luke's Buying", on Saturday night, November 6, at 9:00 in the Multipurpose Room.

## RED CROSS BLOODMOBILE

The Red Cross Bloodmobile will be at the Union Multipurpose Room on Thursday, November 11 from 10:45 to 4:45 and on Friday, November 12 from 9:45 to 3:45. Please take an hour of your time to help save a life! Sign up around the corner from the Union Information Desk.

## ATTENTION

### EDUCATION MAJORS

Campus interviews with Lower Dauphin School District of Middletown, PA, for both elementary and secondary education majors will be held Tuesday, November 9, from 9-4

p.m. Sign up in the Career Development and Placement Center in Ben Franklin Room 12.

## POSITIONS AS UNDERWRITERS

On campus interviews with Liberty Mutual Insurance Company for position as underwriters will be held Thursday, November 11. Sign up in the Career Development and Placement Center, Ben Franklin Room 12.

## RECREATION SCHEDULE

The recreation schedule is Friday, November 5, from 6:30-9:30 p.m. at Nelson Fieldhouse; Saturday, November 6, from 2-6 at Nelson Fieldhouse and Centennial Gym; and Sunday, November 7, from 2-6 at Nelson Fieldhouse and Centennial Gym.

## Hoops, pools, mats and track

(continued from page Eight) Brandt and Anthony Montouth. Each is going to Springfield, Missouri on November 12, 13 and 14 for the division II championships, in cross country.

Coach Hinkel is assisted by Frank Williams and Phil Krause once again to try to accommodate the need of the large number of candidates out for the team. Hinkel states that "we do have the raw material for a successful season."

Like all other sports, the financial cutback is detrimental to the team. It is hard for any coach to decide which athlete has the most

quality performance. This is the case with track.

The main goal of indoor track is to find out the strengths and weaknesses to use for outdoor competition. Due to limited facilities, there are no pole vaulters, discus throwers, triple jumpers or javelin throwers indoors. The indoor track season has begun earlier than usual, with practices running from 3:30 to 5:30.

## WRESTLING

In his fifth year of coaching the wrestling team, Coach Sanders proclaims "this is the best squad I've ever had in wrestling." A great amount of potential lies in the many recruited wrestlers, such as Tony Gallo, Joe Daugherty, Larry Larson, Ken Brodmerkel, Ron Dermo, Terry Donohue, Bart "Bucky" McCollum, Mel Sharp and Ernie Jackson. Yet, their strongest men are returning Steve Scheib, Dexter Derr, Carl Poff, Charles Carter, Mike Snyder, Jim Davis, Kevin Schuck, Bill Kaercher, Tony Caravella, Dan Lechner, Andy Cappelli, Jim Hohmann and

Giustino "Tino" DeMarco. The nucleus will be from three freshmen, seven sophomores and two juniors.

Their practice includes a two to five mile run, drills, weight lifting and different types of physical fitness conditioning. Their season is from October until March.

Sanders is so confident that he said, "we have the potential to be one of the top twenty in the country." Since they are now in division I, which includes Penn State, Clarion and Pittsburgh, they will have to maintain a high quality of performance. This shouldn't be too hard since six of the men are placemen in division I.

The overall outlook for the men's winter sports looks like there will be many exciting games because not only are the coaches optimistic, but the men are giving their best effort as individuals to help their team win. Student support would definitely add to atmosphere of excitement as the men show how they accept the challenge of sports.

## Speakers cop honors in Frostburg tourney

The Bloomsburg State College Forensic Society attended the annual Allegany Individual Events Championships held at Frostburg State College, Frostburg, Maryland, this past weekend (October 29-30). The local competitors did extremely well and returned with three trophies.

Regina Wild captured the First Place Trophy in Extemporaneous Speaking and just missed getting into the final round in Oral Interpretation - Prose. She also competed in Persuasion, Dramatic Duo, and Oral Interpretation - Poetry.

Jeff Hunsicker returned home with Fourth Place Trophy in

Extemporaneous Speaking and he also competed in Dramatic Duo.

Sue Waters captured the Fifth Place Trophy in Oral Interpretation - Prose and just missed making the final round in Extemporaneous Speaking. She also competed in After Dinner Speaking.

Mary Fowler competed in Oral Interpretation - Prose and Poetry and Kathie Steighmer was entered in Oral Interpretation - Prose and Poetry.

BSC had the smallest contingent of competitors out of the twenty-one colleges competing, but in the over-all sweepstakes awards, Bloomsburg ranked seventh out of twenty-one.

Members of the BSC Speech Communication and Theatre Arts Department who coach the Forensic Society are Professors Richard Alderfer, George Boss, Erich Frohman, Harry C. Strine III, Director of Forensics, and Mr. Neil Hilkert, Graduate Assistant. Dr. Melville Hopkins serves as Chair-person of the department. Mr. Hilkert accompanied the students to the tournament.

This weekend, November 5-6, 1976, the BSC Forensic Society will be hosting its 8th Annual Mad Hatter Individual Events Tournament. Most of the events will be held in Bakeless Center for the Humanities and the public is invited.

## Good profs

(continued from page three)

many careers represented there. This workshop will take place in the President's Lounge of Kehr Union.

The Symposium is being held for the betterment of the college. Therefore your presence and consequently your opinions will be greatly appreciated. Go and voice them.

## For Sale:

Two Irish Setter puppies, AKC registered, championship lines. \$50 a piece.

Call 784-4566

## SHARPING SHOES

16 E. Main St.



Florsheim Pro Keds Pedwin  
Life Stride

10% discount with BSC student ID  
September and October

## Women's sports

(continued from page eight) women's swimming and diving team will be strong. Practices run Monday through Friday and sometimes Sunday's when the schedule gets heavy. Right now, both swimmers and divers are working on conditioning, which averages about 5,000 to 6,000 yards per practice.

Gardner feels credit is due to the women since they started their conditioning on their own about three weeks ago. "We have got a lot of talent and enthusiasm," commented Gardner.

The divers, Sue White and Pat Seither have been working out for over a month with Doug McCourt. Tine DeVeries, Carla DeVeries, Tina O'Hara, Jan Crossmore, Molly Mondell, Julie Metz and Pricilla Elliott are returning to team as the strong swimmers. However, Mrs. Gardener is looking for a lot of action from Laurie Kemmerer, Jane Lamon and Ann Fadner.

Overall, both teams should have an exciting season ahead with the talent, devotion and enthusiasm displayed by the

women. Now all they need is some support from the students to make their efforts even more worthwhile.

## Off on tangent

(continued from page two)

deer, which is common in this part of the country, is one of the most difficult animals in the world to bag.

Small game such as rabbits, pheasants and grouse have the camouflage of the woods and fields to hide them. They also have their swiftness and craft (grouse will cover themselves with leaves to hide from hunters).

Animals that are killed are not wasted either. They are eaten and enjoyed just as poultry, beef, and pork are. People also kill chickens, cows, and pigs.

Of course, as in everything else, there are exceptions. There are hunters who abuse the privilege of hunting or who just don't respect nature. But as they say, you'll have this. (There, I said it).

# Hoops, pools, mats and track

by HOLLY MILLER

Basketball, swimming and diving, track and wrestling are the varsity winter sports which are now practicing in anticipation of a successful season. The coaches are optimistic even though the winter season is the hardest because of the long breaks.

Coach Chronister reminds the basketball team that "Defense is the key to the NCAA tournament!" With a pre-season

scrimmage scheduled for November 10, they don't have much time left for anything other than perfecting their shooting skills and their defense.

Burt Reese, Mike Herbert and Gary Tyler work along with Chronister to try to unify the team. However, with players like Jerry Radocha, Al Williams, Steve Bright, Rick Evans (co-captain), Rick Joseph and Jeff Slocum this is

not likely to be a hard task. Jerry Radocha has earned titles such as most valuable player in the Keystone Classic; he made the all tournament team for the LeMoyne Christmas Classic, the first team on the PA all-conference and the E.C.A.C. division II all star weekly honor roll five times.

The team practices Monday through Friday, and Sunday nights. They work with the idea that "you play as you practice."

With 25 students out for the team Mr. Chronister feels they have depth along with the reassurance of possible athletes to come.

## SWIMMING & DIVING

As for the swimming and diving team, Coach Eli McLaughlin has four All-American swimmers for the backbone of his team. They are Keith Torok, Wayne Richards, Stu Marvin and Jim Balchunas.

They work out five to seven days a week, depending upon their own individual work load. Individualism is vital according to McLaughlin because he believes that each swimmer or diver peaks on their own and not as a team. Nevertheless, most athletes peak around the same time since they use tournaments as goals.

The men have practiced since the first day of school. First working on endurance and strength, then deciding and perfecting their particular event, and now they are concerned with timing.

They will open with the Millersville Relays, which are very beneficial to the Huskies, on November 13. McLaughlin points out that they are a "small squad, but potent. They should do exceptionally well in all the individual events."

Other advantageous swimmers are Doug Thren and Kurt Moore. The divers are Brian Cox, Gary Havens, Kevin Johnson, Mark Robinson, Eric Slingerland and Scott Wiegard. All of these men are good, but due to lack of time and coaching, they "are the weakness if there is a weakness on this team." McLaughlin closed stating that their "competition has improved too, so the season should be very interesting."

## INDOOR TRACK

Returning for another season of indoor track is Barry Staton, Ken Curcio, Fred Koetteritz, Ed Hauck, Mark Bond, Brian Loudy, Steve Eachus, Jeff

(continued on page seven)

## Women's winter sports tell of training traits

by HOLLY MILLER

The women's varsity basketball team and the swimming and diving team have expanded in quality as well as quantity. Both teams have tougher schedules, but the coaches feel the women will be able to cope with this because of the desire and talent shown by them.

The basketball team has grown steadily and has proved to be a pacesetter in establishing several notable firsts in BSC's athletic history. This team was first in presenting BSC with a trophy for female athletic excellence. The coaches, Miss Joanne McComb and Ms. Susan Hibbs are both optimistic about this season.

As of now, there are about 35 women out for the team. They are going through the ritual calisthenics and ball handling techniques for the first few weeks, while also working on endurance. The team practices

Monday through Saturday.

The team is young, but experienced. Since the schedule has been "beefed up," the experience will come in handy. Returning players are Ellen French, Sally Miller, Ann D'Ignazio, Mary Balaban, Julie Ludrof, Terri Mangino and Sue McKeegan. As for the freshmen, the coaches agree that they are "impressed by the freshmen from the last couple of years." They have had better coaching, more playing experience, greater amount of diverse team techniques and more knowledge of the game tactics.

Their season goes from November until March, then in March, the AIAW (Association of Intercollegiate Athletics for Women), regionals. Last year they came in fourth out of 18 teams.

"Due to the change in schedules," McComb stated "last year we were confident we were the better team, but this

year we just don't know." This is a challenge to the coaches and the students as athletes.

## SWIM TEAM DEDICATION

Doug McCourt's video tapes and devotion allow Coach Gardner to believe that the (continued on page seven)



Quarterback Mike Canzler lets loose to a "fuzzy" receiver, in the foreground, during action last weekend. Tomorrow the Huskies will battle unbeaten East Stroudsburg at ESSC.

(Photo by Paglialunga)

## Stickwomen shine at Ssuq. FHA Tourney

by DENISE RATH

The annual Susquehanna Field Hockey Association Tournament, hosted by Wilkes College, was held last Saturday and Sunday.

Seven teams participated in the round-robin play: Bucknell University, Susquehanna University, Wilkes College, Lock Haven second team, Bloomsburg State College, Centre County Club, and a pick-up team consisting of substitutes from each school or club. The tournament culminated with the election of 24 women to represent the association at the Mideast Tournament to be held on November sixth to seventh in New York.

Bloomsburg compiled a 3-1-2 record on the weekend, placing second in the team standings. BSC played very well both days and just missed capturing the first place spot.

The high level of skill displayed by the Huskies is evidenced by the fact that five Bloomsburg women were selected for the two representative teams. Junior, Nancy Chapman, who had a fine season marked by consistently good play, will play the right inner position for the team. Second team members include sophomores Donna Santa Maria and Robin Maurer, and fresh-

man, Bev Crawford.

Santa Maria will play right halfback, a position at which she excelled throughout the season and during the tournament. Maurer, who possesses good speed, strong drives, and uncanny dodges, will be found in the wing position. Crawford, who during her first year at BSC showed outstanding goaltending ability, will defend the goal for the second team.

Crawford is also the only goalie from the tournament with a goal to her credit — she scored on a penalty stroke in a game against Lock Haven. Cheryl Krause, a sophomore with excellent offensive and defensive skills, will accompany the teams as a substitute. Junior co-captain Sharon Gettel, a fine, hustling, and hardworking line player, received honorable mention honors.

### The Ploughman.

Open 11:30 a.m. to 11:00 p.m.

featuring imported Heineken on tap plus homemade pizza and sandwiches

Located on Central Rd. across for WCNR.

In a cross-country story printed last week, information pertaining to Steve Eachus' reason for not participating was incorrect. The fact was that he was ill. Sports Ed.

### ASH & NAUNAS CONFECTIONERY

390 East St.

featuring snacks, ice cream cones, soft pretzels, greeting cards. Largest selection of magazines in town Daily & Sunday newspapers

Located 2 blocks from Campus on East St. at the big ice cream cone.

## ETCETERA DRESS SHOP

A unique new clothing store

located at:

2608 Old Berwick Road, Espy



Sale: Friday & Saturday

20% off tops

Long and short sleeve pullovers

India Art Gauze

Hooded zip front tops

Cotton pullovers

Beautiful selection of hand crafted silver jewelry

Open Monday 10-5

Tues., Wed., Thurs., Fri. 10-9

Saturday 9-5