

# College brings \$17 million to Bloomsburg

Local concerns about economic conditions have focused increasing attention on the recent growth of BSC and the impact the college has on the economy of Bloomsburg and the surrounding area. This year college operations will generate income for the area estimated at more than \$17.5 million.

## Payroll input

BSC has the largest payroll of any industry or business in the greater Bloomsburg area, with an annual budget of \$13,663,800 for personnel costs. With an authorized complement of 627 positions, the college presently employs 325 faculty members and ad-

ministrative personnel and 290 non-instructional employees. Additionally, approximately 60 people are employed in separate, but college-related operations of the College Store, Dining Service, Snack Bar and the Community Activities Office. These payrolls total to \$330,000.

Since taxes are closely related to payrolls, there is a direct benefit to municipalities and school districts through the one percent payroll tax, and the occupational and the per capita levies. Students who work part time for the College and the student payroll exceeds \$620,000-pay the one

percent tax, and all resident students, whether employed or not, are liable for other local taxes, unless they obtain exemption. Records for 1975 show that students paid \$30,271 in taxes, in addition to the one percent payroll tax.

But taxes are only the beginning of the economic benefits derived by the community from the college population of 6,500 students and employees.

Salaries of college employees will be spent much the same as those of other workers in the same banks and business establishments and for the same professional services. Those employees

will contribute to the same churches and charities, participate in the same fund-raising activities, and send their children to the same schools.

## Student Expenditures

But what about the nearly 6,000 students?

Approximately 2,400 of them will live on campus, but they will be seen frequently shopping downtown or at an area shopping center. The many cars that are serviced locally, the gifts, clothing and assorted necessities these students purchase generate business income believed to be in excess of \$750,000.

Nearly 1,500 non-commuting students live off-campus in Bloomsburg and the nearby areas. Rental income for

landlords is estimated at nearly \$1 million annually, with part of that rent money eventually reaching the municipalities through taxes. These off-campus residents are the students who will be seen in eating places or supermarkets, and their expenses for food total another \$1 million annually.

Commuting students, including part-time students along with the some 1,500 students who attend the summer sessions, also spend money in the community, especially at eating places, service stations and garages.

The amount involved in these student expenditures in the community and the nearby area is estimated at more than \$3 million annually. This

Bloomsburg State College, Bloomsburg, Pa. 17815

# THE CAMPUS VOICE

VOL. LIV  
No. 20

A Publication of the Maroon and Gold News

## CGA candidate

### Student voters united stress lawyer, law enforcement

The following is the platform for C.G.A. officers as submitted by **Student Voters United**. It will be the policy of **Student Voters United** and their officials to deal with issues and problems of concern to students. If elected they pledge to work toward the achievement of the following:

1. **Hiring a Lawyer for Students.** A lawyer will be able to advise students in relation to housing and financial matters, laws relating to welfare, G.I. Bill, food stamps, and other areas of student needs. The lawyer will review campus judicial procedures and conduct training sessions for members of judicial boards.

2. **Law Enforcement.** A complete review of relations with campus, town, and state police, especially including campus law enforcement

policy and rules. A revision of the unjust fines now levied which work to the detriment of students but not other members of the College Community. The establishment of a liaison group to bring together law enforcement agents and students in an effort to work out problems short of legal action.

3. **Retrenchment** Working in cooperation with the local organizations of C.A.S., APSCUF, AFSCME, and PSEA the retrenchment of faculty, staff, and programs must be fought on every level of the educational structure to stop the gradual erosion of the state college system.

4. **Politics and Public Relations.** The students of Bloomsburg State College will be encouraged to register and vote. **Student Voters United** will make every effort to have the County Registrar on campus for this purpose. Candidates for public office who support the financial, material, and legal needs of the College will be endorsed. Through a public relations program, an attempt will be made to make the surrounding community aware of the economic, cultural, and service impact of Bloomsburg State College. A student membership in the Chamber of Commerce will be considered. The President of the College will be requested to

have a study conducted on the College payroll, purchasing of food, services, and supplies, and student expenditures in the local community to bring home the economic importance of BSC to the people of Columbia County.

5. **Medical Services.** A committee will be appointed to review the contractual and other relations between Bloomsburg State College and the Bloomsburg Hospital, including the employment of medical personnel, emergency service, and the V.D. Clinic. The operation of the campus infirmary will also be investigated and attempt will be made to bring the College Doctor back on campus. The current student medical insurance policy will be studied with the intention of obtaining the best possible contract at the lowest price.

6. **Basic Documents.** A committee will be appointed to review and revise the Constitution of C.G.A. and the Statement of Student Rights, Freedoms, and Responsibilities. Among the proposed changes would be:

a. Ex-office membership on the Executive Board for the Third World Cultural Society and the Campus radio station.

b. Revising the number of seats allotted to the dormitories and off-campus representatives to more closely approximate the

## CGA candidate

### Prima stresses econ, town relations

I would like to introduce myself; my name is Matti Prima and I am a candidate for the office of C.G.A. President. My experience in C.G.A. has given me a firm understanding of its functions: in the past year my position was that of off-campus representative, and I was elected to an executive officer by the college council. I was then appointed to the Arts Council, and chaired or served on various committees.

The main concern of a C.G.A. President is that of the student, and I propose to open the Community Government to all who are interested. We must improve the student government from within and make the students aware of what is going on with allocations and policies.

There are two basic goals that must be attained and which can be achieved quickly and effectively. First, C.G.A. representatives must be made aware of the constitution and budgetary policies. We could replace the first meeting with a mandatory workshop where the representatives would be able to familiarize themselves with the organization, remembering that they are the people voting on your behalf concerning the \$60 Activity Fee all of us must pay.

Second, the students must be made aware of the organizations' intentions and motives. If I am elected, the office of C.G.A. President would be open to all to question, criticize and to submit ideas; there is no reason why anyone should feel they could not approach any officer: C.G.A. is here for you. In order to create this awareness, the organization should be brought to you. The community government used to hold its meeting in the dormitories, and I would like to see this occur once again.

It is a president's obligation to help provide services that



Matti Prima

benefit the student and the campus. I am in favor of utilizing the C.G.A. funds to the maximum to meet any and all student needs. In providing any student services, expenditures must be made wisely and effectively. An important example would be that the Community Government has nearly \$400,000 in Contingency Funds which annually earns anywhere from \$25 - \$30,000 in interest. This income could be utilized to the benefit of the student.

An equitable share of support from C.G.A. should be channeled towards the women's programs, an area on campus that appears to lack assistance. Improvements in the areas of recreation and cultural enrichment need to be further developed. The tri-level should be worked over for recreational use, a question which has been quibbled over for too long. Also, by expanding the Arts Council to their fullest potential, this campus would enjoy a more diversified cultural program.

Another area that I am very concerned about is the relationship between the students and the townspeople; this relationship could be improved through informal measures, striving to create a better environment for students living on campus as well as those living downtown.

cont'd on P. 5



Tom Mulhern

cont'd on p. 4

# EDITORIAL

## Prima for president

Elections for CGA officers are coming up next week and this year's race is proving to be unique. Presidential candidate Tom Mulhern is running on the Student Voters United (SVU) ticket along with four other students. At first, the idea of SVU appeared to be an extremely good idea—to make a party out of the 800 students who registered to vote last fall.

But SVU does not represent these 800 registered students. It represents a handful of 10 or so students who came up with the idea and who bestowed this strong support upon themselves. The meetings of SVU held were open only by invitation to the elite ten to draw up the platform and choose the candidates who appear on the SVU ticket.

Don't let the supposed strength of this ticket fool you—it's just that, "supposed".

Matti Prima, the other Presidential candidate is running somewhat independent although he endorses Shelia Miller for Vice President. Mulhern in essence is just as independent as Prima, the only difference being that Prima is not maintaining a facade of student support as Mulhern is.

The platforms that these candidates are working from appear on the front page of the *Campus Voice*, and the first thing you may notice is that the SVU platform is impressively organized and includes multitudinous items of student concern. On the other hand, Prima is first concerned with CGA itself and the changes it needs. CGA as it operates now is in need of many changes before it can run as effectively as possible with greater student turnout at the Monday night meetings. Even though SVU does recognize that changes need to be made within, they are unrealistic in placing this priority under "Additional concerns" instead of right out front.

What of the candidates themselves? Presently both candidates are members of CGA and seeing them in action is where a distinction is easily drawn. Mulhern is weak—whenever he presents something before the council the issue will surely be drawn out as others will ask him questions that he can not answer. Then the discussion will be tabled for further investigations and the same thing happens every meeting.

How could anyone support a candidate who is not articulate? Who cannot think on his feet? This is what you will be supporting if you vote for Mulhern.

Prima is an articulate person and has been noticeably growing from the experience of being a councilperson on CGA. At a recent CGA meeting, Prima deftly answered questions that were fired at him from Dean Norton and others concerning issues he raised, without faltering once. It is so essential that a President have self-confidence in what he or she proposes and this factor alone puts Prima ahead.

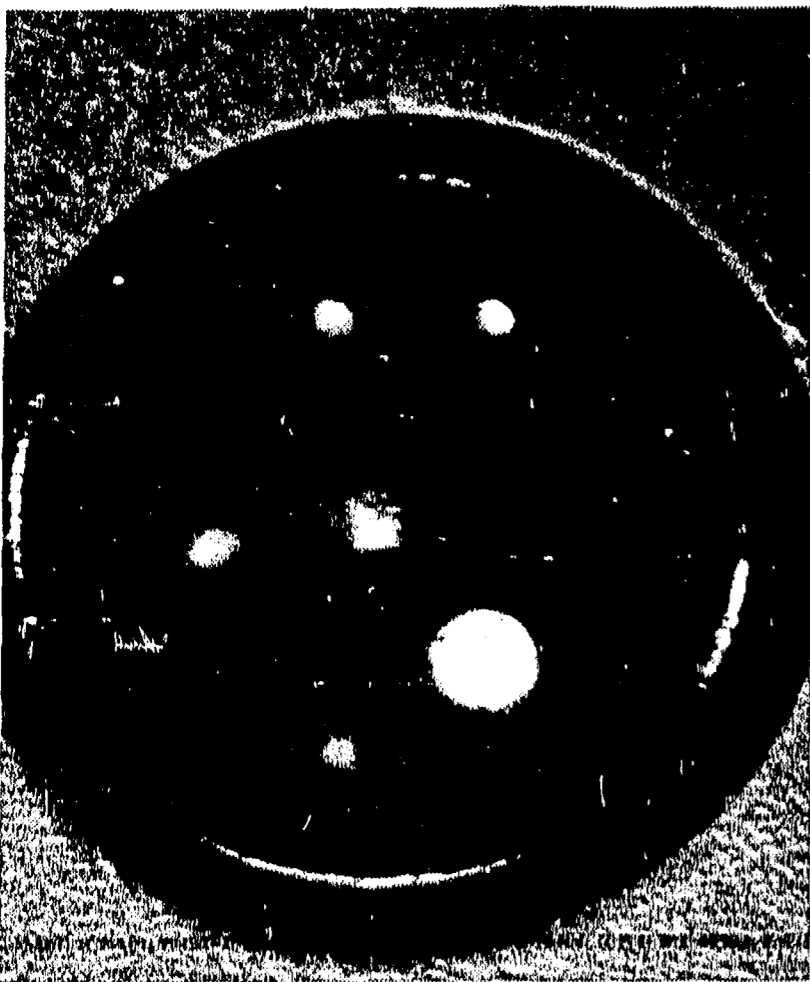
There doesn't appear to be a choice.

Barb Wanchisen

## What is it?

Gerry Strathmeyer and Pete Cortazzo were last week's winners when they identified the picture as the inside of a typewriter. If you can tell us what is pictured here, write your answer on a piece of paper along with your name and address and bring it to the *Campus Voice* office. If you are correct, you will be the lucky winner of a Capri pizza or a free pass to the movies.

(Photo by Palmer)



## Weekly Jabberings

by Peggy Moran

### Prima's platform looks best.

Having read, thought about, and given careful consideration to all the political propaganda appearing on the front page of the *Campus Voice*, I feel quite prepared to endorse one of the candidates running for CGA President.

To my way of thinking, the main concern of the CGA President must be to serve his constituency. He must be willing to listen to people even when he's certain they don't know what they're talking about. In addition, he must be open to and receptive of constructive criticism of both his actions and those of his entire organization.

But probably, the most important thing this person must keep in mind is that he is only one person working for many. If he loses perspective on the confines of his abilities

he will become totally ineffective. It is far better to accomplish a few far reaching goals, than to dabble in everything that comes your way.

With this in mind, I'd like to talk about the platforms that each candidate has set up as a ground work for what he plans to work toward while in office.

Getting right down to it, the platform presented by Tom Mulhern and the Student Voters United offers a concrete outline of exactly what they plan to accomplish.

But I must question the reality of getting even a simple majority of those items acted upon. Several of them involve extensive research and long range planning which I don't think can be carried out to any meaningful extent in one year.

It is a strong platform speaking for student concerns, but I don't think something that planned out and structured will work here yet.

Turning to Matti Prima's platform, if you can read around his verbose style of writing, its all right there. Lawyer, college-town relations, cultural, recreational, and economic enlightenment all highlight his planning document.

I think that its scope can be accomplished within the allotted time.

And that's what really counts.

In the end, it's not going to matter what you set out to do, but what you've managed to get accomplished that's the main reason behind why I'm endorsing Matti Prima for CGA President.

## Mike's Hat by Lenny Blazick



### L and M still pleasing

**Native Son - Loggins & Messina (Columbia, 1976)**

I first heard of Loggins and Messina on an FM station in Maryland during the late summer of 1971 (only then, it was Kenny Loggins with Jim Messina). I was immediately attracted to their music.

After a few months I finally bought their first album, "Sittin' In" and I became an instant fan. They fused rock, country, and pop into a very listenable blend of music which incidentally, was very good.

But L&M's first album wasn't all that successful; that is, until the release of their second album, "Loggins & Messina." They had a hit single, "Your Mama Don't Dance" from this album and this was the spark which ignited the fire of their success.

A tune from their first album, "Danny's Song" was also accumulating kudos from the FM listeners of the country.

Their group now established, L&M became a highly polished machine, both on record and on stage. Their third album, "Full Sail" is an extension of their highly successful style; L&M didn't want to ruin a good thing and kept to their established formula. Their next album was a double-live set and as live albums go, it is very good. "Mother Lode" found L&M in a melancholy mood. The overall tone of the album is very laidback and somber.

"Native Sons," their new album will not make any waves in the music world, but just the same it is a fine-sounding disc. On this album the boys make use of a string section on quite a few songs.

For the most part, the orchestration is not overdone and it helps to amplify their sound. Jimmy Messina has learned to use his voice to full effect; he ranges from a lilting near-falsetto to a more rock-oriented style.

There has been a few personnel changes in L&M's band; Al Garth, one of the original members is gone. He has been replaced by the addition of four new members to the the L&M entourage (I wonder if they'll all tour).

The cover of the album is one of the more eye pleasing ones that I've seen in a long time; L&M also did a unique job with their lyrics. They had them printed on the inside cover in the form of an 1800's newspaper.

Side 1 begins with "Sweet Marie", a cute, soft, and sexy tune whose lyrics might make a good Clairrol commercial:

**To see her in blue jeans**

**Is such a good sight**

**And when she lets her hair down**

**There's no one who's quite like Sweet Marie"**

"Pretty Princess" is a very sensuous ballad concerning infidelity. Rather than denigrating or exaggerating the affair, Messina and MacLeod deliver a touching and haunting picture of the couple's mutual desires and understanding. "My Lady, My Love" is a standard Kenny Loggins' ballad on the order of "Danny's Song" and "A Love Song." But he doesn't bore me at all; I enjoy his voice and his lyrics are quaint, yet enticing. "When I Was A Child" is a somber reflection of a young man's relationship with his father. Messina also touches upon the mysteries of time

and growth:

**"But time has no mercy  
For the growing soul  
It leaves us with memories  
While it makes us grow old"**

The song seems like a rather personal statement from Jimmy. "Wasting Our Time" is Loggins' other contribution to the first side. Starting out softly, the song quickly builds into a fast-paced mood until eventually winding down again.

"Peacemaker" has got to be about Henry Kissinger. Loggins, along with Ed Sanford and Johnny Townsend wrote this tune which is a rather succinct statement on the fortunes and foibles of an international troubleshooter. "It's Alright" is a lament for today's screwed-up world. Coming off like a late '60's protest song, the tune first irritated me, but upon listening to the lyrics, Messina and MacLeod make some sense:

**"TV commercials are just so damn insulting**

**With all their doctor's reports"**

"Boogie Man" is a boogie-woogie tune and I really enjoy this type of music; it really gets me moving. Have a good time with this one. "Fox Fire" concerns the age-old theme of a hunter pursuing the elusive prey: the more I listen to Loggins' voice the more I like it. "Native Son" finishes the album and was written by Kenny along with Dan Loggins. I wonder if there's any relation. Loggins seems to have been struck with Bicentennial fever, as the song reaffirms his "native son"

After listening to this album cont'd on p. 4



# Editor..Letters to the Editor..Letter.

Dear Editor,

We would like to thank the members of the C.G.A., Dean Norton, and Dr. Bautz for the intense interest they showed in our problem involving the Men's Swimming Team here at BSC. The three individuals who attended the Executive Board Meeting of the C.G.A. on Monday, Feb. 9 went with no idea of what to expect, and were extremely impressed in the interest showed. This was the first experience the three people involved had with the C.G.A., and if the C.G.A. deals with the other problems they face here at BSC with the interest they showed in ours, they deserve a big round of applause. It is with extreme sincerity that we say thank-you.

Signed,  
The EX-Swimmers at BSC

Dear Editor:

I would like to make the students aware of a very costly matter, which I am sure they do not realize. Since Jan. 15, 1975, it has cost Saga Food Service over \$11,000 to replace the silverware, glasses and dishes that have walked away from the Commons. This

Exhibit in Bakeless

## African Tribal Art

by Gene W. Walters

The problem of preservation is one which most perishable materials have in common. Naturally, the longevity of the object depends upon the nature of the structural material, and the conditions in which it physically exists. A case in point: "The Iron and Rail," which is made exclusively of iron. In a fashionable way then, African tribal art is easily comparable to native Amerindian art forms, like the Chinook totempoles. The totempoles of the Northwest and Northern Tribes could not adequately withstand the dual ravages of entropy and time, and the harsh climactic conditions of the geographical region.

Overall, there is a preferred advantage to the adapted environs of artificial climactic control. By placing such art objects behind museum walls, the objects remain physically intact for a considerably longer period of time.

But, while adaptive climatic control may be fine for physical preservation and stopping the process of aging greatly, it is definitely not the optimum aesthetic condition under which an art object should be seen. The art object is perceived in a superficial light and the static nature of the artificial atmosphere worsens the problem. In a sense, the art object is no longer dynamic. Musty smells and glazed sunlight filtering through rustic museum windowglass can scarcely substitute for the natural exoticism of the African rain forest and plain.

All letters to the editor must be typed on a 60 character line and double spaced with a maximum of 400 words.

expense has to be taken out of the money the students pay for their board. Some of the replacement is due to breakage, but the blunt of it is taken by students to furnish apartments, rooms, etc.

Traying, which I agree is a lot of fun, has cost over \$2,500 alone. We are missing over 800 trays at \$3.25 each.

I would like to use this money in a different way. Specials and extras: ice cream cone smashes, bread bars, cheese and crackers, etc. These extras and specials could be more frequent than they are now. But, when I have to build my inventory back up to its original level with this money, many extras have to be eliminated. We do run the contracted menu with some additional events. I would like to be able to give the students more.

We will have a box put in the lobbies of each Resident Hall. If you could help us out, it would be appreciated.

Brian T. Sarris

Dear Editor

There is a young man on campus who is a sophomore and uses a guide dog, and who is having a considerable amount of difficulty with stray dogs. It seems that some students who have pets allow them to run free on campus and this creates quite a problem for the guide dog. Not only do they distract the dog and interfere with the young man's efforts to get around on campus, but several have attacked his dog as well.

I guess what I'm asking is that a plea be made to individuals in the campus community to be a bit more sensitive and to keep their animals tied. It may seem like a rather unnecessary request, but I am sure it is upsetting to the student with the visual handicap.

John L. Walker  
Acting Executive Assistant  
to the President

Dear Editor:

I am writing this letter concerning the situation at the Nelson Fieldhouse. This past

weekend I went up to the gym in hopes of working out by playing racquetball and possibly using the weight room. But, like the weekend before, my hopes were unfounded. Upon reaching the field house I found it closed. I found this puzzling, because there were no activities scheduled for the day.

I was not the only one who

found this disappointing situation. There were at least 15 other people awaiting the gym's opening. Being that it was before 2:00 I thought the gym might be open at 2. But again, I was wrong; I waited at least 45 min. and the gym still did not open. I finally left in disgust.

Could you please look into this situation? Why doesn't the administration consider the students' interests for once?

Thank You.  
Lou Sannutti

### We've Got Your College Needs

OUR STOCK INCLUDES:  
Crewel String Art Needlepoint  
Instruction Books  
Rug Supplies Crocheting Buttons  
Candle Making Bead-work  
Knitting Macrame  
STOP IN TO BROWSE  
Monday thru Saturday 10:30 - 5:00  
CLOSED ALL DAY WEDNESDAY  
MORGAN'S YARN AND CRAFT SHOP  
251 West 5th St. - Bloomsburg

Mostly, African tribal art is fashioned out of wood, shells, feathers, and hides. On occasion, it is possible to find art objects which have been made from a rather sophisticated metallurgical process, fashioning copper, iron, and other heavy metals into beautiful sculpted pieces.

The exhibit at Bakeless is uniquely singular in itself. But, even more striking, is its real economic value. Over a short period of time it has tripped, and in some cases, at least quadrupled! This is due almost exclusively to the fluctuations of the law of supply and demand and owing too, to the phenomenally rising interest in African tribal art and culture.

To me, the two most interesting pieces on display are the "Mask," and the "Child's Chair," both from Angola, and both circa 1900.

The mask is stylized with equally striking teeth, ears, and eyes. The mask's protruding frontal lobe imparts the purest impressions of valiance and courage. Valiance and courage in the face of an advancing potential adversary. The holes dotting the surface simulate hair, and are ceremonial in fashion. The trailing streamers add to the feeling of depth, precision, and movement. It is perhaps a fitting parallel, and perhaps even an artistic prelude to the modern Age of Angst.

The "Child's Chair" is a finely carved, and delicately balanced piece of woodwork. It is evenly textured and rich in both internal and external harmony.

Both are richly dynamic and fluid in their total symmetry. And, when delicate form, and adequate texture are combined, the blend is indeed, rather superb. It is with the Bakeless exhibit. Simply let your imagination be free. Then, it will be nearly possible to envision the noble, proud, grass-skirted Africans performing a ceremonial tribal dance. The possibilities are almost endless.

Indeed, if your interest lies in capturing a glimpse of African culture and perceiving tribal history through the realm of art, do come to the art exhibit in Bakeless Hall. Your imagination, and the art pieces on exhibit will help you to better understand and more fully appreciate the aesthetics of the Angolan artistic heritage.

**FANTASTIC!**  
...PREVIEW OF GREAT VALUES  
Artists such as:  
Theonious Monk - Soft Machine  
Argent - Shuggie - Quicksilver  
Otis - Charlie Byrd - Grace Slick  
Electric Flag - Bette Midler  
Donovan - Edgar - Hollies - Gordon  
Winter - Tom Rush - Lightfoot - Plus  
Dave Brubeck - Sly & The Family Stone - Many More.

**2.99**  
VAL TO 6.98

**LOOK AT THIS SAVINGS**  
Artists such as: B.B. King - Allman Bros.  
Mark/Almond - Beach Boys - Cactus - Deep Purple  
Dr. John - Doors - Guess Who - Jimi Hendrix - James  
Gang - Jefferson Airplane - Graham Nash  
Steppenwolf - Three Dog Night - Fifth Dimension - Plus Many More.

**1.99**  
VAL TO 9.98

At The College Store Thru March 4

## the campus voice

Editor-in chief - Barb Wanchison  
Production Manager - Vickie Mears  
Business Manager - John Chacosky  
Managing Editor - Peggy Moran  
News Editors - Joe Sylvester Linda Gruskiewicz  
Feature Editor - Dale Myers  
Assistant Feature Editor - Barb Hagan

Sports Editor - Ed Hauck  
Assistant Sports Editor - Tim O'Leary  
Photo Editor - Randy Mason  
Assistant Photo Editor - Wayne Palmer  
Copy Editor - Kim Chiodo  
Advertising Manager - Craig Winters  
Circulation Managers - Robin Olson Bonnie Lethbridge

Mr. Ken Hoffman - Director of Public Relations and Publication; is advisor  
Reporters - Gordy Schultz, Dianne Abruzzese, Bill Troxell, Dale Keen, Louie Hunsinger, Jim Stabinski, Laurie Pollock, Randi Matson, Lenny Blazick, George Shaloka, Bob Schiacter, Jack Furniss, John Elchonau.  
Production - Kim Chiodo, Joan Darr, Kelly Care, Kathy Urbani, Andy Shicora, Karl Wells, Jean Sambor, Michael Payne, Maureen McGeohan, Nancy Shay, Nina Bangham  
Photographers - Jo Willard, Al Pagliarunga, Tim Hough, Chuck Dickson  
The Campus Voice offices are located on the second floor of the Kehr Union. The Phone number is 389-3101. All copy must be typed, double-spaced and with a 60 character line.  
The Campus Voice is governed by the Editorial Board, with final responsibility for all material resting with the Editor-in-Chief, as stated in the Joint Statement on Rights, Freedoms, and Responsibilities of Students of Bloomsburg State College.  
The Campus Voice reserves the right to edit all letters and copy submitted. A maximum of 400 words will be placed on all letters to the Editor, with an allowance for special exceptions. All letters to the Editor must be signed and have a telephone number and address attached. Names will be withheld upon request.  
NOTE: The opinions voiced in the columns, feature articles and editorials of the Campus Voice are not necessarily shared by the entire staff.

# TWCS spotlights minority cultures

by Jim Stabinski

The Third World Cultural Society, in conjunction with the Human Relations Committee and the Student Program Board, will present the "Third World Cultural Week," starting Feb. 22 and ending Feb. 28. Phil Lewis, co-chairman of the TWCS, said "The Third World Cultural Week is basically designed to be a cultural, educational, and social experience for the entire campus community and surrounding areas."

The TWCS is an organization comprised of minorities such as blacks, Puerto Ricans, and Latin Americans. Keith Lawson, the other co-chairman of the

TWCS, says "It is not totally an organization of minority students. The door is open for students of other nationalities as well."

An entire series of interesting events are scheduled for each day of Third World Cultural Week, and only one event will have a minimum cover charge of \$2, all of the other events are free.

The first event, scheduled for Feb. 22 at 2:30 P.M. in Haas Auditorium, will be a Gospel Concert. Evangelist Charles Hawkins, from Bridgeton, N.J. will be the Master of Ceremonies. Hawkins will present gospel groups from eastern Pennsylvania and New Jersey.

On Feb. 23, Piri Thomas will speak on "Third World Identity" in the Kehr Union at 3:15 p.m. He is an actor and has written "Down These Mean Streets," which is his autobiography. The book describes him growing up in New York as a young Puerto Rican. His book has been used by BSC's Department of Sociology for the course "Racial and National Minorities."

The next event on Feb. 24 will be the movie "King, Montgomery to Memphis," to be held in the Kehr Union at 8:00 p.m. Film Images, the producers of the film, say this: "The film is a chronicle of the struggle for equality

and justice from 1955 to 1968. In it, the events are depicted as they occurred, without editorializing. Dr. King's unforgettable prose is re-experienced in his sermons, 'I Have A Dream' and 'I Have Been To The Mountain Top'."

On Wednesday, Feb. 25, Sam Greenlee will be in the Kehr Union at 7:00 p.m. Greenlee is the author of the book, and co-producer of the movie "The Spook Who Sat By The Door," which will be shown. Following the showing of the movie, Greenlee will offer a rap session and discussion.

A dance workshop will be held on Feb. 26 in the Kehr Union at 7:00 p.m. The workshop will be led by members of the TWCS and will include modern dance interpretations.

On Friday, Feb. 27, a concert will be held in Haas Auditorium at 7:30 p.m. presenting Lonnie Liston Smith and the "Cosmic Echoes." This event will have a \$2 charge. The group, which performs modern jazz, should be one of interest since BSC rarely has any jazz concerts. Tickets will be on sale in the Union at the Information Desk.

The last day, Feb. 28, will feature two events; a fashion show in Haas Auditorium at

7:30 p.m. and a 'disco' in the Union at 11:00 p.m. The fashion show will display a wide variety of men's and women's clothing in the sports, casual, semi-formal, and formal lines. Bloomsburg stores sponsoring clothes are: Al's Men Shop, Bart Purcells, Arcus', and Eudoras. Models for the Fashion Show will be members of the TWCS, some of whom will also be wearing their own hand-made outfits and creations. The disco, which will be later on in the evening, will have "Master K" the DJ from New York City on hand to keep the music alive. "Master K" is a free lance DJ whose specialty is performing at concerts, benefits, and night clubs.

The disco dance will close the week-long list of events on Saturday night. But, as Keith Lawson, Chairman of the TWCS, put it: "Third World Cultural Week is a week that should not be just once a year. It should be a continuous experience that is felt throughout the year."

## Mulhern, student voters campaign

cont'd from p. 1

College population. Also to open representation to organizations on campus as ex-office members on College counsel. The membership figure of 250 will be used to ascertain representation of the nature. (ie. S.S.H.A., CARC, I.F.C., I.S.C.)

c. The creation of a special Budget committee to handle budget requests that need not go in front of regular council. This committee is to consist of the President, V.P., Treas, of college counsel the Student Life Accountant, 2 Pres. appointees and the Dean of Student Life.

d. Changing the organizations name to Student Government Association.

e. Permitting the student government and student publications to have advisors of their, rather than the administration's, choice.

### Miscellaneous

A. The employment of student personnel in the College Store and Kehr Union rather than non-students whenever possible.

B. Publication and distribution to the student body of the availability, amounts, and procedures for obtaining loans and grants.

C. Opposition to any increase in tuition, dormitory, and activities fees.

D. A study of the operation, profits, and materials stocked in the College Store to make that facility more responsive to student needs.

E. A study of the operation and profits of the Student Bank to make that facility more responsive to student needs.

F. The enforcement of the Affirmative Action Program.

G. Continued support for varsity and intramural sports programs.

H. Improvement in the Big

Name Entertainment programs.

I. A review of the campus Student Grievance Policy to facilitate complaints about grades, and classroom practices and publication of this policy.

J. To formulate and publish a faculty evaluation representing the needs of students.

President - Tom Mulhern  
Vice President - Matt Connell  
Coors. Sec. - Randi Matson  
Rec. Sec. - Sally Wilson  
Treasurer - Barb Schiffert

## L&M review

cont'd from p.2

for the first time I really didn't like it too much. But, as is the case with most albums I buy, the more I listened to it, the more I enjoyed it. I don't think that any of their albums have matched the excellence of their first album, but all of their albums have been pleasing attempts at trying.

### Covered Bridge Smoke Shop

- Now featuring:
- Pipe of the Week & Blend of the Week
- Savings up to 25 per cent!
- Imported cigars

101 N. State St.  
Bloomsburg

Remember to call Mom to tell her about your nifty new place. Tell her she'd love your decorator. She'll be glad you called. And so will you.

Bell of Pennsylvania



**Kansas**

# A Variation Of Styles

by Dale Myers

I've got a feeling that **Kansas** is going to hit it big on their tour which included last Tuesday night's stop at Haas Auditorium. While they weren't one of the flashiest bands (they wore modest dress) **Kansas** featured one of the most unique styles of music I have ever heard at a concert. Their music seemed to fit somewhere between heavy metal, "Icharus Born on Wings of Steel," and soft, delicate music "Lonely Wind."

**Kansas** captured the attention of the crowd by opening with an excellent rendition of "Song for America." While the music was complex and pleasing, **Kansas** also had a fine light show and ended the song with the eye catching use of a mirror ball, giving the audience an impression of travelling through space while hearing the end of "Song for America."

**Kansas** also provided a superior song entitled "Lonely Wind." In this song it became apparent that **Kansas** is a group with feeling for the finer points of musicianship. The instrumentation of the piece, Steve Walsh on keyboards and vocals, the harmonized singing and violin of Robbie Steinhardt, and the lyrics made "Lonely Wind" **Kansas'** best song of the concert.

One of the things which detracted from **Kansas** set was their feature of Kerry

Livgren on guitar. While Livgren is an adequate guitarist I hardly think that he was deserving of the five minute solo which he played. When a band has an exceptional guitarist, a feature of this nature is fine, but Livgren's solo was quite boring. Conversely, the feature of Phil Ehart on drums showed that one member of the band had good individual talent.

Not to say that **Kansas** was a group of poor musicians but it was apparent that they sounded better when everyone was playing rather than just one or two members of the band. This is what made **Kansas** a better than average live group. When they blended all the instruments and sung together they came on much better than when each did his own thing. I say that they were better than average because they were not spectacular, even though they seemed to be in comparison to **Hammersmith**, the warm-up band.

**Hammersmith**

All I can say about **Hammersmith** is that I hope they never put out a live album. Whoever chose their name certainly hit the nail on the head. I felt like I had been hammered after their set. Had I not been reviewing the concert I doubt that I would have stayed for their performance after first number.

**Hammersmith** played only

one decent song during their set. "Open Up the Sky," was decent, yet it remained alone as the only type of musical accomplishment by the band. They also tried a version of "Nights in White Satin" which was much less than a suitable duplication. The band apparently thought they had a good tune in "Whiskey Eyes," but one would have to have been loaded up with the liquid to hear anything close to music in that song.

The main impression I got from **Hammersmith** is that they have to play loud to cover up their deficiencies as far as musical talent is concerned. A listener had to wade through tons of metal to detect music and then there was none. One thing I can say is that all the members of the band could squat.

## Prima's promises

cont'd from p.1

in the Community Government Association. I would simply like to state that I believe in myself, because if I didn't, how could I ask any one of you to believe in me? Thank you.

I would like to add that my interest lies in striving to benefit the entire campus in all possible ways, but we should strive to work together. It is good to see that many students are taking a concern



Robert Steinhardt captivated by his own music. (Photo By Palmer)

# "Our Music Is Most Important"

by Bill Troxell

Just in case you ever wondered, **Kansas** is really from Kansas. Each member of the sextet has spent at least 24 years in Kansas, "that wonderful state which gave you 'The Wizard of Oz', wheat, Leavenworth Prison and tornados."

After their powerful performance here on Tuesday night, the band gave an interview to the Campus Voice in which they told their opinions on Bloomsburg, music, and on themselves as people.

"I don't know whether it was us or them, but it was a little laid back tonight," said Robbie Steinhardt, violinist and vocalist when asked for his opinion of BSC. "We've played a lot of places in Pennsylvania, like Philadelphia, Erie, Allentown, Kutztown, Harrisburg, Pittsburgh and many other small towns, but this is one of the worst reactions in the state that we've ever had." Steinhardt also remarked: "It's surprising to go to a place in PA and get this kind of reaction. I guess some people just don't have the intelligence to understand exactly what we are doing and saying with our music and stagework. The people did seem to really like our effects the blast and the mirrored ball but they didn't get into the most important thing: our music."

**Kansas** has now been on the national road for two years. When asked whether they like the road, Steinhardt replied, "no, not at all; I mean, yes, we like to play, but we don't like to be away from home so much. The road just gets to you after a while."

Just as anyone else, the band has their favorite things

to do after work. It was quite evident that they like to "munch-out", due to the phenomenal number of empty buckets of chicken laying around with a countless quantity of meatless bones scattered about only twenty minutes after the show. "Our favorite thing is to go somewhere and party with the crew," said Steinhardt. "After all the partying is over we like Rock Concert or the Midnight Special."

As a band, **Kansas** began three years ago by playing in small bars and clubs as a five-piece band. Shortly after they picked up the sixth member, they began to travel a little bit more. They happened to be in New York when Don Kirshner heard one of their demo tapes. Since then, the band has traveled almost everywhere in the country, and has put out three albums entitled, "Kansas, Song for America, and Masque."

Perhaps the most prominent performer on stage, Robbie Steinhardt, violinist and vocalist for the band, has quite an extensive background in classical violin. Although he himself does not write, he plays an important role in arranging the music.

Kerry Livgren, who showed his musical versatility by playing lead and rhythm guitar, piano, organ and synthesizer also composes most of **Kansas'** music.

Steve Walsh, the new member of the band, also does some writing for the band. He is also the main keyboards man and does quite a bit of singing. The bassist, Dave Hope, along with drummer Phil Ehrhart and Guitarist Rich Williams, also play major roles in the band as arrangers.

Come and see

*Racusem's* new window trim

Main St. Bloomsburg

We have lots of new items:

- gauge & knit shorts

Chip-Chip  
Harlan Matthews

- European slacks

Forum  
Bonhomme

- jeans from

Male  
Landlubber  
Lee  
Lovi  
Vicerey  
Folded Glory





## Borrowed Space

by Bill Sipler

This weekend sees both the BSC Grapplers and the Swimmers at their respective State Championships for the Pennsylvania Conference. The swimmers are on the road on Thursday, Friday and Saturday while the Nelson Fieldhouse will be the site of the Wrestling Championships.

The wrestlers should give the local fans some thrills as they take another shot at the conference title. Clarion and Slippery Rock should be favorites for the crown.

The tankmen, on the other hand, will face stiff competition as they try to place in the top five. East Stroudsburg will probably be the dark horse with the best part of the effort coming between Clarion and last year's runner up, Edinboro.

The Huskies should have some incentive in the swimming championships: they have posted the first losing record in ten years for Coach McLaughlin, while experiencing a rebuilding year. The team's year was slightly successful in that they gave Coach McLaughlin his 100th career coaching win and also stopped SUNY—Oneota for the first time in their five years of meeting. On the other side of the ledger the Huskies dropped a 68-45 decision to Kutztown to give the golden Bears their first swimming win over BSC.

People to watch in the swimming competition for the Huskies should be freshman Wayne Richards, senior Bill Ewell, Keith Torok, the 400 freestyle relay team of Richards, Torok, Oberly, and Price and several other outstanding performers for the Huskies.

### Wrestling

The Huskies will be bringing a better than 500 record into the competition. One of the tougher teams that will also be entering could be Millersville, which stopped Pittsburgh earlier in the year.

Leading the Huskies will be Steve Scheib, one of Coach Sanders top wrestlers. Other members of the Huskies that could be impressive include Tony Caravella, and Tony DiMarco.

For those of you who want to see good wrestling action, Nelson Fieldhouse will be where it's at Friday night and all day Saturday. With Clarion, Slippery Rock, Millersville, and all the other State Colleges, including the Huskies, who could want better wrestling?

# Huskiettes bounce on Baptist Bible

by Maripat O'Donnell

On Feb. 10th the women's basketball team travelled to play Baptist Bible, resulting in a win for the Huskiettes with a score of 60-58. It was an extremely close game with tension mounting throughout its entirety. One of the main highlights of the game was seen during the last four seconds. At this time the score was tied with four seconds left to play. Ellen French came through, bucketing the two winning points for the Huskiettes.

The game was full of disputes and confusion among the officials: One official sounded the whistle for timeout. Not hearing the whistle the second official

allowed Baptist Bible to score, yet the points were not given due to the contradiction among the two officials.

Early in the second half Julie Ludrof fouled out, she did however score 11 pts. within her 21 minute playing span. Ellen French was high scorer with 18 points and 14 rebounds. Ann D'Ignazio came next with 12 pts., 7 rebounds and 5 assists. Terri Mangine chipped in 9 points with 9 rebounds and Mary Balaban had 7 points with 9 rebounds. Sandy Serafin, a freshman JV, went into the varsity game for the last four minutes and provided the necessary rebounding edge BSC needed which eventually enabled the B'Ball players to

score the winning basket.

Miss Button, the center for the Baptist Bible team, was the central power for the opposing team. She played the whole game scoring 16 points and accounted for the majority of rebounds taken by the losing team. Bible's outside shooters Clebenger and Pickering combined for 26 outside points, mostly 20-30 foot shots.

There was no JV game played.

### Coming Events

Ending the season on the 28th of this month the last week of games will be played on Sunday, Tuesday, Thursday, and Saturday. Bucknell, a home game, appears to be a

cont'd on p.7

## BSC mermaids sink to ESSC

by Maripat O'Donnell

At an away meet with East Stroudsburg State College the BSC mermaids fell to their competitors with a score of 99-32. In spite of the loss, three new school records were set. Carla deVries set a record for the 100 yard individual medley at 1:08.5 seconds and the 50 yard butterfly record was set by Mollie Mandell at 29.9. Pat Seither set the record for the three meter diving with 166.15 pts., and also won the event. Tina O'Hara did a fine job by winning both the 50 and the 100 yard backstrokes.

A few outstanding Bloom

swimmers in the last competition were, O'Hara who took first place in the 50 yard backstroke and third place in the 50 yard freestyle, and Jan Crossmore, who took second place in the 200 freestyle and third place in the 100 butterfly. Sue White came in second in the one meter diving competition. Mollie Mandell took third place in the 50 yard butterfly event. Other third place winners were: Carla de Vries for the 100 individual medley, the 50 yard breaststroke and the 100 yard breaststroke; Tina deVries for the 50 yard backstroke; Karen

McPoyle for the 100 yard freestyle, and taking third place for the 500 yard freestyle, Robin Hess.

"Many of the girls bettered their own individual performance time which made the meet very worthwhile," reported Coach Mary Gardner. "The team is looking forward to our next two weeks of competition with meets against Bucknell University, Lock Haven, State College, Lehigh University and Shippensburg State College. All four meets should be very close with a lot of good competition."

## Campus Interviews

Feb. 20 9:00-4:30	Jewelcor Distributors Gateway Shopping Center Edwardsville, Pa.	Bus. or Bus oriented majors for Mgmt Trng Programs for Retail Mgmt, Merchandising; Advertising or Operations Mgmt.
Feb. 24 9:00-3:00	Dept of the Navy Naval Officer Information Team	All Officer Programs-Info. Table in Union and or Interview in Placement Center.
Feb. 25 8:30-4:30	Fidelity Insurance Company	Sales; Sales Mgmt Trng.
March 4 9:00-4:30	National Bank Examiners Philadelphia, Pa.	
March 4 8:30-4:00	ACTION (peace Corps-Vista) Philadelphia, Pa.	Info. table in Union and or personal Interview in Placement Center
March 19 9:30-4:30	Equitable Assurance Company Wilkes Barre, Pa.	Sales positions with Mgmt future-any major.
March 22 8:30-4:30	Anne Arundel County Bd of Ed. Annapolis, Md.	Sp. Ed (MR); Math; Sci; Lang Arts (emphasis on Reading or Journalism); Sp Therapy (Masters req).
March 23 9:30-4:30	Harford County Bd of Ed. Bel Air, Md.	Teacher Candidates.
March 25 9:00-4:30	Baltimore County Bd of Ed. Towson, Md.	Preferably-Bus Ed; Math; Reading; Science (gen-Chem-Physics or Bio); Sp. Ed. (trainable, aud. or vis. impaired, prof. retarded)
March 30	Carroll County Bd of Education Westminster, Md.	Elem.,Sec.-Math; Eng; Science; Other Areas.

## GUIDE TO MONEY FOR HIGHER EDUCATION

Guide to more than 250,000 Scholarships and Financial Aid Source — items valued at over \$500 million dollars.

### Contains the most up-to-date information on:

Scholarships, grants, aids, fellowships, loans, work-study programs, cooperative education programs, and summer job opportunities; for study at colleges, vocational and technical schools, paraprofessional training, community or two-year colleges, graduate schools, and post-graduate study or research; funded on national, regional, and local levels by the federal government, states, cities, foundations, corporations, trade unions, professional associations, fraternal organizations, and minority organizations. Money is available for both average as well as excellent students, both with and without need.

### BENNETT PUBLISHING CO.

Dept. 214, 102 Charles Street, Boston, Mass. 02114.

Please rush me \_\_\_\_\_ copies of GUIDE TO MONEY FOR HIGHER EDUCATION at \$5.95 plus 50c for postage and handling for each copy.

I am enclosing \$ \_\_\_\_\_ (check or money order).

Name \_\_\_\_\_

Address \_\_\_\_\_

City \_\_\_\_\_

State \_\_\_\_\_

Zip \_\_\_\_\_

© Copyright 1976 Bennett Publishing Co.

# BLOOMSBURG TRACK '76

by Ed Hauck

The Bloomsburg track team upped their record to 6-2 by making a clean sweep over four teams last Friday night at Nelson Fieldhouse. BSC rang up a total of 72 points with SUNY Binghamton and Monmouth College tying for second place with 24 points each, Lock Haven scored nine points for the evening, while Susquehanna could only manage one point.

In addition to the quality performances that Bloomsburg has to offer its opponents in track meets, the Huskies also boast a lot of quality depth in many events. This is shown by the tally of the scores where BSC posted points by either or both of the B and C teams scoring points.

To start off the evening of running events, the Husky A & B teams went first and second in the High Hurdle Relay. The winning team, consisting of Ken Curcie (6.4), Brian Loudy (6.7), Jay Wehlgemuth (6.8) and Ed Hauck (6.8), combined

for a total of 26.7 in the 50 yard Dash Relay, Bloom took first, third and fourth places with SUNY taking second. The winning four were Barry Staton (5.5), Ken Curcie (5.6), Russ Diltz (5.6) and Ed Hauck (5.6) for a total time of 22.3.

The Crescende Relay (160 yd., 320 yd., 480 yd., 640 yd.) was won by Monmouth (Butler, Berdick, Freeman, Nestrand) in 3:57.2 with B'sburg second 3:59, and SUNY third in 4:02.8. The Huskies bounced back in the Decrescende Relay to win in 4 minutes flat, with the winners Howie Pillet, Bruce Henzy, John Bergen and Barry Staton pacing the other teams. Second went to SUNY, third to Monmouth and fourth to the BSC team.

The Distance Medley (three-quarters mile, one-fourth mile, 880 ) went to the B'sburg team of Mark Bond, Steve Reckefus, Bob Kantner and Steve Eachus in a total time of 10:41.4. Monmouth

capped second place, SUNY placed third and Lock Haven fourth. Bloomsburg showed its supremacy in the sprint relay department as they took the first three places in the 8 Lap Relay with Monmouth getting fourth place. The winning B'sburg team was Russ Diltz, Ken Curcie, Barry Staton and Ed Hauck and they finished in a time of 2:30.0.

Monmouth won both the Mile Relay and Two Mile Relay. In the Mile Relay, Monmouth ran to a 3:32.1 to win with BSC A team second, SUNY third and BSC B team fourth. Manning, Nevitski, Gibbs and Ullmeyer of Monmouth put forth an 8:03.0 effort to win the 2 Mile Relay with Bsc second, SUNY third and Susquehanna fourth.

The 2 Mile Run, an individual event, Daniels McMullen, and Owens, all of SUNY, went 1, 2, & 3 respectively while BSC's Jeff Brandt placed fourth. Daniels' time was 9:25.2.

In the field events, the Huskies faired extremely well starting with the Pole Vault. Fred Koetteritz won with a 12 feet vault, with Brian Sullivan second and Scot Lux third. All of the placers were from BSC. The Shot Put was won by Tom Burnes of Lock Haven with a toss of 48'5". Gary Coldren, second, Sean McBain, third, and Mike Rhue fourth, all three are from The Burg. (Bloomsburg, that is!)

In the High Jump Relay, the Nelson Fieldhouse record was tied by Mike Kieper as he jumped 6'8", while his teammate, Chuch Stathopolous, jumped 6'2" to combine for the win at 12'10". Lock Haven was second and BSC's B and C teams captured places three and four.

Coaches Ron Puhl and Phil Krause were quite pleased with the performances Friday night and hope they did as well last night against Bucknell University and University of Scranton up at the fieldhouse.

## Huskies lose to Cheyney St., 75-61

by Tim O'Leary

The Bloomsburg State College basketball team continued its downward spin last week, dropping their only game to Cheyney State. The loss drops the Huskies record to 11-10 on the year, with only one game left to play. For Cheyney, the win moves them one step closer to winning the Eastern Division of the Penna. Conference.

The quick paced game saw the Huskies fall behind early, and they were forced to play "catch up" most of the first period. The Wolves of Cheyney led for the first six minutes of the game, but Bloomsburg soon rallied back to take command. The Huskies rattled off twelve points to their opponents two and enjoyed their only lead of the night, 18-16. Beyond that point the game was all

Cheyney's, as the Wolves closed the first half with a seven point lead that they never relinquished. The second half provided few highlights for Husky fans as Cheyney dominated the scoring.

At one point the Huskies did threaten, closing to within eight points of Cheyney, but it was too little too late. Bloomsburg lost the match 75-61, but did offer firm resistance against the tough Cheyney team.

The high scorers for Bloomsburg were: Al Williams with 19 points (seven field goals and five free throws), Rich Yanni with 16 and Jerry Radocha with 10. The remainder of the squad finished with totals under ten points in the Huskies' losing effort.

## Huskiettes win again

cont'd from p. 6

The BSC Huskiettes' only loss last year was with Bucknell University and we can expect exciting competition again with them this year. This game will be a test of ability for the Bloom girls. Sport fans are urged more than ever to attend and support BSC for this competitive game.

Recently the BSC basketball team has applied for a post-season eight team tournament

with the Associate of Intercollegiate Athletics for Women and are awaiting word from the AIAW.

"We have the toughest competition of the season ahead of us" stated coach Hibbs. "Since four of the last five games are away, all within a span of nine days, this will not only be a test of ability but of endurance as well."

The Huskiettes continue with a perfect game record of 5 and 0.

## Wrestling Schedule

Bloomsburg State College wrestling enthusiasts will enjoy a rare treat the weekend of February 20 as the finest grapplers in the state trek to Nelson Fieldhouse to compete in the 1976 Pennsylvania State Conference wrestling championships. The following is the tentative time schedule for the event:

**Thursday Feb. 19**  
6:00 p.m.

6:30 p.m.

8:30 p.m.

**Friday Feb. 20**  
8:00-9:00 a.m.

1:00-4:00 p.m.

6:30 p.m.

**Saturday Feb. 21**  
7:00 a.m.

8:00 a.m.

12:00 p.m.

1:00 p.m.

6:30 p.m.

8:30 p.m.

Verification of all teams in the lobby of Nelson Fieldhouse

Seeding Committee meeting in the Conference Room of Nelson Fieldhouse

Coaches meeting in Conference Room of Nelson Fieldhouse. Refreshments included.

Weigh-in

First Round

Quarter-finals, first round consolation

Weigh-in for consolation wrestlers

Weigh-in for semi finalists

Second round consolation

Semi finalists

Consolation finals

Finals

Reminder: Participants must bring their own locks!

Those interested in buying tickets in advance should purchase these tickets in the Kehr Union student bank. The cost of a four session book is three dollars while individual sessions are one dollar apiece with ID.

## Come Hug A Tree

Trees and Plants in all shades of green... and red... and purple...

Add a little life to your room

SPECIAL

Terrarium Cactus. . . . . **37¢**



at  
**GARDEN CITY**

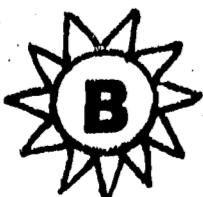
the largest selection of plants in the area

Rte. 11 - Bloomsburg

**OPEN:** MON. - SAT. 10 a.m. - 9 p.m.  
SUNDAY 12 noon - 5:00 p.m.

VOTE FOR

**COMMUNITY GOVERNMENT ASSOCIATION  
TREASURER**



He'll get you  
more for  
your money!



General primary  
election:

Monday  
February 23

**BILL BOYER**



## College supports town

cont'd from p. 1

figure is greater than the total college payroll was 10 years ago.

### Visitor contributions

But this is only a part of the college's contribution to the economy of the region. Last fall more than 2,000 parents were registered for the special events of Parents Weekend and many of them were overnight visitors. Three orientation sessions during the summer, as well as visits to campus by prospective students and their parents, also brings many visitors to the area.

In addition to Parents Weekend, Homecoming Weekend, Siblings Weekend and Alumni Day there is a crowded schedule of educational conferences, seminars, and institutes through the year that attract thousands of visitors to the area.

### College purchases

Approximately \$300,000, or nearly one-tenth of the college's \$3 million operating budget, is spent locally for supplies and equipment, for

contracted municipal services such as water and sewage, and for hospital and medical services. Additionally, the campus food services and the CGA spent a substantial amount for local purchase of supplies, equipment and services.

Contractors working on construction of Lycoming Hall, the residence hall scheduled for completion in June, include local firms and local workmen. The same was true of other construction project on the campus. Cost of the new building is expected to total \$2,234,000.

Work has been started on the installation of an electronic monitoring system which will coordinate and monitor the fire alarm and clock systems on campus and improve college maintenance operations. It will provide for more efficient regulation of equipment and the monitoring of sensitive controls. Another project nearing completion is that of replacing the electrical wiring and equipment in Carver Hall.

# tlebutt...Scuttlebutt...Scuttleb

### Pre-Registration for El. Ed. Majors

All undergraduate students majoring in Elementary Education must see their advisor in the department of Elementary Education and secure his or her signature on the course selection form when pre-registering for courses. Course selection forms without your department advisor's signature and the official stamp will not be accepted at the Office of the Registrar. Exceptions to the above procedure will be student teachers whose course selection forms will be signed by their college supervisor.

### Transportation to Health Services

Students living in a residence hall or off-campus housing who need special transportation to the Bloomsburg Hospital Dispensary or to other local medical facilities for further treatment, may be transported by the Division of Law Enforcement. To arrange transportation to the Bloomsburg Hospital

Dispensary, a student must contact a College nurse between the hours of 7 a.m. and 11:30 p.m. on Monday through Friday. When the College Infirmary is closed, a student should call a Resident Dean, a Resident Advisor, or the Law Enforcement Office. Transportation of referrals to other local medical facilities will be provided only upon receipt of proper authorization from a member of the College Health Services or a member of the professional staff at the Bloomsburg Hospital Dispensary.

Return transportation from the site of the treatment will be the responsibility of the student. The Law Enforcement Office will aid the student in obtaining return transportation from the site of treatment when the student has exhausted all personal contacts.

In the case of extreme emergency requiring special medical transportation, an ambulance may be summoned by a College nurse, a Resident Dean, or the Law Enforcement Office.

### Express Line at Union

Something new and different will be offered at the Union Snack Bar in two or three weeks. A variety of donuts from Letterman's Bakery, pastry, and coffee will be served from 7:30 a.m. to 10:30 a.m. in a special line designed for fast service.

### Appalachian Weekend

The Protestant Campus Ministry is sponsoring a work-study at the People's Church Appalachian Ministry in St. Paul, VA March 19-20. Twenty students can take advantage of this opportunity and it is not essential to be currently involved in other programs of the campus ministry to participate. Lodging will be provided in St. Paul, but sleeping bags are necessary. The only expenses will be sharing travel and meal costs.

Those who have a special interest in this field of work, from sociological, economic, or religious perspectives, should contact Jay Rochelle at 784-0133 to sign up.

## CHALLENGE:

If you've got it, prove it. If you want it, work for it. If you think you're a leader, show us. That's what we ask and expect of every college man who enters our Platoon Leaders Class commissioning program. PLC ...with ground, air and law options, summer training, and the chance for up to \$2,700 in financial assistance. But to make our team...you have to meet our challenge.

**THE MARINES ARE LOOKING FOR A FEW GOOD MEN.**



## SOPHOMORES!

Earn a Total of  
**\$2000**

**During Your Junior and Senior Years and Develop Another Career Option through Army ROTC Two-Year Program**

Deadline for Application: March 1, 1976

Call Collect: Maj. Doug Barr (717) 524-1100

ARMY ROTC: "LEARN WHAT IT TAKES TO LEAD"

## Arthur Treacher's introduces inflation beating eating.



THE BUDGET BANQUET



A complete meal of fish and chips, creamy cole slaw and choice of beverage.

**Tuesday only**

**\$1.69**

**Arthur Treacher's Fish & Chips**



**Bloomsburg-Berwick Highway**

*Division of Magee Foods*