

LD4481.P63

00118102



LIBRARY
STATE TEACHER COLLEGE
Bloomsburg, Pennsylvania

LD4481.P63

00118102



Souvenir Views

OF THE

State Normal School,

Bloomsburg, Pa.

adjusted

LD

4481

. PLG?

53

Fourteen acres of campus afford ample space for lawns and athletic grounds, and include a large and beautiful oak grove; while the four large brick buildings shown in the picture, containing a floor space of four and one-seventh acres, are admirably adapted to their different uses. The total length of the corridors in these buildings exceeds one-half a mile.



CUT OF BUILDINGS AND GROUND.

38914

The school property attracts much attention. It is at an elevation of over 150 feet above the Susquehanna. The view from this elevation is almost unrivalled. The river, like a ribbon edges the plain on the south and disappears through a bold gorge three miles to the southwest. Rising immediately beyond the river is a precipitous ridge four hundred feet high, backed by the majestic Catawissa mountain. The town lies at the feet of the spectator. Hill and plain, land and water, field and forest, town and county, manufacture and agriculture, are combined in the varied scene.

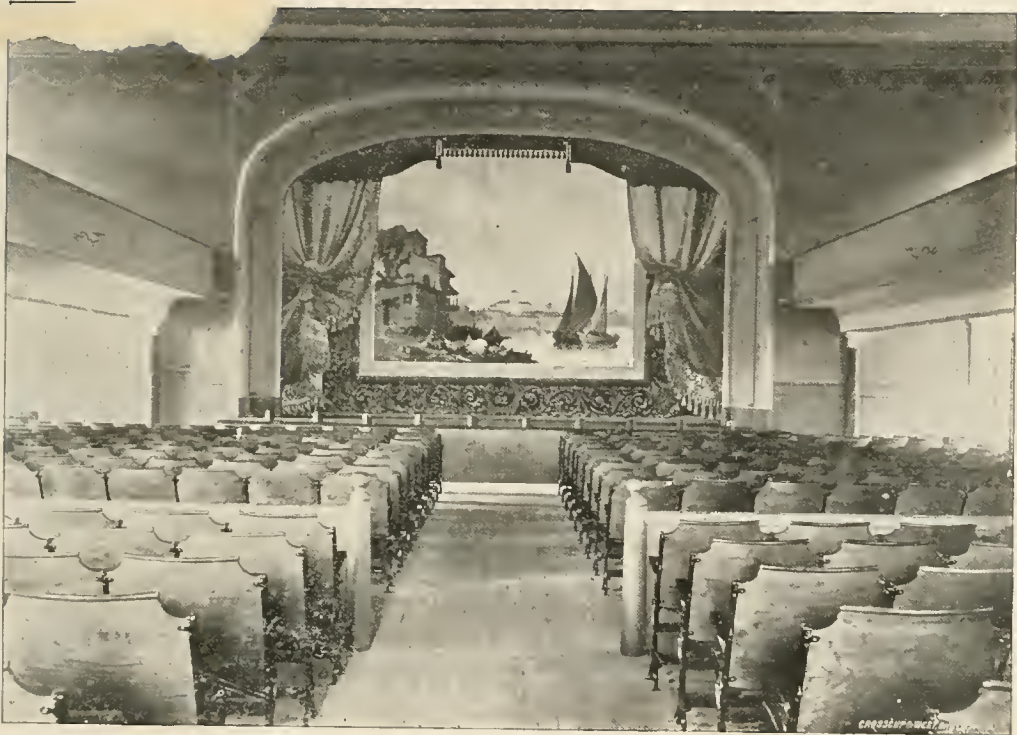
Bloomsburg is an attractive town in one of the most beautiful regions of Pennsylvania, has a population of about seven thousand and is easily accessible by the three largest railroads in the State : the Delaware, Lackawanna & Western, the Reading, and the Pennsylvania.

The town has the district system of steam heating, a perfect public sewer system, pure water from a mountain stream, illuminating gas, and both the arc and incandescent electric lights.



THE TOWN OF BLOOMSBURG.

This beautiful audience room has been remodeled, refurnished, and handsomely decorated at great expense. It contains one thousand and twenty-six opera chairs, and when occasion demands, can be made to accommodate many more people. The acoustic properties are apparently perfect.



THE AUDITORIUM.

“When you are furnishing the mind, get the best. It never pays to spend time and money at an inferior school. If one must economize in his education he should remember that a few weeks spent at a good school under skillful instructors, is more profitable than many months spent in a school poorly organized, badly disciplined, and unskillfully taught.”

ANON.



A CLASS ROOM.

“A library may be regarded as the solemn chamber in which a man may take counsel with all that have been wise and great and good and glorious amongst the men that have gone before him.”

DAWSON,—Address
on opening of Birmingham Free Library.



THE LIBRARY AND STUDY HALL.

A passenger elevator has recently been put into the dormitory at a cost of nearly four thousand dollars. It is capable of lifting twenty-five to thirty grown persons at a time, and is under the constant management of an efficient operator. Climbing stairs is now a thing of the past, and rooms on the top floors are sought for in preference to those below. They are more comfortable, quieter and command a more extended view of the surrounding country. The elevator was built by the famous Otis Brothers and is their best hydraulic elevator operated by the duplex pump and pressure tank system.



New furniture has recently been placed in all students' rooms, and spring mattresses have been provided for all beds. Rooms are frequently inspected, and habits of neatness and order are inculcated. The beds of gentlemen are made, and their rooms cared for daily.



"OTIUM CUM DIGNITATE."

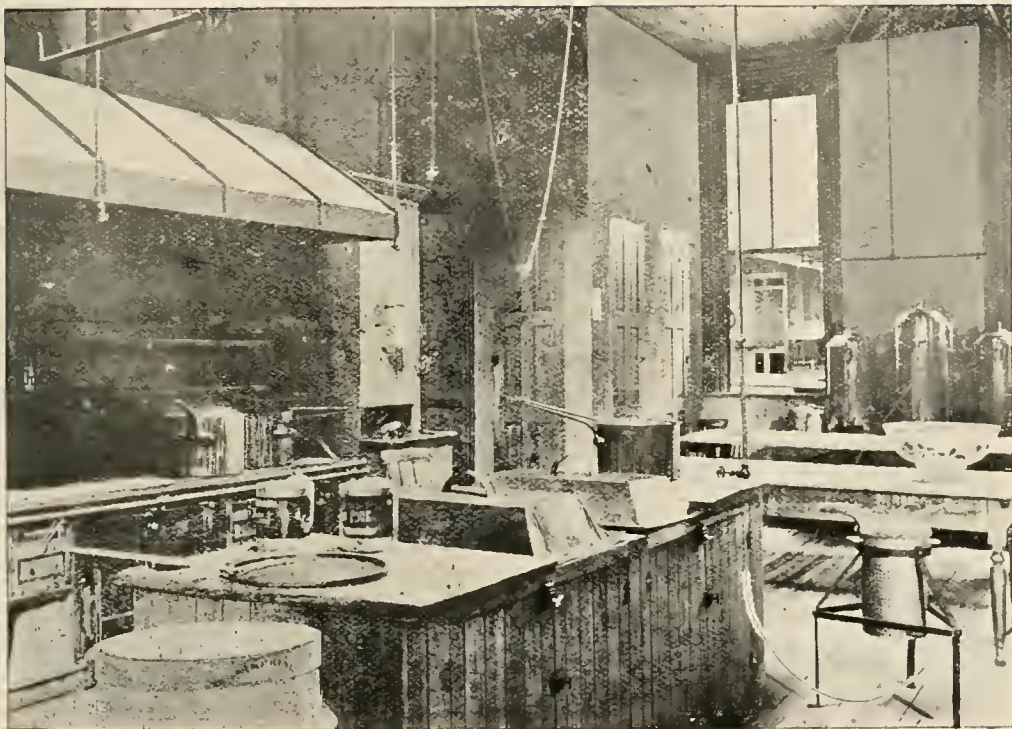
No phase of our normal school life has been marked by more rapid change during the past few years than the athletic. Not only have all the leading branches of athletics taken a place among us, but they have come to stay. Permanent tennis, football and base-ball organizations have been effected and their wholesome influence upon the life of the school has been very marked.



BASE BALL CLUB

“The cook makes our bodies ; the apothecary only cobbles them.”

OLIVER WENDELL HOLMES.



THE KITCHEN.

“ There is no teaching until the pupil is brought into the same state or principle in which you are ; a transfusion takes place ; he is you and you are he ; there is a teaching ; and by no unfriendly chance or bad company can he ever quite lose the benefit.”

EMERSON.



CORRIDOR, 1ST FLOOR, 275 FT. LONG.

Chas. Kingsley in his Hypatia lets fall from the lips of the Christian Bishop Synesius, on an occasion when the hunting proclivities of that old worthy were called into question, these words: "The hunt gives me endurance, promptness, courage, self-control, health and cheerfulness." Would not the same words apply to our American game of foot-ball? No other athletic game is to be compared with foot-ball in the direction of bringing all muscles into play. And moreover, none of them except rowing, gives training so valuable in strengthening the great involuntary muscles, those of the heart and diaphragm.



FOOT BALL TEAM.

“Old and young alike vie with each other in their eagerness to engage in this health giving exercise. Dull care has no abiding place on the tennis court. One has but to note the sparkling eye, the healthful glow, the merry ring of happy voices to realize the value of this delightful sport.”



THE TENNIS COURTS.

I value Science—none can prize it more,
It gives ten thousand motives to adore :
Be it religion, as it ought to be,
The heart it humbles, and it bows the knee :
What time it lays the breast of nature bare,
Discerns God's fingers working everywhere ;
In the vast sweep of all embracing laws,
Finds Him the real and the only cause ;
And, in the light of clearest evidence,
Perceives Him acting in the present tense.

ABRAHAM COLES.



THE SCIENCE ROOM.

“ Now good digestion wait on appetite,
And health on both ! ”

SHAKESPEARE.



THE DINING ROOM—45 ft. x 100 ft.

TRAINING in this department aims to train the hand and the mind—the mind through the hand. Dr. Belfield says : “My own opinion is that an hour in the shop of a well-conducted manual training school develops as much mental strength as an hour devoted to Latin or Geometry.”



MANUAL TRAINING ROOM.

"Cycling is the prince of sports. It clears the brain, trains the judgment, makes the eye quick and accurate, and steadies and strengthens both nerve and muscle, making them quick to respond to the decisions of the will."

Herbert J. Smith, Prof. Colgate University, Oswego, N. Y.



BICYCLE CLUB.

“ No little room so warm and bright,
Wherein to read, wherein to write.”

TENNYSON.



THE PARLORS.

“The fact is, that all breaches of the laws of health are physical sins. When this is generally seen, then, and perhaps not till then, will the physical training of the young receive all the attention it deserves.”

HERBERT SPENSER.



A CLASS IN THE GYMNASIUM.

“The man with a first-class brain, and a third-class stomach, and a fourth-class liver is beginning to find out that he is really not a strong man ; and that while by sensible exercise he might have staid like Bismarck or Gladstone till seventy, his obituary is likely to be written by the time, or soon after the time he is fifty.”

WM. BLAIRIE.



BOYS GYMNASIUM CLASS.

“ Lastly came Winter, cloathed all in frize,
Chattering his teeth for cold that did him chill
Whils’t on his hoary beard his breath did freese.”

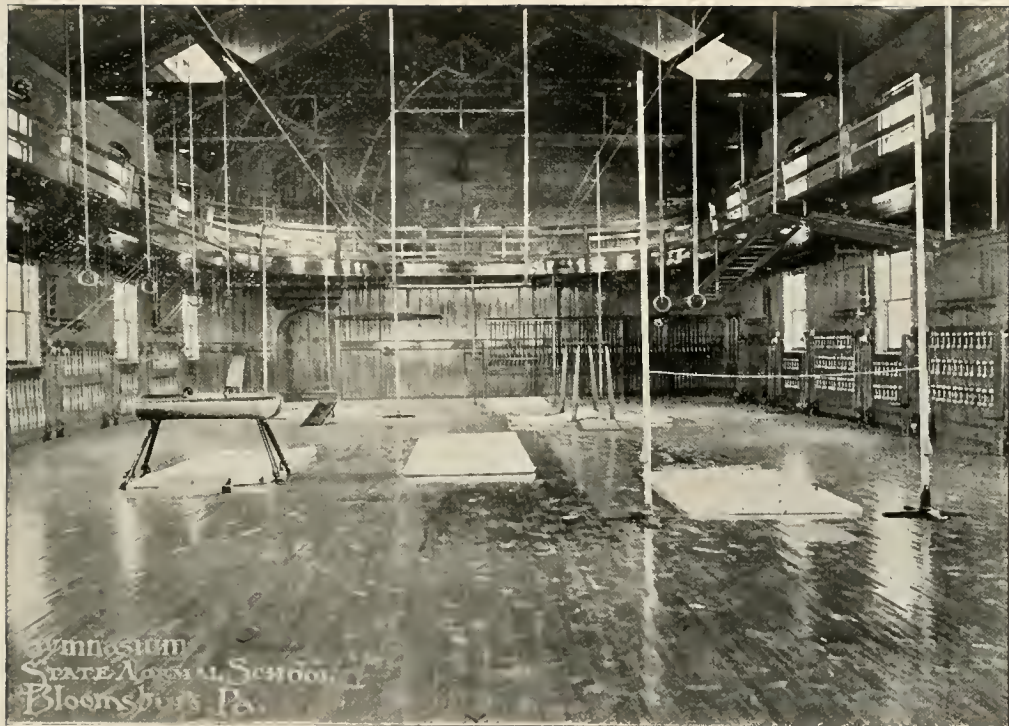
SPENSER.



SNOWED UNDER.

“ However fine a soul may be, it is not worth much in this world without a good body.”

SAVAGE.



Gymnasium
STATE NORMAL SCHOOL
Bloomsburg, Pa.

The man that hath no music in himself,
And is not moved with concord of sweet sounds,
Is fit for treasons, stratagems, and spoils.

SHAKESPEARE.



THE B. S. N. S. ORCHESTRA.

When we build, let us think that we build (public edifices) for ever. Let it not be for the present delight, nor for present use alone, let it be such work as our decendants will thank us for, and let us think, as we lay stone on stone, that a time is to come when those stones will be held sacred because our hands have touched them, and that men will say as they look upon the labor and wrought substance of them, See ! this our fathers did for us."

RUSKIN.



REAR VIEW OF BUILDINGS.

EXPENSES at this Institution are reduced to the minimum, as may be seen by consulting the catalogue ; a copy of which will be sent on request.

SOUVENIR OF THE BLOOMSBURG



State
NORMAL SCHOOL
and
Literary Institute.



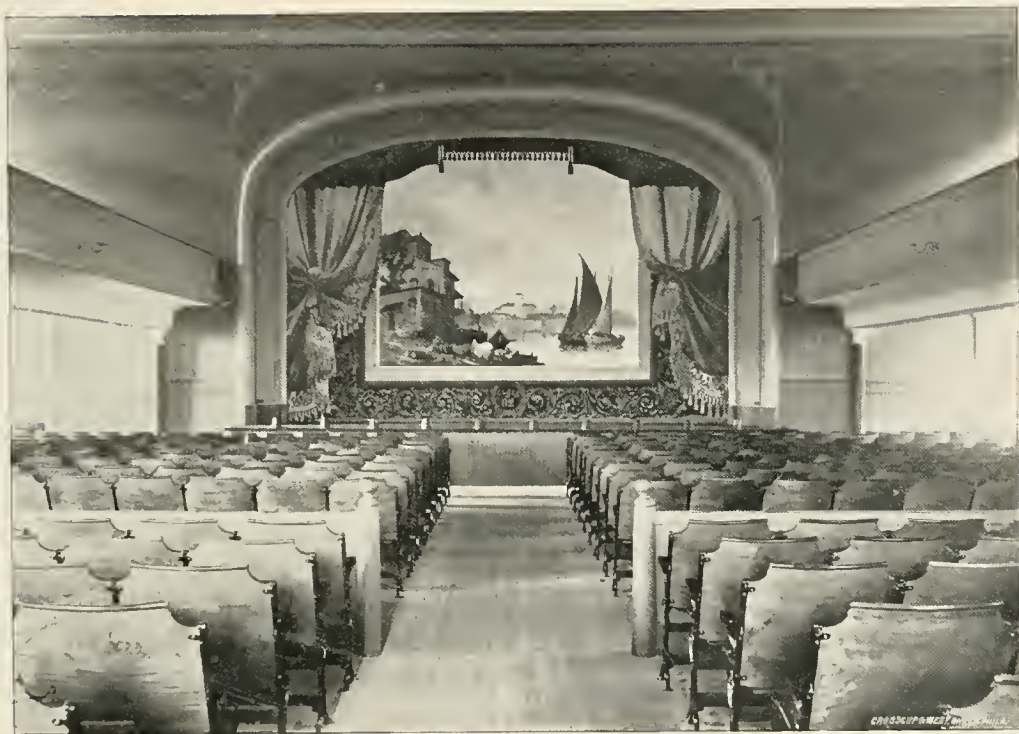
VIEW FROM A NORMAL WINDOW.



TOWN OF BLOOMSBURG.



BACK VIEW OF AUDITORIUM.



FRONT VIEW OF AUDITORIUM.





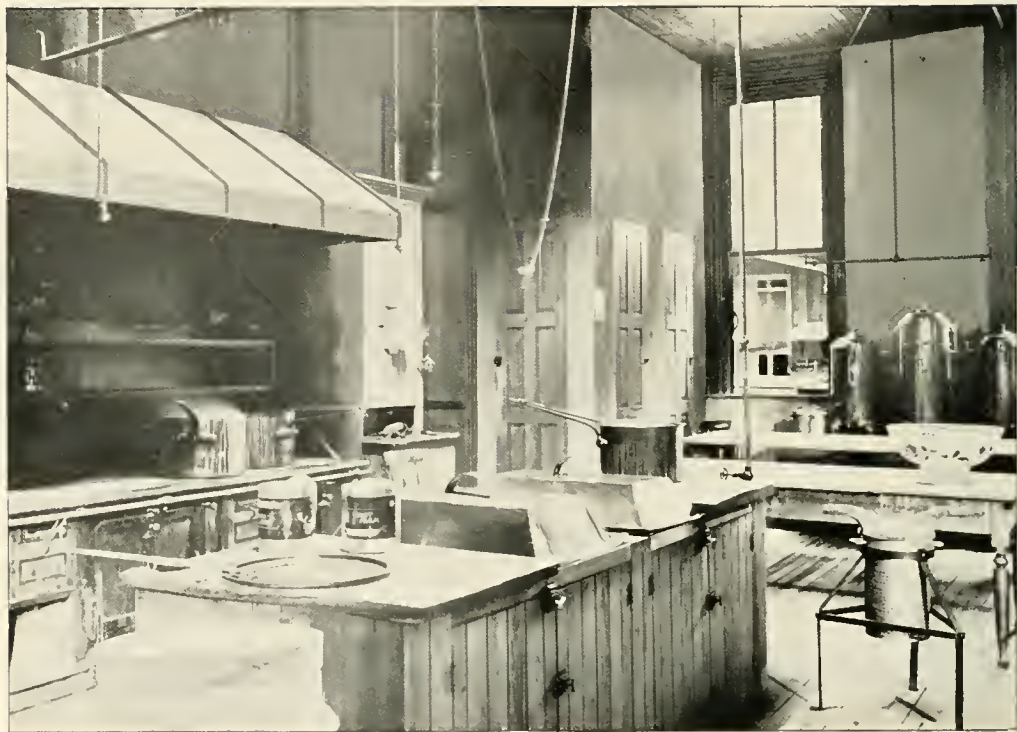
THE TENNIS COURTS.



MANUAL TRAINING ROOM.



SCIENCE ROOM.



KITCHEN.



DINING ROOM.

DRIVES &
CYCLE PATHS





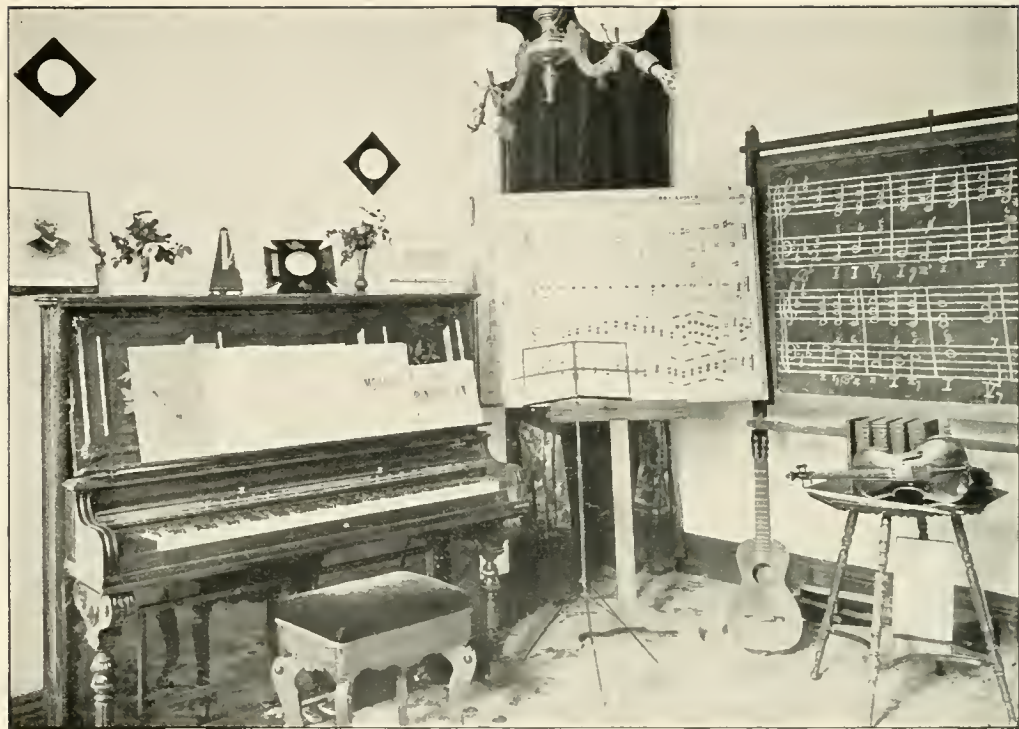
NORMAL, CYCLERS.



STUDENTS' ROOM.



STUDENTS' ROOM.



A Music Room.



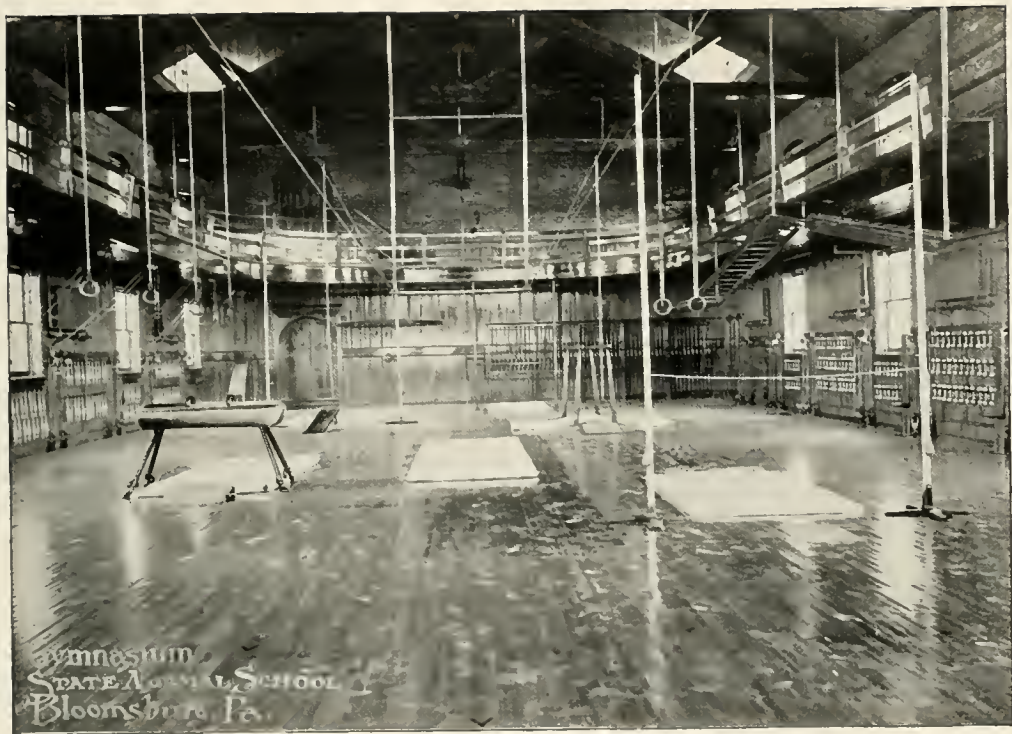
LIBRARY AND STUDY HALL.

38914



CROSSCOP & S. ENGEL PH. LA.

A GYMNASIUM CLASS.



45 FT. x 95 FT. RUNNING TRACK 23 LAPS TO A MILE.



"AND NATURE HAS A DREAMING"



A WINTER MANTLE.



FOOT BALL PRACTICE.



THE FIRST TOUCHDOWN, 1895.



CLEARING THE BAR AT 8 FT. 10 IN., SPRING SPORTS, 1895.

308. 1. 41

BLOOMSBURG UNIVERSITY



3 2404 00078624 0

LD

4481

.P63

S6

38914

SOUVENIR VIEWS OF THE STATE

NORMAL SCHOOL, BLOOMSBURG, PA.

LIBRARY OF THE
BLOOMSBURG STATE COLLEGE

LD
4481
.P63
S6

S