

001-010
011-020
021-030
031-040
041-050
051-060
061-070
071-080
081-090
091-100

THE OBITER



Volume XLIV

State Teachers College

Bloomsburg, Pennsylvania

TO THE READERS:

The 1959-1960 OBITER has tried to record some of the growth and progress evident on our campus over the past four years. In keeping with the times in which we live, there have been many changes in the appearance of the campus and additional opportunities for increasing skills in teaching through expanded programs.

Both faculty and students have met these opportunities for growth and progress while keeping alive the warmth and friendliness so traditional to our college. It is hoped that, as the years go by, students at Bloomsburg State Teachers College will always have the opportunity to study and grow in an atmosphere of friendly fellowship.

THE STAFF



JOSEPH MICHAEL ANDRYSICK

COLLEGE COMMONS . . .

CAMPUS CHANGES

Four years ago, or less for some of us, the members of the Class of 1960 first entered Bloomsburg State Teachers College. Impressed by the gently rolling landscape and well-kept buildings, perhaps many of us were not aware at first of the beautiful shrubbery and trees that adorn the campus grounds.

Perhaps, too, the red brick buildings which seemed so forbidding to us as new freshmen were what really held our interest. In these buildings, amidst the friendly atmosphere of the "College on the Hill," we were to spend much of the next few years. During these years, there have been many changes on campus.

Waller Hall, four years ago, was divided into dormitory facilities for men and women students. However, the ever-increasing student body and the





demand for more housing soon made it necessary for the men to move downtown and for the women to take over every available space in Waller Hall.

This left only small North Hall to provide campus housing for men. This year, at last, the situation was remedied by the completion of a new men's dormitory. However, Senior women found themselves room hunting in downtown Bloomsburg in order to make room for the ever-growing Waller Hall population.

Four years ago, too, the cafeteria was located on the very same spot that now houses our modern library. The line for supper, which seemed practically as long even then, formed in Waller Hall lobby outside of the elevator instead of in front of the tunnel.





The library was then located in what is now the new second floor hall of the women's dormitory. This change came about as the result of the construction of beautiful College Commons which houses our dining room and kitchen facilities.

The Class of 1960 was fortunate in that the Husky Lounge and Book Store were already in existence in September 1956. In fact, coffee breaks, pinochle, and end-of-the-semester book lines were practically traditions.

Traffic in Science Hall moved two ways four years ago, but larger classes soon made one-way traffic the only sure way of being able to enter and leave the building. This year, we enjoyed the use of a new science building with modern equipment. This new building is located next to Centennial Gymnasium, overlooking the beautiful Susquehanna Valley.







Centennial Gymnasium, complete with swimming pool, has remained the same during the four year stay of the Class of '60. Mt. Olympus, scene of many Husky triumphs, has also remained unchanged. However, construction and progress have been responsible for the destruction of two of the four tennis courts that were in existence in 1956.

Benjamin Franklin Training School, which provided our first observations of classroom situations, remains much as it did four years ago. This year, many members of our class did nine weeks of student teaching in this building.

Traditional Navy Hall registration moved to more spacious quarters in Centennial Gymnasium. Navy Hall basement, the location of the old registration lines, will soon be remodeled to house a new Speech and Hearing Clinic.

Freshmen are no longer confined to the balcony during assemblies in Carver Hall. In fact, Freshmen now attend assemblies on Tuesday; while Thursday is reserved for upperclassmen. Combined assemblies are held in Centennial's large gym.

The lions at the end of Senior



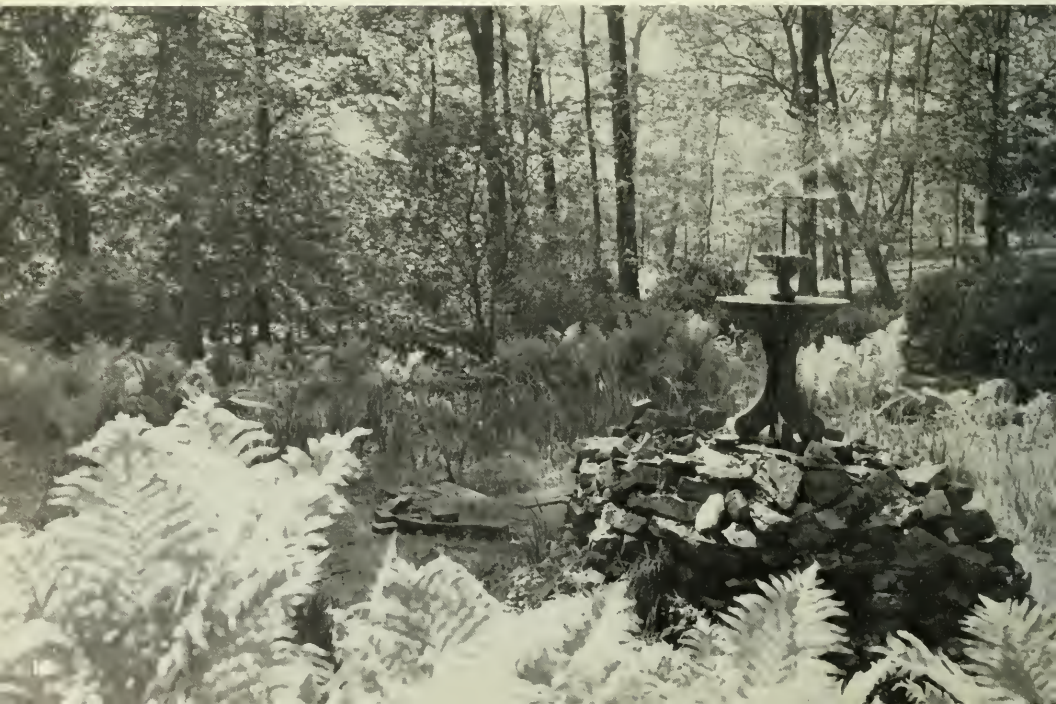
Walk greeted students long before 1956 just as they do today, and the colored lights of the fountain by long porch still take our breath away just as they did when we first saw them.

Long Porch has always been the place to talk with old friends and meet new ones. Warm weather usually complements the motion of the rocking chairs on spring evenings.

Long Porch is also the spot for week-end and vacation departures. Unfortunately, there are still far too many suitcases lining the porch each week-end.

It is evident that the changes in the buildings and grounds are not the only changes that have taken place on campus during the last four years. There have also been many changes in campus policies and traditions.

Perhaps the most unwelcome change of all was the removal of "Roongo," the Husky mascot, from his home near the laundry. Due to the expense of his upkeep and the care which he required, it was necessary to sell "Roongo" to a private owner. She still takes part in all home football games, however, and is as fond of students as ever.



Another rather unwelcome change was the elimination of regular Wednesday night lounge dances. This condition is being rectified by the planning of more social activities on week-ends and the hope of more dances during the regular session.

Television fans have also missed the use of a second television set which was in existence four years ago. This change has called for democracy in the selection of programs to be viewed.

There have also been many welcome changes on campus. One of these was a soda machine installed in the third floor smoker of Waller Hall. This machine, it was hoped, would keep the studying coeds happy and eliminate the necessity of running to the lounge in bermudas and raincoats.

Much to everyone's dismay, one of the biggest campus changes was Saturday classes for everyone.

This change keeps the "Suitcase Sams and Sues" on campus until Saturday afternoon. The new schedule resulted in the library being open on Saturday afternoon and on Sunday afternoon and evening—a most welcome change.

A change that the Class of '60 happily avoided was the requirement of entrance exams for all prospective students. On several Saturdays throughout the year, prospective freshmen file into Carver Hall for a full morning of tests. Looking weary and brainwashed, they can be seen taking a break in the Husky Lounge at intervals during the day. Those of us who escaped this fate met with something similar during our first week at Bloomsburg. It looks as if tests—all kinds of them—shall be forever a part of our college experience.





Bloomsburg went really modern this year with the distribution of plastic identification cards. This eliminated the well-chewed, quite bent, very used look when second semester registration rolled around.

Another change during the past four years was the removal of the caretaker's home near the laundry and the relocation of the hothouse to a nearby site. This came about when the construction of the new men's dormitory was beginning.

The hothouse supplies many of the plants that are found in the flower beds on campus. Each





spring some new species adds beauty and color to our campus.

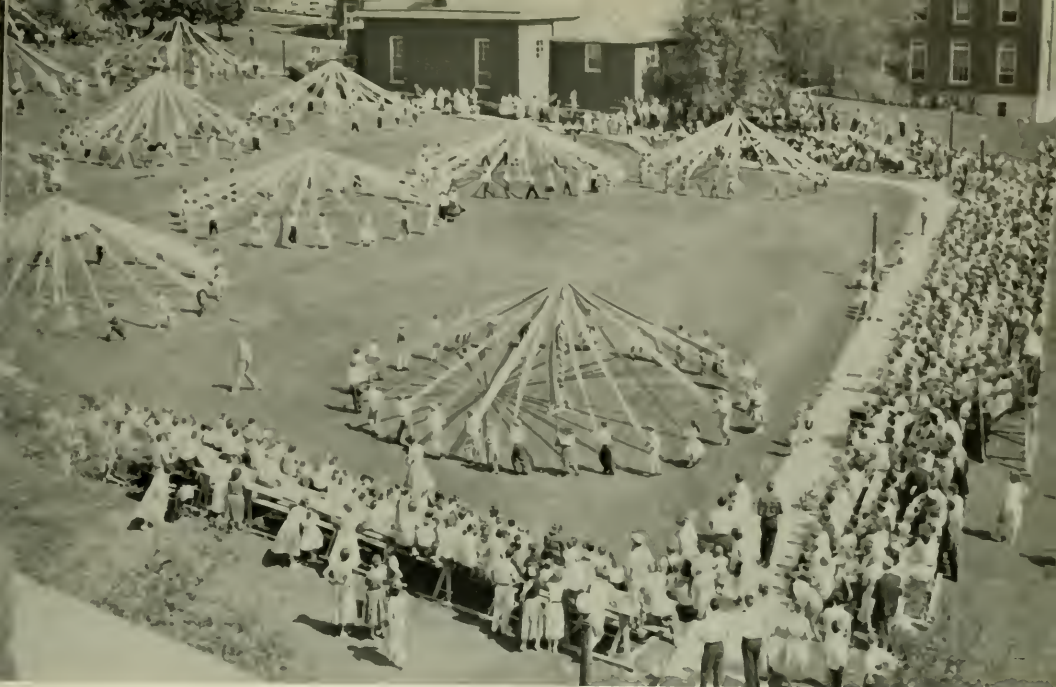
Another change in the dining room was the addition of plastic dishes to replace the heavy ceramic dishes—a much needed change for the waitresses and waiters. Speaking of waitresses and waiters, the waitresses seem to be outnumbering the waiters these days.

Another very important change came about with the formation of department heads and the Office of Admissions and Placement. This is additional evidence of the progress on our campus.





BLOOMSBURG
NORMAL TEACHERS COLLEGE



There may be many changes which we have not been able to record in these few pages; and certainly, when reviewing this book in the future, there will be many new evidences of progress and growth. Our student body and faculty will continue to grow; and to meet the demands of a larger enrollment, there will be additional buildings and equipment.

Most important of all will be the increased op-



portunities for fellowship and friendship. Of the traditions and memories held dear at this time, some will fade and others will disappear altogether. The one that will always remain is the memory of friendships made while studying and learning together. May Bloomsburg State Teachers College continue to grow in brotherhood and knowledge, and may all of her students be inspired by the example of that growth.



A
D
M
I
N
I
S
T
R
A
T
I
O
N

&

F
A
C
U
L
T
Y





To the First State College Class:

Academy — Literary Institute — Norman School — Teacher's College — and now State College.

Every generation has marked a change in name of the institution from which you are now graduating.

One hundred and twenty years (1839-1959) of educational progress challenges you to be worthy of the heritage of Bloomsburg.

Harvey A. Andrus

Harvey A. Andrus
President





Members of the Board of Trustees

SEATED: Hon. Carl H. Fleckenstine, Orangeville, Pa.; Dr. Harvey A. Andruss, President of the College, Bloomsburg, Pa.; Hon. Harold L. Paul, Pottsville, Pa.; Mr. Frank A. Thornton, Shamokin, Pa.

STANDING: Hon. C. William Kreisher, Catawissa, Pa.; Howard R. Berninger, Esq., Mifflinville, Pa.; Mr. Sam M. Jacobs, Danville, Pa.; Mr. John H. Shuman, Bloomsburg, Pa.; Mr. Leo S. Dennen, Turbotville, Pa.

Not present when photo was taken: Bernard J. Kelley, Esq., Philadelphia, Pa.

BOARD OF TRUSTEES

C. WILLIAM KREISHER	PRESIDENT
CARL H. FLECKENSTINE	VICE-PRESIDENT
HOWARD R. BERNINGER	SECRETARY-TREASURER
HARVEY A. ANDRUSS	PRESIDENT OF THE COLLEGE
CHARLES H. BOEHM, ex-officio	SUPERINTENDENT OF PUBLIC INSTRUCTION



To the Graduates of 1960:

My most sincere wishes for happiness and satisfaction in your chosen profession go to you who have qualified for the title of "Teacher." It is an enviable title, one of honor and prestige.

May your preparation at Bloomsburg be reflected by your attaining success and status as the leaders of youth.

Elizabeth B. Miller

Elizabeth B. Miller
B.S., M.Ed.
Dean of Women



To the Graduates of 1960:

Sincere congratulations on your many fine achievements in the various areas of college work, academic and otherwise. As you enter upon new ventures in new scenes we wish you complete success and great personal satisfaction. For those of you who will teach, be ever aware that you will appear to those you serve as beings possessing wisdom capable of bringing light into dark places; as friends of youth whose council may be freely sought and confidently accepted, as guides who may always be trusted.

The challenge of these high expectations is great. We trust that Bloomsburg State College has contributed to your ability to meet this challenge and that you may never fail those who look to you for so much as they, too, seek the truth that shall free them from the bonds of ignorance.

Sincerely yours,

George G. Stradtman

George G. Stradtman,
B.S., M.Ed.
Dean of Men





To Graduating Seniors:

Your four years of preparation for your chosen field are now completed. However, we do not want you to think that this is the end of your education. The old maxim "this is the beginning, not the end," still holds true.

There are many advances being made in the field of education, and there is room for many more.

Bloomsburg State College is proud of its graduates, because we feel that they will carry the ideals taught them wherever they go. We hope that we have prepared you well for the task ahead.

Welcome to the other side of the desk!

John A. Hock

John A. Hock
A.B., M.A.
Dean of Instruction



ASSISTANT DEANS



EVELYN J. SACHS
B.S., M.A.
Assistant Dean of Women
Guidance and Counseling



RALPH S. HERRE
B.S., M.A., Ed.D.
Assistant Dean of Men
Social Studies

FACULTY



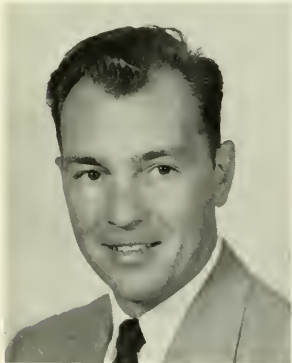
BRUCE E. ADAMS
B.A., M.Ed., D.Ed.
Geography



EDNA J. BARNES
B.S., M.A.
Elementary Education



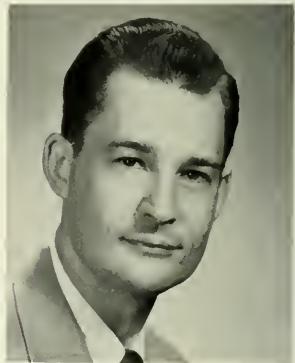
IVA MAE BECKLEY
B.S., M.Ed.
Laboratory School Grade II



WALTER R. BLAIR
B.S., M.Ed.
Physical Science



CLAUDE L. BORDNER
A.B., M.A.
Mathematics



BOYD F. BUCKINGHAM
B.S., M.S.
Speech



CHARLES H. CARLSON
B.A., M.A., D.Ed.
Music



WILLIAM F. COPE
B.F.A., M.A.
Speech



EDWARD T. DeVOIE
B.S., M.Ed., D.Ed.
English



VIRGINIA A. DUCK
B.A.
English



C. STUART EDWARDS
B.S., M.Ed.
Psychology



ERNEST H. ENGELHARDT
B.A., M.A., D.Ed.
Secondary Education



BEATRICE ENGLEHART
B.S., M.Ed.
Laboratory School, Kindergarten



JOHN A. ENMAN
B.A., M.A.
Geography



DOROTHY J. EVANS
B.S.
Music



HOWARD F. FENSTERMAKER
B.A., M.A.
Foreign Language



HENRY R. GEORGE
A.B., M.Litt.
Social Studies



HELEN E. GIBBONS
B.S., M.Ed.
Business Education



DEBORAH W. GRIFFITH
B.S., M.A.
Laboratory School, Grade IV



DONALD HEILMAN
B.S., M.Ed.
History



NORMAN L. HILGAR
B.S., M.A.
Business Education



CLAYTON H. HINKEL
B.S., M.Ed.
Business Education



MATTHEW H. HOHN
B.S., M.S., Ph.D.
Biological Science



J. CALVIN HOLSINGER
A.B., M.A., D.Litt.
History



MARY HOMRIGHOUS
B.A., M.A.
Speech



RUSSELL HOUK
B.S., M.S.
Physical Education



M. PATRICIA HOUTZ
B.S., M.S.
Business Education



CALVIN ISRAEL
B.A., M.A.
English



MARY LOU JOHN
B.S.
Social Studies



WARREN I. JOHNSON
B.S., M.Ed.
Laboratory School, Grade VI



ELINOR R. KEEFER
B.A., M.Litt., B.S. in L.S.
Librarian



CARL KENDALL
A.S., B.S., M.S., D.Sci.
Science



MARY E. KRAMER
B.S., M.A.
Laboratory School, Special Education
Class



MYRRL H. KRIEGER
B.S., A.A., B.S.Ed., M.Ed.
Art



KIMBER C. KUSTER
B.S., M.S., Ph.D.
Physical Science



HAROLD H. LANTERMAN
B.S., M.A., D.Ed.
Physical Science



ALLEN B. LEE,
A.B., M.A., Ph.D.
Political Science



JAMES R. C. LEITZEL
B.A.
Mathematics



MARGARET E. McCERN
B.S., M.Ed.
Business Education



ELEANOR J. McCUE
B.S., M.Ed.
Laboratory School, Grade I



CHARLOTTE McKECHNIE
B.S.
English



M. BEATRICE METTLER
A.B., M.A.
College Nurse, Health Education



NELSON A. MILLER
B.S., M.Ed.
Music



DAVID J. MULLEN
B.S., M.Ed., D.Ed.
Secondary Education



FRANK PETERSON
B.S., M.A.
Special Education



DONALD D. RABB
B.S., M.Ed., D.Ed.
Biological Science



FRANCIS J. RADICE
B.S., M.Ed.
Business Education



GWENDOLYN REAMS
B.A., M.A.
Assistant Librarian



KENNETH A. ROBERTS
B.S., M.S.
Laboratory School, Grade IV



SUSAN RUSINKO
B.A., M.A.
English



J. ALMUS RUSSELL
B.A., M.A., Ph.D.
London University Certificate
English, Children's Literature



WALTER S. RYGIEL
B.S., M.A.
Business Education



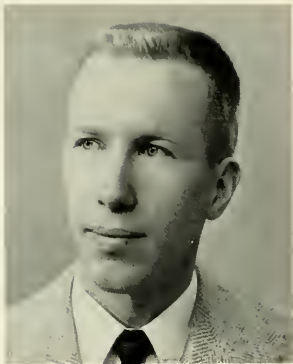
MARTIN A. SATZ
B.A., M.A., Ph.D.
Psychology



TOBIAS F. SCARPINO
B.S., M.S.
Science



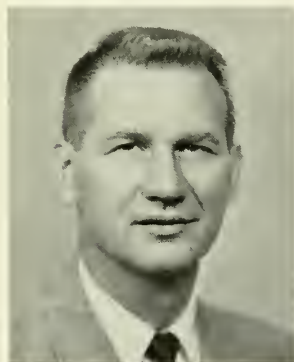
RUSSELL F. SCHLEICHER
B.S., M.A.
Psychology, Elementary Science



JOHN J. SCRIMGEOUR
B.S.
Physical Sciences



GILBERT R. W. SELDERS
B.A., M.Ed., D.Ed.
Reading Specialist



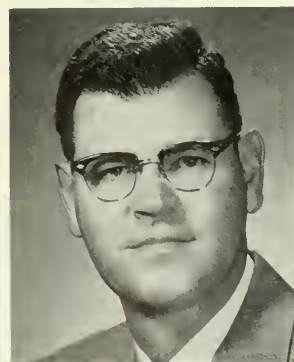
REX E. SELK
B.A., M.S.
Chemistry



JOHN J. SERFF
B.S., M.Ed., Ph.D.
Social Studies



CECIL C. SERONSY
B.A., M.A., Ph.D.
English



HAROLD SHELLY
B.A., M.A.
Physical Education



BARBARA J. L. SHOCKLEY
B.A., M.S., Ph.D.
Philosophy



WILLIAM B. STERLING
B.S., M.S.Ed.
Geography, Aviation



MARCELLA M. STICKLER
B.S., M.A.
Laboratory School, Grade III



CHARLES R. STRONG
B.S.
Business Education



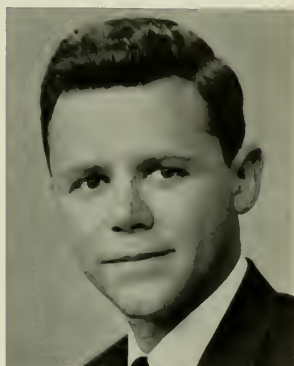
LOIS SUTLIFF
B.S.
Physical Education



EUGENE D. THOENEN
B.A., M.A., Ph.D.
Economics



ROBERT ULMER
B.S., M.Ed.
Art



EDWARD VAN NORMAN
B.S., M.Ed.
Audio-Visual Education



E. PAUL WAGNER
B.S., M.Ed., D.Ed.
Psychology, Public School
Psychologist



MARY ELEANOR WRAY
B.A., M.S.
Health Education



EDITH C. ZINN
B.A., M.A.
Art

NON-TEACHING PERSONNEL



MRS. MARGARET ANDERSON
Resident Adviser



MRS. ALTHEA HOKE
Resident Adviser



W. HORACE WILLIAMS
Manager of the College Store



THOMAS CORREY
Superintendent of Grounds



PAUL G. MARTIN
B.S., Business Manager



Mrs. Helen Loreman



Mrs. Helen Barkauskas



Miss Beatrice Eyerly



Frank Billman

SENIORS





Dear Fellow Graduates:

May 20, 1960: the beginning and the end. For our college, and for us this day is monumental. The former Bloomsburg State Teacher's College graduates its first class from Bloomsburg State College. A single step forward that will undoubtedly be followed by a continuous march of progress. For us, the class of 1960, it means an end to four wonderful years at Bloomsburg, but most important, it also marks a beginning of a new life as we enter our chosen profession.

From Bloomsburg we have taken much: maturity, friends, contacts, fond memories, pleasant experiences, and most important, an education. It has not been, however, all reception and no giving. We, as a class, have contributed to the athletic records of our college. Whether our contributions are surpassed or are never equalled, they none the less will remain a part of Bloomsburg State College.

We are now faced with a situation that is indeed difficult: for to say an abrupt farewell is impossible, and to linger on a farewell only makes it more difficult to close. Perhaps by using an old adage, "All good things must come to an end," we realize that the twilight is upon us here at Bloomsburg. We are thankful, however, as this twilight rapidly descends, that the inevitable night will be followed by a new dawn. A dawn that will be marked by an entrance to life's journey, a journey which we are well qualified to take, thanks to Bloomsburg.

Not most important is the fact that we enter into society as useful, mature, and educated citizens, but that we are capable of and are responsible for building these same useful, educated, and mature citizens of tomorrow. Whatever our endeavors may be, we will never forget the foundation we have acquired here.

As spokesman for the class of 1960, I would like to extend our sincere appreciation to: our parents, our president, our faculty, the Board of Trustees, the Commonwealth of Pennsylvania, and our class advisers, Mrs. Beeman, Mr. Adams, Mr. Houk, and Mr. Hilgar, who have given a great deal of their time and efforts for our benefit.

It goes without saying that I have considered it a deep-felt honor and privilege to serve as your president. I would like to take this opportunity to wish you success and happiness in the future. May God be with you, and may you turn often in memory to Bloomsburg State College.

James J. Peck

James J. Peck
Class President, 1960

SENIOR CLASS OFFICERS



Mr. Hilgar assists James Peck.



William Thomas, Patricia Glatts, Nikki Scheno.

<i>President</i>	James Peck
<i>Vice-President</i>	William Thomas
<i>Treasurer</i>	James Wagner
<i>Secretary</i>	Nikki Scheno
<i>Woman Representative</i>	Patricia Glatts
<i>Man Representative</i>	Robert Steinruck
<i>Historian</i>	Jeanette Andrews
<i>Adviser</i>	Mr. Norman L. Hilgar



James Wagner, Jeanette Andrews, Robert Steinruck.

BUSINESS EDUCATION

THOMAS B. MARTIN
B.S., M.S., Ed.D.

Director of Business Education



Business student, Mary Shaffer, works on her bookkeeping practice set.



James Peck, student teacher, instructs a bookkeeping class at Bloomsburg High School.



ARISTIDE MATTHEW ADELIZZI

Havertown

General Business

Business Education Club 2, 3, 4, President 4; SPSEA 4; Social Usage Club 2; MA-ROON AND GOLD Reporter 2.

WILLIAM EUGENE ALGATT

Berwick

Accounting, Typing, Social Studies

Day Men's Association 1, 2, 3; Men's Resident Council 4; SPSEA 4.



JEANETTE GAIL ANDREWS

Osceola

General Business

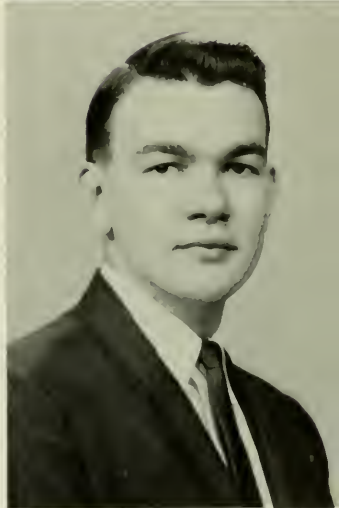
Class Historian 4; Waller Hall Association 1, 2, 3, 4; Kappa Delta Pi 3, 4; Pi Omega Pi 2, 3, 4, Program Chairman 3, Vice-President 4; Business Education Club 1, 2; Dramatic Club 2, 3; OBITER Advertising Staff 1; WHO'S WHO AMONG STUDENTS IN AMERICAN COLLEGES AND UNIVERSITIES.

BOYD EUGENE ARNOLD

Lewistown

General Business

Hospitality Committee 2; Election Committee 3; Men's Resident Council 1, 2, 3, 4; Kappa Delta Pi 3, 4, Treasurer 4; Pi Omega Pi 2, 3, 4; Business Education Club 1, 2, 3, 4; SCA 1; SPSEA 3, 4, Treasurer 4; OBITER Typing Staff 4; Senior Reserve Seat Committee.



RICHARD D. BALL

Bloomsburg

Accounting, Sales, Typing

Day Men's Association 1, 2, 3, 4, Kappa Delta Pi 3, 4, Vice-President 4; Pi Omega Pi 2, 3, 4; Business Education Club 1, 2; SPSEA 4; Senior Reserve Seat Committee.

LINDA ANNE BARTLOW

New Albany

General Business

Hospitality Committee 2; Waller Hall Association 1, 2, 3, 4, Election Chairman 3; Kappa Delta Pi 3, 4, President 4; Pi Omega Pi 2, 3, 4; Sigma Alpha Eta 3, 4, Business Education Club 1, 2, 3, College Choraleers 1; SPSEA 3, 4; WHO'S WHO AMONG STUDENTS IN AMERICAN COLLEGES AND UNIVERSITIES.





MARJORIE ELLEN BETZ

Camp Hill

General Business

Customs Committee 2; Dining Room Committee 1; Waller Hall Association 1, 2, 3, 4; Business Education Club 1, 2, 3; College Choraleers 1; SCA 1; Social Usage Club 1; SPSEA 4; Fashion Show Coordinator 3; Basketball Tournament Committee 1; MAROON AND GOLD Typist 1; Invitation Committee 4.

EDWARD WAYNE BROWN

Blommsburg

Accounting, Sales, Typing

Pep Committee 3; Day Men's Association 1, 2, 3, 4; Business Education Club 1, 2; SPSEA 4; Gift Committee 4.



KENNETH PIERCE CARLSON

Blommsburg

Accounting, Sales, Typing

Pep Committee 3; Social Recreation Committee 4; Day Men's Association 1, 2, 3, 4; Business Education Club 1, 2; Maroon and Gold Band 1, 2, 3; SPSEA 4; Memorial Committee 4.

DANIEL CORTAZZO

Bangor

Accounting, Sales, Typing

Men's Resident Council 1, 2, 3, 4; Aviation Club 1, 2, 3; Business Education Club 1, 2, 3; Senior Cap and Gown Committee.



THEODORE EDWARD CROUSE

Berwick

Accounting, Typing, Social Studies

Day Men's Association 1, 2, 3; Business Education Club 1, 2, 3; SPSEA 4.

RUSSELL CURTIS DAVIES

Peckville

Accounting, Typing, English

Day Men's Association 1; Business Education Club 1; OLYMPIAN Distribution Staff 2; MAROON AND GOLD Photographer 2; OBITER Photographer 1.





DOROTHY ANNA DELBO

Danville

General Business

Day Women's Association 1, 2, 3, 4; Waller Hall Association 1; Pi Omega Pi 2, 3, 4; Historian 4; Business Education Club 1, 2, 3, 4; Maroon and Gold Band 1, 2, 3, 4; Poetry Club 1, 2, 3, 4; SCA 2, 3, 4; Publicity Chairman 3; Senior Announcement and Namecard Committee.

ELIZABETH JEAN DERR

Bloomsburg

General Business

Day Women's Association 1, 2, 3, 4; Treasurer 2; Official Board 1, 2, 3; Business Education Club 1, 2, 3, 4; SPSEA 3, 4; Senior Reserve Seat and Ushers Committee, Chairman.



MARY ELLEN DUSHANKO

Hazleton

General Business

Customs Committee 4; Hospitality Committee 2, 3, 4; Waller Hall Association 1, 2, 3, 4; Proctor 2, 3; Business Education Club 2, 3, 4; Secretary 3; College Choraleers 1; SPSEA 3, 4; Basketball Tournament Committee 3; Majorette 3, 4; MAROON AND GOLD Typist 2, 3; OBITER Head Typist 4; Senior Gifts Committee.

PETER D. EGO

Philadelphia

Accounting, Typing

Day Men's Association 1; Men's Resident Council 3; Aviation Club 1; Business Education Club 1, 2; Basketball Tournament Committee 1.



ROGER WAYNE ELLIS

Turbotville

General Business

Election Committee 3, 4; Men's Resident Council 1, 2, 3, 4; Pi Omega Pi 2, 3, 4; Business Education Club 1, 2, 3, 4; College Choraleers 1; SPSEA 4; SCA 1; OBITER Typing Staff 4; Senior Reserve Seat Committee.

GERALD ELTRINGHAM

Shamokin

General Business

Day Men's Association 1, 2, 3, 4; SPSEA 3, 4; Varsity Club 1, 2, 3, 4; Wrestling 1, 2; Senior Transportation Committee.





EDWARD MICHAEL FLANAGAN

Montrose

Accounting, Social Studies, Typing

Men's Resident Council 1, 2, 3; Aviation Club 1; Business Education Club 3; SPSEA 4; Basketball Tournament Committee 3; Basketball 2; MAROON AND GOLD Advertising Manager 3.

STEVEN ANTHONY FRAIND

Berwick

General Business

Day Men's Association 1, 2, 3, 4; Business Education Club 2, 3.



YVONNE DOLORES GALETZ

Shillington

General Business

Waller Hall Association 1, 2, 3, 4; Kappa Delta Pi 4; Pi Omega Pi 2, 3, 4, Secretary 3, President 4; Business Education Club 1, 2, 3, 4; College Choraleers 1, 2, 3; SCA 1; Fashion Show Usherette and Children's Assistant 2, 3; Senior Invitations Committee, Chairman.

ALMEDA M. GORSLINE

Athens

General Business

Day Women's Association 3; Waller Hall Association 1, 2; Pi Omega Pi 2, 3; Athenaeum Club 2; Business Education Club 1, 2; SPSEA 3, 4; SCA 1; PILOT Associate Editor 3; MAROON AND GOLD Typing Staff 1; Senior Invitations Committee; WHO'S WHO AMONG STUDENTS IN AMERICAN COLLEGES AND UNIVERSITIES.



JANET ELVA GROSS

Wyoming

General Business

Waller Hall Association 1, 2, 3, 4; Business Education Club 1, 2, 3; SPSEA 3; Majorette 1, 2, 3, 4, Head Majorette 4; SCA 1, 2, 3, 4, Membership Chairman; Booklet Editor 4; Social Recreation Committee 3; Intramural Basketball and Baseball 2, 3; Senior Program and Ivy Day Committees.

MARJORIE ANN HAND

Scranton

General Business

Customs Committee 2; Social Recreation Committee 3; Election Committee 4; Waller Hall Association 1, 2, 3, 4; Pi Omega Pi 3, 4; Business Education Club 2, 3, Sergeant-at-Arms 3; College Choraleers 1; SPSEA 3, 4; Social Usage Club 1; Basketball Tournament Committee 3; CO-PILOT Typist 2; MAROON AND GOLD Typist 1, 2; OBITER Typist 4; Senior Invitations and Announcements Committee.





ROGER FRANCIS HENNINGER

Gowen City

General Business

Day Men's Association 1, 2, 3; Pi Omega Pi 4; Business Education Club 2, 3, 4.

RONALD LOREN HILEMAN

Bloomsburg

Accounting, Social Studies, Typing

Day Men's Association 1, 2, 3, 4; Business Education Club 1; College Choraleers, 1, 2, 3, 4, Vice-President 1; Intramural Basketball 3.



CHARLES CLIFTON HOUSENICK

Bloomsburg

Accounting

Day Men's Association 2, 3, 4.

CARL FRANK KADTKE

Shickshinny

Accounting, Typing, Social Studies

Day Men's Association 1, 2, 3; Business Education Club 1, 2, 3; Senior Invitation Committee.



ANDREW KELLY

Shamokin

Accounting, Mathematics

Day Men's Association 1, 2, 3, 4; Business Education Club 1.

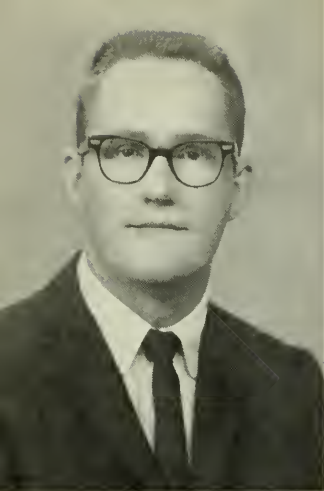
ELIZABETH MARIE LAPOINT

Mountaintop

General Business

Hospitality Committee 2; Waller Hall Association 1, 2, 3; Pi Omega Pi 4; Business Education Club 1, 2, 3; Senior Invitations Committee; WHO'S WHO AMONG STUDENTS IN AMERICAN COLLEGES AND UNIVERSITIES.





JOHN EUGENE LAUBACH

Bloomsburg

Accounting, Typing Social Studies

Day Men's Association 1, 2, 3, 4; Business Education Club 1, 2.

LARUE LELAND LAWTON

Bloomsburg

General Business

Day Men's Association 1, 2, 3, 4; Business Education Club 3, 4.



JOSEPH JOHN LEONARDO

Mayfield

Accounting, Typing

Day Men's Association 3, 4; Business Education Club 3, 4.

JEAN MARIE MATCHULAT

Moscow

Secretarial, Social Studies

Election Committee 4; CGA Assembly Committee 3; Customs Committee 2; Waller Hall Association 1, 2, 3, 4, Proctor 2; "B" Club 2, 3, 4, Treasurer 4; Business Education Club 1, 2, 3, 4; College Choraleers 1; Bloomsburg Players 1; SPSEA 3, 4; OBITER Head Typist 2; CO-PILOT Head Typist 2; MARGON AND GOLD Typist 1, 2, 3; Senior Decoration Committee 4; Basketball Tournament Committee 3, 4.



JOAN BEVERLY MATCHULAT

Moscow

General Business

Class Secretary 3; Waller Hall Association 1, 2, 3, 4; "B" Club 1, 2, 3, Secretary 1; Business Education Club 1, 2, Secretary 2; College Choraleers 1; Assembly Committee 1; Hospitality Committee 1.

WILLIAM FRANCIS McCANN

Tresckow

Accounting, Social Studies, Typing

Day Men's Association 1; Men's Resident Council 2, 3, 4; Athenaeum Club 1, 2, 3, 4; Aviation Club 1, 2, 3; Business Education Club 1, 2, 3; SPSEA 4; Senior Transportation Committee, Chairman.





ESTHER KATHRYN McMICHAEL

Stillwater

General Business

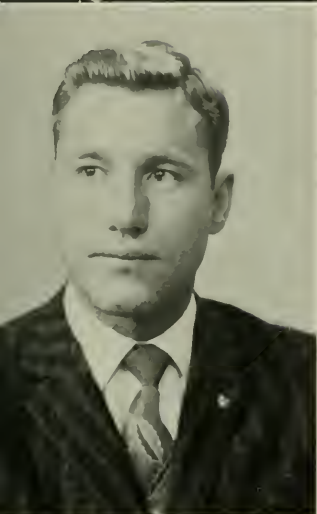
Day Women's Association 1, 2, 3, 4; Business Education Club 1, 2, 3; SPSEA 3, 4.

JOSEPH MERENA

Shamokin

Accounting, Sales, Typing

Day Men's Association 2, 3; Aviation Club 2; SPSEA 4.



WILLIAM ORSON MILLER

Bloomsburg

General Business

Day Men's Association 1, 2, 3, 4; Business Education Club 3; SPSEA 4; Wrestling 1; Senior Reserve Seat Committee.

KATHLEEN REGINA NEBUS

Jamesburg, New Jersey

Secretarial, Social Studies

Waller Hall Association 1, 2, 3, 4; "B" Club 2, 3, 4; Business Education Club 2, 3; College Choraleers 1, 2; SPSEA 4; CO-PILOT Typist 3; MAROON AND GOLD Typist 4; OBITER Typist 4; Senior Ivy Day Committee and Gifts Committee.



BARBARA ANN OBUDZINSKI

Reading

Accounting, Math

Customs Committee 3, 4; Day Women's Association 1; Waller Hall Association 2, 3, 4; "B" Club 2, 3, 4; Business Education Club 1, 2, 3; College Choraleers 1; SPSEA 4; Senior Announcements Committee.

PATRICIA ANN OSWALD

Fleetwood

General Business

Customs Committee 3; Waller Hall Association 1, 2, 3, 4; "B" Club 2, 3; Business Education Club 1, 2, 3; SCA 1; SPSEA 1; Basketball Tournament Committee 1; MAROON AND GOLD Typist 1; Senior Invitation Committee.





PAUL THOMAS PALISCAK
 Plymouth
Accounting, Typing
 Day Men's Association 1, 2, 3; Business Education Club 1.



JAMES J. PECK
 Boyertown
Accounting, Sales, English, Typing
 Man Representative 2; Class President 3, 4; Student Government Conference Delegate 2, 3; Election Committee Chairman 3; Social Recreation Committee 2; Men's Resident Council 1, 2, 3, 4, Executive Council 3, 4; Phi Sigma Pi 2, 3, 4, Secretary 3, Executive Council 3; Pi Omega Pi 3, 4; Business Education Club 1, 2, 3; SPSEA 3, 4; SCA 1; Varsity Club 4; Basketball 1, 2, 3, 4; MAROON AND GOLD G. I. Mail Editor 2, 3; WHO'S WHO AMONG STUDENTS IN AMERICAN COLLEGES AND UNIVERSITIES.



ROBERT PERRY
 Scranton
Accounting, Typing
 Men's Resident Council 1, 2, 3, 4.



ROBERT JAMES PICHOLA
 Shamokin
Accounting, Social Studies, Typing
 Men's Resident Council 1, 2, 3, 4; Business Education Club 1, 2, 3; SPSEA 4.



NICHOLAS PITUCH
 Lansford
Accounting, Sales, Typing
 Men's Resident Council 1, 2, 3, 4; Business Education Club 1, 2, 3, 4; SPSEA 4.



RAYDEL R. RADZAI
 Mt. Carmel
Secretarial, French
 Waller Hall Association 1, 2, 3; Day Women's Association 1, 2, 3; Day Women's Association 4; Alpha Psi Omega 2, 3, 4, Treasurer 3, Vice-President 4; Business Education Club 2, 3; Dramatic Club 1, 2, 3, 4, President 3; SPSEA 4; MAROON AND GOLD Advertising Staff 1; Senior Gifts Committee.



EDWARD REBAR

Nesquehoning
Accounting, Sales, Typing
Men's Resident Council 1, 2, 3, 4; Business Education Club 1, 2, 3, 4; SPSEA 3, 4; Senior Transportation Committee.

LORELEI REED

Reading
General Business
Day Women's Association 1; Waller Hall Association 1, 2, 3, 4; Business Education Club 3, 4; College Choraleers 1; Dramatic Club 1; SCA 1, 2, 3; Senior Publicity Committee.



SALLY ANN RIEFENSTAHL

Forty Fort
General Business
Waller Hall Association 1, 2, 3, 4; Business Education Club 2; Dramatic Club 2; SPSEA 3; Senior Lifesaving Club 1; CGA Customs Committee 2; Fashion Show 1, 2, 3, 4; Head Fashion Co-ordinator 4; Cheerleader 3; Intramural Baseball 1, 2; OBITER Typing Staff 2; Senior Gift Committee, Chairman.

CHARLES RIEGEL

Sunbury
Accounting, Social Studies, Typing
Class Vice-President 1; Day Men's Association 2, 3, 4; Men's Resident Council 1; Fashion Show 2; Varsity Club 2; Football 1, 2; Wrestling 1, 2, 3.



CAROLE ANN RUCKLE

Bloomsburg
Secretarial, English
CGA Social Recreation Committee 2, 3; Day Women's Association 1, 2, 3, 4; Business Education Club 3, 4; OLYMPIAN Typing Staff 1; Senior Invitations Committee.

ROBERT ZANE SCHALLES

Nescopeck
Accounting, Sales, Typing
CGA Dining Room Committee 4, Chairman 4; Customs Committee 3; Day Men's Association 2, 3, 4; Business Education Club 2, 3; SPSEA 4; Basketball Tournament Committee 2, Assistant Student Director 2, Student Director 3, 4; State Wrestling Championships, Student Director 3; Senior Cap and Gown Committee.





NIKKI ANN SCHENO

Berwick

General Business

Class Secretary 4; CGA Secretary 3; Customs Committee 2; Day Women's Association 1, 2, 3, 4, Official Board 4; Business Education Club 3; SPSEA 4; Bloodmobile Chairman 2, 3, 4; MAROON AND GOLD Columnist 1, 2, 3, 4; Senior Programs and Distribution Committee; WHO'S WHO AMONG STUDENTS IN AMERICAN COLLEGES AND UNIVERSITIES.

JOAN CAROL SCHOELKOPF

Reading

Accounting, Social Studies, Typing

CGA Customs Committee 2; Social Recreation Committee 3; Waller Hall Association 1, 2, 3, 4; "B" Club 2, 3, 4; Business Education Club 1, 3; College Choraleers 1; SPSEA 3, 4; SCA 1; Basketball Tournament Committee 2, 3, 4; CO-PILOT Typist 2; MAROON AND GOLD Typist 1, 2; OBITER Typist 4; Cap and Gown Committee.



JOYCE ANN SHIRK

Paradise

General Business

CGA Pep Committee 2, 3; Waller Hall Association 1, 2, 3, 4; Pi Omega Pi 3, 4; Business Education Club 1, 2; College Choraleers 1; SPSEA 4; Senior Ivy Day Committee.

THOMAS FRANCIS SIMOES

Mahanoy City

Accounting, Sales, Typing

Athenaeum Club 4; Business Education Club 2, 3; Basketball Tournament Committee 4; Senior Orchestra Committee, Chairman.



BERNARD STANLEY SOIKA

Hazleton

General Business

Men's Resident Council 1, 2, 3, 4; Business Education Club 1, 2; Dramatic Club 1; Maroon and Gold Band 1; Basketball Tournament Committee 2; Basketball 1, 2.

MARIE CORA STANELL

Shenandoah

Secretarial, English

CGA Pep Committee 2; Waller Hall Association 1, 2, 3, 4; Kappa Delta Pi 3, 4; Tutoring Committee Chairman 4; Pi Omega Pi 4; Business Education Club 2, 3, 4; Historian 3; Contest Publicity Chairman 3, 4; CO-PILOT Staff 3; OLYMPIAN Art Editor 3; MAROON AND GOLD Sports Staff 2; Art Editor 4; Senior Cap and Gown Committee.





ROLAND LEE STETLER

Danville

General Business

Pi Omega Pi 3, 4; Business Education Club 1; Senior Orchestra Committee.

MRS. ANN PAGE STONE

Susquehanna

General Business

Waller Hall Association 1, 2, 3, 4; Pi Omega Pi 2, 3, 4, Historian 3, Project Chairman 3; Business Education Club 1, 2, 3, 4; College Choraleers 1; Maroon and Gold Band 1, 2; SPSEA 3, 4; Senior Announcements and Namecards Committee.



RAY THAYER

Kane

Accounting, Social Studies, Typing

Men's Resident Council 1, 2, 3, 4; Track 1, 2, 3, 4.

KENNETH THOMAS, JR.

Wyalusing

General Business

CGA Hospitality Committee 2, 3; Business Education Club 1, 2, 3; Maroon and Gold Band 1, 2, 3, Assistant Librarian; SPSEA 3; OBITER Editorial Board 1.



WILLIAM MEAD THOMAS

Forty Fort

Accounting, Sales, Typing

Class Vice-President 4; College Council 3, 4; CGA Customs Committee 3; Men's Resident Council 1, 2, 3, 4, President 4; Phi Sigma Pi 2, 3, 4, Treasurer 3; Business Education Club 2, 3, Vice-President 3; SPSEA 4; Senior Class General Chairman.

MARY ELOISE TRAUGH

New Cumberland

General Business

Waller Hall Association 2, 3; Business Education Club 2, 3; SPSEA 3, 4; OLYMPIAN Typist 2; OBITER Editorial Staff 2; Senior Invitations Committee.





MARIE HELEN TRICK

Hughesville

General Business

Day Women's Association 1, 2, 3, 4; Business Education Club 2, 3, 4; SPSEA 3, 4; SCA 1; Senior Invitation and Reserve Seat Committees.

JAMES EUGENE WAGNER

Valley View

Accounting, Social Studies, Typing

Class Treasurer 4; Men's Resident Council 1, 2; Pi Omega Pi 3, 4, Treasurer 4; Business Education Club 2, 3, 4; SPSEA 3, 4; Basketball Tournament Committee Publicity Chairman 1, 2, 3, 4; MAROON AND GOLD Sports Editor 1, 2.



MARY A. WEISER

Boyetown

General Business

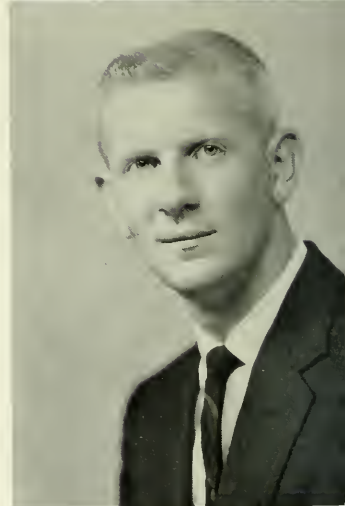
CGA Dining Room Committee 2; Election Committee 3; Pi Omega Pi 3, 4; Business Education Club 1, 2, 3, Treasurer 3; SPSEA 3, 4; OLYMPIAN Head Typist 3; MAROON AND GOLD Distribution Staff 3; Senior Announcements and Name-cards Committee, Co-chairman.

JAMES HAROLD WILLIAMS

Shamokin

General Business

Day Men's Association 1, 2, 3, 4; Business Education Club 3; Wrestling 3, 4; OB-ITER Advertising Staff 3; Senior Ushers and Reserve Seat Committee, Chairman.



MRS. MARLENE STAUDE WILLIAMS

Bloomsburg

General Business

CGA Election Committee 2; Social Recreation Committee 3; "B" Club 3, 4; Business Education Club 2, 3; SPSEA 4; Basketball Tournament Committee 2, 3; CO-PILOT Typist 2; OLYMPIAN Typist 3; MAROON AND GOLD Typist 3; Senior Invitations and Announcements Committee.

JOSEPH B. ZAPACH

Freeland

Accounting, Shorthand, Typing

Class President 2; CGA Vice-President 3, President 4; Men's Resident Council 1, 2, 3, 4; Alpha Psi Omega 3, 4, Treasurer 4; Business Education Club 2, 3, Assistant Contest Chairman 2, Chairman 3; Dramatics Club 1, 2, 3, 4, President 2; SPSEA 4; College Sports Statistician 1, 2, 3, 4; WHO'S WHO AMONG STUDENTS IN AMERICAN COLLEGES AND UNIVERSITIES.





ELEMENTARY EDUCATION

ROYCE O. JOHNSON
B.S., M.Ed.
Director of Elementary Education



Christmas decorations at the Training School are given an artistic touch by student teacher, Anna Czepukaitis.



Student teachers, Jerome Natishan and Myron Zawoiski, conduct a reading class at the Benjamin Franklin Training School.



CONSTANCE JANE ADAMS

Glen Lyon

Elementary

Day Women's Association 1, 2, 3, 4; Athenaeum Club 1, 2.

ILENE M. ARMITAGE

Scranton

Elementary

CCA Hospitality Committee 2, 3; Waller Hall Association 1, 2, 3, 4; Athenaeum Club 2, 3; SPSEA 3, 4; SCA 1.



CONNIE ANN AUSTIN

Bloomsburg

Elementary

Day Women's Association 1, 2, 3, 4; Aviation Club 1; Business Education Club 1; College Choraleers 1, 2; SCA 1; Science Club 2, 3; SPSEA 3, 4; Senior Announcements and Namecards Committee.

MAUREEN J. BARBER

Fairless Hills

Elementary

CCA Hospitality Committee 1, 3, Pep Committee 2, Customs Committee 3; Waller Hall Association 1, 2, 3, 4; Athenaeum Club 2; Dramatic Club 1, 2, 3, 4; SPSEA 3, 4; MAROON AND GOLD Circulation Staff 3; Senior Tickets and Distribution Committee.



MARY ROSE BARECHIO

Susquehanna

Elementary

CCA Customs Committee 3; Waller Hall Association 1, 2, 3, 4; College Choraleers 2; SPSEA 4.

DORIS MADLYN BERGE

Lewisburg

Elementary

Day Women's Association 2, 3; Waller Hall Association 1, 4; Athenaeum Club 1, 2, 3; Intramural Basketball 1; Senior Cap and Gown Committee.





ANITA JEAN BLOCHBERGER

Conklin, New York

Elementary

CGA Hospitality Committee 3; Waller Hall Association 1, 2, 3, 4; College Choraleers 1, 2, 3; Maroon and Gold Band 1, 2; Women's Chorus 1; Senior Cap and Gown Committee.



LOIS EILEEN CARPENTER

Bloomsburg

Elementary

Day Women's Association 1, 2, 3, 4; College Choraleers 1; SPSEA 3, 4; Harmonettes 2, 3, 4; Fashion Show 2, 3, 4; OBITER Advertising Staff 4; Senior Reserve Seats Committee.



SANDRA LYNDELL CLARKE

Bloomsburg

Elementary

Day Women's Association 1, 2, 3, 4; Phi Sigma Pi Sweetheart 4; SPSEA 3, 4; SCA 1; CGA Social Recreation Committee 2, 3; Fashion Show 1, 2, 3, 4; OBITER Advertising Staff 4; Senior Decorations Committee.



MRS. BARBARA WOOSTER COBB

Ardmore

Elementary

CGA Hospitality Committee 2; Pep Committee 3; Waller Hall Association 1, 2, 3, 4; Athenaeum Club 3; "B" Club 2, 3; College Choraleers 2; SPSEA 3, 4; SCA 1.



WILLIAM ALVIN CRISWELL

Lewisburg

Elementary

CGA Election Committee 3; Men's Resident Council 1, 2, 3, 4; SPSEA 3, 4; SCA 1, 2, 3, 4; PILOT Associate Editor 1, 2; OBITER Distribution Staff 2; Senior Announcements and Name Cards Committee



ANNE H. CZEPUKAITIS

Mt. Carmel

Elementary

Alpha Psi Omega 2, 3, 4, President 3, Secretary 4; "B" Club 1; Dramatic Club 1, 2, 3, 4; Senior Gift Committee; WHO'S WHO AMONG STUDENTS IN AMERICAN COLLEGES AND UNIVERSITIES.



DAVID JAMES DAVIES

Portsmouth, Virginia

Elementary

CGA Hospitality Committee 1, 2, 3, 4, Pep Committee 2, Election Board 3; Men's Resident Council 1, 2, 3, 4; Sigma Alpha Eta 2; SPSEA 3, 4, Vice-President 4; Maroon and Gold Band 1; SCA 1; MAROON AND GOLD Circulation Staff 2, Manager 3; OBITER Distribution Staff 3, Manager 4; Senior Caps and Gowns Committee Chairman.

JOANNE DEBRAVA

Elkins Park

Elementary

CGA Hospitality Committee 3; Waller Hall Association 1, 2, 3, 4, Governing Board 1, 4, Head Counselor 3; Kappa Delta Pi 3, 4, Historian 4; College Choraleers 2, 3, Secretary 3; SCA 1; Women's Chorus 3; Senior Cap and Gown Committee.



VIRGINIA RENEE DEIBERT

Danville

Elementary

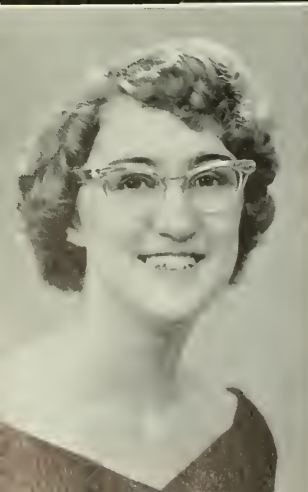
CGA Hospitality Committee 3; Waller Hall Association 1, 2, 3, 4; Alpha Psi Omega 4; College Choraleers 1, 2, 3, 4, Librarian 2, Treasurer 3; Dramatic Club 1, 2, 3; SPSEA 3, 4, Program Chairman 4; SCA 1; Women's Chorus 1; Senior Cap and Gown Committee Co-Chairman.

MARGARET LOUISE DRAGNA

Pottsville

Elementary

CGA Social Recreation Committee 2, Dining Room Committee 3; Waller Hall Association 1, 2, 3, 4; Harmonettes 2, 3; SPSEA 4; SCA 1; OBITER Advertising Staff 3; Senior Announcements and Name-cards Committee.



JOY CONSTANCE EATON

Harford

Elementary

CGA Hospitality Committee 3; Waller Hall Association 1, 2, 3, 4; College Choraleers 1, 2; SPSEA 4; SCA 1, 2, 3, Worship Chairman, Religion-in-Life Week Chairman; Harmonettes 2; Senior Memorial Committee.

JEAN ANN FENSTERMACHER

Espy

Elementary

Day Women's Association 1, 2, 3, 4; Athenaeum Club 1, 2, 3.





JANE LOUISE FLANAGAN

Shamokin

Elementary

CGA Customs Committee 3, Hospitality Committee 3; Waller Hall Association 1, 2, 3, 4; Athenaeum Club 1, 2; College Choraleers 1; SPSEA 3, 4; "B" Counselor 3; Senior Announcements and Namecards Committee.

ARTHUR DALE FRANKLIN

Bloomsburg

Elementary

Day Men's Association 1, 2, 3, 4; Varsity Club 2, 3, 4; Baseball 1, 2, 3, 4; Intramural Basketball 2, 3, 4; Intramural Softball 1, 2.



MRS. PAULETTE BIDDLE
FURMAN

Turbotville

Elementary

Waller Hall Association 1, 2; Day Women's Association 3, 4; Athenaeum Club 3; College Choraleers 1; SPSEA 3; SCA 1.

GLORIA MARY GLAHN

Kingston

Elementary

CGA Hospitality Committee 3; Waller Hall Association 1, 2, 3, 4, Secretary 3, Representative 2, 4; Alpha Psi Omega 2, 3, 4, President 4, Secretary 3; "B" Club 2, 3, 4, President 4; Dramatic Club 1, 2, 3, 4; SPSEA 3, 4; SCA 1; OBITER Art Editor 4; Senior Program and Distribution Committee Co-Chairman.



LYDIA A. GOBBI

Easton

Elementary

Waller Hall Association 3, 4; Sigma Alpha Eta 1; Dramatic Club 3, 4; SPSEA 2; MAROON AND GOLD Columnist, Typist 3, 4; Senior Decoration and Tickets Committees.

MARY LOU GOWEN

Freeland

Elementary

CGA Hospitality Committee 3, 4; Waller Hall Association 1, 2, 3, 4; College Choraleers 1, 2, 3; SPSEA 3, 4; MAROON AND GOLD Typist 2; Senior Cap and Gown Committee.





CAROL ANN GREENE

Williamsport

Elementary

Waller Hall Association 1, 2, 3, 4; "B" Club 3, 4; College Choraleers 1; SCA 1; Harmonettes 2; Basketball Tournament Committee 2; CO-PILOT 2, 3, Editor 3; Olympian 1, 2, Assistant Editor 2; MA-ROON AND GOLD Editorial Staff 2, 3; WHO'S WHO AMONG STUDENTS IN AMERICAN COLLEGES AND UNIVERSITIES.

BETTY JANE GREGORY

Kingston

Elementary

CGA Custom Committee 2; Waller Hall Association 1, 2, 3, 4; College Choraleers 1; SPSEA 4; SCA 1; Harmonettes 2, 3.



MARLENE GRIM

Beaver Springs

Elementary

Waller Hall Association 1, 2, 3, 4; Choraleers 1, 2, 3; Dramatic Club 1; SPSEA 3, 4; SCA 1, 2, 3; Senior Cap and Gown Committee.

MARGARET LILLIAN GUNTON

Noxen

Elementary

Waller Hall Association 1, 2, 3, 4; College Choraleers 1, 2; SPSEA 3, 4; SCA 1, 2, 3; Senior Cap and Gown Committee and Senior Ivy Day Committee.



VIRGINIA LEE HARDY

Kingston

Elementary

CGA Customs Committee 2, 3; Hospitality Committee 3, 4; Pep Committee 1, 2, 3; Waller Hall Association 1, 2, 3, 4; Phi Sigma Pi Sweetheart 3; College Choraleers 1; Dramatic Club 1, 2; SCA 1, 2; Social Usage Club 3; Harmonettes 2, 3; SPSEA 3, 4; Fashion Show 1, 2, 3, 4; Basketball Tournament Committee 1, 2, 3, 4; Cheerleader 1, 2, 3, Captain 3; OBITER Art Staff 4; Senior Decorations Committee.

MRS. BARBARA JANE HAYNES

Shavertown

Elementary

Waller Hall Association 3, 4; Dramatic Club 3.





PATRICIA MAE HEDDINGS

Montandon

Elementary

Waller Hall Association 1, 2, 3, 4; Athenaeum Club 4; SPSEA 3, 4; SCA 1, 2, 3; Senior Cap and Gown Committee.

PHYLLIS ANN HENNINGER

Williamsport

Elementary

CGA Customs Committee 3; Waller Hall Association 2, 3, 4; SCA 2; SPSEA 3, 4; CO-PILOT Typist 2; Senior Namecards and Invitation Committee, Senior Decoration Committee.



CATHERINE LOUISE HOFFMAN

Montandon

Elementary

Waller Hall Association 1, 2, 3, 4; Athenaeum Club 4; College Choraleers 2; SPSEA 3, 4; SCA 1, 2, 3; Senior Cap and Gown Committee.

JOHN JOSEPH HUDA

Factoryville

Elementary

Day Men's Association 1, 2; Men's Resident Council 3, 4; Aviation Club 1, 2, 3; Maroon and Gold Band 3; Social Usage Club 2, 3; Baseball 1, 2.



GEORGIANN KAPRAL

Swoyerville

Elementary

CGA Hospitality Committee 2, 3, 4; Waller Hall Association 1, 2, 3, 4; Dramatic Club 1, 2, 3, 4; SPSEA 3, 4; Poetry Club 2; SCA 1; OBITER Distribution Staff 3, 4; Senior Cap and Gown Committee.

**MRS. MOLVENE KEINER
KASHNER**

Berwick

Elementary

Day Women's Association 2, 3, 4, Social Committee 3; Athenaeum Club 3; SPSEA 3; Senior Announcements and Invitations Committee.





SANDRA EARLIE KASHER

Bloomsburg

Elementary

CGA Social Recreation Committee 3; Day Women's Association 1, 2, 3, 4; College Choraleers 1; SCA 1; Harmonettes 2; Fashion Show Co-ordinator 2, 3; MA-ROON AND GOLD Circulation Staff 2, 3; Senior Announcements and Invitations Committee.

E. DERLENE KELLER

Bloomsburg

Elementary

Day Women's Association 1, 2, 3, 4; SPSEA 4; Fashion Show 3; OLYMPIAN Typist 2; OBITER Typist 3; Senior Announcements and Namecards Committee.



CARROLL ELEANOR KICHLINE

Easton

Elementary

Waller Hall Association 1, 2, 3, 4; SPSEA 3, 4; SCA 1, 2, 3, 4, Social Chairman 3. Worship Chairman 4; Senior Ivy Day Committee.

MRS. JANICE JONES KULP

Kempton

Elementary

Waller Hall Association 1, 2, 3, 4; "B" Club 2, 3, 4; SCA 1; Harmonettes 2, 3.



PAUL FRANKLIN KUNKEL

Beaver Meadows

Elementary

Day Men's Association 1, 2, 3, 4; College Choraleers 1, 2.

NANCY LOU LASSER

Ashland

Elementary

Day Women's Association 4; Waller Hall Association 3; College Choraleers 3; Dramatic Club 3; SPSEA 3, 4; Senior Memorial and Reserve Seats Committees.





PAUL GABRIEL MANKO

Beaver Meadows

Elementary

Men's Resident Council 1, 2, 3, 4; Varsity Club 3, 4; SPSEA 3, 4; Basketball Tournament Committee 1, 2, 3, 4; Football 1, 2, 3, 4; Track 3; Intramural Baseball, Basketball 1, 2, 3, 4.

JOHN FRANCIS MASCIOLI

Kingston

Elementary

Men's Resident Council 1, 2, 3, 4; Aviation Club 1, 2; SPSEA 4; Varsity Club 1, 2, 3, 4; Basketball 1, 2, 3, 4, Co-Captain 4; Senior Orchestra Committee, Senior Investigations and Arrangements Committee.



SARA ANN MASTER

Beaver Springs

Elementary

Waller Hall Association 1, 2, 3, 4; Counselor 3; Dramatic Club 1; SPSEA 3, 4; SCA 1, 2, 3; Senior Ivy Day Committee; Senior Cap and Gown Committee.

SANDRA ELAINE MATTER

Millersburg

Elementary

Waller Hall Association 1, 2, 3, 4; SCA 1, 2, 3, 4; SPSEA 4; Senior Decoration Committee.



MOLLY ANN MATTERN

Catawissa

Elementary

Day Women's Association 1, 2, 3, 4; Athenaeum Club 2; SPSEA 3, 4; SCA 1; Senior Caps and Gowns Committee; Senior Announcements and Namecards Committee.

SHIRLEY CAROL METZ

Kennett Square

Elementary

CGA Hospitality Committee 3; Social Recreation Committee 3; Waller Hall Association 1, 2, 3, 4, Counselor 3; Sigma Alpha Eta 2, 3; College Choraleers 1; Dramatic Club 1; SPSEA 3, 4; SCA 1; Intramural Baseball 1, Basketball 1, 2; MAROON AND GOLD Art Staff 3; OBITER Distribution Staff 3, Art Staff 4; Senior Decorations Committee.





LORRAINE JEAN MORLOCK

Cornwells Heights

Elementary

Customs Committee 2; Waller Hall Association 1, 2, 3, 4, Art Committee Chairman; Alpha Psi Omega 3, 4, Program Chairman 3; Sigma Alpha Eta 3; Dramatic Club 1, 2, 3, 4; SPSEA 4; WHO'S WHO AMONG STUDENTS IN AMERICAN UNIVERSITIES AND COLLEGES.

EMILY ANN MOSS

New Milford

Elementary

Waller Hall Association 1, 2, 3, 4; Dramatic Club 2; SPSEA 3, 4; SCA 1, 2, 3, 4; Senior Decoration and Ticket Committees.



JEROME PAUL NATISHAN

Edwardsville

Elementary

Social Decoration Committee 3; Men's Resident Council 1, 2, 3, 4; Aviation Club 1; SPSEA 1; Basketball Tournament Committee 3; Intramural Baseball and Basketball 1, 2, 3, 4; Football 1, 2, 3, Trainer 4; Track 2; Wrestling 1; Senior Investigation Committee.

PATRICIA ANN OLEY

Pittston

Elementary

Waller Hall Association 1, 2, 3, 4; Governing Board 4; Athenaeum Club 2; SPSEA 3, 4; SCA 1; Senior Cap and Gown Committee; Senior Ivy Day Program Committee.



HENRY ANTHONY ORBAND

Jessup

Elementary

Men's Resident Council 1, 2, 3, 4, Treasurer 2; Varsity Club 2, 3, 4; Football 1, 2, 3, 4; Wrestling 2, 3, 4.

BARBARA PELAK

Plains

Elementary

Day Woman's Association 1; Waller Hall Association 3; Athenaeum Club 2; Aviation Club 1; SPSEA 2; OBITER Senior Pictures Chairman; Senior Program and Distribution Committee.





LINDA GAY PIERSOL

Eplirata
Elementary

Waller Hall Association 1, 2, 3, 4; Ath-
naeum Club 1, 2; College Choraleers 2;
SPSEA 4.

ANNA MAE POWELL

Wyalusing
Elementary

Waller Hall Association 1, 2, 3, 4; Maroon
and Gold Band 3, 4.



VERA ANN REARICK

Danville
Elementary

Waller Hall Association 1; Day Women's
Association 2, 3, 4, Secretary 2; Aviation
Club 1; "B" Club 2, 3, 4; College Choral-
eers 1; Harmonettes 2; SPSEA 3, 4; Ho-
spitality and Customs Committees 3; SCA
1; Intramural Baseball 1; Senior Decora-
tion Committee.

HELEN ELIZABETH
ANTOINETTE REIFF

Gordon
Elementary

CGA Hospitality Committee 3, 4; Waller
Hall Association 1, 2, 3, 4; SPSEA 3, 4;
OBITER Typist 2, 3; Senior Memorial
and Reserve Seats Committees.



MAE V. REINER

Pitman
Elementary

Waller Hall Association 1, 2, 3, 4; SPSEA
3; SCA 2; Senior Memorial Committee.

LOLA MAE RIGEL

Beaver Springs
Elementary

Waller Hall Association 1, 2, 3, 4, Repre-
sentative 4; College Choraleers 2, 3; Dra-
matic Club 1; SPSEA 3, 4, Secretary 4;
SCA 1, 2, 3, 4; Harmonettes 2, 3; Octet
1, 2, 3; Senior Publicity Committee.





ANN SACKS

Langhorne

Elementary

CGA Social Recreation Committee 2; Dining Room Committee 3; Waller Hall Association 1, 2, 3, 4, Representative 3; SPSEA 4; SCA 1; Harmonettes 2, 3; CO-PILOT Writer 3; OBITER Advertising Staff 2; Senior Gift Committee.

**MARTHA ELIZABETH
SOFRANKO**

Beaver Meadows

Elementary

CGA Social Recreation Committee 3; Waller Hall Association 4; Alpha Psi Omega 3, 4; College Choraleers 1, 2; Dramatic Club 1, 2, 3, 4, Secretary 3; SPSEA 3, 4; Senior Announcements and Namecards



SARA KAY STETLER

Snow Shoe

Elementary

Waller Hall Association 1, 2, 3, 4; Alpha Psi Omega 2, 3, 4; Dramatic Club 1, 2, 3, 4; SPSEA 4; SCA 1, 2, 3, 4, Secretary 3; Senior Ivy Day; Senior Program and Invitation Committee.

MRS. EUGENIA L. SWISHER

Bloomsburg

Elementary

Day Women's Association 4; Mixed Chorus 2; A Cappella Choir 2; SPSEA 1; Senior Tickets and Distribution Committees.



ELIZABETH ANN TARR

Bloomsburg

Elementary

CGA Awards Committee 1; CGA Hospitality Committee 1, 2, 3, 4; Day Women's Association 1, 2, 3, 4, Social Chairman and Secretary 3, 4; Sigma Alpha Eta 2, 3; Athenaeum Club 3; College Choraleers 1, 2; SPSEA 3, 4; Harmonettes 2, 3, 4; OBITER Secretary 3, 4; Senior Cap and Gown and Decoration Committees.

CAROLYN LUCILLE TAVENNER

Pottsville

Elementary

Day Women's Association 4.





HELEN ANN TOOHEY

Havertown

Elementary

Hospitality Committee 1, Pep Committee 2; Customs Committee 3; Waller Hall Association 1, 2, 3, 4, Head Proctor 3; Athenaeum 2; Dramatic Club 1, 2, 3, 4, Treasurer 3, President 4; SPSEA 3, 4; MAROON AND GOLD, Circulation Committee 3; Senior Ticket and Distribution Committee.

RICHARD OWEN TYLER

Northumberland

Elementary

SPSEA 4; Wrestling 1; Senior Memorial Committee.



RITA ROSE VIGNOLA

Milton

Elementary

Waller Hall Association 1, 2, 3, 4; Sigma Alpha Eta 2, 3, 4; "B" Club 2, 3, 4; OBITER Advertising Staff 3; Senior Tickets and Distribution Committee.

JEAN MOHLER VOROSMARTI

Palmerton

Elementary

Waller Hall Association 3; Sigma Alpha Eta 1; SCA 2; Social Recreation Committee 4; Senior Ticket and Distribution Committee.



BARBARA ANN WAGNER

Bethlehem

Elementary

Day Women's Association 1, 2, 3; Business Education Club 2; Dramatic Club 1; Social Recreation Committee 1, 2; Chairman Summer School; MAROON AND GOLD 1, 2, Exchange Editor 2, Reporter 1; Senior Ticket and Distribution Committee.

MARY LOUISE WAGNER

Lewisburg

Elementary

Assembly Committee 1, 3; Waller Hall Association 1, 2, 3, 4, Head Proctor 3; Athenaeum Club 2; SPSEA 3, 4; Dramatic Club 4; MAROON AND GOLD Circulation Staff 3; Senior Gift Committee.





MRS. CAROL VANCE WARY

Mahanoy City

Elementary

Day Women's Association 1, 2, 3, 4; Waller Hall Association 1; Athenaeum Club 2, 3; Aviation Club 2, 3; SPSEA 3, 4; Senior Transportation and Orchestra Committees.

HENRY THEODORE WEST

Berwick

Elementary

Day Men's Association 4.



DORIS JANE WHIPPLE

Hughesville

Elementary

CGA Hospitality Committee 3, 4; Waller Hall Association 1, 2, 3, 4; College Choraleers 1, 2, 3; SPSEA 3, 4; Fashion Show Co-ordinator 2, 3, 4; OBITER Senior Activities Committee 4; Senior Class Pictures Committee.

MRS. BEVERLY BROWN WHITE

Bloomsburg

Elementary

Day Women's Association 3, 4.



LORRAINE ANN YEAGER

Easton

Elementary

CGA Representative 3; College Council 3; Waller Hall Association 1, 2, 3; Program Chairman 3; Aviation Club 1; College Choraleers 1, 2, 3, 4; SPSEA 1; Ensemble 2; Harmonettes 3; WHO'S WHO AMONG STUDENTS IN AMERICAN COLLEGES AND UNIVERSITIES.

ROSEMARY ZALENSKI

Wyoming

Elementary

CGA Hospitality Committee 2, 3; Waller Hall Association 1, 2, 3, 4; Athenaeum Club 3; College Choraleers 2, 3; SPSEA 3, 4; Poetry Club 1; MAROON AND GOLD Typist 1, 2; Senior Announcements and Namecards Committee.





MRS. CAROL GRIFFITH
ZEISLOFT

Benton
Elementary

Day Women's Association 1, 2, 3, 4; Ath-
enacum Club 3; College Choraleers 1;
SPSEA 4.



Student teacher, Mary Mellon, instructs art
at the Benjamin Franklin Training School.



Benjamin Franklin third graders visit college
library under direction of student teachers
Joanne DeBrava and Doris Berge.



SECONDARY EDUCATION

GEORGE J. FIKE
A.B., A.M., Ed.M., Ph.D.
Director of Secondary Education



Student teacher, Gary Anderson, instructs a biology class at Bloomsburg High School.



English instruction at Bloomsburg High School is given by student teacher, Joann Little.



GARY FISHER ANDERSON

High Bridge, New Jersey

Mathematics, Biological Science

Fire Marshal 3; Men's Resident Council 1, 2, 3, 4, Vice-President 3; College Choraleers 1; SPSEA 4; Social Usage Club 1, 2, 3, 4; Basketball Tournament Committee 1, 3, 4; Wrestling Tournament 3; Varsity Club 2, 3, Treasurer 2, President 3; Baseball 2, 3, 4; Football Manager 1, 2, 3, 4, Head Manager 4; Intramural Basketball 2, 3, 4; Senior Ball Committee, Tickets Co-chairman.

DONALD L. BACHMAN

Hazleton

Science

Day Men's Association 2; Ivy Day.



FRED N. BALLENTINE, JR.

Bloomsburg

Science

CGA Class Representative 3; Phi Sigma Pi 4; Senior Invitation Committee.

FRANK JOSEPH BENDINSKY

Mildred

English, Social Studies

Day Men's Association 1; Men's Resident Council 1, 2, 3, 4; Phi Sigma Pi 4; Sigma Alpha Eta 3; Dramatic Club 1; MAROON AND GOLD 3, 4, Reporter 3, 4, Copy Editor 4; Senior Ball Tickets 4; Senior Ball Arrangements; Maroon and Gold Band 1, 2.



JOHN ELMER BENFER

Beavertown

Science, Geography

Men's Resident Council 3; Dramatic Club 2; Maroon and Gold Band 2, 3, Drum Major 2, 3; SCA 2; Science Club 3; Fashion Show Lighting Director 3; Senior Photograph Committee 4; Senior Name-cards and Invitations Committee.

EDWARD DAVID BLACKBURN

South Williamsport

Science, Geography

Men's Resident Council 2; Gamma Theta Upsilon 3; Phi Sigma Pi 2; Choraleers 2; Basketball Tournament Committee 4; Baseball 4; Football 2; Senior Ivy Day Committee 4; Senior Orchestra.





JAMES WESLEY BLAIR

South Williamsport

Science, Geography

Men's Resident Council 1, 2; Gamma Theta Upsilon 3, Vice-President 4; SPSEA 4; Basketball Tournament Committee 1; Football 1, 2; Track 1; Men's Intramurals 1, 2, 3, 4; Senior Orchestra.

TODD JAY BOWER

Berwick

Biological Science

Day Men's Association 1, 2; Science Club 1; Investigation and Arrangements for Senior Ball.



JAMES BENJAMIN BRAY

Blakely

Social Studies, English

College Choraleers 2; SPSEA 4; OLYMPIAN Circulation Department 2; MAROON AND GOLD Sports Reporter 2, 3; Senior Class Pictures; Ivy Day Committee.

JAMES RICHARD CARRIGAN

Cumbola

Social Studies, Geography

Athenaeum Club 4; SPSEA 4; Transportation Committee.



DANIEL ANDREW CAVOLASKI

Tamaqua

Biological Science, English

Science Club 1; Football 1; Track 1; Programs and Distribution 4; Announcements and Namecards Committee.

JOHN JOSEPH CHIDESTER, JR.

Bloomsburg

Social Studies, Geography

Day Men's Association 1, 2, 3, 4; Gamma Theta Upsilon 2, 3, 4, Corresponding Secretary 3; Varsity Club 1, 2, 3, 4; SPSEA 4; Fire Drill Committee 3; Wrestling Tournament Committee 2; Football 1, 2, 3, 4; Wrestling 1, 2, 3; Student Coach 4; Orchestra 4; Senior Class Pictures Committee; WHO'S WHO AMONG STUDENTS IN AMERICAN COLLEGES AND UNIVERSITIES.





PATRICK LEO CHRISTOFF

Osceola Mills

General Science

Men's Resident Council 1, 2; Science Club 1, 2; Basketball Tournament Committee 3; Basketball 1, 2.

WILLIAM H. CONRAD III

Northumberland

General Science

Maroon and Gold Band 1, 2, 3, 4; Science Club 3, 4, Vice-President 4.



ELIZABETH DE MARTE

Harrisburg

English, Social Studies

Waller Hall Association 1, 2, 3, 4; College Choraleers 2; OBITER Distribution 2, 3.

JOSEPH C. DEVANEY

Fern Glen

Social Studies, English

Day Men's Association 1, 2, 3, 4; Athenaeum Club 1; Aviation Club 2; SPSEA 4.



HARRY ROBERT DICKINSON

Dalton

English, Social Studies

Dramatic Club 3; SPSEA 3; Senior Name-cards and Announcement Committee; Commencement Seating Committee.

JOHN DINICH

Pottsville

Social Studies, Geography

Day Men's Association 1, 2, 3, 4; Aviation Club 1, 2; Science Club 4; Senior Transportation Committee and Senior Ball Orchestra Committee.





KATHLEEN LOIS DURKIN

Ashland

English, Social Studies

Pep Committee 4; Waller Hall Association 1, 2, 3; College Choraleers 1, 3; Dramatic Club 3; Fashion Show 1, 2, 3; Senior Announcements and Namecards Committee.

FRED U. DYER

Lopez

English, Social Studies

Pep Committee 3, 4; Men's Resident Council 1, 2, 3, 4; College Choraleers 1, 2, 3, 4; Dramatic Club 1, 2, 3, 4; FTA 3, 4; Poetry Club 3, 4; Senior Announcements Committee.



RICHARD EUGENE ENKLAR

Milton

Social Studies, Geography

Aviation Club 1, 2, 3; Football 1; Senior Orchestra Committee; SPSEA 4.

NORMAN H. EHRENFRIED

Weatherly

Social Studies, Geography

Men's Resident Council 1, 2, 3, 4; Kappa Delta Pi 3, 4; Aviation Club 1, 2; Science Club 4; SPSEA 4; Senior Ball Transportation Committee.



STANLEY EDWARD ELINSKY

Kingston

Science

Men's Resident Council 4; SPSEA 4; Science Club 1; Varsity Club 3; Football 1, 2, 3, 4; Track 1, 2, 3, 4; Wrestling 1, 2, 3, 4; Senior Ticket Committee.

ERWIN H. FARROW

Peckville

English, Social Studies

Social and Recreation Committee 2, 3; Student Faculty Program Committee 3, 4; Men's Resident Council 1, 2, 3; Phi Sigma Pi 2, 3, 4, President 4; Jazz Concert Chairman 3; SPSEA 4; Basketball Tournament Committee 2, 3; Intramurals 1, 2, 3, 4; PILOT Editorial Board 2; OLYMPIAN Editor 3; MAROON AND GOLD Editorial Board 1, 2, 3; Senior Ball Investigation and Arrangements Committee Co-Chairman.





DANIEL CLINTON FEGLEY

Catawissa

Social Studies, Geography

Day Men's Association 1, 2, 3, 4; Gamma Theta Upsilon 3, 4; Aviation Club 2; Science Club 1.

FRANK E. FISK

Danville

Science, Mathematics

Day Men's Association 1, 2, 3, 4; SPSEA 4; Baseball 3; Ivy Day Committee.



ROBIN ILENE FOLMSBEE

Berwick

English, History

College Council Member 3; Awards Committee 3; Day Women's Association 1, 2, 3, 4. Vice-President 2, President 3; Day Women's Official Board 1; SPSEA 4; Poetry Club 1; MAROON AND GOLD Columnist 2, 3, 4; BSTC Radio Program 2, 3, 4; Senior Class Memorial Chairman; WHO'S WHO AMONG STUDENTS IN AMERICAN COLLEGES AND UNIVERSITIES.

JOANNE GAIL FOUST

Danville

English, Social Studies

Day Women's Association 1, 2, 3, 4; "B" Club 3, 4; College Choraleers 1; SPSEA 4; SCA 1.



RANDALL JAMES FOX

Shamokin

Physical Science, Social Studies

Day Men's Association 2, 3, 4; Aviation Club 2; SPSEA 4; Science Club 2; Basketball Tournament Committee 1; Senior Ball Orchestra Committee.

ALBERT PAUL FRANCIS

Pottsville

Mathematics, French

CGA 2, 3; CGA Athletic Committee 3; Men's Resident Council 1, 2, 3, President 2, 3; Kappa Delta Pi 3, 4, Corresponding Secretary 4; Varsity Club 1, 2, 3, 4, President 4; SPSEA 4; Basketball 1, 2, 3, 4, Captain 4; Football Student Coach 2, 3; Senior Invitations Committee; WHO'S WHO AMONG STUDENTS IN AMERICAN COLLEGES AND UNIVERSITIES.





WILLIAM CARL FRIEDEL

Scranton

Social Studies, English

Athenacum Club 4; SPSEA 4; Basketball Tournament 3, 4; MAROON AND GOLD 3, 4; Senior Decoration Committee.

WILLIAM WARREN FUNK

Nescopeck

English, Social Studies

Maroon and Gold Band 1, 2, 3; Day Men's Association 1, 2, 3, 4; SPSEA 3.



EDWARD DAVID GALITSKY

Shenandoah

Social Studies, Geography

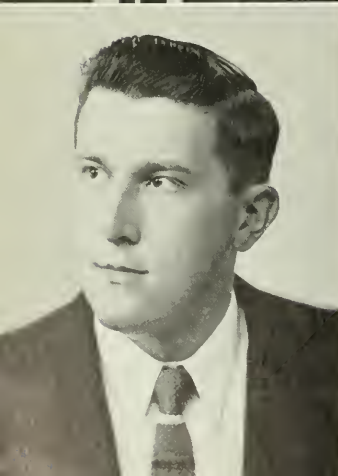
Men's Resident Council 1, 2, 3, 4; SPSEA 4; Varsity Club 2, 3, 4; Baseball 1, 2, 3, 4; Football 1, 2, 3, 4; Senior Orchestra Committee; Senior Investigations and Arrangements Committee.

DAVID ROGER GERBER

Pottstown

Biological Science, Geography

Men's Resident Council 1, 2, 3, 4, Treasurer 3, 4; Science Club 2, 3, Treasurer 2, 3; Varsity Club 3, 4; Football 1, 2, 3, 4; Senior Investigations and Arrangements Committee.



JOHN GORGUS

Wanamie

Science, Mathematics

Resident Men's Council 1, 2, 3, 4; Science Club 3, 4.

ROBERT WALTER GRAZIUL

Wilkes-Barre

Science, Social Studies

Men's Resident Council 1, 2, 3, 4; Aviation Club 2; SPSEA 4; Maroon and Gold Band 1, 2, 3; Science Club 3, 4; Men's Intramurals 3, 4; Senior Investigations and Arrangements Committee.





JOSEPH MICHAEL GRONKA

Nanticoke

Physical Science, Math

Men's Resident Council 1, 2, 3, 4; Varsity Club 3, 4; Football 1, 2, 3, 4.

LOLA JOANNE GUM

Millville

Social Studies, Geography

Day Women's Association 1, 2, 3, 4; Athenaeum Club 1; SCA 2, 3; Senior Reserved Seat Committee.



ROBERT GUZIEJKA

Wilkes-Barre

Physical Science, Social Studies

Resident Men's Council 1, 2, 3, 4.

SAMUEL WESLEY HAUPT

Sunbury

Biological Science, Social Studies

Class Treasurer 3; CGA Pep Committee 2, 3, Co-Chairman 3; Customs Committee 3; Assembly Committee 2, 3, 4; College Crier 2, 3, 4; Men's Resident Council 1, 2, 3, 4; Dramatic Club 1, 2; SPSEA 4; SCA 1, 2; Track 1, 2, 3, 4; Wrestling 1, 2, 3, 4; Senior Orchestra Committee.



DONALD CHARLES HERRING

Elysburg

Science, Social Studies

SCA 1; Science Club 2, 3.

ROBERT ALLEN HESS

Sunbury

Social Studies, English

Day Men's Association 3, 4; Resident Men's Association 1, 2; Aviation Club 1; SPSEA 3, 4; Basketball Tournament Committee 3; Basketball 1; Wrestling 1; Senior Namecards and Announcements Committee.





PAUL M. HOFFMAN

East Stroudsburg

Physical Science

Men's Resident Council 1, 2, 3, 4; College Choraleers 2; Basketball Tournament Committee 3; Baseball 1, 2, 4; Football 2; North Hall Rangers 4.

CLARE S. HUMMER

Bloomsburg

English, Biological Science

CGA Pep Committee 4; Day Women's Association 3, 4; College Choraleers 3, 4; Science Club 3; Senior Gifts Committee.



JEANETTE IDE

Harveys Lake

Social Studies, Mathematics, English

Waller Hall Association 1, 2, 3, 4; Kappa Delta Pi 4; Athenaeum Club 2, 3, Program Chairman 4; College Choraleers 1; SPSEA 3, 4.

ADAM JAMES

Bloomsburg

English, Social Studies

Resident Men's Council 1, 2, 3, 4.



THEODORE W. JARRETT

Plymouth

Mathematics, Social Studies

Day Men's Association 1, 2, 3, 4, Secretary 2; Aviation Club 1; Science Club 1, 2; Senior Transportation Committee.

JOHN JORDAN

Hazleton

Biological Science, Social Studies

Day Men's Association 1, 2, 3, 4.





DANIEL CHARLES KELLER, JR.

Lavelle

English, Social Studies

CGA Election Committee 3; Phi Sigma Pi 3, 4, Treasurer 4; Athenaeum Club 2, 3, 4, Vice-President 3, President 4; Choraleers 1, 2; SPSEA 3, 4; PILOT Associate Editor 2, Assistant Editor 3; Senior Announcement and Namecard Committee Co-chairman.

PAUL HAROLD KELLOGG

LT. COL., USMC

Bloomsburg

Social Studies, English

Lt. Col. United States Marine Corps now on active duty.



WALLACE I. KNEPPER

Weatherly

Physical Science, History

Men's Resident Council 1, 2, 3, 4; SPSEA 4; Maroon and Gold Band 1, 2, 3, 4; Science Club 3, 4, President 4.

JOAN ANN KOTCH

New Coxeville

Science

Waller Hall Association 1, 2, 3; SPSEA 4; Science Club 2, 3, 4, Program Chairman 4.



JOHN PAUL KOVALCHIK

Shickshinny

Social Studies, Geography

Day Men's Association 1, 2, 3, 4; Aviation Club 1, 2.

BYRON KADEL KRAPF

Hollidaysburg

Social Studies, English

CGA Dining Room Committee 2, 3, Chairman 3; Men's Resident Council 1, 2, 3, 4, Executive Council 3; Phi Sigma Pi 2, 3, 4, Chaplain 3, 4; Choraleers 1, 2; SCA 1, 2, 3, 4, President 4, Representative to Student Council of Pennsylvania for YMCA; Inter-Faith Council Chairman; Senior Ivy Day Committee Co-chairman.





DALE ALBION KROTHE

Berwick

Mathematics, Social Studies

Day Men's Association 1, 2, 3, 4; MA-
ROON AND GOLD Circulation Staff 2.

DAVID C. LAUBACH

Benton

English, Social Studies

Day Men's Association 1, 2, 4; Poetry
Club 3, 4; OLYMPIAN Staff 3, 4; MA-
ROON AND GOLD Feature Writer 3, 4;
Senior Ivy Day Committee.



ROBERT HAROLD LEHMAN

Northumberland

Biological Science, Social Studies

Science Club 2, 3.

GUIDO ROBERT LISELLA

Summit Hill

Mathematics, Physical Science

Men's Resident Council 1, 2, 3, 4; College
Choraleers 1.



JOHN JOSEPH LIPOVSKY

Berwick

English, Social Studies

Day Men's Association 1, 2, 3, 4; Dra-
matic Club 1; SPSEA 4; MAROON AND
GOLD Art Staff 2, 3, 4; Senior Publicity
Committee.

JOHN LITCHKO, JR.

Kingston

Social Studies, Geography

Day Men's Association 1, 2, 3, 4; College
Choraleers 1, 2; Senior Orchestra Com-
mittee.





JOANN LOUISE LITTLE

Blooms-burg

English, Social Studies

Day Women's Association 2, 3, 4; Kappa Delta Pi 3, 4; Poetry Club 2, 3, 4, Secretary-Treasurer 4; SCA 2, 3; Senior Programs and Distribution Committee.

PHILLIP LARUE LOCKCUFF

South Williamsport

Social Studies, Geography

Men's Resident Council 1, 2, 3, 4; Varsity Club 2, 3, 4; Baseball 1, 2, 3, 4; Football 1, 2, 3, 4; Wrestling 1, 2, 3; Senior Tickets and Distribution Committee.



MRS. HELEN RISHEL MADER

Danville

English, French

Day Women's Association 3, 4.

MRS. MARIE BADDICK MARTZ

Oneida

Social Studies, Geography, English

Day Women's Association 2, 3, 4; Waller Hall Association 1; Athenaeum Club 1, 2; SPSEA 4; Science Club 2; Senior Caps and Gowns Committee and Senior Invitations Committee.



CHARLES MICHAEL McBRIDE

Shamokin

Social Studies

Day Men's Association 2, 3, 4; Aviation Club 2; Science Club 3; OBITER Advertising Staff 3; Senior Publicity and Program Committee.

JAMES RICHARD MCCARTHY

Drifton

Biological Science, Social Studies

CGA Awards Committee 3; Men's Resident Council 1, 2, 3, 4; College Choraleers 1; Maroon and Gold Band 1, 2, 3, 4; Science Club 3; SPSEA 3, 4; Senior Class Memorial Committee.





JOHN HERBERT MCCARTHY

Mahanoy City
Social Studies, Geography
Day Men's Association 2, 3, 4, Vice-President 4; Men's Resident Council 1; Athenaeum Club 3, 4; Aviation Club 1, 2.

ROBERT THOMAS MILLER

Hazleton
Mathematics, Physical Science
Day Men's Association 1, 2, 3, 4; SPSEA 4; Science Club 4; OLYMPIAN Business Manager 4; Senior Programs and Distribution Committee.

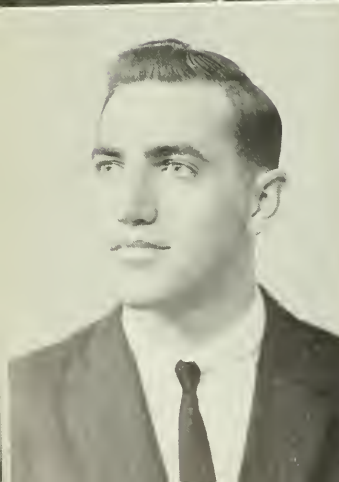


VICTOR ARTHUR MILLER

Weatherly
Mathematics, Physical Science
Men's Resident Council 1, 2, 3, 4; Aviation Club 1, 2, 3; SPSEA 4.

MADLYN ANN MORAN

Nanticoke
English, Social Studies
Waller Hall Association 1, 2, 3, 4; Athenaeum Club 1, 2, 3; Dramatic Club 1; SPSEA 3, 4; Poetry Club 1, 2, 3, President 3; SCA 1; Social Usage Club 1, 2, 3; Senior Cap and Gown Committee.



DONALD MORGAN

Gilberton
Social Studies, English
CGA Assembly Committee 4; Dining Hall Committee 2; Men's Resident Council 1, 2, 3, 4; Athenaeum Club 1; Dramatic Club 2; SPSEA 4; Poetry Club 2, 3; SCA 1; Social Usage Club 2; MAROON AND GOLD Columnist 2, 3, 4; Senior Class Picture Committee.

WILLIAM RICHARD MORRIS

Duryea
Physical Science, Social Studies
Men's Resident Council 1, 2, 3, 4; Varsity Club 2, 3, 4; SPSEA 3, 4; Basketball Tournament Committee 3; Baseball 1; Football 1, 2, 3, 4.





ELMER REDLINE MOWERY

Mifflinville

English, French, German

Kappa Delta Pi 4; Phi Sigma Pi 3, 4; Dramatic Club 4; Poetry Club 3, 4, President 4; Social Usage Club 3; Fashion Show Stage Designer 3; OLYMPIAN Editorial Staff 4; MAROON AND GOLD Editorial Board 3, 4, News Editor 4, Columnist 4.

JOHN STANLEY MURRAY, JR.

Montandon

Biological Science, History

Day Men's Association 4; Men's Resident Council 1, 2, 3; Aviation Club 2; SCA 1, 2; Science Club 3, 4.



DENNIS PRITCHARD MUSKET

Laureldale

Mathematics, Biological Science

CGA Customs Committee 2, 3; Men's Resident Council 1, 2, 3, 4; SPSEA 4; SCA 1, 2; Science Club 1, 2, 3, 4, Vice-President 3; Men's Intramurals 1, 2, 3, 4; Senior Class Decoration Committee.

WALTER LAWRENCE NEARY

Shamokin

Science, Social Studies

Day Men's Association 1, 2, 3, 4; Science Club 1, 2, 3; SPSEA 4.



GERALDINE AGNES O'BRIEN

Easton

Mathematics, Biological Science

Freshman Class Advisor 3; CGA Hospitality Committee 2; Waller Hall Association 1, 2, 3, 4; College Choraleers 1; SCA 3; SPSEA 4; Fashion Show Co-ordinator 2, 3, 4; Majorette 3, 4; CO-PILOT Staff 3; OBITER Typing Staff 4; Senior Class Decorations Committee.

ARTHUR LESLIE OHL

Bloomsburg

Biological Science, Mathematics

Day Men's Association 2, 3, 4; Science Club 2, 3, 4; Senior Class Ticket and Transportation Committees.





DANIEL L. O'NEILL, JR.

Wilkes-Barre

Social Studies

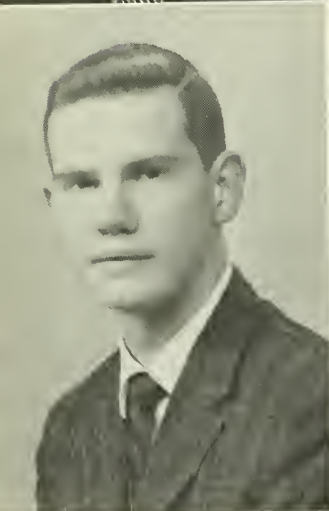
Day Men's Association 3, 4; Aviation Club 1.

GEORGE MICHAEL OPILLA

Freeland

Social Studies, English

Athenaeum Club 2; Aviation Club 1; SPSEA 4; Science Club 3; OLYMPIAN Staff 1; MAROON AND GOLD Staff 2, 3; Senior Transportation Committee.



RICHARD EUGENE PADEN

Nescopeck

Science, Mathematics

Day Men's Association 1, 2, 3, 4; Science Club 2.

JOSEPH ANDREW PANICHELLO

Glenside

Social Studies, Geography

SPSEA 3, 4; Varsity Club 1, 2, 3, 4; Basketball Tournament Committee 1, 2; Baseball 1, 2, 3, 4; Football 1, 2, 3, 4; Wrestling 1, 2, 3, 4.



KENNETH HARRY PARKER

Weatherly

Social Studies, Biological Science

Men's Resident Council 1, 2, 3, 4; Aviation Club 1, 2, 3; Track 1; Senior Transportation Committee.

WALTER E. PATYNSKI

Shamokin

Social Studies, Geography

Men's Resident Council 1, 3; Day Men's Association 2, 4; Gamma Theta Upsilon 4; Kappa Delta Pi 4; SPSEA 3, 4; Varsity Club 2, 3, 4; Baseball 1, 2, 3, 4; Senior Decoration and Ivy Day Committees.





JOHN POLASCHIK

Freeland

Science

Men's Resident Council 1, 2, 3, 4; Phi Sigma Pi 2, 3, 4, Sergeant-at-Arms 4; Aviation Club 1; SPSEA 4; Science Club 2, 3, 4, President 3; MAROON AND GOLD Editorial Board 4.

ROBERT THOMAS PRICE

Ashland

Physical Science, Geography

Men's Resident Council 2, 3, 4; Science Club 1, 2, 3.



ELEANOR JOAN RAMAGE

Mt. Carmel

Social Studies, French

Day Women's Association 1, 2, 3, 4; Atheneum Club 2, 3; Aviation Club 1; SCA 1, 2; Senior Reserve Seat Committee.

ROBERT EDWARD REISSER

Forty Fort

Mathematics, Physical Science

Day Men's Association 3, 4; Men's Resident Council 1, 2; Aviation Club 1; Science Club 2; SPSEA 4.



RICHARD HUGH RIMPLE

Forty Fort

Biological Science, Mathematics

Men's Resident Council 1, 2, 3, 4, Secretary 3; Varsity Club 1, 2, 3, 4, Vice-President 3; Track 1; Wrestling 1, 2, 3, 4; Senior Transportation Committee.

WILLIAM DONALD ROBERTS

Shavertown

English, Social Studies

CGA Man Representative 3; CGA Customs Committee 2, 3; Men's Resident Council 1, 2, 3, 4; Phi Sigma Pi 3, 4; College Choraleers 1; PILOT Associate Editor 4.





ROBERT MAX ROHM

Muncy

Social Studies, Geography

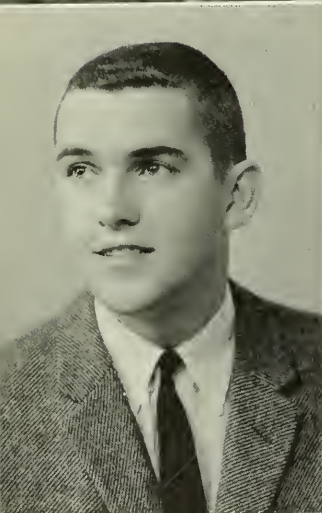
Day Men's Association 1, 2, 3, 4; Gamma Theta Upsilon 3, 4; SPSEA 4; Varsity Club 3, 4; CGA Fire Marshal 3; Baseball 1, 2, 3, 4; Football 1, 2, 3, 4; Wrestling 1, 2, 3, 4; Senior Ivy Day Committee Chairman; WHO'S WHO AMONG STUDENTS IN AMERICAN COLLEGES AND UNIVERSITIES.

**HERBERT NORMAN
ROSENBERGER**

Doylestown

Social Studies, Geography

Men's Resident Council 1, 2, 3, 4; Gamma Theta Upsilon 2, 3, 4; Kappa Delta Pi 3, 4; Aviation Club 1, 2, 3, Treasurer 3.



RICHARD ROSSI

West Pittston

Mathematics, Physical Science

CGA Furniture Committee 2; Men's Resident Council 2, 3, 4, Officer 3; Phi Sigma Pi 3, 4; SPSEA 3; Baseball Intramurals 2, 3, 4; Senior Transportation Committee Chairman.

DONALD SAMSEL

Berwick

Biological Science, Social Studies

Day Men's Association 1, 2, 3, 4.



LARRY HARTFORD SAXE

Nanticoke

Social Studies, English

Day Men's Association 1, 2, 3, 4; Athenaeum Club 2, 4; Aviation Club 1; SPSEA 3, 4.

DEAN M. SCHAFFER

Bloomsburg

Science, Social Studies

Day Men's Association 1, 2, 3; Aviation Club 1; Science Club 2; SPSEA 4; Basketball Intramurals 2, 3.





CHARLES E. SCHLEGEL

Shamokin

Social Studies, Biological Science

Day Men's Association 1, 2, 3, 4, Vice-President 3; Aviation Club 1, 2; SPSEA 4; Senior Reserve Seat Committee.

JOAN ELSA SCHUYLER

Doylestown

English, Social Studies

CGA Pep Committee 2, 3, Secretary 2, Chairman 3; Hospitality Committee 1; Homecoming Committee Co-chairman 3; Waller Hall Association 1, 2, 3, 4, Counselor 2; Athenaeum Club 1, 2; College Choraleers 1; SCA 1; SPSEA 4; Intramural Softball Co-Captain 1, 2; MAROON AND GOLD News Staff 1, 2, Proofreader 2; Senior Ivy Day Committee.



BARBARA ANN SEIFERT

Easton

Social Studies, English

Waller Hall Association 1, 2, 3, 4; College Choraleers 1, 2; Dramatic Club 1; SPSEA 3, 4, Publicity Committee 3; OLYMPIAN Typist 3; Senior Invitations and Memorial Committees.

RONALD JOHN SENKO

Edwardsville

Science, Social Studies

Men's Resident Council 1, 2, 3, 4; Aviation Club 2, 3, Vice-President 3; SPSEA 4; Science Club 3; OBITER Advertising Committee 4; Senior Class Memorial Committee.



MRS. JOYCE H. SHAULL

Catawissa

English, Social Studies

Day Women's Association

ROY EUGENE SHIFFLET

Montoursville

Social Studies, Geography

Men's Resident Council 1, 2, 3, 4; SPSEA 3, 4; Varsity Club 2, 3, 4; Basketball Tournament Committee 3; Baseball 1, 2; Football 1, 2, 3, 4; Wrestling 1; Senior Ticket Committee.





JOSEPH S. SIEPIETOSKI

Glen Lyon

Biological Science, Social Studies

Men's Resident Council 1, 2, 3, 4; Aviation Club 1, 2; College Choraleers 1; Science Club 1, 2, 3.

VERNON F. SINN

Tamaqua

Social Studies, Geography

Men's Resident Council 2, 3, 4; Gamma Theta Upsilon 3, 4, Treasurer 4; Kappa Delta Pi 4; Athenaeum Club 2, 3, Treasurer 3; Senior Namecards and Announcements Committee.



CHESLEY JAMES SMITH

Mifflinburg

English, Social Studies

Maroon and Gold Band 3, 4; OLYMPIAN Staff 3, 4; MAROON AND GOLD Columnist 4; Senior Decorations Committee.

DAVID STANLEY SNOOK

McClure

Mathematics, Science

CGA Customs Committee 3; Men's Resident Council 1, 2, 3, 4; Science Club 1, 2, 3, 4, Treasurer 2, President 3; SCA 1, 2; Men's Intramurals 1, 2, 3, 4; Swimming Team 4; Senior Program Committee Chairman.



RICHARD ARTHUR STABER

Conyngham

Social Studies, Geography

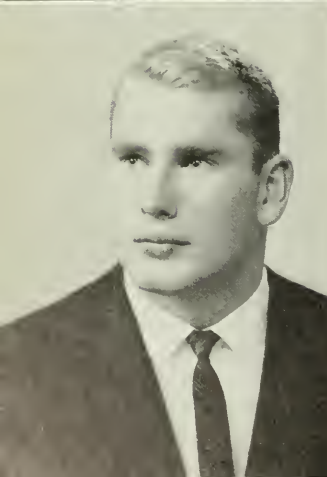
Gamma Theta Upsilon 3, 4; Athenaeum Club 3; Dramatic Club 2; SPSEA 3, 4; Football 2, 3, 4; Men's Intramurals 3, 4.

JOSEPH BLASE STANCATO

Hazleton

Science

Day Men's Association 1, 2, 3, 4; Science Club 1, 2, 3, 4; Aviation Club 1; College Choraleers 1; Senior Invitation Committee.





CARL LEON STANITSKI

Shamokin

Science

Class Treasurer 1; CGA Social Recreation Committee 1, 2, 3; Phi Sigma Pi 3, 4; Science Club 1, 2, 3, 4; Varsity Club 4; SPSEA 4; Basketball Tournament Committee 1, 2, 3, 4; Basketball 1, 2, 3; Track 1, 2, 3; MAROON AND GOLD Sports Staff 1, Sports Co-Editor 4; Senior Orchestra Committee.

CONRAD LEON STANITSKI

Shamokin

Biological Science, Geography

Freshman Class Adviser 3; CGA Social Recreation Committee 2, 3; Gamma Theta Upsilon 2, 3, 4; Phi Sigma Pi 2, 3, 4, Sergeant-at-Arms 3; Science Club 1, 2, 3, 4, Vice-President 2; Varsity Club 4; SPSEA 4; Basketball 1, 2, 3; Track 1, 2, 3, 4; MAROON AND GOLD Sports Staff 1, 4; OBITER Sports Staff 4; Senior Orchestra Committee Co-Chairman.



ROBERT LLOYD STEINRUCK, JR.

Bloomsburg

English, Spanish

Class Vice-President 3; CGA Man Representative 4; CGA Social Recreation Committee 2, 3, Chairman 2; Alpha Psi Omega 3, 4; Phi Sigma Pi 2, 3, 4; College Choralers 1, 2, 3, Vice-President 3; College Octet 1, 2, 3; Dramatic Club 1, 2, 3, 4, President 3; Football 2, 3, Student Trainer 4; OLYMPIAN Advertising Manager 3; MAROON AND GOLD Sports Editor 2, 3; OBITER Business Manager 4; WHO'S WHO AMONG STUDENTS IN AMERICAN UNIVERSITIES AND COLLEGES.

JOHN SPARKS STINSON

Havertown

Social Studies, Geography

CGA Furniture Committee 1; Men's Resident Council 1, 2, 3, 4; Gamma Theta Upsilon 3, 4, President 4; Phi Sigma Pi 3, 4; Athenaeum Club 3; Aviation Club 1; Track 1; OLYMPIAN Art Staff 2, 3; OBITER Art Staff 3.



THOMAS EUGENE STOVER

Picture Rocks

Social Studies

Gamma Theta Upsilon 2, 3, 4; Phi Sigma Pi 3, 4; SPSEA 3, 4; Baseball 1, 2, 3, 4; Senior Ivy Day Committee.

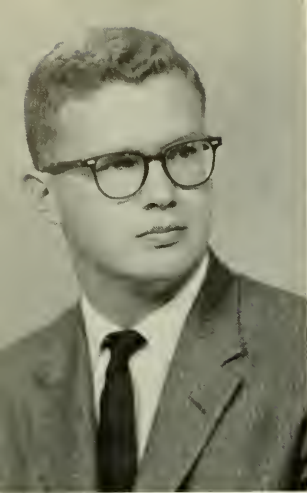
JOHN STRAUSSER

Shamokin

Social Studies, English

Day Men's Association 1, 2, 3, 4.





JOSEPH PETER SWATSKI
Mount Carmel
Mathematics, Physical Science
Day Men's Association 3, 4; SPSEA 4.

**LAWRENCE MICHAEL
TROUTMAN**

Selinsgrove
Biological Science, Geography
Day Men's Association 2; Gamma Theta
Upsilon 2; Aviation Club 1; SPSEA 2.



RAYMOND A. TRUDNAK
Bloomsburg
English, Physical Science
Day Men's Association 1, 2, 3, 4; Aviation
Club 1; OLYMPIAN 1, Business Man-
ager 3.

B. GORDON TRUMBOWER

Hunlock Creek
Science, Social Studies
Day Men's Association 1, 2, 3, 4; Science
Club 2, 3.



**PHILIP EUGENE
UNDERKOFFLER**
Williamstown
Science, Social Studies
Men's Resident Council 1, 2, 3, 4; College
Choraleers 1, 2, 3, 4, President 3; SPSEA
4; SCA 1; College Octet 1, 2, 3, Presi-
dent 3.

WILLIAM L. VINCENT, JR.

Danville
Social Studies, Geography
Day Men's Association 1, 2, 3, 4; Aviation
Club 1; SCA 1; Senior Class Memorial
Committee.





THOMAS MARTIN WAGNER

Beaver Springs

Social Studies, Science

Men's Resident Council 1, 2, 3, 4; SPSEA 4; SCA 1, 2, 3, 4; Science Club 2; Basketball Tournament Committee 1, 2, 3; OBLITER Advertising Staff 4; Senior Announcements and Namecards Committee, Senior Class Memorial Committee; Aviation Club 2.

BARBARA ANN WAINWRIGHT

Berwick

English, Mathematics

CGA Assembly Committee 4; Day Women's Association 1, 2, 3; Waller Hall Association 1, 4; Kappa Delta Pi 3, 4; SPSEA 3, 4; Freshman Talent Show 1; PILOT Editor 4; MAROON AND GOLD Reporter and Copywriter 4; Chairman Senior Publicity Committee; WHO'S WHO AMONG STUDENTS IN AMERICAN COLLEGES AND UNIVERSITIES.



ELIZABETH ANN WALINCHUS

Mahanoy City

French, English

Day Women's Association 2, 3, 4; Waller Hall Association 1; Athenaeum Club 3; SPSEA 3.

DAVID EUGENE WALKER

Northumberland

Science, Social Studies

Day Men's Association 1, 2, 4; SPSEA 3, 4; Science Club 1, 2, 3, 4, Treasurer 4.



EARL E. WALTER

Milton

Biological Science, Social Studies

Day Men's Association 1, 2, 3, 4; Science Club 3, 4; Intramural Sports 3.

MARION WASSEL

Freeland

Spanish, English

CGA Pep Committee 2, 3; Waller Hall Association 1, 2, 3, 4; Kappa Delta Pi 4; Athenaeum Club 2, 3; Dramatic Club 1, 2; SPSEA 4; Poetry Club 4; Women's Chorus 1; Associate Editor of PILOT 3; MAROON AND GOLD Reporter 2, 3; Senior Tickets and Distribution Committee.





KARL MATHEW WEINGARTNER
Shamokin
Social Studies, Geography
Day Men's Association 2; Gamma Theta
Upsilon 2; Senior Ivy Day Committee.



PAUL STUART WOEHRL
Bloomsburg
Mathematics, Social Studies
Day Men's Association 1, 2, 3, 4; Senior
Ivy Day Committee.



**EDWARD CHARLES
WOJCIECHOWSKI**
Mt. Carmel
Science, Social Studies
Day Men's Association 2, 3, 4; Men's
Resident Council 1; Baseball 1, 2; Foot-
ball 1.



RICHARD OSBORNE WOLFE
Schuylkill Haven
Mathematics, Physical Science
Men's Resident Council 1, 2, 3, 4; Phi
Sigma Pi 4; SPSEA 4; SCA 1, 2, Vice-
President 1; Science Club 1, 2, 3, 4;
MAROON AND GOLD Sports Writer 1;
Senior Reserve Seat and Memorial Com-
mittees.



RONALD GENE WOLFE
Northumberland
Social Studies, Mathematics
Day Men's Association 2, 3, 4; Aviation
Club 2, 3, 4, Vice-President 3, 4; Maroon
and Gold Band 2, 3, 4; Senior Orchestra
Committee.



DONALD HARRISON WRIGHT
Kingston
Social Studies, Geography
Men's Resident Council 1, 2, 3, 4; Varsity
Club 3, 4; SPSEA 3, 4; Basketball Tour-
nament Committee 3; Baseball 3, 4; Foot-
ball 1, 2, 3, 4, Student Coach 3, 4; Wres-
tling 2, 3.



RICHARD STANLEY WYDOSKI

West Nanticoke
Science

Day Men's Association 3, 4; Men's Resident Council 2; Science Club 2, 3, 4.

WILLIAM JOSEPH YURKIEWICZ

Elysburg
Science

Day Men's Association 1, 2, 3, 4; Aviation Club 2; Choraleers 1; SPSEA 4; Science Club 1, 2, 3, 4, Vice-President 4; Senior Gift and Announcements and Namecard Committees.



EDWIN JOSEPH ZAREK

Mt. Carmel
English, Science

Day Men's Association 2; Athenaeum Club 2, 3, 4, Vice-President 4; Science Club 1; Senior Orchestra Committee.

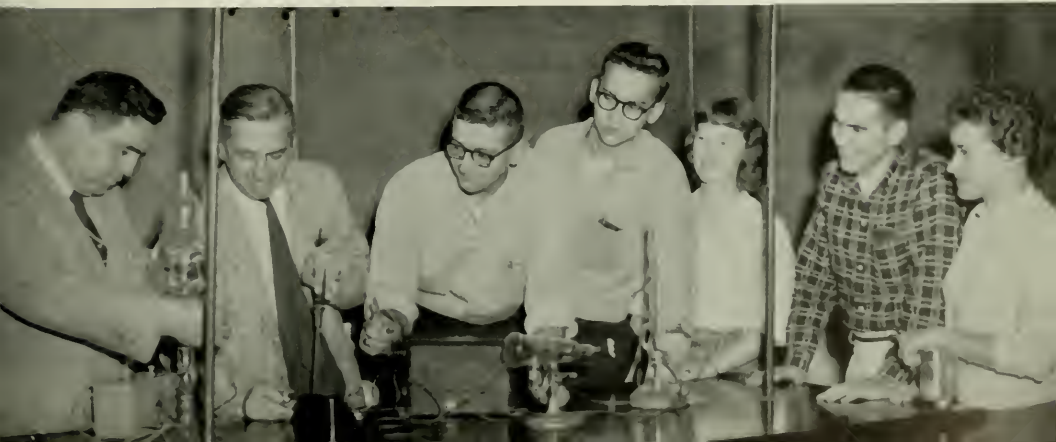
RICHARD JOHN ZORANSKY

Plymouth
Science, Geography

Day Men's Association 2, 3, 4; Gamma Theta Upsilon 3, 4; Science Club 1, 2, 3; Senior Transportation Committee.



Mr. Scarpino and Dr. Lanterman conduct an experiment in Physics for an appreciative audience.





SPECIAL EDUCATION

DONALD F. MAIETTA
B.S., M.S., Ph.D.
Director of Special Education



John Straw, student clinician, conducts articulation therapy.



Student clinician, Joanne Moyer, uses hearing therapy with child at campus clinic.



**MRS. MARCIA SWEPPENHISER
BAILEY**

Berwick
*Education for the Mentally Retarded,
Elementary*

Day Women's Association 2, 3, 4; College
Choraleers 2; SPSEA 3, 4.

MRS. DOROTHY Z. BANGS

Bloomsburg
Speech Correction

Day Women's Association 1, 2, 3, 4; Sigma
Alpha Eta 1, 2, 3, 4, Executive Council 3,
4; Senior Memorial Committee.



RONALD EDWARD BITTLE

Cressona
*Education for the Mentally Retarded,
Elementary*

Men's Resident Council 2, 3, 4; Sigma
Alpha Eta 3, 4; Athenaeum Club 3, 4;
SPSEA 3, 4; Senior Cap and Gown Com-
mittee.

SUE I. BOGLE

Milton
Speech Correction

Day Women's Association 1, 2, 3; Waller
Hall Association 4; Kappa Delta Pi 3, 4;
Sigma Alpha Eta 2, 3, 4, Executive Council
3, 4, Treasurer 4; Senior Picture Com-
mittee Co-chairman; OBITER 4.



FORREST FREDERICK COLE

Johnsville
*Education for the Mentally Retarded,
Elementary*

Day Men's Association 2, 3, 4; Sigma
Alpha Eta 4; Aviation Club 1, 2, Presi-
dent 1; SPSEA 3, 4, President 4; Senior
Decoration Committee.

CONCETTA ANN CORDORA

West Pittston
*Education for the Mentally Retarded,
Elementary*

Waller Hall Association 1, 2, 3, 4, Vice-
President 3; Kappa Delta Pi 3, 4, Re-
cording Secretary 4; "B" Club 3, 4;
College Choraleers 1; SPSEA 3, 4;
OBITER Editorial Staff 1, 2, 3; Co-chair-
man Senior Decorations Committee.





PAUL FRANKLIN CRISLER

Nanticoke
*Education for the Mentally Retarded,
Elementary*

Social Recreation Committee, Co-Chairman
1, 4; SPSEA 4; Varsity Club 2, 3, 4;
Director—Freshman Talent Show 1; Ad-
viser Freshman Talent Show 2; Adviser
OBITER Show 2; Intramural Basketball,
Softball 1, 2, 3, 4; Senior Investigation
and Arrangements Committee.

FREDERICK LEE CROWL

Elysburg
Speech Correction, Biological Science

Day Men's Association 1, 2, 3, 4; Sigma
Alpha Eta 2, 3, 4, Executive Council 3, 4;
Senior Ivy Day Committee.



JOHN LEROY EBERHART

Williamstown
Speech Correction, French

CGA Treasurer 3; Election Board 2; Phi
Sigma Pi 3, 4, Vice-President 4, Execu-
tive Council 4; Maroon and Gold Band
1, 2, 3; OBITER Advertising Manager 4;
Senior Class Memorial Committee Co-
Chairman; WHO'S WHO AMONG STU-
DENTS IN AMERICAN UNIVERSI-
TIES AND COLLEGES.

MRS. SALLY ANN FLANAGAN

Bloomsburg
*Education for the Mentally Retarded,
Elementary*

Dining Room Committee 3; Waller Hall
Association 1, 2, 3; "B" Club 2, 3; Dra-
matic Club 1; SPSEA 3, 4; CO-PILOT
Typist 3.



PATRICIA ELIZABETH GLATTS

Chester
Speech Correction, English

Class Treasurer 2; Woman Representative
4; CGA 4; Hospitality Committee Chair-
man 3; Waller Hall Treasurer 3; Sigma
Alpha Eta, Executive Council 2, 3, 4,
Recording Secretary 4; MAROON AND
GOLD Staff 1, 2, 3; OBITER Editor 4;
WHO'S WHO AMONG STUDENTS IN
AMERICAN UNIVERSITIES AND COL-
LEGES.

OLIVIA MARY GREENAWAY

Berwick
*Education for the Mentally Retarded,
Elementary*

Day Women's Association 1, 2, 3, Vice-
President 2; Dramatic Club 1, 2; SPSEA
3, Senior Transportation Committee.





MRS. LUCILLE F. ISAAC

Bloomsburg
*Education for the Mentally Retarded,
Elementary*
Athenaeum Club 1; College Choraleers 1.

ROBERT HENRY LEISS

Lebanon
Speech Correction, English
CGA Social Recreation Committee 2, 3, 4, Chairman 3, 4; Assembly and Evening Entertainment Committee Chairman 4; Election Committee 4; Men's Resident Council 1, 2, 3, 4; Sigma Alpha Eta 1, 2, 3, 4; Intramural Basketball and Softball 1, 2, 3, 4; Intramural Football 1; Intramural Bowling 2, 4; Senior Investigation and Arrangements Committee Chairman; Senior Orchestra Committee.



MARY JEANETTE MELLON

Mahanoy City
*Education for the Mentally Retarded,
Elementary*

Waller Hall Association 1, 2, 3, 4; Sigma Alpha Eta 1, 2, 3; Athenaeum Club 2, 3, Secretary 3; College Choraleers 1; SCA 1; SPSEA 3.

JOANNE J. MOYER

Pottsville
Speech Correction, Elementary
CGA Social Recreation Committee 2; Assembly Committee 3; Waller Hall Association 1, 2, 3, 4; Waller Hall Governing Board 3; Sigma Alpha Eta 2, 3, 4, Executive Council 3, 4; Dramatic Club 1; SCA 1, 2; MAROON AND GOLD Typing Staff 3; Senior Picture Committee Co-Chairman; OBITER 4.



DOLORES ANN PANZITTA

Harding
Speech Correction, English
CGA Pep Committee 3; Hospitality Committee 3; Waller Hall Association 1, 2, 3, 4; Sigma Alpha Eta 2, 3, 4, Executive Council 2, 3; SPSEA 3; SCA 1; PILOT Editorial Staff 2; OLYMPIAN 2; WHO'S WHO AMONG STUDENTS IN AMERICAN COLLEGES AND UNIVERSITIES.

JOHN STEPHEN SEAMON

Tresckow
Speech Correction, Elementary
Day Men's Association 1; Sigma Alpha Eta 3, 4; College Choraleers 1, 2; Varsity Club 2; College Quartet and Octet 1, 2; Fashion Show 3; Freshman Talent Show Co-ordinator; Baseball 2, Intramural Softball, Football, Basketball 4.





**MRS. ADABELLE HARTMAN
SHELLENBERGER**

Bloomsburg
Speech Correction
Sigma Alpha Eta 2, 3, 4; SCA 1.

JOHN JOSEPH SIMKO

Trevorton
*Education for the Mentally Retarded,
Elementary*
Day Men's Association 1, 2, 3, 4; Atheneum Club 4; Aviation Club 1, 3; SPSEA 3, 4; Senior Cap and Gown Committee.



HENRIETTA A. SMITH

Hazleton
*Education for the Mentally Retarded,
Elementary*
Day Women's Association 1; Waller Hall Association 2, 3, 4; Sigma Alpha Eta 3; Aviation Club 1; Dramatic Club 2, 3; Senior Ticket Committee Co-chairman.

WILLIAM GEORGE WARY

Mabanoy City
*Education for the Mentally Retarded,
Elementary*
Day Men's Association 1, 2, 3, 4; Phi Sigma Pi 3, 4; Athenaeum Club 2, 3; Aviation Club 2, 3; SPSEA 3, 4.



JUDITH ANN WITMYER

Brownstown
*Education for the Mentally Retarded,
Elementary*
Waller Hall Association 1, 2, 3, 4; Sigma Alpha Eta 2, 3, 4; "B" Club 3, 4; College Choraleers 1; SPSEA 3, 4; Women's Intramurals 1, 2, 3, 4; OBITER Staff 1; Senior Memorial Committee.

MYRON THOMAS ZAWOISKI

Plains
*Education for the Mentally Retarded,
Elementary*
Sigma Alpha Eta 2, 3; Homecoming Committee 2; Aviation Club 1; May Day Committee 1, 2; Intramural Basketball, Football, Baseball 1, 2, 3, 4; Senior Orchestra Committee.





MRS. GERTRUDE WILCOX
ZURN

Montrose

Speech Correction

Woman Representative 2; Waller Hall Association 1, 2, 3; Sigma Alpha Eta 1, 2, 3, 4. Secretary 3; SPSEA 4; Maroon and Gold Band 1; College Choraleers 1; MAROON AND GOLD Reporter and Typist 2; Senior Gift Committee.

WHO'S WHO AMONG STUDENTS IN



John LeRoy Eberhart



Lorraine Ann Yeager



Patricia Elizabeth Glatts



Robert Max Rohm

AMERICAN UNIVERSITIES AND COLLEGES



Carol Ann Greene



Dolores Ann Panzitta



Robin Ilene Folmsbee



Jeanette Gail Andrews

WHO'S WHO AMONG STUDENTS IN



Albert Paul Francis



Anna Czepukaitis



Nikki Ann Sheno



Joseph B. Zapach

AMERICAN UNIVERSITIES AND COLLEGES



James J. Peck



Barbara Ann Wainwright



Lorraine Jean Morlock



John Joseph Chidester Jr.

WHO'S WHO AMONG STUDENTS



Almeda M. Gorsline



Robert Lloyd Steinruck Jr.



Elizabeth Marie LaPoint

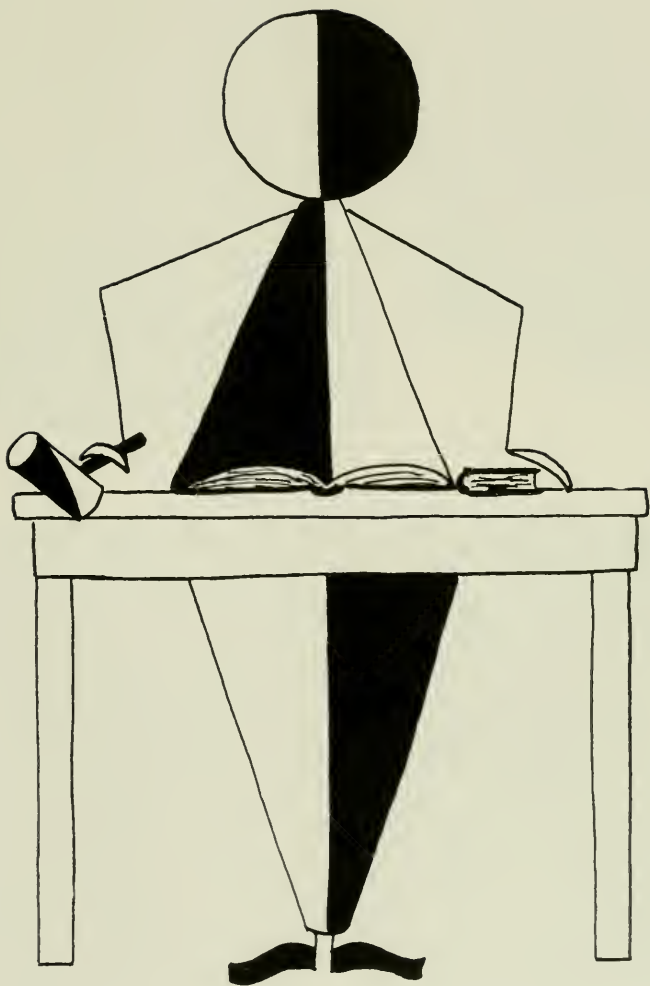


Linda Ann Bartlow

JANUARY GRADUATION — 1960



O
R
G
A
N
I
Z
A
T
I
O
N
S



COMMUNITY GOVERNOR COLLEGE



JOSEPH ZAPACH—President



GARY REDDIG—Vice-President

FACULTY MEMBERS

Dean Hoch
Mrs. Miller
Mrs. Sachs
Mr. Blair
Dr. Herre
Mr. Stradtman
Mr. Johnson
Dr. Fike
Dr. Maietta



MENT ASSOCIATION COUNCIL

STUDENT REPRESENTATIVES

Harry Cole
 Elaine Anderson
 Richard Lloyd
 Joseph Thompson
 Marjorie Ginnick
 Fred Ballentine
 James Peck
 Patricia Glatus
 Robert Steinruck
 Benjamin Baum
 Anne Golder
 Dale Anthony
 Mary L. Todorowski
 Edward Glennon
 Rebecca Henry
 William Thomas
 Sandra Moore



MYLES ANDERSON
 Treasurer



ROSE FATZINGER
 Secretary



JAMES KITCHEN
 Assistant Treasurer



CGA STANDI



COMMITTEE CHAIRMEN

Sandra Moore
Freshman Class Adviser

Edwin Kuser
Furniture Committee

Philip DeBoard
Freshman Class Adviser

Roger Sharp
Election Board

Robert Leiss
Social-Recreation Committee

Majorie Cinnick
Awards Committee

CGA Standing Committees are part of the framework of the governmental system of the school. Every aspect of government essential to the college community is represented by a committee comprised of members of the student body. The chairmen of these committees are responsible to the Vice-President of CGA who is Chairman Ex-Officio of each committee.



Looking for something?



Now you has jazz!

NG COMMITTEES

COMMITTEE CHAIRMEN

Connie Terzopolos
*Hospitality
Committee*

Bill Price
*Customs
Committee*

Gary Reddig
*Vice-President
of C.G.A.*

Bill Stevenson
*Fire Drill
Committee*

Fred Dyer
Pep Committee

Deane Kemp
Pep Committee



Individually, each committee has a specific job to do. The student body may make suggestions or offer advice to the chairman. The total picture shows, however, that these duties of the committees overlap. As a result, the problems of the school are sufficiently covered, and the governmental duties are thus performed.



Stuffing the box?



Just a nightly mud pack.

WALLER HALL

OFFI



President _____
Vice-President _____
Secretary _____
Treasurer _____
Social Chairman _____
Assistant Social Chairman _____

GOVERNING

Eileen Wolchesky
 Ruthanne Baer
 Sandra Calli
 Barbara James
 Jeanne Fischer
 Barbara Hickernill



ASSOCIATION

ERS

Rebecca Henry
Carolyn Cribbs
Kay Gaglionne
Argie Zevas
Judith Goss



I bet it isn't always this clean.

Elaine Anderson

BOARD

Gloria Glahn
Mable Keafer
Pat Obey
JoAnne DeBrava
Lola Rigel
Gail Hurter



He called!!

Just a friendly chat.



RESIDENT



En garde!



William Thomas—President



Trump???



The halls of ivy.



Richard Rossi—Secretary



Now where's my razor?



MEN



Dave Gerber—*Treasurer*



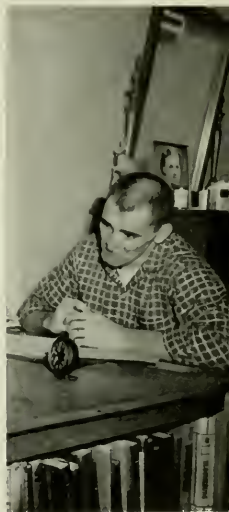
Norm Shutovich—*Vice-President*



It's your move.



Pin him!



I think I'd rather be home.



Girl shortage!!



Something has to be missing.

DAY WOMEN'S ASSOCIATION



OFFICERS

President Mary Todorowski
Vice-President Madelyn Scheno
Secretary Elizabeth Tarr
Treasurer Kay Kerlish

OFFICIAL BOARD

Nikki Scheno
 Elizabeth Tarr
 Nancy Mausteller
 Carol Coolbaugh
 Judith Foust
 Kay Kerlish
 Diane Bosala
 Linda Dennison



Is it too long?

Listen, my children . . .

DAY MEN'S ASSOCIATION



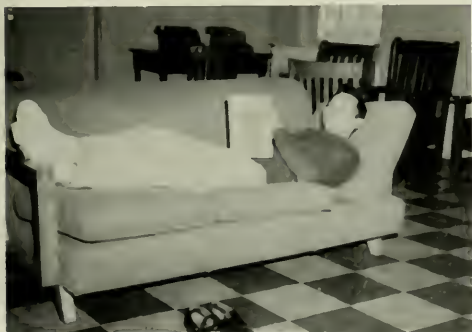
SEATED: E. Glennon, J. McCarthy.
STANDING: B. Deppen, W. Buriak.

OFFICERS

President E. Glennon
 Vice-President J. McCarthy
 Secretary B. Deppen
 Treasurer W. Buriak
 Adviser Dr. R. S. Herre



Don't get your processes mixed.



All the comforts of home.



I hate to tear you away, but . . .

ATHENAEUM CLUB



Mr. James Leitzel
Adviser

OFFICERS—Left to right: K. Karmilowicz, Program Chairman; J. Collins, Secretary. SECOND ROW: E. Zarek, Vice-President; C. Keller, President; Charles Pomietzer, Treasurer.

The purpose of the Athenaeum Club is to familiarize students with many types of music. During the year the members listen to records and discuss various aspects of the compositions. The programs are diversified, and include selections ranging from classical to progressive jazz.



AVIATION CLUB

The Aviation Club, a co-educational organization, was formed with the purpose of stimulating and developing an interest in flying. The only requirement for admission is an interest in aviation.

During the meetings, which are held twice a month, the members study and discuss various aspects of aviation. This year excursions were made to the radar station and Bloomsburg Airport.

Mr. W. Bradford Sterling is the club's adviser.



OFFICERS—Left to right: R. Anthony, Secretary-Treasurer; R. Wolfe, President; Mr. W. B. Sterling, Adviser.



"B" Club

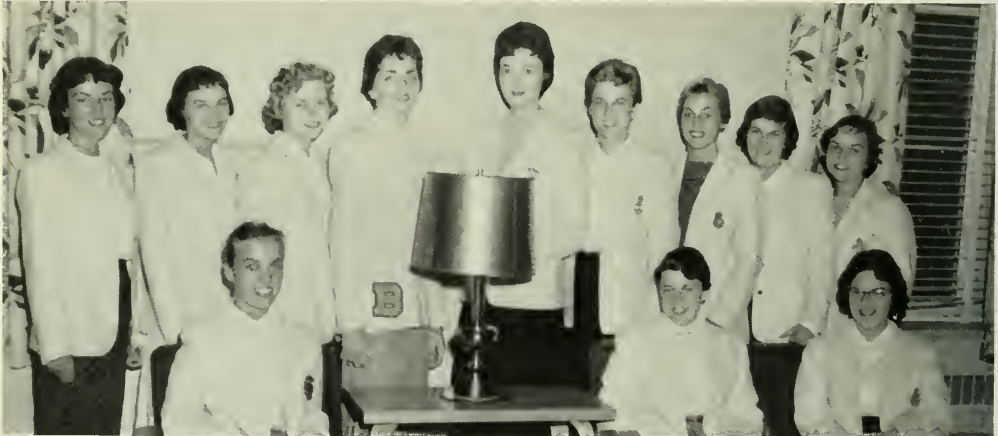


OFFICERS: G. Glahn, President; J. Matchulat, Treasurer; J. Matchulat, Secretary; L. McVey, Vice-President. Miss E. Wray is the adviser.

"B" Club has been established to foster a spirit of co-operation and sportsmanship, and to create a greater interest in athletics among the women of the college.

Any woman in the college is eligible for membership in the club if she can earn 500 points through participation in athletic events during the school year.

"B" Club meets twice a month and plans projects such as their spring camp-out, which is held during a weekend in April. This camp-out, it is hoped, will soon become a traditional activity at B.S.T.C.



PERSPECTIVE

Perspective meets on the second and fourth Thursday of every month in the Social Rooms of Science Hall, and membership is open to all students.

The purpose of the organization is the discussion of timely topics related to life and literature. It is hoped that through this discussion all members will develop an interest in and an appreciation of the world of literature.

Socrates has said that truth is reached through logic refined in debate. The purpose of Perspective is to get closer to that truth.



Left to right: S. Churchill, B. Weslosky, N. Engel, M. Downey, H. Cole, E. Mowery, E. Anderson, W. Oakey, J. Little, Mr. Calvin Israel, Adviser, F. Dyer.

BUSINESS ED



The Business Education Club is an organization open to all students of the Business Education Department. It helps to develop qualities of leadership and to train future teachers for the position they will hold. The club also performs duties for the Department of Business Education.

OFFICERS—Left to right: J. Kitchen, Vice-President; R. Fitzsimmons, President; B. Iveson, Historian; R. Wasson, Secretary; P. Sieber, Treasurer.



UCATION CLUB



DRAMATIC



The Dramatic Club provides an opportunity for students who wish to learn play direction and production. Anyone with a genuine interest in dramatics and previous experience in acting or staging plays may join the "Bloomsburg Players."



Left to right: Ann Tooy, President; M. Downey, Vice-President; E. Wolchesky, Secretary;



CLUB



R. Sharpe, Treasurer; Miss Mary Homrighous, Adviser.

One-act workshop plays are given once a week by various members of the club. A major production is given once a year. The club also participates in school assemblies and various school activities.



VARSITY



The Varsity Club is composed of men who have won a letter in any authorized intercollegiate sport. Founded upon a basis of athletic ability, the club's purposes are to advance ideals of sportsmanship and scholarship, to encourage brotherhood and fellowship among men of similar interests, and to promote an interest in intercollegiate athletics.

Left to right: R. Hutteman, Secretary; J. Johnson, Vice-President; Mr. Harold Shelly, Adviser; N. Shutovitch, Treasurer; A. Francis, President.



CLUB





SCIENCE CLUB

If you are interested in either the biological or physical sciences, then more likely than not you are a member of one of the more popular clubs on campus, the Science Club.

It is the purpose of this organization to study and discuss topics dealing with the various branches of these sciences. This is accomplished through the use of films, lectures, group discussion, and an annual all-day field trip.

Through membership in this organization, a much more thorough understanding of science and the role it plays in our lives is acquired.

OFFICERS

<i>President</i>	W. Knepper
<i>Vice-President</i>	W. Yurkiewicz
<i>Secretary</i>	M. Todorowski
<i>Treasurer</i>	D. Walker
<i>Program Chairman</i>	J. Kotch
<i>Advisers</i>	Dr. Lanterman Mr. Scarpino



ALPHA CHAPTER OF THE COUNCIL OF EXCEPTIONAL CHILDREN



CHEERLEADERS



Bobbi Clark; Dolores Gross; Bonnie Kline; Sandy McKee; Elaine Wolchesky, Co-Captain; Marti Williams, Co-Captain.



Cheerleaders "pep-up" pep rally in Husky Lounge.

MAJORETTES



MAJORETTES

Left to right: L. Schmidt, J. Reinaker, M. Dushanko, H. Salfi, G. O'Brien, J. Stettner, C. Wetzel, J. Gross, Head Majorette. Absent: M. Ginnick, Drum Majorette.



The majorettes add spark to the pep rallies.

MAROON AND



Student musicians, a capable director, and an interested and appreciative student body—these are the elements that are combined to make the Maroon and Gold Band one of the finest organizations on campus.

The services this group performs for the college community are numerous. During football season the fast stepping marching band can be seen at all football games.



GOLD BAND



pep rallies, and parades, doing its part to cheer the Huskies on to victory. After football season is over our marching band then becomes a concert band which presents many interesting and varied programs for the enjoyment of both the college community and the residents of the surrounding areas.



COLLEGE



The College Choraleers is an organization that endeavors to provide an enjoyable and purposeful singing group. Membership is open to all male and female students who enjoy singing and are able to attend rehearsals. This year the chorus has been divided into two groups, a men's glee club and a women's glee club. The programs presented included selections by each of the groups and also members by the combined chorus.

The year's activities included a pro-

OFFICERS—Left to right: L. Lipdenmuth, Librarian; M. Miller, Librarian; J. Goss, Secretary; R. Hileman, Vice-President; R. Strain, Treasurer; R. Machamer, President.



CHORALEERS

gram presented for Annual Conference for Teachers and Administrators and Christmas selections recorded and broadcast nationally. The group, in addition, presented various other concerts and programs for both college students and the townspeople. Through its many activities the Choraleers provided much musical enjoyment for our college community. Mr. Nelson Miller and Mr. Charles M. Carlson are co-directors of the Choraleers.



ACCOMPANISTS: M. Beck and M. Somerset.



STUDENT EDUCATION ASSO



SEATED: F. Cole, L. Reigal. STANDING: B. Arnold, V. Deibert.

OFFICERS

<i>President</i>	F. Cole
<i>Vice-President</i>	J. Davies
<i>Secretary</i>	L. Reigal
<i>Treasurer</i>	B. Arnold
<i>Social Chairman</i>	V. Deibert
<i>Advisers</i>	Dr. G. Fike Dr. T. Martin Dr. D. Maietta Mr. R. Johnson



CIATION OF PENNSYLVANIA

The SEAP endeavors to promote professional interests and activities, to develop professional educational standards, and to strengthen teacher-student relationships. The various projects of this chapter prove very profitable to the college community as a whole.

The most outstanding activity proving most beneficial is the tutoring service. Since the organization is composed of juniors and seniors of the three curriculums, these upperclassmen are capable of tutoring those students desiring help.

The entire program is designed to meet the needs of students, as well as to aid student teachers in their experiences.



STUDENT CHRIS



Left to right: Mr. C. Hinkel, Adviser; B. Thomas, Treasurer; R. Wasson, Secretary; W. Eifert, Vice-President; B. Krapf, President.



TIAN ASSOCIATION

The purpose of the Student Christian Association is to advance the knowledge of Christian Fellowship on the campus, to better realize the importance of religion in life.

Each meeting includes prayer and worship. Programs may consist of group discussion on pertinent subjects, talks by interesting speakers, film-strips, and special services, such as seasonal parties or All-College Vespers.

During National Brotherhood Week in February, the organization presented an assembly program for the benefit of the college students.



ALPHA PSI OMEGA



Miss Mary E. Homrighous, Adviser; Gloria Glahn, President.

The Alpha Omicron Chapter of Alpha Psi Omega is made up of selected academically high students of the Dramatic Club. It provides an honor society for those doing a high standard of work in college dramatics, and secures for them the mutual helpfulness provided by a large national fraternity.

OFFICERS

<i>President</i>	Gloria Glahn
<i>Vice-President</i>	Raydel Radzai
<i>Secretary</i>	Anne Czepukaitis
<i>Treasurer</i>	Joseph Zapach



GAMMA THETA UPSILON



OFFICERS
J. Stinson
J. Blair
M. Bower
M. Faltisco
V. Sinn
Mr. W. B. Sterling
Dr. B. Adams

President
Vice-President
Recording Secretary
Corr. Secretary
Treasurer
Adviser
Adviser

Gamma Theta Upsilon, a co-educational geography fraternity, is open to students who have a geography major or minor, and are academically high in geography courses.

The purpose of the organization is to advance the study of geography, both as a cultural discipline and as a practical subject for study and investigation. A National Loan Fund has been established by the fraternity in order to promote graduate work in geography.

Interesting programs are provided throughout the year by qualified persons who have an interest in the organization and its purposes.



KAPPA DELTA PI



Left to right: Mrs. Griffith, Francis, Arnold, Ball, Condora, Bartlow.

Kappa Delta Pi, co-educational honor society in education, endeavors to promote high professional, intellectual, and personal standards, and to recognize outstanding educational contributions. Members are required to be juniors or seniors, have a general scholastic rating on the Dean's List, and pass a majority vote of the members present.



OFFICERS

President L. Bartlow
Vice-President R. Ball
Recording Secretary C. Condora
Corresponding Secretary A. Francis
Treasurer B. Arnold
Adviser Mrs. Griffith



PI OMEGA PI

The Alpha Delta Chapter of Pi Omega Pi is a Professional Business Education Fraternity fostering its aims to encourage, promote, extend, and create interest and scholarship in commerce, to aid civic betterment in colleges, to encourage and foster high ethical standards in business and professional life, and to teach the idea of service as the basis of all worthy enterprise.

A second semester sophomore standing scholastic rating of 2.8 and two semesters credit in the Business Education Club are required for initiation into the fraternity.



OFFICERS—Left to right: D. Delbs, Historian; Y. Galetz, President; J. Anderson, Vice-President; J. Wagner, Treasurer; M. Keafer, Secretary.



SIGMA ALPHA ETA



Left to right: Aumiller, Bogle, Eberhart, Ginnick, Glatts.

OFFICERS

<i>President</i>	Jack Eberhart
<i>Vice-President</i>	Marjorie Ginnick
<i>Recording Secretary</i>	Patricia Glatts
<i>Corresponding Secretary</i>	Constance Aumiller
<i>Treasurer</i>	Sue Bogle
<i>Adviser</i>	Mr. Donald F. Maietta

Sigma Alpha Eta is a fraternity for those students who are interested in speech and hearing. The aims of this organization are to create an interest in the field of Speech and Hearing, to encourage professional growth, to insure high planes of achievement in academic and clinical activities, and to build wholesome public relations with other college departments and with local organizations interested in knowing about the field of speech and hearing rehabilitation.

The four grades of membership are (1.) Affiliate—students having an interest in becoming informed about the field; (2.) Associate—students who have completed the first year, and have an active interest in training in the field; (3.) Key Members—advanced students in the field with a 2.7 average; (4.) Honor Members—a recognition level for key members who have demonstrated outstanding leadership in the organization.





PHI SIGMA PI



Left to right: E. Farrow, President; J. Eberhart, Vice-President; D. Rapson, Secretary; C. Keller, Treasurer. SECOND ROW: Mr. Russell Schleicher, Adviser; N. Shutovitch, Historian; J. Polaschik, Sergeant-at-Arms; B. Krapf, Chaplain.

Phi Sigma Pi is the men's professional education fraternity. Founded on a basis of superior scholarship, it exists to meet the needs of close fellowship among men interested in advancing educational ideals.

Men eligible for membership must be students of college work who have maintained a 2.5 cumulative rating with a 2.5 average the semester previous to initiation. Members must also be students in residence.

The Iota Chapter of Bloomsburg sponsors the annual Battle of the Classes. Sandra Clark was selected fraternity sweetheart.



THE LIBRARY



SEATED: Paula Schell, Jean Valentiner, Pat Vaughn.
STANDING: Marion Huttenstine.



SEATED: Betty Tarr, Mary Ellen Dushanko. STANDING: Mrs. Laubach, Jacqueline Wisser, Margaret Lillie, Joanne Shaffer.



Miss Reams assists students from the Benjamin Franklin Training School.

ATHLETICS



FOOTBALL



COACHING STAFF

Left to right: H. Shelly, Trainer and Assistant Coach; R. Houk, Line Coach; W. Blair, Head Coach; D. Heilman, Backfield Coach.

FOOTBALL RECORD—1959

<i>Bloomsburg</i>	<i>Opponent</i>	
7	Shippensburg	13
6	Kings College	0
12	Mansfield	6
6	Cortland	6
14	Millersville	20
0	East Stroudsburg	7
13	West Chester	10
6	Lock Haven	14



STUDENT COACHES

D. Wright, J. Chidester



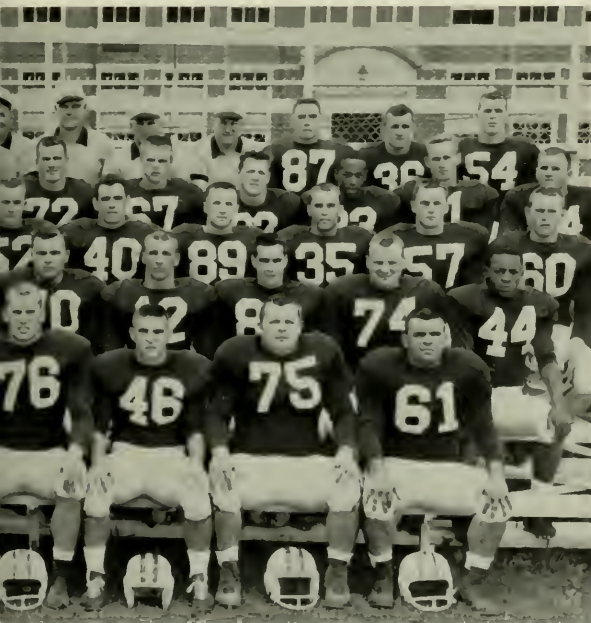
FRONT ROW, left to right: E. Galitsky, P. Lockcuff, W. Morris, H. Orband, R. Staber, D. Gerber, P. Manko, J. Panichello. SECOND ROW: J. Conrad, R. Cunningham, S. Hugo, J. Gronka, R. Rohm, R. Shifflet, J. Rishkofski, R. Wetzal, G. Nace, J. Johnson. THIRD ROW: J. Treon, D. Walters, E. Lockman, M. Montanye, P. Luzenski, D. Noll, R. Naylor, W. Miller, G. Gruber,



HEAD MANAGER
G. Anderson



MANAGERS
D. Morgan, E. Kuser



STUDENT TRAINERS
Left to right: R. Steinruck, A. Litavec, J. Natishan.

R. Christina, C. Decker. FOURTH ROW: D. Denick, K. Robbins, A. Williams, B. Patynski, J. Sills, F. Crenetti, W. Carson, G. Stackhouse, O. Harazim, M. Scott, R. Rohrer, J. Dixon. TOP ROW: R. Davis, J. Chyko, E. Reichley, R. Jenkins, John Chidester, Coaches R. Houk, W. Blair, H. Shelly, D. Heilman, D. Wright, R. Lannstein, E. Dixon, V. Raupers.



DAVID GERBER

Playing an eight game schedule, the B.S.T.C. gridders closed out their season with three wins against four losses and one tie. Each of the defeats was sustained by a margin of only one touchdown. A high-flying Husky passing attack was greatly hampered by muddy conditions.

The big news of the pigskin season was the local's upset of arch-rival West Chester. Many observers feel that, regardless of the over-all seasonal record, the victory over the Golden Rams makes this year's record a success.

In general, this year's Blairmen displayed a fine brand of football, and showed the fans a rugged, hard-hitting team culminating in an all-out team effort in the West Chester upset.



HENRY ORBAND



ROBERT ROHM



PAUL MANKO



PHILIP LOCKCUFF



ROY SHIFFLET



WILLIAM MORRIS



EDWARD GALITSKY



STANLEY ELINSKY



JOSEPH PANICHELLO



RICHARD STABER



BLOOMSBURG 13 — WEST CHESTER 10!



The one that beat West Chester.



So near and yet so far.



"Now, here's what we'll do!"

BASKETBALL

Coach Harold Shelly "greeted" a group of 25 candidates to be put through their paces in preparation for a 17-game slate. So far during the affable mentor's 10-year stay at the "Hill," he has not posted a losing season while winning 105 and dropping 64. Eight returning lettermen help form the nucleus for the '59-'60 squad.

J.V. Coach John Scrimgeour returned to his alma mater and has turned in a very creditable first year record.

At this writing, Dick Lloyd is leading the Conference in scoring closely followed by teammates Houser and Shutovich.

Employing a high-flying, fast-breaking, attack coupled with a shifty defense, the locals have excited local rooters with their thrilling brand of ball.



MANAGERS

Left to right: D. Reiter, B. Morgan, F. Moyer.

VARSITY



Left to right: P. Perialas, J. Mascioli, A. Yaverski, B. Gatski, P. Houser, N. Shutovich, R. Farmer, T. Gladsky, L. Ludinsky, D. Lloyd, B. Strauser, J. Swisher, A. Francis.

COACH HAROLD SHELLY



Lloyd grabs rebound.



Houser scores two for Bloom.

JUNIOR-VARSITY



Left to right: A. Espostio, D. Springer, F. Raube, G. Rupert, N. Lewis, D. Graham, D. Fagans, R. Cranford, T. Miller, J. Wagner, B. Webb, B. Goldberg.

COACH JOHN SCRIMGEOUR

JOHN MASCIOLI



Shutovich taps one in.



Lloyd drives for two.

ALBERT FRANCIS



Here it comes again!



Now you did it!

WRESTLING

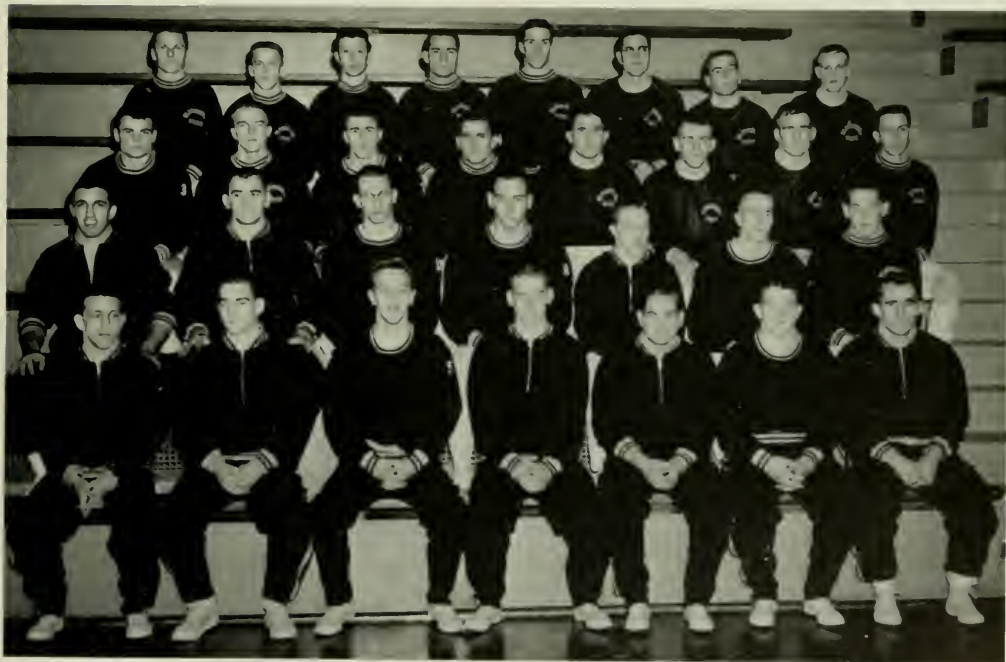
Led by co-captains Rohm, Rimple, and Elinsky, the Husky wrestling squad, defending state champs, began workouts in late fall to prepare for their title defense. With a nucleus of this trio, plus Sullivan, Gorant, coach Houk quickly whipped the team into shape. Added to this experienced core were Hughes, Dixon, Rider, and Garson as the matmen breezed through their first four matches by downing Millersville, Shippensburg, highly touted Rochester Polytechnical Institute, and snapped Lock Haven's thirty-six match conference winning streak with a tremendous 15-11 showing.

With the veterans showing their experience and savvy plus the frosh coming along in fine style, the team should put up a strong defense of the crown.



COACHING STAFF

M. Flanagan, Assistant Coach; R. Houk, Head Coach.



FRONT ROW, left to right: E. Hughes, D. Sullivan, T. Gorant, D. Rimple, C. Baker, W. Rider, G. Dixon. SECOND ROW: R. Rohm, S. Elinsky, W. Stevenson, P. Withers, D. McMullen, G. Wright, H. Pritchard. THIRD ROW: R. Hall, D. Poust, B. Stroup, J. Dixon, T. Morris, G. Decker, W. Garson, R. Davidheiser, E. Slatky, L. Jackson, W. Moser, C. Pomicter, W. Moss, D. Barbour, C. Bieber, J. Thompson.



RICHARD RIMPLE



STANLEY ELINSKY



Dixon goes for pin against Waynesburg.



Keep after him, Don.



ROBERT ROHM



It's a pin!



Keep him away from the line, Dick.



Rider ties him up.



I give up, who is it?

TRACK



PETE VALANIA
Manager

Hampered by bad weather and inexperience, the 1959 edition of the Husky Track Squad posted a 2 and 4 record. Hit hard by graduation, the thinclads saw only a few lettermen return to the oval and green, the majority of the team being made up of freshmen.

The Shellymen displayed power in several departments and improvement shown by Raupers, Conrad Stanitski, Cole, and Enney gives a promise for the future.

In the STC state meet, the thinclads placed fifth, with Terry Engleman copping both the mile and two-mile records. Stan Hugo placing second in the pole vault, and Beau Hutteman grabbing fourth place in the javelin.



COACH HAROLD SHELLY



FIRST ROW, left to right: R. Heutteman, D. Cole, T. Engleman, B. Price, R. Naylor, S. Hugo, S. Elinsky. SECOND ROW: J. Smith, R. Davidheiser, W. Moss, M. Mensch, R. Thayer, J. Enney. THIRD ROW: V. Raupers, Carl Stanitski, N. Shutovich, Conrad Stanitski, C. Fox, B. Stevenson.

1959

TRACK RECORD 1959

BSTC	80	Kutztown	33
BSTC	31 $\frac{1}{2}$	Shippensburg	89 $\frac{1}{2}$
BSTC	43 $\frac{2}{3}$	Millersville	78 $\frac{1}{3}$
BSTC	80	Cheyney	48
BSTC	53 $\frac{1}{2}$	Lock Haven	77 $\frac{1}{2}$
BSTC	49	E. Stroudsburg	82



Ray Thayer, Husky senior, takes handoff from Cole.



Ray Naylor finishes first for the Huskies.



Made it, Stan!



Husky hand-off, Mensch to Moss.



Keep your eye on that disc, Con.



Gently, with feeling, Carl!

BASEBALL 1959

As the M & G takes to the diamond this spring, they have a solid core of 10 veterans around which the squad can be molded. With this nucleus of 10 lettermen, Coach Walt Blair has the potential to improve on last year's record.

The '59 squad was confined to indoor practice for much of the early season due to inclement weather but picked up steam midway through the 17 game campaign and finished looking like a much-improved ball club.

Trouble co-ordinating a hard-hitting attack with fine pitching performances hurt the locals as they dropped a number of one run decisions. Late season performances by first year men Houser, Ron Blackburn, and Perialas led local rooters to predict a winning season for this year's batsmen. Veterans Rohm, Fish, and Panichello are back to take up the burden with their fine hitting and fielding.

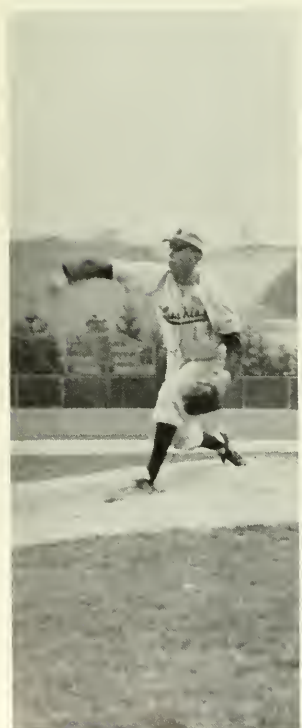
Local fans can expect to see many thrilling contests this spring as the Mr. Olympus diamond-men take on a 16 game slate.



FIRST ROW, left to right: D. Fritz, E. Blackburn, P. Lockuff, B. Rohm, W. Patynski, T. Stover. SECOND ROW: F. Fisk, G. Anderson, P. Perialas, J. Timko, C. Derr, P. Houser. THIRD ROW: J. Panichello, J. Rishkoski, D. Franklin, E. Galitsky, B. Meckley, J. Oravitz. FOURTH ROW: R. Blackburn, E. Kuser, A. Litavec, F. Tibbs.



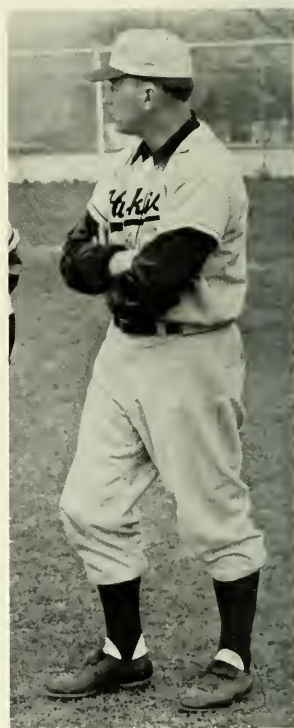
Mt. Olympus, home of the Husky Nine.



DALE FRANKLIN

SCORES

BSTC..... 1	Lock Haven	2
BSTC..... 2	Lock Haven	0
BSTC..... 7	Kutztown	2
BSTC..... 7	Mansfield	2
BSTC..... 2	Mansfield	5
BSTC..... 2	Lock Haven	0
BSTC..... 0	Lock Haven	1
BSTC..... 0	West Chester	2
BSTC..... 7	Millersville	8
BSTC..... 10	Mansfield	5
BSTC..... 13	Mansfield	5
BSTC..... 5	E. Stroudsburg	4
BSTC..... 8	Lycoming	4
BSTC..... 5	E. Stroudsburg	10
BSTC..... 6	Lycoming	9
BSTC..... 2	Shippensburg	8
BSTC..... 4	Shippensburg	9



COACH WALTER BLAIR



"Flip" Houser slams one for the Huskies



Carl Derr



"Bud" Gruber

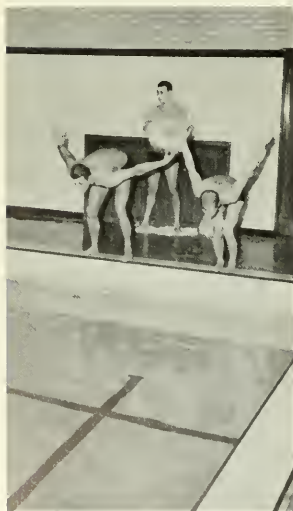


Frank Fisk scores for Bloomsburg.

SWIMMING



FIRST ROW, left to right: T. Little, B. Lahnstein, T. Jones, W. Knepper. SECOND ROW: A. Alastick, B. Drogan, N. Young, R. Davidheiser, L. Konetski. THIRD ROW: J. Nash, B. Price, N. Swarts, P. Lutz.



"On your mark, get set . . ."

This year marked the debut of the Husky swimming squad. Coached by "Bud" Heilman, the tankmen, hampered by inexperience and a lack of squad depth, nevertheless made a commendable showing as they made tremendous progress as the season drew on. Wally Knepper, only senior on the squad, splashed to several outstanding showings in the 220 and 440 yard freestyle. With "Beau" Huttemann, John Young, Ron Davidheiser, Nelson Swarts, Nick Nash, Pete Lutz and Tom Jones returning to the lanes next year, the Husky mermen have a strong nucleus and with some added depth the Maroon and Gold swimmers can be looked upon as strong contenders in the State Conference.



WALLACE KNEPPER

GOLF



Golf took part in the intercollegiate athletic program of 1959-60 for the first time in the history of BSC. At the time these pictures were taken, there wasn't the vaguest notion as to how the budding golf team would do in intercollegiate competition. The men were, nevertheless, working out regularly in the basement of the Benjamin Franklin School where equipment was provided for the hitting of regular golf balls. Several on the squad showed promise. Arrangements had been made with the Bloomsburg Country Club for the use of the course for spring practice and conference matches.

P
U
B
L
I
C
A
T
I
O
N
S



OBITER



Patricia Glatts, Editor; Dr. E. T. DeVoe, Adviser; Mary Frances Downey, Assistant Editor.

Editor: Patricia Glatts
Assistant Editor: Mary Frances Downey
Business Manager: Robert Steinruck
Adviser: Dr. Edward T. DeVoe
Art Editor: Gloria Glahn
Sports Editor: Richard Lloyd
Photographer: Robert Bogdanski



Robert Bogdanski
Photographer



TYPING STAFF

Left to right: G. O'Brien, K. Nehus, J. Matchukat, M. Betz, M. Redman, J. Schoelkopf, M. E. Dushanko, L. Schmidt, B. Iveson, P. Smith.



SPORTS: Conrad Stanitski, D. Lloyd, Sports Editor; Carl Stanitski.



ART COMMITTEE: Virginia Hardy; Gloria Glahn, Art Editor.

THE COLLEGE YEARBOOK



COPYREADERS

Left to right: C. Sipos, B. Arnold, N. Wurster, R. Ellis.



T. Wagner; R. Steinruck, Business Manager.



ADVERTISEMENT COMMITTEE

S. Clark, J. Eberhart, L. Carpenter, R. Sinko.



T. Oakey, Chairman, Co-ed of the Year Contest; J. Davies, Distribution Manager.



SENIOR COMMITTEES

Left to right: M. Boyer; M. Huttenstine; S. Bogle, Co-Chairman, Senior Picture Committee; J. Moyer, Co-Chairman, Senior Picture Committee; D. Whipple, Chairman, Senior Activities Committee; B. Brooker.



Sandra Moore—*Editor*



Harry Cole—*Assistant Editor*



EDITORIAL BOARD

STANDING: J. Polascik, M. Downey, E. Mowery, H. Cole, M. Shutovich. SEATED: S. Moore, Editor.



R. Dennen, Business Manager; P. Appel, Head Typist; R. Stienhart, Advertising Manager.



NEWS REPORTERS

Left to right, FIRST ROW: J. Wolfe, L. Niehoff, B. Peeling, W. Kline, S. Marcheski, C. Bowman. SECOND ROW: M. Huttenstine, J. Beaumont, G. Opilla, C. Mowery, B. Search. SEATED: Elmer Mowery, News Editor.



PHOTOGRAPHERS

SEATED: J. Rado. STANDING: T. Oakey, B. Bogdansky.



CIRCULATION STAFF

Left to right: M. Bower, C. DelVecchio, D. Lloyd, R. Talerico, N. Swartz, D. Rudolph, B. Brooker.



ART STAFF

P. Bingaman, M. Stanell, C. Stinson, J. Lipovsky.



SPORTS STAFF

W. Morrissy, F. Crenetti, C. Stanitsky, J. Bray, C. Stanitski. 173

THE OLYMPIAN

The College Literary Magazine



Dr. J. Almus Russell, Adviser: Clinton Oxenrider, Editor.



SEATED: Pat Sieber, W. Kline, Dot Born. STANDING: B. O'Donnell, R. Miller, E. Yurick, R. Domalavage.



EDITORIAL BOARD

Left to right: D. Conrad, J. Morette, S. Martin, C. Oxenrider, Editor: C. Stinson, S. Morrisson, M. Luchen, R. Strunk, L. Snyder, Assistant Editor.



Editor: Barbara Wainwright

STAFF

Editor:
Barbara Wainwright

Assistant Editor:
Charles Keller

Associate Editors:
Judith Beaumont
Harry Cole
Patricia Dunnigan
Almeda Gorsline
Kathryn Kerlish
William Roberts
Marion Wassel

Business Manager:
Edwin Kuser



SEATED, left to right: Ed Kuser, Kathryn Kerlish, Charles Keller. STANDING: Judy Beaumont, Harry Cole, Marion Wassel, Bill Roberts, Almeda Gorsline.

FEATURES



MAY DAY - 1959

May Queen—LORRAINE BASSO

THE QUEEN'S COURT

Mary Pomes
Barbara Curry
Nancy Herman
Joanne Heston

Sandra Lewis
Nancy Pekala
June Locke Trudnak
Claire Walsh





Ron Romig crowns Lorraine Queen.



FRESHMAN FANTASY



In a hurry, boys?



The cast



Ohhh—Joey!



Hi, there!

NEW FACES



takes a bow.



Whattava mean, you're looking for somebody?



1-2-3, cha cha cha.



"That Old Black Magic"

HOMECOMING -



Charleston, Charleston . . .



Sandy Clark, Phi Sig Sweetheart, is escorted by Erwin



Hold that pose!



Phi Sig pledges demonstrate school spirit.



Farrow, president of the fraternity.



But this time . . .



Go, man, go.



Maroon and Gold band entertains.



Roll those dice, Zeke.



"As of this date all girls are permitted to wear





Bermuda shorts except on Sundays, etc.



Medic



A new cook?



One little, two little, three little

SATCHMO . . .



M-m-mm—Yes!



Won't you come home, Bill Bailey—



And the crowd went wild.



Collaboration



WILLIAM BOYD SUTLIFF HALL
Science and Business

Shown below is the new William Boyd Sutliff Hall, latest addition to the College campus. To the left is a portrait of Dean Emeritus Sutliff which will be placed in the new classroom building, along with a suitable bronze tablet honoring the well-known educator. Bottom photo shows Dr. Andruss unveiling the plaque at Homecoming Day exercises held in Centennial Gymnasium. Both the portrait and the plaque were gifts of B.S.T.C. alumni.





SHORTHAND CLASS WINS FIFTH PLACE IN WORLD-WIDE CONTEST

Professor Walter S. Rygiel, of the Bloomsburg State College Faculty, recently received the announcement that his shorthand class team won Fifth Place in the International Order of Gregg Artists Shorthand Contest, Collegiate Division, sponsored by the Gregg Publishing Company.

There were approximately 2,500 teams competing in the contest. Canada, Hawaii, Thailand, Republic of Panama, Malaya, Japan, British Guiana, London, Republic of China, and Cuba are only a few of the teams represented in the World-Wide Contest. Quebec, Canada, won the first prize.

The fifth prize is the banner shown above awarded to Bloomsburg.

The following students comprised the team:

FIRST ROW: P. Oswald, N. Scheno, E. Derr, J. Gross, M. Betz, J. Shirk, C. Ruckle.

SECOND ROW: Dr. Thomas Martin, Director of the Division of Business Education, B.S.C., M. Stanell, A. Page, M. Weiser, S. Riefenstahl, Y. Galetz, R. Radzai, J. Andrews, L. Reed, L. Bartlow, D. Delbo, Professor Walter S. Rygiel, teacher of the team.

THIRD ROW: J. Matchulat, M. Dushanko, B. Arnold, J. Zapach, B. Soika, J. Williams, R. Ellis, M. Hand, E. McMichael, J. Matchulat.

For three years in succession Professor Rygiel and his shorthand students took First Prize in the National Shorthand Contests. This is the first time in the history of the contest that a college has won first place three years consecutively.

NAME OF INSTITUTION CHANGED TO BLOOMSBURG STATE COLLEGE



Another milestone was recorded in the 121 year history of the college when Governor David Lawrence signed a bill passed by the General Assembly of the Commonwealth of Pennsylvania. The history of Bloomsburg dates back to 1839 when an academy was founded in this community. This was chartered as a Literary Institute in 1856 and the institution became a State Normal School as well, three years later. In 1916, the Normal School was purchased by the Commonwealth of Pennsylvania and became a State Teachers College in 1927. The College became a four-year degree-granting institution in 1934. No change is contemplated in the function of the fourteen state colleges at this time.



— Niccolò Cortiglia

THE FACULTY OF
BLOOMSBURG STATE COLLEGE

presents this Testimonial to

Harvey A. Andruss, Sr.

IN GRATITUDE for—his consecration to the ideals of Bloomsburg, his courage in sustaining his convictions, his lofty principles and personal integrity, and the judicious use of the powers of his position;

IN RECOGNITION of—his genius for organization which has found time for detail as well as for policy; his sense of worth in setting the objectives for student, teacher, and College; and his wealth of constructive and progressive ideas;

IN ACKNOWLEDGMENT of—his dedication to Education and to the teaching profession, his application of ethical standards to administrative code, his awareness of the dynamic relationship between community and college, and his unstinting sacrifice of personal comfort for the demands of duty.

This fifteenth day of March, nineteen hundred and sixty.

Margaret E. McCern

President

Bloomsburg State College Faculty Association

CAMPUS CANDIDS



The end of a perfect day.



Well, we did step on their toes.



"I am Eloise . . ."



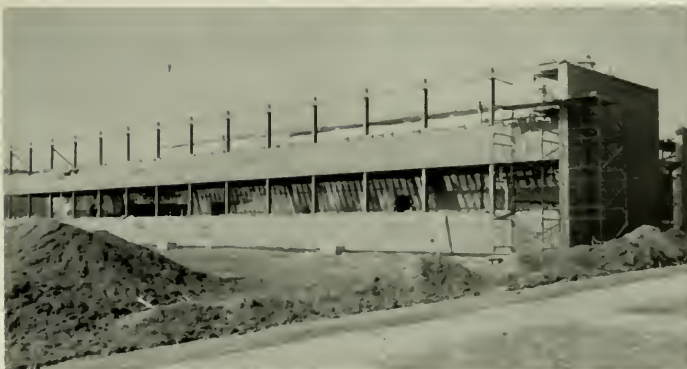
A-feudin', a-fussin', and a-fightin'.



BSC has: fertile soil.



... breathtaking scenery



... and ambition.



And the bride wore—



Batter up!



Mr. Flanagan emphasizes a point.



Dr.-er, Thencken-er-Thurston-er-Thoenen!



Stop the press!

COED-OF-THE-YEAR CANDIDATES



Kathy Durkin
Senior



Mary Weiser
Senior

COED-OF-THE-YEAR CANDIDATES



Judy Goss
Junior

Informal shot of underclass
candidates



COED-OF-THE-YEAR CANDIDATES



Myrna Bassett
Sophomore



Janice Werley
Sophomore

COED-OF-THE-YEAR CANDIDATES



Carol Bowman
Freshman



Melinda Sorber
Freshman



Marjorie Ginnick

1960 · COED-OF-THE-YEAR

U
N
D
E
R
G
R
A
D
U
A
T
E
S



CLASS OF 1961 -



STANDING, left to right: Roberta Strain, Treasurer; Mr. Donald Heilman, Adviser; Marianne Shutovich, Secretary. SEATED: Marjorie Ginnick, Woman Representative; Joseph Thompson, President; Judy Goss, Vice-President; Fred Ballentine, Man Representative.



Juniors order class rings outside of the Husky Lounge.



Juniors participate in "Battle of the Classes" Contest sponsored by TIME Magazine.



LAUREL PRINCESS CANDIDATES—STANDING, left to right: Argerly Zevas, Gail Hurter, Kay Gaglione, Ava Jo Hilner, Marjorie Ginnick, Rita Botteon. SEATED: Jacie Schwatt, Judy Goss, Norcen Van Tuyle, Isabelle Gladstone.

CLASS OF 1962 -



SEATED: Harry Cole, President; Roger Sharpe, Vice-President; Elaine Reifsnyder, Secretary. STANDING: Russell Millhouse, Treasurer; Elaine Anderson, Woman Representative; Dick Lloyd, Man Representative; Mr. John Scrimgeour, Adviser.



Left to right: Elaine Reifsnyder, Roger Sharpe, Myrna Bassett, Harry Cole, Dick Lloyd, Margaret Bower, Mr. John Scrimgeour.

FALL FANTASY



The shadowy beauty of a fall fantasy.



Dancing to the music of Lee Vincent and his orchestra.

CLASS OF 1963—



Left to right: Dale Anthony, Man Representative; Mr. Cope, Adviser; Anne Golder, Woman Representative; Benjamin Baum, President; Robert Moyer, Vice-President; Joanne Shaffer, Secretary; Richard Kennedy, Treasurer.



Registration: a freshman's college life officially begins.

CUSTOMS



My girl's a hullabaloo . . .



What is it???



. . . except an upperclassman.

A
D
V
E
R
T
I
S
E
M
E
N
T
S



Join your ALUMNI ASSOCIATION, and keep your membership active through the years. Annual dues of \$2.00 will include a year's subscription to the ALUMNI QUARTERLY. This magazine, which appears four times a year, will keep you informed of the activities of your classmates and the events happening on campus.

Our Object . . .

“To Keep the Door of Opportunity
Open for Worthy American Youth.”

Our Slogan . . .

“Every graduate of Bloomsburg an Active
Member of the ALUMNI ASSOCIATION.”

All dues should be sent to
Dr. E. H. Nelson
President
Alumni Association
State College
Bloomsburg, Pennsylvania



DR. E. H. NELSON

THERE'S NOTHING LIKE CARPET
TO ADD TO THE BEAUTY AND LIVABILITY
OF YOUR HOME . . .
Especially, if it's MAGEE



Manufacturers of America's Finest Quality
Carpets and Rugs

WILTON . . . VELVET . . . AXMINSTER . . . TUFTED . . . KNITTED



THE MAGEE CARPET COMPANY
Bloomsburg, Pa.

MILLER OFFICE SUPPLY
& EQUIPMENT CO.



18 West Main Street
BLOOMSBURG, PENNSYLVANIA

HARRIS SUNOCO SERVICE

Route 11 Bloomsburg, Pa.



MERCK & CO., INC.
Manufacturing Chemists

Cherokee Plant
DANVILLE, PENNSYLVANIA

The Name
"BALFOUR"

Stands for the Finest in
Class Rings, Commencement Announcements,
Club Pins, Diplomas, Medals and Trophies

L. G. BALFOUR COMPANY

Taylor-made Yearbooks
AMBY NOLAN—MATT LYNOTT

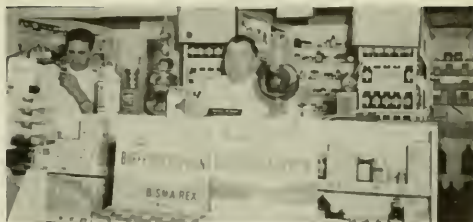
Miners Bank Building
WILKES-BARRE, PENNSYLVANIA

**BLOOMSBURG BANK —
COLUMBIA TRUST COMPANY**

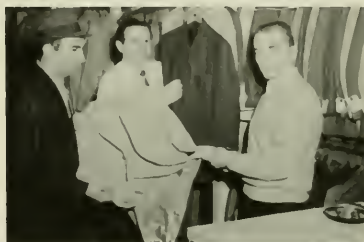


Our Newest Service
**DRIVE-IN WINDOW and
CUSTOMER PARKING**

REA & DERICK, INC.
Main Street — Bloomsburg



Known for
Friendly, Reliable Service



AL'S MEN'S SHOP
134 East Main Street
BLOOMSBURG, PENNSYLVANIA

Compliments
of

MIDWAY LANES

16 Lanes — Automatic Pin Setters
Fully Air-Conditioned
BLOOMSBURG-DANVILLE HIGHWAY



FOUGHT'S RESTAURANT
—On the Berwick Highway

LETTERMAN'S

MASTER BAKERY PRODUCTS



Fourth and Market Streets
BLOOMSBURG, PENNSYLVANIA

Success to the

Class of 1960

From

JOHN A. SCHELL

Architect

Light Street Road Bloomsburg, Pa.

Keep Your Campus Costume in Trim
at SPIC & SPAN CLEANERS—Bloomsburg



SUTLIFF HALL



Constructed by
S. H. EVERT COMPANY, INC.
Bloomsburg, Pennsylvania

Congratulations

Grads of '60!



**WISE
POTATO CHIP COMPANY**

Berwick, Pennsylvania

Good Luck, Grads . . . From
NESPOLI JEWELERS



Stop In and Talk With "Chic" . . .
Main Street—Bloomsburg, Penna.

Compliments
of

MAREE'S DRESS SHOP

Main Street Bloomsburg, Pa.

**CLEWELL'S
BERWICK CREAMERY**

Supplies to the Snack Bar



Berwick, Pennsylvania — Phone 4511

Compliments
of

**MILCO
UNDERGARMENT
COMPANY, INC.**

Bloomsburg, Penna.

**BLOOMSBURG NEW
CAR & TRUCK
DEALERS ASSOCIATION**

**THE FIRST NATIONAL BANK
OF BERWICK**
"The Bank With the Time Clock"



111 West Front Street
BERWICK, PENNSYLVANIA

HARRY LOGAN
Jeweler



5 West Main St., Bloomsburg, Pa.

**CLEM E. CLARKE
& SONS, INC.**

Old Danville Road
BLOOMSBURG

Marketing Finest Quality Eggs!

GEISTWITE STUDIOS

1960 Obiter Photographer



124 East Main Street
BLOOMSBURG, PENNA.

**CONFAIR
BEVERAGE COMPANY**



For a Quick,
Refreshing
Lift!

BERWICK, PENNSYLVANIA

TENNYTOWN MOTEL

U. S. Rt. 11
Bloomsburg-Berwick Highway
Bloomsburg, Pa.

AIR CONDITIONED
TV IN ALL ROOMS
ROOM TELEPHONES
Phone ST-4-1812



116 East Main Street
BLOOMSBURG, PENNA.

**WHETHER YOU HAVE A
RAVENOUS APPETITE**

(Like One of the Huskies)

. . . OR A DAINTY ONE

(Prefer Salads or Snacks)

SLATER'S Goal Is

to Appease It and Please It!



We're Privileged to Serve
THE MAROON AND GOLD . . .

and

One Hundred Twenty-one Other
Leading Colleges and Universities . . .



Lombard at 25th Street
PHILADELPHIA 46

501 St. Paul Place
BALTIMORE 2

WAFFLE GRILL



SNEIDMAN'S JEWELER



130 East Main Street, Bloomsburg, Pa.

Compliments
of
HOUTZ TOBACCO COMPANY
SUNBURY, PENNA.
Wholesale Distributors
SCHRAFFT'S CHOCOLATES

Congratulations to the
Graduates . . .
From
DR. J. FRANK BRINK, JR.
First National Bank Building
BLOOMSBURG, PENNA.
ST-4-4535

CONGRATULATIONS and GOOD LUCK
TO THE
MEMBERS of the CLASS of 1960



THE FIRST NATIONAL BANK
of
BLOOMSBURG
BLOOMSBURG, PENNSYLVANIA
and Its
EAST END BRANCH
Member of Federal Deposit Insurance Corporation

SHARPLESS HARDWARE



49 East Main Street, Bloomsburg, Pa.

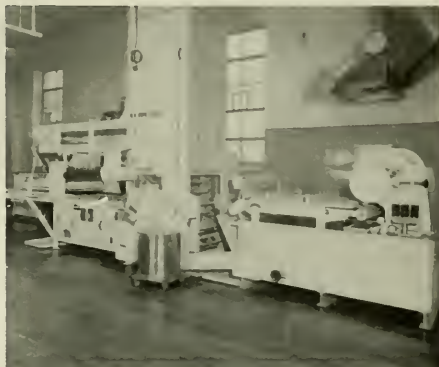
CONGRATULATIONS TO
EACH AND EVERY GRAD OF 1960
From
DEISROTH'S
DEPARTMENT STORE
"On the Square"
BLOOMSBURG, PENNSYLVANIA

EPPLEY'S DRUG STORE



Bloomsburg, Penna.

VAUGHN'S BAKERY



BERWICK, PENNSYLVANIA

Through this equipment pass the world's finest VAUGHN'S ROLLS.

Success From THE DIXIE SHOPS

For
Fine
Women's
Apparel



Clothes
for
the
Campus

Compliments
of



WALKERS JEWELRY

14 West Main Street, Bloomsburg, Pa.

ROCK'S STEAK HOUSE

Seafood and Spaghetti

AIR CONDITIONED



Corner of

FIFTH AND EAST STREETS

BLOOMSBURG, PENNSYLVANIA

DILLON'S FLOWERS



. . . for All Occasions

RACUSINS



Conveniently Located
to "Suit the CAMPUS" . . .

Compliments
of
BART PURSEL

Men's and Boys' Wear

THE BERWICK BANK

BERWICK, PENNA.

A Friendly Bank — Featuring Courteous Service



Use Our Drive-In
and
Walk-Up Banking Service

Member Federal Deposit Insurance Corp.



BLOOMSBURG—BERWICK—DANVILLE

MOYER PHARMACY



Main Street, Bloomsburg, Penna.

Best Wishes From . . .



149 East Main Street

HARTER'S

HARTER'S

S
P
O
T



L
U
N
C
H

△ HOAGIES—STEAKWICHES—PIZZA

Always . . .
 A WARM
 WELCOME
 to You . . .
 and it's a
 good time to . . .



Come In for a
FREE COIN SAVER
 • All Savings Insured
 • Withdrawals Any Time

Federal Savings
ASSOCIATION OF HAZLETON

17 East Main Street Bloomsburg

CROSS ROAD TAVERN

George Coval, Prop., Bloomsburg RD2

LOBSTERS
 and
 SHRIMPS



STEAKS

Air-Conditioned

Your Favorite Beverage and Cocktails
 Varied Platters—Homemade Bread,
 Spaghetti—Chicken in the Basket

THE DIANE SHOP

Foundations, Bras, Lingerie,
 Hosiery and Sportswear

144 E. MAIN STREET, BLOOMSBURG, PENNA.



FRY BROTHERS' GARAGE



New Berwick Highway—Bloomsburg

THE TEXAS

. . . Where Dad Took His Girl!

142 East Main Street

BLOOMSBURG, PENNSYLVANIA

RITTER'S



For School Supplies . . .
 BLOOMSBURG, PENNSYLVANIA

For All Camera Needs . . .

FEST'S PHOTO SERVICES, INC.



Main Street Bloomsburg, Penna.

SENIOR DIRECTORY

BUSINESS

Adelizzi, Aristide 420 Kenmore Road, Havertown, Pa.
 Algatt, William 337 A Mulberry, Berwick, Pa.
 Andrews, Jeanette Osceola, Pa.
 Arnold, Boyd R. D. #2 Box 121, McClure, Pa.
 Ball, Richard R. D. #5, Bloomsburg, Pa.
 Bartlow, Linda Box 22, New Albany, Pa.
 Betz, Marjorie 10 Forge Road, Camp Hill, Pa.
 Brown, Edward 2450 Second, Bloomsburg, Pa.
 Carlson, Kenneth R. D. #5, Bloomsburg, Pa.
 Cortazzo, Daniel 745 Pennsylvania Avenue, Bangor, Pa.
 Crouse, Teddy 505 East Fourth, Berwick, Pa.
 Davies, Russell 412 Keystone Avenue, Peckville, Pa.
 Delbo, Dorothy R. D. #5, Danville, Pa.
 Derr, Elizabeth 364 Iron, Bloomsburg, Pa.
 Dushanko, Mary Ellen 1040 North Church, Hazleton, Pa.
 Ego, Peter 2063 65th Ave. Philadelphia 38, Pa.
 Ellis, Roger R. D. #3, Danville, Pa.
 Eltringham, Gerald 11 North Coal, Shamokin, Pa.
 Flanagan, Edward 22 Church, Montrose, Pa.
 Fraind, Steven 1409 Third Avenue, Berwick, Pa.
 Galetz, Yvonne 517 Harding Avenue, Mifflin Park,
 Shillington, Pa.
 Gorsline, Almeda 204 East Frederick, Athens, Pa.
 Gross, Janet 250 Detterbone, Wyoming, Pa.
 Hand, Marjorie 848 North Webster Avenue,
 Scranton, Pa.
 Henninger, Roger Box 54, Gowen City, Pa.
 Hileman, Ronald 275 East Third, Bloomsburg, Pa.
 Housenick, Charles 503 Market, Bloomsburg, Pa.
 Kadtke, Carl 37 Glen Avenue, Shickshinny, Pa.
 Kelley, Andrew 1005 West Arch, Shamokin, Pa.
 LaPoint, Elizabeth Box 321, R. D. #3, Mountaintop,
 Wilkes-Barre, Pa.
 Laubach, John 379 East Fifth, Bloomsburg, Pa.
 Lawton, LaRue 1312 Old Berwick Road,
 Bloomsburg, Pa.
 Leonardo, Joseph 514 Main, Mayfield, Pa.
 Matchulat, Jean 616 Main, Moscow, Pa.
 Matchulat, Joan 616 Main, Moscow, Pa.
 McCann, William 21 East Market, Tresckow, Pa.
 McMichael, Esther R. D. #1, Stillwater, Pa.
 Merena, Joseph 10 North Third, Shamokin, Pa.
 Miller, William 713 Park, Bloomsburg, Pa.
 Nebus, Kathleen R. D. #1 Box 171,
 Jamesburg, New Jersey
 Obudzinski, Barbara 419 Rehr, Reading, Pa.
 Oswald, Patricia 211 South Richmond, Fleetwood, Pa.
 Palisack, Paul 538 West State, Plymouth, Pa.
 Peck, James 546 Montgomery Avenue,
 Boyertown, Pa.
 Perry, Robert 412 St. Cabrini, Scranton, Pa.
 Pichola, Robert 211 West Commerce, Shamokin, Pa.
 Pitech, Nicholas 323 1/2 East Bertsch, Landsford, Pa.
 Radzai, Raydel 251 South Oak, Mt. Carmel, Pa.
 Rebar, Edward 338 West Coal, Nesquehoning, Pa.
 Reed, Lorelei 601 Raymond, Reading, Pa.

Riefenstahl, Sally 123 Yeager Avenue, Forty Fort, Pa.
 Riegel, Charles 936 1/2 South Front, Sunbury, Pa.
 Ruckle, Carole 524 West Third, Bloomsburg, Pa.
 Schalles, Robert 217 Broad, Nescopeck, Pa.
 Scheno, Nikki 217 Iron, Berwick, Pa.
 Schoelkopf, Joan 547 Bingaman, Reading, Pa.
 Shirk, Joyce Paradise, Pa.
 Simoes, Thomas 208 East Centre, Mahanoy City, Pa.
 Soika, Bernard 730 Garfield St., Hazleton, Pa.
 Stanell, Marie 105 North Jardin St., Shenandoah, Pa.
 Stetler, Roland 1331 Bloom Road, Danville, Pa.
 Stone, Ann R. D. #1, Susquehanna, Pa.
 Thayer, Raymond 761 Tionesta, Kane, Pa.
 Thomas, Kenneth R. F. D. #1, Wyalusing, Pa.
 Thomas, William 94 West Pettebone, Forty Fort, Pa.
 Traugh, Mary 530 Harding, New Cumberland, Pa.
 Trick, Marie R. D. #1, Hughesville, Pa.
 Wagner, James Main, Valley View, Pa.
 Weiser, Mary 816 Rhoads Avenue, Boyertown, Pa.
 Williams, James 1 South Rock, Shamokin, Pa.
 Williams, Marlene 36 East Main, Bloomsburg, Pa.
 Zapach, Joseph 240 Ridge, Freeland, Pa.

ELEMENTARY

Adams, Constance 15 Railroad St., Glen Lyon, Pa.
 Armitage, Ilene 2903 Frink St., Scranton 4, Pa.
 Austin, Connie 503 West Ninth St., Bloomsburg, Pa.
 Barber, Maureen 728 Beaumont Road, Fairless Hills, Pa.
 Barechio, Mary Rose 207 High St., Susquehanna, Pa.
 Berge, Doris R. D. #1, Lewisburg, Pa.
 Blochberger, Anita 24 Leslie Ave., Conklin, N. Y.
 Carpenter, Lois 1834 Old Berwick Rd., Bloomsburg, Pa.
 Clarke, Sandra 1205 S. Market St., Bloomsburg, Pa.
 Cobb, Barbara 2327 Haverford Rd., Ardmore, Pa.
 Criswell, William R. D. #1, Lewisburg, Pa.
 Czepukaitis, Anne 19 S. Beech St., Mt. Carmel, Pa.
 Davies, David 46 Cypress Rd., Portsmouth, Va.
 DeBrava, Joanne 105 Ashburn Rd., Elkins Park 17, Pa.
 Deibert, Virginia R. D. #2, Danville, Pa.
 Dragna, Margaret 805 W. Norwegian St., Pottsville, Pa.
 Eaton, Joy Constance Box #7, Harford, Pa.
 Fenstermacher, Jean 2742 Old Berwick Road,
 Bloomsburg, Pa.
 Flanagan, Jane 421 N. Shamokin St., Shamokin, Pa.
 Franklin, A. Dale 539 W. Main St., Bloomsburg, Pa.
 Furman, Paulette 183 8th St., Bloomsburg, Pa.
 Glahn, Gloria 31 S. Gates St., Kingston, Pa.
 Gobbi, Lydia 221 S. 7th St., Easton, Pa.
 Gowen, Mary Lou 423 Parke St., Freeland, Pa.
 Greene, Carol 633 5th Ave., Williamsport, Pa.
 Gregory, Betty Jane 332 Ruttes Ave., Kingston, Pa.
 Grim, Marlene R. D. #1, Beaver Springs, Pa.
 Gunton, Margaret Noxen, Pa.
 Hardy, Virginia 375 Osceola Ave., Kingston, Pa.
 Haynes, Barbara E. Franklin St., Shavertown, Pa.
 Heddings, Patricia Box 187, Montandon, Pa.
 Henninger, Phyllis 253 Lincoln Ave., Williamsport, Pa.

Hoffman, Catherine	P. O. Box 167, Montandon, Pa.	Blair, James	R. D. 2, Montoursville, Pa.
Huda, John	Mathewson Terrace, Factoryville, Pa.	Bower, Todd	1706 N. Market St., Berwick, Pa.
Kapral, Georgiann	39 Filbert St., Swoyerville, Pa.	Bray, James	300 First St., Blakely, Pa.
Kashner, Molvene	1800 Bowman St., Berwick, Pa.	Carrigan, James	Main St., Cumbola, Pa.
Kashner, Sandra	170 West 12th St., Bloomsburg, Pa.	Cavolaski, Daniel	R. D. 2, Tamaqua, Pa.
Keller, E. Derlene	403 Catherine St., Bloomsburg, Pa.	Chidester, John	533-A East Fourth St., Bloomsburg, Pa.
Kichline, Carroll	R. D. #4, Box 245, Easton, Pa.	Christoff, Patrick	705 Stone St., Osceola Mills, Pa.
Kulp, Janice	Route 1, Kempton, Pa.	Conrad, William	155 Water St., Northumberland, Pa.
Kunkel, Paul	20 Berwick St., Beaver Meadows, Pa.	DeMarte, Elizabeth	2311-A North Fourth St., Harrisburg, Pa.
Lasser, Nancy	1418 Centre St., Ashland, Pa.	DeVaney, Joseph	236 Main St., Fern Glen, Pa.
Manko, Paul	11 Berwick St., Beaver Meadows, Pa.	Dickinson, Harry	R. D. 2, Dalton, Pa.
Mascioli, John	538 Rutter Ave., Kingston, Pa.	Dinich, John	801 North 16th St., Pottsville, Pa.
Master, Sara	Beaver Springs, Pa.	Durkin, Kathleen	1211 Centre St., Ashland, Pa.
Matter, Sandra	347 Union St., Millersburg, Pa.	Dyer, Fred	Lopez, Pa.
Mattern, Molly	Route 1, Catawissa, Pa.	Englar, Richard	223 Hepburn St., Milton, Pa.
Metz, Shirley	Longwood Gardens, Kennett Square, Pa.	Ehrenfried, Norman	51 Spring St., Weatherly, Pa.
Morlock, Lorraine	911 Ashton Road, Cornwells Hts., Pa.	Elinsky, Stanley	R. D. 3, Wyoming, Pa.
Moss, Emily	225 Main St., New Milford, Pa.	Farrow, Erwin	215 Hickory St., Peckville, Pa.
Natishan, Jerome	84 Atlantic Ave., Edwardsville, Pa.	Fegley, Daniel	129 South Second St., Catawissa, Pa.
Oley, Patricia	438 S. Main St., Pittston, Pa.	Fisk, Frank	301 West Mahoning St., Danville, Pa.
Orband, Henry	607 Center St., Jessup, Pa.	Folmsbee, Robin	R. D. 2, Berwick, Pa.
Pelak, Barbara	93 Cleveland St., Plains, Pa.	Foust, Joanne	306 Church St., Danville, Pa.
Piersol, Linda	212 Terrace Ave., Ephrata, Pa.	Fox, Randall	R. D. 1, Box 171, Shamokin, Pa.
Powell, Anna Mae	R. F. D. #1, Wyalusing, Pa.	Francis, Albert	104 Hickory St., Schuylkill Haven, Pa.
Rearick, Vera	230 Vine St., Danville, Pa.	Friedel, William	16-15 Wyoming Ave., Scranton, Pa.
Reiff, Helen Elizabeth	Biddle St., Gordon, Pa.	Funk, William	501 Broad St., Nescopeck, Pa.
Reiner, Mae	Pitman, Pa.	Galitsky, Edward	318 West Cherry St., Shenandoah, Pa.
Rigel, Lola	Beaver Springs, Pa.	Gerber, David	54 Beech St., Pottstown, Pa.
Sacks, Ann	212 N. Bellevue Ave., Langhorne, Pa.	Gorgus, John	138 Brown Row, Wanamie, Pa.
Sofranko, Martha	New Coxeville, Beaver Meadows, Pa.	Graziul, Robert	304 Center St., Wilkes-Barre, Pa.
Stetler, Sara	Snow Shoe, Pa.	Gronka, Joseph	209 East Broad St., Nanticoke, Pa.
Swisher, Eugenia	447 Market St., Bloomsburg, Pa.	Gum, Joanne	Millville, Pa.
Tarr, Elizabeth	246 East 9th St., Bloomsburg, Pa.	Guziejka, Robert	81 Schuler St., Wilkes-Barre, Pa.
Tavener, Carolyn	Hillside, Box 326C, Pottsville, R. D. #1, Pa.	Haupt, Samuel	1010 Masser St., Sunbury, Pa.
Tooley, Helen Ann	260 Oxford Rd., Havertown, Pa.	Herring, Donald	Market and Center Sts., Elysburg, Pa.
Tyler, Richard	386 Water St., Northumberland, Pa.	Hess, Robert	R. D. 2, Sunbury, Pa.
Vignola, Rita	333 Park Avenue, Milton, Pa.	Hoffman, Paul	125 South Green St., East Stroudsburg, Pa.
Vorosmarti, Jean	244 Lehigh Ave., Palmerton, Pa.	Hummer, Clare	511 East Third St., Bloomsburg, Pa.
Wagner, Barbara	271 Flagstone Drive, Bethlehem, Pa.	Ide, Jeanette	R. D. 1, Sweet Valley, Pa.
Wagner, Mary Louise	611 Market St., Lewisburg, Pa.	James, Adam	Hospital, Bloomsburg, Pa.
Wary, Carol	400 E. Center St., Mahanoy City, Pa.	Jarrett, Theodore	1-16 Gaylord St., Plymouth, Pa.
West, Henry	1144 First Ave., Berwick, Pa.	Jordan, John	221 East Green St., Hazleton, Pa.
Whipple, Doris	374 Broadway, Hughesville, Pa.	Keller, Daniel	Lavelle, Pa.
White, Beverly	3460 Old Berwick Rd., Bloomsburg, Pa.	Kellogg, Lt. Col. Paul	240 Penn St., Bloomsburg, Pa.
Yeager, Lorraine	2419 Birch St., Easton, Pa.	Knepper, Wallace	409 Carbon St., Weatherly, Pa.
Zalenski, Rosemary	178 Wyoming Ave., Wyoming, Pa.	Kotch, Joan	New Coxeville, Beaver Meadows, Pa.
Zeisloft, Carol	R. D. #1, Bloomsburg, Pa.	Kovalchick, John	106 Susquehanna Ave., Shickshinny, Pa.

SECONDARY

Anderson, Gary	42 Thomas St., High Bridge, N. J.	Krapf, Byron	316 Wayne St., Hollidaysburg, Pa.
Bachman, Donald	14 West First St., Hazleton, Pa.	Krothe, Dale	R. D. 1, Berwick, Pa.
Ballentine, Fred	455 East Eighth St., Bloomsburg, Pa.	Laubach, David	R. D. 2, Benton, Pa.
Bendinsky, Frank	Box 338, Mildred, Pa.	Lehman, Robert	R. D. 1, Northumberland, Pa.
Benfer, John	West Market St., Beavertown, Pa.	Lisella, Guido	117 East While St., Summit Hill, Pa.
Blackburn, Edward	937 W. Southern Ave., South Williamsport, Pa.	Lipovsky, John	515 Arch St., Berwick, Pa.
		Litchko, John	592 Wyoming Ave., Kingston, Pa.
		Little, Joann	447 Market St., Bloomsburg, Pa.

Lockeuff, Phillip	2056 Riverside Drive. South Williamsport, Pa.	Troutman, Lawrence	101 North Market St., Selinsgrove, Pa.
Mader, Helen	21 W. Mahoning St., Danville, Pa.	Trudnak, Raymond	25 West Anthony Ave., Bloomsburg, Pa.
Martz, Marie	111 Second St., Oneida, Pa.	Trumbower, Gordon	R. D. 1, Hunlock Creek, Pa.
McBride, Charles	238 South First St., Shamokin, Pa.	Underkoffler, Philip	233 West St., Williamstown, Pa.
McCarthy, James	33 First St., Drifton, Pa.	Vincent, William	R. D. 2, Danville, Pa.
McCarthy, John	1120 East Center St., Mahanoy City, Pa.	Wagner, Thomas	Beaver Springs, Pa.
Miller, Robert	610 Peace St., Hazleton, Pa.	Wainwright, Barbara	226 East 11th St., Berwick, Pa.
Miller, Victor	306 Third St., Weatherly, Pa.	Walinchus, Elizabeth	404 West Centre St., Mahanoy City, Pa.
Moran, Madlyn	131 Orchard St., Nanticoke, Pa.	Walker, David	336 Queen St., Northumberland, Pa.
Morgan, Donald	18 Long Row, Gilberton, Pa.	Walter, Earl	R. D. 1, Milton, Pa.
Morris, William	192 Foote Ave., Duryea, Pa.	Wassel, Marion	614 South St., Freeland, Pa.
Mowery, Elmer	Mifflinville, Pa.	Weingartner, Karl	1023 West Montgomery St., Shamokin, Pa.
Murray, John	Box 117, Montandon, Pa.	Woehrl, Paul	459 East Fourth St., Bloomsburg, Pa.
Musket, Dennis	3500 Raymond St., Laureldale, Pa.	Wojciechowski, Edward	412 East Ave., Mt. Carmel, Pa.
Neary, Walter	1048 West Water St., Shamokin, Pa.	Wolfe, Richard	337 Centre Ave., Schuylkill Haven, Pa.
O'Brien, Geraldine	115 South 17th St., Easton, Pa.	Wolfe, Ronald	73 Orange St., Northumberland, Pa.
Ohl, Arthur	R. D. 2, Bloomsburg, Pa.	Wright, Donald	44 West Walnut St., Kingston, Pa.
O'Neill, Daniel	431 Jefferson St., Bloomsburg, Pa.	Wydoski, Richard	110 McDonald St., West Nanticoke, Pa.
Opilla, George	343 Park St., Freeland, Pa.	Yurkiewicz, William	R. D. 1, Box 119, Elysburg, Pa.
Paden, Richard	R. D. 1, Nescopeck, Pa.	Zarek, Edwin	337 South Apple, Mt. Carmel, Pa.
Panichello, Joseph	101 Lismore Ave., Glenside, Pa.	Zoransky, Richard	75 Church St., Plymouth, Pa.
Parker, Kenneth	R. D. 1, Weatherly, Pa.		
Patynski, Walter	415 Harrison St., Shamokin, Pa.	SPECIAL EDUCATION	
Polaschik, John	101 Washington St., Freeland, Pa.	Bailey, Marcia	208 Martzville Road, Berwick, Pa.
Price, Robert	1612 Center St., Ashland, Pa.	Bangs, Dorothy	142 East Fifth St., Bloomsburg, Pa.
Ramage, Eleanor	224 South Chest St., Mt. Carmel, Pa.	Bittle, Ronald	47 Grove St., Cressona, Pa.
Reisser, Robert	99 Fort St., Forty Fort, Pa.	Bogle, Sue	301 Hepburn St., Milton, Pa.
Rimple, Richard	39 Slocum St., Forty Fort, Pa.	Cole, Forrest	652 School House Lane, Johnsville, Pa.
Roberts, William	24 School St., Shavertown, Pa.	Cordora, Concetta	25 Washington St., West Pittston, Pa.
Rohm, Robert	212 Railroad St., Muncy, Pa.	Crisler, Paul	7 East Union St., Nanticoke, Pa.
Rosenberger, Herbert	121 West Court St., Doylestown, Pa.	Crowl, Frederick	Box 108, Elysburg, Pa.
Rossi, Richard	R. D. 1 Harding, Pittston, Pa.	Eberhart, John	203 East St., Williamstown, Pa.
Samsel, Donald	120 Raseley St., Berwick, Pa.	Flanagan, Sally	26 West Third St., Bloomsburg, Pa.
Saxe, Larry	342 East Broad St., Nanticoke, Pa.	Glatts, Patricia	203 Edwards Drive, Brookhaven, Chester, Pa.
Schaffer, Dean	334 Fair St., Bloomsburg, Pa.	Greenaway, Olivia	910 LaSalle St., Berwick, Pa.
Schlegel, Charles	121 South Seventh St., Shamokin, Pa.	Isaac, Lucille	219 West St., Bloomsburg, Pa.
Schuyler, Joan	Cherry Lane, R. D. 3, Doylestown, Pa.	Leiss, Robert	434 New St., Lebanon, Pa.
Seifert, Barbara	533 Line St., Easton, Pa.	Mellon, Mary	212 West Spruce St., Mahanoy City, Pa.
Senko, Ronald	121 Bonny Lane, Edwardsville, Pa.	Moyer, Joanne	1421 Seneca St., Pottsville, Pa.
Shaull, Joyce	130 Church St., Catawissa, Pa.	Panzitta, Delores	R. D. 1, Pittston, Pa.
Shifflet, Roy	101 Bella Vista Road, Montoursville, Pa.	Seamon, John	Maple St., Tresckow, Pa.
Siepietoski, Joseph	33 West Enterprise St., Glen Lyon, Pa.	Shellenberger, Adabelle	901 Berwick Road, Bloomsburg, Pa.
Sinn, Vernon	408 East Mauch Chunk St., Tamaqua, Pa.	Simko, John	501 Mountain St., Trevorton, Pa.
Smith, Chesley	134 Market St., Mifflinburg, Pa.	Smith, Henrietta	634 Carson St., Hazleton, Pa.
Snook, David	Railroad St., McClure, Pa.	Wary, William	400 East Center St., Mahanoy City, Pa.
Staber, Richard	73 Main St., Conyngham, Pa.	Witmyer, Judy	238 East Main St., Brownstown, Pa.
Stancato, Joseph	548 North Church St., Hazleton, Pa.	Zawoiski, Myron	61 Maffett St., Plains, Pa.
Stanitski, Carl	14 South Shamokin St., Shamokin, Pa.	Zurn, Gertrude	16 Chenango St., Montrose, Pa.
Stanitski, Conrad	14 South Shamokin St., Shamokin, Pa.		
Steinruck, Robert	155 West Eighth St., Bloomsburg, Pa.		
Stinson, John	42 Braeburn Road, Havertown, Pa.		
Stover, Thomas	Picture Rocks, Pa.		
Strausser, John	825 West Independence St., Shamokin, Pa.		
Swatski, Joseph	343 South Vine St., Mt. Carmel, Pa.		



