

1958

ORBITER











# *THE OBITER*

*1958 Volume XLII*

# *Introduction*

Bloomsburg in the fall . . . winter . . . spring . . . summer . . . each in its own right a season worth remembering for students true to their hilltop college . . . often said that Bloomsburg's campus is a splendor to behold anytime . . . the first section devoted to a pictorial description is interjected with narrative true only of Bloomsburg . . . we of the staff hope that in leafing through these pages you will recall a few activities . . . situations in which you have an interest or in which you have participated . . .

Pictures on this page are symbolic of scenes in fall . . . winter . . . spring . . . and summer . . . first, Waller Hall through the foliage of fall when it has not yet turned to the shades of fall . . . second, the traditional lions guarding senior walk in its sheet of white . . . third, the brightness of the lagoon in the sudden burst of spring . . . fourth, the stillness of long porch in the afternoon sun of summer . . .

Throughout the rest of the book . . . we have tried to capture the phases of college life you have encountered as a student . . . hoping that in the years to come you can fondly re-live, at least in part, your college days at Bloomsburg . . .







*A Spirit That Sends  
a Call . . .*



# Fall

When summer recollections become the main topic of conversation . . . the summer job at the shore, or counseling in the mountains . . . summer beaux that leave memories to be recalled often . . .

For the Freshman . . . the expectations in beginning college life . . . meeting his roommate and making life-long friends . . . people who will later sign those necessary excuse blanks . . . a period of Customs in conspicuous name tags, a maroon and gold dink that is kept for four years as a reminder, the kiddie day ribbons, and Frosh wearing rain gear in 85 degree heat . . . the exciting moment when you were named to the cheerleading squad or to the band of majorettes . . . or when the coach yelled to you — “Get in there and fight” . . .

Football season . . . highlighted by a thrilling homecoming game . . . the campus dotted with coeds wearing traditional pom poms and Roongo III, a colorful supporter to the Husky eleven . . . the introduction of a new assistant coach to aid Mr. Blair . . . friendly rivalry between the Huskies and Rams . . . a glowing parade . . . a lovely Phi Sig Sweetheart . . . a thrilling bonfire . . .





And for Seniors . . . whose student teaching was a significant period of their career . . .

third grade at Memorial . . .

Spanish I at Bloomsburg High . . .

Junior physics in Danville . . .

Kindergarten and Special Education in the Benjamin Franklin School . . .

Those early, early, Saturday morning classes . . .

With classes go . . . incessant practicing of Reynard the Fox . . . a theme on the Bloomsburg Fair . . . endless brief forms . . . a trip into the unknown sphere of Audio-Vis with Mr. Henrie . . . a six page lesson plan for a ten minute lesson . . . digesting scientific formulae . . . irregular French verbs . . . Sales I students selling vacuum cleaners, pyrex wear, air conditioners and fur coats . . . Listening to Bach, Schuman, Wagner and Schubert in appreciation classes . . . Thursday afternoon at one for Freshmen . . . learning more about their college . . . eight o'clock class in Centennial Gymnasium . . .

Eager-beaver Freshmen pour out talent under Carl and Pat's watchful eyes . . . the same eager Freshmen, anxious to be a part of the everyday life at Bloomsburg . . .









College Joes, after weeks of appearing with red foreheads become Phi Sig brothers . . . that is, also after a trip to a seemingly distant land! . . . campus athletes put away helmets and pigskins . . . their thoughts turn to the Varsity Club dance and the selection of a beautiful queen . . .

Little sisters and big sisters meet in halls, rooms, and lounge to get "inside information" on blue books and beaux . . .

Extracurricular organizations take on a new glow . . .

the newspaper and yearbook with their midnight sessions . . .

discussing Keats and Byron during Poetry Club meeting . . .

studying new T-formation plays between Lit I and History of Civ I assignments . . .

educators chosen to speak to Juniors and Seniors at F.T.A. meetings . . .

Choraleers presenting programs in the town churches.

A rush for textbooks in the College Book Store . . . upon arriving, standing in the endless line . . . Juniors who ordered their college rings from President Ken Swatt, having difficulty in choosing a garnet, sapphire, ruby or black stone . . .

Scampering to collect colored leaves for Elementary Science notebooks . . . Seniors looking about for a proper location for their enchanting Senior Ball . . . Senior committee chairmen and their "helpers" announced on bulletin board by President Ray Hargreaves . . .

Finding your mail box at Post Office corner . . . and then proceeding to spend a lengthy visit there decoding the combination . . . returning to the same spot many many times . . . new students receiving pictures taken to identify themselves . . .

The Pilot and Co-Pilot, two booklets on the best-sellers list of any BSTC student . . .

Farmer dances . . . a specialty on the Social Recreation calendar . . . but the Masquerade dance, a top social event at the College on the Hill . . .





## Winter

When evenings in the Lounge meant a date with the Four Freshmen — on the Hi-Fi set . . . wrestling continued to attract fans with its fascinating holds . . . Sunday nights with roommates returning from home with food enough to last a week . . . perfect for the Sunday night party, and no more! . . . when the clicking of knitting needles produced relaxation for the girls and argyles for the boys . . . and annoyance for the assembly performers when a needle fell and resounded throughout the auditorium . . .

The Olympian appears with . . .  
    stories that originated as themes . . .  
    sentimental poetry . . .  
    short stories written for relaxation . . .  
all given with thumbnail sketches of the authors . . .  
a magazine to be kept over the years . . .











After dinner pinochle games in the lounge . . . perfect for getting into the studying mood . . .  
Wednesday night dances . . . a few with “goodies” through the efforts of Bob Steinruck and the  
Social Recreation Committee . . . the Husky cagers . . . sparked by five seniors give Bloomsburg  
and Coach Shelly pleasant memories of a long successful season . . .

Confident Sophomores . . . with a year of vital experience, plan and stage the sparkling Sophomore  
Cotillion . . . a prelude to the pre-holiday festivities . . .

Trees . . . the symbol of Christmastide . . .

in the shadow of Carver Hall . . .

glittering in blue in Waller’s Lobby . . .

signifying BSTC’s four classes in the Husky Lounge . . .

on each floor of the dormitory to give the girls the pleasant task of trimming . . .

Yuletide music rings throughout . . . Christmas celebrations prevail . . . When the excitement of  
Christmas spiring keeps the girls in Waller Hall on their toes . . . the ohs and ahs when the  
spooking females are uncovered . . .

Two weeks before semesters . . .

term papers due . . .

ten chapters to read before the final examination . . .

a unit on Indians to be written for a second grade class . . .

and so the college students moan . . .

Class officers meet, the buzz is around . . . soon appear the pictures of eight charming coeds.  
each a credit to her class, each worthy of the title “Coed of the Year” . . . Freshmen, functioning as  
a class, provide the glamorous setting for the crowning . . . at the Freshman Hop . . . the gracious  
reigning Queen of the Campus, Miss Lorraine Basso, presents the distinguished crown to her suc-  
cessor . . .

The battle, the Battle of the Classes, a lengthy show . . . an informative one . . . with eight readers of Time . . . sparked by genial John Hoch and expert Harold Shelly . . . upperclassmen vs. underclassmen, contestant vs. contestant with no help allowed from friends in the audience . . . broadcast for an interested audience . . .

Religion-In-Life Week . . . a Student Christian Association program, highlighted by Protestant, Catholic and Jewish speakers . . . topics included "Does God Have a Place on Your Schedule?" and "One Nation, One World, One God" . . . an inspiration to all, a soul-searching period for many . . .

Working students provide necessary help in library, dining room, maintenance department, offices and broom department! . . .

The trek to Science Hall . . . the last puff before class in S34 . . . getting a gulp of cool flavorful water in Science Hall . . . mischievously swinging the pendulum on the way up . . . observing the "Give Blood" sign and thinking you will do so on February 14 . . . admiring the art displays from Introduction and Elementary Art classes . . .

January graduation . . . a big day for those students who complete their studies during mid-year . . . the procession of the colorfully-robed faculty . . . the last singing of the Alma Mater . . . congratulated by family and friends later in the Husky Lounge . . .

A resolution to go to the library . . . only to find its doors closed for a program in Carver Auditorium — the program? the big dramatic production of the year for the talented members of the Dramatic Club . . . signing in after the show . . . in your best handwriting, of course . . .

Dormitory frolics . . . popping corn during a twelve o'clock study break . . . the ever-so-frequent "Quiet Hours" . . . hard, hard chairs in the smokers . . . the weekly wash line on Saturday from the tubs to the elevator . . . the screeching "Wait, Frank" . . . being hit with the B. R. door as you return from a visit . . . six at a window facing the court to hear the serenaders . . .

Conscientious chairmen performing their duties in the Furniture, Assembly, Hospitality, Awards, Pep and Election committees . . . reports given to "Cap" Parry who, in turn, relays them to College Council . . .

Infirmity blues take you to second floor and the comforting pills and advice from Miss Mettler . . .





# Spring

First signs of spring . . . the swish of crinolines down the hall . . . Mrs. Beeman's Biology class outside inspecting the new buds and sprouts . . .

the walk down the hill for a coke at the grill — without a coat . . .

criers in assembly announcing the tricky names of those intramural baseball teams . . .

the call for baseball candidates . . .

two people spending most of their time talking in a corner of long porch . . .

the sudden burst of the fountain from its winter moorings . . .

Keen competition in fashion show tryouts . . . a picture of co-operation — poised upperclassmen reveal fashion secrets to new models . . . an outstanding fashion set to compliment lovely apparel . . .

C.G.A. election time . . . a poster and display contest by our own Maroon and Gold . . . each candidate with a loyal following . . . a rally to spearhead the voting . . . Presidential and Vice Presidential speeches from the heart . . . a real day at the polls . . . a scoop for the Maroon and Gold . . . five overjoyed officers installed . . .

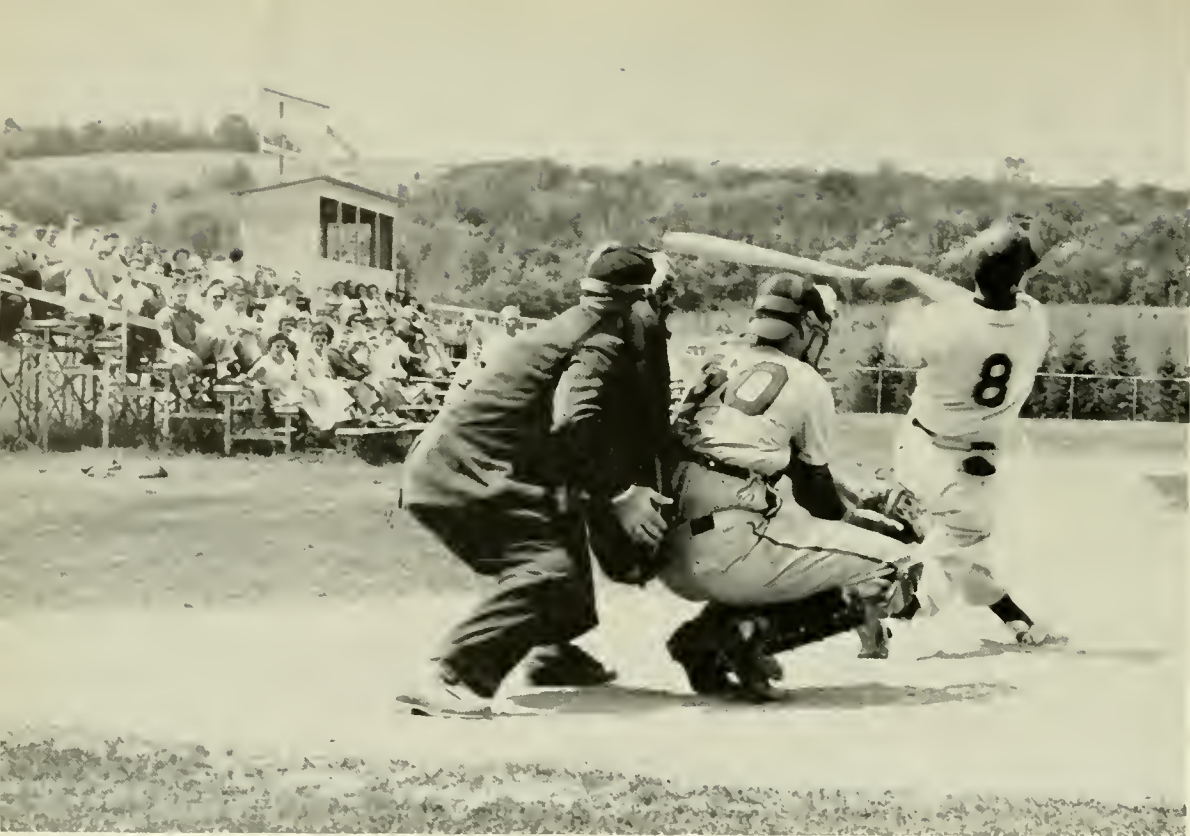
Splash parties beckon swimmers and non-swimmers on Saturday afternoons . . . a delightful pause in a day of study or relaxation . . .

Hurrying out of a three o'clock class to Mount Olympus and a baseball game . . . a new coach to lead the diamondmen to victory after victory . . . fiery track team under Coach Shelly . . . breaks records and attracts hundreds to its meets . . .









Dressing for table service . . . finding out there isn't any . . . coming down to a Wednesday night dance . . . finding out there isn't any . . . checking your mail box for mail . . . finding out there isn't any . . .

Feeling that lazy spring feeling . . . sleeping in for those eight o'clock classes . . . enjoying a rock in the newly painted rockers on long porch . . . noticing the geraniums and marigolds beginning to bloom in the greenhouse . . . walking over to the laundry on Thursday to get some of that fresh air . . . welcoming the squirrels after their winter sleep . . . a warm feeling when you see the Blair children playing in their comfortable enclosure . . . the scramble to the head of the lunch line to give more time to socialize in the lounge . . . sprucing up for a big spring weekend at a big eastern college . . . a walk up to the country club on a lazy afternoon . . .

Commuters bringing potato salad, baked beans, baked ham, and cole slaw for a "community dinner" in the day room . . . typing a report while waiting for a four o'clock ride home . . . consulting with Miss Macdonald on schedules and day room programs . . . trying to get a locker open in a split second . . .





Juniors receiving their rings in a flurry of excitement . . . of course, with half a dozen who didn't receive the right color or size . . . preparing the roster for the annual faculty-student baseball game . . . a game to be remembered for hits and more hi-jinks . . . a hash-over on strategy before the game between members of the faculty all-stars in the faculty lounge . . .

Waiting for the courts to be rolled for that first tennis match . . . long porch filled with suitcases and laundry bags waiting to be carried home by their owners for a short weekend . . .

A May Day in traditional form to entertain . . . a spectacle worth the yards of film taken of it . . . a kind of senior spectacle . . . with a very lovely queen and a court worthy of its position . . .

A scintillating Junior prom . . . given extra treatment by Juniors clever in every phase of dance planning . . .

The thought of going home for the summer . . . saddens the hearts of Seniors . . . packing and preparation for weeks in advance . . . choosing new rooms and apartments for those returning . . . a last look at long porch with a bit of nostalgia . . .





For students who attend all or one session of summer school . . . the friendly atmosphere in a small group . . . tennis on the courts high on Mount Olympus . . . sunbathing on the open terraces during the sweltering July days . . . a swim in the sunlit pool to refresh after a weekly examination . . . the hour coffee break to talk and relax in the lounge . . . an unusual and exciting assembly program every Wednesday . . . afternoon labs for the science students . . . enjoyment in the doggie roasts on the Navy Hall grounds . . . late parties in the courtyard . . . a short jaunt to the Eagles Mere Playhouse . . . listening to the electric lawn mower while trying to concentrate on an important lecture . . . knowing the coming attractions at the Capital and Columbia to spend a comfortable afternoon enjoying air conditioning . . .







*Administration  
and  
Faculty*

# Board of Trustees



## MEMBERS OF THE BOARD OF TRUSTEES

*Seated:* Mr. John H. Shuman, Bloomsburg, Pa.; Hon. Carl H. Fleckenstine, Orangeville, Pa.; Dr. Harvey A. Andruss, President of the College, Bloomsburg, Pa.; Howard R. Berninger, Esq., Mifflinville, Pa. *Standing:* Mr. Sam M. Jacobs, Danville, Pa.; Bernard J. Kelley, Esq., Philadelphia, Pa.; and Mr. Frank A. Thornton, Shamokin, Pa.

Those not present when the photograph was taken: Hon. C. William Kreisher, Catawissa, Pa.; Hon. Harold L. Paul, Pottsville, Pa.; and Mr. Leo S. Dennen, Turbotville, Pa.

C. WILLIAM KREISHER .....	<i>President</i>
CARL H. FLECKENSTINE .....	<i>Vice President</i>
HOWARD R. BERNINGER .....	<i>Secretary-Treasurer</i>
HARVEY A. ANDRUSS .....	<i>President of the College</i>
CHARLES H. BOEHM, ex-officio.....	<i>Superintendent of Public Instruction</i>



# President's Message



A Message to the Class of 1958:

Each generation feels that its problems are more serious than the previous one. Thus, every generation has a rendezvous with destiny.

Into such a world we send you with hope and confidence that you will be able to meet the problems of the future as well as you have met those of the last four years.

That you may reflect credit upon your Alma Mater and your profession is the prayer of

*Harvey A. Andrus*

HARVEY A. ANDRUSS, *President*

Mrs. Anna M. Knight, Institutional Secretary, takes dictation from Dr. Andrus.





Education is never "finished business."

It is my hope that in these years at Bloomsburg you have developed a strong enthusiasm for education as well as a permanent and active interest in teaching. May you continue to learn skills and gain knowledge so that you may enjoy the rewards of this very satisfying profession.

*Elizabeth B. Miller*

Elizabeth B. Miller

B.S., M.Ed.

*Dean of Women*



Mrs. Miller and Miss Zinn watch as Mrs. Hoke performs one of her new duties as Waller Hall hostess.



Dean Miller offers friendly counseling to senior Nancy Hughes.



To the Seniors of 1958:

As graduation draws near, there is probably a general feeling of happiness. You have reached another milestone in your life. We are happy that you are realizing the fulfillment of an ambition even though it means you will be leaving the campus. Our hope is that you will cherish the memories of college life here at Bloomsburg and that you will return to see us often.

*Walter R. Blair*

Walter R. Blair

B.S., M.Ed.

*Dean of Men*



You're running the wrong way.



Carl Sweet and Mr. Blair discuss the latest additions to their families.



To graduating Seniors:

The progress we have made as a dynamic and free society has been due to the fact that we have provided more educational opportunity of more kinds for more of our people than any other nation. Each of you will now join the ranks of those who have earned the baccalaureate degree. It is our sincere hope that you will continue to grow educationally and intellectually, for there is an important job to be done. Our kind of democracy can remain strong only if we have educated manpower sufficient to meet the demands of a nation still growing both in quality and in size.

*John A. Hoch*

John A. Hoch

A.B., M.A.

*Dean of Instruction*



Work isn't all drudgery for Betty Jane when Johnny Huda's record comes up.



"Oh, Mr. Hoch, I know I'd just love kindergarten!"



# Assistant Deans



EDITH G. ZINN  
B.A., M.A.  
Assistant Dean of Women  
English

GEORGE G. STRADTMAN  
B.S., M.Ed.  
Assistant Dean of Men  
Mathematics, Science



Miss Zinn smiles at our photographer from her correspondence corner.

... two hours study for every hour in class ...

MARY E. MacDONALD  
A.B., A.M.  
Assistant Dean of Women  
Guidance Services

RALPH S. HERRE  
B.S., M.A., Ed.D.  
Assistant Dean of Men  
Social Studies



# Department Heads



THOMAS B. MARTIN  
B.S., M.S., Ed.D.  
Business Education



EDNA J. HAZEN  
B.S., M.A.  
Elementary Education



ERNEST H. ENGELHARDT  
A.B., M.A., Ed.D.  
Secondary Education



\$5,000 — but who wants to teach  
in Bolivia?

Time for a coffee break. Oh,  
those student teachers.





# Faculty



BRUCE E. ADAMS  
B.S., M.Ed.  
Geography



HAROLD O. BAHLKE  
B.Ed., M.A., Ph.D.  
English, Social Studies



EDNA J. BARNES  
B.S., M.A.  
Elementary Education



Mosquitoes were bigger then.



MRS. IVA MAE BECKLEY  
B.S., M.Ed.  
Laboratory School  
Grade II

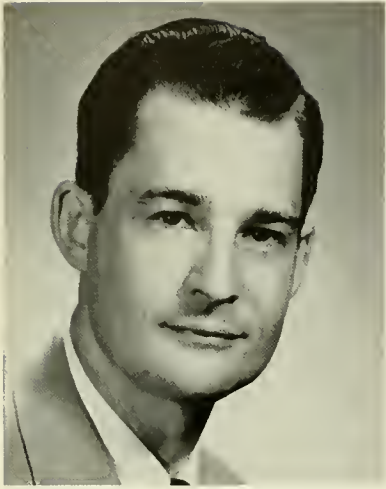


MRS. OLIVE P. BEEMAN  
Ph.B.  
Art  
25



CLAUDE L. BORDNER  
A.B., M.A.  
Mathematics

# Faculty



BOYD F. BUCKINGHAM  
B.S., M.S.  
Speech



EDWARD T. DEVOE  
B.S., M.Ed., Ed.D.  
English



BEATRICE ENGLEHART  
B.S., M.S. Ed.  
Laboratory School  
Kindergarten



No, Rimsky-Korsakov did not write "Stars and Stripes Forever."

"All this is fine, but when do we eat?"



MRS. DOROTHY J. EVANS  
B.S.  
Music



HOWARD F. FENSTEMAKER  
B.A., M.A.  
Foreign Languages



GEORGE J. FIKE  
A.B., A.M., Ed.M., Ph.D.  
Secondary Education



# Faculty



WILLIAM C. FORNEY  
B.A., M.A.  
Business Education



HENRY R. GEORGE  
B.A., M. Litt.  
Social Science



MRS. DEBORAH W. GRIFFITH  
B.S., M.A.  
Laboratory School  
Grade IV



Generally speaking, this is not a typewriter.



And I said to my hairdresser . . .



NORMAN L. HILGAR  
B.S., M.A.  
Business Education



CLAYTON H. HINKEL  
B.S., M.Ed.  
Business Education



RUSSELL E. HOUK  
B.S., M.S.  
Physical Education

# Faculty



MRS. MARTHA M. JOHNSON  
B.S.  
Art



WARREN I. JOHNSON  
B.S., M.Ed.  
Laboratory School  
Grade VI



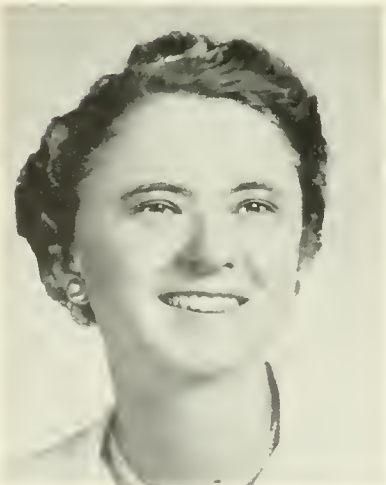
ELINOR R. KEEFER  
B.A., Litt. M., B.S. in L.S.  
Librarian



Hummmm . . . Lobster tail.



When the roll is called down yonder.



MARY E. KRAMER  
B.S., M.A.  
Laboratory School



KIMBER C. KUSTER  
B.S., M.S., Ph.D.  
Biological Science



HAROLD H. LANTERMAN  
B.S., M.A., Ed.D.  
Physical Science



# Faculty



DONALD F. MAIETTA  
B.S., M.S., Ph.D.  
Speech Correction



NELL MAUPIN  
B.A., M.A., Ph.D.  
Social Studies



MRS. MARGARET E. McCERN  
B.S., M.Ed.  
Business Education



"Let your conscience be your guide."



A one . . . a two . . .



JEAN McCUE  
B.S., M.Ed.  
Laboratory School  
Grade 1



M. BEATRICE METTLER  
A.B., M.A.  
College Nurse  
Health Education



NELSON A. MILLER  
B.S., M.Ed.  
Music

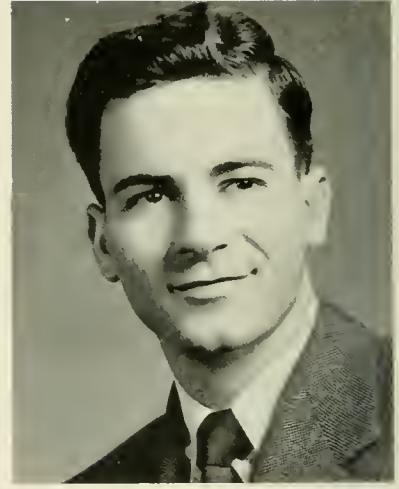
# Faculty



**JOHN R. O'DONNELL**  
B.S., M.Ed.  
Laboratory School  
Grade V



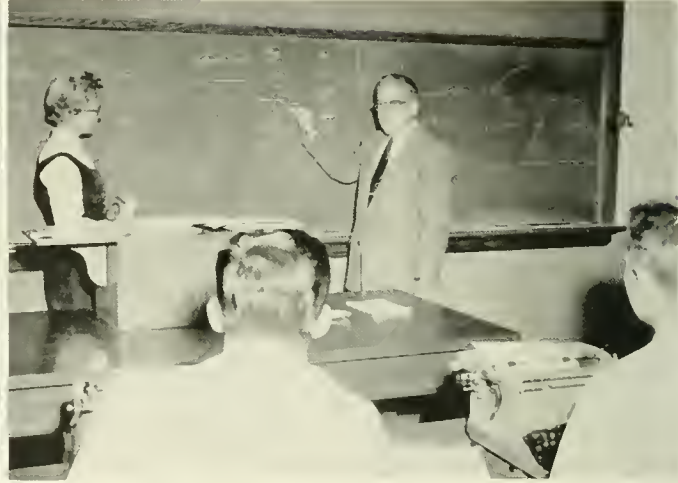
**DONALD D. RABB**  
B.S., M.S. Ed.  
Survey Science



**FRANCIS J. RADICE**  
B.S., M.Ed.  
Business Education



No matter how busy, women always find time for a chat with a friend.



Of course you know we have an unbeaten record to uphold.



**GWENDOLYN REAMS**  
B.A., M.A.  
Assistant Librarian  
Children's Literature



**J. ALMUS RUSSELL**  
A.B., A.M., Ph.D.  
London University Certificate  
English



**WALTER S. RYGIEL**  
B.S., M.A.  
Business Education



# Faculty



RUSSELL F. SCHLEICHER  
B.S., M.A.  
Psychology  
Elementary Science



GILBERT R. W. SELDERS  
B.A., M.Ed., D. Ed.  
Reading Specialist



JOHN J. SERFF  
B.S., M.Ed., Ph.D.  
Social Studies



But, Daddy, you're cutting off her head.



With students like Mr. Berger, teachers can't afford to be fatherly.



CECIL S. SERONSY  
B.A., M.A., Ph.D.  
English

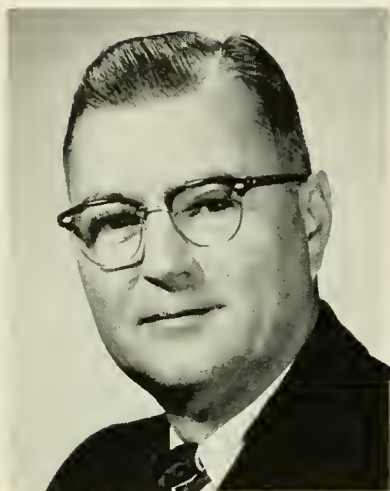


HAROLD S. SHELLY  
A.B., M.A.  
Physical Education



MRS. GRACE CLINTON SMITH  
B.S.  
English

# Faculty



**WILLIAM B. STERLING**  
B.S., M.S. Ed.  
Geography, Aviation



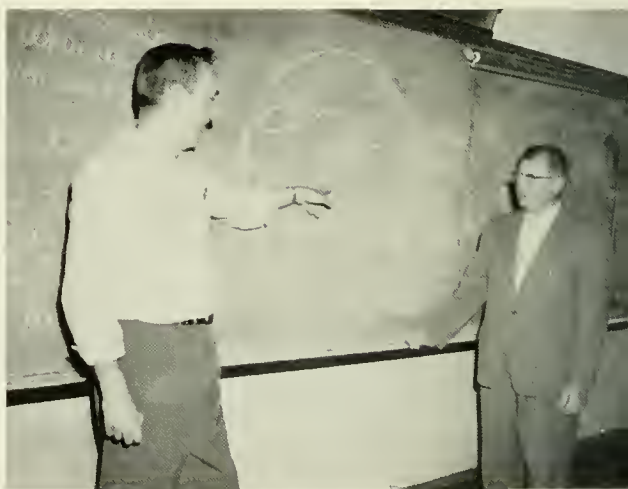
**MARCELLA M. STICKLER**  
B.S., M.A.  
Laboratory School  
Grade III



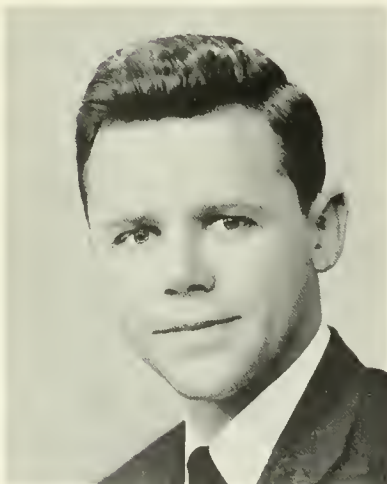
**ROBERT P. ULMER**  
B.S., M.Ed.  
Art



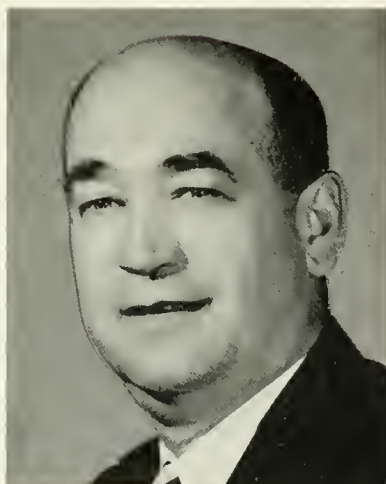
Some day this will be a great industry.



It's not a doodle even though this is an Elementary course.



**EDWARD M. VAN NORMAN**  
B.S., M.Ed.  
Audio-Visual Education



**E. PAUL WAGNER**  
B.S., M.Ed., Ed.D.  
Psychology  
Public School Psychologist



**MRS. MARY ELEANOR WRAY**  
B.A., M.S.  
Health Education



# Non-Teaching Personnel



MRS. ALTHEA HOKE  
Resident Counselor



JENNINGS B. KNOEBEL  
B.S. in A.E.  
Superintendent of Grounds



PAUL G. MARTIN  
B.S.  
Business Manager



W. HORACE WILLIAMS  
Manager of College Store



Tsheusshh! . . . ten cents for a cup of coffee!



MRS. HELEN LOREMAN — Housekeeper and possessor of the Pass Key.



MISS BEATRICE EYERLY — a smile to the College Book Store customers.



FRANK BILLMAN — "Frank the Elevator Man."



MRS. HELEN BARKAUSKAS helps MISS EYERLY sort out essential items for any college student.





*Seniors*



My fellow graduates:

College has meant many things to many people. To some of us it has been a challenge, a way of life—an opportunity. To others it means an end, a goal—an accomplishment. To a few, and to most of the public, it is a four-year period of dancing, cheering, and fraternizing, ever seeking to attain that “old college spirit.”

Whatever graduation means to you as an individual, you can never forget the good times, and the bad times; the joys, and the sorrows; the accomplishments, and the failures, shared by the Class as a whole. As we leave Bloomsburg, many marks of our passing through remain. Some of these marks will be surpassed, some will never be equaled. One thing is assured, surpassed or unequaled, they will always remain!

As we pause and look back over the past several years, we find it very difficult to take leave of the many pleasant memories that are Bloomsburg. Through our education we have been given a cornerstone. Where we place it and what we will build upon it is entirely up to us as individuals. May we endeavor to build upon it a tower of strength and light for those whom we teach, helping them to take their rightful places in our society as intelligent, acceptable citizens.

On behalf of the Class, I would like to extend our sincere thanks and gratitude to: our President, our Faculty, our Parents, the Board of Trustees, the Commonwealth of Pennsylvania, and our class advisors, Mr. Fenstermaker, Mr. Miller, and Dr. Serff, who have most willingly devoted their time to our efforts.

As your President, it has indeed been an honor and a privilege serving you, and I would like to take this opportunity to extend my heartiest congratulations and best wishes, to each and every one of you, in whatever line of endeavor you may undertake. May the future treat you kindly, and your memories often return to the “Friendly College on the Hill.”

Sincerely,

*Raymond Hargreaves*

Raymond Hargreaves

*Class President, 1958*





### SENIOR CLASS OFFICERS

*Seated:* Ray Hargreaves, President; Dr. John Serff, Class Advisor. *Standing:* Annette Roush, Woman Representative; Mary Grace, Secretary; Edward Braynock, Historian; Jack Herman, Man Representative; Wayne Gavitt, Treasurer; Constantine Spentzas, Vice President.



The officers admire senior attire.



Mary and Ray prepare for the big day.

## *Business Education*

The Business Department in Navy Hall teaches various business skills. In the upper right-hand photo, students learn how to use Sound Scribes under the direction of Mr. Hinkel. In the center photo, students from Bloomsburg High School operate adding machines under the direction of Ray Hargreaves, student teacher. In the lower left photograph, Mr. Hilger supervises a class in accounting methods. The lower right-hand photo shows a class in typing, directed by Mrs. McCern.





**CHARLES DAVID ABENMOHA**

Forty Fort

*Accounting, Sales*

Day Men's Association 4; Men's Resident Council 1, 2, 3; Business Education Club 3; Varsity Club 2; Basketball Tournament Committee 1; Wrestling 2.

**(MRS.) PATRICIA ALICE ARNOLD**

Bloomsburg

*Secretarial, Sales*

Day Women's Association 1, 2, 3, 4; Business Education Club 1, 3; College Choraleers 1, 2, 3; Dramatic Club 1; SEAP 4; Maroon and Gold Band 2, 3; Majorette 2, 3; *Olympian* Advertising Staff 2, 3; *Maroon and Gold* Advertising Staff 1; *Obiter* Advertising Staff 3.



CHARLES ABENMOHA

PATRICIA ARNOLD

**NORMAN JOSEPH BALCHUNAS**

Shamokin

*General Business*

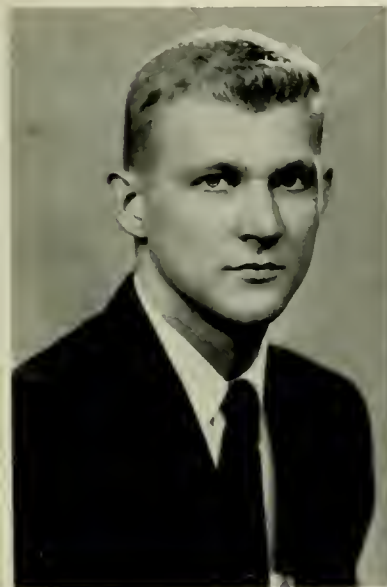
Class Treasurer 3; CGA Treasurer 4; College Council 4; Dining Room Committee Chairman 4; Men's Resident Council 1, 2, 3, 4; Phi Sigma Pi 2, 3, 4, Sergeant-at-Arms 4; Aviation Club 1; Business Education Club 2, 3, Vice President 3; SEAP 3, 4, Vice President 4; *Maroon and Gold* Circulation Manager 4; Basketball Tournament Student Coordinator 3.

**JOSEPH J. BARROS**

Palmerton

*Accounting, Social Studies, Typing*

Men's Resident Council 1, 2, 3, 4; Business Education Club 1, 2, 3, 4; SEAP 3, 4.



NORMAN BALCHUNAS

JOSEPH BARROS

**R. BARRY BEILHARZ**

Muncy

*Accounting, Sales, Typing, Social Studies*

Day Men's Association 1; Men's Resident Council 2, 3; SEAP 2, 3; SCA 1, 2, 3, Treasurer 2, 3; Varsity Club 2; Wrestling 1, 2.

**DUANE ALLAN BELLES**

Berwick

*General Business*

Day Men's Association 1, 2, 3, 4; Phi Sigma Pi 4; Pi Omega Pi 2, 3, 4, President 4; Business Education Club 1, 2, 3, 4; SEAP 3, 4; Social Usage Club 3; Senior Committee Co-Chairman.



39 R. BARRY BEILHARZ

DUANE BELLES



PATRICIA BERGER



ROBERT BLESSING

**PATRICIA A. BERGER**

Bloomsburg

*Shorthand, Typing, Social Studies*

Day Women's Association 1, 2, 3, 4; Business Education Club 1, 2; SEAP 3; *Maroon and Gold News Staff* 1; College Choraleers 1.

**ROBERT WILLIAM BLESSING**

Bloomsburg

*Accounting, Social Studies*

Day Men's Association 1, 2, 3, 4; Business Education Club 1; SEAP 4.

**WILLIAM LARRY BOWER**

Berwick

*Accounting, Shorthand*

Day Men's Association 1, 2, 3, 4; Business Education Club 1, 2, 3, 4; SEAP 3, 4.

**ROBERT JAMES BOYLE**

Scranton

*Accounting, Typing, English*

Assembly Committee 2, 3; Men's Resident Council 1, 2, 3, 4; Phi Sigma Pi 2, 3, 4; SEAP 4; Varsity Club 1, 2, 3, 4; Fashion Show 2, 3; Basketball Tournament Manager 1, 2; Baseball 1, 2, 3, 4; Basketball 1, 2, 3, 4; *Who's Who Among Students in American Universities and Colleges.*



WILLIAM BOWER



ROBERT BOYLE



ABRAM BRASSINGTON



BARBARA BRUNNER 40

**ABRAM AUSTIN BRASSINGTON**

Frackville

*Accounting, Sales, Typing*

Men's Resident Council 1, 2, 3, 4; Aviation Club 2; Business Education Club 3; SEAP 3, 4; Track 1; Men's Intramurals 2, 3.

**BARBARA DEAN BRUNNER**

Pottstown

*Accounting, Shorthand*

Waller Hall Association 1, 2, 3, 4; Alpha Psi Omega 3, 4; Pi Omega Pi 2, 3, 4; Aviation Club 2, 3, 4; Secretary 3; Business Education Club 1, 2, 3, 4; Dramatic Club 1, 2, 3, 4; SEAP 3, 4; SCA 1, 2.



**SHIRLEY MAE CAMPBELL**

Millerstown

*Secretarial, Social Studies*

Waller Hall Association 1, 2, 3, 4; Business Education Club 1, 2, 3, 4; SEAP 3, 4; SCA 1, 2, 3, 4; Women's Intramurals 1, 2; *Maroon and Gold News* Staff 2, 3, 4; *Obiter* Typing Staff 3.

**DONALD R. COFFMAN**

Mt. Pocono

*General Business*

Hospitality Committee 3; Day Men's Association 1, 2; Men's Resident Council 3, 4; Phi Sigma Pi 4; Business Education Club 1, 2, 3, 4; SEAP 3, 4; SCA 1; Social Usage Club 3; Basketball Tournament Committee 3, 4; Men's Intramurals 1, 2, 3; *Maroon and Gold News* 2, Sports Editor 3; Senior Committee Co-Chairman.



SHIRLEY CAMPBELL

DONALD COFFMAN

**ROSE MARIE COULTER**

Croyden

*General Business*

Customs Committee Chairman 2; Customs Committee 3; Dining Room Committee 4; Waller Hall Association 1, 2, 3, 4, Representative 1, 3, 4; Business Education Club 1, 2, 3, 4, Historian 2, Treasurer 3; SEAP 3, 4; *Maroon and Gold* Typing Staff 4; *Obiter* Typing Staff 3; College Choraleers 1.

**BOBBIE A. CREAMER**

Penndel

*Accounting, English*

Assembly Committee 3; Waller Hall Association 1, 2, 3, 4; Pi Omega Pi 3, 4; Business Education Club 1, 2; SEAP 4; Poetry Club 4; Fashion Show 1, 3, 4.



ROSE COULTER

BOBBIE CREAMER

**MARY ANNE CUBER**

Wayne, New Jersey

*Secretarial, English*

Class Representative 3; College Council Member 3; Waller Hall Association 1, 2, 3, 4; Business Education Club 1; Fashion Show Coordinator 1, 2, 3, 4; *Olympian* Editorial Staff 2; *Obiter* Typing Staff 3.

**GERALD E. DONMOYER**

Schuylkill Haven

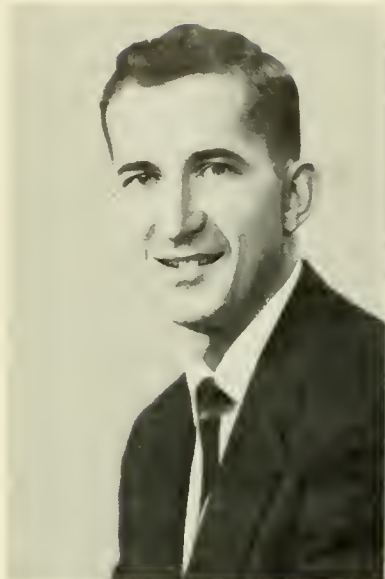
*General Business*

Hospitality Committee Chairman 3, Day Men's Association 2; Men's Resident Council 1, 3, 4; Alpha Psi Omega 2, 3, 4, President 3; Phi Sigma Pi 3, 4, Secretary 4; Pi Omega Pi 2, 3, 4; Business Education Club 1, 2, 3, 4, Historian 3; Dramatic Club 1, 2, 3, 4, Treasurer 2; SEAP 3, 4; Social Usage Club 3; Pilot Business Manager 3; *Obiter* Editorial Board 3, Sports Editor 4; Senior Committee Co-Chairman.



41 MARY CUBER

GERALD DONMOYER



CHARLES FAHRINGER



WAYNE GAVITT

CHARLES EDWARD FAHRINGER

Sunbury

*General Business*

Day Men's Association 1, 2, 3, 4; Pi Omega Pi 3, 4; Business Education Club 1, 2, 3; SEAP 3, 4; Science Club 1.

WAYNE EDWARD GAVITT

Laporte

*Accounting, Typing, Social Studies*

Class Treasurer 4; Day Men's Association 2; Men's Resident Council 3, 4; Kappa Delta Pi 3, 4; Pi Omega Pi 3, 4; Business Education Club 2, 3; Dramatic Club 3, 4; SEAP 3, 4; Men's Intramurals 3, 4; *Maroon and Gold News Staff* 3.

FERN ALVIN GOSS

McClure

*Accounting, Social Studies*

Customs Committee 2; Day Men's Association 1, 2; Men's Resident Council 3; Business Education Club 1, 2, 3; SEAP 2, 3; SCA 1, 2, 3, President 2, 3; Student Christian Movement Treasurer 2, President 3; Senior Committee Co-Chairman.

MARY I. GRACE

Stroudsburg

*General Business*

Class Secretary 3, 4; Waller Hall Association 1, 2, 3, 4, Social Chairman 3; Pi Omega Pi 3, 4, Secretary 3; Business Education Club 1, 2; College Choraleers 1, 2; Maroon and Gold Band 1, 2, Secretary 2; Fashion Show 1, 2, 3, 4, Commentator 3; *Who's Who Among Students in American Universities and Colleges*.



FERN GOSS



MARY GRACE



WILLIAM HAND



RAYMOND HARGREAVES

WILLIAM EDWARD HAND

Shamokin

*Accounting, Shorthand*

Day Men's Association 1, 2, 3, 4; Business Education Club 2, 3; SEAP 2, 3.

RAYMOND CHARLES HARGREAVES

Scranton

*Accounting, Shorthand, Typing*

Class Representative 3; Class President 4; College Council 3, 4; Men's Resident Council 1, 2, 3, 4; Phi Sigma Pi 3, 4, Treasurer 4; Pi Omega Pi 3, 4, Vice President 4; Business Education Club 1, 2, 3, 4, President 3; SEAP 3, 4; Maroon and Gold Band 1, 2; SCA 1; *Pilot Associate Editor* 1, 2, 3, 4; *Who's Who Among Students in American Universities and Colleges*.



**JOHN EDWARD HARTZEL**

Espy

*Accounting, Shorthand, Typing*

Day Men's Association 1, 2, 3, 4, Secretary 3; Phi Sigma Pi 3, 4; Business Education Club 1, 2, 3; College Choraleers 1; SEAP 4; Basketball 1; Senior Committee Co-Chairman.

**WILBUR DANE HELT**

Berwick

*Accounting, Shorthand, Typing*

Day Men's Association 1, 2, 3, 4; Phi Sigma Pi 3, 4; Business Education Club 2, 3.



JOHN HARTZEL



WILBUR HELT



DONALD HEMLER



TERESA JULIO

**DONALD FRANCIS HEMLER**

Hanover

*Accounting, Sales*

Men's Resident Council 1, 2, 3, 4; Athenaeum Club 1, 2; Business Education Club 2, 3; SEAP 3, 4.

**TERESA E. JULIO**

Scranton

*General Business*

Waller Hall Association 1, 2, 3, 4; Pi Omega Pi 2, 3, 4, Treasurer 3; Business Education Club 1, 2, 3, 4; College Choraleers 1, 2, 3, 4; SEAP 3, 4, Program Chairman 4; *Co-Pilot* Writer 4; *Olympian* Circulation Manager 3; *Maroon and Gold News* Staff 1, 3; *Obiter* Distribution and Typing Staffs 2, 3. Distribution Manager 4.

**EDNA MAE KEEFER**

Pottsgrove

*Accounting, Sales, Typing*

Waller Hall Association 1, 2, 3, 4; Business Education Club 1, 2, 3, 4; College Choraleers 1; SEAP 3; *Maroon and Gold* Exchange Staff 2.

**DANIEL ROBERT KRESSLER**

Bloomsburg

*Accounting, Typing, Sales, Social Studies*

Day Men's Association 1, 2, 3, 4; Business Education Club 1, 2; Dramatic Club 2; Fashion Show 1, 2, 3, 4; Track 3; *Olympian* Business Manager 3; SEAP 4.



43 EDNA KEEFER



DANIEL KRESSLER



RITA KRZYWICKI



GARY LEVAN

RITA CAROL KRZYWICKI

Plymouth  
*Accounting*

Waller Hall Association 1, 2, 3, 4; Business Education Club 1; SEAP 4; SCA 1.

GARY DEAN LEVAN

Numedia  
*Accounting, Sales*

Day Men's Association 1, 2, 3, 4; Aviation Club 1; Business Education Club 2, 3; SEAP 3, 4; Track 1, 2; Men's Intramurals 3, 4.

MARGARET ANN LYNCH

Athens  
*Secretarial, English*

Customs Committee 2, 4; Waller Hall Association 1, 2, 3, 4; "B" Club 3, 4; Business Education Club 2, 3, Secretary 3; College Choraleers 1; SEAP 3, 4; Maroon and Gold Band 1, 2; Poetry Club 4; *Maroon and Gold* Typing Staff 2, Secretarial Editor 3, News Staff 4.

JOSEPH RICHARD MALT

Hazleton  
*Accounting, Shorthand, Typing*

Day Men's Association 1, 2, 3, 4; Pi Omega Pi 3, 4; Aviation Club 3; Business Education Club 1, 2, 3; SEAP 3, 4.



MARGARET LYNCH



JOSEPH MALT



DONNA MATTOCKS



LAWRENCE MAYLOCK 44

DONNA MAE MATTOCKS

Columbia Cross Roads  
*General Business*

Waller Hall Association 1, 2, 3, 4; Pi Omega Pi 2, 3, 4, Secretary 4; Business Education Club 1, 2, 3, 4, Sergeant-at-Arms 3; College Choraleers 1, 2; SEAP 3, 4, Secretary 4; SCA 1, 2, 3, 4; *Co-Pilot* Typing Staff 3; *Olympian* Typing Staff 3; *Obiter* Typing Staff 3, 4.

LAWRENCE JOHN MAYLOCK

West Nanticoke  
*Accounting, Typing, English*

Men's Resident Council 1, 2, 3, 4; Business Education Club 1, 2, 3, 4; SEAP 3, 4; SCA 1, 2; Basketball Tournament Committee 2, 3; Men's Intramurals 1, 2, 3.



**ANDREW JOSEPH McBRIDE**  
Shamokin

*Accounting, Social Studies*

Day Men's Association 1, 2, 3, 4; Aviation Club 1, 2, 3; Business Education Club 2, 3; College Choraleers 1; SEAP 4; Poetry Club 1.

**JOHN LEO McGRAW**  
Freeland

*Accounting, Typing, Social Studies*

Day Men's Association 2, 3; Men's Resident Council 4; Business Education Club 2, 3; SEAP 3, 4; Maroon and Gold Band 2; Men's Intramurals 3, 4.



ANDREW McBRIDE



JOHN McGRAW



ALFRED MILLER



MARJORIE MYERS

**ALFRED F. MILLER JR.**  
Northampton

*Accounting, Sales*

Men's Resident Council 1, 2, 3, 4; Business Education Club 1, 2, 4; College Choraleers 1; SEAP 3, 4; SCA 3, 4; Men's Intramurals 2, 3, 4; *Obiter* Advertising Staff 1.

**MARJORIE ANNE MYERS**  
Lansdale

*Accounting, Shorthand, Typing*

Day Women's Association 3; Waller Hall Association 1, 2, 4; Pi Omega Pi 2, 3, 4; "B" Club 1, 2, 3, 4; Business Education Club 1, 2, 3; College Choraleers 1, 2; SEAP 3, 4; SCA 1, 2, 3, 4, Program Chairman 2; Chairman of Religion-in-Life Week 3; *Pilot* Associate Editor 1; *Obiter* Advertising Staff 1, 2.

**DONALD G. NICE**  
Nanticoke

*Accounting, Social Studies*

Hospitality Committee 2; Customs Committee 2; Day Men's Association 1, 2; Men's Resident Council 3, 4; Aviation Club 3, 4, Treasurer 3, 4; Business Education Club 1, 2, 3, 4; SEAP 3, 4; SCA 1, 2, 3, 4; Chairman of Religion-in-Life Week 4.

**LEON FRANK NOWAKOWSKI**  
Nanticoke

*Accounting, Typing, Social Studies*

Dining Room Committee 2; Day Men's Association 4; Men's Resident Council 1, 2, 3; Business Education Club 1, 2, 3, 4; SEAP 3, 4; Baseball 1.



45 DONALD NICE



LEON NOWAKOWSKI



MARIAN ONUFRAK



KENNETH OSWALD

MARIAN ONUFRAK

Berwick

*General Business*

Day Women's Association 1; Waller Hall Association 2, 3, 4; Business Education Club 1, 2, 3, 4; College Choraleers 1; SEAP 3, 4; SCA 1.

KENNETH JAMES OSWALD

Berwick

*Accounting, Shorthand*

Day Men's Association 1, 2, 3, 4; Business Education Club 2; SEAP 3.

LAWRENCE ALVIN PETUSKEY

Catawissa

*Accounting, Sales*

Day Men's Association 1, 2, 3, 4; Aviation Club 1; Business Education Club 1; SEAP 3; Baseball 1, 3.

SANDRA LE RAKER

East Smithfield

*General Business*

Waller Hall Association 1, 2, 3, 4; Kappa Delta Pi 4; Pi Omega Pi 2, 3, 4, Historian 3; Business Education Club 1, 2, 3; College Choraleers 1, 2; SEAP 3, 4; SCA 1, 2, 3, 4, Secretary 3; *Maroon and Gold* News Staff 2, 3; Senior Committee Co-Chairman; *Who's Who Among Students in American Universities and Colleges.*



LAWRENCE PETUSKEY



SANDRA RAKER



GEORGE RENN



DONALD RICHARDS 46

GEORGE EMERSON RENN

Sunbury

*Accounting, Sales*

Day Men's Association 1, 2, 3, 4; Pi Omega Pi 2, 3, 4; Business Education Club 1, 2, 3; SEAP 3, 4.

DONALD GENE RICHARDS

Elysburg

*Accounting, Sales, Social Studies*

Day Men's Association 1, 2, 3, 4; Business Education Club 2; SEAP 3, 4; Football 1.



**ROBERT FULTON RIDGWAY**

Catawissa

*Accounting, Social Studies*

Day Men's Association 1, 2, 3, 4; Business Education Club 3; SEAP 3, 4.

**RAYMOND JOSEPH ROSINSKI**

Mount Carmel

*Accounting, Sales, Typing*

Day Men's Association 1, 2, 3, 4. Treasurer 4; Pi Omega Pi 3, 4; Athenaeum Club 3, 4; Aviation Club 1, 4; Business Education Club 1, 2, 3; SEAP 3, 4.



ROBERT RIDGWAY



RAYMOND ROSINSKI



JOHN SARAKA



JOHN SCHAEFER

**JOHN LAWRENCE SARAKA**

Edwardsville

*General Business*

Day Men's Association 1, 2, 3, 4; Business Education Club 1, 2, 3, 4; SEAP 3, 4; Men's Intramurals 3, 4.

**JOHN JOSEPH SCHAEFER**

Berlin, New Jersey

*General Business*

Men's Resident Council 1, 2, 3, 4; Business Education Club 1; SEAP 4; Varsity Club 2, 3, 4, Secretary 3, 4; Basketball 1, 2, 3, 4; Track 1, 2; Men's Intramurals 1, 2, 3, 4.

**JAMES FREDERICK SNYDER**

Her-hey

*Accounting, Social Studies*

Class Representative 2; College Council Member 2; Men's Resident Council 1, 2, 3, 4; Phi Sigma Pi 2, 3, 4. Treasurer 3; Business Education Club 2; College Choraleers 1; SEAP 4; Varsity Club 1, 2, 3, 4; Fashion Show 3; Baseball 1, 2; Basketball 1, 2, 3, 4; Men's Intramurals 3, 4.

**CONSTANTINE JOHN SPENTZAS**

Towanda

*General Business*

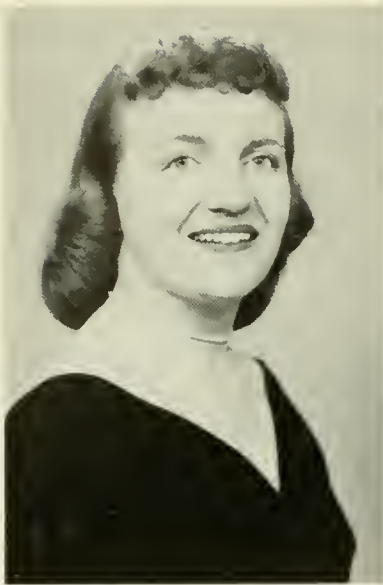
Class Vice President 4; Social Recreation Committee 2; Men's Resident Council 1, 2, 3, 4. Vice President 2; Kappa Delta Pi 3, 4; Phi Sigma Pi 2, 3, 4. Historian 4; Business Education Club 3, 4; College Choraleers 1, 2; SEAP 4; Basketball Tournament Program Chairman 3; Track 1; *Maroon and Gold News Staff* 2. *GI Mail Editor* 3; *Obiter Business Manager* 4; General Chairman of Senior Committees; *Who's Who Among Students in American Universities and Colleges.*



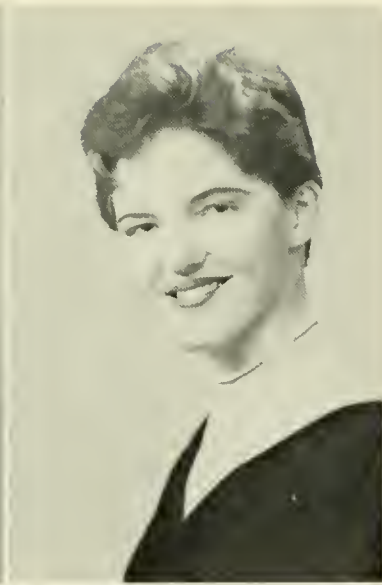
47 JAMES SNYDER



CONSTANTINE SPENTZAS



BETTY STIFF



DOROTHY STOUTD

**BETTY LOIS STIFF**

East Stroudsburg

*General Business*

Social Recreation Committee 3; Waller Hall Association 1, 2, 3, 4; Waller Hall Governing Board 3, 4; Business Education Club 1, 2, 3, 4; College Choraleers 1, 2; SEAP 3, 4; SCA 1, 2, 3, 4; *Copilot* Editor 3; *Obiter* Typing Staff 3, Head Typist 4.

**DOROTHY MAE STOUTD**

Sinking Spring

*General Business*

Waller Hall Association 1, 2, 3, 4; Business Education Club 1, 2, 3; College Choraleers 1; SEAP 3, 4; Maroon and Gold Band 1, 2, 3, 4, Secretary 3; SCA 1, 2, 3, 4, Secretary 2; *Olympian* Typing Staff 3; *Maroon and Gold* Typing Staff 3.

**STEPHEN LEE STUART**

Berwick

*Accounting, Social Studies*

Day Men's Association 2, 3, 4; Pi Omega Pi 3, 4, Treasurer 4; Aviation Club 2, 3, 4, Vice President 4; Business Education Club 2, 3; College Choraleers 2, 4; SEAP 4.

**CLARENCE WERNER SWADE**

Frackville

*Accounting, Sales, Typing*

Day Men's Association 1, 2, 3, 4; Business Education Club 3; College Choraleers 1; SEAP 3; SCA 1, 2.



STEPHEN STUART



CLARENCE SWADE



FRANK VACANTE



JAMES VOWLER

**FRANK JOSEPH VACANTE**

Kelayres

*Accounting, Social Studies*

Pep Committee 1; Men's Resident Council 1; Day Men's Association 2, 3, 4; Kappa Delta Pi 3, 4, Vice President 3; Pi Omega Pi 3, 4, Vice President 3; Business Education Club 1, 2; College Choraleers 1; Dramatic Club 1; SEAP 3, 4; *Obiter* Assistant Business Manager 1; *Who's Who Among Students in American Universities and Colleges*.

**JAMES HENRY VOWLER**

Upper Darby

*Accounting, English*

Dining Room Committee 4; Day Men's Association 1; Men's Resident Council 2, 3, 4, Treasurer 3; Business Education Club 1; SEAP 4; Maroon and Gold Band 1, 2, 3, 4; Men's Intramurals 1, 2, 3, 4; SCA 1.



**WILLIAM ALLEN WELLIVER**

Shamokin

*Accounting, Sales*

Day Men's Association 1, 2, 3, 4; Aviation Club 1;  
Business Education Club 2, 3, 4; SEAP 4.

**DANIEL M. WEST**

Shamokin

*Accounting, Social Studies*

Day Men's Association 1, 2, 3, 4; SEAP 4; *Maroon  
and Gold* Circulation Staff 2, 3.



WILLIAM WELLIVER



DANIEL WEST



MARIE WILL



NORMAN WISMER

**MARIE ELIZABETH WILL**

Quakertown

*Accounting, Typing, Social Studies*

Waller Hall Association 1, 2, 3, 4; Business Educa-  
tion Club 1, 2, 3, 4; SEAP 3, 4; SCA 1, 2, 3, 4;  
*Obiter* Business Staff 1, 2, 3.

**NORMAN NEWELL WISMER**

Royersford

*General Business*

Day Men's Association 1, 2, 3; Men's Resident  
Council 4; Business Education Club 1, 2, 3, 4;  
SEAP 3, 4; Poetry Club 1, 2, 3, 4.

**MICHAEL A. YESALAVAGE**

Girardville

*Accounting, English*

Men's Resident Council 1, 2, 3, 4; Aviation Club  
1, 2; Business Education Club 4; SEAP 4; Basket-  
ball Tournament Committee 3.



MICHAEL YESALAVAGE

# *Elementary Education*

Dianne Samois accepts a fish bowl from Tommy as part of their "share and tell" period.



Jack Herman, student teacher, aids children in interpreting stick figure cartoons used in special education class.

A familiar school scene. Miss Linda Scott, student teacher, conducts the flag salute in a third grade classroom of the Benjamin Franklin Laboratory School.





MARIANNE MARTA ANGRADI

Glen Lyon

Elementary

Social Recreation Committee 2, 3; Pep Committee 2, 3; Furniture Committee 4; Waller Hall Association 1, 2, 3, 4; Athenaeum Club 2; College Choraleers 1; SEAP 3, 4; *Obiter* Advertising Staff 1; Senior Picture Committee 2; Director of Senior Pictures 3, 4; Senior Committee Co-Chairman.

RANDALL WAYNE ARBOGAST

Northumberland

Elementary

Day Men's Association 1, 2, 3, 4; College Choraleers 1; SEAP 4; Maroon and Gold Band 1; Basketball Tournament 1; Men's Intramurals 1, 2; SCA 1.



MARIANNE ANGRADI

RANDALL ARBOGAST



JOANNE ATKINSON

Rushland

Elementary

Social Recreation Committee 2, 3; Waller Hall Association 1, 2, 3, 4; Athenaeum Club 2; College Choraleers 1; SEAP 3, 4; *Obiter* Typing Staff 2.

GLORIA D. BARBER

Danville

Elementary

Day Women's Association 1, 2, 3, 4; "B" Club 2, 3, 4; College Choraleers 1, 2; *Maroon and Gold News* Staff 2, 3.

JOANNE ATKINSON

GLORIA BARBER

ELIZABETH ANN BARRON

Ashland

Elementary, Speech Correction

Waller Hall Association 1, 2, 3; Alpha Psi Omega 3, 4, President 4; Sigma Alpha Eta 2, 3, 4, Corresponding Secretary 3, Executive Secretary 4; College Choraleers 2, 3; Dramatic Club 2, 3, 4; SEAP 3; Maroon and Gold Band 2; Poetry Club 2; SCA 2; *Who's Who Among Students in American Universities and Colleges*.

(MRS.) CONSTANCE ELIZABETH BASTIAN

Sunbury

Elementary

Day Women's Association 3, 4.



ELIZABETH BARRON

CONSTANCE BASTIAN



ROBERTA BOWEN



MARGARET BRINSER

ROBERTA LEE BOWEN

Sayre

Elementary

*Special Education for the Mentally Retarded*

Hospitality Committee 2; Waller Hall Association 1, 2, 3, 4, Representative 2; Sigma Alpha Eta 4; College Choraleers 1, 2, 3, Vice President 3, Librarian 2; SEAP 4; Maroon and Gold Band 1, 2, 3, 4, Librarian 2; *Maroon and Gold News Staff* 3, 4; *Obiter Advertising Staff* 3, 4; *Who's Who Among Students in American Universities and Colleges.*

MARGARET ADELAIDE BRINSER

Harrisburg

Elementary

Hospitality Committee 2, 3; Election Board 3; Customs Committee 2; Waller Hall Association 1, 2, 3, 4; Sigma Alpha Eta 2; "B" Club 1, 2, 3, 4, President 4, Point Collector 3; College Choraleers 1; SEAP 3, 4; SCA 1, 2, 3, 4; Basketball Tournament Committee 3; *Maroon and Gold News Staff* 1, 2, 3; *Who's Who Among Students in American Universities and Colleges.*

WILLIAM CHARLES CALDERWOOD

State College

Elementary

*Special Education for the Mentally Retarded*

Men's Resident Council 1, 2, 3, 4; Aviation Club 1, 2; SEAP 3, 4; Varsity Club 2, 3, 4; Baseball 1, 2; Wrestling 1, 2, 3, 4; Men's Intramurals 1, 2, 3, 4; *Obiter Advertising Staff* 4.

BETTY LOU CAMPBELL

Canton

Elementary

Waller Hall Association 1, 2, 3, 4; Sigma Alpha Eta 1, 2; Athenaeum Club 1, 2; SEAP 3, 4.



WILLIAM CALDERWOOD



BETTY CAMPBELL



MAX DANILOWICZ



CARL DEFEBO

MAX JOHN DANILOWICZ

Nanticoke

Elementary

Day Men's Association 4; Men's Resident Council 1, 2, 3; Aviation Club 2; SEAP 4; Men's Intramurals 2, 3.

CARL EUGENE DEFEBO

Berwick

Elementary

Fire Drill Committee Chairman 3, 4; Men's Resident Council 1, 2, 3, 4; SEAP 4; Varsity Club 1, 2, 3, 4; Fashion Show 3; Football 1, 2, 3, 4; Senior Committee Co-Chairman.



**JOSEPH JOHN DEKUTOSKI**

Glen Lyon

*Elementary*

*Special Education for the Mentally Retarded*

Men's Resident Council 1, 2, 3, 4; Phi Sigma Pi 2, 3, 4; Sigma Alpha Eta 1, 2; Athenaeum Club 2; Aviation Club 2; SEAP 3, 4.

**SHIRLEY MAE EDWARDS**

Bloomsburg

*Elementary*

Day Women's Association 1, 2, 3, 4, Secretary 3; Day Women's Official Board 3, 4; Athenaeum Club 3; College Choraleers 1; SEAP 3, 4; Science Club 1.



JOSEPH DEKUTOSKI



SHIRLEY EDWARDS

**CAROL ANN ELY**

Hughesville

*Elementary*

Waller Hall Association 1, 2, 3, 4, Representative 2; SEAP 3, 4; SCA 1, 2; Fashion Show 1, 2, 3, 4; Basketball Tournament Committee 3; *Obiter* Editorial Staff 1.

**LONA ANDREA FRANKLIN**

Waymart

*Elementary*

Hospitality Committee Chairman 3; Social Recreation Committee 2; Hospitality Committee 2; Waller Hall Association 1, 2, 3, 4; Athenaeum Club 3; College Choraleers 1; SEAP 3, 4; SCA 2.



CAROL ELY



LONA FRANKLIN

**(MRS.) RUTH MARIE FRIEDMAN**

Shamokin

*Elementary, Spanish*

Day Women's Association 1, 2, 3, 4; Day Women's Official Board 1, 2; Athenaeum Club 1, 2; Aviation Club 1; SEAP 3, 4; Science Club 2.

**MARY KATHRYN FRITZ**

Bloomsburg

*Elementary*

Day Women's Association 1, 2, 3, 4; Athenaeum Club 2, 3; SEAP 3, 4; Science Club 1; *Olympian* Contributor 3.



RUTH FRIEDMAN



MARY FRITZ



ROBERT GABRIEL



NANCY GETZ

ROBERT JOHN GABRIEL

Shamokin

Elementary

Day Men's Association 4; Aviation Club 2, 3, Treasurer 2, 3.

(MRS.) NANCY ANN GETZ

Middleburg

Elementary

Day Women's Association 4; Waller Hall Association 1, 2, 3; Athenaeum Club 4; Dramatic Club 2, 3; SEAP 3, 4; SCA 1, 2, 3; *Maroon and Gold News Staff* 1.

MARY MARGARET HEATLEY

Shamokin

Elementary

*Special Education for the Mentally Retarded*

Class Representative 1; College Council Member 1; Social Recreation Committee 2; Day Women's Association 1; Waller Hall Association 2, 3, 4; SEAP 4; Fashion Show 1, 2, 3, 4; Senior Committee Co-Chairman.

JOHN PETER HERMAN, JR.

Harrisburg

Elementary

*Special Education for the Mentally Retarded*

Class Representative 4; College Council Member 4; Freshman Class Advisor 3; Hospitality Committee 2; Social Recreation Committee 3; Customs Committee 2; Men's Resident Council 1, 2, 3, 4; Men's Resident Council Officer 2, 3; Phi Sigma Pi 3, 4; Sigma Alpha Eta 2; Aviation Club 1; SEAP 3, 4; Basketball Tournament Committee 2, 3; Senior Committee Co-Chairman.



MARY HEATLEY



JOHN HERMAN



SUSAN HOFFMAN



BETTA HOFFNER

SUSAN ANN HOFFMAN

Hatboro

Elementary

Social Recreation Committee 2; Waller Hall Association 1, 2, 3, 4; "B" Club 4; College Choraleers 1; SEAP 3, 4; Majorette 1, 2, 3, 4; Head Majorette 3, 4; Women's Intramurals 1, 2; *Maroon and Gold Typing Staff* 3, 4.

BETTA L. HOFFNER

Clarks Summit

Elementary

Hospitality Committee 3; Waller Hall Association 1, 2, 3, 4, Representative 1, 3; Kappa Delta Pi 3, 4, Recording Secretary 4; College Choraleers 1; SEAP 3, 4; SCA 1; Fashion Show Usher 3; Basketball Tournament Committee 3; Women's Intramurals 1; *Maroon and Gold Editorial Board* 3; *Obiter Editorial Staff* 3, Editorial Board 4; Senior Committee Co-Chairman; *Who's Who Among Students in American Universities and Colleges*.



**NANCY ANN HUGHES**

Bangor

*Elementary*

Dining Room Committee 4; Waller Hall Association 1, 2, 3, 4, Secretary 3; SEAP 3, 4; Fashion Show Coordinator 2, 3, 4; *Co-Pilot* Staff Member 3; *Maroon and Gold* News Staff 3, 4; *Obiter* Editorial Staff 3, 4.

**ELOISE JUNE KAMINSKI**

South Gibson

*Elementary*

Social Recreation Committee 2; Waller Hall Association 1, 2, 3, 4, Treasurer 3; Waller Hall Governing Board 4; College Choraleers 1, 2, 3, 4; SEAP 4; Women's Chorus 1, 2; *Maroon and Gold* News Editor 3; *Obiter* Editorial Staff 4; Senior Committee Co-Chairman.



NANCY HUGHES

ELOISE KAMINSKI



**CATHERINE S. KELLER**

Bloomsburg

*Elementary*

Customs Committee 2; Day Women's Association 1, 2, 3, 4, Vice President 2; Day Women's Official Board 2, 3; Athenaeum Club 3; College Choraleers 1; SEAP 3, 4; Science Club 1; Senior Committee Co-Chairman.

**CATHERINE ANN KERL**

Simpson

*Elementary*

*Special Education for the Mentally Retarded*

Waller Hall Association 1, 2, 3, 4; Waller Hall Governing Board 2; Alpha Psi Omega 2, 3, 4, Secretary 4; Sigma Alpha Eta 1, 2, 3; College Choraleers 1; Dramatic Club 1, 2, 3, 4, Secretary 2; SEAP 3, 4; Poetry Club 2, 3, Secretary 2, 3, SCA 2; Social Usage Club 3; *Obiter* Advertising Staff 2, 3.

CATHERINE KELLER

CATHERINE KERL

**FOSTER EARL LEONHARDT, JR.**

Bloomsburg

*Elementary*

*Special Education for the Mentally Retarded*

Day Men's Association 1, 2, 3, 4; Aviation Club 2; SEAP 3, 4.

**ARTHUR BRECHT LESHER**

Berwick

*Elementary*

Bulletin Board Committee Co-Chairman 3; Election Board 4; Day Men's Association 1, 2, 3, 4; Aviation Club 1, 2, 3, Treasurer 2; SEAP 4; Social Usage Club 4; SCA 3.



FOSTER LEONHARDT

ARTHUR LESHER



RAY LEWIS



MARY BELLE LONTZ

RAY WILBUR LEWIS

Mount Union

*Elementary*

Bulletin Board Committee Chairman 3; Election Board 4; Men's Resident Council 1, 2, 3, 4; Aviation Club 2, 3; SEAP 4; Maroon and Gold Band 1, 2, 3, 4; SCA 3.

MARY BELLE FERTIG LONTZ

Milton

*Elementary*

Day Women's Association 3, 4; Waller Hall Association 1, 2; "B" Club 1, 2, 3, 4; College Choraleers 1, 2, Librarian 1, 2; SEAP 4; Maroon and Gold Band 1, 2, 3, 4, Librarian 1, 2, 3, 4.

CHARLES C. LOUGHERY

Horsham

*Elementary*

Day Men's Association 4; Men's Resident Council 1, 2, 3; Business Education Club 1; SEAP 3, 4; SCA 1; Varsity Club 1, 2, 3, 4; Track 1, 2, 3, 4, Co-Captain 3, 4; Senior Committee Co-Chairman.

SAUNDRA JEAN McBRIDE

Williamsport

*Elementary*

Social Recreation Committee 2, 3; Customs Committee 2; Pep Committee 1, 2, 3; Freshman Class Advisor 3; Waller Hall Association 1, 2, 3, 4; Athenaeum Club 2; College Choraleers 1; SEAP 3, 4; SCA 1; Basketball Tournament Committee 1, 2, 3; Cheerleader 1, 2, 3; Cheerleader Captain 3; *Pilot* Editorial Staff 2; *Maroon and Gold News* Staff 2, 3; *Obiter* Editorial Board 3, Associate Editor 4; Senior Committee Co-Chairman; *Who's Who Among Students in American Universities and Colleges*.



CHARLES LOUGHERY



SAUNDRA McBRIDE

EUNICE LUCILLE MILLER

Selinsgrove

*Elementary*

Waller Hall Association 1, 2, 3, 4; Sigma Alpha Eta 2; SEAP 3, 4; Maroon and Gold Band 1, 2, 3, 4; SCA 1, 2, 3, 4; Basketball Tournament Committee 3.

GEORGE JAMES MILLER

Northampton

*Elementary*

Hospitality Committee 2, 3; Men's Resident Council 1, 2, 3, 4; SEAP 3, 4; Science Club 2; Basketball Tournament Committee 2; *Maroon and Gold Business Staff* 1, 2.



EUNICE MILLER



GEORGE MILLER



**M. DONALD MILLER**

Plymouth  
Elementary

Day Men's Association 1, 2, 3, 4; Aviation Club 1, 2, 3, 4; Men's Intramurals 1, 2, 3, 4; Basketball 1, 2; SEAP 3, 4.

**JULIA ANNE MOORE**

Athens  
Elementary

Election Board 4; Hospitality Committee 2; Waller Hall Association 1, 2, 3, 4; College Choraleers 1, 2, 3; SEAP 3, 4; *Maroon and Gold* Feature Writer 3, 4; *Obiter* Advertising Staff 3, 4.



M. DONALD MILLER

JULIA MOORE

**DEANNA MAE MORGAN**

Jim Thorpe  
Elementary

Social Recreation Committee Chairman 3; Hospitality Committee 1, 2; Waller Hall Association 1, 2, 3, 4; Alpha Psi Omega 2, 3, 4; "B" Club 3; Business Education Club 1; College Choraleers 1, 2, 3, 4, Secretary 3, Vice President 4; Dramatic Club 1, 2, 3, 4, Secretary 2, Vice President 3; SEAP 3, 4; Poetry Club 2; Collegiate Chorus 1, 2, 3, 4; Women's Chorus 1; *Pilot* Associate Editor 2; *Olympian* Advertising Staff 1; *Maroon and Gold* Typing Staff 1, 2; *Obiter* Advertising Staff 1, Editorial Staff 2; *Who's Who Among Students in American Universities and Colleges*.

**PHILIP HAYDEN MOSIER**

Shavertown  
Elementary

Assembly Committee 4; Day Men's Association 1, 2; Men's Resident Council 3, 4; Phi Sigma Pi 2, 3, 4, President 3; Sigma Alpha Eta 1; Aviation Club 1, 2, 3, President 2; SEAP 3, 4; *Obiter* Advertising Manager 4; Senior Committee Co-Chairman; Basketball Tournament Committee 1, 2, 3, 4.



DEANNA MORGAN

PHILIP MOSIER

**(MRS.) JOANNE LOUISE GORDNER MOSTELLER**

Millville  
Elementary

Day Women's Association 1, 2, 3, 4; Athenaeum Club 1, 2; SEAP 3, 4; Science Club 1.

**FRANCES L. MYERS**

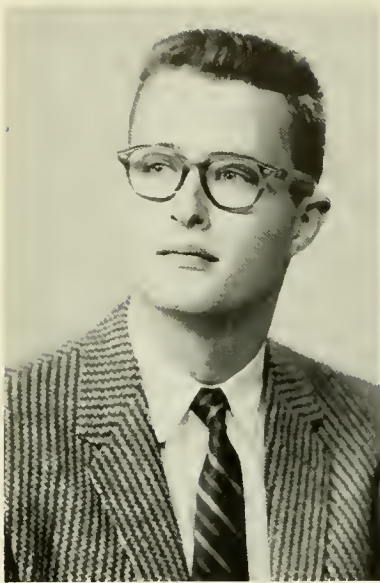
Nicholson  
Elementary  
*Special Education for the Mentally Retarded*

Waller Hall Association 1, 2, 3, 4; Dramatic Club 1, 2, 3, 4; SEAP 3, 4; SCA 1, 2; *Obiter* Typing Staff 1.

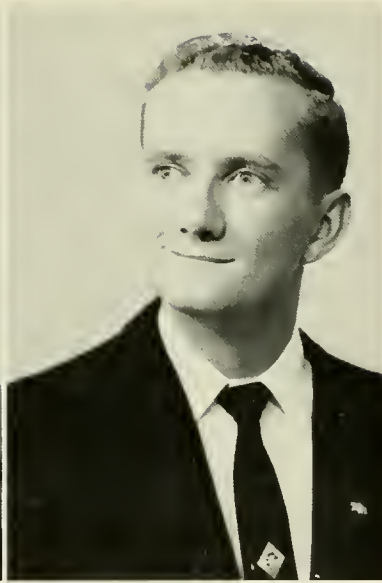


JOANNE MOSTELLER

FRANCES MYERS



LUTHER NATTER



BERNARD O'BRIEN

LUTHER C. NATTER

Spring City

Elementary

CGA Vice President 3, President 4; College Council Member 3, 4; Hospitality Committee 2; Student Government Conference 3; Men's Resident Council 1, 2, 3, 4; Phi Sigma Pi 3, 4; College Choraleers 2; SEAP 3, 4; Maroon and Gold Band 2; *Maroon and Gold News Staff* 3, 4; *Obiter Editorial Staff* 4; *Who's Who Among Students in American Universities and Colleges.*

BERNARD EDWARD O'BRIEN

Locust Gap

Elementary

Phi Sigma Pi 3, 4; Athenaeum Club 1; Aviation Club 3, 4, President 4; SEAP 4.

(MRS.) DOLORES MARIE PLUMMER

Bloomsburg

Elementary

Day Women's Association 1, 2, 3, 4; Kappa Delta Pi 3, 4; Athenaeum Club 1, 2; SEAP 3, 4.

LYNNE LAVERNE RAKER

Numidia

Elementary

Day Women's Association 2, 3, 4; Day Women's Official Board 4; Athenaeum Club 2; SEAP 3, 4.



DOLORES PLUMMER



LYNNE RAKER



ARNOLD REDBORD



THEODORE REZNICK

ARNOLD OWEN REDBORD

East Orange, New Jersey

Elementary

*Special Education for the Mentally Retarded*

Furniture Committee Chairman 3; Dining Room Committee 1; Pep Committee 3; Social Recreation Committee 3; Men's Resident Council 1, 2, 3, 4; Executive Committee 3, 4; Sigma Alpha Eta 1, 2; SEAP 3, 4; *Maroon and Gold Business Manager* 3; *Maroon and Gold News Staff* 1, 2, 3; *Obiter Advertising Staff* 1.

THEODORE FRANCIS REZNICK

Hazleton

Elementary

Aviation Club 2; College Choraleers 1; SEAP 3, 4.



**NANCY Y. RIDALL**

Shickshinny

*Elementary*

Hospitality Committee 2; Waller Hall Association 1, 2, 3, 4; Waller Hall Governing Board 4, Head Counsellor 3; Sigma Alpha Eta 2; College Choraleers 1, 2; SEAP 3, 4; Maroon and Gold Band 1, 2, 3, 4; SCA 1, 2, 3; Fashion Show Usher 1, 2, 3; Basketball Tournament Committee 3; *Maroon and Gold* Distribution 2.

**SARAH BELLE RIDGWAY**

Catawissa

*Elementary*

*Special Education for the Mentally Retarded*

College Council Member 3; Awards Committee Chairman 2, 3; Day Women's Association 1, 2, 3, 4, Treasurer 2, President 3, Official Board 1, 2, 3; Sigma Alpha Eta 3; SEAP 4; *Who's Who Among Students in American Universities and Colleges*.



NANCY RIDALL



SARAH RIDGWAY



PATRICIA RINDGEN



MARY ROBB

**PATRICIA ANN RINDGEN**

West Pittston

*Elementary*

Hospitality Committee 3; Waller Hall Association 2, 3, 4; Athenaeum Club 2, 3, 4; Aviation Club 2; SEAP 3, 4; *Obiter* Advertising Staff 2.

**MARY ELLEN ROBB**

Danville

*Elementary*

Waller Hall Association 1, 2, 3, 4; Athenaeum Club 1, 2, 3; College Choraleers 1, 3; SEAP 3, 4.

**DIANNE M. SAMOIS**

Harrisburg

*Elementary*

Day Women's Association 1, 2, 3, 4; Aviation Club 2; College Choraleers 1; SEAP 4; Maroon and Gold Band 1, 2.

**LAMAR HAROLD SAUSSER**

Ashland

*Elementary*

Day Men's Association 2, 3, 4; Men's Resident Council 1; Aviation Club 1, 2; SEAP 3, 4; Basketball Tournament Committee 2; Men's Intramurals 1.



DIANNE SAMOIS



LAMAR SAUSSER



CONNIE SCHRAEDER



LYNDA SCOTT

CONNIE JEAN SCHRAEDER

Alden Station

*Elementary*

Waller Hall Association 1, 2, 3, 4; Athenaeum Club 3; College Choraleers 1; Dramatic Club 2; SEAP 3, 4; *Maroon and Gold* Typing Staff 1.

LYNDA LEE SCOTT

Scranton

*Elementary*

Waller Hall Association 1, 2, 3, 4; Athenaeum Club 1, 2, 3, 4; SEAP 3, 4.

LEONORA ALBERTA SERGOTT

Alden Station

*Elementary*

Waller Hall Association 1, 2, 3, 4; Sigma Alpha Eta 2; Athenaeum Club 1, 2; College Choraleers 1; SEAP 3, 4.

CAROL LOUISE SHAFER

Bloomsburg

*Elementary*

Day Women's Association 1, 2, 3, 4; Athenaeum Club 1, 2, 3, Secretary 3; Science Club 1.



LEONORA SERGOTT



CAROL SHAFER



LOUISE SHEPPERSON



ELLEN SHIFFER

(MRS.) LOUISE MARLENE

SHEPPERSON

Danville

*Elementary*

Day Women's Association 1, 2, 3, 4; Aviation Club 1.

ELLEN DIANE SHIFFER

Pittston

*Elementary*

Waller Hall Association 2, 3, 4; Athenaeum Club 3; SEAP 3, 4; *Obiter* Senior Picture Committee 2.



FRANCES ANN SNAVELY

Hershey

Elementary

Graduate of Hershey Junior College; Waller Hall Association 3, 4; College Choraleers 3; SEAP 3, 4; *Obiter* Editorial Staff 3, 4.

RACHEL ANN SNAVELY

Hershey

Elementary

Graduate of Hershey Junior College; Waller Hall Association 3, 4; College Choraleers 3; SEAP 3, 4; *Obiter* Editorial Staff 3, 4.



FRANCES SNAVELY

RACHEL SNAVELY

JANICE LEORA SOUDER

Bloomsburg

Elementary

Day Women's Association 1, 2, 3, 4; Sigma Alpha Eta 2, 3, 4; SEAP 3, 4; *Maroon and Gold* Typing Staff I.

NANCY L. SUWALSKI

Wilkes-Barre

Elementary

Class Secretary 1, 2; CGA Secretary 3; College Council Member 3; Student Government Conference 3; Waller Hall Association 1, 2, 3, 4; Kappa Delta Pi 3, 4; College Choraleers 1; SEAP 3, 4; Basketball Tournament Committee 3; *Maroon and Gold* News Staff 1, Editorial Board 2, 3; *Obiter* Distribution Staff 2, Editorial Board 3, Editor 4; Senior Committee Chairman; *Who's Who Among Students in American Universities and Colleges*.



JANICE SOUDER

NANCY SUWALSKI

MARCIA EILEEN SWEPENHISER

Berwick

Elementary

Day Women's Association 3, 4; College Choraleers 3.

AUGUSTUS RANDOLPH TIBBS

Jenkintown

Elementary

Men's Resident Council 1, 2, 3, 4; College Choraleers 1, 2, 3, 4; SEAP 3, 4; SCA 1, 2, 3, 4; Varsity Club 4; Football 1; Track 1, 3, 4; Men's Intramurals 1, 3, 4.



MARCIA SWEPENHISER

AUGUSTUS TIBBS



JOANNE TRETTEL



JOHN VALANIA

JOANNE MARY TRETTEL

Hazleton

*Elementary*

Hospitality Committee 2; Furniture Committee 3, 4; Waller Hall Association 1, 2, 3, 4; Athenaeum Club 2, 4, Vice President 3, 4; College Choraleers 1, 2; SEAP 3, 4; Social Usage Club 2, Secretary-Treasurer 2; *Maroon and Gold* News Staff 2, 3, 4; *Obiter* Typing Staff 4.

JOHN ANTHONY VALANIA, JR.

Alden Station

*Elementary*

*Special Education for the Mentally Retarded*

Assembly Committee 4; Day Men's Association 1, 2; Men's Resident Council 3, 4, Executive Council 3, 4; Phi Sigma Pi 3, 4; Sigma Alpha Eta 1, 2; Aviation Club 1, 2, 3; College Choraleers 2; SEAP 3, 4, President 4; Varsity Club 3, 4; Basketball Tournament Committee 2, 3; Baseball 2, 3, 4; *Obiter* Advertising Staff 4.

THOMAS JACOB VAXMONSKY

Pittston

*Elementary*

Men's Resident Council 1, 2, 3; Aviation Club 1, 2; SEAP 4; Varsity Club 2, 3, 4; Football 1, 2, 3, 4; Track 2, 3, 4.

GEORGE N. VIVACQUA

Girardville

*Elementary*

Pep Committee 1; Men's Resident Council 1, 2, 3, 4, Officer 3; Athenaeum Club 2; Aviation Club 1; Dramatic Club 1; SEAP 3; Wrestling 2, 3.



THOMAS VAXMONSKY



GEORGE VIVACQUA

EDWARD ROBERT WATTS

Jenkintown

*Elementary*

*Special Education for the Mentally Retarded*

Men's Resident Council 1, 2, 3, 4; SEAP 3, 4; Varsity Club 1, 2, 3, 4; Basketball Tournament Committee 2, 3, 4; Basketball 1; Football 1, 2, 3, 4; Track 1, 2, 3, 4; Wrestling Manager 3; Men's Intramurals 2, 3, 4.

MARGARET ANN WILKINSON

Mount Carmel

*Elementary*

*Special Education for the Mentally Retarded*

Waller Hall Association 1, 2, 3, 4; Alpha Psi Omega 2, 3, 4, Secretary 3; Athenaeum Club 3; College Choraleers 1; Dramatic Club 1, 2, 3, 4; SEAP 3, 4; SCA 1, 2, 3, 4; *Maroon and Gold* News Staff 1, 2, 3, 4; *Obiter* Advertising Staff 3, 4.



EDWARD WATTS



MARGARET WILKINSON



**JOHN CYNWIL WILLIAMS**

West Pittston

*Elementary*

Men's Resident Council 1, 2, 3, 4; Phi Sigma Pi 3, 4; Aviation Club 2; SEAP 3, 4.

**JOAN K. YOHN**

Selinsgrove

*Elementary*

Class Representative 2; College Council Member 2; Waller Hall Association 1, 2, 3, 4; Sigma Alpha Eta 1, 2; "B" Club 3, 4; College Choraleers 1, 2; SEAP 3, 4; Social Usage Club 1, 2; Fashion Show Usher 2, 3.



JOHN WILLIAMS



JOAN YOHN



BERNARD ZABOROWSKI



WALTER ZEGARSKI

**BERNARD RICHARD ZABOROWSKI**

Wanamie

*Elementary*

Men's Resident Council 1, 2, 3, 4; Varsity Club 1, 2, 3; Football 1, 2, 3; *Obiter* Advertising Staff 4.

**WALTER J. ZEGARSKI**

Plains

*Elementary, Speech Correction*

Men's Resident Council 1, 2, 3, 4; Sigma Alpha Eta 1, 2, 3, 4; SEAP 4; Football 1, 2; Men's Intramurals 1, 4.



# Secondary Education

Student teacher James Johnson illustrates a problem in Math at the Bloomsburg High School.



Thomas Zelinske, student teacher, employs visual aids in teaching geography.



Allen Nuss explains an intricate problem in Algebra I at Bloomsburg High School.



Douglas Boden points out one of the trouble spots in Asia to a group of High School students.





**ALLEN FRANKLIN ACOR**

Bloomsburg

*Science*

Day Men's Association 1, 2, 3, 4; Dramatic Club 1.

**PAUL H. ANDERSON**

Cheltenham

*English, Social Studies*

Class Treasurer 2; CGA Treasurer 3; College Council Member 3; College Crier 3; Assembly Committee 3; Awards Committee 2, 3; Hospitality Committee 1, 2; Pep Committee 2; Men's Resident Council 1, 2, 3, 4; Phi Sigma Pi 2, 3, 4, Pledge Master 3, 4; Chaplain 4; College Choraleers 1; SEAP 3, 4; Varsity Club 2, 3, 4; Basketball Tournament Committee 1, 2, 3, 4; Basketball 1, 2, 3, 4; Track 1, 2; Men's Intramurals 1, 2, 3, 4; Maroon and Gold GI Mail Editor 2, News Staff 4; Senior Committee Co-Chairman; *Who's Who Among Students in American Universities and Colleges.*



ALLEN ACOR



PAUL ANDERSON



DALE BANGS



MARLENE BARBARETTE

**DALE WILSON BANGS**

Millville

*Social Studies, Geography*

Day Men's Association 2, 3, 4, Treasurer 4; Gamma Theta Upsilon 3, 4, Corresponding Secretary 4; Aviation Club 3.

**MARLENE MARIE BARBARETTE**

Hazleton

*Mathematics, History*

Waller Hall Association 1, 2, 3, 4; Athenaeum Club 1, 2; College Choraleers 1; SEAP 3, 4.

**MICHAEL BIAS**

McAdoo

*Speech Correction, Social Science*

Day Men's Association 2, 3; Men's Resident Council 3, 4; Sigma Alpha Eta 2, 3, 4; Athenaeum Club 2; SEAP 3, 4; Science Club 2.

**DALE EUGENE BIEVER**

Harrisburg

*Social Studies, Geography*

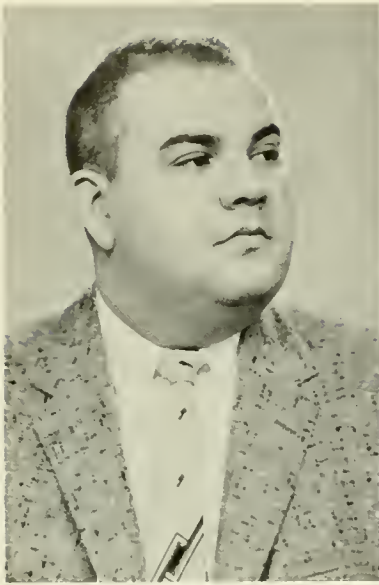
Hospitality Committee 2; Men's Resident Council 1, 2, 3, 4; Alpha Psi Omega 3, 4; Gamma Theta Upsilon 3, 4, President 4; Aviation Club 1; Dramatic Club 2, 3, 4, Treasurer 3, Vice President 4; SEAP 3, 4; Maroon and Gold Band 1, 2, 3, 4, Treasurer 4; Science Club 2; Senior Committee Co-Chairman.



MICHAEL BIAS



DALE BIEVER



CHARLES BILDER



JACOB BLUGES

**CHARLES RAYMOND BILDER**

Mount Carmel

*History, General Science*

Day Men's Association 1, 2, 3, 4; Athenaeum Club 1, 2, 3; SEAP 4; Science Club 1, 2, 3, 4.

**JACOB PETER BLUGES**

Shamokin

*Science*

Day Men's Association 1, 2, 3, 4; Sigma Alpha Eta 3, 4; Aviation Club 1; SEAP 3, 4; Science Club 2, 3, 4.

**DOUGLAS YOUNG BODEN**

Northumberland

*Social Studies, Geography*

Day Men's Association 1, 2; Men's Resident Council 3, 4; SEAP 3, 4; SCA 1, 2, 3, 4, President 2; Senior Committee Co-Chairman.

**EDWARD JOHN BRAYNOCK**

Wilkes-Barre

*English, Spanish, History*

Class Historian 4; Hospitality Committee 3, 4; Men's Resident Council 1, 2, 3, 4; Kappa Delta Pi 3, 4, President 4; Phi Sigma Pi 4; College Choraleers 1, 2; Dramatic Club 2; SEAP 3, 4; *Pilot* Associate Editor 4; *Olympian* Contributor 3; *Maroon and Gold* News Staff 3, 4; *Obiter* Editorial Board 4.



DOUGLAS BODEN



EDWARD BRAYNOCK



GEORGE CAMPBELL



GEORGE CHAUMP

**GEORGE CAMPBELL**

Berwick

*Social Science, Geography*

Day Men's Association 1, 2, 3, 4; Gamma Theta Upsilon 3, 4, Vice President 4; SEAP 4; Basketball 2, 3, 4; Men's Intramurals 3, 4.

**GEORGE ROBERT CHAUMP**

West Pittston

*Mathematics, Science*

Class President 3; College Council Member 3; Fire Drill Committee Chairman 3; Men's Resident Council 1, 2, 3, 4; SEAP 4; Varsity Club 1, 2, 3, 4; Basketball Tournament Committee 1, 2, 3, 4; Football 1, 2, 3, 4; Wrestling 1, 2, 4; Men's Intramurals 2, 3; Senior Committee Co-Chairman.



**RICHARD LAWRENCE CONNOLLEY**

Danville

*Social Studies, English*

Class Treasurer 1; CGA Assistant Treasurer 2; College Council Member 2; Social Recreation Committee 1, 2, 3; Awards Committee 1, 2, 3; Men's Resident Council 1, 2, 3, 4; Athenaeum Club 4; College Choraleers 1; SEAP 4; *Maroon and Gold* News Staff 3.



RICHARD CONNOLLEY



GEORGE COTTERALL

**GEORGE FLOYD COTTERALL**

Trevorton

*Physical Science, Mathematics*

Day Men's Association 1, 2, 3, 4; Aviation Club 1, 2; SEAP 4; Science Club 2, 3.



JAMES CUFF



JOHN DANKO

**JAMES JOSEPH CUFF**

Shenandoah

*History, Geography*

Day Men's Association 1, 2, 3, 4; Aviation Club 1; SEAP 3, 4.

**JOHN EDWARD DANKO**

Sheppton

*Social Studies, Biological Science*

Day Men's Association 1, 2, 3, 4; Aviation Club 2; SEAP 4.

**PATRICK DAVID DENOY**

Mocanaqua

*History, Geography*

Day Men's Association 1, 2, 3, 4; Aviation Club 1; Varsity Club 3; Baseball 1, 2, 3, 4.

**JOSEPH DEROSE**

Peckville

*Speech Correction, Social Studies*

Day Men's Association 1, 2, 3, 4; Sigma Alpha Eta 3, 4, Program Chairman 3; College Choraleers 1; Dramatic Club 2; SEAP 4; *Maroon and Gold* Advertising Staff 3.



PATRICK DENOY



JOSEPH DEROSE



FRANKLIN DUNCAN



FRED EVANS

FRANKLIN MONROE DUNCAN

Montgomery

*Science, Social Studies*

Day Men's Association 1, 2, 3, 4; Science Club 1, 2, 3; Football 1.

FRED RAYMOND EVANS

Wilkes-Barre

*Social Studies, Geography*

Day Men's Association 1, 2; Men's Resident Council 3, 4; Gamma Theta Upsilon 3, 4; Kappa Delta Pi 3, 4; Athenaeum Club 1, 2; Aviation Club 1; SEAP 3, 4.

ALICE JUNE FAUX

Falls

*Mathematics, French*

Waller Hall Association 1, 2, 3, 4; Alpha Psi Omega 3, 4; College Choraleers 1, 2; Dramatic Club 1, 2, 3, 4; SEAP 4; SCA 1, 2.

WILMOT EVAN FELLOWS

Frackville

*Social Studies, Geography*

Day Men's Association 2, 3, 4; Men's Resident Council 1; Gamma Theta Upsilon 3; Aviation Club 1; SEAP 4.



ALICE FAUX



WILMOT FELLOWS



JAMES FOLTZ



NORMAN FOWLER

JAMES LEWIS FOLTZ

Sunbury

*Social Studies, Geography*

Day Men's Association 1, 2, 3, 4; Gamma Theta Upsilon 2, 3, 4; SEAP 4; Science Club 2; Men's Intramurals 2.

NORMAN L. FOWLER

Middletown

*Social Studies, Geography*

Day Men's Association 3, 4; Gamma Theta Upsilon 3, 4.



**DALE RONALD FOX**

Sunbury  
*Science, History*

Customs Committee 3; Day Men's Association 1, 2, 3; Men's Resident Council 4; Aviation Club 1; SEAP 4; Science Club 1, 2, 3, 4, Vice President 2, 3.

**WILLIAM ROBERT FREED**

Pottsville  
*Mathematics, Social Studies*

Men's Resident Council 1, 2, 3, 4; College Choraleers 1, 2; SEAP 4; Varsity Club 2, 3, 4; Basketball Tournament 2; Baseball 1, 2, 3; Men's Intramurals 1, 2, 3, 4.



DALE FOX



WILLIAM FREED



MARY GALATHA



JONAH GOOBIC

**MARY E. GALATHA**

Hazleton  
*English, French*

College Council Member 4; Dining Room Committee 4; Waller Hall Association 1, 2, 3, 4; Kappa Delta Pi 3, 4, Historian 4; SEAP 3, 4; Maroon and Gold Band 1; Poetry Club 4; Basketball Tournament Committee 3; *Co-Pilot* Editorial Board 3; *Olympian* Editorial Board 3; *Obiter* Editorial Board 4; *Maroon and Gold News Staff* 2, Assistant Editor 3, Editor 4; *Who's Who Among Students in American Universities and Colleges*.

**JONAH GOOBIC**

Hudson  
*English, Social Studies*

Fire Drill Committee 3; Election Board 1, 2; Men's Resident Council 1, 2, 3, 4; College Choraleers 1; SEAP 4; Varsity Club 2, 3, 4; Baseball 1, 2, 3, 4; Football 1, 2, 3, 4.

**JAMES MICHAEL GUSTAVE**

Plains  
*English, Spanish*

Class Vice President 2, 3; Bulletin Board Committee Chairman 2; Men's Resident Council 1, 2, 3, 4; Phi Sigma Pi 2, 3, 4; SEAP 4; Varsity Club 1, 2, 3, 4; Fashion Show 2, 3; Basketball Tournament Committee 1, 2; Basketball 1, 2, 3, 4; Track 1, 2, 3, 4; Men's Intramurals 1, 2, 3, 4.

**ALBERT LAWSON HELLER**

Allentown  
*Mathematics, Spanish*

Day Men's Association 3, 4; Men's Resident Council 1, 2; College Choraleers 1, 2, 3; SEAP 3, 4; Varsity Club 4; Track 1, 2, 3; Men's Intramurals 1, 2, 3, 4.



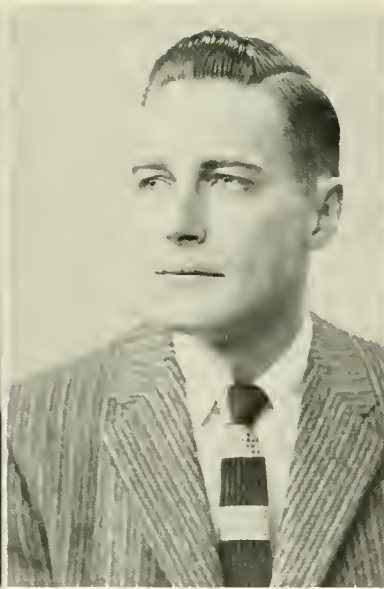
JAMES GUSTAVE



ALBERT HELLER



GEORGE HERMAN



CARL HILSCHER

GEORGE T. HERMAN

Sunbury

*Speech Correction*

*Special Education for the Mentally Retarded.*

Day Men's Association 1, 2, 3, 4; Sigma Alpha Eta 2, 3, 4, Treasurer 3, President 4; Athenaeum Club 1; Dramatic Club 1, 2.

CARL V. HILSCHER

Bloomsburg

*Social Studies, English*

Day Men's Association 1, 2, 3, 4; Aviation Club 3; SEAP 4; *Olympian* Advertising Staff 4.

WILLIAM THOMAS HUGHES

W. Hazleton

*Science*

Aviation Club 3 4; Maroon and Gold Band 1; Science Club 4; Track 1, 3, 4; Men's Intramurals 1, 3, 4.

WALTER HUTZ

Wilkes-Barre

*Science, Mathematics*

Pep Committee Chairman 4; Election Committee 3; Dining Room Committee 3, 4; Men's Resident Council 1, 2, 3, 4, Secretary 3; Phi Sigma Pi 2, 3, 4, Sergeant-at-Arms 3, Vice President 4; Aviation Club 1; SEAP 3, 4, Treasurer 4; Science Club 2, 3, Treasurer 3; SCA 2; Basketball Tournament Committee 1, 2, 3, 4, Assistant Co-ordinator 2; Student Director 3; Track 1.



WILLIAM HUGHES



WALTER HUTZ



PAUL IRZINSKI



CHARLES JESSOP  
70

PAUL VALENTINE IRZINSKI

Wilkes-Barre

*Speech Correction, Social Studies*

Day Men's Association 4; Men's Resident Council 1, 2, 3; Sigma Alpha Eta 1, 2, 3, 4; Aviation Club 1; Dramatic Club 1; SEAP 4.

CHARLES ROBERT JESSOP, JR.

Peckville

*Science, Social Studies, English*

Graduate of Keystone Junior College; Men's Resident Council 3, 4; Kappa Delta Pi 4, Treasurer 4; Athenaeum Club 3; College Choraleers 3; SEAP 4.



**JOHN FRANKLIN JESSOP**

Peckville

*Science, Social Studies*

Graduate of Keystone Junior College; Men's Resident Council 3, 4; Athenaeum Club 3; SEAP 4.

**JAMES EDWARD JOHNSON**

Rock Glen

*Science, Mathematics*

Day Men's Association 2, 3, 4; College Choraleers 1; Science Club 2, 3, 4.



JOHN JESSOP



JAMES JOHNSON



HELEN KERSTETTER



NANCY KLOTZ

**(MRS.) HELEN KERSTETTER**

Mt. Carmel

*Biology, English*

Day Women's Association 1, 2, 3, 4; Athenaeum Club 1, 2; SEAP 4; Science Club 1, 2, 3, Program Chairman 1.

**NANCY JEAN KLOTZ**

Bethlehem

*Social Studies, Geography*

Hospitality Committee 2; Customs Committee 3; Waller Hall Association 1, 2, 3, 4; SEAP 4; SCA 1; Women's Chorus 1; Senior Committee Co-Chairman.

**RICHARD PAUL KRESSLER**

Allentown

*Mathematics, Social Studies*

Day Men's Association 3, 4; Men's Resident Council 1, 2; Aviation Club 1, 2, 3; College Choraleers 1, 2; SEAP 4; SCA 1, 2; Track 1, 2, 3, 4; Men's Intramurals 1, 2, 3.

**(MRS.) SUZANNE EMILY LOUGHERY**

Horsham

*Social Studies, English*

Pep Committee 2; Waller Hall Association 1, 2; Athenaeum Club 1; Maroon and Gold Band 1; Fashion Show 1, 2; Hostess of Senior Ball.



RICHARD KRESSLER



SUZANNE LOUGHERY



ERNEST LUNDY



GARY LYNCH

**ERNEST EUGENE LUNDY**

Catawissa

*English, French*

Day Men's Association 1, 2, 3, 4; Kappa Delta Pi 4; Athenaeum Club 2, 3; Science Club 1.

**GARY P. LYNCH**

Athens

*Social Studies, Geography*

Day Men's Association 1, 2; Men's Resident Council 3, 4; Athenaeum Club 1; Aviation Club 1, 2; SEAP 3, 4; Men's Intramurals 1, 2, 3, 4; *Olympian* Advertising Staff 4.

**MICHAEL JAMES MARCINKO**

Fern Glen

*Social Studies, Geography*

Day Men's Association 1; Men's Resident Council 2, 3, 4; Gamma Theta Upsilon 2, 3, 4, Recording Secretary 3; Kappa Delta Pi 3, 4; Phi Sigma Pi 3, 4; Athenaeum Club 3; Aviation Club 2, 3; SCA 1, 2; Science Club 1, 2; Basketball Tournament Committee 3; Men's Intramurals 1, 2, 3.

**JANE CECILIA MARTINI**

Shamokin

*English, Social Studies*

Hospitality Committee 4; Waller Hall Association 1, 2, 3, 4; Athenaeum 2, 3, 4, President 4; "B" Club 2, 3, 4, Treasurer 4; SEAP 3, 4; *Maroon and Gold* Circulator 3.



MICHAEL MARCINKO



JANE MARTINI



MARIE MARTZ



JOSEPH MAZESKI

**(MRS.) MARIE BADDICK MARTZ**

Oneida

*Social Studies, Geography*

Day Women's Association 2, 3, 4; Waller Hall Association 1; Athenaeum Club 1, 2; *Maroon and Gold* Band 4; Science Club 2.

**JOSEPH WILLIAM MAZESKI**

Phoenixville

*English, Social Studies*

Athenaeum Club 1; Aviation Club 2; *Olympian* Business Manager 4.



**BRUCE EDWARD MILLER**

Muncy

*Biological Science, Geography*

Day Men's Association 1, 2, 3, 4; Gamma Theta Upsilon 3, 4, Treasurer 4; Science Club 1, 2, 3, 4, President 3.

**SAMUEL J. MITCHELL**

Bloomsburg

*Social Studies, Geography*

Day Men's Association 1, 2, 3, 4; SEAP 4.



BRUCE MILLER



SAMUEL MITCHELL



JOSEPH MOLITORIS



PATRICK NEARY

**JOSEPH MARTIN MOLITORIS**

Mocanaqua

*Social Science, Geography*

Day Men's Association 2, 3, 4; Aviation Club 1, 3; SEAP 4.

**PATRICK WILLIAM NEARY**

Shamokin

*Science, Social Studies*

Day Men's Association 1, 2, 3, 4; Science Club 2, 3.

**ALLEN ULYSSES NUSS**

Pottsville

*Mathematics, Physical Science*

Social Recreation Committee 2, 3; Customs Committee 2; Men's Resident Council 1, 2, 3, 4; Phi Sigma Pi 3, 4; College Choraleers 1, 2, 3, 4, President 4; SEAP 4; Maroon and Gold Band 1; State Collegiate Chorus 2, 3, 4; Track 1, 2, 3, 4; Men's Intramurals 1, 2, 3, 4; Varsity Club 1, 2, 3, 4; Wrestling 1.

**GEORGE WILLIAM O'CONNELL**

Drexel Hill

*Social Studies, Geography*

Varsity Club 3, 4; Wrestling 3, 4; Men's Resident Council 1, 2, 3, 4; Pep Committee 4; SEAP 4.



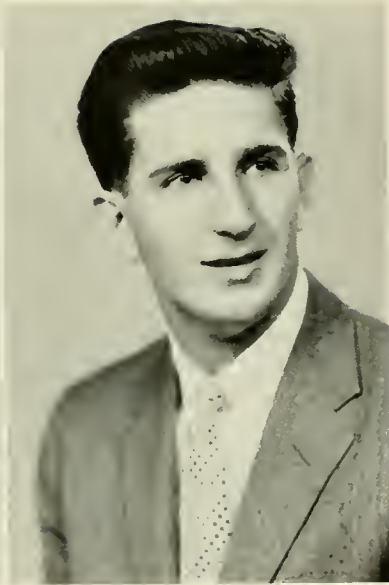
73 ALLEN NUSS



GEORGE O'CONNELL



CHARLES ORNER



JOHN OUSTRICH

**CHARLES M. ORNER**

Gowen City

*Social Studies, Geography*

College Council Member 4; Day Men's Association 1, 2, 3, 4, President 4; Athenaeum Club 1, 2; Aviation Club 1; Baseball Assistant Coach 2.

**JOHN AUGUST OUSTRICH**

Taylor

*Social Studies, Geography*

Men's Resident Council 1, 2, 3, 4; Gamma Theta Upsilon 2, 3, 4; Aviation Club 1; SEAP 4; Varsity Club 2, 3, 4; Baseball 1, 2, 3, 4; Football 1, 2, 3, 4; Fire Drill Committee 3.

**KENNETH HARRY PADEN**

Nescopeck

*Science, Mathematics*

Day Men's Association 1, 2, 3, 4; Aviation Club 1; Science Club 1, 2, 4; SEAP 4.

**GEORGE DONALD PARSELL**

Orangeville

*Social Studies, Geography*

Day Men's Association 1, 2, 3, 4; Aviation Club 2, 3; Varsity Club 4; Baseball 3, 4.



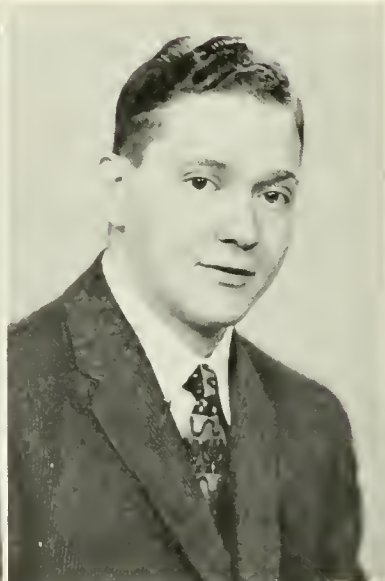
KENNETH PADEN



GEORGE PARSELL



JOHN PLEVYAK



ROBERT POLLER

**JOHN G. PLEVYAK**

Beach Haven

*Science*

Day Men's Association 1, 2, 3, 4; Athenaeum Club 1, 2; Science Club 1, 2, President 1.

**ROBERT JACK POLLER**

Scranton

*English, Social Studies*

Men's Resident Council 1, 2, 3, 4; Athenaeum Club 4; Dramatic Club 3, 4; Poetry Club 3; SCA 1, 2; Social Usage Club 1; Maroon and Gold News Staff 1, 2.



**FRANK RICHARD PRUSCH, JR.**

Duryea

Science

Men's Resident Council 1, 2, 3, 4; SEAP 4; Varsity Club 2, 3, 4; Basketball Tournament Committee 1, 2, 3, 4; Football 1, 2, 3, 4; Wrestling 1, 2, 3, 4; *Obiter* Editorial Staff 3.

**CHARLES SOMMERS PUCKEY**

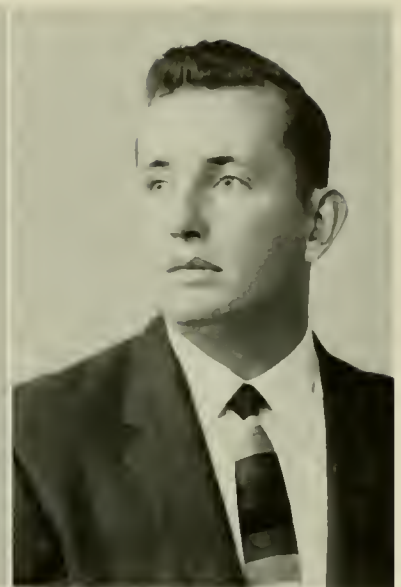
Nuangola

*Speech and Hearing, Social Studies*

Men's Resident Council 1, 2, 3, 4; Phi Sigma Pi 4; Sigma Alpha Eta 3, 4; Aviation Club 2; SEAP 3, 4; Varsity Club 1, 2, 3, 4, President 3; Baseball 2, 3; Football 1, 3, 4, Student Coach 3, 4; Basketball Tournament Committee 3; Senior Committee Co-Chairman.



FRANK PRUSCH



CHARLES PUCKEY



JOSEPH PURCELL



MAE ROMIG

**JOSEPH EDWARD PURCELL**

Centralia

*Social Studies, Geography*

Day Men's Association 1, 2, 3, 4; Aviation Club 2, 3; SEAP 4; Science Club 1; Men's Intramurals 1.

**MAE IRENE ROMIG**

McClure

*English, Social Studies*

Waller Hall Association 1, 2, 3, 4; College Choraleers 1; Dramatic Club 1, 2; Poetry Club 2, 3, President 3; *Co-Pilot* Staff Member 2; *Olympian* Editor 3.

**(MRS.) ANNETTE WILLIAMS ROUSH**

Wilkes-Barre

*Spanish, English, Social Studies*

Class Representative 4; College Council Member 4; Dining Room Committee 3; Pep Committee 4; Day Women's Association 1; Waller Hall Association 2, 3, 4; Kappa Delta Pi 3, 4; College Choraleers 1, 2; SEAP 3, 4; Poetry Club 4; SCA 4; Science Club 1, 2, Secretary 1, 2; Cheerleader 2, 3; *Olympian* Editorial Board 3, Contributor 3, 4; *Maroon and Gold* Feature Editor 3, News Staff 2, 3, 4; *Obiter* Editorial Staff 3; Hostess of Senior Ball; *Who's Who Among Students in American Universities and Colleges*.

**JOSEPH J. RUANE**

Shamokin

*Social Studies, Biological Science*

Day Men's Association; Science Club 1; SEAP 4.



75 ANNETTE ROUSH



JOSEPH RUANE



JOHN SALATA



SARAH SANDS

**JOHN ANTHONY SALATA**

Lattimer Mines

*Mathematics, Science*

Day Men's Association 2, 3, 4; Athenaeum Club 2; Aviation Club 3; SEAP 4; Men's Intramurals 3.

**SARAH ANN SANDS**

Orangeville

*English, French*

Day Women's Association 1, 2, 3, 4; Business Education Club 1; SEAP 4; *Maroon and Gold News Staff* 1, 2, 3.

**RONALD EDWARD SCHEUREN**

Lavelle

*Physical and Biological Sciences*

Day Men's Association 1, 2; Men's Resident Council 3, 4; Athenaeum Club 1, 2; Dramatic Club 1, 2, 3, 4; SCA 1; Science Club 2, 3, 4; Basketball Tournament Committee 2, 3.

**RAY R. SEITZ**

Danville

*Speech Correction, Special Education*

College Council Member 3; Day Men's Association 1, 2, 3, 4; Sigma Alpha Eta 2, 3, 4; Public Relations Chairman 3; SEAP 3; *Maroon and Gold* 3, 4; Editorial Board 3, Editor-in-Chief 4.



RONALD SCHEUREN



RAY SEITZ



THOMAS SHEEHAN



WILLIAM SHELLENBERGER

**THOMAS JAMES SHEEHAN, JR.**

South Williamsport

*Mathematics, Physical Science*

Varsity Club 4; Baseball 3, 4, Manager; Men's Intramurals 3, 4; Men's Resident Council 1, 2, 3, 4.

**WILLIAM CARL SHELLENBERGER**

Bloomsburg

*Biological and Physical Sciences*

Day Men's Association 1, 2.



**WILLIAM CHARLES SHERIDAN**

Kennett Square

*Social Studies, French*

College Council Member 3; Pep Committee Chairman 3; Hospitality Committee Chairman 2; Customs Committee 2; Assembly Committee 2, 3; Pep Committee 2, 3; Men's Resident Council 1, 2, 3, 4, President 3; Alpha Psi Omega 3, 4; Phi Sigma Pi 2, 3, 4; Aviation Club 1; Dramatic Club 1, 2, 3, 4, President 3; SEAP 3, 4; Sports Statistician 2, 3, 4; *Maroon and Gold News Staff* 2, 3, 4; *Obiter Show Director* 3; Senior Committee Co-Chairman.

**CARL EDWARD SHIVELY**

Sunbury

*Science, Social Studies*

Class Representative 1; College Council Member 1; Men's Resident Council 1, 2, 3, 4; SEAP 4; Science Club 1, 2, 3, 4.



WILLIAM SHERIDAN



CARL SHIVELY



BERNARD SHULTZ



ROBERT SHUTTLESWORTH

**BERNARD EUGENE SHULTZ**

Bloomsburg

*Mathematics, Science*

Day Men's Association 1, 2, 3, 4; SEAP 4; Science Club 2, 3, 4, Vice President 4.

**ROBERT FRANKLIN SHUTTLESWORTH**

Ashland

*Social Studies, Geography*

Day Men's Association 3, 4; Men's Resident Council 1, 2; SEAP 4; Varsity Club 1, 2; Basketball 1, 2.

**ROBERT EUGENE SMITH**

Berwick

*Science*

Day Men's Association 1, 2, 3, 4; Kappa Delta Pi 3, 4, Vice President 4; Aviation Club 3; College Choraleers 1; Science Club 2.

**DONALD IRVIN STEINHART**

Shamokin

*Social Studies, Geography*

Day Men's Association 1, 2, 3, 4; Aviation Club 1, 2, 3; SEAP 4.



77 ROBERT SMITH



DONALD STEINHART



EDWARD STUBITS



FRED TEMPLIN

EDWARD STEPHEN STUBITS

Northampton

*Social Studies, Geography*

Day Men's Association 1, 2; Men's Resident Council 3, 4; Gamma Theta Upsilon 3, 4; Athenaeum Club 1; Aviation Club 1, 2, 3; SEAP 3, 4; Men's Intramurals 1, 2, 3, 4; *Olympian* Assistant Business Manager 4.

FRED MARLIN TEMPLIN

Dallas

*Mathematics, Science*

Day Men's Association 1, 2, 3, 4; College Choraleers 1; SEAP 4; Science Club 1, 2, 3.

JOSEPH THIROWAY

Atlas

*General Science*

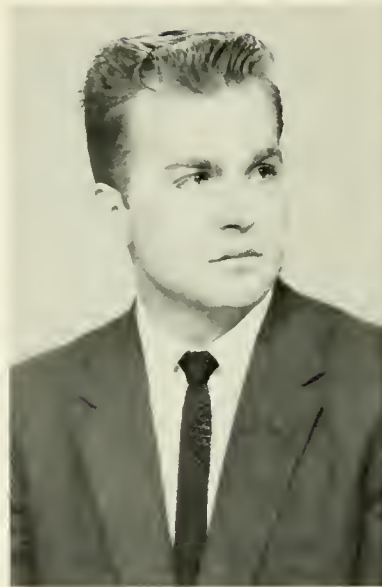
Day Men's Association 1, 2, 3, 4; SEAP 4; Science Club 2, 3, 4.

WILLIAM ELLSWORTH TRIVELPIECE

Berwick

*Social Science, Geography*

Day Men's Association 1, 2, 3, 4; Athenaeum Club 1, 2; Aviation Club 4; SEAP 4; Men's Intramurals 1, 2.



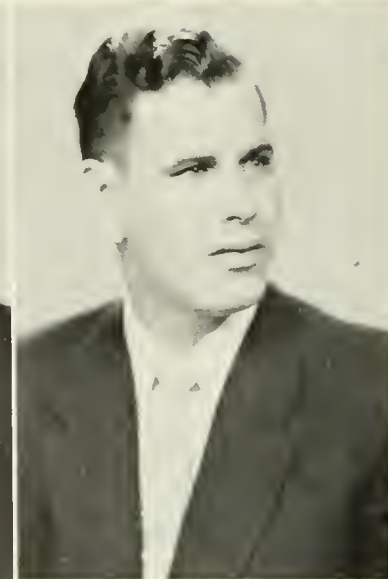
JOSEPH THIROWAY



WILLIAM TRIVELPIECE



PAUL TROUTMAN



RAYMOND TRUMP

PAUL F. TROUTMAN

Shamokin

*Social Studies, Geography*

Day Men's Association 1, 2, 3, 4; Aviation Club 1; SEAP 4.

RAYMOND LEO TRUMP

Bloomsburg

*Science, Geography*

Day Men's Association 1, 2, 3, 4; Aviation Club 1, 2; College Choraleers 2; SEAP 3, 4; Men's Intramurals 4; *Obiter* Art Editor 4; Advertising Staff 4; Senior Committee Chairman; Science Club 1, 2, 3, 4, President 4.





DONALD WALLACE



WILLIAM WELDON



GERALD WOOD



G. RICHARD WYNN

**DONALD EDMUND WALLACE**  
Wilkes-Barre

*Speech Correction, Social Studies*  
Men's Resident Council 2, 3, 4; Sigma  
Alpha Eta 2, 3, 4, Vice President 3;  
Athenaeum Club 2; SEAP 3, 4.

**WILLIAM JOSEPH WELDON**  
Kulpmont

*Social Studies, English*  
Day Men's Association 1, 2, 3, 4; Avia-  
tion Club 2, 3; SEAP 4; Men's Intra-  
murals 2, 3.

**GERALD BOYD WOOD**  
Mechanicsburg

*Social Studies, Geography*  
Men's Resident Council 1, 2, 3, 4; Phi  
Sigma Pi 2, 3, 4, Vice President 3;  
Varsity Club 2, 3, 4; Football 1, 2, 3,  
4; Track 1, 2, 3, 4.

**G. RICHARD WYNN**  
Shamokin

*Social Studies*  
Day Men's Association 1, 2, 3, 4; Kappa

Delta Pi 3, 4; Aviation Club 1; SEAP  
3, 4; Science Club 1, 2, 3.

**LOUIS A. YURECHKO**  
Kelayres

*Science, Social Studies*  
Men's Resident Council 1, 2, 3, 4;  
Athenaeum Club 1; Aviation Club 4;  
Business Education Club 2; SEAP 4;  
SCA 2; Science Club 3.

**ROBERT JOSEPH ZEGLEY**  
Mahanoy City

*Social Studies, English*  
Dining Room Committee 2; Men's Res-  
ident Council 1, 2, 3, 4; Phi Sigma Pi  
2, 3, 4; SEAP 3, 4; Poetry Club 4;  
*Olympian* Advertising Staff 4.

**THOMAS P. ZELINSKE**  
Shamokin

*Speech Correction, Special Education  
for the Mentally Retarded*  
Day Men's Association 1, 2, 3, 4; Sigma  
Alpha Eta 2, 3, 4; SEAP 4; Science  
Club 1; *Maroon and Gold* Circulation  
Editor 3.



LOUIS YURECHKO



ROBERT ZEGLEY



THOMAS ZELINSKE

# Who's Who Among Students in

Recognition by *Who's Who Among Students in American Universities and Colleges* means that the student was, first, officially recommended from the university or college he attends and, then, accepted by the organization. Nominations may be submitted annually by four-year degree-granting institutions. Selection of nominees is conducted by campus committees and usually involves student-faculty-administrative participation. This committee at Bloomsburg consists of the Dean of Instruction, Directors of the three curriculums, Deans of Men and Women, and Coordinator of Guidance and Personnel Services.

Nominating committees are requested to consider the student's scholarship, his leadership and cooperation in educational and extracurricular activities, his general citizenship, and his promise of future usefulness. The committee followed this list of qualifications in choosing the Bloomsburg recipients of this honor.

Each student who becomes a member receives: a certificate of recognition; recognition in the annual publication; and benefits of the Student Placement Service.



PAUL ANDERSON



ELIZABETH BARRON



ROBERTA BOWEN



*American Universities and Colleges*



ROBERT BOYLE



MARGARET BRINSER



MARY GALATHA



MARY GRACE



RAYMOND HARGREAVES

*Who's Who Among Students in*



BETTA HOFFNER



SAUNDRA McBRIDE



DEANNA MORGAN



LUTHER NATTER



SANDRA RAKER



*American Universities and Colleges*



SALLY RIDGWAY



ANNETTE ROUSH



CONSTANTINE SPENTZAS



NANCY SUWALSKI



FRANK VACANTE



## *January Graduates of '58*



Congratulations and the coveted diploma from President Andruss.



Class officers extend best wishes to a member of the graduating class.



The graduates prepare to sing their Alma Mater for the last time.





*Organizations*

# Community Governm College

## FACULTY MEMBERS

Mr. Hoch  
Mr. Blair  
Mrs. Miller  
Mr. Stradtman  
Miss Zinn  
Dr. Herre  
Miss Macdonald  
Miss Hazen  
Dr. Engelhardt  
Dr. Martin



## Officers



IRWIN PARRY  
*Vice President*



LUTHER NATTER  
*President*



JOANNE BECHTEL  
*Secretary*



NORMAN BALCHUNAS  
*Treasurer*



KENNETH WOOD  
*Assistant Treasurer*



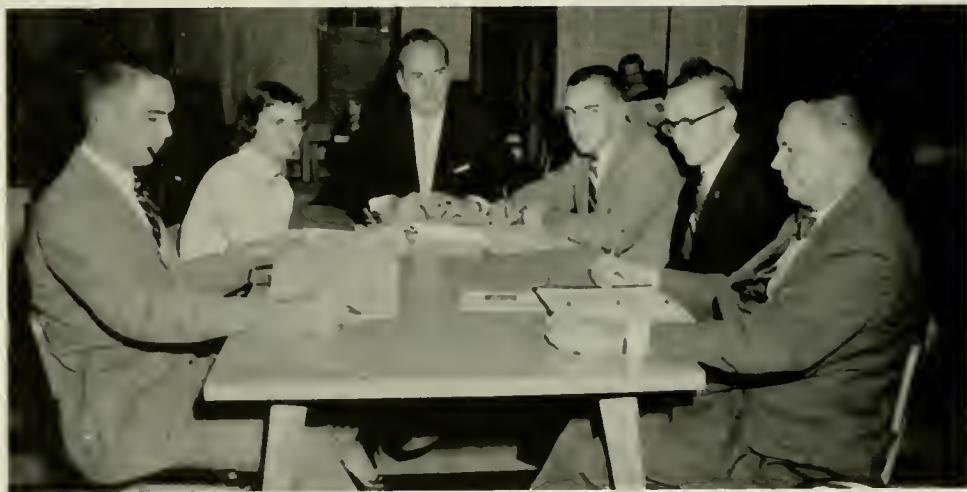
# ent Association Council



## STUDENT REPRESENTATIVES

Ray Hargreaves  
Annette Roush  
Jack Herman  
Kenneth Swatt  
Ruby Roush  
Ronald Romig  
Joseph Zapach  
Trudy Wilcox  
James Peck  
Mary Galatha  
Paul Spahr  
Janice Kunes  
Kay Nearing  
Charles Orner  
Gary Reddig  
Judy Goss  
Richard Rapson

A special committee in Council meets to discuss the proposal for a Student Tribunal.



Bill Kautz receives the gavel he used as president from Lu Natter, this year's CGA president.



Social-Recreation brings two freshmen together.

The CGA Standing Committee assists the officers of CGA in making it into a functioning as well as a policy formulating organization. The chairmen of these committees are appointed by the Vice President of the association for a term of one year and are usually selected because of previous experience in their particular type of committee work. They are responsible to the Vice President for a monthly report on the activities of their individual committees. He, in turn, reports on the progress of each committee at a council meeting of CGA officers and faculty.

A variety of college functions such as freshman customs, class elections, dances, teas, etc., are performed under the supervision of these chairmen.

The standing CGA committees provide an opportunity for all members of the college community to participate in its government.



## CGA COMMITTEE CHAIRMEN

Mary Ann Thornton, *Hospitality Committee*  
Pat Antonio, *Freshman Class Advisor*  
Carl Janetka, *Freshman Class Advisor*  
IRWIN PARRY, VICE PRESIDENT OF CGA  
Norman Balchunas, *Dining Room Committee*  
Beth Sprout, *Awards Committee*  
Paul Spahr, *Election Board*

John Valania, *Assembly Committee*  
Carl DeFebo, *Fire Drill Committee*  
Jack Stinson, *Furniture Committee*  
Joe Pental, *Customs Committee*  
Walter Hutz, *Pep Committee*  
*Absent:*  
Bob Steinruck, *Social Recreation Committee*



# Committees



Aw, you're 'lion.' You don't really want to put that on the tree, Annette.



Whose suitcases are those?



Does anyone have an extra crinoline?



Fisburn and Gallo motivating the top row of the bleachers.



Is this that famous Australian ballot?



CO-PILOT STAFF

Seated: D. Mattocks, Miss Zinn, Advisor; B. Stiff, Editor.  
Standing: T. Julio, B. Hockenberry, L. Ruggieri, N. Hughes,  
K. Wahl.



Becky and Janet contribute friendly conversation to the atmosphere of their prize-winning room.



GOVERNING BOARD OFFICERS

Seated: B. Hockenberry, Social Chairman; J. Kunes, President;  
L. Fisher, Vice President. Standing: B. Deitz, Treasurer; J.  
Locke, Secretary.



The smoker wouldn't that perpetua





GOVERNING BOARD

First row: N. Ridall, J. Locke, L. Fisher, J. Kunes, B. Deitz, B. Hockenberry, J. Heston. Second row: Mrs. Hoke, Mrs. Miller, R. Coulter, P. Fox, N. Hane, B. Stiff, A. Beeson, G. Glahn, S. Schilling, E. Kaminski, Miss Zinn.



seem the same without pinochle game.



The animals rule the roost in Bobbie's and Carol's prize-winning pink and grey room.



Knitting takes precedence three to one.

# Commuting Women



OFFICERS

*First row:* Elaine DiAugustine, Kay Nearing, *President*; Rita Lechner. *Second row:* Betty Derr, Vera Rearick, Robin Folmsbee, Lynn Raker.



Last minute check before class.



Study and relaxation prevail in the Day Women's lounge.



The Day Women's contribution to the West Chester Parade.



# Commuting Men



First come, first served holds true in the commuting men's lounge, too.



There's nothing like conversation to add flavor to the cold cuts or vice versa.



Naps and knowledge seem to go hand in hand.



Integration—Residents and commuters in the Husky Lounge.



A familiar scene in the elevated portion of Husky Lounge.



OFFICERS

Mr. Stradtman, *Advisor*; R. Romig, *Vice President*; I. Parry, *Secretary*; P. Spahr, *President*; D. Fritz, *Treasurer*; Mr. Blair, *Advisor*.



Stan Covington coaxes some "sounds" from the radio in the lobby of North Hall.



Sneak preview of the preparation for that big date.

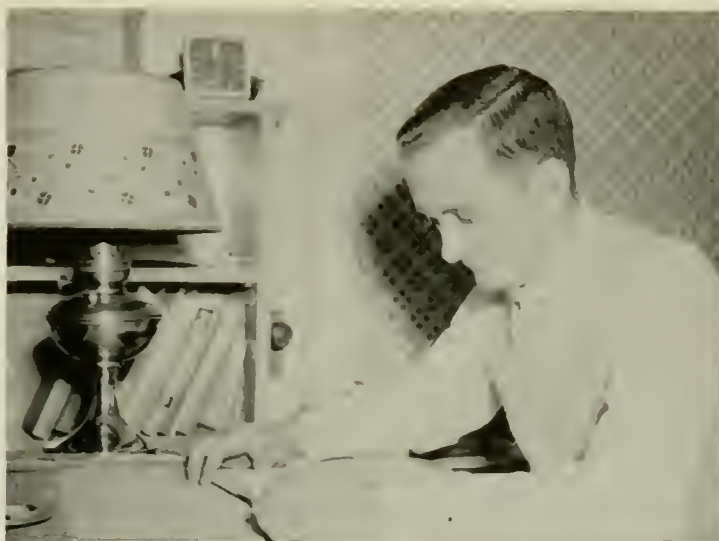


Barney clues the fellas in on the proper attire





Nick Volpetti surveys the scene from his upper bunk penthouse.



Ed O'Brien strives for further knowledge.



Two typically studious men create a good impression for our photographer.



for the trip to and from the shower.



Is it a Wildeat or a "barecat"?

# Athenaeum Club



OFFICERS—Left to right: D. Andrysick, Secretary; E. Morgan, Treasurer; J. Martini, President; Mr. Robert Ulmer, Advisor; S. May, Program Chairman. Absent: J. Trettle, Vice President.

The purpose of the Athenaeum Club is to enable students to become acquainted with, and become appreciative of, all music—classical, semiclassical, and popular. The only requirement for admission to this club is an interest in music.

The club listens to the recordings of famous composers and by discussing the various points of each composition, gains a better understanding of the vast world of music.



Seated, left to right: B. Grochowski, R. Poller, E. Morgan, J. Martini, S. May, D. Andrysick, E. Ramage, Mr. Robert Ulmer, Advisor. Standing: P. Oley, I. Armitage, N. Burrows, J. Ide, M. Moran, A. Vottero, D. Hutchinson, P. Hawk, M. Marvin, P. Biddle.

Seated, left to right: P. Markovci, A. Tooy, R. Moser, M. Wagner, T. Raker, L. Snyder, L. Morlock, N. Hane. Standing: J. Fenstermaker, M. Mattern, C. Dzialdowski, B. Boop, J. Smith, L. John, J. Hughes, S. May, V. Marcavage.





# Aviation Club

The Aviation Club, with the object of stimulating and developing an interest in flying, has had both educational and entertaining programs this past semester.

Among the various programs enjoyed by the club were the showing of an Air Force film, a lecture given by Mr. Brad Sterling, the club's advisor, on the different aspects of flying, and the viewing of several films concerned with the operation of an airplane.

During the weekend of the West Chester game the club received second prize for their contribution to the College Float Parade.

Since the club held two meetings in Carver Hall every month, many activities were planned and carried out for its thirty-five members.

These activities stimulated an active interest in flying for both the men and women of the organization.



OFFICERS—*Seated:* B. O'Brien, *President.* *Standing, left to right:* Mr. William Sterling, *Advisor;* D. Wanat, *Secretary;* S. Stuart, *Vice President;* W. Hughes, *Program Chairman;* D. Nice, *Treasurer.*



*First row, left to right:* L. Yurechko, D. Wanat, H. Rishel, J. Polaschik, R. Senko, R. Graziul, W. Price, P. Taormina, S. Stuart. *Second row:* S. Lumpczyk, N. Nash, D. Nice, R. Helgemo, W. Hughes, P. Brennan, B. Heck, L. Yurgis. *Third row:* D. Straub, J. Brosius, H. George, F. Cole, S. Kish, J. Kessler, K. Parker, H. Rosenberger. *Fourth row:* B. O'Brien, A. Sebastianelli, J. Murray, B. Staronka, F. Aumiller, R. Reisser, W. Frable, R. Pagnotti. *Fifth row:* D. Yerck, J. Pental, J. Sieputoski, K. Angradi, C. Vassia, R. Sugalski, J. Huda, C. Makuch.

# "B" Club



OFFICERS—Seated, left to right: J. Ott, Secretary; Miss Eleanor Wray, Advisor; J. Muir, Vice President. Standing: J. Martini, Treasurer; M. Brinser, President.

The "B" Club is an athletic organization for women which has a dual purpose, to foster a spirit of cooperation and sportsmanship and to create a greater interest in athletics as a means toward recreation and physical development.

It has been the custom of the club to have at least two social events each year to which all women of the college community are invited. An extensive intramural program is sponsored by the club every Monday and Wednesday afternoons.

Membership to the club is open to every college girl who fulfills the requirement of earning one thousand points as specified under the intramural system.



Seated, left to right: M. Brinser, B. Batzel, I. Basso, P. Davies, S. Hoffman. Standing: B. Heck, E. Kovalevich.

Seated, left to right: B. Curry, W. Rundel, M. Thornton, A. Beeson, G. Beers, J. Ott. Standing: P. Fisher, S. Smith, J. Kunes, J. Neff, K. Nearing.





# Poetry Club

The Poetry Club enjoys informal group study of poetry every second and fourth Thursday of each month in the Social Rooms of Science Hall. Various members conduct each meeting in which the poetry of a particular poet is read, studied, and analytically discussed.

One purpose of the club is to enable its members to become better acquainted with the fundamentals of poetry, thereby increasing their enjoyment of creating, reading, and discussing poetic works.

In late November, the club was invited to Bucknell University where they heard a talk on poetry given by John Ciardi, professor of English and poetry editor of the *Saturday Review*.

And in addition to regular meetings, the members were entertained at the home of Dr. and Mrs. Bahlke at an evening session before Christmas where they were served refreshments.



OFFICERS—Left to right: H. Giacomini, *President*; Dr. Harold Bahlke, *Advisor*; M. Walsh, *Vice President*; D. Regan, *Secretary*. Absent: M. Bonenberger, *Treasurer*; R. Folmsbee, *Social Chairman*.



Seated, left to right: M. Fowler, G. Reed, A. Roush, P. Lynch, M. Galatha, R. Folmsbee, M. Walsh, D. Regan, Dr. Harold Bahlke, *Advisor*. Standing: R. Gower, H. Giacomini.



The Business Education Club is an organization of the students of the Business Education Department. The aims of the club are to develop qualities of leadership, to promote interest in the organization of commercial clubs in high schools, to train teachers in the organizing of such clubs, to encourage scholarship through contests, to serve the needs of the Business department, to furnish a means of gaining contact with other schools and associations, to become conversant with modern business methods and systems, to encourage school contact, and to develop promptness and ability to shoulder responsibility.

Throughout this year the club has had outstanding programs. A demonstration was given by a representative of the Bell Telephone System, a mock trial was presented, and a panel of working secretaries gave their views of the business world. Members also cooperated in compiling an annual.

**OFFICERS**—Seated: L. Fisher, *President*. Standing, left to right: J. Long, *Historian*; C. Ryan, *Vice President*; L. Ruggieri, *Treasurer*; Joan Matchulat, *Secretary*; Mr. Walter Rygiel, *Advisor*.





*Education Club*





OFFICERS—Seated, left to right: D. Wanat, Secretary; D. Biever, Vice President; L. Zimmerman, Treasurer. Standing: J. Zapach, President; Mrs. Grace Smith, Advisor.

The "Bloomsburg Players" is organized to help interested students gain more knowledge in the art of drama. Experience is obtained in acting, directing, staging, lighting, make-up, and costuming. Each week a play is given, directed by a student. During these plays, all interested persons can do work on the phase of drama in which their interest lies. The club is open to all students who are desirous of obtaining further knowledge of drama and the dramatic arts.

The activities of the club include workshop plays every week, a major production once a year, and participation in assemblies and other school activities. The club also travels to nearby schools to see plays presented by collegiate dramatic groups.

This year the organization chose to do a play by one of the most controversial authors of our time, Tennessee Williams. The play, "Summer and Smoke" was well received by the college community.



First row, left to right: C. Neos, M. Sofranko, T. Rakus, J. Schor, M. Wagner, T. Raker, L. Morlock, K. Schutt, J. Shirk. Second row: M. Zelenok, P. Fedullo, A. Brumbach, G. Deibert, S. Stetler, G. Glahn, S. Riefenstahl, A. Toocy, M. Barber, B. Seifort, R. Radzai, A. Czepokaitis, E. Moss. Third row: B. Weber, R. Stish, R. Poller, W. Sheridan, R. Scheuren.





Peggy and Doakie demonstrate make-up technique before a weekly production.



Dramatic Club's "Stew the Rams" float rolls down the hill.



First row, left to right: A. Wassel, J. Acresti, R. Moser, M. Downey, J. Bugel, E. Hagerty, K. Kerl, C. Clark, E. Wolchesky. Second row: P. Dunnigan, M. Wilkinson, D. Morgan, P. Fetteroff, M. Kreisher, J. Neff, M. Ardoline, R. Botteon, E. Eyerly, J. Schwatt, P. Deluca, B. Wainwright, B. Staley, M. Shutovich, P. Appel, L. Niehoff. Third row: F. Dyer, W. Gavitt, W. Boyer, F. Buck, D. Loughlin, D. Har-ch, R. Fitz-simmons, S. Haupt.

The Varsity Club is composed of men who have earned a major letter award in any authorized intercollegiate sport.

This club is founded on a basis of athletic ability and has the avowed purpose of advancing ideals of sportsmanship. It meets the needs of men of similar interests by encouraging close relationships and the advancement of intercollegiate athletics between Bloomsburg and its opponents. The club strives to encourage brotherhood, fellowship and scholarship.

The activities of this group are many. They sponsor the annual Varsity Dance at which a Varsity Queen is selected by its members. This year they honored Miss June Locke as their Queen. The club also acts as a hospitality committee for the teams of visiting schools.



OFFICERS—Seated: B. Bottorf, Vice President; J. Schaefer, Secretary; G. Anderson, Treasurer; P. Spahr, President.



First row, left to right: A. Francis, J. Panichello, A. Tibbs, R. Boyle. Second row: Mr. Harold Shelly, Advisor, J. Schaefer, W. Swisher, J. Gustave, J. Snyder, D. Fritz, C. Sweet.





*Seated, left to right: J. Mascioli, J. Chidester, J. Garman, D. Rimple. Standing: A. Heller, E. Levengood, G. Chaump, T. Vaxmonsky, S. Covington, T. Sheehan, W. Freed, S. Elinsky, R. Bottorf.*



*Seated, left to right: G. Anderson, C. DeFebo, J. Goobic, J. Oustrich, F. Prusch, P. Valania. Standing: G. O'Connell, L. Freeland, J. Johnson, M. Shultz, R. Lesko, A. Nuss, J. Pental, K. Wood, G. Wood.*

The College Choraleers is an organization on campus open to both male and female students. Its main purpose is to provide a joyful and purposeful singing group for the enjoyment of the student body and the townspeople. The requirements for admission to this organization are that the student enjoys singing and is able to attend rehearsals.

The activities of the Choraleers are numerous. On November 16th the 120 members presented a musical program on campus at the Eleventh Annual Conference for Teachers and Administrators. This was under the direction of Mrs. Dorothy J. Evans. A Christmas broadcast under the supervision of Mr. Nelson Miller was an outstanding feature of this group. In addition a Spring Concert was presented to the students and sacred concerts were held at various churches. With Pat Fetterolf as accompanist, the Choraleers contributed much to the musical activity on campus.

PAT FETTEROLF, *Accompanist*





# Choraleers



OFFICERS—*Seated:* Mr. Nelson Miller, *Ad-visor*; *Standing:* V. Deibert, *Librarian*; D. Morgan, *Vice President*; A. Nuss, *President*; J. Baylor, *Librarian*; M. Morson, *Treasurer*; J. Ott, *Secretary*.



# Maroon and



Stop the music—Name that tune.

The Maroon and Gold Band, under the direction of Mr. Nelson Miller, constitutes an important phase of campus life. Their support at football games is vital to a Husky victory, and their playing at various other school functions adds a great deal to the affair.

During the school year the band presented a concert in the spring, in mid-winter, on Homecoming Day, May Day, and gave a few public concerts not associated with the college.

Actually the Maroon and Gold Band is two bands in one. The sprightly marching band is on display at football games, pep rallies, and parades, while the concert band, which starts rehearsals immediately after the last football game, presents programs featuring the works of some of our greatest composers from the classical to the modern.

Officers from the past year were: D. Ker, President; R. Davis, Vice President; L. Zimmerman, Secretary; D. Biever, Treasurer; C. Girton, Librarian.



First row, left to right: R. Henry, C. Mazza, J. Finn, E. Sandel. Second row: J. Fry, R. Davis, C. Girton, J. Graver, W. Maurer, R. Wolfe, R. Rapson, H. Howard, F. Buck, J. Vowler, F. Deaner. Third row: D. Biever, D. Barnhart, J. Eberhart, W. Foust, D. Burrell, J. Long, R. Bowen, W. Knepper, C. Coons.



# Gold Band



*First row, left to right: R. Boonie, R. Kitchen, G. Kimmick, L. Myers, G. Higby, S. Kierstead, J. McCarthy, N. Hane, M. Lontz.*



*First row, left to right: B. Batzel, L. Zimmerman, J. Stackhouse, P. Polovitch, E. Drendall, D. Delbo, R. Davis, D. Wenkenbach, L. Knapp, S. Pfister, C. Cribbs, K. Thomas, D. Marcy, K. Carlson. Second row: W. Murray, B. Funk.*

# Majorettes



*Kneeling, left to right: Molly Mattern, Susan Hoffman, Captain, Janet Gross, Pam Fox. Standing: Susan Woods, Jane Reinaker, Helen Davis, Marjorie Ginnick.*



Everyone's in step to lead the Husky followers.

SUSAN HOFFMAN, *Captain*





# Science Club

Members of the student body who are interested in the biological and physical sciences make up one of the most popular clubs on campus.

Programs designed for the interest of its members were presented by the club. Lectures, films, and group presentations offered a variety of topics for discussion.

An annual all-day field trip is held at the end of each college year, at which time the entire club visits some point of scientific interest.

All students, regardless of their chosen field of study, are eligible for membership. All the members gain a better understanding of the maze of scientific miracles that are endlessly entering our lives.



OFFICERS—*Left to right: Dr. Kimber Kuster, Advisor; R. Beaver, Program Chairman; J. Heston, Secretary; R. Trump, President; P. Valania, Treasurer; B. Shultz, Vice President; Dr. Harold Lanterman, Advisor.*



*First row, left to right: R. Trump, Dr. Kimber Kuster, Advisor; J. Heston, K. Wahl, J. Kotch, Dr. Harold Lanterman, Advisor. Second row: P. Valania, R. Beaver, G. Ketner, P. Christoff, D. Snook, R. Scheuren, K. Paden, D. Bingaman, R. Price. Third row: B. Miller, J. Stancato, K. Michael, J. Smaltz, D. Ritzman, D. Musket, R. Zoransky, G. Egli, R. Bowen, R. Paden. Fourth row: R. Hollingshead, Carl Stanit-ki, B. Shultz, M. Sasso, G. Spaid, Conrad Stanit-ki, E. Zarek, W. Neany.*

# Student Education

The S.E.A.P., formerly the Oscar Hugh Bakeless chapter of the Future Teachers of America, is formed to promote professional interests and activities, to develop professional educational standards, and to strengthen teacher-student relationships. The college community profits from the various projects of this chapter.

Perhaps the most outstanding activity proving most beneficial is the tutoring service. Since the organization is composed of juniors and seniors of the three curriculums, these upperclassmen are in a position to tutor students who so desire to be helped.

Their program is designed to meet the needs of students and also aids student teachers too, by holding mock interviews to acquaint them with the procedures involved in securing jobs.



OFFICERS—First row, left to right: W. Hutz, Treasurer; Miss Edna Hazen, Advisor; J. Valania, President; T. Julio, Program Chairman. Second row: Dr. Thomas Martin, Advisor; Dr. Ernest Engelhardt, Advisor; D. Mattocks, Secretary; N. Balchunas, Vice President.





*Association*

*of Pennsylvania*



The purpose of the Student Christian Association is to advance the knowledge of Christian Fellowship on the campus, to create a better understanding of the Bible and to better realize the importance of religion in life.

Each meeting includes prayer and worship. The meeting then may be designed to provide discussion in groups on pertinent topics, listening to speakers, viewing films or the sponsoring of some special service as All-College Vespers or seasonal parties.

The highlight of the SCA throughout the year was its Religion-In-Life Week service. This was a three day affair providing Protestant, Jewish, and Catholic speakers. Discussions provided a time for asking questions.

This year the SCA answered the need of students by undertaking four projects. Members printed their own song book, revised its constitution, made a bibliography of Christian-related books contained in the college library, and printed a pamphlet of organized Bible selections to be used by student teachers as a guide to more effective morning devotions.



OFFICERS—*Left to right:* D. Barnhart, *Vice President*; J. Dreishbach, *Secretary*; F. Goss, *President*; B. Beilharz, *Treasurer*; Mr. Clayton Hinkel, *Advisor*.



*First row, left to right:* J. Bole, M. Wilkinson, A. Roush, D. Wenkenbach, C. Kichline, D. Barnhart, B. Curry, D. Marcy, J. Stackhouse, R. Wasson, R. Henry, F. Scott. *Second row:* L. Gerhart, E. Kline, E. Kern, S. Campbell, R. Helgemo, B. Staley, R. Fatzinger, E. Moss, J. Turner, C. Higby, J. Vorosmarti, M. Schaffroth. *Third row:* C. Aumiller, D. Mattocks, P. Henninger, D. Stroble, A. Zeras, L. Niehoff, C. Eaton, R. Schloyer, D. Nice, W. Criswell, D. Boden, W. Murray. *Fourth row:* A. Waltman, B. Stiff, D. Hutchinson, D. Shuey, M. White, H. Howard, M. Miller, J. Clarke.



# Association



*First row, left to right: B. Beilharz, J. Dreisbach, J. Bailey, P. Golka, B. Ritter, S. Pfister, N. Burrows, P. Crocker. Second row: B. Krapf, J. Moyer, J. Buxton, S. Greider, J. Cagno, D. Delbo, L. Bartlow, N. Wurster. Third row: J. Collins, G. Fullmer, F. Goss, L. Knapp, R. Wolfe, Mr. Clayton Hinkle, Advisor, P. Vaughn.*



Religion-in-Life Week — an inspirational time for all.



*First row, left to right: M. Gunther, P. Heddings, K. Hoffman, B. Marshal, M. Winkleblech, I. Hastie, A. Crandall, L. Morlock, S. Masters, M. Reiner, M. Grim, B. Heck. Second row: J. Murray, M. Tier, L. Taylor, C. Bonham, S. Lynne, C. Carson, M. Keater, J. Davis, L. Reed, D. Snyder, B. Strain, B. Ellis. Third row: C. Greene, J. Schoelkopf, E. Berg, E. Myers, N. Vantuyle, J. Jones, M. Henry, G. Lisella, L. Reigel, D. Stradman, J. Rothermel, M. Redman.*

# Alpha Psi Omega



*Seated, left to right: Pat Antonio, Treasurer; Betty Barron, President; Mrs. Grace Smith, Advisor; Kay Kerl, Secretary.*

Alpha Psi Omega was organized to provide an honor society for those doing a high standard of work in college dramatics, and to secure for them the mutual helpfulness provided by a large national fraternity and to provide leadership in the work of the Bloomsburg Players.

This group is made up of selected students and each student must be in good standing academically. The members work in conjunction with the Dramatic Club.

Among its activities this year were the major "Summer and Smoke," counseling new students, and a trip to New York City where the members observed various Broadway plays. While in New York a tour was made of one of the leading drama schools, The American Theatre Wing.



*Seated, left to right: J. Neff, P. Antonio, K. Kerl, B. Barron. Standing: B. Sheridan, P. Wilkinson, D. Wanat, D. Biever, Mrs. Grace Smith, Advisor.*



# Gamma Theta Upsilon

Gamma Theta Upsilon is a co-educational geography fraternity. This organization was begun for the purpose of advancing the professional study of geography, both as a cultural discipline and as a practical subject for study and investigation. In order to promote the graduate study of geography, a National Loan Fund has been established.

The requirements for entrance into this fraternity are that students must have a geography major or minor, have a high ranking in geography courses and must be at least in their second geography course.

Interesting programs are provided by persons qualified in the field of geography. These programs vary from discussions, lectures and projections to other activities of interest to future geography teachers. Mr. Bruce Adams, also a geography teacher on campus, was made an honorary member of Gamma Theta Upsilon.



OFFICERS—Left to right: B. Miller, Treasurer; G. Campbell, Vice President; J. Smith, Recording Secretary; D. Biever, President; D. Bangs, Corresponding Secretary.



Clockwise: D. Bangs, D. Biever, Conrad Stanitski, Mr. Bruce Adams, Advisor; S. Covington, E. Stubits, C. Barnhart, H. Rosenberger.



First row, left to right: F. Evans, Mr. William Sterling, Advisor; J. Smith, D. Bingaman. Second row: G. Wood, G. Campbell, B. Miller, N. Fowler, J. Foltz, M. Marcinko.

# Kappa Delta Pi



*OFFICERS—Left to right: D. Wanat, Corresponding Secretary; Dr. Nell Maupin, Advisor; E. Braynock, President; R. Smith, Vice President; B. Hoffner, Recording Secretary; M. Galatha, Historian. Absent: C. Jessop, Treasurer.*

Kappa Delta Pi, co-educational honor society in education, encourages high standards and recognizes outstanding contributions to education.

A student must be a Junior, have a general scholastic rating on the Dean's List, and pass a majority vote of the present members before becoming a Kadelplan.

This year's program consisted of a talk by Mrs. Louise Seronsy on the topic "Human Engineering"; the annual banquet held at the Magee Hotel; slides shown by Dr. Maupin, the fraternity sponsor; a debate on Homogeneous Grouping vs Heterogeneous Grouping; a joint meeting with Lock Haven's Kappa Delta Pi Fraternity; a joint meeting with Phi Sigma Pi, the professional education fraternity for men; and the co-sponsorship with the Social Recreation Committee of a Christmas dance.



*Seated, left to right: S. Ridgway, B. Hoffner, I. Rosen, D. Wanat, B. Sprout, S. Raker. Standing: R. Smith, K. Michael, J. Richenderfer, C. Janetka.*



*Seated, left to right: Dr. Nell Maupin, Advisor; D. Plummer, A. Roush, N. Suwalski, M. Galatha, E. Braynock. Standing: F. Evans, F. Vacante, W. Gavitt, M. Marcinko.*



# Sigma Alpha Eta

The Iota Chapter of Sigma Alpha Eta, National Speech and Hearing Fraternity, met in the Social Rooms of Science Hall with the purpose of stimulating interest in the field of speech and hearing.

The major projects of the year included a refreshment stand at the Bloomsburg Fair, and the annual Christmas party for children who come to speech clinic. In November, a field trip to the speech clinic at Geisinger Hospital was taken.

Any student professing an interest in speech may join the fraternity at the Affiliate level. From there he may advance if planning to train in the field and if qualified, to the Associate and then Key levels. Honor members are chosen at the end of the year to recognize Key members outstanding in scholastic and clinical activities.



*Seated, left to right: M. Tier, Corresponding Secretary; G. Herman, President; E. Barron, Recording Secretary. Standing: H. Giacomini, Vice President; Dr. Donald Maietta, Advisor; R. Warcomski, Treasurer.*



# Pi Omega Pi



OFFICERS—Seated, left to right: S. Stuart, *Treasurer*; D. Lezinski, *Historian*; D. Belles, *President*; D. Mattocks, *Secretary*; R. Hargreaves, *Vice President*. Standing: Dr. Thomas Martin, *Advisor*; Mr. Clayton Hinkle, *Advisor*.

Members of Pi Omega Pi are interested in encouraging and creating interest and scholarship in commerce. By this they aid in the civic betterment of the college and promote high ethical standards in business and professional life as well as teach the idea of service as the basis of all worthy enterprise.

The requirements for admission to this fraternity are a second semester sophomore standing, a scholarship rating of 1.8 cumulative, and two semesters of credit in the Business Education Club.

Some of the projects presented during the year consisted of preparing name tags for all business conferences, introducing Future Business Leaders of America Clubs in the area high schools, and bringing the business alumni files up to date. An annual outing was also held by Pi Omega Pi.



First row, left to right: J. Kunes, B. Dietz, B. Rozelle, C. Clark, A. Beeson, S. Raker, F. Vacante.  
Second row: W. Rhoades, K. Swatt, W. Delbaugh, C. Fahringer, G. Renn, G. Tressler, C. Unger, R. Harris, S. Swider, W. Gavitt, G. Donmoyer, R. Rosinski.



# Phi Sigma Pi

Phi Sigma Pi is a professional educational fraternity for men in teacher-training institutions, founded upon a basis of superior scholarship and with the avowed purpose of advancing educational ideals. It exists to meet the needs of close fellowship and social intercourse among men of like ideals, interested in the same end and striving for a higher social expression.

Men eligible for membership must be students of college work in residence, who are enrolled in a regular prescribed curriculum, and whose scholarship is of superior rank. They must possess a scholarship rating of 1.5 the semester previous to initiation with a 1.5 cumulative rating.

The Iota Chapter of Bloomsburg sponsors an annual Battle of the Classes, held during the second semester. The fraternity sweetheart was Bobbie Creamer. A jazz concert was also one of the year's highlights.



OFFICERS—Seated, left to right: Mr. Russell Schleicher, *Advisor*; J. Butz, *President*; W. Hutz, *Vice President*. Standing: C. Spentzas, *Historian*; R. Hargreaves, *Treasurer*; N. Balchunas, *Sergeant-at-Arms*; P. Anderson, *Chaplain*; G. Donmoyer, *Secretary*.

Seated, left to right: E. Farrow, S. Swider, I. Parry, L. Kruk, E. Braynock. Second row: D. Coffman, K. Swatt, R. Wynn, J. Peck, J. Nagle, W. Hutz. Third row: L. Fisher, G. Donmoyer, D. Belles, J. Butz, L. Natter, N. Balchunas.



Seated, left to right: J. Andrysick, W. Norton, K. Swatt, C. Puckey, Mr. Russell Schleicher, *Advisor*. Second row: R. Gower, B. Zegley, C. Spentzas, R. Corrigan, P. Mosier, J. Valania, E. O'Brien, J. Hartzel, M. Marcinko, P. Valania. Third row: J. Herman, J. Gustave, W. Sheridan, R. Boyle, A. Nuss, J. Snyder, J. Williams, R. Romig, O. Fine, G. Wood, C. Janetka, R. Hargreaves, P. Anderson.



Monsieur Swatt approves



Leonardo de Nagle



Dashing and debonair



Master painters at work



*D  
o  
i  
n  
g  
s*



Maybe just a little more detail.



Yes, Charlie, but think how happy the children will be.



Why our campus is so clean.



Blind man's bluff, Pi Omega Pi style.



LIBRARY STAFF—*Seated:* S. Kish, E. Tarr, J. Aufer, M. Huttenstine. *Standing:* M. Morson, M. Dushanko, N. Ruloff, C. Eaton, J. Moyer, Mrs. MacNeal.

## The Library

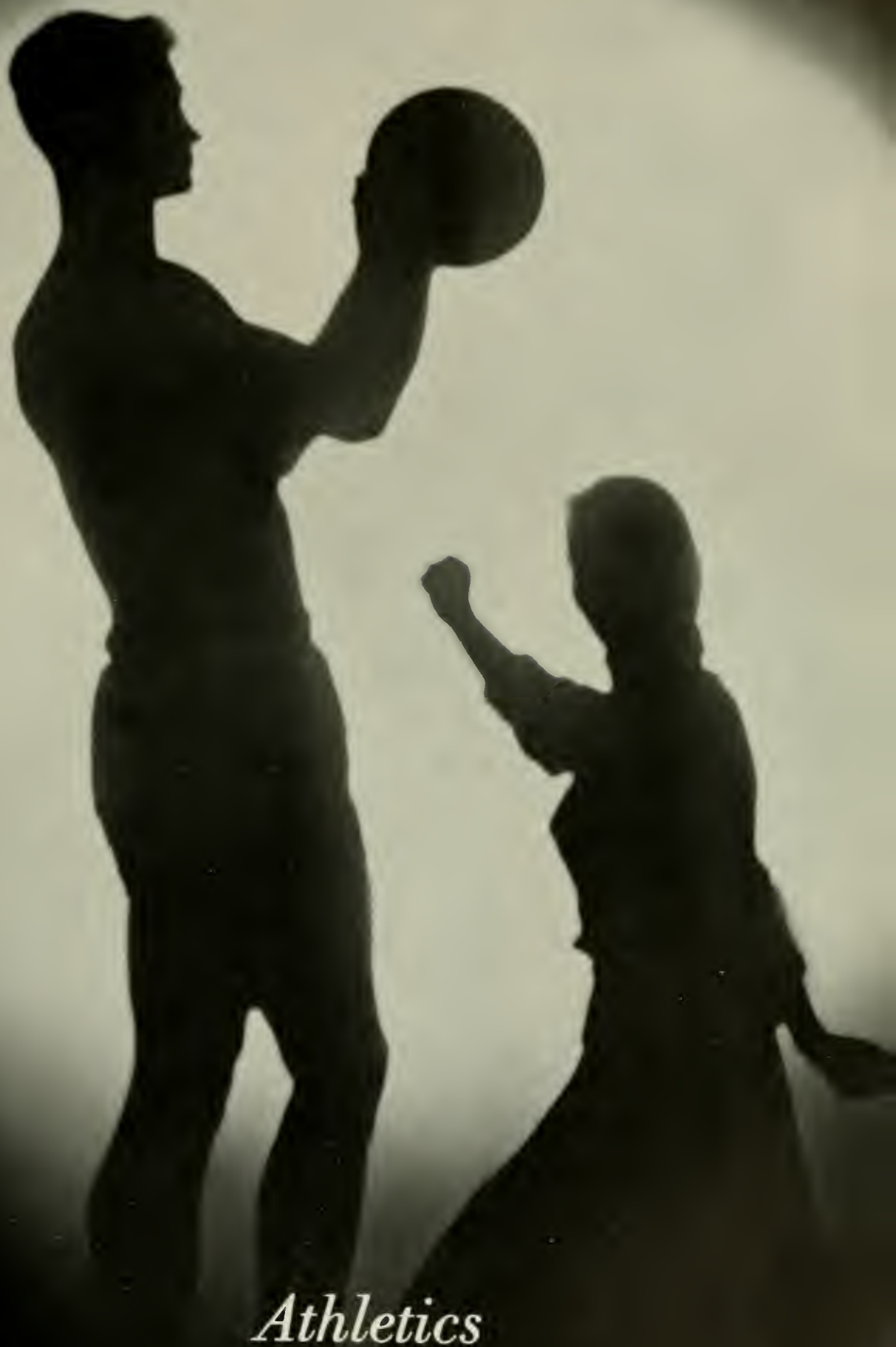


You better look that word up in the dictionary!



Looks impressive, anyway





*Athletics*

# Football



JONAH GOOBIC



JOHN OUSTRICH



"CHICK" DEFEBO



GEORGE CHAUMP





*In 1957*



FRANK PRUSCH



TOM VAXMONSKY



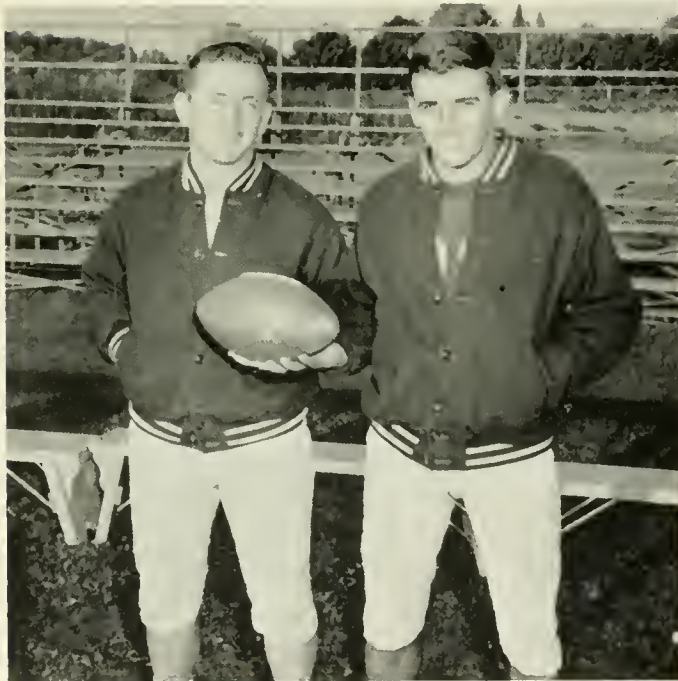
ED WATTS



GERALD WOOD



The coaching staff includes: Al Francis, Mr. Houk, Mr. Blair, Mr. Shelly and Charlie Puckey.



Charlie Puckey and Al Francis.

This year, for the first time in many years, the Husky team came out on the short end of the win-loss column, winning two and losing five. However, this belies the strength of our gridiron team. They lost two games by only one touchdown and another by one extra point. Under their new head coach, Walter Blair, the Huskies made a fine appearance for their

Bloomsburg	-----	6
Bloomsburg	-----	0
Bloomsburg	-----	12
Bloomsburg	-----	33
Bloomsburg	-----	19
Bloomsburg	-----	26
Bloomsburg	-----	7



Fighting Huskies





... and *this* is a helmet ...

first season under his tutorage. The flu bug and a few key injuries also kept our season from becoming outstanding. The crowning glory came, however, when we almost upset heavily favored West Chester. This game proved what our team could do when the odds were against them. The Kings College game was cancelled because of illness.

Lock Haven S.T.C. ....	13
Delaware S.T.C. ....	13
Cortland S.T.C. ....	42
Mansfield S.T.C. ....	6
Shippensburg S.T.C. ....	20
California S.T.C. ....	12
West Chester S.T.C. ....	13



Roongo and buddies.



The (plunge-over the line) men.



Make 'em work, coach



What *do* they talk about?



Shades of the Roaring Twenties!



Don't kill it, Fritz

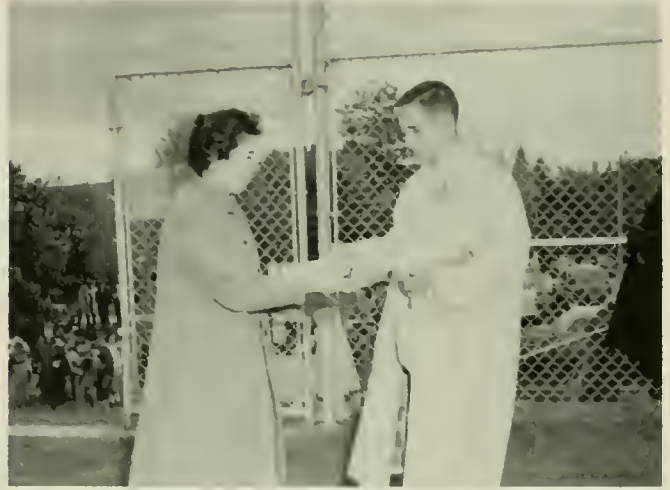




Get him!



Hard workin' Lamar—



That's the best way to spend money, Dee



"Put me down, boys—I was only joshing!"



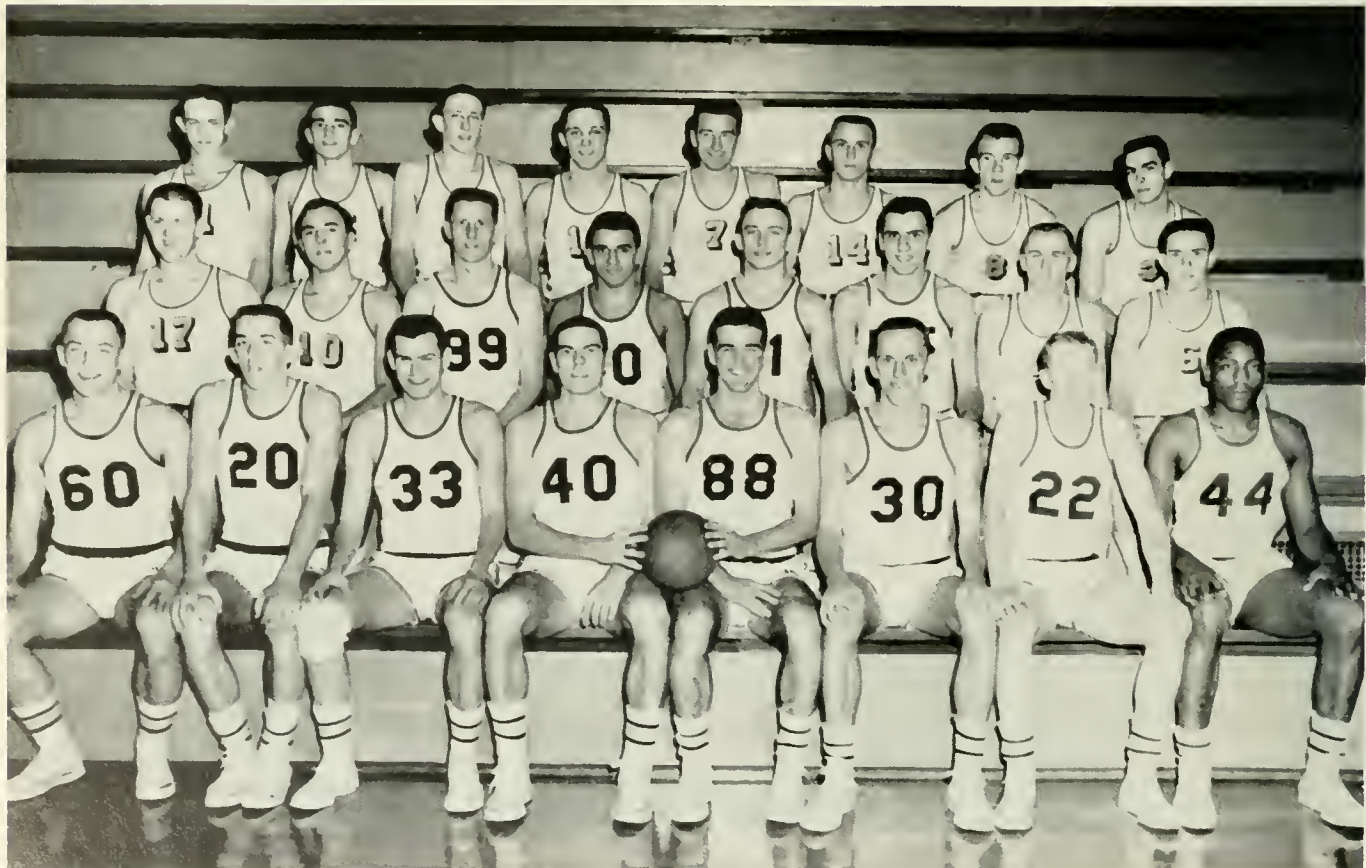
Coaches Hilgar and Shelly

Coach Shelly and his impressive squad gave us another year of exciting basketball of which the team and the student body can be proud.

The season started slowly, but after losing the first two games we were on our way to excitement and many victories. No team was too fast or too big for the Husky five.

From the first day of practice, the Huskies showed great prospects for the year. The first two games of the season were rather disappointing, but the Huskies ended the season with a fine record of which the coach and student body were proud.

## *Basketball*







BOB BOYLE



JIM GUSTAVE



Former All-Suburbanites Become Managers



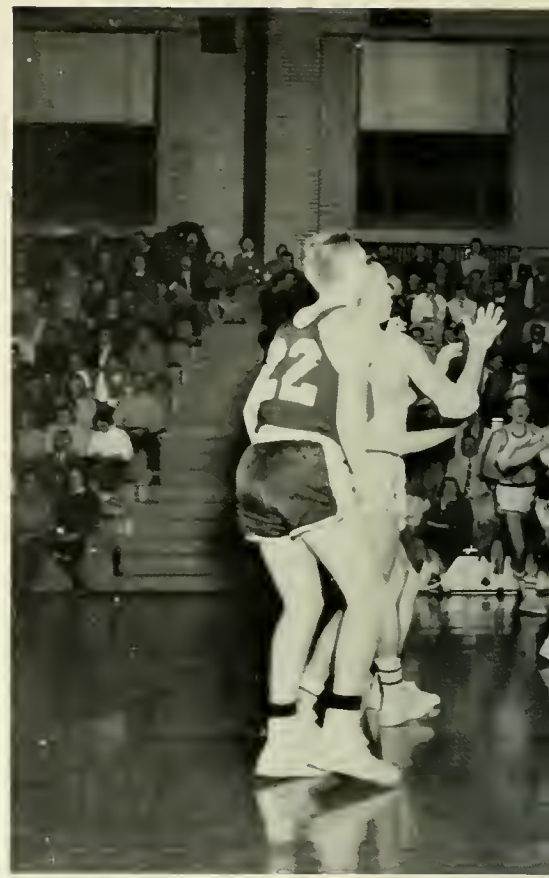
JOHN SCHAEFER



JIM SNYDER



Manager Nagle dutifully attends senior Jim Gustave



Two points!



Shutovich rebounds for the Huskies.



Our turn at the foul line.





A Husky hits for two.



Mass confusion



Refreshments at half-time.

# Wrestling



COACH RUSSELL HOUK

Wrestling, our newest sport on campus, is fast growing to be the most popular of all sports. The team showed great ability and know-how in the fundamentals of wrestling from the first practice session. They moved to the first victory of the season by defeating Shippensburg.

Later, even though the Huskies were not on the winning side of the ledger against powerful Millersville and Lock Haven, the grapplers showed terrific potential. Mr. Russell Houk, their coach, was pleased with the way in which the boys handled themselves against the experienced teams from East Stroudsburg, Lincoln University and West Chester State Teachers College.

The team entered the annual Wilkes College Wrestling Tournament and everyone was pleased with the fine showing they made. Another instance of their growing ability was shown at the State Teachers College Wrestling Tournament held at Lock Haven State Teachers College.







GEORGE O'CONNELL



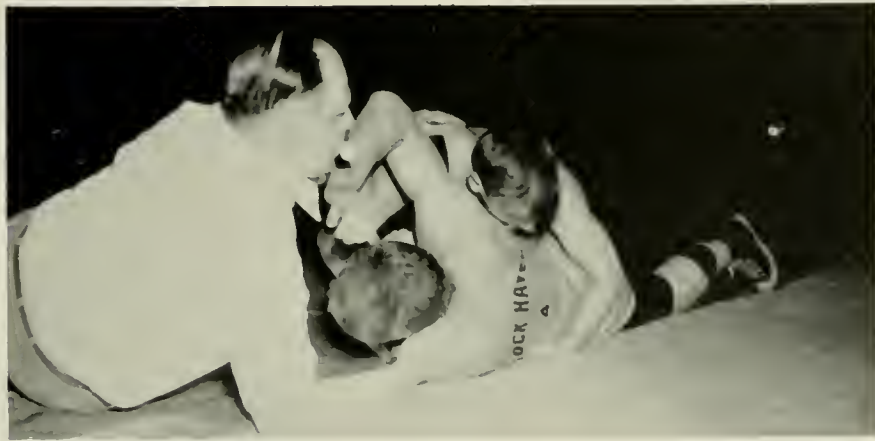
Pete and Chad before the Lock Haven match.



FRANK PRUSCH



Seconds later—a pin.



Stop blowing the whistle in my ear.

# ... Grappling in Centennial



Garman reverses the strategy as his opponent tries for a take-down.



Bill Stevenson escorts his opponent off the mats.



Rohm tries for a take-down.



A Husky grappler proves the end is near.



Bloomburg's Garman applies a pinning combination to his opponent.





Coach Wagner gives friendly words of advice.

## Baseball - 1957

The baseball team, under the capable coaching of E. Paul Wagner of the faculty, enjoyed another successful season of baseball at Bloomsburg.

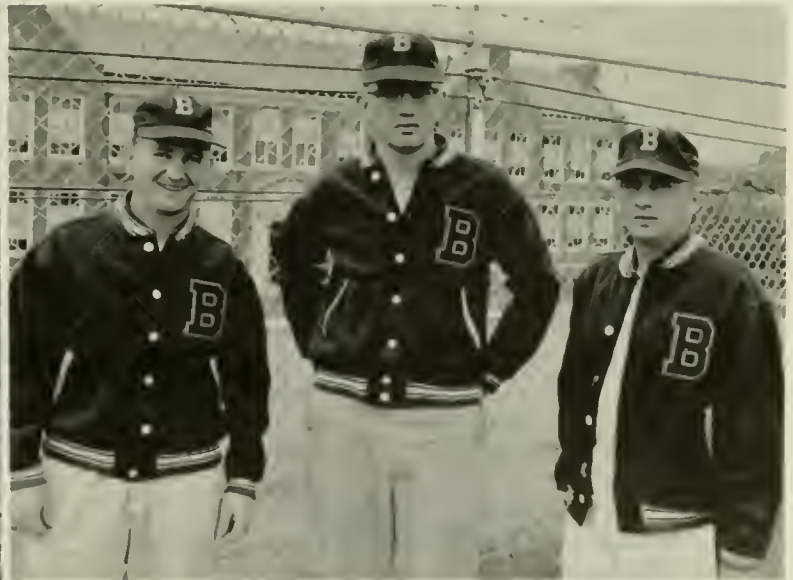
Several practice sessions were delayed, and many of the games had to be postponed until later in the season because of inclement weather early in the spring. After the team overcame these obstacles, they showed fine baseball ability to the students.

### SCORES

BSTC .....	(rained out)	Lycoming College .....	8
BSTC .....	4	E. Stroudsburg .....	1
BSTC .....	2	Colgate .....	2
BSTC .....	3	Lock Haven .....	7
BSTC .....	6	E. Stroudsburg .....	2
BSTC .....	(rained out)	Millersville .....	11
BSTC .....	8	Mansfield .....	8
BSTC .....	15	Scranton University .....	5
BSTC .....	7	Lycoming College .....	10
BSTC .....	4	Lycoming College .....	5
BSTC .....	3	Kutztown .....	5
BSTC .....	4	Lock Haven .....	2
BSTC .....	4	Shippensburg .....	3
BSTC .....	5	Shippensburg .....	2
BSTC .....	3	Mansfield .....	



Is he safe?



Doc's three happy helpers—Puckey, Tom and John.



Husky hurlers  
before a game.



Bloomsburg's  
Babe Ruth.



Tiger and his buddy, Bob



Who said we're not happy?





Bunt? Pop fly? Hit?



Bob Boyle



Jonah Goobic



The 1957 baseball squad



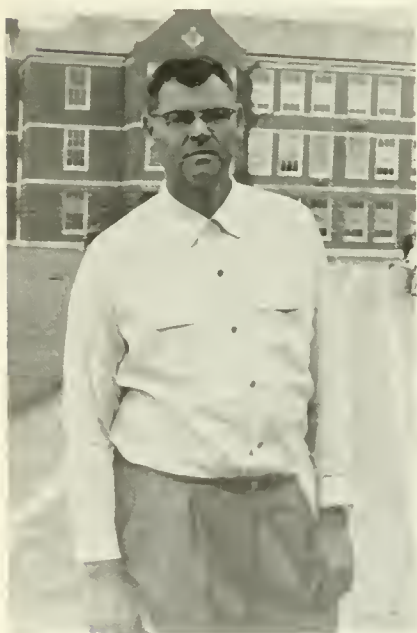
## Track 1957

The 1957 track team will long be remembered by those who were members of the team. Although they were not a championship team, they displayed good sportsmanship and outstanding ability.

Among the memorable events of the team were their trips to the State Teachers Conference Tournament at West Chester, and to the Penn Relays in Philadelphia.

4/13	Bloomsburg	100	Kutztown STC	17
5/2	Bloomsburg	76	Cheyney STC	50
5/8	Bloomsburg	40-1/3	Shippensburg	76-2/3
5/8	Bloomsburg	64	Millersville	62
5/15	Bloomsburg	39 1/2	E. Stroudsburg	86 1/2
5/17	Bloomsburg	70	Lock Haven	66

Won 4    Lost 2  
 Penn Relays—4th Place in S.T.C. Relay  
 State Meet—7th Place



COACH HAROLD SHELLY



Elinsky is out in front again.

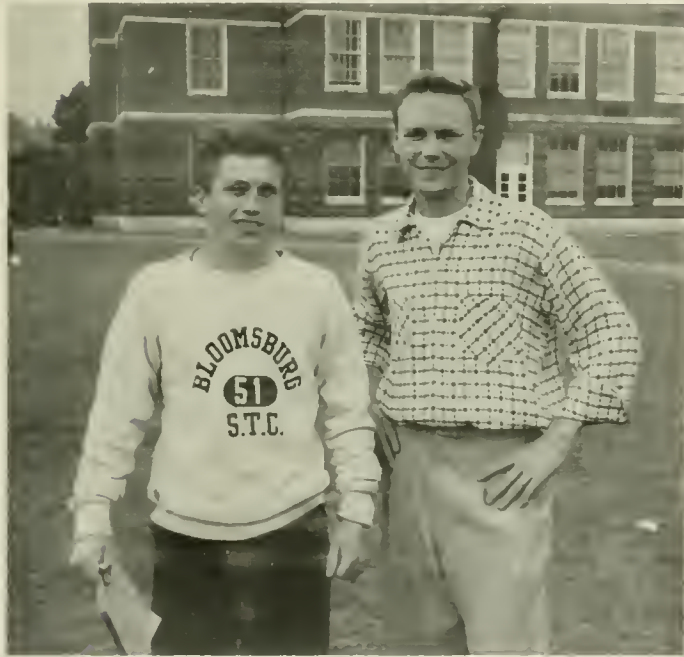




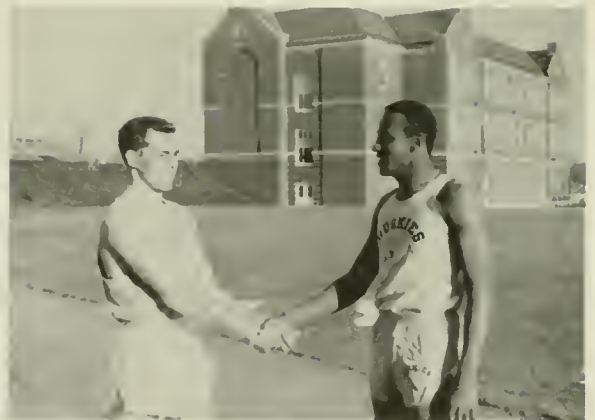
Vaxmonsky scores for Bloomsburg.



Hughes heads for the pit.



Managers Valania and Heller



Seniors Loughery and Watts extend best wishes to each other before the Penn Relays.



Haverd, Gustave, Volpetti and Wood



Hughes, Carl Stanitski, Elinsky and Tibbs



Loughbery off to break another record



Mensch does it again



Stiney takes to the air.



# Cheerleaders



*Left to right: Ginny Hardy, Margie Morson, Captain, Ann Beeson, Marti Williams, June Locke, Eileen Wolchesky.*

**MARGIE MORSON, Captain**



*Ann, Marti and Eileen accompany Charlie and Roongo down the hill before the West Chester game.*



Husky spirit prevails over the flu bug at Homecoming.



Mansfield outjumps the Huskies.



Drum Major Bedford strikes up the band.



The Maroon and Gold band performs in the lounge on Homecoming.





*Publications*



NANCY SUWALSKI  
*Editor*



SAUNDRA McBRIDE  
*Assistant Editor*



JOE ANDRYSICK  
*Photographer*



EDITORIAL BOARD  
*Seated: M. Galatha, J. Bechtel, B. Hoffner. Standing: K. Thomas, E. Braynock, M. Tier, M. Thornton.*



ADVERTISING STAFF  
*Seated: P. Markovci, R. Bowen, P. Wilkinson. Standing: J. Clarke, R. Trump, J. Valania.*



CARL JANETKA  
*Coed-of-the-Year Director*





CONSTANTINE SPENTZAS  
*Business Manager*



EDITORIAL STAFF

*Seated:* E. Traugh, F. Snavely, R. Snavely, E. Kaminski, C. Cordora, G. Beers. *Standing:* M. Suwalski, M. Huttenstine, L. Bartlow, S. Riefenstahl, L. Natter, S. Greenwood, A. Cotner, W. Rundel, N. Hughes.



GERALD DONMOYER  
*Sports Editor*



TYPING AND DISTRIBUTION STAFFS

*Seated:* J. Baylor, D. Mattocks, M. Weiser, F. Myers. *Standing:* L. Zimmerman, J. Trettle, J. Moyer, A. Beeson, W. Criswell, D. Lezinski, B. DeMarte, E. Tarr.



DEPARTMENT HEADS

*Seated:* T. Julio, *Distribution;* M. Angradi, *Senior Pictures;* P. Mosier, *Advertising.* *Standing:* S. Kierstead, *Advertising;* R. Trump, *Art;* D. Andrysick, *Senior Pictures;* B. Stiff, *Typing.*



MARY GALATHA  
*Editor*



EDITORIAL BOARD

*Left to right: G. Reed, E. Farrow, H. Giacomini, C. Greene, M. Pileski.*



DEPARTMENT HEADS

*Seated: J. Peck, G. I. Mail; R. Terzopolos, Secretarial.  
Standing: J. Wagner, Sports; N. Balchunas, Circulation.*



PETE VALANIA  
*Ace Photographer*



BUSINESS STAFF

*Seated, left to right: M. Hand, S. Hoffman, S. Metz, J. Baylor. Standing: M. Dushanko, C. Yost, G. Beers, A. Brumbach, A. Beeson.*



The College Newspaper



MARY ANN THORNTON  
*Assistant Editor*



LEN PEROTTI  
*Business Manager*



NEWS STAFF

*Seated, left to right: J. Lazo, P. Glatts, S. Maurey, M. Weiser. Standing: M. Walsh, J. Schuler, L. Zimmerman, J. Trettel.*



COLUMNISTS

*Seated, left to right: M. Wahl, R. Folmsbee, N. Scheno. Standing: D. Morgan, M. Keefer, J. Moore.*

Fritz finds his name in the Ma-  
roon and Gold.



# The Olympian . . .

## Literary Magazine



MARY WAHL  
*Editor*



CAROL GREENE  
*Assistant Editor*



TYPISTS

*Seated: M. Walsh, D. Lezinski, S. Maurey, E. Traugh, S. Kish.*



BUSINESS MANAGERS

J. Mazeski, E. Stubits

EDITORIAL BOARD

Dr. J. Almus Russell, *Advisor*; D. Panzitta,  
H. Giacomini, D. Andrysick, J. Jordan.





# The Pilot . . .

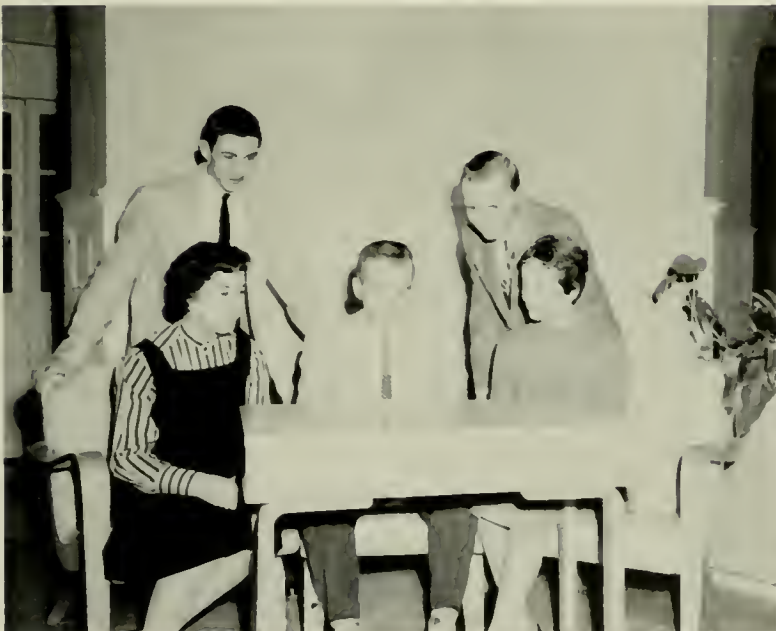
## Student Handbook



MARY PILESKI  
*Editor*



JANE ANN SMITH  
*Assistant Editor*



EDITORIAL BOARD

*Seated, left to right: D. Panzitta, R. Hargreaves, P. Antonio. Standing: E. Braynock, W. Criswell.*



GERALD DONMOYER  
*Business Manager*



The Advertising Staff takes its turn at burning the midnight oil.



The day they gave pictures away



The OBITER'S "flash" Andrysick takes his turn in front of the camera.



The time?—4:00 A.M. The place?—the OBITER office. Reason for desertion?—The day after the deadline.





*Features*



Miss Barbara Lentz, crowned May Queen by William Kautz, President of C.G.A.



The smiling May Queen is ready for the procession to begin.



The attendants help Barhy with her train until the first grade boys act as train bearers.



M  
a  
y  
D  
a  
y



The Queen reigns.

1957



The Queen and her Court add color to the festivities.



The traditional May poles and Maroon and Gold Band provide a backdrop for May Day at Bloomsburg.



Assuming that professional attitude.



Bill Calderwood surveys George Vivacqua's contribution to that old Bloomsburg spirit.



Anyone for a "do-it-yourself" yearbook?



Bloomsburg goes social.





Dr. Bahlke's Lit I takes its toll.



Who says there are five girls for each fella?



"And the line goes round and round."



Dig those crazy ornaments!



Freshman Week requires daily assignments.



Freshman girls become acquainted with upperclassmen.





Marie Suwalski provides the music for the Freshman Talent Show.



Cafe Americana features four lovely can can girls.



Oops, Kiddie Day for the Frosh.



Big sisters honor little sisters at annual tea.



Phi Sig boys stage a reminiscing stand.

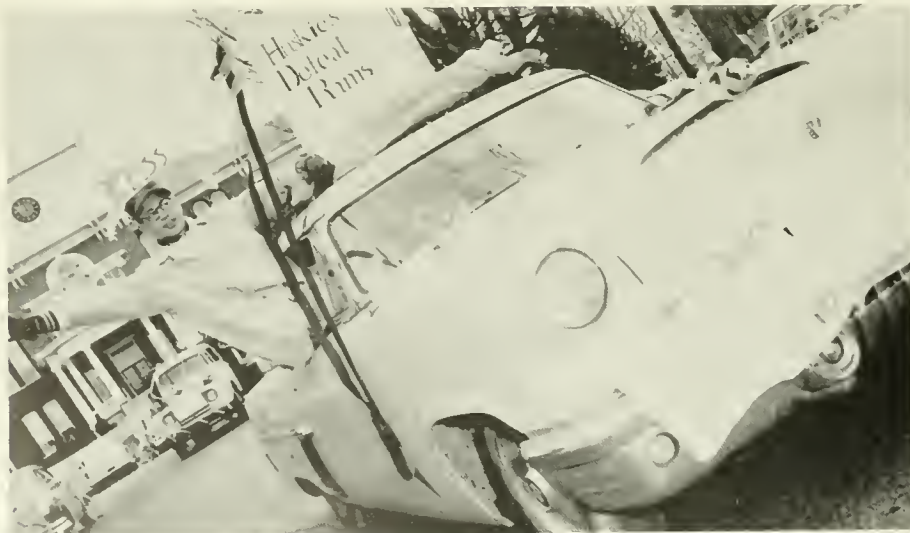
## Homecoming



Typical Bloomsburg Co-ed.



Pom poms for my lady.



Bill is getting a good slant on the West Chester parade.





With each program goes a genuine Wally "Pep Committee" Hutz megaphone.



Raccoons come out of moth balls to help cheer the Huskies on to victory.

## *West Chester*



Every inch a queen.



They were the good ole days.



Who said the ref socked me in the nose?

## *Halloween*



When I grow up do you think I'll make the cover of Esquire?





The bride wore white and the bridesmaids wore bedspreads.

## Dance



Any moonshine at dis here shindig?



Is Bloomsburg really a normal school?



Stegmaier Gold Medal Belly

June Locke was honored as Queen of the Harvest Ball by Varsity Club members who sponsored the autumn dance on November 25.

Crowned queen by President Paul Spahr, Miss Locke—bright, sweet, and pretty—reigned as sovereign of the popular annual Varsity Dance. June is a sophomore from Chester and is majoring in science and mathematics.

Each class was represented by one or two candidates, Suzy Loughery of the senior class; Beth Sprout and Nancy Herman, junior class; Ann Sprawles of the freshman class; and the 1957 Varsity Queen, June Locke. The other candidates became the Queen's court and gathered around her throne in attendance.

V  
a  
r  
s  
i  
t  
y



Q  
u  
e  
e  
n

June Locke is crowned Queen at the Harvest Ball



The Queen is attended by Suzi Loughery, Nancy Herman, Beth Sprout and Ann Sprawles.

June dances her first dance as Queen with Paul Spahr.





## *Bloomsburg Wins National Shorthand Award*

For the second consecutive year, students of the Shorthand III Class taught by Mr. Walter Rygiel have won first prize in the Nationwide Contest, Collegiate Division, Class "A," sponsored by the Esterbrook Pen Company. It is the first time in the history of the contest that a school has won the prize two years in

succession. A total of 55,709 students, representing 2,229 teams or schools, competed for the awards. Each member of the winning team received a certificate of merit and a pen with the student's name inscribed on it. Mr. Rygiel again was awarded a gold trophy.



*Seated, left to right: B. Brunner, T. Julio, S. Raker, B. Nancarrow, M. Onufrak, M. Myers, R. Coulter. Standing: N. Wismer, D. Coffman, J. Hartzel, B. Stiff, J. Schaefer, D. Mattocks, D. Yerck, C. Fabringer, Mr. Walter Rygiel, Advisor.*

# Newest Addition

## The College Commons



The rough stages of construction began to look like this in the spring of 1956.



When the exterior was nearly completed.



The goal is in sight in March of 1957.



Draperies and landscaping added the final touches to the finished project.



# Magic Moments . . .

## in Student Teaching



Everyone claps when it is time for music in second grade.



"Around the world" with Mr. Reznick.



Algebra is much easier when Mr. Cotterall lends a helping hand.



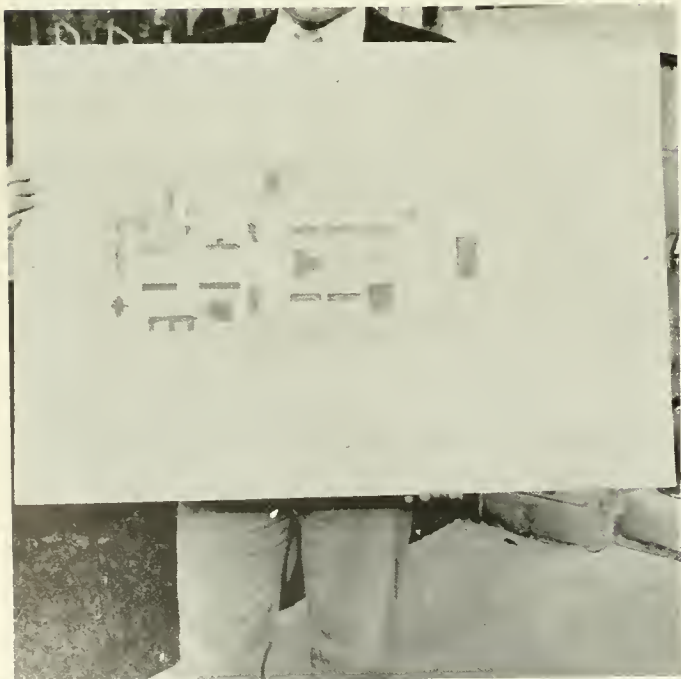
Miss Angradi shows a fifth grader that books aren't so bad after all.



You mean I don't have the average to be President?



Shall I tell her the car broke down or that the bridge was washed out?



We only wanted a picture of the diagram, Prusch, but we just couldn't resist that dimple.



Cameras never lie—or do they?





We realize it's a long walk from the gym to Science Hall, but roller skates just aren't becoming to future teachers. Besides, they are hard on the grass.



Honest, Miss Reams, I didn't make the puddle on the floor.



Here I come, cruel world.



I don't care if this is the friendly college, we still can't refer to him as "Harv."

I  
n

# Centennial Gymnasium and Carver Auditorium



Two of Bloomsburg's Thespians — Mary F. Downing and Deanna Morgan.



President Natter installs the members of the 1957-1958 Community Government Association.



A curtain call for "Summer and Smoke."



Lois Dunmoyer, Deanna Morgan, and Cathy Neos in a scene from the Dramatic Club's major production.



A combined assembly enjoys the efforts of Mr. Fishburn and his partner.



*Coed-of-the-Year Candidates*

*Judy Goss*

*Freshman*



*Beverly Tuckwood*

*Freshman*





*Pam Fox*  
*Sophomore*



*Joanne Bechtel*  
*Junior*



*Nancy Herman*  
*Junior*



*Carol Ely*  
*Senior*



*Annette Roush*

*Senior*



Lorraine Basso crowns her successor as Coed-of-the-Year, Nikki Scheno.





*Coed-of-the-Year*

*Nikki Scheno*

# The Co-ed and Her Court



Nikki is presented with a gold bracelet as a sentimental remembrance.



*Seated:* Judy Goss, Carol Ely, Nikki Scheno, Jo Bechtel. *Standing:* Richard Rapson, Jack Herman, Gary Reddig, Ron Behers.



*Seated:* Annette Roush, Nancy Herman, Pam Fox, Beverly Tuckwood. *Standing:* Edward Williams, John Nagle, Richard Shipe, Thomas Kisatsky.





*Undergraduates*



Class of



OFFICERS—E. Brower, *Treasurer*; R. Romig, *Man Representative*; R. Roush, *Woman Representative*; J. Ott, *Secretary*; D. Ker, *Vice President*; K. Swatt, *President*. Standing: Mr. Norman Hilgar, *Advisor*.







Did he or didn't he buy it?

1959





*Class of*



CLASS OFFICERS—Seated: Mr. Bruce Adams, *Advisor*; J. Zapach, *President*; J. Locke, *Vice President*. Standing: J. Peck, *Man Representative*; P. Glatts, *Treasurer*; T. Wilcox, *Woman Representative*; P. Fox, *Secretary*.







Sophomores in Business.

1960





Seated, left to right: C. Terzopolos, Secretary; G. Reddig, President; J. Goss, Woman Representative. Standing: R. Rapson, Man Representative; H. Baney, Vice President; J. Kitchen, Treasurer.



Mr. Rabb, Freshman Advisor, seems to be struck with a brilliant idea.







Join your ALUMNI ASSOCIATION, and keep your membership active through the years. Annual dues of \$2.00 will include a year's subscription to the ALUMNI QUARTERLY. This magazine, which appears four times a year, will keep you informed of the activities of your classmates and the events happening on campus.

Our Object . . .

“To Keep the Door of Opportunity  
Open for Worthy American Youth.”

Our Slogan . . .

“Every graduate of Bloomsburg an Active  
Member of the ALUMNI ASSOCIATION.”



DR. E. H. NELSON

All dues should be  
sent to

DR. E. H. NELSON  
*President*

Alumni Association

State Teachers College  
Bloomsburg, Pennsylvania





*Advertisements*

Everywhere You Go . . .

You'll Find MAGEE Carpet . . .



(This Happens to Be an Installation of Magee Carpet  
in the Silver Saddle Inn, Downey, California)



Wilton—Velvet

Axminster—Tufted

—Beautifying the Homes of America—

**THE MAGEE CARPET COMPANY**

BLOOMSBURG, PA.



# EVANS & HEEPS

Sumner Avenue  
ALLENTOWN, PA.



## REAVES & PARVIN & COMPANY

301 West Third St.  
WILLIAMSPORT, PENNA.  
College Commons Institutional  
Distributor of Groceries

## CLEM E. CLARKE & SONS, INC.

Old Danville Road  
BLOOMSBURG  
Marketing Finest Quality Eggs!

PLEASE

PATRONIZE

OUR

ADVERTISERS

Success to the Class  
of '58  
From  
**JOHN A. SCHELL**

Architect

Light Street Road      Bloomsburg, Pa.

## SHARPLESS HARDWARE

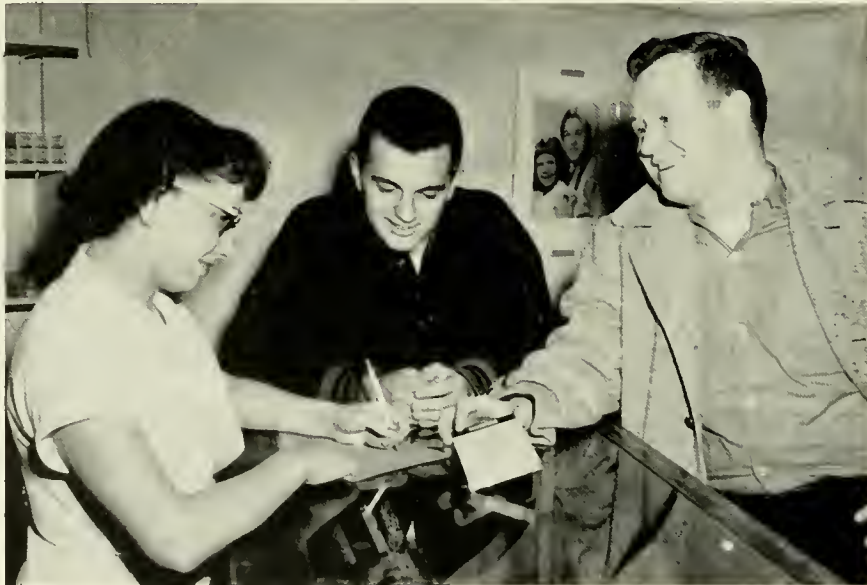


49 E. Main Street

Bloomsburg, Pa.

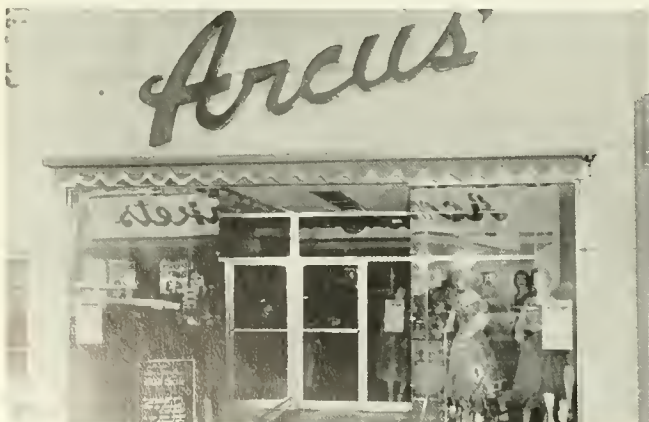
## GEISTWITE STUDIOS

124 EAST  
MAIN  
STREET



BLOOMS-  
BURG  
PENNA.

1958 Obiter Photographer



Congratulations to the Graduates . . .

From

**DR. J. FRANK BRINK, JR.**

First National Bank Building

BLOOMSBURG, PA.

ST-4-4535



## AL'S MEN'S SHOP



BLOOMSBURG, PENNA.

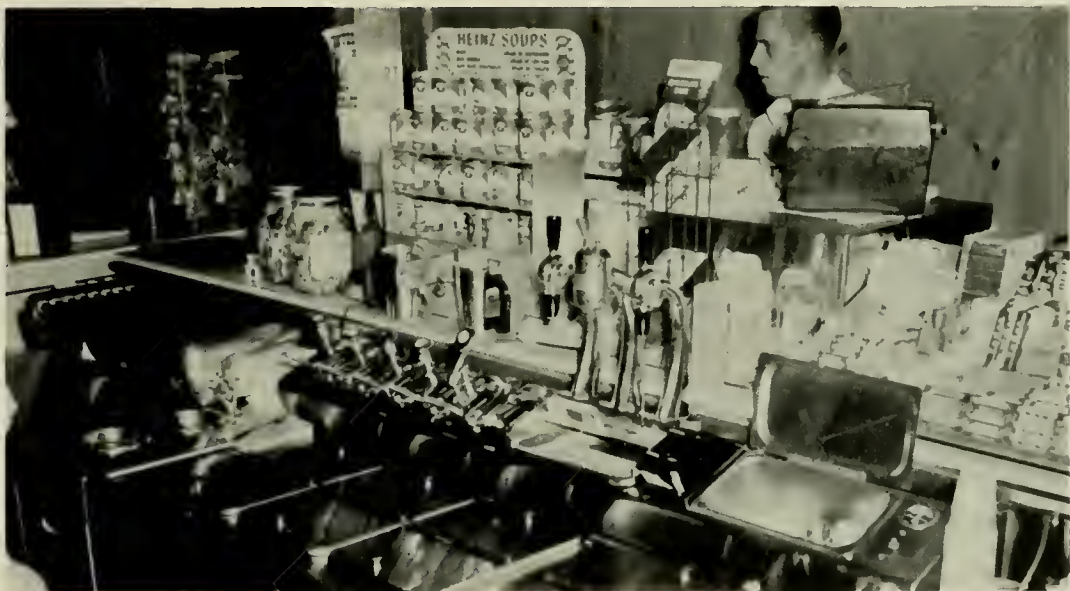
## JIM FOSTER RECORD SHOP

DANVILLE

PENNSYLVANIA

## H. & C. STORE EQUIPMENT

"Sani-Service Direct Straw Dairy Freezers"



ST-4-2755

Bloomsburg  
Pa.

"Sani-Serve Milk Shake Machines  
Make Instant Thick Drinks"

Compliments  
of  
AL'S CAFE

## SNYDER'S DAIRY



BLOOMSBURG, PENNA.

# ROCK'S STEAK HOUSE

Seafood and Spaghetti

Air Conditioned



Corner of  
5th and East Streets  
Bloomsburg, Pa.

Compliments  
of

## MILCO UNDERGARMENT COMPANY, INC.

BLOOMSBURG, PENNA.

# HOUTZ TOBACCO COMPANY

SUNBURY, PA.

Wholesale Distributors

Schrafft's  
Chocolates

From Maine to Florida  
AMERICA'S  
MOST POPULAR  
POTATO CHIPS



## WISE POTATO CHIPS



Compliments  
of

**BLOOMSBURG  
MILLS, INC.**

Weavers of Quality Fabrics  
Since 1889

Mills Located at:  
·BLOOMSBURG, PA.  
LOCKHAVEN, PA.

**Clewell's**

**BERWICK CREAMERY**

Supplies to the Snack Bar



BERWICK, PA.

PHONE 4511

Research and Production  
for the  
Nation's Health



**MERCK & CO., INC.**

Manufacturing Chemists  
Cherokee Plant  
DANVILLE, PENNSYLVANIA

**TENNYTOWN MOTEL**

U.S. Route 11

1 Mile East

of

BLOOMSBURG, PA.

ST-4-9852

Compliments  
of

**BART PURSELL**

Men's and Boys' Wear

YOUR DINING ROOM CATERERS  
**M. W. WOOD, INC.**



Catering for Schools and Industries

38 NO. SEVENTH STREET

ALLENTOWN, PA.

MASTER BAKERY  
PRODUCTS  
by  
**LETTERMAN'S**



BLOOMSBURG, PENNA.

**BLOOMSBURG BANK—**



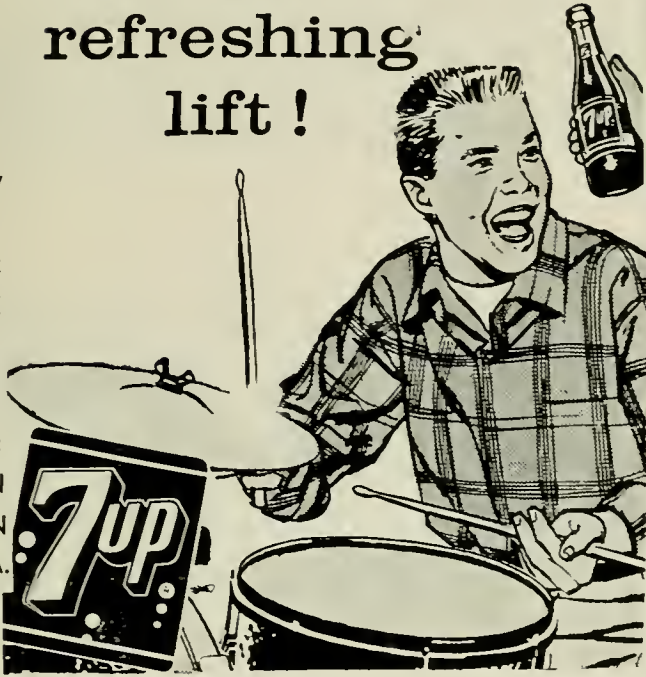
**COLUMBIA TRUST COMPANY**



CONFAIR  
BEVERAGE COMPANY

*For a quick,  
refreshing  
lift!*

B  
E  
R  
W  
I  
C  
K  
  
P  
E  
N  
N  
A.



VINCENT'S  
MEN'S WEAR



106  
West  
Front  
Street  
BERWICK  
PENNA.

The Name  
"BALFOUR"

Stands for the Finest in  
Class Rings, Commencement Announcements,  
Club Pins, Diplomas, Medals and Trophies

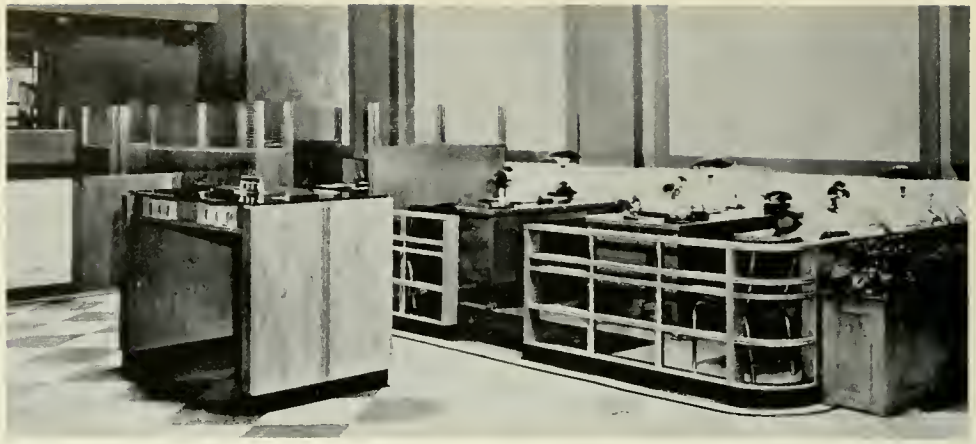
L. G. BALFOUR COMPANY

Taylor-made Yearbooks  
AMBY NOLAN—MATT LYNOTT

Miners Bank Building  
WILKES-BARRE, PENNSYLVANIA

**THE BERWICK  
BANK**

123 West Front Street  
BERWICK, PA.  
Telephone 4538



**HARRIS SUNOCO SERVICE**



Route 11 BLOOMSBURG, PA.

**FOUGHT'S RESTAURANT**



. . . on the Berwick Highway

**CAMPUS CLEANERS**

"Where East Meets West"



BLOOMSBURG, PENNA.

**DEISROTH'S  
DEPARTMENT STORE**



BLOOMSBURG PENNA.

Success From the  
DIXIE SHOPS



For Fine Women's Apparel . . .



5 W. Main St., Bloomsburg, Pa. ST-4-3808





ROBERTS OF FIFTH AVENUE



Bloomsburg, Pa.

SNEIDMAN'S



130 E. Main St. Bloomsburg, Pa.

MILLER OFFICE SUPPLY & EQUIPMENT CO.



Best Wishes From . . .  
ECONOMY STORES CO., INC.



HESS'  
BAR AND GRILL

Oven Fresh Pizza

DILLON'S FLOWERS



116 East Main Street  
BLOOMSBURG, PA.

. . . for All Occasions



For  
Feminine Apparel  
and  
Masculine  
Attention  
**POLMON**  
144 E. Main Street



### MOYER'S PHARMACY

Main Street      Bloomsburg, Pa.

Congratulations, Graduates  
**RACUSIN'S**

Compliments

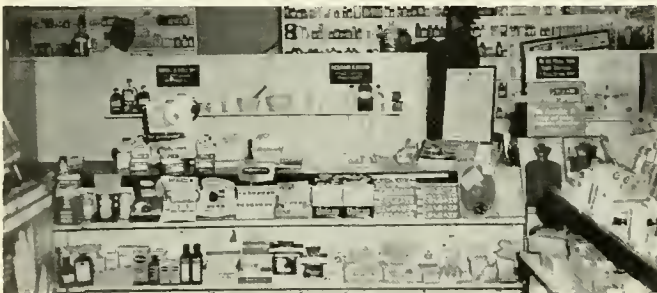
of

**A FRIEND**



Compliments  
**EPPLEY'S DRUG STORE**

### WAFFLE GRILL



### SUNBURY WHOLESAL SEAFOOD

"Supplier of College Commons  
Fresh and Frozen Seafoods"

449 Chestnut Street  
SUNBURY, PA.







# Senior Directory

Ridgway, Sarah	311 Main, Catawissa, Pa.	Hilscher, Carl	8 W. Eighth, Bloomsburg, Pa.
Rindgen, Patricia	29 Elm, West Pittston, Pa.	Hughes, William	336 N. Broad, W. Hazleton, Pa.
Robb, Mary	R. D. No. 3, Danville, Pa.	Hutz, Walter	R. D. No. 2, Wilkes-Barre, Pa.
Samois, Dianne	216½ Maclay, Harrisburg, Pa.	Irzinski, Paul	1 Crystal, Wilkes-Barre, Pa.
Sausser, Lamar	104 Hoffman, Ashland, Pa.	Jessop, Charles	405 Keystone, Peckville, Pa.
Schraeder, Connie	7 W. Kirmar, Alden Station, Pa.	Jessop, John	405 Keystone, Peckville, Pa.
Scott, Lynda	322 N. Webster, Scranton, Pa.	Johnson, James	Rock Glen, Pa.
Sergott, Leonora	156 Sharpe, Alden Station, Nanticoke, Pa.	Kerstetter, Helen	351 S. Vine, Mt. Carmel, Pa.
Shafer, Carol	145 W. Ninth, Bloomsburg, Pa.	Klotz, Nancy	633 Itaska, Bethlehem, Pa.
Shepperson, Louise	705 E. Front, Danville, Pa.	Kressler, Richard	Allentown, Pa.
Shiffer, Ellen	R. D. No. 1, Pittston, Pa.	Loughery, Suzanne	405 Washington, Horsham, Pa.
Snively, Frances	10 Java, Hershey, Pa.	Lundy, Ernest	300 N. Second, Catawissa, Pa.
Snively, Rachel	10 Java, Hershey, Pa.	Lynch, Gary	507 Desmond, Athens, Pa.
Souder, Janice	333 W. Main, Bloomsburg, Pa.	Marcinko, Michael	238 Main, Fern Glen, Pa.
Suwalski, Nancy	529 Fellows, Wilkes-Barre, Pa.	Martini, Jane	608 W. Chestnut, Shamokin, Pa.
Sweppenhiser, Marcia	208 Martzville Rd., Berwick, Pa.	Martz, Marie	40 N. Second, Oneida, Pa.
Tibbs, Augustus	512 Division, Jenkintown, Pa.	Mazeski, Joseph	318 Walnut, Phoenixville, Pa.
Trettel, Joanne	543 Garfield, Hazleton, Pa.	Miller, Bruce	108 E. Penn, Muncy, Pa.
Valania, John	80 Laurel, Alden Station, Pa.	Mitchell, Samuel	61 Pine, Bloomsburg, Pa.
Vaxmonsky, Thomas	1315 Main, Pittston, Pa.	Molitoris, Joseph	53 Italy, Mocanaqua, Pa.
Vivacqua, George	374 W. Mahanoy, Girardville, Pa.	Neary, Patrick	1452 W. Chestnut, Shamokin, Pa.
Watts, Edward	504 Division, Jenkintown, Pa.	Nuss, Allen	1212 Howard, Pottsville, Pa.
Wilkinson, Margaret	5 N. Walnut, Mt. Carmel, Pa.	O'Connell, George	1214 Old Lane, Drexel Hill, Pa.
Williams, John	310 York, West Pittston, Pa.	Orner, Charles	Gowen City, Pa.
Yohn, Joan	717 Eighth, Selinsgrove, Pa.	Onstrich, John	507 Union, Taylor, Pa.
Zaborowski, Bernard	121 Railroad, Wanamie, Pa.	Paden, Kenneth	R. D. No. 1, Nescopeck, Pa.
Zegarski, Walter	70 Abbott, Plains, Pa.	Parsell, George	Pine, Orangeville, Pa.
		Plevyak, John	226 Beach Haven, Pa.
		Poller, Robert	620 Harrison, Scranton, Pa.
		Ruane, Joseph	1016 W. Willow, Shamokin, Pa.
		Prusch, Frank	535 Green, Duryea, Pa.
		Puckey, Charles	Nuangola, Pa.
		Purcell, Joseph	534 Locust, Centralia, Pa.
		Romig, Mae	Box 206, McClure, Pa.
		Roush, Annette	86 Cist, Wilkes-Barre, Pa.
		Salata, John	301 Main, Lattimer Mines, Pa.
		Sands, Sarah	Main, Orangeville, Pa.
		Scheuren, Ronald	Lavelle, Pa.
		Seitz, Ray	R. D. No. 3, Lewisburg, Pa.
		Sheehan, Thomas	414 Percy, S. Williamsport, Pa.
		Shellenberger, William	R. D. No. 1, Bloomsburg, Pa.
		Sheridan, William	420 Center, Kennett Square, Pa.
		Shively, Carl	1103 Susque, Sunbury, Pa.
		Shultz, Bernard	240 Penn, Bloomsburg, Pa.
		Shuttlesworth, Robert	414 Center, Ashland, Pa.
		Smith, Robert	221 Duval, Berwick, Pa.
		Steinhart, Donald	1700 W. Spruce, Shamokin, Pa.
		Stubits, Edward	1382 Newport, Northampton, Pa.
		Templin, Fred	31 Woodlawn, Dallas, Pa.
		Thirway, Joseph	231 Saylor, Atlas, Pa.
		Trivelpiece, William	540 W. Third, Berwick, Pa.
		Troutman, Paul	1709 W. Pine, Shamokin, Pa.
		Trump, Raymond	111 E. Fifth, Bloomsburg, Pa.
		Wallace, Donald	22 Lee Park, Wilkes-Barre, Pa.
		Weldon, William	210 Chestnut, Kulpmont, Pa.
		Wood, Gerald	Mt. Rd., Mechanicsburg, Pa.
		Wynn, Richard	R. D. No. 2, Shamokin, Pa.
		Yurechko, Louis	Fourth, Kelayres, Pa.
		Zegley, Robert	903 E. Pine, Mahanoy City, Pa.
		Zelinske, Thomas	108 S. Diamond, Shamokin, Pa.

## SECONDARY

Acor, Allen	224 W. Anthony, Bloomsburg, Pa.
Anderson, Paul	323 Myrtle, Cheltenham, Pa.
Bangs, Dale	R. D. No. 1, Orangeville, Pa.
Barbarett, Marlene	630 Carson, Hazleton, Pa.
Bias, Michael	112 W. Grant, McAdoo, Pa.
Biever, Dale	150 Linglestown, Harrisburg, Pa.
Bilder, Charles	225 S. Chestnut, Mt. Carmel, Pa.
Bluges, Jacob	110 S. Pearl, Shamokin, Pa.
Boden, Douglas	912 Front, Northumberland, Pa.
Braynock, Edward	39 Stanley, Wilkes-Barre-Peeley, Pa.
Campbell, George	R. D. No. 2, Berwick, Pa.
Champ, George	R. D. No. 1, West Pittston, Pa.
Connolley, Richard	301 W. Mahoning, Danville, Pa.
Cotterall, George	417 Shamokin, Trevorton, Pa.
Cuff, James	336 N. Twelfth, Pottsville, Pa.
Danko, John	W. Pine, Shepton, Pa.
Denoy, Patrick	116 Italy, Mocanaqua, Pa.
DeRose, Joseph	R. D. No. 3, Bloomsburg, Pa.
Duncan, Franklin	122 Broad, Montgomery, Pa.
Evans, Fred	74 E. St. Mary's Rd., Wilkes-Barre, Pa.
Faux, Alice	R. D. No. 1, Falls, Pa.
Fellows, Wilmot	208 S. Balliet, Frackville, Pa.
Foltz, James	906 S. Front, Sunbury, Pa.
Fowler, Norman	30 E. Main, Middletown, Pa.
Fox, Dale	134 Spruce, Sunbury, Pa.
Freed, William	605 E. Market, Pottsville, Pa.
Galatha, Mary	R. D. No. 1, Hazleton, Pa.
Goobic, Jonah	31 Center, Hudson, Pa.
Gustave, James	57 Hudson, Plains, Pa.
Heller, Albert	1519 Liberty, Allentown, Pa.
Herman, George	605 Reagan, Sunbury, Pa.













