

THE

Center

1957







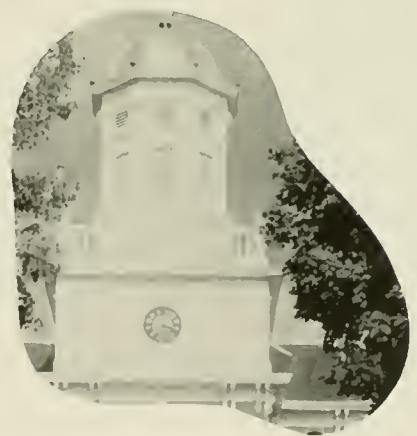
# **THE OBITER**

**PUBLISHED BY AND FOR THE STUDENTS  
OF**

**BLOOMSBURG STATE TEACHERS COLLEGE  
BLOOMSBURG, PENNSYLVANIA**

**1957**

**VOLUME XLI**





**1957 OBITER EDITORS**

**DEPARTMENT**



*Editor-in-Chief* ..... SUZANNE OSBORN  
*Associate Editor* ..... MARILYN RITTER  
*Business Manager* ..... WAYNE BOYER  
*Advertising Manager* ..... WALTER RUDY  
*Director of Senior Pictures* ... MARIANNE ANGRADI  
*Photographer* ..... JOSEPH ANDRYSICK  
*Art Editor* ..... ROBERT ARBOGAST  
*Head Typist* ..... EVELYN KILPATRICK  
*Distribution Manager* ..... MICKEY GRAFF  
*Coed-of-the-Year Director* ..... ROBERT ASBY  
*Obiter Show Director* ..... BUD SHERIDAN  
*Advisor* ..... EDWARD T. DEVOE

**AND**

**HEADS**

## **A LETTER TO THE READERS:**

It is the sole purpose of your 1957 OBITER editors and staff that when you browse through this book you will recall those memories of Bloomsburg State Teachers College that have become so dear to you during your college career. Time may fade places, names, and faces. Future events in your lives will tend to overshadow what are presently vivid images.

To each graduate and underclassman, Bloomsburg holds a special significance. It is impossible to recapture in these few pages every memorable moment of your life at the "Friendly College on the Hill." However, we have attempted to include a small portion of every college phase—your activities, friendships, classes, and social life.

If, twenty years from now, you can leaf through the pages of your 1957 OBITER and fondly relive your college days, we shall feel that our efforts in compiling this book were not in vain. Only then shall we feel certain we have accomplished our purpose.

THE STAFF







***The Maroon and Gold  
of B.S.T.C. . . .***



Turns to a scintillating white



As each season brings new beauties to our campus, situated . . .



**FAR ABOVE THE RIVER WINDING**

On fifty-five acres,  
overlooking the winding  
Susquehanna



our campus nestles . . .



**MIDST THE MOUNTAINS GRAND**



Atop College Hill . . .



Majestically surveying the town of Bloomsburg . . .



**STANDS OUR COLLEGE**



Her buildings and landmarks, which hold  
special memories for all,







**DEAR TO STUDENTS**



Fond memories of B.S.T.C.

will be carried . . .





**FAR THROUGHOUT THE LAND.**



Bloomsburg, Bloomsburg, Bloomsburg College,  
Up on College Hill;  
Years to come shall find us ever,  
True to Bloomsburg still.





**ADMINISTRATION  
AND  
FACULTY**

# BOARD OF TRUSTEES



Left to right: Dr. Harvey A. Andrus, Leo S. Dennen, Carl E. Fleckenstine, Fred W. Diehl, C. William Kreisher, Harold L. Paul, Mrs. Elsie Yorks Jones.

FRED W. DIEHL ..... *President*  
C. WILLIAM KREISHER ..... *Vice President*  
MRS. ELSIE YORKS JONES ..... *Secretary-Treasurer*

EARL V. WISE, SR.  
VICTOR C. DIEHM  
CHARLES D. STEINER  
HAROLD L. PAUL  
CARL E. FLECKENSTINE  
LEO S. DENNEN  
DR. HARVEY A. ANDRUSS  
CHARLES H. BOEHM, *ex-officio*

To the Class of 1957:

Change is all about us. Schools are crowded, and they will become even more congested. Mere numbers create many new challenges.

Entering the teaching profession in such times as these, you must be more adaptable than any of those who have gone before.

That you may continue to value the learner as a human being, and remember that, at first, the teacher is more interesting than what the teacher teaches, is a parting bit of advice from

Harvey A. Andruss, *President*

*Harvey A. Andruss*



Dr. Andruss and Mrs. Anna M. Knight, *Institutional Secretary.*

To the 1957 Graduates:

You are now a member of the teaching profession. It is a noble profession, known both as a science and as an art.

It is my hope that in these four years you have obtained the knowledge and mastered the techniques that will make you a fine artist, and that you have developed those character traits that will help you maintain the highest standards of the teaching profession.



*Elizabeth Miller*

Elizabeth B. Miller

B.S., M.Ed.

Dean of Women





To the Seniors of 1957:

With diploma in hand, you go forth to accept the challenge of the teaching profession. You will find unlimited opportunities and heartfelt satisfaction as you set aside the title "student" and accept the title "faculty."

Pause with me for one last look at the steeple of BSTC. May it always be a symbol of the well wishes that are sent with you from those who remain at the Friendly College on the Hill.

A handwritten signature in cursive script that reads "Jack W. Yohe". The signature is fluid and elegant, with long, sweeping lines.

Jack W. Yohe  
B.S., M.Ed.  
*Dean of Men*



To the Graduates of 1957:

Each of you is entering the most responsible, most stimulating, and most satisfying profession in the world. Because teaching *is* important, each of you should be proud to enter this profession.

If you are a teacher, you are not "just a teacher;" for if, in your own opinion, you are no more than a "Justa," in whose opinion can you expect to be more?

My advice to each of you, therefore, is simply this:  
Be proud to teach.

*John A. Hoch*

John A. Hoch

A.B., M.A.

*Dean of Instruction*

# DEPARTMENT HEADS



THOMAS B. MARTIN  
B.S., M.S., Ed.D.  
Business Education



EDNA J. HAZEN  
B.S., M.A.  
Elementary Education



ERNEST H. ENGELHARDT  
A.B., M.A., Ed.D.  
Secondary Education

# ASSISTANT DEANS



EDITH G. ZINN  
B.A., M.A.  
Assistant Dean of Women  
English



WALTER R. BLAIR  
B.S., M.A.  
Assistant Dean of Men  
Physical Science

MARY E. MacDONALD  
A.B., A.M.  
Assistant Dean of Women  
Guidance Services

RALPH S. HERRE  
B.S., M.A., Ed.D.  
Assistant Dean of Men  
Social Studies



# FACULTY

BRUCE E. ADAMS  
B.S., M.Ed.  
Geography



HAROLD O. BAHLKE  
B.Ed., M.A., Ph. D.  
English, Social Studies



EDNA J. BARNES  
B.S., M.A.  
Elementary Education



MRS. IVA MAE BECKLEY  
B.S., M.Ed.  
Laboratory School  
Grade II



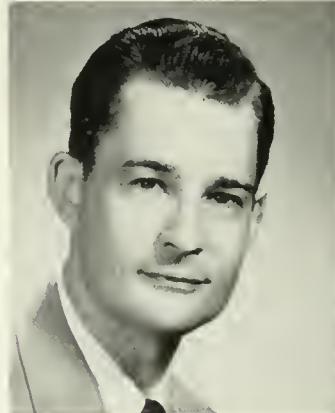
MRS. OLIVE P. BEEMAN  
Ph.B.  
Art



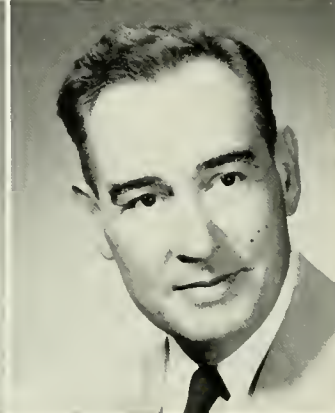
CLAUDE I. BORDNER  
A.B., M.A.  
Mathematics



BOYD F. BUCKINGHAM  
B.S., M.S.  
Speech



EDWARD T. DEVOE  
B.S., M.Ed.  
English



# FACULTY



BEATRICE ENGLEHART  
B.S., M.S. Ed.  
Laboratory School  
Kindergarten



MRS. DOROTHY J. EVANS  
B.S.  
Music



HOWARD F. FENSTEMAKER  
B.A., M.A.  
Foreign Languages



GEORGE J. FIKE  
A.B., A.M., Ed.M., Ph.D.  
Secondary Education



WILLIAM C. FORNEY  
B.A., M.A.  
Business Education



MRS. DEBORAH W. GRIFFITH  
B.S., M.A.  
Laboratory School  
Grade IV



CHARLES H. HENRIE  
B.S., M.Ed.  
Business Education  
Audio Visual Education



NORMAN L. HILGAR  
B.S., M.A.  
Business Education

# FACULTY

CLAYTON H. HINKEL  
B.S., M.Ed.  
Business Education



WARREN I. JOHNSON  
B.S., M.Ed.  
Laboratory School  
Grade VI



ELINOR R. KEEFER  
B.A., Litt.M., B.S. in L.S.  
Librarian



MARY E. KRAMER  
B.S., M.A.  
Laboratory School  
Special Education



KIMBER C. KUSTER  
B.S., M.S., Ph.D.  
Biological Science



HAROLD H. LANTERMAN  
B.S., M.A., Ed.D.  
Physical Science



DONALD F. MAIETTA  
B.S., M.S., Ph.D.  
Speech Correction



NELL MAUPIN  
B.A., M.A., Ph.D.  
Social Studies



# FACULTY

LUCY McCAMMON  
A.B., M.A.  
Physical Education



MRS. MARGARET E. McCERN  
B.S., M.Ed.  
Business Education



JEAN McCUE  
B.S., M.Ed.  
Laboratory School  
Grade I



M. BEATRICE METTLER  
A.B., M.A.  
College Nurse  
Health Education



NELSON A. MILLER  
B.S., M.Ed.  
Music



JOHN R. O'DONNELL  
B.S., M.Ed.  
Laboratory School  
Grade V



GWENDOLYN REAMS  
B.A., M.A.  
Assistant Librarian  
Children's Literature



J. ALMUS RUSSELL  
A.B., A.M., Ph.D.  
London University  
Certificate  
English



# FACULTY

WALTER S. RYGIEL  
B.S., M.A.  
Business Education



RUSSELL F. SCHLEICHER  
B.S., M.A.  
Psychology  
Elementary Science



JOHN J. SERFF  
B.S., M.Ed., Ph.D.  
Social Studies



CECIL C. SERONSY  
B.A., M.A., Ph.D.  
English



HAROLD S. SHELLY  
A.B., M.A.  
Physical Education



WILLIAM B. STERLING  
B.S., M.S.Ed.  
Geography, Aviation



MARCELLA M. STICKLER  
B.S., M.S.  
Laboratory School  
Grade III



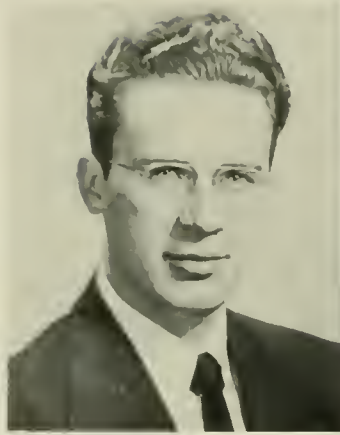
GEORGE G. STRADTMAN  
B.S., M.Ed.  
Mathematics, Science





# FACULTY

ROBERT P. ULMER  
B.S., M.Ed.  
Art



E. PAUL WAGNER  
B.S., M.Ed., Ed.D.  
Psychology  
Public School Psychologist



## NON-TEACHING PERSONNEL



JENNINGS B. KNOEBEL  
B.S. in A.E.  
Superintendent of Grounds



PAUL G. MARTIN  
B.S.  
Business Manager



FREDA PARKER McBRIDE  
Dietitian



W. HORACE WILLIAMS  
Manager of College Store



Mrs. Loreman, Housemother, checks the girls in on her Friday night vigil.



Miss Eyerly gives smiling service at the College Store.



Frank waits for . . .



a full load for fourth floor.



**SENIORS**



My fellow graduates:

We will be closing our college careers here at Bloomsburg in a very short time. Without a doubt, this is a very significant event in our lives. This goal has been made possible by the many sacrifices we and our parents have made. We can feel justly proud of this notable achievement. Although I am one of you, I feel that in the position with which you have honored me, it is not inappropriate to congratulate you.

It is a hard task to say farewell to a place that has given us so much. But, as we leave, we shall take along with us many happy memories that are Bloomsburg. Upon graduation, Bloomsburg will have left a mark which can never be erased; likewise, we also will leave something of ourselves here at Bloomsburg that will enrich our college community.

We are about to embark on a more extensive school of learning than the one we are leaving. Bloomsburg has given us a good foundation, but it is up to us, as individuals, to build upon this by perseverance and diligence in order to reach our desired goals. Pope Pius III once said, "To be a teacher is a great mission." Our mission then, as teachers, should be to guide or lead our students in becoming acceptable citizens in this challenging world. Our ultimate goal should be the helping of others to improve their worth.

Others who deserve recognition at this time are our President, our Faculty, the Board of Trustees, the Commonwealth of Pennsylvania, and our class advisors, Mr. Buckingham, Mr. Miller, Mrs. Beeman, and Dr. Seronsy, who have most willingly devoted their time to our welfare.

I have felt it an honor and privilege to serve as your class president, and I want to thank you from the bottom of my heart. May God watch over you in whatever you may undertake and may life be filled with happiness for you and yours.

Sincerely,

*William Pohutsky*

William Pohutsky  
Class President, 1957

DR. CECIL C. SERONSY  
Senior Class Advisor



Senior committee chairmen discuss plans for the annual Senior Ball.



SENIOR CLASS OFFICERS

Left to right: Bill Pohutsky, *President*; Evelyn Gilchrist, *Woman Representative*; Judith Ulmer, *Treasurer*; Miriam Miller, *Secretary*; Kathryn Crew, *Historian*; Len Kozick, *Vice President*.  
Absent: Dick Strine, *Man Representative*.

# BUSINESS EDUCATION





Burton Bane



Robert Biemesderfer

BURTON MERRILL BANE

Stillwater

*Accounting, Typing, Shorthand*

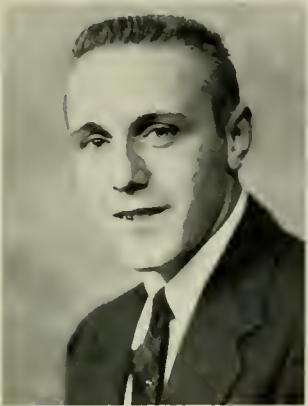
Day Men's Association 1, 2, 3, 4; Pi Omega Pi 3, 4; Business Education Club 1, 2, 3, 4; FTA 4.

ROBERT KLINE BIEMESDERFER

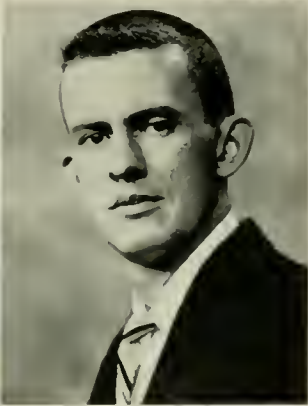
Hershey

*Accounting, Sales, Typing*

Class Treasurer 1, 2; Hospitality Committee Chairman 2; Customs Committee 2, 3; Dining Room Committee 3; Day Men's Association 4; Dorm Men's Association 1, 2, 3; Phi Sigma Pi 2, 3, 4, Treasurer 3; Business Education Club 2, 3, 4; Dramatic Club 1; FTA 4; Varsity Club 2, 3, 4; Football Manager 1, 2, 3; Basketball Tournament 1, 2, Student Coordinator 2; Lutheran Student Association 1, 2.



Wayne Boyer



Edward Bradley

WAYNE MERLIN BOYER

Mifflinburg

*Accounting, Sales, Typing*

Dorm Men's Association 1, 2, 3, 4; FTA 3, 4; Business Education Club 1, 2, 3, 4; Student Christian Association 1; Track 1, 2, 3, 4; Varsity Club 2, 3, 4; Basketball Tournament 3, 4; Maroon and Gold 2, 3, Business Manager 3; Obiter 3, 4, Business Manager 4; Senior Committee Chairman 4.

EDWARD FRANCIS BRADLEY

Freeland

*Accounting, Typing, Social Studies*

Day Men's Association 3, 4; FTA 4; Business Education Club 3, 4.

HARRY BURGGRAF

Hazleton

*Accounting, Typing, Social Studies*

Day Men's Association 3, 4; FTA 4; Business Education Club 3, 4.

JOHN ANTHONY BURGGRAF

Hazleton

*Accounting, Typing, Social Studies*

Day Men's Association 3, 4; Pi Omega Pi 4; Business Education Club 3, 4; FTA 4; College Choraleers 3, 4.



Harry Burggraf



John Burggraf

SAMINA R. COLE

Bloomsburg

*General Business*

Day Women's Association 1, 2, 3, 4; Kappa Delta Pi 3, 4, Secretary 4; Pi Omega Pi 3, 4; Business Education Club 1, 3, 4.

JAMES BRITTIN CREAMY

Bloomsburg

*General Business, Social Studies*

Class Representative 1; Day Men's Association 1, 2, 3, 4; Kappa Delta Pi 4; Pi Omega Pi 4; Athenaeum Club 3; Business Education Club 3, 4; College Choraleers 1, 2; Dramatic Club 1, 2, Treasurer 2; FTA 4; Newman Club 1, 2, 3, 4; Olympian, Business Manager 4; Maroon and Gold 1, 2; Who's Who in American Universities and Colleges.



Samina Cole



James Creamy

MARGARET MARY CROFT  
Campbell, New York  
*Secretarial, Social Studies*

Day Women's Association 4; Waller Hall Association 1, 2, 3;  
Business Education Club 1, 2, 3; FTA 4; Newman Club 1.

JACQUELINE MARY DESMOND  
Milton

*Secretarial, English*

Day Women's Association 3, 4; Waller Hall Association 1, 2;  
FTA 2, 3; Women's Chorus 1, 2; Newman Club 1, 2, 3,  
Treasurer 3; Maroon and Gold 1.



Margaret Croft



Jacqueline Desmond

DOYLE G. DODSON  
Orangeville

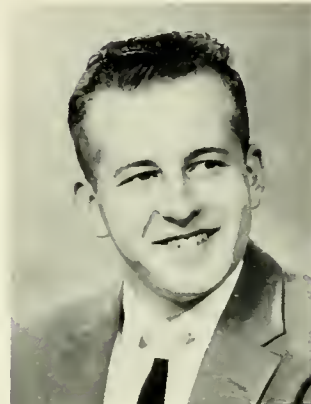
*Accounting, Shorthand, Typing*

Day Men's Association 1, 2, 3, 4; Business Education Club  
1, 2, 3, 4; FTA 4.

EDWARD M. DROPEKEY  
Mount Carmel

*Accounting, Sales, Typing, Social Studies*

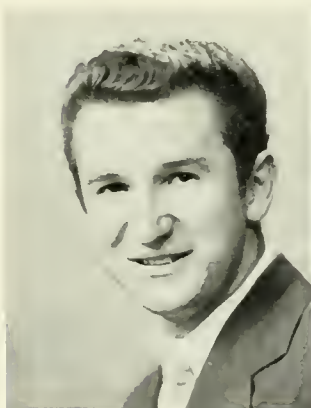
Day Men's Association 1, 2, 3, 4; Business Education Club 2, 4;  
FTA 4; Intramurals 1, 3.



Doyle Dodson



Edward Dropesky



William Dupkanick



Elwood Erle

WILLIAM DUPKANICK  
Berwick

*Accounting, Typing, Sales*

Day Men's Association 1, 2, 3, 4; Aviation Club 1, 2, 3,  
Vice President 3; Business Education Club 2, 3; FTA 4; College  
Choraleers 3; Intramurals 2, 3; Maroon and Gold 3.

ELWOOD CARL ERLE  
Sayre

*General Business, Social Studies*

Day Men's Association 1, 3, 4; Dorm Men's Association 2;  
Business Education Club 1, 2, 3, 4; Poetry Club 1, 2, 3, 4;  
Lutheran Student Association 1, 2, 3.

MARY JANE MILLER ERTEL  
Cheltenham

*General Business*

Day Women's Association 4; Waller Hall Association 1, 2, 3;  
Waller Hall Governing Board Representative 3; Athenaeum  
Club 4; Business Education Club 1, 2, 3, Secretary 3; College  
Choraleers 2; FTA 3; Women's Chorus 1; Student Organist  
1, 2, 3; Fashion Show 1, 2, 3.

ULYSSES GRANT EWELL  
Shamokin

*Accounting, Typing, Sales*

Day Men's Association 1, 2, 3, 4; Business Education Club  
1, 2, 3, 4; FTA 4.



Mary Jane Ertle



Ulysses Ewell





Mary Fawcett



James Fiebig

MARY FAITH FAWCETT

Williamsport

General Business

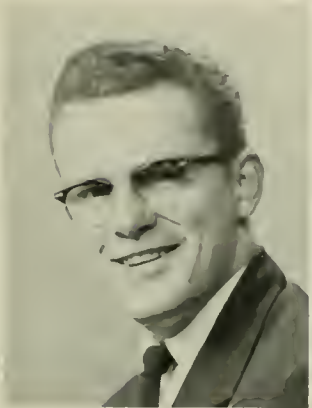
Day Women's Association 4; Waller Hall Association 1, 2, 3, 4; Pi Omega Pi 2, 3, 4; Athenaeum Club 2; Aviation Club 2, 3; Business Education Club 1, 2, 3, 4; FTA 3, 4; Student Christian Association 1, 2, 3, 4; Fashion Show 1, 2, 3; Obiter Head Typist 3.

JAMES J. FIEBIG

Shamokin

Accounting, Typing

Day Men's Association 1, 2, 3, 4; Athenaeum Club 1; Aviation Club 1, 2, 3, 4; Business Education Club 2, 3, 4; Newman Club 1, 2, 3, 4.



Rodney Follmer



John Ford

RODNEY CLARK FOLLMER

Bloomsburg

Accounting, Sales, Typing

Day Men's Association 1, 2, 3, 4; Business Education Club 1, 2, 3, 4; Football 1.

JOHN JOSEPH FORD

Shamokin

Accounting, Shorthand, Typing

Day Men's Association 1, 2, 3, 4, President 4; Kappa Delta Pi 4; Pi Omega Pi 3, Vice President 4; CGA 4; Business Education Club 1, 2, 3, 4; FTA 4; Who's Who in American Universities and Colleges.

WALTER GEORGE FOX

Catawissa

General Business

CGA Awards Committee 1, 2, 3; Day Men's Association 1, 2, 3, 4; Alpha Psi Omega 3, 4; Pi Omega Pi 3, 4; Business Education Club 1, 2, 3, 4; Dramatic Club 1, 2, 3, 4, Vice President 2, President 3; FTA 3, 4; Business Education Contest General Chairman 3.

THOMAS A. GARRETT

Lebanon

Accounting, Typing, Social Studies

Day Men's Association 3, 4; Dorm Men's Association 1, 2; Band 2, 3; Track 2, 3; Maroon and Gold 3.



Walter Fox



Thomas Garrett

ANNE LOUISE GEARY

Cressona

General Business

Day Women's Association 4; Waller Hall Association 1, 2, 3, 4; Waller Hall Governing Board Representative 4; Business Education Club 1, 2, 3; Student Christian Association 1, 2.

BETTE ANN GIBSON

Shenandoah Heights

General Business

Waller Hall Association 1, 2, 3, 4; Pi Omega Pi 3, 4; Business Education Club 1, 2, 3, 4; College Choraleers 1; FTA 4; Fashion Show 1, 2, 3, 4; Student Christian Association 1, 2, 3, 4; Maroon and Gold 3.



Anne Geary



Bette Gibson

EVELYN JOAN GILCHRIST  
Pottsville

*Secretarial, English*

Class Representative 4; CGA 4; CGA Election Board 4; Social Recreation Committee 3; Waller Hall Art Committee Chairman 4; Student Christian Association 1; Social Usage Club 1; FTA 4; Wesley Fellowship 1; Waller Hall Handbook 2; Olympian 2, 3, 4, Editor 4; Obiter 3, 4, Director of Obiter Show 3; Who's Who in American Universities and Colleges.

DOROTHY LEONNE HORNING  
Schuylkill Haven

*Secretarial, Sales*

Waller Hall Association 1, 2, 3, 4; Business Education Club 3, 4; College Choraleers 1, 2, 3, 4; FTA 4; Women's Chorus 1; Knox Fellowship 1, 2, 3, 4; All-Collegiate Chorus 1, 2, 3.



Evelyn Gilchrist



Dorothy Horning

DONALD HUGH HUTCHINSON  
Berwick

*Accounting, Sales, Typing*

Day Men's Association 1, 2, 3, 4; Business Education Club 2, 3; FTA 4.

NANCY JEANNE HYDE  
Bloomsburg

*Secretarial, Sales*

Customs Committee 3; Awards Committee 2, 3; Day Women's Association 1, 2, 3; "B" Club 3, 4; Business Education Club 1, 2, 3, 4; College Choraleers 1, 2, 3, 4; FTA 4; Student Christian Association 1; Women's Chorus 1, 2; Olympian 2, 3; Maroon and Gold 1, 2; Obiter 2, 3.



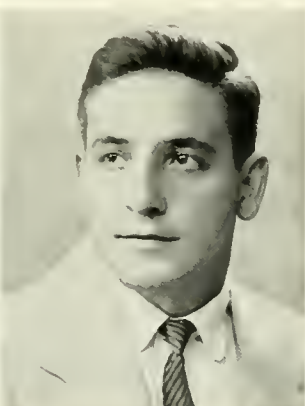
Donald Hutchinson



Nancy Hyde



Ella Johnson



Frank Kaminsky

ELLA LOUISE JOHNSON  
Athens

*General Business*

Waller Hall Association 1, 2, 3, 4; Waller Hall Governing Board 2; Business Education Club 2, 3, 4; College Choraleers 2; Dramatic Club 1; FTA 4; Canterbury Club 2.

FRANK MICHAEL KAMINSKY  
Mayfield

*Accounting, Sales*

CGA Election Committee 3, 4; Dorm Men's Association 1, 2, 3, 4; Business Education Club 2, 3; FTA 3, 4; Varsity Club 1, 2, 3, 4; Basketball Tournament 2; Football 1, 2, 3, 4; Canterbury Club 1, 2, 3, 4; Olympian 2.

JOHN JOSEPH KAPLAFKA  
Lost Creek

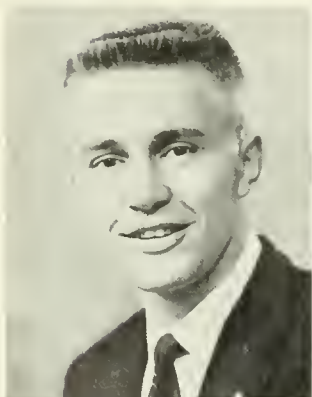
*Accounting, Typing*

Business Education Club 3, 4; FTA 4; Social Usage Club 4; Baseball 3; Newman Club 3, 4.

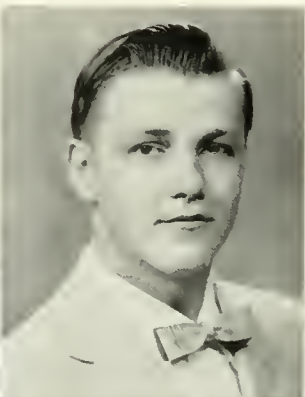
LEONARD W. KAPOCHUS  
Larksville

*Accounting, Shorthand, Typing*

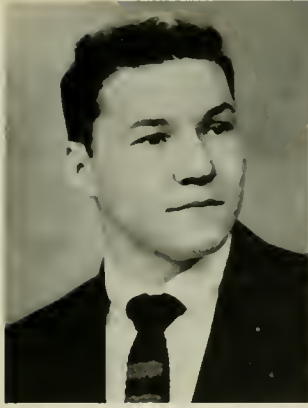
Day Men's Association 1, 2, 3; Aviation Club 3; Business Education Club 2, 3; FTA 2, 3; Student Christian Association 3; Newman Club 3; Olympian 1.



John Kaplafka



Leonard Kapochus



Allen Kessler



Evelyn Kilpatrick

ALLEN HARRY KESSLER  
Danville

*General Business*

Pi Omega Pi 2, 3, 4; Business Education Club 1, 2, 3; Day Men's Association 1, 2, 3, 4.

EVELYN MAE KILPATRICK  
Nazareth

*General Business*

Day Women's Association 4; Waller Hall Association 1, 2, 3, 4; Pi Omega Pi 2, 3, 4, Historian 3; Business Education Club 1, 2, 3, 4; Band 3, 4; Student Christian Association 1; Reformed Fellowship 1, 2, 3, 4; *Obiter* Head Typist 4; Student Organist 4.



Alan Kleinschrodt



Richard Kratzer

ALAN P. KLEINSCHRODT  
Scranton

*Accounting, Mathematics*

Class Officer, Vice President 2; Assembly Committee 3, 4, Chairman 4; Day Men's Association 4; Dorm Men's Association 1, 2, 3; Business Education Club 2, 3; FTA 4; Band 1, 2, 3, 4, President 4; Student Christian Association 1, 2, 3, 4, Treasurer 4; Basketball Tournament Committee 2, 3; Intramural Softball 1, 2, 3.

RICHARD JOSEPH KRATZER  
Sunbury

*Accounting, Social Studies, Typing*

Day Men's Association 1, 2, 3, 4; Pi Omega Pi 4; Aviation Club 3; Business Education Club 1, 2; FTA 4.

ROBERT FRANKLIN LANE  
Danville

*General Business*

Day Men's Association 1, 2, 3, 4; Business Education Club 1, 2, 3; Newman Club 1, 2, 3, 4.

ANNABELLE LEFFELAAR  
Stroudsburg

*General Business*

Social Recreation Committee 2; Business Education Club 2, 3, 4; College Choraleers 1, 2, 3; FTA 4; Student Christian Association 2; Women's Chorus 1, 2; Basketball Tournament Committee 2; Knox Fellowship 1, 2, 3, 4; *Olympian* Head Typist 3; Senior Committee Chairman 4.



Robert Lane



Annabelle Leffelaar

M. FRANKLIN MACKERT  
Sunbury

*Accounting, Typing, Social Studies*

Day Men's Association 1, 2, 3, 4; Kappa Delta Pi 3, 4; Pi Omega Pi 3, 4; Business Education Club 1; FTA 4.

ROBERT JAMES MARENICK  
Mt. Carmel

*Accounting, Sales, Typing*

Day Men's Association 1, 2, 3, 4; Business Education Club 1, 2, 3, 4; FTA 4.



Franklin Mackert



Robert Marenick

NATALIE ANNETTE MARSILIO

Hazleton

General Business

Waller Hall Association 1, 2, 3, 4; "B" Club 1, 2, 3, 4; Business Education Club 1, 2, 3, 4; College Choraleers 1, 2; Women's Chorus 1, 2; Newman Club 1, 2, 3, 4.



Natalie Marsilio



Donald McAfee

DONALD EUGENE McAFEE

Berwick

General Business

Day Men's Association 1, 2, 3, 4; Pi Omega Pi 3, 4; Business Education Club 1, 2, 3; FTA 4.

ISAIAH LEROY McCLOSKEY, JR.

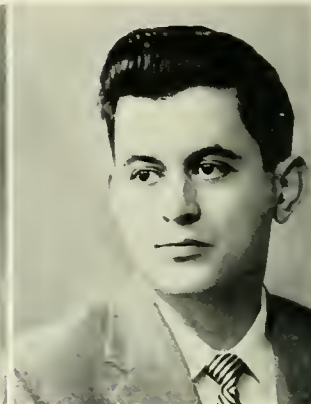
Bloomsburg

Accounting, Typing, Social Studies

Day Men's Association 1, 2, 3, 4; Business Education Club 1, 2, 3; FTA 4; Student Christian Association 4.



Isaiah McCloskey



Thomas McDevitt

THOMAS ANTHONY McDEVITT

Shamokin

Accounting, Sales, Typing

Dorm Men's Association 1, 2, 3; Day Men's Association 1, 2, 3; Phi Sigma Pi 2, 3, 4, Secretary 3, Assistant Secretary-Treasurer 4; Business Education Club 1; FTA 4; Basketball Tournament Manager 3; Newman Club 1, 2.



Miriam Miller



James Monaghan

MIRIAM E. MILLER

St. Clair

General Business

Waller Hall Association 1, 2, 3, 4; Class Officer, Secretary 3, 4; College Council 4; Waller Hall Governing Board 3, 4, President 4; Kappa Delta Pi 3, 4, Secretary 4, Convention Delegate 3; Pi Omega Pi 2, 3, 4, Secretary 3; Business Education Club 1, 2, 3, Treasurer 3; FTA 4; Student Christian Association 1; Co-Pilot 3; Obiter 4; Who's Who in American Universities and Colleges.

JAMES JOSEPH MONAGHAN

Ashland

Accounting, Typing, Social Studies

Dorm Men's Association 1; Day Men's Association 2, 3, 4; Pi Omega Pi 3, 4; Aviation Club 1, 2; Business Education Club 2, 3, 4; FTA 4; Newman Club 1, 2.

JEAN MARIE NAUGHTON

Williamsport

General Business

Waller Hall Association 1, 2, 3; Day Women's Association 4; Aviation Club 3; "B" Club 2, 3, 4; Business Education Club 2, 3, 4; FTA 3, 4; Band 1, 2, Secretary 2; Fashion Show 1, 2, 3, 4; Newman Club 1, 2, 3, 4, Treasurer 3; Maroon and Gold 1, 2, 3, Head Typist 3.

CONSTANCE GAIL OZALAS

Palmerton

General Business

Waller Hall Association 1, 2, 3; Day Women's Association 4; Class Officer, Vice President 3; Kappa Delta Pi 3, 4; Pi Omega Pi 2, 3, 4, President 3; Business Education Club 1, 2, 3, 4, Vice President 3; FTA 3, 4; Newman Club 1, 2, 3, 4; Olympian 3; Maroon and Gold 1, 2.



Jean Naughton



Constance Ozalas



Nancy Pearce



Domenic Repice

NANCY LOIS PEARCE  
Dunmore

*Secretarial, Social Studies*

Waller Hall Association 1, 2, 3; Day Women's Association 4; Social Recreation Committee 3; Business Education Club 2, 3; College Choraleers 1, 2, 3, 4; Student Christian Association 1; Women's Chorus 1, 2; Wesley Fellowship 1.

DOMENIC L. REPICE  
Philadelphia

*Accounting, Shorthand, Typing*

Dorm Men's Association 2, 3, Executive Committee 3; Business Education Club 2, 3, 4; Newman Club 2, 3, 4.



Bobbi Roadside



Elmer Robinson

BOBBI A. ROADSIDE  
Philadelphia

*General Business*

Waller Hall Association 1, 2, 3, 4; Class Officer, Secretary 1; Aviation Club 1; "B" Club 3, 4; Business Education Club 1, 3, 4; FTA 4; Social Usage Club 2; Women's Chorus 1; Social Recreation Committee 3; Dining Room Committee 3; Customs Committee 3; Fashion Show 1, 2, 3, 4; Cheerleader 1, 2, 3, Captain 3; Newman Club 1, 3, 4; Co-Pilot 2; Olympian 3.

ELMER D. ROBINSON  
Chester

*Accounting, Sales, Typing*

Day Men's Association 4; Dorm Men's Association 1, 2, 3, President 3; Phi Sigma Pi 3, 4; Aviation Club 1, 2, Vice President 2; Business Education Club 1, 2, 3, 4, President 3; Varsity Club 3, 4; Basketball Tournament 2; Basketball 1, 2, 3, 4; Who's Who in American Universities and Colleges.

ANNE MARIE ROMANCZYK  
Forest City

*Secretarial, Social Studies*

Waller Hall Association 1, 2, 3; Day Women's Association 4; Aviation Club 4; Business Education Club 1, 2, 4; FTA 4; Student Christian Association 1, 4; Newman Club 1, 2, 4; Maroon and Gold 4.

ROBERT WILLIAM RORICK  
Catawissa

*Accounting, Sales, Typing*

Day Men's Association 1, 2, 3, 4; Pi Omega Pi 3, 4; Business Education Club 1, 2, 3; FTA 4.



Anne Romanczyk



Robert Rorick

WALTER N. RUDY  
Bloomsburg

*Accounting, Sales, Typing, Social Studies*

Day Men's Association 1, 2, 3, 4; Customs Committee 2; Hospitality Committee 3; Business Education Club 1, 2, 3, 4; FTA 3, 4; Band 1, 2, 3, 4, Librarian 1, 2; Reformed Fellowship 2, 3, 4; Pilot, Business Manager 4; Maroon and Gold 3; Obiter, Advertising Manager 4; General Chairman of Senior Committees 4.

SHIRLEY ANN SEILER  
Auburn

*Secretarial, Sales*

Waller Hall Association 1, 2, 3, 4; "B" Club 3; Business Education Club 2, 3, 4; College Choraleers 2; Women's Chorus 1; Basketball Tournament Committee 2; Lutheran Student Association 1; Olympian 2, 3; Dining Room Committee 3; Pep Committee 2.



Walter Rudy



Shirley Seiler

EDWARD MICHAEL SETAR  
Nesquehoning  
*General Business*

Day Men's Association 4; Dorm Men's Association 1, 2, 3, Treasurer 3; Pi Omega Pi 3, 4, President 4; Aviation Club 1, 2; Business Education Club 2, 3, 4; Band 4; Canterbury Club 1; *Who's Who in American Universities and Colleges.*

ROBERT LUTZ SHANEMAN  
Pottsville  
*Accounting, Social Studies*

Day Men's Association 1, 3, 4; Business Education Club 1, 3, 4; College Choraleers 3, 4; FTA 4.



Edward Setar



Robert Shaneman

EDWARD GEORGE SHUSTACK  
Shenandoah  
*General Business*

Class Officer, Man Representative 1, 2, 3; Day Men's Association 4; Dorm Men's Association 1, 2, 3; Phi Sigma Pi 2, 3, 4, Sergeant-at-Arms 3, Chaplain 4; Business Education Club 1, 4; FTA 4; Student Christian Association 4; Varsity Club 2, 3, 4, Treasurer 3; Basketball Tournament 1, 2, 4; Baseball 1, 2, 3, 4, Co-Captain 3, 4; Basketball 1, 2; Newman Club 4; *Maroon and Gold* 2.

WILLARD ALVIN SNYDER  
Lehighton  
*Accounting, Sales, Typing*

Business Education Club 1, 2, 3, 4; FTA 3, 4; Student Christian Association 1, 2, 3, President 2, Treasurer 3; Reformed Fellowship 1, 2, 3, Treasurer 2.



Edward Shustack



Willard Snyder



Sally Stallone



Gordon Stamets

SALLY ANNE STALLONE  
Reading  
*Secretarial, English*

CGA Secretary 3; Class Officer, Woman Representative 2; Customs Committee 3; Waller Hall Association 1, 2, 3, 4; Waller Hall Governing Board 2; Business Education Club 2, 3; FTA 3, 4; Student Christian Association 1; Women's Chorus 1; Fashion Show 1, 2, 3, 4; Lutheran Student Association 1; *Maroon and Gold* 2, 3.

GORDON A. STAMETS  
Shamokin  
*Accounting, Shorthand, Typing*

Day Men's Association 2, 3, Treasurer 3; Dorm Men's Association 1; Aviation Club 1, 2, 3; Business Education Club 1, 2, 3; FTA 3, 4; Aviation Club President 3.

DONALD ROBERT STUBBS  
White Haven  
*Accounting, Sales, Typing*

Day Men's Association 1, 2, 3, 4; Pi Omega Pi 3, 4; Business Education Club 1, 2, 3, 4; FTA 4.

EDMUND JOSEPH SWARTZ  
Mount Carmel  
*Accounting, Sales, Typing*

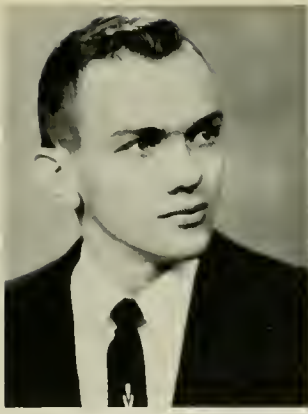
Day Men's Association 1, 2, 3, 4; Business Education Club 1, 2, 3, 4; FTA 4.



Donald Stubbs



Edmund Swartz



Charles Thomas



Mary Thornton

CHARLES ARTHUR THOMAS  
Mifflinburg

*Accounting, Sales, Typing*

Dorm Men's Association 1, 2, 3; Day Men's Association 4;  
Business Education 3, 4; FTA 4; Band 4; Varsity Club 4;  
Baseball 2, 3, 4; Basketball 1; Track 1.

MARY LOU THORNTON  
Scranton

*Accounting, Shorthand, Typing*

Waller Hall Association 1, 2, 3, 4; Pi Omega Pi 2, 3, 4,  
Treasurer 3; Aviation Club 1, 2, Secretary 2; Business Education  
Club 1, 2, 3; College Choraleers 2; Dramatic Club 1; FTA 3;  
Newman Club 1. ?



Frances Vottero



Harry Ward

FRANCIS T. VOTTERO  
Trevorton

*Accounting, Shorthand, Typing*

Day Men's Association 1, 2, 3, 4; Pi Omega Pi 3, 4; Business  
Education Club 2, 3, 4; FTA 4; Newman Club 1.

HARRY ARTHUR WARD  
Bloomsburg

*Accounting, Sales, Typing*

Day Men's Association 1, 2, 3, 4; Business Education Club  
1, 3, 4; Lutheran Student Association 1, 2, 3, 4.

GLEN CLIFFORD WITMER  
Sunbury

*Accounting, Typing, Social Studies*

Day Men's Association 1, 2, 3, 4; FTA 4; Business Education  
Club 1, 2, 3, 4.

ROBERT PETER YORI  
Freeland

*Accounting, Social Studies*

Day Men's Association 3, 4; Pi Omega Pi 4; Business Education  
Club 3, 4; FTA 4.



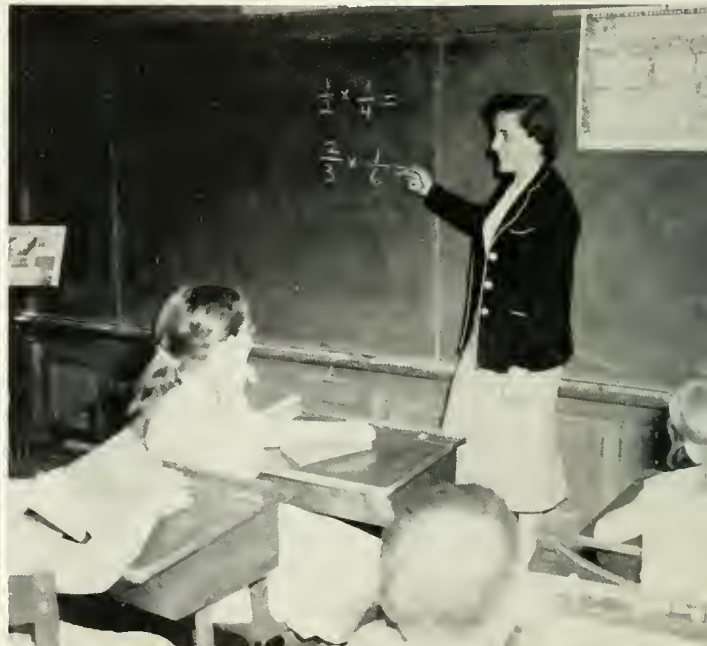
Glen Witmer



Robert Yori



# ELEMENTARY EDUCATION







Harry Arbogast



Donna Auten

HARRY ROBERT ARBOGAST  
Canton

*Elementary, Special Education for the  
Mentally Retarded*

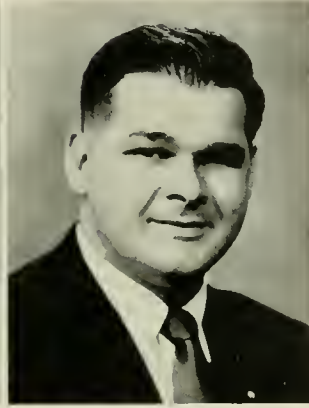
Day Men's Association 4; Dorm Men's Association 1, 2, 3;  
Sigma Alpha Eta 2, 3; Aviation Club 1; FTA 4; Varsity Club  
3, 4; Wrestling Manager 2, 3, 4; Pilot, Art Editor 3, 4; Obiter,  
Art Editor 4.

DONNA DIANE AUTEN  
Bloomsburg  
*Elementary*

Day Women's Association 1, 2, 3; FTA 3; Band 1, 2, 3;  
Reformed Fellowship 1, 2, 3, Vice President 3.



Christine Boop



James Brokenshire

CHRISTINE ELAINE BOOP  
Mifflinburg  
*Elementary*

Day Women's Association 4; Waller Hall Association 1, 2, 3;  
Band 1, 2, 3, 4; Student Christian Association 1, 2, 3; Reformed  
Fellowship 1, 2, 3, 4, Secretary 2, Vice President 3.

JAMES OPIE BROKENSHERE  
Kingston  
*Elementary*

Day Men's Association 2, 3, 4; Dorm Men's Association 1;  
Aviation Club 1, 3; FTA 4; Varsity Club 3, 4, Vice President 4;  
Basketball Tournament 3, 4; Baseball, Manager 3, 4; Football  
1, 3; Knox Fellowship 4; Intramurals Director 3, 4.

DORIS ANN BROWN  
Tamaqua  
*Elementary*

Waller Hall Association 1, 2, 3, 4; Alpha Psi Omega 3, 4,  
Treasurer 4; College Choraleers 2; Dramatic Club 1, 2, 3, 4;  
FTA 3, 4; Student Christian Association 1, 2, 3, 4; Women's  
Chorus 1; Reformed Fellowship 1, 2, 3, 4, Secretary 1, President  
2, 3; Maroon and Gold 1, 2, 3.

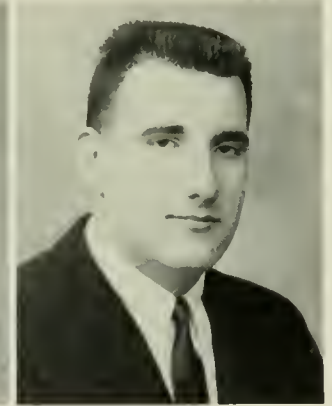
JOHN IRVIN BUSHEY  
Harrisburg

*Elementary, Special Education for the  
Mentally Retarded*

Hospitality Committee 1; Day Men's Association 4; Dorm Men's  
Association 1, 2, 3; Phi Sigma Pi 2, 3, 4; Aviation Club 1, 2;  
FTA 3, 4; Basketball Tournament 1, 2; Lutheran Student Associa-  
tion 1, 2, 3, 4, President 3, 4; Maroon and Gold 1, 2, 3, 4.



Doris Brown



John Bushey

CHARLES D. CASPER  
Unionville

*Elementary, Special Education for the  
Mentally Retarded*

Pep Committee, Co-Chairman 3; Dorm Men's Association 1, 2,  
3, 4; FTA 4; Varsity Club 1, 2, 3, 4, Assistant Secretary 3;  
Baseball 1, 2, 3, 4, Co-Captain 3; Football 1, 2, 3, 4; Wesley  
Fellowship 1, 2, 3, 4.

KATHRYN ANN CREW  
Williamsport  
*Elementary*

Class Historian 4; Customs Committee 2, 3, Chairman 2; Social  
and Recreation Committee 3, 4, Chairman 3; Day Women's  
Association 4; Waller Hall Association 1, 2, 3, 4; Waller Hall  
Governing Board 4; "B" Club 1, 2, 3, 4, President 4; College  
Choraleers 1, 2, Librarian 2; FTA 4; Social Usage Club 2;  
Women's Chorus 1; Olympian, Art Editor 3; Who's Who in  
American Universities and Colleges.



Charles Casper



Kathryn Crew

**JEANNE MARIE CROCKER**

Trucksville

Elementary

Waller Hall Association 1, 2, 3, 4; FTA 3, 4; Social Recreation Committee 3; Athenaeum Club 1, 2, 3, 4, Treasurer 2, 4; Dramatic Club 2; Women's Chorus 1; Lutheran Student Association 1, 2; Maroon and Gold 3; Obiter 4.



Jeanne Crocker



Margaret Duck

**MARGARET ANN DUCK**

Bloomsburg

Elementary

Day Women's Association 1, 2, 3, 4; FTA 3, 4; Athenaeum Club 4; Dramatic Club 1; College Choraleers 1, 2; Women's Chorus 1; Student Christian Association 1, 2, 3, 4; Reformed Fellowship 1, 2, 3.

**ALICE MARIE EYER**

Lightstreet

Elementary

Day Women's Association 1, 2, 3, 4, Secretary 3, Official Board 1, 3, 4; FTA 3, 4; Band 1; Women's Chorus 2; Fashion Show 1.



Alice Eyer



Alice Fegley

**ALICE M. FEGLEY**

Catawissa

Elementary

Day Women's Association 1, 2, 3, 4; FTA 4; Athenaeum Club 2; Aviation Club 2; Maroon and Gold 1, 2.



Lynda Firmstone



Etta Geisinger

**LYNDA LOU FIRMSTONE**

Honesdale

Elementary

Waller Hall Association 1, 2, 3, 4; FTA 3, 4; Athenaeum Club 1, 2, 3; "B" Club 1, 2, 3, 4; College Choraleers 1, 2; Maroon and Gold 1; Obiter 4; Assembly Committee 1, 2, 3, 4, Secretary 2.

**ETTA MAE GEISINGER**

Lebanon

Elementary

Waller Hall Association 1, 2, 3, 4; Election Board 3, Chairman 4; Band 1, 2; FTA 3, 4; Student Christian Association 1; Reformed Fellowship 1, 2, 3, 4.

**JOANNE LYNNE GRAEBER**

Springfield

Elementary

Waller Hall Association 1, 2, 3, 4; FTA 3, 4; Freshman Advisor 3; Customs Committee 2, 3; Athenaeum Club 2, 3, Treasurer 3; "B" Club 2, 3, 4, Vice President 3; Dramatic Club 1, 2; Basketball Tournament Committee 3; Maroon and Gold 2, 3; Obiter 1, 2, 3, 4; Senior Committee Co-Chairman 4.

**WINIFRED SUZANNE GRAFF**

Springfield

Elementary

Waller Hall Association 1, 2, 3, 4; FTA 3, 4; Athenaeum Club 2, 3; Aviation Club 1; "B" Club 2, 3, 4; College Choraleers 1, 2, 3, 4; Treasurer 4; Women's Chorus 1; Canterbury Club 1; Lutheran Student Association 3; Maroon and Gold 1, 2; Obiter 1, 2, 3, 4, Distribution Manager 4.



JoAnne Graeber



Winifred Graff



Nancy Green



Hortense Hagenbuch

NANCY G. GREEN  
Hazleton

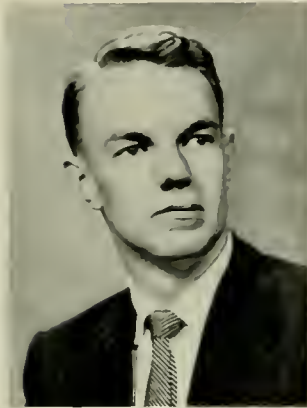
*Elementary, Special Education for the  
Mentally Retarded*

Waller Hall Association 1, 2, 3, 4; FTA 3, 4; Sigma Alpha Eta  
2, 3, 4; "B" Club 3, 4; Band 1, 2, 3, 4; Social Usage Club 2;  
Newman Club 1, 2, 3, 4; Maroon and Gold 3.

HORTENSE EVANS HAGENBUCH  
Berwick

*Elementary*

Day Women's Association 1, 2.



James Harris



Carol Hetherington

JAMES EDWIN HARRIS  
Bloomsburg

*Elementary*

Day Men's Association 1, 2, 3, 4; Aviation Club 1; Business  
Education Club 1, 2, 3; Reformed Fellowship 1, 2.

CAROL JOAN HETHERINGTON  
Selinsgrove

*Elementary*

Waller Hall Association 2, 3, 4; Sigma Alpha Eta 2; College  
Choraleers 2; FTA 3, 4; Poetry Club 3, 4, Vice President 4;  
Lutheran Student Association 2.

CORALIE MARTIN HUGHES

Luzerne

*Elementary*

Waller Hall Association 1, 2, 3, 4; FTA 4; Social Recreation  
Committee 3; Aviation Club 1; Poetry Club 2; Social Usage  
Club 2; Olympian, Circulation Manager 3; Maroon and Gold  
2, 3, 4, Wesley Fellowship 1.

JAMES HAMILTON JOY

Bloomsburg

*Elementary*

Day Men's Association 1, 2, 3, 4; FTA 4; Aviation Club 2, 3, 4;  
Dramatic Club 1; Business Education Club 1; Varsity Club  
1, 3, 4; Basketball Tournament 2, 3, 4; Baseball 1, 3, 4;  
Canterbury Club 1, 2, 3, 4, President 4.



Coralie Hughes



James Joy

PATRICIA LOUISE KEMP

Berwick

*Elementary*

Day Women's Association 1, 2, 3, 4; FTA 3, 4; Athenaeum  
Club 2; Science Club 1; Maroon and Gold 1.

MARLENE JUNE KOSTENBAUDER

Courtdale

*Elementary*

Waller Hall Association 1, 2, 3, 4; College Choraleers 1, 2;  
FTA 4; Knox Fellowship 3; Science Club 4.



Patricia Kemp



Marlene Kostenbauder

GUY EDGAR LAURENSEN

Mt. Pleasant Mills

Elementary

Day Men's Association 3, 4.

BARBARA JEAN LENTZ

Williamsport

Elementary

Waller Hall Association 1, 2, 3, 4; Class Secretary 2; Customs Committee 2; "B" Club 2, 3, 4, Secretary 4; College Choraleers 1, 2, 3, 4, Treasurer 2, 3; FTA 3, 4; Dramatic Club 1; Women's Chorus 1, 2; Cheerleader 2, 3; Basketball Tournament Committee 2, 3; Newman Club 1, 2, 3, 4; Maroon and Gold 3; Senior Committee, Co-Chairman 4; Who's Who in American Universities and Colleges.



Guy Laurensen



Barbara Lentz

HARRIET JANE LINK

Coopersburg

Elementary, Special Education for the Mentally Retarded

Waller Hall Association 1, 2, 3, 4; FTA 4; Dining Room Committee 2; Sigma Alpha Eta 2, 3, 4; College Choraleers 1, 2, 4; Poetry Club 2; Women's Chorus 1, 2; Olympian, Editorial Board 3; Obiter 3, 4, Editorial Board 4; Maroon and Gold 1, 2, 3, Editorial Board 2, 3; Senior Committee Co-Chairman 4.

VICTOR A. MICHAEL

Milton

Elementary

Dorm Men's Association 1, 2, 3; Day Men's Association 1, 4; Aviation Club 1; Student Christian Association 1, 2, 3; Knox Fellowship 1, 2, 3, 4.



Harriet Link



Victor Michael

CAROL JEAN NEARING

Bloomsburg

Elementary

Day Women's Association 1, 2, 3, 4, Vice President 2, President 3, Official Board 1, 2, 3; College Council 3; "B" Club 3, 4, Secretary 3; College Choraleers 1, 2, 3, 4; FTA 4; Women's Chorus 1, 2; Knox Fellowship 1, 2, 3, 4; Pilot 1, 2, 3, Editor 3.

SUZANNE OSBORN

Springfield

Elementary

Waller Hall Association 1, 2, 3, 4; FTA 3, 4; Customs Committee 2; Social Recreation Committee 3; Waller Hall Governing Board 4; Kappa Delta Pi 3, 4; Athenaeum Club 2, 3, Secretary 3; "B" Club 2, 3, 4; College Choraleers 1, 2; Dramatic Club 1, 2; Women's Chorus 1; Olympian 1, 2, Editorial Board 2; Maroon and Gold 1, 3, Acting Editor 3; Obiter 2, 3, 4, Editorial Board 3, Editor-in-Chief 4; Who's Who in American Universities and Colleges.

JANET HELEN PLUMMER

Shamokin

Elementary

Waller Hall Association 1, 2, 3, 4; FTA 3, 4; Athenaeum Club 3, 4; College Choraleers 2; Women's Chorus 1; Fashion Show 2, 3, 4.

WILLIAM JOHN POHUTSKY

Old Forge

Elementary

Dorm Men's Association 1, 2, 3; Day Men's Association 4; Class President 4; Aviation Club 1, 2; FTA 3, 4; Basketball Tournament 2; Newman Club 3, 4; PFTA Executive Committee 4.



Carol Nearing



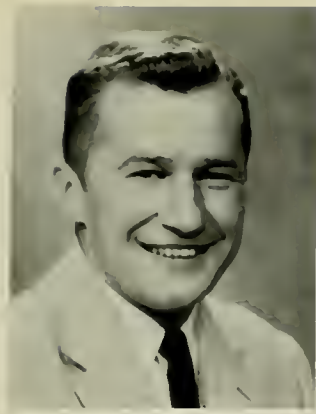
Suzanne Osborn



Janet Plummer



William Pohutsky



Robert Rainey



Barbara Raski

ROBERT GLENN RAINEY

Johnstown

Elementary

Dorm Men's Association 1, 2, 3, 4; FTA 4; Varsity Club 1, 2, 3, 4; Basketball Tournament Committee 2; Football 1, 2, 3, 4; Newman Club 1, 2, 3, 4; Class Treasurer 1.

BARBARA RASKI

Benton

Elementary

Waller Hall Association 1, 2, 3, 4; "B" Club 4; Athenaeum Club 3; College Choraleers 2; Women's Chorus 1; FTA 3, 4; Obiter 3.



Dreher Richards



Joan Rieder

DREHER LEROY RICHARDS, JR.

Berwick

Elementary

Day Men's Association 1, 2, 3, 4; Basketball 1, 2; Soccer 1, 2.

JOAN IRENE RIEDER

Scranton

Elementary

Waller Hall Association 1, 2, 3, 4; FTA 3, 4; Hospitality Committee 2, 3, Chairman 3; Aviation Club 2; "B" Club 3, 4; Student Christian Association 1; Women's Chorus 1, 2; Fashion Show 1, 2, 3, 4; Knox Fellowship 1, 2, 3, 4, Secretary 2; Maroon and Gold 2, 3, 4, Circulation Manager 3; Dining Room Committee 1.

MARILYN JEAN RITTER

Forty Fort

Elementary

Waller Hall Association 1, 2, 3, 4; FTA 3, 4, Treasurer 4; Election Committee 1, 2, 3, 4, Co-Chairman 2, 3; Waller Hall Governing Board 3; Kappa Delta Pi 3, 4, Historian 4; "B" Club 2, 3, 4, Vice President 4; College Choraleers, Librarian 1, Student Christian Association 1, 2, Treasurer 2; Wesley Fellowship 1, 2, 3, 4, Vice President 3; Olympian 2; Maroon and Gold 1, 2, 3, Editorial Board 3; Obiter 4, Associate Editor; Who's Who in American Universities and Colleges.

JOHN LEONARD SHIREY

Lewistown

Elementary, Special Education for the Mentally Retarded

Dorm Men's Association 1; Day Men's Association 2, 3; Sigma Alpha Eta 1, 2, 3; College Choraleers 1; Science Club 3; Track 1.



Marilyn Ritter



John Shirey

MARGARET E. SHOEMAKER

Bloomsburg

Elementary

Day Women's Association 1, 2, 3, 4.

JEAN FRANCES SNYDER

Jermyn

Elementary

Day Women's Association 1, 2, 3, 4; College Choraleers 1, 2; Dramatic Club 1; FTA 3, 4; Student Christian Association 1.



Margaret Shoemaker



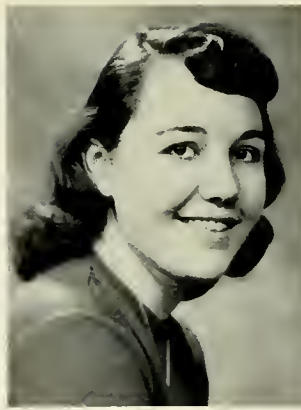
Jean Snyder

JOANNE AUDREY SPECHT  
Lewisburg  
Elementary

Waller Hall Association 1, 2, 3, 4; FTA 3, 4; Athenæum Club 2; College Choraleers 1, 2; Dramatic Club 2, 3, 4; Student Christian Association 2, 3, 4; Maroon and Gold 2, 3, 4, Feature Editor 3.

EDITH H. STACKHOUSE  
Unityville  
Elementary

Day Women's Association 1, 2, 3, 4; FTA 3, 4; Athenæum Club 2; Science Club 1; Maroon and Gold 1.



Joanne Specht



Edith Stackhouse

DOLORES DIANA STANTON  
Williamsport  
Elementary

Waller Hall Association 1, 2, 3, 4; FTA 3, 4; Athenæum Club 3, 4; "B" Club 3, 4; Fashion Show Coordinator 2, 3, 4; Newman Club 1, 2, 3, 4; Maroon and Gold 3.

JEAN STAVISKY  
Old Forge  
Elementary

Waller Hall Association 1, 2, 3, 4; FTA 3, 4; Kappa Delta Pi 3, 4; Athenæum Club 3, 4; Aviation Club 2; Band 1, 2; Science Club 3; Lutheran Student Association 4.



Dolores Stanton



Jean Stavisky

HELENE MICHELE STEC  
Mahanoy Plane  
Elementary

Waller Hall Association 1, 2, 3, 4; FTA 3, 4; Aviation Club 1, 2, 3, 4; College Choraleers 2; Newman Club 1, 2, 3, 4; Maroon and Gold 3, 4.

HARLEY SILAS STEWART, JR.  
Allentown  
Elementary

Dorm Men's Association 1, 2, 3, 4; FTA 4; Customs Committee Chairman 2; Aviation Club 1; Business Education Club 1, 2; College Choraleers 3, 4; Student Christian Association 4; Varsity Club 4; Basketball Tournament 1, 2, 3, 4; Basketball 1, 2, Manager; Lutheran Student Association 1, 2, 3, 4, President 2, Treasurer 3, 4.

ROBERT STROUP  
Johnstown  
Elementary, Special Education for the  
Mentally Retarded

Dorm Men's Association 1, 2; Day Men's Association 3, 4; FTA 4; Varsity Club 1, 2, 3, 4, Vice President 3; Basketball Tournament 1; Baseball 1, 2, 3, 4; Football 1, 2, 3, 4; Knox Fellowship 1, 2, 3, 4; Intramurals 1, 2, 3, 4.

JOSEPH SWIGONSKI  
Nanticoke  
Elementary

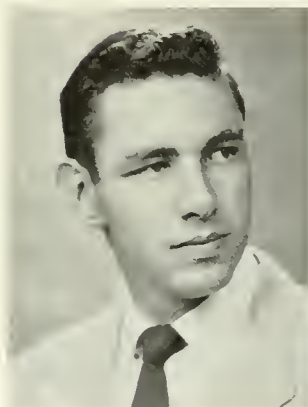
Dorm Men's Association 1, 2; Day Men's Association 3, 4; Aviation Club 1, 2; FTA 3, 4.



Helene Stec



Harley Stewart



Robert Stroup



Joseph Swigonski



Beverly Thomas



Janice Truscott

BEVERLY R. THOMAS

Hazleton

*Elementary, Special Education for the Mentally Retarded*

Waller Hall Association 2, 3; Dramatic Club 2, 3; Social Usage Club 2; Olympian 3; Maroon and Gold 3.

JANICE HELEN TRUSCOTT

Oneonta, New York

*Elementary, Special Education for the Mentally Retarded*

Waller Hall Association 1, 2, 3, 4; "B" Club 3, 4; FTA 4; Student Christian Association 1, 2, 3, 4; Wesley Fellowship 1, 2, 3, 4, President 3; Maroon and Gold 1.

JUDITH ANNE ULMER

Williamsport

*Elementary*

Waller Hall Association 1, 2, 3, 4; FTA 3; Class Treasurer 3, 4; Co-Chairman Furniture Committee 2; Dining Room Committee 3; Waller Hall Governing Board 3; Athenaeum Club 3, 4; College Choraleers 2; Women's Chorus 1; Fashion Show 1, 2, 3; Lutheran Student Association 1; Maroon and Gold 2, 3, News Editor 3; Who's Who in American Universities and Colleges.



Judith Ulmer



Enola Van Auken

ENOLA FAYE VAN AUKEN

Mill City

*Elementary*

Waller Hall Association 1, 2, 3, 4; Election Committee 3; Hospitality Committee 2; Waller Hall Governing Board 1, 2, 3, 4, Secretary 3; Kappa Delta Pi 3, 4, Treasurer 4; "B" Club 2, 3, 4, Treasurer 3; FTA 3, 4, Secretary 4; Student Christian Association 1, 2, 3, 4, Vice President 3; Wesley Fellowship 1, 2, 3, 4; Maroon and Gold 3; Who's Who in American Universities and Colleges.

SHIRLEY WAGNER

Hazleton

*Elementary*

Waller Hall Association 1, 2, 3, 4; FTA 3, 4; Dining Room Committee 3; Hospitality Committee 3; Athenaeum Club, Program Chairman 3, 4; Business Education Club 1; College Choraleers 2; Maroon and Gold 1, 2, 3; Obiter 1, 3; Basketball Tournament Committee 3.

JEAN LOUISE WILSON

Bloomsburg

*Elementary*

Day Women's Association 3, 4; Aviation Club 2; Athenaeum Club 3.



Shirley Wagner



Jean Wilson

MARGARET E. YOHN

Selinsgrove

*Elementary*

Waller Hall Association 1, 2, 3, 4; FTA 3, 4; Class Representative 1, 3; Sigma Alpha Eta 2; Athenaeum Club 1; "B" Club 3, 4, Treasurer 4; College Choraleers 1, 2, 3, 4, Secretary 3; Student Christian Association 1, 2, 3, 4; Women's Chorus 1; Lutheran Association 1, 2; Co-Pilot, Editor 3; Maroon and Gold 3; Senior Committee Co-Chairman; Who's Who in American Universities and Colleges.

MAXINE YVONNE ZEISLOFT

Bloomsburg

*Elementary*

Day Women's Association 1, 2, 3, 4, Official Board 3; Athenaeum Club 2; FTA 3; Science Club 1.



Margaret Yohn



Maxine Zeisloft

# SECONDARY EDUCATION







Donald Alter



Edward Augustine

DONALD EARLE ALTER

Danville

*English, Social Studies*

Day Men's Association 1, 2, 3, 4; Dramatic Club 1, 2, 3; Life Saving Instructor 1, 2, 3, 4.

EDWARD STANLEY AUGUSTINE

Nanticoke

*Science, Mathematics*

Day Men's Association 2, 3, 4; Kappa Delta Pi 3, 4, President 4; Science Club 2, 3, 4; FTA 4; Newman Club 2.



George Bach



Jeanne Bandes

GEORGE JAMES BACH, JR.

Mt. Carmel

*Science, Social Studies*

Day Men's Association 1, 2, 3, 4; Customs Committee 2; Sigma Alpha Eta 4; Aviation Club 3; Science Club 1, 2; FTA 4; Newman Club 1, 2, 3.

(MRS.) JEANNE GLENNER BANDES

Bloomsburg

*Science, French*

Day Women's Association 3, 4; Dramatic Club 3; Poetry Club 4.

GUY H. BASTRESS

Danville

*English, Spanish, Social Studies*

Day Men's Association 1, 2, 3, 4.

RONALD BRUCE BEHERS

Bellefonte

*Social Studies, English*

Dorm Men's Association 1, 2, 3; Day Men's Association 4; Customs Committee 3; Basketball Tournament Committee 2, 4; FTA 4; Knox Fellowship 4; Maroon and Gold 1, 2; Intramurals 1, 2, 3, 4; Senior Committee Chairman.



Guy Bastress



Ronald Behers

JAMES HAROLD BRUNN

Nanticoke

*English, Social Studies*

Day Men's Association 1, 2, 3; Aviation Club 1; Athenaeum Club 2; College Choraleers 1; Poetry Club 2; Science Club 2; Student Christian Association 1, 2; Basketball Tournament Committee 2, 3; Maroon and Gold 2, 3; Intramurals 2.

JAMES ALVIN CARTER

Northumberland

*Social Studies, Geography*

Day Men's Association 1, 2, 3, 4; Aviation Club 1; Science Club 4; Social Usage Club 4; Intramurals 4.



James Brunn



James Carter

CATHERINE ROSE CHRISTIAN  
St. Clair

*Science, Social Studies*

Waller Hall Association 1, 2, 3, 4; FTA 4; Aviation Club 1; Student Christian Association 1; Science Club 2, 3, 4; Newman Club 1, 3, 4.

(MRS.) JOANNE TRESSLER COAKLEY  
Port Carbon

*Social Studies, Geography*

Waller Hall Association 1, 2, 3, 4; FTA 3, 4; Athenaeum Club 2, 3, 4; College Choraleers 2; Dramatic Club 1.



Catherine Christian



Joanne Coakley

WILLIAM E. CRANMER  
McEwensville

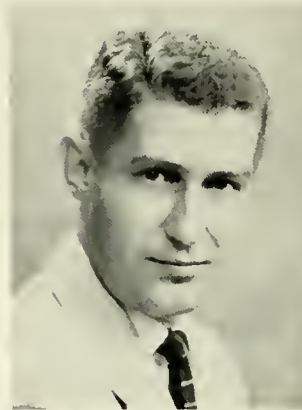
*Social Studies, English*

Dorm Men's Association 1, 2, 3; FTA 3, 4; Social Recreation Committee 3, 4, Chairman 4; Phi Sigma Pi 3, 4; Athenaeum Club 1; Poetry Club, Treasurer 3; Lutheran Student Association 1, 2.

GEORGE RALPH DAVENPORT  
Plymouth

*Social Studies, Geography*

Dorm Men's Association 1, 2, 3; Day Men's Association 4; Gamma Theta Upsilon 2, 3, 4; Aviation Club 1; FTA 3, 4; Wesley Fellowship 4.



William Cranmer



George Davenport



Kenneth Derr



Ramon DeTato

KENNETH FRANK DERR  
Muncy

*Social Studies, Geography*

Day Men's Association 1, 2, 3, 4; Athenaeum Club 1.

RAMON GEORGE DETATO  
Berwick

*Science, Social Studies*

Day Men's Association 1, 2, 3, 4; Sigma Alpha Eta 4; Science Club 1.

ROBERT OLIN DEWOLFE  
Bloomsburg

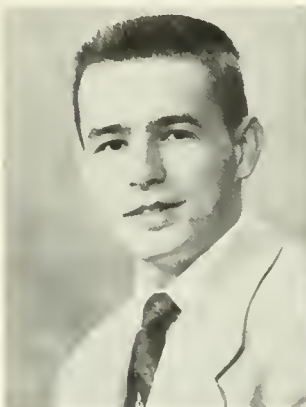
*Social Studies, Geography*

Day Men's Association 2, 3, 4; Gamma Theta Upsilon 2, 3, 4, Secretary 3, President 4; Athenaeum Club 1; Science Club 1, 2, 3.

ROBERT L. JOHN DIPIPI  
Old Forge

*Science, Mathematics*

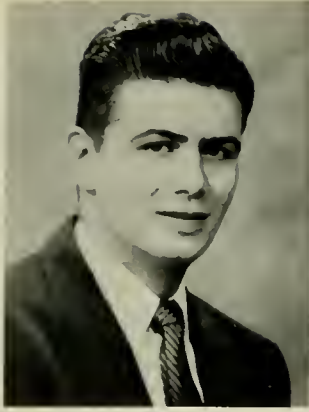
Dorm Men's Association 1, 2, 3; Day Men's Association 4; Phi Sigma Pi 3, 4; Aviation Club 1, 2; Varsity Club 1, 2, 3, 4; Basketball Tournament Committee 1; Baseball 1, 2, 3, 4; Basketball 1; Football 1, 2.



Robert DeWolfe



Robert Dipipi



Carmen DiSimoni



Regina Doraski

CARMEN FRANK DISIMONI  
Old Forge

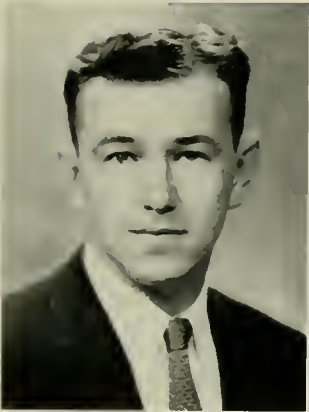
*Social Studies, Geography*

Dorm Men's Association 1, 2, 3; Day Men's Association 4; Gamma Theta Upsilon 3, 4; Aviation Club 1, 2; FTA 4; Basketball 1, 2; Newman Club 1, 2; Intramurals 1, 2, 3, 4.

REGINA MARIE DORASKI  
Catawissa

*Science, Mathematics*

Day Women's Association 1, 2, 3, 4; Science Club 2, 3, 4; Athenaeum Club 3, 4; Newman Club 1, 2, 3, 4; Maroon and Gold 2, 3.



Frank Durkas



Robert Ebner

FRANK P. DURKAS  
Glen Lyon

*Social Studies, Geography*

Dorm Men's Association 1, 2, 3, 4; FTA 4; Gamma Theta Upsilon 3, 4; Aviation Club 3; Science Club 1, 2.

ROBERT LEWIS EBNER  
Muncy

*Social Studies, Geography*

Dorm Men's Association 1, 2, 3, 4, Vice President 3; Alpha Psi Omega 4; FTA 3, 4; Gamma Theta Upsilon 2, 3, 4, Secretary 4; Phi Sigma Pi 2, 3, 4, Secretary 4; Dramatic Club 1, 2, 3, 4, Vice President 3; Athenaeum Club 1, 2, 3, 4, Vice President College Choraleers 1, 2, 3, 4.

RAYMOND FREDERICK EDWARDS  
West Pittston

*Physical Science, Mathematics*

Dorm Men's Association 1, 2; Day Men's Association 3, 4; Class Vice President 3; Dining Room Committee 2, 3, Chairman 3; Assembly Committee 2, 3; Phi Sigma Pi 2, 3, 4; Science Club 2; FTA 3, 4; Basketball Tournament 2, 3, Student Director 3; Senior Committee Co-Chairman.

JOHN MICHAEL FORGACH  
Glen Lyon

*Science, Social Studies*

Day Men's Association 1, 2, 3, 4; Newman Club 1; Science Club 1, 2, 3, 4; Intramurals 1, 2, 3, 4.



Raymond Edwards



John Forgach

MARILYN FRIEDMAN  
Clarks Summit

*French, Spanish*

Waller Hall Association 1, 2, 3, 4; FTA 3, 4, Vice President 4; Student Christian Association 1, 2; Women's Chorus 1; Wesley Fellowship 1, 2, 3, 4, Secretary 3; Maroon and Gold 2, 3, 4; Senior Committee Co-Chairman.

JOSEPH CIRIL GARCIA  
Kulpmont

*Science, Social Studies*

Dorm Men's Association 1, 2, 3, 4; Aviation Club 1; College Choraleers 1; FTA 4; Science Club 3; Newman Club 2, 3, 4.



Marilyn Friedman



Joseph Garcia

CLYDE S. GASS  
Orangeville

*Social Studies, Geography*

Day Men's Association 1, 2, 3, 4; Gamma Theta Upsilon 4.

DONALD RUSSELL HARE  
Sunbury

*Mathematics, Social Studies*

Day Men's Association 1, 2, 3, 4; FTA 4; Kappa Delta Pi 3, 4,  
Vice President 4; Aviation Club 3.



Clyde Gass



Donald Hare

WILLIAM COPELAND HARRELL  
Bloomsburg

*Social Studies, Geography, English*

Day Men's Association 1, 2, 3, 4; FTA 4; Aviation Club 1, 2,  
3, 4; Knox Fellowship 1, 2.

ROBERTA ELEANOR HENDRICKSON  
Elkland

*English, Social Studies*

Waller Hall Association 1, 2, 3, 4; FTA 4; Customs Committee  
2, 3; "B" Club 2, 3, 4; Business Education Club 1, 2, 3; Student  
Christian Association 1; Wesley Fellowship 1, 2, 3, 4; *Olympian*  
1, 3, Editorial Board 1; *Maroon and Gold* 1, 2; *Obiter* 3.



William Harrell



Roberta Hendrickson



Virgil Hettinger



Marlin Horne

VIRGIL JAMES HETTINGER  
Berwick

*Social Studies, Geography*

Day Men's Association 1, 2, 3, 4, Vice President 4; Gamma  
Theta Upsilon 4; Aviation Club 1, 2, 3; FTA 4.

MARLIN HORNE  
Kulpmont

*Science*

Day Men's Association 1, 2, 3, 4; FTA 4; Sigma Alpha Eta 4;  
Athenaeum Club 1; Science Club 3.



Daniel Hudak



Harry Hughes

DANIEL ABRAHAM HUDAK  
Nanticoke

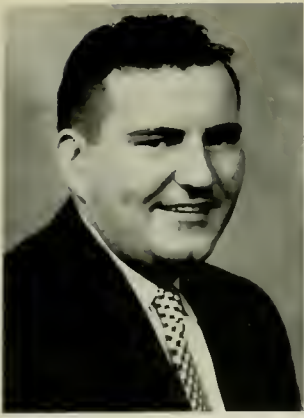
*Science, Social Studies*

Day Men's Association 1, 2, 3, 4; FTA 4; Aviation Club 2, 3;  
College Choraleers 1; Science Club 3; Senior Committee  
Chairman.

HARRY THOMAS HUGHES  
Williamsport

*Social Studies, Geography*

Dorm Men's Association 1, 2, 3, 4; Varsity Club 1, 2, 3, 4;  
Football 1, 2, 3, 4; Track 1, 2; Wrestling 2, 3, 4; Wesley  
Fellowship 1, 2, 3, 4; Intramurals 1, 2, 3, 4.



Joseph Jones



William Kautz

JOSEPH JAMES JONES

Nanticoke

*Social Studies, Geography*

Day Men's Association 1, 2, 3, 4; Gamma Theta Upsilon 2, 3, 4; Aviation Club 1, 2; FTA 4; Intramurals 3.

WILLIAM DAVID KAUTZ

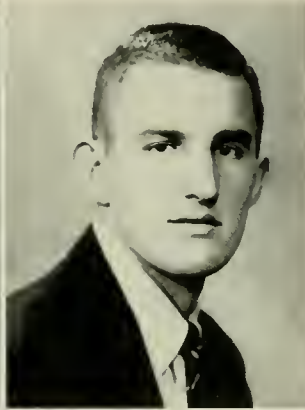
Harrisburg

*Social Studies, Geography*

Dorm Men's Association 1, 2; Day Men's Association 3, 4; CGA President 4; Assembly Committee 1, 2, 3, 4; Gamma Theta Upsilon 2, 3, 4; Treasurer 3, 4; Phi Sigma Pi 3, 4; Aviation Club 1; FTA 4; Basketball Tournament 1, 4; Maroon and Gold 1, 2, 3, 4; Who's Who in American Universities and Colleges.



Mary Koch



Leonard Kozick

MARY JOAN KOCH

West Hazleton

*Mathematics, Social Studies*

Waller Hall Association 1, 2, 3, 4; FTA 4; Kappa Delta Pi 3, 4; Poetry Club 1, 2; Student Christian Association 2, 3, 4; Social Usage Club 4; Canterbury Club 1, 2, 4; Co-Pilot, Assistant Editor 2; Olympian, Editorial Board 3.

LEONARD KOZICK

Dallas

*Social Studies, Geography*

Dorm Men's Association 1, 2, 3, 4; Class Vice President 4; Chairman Fire Drill Committee 3; Gamma Theta Upsilon 3, 4; Varsity Club 1, 2, 3, 4; FTA 4; Basketball Tournament 1, 3, 4; Basketball 1, 2, 3, 4; Newman Club 1, 2, 3, 4.

JAY ALLEN KROTHER

Shickshinny

*Social Studies, Geography*

Day Men's Association 1, 2, 3, 4; Gamma Theta Upsilon 4; Aviation Club 1, 3, 4; Wesley Fellowship 1, 2, 3, 4.

CLARENCE R. LAINE

Wilkes Barre

*Science, Social Studies*

Dorm Men's Association 1, 2, 3; Day Men's Association 4; Aviation Club 1, 2, 3, 4; Science Club 4; FTA 3, 4; Student Christian Association 3, 4; Football 1; Lutheran Student Association 1, 4.



Jay Krothe



Clarence Laine

ROBERT EUGENE LITWIN

Keiser

*Speech Correction, Social Studies*

Day Men's Association 1, 2, 3, 4, Treasurer 4; Sigma Alpha Eta 3, 4; FTA 4; Newman Club 1, 2, 3, 4.

DONALD L. MacLEAN

Lumberville

*Social Studies, Geography*

Day Men's Association 1, 2, 3, 4; FTA 4; Social Recreation Committee 2; Gamma Theta Upsilon 4; Phi Sigma Pi 4; Aviation Club 3; Athenaeum Club 1; Social Usage Club 2.



Robert Litwin



Donald MacLean

JOSEPH PETER MALCZYK  
Nanticoke

*Social Studies, Biological Science*

Dorm Men's Association 1, 2, 3, 4; FTA 4; Class President 3;  
College Council 3; Aviation Club 1; Varsity Club 2, 3, 4;  
Baseball 3, 4; Football 2, 3, 4, Co-Captain 4; Newman Club  
1, 2, 3.

ROBERT MORGAN MAURER  
Girardville

*English, Social Studies*

Day Men's Association 3, 4; Phi Sigma Pi 4; Aviation Club 3, 4;  
Student Christian Association 3, 4; Baseball, Student Coach 4;  
Knox Fellowship 3, 4.



Joseph Malczyk



Robert Maurer

THOMAS JOSEPH McBRIDE  
Shamokin

*Social Studies, Geography*

Day Men's Association 1, 2, 3, 4; Aviation Club 1, 2; Athenaeum  
Club 4; FTA 4; Newman Club 1, 2, 3, 4.

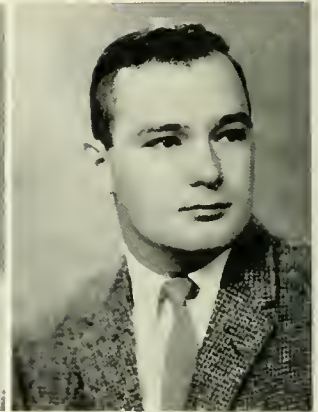
KERMIT MERLE McMEANS, JR.  
Johnstown

*Social Studies, English*

Dorm Men's Association 1, 2, 3; Day Men's Association 4;  
Social Usage Club 4; FTA 3, 4; Basketball Tournament 4;  
Football 1.



Thomas McBride



Kermit McMeans



Peter McMonigle



Donald McNelis

PETER JOSEPH McMONIGLE  
Harleigh

*Social Studies, Geography*

Day Men's Association 3, 4; Gamma Theta Upsilon 4; Aviation  
Club 3, 4; Dramatic Club 4; Intramurals 3, 4; Newman Club  
3, 4; FTA 4.

DONALD THOMAS McNELIS  
Kingston

*Mathematics, Social Studies*

Dorm Men's Association 1, 2, 3; Day Men's Association 4;  
Freshman Class Advisor 3; Phi Sigma Pi 3, 4; College Choraleers  
2; Dramatic Club 1, 2; FTA 4; Men's Glee Club 1; Football 1;  
Newman Club 1, 2.

RICHARD PHILLIP MEASE  
Milton

*Speech Correction, Special Education for the  
Mentally Retarded*

Day Men's Association 1, 2, 3, 4; Kappa Delta Pi 4; Sigma  
Alpha Eta 1, 2, 3, 4, Secretary 4; FTA 4; Maroon and Gold 3,  
4, Editorial Board 4.

ALBERT JOHN MILES  
Hunlock Creek

*English, Social Studies*

Dorm Men's Association 1, 2, 3; Customs Committee 2, 3,  
Chairman 2; Phi Sigma Pi 2, 3, 4; FTA 4; Band 1, 2, 3, 4,  
Vice President 3; Basketball Tournament 2; Olympian, Editorial  
Board 3.



Richard Mease



Albert Miles



Marilyn Miller



John Moss

MARILYN M. MILLER  
Mahanoy City

*Mathematics, Social Studies*

Waller Hall Association 1, 2, 3, 4; FTA 3, 4; Waller Hall Governing Board 2, 3, 4, Treasurer 3, Vice President 4; Aviation Club 1; "B" Club 1, 2, 3, 4; Band 1, 2, 3; Newman Club 1, 2, 3, 4; Maroon and Gold 3.

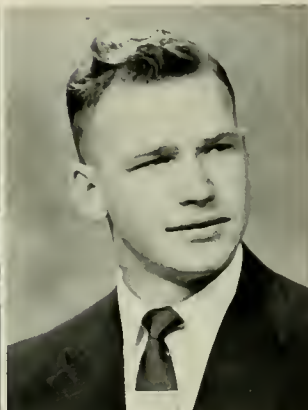
JOHN P. MOSS  
New Milford

*Science, Social Studies*

Day Men's Association 1, 3, 4; Dorm Men's Association 2; Customs Committee 2, 3, Chairman 2; Kappa Delta Pi 4; Athenaeum Club 2; Aviation Club 1; Science Club 2, 3, 4, Vice President 4; Knox Fellowship 1, 2, 3; *Pilot*, Associate Editor 2; Senior Committee Co-Chairman 4.



Betty Moyer



Cameron Myers

BETTY LOU MOYER  
Montgomery

*Mathematics, Spanish*

Waller Hall Association 1, 2, 3, 4; FTA 4; College Choraleers 1; Dramatic Club 2, 3, 4; Maroon and Gold 1.

CAMERON S. MYERS, JR.  
Danville

*Science, Mathematics*

Day Men's Association 1, 2, 3, 4; Athenaeum Club 2, 3; Dramatic Club 1, 3; Science Club 2, 3.

EDWARD J. O'BRIEN  
Ashland

*English, French*

Day Men's Association 3, 4; Dorm Men's Association 1, 2; Athenaeum Club 3, 4; Aviation Club 3; Social Usage Club 4; FTA 3, 4; Basketball Tournament Committee 4; Baseball 1; Newman Club 3, 4.

THOMAS LEE OHL  
Bloomsburg

*Science, Mathematics*

Day Men's Association 1, 2, 3, 4; Aviation Club 1; Science Club 3, 4; Basketball Tournament Committee 3, 4; Track 2, 3.



Edward O'Brien



Thomas Ohl

STANLEY L. OKUNIEWSKI  
Ashley

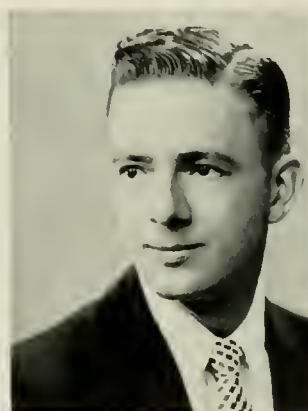
*Social Studies, Geography*

Dorm Men's Association 1; Day Men's Association 2, 3, 4; Customs Committee 4; Gamma Theta Upsilon 2, 3, 4; Phi Sigma Pi 3, 4; Aviation Club 1, 2, 3; FTA 4.

KENNETH ORVAL PAISLEY  
Dorrance Corners

*Social Studies, Biological Science*

Day Men's Association 1, 2, 3; Sigma Alpha Eta 3; Athenaeum Club 3; Aviation Club 3; Science Club 1; Track 1.



Stanley Okuniewski



Kenneth Paisley

MICHAEL MYRON PATRILAK  
Shamokin

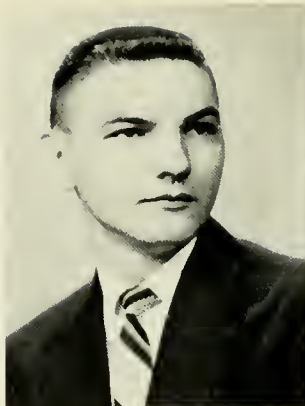
*Physical Science, Mathematics*

Day Men's Association 2, 3, 4; FTA 4; Science Club 3, 4;  
Newman Club 2, 3, 4.

JOHN RUSSELL PHILLIPS  
Scranton

*Social Studies, Geography*

Dorm Men's Association 1, 2, 3; Day Men's Association 4;  
Gamma Theta Upsilon 3, 4; Aviation Club 1, 2; FTA 3, 4;  
Wesley Fellowship 3.



Michael Patrilak



John Phillips

JAMES DAVID PRICE  
Shickshinny

*Social Studies, Geography*

Day Men's Association 1, 2, 3, 4; Gamma Theta Upsilon 2, 3, 4;  
Phi Sigma Pi 4; Aviation Club 1; Knox Fellowship 1, 2, 3, 4.

(MRS.) VANICE LORRAINE PURVIS  
Millville

*Science, Geography*

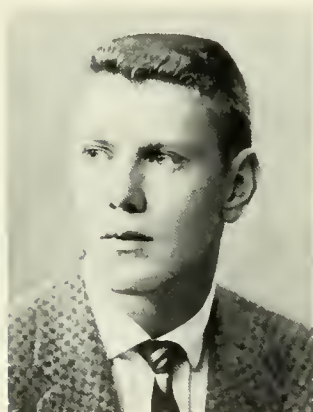
Day Women's Association 1, 2, 3, 4; Gamma Theta Upsilon 4;  
Aviation Club 1, 2, 3, 4.



James Price



Vanice Purvis



William Quinn



Arlene Rando

WILLIAM GEORGE QUINN  
Shamokin

*Social Studies, Geography*

Day Men's Association 1, 2, 3, 4; Gamma Theta Upsilon 3, 4;  
Athenaeum Club 1; Aviation Club 1; FTA 4.

ARLENE H. RANDO  
Shamokin

*English, Spanish*

Day Women's Association 1, 2, 3, 4, Official Board 2, 4; FTA  
3, 4; Kappa Delta Pi 3, 4; Aviation Club 1, 2; Athenaeum  
Club 3, 4, President 4; Newman Club 3, 4; Olympian, Editorial  
Board 3, 4; Maroon and Gold 1, 2, 3, 4.

THOMAS JOHN REIMENSNYDER  
Mifflinburg

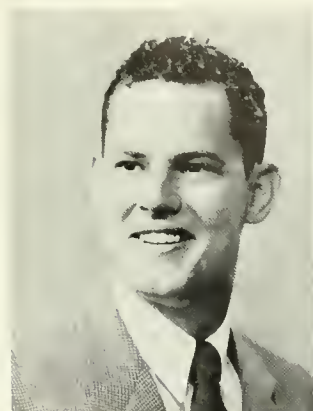
*Social Studies, Geography*

Day Men's Association 1, 2, 3, 4; Gamma Theta Upsilon 2, 3, 4,  
Vice President 3, 4; Aviation Club 2; College Choraleers 1;  
FTA 4; Science Club 4; Social Usage Club 4; Intramurals 3;  
Maroon and Gold 4.

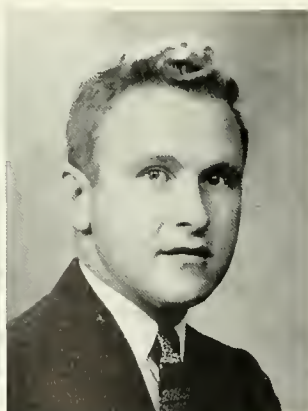
JOHN STANLEY RISKIS  
Tower City

*Social Studies, Geography*

Dorm Men's Association 1, 2; Gamma Theta Upsilon 1; Kappa  
Delta Pi 1; Aviation Club 1, 2, 3; Business Education Club 1;  
FTA 1, 2.

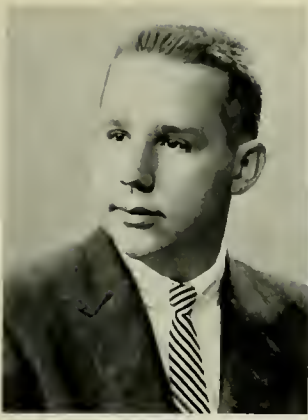


Thomas Reimensnyder



John Riskis





John Roberts



William Sarkas

JOHN LEE ROBERTS

Bloomsburg

*Science, Social Studies*

Day Men's Association 1, 2, 3, 4; FTA 4; Band 1, 2, 3, 4; Science Club 3, 4.

WILLIAM HARRY SARKAS

Hazleton

*Social Studies, Geography*

Day Men's Association 3, 4; Dorm Men's 1, 2; Gamma Theta Upsilon 3, 4; Aviation Club 4; Business Education Club 1, 2; Student-Christian Association 1; Intramurals 1, 2, 3, 4.



Donald Schlauch



Thomas Sherwood

DONALD HENRY SCHLAUCH

West Hazleton

*English, Social Studies*

Day Men's Association 1, 2, 3, 4; Customs Committee Chairman 4; Alpha Psi Omega 4; College Choraleers 1, 2, 3, 4, President 4; Dramatic Club 1, 2, 3, 4, President 4; Band, Head Drum Major 2, 4; FTA 4; Lutheran Student Association 1, 2, 3; Reformed Fellowship 4.

THOMAS JAMES SHERWOOD

Danville

*Biological Science, Social Studies*

Day Men's Association 1, 2, 3, 4; FTA 4; Poetry Club 1, 3.

LESTER JOHN SHUDA

Mt. Carmel

*Science*

Day Men's Association 1, 2, 3, 4; Phi Sigma Pi 2, 3, 4; Science Club 2, 3; FTA 4; Varsity Club 1; Football 1; Newman Club 1.

WALTER N. SMERCONISH

West Hazleton

*Social Studies, Geography, English*

Day Men's Association 3, 4; Gamma Theta Upsilon 4; Athenaeum Club 3; Aviation Club 4; FTA 4; Canterbury Club 3; Intramurals 3.



Lester Shuda



Walter Smerconish

KENNETH R. SMITH

Berwick

*Science, Geography*

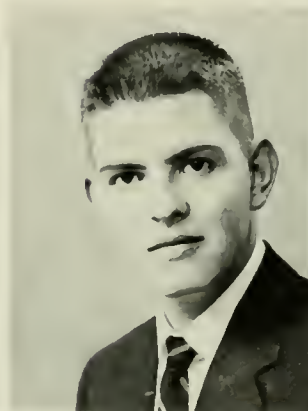
Day Men's Association 1, 2, 3, 4; Gamma Theta Upsilon 3, 4; Phi Sigma Pi 4; Athenaeum Club 1; FTA 4; Poetry Club 2; Science Club 4.

STERLING STEWART SMITH

Berwick

*Science, French*

Day Men's Association 1, 2, 3, 4; Science Club 1, 2, 3; Who's Who in American Universities and Colleges.



Kenneth Smith



Sterling Smith

DALE JOHNSON SPRINGER

Lopez

Science, Speech Correction

Dorm Men's Association 1, 2; Day Men's Association 3, 4; Kappa Delta Pi 4; Sigma Alpha Eta 2, 3, 4, President 4; FTA 4; Science Club 2, 3; Track 1, 2.

DICK COLEMAN STRINE

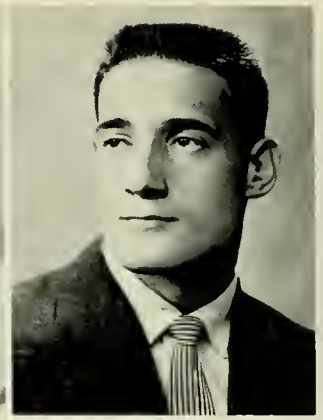
Milton

Social Studies, English

Dorm Men's Association 1, 2, 3, 4; CGA Representative 4; CGA Vice President 3; Phi Sigma Pi 2, 3, 4; Varsity Club 1, 2, 3, 4; FTA 3, 4, President 4; Football 1, 2, 3, 4; Reformed Fellowship 1, 2; Olympian, Business Manager 2; Who's Who in American Universities and Colleges.



Dale Springer



Dick Strine

(MRS.) BARBARA TUCKWOOD THOMAS

Springfield

English, Social Studies

Waller Hall Association 1, 2, 3, 4; FTA 4; Awards Committee 2, 3, Co-Chairman 3; "B" Club 2, 3, 4; Business Education Club 1; College Choraleers 1; Women's Chorus 1; Fashion Show 2; Pilot, Associate Editor 2; Olympian 2; Maroon and Gold 1, 2; Obiter, Director of Senior Pictures 3, Editorial Board 2, 4; Senior Committee Co-Chairman.

SHIRLEY MELISSA TREGO

McClure

Mathematics, Social Studies

Waller Hall Association 1, 2, 3, 4; "B" Club 2, 3, 4; Dramatic Club 1, 2; Women's Chorus 1; Lutheran Student Association 1, 2; Maroon and Gold 3, 4.



Barbara Thomas



Shirley Trego



Joseph Warner



Joseph Wascavage

JOSEPH WARNER

Kulpmont

English, French

Day Men's Association 1, 2, 3, 4; FTA 4; Athenaeum Club 1; Aviation Club 2, 3.

JOSEPH S. WASCavage

Old Forge

Social Studies, Geography

Dorm Men's Association 1, 2, 3, 4; FTA 3, 4; Gamma Theta Upsilon 2, 3, 4; Aviation Club 1, 2; Varsity Club 1, 2, 3, 4; Football 1, 2, 4; Newman Club 1, 2; Intramurals 1, 2, 3.

KENNETH LEON WEIR

Hatboro

Social Studies, English

Dorm Men's Association 1, 2, 3; Day Men's Association 4; Class President 2; CGA Assistant Treasurer 2; Customs Committee 2, 3; Hospitality Committee 1, 2, 3; FTA 4; Dramatic Club 1, 2; Basketball Tournament 1; Football Manager 2; Knox Fellowship 3, 4; Wesley Fellowship 1, 2; Olympian 3; Maroon and Gold 2.

DONNA RUBY WILCOX

Milan

Mathematics, Science

Waller Hall Association 1, 2, 3, 4; FTA 3, 4; College Choraleers 1; Dramatic Club 1; Poetry Club 1; Women's Chorus 1.



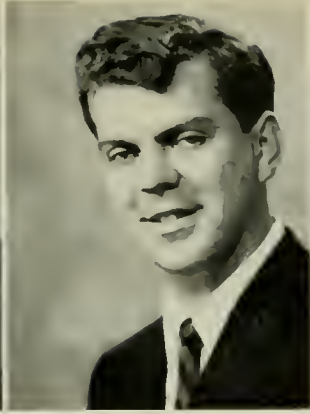
Kenneth Weir



Donna Wilcox



Stanley Wintergrass



John Woyurka

STANLEY WILLIAM WINTERGRASS

Wanamie

*Science, Social Studies*

Dorm Men's Association 1, 2, 3; FTA 3; Aviation Club 3; Science Club 1, 2.

JOHN WOYURKA

Shamokin

*Social Studies, Geography*

Day Men's Association 1, 2, 3, 4; Gamma Theta Upsilon 2, 3, 4; Athenaeum Club 3, 4; Aviation Club 2, 3; FTA 4; Newman Club 3.



Edmund Zajaczkowski



Frank Zeranski

EDMUND ANTHONY ZAJACZKOWSKI

Nanticoke

*Biological Science, Social Studies*

Dorm Men's Association 1, 2; Day Men's Association 3, 4; Phi Sigma Pi 4; Aviation Club 4; College Choraleers 2; FTA 3, 4; Varsity Club 3, 4; Baseball, Student Coach 1, 2, 3.

FRANK JOSEPH ZERANSKI

Forest City

*Speech Correction, Social Studies*

Day Men's Association 1, 2, 3, 4; Dorm Men's Association 1; Sigma Alpha Eta 2, 3, 4; Business Education Club 1, 2; Dramatic Club 1, 2.

IRENE MARY ZIELINSKI

Duryea

*English, Spanish*

Waller Hall Association 1, 2, 3, 4; Hospitality Committee 2, 3; FTA 3, 4; Poetry Club 1, 2, 3, 4; Vice President 2, President 3; Newman Club, Vice President 3; Co-Pilot 3; Olympian 3, 4, Associate Editor 4; Maroon and Gold 2, 3.



Irene Zielinski



Individualized instruction helps prepare BSTC teachers.

# WHO'S WHO IN AMERICAN



EVELYN GILCHRIST  
JAMES CREASY

KATHRYN CREW  
EDWARD SETAR

# UNIVERSITIES AND COLLEGES



MARILYN RITTER  
ENOLA VAN AUKEN

SUZANNE OSBORN  
STERLING SMITH

# WHO'S WHO IN AMERICAN



BARBARA LENTZ  
WILLIAM KAUTZ

MIRIAM MILLER  
JOHN FORD

# UNIVERSITIES AND COLLEGES



JUDITH ULMER  
ELMER ROBINSON

MARGARET YOHN  
DICK STRINE



Reminiscing over the past four years . . .



the last assembly



No tears in this group.



Parents and friends gather after graduation.





STUDENTS

# ORGANIZATIONS



WILLIAM KAUTZ



LUTHER NATTER



NANCY SUWALSKI



PAUL ANDERSON



JAMES LONG



# COMMUNITY GOVERNMENT ASSOCIATION

## COLLEGE COUNCIL

### OFFICERS

President	WILLIAM KAUTZ
Vice President	LUTHER NATTER
Secretary	NANCY SUWALSKI
Treasurer	PAUL ANDERSON
Assistant Treasurer	JAMES LONG

### FACULTY MEMBERS

Miss Hazen	Mrs. Miller	Miss Zinn
Dr. Engelhardt	Mr. Yohe	Mr. Hoch
Dr. Martin	Miss Macdonald	Mr. Blair
	Dr. Herre	

### STUDENT REPRESENTATIVES

William Pohutsky	William Sheridan	Evelyn Gilchrist
George Chaump	Sarah Ridgway	Dick Strine
Carl Janetka	John Ford	Mary Cuber
David Spahr	Dorothy Andrysick	Raymond Hargreaves
Raymond Seitz	Frank Reed	Louise Campbell
Miriam Miller		Paul Spahr





C.G.A. Committee Chairmen



Results of the Customs Committee . . .



and a hard working Social Recreation Committee.





### OFFICERS

Left to right: J. Concannon, Treasurer; S. Ridgeway, President; Miss Macdonald, Advisor; E. DiAugustine, Vice President; S. Edwards, Secretary.

## DAY WOMEN'S ASSOCIATION





Mim Miller confers with Mrs. Miller and Miss Zinn.

**WALLER**





# HALL ASSOCIATION



## OFFICERS

- MIRIAM MILLER ..... *President*
- MARILYN MILLER ..... *Vice President*
- NANCY HUGHES ..... *Secretary*
- ELOISE KAMINSKY ..... *Treasurer*
- MARY GRACE ..... *Social Chairman*

WALLER HALL OFFICERS



Seated: Marilyn Miller, Miriam Miller. Standing: Mary Grace, Nancy Hughes. Absent: Eloise Kaminsky.

CO-PILOT STAFF

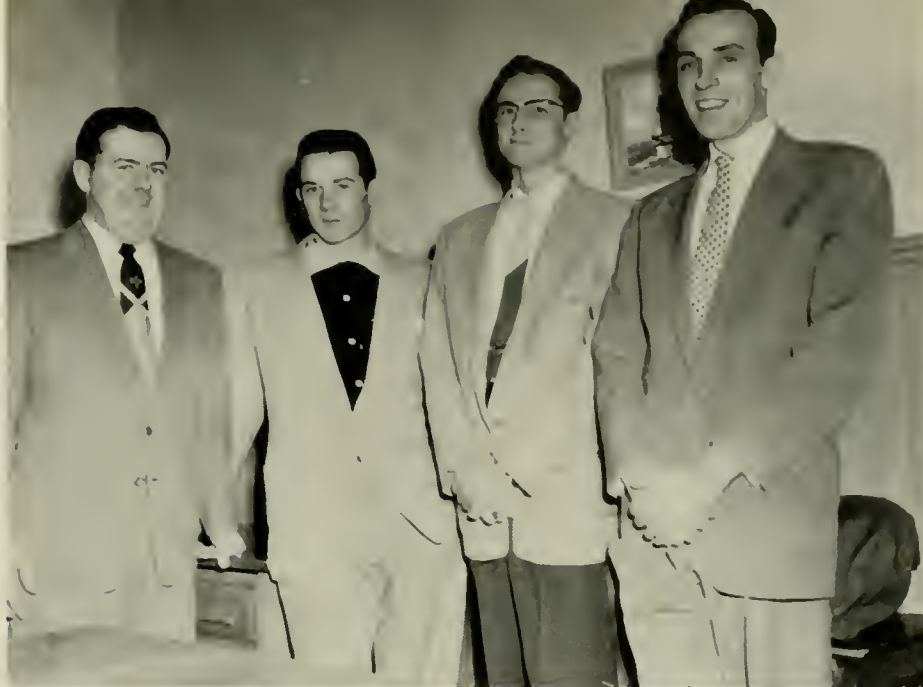
Left to right: Mary Galatha, Sandra Pfister, Margaret Yohn, Editor; Mae Romig.



WALLER HALL GOVERNING BOARD

First row, left to right: R. Coulter, M. Miller, N. Hughes, M. Miller, B. Hoffner, M. Grace. Second row: Mrs. Miller, J. Coons, E. Van Auken, B. Stiff, C. Crew, P. Antonio, S. Shilling, S. Osborn, Miss Zinn.





#### OFFICERS

*Left to right: John Ford, President; John Hartzel, Secretary; Virgil Hettinger, Vice President; Robert Litwin, Treasurer.*

## DAY MEN'S ASSOCIATION



# MEN'S DORMITORY ASSOCIATION



## OFFICERS

*Left to right: James Vowler, Treasurer; Walter Hutz, Secretary; Constantine Spentzas, Vice President; William Sheridan, President.*



# AVIATION CLUB



## OFFICERS

*Left to right: R. Gabriel, Treasurer; B. Brunner, Secretary; P. Mosier, President; Mr. Sterling, Advisor. Absent: W. Dupkanick, Vice President.*





## TOP PICTURE

*First row, left to right: V. Marcavage, P. Wilkinson, E. Shiffer, L. Franklin, P. Rindgen, M. Pupo, Mr. Ulmer. Second row: J. Turner, A. Waltman, D. Hutchinson, B. Curry, V. Holt, S. May, A. Vottero, S. Shilling. Third row: J. Jessup, R. Wetzel, D. Morgan, I. Parry, E. Farrow, J. Smith, J. Schuyler.*





OFFICERS

Seated, left to right: J. Crocker, Treasurer; A. Rando, President; S. Wagner, Program Chairman; C. Shafer, Secretary. Standing: Mr. Ulmer, Advisor.



BOTTOM PICTURE

First row, left to right: J. Fenstemaker, D. Stanton, A. Peal, J. Heston, M. Fritz, K. Keller, S. Edwards. Second row: R. Duraski, P. Stevens, A. Haney, L. Smith, E. DiAugustine, R. Lechner, J. Trettle, N. Pekala, M. Robb, L. Scott. Third row: P. Desmond, M. Marcinko, J. Stenson, T. Fleck, W. Swoyer, R. Scheuren, L. Raker, I. Rosen.

# POETRY CLUB



Seated, left to right: M. Walsh, M. Romig, J. Bades, K. Kerl. Standing: R. Poller, Dr. Bahlke, J. Fiorenza, M. Mensch, H. Giacomini.

## OFFICERS

MAE ROMIG .....	President
CAROL HETHERINGTON .....	Vice President
KATHERINE KERL .....	Secretary
HAROLD GIACOMINI .....	Treasurer
DR. BAHLKE .....	Advisor

# "B" CLUB



First row, left to right: J. Ott, J. Muir, B. Lentz, D. Stanton, B. Raski. Second row: C. Nearing, J. Graeber, L. Firmstone, J. Neff, J. Martini, E. Kovalevich, M. Ritter.



... and we're off to Eaglesmere.



First row, left to right: M. Yohn, C. Crew, M. Brinser, M. Myers, G. Barber. Second row: M. Graff, S. Smith, J. Reider, M. Mattern, J. Truscott.



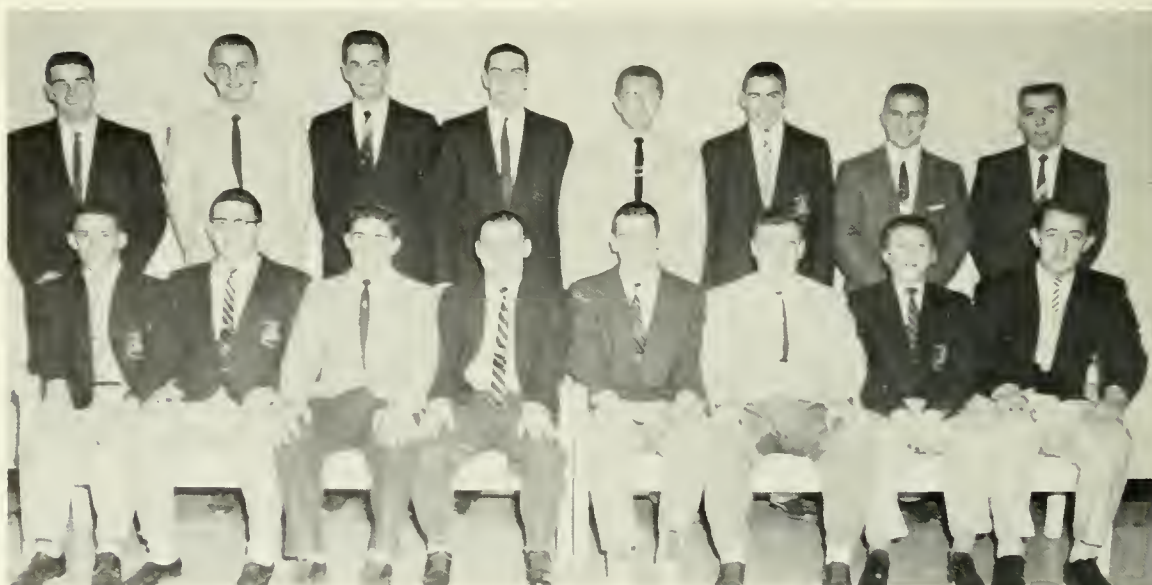
*First row, left to right: B. Calderwood, B. Asby, C. Puckey, R. Rainey, J. Malczyk, C. DeFebo, G. Chaump, B. Beilharz. Second row: C. Casper, F. Prusch, J. Snyder, J. Huda, D. Strine, B. Zaborowski, A. Nuss, F. Kaminsky, J. Goobic, J. Brokenshire.*

## **VARSITY CLUB**



### **OFFICERS**

*Left to right: J. Garman, Treasurer; C. Puckey, President; Mr. Shelly, Advisor; J. Brokenshire, Vice President; C. DeFebo, Secretary.*



*First row, left to right: J. Garman, J. Johnson, W. Rhoads, B. Bottorf, M. Schultz, J. Wasavage, J. Valania, T. Vaxmonsky. Second row: B. Boyle, L. Kozick, W. Freed, J. Gustave, J. Pental, D. Fritz, K. Wood, O. Snyder.*



Charlie Puckey crowns  
1956 Varsity Queen,  
Barbara Lentz.

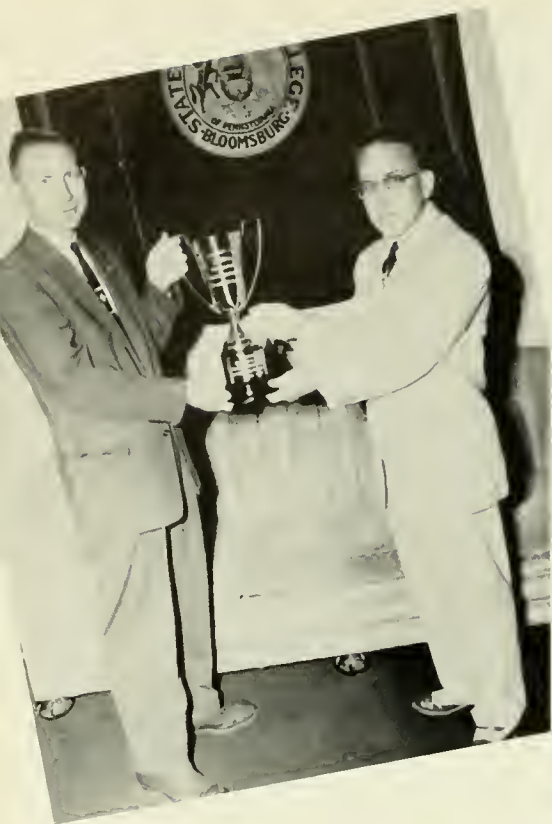


The Queen's dance.



Barbara and her court,  
Bobbi Creamer, Lorraine Basso,  
and Ginny Hardy.





Dr. Martin and Mr. Rygiel display cup awarded to outstanding business students.

## BUSINESS





## EDUCATION CLUB



### OFFICERS

RAYMOND HARGREAVES . . . . .	President
NORMAN BALCHUNAS . . . . .	Vice President
MARGARET LYNCH . . . . .	Secretary
ROSE COULTER . . . . .	Treasurer
GERALD DONMOYER . . . . .	Historian
MR. RYGIEL . . . . .	Advisor

# DRAMATIC CLUB



## OFFICERS

*Seated: P. Antonio, Secretary; D. Biever, Treasurer. Standing: J. Andrysick, Vice President; B. Sheridan, President; Mr. Buckingham, Advisor.*





Backstage before . . .



"A Guest in the House."

# COLLEGE CHORALEERS



## OFFICERS

DONALD SCHLAUCH .....	President
ROBERTA BOWEN .....	Vice President
MICKEY GRAFF .....	Treasurer
DEANNA MORGAN .....	Secretary
MR. MILLER .....	Director



# FUTURE TEACHERS OF AMERICA





OFFICERS

DICK STRINE ..... *President*  
 MARILYN FRIEDMAN ..... *Vice President*  
 ENOLA VAN AUKEN ..... *Secretary*  
 MARILYN RITTER ..... *Treasurer*  
 MARGARET YOHN ..... *Program Chairman*  
 MISS HAZEN, DR. ENGELHARDT,  
 DR. MARTIN ..... *Advisors*





Drum Major, D. Schlauch; Majorettes, P. Fox, J. Gross, S. Hoffman, M. Mattern, S. Woods.

## MAROON AND



BRASS

Seated, left to right: C. Boop, B. Bowen, N. Watts, J. Long, J. Eberhart, H. Giacomini, D. Barnhardt, D. Biever, C. Coons, J. Fry, G. Wilcox, C. Girton, F. Buck, R. Davis. Standing: C. Croft, N. Green, R. Lewis, W. Boyer, E. Sandel, L. Schell, L. Kruk, J. Galinsky, H. Howard, J. Vowler.



### PERCUSSION

*Left to right:* L. Myers, N. Hane, A. Kleinschrodt, W. Rudy, D. Kerr, J. McCarthy, J. Roberts, D. Spahr, M. Lontz, S. Kierstead.

## GOLD BAND



### WOODWINDS

*Seated, left to right:* R. Arbogast, S. Lewis, R. Carespodì, A. Blockberger, W. Murray, B. Funk, B. Beitzel, E. Miller, L. Zimmerman, S. Pfister, D. Delbo. *Standing:* N. Ridall, D. Marcy, K. Carlson, D. Stoudt, R. Musselman, D. Wenkenbach, R. Davis.

# STUDENT CHRISTIAN ASSOCIATION

## OFFICERS

Left to right: A. Kleinschrodt, Treasurer; E. Miller, Vice President; F. Goss, President; Mr. Hinkel, Advisor.



# SCIENCE CLUB

## OFFICERS

- C. Shively ..... President
- J. Moss ..... Vice President
- A. Krum ..... Secretary
- W. Hutz ..... Treasurer
- J. Dalton ..... Program Chairman
- Dr. Kuster ..... Advisor
- Dr. Lanterman ..... Advisor



First row, left to right: W. Hutz, C. Shively, J. Bower, A. Krum, J. Concannon, J. Dalton, J. Johnson, J. Moss. Second row: R. Scheuren, J. Reed, L. Yurechko, R. Hollingshead, T. Reimensnyder, K. Smith, G. Cotterall, Dr. Lanterman, Advisor.



First row, left to right: P. Valania, K. Wahl, E. Deussen, C. Christian, R. Beaver, D. Binghamman, R. Price. Second row: R. Trump, G. Egli, F. Templin, J. Forgash, J. Beinlick, J. Shirey, K. Michael, Dr. Kuster, Advisor.

# THE GEOGRAPHY FRATERNITY

## OFFICERS

R. DEWOLFE ..... *President*  
 T. REIMENSNYDER ..... *Vice President*  
 M. MARCINKO ..... *Recording Secretary*  
 R. EBNER ..... *Corresponding Secretary*  
 W. KAUTZ ..... *Treasurer*  
 MR. STERLING ..... *Advisor*



# GAMMA THETA UPSILON



*First row, left to right: J. Jones, W. Quinn, V. Hettinger, J. Oustrich. Second row: S. Okuniewski, B. Miller, C. Barnhart, D. MacLean, C. DiSimoni, W. Fellows.*



*First row, left to right: J. Foltz, D. Biever, V. Purvis, J. Smith, W. Smerconish, G. Davenport, J. Woyurka. Second row: R. Ebner, W. Harrell, D. Bingaman, S. Covington, J. Cawthorn, D. Bangs, J. Phillips, N. Fowler, F. Durkas, K. Smith, G. Campbell.*

OFFICERS

E. SETAR .....	President
J. FORD .....	Vice President
M. GRACE .....	Secretary
T. JULIO .....	Treasurer
S. RAKER .....	Historian
DR. MARTIN .....	Advisor

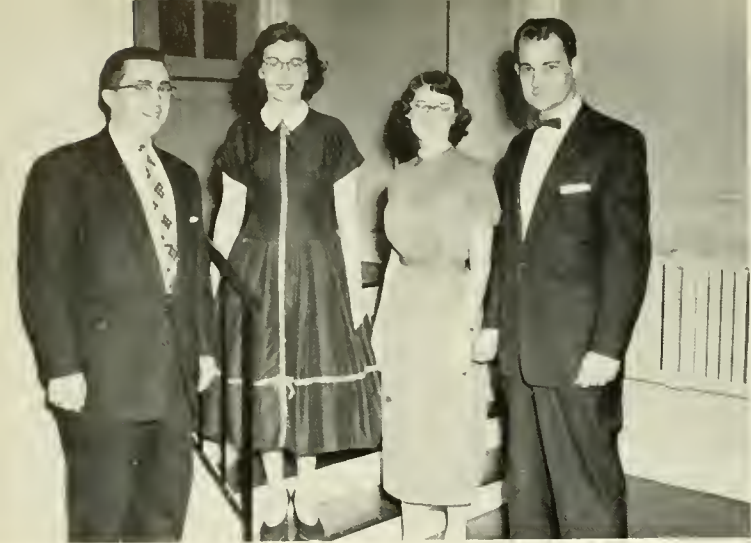


**PI OMEGA PI**

First row, left to right: F. Mackert, S. Cole, M. Miller, B. Brunner, C. Ozalas, E. Kilpatrick, B. Gibson, W. Fox. Second row: F. Vottero, D. Stubbs, J. Monaghan, G. Renn, W. Gavitt, J. Burggraf, R. Yori.



First row, left to right: B. Bane, D. Belles, D. Mattocks, M. Myers, M. Thornton, M. Fawcett, R. Rosinski, R. Hargreaves. Second row: G. Donmoyer, R. Rorick, C. Fahringer, F. Vicanti, J. Creasy, D. McAfee, H. Burggraf, J. Malt.



THE DRAMATIC FRATERNITY

G. Donmoyer, *President*; P. Wilkinson, *Secretary*; D. Brown, *Treasurer*; Mr. Buckingham, *Advisor*.

**ALPHA PSI OMEGA**



*First row, left to right: D. Wanat, P. Antonio, B. Brunner, B. Barron, J. Neff, B. Moyer, K. Kerl. Second row: D. Schlauch, A. Faux, W. Fox, B. Sheridan, D. Biever, J. Andrysick, B. Ebner, D. Morgan.*



THE SPEECH AND HEARING  
FRATERNITY



Left to right: D. Springer, President; D. Wallace, Vice President; G. Herman, Treasurer; R. Mease, Recording Secretary; B. Bushey, Corresponding Secretary; Dr. Maietta, Advisor.

SIGMA ALPHA ETA



First row, left to right: A. Waltman, D. Hutchinson, S. Woods, B. Barron, R. Pavlick, S. Goodhart, A. Ide, L. Yurgis. Second row: L. Taylor, R. Roush, F. Zeranski, M. Bias, R. Seitz, J. DeRose, W. Zegarski, R. Litwin, H. Link, M. Tier.



First row, left to right: M. Horne, D. Marcy, A. Breslin, R. Terzopolos, M. Mellon, B. Curry, G. Wilkinson, W. Ziegler. Second row: H. Giacomini, J. Bluges, B. Leiss, P. Irzinski, D. Davies, W. Atkins, A. Pellman, R. Warkowski, C. Puckey, L. Bower, C. Kidron.

# KAPPA DELTA PI

THE EDUCATIONAL  
FRATERNITY



Seated, left to right: N. Suwalski, B. Hoffner, J. Ford, J. Creasy, A. Williams, M. Galatha. Standing: J. Moss, E. Braynock, J. Woyurka, D. Springer, M. Marcinko.



Seated, left to right: J. Stavisky, A. Rando, S. Cole, Dr. Maupin, S. Osborn, E. Van Auken, M. Ritter, E. Setar. Standing: J. Riskis, D. Hare, E. Augustine, M. Mackert, R. Mease.



## OFFICERS

Clockwise: M. Miller, Recording Secretary; E. Van Auken, Treasurer; E. Augustine, President; Dr. Maupin; D. Hare, Vice President; S. Cole, Corresponding Secretary; M. Ritter, Historian.

# PHI SIGMA PI

THE MEN'S EDUCATIONAL  
FRATERNITY



*Left to right: W. Hutz, Sergeant-at-arms; J. Butz, Assistant Secretary; P. Mosier, President; Mr. Schleicher, Advisor; E. Shustack, Chaplain; J. Snyder, Treasurer; G. Wood, Vice President*



*First row, left to right: P. Valania, O. Fine, B. Sheridan, P. Anderson, W. Kautz, S. Okuniewski, R. Maurer, D. MacLean. Second row: D. McNelis, E. Robinson, C. Janetka, J. Williams, R. Corrigan, J. Dekutoski, N. Balchunas, R. Hargreaves, E. Shustack, P. Mosier.*



*First row, left to right: R. Zeigley, R. DiPippi, W. Hutz, Mr. Schleicher, J. Bushey, W. Cranmer, J. Andrysick. Second row: J. Snyder, J. Herman, L. Shuda, R. Edwards, D. Strine, L. Natter, G. Wood, R. Gower, J. Butz, K. Smith, J. Long.*

PHI SIG initiates get a dunking from Waller Hall women . . .



Miss Keefer's handy helpers.



Pete, Bob, and Bucky still smile.

The pledges, all ready for the Mansfield game.





# **ATHLETICS**



COACHES JACK YOHE and WALTER BLAIR



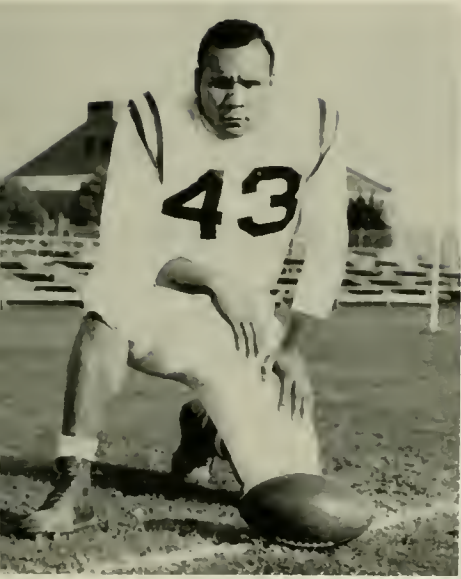
"BO" RAINEY



BOB STROUP



JOE MALCZYK



HARRY HUGHES



FRANK KAMINSKY



JOE WASCAUGE



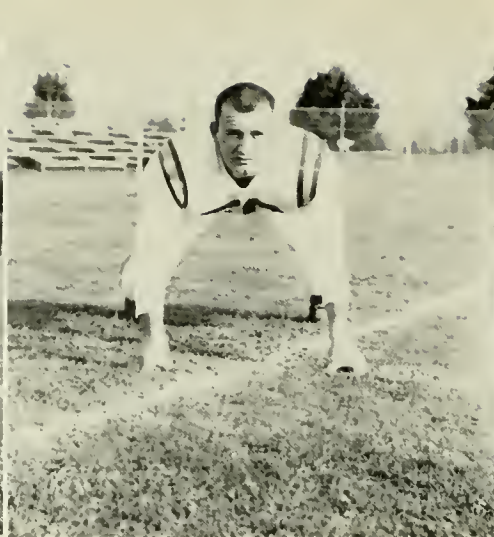
CHUCK CASPER



DICK STRINE



CHICK DEFEBO



"FRITZ" PRUSCH

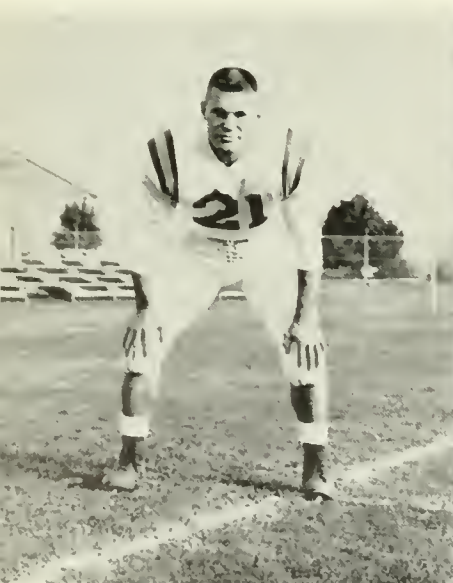


JOHN OUSTRICH

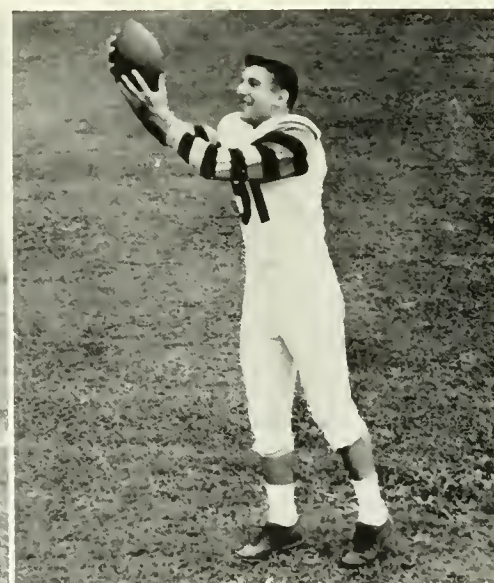
### THE 1956 SEASON

Our football team, studded with eight seniors, gave us a good season, event though the win-lose record was 3-4. The many highlights of the year included a win over previously once-beaten Delaware State by 13-0. Mansfield State Teachers College was our Homecoming opponent. Although MSTC beat Kings College, our team humbled them before a capacity crowd, 38-6. Our next victim was Kings College. The Huskies played first-class football, and our men were all-powerful in shellacking the Colonels 25-7.

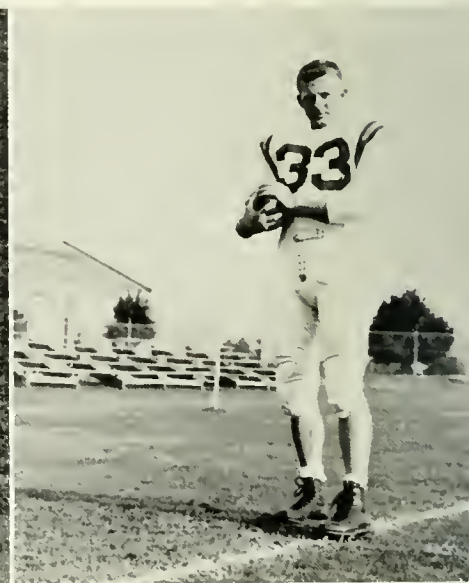
Of course we lost a few: Cortland STC 6—BSTC 3; Shippensburg STC 20—BSTC 3; California STC 31—BSTC 6; and our archrival, West Chester STC, gained revenge for their loss of last year by defeating the Yohemen by a score of 27-7.



IRVING ALEXANDER

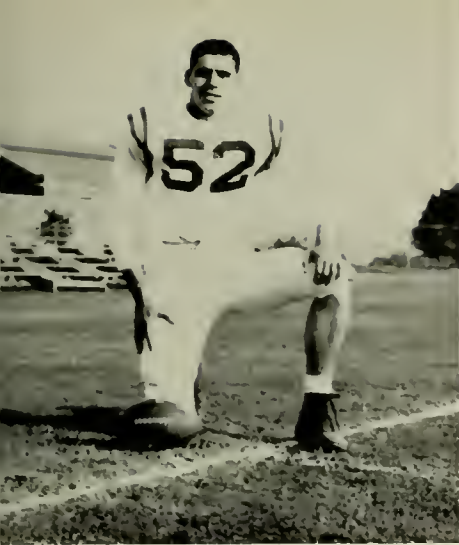


GEORGE CHAUMP



JONAH GOOBIC





BERNIE ZABOROWSKI



EDDIE WATTS



GERALD WOOD



"Bo" Rainey charges through the victory line.



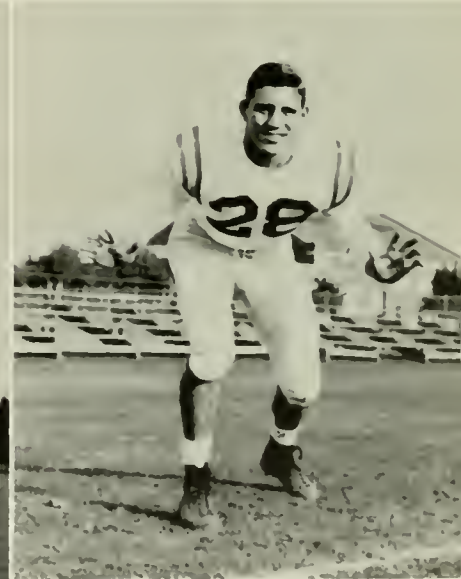
All aboard for California STC



TOM VAXMONSKY



BOB ASBY



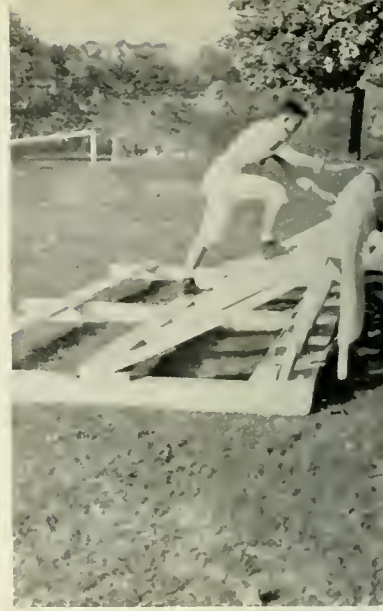
"WOODY" RHOADS



STAN COVINGTON



MORRIE SCHULTZ



KENNY WOOD



OSCAR SNYDER



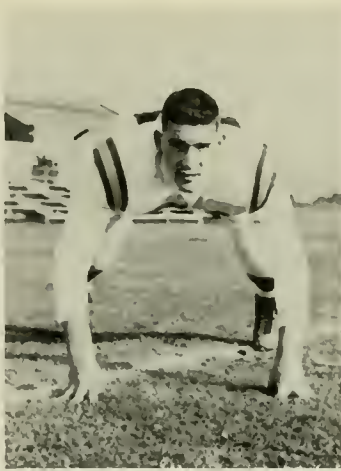
BOB MESCAN



JOE JOHNSTON



BOB BOTTORF



PAUL SPAHR



RON ROMIG



BOB TAMBUR



CARL SWEET



ARCHIE RICH



GARY YOHE



JOE PANICHELLO



It's going to be a long ride



Strik



We train 'em young



Three minute



to the band.



The crowd cheers on.



The end of a perfect game!



to go . . .



NORMAN L. HILGAR, Assistant Coach

HAROLD S. SHELLY, Head Coach



First row, left to right: B. Swisher, B. Boyle, J. Gustave, L. Kozick, J. Schaefer, J. Snyder, J. Mascioli. Second row: S. Covington, C.

# HUSKY CAGERS

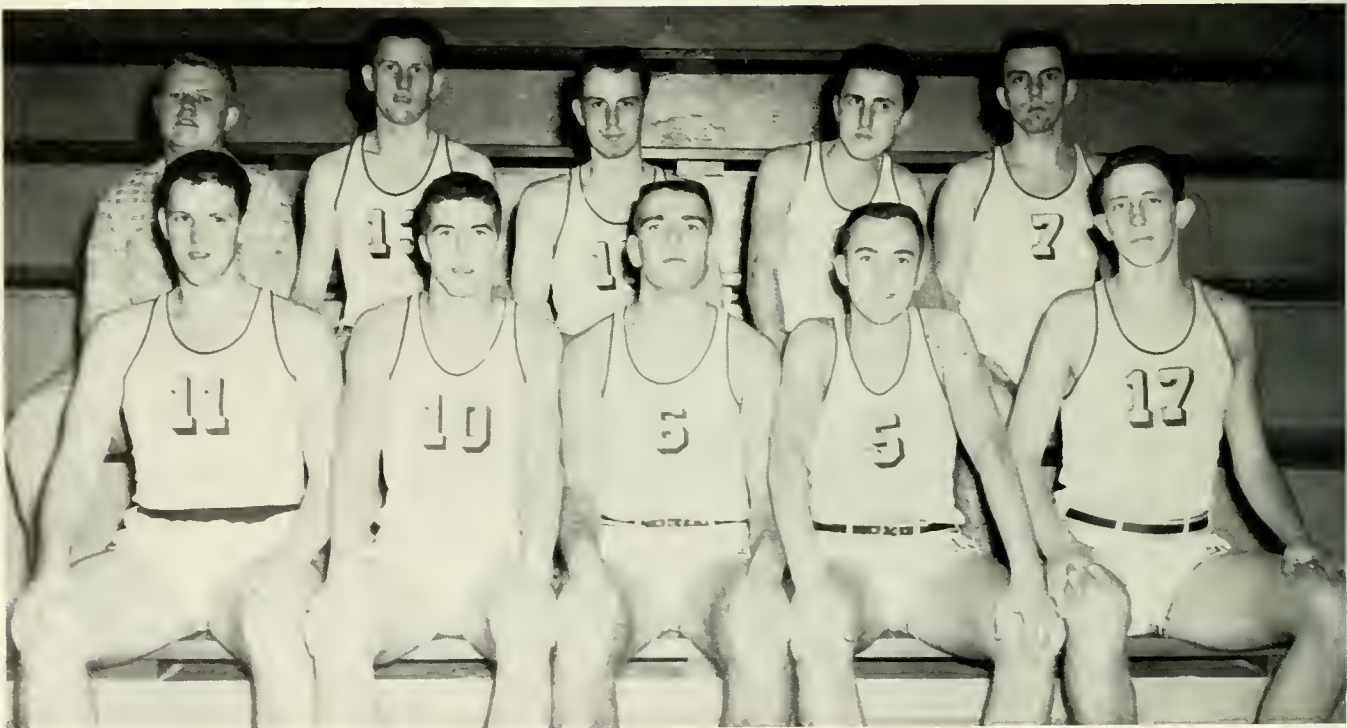
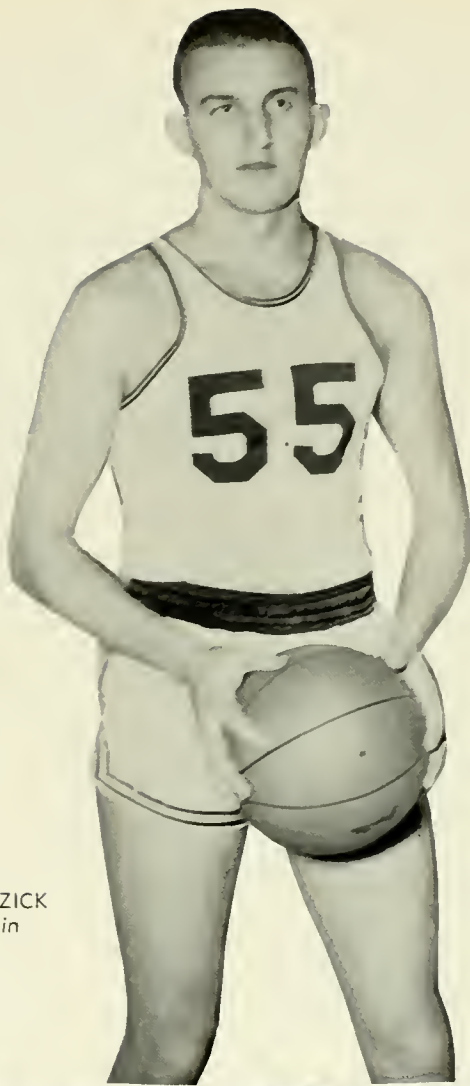


Janetka, J. Worrell, M. Rachkiss, C. Sweet, A. Francis. Third row: G. Campbell, P. Anderson, Managers.

## THE 1956-57 SEASON

Coach Shelly and his impressive squad gave us another basketball season of which we are proud. Our boys started slowly because of injuries, but improved steadily during the season. No opponent was too big or too fast for our Husky five; they did their best in every possible way. With a majority of undergraduates playing varsity ball, our squad should be tops when they take to the court next year.

LEN KOZICK  
Captain



### JUNIOR VARSITY

*First row, left to right: C. Sweet, G. Zimmerman, D. Custer, J. Peck, C. Stanitski. Second row: J. Ellinger, B. Soika, R. Keifer, L. Ludinsky, S. Elinsky.*



JIM SNYDER



JIM GUSTAVE



BOB BOYLE



BILL SWISHER



STAN COVINGTON

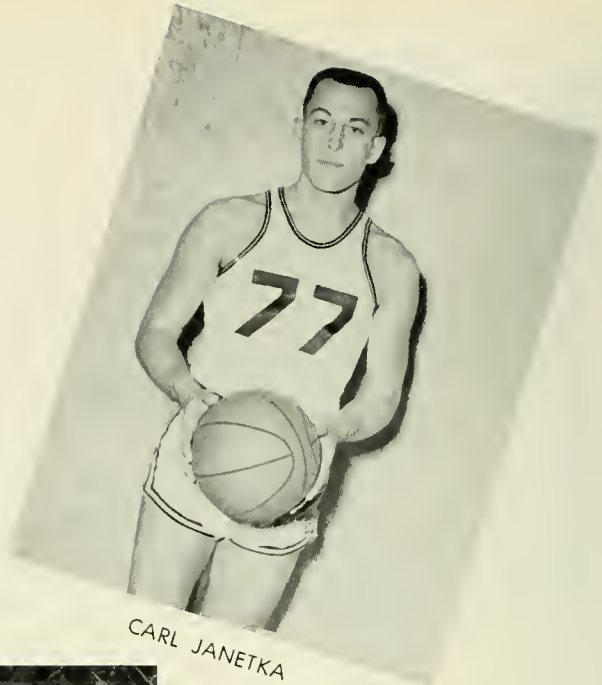


AL FRANCIS





JOHN SCHAEFER



CARL JANETKA



MIKE RACHKISS



CARL SWEET



JOHN MASCIOLI

# WRESTLING



HARRY HUGHES  
Captain



First row, left to right: J. Cawthern, R. Rimple, R. Steinruck, P. Valania, J. Garman. Second row: G. O'Connell, R. Bottorf, P. Lockuff, R. Rohm, S. Haupt, G. Eltringham. Third row: J. Chidester, H. Hughes, J. Panichello, K. Michaels, F. Prusch, C. Riegel, S. Elinsky.



JACK CHIDESTER



JIM GARMAN



ROBERT ROHM



Assistant Coach, Al Hoffman, and Head Coach, Walter Blair, give Frank Prusch a few last minute instructions.



DICK RIMPLE



BOB BOTTORF



GERALD ELTRINGHAM



FRANK PRUSCH

Wrestling, our newest sport on campus, provided us again this year with much excitement. Harry Hughes, Jack Chidester, Jimmy Garman, and the rest of Coach Blair's grapplers really kept the fans on the edge of their seats.

With many impressive freshmen and sophomores on the squad, we hope to see a championship team in the future, as well as another sport firmly entrenched on BSTC's campus.



PETE VALANIA



GEORGE O'CONNELL



JOE CAWTHON



DICK DAPRA



Thirty seconds to go.

A Millersville man takes a look at our lights.



Rohm takes his man down.



COACHING STAFF: Robert Maurer, Dr. E. Paul Wagner, Head Coach, "Bucky" Zajczkowski.

## 1956 STATE TEACHERS CHAMPIONS





JOHN HUDA



BILL FREED

The Husky baseball team enjoyed a very successful year during the 1956 season. Under the capable coaching of Dr. Paul Wagner, the team climbed to the top of the ladder by capturing the State Teachers College Conference Championship.

Wilkes College was the only team that was able to defeat the Husky ball club. However, this did not mar our undefeated record in the State Teachers College Conference.

At the conclusion of the season, each member of the team was awarded a blue blazer in recognition of his achievement.



JIM JOY



DICK REICHART



BOB DIPIPI





CHUCK CASPER



PITCHERS

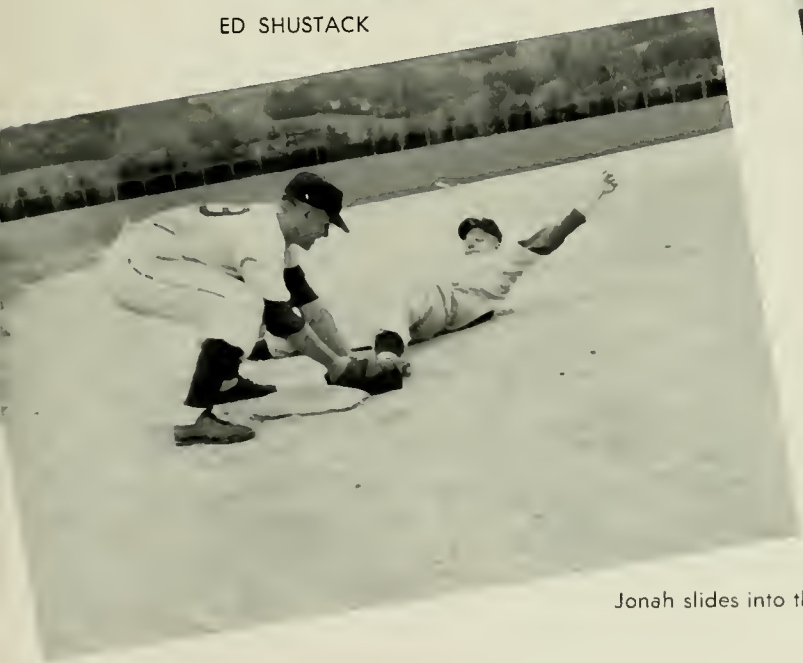
First row, left to right: J. Joy, C. Kwiatkowski, B. Dipippi. Second row: D. Reichart, B. Freed, J. Huda.



ED SHUSTACK



BOB STROUP



Jonah slides into third.

## 1956 TRACK TEAM

The 1956 track team made a good showing against many of the schools that produce championship teams in the Teachers College Conference. Many of the boys who turn out for the team each Spring are novices at track. However, the 1956 season produced several winners in various field events.



*First row, left to right: A. Heller, W. Boyer, Managers, D. Kressler, D. Bakish, H. Giacomini, A. Nuss, E. Watts. Second row: T. Vaxmonsky, G. Wood, F. Kren, C. Loughery, E. Mugavaro, W. Rhoads, K. Wood. Third row: S. Covington, M. Mensch, J. Gustave, J. Schaefer, C. Janetka, C. Beech, Mr. Shelly, Coach.*



### SPRINTERS AND MILERS

Left to right: C. Loughery, E. Watts, W. Rhoads, C. Beech, H. Giacomini, M. Mensch, D. Bakish.



### FIELD EVENTS

Left to right: E. Mugavaro, T. Vaxmonsky, S. Covington, G. Wood, K. Wood.



### HIGH JUMP AND POLE VAULT

Left to right: W. Rhoads, C. Janetka, D. Kressler, A. Nuss, F. Kren, J. Gustave, J. Schaefer.



Almost, but not quite.



"Woody" heaves a powerful shot.



Gustave sails over six feet.



The girls relax between cheers.

## CHEERLEADERS



Annette, Roongo III, and Sandy



*Top to Bottom*

Ginny Hardy  
Margie Morson  
Anne Beeson  
June Locke  
Sandy McBride, Captain  
Annette Williams



... and it's in for two points.



The band takes a break.



Precision formation.

Heated September workouts.





**PUBLICATIONS**



SUZANNE OSBORN  
Editor-in-Chief



MARILYN RITTER  
Associate Editor



EDITORIAL BOARD

Seated: Marianne Angradi, Director of Senior Pictures, Sandra McBride, Gerald Donmoyer, Nancy Suwalski. Absent: Barbara Thomas.



EDITORIAL STAFF

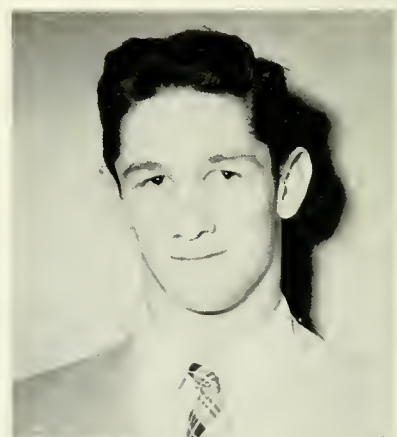
First row, left to right: W. Rundel, A. Williams, J. Crocker, N. Hughes, B. Hoffner. Second row: M. Beers, F. Snavelly, R. Snavelly, C. Cordora, N. Herman, M. Gordon, J. Witmyer. Third row: J. Bechtel, W. Boyer. Absent: F. Prusch, H. Link.



ROBERT ARBOGAST  
Art Editor



BUD SHERIDAN  
Obiter Show Director  
132



ROBERT ASBY  
Coed of the Year Director





WALTER RUDY  
Advertising Manager



WAYNE BOYER  
Business Manager



### BUSINESS STAFF

First row, left to right: L. Ruggieri, M. Miller, P. Fisher, S. Campbell. Second row: T. Julio, R. Coulter, J. Smith, D. Mattocks, B. Stiff, M. Will.



EVELYN KILPATRICK, Head Typist,  
MARY CUBER, Assistant.



### ADVERTISING STAFF

First row, left to right: L. Firmstone, R. Vignola, J. Andrews. Second row: W. Dupkanick, C. Kerl, S. Metz, M. Graff, P. Wilkinson, V. Hettinger.



MICKEY GRAFF  
Distribution Manager

# THE OLYMPIAN . . .

## the College Magazine



MAE ROMIG, *Editor*



The staff surveys the finished product.



Left to right: A. Williams, M. Romig, J. Creasy, M. Wahl.

# THE PILOT . . .

## *the College Handbook*



Mrs. Miller, Advisor, and  
Carol Nearing, Editor.



Left to right: R. Hargreaves, J. Smith, W. Rudy, M. Pileski, B. Beaver.



RAY SEITZ  
*Editor-in-Chief*



MARY GALATHA  
*Associate Editor*



## EDITORIAL BOARD

*Seated:* R. Mease, C. Greene, B. Hoffner.  
*Standing:* G. Reed. *Absent:* N. Suwalski,  
R. Steinruck.

## DEPARTMENT HEADS

*Left to right:* E. Kaminsky, P. Lynch, D. Coffman, A. Williams. *Absent:* B. Hockenberry, T. Zelinske.



# AND GOLD . . . the College Newspaper

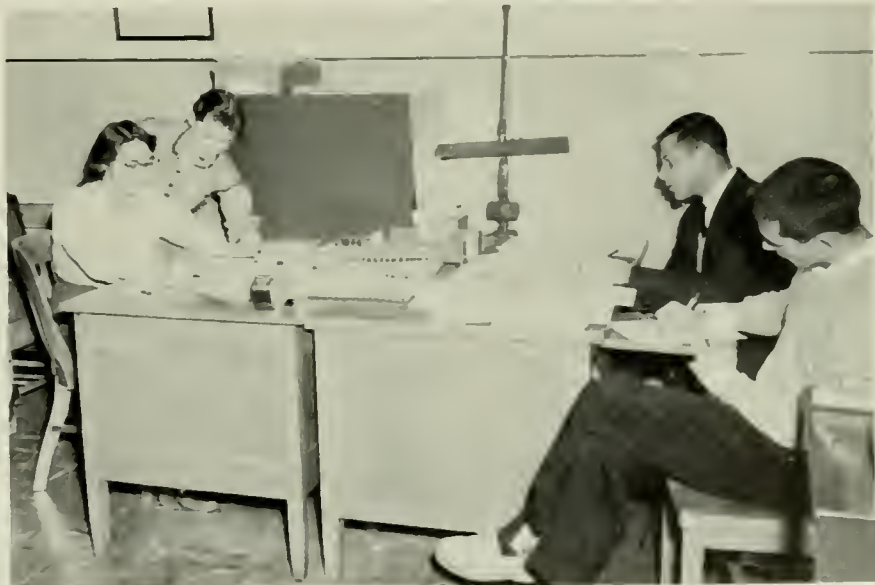


ARNOLD REDBORD  
Business Manager



GENERAL STAFF

First row, left to right: S. Hoffman, M. Walsh, R. Bowen, J. Schuyler, D. Wenkenbach, B. Curry, P. Glotts, J. Laxo. Second row: S. Campbell, J. Brunn, M. Thornton, N. Herman, W. Gavitt, J. Bechtel, J. Neff, C. Green, T. Julio.



The staff at work



JOE ANDRYSICK  
*Publications Photographer*



Copy readers at work



Hot off the press



# FEATURES



Her Majesty and her court.



A traditional final.



The ascent to the throne



Flowered wands



May Queen, MISS JOAN CHRISTIE, is crowned by 1956 C.G.A. President, Bob Evans.



-winding the May pole



Arkansas Travelers



way to "Greensleeves"

# HIGHLIGHTS OF '56



A fashion show of . . .



. . . "Plain and Fancy."



A Business Machine Show.



A "Masquerade Party" . . .



. . . where everyone joined in the fun.

Notice anything different about us?



# FRESHMAN



"Buttons," Frosh.



Dressed for



Kiddies' Day.



... And I sacrifice

# CUSTOMS



the occasion.



A new game was enjoyed by all!



picture of my best beau.



Civil Defense Day.

The Fire House Five minus  
one plus two.



Battle of the Classes—a tie.



Chow down!



146 Motivation is the key to all

# COED-OF-THE-YEAR CANDIDATES

PAM FOX  
*Freshman*



BOBBIE CREAMER  
*Junior*



ANN BEESON  
*Sophomore*



JUNE LOCKE  
*Freshman*



MARY GRACE  
*Junior*



SUE OSBORN  
*Senior*



MARGIE YOHN  
*Senior*

Annette Williams, 1956 Coed-of-the-Year, about to relinquish her crown.



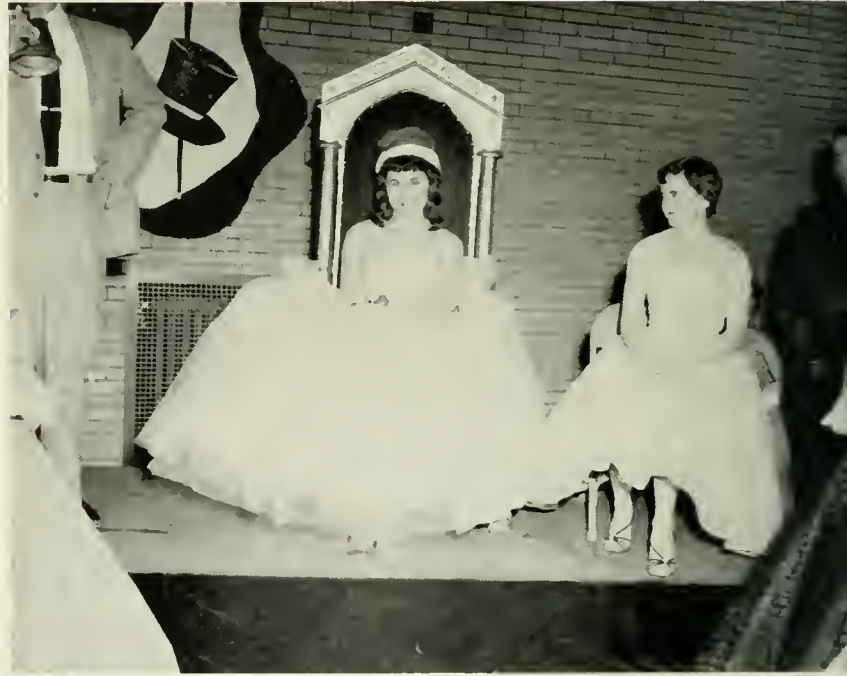


Coed-of-the-Year  
LORRAINE BASSO



Lorraine is presented with flowers, a loving cup, and an engraved bracelet.

Annette smiles her approval on the new Coed-of-the-Year.



The crowd at "High Society" gathers for the crowning.

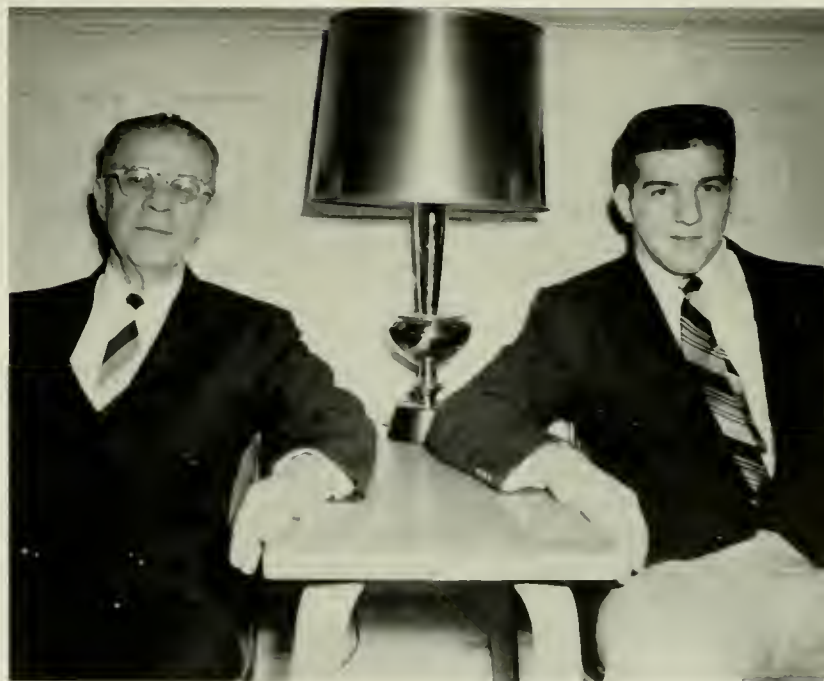


# **UNDERGRADUATES**



JUNIOR CLASS OFFICERS

GEORGE CHAUMP .....	President
JAMES GUSTAVE .....	Vice President
MARY GRACE .....	Secretary
NORMAN BALCHUNAS .....	Treasurer
MARY CUBER .....	Woman Representative
RAYMOND HARGREAVES .....	Man Representative
MR. FENSTEMAKER .....	Advisor



Mr. Fenstemaker and George Champ



SOPHOMORE CLASS

- CARL JANETKA .....
- PATRICK GOLDEN .....
- NANCY HERMAN .....
- PATRICIA ANTONIO .....
- LOUISE CAMPBELL .....
- PAUL SPAHR .....
- MR. STRADTMAN .....

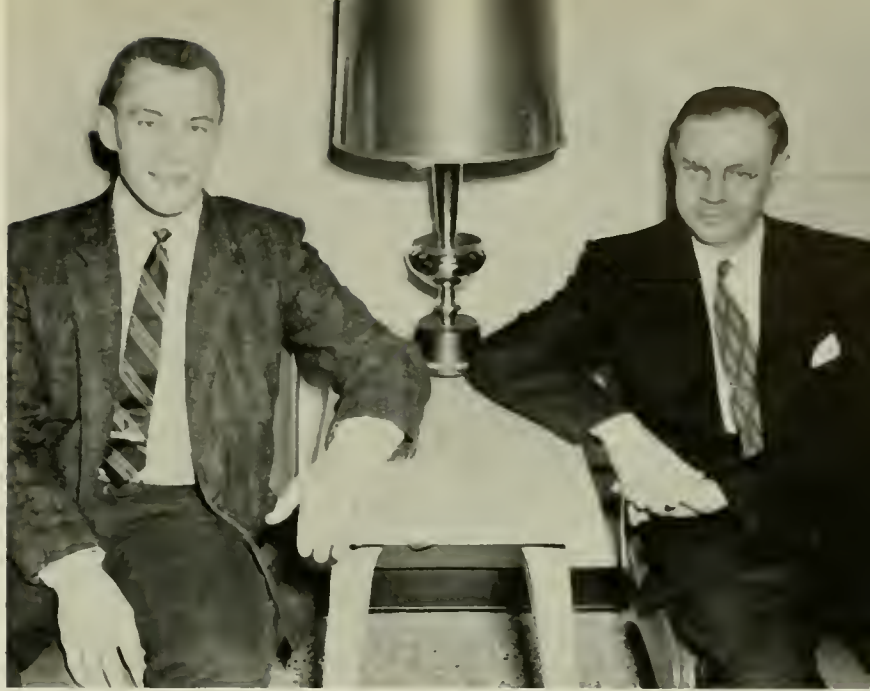
CLASS





OFFICERS

- ..... President
- ..... Vice President
- ..... Secretary
- ..... Treasurer
- ..... Woman Representative
- ..... Man Representative
- ..... Advisor



Carl Janetka and Mr. Stradtman

OF 1959





Dave Spahr and Mrs. Beeman



FRESHMAN

- DAVID SPAHR .....
- JUNE LOCKE .....
- ANN PEAL .....
- CARL STANITSKI .....
- DOROTHY ANDRYSICK .....
- FRANK REED .....
- MRS. BEEMAN .....



CLASS OFFICERS

- ..... President
- ..... Vice President
- ..... Secretary
- ..... Treasurer
- ..... Woman Representative
- ..... Man Representative
- ..... Advisor



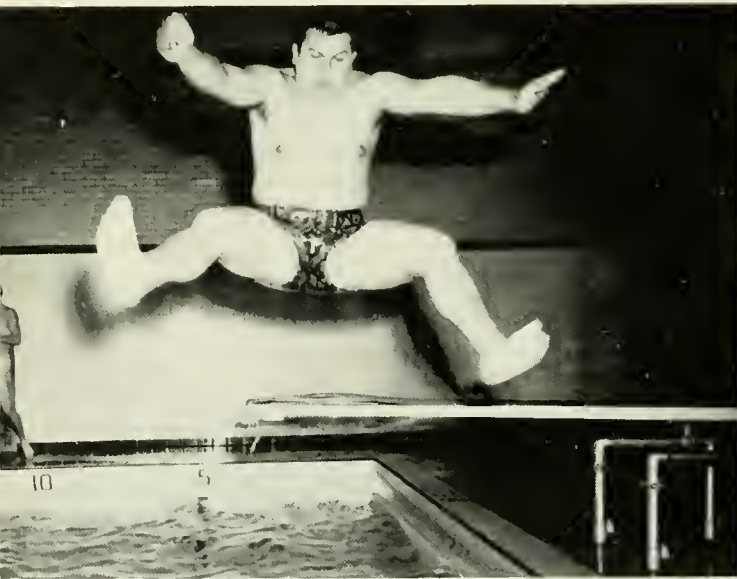
# MEMORIES ARE MADE OF THIS . . .



The book store line in September



Mock Elections (Ike won)



The Splash that Barney made



Real Elections



Thursday trips to the laundry.



A new use for dining room trays.



Getting the Christmas Spirit



Cramming in the Library



Double trouble at the Snack Bar



That 10:00 coffee break



That 8:00 quick shave



Waiting for that letter



Breaking rules and regulations



Beds that were too short



Mr. Henrie's 8:00 witticisms

## SENIORS . . .

Join your ALUMNI ASSOCIATION, and keep your membership active through the years. Annual dues of \$2.00 will include a year's subscription to the ALUMNI QUARTERLY. This magazine, which appears four times a year, will keep you informed of the activities of your classmates and the events happening on the campus.

Our Object . . .

"To Keep the Door of Opportunity  
Open for Worthy American Youth."

Our Slogan . . .

"Every Graduate of Bloomsburg an Active  
Member of the ALUMNI ASSOCIATION."



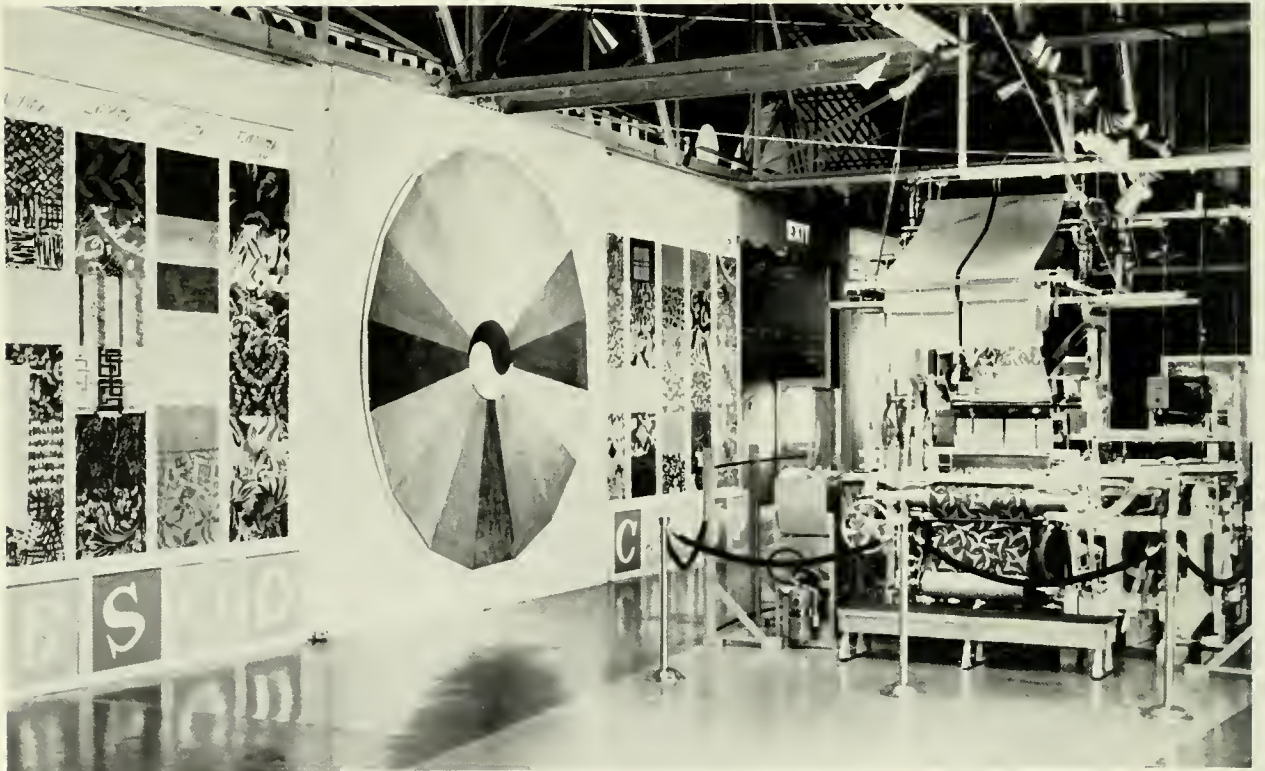
All dues should be sent to  
DR. E. H. NELSON  
*President*  
*Alumni Association*  
State Teachers College  
Bloomsburg, Pennsylvania



# ADVERTISEMENTS

CARPETS OF BEAUTY . . .  
WOVEN BY MAGEE  
A COMPLETE LINE FROM "A TO Z"

Wilton — Tufted — Velvet — Axminster  
. . . SEE THEM AT YOUR  
Magee Dealers . . .



**THE MAGEE CARPET COMPANY**

Bloomsburg, Penna.



The Name  
"BALFOUR"

Stands for the Finest in  
CLASS RINGS, COMMENCEMENT ANNOUNCEMENTS  
CLUB PINS, DIPLOMAS, MEDALS AND TROPHIES

**L. G. BALFOUR COMPANY**

Taylor-Made Yearbooks  
AMBY NOLAN — MATT LYNOTT

Miners Bank Building  
Wilkes-Barre, Pennsylvania

MASTER BAKERY  
PRODUCTS  
by  
**LETTERMAN'S**



Bloomsburg, Pa.

"The Place to Meet Your Friends"



WAFFLE GRILL

Success From  
**THE DIXIE  
SHOPS**

. . . for Fine  
Women's  
Apparel . . .



# JIM FOSTER

Record Shop

DANVILLE

PENNSYLVANIA



1957 Obitier Photographer

## GEISTWITE STUDIOS



124 East Main St.  
BLOOMSBURG, PA.



LOGAN'S JEWELRY STORE

5 W. Main St. Bloomsburg, Pa. ST 4-3808

Congratulations to the Graduates . . .

From

DR. J. FRANK BRINK, JR.

First National Bank Building

BLOOMSBURG, PA.

TELEPHONE: ST 4-4535

# DEISROTH'S DEPARTMENT STORE

"On the Square"



BLOOMSBURG, PA.

# SNEIDMAN'S



130 E. Main St.      Bloomsburg, Pa.

# DILLON'S FLOWERS



. . . for All Occasions



# HARRIS SUNOCO SERVICE



Route 11      Bloomsburg, Pa.

# AL'S MEN SHOP

134 East Main Street



BLOOMSBURG, PA.

Compliments  
of

**MILCO  
UNDERGARMENT  
COMPANY, INC.**

Bloomsburg, Penna.

**FIRST NATIONAL BANK**



Bloomsburg, Pa.

**RITTER'S**



... for All Your  
Stationery Needs

**H. & C. STORE EQUIPMENT CO.**

Sani-Serve Direct Straw Dairy Freezers

"Sani-Serve Milk Shake Machines Make Instant Thick Drinks"



ST. 4-2755

Bloomsburg, Penna.

Congratulations to  
the Class of 1957



**MERCK & CO., INC.**

CHEMICAL DIVISION  
CHEROKEE PLANT  
Danville, Pennsylvania

Compliments  
of

**CONFAIR BEVERAGE  
COMPANY**

BERWICK, PENNA.

**BLOOMSBURG BANK—**



Columbia Trust Company

From Maine to Florida  
**AMERICA'S  
MOST POPULAR  
POTATO CHIPS**



## BURT PURSEL



Congratulations to the

Graduating Seniors

FROM A FRIEND

## ROCK'S STEAK HOUSE

Corner of  
5th and East Streets



BLOOMSBURG, PA.

## SHENK & TITTLE

"Everything for Sport"

PLAY MORE — LIVE LONGER

313 Market St. Harrisburg, Pa.  
PHONE: CE 4-3274

## TENNYTOWN MOTEL

U.S. Route 11  
1 Mile East  
of  
Bloomsburg, Pa.  
ST. 4-9852

Congratulations, Graduates

RACUSIN'S



MILLER OFFICE SUPPLY  
& EQUIPMENT CO.



Phone St. 4-2561

## SCHAUB BROTHERS

444 Centre Street  
Freeland, Pa.  
Phone 844

## CAMPUS CLEANERS

"Where East Meets Main"



BLOOMSBURG, PENNA.

Congratulations

## BERWICK CREAMERY

Clewell's Ice Cream



BERWICK, PA.

Success to the  
Class of '57 . . .

From

JOHN A. SCHELL

Architect

LIGHT STREET ROAD  
BLOOMSBURG, PA.

## SHARPLESS HARDWARE



49 E. Main Street Bloomsburg, Pa.

## VINCENT'S MEN'S WEAR



106 West Front Street  
Berwick, Pa.

## SNYDER'S DAIRY



Bloomsburg, Pa.



REA and DERICK, INC.

Success to the Graduates  
From . . .

## S. H. EVERT CO., INC. Contractors

Danville Road  
Bloomsburg, Pa.

Telephone  
ST. 4-1707

## HESS' BAR AND GRILL



116 East Main Street



For  
Feminine  
Appeal  
and  
Masculine  
Attention  
**POLMON**  
144 E. Main St.





ARCUS'

Best Wishes From . . .  
ECONOMY STORES CO., INC.



FOUGHT'S RESTAURANT



. . . on the BERWICK HIGHWAY

HOUTZ  
TOBACCO COMPANY

Sunbury, Pa.

Wholesale  
Distributors

SCHRAFFT  
CHOCOLATES

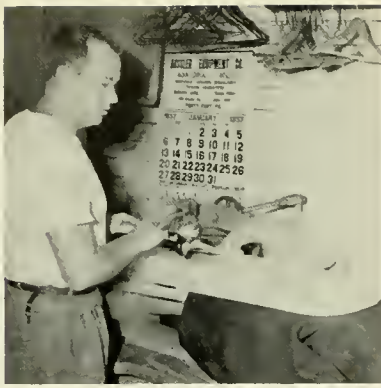
Compliments of  
EPPLEY'S DRUG STORE



TEMPLE OF MUSIC

Best in Quality  
 Fastest in Service  
 Lowest in Prices

SPIC  
 AND  
 SPAN  
 CLEANERS



Bloomsburg, Pa.

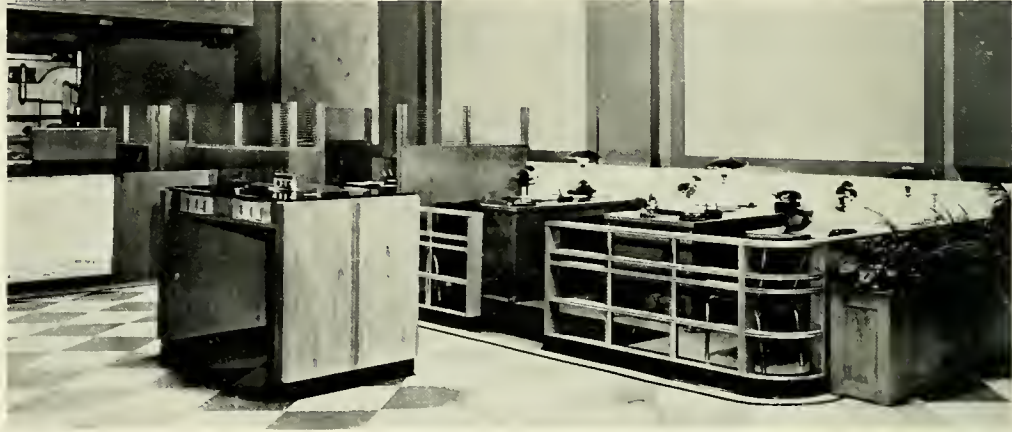
ROBERTS of Fifth Avenue



Bloomsburg, Pa.

**THE BERWICK  
 BANK**

123 West Front Street  
 BERWICK, PA.  
 Telephone: 4538



Compliments of

**BLOOMSBURG  
 MILLS, INC.**

Weavers of Quality Fabrics  
 Since 1889

Mills Located at:  
 BLOOMSBURY, PA.  
 LOCK HAVEN, PA.

PLEASE PATRONIZE

OUR

ADVERTISERS

# SENIOR DIRECTORY

## BUSINESS

BANE, BURTON ..... R. D. No. 1, Stillwater, Pa.  
 BIEMESDERFER, ROBERT ..... 26 W. Third, Bloomsburg, Pa.  
 BOYER, WAYNE ..... R. D. No. 2, Mifflinburg, Pa.  
 BRADLEY, EDWARD ..... 714 Ridge, Freeland, Pa.  
 BURGGRAF, HARRY ..... 565 Seybert, Hazleton, Pa.  
 BURGGRAF, JOHN ..... 565 Seybert, Hazleton, Pa.  
 COLE, SAMINA ..... 423 Center, Bloomsburg, Pa.  
 CREAMY, JAMES ..... 612 W. Third, Bloomsburg, Pa.  
 CROFT, MARGARET ..... Campbell, New York  
 DESMOND, JACQUELINE ..... 612 Mahoning, Milton, Pa.  
 DODSON, DOYLE ..... R. D. No. 2, Orangeville, Pa.  
 DROESKEY, EDWARD ..... 524 E. Second, Mt. Carmel, Pa.  
 DUPKANICK, WILLIAM ..... 716 Warren, Berwick, Pa.  
 ERLE, ELWOOD ..... 522 Stevenson, Sayre, Pa.  
 ERTEL, MARY ..... 603 Central, Cheltenham, Pa.  
 EWELL, ULYSSES ..... R. D. No. 1, Trevorton, Shamokin, Pa.  
 FAWCETT, MARY ..... 673 Heller, Williamsport, Pa.  
 FIEBIG, JAMES ..... 664 Bear Valley, Shamokin, Pa.  
 FOLLMER, RODNEY ..... 416 E. Anthony, Bloomsburg, Pa.  
 FORD, JOHN ..... 79 E. Sunbury, Shamokin, Pa.  
 FOX, WALTER ..... R. D. No. 2, Catawissa, Pa.  
 GARRETT, THOMAS ..... 214 S. Ninth, Lebanon, Pa.  
 GEARY, ANNE ..... 28 Carpenter, Cressona, Pa.  
 GIBSON, BETTE ..... 184 Schuylkill, Shenandoah Heights, Pa.  
 GILCHRIST, EVELYN ..... 246 Pierce, Pottsville, Pa.  
 HORNING, DOROTHY ..... R. D. No. 2, Schuylkill Haven, Pa.  
 HUTCHINSON, DONALD ..... 411 Chestnut, Berwick, Pa.  
 HYDE, NANCY ..... 746 Centre, Bloomsburg, Pa.  
 JOHNSON, ELLA ..... 216 South, Athens, Pa.  
 KAMINSKY, FRANK ..... 431 May, Mayfield, Pa.  
 KAPLAFKA, JOHN ..... 95 High, Lost Creek, Pa.  
 KAPOCHUS, LEONARD ..... 65 Barney, Larksville, Pa.  
 KESSLER, ALLEN ..... 36 Ash, Danville, Pa.  
 KILPATRICK, EVELYN ..... R. D. No. 3, Nazareth, Pa.  
 KLEINSCHRODT, ALAN ..... 2123 Shawnee, Scranton, Pa.  
 KRATZER, RICHARD ..... 1148 E. Chestnut, Sunbury, Pa.  
 LANE, ROBERT ..... 297 Mill, Danville, Pa.  
 LEFFELAAR, ANNABELLE ..... 428 Shook, Stroudsburg, Pa.  
 MACKERT, FRANKLIN ..... 1269½ Highland, Sunbury, Pa.  
 MARENICK, ROBERT ..... 421 W. Fifth, Mt. Carmel, Pa.  
 MARSILIO, NATALIE ..... 509 E. Diamond, Hazleton, Pa.  
 McAFEE, DONALD ..... 118 E. Fifteenth, Berwick, Pa.  
 McCLOSKEY, ISAIAH ..... 359 Iron, Bloomsburg, Pa.  
 McDEVITT, THOMAS ..... 1250 W. Pine, Shamokin, Pa.  
 MILLER, MIRIAM ..... 43 N. Front, St. Clair, Pa.  
 MONAGHAN, JAMES ..... 523 Walnut, Ashland, Pa.  
 NAUGHTON, JEAN ..... 905 Sheridan, Williamsport, Pa.  
 OZALAS, CONSTANCE ..... 749 Lafayette, Palmerton, Pa.  
 PEARCE, NANCY ..... 123 S. Blakely, Dunmore, Pa.  
 REPICE, DOMENIC ..... 1819 Hoffman, Philadelphia, Pa.  
 ROADSIDE, BOBBI ..... 7724 Loretta, Philadelphia, Pa.  
 ROBINSON, ELMER ..... 1116 Church, Chester, Pa.  
 RORICK, ROBERT ..... 450 Mill, Catawissa, Pa.

ROMANCZYK, ANNE ..... B14 Delaware, Forest City, Pa.  
 RUDY, WALTER ..... 20 Nottingham, Bloomsburg, Pa.  
 SEILER, SHIRLEY ..... Box 248, Auburn, Pa.  
 SETAR, EDWARD ..... 45 W. Rhume, Nesquehoning, Pa.  
 SHANEMAN, ROBERT ..... 503 N. Eighteenth, Pottsville, Pa.  
 SHUSTACK, EDWARD ..... 837 W. Coal, Shenandoah, Pa.  
 SNYDER, WILLARD ..... R. D. No. 2, Lehighton, Pa.  
 STALLONE, SALLY ..... 35 S. Tenth, Reading, Pa.  
 STAMETS, GORDON ..... 142 E. Lincoln, Shamokin, Pa.  
 STUBBS, DONALD ..... White Haven, Pa.  
 SWARTZ, EDMUND ..... 326 W. Olive, Mt. Carmel, Pa.  
 THOMAS, CHARLES ..... 237 Chestnut, Mifflinburg, Pa.  
 THORNTON, MARY LOU ..... 2239 Prospect, Scranton, Pa.  
 VOTTERO, FRANCIS ..... 247 Coal, Trevorton, Pa.  
 WARD, HARRY ..... 153 Scott, Bloomsburg, Pa.  
 WITMER, GLEN ..... 1087 Reagan, Sunbury, Pa.  
 YORI, ROBERT ..... 704 Walnut, Freeland, Pa.

## ELEMENTARY

ARBOGAST, HARRY ..... 85 W. Union, Canton, Pa.  
 AUTEN, DONNA ..... 121 E. Third, Bloomsburg, Pa.  
 BOOP, CHRISTINE ..... 409 Thompson, Mifflinburg, Pa.  
 BROKENSHERE, JAMES ..... 178 S. Sprague, Kingston, Pa.  
 BROWN, DORIS ..... 107-A Rowe, Tamaqua, Pa.  
 BUSHEY, JOHN ..... 530 Curtin, Harrisburg, Pa.  
 CASPER, CHARLES ..... Fleming, Pa.  
 CREW, KATHRYN ..... 1327 Walnut, Williamsport, Pa.  
 CROCKER, JEANNE ..... Spring Garden, Trucksville, Pa.  
 DUCK, MARGARET ..... 342 West, Bloomsburg, Pa.  
 EYER, ALICE ..... Lightstreet, Pa.  
 FEGLEY, ALICE ..... 531 Mill, Catawissa, Pa.  
 FIRMSTONE, LYNDA ..... 636 Park, Honesdale, Pa.  
 GEISINGER, ETTA ..... Route 20, Lebanon, Pa.  
 GRAEBER, JO ANNE ..... 228 S. Bishop, Springfield, Pa.  
 GRAFF, WINIFRED ..... 113 Kent, Springfield, Pa.  
 GREEN, NANCY ..... 514 W. Eighth, Hazleton, Pa.  
 HAGENBUCH, HORTENSE ..... 313 E. Fourth, Berwick, Pa.  
 HARRIS, JAMES ..... R. D. No. 5, Bloomsburg, Pa.  
 HETHERINGTON, CAROL ..... 110 N. Broad, Selinsgrove, Pa.  
 HUGHES, CORALIE ..... 31 Hughes, Luzerne, Pa.  
 JOY, JAMES ..... 599 W. Main, Bloomsburg, Pa.  
 KEMP, PATRICIA ..... 542 Green, Berwick, Pa.  
 KOSTENBAUDER, MARLENE ..... 39 Hoyt, Courtdale, Pa.  
 LAURENSEN, GUY ..... Mt. Pleasant Mills, Pa.  
 LENTZ, BARBARA ..... 1515 Sheridan, Williamsport, Pa.  
 LINK, HARRIET ..... 507 Fairview, Coopersburg, Pa.  
 MICHAEL, VICTOR ..... 245 N. Front, Milton, Pa.  
 NEARING, CAROL ..... 203 W. Fifth, Bloomsburg, Pa.  
 OSBORN, SUZANNE ..... 17 Fairview, Springfield, Pa.  
 PLUMMER, JANET ..... Box 225A, R. D. No. 1, Shamokin, Pa.  
 POHUTSKY, WILLIAM ..... 112 William, Old Forge, Pa.  
 RAINEY, ROBERT ..... 625 Fronheiser, Johnstown, Pa.  
 RASKI, BARBARA ..... R. D. No. 2, Benton, Pa.  
 RICHARDS, DREHER ..... 304 E. Tenth, Berwick, Pa.  
 RIEDER, JOAN ..... 2633 Olyphant, Scranton, Pa.

# SENIOR DIRECTORY

RITTER, MARILYN ..... 25 Crisman, Forty Fort, Pa.  
 SHIREY, JOHN ..... 70 Catherine, Lewistown, Pa.  
 SHOEMAKER, MARGARET ..... 531 Catherine, Bloomsburg, Pa.  
 SNYDER, JEAN ..... R. D. No. 1, Jermyn, Pa.  
 SPECHT, JOANNE ..... R. D. No. 1, Lewisburg, Pa.  
 STACKHOUSE, EDITH ..... Unityville, Pa.  
 STANTON, DOLORES ..... 1221 Faxon Pky., Williamsport, Pa.  
 STAVISKY, JEAN ..... 511 Winter, Old Forge, Pa.  
 STEC, HELENE ..... 123 E. Main, Mahanoy Plane, Pa.  
 STEWART, HARLEY ..... 1338 Liberty, Allentown, Pa.  
 STROUP, ROBERT ..... 115 Village, Johnstown, Pa.  
 SWIGONSKI, JOSEPH ..... 361 E. Ridge, Nanticoke, Pa.  
 THOMAS, BEVERLEY ..... 534 W. Fifth, Hazleton, Pa.  
 TRUSCOTT, JANICE ..... 3 West, Oneonta, N. Y.  
 ULMER, JUDITH ..... 334 Jerome, Williamsport, Pa.  
 VAN AUKEN, ENOLA ..... Box 93, Mill City, Pa.  
 WAGNER, SHIRLEY ..... 195 S. Wyoming, Hazleton, Pa.  
 WILSON, JEAN ..... 50 Pine, Bloomsburg, Pa.  
 YOHN, MARGARET ..... 717 Eighth, Selingsgrove, Pa.  
 ZEISLOFT, MAXINE ..... R. D. No. 1, Bloomsburg, Pa.

## SECONDARY

ALTER, DONALD ..... 314 Mill, Danville, Pa.  
 AUGUSTINE, EDWARD ..... 277 E. Green, Nanticoke, Pa.  
 BACH, GEORGE ..... 400 N. Chestnut, Mt. Carmel, Pa.  
 BANDES, JEANNE ..... 503 E. Third, Bloomsburg, Pa.  
 BASTRESS, GUY ..... R. D. No. 5, Danville, Pa.  
 BEHERS, RONALD ..... 622 E. Burnside, Bellefonte, Pa.  
 BRUNN, JAMES ..... 265 Spring, Nanticoke, Pa.  
 CARTER, JAMES ..... 696 Hanover, Northumberland, Pa.  
 CHRISTIAN, CATHERINE ..... 145 Broad, St. Clair, Pa.  
 COAKLEY, JOANNE ..... 200 Jackson, Port Carbon, Pa.  
 CRANMER, WILLIAM ..... McEwensville, Pa.  
 DAVENPORT, GEORGE ..... 14 Ransom, Plymouth, Pa.  
 DERR, KENNETH ..... R. D. No. 3, Muncy, Pa.  
 DETATO, RAMON ..... 351 Market, Berwick, Pa.  
 DEWOLFE, ROBERT ..... 233 E. First, Bloomsburg, Pa.  
 DIPIPI, ROBERT ..... 211 Oak, Old Forge, Pa.  
 DISIMONI, CARMEN ..... 206 Oak, Old Forge, Pa.  
 DORASKI, REGINA ..... R. D. No. 1, Catawissa, Pa.  
 DURKAS, FRANK ..... 60 E. Main, Glen Lyon, Pa.  
 EBNER, ROBERT ..... R. D. No. 1, Muncy, Pa.  
 EDWARDS, RAYMOND ..... 528½ Delaware, West Pittston, Pa.  
 FORGACH, JOHN ..... 30 Engle, Glen Lyon, Pa.  
 FRIEDMAN, MARILYN ..... 310 Center, Clarks Summit, Pa.  
 GARCIA, JOSEPH ..... 728 Scott, Kulpmont, Pa.  
 GASS, CLYDE ..... Orangeville, Pa.  
 HARE, DONALD ..... 1006 Market, Sunbury, Pa.  
 HARRELL, WILLIAM ..... R. D. No. 2, Bloomsburg, Pa.  
 HENDRICKSON, ROBERTA ..... Highland, Elkland, Pa.  
 HETTINGER, VIRGIL ..... 332 E. Eleventh, Berwick, Pa.  
 HORNE, MARLIN ..... 1407 Poplar, Kulpmont, Pa.  
 HUDAK, DANIEL ..... 107 S. Hanover, Nanticoke, Pa.  
 HUGHES, HARRY ..... 630 Walnut, Williamsport, Pa.

JONES, JOSEPH ..... 348 E. Field, Nanticoke, Pa.  
 KAUTZ, WILLIAM ..... 2512 Jefferson, Harrisburg, Pa.  
 KOCH, MARY ..... 331 Allen, West Hazleton, Pa.  
 KOZICK, LEONARD ..... R. D. No. 3, Dallas, Pa.  
 KROTHER, JAY ..... 132 Susquehanna, Shickshinny, Pa.  
 LAINE, CLARENCE ..... 71 S. Grant, Wilkes-Barre, Pa.  
 LITWIN, ROBERT ..... 135 Clermont, Keiser, Pa.  
 MacLEAN, DONALD ..... Lumberville, Pa.  
 MALCZYK, JOSEPH ..... 238 Robert, Nanticoke, Pa.  
 MAURER, ROBERT ..... 365 W. Main, Girardville, Pa.  
 McBRIDE, THOMAS ..... 23B S. First, Shamokin, Pa.  
 McMEANS, KERMIT ..... 105 Arthur, Johnstown, Pa.  
 McMONIGLE, PETER ..... 72 Main, Harleigh, Pa.  
 McNELIS, DONALD ..... 416 Schuyler, Kingston, Pa.  
 MEASE, RICHARD ..... 44½ Mahoning, Milton, Pa.  
 MILES, ALBERT ..... R. D. No. 1, Box 84, Hunlock Creek, Pa.  
 MILLER, MARILYN ..... Park Place, Mahanoy City, Pa.  
 MOSS, JOHN ..... 255 Main, New Milford, Pa.  
 MOYER, BETTY ..... R. D. No. 1, Montgomery, Pa.  
 MYERS, CAMERON ..... R. D. No. 1, Danville, Pa.  
 O'BRIEN, EDWARD ..... 1501 Centre, Ashland, Pa.  
 OHL, THOMAS ..... R. D. No. 2, Bloomsburg, Pa.  
 OKUNIEWSKI, STANLEY ..... 13 Frederick, Ashley, Pa.  
 PAISLEY, KENNETH ..... Wapwallopen R. D. No. 1,  
 Dorrance Corners, Pa.  
 PATRILAK, MICHAEL ..... 847 W. Chestnut, Shamokin, Pa.  
 PHILLIPS, JOHN ..... 2310 Boulevard, Scranton, Pa.  
 PRICE, JAMES ..... 18 Butler, Shickshinny, Pa.  
 PURVIS, VANICE ..... Millville, Pa.  
 QUINN, WILLIAM ..... 334 S. Market, Shamokin, Pa.  
 RANDO, ARLENE ..... 126 N. Marshall, Shamokin, Pa.  
 REIMENSNYDER, THOMAS ..... 225 Market, Mifflinburg, Pa.  
 RISKIS, JOHN ..... 201 Wiconisco, Tower City, Pa.  
 ROBERTS, JOHN ..... 127 Twelfth, Bloomsburg, Pa.  
 SARKAS, WILLIAM ..... 237 W. Broad, Hazleton, Pa.  
 SCHLAUCH, DONALD ..... 104 N. Broad, West Hazleton, Pa.  
 SHERWOOD, THOMAS ..... 209 Honeymoon, Danville, Pa.  
 SHUDA, LESTER ..... 25 N. Tamaqua McAdoo, Pa.  
 SMERCONISH, WALTER ..... 106 N. Broad, West Hazleton, Pa.  
 SMITH, KENNETH ..... 1500 Pine, Berwick, Pa.  
 SMITH, STERLING ..... 117 S. Vine, Berwick, Pa.  
 SPRINGER, DALE ..... Lopez, Pa.  
 STRINE, DICK ..... 616 Lincoln, Milton, Pa.  
 THOMAS, BARBARA ..... 26 Greenhill, Springfield, Pa.  
 TREGO, SHIRLEY ..... McClure, Pa.  
 WARNER, JOSEPH ..... 704 Pine, Kulpmont, Pa.  
 WASCavage, JOSEPH ..... 508 Maple, Old Forge, Pa.  
 WEIR, KENNETH ..... Rustling Maples, Hatboro, Pa.  
 WILCOX, DONNA ..... Route 1, Milan, Pa.  
 WINTERGRASS, STANLEY ..... 36 W. Main, Wanamie, Pa.  
 WOYURKA, JOHN ..... 201 Cameron, Shamokin, Pa.  
 ZAJACZKOWSKI, EDMUND ..... 317 E. Grand, Nanticoke, Pa.  
 ZERANSKI, FRANK ..... 601 Hudson, Forest City, Pa.  
 ZIELINSKI, IRENE ..... 527 Donnelly, Duryea, Pa.







