

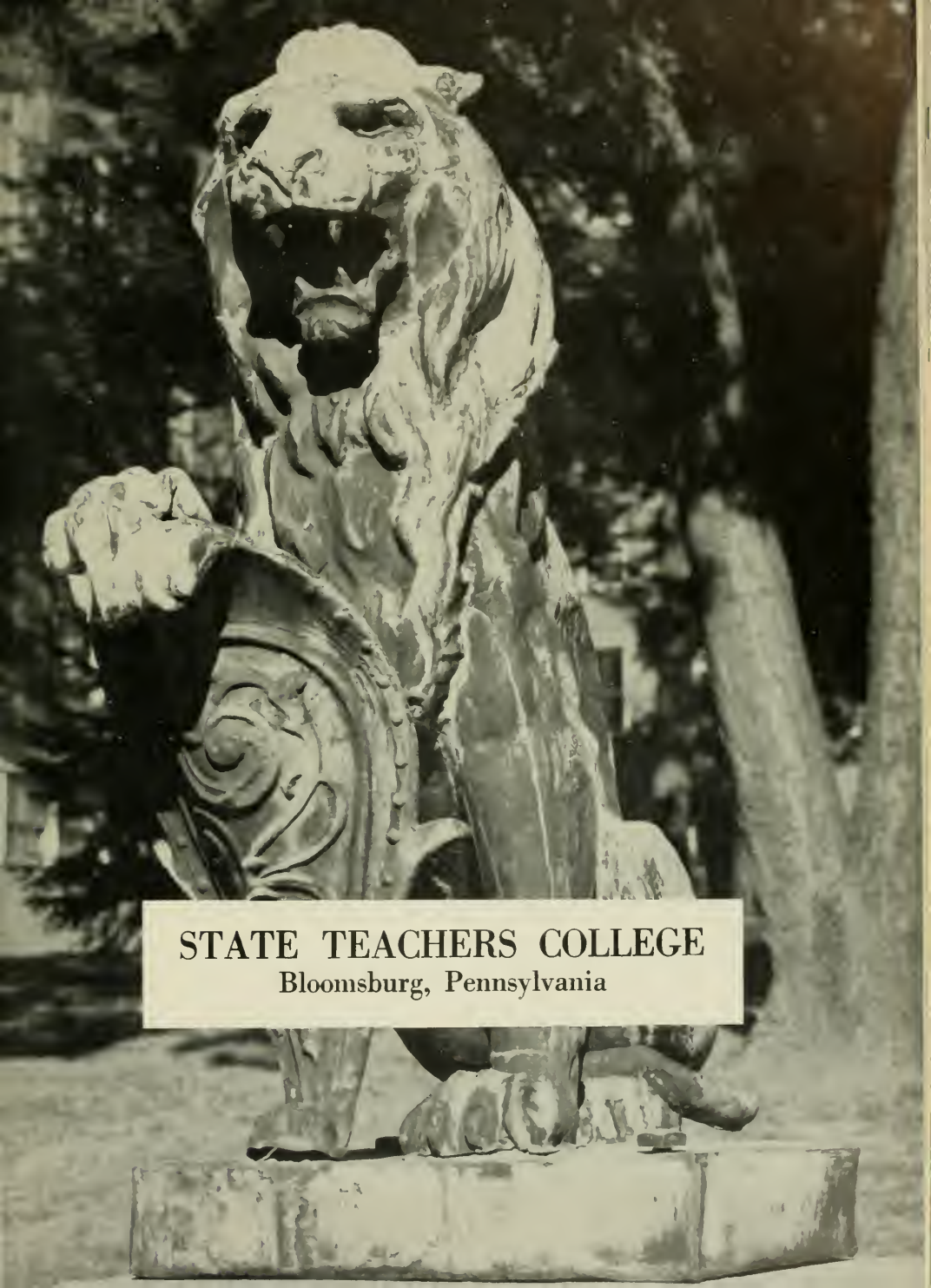
Obiter

1955









STATE TEACHERS COLLEGE
Bloomsburg, Pennsylvania

THIS IS B.S.T.C.





A pictorial tour of the campus using as the theme a few of the buildings . . . their interiors, some of the activities and events peculiar to them . . . the memories they stir up . . .



CARVER HALL . . .

Here is a dedicated building . . . dedicated in name to the man who built it . . . dedicated in purpose to the perpetuation of learning and free thinking . . . dedicated in spirit to an honored group of men who died in battle so that its purpose might live.

Here beats the heart of B.S.T.C., for here the administration coordinates the various phases of college life into a smooth running educational machine.

Here too, are memories . . .



Remember when a car tried

Once this door led to classrooms. Now . . .



Dynamite finally worked.



. . . the beautiful new home of the administration.
Let's have a look around . . . first

MRS. ANNA M. KNIGHT—Secretary



to the President's office.



Next, the business office, where we



are greeted by . . .



DR. HARVEY A. ANDRUSS, *President.*

MR. PAUL G. MARTIN, Business Manager



AND THE STAFF ...



MRS. AULA F. HARMAN



MISS LAURA JANE UNGER

Now, across the lobby to . . .



MISS ETHYL M. WILSON



*. . . the Dean of Instruction's office,
where we meet . . .*

MISS HELEN WRIGHT



MRS. MARY T. HAGGERTY

MR. JOHN A. HOCH
Dean of Instruction



*Our last visit
will take us to . . .*



. . . the Placement office, and

a pleasant "hello" from . . .

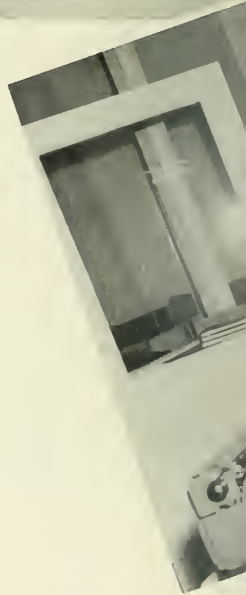


*and the man responsible for
placement of graduates . . .*

DR. ERNEST H. ENGLEHARDT



. . . MISS LEONA CHYKO, Secretary



We continue our tour . . .

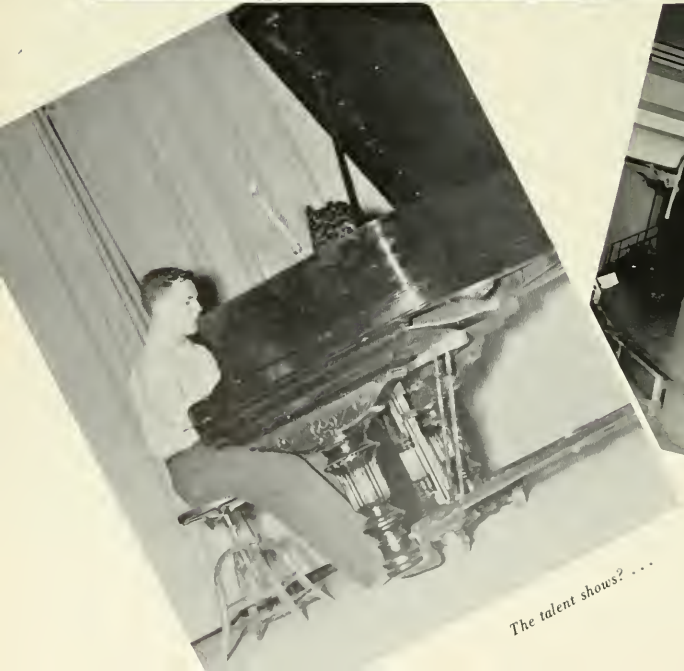
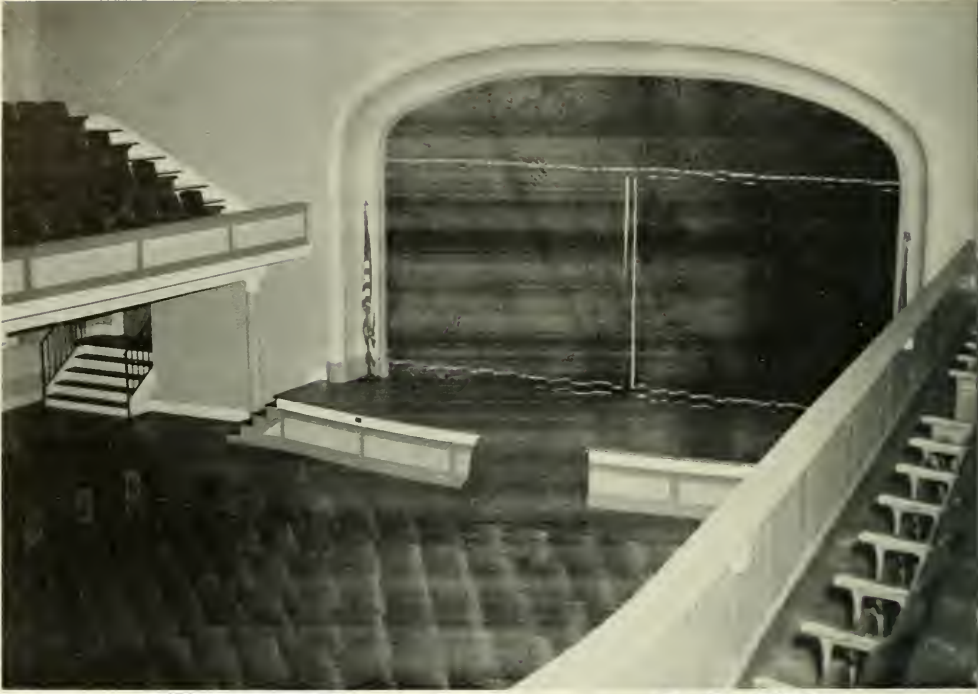


All's well in the back room, so . . .



*up the old familiar back stairs
to . . .*

THE AUDITORIUM. *The wealth of memories here could fill volumes; we can only pick a few. Remember . . .*



The talent shows? . . .



And there were Arnie and . . .

There were honor assemblies . . .



. . . and more talent.



Bud and a "flowery" speech,



*and a well known
quiz show.*

e Coeds,



To the Seniors of the Class of 1955:

Yours is a heritage of history. One hundred years ago the first institute for teachers was held in an academy which, in turn, became the first normal school.

The greatest task of a democracy is the education of its youth. The success of schools cannot be attributed to buildings, grounds, or equipment but is measured by the influence of teachers who lead students to learn to think and to live rightly.

May your opportunity for service bring you gratifying rewards is the parting hope of

HARVEY A. ANDRUSS, *President*



DR. HARVEY A. ANDRUSS
President



MR. JOHN A. HOCH
Dean of Instruction

The rise from Dean of Men to Dean of Instruction is an honored and responsible one indeed, but no person was more deserving or better qualified for such an honor than John A. Hoch.

Native of Milton . . . graduate of Pennsylvania State College and Bucknell University . . . high school instructor . . . B.S.T.C. faculty member since 1946 . . . Dean of Men since 1947 . . . pioneer founder and secretary-treasurer of the Pennsylvania State Teachers College Athletic Conference . . . assistant football coach . . . director of public relations . . . chairman of Athletic Committee . . . Dean Hoch's list of accomplishments is long and varied.

Indispensable is a word seldom used . . . and justifiably so, for few men deserve such a title. But to Dean Hoch, the student body gives the distinction of being as indispensable as one person can be.

Each one of us has come into contact with you in some phase of college life . . . in the classroom . . . on the athletic field . . . over the public relations desk . . . in the Dean's office . . . and each one of us will carry some fond memory of you . . . an encouraging smile when college looked the darkest . . . helpful and never-failing advice when most needed . . . intuitive understanding of all our problems. For this, we thank you, Dean John Hoch . . . "the spirit that is Bloomsburg."

THE ASSISTANT DEANS



RALPH S. HERRE
B.S., M.A., Ed.D.
Social Studies



MARY E. MacDONALD
A.B., M.A.
Guidance Services



MARGARET E. WALDRON
A.B., M.A.
Mathematics



ELIZABETH B. MILLER
Dean of Women



JACK W. YOHE
Dean of Men

THE DEANS

The college deans . . . vital factors in the lives of all dormitory students . . . coordinating links between the students and administration . . . ever present sources of patience, understanding, advice, and help . . . for all this the student body expresses its sincere appreciation and gratitude to Mrs. Miller and Mr. Yohe . . . two people who will long remain in the memory of every Bloomsburg student as instrumental in making B.S.T.C. "the friendly college" that it is.



DR. THOMAS P. NORTH

The closing of the year 1954 brought the termination of twenty-five years of dedicated service to the College of its beloved Dean of Instruction, Dr. Thomas P. North. With his retirement, a little of the "spirit that is Bloomsburg" seemed to follow him. His sympathetic guidance and infinite understanding linger at the heart of the campus, as do remembrances of his untiring efforts for a "better" Bloomsburg.

Dr. North has been called "the father of the professional standards movement in Pennsylvania." and in keeping with this title he inaugurated an improved system of selection of candidates for admission to college and to the teaching profession. He established a plan for the inspection and improvement of all instructional facilities. In addition, Dr. North was largely responsible for the institution of the college calendar, for professional orientation classes for new students, and for the class dues program.

His contributions have not been confined to the Bloomsburg campus alone, for Dr. North has devoted much energy to furthering high standards throughout the profession. Although he has relinquished his position at B.S.T.C., Dr. North will continue his ambition to strengthen the ideals of a great profession.

We sincerely hope that his many remaining years will be filled with happiness and with fond memories of the college to which he gave so much.

God Speed, Dr. North.



DR. JOHN E. BAKELESS DR. HARVEY A. ANDRUSS

An outstanding Alumnus of the Bloomsburg State Normal School, Dr. John E. Bakeless was selected as a Pennsylvania Ambassador for 1954. These people once lived in Pennsylvania, and have gone to greater heights while now residents of other states.

Doctor Bakeless: Williams College, B.A.; Harvard, M.A.; Ph.D.; is an author, soldier, and educator, and the son of Oscar Hugh Bakeless, for many years the Director of the Model School.

Presentation of the Pennsylvania Ambassador Award is here being made by President Harvey A. Andruss.

TWENTY-FIVE YEARS OF SERVICE (1930-1955)



PRESIDENT AND MRS. HARVEY A. ANDRUS

“ 'TIS BUT TO NOTE THE PASSING TIME”

Doctor Andruss came to Bloomsburg in 1930 to organize the Department of Commerce, of which he was Director for seven years. After serving two years as Dean of Instruction, he became President in 1939.

In addition to substantial contributions to both the Husky and Alumni Loan Funds, he has made available the royalty of one of his books, BUSINESS LAW CASES AND TESTS (originally published by Prentice-Hall, Inc., New York City), for student aid in the form of the President's Scholarship.

Mrs. Andruss came from a Teachers College family, since her parents are both graduates of Indiana State Teachers College, of which her father was a member of the Board of Trustees, and her brother-in-law was Dean of Men and later Dean of Instruction of the Shippenburg State Teachers College. She is also an organizing member of the Bloomsburg Branch of the American Association of University Women, and, in addition to acting as a charming hostess for many college occasions, is active in the club and community life of Bloomsburg.



Leaving Carver Hall, we glance to the left, decide on that route, and continue our tour with a brief visit to . . .



. . . SCIENCE HALL

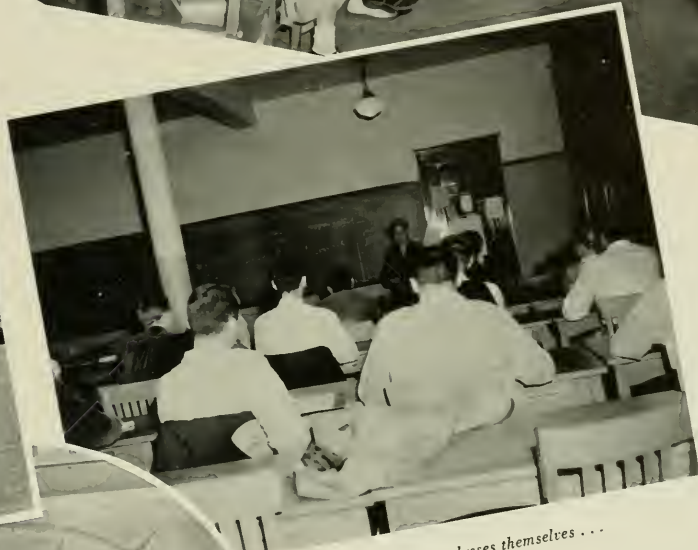
When we think of Science Hall we naturally think of scientific study. However, not only is this building dedicated to the study of science, but to all the fields of secondary education as well.

These is much to remember about Science Hall—much that cannot be captured by a camera. We can only photograph concrete things; we cannot capture memories on film.

What are some of the more vivid memories concerning Science Hall? Are they . . .



the breaks between classes . . . ?



perhaps the classes themselves . . .



the pendulum . . . ?

or something outstanding about





a particular classroom.



The social rooms downstairs offered

a chance for fellowship . . .



occasional discussions . . .



*and a chance for
old friends to
get together.*

THE FACULTY
in
Secondary Education



DR. ERNEST H. ENGELHARDT
Director of Secondary Education



EDWIN BARTON
B.A., M.A.
Social Studies



OLIVE PAYNE BEEMAN
Ed.B., Ph.B.
Art, Science



CLAUDE L. BORDNER
A.B., M.A.
Mathematics



BOYD F. BUCKINGHAM
B.S.Ed., M.S.Ed.
Speech



EDWARD T. DEVOE
B.S., M.Ed.
English



DOROTHY T. EVANS
B.S.
Music



HOWARD F. FENSTEMAKER
B.A., M.A.
Foreign Languages



DONALD W. HERBERHOLZ
B.A., M.A.
Art



RALPH S. HERRE
B.S., M.A., Ed.D.
Social Studies



MARY E. MacDONALD
A.B., A.M.
Guidance Services



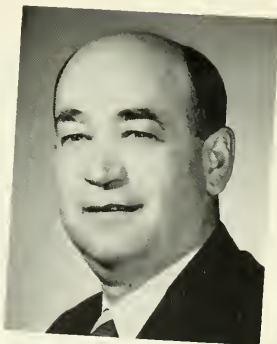
NELL MAUPIN
B.A., M.A., Ph.D.
Social Studies



NELSON A. MILLER
B.S., M.Ed.
Music



WILLIAM B. STERLING
B.S., M.S.Ed.
Aviation, Geography



E. PAUL WAGNER
B.S., M.S., Ed.D.
Psychology



MARGARET E. WALDRON
B.A., M.A.
Mathematics



KIMBER C. KUSTER
B.S., M.S., Ph.D.
Biological Science



HAROLD L. LANTERMAN
B.S., M.A., Ph.D.
Physical Science



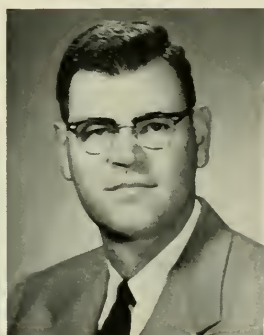
LUCY McCAMMON
A.B., M.A.
Health Education



J. ALMUS RUSSELL
A.B., A.M., Ph.D.
London University Certificate
English



CECIL C. SERONSY
B.A., M.A., Ph.D.
English



HAROLD S. SHELLY
A.B., M.A.
Physical Education



CLARA B. WEIR
B.O.E., M.A.
Clinical Speech



STEPHEN R. HOPKINS
B.M. of Music
Private School of Music



BEATRICE METTLER
A.B., M.S., R.N.
Graduate Nurse



The lagoon . . .

*which just a few
weeks ago looked
like this.*



The emp



The college greenhouse . . .



ing lot brings



like this.



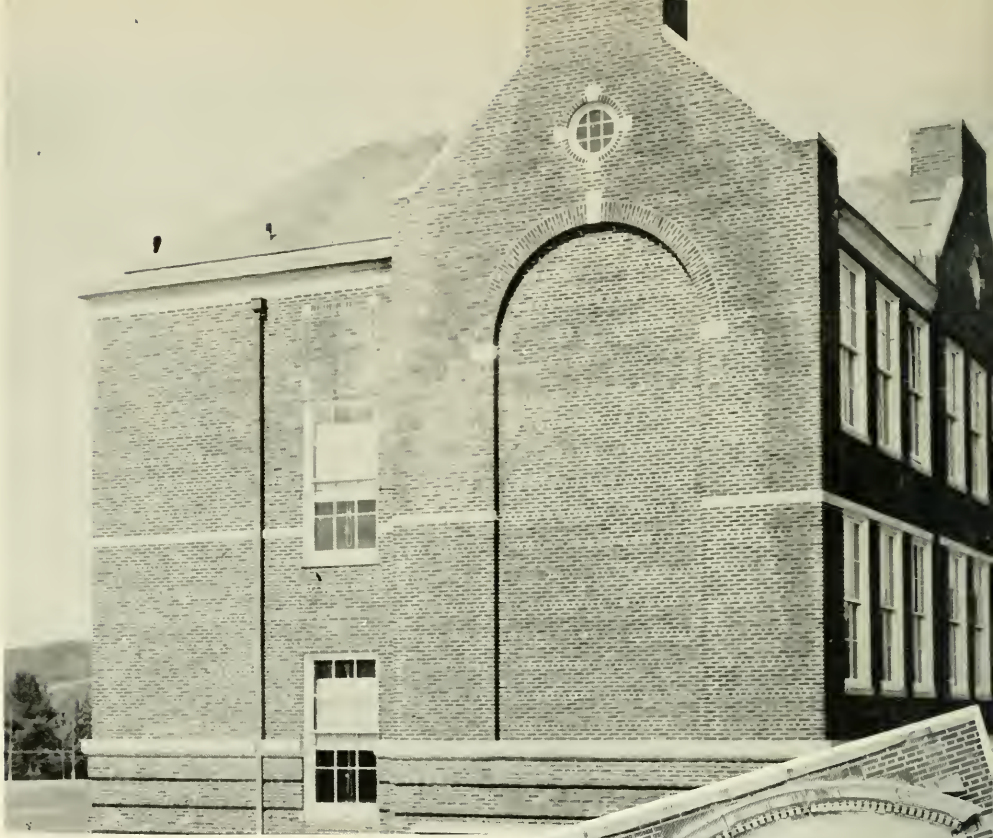
to our memories scenes . . .



he home of . . .



EDWARD SHARRETT
Superintendent of
Buildings and Grounds



NAVY HALL

Originally constructed to house the V-12 Naval Training program during World War II, Navy Hall now serves as the home of Business Education.

However, we find other activities carried on here as well, among which was our very first. Remember . . . ?



The schedule . . .



.....S



?...?...?



finally, the "I.D." picture



to business . . . under the capable guidance



and we're ready to get down . . .



occasionally, we find a few moments to relax.



THE FACULTY
in
Business Education



DR. THOMAS B. MARTIN
Director of Business Education



WILLIAM C. FORNEY
B.S., M.A.



EARL A. GEHRIG
B.S., M.B.A.



CHARLES H. HENRIE
B.S., M.Ed.



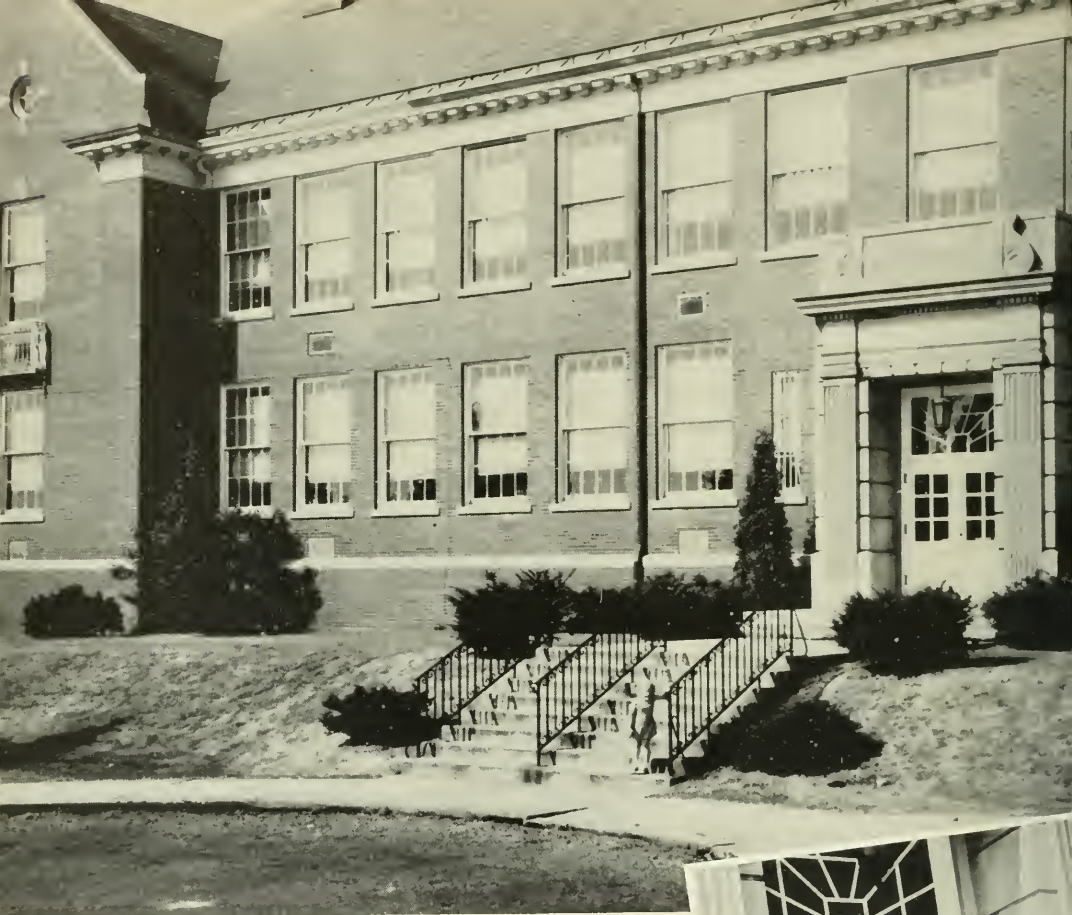
CLAYTON M. HINKEL
B.S., M.Ed.



MARGARET E. McCERN
B.S., M.Ed.



WALTER S. RYGIEL
B.S., M.Ed.



BENJAMIN FRANKLIN

Unique in its purpose, Benjamin Franklin Laboratory School not only affords a superior education to pupils in the elementary grades, it offers many of our Elementary student teachers the opportunity to practice under the careful supervision of trained specialists.

“Ben Franklin” is always a buzz of activity in some form or other. Here we find . . .





industry . .



scenes of study . . .



of curiosity . . .

and scenes of fun and play.



The day is over.



WARREN I. JOHNSON
B.S., M.Ed.
Training Teacher
Grade VI



RUSSELL F. SCHLEICHER
B.S., M.A.
Training Teacher
Grade V



ANNA GARRISON SCOTT
B.S., M.A.
Training Teacher
Grade IV

THE FACULTY
in
 Elementary Education



EDNA B. HAZEN
 Director of Elementary Education



LUCILE J. BAKER
 A.B., Mus.B., A.M.
 Training Teacher
 Grade I



EDNA J. BARNES
 B.S., M.A.
 Elementary Education



IVA MAE BECKLEY
 B.S., M.Ed.
 Training Teacher
 Grade II



MARCELLA MARIE STICKLER
 B.S., M.S.
 Training Teacher
 Grade III

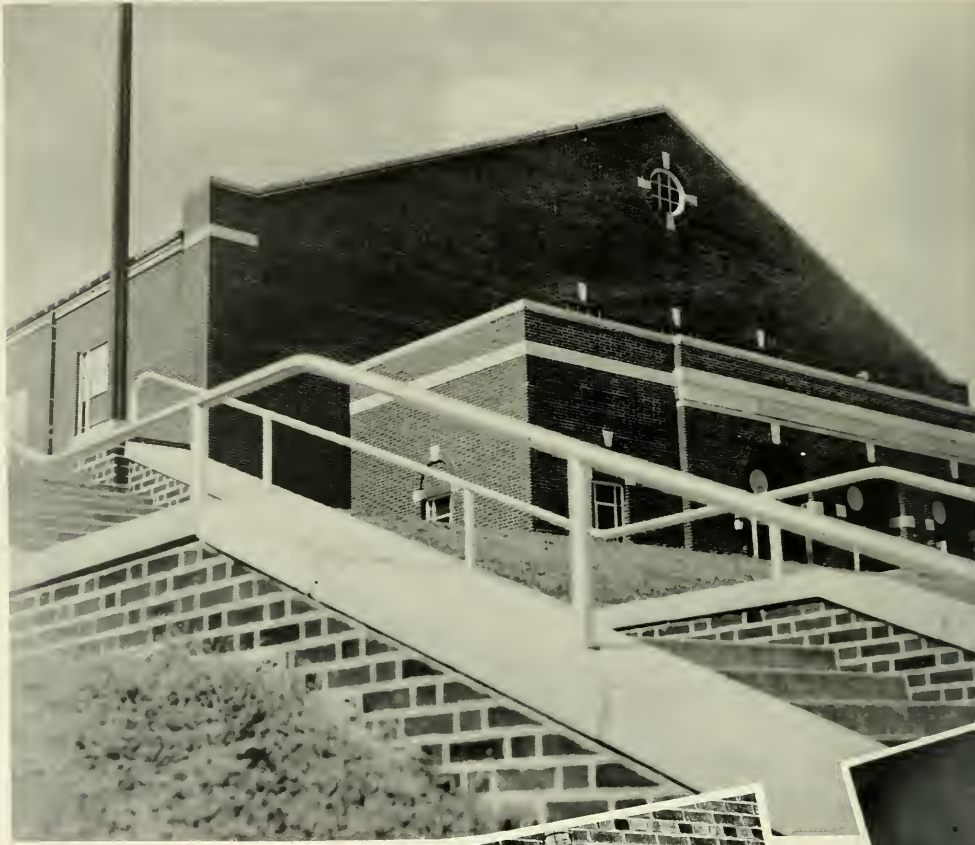


MARJORIE STOVER
 B.S.
 Training Teacher
 Special Class

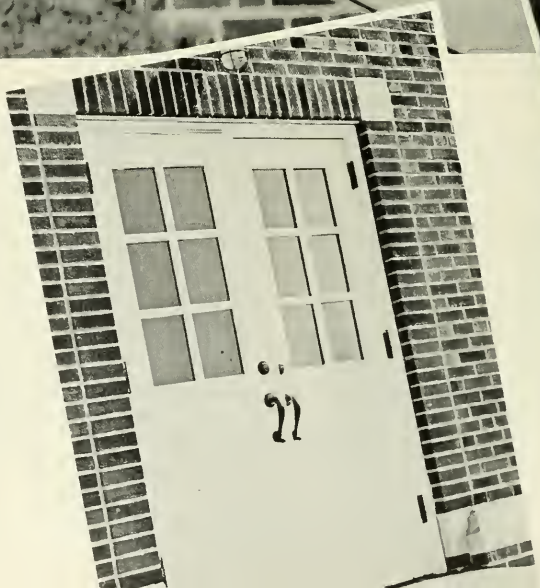


GRACE H. WOOLWORTH
 Ph.B., A.M.
 Elementary Education

CENTENNIAL GYMNASIUM . . .



Etched sharp and clear against the Pennsylvania sky stands Centennial Gymnasium, B.S.T.C.'s newest building. From her vantage point atop college hill, Centennial experiences the college life both around and within her walls.





The gym, the banking boards, the clock . . . our thoughts almost automatically turn to . . .

HAROLD SHELLY
Head Coach



ROBERT EVANS



HARRISON MORSON



KEITH WEISER

WALT STANEK
Student Coach



LEONARD KOSICK



ELMER ROBINSON



FRED BETZ, *Captain*



PAUL ANDERSON JOHN WOOL

BASKETBALL 1955

As Coach Harold Shelly prepared his '54-55 Husky hardwood crew for the season's curtain-raiser, he found that Fred Betz was the only senior who had survived the four-year grind, and was the only veteran of the championship 52-53 team that had much varsity experience. The remainder of the squad would then be of juniors, who were frosh stars in the championship days, one sophomore, and untried freshman talent.

At the outset there were many juniors who had been members of that undefeated freshman squad of two years ago, but only Keith Weiser, Bob Evans, Mo Morson, and Elmer Robinson were in uniform when the season's final records were written. Len Kozick proved to be the only sophomore surviving the many perils that confront a college athlete. So this left Coach Shelly with the problem of filling out the bench strength from the freshman talent show. This show proved to be a success as Jim Gustave, Bob Boyle, John Shaffer, and Jim Snyder all lent a hand in the varsity replacement department.

As usual, the Shellymen gave a good account of themselves, and were in the running for the league title when they ran into their arch court rival, the Maurauders of Millersville. In both contests the Lads from the Hill held the lead at the half but weren't strong enough at the finish, dropping two close decisions to the Lancaster County Tutors.

Fred Betz, team captain, played outstanding ball for the Hilltop courtmen, and at the same time paced the Husky scoring department. Bob Evans, in his first season as a starter, proved his worth to Coach Shelly and his mates. Keith Weiser provided an unusual scoring punch from the back court in his initial season as a first team starter. Big Mo Morson asserted his value to the Shellymen with his rebounding efforts and playmaking ability. Len Kozick, who rounded out the first team, had been second in scoring during his freshman year and followed suit in his sophomore campaign.

VARSITY CLUB . . .



Mr. Shelly, R. Cummins

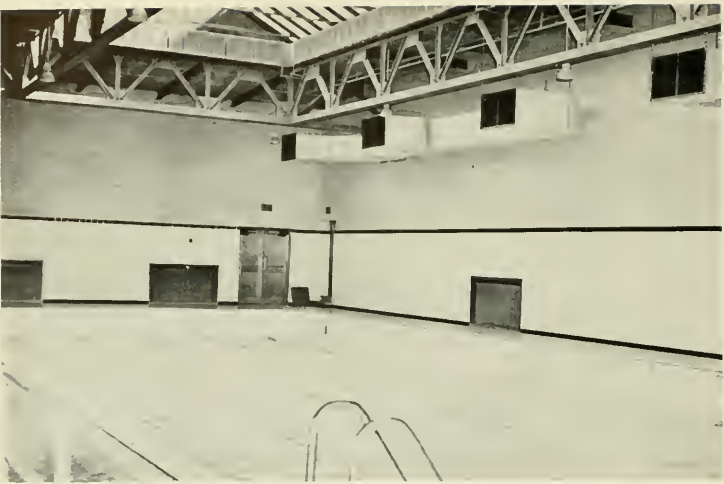
. . . giving unity to that group of men whose strength and skill are the pride of the college . . . fulfilling a social usefulness with the Varsity Dance . . .



T. Persing
T. Higgins, R. Groover

OFFICERS . . .

<i>President</i>	ROBERT CUMMENS
<i>Vice President</i>	THOMAS PERSING
<i>Secretary</i>	ROBERT GROOVER
<i>Assistant Secretary</i>	THOMAS HIGGINS
<i>Treasurer</i>	JOHN PANICHELLO
<i>Advisor</i>	MR. HAROLD SHELLY



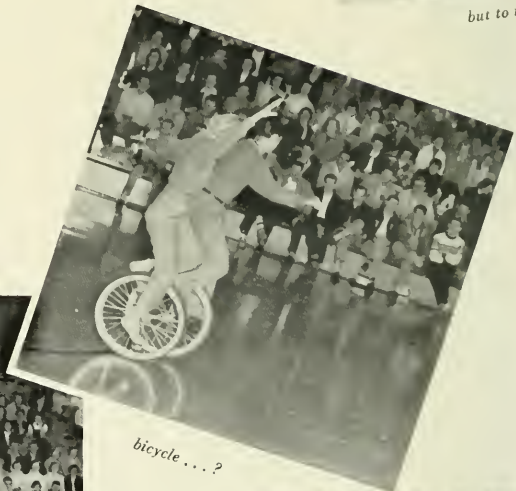
The pool has seen many splash parties . . .



but to most o.

Centennial Gym played host to two assembly programs during the course of the year.

Remember when a talented young couple showed us their skill . . .



bicycle . . . ?



on a trampoline . . . and a mixed up

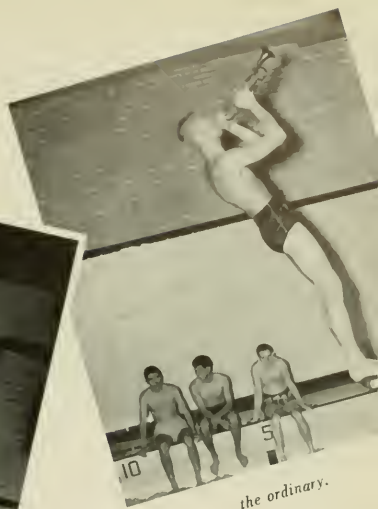




this was something



slightly out of . . .



the ordinary.

and there was the wrestling clinic where . . .



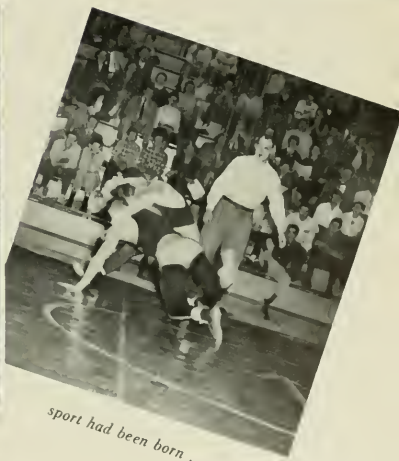
we caught a rare glimpse of



Welliver on his back.



More important, we discovered that a new



sport had been born . . .



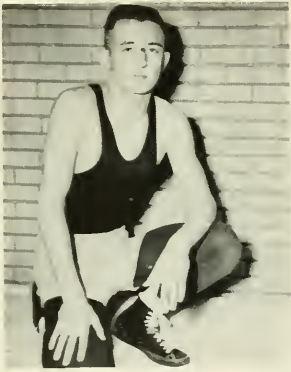
BILL TROLANI



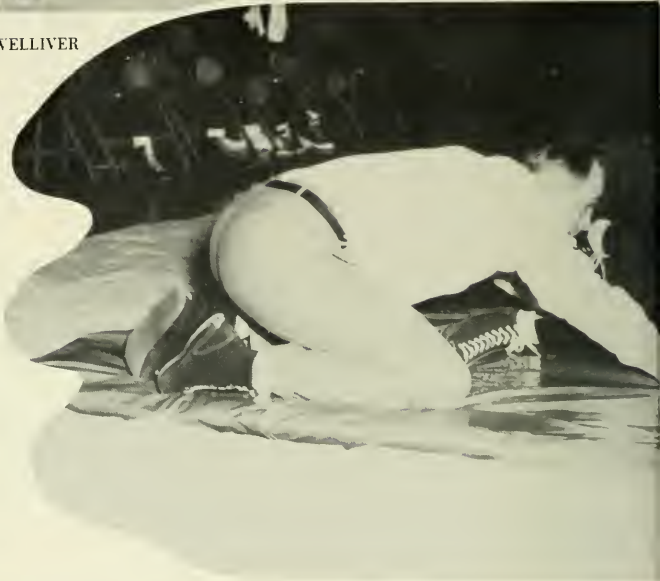
TOM WELLIVER



JACK YOHE
Head Coach



KEN LYNN



WRESTLING 1955

A new winter sport was introduced into the athletic itinerary in 1955. The popularity of the inter-collegiate mat sport had been spreading to eastern campuses, and it was only a matter of course that Bloomsburg should adopt the idea.

Wrestling was well received by the Husky fans, although not too much was known of the grapplers until Coach Jack Yohe held a wrestling clinic at Centennial Gym during an assembly period. Here, Coach Yohe explained the fundamentals necessary for understanding and scoring a meet.

Athletic Director, John Hoch, in one of his last efforts in this post, planned a card that employed seven regular dual meets, and an entry in the Teachers College State meet. A new mat, uniforms, and equipment were purchased, and the Husky was ready for its first crack at inter-collegiate wrestling.



HARRY KUNTZ



TOM WELLIVER
Student Coach



CHARLIE ABENMOAHA



BOB ASBY



DON WISE



HARRY HUGHES

Of the eight weight divisions recognized in college wrestling, Yohe managed to use at least five freshmen in starting assignments, in order to build a strong foundation for the future. He employed only one senior—Tom "Red" Welliver. A State Champion from his Shamokin High School days, Red was elected to captain the first Husky wrestling team. Other stand-outs were Harry Hughes, a sophomore from Williamsport in the unlimited weight class, and Don Wise, former Forty Fort grappler now in his junior year, wrestling in the 177 pound class.

SCORES

Millersville	22	BSTC	10
West Chester	26	BSTC	00
E. Stroudsburg	16	BSTC	11
Wilkes	19	BSTC	13
Lock Haven	27	BSTC	00
Indiana	16	BSTC	15
Lincoln	00	BSTC	40

State Meet

Welliver	3rd place—147 lb.
Wise	3rd place—177 lb.

Can anyone think of Centennial without recalling the many wonderful dances, the beautifully decorated gymnasium? And with each new dance . . .



... there was usually plenty of excitement,



since each organization was . . .



almost certain to choose . . .



Even intermission time . . .



often meant a . . .



BOBBI ROADSIDE
1955 Coed of the Year



time for entertainment.



lovely new queen like . . .

In addition to all this, Centennial Gym offered one more outstanding event . . . an event that was destined to be the Highlight of 1955. It all came about when the Social Recreation heard of a certain jazz band that was "knocking them cold" on college campuses all over the country.

And so they invited this band . . . led by a man named . . .



MAX KAMINSKY



Then they!



The air was filled with excitement as



the "All-Stars" set up



turned on the heat . . .



and the excitement turned to pandamonium.



their equipment.



Dick Bittner expressed it for all of us. Well done, Max . . . well done!

Here we must leave Centennial, for there are other visits to make and time is limited . . .

And so, on to . . .

Leaving Centennial Gymnasium behind, we begin to realize how much more could be included in our tour.

We might visit the dormitories of . . .



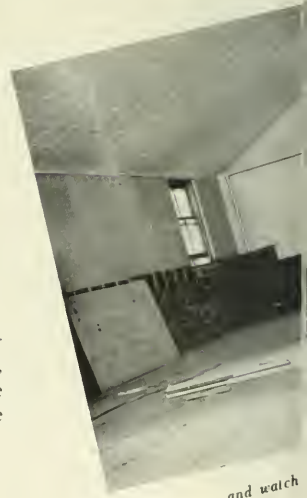
NORTH HALL and . . .



WALLER HALL . . .



of the process



and watch



seeing once again the rooms with their "double deckers" and crowded closets, the much used telephone booths, or the smokers . . . or we could pause in the lounge . . .

MRS. HELEN M. LORMAN



an "old gym" to a . . .



of changing . . .



a little more . . .



modern new social room . . .

or a glimpse of the dining room might show
us the bustle of activity in the kitchen . . .



a banquet . . .



or that endless line at lunch time . . .



MISS MARY FONTANA
Dietitian

Yes, with the aid of the camera we can see all this and more . . . but these are only pictures—actually worth no more than the cost of printing them. Their real value lies in the meaning they hold and in the memories they stir up within each one of you . . . For there will be memories—memories that will live forever in your minds . . . in your very beings.

Whatever the future holds in store for you, whatever you choose to do, wherever you choose to go, they will go with you. They will be what this college has made of you, but more important, they will be what you have made of yourself. They will represent—in you—the total effect, the net result of all that went into the making of your college career.

All this is far too intimate, far too intangible for the poor powers of the camera to capture. The camera can do much, but there is much it cannot do. The camera is purely a graphic instrument. It can photograph two friends together, but it cannot depict their experiences or their deep feeling toward one another. It can picture a group or an organization, but the purpose, the cooperation, the spirit, are lost on paper. The camera can capture the beauty of a college campus; it cannot show what that campus has meant to you. The camera can look silently about, capturing the magnitude and beauty, but it cannot speak out and say, "This has been my home."

As our tour ends, we turn to . . .

THE

ORGANIZATIONS . . .



OFFICERS . . .

<i>President</i>	ALICE FISHER
<i>Vice President</i>	JOANNE HESTER
<i>Secretary</i>	MARION DURICKO
<i>Treasurer</i>	TINA VALENTE
<i>Advisors</i>	MRS. ELIZABETH MILLER MISS MARY MacDONALD



GOVERNING



J. Hester, T. Valent, M. Duricko





Miss MacDonald, A. Fisher, Mrs. Miller



BOARD

WALLER HALL ASSOCIATION

. . . all dormitory women who make living together a pleasant, cheerful, and cooperative experience, while carrying out social, educational, and governing programs . . .





Miss Waldron, P. Hartman



OFFICERS . . .

President	PATRICIA HARTMAN
Vice President	CAROL NEARING
Secretary	JUNE REESE
Treasurer	NANCY EBERSOLE
Advisor	MISS MARGARET WALDRON

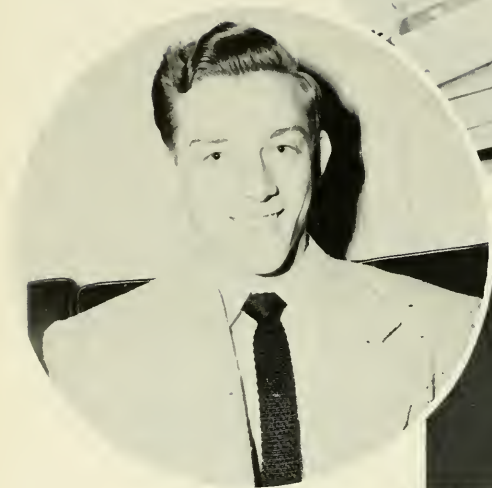
DAY WOMEN'S ASSOCIATION

. . . promoting and protecting the interests of non-dormitory women students, working together in social, welfare, and student government affairs . . .



Nancy Ebersole, June Reese, Carol Nearing





JOSEPH KINDER



MEN'S DORMITORY ASSOCIATION . . .

. . . all resident male students working together for the regulation of dormitory conditions . . . providing social programs for the benefit of the association and the college . . .



OFFICERS . . .

<i>President</i>	JOSEPH KINDER
<i>Vice President</i>	WILLIAM MIELKE
<i>Secretary</i>	MICHAEL BERNOT
<i>Treasurer</i>	PHILIP GERGEN
<i>Advisors</i>	MR. JOHN HOCH MR. JACK YOHE





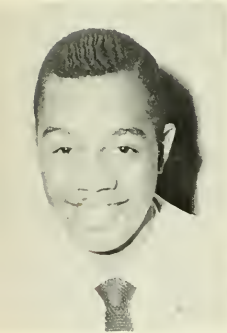
EDWARD CONNOLLEY



CARL MEYER



MURIEL NEILSON



HARRISON MORSON



KENNETH WEIR



. . . a representative governing body composed of students and faculty working together in the interests of the students, the college, and the community . . . formulating college policies, creating student committees, and regulating student activities . . .

COMMUNITY GOVERNMENT ASSOCIATION

College Council

OFFICERS . . .

President EDWARD CONNOLLEY
Vice President CARL MEYER
Secretary MURIEL NEILSON
Treasurer HARRISON MORSON
Assistant Treasurer KENNETH WEIR

FACULTY MEMBERS

Dr. Englehardt
Miss Hazen
Dr. Herre

Mr. Hoch
Dr. Martin
Miss MacDonald
Mrs. Miller

Dr. North
Miss Waldron
Mr. Yohe

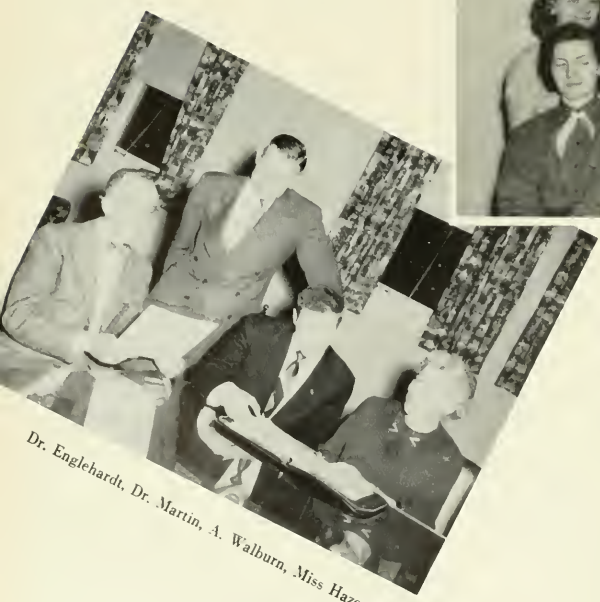
STUDENT REPRESENTATIVES

Robert Asby
Edwin Chase
Joan Christie
Robert Cummens
Robert Evans

Alice Fisher
Arnold Garinger
Robert Groover
Patricia Hartman
Mary Heatley
Joanne Hester

Grace Histed
Joseph Kinder
Carl Shively
Edward Shustack
Sally Stallone





Dr. Englehardt, Dr. Martin, A. Walburn, Miss Hazen

OFFICERS . . .

- President ALLAN WALBURN
- Vice President THOMAS SANDERS
- Secretary CORA GILL
- Treasurer SHERRILL HILLER
- State Secretary JOAN DIORIO
- Program Chairman EVELYN WEAVER
- Advisors NANCY SUE WILLIAMS
- DR. ERNEST ENGLEHARDT
- DR. THOMAS MARTIN
- MISS EDNA HAZEN

FUTURE TEACHERS OF AMERICA

... acquainting upperclassmen with teaching problems while advancing the interests of education to prospective students and those already enrolled at Bloomsburg...



Left to right: T. Sanders, E. Weaver, J. DiOrio, S. Hiller, N. Williams, C. Gill.



THE LIBRARY . . .

. . . providing interested students with a source of the various types of literature necessary for complete and thorough study . . .



STAFF . . .

Miss Keefer
Miss Reams
Marilyn Friedman
Patricia Hartman
Nancy Homsher
Joan Koch
Joyce Lundy
Vivian Scott
Joanne Specht
Janice Truscott
Joan Yohn



GAMMA THETA UPSILON

. . . a Professional Geography Fraternity seeking close bonds of fellowship, professional promise and study, and high character and ideals . . .



Fred Betz, Mr. Sterling



OFFICERS . . .

- | | | |
|----------------|-------|--------------------|
| President | | FRED BETZ |
| Vice President | | ALBERT BELINSKY |
| Secretary | | LOUIS MERVINE |
| Treasurer | | WILLIAM ELLINGER |
| Advisor | | MR. W. B. STERLING |



Albert Belinsky, William Ellinger, Lewis Mervine



ATHENAEUM CLUB . . .



OFFICERS . . .

<i>President</i>	JOHN SANDLER
<i>Vice President</i>	JOAN DIORIO
<i>Secretary</i>	ELIZABETH ADAMS
<i>Treasurer</i>	JEANNE CROCKER
<i>Program Chairman</i>	ROBERT EBNER



. . . advancing the understanding and enjoyment of music, both classical and popular, by utilization of both club and outside talent . . .

POETRY CLUB . . .



L. Bogart, Dr. Seronsy

OFFICERS . . .

<i>President</i>	LYNDA BOGART
<i>Vice President</i>	IRENE ZEILINSKI
<i>Secretary-Treasurer</i>	PEGGY BARTGES
<i>Advisor</i>	DR. CECIL C. SERONSY

. . . delving critically and analytically into the realms of poetry . . . encouraging its members to create, read, and discuss poetry for their own enjoyment . . .

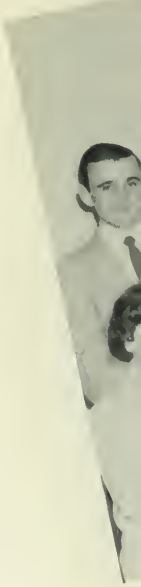
KAPPA DELTA PI



Dr. Maupin, O. Baker

OFFICERS ...

- President* OREN BAKER
- Vice President* ALTON SCHMIDT
- Recording Secretary* RUTH PAUL
- Corresponding Secretary* SALLY MORGAN
- Treasurer* NANCY SUE WILLIAMS
- Historian* LOUISE LASORSA
- Advisor* MISS NELL MAUPIN





A. Schmidt, N. Williams
L. LaSorsa, R. Paul, S. Morgan



... a National Honor Society in Education,
encouraging high intellectual and personal
standards, and fostering professional fellow-
ship and growth ...

PHI SIGMA PI . . .

OFFICERS . . .

President THOMAS HIGGINS
Vice President JOHN NALCOVICH
Secretary RONALD KRAJACK
Treasurer HARVEY BOUGHNER
Advisor MR. R. F. SCHLEICHER

. . . a National Professional Fraternity
for men based on twenty-five years of
fellowship, scholarship and professional
skill . . .



Mr. Schleicher, Mr. Hoch
T. Higgins



SCIENCE CLUB

... enlarging scientific knowledge and experience in both the biological and physical fields through use of lectures, demonstrations, motion pictures and field trips ...



Dr. Kuster
Dr. Lanterman, J. Shemanski



P. Hartman, B. Adams, A. Swortwood
M. Homick



OFFICERS . . .

President	JOSEPH SHEMANSKI
Vice President	MICHAEL HOMICK
Secretary	PATRICIA HARTMAN
Treasurer	BARBARA ADAMS
Advisors	DR. K. C. KUSTER DR. H. H. LANTERMAN

BUSINESS EDUCATION CLUB

... a large and active organization using extracurricular activities to enlarge the business education experience of its members...



OFFICERS . . .

<i>President</i>	CURT ENGLISH
<i>Vice President</i>	DONALD CAREY
<i>Secretary</i>	JOYCE KLINE
<i>Treasurer</i>	JOAN CHRISTIE
<i>Historian</i>	MARION DURICKO
<i>Advisor</i>	MR. WALTER S. RYGIEL



Mr. Rygiel, C. English





M. Duricko, J. Christie, J. Kline, D. Carey



PI OMEGA PI



Dr. Martin, Mr. Gehrig
Mary Hoffecker



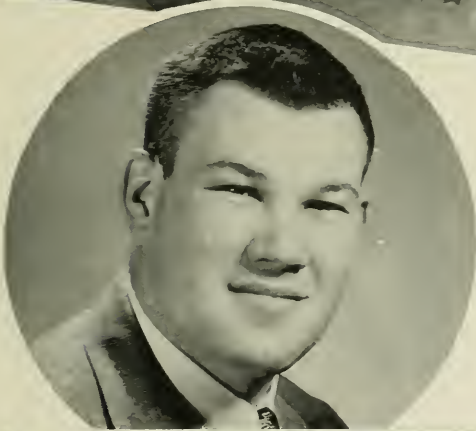
... promoting, extending, and creating
interest and scholarship in commerce
... members having a high professional
promise and superior scholastic ratings,
high ethical standards plus service
equaling worthy enterprise ...

OFFICERS . . .

- | | |
|-----------------------------|--------------------------------------|
| <i>President</i> | MARY HOFFECKER |
| <i>Vice President</i> | JOANNE McCORMICK |
| <i>Secretary</i> | SALLY MORGAN |
| <i>Treasurer</i> | ROBERT CAREY |
| <i>Historian</i> | PATRICIA O'BRIEN |
| <i>Advisors</i> | DR. THOMAS MARTIN
MR. EARL GEHRIG |



DAY MEN'S ASSOCIATION . . .



. . . all non-dormitory male students taking a unified active part in the social and student governmental functions of college life . . .



OFFICERS . . .

<i>President</i>	EDWIN CHASE
<i>Vice President</i>	OREN BAKER
<i>Secretary</i>	ROBERT LYON
<i>Treasurer</i>	RONALD GIRTON
<i>Advisor</i>	DR. R. S. HERRE

SIGMA ALPHA ETA . . .



OFFICERS . . .

- President* CHARLOTTE RUMMAGE
- Secretary* AVERY WILLIAMS
- Treasurer* ALVIN DAVIS
- Advisor* MISS CLARA B. WEIR

Miss Weir, C. Rummage



. . . creating and stimulating interest in speech and hearing . . . supplementing class and clinical experience . . . coordinating interests and efforts toward a common goal . . .

"B" CLUB

... using a point rating based on sports participation to further the ideals of sportsmanship, cooperation and athletic fitness...



A. Drees, R. Paul, G. Harris

OFFICERS...

President BETTY HOFFMAN
 Vice President RUTH PAUL
 Secretary GLORIA HARRIS
 Treasurer ANNA DREESE
 Advisor ... MISS LUCY McCAMMON



Miss McCammon, B. Hoffman

OFFICERS . . .
First Semester

- President ALVIN DAVIS
- Vice President GILBERT NEIBAUER
- Secretary JOYCE LUNDY
- Treasurer BERTHA KNOUSE
- Advisor MR. BOYD BUCKINGHAM



H. Clark, B. Knouse, J. Lundy
W. Fox, G. Neibauer



BLOOMSBURG PLAYERS . . .

. . . a workshop in educational dramatics by the creation of student staged productions for the benefit of the club, the college, and the public . . .



Mr. Buckingham
A. Davis, A. Aiello



OFFICERS . . . Second Semester

- | | |
|----------------------|---------------------|
| President | ANTHONY AIELLO |
| Vice President | WALTER FOX |
| Secretary | HOPE CLARK |
| Treasurer | BERTHA KNOUSE |
| Advisor | MR. BOYD BUCKINGHAM |

ALPHA PSI OMEGA

. . . providing encouragement and recognition for students interested in dramatics and the college theater, being comprised of outstanding members of the Bloomsburg Players . . .



OFFICERS . . .

<i>President</i>	SHERRILL HILLER
<i>Secretary</i>	WYLLA MAE BOWMAN
<i>Treasurer</i>	DOYLE LYNN
<i>Advisor</i>	MR. BOYD BUCKINGHAM



S. Hiller, Mr. Buckingham



W. Bowman, D. Lynn

MAROON AND GOLD BAND . . .



OFFICERS . . .

<i>President</i>	PHILIP GERGEN
<i>Vice President</i>	JOHN LEHET
<i>Secretary</i>	JEAN NAUGHTON
<i>Librarians</i>	MARY LONTZ
	ELEANOR NICHOLS
<i>Advisor</i>	MR. NELSON A. MILLER

J. Lehet, M. Lontz
J. Naughton, E. Nichols



P. Gergen, Mr. Miller





MR. JACK YOHE, *Head Coach*





TOM PERSING

BOB CUMENS

Co-Captains



JIM BROWNING



GARY YOHE



HARVEY BOUGHNER

Football season 1954 found Coach Jack Yohe starting his third year in the role of head Husky. Five veterans of the once-proud championship '51 team were available for call, and, as usual, a host of new faces waited to replace many of the greats who had departed from the land of the Husky.

Leading the parade of veterans who had performed for Bob Redman and John Hoch on the team that had gone undefeated and taken the first crown ever offered by the newly formed Teachers College Conference, were Alex Boychuck, a returning G.I. who had played in the defensive backfield of the two-platoon era; Eddie Connolley, the Danville Ironman, who was ready for his fourth season at center; John Panichello, the Glenside Giant, formerly a defensive tackle who was now set to work both ways; Big Don Thomas, an exceptionally speedy tackle seasoned with varsity experience; and finally, Charlie Pope, who had played for the past three years as an end.

The other two seniors who were ready to write their final grid chapters were the co-captains, Bob Cumens and Tom Persing. Cumens, originally a blocking back, had switched to end in order to strengthen the Yohemen. Persing was well entrenched in his berth as a varsity guard. An all-league selection for 1954, he was a good bet to repeat in '55.

The Huskies were off and running in the '54 season which many experts predicted to be another championship year. They took Mansfield to task 28-0 without exerting any show of power. The game did take its toll, however, as Eddie Connolley suffered a broken ankle during the first half and was lost for the season.

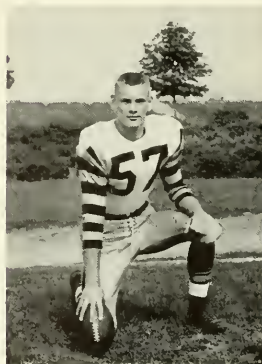
The week of practice that followed further put a mark on the chances



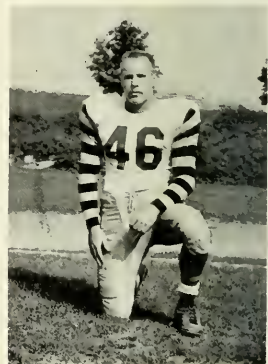
HARRY HUGHES



MIKE LASHENDOCK



CHARLES SKIPTUNAS



DON THOMAS



ALEX BOYCHUCK



JOHN PANICHELLO



JOSEPH MALCZYK

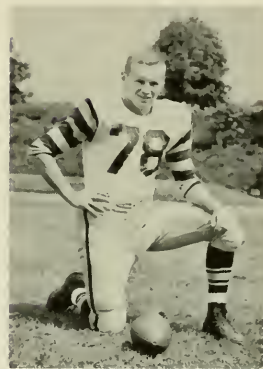
of realizing the new popular phrase on campus, "We're going all the way." Panichello and Pope were injured, causing Yohe to employ more inexperienced hands.

Courtland Teachers, making their first appearance on a Bloomsburg schedule, were victims of the win-hungry Huskies, by a 26-13 count. The following week was Homecoming and undefeated Wilkes fell prey to a great Bloomsburg team by a 44-0 surprise. The purge continued the following week when Bloomsburg traveled to Wilkes-Barre to knock undefeated Kings aside 49-0, in a demonstration of near perfect football.

With a record of four wins and no losses, the Huskies were riding the crest of the wave, and as the saying goes, they were riding for a fall. New Haven provided the necessary effort to push the Husky from the nation's undefeated ranks, and the final score read New Haven 26, Bloomsburg 14. The Lads from College Hill then took a trip across the state to play a strong California team, and brought the bacon home wrapped in a 20-13 package.

Again the stage was set. The biggest one of them all, the one we needed, brought more support from the student body than all the rest put together. West Chester! Win this one and there will be "no school Monday." But, it turned out to be the blackest Friday that a Bloomsburg team has had to face in post-war football. As classes went on as scheduled Monday morning it was still hard to believe that this team could have been beaten 41-0.

The Yohemen bounced back in the finale by taking Lock Haven over by a 40-13 score. This win enabled the Huskies to salvage a three-way tie for the conference along with West Chester and East Stroudsburg.



EDWARD CONNOLLEY



ROBERT DIPIPI



CHARLES POPE



ROBERT STROUP



Huskies Get Share Of State Crown With 40 To 13 Victory At Lock Haven ST

Display Strong Ground Attack

Entire Squad Sees Action As Victors Score In Opening Minutes

Bloomburg College Huskies got a piece of the state gridiron title in the teachers college conference Saturday night with a decisive 40-13 victory over the Lock Haven Blue Eagles before an assemblage of over 2,000 on the Lock Haven High School Field.

The Huskies took the opening kickoff back for a score, moving 65 yards in seven plays, all on the ground. Bob Dupst went over from the one on a sneak. From that time on the Maroon and Gold gained "score" at will and the very fourth play they had a very field goal.

Yohe's Huskies Trounce Mansfield, Score 3 Times In 10 Minutes

Bloomburg Gets Season Off To Good Start With 26-0 Win

Huskies Home When Opportunity Knocks

Bloomburg Goes 53, 68 For TDs As Yohe's Attack

Huskies Roped Maroon Of Hottentots

Regin Old Form For Fast Finish

Fast downs	17	8
Yards rushing	400	63
Yards lost rush	49	21
Net gain rushing	351	39
Passes attempted	8	25
Passes completed	3	6
Intercepted by	2	0
Yards gained passed	68	148
Fumbles	4-55	4-32-1
Penalties	6-60	4-30
Fumbles lost	2	1
Fumbles returned	2	0

Baven was driving when Haver pass was intercepted by all the way to the goal. Pope gave substantial key of a key block again.

Later the Huskies their ten when a long pass was intercepted by all the way to the goal. Pope gave substantial key of a key block again.

Huskies' offense was very effective in the first ten minutes of the game. They scored three touchdowns in ten minutes.

Huskies' offense was very effective in the first ten minutes of the game. They scored three touchdowns in ten minutes.

Huskies' offense was very effective in the first ten minutes of the game. They scored three touchdowns in ten minutes.

Huskies' offense was very effective in the first ten minutes of the game. They scored three touchdowns in ten minutes.

Huskies' offense was very effective in the first ten minutes of the game. They scored three touchdowns in ten minutes.

Drive 70, 80 Yards To Goal

Victory Red Dragons Get First Tally On 24-Yard Pass

Sustained Attack

Such better in the yard runs, one by and one by. Malczyk got another in that matter. The half had in that period an at bootleg. The er when John's who was new at 30 yards. The fourth sub attack.

ies Smoother Wins College, 14 To 0

Score On Two Long Drives

Vulcan Tallies Come From Sustained Aerial Assaults

Tom Persing Stars In College Sports

Owl Forwards Outstanding

Huskies Show Power In 26-0 Victory

Victory does not tell however as those typical intensity of the block was an indication on the two teachers.

It looked like the going to start off the bang as Don Thomas' was fumbled by Gary Kemm, and the Huskies had possession on the Columbia 12 yard line. But the stubborn California held Jim Browning to 5 yards.

Four minutes later started, Bill Mac-California with a taking pass. The took only seven Cameron's with a pass. California hung and 13, running Michigan's

Michigan pass and lateralized to Lawandick, who was downed on the 16. An unnecessary roughness penalty moved the ball to the Vulcan one yard line, from which Bob Dippi, newly-substituted quarterback, darted over for the touchdown. Cameron's 17th consecutive placement this year was good, as the score mounted.

Halfway through the second quarter, Skophans intercepted Michigan's pass and lateralized to Lawandick, who was downed on the 16. An unnecessary roughness penalty moved the ball to the Vulcan one yard line, from which Bob Dippi, newly-substituted quarterback, darted over for the touchdown. Cameron's 17th consecutive placement this year was good, as the score mounted.

Halfway through the second quarter, Skophans intercepted Michigan's pass and lateralized to Lawandick, who was downed on the 16. An unnecessary roughness penalty moved the ball to the Vulcan one yard line, from which Bob Dippi, newly-substituted quarterback, darted over for the touchdown. Cameron's 17th consecutive placement this year was good, as the score mounted.

Halfway through the second quarter, Skophans intercepted Michigan's pass and lateralized to Lawandick, who was downed on the 16. An unnecessary roughness penalty moved the ball to the Vulcan one yard line, from which Bob Dippi, newly-substituted quarterback, darted over for the touchdown. Cameron's 17th consecutive placement this year was good, as the score mounted.

Halfway through the second quarter, Skophans intercepted Michigan's pass and lateralized to Lawandick, who was downed on the 16. An unnecessary roughness penalty moved the ball to the Vulcan one yard line, from which Bob Dippi, newly-substituted quarterback, darted over for the touchdown. Cameron's 17th consecutive placement this year was good, as the score mounted.

West Chester Has Gala Night

Score In 1:20 And Husky Fumbles

West Chester team outlasted Blue Eagles in a 14-0 victory Saturday night at the Lock Haven High School Field.

West Chester team outlasted Blue Eagles in a 14-0 victory Saturday night at the Lock Haven High School Field.

West Chester team outlasted Blue Eagles in a 14-0 victory Saturday night at the Lock Haven High School Field.

West Chester team outlasted Blue Eagles in a 14-0 victory Saturday night at the Lock Haven High School Field.

West Chester team outlasted Blue Eagles in a 14-0 victory Saturday night at the Lock Haven High School Field.

West Chester team outlasted Blue Eagles in a 14-0 victory Saturday night at the Lock Haven High School Field.

West Chester team outlasted Blue Eagles in a 14-0 victory Saturday night at the Lock Haven High School Field.

West Chester Has Gala Night

Score In 1:20 And Husky Fumbles

West Chester team outlasted Blue Eagles in a 14-0 victory Saturday night at the Lock Haven High School Field.

West Chester team outlasted Blue Eagles in a 14-0 victory Saturday night at the Lock Haven High School Field.

West Chester team outlasted Blue Eagles in a 14-0 victory Saturday night at the Lock Haven High School Field.

West Chester team outlasted Blue Eagles in a 14-0 victory Saturday night at the Lock Haven High School Field.

West Chester team outlasted Blue Eagles in a 14-0 victory Saturday night at the Lock Haven High School Field.

West Chester team outlasted Blue Eagles in a 14-0 victory Saturday night at the Lock Haven High School Field.

West Chester team outlasted Blue Eagles in a 14-0 victory Saturday night at the Lock Haven High School Field.

END Mike Paneth
 END-John Marek
 TACKLE-John Coyne
 TACKLE-Phil Marella
 Guard-Tom Persing
 Guard-Joe Alpin
 CENTER-Joe Persing
 BACK-Spence Keyes
 BACK-Jim Brown



LITTLEBUTT

Huskies, 41-0; 1

There Will Be
Classes On Monday

1st	186
2nd	206
3rd	151
4th	124
5th	17
6th	163
7th	234
8th	233
9th	2
10th	6



**Name Persing
Jim Browning**

Opposes
In TV Tilt

...the "friendly" recreation in the future success of the school.

Husky Stars Win Bertha O'Brien
All-State Conference Eleven

21-13 Win At California;

...the "friendly" recreation in the future success of the school.

Huskies Crush King's, 49-0;

Always Play Big Role In This One

Yards	399
Plays	22
Yards	306
Plays	10
Yards	157
Plays	13
Yards	132
Plays	8
Yards	121
Plays	7

Lightning Electrifies In 2nd Year Way

Check DeFuria: "I think the BACK Charles Shaw E. Str BACK Ted Wasenewski Clarab



THOMAS PERSING, JAMES BROWNING
1954 All-State First Team



1954 SQUAD

SEASON SCORES

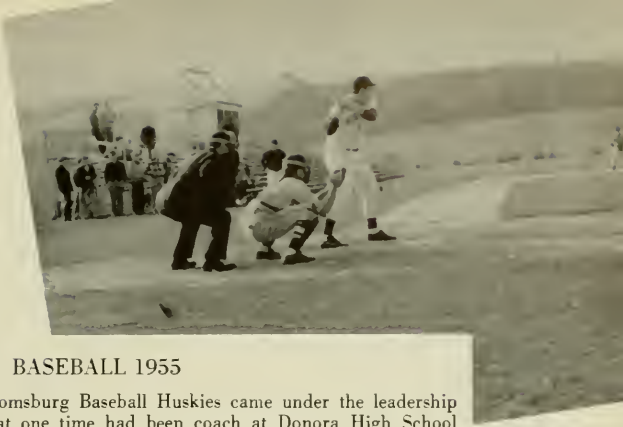
Record—5 Wins, 5 Losses

Mansfield	2	BSTC	15
Lock Haven	6	BSTC	2
Kutztown	3	BSTC	15
Millersville	3	BSTC	4
Mansfield	8	BSTC	5
Wilkes	9	BSTC	5
West Chester	3	BSTC	1
Rider	12	BSTC	3
Scranton	0	BSTC	6
Wilkes	1	BSTC	10



DR. E. PAUL WAGNER, *Coach*





BASEBALL 1955

The 1955 edition of the Bloomsburg Baseball Huskies came under the leadership of Dr. E. Paul Wagner, who at one time had been coach at Donora High School during its reign over schoolboy sports.

The diamond hopefuls were a dowery which consisted, at the outset, of a veteran-studded infield, a host of catchers, and a badly depleted pitching and outfield staff.

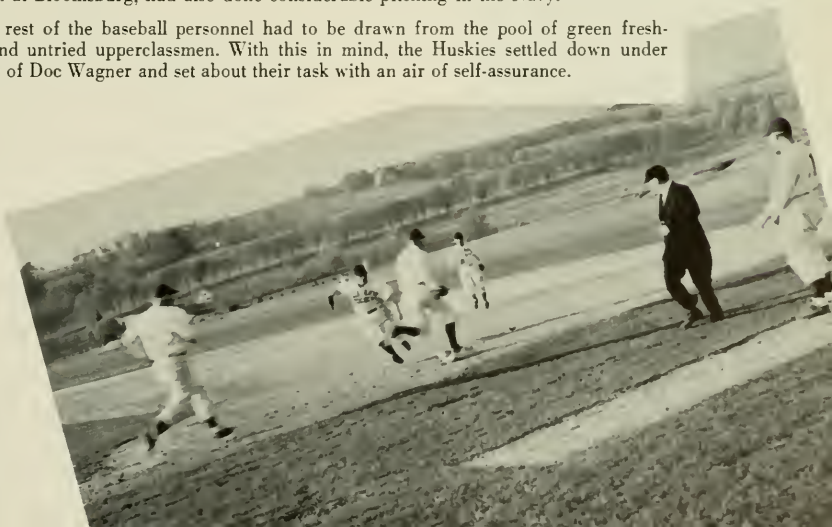
In the experienced infield, first base was well-manned by former monogram winners Bob Stroup and George Derk. At second, senior Johnny Halcovitch, the team's leading hitter in 1954, was well entrenched. Rifle-armed Bob Cumens was at third base in this fourth year as a varsity competitor. But "Doc" had some tough decisions to make at the short stop position; Terry Zachowski had been the regular in '54, but Chuck Casper also had a keen eye on the coveted infield spot. The final decision rested on the ability of each to field his position with the flawless effort required of a Wagner-coached player.

The catching department had a wealth of untried material, and only Joe Keefer as a hold-over from the '54 team. Among the untested backstops were Treverton's Harv Boughner, Bobby Boyle, former Scranton player, and Frank Fisk, one-time Danville Ironman.

Eddie Shustack, a 1954 letter winner in center field, and Chuck Casper, a shifted shortstop, were the only outfielders inherited from the previous season, and the search started for patrollers of the outer pastures.

The pitching department was also sparse in starters and light in collegiate experience. Leading the parade of veteran chuckers was Bobby Dipipi, former Old Forge hurler and successful B.S.T.C. pitcher of '54. Charles Kwiatkoski, another baseball veteran at Bloomsburg, had also done considerable pitching in the Navy.

The rest of the baseball personnel had to be drawn from the pool of green freshmen and untried upperclassmen. With this in mind, the Huskies settled down under the eye of Doc Wagner and set about their task with an air of self-assurance.



TRACK . . .



HAROLD SHELLY
Coach



CHEERLEADERS

. . . six sweet gals loaded with Vim,
Vigor, and Vitality leading the student
body in the old Bloomsburg spirit . . .



JUDY STEPHENS	MARY HOFFECKER
BARBARA LENTZ	BOBBI ROADSIDE
SANDY McBRIDE	EMY PARK



the blending of sweet soprano, mellow alto and tenor, and rich bass voices for the common pleasure of the group, the college, and the community . . .



C. Pope, Mr. Miller



HOIR

OFFICERS . . .

<i>President</i>	CHARLES POPE
<i>Vice President</i>	SAMUEL HALL
<i>Secretary</i>	JOYCE LUNDY
<i>Treasurer</i>	BARBARA LENTZ
<i>Pianist</i>	MARY JANE MILLER
<i>Advisor</i>	MR. NELSON MILLER



S. Hall, M. Miller
J. Lundy, B. Lentz



WOMEN'S CHORUS . . .



Mrs. Evans, J. Buck

OFFICERS . . .

<i>President</i>	JOYCE BUCK
<i>Vice President</i>	TINA VALENTE
<i>Secretary</i>	BERNADINE BUTZ
<i>Treasurer</i>	JACQUELINE ALBERT
<i>Advisor</i>	MRS. D. T. EVANS

B. Butz, T. Valent, J. Alberts



. . . music enthusiasts singing together for the enjoyment of the college and community . . .



OFFICERS . . .

President	GORDON STAMETS
Vice President	FRANK ANDREWS
Secretary	MARY LOU THORNTON
Treasurer	ARTHUR LESHER
Advisor	W. B. STERLING

M. Thornton, A. Leshar



G. Stamets, Mr. Sterling



. . . looking into the future and keeping abreast of the present by promoting all aspects of aeronautics . . .

STUDENT CHRISTIAN ASSOCIATION

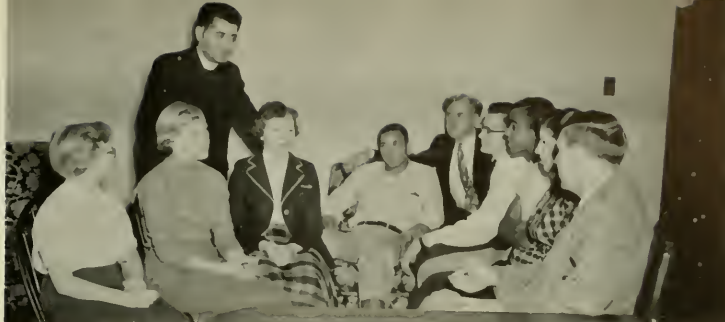


Mr. Hinkle
Enola Van Auken, Willard Snyder



OFFICERS . . .

- | | |
|-----------------------------|--------------------|
| <i>President</i> | WILLARD SNYDER |
| <i>Vice President</i> | NANCY HOMSCHER |
| <i>Secretary</i> | ENOLA VAN AUKEN |
| <i>Treasurer</i> | MARILYN RITTER |
| <i>Advisor</i> | MR. CLAYTON HINKLE |



RELIGION IN LIFE WEEK

On Tuesday morning, November 16, 1954 during the assembly period, Victor Michael, Chairman of Religion in Life Week Committee, made the announcement, "This is Religion in Life Week." Through the tireless effort of a committee composed of all religious faiths and denominations, the first Religion in Life Week was underway here on our campus.

At first, the student response was viewed with little optimism, but after the attentiveness shown during the address given by the Reverend Raymond Shaheen, the speaker for the Protestant faith, there was no doubt that religion was something about which college students were vitally concerned.

Further evidence of the fine student response was shown by the number who attended the informal discussion group meetings. The well-populated Carver Hall auditorium for the Wednesday Vesper service, when Rabbi Isaac Vander Walde spoke on behalf of his faith, displayed the desire of the student body to become more tolerant of the other person's religion.

On Thursday, November 18, 1954, the Right Reverend Monsignor George D. Mulchay, represented the Catholic faith by presenting to an attentive audience his address during assembly. In the afternoon the best-attended discussion group meeting of the series dealt with the subject of Mixed Marriages, concluding three days of religious awakening.

The outstanding achievement of the entire program was not attained during the week: rather, it was the continued interest in religion, as evidenced by increased attendance in Bloomsburg churches and the increased number of students who now attend the Student Christian Association meetings. These were the signs that "Religion in Life Week" far surpassed the expectations of the committee who helped to make it possible.





JOANNE HESTER, *Editor-in-Chief*

... a student publication presenting current news and opinion to the college community through the cooperative efforts of journalistically minded students ...

EDITORIAL BOARD



Charlotte Rummage,
Joan Christie,

Ed Siscoe,

Nancy S. Williams
Martha Starvatow



Dean John Hoch To Replace Marmm and ...

New Team Will Succeed
In North Administration
Head to January Semester



Administrative Team
Including Mr. Hoch, Mr. ...
President, ...

...ting Dr. North

Gold

S.T.C. To Hold F
Dr. North At H
January Matinee



DEPT. HEADS



William Bitner.
Bernadine Butz.

Larry Fiber
Joyce Kline

- Editor-in-Chief Joanne Hester
- Business Manager George Derk
- Editorial Board Charlotte Rummage.
- Edward Siscoe. Joan Christie. Nancy Sue Williams.
- Harriet Link. Martha Starvatow

DEPARTMENT HEADS

- News Larry Fiber
- Feature Elinor Evans
- Sports Bill Bittner
- Circulation Bernadine Butz
- Typing Joyce Kline

GEORGE DERK. *Business Manager*



PILOT

. . . the student handbook acting as a printed guide to a more thorough understanding of college activity and policy . . .



E. SISCOE

Top row:
M. NEILSON
C. NEARING



Bottom row:
M. STARVATOW
M. DURICKO

STAFF . . .

- | | | |
|--------------------------------------------------------------------------|-------|-----------------|
| Editor-in-Chief | | Edward Siscoe |
| Assistant Editor | | Carol Nearing |
| Art Editor | | Doris Krzywicki |
| Business Editor | | Donald Carey |
| Associate Editors | | Marion Duricko, |
| Pasquale Giangiulio, Muriel Neilson, Corrine Pentecost, Martha Starvatow | | |

D. KRZYWICKI



D. CAREY

OLYMPIAN

. . . the annual student literary publication providing an opportunity for those endowed with creative talents in the fields of poetry, prose, and humor . . .



STAFF . . .

Editor-in-Chief	Charlotte Rummage
Editorial Board	Anthony Aiello.
Keith McKay, Elinor Evans, Sue Osborn, Joanne Hester	
Business Manager	Richard Strine
Copy Readers	Mary Jane Trefsgar,
Evelyn Gilchrist	
Typist	Connie Ozalas
Publicity	Harrison Morson
Circulation	Betty Carvolth



KEITH MCKAY
Editor-in-Chief

As the years following your graduation increase in number, many of the memories and recollections of your four years here at B.S.T.C. will become more vivid and meaningful. However, in later years, the more recent events in your lives will tend to push many of those fond recollections back into the hidden depths of your memories.

Our purpose in bringing you the 1955 OBITER is actually an attempt—an attempt to provide, through the medium of photography, some of the Bloomsburg you knew as a student.

We hope that in the years to come you will turn occasionally to your yearbook and refresh some of those memories which time might have tended to fade a bit. If you do this, our purpose will have been accomplished.

YOUR EDITOR



THOMAS HIGGINS



CHARLOTTE RUMMAGE, JOANNE HESTER

MARY JANE TREFSGER, SUZANNE OSBORN



WILLIAM BITNER
Sports Editor



JOHN SANDLER
Art Editor

THE OBITER '55



NANCY SUE WILLIAMS
Associate Editor



CAROL ELY, JAN FERENCE, BARBARA TUCKWOOD

<i>Editor-in-Chief</i>	Keith McKay
<i>Associate Editor</i>	Nancy Sue Williams
<i>Editorial Board</i>	Corinne Pentecost
	Barbara Tuckwood
	Marie Will
	Carol Ely
<i>Editorial Staff</i>	Joanne Hester
	Charlotte Rummage
<i>Business Manager</i>	Holley Smith
<i>Co-Advertising Managers</i>	George Derk
	Curt English
<i>Director Senior Pictures</i>	Jan Ference
<i>Art Editor</i>	John Sandler
<i>Sports Editor</i>	Bill Bitner
<i>Copyreaders</i>	Suzanne Osborn
	Mary Jane Trefsgar
<i>Coed-of-the-Year Contest</i>	
<i>Coordinator</i>	Tom Higgins
<i>Faculty Advisor</i>	E. T. DeVoe

HOLLEY R. SMITH
Business Manager



1955 OBITER COED
CONTEST . . .



JOAN RIEDER



SHERRILL HILLER



LORRAINE DEIBERT



JUDY STEPHENS



JOANNE McCORMICK



EMAGENE PARK



MARY HEATLEY



MISS BOBBI ROADSIDE
Coed of the Year

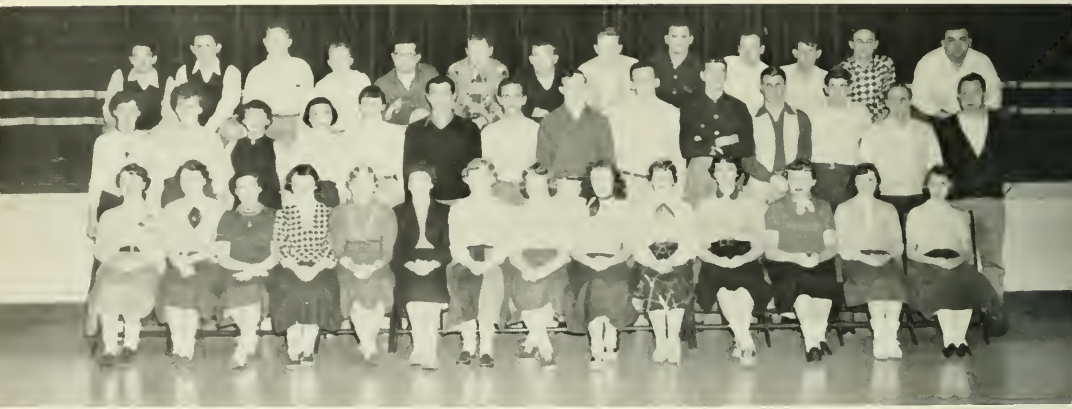
THE CLASS OF 1958 . . .

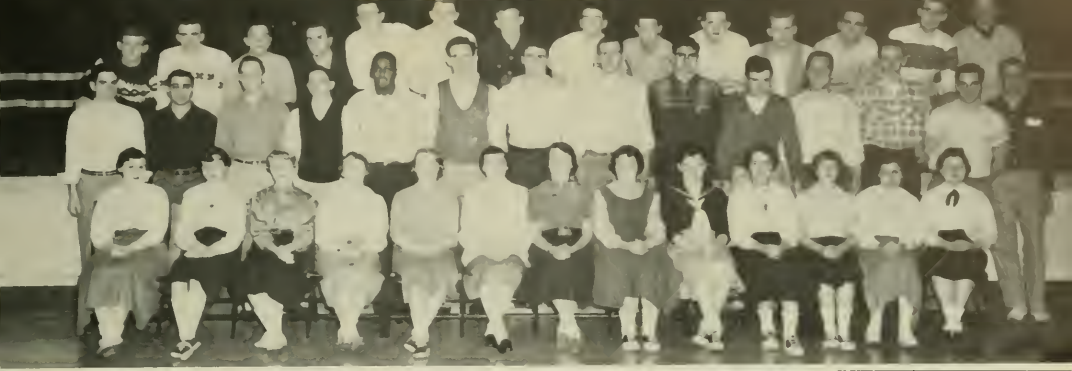
. . . the rigors of customs . . . the initial exploring of Bloomsburg . . . the traditional talent show . . . new friends, habits, routines . . . Gerry Kehler "Up in Central Park" at the Freshman Dance . . .



OFFICERS . . .

President	ROBERT ASBY
Vice President	ROBERT BOYLE
Secretary	NANCY SUWALSKI
Treasurer	RICHARD CONNOLLEY
Woman Rep.	MARY HEATLEY
Man Rep.	CARL SHIVELY





N. Suwalski, R. Asby, M. Heatley
R. Boyle, C. Shively, R. Connolley, Mr. Fenstemaker

CLASS OF 1957 . . .

. . . the transition stage between under and upperclassmen . . . Sophomore week
. . . "Candyland" at the annual Cotillion
. . . taking a definite place in the pattern of Bloomsburg . . .



R. Beimensderfer, E. Shustak, K. Weir, A. Kleinschrodt,
S. Stallone, Mr. Miller, B. Lentz.



OFFICERS . . .

- President _____
- Vice President _____
- Secretary _____
- Treasurer _____
- Man Rep. _____
- Woman Rep. _____
- Advisor _____

- KENNETH WEIR
- ALAN KLEINSCHRODT
- BARBARA LENTZ
- ROBERT BIENESDERFER
- EDWARD SIUSTACK
- SALLY STALLONE
- MR. N. H. MILLER



K. Weir, Mr. Miller.



CLASS OF 1956



R. Evans, P. Giangulio, R. Edwards, R. Groover
J. Kline, Dr. Seronsy, J. Christie



... assuming and fulfilling the role
 and responsibilities of upperclassmen
 ... procuring school rings ... creating
 a memorable event with the Junior
 Prom ...

OFFICERS ...

<i>President</i>	ROBERT EVANS
<i>Vice President</i>	RAYMOND EDWARDS
<i>Secretary</i>	JOYCE KLINE
<i>Treasurer</i>	PASQUALE GIANCIULIO
<i>Man Rep.</i>	ROBERT GROOVER
<i>Woman Rep.</i>	JOAN CHRISTIE
<i>Advisor</i>	DR. C. C. SERONSY



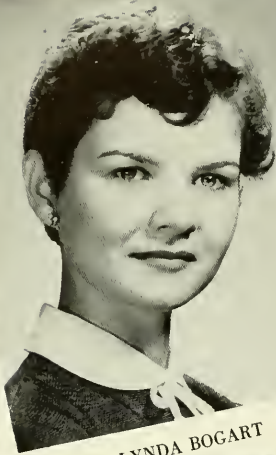
Dr. Seronsy, R. Evans





WHO'S WHO

in American Colleges and



LYNDA BOGART



EDWARD CONNOLLEY



JANICE BOWER



JEAN GRIFFITHS

Universities . . .



JUNE LUKAC



GRACE HISTED



JOYCE LUNDY



HOPE HORNE



JEANETTA MINCER

WHO'S WHO (Continued)



MICHAEL MORAN



RELDA ROHRBACH



SALLY MORGAN



NANCY SUE WILLIAMS



ARNOLD GARINGER
President, Class of '55

MY FELLOW GRADUATES

In a short time you will close your college careers at Bloomsburg. You can be justly proud because of the many sacrifices made by you and your families in order to reach this accomplished goal. I should like to be one of the first to offer my sincere congratulations.

As we go out into the world, each in his own way, let us never forget the happy memories of these ivied walls. Each of you will leave your mark at Bloomsburg . . . some large, some small, but nevertheless a mark . . . Bloomsburg too, will leave a mark on you that will never be erased.

As you leave, do not go with the thought in mind that you have finished. Believe me, you are only beginning. Do not stop until you reach the top. Bloomsburg has given you a good start. Always remember as you take your place in the teaching profession that the most important part of one's life is not in doing something for himself, but in doing something for others.

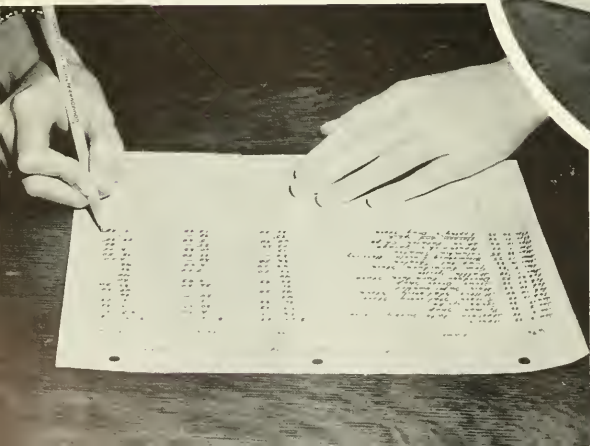
Besides ourselves and our parents, there are many other factors that deserve recognition—our President, our Faculty, the Board of Trustees, the model community of which we have been a part for four years, and finally, the great state of Pennsylvania, without whose help many of us would not have been able to make this step upward.

I want to thank you for the honor and privilege it has been to serve as your class president. It is my heartfelt wish that life may be filled with great happiness for you and yours.

Sincerely,

ARNOLD GARINGER

BUSINESS





M. BELOCK



C. BERDY

MICHAELNE BELOCK

Scranton

General Business

Waller Hall Association 1, 2, 3, 4; Newman Club 1, 2;
Business Ed. Club 1, 2, 3, 4; FTA 3, 4; Fashion Show
Co-ordinator 1.

CAROLYN BERDY

Dallas

Secretarial

Waller Hall Association 1, 2, 3, 4; "B" Club 4; Business
Ed. Club 1, 2; Mixed Chorus 3; FTA 3, 4; Drum
Majorette 2, 3, 4; Social Recreation Committee 2, 3.

OLIVE HUNTER BUYNAK

Taylor

Secretarial

Waller Hall Association 1, 2, 3, 4; Business Ed. Club 1;
FTA 3, 4; SCA 3; Women's Chorus 1.

ROBERT WALTER CAREY

Forest City

General Business

Dorm Men's Association 2, 3, 4; Business Ed. Club 2, 3;
Aviation Club 1; Newman Club 1; Pi Omega Pi 3, 4;
Phi Sigma Pi 3, 4; FTA 4.

JOAN M. CHAPIN

Berwick

Secretarial

Waller Hall Association 1, 4; Day Women's Association
2, 3; Bloomsburg Players 1, 2, 3, 4; SCA 1; Women's
Chorus 1, 2; Athenaeum Club 1, 2; Alpha Psi Omega
3, 4; *Maroon and Gold* 1, 2; FTA 4.

G. WILLIAM CREASY

Mifflinville

Accounting

Day Men's Association 1, 2, 3, 4; Business Ed. Club 1,
2, 3; Baseball 3; FTA 4.

O. BUYNAK

R. CAREY

J. CHAPIN

G. CREASY





R. CUMENS



G. DERK



E. GEROSKY



M. COBSTER

ROBERT E. CUMENS

Coatesville

Accounting

Dorm Men's Association 1, 2, 3, 4; Varsity Club 1, 2, Treasurer 3, President 4; Class Vice President 3; College Council 4; Football 1, 2, 3, 4; Baseball 1, 2, 3, 4.

GEORGE W. DERK

Montandon

General Business

Dorm Men's Association 1, 2, 3, 4; Varsity Club 4; Wesley Fellowship 1, 2, 3, 4; Mixed Chorus 1, 4; FTA 3, 4; Business Ed. Club 1, 2, 3; CGA Vice President 3; Baseball 3, 4; *Maroon and Gold*, Business Manager 4; OBITER Advertising Manager 3, 4.

EILEEN HELEN GEROSKY

Pittston

General Business

Waller Hall Association 1, 2, 3, 4; Newman Club 1, 2; FTA 3, 4; Women's Chorus 1, 2; Business Ed. Club 1, 3; Pi Omega Pi 3, 4; Kappa Delta Pi 3, 4; Fashion Show Co-ordinator 3, 4; *Maroon and Gold* 1, 2, 3.

MARLENE P. GOBSTER

Shenandoah

Secretarial

Waller Hall Association 1, 2, 3, 4; Newman Club 1; Business Ed. Club 1, 2, 3; FTA 4; Women's Chorus 1; Fashion Show Co-ordinator 1, 2, 3.

MOLLIE H. HARTER

Bloomsburg

General Business

Day Women's Association 1, 2, 3, 4; Bloomsburg Players 1, 2, 3, 4, Secretary 2; FTA 4; Alpha Psi Omega 3, 4, Secretary 3; *Maroon and Gold* 1, 2, 3; OBITER 3.

MARY ELLEN HENNING

Stroudsburg

General Business

Waller Hall Association 1, 2, 3, 4; LSA 1, 2, 3, 4; Business Ed. Club 1, 2, 3; Women's Chorus 1; College Council 2; CGA Secretary 3; Pep Committee 1; Pi Omega Pi 3, 4; Kappa Delta Pi 3, 4; Majorette 2, 3.



M. HARTER



M. E. HENNING



S. HILLER



N. HOLTZMAN

SHERRILL V. HILLER

Jersey Shore *Secretarial; English*

Waller Hall Association 1, 2, 3, 4; Bloomsburg Players 1, 2, 3, 4, Treasurer 2, Secretary 3; Business Ed. Club 1, 2, 3, 4, Secretary 3; FTA 3, 4, Treasurer 4; "B" Club 3, 4; LSA 1, 2, 3; Freshman Class Advisor 3; Hospitality Committee 2; Alpha Psi Omega 3, 4, President 4; OBITER 1.

NANCY BANGS HOLTZMAN

Bloomsburg *General*

Day Women's Association 1, 2, 3, 4, Treasurer 3; Athenaeum Club 1; Business Ed. Club 2; Bloomsburg Players 3, 4; FTA 3, 4; Customs Committee 3; OBITER 3.

RICHARD G. HURTT

Forty Fort *Accounting*

Day Men's Association 1, 2, 3, 4; Business Ed. Club 1, 2, 3; Men's Chorus 1; Class Treasurer 3; Furniture Committee Co-Chairman 2; Hospitality Committee Co-Chairman 3; FTA 4.

JOSEPH EDWARD KINDER

St. Clair *Accounting*

Men's Dormitory Association 1, 2, 3, 4, Treasurer 3, President 4; Business Ed. Club 1; Varsity Club 3, 4; Newman Club 1; Men's Chorus 1; Class Vice President 2; College Council 4; Hospitality Committee 3; Customs Committee 3; Football 1; Baseball 1, 2; Phi Sigma Pi 3, 4; OBITER Co-Advertising Manager 4.

MARY LOU KUBIC

Mountaintop *General*

Waller Hall Association 1, 2, 3, 4; Newman Club 1, 2; Business Ed. Club 1, 2; FTA 4; Cheerleader 1, 2, 3.

DONALD D. LEVAN

Catawissa *Accounting*

Day Men's Association 1, 2, 3, 4; Business Ed. Club 1, 2, 3, 4; FTA 4; Aviation Club.

R. HURTT

J. KINDER

M. L. KUBIC

D. LEVAN





J. McCORMICK



J. MINCER



N. MORAN



S. MORGAN

JOANNE M. McCORMICK

Sunbury *Secretarial; English*

Waller Hall Association 1, 2, 3, 4; Committee Chairman 3; Governing Board 2, 4; Newman Club 1, 2, 3, Secretary 2; Business Ed. Club 1, 2; FTA 3, 4; Women's Chorus 1, 2; Hospitality Committee 2; Fashion Show 1; Pi Omega Pi 3, 4, Vice President 4.

JEANNETTA A. MINCER

Jersey Shore *General*

Waller Hall Association 1, 2, 3, 4; "B" Club 1, 2, 3, 4, President 4; Bloomsburg Players 1, 2; Business Ed. Club 1, 2, 3, 4; Women's Chorus 1, 2; FTA 3, 4; Calendar Committee 1; Customs Committee 3; Social Recreation Committee 3; Freshman Counselor 2; Pi Omega Pi 3, 4, Treasurer 3; Kappa Delta Pi 3, 4; *Who's Who in American Colleges and Universities.*

NANCY A. MORAN

Seranton *Secretarial; English*

Waller Hall Association 1, 2, 3, 4; Business Ed. Club 1, 3; Athænaum Club 1; Mixed Chorus 3; FTA 3, 4; Customs Committee 2; Dining Room Committee 3.

SALLY F. MORGAN

Edwardsville *Accounting; Mathematics*

Waller Hall Association 1, 2, 3, 4, Secretary 3; Business Ed. Club 1, 2, 3; FTA 3, 4; Women's Chorus 1, 2, 3, 4; Hospitality Committee Co-Chairman 3; Dining Room Co-Chairman 3; Pi Omega Pi 3, 4, Secretary 3, 4; Kappa Delta Pi 3, 4, Corresponding Secretary 4; *Who's Who in American Colleges and Universities.*

JOHN C. PANICHELLO

Glenside *Accounting*

Dorm Men's Association 1, 2, 3, 4; Newman Club 2, 3, 4, Vice President 4; Varsity Club 1, 2, 3, 4, Treasurer 4; FTA 4; Business Ed. Club 1, 2, 3, 4; Class Treasurer 4; Basketball Tournament Committee 2, 3, 4, Program Chairman 2, 3, 4; Football 1, 2, 3, 4, Basketball 1, 2, 3, 4.

JAMES K. ROBERTS, JR.

Mifflinville *Accounting*

Day Men's Association 1, 2, 3, 4; Business Ed. Club; *Maroon and Gold* Circulation Staff 4; FTA 4.



J. PANICHELLO



J. ROBERTS



J. SIBLY



A. SNYDER

JOHN B. SIBLY
Bloomsburg *General*

Day Men's Association 1, 2, 3, 4; Business Ed. Club 1, 2, 4; Men's Glee Club 1; FTA 4; Assembly Committee 1, 2.

ANN ELIZABETH SNYDER
Elysburg *General*

Waller Hall Association 1, 2, 3; Day Women's Association 4; Business Ed. Club 1, 2, 3, 4; FTA 3, 4; Women's Chorus 1, 2, 3, 4.

ROBERT F. SNYDER
Sunbury *Accounting*

Day Men's Association 1, 2, 3, 4; Aviation Club 1, 2; FTA 3, 4.

GRACE D. VANDERSLICE
Berwick *General*

Waller Hall Association 1, 2, 3; Day Women's Association 4; Women's Chorus 1, 2; Business Ed. Club 1, 2, 3, 4; FTA 3, 4; Pi Omega Pi 3, 4; Kappa Delta Pi 3, 4.

RALPH CHARLES VERANO
Shamokin *General*

Dorm Men's Association 1, 2; Day Men's Association 3, 4; Aviation Club 1, 2, 3, 4; Business Ed. Club 1, 2; Newman Club 1, 2; Customs Committee 2; Football 1, 2.

GEORGE VITI
Shickshinny *Accounting*

Day Men's Association 2, 4; Business Ed. Club 1, 2; Class Vice President 1; Band 1, 2; Orchestra 1.

R. SNYDER

G. VANDERSLICE

R. VERANO

G. VITI





E. WEAVER



T. WELLIVER



G. WIJK

EVELYN MAE WEAVER

Muncy

General Business

Waller Hall Association 1, 2, 3, 4; Business Ed. Club 1, 3; "B" Club 4; Mixed Chorus 4; FTA 3, 4, State Secretary 4; Fashion Show Co-ordinator 1, 2, 3, Chairman 3; Waller Hall Governing Board Treasurer 3; Band 1, 2, 3; *Maroon and Gold* 1.

THOMAS J. WELLIVER

Shamokin

Accounting

Day Men's Association 1, 2, 3, 4; Aviation Club 1, 2, 3; Business Ed. Club 2, 4; Bloomsburg Players 1, 2; FTA 4; Wrestling 4.

GLENN LEON WIJK

Allentown

Accounting

Day Men's Association 1, 2, 3, 4; Business Ed. Club 1, 2; FTA 4; LSA 1, 2; Customs Committee 2; Hospitality Committee 3; Basketball Tournament Committee 1, 2, 3; Student Co-ordinator 3.





ELEMENTARY





D. BARNES



J. BOLLING

DOROTHY ANN BARNES

Starrucca

Waller Hall Association 1, 2, 3, 4; Women's Chorus 1; Aviation Club 1, 2, 3; FTA 3, 4; Pep Committee 4.

JUDITH M. BOLLING

Scranton

Waller Hall Association 1, 2, 3, 4; SCA 1, 2; Bloomsburg Players 1, 2, 3, 4; Athenaeum Club 1; FTA 3, 4; Knox Fellowship 3, 4; Counselor 2; Alpha Psi Omega 2, 3, 4.

JANICE B. BOWER

Clarks Green

Waller Hall Association 1, 2, 3, 4; "B" Club 4; Athenaeum Club 1; Women's Chorus 1, 2; FTA 3, 4; Wesley Fellowship 1, 2, 3, 4; Governing Board 1, 2, 3, 4; Kappa Delta Pi 3, 4; *Who's Who in American Colleges and Universities* 4.

ETHEL MAE BRACE

Hunlock Creek

Waller Hall Association 1, 2, 3, 4; Women's Chorus 1, 2; Wesley Fellowship 1, 2, 3, 4; FTA 3, 4; House Committee Chairman 2.

ALLENE BURLINGAME

Berwick

Day Women's Association 1, 2, 3, 4; FTA 4; Athenaeum Club 2, Secretary 3; Mixed Chorus 3; Aviation Club 1.

MARCY CEDOR

Berwick

Day Women's Association 1, 2, 3, 4; Science Club 2; Athenaeum Club 1; Aviation Club 4; FTA 3, 4.

J. BOWER

E. BRACE

A. BURLINGAME

M. CEDOR





H. CLARK



A. DREESE



R. ELLIS



J. FERENCE

HOPE A. CLARK
Dornisfe

Waller Hall Association 1, 2, 3, 4; Women's Chorus 2;
Poetry Club 3; FTA 3; Bloomsburg Players 1, 2, 3.

ANNA LOUISE DREESE
Beavertown

Waller Hall Association 1, 2, 3, 4; "B" Club 3, 4;
Women's Chorus 1, 2; Band 1; SCA 2; FTA 3, 4;
Waller Hall Governing Board 3.

REBECCA ANN ELLIS
Milton

Waller Hall Association 2, 3, 4; SCA 2; FTA 3, 4;
Athenaeum Club 1; LSA 2, 3; Kappa Delta Pi 3, 4.

JANET RUTH FERENCE
Pittsburgh

Waller Hall Association 2, 3, 4; Women's Chorus 2;
Bloomsburg Players 2, 3, 4; FTA 4; Publicity Committee
Co-Chairman 4; Art Committee Co-Chairman 4; Kids'
Christmas Co-Chairman 2; Fashion Show 2, 3, 4; Waller
Hall Handbook 3; *Olympian* Editorial Board 3; OBITER
2. Editorial Board 3, Senior Pictures 4.

ALICE I. FISHER
Sunbury

Waller Hall Association 1, 2, 3, 4; FTA 3, 4; "B" Club
3, 4; Athenaeum Club 1; Waller Hall Governing Board
2, Vice President 3, President 4; College Council 4;
Hospitality Committee 1; Kappa Delta Pi 3, 4; *Maroon
and Gold* 3, 4.

LORETTA N. FRY
Muncy

Waller Hall Association 1, 2, 3, 4; Women's Chorus 2,
3, 4; Mixed Chorus 2, 3, 4; FTA 2, 3, 4; SCA 2, 3, 4.



A. FISHER



L. FRY



C. GILL



R. GILLMAN

CORA R. GILL
Wilkes-Barre

Waller Hall Association 1, 2, 3, 4; Science Club 1, 2, 3, 4, Secretary 2, 3; Women's Chorus 1, 3; FTA 3, Secretary 4; Canterbury Club 1, 2, 3, 4; Governing Board 1.

RUTH GILLMAN
Mountaintop

Waller Hall Association 1, 2, 3, 4; Women's Chorus 1, 2; Mixed Chorus 3; FTA 3, 4; Class Secretary 1; Customs Committee 2; Wesley Fellowship 1, 2, 3, 4; Cheerleader 1.

RAE B. GIRDAUSKAS
Forest City

Waller Hall Association 1, 2, 3, 4; Athenaeum Club 1, 2, 3, 4, Vice President 3; Women's Chorus 1, 2; Mixed Chorus 2, 3, 4; Newman Club 1, 2.

GILMORE G. GRAYBILL
Richfield

Day Men's Association 1, 2, 3, 4; Aviation Club 3; FTA 4; Photography Club 1; Soccer 1.

JEAN E. GRIFFITHS
Scranton

Waller Hall Association 1, 2, 3, 4, Social Chairman 2, 3; SCA 1; "B" Club 2, 3, 4; Athenaeum Club 2, Vice President 2; Class Secretary 2, 4; Women's Chorus 2, 3; Homecoming Day Committee 2, 3; LSA 1, 2, 3, 4; *Who's Who in American Colleges and Universities*.

RITA GYDOSH
Duryea

Waller Hall Association 1, 2, 3, 4; Newman Club 1, 2; Athenaeum Club 1, 2; Science Club 3; FTA 3, 4; Band 1, 2.

R. GIRDAUSKAS

G. GRAYBILL

J. GRIFFITHS

R. GYDOSH





G. HARRIS



M. HIPPENSTEEL



G. HISTED



B. HOFFMAN

GLORIA M. HARRIS

Hickory Corners

Waller Hall Association 1, 2, 3, 4; "B" Club 3, Secretary 4; Women's Chorus 1, 2; LSA 2, 3, 4; FTA 3, 4; SCA 2; Hospitality Committee 2; Kappa Delta Pi 3, 4.

MOLLIE JANE HIPPENSTEEL

Espy

Day Women's Association 1, 2, 3, 4; "B" Club 2, 3, 4; Athenaeum Club 1; Women's Chorus 2, 3; LSA 1, 2, 3, 4; Majorette 3, 4.

GRACE HISTED

Honesdale

Waller Hall Association 1, 2, 3, 4; "B" Club 2, 3, 4; Athenaeum Club 2; Women's Chorus 1, 2, 3; Mixed Chorus 1, 2; FTA 3, 4; SCA 1, 2; Canterbury Club, Secretary 1, President 2, 3; Fashion Show 1, 2, 3, 4; House Committee 2; College Council 4; Kappa Delta Pi 3, 4; *Who's Who in American Colleges and Universities.*

BETTY J. HOFFMAN

Annville

Waller Hall Association 1, 2, 3, 4; "B" Club 2, 3, President 4; Women's Chorus 1, 2; FTA 3, 4; SCA 2, Vice President 3; LSA 1, 2, 3, Secretary 4; Hospitality Committee 2.

HOPE H. HORNE

Catawissa

Day Women's Association 1, 2, 3, 4, Official Board 1, 4, Vice President 2, President 3; Science Club 1, 2; Women's Chorus 3; Mixed Chorus 3; FTA 4; College Council 3; CGA Evaluation Committee 2; Kappa Delta Pi 3, 4; *Maroon and Gold* 1; *Who's Who in American Colleges and Universities.*

BEVERLY HOUGH

Berwick

Day Women's Association 1, 2, 3, 4; Science Club 2; Aviation Club 4; Athenaeum Club 1; FTA 4.



H. HORNE



B. HOUGH



N. HOY



J. KANYOK

NANETTE HOY

Snydertown

Waller Hall Association 1, 2, 3; Mixed Chorus 1, 2; Women's Chorus 1; FTA 4; Pep Committee 2; Dining Room Committee 1; *Maroon and Gold* 1.

JOAN KANYOK

Moosic

Waller Hall Association 1, 2, 3, 4; Newman Club 1, 2; Poetry Club 1, 2, 3, Secretary 3; Women's Chorus 1, 2; FTA 3, 4; OBITER 3.

FLORENCE ALICE KEIPER

Noxen

Waller Hall Association 1, 2, 3, 4; Athenaeum Club 2; Women's Chorus 1, 2; Mixed Chorus 3, 4; SCA 1, 2, 3; Wesley Fellowship 1, 2, 3; FTA 4.

J. SYLVIA KRAPE

Holidaysburg

Waller Hall Association 1, 2, 3, 4; FTA 3, 4; SCA 2, 3; Wesley Fellowship 1, 2, 3, 4; Athenaeum Club 3; Women's Chorus 1, 2; Kappa Delta Pi 3, 4.

LOUISE M. LASORSA

Falls

Day Women's Association 1, 2; Waller Hall Association 3, 4; Newman Club 1, 2, 3, 4, Secretary 3; FTA 4; Mixed Chorus 1, 2, 3, 4, Secretary 3; Band 1, 2, 3, 4; Women Representative 3; Assembly Committee 2, 3; Bulletin Board Committee 3; Kappa Delta Pi 3, 4, Historian 4.

MARY LINGOUSKY

Sheppton

Waller Hall Association 1, 2, 3, 4; Poetry Club 2; Women's Chorus 2; Athenaeum Club 3; FTA 3; Chairman of Waller Hall Art Committee 3; OBITER Advertising Staff 3.

F. KEIPER

J. KRAPE

M. LASORSA

M. LINGOUSKY





J. LIPKO



G. LONG



J. LUKAC



J. LUNDY

JOHANNA LIPKO

Forest City

Waller Hall Association 1, 2, 4; Counselor 4; Newman Club 1, 2; Athenaeum Club 2; Women's Chorus 1, 2; FTA 4; Band 2.

GUY A. LONG

Danville

Day Men's Association 1, 2, 3, 4; Athenaeum Club 1; Aviation Club 3; FTA 4.

JUNE ELIZABETH LUKAC

Freeland

Waller Hall Association 1, 2, 3, 4, Program Chairman 2; Athenaeum Club 1, President 3; FTA 3, 4; LSA 1, 2, 3, 4; SCA 1, 2, President 3; Women's Chorus 1, 2; Waller Hall Governing Board 4; Chairman Kid's Christmas Committee 3; Kappa Delta Pi 3, 4; *Who's Who in American Universities and Colleges* 4.

JOYCE M. LUNDY

Bloomsburg

Day Women's Association 1, 2, 3, 4; Women's Chorus 1, 2; Mixed Chorus 3, 4, Secretary 4; Bloomsburg Players 1, 2, 3, 4, Secretary 4; Customs Committee 2; Hospitality Committee 3; Library Committee 4; Alpha Psi Omega 3, 4; Kappa Delta Pi 3, 4; *Who's Who in American Universities and Colleges*.

JACQUELINE MCCAULEY

Shenandoah

Waller Hall Association 1, 2, 3, 4; FTA 3, 4; Newman Club 1, 2, 3; Athenaeum Club 1, 2, 3, 4.

DOLORES E. MILEWSKI

Mt. Carmel

Day Women's Association 1, 2, 3, 4; Poetry Club 1, 2, 3, Vice President 3; FTA 3, 4; "B" Club 2, 3, 4; Science Club 3; OBITER 3.



J. MCCAULEY



D. MILEWSKI



M. MORAN



E. NOVICK

MICHAEL MORAN

Hazleton

Day Men's Association 1; Dorm Men's Association 2, 3, 4; Men's Glee Club 1, 2; Mixed Chorus 1, 2; FTA 4; Newman Club 1, 2; Class Vice President 1; Social Recreation Committee, Co-Chairman 3; Assembly Committee 2; *Who's Who in American Colleges and Universities* 4.

ELEANOR NOVICK

Wilkes-Barre

Waller Hall Association 1, 2, 3, 4; FTA 3, 4; Women's Chorus 2, 3; Newman Club 1, 2, 3; SCA 1; Counselor 2, 3; Proctor 2, 3; *Maroon and Gold* 2.

MARY O'BRAITIS

Edwardsville

Waller Hall Association 1, 2, 3, 4; Women's Chorus 1, 2; Mixed Chorus 2; Newman Club 1, 2, 3; Athenaeum Club 3; FTA 4; Fire Committee 3; Hospitality Committee 2.

EDWARD P. PALUSHOCK

Fern Glen

Dorm Men's Association 1, 2, 3, 4; Aviation Club 1, 2; FTA 3, 4.

RUTH ELEANOR PAUL

Plymouth

Waller Hall Association 1, 2, 3, 4; "B" Club 1, 2, 3, 4; Poetry Club 1, 2; Mixed Chorus 2, 3, 4, Vice President 2; Treasurer 3; Social Recreation Committee, Co-Chairman 3; Class Secretary 3; Kappa Delta Pi 3, 4, Recording Secretary 4; FTA 4; Women's Chorus 2, 3, 4.

PATRICIA IRENE PHILLIPS

Williamsport

Waller Hall Association 1, 2, 3, 4, Counselor 3; "B" Club 3, 4; FTA 3, 4; SCA 1, 2, 3, Committee Chairman 2.

M. O'BRAITIS

E. PALUSHOCK

R. PAUL

P. PHILLIPS





S. REDLINE



B. REITMEYER



R. ROHRBACH



T. SANDERS

SHIRLEY BEATRICE REDLINE

Bloomsburg

Day Women's Association 1, 2, 3, 4, Official Board 4; Mixed Chorus 3, 4; "B" Club 2, 3, 4; FTA 4; Kappa Delta Pi 3, 4.

BARBARA MARY REITMEYER

Oneida

Waller Hall Association 1, 2, 4; Women's Chorus 1, 2; Athenaeum Club 2; Poetry Club 1, 2; Newman Club 1, 2; FTA 4; OBITER 2.

RELDA MAY ROHRBACH

Sunbury

Waller Hall Association 1, 2, 3, 4; "B" Club 3, 4; FTA 3, 4; SCA 1, 3; Furniture Committee 2, 3; Band 1, 2; Fashion Show 1, 2, 3, 4; Wesley Fellowship 1, 2, 3, 4, President 3; OBITER 1; *Who's Who in American Colleges and Universities*.

THOMAS E. SANDERS

Shamokin

Day Men's Association 4; Dorm Men's Association 1, 2, 3; Science Club 1; Aviation Club 3; Athenaeum Club 2; FTA 3. Vice President 4; Newman Club 1, 2, 3, 4.

GEORGE ALFRED SCHELL

Bloomsburg

Day Men's Association 1, 2, 3, 4; FTA 4; Band 1, 2, 3, 4, President 3.

ALBERTA JEAN SEMANSKI

Duryea

Waller Hall Association 1, 2, 3, 4; SCA 1; FTA 3, 4; Canterbury Club 2, 3; Women's Chorus 1; Mixed Chorus 2; *Olympian* 3; *Maroon and Gold* 2, 3, 4; OBITER 4.



G. SCHELL



A. SEMANSKI



C. SHUPP



H. SMOZYNSKI

CAROL LOUISE SHUPP

Plymouth

Waller Hall Association 1, 2, 3, 4; Poetry Club 1, 2; Women's Chorus 2; FTA 3, 4; SCA 1; Kappa Delta Pi 3, 4.

HUBERT L. SMOZYNSKI

Mt. Carmel

Day Men's Association 1, 2, 3, 4; Athenaeum Club 1; Aviation Club 2, 3, 4; Newman Club 1, 2, 3, 4, Treasurer 4; Social Recreation Committee 3; Religion in Life Week Committee 4; Basketball Tournament Committee 3; *Pilot* 3, Associate Editor 3.

LURA SZERAFINSKI

Dalton

Waller Hall Association 1, 2, 3, 4; Athenaeum Club 2, 3, 4, Treasurer 3; SCA 1, 2, 3, 4; Women's Chorus 2; FTA 3, 4; Wesley Fellowship 1, 2, 3, 4.

THEODORE CRAIG THOMAS

Naticoke

Dorm Men's Association 1, 2, 3, 4; Day Men's Association 1, 4; Men's Chorus 2, 3; Phi Sigma Pi 3, 4.

MARY JANE TREFSGER

Watson town

Day Women's Association 1, 2, 3; Waller Hall Association 4; Poetry Club 1; Mixed Chorus 4; FTA 4; Wesley Fellowship 1, 2, 3, 4, Vice President 4; Kappa Delta Pi 4; *Maroon and Gold* 1, 2, 3, 4; OBITER 3, 4; SCA 1, 4; Sigma Alpha Eta 4.

JANET WAGNER

Kingston

Waller Hall Association 1, 2, 3, 4; Day Women's Association 2; SCA 1; FTA 3, 4; LSA 1, 2, 3, 4; Women's Chorus 1, 2; Aviation Club 3.

L. SZERAFINSKI

T. THOMAS

M. TREFSGER

J. WAGNER





C. WALLACE



N. WILLIAMS



S. WILLIAMS



J. WIRTH

CONNIE ANN WALLACE

Wilkes-Barre

Waller Hall Association 1, 2, 3, 4; FTA 3, 4; Newman Club 1; Social Recreation Committee 2; Dining Room Committee 2, 3; *Maroon and Gold* 1.

NANCY SUE WILLIAMS

Clarks Summit

Waller Hall Association 1, 2, 3, 4; Women's Chorus 1, 2, 3; FTA 3, Program Chairman 4; Awards Committee Chairman 2, 3; Kappa Delta Pi 3, Treasurer 4; *Maroon and Gold* 1, 2, Editorial Board 3, 4; OBITER Associate Editor 4; *Who's Who in American Colleges and Universities*.

(MRS.) SHIRLEY SEARCH WILLIAMS

Shickshinny

Day Women's Association 2; Bloomsburg Players 2; Women's Chorus 2; Aviation Club 2; Sigma Alpha Eta 2; *Maroon and Gold* 2.

JAY STANLEY WIRTH

Northumberland

Day Men's Association 1, 2, 3, 4; Aviation Club 1, 2, 3; FTA 3, 4.

CAROLYN ANN YOST

Orangeville

Day Women's Association 1, 2, 3, 4; Athenaeum Club 1, 2, 3; FTA 4; Day Women's Social Chairman 3; Athenaeum Club Program Chairman 4.

JANICE YOZVIK

Wilkes-Barre

Waller Hall Association 1, 2, 3, 4; "B" Club 2, 3, 4; Athenaeum Club 3; FTA 3, 4; Science Club 1, 2; Waller Hall Governing Board 4; CGA Fire Drill Committee Chairman 3; Dining Room Committee 3.



C. YOST



J. YOZVIK



SECONDARY





J. ANGUS



R. AURAND

JOHN D. ANGUS

Bloomsburg

Social Studies, Geography

Dorm Men's Association 1, 2, 3; Day Men's Association 4; Aviation Club 3; Football 1, 2, 3; Baseball 1, 2; Gamma Theta Upsilon 3, 4.

ROBERT L. AURAND

Danville

Mathematics, Geography

Day Men's Association 1, 2, 3, 4; Aviation Club 1, 2, 3; FTA 4; Baseball 1, 2, 3, 4.

OREN A. BAKER

Bloomsburg

Science, Mathematics

Day Men's Association 1, 2, 3, 4, Vice President 3; Science Club 1, 2, 3, 4; College Council 1; Customs Committee 2, 3; Awards Committee 1, 2, 3, 4; Phi Sigma Pi 3, 4; Kappa Delta Pi 3, President 4.

ALBERT T. BELINSKY

Berwick

Social Studies, Geography

Day Men's Association 1, 2, 3, 4; Aviation Club 4; Baseball 1, 2; Gamma Theta Upsilon 2, 3, Vice President 4.

MICHAEL RICHARD BERNOT

Mt. Carmel

Social Studies, Mathematics

Dorm Men's Association 1, 2, 3, Secretary 4; Varsity Club 1, 2, President 3; Football 1; Kappa Delta Pi 3, 4

FREDRIC J. BETZ

Lemoine

Social Studies, Geography

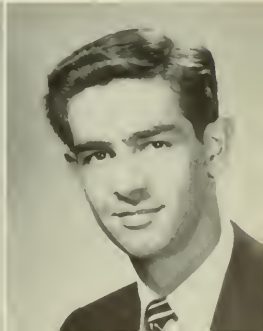
Dorm Men's Association 1, 2, 3, 4; Varsity Club 1, 2, 3, 4; FTA 4; Customs Committee 2; Senior Committee Chairman; Basketball 1, 2, 3, 4; Gamma Theta Upsilon 3, President 4.

O. BAKER

A. BELINSKY

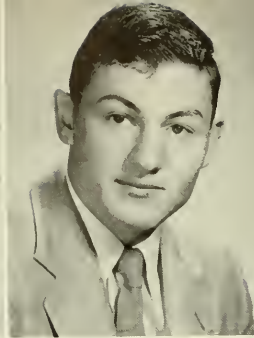
M. BERNOT

F. BETZ





B. BISHOP



R. BLYLER



L. BOGART



V. BUCKWASH

BYRON P. BISHOP

Honesdale

Science, Social Studies

Day Men's Association 1, 2, 3, 4; Science Club 1, 2, 3, 4; FTA 4.

ROBERT PAUL BLYLER

Bloomsburg

Science, Social Studies

Day Men's Association 1, 2, 3; Science Club 1, 2, 3, Program Chairman 2; Awards Committee 1, 2.

LYNDA M. BOGART

Berwick

French, Spanish, English

Waller Hall Association 1, 2, 3, 4; Poetry Club 1, Vice President 2, President 3, 4; "B" Club 3, 4; Athenaeum Club 1; Women's Chorus 1, 2; Mixed Chorus 3; FTA 3, 4; SCA 1; LSA 1, 2, 3, 4; Kappa Delta Pi 3, 4; *Who's in American Colleges and Universities.*

VINCENT BUCKWASH

Keiser

Science, Mathematics

Day Men's Association 1, 2, 3, 4; Aviation Club 1, 2; Science Club 3, 4; Phi Sigma Pi 2, 3, 4; Kappa Delta Pi 3, 4.

EDWIN H. CHASE

Seranton

English, Social Studies

Day Men's Association 1, 2, President 3; Poetry Club 3; Aviation Club 1; FTA 3; Class Treasurer 2; College Council 3; Football 1; Phi Sigma Pi 2, 3.

RONALD L. COLE

Berwick

Social Studies, Geography

Day Men's Association 1, 2, 3, 4; Aviation Club 3, 4; Science Club 2; Bloomsburg Players 1, 2; Gamma Theta Upsilon 3, 4.



E. CHASE



R. COLE



E. CONNOLLEY



R. COUCH

EDWARD J. CONNOLLEY
Danville

Science, Mathematics

Day Men's Association 1, 2, 3; Dorm Men's Association 4; Science Club 1, Vice President 2, President 3; Newman Club 3, 4; FTA 4; Class Treasurer 2; Class President 3; College Council 3; CGA President 4; Furniture Committee 2; Basketball Tournament Committee 2; Phi Sigma Pi 2, 3, 4, Historian 3; *Who's Who in American Colleges and Universities*; Varsity Football 1, 2, 3, 4.

RONALD JAMES COUCH
Tamaqua

English, Social Studies

Dorm Men's Association 1, 2, 3; Day Men's Association 4; Varsity Club 1, 2, 3, 4; FTA 3, 4; Football 1, 2, 3, 4; Basketball 1; Track 1, 2; Basketball Tournament Committee 1, 2, 3, 4.

THOMAS SAMUEL DAVIS
Harveys Lake

Science, Social Studies

Day Men's Association 1, 2, 3, 4; Aviation Club 1; Poetry Club 2; Science Club 1, 2, 3, 4; FTA 4.

GEORGE R. DIETZ
Bloomsburg

Science, Speech

Day Men's Association 1, 2, 3, 4; Science Club 3, 4; Football 1, 2; Football Manager 2.

WILLIAM BELVEN ELLINGER
Bloomsburg

Social Studies, Geography

Dorm Men's Association 1, 2, 3; Day Men's Association 4; Aviation Club 1, 2; FTA 3; Football 1, 2; Gamma Theta Upsilon 2, 3, 4.

ELINOR EVANS
Laceyville

English, Social Studies

Waller Hall Association 1, 2, 3; Poetry Club 3; Athenaeum Club 1; Mixed Chorus 1; FTA 3; Kappa Delta Pi 2, 3; *Maroon and Gold* 1, 3; *Olympian* 3.

T. DAVIS

G. DIETZ

W. ELLINGER

E. EVANS





R. GARINGER



P. CERGEN



G. GERMANA



A. GURZYNSKI

R. ARNOLD GARINGER

Harveys Lake

Science, Social Studies

Dorm Men's Association 1, 2, 3, 4; Science Club 1, 2; Varsity Club 2, 3, 4; Bloomsburg Players 1; FTA 4; Wesley Fellowship 2, 3, 4; College Council 4; Class President 4; Pep Committee 1, 2; Assembly Committee 3, 4; College Crier 3; Football Manager 1, 2, 3, 4; *Maroon and Gold* 1, 2, Columnist 3, 4; *Olympian* 3, 4, Humor Editor 3; OBITER Show Director 4.

PHILIP CERGEN

Mt. Carmel

Social Studies, Geography

Dorm Men's Association 2, 3, Treasurer 4; FTA 4; Newman Club 2, 3, 4; Basketball Tournament Committee 3, 4; Band 2. Vice President 3, President 4; Gamma Theta Upsilon 2, 3, 4.

GUY THOMAS GERMANA, JR.

Bloomsburg

Biological Science, Geography

Day Men's Association 1, 2, 3, 4; Aviation Club 1, 2, 3; Science Club 1, 2, 4; Varsity Club 2; FTA 4; Track 1, 2; Gamma Theta Upsilon 2, 3, 4.

ARCHIE GURZYNSKI

Mocanaqua

Science, Mathematics

Day Men's Association 1, 2, 3, 4; Aviation Club 1; Science Club 3; FTA 4; Newman Club 1; Phi Sigma Pi 4.

JOHN MARTIN HALCOVICH

Shamokin

Science, Mathematics

Dorm Men's Association 1, 2, 3, 4; Science Club 1, 2; Varsity Club 2, 3, 4; Baseball 1, 2, 3, 4; Phi Sigma Pi 3, Vice President 4.

HARRY J. HEISER

Nescopeck

Social Studies, English

Day Men's Association 3, 4; Science Club 4; FTA 4; Phi Sigma Pi 4.



J. HALCOVICH



H. HEISER



R. HOLTZMAN



V. HORNE

RUDOLPH VICTOR HOLTZMAN

Bloomsburg

French, Spanish, English

Dorm Men's Association 1, 2, 3; Day Men's Association 4; Mixed Chorus 1; Class Historian 1; Basketball 1; Baseball 1, 2; Library Committee 3; Phi Sigma Pi 2, 3, 4, President 3.

VIRGINIA GRACE HORNE

Bloomsburg

English, Social Studies

Day Women's Association 1, 2, 3, 4; "B" Club 2, 3, 4; Athenaeum Club 1; FTA 4; Bloomsburg Players 3, 4.

RONALD B. KANASKIE

Shamokin

Science, Mathematics

Day Men's Association 1, 2, 3, 4; Science Club 1, 2, 3, 4; FTA 4; Phi Sigma Pi 3, 4; Kappa Delta Pi 3, 4.

EUGENE J. KLIMOVICH

Mocanaqua

Science

Day Men's Association 2, 3, 4; Science Club 3, 4; Aviation Club 2; FTA 4.

JOHN E. KOSOLOSKI, JR.

Mt. Carmel

Science, Social Studies

Day Men's Association 1, 2, 3, 4; Science Club 2, 3, 4; Newman Club 4; FTA 4; Phi Sigma Pi 2, 3, 4.

JOSEPH JEROME MATIKIEWICZ

Thompson

Social Studies, Geography

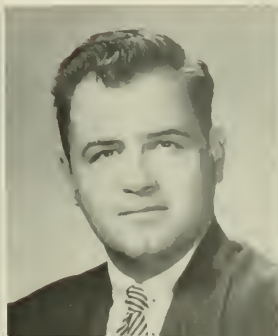
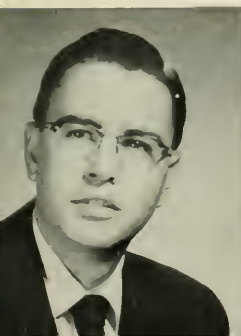
Dorm Men's Association 1, 2, 3, 4; Aviation Club 2; Kappa Delta Pi 4; Gamma Theta Upsilon 4; *Maroon and Gold* 3, 4.

R. KANASKIE

E. KLIMOVICH

J. KOSOLOSKI

J. MATIKIEWICZ





J. MCCARTHY



K. MCKAY



L. MERVINE



M. MORRIS

JOHN MCCARTHY

Bloomsburg

Social Studies, Geography

Dorm Men's Association 2; Day Men's Association 3, 4; Varsity Club 3, 4; FTA 4; Football 2, 3; Baseball 3, 4.

KEITH D. MCKAY

Harrisburg

Biology, Social Studies

Day Men's Association 1; Dorm Men's Association 2, 3, 4; Bloomsburg Players 1, 4; Men's Glee Club 1; LSA 1, 2; FTA 4; Hospitality Committee 2; CGA Fire Committee 2; Senior Committee; Class President 1; College Council 1, 2; Phi Sigma Pi 2, 3, 4; Kappa Delta Pi 3, 4; *Olympian* Editor-in-Chief 3; *Maroon and Gold* Photography Head 3, 4; OBITER Coed-of-the-Year Director 2, Publicity Director 2, Editorial Board 3, Editor-in-Chief 4.

LEWIS REILLY MERVINE

Gordon

Social Studies, Geography

Dorm Men's Association 2, 3, 4; LSA 3, 4; FTA 4; Wrestling 4; Gamma Theta Upsilon 3, Secretary 4; Phi Sigma Pi 4.

MARK GRAY MORRIS

Bloomsburg

Social Studies, Geography

Day Men's Association 1, 2, 3, 4; Aviation Club 2; FTA 4; Gamma Theta Upsilon 2, 3, 4.

JOHN W. NEMETZ

Shamokin

Social Studies, Geography

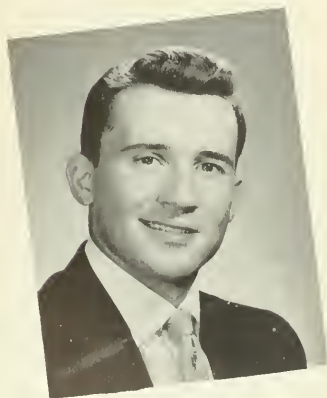
Dorm Men's Association 1, 2, 3; Day Men's Association 4; Aviation Club 1, 2, 3; Varsity Club 1, 2, 3, 4; FTA 4; Newman Club 1, 2; Football 1, 2, 3, 4; Track 1, 2, 3; Sigma Alpha Eta 1, 2; *Maroon and Gold* 1.

THOMAS E. PERSING

Shamokin

Science

Day Men's Association 1, 2; Dorm Men's Association 3, 4; Varsity Club 1, 2, 3, Vice President 4; Aviation Club 3; Science Club 4; FTA 4; Football 1, 2, 3, Co-Captain 4; Wrestling 4.



J. NEMETZ



T. PERSING



C. POPE



P. RHODES

CHARLES GREER POPE
Conyngham

Social Studies, English

Dorm Men's Association 1, 2, 3, 4; Varsity Club 3, 4; Men's Glee Club 1; Mixed Chorus 2, Vice President 3, President 4; FTA 4; Wesley Fellowship 1, 2, 3, 4; Class Vice President 4; Basketball Tournament Committee 3, 4; Football 1, 2, 3, 4.

PAUL HAROLD RHODES
Catawissa

Science, Mathematics

Day Men's Association 1, 2, 3, 4; Science Club 4; Aviation Club 1, 2, 3, Treasurer 2; FTA 4.

ALTON WILLIAM SCHMIDT
Lavelle

Science, Mathematics

Dorm Men's Association 1, 2, 3; Day Men's Association 4; Science Club 1, 2, 3, 4, Treasurer 2; FTA 4; Varsity Club 1, 2; Kappa Delta Pi 3, 4, Vice President 4; Phi Sigma Pi 2, 3, 4; *Maroon and Gold* 2, 3, 4, News Manager 3.

JOSEPH J. SHEMANSKI
Glen Lyon

Science, Mathematics

Day Men's Association 1, 2, 3, 4; Science Club 1, 2, 3, President 4; Newman Club 1, 2; FTA 4; Basketball Tournament 1, 3; Football 1, 2; Track 2.

JACOB E. SLEMBARSKI
Mocanaqua

Science

Day Men's Association 1, 2, 3, 4; Aviation Club 3; Science Club 4; Newman Club 1; Phi Sigma Pi 3, 4; *Maroon and Gold* 1, 2.

DONALD E. SMITH
Dallas

Biology, Geography

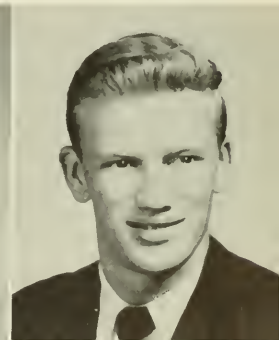
Day Men's Association 1, 2, 3, 4; Aviation Club 3; Science Association 4; Athenaeum Club 1; Mixed Chorus 1, 2, Treasurer 2; Aviation Club 1, 2; FTA 4; College Council 3; Customs Committee 3; Track 1, 2; Phi Sigma Pi 3, 4; Gamma Theta Upsilon 3, 4; Kappa Delta Pi 3, 4; *Maroon and Gold* 1.

A. SCHMIDT

J. SHEMANSKI

J. SLEMBARSKI

D. SMITH





H. SMITH



M. SMITH



N. SNYDER



W. STANEK

HOLLEY R. SMITH

LaAnna

Science, Social Studies

Dorm Men's Association 1, 2, 3, 4; Men's Glee Club 1, 2; FTA 4; *Olympian* Advertising Manager 3; *Maroon and Gold* 3; OBITER 2, 3, Business Manager 4.

MALCOLM H. SMITH

Hazleton

English, Social Studies

Day Men's Association 1, 4; Dorm Men's Association 2, 3; Aviation Club 2; Athenaeum Club 1; FTA 4; Men's Glee Club 1, 2; Mixed Chorus 3; CGA Furniture Committee 2; Kappa Delta Pi 3, 4; *Olympian* 3, Business Manager.

NANCY SNYDER

Hazleton

Science, Mathematics

Waller Hall Association 1, 2, 3, 4; Science Club 2, 3; FTA 3; SCA 1; Kappa Delta Pi 3, 4.

WALTER STANEK

Hazleton

Science, Social Studies

Day Men's Association 2, 3, 4; FTA 4; Basketball 2, 3, 4; Baseball 4.

JAMES P. STEINER

Bloomsburg

Physical Science, Geography

Day Men's Association 1, 2, 3, 4; Science Club 1, 2, 3, 4; FTA 4; Varsity Club 1; Football 1; Gamma Theta Upsilon 4.

DONALD W. THOMAS

Shamokin

Social Studies, Geography

Day Men's Association 1, 2, 3, 4; Aviation Club 4; Varsity Club 1, 2, 3, 4; Football 1, 2, 3, 4; Gamma Theta Upsilon 4.

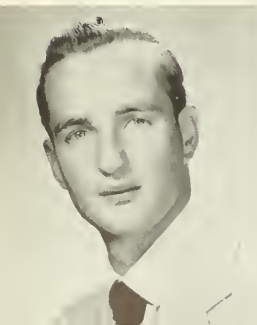
ALLEN B. WALBURN

Shamokin

Science, Mathematics

Dorm Men's Association 1, 2, 3, 4; Day Men's Association 4; Science Club 1, 2, 3, 4; FTA 3, 4, President 4, State Convention Delegate 3, 4; Track 1; Phi Sigma Pi 3, 4; Kappa Delta Pi 3, 4.

J. STEINER



D. THOMAS



A. WALBURN



SENIOR DIRECTORY 1955

BUSINESS

Belock, Michalene	1315 Bryn Mawr, Scranton, Pa.
Berdy, Carolyn	R. D. No. 1, Dallas, Pa.
Buynak, Olive (Hunter)	419 S. Main, Taylor, Pa.
Carey, Robert	415 Hudson, Forest City, Pa.
Chapin, Joan	229 E. Fifth, Berwick, Pa.
Creasy, G. William	Millfinville, Pa.
Cumens, Robert	45 Kirby, Coatsville, Pa.
Derk, George	Box 154, Montandon, Pa.
Gerosky, Eileen	9 Union, Pittston, Pa.
Gobster, Marlene	333 W. Coal, Shenandoah, Pa.
Harter, Mollie	446 E. Fourth, Bloomsburg, Pa.
Henning, Mary Ellen	19 N. Tenth, Stroudsburg, Pa.
Hiller, Sherrill	339 Oak, Jersey Shore, Pa.
Holtzman, Nancy	405 Iron, Bloomsburg, Pa.
Hurt, Richard	141 Butler, Forty Fort, Pa.
Kinder, Joseph	123 Broad, St. Clair, Pa.
Kubic, Mary Lou	Mountain Top, Pa.
Levan, Donald	R. D. No. 1, Catawissa, Pa.
McCormick, Joanne	310 S. Fourth, Sunbury, Pa.
Mincer, Jeannetta	528 S. Broad, Jersey Shore, Pa.
Moran, Nancy	712 Clay, Scranton, Pa.
Morgan, Sally	178 Summit, Edwardsville, Pa.
Panichello, John	101 Lismore, Glenside, Pa.
Roberts, James	235 Main, Millfinville, Pa.
Sibly, John	R. D. No. 2, Benton, Pa.
Snyder, Ann	Elysburg, Pa.
Snyder, Robert	117 N. Eighth, Sunbury, Pa.
Vanderslice, Grace	1919 W. Front, Berwick, Pa.
Verano, Ralph	316 S. Shamokin, Shamokin, Pa.
Viti, George	38 S. Main, Shicksville, Pa.
Weaver, Evelyn	415 S. Market, Muncy, Pa.
Welliver, Thomas	Box 225, R. D. No. 1, Shamokin, Pa.
Wiik, Glenn	3136 Oxford Circle, Allentown, Pa.

Moran, Michael	1014 W. Fifteenth, Hazleton, Pa.
Novick, Eleanor	105 Prospect, Wilkes-Barre, Pa.
O'Braitis, Mary	106 Church, Edwardsville, Pa.
Palushock, Edward	154 Main, Fern Glen, Pa.
Paul, Ruth	34 Turner, Plymouth, Pa.
Phillips, Patricia	406 Brandon, Williamsport, Pa.
Redline, Shirley	R. D. No. 5, Bloomsburg, Pa.
Reitmeyer, Barbara	120 Second, Onedia, Pa.
Rohrbach, Relda	245 Ridge, Sunbury, Pa.
Sanders, Thomas	1412 State, Shamokin, Pa.
Schell, George	361 Fair, Bloomsburg, Pa.
Semanski, Alberta	243 Main, Duryea, Pa.
Shupp, Carol	227 Cameron, Plymouth, Pa.
Smoczyński, Hubert	351 S. Oak, Mt. Carmel, Pa.
Szerzinski, Lura	R. D. No. 2, Dalton, Pa.
Thomas, Theodore	20 W. Spring, Nanticoke, Pa.
Tresfger, Mary Jane	R. D. No. 1, Watsonstown, Pa.
Wagner, Janet	393 Northampton, Kingston, Pa.
Wallace, Connie	188 Division, Wilkes-Barre, Pa.
Williams, Nancy Sue	302 Main, Clarks Summit, Pa.
With, Jay	Fourteenth and Queen, Northumberland, Pa.
Yost, Carolyn	Mill, Orangeville, Pa.
Yozviak, Janice	31 Luzerne, Wilkes-Barre, Pa.

SECONDARY

Angus, John	R. D. No. 1, Mt. Pleasant, Pa.
Aurand, Robert	618 Bloom, Danville, Pa.
Baker, Oren	335 West, Bloomsburg, Pa.
Belinsky, Albert	1161 First, Berwick, Pa.
Bernot, Michael	130 W. Second, Mt. Carmel, Pa.
Betz, Fredric	514 S. Third, Lemoyne, Pa.
Bishop, Byron	310 Tracy, Honesdale, Pa.
Blyler, Robert	R. D. No. 2, Bloomsburg, Pa.
Bogart, Lynda	803 E. Fourth, Berwick, Pa.
Buckwash, Vincent	442 Warsaw, Keiser, Pa.
Chase, Edwin	208 W. First, Bloomsburg, Pa.
Cole, Ronald	223 E. Front, Berwick, Pa.
Connelley, Edward	301 W. Mahoning, Danville, Pa.
Couch, Ronald	322 Rolling Mill, Tamaqua, Pa.
Davis, Thomas	R. D. No. 1, Harveys Lake, Pa.
Dietz, George	152 E. Third, Bloomsburg, Pa.
Ellinger, William	33 N. Main, Shickshinny, Pa.
Evans, Elinor	23 Second, Laceyville, Pa.
Garinger, Raymond	Harveys Lake, Pa.
Gergen, Philip	142 N. Oak, Mt. Carmel, Pa.
Germana, Guy	202 W. First, Bloomsburg, Pa.
Gurzynski, Archie	57 Italy, Mocanaqua, Pa.
Halcoiver, John	1015 Webster, Shamokin, Pa.
Heisch, Harry	R. D. No. 1, Nescopeck, Pa.
Holtzman, Rudolph	405 Iron, Bloomsburg, Pa.
Horne, Virginia	R. D. No. 3, Bloomsburg, Pa.
Kanaskie, Ronald	R. D. No. 1, Box 53, Shamokin, Pa.
Klimovitch, Eugene	140 River, Mocanaqua, Pa.
Kosoloski, John	26 S. Locust, Mt. Carmel, Pa.
McKay, Keith	541-A Macley, Harrisburg, Pa.
Mervine, Lewis	Box 143, Gordon, Pa.
Morris, Mark	646 W. Main, Bloomsburg, Pa.
Nemetz, John	1712 Tioga, Shamokin, Pa.
Persing, Thomas	127 S. Rock, Shamokin, Pa.
Pope, Charles	Main, Conyngham, Pa.
Rhodes, Paul	R. F. D. No. 2, Catawissa, Pa.
Schmidt, Alton	Lavelle, Pa.
Shemanski, Joseph	34 Coal, Glen Lyon, Pa.
Slembarski, Jacob	Pond Hill, Mocanaqua, Pa.
Smith, Donald	Hillcrest, Dallas, Pa.
Smith, Holley	LaAnna, Pa.
Smith, Malcolm	710 Grant, Hazleton, Pa.
Snyder, Nancy	981 W. Fourth, Hazleton, Pa.
Stanek, Walter	Box 37, R. D., Hazleton, Pa.
Steiner, James	249 Preston Place, Girardville, Pa.
Thomas, Donald	410 E. Church, Shamokin, Pa.
Walburn, Allen	1252 W. Pine, Shamokin, Pa.

ELEMENTARY

Barnes, Dorothy	Starrucca, Pa.
Bolling, Judith	940 N. Webster, Scranton, Pa.
Bower, Janice	210 Hall, Clarks Creek, Pa.
Brace, Ethel	R. D. No. 2, Hunlock Creek, Pa.
Burlingame, Allene	333 Martzville, Berwick, Pa.
Cedor, Marcy	330 E. Second, Berwick, Pa.
Clark, Hope	R.D. No. 1, Dornsife, Pa.
Dreese, Anna	Beavertown, Pa.
Ellis, Rebecca	R. D. No. 1, Milton, Pa.
Ference, Janet	4872 Elmwood, Pittsburgh 27, Pa.
Fisher, Alice	R. D. No. 2, Sunbury, Pa.
Fry, Loretta	R. D. No. 4, E. Water, Muncy, Pa.
Gill, Cora	3 Rutter, Buttonwood, Pa.
Gillman, Ruth	Mountaintop, Pa.
Girdauskas, Rae	142 Dundaff, Forest City, Pa.
Graybill, Gilmore	Richfield, Pa.
Griffiths, Jean	1024 Alder, Scranton, Pa.
Gydosh, Rita	302 Cherry, Duryea, Pa.
Harris, Gloria	Box 104, Hickory Corners, Pa.
Hippensteel, Mollie	Main, Espy, Pa.
Histed, Grace	1517 West, Honesdale, Pa.
Hoffman, Betty	Box 362, Annyville, Pa.
Horne, Hope	Route No. 3, Catawissa, Pa.
Hough, Beverly	R. D. No. 1, Berwick, Pa.
Hoy, Nanette	Snydertown, Pa.
Kanyok, Joan	727 Main, Moosic, Pa.
Keiper, Florence	Box 137, Noxen, Pa.
Krapf, Sylvia	316 Wayne, Holidaysburg, Pa.
LaSorsa, Marie L.	R. No. 1, Falls, Pa.
Lingousky, Mary	Shepton, Pa.
Lipko, Johanna	309 Delaware, Forest City, Pa.
Long, Guy	237 Mill, Danville, Pa.
Lukac, June	603 Vine, Freeland, Pa.
Lundy, Joyce	422 E. Fourth, Bloomsburg, Pa.
McCauley, Jacqueline	1248 W. Coal, Shenandoah, Pa.
Milewski, Dolores	135 Vine, Mt. Carmel, Pa.

SENIORS . . .

Join your ALUMNI ASSOCIATION, and keep your membership active through the years. Annual dues of \$2.00 will include a year's subscription to the ALUMNI QUARTERLY. This magazine, which appears four times a year, will keep you informed of the activities of your classmates, and the events happening on the campus. A three year membership (\$5.00) will bring you also the 72 page booklet "Bloomsburg Through the Years."

Our Object . . .

"To Keep the Door of Opportunity
Open for Worthy American Youth."

Our Slogan . . .

"Every Graduate of Bloomsburg an Active
Member of the ALUMNI ASSOCIATION."

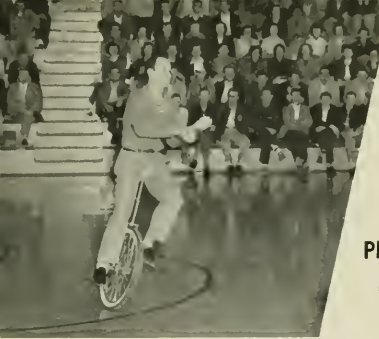
All Dues Should Be sent to . . .

DR. E. H. NELSON

*President, Alumni Association
State Teachers College
Bloomsburg, Pennsylvania*



DR. E. H. NELSON



CAIN'S
PHARMACY
Danville, Pa.



Compliments of . . .

ENT'S RESTAURANT



THE
WAFFLE
GRILL



AL'S MEN'S SHOP

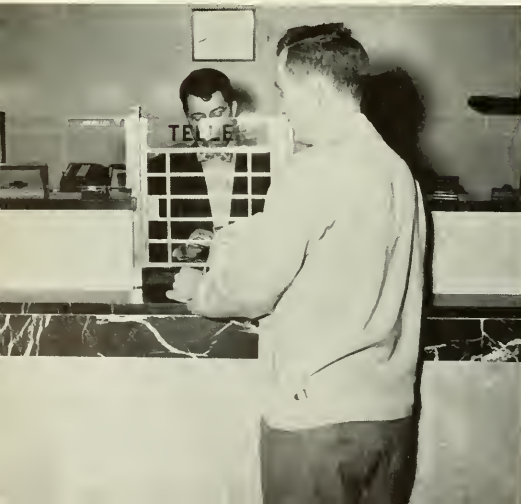
Compliments of . . .



NEW CAR AND TRUCK DEALERS ASSOCIATION

Compliments of . . .

**BLOOMSBURG BANK
COLUMBIA TRUST CO.**

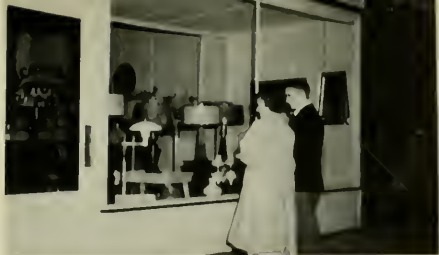


FEST'S RESTAURANT

Main and Leonard Streets

GIRTON'S STUDIO





Compliments of . . .
THE ECONOMY STORES

WIEDENMAN AND COMPANY, INC.

102 West Main St. Phone 700

FRIGIDAIRE

SALES AND

SERVICE



ROCK'S RESTAURANT

Home of Fine Food

**Class Rings, Club Pins, Diplomas, Medals, Trophies
and Announcements**



L. G. BALFOUR COMPANY

Amby Nolan, Miner's Bank Bldg.
WILKES-BARRE, PA.



THE TEMPLE OF MUSIC

. . . with an interest in
School and Community . . .



FIRST NATIONAL BANK OF MILLVILLE



ARCUS'
for a
Prettier
YOU

HOTEL MAGEE

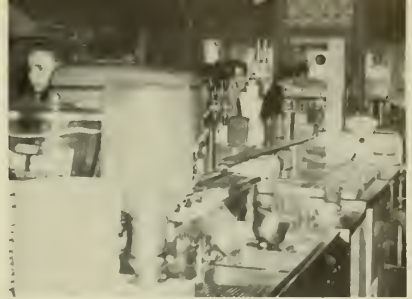
. . . for the rest of your life.





LOGAN'S

. . . Your
Jeweler
Away
From
Home.



JIMI-JAC'S Coffee Shop

Compliments of . . .



SNYDER'S DAIRY

Compliments of

VAUGHN'S BAKERY

THE
DIXIE
SHOP

26 E. Main
Bloomsburg





**VINCENT'S
HABERDASHERY**

Berwick, Pa.

Best

Wishes

From

**CONFAIR'S
BEVERAGE COMPANY**

Berwick, Pa.

Compliments of . . .

**SNEIDMAN'S
JEWELRY STORE**

130 E. Main

Phone 1724

HESS' BAR AND GRILL



**EPPLEYS
DRUG
STORE**

WISE POTATO CHIPS



That Extra Fine Quality



RITTER'S STATIONERY

Main Street

Bloomsburg, Pa.

THE PINE BARN INN
Finest in Food and Lodgings
DANVILLE, PA.

Phone 1102



Compliments of . . .

DOBYN'S
STUDIOS

Bloomsburg, Pa.



Compliments of



**THE
MAGEE CARPET COMPANY**

BLOOMSBURG, PA.

MANUFACTURERS . . .

Velvet Axminster Wilton Cotton
Carpets and Rugs



RACUSIN'S CLOTHING

Compliments of

**GEISTWITE
STUDIOS**

Main Street

Bloomsburg



**Compliments of . . .
THE ZEPHYR DINER**

DEISROTH'S

**Bloomsburg's
Friendly Place to Shop**



BART PURSEL

**Clothing
for Men
and
Boys**





NESPOLI JEWELERS

Berwick, Pa.



Compliments of . . .

BART PURSEL



MILLER OFFICE SUPPLY AND EQUIPMENT COMPANY

7 East Main Street
Bloomsburg

Compliments of . . .
LETTERMAN'S BAKERY
Bloomsburg, Pa.

Best Wishes from . . .
RACUSIN'S





