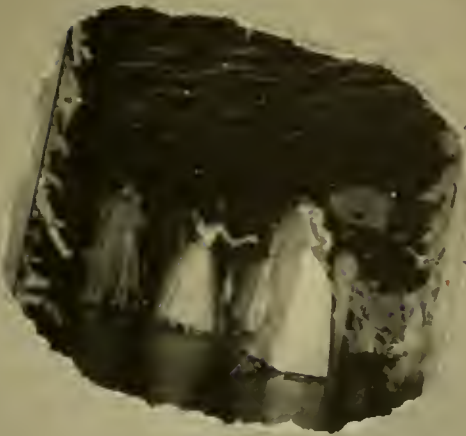


THIS IS BLOOMSBURG





EX LIBRIS

OBITER

Annual Publication of the

Bloomsburg State Teachers College

1953



FOREWORD

Buildings and lawn, classrooms and equipment—these are the things that are Bloomsburg for every person who has ever come to school here on The Hill. The physical things are the common environment of all of us who have gone before or who will go here in years to come.

But for us of '53 it is the people we've known and the things we've done that constitutes our own special four year environment. When the exact architecture of Carver Hall has been dimmed by years, we will still remember the times we've had, both good and bad; the gang, the teachers, the secretaries and cooks, and deans, and janitors—in short, the people who *are* Bloomsburg. This entire book is meant to be a dedication to all those people.

THE COLLEGE

THE CLASSES

THE ACTIVITIES

THE ATHLETICS

THE ADVERTISING

CONTENTS





The

COLLEGE



7:45



7:50





7:55



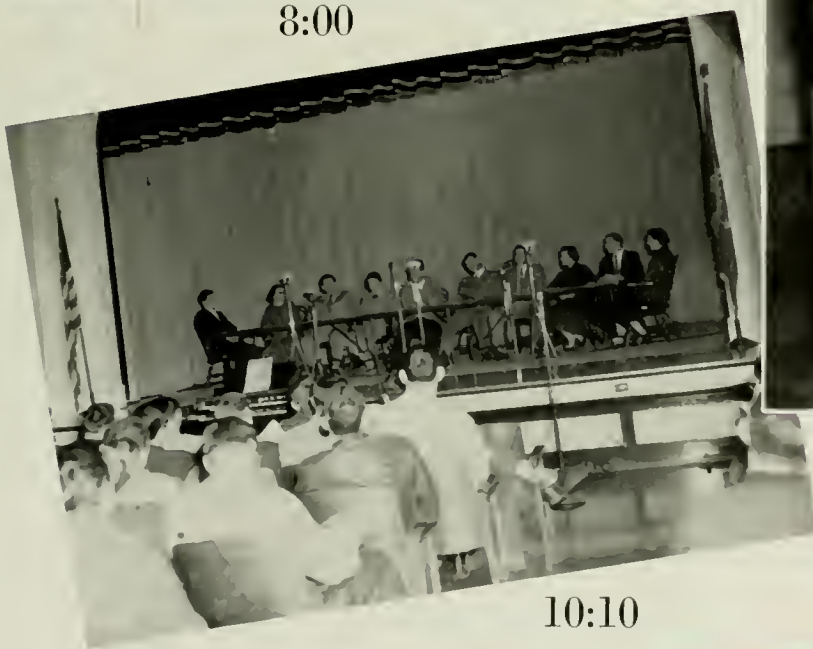
12:05



8:00



10:55



10:10



3:05



5:16



5:15



5:47



7:02



6:45



6:15



9:25



9:59½



11:00



11:45



12:01



12:37



11:45

This, then, is
Bloomsburg



DR. HARVEY A. ANDRUS
President of the College

TO THE SENIORS OF 1953:

Bloomsburg parts today with another goodly company of her sons and daughters.

Regret and expectancy are, I doubt not, the feelings uppermost in your minds; hope and confidence are those which the college cherishes for you.

Your graduation is a mark that you have done what has been asked of you, but the future lies with you and you alone.

Yet not quite alone, for there goes with you the best wishes of your many friends, and among them

HARVEY A. ANDRUS,
President.



MRS. KNIGHT, DR. ANDRUS

TO THE MEMBERS OF THE
CLASS OF 1953

The primary purpose of the State Teachers College at Bloomsburg is the preparation of successful teachers. Its programs of initial and continuous selection, the improvement of instruction and facilities, and the placement records indicate to no small degree the attainment of this goal. It is our sincere hope that our graduates will continue to expand and intensify their knowledge and understanding of children, of school problems, and of effective teaching procedures. It is my personal wish that many members of the Class of 1953 will be cited by great men and women of future Pennsylvania and America as having been responsible for their individual success.

THOMAS P. NORTH,
Dean of Instruction



DR. THOMAS P. NORTH
Dean of Instruction



DR. NORTH, J. GILMORE, M. HAGGERTY



PAUL G. MARTIN
Business Manager



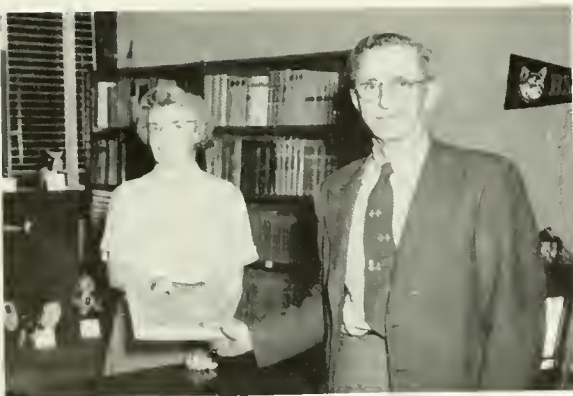
E. M. WILSON, A. F. HARMON



L. J. UNGER, J. LAWTON



E. D. SHARRETTS
Superintendent of Grounds



B. EYERLY, G. T. WATTS



D. DeWALD, S. FREY

The Deans

FACULTY



ETHEL A. RANSON
A.B., M.A.
*Assistant Dean of Women
Mathematics*



MARY E. MACDONALD
A.B., A.M.
*Assistant Dean of Women
Guidance Services*



MARGUERITE KEHR
B.A., M.A., Ph.D.
Dean of Women

TO THE CLASS OF 1953:

Maturity of the mind and the capacity to live abundantly are hard won; it has never been easy, and I doubt whether it will ever be so. We need education badly; we need the leadership of minds that have attained not only wisdom, but understanding. It is my hope that Bloomsburg has helped you to take a long step towards this goal.

JOHN A. HOCH,
Dean of Men

TO THE CLASS OF 1953:

Congratulations for the successful completion of your college career and best wishes for your future happiness and success. You will take something of BSTC with you and you will leave something of yourselves in BSTC. The WELCOME mat here will always be out for you.

Sincerely yours,

MARGUERITE KEHR,
Dean of Women



JOHN A. HOCH
A.B., M.A.
Dean of Men

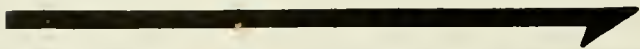


RALPH S. HERRE
B.S., M.A., Ed.D.
Social Studies



JACK W. YOHE
B.S., M.Ed.
*Psychology, Biological Science
Athletic Coaching*

BUSINESS EDUCATION



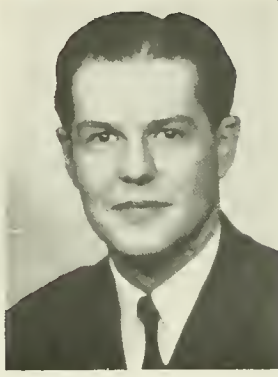
DEPARTMENT
HEAD



RICHARD G. HALLISY
B.Ed., M.A.
*Director of
Business Education*



WILLIAM C. FORNEY
B.S., M.A.



EARL A. GEHRIG
B.S., M.B.A.



CHARLES H. HENRIE
B.S., M.Ed.



CLAYTON H. HINKEL
B.S., M.Ed.

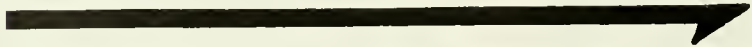


HONORA M. NOYES
B.A., M.Ed.



WALTER S. RYGIEL
B.S., M.Ed.

ELEMENTARY EDUCATION



DEPARTMENT
HEAD



EDNA J. HAZEN
B.S., M.A.
*Director of Elementary
Education*



MRS. LUCILE J. BAKER
A.B., Mus.B., A.M.
Training Teacher, Grade I



EDNA J. BARNES
B.S., M.A.
Elementary Education



IVA MAE BECKLEY
B.S., M.Ed.
Training Teacher, Grade II

ELEMENTARY EDUCATION



WARREN ILLICK JOHNSON
B.S., M.Ed.
Training Teacher, Grade VI



RUSSELL F. SCHLEICHER
B.S., M.A.
Training Teacher, Grade V



ANNA GARRISON SCOTT
B.S., M.A.
Training Teacher, Grade IV



MARCELLA MARIE STICKLER
B.S., M.S.
Training Teacher, Grade III



MARJORIE STOVER
B.S.
Training Teacher, Special Class



GRACE H. WOOLWORTH
Ph.B., A.M.
Training Teacher, Kindergarten

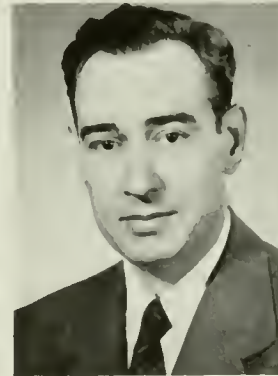
SECONDARY EDUCATION



EDWIN BARTON
B.A., M.A., M.A.
Social Studies



OLIVE PAYNE BEEMAN
Ed.B., Ph.B.
Art



EDWARD T. DeVOE
B.S., M.Ed.
English



ERNEST H. ENGELHARDT
A.B., M.A., Ed.D.
*Director of Secondary
Education
Placement Service*

DEPARTMENT
HEAD

SECONDARY EDUCATION



HOWARD F. FENSTEMAKER
B.A., M.A.
Foreign Languages



KIMBER C. KUSTER
B.S., M.S., Ph.D.
Biological Science



HAROLD H. LANTERMAN
B.S., M.A.
Physical Science



NELL MAUPIN
B.A., M.A., Ph.D.
Social Studies



LUCY McCAMMON
A.B., M.A.
Health Education



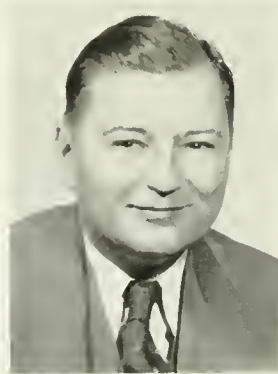
J. ALMUS RUSSELL
A.B., A.M., Ph.D., London
University Certificate
English



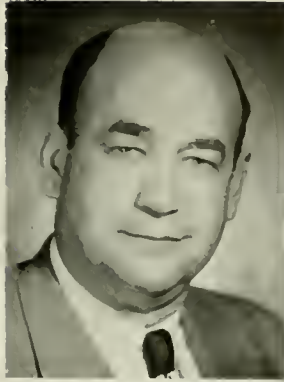
HAROLD S. SHELLY
A.B., M.A.
Physical Education



RALPH FISHER SMITH
B.S., M.Ed.
Public School Music



WILLIAM B. STERLING
B.S., M.S.Ed.
Aviation, Geography



PAUL E. WAGNER
B.S., M.S., Ed.D.
Psychology



MARGARET E. WALDRON
B.A., M.A.
Mathematics



CLARA B. WEIR
B.O.E., M.A.
Clinical Speech

COLLEGE NURSE



MARYLAND W. WILSON
B.A., M.A., Ph.D.
Speech



STEPHEN R. HOPKINS
B. of Music
Private School of Music



BEATRICE METTLER
A.B., M.S., R.N.
Graduate Nurse

THE LIBRARIANS

DIETITIAN



ELSIE G. BOWER
B.S., B.S. in L.S.
Assistant Librarian



ELINOR R. KEEFER
A.B., LL.M., B.S. in L.S.
Librarian



REBECCA S. HUFFCUT
B.S.
Dietitian

Enduring Memories . . .

Those things of stone and mortar that remain after Seniors have packed their memories and departed.



Long porch and night



Eleven fifty-two



The Guardians

WHO'S WHO IN AMERICAN UNIVERSITIES AND COLLEGES

Below:

H. MARINI
C. DAVIS
D. NEWBURY



I. CICHOWICZ
J. BOGDAN



J. SCRIMGEOUR, R. DANILO
R. KNAUSE



C. BRENNAN, M. DEAN BARTHOLOMEW, E. CUNFER

Each year a faculty committee chooses a small number of Seniors for the greatest honor possible to attain here at Bloomsburg—recognition in the annual publication of *Who's Who Among Students in American Universities and Colleges*. These students are those who have made outstanding contributions to the College Community during their college career. This award is based on scholarship, leadership in extra-curricular and educational activities, general citizenship, and professional promise.





The

CLASSES

SENIORS



HENRY MARINI
President of the Class of 1953

MY FELLOW GRADUATES:

It is time to take leave of our friendly hilltop alma mater. In so doing, we take with us much more than the degree which symbolizes our academic achievement. With us we take things less tangible but infinitely more treasured; learnings, ideals, friendships, and memories.

Richer by these measures we face the world beyond our campus. It is a world rich in promise and opportunity. Its many problems and fears we inherit and endeavor to solve and allay. To the growth of this world it is our task to contribute in material and moral development.

It was Pope who so aptly phrased the thought: "As the twig is bent; the tree's inclined." As teachers we become benders of twigs, for the seeds of thought we sow in young minds will grow and blossom in tomorrow's world.

It has been a privilege to serve in the office you have granted me: for that privilege I should like to thank you. To all of you I extend my most sincere congratulations and the hope that your life will be a happy and fruitful one.

HENRY MARINI,
President, Class of 1953



*Left to Right, Sitting—M. Wrzesniewski, J. Pichel, C. Davis.
Standing—A. Kubik, D. Fitzpatrick, J. Scrimgeour.*

OFFICERS

President - - - HENRY MARINI
Vice President - JOHN SCRIMGEOUR
Secretary First Semester — JUNE PICHEL
Secretary Second Semester—CLARE DAVIS
Treasurer - DANIEL FITZPATRICK
Woman Representative—
First Semester—MILDRED WRZESNIEWSKI
Second Semester - JOANNI CUFF
Man Representative - ALEX KUBIK

CLASS ADVISERS

EDWARD T. DE VOI	1950
S. I. SHORTESS	1951
DR. KIMBER C. KUSTER	1952
DR. NELL MAUPIN	
WALTER S. RYGIU	1953

Upper row:

JOSEPH RICHARD BARKLEY

Hatboro

General Business

Business Education Club 1, 2, 3, 4; Track 3, 4; OBITER 3, 4, Business Manager 3, Associate Editor 4; Intramurals 1, 2, 3, 4, Football 1, Basketball 1, 2, 3, Softball 1, 2, 3, 4; Future Teachers of America 4, Treasurer; Customs Committee 3; Baseball 2; Men's Dormitory Association 1, 2, 3, 4.

ERMA R. BEAN

Rahns

General Business

Future Teachers of America 3, 4; Business Education Club 1, 2, 3, 4; Waller Hall Association 1, 2, 3, 4, Governing Board 3; Kappa Delta Pi 3, 4, Recording Secretary 4; Pi Omega Pi 2, 3, 4; Class Secretary 3; OBITER 3.

Lower row:

KEITH BEARDE

Spring City

Accounting

Business Education Club 1, 2, 4; Election Board 1, 2, 4, Co-chairman 2, 4.

RICHARD D. BISHOP

Pittston

Accounting, Social Studies

Future Teachers of America 4; Business Education Club 2; Day Men's Association 2, 3, 4; Aviation Club 3.



BUSINESS



Navy Hall

S
E
N
I
O
R
S

1
9
5
3



SENIORS
1953

Upper row:

SYLVESTER V. BODEK

Nanticoke

Accounting, Sales, Typewriting

Future Teachers of America 3, 4; Band 3; Men's Dormitory Association 1, 2, 3, 4; Business Education Club 1, 2, 3, 4, Treasurer 4; Newman Club 2, 3, 4, Treasurer 4.

JOSEPH EDWARD BOYLE

Harwood

General Business

Men's Dormitory Association 1, 2, 3, 4; Business Education Club 1, 2, 3, 4; Newman Club 1, 2, 3, 4; Football 1, 2, 3; Varsity Club 2, 3, 4; Future Teachers of America 4.

Lower row:

JAMES CIAVAGLIA

Leighton

Accounting, English

Future Teachers of America 4; OBITER 4, Advertising Manager 4; Dramatic Club 1, 2, 3, 4, President 4; Alpha Psi Omega 3, 4, President 4; Kappa Delta Pi 3, 4; Student Assembly Committee 3, 4, Publicity Director 3, 4; Day Men's Association 1, 2; Men's Dormitory Association 3, 4; Community Government Association, Capt. Hospitality Committee 4.

IRENE L. CICHOWICZ

Shenandoah

General Business

Drum Majorette 1, 2, 3, 4; Dramatic Club 3, 4; Kappa Delta Pi 3, 4, Corresponding Secretary 4; Women's Chorus 1; National Student Association 1; Waller Hall Association 1, 2, 3, 4; Class Secretary 2; OBITER 3, 4, Secretary 4; Pilot 4, Associate Editor 4; Waller Hall Handbook 4; Newman Club 1, 4; Business Education Club 2, 3, 4; Future Teachers of America 4; Pi Omega Pi 4; Senior Banquet Chairman; *Who's Who in American Colleges and Universities* 4.

ROY CROOP

Berwick

General Business

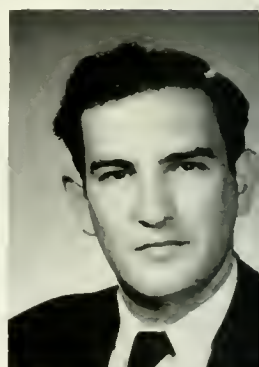
Business Education Club 1, 2, 3, 4; Aviation Club 2; Future Teachers of America 4.

JOANNE CUFF

Shenandoah

General Business

Dramatic Club 1, 2, 3, 4, Secretary 3; Business Education Club 1, 2, 3, 4; Community Government Committee 1, 2, 3; Fashion Show Co-ordinator 2, 3, 4; Future Teachers of America 3, 4; Newman Club 1, 2, 3; Women's Chorus 1, 2, 3; Alpha Psi Omega 3, 4, Treasurer 4; Waller Hall Association 1, 2, 3, 4; Day Women's Association 4.



Upper row:

EDWIN WARREN CUNFER

Slatington

General Commercial

Community Government Association President 4; Football Manager 1, 2, 3, 4; Invitational Basketball Tournament 1, 2, 3, 4, Assistant Director 3, Director 4; Business Education Contest 1, 2, 4, Chairman 4; Business Education Club 1, 2, 3, 4; Future Teachers of America 4; Lutheran Student Association 1, 2, 3, 4; Varsity Club 1, 2, 3, 4; Kappa Delta Pi 3, 4; Pi Omega Pi 2, 3, 4, Historian 3, Inter-fraternity Representative 4; Phi Sigma Pi 3, 4; Men's Dormitory Association 1, 2, 3, 4; *Who's Who in American Colleges and Universities* 4.

CLARABELLE DAVIS

Clarks Summit

General Commercial

Women's Chorus 1, 2, Treasurer 2; Dramatic Club 1; Waller Hall Association 1, 2, 3, 4; College Council Representative 2; Community Government Association Secretary 3; Pi Omega Pi 3, 4, Vice President 4; Kappa Delta Pi 3, 4; Future Teachers of America 3, 4; Business Education Club 2, 3, 4; Class Secretary 4; *Who's Who in American Colleges and Universities* 4.

LEONA I. DILTZ

Muncy

General Business

Day Women's Association 1, 2, 3, 4, Treasurer 4; Business Education Club 1, 2, 3, 4; Future Teachers of America 4.

MICHAEL J. DURSO

Wayne

General Business

Business Education Club 1, 2, 3, 4; Future Teachers of America 4; Newman Club 2, 3; Basketball 3.

PALMER E. DYER, JR.

Sunbury

Accounting, History

Aviation Club 2, 3; Business Education Club 1; Day Men's Association 1, 2, 3.

Lower row:

MADGE ROBERTA FELKER

Mt. Bethel

Secretarial, English

Business Education Club 1, 2, 3, 4; Waller Hall Association 1, 2, 3, 4; Future Teachers of America 3, 4; Lutheran Student Association 1, 2, 3, 4, Treasurer 3.

LORETTA C. FORMULAK

Glen Lyon

General Commercial

Kappa Delta Pi 3, 4; Science Club 1; Athenaeum Club 2; Future Teachers of America 3, 4; Business Education Club 3, 4; Waller Hall Association 1, 2, 3; Day Women's Association 4; Pi Omega Pi 4.

EDWARD M. GOODHART

Northumberland

Accounting, Typing, Sales

Future Teachers of America 4; Basketball 1, 2, 3; Varsity Club 2, 3; Band 1, 2.

THOMAS A. GOODWIN

Kane

General Business

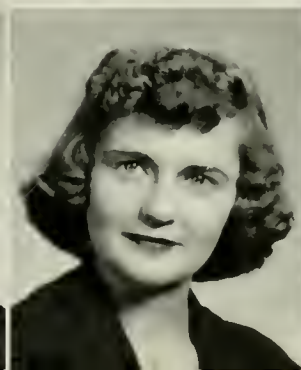
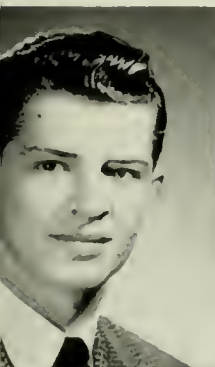
Future Teachers of America 4; Football 1; Track 1, 2; Business Education Club 2; Social Recreation Committee 3; Varsity Club 2, 3; Kappa Delta Pi 3, 4.

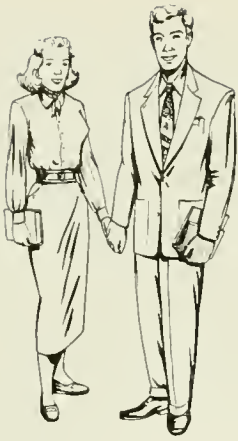
MARIE GRAZEL

Shenandoah

Secretarial, Sales, English

Community Government Committee 2; Business Education Club 1, 2; Waller Hall Association 2; Women's Chorus 1, 2, 3; Future Teachers of America 4; Day Women's Association 4; B Club 3, 4; *Olympian* 3; Newman Club 1, 2, 3; Fashion Show Co-ordinator 2, 3.





SUSAN DOLORES HVASTA

Scranton

Secretarial Science, English

Business Education Club 1, 2, 3, 4, Program Chairman 2, 3; Future Teachers of America 3, 4; Dramatic Club 1, 2, 3, 4; Dining Room Committee Co-chairman 3; Day Women's Association 4; Waller Hall Association 1, 2, 3, 4.



WILMA JONES

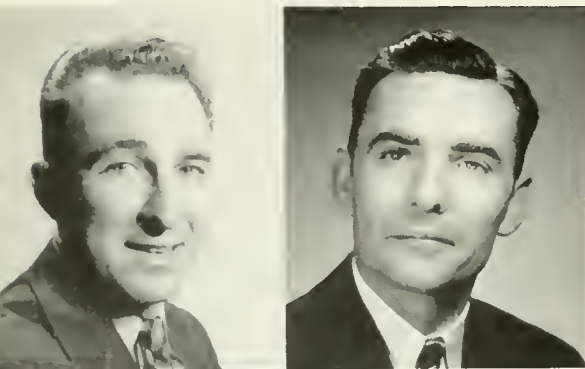
LeRaysville

General Commercial

Waller Hall Association 1, 2, 3, 4, Governing Board 1, 2; Women's Chorus 1, 2; Maroon and Gold Band 2; College Council Representative 1; Fashion Show Co-ordinator 2; Pi Omega Pi 3, 4; Kappa Delta Pi 3, 4; Business Education Club 1, 2, 3, 4; Future Teachers of America 3, 4.



SENIORS 1953



Upper row:

ROBERT V. HAAS

Nescopeck

General Business

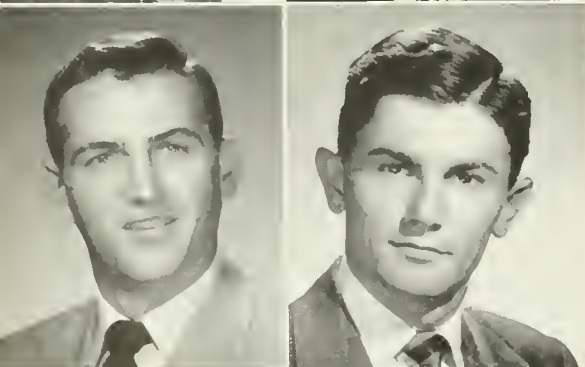
Business Education Club 1, 2, 3; Pi Omega Pi 3, 4; Kappa Delta Pi 3, 4.

ROBERT EDWARD HARRIS

Pittston

General Business

Business Education Club 1, 2; Pi Omega Pi 3, 4; Kappa Delta Pi 3, 4, Vice President 4; Future Teachers of America 4.



Lower row:

WILLIAM HATRACK

Mt. Carmel

Accounting, Sales

Day Men's Association 1, 2, 3, 4; Business Education Club 1, 2, 3, 4, President 4; Pi Omega Pi 3, 4.

DOUGLAS I. HAYHURST

Bloomsburg

General Business

Aviation Club 2, 3; Business Education Club 2.



Upper row:

HERBERT R. KERCHNER

Reading
General Business

Business Education Club 1; Community Government Association
Assistant Treasurer 2; Senior Banquet Chairman.

RICHARD C. KNAUSE

Pottstown
General Commercial

Band 1, 2, 3, Vice President 2; Business Education Club 1, 2, 3,
Treasurer 2, Vice President 3; Business Education Contest 1, 2,
3; *Maroon and Gold* 1, 2, 3; OBITER 2, 3; Pi Omega Pi 2, 3,
4; Future Teachers of America 4; *Who's Who in American
Colleges and Universities* 4.

MICHAEL A. KREPICH

Berwick
General Business

Football 1; Track 1; Business Education Club 4;
Future Teachers of America 4.

ROBERT L. LABARR

Oneida
General Business

Business Education Club 1, 2, 3; Day Men's Association 4.

RICHARD J. LOCKE

Nanticoke
General Business

Pi Omega Pi 2, 3, 4; Phi Sigma Pi 2, 3, 4; Business Education
Club 1, 2, 4; Newman Club 1, 2, 3, 4; Aviation Club 4;
Future Teachers of America 4; Day Men's Association 2, 3;
Men's Dormitory Association 3, 4.

Lower row:

LEONORA M. MACGILL

Nisbet
General Commercial

Business Education Contest Booklet Co-editor 2, 3; B Club 1,
2, 3, 4, President 4; Business Education Club 1, 2; Pi Omega
Pi 3, 4, Historian 4; Kappa Delta Pi 3, 4; Assembly Committee
1, 2, 3, 4; *Olympian* 2, 3, Business Manager 2, 3; OBITER 3;
Future Teachers of America 4.

JOSEPH H. MEIER

Mifflinville
Accounting, Sales, Typewriting

Business Education Club 1, 2; Future Teachers of America 3;
Election Board 1, 2, 3; Day Men's Association 1, 2, 3.

LELAND E. NEY

Tunkhannock
General Business

Business Education Club 1, 2, 3, 4; Future Teachers of America
4; Aviation Club 1; Day Men's Association 1, 2, 3, 4; Business
Education Contest 3, 4.

MIRIAM L. NEYHARD

Orangeville
General Business

Day Women's Association 1, 2, 3, 4, Secretary 4; Business Education
Club 1, 2, 3, 4; Future Teachers of America 4.

EDWIN PAUZER

Kulpmont
Accounting, English

Business Education Club 1, 2, 3; Aviation Club 2; Day Men's
Association 1, 2, 3, 4; *Maroon and Gold* 2.



Upper row:

CHARLES EDWARD PEASE

Stevensville
General Business

Day Men's Association 1; Men's Dormitory Association 2, 3, 4; Men's Glee Club 1, 2, Treasurer 2; Business Education Club 1, 2, 3, 4; Pi Omega Pi 2, 3, 4; Kappa Delta Pi 3, 4; Future Teachers of America 4.

JUNE PICHEL

Hellertown
General Commercial

Art Committee 1, 2, 3, 4, Chairman 2, 3; Business Education Club 1; Business Education Contest Booklet Co-editor 2, 3; Pi Omega Pi 3, 4; Kappa Delta Pi 3, 4; *Olympian* 3; Poetry Club 1; B Club 1, 2, 3, 4; Future Teachers of America 4; Waller Hall Association 1, 2, 3, 4; Day Women's Association 4.

MICHAEL PIHANICH, JR.

Nanticoke
General Business

Future Teachers of America 3; Business Education Club 2, 3; Aviation Club 1; Pi Omega Pi 3, 4; Kappa Delta Pi 3, 4; Day Men's Association 1, 4; Men's Dormitory Association 2, 3.

WARREN L. RAKER

West Pittston
General Business

Business Education Club 2, 3, 4, Treasurer 4; Kappa Delta Pi 3, 4; Men's Chorus 1, 2; Pep Committee Chairman 3; Pi Omega Pi 3, 4; Phi Sigma Pi 3, 4, Historian 4; Future Teachers of America 4; *Maroon and Gold* 1.

CLAUDE W. RENNINGER

Richfield
General Business

Business Education Club 1; Maroon and Gold Band 1, 2, 3, 4; Phi Sigma Pi 2, 3, 4, President 3, Inter-fraternity Representative 4; College Council Representative 3; Day Men's Association 1, 4; Basketball Manager 2, 3, 4; Future Teachers of America 4.

Lower row:

EDWARD ROMPALA

Meshoppen
General Business

Future Teachers of America 4; Men's Dormitory Association 2, 3, 4; Day Men's Association 1; Newman Club 2, 3, 4, Treasurer 2, Vice President 3, President 4; Men's Glee Club 2; Business Education Club 2, 3, 4; Honor Assembly Co-chairman 4.

JEAN A. SKEEBA

Hazleton
General Business

Future Teachers of America 3, 4; Business Education Club 1, 2, 3, 4; *Maroon and Gold* 2, 3, 4; Newman Club 1, 2, 3, 4; Waller Hall Association 1, 2, 3, 4; Business Education Contest 3, 4.

JACK W. SOBERICK

Berwick
General Business

Maroon and Gold Band 1, 2; Kappa Delta Pi 3.

ELIZABETH ANN SPEAL

Freeland
General Business

Women's Chorus 1; B Club 4; Athenaeum Club 3; Business Education Club 1, 2, 3; Lutheran Student Association 1, 2, 3, 4; Kappa Delta Pi 3, 4; Pi Omega Pi 3, 4; Future Teachers of America 3, 4; *Maroon and Gold* 3, 4, Typing Editor 4; College Council Committee 3, 4; Waller Hall Association 1, 2, 3, 4.

ROBERT C. STEVENSON

Factoryville
General Business

Photography Club 3, Secretary 3; Business Education Club 1, 2, 3, 4; Men's Dormitory Association 2, 3; Day Men's Association 1, 4.



ALEXANDER T. SWABOSKI

Mt. Carmel

Business Accounting, Sales, Typing

Business Education Club 2, 3, 4; Pi Omega Pi 3, 4;
Day Men's Association 2, 3, 4.

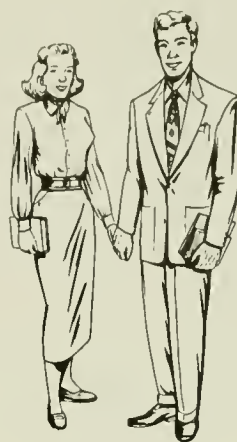


CHARLES HOWARD TAYLOR

Hatboro

General Business

Business Education Club 1, 2, 3; Baseball 2; Invitational Basketball Tournament 3; Men's Dormitory Association 1, 2, 3.



SENIORS 1953

Upper row:

JAMES W. THOMPSON

Kane

Accounting, Sales

Varsity Club 1, 2; Baseball 1, 2; Basketball 1, 2, 3, 4; Soccer 1; Intramurals 1, 2, 3, 4; Basketball 3, 4; Softball 1, 2, 3, 4; Future Teachers of America 4; Day Men's Association 4; Aviation Club 3, 4; Men's Dormitory Association 1, 2, 3.

JOHN J. TILMONT

Centralia

Accounting, History

Business Education Club 1; Future Teachers of America 4; Day Men's Association 2.

Lower row:

RAYMOND JAMES WAGNER

Simpson

General Business

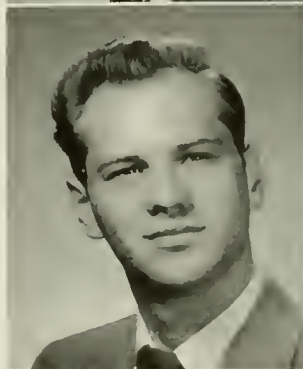
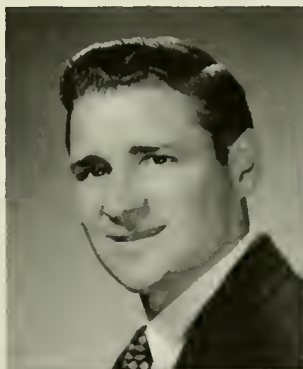
Soccer 1, 2, 3; Business Education Club 1, 2, 3; Newman Club 1, 2, 3; Day Men's Association 1, 2, 4; Men's Dormitory Association 3; Future Teachers of America 4.

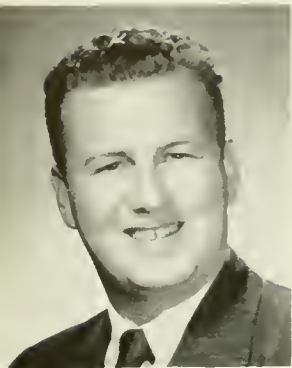
ROBERT G. WANICH

Berwick

General Business

Pi Omega Pi 3, 4; Kappa Delta Pi 3, 4; Business Education Club 3; Aviation Club 1; Athenaeum Club 1; Day Men's Association 1, 2, 3, 4.





ALFRED V. WESNER

Mt. Carmel
General Business

Business Education Club 1, 2, 3; Day Men's Association 1, 2, 3.



MILDRED J. WRZESNIEWSKI

Chester
General Business

Class Secretary 2; Community Government Committee 4; Pi Omega Pi 2, 3, 4; Kappa Delta Pi 3, 4; Business Education Club 1, 2, 3, 4, Secretary 3; Newman Club 1, 2, 3, 4, Secretary 2, 3; Women's Chorus 1, Librarian 1; Future Teachers of America 3, 4; Business Education Contest 1, 2, 3; Election Board 2; Student Assembly Committee 3, 4; OBITER 4; Waller Hall Association 1, 2, 3, 4; Day Women's Association 4.



Mr. Hallisy

"Now the law of supply and demand . . ."



Sarae—at the Keyboard

Upper row:

CLYDE C. ADAMS

Shamokin
Elementary

Day Men's Association 4, Treasurer 4; Photography Club 3, 4, Vice President 4; Aviation Club 2; Science Club 1; Kappa Delta Pi 3, 4; Future Teachers of America 4.

MARY GRACE ALMERS

Plymouth
Elementary

Future Teachers of America 4; Accompanist for Women's Chorus 1, 2, 3; Waller Hall Association 1, 2, 3; Day Women's Association 4; Community Government Association 3; Student Christian Association 1; Athenaeum Club 2, 3, Treasurer 3; Assembly Organist 1, 2, 3, 4; Student Assembly Committee 2, 3; Lutheran Student Association 1; Maroon and Gold Band 3; Fashion Show Organist 1, 2, 3.

Lower row:

TERRY E. ANSPACH

Turbotville
Elementary

Aviation Club 1, 2; Photography Club 3; Future Teachers of America 4; Day Men's Association 1, 2, 3, 4.

MARJORIE AYRE

Tunkhannock
Elementary

Women's Chorus 1; Maroon and Gold Band 1, 2, 3; Future Teachers of America 4; Student Christian Association 1; Waller Hall Association 1, 2, 3; Day Women's Association 4; Community Government Committee 3.



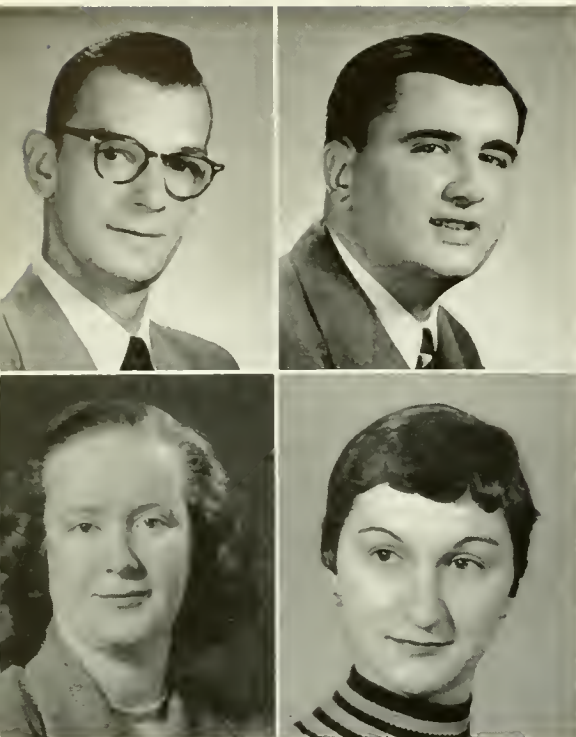
ELEMENTARY



Ben Franklin Training School

S
E
N
I
O
R
S

1
9
5
3



Upper row:

LEE E. BENNER

Selinsgrove
Elementary

Dramatic Club 1, 2, 3, 4; Aviation Club 1, 2, 3, 4, Treasurer 2, President 3, 4; Future Teachers of America 4; Kappa Delta Pi 3, 4.

JOHN T. BOGDAN

Philadelphia
Elementary

Day Men's Association 1, 2, 3, 4, Secretary 4; Athenaeum Club 1, 2, 3, 4, President 2; Future Teachers of America 4, President 4; Men's Glee Club 1, 2, 3; Canterbury Club 2, 3, 4; *Maroon and Gold* 2, 3, 4, Editorial Staff 4; *Pilot* 3, Associate Editor 3; Kappa Delta Pi 4; Intramurals 3, 4; Softball 3, 4; *Who's Who in American Colleges and Universities* 4.

Lower row:

VIVIAN BURNES

Atlantic City, New Jersey
Elementary—Speech Correctionist

Day Women's Association 1, 2, 3, 4; Science Club 1, 2; Women's Chorus 1, 2; Dramatic Club 2, 3, 4; Sigma Alpha Eta 3, 4; Alpha Psi Omega 4; Future Teachers of America 4.

LENA ANN CACCIA

Dushore
Elementary—Speech Correctionist

Dramatic Club 2, 3, 4, Treasurer 3; Women's Chorus 2; Alpha Psi Omega 4, Secretary 4; Sigma Alpha Eta 2, 3, 4; Waller Hall Association 1, 2, 3, 4; Future Teachers of America 4.

SENIORS

1953

SHIRLEY M. CARMODY

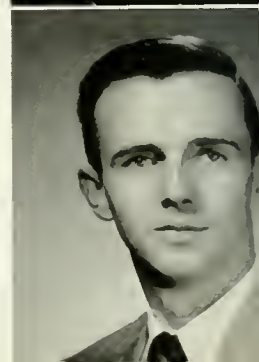
Danville
Elementary

Day Women's Association 1, 2, 3, 4, Secretary 3; Science Club 1; Athenaeum Club 2, 3; Kappa Delta Pi 3, 4; Future Teachers of America 4.

ROBERT J. CASTLE

Kingston
Elementary

Maroon and Gold 3, 4; Future Teachers of America 4; Day Men's Association 1, 4; Men's Dormitory Association 2, 3, 4; Newman Club 1, 2; Men's Glee Club 1, 2; Athenaeum Club 2, 3, 4; *OBITER* 4.



Upper row:

THERESA L. CHARNEY

Mahanoy Plane
Elementary

Waller Hall Association 1, 2, 3, 4; Day Women's Association 4; Women's Chorus 1, 2, 3, 4; Women's Athletics 1, 2, 3; Athenaeum Club 3; Newman Club 1, 2, 3, 4; Future Teachers of America 4.

WILLIAM J. CLEAVER

Orangeville
Elementary

Soccer 1, 2; Varsity Club 3, 4; Future Teachers of America 4; Day Men's Association 1, 2, 3, 4.

MARY C. CONDON

Old Forge
Elementary

Future Teachers of America 3, 4; Waller Hall Association 1, 2, 3, 4, Governing Board 2, 3; Kappa Delta Pi 3, 4; Day Women's Association 4; Newman Club 1, 2, 3; Athenaeum Club 2, 3.

LARUE A. COOKE

Frosty Valley
Elementary

Aviation Club 1, 2, 3, 4; Day Men's Association 1, 2, 3, 4; Future Teachers of America 4.

ILA MAE COURSEN

Scranton
Elementary

Women's Chorus 2, 3; Aviation Club 3, 4; Waller Hall Association 2, 3, 4, Governing Board 4; Future Teachers of America 4.

Lower row:

ROSELLA DANILO

Carbondale
Elementary

Dramatic Club 1, 2, 3, 4, Secretary 2, Vice President 3; Student Christian Association 1, 2, 3, Secretary 3; Waller Hall Association 1, 2, 3, 4, Governing Board 3, President 4; Future Teachers of America 4; Kappa Delta Pi 3, 4; Day Women's Association 4; *Who's Who in American Colleges and Universities* 4.

MARY ELLEN (DEAN) BARTHOLOMEW

Milton
Elementary

Waller Hall Association 1, 2, 3, Vice President 3; Day Women's Association 4; Women's Chorus 2, 3, 4; Student Christian Association 1, 2, 3, President 2, Vice President 3; Future Teachers of America 4; Senior Awards Committee, Co-chairman 2, 3; Kappa Delta Pi 3, 4; Girl's Trio 2, 3; *Who's Who in American Colleges and Universities* 4.

HELEN K. DeCAMPI

Nuremberg
Elementary

Women's Chorus 1; Waller Hall Association 1, 2, 3, 4; Aviation Club 2, 3; Newman Club 1, 2; Future Teachers of America 4.

BENJAMIN C. DUKE, JR.

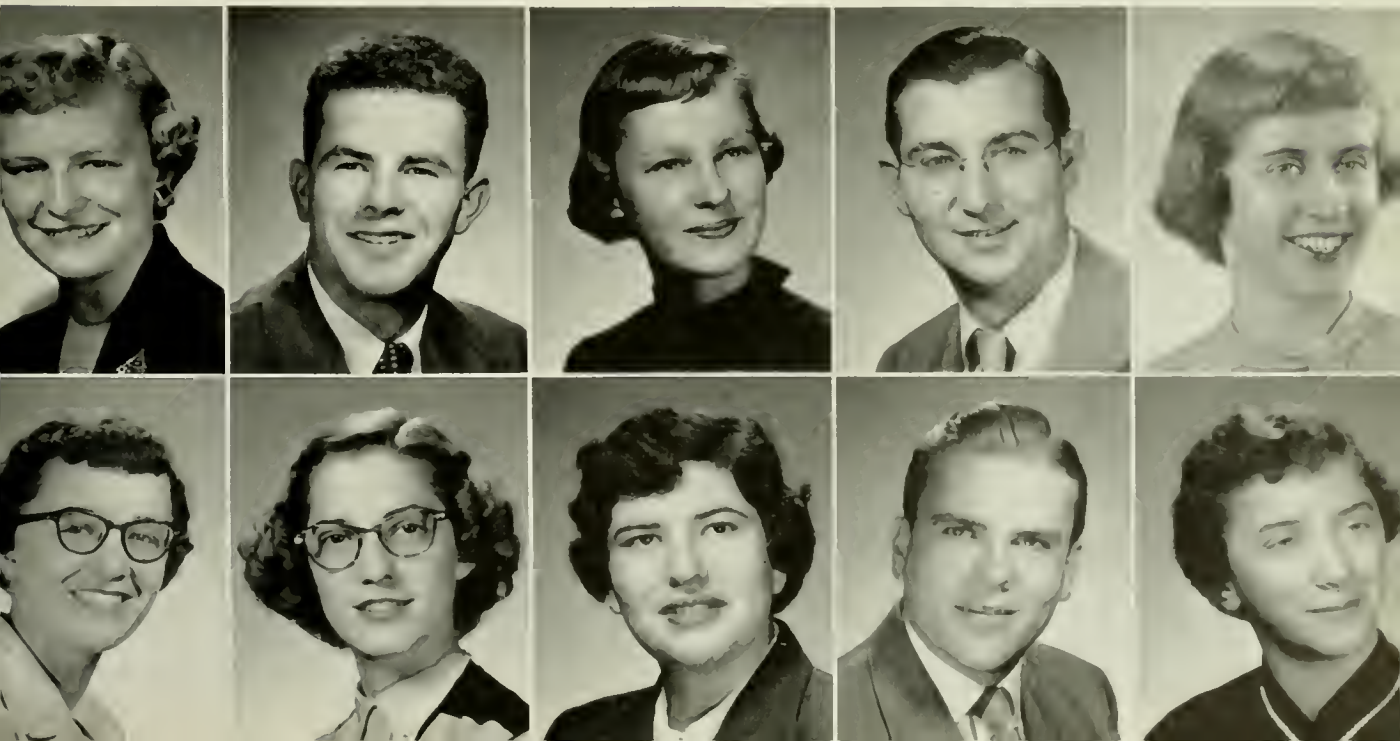
Berwick
Elementary

Future Teachers of America 4; Science Club 2, 3; Aviation Club 2, 3; Men's Glee Club 1; Kappa Delta Pi 3, 4; Day Men's Association 1, 2, 3, 4; Class Vice President 2.

IRENE JOAN ENDLER

Wilkes-Barre
Elementary

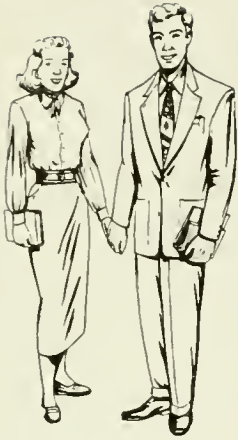
Dramatic Club 2, 3, 4; Waller Hall Association 1, 2, 3, 4; Athenaeum Club 2; Future Teachers of America 4; Day Women's Association 4.



JOHN M. GEMBUSIA

Alden
Elementary

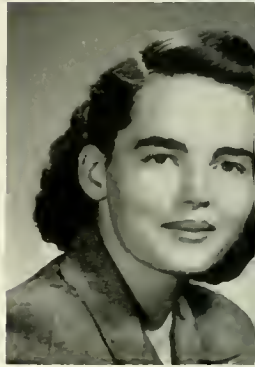
Aviation Club 2, 3, 4; Day Men's Association 1, 2, 3, 4.



ELLEN GIBBONS

Trucksville
Elementary

Dramatic Club 2, 3, 4; Newman Club 1; Women's Chorus 1, 2; Waller Hall Association 1, 2, 3, 4.



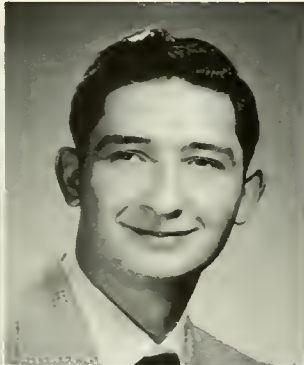
SENIORS 1953

Upper row:

C. RICHARD EWING

McClure
Elementary

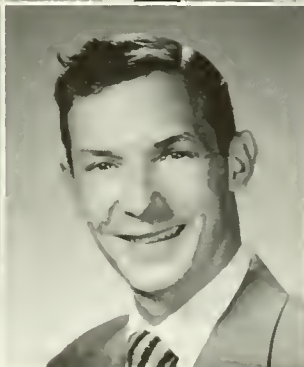
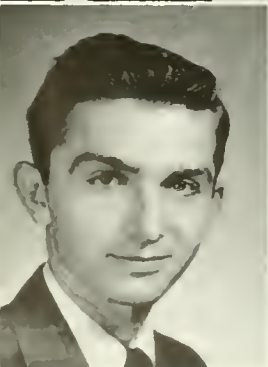
Maroon and Gold Band 1; Dramatic Club 1, 2, 3; Kappa Delta Pi 3, 4; Future Teachers of America 4; Day Men's Association 4; Men's Dormitory Association 2, 3, 4.



JAMES V. FERDINAND

Freeland
Elementary

Science Club 2; Athenaeum Club 2, 3, Historian 3; Maroon and Gold 2, 3; Calendar Committee Chairman 3; Dramatic Club 3, 4; Kappa Delta Pi 3, 4; Day Men's Association 1, 2, 3, 4; Future Teachers of America 4; Newman Club 2, 3.



Lower row:

DANIEL E. FITZPATRICK

Northumberland
Elementary

Class Treasurer 4; Photography Club 3, Treasurer 3; Maroon and Gold Band 1, 2, 3, 4; Future Teachers of America 4; Kappa Delta Pi 3, 4; Baseball 1, 2; Men's Dormitory Association 1, 2, 3; Day Men's Association 4.

THURSTON S. FULMER

Northumberland
Elementary

Athenaeum Club 1; Aviation Club 2; Future Teachers of America 4; Kappa Delta Pi 3, 4; Day Men's Association 1, 2, 3, 4.



Upper row:

ARLENE G. GORDNER

Millville
Elementary

Day Women's Association 1, 2, 3, 4; Science Club 1, 2;
Athenaeum Club 3; Future Teachers of America 4.

JOAN GRECO

Old Forge
Elementary

Science Club 1; Athenaeum Club 2, 3, 4; Newman Club 1, 2,
3, 4; Waller Hall Association 1, 2, 3, 4, Governing Board 4;
Future Teachers of America 3, 4.

BARBARA A. GULICK

Riverside
Elementary

Day Women's Association 1, 2, 3, 4, Governing Board 1; Athenaeum Club 1, 2, 3, President 2; Kappa Delta Pi 3, 4; Fashion Show 2, 3, 4; Women's Chorus 1, 2, 3; Future Teachers of America 4; Customs Committee 2; *Olympian* 2.

ROBERT E. HALE

Hazleton
Elementary

Future Teachers of America 3, 4; Aviation Club 2, 3; Kappa Delta Pi 3, 4; Canterbury Club 3, 4, President 3; Day Men's Association 2, 3, 4.

A. CAROLYN HEACOCK

Millville
Elementary

Poetry Club 1, 2, 3, 4, Historian 2, 4, Secretary 3; Women's Chorus 1, 3; Science Club 2; Future Teachers of America 4; Waller Hall Association 1; Day Women's Association 2, 3, 4.

Lower row:

NANCY RUTH HEEBNER

West Orange, New Jersey
Elementary—Speech Correctionist

Science Club 1, 2; Athenaeum Club 1, 2, 3; Dramatic Club 1, 2, 3; *Maroon and Gold* 2, 3; *Olympian* 1, 2, 3; Sigma Alpha Eta 2, 3, 4, Vice President 3, 4; B Club 1, 2; Future Teachers of America 4; Class Vice President 1; College Council Representative 3; Dance Chairman 1; Co-chairman, Hospitality Committee 2; Waller Hall Association 1, 2, 3, 4; Knox Fellowship 1, Treasurer 1; Customs Committee 2, 3.

REGINA HERCHEL

West Hazleton
Elementary

Future Teachers of America 4; Science Club 2, 3, 4, Reporter 2; Waller Hall Association 2, 3; Hospitality Committee 2; Day Women's Association 4; Kappa Delta Pi 3, 4, Treasurer 4; Newman Club 2, 3, 4; *Olympian* 2.

WINNIE M. HILEMAN

Bloomsburg
Elementary

Day Women's Association 1, 2, 3, 4, Official Board 2; Athenaeum Club 2; Future Teachers of America 4; B Club 4.

MARGERY NORTH HOSLER

Bloomsburg
Elementary

Women's Chorus 1, 3; Future Teachers of America 4; Athenaeum Club 3, 4; Day Women's Association 1, 2, 3, 4; Knox Fellowship 3, 4.

JANICE E. JOHNSON

Lewisburg
Elementary

Waller Hall Association 1, 2, 3, 4; Maroon and Gold Band 1, 2, 3, 4; Athenaeum Club 3, 4; Student Christian Association 3; Future Teachers of America 4; Day Women's Association 4; Wesley Fellowship 1, 2, 3, 4.



Upper row:

RICHARD H. JONES

Millville

Elementary—Speech Correctionist

Sigma Alpha Eta 1; Kappa Delta Pi 3; Day Men's Association.

MARY E. KALLENBACH

Shartlesville

Elementary

Maroon and Gold 2, 3, 4, Circulation Manager 3, 4; Dramatic Club 3, 4; Waller Hall Association 2, 3, 4; Day Women's Association 1, 4.

ANNE M. KELLEY

Shamokin

Elementary

Maroon and Gold 1, 2, 3; Athenaeum Club 2; Newman Club 1; Women's Chorus 2; Election Board 1; Waller Hall Association 1, 2, 3, Governing Board 2; Day Women's Association 4.

JOHN L. KENNEDY

Kingston

Elementary

Future Teachers of America 3, 4; Dramatic Club 2, 3, 4; Men's Glee Club 1, 2, 3; Assembly Committee 2; Cheerleader 1, 2, Captain 2; Intramurals 1, 2, 3, 4; Red Cross Blood Drive Chairman 3; Sigma Alpha Eta 2; Pep Committee 2, 3, 4.

JOHN L. KRAUSE

Sugarloaf

Elementary

Future Teachers of America 4; Science Club 3, 4; Kappa Delta Pi 4.

Lower row:

JOSEPH F. KRUNKOSKY

Lost Creek

Elementary

Aviation Club 1, 2, 3; Future Teachers of America 1; Day Men's Association 1, 2, 3, 4.

MARY LOU KRUNKOSKY

Lost Creek

Elementary

Day Women's Association 1, 2, 3, 4; Science Club 1, 2; Aviation Club 1, 2, 3; Future Teachers of America 4; *Olympian* 2, 3; Assembly Organist 1, 2, 3, 4.

LAWRENCE KSANZNAK

West Hazleton

Elementary

Basketball 1, 2, 3, 4; Varsity Club 2, 3, 4, Secretary 4; Soccer 2; Glee Club 1; Science Club 2; Future Teachers of America 4; Phi Sigma Pi 3, 4; Kappa Delta Pi 3, 4; Dining Room Committee 4; *Maroon and Gold* 3; *OBITER* 4; Dance Chairman 3; Men's Dormitory Association 1, 2, 3; Day Men's Association 4.

GEORGE LAMBRINOS

Endicott, New York

Elementary

Men's Dormitory Association 3; Football 1, 2, 3, 4; Basketball 2, 3; Baseball 1, 2, 3.

EDWARD R. LINN

Bloomsburg

Elementary

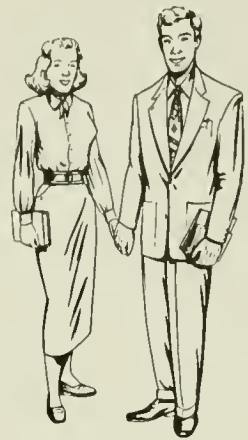
Science Club 1, 2, 3; Future Teachers of America 4; Day Men's Association 1, 2, 3, 4.



M. JUNE LONG

Liberty
Elementary

Women's Chorus 1; Science Club 2, 3; Kappa Delta Pi 3, 4;
Future Teachers of America 4; Day Women's Association
1, 2, 3, 4.



DONALD R. McCLINTOCK

Berwick
Elementary

Science Club 1; Kappa Delta Pi 3, 4;
Day Men's Association 1, 2, 3, 4.

SENIORS 1953

Upper row:

NIRA JANE McQUOWN

Shickshinny
Elementary

Day Women's Association 1, 2; Waller Hall Association 3;
Science Club 1, 2, 3; Future Teachers of America 3.

MYRTELE I. MEGARGEL

Danville
Elementary—Speech Correctionist

Women's Chorus 1; Dramatic Club 1, 2; Sigma Alpha Eta
3, 4; Future Teachers of America 4; OBITER 4.

Lower row:

RITA MARIE MEISNER

Kulpmont
Elementary

Aviation Club 2, Secretary 3; Day Women's Association.

JEAN MILLER

Tunkhannock
Elementary

Women's Chorus 2, 3, 4; Dramatic Club 2, 3, 4, Secretary 3,
Public Play 2, 3; OBITER 4, Director of Senior Pictures 4; Fu-
ture Teachers of America 4; Freshman Adviser 3; Alpha Psi
Omega 3, 4; Waller Hall Association 2, 3, 4, Governing Board
3; Day Women's Association 4.



Upper row:

PHYLLIS Y. MORGAN

Bloomsburg
Elementary

Women's Chorus 1, 2; Science Club 1, 2; Athenaeum Club 2, 3;
Day Women's Association 1, 2, 3, 4, Secretary 4; Lutheran
Student Association 1, 2, 3, 4; Future Teachers of America 4.

OGDEN MOSS, JR.

New Milford
Elementary

Kappa Delta Pi 4; Future Teachers of America 4; Science Club
1, 2, 3, 4; Athenaeum Club 1, 2, 3, 4; Student Christian Asso-
ciation 1, 2, 3, 4; Men's Dormitory Association 1, 2, 3, 4.

M. ELAINE OHLMAN

Wilkes-Barre
Elementary—Speech Correctionist

Waller Hall Association 1, 2, 3, 4; Women's Chorus 2, 3;
Sigma Alpha Eta 3, 4; Future Teachers of America 4; OBITER
3; Lutheran Student Association 2; Day Women's Association 4.

DORIS A. PATERNOSTER

Hazleton
Elementary

Future Teachers of America 3, 4, Secretary 3; Kappa Delta Pi
3, 4; Day Women's Association 4; Waller Hall Association 1,
2, 4; Newman Club 2, 3, 4; Athenaeum Club 2.

M. ELIZABETH PATTON

Wyalusing
Elementary

Women's Chorus 1, 2, 3; Athenaeum Club 3, 4, Secretary 4;
Waller Hall Association 1, 2, 3, 4, Governing Board 4; Fashion
Show 1, 2, 3, 4; Day Women's Association 4.

Lower row:

MILDRED M. PLISCOTT

Exeter
Elementary—Speech Correctionist

Community Government Association Committee Chairman 1;
Cheerleader 1, 2, 3; Women's Chorus 1, 2; Sigma Alpha Eta 3,
4; Waller Hall Association 1, 2, 3, Governing Board 2; Dra-
matic Club 2, 3; Maroon and Gold 2, 3; Olympian 1, 2, 3;
Future Teachers of America 4.

ROBERT IRVIN PRICE

Shamokin
Elementary

Kappa Delta Pi 3, 4; Aviation Club 2; Day Men's Association
2, 3, 4; Maroon and Gold 2, 3; Athenaeum Club 3; Future
Teachers of America 4.

RAYMOND R. RAABE

West Hazleton
Elementary

Men's Glee Club 1, 2, 3; Science Club 1, 2; Future
Teachers of America 4; Aviation Club 4.

SUZANNE (REASER) COVAL

Berwick
Elementary

Future Teachers of America 4; Waller Hall Association
1, 2, 3, 4; Maroon and Gold Band 1.

SHIRLEY M. REISENWEAVER

Conyngham
Elementary

Future Teachers of America 3; Maroon and Gold 1, 2;
Women's Chorus 3; Waller Hall Association 1, 2, 3.



Upper row:

EDWARD A. SABLE

Glen Lyon
Elementary

Aviation Club 1, 2; Men's Glee Club 1; Sigma Alpha Eta 2;
Kappa Pi 3, 4; Day Men's Association 1, 2, 3, 4; Future Teachers of America 4.

JOYCE (SCHOFIELD) McMAHAN

Audenried
Elementary

Waller Hall Association 3, 4; Women's Chorus 3;
Athenaeum Club 4; Future Teachers of America 4.

Lower row:

JAMES H. SHARP

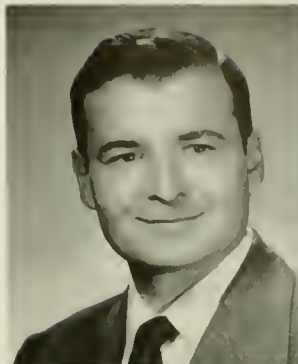
Hazleton
Elementary

Aviation Club 2; Men's Glee Club 3; Day Men's Association 4.

MARTHA STINER

Berwick
Elementary—Speech Correctionist

Day Women's Association 1, 2; Waller Hall Association 3, 4;
Maroon and Gold 1, 2, 3; Dramatic Club 2, 3; Sigma Alpha Eta 2, 3, 4; Future Teachers of America 4.



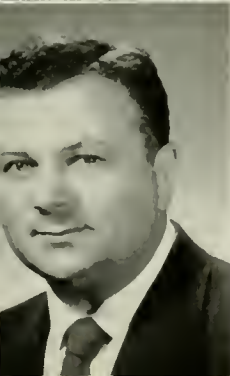
SENIORS
1953



NANCY LOU RHOADS

Catawissa
Elementary—Speech Correctionist

Maroon and Gold Band 1, 2, 3, 4, Secretary 2, 3; Maroon and Gold 1, 2, 3, 4; Future Teachers of America 4; Day Women's Association 1, 2, 3, 4; Sigma Alpha Eta 2, 3; OBITER 2, 3, 4; Customs Committee 2, 3, 4.



FRANK THEODORE ROLL

Berwick
Elementary

Football 1; Aviation Club 2, 3; Day Men's Association 1, 2, 3, 4.



Upper row:

NELLIE H. SWARTZ

Montoursville

Elementary—Speech Correctionist

Waller Hall Association 1, 2, 3, 4, Governing Board 1, Treasurer 3; Women's Chorus 1, 2, 3; Sigma Alpha Eta 3, 4; Future Teachers of America 4.

JEANNE A. WALLACE

Berwick

Elementary

Future Teachers of America 4; Glee Club 2; *Maroon and Gold* 3, 4; Day Women's Association 1, 2, 3, 4.

Lower row:

JOSEPH J. WASIAKOWSKI

Nanticoke

Elementary

Future Teachers of America 3, 4; Men's Glee Club 3; Aviation Club 3; Service Key Point Committee 3; Track 1.

ALBERT E. WILLIAMS

Nanticoke

Elementary

Basketball 1, 2, 3, 4; Baseball 1; Varsity Club 2, 3, 4; Future Teachers of America 4; Men's Dormitory Association 1, 2, 3, 4; Softball 1, 2, 3, 4; Day Men's Association 4; Invitational Basketball Tournament 2, 3, 4.

SENIORS

1953

BESSMARIE WILLIAMS

Forty Fort

Elementary

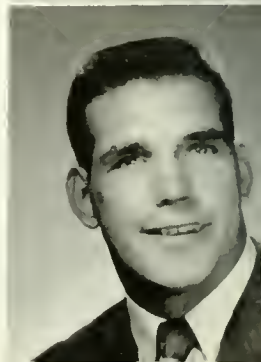
Class Secretary 1; Newman Club 1; Science Club 1, 2; Athenaeum Club 1, 2; *Maroon and Gold* 1, 2, 3, 4, Editorial Board 3, 4; *Olympian* 2, 3, Advertising Manager 3; *OBITUARY* 4, Associate Editor 4; Women's Chorus 3; Future Teachers of America 4; Social Recreation Committee 3; Waller Hall Association 1, 2, 3, 4; Day Women's Association 4.

ARDELL E. ZEIGENFUSE

Mowry

Elementary

Future Teachers of America 4; Varsity Club 2, 3, 4; Science Club 2; Football 1, 2, 3, 4.





"Those we teach . . .



. . . Wish to learn."

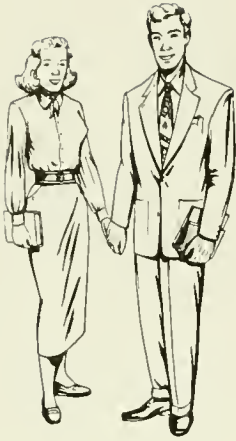


ALTON S. ZERBY

Halifax

Elementary

Aviation Club 2, 3; Kappa Delta Pi 3, 4; Election Board 3;
Men's Dormitory Association 3, 4; Future Teachers of America 4.



ELIZABETH A. BAER

Shickshinny

Social Studies, Mathematics

Student Christian Association 1; Science Club 1, 2, 3, 4, Reporter 3, Secretary 4; Women's Chorus 2; Future Teachers of America 4; B Club 4; Waller Hall Association 1, 2, 3, 4, Governing Board 4.

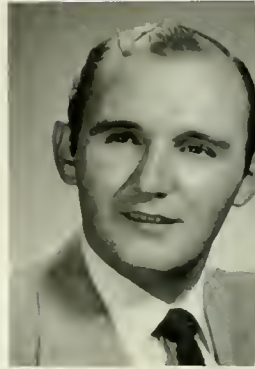


WILLIAM BARTLESON

Warrior Run

Speech Correction, Social Studies

Basketball 1, 2; Baseball 3, 4.



SECONDARY



Science Hall

S
E
N
I
O
R
S

1
9
5
3



Upper row:

CLYDE H. BELL

Freeland

Speech Correctionist, Social Studies

Future Teachers of America 3, 4; Kappa Delta Pi 3, 4; Sigma Alpha Eta 3, 4, Treasurer 4; Men's Chorus 3, 4, President 4; Day Men's Association 3, 4; Wesley Fellowship 3, 4, Program Chairman 3, President 4.

IRVIN R. BICKEL

Suobury

Science, Social Studies

Men's Dormitory Association 3, 4; Lutheran Student Association 3, 4; Aviation Club 3, 4; Maroon and Gold Band 3, 4; Future Teachers of America 4.

DONALD N. BLYLER

Bloomsburg

French, Spanish, English, Social Studies

Glee Club 1, 2; Day Men's Association 1, 2, 3, 4; Kappa Delta Pi 3, 4; Senior Ball Chairman.

DANIEL BOYCHUCK

Shamokin

Science, Social Studies

Basketball 1, 2, 3, 4; Varsity Club 1, 2, 3, 4; Men's Dormitory Association 1, 2, 3, 4; Baseball 2, 4; Future Teachers of America 4; Day Men's Association 4.

CHARLES M. BRENNAN

Towanda

Science, Mathematics

Track 1, 2, 3, 4; Football 1, 2, 3, 4, Co-captain 4; Class Vice President 3; Men's Dormitory Association 1, 2, 3, 4, Secretary 3, Vice President 2, 4; Varsity Club 2, 3, 4, President 4; Phi Sigma Pi 2, 3, 4, Secretary 3, 4; Kappa Delta Pi 3, 4; Newman Club 4; Future Teachers of America 4; Hospitality Committee Chairman 3; Senior Banquet Chairman; *Who's Who in American Colleges and Universities* 4.

Lower row:

HARRY P. BROOKS

Pittsburgh

Speech Correctionist, English

OBITER 3, Sports Editor 3; *Maroon and Gold* 1, 2, 3, 4, Sports Editor 2, 3, 4; Sigma Alpha Eta 3, 4, Program Director 3, 4; Dramatic Club 1, 2, 3, 4; Glee Club 1, 2; Newman Club 1, 2.

DONALD JOSEPH BUTLER

Warrior Run

Speech Correctionist, Social Studies

Sigma Alpha Eta 3, 4; Basketball 1, 2, 3, 4; Baseball 1, 2, 3, 4; Future Teachers of America 4; Men's Dormitory Association 1, 2, 3, 4; Varsity Club 3, 4.

WILLIAM E. BYHAM

Kane

Speech Correctionist, Social Studies

Varsity Club 2, 3, 4; Sigma Alpha Eta 2, 3, 4; Basketball 1, 2, 3, 4; Baseball 1, 2, 3, 4; Football 1; Future Teachers of America 4; Men's Dormitory Association 1, 2, 3; Day Men's Association 4.

EDWARD J. CAMPBELL

Ashland

Social Studies, Geography

Aviation Club 3; Day Men's Association 3, 4, President 4; Future Teachers of America 4; Gamma Theta Upsilon 3, 4; College Council 4.

ALFRED J. CYGANOWSKI

Nanticoke

Science, Mathematics

Science Club 1, 2; Day Men's Association 1, 4; Men's Dormitory Association 2, 3; Future Teachers of America 4.



Upper row:

RONALD D'ANGELO

Berwick

Science, Geography

Future Teachers of America 4; Football 2; Gamma Theta Upsilon 3, 4; Aviation Club 3.

JOHN M. DiRICO, JR.

Wayne

Mathematics, Geography

Future Teachers of America 3, 4; Maroon and Gold Band 1, 2, 3; Newman Club 1, 2, 3, 4; Aviation Club 4; Gamma Theta Upsilon 3, 4; Track 3; Men's Dormitory Association 2, 3, 4; Gamma Theta Upsilon 3, 4, Treasurer 3, 4.

JAMES E. DOTY

Bloomsburg

Speech Correctionist, Biological Science

Maroon and Gold Band 1, 2, 3; Future Teachers of America 3; Day Men's Association 1, 2, 3, 4.

ROBERT J. DOWD

Ringtown

Science, Mathematics

Future Teachers of America 4; Science Club 1, 2, 3; Day Men's Association 1, 2, 3.

HARRY R. EDWARDS

Hazleton

Social Studies, English

Athenaeum Club 1; Kappa Delta Pi 3; Day Men's Association 1, 2, 3.

Lower row:

JoANN FORNWALD EDWARDS

Montgomery

Science, Mathematics

Maroon and Gold Band 1, 2, 3; Women's Chorus 1; Day Women's Association 1, 2, 3, 4, Vice President 2; *Olympian* 2, Editorial Board 2; Kappa Delta Pi 3; Science Club 3.

N. DOUGLAS ERICKSON

Ludlow

Science, Social Studies

Basketball 2, 3, 4; Varsity Club 3, 4; Phi Sigma Pi 4; Future Teachers of America 4; Men's Dormitory Association 1, 2, 3, 4; Day Men's Association 4.

RICHARD W. EVANS

Shamokin

Science, Social Studies

Science Club 1, 2, 3; OBITER 1; Day Men's Association 1, 2, 3, 4; Future Teachers of America 4.

STEPHEN FAGO

Centralia

Science, Mathematics

Science Club 1, 2, 3, 4; Future Teachers of America 4; Day Men's Association 1, 2, 3, 4.

JOSEPH P. FEIFER

Mt. Carmel

Science, Mathematics

Track 1, 2, 3, 4; Science Club 1, 2, 3, 4; Phi Sigma Pi 3, President 4; Class Treasurer 2; Invitational Basketball Tournament 1, 3, 4; Future Teachers of America 4; Men's Dormitory Association 1, 2, 3, 4, President 4; College Council 4; Varsity Club 2, 3; Newman Club 1, 2.

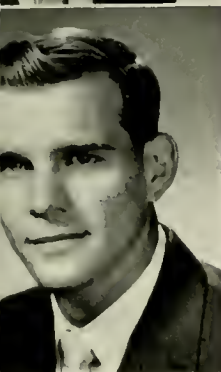


WILLIAM G. FISHER

Kulpmont

Science, Geography

Day Men's Association 1, 2, 3, 4, Vice President 3, 4; Science Club 2, 3, 4, Program Chairman 3, President 3; Aviation Club 1; Gamma Theta Upsilon 2, 3, 4, Vice President 3, 4; Kappa Delta Pi 3, 4; Phi Sigma Pi 3, 4.

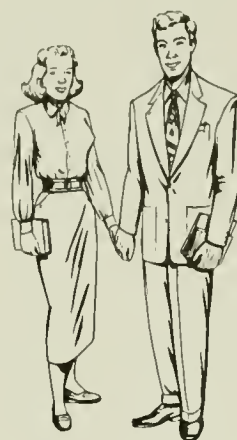


ROBERT A. GERHARD, JR.

Palmerton

Science, Mathematics

Basketball 2, 3, 4; Varsity Club 3, 4; Phi Sigma Pi 4; Future Teachers of America 4; Science Club 3; Day Men's Association 1, 2, 3, 4.



SENIORS 1953

Upper row:

DELORES E. HARDING

Muncy

Social Studies, Spanish

Day Women's Association 1, 2, 3, 4, President 3; Science Club 1, 2, 3, 4; Future Teachers of America 4.

GRACE HEPPE

Sugarloaf

Biological Science, Social Studies

Future Teachers of America 4; Olympian 3; Day Women's Association 4; Waller Hall Association 2, 3; Science Club 2, 3; Women's Chorus 3; Hospitality Committee 3; OBITER 3.



Lower row:

WILLIAM J. HILL

Williamsport

Mathematics, Science, English, Social Studies

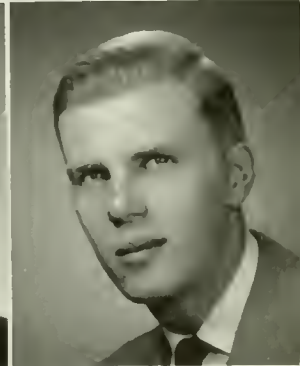
Science Club 3, 4; Future Teachers of America 4; Men's Dormitory Association 3, 4.

RUSSELL OLIVER HONS

Shavertown

Social Studies, Geography

Future Teachers of America 3, 4; Business Education Club 1; Basketball 1; Science Club 2, 3, 4; Baseball 2; Gamma Theta Upsilon 3, 4, Secretary 4; Aviation Club 3; Invitational Basketball Tournament 3, 4; Wesley Fellowship 1, 2, 3, 4, Treasurer 2, 3.



Upper row:

R. EUGENE HUMMEL

Bloomsburg
Science, Mathematics

Maroon and Gold Band 1, 2, 3, 4, President 3; Inter-collegiate Band 2, 3; Future Teachers of America 4; Lutheran Student Association 1, 2, 3, 4; Day Men's Association 1, 2, 3, 4.

GEORGE F. JOHNS

Williamsport
Social Studies, Geography

Football 1, 2, 3; Basketball 1; Future Teachers of America 4.

JIMMIE JOHNSON

Benton
Science, Mathematics

Future Teachers of America 4; Dramatic Club 1, 2; *Maroon and Gold* 1, 2; *OBITER* 2, 4, Sports Editor 4; Science Club 3, 4.

WILLIAM H. KLINE

Millersburg
Physical Science, Mathematics

Pilot 3, Associate Editor 3; Future Teachers of America 4; Class Treasurer 3; *OBITER* 2, 4, Sports Editor 2, Business Manager 4; Student Christian Association 1; Science Club 1, 2, 3, 4; Kappa Delta Pi 3, 4; *Maroon and Gold* 1, 2, 3, 4; Phi Sigma Pi 4; Social Recreation Committee 3, Chairman 3; Invitational Basketball Tournament 3, 4.

ALEX PAUL KOHARSKI

Wyoming
Spanish, French, English

Maroon and Gold Band 1, 2, 3, Vice President 3; Glee Club 1, 2, 3, Secretary 2; Athenaeum Club 1, 2, 3, President 3; Newman Club 1, 2, 3, President 2; Kappa Delta Pi 3, 4; Future Teachers of America 4; *Pilot* 2, Associate Editor 2; Men's Dormitory Association 1, 2, 3.

Lower row:

ALEX WILLIAM KUBIK

York
Speech Correctionist, Social Studies

Class President 1; College Council Representative 4; Hospitality Committee Co-chairman; Freshman Adviser 3; Kappa Delta Pi 3, 4; Phi Sigma Pi 3, 4, Historian 3, Vice President 4; Sigma Alpha Eta 3, 4, President 4; Men's Glee Club 1, 2, 3, 4, Secretary 2, President 4; Dramatic Club 1, 2, 3, 4; *OBITER* 1, 2, 3; *Olympian* 1, 2; Football 1, 2, 3; Track 1, 2.

WILLIAM BEN LINN

Catawissa
English, French

Men's Glee Club 1, 2; Kappa Delta Pi 3, 4; Future Teachers of America 4; Day Men's Association 1, 2, 3, 4.

CLEMENT J. MAKOWSKI

Keiser
Social Studies, Geography

Aviation Club 1, 2, 3; Baseball 2, 3; Gamma Theta Upsilon 3.

R. HENRY MARINI, JR.

Wayne
Science, Geography

Dramatic Club 1, 2; Maroon and Gold Band 1, 2, 3; College Council 2, 3, 4, Vice President 3; Kappa Delta Pi 3, 4; Gamma Theta Upsilon 3, 4; Class President 4; *Olympian* 2, Business Manager 2; Future Teachers of America 4; *Who's Who in American Colleges and Universities* 4.

JOHN B. MATURANI

Milton
Social Studies, Geography

Men's Dormitory Association 1, 2, 3, 4; *Maroon and Gold* 2, 3, 4; *OBITER* 3, 4; Football 1, 2, 3, 4; Future Teachers of America 3, 4; Varsity Club 2, 3, 4.



Upper row:

JOHN K. MINCEMOYER

Muncy

Social Studies, Geography

Day Men's Association 3, 4; Baseball 3, 4; Aviation Club 4; Future Teachers of America 4.

ROBERT MOORE

Benton

Science, Mathematics

Men's Glee Club 2; Science Club 2, 3, 4; Athenaeum Club 1; Day Men's Association 1, 4; Men's Dormitory Association 2, 3; Phi Sigma Pi 3, 4; Future Teachers of America 4.

Lower row:

M. EUGENE MORRISON

Bloomsburg

Science, Mathematics

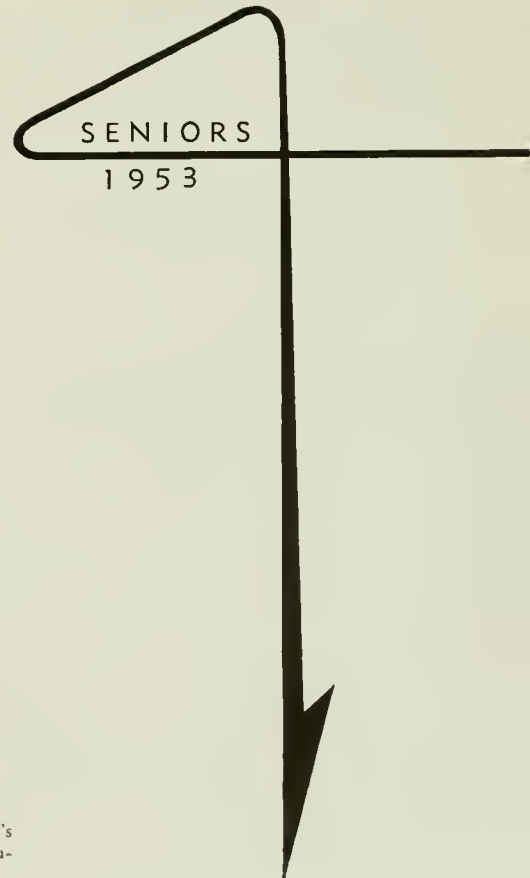
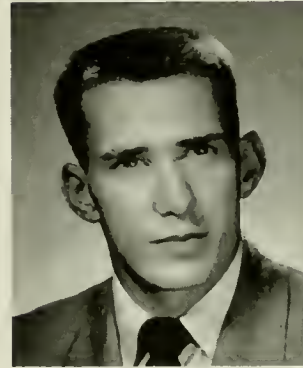
Football 1, 2, 3, 4; Basketball 1, Manager 2, 3, 4; *Maroon and Gold* 2, 3, 4; Varsity Club 1, 2, 3, 4, Vice President 4; Future Teachers of America 4; Day Men's Association 1, 2, 3, 4; Customs Committee 4; *Olympian* 3.

DAVID NORMAN NEWBURY

Watsonstown

Biological Science, Social Studies

Science Club 1, 2, Program Chairman 1; Assembly Committee 1, 2, 3, 4, Chairman 3; Talent Show Director 2; Dramatics Club 1, 2, Public Play 2; *OBITER* 1, 2, 3, 4, Publicity Director 1, Junior Editor 3, Editor 4; *Olympian* 2, Editor 2; College Council 3; Class President 3; Day Men's Association 1, 2; Men's Dormitory Association 3, 4; Kappa Delta Pi 3, 4; *Maroon and Gold* 3, 4, Editorial Board 3, Feature Writer 4; Future Teachers of America 4; Social Recreation Committee 3; *Who's Who in American Colleges and Universities* 4.

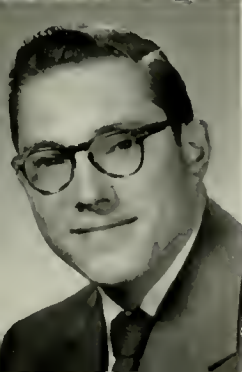


EDWARD J. MCGEE

Hazleton

Social Studies, Spanish

Day Men's Association 1, 2, 3, 4.



DONALD E. MEREDITH

Northumberland

History, Geography

Maroon and Gold Band 3, 4; Gamma Theta Upsilon 3, 4; Men's Dormitory Association 2, 3, 4; Day Men's Association 1; Future Teachers of America 4.



Upper row:

MICHAEL JAMES PALKO

Pottsville

Science, Social Studies

Science Club 3, 4; *Olympian* 3; Future Teachers of America 4; Day Men's Association 3, 4.

ALICE J. QUICK

Wyalusing

French, Spanish, English

Waller Hall Association 1, 2, 3, 4; Future Teachers of America 3, 4; *Maroon and Gold* 3, 4; Editorial Board 4; Kappa Delta Pi 3, 4; Historian 4; Poetry Club 1, 2, 3, 4; Secretary 2, President 3; Treasurer 4; Student Christian Association 1, 2, 3, 4; Knox Fellowship 2, 3, 4; Secretary 2, President 3; OBITER 4; Copy Editor 4.

Lower row:

GEORGE REINSMITH

Lehighton

Social Studies, Geography

Men's Dormitory Association 3, 4.

JOHN H. RITTENMEYER

Philadelphia

Speech, Corrector, Social Studies

Sigma Alpha Eta 2, 3, 4; Phi Sigma Pi 3, 4, President 4; Basketball 1, 2; Future Teachers of America 4; Men's Dormitory Association 1, 2, 3; Day Men's Association 4.

SENIORS

1953

JOHN S. SCRIMGEOUR

West Pittston

Science, Mathematics

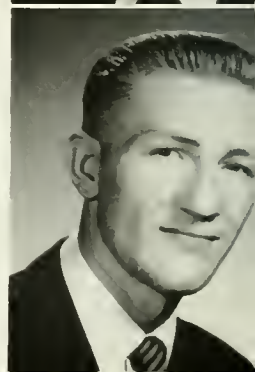
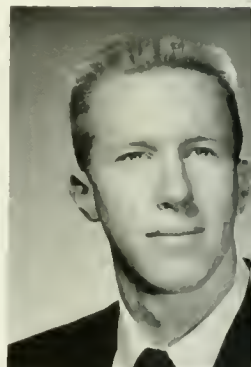
Track and Field 2, 3, 4; Basketball 2; Class Treasurer 2; Class Vice President 3, 4; Future Teachers of America 4; Vice President 4; Science Club 3, 4; Program Chairman 3; President 4; Kappa Delta Pi 3, 4; President 4; Phi Sigma Pi 3, 4; Treasurer 3, 4; Men's Dormitory Association 2, 3, 4; Treasurer 4; Invitational Basketball Tournament 3; Co-ordinator 3; Varsity Club 4; Senior Ball and Banquet, General Chairman; *Who's Who in American Colleges and Universities* 4.

JOHN SIVULICH

Kulpmont

Biology, Social Studies

Future Teachers of America 4; Day Men's Association 1, 4; Men's Dormitory Association 2, 3; Science Club 1, 3, 4; Aviation Club 2, 3; *Olympian* 3; Canterbury Club 4.



Upper row:

WILLIAM HARRY STOUTENBURGH

Hatboro

Science, Mathematics

Future Teachers of America 3, 4; Science Club 1, 2, 3, 4; Phi Sigma Pi 3, 4; Assistant Secretary 3; Dining Room Committee Chairman 4; Varsity Club 3, 4; Men's Dormitory Association 4; Baseball 1, 2, 3, 4; Pep Committee 2; Intramurals 1, 2, 3, 4; Basketball 1, 2, 3, Softball 2.

RUTH E. THOMAS

Bloomsburg

Science, Mathematics

Science Club 1, 2, 3, 4, Treasurer 3; Women's Chorus 1, 2, 3; Day Women's Association 1, 2, 3, 4, Official Board 3; Future Teachers of America 3, 4; Knox Fellowship 1, 2, 3, 4, Treasurer 2, Vice President 3; Kappa Delta Pi 3, 4; Student Christian Association 2.

RUSSELL VERHOUSKY

Coaldale

Speech Correctionist, Social Studies

Future Teachers of America 4; Sigma Alpha Eta 3, 4; Football 1, 2, 3, 4; Baseball 2; Track 1, 2, 3, 4; Varsity Club 2, 3, 4.

THOMAS ANTHONY WALSH

Warrior Run

Social Studies, Geography

Future Teachers of America 3, 4; Newman Club 1; Men's Dormitory Association 1, 2, 3; Gamma Theta Upsilon 4; Day Men's Association 4.

DOROTHY S. WATKINS

Summit Hill

French, Spanish, English

Kappa Delta Pi 3, 4; Future Teachers of America 3, 4; Women's Chorus 1, 2; Waller Hall Association 1, 2, 3, 4; Day Women's Association 4.

Lower row:

EDWARD P. WEAVER, JR.

Bethlehem

Science, Mathematics

Athenaeum Club 3; Science Club 3, 4; Aviation Club 3; Future Teachers of America 3, 4; Dining Room Committee 3.

JOAN LOUISE WERSINGER

Hazleton

French, Spanish, English

Kappa Delta Pi 3, 4; Dramatic Club 3, 4; Poetry Club 2; Future Teachers of America 3, 4; Waller Hall Association 2, 3.

HAROLD WHITEBREAD

Beech Haven

Science, Mathematics

Science Club 1, 2; Kappa Delta Pi 3.

SHELDON WILLIAMS

Wilkes-Barre

Social Studies, English

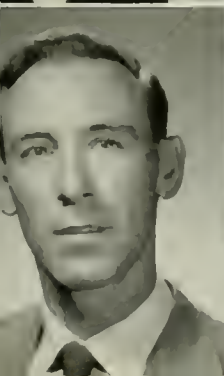
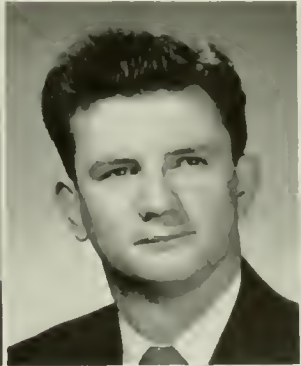
Men's Dormitory Association 1, 2, 3; Athenaeum Club; Mixed Chorus; F. T. A.

SAMUEL R. YEAGER

Montgomery

Science, Mathematics

Future Teachers of America 3, 4; Science Club 1, 2, 3, 4, Program Chairman 4; Maroon and Gold 1, 2, 3, Editorial Board 2; Co-ed of the Year Contest Chairman, OBITER 3.





JOSEPH J. ZAHORA

Coaldale

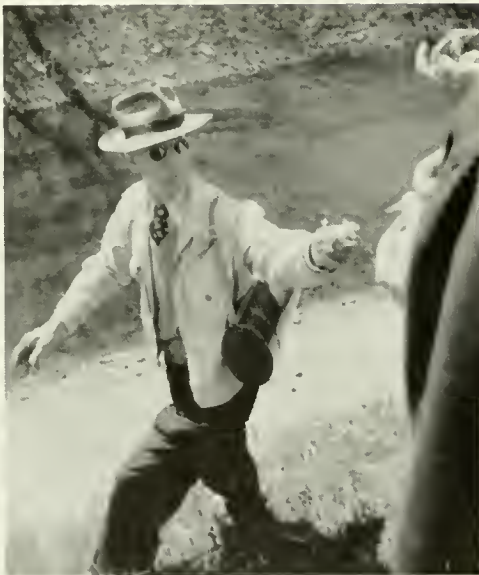
General Science, Social Studies

Football 1, 4; Future Teachers of America 4; Varsity Club 3, 4,
Assistant Secretary 4; Track 1; Freshman Football Coach 3.

Dr. Engelhardt



"A current problem in high schools . . ."



Dr. Kuster—Science in the Field

*Mr. Barton—A Challenging Question
in American History*



Four Years' Memories

HAPPY EVENTS—



—BIG EVENTS

THE MAIN EVENT—



Junior Class

OFFICERS

Adviser—MRS. BEEMAN

President - - - - DAVID SUPERDOCK

Vice President - - - DOUGLAS STAUFIER

Secretary - - - - DOLORES DOYLE

Treasurer - - - - JOHN ANDERSON

Woman Representative — HARRIET WILLIAMS

Man Representative - - CHARLES ANDREWS





* Consult Student Directory, pp. 142-44.

Junior Class



. . . assuming the leadership due upperclassmen
and ably performing its responsibilities . . .
procuring school rings . . . creating "April in
Paris" at the Junior Prom.

Sophomore Class

. . . the transition stage between under and upperclassmen . . . "Winter Wonderland" at the annual Cotillion . . . taking a definite place in the pattern of Bloomsburg.

* Consult Student Directory pp. 142-44.





Sophomore Class



OFFICERS

Adviser—DR. KUSTER

President - - - FRED DELMONTE

Vice President - - - JOSEPH KINDER

Secretary - - - JEAN GRIFFITHS

Treasurer - - - EDWARD CONNOLLY

Woman Representative—
MARY ELLEN HENNING

Man Representative - - - KEITH MCKAY

Freshman Class

OFFICERS

Adviser—EDWARD T. DEVOE

President - - - THOMAS HIGGINS

Vice President - - - JAMES NICHOLAS

Secretary - - - - JOAN CHRISTIE

Treasurer - - - CURT ENGLISH

Woman Representative — ELEANOR NICHOLAS

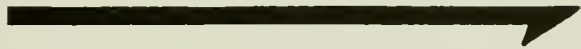
Man Representative - - - CARL MEYER





* Consult Student Directory pp. 142-44.

Freshman Class



. . . the rigors of customs . . . the exploring
of Bloomsburg . . . the traditional talent show
. . . new friends, habits, routines . . . Sweet-
heart theme of the Freshman Dance.





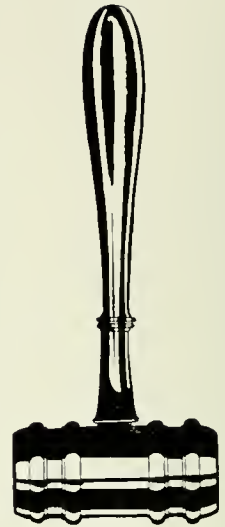
The

ACTIVITIES

Community Government Association



Left to Right—G. Houseknecht, J. Fry, E. Cunfer, M. Crisci, W. Jacobs.



. . . all students in one body functioning through a college council, a medium of exchange for the plans and ideas of students, faculty, and administration . . .



EDWIN CUNFER
*President, Community
Government Association*

Community Government Association

OFFICERS

<i>President</i>	- - - - -	EDWIN CUNTER
<i>Vice President</i>	- - - - -	MICHAEL CRISCI
<i>Secretary</i>	- - - - -	JUDITH FRY
<i>Treasurer</i>	- - - - -	WILLIAM JACOBS
<i>Assistant Treasurer</i>	- - - - -	GERALD HOUSEKNECHT

FACULTY MEMBERS

Dr. Engelhardt
Mr. Hallisy
Miss Hazen

Dr. Herre
Mr. Hoch
Dr. Kehr
Miss Macdonald

Dr. North
Miss Ranson
Mr. Yohe

STUDENT REPRESENTATIVES

Charles Andrews
Edward Campbell
Alfred Chiscon
Joanne Cuff
Rosella Danilo
Fred DelMonte

Joseph Feifer
Elaine Gunther
Mary Ellen Henning
Thomas Higgins
Alex Kubik
Keith McKay

Henry Marini
Carl Meyer
Eleanor Nichols
David Superdock
Harriet Williams
Mildred Wrzesniewski





First Row, Left to Right—J. Scrimgeour, A. Quick, M. Condon, I. Cichowicz, Dr. Maupin, R. Herchel, R. Harris. Second Row—L. Benner, C. Adams, W. Carson, R. Ewing, J. Ferdinand, J. Anderson. Third Row—J. Bogden, H. Edwards, J. Froncek, S. Carmody, P. Edwards, D. Doyle, C. Brennan. Fourth Row—W. Hill, E. Gunther, R. Evans, A. Bittner, J. Fry, R. Grant, C. Bell. Fifth Row—E. Cunfer, G. Houseknecht, T. Goodwin, B. Gulick, J. Johnson, S. Hoffman. Sixth Row—J. Krause, W. Jacobs, A. Hantjis, B. Duke, J. Ciavaglia, W. Kline.

Kappa Delta Pi

. . . a National Honor Society in Education,
encouraging high intellectual and personal stan-
dards, and fostering professional fellowship and
growth . . .

Kappa Delta Pi

OFFICERS

Adviser—DR. MAUPIN

President - - JOHN SCRIMGEOUR
Vice President - - ROBERT E. HARRIS
Corresponding Secretary — IRENE CICHOWICZ
Recording Secretary - - ERMA R. BEAN
Treasurer - - REGINA M. HERCHEL

First Row, Left to Right—D. Newbury, J. Long, R. Thomas, M. Williams, D. Watkins, J. Wersinger, W. Raker, C. Pease. *Second Row*—M. Ledyard, J. O'Donnell, M. Neugard, D. Paternoster, S. Uhrich, J. Newhart, P. McLaren, O. Moss. *Third Row*—P. O'Loughlin, J. Traver, P. Macalously, R. Korba, J. Miller, L. MacGill, M. Wrzesniewski, A. Kubik. *Fourth Row*—T. Johnson, A. Chiscon, E. Sable, H. Marini, H. Whitebread, D. Superdock, K. Smith.



Phi Sigma Pi



First Row, Left to Right—A. Kubik, J. Rittenmeyer. Second Row—V. Buckwash, W. Raker, M. Crisci, J. Scrimgeour, C. Brennan, R. Locke, J. Zahora, Adviser; R. Schleicher. Third Row—M. Moran, A. McManus, W. Stoutenburgh, D. Superdeck. Fourth Row—E. Connolly, F. Del Monte, D. Richardson, W. Kline, M. Jones, R. Holtzman, J. Kopec. Fifth Row—R. Steinbach, F. Gavio, D. Newbury, A. Chiscon, C. Andrews, R. Oney, K. Kirk. Sixth Row—C. Rumer, A. Schmidt, K. McKay.

OFFICERS

Adviser—MR. SCHLEICHER

President - - - JACK RITTENMEYER
Vice President - - - ALEX W. KUBIK
Secretary - - - CHARLES BRENNAN
Treasurer - - - JOHN S. SCRIMGEOUR

. . . a National Professional Fraternity
 for men based on twenty-three years
 of fellowship, scholarship, and profes-
 sional skill . . .

Pi Omega Pi

OFFICERS

Adviser—MR. GEHRIG

President - - - - WILLIAM JACOBS

Vice President - - - - CLARE DAVIS

Secretary - - - - JEAN NEWHART

Treasurer - - - - JUDITH FRY

. . . promoting, extending, and creating interest and scholarship in commerce . . . members having a high professional promise and superior scholastic ratings, high ethical standards plus service equaling worthy enterprise . . .



First Row, Left to Right—Dr. Andrus, Miss Noyes, L. Macgill, J. Newhart, W. Jacobs, J. Fry, Mr. Gehrig, Mr. Hinkel, Mr. Henric. *Second Row*—R. Harris, S. Uhrich, M. Neugard, S. Hoffman, P. O'Loughlin, R. Grant, A. Bittner, M. Wrzesniewski, J. Pichel, W. Raker. *Third Row*—Mr. Hallisy, E. Longo, R. Haas, A. Swaboski, A. Hantjis, R. Locke, C. Pease, R. Knause, E. Cunfer.

Alpha Psi Omega



Sitting, Left to Right—B. Caccia, Secretary; V. Burness, J. Miller. *Standing*—B. Von Drach, J. Ciavaglia, President; N. Wilson, Adviser; G. Houseknecht.

. . . providing encouragement and recognition for students interested in dramatics and the college theater, being comprised of outstanding members of the Bloomsburg Players . . .



OFFICERS

Adviser—DR. WILSON

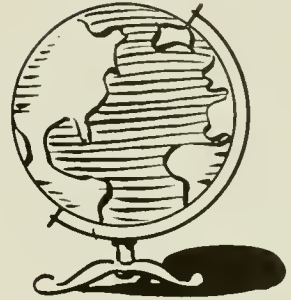
<i>President</i>	-	-	-	JAMES CIAVAGLIA
<i>Secretary</i>	-	-	-	LENA A. CACCIA
<i>Treasurer</i>	-	-	-	JOANNE R. CUFF

Gamma Theta Upsilon

OFFICERS

Adviser—MR. STERLING

President - - - WILLIAM FISHER
Vice President - - CLIM MAKOWSKI
Secretary - - - RUSSELL HONS
Treasurer - - - JOHN M. DIRICO



. . . a Professional Geography Fraternity seeking close bonds of fellowship, professional promise and study, and high character and ideals . . .



First Row, Left to Right—H. Marini, R. Hons, C. Makowski, J. DiRico, J. Iles. *Second Row*—H. Eckart, A. Belinsky, E. Campbell, J. Schalles, B. Yeager, T. Stefanik. *Third Row*—M. Morris, D. Smith, K. Hidlay, B. Ellinger, R. Lewis, J. Froncek.

Sigma Alpha Eta



First Row, Left to Right—C. Bell, Treasurer; M. Dreibelbis, Corresponding Secretary; Miss Weir, Adviser; R. Korba, Recording Secretary, A. Kubik, President. *Second Row*—N. Rhodes, E. Ohlman, N. Swartz, M. Martz, J. Levandosky, P. Noll. *Third Row*—D. Peterson, G. Masanovich, D. Stauffer, P. Boyle, E. Keim, M. Pliscott, H. Brooks. *Fourth Row*—B. Von Drach, J. Mahoney, R. Grobowski, E. Schmidt, G. Bennet, B. Jones.

OFFICERS

Adviser—MISS WEIR

President - - ALEX KUBIK

Vice President—NANCY HEEBNER

Recording Secretary—
MARY DREIBELBIS

Corresponding Secretary—
ROSE M. KORBA

Treasurer - - CLYDE BELL

. . . creating and stimulating
interest in speech and hearing
. . . learning experiences, uni-
ty, offering fellowship, and
co-ordinating interests and
efforts toward a common
goal . . .



Student Christian Association



First Row, Left to Right—J. Coleman, Mr. Hinkel, E. Nunn, A. Fisher, L. Schullery, G. Houseknecht, J. Laidecker. *Second Row*—M. Nielson, L. Deibert, W. Bowman, B. Balliet, P. Phillips, A. Dreese, R. Ellis, G. Harris, R. Lewis. *Third Row*—E. Nichols, D. Sharretts, M. Trefsgar, L. Fry, M. Bitler, L. Szerafinski, B. Zimmerman, F. Evert, B. Hoffman. *Fourth Row*—A. Swartz, P. Edwards, N. Gunton, J. Traver, J. Lukac, A. Moyer, A. Quick, M. Parrish, A. Atmonavage. *Fifth Row*—O. Moss, J. Nicholas, B. Yeager, C. Trobetsky, A. Hermany, N. Homsher, C. Davis, H. Edwards.

OFFICERS

Adviser—MR. HINKEL

President - - LOUISE SCHULLERY
Vice President - GERALD HOUSEKNECHT
Secretary - - - ALICE FISHER
Treasurer - - - EDGAR NUNN

. . . a social and devotional on-campus organization including students of all denominations united in Christian faith . . .

Future Teachers of America



OFFICERS

President - - - JOHN BOGDAN
Vice President - - JOHN SCRIMGFOUR
Secretary - - - JEAN O'DONNELL
Treasurer - - - JOSEPH BARKLEY

MEMBERS

Adams, C.
 Anderson, J.
 Anspach, T.
 Baer, B.
 Barkley, J.
 Bean, E.
 Bell, C.
 Benner, L.
 Bennett, P.
 Bickel, B.
 Bodek, S.
 Bogden, J.
 Boychuck, D.
 Boyle, J.
 Brennan, C.
 Brooks, H.
 Burness, V.
 Caccia, L.

Campbell, E.
 Carmody, S.
 Castle, R.
 Charney, T.
 Chiscon, A.
 Ciavaglia, J.
 Cichowicz, I.
 Cleaver, W.
 Condon, M.
 Cooke, L.
 Coursen, I.
 Crisci, M.
 Cuff, J.
 Cunfer, E.
 Cyganowski, A.
 Czerwinski, A.
 Davis, C.
 D'Angelo, R.

Danilo, R.
 Davenport, J.
 Dean, M.
 De Campi, H.
 Dennen, J.
 De Paul, R.
 Diltz, L.
 Di Rico, J.
 Dotter, S.
 Doty, J.
 Dowd, R.
 Duke, B.
 Durso, M.
 Edwards, H.
 Edwards, P.
 Endler, I.
 Erickson, D.
 Erwine, S.
 Eunson, F.
 Evans, R.
 Evans, J.
 Eveland, S.
 Ewig, C.
 Fago, S.
 Fedrigo, O.
 Feifer, J.
 Felker, M.

Ferdinand, J.
 Fitzpatrick, D.
 Froncek, J.
 Fry, R.
 Fulmer, T.
 Garrison, R.
 Gembusia, J.
 Gerhard, R.
 Goodhard, E.
 Goodwin, T.
 Gordner, A.
 Grabowski, R.
 Grant, R.
 Gray, H.
 Grazel, M.
 Greco, J.
 Gulick, B.
 Gunther, E.
 Gunton, N.
 Gurzynski, F.
 Hale, R.
 Harding, D.
 Harris, R.
 Haupt, M.
 Havard, J.
 Heacock, A.
 Heebner, N.

Heisley, J.
 Hendershot, T.
 Heppe, G.
 Herchel, R.
 Hess, P.
 Hileman, W.
 Hill, W.
 Hoffman, S.
 Hons, R.
 Hosler, M.
 Houseknecht, G.
 Hvasta, S.
 Johns, G.
 Johnson, J.
 Johnson, J.
 Johnson, T.
 Jones, M.
 Jones, W.
 Jones, R.
 Kallenbach, G.
 Kallenbach, M.
 Kelshaw, J.
 Kennedy, J.
 Kirk, K.
 Kissinger, F.
 Kline, W.
 Knause, R.

Future Teachers of America



Knecht, A.
 Koharski, A.
 Kornfeld, A.
 Krause, J.
 Krunkosky, J.
 Krunkosky, M.
 Ksanznak, L.
 Kubik, A.
 Laidacker, J.
 Ledyard, M.
 Lewis, R.
 Linn, B.
 Linn, E.
 Locke, R.
 Long, M.
 Macgill, L.
 Magargel, M.
 Makowski, C.
 Marini, H.
 Marr, H.
 Maturani, J.
 Mayo, G.
 McCauley, J.
 McLaren, P.
 McManus, A.
 McQuown, N.
 Meier, J.

Meisner, R.
 Meredith, D.
 Miller, J.
 Mincemoyer, J.
 Montague, H.
 Moore, R.
 Morgan, M.
 Morgan, P.
 Morrison, G.
 Moss, O.
 Moyer, A.
 Neugard, M.
 Newbury, D.
 Newhart, J.
 Neyhard, M.
 Nunn, W.
 O'Donnell, J.
 Ohlman, E.
 O'Loughlin, P.
 Oney, R.
 Ottaviani, W.
 Paige, P.
 Parrish, M.
 Paternoster, D.
 Patton, E.
 Pease, C.
 Pichel, J.

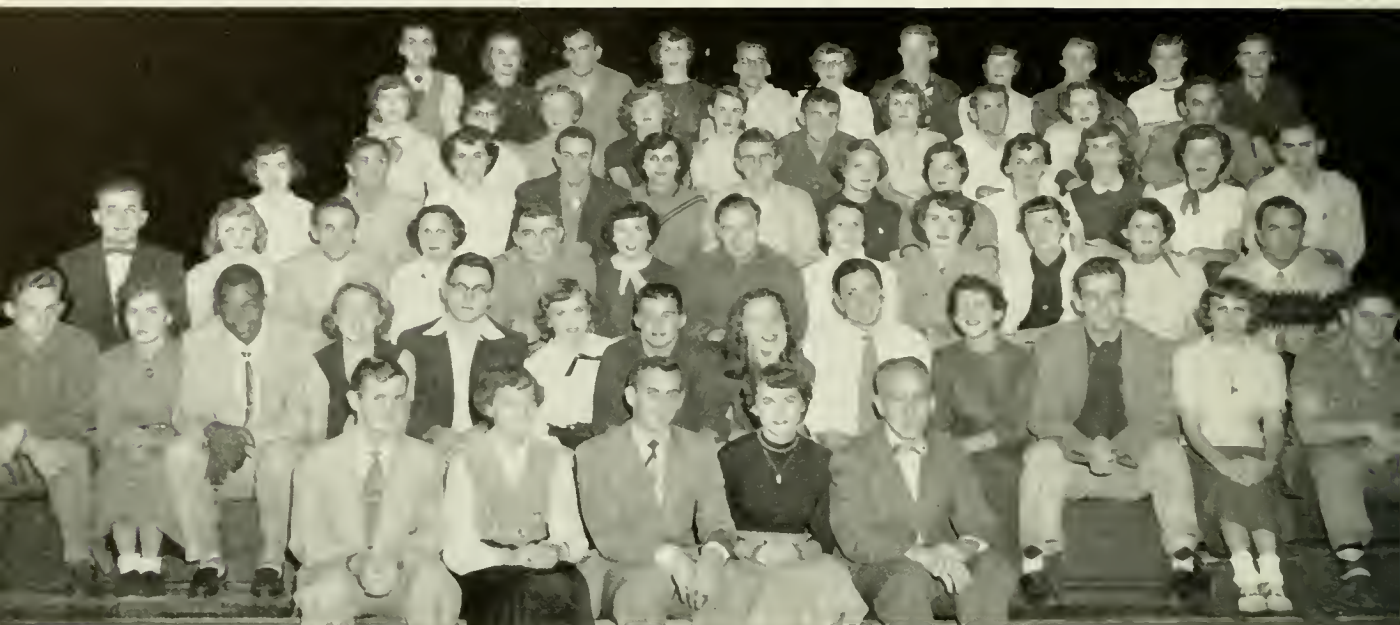
Pliscott, L.
 Price, R.
 Pugh, J.
 Quick, A.
 Raabe, R.
 Raker, W.
 Reinsmith, G.
 Reisenweaver, S.
 Rhoads, C.
 Rhoads, N.
 Richardson, C.
 Roll, T.
 Rompola, E.
 Sable, E.
 Schofield, J.
 Schmidt, L.
 Schullery, L.
 Scrimgeour, J.
 Shamro, J.
 Sharp, J.
 Smith, K.
 Snierski, R.
 Soberick, F.
 Speal, E.
 Stauffer, D.
 Stefanik, T.
 Stiner, M.

. . . acquainting upperclassmen with teaching problems while advancing the interests of education to prospective students and those already enrolled at Bloomsburg . . .

Stoutenburg, W.
 Swartz, N.
 Skeebe, J.
 Thomas, R.
 Thompson, J.
 Tilmont, J.
 Traver, J.
 Uhrich, S.
 Verhousky, R.
 Von Drach, R.
 Wallace, C.
 Wallace, J.
 Walsh, T.
 Walters, S.
 Wasiakowski, J.

Watkins, D.
 Weaver, E.
 Wersinger, J.
 Whitebread, H.
 Williams, A.
 Williams, B.
 Williams, M.
 Williams, S.
 Wirth, J.
 Wrzesniewski, M.
 Yeager, S.
 Yencha, S.
 Yesson, C.
 Zahora, J.
 Zeigenfuse, A.
 Zerby, A.

Business Education Club



First Row, Left to Right—S. Bodek, Treasurer; S. Ulrich, Secretary; W. Hatrack, President; J. Newhart, Vice President; Mr. Rygiel, Sponsor. *Second Row*—J. Kinder, J. Cook, H. Morrison, M. Hoffecker, C. Pease, J. Stephens, E. Berry, J. Shamro, M. Crisci, D. Doyle, J. Coval, D. Johnson. *Third Row*—R. Locke, R. Verano, E. Rompala, J. Cichowicz, W. Raker, M. Walsh, J. Boyle, S. Andre, S. Hiller, D. Jones, T. Welliver. *Fourth Row*—T. Jones, M. Durso, M. Wrzniewski, S. Hvasta, R. Oney, M. Henning, C. Trobetsky, J. Barklev. *Fifth Row*—K. Kirk, J. Muelhof, Croup, J. Mincer, F. Zeranski, J. Kline, J. Murray, B. Bennet, B. Westover, S. Hoffman, J. Nicholas.

OFFICERS

Adviser—MR. RYGIEL

President - - - WILLIAM HATRACK

Vice President - - - JEAN NEWHART

Secretary - - - SARAE ULRICH

Treasurer - - - SYLVESTER BODEK

Business Education Club

. . . a large and active organization using extra-curricular activities to enlarge the business education experiences of its members . . .



First Row, Left to Right—A. Ikeler, J. Keifer, J. Christie, J. Czeck, M. Lewis, R. Wayne, M. Harter, J. Sibley, R. Montague, E. Dean. *Second Row*—J. Mackelhoe, G. Wiik, B. Bietg, H. Stewart, C. Case, R. Hurtt, J. Reese, W. Kozlaski, M. Neugard, W. Jacobs, A. Gengenbach. *Third Row*—J. Bush, A. Vermilya, J. Panichello, L. Diltz, F. Childs, M. Neyhart, J. Cherrington, E. Balent, D. Levan, J. O'Donnell. *Fourth Row*—J. Coleman, P. O'Brien, L. Rhinchart, M. Gobster, R. Shuttlesworth, J. McCormick, V. Karycki, R. Grant.

Women's Chorus

OFFICERS

Adviser—MR. SMITH

President - - - MYRA ALBERTSON
Vice President - - LOUISE SCHULLERY
Secretary - - - SALLY MORGAN
Treasurer - - - MARY LEDYARD



First Row, Left to Right—Mr. Smith, J. Stephens, J. Hester, M. Williams, J. Miller, J. Curilla, M. Lewis, M. Melchan, E. Miller, A. Vermilya, J. Lipko, J. Desmond, B. Hendershot. *Second Row*—J. Buck, M. Hoffecker, B. Kester, C. Rummage, G. Harris, A. Dreese, E. Watson, F. Keiper, A. Kornfeld, H. Clark, L. Deibert, B. Balliett, R. Snierski. *Third Row*—M. DePaul, R. Korba, M. Neugard, E. Brace, J. Traver, R. Girdauskas, L. Szerafinski, C. Shupp, S. Fisher, L. Fisher, R. Paul, E. Balent, P. Phillips, E. Novak, L. Schullery. *Fourth Row*—M. Bitler, A. Swartz, M. Neilson, J. Kanyok, J. Ference, C. Case, M. Ertel, G. Gebhard, E. Adams, J. McCormick, M. O'Braitis, B. Bryan, P. McLaren.

Women's Chorus



First Row, Left to Right—A. Williams, L. Bogart, P. Edwards, N. Gunton, D. Jones, J. Kline, J. Albert, E. Myers, M. Dreibelbis, M. Hippensteel, J. Lundy. *Second Row*—B. Vanderslice, L. Fry, P. Hess, S. Yenshaw, A. Snyder, A. Jenkins, J. Lukac, M. Duttinger, P. Noll, S. Andre, N. Wren, J. Wagner, M. Albertson, T. Valenta, R. Cope. *Third Row*—R. Fry, G. Ott, J. Heisly, M. Gracion, J. Griffiths, C. Vought, W. Bowman, E. Hall, A. Gengenbach, C. Stoeht, A. Moyer, S. Krapf, B. Hoffman, R. Gillman, G. Histed, M. Parrish, N. Williams, S. Reisenweaver. *Fourth Row*—E. Adams, P. O'Loughlin, M. Ledyard, J. Evans, A. Hermany, S. Hoffman, R. Grant, P. Haupt, S. Morgan.

. . . golden throated lassies singing together for the enjoyment of themselves, the college, and the community . . .

Mixed Chorus



First Row, Left to Right—Mr. Smith, R. Paul, B. Von Drach, M. Lewis. *Second Row*—W. Bowman, E. Adams, F. Keiper, M. Williams, L. Schullery, N. Williams, A. Kornfeld, A. Semanski. *Third Row*—M. Bitler, L. Fry, J. Miller, S. Morgan, E. Miller, A. Vermilya, R. Girdauskas. *Fourth Row*—P. Goditus, L. Diebert, P. Phillips, J. McCormick, E. Novak, M. O'Braitis, A. Hermany, M. Duttinger, N. Hoy. *Fifth Row*—P. Paige, M. Dean, J. Hester, C. Rummage, M. Renn, M. Ledyard, P. O'Loughlin, S. Hoffman. *Sixth Row*—S. Williams, B. Westover, S. Deveraux, E. Dean, C. Deitch, B. Shaneman, B. Lewis, J. Bogden, R. Raabe, T. Rebbeneck, P. Shupp.

OFFICERS

President - - - ROBERT VON DRACH
Vice President - - - RUTH PAUL
Secretary - - - MARY LEWIS
Treasurer - - SARA JANE HOFFMAN

. . . the blending of sweet soprano and rich baritone voices for the common pleasure of the group, the college, and the community . . .

Aviation Club

OFFICERS

Adviser—MR. STERLING

President - - - - LEE BENNER
Vice President - - - JAY S. WIRTH
Secretary - - - - RITA MEISNER
Treasurer - - - ILA M. COURSEN

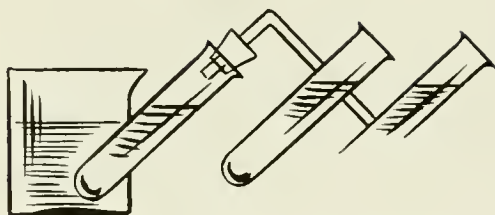


. . . looking into the future and keeping abreast of the present by promoting all aspects of aeronautics . . .



First Row, Left to Right—L. Benner, I. Coursen, D. Derr, K. Beard, R. Locke. *Second Row*—D. Paralis, T. Laine, A. Wolfe, J. Pugh, J. Omlor, F. Del Monte. *Third Row*—R. Dinger, R. Girton, J. DiRico, A. McManus, C. Ruffing, R. Miller, T. Welliver. *Fourth Row*—E. Keim, R. Williams, J. Mincemoyer, A. Aurand, R. Ishler. *Fifth Row*—B. Carvolth, C. Rummage, R. Rhodes, I. Sones, J. Reese, H. Mauer. *Sixth Row*—E. Palushock, R. Raabe, M. Morris, D. Lynn, R. Shark.

Science Club



OFFICERS

Advisers—DR. KUSTER, MR. LANTERMAN

President - - - JOHN S. SCRIMGEOUR
Vice President - - - SHIRLEY EVELAND
Secretary - - - - ELIZABETH BAER
Treasurer - - - ALTON W. SCHMIDT



First Row, Left to Right—H. Novak, N. Noz, F. Soberick, S. Eveland, R. Fry, G. Holdren, P. Hartman.
Second Row—T. Davis, H. Horne, S. Krum, J. Dennen, R. Rhodes, O. Baker, A. Schmidt. *Third Row*—
A. Garringer, J. Tuckett, N. Snyder, P. Ives, H. Rutkowski, S. Rinehimer, V. Scrimgeour, R. Thomas.
Fourth Row—R. Huntz, A. Atmonavage, B. Butler, R. Blyler, J. Slembariski, F. Baer, D. Harding.

Science Club



First Row, Left to Right—L. Cole, W. Hill, J. Anderson, W. Stoutenburgh, J. Feifer, R. Moore, W. Kline. Second Row—J. Krause, S. Yeager, E. Gunther, W. Carson, R. Cornell, J. Luchs, Dr. Kuster, Sponser. Third Row—M. Palko, P. Harding, B. Dowd, J. Froncek, B. Bishop, Mr. Lanterman. Fourth Row—J. Heisley, R. Evans, V. Buckwash, R. Kanaskie, J. Halcovich, A. Walburn, J. Scrimgeour. Fifth Row—P. Bennett, P. Harding, R. Ledger, J. Johnson, A. Chiscon.

. . . enlarging scientific knowledge and experience in both the biological and physical fields through use of lectures, demonstrations, motion pictures, and field trips . . .



Bloomsburg Players



First Row, Left to Right—M. Harter, H. Clark, C. Craparo, J. Wersinger, W. Bowman, S. Hiller, J. Bolling, L. Goodell, J. Scott, M. Ruddick, P. Boyle, J. Ciavaglia, R. Danilo, M. Hoffecker. *Second Row*—J. Ference, J. Mincer, I. Cichowicz, O. Fedrigo, J. O'Donnell, G. Benner, S. Phillips, N. Noz, P. McLaren, J. Cuff, J. Miller, S. Hvasta, Dr. Wilson. *Third Row*—J. Palutis, M. Martz, S. Devereaux, B. Carter, T. Stefanik, G. Herre, B. Von Drach, J. Curilla, C. Bauer, J. Chapin, I. Endler, L. Benner. *Fourth Row*—P. Shoop, F. Vacante, C. Deitch, P. Magaro, D. Lynn, M. Moran, D. McNeilis, B. Ottaviani, J. Ferdinand, G. Houseknecht, J. Luchs.

OFFICERS

Adviser—DR. WILSON

President - - - JAMES CIAVAGLIA

Vice President - - - JAMES FERDINAND

Secretary - - - MARY ANN MARTZ

Treasurer - - - SHERRILL HILLER

. . . a workshop in educational dram-
atics by creation of student staged
productions for college and public . . .

Bloomsburg Players



"Kind Lady"



"A Tuesday Night"



"You Can't Take It With You"

Waller Hall Association

Governing

OFFICERS

Advisers—DEAN KEHR, MISS MACDONALD

President - - - ROSELLA DANILO

Vice President - - MYRA E. ALBERTSON

Secretary - - - LOUISE SCHULLERY

Treasurer - - - MARY LEDYARD



Seated, Left to Right—Miss Macdonald, L. Schullery, M. Albertson, M. Ledyard, R. Danilo, Dr. Kehr.

First Row, Left to Right—W. Bowman, L. Bogart, A. Fisher, B. Berry, G. Ott, J. Griffiths. *Second Row*—R. Danilo, R. Grant, I. Cichowicz, H. Rutkowski, J. Bower, E. Brace, P. McLaren, J. Hester. *Third Row*—J. Bolling, P. Haupt, M. Williams, B. Baer, G. Benner, M. Neugard, J. Lukac, H. Clark, R. Gydosh. *Fourth Row*—J. Johnson, B. Balliet, M. Gobster, E. Gerosky, N. Snyder, J. Yosviak, S. Andre, J. Albert, L. Szerafinski.



Waller Hall Association

Board



Standing—P. Edwards, J. Bower, I. Coursen, B. Baer, M. Patton, P. O'Loughlin, J. McCormick, J. Greco, A. Fisher, M. Williams.

. . . all women dormitory students making living together a pleasant, cheerful, and cooperative experience, while carrying out social, educational, and governing programs . . .

First Row, Left to Right—J. Scott, J. Wersinger, J. Traver, N. Gunton, B. Hoffman, L. Schullery, C. Gill. *Second Row*—R. Rohrbach, J. McCauley, P. Edwards, J. Ference, S. Hiller, S. Hvasta, T. Jones, N. Homsher. *Third Row*—A. Quick, M. Ledyard, S. Hoffman, A. Kornfeld, M. Hoffecker, C. Case, P. Miller, E. Nichols, C. Goodell. *Fourth Row*—C. Rummage, P. Bitler, L. Fry, C. Sanders, N. Renn, B. Reitmeyer, M. Lyngousky, G. Histed, P. O'Loughlin, M. Albertson, M. Wrzesniewski.



Men's Dormitory Association



First Row, Left to Right—R. Shuttlesworth, F. Betz, J. Nemetz, J. Panichello, B. Mont, J. Swigonski, E. Cunfer, R. Lewis, W. Ellinger. *Second Row*—J. Ondrula, J. Zahora, M. Bernot, J. Johnson, S. Devreaux, R. Schmidt, R. Locke, R. Von Drach, J. Koval. *Third Row*—E. Berry, M. Crisci, T. Goodwin, M. Jones, W. Stoutenburgh, D. Erickson, C. Andrews, W. Raker, A. Geringer, R. Hons. *Fourth Row*—P. Bennett, C. Brennan, R. Holtzman, F. Williams, T. Sanders, J. Tucket, T. Higgins, C. Ruffing, J. Shemanski, T. Rowley. *Fifth Row*—J. Davenport, T. Stefanick, J. Boyle, R. Castle, A. McManus, W. Ottaviani, J. Anderson, D. Meredith, D. Newberry. *Sixth Row*—G. Kallenbach, K. Kirk, C. English, K. Smith, C. Pease, W. Kline, J. Johnson, J. Feifer, M. MacKay, E. Palushock.

. . . all resident male students together for the regulation of dormitory conditions along with the providing of social programs for the entire college community . . .

OFFICERS

Advisor—DEAN HOCH

President - - JOSEPH FEIFER
Vice President - CHARLES BRENNAN
Secretary - - JOSEPH COLONI
Treasurer - - JOHN SCRIMGEOUR



Day Men's Association



. . . all non-dormitory male students taking a unified active part in the social and student governmental functions of college life . . .

OFFICERS

Adviser—MR. HERRE

President - EDWARD CAMPBELL
Vice President - WILLIAM FISHER
Secretary - - JOHN BOGDAN
Treasurer - - - CLYDE ADAMS



First Row, Left to Right—F. Campbell, J. Slembariski, B. Bishop, H. Novak, J. Omlor, G. Wiik, R. Gerhard, R. George, B. Evans, J. Bogdon. *Second Row*—D. Levan, H. Eckhart, P. Cain, J. Meir, J. Roberts, G. Houseknecht, C. Adams, W. Carson, K. Wagner, L. Benner. *Third Row*—A. Galanti, D. Carey, O. Baker, A. Gurzunski, E. Kapsak, J. Healey, G. Herre, R. Hale, B. Duke, R. Wayne. *Fourth Row*—E. Sable, J. Harris, W. Pettit, E. Connolley, R. Girton, J. Kennedy, A. Kubik, P. Gergen, B. Hughes, D. Evans. *Fifth Row*—B. Carter, G. Watts, R. Bittner, E. Siscoe, J. Bluges, E. Mordan, N. Traugh, P. Harding, R. Kocher, J. Kosloski.

Day Women's Association



First Row, Left to Right—Miss Ranson, L. Diltz, M. Neyhard, B. Bucher, E. Gunther, F. Eunson, H. Horne, A. Frey, P. Makowski.
Second Row—M. Walters, B. Vanderslice, C. Vought, B. Zimmerman, N. Rhoads, D. Harding, M. Bogardus, S. Carmody, M. Megargel, S. Watts. *Third Row*—A. Heacock, R. Thomas, G. Milewski, C. Yost, S. Krum, R. Fry, J. Reese, I. Sones, P. Morgan, M. Harter.
Fourth Row—P. Bartges, B. Knouse, D. Jones, J. Lundy, P. O'Brien, A. Burlingame, M. Hippensteel, J. Wintersteen, S. Eveland, F. Soberick, R. Herchel, H. May. *Fifth Row*—J. DeOrio, J. Wersinger, R. Moore, B. Hough, J. Schalles, S. Gerhard, N. Oberdorf, B. Yohey, E. Fowler, P. Hartman. *Sixth Row*—B. Gulick, M. Trefsgar, E. Myers, M. Cedor, J. Dauber, N. Bangs, F. Montague, G. Heppe, R. Danilo, J. Johnson.

Day Women's Association

OFFICERS

Adviser—MISS RANSON

President - - - ELAINE GUNTHER

Vice President - - - HOPE HORNE

Secretary - - - MIRIAM NEYHARD

Treasurer - - - LEONA DILTZ

. . . promoting and protecting the interests of non-dormitory women students, working together in social, welfare, and student-government affairs.

Then on to class



OBITER



DAVID N. NEWBURY
Editor-in-Chief

Editor-in-Chief - - - - DAVID NEWBURY

Associate Editors—ALFRED CHISCON, JOSEPH BARKLEY, BESSMARIE WILLIAMS

Copy Editor - - - - ALICE QUICK

Sports Editors—
JIMMIE JOHNSON, EUGENE MORRISON

Business Manager - - - - WILLIAM KLINE

Advertising Manager - - - - JAMES CIAVAGLIA

Advertising—KEITH WEISER, NANCY NOZ, MARY HOFFECKER, JOANNI HEISLEY, HANK NOVAK, NANCY LOU RHODES, SHERRILL PHILLIPS, LARRY KSANZNAK, FRANK VACANTE, MARGARET SHULTZ, BURT CARTER, MYRTLE MEGARGEL



. . . providing a lasting pictorial record of life at B. S. T. C. — its leaders, members, and activities — while giving workshop experience for the book's constructors.



JIMMIE JOHNSON
Sports Editor



ALICE QUICK
Copy Editor



KEITH MCKAY
Publicity Director

STAFF 1953

Sales Manager - - - THOMAS JOHNSON

Sales—EDNA KEIM, MARY LEWIS, HOLLY SMITH,
ELINOR EVANS, VIRGINIA SCRIMGEOUR, HOWARD
MARR, STANLEY AAGARD

Publicity Director - - - KEITH MCKAY

Staff Artist - - - STEPHEN WOLIE

Secretary - - - IRENE CICHOWICZ

Typists—JEANETTA MINCER, SARA JANE HOFFMAN,
CLARE DAVIS, BETSY HENDERSHOT, JOHN CHER-
RINGTON



WILLIAM KLINE
Business Manager



THOMAS JOHNSON
Sales Manager



JAMES CIAVAGLIA
Advertising Manager



IRENE CICHOWICZ
Secretary



ALFRED CHISCON
Editor-in-Chief

MAROON

. . . presenting current news and opinions to the student body by way of the printed word, while encouraging the creativeness of journalistically minded students . . .

EDITORIAL BOARD



First Row, Left to Right—Ferne Soberick, Nancy Sue Williams, Bessmarie Williams, Betty Hoover. *Second Row*—John Bogdan, Charles Andrews, Stephen Wolfe.



ALBERT McMANUS
Business Manager

and GOLD

DEPARTMENTAL HEADS



First Row, Left to Right—Robert Von Drach, Anna Bittner, Dolores Doyle, Betty Speal, Antoinette Czerwinski. Second Row—Thomas Johnson, Harry Brooks, Stanley Agard, David Newbury.



HARRIET WILLIAMS
Associate Editor



TUESDAY NIGHTS



Athenaeum Club

. . . advancing the understanding and enjoyment of music, classical and popular, by utilization of both club and outside talent . . .

OFFICERS

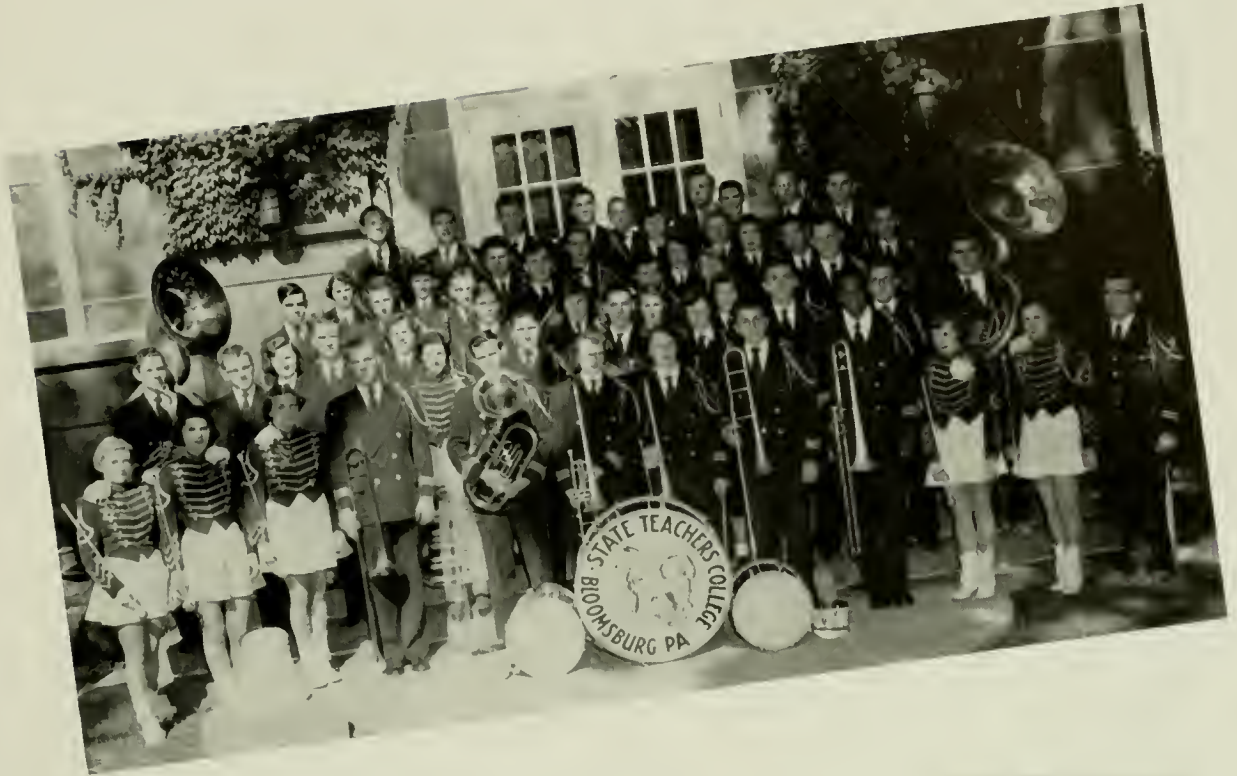
Adviser—MR. SMITH

<i>President</i>	- - -	ALEX P. KOHARSKI
<i>Vice President</i>	- - -	JEAN GRIFFITHS
<i>Secretary</i>	- - - -	MARY E. PATTON
<i>Treasurer</i>	- - - -	JANICE E. JOHNSON



First Row, Left to Right—Ralph Fisher Smith, Janice Johnson, Treasurer; June Lukac, Elizabeth Patton, Secretary; Jean Griffiths, Vice President; Alex Koharski, President. *Second Row*—Joan DeOrio, Beverly Hough, Grace Histed, Carolyn Yost, Carl Meyer, Jim Hogan, Joe Swigonski, Bill Bitner, Elaine Fowler. *Third Row*—Phyllis Makowski, Thelma Hendershot, Rae Girdauskas, Rita Gydosh, Lura Szerafinski, Florence Keiper, Ogden Moss, John Bogdan, Bill Ottaviani, Marcy Cedor. *Fourth Row*—Lorraine Deibert, Barbara Balliet, Wayne Pettit, Joan Chapin, Carole Ann Bond, Eiderson Dean, Jack Healy, Robert Long, Guy Long, Peggy Bartges. *Fifth Row*—Sheldon Williams, Thomas Sanders, Robert Lewis, Flora Kissinger, Antoinette Czerwinski, Neale Traugh, Hubert Smoczynski, Thomas Stefanik, Edward Siscoe.

Maroon and Gold Band



. . . representing and entertaining the college community while serving as a training unit for future band leaders and as an outlet for expression . . .

OFFICERS

Adviser—MR. HENRIE

<i>President</i>	- - - - -	DANIEL FITZPATRICK
<i>Vice President</i>	- - - - -	ALEX KOHARSKI
<i>Secretary</i>	- - - - -	EVELYN WEAVER



CHARLES HENRIE
Director

MEMBERS

Anthony, William
Benner, Gloria
Berry, Barbara
Bickel, Irvin
Bittner, Anna
Bogardus, Marian
Bottorf, Bob
Cain, Paul
Camp, Kenneth
Clyde, Warren
Doty, Jim
Evans, Byron
Felton, Marjorie
Fitzpatrick, Daniel

Gergen, Philip
Gydosh, Rita
Hidlay, Kenneth
Hinger, Carl
Hoyt, Robert
Hughes, William
Hummel, Eugene
Ikeler, Alfred
Johnson, Janice
Johnson, Thomas
Jones, Theophele
Kissinger, Joseph
Koehler, George
Koharski, Alex

Krafjack, Ronny
Krzywicki, Doris
La Sorsa, Louise
Magaro, Peter
Marris, Howard
Meredith, Donald
Morson, Harrison
Nichols, Eleanor
Renninger, Claude
Rhodes, Nancy Lou
Rohrback, Relda
Ruddick, Mary Ruth
Schell, George
Schell, Larry

Scott, Joan
Stines, Joseph
Tovey, Nancy
Walters, Marjorie
Weaver, Evelyn
Wolfe, Steve
Yeager, Betty

Majorettes
Berdy, Carolyn
Cichowicz, Irene
Henning, Mary Ellen
Roab, Joan
Walters, Shirley

The "B" Club



Sitting, Left to Right—B. Baer, A. Gengenbach, M. Macgill, S. Uhrich, N. Tovey, M. E. Henning.
Standing—D. Grael, J. Mincer, P. O'Loughlin, R. M. Grant, A. Bittner, R. Paul, J. Pichel, E. Ohlman.

. . . using a point rating based on sports participation to further the ideals of sportsmanship, cooperation, and athletic fitness . . .

OFFICERS

Adviser—Miss McCAMMON

<i>President</i>	-	LEONORA MACGILL
<i>Vice President</i>	- -	NANCY TOVEY
<i>Secretary</i>	- -	SARAE UHRICH
<i>Treasurer</i>	- -	ANN GENGENBACH

Newman Club*

. . . deepening and enriching the spiritual and temporal lives of the Catholic students on campus . . . varying activities to include religious, intellectual, and social pursuits.

OFFICERS

Adviser—REV. FATHER BURKE

President - - - ALBERT McMANUS

Vice President - - - RONALD KRAFJACK

Secretary - - - LOUISE LASORSA

Treasurer - - - WILLIAM OTTAVIANI

Publicity Chairman - JOSEPH FRONCEK

* A non-college organization.



First Row, Left to Right—J. Christie, M. Wrzesniewski, J. Alex. J. McCormick, Secretary; F. Gerosky, J. Desmond, T. Valente, B. Butz, J. Kanyok. *Second Row*—Rev. Father Burke, C. Craparo, C. Sanders, B. Butler, R. Gydosh, R. Krafjack, L. LaSorsa, E. Rompala, Vice President; H. Clark, S. Bodek, Treasurer; M. Walsh, F. Vacante, E. Novick, R. Verona, R. Girauskas, J. Froncek, J. DiRico. *Third Row*—R. Wayne, C. Richel, R. Locke, B. Ottaviani, J. Anderson, D. Paralis, O. Kozloski, J. Boyle, S. Devereux, A. McManus, C. Ruffing.

1953 OBITER COED CONTEST



The contestants for the third annual "Coed of the Year Contest" were selected by the president and man representative of each of the classes. The selection was based on the key phrase of the contest—"Beauty, Poise, and Personality."

An all-college election decided who was to be the winner and the 1953 Coed was crowned at the Freshman Sweetheart Dance.



JAN FERENCE

Top to Bottom—

BARBARA BENNETT
JOAN SCOTT
NANCY BANGS



Top to Bottom—

SHIRLEY EVELAND
BESSMARIE WILLIAMS
ELIZABETH PATTON



JUDY FRY

Coed of the Year

QUEENS



Since the May Queen is selected too late in the year for any yearbook recognition, *OBITER* 1953 presents this picture of the beautiful Peggy Bourdette, May Queen of 1952.

PEGGY BOURDETTE
May Queen '51-'52

One of the events made popular by the Varsity Club is their election of the Varsity Queen to be presented at the annual Varsity Dance. This year the Club did a thorough job and also elected a queen for each sport. They are:

Football Queen - BESSMARIE WILLIAMS
Baseball Queen - - SHERRILL HILLER
Basketball Queen—NANCY SUE WILLIAMS
Track Queen - - - JUNE PICHEL

DOLORIS DOYLE
Varsity Queen



FASHION SHOW 1952



. . . beautiful young ladies gain poise and the opportunity of modeling experience. The Business Education Club sponsors this Spring social event and furthers cooperation with downtown merchants.







The

ATHLETICS



First Row, Left to Right—B. Mont, F. Bidelspach, J. Nemetz, E. Morrison, J. Zahora, R. Verhousky, C. Brennan, D. Linkchorst, A. Zeigenfuse, B. Osevala, R. Rainey. Second Row—J. Browning, S. Belle, T. Connolley, D. Thomas, C. Pope, T. Rainey, F. Williams, J. Glosek, M. Jones, J. Angus, R. Couch. Third Row—W. Ellinger, R. Verano, M. Shultz, M. Lashendock, A. DiPaole, R. Caton, T. Shuey, T. Persing, L. Starr, R. VanGorder, R. Groover, R. Bottorf, C. Rumer.

Football at Bloomsburg

Team Roster

<i>Name</i>	<i>Position</i>	<i>Name</i>	<i>Position</i>
Angus, John	Quarterback	Nemetz, John	Tackle
Bell, Sammy	Halfback	Osevala, Barney	Halfback
Bidelspach, Francis	Guard	Panichello, John	Tackle
Bottorf, Bob	Fullback	Persing, Thomas	Guard
Brennan, Charles	End	Pope, Charles	End
Browning, James	Halfback	Rainey, Robert	Halfback
Caton, Richard	Halfback	Rainey, Ted	Fullback
Connolley, Edward	Center	Rumer, Claude	Guard
Couch, Ronald	Tackle	Schultz, Moritz	End
Cumens, Robert	Halfback	Shemanski, Joe	Tackle
DiPaolo, Anthony	Center	Shuey, Thomas	Tackle
Ellinger, William	End	Skiptunas, Charles	Center
Glosek, Joseph	Guard	Starr, Len	Halfback
Groover, Robert	Halfback	Thomas, Donald	Tackle
Jones, Merlyn	Guard	Van Gorder, Robert	Center
Kinder, Joe	Halfback	Verano, Ralph	Halfback
Lashendock, Mike	Quarterback	Verhousky, Russel	End
Linkchorst, David	Quarterback	Williams, Floyd	Tackle
Mont, Bernie	Halfback	Zahora, Jee	Fullback
Morrison, Eugene	End	Zeigenfuse, Ardell	Guard



in 1952

With Jack Yohe making his debut as head coach and his able assistants, Bells Colone, John Hoch, and Harold Shelly, they faced the task of rebuilding an eleven wrecked by graduation of six starters plus numerous reserves.

Incorporating the split T for the first time at Bloomsburg, Mr. Yohe guided the Husky gridders to another successful season against some of the best competition in the state, thus maintaining B. S. T. C.'s great football record.

—THE TEAM and THE COACH—

Mr. Jack Yohe, who hails from Jersey Shore, has had a great deal of experience with athletics. In addition to graduation from Lock Haven State Teachers College, where his main sports were football, baseball, basketball and track, he did his graduate work at Temple University.

He spent some time coaching at Biglersville High School; and then he entered the Navy with a rank of Lieutenant j.g., serving as athletic and recreation officer. After the war, he served one year coaching football, basketball, and track at Upper Marion High School. He then became head backfield coach at West Chester for five years before coming to Bloomsburg this year as head football and baseball coach.



COACH JACK YOHE

WILKES AT BLOOMSBURG

The Huskies unveiled Coach Yohe's split T in a flurry of gridiron dust as they neatly dusted off Wilkes 32-12 before 1500 fans at Athletic Park in the season's opener.

Led by veterans Russ Verhousky, Bernie Mont, and Barney Osevala on offense and a brilliant performance by Charlie Brennan at defensive end, the Huskies ground out a very decisive victory against the Colonels.

MANSFIELD AT BLOOMSBURG

Colorful Homecoming Day on Mt. Olympus saw the Huskies roll to their eleventh straight victory over a two year period. Before a gala crowd of alumni, friends, and students, the Huskies led by only six at half time but finally overwhe'med the Mountaineers in the last half with thirteen points for a final 25-6 win.

The Mike Lashendock-Dave Linkhorst passing combine netted a T. D. in the opening minutes of play while Bernie Mont, Bo Rainey, and Barney Osevala collaborated for three more scores by the overland route.

BLOOMSBURG AT TRENTON

The Husky eleven made its road debut against Trenton State Teachers by exploding for two last period touchdowns to squeak out a 13 to 6 victory.

A game marred by numerous penalties against the Huskies, B. S. T. C.'s gridders vastly outplayed their hosts with sixteen first downs to three.



VERHOUSKY, End



MONT, Halfback



DIPAULO on Target



OSEVALA, Halfback



BRENNAN, End



HERSCH About to Bite Turf

Bernie Mont, Bloom's offensive leader, tossed to Bo Rainey for the first tally, and John Panichello recovered a fumble for the second score while Trenton scored in the waning minutes of the game on a desperation pass play. This was Bloomsburg's twelfth straight win.

BLOOMSBURG AT SCRANTON U.

All good things must come to an end, and that they did at Scranton as the Huskies dropped a 33 to 7 fracas, their first defeat since 1950. However, in defeat Coach Yohe's gridders fought gloriously as they drew first blood in the early minutes of play. On the third play of the game, quarterback Dave Linkchorst rifled a pass to Barney Osevala for a T. D. After this, Royal depth and weight proved too much for our boys. Although the Huskies were outplayed, they were never outfought.



NEMETZ, Tackle



ZEIGENFUSE, Guard



RAINY, Halfback



"The Girls Varsity-Pep Squad"



LINKCHORST, Quarterback

BLOOMSBURG AT CALIFORNIA

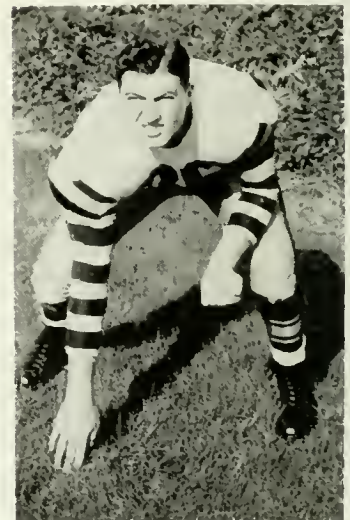
A letdown from the Scranton game resulted in a scoreless tie with California in their second tutor conference game of the season. The orchids in this game went to the Husky linemen for their outstanding defensive work. In this game, Charlie Brennan suffered a foot injury that limited his play for the remainder of the season. At various times throughout the game both teams pounded their way toward pay dirt, but were never able to cross the goal.

NEW HAVEN AT BLOOMSBURG

Returning to the friendly confines of Mt. Olympus, the Huskies also returned to the victory trail with a 22-12 win over a stubborn Owl eleven. The first Husky score came by the aerial route with Bo Rainey on the receiving end of a Linkchorst pass. The second first quarter touchdown featured Barney Osevala's forty-five yard gallop. The most thrilling play of the game came as the half ended when Russ Verhousky, All-Conference end, closely guarded by two defenders, made a leaping catch of Linkchorst's aerial. Bernie Mont's punting was also a standout feature of this game as he averaged 43 yards per punt.



JONES, Guard



GLOSEK, Guard



COUCH, Tackle



RAINEY, Fullback



LASHENDOCK, Quarterback

BLOOMSBURG AT WEST CHESTER

With spirits electrified, practically the whole student body followed the Huskies to Wayne Field and watched the Yohemen vie with the Rams for the Teachers College crown. Although the Huskies came out on the short end of a 26-6 score, they kept the rampaging Rams from running away with the game. Previously to this, West Chester had averaged forty-four points per game. Earl Hersch, the West Chester battering Ram, must be classified as the outstanding performer of the contest, scoring twice and having two other touchdowns called back. The Husky offense consisted of a Lashendock pass sandwiched by runs of Barney Osevala and Bernie Mont with the former scoring.

This description would be incomplete if the brilliant all-around play of Russ Verhousky were not mentioned. He won infinite praise from both Glenn Killinger and his own coach, Jack Yohe.

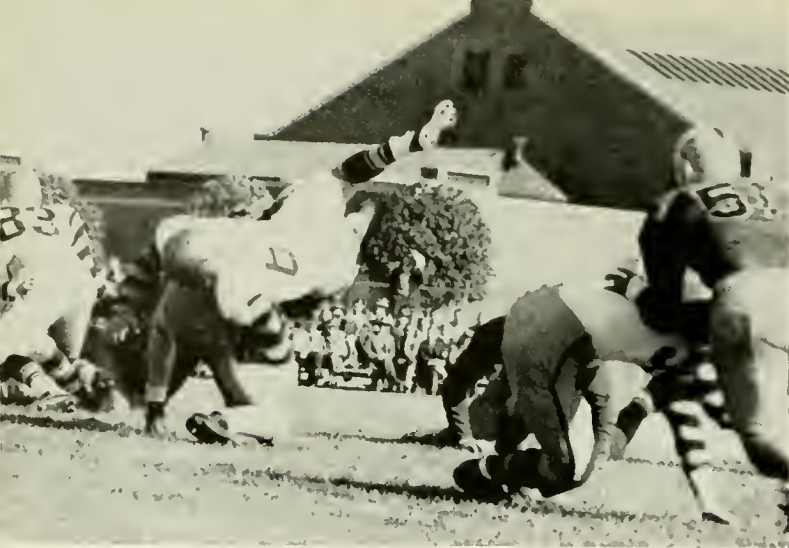
BLOOMSBURG AT LOCK HAVEN

The grand finale of a successful campaign was fought in the rain and mud as two fourth-period touchdowns by Osevala and Mont were the margin of the 14 to 0 victory.

It took 45 minutes of slopping around in the mud before the Huskies could get started; but midway through the final quarter, Osevala went over from the eleven. A few moments later Bernie Mont tallied from the nine. However, Lock Haven fought back, and the game ended with the Bald Eagles in possession of the pigskin on the Husky two-yard line.

"A Dark Night at West Chester"





RAINEY, Up and Over



MORRISON, End

RECORD

B. S. T. C.	32	Wilkes	12
B. S. T. C.	25	Mansfield S. T. C.	6
B. S. T. C.	13	Trenton S. T. C.	6
B. S. T. C.	7	Scranton U.	33
B. S. T. C.	0	California S. T. C.	0
B. S. T. C.	22	New Haven S. T. C.	12
B. S. T. C.	6	West Chester S. T. C.	26
B. S. T. C.	14	Lock Haven S. T. C.	0



DI PAOLO, Center



"Suiting Up" at Lock Haven

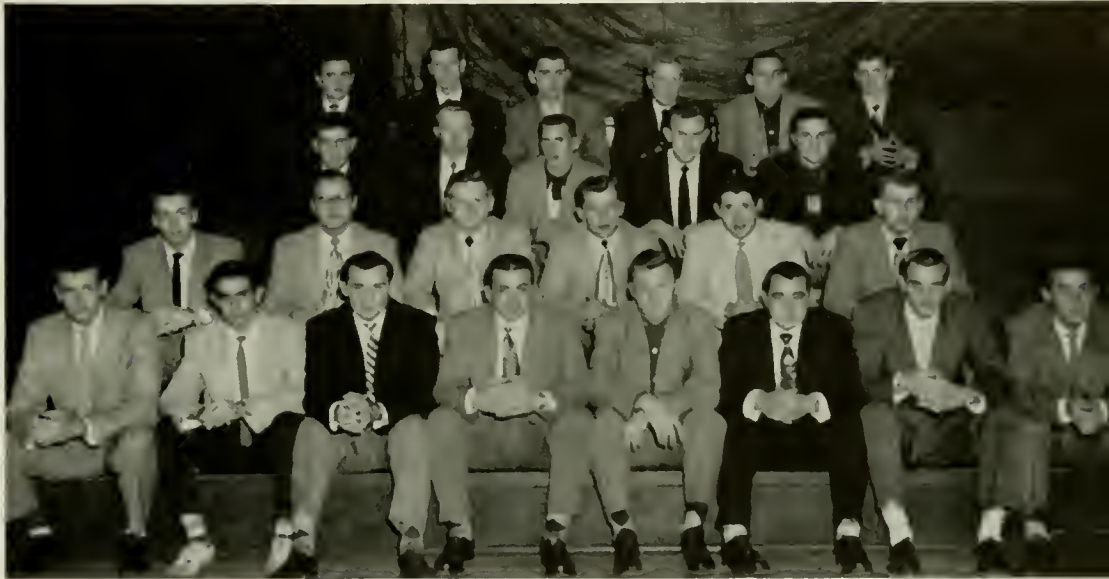
THE MANAGERS



A. GARRINGER, E. CUNFER, T. HIGGINS

Varsity Club

. . . giving the strength of unity to that group of men whose strength and skill is the pride of the college . . . fulfilling a social usefulness with the Varsity Dance . . . a select group of letter-winners.



First Row, Left to Right—B. Shuttlesworth, F. Betz, J. Nemetz, J. Panichello, B. Mont, A. Williams, B. Gerhard, L. Ksanznak. *Second Row*—J. Ondrula, J. Zahora, M. Bernot, B. Rainey, J. Lesser, C. Rumer. *Third Row*—T. Goodwin, M. Jones, J. Scrimgeour, G. Morrison, D. Erickson, J. Kopec. *Fourth Row*—C. Brennan, R. Holtzman, F. Williams, B. Stoutenburgh, R. Verhousky, E. Cunfer.

OFFICERS

Adviser—HAROLD SHELLY

<i>President</i>	-	-	-	-	CHARLES BRENNAN
<i>Vice President</i>	-	-	-	-	GENE MORRISON
<i>Secretary</i>	-	-	-	-	LAWRENCE KSANZNAK
<i>Treasurer</i>	-	-	-	-	MERLYN W. JONES

State Teachers College Champions--1953



First Row, Left to Right—D. Boychuck, A. Williams, R. Gerhard, D. Erickson, L. Ksanznak, D. Linkchorst. *Second Row*—K. Weiser, R. Shuttlesworth, J. Ondrula, F. Betz, J. Kopec, L. Bush. *Third Row*—J. Colone, H. Morson, S. Belle, R. Evans, H. Shelly.

Basketball

The 1952-53 Husky basketeers started slowly by dropping three out of their first four games. However, the picture changed, and the Huskies drove ahead to secure the first State Teachers Conference Championship in the history of B. S. T. C. with a 10-2 record.

The Husky dribblers, tutored by Harold Shelly, completed a successful season with a final total of 11 wins and 7 losses. On the whole, the cagers played fine ball, however their one main stumbling block was Wilkes who stopped them twice during the year despite many other decisive conference victories by the Shellymen.

Jumpin' Joe Ondrula, who headed the Husky scoring sheets, gained a second team berth on the All-Conference team, while Williams and Gerhard received honorable mention. Dave Linkchorst was the one Husky cager given honorable mention on the All-State Team.

Six seniors played their last game and, come next year, will be sorely missed. Those lost through graduation are D. Boychuck, D. Erickson, B. Gerhard, D. Linchorst, L. Ksanznak, and A. Williams.

The picture for next year is actually brighter than it appears, for though Coach Shelly will have only three returning varsity players—Betz, Ondrula, Shuttlesworth—these three men will form the nucleus and this year's undefeated J. V. squad will provide the structure for another winning season.

SCORES

B. S. T. C.	71	Scranton	78
B. S. T. C.	69	Kutztown	85
B. S. T. C.	79	Lock Haven	57
B. S. T. C.	58	Wilkes	74
B. S. T. C.	96	Cheyney	57
B. S. T. C.	96	Mansfield	66
B. S. T. C.	73	Lock Haven	57
B. S. T. C.	73	Millersville	69
B. S. T. C.	93	Lycoming	84
B. S. T. C.	95	Cheyney	88
B. S. T. C.	99	West Chester	96
B. S. T. C.	81	Wilkes	92
B. S. T. C.	88	Indiana	58
B. S. T. C.	83	Kutztown	79
B. S. T. C.	59	Millersville	65
B. S. T. C.	73	Mansfield	60
B. S. T. C.	67	Lycoming	103
B. S. T. C.	61	Millersville	66

(NAIA playoff)

Won 11; Lost 7

LINKCHORST, Guard



WILLIAMS, Guard

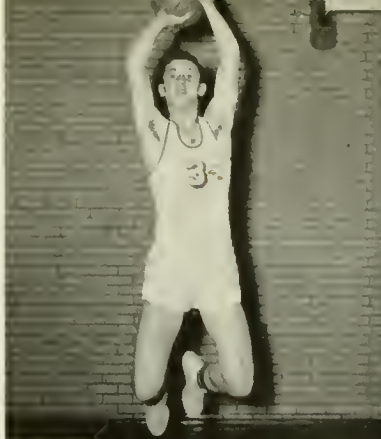


GERHARD, Forward

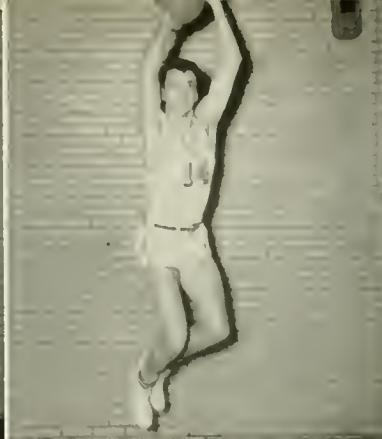




ERICKSON, Center



KSANZNAK, Guard



BOYCHUCK, Forward

STATISTICS

<i>Player</i>	<i>Field Goals</i>	<i>Foul Goals</i>	<i>Foul Attempts</i>	<i>Total Points</i>
Ondrula	92	66	114	250
Erickson	75	44	74	191
Gerhard	65	57	112	187
Williams	66	35	51	167
Betz	69	26	38	164
Linkehorst	39	21	29	99
Ksanznak	37	22	39	96
Boychuck	22	34	51	78
Shuttlesworth	14	19	28	47
Bush	15	3	7	33
Weiser	4	0	0	8
Belle	2	3	5	7
Evans	1	4	5	6
Morson	2	0	0	4
* Totals	507	341	563	1355

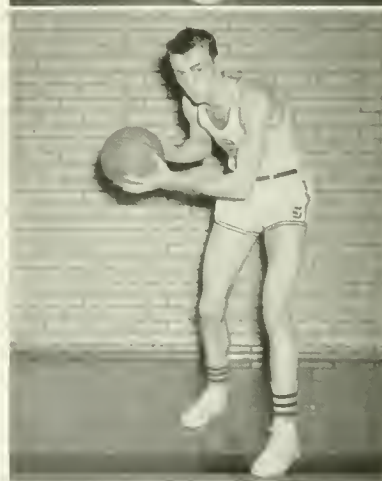
Scoring average per game 79.7.

* Does not include N. A. I. A. playoff game with Millersville.

BETZ, Guard



COACH HAROLD SHELLY



ONDRUI A, Forward



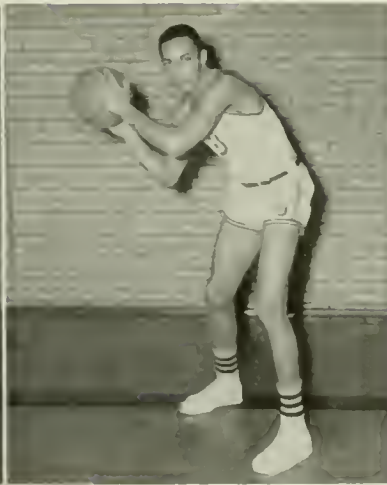
Doug gets the tap



Ballet?



WISER, Forward



BELIE, Forward



EVANS, Center

The Husky

Cheerleaders



SARAH ULRICH



DOLORES DOYLE



RUTH GILMAN



MARY HOFFECKER



MARY LOU KUBIK



JUDY STEPHENS

Track 1952



FEIFER — Out Front



SCRIMGEOUR — 184 feet?

Track in 1952 resulted in another dismal season as far as victory records are concerned. But a strong nucleus for 1953 was developed in the personages of Joe Feifer and John Scrimgeour.

In spots, the thin-clads excelled beyond the greatest hopes, but more depth in certain key events could have changed the complexion of an otherwise disheartening season. In addition to their Cheyney victory in the final contest, the Shellymen participated in the Penn Relays and the State Meet at Shippensburg.

STATE MEET

The success of the Husky track season was highlighted in the State Meet when Joe Feifer and John Scrimgeour became state champs in the mile and javelin throw respectively.

Feifer, who was undefeated in the mile and half mile in dual meets, continued to enjoy success in the State Meet by winning the mile in his best time of the year, 4:40.

The marathon of the year came in the Cheyney meet when Joe won the half mile, mile, and two mile.

Our other state champion, John Scrimgeour, who equally well exhibited himself in the clutch, excelled in his specialty, the javelin. John's best heave came against Lock Haven as he tossed the javelin for 184 ft. and continued unbeaten.

Competing with the best throwers in Teachers College ranks at Shippensburg, he picked up all the marbles with a victorious 180 ft. toss.

The courage of these two stars proved to Husky fans that, although outmanned, Shelly's team was never outfought.



Jack be nimble

RECORD

B. S. T. C.	47½	Lock Haven S. T. C.	78½
B. S. T. C.	30½	West Chester S. T. C.	96½
B. S. T. C.	44	Scranton U.	82
B. S. T. C.	34	Shippensburg S. T. C.	93
B. S. T. C.	72	Cheyney S. T. C.	53



TFD RAINEY heaves a shot



Move over boys—comin' thru

Baseball 1952



Note the centennial look



Here comes the peg

Bob Redman closed out his successful coaching career at Bloomsburg as he guided the Husky nine to a nine and three record.

Lefties Clem Makowski and Bill Creasey bore the bulk of the pitching while Don Butler and George Lambrinos supplied the offensive punch.

Bowing to Lock Haven twice, the Huskies defeated such outstanding foes as Indiantown Gap, West Chester, and Rider in addition to annihilating Harpur twice.

Although rain played havoc with the schedule, Mr. Redman once more developed a well rounded diamond aggregate.



Fenceward ho!

RECORD

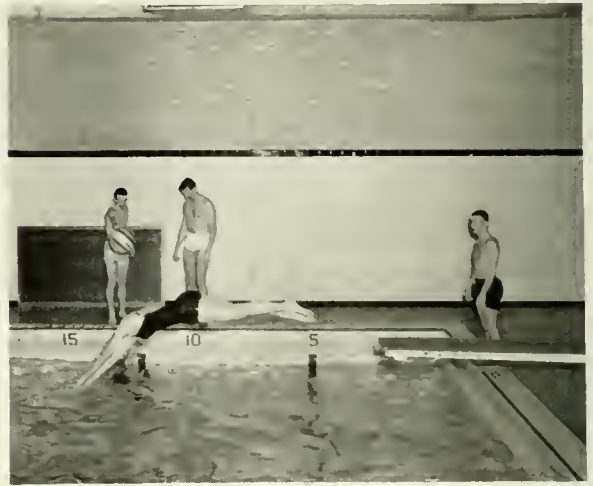
B. S. T. C.	Opp.
9	Wilkes 0
13	Mansfield S. T. C. 2
4	Scranton U. 1
8	Lock Haven S. T. C. 9
25	Harpur 1
3	Lock Haven S. T. C. 6
8	Indiantown Gap 7
12	Shippensburg S. T. C. 2
3	West Chester S. T. C. 1
9	Rider 6
18	Harpur 1
2	Millersville S. T. C. 3

Saturday Afternoon "Openhouse"



"Such nice eyes"

. . . after a long week of book-work, the Saturday afternoon "workout" . . . a happy change, a lot of fun . . . a welcome addition to weekend leisure time . . .



Splash!



Toe to toe



Ziggy up in the air

Women's Athletics



The Coeds also exhibit their athletic prowess in Centennial Gym as they strut their forms around every Tuesday evening. Points for "B" Club are tallied for the following extra-curricular activities:

BASKETBALL SHUFFLEBOARD SOFTBALL
VOLLEYBALL BADMINTON FIELD HOCKEY
CAGEBALL SWIMMING PING PONG
RED CROSS JUNIOR AND SENIOR LIFE SAVING



Gurgle



The gunner





The

ADVERTISING

SENIORS

Join your ALUMNI ASSOCIATION, and keep your membership active through the years. Annual dues of \$2.00 will include a year's subscription to the ALUMNI QUARTERLY. This magazine, which appears four times a year, will keep you informed of the activities of your classmates, and the events happening on the campus. A three year membership (\$5.00) will bring you also the 72 page booklet "Bloomsburg Through the Years."

Our Object:

"To Keep the Door of Opportunity
Open for Worthy American Youth."

Our Slogan:

"Every Graduate of Bloomsburg an Active Member of the ALUMNI ASSOCIATION."



DR. E. H. NELSON

All Dues Should Be Sent to:

DR. E. H. NELSON

President, Alumni Association

STATE TEACHERS COLLEGE

BLOOMSBURG, PA.

**R. G. BUCKALEW
CHEVROLET CO.**

**CHEVROLET
OLDSMOBILE
CADILLAC**



**BLOOMSBURG
PA.**

The Best of
LUCK and SUCCESS
in YOUR NEW FIELD
of ENDEAVOR

**ROCK'S
RESTAURANT**

The Home of Fine Food

Corner East and Fifth St.
BLOOMSBURG, PA.

Phone 9172



Come Josephine in My Flying Machine.



HOUSENICK MOTOR CO.

"THE HOUSE OF SERVICE"

Corner Main and East Streets

VAUGHN'S



DAINTY BREAD

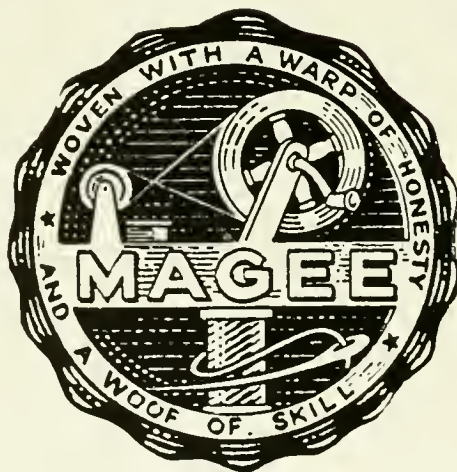
FAMOUS ROLLS

DAINTY SWEETS

Manufacturers . . .

Velvet . . . Axminster . . . Wilton . . . Cotton

Carpets and Rugs



The Magee Carpet Company

BLOOMSBURG, PA.



The gang meets here

WAFFLE GRILLE

140 East Main Street

SPEROS P. MARINOS

Compliments
of

ELKS CLUB

Bloomsburg, Penna.

Compliments of

WATTS

HOTEL



DANVILLE, PA.

**MILLER OFFICE SUPPLY
and
EQUIPMENT COMPANY**

*Office and School
Supplies*

ROYAL TYPEWRITERS

9 East Main Street



Swing your partner!



*Top: Sweet Adeline
Bottom: The Smile of Triumph*

The Farmers National Bank

BLOOMSBURG, PA.



Sound Banking Since 1891

H. B. SHARPLESS

**HARDWARE
and
GIFTS**

Compliments of

LEE-PAT'S

VAN HEUSEN SHIRTS

LEE HATS

WORSTED-TEX SUITS

"Outfitters to Men and Boys"

20 E. Main St.

Phone 1102

LOW'S

for

HOUSEHOLD APPLIANCES

TELEVISION

BOTTLED GAS

63 East Main

BLOOMSBURG, PA.

Known for Better Values

J. S. RAUB

SHOE STORE

24 East Main Street

BLOOMSBURG, PENNSYLVANIA

SUNSHINE LAUNDRY, INC.

BLOOMSBURG — BERWICK

Call

2400 3651

LYCOMING LINEN SUPPLY

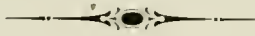
9th and Market Streets

BLOOMSBURG

A Lodge of Over 2,800 Members

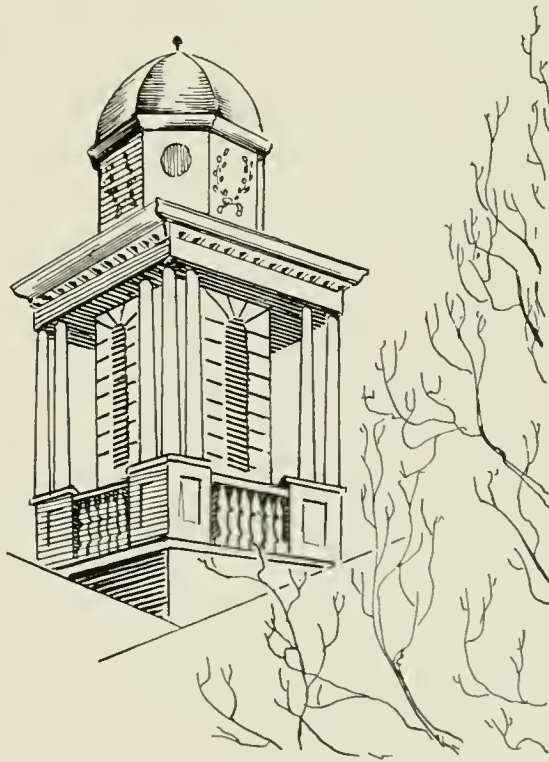
LOYAL ORDER OF MOOSE

BLOOMSBURG LODGE No. 623



Our membership has always been interested in all B. S. T. C. activities.

To the graduating class of 1953 we extend our sincere congratulations, and wish each and every one the best of luck.



SNYDER'S DAIRY

Safe MILK
and the

Finest in

DAIRY PRODUCTS

BLOOMSBURG — CATAWISSA
DANVILLE



Compliments of

**F. W. WOOLWORTH
COMPANY**

"The Friendly Store"

BLOOMSBURG, PA.

Compliments of

**CLEWELL'S
ICE CREAM**

Dairy Products of Columbia County
for over 50 years.

BERWICK CREAMERY

LABORATORY CONTROLLED CREAMERY PRODUCTS



— Those lovely hulu hands . . .

NELLIE WELLIVER

BERWICK, PA.

Dresses

Coats

Suits

Accessories

VINCENT'S
Haberdashery

Tailors—Cleaners

Latest in Men's Wear

103 Mulberry St.

Dial 4212

BERWICK, PA.

HARRY S. BARTON

REAL ESTATE—INSURANCE



BLOOMSBURG, PA.



*Smart
Shoppers
Shop
in
Bloomsburg*

Compliments of

BART PURSEL

BLOOMSBURG, PA.

CLOTHING *for MEN and BOYS*

DRY CLEANING

Compliments of

HESS'

GRILLE



"Meet Me at the Fair . . ."



Top: The Card Sharks

Bottom: Mums, Programs, and Football

YOUR GIFT

MEANS
MORE
WHEN THE BOX

Says

DILLON'S
Flowers

Phone
127

Where Quality Counts

**LETTERMAN'S
BAKERY,
INC.**

4th and Market Streets
BLOOMSBURG — Phone 554



—*Baking Masters*
of "Master" Products

HOTEL MAGEE

For the "Rest" of Your Life

BLOOMSBURG, PENNSYLVANIA

Compliments of

RITTER'S STATIONERY

Main Street
BLOOMSBURG, PA.

PINE BARN INN

Route 11
DANVILLE, PA.

BREAKFAST

LUNCHEON

DINNER

Guest Rooms

Banquets

Congratulations

Class of '53

W H L M

The Voice of the Susquehanna Valley

690 ON YOUR DIAL

HOTEL MAGEE
BLOOMSBURG, PA.

Compliments of

NORTH BRANCH BUS COMPANY



HUSKY TRANSPORTATION

The Name

“BALFOUR”

Stands for the finest in

Class Rings, Commencement Announcements, Club Pins,
Diplomas, Medals, and Trophies

L. G.

BALFOUR
COMPANY

AMBY NOLAN, Miners Bank Building, Wilkes-Barre, Pa.

“All-Ways” Reliable

The BEST in Men's
Furnishings

FRED R. HIPPENSTEEL

ANN BRUNER

DRESS SHOP



144 East Main Street
BLOOMSBURG, PA.



The Day the Big Maa Came to Town

MILLER ZEISLOFT & SON

Carburetor and General Repairing
Car Washing and Greasing

East and Main Streets

Phone 9162

BLOOMSBURG

*Congratulations
from*

SUNBURY

Coca-Cola
TRADE-MARK

BOTTLING WORKS, INC.

314 North Second Street
SUNBURY, PENNSYLVANIA
Telephone: Sunbury 1105

*Compliments
of*

Al's Cafe



*A Pleasant Place
For Pleasant People*



Hip! Hip! and Hop

ARCUS'

For a prettier you



BLOOMSBURG

BERWICK

*Compliments
of*

**GUINAN'S
DEPT. STORE**



BERWICK, PA.



Monday Morning Mont

*Compliments
of*
**NESPOLI
JEWELERS**



Berwick, Pa.

Compliments of
CAIN'S PHARMACY

R. R. CAIN, Pharmacist

108 Mill St.

DANVILLE

BOWMAN'S CLEANERS

*The Best
in Town*

TUXEDOS FOR HIRE

Orders for
Tailored Suits, Overcoats, Dresses

Professional Friends of OBITER 1953

J. K. MONTGOMERY

J. M. YOUNG

RALPH MARIUM

J. J. MILLER

R. S. HEMINGWAY

CHARLES YOST

Where Dad Took His Girl

THE TEXAS

D. J. Comuntzis, Prop.

BLOOMSBURG, PA.

EPPLEY'S DRUG STORE

Main and Iron Streets

BLOOMSBURG, PENNSYLVANIA

Congratulations

From

Robert N. Somerville

Photographer



WILLIAMSPORT, PA.

Compliments of

AL'S MEN'S SHOP

143 E. Main Street

BLOOMSBURG, PA.

HARRY LOGAN

Jeweler

Guaranteed Repairing. Fine Jewelry
Class Rings

Your Jeweler Away From Home

5 West Main Street

Telephone 2205



*Top: The Boys
Bottom: The Men*



September Affair

MORGAN'S BAR-B-QUE

Corner 11th and Mulberry Streets

CURB SERVICE
FOUNTAIN SERVICE

All Kinds of

SANDWICHES

THE POTATO CHIPS

with that



EXTRA

FINE

QUALITY

Always Crispy Fresh



Compliments
to the Class of '53

DEISROTH'S

Your
Department Store

Bloomsburg's Friendly Place to Shop

ZEPHER DINER

A Good Place to Eat

On Route 11

24 Hour Service

Phone 9181

CONGRATULATIONS *From*

Gaydash's White Horse Grille

1200 4th Avenue

BERWICK, PA.



Top: Where's Joe?



Bottom: The Midnight Oil

Your OBITER

Was Engraved, Printed and Bound
in our School Annual Department.

GRIT offers complete services in commercial art for design and layout, photography, photo-engraving for black and white and color plates, a modern letterpress plant, and a bindery with facilities for every phase of the work.

You can depend on GRIT'S service and quality workmanship. Consult us before placing your next order for printing.

GRIT PUBLISHING COMPANY

WILLIAMSPORT, PA.

Patronize

Your

Community Store

B. S. T. C.



Confair's Beverage Co.

BERWICK, PA.

STUDENT DIRECTORY -- 1953

SENIORS

Clyde C. Adams	Box 224, R. D. 1, Shamokin, Pa.	John L. Kennedy	261 Pierce Street, Kingston, Pa.
Mary G. Almers	114 Girard Street, Plymouth, Pa.	Herbert R. Kerchner	254 East Street, Bloomsburg, Pa.
Terry E. Anspach	Route 1, Turbotville, Pa.	William H. Kline	112 Gerhart Street, Millersburg, Pa.
Marjorie H. Ayre	110 Franklin Avenue, Tunkhannock, Pa.	Richard C. Knause	248 East Fifth Street, Bloomsburg, Pa.
Elizabeth A. Baer	R. D. 2, Shickshinny, Pa.	Alex P. Koharski	14 Fifth Street, Wyoming, Pa.
Joseph R. Barkley	2349 Armstrong Avenue, Holmes, Pa.	John L. Krause	2 Tamarack Street, West Hazleton, Pa.
Mary Ellen Dean Bartholomew	306 Mahoning Street, Milton, Pa.	Michael A. Krepich	1233 Ferris Avenue, Berwick, Pa.
William A. Bartleson	329 Orchard Street, Warrior Run, Pa.	Joseph F. Krunkosky	Lost Creek, Pa.
Erma R. Bean	Rahns, Pa.	MaryLou A. Krunkosky	Lost Creek, Pa.
Keith S. Bearde	122 Chestnut Street, Spring City, Pa.	Lawrence R. Kszanznak	206 East Green Street, West Hazleton, Pa.
Clyde H. Bell	527 Front Street, Freeland, Pa.	Alex W. Kubik	R. D. 2, York, Pa.
Lee E. Benner	100 North Front Street, Selinsgrove, Pa.	Robert L. LaBarr	42 North Street, Oneida, Pa.
Irvin R. Bickel	1028 Masser Street, Sunbury, Pa.	George Lambrinos	123 Hill Avenue, Endicott, N. Y.
Richard D. Bishop	R. D. 1, Pittston, Pa.	Edward R. Linn	R. D. 1, Bloomsburg, Pa.
Donald N. Blyler	R. D. 2, Bloomsburg, Pa.	William B. Linn	310 North Second Street, Catawissa, Pa.
Sylvester Bodek	112 Newport Street, Nanticoke, Pa.	Richard J. Locke	161 Sharpe Street, Alden Station, Pa. (Nanticoke)
John T. Bogdan	729 North Third Street, Philadelphia 23, Pa.	Mildred June Long	R. D. 1, Liberty, Pa.
Daniel Boychuck	401 North Shamokin Street, Shamokin, Pa.	Leonora M. Macgill	Nisbet, Pa.
Joseph E. Boyle	73 Cross Street, Harwood Mines, Pa.	Clem J. Makowski	342 Melrose Street, Keiser, Pa.
Charles M. Brennan	319 York Avenue, Towanda, Pa.	R. Henry Marini	368 Morris Avenue, Wayne, Pa.
Harry P. Brooks	738 Shady Lane, Pittsburg 31, Pa.	John B. Maturani	335 Fetterman Avenue, Bloomsburg, Pa.
Vivian E. Burness	42 West 4th Street, Bloomsburg, Pa.	Donald R. McClintock	1122 Walnut Street, Berwick, Pa.
Donald J. Butler	526 Orchard Street, Warrior Run, Pa.	Edward J. McGee	Box 114K, R. D., Hazleton, Pa.
William E. Byham	505 Greeves Street, Kane, Pa.	Nira J. McQuown	69 North Main Street, Shickshinny, Pa.
Lena Ann Caccia	Friendsville, Pa.	Myrtle Megargel	R. D. 2, Danville, Pa.
Edward J. Campbell	20 South Front Street, Ashland, Pa.	Joseph H. Meier	Millinville, Pa.
Shirley M. Carmody	115 Vine Street, Danville, Pa.	Rita M. Meisner	833 Pine Street, Kulpmont, Pa.
Theresa L. Charney	122 Main Street, Mahanoy Plane, Pa.	Donald E. Meredith	346 Queen Street, Northumberland, Pa.
Salvatore J. Ciavaglia	R. D. 2, Lehighton, Pa.	Jeanne L. Miller	5 East Harrison Street, Tunkhannock, Pa.
Irene L. Cichowicz	416 South Jardin Street, Shenandoah, Pa.	John K. Mincemoyer	209 South Main Street, Muncy, Pa.
William J. Cleaver	R. D. 2, Orangeville, Pa.	Robert E. Moore	Benton, Pa.
Mary C. Condon	417 Sampson Street, Old Forge, Pa.	Phyllis Y. Morgan	R. D. 4, Dauville, Pa.
LaRue A. Cooke	R. D. 3, Danville, Pa.	Milton Eugene Morrison	R. D. 5, Bloomsburg, Pa.
Roy Croop, Jr.	709 Green Street, Berwick, Pa.	Ozden P. Moss, Jr.	Main Street, New Milford, Pa.
Joanne R. Cuff	211 West Oak Street, Shenandoah, Pa.	David N. Newbury	8th and Ash Streets, Watsonport, Pa.
Ila M. Coursen	1409 Brook Street, Scranton, Pa.	Leland E. Ney	1144R Second Avenue, Berwick, Pa.
Edwin W. Cunfer	315 East Church Street, Slatington, Pa.	Miriam L. Neyhard	Box 136, Orangeville, Pa.
Alfred J. Cyganowski	168 Orchard Street, Nanticoke, Pa.	Michael J. Ohlman	93 Charles Street, Wilkes-Barre, Pa.
Ronald F. D'Angelo	1961 North Market Street, Berwick, Pa.	Michael J. Palko	804 Pottsville Street, Pottsville, Pa.
Rosella Dumilo	R. D. 1, Carbondale, Pa.	Doris A. Paternoster	571 Alter Street, Hazleton, Pa.
Clara Davis	R. D. 2, Clarks Summit, Pa.	Mary E. Patton	R. D. 1, Wyalusing, Pa.
Helen K. DeCampi	Hazle Street, Nuremberg, Pa.	Edwin L. Pauzer	1220 Scott Street, Kulpmont, Pa.
Leona I. Diltz	R. D. 1, Muncy, Pa.	Stephen F. Payer	McAdoo, Pa.
John M. DiRico, Jr.	338 Morris Avenue, Wayne, Pa.	Charles E. Pease	R. D. 1, Wyalusing, Pa.
James E. Duty	215 Third Street, Bloomsburg, Pa.	June Pichel	R. D. 1, Hellertown, Pa.
Robert J. Dowd	Ringtown, Pa.	Michael Pihanich, Jr.	138 Welles Street, Nanticoke, Pa.
Ben C. Duke, Jr.	103 Summerhill Avenue, Berwick, Pa.	Mildred M. Pliscott	1 Bennett Street, Exeter, Pa.
Michael J. Durso	381 Morris Road, Wayne, Pa.	Robert I. Price	210 South Market Street, Shamokin, Pa.
Palmer E. Dyer	1263 1/2 Market Street, Sunbury, Pa.	Alice J. Quick	Wyalusing, Pa.
Harry R. Edwards	675 Peace Street, Hazleton, Pa.	Raymond R. Raabe	Box 83, Sugarloaf, Pa.
JoAnn F. Edwards	R. D. 2, Montgomery, Pa.	Warren L. Raker	34 Montgomery Avenue, West Pittston, Pa.
Irene J. Endler	25 Susquehanna Street, Wilkes-Barre, Pa.	George W. Reinsmith	417 West 4th Street, Lehighton, Pa.
N. Douglas Erickson	Box 114, Ludlow, Pa.	Shirley M. Reisenweaver	Conyngham, Pa.
Richard Wm. Evans	118 North Poplar Street, Shamokin, Pa.	Claude W. Renninger	350 Locust Street, Bloomsburg, Pa.
C. Richard Ewing	R. D. 2, McClure, Pa.	Nancy Lou Rhoads	224 Main Street, Catawissa, Pa.
Stephen Fago	424 West Park Street, Centralia, Pa.	Jack Rittenmeyer	7237 Erdrick Street, Philadelphia, Pa.
Joseph P. Feifer	403 West 4th Street, Mount Carmel, Pa.	Theodore Roll	1409 Second Avenue, Berwick, Pa.
Madge Felker	Mt. Bethel, Pa.	Edward R. Rompala	Meshoppen, Pa.
James V. Ferdinand	816 Carbon Street, Freeland, Pa.	Edward A. Sable	60 West Enterprise Street, Glen Lyon, Pa.
William G. Fisher	1159 Poplar Street, Kulpmont, Pa.	Joyce Schofield McMahan	72 Church Street, Audenried, Pa.
Daniel E. Fitzpatrick	111 King Street, Northumberland, Pa.	John S. Scrimgeour	602 Wyoming Avenue, West Pittston, Pa.
Loretta C. Formalak	19 West Enterprise Street, Glen Lyon, Pa.	James H. Sharp	17 West Oak Street, Hazleton, Pa.
Thurston S. Fulmer	669 Queen Street, Northumberland, Pa.	John Sivulich	1022 Spruce Street, Kulpmont, Pa.
John M. Gembusia	10 West Kirmar Street, Alden, Pa.	Jean A. Skeeba	118 East Chapel Street, Hazleton, Pa.
Robert A. Gerhard	718 First Street, Palmerton, Pa.	Jack W. Soberick	204 West Front Street, Berwick, Pa.
Ellen A. Gibbons	R. D. 1, Trucksville, Pa.	Elizabeth A. Speal	529 Center Street, Freeland, Pa.
Edward M. Goodhart	R. D. 1, Northumberland, Pa.	Robert C. Stevenson	178 College Avenue, Factoryville, Pa.
Thomas A. Goodwin	224 Park Avenue, Kane, Pa.	Martha E. Stuer	1148 Market Street, Berwick, Pa.
Arlene G. Gardner	Main Street, Millville, Pa.	Anne Kelley Stonik	1005 Arch Street, Shamokin, Pa.
Marie R. Grazel	520 West Center Street, Shenandoah, Pa.	William H. Stontenburgh	46 Abbotts Lane, Hatboro, Pa.
Joan M. Greco	115 Oak Street, Old Forge, Pa.	Alexander T. Swaboski	414 East Sixth Street, Mt. Carmel, Pa.
Barbara A. Gulick	114 Sunbury Street, Riverside, Pa.	Nellie H. Swartz	362 Broad Street, Montoursville, Pa.
Robert V. Haas	214 Broad Street, Nescopeck, Pa.	Charles H. Taylor, Jr.	Township Line, Willow Grove, Pa.
Robert E. Hale	Box 125a, R. D. 1, Hazleton, Pa.	John J. Tilmont	129 Locust Avenue, Centralia, Pa.
Delores E. Harding	R. D. 1, Muncy, Pa.	Ruth E. Thomas	R. D. 4, Bloomsburg, Pa.
Robert E. Harris	R. D. 1, Pittston, Pa.	James W. Thompson	325 Haines Street, Kane, Pa.
William Hatrack	332 South Locust Street, Mt. Carmel, Pa.	Russ Verhousky	216 East Street, Coaldale, Pa.
Douglas I. Hayhurst	Old Berwick Road, Bloomsburg, Pa.	Raymond J. Wagner	815 Main Street, Simpson, Pa.
Anna C. Hencock	R. D. 1, Millville, Pa.	Jeanne A. Wallace	906 Chestnut Street, Berwick, Pa.
Nancy R. Heebner	24 Swaine Place, West Orange, N. J.	Thomas A. Walsh	345 Boyle Street, Warrior Run, Pa.
Grace Heppie	Sugarloaf, Pa.	Joseph J. Wasiakowski	151 East Noble Street, Nanticoke, Pa.
Regina M. Herchel	326 Winters Avenue, West Hazleton, Pa.	Dorothy S. Watkins	236 West White Street, Summit Hill, Pa.
Mrs. Winnie Mae Hileman	R. D. 5, Bloomsburg, Pa.	Edward P. Weaver	626 Pawnee Street, Bethlehem, Pa.
William J. Hill	218 Beech Street, South Williamsport, Pa.	Joan Wersinger	171 South Pine Street, Hazleton, Pa.
Russell O. Hons	4 Ellis Avenue, Shavertown, Pa.	Alfred V. Wesner	212 South Peach Street, Mt. Carmel, Pa.
Mrs. Margery N. Hosler	Millville Road, Bloomsburg, Pa.	Harold B. Whitebread	710 Fourth Street, Nescopeck, Pa.
R. Eugene Hummel	360 Fair Street, Bloomsburg, Pa.	Albert E. Williams	47 South Prospect Street, Nanticoke, Pa.
Susau D. Hvasta	1110 Diamond Avenue, Scranton, Pa.	Bessmarie C. Williams	51 West Pettebone Street, Forty-Fort, Pa.
George F. Johns	367 Hill Street, South Williamsport, Pa.	Sheldon Williams	1369 North Washington St. Wilkes-Barre, Pa.
Janice E. Johnson	1070 Adams Avenue, Lewisburg, Pa.	Mildred J. Wrzesniewski	310 Taylor Terrace, Chester, Pa.
Jimmie D. Johnson	R. D. 1, Benton, Pa.	Sammel R. Yeager	82 Wagner Avenue, Montgomery, Pa.
Richard H. Jones	155 East 8th Street, Bloomsburg, Pa.	Joseph J. Zahora	308 East Patterson Street, Lansford, Pa.
Wilma I. Jones	LeRaysville, Pa.	Arnell E. Zeigenfuse	Mowry, Pa.
Mary E. Kallenbach	Shartlesville, Pa.	Alton S. Zerby	Halfax, Pa.

JUNIORS

Aagard, Stanley A.	Secondary	Hess, Patricia	Elementary	Newhart, Jean E.	Business
Albertson, Myra E.	Elementary	Hinger, Carl K.	Secondary	Noll, Margaret L.	Elementary
Anderson, John A.	Secondary	Hoffman, Sara	Business	Noz, Nancy L.	Secondary
Andrews, Charles R.	Secondary	Hosler, Margery (Mrs.)	Elementary	Nunn, William E.	Elementary
Bennett, Paul	Secondary	Houseknecht, Gerald	Secondary	O'Donnell, Jean M.	Business
Berry, Edgar	Business	Hvasta, Susan D.	Business	O'Loughlin, Patricia	Business
Bittner, Anna K.	Business	Iles, Joseph D., Jr.	Secondary	Oney, Robert C.	Business
Boyle, Patricia E.	Elementary	Jacobs, William	Business	Ottaviani, William	Secondary
Camp, Kenneth	Business	Johns, George	Secondary	Paige, Phyllis	Elementary
Carson, W. Leonard	Secondary	Johnson, John C.	Elementary	Parrish, Marie	Elementary
Cherrington, John R.	Business	Johnson, Thomas	Secondary	Peterson, Donald D.	Secondary
Chiseon, Alfred J.	Secondary	Jones, Blandford, Jr.	Elementary	Pugli, Janice	Elementary
Coursen, Ila M.	Elementary	Jones, Merlyn W.	Secondary	Rhodes, Russell	Secondary
Cook, Jean L.	Secondary	Kallenbach, George	Elementary	Richardson, Donald	Elementary
Crisci, Michael R.	Business	Keim, Edna	Elementary	Rowley, Thomas J.	Secondary
Czerwinski, Antoinette	Secondary	Kelshaw, Joan M.	Elementary	Ruffing, Charles J.	Elementary
Davenport, James F.	Elementary	Kessler, James L.	Secondary	Schmidt, Roland C.	Elementary
Dennen, John E.	Secondary	Kirk, Kenneth	Business	Schullery, Louise M.	Elementary
DePaul, Mary A.	Elementary	Kissinger, Flora J.	Elementary	Shaffer, John E.	Elementary
Dinger, Russell F.	Elementary	Kissinger, Joseph D.	Secondary	Shamro, Jeanne	Business
Dotter, Sharon	Elementary	Knecht, Alfred D.	Business	Shultz, Margaret E.	Elementary
Doyle, Dolores	Business	Koehler, George E.	Secondary	Skammer, David J.	Business
Dreibelbis, Mary R.	Elementary	Kopec, Jerome	Secondary	Smith, Keith A.	Business
Edwards, Patricia	Elementary	Korba, Rose M.	Elementary	Snierski, Rosemary	Elementary
Erwine, Sheldon	Secondary	Kornfeld, Anna Mae	Elementary	Soberick, Ferne A.	Secondary
Eunson, Edna Faith	Elementary	Ksanznak, Stanley L.	Secondary	Stauffer, Douglas A.	Secondary
Eveland, Shirley	Secondary	Laidacker, John S.	Secondary	Stefanik, Thomas J.	Secondary
Fedrigon, Olive	Elementary	Ledyard, Mary L.	Elementary	Steinbach, Ronald P.	Business
Froncek, Joseph	Secondary	Lesser, James F.	Secondary	Superdock, David A.	Secondary
Fry, Judith	Business	Lewis, Thomas R.	Secondary	Tovey, Nancy E.	Elementary
Fry, Ruth Ann	Elementary	Linkhorst, David R.	Elementary	Traver, Jeannette	Elementary
Garrison, Robert	Business	Longo, Edmund M.	Business	Trocki, Daniel	Business
Gavio, Francis	Business	Makowski, Phyllis	Elementary	Urich, Sarae	Business
Gembusia, John M.	Elementary	Marr, Howard J.	Elementary	Vanderslice, Betty	Elementary
Geigenbach, Ann J.	Business	Martz, Mary Ann	Elementary	Vought, Carol	Elementary
Gerhard, Robert A.	Secondary	McAnall, Kenneth H.	Business	Wagner, Kenneth	Secondary
Glosek, Joseph S. A.	Secondary	McCauley, Jebita C.	Elementary	Walters, Margaret	Elementary
Grant, Rose Marie	Business	McLaren, Phyllis E.	Elementary	Walters, Shirley	Elementary
Gray, Harry G.	Elementary	McManus, Albert J.	Secondary	Watts, Sarah A.	Elementary
Gunther, Elaine C.	Elementary	McQuown, Mira J.	Elementary	Williams, Floyd	Elementary
Guntton, Nancy L.	Elementary	Miller, Jean L.	Elementary	Williams, Harriet	Secondary
Hantjris, Anthony W.	Business	Mont, Bernard J.	Elementary	Williams, Mary Joan	Elementary
Hatrack, William	Business	Montagne, Ruth A.	Business	Wolfe, Stephen	Secondary
Haupt, Margaret	Elementary	Morgan, Margaret J.	Elementary	Yeager, Betty L.	Secondary
Havard, Joan	Elementary	Moyer, Arlene E.	Elementary	Yench, Shirley	Elementary
Heisley, Joanne	Elementary	Nemetz, John W.	Secondary	Yesson, Charles J.	Secondary
Hendshot, Thelma	Elementary	Nengard, Mae P.	Business		

SOPHOMORES

Albano, Joseph A.	Secondary	Evans, Jeananne	Elementary	Kanaskie, Ronald B.	Secondary
Angus, John D.	Secondary	Evence, Janet R.	Elementary	Kapsak, Edward J.	Elementary
Anthony, William S.	Secondary	Fisher, Alice	Elementary	Karol, Eugene M.	Secondary
Aurand, Robert L.	Secondary	Flack, Patricia	Secondary	Karycki, Victor J., Jr.	Business
Baker, Oren A.	Secondary	Flaugh, Donald S.	Business	Keiper, Florence A.	Elementary
Balent, Eleanor B.	Business	Forsner, Richard	Business	Kinder, Joseph E.	Business
Bangs, Nancy	Secondary	Franklin, A. Paul	Secondary	Krapf, Sylvia	Elementary
Barnes, Dorothy A.	Secondary	Frey, Aileen	Business	Krum, Shirley	Elementary
Bauer, Constance	Elementary	Fry, Loretta N.	Elementary	Kubic, Mary Louise	Business
Bauer, Judith	Elementary	Galeuti, Anthony V.	Secondary	Laine, Clarence R.	Secondary
Belinsky, Albert	Secondary	Gallo, Frank B.	Secondary	LaSorsa, Marie L.	Elementary
Belock, Michalene	Business	Garinger, R. Arnold	Secondary	Ledger, Rex	Elementary
Benner, Gloria	Elementary	Gerosky, Eileen H.	Business	Lenio, John	Business
Berdy, Carolyn	Business	Gill, Cora R.	Elementary	Lewis, Mary G.	Business
Betz, Frederic	Secondary	Gillman, Ruth E.	Elementary	Luchs, James K.	Secondary
Bishop, Byron	Secondary	Girdauskas, Rae B.	Elementary	Lukac, June E.	Elementary
Bitler, Marguarite	Elementary	Gobster, Marlene P.	Business	Mahoney, James E.	Elementary
Bogardus, Marion E.	Elementary	Goodell, Carolyn	Elementary	Masanovich, George	Elementary
Bogart, Lyuda M.	Secondary	Grabowski, Richard R.	Secondary	Mayo, George R.	Secondary
Bolling, Judith	Elementary	Griffiths, Jean E.	Elementary	McCauley, Jacqueline M.	Elementary
Bower, Janice B.	Elementary	Gruzta, Frank, Jr.	Business	McCormick, Joanne	Business
Brace, Ethel	Elementary	Grzynski, Archie	Secondary	McKay, Keith D.	Secondary
Bucher, Barbara A.	Elementary	Gydosh, Rita	Secondary	McNelis, Donald T.	Secondary
Buckwash, Vincent	Secondary	Halcovich, John M.	Secondary	Mensing, M. Grace	Elementary
Burlingame, Allene	Elementary	Hall, Elizabeth J.	Elementary	Milewski, Dolores E.	Elementary
Burrows, Lonise M.	Elementary	Harding, Paul D.	Secondary	Miller, Reed Q.	Business
Cain, Paul M., Jr.	Business	Harris, Gloria M.	Elementary	Mincer, Jeannetta A.	Business
Carey, Robert W.	Business	Harter, Mollie H.	Business	Montague, Florence C.	Business
Chapin, Joan	Business	Henning, Mary Ellen	Business	Moran, Michael	Elementary
Cole, Ronald	Secondary	Herre, George M.	Elementary	Moran, Nancy A.	Business
Colone, Joseph F.	Elementary	Hidlay, Kenneth H.	Secondary	Morgan, Mary M.	Business
Connolley, Edward J.	Secondary	Hiller, Sherrill	Business	Morgan, Sally F.	Business
Cornell, Richard V.	Secondary	Hippensteel, Mollie	Elementary	Morris, Mark G.	Secondary
Couch, Ronald J.	Secondary	Histed, Grace	Elementary	Novick, Eleanor M.	Elementary
Creasy, George W.	Business	Hoffman, Betty	Elementary	O'Braitis, Mary E.	Elementary
Cumens, Robert E.	Business	Holtzman, Gertrude A.	Elementary	Ondrula, Joseph E.	Secondary
Curilla, Joan A.	Secondary	Holtzman, Rudolph V.	Secondary	Osevala, Barney J.	Secondary
Davis, Thomas S.	Secondary	Hoover, Betty M.	Secondary	Ott, Grace D.	Business
Davis, Charles	Secondary	Horne, Hope H.	Elementary	Palushock, Edward P.	Secondary
DeMonte, Fred B.	Business	Horne, Virginia G.	Secondary	Palutis, Joan H.	Elementary
Derk, George W.	Business	Hughes, Janet A.	Elementary	Panichello, John C.	Business
Derr, Druseilla	Elementary	Hurt, Richard G.	Business	Paul, Ruth E.	Elementary
Dreese, Anna L.	Elementary	Ikeler, Alfred E.	Business	Phillips, Patricia	Elementary
Eekart, Harvey F.	Secondary	Ives, Patricia C.	Secondary	Pilafaan, Robert B.	Business
Ellinger, William	Secondary	Janowczyk, Frank A.	Business	Pope, Charles G.	Secondary
Ellis, Rebecca	Elementary	Johnson, Dolores I.	Business	Rainey, Robert G.	Elementary

Rhoads, Charles E. Business
 Rhodes, Paul H. Secondary
 Rinehimer, Shirley Elementary
 Roberts, James K., Jr. Business
 Rohrbach, Relda M. Elementary
 Rutkoski, Helen C. Elementary
 Sadowski, Doris A. Business
 Sanders, Thomas Elementary
 Schalles, Joyce C. Secondary
 Schell, George A. Elementary
 Schmidt, Alton Secondary
 Semanski, Alberta Elementary
 Semanski, Joseph Secondary
 Shupp, Carol Elementary
 Shuttlesworth, Robert Business

Sibly, John B. Business
 Slembarsky, Jacob Secondary
 Smith, Donald Secondary
 Smith, Holley Secondary
 Smith, Malcolm Secondary
 Snyder, Ann E. Business
 Snyder, Nancy Secondary
 Snyder, Robert F. Business
 Steiner, James P. Secondary
 Stewart, Harley, Jr. Business
 Stoehr, Charlotte Elementary
 Szrafinski, Lura Elementary
 Teter, Catherine Elementary
 Thomas, Donald W. Secondary
 Tuckett, James Secondary
 Verano, Ralph Business

VonBrach, Robert Secondary
 Wagner, Janet R. Elementary
 Walburn, Allen B. Secondary
 Wallace, Connie A. Elementary
 Walter, Marjorie A. Elementary
 Weaver, Evelyn M. Business
 Welliver, Thomas J. Business
 Westover, Robert Business
 Wiik, Glen L. Business
 Williams, Nancy Sue Elementary
 Wirth, Jay S. Elementary
 Wolfe, William Secondary
 Yost, Carolyn A. Elementary
 Yozviak, Janice A. Elementary
 Zimmerman, Mary B. Secondary

FRESHMEN

Adams, Elizabeth M. Secondary
 Albert, Jacqueline F. Elementary
 Alex, Joan T. Business
 Andre, Shirley V. Business
 Atmonavage, Anthony D. Secondary
 Balliet, Barbara Elementary
 Bartzges, Peggy L. Elementary
 Belle, Samuel E. Business
 Bennett, Barbara Secondary
 Bernot, Michael Secondary
 Berry, Barbara Business
 Bitner, William L. Secondary
 Bittner, Richard A. Elementary
 Bloskey, Robert F. Secondary
 Bluzes, Jacob P. Secondary
 Blyler, Robert P. Secondary
 Bond, Carole Ann Elementary
 Bortoff, Robert A. Secondary
 Boughner, Harvey C. Secondary
 Bowman, Wylla Mae Elementary
 Browning, James E. Business
 Brush, Robert C. Business
 Bryan, Beverly J. Elementary
 Buck, Joyce M. Elementary
 Bush, Lawrence Secondary
 Butler, Bruce Secondary
 Butz, Bernadine Business
 Carey, Donald W. Business
 Carl, Donald F. Secondary
 Carter, Burton Business
 Carvorth, Betty L. Business
 Case, Carolyn Business
 Caton, Richard G. Elementary
 Cedor, Marcella Elementary
 Chamberlain, David W. Secondary
 Chase, Edwin Secondary
 Childs, Edward Business
 Christie, Joan C. Business
 Clark, Helene C. Elementary
 Clark, Hope A. Elementary
 Coleman, James W. Business
 Cope, D. Roseann Elementary
 Craparo, Carmel Ann Business
 Croup, Milton Business
 Dauber, Joanne Business
 Davis, Alvin J. Secondary
 Dean, Elderson A. Secondary
 Deibert, Jeanette L. Elementary
 Deitch, Calvin Secondary
 DeOrio, Joan M. Secondary
 Desmond, Jacqueline Business
 Devereux, Stephen A. Secondary
 Dietz, Robert J. Elementary
 DiPaulo, Anthony Elementary
 Duricko, Marion M. Elementary
 Duttlinger, Margaret Secondary
 Ebersole, Nancy J. Business
 English, Curtis Business
 Ertel, Mildred Elementary
 Erwine, H. Rodney Business
 Evans, W. Byron Business
 Evans, Elinor E. Secondary
 Evans, Robert L. Secondary
 Evans, Shem R. III Secondary
 Evert, Florence E. Elementary
 Fawcett, Mary T. (W) Elementary
 Felton, Marjorie J. Elementary
 Fisher, Lucy Business
 Fisher, Shirley Secondary
 Formulak, Raymond A. Secondary
 Fowler, Elaine Elementary
 Gebhard, Glenna Elementary
 George, C. Robert Secondary
 Gergen, Phillip Secondary
 Gerhard, Sylvia Elementary
 Giangulio, Pasquale Business
 Girton, Ronald G. Secondary
 Golatus, Patricia Elementary
 Golazeski, Clara T. Secondary
 Gracion, Marcia Business
 Groover, Robert Secondary
 Gurazdowski, Leonard Business
 Harris, James E. Business

Harter, Marilyn Secondary
 Hartman, Patricia Secondary
 Healy, Jack H. Secondary
 Heisler, Miles W. Secondary
 Hendershot, Betsy Elementary
 Hermant, Alta Business
 Hester, Joanne Elementary
 Higgins, Thomas J. Secondary
 Hines, David Elementary
 Hoffecker, Mary H. Business
 Homick, Michael Business
 Homsher, Anne J. (Nancy) Business
 Hough, Beverly Elementary
 Hower, James J. Elementary
 Hoy, Nanette Elementary
 Hoyt, Charles Business
 Hughes, William T. Secondary
 Huntz, Robert J. Secondary
 Ishler, Richard Elementary
 Jenkins, Ann Elementary
 Jones, C. Diann Business
 Jones, Theophele Business
 Kanyok, Joan L. Elementary
 Keefer, Joseph P. Business
 Kehner, Rodney Secondary
 Kerelner, Gerald Elementary
 Kester, Barbara E. Business
 Kile, Russell L. Secondary
 Killian, Nathan R. Secondary
 Klimovich, Eugene Secondary
 Kline, Joyce A. Business
 Kline, Warren B., Jr. Secondary
 Knouse, Bertha M. Secondary
 Koch, John H. Secondary
 Kosolowski, John E., Jr. Secondary
 Koval, Joseph P. Business
 Kozloski, Walter J. Business
 Krafjack, Ronald G. Secondary
 Krzywicki, Doris F. Elementary
 Kwak, Joseph J., Jr. Secondary
 LaCoe, Elvin C. Secondary
 Lashendock, Mike A. Secondary
 Laubach, Barbara A. Business
 Lee, Sheldon Secondary
 Levan, Donald Business
 Levandosky, Jean M. Elementary
 Lingousky, Mary Elementary
 Lipko, Johanna A. Elementary
 Loftus, Francis Paul Business
 Long, Guy A. Elementary
 Lotito, John A. Elementary
 Lundy, Joyce M. Elementary
 Lynn, Doyle L. Secondary
 Lyon, Robert T. Secondary
 Magaro, Peter A. Secondary
 Margle, Stanley J. Business
 Martz, Helen E. Elementary
 Matino, Frank J. Business
 Maurer, Herbert A. Secondary
 McCarthy, Daniel W. (W) Business
 McCarthy, John Secondary
 McClintock, Ned D. Elementary
 McElhoo, John P. Business
 Meyer, Carl S. Elementary
 Mielke, William J. Secondary
 Mihaly, John, Jr. Secondary
 Miller, Emma A. Elementary
 Miller, Margaret A. Secondary
 Molchan, Martha Ann Elementary
 Molenda, Francis A. Secondary
 Moore, Dorothy J. Elementary
 Moore, Ruth Secondary
 Mordan, Earle H. Secondary
 Morson, Joseph Harrison Business
 Muchhof, Janet C. Business
 Murray, John F. Business
 Myers, Earla M. Elementary
 Narkoff, Michael (W) Secondary
 Nejbauer, Gilbert Secondary
 Neilson, Muriel J. Business
 Nicholas, James L. Business
 Nichols, Eleanor J. Elementary
 Oberdorf, Nancy L. Elementary

O'Brien, Patricia R. Business
 Omlor, Joseph F. Secondary
 Papania, Samuel S. Business
 Paralis, Don C. Elementary
 Parsall, George Secondary
 Peak, Lloyd N. Elementary
 Peiffer, Paul R. Elementary
 Persing, Thomas E. Secondary
 Petrucci, Dominic, Jr. Elementary
 Pettit, Wayne C. Business
 Phillips, Sherrill Elementary
 Raab, Joan M. Elementary
 Rebenack, Theodore Elementary
 Rehel, Charles R. Business
 Redline, Shirley Elementary
 Reese, June Business
 Reinhart, Lewis H. Business
 Rittenmeyer, Barbara Elementary
 Reun, Nancy M. Elementary
 Richie, Carl W. Secondary
 Rick, George F. Secondary
 Rosenberger, Roy Business
 Ruddick, Mary R. Elementary
 Rummage, Charlotte A. Elementary
 Sanders, Catherine D. Elementary
 Secheterly, C. Barry Elementary
 Schell, Larry E. Business
 Schultheis, Eugene R. Secondary
 Schultz, Moritz Secondary
 Scott, Joan E. Elementary
 Scott, Vivian L. Elementary
 Scrimgeour, Virginia Secondary
 Seybert, Jerry N. Business
 Shamp, Charles B. Business
 Shaneman, Robert Business
 Sharretts, Deley Business
 Shoop, Paul Secondary
 Shuey, Thomas A. Elementary
 Siscoe, Edward A. Business
 Skiptunas, Charles P. Secondary
 Smith, Ted J. Business
 Smoczynski, Hubert Elementary
 Sones, Irene Elementary
 Stanek, Walter Secondary
 Stark, Robert D. Secondary
 Starr, James E. Secondary
 Starzan, Peter, Jr. Secondary
 Stearns, Sally A. Business
 Stephens, Judith A. Business
 Stines, Joseph W. Business
 Supreme, Don P. Business
 Swartz, Alice Elementary
 Thomas, Daniel H. Secondary
 Thomas, John P. Elementary
 Tomasko, Lillian Secondary
 Traugh, Neale G. Secondary
 Trefsger, Mary J. Elementary
 Trobatsky, Catherine Business
 Tucker, Alfred Business
 Vacante, Frank J. Business
 Valente, Tina Ann Elementary
 VanGorder, Robert E. Business
 Vermilya, Ann R. Business
 Verona, Rosalyn C. Business
 Volkman, Paul I. Elementary
 Wagner, Joan C. (W) Business
 Walsh, Marian A. Business
 Ward, Harry A. Business
 Watson, Eileen A. Elementary
 Watts, John L. Secondary
 Wayne, Raymond H. Business
 Weiser, Leland Keith Business
 West, Clement Business
 Wetzel, Nancy E. Elementary
 Williams, Avery E. Secondary
 Williams, Rachel C. Elementary
 Wilson, Lawrence Elementary
 Wintersteen, Janet L. Elementary
 Wise, Donald M. Business
 Yeager, Burton A. Secondary
 Yohey, Barbara A. Secondary
 Zeranski, Frank J. Business
 Zimmerman, Jeanie E. Elementary

THIS IS BLOOMSBURG





