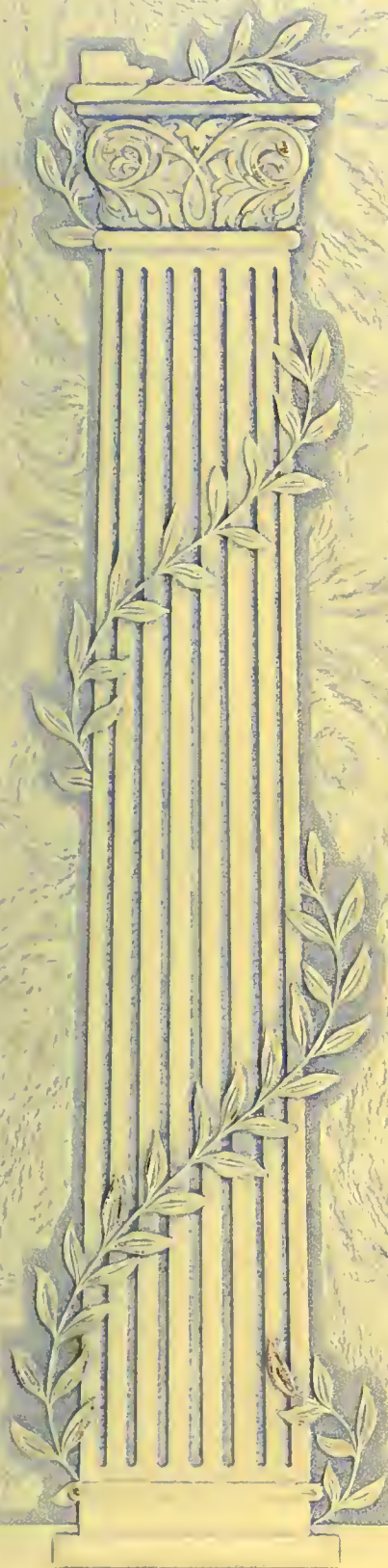


Obiter

1952



London May 9 18

Edmund Lee

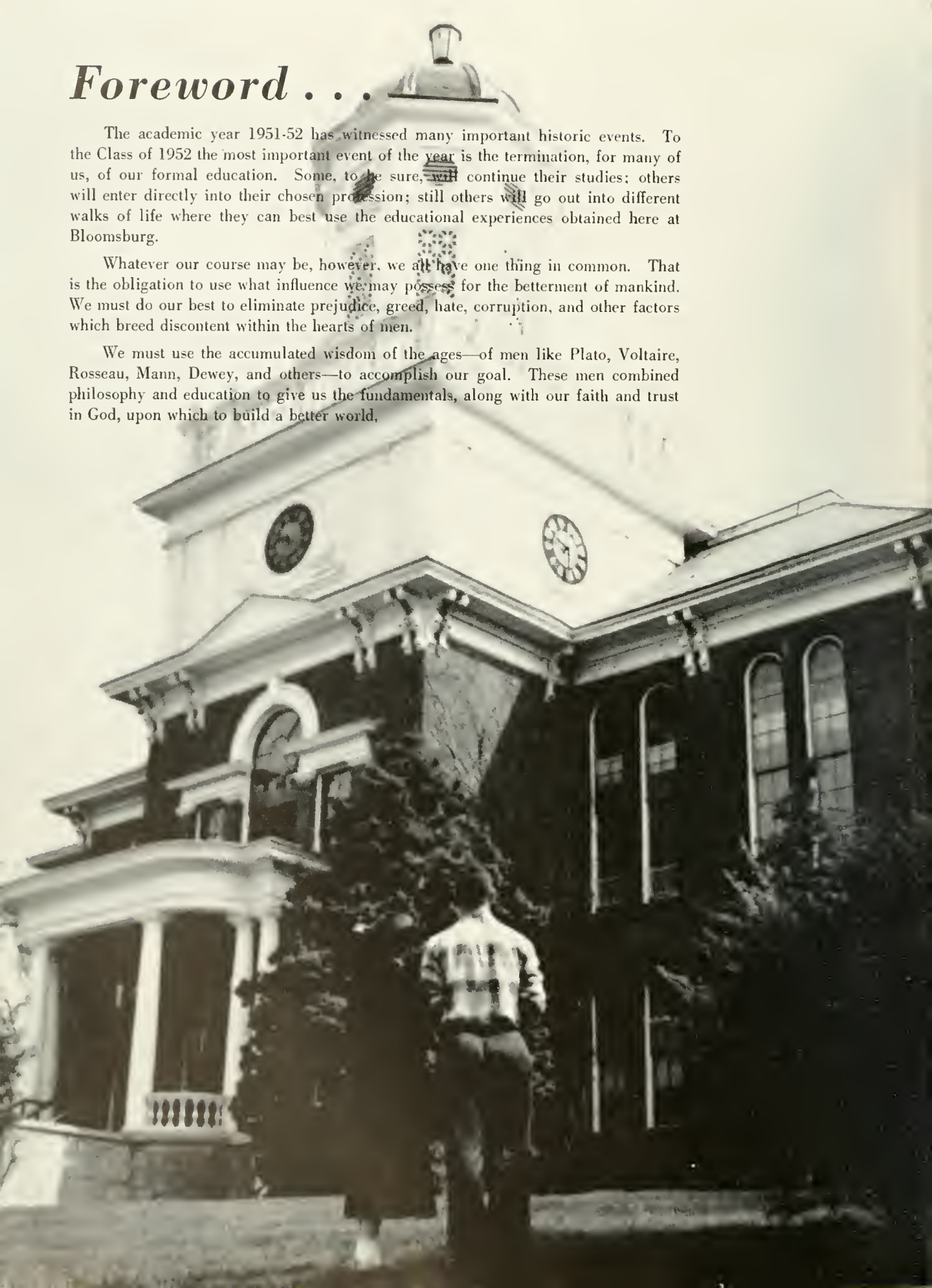
Ex Libris

Foreword . . .

The academic year 1951-52 has witnessed many important historic events. To the Class of 1952 the most important event of the year is the termination, for many of us, of our formal education. Some, to be sure, will continue their studies; others will enter directly into their chosen profession; still others will go out into different walks of life where they can best use the educational experiences obtained here at Bloomsburg.

Whatever our course may be, however, we all have one thing in common. That is the obligation to use what influence we may possess for the betterment of mankind. We must do our best to eliminate prejudice, greed, hate, corruption, and other factors which breed discontent within the hearts of men.

We must use the accumulated wisdom of the ages—of men like Plato, Voltaire, Rousseau, Mann, Dewey, and others—to accomplish our goal. These men combined philosophy and education to give us the fundamentals, along with our faith and trust in God, upon which to build a better world.



Obiter

1952

Volume XXXVI

Published by
THE SENIOR CLASS
State Teachers College
BLOOMSBURG, PA.

Contents:

Section I	1-23
College	
Section II	24-59
Classes	
Section III	60-103
Activities	
Section IV	104-123
Athletics	
Section V	124-146
Advertising	
Section VI	147-148
Senior Directory	

Dedication

THE fact that *OBITER* 1952 is being dedicated to two persons in no way lessens the sincere respect and appreciation with which the dedication is tendered.

In the process of living there is no more important phase than that of learning. Those people who take upon themselves the difficult task of teaching their fellow men must be endowed with certain inherent characteristics among which are honesty, devotion, good humor, and patience.

There is no better proof of these characteristics than long and faithful service. It is for just such service that we wish to dedicate this book.

Miss Alice Johnston

Miss Johnston has served the college faithfully and well for twenty-six and one-half years as instructor in the fields of speech and speech correction. Miss Johnston, during her active teaching career at Bloomsburg, also was sponsor of the Dramatic Club; Alpha Psi Omega, the dramatic fraternity; and Sigma Alpha Eta, the speech fraternity.

During her years as teacher and friend she has done much to make this the "Friendly College on the Hill."



Mr. Edward A. Reams



In his genial, thorough manner, Mr. Reams has taught social studies here on the Hill for twenty-six years. During that time Mr. Reams has been active as sponsor of the Phi Sigma Pi Fraternity and as a sub-chairman of the Faculty Assembly Committee. Mr. Reams terminates his fine service to the College in May of 1952. It is our hope that he receives from the future as much as he has given us in the past.





“That alone—I mean wisdom—
is the true and unalloyed coin,
for which we ought to exchange
all these things: for this, and with
this, everything is in reality bought
and sold — fortitude, temperance,
and justice, and, in a word, true
virtue subsists with wisdom.”

—PLATO

College



Carver Hall



Noetling Hall

Waller Hall





North Hall

Science Hall





Navy Hall

Benjamin Franklin Training School



**Centennial
Gymnasium**



President's Home



Administration



DR. HARVEY A. ANDRUS
President

L'Envoi to Graduates

And so you go, but still you stay behind
For something you left here will be ours
To make us think of you, to hope you'll find
Long years of usefulness and happy hours.

Bloomsburg is what its graduates make it through their continued efforts as moulders of the American youth of tomorrow.

Life is now your college. May you graduate and earn some honors for yourself and your Alma Mater in your chosen profession.

Harvey A. Andrus

President.

A Message From the Dean of Instruction:

It is a pleasure to extend greetings to the members of our college community, especially to the members of our graduating class. The class of 1952 has witnessed for the first time in history a growing alertness on the part of the students of education, teachers and administrators within all the areas of teaching, to the need for an organized profession to take part in the selection, in the preparation and in the development of standards for its members. Here at "old Bloomsburg" we have taken our places in the crusade for better schools and the elevation of teaching to a profession. The early interest of many of our students in professional activities on and off our campus presages leadership in the profession in the years to come.

Thomas P. North
Dean of Instruction.

DR. THOMAS P. NORTH
Dean of Instruction

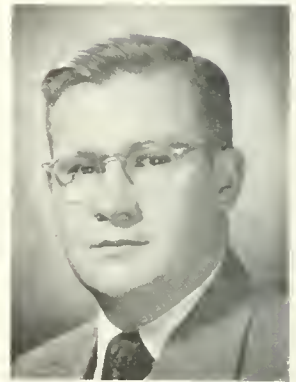




Left to Right— H. Billig, B. Eyerly, J. Sherman, E. Wilson.



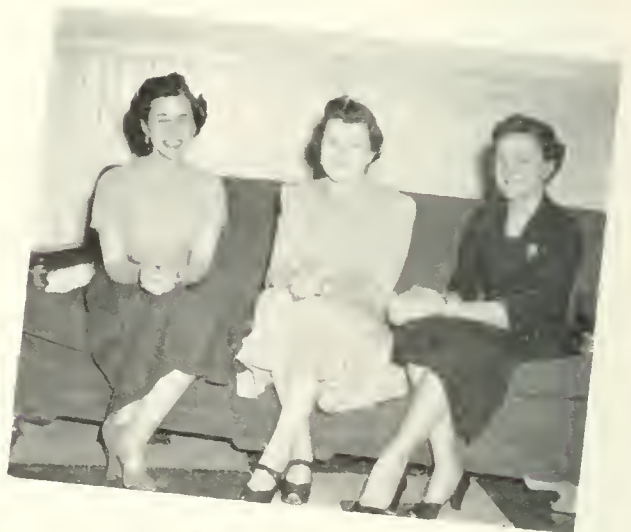
E. D. SHARRETT'S
Superintendent of Grounds



P. G. MARTIN
Business Manager



*Left to Right— M. Haggerty, M. Ammerman,
A. Knight, A. Gillespie.*



Left to Right— R. Eyerly, P. Erdman, M. Luschyk.

The Faculty



MARGUERITE KEHR
Dean of Women

TO THE CLASS OF 1952:

When you came to college the road to becoming Seniors probably looked long. Now you have achieved that proud distinction and we congratulate you. When you take the future step of becoming alumni you will enter upon a lifelong relationship to your Alma Mater which we hope you will keep alive by coming back often. With all good wishes,

Sincerely yours,
MARGUERITE KEHR,
Dean of Women

THE DEANS



RALPH S. HERRE
Social Studies

Colgate University, B.S.; Teachers College, Albany, New York, M.A.; Graduate Work, Clark University, New York University, University of Buffalo; Pennsylvania State College, Ed.D.



ROBERT B. REDMAN
Social Studies and Athletic Coaching

Swarthmore College, A.B.; Pennsylvania State College; Graduate Work, University of Wisconsin; Duke University, M.A.



JOHN A. HOCH
Dean of Men



ETHEL A. RANSON
Assistant Dean of Women and Mathematics
University of Illinois, A.B.; Columbia University, M.A.; Graduate Work, Columbia University.



MARY E. MACDONALD
Assistant to Dean of Women; Coordinator of Guidance Services
University of Michigan, A.B.; Teachers College, Columbia University, A.M.; Graduate Work, Columbia University.

TO THE SENIOR CLASS:

Each beginning teacher has a unique opportunity. The next generation sits in his classroom future bank tellers and statesmen, creative artists and drug store attendants, future men of wealth and men of poverty, workers, farmers, and just plain city folks, including all the fathers and mothers of the generation to follow. It will be they who must accomplish a great forward step to balance the scientific materialism of this generation with the spiritual victory of the next. That is why the beginning teacher must be an inspirational teacher in a technical age.

JOHN A. HOCH
Dean of Men

DEPARTMENT HEADS



RICHARD G. HALLISY
Director of Business Education
 State Teachers College, Whitewater, Wisconsin, B.Ed.; University of Iowa, M.A.; Graduate Work, University of Pittsburgh.



EDNA J. HAZEN
Director of Elementary Education
 State Normal School, Edinboro, Pennsylvania; Allegheny College, Meadville, Pennsylvania; Columbia University, B.S., M.A.; Graduate Work, New York University, Clark University.

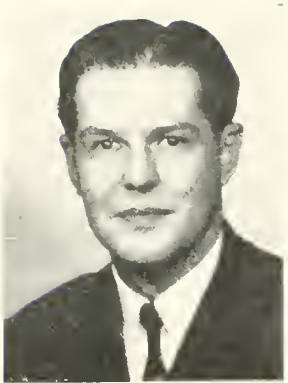


ERNEST H. ENGELHARDT
Director of Secondary Education and Placement Service
Director of Extension Education
 Bucknell University, A.B.; New York University, Bucknell University, M.A.; University of Pittsburgh, Ed.D.

BUSINESS EDUCATION



WILLIAM C. FORNEY
 Temple University, B.S.; New York University, M.A.; Graduate Work, Harvard University, Chicago University.



EARL A. GEHRIG
 State Teachers College, Bloomsburg, Pennsylvania, B.S.; Graduate Work, Bucknell University; Northwestern University, M.B.A.



CHARLES H. HENRIE
 State Teachers College, Bloomsburg, Pennsylvania, B.S.; Temple University, M.Ed.; Graduate Work, University of Pittsburgh, New York University.



CLAYTON H. HINKEL
 State Teachers College, Bloomsburg, Pennsylvania, B.S.; Temple University, M.Ed.; New York University, Graduate Work.



HONORA M. NOYES
 George Washington University, B.A.; University of Pittsburgh, M.Ed.; Graduate Work, Pennsylvania State College, Columbia University.



WALTER S. RYGIEL
 Temple University, B.S., M.Ed.; Graduate Work, Temple University, University of Pennsylvania, Pennsylvania State College.

ELEMENTARY EDUCATION



MRS. LUCILE J. BAKER
Training Teacher, Grade I
 Western State College, Colorado, A.B.;
 Tri-State College, Indiana, Mus.B.;
 Columbia University, A.M.; Graduate
 Work, Pestalozzi-Froebel School, Chi-
 cago, Illinois; Denver University, Den-
 ver, Colorado.



EDNA J. BARNES
Training Teacher, Grade VI
 McMurray College, Jacksonville, Illi-
 nois, Western State College, Macomb,
 Illinois, B.S.; Columbia University,
 M.A.; Graduate Work, University of
 Colorado, Columbia University.



IVA MAE BECKLEY
Training Teacher, Grade II
 State Teachers College, Lock Haven,
 Pennsylvania, B.S.; Pennsylvania State
 College, M.Ed.; Graduate Work, Col-
 umbia University.



RUSSELL F. SCHLEICHER
 State Teachers College, Kutztown, Pa.,
 Pennsylvania, Pennsylvania State Col-
 lege, B.S.; Lehigh University, M.A.



ANNA GARRISON SCOTT
Training Teacher, Grade IV
 State Normal School, Bloomsburg,
 Pennsylvania; Columbia University,
 B.S., M.A.



MARCELLA MARIE STICKLER
Training Teacher, Grade III
 State Teachers College, Lock Haven,
 Pennsylvania, B.S.; St. Bonaventure
 College, M.S.; Graduate Work, Penn-
 sylvania State College.



MARJORIE STOVER
Training Teacher, Special Class
 State Teachers College, Bloomsburg,
 Pennsylvania, B.S.; Graduate Work,
 University of Michigan, Temple Uni-
 versity.



GRACE H. WOOLWORTH
Training Teacher, Kindergarten
 State Teachers College, Kearney, Ne-
 braska; University of Chicago, Ph.B.;
 University of California; Columbia Uni-
 versity, A.M.; Graduate Work, Colum-
 bia University.

SECONDARY EDUCATION



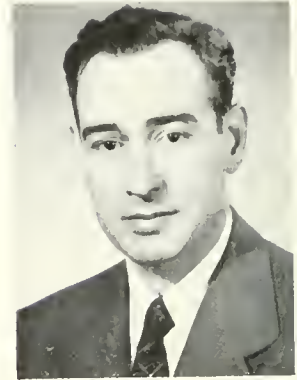
OLIVE PAYNE BEEMAN
Art

University of Chicago, Associate Ed.B., Ph.B.; Graduate Work, University of Indiana, Oswald Art School.



C. CORDELLA BRONG
Clinical Speech

Hood College, Frederick, Md., B.A.; I.C. Columbia University, M.A.; Northwestern University, Ph.D.



EDWARD T. DE VOE
English

State Teachers College, Bloomsburg, Pennsylvania, B.S.; Bucknell University, M.Ed.; Graduate Work, Pennsylvania State College.



HOWARD F. FENSTEMAKER
Foreign Languages

State Normal School, Bloomsburg, Pennsylvania; University of Michigan, B.A.; New York University, M.A.; Graduate Work, University of Pennsylvania.



ALICE JOHNSTON
Speech

Park College, Missouri, L.B.; Columbia University, M.A.; Graduate Work, University of Wisconsin, Columbia University, University of Michigan, University of Chicago, Central School of Speech, London, England; New York League for Hard of Hearing, Feagan School of Dramatic Art, New York.



KIMBER C. KUSTER
Biological Science

State Normal School, Bloomsburg, Pennsylvania; University of Michigan, B.S., M.S., Ph.D.



HAROLD H. LANTERMAN
Physical Science

State Teachers College, Bloomsburg, Pennsylvania, B.S.; New York University, M.A.; Graduate Work, New York University, Pennsylvania State College.



NELL MAUPIN
Social Studies

Peabody Teachers College, B.A.; Vanderbilt University; Chicago University; University of Iowa, M.A.; Ph.D.; New York University.



LUCY McCAMMON
Health Education

Southwestern Missouri Teachers College, Springfield, Missouri, A.B.; Columbia University, M.A.; Graduate Work, Alabama University, Columbia University.



EDWARD A. REAMS
Social Studies

Kansas Wesleyan, A.B.; Columbia University, M.A.; Graduate Work, Pennsylvania State College, New York University, University of Southern California.



J. ALMUS RUSSELL
English

Dartmouth College, A.B.; Cornell University, A.M., Ph.D.; London University, Certificate.



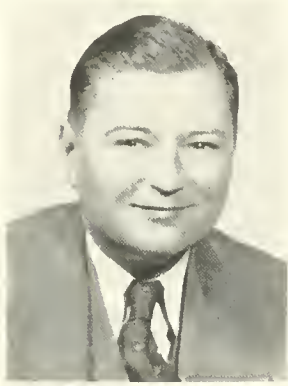
HAROLD S. SHELLY
Physical Education

Ohio Northern University, Ada, Ohio, A.B.; University of Michigan, Ann Arbor, Michigan, M.A.



RALPH FISHER SMITH
Public School Music

Faelten Pianoforte School, Boston, Mass.; Private Study, Arthur Foote, Boston, Mass.; Bandmasters and Musicians School, Chaumont, France; New York University, B.S.; Temple University, M.Ed.



WILLIAM B. STERLING
Aviation

Plattsburg State Normal School, Diploma; University of Buffalo, B.S.; Syracuse University, M.S. Ed.; Instructor's Rating, Single Engine Land; Designated Flight Examiner No. 3199 (C. A. A.); Graduate Work, United Air Lines Pilot School, Denver, Colorado.



DOROTHY E. STOLP
Speech and English

Eastern Washington College of Education, B.A.; Northwestern University, M.A.; Additional Graduate Work, Northwestern University and Louisiana State University.



PAUL E. WAGNER
Pennsylvania State College, B.S., M.S., Ed.D.



MARGARET E. WALDRON
Mathematics

Wellesley College, B.A.; Columbia University, M.A.; Graduate Work, University of Southern California, Harvard University.



STEPHEN R. HOPKINS
Private School of Music

Yale University School of Music, B. of Music; Student, Tobias Mathay Pianoforte School, Royal Academy of Music, and Dalcroze School, all of London, England.

DIETITIAN



REBEKAH S. HUF CUT
Dietitian

Columbia University, B.S. in Home Economics.

COLLEGE NURSE



M. BEATRICE METTLER
Graduate Nurse

Bucknell University, A.B.; University of Pennsylvania, M.S.; Graduate of the Johns Hopkins Hospital School of Nursing, Baltimore, Maryland; Graduate Work, University of Chicago; R.N., Pennsylvania and Maryland.

LIBRARIANS



ELSIE G. BOWER
Assistant Librarian

State Teachers College, Bloomsburg, Pennsylvania; Pennsylvania State College, B.S.; Drexel Institute of Technology, Philadelphia, Pennsylvania, B.S. in L.S.



ELINOR R. KEEFER
Librarian

Muskingum College, New Concord, Ohio, A.B.; University of Pittsburgh, Pittsburgh, Pa., LL.M.; George Peabody College for Teachers, Nashville, Tennessee, B.S. in L.S.

Faculty Advisers

DR. MAUPIN
1948-1949

MARJORIE KELLER SWARTZ
1919-1950

DR. KUSTER
1950-1951

MR. GEHRIG
1951-1952



MR. EARL GEHRIG
Senior Class Adviser



MARGARET BOURDETTE
ROBERT BURNS
Senior Class Representatives

THOMAS ANTHONY
Senior Class President



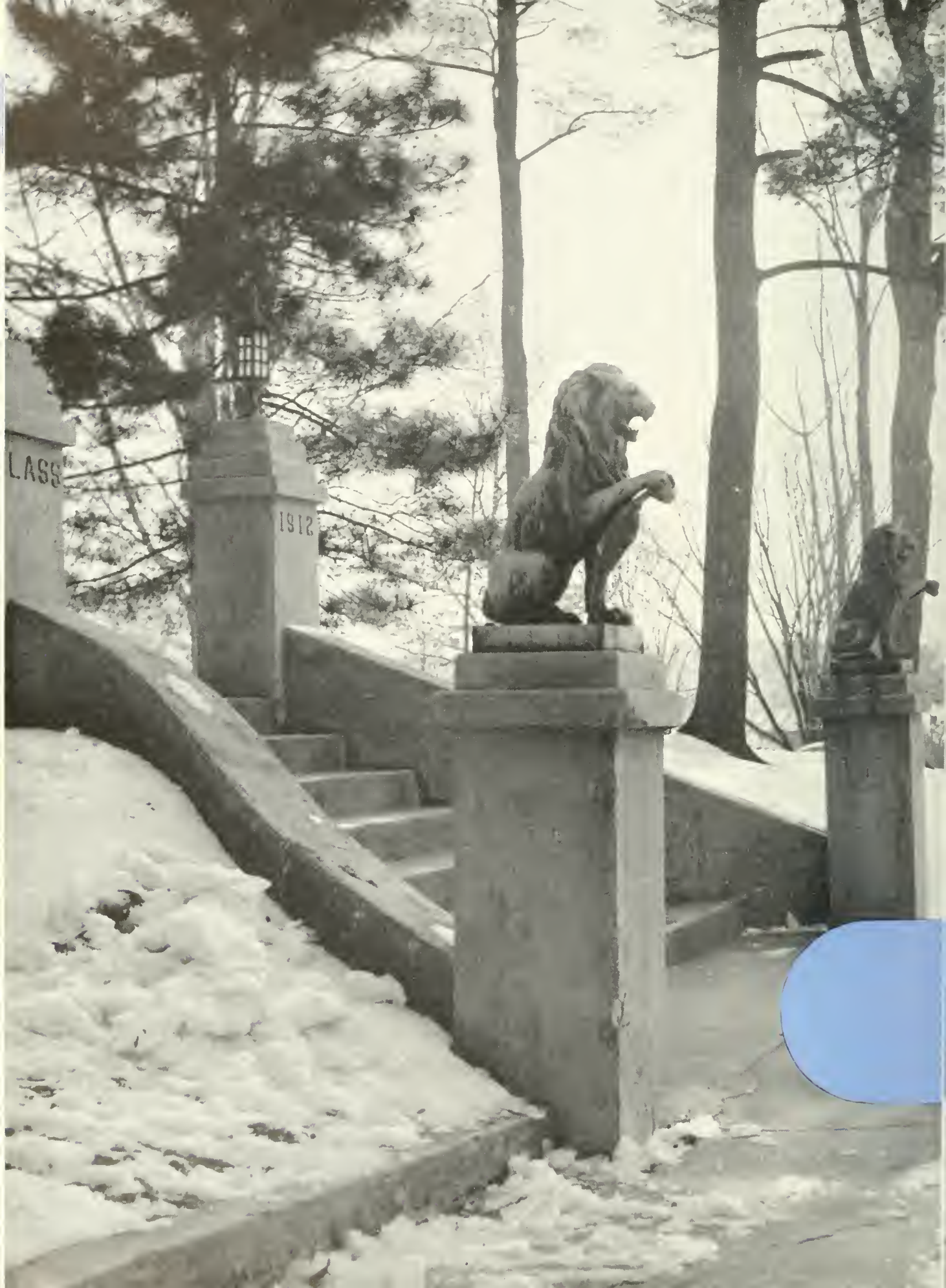
To My Fellow Graduates:

We've come to the end of four long and happy years of college life that entitles us to that sometimes illusive sheepskin. Now, we are about to assume full adult responsibility toward solving problems which are, today, world wide in scope.

We're heading out into a society of loyalty oaths, guilt by association, and of fear. If we teach, we must take a loyalty oath and then be mighty careful what we say for it might result in the loss of our job and a snitched reputation. It is up to us as individual citizens to combat these things lest we lose our right to heterodox thought which has been one of our bulwarks of democracy. My fervent wish is that when you look at these lines years from now you will think my fears silly for you'll be enjoying full civil liberties. I hope so.

I want to thank all of you for your wonderful co-operation and help this year. It has been a privilege and an honor to work with you and for you. God bless you all.

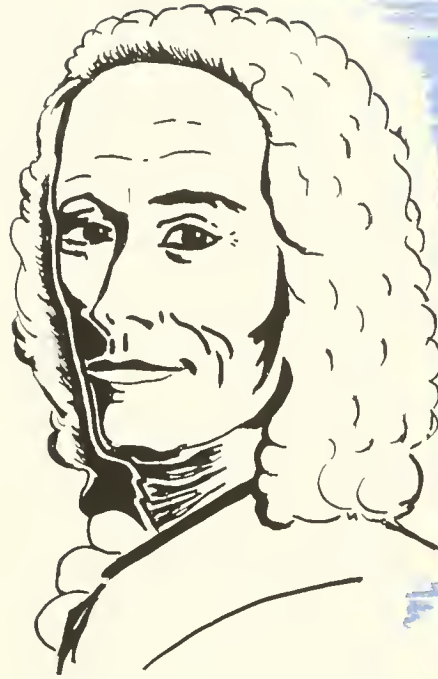
TOM ANTHONY, *President.*
Senior Class of 1952



LASS

1912





"I disapprove of what you say,
but I defend to the death you're
right to say it."

—VOLTAIRE

Classes

SENIOR CLASS 52

OFFICERS

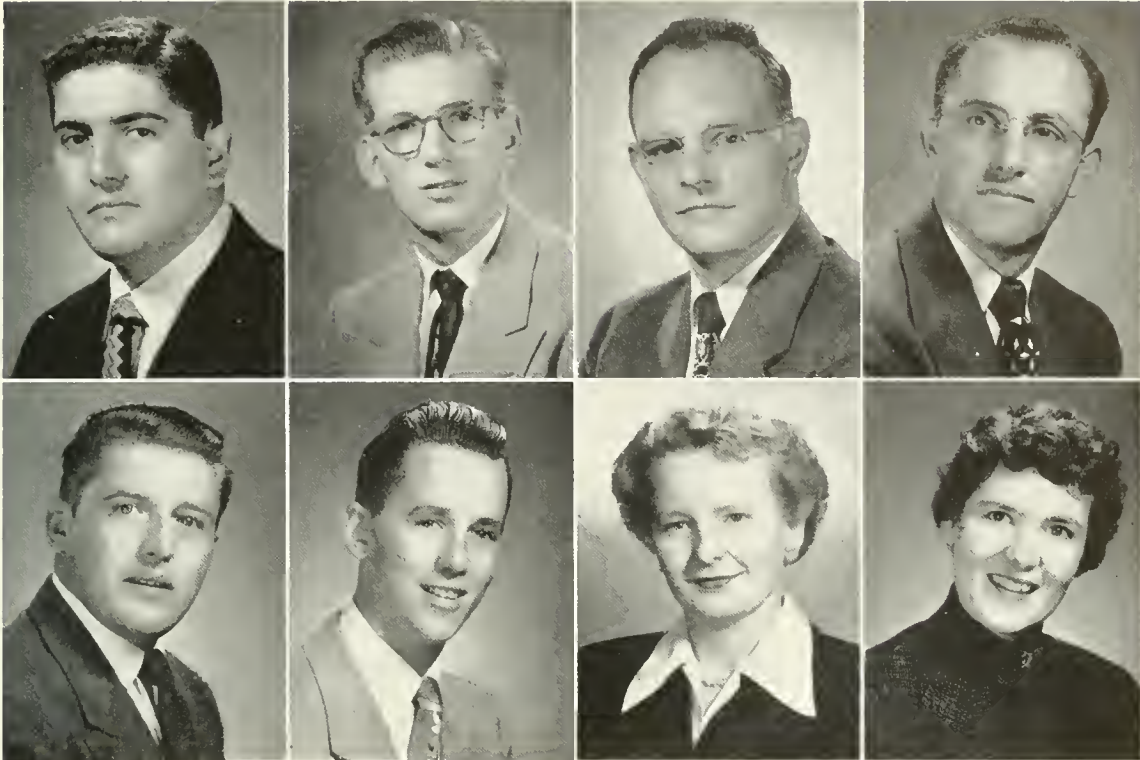
THOMAS ANTHONY	- - - - -	<i>President</i>
MAYNARD HARRING	- - - - -	<i>Vice President</i>
BARBARA HARMON	- - - - -	<i>Secretary</i>
RICHARD POWELL	- - - - -	<i>Treasurer</i>
ROBERT BURNS	- - - - -	<i>Man Representative</i>
MARGARET BOURDETTE	- - - - -	<i>Woman Representative</i>
<i>Class Adviser</i> - MR. EARL H. GEHRIG		

The graduating seniors always have many happy memories of their days at Bloomsburg. But as graduating seniors, the time for carefree college days being gone, they must settle down to the more serious business immediately at hand. The Class of 1952, as a group and individually, has made many commendable contributions to the college community. The Seniors leave with the fervent hope that all they have known here may be kept alive by the remaining classes.



Front Row - M. Bourdette, T. Anthony, B. Harmon.
Back Row - R. Powell, M. Harring, R. Burns.

BUSINESS CURRICULUM



Upper row:

EUGENE A. ADAMI

Berwick

Accounting, Social Studies

Business Education Club 1, 2, 4; *Maroon and Gold* 3; Aviation Club 3; Day Men's Association 2, 3, 4.

THOMAS H. ANTHONY, JR.

Shamokin

General Business

Senior Class President 4; Sophomore Class President 2; College Council 2, 3, 4. Vice President 3; Alpha Psi Omega 2, 3, 4. President 3; Pi Omega Pi 3, 4; Kappa Delta Pi 3, 4; Football Manager 1, 2, 3, 4; OBITER 2, 3. Director of Publicity 2, 3; *Maroon and Gold* 2; *Who's Who in American Colleges and Universities* 4; Dramatic Club 1, 2, 3, 4; Business Education Club 2, 3, 4; Men's Glee Club 1, 2, 3; Varsity Club 3, 4; Future Teachers of America 3, 4; Men's Dormitory Association 1, 2, 3; Day Men's Association 4; Business Education Contest 3; Co-chairman of Typewriting Committee.

JAMES BABCOCK

Mahanoy City

Accounting, Retail Selling

Men's Glee Club 1, 2, 3; Community Government Association 2, 3; *Maroon and Gold Band* 3; Phi Sigma Pi 3, 4; Future Teachers of America 3, 4.

GEORGE V. BAKSI

Keiser

Accounting, Social Studies

Day Men's Association 1, 2, 3, 4; Business Education Club 1, 2; Aviation Club 3; Phi Sigma Pi 3, 4.

Lower row:

CHARLES BARON

Endicott, New York

Accounting, Retail Sales, Social Studies

Football 1, 2, 3, 4; Track 1, 2; Future Teachers of America 3; Business Education Club 3; Varsity Club 1, 2, 3; Golf 4.

DALE T. BENNETT

East Bangor

Accounting, Typing, Mathematics

Business Education Club 1, 2, 3, 4; Day Men's Association 1, 2, 3, 4. Vice President 2; Basketball Manager 1, 2, 3, 4; College Council 3; Kappa Delta Pi 3, 4; Pi Omega Pi 3, 4. President 4.

ELEANORE D. BOLINSKY

Hazleton

General Business

Women's Chorus 1; Business Education Club 1, 2; Newman Club 1, 2, 3, 4; OBITER 3, 4. Typist 3, 4; Future Teachers of America 4.

MARGARET L. BOURDETTE

Athens

General Business

Waller Hall Association 1, 2, 3, 4; Waller Hall Governing Board 4. Secretary 4; Kappa Delta Pi 3, 4. Recording Secretary 4 (one semester); Pi Omega Pi 3, 4; *Maroon and Gold Band* 2, 3; College Council 4; B Club 2, 3, 4. President 4; Future Teachers of America 4; Business Education Club 1, 2, 3, 4. Historian 4; OBITER 2, 4. Typist 2. Secretary 4; Election Board 3.



Upper row:

ALBERT L. BROWN

Sunbury

Accounting, Sales, Typing

Basketball 1; Business Education Club 1; Aviation Club 1; Day Men's Association 1, 2, 3, 4; Future Teachers of America 4.

FRANCIS T. BROWN

Sunbury

Accounting, Sales, Typing

Aviation Club 2, 3; Business Education Club 2, 3; Day Men's Association 1, 2, 3, 4; Future Teachers of America 4.

MICHAELNE A. CASULA

Shenandoah

Secretarial Sequence, Retail Selling, English

Business Education Club 2, 3; Science Club 2; Women's Chorus 2, 3; B Club 2, 3, 4; Fashion Show Co-ordinator 3, 4; OBITER 3, Secretary 3; Waller Hall Association 1, 2, 3, 4; Assembly Committee 3, 4; Future Teachers of America.

ROCCO V. CHERILLA

Hazleton

General Business

Kappa Delta Pi 3, 4; Pi Omega Pi 3, 4; Business Education Club 1, 2, 3, 4, Vice President 3; Newman Club 3, 4; Future Teachers of America 4; Men's Dormitory Association 2, 3, 4.

Lower row:

IRENE G. ECKERT

Gilberton

Secretarial Sequence, Retail Selling, English

Band 1; Business Education Club 1, 2, 3; Fashion Show Co-ordinator 3; Future Teachers of America 4; B Club 3, 4, Secretary 18 weeks 4; Waller Hall Association 1, 2, 3, 4; Wesley Fellowship 1, 2, 3.

MARGUERITE M. FITZSIMMONS

Mayfield

General Business

Haroon and Gold 1; Business Education Club; Waller Hall Association 1, 2, 3; Newman Club 2, 3; Future Teachers of America 4; Social and Recreational Committee.

GERALDINE FUNK

Lebanon

General Commercial

Women's Chorus 1, 2; Business Education Club 1, 2, 3, 4; Women's Athletics 1, 2, 3; Waller Hall Association 2, 3; Kappa Delta Pi 3, 4; Pi Omega Pi 3, 4.

LEONARD GALILEY

Danville

General Commercial

Business Education Club 2; Aviation Club, Treasurer 3; Kappa Delta Pi 3, 4; Pi Omega Pi 3, 4.

Upper row:

FRANCIS B. GALINSKI

Forest City
General Business

Business Education Club 1, 2, 3, 4; President 4; Newman Club 1, 2, 3, 4; Treasurer 3; President 4; Pi Omega Pi 3, 4; Men's Dormitory Association 1, 2, 3, 4; Future Teachers of America 4; Election Board 3; Kappa Delta Pi 3, 4.

EDWARD GALLAGHER

Shickshinny
Accounting, Social Studies

Science Club 2, 3, 4; Business Education Club 2.

JOSEPH DENNIS GEORGE

Chambersville
Accounting, Social Studies

Men's Glee Club 3; Business Education Club 3, 4; Day Men's Association; Men's Dormitory Association.

RUTH GLIDDEN

Susquehanna
General Commercial

Maroon and Gold Band 1, 2, 3; Secretary 1; Librarian 2; Business Education Club 1, 2, 3, 4; Waller Hall Association 2, 3; Governing Board 2, 3; Women's Athletics 2, 3; Vice President 3; Community Government Association 3; Kappa Delta Pi 3, 4; Pi Omega Pi 3, 4.

Lower row:

DYAR HADDAD

Schuylkill Haven
Secretarial, Sales

Day Men's Association 2, 3, 4; Men's Dormitory Association 1; Business Education Club 1, 2, 3; Aviation Club 2, 3; Vice President 3; Future Teachers of America 4.

BERNARD HAMERSHOCK

Weatherly
Accounting, Sales, History

Men's Dormitory Association 2, 3, 4; Men's Glee Club 1, 2; Football 2, 3; Future Teachers of America 3; Varsity Club 3, 4.

BARBARA HARMAN

Lykens
General Commercial

Bloomsburg Players 1, 2; Cheerleader 1, 2, 3; Women's Athletics 1, 3; Business Education Club 2, 3, 4; Secretary 3; Waller Hall Association, Governing Board 2; Pi Omega Pi 3, 4; Junior Class Officer, Secretary 3; Kappa Delta Pi 3, 4; Fashion Show 3.

LESTER J. HORNBERGER

Mt. Carmel
Accounting, Social Studies

Business Education Club 1, 3; Kappa Delta Pi 3, 4; Day Men's Association 1, 2, 3, 4; Treasurer 4.



Upper row:

HENRY C. HURTT

Forty Fort
Accounting, Sales

Phi Sigma Pi 3, 4; Kappa Delta Pi 3, 4; Men's Dormitory Association 1, 2, 3, 4; Community Government Association 1, Treasurer 1; Maroon and Gold Band 1, 2, 3, President 3; Varsity Tennis 3, 4; *Maroon and Gold* 2; Knox Fellowship 2; Election Board 2; C. G. A. Budget Committee 3; *Who's Who in American Colleges and Universities* 4.

WILLIAM J. KREISHER

Shamokin
Accounting, Typing, Sales

Aviation Club 1, 2, President 2; Business Education Club 3; Science Club 3; Day Men's Association 1, 2, 3, 4.

MICHAEL A. KREPICH

Berwick
Sales, Social Studies

Football 2; Track 1; Business Education Club 1; Day Men's Association 1, 2, 3, 4.

RICHARD LAUX

Trucksville
General Commercial

Business Education Club 1, 2, 3, 4; Community Government Association 2, 3; Pi Omega Pi 2, 3, 4; Kappa Delta Pi 2, 3, 4; Future Teachers of America 3, 4; *Who's Who in American Colleges and Universities* 4.

Lower row:

RICHARD A. LEDYARD

Bloomsburg
Accounting, Sales, Typing

Baseball 2, 3, 4; Basketball 1; Varsity Club 2, 3, 4; Day Men's Association 1, 2, 3, 4.

MICHAEL LYLO

Berwick
Accounting, Social Studies
Business Education Club 2, 3, 4; Day's Men's Association 1, 2, 3, 4; Aviation Club 3.

ALFRED S. MARSILIO

Hazleton
Accounting, Sales

Men's Glee Club 1, 2, 3, Vice President 2; Men's Dormitory Association 1, 2, 3; Newman Club 1, 2, 3, Vice President 2; Future Teachers of America 3; College Council 3, Treasurer; Election Board 1; NSA Delegate 3; Calendar Committee 2; Finance and Allocation Committee 3; Assembly Committee 3; Phi Sigma Pi 4.

WILLIAM McALOOSE

Kelayres
Accounting, Retail Selling, Typewriting
Aviation Club 2, 3, Vice President 3, Secretary 3.





Upper row:

THOMAS J. McLAUGHLIN
Mahanoy Township
Accounting, Sales, Typing, English

Athenaeum Club 1; Football 1, 2, 3, 4; *Maroon and Gold* 1, 2; Future Teachers of America 3, 4; Newman Club 1, 2; Varsity Club 3, 4. Treasurer; Men's Dormitory Association.

ROBERT E. MILLER
Sunbury
Accounting, Sales, Social Studies

Aviation Club 3; Business Education Club 2, 3; Future Teachers of America 4; Day Men's Association 3, 4; Men's Dormitory Association 1, 2.

RICHARD R. MORRISON
Danville
Accounting, Sales, Social Studies

Business Education Club 2; Aviation Club 2.

VINCENT NAWROCKI
New Philadelphia
General Business

Kappa Delta Pi 4; Pi Omega Pi 3, 4; Phi Sigma Pi, Treasurer 3; Business Education Club 1, 2, 3, 4; Newman Club 1, 2, 3, 4, Vice President 3; Future Teachers of America 4; Men's Dormitory Association 1, 2, 3, 4.

Lower row:

ROBERT G. OSENBACH
Frackville
Accounting, Sales, Typing

Pi Omega Pi 3, 4; Business Education Club 1, 2, 3; Aviation Club 2, 4; Day Men's Association 1, 2, 3, 4; Future Teachers of America 4; Kappa Delta Pi 4.

JOSEPH J. PELCHAR
Keiser

Secretarial Sequence, Social Studies
Business Education Club 1, 2; Day Men's Association 1, 2, 3, 4.

LAURA A. PHILO
Bloomsburg
General Business, Sales

Business Education Club 1, 2, 3, 4, Secretary 2; Bloomsburg Players 1, 2, 3, 4, Secretary 2; Alpha Psi Omega 2, 3, 4, Treasurer 3, Secretary 4; College Council 3, Secretary; Fashion Show 2, 3, 4; Maroon and Gold Band 1, 2, 3, 4; *Maroon and Gold* 3, 4; Day Women's Association 1, 2, 3, 4; Future Teachers of America; Senior Class Secretary (18 weeks).

RICHARD C. POWELL
Pottstown
General Business

Future Teachers of America 3, 4; Business Education Club 2, 3, 4, Historian 3; Men's Glee Club 2, 3, 4, President 3; Dramatic Club 2, 3, 4, Business Manager 3; Pi Omega Pi 3, 4; Kappa Delta Pi 3, 4, Treasurer 4; Phi Sigma Pi 4; Day Men's Association 2; Men's Dormitory Association 3, 4; OMBTA 3, 4; Wesley Fellowship 3, 4, President 4; Vice President Junior Class; Treasurer Senior Class; *Who's Who in American Colleges and Universities* 4.



Upper row:

JANET E. PRICE

Reading

General Business

Dramatic Club 2, 3, 4; Waller Hall Association 3; B Club 3, 4, Treasurer 3, 4 (18 weeks); Business Education Club 2, 3, 4; Future Teachers of America 4; Athenaeum Club 4; Maroon and Gold Band 2, 3; NSA Committee 2, 3.

GEORGE RACHKO

Frackville

General Business

Future Teachers of America 4; Business Education Club 1, 2, 3, 4; Aviation Club 3; Day Men's Association 1, 2; Men's Dormitory Association 3, 4.

WILLIAM W. REED

Sunbury

Accounting, Social Studies

Business Education Club 1, 2, 3; Aviation Club 3, 4.

KATHRYN L. RHINARD

Berwick

Secretarial, English, Sales

Business Education Club; Fashion Show; Day Women's Association 1, 2, 3, 4.

Lower row:

ANGELO P. SCHENO

Bloomsburg

Accounting, Social Studies

Maroon and Gold 1; Business Education Club 1, 4; Day Men's Association.

THOMAS E. SCHUKIS

Mahanoy City

Accounting, Social Studies

Football 1, 2, 3, 4; Basketball 1; Newman Club 1, 2, 3, 4; Varsity Club 3, 4.

JOHN P. SHANAHAN

Bangor

Accounting

Business Education Club 1, 2, 3, 4; Future Teachers of America 4; Aviation Club 4; Vice President Sophomore Class.

FRANCIS J. SHEEHAN

Mahanoy City

Accounting

Football 1, 2, 3, 4; Varsity Club 3, 4, Vice President 4; College Crier 3; Future Teachers of America 4; Business Education Club 4; Men's Dormitory Association 1, 2, 3, 4; Newman Club 1, 2.

Upper row:

JOYCE SLUYTER

Towanda

General Commercial

Women's Chorus 1, 2, 3; Business Education Club 1, 2, 3; Women's Athletics 1, 2, 3; Kappa Delta Pi 3, 4; Pi Omega Pi 3, 4; Waller Hall Association 3.

FRANCIS J. STANITSKIE

Kulpmont

General Business

Day Men's Association 1, 2, 3, 4; Business Education Club 1, 4; Aviation Club 2; Pi Omega Pi 3, 4; Future Teachers of America 1; Kappa Delta Pi 4.

JOHN STEVENS

Morea

General Business

Baseball 1; Business Education Club 1, 2, 3; Day Men's Association 2, 3; Aviation Club 1, 2, 3; Future Teachers of America 3.

Lower row:

NANCY DAWN SWARTZ

Forty Fort

Secretarial Sequence, Sales, English

OBITER 1; *Maroon and Gold* 1; College Council 2; Business Education Club 1, 2, 3; Maroon and Gold Band 1, 2, 3, 4; Fashion Show 1, 2, 3, 4; Waller Hall Association 1, 2, 3, 4; Waller Hall Governing Board 3, Treasurer; Future Teachers of America 4; Women's Chorus 3, 4; Kappa Delta Pi 3, 4; Pi Omega Pi 3, 4.

JAMES A. WHIBLEY

Coatesville

General Business

Dramatics Club 1; Business Education Club 1, 2; Pi Omega Pi 2, 3; Kappa Delta Pi 2, 3; Soccer Team 1; Maroon and Gold Band 1; Future Teachers of America 3; Sophomore Class President; *Who's Who in American Colleges and Universities*.

Not Pictured

CARL SHULTZ



ELEMENTARY EDUCATION



Upper row:

JEAN RUTH ALLEN

Scranton
Elementary

Student Christian Association 3, 4; Poetry Club 3, 4; Historian 4; *Maroon and Gold* 4; Knox Fellowship 3, 4; Athenaeum Club 3, 4; Future Teachers of America 4; Kappa Delta Pi 4.

SHIRLEY J. COLEMAN

Beavertown
Elementary

Waller Hall Governing Board 4; Women's Chorus 2, 3; Kappa Delta Pi 3, 4; Future Teachers of America 4.

LOLA JEAN DEIBERT

Danville
Elementary

Women's Chorus 1, 2, 3, 4, Treasurer 2, Vice President 3, President 4; Student Christian Association 1, 2, Secretary 2; Athenaeum Club 1, 2, Treasurer 2; Waller Hall Association 1, 2, 3, 4; Waller Hall Governing Board 3, 4, Vice President 3; *Pilot* 3, Associate Editor; *Who's Who in American Colleges and Universities* 4.

JOHN A. DIETZ

Plymouth.
Elementary

Varsity Club; Football 2, 3, 4; Men's Dormitory Association 2, 3, 4, Treasurer 4; Future Teachers of America 4; Aviation Club 4; Men's Glee Club 4.

Lower row:

MARGARET A. DORASAVAGE

Pottsville
Elementary, Special Education

Cheerleader 1, 2, 3; Dramatic Club 1, 2, 3, 4; Poetry Club 2; Newman Club 1, 2, 3, 4; Alpha Psi Omega 3, 4, Treasurer 4; Future Teachers of America 4; Waller Hall Association 1, 2, 3, 4.

RICHARD MORGAN EDWARDS

Plymouth
Elementary, Special Education

Men's Glee Club 1; Future Teachers of America 4; Kappa Delta Pi 3, 4; C. G. A. Awards Committee.

JOAN C. ENAMA

Nuremberg
Elementary

Women's Chorus 1, 2, Librarian; Cheerleader 1, 2; Fashion Show 2, 3, 4; Waller Hall Governing Board 4; Future Teachers of America 4.

MARILYN BEVERLY EVANS

Wilkes-Barre
Elementary

Kappa Delta Pi 3, 4, Inter-fraternity Representative 3; *Maroon and Gold* 1, 2, 3, 4; Poetry Club 1, 2, 3, 4, Secretary 2, Vice President 4, President 3; B Club 2, 3, 4; Student Christian Association 1, 2; Women's Chorus 1, 2, 3, 4.



Upper row:

ELLEN A. GIBBONS

Trucksville
Elementary

Newman Club 2; Dramatic Club 3, 4; Future Teachers of America 3, 4; Waller Hall Association 2, 3, 4; Day Women's Association 1.

HAROLD V. HARTLEY

Lenoxville
Elementary, Speech Correction

Men's Dormitory Association 1, 2, 3, 4; Wesley Fellowship 1, 2, 3, 4; Football Manager 1, 2; Track 2, 3; Science Club 3; Future Teachers of America 3, 4; Sigma Alpha Eta 3, 4.

WILLIAM G. HERR

Hazleton
Elementary
Athenaeum Club; Aviation Club 1.

BARBARA M. HESSERT

South Williamsport
Elementary

Women's Chorus 1, 2, 3, 4, Treasurer 4; Student Christian Association 3; Future Teachers of America 4; B Club 4; Kappa Delta Pi 4.

Lower row:

ALBERT HITCHINGS

Luzerne
Elementary

Day Men's Association 1, 2, 3, 4; Soccer 1; Future Teachers of America 4; Aviation Club 4.

MILTON C. HUGHES

Wilkes-Barre
Elementary

Knox Fellowship 1, 2, 3, 4; Aviation Club 2, 3, 4; Men's Dormitory Association 2, 3, 4; Day Men's Association; Future Teachers of America 4.

ELEANOR M. JOHNSON

Kane
Elementary

Student Christian Association 1, 2, 3, 4, Vice President 2, 3; Maroon and Gold Band 1, 2; Future Teachers of America 3, 4; Women's Chorus 3; Waller Hall Association 1, 2, 3, 4; Waller Hall Governing Board 3, 4, Secretary 3, President 1; College Council 4; Lutheran Student Association 1, 2, 3, 4, Local Secretary 2, Susquehanna Area Secretary 3, Susquehanna Area President 4, North Atlantic Region Secretary 4, National Relationships Secretary 4; *Who's Who in American Colleges and Universities* 4.

THOMAS C. JONES

West Pittston
Elementary

Maroon and Gold Band 1, 2, 3; Aviation Club 1, 2, 3; Science Club 1, 2; Glee Club 1, 2, 3; Future Teachers of America 4; Men's Dormitory Association 4; Day Men's Association 1, 2, 3.

Upper row:

ELEANOR A. KENNEDY

Bloomsburg
Elementary

Women's Chorus 1, 2, 3, 4; Science Club 2; Day Women's Association 1, 2, 3, 4; Future Teachers of America 4.

PATRICIA A. KISTLER

Bloomsburg
Elementary

B Club 4; Day Women's Association 1, 2, 3, 4; Future Teachers of America 4; Maroon and Gold Band 1, 2, 3; Lutheran Student Association 1, 2, 3, 4. Secretary 3.

GEORGE KOBAL

Nanticoke
Elementary, Special Education

Aviation Club 2; Athenaeum Club 4; Future Teachers of America 4; Phi Sigma Pi 4; Day Men's Association 1; Men's Dormitory Association 2, 3, 4.

JEANNE C. KRZYWICKI

Plymouth
Elementary

Women's Chorus 1, 2, 3, 4; Future Teachers of America 4; B Club 4.

Lower row:

ROBERT E. LAUBSCHER

Selinsgrove
Elementary, Speech Correction

Future Teachers of America 3, 4; Dramatic Club 2, 3, 4; Men's Glee Club 3, 4, Vice President; Sigma Alpha Eta 3, 4, Vice President; Alpha Psi Omega 4; Election Board 3, Co-chairman.

RUSS LOOKER

Johnstown
Elementary, Special Education

Football 1, 2, 3, 4; Knox Fellowship 1, 2, President; Dramatics Club 4; College Council President; Future Teachers of America 4; Varsity Club 1, 2; Student Christian Association 3, 4.

MARILYN W. LUNDY

Bloomsburg
Elementary, Speech Correction

Day Women's Association 4, 2, 3, 4; Women's Chorus 1, 2, 3, 4; Kappa Delta Pi 3, 4, Corresponding Secretary 4; Sigma Alpha Eta 3, 4, Treasurer 3, Secretary 4; Future Teachers of America 4.

JOYCE J. MacDOUGALL

Berwick
Elementary

Orator 4; Science Club 1, 2, 3, 4, Secretary 3, 4; Assembly Committee 2, 3, 4, Secretary 2, 3; Women's Chorus 2, 3; Day Women's Association 1, 2, 3, 4; *Olympian* 2; Fashion Show 1, 2, 3, 4; Future Teachers of America; *Who's Who in American Colleges and Universities* 4.





Upper row:

CHARLOTTE M. MATULESKI

Nanticoke
Elementary

Future Teachers of America 4; Student Christian Association 1; NSA 1, 2; Women's Chorus 1, 2, 3; Athenaeum Club 4; Waller Hall Handbook 2; Student Faculty Committee 1; Kappa Delta Pi 4.

GLORIA MAZZETTI

Berwick
Elementary

Women's Chorus 1; Day Women's Association 1, 2, 3; Future Teachers of America 3; Sigma Alpha Eta 2, 3; *Haroon and Gold* 2.

CORNELIUS McHUGH

Hazleton
Elementary

Men's Glee Club 1, 2; Future Teachers of America 4; Day Men's Association 3, 4.

DOROTHY CEDOR McNAMEE

Berwick
Elementary

College Players 1; *Haroon and Gold* 1, 2, 3, 4; Science Club 3; Fashion Show 1, 2, 3; Future Teachers of America 3, 4; Day Women's Association 1, 2, 3, 4.

Lower row:

JEAN M. MEIER

Millinville
Elementary

Women's Chorus 1, 2, 3, 4; B Club 3, 4; Future Teachers of America 4; Day Women's Association 1, 2, 3, 4.

FLORENCE MERTZ

Northumberland
Elementary

Women's Chorus 2, 3, 4, Librarian 3, Secretary 4; Waller Hall Association 2, 3, 4; Election 2, 3; Future Teachers of America 4.

KATHLEEN MITCHELL

Mahanoy City
Elementary

Cheerleader 1, 2, 3, 4; Poetry Club 2; Dramatic Club 2, 3, 4; Fashion Show 1, 2, 3, 4; Future Teachers of America 4.

OLIVE MOUERY

Mt. Carmel
Elementary

Athenaem Club 2, 3, Secretary 3, Treasurer 3; Sigma Alpha Eta 3, 4, Corresponding Secretary 4; Science Club 2; Waller Hall Governing Board 3; Future Teachers of America 4; Waller Hall Association 2, 3, 4; Kappa Delta Pi 3, 4; Fashion Show 2; Election Board 2.



Upper row:

LOIS J. NEWMAN
 Wilkes-Barre
 Elementary

Kappa Delta Pi 4; Waller Hall Association 1, 2, 3, 4; Waller Hall Governing Board 4; Women's Chorus 1, 2, 3; Poetry Club 3; Student Christian Association 1.

THOMAS J. REED
 Plymouth
 Elementary

Men's Dormitory Association 4, Vice President 4; Basketball 1; Future Teachers of America 1; Aviation Club 1.

M. JANICE RIDER
 Millville
 Elementary

Women's Chorus 3; Science Club 1, 2, 3, 4, Secretary 2, Treasurer 3; Day Women's Association 1, 2, 3, 4; Future Teachers of America 1; Kappa Delta Pi 4.

JOHN E. RILEY
 Danville
 Elementary

Football 1; Basketball 1; Baseball 1, 2; Varsity Club 3, 4; Future Teachers of America 4; Day Men's Association 1, 2, 3, 4.

Lower row:

M. JEANNE RUCKLE
 Bloomsburg
 Elementary

Day Women's Association 1, 2, 3, 4, President 3, Treasurer 4; Women's Chorus 2, 3, 4; Dramatic Club 1, 2, 3, 4; Alpha Psi Omega 2, 3, 4, Secretary 3, President 4; Kappa Delta Pi 3, 4, Historian 4; Future Teachers of America 4; *Maroon and Gold* 3, 4.

PHILIP W. SEARCH
 Wilkes-Barre
 Elementary, Social Studies

Men's Glee Club 1, 2, 3; *Maroon and Gold* 2, 3; C. G. A. Publicity Committee 2.

BARBARA A. SHERMAN
 Benton
 Elementary, Speech Correction

Dramatic Club 1, 2, 3, 4; Women's Chorus 1, 2, 3; Sigma Alpha Eta 3, 4, Secretary 3; Future Teachers of America 4; Assembly Committee 2, 3, 4; Waller Hall Association 1, 2, 3, 4; Kappa Delta Pi 4.

EDWARD P. SLIKES
 Wilkes-Barre
 Elementary

Phi Sigma Pi 3, 1; Kappa Delta Pi 3, 4; Future Teachers of America 4; Men's Glee Club 1, 2, 3; Athenaeum Club 4; Newman Club 4.

Upper row:

CONSTANCE M. STANKO

Danville
Elementary

Athenaeum Club 2; Day Women's Association 1, 2, 3;
Future Teachers of America 3; B Club 3.

JOHN M. STONIK

Plymouth
Elementary

Men's Dormitory Association 1, 2, 3, 4; Future Teachers
of America 4; Football 1, 2, 3; Varsity Club 3, 4.

PATRICIA J. TAYLOR

Dushore
Elementary

Dramatic Club 1, 3, 4; Newman Club 1, 4; Future
Teachers of America 4; Women's Chorus 4; Waller
Hall Association 1, 3, 4; Freshman Class Secretary;
Fashion Show; Athenaeum Club 3.

DAVID H. THOMAS

Orangeville
Elementary, Special Education

Aviation Club 1; Athenaeum Club 1; Day Men's Asso-
ciation 1, 2, 3; Future Teachers of America 4.

Lower row:

NANCY JEAN UNGER

Forty Fort
Elementary

Dramatic Club 2, 3, 4, Secretary; Women's Chorus;
B Club 4; Alpha Psi Omega 4.

JOANNE M. VANDERSLICE

Bloomsburg
Elementary

Maroon and Gold Band 1, 2, 3, Librarian 1; Day Wo-
men's Association 1, 2, 3, 4; Lutheran Student Associa-
tion 1, 2, 3, 4, Vice President 3, 4; Fashion Show 1, 2,
3, 4; Future Teachers of America 4.

PHILIP WEINSTEIN

Wilkes-Barre
Elementary, Speech Correction

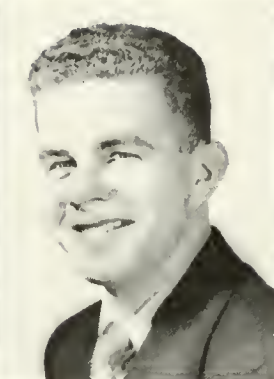
Dramatic Club 2, 3, 4; Alpha Psi Omega 4; Men's Glee
Club 2, 3, 4; Kappa Delta Pi 3, 4; Sigma Alpha Eta
3, 4; *Olympian* 3; *Maroon and Gold* 2, 3, 4; Future
Teachers of America 3, 4; Election Board 3; *College
Handbook Editor* 1951; Men's Dormitory Associa-
tion 3, 4.

GEORGE E. WILLIAMS

Shickshinny
Elementary, Science

Science Club 1, 2, 3; Glee Club 1, 3; *Maroon and Gold*
3; Future Teachers of America 4; Day Men's Associa-
tion 1, 2, 3, 4.





MARY A. WRIGHT

Bloomsburg
Elementary, Speech Correction

Day Women's Association 1, 2, 3, 4; Women's Chorus 2, 3; Lutheran Student Association 1, 2, 3, 4; Wesley Fellowship 1, 2, 3; Sigma Alpha Eta 3, 4; Future Teachers of America 4; *Maroon and Gold* 4.

* WILLIAM J. CLEAVER

R. D. 2, Orangeville
Elementary

Soccer 1, 2; Day Men's Association 1, 2, 3, 4; Varsity Club 3, 4.

Out of alphabetical order.

MARIE C. YOZVIAK

Hanover
Elementary

Science Club 2, 3; Future Teachers of America 3, 4; B Club 4; Waller Hall Association 2, 3, 4; Kappa Delta Pi 1.

‡ JACK D. REESE

Berwick
Social Studies, English

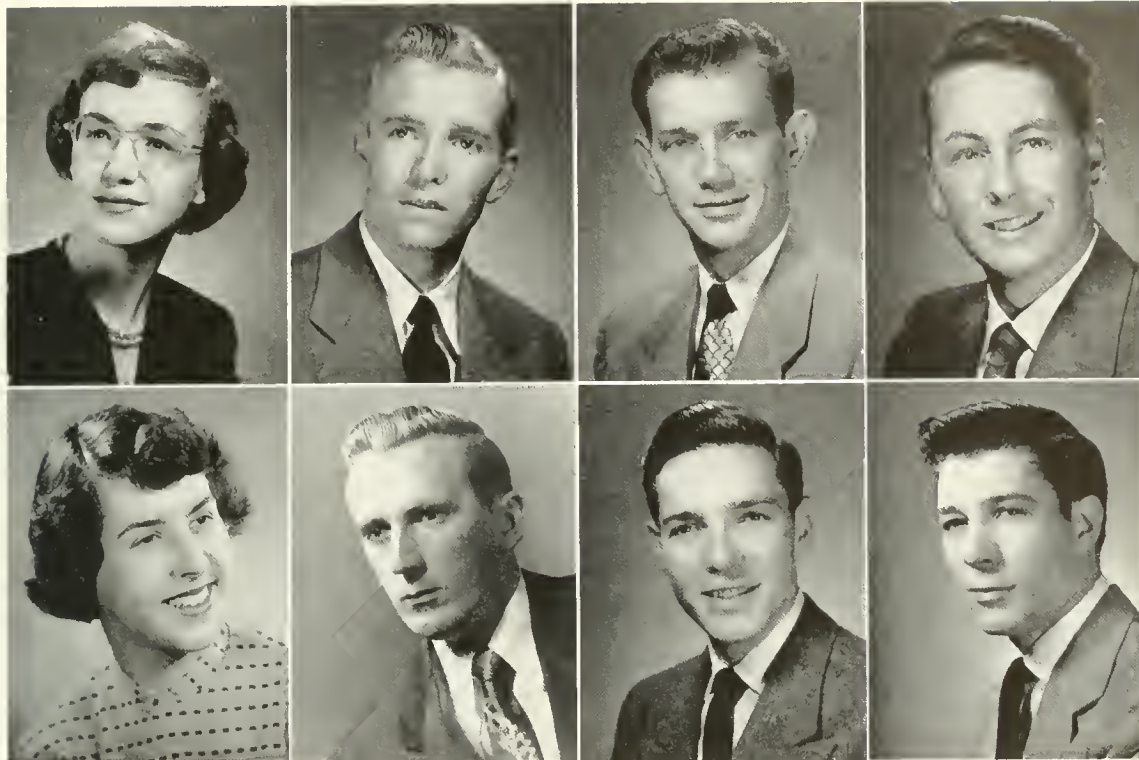
Treasurer, Senior Class of 1951 (First Semester); Feature Editor, *Maroon and Gold* 3, 4; Men's Dormitory Association 2, 3; Day Men's Association 3, 4.

‡Returned from service at mid-semester.(Secondary Student).



A Class in the Benjamin Franklin Laboratory School

SECONDARY EDUCATION



Upper row:

PRISCILLA ABBOTT

Lehman
English, Biological Science

Maroon and Gold 1, 2, 3, 4, Co-editor 4; Bloomsburg Players 2, 3; B Club 2, 3, 4, Secretary 3, Vice President 4; Women's Chorus 1; Science Club 2, 3; Kappa Delta Pi 3, 4, Vice President 4; Future Teachers of America 4; College Council 1; Poetry Club 2, 3; Maroon and Gold Band 2, 3; Waller Hall Association 1, 2, 3, 4.

ATWOOD F. BADMAN

Shamokin
Science, Social Studies

Football Manager 1; Men's Glee Club 1, 2, 3; Soccer 3; Science Club 3, 4; Future Teachers of America 3, 4; Track 1; Day Men's Association 1, 2; Men's Dormitory Association 3, 4.

ADAM BEN

Blakely
Science, Mathematics

Science Club 3, 4, Vice President 3, 4; Kappa Delta Pi 3, 4; Phi Sigma Pi 4; Soccer 1, 2; Track 1, 2; Day Men's Association 1; Men's Dormitory Association 2, 3, 4; Future Teachers of America 4, President 4.

GEORGE E. BLYLER

Battletown
Science, Math

Science Club 1; Dramatic Club 2, 3, 4; Kappa Delta Pi 3, 4; Day Men's Association 1, 2, 3, 4; Future Teachers of America 4; Alpha Psi Omega 4.

Lower row:

DORIS R. BOWMAN

Milton
Spanish, French, English

Waller Hall Association 1, 2, 3, 4; Waller Hall Governing Board 3; Hospitality Committee 2, Chairman 2; Sophomore Class Secretary 2; Women's Chorus 1, 2, 3, Secretary 3; Kappa Delta Pi 3, 1; *Maroon and Gold* 3; Future Teachers of America 1; *Who's Who in American Colleges and Universities* 4.

RUSSELL C. BRACHMAN

West Hazleton
Science, Math
Science Club 1; Day Men's Association 2.

JOHN J. BURNS

Harrisburg
Social Studies, English

Kappa Delta Pi 4; Phi Sigma Pi 4; *OBITER* 2, 3, 4, Associate Editor 3, Editor-in-Chief 4; *Maroon and Gold* 3, Business Manager 3; *Olympian* 2; Men's Glee Club 1, 2, 3, Vice President 3; Athenaeum Club 2, 3, Vice President 3; Assembly Committee 3; Social and Recreational Committee 2, Chairman; Election Board 3, 4, Co-chairman 3, 4; Assistant Track Manager 1; Future Teachers of America 4, Treasurer; Day Men's Association 1, 2; Men's Dormitory Association 3, 4; Newman Club 1, 2, 3, President 3.

ROBERT P. BURNS

Harrisburg
Social Studies, Geography

Science Club 2; Gamma Theta Upsilon 3, 4; *OBITER* 3, 4, Advertising Manager 3, 4; Athenaeum Club 3, 4; College Council 4; *Maroon and Gold* 3, Assistant Business Manager 3; Day Men's Association 2; Men's Dormitory Association 3, 4; Newman Club 2, 3, 4; Future Teachers of America 4; Phi Sigma Pi 4.

Upper row:

RONALD P. BUSHICK

Kulpmont

Biological Science, Social Studies

Day Men's Association 1, 2, 3; Science Club 3; Men's Dormitory Association 1, 2, 3, 4; Aviation Club 1, 2; Band 1.

DONALD JOSEPH BUTLER

Warrior Run

Speech Correction, Social Studies

Sigma Alpha Eta 3, 4; Basketball 1, 2, 3, 4; Baseball 1, 2, 3, 4; Future Teachers of America 4; Men's Dormitory Association 1, 2, 3, 4; Varsity Club 3, 4.

JAMES J. CANNON

Shamokin

Science, Social Studies

Aviation Club 1, 2, Secretary 2; Day Men's Association 1, 2, 3, 4, President 3; College Council 3; Future Teachers of America 4; Kappa Delta Pi 4.

HAROLD W. CAREY

West Pittston

Spanish, French, English

Kappa Delta Pi 3, 4; Phi Sigma Pi 2, 3, 4; Men's Dormitory Association 1, Treasurer; Day Men's Association; Aviation Club 1; Future Teachers of America 4; Knox Fellowship 1, 2, 3, 4.

Lower row:

DONALD J. CESARE

Old Forge

Social Studies, English

Kappa Delta Pi 3, 4; Phi Sigma Pi 3, 4, Vice President 3; Varsity Club 2, 3, 4, President 4; Football 2, 3, 4; Men's Dormitory Association 4; Future Teachers of America.

ANTHONY CIAMPI

Shickshinny

Social Studies, Geography

Kappa Delta Pi 3, 4; Gamma Theta Upsilon 3, 4; Science Club 1, 2, 3; Maroon and Gold 2, 3, 4; Day Men's Association 1, 2, 3, 4; Phi Sigma Pi 4.

CLIFTON G. CLARRIDGE

Washington, D. C.

Science, Mathematics

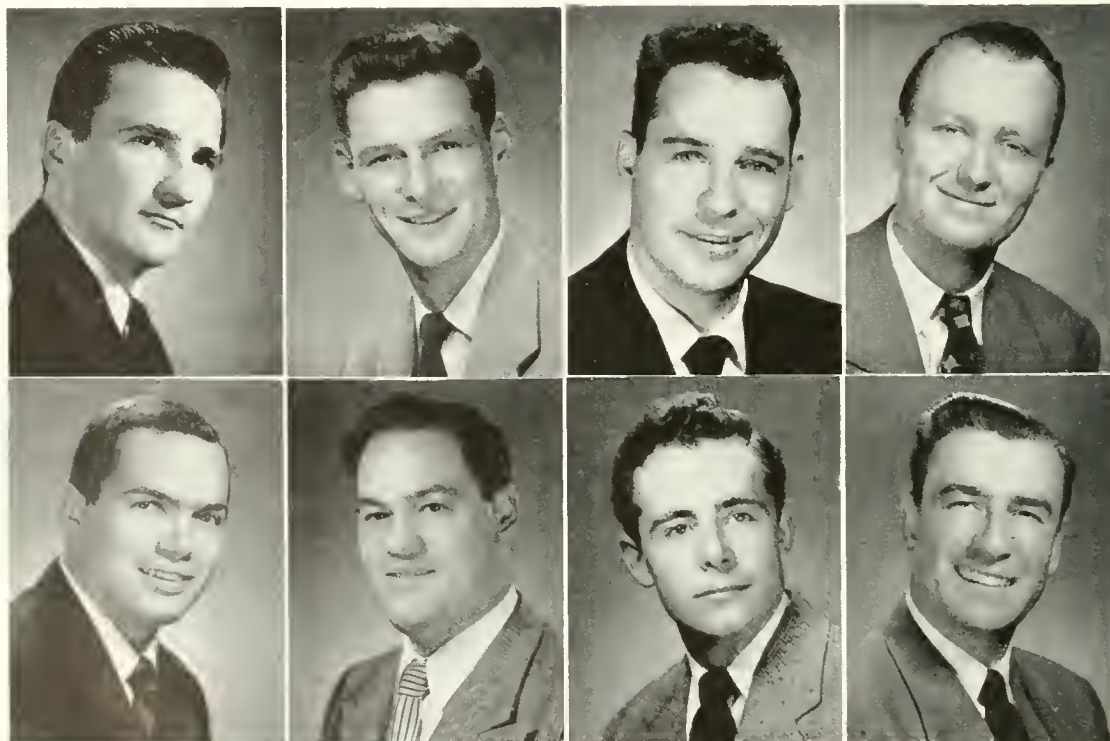
Kappa Delta Pi 4; Science Club 2, 3; Men's Glee Club 2, 3, Treasurer 3; Day Men's Association 1, 2, 3, 4; Future Teachers of America 4; Track Manager 2, 3; OBITER 2, 3, 4, Advertising Manager 3, 4; Phi Sigma Pi 4.

LEON COVAL

Bloomsburg

Science, Geography

Science Club 1, 2, 3, 4; Aviation Club 3; Gamma Theta Upsilon 2, 3, 4.





Upper row:

JACOB E. DAILEY

Danville

Science, Geography

Science Club 1, 2; Day Men's Association; Future Teachers of America 4.

CHARLES J. DALY

Kane

Speech Correction, English, Social Studies

Basketball 2, 3, 4; Track 3; Varsity Club 3, 4; *Maroon and Gold* 4; Sigma Alpha Eta 3, 4.

STEWART E. DAVIS

Wilkes-Barre

Science, Geography

Kappa Delta Pi 2, 3; Science Club 2, 3; Future Teachers of America 3; Day Men's Association; Gamma Theta Upsilon 4.

ROSE MARIE DOMALESKI

Frackville

Science, Mathematics

Women's Chorus 1, 2, 3; Science Club 1, 2, 3; Waller Hall Dormitory Association 1, 2, 3, 4; Waller Hall Governing Board 3; Future Teachers of America 3; Kappa Delta Pi 4.

Lower row:

MICHAEL J. DORAK, JR.

Berwick

Social Studies, English

Assembly Committee 2, 3, 4, Chairman 3, 4; Future Teachers of America 1, Vice President 4; Day Men's Association 1, 2, 3, 4; *Maroon and Gold* 2, 3, Advertising Manager 2, 3; *OBITER* 2, 3; C. G. A. Budget Committee 3; Phi Sigma Pi 3, 4; Kappa Delta Pi 4; *Who's Who in American Colleges and Universities* 4.

DAVID C. EVANS

West Reading

Science, Geography

Football 1, 2, 3, 4; Track 1, 2, 3, 4; Men's Dormitory Association 1, 2, 3, 4; Future Teachers of America 3, 4; Gamma Theta Upsilon 3, 4; Varsity Club 3, 4; Wesley Fellowship 3, 4; Phi Sigma Pi 4.

HARRY M. FENSTERMACHER

Catawissa

Social Studies, English

Science Club 1, 2, 3; Varsity Club 3, 4; Soccer 1, 2; Kappa Delta Pi 3, 4; Day Men's Association 1, 2, 3, 4; *Unrooa and Gold* 3; *OBITER* 3, Assistant Editor; Future Teachers of America 4; *Olympian* 3.

GLENN N. FOGEL

Sunbury

Science, Social Studies

Business Education Club 1; Aviation Club 3; Day Men's Association 3, 4; Kappa Delta Pi.



Upper row:

FRANK J. FURGELE
Shamokin
Social Studies, Geography

Soccer 1, 2, 3; Basketball 1, 3; Men's Dormitory Association 1, 2, 3, 4; Varsity Club 3, 4, Secretary 4; Future Teachers of America 4; Gamma Theta Upsilon 2, 3, 4, President 4; Phi Sigma Pi 4.

FRANKLYN I. GEIST
Danville
Science, Mathematics

Science Club 2, 3; Day Men's Association; Future Teachers of America 4.

WILLIAM J. GILBERT
Wilkes-Barre
Science, Mathematics

Future Teachers of America 4; Track 1, 2, 3, 4; Science Club 2; Men's Dormitory Association 1, 2, 3, 4.

WILLIAM G. GILLESPIE
Bloomsburg

Biological Science, Social Studies, English

Science Club 1, 2, 3; Kappa Delta Pi 3, 4; Day Men's Association 1, 2, 3, 4.

Lower row:

WILLIAM GINTER
Hunlock Creek
Science, Mathematics

Track 2, 3, 4; Maroon and Gold Band 3, 4; Day Men's Association 1; Men's Dormitory Association 2, 3, 4; Science Club 1, 2; Phi Sigma Pi 4.

JOHN C. HADDON
Northumberland
Speech Correction, English

Aviation Club 2; Sigma Alpha Eta 2, 3, Treasurer 3; Dramatic Club 1, 2; Kappa Delta Pi 4.

MAYNARD L. HARRING
Pitman
Science, Mathematics

College Council 2, 3, 4; Day Men's Association 1; Men's Dormitory Association 2, 3, 4, Secretary 3, President 4; Science Club 1, 2, 3, 4, President 4; Varsity Club 4; Soccer 3; Track 3, 4; Phi Sigma Pi 3, 4; Kappa Delta Pi 3, 4, President 4; Junior Class President; Senior Class Vice President.

DAVID L. HECKMAN
Bloomsburg
Science, Mathematics

Maroon and Gold Band 1, 2, 3, Librarian 2, Vice President 3; Dramatic Club 1; Future Teachers of America 3; Kappa Delta Pi 3; Day Men's Association 1, 2, 3.

Upper row:

HARRY M. HERMAN

Sunbury

English, Speech Arts

Dramatic Club 1; Aviation Club 1.

WILLIAM F. HRISKO

Frackville

Science, Social Studies

Science Club 4; Future Teachers of America 4; Day Men's Association 4.

DAVID WALTER JENKINS

West Hazleton

Social Studies, English

Science Club 3; Day Men's Association 3, 4; *Maroon and Gold* 3; OBITER 3, 4; Phi Sigma Pi 4; Future Teachers of America 4; C. G. A. Assembly Committee 3.

EDWARD W. JOHNSON

Mainville

Science, Mathematics

Aviation Club 1, 2; Football 3; Baseball 2, 3, 4; Day Men's Association 1, 2; Varsity Club 3, 4; *Maroon and Gold* Band 1; Future Teachers of America 4.

Lower row:

RONALD A. KALER

Millville

Science, Mathematics

Men's Glee Club 1, 2; Science Club 1, 2; Future Teachers of America 4; Day Men's Association 1, 2, 3, 4.

CALVIN W. KANYUCK

Glen Lyon

General Science, Mathematics

Dramatic Club 1, 2, 3, 4; Science Club 2, 3, 4; Day Men's Association 1, 2, 3, 4; *College Crier* 2; Alpha Psi Omega 3, 4; *Maroon and Gold* 3, 4; Lutheran Students Association 1, 2, 3, 4; Future Teachers of America 3, 4; Student Faculty Assembly Committee; Student Christian Association 4.

NELSON H. KILE

Wyoming

Mathematics, Geography

Men's Glee Club 1, 2, 3; Men's Dormitory Association 1, 2; Day Men's Association 3, 4; Gamma Theta Upsilon 2, 3, 4; Treasurer 1; Student Social and Recreation Committee 2, Chairman 2; Future Teachers of America 3, 4; Knox Fellowship 1, 2, 3, 4.

RAYMOND J. KOZLOWSKI

Kingsley

Science, Social Studies, English

Science Club 2, 3; Aviation Club 1; Future Teachers of America 4; Kappa Delta Pi 4.





Upper row:

JACK M. LENHART

Bloomsburg

Science, Mathematics

Basketball 1; Baseball 1; Science Club 1; Varsity Club 4; Day Men's Association 1, 2, 3, 4.

STANLEY LeVAN

Bloomsburg

Biological Science, Geography

Baseball 1, 2, 3; Basketball 1; Aviation Club 1, 2, 3; Future Teachers of America 4; Day Men's Association 1, 2, 3, 4; Varsity Club 3, 4; Gamma Theta Upsilon 4.

ROYAL A. MILLER

Bloomsburg

Social Studies, Geography

Aviation Club 1; Men's Glee Club 1; Soccer 1; Gamma Theta Upsilon 2.

DAVID TAYLOR NORTH

Bloomsburg

Science, Social Studies

Science Club 1, 2, 3; Future Teachers of America 4; Bloomsburg Players 1, 2, 3, 4; Phi Sigma Pi 4.

Lower row:

MARION V. PAYNE

Williamsport

English, French, Social Studies

Athenaeum Club; Women's Chorus; *Maroon and Gold*; Knox Fellowship; Future Teachers of America.

JOHN JOSEPH PEFFER

Kulpmont

Science, Geography

Future Teachers of America 3, 4, President 3; Gamma Theta Upsilon 3, 4; Aviation Club 1, 2, 3; Men's Dormitory Association 2, 3, 4; Science Club 1.

WILLIAM JOSEPH RADZWICH

West Hazleton

Social Studies, Geography

Day Men's Association 1, 3, 4; Future Teachers of America 4; Gamma Theta Epsilon 4; Track 3, 4; Varsity Club 4.

FREDERICK C. RUMMAGE

Hunlock Creek

Science, Mathematics

Science Club 2; Athenaeum Club 3; Future Teachers of America 4; Phi Sigma Pi 1; Kappa Delta Pi 4; Men's Dormitory Association.

Upper row:

ROY W. SANDERS

Shamokin
Science, Social Studies

Men's Dormitory Association 1, 2, 3, 4; Science Club 1, 2, 3; Future Teachers of America 3, 4; Baseball 3.

EDWIN R. SIMPSON

Berwick
English, Speech Correction

Men's Chorus 1, 2; *Olympian* 1, 2, 3, Associate Editor; Sigma Alpha Eta 2, 3, President; Day Men's Association 1, 2, 3.

GEORGE A. SMITH

Sunbury
Speech Correction, Geography

Dramatic Club 2, 3, 4, President 4; Science Club 1, 2, 3; Athenaeum Club 2; Future Teachers of America 3, 4; Day Men's Association 1, 2, 3; Sigma Alpha Eta 3, 4; Gamma Theta Upsilon 3, 4; Alpha Psi Omega 4; Men's Dormitory Association 4; Track 1, 2.

EDWARD SNYDER

Hazleton
Social Studies, French

Day Men's Association 1, 2, 3, 4; Men's Glee Club 1; Science Club 2; Future Teachers of America 4; Gamma Theta Upsilon 4.

Lower row:

DOROTHY M. STEC

Mahanoy Plane
English, French

Newman Club 1; Women's Chorus 1, 2; Waller Hall Association 1, 2, 3, 4; Future Teachers of America 4.

FRED L. STRAUSSER

Blommsburg
Science, Social Studies
Science Club 1, 2, 3; Day Men's Association 1, 2, 3; Kappa Delta Pi 4.

ROBERT L. THURSTON

Sunbury
Social Studies, Speech Correction

Football 1, 2, 3, 4; Varsity Club 3; Men's Dormitory Association 1, 2, 3, 4.

JOHN F. TRISKO

Hazleton
Science, Mathematics
Science Club; Aviation Club.





Upper row:

C. WALTER TROUTMAN

Shamokin

Biological Science, Mathematics

Day Men's Association 1, 2; Aviation Club 1, 2, 3, 4; Treasurer 2; Soccer 3; Junior Class Treasurer 3; Phi Sigma Pi 3, 4; Vice President 4; Science Club 3, 4; Future Teachers of America 3, 4; Men's Dormitory Association 3, 4.

WILLIAM I. TROXELL

Shamokin

Science, Mathematics

Aviation Club 3, 4; Business Education Club 3; Science Club 3, 4.

JOHN I. WAGNER

Mt. Carmel

Science, Speech Correction

Aviation Club 3, 4; Alpha Psi Omega 3, 4; Future Teachers of America 4.

JOHN EDWARD WHITE

Bloomsburg

Social Studies, Spanish, English

Science Club 1, 2.

Lower row:

NANCY B. WILLIAMS

Ashland

Social Studies, Geography

Athenaeum Club 1; Student Christian Association 1; Science Club 2, 3; Secretary 3; Gamma Theta Upsilon 2, 3, 4; Future Teachers of America 3, 4.

ROBERT M. WOMER

Pottsville

Biological Science, Social Studies, English

Knox Fellowship 1; Science Club 1; Men's Dormitory Association 2, 3; Athenaeum Club 4; Day Men's Association 1, 4; Aviation Club 1; Future Teachers of America 4.

GRAYDON C. WOOD

Berwick

Mathematics, Science

Aviation Club 1, 2, 3; President; Day Men's Association 1, 2, 3.

WALTER WORHACZ

Shamokin

Speech Correction, Social Studies

Day Men's Association 1, 2, 3; President 3; Dramatic Club 1, 2; Aviation Club 1, 2; Sigma Alpha Eta 1, 2; Business Education Club 2; Phi Sigma Pi 1; Future Teachers of America 4.



JAMES WHIBLEY, THOMAS ANTHONY



DORIS BOWMAN, JOYCE MacDOUGALL



RICHARD LAUX, MICHAEL DORAK



RICHARD POWELL, HENRY HURTT

WHO'S WHO IN AMERICAN COLLEGES AND UNIVERSITIES

Seniors who make outstanding contributions in service of the College Community are annually chosen by a faculty committee for recognition in *Who's Who in American Colleges and Universities*. Traits taken into consideration in making the awards are scholarship, leadership in educational and extra-curricular activities, general citizenship, and professional promise.

LOLA DEIBERT, ELEANOR JOHNSON





Left to Right E. Bean, D. Newbery, W. Kline, C. Brennan.

Junior Class

OFFICERS

DAVID NEWBURY	- - - - -	<i>President</i>
CHARLES BRENNAN	- - - - -	<i>Vice President</i>
ERMA BEAN	- - - - -	<i>Secretary</i>
WILLIAM KLINE	- - - - -	<i>Treasurer</i>
CLAUDE RENNINGER	- - - - -	<i>Man Representative</i>
NANCY HEEBNER	- - - - -	<i>Woman Representative</i>

Class Adviser—DR. KIMBER C. KUSTER

With the Seniors necessarily attending to the various duties of student teaching and graduation, it becomes the duty of the Junior Class to assume leadership, as upperclassmen, of the various campus activities. Juniors can be found in positions of responsibility in student government, publications, sports, dramatics, and music. The Junior Class activities include one of the main social events of the year, the Junior Prom, and procurement of college rings.



Junior Class Roll

Adams, Clyde	Camp, Kenneth M.	Doty, James E.
Almers, Mary G.	Campbell, Edward J.	Dowd, Robert
Ayre, Marjorie H.	Carmody, Shirley M.	Duke, Ben C.
Baer, Elizabeth A.	Castle, Robert J.	Durso, Michael J.
Barkely, Joseph	Charney, Theresa L.	Dyer, Palmer E.
Bartleson, William A.	Ciavaglia, Salvatore	Edwards, Harry R.
Bean, Erma R.	Cichowicz, Irene	Endler, Irene J.
Bearde, Keith S.	Condon, Mary C.	Erickson, N. Douglas
Bell, Clyde H.	Conwell, Ann T.	Evans, Richard
Benner, Lee	Cooke, LaRue A.	Ewing, C. Richard
Bickel, Irvin R.	Coursen, Ha M.	Fago, Stephen
Bishop, Richard	Croop, Roy	Feifer, Joseph
Blyler, Donald N.	Cull, Joanne R.	Felker, Madge
Bodek, Sylvester V.	Cunfer, Edwin W.	Ferdinand, James
Bogdan, John T.	Cyganowski, Alfred J.	Fisher, William G.
Boychuck, Daniel	D'Angelo, Ronald	Fitzpatrick, Daniel
Boyle, Joseph E.	Danilo, Rosella	Formulak, Loretta
Brennan, Charles M.	Davis, Clare	Fornwald, JoAnn
Brooks, Harry P.	Dean, Mary Ellen	Fulmer, Thurston S.
Burness, Mrs. Vivian	DeCampi, Helen K.	Gembusia, John M.
Byham, William	Diltz, Leona I.	Gerhard, Robert A.
Caccia, Lena A.	DiRico, John M.	Goodhart, Edward

Goodwin, Thomas
Gordner, Arlene G.
Graybill, Gilmore
Grazel, Marie R.
Greco, Joan
Gulick, Barbara A.
Haas, Robert V.
Hale, Robert E.
Harding, Delores
Harris, Robert E.
Hatrack, William
Hayhurst, Douglas
Heacock, Anna C.
Heebner, Nancy
Heppe, Grace
Herchel, Regina M.
Heydenreich, Fred C.
Hileman, Mrs. Winnie
Hous, Russell
Hosler, Mrs. Margery
Hummel, R. Eugene
Hvasta, Susan
Johnson, Janice E.
Johnson, Jimmie D.
Johnson, Thomas J.
Jones, Richard H.
Jones, Wilma
Kallenbach, Mary
Kelley, Anne
Kennedy, John
Kerschner, Herbert R.
Kline, William H.
Knause, Richard C.
Koharski, Alex P.
Krunkosky, Joseph
Krunkosky, Mary Lou
Ksanznak, Lawrence R.
Kubik, Alex W.
LaBarr, Robert L.
Lambrinos, George
Lang, Robert

Linkhorst, David
Linn, Edward R.
Linn, William B.
Locke, Richard
Long, Mildred J.
MacGill, Leonora M.
Makowski, Clem
Marini, R. Henry
McAnall, Kenneth H.
McClintock, Donald
McQuown, Nira J.
Megargel, Myrtele
Meier, Joseph
Meisner, Rita
Mensch, Walter
Meredith, Donald E.
Mervine, Mildred A.
Miller, Jeanne L.
Mincemoyer, John
Moore, Robert
Morgan, Phyllis
Morrison, M. Eugene
Moss, Ogden
Newbury, David
Ney, Leland E.
Neyhard, Miriam L.
Oblman, M. Elaine
Palko, Michael J.
Paternoster, Doris
Patton, Mary E.
Pauger, Edwin L.
Pease, Charles E.
Pichel, June
Pibanich, Michael
Pliscott, Mildred
Price, Robert I.
Quick, Alice J.
Raabe, Raymond R.
Raker, Warren L.
Reaser, Suzy W.
Reisenweaver, Shirley
Renninger, Claude W.

Rhoads, Nancy Lou
Rittenmeyer, Jack
Roberts, Fay I.
Roll, Theodore
Rompala, Edward
Sable, Edward A.
Scringecour, John S.
Sharp, James H.
Sivulich, John
Skeeba, Jean A.
Soberick, Jack
Speal, Elizabeth
Stefanik, Thomas
Stevenson, Robert
Stiner, Martha
Stoutenburgh, William
Swaboski, Alexander
Swartz, Nellie
Taylor, C. Howard
Thomas, Ruth
Thompson, James W.
Todd, Mary Lou
Verhousky, Russ
Wagner, Raymond J.
Wallace, Jeanne A.
Walsh, Thomas A.
Wanick, Robert G.
Wasiakowski, Joseph
Watkins, Dorothy
Weaver, Edward P.
Wersinger, Joan
Wesner, Alfred V.
Whitelbread, Harold
Williams, Albert
Williams, Bessmarie
Williams, Sheldon
Wrzesniewski, Mildred
Wynings, Shirley
Yeager, Samuel R.
Zeigenfuse, Ardell
Zerby, Alton S.



*First Row, Left to Right—J. Scrimgeour,
C. Andrews, I. Cichowicz.
Second Row—E. Berry, M. Crisci.*

Sophomore Class

OFFICERS

CHARLES ANDREWS	- - - - -	<i>President</i>
JOHN SCRIMGEOUR	- - - - -	<i>Vice President</i>
IRENE CICHOWICZ	- - - - -	<i>Secretary</i>
EDGAR BERRY	- - - - -	<i>Treasurer</i>
MICHAEL CRISCI	- - - - -	<i>Man Representative</i>
ELAINE GUNTHER	- - - - -	<i>Woman Representative</i>

Class Adviser—Miss HONORA NOYES

As students reach the Sophomore Class level, they come to realize their important positions. A bit higher than Freshmen, they act as guides whenever possible; a little less than Juniors and Seniors, they are eager to assume responsibility and fit even more tightly into the pattern of life at Bloomsburg. The main social event of the year is the always successful Sophomore Cotillion.



Sophomore Class Roll

Aagaard, Stanley	Czerwinski, Antoinette	Grant, Rose Marie
Albertson, Myra E.	Dennen, John E.	Gray, Harry G.
Anderson, John A.	DePaul, Mary A.	Gunther, Elaine C.
Andrews, Charles R.	Doyle, Dolores A.	Gunton, Nancy L.
Anspach, Terry	Dreibelbis, Mary R.	Gurzyuski, Frank
Benner, Gloria E.	Edwards, Patricia L.	Hantjis, Anthony
Bennett, Louis G.	Erwine, Sheldon	Haupt, Margaret
Berry, Edgar F.	Eunson, E. Faith	Havard, Joan M.
Bittner, Anna K.	Eveland, Shirley	Heisley, Joanne K.
Boyle, Patricia E.	Fedrigon, Olive J.	Hendershot, Thelma A.
Bushick, Robert E.	Fink, Mary A.	Hess, Patricia A.
Carson, William L.	Froncek, Joseph	Hinger, Carl K.
Cherrington, John	Fry, Judith E.	Hoffman, Sara J.
Cliscon, Alfred J.	Fry, Ruth Ann	Houseknecht, Gerald
Cleaver, Colleen	Garrison, Robert	Hes, Joseph
Cramer, William E.	Gavio, Francis P.	Jacobs, William
Creasy, George William	Geugenbach, Ann	Johnson, John C.
Crisci, Michael R.	Glosek, Joseph	Jones, Blandford

Jones, Merlyn W.	Nemetz, John W.	Snierski, Rosemary
Kallenbach, George	Neugard, Mae	Soberick, Fernie A.
Kapsak, Edward	Newhart, Jean E.	Stauffer, Douglas
Kelshaw, Joan M.	Noll, Margaret L.	Steinbach, Ronald
Kessler, James L.	Noz, Nancy L.	Superdock, David
Kirk, Kenneth G.	Num, William E.	Swigonski, Joseph
Kissinger, Flora J.	O'Donnell, Jean	Teter, Catharine
Kissinger, Joseph D.	O'Loughlin, Patricia	Tilmout, John J.
Knecht, Alfred C.	Ondrula, Joseph E.	Tovey, Nancy E.
Kocher, George E.	Oney, Robert C.	Traver, Jeanette E.
Kopec, Jerome S.	Osevala, Barney J.	Trocki, Daniel B.
Korba, Rose M.	Ottaviani, William	Troy, James D.
Kornfeld, Anna M.	Parrish, Marie	Ubrich, Sarae
Ksanznak, Stanley L.	Pugh, Janice	Vanderslice, Betty
Laidacker, John	Rhoads, Charles	VonDrach, Robert
Latimer, William	Rhodes, Russell	Vought, Carol D.
Ledyard, Mary	Richardson, Donald	Wagner, Kenneth D.
Lesser, James	Rowley, Thomas J.	Walters, Margaret
Lewis, Thomas R.	Ruffing, Charles J.	Walters, Shirley
Logan, Robert H.	Ruppel, Karol	Watts, Sarah
Longo, Edmund M.	Schaar, John A.	Williams, Floyd C.
Makowski, Phyllis	Schmidt, Roland C.	Williams, Harriet
Marr, Howard	Schullery, Louise	Williams, Mary J.
Martz, Mary Ann	Seeley, Jane E.	Williamson, Leota
McCauley, Jevita	Shaffer, John E.	Wirth, Jay S.
McLaren, Phyllis	Shamro, Jean B.	Wolfe, Stephen
McManus, Albert	Shultz, Margaret E.	Wolfe, William Allen
Mont, Bernard J.	Skammer, David J.	Yeager, Betty
Montague, Ruth A.	Slembarsky, Jacob	Yencha, Shirley
Morgan, Margaret	Smith, Keith A.	Yesson, Charles
Moyer, Arlene E.	Snuilyan, Arthur	Zahora, Joseph



*Front Row, Left to Right R. Rainey,
R. Gilman, R. Holtzman.
Back Row—M. Moran, K. McKay.*

Freshman Class

OFFICERS

KEITH MCKAY	- - - - -	<i>President</i>
MICHAEL MORAN	- - - - -	<i>Vice President</i>
RUTH GILMAN	- - - - -	<i>Secretary</i>
ROBERT RAINEY	- - - - -	<i>Treasurer</i>
RUDOLPH HOLTZMAN	- - - - -	<i>Historian</i>
FRED DEL MONTE	- - - - -	<i>Man Representative</i>
BARBARA JAMES	- - - - -	<i>Woman Representative</i>

Class Adviser—Mrs. CHARLES BEEMAN

Always the largest class, the Freshmen are also the most willing to learn how to assume their role as college men and women. Even with many adjustments to be made in their new life at Bloomsburg, the Freshmen still find time to sponsor the Frosh Hop as their contribution to the social life of the college.



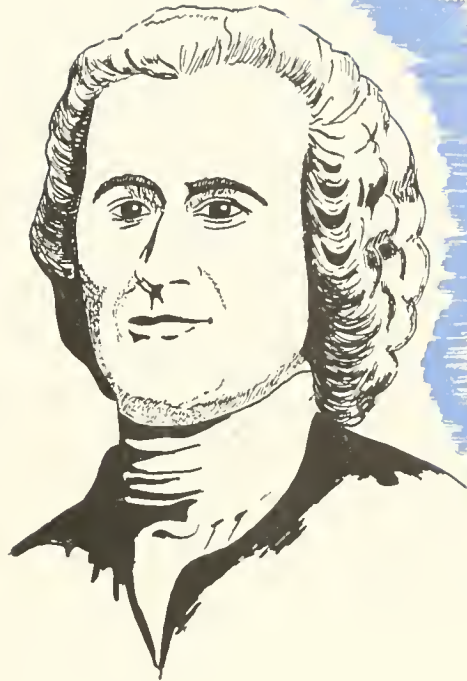
Freshman Class Roll

Adams, Thomas	Bishop, Byron	Cole, Ronald L.
Angus, John D.	Büler, Marguerite	Colone, Joseph
Arnold, Shirley A.	Bogardus, Marion E.	Connolley, Edward J.
Anrand, Robert L.	Bogart, Lynda M.	Cook, Jean L.
Babetski, Robert A.	Bolling, Judith M.	Cornell, Richard
Baiamonte, Andrew	Bond, Carole Ann	Couch, Ronald J.
Baker, Oren A.	Bower, Janice B.	Cumens, Robert E.
Balent, Eleanor	Brace, Ethel M.	Curilla, Joan A.
Bangs, Nancy M.	Brandt, James	Czeck, John J.
Barnes, Dorothy A.	Bucher, Barbara A.	Davis, Charles
Batey, George D.	Buchwash, Vincent	Davis, Thomas
Bauer, Constance M.	Burlingame, Allene	DeMonte, Fred B.
Bauer, Judith	Burrows, Louise M.	Derk, George W.
Belinsky, Albert T.	Cain, Paul M.	Derr, Druscilla M.
Belock, Michalene	Carey, Robert	Devereux, Stephen
Berdy, Carolyn	Chapin, Joan M.	DeWolfe, Robert
Betz, Fredric J.	Childs, Edward	Dotter, Sharon L.
Bidelspach, Francis A.	Coates, Gerald S.	Dougherty, Cyril R.

Dreese, Anna L.	Harris, Gloria M.	Koval, Joseph
Eckart, Harvey	Heise, Loretta	Krapf, J. Sylvia
Ellinger, William	Hendershot, Raymond	Krause, John L.
Ellis, Rebecca A.	Henning, Mary E.	Krum, Shirley A.
Eunson, Elizabeth	Herbert, Thomas R.	Kubik, Mary Louise
Evans, Jeananne	Herre, George M.	Kwak, Joseph J.
Fisher, Alice	Hidlay, Kenneth	Laine, Clarence
Flack, Patricia	Hill, William J.	LaSorsa, Marie L.
Flaugh, Donald S.	Hiller, Sherrill	Ledger, Rex
Forschner, Richard	Hines, David	Lenio, John
Frace, Charles R.	Hippensteel, Mollie	Leonard, John C.
Franklin, A. Paul	Histed, Grace	Levan, Donald
Franks, Paul J.	Hoffman, Betty J.	Lewis, Mary G.
Frey, Aileen G.	Holdren, Gertrude A.	Lubnow, Francis
Fry, Loretta N.	Holtzman, Rudolph V.	Luchs, James
Galanti, Anthony V.	Hoover, Betty M.	Lukac, June E.
Garinger, R. Arnold	Horne, Hope H.	Mahoney, James E.
Gerosky, Eileen H.	Horne, Virginia G.	Martz, Charles W.
Gill, Cora R.	Horning, Cornelia	Masanovich, George
Gillman, Ruth	Hughes, Janet A.	Mayo, George R.
Girdauskas, Rae B.	Hurt, Richard	McCauley, Jacqueline
Gobster, Marlene	Ikeler, Alfred E.	McCormick, Joanne
Goodell, Carolyn R.	Ives, Patricia C.	McGee, Edward J.
Grabowski, Richard	James, Barbara L.	McKay, Keith
Griffiths, Jean E.	Janowczyk, Frank A.	McLaughlin, Charles
Grutza, Frank	Johnson, Dolores I.	McNelis, Donald T.
Guinard, Theresa B.	Johnston, John E.	Mensing, Mary G.
Gurzynski, Archie	Katchi, Jean J.	Mihaly, John
Gydosh, Rita	Kanaskie, Ronald B.	Mihocko, June M.
Haas, Mollie	Kanyok, Joan L.	Milewski, Dolores
Haddon, Donna	Karol, Eugene	Miller, Reed
Halcovich, John	Karycki, Victor J.	Miller, Robert E. II.
Hall, Elizabeth	Keiper, Florence	Mincer, Jeannetta
Hamershock, Kenneth	Kinder, Joseph E.	Montague, Florence
Harding, Paul D.	Klimovich, Eugene J.	Moran, Michael

Moran, Nancy A.	Rohrbach, Relda M.	Steiner, James P.
Morgan, Mary	Romanell, Mildred	Steiner, Joseph A.
Morgan, Sally	Rowland, Mary A.	Stewart, Harley
Morris, Mark G.	Rumer, Claude W.	Stoehr, Charlotte
Nolan, Edward G.	Rutkoski, Helen C.	Szerafinski, Lura
Norquest, Robert O.	Sadowski, Doris A.	Taylor, Charles F.
Novick, Eleanor M.	Sanders, Thomas E.	Thomas, Barbara
O'Braitis, Mary E.	Schalles, Joyce E.	Thomas, Donald W.
Ondrula, Rudy	Schell, George A.	Tregellas, Shirley
Ott, Grace D.	Schickley, Nancy L.	Tuckett, James
Paige, Phyllis E.	Schmidt, Alton W.	Vacante, Frank
Palushock, Edward	Schofield, Joyce L.	Verano, Ralph C.
Palutis, Joan H.	Semanski, Alberta J.	Wagner, Janet R.
Panicello, John	Seybert, Jerry	Wagner, William
Patterson, E. Joan	Shamp, Charles B.	Walburn, Allen B.
Paul, Ruth E.	Shemanski, Joseph J.	Wallace, Constance
Payne, Patricia	Shiner, Donald S.	Walp, Nancy A.
Persing, Thomas	Shupp, Carol	Walter, Bernice
Phillips, Patricia I.	Shuttlesworth, Robert	Walter, Marjorie A.
Phillips, Sherrill	Sibly, John	Ward, Harry A.
Plafcan, Robert B.	Sick, Lois E.	Wayne, Raymond
Pope, Charles G.	Smith, Donald E.	Weaver, Evelyn M.
Pozzebon, Louise	Smith, Holley	Welliver, Thomas
Rainey, Robert G.	Smith, Malcolm	Westover, Robert
Rainey, Theodore	Sneidman, W. Carl	Wiik, Glenn
Reinsmith, George	Snyder, Ann E.	Williams, Nancy S.
Rhodes, Paul H.	Snyder, Nancy M.	Yost, Carolyn A.
Richards, Donald G.	Snyder, Robert F.	Yozviak, Janice
Rinehimer, Shirley		Zimmerman, Mary B.





“As soon as public service ceases to be the chief business of the citizens, and they would rather serve with their money than with their persons, the State is not far from its fall.”

—JEAN JACQUES ROUSSEAU, 1712-1778

Activities



Left to Right — H. Kerschner, H. Marini, R. Looker, C. Davis, H. Hurtt.

Community Government Association

The Community Government Association is comprised of the entire student body. The Association's objectives are carried out by the College Council, which is composed of student and faculty representatives whose duty consists of recommending policies for all student activities. The College Community benefits from the exchange of ideas made possible by communication with the organizations of other colleges.



Seated, Left to Right — M. Macdonald, H. Kerschner, H. Hurtt, C. Davis, R. Looker, H. Marini, D. Newbury, D. Harding.
Standing — K. McKay, M. Crisci, P. Abbott, F. Del Monte, M. Bourdette, C. Andrews, E. Johnson, T. Anthony, N. Heebner, J. Hoch, E. Ranson, M. Haring, E. Hazen, E. Gunther, B. James, R. Hallisy, M. Kehr, R. Burns, T. North.

Community Government Association

OFFICERS

RUSSELL LOOKER	- - - - -	<i>President</i>
HENRY MARINI	- - - - -	<i>Vice President</i>
CLARE DAVIS	- - - - -	<i>Secretary</i>
HENRY HURT	- - - - -	<i>Treasurer</i>
HERBERT KERSCHNER	- - - - -	<i>Assistant Treasurer</i>

FACULTY MEMBERS

Dr. North	Miss Macdonald	Miss Hazen
Dr. Kehr	Miss Ranson	Dr. Engelhardt
Mr. Hoch	Mr. Redman	Mr. Hallisy
	Dr. Herre	

STUDENT REPRESENTATIVES

Thomas Anthony	Charles Andrews	Barbara James
Margaret Bourdette	Michael Crisci	Priscilla Abbott
Robert Burns	Elaine Gunther	Delores Harding
Dave Newbury	Keith McKay	Walter Worhacz
Claude Renninger	Fred DelMonte	Eleanor Johnson
Nancy Heebner		Maynard Haring



RUSSELL LOOKER
President



Phi Sigma Pi

OFFICERS

CLAUDE RENNINGER	- - - - -	<i>President</i>
WALTER TROUTMAN	- - - - -	<i>Vice President</i>
CHARLES BRENNAN	- - - - -	<i>Secretary</i>
VINCENT NAWROCKI	- - - - -	<i>Treasurer</i>
MR. REAMS	- - - - -	<i>Adviser</i>

The Iota Chapter of Phi Sigma Pi, a National Professional Educational Fraternity for men, was installed at Bloom-burg State Teachers College on April 26, 1930. The three basic principles upon which Phi Sigma Pi is founded are: Fellowship, scholarship, and professional skill. Members of the Fraternity are selected on the basis of leadership in both professional and social life.

Pi Omega Pi

OFFICERS

DALE BENNETT	<i>President</i>
JAMES WHIBLEY	<i>Vice President</i>
GERALDINE FUNK	<i>Secretary</i>
MR. GEHRIG	<i>Adviser</i>

Members of the Department of Business Education who have shown high professional promise and have demonstrated superior scholastic ratings are eligible for membership in Pi Omega Pi. The Alpha Delta Chapter of the National Professional Education Fraternity was installed at Bloomsburg State Teachers College on May 28, 1935. Since that time it has consistently promoted, extended, and created interest and scholarship in commerce. In addition, it encourages and fosters high ethical standards and teaches the ideal of service as the basis of all worthy enterprise. Outstanding among Pi Omega Pi's activities of its past year was the radio program which presented the story of our fraternity on the campus.





Kappa Delta Pi

OFFICERS

MAYNARD L. HARRING	-	-	-	-	-	-	-	<i>President</i>
PRISCILLA ABBOTT	-	-	-	-	-	-	-	<i>Vice President</i>
BARBARA HARMAN, MARGARET BOURDETTE								<i>Recording Secretaries</i>
MARILYN LUNDY	-	-	-	-	-	-	-	<i>Corresponding Secretary</i>
RICHARD POWELL	-	-	-	-	-	-	-	<i>Treasurer</i>
JEANNE RUCKLE	-	-	-	-	-	-	-	<i>Historian-Reporter</i>
CLIFTON CLARRIDGE, HENRY MARINI	-	-	-	-	-	-	-	<i>Program Chairmen</i>
DR. NELL MAUPIN	-	-	-	-	-	-	-	<i>Counselor</i>

Kappa Delta Pi is a National Honor Society in Education. The Gamma Beta Chapter of Kappa Delta Pi, was installed at the State Teachers College, Bloomsburg, Pennsylvania, on February 21, 1931. Membership is extended to those Junior and Senior students who have commendable personal qualities and worthy ideals and whose cumulative grades are in the upper quartile of the composite grade of the institution.

The purpose of the fraternity is to encourage high professional, intellectual, and personal standards; to recognize a high degree of professional fellowship among its members and to quicken professional growth by honoring achievement in educational work.



Kappa Delta Pi

The following students are members of Kappa Delta Pi:

Abbott, Priscilla	Domaleski, Rose Marie	Hessert, Barbara	Raker, Warren
Allen, Jean	Dorak, Michael	Hornberger, Lester	Rider, Janice
Anthony, Thomas	Duke, Ben	Hurt, Henry	Ruckle, Jeanne
Bean, Erma	Edwards, Harry	Johnson, Barbara	Rummage, Fred
Ben, Adam	Edwards, Richard	Johnson, Janice	Russell, Donald
Benner, Lee	Evans, Marilyn	Jones, Wilma	Scrimgeour, John
Bennett, Dale	Ewing, C. Richard	Kozłowski, Raymond	Sherman, Barbara
Blyler, Donald	Fenstermacher, Harry	Ksanznak, Lawrence	Shultz, Carl
Blyler, George	Fisher, William	Kubic, Alex	Slikes, Edward
Bourdette, Margaret	Fitzpatrick, Daniel	Laux, Richard	Sluyter, Joyce
Bowman, Doris	Fogel, Glenn	Linn, William	Soberick, Jack
Brennan, Charles	Foley, M. Iva	Long, Mildred June	Speal, Elizabeth
Burns, John	Fornwald, JoAnn	Lundy, Marilyn	Stanitskie, Francis
Cannon, James	Fulmer, Thurston	MacGill, Leonora	Strausser, Fred
Carey, Harold	Funk, Geraldine	Marini, Henry	Swartz, Nancy
Carmody, Shirley	Galiley, Leonard	Matuleski, Charlotte	Thomas, Harvey
Cesare, Donald	Galinski, Francis	McClintock, Donald	Thomas, Ruth
Cherilla, Rocco	Gillespie, William	Mouery, Olive	Todd, Mary Louise
Ciampi, Anthony	Glidden, Ruth	Nawrocki, Vincent	Wallace, Jeanne
Ciavaglia, James	Goodwin, Thomas	Newman, Lois	Wanick, Robert
Clarridge, Clifton	Groff, Bertha	Osenback, Robert	Watkins, Dorothy
Coleman, Shirley	Gulick, Barbara	Paternoster, Doris	Weinstein, Philip
Condon, Mary	Haddon, John	Pease, Charles	Wersinger, Joan
Cunfer, Edwin	Harman, Barbara	Pichel, June	Whibley, James
Danilo, Rosella	Harring, Maynard	Pihanich, Michael	Whitebread, Harold
Davis, Clarabelle	Hemlock, Michael	Powell, Richard	Wrzniewski, Mildred
Davis, Stewart	Herchel, Regina	Price, Robert	Yozviak, Marie
Dean, Mary Ellen	Heckman, David	Quick, Alice	Zerby, Alton

Alpha Psi Omega

OFFICERS

JEAN RUCKLE	<i>President</i>
LACRA PHILO	<i>Vice President</i>
PEGGY DORSAVAGE	<i>Treasurer</i>
MISS STOLP, MISS JOHNSTON	<i>Advisers</i>

The Alpha Omicron Chapter of Alpha Psi Omega, a National Honorary Fraternity in Dramatics, provides encouragement and recognition for students who are interested in dramatics and the college theater. The chapter here at Bloomsburg is composed of those members of the Bloomsburg Players who have done commendable work in dramatics.





Gamma Theta Upsilon

OFFICERS

FRANK FURCELE	- - - - -	<i>President</i>
NANCY WILLIAMS	- - - - -	<i>Secretary</i>
NELSON KILE	- - - - -	<i>Treasurer</i>
MR. STERLING	- - - - -	<i>Adviser</i>

The Delta Chapter of Gamma Theta Upsilon, a Professional Geography Fraternity, seeks to bring a closer bond of fellowship among undergraduate students of geography, and to promote the professional study of the subject. Membership in Gamma Theta Upsilon is extended to students of geography who show professional promise and give evidence of high character and ideals.



Sigma Alpha Eta

OFFICERS

JACK SIMPSON	- - - - -	<i>President</i>
NANCY HEEBNER	- - - - -	<i>Vice President</i>
MARILYN LUNDY	- - - - -	<i>Recording Secretary</i>
OLIVE MOUREY	- - - - -	<i>Corresponding Secretary</i>
JOHN HADDON	- - - - -	<i>Treasurer</i>
MISS JOHNSTON	- - - - -	<i>Adviser</i>

Iota Chapter of Sigma Alpha Eta was organized on the campus of Bloomsburg State Teachers College February 19, 1951. The purpose of this national organization is to create and stimulate an interest among college students in the field of speech and hearing; to encourage professional growth by providing learning experiences not offered in the formal course structure; to foster a spirit of unity by co-ordinating the interests and efforts of persons with a common goal; by offering opportunities for social and professional fellowship; by providing situations in which students and faculty can work together as a team to advance the profession as a whole; to aid in building wholesome public relations with other college departments and with local organizations interested in knowing about the field of speech and hearing. Membership is divided into two classes, Key and Associate, according to academic standing and work done in the field.

Business Education Club

OFFICERS

FRANCIS GALINSKI	- - - - -	<i>President</i>
RICHARD KNAUSE	- - - - -	<i>Vice President</i>
MILDRED WRZENIEWSKI	- - - - -	<i>Secretary</i>
WARREN RAKER	- - - - -	<i>Treasurer</i>
MR. RYGIEL	- - - - -	<i>Adviser</i>

The Business Education Club, one of the largest and most active organizations on campus, has sponsored through the year a number of socially and educationally interesting programs. The purpose of the club is primarily that of enlarging the business education experiences of its members through extracurricular activities. Through such activities as the Business Education commercial contest for high schools, a project in which the club assists, high school students are acquainted with the type of professional work developed at Bloomsburg.





Waller Hall Association

OFFICERS

ELEANOR JOHNSON	- - - - -	<i>President</i>
MARY ELLEN DEAN	- - - - -	<i>Vice President</i>
MARGARET BOURDETTE	- - - - -	<i>Secretary</i>
NELLIE SWARTZ	- - - - -	<i>Treasurer</i>



Waller Hall Association

The Waller Hall Association is composed of all women dormitory residents. The Association strives to make living in Waller Hall a pleasant, cheerful, and cooperative experience. The functions of the Association are carried out through the Governing Board assisted by the Dean and Assistant Dean of Women. Various committees carry out the social and educational programs.



Women's Chorus

OFFICERS

LOLA JEAN DEIBERT	- - - - -	<i>President</i>
MYRA ALBERTSON	- - - - -	<i>Vice President</i>
FLORENCE MERTZ	- - - - -	<i>Secretary</i>
BARBARA HESSERT	- - - - -	<i>Treasurer</i>
OLIVE JEAN FREDIGON, MARY LEDYARD	- - - - -	<i>Librarians</i>
MR. SMITH	- - - - -	<i>Director</i>



The Women's Chorus is one of the largest and most active organizations on campus. The group appears at various times throughout the year in chapel exercises and radio programs. The highlight of the year is the annual Christmas program.



Women's Chorus

MEMBERS

First Soprano

Albertson, Myra	Fedrigon, Olive Jean	Ledyard, Mary	Semanski, Alberta
Bogart, Lynda	Fink, Mary Ann	Lukac, June	Slicker, La Rue
Bucher, Barbara	Fry, Loretta	Martini, Doris	Stoehr, Charlotte
Caccia, Lee Ann	Fry, Ruth Ann	Matuleski, Charlotte	Snyder, Ann
Chapin, Joan	Gulick, Barbara	Mervine, Mildred	Swartz, Nancy
Edwards, Patricia	Gunton, Nancy	Mertz, Florence	Vanderslice, Betty
Eunson, Elizabeth	Gillman, Ruth	O'Loughlin, Patricia	Vought, Carol
Eunson, Faith	Kelshaw, Joan	Ott, Grace	Yenchia, Shirley
Evans, Jeananne	Krapf, Sylvia	Noll, Peggy	

Second Soprano

Barnes, Dorothy	Gerosky, Eileen	Hoffman, Betty	Patton, Clara
Bower, Janice	Girdauskas, Rae	Hoffman, Sarah	Schickley, Nancy
Brace, Ethel	Gobster, Marlene	Horning, Cornelia	Snierski, Rose
Brobst, Annabelle	Grant, Rosemarie	Korba, Rose	Traver, Jeannette
Coursen, Ida Mae	Heacock, Carolyn	McCormick, Joanne	Wagner, Janet
Curilla, Joan	Haupt, Margaret	Miller, Jeanne	Watkins, Dorothy
Dreese, Anna	Histed, Grace	Ohlman, Elaine	Williams, Joyce
Derr, Druscilla			Williams, Mary Jo

First Alto

Balent, Eleanor	Harris, Gloria	Novick, Eleanor	Swartz, Nellie
Bauer, Constance	Hoover, Betty	O'Braitis, Mary	Sick, Lois
Bitler, Peggy	Keiper, Florence	O'Donnell, Jean	Taylor, Patricia
Bogardus, Marion	Lewis, Mary	Patton, Mary Elizabeth	Thomas, Ruth
Conwell, Ann	Mincer, Jeannette	Paul, Ruth	Ulrich, Sarae
Gill, Cora	Morgan, Sally	Phillips, Patricia	Williams, Nancy
Grazel, Marie	Newhart, Jean	Schullery, Louise	

Second Alto

Charney, Theresa	De Paul, Mary	Hepe, Grace	Kornfeld, Ann
Dean, Mary Ellen			Sadowski, Doris



Men's Glee Club

MEMBERS

First Tenor

Dick Powell
John Bogdan

Clyde Bell
Thomas Johnson

Frank Janowizyk
Robert Lewis

Second Tenor

Thomas Adams
Alfred Chiscon
Gerald Houseknecht
Raymond Raabe

Bob Westover
Bill Latimer
Malcolm Smith
Howard Marr

Atwood Badman
Kenneth Hamershock
Holley Smith
Richard Forschner

Baritone

Alex Koharski
John Sibly
Donald Smith

Charles Pope
Mike Moran
Donald McNelis

Frank Vacante
George Derk
Richard Hurt

Bass

Alex Kubik
Karol Ruppel
Joseph Kinder

Keith McKay
Thomas Anthony
James Mahony

Steve Devereux
Ben Lynn
David Hines

Men's Glee Club

OFFICERS

ALEX KUBIK	<i>President</i>
KAROL RUPPEL	<i>Vice President</i>
ALEX KOHARSKI	<i>Secretary</i>
DONALD SMITH	<i>Treasurer</i>
THOMAS JOHNSON, MALCOLM SMITH	<i>Librarians</i>
MR. RALPH FISHER SMITH	<i>Director</i>



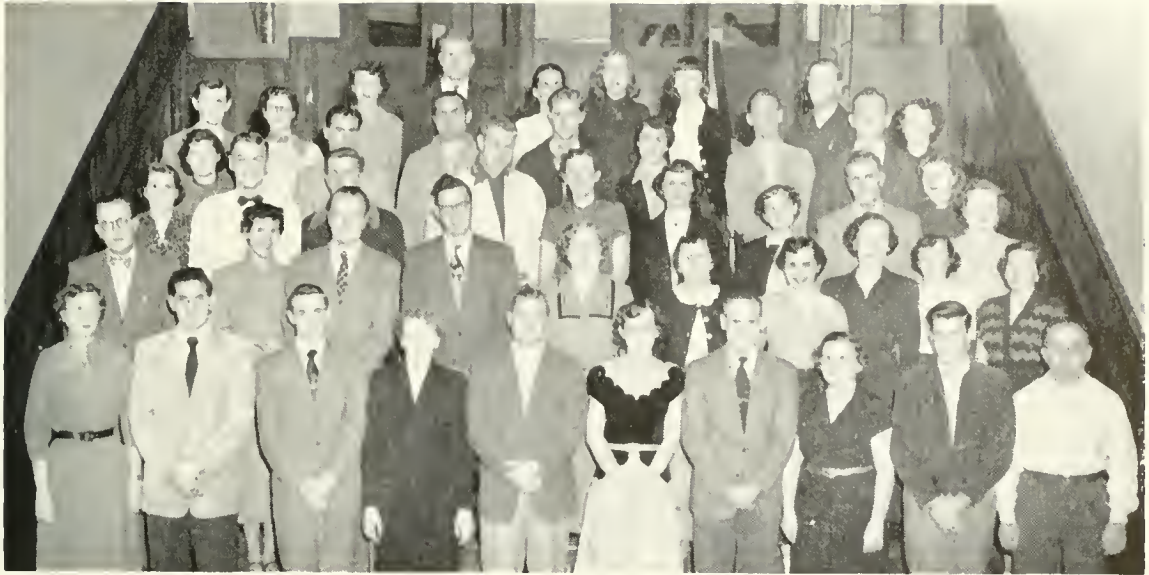
The Men's Glee Club, an enthusiastic choral organization on campus, is in the hands of a new and capable director this year—Mr. Smith. The Glee Club presents several concerts each year in addition to a number of off-campus engagements. One of the most impressive choral presentations of the year is the annual combined chorus Christmas program in which the Glee Club joins with the Women's Chorus.



Future Teachers of America

OFFICERS

ADAM BEN	- - - - -	<i>President</i>
MICHAEL DORAK (First Semester)	- - - - -	<i>Vice President</i>
MAYNARD HARRING (Second Semester)	- - - - -	<i>Vice President</i>
DORIS PATERNOSTER	- - - - -	<i>Secretary</i>
JOHN BURNS	- - - - -	<i>Treasurer</i>
DR. ENGELHARDT, MR. HALLISY, MISS HAZEN	- - - - -	<i>Advisers</i>



Future Teachers of America

Chapters of Future Teachers of America are organized under the auspices of the National Education Association. F. T. A. has as its purpose the acquainting of teachers in training with the problems of the profession in order to interest the best type of men and women in education as a career. Membership is open to any student with an interest in the advancement of education.



Science Club

The Science Club is one of the largest organizations on the campus. The chief aims of the club are to promote interest in science and afford its members opportunity to enlarge their knowledge and experience through scientific lectures and demonstrations. The recent acceleration of scientific progress has given the club a diversity of material that has led to the presentation of programs of unusual interest and value. Highlight of the club's activity is the annual field trip and picnic taken each spring.





Science Club

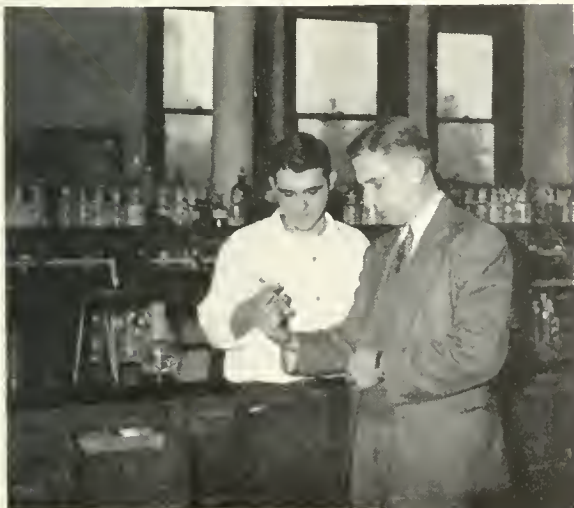
OFFICERS

First Semester

MAYNARD HARRING - - - - *President*
 ADAM BEN - - - - *Vice President*
 JOYCE MACDOUGALL - - - - *Secretary*
 RUTH THOMAS - - - - *Treasurer*
 WILLIAM FISHER - *Program Chairman*
 DR. KUSTER, MR. LANTERMAN - *Advisers*
 ELIZABETH BAER *Maroon and Gold Reporter*

Second Semester

WILLIAM FISHER - - - - *President*
 LEON COVAL - - - - *Vice President*
 ELIZABETH BAER - - - - *Secretary*
 RUTH THOMAS - - - - *Treasurer*
 JOHN SCRIMEGEOUR - *Program Chairman*
 DR. KUSTER, MR. LANTERMAN - *Advisers*
 REGINA HERCHEL *Maroon and Gold Reporter*





Bloomsburg Players

OFFICERS

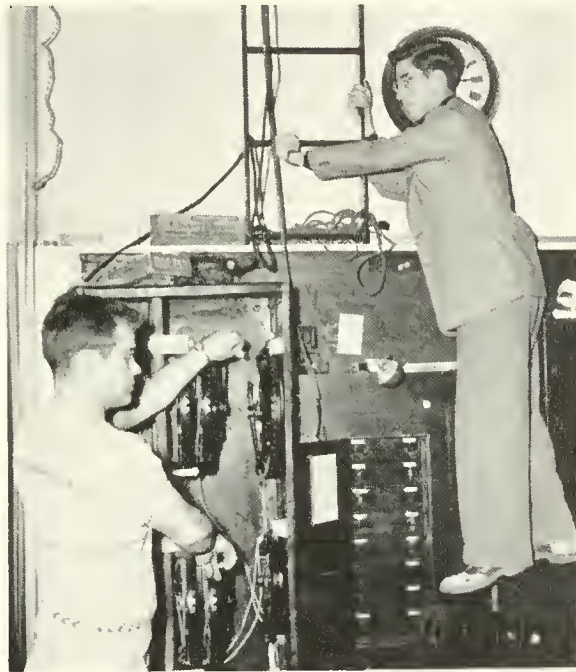
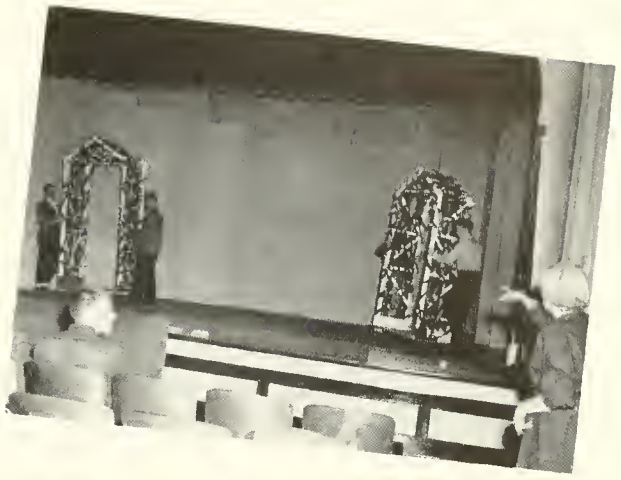
First Semester

GEORGE SMITH - - - - *President*
 ROSELLA DANILO - - - - *Vice President*
 JEANNE MILLER - - - - *Secretary*
 LEE ANN CACCIA - - - - *Treasurer*
 MISS JOHNSTON - - - - *Adviser*

Second Semester

KAROL RUPPEL - - - - *President*
 ROBERT VON DRACH - - - - *Vice President*
 JOANNE CUFF - - - - *Secretary*
 LEE ANN CACCIA - - - - *Treasurer*
 MISS STOLP - - - - *Adviser*

The Bloomsburg Players is the College dramatics group. Through plays produced at weekly meetings under student directors, a workshop is provided for those students interested in the various aspects of dramatics. In addition to presenting plays for the College Community, the group also participates in radio programs and presents plays in nearby communities.



Day Men's Association

The membership of the Day Men's Association includes all non-dormitory male members of the student body. Its primary purpose is to give the Day Men representation in student government and to afford opportunity to formulate policies for the group's benefit. Besides its administrative functions, the Association also sponsors several social affairs, one of which is a dance for the entire College Community.



OFFICERS

WALTER WORHACZ - - - - *President*
WILLIAM FISHER - - - - *Vice President*
ROBERT GARRISON - - - - *Secretary*
LESTER HORNBERGER - - - - *Treasurer*
DR. HERRE - - - - *Adviser*



Day Women's Association

The Day Women's Association is made up of all the non-dormitory women members of the student body. The Day Women's Rooms on the first floor of Noetting Hall have recently been refurnished. These rooms consist of office and study, a lounging room, and a lunch room with a modern electric unit.

The purpose of the organization is to promote and protect the interests of day women and make them feel that they are a real part of the College Community. Each year the association sponsors social events for its members and their guests and engages in welfare work during the Christmas Season.

OFFICERS

DELORES HARDING	- - -	<i>President</i>
ELAINE GUNTHER	- - -	<i>Vice President</i>
PHYLLIS MORGAN	- - -	<i>Secretary</i>
JEAN RUCKLE	- - -	<i>Treasurer</i>
MISS RANSON	- - -	<i>Adviser</i>



Left to Right— E. Gunther, P. Makowski, D. Harding, B. Yeager, J. Ruckle, P. Morgan, R. Thomas, J. Vanderslice.



Men's Dormitory Association

OFFICERS

MAYNARD L. HARRING	- - - - -	<i>President</i>
THOMAS REED	- - - - -	<i>Vice President</i>
CHARLES BRENNAN	- - - - -	<i>Secretary</i>
JOHN DIETZ	- - - - -	<i>Treasurer</i>
JOHN A. HOCH	- - - - -	<i>Adviser</i>

The Men's Dormitory Association is composed of all resident male students of the college. The Association regulates conditions in the men's dormitories and provides a varied social program for the benefit of the entire College Community. The highlights of the Association's social program were: a Dorm Men's party, in the form of a square and round dance; an all-college dance; and a pep parade preceding the West Chester football game. This pep parade was the largest and most successful of any of the previously staged parades.

The "B" Club

The "B" Club is an athletic organization for girls who have accumulated a sufficiently high point rating for membership. This point rating is based on participation in individual or group sports. Through its social and recreational program, the Club strives to further the ideals of sportsmanship, co-operation and athletic fitness. The girls' intramural sports program is sponsored by the Club.



OFFICERS

MARGARET BOURDETTE	-	-	<i>President</i>
PRISCILLA ABBOTT	-	-	<i>Vice President</i>
RUTH GLIDDEN	-	-	<i>Secretary</i>
BARBARA HARMAN	-	-	<i>Treasurer</i>
MISS McCAMMON	-	-	<i>Adviser</i>



ALFRED CHISCON
Co-editor



PRISCILLA ABBOTT
Co-editor

The Maroon and Gold

Co-editors - - - - - PRISCILLA ABBOTT AND ALFRED CHISCON
Editorial Board - HARRIET WILLIAMS, BESS MARI WILLIAMS, CHARLES ANDREWS, DAVE NEWBURY
Business Manager - WILLIAM LATIMER *Advertising Manager* - ALBERT McMANUS
Feature Editor - MARILYN EVANS *Sports Editor* - HARRY BROOKS
Layout Editor - WILLIAM WAGNER *News Editor* - EVELYN WEAVER
 EDWARD T. DeVoe, *Adviser*

STAFF

News Staff

Barbara Bucher	Janet Hughes	Marion Payne	Margaret Walters
James Ferdinand	Nan Kelly	Alice Quick	Nancy Sue Williams
Carolyn Goodell	Mildred Mervine	Don Smith	Betty Yeager
Nancy Heebner	Margaret Morgan	Ferne Soberick	Robert Van Droch
Hope Horne			Shirley Reisinweaver

Art and Humor

Nancy Lou Rhoads Phil Search

Exchange

Jean Allen Edna Keim

Feature Staff

Anna Bittner	Eileen Gerosky	Robert Price	Mary Lou Todd
Dolores Doyle	Theresa Guinard	Thomas Rowley	Mae Neugard
Ann Geugenbach	Molly Haas	Jacob Slembaraky	

G. I. Mail

Mary Anna Wright Jeanne Ruckle

Spotts Staff

John Bogdan	Chuck Daly	George Herre	Gene Morrison
Bill Byham			Charles Yesson

Photographers

Richard Knause	Donald Shiner	Keith Smith	William Wagner
----------------	---------------	-------------	----------------

Advertising Staff

Sharon Dotter	Mollie Haas	Jean Newhart	Sarae Ulrich
Shirley Eveland	Joanne Heisley	Sherrill Phillips	Connie Wallace
Jeananne Evans			

Circulation Staff

Anthony Ciampi	Frank Gutzynski	Martha Steiner	Nancy Noz
William Fisher	Mary Kallenbach	Jeanne Wallace	

Typists

Robert Castle	William Ottaviani	Jean Skeeba	Betty Speel
---------------	-------------------	-------------	-------------



The Maroon and Gold

The *Maroon and Gold* is the weekly College newspaper published by members of the student body interested in journalism. Its purpose is to present news and opinion of current interest to the College Community. Staff membership is extended to all students who show ability in creative writing or interest in the technical aspects of newspaper work.



WILLIAM LATIMER
Business Manager



EDITORIAL BOARD
H. Williams, C. Andrews, D. Newbuy,
B. Williams



JOHN BURNS
Editor-in-Chief

The Obitier

The OBITER is the annual publication of the student body of Bloomsburg State Teachers College. Its primary objective is to provide a lasting record of our thoughtful as well as carefree associations during college years. Staff membership is extended to all students interested in any of the various phases of yearbook publication. The OBITER not only provides a service to the College, but also gives workshop experience in yearbook construction.



JOSEPH BARKLEY
Business Manager



CLIFTON CLARRIDGE
Advertising Manager



Robert Burns, Margaret Bourdette, David Newbury



Harry Brooks, Alex Kubik, Sam Yeager

The Obiter Staff

Editor-in-Chief - - - - JOHN BURNS

Junior Editor - - - - DAVID NEWBURY

Business Manager - - - JOSEPH BARKLEY

Sports Editor - - - - HARRY BROOKS

Advertising Managers

ROBERT BURNS, CLIFTON CLARRIDGE

Director of Senior Pictures JOYCE MACDOUGALL

Photographers

RICHARD KNAUSE, KEITH SMITH, WILLIAM WAGNER

Secretary - - - - MARGARET BOURDETTE

EDWARD T. DE VOE. *Adviser*

Sales Manager and Obiter Show ALEX KUBIK

Coed of the Year Director SAMUEL YEAGER

Typists—ERMA BEAN, IRENE CICHOWICZ, ELEANOR BOLINSKY, RICHARD POWELL

Advertising—DORIS BOWMAN, LEON COVAL, MICHAEL DORAK, JOANNE HEISLEY, DAVID JENKINS, JOHN JOHNSON, ELAINE OHMAN, NANCY LOU RHOADES, CHARLES RUFFING, JO ANN VANDERSLICE, BARBARA JAMES

Sales—GRACE HEPPE, RHELD A RHORBACH, LOUISE SCHULLERY



William Wagner, Dick Knause, Keith Smith



Dick Powell, Joyce MacDougall



STEVE WOLFE

CHARLES ANDREWS

DAVID SUPERDOCK

The Olympian

STAFF

CHARLES R. ANDREWS	- - - - -	<i>Editor-in-Chief</i>
STEPHEN WOLFE, DAVID SUPERDOCK	- - - - -	<i>Associate Editors</i>
LEONORA MACGILL	- - - - -	<i>Business Manager</i>
BESSMARIE WILLIAMS	- - - - -	<i>Advertising Manager</i>
MILDRED PLISCOTT	- - - - -	<i>Sales Manager</i>
STEPHEN WOLFE	- - - - -	<i>Art</i>
HARRIET WILLIAMS	- - - - -	<i>Humor</i>
MILLIE MERVINE, JOHN SIVULICH, DEBBY GRAZEL	- - - - -	<i>Typists and Copyreaders</i>
DR. J. A. RUSSELL	- - - - -	<i>Faculty Adviser</i>

The Olympian, the campus literary-humor magazine, is provided as an extension of campus publication services and a means of recognition and encouragement for students interested in creative writing. Students who contribute material for publication are eligible for staff membership.

Student Christian Association

OFFICERS

GERALD HOUSEKNECHT	- - - - -	<i>President</i>
MARY ELLEN DEAN	- - - - -	<i>Vice President</i>
ROSELLA DANILO	- - - - -	<i>Secretary</i>
ROBERT LEWIS	- - - - -	<i>Treasurer</i>
MR. HINKEL	- - - - -	<i>Adviser</i>

The Student Christian Association is an on-campus organization that includes students of all denominations united in Christian fellowship.

A Freshman get-acquainted party and hike, attendance at religious conferences and conventions, programs in local churches, and Lenten services in Carver Hall auditorium, are activities in which SCA members participate.

At regular meetings, held on the first and third Wednesdays of each month, worship programs, speakers, and discussion periods furnish interesting and very worthwhile subjects. Social activities are also enjoyed in conjunction with the regular meetings.



Maroon and Gold Band

OFFICERS

R. EUGENE HUMMEL	<i>President</i>
DAVID HECKMAN	<i>Vice President</i>
NANCY LOU RHOADES	<i>Secretary</i>
MR. HENRIE	<i>Adviser</i>

The Maroon and Gold Band is open to those students interested in music and who are able to play band instruments. In addition to serving as a training unit for band leaders of the future, it serves as an outlet for expression. In fulfillment of these aims, it serves its secondary purpose—entertainment for the College Community. Always on hand for athletic contests, the band also gives a number of concerts each year, both in College assemblies and in regional high school auditoriums.





Athenaeum Club

OFFICERS

JOHN T. BOGDAN	- - - - -	<i>President</i>
JOHN J. BURNS	- - - - -	<i>Vice President</i>
FLORA J. KISSINGER	- - - - -	<i>Secretary</i>
WILLIAM K. LATIMER	- - - - -	<i>Treasurer</i>
JAMES V. FERDINAND	- - - - -	<i>Program Chairman</i>
MR. SMITH	- - - - -	<i>Adviser</i>

The Athenaeum Club, organized in 1945, is composed of sixty-eight members. This club has for its chief objective a more thorough enjoyment of all music, classical, semi-classical, and popular, by a more extensive understanding of the music. Piano, vocal, and instrumental selections by the members of the club and a musical quiz show add variation to the planned programs of recorded music. Membership is open to all students interested in both classical and popular music as a means toward cultural growth.

Newman Club*

OFFICERS

First Semester

FRANCIS GALINSKI - - - *President*
VINCENT NAWROCKI *Vice President*
MILDRED WRZESNIEWSKI *Secretary*
EDWARD ROMPALA - - - *Treasurer*
ROCCO CHERILLA - - - *Marshall*

Second Semester

ALEX KAHARSKI - - - *President*
EDWARD ROMPALA - - *Vice President*
JOANN McCORMICK - - *Secretary*
SYLVESTER BODEK - - - *Treasurer*

MR. RYGIEL, *Adviser*

VERY REVEREND FATHER WILLIAM J. BURKE, *Chaplain*

The Newman Club, an organization composed of Catholic students of the College, has as its purpose the deepening and enriching of the spiritual and temporal lives of its members. Its varied activities comprise a program of religious, intellectual, and social pursuits which endeavor to develop capable student leadership among its members. The Club is also affiliated with the National Newman Club Federation.

* This is an off-campus organization. No extra-curricular credit is given for this activity.





The contestants for the Coed of the Year contest were selected by the popular vote of the man and woman representatives from each of the classes. The contestants were selected on the basis of beauty, personality, popularity, and participation in campus activities.

The Coed of the Year was then selected from these contestants by an all-college vote and crowned at the Freshman Mardi Gras as Coed of the Year and Queen of the Mardi Gras.

Top to Bottom—

RUTH GILLMAN
NANCY SUE WILLIAMS
DOLORES DOYLE
CLARE DAVIS
WILMA JONES
BARBARA HARMON
NANCY SWARTZ



PHYLLIS McLAREN

Coed of the Year



PEGGY BOURDETTE
Snow Queen



SHERRILL HILLER
Varsity Queen



Waller Hall at Night



The Tower at Christmas



Fashion Show

The house lights dim, the spotlights flick on, and the annual Fashion Show is set in sparkling motion. The Fashion Show is a major social enterprise sponsored each year by the Business Department in cooperation with the downtown merchants.

Through this event college women are given an opportunity to taste the bright career of a model.



The search for knowledge



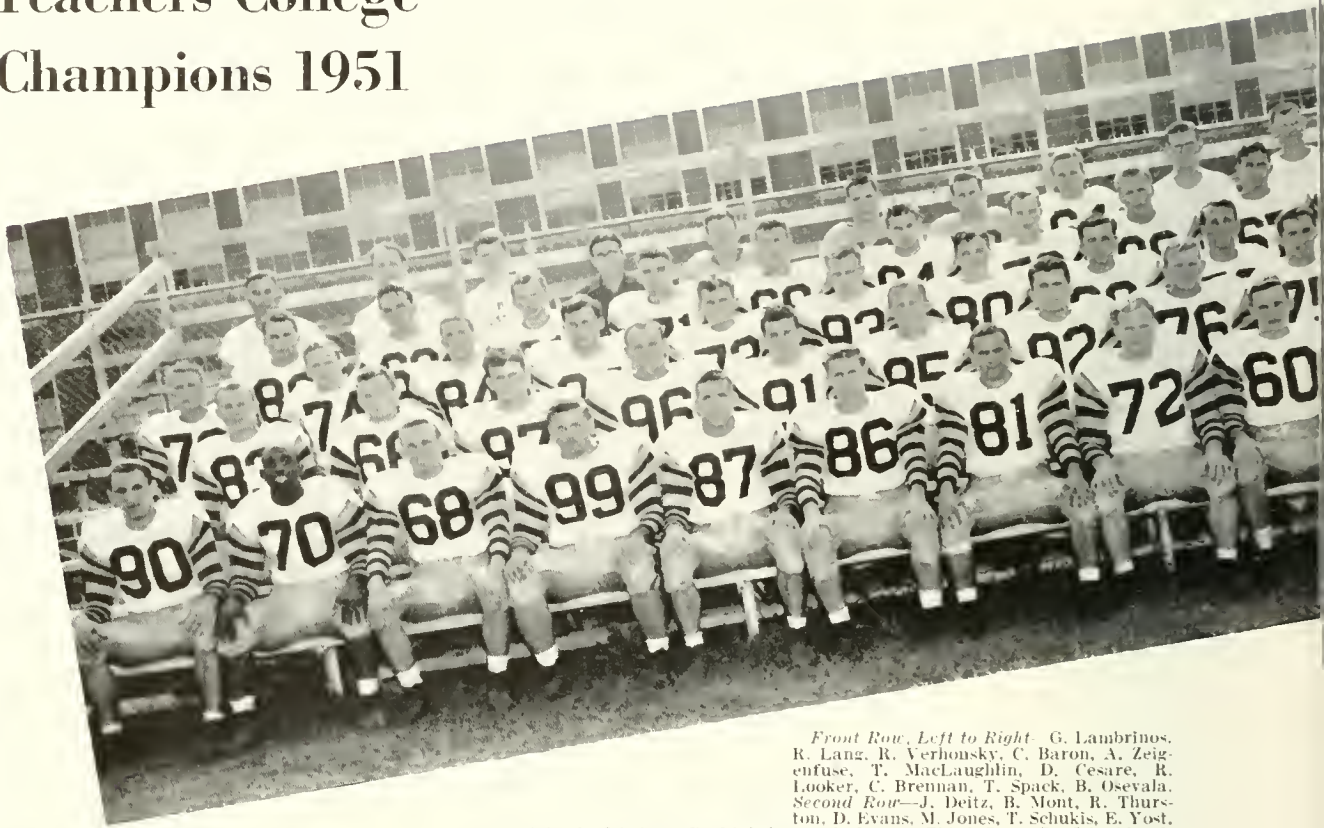


“The school cannot be a preparation for social life except as it reproduces the typical conditions of life.”

—JOHN DEWEY

Athletics

Teachers College Champions 1951



Front Row, Left to Right— G. Lambrinos, R. Lang, R. Verhonsky, C. Baron, A. Zeigenschuss, T. MacLaughlin, D. Cesare, R. Looker, C. Brennan, T. Spack, B. Osevala. *Second Row—* J. Deitz, B. Mont, R. Thurston, D. Evans, M. Jones, T. Schukis, E. Yost, A. Kubik, J. Scheirer, D. Linkhorst, J. Long. *Third Row—* R. Schmidt, J. Boyle, K. Ruppel, J. Nemetz, J. Costa, F. Sheehan, J. Glosek, J. Panichiello, J. Schar, A. Boychuck, T. Rainey. *Fourth Row—* J. Angus, D. Trocki, R. Rainey, F. Williams, F. Bidelspach, B. Zenuck, J. Steiner, T. Thomas, R. Conch, G. Morrison, E. Connally. *Fifth Row—* R. Redman, J. Hoch, E. Cunfer, S. Williams, J. Lenox, C. Pope, R. Verano, J. Steiner, T. Anthony, H. Shelly, J. Colone, R. Cumens.

Again last fall, the versatile Bob Redman with his assistants John Hoch, Harold Shelly, and "Bells" Colone manned the Husky reins and whipped the growling gridders into shape to net B. S. T. C. its second unbeaten, untied campaign in four years. Despite the fact that the Redmen faced their most strident schedule in years, they came out on top to bowl over eight fighting opponents and also annex the first Teachers College Conference Title. With these achievements heaped atop all past laurels, the Huskies can well wear their new-found crown with permanent pride. Nineteen Fifty-one will pass on in the annals as another banner year in par excellent football at Bloomsburg, surpassing all previous grid-war glories at the tough but "Friendly College on the Hill."



COACH ROBERT REDMAN

1951 SUMMARY

Bloomsburg ----20	Mansfield S. T. C. ---- 7
Bloomsburg ----35	Lock Haven S. T. C. -- 6
Bloomsburg ----40	Millersville S. T. C. --14
Bloomsburg ----40	Shippensburg S. T. C. 14
Bloomsburg ----28	Kutztown S. T. C. ---- 0
Bloomsburg ----27	Wilkes College ----- 7
Bloomsburg ----16	West Chester S. T. C. -- 7
Bloomsburg ----20	Indiana S. T. C. ----- 0

"Bob" Redman, football kingpin here at Bloomsburg, has now completed his sixth season coaching the Husky forces in football and baseball. During his half dozen year reign, his teams have been the most successful in the history of the College.

At the "Friendly College," "Bob" has made countless friends with his genial social wit; his sparkle in the academic classroom; and his sound, hard-driving tactics on the pig-skin turf or baseball diamond.

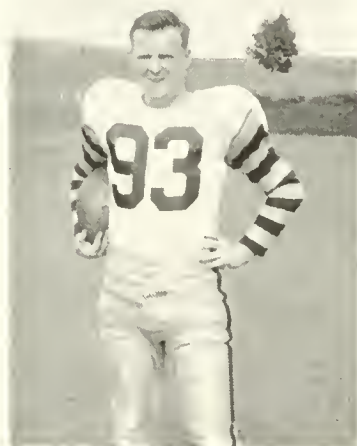
A product of Swarthmore College, Redman served in the United States Navy with an officer's commission during the last war, and prior to that, had coached at Triple Cities College. He has carved his name well in the Husky hall of fame, and has certainly earned the title, "Teachers College Coach of the Year—1951."



A worm's eye view.

In the initial fracas of the 1951 campaign, the Maroon and Gold generated their high-powered offense sparingly to electrify Mansfield's tame Mountaineers 20-7 on Berwick's Crispin Field. On this early September night, the Redmen marched to an easy win behind the double touchdown treks of Bob Lang, and Tom Spack's flashy 71 yard jaunt. The outcome of the game was never in doubt as the Huskies led at halftime, 20-0. Mansfield tallied in the last stanza against Husky reserves.

On September 29, the Lock Haven Tutors journeyed to Athletic Park for the second tilt of the season. With gazelle-like running by Bob Lang, Barney Osevala, and Tom Spack, the Huskies clipped the Bald Eagles' wings for a 35-6 decision. "Daddy" ripped off two trips to paydirt in the first half, then Spack, Osevala, and Brennan participated in the victory drama by slamming over three more tallies in the second act. Dave Linkchorst booted five extra points to boost his season's total to seven for eight.



SHEEHAN, *Center*

Again Athletic Park was the scene of battle and once more the Redmen raced to victory. This time the Millersville gridders fell, 40-14. Behind the high-octane arm of D'Amico and their Bunyan-like end, Alexander, the Millers made it an exciting melee for three periods before the running of the reliables Lang, Osevala, and Spack, made the contest a rout. The Huskies tallied three times in the first half, then garnered another three in the third and fourth stanzas to mark the highest point total since 1949.

Sports fans awaited the all-star fray between the visiting Red Raiders from Shippensburg and Redman's Huskies scheduled for



McLAUGHLIN, *Center*



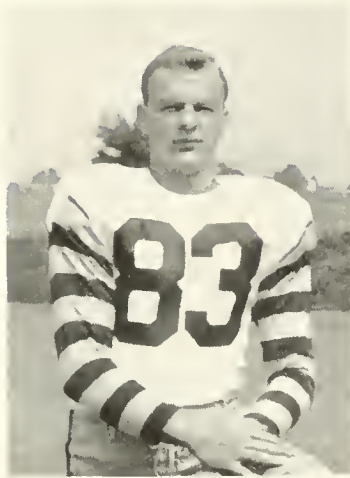
SHUKIS, *Center*



CESARE, *Guard*



LAMBRINOS, *Quarterback*



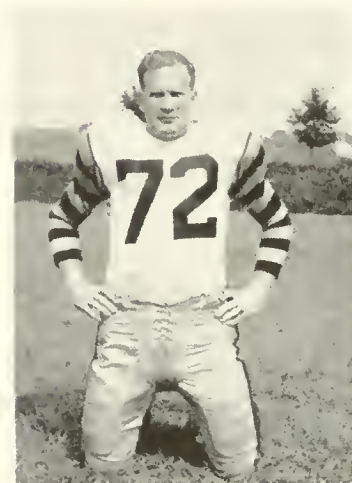
DIETZ, *Quarterback*



LANG, *Halfback*

Olympus on Homecoming Day. They were not disappointed. The largest Alumni Day crowd in several years watched the Huskies romp, run, and wreck the Red Raider offense to down Rambo's air-minded aggregation, 10-14. The first quarter was a tense affair as a long Shippensburg pass put the Raiders out in front, 7-0. But not for long. Behind the brilliant passing arm of Tom Spack and the running of "13" point Lang, the Huskies slugged back to send the Red Raiders home "Blue Velvet" under the wake of six touchdowns. Lang, Verhousky, Osevala, Spack, and Thurston appeared in the Huskies' T. D. parade.

Playing their first battle on foreign turf, the Redmen found the Pennsylvania Dutch country to their liking and promptly walked away with a 28-0 verdict over Kutztown. Despite their



LOOKER, *Tackle*

Nice blocking by Shippensburg.





Spack slices for yardage against W. C.

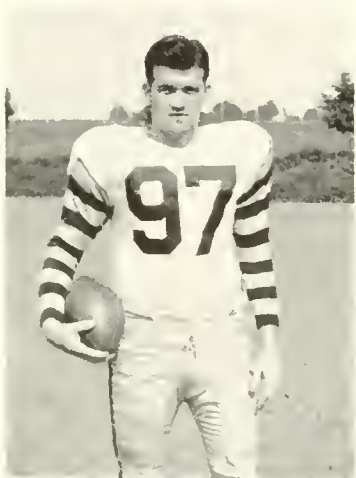
lack of punch in this game, the Huskies had the power in the clutch. Brilliant line play by Nemetz, Verhousky, and Lambrinos halted an early Golden Avalanche drive, then in the second quarter, the listless Huskies came to life as Tom Spack found the airplanes free to pass to Charlie Brennan for a T. D. Spack also ran for a Bloom six-pointer. The score at intermission read, Bloom 14, Kutztown 0. In the second half, it was much the same story. Spack flipped to Verhousky and Thurston to make the final total Bloomsburg 28, Kutztown 0. The game marked the first time Lang was held scoreless, and also the first time the opposition was held free of scoring. "Link" booted four more extra points for a 21 for 24 percentage.



EVANS, Tackle

Once again the Maroon and Gold spread out the traveling maps and paddled up the Susquehanna to meet "Pappy" Ralston's scrappy Wilkes gridders on a bitter cold November evening in Kingston Stadium. A handful of hardy B. S. T. C. eskimos watched the Huskies' blood circulate long enough to snow-under the Colonels, 27-7. What little Al Nicholas could do for Wilkes wasn't enough as Lang, Osevala, and Long crossed the final chalk mark for Redman's eleven. After leading by only 7-0 at half-time, the Maroon and Gold began to roll in the final stanzas. Lang tallied twice in the third period to ice the frigid prelim to the big tilt with West Chester the next week.

Perhaps the most widely publicized fracas in Bloom history took form on sunny Crispin Field before a crowd of 4,000 on November 10th. "The battle of the year" with West Chester's Golden Rams resulted in a brilliant Husky upset, 16-7. In addi-



THURSTON, End



LINKCHORST, Halfback



OSEVALA, Fullback



VERHOUSKY, *End*



SPACK, *Halfback*



BARON, *Tackle*

tion to the revenge win, the Huskies toted off the first Tutor Crown in the newly organized Teacher Conference.

Early in the initial stanza, the Golden Rams' Hersh "shook up" the crowd by scampering 33 yards to put the flock ahead, 7-0. A few minutes later, after "Irish" Brennan tackled Hagan in the end zone for a B. S. T. C. safety, "Crazy Legs" Lang ripped a page out of 1920 football and raced 34 yards for a "statue of liberty" T. D. Bloom led at the quarter, 9-7. Late in the second period, Osevala clinched the upset by tallying to end the scoring for the day. See-saw play marked the second half, but the most exciting performance was put on by the Giltless Rams' genial mentor, Glenn Killinger, when he flipped his fedora on the field. All the boys, both on the line and in the backfield shined in the victory.

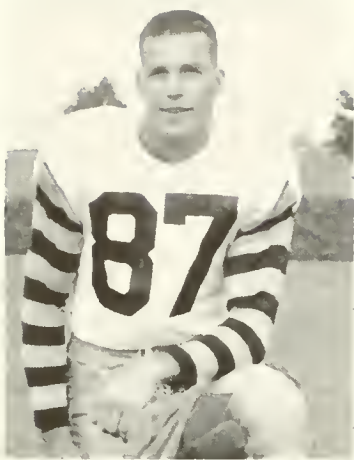


NEMETZ, *Tackle*

In the season's final fray, Indiana's Indians came scalp hunting on Mount Olympus and found the Husky warpath a dead end. Thus the B. S. T. C. gridders ended an exciting eight game schedule with a 20-0 win, to cop an undefeated, untied, season. After the strong M. and G. forward wall halted an early Indiana drive, the Huskies attacked with atomic power and shoved the hopeless Red and White visitors up and down the soggy turf for the remainder of the game. With this win, the Huskies fought to their second unblemished record in four years and recorded their thirty-eighth victory in forty-two tries—truly an accomplishment for the "Friendly College."



Lang greeted by a host of Golden Rams.



ZEIGENFUSE, *Guard*



BOYCHUCK, *Halfback*



BRENNAN, *End*



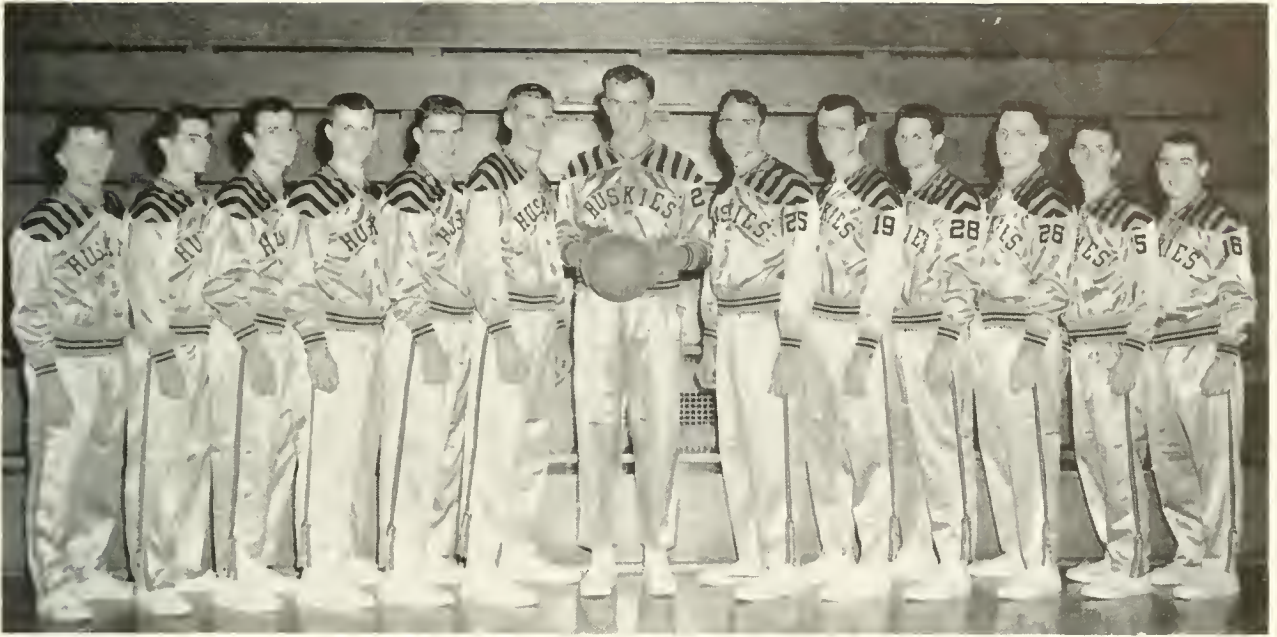
McLaughlin throws Hersh of
W. C. for a loss.



BIDLE-PACH, *Guard*

Left to Right Redman, Hoch,
Shelly, Colone, Zahora.





Left to Right—Linkhorst, Betz, Boychuck, Holtzman, Daly, Gerhard, Erickson, Goodhart, Shuttlesworth, Butler, Byham, Ksanznak, Williams.

Basketball

Mr. Shelley's basketball wizardry finally reigned on the State Teachers College courts this past season as the Maroon and Gold eagers dribbled, swished, and bucketed their way to a brilliant record of 12 happy nights against but 1 reversals. With Chuck Daly, Kane ace, leading the Husky pack with 203 points, the B. S. T. C. boys lost only to Miller-ville, Lock Haven, Mansfield, and Kutztown, all in foreign dens. Another phenomenon lay in the fact that Shelly's stars didn't bow to any team twice this year—quite a feat considering the strong opposition in Millersville and Lock Haven.

The Huskies opened the season with an easy home verdict over Harpur. Mediocre success followed as the locals bowed in close tilts to Kutztown and Millersville. After the New Year, the Husky Hoopsters found new life and rolled over practically all competition. As the campaign ended, the Maroon and Gold had up-ended seven consecutive foes to set their final chart at 12 and 1.

Shelly's free use of substitutions was advantageous on almost every occasion, and the closeness in individual scoring showed this true. After Daly were Byham, Williams, Linkhorst, and Erickson in tallying—all four of these boys scoring over 120 points.

With the loss of but three players via the diploma route, the Shellymen can well point to next season when old standby Maroon and Gold talent will show its full might on the courts of the Tutor Conference.



ERICKSON, *Center*



BYHAM, *Forward*



DALY, *Forward*



WILLIAMS, *Guard*



LINKHORST, *Guard*

SCORES

B. S. T. C. -----	65	Harpur -----	47
B. S. T. C. -----	55	Kutztown -----	56*
B. S. T. C. -----	71	Lock Haven -----	57*
B. S. T. C. -----	60	Millersville -----	64*
B. S. T. C. -----	67	Kutztown -----	43*
B. S. T. C. -----	69	Lock Haven -----	84*
B. S. T. C. -----	75	Wilkes -----	71
B. S. T. C. -----	60	Shippensburg -----	37*
B. S. T. S. -----	44	Mansfield -----	48*
B. S. T. C. -----	65	Millersville -----	56*
B. S. T. C. -----	72	Mansfield -----	57*
B. S. T. C. -----	93	West Chester -----	76*
B. S. T. C. -----	92	Shippensburg -----	53*
B. S. T. C. -----	79	Indiana -----	73*
B. S. T. C. -----	83	Wilkes -----	66
B. S. T. C. -----	90	Harpur -----	69

Won 12; Lost 4

* Denotes League games.



GEARHART, *Center*



ONDRULA, *Forward*



BETZ, *Guard*

<i>Players</i>	<i>Field Goals</i>	<i>Foul Goals</i>	<i>Foul Attempts</i>	<i>Total Points</i>
Daly, C.	76	51	63	203
Byham, W.	52	34	54	138
Williams, A.	56	23	28	135
Linkhorst, D.	54	26	36	134
Erickson, D.	51	22	36	124
Ksanznak	40	19	31	99
Gerhard, R.	36	19	17	91
Butler, D.	30	16	37	76
Ondrula, J.	25	7	11	57
Betz, F.	15	7	12	37
Boychuck, D.	7	9	17	23
Shuttlesworth, W.	5	1	1	14
Kopec, J.	2	1	1	5
Goodhart, E.	2	0	1	4
Bartleson, W.	0	2	1	2
Durso, M.	1	0	0	2
Holtzman, R.	0	0	0	0
Lubnow	0	0	0	0
Ondrula, R.	0	0	0	0
	152	240	385	1144



BOYCHUCK, *Forward*



At the half.



KSANZNAK, *Guard*



Left to Right M. Durso, C. Hinger, F. Lubnow, J. Mahoney, F. Grutza, S. Aagaard, C. Dougherty, J. Kopec.



Doug gets the tap against W. C.



Gerhard tries for one.



"Jumpin' Joe" steals the ball.



HAROLD S. SHELLY

Genial Harold Shelly this year led the Huskies to one of their most successful cage campaigns in the last twenty years when his team boasted a record of twelve wins and only four reverses, including an all-win streak on the home hardwoods.

Shelly's sound judgment has won him the respect of the entire college community who has seen his proteges come out on top of the heap repeatedly.



Track 1951

1951 marked another tough track schedule and also another disheartening season for the Shelly thin clad. Winning only one of five meets, the Huskies developed a well-rounded field and track attack, but lacked the depth to cop more decisions. The lone Bloomsburg victory came at the hands of Lock Haven while the local cinder boys bowed to Scranton U, Shippensburg, Bucknell, and West Chester. In addition to these dual meets, the Shellymen competed and represented Bloomsburg well in both the Penn Relays and the State Meet at West Chester.

Probably the most outstanding squad member for the 1951 campaign was Frank Womer who was consistently a stellar standout for the locals. His pole vault of twelve feet, seven and a half inches at Shippensburg set a new Husky record. Tom Spack, master with the javelin, was another star in the developing Maroon and Gold constellation.



THE RECORD

Bloomsburg	53	Scranton	76
Penn Relays—			
Bloomsburg	63	Lock Haven	63
Bloomsburg	51	Shippensburg	75
State Meet at West Chester—			
Bloomsburg	29	Bucknell	97
Bloomsburg	57	West Chester	69



Front Row, Left to Right — D. Butler, B. Byham, S. Levan, R. Hummel, M. Evans, J. Glosek, R. Ledgerd.
Second Row — D. Boychuck, G. Lambrinos, D. Linchorst, J. Thompson, E. Johnson, D. Kearns, D. Fitzpatrick,
 A. Boychuck. *Third Row* — R. Redman, J. Costa, R. Steinbach, R. Verhousky, E. Kaysak, W. Stoutenburgh,
 M. Jones.

Baseball 1951

Behind the sturdy pitching arms of Buck Byham, Don Kearns, and Clem Makowski, the Maroon and Gold swatters of coach Rapid Robert Redman smacked out a bright eleven and three record for the 1951 diamond season. During the campaign, the locals bowed only to Trenton, Wilkes, and Lock Haven while at the same time they whipped several formidable foes. The stormy season found the hot Husky batters slapping out 121 runs in fourteen tilts for an average of almost nine runs per game. At the same time, the opposition racked the Redmen hurlers for 5.5 tallies per fracas. Outfielders Don Butler and Mike Evans led the high-octaned Maroon and Gold attack with top batting averages and consistent clutch hitting. Per usual, Redman produced another balanced diamond representative for B. S. T. C.

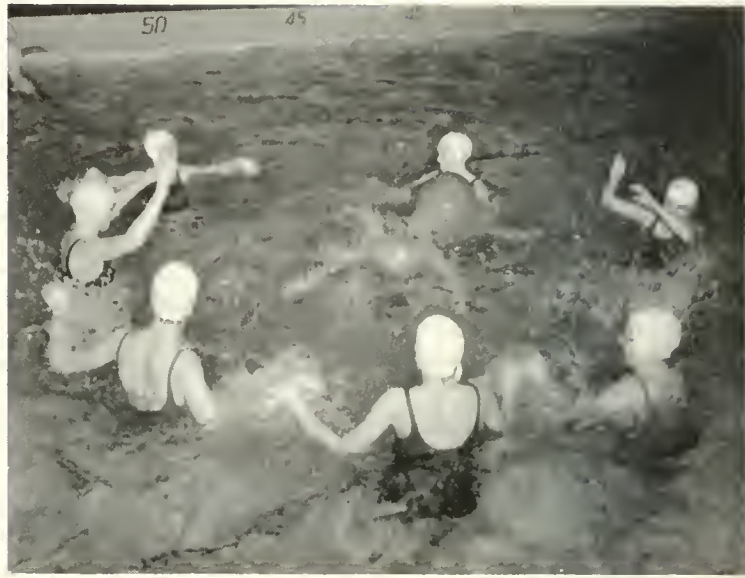
BASEBALL RECORD

B. S. T. C. -----	8	Lock Haven -----	4
B. S. T. C. -----	13	Trenton -----	14
B. S. T. C. -----	10	Temple -----	9
B. S. T. C. -----	4	Kings -----	3
B. S. T. C. -----	2	Wilkes -----	5
B. S. T. C. -----	10	Shippensburg -----	8
B. S. T. C. -----	4	Mansfield -----	3
B. S. T. C. -----	7	Scranton -----	6
B. S. T. C. -----	8	Kutztown -----	4
B. S. T. C. -----	5	Lock Haven -----	11
B. S. T. C. -----	17	Kings -----	2
B. S. T. C. -----	12	St. Francis -----	0
B. S. T. C. -----	12	Millersville -----	2
B. S. T. C. -----	12	Wilkes -----	6





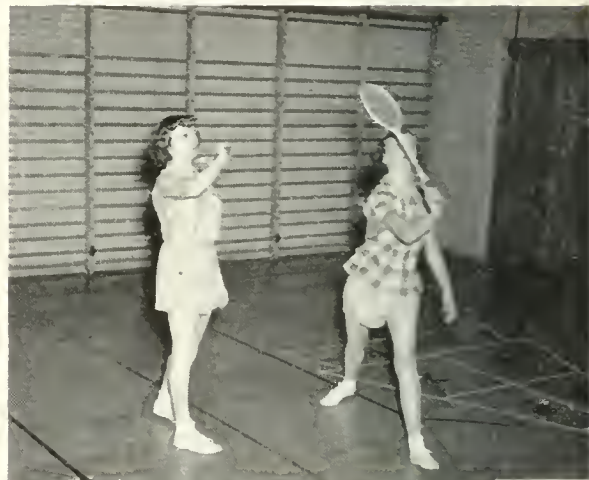
Training for her "M R S".



Looks like fun!



A game of volleyball.



"Where's the birdie?"

Women's Sports

From the pictures on these two pages, it is evident that our coeds have been active each Thursday night at Centennial Gymnasium.

In trying to accumulate the necessary 1000 points for "B" club membership, the women participate in the following sports:

- | | |
|-------------|--------------|
| BASKETBALL | BADMINTON |
| VOLLEY BALL | SOFT BALL |
| CAGEBALL | FIELD HOCKEY |
| SWIMMING | PING PONG |

SHUFFLEBOARD

Red Cross courses in Junior and Senior Life Saving



Ping Pong.

The ball's up there somewhere.



Three types of holds. (These classes should be coeducational.)



Left to Right — Sara Ehrich, Mary Lou Todd, Luck Pliscott, D. Doyle, Ruth Gillman, Mary Louise Kubie.

Cheerleaders

Under Captain Dolores Doyle, our cheerleaders really had something to yell about this year. Our second undefeated football season in three years found the cheerleaders rising to the occasion.

Several new cheers were introduced this year and the spirit at games and pep rallies was generally good.



Time out between cheers.



1—Student teachers take a break. 2—Mr. Fenstermaker—guest conductor. 3—"Now, here's the way I see it . . ." 4—From out of the East. 5 —Burning the midnight oil. 6—A song by Mary Ann. 7—Where's everybody going?



CAPITOLE
THEATRE

Capitole

VAN JOHNSON
"INVITATION"
DOROTHY MCGUIRE
DONALD DUCK CARTOON



“Lost, yesterday, somewhere
between sunrise and sunset, two
golden hours, each set with sixty
diamond minutes. No reward is
offered for they are gone forever.”

—HORACE MANN, 1796-1859

Advertising



1 Between Classes. 2 "Who's sweater, Barb?" 3-Careful, now! 4-Oh, to own a convertible!
5 In a huddle. 6-A couple of coeds. 7-What, no heart?

SENIORS

Join your ALUMNI ASSOCIATION, and keep your membership active through the years. Annual dues of \$2.00 will include a year's subscription to the ALUMNI QUARTERLY. This magazine, which appears four times a year, will keep you informed of the activities of your classmates, and the events happening on the campus.

Our Object:

“To Keep the Door of Opportunity
Open for Worthy American Youth.”

Our Slogan:

“Every Graduate of Bloomsburg an
Active Member of the ALUMNI
ASSOCIATION.”



DR. E. H. NELSON

All Dues Should Be Sent to:

DR. E. H. NELSON

President, Alumni Association

STATE TEACHERS COLLEGE

BLOOMSBURG, PENNSYLVANIA

MAGEE CARPETS

make your house a home

The

MAGEE CARPET COMPANY

BLOOMSBURG, PENNSYLVANIA



Manufacturers

Velvet

Axminster

Broadloom

Wilton

— CARPETS AND RUGS —



Sales Offices:

NEW YORK CITY CHICAGO



1— Chow hounds! 2—Wanna help? 3—(No caption necessary). 4—At least it's balanced. 5—
What are you selling now, Rowley? 6—Inner sanctum. 7—Discussion of world-shaking events.
8—Doesn't anyone drink that coffee?

SNYDER'S DAIRY

Safe MILK
and the

Finest in

DAIRY PRODUCTS

BLOOMSBURG—CATAWISSA

DANVILLE



Robert N. Somerville

Photographer

~

WILLIAMSPORT, PA.



Be Sure
of the
Wise Owl
Trademark!

It's your assurance of
Crispy Fresh

WISE POTATO CHIPS



"Through these portals"

Letterman's Bakery, Inc.

4th and Market Streets

Bloomsburg — Phone 554

*Baking Masters
of "Master" Products*

Best of Wishes
to the
CLASS OF '52

ROCK'S RESTAURANT

Where Old
Friends
Meet

501 East St., BLOOMSBURG, PA.

ANN BRUNER

DRESS SHOP

◆
144 East Main Street
BLOOMSBURG, PA.

Enjoy the Best
from

BREISCH'S DAIRY
CATAWISSA, PA.

Congratulations Seniors—

Look your best for graduation

Ruth's Corset and Lingerie Shop

features all standard brands in
Girdles, Corsets, Lingerie, Hose,
Bras, and Pajama Sets

RUTH'S CORSET SHOP

Graduate Corsetieres

1 E. Main

Bloomsburg, Pa.

Compliments of

SEARS, ROEBUCK and CO.

Wash Airlyte

A. A. BOWMAN & SON

806 N. Front St. Telephone 662

MILTON, PENNA.

Where Dad Took His Girl

THE TEXAS

D. J. COMUNTZIS, *Prop.*

BLOOMSBURG, PA.

Compliments of

BART PURSEL

BLOOMSBURG, PA.

CLOTHING for Men and Boys

DRY CLEANING

Compliments of

BLOOMSBURG MILLS, INC.

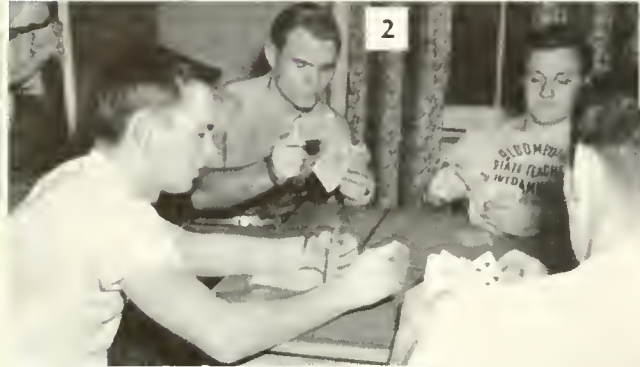


Sales Office

525 Seventh Avenue
NEW YORK, N. Y.

Mills at

BLOOMSBURG, PA.
LOCK HAVEN, PA.
DALLAS, PA.



1. The pause that refreshes. 2. What d'ya bid Ughamup? 3. Hess' bound. 4. The fruits of victory . . . 5. Tail-spin Tommy and crew. 6. Off to the salt mines. 7. Our raw material. 8. Casey Jones and Chief Engineer.

Compliments of

CLEWELL'S

ICE CREAM

Dairy products of Columbia County
for over 50 years

BERWICK CREAMERY

Laboratory Controlled Dairy Products

for Belles:

from their Beaux - - -

Fresh

Fragrant

FLOWERS

from

DILLON'S

Individually designed
especially to please her

Phone 127

EAST 5th STREET

BE PHOTOGRAPHED

by

GEISTWITE STUDIOS

124 East Main St.

BLOOMSBURG, PA.

H. B. SHARPLESS

HARDWARE

and

GIFTS

STEWART'S

Quick Service

ATLANTIC STATION

◆

CATAWISSA, PENNSYLVANIA

Compliments of

TEMPLE OF MUSIC

PIANOS—EVERYTHING MUSICAL

Compliments of

ROSE and WALT'S

East Street

◆

Hoping you never forget those sub-
marines you ate.

The Name

“BALFOUR”

Stands for the finest in

Class Rings, Commencement Announcements, Club
Pins, Diplomas, Medals and Trophies

L. G.

BALFOUR

COMPANY

AMBY NOLAN, Miners Bank Building, Wilkes-Barre, Pa.

Compliments of

**SUSQUEHANNA
DISTRIBUTORS**



DIVISION OF SUSQUEHANNA
FOOD PROCESSORS & LOCKERS, INC.

STORE FRONTS

AUTO GLASS

BLOOMSBURG GLASS CO.

All Kinds of FLAT GLASS

OTTO W. ASHWORTH, JR. and JOHN J. NICELY, Owners

Phone 2311

GLASS BLOCKS

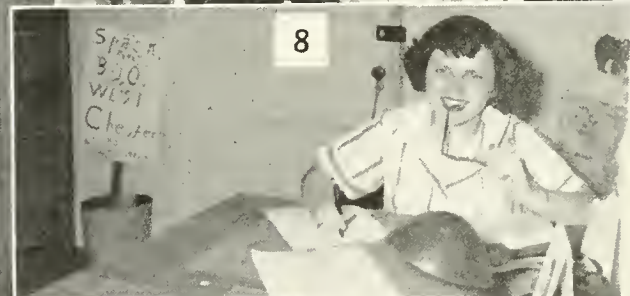
WINDOW GLASS

FOX DRUG STORE

CATAWISSA, PA.



Dial 3531



1—Known as *barking one's shin*. 2—Hey, how did they get a broom job? 3—"Five foot two, eyes of blue . . ." 4—That's *Cyrano* in the middle. 5—"What, they changed the book again?" 6—"Little Ducky Duddle . . ." 7—North Hall gang. 8—Isn't she sweet? 9—It's not all work.

Compliments of

NORTH BRANCH BUS COMPANY



HUSKY TRANSPORTATION

With Compliments

of

Milco Undergarment

Company, Inc.

"All-Ways" Reliable

The BEST in Men's
Furnishings

FRED R. HIPPENSTEEL

Compliments of

HOTEL MAGEE

BLOOMSBURG, PA.

Professional Friends of OBITER 1952

MR. HEMMINGWAY

DR. REESE

DR. YOST

The Farmers National Bank

BLOOMSBURG, PA.



Sound Banking Since 1891

Congratulations

Class of '52

W H L M

The Voice of the Susquehanna Valley

690 ON YOUR DIAL

Affiliate of:

LIBERTY BROADCASTING
SYSTEM



HOUSENICK MOTOR CO.

SALES and SERVICE

MAIN and EAST STREETS

PHOTO SERVICES, INC.

36 E. MAIN

Featuring All Makes of
CAMERAS and MOTION PICTURE EQUIP.

Expert Photo Finishing

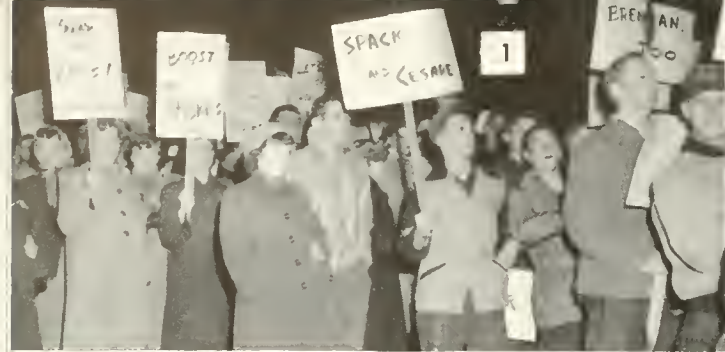
BLOOMSBURG

PHONE 2227

CONGRATULATIONS

**F. W. WOOLWORTH
COMPANY**

BLOOMSBURG, PA.



1 This enthusiasm paid off! 2—On the water wagon. 3 It must have been funny! 4 Mass confusion. 5 Most dignified Fraternity? 6 Where's Ferrilli? 7 No lack of spirit here. 8—The Emancipation Proclamation—for one day.

HESS' GRILL

FILL'er Up at

GIRTON'S

GAS STATION

East Street

BLOOMSBURG, PA.

EPPLEY'S DRUG STORE

Main and Iron Streets

BLOOMSBURG, PENNSYLVANIA

RITTER'S

Everything for SCHOOL

and OFFICE

Main Street

BLOOMSBURG, PA.

HARRY S. BARTON

REAL ESTATE—INSURANCE

BLOOMSBURG, PA.

**Bloomsburg Bank
Columbia Trust Co.**

BLOOMSBURG, PENNSYLVANIA

Over Fifty Years of Banking
Service to This Community

Invites Your Business

Member F. D. I. C.

SUNSHINE LAUNDRY, INC.

BLOOMSBURG—BERWICK

CALL

2400 3651

LYCOMING LINEN SUPPLY

9th and Market Streets BLOOMSBURG

Compliments of

J. S. RAUB SHOE STORE

Smart Styles and Better Values

24 East Main Street

BLOOMSBURG, PENNSYLVANIA

LOW'S

for

HOUSEHOLD APPLIANCES

BOTTLED GAS

63 East Main

BLOOMSBURG, PA.

**FEST'S
RESTAURANT**

JOHN H. SHUMAN

INSURANCE

REAL ESTATE

NOTARY

54 East Main Street

BLOOMSBURG, PENNSYLVANIA

MOYER BROS. INC.

BLOOMSBURG'S

LEADING PRESCRIPTION

DRUG STORE

Since 1868

A Lodge of Over 2,500 Members

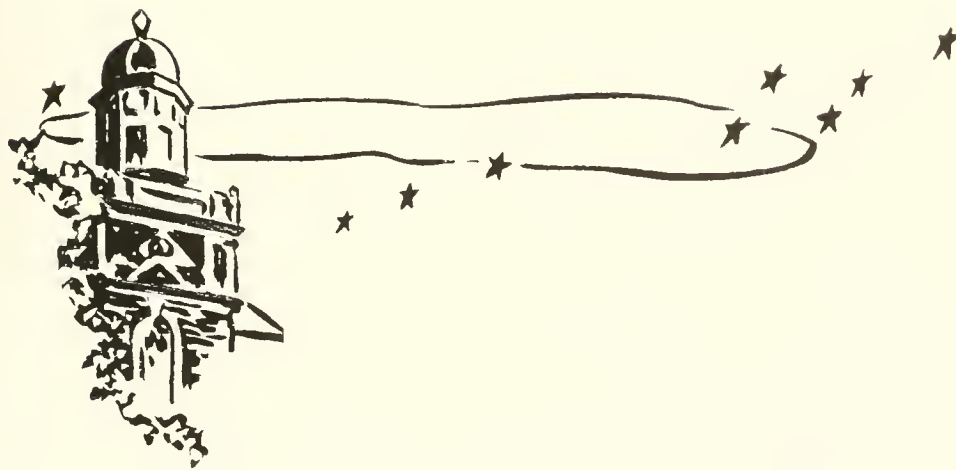
LOYAL ORDER OF MOOSE

BLOOMSBURG LODGE No. 623



Our membership has always been interested in all
B. S. T. C. activities.

To the graduating class of 1952 we extend our
sincere congratulations, and wish each and every
one the best of luck.



Carrying the Finest Lines in the
Jewelry Industry

CLOCKS SILVERWARE
DIAMONDS

Guaranteed Repair

HARRY LOGAN, Jeweler

5 West Main St. BLOOMSBURG, Pa.
Phone 2205

MILLER OFFICE SUPPLY
and
EQUIPMENT COMPANY

Office and School
SUPPLIES

ROYAL TYPEWRITERS

9 East Main Street

WOLFE WHOLESALE

Distributors

CONFECTIONS CIGARETTES

Phone—866J

1081 Market Street

BLOOMSBURG, PENNSYLVANIA

Compliments
to the Class of 1952

DEISROTH'S

Your
Department Store

Bloomsburg's Friendly Place to Shop

**ENT'S
EATS**

STEAKS, CHOPS,

SEA FOODS

and

SHORT ORDERS

24 Hrs. Service Friday
and Saturday

BOWMAN'S CLEANERS

*The BEST in
Town*

TUNEDOS FOR HIRE

Orders:

For TAILORED SUITS, OVERCOATS,
and DRESSES.

KRESSLER GREEN HOUSES

JIM AND LOIS SNYDER, *Prop.*

Phone 114

BLOOMSBURG, PA.

ARCUS'

For a Prettier You

BLOOMSBURG—BERWICK

Patronize

Your

Community Store

B. S. T. C.



Confair's Beverage Co.

BERWICK, PA.

Your

OBITER

Was Engraved, Printed and Bound
in our School Annual Department.

GRIT offers complete services in commercial art for design and layout, photography, photo-engraving for black and white and color plates, a modern letterpress plant and a bindery with facilities for every phase of the work.

You can depend on GRIT'S service and quality workmanship. Consult us before placing your next order for printing.

GRIT PUBLISHING COMPANY

WILLIAMSPORT, PA.



CARVER HALL TOWER

1952 Senior Directory

Abbott, Priscilla	Lehman, Pa.	Fogel, Glenn N.	521 Edison Ave., Sunbury, Pa.
Adami, Eugene A.	810 A. Vine St., Berwick, Pa.	Funk, Geraldine M.	Route 1, Lebanon, Pa.
Allen, Jean R.	122 Quincy Ave., Scranton, Pa.	Furgele, Frank J.	Box 253, Shamokin, Pa.
Anthony, Thomas H.	228 E. Fifth St., Bloomsburg, Pa.	Galiley, Leonard E.	2 Grand St., Danville, Pa.
Babecock, James R.	35 E. Spruce St., Mahanoy City, Pa.	Galinski, Francis B.	607 Lackawanna St., Forest City, Pa.
Badman, Atwood F.	Paxinos, Pa.	Gallagher, Edward C.	87 N. Main St., Shickshinny, Pa.
Baksi, George V.	112 North St., Keiser, Pa.	Geist, Franklin I.	R. D. 1, Danville, Pa.
Baron, Charles	321 Rogers Ave., Endicott, N. Y.	George, Joseph D.	Box 36, Chambersville, Pa.
Ben, Adam M.	168 Seventh St., Blakely, Pa.	Gilbert, William J.	33 Amherst Ave., Wilkes-Barre, Pa.
Bennett, Dale T.	S. Broad St., East Bangor, Pa.	Gillespie, William	372 East St., Bloomsburg, Pa.
Blyler, George E.	R. D. 2, Bloomsburg, Pa.	Ginter, William L.	R. D. 2, Hunlock Creek, Pa.
Bolinsky, Eleanore D.	513 Alter St., Hazleton, Pa.	Glidden, Ruth R.	108 Erie Ave., Susquehanna, Pa.
Bourdette, Margaret L.	503 First St., Athens, Pa.	Haddad, Dyar	202 Arch St., Sunbury, Pa.
Bowman, Doris R.	231 Walnut St., Milton, Pa.	Haddon, John C.	232 Jefferson St., Bloomsburg, Pa.
Brachman, Russell	339 N. Broad St., W. Hazleton, Pa.	Harmon, Barbara	R. D. 1, Lykens, Pa.
Brown, Albert L.	235 1/2 S. 4th St., Sunbury, Pa.	Harring, Maynard L.	Pitman, Pa.
Brown, Francis T.	415 1/2 Walnut St., Sunbury, Pa.	Hartley, Harold V.	Lenoxville, Pa.
Burns, John J.	317 Hamilton St., Harrisburg, Pa.	Heckman, David L.	41 E. Third St., Bloomsburg, Pa.
Burns, Robert P.	317 Hamilton St., Harrisburg, Pa.	Herman, Harry	542 Reagan St., Sunbury, Pa.
Bushick, Ronald P.	755 Chestnut St., Kulpmont, Pa.	Herr, William G.	536 W. Maple St., Hazleton, Pa.
Butler, Donald J.	526 Orchard St., Warrior Run, Pa.	Hessert, Barbara M.	1005 W. Southern Ave., South Williamsport, Pa.
Cannon, James J.	1246 Center St., Shamokin, Pa.	Hitchings, Albert H.	483 Charles St., Luzerne, Pa.
Carey, Harold W.	321 Blackman St., W. Pittston, Pa.	Hornberger, Lester J.	149 N. Quince St., Mt. Carmel, Pa.
Casula, Michalene A.	403 Coal St., Shenandoah, Pa.	Hrisko, William F.	312 S. Middle St., Frackville, Pa.
Cesare, Donald J.	515 Lawrence St., Old Forge, Pa.	Hughes, Milton G.	19 S. Regent St., Wilkes-Barre, Pa.
Cherilla, Rocco V.	246 E. First St., Hazleton, Pa.	Hurt, Henry G.	141 Butler St., Forty-Fort, Pa.
Ciampi, Anthony G.	92 S. Main St., Shickshinny, Pa.	Jenkins, David W.	5 Oak St., West Hazleton, Pa.
Clarridge, Clifton	1303 Maple View Pl., S. E., Washington, D. C.	Johnson, Edward W.	R. D. 3, Bloomsburg, Pa.
Cleaver, William J.	R. D. 2, Orangeville, Pa.	Johnson, Eleanor M.	R. D. 1, Box 304, Kane, Pa.
Coleman, Shirley J.	Beavertown, Pa.	Jones, Thomas C.	544 Delaware Ave., W. Pittston, Pa.
Coval, Leon	20 Columbia Ave., Bloomsburg, Pa.	Kaler, Ronald A.	State St., Millville, Pa.
Dailey, Jacob E.	323 W. Market St., Danville, Pa.	Kanyuck, Calvin	6 Rock St., Glen Lyon, Pa.
Daly, Charles J.	315 Moffit Ave., Kane, Pa.	Kennedy, Eleanor	R. D. 5, Bloomsburg, Pa.
Davis, Stewart E.	345 E. Fifth St., Bloomsburg, Pa.	Kile, Nelson H.	54 W. Eighth St., Wyoming, Pa.
Deibert, Lola J.	R. D. 2, Danville, Pa.	Kistler, Patricia A.	River Road, Bloomsburg, Pa.
Dietz, John A.	260 Vine St., Plymouth, Pa.	Kobal, George	138 Oak St., Nanticoke, Pa.
Domaleski, Rose Marie	716 W. Pine St., Frackville, Pa.	Kozlowski, Raymond J.	Kingsley, Pa.
Dorak, Michael J.	1416 W. Front St., Berwick, Pa.	Kreisher, William J.	P. O., Box 107, Shamokin, Pa.
Dorasavage, Margaret	700 Mahantongo St., Pottsville, Pa.	Krepich, Michael A.	1233 Ferris Ave., Berwick, Pa.
Eckert, Irene G.	Shaft St., Gilberton, Pa.	Krzywicki, Jeanne C.	104 E. Main St., Plymouth, Pa.
Edwards, Richard	117 Moss St., Plymouth, Pa.	Laubscher, Robert E.	105 Broad St., Selinsgrove, Pa.
Enama, Joan C.	Nuremberg, Pa.	Laux, Richard F.	W. Main St., Truexville, Pa.
Evans, David C.	341 Chestnut St., W. Reading, Pa.	Ledyard, Richard A.	453 E. Fourth St., Bloomsburg, Pa.
Evans, Marilyn B.	654 N. Franklin St., Wilkes-Barre, Pa.	Lenhart, Jack M.	803 Berwick Rd., Bloomsburg, Pa.
Fenstermacher, Harry	239 Pine St., Catawissa, Pa.	LeVan, Stanley L.	635 E. Fourth St., Bloomsburg, Pa.
Fitzsimmons, Marguerite	1019 Lackawanna Ave., Mayfield, Pa.	Looker, Russell L.	129 Lorain St., Johnstown, Pa.

1952 Senior Directory

Lundy, Marilyn W.	122 E. Fourth St., Bloomsburg, Pa.	Scheno, Angelo P.	63 E. Fifth St., Bloomsburg, Pa.
Lylo, Michael	1419 Second Ave., Berwick, Pa.	Selukis, Thomas E.	714 Center St., Mahanoy City, Pa.
MacDougall, Joyce L.	729 E. Third St., Berwick, Pa.	Search, Philip W.	262 Madison St., Wilkes-Barre, Pa.
Marsilio, Alfred S.	240 E. Elm St., Hazleton, Pa.	Shanahan, John P.	417 Pennsylvania Ave., Bangor, Pa.
Matuleski, Charlotte M.	31 Slope St., Nanticoke, Pa.	Sheehan, Francis J.	64 Valley St., New Philadelphia, Pa.
Mazzitti, L. Gloria	1103 Ferris Ave., Berwick, Pa.	Sherman, Barbara A.	Benton, Pa.
McAlouse, William M.	Center St., Kelayres, Pa.	Shultz, Carl R.	306 Glenn Ave., Bloomsburg, Pa.
McHugh, Cornelius J.	415 W. Seventh St., Hazleton, Pa.	Simpson, Edwin R.	1023 Pine St., Berwick, Pa.
McLaughlin, Thomas J.	Buck Mountain, Barnesville, Pa.	Sikes, Edward P.	18 Gravel St., Wilkes-Barre, Pa.
McNamee, Mrs. Dorothy Cedor	Havre de Grace, Md.	Sluyter, Joyce M.	R. D. 1, Towanda, Pa.
Meier, Jean M.	Millinville, Pa.	Smith, George A.	335 Catawissa Ave., Sunbury, Pa.
Mertz, Florence M.	R. D. 1, Northumberland, Pa.	Snyder, Edward	466 W. Broad St., Hazleton, Pa.
Miller, Robert E.	322 S. Fourth St., Sunbury, Pa.	Stanitskie, Francis J.	1311 Chestnut St., Kulpmont, Pa.
Miller, Royal A.	R. D. 3, Bloomsburg, Pa.	Stanko, Constance M.	321 Front St., Danville, Pa.
Mitchell, Kathleen	467 W. Mahanoy St., Mahanoy City, Pa.	Stee, Dorothy M.	23 Main St., Mahanoy Plane, Pa.
Morrison, Richard R.	528 E. Market St., Danville, Pa.	Stevens, John	47 Main St., Morea, Pa.
Monery, Olive L.	136 S. Poplar St., Mt. Carmel, Pa.	Stonik, John M.	61 E. Shawnee Ave., Plymouth, Pa.
Nawrocki, Vincent F.	4 Federal St., New Philadelphia, Pa.	Strausser, Fred L.	203 E. Ninth St., Bloomsburg, Pa.
Newman, Lois J.	73 Oliver St., Wilkes-Barre, Pa.	Swartz, Nancy D.	56 Bedford St., Forty-Fort, Pa.
North, David T.	Millville, Rd., Bloomsburg, Pa.	Taylor, Patricia J.	Dushore, Pa.
Osenbach, Robert C.	19 S. Fourth St., Frackville, Pa.	Thomas, David H.	Orangeville, Pa.
Payne, Mariou V.	1016 Vine Ave., Williamsport, Pa.	Thurston, Robert L.	136 South St., Sunbury, Pa.
Peffer, John J.	1064 Chestnut St., Kulpmont, Pa.	Trisko, John	747 James St., Hazleton, Pa.
Pelchar, Joseph J.	538 North St., Keiser, Pa.	Troutman, C. Walter	Overlook, R. D. 2, Shamokin, Pa.
Philo, Laura A.	240 E. First St., Bloomsburg, Pa.	Troxell, William	426 Stevens St., Shamokin, Pa.
Powell, Richard C.	356 S. Hanover St., Pottstown, Pa.	Unger, Nancy J.	27 W. Pettehone St., Forty-Fort, Pa.
Price, Janet E.	251 Carsonia Ave., Reading, Pa.	Vanderslice, Joanne M.	360 W. Fifth St., Bloomsburg, Pa.
Rachko, George	324 Lehigh Ave., Frackville, Pa.	Wagner, John I.	2 E. Pine St., Bloomsburg, Pa.
Radzwich, William J.	521 Main St., Tomhicken, Pa.	Weinstein, Philip	85 S. Grant St., Wilkes-Barre, Pa.
Reed, Thomas J.	114 Blair St., Plymouth, Pa.	Whibley, James A.	227 W. Main St., Bloomsburg, Pa.
Reed, William W.	1265 Highland Ave., Sunbury, Pa.	White, John E.	623 E. Fifth St., Bloomsburg, Pa.
Reese, Jack	406 E. 5th St., Berwick, Pa.	Williams, George E.	15 Cross St., Danville, Pa.
Rhinard, Kathryn L.	1400 Chestnut St., Berwick, Pa.	Williams, Nancy B.	732 Centre St., Ashland, Pa.
Rider, M. Janice	State St., Millville, Pa.	Womer, Robert M.	1202 Howard Ave., Pottsville, Pa.
Riley, John E.	20 Mulberry St., Danville, Pa.	Wood, Graydon C.	1929 N. Market St., Berwick, Pa.
Ruckle, M. Jeanne	324 W. Third St., Bloomsburg, Pa.	Worhacz, Walter	234 S. Second St., Shamokin, Pa.
Rummage, Frederick C.	R. D. 1, Hunlock Creek, Pa.	Wright, Mary Anna	8 E. Third St., Bloomsburg, Pa.
Sanders, Roy W.	1412 State St., Shamokin, Pa.	Yozviak, Marie C.	31 Luzerne St., Wilkes-Barre, Pa.

