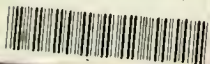


LH1.B55

00111344



OBITUARY



1951

LIBRARY
STATE TEACHERS COLLEGE
Bloomsburg, Pennsylvania



EX LIBRIS

00111344



OBITER

1951



*The Annual Publication
of the Student Body of*
BLOOMSBURG STATE
TEACHERS COLLEGE
BLOOMSBURG, PENNA.

Volume XXXV

Foreword

21
957
C 2

The malignant cancer of war is again breaking forth and spreading an ever-widening path of death and destruction throughout the world. We, the peoples of the United Nations, are trying to check this growth by armed force. But we can only hope to check, not cure, by this means. In the culture of ignorance and racial prejudice this disease grows rapidly and then breaks forth again in all its pent-up fury.

As future teachers, we must realize that we hold the key to an eventual cure through our influence over the youth of America. Once the growth factors are eliminated, war, the malignant cancer, is eliminated also.

For us here at Bloomsburg, the Husky has come to symbolize the strength, fair play, hard work, courage, and unity of the American Spirit.

In our years spent molding the future of this country, we must again remember the Husky, and not only practice, but also spread these self-same ideals throughout our areas of influence.

Contents

ALMA MATER

FACULTY

CLASSES

ORGANIZATIONS

ATHLETICS

ADVERTISING

36130

Dedication



To Mr. HAUSKNECHT:

For the highly efficient manner in which he conducted the financial business of Bloomsburg State Teachers College for twenty-five years.

For his patient understanding of students' financial problems and his helping hand in many cases.

For his excellent example as a citizen of these United States of America.

To MR. ENGLEHART:

For helping to create one of the most beautiful of the State Teachers Colleges.

For his efficient service in maintaining this campus at the highest point possible the year round.

For putting forth his maximum effort to fulfill the position of Superintendent of Grounds in the forty-five years that he has served this institution.



Roll of Honor

BARTLESON, WILLIAM	JONES, DAVID H.
BEILY, JOSEPH J.	KLOTSKO, JOHN
BENSCOTER, RUTH	KRESSLER, ROBERT R.
BICKERT, ROBERT	LUPASHUNSKI, CHARLES
BROKENSHIRE, JAMES	MORRISON, JOHN W.
BROOKS, CHARLES ALLEN	NOVAK, HENRY
COLEMAN, HARRY E.	PARLETTE, KENDALL T.
CONRAD, PAUL L.	PAUL, RICHARD
CREASY, JAMES B.	PODZIELINSKI, LEONARD J.
DAVIES, IVOR	POPE, R. GERALD
DE NAPOLI, JOHN	PUCKEY, CHARLES S.
DODSON, DEAN	PURSEL, ELMER, JR.
DUNCAN, FRANKLIN	RADZAI, GERALD
DYSLESKI, WALTER A.	REESE, JACK D.
FENSTERMACHER, R. GLEN	RIDALL, FRANK W.
FRONCEK, JOSEPH R.	ROAN, WILLIAM ROBERT
GAVIS, JOSEPH E.	SAVAGE, ALLEN F.
GUNTHER, LOUIS E.	SCHWARTZ, RICHARD C.
HAHN, JAMES	STOUT, ARTHUR
HARRELL, WILLIAM	WILLIAMS, ROBERT
HOUSE, D. LARRY	

When duty whispers low, *Thou must,*
The youth replies, *I can*

—EMERSON

This list includes only those who entered the service prior to publication of the OBITER.



In Memoriam

The sudden death of Dr. Ted J. Satterfield, during an operation at Jefferson Hospital in Philadelphia, on August 16, 1950, came as a profound shock to the faculty and students of the Bloomsburg State Teachers College.

While at Bloomsburg, Dr. Satterfield won the respect and admiration of the entire college community by his earnest application of the highest ideals of education in his classroom teaching.

In the capacity as line coach of the football team, he was instrumental in helping build one of the greatest football teams ever produced at this college. Their brilliant record reflects his ability as a coach.

Dr. Satterfield was an outstanding example of the American teaching profession. He not only attained high scholastic honors, but he also inspired and materially aided his students to reach for the finer things of life through education.

$$\frac{36}{A^2} - \frac{25}{B^2} = 1$$

$$y = x^2 - 5x + 8$$

$$\frac{dy}{dx} = 2x - 5$$

OUR CAMPUS





Bloomsburg Forever



*Thru the wind
Thru the rain
Thru the storm*



Bloomsburg Forever



*Just the thought
Will keep me warm*



I'll always remember



*All the fun
That we had
In days of yore*

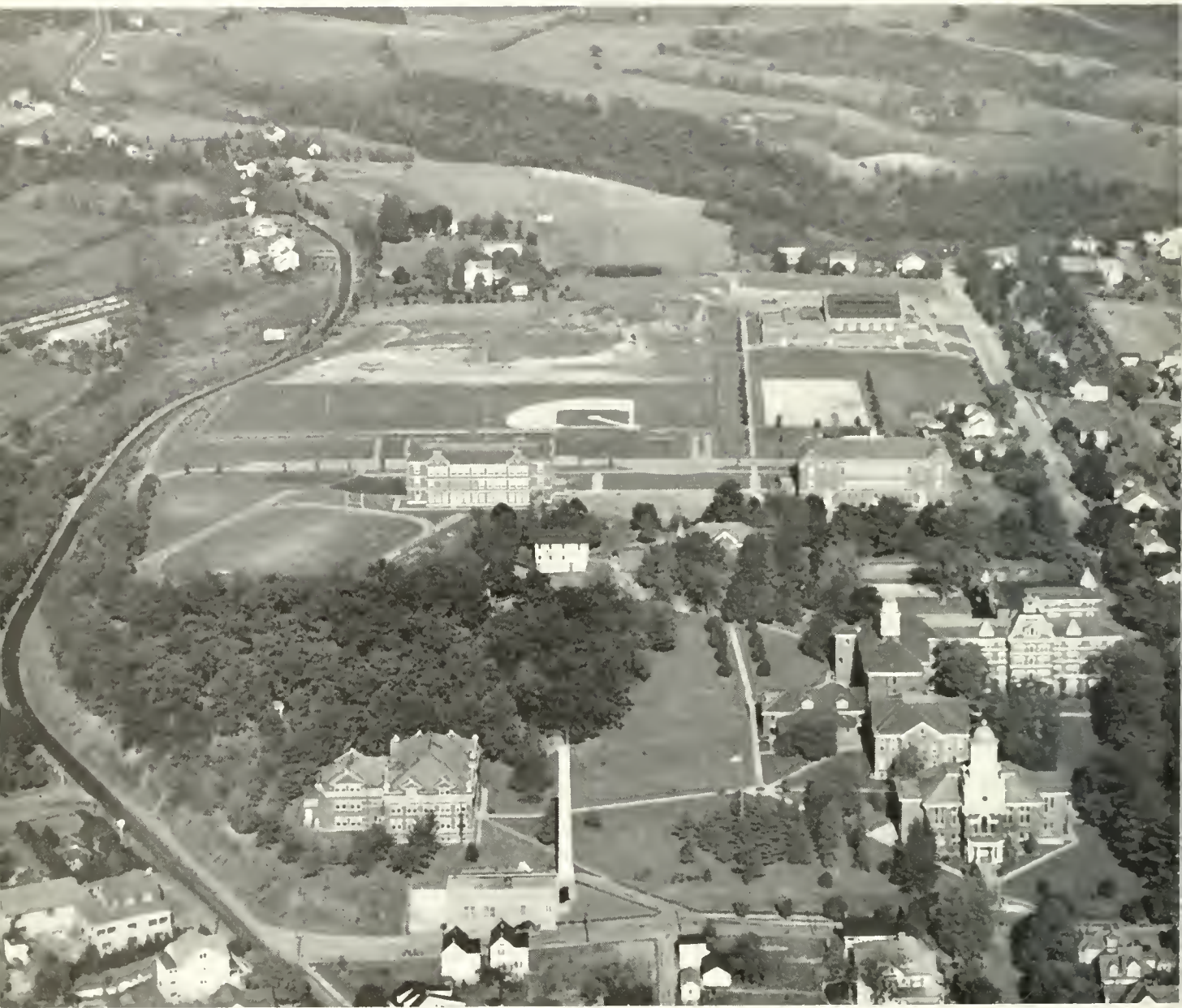


It's Bloomsburg Forever



Bloomsburg forevermore

M. KAPLAN (Author)



Aerial view of our campus

Alma Mater

Far above the river winding,
Midst the mountains grand
Stands our College, dear to students
Far throughout the land.

Far and wide though we may wander
Still our hearts are true
To our hilltop Alma Mater
We our pledge renew.

Ever seaward Susquehanna
Never resting flows—
Ever upward, striving, climbing
Onward Bloomsburg goes.

Chorus

Bloomsburg, Bloomsburg, Bloomsburg, College,
Up on College Hill
Years to come shall find us ever
True to Bloomsburg still.

JOSEPH H. DENNIS

Commonwealth of Pennsylvania
DEPARTMENT OF PUBLIC INSTRUCTION

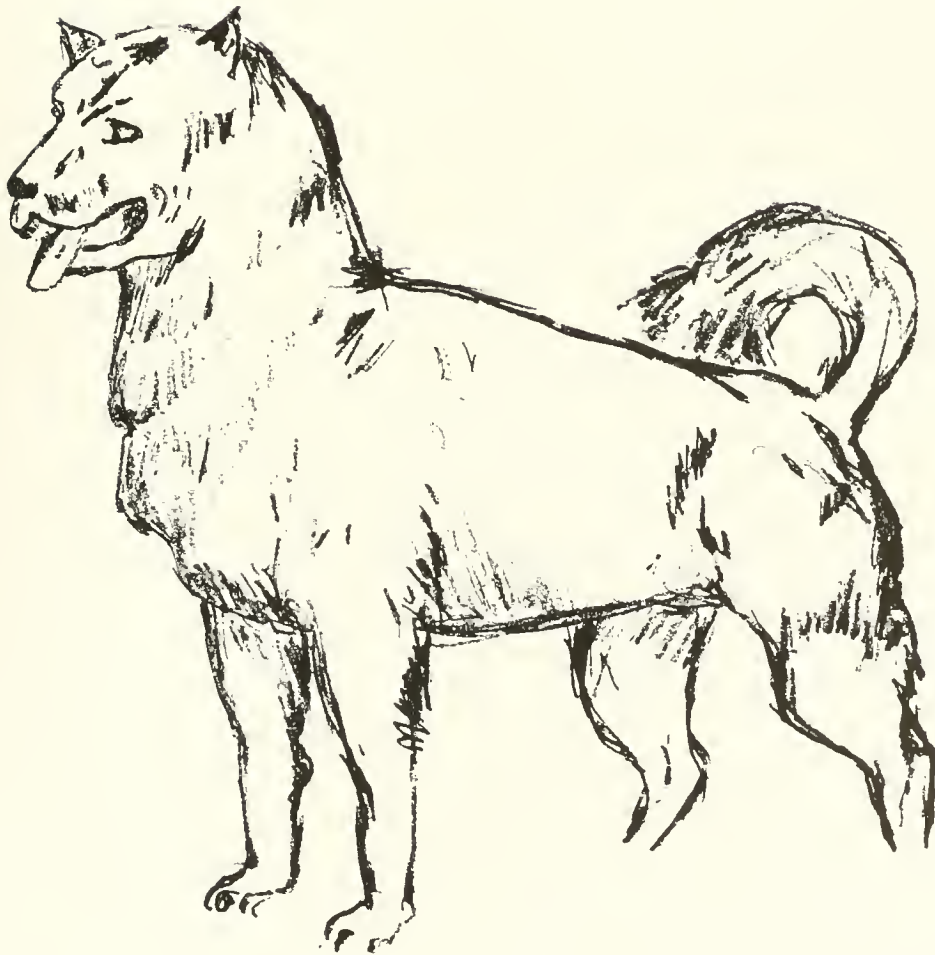


I will, upon the present and coming meetings
be known that the State Teachers College at Scranton grant to
Edward Raymond Hartzell, Jr.
Bachelor of Science in Education
He has completed the prescribed four year course in the
State Normal School at Scranton, Pa.
I hereby certify that he is entitled to the
degree of Bachelor of Science in Education
at the State Teachers College at Scranton, Pa.
this 10th day of August 1910

Wm. L. ...
Supt. of Public Instruction

Edward Raymond Hartzell, Jr.
Scranton, Pa.

**ADMINISTRATION
AND
FACULTY**





DR. HARVEY A. ANDRUS

To Students of the Mid-Century College Year:

Any sensitive person, in his passage through life, becomes increasingly aware of those to whom, mentally and spiritually, he owes the most. Those who have—consciously or unconsciously—molded his thoughts and beliefs and conduct.

Such molders of men are seldom the obviously successful, the wealthy, the powerful—a teacher, a parent, a priest, a grandfather, a friend, and, sometimes, a fellow student.

These unknown men and women holding fast to eternal values, wise in restraint and repose and good manners are by their lives and practices the guardians of our present civilization.

That you may realize your debt to those you owe the most and repay your obligation by helping others, is the hope of

Harvey A. Andrus
President.

Members of the College Community:

Today, as never before, a teacher's professional activities must reflect the democracy of our way of life. This means that the processes of our classrooms and our extra-curricular life are very important.

At Bloomsburg our extra-curricular life has an unusually broad meaning. Here, we have developed social living to a degree not always understood and appreciated by most of us close to it. To me, this is the real spirit of "Old Bloomsburg."

Sincerely yours,

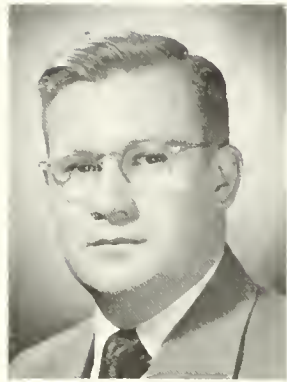
Thomas P. North

Dean of Instruction



DR. THOMAS P. NORTH

Administrative Officers



P. G. MARTIN
Business Manager



E. D. SHARRETTS
Superintendent of Grounds



First Row, Left to Right - A. Harman, R. Eyerly, M. Teel, E. Wilson, M. Trump, A. Knight.
Standing - B. Eyerly, L. Følstad, M. Kollesar, M. Luschyk, M. Haggerty.



MARGUERITE KEHR
Dean of Women

THE DEANS



JOHN A. HOCH
Dean of Men

TO THE CLASS OF 1951:

If there is ever to be a better world, it is going to require better people to make it. If there are to be better people, then better teachers, parents, and citizens will be needed. May the Class of 1951 furnish its full share of all of these.

MARGUERITE KEHR,
Dean of Women

TO BLOOMSBURG MEN AND WOMEN:

Some two thousand years ago the philosopher, Epictetus, had this to say about education: "The Ruler has said that only the free shall be educated, but God has said that only the educated shall be free." To add the modernness of Toyntee to the agelessness of Epictetus, we may well say in this modern world: Only the free can be educated, but only the *truly* educated will find the spiritual spark of genius and morality necessary to remain free.

JOHN A. HOCH,
Dean of Men



MARY E. MACDONALD
*Assistant to Dean of Women;
Coordinator of Guidance Services*
University of Michigan, A.B.;
Teachers College, Columbia Uni-
versity, A.M.; Graduate Work,
Columbia University.



ETHEL A. RANSON
*Assistant Dean of Women
and Mathematics*
University of Illinois, A.B.; Col-
umbia University, M.A.; Grad-
uate Work, Columbia University.

RALPH S. HERRE
Social Studies

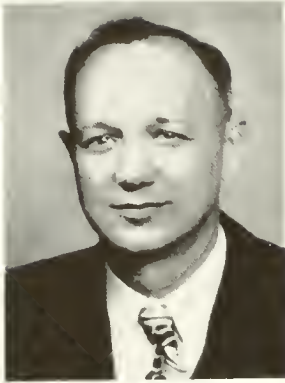
Colgate University, B.S.; Teachers
College, Albany, New York,
M.A.; Graduate Work, Clark
University, New York University,
University of Buffalo; Pennsyl-
vania State College, Ed.D.

ROBERT B. REDMAN
*Social Studies and
Athletic Coaching*

Swarthmore College, A.B.; Penn-
sylvania State College; Graduate
Work, University of Wisconsin;
Duke University, M.A.



DEPARTMENT HEADS



RICHARD G. HALLISY
Director of Business Education
 State Teachers College, Whitewater, Wisconsin, B.Ed.; University of Iowa, M.A.; Graduate Work, University of Pittsburgh.



EDNA J. HAZEN
Director of Elementary Education
 State Normal School, Edinboro, Pennsylvania; Allegheny College, Meadville, Pennsylvania; Columbia University, B.S., M.A.; Graduate Work, New York University, Clark University.

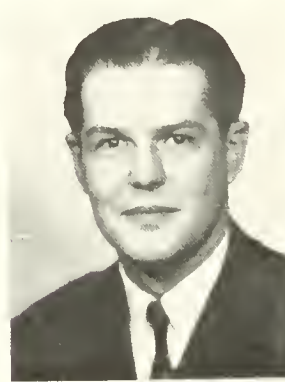


ERNEST H. ENGELHARDT
Director of Secondary Education and Placement Service
Director of Extension Education
 Bucknell University, A.B.; New York University, Bucknell University, M.A.; University of Pittsburgh, Ed.D.

BUSINESS EDUCATION



WILLIAM C. FORNEY
 Temple University, B.S.; New York University, M.A.; Graduate Work, Harvard University, Chicago University.



EARL A. GEIRIG
 State Teachers College, Bloomsburg, Pennsylvania, B.S.; Graduate Work, Bucknell University; Northwestern University, M.B.A.



CHARLES D. HENRIE
 State Teachers College, Bloomsburg, Pennsylvania, B.S.; Temple University, M.Ed.; Graduate Work, University of Pittsburgh, New York University.



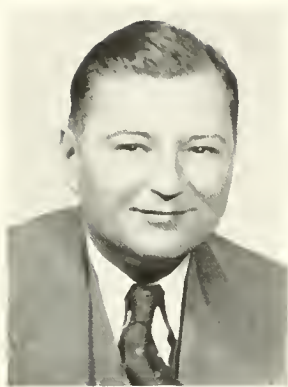
CLAYTON H. HINKEL
 State Teachers College, Bloomsburg, Pennsylvania, B.S.; Temple University, M.Ed.; New York University, Graduate Work.



HONORA M. NOYES
 George Washington University, B.A.; University of Pittsburgh, M.Ed.; Graduate Work, Pennsylvania State College, Columbia University.



WALTER S. RYGIEL
 Temple University, B.S., M.Ed.; Graduate Work, Temple University, University of Pennsylvania, Pennsylvania State College.



WILLIAM B. STERLING

Aviation

Plattsburg State Normal School, Diploma; University of Buffalo, B.S.; Syracuse University, M.S.Ed.; Instructor's Rating, Single Engine Land; Designated Flight Examiner No. 3499 (C. A. A.); Graduate Work, United Air Lines Pilot School, Denver, Colorado.



MARJORIE KELLER SWARTZ

State Teachers College, Indiana, Pennsylvania, B.S.; University of Pittsburgh, M.Ed.; Graduate Work, University of Wisconsin.

ELEMENTARY EDUCATION



MRS. LUCILE J. BAKER

Training Teacher, Grade I

Western State College, Colorado, A.B.; Tri-State College, Indiana, Mus.B.; Columbia University, A.M.; Graduate Work, Pestalozzi-Froebel School, Chicago, Illinois; Denver University, Denver, Colorado.



EDNA J. BARNES

Training Teacher, Grade VI

McMurray College, Jacksonvillle, Illinois, Western State College, Macomb, Illinois, B.S.; Columbia University, M.A.; Graduate Work, University of Colorado, Columbia University.



IVA MAE BECKLEY

Training Teacher, Grade II

State Teachers College, Lock Haven, Pennsylvania, B.S.; Pennsylvania State College, M.Ed.; Graduate Work, Columbia University.



RUSSELL F. SCHEICHER

State Teachers College, Kutztown, Pennsylvania; Pennsylvania State College, B.S.; Lehigh University, M.A.



ANNA GARRISON SCOTT

Training Teacher, Grade IV

State Normal School, Bloomsburg, Pennsylvania; Columbia University, B.S., M.A.



MARCELLA MARIE STICKLER

Training Teacher, Grade III

State Teachers College, Lock Haven, Pennsylvania, B.S.; St. Bonaventure College, M.S.; Graduate Work, Pennsylvania State College.



MARJORIE STOVER

Training Teacher, Special Class

State Teachers College, Bloomsburg, Pennsylvania, B.S.; Graduate Work, University of Michigan, Temple University.



GRACE H. WOOLWORTH

Training Teacher, Kindergarten

State Teachers College, Kearney, Nebraska; University of Chicago, Ph.B.; University of California; Columbia University, A.M.; Graduate Work, Columbia University.

SECONDARY EDUCATION



OLIVE PAYNE BEEMAN

Art

University of Chicago, Associate Ed.B., Ph.B.; Graduate Work, University of Indiana, Oswald Art School.



EDWARD T. DE VOE

English

State Teachers College, Bloomsburg, Pennsylvania, B.S.; Bucknell University, M.Ed.; Graduate Work, Pennsylvania State College.



EDWARD F. FENSTEMAKER

Foreign Languages

State Normal School, Bloomsburg, Pennsylvania; University of Michigan, B.A.; New York University, M.A.; Graduate Work, University of Pennsylvania.



JOHN J. FISHER

Psychology

Goshen College, Goshen, Indiana, B.A.; Indiana University, M.A.; Graduate Work, University of Pennsylvania, Columbia University, University of Chicago, Ohio State University.



ALICE JOHNSTON

Speech

Park College, Missouri, I.B.; Columbia University, M.A.; Graduate Work, University of Wisconsin, Columbia University, University of Michigan, University of Chicago, Central School of Speech, London, England; New York League for Hard of Hearing; Feagan School of Dramatic Art, New York.



GEORGE J. KELLER

Art

State Normal School, Bloomsburg, Pennsylvania; Teachers College, Columbia University, B.S.; Bucknell University, M.A.



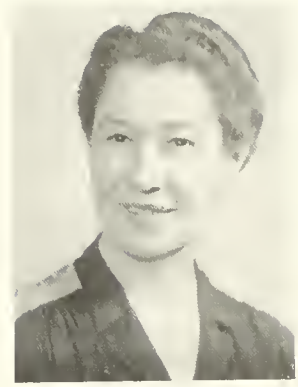
KIMBER C. KUSTER
Biological Science

State Normal School, Bloomsburg, Pennsylvania; University of Michigan, B.S., M.S., Ph.D.



HAROLD H. LANTERMAN
Physical Science

State Teachers College, Bloomsburg, Pennsylvania, B.S.; New York University, M.A.; Graduate Work, New York University, Pennsylvania State College.



NELL MAUPIN
Social Studies

Peabody Teachers College, B.A.; Vanderbilt University; Chicago University; University of Iowa, M.A., Ph.D.; New York University.



LUCY McCAMMON
Health Education

Southwestern Missouri Teachers College, Springfield, Missouri, A.B.; Columbia University, M.A.; Graduate Work, Alabama University, Columbia University.



HARRIET M. MOORE
Public School Music

State Teachers College, Kirksville, Missouri; Bush Conservatory, Chicago, Illinois, Mus.B.; New York University, B.S. in Music Education, M.A.; Graduate Work, New York University, University of Chicago, Washington University, St. Louis, Missouri.



EDWARD A. REAMS
Social Studies

Kansas Wesleyan, A.B.; Columbia University, M.A.; Graduate Work, Pennsylvania State College, New York University, University of Southern California.



H. HARRISON RUSSELL
Geography

Illinois State Normal University, B.Ed.; Clark University, M.A., Ph.D.



J. ALMUS RUSSELL
English

Dartmouth College, A.B.; Cornell University, A.M., Ph.D.; London University, Certificate.



HAROLD S. SHELLY
Physical Education

Ohio Northern University, Ada, Ohio, A.B.; University of Michigan, Ann Arbor, Michigan, M.A.



S. I. SHORTESS
Physical Science

Albright College, A.B.; University of Pennsylvania, M.S.; Graduate Work, New York University.



PAUL E. WAGNER
Pennsylvania State College, B.S., M.S., Ph.D.



MARGARET E. WALDRON
Mathematics

Wellesley College, B.A.; Columbia University, M.A.; Graduate Work, University of Southern California, Harvard University.



SAMUEL L. WILSON
English

Bucknell University, Sc.B.; Columbia University, M.A.; Graduate Work, Pennsylvania State College, Harvard University, New York University.



STEPHEN R. HOPKINS
Private School of Music

Yale University School of Music, B. of Music; Student, Tobias Matthay Piano-forte School, Royal Academy of Music, and Dalroze School, all of London, England.



M. BEATRICE METTLER
Graduate Nurse

Bucknell University, A.B.; University of Pennsylvania, M.S.; Graduate of the Johns Hopkins Hospital School of Nursing, Baltimore, Maryland; Graduate Work, University of Chicago; R.N., Pennsylvania and Maryland.



DELLA M. THAYER
Diction

Syracuse University, B.S. in Home Economics.



MATHILDA G. MUYSKENS
Circulation Librarian

State University of Iowa, B.A.; Columbia University, B.S. in Library Science.



CATHERINE L. ZEALBERG
Librarian

State Teachers College, Kutztown, Pennsylvania, B.S.; George Peabody College for Teachers, Nashville, Tennessee, M.A.

Class Advisers



HOWARD F. FENSTEMAKER
1947-48



CLAYTON H. HINKEL
1948-49



KIMBER C. KUSTER
1949-50



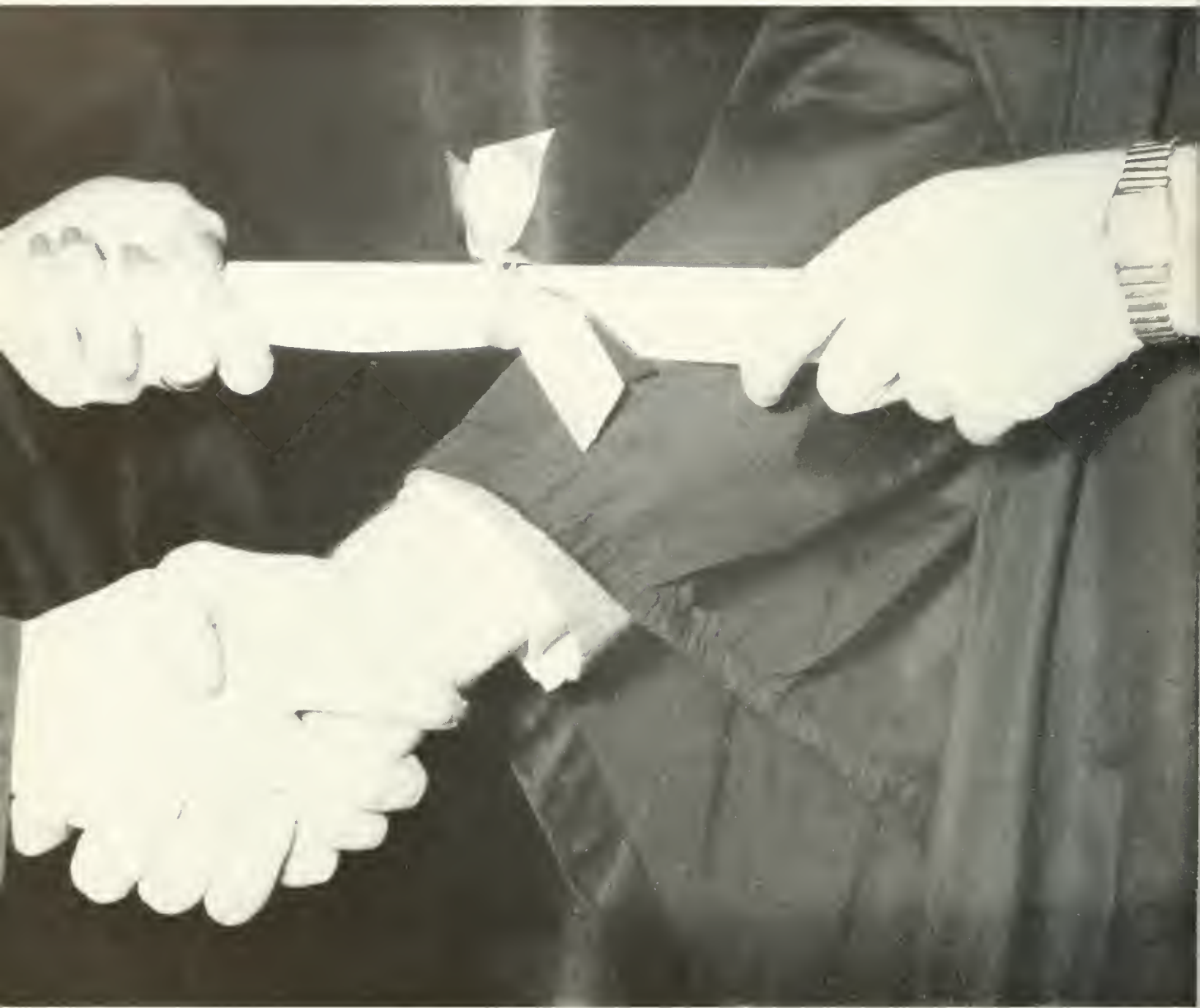
MARJORIE KELLER SWARTZ
1950-51

The Class of 1951 is sincerely grateful for the help of four faculty members who have served as advisers throughout our four years of college.

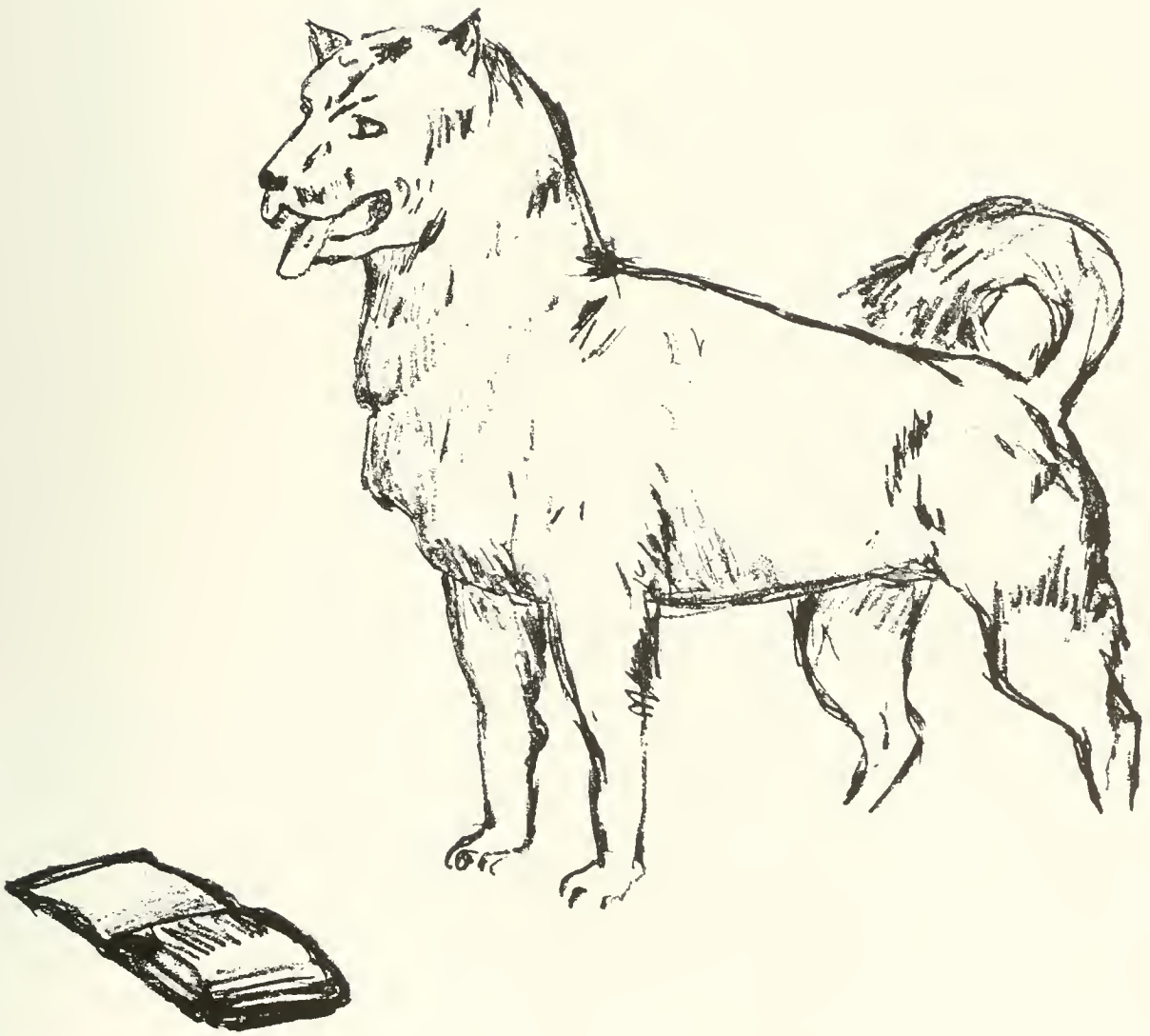
MR. FENSTEMAKER	- - - - -	1947-48
MR. HINKEL	- - - - -	1948-49
DR. KUSTER	- - - - -	1949-50
MRS. SWARTZ	- - - - -	1950-51

These four people have been a steading influence during the time the Class of 1951 was in College.

We thank them for their inspiration and careful guidance.



CLASSES



Senior Class

OFFICERS

<i>President</i>	- - -	RICHARD M. KRESSLER
<i>Vice President</i>	- - -	CARL PERSING
<i>Secretary</i>	- - -	BARBARA FREDERICK
<i>Treasurer</i>	- - -	RUSSEL DAVIS
<i>Historian</i>	- - -	MARIE MATTIS
<i>Class Adviser</i>	- - -	MRS. SWARTZ



Front Row, Left to Right—N. Powell, R. Kressler, B. Frederick,
Back Row—R. Davis, J. Purcell, E. Denn.

The long sought-after goal has finally been realized, and graduation day is upon the Class of 1951. The busy program necessitated by student teaching, together with making plans for the big events of the year, leaves the senior with little time on his hands for extra-curricular activities.

Only five short years have elapsed since the end of that terrible and gigantic conflict—World War II. Many members of the Class of 1951 who participated in that struggle face the prospect of again being called to the defense of their country. Their future looms, uncertain, but whatever the outcome may be, they will always remember the high ideals and purposes instilled here at Bloomsburg.

Business Education

Offering curriculums leading to a Bachelor of Science degree in Education, the Business Education Department seniors will graduate with certification in several of the following fields: Bookkeeping and Accounting, Business English, Commercial Law, Commercial Mathematics, Economics, Junior Business Training, Office Practice, Retail Selling, Salesmanship, Shorthand, and Typewriting. Offices and classrooms of the Department are located in Navy Hall.

Class in Typing





MARY ANN ALARCON

Keiser

Secretarial, Retail Selling, English

Waller Hall Association; Business Education Club; Future Teachers of America; Women's Glee Club.

SHIRLEY G. ASHNER

Lehighton

General Commercial

Student Christian Association; Lutheran Student Association; Women's Glee Club; Business Education Club; Pi Omega Pi (Treasurer); Future Teachers of America; B Club; Waller Hall Association; Waller Hall Governing Board (President); College Council; Kappa Delta Pi.

GERALD ARTHUR BACON

Towanda

Secretarial, Retail Selling, English

Day Men's Association; Dorm Men's Association; Men's Glee Club; Business Education Club (Vice-President); Phi Sigma Pi (Secretary, President); Inter-Fraternity Council (President); Future Teachers of America.

LEWIS BALLANTINE

Shamokin

Accounting, Retail Selling, Typing

Business Education Club; Phi Sigma Pi; Kappa Delta Pi; Dorm Men's Association.

ROBERT J. BRUCHIS

Hazleton

Secretarial, English

Business Education Club; Dramatic Club; Aviation Club.

JAMES R. CREVELING

Bloomsburg

Accounting, Retail Selling, Typing

Business Education Club; Aviation Club; Pi Omega Pi; Day Men's Association.

ROMEO DANNI

Allentown

General Commercial

College Council; Science Club; Junior Class (Vice-President); OBITER 1950 (Business Manager).

RITA M. DIXON

West Hazleton

General Commercial

OBITER 1949; Women's Chorus; Business Education Club; *Pilot* (Assistant Editor, Editor); Dramatic Club; Future Teachers of America; Student Christian Association; B Club; Waller Hall Association; Newman Club.



CHARLES L. EDWARDS

Shamokin

General Commercial

Day Men's Association; Dorm Men's Association; Men's Glee Club; Business Education Club; *Maroon and Gold*; *Olympian*; Future Teachers of America; Pennsylvania Future Teachers of America (Vice-President).

ALBERT C. FREMICH

Catawissa

Accounting, Retail Selling, Typing

Football; Track; Varsity Club (Secretary); Day Men's Association; Dorm Men's Association.

ANNA B. FREDERICK

Millinburg

General Commercial, English

Senior Class Secretary; Maroon and Gold Band (Secretary); *Maroon and Gold*; Women's Chorus; Student Christian Association (Treasurer); Business Education Club; Pi Omega Pi (Vice-President); Kappa Delta Pi; Future Teachers of America; Waller Hall Association (Governing Board).

JOAN A. GRAZELL

Shenandoah

Secretarial, Retail Selling, English

Waller Hall Association; Future Teachers of America; Business Education Club; B Club; Fashion Show.



JOHN M. GREENLY

Millville

Accounting, Typing, English

Business Education Club; Day Men's Association; Future Teachers of America.

MABEL E. HARRIS

Beach Haven

General Commercial, English

Business Education Club; Student Christian Association; Future Teachers of America.

MICHAEL HEMLOCK

Berwick

Accounting, Social Studies

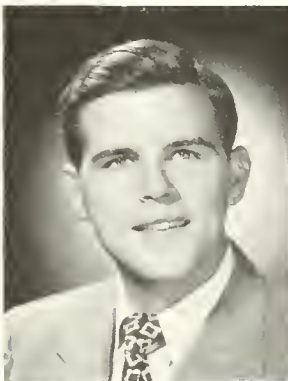
Pi Omega Pi; Kappa Delta Pi; Business Education Club; Day Men's Association; Future Teachers of America.

JOHN D. KEEGAN, JR.

Shamokin

Accounting, Retail Selling

Athenaeum Club; *Maroon and Gold*; Aviation Club; Future Teachers of America; Men's Dorm Association; Day Men's Association.





GORDON L. KEMP

Nescopeck

General Commercial, Typing

Class President; C. G. A. (Treasurer); Business Education Club; College Council; Day Men's Association; Pi Omega Pi; Kappa Delta Pi.

JOHN KOCUR

Junedale

General Commercial

Future Teachers of America; Student Christian Association; Day Men's Association; Dorm Men's Association; Men's Glee Club (Vice-President); Business Education Club; Newman Club.

CHARLES G. KRAEMER

Scranton

Accounting, English

Business Education Club; Men's Glee Club; Pi Omega Pi; Kappa Delta Pi.

ROBERT LePARD

Lansdowne

Sales, Social Studies

Business Education Club; Future Teachers of America; Track.

CHARLES LOCKARD

Muncy

Accounting, Retail Selling

Business Education Club; Day Men's Association; Lutheran Student Association.

ROBERT MAZA

Nanticoke

Secretarial, Social Studies

Business Education Club; Day Men's Association; Dorm Men's Association; Football; Basketball; Lutheran Student Association.

ROBERT S. MERRIFIELD, JR.

Ventnor, N. J.

General Commercial, Retail Selling

Business Education Club (President); Day Men's Association; Student Christian Association; Future Teachers of America.

LILLIAN MLKVY

Palmerton

General Commercial, Retail Selling

Student Christian Association; Women's Chorus; Business Education Club; B Club; Pi Omega Pi; Kappa Delta Pi; Future Teachers of America; Waller Hall Association; OBITER (Business Manager); Class Secretary (pro tem).



HAZEL PALMER

New Milford

General Commercial

Pi Omega Pi; Kappa Delta Pi; Future Teachers of America; Business Education Club; *Olympian*.

FRANK V. PERRY

Shamokin

Accounting, Retail Selling, Typing

Varsity Club; Business Education Club; Football; Future Teachers of America.

CARL J. PERSING, JR.

Mt. Carmel

Accounting, Retail Selling, Typing

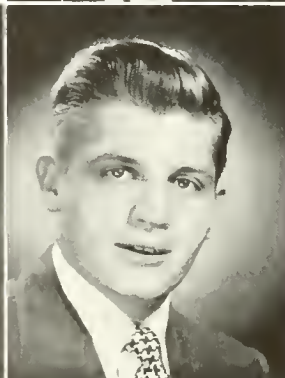
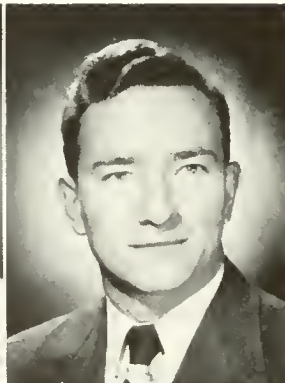
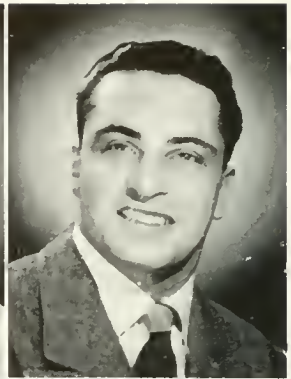
Business Education Club; Basketball; Track; Aviation Club; Day Men's Association; Dorm Men's Association; Senior Class (Vice-President); Newman Club.

WANDA M. PETRAITIS

Collegeville

General Commercial

Women's Chorus; Business Education Club; B Club; Future Teachers of America.



DOROTHY PICHEL

Hellertown

General Commercial

Pi Omega Pi; Kappa Delta Pi; Business Education Club; *Maroon and Gold*; Waller Hall Association; B Club.

EMORY RARIG, JR.

Catawissa

General Commercial

Kappa Delta Pi; Pi Omega Pi (Treasurer); Men's Glee Club (Secretary-Treasurer); Phi Sigma Pi; Future Teachers of America; Day Men's Association; Dorm Men's Association; Business Education Club (Vice-President); Lutheran Student Association (President).

JOHN E. RODEBACK

West Chester

Accounting, Retail Selling, Typing

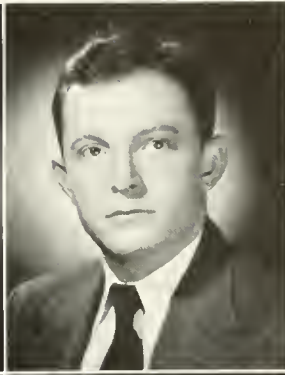
Men's Dorm Association; Business Education Club; Basketball; Future Teachers of America.

GEORGE N. ROESSNER

Maplewood, N. J.

Accounting, Retail Selling

Day Men's Association; Athenaeum Club, (President); Dorm Men's Association; OBITER; Future Teachers of America.



DONALD H. RUSSELL

Bloomsburg

Accounting, Social Studies, Typing
Business Education Club; Aviation Club;
Day Men's Association.

JOHN J. RYAN

Philadelphia

Accounting, Retail Selling, Typing
Pi Omega Pi (President); Phi Sigma Pi; Kappa
Delta Pi; C. G. A.; Business Education Club; Avia-
tion Club; Dorm Men's Association; Future Teach-
ers of America.

GENEVIEVE SCHEETZ

Easton

General Commercial
Business Education Club; Pi Omega Pi (Secretary);
Kappa Delta Pi; Waller Hall Association.

RICHARD SCHWARTZ

Pine Grove

Secretarial, Sales
Business Education Club; Maroon and Gold Band
(President); Student Christian Association (Presi-
dent).

MAXINE L. SHIREY

Clearfield

General Commercial, English

OBITER 1950 (Secretary); *Maroon and Gold*; Maroon
and Gold Band; Business Education Club; Future
Teachers of America; Kappa Delta Pi; Pi Omega
Pi; Student Christian Association; Women's Chorus.

JOHN SWARTZ

Montoursville

General Commercial

Business Education Club; Maroon and Gold Band
(Librarian); Track; Lutheran Student Association.

ELVIRA E. THOMSEN

Wilkes-Barre

General Commercial

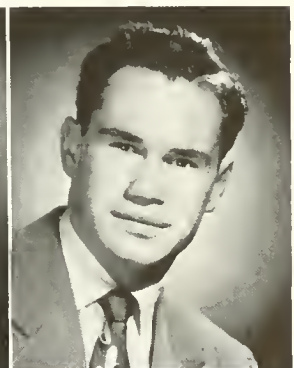
Future Teachers of America; Dorm Women's Asso-
ciation; Women's Chorus; Business Education Club.

AGNES VALIMONT

Frenchville

General Commercial

Women's Chorus; Business Education Club; Waller
Hall Association; B Club; Newman Club.



EDWARD T. VASILAUSKAS

Mt. Carmel

Accounting, Retail Selling, Typing

Business Education Club; Aviation Club; Day Men's Association; Future Teachers of America.

MURIEL WAGNER

Carbondale

Accounting, Typing, English

Women's Chorus; Pi Omega Pi; Business Education Club; B Club; Waller Hall Association.

CAROL A. WANICH

Bloomsburg

General Commercial

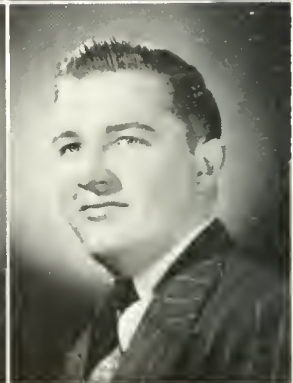
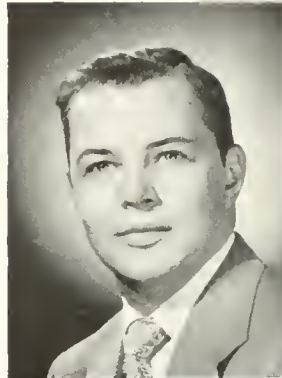
Business Education Club; Student Christian Association; Day Women's Association (Treasurer); Maroon and Gold Band.

RALPH W. WIRE

Harrisburg

Accounting, Retail Selling

Kappa Delta Pi (President); Pi Omega Pi; Future Teachers of America; Men's Glee Club; Business Education Club; Day Men's Association.



ROBERT WIRE

York

General Commercial, Retail Selling

Dramatic Club; Day Men's Association; Dorm Men's Association.

SHIRLEY WISMER

Royersford

General Commercial, English

Women's Chorus; Student Christian Association; Business Education Club; Waller Hall Association.

CHARLES W. WOLL

Berwick

General Commercial

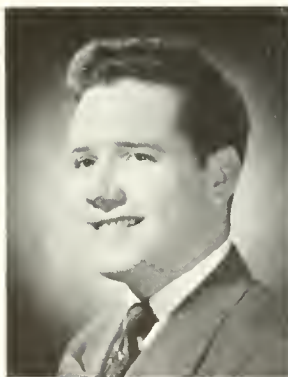
Business Education Club; Aviation Club; Day Men's Association.

HOMER ZEIGLER

Millersburg

General Commercial

Maroon and Gold Band; Student Christian Association (President, Treasurer); Phi Sigma Pi; OBITER 1951 (Editor); Business Education Club; Dramatic Club; Day Men's Association; Future Teachers of America.





WALTER ZORN

Lansdowne

Secretarial, Sales

College Council; Junior Class President;
Business Education Club; Soccer.

MARY ZWEIZIG

Shoemakersville

General Commercial, English

Women's Chorus; Student Christian Association;
Business Education Club; Waller Hall Association.



Clerical Office Practice

*Director of Business Education, Mr.
Richard G. Hallisy and Secretary, Mrs.
Eyerly.*





A Class in the Laboratory School

Elementary Education

Offering curriculums leading to Bachelor of Science degree in Education, the Elementary Education Department seniors will graduate with certificates in the elementary grades. Teachers in training are given the opportunity to observe and practice latest teaching methods in the Benjamin Franklin Laboratory School. The Laboratory school is located on campus and it houses the offices of the Department.

WALTER J. BANULL

Scranton
Elementary

Dormitory Men's Association; Basketball.

ROY W. BEYERS

Danville
Elementary

Day Men's Association; Business Education Club;
Future Teachers of America.

BARBARA JANE BRACE

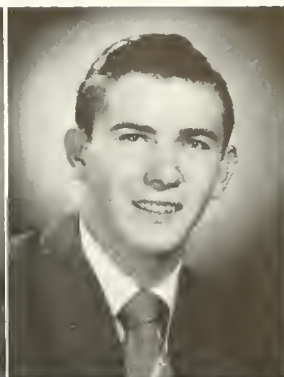
Dallas
Elementary

Student Christian Association; Future Teachers of
America (Librarian); B Club; Poetry Club; Waller
Hall Association.

MARTHA BRONSON

Bloomsburg
Elementary

Business Education Club; B Club; Knox Fellowship;
Future Teachers of America.



L. MAE BRUNDAGE

Union Dale
Elementary

Science Club; Athenaeum Club; Women's Chorus;
Future Teachers of America.

DELPHINE R. BUSS

Watson town
Elementary

Cheerleader; Women's Chorus; Kappa Delta Pi;
Junior Class Treasurer; Waller Hall Association;
C. G. A.

VIVIAN J. CAREY

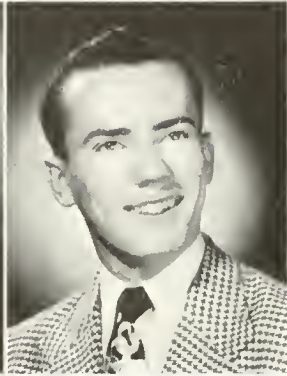
Carbondale
Elementary

Student Christian Association; Future Teachers of
America; Waller Hall Association; Athenaeum Club.

RHODA C. CARLS

Ringtown
Elementary

Poetry Club; Science Club; Student Christian As-
sociation; Women's Chorus; Future Teachers of
America; Waller Hall Association; Day Women's
Association.



JEAN SILVAN DAVIS

Wilkes-Barre

Elementary

Day Women's Association; Kappa Delta Pi.

FRANCIS P. DEAN

Lost Creek

Elementary - Speech Correctionist

Alpha Psi Omega; Dramatic Club (Vice-President); College Council; *Maroon and Gold* (News Editor); Men's Chorus (Secretary); Maroon and Gold Band; Newman Club; Day Men's Association; Dorm Men's Association; Future Teachers of America; Kappa Delta Pi; Sigma Alpha Eta.



MARY C. DeMATT

Hazleton

Elementary

Waller Hall Association (Governing Board); Newman Club; Women's Chorus (Librarian); Future Teachers of America.

BERNARD J. DePAUL

Berwick

Elementary

Football; Freshman Squad (Coach); Class Historian (Freshman); Future Teachers of America; Dorm Men's Association.

RUTH ANN DOODY

Canadensis

Elementary

Waller Hall Governing Board (Vice-President); Freshman Class (Vice-President); Business Education Club (Secretary); Women's Chorus (President); Kappa Delta Pi (Secretary); Future Teachers of America.

LOIS E. DZURIS

Nanticoke

Elementary

Waller Hall Association (Governing Board); Kappa Delta Pi; Poetry Club (Treasurer); Future Teachers of America; Women's Chorus; *Maroon and Gold*.

CAROL B. GREENOUGH

Williamsport

Elementary

Waller Hall Association; Student Christian Association; Athenaeum Club (Secretary); Future Teachers of America; Kappa Delta Pi.

FAYTHE M. HACKETT

Glenside

Elementary - Special Education

Waller Hall Association; Women's Chorus; Poetry Club; Kappa Delta Pi.



NORMA P. HINDERLITER

Ringtown
Elementary

Poetry Club; Dramatic Club; Waller Hall Association;
Day Women's Association; Kappa Delta Pi.

RICHARD S. HUMMEL

Northumberland
Elementary

Day Men's Association; Future Teachers of America;
Baseball.

ALICE JACQUES

Falls
Elementary
Student Christian Association.

PAUL L. KEENER

Dewart
Elementary-Speech Correctionist

Bloomsburg Players; Alpha Psi Omega; Student
Christian Association; Men's Glee Club; Future
Teachers of America; Day Men's Association.



VERNAMAE COMPTON KIEFER

Bethlehem
Elementary Special Classes for the Mentally Retarded

B Club; Student Christian Association; Waller Hall
Association (Governing Board); Women's Chorus;
Athenaeum Club; *Maroon and Gold*; Future Teach-
ers of America.

NED L. KNARR

Shamokin
Elementary
Future Teachers of America; Kappa Delta Pi;
Science Club.

BERNARD C. KOTULA

Cambola
Elementary
Baseball; Athenaeum Club; Day Men's Association;
Future Teachers of America; Newman Club.

BERNARD KRAUSE

Nanticoke
Elementary
Men's Dorm Association; Aviation Club;
Future Teachers of America.



M. CHRISTINE KREAMER

Bloomsburg

Elementary

Women's Chorus; Day Women's Association;
Future Teachers of America.

NATALIE J. LAUBACH

Benton

Elementary

Day Women's Association; Women's Chorus; Ath-
enaecum Club; Future Teachers of America.

ANDREW MACEIKO

Wilkes-Barre

Elementary

Day Men's Association; Dorm Men's Association;
Men's Glee Club; Athenaeum Club; Dramatic
Club; Kappa Delta Pi.

MILO MASANOVICH

West Hazleton

Elementary

Men's Glee Club; Future Teachers of America;
Dorm Men's Association.

BARBARA L. MERTZ

Northumberland

Elementary

Athenaeum Club; Day Women's Association;
Future Teachers of America.

FLORENCE J. MORDAN

Milville

Elementary

Science Club; Day Women's Association;
Future Teachers of America.

DANIEL C. PARRELL

Hazleton

Elementary

Football; Varsity Club (President);
Men's Dorm Association.

JACQUELIN E. REINHART

Hazleton

Elementary

Future Teachers of America; Student Christian As-
sociation; Athenaeum Club; Methodist Fellowship.



WINIFRED J. SHARKEY

Lattimer Mines

Elementary

Waller Hall Association; Women's Chorus;
Future Teachers of America.

WILLIAM R. T. SICKINGER

Philadelphia

Elementary—Speech Correctionist

Bloomsburg Players; Maroon and Gold Band;
Alpha Psi Omega.

F. DIANE SNYDER

Mill Hall

Elementary

Waller Hall Association; Future Teachers of America;
Women's Chorus; Dramatic Club.

LEWIS R. STAUFFER

Bloomsburg

*Elementary—Special Classes for the Mentally
Retarded*

Day Men's Association; Athenaeum Club.



EDWARD STEINER

Aristes

Elementary

Men's Glee Club (President); Day Men's
Association; Kappa Delta Pi.

ELOISE M. SYMONS

Wilkes-Barre

Elementary

Kappa Delta Pi; Women's Chorus; Dramatic Club;
Waller Hall Governing Board; Student Christian
Association; B Club; Future Teachers of America.

BETTY ANNE WALTERS MEISS

Hazleton

Elementary

Women's Chorus; Science Club; B Club; Athenaeum
Club; Future Teachers of America.

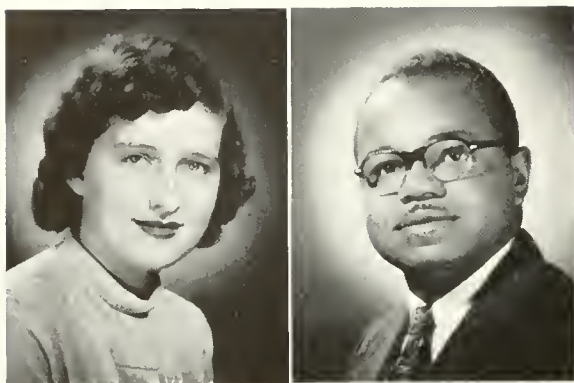
EPHRAIM S. WEAVER, JR.

Shamokin

Elementary

Poetry Club; Men's Dorm Association; Future
Teachers of America; Men's Glee Club.





LEAH L. WERTMAN

Andreas

Elementary

Waller Hall Association; Lutheran Student Association; Student Christian Association; Future Teachers of America.

GEORGE D. YOUNG

Danville

Elementary

Business Education Club; Men's Glee Club; Day Men's Association; Future Teachers of America.

BLANCHE O. SCHULTZ

Millville

Elementary

Women's Chorus; French Club.



Classes in the Laboratory School



Secondary Education

Offering curriculums leading to Bachelor of Science degree in Education, the Secondary Education Department seniors will graduate with certificates in two or more of the following fields: English, French, Spanish, Latin, Biology, General Science, Physical Science, Geography, Social Studies, Mathematics, and Speech. Offices of the Department are located in Benjamin Franklin Laboratory School.



Library

ROBERT C. ANDREWS

Johnstown

Science, Social Studies

Basketball; Track; Phi Sigma Pi; Kappa Delta Pi;
Men's Dorm Association; Future Teachers of America;
Varsity Club.

JOSEPH L. APICHELLA

Hazleton

Spanish, French

Football

JAMES C. ARNOLD

Hughesville

Science, Mathematics

Science Club; Day Men's Association;
Future Teachers of America.

JOHN F. BABB

Bloomsburg

Spanish, English, History

Football; Future Teachers of America;
Kappa Delta Pi; Baseball.



MERLIN C. BEACHELL

Bloomsburg

Social Studies, Geography

Maroon and Gold (Co-editor); Science Club (Vice-President); Phi Sigma Pi (Vice-President); Lutheran Student Association; Kappa Delta Pi; Future Teachers of America; Gamma Theta Upsilon.

FRANCIS R. BODINE

Kane

Science, Mathematics

Science Club; Day Men's Association; Kappa Delta Pi; Baseball (Manager); Future Teachers of America; Knox Fellowship.

HELYN J. BURLINGAME

Berwick

Spanish, French, English

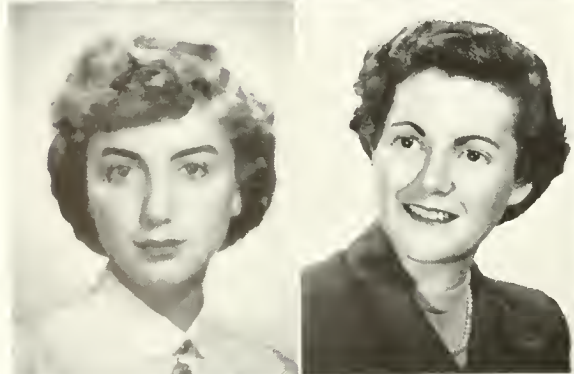
Day Women's Association; Women's Chorus; *Maroon and Gold*; Fashion Show; Science Club; Future Teachers of America.

BEVERLY COLE

Bloomsburg

Spanish, French, English

College Council; Kappa Delta Pi; *Maroon and Gold*; Future Teachers of America.





RUSSELL C. DAVIS, JR.

Luzerne

Science, Mathematics

Bloomsburg Players; Alpha Psi Omega; Maroon and Gold Band; Maroon and Gold Concert Orchestra; Men's Glee Club; Student Christian Association; Poetry Club; Day Men's Association; Dorm Men's Association; Senior Class Treasurer; Future Teachers of America.

MARY J. DORSEY

Bloomsburg

English, Mathematics

Day Women's Association; Women's Chorus; Science Club; Future Teachers of America; Women's Athletic Association; B Club.

ROBERT J. DUBBS

Shamokin

Biological Science, Social Studies

Science Club; Athenaeum Club; Aviation Club; Future Teachers of America; Baseball (Manager); Day Men's Association.

DAVID T. EDWARDS

Kingston

Social Studies, Geography

Gamma Theta Upsilon; Science Club; Men's Dormitory Association; Future Teachers of America.

HUGH ELLIOTT

Slickshinny

Science, Mathematics

Day Men's Association; Science Club (President); Kappa Delta Pi; C. G. A.; Future Teachers of America.

HAROLD F. EMMITT

Danville

Science, Social Studies

Day Men's Association; Science Club; Track; Future Teachers of America.

CARLETON H. ERMISH

Berwick

English, Spanish

Band; Day Men's Association.

MICHAEL P. EVANS

Wilkes-Barre

Social Studies, Geography

Baseball; Basketball; Future Teachers of America; Gamma Theta Upsilon (Vice-President); Varsity Club.



PAUL R. FARNSWORTH

Danville

Social Studies, Mathematics

Men's Glee Club; Aviation Club; Day Men's Association; Future Teachers of America.

CAROL M. GASS

Danville

Science, Mathematics

Women's Chorus; Science Club; Day Women's Association.

CHARLES R. GEARHART

Catawissa

Social Studies, Geography

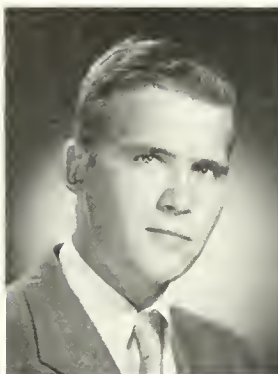
Glee Club; Maroon and Gold Band; Day Men's Association; Gamma Theta Upsilon; Soccer Team; Future Teachers of America.

GEORGE GORDA

Hazleton

Social Studies, Science

Men's Glee Club; Science Club.



ANTHONY R. GRABOWSKI

Shamokin

Science, English

Day Men's Association; Science Club; *Olympian*; Kappa Delta Pi; Phi Sigma Pi; Future Teachers of America; Dorm Men's Association; College Council (President).

RICHARD C. HARNER

Berwick

English, Spanish

Maroon and Gold Band; Men's Glee Club; Day Men's Association.

RUSSELL E. HAWK, JR.

Milton

Social Studies, Mathematics

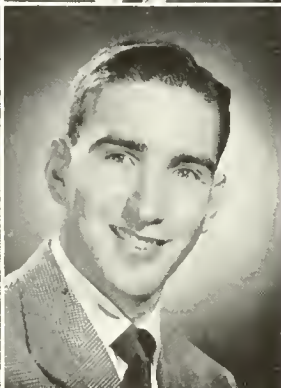
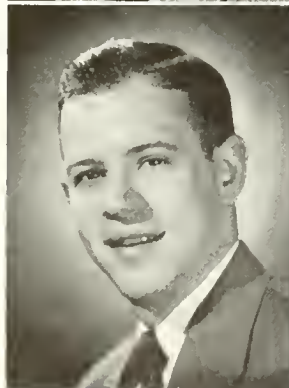
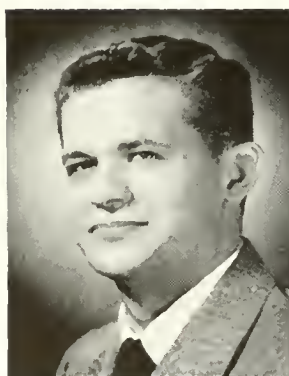
Men's Glee Club; Men's Dorm Association; Future Teachers of America; *Maroon and Gold*; *Olympian*.

ROBERT E. HILEMAN

Light Street

Science, Mathematics

Day Men's Association; Science Club; Kappa Delta Pi; Future Teachers of America.





LYLE HORNE

Ringtown
Science, Mathematics
 Science Club.

GEORGE R. HUGHES

Shamokin
Social Studies, Geography
 Day Men's Association; Dorm Men's Association;
 Men's Glee Club (President); Gamma Theta Upsilon;
 Future Teachers of America.

ROBERT J. JEWELL

Dallas
Speech Correctionist, Social Studies
 Day Men's Association; Dorm Men's Association;
 Men's Glee Club (Vice President); Dramatic Club
 (President).

BARBARA JOHNSON

Berwick
Spanish, French, English
 Day Women's Association; *Maroon and Gold*;
 OBTET; Kappa Delta Pi; Science Club.

CALVIN W. KANYUCK

Glen Lyon
General Science, Mathematics
 Dramatic Club; Science Club; Day Men's Association;
 College Crier; Alpha Psi Omega; *Maroon and Gold*;
 Lutheran Student Association; Future Teachers
 of America; Men's Glee Club.

MAX KAPLAN

Port Chester, N. Y.
Speech Correctionist, English
 College Crier; OBTET 1950; *Maroon and Gold*;
Olympian; Alpha Psi Omega; Kappa Delta Pi;
 Dramatic Club; Poetry Club (President); Dorm
 Men's Association; Day Men's Association; Men's
 Glee Club.

DONALD C. KEARNS

Lewistown
Speech Correctionist, Social Studies
 Dramatic Club; Varsity Club; Baseball; Basketball;
 Men's Dorm Association; Day Men's Association;
 Future Teachers of America.

ROBERT H. KISHBAUGH

Berwick
Science, Social Studies
Maroon and Gold; Science Club; Men's Glee Club;
 Future Teachers of America; Athenaeum Club; Day
 Men's Association.



JAMES A. KLEMAN

Ashland

Science, English

Science Club (President); Men's Dorm Association; Phi Sigma Pi (Treasurer); Kappa Delta Pi; College Council; Newman Club; Future Teachers of America; Basketball.

NORMAN E. KLINE

Lewistown

Science, Mathematics

Glee Club; Science Club (President); Future Teachers of America; Soccer; Men's Dorm Association; Kappa Delta Pi; Day Men's Association.

JOHN A. KLOTSKO

New Philadelphia

Science, Geography

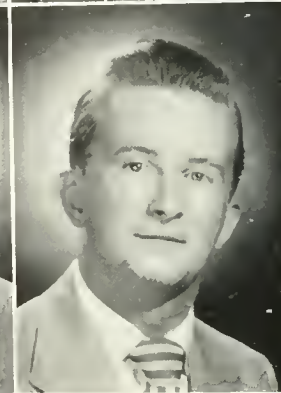
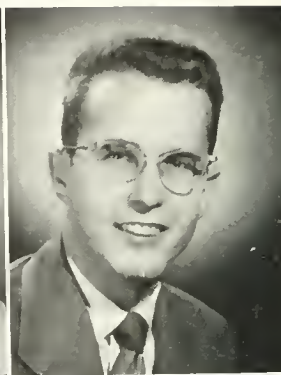
Science Club (Treasurer); Men's Dorm Association; Gamma Theta Upsilon (President); Newman Club; Future Teachers of America.

HENRY J. KRAUSER

Wilkes-Barre

Science, Mathematics

Kappa Delta Pi; Phi Sigma Pi; Science Club; Football (Manager); Day Men's Association; Dorm Men's Association; Newman Club; Varsity Club; Future Teachers of America.



RICHARD N. KRESSLER

Bloomsburg

Social Studies, Geography

Dramatic Club; *Maroon and Gold*; Day Men's Association (Treasurer); Gamma Theta Upsilon; President Senior Class; *Who's Who*; Alpha Psi Omega.

PATRICIA M. KRINGE

West Hazleton

English, Social Studies, Spanish

Dramatic Club; Waller Hall Association; Newman Club; Future Teachers of America; Kappa Delta Pi.

CHARLES F. LEWIS

Northumberland

Science, Social Studies

Day Men's Association; Aviation Club.

CHARLES J. LINETTY

Kulpmont

Science, Social Studies

Football; Basketball; Newman Club.





GLORIA DAWN LONG

Briar Creek

Spanish, French, English

Women's Chorus (Librarian); *Olympian* Staff; Science Club; Athenaeum Club; Day Women's Association; Knox Fellowship; Kappa Delta Pi; Future Teachers of America.

HAROLD E. LUNDY

Williamsport

Science, Mathematics

Track; Basketball; Science Club; Varsity Club.

MARIE B. MATTIS

Shamokin

Spanish, English, French, Social Studies

College Council; *Maroon and Gold* (Co-editor); OBITER 1950; OBITER 1951; *Olympian* (Editorial Board); Poetry Club (Historian, Treasurer, Vice-President); Athenaeum Club; Future Teachers of America; Women's Chorus; Kappa Delta Pi; Newman Club.

ROBERT W. McCAFFREY

Berwick

Science, Social Studies

Dorm Men's Association; Football; Basketball; Science Club.

DANIEL P. McGREW

Mahanoy Plane

Social Studies, Geography

Athenaeum Club; Day Men's Association.

FRANCIS R. McNAMEE

Bloomsburg

English, Social Studies

Future Teachers of America; Day Men's Association; Basketball; Science Club.

WILLIAM J. MOUERY

Mt. Carmel

Science, Mathematics

Athenaeum Club; Day Men's Association.

DONALD J. MURPHY

Wilkes-Barre

Science, Social Studies

Day Men's Association; Dorm Men's Association; Science Club; Aviation Club; Future Teachers of America.



JOSEPH PAPANIA

Bloomsburg

Science, English

Day Men's Association; Aviation Club.

JOHN L. PARSELL

Orangeville

Social Studies, Geography

Gamma Theta Upsilon; Day Men's Association;
Future Teachers of America.

NANCY R. POWELL

Scranton

Speech Correctionist, English

Dramatic Club; Alpha Psi Omega; C. G. A.; Junior
Class (Secretary); *Maroon and Gold*; *Olympian*;
Waller Hall Association.

JAMES J. PURCELL

Shamokin

English, Social Studies

Day Men's Association; Poetry Club.



GEORGE E. RECK

Trevorton

Science, Mathematics

Men's Glee Club; Dramatic Club; Poetry Club;
Day Men's Association; Dorm Men's Association;
Football; Future Teachers of America.

FRANK R. SCHILLING

Bloomsburg

Science, Mathematics

Science Club; Day Men's Association; Aviation Club.

GENE D. SEARCH

Nescopeck

Social Studies, Geography

Science Club; Day Men's Association.

JOHN E. SEEBOLD

Danville

Science, Mathematics

Science Club; Day Men's Association (Vice-
President); Future Teachers of America.



ANTHONY C. STANZIOLA

Hazleton

Science, Social Studies

Men's Glee Club; Science Club; Future Teachers of America; Day Men's Association.

EDWARD J. TAVALSKY

Johnstown

Speech Correctionist, Social Studies

Dramatic Club; Basketball; Future Teachers of America; Varsity Club (Vice-President); Men's Dorm Association; Football.

HERVEY R. THOMAS

Orangeville

Social Studies, Geography

Soccer; Gamma Theta Upsilon; Kappa Delta Pi; Day Men's Association; Athenaeum Club.

HELEN L. TIETJEN

Newmanstown

Science, Social Studies

Business Education Club; Women's Chorus; Science Club; Waller Hall Association; Kappa Delta Pi; B Club; Future Teachers of America.

CAROLYN V. VERNOY

Canadensis

Science, Mathematics

Waller Hall Association (Governing Board); Science Club; Future Teachers of America.

GLENN VON STETTEN

Columbia

Social Studies, Geography

Maroon and Gold; OBITER; Football; Basketball; Varsity Club; Day Men's Association.

UKASIN S. VUKCEVICH

West Hazleton

Science, Geography

Phi Sigma Pi; Gamma Theta Upsilon; Science Club; Men's Glee Club (Treasurer); Aviation Club; Future Teachers of America; OBITER; Kappa Delta Pi.

RICHARD F. WAECHTER

West Hazleton

Science, Mathematics

Science Club; Dramatics Club; Future Teachers of America; Day Men's Association.



DANIEL C. WELKER

La Velle

Science, Mathematics

Science Club; Newman Club; Kappa Delta Pi;
Track; Day Men's Association.

JAMES L. WHITNEY

Sunbury

Science, Mathematics

Day Men's Association; Dorm Men's Association;
Science Club; Phi Sigma Pi (Secretary); Athe-
naeum Club (Vice-President); Men's Glee Club;
Future Teachers of America.

JACK E. WILLIAMS

Milton

Social Studies, Mathematics

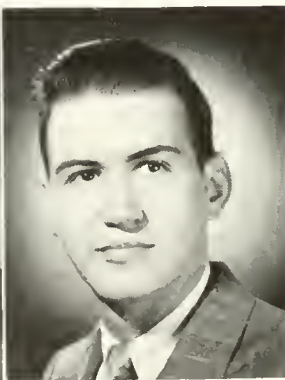
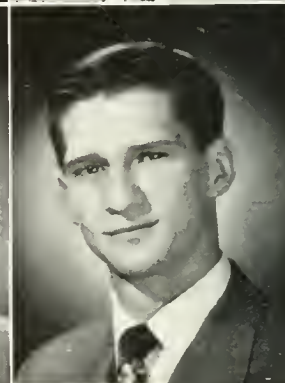
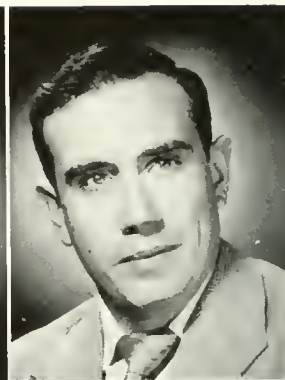
Dorm Men's Association; Student Christian Associa-
tion; Men's Glee Club; Future Teachers of America;
College Council.

FRANKLIN P. WOMER

Pottsville

Science, Mathematics

Aviation Club; Varsity Track; Basketball; Knox
Fellowship; Dorm Men's Association.



ROBERT M. WOMER

Pottsville

Science, Mathematics, English

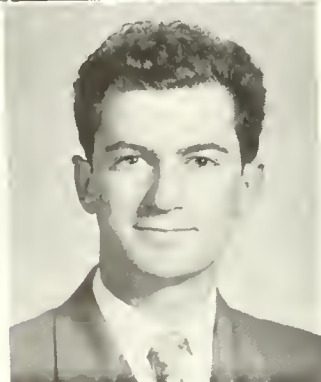
Athenaeum Club; Aviation; Science Club.

JOHN J. YEAGER

Wapwallopen

Social Studies, Spanish

Day Men's Association; Men's Glee Club; Science
Club; Future Teachers of America.



CLYDE E. YOHEY

Bloomsburg

Science, Mathematics

Science Club; Soccer; Future Teachers of America.



Front Row, Left to Right—R. Glidden, M. Harring, B. Harman.
 Back Row—D. Bennett, R. Powell, W. Troutman

Junior Class

OFFICERS

<i>President</i>	- - - - -	MAYNARD HARRING
<i>Vice President</i>	- - - - -	RICHARD POWELL
<i>Secretary</i>	- - - - -	BARBARA HARMAN
<i>Treasurer</i>	- - - - -	WALTER TROUTMAN
<i>Class Adviser</i>	- - - - -	DR. KUSTER

The pressing demands upon the senior's time by student teaching and graduation plans leaves much of the leadership of the college community activities in the hands of the Junior Class. They have taken this challenge and have experienced the responsibility of guiding many community activities. They have been enriched by the experience of knowing what is expected of a student in our college community or in any other community. The Junior Prom was the outstanding event of the Junior year.



Junior Class Roll

BUSINESS

Anthony, Thomas H., Jr.
Babcock, James R.
Baksi, George V.
Bennett, Dale T.
Bolinsky, Elanore D.
Bourdette, Margaret L.
Bruchs, Robert J.
Casula, Michalene A.
Eckert, Irene G.
Funk, Geraldine M.
Galiley, Leonard E.
Glidden, Ruth H.

Gustin, Janice E.
Haddad, Dyar
Hamershock, Bernard
Harman, Barbara E.
Hunter, Olive S.
Kemp, Gordon L.
Kreisher, William J.
Krepich, Michael A.
Laux, Richard F.
Ledyard, Richard A.
Lylo, Michael

Marsilio, Alfred S.
McLaughlin, Thomas J.
Pelchar, Joseph J.
Philo, Laura A.
Powell, Richard C.
Price, Janet E.
Roessner, George N.
Schukis, Thomas K.
Shanahan, John P.
Sheehan, Francis J.
Sluyter, Joyce M.
Swartz, Nancy D.

ELEMENTARY

Cedor, Dorothy L.	Jacques, Alice M.	McHugh, Cornetius
Cooper, Polly Lou	Johnson, Eleanor M.	Reed, Thomas J.
Decker, Antoinette C. (Mrs.)	Jones, Thomas C.	Rider, M. Janice
Deibert, Lola J.	Kennedy, Eleanor A.	Ruckle, M. Jeanne
Doody, Ruth Ann	Kistler, Patricia A.	Search, Philip W.
Dorasavage, Margaret A.	Laubscher, Robert E.	Sherman, Barbara A.
Edwards, Richard M.	Lundy, Marilyn W.	Stonik, John M.
Enama, Joan C.	MacDougall, Joyce L.	Vanderslice, Joanne M.
Evans, Marilyn B.	Meier, Jean M.	Weinstein, Philip
Gibbons, Ellen A.	Mitchell, Kathleen T.	Williams, George E.
Hessert, Barbara M.	Newman, Lois J.	Wright, Mary Anna
Hughes, Milton G.		Young, Eleanor J.

SECONDARY

Abbott, Priscilla	Evans, David C.	Lenhart, Jack M.
Arnold, James C.	Fenstermacher, Harry M.	LeVan, Stanley L.
Babb, John F.	Fogel, Glenn N.	Luchs, Robert W.
Badman, Atwood F.	Furgele, Frank J.	Miller, Royal A.
Bartleson, William A.	Gavis, Joseph E. E.	Mouery, William J.
Blyler, George E.	Gilbert, William J.	Murphy, Donald J.
Bowman, Doris R.	Ginter, William L.	Payne, Marion V.
Brachman, Russell C.	Gillespie, William	Peffer, John J.
Burness, Benjamin A.	Harring, Maynard L.	Piccolo, Philomena C.
Burns, John J.	Horne, Lyle R.	Smith, George A.
Bushick, Ronald P.	Hughes, George R.	Stec, Dorothy M.
Canson, James J.	Jenkins, David W.	Thurston, Robert L.
Cesare, Donald J.	Johnson, Edward W.	Troutman, Clarence W.
Clarridge, Clifton G.	Kaler, Ronald A.	White, John E.
Covel, Leon	Kanyuck, Calvin W.	Williams, Nancy B.
Dorak, Michael J.	Kile, Nelson H.	Womer, Franklin P.



Front Row, Left to Right - C. Davis, M. Wrzesniewski, J. Fornwald.
 Back Row - J. Whibley, J. Feifer.

Sophomore Class

OFFICERS

- President* - - - - - JAMES WHIBLEY
- Vice President* - - - - - BEN DUKE
- Secretary* - - - - - MIDGE WRZESNIEWSKI
- Treasurer* - - - - - JOSEPH FEIFER
- Class Adviser* - - - - - MR. SHORTESS

The transition from a lowly freshman to the exalted position of a sophomore has now become a reality for the 211 members of the Sophomore Class. This fact was made evident by the particularly zealous enforcement of Freshman week regulations by this class. The members of the class have become an integral part of the college community as evidenced by their active participation in sports events and college organizations. The Cotillion in December reached the acme of Sophomore activities.



Sophomore Class Roll

BUSINESS

Adami, Eugene A.
 Barkley, Joseph R.
 Baron, Charles
 Bateman, Glenn E.
 Bean, Erma R.
 Bishop, Richard C.
 Boyle, Joseph E.
 Brown, Albert L.
 Brown, Francis T.
 Cherilla, Rocco V.
 Ciavaglia, Salvatore J.
 Coleman, Harry E.
 Creasy, James B.
 Croop, Roy
 Cuff, Joanne R.
 Cunfer, Edwin W.
 Davis, Clarabelle
 Diltz, Leona I.
 Fitzsimmons, Marguerite M.
 Gale, Betty J.
 Galinski, Francis P.
 Gallagher, Edward C.

Goodhart, Edward M.
 Goodwin, Thomas A.
 Grausem, George G.
 Grazel, Marie R.
 Hartline, Helen L.
 Hayhurst, Douglas J.
 Hornberger, Lester J.
 Hurtt, Henry C.
 Jones, Wilma I.
 Kessler, Geraldine V.
 Knause, Richard C.
 LaBarr, Robert L.
 Lang, Robert L.
 Macgill, Leonora M.
 McAloose, William M.
 Mensch, Walter F. J.
 Miller, Robert E.
 Morrison, Richard R.
 Nawrocki, Vincent F.
 Ney, Leland E.
 Neyhard, Miriam L.
 Osenbach, Robert G.

Pague, William J.
 Pease, Charles E.
 Pichel, June
 Rachko, George
 Reed, William W.
 Renninger, Claude W.
 Rhinard, Kathryn L.
 Riley, Frances E.
 Scheno, Angelo P.
 Schweppenheiser, George (W.)
 Shultz, Carl R.
 Skeeba, Jean A.
 Soberick, Jack W.
 Stanitskie, Francis J.
 Stevens, John
 Taylor, Charles H., Jr.
 Thompson, James W.
 Todd, Mary Louise
 Wanick, Robert G.
 Whibley, James A.
 Whitner, Richard H.
 Wrzesniewski, Mildred J.

ELEMENTARY

Ayre, Marjorie H.
Benner, Lee E.
Brennan, Vivian
Caccia, Lena Ann
Castle, Robert J.
Charney, Theresa L.
Cleaver, William J.
Coleman, Shirley J.
Condon, Mary C.
Cooke, LaRue A.
Danilo, Rosella
Davenport, James G.
Davidson, Robert J.
Dean, Mary Ellen
DeCampi, Helen K.
Dietz, John A.
Duke, Ben C.
Ewing, C. Richard
Gordner, Arlene G.
Graybill, Gilmore G.
Gulick, Barbara A.
Hartley, Harold V.
Heacock, Anna C.
Heebner, Nancy R.
Herr, William C.
Hitchings, Albert B.

Hummel, Russel E.
Johnson, Janice E.
Kallenbach, George E.
Kallenbach, Mary E.
Keithan, Nancy Ann
Kelley, Anne M.
Kieffer, Lois J.
Kobal, George
Krunkosky, Joseph
Krunkosky, Mary Lou
Krzywicki, Jeanne C.
Ksanznak, Lawrence R.
Kubik, Alex W.
Lambrinos, George
Long, Mildred June
Looker, Russell L.
Matuleski, Charlotte M.
Mazzetti, L. Gloria
McClintock, Donald R.
Megargel, Myrtele
Mericle, Winnie Mae
Mertz, Florence M.
Mervine, Mildred A.
Morgan, Phyllis Y.
Mosier, Janet E.
Mouery, Olive L.
Munchak, Jack B.

Ohlman, M. Elaine
Patton, Mary E.
Penny, Patricia
Pliscott, Mildred M.
Raabe, Raymond R.
Rhoads, Nancy Lou
Riley, John E.
Savage, Lila J. (W)
Search, Shirley J.
Slikes, Edward P.
Stanko, Constance M.
Stiner, Martha E.
Stout, Arthur T. (W)
Swartz, Nellie H.
Taylor, Patricia J.
Thomas, David H.
Thomas, Helen R.
Thomas, Theodore C.
Unger, Nancy J.
Wallace, Jeanne A.
Wasiakowski, Joseph J.
Weiler, Shirley M.
Williams, Albert E.
Williams, Mary Joan
Wynings, Shirley N.
Yozviak, Marie C.

SECONDARY

Almers, Mary G.
Baer, Elizabeth A.
Ben, Adam M.
Bennett, Paul L.
Blyler, Donald N.
Boychuck, Daniel
Brennan, Charles
Brobst, Annabelle L.
Brooks, Harry P.
Burns, Robert P.
Butler, Donald J.
Byham, William E.
Carey, Harold W.
Ciampi, Anthony G.
Conwell, Ann T.
Cyganowski, Alfred J.
Dailey, Jacob L.
Daly, Charles J.
D'Angelo, Ronald F.
Davis, Stewart E.
Dietz, George R.
DiRico, John, Jr.

Donaleski, Rose Marie
Evans, Richard W.
Fago, Stephen
Feifer, Joseph P.
Fisher, William G.
Fornwald, JoAnn V.
Frantz, Lois F.
Geist, Franklyn
Germana, Guy
Haddon, John C.
Harding, Delores E.
Harrell, William E.
Hayes, John J.
Heckman, David L.
Heydenreich, Fred C.
Johnson, Jimmie D.
Kline, William H.
Kuschel, Marilyn A.
Linn, William B.
Makowski, Clem J.
Marini, R. Henry
Montz, George W., Jr.
Moore, Robert E.

Morrison, John W.
Morrison, Milton Eugene
Newbury, David N.
North, David T.
Quick, Alice J.
Rittenmeyer, Jack H.
Roll, Theodore
Rummage, Frederick C.
Sanders, Roy W.
Simpson, Edwin R.
Sivulich, John
Snyder, Edward
Strausser, Fred L.
Thomas, Jack L.
Thomas, Ruth E.
Waner, John I.
Watkins, Dorothy S.
Wersinger, Joan F.
Whitebread, Harold B.
Wood, Graydon C.
Worhacz, Walter B.
Yeager, Samuel R.



Front Row, Right to Left - M. Crisci, D. Doyle,
O. Baker.
Back Row - J. Scrimgeour, M. Bernot.

Freshman Class

OFFICERS

<i>President</i>	- - - - -	MICHAEL CRISCI
<i>Vice President</i>	- - - - -	MICHAEL BERNOT
<i>Secretary</i>	- - - - -	DOLORES DOYLE
<i>Treasurer</i>	- - - - -	JOHN SCRIMGEOUR
<i>Woman Representative</i>	- - - - -	ELAINE GUNTHER
<i>Man Representative</i>	- - - - -	OREN BAKER
<i>Class Adviser</i>	- - - - -	DR. WAGNER

Freshman Class Roll

BUSINESS

Aagaard, Stanley
 Abraczinskas, Anthony
 Abraczinskas, Robert
 Andrews, Shirley M.
 Bearde, Keith
 Berry, Edgar F., Jr.
 Bevan, Beryl E.
 Bickert, Robert E.
 Bittner, Anna K.
 Bod'k, Sylvester V.
 Brosehart, Joseph W.
 Camp, Kenneth M.
 Cherrington, John
 Cichowicz, Irene L.
 Costa, Joseph J.
 Crammer, William E.
 Creasy, George

Crisci, Michael R.
 Dodd, Barbara A.
 Dodson, Dean S.
 Doyle, Dolores A.
 Durso, Michael J.
 Dyer, Palmer E.
 Felker, Madge R.
 Fenstermacher, R. Glen
 Ferrilli, Peter
 Formulak, Loretta C.
 Fry, Judith E.
 Funk, Herman H.
 Gallagher, Joseph B.
 Gansel, Paul J.
 Garrison, Robert
 Gavis, Francis P.
 Gaydosh, Donald J.

Gengenbach, Ann J.
 George, Joseph D.
 Grant, Rose Marie
 Gruver, Delwyne W.
 Haas, Robert V.
 Hahn, James W.
 Hanincik, John J.
 Hantjis, Anthony W.
 Harris, Robert E.
 Hatrack, William
 Heil, Betty L.
 Hoffman, Sara J.
 Hvasta, Susan D.
 Ingersoll, Marc F.
 Jacobs, William J.
 Jones, Blandford B.
 Joy, James H.



Kapralick, Joseph L.
 Karycki, Victor J.
 Keller, E. Derlene
 Kerchner, Herbert R.
 Kirk, Kenneth G.
 Locke, Richard J.
 Longo, Edmund M.
 Mahoney, Francis J.
 McAnall, Kenneth H.
 McCauley, Jevita C.
 McLaughlin, Charles T.
 Meier, Joseph H.
 Metza, Paul
 Miller, Larry L.
 Miller, Marie M.
 Montagne, Ruth A.
 Moore, William T. (W)
 Neugard, Mae P.
 Newhart, Jean E.

O'Donnell, Jean M. L.
 O'Loughlin, Patricia A.
 Oney, Robert C.
 Pachulo, Corvita A.
 Paden, Margaret N.
 Parlette, Kendall T.
 Paul, Richard O.
 Paul, Ruth M.
 Pauzer, Edwin L.
 Pihanich, Michael
 Podzielinski, Leonard J. (W)
 Pursel, Elmer
 Raker, Warren L.
 Rhoads, Charles E.
 Rishton, Samina L.
 Rompala, Edward R.
 Rumer, Nancy A.
 Ruppel, Karol E.
 Sasso, Matthew

Savage, Allen F.
 Seeley, Jane E.
 Shamro, Jane
 Shoup, Margaret J.
 Skammer, David J.
 Speal, Elizabeth A.
 Stecker, Edward W.
 Steinbach, Ronald P.
 Stevenson, Robert C.
 Swaboski, Alexander T.
 Thompson, Hazel A.
 Tomsykoski, Theresa R.
 Troeki, Daniel B.
 Ulrich, Sarae M.
 VonDrach, Robert B.
 Wagner, Raymond J.
 Wesner, Alfred V.
 White, George G.
 Williams, Shirleymae

ELEMENTARY

Adams, Clyde G.
 Albertson, Myra E.
 Allen, Jean R.
 Anspach, Terry E.
 Beuner, Gloria E.
 Bloss, Mary Lou C.
 Boyle, Edward J.
 Boyle, Patricia E.
 Brokenshire, James O. (W)
 Campbell, Edward J.
 Carmody, Shirley W.
 Carson, William L.
 Cleaver, Colleen M.
 Coursen, Ila M.
 Darby, Carmen L.
 Davies, Ivor
 Davis, Jo Anne
 DeNapoli, John G.
 DePaul, Mary A.
 Dreihelbis, Mary R.

Dy-leski, Walter A.
 Edwards, Patricia L.
 Endler, Irene J.
 Eunson, Edno Faith
 Fedrigan, Olive Jean
 Fegley, Patricia Ann
 Ferdinand, James
 Fink, Mary Ann
 Fitzpatrick, Daniel E.
 Fry, Ruthann
 Fulmer, Thurston S.
 Genbusia, John M.
 Greco, Joan
 Gunther, Elaine C.
 Gunton, Nancy L.
 Harrison, William C.
 Haupt, Margaret R.
 Havard, Joan
 Heisley, Joanne K.
 Hendershot, Thelma A.

Herchel, Regina M.
 Hess, Patricia A.
 Johnson, John C.
 Jones, David H.
 Kapsak, Edward J.
 Kashner, Marion L.
 Keim, Edna R.
 Kelshaw, Joan M.
 Kennedy, John L.
 Kissinger, Flora J.
 Korba, Rose M.
 Kornfeld, Anna M.
 Ksanznak, Stanley
 Latimer, William K.
 Latsha, Ned A.
 Ledyard, Mary L.
 Lesser, James F.
 Linkhorst, David R.
 Linn, Edward A.
 Macio, Paul A.

Makowski, Phyllis P.
 Martz, Mary Ann
 Maurer, Anna Jane
 McLaren, Phyllis E.
 McQuown, Nira J.
 Meisner, Rita M.
 Miller, Jeanne L.
 Morgan, Margaret L.
 Moss, Odgen P.
 Moyer, Arlene E.
 Nangle, Beverly L.
 Noll, Margaret L.
 Nunn, W. Edgar
 O'Toole, Thomas
 Paige, Phyllis E.
 Parrish, Marie A.
 Patenoster, Doris A.
 Pezelski (Pell) Edward F. (W)
 Phillips, Donald R.
 Poeth, Dean F.
 Porr, John C.
 Price, Robert J.
 Puckey, Charles S.

Pugh, Janice L.
 Reaser, Suzy W.
 Reisenweaver, Shirley M.
 Richards, Dreher L.
 Richardson, Donald A.
 Ridall, Frank W.
 Roan, William Robert
 Rohland, Patricia L.
 Ruffling, Charles J.
 Sable, Edward
 Schmidt, Roland C.
 Schullery, Louise M.
 Schwarz, Rae O. (W)
 Scudder, Jane S.
 Search, Bernadine E.
 Sharp, James H.
 Shultz, Margaret E.
 Simononis, Robert R.
 Smith, Keith A.
 Smierski, Rosemary T.
 Spack, Thomas S.
 Stauffer, Douglas A.

Steinmayer, Joanne F.
 Swigonski, Joseph
 Teter, Catharine S.
 Tovey, Nancy E.
 Traver, Jeanette E.
 Vanderslice, Betty J.
 Verhousky, Russell
 Vought, Carol D.
 Wachowski, Delores R.
 Wagaman, Loraine B.
 Walters, Margaret E.
 Walters, Shirley M.
 Watts, Sarah A.
 Wetzel, Marlene K.
 White, Edward L.
 Williams, Bessmarie C.
 Williams, Floyd C.
 Williams, Robert C.
 Williamson, Leota J.
 Wolcott, Samuel D.
 Yench, Shirley E.
 Zeigenfuse, Ardell E.
 Zerby, Alton S.

SECONDARY

Anderson, John A.
 Andrews, Charles A.
 Antonoff, Henry T.
 Augustine, Edward S.
 Austin, Robert B.
 Baker, Oren A.
 Beily, Joseph J.
 Bennett, Louis G.
 Benscoter, Ruth H. (Mrs.)
 Bernhardt, Lawrence R.
 Bernot, Michael R.
 Bogdan, John T.
 Bower, Loren J.
 Boychuck, Alexander
 Brooks, Charles Allen
 Buck, Vanice L.
 Chaplinsky, John J.
 Chapman, June L.
 Chiscon, Alfred J.
 Conrad, Paul L.
 Crouse, Frank D.
 Czerwinski, Antoinette M.
 Dennon, John E.
 Doty, James E.
 Dowd, Robert J.
 Duncan, Franklin (W)
 Edwards, Harry R.
 Elliott, Hazel W.
 Englar, Richard E.
 Erickson, N. Douglas
 Erwine, Sheldon
 Eveland, Shirley E.
 Froncek, Joseph R. (W)
 Gerhard, Robert A.
 Gilbert, Katharine
 Glosek, Joseph S. A.

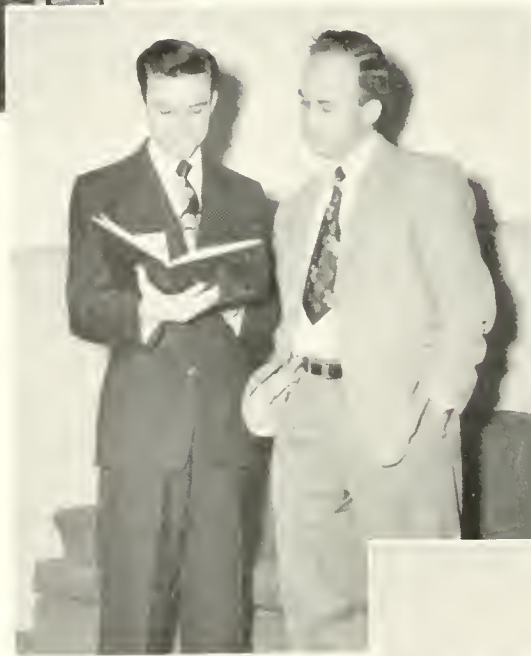
Gunther, Louis E.
 Hartman, Lake L.
 Heppe, Grace M.
 Herman, George T.
 Herman, Harry M.
 Hinger, Carl K.
 Hons, Russell O.
 House, D. Larry
 Houseknecht, Gerald
 Hrisko, William F.
 Jankowski, John F.
 Johnson, Thomas J.
 Just, John L.
 Kessler, James L.
 Kissinger, Joseph D.
 Lleckner, Franklin V.
 Kliamovich, William
 Kline, Donald R.
 Kocher, George E.
 Koharski, Alex P.
 Kpeck, Jerome S.
 Kozlowski, Raymond
 Kressler, Robert R.
 Laidacker, John S.
 Lewis, Robert J.
 Lewis, Thomas R.
 Logan, Robert H.
 Long, Jack R.
 Lupashunski, Charles
 Marsh, Tallie H.
 McManus, Albert J.
 Meredith, Donald E.
 Mont, Bernard J.
 Nemetz, John W.
 Novak, Henry A.

Oliver, George J. (W)
 Osevala, Barney J.
 Ottaviani, William
 Parrell, Alfred M.
 Perotti, Sylvia M.
 Pope, Russell G.
 Radzai, Gerald F.
 Radzwich, William J.
 Rhodes, Russell H.
 Roberts, Fay I.
 Roth, Robert C.
 Rowley, Thomas J.
 Schaar, John A.
 Scrimgeour, John
 Shaffer, John E.
 Smith, Judith R.
 Smith, Sterling S.
 Soberick, Ferne A.
 Springer, Dale J.
 Stefanik, Thomas J.
 Stevens, Grant G.
 Stoutenburgh, William H.
 Supdock, David A.
 Topolski, Walter J.
 Trisko, John F.
 Troy, James D.
 Troxell, William I.
 Wallace, Robert T. (W)
 Walsh, Thomas A.
 Weaver, Edward P.
 Williams, Harriet S.
 Williams, Sheldon
 Wolfe, Stephen L.
 Yeager, Betty L.
 Yesson, Charles
 Yost, Edward H.

Who's Who in American Colleges and Universities



A. GRABOWSKI
J. KLEMEN
N. POWELL



R. KRESSLER
E. RARIG
L. DZURIS

M. BEACHELL
R. WAECHTER

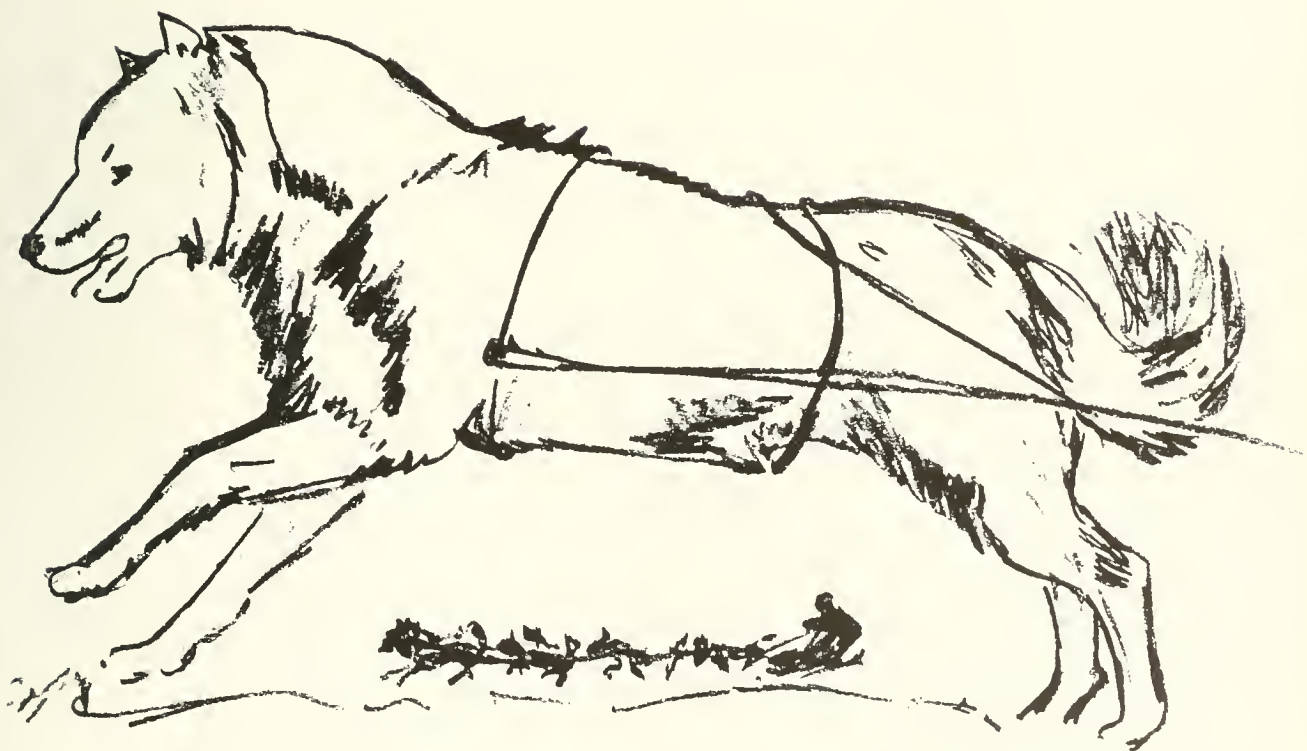
Seniors who make outstanding contributions in service of the College Community are annually chosen by a faculty committee for recognition in *Who's Who in American Colleges and Universities*. Traits taken into consideration in making the awards are scholarship, leadership in educational and extra-curricular activities, general citizenship, and professional promise.







ORGANIZATIONS





J. Ryan, L. Philo, A. Grabowski, A. Marsilio, T. Anthony.

Community Government Association

The Community Government Association is made up of the entire student body and faculty. The Association functions through the College Council, which is composed of student and faculty representatives whose purpose it is to recommend policies concerning all student activities. The Bloomsburg Community Government Association is a member of state and national student organizations. Many benefits to the College Community are derived by the exchange of constructive ideas.

Community Government Association

OFFICERS

<i>President</i>	- - - - -	ANTHONY GRABOWSKI
<i>Vice President</i>	- - - - -	THOMAS ANTHONY
<i>Secretary</i>	- - - - -	LAURA PHILO
<i>Treasurer</i>	- - - - -	ALFRED MARSILIO
<i>Assistant Treasurer</i>	- - - - -	JOHN RYAN

FACULTY MEMBERS

Dean Kehr	Dr. Engelhardt	Dr. Herre
Dean Hoch	Miss Ranson	Miss Macdonald
Dean North	Miss Hazen	Mr. Redman
	Mr. Hallisy	



Front Row, Left to Right—F. Dean, M. Mattis, S. Ashner, R. Glidden, J. Ruckle, C. Davis, Dr. Kehr, R. Kressler.
Back Row—J. Whibley, Miss MacDonald, Mr. Redman, Dr. Engelhardt, M. Harring, Mr. Hoch, Dr. Herre, J.
William, O. Baker, D. Bennett, Dr. North, M. Crisci, Miss Ranson, H. Marini.



Kappa Delta Pi

OFFICERS

<i>President</i>	- - - - -	RALPH WIRE
<i>Vice President</i>	- - - - -	HENRY KRAUSER
<i>Corresponding Secretary</i>	- - - - -	LILLIAN MLKVY
<i>Recording Secretary</i>	- - - - -	RUTH ANN DOODY
<i>Treasurer</i>	- - - - -	DELPHINE BUSS
<i>Sponsor</i>	- - - - -	DR. MAUPIN

The Gamma Beta Chapter of Kappa Delta Pi, a National Honor Society in Education, was installed at Bloomsburg State Teachers College on February 21, 1931. Both men and women who have attained the college rating of junior or higher, have commendable personal qualities, and a scholarship record in the upper quartile are eligible for membership.

Kappa Delta Pi seeks to encourage high professional, intellectual, and personal standards among those who have chosen education as a career.



Kappa Delta Pi

MEMBERS

Abbott, Priscilla
 Andrews, Robert C.
 Anthony, Thomas
 Arnold, James
 Ashner, Shirley
 Babb, John F.
 Ballantine, Lewis
 Beachell, Merlin
 Bennett, Dale
 Blyler, George
 Bodine, Francis
 Bourdette, Margaret
 Bowman, Doris
 Burlingame, Helyn
 Buss, Delphine
 Cesare, Donald
 Cole, Beverly
 Davis, Mrs. Jean
 Dean, Francis
 Doody, Ruth
 Dzuris, Lois
 Evans, Marilyn
 Elliott, Hugh
 Fenstermacher, Harry
 Frederick, Barbara
 Funk, Geraldine

Galiley, Leonard
 Gillespie, William
 Glidden, Ruth
 Gorda, George
 Grabowski, Anthony
 Greenough, Carol
 Hackett, Faythe
 Harman, Barbara
 Harring, Maynard
 Hemlock, Michael
 Hileman, Robert
 Hinderliter, Norma
 Hornberger, Ralph
 Johnson, Barbara
 Kaplan, Max
 Kemp, Gordon
 Kleman, James
 Kline, Norman
 Knarr, Ned L.
 Kraemer, Charles
 Krauser, Henry
 Kressler, Richard
 Kringe, Patricia
 Laux, Richard
 Long, Gloria Dawn

Lundy, Marilyn
 Maceiko, Andrew
 Mattis, Marie B.
 Mlkvy, Lillian
 Mouery, William
 Palmer, Hazel
 Pichel, Dorothy
 Powell, Richard
 Rarig, Emory
 Ruckle, Jeanne
 Russell, Donald
 Ryan, John
 Scheetz, Genevieve
 Seebold, John
 Shirey, Maxine
 Shuyter, Joyce
 Steiner, Edward
 Swartz, Nancy
 Symons, Eloise
 Thomas, Hervey
 Tietjen, Helen
 Vukceviich, Ukasin
 Weinstein, Philip
 Welker, Daniel
 Wire, Ralph W.
 Woll, Charles



Phi Sigma Pi

OFFICERS

<i>President</i>	- - - - -	GERALD BACON
<i>Vice President</i>	- - - - -	MERLIN BEACHELL
<i>Secretary</i>	- - - - -	JAMES WHITNEY
<i>Treasurer</i>	- - - - -	LEWIS BALLANTINE

The Iota Chapter of Phi Sigma Pi, a National Professional Educational Fraternity for men, was installed at Bloomsburg on April 26, 1930. Phi Sigma Pi is founded on three principles: Fellowship, scholarship, and professional skill. The organization is based on high scholastic attainments and seeks to advance educational ideals, promote close fellowship, improve the training of teachers, and uphold just and efficient government. Members of the Fraternity are selected on the basis of leadership in both professional and social life.

Pi Omega Pi

OFFICERS

<i>President</i>	JOHN J. RYAN
<i>Vice President</i>	BARBARA FREDERICK
<i>Secretary</i>	G. JANE SHEETZ
<i>Treasurer</i>	SHIRLEY ASHNER
<i>Historian</i>	DOROTHY PICHEL
<i>Inter-fraternity Representatives</i>	MAXINE SHIREY, CHARLES KRAEMER
<i>Sponsor</i>	MR. EARL A. GEHRIG

The Alpha Delta Chapter of Pi Omega Pi, a National Professional Education Fraternity, was installed at Bloomsburg State Teachers College on May 28, 1935. Its aims are to encourage, promote, extend, and create interest and scholarship in commerce; to encourage and foster high ethical standards; and to teach the ideal of service as the basis of all worthy enterprise. Membership is extended to members of the Department of Business Education who have high professional promise and have superior scholastic ratings. Programs sponsored by the fraternity during the year were of an educational and social nature.



Alpha Psi Omega

OFFICERS

President - - - - - THOMAS ANTHONY
Secretary - - - - - JEANNE RUCKLE
Business Manager - - - - - LAURA PHILO

The Alpha Omicron Chapter of Alpha Psi Omega, a National Honorary Fraternity in Dramatics, provides a medium for the recognition and encouragement of students who are interested in dramatics and the college theater. The Bloomsburg Chapter is composed of thirteen members of the Bloomsburg Players who have done commendable work in dramatics.





Gamma Theta Upsilon

OFFICERS

<i>President</i>	- - - - -	JOHN KLOTSKO
<i>Vice President</i>	- - - - -	MICHAEL EVANS
<i>Secretary</i>	- - - - -	NANCY WILLIAMS
<i>Treasurer</i>	- - - - -	HERVEY THOMAS
<i>Adviser</i>	- - - - -	DR. H. H. RUSSELL

The Delta Chapter of Gamma Theta Upsilon, a Professional Geography Fraternity, seeks to bring a closer bond of fellowship among undergraduate students of geography, and to promote the professional study of the subject. Membership in Gamma Theta Upsilon is extended to students of geography who show professional promise and give evidence of high character and ideals.

Waller Hall Association

All women dormitory residents belong to the Waller Hall Association. The organization strives to make living in Waller Hall pleasant and cheerful through sharing of responsibility. Government of the dormitory is regulated by members of the Governing Board, assisted by the Dean and Assistant Dean of Women. Social and educational functions are directed by various committees.



First Row, Left to Right Miss MacDonald, Nancy Swartz, Treasurer, Eleanor Johnson, Secretary, Shirley Ashner, President, Lola Deibert, Vice President, Dr. Kehr.

Second Row - Mildred Pliscott, Eleanor Young, Louise Schillery, Doris Bowman, Janet Price, Lois Dzuris, Phyllis McClaren, Wilma Jones, Olive Mowery, Mary Gordon, Carolyn Vernoy.



Waller Hall Association

OFFICERS

<i>President</i>	- - - - -	SHIRLEY ASHNER
<i>Vice President</i>	- - - - -	LOLA DEIBERT
<i>Secretary</i>	- - - - -	ELEANOR JOHNSON
<i>Treasurer</i>	- - - - -	NANCY SWARTZ



Women's Chorus

OFFICERS

<i>President</i>	- - - - -	RUTH ANN DOODY
<i>Vice President</i>	- - - - -	LOLA JEAN DEIBERT
<i>Secretary</i>	- - - - -	DORIS BOWMAN
<i>Treasurer</i>	- - - - -	CLARE DAVIS
<i>Librarians</i>	- - - - -	FLORENCE MERTZ, GLORIA DAWN LONG
<i>Director</i>	- - - - -	MISS HARRIET MOORE

Under the able direction of Miss Harriet Moore, the Women's Chorus contributed much to the college cultural life throughout the year. Our fall rehearsals were devoted to preparation for the annual Christmas assembly program. The recital was composed of songs of both spiritual and secular nature. In addition, the chorus presented a program of compositions from current operas and other modern compositions in the late spring. The benefits derived from companionship and blended interests are responsible for the club's large enrollment. The chorus extends its appreciation to Mary Grace Almers, our accompanist, for her cooperation in making this year a successful one.



Women's Chorus

MEMBERS

Albertson, Myra	Gunton, Nancy	O'Donnell, Jean
Almers, Mary Grace	Haupt, Margaret	Ohlman, Elaine
Ashner, Shirley	Hessert, Barbara	O'Loughlin, Patricia
Baer, Shirley	Hoffman, Sara	Pachuilo, Coruita
Bowman, Doris	Johnson, Eleanor	Paige, Phyllis
Carls, Rhoda	Kelshaw, Joan	Patton, Elizabeth
Casula, Michalene	Kennedy, Eleanor	Pliscott, Mildred
Charney, Theresa	Kieffer, Lois	Rider, Janice
Coleman, Shirley	Korba, Rose Marie	Ruckle, M. Jeanne
Courson, Ila Mac	Kornfeld, Ann	Schullery, Louise
Czerwinski, Antoinette	Krzywicki, Jeanne	Search, Shirley
Davis, Clare	Ledyard, Mary	Sherman, Barbara
Dean, Mary Ellen	Long, Gloria Dawn	Sluyter, Joyce
Decker, Antoinette	Lundy, Marilyn	Swartz, Nancy
Deibert, Lola Jean	MacDougall, Joyce	Swartz, Nellie
DeMatt, Mary	Martz, Mary Ann	Thomas, Helen Ann
Domdleski, Rose Marie	Mattis, Marie B.	Thomas, Ruth
Doody, Ruth	Meier, Jean	Traver, Jeannette
Dreibelbis, Mary Ruth	Mertz, Florence	Vanderslice, Betty
Edwards, Patricia	Miller, Jeanne	Vought, Carol
Eunson, Faith	Mervine, Mildred	Wallace, Jeanne
Evans, Marilyn	Neugard, Mae	Watkins, Dorothy
Grant, Rose Marie	Newman, Lois	Weiler, Shirley May
Grazell, Marie	Noll, Peggy Lou	Wright, Mary Anna
Gulick, Barbara		Yencha, Shirley



Men's Glee Club

OFFICERS

<i>President</i>	- - - - -	GEORGE HUGHES
<i>Vice President</i>	- - - - -	ROBERT JEWELL
<i>Secretary</i>	- - - - -	FRANK DEAN
<i>Treasurer</i>	- - - - -	UKASIN VUKCEVICH
<i>Librarian</i>	- - - - -	BEN BURNES
<i>Accompanists</i>	- - - - -	MARY JO WILLIAMS, GLORIA DAWN LONG
<i>Directress</i>	- - - - -	MISS HARRIET M. MOORE

The Men's Glee Club is one of the largest and most enthusiastic organizations on campus. The group appears several times annually in various entertaining programs for the benefit of the College Community. A series of off-campus concerts and radio-programs are also presented.

Men's Glee Club

MEMBERS

First Tenor

Clarridge, Clifton

Edwards, Charles

Mahoney, Francis

Latimer, Bill

Lewis, Thomas

Powell, Richard

Sasso, Matthew

Second Tenor

Badman, Donald

Burness, Ben

Burns, John

Edwards, Richard

Funk, Herman

Hantjis, A.

Houseknecht, Gerald

Jones, Thomas

Laubscher, Robert

Marsilio, Alfred

McHugh, Cornelius

Moore, Robert

Ottaviani, Bill

Pease, Charles

Raabe, Raymond

Wasiakowski, Joe

Williams, George

Yeager, John

First Bass

Chiscon, Alfred

Coleman, Harry

Creasy, Jim

Davenport, Jim

Dean, Frank

George, Joseph

Ingersoll, Mark

Jewell, Robert

Kennedy, John

Montz, Walter

Raker, Warren

Rampalo, Edward

Sable, Edward

Slikes, Edward

Von Drach, Bob

Vukevich, Ukasin

Weinstein, Philip

Williams, Jack

Young, George

Second Bass

Blyler, Donald

Hughes, George

Jones, Blandford

Kubick, Alex

Linn, Ben

Reck, George

Search, Phil

Future Teachers of America

“O God—give us the courage to change
what should be changed, to accept what
should not be changed, but give us the
wisdom to distinguish between them.”





Science Club

FIRST SEMESTER OFFICERS

President - - - - - HUGH ELLIOTT
Vice President - - - - - MERLIN BEACHELL
Secretary - - - - - NANCY WILLIAMS
Treasurer - - - - - JANICE RIDER
Program Chairman - - - - RICHARD WAECHTER
Adviser—DR. KUSTER

Science Club

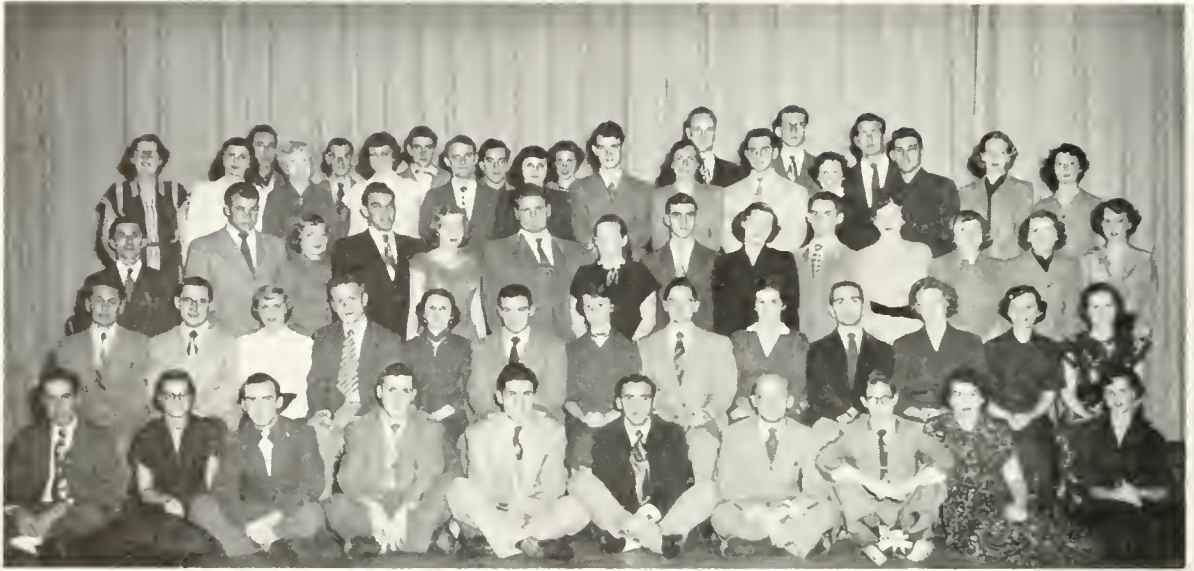
SECOND SEMESTER OFFICERS

President - - - - - HENRY KRAUSER
Vice President - - - - - ADAM BEN
Secretary - - - - - JOYCE MACDOUGALL
Treasurer - - - - - JANET RIDER
Program Committee - FRANK STRAUSSER, CALVIN KANYUCK

The Science Club is one of the largest organizations on the campus. The chief aim of the Club is to promote interest in science and afford its members opportunity to enlarge their knowledge and experience through scientific lectures and demonstrations. The recent acceleration of scientific progress has given the Club a diversity of material that has led to the presentation of programs of unusual interest and value. Highlight of the Club's activity is the annual field trip and picnic.



Front Row, Left to Right- H. Krauser, J. MacDougall, Dr. Kuster.
Back Row - F. Straussler, C. Kanyuck, A. Ben.



Bloomsburg Players

OFFICERS

<i>President</i>	- - - - -	ROBERT JEWELL
<i>Vice President</i>	- - - - -	NANCY POWELL
<i>Secretary</i>	- - - - -	MARY J. WILLIAMS
<i>Treasurer</i>	- - - - -	JAMES CREASY
<i>Sponsor</i>	- - - - -	MISS ALICE JOHNSON



Tuesday Nights

*The Barrets of
Wimpole Street*



Bloomsburg Players

The Bloomsburg Players is the College dramatics group. Through plays produced at weekly meetings under student directors, a workshop is provided for those students interested in the various aspects of dramatics. In addition to presenting plays for the College Community, the group also participates in radio programs and presents plays in nearby communities.



The Maroon and Gold

Faculty Adviser—MR. EDWARD T. DEVOE

Co-Editors
Editorial Board

MARIE B. MATTIS AND MERLIN C. BEACHELL
HARRY FENSTERMACHER, PRISCILLA ABBOTT, SAMUEL YEAGER

News Editor
FRANK DEAN

Feature Editor
MARILYN EVANS

Sports Editor
HARRY BROOKS

News Staff

ALFRED CHISCON
NANCY HEEBNER
BLANDFORD JONES
VAN KELLY

JOHN S. LAIDACKER
ALBERT McMANUS
MILDRED MERVINE
MARIAN PAYNE

MILDRED PLISCOTT
ROBERT PRICE
SHIRLEY SEARCH
SHIRLEY REISENWEAVER

MARY LOU TODD
HARRIET WILLIAMS
DAVID JENKINS

Advertising Staff

DICK KRESSLER
MIKE DORAK

EUGENE ADAMI

JEAN NEWHART

MARGARET SHOUP

Business Manager

JAMES CREASY

Feature Staff

DOE CEDOR
ANN GENGENBACH
CHARLES EDWARDS

CAVIN KANYUCK
MAX KAPLAN

NANCY POWELL
ROBERT PRICE

NANCY RHODES
THOMAS ROWLEY
CHARLES YESSON

Circulation Staff

HELYN BURLINGAME
MARY KALLENBACK
JOHN NEMETZ

ANTHONY CIAMPI
RUSS HAWK

ROBERT DOWD
MARTHA STEINER

DORIS BOWMAN
ROBERT DAVIDSON
TOM McLAUGHLIN

Exchange Staff

LOIS FRANTZ

EDNA KLIM

Spotts Staff

JIMMY JOHNSON
BILL KLINE

JEROME KOPEK
BILL LUTHWILER

GENE MORRISON
HANK NOVAK

PHIL WEINSTEIN
BILL BYHAM

Art Staff

PHIL SEARCH, ED.

CHUCK ANDREWS

Photographers

DICK KNAUSE

KEITH SMITH

Typists

ROBERT J. LEWIS
PAT PENNY

MAVINE SHIRLEY

JEAN SKEEBA

KENNETH McANALL

The Maroon and Gold



MERLJN BEACHELL
Co-Editor

The Maroon and Gold is the weekly newspaper published by B. S. T. C. students in order to acquaint the College Community with current news. It is produced by members of the student body who have an interest in journalism. The publication for the year 1950-51 was marked by several innovations which included introduction of a classified advertising column and a calendar of events.



MARIE MATTIS
Co-Editor



JAMES CREASY
Business Manager

1951 OBITER



HOMER ZEIGLER
Editor-in-Chief

STAFF

- HOMER ZEIGLER - - - - - *Editor-in-Chief*
- LILLIAN MELBY - - - - - *Business Manager*
- JOHN BURNS, HARRY FENSTERMACHER - - - *Associate Editors*
- WILLIAM KLINE, JAMES JOHNSON - - - - - *Sports*
- KEITH SMITH, RICHARD KNAUSE - - - - - *Photography*
- MARIE MATTIS - - - - - *Director of Senior Pictures*



JOHN BURNS
Associate Editor



HARRY FENSTERMACHER
Associate Editor



WILLIAM KLINE
Sports



RICHARD KNAUSE
Photography



KEITH SMITH
Photography



MICHELENE CASULA
Typist



THOMAS ANTHONY
Director of Publicity



MARIE MATTIS
Director of Senior Pictures



CLIFTON CLARRIDGE
Advertising Manager

ADVERTISING STAFF

- CLIFTON CLARRIDGE, ROBERT BURNS - - *Advertising Managers*
- THOMAS ANTHONY - - - - - *Director of Publicity*
- MICHELENE CASULA - - - - - *Secretary*
- ELEANOR BOLINSKY, MICHELENE CASULA, RICHARD POWELL - *Typists*
- ALEX KUBIK - - - - - *Circulation*
- LEONORA MACGILL - - - - - *Artist*



ROBERT BURNS
Advertising Manager

ADVERTISING STAFF

- DAVE JENKINS
- GEORGE ROESSNER
- LEON COVAL
- JOANNE CUFF
- HARRY FENSTERMACHER
- MIKE DORAK
- UKASIN VUKCEVICH
- ROBERT BURNS



LILLIAN MIKVY
Business Manager

36130



ALEX KUBIK. JOE KISSINGER



LEONORA MACGILL

Appreciation

The staff of *OBITER* 1951 extends its appreciation to all those who helped make this publication possible. Without the cooperation of the entire College Community this 35th edition of the *OBITER* could not have been realized. We sincerely hope that this book, in years to come, will bring back many happy memories of your College days.



RICHARD POWELL. ELEANOR BOLINSKY



Left to Right J. Simpson, D. Newbury, J. Fornwald, L. Macgill

The Olympian

STAFF

<i>Editor-in-Chief</i>	- - - - -	DAVID NEWBURY
<i>Associate Editors</i>	- - - - -	JO ANN FORNWALD, JACK SIMPSON
<i>Business Manager</i>	- - - - -	LEONORA MACGILL
<i>Advertising Managers</i>	- - - - -	GLORIA DAWN LONG, HENRY MARINI
<i>Sales Manager</i>	- - - - -	ALEX KUBIC
<i>Art Editor</i>	- - - - -	CHARLES ANDREWS
<i>Humor</i>	- - - - -	NANCY POWELL, CHARLES EDWARDS

The *Olympian* owes its life to the students who write the short stories, poems, and essays of which it is comprised. Although relatively young as a magazine, it is believed to be an important and necessary addition to campus publication services. It provides a means for encouragement and recognition of students in the field of creative writing. Any student who contributes material for publication is eligible for staff membership.

Business Education Club

OFFICERS

<i>President</i>	ROBERT MERRIFIELD
<i>Vice President</i>	GERALD BACON
<i>Secretary</i>	BARBARA HARMAN (13 weeks) and AGNES VALIMONT (13 weeks)
<i>Treasurer</i>	RICHARD KNAUSE
<i>Historian</i>	RICHARD POWELL
<i>Sponsor</i> — MR. RYGIEL	

The Business Education Club is one of the largest and most active organizations on the campus. The Club had a most successful year, both socially and educationally, with its usual variety of interesting programs. The Club's purpose is primarily that of enlarging the business education experience of its members through activities that are not ordinarily a part of the regular curriculum. The Club assists in sponsoring the Business Education commercial contest for high schools each year. Through this activity the high school students are acquainted with the type of professional work being developed here at Bloomsburg.



Day Women's Association

OFFICERS

<i>President</i>	M. JEANNE RUCKLE
<i>Vice President</i>	JO ANN FORNWALD
<i>Secretary</i>	SHIRLEY CARMODY
<i>Treasurer</i>	MARY JANE DORSEY
<i>Publicity Chairman</i>	BARBARA MERTZ
<i>Social Chairman</i>	MARILYN LUNDY
<i>House Chairman</i>	JOANNE VANDERSLICE

Twenty years ago the girls who did not live in the dormitory formed the Day Women's Association to promote the interests of day women. The Day Women's Rooms on the first floor of Noetting Hall have recently been re-decorated. These rooms consist of an office and study, a lounging room, and a lunch room with a modern electric unit. During the school year, the Day Women have several covered-dish parties, and at Christmas the organization does welfare work for needy families in the vicinity of Bloomsburg.





Aviation Club

OFFICERS

<i>President</i> - - - - -	CHARLES WOOD
<i>Vice President</i> - - - - -	DYAR HADDAD
<i>Secretary</i> - - - - -	WILLIAM McALOOSE
<i>Treasurer</i> - - - - -	LEONARD GALILEY

Sponsor — MR. STERLING

The purpose of the Aviation Club is to stimulate and develop interest in flying. The club promotes aviation as a hobby and as a means of keeping its members familiar with the latest developments in aeronautics. An education program which includes films and lectures on the identification and operation of various types of aircraft keeps members informed of recent progress in the field of aviation. In addition, the club has open discussions on personal aviation experiences.

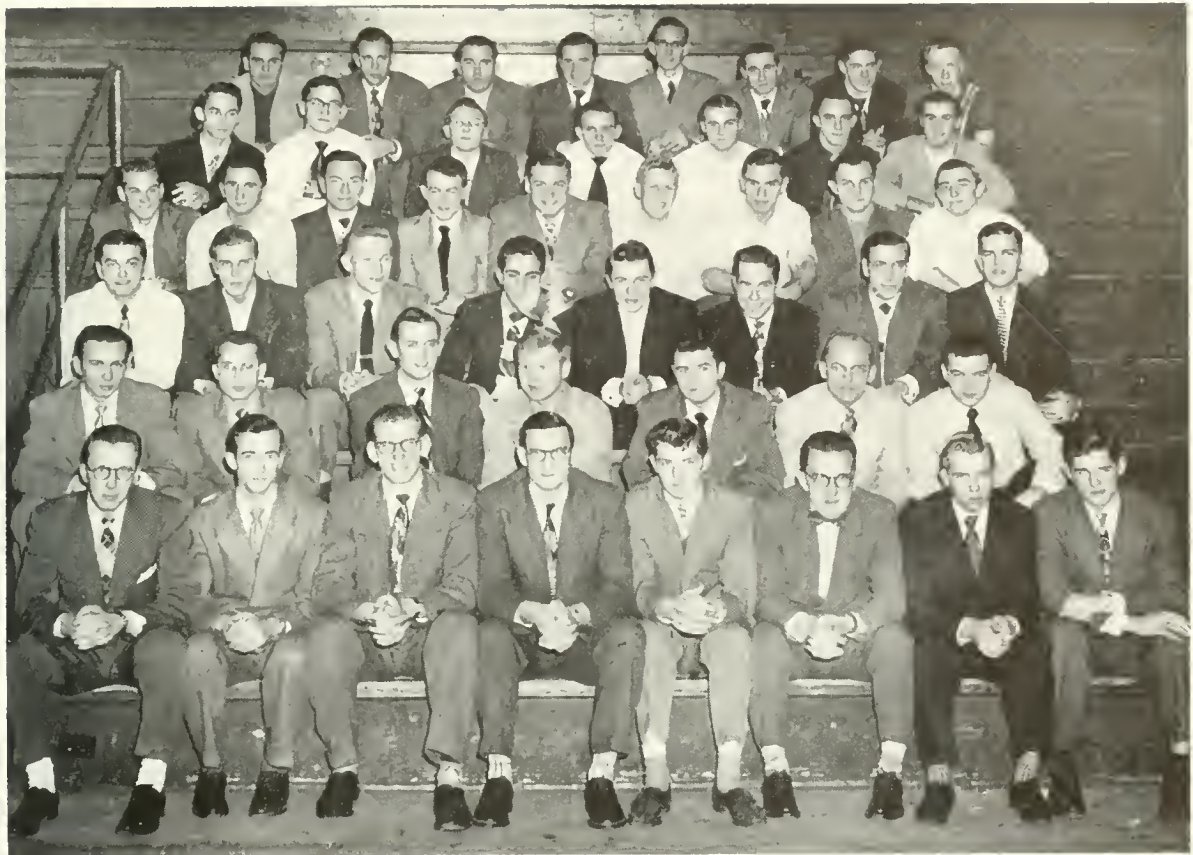
Student Christian Association

OFFICERS

<i>President</i>	MARY ELLEN DEAN
<i>Vice President</i>	ELEANOR JOHNSON
<i>Secretary</i>	ALICE JACQUES
<i>Treasurer</i>	HOMER ZEIGLER
<i>Faculty Adviser</i>	CLAYTON H. HINKEL

Among the many and varied activities of the Student Christian Association are the following: programs in community churches; Christmas caroling; Lenten service in Carver Hall; get-acquainted party and hike for Freshmen; attendance at religious conferences. Worship, speakers, and discussions of pertinent subjects are topics of interest at the regular meetings held on the first and third Wednesdays of each month in the Social Rooms of Science Hall.





Men's Dormitory Association

OFFICERS

<i>President</i>	- - - - -	JACK WILLIAMS
<i>Vice President</i>	- - - - -	CHARLES BRENNAN
<i>Secretary</i>	- - - - -	MAYNARD HARRING
<i>Treasurer</i>	- - - - -	HAROLD CAREY

The Men's Dormitory Association is composed of all resident male students of the college. The association regulates conditions in the Men's dormitories and maintains a men's recreation room in the basement of North Hall. The high lights of the Association's social program were: a Dorm Men's party, an all college dance, college pep parade, and a Dorm Men's banquet.



Newman Club*

OFFICERS

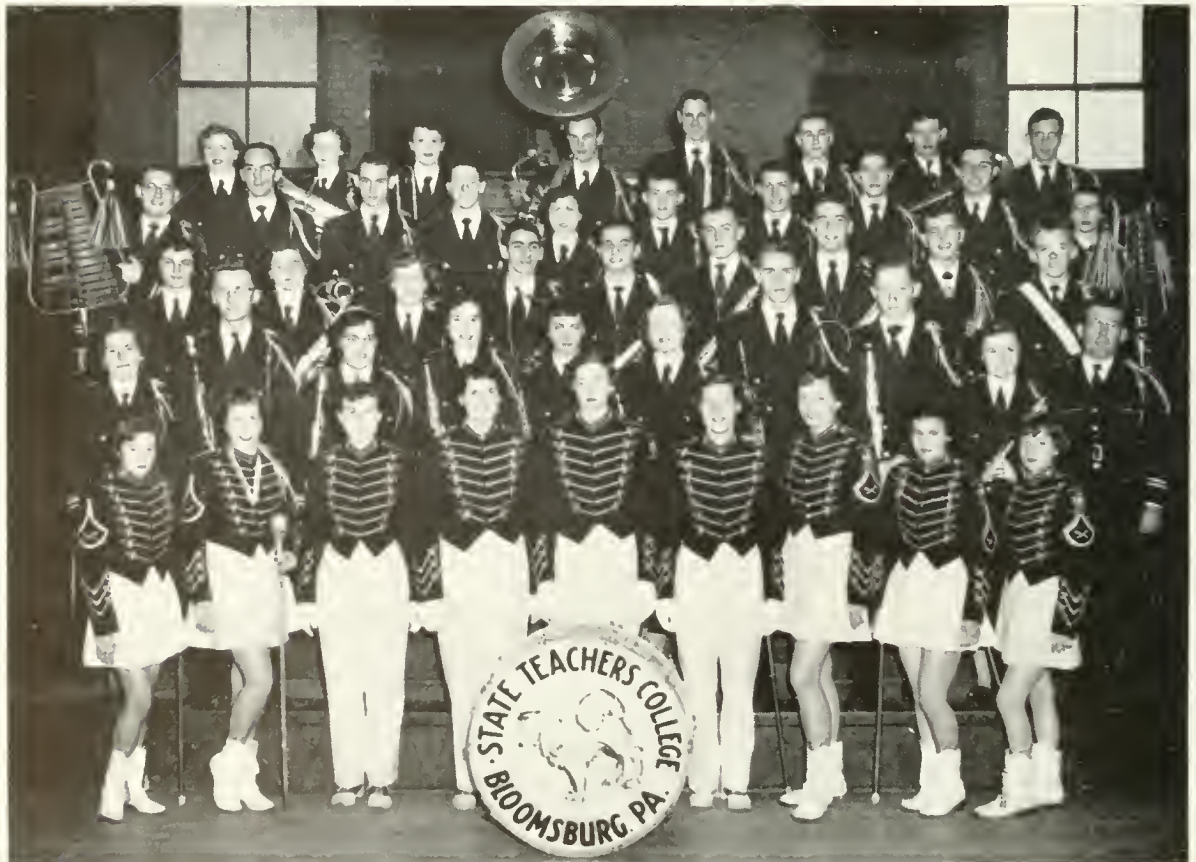
<i>President</i>	- - - - -	JOHN BURNS
<i>Vice President</i>	- - - - -	ALFRED MARSILIO
<i>Secretary</i>	- - - - -	MILDRED WRZESNIEWSKI
<i>Treasurer</i>	- - - - -	FRANCIS GALINSKI
<i>Marshal</i>	- - - - -	DANIEL WELKER
<i>Chaplin</i>	- - - - -	VERY REVEREND FATHER WILLIAM J. BURKE

The Newman Club is an organization composed of the Catholic students of the college. Its purpose is to deepen and enrich the spiritual and temporal lives of its members. Its many activities combine a program of religious, intellectual, and social activities which strive to develop capable student leadership among its members. The Club is also affiliated with the National Newman Club Federation.

* This is an off-campus organization. No extracurricular credit is given for this activity.

Maroon and Gold Band

The Maroon and Gold Band is open to those students interested in music and are able to play band instruments. In addition to serving as a training unit for band leaders of the future, it serves as an outlet for expression. In fulfillment of these aims, it serves its secondary purpose: entertainment for the College Community. Always on hand for Athletic contests, the band also gives a number of concerts each year, both in College assemblies and in regional high school auditoriums.





Athenaeum Club

OFFICERS

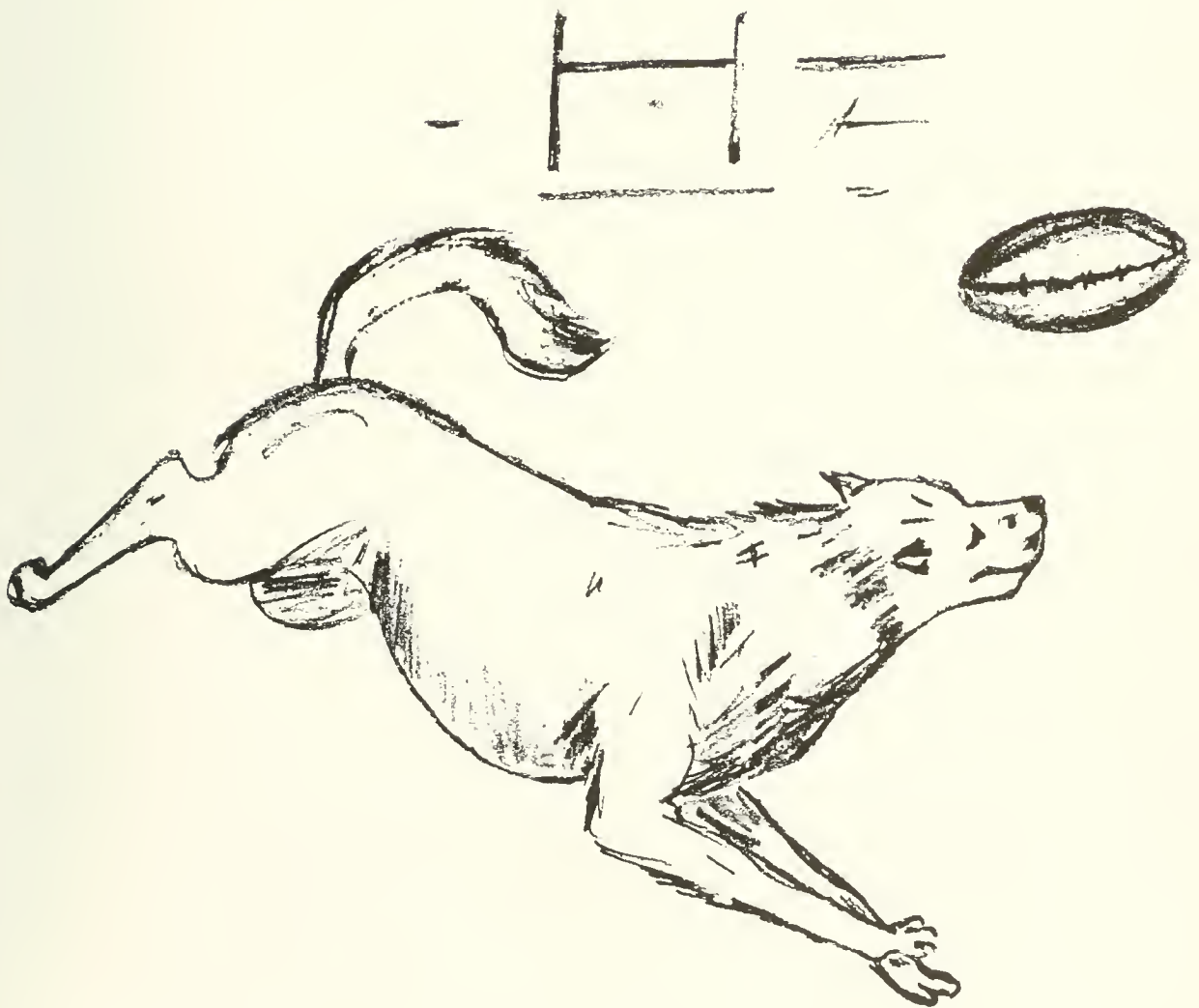
<i>President</i>	- - - - -	GEORGE N. ROESSNER
<i>Vice President</i>	- - - - -	JOHN BURNS
<i>Secretary</i>	- - - - -	OLIVE MOWERY
<i>Treasurer</i>	- - - - -	MARY GRACE ALMERS
<i>Program Chairman</i>	- - - - -	WILLIAM HERR

Adviser — MR. SHORTESS

The Athenaeum Club, which was organized in 1945, is composed of 57 members. This club has for its chief objective a more thorough enjoyment through a broader understanding of classical and semi-classical music. Organ, piano, vocal and instrumental selections by the talented members of the club added variation to the planned programs of recorded music. Membership is open to all students interested in classical and popular music as a means toward cultural growth.



ATHLETICS





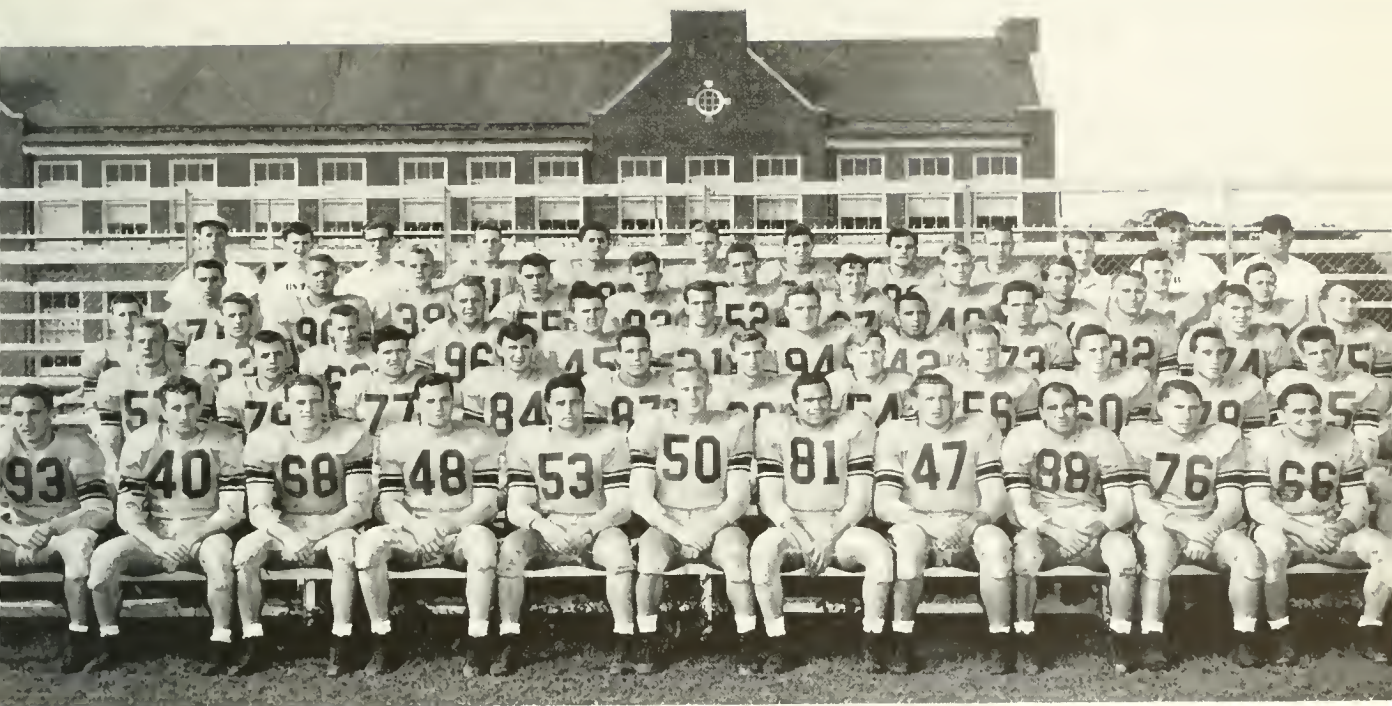
Richard Whitmer With Roongo III

Roongo III

Here is Roongo, III, the mascot of the Bloomsburg State Teachers College Huskies! Roongo was purchased by the Alumni Association and presented by Dr. E. H. Nelson, Alumni President, to Husky athletic teams on Alumni Day last May. The pup arrived on the campus May 19, 1950, from the Green Lawn Kennels, Laconia, N. H. A full-bred Siberian Malemute, Roongo III is two years old.

The new Husky mascot is the third of a line of handsome dogs which have served the Huskies well. The first of the line was acquired by George Keller who coined the name Roongo, a combination of syllables taken from the college colors—Maroon and Gold. Roongo I made quite a reputation locally and was even borrowed by the University of Washington's Huskies as their mascot in the Rose Bowl game of 1937.

Roongo II, succeeded his distinguished predecessor and after serving faithfully as a mascot for many Husky teams, was selected to make the trip to the South Pole with Admiral Byrd. The Huskies have had no mascots since that time and the greatest football teams in the college history have ramped on the gridiron without the support of a mascot. Now, however, the story is different, and we trust that the reign of Roongo III will see Husky teams on football field, basketball court, baseball diamond or anywhere ramble on to many victories and triumphs.



First Row, Left to Right—G. Lambrinos, D. Linckhorst, R. Verhansky, A. Eremich, F. Perry, T. Schukis, D. Cesare, C. Baron, E. Tavalisky, T. Spack, D. Parrell.
 Second Row—J. Dietz, B. Osevala, B. Thurston, J. Nemetz, A. Zeigentuse, T. McLaughlin, M. Bernot, R. Looker, C. Brennan, R. D'Angelo, A. Boyelchuk.
 Third Row—J. Babb, J. Kapralick, G. Morrison, D. Evans, B. Kressler, J. Chaplinsky, E. Stecker, G. Gormana, J. Boily, L. Podzielinski, J. Long, B. Hammershock.
 Fourth Row—G. Pope, W. Dysleski, L. Bernhardt, F. Williams, J. Costa, V. Karyeki, J. Glusek, A. Kubik, J. Schaar, B. Mout, L. Bower.
 Fifth Row—Assistant Coach Hoch, E. Cunfer, Manager; T. Anthony, Manager; C. Puckey, F. Duncan, L. House, M. Jones, J. Just, J. Stonik, H. Krauser, Assistant Coach Wagner, Head Coach Redman.

Bloomsburg State Teachers College Huskies 1950

1950 SUMMARY

Bloomsburg	39	Mansfield S. T. C.	6
Bloomsburg	20	Lock Haven S. T. C.	0
Bloomsburg	10	Millersville S. T. C.	2
Bloomsburg	26	Shippensburg S. T. C.	6
Bloomsburg	35	Kutztown S. T. C.	0
Bloomsburg	27	Wilkes College	7
Bloomsburg	6	West Chester S. T. C.	31
Bloomsburg	12	Indiana S. T. C.	0



ROBERT REDMAN, *Head Coach*



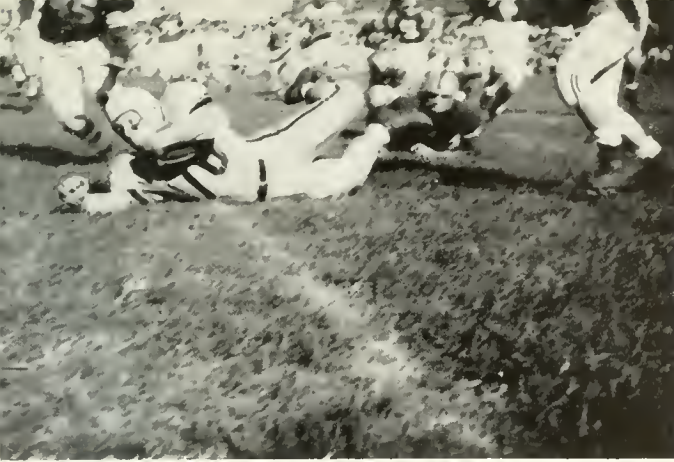
JOHN HOCH, *Assistant Coach*



PAUL WAGNER, *Assistant Coach*

FOOTBALL, 1950

For the second successive year the Bloomsburg State Teachers College Huskies under head coach Robert B. Redman came within one game of an undefeated season such as they enjoyed in 1943. The Huskies started with a rush by taking the measure of their first six foes and posting their fourteenth consecutive victory; their nineteenth in a row over Teachers College opposition. The season's record showed seven victories against a lone setback which came at the hands of West Chester. They scored 206 points as against 52 for their opponents. Coach Redman and his staff certainly are to be commended for the fine records of the Husky football teams of the last three seasons. In this period the Huskies have won 21 contests while dropping only two, and have brought to Bloomsburg two conference championships.



RUSSELL LOOKER
Tackle

BLOOMSBURG 39 — MANSFIELD 6

The Huskies opened the 1950 season under the arc lights at Crispin Field in Berwick with a 39 to 6 triumph over Mansfield State Teachers College. Bloomsburg scored fast and furiously early in the first quarter on a pass-lateral series from Lambrinos to Tavalsky to Lang. Two more touchdowns were notched in the second period by Dan Parrell on rushes of 4 and 7 yards. The third period opened with a rush as the Huskies scored within the first two minutes on a 72 yard drive that ended in Lang's twisting 27 yard touchdown dash. After the kickoff Mansfield drove to the Husky 22 where a pass interception by Charley Brennan stalled the attack. The Huskies kept possession of the ball and went all the way to score with Barney Osevala plunging over from the 2. Alex Boychuck scored the final T. D. on an 85 yard whirl in the fourth stanza. Mansfield posted its lone tally against Husky reserves.



DAVID LINKHORST
Halfback



ROBERT LANG
Halfback

FRANK PERRY
Guard





ALBERT EREMICH
Tackle



GEORGE LAMBRINOS



EDWARD TAVASKY
End



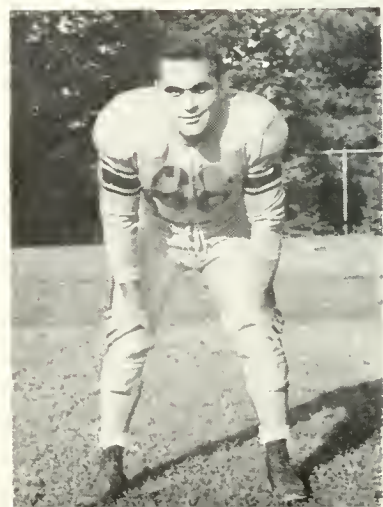
BLOOMSBURG 20 — LOCK HAVEN 0

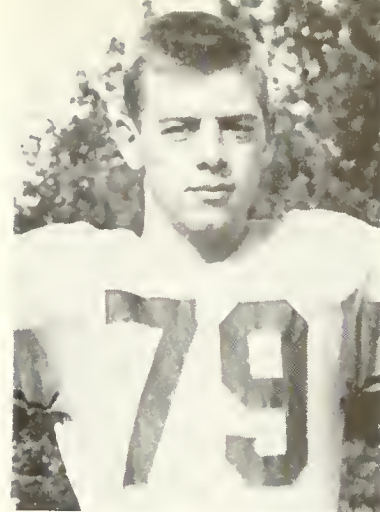
Scoring their first white-wash of the season, the Huskies overwhelmed a mediocre Lock Haven squad 20-0 at Lock Haven. Starting slow, the Huskies passing attack began clicking in the second quarter as halfback Tom Spack hit end Russ Verhausky in the end zone for the first score. Ed Tavalsky converted and Bloomsburg led 7 to 0 at half time. After receiving the third period kickoff the Huskies drove to the Lock Haven 3 where they lost the ball on a fumble. This play, however, proved unimportant as Ed Tavalsky intercepted a Bald Eagle pass a few minutes later and waltzed across the goal line for touchdown number 2. He also converted and the score stood at 14 to 0. Midway through the fourth period, Alex Boychuck climaxed a Husky drive by going the final six yards for the last score.

BLOOMSBURG 40 — MILLERSVILLE 2

Extending their winning streak to eleven straight, the Huskies bombarded Millersville 40 to 2 at Columbia, Pennsylvania. Bloomsburg scored almost at will as they led at halftime 28 to 0. In the

DANIEL PARRELL





BARNEY OSEVALA
Halfback

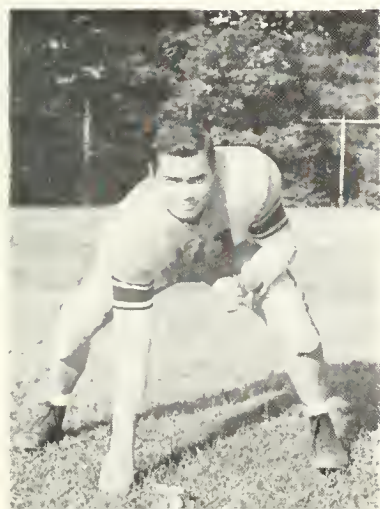
first period George Lambrinos hauled in a Spack pass and raced 63 yards for a touchdown on the third play of the game. Danny Parrell scored three more touchdowns before half time and the Huskies countered on a safety in the second period. The second half was a continuation of the first as far as Millersville was concerned. Osevala scored from twenty yards out for touchdown number five, and Joe Kapralick tallied the final touchdown on a 69 yard jaunt in the final session.

BLOOMSBURG 26 — SHIPPENSBURG 6

The Huskies made it 12 in a row as they tripped a stubborn Shippensburg team 26 to 6. The score, however, does not indicate the quality of ball that Shippensburg played. The Huskies were forced to fight all the way for every score. Play was confined between the twenty yard lines in a scoreless first quarter. In the second period three Husky drives were successful with Danny Parrell crashing over on two short plunges and tallying again on a pass from Tom Spack that caught the defenders flat footed. The second half featured



EDWARD STECKER
Guard



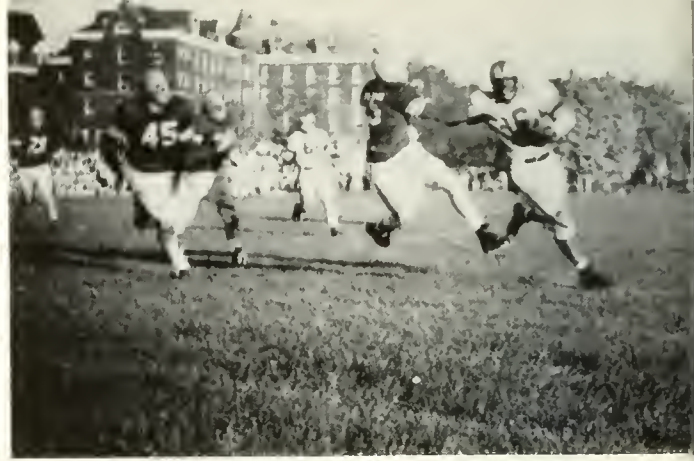
DONALD CESARE
Guard

RONALD D'ANGELO
Halfback





RUSSELL VERHALSKY
End



fine ball playing by both teams and an especially good defensive show by Bloomsburg. The Red Raiders eventually tallied in the third period but this marker was matched by Husky back Barney Osevala's run in the last frame.

BLOOMSBURG 35 — KUTZTOWN 0

"Huskies Defeat Kutztown 35 to 0 on Homecoming Day" was the headline of the day as Bloomsburg won its 13th straight game before a large Homecoming Day crowd on Mt. Olympus Field. The Huskies rolled through Kutztown like water through a sieve as they scored four times in the opening half. Dan Parrell added three more touchdowns to his growing array as he scored on a 27 yard ramble and on two plunges of 3 and 5 yards respectively.



THOMAS SPACK
Halfback

BLOOMSBURG 27 — WILKES 7

Coach Redmen's team proved that it could conquer non-conference foes as well as tutor opponents in their sixth set of the season. Revenge for last years upset by the Colonels was sweet as the Huskies trampled Wilkes College 27 to 7. High scoring Danny Parrell tallied



CHARLES BARON
Tackle



JOHN NEMETZ
Tackle



ALEX BOYCHUCK
Halfback

on the very first play from scrimmage with a 80 yard ramble. An inspired Wilkes team did not give up as they held the Huskies in check until midway through the second period when Spack tossed to Tavalisky in the end zone for the second tally. The half-time score read 11 to 0, Bloomsburg. Wilkes, however, was not to be denied as they took the second half kickoff and marched 71 yards to score their only touchdown of the game. For the remainder of the game Wilkes kept pounding but was unable to really get going. After Bob Lang intercepted a Wilkes pass in the fourth period, Barney Osevala dashed over from 21 yards out to score the third Husky touchdown. Osevala also scored the last tally in the final seconds of the game.

BLOOMSBURG 6 — WEST CHESTER 31

It was just one of those nights when we couldn't do anything right and the opposition couldn't do anything wrong. The Huskies winning streak was abruptly snapped by a strong, hard-charging, well-coached aggregation at West Chester. Definitely "up" for the contest the Golden Rams overwhelmed the Huskies with three first

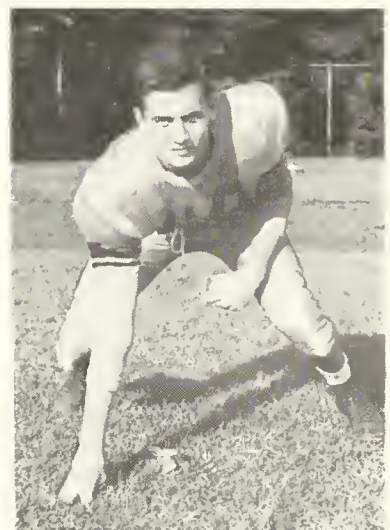


JOHN DIETZ
Halfback



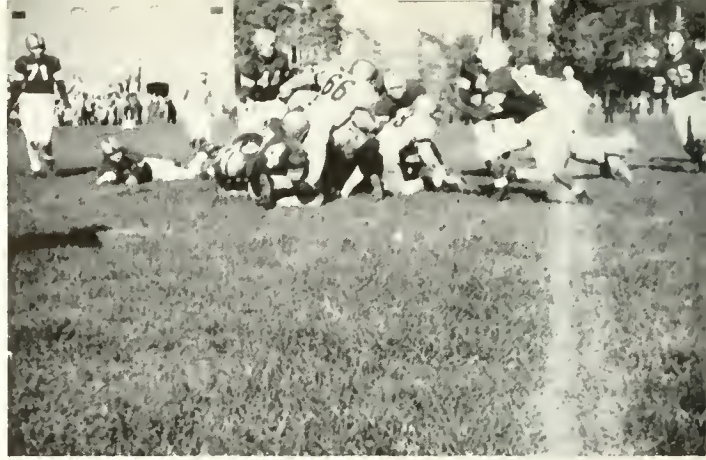
THOMAS SCHUKIS
Center

CHARLES BRENNAN
End





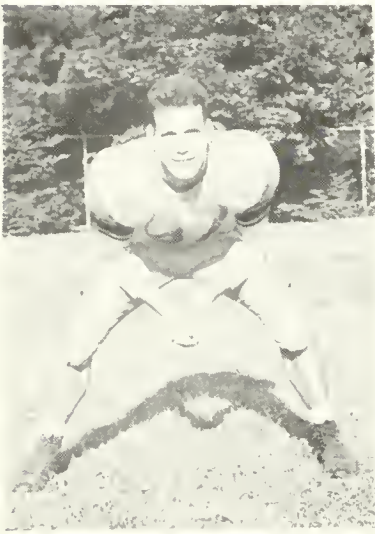
THOMAS McLAUGHLIN
Center



period scores, and that was the old ball game. A large following from Bloomsburg watched the stunned Huskies hang on with everything they had as the half found West Chester leading 19-0. The Huskies escaped a whitewashing in the third frame when they scored their only tally on a one yard plunge by Tommy Spack after he had a previous 37 yard scoring dash called back. The Golden Rams clicked for two more touchdowns in the final frame to wind up the scoring, and the Huskies dream of an undefeated season.

BLOOMSBURG 42 — INDIANA 0

Despite a natural letdown following the West Chester defeat, the Huskies managed to score two fourth quarter touchdowns to dump the Indiana State Teachers Indians 12 to 0. Bloomsburg thwarted the Indiana attack time after time in the first three periods; then early in the final frame, sparked by freshman back Barney Osevala, the Huskies scored the initial tally. Osevala later passed to Lambrinas who lateraled to Lang for the final six points of the 1950 football season.



ARDELL ZEIGENFUSE
Guard

MICHAEL BERNOT
Guard



ROBERT THURSTON
End





First Row, Kneeling, Left to Right - C. Daly, D. Linkhorst, A. Williams, J. Thompson, J. Kopee, C. Andrews,
 Second Row, Standing - D. Bennett, Manager; D. Boychuck, G. Lambrinos, J. Rittenmeyer, W. Banull, W. Byham,
 D. Butler, Coach Shelly.

Basketball, 1950-1951

The Husky hoopsters of 1950-51 under the excellent mentorship of Coach Harold Shelly compiled a 9 won and 7 lost record, bringing Coach Shelly's two year record to 21 victories and 14 defeats. In doing this the Huskies were handicapped with a pronounced lack of height and also with the loss at January Graduation of two starters "Walt" Banull and "Smoky" Andrews. Despite these deficiencies, the team did a fine job against stiff teachers' college foes, and other opponents. Fans are quite content with the performances of such regular tossers as Chuck Daly, Buck Byham, Don Butler, Dave Linkhorst, Jim Thompson, Danny Boychuck, and Al Williams all of whom contributed toward making basketball in the 1950-51 season a winning sport "at the Friendly College on the Hill."



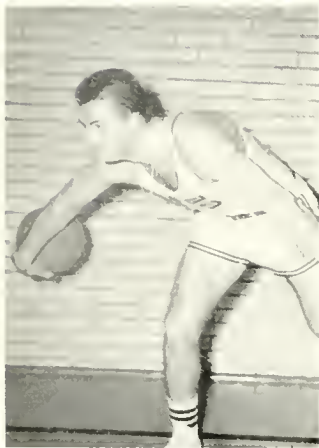
CHUCK DALY



BUCK BYHAM



JIM THOMPSON



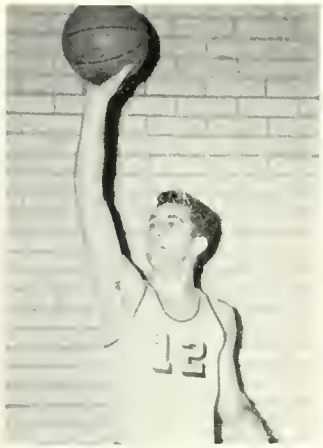
WALT BANULL

HUSKY SCHEDULE AND SCORES 1950-1951

B. S. T. C.	53	Wilkes College	44
B. S. T. C.	15	Lock Haven S. T. C.	70
B. S. T. C.	62	Millersville S. T. C.	58
B. S. T. C.	58	West Chester S. T. C.	62
B. S. T. C.	32	Lock Haven S. T. C.	62
B. S. T. C.	59	Shippensburg S. T. C.	61
B. S. T. C.	55	Millersville S. T. C.	70
B. S. T. C.	75	Harpur College	68
B. S. T. C.	56	Shippensburg S. T. C.	57
B. S. T. C.	72	Mansfield S. T. C.	66
B. S. T. C.	90	Mansfield S. T. C.	77
B. S. T. C.	54	Kutztown S. T. C.	52
B. S. T. C.	72	Harpur College	70
B. S. T. C.	61	Indiana S. T. C.	78
B. S. T. C.	85	Wilkes College	69
B. S. T. C.	63	Kutztown S. T. C.	57

SMOKEY ANDREWS





DAVE LINKHORST



DON BUTLER



AL WILLIAMS

SHELLY'S SHARPSHOOTERS

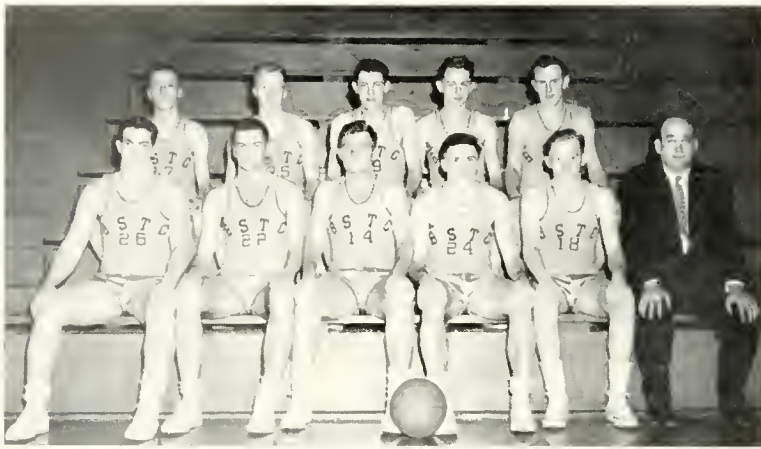
<i>Player</i>	<i>G.</i>	<i>P. A.</i>	<i>F. M.</i>	<i>T. Pts.</i>
Daly	90	15	35	215
Butler	69	65	32	170
Byham	62	61	14	168
Linkhorst	45	36	29	119
Thompson	45	38	26	116
Banull	26	13	24	76
Boychuck	12	29	17	11
Andrews	13	16	11	37
Williams	11	6	5	33
Gearhart	5	8	5	15
Lambrinos	3	2	0	6
Goodhart	1	6	1	6
Rittenmeyer	0	1	0	0
Furgele	0	0	0	0
Kopce	0	6	0	0
	385	359	232	1,002



DAN BOYCHUCK

GEORGE LAMBRINOS





Front Row, Left to Right—Coach, Taylor, Costa, Kopez, Hinger, Dr. Wagner, coach.
Rear Row—Ondrula, Serimageour, Aagaard, Yesson, Erickson.



ED GOODHART

LAYUP SCHEDULE AND SCORES

B. S. T. C.	57	Wilkes College, J. V.	29
B. S. T. C.	58	Lock Haven S. T. C., J. V.	61
B. S. T. C.	72	Hazleton Penn State	53
B. S. T. C.	62	Lock Haven S. T. C., J. V.	52
B. S. T. C.	15	Bucknell Freshmen	61
B. S. T. C.	63	Bloomsburg Shawnees	17
B. S. T. C.	50	Mansfield S. T. C., J. V.	39
B. S. T. C.	67	Mansfield S. T. C., J. V.	53
B. S. T. C.	57	Olmstead Air Base	56
B. S. T. C.	67	Wilkes College, J. V.	57
B. S. T. C.	11	Bucknell Freshmen	56
B. S. T. C.	74	Sunbury Y. M. C. A.	61



BOB GEARHART

JACK RITTENMEYER



JERRY KOPEC





First Row, Left to Right—A. Badman, H. Fenstermacher, B. Camp, R. Miller, J. Lesser, G. Richards, B. Roan,
 Second Row—W. Troutman, A. Agerzinscus, A. Savage, F. Furgale, R. Gearhardt, J. Thompson, R. Bickert,
 Third Row—L. Kazaznack, R. Aberzinscus, R. Conrad, M. Herring, R. Wagner, A. Ben, Coach H. Shelly,
 Fourth Row—L. Benner, D. Jones, C. Grable.

Soccer, 1950

SUMMARY

B. S. T. C.	1	Wilkes	0
B. S. T. C.	1	Lincoln	2
B. S. T. C.	4	Elizabethtown	1
B. S. T. C.	1	Lock Haven S. T. C.	2
B. S. T. C.	4	Wilkes	2
B. S. T. C.	0	Howard	5
B. S. T. C.	6	Indiana S. T. C.	0



Coach Harold Shelly, who mentored his second year of soccer here at Bloomsburg, certainly deserves high praise for taking a group of young inexperienced ball players and molding them into a winning team. Despite a rough seven game schedule the Huskies were able to compile a very commendable record of four victories and three setbacks.

The Husky booters opened the season against the team from Wilkes College and defeated them 1 to 0. Bucky Richards' goal in the opening frame completed the day's scoring.

Their record was evened up the following Saturday when they were edged 2 to 1 by a fine Lincoln University team. Jim Thompson scored Bloomsburg's lone counter.

The booters opened their home season in great fashion as they overwhelmed Elizabethtown 4 to 1. Bob Bickert and Roan scored for the Huskies in the first half while Ed Jankowski and Dick Gearhart iced the decision in the third and fourth quarters with one goal each.

Bloomsburg once more went on the road and the booters lost a close one to a rugged Lock Haven eleven 2 to 1. Each team tallied in the initial frame with Brickert scoring for the locals. However, the Bald Eagles pushed across the winning goal in the final stanza.

The following Saturday the Huskies boosted their record to three wins against two defeats as they played host to Wilkes in a return engagement on Mt. Olympus field. They defeated the Colonels 4 to 2. Bickert, Pursel, Roan, and Gearhart scored for the Huskies.

The Huskies suffered their worst defeat of the season when they journeyed to the Nation's Capital to take on a powerful Howard University team. Final score Howard 5—Bloomsburg 0.

The Booters wound up a successful season with a convincing 6 to 0 triumph over Indiana State Teachers on Mt. Olympus field. Gearhart, Conrad, Furgele, Bickert, and Thompson all shared in scoring for the victors.



F. FURGELE, *Captain*



R. GEARHART

Track, 1950

Taking a backward glance at the record compiled by the Husky thinclads in 1950 leaves something to be desired in the way of triumphs. The Shellymen were able to win only one in five meets. However, there is a great deal to look forward to with the return of many performers who we trust with the gathering of experience will be able to better last year's record.

Plus the regularly scheduled meets the Husky team also sent entries to the Penn Relays and the State Meet held at Shippensburg S. T. C. The Husky trackmen at the Relays brought home no points but in the State Meet Tom Goodwin captured a third place in the 220 dash and Frank Womer, one of the finest polevaulters and all round trackmen in Bloomsburg's history, tied with Hatfield of Shippensburg S. T. C. for first place in the polevault with a jump of 12 feet 6 inches. This height is a new States Teachers College Record.

SUMMARY 1950 TRACK

B. S. T. C. -----	47	Cheyney -----	78
B. S. T. C. -----	68 1 3	Scranton U. -----	62 2 3
B. S. T. C. -----	28 1 2	Lock Haven S. T. C. -	97 1 2
B. S. T. C. -----	24 2 3	West Chester S. T. C. -	101 1 3
B. S. T. C. -----	13	Lincoln U. -----	113



Baseball, 1950

The B. S. T. C. Huskies recorded one of the most amazing records in the annals of Husky baseball history as they gained nineteen victories in a row over a two year span, winning fourteen contests in 1949 and the first five in 1950.

Bloomsburg's streak came to a halt on Mt. Olympus on April 28, 1950 as the Huskies went down to defeat at the hands of a good Shippensburg nine—5 to 2.

After this loss, they rebounded with wins of 5 to 2, 16 to 0, and 6 to 3 over Kutztown, Lycoming, and Wilkes College respectively.

However, the Huskies were not able to keep up the pace and they were defeated twice in a row by Lock Haven, 7 to 6, and Mansfield, 5 to 2.

After these two setbacks, they finished the season on the right foot by walloping Wilkes—16 to 0.

All in all, Bloomsburg's Huskies had a very commendable season with 9 wins and 3 defeats.



First Row, Left to Right: D. Kearns, E. Johnson, S. Levan, R. Ledyard, R. Hummel, J. Reilly, H. Brunn.
Second Row: C. Jaskiewicz, M. Evans, W. Savage, D. Butler, J. Stevens, C. Mensinger.
Third Row: R. Rodman, Coach: E. Piestrak, J. Buydak, H. Marek, W. Byham, J. Thompson, R. Bodine, Manager.



SUMMARY 1950 BASEBALL

B. S. T. C. -----	6	Kings -----	0
B. S. T. C. -----	11	Lock Haven S. T. C. -----	5
B. S. T. C. -----	16	Lycoming -----	4
B. S. T. C. -----	4	Mansfield S. T. C. -----	3
B. S. T. C. -----	7	Millersville S. T. C. -----	6
B. S. T. C. -----	2	Shippensburg S. T. C. -----	5
B. S. T. C. -----	5	Kutztown S. T. C. -----	2
B. S. T. C. -----	16	Lycoming -----	0
B. S. T. C. -----	6	Wilkes -----	3
B. S. T. C. -----	6	Lock Haven S. T. C. -----	7
B. S. T. C. -----	2	Mansfield S. T. C. -----	5
B. S. T. C. -----	16	Wilkes -----	0



K. Mitchell, B. Harman, M. Dorasavage.



Top to Bottom J. Kennedy, D. Doyle, M. Pliscott, M. Todd.

Cheerleaders

Our faithful cheerleaders were always ready throughout the year to lend a hand toward creating the proper spirit and enthusiasm demanded by the occasion.

The success of their efforts was evident in the student participation at bonfires, pep rallies, and athletic contests.

Under the capable direction of head cheerleader John Kennedy, several new cheers were introduced this year.

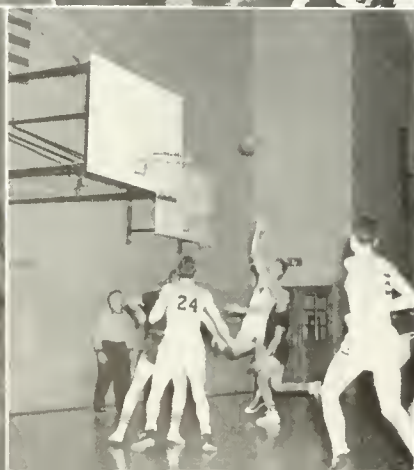
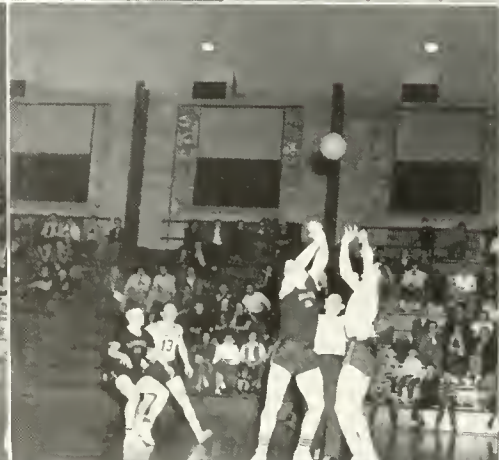


Women's Sports

In order to accumulate the necessary one thousand points for "B" Club membership, every Thursday night the Centennial Gymnasium becomes a beehive of feminine activity.

Our versatile coeds participate in the following sports: basketball, volley ball, soft ball, cageball, field hockey, swimming, ping pong, shuffleboard, badminton, and Red Cross courses in Junior and Senior life saving.







ADS

SENIORS

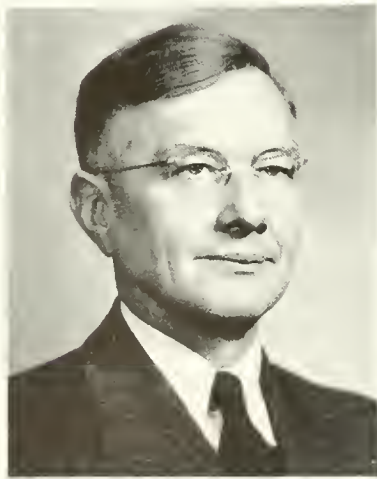
Join your ALUMNI ASSOCIATION, and keep your membership active through the years. Annual dues of \$2.00 will include a year's subscription to the ALUMNI QUARTERLY. This magazine, which appears four times a year, will keep you informed of the activities of your classmates, and the events happening on the campus.

Our Object:

"To Keep the Door of Opportunity
Open for Worthy American Youth."

Our Slogan:

"Every Graduate of Bloomsburg an Active
Member of the ALUMNI ASSOCIATION."



DR. E. H. NELSON

All Dues Should Be Sent to:

DR. E. H. NELSON

President, Alumni Association

STATE TEACHERS COLLEGE

BLOOMSBURG, PENNSYLVANIA

CONGRATULATIONS

**F. W. WOOLWORTH
COMPANY**

BLOOMSBURG, PA.

Compliments of

ANDREA THEATRE



CATAWISSA, PENNSYLVANIA

Fill 'er Up at

**GIRTON'S
GAS STATION**

East Street BLOOMSBURG, PA.

Don't electrocute yourself

1ST — VISIT

CATAWISSA APPLIANCE

WOLF BROTHERS

Wholesale Distributors

**CONFECTIONS
CIGARETTES**

Phone — 866J

1081 Market Street

BLOOMSBURG, PENNSYLVANIA

WHITMAN'S CANDY

BREYER'S
ICE CREAM

FOX DRUG STORE

CATAWISSA, PENNSYLVANIA

GREETING CARDS

COSMETICS

ARCUS'

For a Prettier You

BLOOMSBURG, PENNSYLVANIA



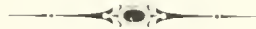
MAGEE CARPETS

Make your house a home

The

MAGEE CARPET COMPANY

BLOOMSBURG, PENNSYLVANIA



Manufacturers

Velvet

Axminster

Broadloom

Wilton

— CARPETS and RUGS —



Sales Offices:

NEW YORK CITY CHICAGO



With Compliments

of

Milco Undergarment
Company, Inc.

Best of Wishes
to the
CLASS OF '51

ROCK'S
RESTAURANT

Where Old
Friends
Meet

501 East St. BLOOMSBURG, PA.

Compliments
to the Class of 1951

F. P. PURSEL

Your
Department Store

Bloomsburg's Friendly Place to Shop

Where Dad Took His Girl

THE TEXAS

D. J. Comuntais, Prop. BLOOMSBURG, PA.

Compliments of

Clewells

VELVET
ICE CREAM



*Where breads are
always fresh*

**LETTERMAN'S
BAKERY, INC.**

Buy a pie,
for you'll know why.

BLOOMSBURG, PA.

Remember!

IT'S

BERWICK CREAMERY

When Buying

ICE CREAM

**MILLER OFFICE SUPPLY
and
EQUIPMENT COMPANY**

Office and School
SUPPLIES

ROYAL TYPEWRITERS
9 EAST MAIN STREET

Compliments of

NORTH BRANCH BUS COMPANY



HUSKY TRANSPORTATION



"HER FAVORITE"
for
every BSTC festivity

DILLON'S FLOWERS

We have enjoyed serving both students and faculty; and hope our name will be a treasured memory for graduates wherever you may live.

Phone 127

East Fifth Street BLOOMSBURG, PA.

BREISCH'S DAIRY

"Enjoy the Best"

•

CATAWISSA, PENNA.

Compliments of

BART PURSEL

BLOOMSBURG, PA.

CLOTHING *for Men and Boys*
DRY CLEANING

Compliments of

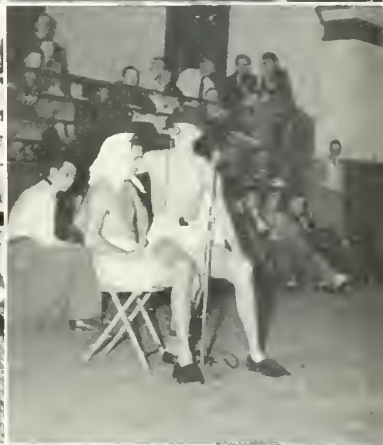
BLOOMSBURG MILLS, INC.

Sales Office

525 Seventh Avenue
NEW YORK, N. Y.

Mills at

BLOOMSBURG, PA.
LOCK HAVEN, PA.
DALLAS, PA.



SNYDER'S DAIRY

Safe MILK

and the

Finest in

DAIRY PRODUCTS

BLOOMSBURG — CATAWISSA

DANVILLE



L. G. BALFOUR COMPANY

ATTLEBORO, MASSACHUSETTS

Known wherever there are schools and college

CLASS RINGS • TROPHIES

DIPLOMAS • AWARDS

COMMENCEMENT ANNOUNCEMENTS

Represented by

AMBY NOLAN

22 North Franklin Street

WILKES-BARRE, PA.

Telephone — 2-1270

Compliments of

J. S. RAUB SHOE STORE

Known for Better Values

21 E. Main St.
BLOOMSBURG

137 W. Front St.
BERWICK

EPPLEY'S DRUG STORE

Main and Iron Streets

BLOOMSBURG, PENNSYLVANIA

Compliments of

HOTEL MAGEE

★

BLOOMSBURG, PA.

HESS' GRILL

RITTER'S

Everything for SCHOOL
and OFFICE

Main Street

•
BLOOMSBURG, PA.

Carrying the Finest Lines in the
Jewelry Industry

CLOCKS SILVERWARE
DIAMONDS

Guaranteed Repair

HARRY LOGAN, Jeweler

5 West Main St.

BLOOMSBURG, PA.

Phone 2205

MOYER BROS., INC.

BLOOMSBURG'S

LEADING PRESCRIPTION
DRUG STORE

Since 1868

ANN BRUNER

DRESS SHOP

◆

144 East Main Street

BLOOMSBURG, PA.

"All-Ways" Reliable

The BEST in Men's
Furnishings

FRED R. HIPPENSTEEL

Compliments of

ROSE and WALT'S

EAST STREET

•

Hoping you never forget those
submarines you ate.

CONGRATULATIONS.

Class of '51

WLTR

The Voice of the Susquehanna Valley

690 on your dial

W-orth

L-istening

T-o

R-egularly

LOW'S

for
HOUSEHOLD APPLIANCES

63 East Main

BLOOMSBURG, PA.

BOWMAN'S CLEANERS

The BEST in
Town

ORDERS:

For Tailored Suits, Overcoats
and Dresses.

SEARS, ROEBUCK

and

COMPANY

Main Street

BLOOMSBURG, PA.

A FRIEND
CONGRATULATES THE GRADUATES

STEWART'S QUICK SERVICE

ATLANTIC STATION

CATAWISSA

PENNSYLVANIA

Your OBITER

Was Engraved, Printed and Bound
in our School Annual Department.

GRIT offers complete services in commercial art for design and layout, photography, photo-engraving for black and white and color plates, a modern letterpress plant and a bindery with facilities for every phase of the work.

You can depend on GRIT'S service and quality workmanship. Consult us before placing your next order for printing.

GRIT PUBLISHING COMPANY

WILLIAMSPORT, PA.

BLOOMSBURG UNIVERSITY



3 2404 00421879 4

L

1

.55
171

c.2

0310

01120 1.5

Analysis Library
Bloomsburg University
Bloomsburg PA. 17815

Ref

LH

1

.B55

1951

c.2