

OBITER



1948



EX LIBRIS



OBITER for 1948



Volume XXXII

PUBLISHED BY THE COLLEGE COMMUNITY,
STATE TEACHERS COLLEGE
BLOOMSBURG, PA.





FOREWORD



*D*URING the past nine months, Bloomsburg State Teachers College has enjoyed probably its busiest and most successful sports schedule in history. This included sports not only on an intercollegiate scale but also a crowded program of intramural and girls' activities.

The soccer and football squads turned in record-breaking performances, the booters having won six, lost one, and tied two, and the gridmen racking up six triumphs in eight starts. After a slow start, track came through with a fine performance. Basketball and baseball managed to keep around the .500 mark, thus giving Husky athletic teams a very high composite percentage for the year.

This policy of intercollegiate and intramural activities in which a large majority of the students are participating shows that Bloomsburg is interested in the physical aspect of education as well as the mental. Physical education is annually becoming a major factor in the curriculum, and Bloomsburg is going to be certain that the student gets a well rounded education.

CONTENTS



CAMPUS

FACULTY

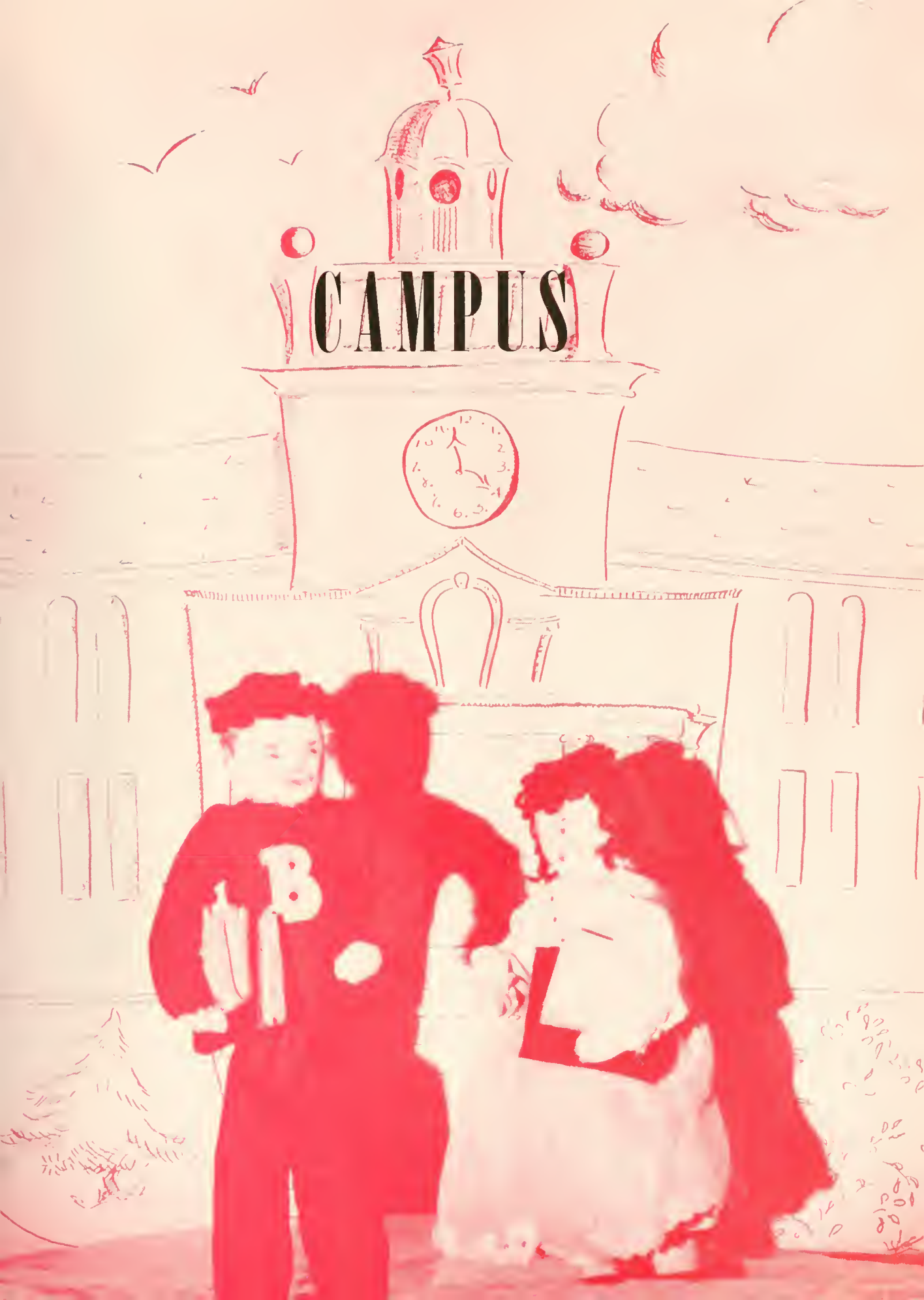
CLASSES

ATHLETICS

ORGANIZATIONS

ADVERTISEMENTS

CAMPUS





HOMECOMING!



CAMPUS

The State Teachers College property comprises about fifty-five acres, of which over forty acres form the campus proper. The campus lies on a hillside from which one looks down over Bloomsburg homes towards the bright ribbon of the Susquehanna and beyond to the softly tinted distant hills. The campus contains an athletic field, tennis courts, and a general recreation field. An oak grove with a pergola and a lagoon forms an ideal place for out-of-doors pageants and dramatics.

HISTORY OF THE STATE TEACHERS COLLEGE AT BLOOMSBURG



PRINCIPALS AND PRESIDENTS

Henry Craver	1869-1871
Charles G. Barkley	December 20, 1871-March 27, 1872
John Hewitt	March 27, 1872-June, 1873
T. L. Griswold	1873-1877
D. J. Waller, Jr.	1877-1890
Judson P. Welsh	1890-1906
D. J. Waller, Jr.	1906-1920
Charles H. Fisher	1920-1923
G. C. L. Reimer	1923-1927
Francis B. Haas	1927-1939
Harvey A. Andruss	1939-

Academy, Literary Institute, Literary Institute and State Normal School, State Teachers College—such has been the metamorphosis of the present State Teachers College at Bloomsburg.

Away back in 1839, a private academy was opened at Bloomsburg. C. P. Waller, a graduate of Williams College, successfully conducted the school for two years. Later public school teachers taught in the academy during their summer vacations. Among the outstanding teachers during this period were Joe Bradley and D. A. Beckley.

In 1856, D. J. Waller drew up a charter, which was subscribed to by worthy citizens of Bloomsburg and which provided that the school be known as the Bloomsburg Literary Institute for the promotion of education in the ordinary and higher branches of English literature and science and in the ancient and modern languages.

In 1866, Henry Craver, of Binghamton, N. Y., taught the school. His unusual influence and personality had much to do with molding its early policies. He insisted that a new building was essential for the future development of the Bloomsburg Literary Institute.

Under his inspiration, the charter of 1856 was received. Mr. Carver assured the trustees that \$15,000 would build a suitable building. The energy and enthusiasm of the man was such that when some doubted that the type of building which he planned could be built for that amount, he assumed, in addition to his duties as teacher, the offices of architect and contractor.

On April 4, 1867, that building, the present Carver Hall was dedicated with gala observance by the townspeople. Members of the first class at the new school by popular subscription raised \$1,200 in a single week for the fine bell which formerly called the

students to their classes. The first faculty comprised Professor Carver, teacher of mathematics and the higher English branches; Rev. J. R. Dimm, teacher of Latin and Greek; and Miss Sarah Carver, teacher of the lower English branches.

In the autumn of 1867, James P. Wickersham, State Superintendent of Public Instruction, was traveling through Bloomsburg on the train. He saw the new school on the hill "ablaze with lights" and thought the Literary Institute's location would be ideal for a State Normal School. So at a meeting in 1868, at which he addressed the citizens of Bloomsburg, it was decided to establish a Normal School under the Act of 1857. A dormitory was completed at a cost of \$36,000. The school was recognized as a State Normal School on Friday, February 19, 1869. In September of that year, there were 150 in the Normal Department and 80 in the Model School.

The school was called the Bloomsburg Literary Institute and State Normal School until it was purchased by the State May 22, 1916. After that it was known as the State Normal School at Bloomsburg until the name was changed to State Teachers College on May 13, 1927, by the State Council of Education. Up to 1920, when the Department of Public Instruction revised the programs of all the Normal Schools, the school offered college preparatory courses as well as teacher training courses.

Those early years were trying ones; subscriptions would fall off and trustees would often meet obligations on their own personal responsibility. In 1875, the dormitory was completely destroyed by fire. In 1876, a larger and handsomer building, the original part of Waller Hall was built. In spite of discouraging circumstances, the school began paying expenses during Doctor Griswold's administration.

Major campus improvements include the following: the addition of eighteen acres of land; the construction of a new Laundry Building; Elementary Training School; Gymnasium; Junior High School; Shop and Maintenance Building; addition to the Boiler Plant; Fire towers for several buildings; a complete remodeling of Science Hall; and the remodeling of the auditorium.

Smaller projects include the provision of complete and comfortable rooms for day students; the construction of a new recreation field; the adoption of a tree-planting program; the building of new tennis courts; the installation of sound picture equipment in the auditorium; the laying of 2,000 lineal feet of new sidewalk and street curbs, and the addition of new underground steam and electric service.

Before the passage of the first Selective Service Act in 1940 it was apparent that the upsurge of industrial activity would decrease enrollments in technical and professional institutions. Thus a transition made over a three year period required only gradual adjustment in plant, personnel, and student-body.

War programs involving contracts with the Department of Commerce, Navy Department, National Office of Education, and the Bloomsburg Hospital, enabled the college to inaugurate educational service in addition to teacher preparation.



PINERY



CARVER HALL

Carver Hall, erected in 1867, and named for Henry Carver, the first Principal, stands at the head of Main Street. Its white belfry and pillared entrance form a picturesque approach to the College campus and buildings. The building contains an auditorium seating 1,000 which has recently been completely equipped for motion pictures with sound equipment. A number of classrooms are also located in this building.



NOETLING HALL

Noetling Hall, named for William Noetling, the head of the Department of Pedagogy from 1877-1900, is in the rear of Carver Hall. On the first floor are housed the psychological and speech clinics, each with a suite of modernly equipped offices and consultation rooms.



WALLER HALL

The main dormitory, Waller Hall, named for D. J. Waller, Jr., Principal of the College for twenty-seven years, is four stories high with a frontage of 165 feet and a wing 40 by 104 feet. This building is equipped with one passenger and two freight elevators.

The ground floor of this building contains the lobby, the dining room and kitchen, the administrative and business offices, and the post office.



NORTH HALL

North Hall, the men's dormitory, is a short distance from Waller Hall. It is a three-story building, 50 by 90 feet.



SCIENCE HALL

Science Hall was built in 1906. It is equipped for laboratory work in biology, chemistry, and physics. It contains a number of classrooms and two lecture rooms with lanterns, screens and other visual-education apparatus. There are two large, well-lighted art studios in this building.



BENJAMIN FRANKLIN TRAINING SCHOOL

The Benjamin Franklin School building was opened for use the first day of the 1930-1931 school year. It is designed, planned, and equipped in accordance with the best modern practice. It provides practice teacher facilities from the kindergarten to the sixth grade, as well as a special class for the mentally retarded. Among the features is a special room arranged for observation and demonstration work.



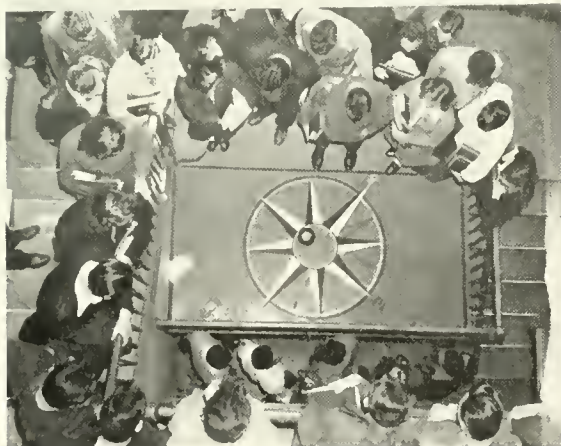
NAVY HALL

The building has classrooms, a large auditorium, home economics and industrial laboratories, library and offices. It is now occupied chiefly by the Department of Business.



CENTENNIAL GYMNASIUM

The Centennial Gymnasium is located on the upper part of the campus close to the athletic field. It is a building modern in every respect and fully adequate to meet the growing needs of the institution.





This
MARK OF COMMENDATION
is awarded to

STATE TEACHERS COLLEGE

*for effective cooperation
in training naval personnel
during World War II*



NAVY V-12 UNIT
NAVY V-5 UNIT
NAVAL FLIGHT PREPARATORY SCHOOL

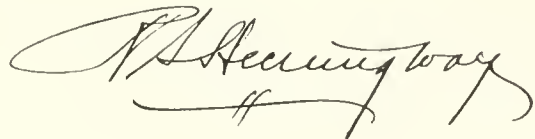
James Forrestal
Secretary of the Navy

PRESIDENT ANDRUSS, CAPTAIN MCGARRY, MEMBERS OF THE FACULTY AND ALUMNI
OF THE COLLEGE, STUDENTS, AND FRIENDS:

As President of the Board of Trustees of the College I wish to take this opportunity of extending to you, Captain McGarry, as the representative of the United States Navy, our sincere thanks for this manifestation of appreciation of the efforts put forth by this institution in developing the young men sent us into efficient and capable members of our Navy during the last World Conflict. I need not tell you, sir, nor those in this audience, what an important part our Navy played in bringing victory to our arms. History will record the overwhelming odds under which they many times fought, of their valiant exploits in the face of what appeared to be insurmountable obstacles, and of the splendid victories they achieved.

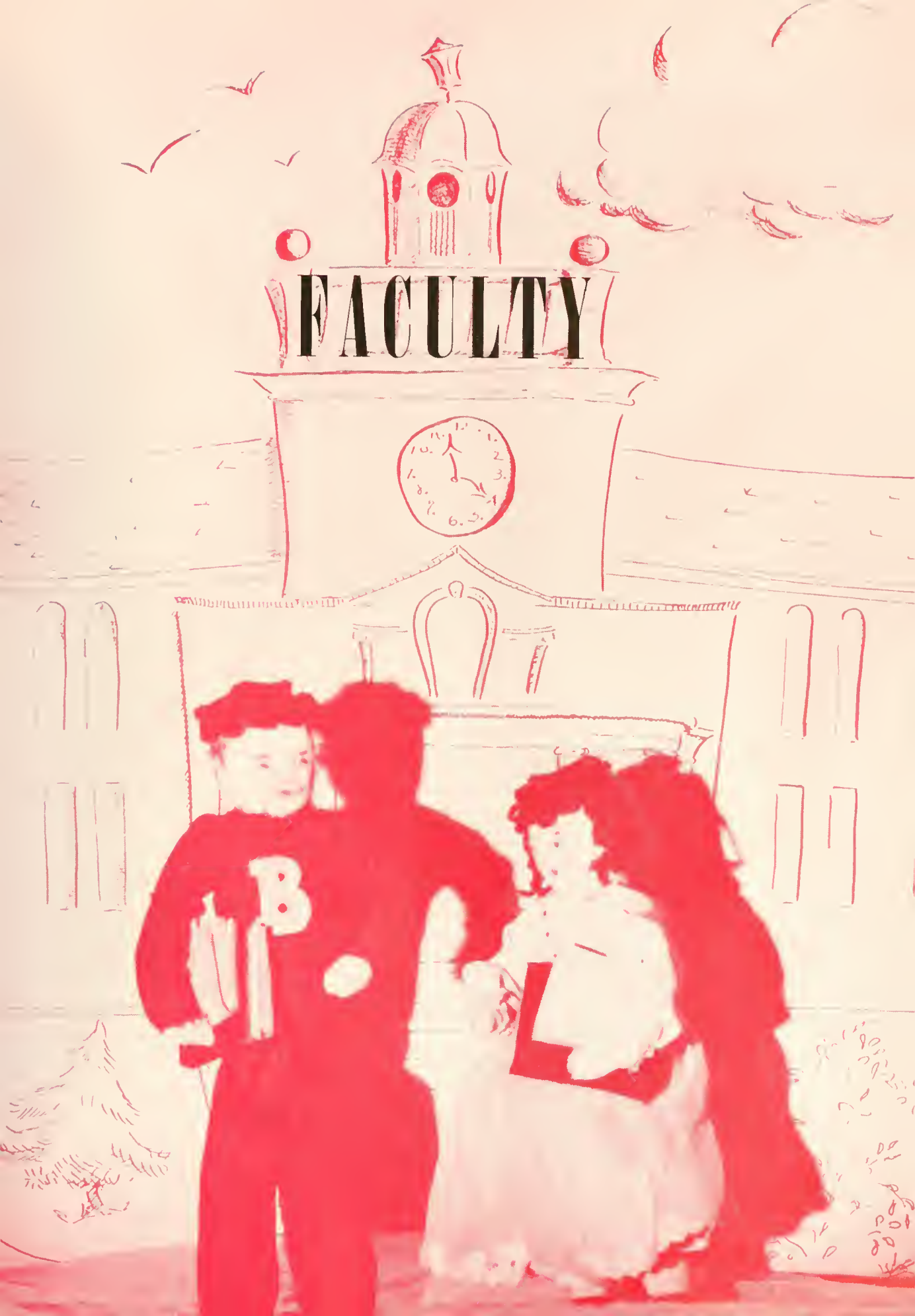
We are especially proud of the young men our Country permitted us to train, and of the untiring zeal exhibited by them and the Faculty of the College in the performance of the work assigned them. Both the students and their instructors were at all times filled with the spirit of patriotism and devotion to the cause of liberty. I know you will not be surprised at this when I remind you that it was in this Commonwealth that the Declaration of Independence and Constitution of the United States were framed and signed, and that Independence Hall, the Cradle of Liberty, nestles just a short distance over those hills.

I consider it a signal honor, sir, to have been chosen as the representative of the College to accept this token of esteem tendered by our Navy. I assure you it will be given a conspicuous place among our trophies, one where it will never fail to be a constant inspiration to all those who enter these halls. I accept this award, sir, acting for and on behalf of the Bloomsburg State Teachers College, as a Memorial to the Service Men trained here and their instructors, and promise you that it will always be cherished as one of our dearest possessions. May Almighty God help us always to preserve the ancient land marks which our forefathers have set.

A handwritten signature in cursive script, appearing to read "R. A. Andrus". The signature is written in dark ink on a light background. The first name "R. A." is written in a smaller, more compact script, while "Andrus" is written in a larger, more flowing cursive. There is a horizontal flourish underneath the name.



FACULTY





Students

It is not long since you
As Freshman came up College Hill
To work and play where nearby the Susquehanna flows
Since time was old and things were still.

Like you, others saw beauty with each season pass.
Colors—green in summer everywhere
Then brown leaves fall and white snow drifting down
Until only pine and hemlock were not bare.

Year after year new students came and went
Until you, too, were here in this long file
But soon you will go and others come
Who in their turn will only stay awhile.

But, in a way, you do not go from here.
For every student leaves something here behind.
Something that lingers after they are gone
Something that lingers on in every mind

They studied once just where you studied now.
On these same chairs they sat with worried brow.
They found it hard to work the problems right
The same old problems you worked last night.

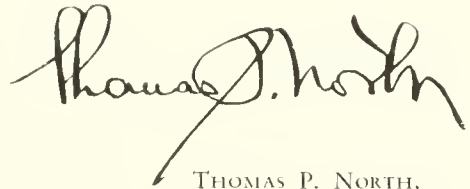
And so you go, but still you stay behind
For something that you left here will be ours
To make us think of you, to hope you'll find
Long years of usefulness and happy hours.

Harvey A. Andrews

TO THE CLASS OF 1948:

Attendance at college not only results in the formation of many lasting friendships, but also the concomitant responsibilities. One of these, not too often considered, is the responsibility of the graduate toward the institution and its place in the realm of education. Bloomsburg, as you know, has attained an esteemed position in the field of higher education through the loyalty and vitality of its several generations of students and faculties. The past, therefore, challenges the present and the future. We hope that you and your generation will accept this challenge by assisting your Alma Mater in its recruitment of worthy candidates for the teaching profession.

Sincerely yours,

A handwritten signature in cursive script that reads "Thomas P. North". The signature is written in dark ink and is positioned above the printed name.

THOMAS P. NORTH,

Dean of Instruction.





Do you remember the kaleidoscope you had for a toy? It was fascinating to shake the bits of colored glass in the tube and watch the shifting patterns.

The college year is like that. In the fall the pattern has much green—grass and trees and freshmen. This changes to the bright autumn colors. Maroon and gold indicates the football season. The soft, dull November shades shift to the merry colored lights of Christmas and the white snow. Midwinter shows bright-hued sportswear and the brilliance of dancewear. Spring's pattern of blue sky and green growth shifts finally to the dignity of the Seniors' black and white academic costume.

Keep all of this play of color in your mind's memory book of BSTC to be recalled with happiness and perhaps a bit of wistfulness.

DR. KEHR,
Dean of Women.

The Deans

TO BLOOMSBURG MEN AND WOMEN:

An old coupler, one born of an 18th century revolution and now used to apply to a 20th century academic revolution, is recalled by the trend of education today: "Bliss was it in that dawn to be alive, but to be young was very heaven." It seems to me that those of us who have reached, or are reaching towards the much-discussed milestone of 40 are beginning to realize that life does not begin as we grow older, it just continues. We can be happy over the fact that we are still alive and can see something of this academic revolution that will occupy decisively the next five or ten years.

Those of you who are just coming into the teaching profession now with the best years of your life ahead will have a growing and decisive influence on the direction that education takes, and to you as you gather strength in that undertaking, all the luck in the world.

JOHN A. HOCH,
Dean of Men.





JOSPH R. BAILER

Director of Secondary Education and Placement

University of Pittsburgh, B.Sc.; New York University, M.B.A.; Graduate Work, Cambridge University, Cambridge, England; University of Grenoble, Grenoble, France; Columbia University, Home, Bloomsburg, Pa.



MRS. LUCILLE BAKER

Training Teacher, Grade 1

Western State College, Colorado, A.B.; Columbia University, A.M.; Graduate Work, Pestalozzi-Proebel School, Chicago, Ill.; Denver University, Home, Bloomsburg, Pa.



HARVEY N. DEAL

Librarian—English

East Carolina Teachers College, A.B.; George Peabody College, M.A., B.S., L.S.; Home, Greenville, North Carolina.



EDWARD T. DE VOE

English

State Teachers College, Bloomsburg, Pa., B.S.; Graduate Work, Bucknell University, Home, Bloomsburg, Pa.



HOWARD F. FENSTERMAKER

Foreign Languages

State Normal School, Bloomsburg, Pa.; University of Michigan, A.B.; New York University, M.A.; Graduate Work, University of Pennsylvania, Home, Bloomsburg, Pa.



JOHN J. FISHER

Psychology—Measurements

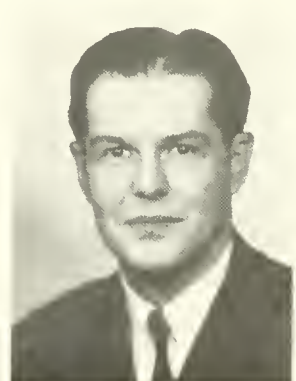
Goshen College, Goshen, Ind., A.B.; Indiana University, M.A.; Harrison Fellow, University of Pennsylvania; Graduate Work, Columbia University; Ohio State University, Home, Bloomsburg, Pa.



HARRY N. GASSER

Training Teacher, Grade 5

State Teachers College, Kutztown, Pa., B.S.; Pennsylvania State College, M.Ed.; Graduate Work, University of Pennsylvania; Temple University; Columbia University, Home, Hazleton, Pa.



EARL A. GERHIG

Business Education

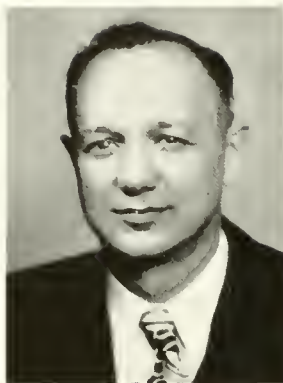
State Teachers College, Bloomsburg, Pa., B.S.; Northwestern University, M.B.A.; Graduate Work, Bucknell University, Home, Bloomsburg, Pa.



MISS DOROTHY E. GILMORE

Assistant Librarian

State Teachers College, Bloomsburg, Pa.; B.S.; Graduate Work, New York University; State Teachers College, Millersville, Pa.; Home, Bloomsburg, Pa.



RICHARD G. HAILISY

Director of Business Education

State Teachers College, Whitewater, Wisconsin; B.Ed.; Iowa University, M.A.; Graduate Work, University of Pittsburgh; Home, Maunstown, Wis.



EDNA J. HAZEN

Director of Elementary Education

Columbia University, B.S., M.A.; Graduate Work, New York University; Home, Bloomsburg, Pa.



CHARLES H. HUNRIFI

Business Education

State Teachers College, Bloomsburg, Pa.; B.S.; Temple University, M.Ed.; Graduate Work, University of Pittsburgh; New York University; Home, Bloomsburg, Pa.



RALPH HERRI

Social Studies

Colgate University, B.S.; Albany State College, Albany, N. Y., M.A.; Graduate Work, Clark University; New York University; University of Buffalo; University of Rochester; Pennsylvania State College; Home, Bloomsburg, Pa.



CLAYTON H. HINKLI

Business Education

State Teachers College, Bloomsburg, Pa.; B.S.; Temple University, M.A.; Home, Bloomsburg, Pa.



STEPHEN R. HOPKINS

Private School of Music

Yale University School of Music, B. of Music; Student, Tobias Matthay Pianoforte School; Royal Academy of Music, Dalroze School, London, England; Home, New York, N. Y.



ALICE JOHNSTON

Speech

Park College, Missouri, B.L.; Columbia University, M.A.; Graduate Work, University of Wisconsin; Columbia University; University of Michigan; University of Chicago; Central School of Speech, London, England; Home, Bloomsburg, Pa.



GEORGE J. KELLIER

Art

State Normal School, Bloomsburg, Pa.,
Columbia University, B.S.; Bucknell
University, M.A. Home, Bloomsburg,
Pa.



ELLA JANE KRUMACHER

Business Education

Rutgers University, B.S.; Rider College,
B.C.S.; New York University, M.A.;
Graduate Work, New York University,
Home, New Jersey.



KIMBER C. KUSTER

Biological Science

State Normal School, Bloomsburg, Pa.,
University of Michigan, B.S., M.A.,
Ph.D. Home, Bloomsburg, Pa.



HAROLD H. LANTERMAN

Physical Science

State Teachers College, Bloomsburg,
Pa., B.S.; New York University, M.A.;
Graduate Work, New York University;
Pennsylvania State College, Home,
Berwick, Pa.



ELMA I. MAJOR

Special Education

State Teachers College, Bloomsburg,
Pa., B.S.; University of Michigan, M.S.;
Graduate Work, Horace Rackham
School of Special Education, Michigan,
Home, Dallas, Pa.



NELL MAUPIN

Social Studies

Peabody Teachers College, B.S.; Van-
derbilt University, Chicago University,
University of Iowa, M.A.; Graduate
Work, New York University, Home,
Bloomsburg, Pa.



M. BEATRICE METTLER

Resident Directing Nurse Hygiene

Bucknell University, A.B.; Graduate,
The John Hopkins School of Nursing,
Baltimore, Md.; Graduate Work, Uni-
versity of Chicago. Home, Elysburg, Pa.



HARRIET M. MOORF

Music Education—Education

State Teachers College, Kirksville, Mo.;
Bush Conservatory, Chicago, Ill.,
Mus.B.; New York University, B.S. in
Music Education, M.A. in Education;
Graduate Work, New York University,
Home, Bloomsburg, Pa.



HONORA M. NOYES

Business Education

George Washington College, B.A.; University of Pittsburgh, M.Ed.; Graduate Work, New York University. Home, Pittsburgh, Pa.



ETHEL A. RANSON

*Assistant Dean of Women
Mathematics*

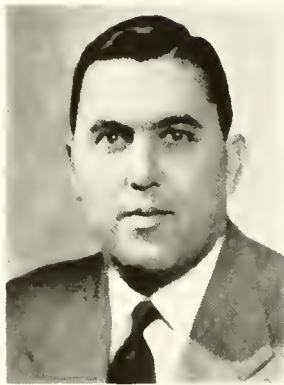
University of Illinois, A.B.; Columbia University, M.A.; Graduate Work, Columbia University. Home, Bloomsburg, Pa.



EDWARD A. REAMS

Social Studies

Kansas Wesleyan, A.B.; Columbia University, M.A.; Graduate Work, University of Southern California; Pennsylvania State College; New York University. Home, Bloomsburg, Pa.



ROBERT A. REDMAN

*Social Studies
Coach—Football, Baseball*

Swarthmore College, A.B.; Duke University, M.A.; Graduate Work, Pennsylvania State College; University of Wisconsin. Home, Sayre, Pa.



H. H. RUSSELL

Geography

Illinois State Normal University, B.Ed.; Clark University, M.A., Ph.D. Home, Bloomsburg, Pa.



J. AIMUS RUSSELL

English

Dartmouth College, A.B.; Cornell University, M.A.; Ph.D.; University of London, Certificate; Graduate Work, University of Rochester; University of Maine. Home, Bloomsburg, Pa.



W. S. RYGIEL

Business Education

Temple University, B.S.; M.Ed.; Graduate Work, University of Pennsylvania; Bucknell University. Home, Wyoming, Pa.



MRS. ANNA GARRISON SCOTT

Training Teacher, Grade 4

Teachers College, Columbia, B.S.; M.A. Home, Bloomsburg, Pa.



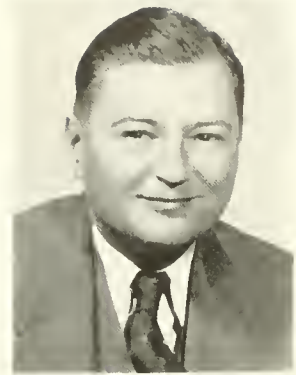
S. I. SHORTESS
Physical Science

Albright College, A.B.; University of Pennsylvania, M.S.; Graduate Work, New York University. Home, Bloomsburg, Pa.



MRS. LORRAINE SNYDER JONES
Training Teacher, Grade 3

State Teachers College, Bloomsburg, Pa., B.S.; Graduate Work, Temple University; University of Michigan. Home, Pottsville, Pa.



WILLIAM B. STERLING
Business Education - Aviation

University of Buffalo, B.S.; Commercial Pilot - Instrument Rating, CAA Designated Private Pilot Examiners Rating. Home, Bloomsburg, Pa.



DELLA M. THAYER
Dictitian

Syracuse University, B.S. in H. Economics. Home, Scranton, Pa.



IVA MAE VAN SCOYOC
Training Teacher, Grade 2

State Teachers College, Lock Haven, Pa., B.S.; Pennsylvania State College, M.Ed. Home, Tyrone, Pa.



MARGARET E. WALDRON
*Assistant Dean of Women
Mathematics*

Wellesley College, B.A.; Columbia University, M.A.; Graduate Work, Howard University; University of Southern California. Home, Muncy, Pa.



S. L. WILSON
English

Bucknell University, B.Sc.; Columbia University, M.A.; Graduate Work, Harvard University; New York University. Home, Bloomsburg, Pa.



PETER WISHER
*Physical Education
Coach - Basketball, Track*

State Teachers College, East Stroudsburg, Pa., B.S.; Pennsylvania State College, M.Ed.; Graduate Work, Pennsylvania State College. Home, Bloomsburg, Pa.



GRACE WOOLWORTH

Training Teacher, Kindergarten
State Teachers College, Kearney, Nebraska; University of Chicago, Ph.D.; University of California, Columbia University, M.A.; Graduate Work, Columbia University. Home, Bloomsburg, Pa.

EDNA J. BARNES

Training Teacher, Grade 4

Western State Teachers College, Macomb, Ill. B.S.; Columbia University, M.A.; Graduate Work, University of Colorado; Columbia University. Home, Bloomsburg, Pa.

WILLIAM C. FORNIY

Business Education

Temple University, B.S.C.; New York University, M.A. Home, Danville, Pa.

LUCY McCAMMON

Health Education

Southwestern Missouri Teachers College, A.B.; Columbia University, M.A.; Graduate Work, Alabama University; Columbia University. Home, Bloomsburg, Pa.

Administration



C. M. HAUSKNECHT
Business Manager



N. T. ENGLFHART
Supt. of Grounds



EDWARD D. SHARRETTS
Institutional Secretary



Rear Row, Left to Right—Mrs. Stout, Mrs. U'rich, Mrs. Knight, C. Young, B. Eyerly.
Front Row—A. Holter, E. Wilson, Mrs. John, M. May, P. Clossen.

Cooperating Teachers

Banghart, Lee W. Bloomsburg State Teachers College, B.S.	<i>Social Studies</i>
Birth, Jennie A.—Berwick High School George Washington University, A.B.; Columbia University, M.A.	<i>Biological Science</i>
Brink, J. Frank—Bloomsburg High School Bloomsburg State Teachers College, B.S.; Bucknell University, M.S.	<i>Physical Science</i>
Campbell, Lawrence J.—Bloomsburg High School St. Bonaventure, B.S.; Bucknell University, M.A.	<i>Math. and Science</i>
Christian, Willard A., Jr. Bloomsburg State Teachers College, B.S.; Bucknell University, M.S.	<i>Business Education</i>
Elder, Caroline E.—Berwick High School Bucknell University, B.S.; New York University, M.A.	<i>English</i>
Eves, Jessie M. Pennsylvania State College, B.A.; New York University, M.A.	<i>English</i>
Free, Sara Smull Bloomsburg State Teachers College, B.S.; Bucknell University, M.S.	<i>Social Studies</i>
Gardner, Gertrude Bucknell University, A.B.	<i>Business</i>
Harter, Edna S. Ursinus College, A.B.; New York University, M.A.	<i>Mathematics</i>
Hidlay, Clarissa B. Bloomsburg State Teachers College, B.S.	<i>Languages</i>
Kessler, Mary Ellen M. Bloomsburg State Teachers College, B.S.; Bucknell University, M.S.	<i>Business</i>
Kline, Harriet H.—Bloomsburg High School Bloomsburg State Teachers College, B.S.; New York University, M.A.	<i>English</i>
Long, Bess M.—Bloomsburg High School Susquehanna University, A.B.; Columbia University, M.A.	<i>Science</i>
McKinstry, Cleora M. Bloomsburg State Teachers College, B.S.; Pennsylvania State College, Ed.M.	<i>English</i>
Mercer, Robert H.—Bloomsburg High School Gettysburg College, B.S.; Bucknell University, M.S.	<i>Mathematics</i>
Miller, Harold R.—Bloomsburg High School Bloomsburg State Teachers College, B.S.; Columbia University, M.A.	<i>Geography</i>
Mordan, George M.—Bloomsburg High School Gettysburg College, B.S.; Bucknell University, M.S.	<i>Mathematics</i>
Myerley, George G. East Stroudsburg State Teachers College, B.S.	<i>Social Studies</i>
Pensyl, Marce E.—Bloomsburg High School Bucknell University, B.S.; New York University, M.A.	<i>Social Studies</i>
Reed, William I.—Bloomsburg High School Bloomsburg State Teachers College, B.S.; University of Pennsylvania, M.S.	<i>Business</i>
Richie, Neil M.—Danville High School Bloomsburg State Teachers College, B.S.; Bucknell University, M.S.	<i>Business</i>
Schell, Ray I.—Bloomsburg High School Ursinus College, B.S.; Bucknell University, M.S.	<i>Mathematics</i>
Selden, William Henry Bloomsburg State Teachers College, B.S.	<i>Business Education</i>
Sharpless, Myra S.—Bloomsburg High School Bloomsburg State Teachers College, B.S.	<i>Foreign Languages</i>
Shutt, William L.—Bloomsburg High School Bloomsburg State Teachers College, B.S.	<i>Business</i>
Smith, Delmar L.—Berwick High School Bloomsburg State Teachers College, B.S.	<i>Social Studies</i>
Thomas, Ruth Hartman Bloomsburg State Teachers College, B.S.	<i>Business</i>
Wanich, Jack C. Bloomsburg State Teachers College, B.S.	<i>Business</i>
Watts, Murray D. Temple University, B.S.C.	<i>Business</i>
Williams, Robert R. Bloomsburg State Teachers College, B.S.	<i>Business</i>

CLASSES





CHARLOTTE REICHARD



HARRY JOHN



ELROY DALBERG



ESTELLE FRIDAY

Senior Class

OFFICERS

<i>President</i>	- - - - -	HARRY JOHN
<i>Vice President</i>	- - - - -	ELROY DALBERG
<i>Treasurer</i>	- - - - -	ESTELLE FRIDAY
<i>Secretary</i>	- - - - -	CHARLOTTE REICHART
<i>Historian</i>	- - - - -	NANCY EVANCHO
<i>Girl Representative</i>	- - - - -	PEGGY LEWIS
<i>Boy Representative</i>	- - - - -	JIM TIERNEY
<i>Class Adviser</i>	- - - - -	DR. MAUPIN

The class of 1948 will be the last that has experienced college life during the war as well as the post war period. College activities, attaining a high peak, have given us many opportunities to enrich our campus life.

The Canteen and OBITER, which were the main projects of Senior classes in previous years, have been taken over by the Community Government Association. Another innovation was the reopening of the Williamsport schools as a teaching center for the overflow of business students.



E. ANNE BALDY

Secondary

President of Freshman Class; Women's Chorus 1, 2, 3, 4, President 3, 4; Athenaeum Club 2, Vice President 2; Science Club 3, 4, Program Chairman 3, Secretary 4; Dramatic Club 1, 2; *Maroon and Gold* 1, 2, 3; Day Women's Association 1, 2, 3, 4; Kappa Delta Pi 3, 4; "B" Club 2, 3, 4; C. G. A. 1, 2, Treasurer 2; F. T. A. 4; Who's Who 4.

Home — Catawissa, Pa.



ROSALYN L. BARTH

Elementary

Home — Plymouth, Pa.

MARJORIE E. BRACE

Elementary

Women's Chorus 1, 2, 3, Librarian 3; "B" Club 2, 3, 4; S. C. A. 1, 2, 3, 4; Waller Hall Association 1, 2, 3, 4, Governing Board 3, 4; Gamma Theta Upsilon 4, Secretary 4; F. T. A. 4.

Home — West Hazleton, Pa.



ROSANNA J. BROADT

Secondary

Day Women's Association 1, 2, 3, 4; *Maroon and Gold* 1, 2, 3, Reporter 1, Circulating Manager 2, 3; Vice President of Sophomore Class; Athenaeum Club 2, Treasurer 2; "B" Club 2, 3, President 3; F. T. A. 4.

Home — Bloomsburg, Pa.





HELENE L. BROWN

Elementary

Women's Chorus 1, 2, 3, Vice President 3; S. C. A. 3, 4; College Council 2; Waller Hall Association 1, 2, 3, 4, Governing Board 3, 4; Kappa Delta Pi 3, 4; F. T. A. 4.

Home — West Hazleton, Pa.

MARY ELLEN CLARK

Elementary

S. C. A. 3, 4; Women's Chorus 3, 4; F. T. A. 4.

Home — Dallas, Pa.

DORIS MARIE CONDOR

Secondary

Waller Hall Association 1, 2, 3, 4, Treasurer 2; "B" Club 2, 3, 4, Treasurer 2; Science Club 2, 3, Vice President 2; Women's Chorus 1, 2, 3, 4; Treasurer of Sophomore Class; Chairman of Waller Hall Customs 4; Governing Board 1, 2; Secretary of Freshman Class; F. T. A. 4.

Home — Hazleton, Pa.

NANCY EVANCHO

Business

Business Education Club 2, 3; Women's Chorus 2; Athenaeum Club 2, 4; Historian of Senior Class; F. T. A.

Home — Eckley, Pa.



BETTY FISHER

Business

Poetry Club 1; Day Women's Association 1, 2, 3, 4, President 3; Business Education Club 1, 2, 3, 4, Editor of Club Annual 2, Publicity Chairman 2, Social Chairman 3; Social Service Club 2, Treasurer 2; Scholarship Awards Committee 1; *Maroon and Gold* Typist 1; Athenaeum Club 2; Secretary of Sophomore Class; Pi Omega Pi 2, 3, 4, Treasurer 3; Kappa Delta Pi 3, 4; "B" Club 2, 3, 4, President 4; Delegate to E. S. A. Conference 3; Secretary of C. G. A. 3, 4; General Chairman of Student Committees for Retail Sales Conference 3; Who's Who 4; F. T. A. 4.

Home — Bloomsburg, Pa.



NANCY M. FISK

Elementary

Women's Chorus 1; Social Service Club 1, 2; Day Women's Association 1, 2, 3, 4; Kappa Delta Pi 3, 4, Secretary 4; Athenaeum Club 2; F. T. A. 4.

Home — Danville, Pa.



ESTELLE FRIDAY

Business

Waller Hall Association 1, 2, 3, 4; *Maroon and Gold* Reporter 1; Business Education Club 1, 2, 3, Treasurer 2; Women's Chorus 1, 2; S. C. A. 1, 2; Secretary of Sophomore Class; "B" Club 2, 3, 4, Treasurer 4; Pi Omega Pi 2, 3, 4; Kappa Delta Pi 3, 4; Treasurer of Senior Class; Chairman of C. G. A. Recreation Committee 4; F. T. A.

Home — Phoenixville, Pa.



JOYCE E. GASS

Elementary

Women's Chorus 1, 2; Science Club 1; Day Women's Association 1, 2, 3, 4, Treasurer 3; Athenaeum Club 2; Kappa Delta Pi 3, 4; F. T. A. 4.

Home — Danville, Pa.

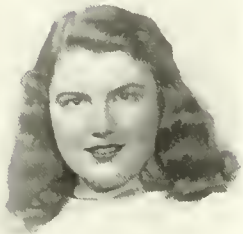


JANET E. GILBODY

Secondary

President of Sophomore Class; Historian of Junior Class; Women's Chorus 1, 2, 3, 4, Treasurer 2; S. C. A. 1, 2; C. G. A. 2, 3, Committee Chairman 2, 3; State Student Representative, Board of Control, E. S. A. 2, 3; Day Women's Association 1, 2, 3, 4, Official Board 1, 4; Kappa Delta Pi 3, 4; "B" Club 2, 3, 4; Athenaeum Club 2, 3, President 3; *Maroon and Gold* 3; F. T. A.

Home — Bloomsburg, Pa.



BARBARA J. GREENLY

Secondary

Day Women's Association 1, 2, 3, 4, Official Board, Publicity Chairman 2; Alpha Psi Omega 4; Football Program 3, 4, Manager 4; C. G. A. Chairman of Hospitality Committee 2, 3; "B" Club 2, 3, 4; Bloomsburg Players 1, 2, 3, 4, Secretary 4; *Maroon and Gold* 1, 2, 3, Exchange Editor 2, 3; Historian of Freshman Class; Social Committee 2; Women's Chorus 1, 2, 3; S. C. A. 2, 3; Athenaeum Club 2; Social Service Club 1; Twirler for *Maroon and Gold* Band 3, 4, Director 4; F. T. A. 4.

Home — Bloomsburg, Pa.

MARTHA A. HATHAWAY

Elementary

Day Women's Association 1, 2, 3, 4; Women's Chorus, Accompanist 1, 2, 3, 4; Election Board Chairman 2, 3; Kappa Delta 3, 4; F. T. A. 4.

Home — Danville, Pa.



MRS. DORIS KELLER HOSLER

Business

Day Women's Association; F. T. A.

Home — Bloomsburg, Pa.



ROSE MARIE KRAISER

Business

Business Education Club 1, 2, 3; Women's Chorus 1, 2, 3, 4; Dramatic Club 1, 2; *Maroon and Gold* 3; "B" Club 2, 3, 4; Pi Omega Pi 2, 3, 4, Secretary 3, Booklet Editor 3, Treasurer 4; Kappa Delta Pi 3, 4, Recording Secretary 4; C. G. A. Budget Committee 3; Editor of Business Education Club Annual 3; Co-Chairman C. G. A. Awards Committee 3; Committee Chairman of Business Education Club 2; Waller Hall Association 1, 2, 3, 4, Governing Board 1, 2; Treasurer of Junior Class; F. T. A.

Home — Horsham, Pa.

ELIZABETH LEHET

Business

Kappa Delta Pi 3, 4; Pi Omega Pi 3, 4; College Council 3, 4; C. G. A. Vice President 4; Secretary of Freshman Class; Athenaeum Club 1; "B" Club 3, 4; Business Education Club 1, 2, 3, 4, Program Chairman 3, Chairman Committee Contest 3; Recreation Committee 2, 3; Waller Hall Association 1, 2, 3, 4, Governing Board Vice President 3, Senior Representative 4, Acting President of Summer Session; Women's Chorus 1; F. T. A. 4.

Home — Wilkes-Barre, Pa.



PEGGY ANN LEWIS

Business

Women's Chorus 1, 2; S. C. A. 1, 2; Waller Hall Association 1, 2, 3, 4; "B" Club 2, 3, 4; Business Education Club 1, 2, 3; C. G. A. Dance Co-Chairman 3, 4; C. G. A. Senior Representative; *Maroon and Gold* 1, 2; Historian of Freshman Class; Social Room Chairman 1, 2; F. T. A. 4.

Home — Phoenixville, Pa.



MRS. ELLEN MOORE LIPSKI

Secondary

Waller Hall Association 1, 2, 3, 4; Science Club 1, 2, 3, Secretary 2; Women's Chorus 2, 3; Kappa Delta Pi 3, 4; "B" Club 3, 4; F. T. A. 4.

Home — Towanda, Pa.



GLORIA C. MAINIERO

Secondary

Dramatic Club 1, 2, 3, 4; Alpha Psi Omega 3, 4, Secretary 4; Waller Hall Association 1, 2, 3, 4, Chairman; "B" Club; Athenaeum Club 2, 3; *Maroon and Gold* 3; F. T. A. 4.

Home — Hazleton, Pa.



DOROTHY J. MITTEN

Business

Waller Hall Association 1, 2, 3, 4, Treasurer 2; S. C. A. 1; Women's Chorus 1, 2; Business Education Club 1, 2, 3, 4; F. T. A. 4.

Home — Camptown, Pa.

MARY A. MOSER

Elementary

Women's Chorus 1, 2, 3; S. C. A. 2, 3, 4, President 4; Waller Hall Association 1, 2, 3, 4, Secretary 3, President 4; "B" Club 2, 3, 4; College Council 3, 4; Canteen Manager 2; Poster Committee Chairman 4; Canteen Committee Chairman 4; F. T. A. 4.

Home — Ringtown, Pa.

ANNE FULLER NORTHUP

Elementary

Y. W. C. A. 1, 2; Athletics 1, 2; Dramatic Club 2, 4; Kappa Delta Pi 4; S. C. A. 4; Who's Who 4; Mixed Chorus 1; Women's Chorus 4; Waller Hall Association 1, 2, 4, Counselor 4; F. T. A. 4.

Home — Dalton, Pa.



JUNE V. NOVAK

Business

Waller Hall Association 1, 2, 3, 4, Governing Board 2; Women's Chorus 1, 2; S. C. A. 2, Secretary 2; OBITER Business Staff 2; F. T. A. 4.

Home — Sheppton, Pa.



MILDRED PALUMBO

Secondary

Dramatic Club 1, 2, 3, 4; Waller Hall Association 1, 2, 3, 4, Governing Board 4; Kappa Delta Pi 4; Secretary of Junior Class; Athenaeum Club 3; F. T. A. 4.

Home — Mount Carmel, Pa.



MATILDA PATRICK

Business

Waller Hall Association 1, 2, 3, 4, Secretary 3; Business Education Club 1, 2, 3, 4, Secretary 3; Women's Chorus 1, 2; F. T. A. 4.

Home — Dupont, Pa.



CHARLOTTE REICHART

Business

Business Education Club 1, 2, 3; Pi Omega Pi 2, 3, 4, Historian 3, 4; Kappa Delta Pi 3, 4; Women's Chorus 1, 2, 3, 4; Day Women's Association 1, 2, 3, 4, Vice President 3, President 4; College Council 3, 4; Social Service Club 1; Athenaeum Club 3; Bloomsburg Players 1; Secretary of Senior Class; F. T. A. 4.

Home — Light Street, Pa.



JEAN RICHARD

Secondary

"B" Club; Bloomsburg Players; Woman's Chorus 1, 2, 3, 4, Vice President 4; C. G. A. Council; *Maroon and Gold* Editorial Board; Girl Representative of C. G. A. 1; Social Service Club; Student Director, Bloomsburg Players, Public Plays; Orchestra 1; Chairman of C. G. A.; *Maroon and Gold* Editor; Alpha Psi Omega 4, Secretary 4; Kappa Delta Pi 3, 4; Athenaeum Club 2, Vice President 2; F. T. A. 4.

Home — Bloomsburg, Pa.



MARY E. RUSH

Secondary

Day Women's Association 1, 2, 3, 4, Official Board 2, 4; Women's Chorus 1, 2, 3, 4; Athenaeum Club 2, 3; "B" Club 4; S. C. A. 2, 3, Treasurer 2, Secretary 3; *Maroon and Gold* 3; Kappa Delta Pi 3, 4; F. T. A. 4.

Home — Bloomsburg, Pa.

MARY SEVERN

Secondary

Day Women's Association 1, 2, 3, 4; Social Service Club 1, 2; Cheerleader 1; "B" Club 4; Color Guard for Band 3; F. T. A. 4.

Home — Bloomsburg, Pa.



LOUISE C. SHARPLESS

Elementary

Day Women's Association 1, 2, 3, 4, Secretary 3; Social Service Club 1, 2; Science Club 2; Athenaeum Club 2, 3; Women's Chorus 3; *Maroon and Gold* 3; F. T. A. 4.

Home — Catawissa, Pa.



FERN N. SHELLENBERGER

Secondary

Women's Chorus 1, 2, 3; Dramatic Club 1; Maroon and Gold Band 1; Athenaeum Club 1; Poetry Club 2, 3, Historian 2, Vice President 3; Day Women's Association 1, 2, 3, House Committee 3; F. T. A. 4.

Home — Bloomsburg, Pa.



MRS. HAZEL SULT SIGWORTH

Elementary

Kappa Delta Pi 4; Gamma Theta Upsilon 4; Women's Chorus 4; F. T. A. 4.

Home — Berwick, Pa.



BERTHA MAY STURMAN

Business

Chairman of C. G. A. Awards Committee 3; Waller Hall Association 1, 2, 3, 4, Governing Board 1, 3; Vice President of Junior Class; Women's Chorus 1, 2, Librarian 1; Business Education Club 1, 2, 3, 4, Treasurer 2; "B" Club 3, 4; Maroon and Gold Band 3, 4; F. T. A. 4.

Home — Tunkhannock, Pa.



NADINE E. TRACY

Secondary

Waller Hall Association 1, 2, 3, 4; F. T. A. 4.

Home — Hanover, Pa.



MARION E. WILSON

Elementary

Athenaeum Club 2, 3; Women's Chorus 3; S. C. A. 2, 3, 4; Waller Hall Association 1, 2, 3, 4, Treasurer 4; Kappa Delta Pi 3, 4; F. T. A. 4.

Home — Kis Lyn, Pa.



DOROTHY WINKELBLECH

Elementary

Day Women's Association 1, 2, 3, 4; Women's Chorus 2, 3, 4; Social Service Club 2; Athenaeum Club 2; Kappa Delta Pi 3, 4; F. T. A. 4.

Home — Berwick, Pa.

JEAN LICHTENWALNER

Secondary

Home — Orangeville, Pa.



Additional Seniors

EDWARD BOLLINGER
MRS. ANNA DOBERSTEIN CUMBIRLAND
BLOWDEN P. EDWARDS
GILBERT HENRIE
HOWARD H. MASTERS
ELAINE WILLIAMS
JACK O. FURMAN
ROBERT L. YFAGER

Secondary
Secondary
Elementary
Business
Elementary
Elementary
Business
Elementary

Erie, Pa.
Hunlock Creek, Pa.
Briar Creek, Pa.
Bloomsburg, Pa.
Mt. Pleasant Mills, Pa.
Kingston, Pa.
Wyalusing, Pa.
Mt. Pleasant Mills, Pa.

PAUL N. BAKER

Business

Day Men's Association; F. T. A. 4.

Home — Bloomsburg, Pa.



LEO CARTER

Business

Dormitory Men's Association 3, 4; Baseball 3, 4; F. T. A.

Home — Throop, Pa.



JOSEPH CHESNEY

Secondary

Dormitory Men's Association 3, 4; Basketball 4; F. T. A. 4.

Home — Mount Carmel, Pa.

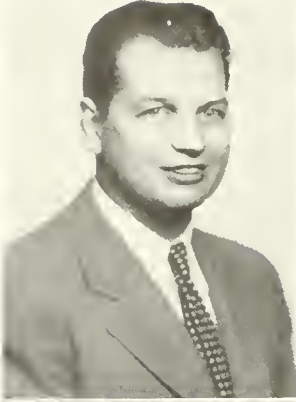


HAROLD O. CLEMENS

Secondary

Day Men's Association 1, 2, 3, 4, Historian 3; Soccer 1;
Athenaeum Club 3; Kappa Delta Pi 4; F. T. A. 4.

Home — Bloomsburg, Pa.



ELROY F. DALBERG

Secondary

Treasurer of Freshman Class; College Council 1; Science Club 3, Vice President 3; Kappa Delta Pi 3, 4, President 4; President of Senior Class; Phi Sigma Pi 3, 4; F. T. A.

Home — Windber, Pa.



JOHN DAVIS

Business

North Hall Association 3, 4, President 3; College Council 3; F. T. A. 4.

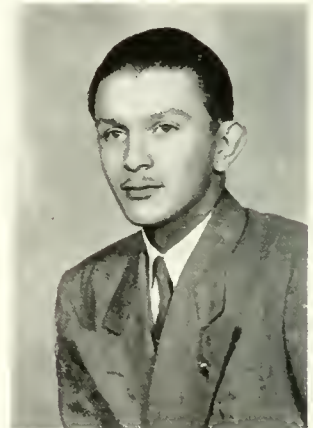
Home — Kingston, Pa.

FREDERICK J. DE BELL, JR.

Secondary

Athenaeum Club 3, 4, Vice President 4; Poetry Club 3, 4, Vice President 4; F. T. A. 4.

Home — North Bennington, Vt.



JAMES J. DORMER

Business

Football 1, 2; J. V. Baseball 2; Social Usage Club 1; Business Education Club 1, 2, 3; Pi Omega Pi 4; Phi Sigma Pi 4; F. T. A. 4.

Home — Hatboro, Pa.



JACK A. GILLUNG

Secondary

Social Usage Club 1, 2; Athenaeum Club 3, 4; Election Board 3, 4; F. T. A. 4.

Home — Brockway, Pa.



JOHN F. GUY

Business

Business Education Club 3, 4; Dormitory Men's Association 3, 4; Treasurer of Sophomore Class; Phi Sigma Pi 3, 4; S. C. A. 3, 4; F. T. A.

Home — Nesquehoning, Pa.



RALPH HINEY

Secondary

Home — Berwick, Pa.



HARRY G. JOHN, JR.

Business

Baseball 1; Phi Sigma Pi 2, 3, 4; Alpha Psi Omega 2, 3, 4; Kappa Delta Pi 4; Pi Omega Pi 4, Vice President 4; President of Junior Class; President of Senior Class; Day Men's Association 1, 2, 3, 4, Treasurer 3; College Council 3, 4; Dramatic Club 1, 2; F. T. A.

Home — Bloomsburg, Pa.



CLEMENT G. KOCH

Business

Band 1, 2; Orchestra 1, 2; Dramatic Club 1, 2; Athenacum Club 3, 4; Day Men's Association 1, 2, 3, 4; Pi Omega Pi 3, 4; Kappa Delta Pi 3, 4; F. T. A.

Home — Shenandoah, Pa.



LEWIS KOHN

Business

Home — Wilkes-Barre, Pa.

HENRY KRISS

Business

Dormitory Men's Association 1, 2; Day Men's Association 3, 4; F. T. A. 4.

Home — Kingston, Pa.

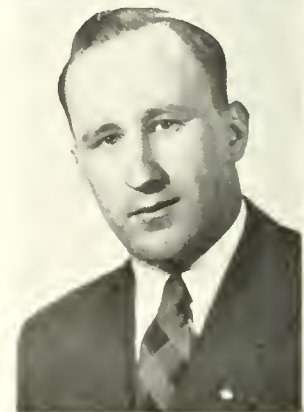


STANLEY KRZYWICKI

Business

Varsity Baseball 2, 3, 4; Varsity Basketball 2; Varsity Football 3, 4; F. T. A. 4.

Home — Forty Fort, Pa.



HENRY KULIK

Secondary

Mixed Chorus 1; Men's Glee Club 2, 3; Science Club 1, 2, 3, 4, President 1, Treasurer 3, Vice President 4; Day Men's Association 1; Dormitory Men's Association 2, 3, 4, President 4; College Council; F. T. A. 4.

Home — Mount Carmel, Pa.



THOMAS W. LEWIS

Secondary

Transfer from Susquehanna University Jan. 1947, as second semester Junior; Baseball Coach 1947; Assistant Coach of Football 1947; F. T. A. 4, Chairman of Program Committee 4.

Home — Northumberland, Pa.



ROBERT M. LLEWELLYN

Secondary

Kappa Delta Pi 3, 4; Phi Sigma Pi 2, 3, 4; Dramatic Club 1, 2, 3; Poetry Club 1; Business Education Club 1; Assembly Announcer 3; F. T. A. 4.

Home — Wilkes-Barre, Pa.

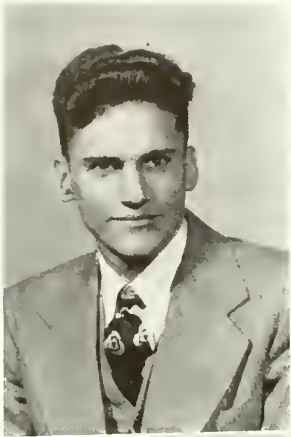


JOHN LONGO

Business

North Hall Association 1, 2, 3, 4, Secretary 3; C. G. A. Representative 2; Columban Club 1, 2, 3, 4; Science Club 1; Business Education Club 3, 4; Phi Sigma Pi 2, 3, 4, Secretary 4; Alpha Psi Omega 3, 4, Treasurer 4; Football Manager 1; Basketball Manager 1, 2, 3, 4; Dramatic Club 2, 3, 4; C. G. A. Social Chairman 2, Publicity Chairman 3; High School Basketball Tournament Chairman 3, 4; F. T. A. 4.

Home — Shepton, Pa.

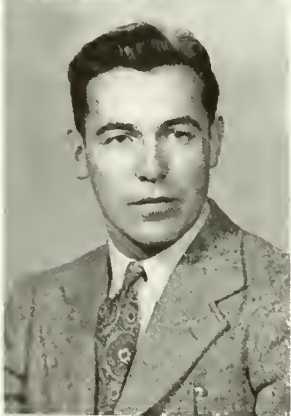


MILLARD LUDWIG

Secondary

Varsity Soccer 3, 4; Baseball 2, 4; Day Men's Association 1, 2, 3, 4, Treasurer 4; *Maroon and Gold* 1, 2, 3, 4, Sports Editor 2, 3, 4; *OBITER* Staff 3, 4; Gamma Theta Upsilon 4; Member Inter-Fraternity Council 4; Varsity Club 4; F. T. A. 4.

Home — Millville, Pa.



JOHN F. MAGILL

Secondary

Soccer Team 1, 2, 3, 4; Baseball 1; Track 1, 3, 4; Day Men's Association 1, 2, 3, 4, President 3; F. T. A. 4.

Home — Sugarloaf, Pa.

JAMES E. MARION

Business

Social Usage Club 1; Business Education Club 1, 3; Phi Sigma Pi 2, 3, 4; Columban Club 1, 2; Newman Club 3, 4; F. T. A. 4.

Home — Harrisburg, Pa.



GEORGE E. MENARICK

Secondary

Day Men's Association 1, 2; Dramatic Club 1, 2, 3, 4, President 4; Alpha Psi Omega 4, President 4; Football 1, 2, 3, 4, Captain 3; Baseball 1, 2; Dormitory Men's Association 4; F. T. A. 4.

Home — Exeter, Pa.



HAROLD L. MILLER

Business

Business Education Club 1, 2, 3, 4, President 3; President of Freshman Class; Athenaeum Club 1, 2, President 1; Pi Omega Pi 2, 3, 4; Kappa Delta Pi 3, 4; Day Men's Association 1, 2, 3, 4, President 1, 3; Dramatic Club 1, 2, 3; Alpha Psi Omega 3, 4; C. G. A. 1; Assembly 2, 3; *Maroon and Gold* 1, 2, 3; F. T. A. 4.

Home — Danville, Pa.



FRANK L. MOLINARO

Secondary

Dramatic Club 4; Phi Sigma Pi 2, 3, 4; Dormitory Men's Association 1, 2, 3, 4, Treasurer 4; Alpha Gamma Pi 1; Football 1; Basketball 1; Baseball 2; International Relations Club 1; F. T. A. 4.

Home — Canonsburg, Pa.



CLEMENCE E. NOVAK

Business

Dormitory Men's Association 2, 3, 4; Business Education Club 2, 3, 4; F. T. A. 4.

Home — Nanticoke, Pa.



WILLIAM S. ORNER

Business

Home — Bloomsburg, Pa.

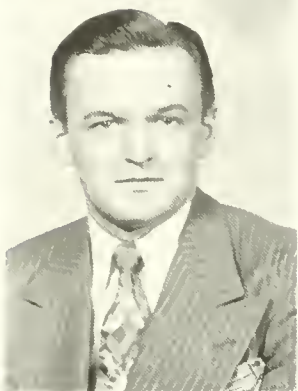


CLAYTON D. PATTERSON, JR.

Secondary

Day Men's Association 1, 2, 3, 4, Secretary 3; Science Club 1, 2, 3, 4, President 4; Geography Club 1; Phi Sigma Pi 3, 4; Soccer 1, 2, 3, 4, Captain 3, 4; F. T. A. 4.

Home — Nescopeck, Pa.



SAMUEL D. PLEVIK

Business

Men's Dormitory Association 1, 2, 3, 4; Athenaeum Club 2, 3; Business Education Club 1, 2, 3, 4; Men's Glee Club 2, 3; *Maroon and Gold* 2; F. T. A. 4.

Home — Carbondale, Pa.

THEODORE Q. RADAI

Secondary

North Hall Association 3, 4; F. T. A. 4.

Home — Hazleton, Pa.



HAROLD W. REINERT

Business

Business Education Club 2, 3, 4, Vice President 3, President 4; S. C. A. 2, 3, President 3; Pi Omega Pi 3, 4; Phi Sigma Pi 3, 4; Kappa Delta Pi 3, 4; *Maroon and Gold* 2; Who's Who 4; F. T. A. 4.

Home — Slatington, Pa.

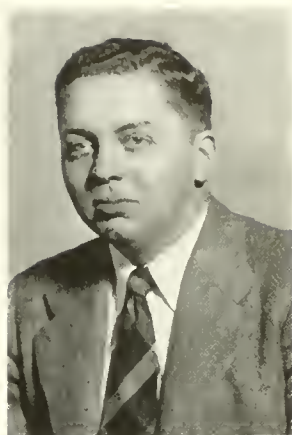


HARRY E. REITZ

Secondary

Football 1; Basketball 1; Dramatic Club 1, 2, 3, 4, President 3; Social Usage Club 1, 2; Business Education Club 1; Dormitory Men's Association 1, 2, 3, 4, President 3; College Council 3, 4; Alpha Psi Omega 2, 3, 4, President 4; Kappa Delta Pi 3, 4; C. G. A. President 4; Letterman's Club 4; Track Manager 3; Chairman of C. G. A. Customs Committee 2; Co-Chairman of C. G. A. Recreation Committee 3; President of Inter-Fraternity Council 4; "The Man Who Came to Dinner" 2; "January Thaw" 3; Treasurer of Pennsylvania Region U. S. National Student Association 4; Co-Chairman of Fire Drill Committee 3; Campus Crier 3; F. T. A. 4.

Home — Shamokin, Pa.

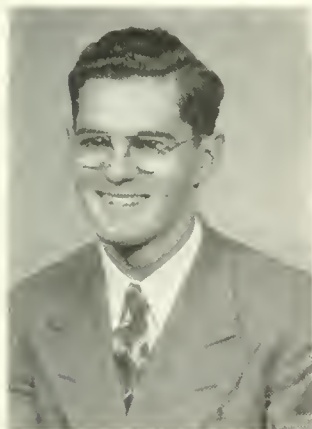
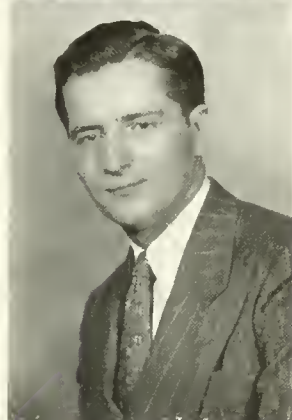


MICHAEL J. REMETZ

Secondary

Kappa Delta Pi 3, 4, Vice President 4; Alpha Psi Omega 2, 3, 4, President 3, Treasurer 2; Phi Sigma Pi 4; Dramatic Club 1, 2, 3, 4; Varsity Basketball 1, 2, 3; Mixed Chorus 1, Librarian 1; Social Usage Club 1; F. T. A. 4.

Home — Swoyerville, Pa.



REGINALD S. REMLEY

Business

President of Freshman Class; S. C. A. 1; Dramatic Club 1; Soccer 1, 3, 4; Baseball 1, 3, 4; *Maroon and Gold* 1; Business Education Club 1, 3, 4; President of Sophomore Class; Pi Omega Pi 3, 4; Phi Sigma Pi 3, 4; Kappa Delta Pi 3, 4; College Council 1, 2; Representative of Inter-Fraternity Council 3, 4; F. T. A. 4, Vice President 4.

Home—Orangeville, Pa.

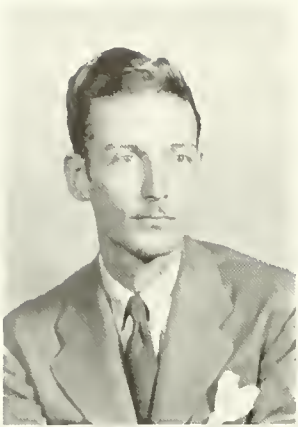


ALBERT D. RICKMERS

Secondary

Baseball 3, 4; Intra-Mural Basketball 3; Kappa Delta Pi 3, 4; Poetry Club 3, 4, President 3; F. T. A. 4.

Home — Bloomsburg, Pa.



DONALD RISHE

Business

Day Men's Association 3, 4; F. T. A. 4.

Home — Bloomsburg, Pa.



LAWRENCE RITTMILLER

Secondary

Day Men's Association 3, 4; F. T. A. 4.

Home — Bellefonte, Pa.

BERNARD F. RODGERS

Secondary

Basketball 1, 2; Baseball 3, 4; Football 1, 2, 3, 4; Science Club 4; Kappa Delta Pi 3, 4; Phi Sigma Pi 3, 4, Treasurer 4; F. T. A. 4.

Home — Hazleton, Pa.



JAMES ROONEY

Secondary

Men's Glee Club 3, 4, President 4; Science Club 3, 4; Flying Club 3; Soccer 3, 4; Track 3; Fire Drill Committee Chairman 3; Assembly Program Committee Chairman 4; Kappa Delta Pi 3, 4, Treasurer 4; Who's Who 4; Intra-Mural Basketball 3; Intra-Mural Softball 4; *Maroon and Gold* Reporter 3; Men's Dormitory Association 3, 4; Program Chairman 4; F. T. A. 4.

Home — Philadelphia, Pa.

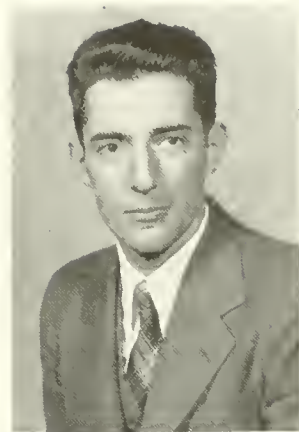


DONALD A. SCHLIEDER

Secondary

Science Club 1, 2, 3; Phi Sigma Pi 3, 4; Kappa Delta Pi 3, 4; Day Men's Association 1, 2, 3, 4; Camera Club 2, President 2; F. T. A. 4.

Home — Catawissa, Pa.



ROBERT F. SCHRAMM

Business

Business Education Club 1, 2, 3, Historian 2; Phi Sigma Pi 2, 3, 4; Pi Omega Pi 3, 4; Kappa Delta Pi 3, 4; F. T. A. 4.

Home — Arlington, Va.



RALPH E. SELTZER

Business

Business Education Club 1, 3, 4; *Maroon and Gold* 3; Day Men's Association 1, 2, 3, 4, Treasurer 3, President 4; College Council 4; Pi Omega Pi 3, 4, President 4; Kappa Delta Pi 4; F. T. A. 4.

Home — Espy, Pa.

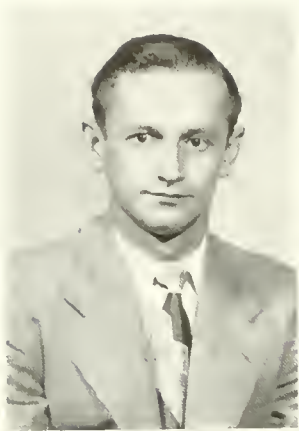


JAMES E. SMITH

Business

Business Education Club 2, 3, 4; *Maroon and Gold* 1, 2, 3; Athenaeum Club 2; Day Men's Association 1, 2, 3, 4, Secretary 3, Vice President 4; F. T. A. 4.

Home — Berwick, Pa.



GEORGE STASKO

Business

Dramatic Club 1, 2; Business Education Club 2, 3, 4; Phi Sigma Pi 2, 3, 4; Pi Omega Pi 4; Soccer 2, 3, 4; F. T. A. 4.

Home — Wilkes-Barre, Pa.



JAMES G. TIERNEY

Business

Kappa Delta Pi 3, 4; Pi Omega Pi 3, 4; Alpha Psi Omega 3, 4; Phi Sigma Pi 3, 4; F. T. A. 4; Bloomsburg Players 1, 2, 3, 4; Business Education Club 2, 3; Class Representative of College Council 3, 4; C. G. A. Committee Chairman 3; Men's Dormitory Association 1, 2, 4; Day Men's Association 3.

Home — Bloomsburg, Pa.

WILLIAM M. TROUTMAN

Secondary

Varsity Football 1, 2; Football Trainer 3, 4; Science Club 1; Kappa Delta Pi 3, 4; Day Men's Association 1, 2, 3, 4; F. T. A. 4.

Home — Bloomsburg, Pa.



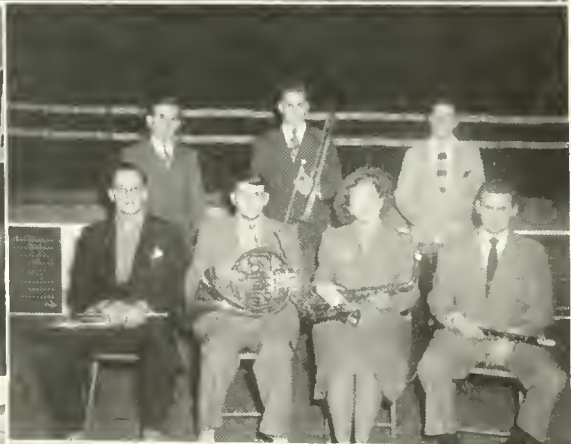
LEONARD WEARNE

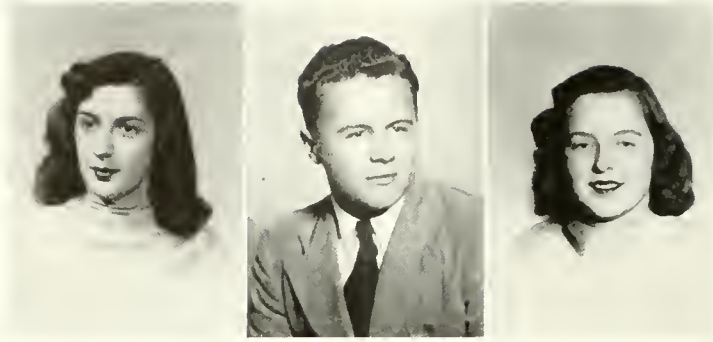
Business

C. G. A. 1; Track 1; Business Education Club 1, 2, 3, 4; Phi Sigma Pi 3, 4; F. T. A. 4; Dormitory Men's Association 1, 2, 3, 4.

Home — Archbald, Pa.







SHIRLEY HENLEY

EDWARD M. ALLEGAR

BARBARA MCNINCH

Junior Class

OFFICERS

<i>President</i>	- - - - -	EDWIN M. ALLEGAR
<i>Vice President</i>	- - - - -	ALBERT DAVIS
<i>Treasurer</i>	- - - - -	BARBARA MCNINCH
<i>Secretary</i>	- - - - -	SHIRLEY HENLEY
<i>Acting Secretary</i>	- - - - -	SHIRLEY BOUGHNER
<i>Adviser</i>	- - - - -	MR. DE VOI

The Class of 1949 reflects many of the adjustments necessary in this post-war period. For the first time in the history of the college, fifteen members of the Junior Class are now engaged in student teaching in Bloomsburg and surrounding communities. The accelerated program has been responsible for increasing the size of the present class to 120 members.

The only social event of any prominence sponsored by the Junior Class was the annual Junior Prom. This gala event was presented in the Centennial Gymnasium on May 8 and was enjoyed by the members of the class and their numerous guests.

Members of the Junior Class also contributed to the success of the Maroon and Gold athletic teams, and were prominent in all school activities. Officers were elected to guide the class through the busy 1947-48 school term.



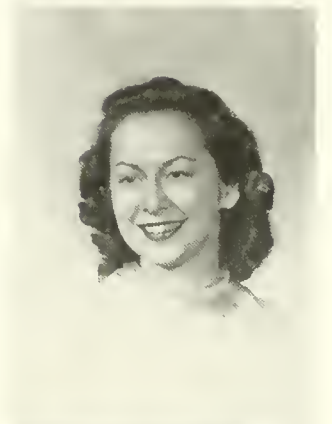
BETTY JANE ANELLA
Secondary
Hazleton, Pa.



VERNE G. COPE
Secondary
Berwick, Pa.



RUTH I. BATH
Elementary
Bloomsburg, Pa.



MADGE FULLER
Business
Berwick, Pa.



BETTY V. BOLIG
Secondary
Richfield, Pa.



MARJORIE G. FULLER
Business
Berwick, Pa.



SHIRLEY M. BOUGHNER
Elementary
Trevorton, Pa.



ALBERTA G. FUNK
Secondary
Danville, Pa.



GLORIA I. GALOW
Elementary
Hazleton, Pa.



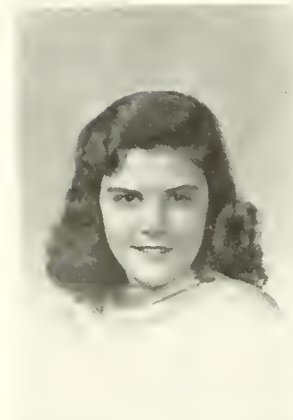
SHIRLEY B. HENLY
Business
Taylor, Pa.



MRS. ELEANOR FRUTCHEV GILBERT
Business
Danville, Pa.



JUNE L. HONIZ
Elementary
Shickshinny, Pa.



DORIS M. GIEDAY
Business
Springfield, Pa.



JEAN E. HOOPER
Secondary
Shickshinny, Pa.



BETH E. HARTMAN
Secondary
Elysburg, Pa.



CAROLYN H. HOWER
Business
Bloomsburg, Pa.



PAULINE L. KOKOLIAS
Business
Matamoras, Pa.



ADDA M. MYERS
Secondary
Hughesville, Pa.



CRESTINE LONGO
Secondary
Nuremberg, Pa.



ELIOSE L. NOBLE
Business
Milanville, Pa.



JANI R. MCCULLOUGH
Elementary
Lewisburg, Pa.



JOSEPHINE B. PADULA
Business
Easton, Pa.



BARBARA R. MCNINCH
Secondary
Bloomsburg, Pa.



JANET M. PAGE
Business
Susquehanna, Pa.



JULIA PICHEL
Business
Hellertown, Pa.



MARTHA J. SITLER
Elementary
Bloomsburg, Pa.



MARGARET SCOTT
Secondary
Berwick, Pa.



DOROTHY A. SNYDER
Business
Bloomsburg, Pa.



LYDIA FERN SHIRK
Secondary
Richfield, Pa.



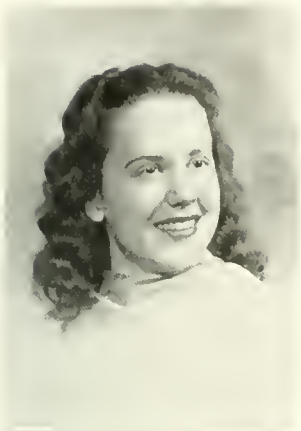
MARIE A. STADTS
Business
Plymouth, Pa.



MARY C. SHOLMAKER
Secondary
Hallstead, Pa.



PEGGY SUCHY
Business
Forest City, Pa.



DOROTHY THOMAS
Elementary
Bloomsburg, Pa.



E. ANNE WRIGHT
Secondary
Bloomsburg, Pa.



ROSE THOMSON
Business
Towanda, Pa.



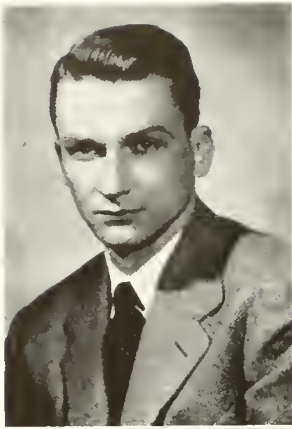
RUTH G. TRIMPLY
Business
Mount Wolfe, Pa.



GRETCHEN D. TROBACH
Secondary
Wilkes-Barre, Pa.

Additional Junior Girls

- ELIZABETH J. CROUSE
- MARY L. FOX
- LOUISE M. GARARD
- SARA A. GRAHAM
- GERALDINE R. HESS
- LOIS M. LANGE
- NANCY C. MCHENRY
- MARY HELEN MORROW
- EVELYN J. PETHICK
- LAUREN A. REIS
- SHIRLEY B. WALTERS



JOSEPH ADAMONIS
Business
Pittston, Pa.



MARIO L. BERLANDA
Secondary
Bloomsburg, Pa.



EDWARD M. ALLEGAR
Secondary
Bloomsburg, Pa.



ROBERT J. BLEW
Secondary
Mahanoy City, Pa.



ANDREW ARDOS
Business
Coaldale, Pa.



CHARLES BOYER, JR.
Business
Bloomsburg, Pa.



WILLIAM BENSON
Business
Moosic, Pa.



MORRIS M. CABELLY
Business
Berwick, Pa.



LOUIS J. CHRISTINA
Business
Bloomsburg, Pa.



RAY C. FRY
Business
Danville, Pa.



SOLOMON COHEN
Secondary
Brooklyn, N. Y.



LUTHER E. GEARHART
Business
Ringtown, Pa.



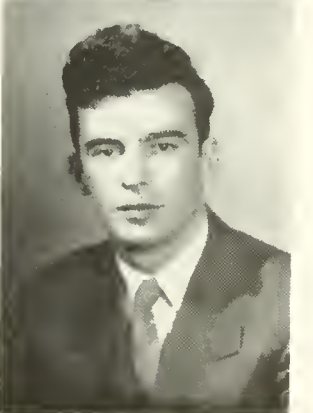
ROYAL W. CONRAD
Secondary
Benton, Pa.



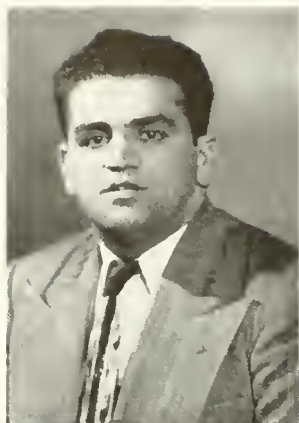
RICHARD C. HESS
Secondary
Cape May, N. J.



WILLIAM R. DEEBEL
Secondary
Shenandoah, Pa.



JOHN L. JONES
Secondary
Mountain Top, Pa.



PHILIP JOSEPH
Business
Easton, Pa.



ROBERT S. LEVAN
Secondary
Bloomsburg, Pa.



JAMES A. KRUM
Secondary
Bloomsburg, Pa.



JOHN M. LYDON
Business
Upper Darby, Pa.



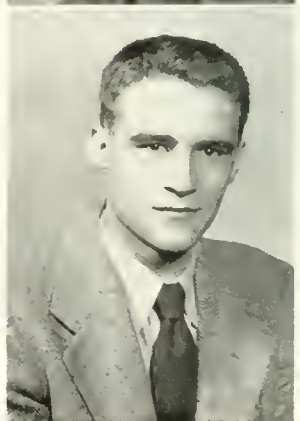
JOSEPH A. KULICK
Secondary
Mount Carmel, Pa.



MATTHEW J. MALEY
Business
Pottsville, Pa.



IRWIN KLINGER
Secondary
Lykens, Pa.



MARVIN L. MIFFLEY
Secondary
Aristes, Pa.



ROBERT T. MILLARD
Secondary
Spring City, Pa.



LAWRENCE J. PEKALA
Secondary
Fern Glen, Pa.



CHARLES K. MOORE
Secondary
Millville, Pa.



HORACI E. READLER
Business
Wilkes-Barre, Pa.



JOHN J. O'DONNELL
Business
Coaldale, Pa.



MICHAEL RIGAN
Business
Buryville, Pa.



FRANK G. PAPE
Business
Hazleton, Pa.



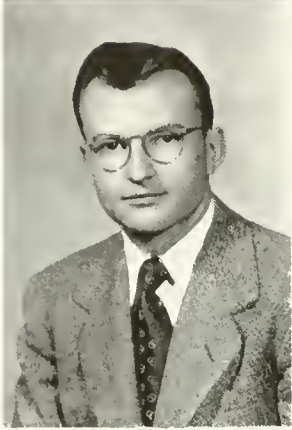
JOHN H. REICHARD
Secondary
Bloomsburg, Pa.



GEORGE REMETZ
Secondary
Swoyerville, Pa.



THADDEUS SWIGONSKI
Secondary
Nanticoke, Pa.



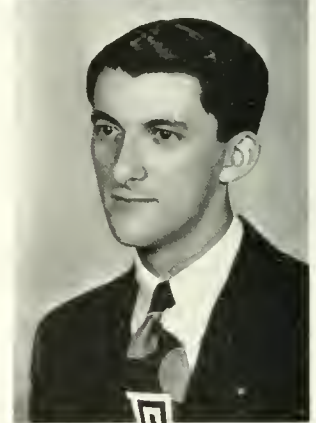
CARL H. ROBBINS
Business
Bloomsburg, Pa.



MERRIL B. TROUTMAN
Elementary
Sunbury, Pa.



JAMES F. SAMPSELL
Secondary
Bloomsburg, Pa.



CARSON WHITESSELL
Elementary
Hunlocks Creek, Pa.



THOMAS SMIGEL
Secondary
Courtdale, Pa.



ALBERT ZIMMIRMAN
Business
Hazleton, Pa.

Additional Junior Men

RALPH W. BAIRD

JOHN J. COHOAT

ROBERT N. CRAMER

HENRY E. CRAWFORD

ALFRED G. DAVIS

BILLY N. DUGAN

JAMES W. HANTJIS

FRANCIS A. HANTZ

THEODORE HARWOOD

DONALD C. HOUCK

ERNEST KASTELIC

LEONARD F. LIPSKI

GLENN A. LOVLLAND

JOSEPH A. MARMO

WILLIAM B. MOONEY

JOHN N. MORGAN

PETER PARNELL

RAYMOND J. POPICK

RICHARD W. SHEARER

PAUL SLIPETZ

LEO J. SPLICHER

DONALD B. THOMAS

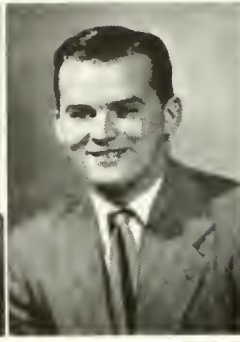
WILLIAM C. VOUGHT



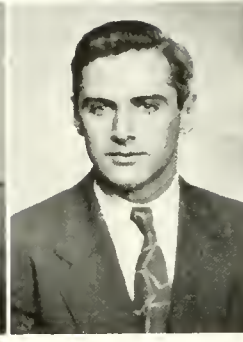




FRANK LUCHNICK



JAMES BOYLE



EDWARD BAKER



DOROTHY LOVETT

Sophomore Class

OFFICERS

<i>President</i>	- - - - -	JAMES BOYLE
<i>Vice President</i>	- - - - -	EDWARD BAKER
<i>Secretary</i>	- - - - -	DOROTHY LOVETT
<i>Treasurer</i>	- - - - -	FRANK LUCHNICK
<i>Sponsor</i>	- - - - -	MR. EARL GEHRIG

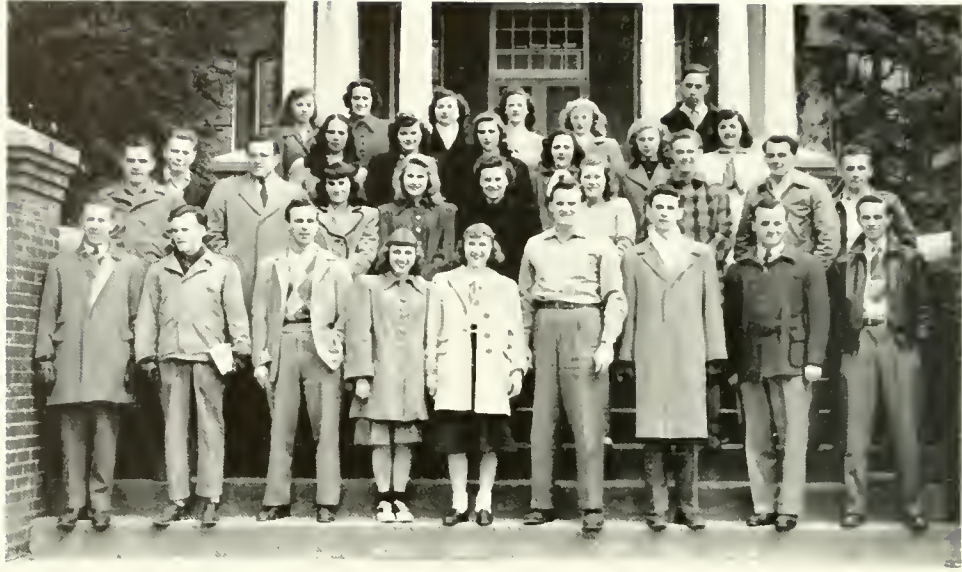
The class of 1950 returned to Bloomsburg this year, having lost many of its former members through the accelerated program, but nevertheless, two hundred fifty strong. The class entered wholeheartedly into the college program for the year, sponsoring two dances, and duly initiating the underdog Frosh. We are looking forward to two more successful years as active participants in college life.



Sophomore Class

BUSINESS STUDENTS

<i>Name</i>	<i>Address</i>	<i>Name</i>	<i>Address</i>
BAKER, EDWARD G.	Spring City, Pa.	GFRA, GEORGE	Eckley, Pa.
BAKER, GLEN R.	Benton, Pa.	GIEDA, JOSEPH J.	Plymouth, Pa.
BECKTEL, STEWART G.	Bloomsburg, Pa.	GILBERT, VINCENT J.	Bloomsburg, Pa.
BERRY, W. ELDON	Berwick, Pa.	GOBORA, HARRY J., JR.	Danville, Pa.
BERTSCH, HARRY J.	Pottsville, Pa.	GRIFASI, DOROTHY	Berwick, Pa.
BEYER, THOMAS F.	Danville, Pa.	GRIMES, RICHARD F.	Harrisburg, Pa.
BOLINSKI, ISABFI D.	Hazleton, Pa.	GUMPY, GRAYDON G.	Bloomsburg, Pa.
BONIN, GLORIA M.	Hazleton, Pa.	HAMMERS, ROBERT W.	S. Williamsport, Pa.
BOWMAN, THOMAS L.	Bloomsburg, Pa.	HARTMAN, CLYDE H.	Bloomsburg, Pa.
BOYCE, SHIRLFY C.	Plymouth, Pa.	HARTZELL, KENNETH P.	Bloomsburg, Pa.
BRANDAU, ROY W.	Nescopeck, Pa.	HENRY, LEROY K.	Bloomsburg, Pa.
CAIN, JAMES M.	Kingston, Pa.	HESS, LOUISE K.	Benton, Pa.
CIERLITSKY, THERESA A.	Tamaqua, Pa.	HILLMAN, MARTHA A.	Pittsburg, Pa.
CREASY, C. WAYNE	Bloomsburg, Pa.	HOMISAK, WILLIAM	Richmondale, Pa.
DATESMAN, LOIS M.	Bangor, Pa.	HOUGH, JOHN W.	Hazleton, Pa.
DEDOVITCH, WALTER	Excelsior, Pa.	JACKOVITZ, EDWARD F.	Carbondale, Pa.
DEMMI, FRED	Shenandoah, Pa.	JAMFS, WALTER G.	Frackville, Pa.
DeMOTT, DOROTHY M.	Eyers Grove, Pa.	JOHNS, EDWARD	Wilkes-Barre, Pa.
DODSON, HAROLD I.	Rohrsburg, Pa.	JONES, FRANKLIN E.	Milton, Pa.
DOTZEL, GEORGE N.	Wilkes-Barre, Pa.	JONES, SHIRLEY I.	Bloomsburg, Pa.
DRIEBELBIS, SUSAN A.	Bloomsburg, Pa.	KAMM, HAROLD R.	Harrisburg, Pa.
DUDZINSKI, FRANK W.	Glen Lyon, Pa.	KASHNIR, ROBERT J.	Bloomsburg, Pa.
DUNHAM, SARAH L.	New Albany, Pa.	KEISER, EDWIN R.	Duboisstown, Pa.
ELDER, RUTH P.	Berwick, Pa.	KELLEY, DANIEL E.	Benton, Pa.
ERTWINE, BRUCE M.	Ringtown, Pa.	KENDALL, CLIFFORD J.	Bloomsburg, Pa.
EVES, CHARLES M.	Bloomsburg, Pa.	KENNA, MICHAEL J.	Cumbola, Pa.
FANZO, MARJORIE L.	Bethlehem, Pa.	KESSLER, DONALD A.	Danville, Pa.
FAUST, SARAH MAUDE	Weatherly, Pa.	KEYSER, DOROTHY L.	Bloomsburg, Pa.
FELLON, LEONARD A.	Trevorton, Pa.	KEYSER, RICHARD B.	Bloomsburg, Pa.
FORESTER, OLGA M.	Barnesville, Pa.	KLINE, ROBERT E.	McClure, Pa.
FOX, HERBERT H.	Danville, Pa.	KRIFITZ, EDWARD J.	Slatington, Pa.
FRIDAY, VINCENT G.	Phoenixville, Pa.	KRUPICH, MICHAEL A.	Berwick, Pa.
GAMBLI, NORMA E.	Wyalusing, Pa.	KUNTZA, JOHN	Berwick, Pa.
GEHRIG, GEORGE F.	Danville, Pa.	LAMPMAN, ALFRED M.	Kingston, Pa.
GEORGI, HARRY JAY	Bloomsburg, Pa.	LAUCK, CHARELS L.	Mt. Carmel, Pa.



Sophomore Class

Name
 LFE, JOHN G.
 LITZ, JEAN E.
 LIVINGSTON, HONEL C.
 LOPATA, PAUL
 LOVETT, DOROTHY R.
 LUCHNICK, FRANCIS J.
 LUTZ, ALVIN E.
 MAGERA, JOHN J.
 MANTZ, DALE F.
 MARCHETTI, ALFRED J.
 MAZZULLA, ALFRED E.
 McANDREW, THOMAS J.
 McNELIS, JOHN G.
 MERENA, WALTER
 MESSNER, LEON H.
 MILLER, ROBERTA E.
 MORRIS, JOHN S.
 MUDROCK, JOSEPH V.
 MUSSOLINI, LAWRENCE J.
 NESTER, WILMER E.
 NICHOLSON, MICHAEL J.
 OLSON, ERNEST C.
 O'ROURKE, JOSEPH J.
 PANZITTA, JOHN J.
 PANZITTA, NICHOLAS
 PAULMENO, ANTHONY J.
 PECORA, LOUIS S.
 PERSING, MARY K.
 PICK, ROBERT W.
 PLEVYAK, PAUL P.
 PRINGLI, FRANK M.
 PURCELL, JOHN M.
 PURSEL, ARCHIL L.
 RADICE, FRANCIS J.
 REDDY, JAMES A., JR.
 REIMSNDYER, VIRGINIA F.

Address
 Wyalusing, Pa.
 Danville, Pa.
 Courtdale, Pa.
 Nesquehoning, Pa.
 Nanticoke, Pa.
 Mt. Carmel, Pa.
 Berwick, Pa.
 Mocanaqua, Pa.
 Slatington, Pa.
 Tamaqua, Pa.
 Kelayres, Pa.
 Dunmore, Pa.
 Lansford, Pa.
 Excelsior, Pa.
 Wiconisco, Pa.
 Bloomsburg, Pa.
 Bloomsburg, Pa.
 Keiser, Pa.
 Hazleton, Pa.
 Emmaus, Pa.
 Hazleton, Pa.
 Yeadon, Pa.
 Wilkes-Barre, Pa.
 Hazleton, Pa.
 Hazleton, Pa.
 Weatherly, Pa.
 Hazleton, Pa.
 Trevorton, Pa.
 Danville, Pa.
 Carbondale, Pa.
 Johnstown, Pa.
 Shenandoah, Pa.
 Sunbury, Pa.
 Wilkes-Barre, Pa.
 Milton, Pa.
 Milton, Pa.

Name
 RICK, JOHN J.
 RIDALL, LIZABETH J.
 RIEFSKI, EMORY S.
 ROBINOLT, KENNETH L.
 ROLL, NICHOLAS
 ROMANCZYK, HELI N M.
 ROMIG, WILLIAM G.
 SAVAGE, CHARLES A.
 SCHNIDER, MIRIAM F.
 SEMIC, STANLEY
 SMITH, MARJORIE A.
 SMOLSKI, ALICE A.
 SNYDER, DONALD E.
 SNYDER, DOROTHY A.
 SNYDER, F. DIANE
 SOPKO, JOSEPH E.
 SPANICH, MICHAEL J.
 STOUT, RICHARD C.
 TALARSKY, HENRY C.
 THEAR, GORGE
 THOMPSON, WAYNE E.
 THOMSON, ROSE A.
 URBAN, ARTHUR J.
 WALTON, CARL K.
 WARNER, JANE K.
 WASDOVICH, GEORGE
 WEBB, RAYMOND L.
 WESENYAK, JOSEPHINE ANN
 WILLIAMS, JOHN W.
 WINGATE, ROBERT M.
 WIRE, KENNETH F.
 WOLFORD, MARVIN R.
 YAKOBOSKI, JOSEPH R.
 YERGES, GEORGE F.
 ZIMMERMAN, GEORGE W.

Address
 Keiser, Pa.
 Town Hill, Pa.
 Glen Lyon, Pa.
 Milton, Pa.
 Berwick, Pa.
 Forest City, Pa.
 Danville, Pa.
 Bloomsburg, Pa.
 Rock Glen, Pa.
 Steelton, Pa.
 Reading, Pa.
 Archbald, Pa.
 Milton, Pa.
 Bloomsburg, Pa.
 Mill Hall, Pa.
 Carbondale, Pa.
 Swoyerville, Pa.
 Bloomsburg, Pa.
 Wilkes-Barre, Pa.
 Nesquehoning, Pa.
 Harrisburg, Pa.
 Towanda, Pa.
 Duryea, Pa.
 Allentown, Pa.
 Weatherly, Pa.
 Oneida, Pa.
 Bloomsburg, Pa.
 Duryea, Pa.
 Bloomsburg, Pa.
 Shamokin, Pa.
 Harrisburg, Pa.
 Montandon, Pa.
 Shamokin, Pa.
 Berwick, Pa.
 ... Pine Grove, Pa.

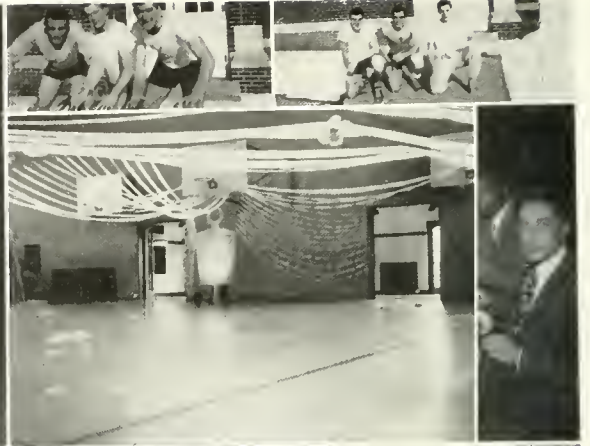
Sophomore Class

SECONDARY STUDENTS

<i>Name</i>	<i>Address</i>	<i>Name</i>	<i>Address</i>
ALBANO, ANGILO M.	McAdoo, Pa.	LUPASHUNSKI, FRANK T.	Berwick, Pa.
ALLEGRUCCI, GFNE J.	Wyoming, Pa.	MAIETTA, DONALD F.	Williamsport, Pa.
BERCILOSKY, WALTER	Kulpsmont, Pa.	MARTINI, ROBERT E.	Benton, Pa.
BOND, JOHN R.	Sayre, Pa.	McCINTOCK, ELEANOR A.	Nescopeck, Pa.
BORST, KENNETH E.	Fquinunk, Pa.	McDONALD, JOAN A.	Ringtown, Pa.
BOWER, ROBERT I.	Orangeville, Pa.	MENSINGER, CLAIR E.	Mifflinville, Pa.
BOYLE, JAMI S B.	Shamokin, Pa.	MILLER, WILLIAM R.	Plymouth, Pa.
BRUNSTETTER, NANCY J.	Catawissa, Pa.	MITROS, EDWARD J.	Glen Lyon, Pa.
BUCK, ELIZABETH A.	Cos Cob, Vt.	MORGANS, RODNLY K.	Williamsport, Pa.
BUTCOSKY, DONALD L.	Shamokin, Pa.	NUSS, EUGENE M.	Catawissa, Pa.
BUTT, LUTHER S.	Hazleton, Pa.	O'BRIEN, ROBERT E.	Locust Gap, Pa.
CANOUSE, ROBERT C.	Berwick, Pa.	PAPANIA, ANN E.	Bloomsburg, Pa.
CHEBRO, GEORGE	Beach Haven, Pa.	PATFRNOSTER, GEORGE D.	Hazleton, Pa.
CLARK, PATRICIA M.	Bloomsburg, Pa.	PHILLIPS, CHARLES E.	Riverside, Pa.
COMUNTZIS, ALEKI D.	Bloomsburg, Pa.	PUTERA, JOSEPH J.	Kingston, Pa.
COOK, KENNETH L.	Elverson, Pa.	REITZ, ROBERT G.	Shamokin, Pa.
CURILLA, JOSEPH	Shamokin, Pa.	RISHI, WILLIAM J.	Danville, Pa.
CZERNIAKOWSKI, JOHN B.	Plains, Pa.	ROTH, LUTHER H.	Wilkes-Barre, Pa.
DERZAK, JOSEPH L.	Wyoming, Pa.	SAKAI SKI, STEPHEN F.	Bloomsburg, Pa.
DIEHLE, OWEN C.	Philadelphia, Pa.	SAMOI, DERYL J.	Danville, Pa.
DILTZ, ROBERT O.	Stillwater, Pa.	SAXTON, JFAN S.	Mauch Chunk, Pa.
DONAN, THOMAS M.	Columbia, Pa.	SHARKEY, WINIFRED J.	Lattimer Mines, Pa.
FINK, GERALD E.	Conyngham, Pa.	SHHEMAN, JOHN	Lopez, Pa.
FRANCISCI, HINRY A.	Fern Glen, Pa.	SHUPP, RUTH E.	Plymouth, Pa.
FREEDA, STANLEY J.	Wyoming, Pa.	SKOWRONSKI, EDWARD F.	Williamsport, Pa.
GABRIEL, LOUIS S.	Sugar Loaf, Pa.	SIOBOZII N, PAUL	Johnstown, Pa.
GILLOW, CHARLES G.	Duryea, Pa.	SLUSSFR, PAUL D.	Bloomsburg, Pa.
GLFOCKLFR, RICHARD C.	Forksiville, Pa.	SMINK, ROBERT T.	Shamokin, Pa.
GRANT, LEON E.	Bloomsburg, Pa.	SMITH, GRACE	Mt. Carmel, Pa.
GRONTKOWSKI, ROSEMARY A.	Plymouth, Pa.	SNYDI R, EUGENE W.	Bloomsburg, Pa.
HAHN, WILLIAM J.	Plymouth, Pa.	SOWERS, CHARLES II.	Williamsport, Pa.
HARTMAN, DAYNE A.	Benton, Pa.	SPANGLER, ZITA A.	Hummels Wharf, Pa.
HAWK, CHARLES E.	Pittston, Pa.	STAIR, CAROL V.	Wapwallopen, Pa.
HAWK, NORMAN J.	Bear Creek, Pa.	STARR, RAYMOND A.	Shamokin, Pa.
HOAR, DONALD I.	Harrisburg, Pa.	STAUFFER, LEWIS R.	Bloomsburg, Pa.
HUBLER, RAYMOND W.	Bloomsburg, Pa.	STEIN, JFAN F.	Shenandoah, Pa.
JOHNS, GEORGE F.	S. Williamsport, Pa.	STIMELING, WILLIAM A.	Berwick, Pa.
JOHNSON, DOYIF W.	Bloomsburg, Pa.	SWALFS, WILLIS, JR.	S. Williamsport, Pa.
JOHNSON, FRANCIS R.	Bloomsburg, Pa.	TEEL, MARTHA L.	Bloomsburg, Pa.
JONES, JANICE A.	Plymouth, Pa.	THOMAS, ROBERT L.	Danville, Pa.
KARAS, VINCENT W.	Shenandoah, Pa.	TIDDY, WILLIAM J.	Shamokin, Pa.
KAZMEROVICZ, CHARLES J.	Plains, Pa.	TODARO, ELEANOR M.	Hazleton, Pa.
KEARKUFF, MARGARET I.	Benton, Pa.	TRIMBLE, JOHN L., JR.	Jersey Shore, Pa.
KEARNEY, GFORGE I.	Shamokin, Pa.	TYSON, MARY R.	Catawissa, Pa.
KILLER, JUNE L.	Benton, Pa.	ULRICH, PAUL L.	Danville, Pa.
KEMP, WILLBUR H.	Bloomsburg, Pa.	UMSTEAD, WILLIAM E.	Washingtonville, Pa.
KLINGER, EDWIN J.	Trevorton, Pa.	VON BERGEN, RUTH C.	Hazleton, Pa.
KLINGER, IRWIN R.	Lykens, Pa.	VON STETTEN, WAYNI	Bloomsburg, Pa.
KRENSAVAGE, THADDIUS P.	McAdoo, Pa.	WAGNER, CALVIN J.	Keiser, Pa.
KRISS, STEPHN F.	Bloomsburg, Pa.	WAGNER, JOHN R.	Nescopeck, Pa.
KUNDRAT, STEPHEN	Berwick, Pa.	WALTHER, ROBERT F.	Columbia, Pa.
LENHART, JACK M.	Bloomsburg, Pa.	WEBB, ANITA D.	Bloomsburg, Pa.
LOHR, M. LOUIS	Berwick, Pa.	WIDGER, GFORGE E.	Catawissa, Pa.
LONGO, CELESTINE M.	Nuremberg, Pa.	WILLIAMS, ROBERT F.	Shamokin, Pa.

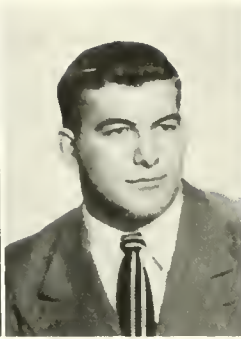
ELEMENTARY STUDENTS

ARNER, GLORIA F.	Lewisburg, Pa.	KRZYWICKI, GENEVIEVE A.	Drums, Pa.
BAKER, LUCY JANF	Bloomsburg, Pa.	MIDDLESWARTH, NERINE M.	Troxelville, Pa.
BRACE, HELFN E.	Hunlocks Creek, Pa.	POUST, ELEANOR I.	Muncy, Pa.
CFRCHIARO, FRANCES A.	Nesquehoning, Pa.	PRETI, SANTO J.	Hazleton, Pa.
EBNFR, DORIS M.	Ringtown, Pa.	RFECE, ELIZABETH M.	Westgrove, Pa.
GARARD, HARRIET T.	Lewisburg, Pa.	SCHALLFS, MADELYN J.	Nescopeck, Pa.
HIPPMAN, ROBERT J.	Shamokin, Pa.	SCHIFFER, CHARLES R.	Steelton, Pa.
HOFFMAN, HELEN M.	Danville, Pa.	SHOFMAKER, MARY C.	Hallstead, Pa.
KELDFR, JEANNE A.	New Albany, Pa.	SMITH, HILDA M.	Danville, Pa.
KFLER, JANI L.	Bloomsburg, Pa.	SWARTZ, DAWN S.	New Buffalo, Pa.
KRAJNIK, MRS. RUTH D.	Wilkes-Barre, Pa.	THOMAS, DOROTHY A.	Bloomsburg, Pa.





RALPH HORNBERGER



ELMER KREISER



RUTH DOODY



PATRICIA TAYLOR

Freshman Class

OFFICERS

<i>President</i>	- - - - -	ELMER KREISER
<i>Vice President</i>	- - - - -	RUTH DOODY
<i>Secretary</i>	- - - - -	PATRICIA TAYLOR
<i>Treasurer</i>	- - - - -	RALPH HORNBERGER
<i>Girl Representative</i>	- - - - -	BEVERLY COLE
<i>Boy Representative</i>	- - - - -	JAY CORTRIGHT
<i>Class Historian</i>	- - - - -	RICHARD RALSTON
<i>Class Adviser</i>	- - - - -	MR. FENSTEMAKER

An intelligent, vivacious, and peace loving group of young men and women entered the Gates of Learning at Bloomsburg State Teachers College, September 1947, to continue their education and to attain their goals. Of the 357 members of the Freshman Class, 75 are Penn State prodigies.

The "greenies" were very satisfactorily entertained at the Freshman Reception in September and soon became old veterans on the campus. Many of the class have become active in sports, the OBITER staff, band, and several clubs.

The manifestation of outstanding abilities and endless ambition is proof that this class has no limit on its future achievements at B. S. T. C.



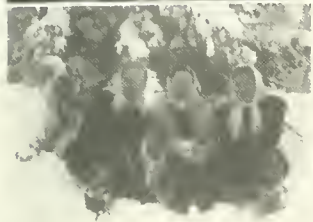
<i>Name</i>	<i>Address</i>	<i>Name</i>	<i>Address</i>
BAYLOR, ROBERT A.	Danville, Pa.	LONGER, CHARLES W.	Ringtown, Pa.
BIRD, WALTER	Berwick, Pa.	MACIEWICZ, EDWARD	Glen Lyon, Pa.
BLAKE, EARL H.	Berwick, Pa.	MAKOWSKI, JEROME W.	Keiser, Pa.
BROWN, JOHN C.	Harrisburg, Pa.	MAREK, HENRY L.	Dupont, Pa.
BRUNDAGE, L. MAE	Union Dale, Pa.	MATTIS, MARIE B.	Shamokin, Pa.
BRUNN, HENRY E.	Nanticoke, Pa.	MATTRANI, JOHN	Milton, Pa.
BRUNN, HERMAN P.	Nanticoke, Pa.	MCDONALD, LEO J.	Ringtown, Pa.
BUSHINSKI, WALTER B.	Shenandoah, Pa.	McGARRAH, EUGENE G.	Bloomsburg, Pa.
BUSS, DELPHINE R.	R. D. No. 2, Milton, Pa.	MENSCH, JAMES A.	Wilburton, Pa.
BUYNAK, JOHN E.	Wilkes-Barre, Pa.	MILLER, CURTIS L.	Millville, Pa.
CHAPIN, KATHERINE E.	Berwick, Pa.	MISCavage, DANIEL J.	Wilkes-Barre, Pa.
CHARNETSKI, JOSEPH A.	Plains, Pa.	MORDAN, JACK L.	Millville, Pa.
COLE, BEVERLY A.	Bloomsburg, Pa.	PARK, MARY P.	Bloomsburg, Pa.
COMPTON, VERNAMAE	Bethlehem, Pa.	PARKER, EDmund L.	East Orange, N. J.
CRUMB, NANCY J.	Berwick, Pa.	PARRY, DONALD	Peckville, Pa.
DANNI, ROMEO J.	Allenstown, Pa.	PATTERSON, MARCIA L.	Nescopeck, Pa.
DAVIS, RUSSELL C., JR.	Luzerne, Pa.	PEUTCH, ANDREW M.	Old Forge, Pa.
DAVIS, WILLIAM C.	Beach Haven, Pa.	PHILLIPS, GEORGE E.	Hickory Corners, Pa.
DEITTERICK, JULIA M.	R. D. No. 1, Bloomsburg, Pa.	POWELL, NANCY R.	Scranton, Pa.
DONNELLY, SHIRLEY M.	Willow Grove, Pa.	TURCELL, JAMES J.	Shamokin, Pa.
DORSEY, MARY JANE	Bloomsburg, Pa.	REDKA, WILSON W.	Bloomsburg, Pa.
DUBLINSKI, ROBERT J.	Shamokin, Pa.	RIEGLER, ARTHUR C.	Catawissa, Pa.
EDWARDS, DAVID T.	Kingston, Pa.	RUSINKO, HELEN	Berwick, Pa.
EDWARDS, EDWARD H.	Edwardsville, Pa.	SAXTON, JUNE S.	Mauch Chunk, Pa.
EMITT, HAROLD F.	R. D. No. 4, Danville, Pa.	SCATTON, FRANK D.	Hazleton, Pa.
ERMISH, CARLETON H.	Berwick, Pa.	SCHULTZ, JOHN B.	Danville, Pa.
EVASIC, MARCELLA	Luzerne, Pa.	SEARCH, GENE D.	Berwick, Pa.
FRONCK, JOSEPH R.	Norristown, Pa.	SHIPE, EUGENE R.	Danville, Pa.
GABRIEL, LEONARD M., JR.	R. D. No. 1, Shamokin, Pa.	SHOEMAKER, WILLIAM F.	Espy, Pa.
GARDNER, JACK E.	W. Wyoming, Pa.	SIMPSON, LEROY E.	Williamsport, Pa.
GARRISON, HAROLD A.	Trevorton, Pa.	SMITH, DONALD R.	Berwick, Pa.
GASS, CAROL M.	Danville, Pa.	SMITH, RUTH A.	Beavertown, Pa.
GEARHART, CHARLES R.	Catawissa, Pa.	SOBACK, ANDREW	Berwick, Pa.
GIEDA, JOHN J.	Wilkes-Barre, Pa.	STRAUSSER, GERALD J.	Shamokin, Pa.
GLEOCKLER, RICHARD C.	Forksville, Pa.	TAVALSKY, EDWARD J.	Johnstown, Pa.
GOLDEN, CHRIS J.	Shamokin, Pa.	TERREL, AUDREY C.	Waymart, Pa.
GOOD, IRIS E.	R. D. No. 3, Shickshinny, Pa.	VERNOY, CAROLYN V.	Canadensis, Pa.
GRABOWSKI, ANTHONY R.	Shamokin, Pa.	Von STETTEN, GLENN D.	Columbia, Pa.
GRAHAM, KATHRYN M.	Bloomsburg, Pa.	WALTERS, BETTY A.	Hazleton, Pa.
HARNER, RICHARD C.	Berwick, Pa.	WAWERKA, JOHN W.	Luzerne, Pa.
HARTMAN, BUDDY M.	R. D. No. 3, Benton, Pa.	WEAVER, EPHRAIM S., JR.	Shamokin, Pa.
HARTZELL, HOWARD R., JR.	R. D. No. 1, Danville, Pa.	WELKER, DANIEL C.	Lavelle, Pa.
HAWK, RUSSELL E., JR.	Milton, Pa.	WHITE, HAROLD J.	Bethlehem, Pa.
HENRIE, DANIEL O.	Berwick, Pa.	WILLIAMS, JACK E.	Milton, Pa.
HEYDENREICH, FRED C.	Muncy, Pa.	WINTERSTEEN, WILLIAM J.	Harrisburg, Pa.
HILDEBRAND, ANDREW M.	Nescopeck, Pa.	WIRE, ROBERT J., JR.	York, Pa.
HILEMAN, ROBERT E.	Light Street, Pa.	WRAY, CHARLES J.	Danville, Pa.
HORNBERGER, RALPH E.	Elysburg, Pa.	YOUNG, FREDERICK D., JR.	Mt. Carmel, Pa.
JARMAN, RICHARD E.	Plymouth, Pa.		
JEWELL, ROBERT	Dallas, Pa.		
JOHNS, JOHN O.	South Williamsport, Pa.		
JOHNSON, BARBARA A.	Berwick, Pa.		
JONES, SHIRLEY H.	Ashley, Pa.		
KALANICK, NICHOLAS	Berwick, Pa.		
KEARNS, DONALD C.	Lewistown, Pa.		
KEENER, PAUL L.	Dewart, Pa.		
KISHBAUGH, ROBERT H.	Berwick, Pa.		
KLOTSKO, JOHN A.	New Philadelphia, Pa.		
KREISER, ELMER	Columbia, Pa.		
KRESSLER, RICHARD N.	Bloomsburg, Pa.		
LAKE, MARIAN E.	Carbondale, Pa.		

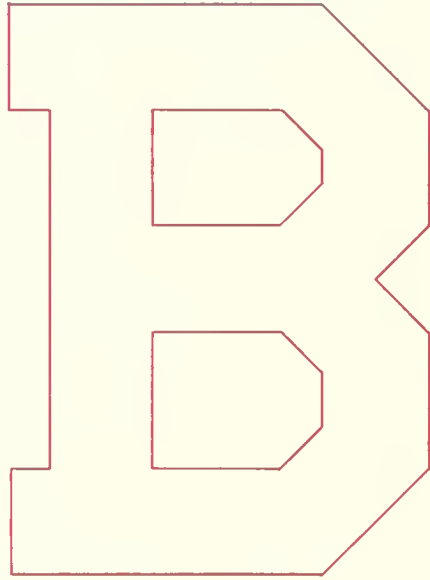
BUSINESS STUDENTS

ABRAHAM, ISAAC W.	Wilkes-Barre, Pa.
AIMETTI, JOHN H.	Berwick, Pa.
ALARCON, MARY ANN	Keiser, Pa.
ANDE, RALPH F.	Bloomsburg, Pa.
ANSTOCK, LOIS M.	Shenandoah, Pa.
ASHNER, SHIRLEY G.	Lehighton, Pa.
BACON, GERALD A.	R. D. No. 3, Towanda, Pa.
BAKSI, RAMONA R.	Keiser, Pa.
BALLANTINE, LEWIS	Shamokin, Pa.



<i>Name</i>	<i>Address</i>	<i>Name</i>	<i>Address</i>
BANFULL, WALTER J.	Plymouth, Pa.	LEONARD, BASIL E.	Sunbury, Pa.
BENNETT, DAVID W.	Montoursville, Pa.	LEFARD, ROBERT K.	Lansdowne, Pa.
BEYER, DONALD	R. D. No. 5, Bloomsburg, Pa.	LOCKARD, CHARLES	Muncy, Pa.
BRONSON, MARTHA E.	R. D. No. 3, Bloomsburg, Pa.	LOGAR, BERDINE A.	Weston, Pa.
BURGDORF, DOROTHY	East Stroudsburg, Pa.	LONG, RONALD E.	Sunbury, Pa.
CARL, JOHN H.	Trevorton, Pa.	MACK, MARIE A.	Shenandoah, Pa.
CLARK, NAOMI R.	R. D. No. 5, Danville, Pa.	MARKS, MURIEL F.	Reading, Pa.
CONNOR, MOLLY M.	Orangeville, Pa.	MAZA, ROBERT T.	Nanticoke, Pa.
CONRAD, ROBERT H.	R. D. No. 2, Boyertown, Pa.	McCABE, JOHN R.	Strong, Pa.
COOLEY, MAX G.	R. D. No. 5, Towanda, Pa.	MERCER, PATRICIA J.	Bloumsburg, Pa.
CORRIGAN, EUGENE J.	Berwick, Pa.	MERRIFIELD, ROBERT S.	Atlantic City, N. J.
CORTRIGHT, JAY B.	R. D. No. 2, Box 66, Dallas, Pa.	MESSA, EDWARD F.	Easton, Pa.
CULP, BARBARA C.	Lost Creek, Pa.	MEYER, DOROTHY B.	Nanticoke, Pa.
DEAN, FRANCES P.	R. D. No. 1, Stillwater, Pa.	MILLHOUSE, RICHARD C.	W. Hazleton, Pa.
DENT, NEIL E.	Berwick, Pa.	MLKVY, LILLIAN	Palmerton, Pa.
DEPAUL, BERNARD J.	W. Hazleton, Pa.	MONTAGUE, ROBERT E.	R. D. No. 4, Danville, Pa.
DIXON, RITA M.	Box 103, Canadensis, Pa.	MOORE, ALBERT L.	Milton, Pa.
DOODY, RUTH A.	Shenandoah, Pa.	PACHOLEC, HENRY F.	Seranton, Pa.
DOWER, ELIZABETH J.	Buck Hill Falls, Pa.	PALENCAR, ANDREW E.	Bethlehem, Pa.
DRENNAN, HARRY	Kane, Pa.	PARFITT, GEORGE H.	Spring City, Pa.
ERICKSON, GAIL	Shamokin, Pa.	PATERSON, ANDREW T.	Moosic, Pa.
FILARSKI, JOHN M.	Mifflinburg, Pa.	PERRY, JOHN D.	Shamokin, Pa.
FREDERICK, ANNA B.	Bethlehem, Pa.	PERRY, FRANK V.	Shamokin, Pa.
GARLAND, AREVE C.	Wilkes-Barre, Pa.	DETRAITIS, WANDA M.	R. D. No. 1, Collegeville, Pa.
GAZENSKI, LEONARD	Shenandoah, Pa.	DICHEL, DOROTHY	R. D. No. 1, Hellertown, Pa.
GRANDE, JOSEPH J.	Danville, Pa.	POWELL, JAMES I.	Spring City, Pa.
GRAFSAM, GEORGE G.	Shenandoah, Pa.	RADZAI, MARIE H.	Mt. Carmel, Pa.
GRAZEL, JOAN A.	Route No. 2, Millville, Pa.	RARG, EMORY W., JR.	R. D. No. 1, Catwawissa, Pa.
GREENLY, JOHN M.	Shamokin, Pa.	REICHAUT, DALE H.	Bloumsburg, Pa.
GRICOSKI, LEONARD E.	Patchoque, N. Y.	ROBERTS, CHARLES E.	Slatington, Pa.
HALLOCK, WILLIAM H.	Box 51, Beach Haven, Pa.	ROBINHOLT, DALE R.	Ringtown, Pa.
HARRIS, MABEL E.	Berwick, Pa.	RODEBACK, JOHN E.	West Chester, Pa.
HENLOCK, MICHAEL	Danville, Pa.	RYAN, WILLIAM J.	Riverdale, Pa.
HENRY, MARY LOUISE	Bethelville, Pa.	SCARANTINO, TONY L.	W. Wyoming, Pa.
HERB, CURTIS W.	Berwick, Pa.	SCHFEITZ, GENEVIEVE F.	Easton, Pa.
HINEY, ROBERT R.	Bloomsburg, Pa.	SCHFEIPE, WALTER G.	Pottsville, Pa.
HIPPENSTEELE, NANCY J.	Milton, Pa.	SCHWARTZ, RICHARD C.	Pine Grove, Pa.
HOFFMAN, LESTER J., JR.	Kingston, Pa.	SCOTT, CHARLES F.	Hyatsville, Md.
HOLMAN, ROBERT E.	Port Chester, N. Y.	SHEPHY, EDWARD F.	Columbia, Pa.
IACOBELLI, MICHAEL F.	Wilkes-Barre, Pa.	SHIREY, MAXINE L.	Clearfield, Pa.
IRVING, JAMES G.	R. D. No. 5, Bloomsburg, Pa.	SMIGELSKI, EDWARD J.	Wilkes-Barre, Pa.
JACOBS, CHARLES K.	R. D. No. 1, Falls, Pa.	SPENRUCK, DOYLE T.	R. D. No. 5, Bloomsburg, Pa.
JACQUES, ALICE M.	Frackville, Pa.	STERLING, WARREN M.	Bloomsburg, Pa.
JAMES, WALTER G.	Dupont, Pa.	STOUT, JAY R.	Berwick, Pa.
JASCZAK, LEONARD A.	Wilkes-Barre, Pa.	STRATTON, WILLIAM R.	Wilkes-Barre, Pa.
JONES, LUTHER	Bethlehem, Pa.	SWARTZ, JOHN D.	Montoursville, Pa.
KARDOS, ELISE	Shamokin, Pa.	TAROLE, CARMELA A.	Bethlehem, Pa.
KEEGAN, JOHN D.	R. D. No. 2, Dallas, Pa.	THOMAS, THEODORE C.	Nanticoke, Pa.
KING, DONALD F.	McClure, Pa.	TETJFEN, HELEN L.	Newmanstown, Pa.
KLINE, RICHARD E.	Freeland, Pa.	VALMONT, AGNES T.	R. D. No. 1, Frenchville, Pa.
KLOPP, THOMAS A.	Pottsville, Pa.	VANYO, ANDRE M.	Duryea, Pa.
KOCH, JOHN	Jeddo, Pa.	VINCENT, JOSEPH G.	Ashley, Pa.
KOENIG, ALBERT H.	Dupont, Pa.	WAGNER, MTRIEL F.	R. D. No. 1, Carbondale, Pa.
KOLLESAR, MICHAEL	Easton, Pa.	WEHNER, JAMES G.	W. Hazleton, Pa.
KOLODGE, EDWARD J.	Nanticoke, Pa.	WISE, ROBERT J.	Berwick, Pa.
KOPLIN, GLENN R.	Bloomsburg, Pa.	WISMER, SHIRLEY F.	Roversford, Pa.
KRAFCHICK, THOMAS A.	Pho-nixville, Pa.	WOYTOVICH, JOSEPH	Shamokin, Pa.
KREAMER, CHRISTINE	Box 5, Salfordville, Pa.	YEAGER, BRUCE O.	Numidia, Pa.
KUCHARIK, DOROTHY P.	Danville, Pa.	YEAGER, JOHN J.	Wapwallopen, Pa.
KULP, GLADYS P.		YOUNG, GEORGE D.	Danville, Pa.
LAHOUT, JOHN S.		ZELINSKI, BERNARD J.	Mt. Carmel, Pa.





The Coaches

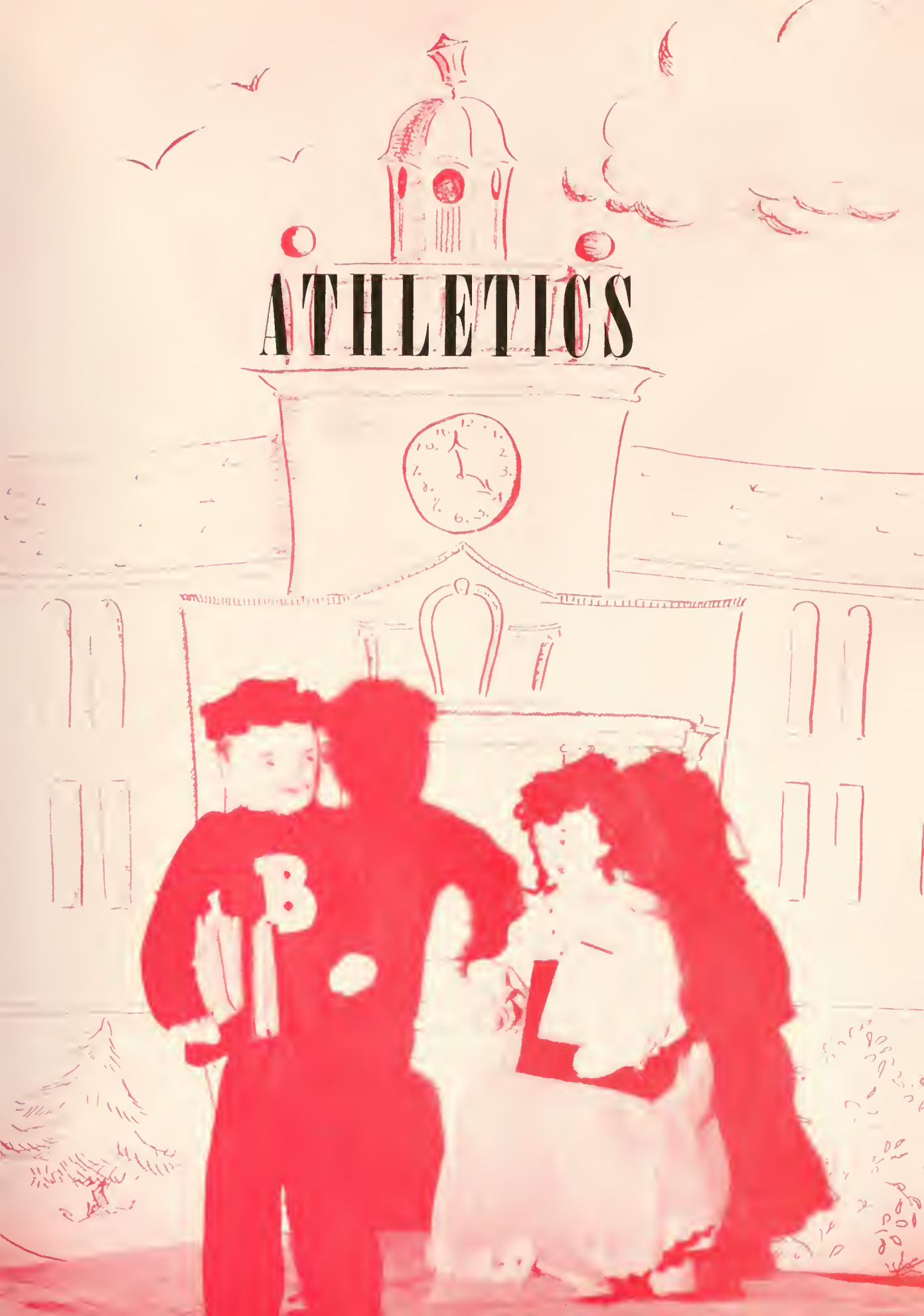


JOHN HOCH

PETER WISHER

ROBERT REDMAN

ATHLETICS





FOOTBALL

Undoubtedly the strongest Husky football team in local gridiron history represented the college last fall. This rugged eleven, which narrowly missed the conference title, boasted a record of six victories and two losses for the best mark ever posted by a Husky football team playing a full, regular schedule.

Robert B. Redman, who came here from Triple Cities College at Binghamton, N. Y., guided this colorful eleven to its great season in his first year at the helm. Assistants John Hoch and Tom Lewis tutored the line and backfield.

A new type of football, different from that ordinarily employed by Husky elevens of the past, gave the fans plenty of thrills during the 1947 season. With All-State Matt Maley doing most of the pitching, the Huskies went in for the razzle-dazzle type of football, often called "southwest style," and the results were good. At least two games were pulled from the fire through this method.

Apparently stirred no little by advance press clippings, the Redman-coached team dropped the opener at Kingston to a supposedly powerful Mansfield crew, 7-6. Later on in the season it developed that the press was largely responsible for this loss, for the Huskies played much stronger teams and came out on top.

The game with Lock Haven will long be remembered. It was picked by many football fans as one of the outstanding clashes in many years. The Maroon and Gold led by a 13-7 score with about six minutes to go. Lock Haven had possession on its own four yard line. An attempted lateral backfired, and Coyne, Bald Eagle back, went 96 yards for the score. The extra point made it 14-13 with five minutes remaining.

Then the Huskies got busy. With Maley doing most of the pitching and Jim Reedy, Stan Krzywicki, and Eddie Jones on the receiving ends, Bloomsburg went to the Havenite 26. On the next play Maley flipped one to Jones, who took it on the 8 and ambled the rest of the way for one of the greatest triumphs ever recorded by a Husky grid machine.

At Clarion, the Huskies defeated the Golden Eagles by a score of 11-7, thus avenging a defeat the previous year. A stalwart Husky line proved the difference between victory and defeat in this clash. Millersville was vanquished to the tune of 37-0 here, in the fourth game of the schedule. It was the worst defeat inflicted by an opponent upon the Millers in history. The Huskies were probably at their greatest height of the season for this game.

After scoring two quick first period touchdowns, the Maroon and Gold saw a stubborn Shippensburg eleven come back to roll up three scores in the second period and go on to hand the Huskies their second defeat of the year before a sell-out Homecoming Day crowd at Athletic Park. This was another thriller all the way. Had the Huskies won this game, they undoubtedly would have been declared the conference winners.

Although yielding a first period touchdown, the men of Coach Redman settled down to cross the double chalk line four times to win over Kutztown's Golden Avalanche in the Berks County community, 24-7.

For the second year in a row East Stroudsburg was beaten by one point when the Huskies, down by a 12-0 count going into the last quarter, scored two touchdowns and converted one extra point to defeat the powerful Big Red, 13-12, on a mud-covered, rain-soaked field last Armistice Day. History also repeated itself in another manner. After Wayne VonStetten had scored the initial Husky six points, Maley tossed one to Georgie Paternoster for the game-tying score on the same kind of a play as the one which broke the Big Red back in '46. Then Angelo

Albano calmly shot a pass with Maley on the receiving end this time for the all-important extra point.

The final tussle of the season was played in Trenton, N. J., against Rider College, and the Huskies mauled the Rough Riders to the tune of 34-0. This game was also played in the rain and mud, but it did not stem the Husky attack, which rolled up three touchdowns in the first quarter. The entire squad saw action in this one.

Three Huskies were given honorable mention on the Associated Press All-State team. Matt Maley, Pottsville; Elmer Kreiser, Columbia; and Tom Donan, Columbia, all gained recognition from the writers. In addition to these boys, Steve Kriss, fleet halfback from Berwick, and George Paternoster, bouncing right end from Hazleton, showed flashes of stardom.

1947 RECORD

(N) *Sat.	Sept. 27	6	Mansfield	7	
				(at Kingston)	
(N) *Sat.	Oct. 4	19	Lock Haven	14	Home
	*Sat. Oct. 11	11	Clarion	7	Away
(N) *Sat.	Oct. 18	37	Millersville	0	Home
(HC) *Sat.	Oct. 25	42	Shippensburg	19	Home
	*Sat. Nov. 1	24	Kutztown	7	Away
	*Tues. Nov. 11	13	East Stroudsburg	12	Home
(N) Sat.	Nov. 15	34	Rider College	0	Away
Totals		156		66	

WON 6, LOST 2

(N) Denotes night game
 * Conference game
 (HC) Homecoming Day





Beth Hartman, Josephine Padula, Delphine Buss, Peggy Suchy, Carolyn Hower Williams, Doris Gilday, William Remig, Horace Readler.

Cheerleaders

RAH! RAH! BLOOMSBURG! With Miss Honora Noyes' assistance the Cheerleaders were an active and enthusiastic group who kept the crowds cheering for our athletic teams whether they were winning or losing.

Let's hope that the succeeding years will find our athletic teams enjoying the successes which they had last year.



SOCCER

Demonstrating a furious offense sparked by a tightly-knit defense, the 1947 edition of the Husky soccer team closed the most successful season in the school's history. The Huskies showed a record of six victories, two ties, and one loss, a mark that placed them near the top of the Eastern Intercollegiate Soccer League standings.

Team spirit, confidence, and the will to win played a dominant part in the Husky drive toward national recognition. Early in September, Coach Peter Wisher looked over the candidates. He didn't promise anything but added that last year's poor record was excusable in view of the fact that the schedule was completed on the spur of the moment.

Some thirty-five boys reported for the first practice sessions. This number was cut to twenty-eight during most of the schedule. Approximately half this number had played some high school soccer, but many were inexperienced.

Veterans from the '46 team included Captain Clayton Patterson, Millard Ludwig, John Magill, Royal Conrad, Pat Rooney, Doyle Johnson, Claire Mensinger, Reg. Remley, and Leroy Henry. Added to this array of material was Owen Diehle, Neil Dent, George Phillips, Glen Baker, and Bruce Yeager.

The Huskies opened the season at home with Lock Haven as the opposition. On a goal by Diehle in the first period the Maroon and Gold took the lead, and that looked like victory until midway in the last quarter when the Havenites scored twice to win, 2-1.

Then the Huskies started their undefeated string. Rider College, which year after year turns in top notch performances, had to come from behind to gain a 3-3 deadlock with the Wishermen in a thrilling contest. Lock Haven was the next opponent in a return engagement, and this also resulted in a stalemate, 2-2, with the Havenites coming from behind to knot the count. This was one of the roughest games of the season.

The first of six straight victories came at the expense of Penn State Jayvees. With the Husky Jayvees playing their hearts out and holding the Lions to a 2-1 score for three periods, Coach Wisher sent the varsity into the fray in order to get them ready for the tough game against Lincoln University. They promptly scored twice to win by a 3-2 count.

At Lincoln, the Maroon and Gold met a team of experienced soccer players. The majority of the squad was composed of exchange students from Nigeria, who had played the boot sport practically all their lives. The Huskies walked off with a well-earned 2-0 victory on Patterson's penalty kick and Conrad's last period goal.

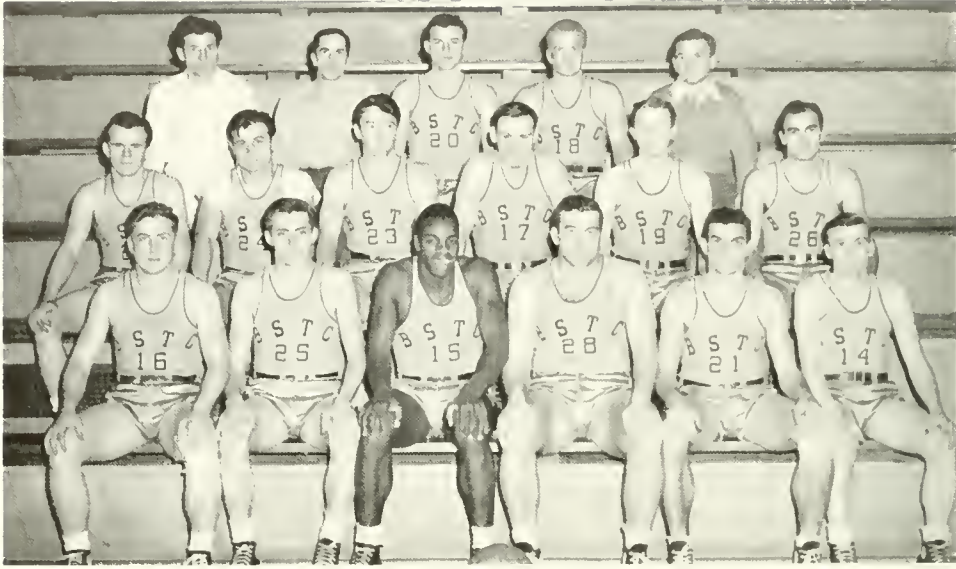
Homecoming Day saw the Husky booters score a 3-0 victory over Elizabethtown, to the delight of the largest crowd ever to view a soccer game on Mt. Olympus, and the following Saturday the Maroon and Gold shut out Lincoln again, 3-0, scoring all three goals within six actual minutes of playing time. The Husky defense, once more led by Magill and Henry, was outstanding in curbing the Lincoln attack.

For the first time in history, the Huskies defeated East Stroudsburg Teachers. This was accomplished on the Big Red field November 8 by a score of 4-3 in one of the most exciting soccer games ever played. Despite the fact that mud and water covered the field of play, both teams displayed a brand of ball seldom seen.

Closing the season at Elizabethtown November 15, the Husky booters set an all time school record by walloping the down staters, 9-3, on a field blanketed by two inches of snow. It was only because of the outstanding work of Keath, Elizabethtown goalie, that the score did not mount higher.

The "atomic line" composed of Patterson, Diehle, Ludwig, Johnson, and Conrad scored 30 goals during the season with Diehle getting nine and Patterson seven. Ludwig had eleven assists and Conrad seven. Rooney, Phillips, Mensinger played great ball at the halfback positions. Magill, Remley, Baker, and Yeager turned in fine jobs at fullback slots, and Henry allowed but four goals in 21 quarters of actual play. Magill, leading the fullbacks, concluded his fourth year of sparkling defensive play.

Other boys who aided considerably in the sparkling play were: Stasko, Borst, Butt, Heydenreich, Maietta, Slusser, Davis, Pekala, Mensch, Reichart, Trimble, Ackerman, Scott, and Shelhammer. Dayne Hartman, Benton, concluded his second year as manager.



BASKETBALL

The Husky basketball team had a very unusual season, in winning ten and losing nine. Playing a 19 game schedule, the heaviest in many years, the Maroon and Gold quintet triumphed six times on foreign boards while losing but three. At home, however, they were able to win but four in ten tries.

Another oddity of the 1947-48 campaign was the consistency with which the Huskies halved home and home series. The Wishermen split decisions with Elizabethtown, Kutztown, West Chester, Lock Haven, East Stroudsburg, and Millersville while beating both Shippensburg and King's College twice. Mansfield dealt the Huskies two losses and Temple was responsible for the opening defeat.

Charlie Boyer, sophomore from Pottsville, led the team in individual scoring with 224 markers, compiled by racking up 73 field goals and 68 free throws. Bob Andrews, of Johnstown, was runner-up with 181. In addition to his point making, he was the most consistent player on the squad.

Other players to hit the century mark in scoring were "Big Ed" Jones, sophomore, who had 134, and Elmer Kreiser, freshman guard, who came up with 114. Bobby Kashner, Bob Walther, Paul Slobozien, and Walter Banull all turned in fine jobs to the Husky cause.

Although pressed during the first half, the powerful Temple Owls opened the season December 3 and walked away with a 58-35 victory. Elizabethtown won an overtime contest the following Saturday as Frank Keath scored 27 points.

Then the Huskies took three in a row, all conference tilts. On a two day road trip, they vanquished Kutztown and West Chester in close games. Lock Haven was the next opponent, and the Bald Eagles fell before the Wishermen, although leading at the end of the first period, 19-7.

West Chester eked out a close victory over the Huskies to record the first Bloomsburg conference loss. In the "March of Dimes" affair at Wilkes-Barre, the Maroon and Gold cagers came from behind to take the King's College Monarchs into camp.

Millersville surprised the Huskies in the first of a two game, two day road trip into southern Pennsylvania. However, they bounced back to rout Shippensburg when the Red Raiders were high in the standings.

Mansfield scored two very close victories over the Huskies within a ten day period. Sandwiched between these losses were brilliant victories over East Stroudsburg and Shippensburg. Then the local cagers proceeded to gain revenge for an earlier beating by walloping Elizabethtown, 68-51, on the down-staters' floor.

Last minute field goals saw East Stroudsburg edge the Huskies after the home boys led by a comfortable margin during most of the game. In the best display of the season, Bloomsburg outscored Millersville, 68-56. This one was a thriller all the way.

Although the Maroon and Gold five led by a 15-2 margin at one point in the first period, Lock Haven won out with a final two minute barrage of baskets. The Huskies then defeated King's College for the second time but dropped the final encounter to Kutztown in a loosely played affair, 38-35.

In conference competition, the Huskies finished in sixth place with a record of seven wins and as many losses. Wisner's charges scored a grand total of 900 points during the year, holding the opposition to 860.

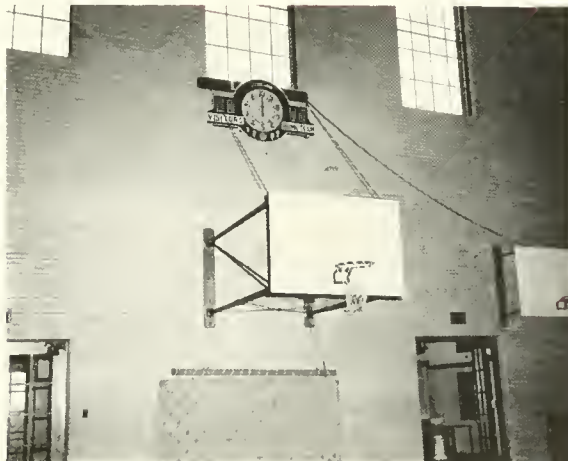
1947-48 RECORD

Wed. Dec. 3	35	Temple	58	Home
Sat. Dec. 6	60	Elizabethtown (overtime)	64	Home
Fri. Dec. 12	36	*Kutztown	33	Away
Sat. Dec. 13	44	*West Chester	36	Away
Tues. Dec. 16	37	*Lock Haven	34	Home
Sat. Jan. 10	39	*West Chester	42	Home
Sat. Jan. 17	56	King's College	45	Away
Fri. Jan. 23	39	*Millersville	47	Away
Sat. Jan. 24	45	*Shippensburg	35	Away
Mon. Jan. 26	51	*Mansfield	53	Home
Sat. Jan. 31	55	*East Stroudsburg	40	Away
Tues. Feb. 3	48	*Shippensburg	44	Home
Fri. Feb. 6	42	*Mansfield	43	Away
Wed. Feb. 11	68	Elizabethtown	51	Away
Sat. Feb. 14	48	*East Stroudsburg	51	Home
Thurs. Feb. 19	68	*Millersville	56	Home
Tues. Feb. 24	41	*Lock Haven	43	Away
Thurs. Feb. 26	53	King's College	47	Home
Wed. March 3	35	*Kutztown	38	Home

* Denotes Conference Game

Won 10 Lost 9

Conference Record Won 7 Lost 7







The "B" Club

OFFICERS

<i>President</i>	- - - - -	BETTY FISHER
<i>Vice President</i>	- - - - -	LAFIRNI SHIRK
<i>Secretary</i>	- - - - -	ALBERTA FUNK
<i>Treasurer</i>	- - - - -	ESTELLE FRIDAY
<i>Sponsor</i>	- - - - -	MISS McCAMMON

The "B" Club is an athletic organization for girls. To be eligible for "B" Club a girl must earn one thousand points. These points are made by participating in individual or group sports.

"B" Club meetings are held the first Thursday night of every month.

Intramurals for girls are held every Thursday night in the Centennial Gymnasium. This gives the girls a chance to take part in nearly all the sports.



BASEBALL

After winning four of nine decisions in 1947, the Husky baseball team took the field this spring in the opening game against Lock Haven determined to make a decided improvement.

The 1948 schedule proved to be one of the best cards in B. S. T. C. diamond history. Major headache to Director John A. Hoch was the difficulty in arranging mid-week home games in order to accommodate students who were unable to attend the Saturday home clashes.

After a great deal of work, four of the six home games were slated for Wednesday. One of the two home Saturday tiffs was the Alumni Day affair with King's College so that actually only one home game was played on Saturday.

Coach Robert B. Redman, who came here from Triple Cities College, did a fine job handling the team with able assistance from Thomas A. Lewis, who coached the nine last year. Redman, himself a former catcher, developed some fine material during the year.

Included among the 11 game schedule were nine conference tilts. The State Teachers College Baseball Conference is the only division of the loop to officially decide a champion. As this article went to press, the Husky nine was hoping for a championship, something which has been absent from the local campus since 1935.

The Huskies opened the '47 campaign with a 2-0 victory over Lock Haven with Lado Savelli serving the Havenites the whitewash. Savelli allowed but five hits in his zero stint on the hill.

At Scranton the following Saturday, the Tommies grabbed an early lead to win by a 7-3 score, the Maroon and Gold getting three rallies in the last two innings. Shippensburg edged the Huskies in the next game as a belated Bloomsburg rally fell short.

East Stroudsburg's strong team slammed out an 11-3 victory as the Huskies lost their third straight. Savelli again came to the rescue as the local lads nipped Mansfield in eleven innings, 8-7. He hurled the last four frames to garner his second triumph of the year.

Although behind in the fourth inning, the Lewismen went on a batting spree and gained even terms for the season with Shippensburg by vanquishing the Red Raiders, 11-6, in a return meeting with Leo Carter pitching fine relief ball and getting the victory.

The Huskies again proved no match for East Stroudsburg, and the Big Red walked off the field with a 12-3 lopsided victory. Lock Haven was scheduled to play here the following week, but rain forced postponement and the contest could not be re-scheduled.

Coming down the stretch, the Huskies played three games during the final week, losing to Mansfield, 5-2; defeating the Danville Washies, of the Tri-County League, 6-5; and tying Scranton University, 2-2, in a seven inning game called because of rain on Alumni Day.

The Husky nine finished the season with four victories, five losses, and one tie for a percentage of .444.

1948 SCHEDULE

Wednesday	April 14	—* Lock Haven	<i>Home</i>
Saturday	April 17	—* Millersville	<i>Away</i>
Wednesday	April 21	—* Shippensburg	<i>Away</i>
Saturday	April 24	—* E. Stroudsburg	<i>Home</i>
Wednesday	April 28	—* Mansfield	<i>Home</i>
Saturday	May 1	— King's College	<i>Away</i>
Wednesday	May 5	—* Millersville	<i>Home</i>
Saturday	May 8	—* E. Stroudsburg	<i>Away</i>
Wednesday	May 12	—* Shippensburg	<i>Home</i>
Saturday	May 15	—* Mansfield	<i>Away</i>
Saturday	May 22	— King's College (Alumni Day)	<i>Home</i>

* Conference Game

1947 BASEBALL RESULTS

Wed.	April 16	2	*Lock Haven	0	<i>Away</i>
Sat.	April 19	3	Scranton	7	<i>Away</i>
Wed.	April 23	8	*Shippensburg	9	<i>Home</i>
Sat.	April 26	3	*E. Stroudsburg	11	<i>Away</i>
Sat.	May 3	8	*Mansfield (11 innings)	7	<i>Home</i>
Wed.	May 7	11	*Shippensburg	6	<i>Away</i>
Sat.	May 10	3	*E. Stroudsburg	12	<i>Home</i>
Sat.	May 17		*Lock Haven (rain)		<i>Home</i>
Wed.	May 21	2	*Mansfield	5	<i>Away</i>
Thurs.	May 22	6	Danville Washies	5	<i>Home</i>
Sat.	May 24	2	Scranton	2	<i>Home</i>
			(called, rain—Alumni Day)		
		—		—	
		48		64	

Won 4, Lost 5, Tied 1

* Conference Game



TRACK

Husky trackmen reeled off one of the busiest schedules in many years during the spring, participating in six dual meets with other colleges as well as the Penn Relays and the annual State Teachers College Meet.

Even while the Maroon and Gold was establishing that long string of 23 victories in dual competition, the schedule was never as stiff as was the case this spring.

The card included meets with four conference foes — Shippensburg, Lock Haven, East Stroudsburg, and Cheyney, a newcomer on the list. In addition to Cheyney, other schools which opposed the Huskies for the initial time were Scranton and Lincoln.

Coach Peter R. Wisner faced the task of almost completely rebuilding his team of a year ago, which won one of three dual meets and finished a good fourth in the state meet. Some likely looking new material promised to give the college something reminiscent of pre-war days when Bloomsburg was a national track power.

The competition for the spring was keen, and the schedule might have been termed "suicide," for there wasn't a soft touch from the lid-lifter against Shippensburg to the final meet with East Stroudsburg.

Cheyney and Lincoln have long been noted for their fine track teams, and Scranton took a back seat to no one. Shippensburg and East Stroudsburg defeated the '47 Huskies by lopsided counts, and both had a veteran team this year. Lock Haven was a much improved outfit from that which lost to the Wishermen last spring.

Gone from that 1947 team were Matt Kashuba, "Red" Thomas, and Pat Rooney, all of whom were stars in two or three events. Wisner hoped to uncover a few stars as this article went to press.

Shippensburg opened the brief 1947 schedule by smashing out an 83 1/3 to 42 2/3 decision over the Huskies. The Red Raiders set a torrid pace, racking up point after point, but it was largely due to the fact that they had many second and third place winners that the final margin was so great.

In the following clash with East Stroudsburg, Pat Rooney, who was a ball of fire all year in the high hurdle events, set a college record in that department by doing the course in 13.1. This broke Don Jenkins' 13.5 mark, established in 1941 when the Huskies were beating everybody.

The Big Red took this meet, 77-49, and again it was largely because the Huskies failed to place enough second and third men. Matt Kashuba, "Red" Thomas, and Rooney, all grabbed first places.

The Huskies finished fourth in a seven entry field at the State Meet, getting 33 points. West Chester came out on top. Kashuba won the high jump and Rooney the high hurdles. Thomas placed second in both dashes.

Lock Haven furnished the opposition in the final meet of the year, and the Maroon and Gold thumped the Havenites, 65-51, with Kashuba, Rooney, Thomas, Smigel, Drennan, and W. Thompson taking first places. This brought glory to an otherwise dismal season as the Huskies attempted to re-establish themselves in track and field, a sport in which Bloomsburg ranked with West Chester in years just prior to the war.

During the winter, Kashuba entered several indoor events, competing in his specialty, the high jump, and he turned in a fine job for his efforts. Jumping against the great Irving Mondschien, of N. Y. U., on each occasion, Kashuba pressed the New York athlete, who set a mad pace this past winter.

1948 SCHEDULE

April 17—*Shippensburg	Away
April 21—Scranton U.	Home
April 24—Penn Relays	(at Philadelphia)
May 1—*Cheyney Teachers	Home
May 4—*Lock Haven	Away
May 8—State Meet	(at Shippensburg)
May 11—Lincoln U.	Home
May 15—*E. Stroudsburg	Away
* Conference Game	



Intramural Athletics

The large number of men who participated in Intramural Athletics during the past year proves the vital need of this activity on the campus.

Last May a softball league was organized by Dean Hoch and four teams entered the competition. Games were played daily at five in the afternoon—thunder storms were no reason for interrupting play. The finals in the post-season play-offs brought together Walter Kreitzberger's Civil Air Patrol and Harry Zavachy's North Hall team. The Civil Air Patrol rolled over the lads from North Hall by a great margin to win the championship. Some of the outstanding players for the Civil Air Patrol Champions were Tom Smigel, Mat Maley, and George Thear.

The football league was organized in October by Luther Butt and Marvin Meneceley. Ten teams were represented and, because of the short time allowed to play, no play-off system was used. The Achin' Backs of Charlie Hawk won their nine scheduled games to take the championship with ease. Herkie Talarsky's Steamrollers gave them their best competition but they were unable to bend the winning streak of the Achin' Backs. Sparkplugs of the champions were Len Lipski, Len Wearne, Glenn Copeland, and Johnnie Hough.

Mr. Redman organized the twin-league basketball season as this article went to press. There were sixteen teams desiring to compete—eight teams to a league. It was planned to have the champions of the two leagues play off for the final championship on March 9th. As we go to press, Mr. Hoch is working on plans to organize a volley ball league. A great number of men have expressed their desire to compete in this sport.

Besides the men competing on the intramural teams themselves, there were many fans attending these games on the campus. For instance, last summer when a player on the Day Men Softball team was injured in a game and had to be hospitalized, a benefit game between a selected All-Star Nine from the college and a Sports Shop Team from Freeland was held and hundreds of people attended. Likewise, there has been a great amount of outside attention drawn to the other Intramural Athletics.

Accumulative Sports Record

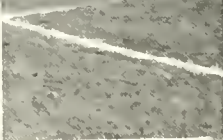
As the *OBITER* went to press, Husky athletic teams appeared well on their way to one of the best years in history. A summary of the three sports completed during the present year shows 22 victories, 12 losses, and two ties.

This results in a percentage of .647, an excellent mark when it is considered that one sport usually lags below the .500 mark. Soccer turned in six wins in nine starts, including two ties. Football showed six victories and but two losses while basketball had the poorest record of the three sports.

The soccer team doubled its goal production over that of the opposition while the gridmen outscored the enemy, 156-66. Basketball recorded 900 points for the Huskies and 860 for opposing teams.

	<i>W</i>	<i>L</i>	<i>T</i>	<i>Pct</i>	<i>Pts</i>	<i>Opp</i>
Soccer	6	1	2	.857	30	15
Football	6	2	0	.750	156	66
Basketball	10	9	0	.525	900	860
Totals	<u>22</u>	<u>12</u>	<u>2</u>	<u>.647</u>	<u>1,086</u>	<u>931</u>





A red-tinted illustration of a school building. At the top center is a clock tower with a dome and a spire. Below it is a large clock face showing the time as approximately 10:10. The building has several arched windows. In the foreground, four students are standing: a boy in a dark sweater with a large white letter 'B' on the chest, a boy in a dark sweater with a white circular emblem, a girl in a white dress with a dark sash, and a girl in a dark dress. The sky is filled with birds and a crescent moon. The overall style is a simple line drawing with a red color overlay.

ORGANIZATIONS



Community Government Association

The Community Government Association consists of students and faculty members organized to create better co-operation among students, faculty and administration.

The College Council is the executive division of the C. G. A. Every student on the campus is represented on the council by representatives from the Waller Hall, Day Women's, North Hall, and Day Men's Associations as well as class representatives.

Committees carry out various duties of the College Community such as planning social affairs, fire drills, pep rallies, and other similar activities.

The Community Government Association and its representative body, the College Council, reflect the opinions of the College Community.

COMMUNITY GOVERNMENT ASSOCIATION OFFICERS

<i>President</i>	- - - - -	HARRY REITZ
<i>Vice President</i>	- - - - -	ELIZABETH LEHI I
<i>Secretary</i>	- - - - -	BILLY L. FISHER
<i>Treasurer</i>	- - - - -	JOHN PURCELL
<i>Class Dues Treasurer</i>	- - - - -	MARIE STADTS

FACULTY MEMBERS OF COLLEGE COUNCIL

Dr. Kehr	Mr. Hoch	Mr. Deal	Mr. Hallisy
Miss Ranson	Mr. Redman	Mr. Wisner	Mr. Bailer
Miss Waldron			Miss Hazen

STUDENT MEMBERS OF COLLEGE COUNCIL

<i>President, Senior Class</i>	- - - - -	HARRY G. JOHN
<i>Representative, Senior Class</i>	- - - - -	PEGGY LEWIS
<i>Representative, Senior Class</i>	- - - - -	JAMES G. TIERNEY
<i>President, Junior Class</i>	- - - - -	EDWIN ALLEGAR
<i>Representative, Junior Class</i>	- - - - -	GLORIA GALOW
<i>Representative, Junior Class</i>	- - - - -	CARSON WHITESILL
<i>President, Sophomore Class</i>	- - - - -	JAMES BOYLE
<i>Representative, Sophomore Class</i>	- - - - -	ALEKI COMUNTZIS
<i>Representative, Sophomore Class</i>	- - - - -	ROBERT KASHNER
<i>President, Freshman Class</i>	- - - - -	ELMER KREISER
<i>Representative, Freshman Class</i>	- - - - -	BEVERLY COLE
<i>Representative, Freshman Class</i>	- - - - -	JAY CORTRIGHT
<i>President, Day Women's Association</i>	- - - - -	CHARLOTTE RICHART
<i>President, Dormitory Women</i>	- - - - -	MARY MOSER
<i>President, Day Men's Association</i>	- - - - -	RAIPH SELTZER
<i>President, Dormitory Men's Association</i>	- - - - -	HENRY KULICK





Men's Dormitory Association

Since the war ended, the college has constantly increased its enrollment and this was more than evident in the men's dorm. Not only were the regular rooms occupied by three or four men but in addition we gave up our smoking rooms to squeeze in a few more fellow students, raising our dorm enrollment to one hundred and sixty men.

Through the splendid co-operation given by our deans—Mr. Hoch, Mr. Deal, and Mr. Redman—we have resumed most of our pre-war activities which are a traditional feature of the men's dorm.

Among the highlights of the year were the unforgettable freshmen customs, the smokers, (with cigarettes and cigars provided), the Christmas caroling, the table tennis games, the dart games, the bull sessions, the visits by the deans and then the intra-mural athletics.

OFFICERS

President - - - - - HENRY A. KULIK
Vice President - - - - - MARVIN MENELEY
Treasurer - - - - - FRANK DUDZINSKI



Waller Hall Association

The Waller Hall Association includes all women students living in Waller Hall and has for many years been an Association known for its friendliness and co-operative spirit.

The Association has a Governing Board, consisting of four officers and representatives from each class. The Dean of Women and Assistant Dean of Women act as advisers to the Governing Board.

Freshman Counsellors are appointed to advise and help freshmen and act in that respect for one semester. House Committees are appointed to report minor infractions of the dormitory and Fire Wardens are appointed to help take care of the safety of Waller Hall residents.

One of the important events of the year is the Homecoming Open House of the women's dormitory. All visitors on that day are welcome in the dorm at set hours.

The Day-Dorm and He-She parties held for girls only are a treat to the entire dormitory. An informal tea is sponsored by the Waller Hall Association during Freshmen week to give the new students an opportunity to become acquainted with the upper classmen.

OFFICERS

President - - - - - MARY MOSER
Vice President - - - - - SHIRLEY HENLEY
Secretary - - - - - MATILDA PATRICK
Treasurer - - - - - MARION WILSON

GOVERNING BOARD MEMBERS

Seniors

Helene Brown
Mildred Palumbo

Marge Brace
Betty Lehet

Juniors

Janet Page

Jane McCullough

Sophomores

Virginia Reimensnyder

Midge Fanzo

Freshmen

Jane Sutherland

Lois Evans



Day Men's Association

The Day Men's Day Room is still located at Navy Hall. During the past two years efforts had been made to have the Day Room re-established in Noetling Hall where the students can be closer to their activities.

It now appears that work will begin shortly to remodel a room on the second floor of Noetling Hall for the use of the Day Men. All hope that this room will be ready for occupancy next September.

Day Women's Association

OFFICERS

<i>President</i>	- - - - -	CHARLOTTE REICHART
<i>Vice President</i>	- - - - -	RUTH ELDER
<i>Secretary</i>	- - - - -	MARY RUSH
<i>Treasurer</i>	- - - - -	ALBERTA FUNK

BOARD MEMBERS

Barbara McNinch	Jane Keller
Martha Teel	Janet Gilbody

All of the women students who commute or live in Bloomsburg are members of the Day Women's Association. The Day Room in Noetling Hall provides a comfortable lounging place and lunch room for the members of the organization.

The Official Board, which governs the Association, is composed of a President, Vice President, and two representatives elected by each class. Miss Ethel A. Ranson, Assistant Dean of Women, acts as sponsor for the group.

The most important social events of the year are the tea given for freshman day women, the Christmas Party, and the annual He-She Party, a get-together for both day and dorm women.

This year the Association was active in cooperating with the Community Government Association to provide Christmas gifts for needy families in the community.



Business Education Club

OFFICERS

<i>President</i>	-	-	-	-	-	HAROLD REINERT
<i>Vice President</i>	-	-	-	-	-	EDWARD BAKER
<i>Secretary</i>	-	-	-	-	-	MATILDA PATRICK
<i>Treasurer</i>	-	-	-	-	-	SHIRLEY HENLEY
<i>Historian</i>	-	-	-	-	-	RAYMOND POPICK
<i>Sponsor</i>	-	-	-	-	-	MR. WALTER S. RYGIEL
<i>Sergeant-at-Arms</i>	-	-	-	-	-	ELOISE NOBLE

A variety of educational and interesting programs marked the most successful year of the Business Education Club. During the past school year, the club had an active membership of over two hundred students and also was one of the most active organizations on the campus.

The outstanding activities of the Club included a Water Carnival held at the Centennial Gymnasium, a demonstration by the Multigraph Machine Company and Wire Recorder, a Christmas party, a picnic on Mount Olympus, panel discussions, interviews of student teachers, Easter party, and Educational films. The Club members also assisted in carrying out the various activities of the Commercial contest. The Club is a member of the National Business Education Teachers of America.

The closing event of the year was the Business Education Club banquet at which time the installation of officers for the ensuing year took place, and the club annuals were distributed.

Club Motto—An investment in knowledge pays the best dividends.

Club Colors—Cardinal and Gray.

Club Flower—Red Carnation.



Science Club

OFFICERS

<i>President</i>	- - - - -	THADDEUS SWIGONSKI
<i>Vice President</i>	- - - - -	HENRY A. KULIK
<i>Secretary</i>	- - - - -	PERRY POSOLCO
<i>Treasurer</i>	- - - - -	JOHN KLOTSKO
<i>Program Chairman</i>	- - - - -	LIONEL LIVINGSTON
<i>Sponsors</i>	- -	DR. KIMBER KUSTER, MR. HAROLD LANTERMAN

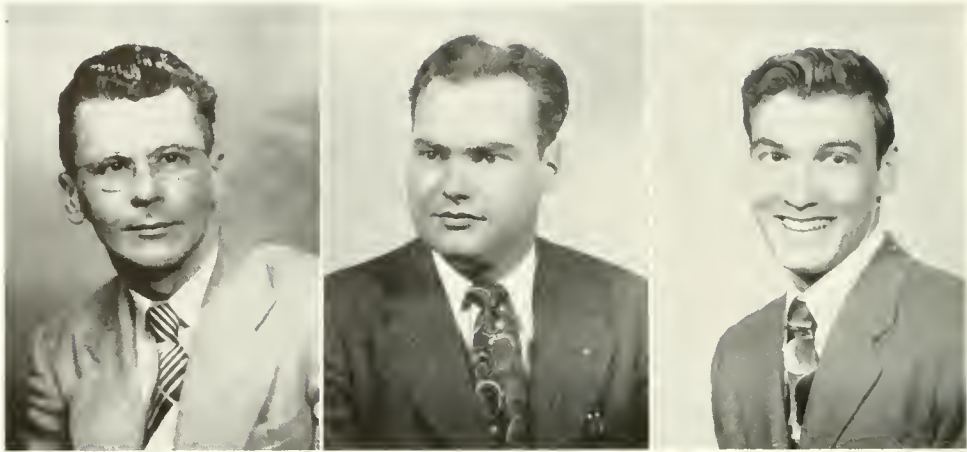
The Science Club has been one of the most active organizations on the campus of B. S. T. C. for many years. The chief aim of the club is to arouse interests of the students in both the natural and physical sciences. Many phases of chemical, biological, and physical sciences are discussed. The programs consist of outside speakers, discussions, movies, quizzes, and field trips to study the scientific aspects of the campus. The club meets every second and fourth Thursday of the month.

The highlights of this year's activities of the Science Club has been the presentation of a radio program. The program was carried over the local Bloomsburg station, WCNR, and was presented in the form of questions and answers. Twenty-four members participated and Lionel Livingston acted as master of ceremonies. The program was written and produced by Thaddeus Swigonski, president of the club. The production was under the direction of Miss Johnston, the college radio program director. Much time and effort was given by the students and Miss Johnston to put on this show. It was very gratifying to learn that the program was enjoyed by both the college community and the outside listening public.

What may be termed as the climax, or "point of highest interest," in the club is the annual field trip. The tentative date is usually set for the middle of May. Both the date and destination are set by the members of the club with the approval of the Dean of Instruction. It is an all-day trip to the country. Here various phases of nature study are observed in their natural environment. The day is topped off with a hearty picnic lunch prepared by the club members.

MEMBERS OF THE SCIENCE CLUB

Bartholomew, Ralph	Longer, Charles
Beachell, Merlin	Longo, Celestine
Bloski, T. R.	Looker, Jack B.
Borst, Kenneth	Luchs, Robert
Brundage, Mae	Marchetti, Alfred
Brunn, Henry	Marcus, Julius
Cameran, Don	Marmo, Joseph
Carroll, Wanda	Martini, Robert E.
Carroll, Wilma	McGarrah, Gene
Case, Frederick J.	Meneeley, Marvin
Cohen, Solomon	Michell, Marty
Cook, Kenneth	Mordan, Florence
Crumb, Nancy	Mordan, Jack L.
Edwards, Dave	Myers, Adda
Edwards, Edward	O'Brien, Robert E.
Everett, Carl	Pecuchi, Andy
Froncek, Joseph	Pekala, Lawrence
Gabriel, Louis	Peterson, Gene
Hahn, William	Posocco, Perry
Harmon, Dave	Putera, Joseph
Hawk, Norman	Reichard, John H.
Hildebrand, Andy M.	Roth, Luther H.
Hippman, Robert	Rusinko, Helen
Hornberger, Ralph	Schilling, Richard
Hurm, Hildegarde	Search, Gene D.
Johnson, Barbara	Sheehy, Edward F.
Keiser, Norman	Shoemaker, William
Kline, Norman	Smeltz, Leroy
Klotsko, John	Stair, Carol
Knarr, Ned	Swigonski, Thaddeus
Koble, Dan	Umstead, William
Krum, James	Vernay, Carolyn
Kulick, Joseph	Walters, Betty
Kulik, Henry	Welker, Dan
Livingston, Lionel	Zelinski, Bernard J.



JOSPH PUTRA
Associate Editor

WILLIAM R. DEIBEL
Editor

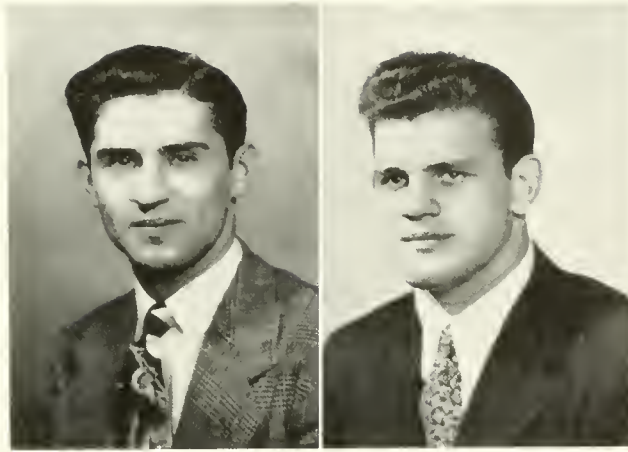
DONALD MAIETTA
Associate Editor

OBITER STAFF



JAMES BOYLE

ROBERT WILLIAMS



JOSEPH SOPKO
Business Manager

FRANK LUCHNICK
Photography

EDITORIAL STAFF

Editor - - - - - WILLIAM R. DEEBEL
Associate Editors, JOSEPH J. PUTERA, DONALD F. MAIETTA
Photography - - - - - FRANK J. LUCHNICK
Sports - - - - - MILLARD C. LUDWIG
Art - - - - - JANET E. GILBODY

BUSINESS STAFF

Business Manager - - - - - JOSEPH E. SOPKO
Advertising - - - - - JAMES H. BOYLE, ROBERT E. WILLIAMS
Distribution - - - - - GLORIA I. GALOW

Advisers

EDWARD T. DEVOE
 SAMUEL L. WILSON

The 1948 OBITER Staff wishes to thank the entire student body for their splendid co-operation in making this book possible in the short time that was available.

We also hope that this book will call up many pleasant memories, and serve as a tie "to that which is Bloomsburg."



Kappa Delta Pi

OFFICERS

<i>President</i>	- - - - -	EIROY F. DALBERG
<i>Vice President</i>	- - - - -	CARSON WHITESELL
<i>Recording Secretary</i>	- - - - -	ROSE MARIE KRAISER
<i>Corresponding Secretary</i>	- - - - -	NANCY FISK
<i>Treasurer</i>	- - - - -	JAMES P. ROONEY, MICHAEL REGAN
<i>Counselor</i>	- - - - -	DR. MAUPIN

The Gamma Beta Chapter of Kappa Delta Pi was installed at the State Teachers College, Bloomsburg, Pa., on February 21, 1931. Kappa Delta Pi membership is extended to the Junior and Senior students, having commendable personal qualities and worthy ideals, and whose accumulative grades are in the upper quarter of the composite grades of the institution.

Kappa Delta Pi is a National Honor Society in Education. The aims of this organization are to establish and promote high intellectual, scholastic, and social standards.



Pi Omega Pi

OFFICERS

<i>President</i>	- - - - -	- - -	RALPH SULTZER
<i>Vice President</i>	- - - - -	- - -	HARRY JOHN
<i>Secretary</i>	- - - - -	- - -	SHIRLEY HENLEY
<i>Treasurer</i>	- - - - -	- - -	ROSE MARIE KRAISLER
<i>Historian</i>	- - - - -	- - -	CHARLOTTE REICHART
<i>Representative to Inter-Fraternity Council</i>	- - - - -	- - -	RÉGINALD RÉMLEY
<i>Sponsor</i>	- - - - -	- - -	EARL A. GEHRIG

The Alpha Delta Chapter of Pi Omega Pi, a National Professional Commercial Educational Fraternity, was installed at State Teachers College, Bloomsburg, Pennsylvania, on May 28, 1935. Its aims are to encourage, promote, extend, and create interest and scholarship in commerce; to encourage and foster high ethical standards; and to teach the ideal of service as the basis of all worthy enterprise.

Membership in the fraternity is extended to members of the Department of Business Education who have attained superior scholastic ratings, who have been a member of the Business Education Club for at least one year, and who show professional promise.

The programs during the year were of both an educational and social nature. The main activity was the publishing of a News Letter which was dedicated to alumni members.



Alpha Psi Omega

OFFICERS

<i>President</i>	- - - - -	HARRY RLITZ
<i>Secretary</i>	- - - - -	JEAN RICHARD
<i>Treasurer</i>	- - - - -	GEORGE MENARICK
<i>Director</i>	- - - - -	MISS ALICE JOHNSTON

The Alpha Omicron Chapter of Alpha Psi Omega, National Dramatic Fraternity, has high standards of ability and performance in dramatic work. Members must have done outstanding work in the College Dramatic Club as well as have a high standing in scholarship and citizenship.

During the past year, the fraternity presented Oscar Wilde's famous comedy, "The Importance of Being Earnest," as their contribution to the college assembly programs. A one-act comedy, "A Wedding," was broadcast over a local station, WCNR. Fraternity members take an active part in all Dramatic Club plays and do a large share of the student directing.



Phi Sigma Pi

OFFICERS

<i>President</i>	- - - - -	ROBERT MILLARD
<i>Vice President</i>	- - - - -	JOHN O'DONNELL
<i>Secretary</i>	- - - - -	GEORGE THEAR
<i>Treasurer</i>	- - - - -	BERNARD RODGERS
<i>Representative to Inter-Fraternity Council</i>	- - - - -	ROYAL W. CONRAD
<i>Sponsor</i>	- - - - -	MR. EDWARD A. REAMS

On April 26, 1930, the Iota Chapter of Phi Sigma Pi was installed on our campus. It is the only national professional educational fraternity for men, and since its installation it has been one of the most active bodies in our college community.

The three basic principles of Phi Sigma Pi are knowledge, training, and fellowship. Based on these three principles, Phi Sigma Pi requires outstanding qualities of leadership in its members, both in the professional and social life on the campus.

One of the highlights of this year's activities was the sponsoring of an athletic banquet for the football and soccer squads. This was held at "Dutch Hill" and from all indications will become a yearly activity of this fraternity.

A number of parties and discussions contributed to an enjoyable and profitable year for the members of Phi Sigma Pi.



Gamma Theta Upsilon

Gamma Theta Upsilon, a professional geography fraternity, was established to bring a closer bond of fellowship among the undergraduate students of geography, and to promote geography in education.

Because of the war period, from 1941 to 1947, the chapter was inactive. On Home Coming Day, October 25, 1947, with the assistance of alumni, members, and Dr. H. H. Russell, the Delta chapter was reorganized.

The professional meetings were begun December 11, 1947. The meetings have included informal talks about geographical experiences in the South Sea Islands, by Millard Ludwig; a panel discussion on the geography of Russia; and the experiences of Robert Blew, as an officer, instructing newly arrived troops how to adjust to the climate, resources, and natives of the tropics.

OFFICERS

<i>President</i>	- - - - -	MARIO BERLANDA
<i>Vice President</i>	- - - - -	THOMAS SMIGEL
<i>Secretary</i>	- - - - -	MARJORIE BRACE
<i>Treasurer</i>	- - - - -	GEORGI REMETZ
<i>Adviser</i>	- - - - -	DR. H. H. RUSSELL

MEMBERS

Berlanda, Mario L.
 Blew, Robert J.
 Brace, Marjorie E.
 Butt, Luther

Deebel, William R.
 Jones, John L.
 Ludwig, Millard

Remetz, George
 Sigworth, Hazel S.
 Smigel, Thomas
 Thomas, Robert L.



Men's Glee Club

OFFICERS

<i>President</i>	- - - - -	RAYMOND STARR
<i>Vice President</i>	- - - - -	WILLIAM HOMISAK
<i>Secretary, first semester</i>	- - - - -	JOHN R. BOND
<i>Secretary, second semester</i>	- - - - -	ROBERT G. REITZ
<i>Treasurer</i>	- - - - -	DANIEL KELLY
<i>Librarian</i>	- - - - -	JOSEPH YAKOBOSKI

The Men's Glee Club, which just completed its second year of operation since the war, has become a well-balanced group of approximately 70 members. The club participated in several assembly and radio programs during the past year.

The secretary, John R. Bond, was called to active duty with the Navy at Pensacola at mid-year. Robert G. Reitz served as secretary for the organization during the second semester.

The men's choral group has again been under the expert direction of Miss Harriet M. Moore. Miss June Keller served quite efficiently in her position as accompanist.

First Tenor

Atwood Badman	Harrison Feese	Phillip Joseph	Charles E. Roberts
John Buynak	Richard Harner	Santo Prete	Ralph Wire

Second Tenor

Gene Allegrucci	Murray Hackenburg	John S. Lahout	Edward Skowronski
Gerald Bacon	Joseph Isajewicz	Donald F. Maietta	Edward J. Smigelski
Louis Ballantine	Edward F. Jackovitz	Edward Mitros	Raymond Starr
Peter Dillman	George L. Kearney	John Morgan	Joseph Vincent
Chris J. Golden	Thomas Kopetskie	Louis Pecora	J. Richard Wagner
John I. Haas			Bernard J. Zelinski

First Bass

Joseph Curilla	Vincent W. Karas	Charles Phillips	Edward W. Steiner
Russel Davis	Paul Keener	Paul Plevyak	Theodore Thomas
Joseph Froncek	Daniel Kelly	Emory W. Rarig, Jr.	William J. Tiddy
John J. Gieda	Irwin R. Klinger	Deryl Samois	Andrew Waypa
William Homisak	Stephen Kundrat	Tony Scarantino	C. J. Wray
Robert Jewell	Gene McGarrah	LeRoy Smeltz	Frederick Young
Doyle W. Johnson	Daniel Miscavage	Donald R. Smith	George Young
Harold R. Kamm			

Second Bass

John R. Bond	Francis Dean	Donald Hoar	Marvin Slomowitz
Robert Bower	Joe Derzak	John Kocur	William Wintersteen
Joe Breisch	Jay Lee Funk	Robert G. Reitz	Joseph Yakoboski



Women's Chorus

OFFICERS

<i>President</i>	- - - - -	ANNI BALDY
<i>Vice President</i>	- - - - -	JLAN RICHARD
<i>Secretary (first semester)</i>	- - - - -	PAULINE KOKOLIAS
<i>Secretary (second semester)</i>	- - - - -	ELOISE NOBLE
<i>Treasurer</i>	- - - - -	JOAN McDONALD
<i>Librarians</i>	- - - - -	LOUISE LOHR, GRACI SMITH
<i>Pianist</i>	- - - - -	MARTHA HATHAWAY
<i>Director</i>	- - - - -	MISS MOORE

One of the most popular and active organizations on campus was Women's Chorus. Every Tuesday of the week from four to five in the afternoon, the girls gathered with Miss Moore to vocalize and harmonize. During the first semester they rehearsed a group of sacred songs which they presented over the radio and before the entire student body in December. During the second semester, the girls rehearsed a number of songs, including spirituals, folk songs, old favorite melodies and others. Toward the end of the semester, they presented another concert which was inspiring to all who heard it.

The club had an enrollment of one hundred and twenty. Martha Hathaway, a senior, accompanied the chorus on the piano for the fourth successive year. Many thanks are extended to her for her able accompaniment and also to Miss Moore for the inspiration she gave the girls through her effort and outstanding leadership.

I Sopranos

Mary Ayers
Helen Brace
Mae Brundage
Marjorie Brunner
Nancy Brunstetter
Frances Cerchiaro
Mary Ellen Clark
Betty Jane Crouse
Barbara Culp
Charlotte Devens
Mary Dorsey
Barbara Frederick
Harriet Garard
Janet Gilbody
Iris Good
Kathryn Graham
Sara Graham

Geraldine Hess
Helen Hoffman
Elsie Kardos
Margaret Kearnuff
June Klinger
Pauline Kokolias
Christine Kreamer
Marian Lake
Marie Mack
Eleanor McClintock
Nerine Middlesworth
Corinne Mittleman
Mary Helen Morrow
Eloise Noble
Anne Northrup
Arlene Pape
Marcia Patterson

Janie Price
Eleanor Reppert
Mary Rush
Maxine Shirey
Ruth Smith
Hilda Smith
F. Diane Snyder
Jean Stein
Peggy Suchy
Dawn Swartz
Carmelee Tarole
Dorothy Thomas
Helen Tietjen
Agnes Valimont
Anita Webb
Shirley Wismer
Mary Zweizig

II Sopranos

Isabel Bolinski
Ruth Bath
Delphine Buss
Katherine Chapin
Patricia Clark
Verna Mae Compton
Aleki Comuntzis
Doris Condor
Susan Dreibelbis
Shirley Donnelly
Ruth Ann Doody
Norma Eber
Marcella Evasic
Blodwen Edwards
Carol Gass

Maryellen Grube
Jean Hooper
Joyce Hornberger
Joanne Kehler
Genevieve Krzywicki
Natalie Laubach
Effie Lichliter
Louise Lohr
Dorothy Lovett
Lillian Mlkvy
Joan McDonald
Joyce Moyer
June Novak
Janet Page

Evelyn Pethick
Wanda Petraitis
Charlotte Reichart
Lorraine Rekus
Deborah Serling
Dolores Shaffer
Mary Shoemaker
Ruth Shupp
Grace Smith
Martha Teel
Kathryn Thompson
Jane Warner
Oce Werre
Jeanne Krape
Rose Marie Kraiser

Altos

Anne Baldy
Betty Buck
Molly Conner
Ann Cherney
Julia Deitterick
Rita Dixon
Rose Eifert
Lois Evans
Sarah Faust

Alberta Funk
Arene Garland
Beth Hartman
Martha Hathaway
Dorothy Karpinski
Muriel Marks
Dorothy Meyer
Josephine Padula

Helen Pond
Jean Richard
Madelyn Schalles
Winifred Sharkey
Ferne Shellenberger
M. Eloise Symons
Audrey Terrel
Muriel Wagner
Betty Walters



Maroon and Gold Band

OFFICERS

<i>President</i>	-	-	-	-	-	-	-	-	FRANCIS HANTZ
<i>Vice President</i>	-	-	-	-	-	-	-	-	THOMAS BOWMAN
<i>Vice President</i>	-	-	-	-	-	-	-	-	JOHN LEE
<i>Secretary</i>	-	-	-	-	-	-	-	-	JEAN SAXTON
<i>Librarian</i>	-	-	-	-	-	-	-	-	RUTH VON BERGEN
<i>Drum Major</i>	-	-	-	-	-	-	-	-	ROY BRANDAU
<i>Director</i>	-	-	-	-	-	-	-	-	CHARLES H. HENRIE

The Maroon and Gold Band had a most colorful year with new uniforms which made a distinct "hit" wherever the band made an appearance. The thirty-five piece band attired in neat maroon suits with gold trim preceded by a color guard, drum major and twirling unit in white made friends every time it participated. Playing for all the home football games, the band also made the trip with the team to Kingston for the opening game with Mansfield.

The band also played for all the pep meetings and marched in the Bloomsburg Hallowe'en Parade. Several times during the year the band broadcast over local radio stations and participated in assembly programs. Bloomsburg had the honor this year of having eight musicians play in the Inter-Collegiate State Band at Lock Haven in April.



Maroon and Gold

The MAROON AND GOLD is a weekly publication made up by the students to present news of current interest written in a journalistic manner.

EDITORIAL STAFF

Editor-in-Chief—WAYNE VON STETTEN

Associates—WILLIAM DIEBEL, WILLIAM A. STIMLING

Editorial Board—ROBERT C. CANOUSI, BARBARA JOHNSON, CHRIS KLINEDINST, ALEKI COMUNTZIS

General Reporters:

Maryellen Grube
Joyce Hornberger
Kathryn Graham
Lila Morgan
Richard Kressler
Jane Schultz
Edward Messa
Janet Roser
Edward F. Sheehy
Pat Clark
Carol Siswein
Shirley Ashner
Andrew Palencar
Lois Evans
Richard Stout

Marie Mattis
Ruth Shupp
Betty Buck

Features:

Kay Chapin
Guy James
Donald Butcofsky
Barbara Niesley
Tony Scarantino
Norma Louise Eber
Russ Davis

Sports:

Millard C. Ludwig, Ed.
Tom Donan

Tommy Kopetskie
Luther Butt
Frank Dean
Curtis Miller

Club News:

Perry Posocco
Betty Buck
Ruth Shupp

Art:

Norma Fehr
Al Zimmerman

Fashions:

Aleki Comuntzis

Veterans:

Jack Johns

Humor:

Chris Klinedinst

Fiction:

Marie Mattis
Vernamae Compton
Lila Morgan

Exchange:

Pat Hetrick

BUSINESS STAFF

General:

Corinne Mittelman
Janet Friedman
Donna Mitrani
Lillian Mlkvy
Genevieve Scheetz
Shirley Ashner

Typists:

Carolyn Hower
Jane Schultz
Ruth Elder
Genevieve Scheetz

Advertising:

James Boyle
Glenn Von Stetten
Janet Constor
Nancy Jacobs
Robert Walther
Robert Williams

CIRCULATION

Manager, JAY CORTRIGHT
George Chebro

Nancy Crumb

Marvin Meneoley
Ann Papania



Future Teachers of America

OFFICERS

<i>President</i>	- - - - -	ERROY F. DALBERG
<i>Vice President</i>	- - - - -	RIGINALD S. RIMILY
<i>Secretary-Treasurer</i>	- - - - -	CARSON L. WHITSELL
<i>Sponsor</i>	- - - - -	MR. J. R. BAHLER

The students of the Secondary, Elementary, and Business Departments are indicating their awareness of the need for professional growth among American teachers. To promote such growth students have become members of the Future Teachers of America, a national group established by the National Education Association to:

1. Give teachers in training practical experience in working together in a democratic way on the problems of the profession and the community.
2. Interest the best young men and women in education as a lifelong career.

In naming their chapter, the local group is honored in commemorating Professor Oscar Hugh Bakeless, whose life on this campus so well exemplified the aims of the organization.



Bloomsburg Players

OFFICERS

<i>President</i>	- - - - -	GEORGE MENERICK
<i>Vice President</i>	- - - - -	OWEN DILLIE
<i>Secretary</i>	- - - - -	ALEKI D. COMUNTZIS
<i>Treasurer</i>	- - - - -	GEORGE REMETZ
<i>Director</i>	- - - - -	ALICE JOHNSTON

The Bloomsburg Players, Dramatic Club of the college, provides a workshop for those who wish training in Educational dramatics. Each week in Dramatic Club a play is produced by a student director working under the supervision of the club director. After the play, the cast receive criticisms from the other members. Points of dramatic technique are discussed and studied.

This year the club has put on some radio plays for the local radio station. They have also presented plays to organizations in Bloomsburg and near-by communities. They are now planning to present an evening program of one act plays for the college community and the public.



Student Christian Association

OFFICERS

<i>President</i>	- - - - -	MARY MOSIR
<i>Vice President</i>	- - - - -	CARSON WHITESILL
<i>Secretary</i>	- - - - -	RUTH SHUPP
<i>Treasurer</i>	- - - - -	BETTY BOLIG

With an active membership of sixty-five students the Student Christian Association enjoyed a very prosperous school year. The club was entirely reorganized on the basis of four commissions; each member contributed to one. The commissions with their respective faculty advisers were as follows: World Relatedness, Miss Elma Major; Personal and Campus Affairs, Mr. Harry Gasser; Social Responsibility, Mr. Clayton Hinkle; and Christian Heritage, Mrs. Eugene Jones.

At the beginning of each semester, a reception and party was held for new freshmen. Other events for the college community included Sunday evening vespers services and "sings" held in the Waller Hall lobby, and a technicolor motion picture. A wienie roast was also enjoyed by club members on Mt. Olympus. Several members represented the association at an area conference at Cowan, the recreation center for Bucknell University, in December.

To advance Christian relationships among the students and to raise the ideals of the college community as a whole are among the aims of the club. With the renewed interest among students, the association promises to be one of the most popular on the campus.



Athenaeum Club

OFFICERS

<i>President</i>	- - - - -	RAY HUBLER
<i>Vice President</i>	- - - - -	FRED DE BELL
<i>Secretary</i>	- - - - -	LUCY JANE BAKER
<i>Treasurer</i>	- - - - -	DONALD PARRY
<i>Program Chairman</i>	- - - - -	RUTH ELDER
<i>Class Adviser</i>	- - - - -	MR. GHRIG

The Athenaeum Club was organized and started on December 14, 1945, to enable the students to become acquainted with and appreciate classical music.

This year the association claims to have forty-five members.

The programs consisted of the biographies of well known composers and their works. In addition to this, the club had programs which included guest performances.



Poetry Club

OFFICERS

<i>President</i>	- - - - -	EDWARD KLINGER
<i>Vice President</i>	- - - - -	FERN SHILLENBERGER
<i>Secretary</i>	- - - - -	GRITCHEN TROBACH
<i>Treasurer</i>	- - - - -	KATHRYN CHAPIN
<i>Historian</i>	- - - - -	JOAN McDONALD
<i>Sponsor</i>	- - - - -	MISS DOROTHY GILMORE

The Poetry Club of B. S. T. C. has as its main purpose the appreciation of poetry. During the regular meetings, the members study the fundamentals of poetry and individual contributions of original poems are read. Each year the best original poems are recorded in the Bloomsburg Book of Verse.



Aviation Club

OFFICERS

<i>President</i>	- - - - -	-	WILLIAM HOMISAK
<i>Vice President</i>	- - - - -	-	WILLIAM J. WINTERSTEIN
<i>Secretary</i>	- - - - -	-	DORIS GILDAY
<i>Treasurer</i>	- - - - -	-	ROBERT BALINT

Under the guidance of Mr. W. B. Sterling, the newly-appointed Aviation Director of B. S. T. C., the Aviation Club has again become an active student organization on the campus.

During the past year, the club has been active in various participations, among those of which were: the showing of films, the discussing of current aviation problems, and promoting of the general aviation interest of all members of the club.

The members of the Aviation Club have a common interest in flying. They cooperate in every way to make this organization both educational and entertaining. Its chief object is to promote sporting aviation to the greatest extent.



The Athletic Club

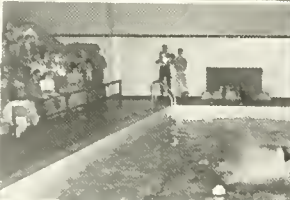
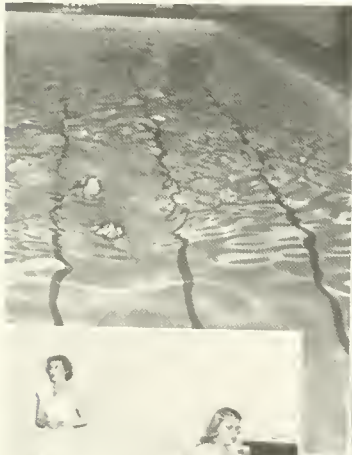
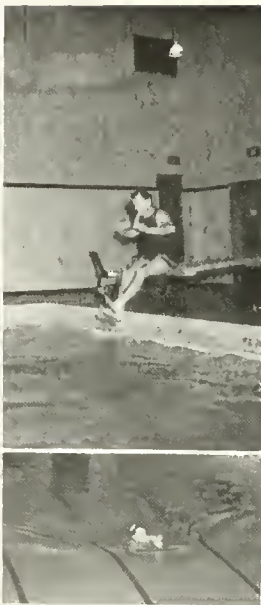
OFFICERS

<i>President</i>	- - - - -	GEORGE MENARICK
<i>Vice President</i>	- - - - -	MATTHI W MALEY
<i>Secretary</i>	- - - - -	THOMAS METZO
<i>Treasurer</i>	- - - - -	RICHARD WOLFORD
<i>Sponsor</i>	- - - - -	ROBERT B. REDMAN

The Athletic Club was first organized on March 1, 1948. Membership in the club is extended to all men students who have been awarded either a major or minor letter, while a member of any intercollegiate athletic team in any sport conducted by this college.

The purposes of this organization are to promote brotherhood among the athletes in our college, to foster a spirit of co-operation and sportsmanship within the student body through examples that we make, and to act as a liaison organization for athletes between the administration and the members of the various athletic teams.





ADVERTISEMENTS





SENIORS:

Join your ALUMNI ASSOCIATION, and keep your membership active through the years. Annual dues of \$1.00 will include a year's subscription to the ALUMNI QUARTERLY. This magazine, which appears four times a year, will keep you informed of the activities of your classmates, and the events happening on the campus.

Our Object: "To Keep the Door of Opportunity Open for Worthy American Youth."

Our Slogan: "Every Graduate of Bloomsburg an Active Member of the ALUMNI ASSOCIATION."

All dues should be sent to:

DR. E. H. NELSON

Business Manager

STATE TEACHERS COLLEGE

Bloomsburg, Pennsylvania

FOR BUSINESS TEXTS SEE

Gregg

Publishers of textbooks, supplementary materials, and teachers' aids in:

- Bookkeeping
- Business Administration
- Business Correspondence
- Business English
- Business Law
- Business Machines
- Business Mathematics
- Business Org. and Mgmt.
- Consumer Education
- Distributive Education
- Economic Geography
- Economics
- General Business
- Retailing
- Salesmanship
- Secretarial Practice
- Shorthand
- Spelling
- Textiles
- Typewriting

Write our nearest office for complete price list and descriptive literature.

THE GREGG PUBLISHING COMPANY

New York 16

Chicago 3

San Francisco 2

Boston 16

Dallas 1

Toronto 5

London, W. C. 1

Compliments of

BLOOMSBURG MILLS, INC.

BLOOMSBURG, PA.

THE NEIGHBORLY
CAPITOL
THEATER



*A Friendly
Comerford Theater*



GEORGE WELCH, *Manager*

Compliments of

ROCK'S RESTAURANT

Corner East and Fifth Streets

BLOOMSBURG, PA.

Compliments of

Hoover's Furniture Co.

"The Store on the Square"

Corner Main and Market Streets

BLOOMSBURG, PA.

Phone 577

A
TREASURED
NAME
AND
MEMORY



DILLON'S
Flowers

East 5th St.

RACUSIN'S

EXCLUSIVE *but*
not EXPENSIVE

Compliments of

J. J. NEWBERRY CO.

BLOOMSBURG, PA.

Compliments of

CREASY AND WELLS, INC.

LUMBER MERCHANTS

BLOOMSBURG, PA.

PHILLIPS' STUDIO

Portrait and Commercial
Photography

218 East St. BLOOMSBURG, PA.

Phone 1236

Compliments of FRED and JEAN MOSIR

Best Wishes to the
Class of 1948

SHARPING, INC.

QUALITY FOOTWEAR

BLOOMSBURG, PA.

H. B. SHARPLESS, ESTATE

49 East Main

BLOOMSBURG, PENNA.

Compliments of

HOTEL MAGEE

BLOOMSBURG, PA.

CONGRATULATIONS TO THE
GRADUATE

Stop at REA & DERICK
When in Town



REA & DERICK, INC.

Compliments of

**W. T. GRANT
COMPANY**

BLOOMSBURG, PENNA.

MOYER BROS., INC.

BLOOMSBURG'S
LEADING PRESCRIPTION
DRUG STORE

Your Prescription Druggists
Since 1868

SUCCESS

and

HAPPINESS

to the

Class of 1948



DOBYNS

Portraits by Photography

THE DIXIE SHOPS

Headquarters for
Teen Age Dresses

Bloomsburg's
Fashion Corner

RITTERS'

Everything for School
and Office



Main Street

BLOOMSBURG, PA.

Meet Your

Friends

at

**Ziegler's
Coffee Shoppe**



Best Wishes to
the Graduate

FEST'S

LUNCHEES



BLOOMSBURG
and
CATAWISSA

BART PURSEL

Bloomsburg's Leading Clothing Store

PRICES TO FIT THE PURSE

- Anything for Men
 - New Boys' Department
 - Service Uniforms

The Town's Leading Dry Cleaner

Compliments of

B. P. O. ELKS 436

BLOOMSBURG, PENNSYLVANIA

FRED R. HIPPENSTEEL

The BEST
in
MEN'S FURNISHINGS
BLOOMSBURG, PA.

Housenick Motor Co.



Sales and Service
Main and East Sts. BLOOMSBURG, PA.

Remember

HARLEY'S

•

The Barber Shop

At East and Main

**Miller Office Supply and
Equipment Co.**

9 East Main Street
BLOOMSBURG, PENNSYLVANIA

•

Office & School Supplies
Royal Typewriters

Congratulations from the
Voice of the Susquehanna Valley

W. L. T. R.

690 on your dial

Engle's Dairy Lunch

ELLIS R. AUTEN, *Prop.*

Platter Lunches

Polar-Wave Ice Cream — Sandwiches

Fountain Service — Delicatessen

Open daily from 6 A. M.-1:00 A. M.

134 E. Main BLOOMSBURG—9173

When It's a

MARIETTA

It's a

First-Edition Fashion

Meet Your Friends

at

RUSSELL'S
Ice Cream Parlor

114 East Main Street

Compliments of

WAFFLE GRILLE

SPEROS MARINOS

Proprietor

SHENK & TITTLE

"Everything for Sport"

313 Market Street

HARRISBURG, PA.

Compliments of

Bloomsburg Packing Co., Inc.

Packers of Quality CANNED FOODS

"Over a Half Century of Continued
Faithful Service"

A. NARDI'S SONS INC.

FRUITS VEGETABLES
NUTS

451-453 Market St. Williamsport, Pa.

This Time It's

HUDSON

Triangle Motor Co.

BLOOMSBURG, PA.

Compliments of

**BUCKALEW
CHEVROLET CO.**

BLOOMSBURG and
BERWICK, PA.

Compliments of

"STUBBY" ENT

•

Parlor City Restaurant

Compliments of

SNYDER'S DAIRY

DANVILLE

BLOOMSBURG

HAZLETON

Compliments of

**LETTERMAN'S
BAKERY, INC.**

BLOOMSBURG, PA.

Compliments of

**Milco Undergarment
Company, Inc.**

•

BLOOMSBURG, PA.

Congratulations, Graduates

**F. W. WOOLWORTH
COMPANY**

BLOOMSBURG, PENNA.

Meet your Friends at

PHILLIP'S BARBECUE

"Home of Delicious Sandwiches"

LOWS'

Household Appliances

Bottled Gas

Corner Main and Iron Streets

BLOOMSBURG 1027

For REFRESHMENTS AND EATS

Don't Forget

TEXAS LUNCH

142 East Main Street

Compliments of

J. S. RAUB SHOE STORE

24 East Main Street

BLOOMSBURG

SNEIDMAN'S

WATCHES — RINGS

Special Jewelry for Schools
and Colleges

DANVILLE WHOLESALE GROCERY CO.

Distributors — ROYAL SWAN

QUALITY FOOD PRODUCTS

DANVILLE, PA.

A REAL TREAT



FOR SALE AT YOUR GROCER

Compliments of the

BLOOMSBURG MOOSE

623

Compliments of

GIALAMAS'

LUNCH — ICE CREAM

Home Made CANDY

Corner East and Main Sts.

FUTURE
*bright
and sunny*



Now, at graduation time, we extend our hearty congratulations and best wishes — confident that your training will open the door to success in the business world.

Remington Rand

THE FIRST NAME IN TYPEWRITERS



*Americans want!
American Rugs!*

Stock and show the
rugs and carpets of

the

MAGEE

CARPET COMPANY

-- *they're*

Loomed by
American Labor

to
**BEAUTIFY
AMERICAN
HOMES**

MAGEE CARPET COMPANY

BLOOMSBURG, PA.

Complete Commercial

ENGRAVING and PRINTING Service

- . . . DESIGNING
- . . . ENGRAVING
- . . . PRINTING
- . . . BINDING

A new streamlined modernly equipped printing plant with facilities for every type of commercial printing . . . including, Folders, Catalogues, College and School yearbooks.

« »

OBITER is one of the many
annuals engraved and printed in
our Commercial Department.

GRIT PUBLISHING COMPANY

WILLIAMSPORT, PA.

Dial 4111

AUTOGRAPHS

