

Whiter

5

4

9

1







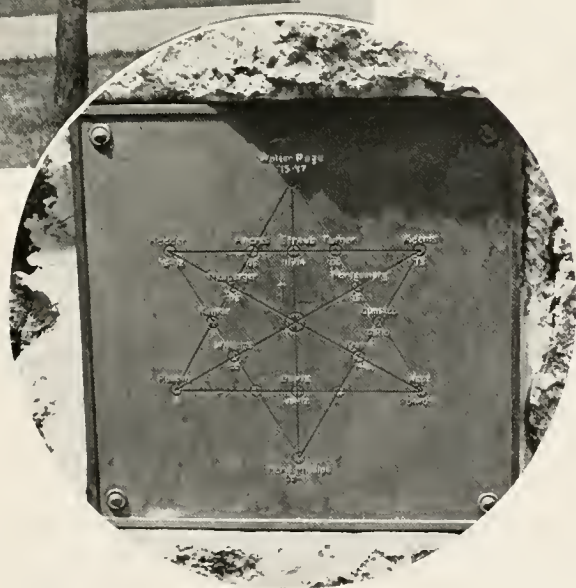




EX LIBRIS

# *Obiter* 1945





*Lest we  
Forget*



WALTER S. RYGIEL



# *Dedication*

It is with the feeling of sincere thankfulness and admiration that the Class of 1945, in appreciation, dedicates the 1945 Obitier to you, Mr. Rygiel.

Your kindness, patience, and pleasant ways have endeared you to the hearts of all. Through your guidance, we have secured the determination to go forward and win.

As adviser of all Senior Class activities, you have taught us confidence in ourselves. In the years to come, we shall glance back to our college days and find your image ever present.



Mr. Walter S. Rygiel, Eugene Rygiel, Walter U. Rygiel, Mrs. Florence Rygiel.



# Foreword

The graduating class of 1945 will always have this yearbook to bring back memories of pleasant times and many acquaintances. Each picture will refresh in our minds those incidents we can always associate with Bloomsburg.



*Contents*

BOOK I

Administration and Faculty

BOOK II

Classes

BOOK III

Navy V-12

BOOK IV

The College

BOOK V

Organizations

BOOK VI

Activities





# Book I

ADMINISTRATION AND FACULTY





HARVEY A. ANDRUS  
*President*

GREETINGS TO THE SENIORS OF 1945:

A class that has adjusted itself to so many changes will undoubtedly be able to meet the challenges of the world ahead.

Pearl Harbor awakened students to a new world—a world at war. For a time there was confusion, but out of this confusion you emerged with a willingness to meet many new and challenging conditions.

You have succeeded.

With this characteristic, the Class of 1945 leaves its Alma Mater with a record unrivaled in the ability to plan for the progress which we expect you to make in the future.

I salute you.

*Harvey A. Andrus*

President.

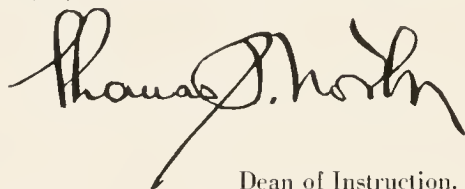


THOMAS P. NORTH  
*Dean of Instruction*

TO THE MEMBERS OF THE WAR CLASS OF 1945:

Your college years have been among the greatest history-making years this world has ever experienced. During these years a large, but little known world, has shrunk to a world, the farthest point of which is relatively only a few hours distance. Already you speak of the "hump" between India and China, or of Leyte or some other once unknown place more intelligently than your parents did before the war of our own Rocky Mountains or Oklahoma.

Three of the major factors in your success or failure during these short years have been *War*, *Change*, and *Adjustment*. War brought to you a depletion of your ranks and regrettable sorrows. It brought numerous changes in your routine ways of living, in your class schedules, and in your programs. Instead of attending four years, many of you have adjusted your economy and energies to the accelerated program, whereby you have completed the requirements of a four-year curriculum in less than three calendar years. The vicissitudes you have experienced and the adjustments resulting from them have been not without values. One of the greatest of these has been the development of ability to cope successfully with change. In the final analysis, a person's education is dependent not only on his degree of adaptability, but is conditioned by the extent to which he is able to surmount his adversities. We sincerely hope that these influences have greatly fortified you for a life of progress in an ever changing civilization.



Dean of Instruction.



MARGUERITE KEHR  
*Dean of Women*

TO THE CLASS OF 1945:

This OBITER will bring you memories of the time when we fought the battle of Bloomsburg on the home front.

To use the language of the Navy, when your anchors are aweigh, may you sail to victory and return safely to your home port. We shall be waiting to hear about your adventures.

Sincerely yours,

MARGUERITE KEHR.

*Dean of Women.*

## THE DEANS

TO THE MEMBERS OF THE  
CLASS OF 1945:

May I extend congratulations and best good wishes to the graduating group of this year. None of us know what the future may hold for any of you, but whatever happens, remember that the people at Bloomsburg will be glad to welcome you back to the campus whenever you can find it possible to return. Best regards.

JOHN C. KOCH.  
*Dean of Men.*



JOHN C. KOCH  
*Dean of Men*





Left to Right—Mr. Gehrig, Mr. Forney, Mr. Rygiel.

## Business Education

The high schools of Pennsylvania may proudly look to Bloomsburg for its source of adequately prepared teachers in the field of Business Education. Since this college specializes in this course of study, the training is such that it advances business knowledge and skills as well as teaching theory and practice.

A person graduating from this curriculum, having received his B.S. degree in Education, has had an opportunity to become certified in the following subjects: Bookkeeping and Accounting, Business English, Business Writing, Commercial and Economic Geography, Commercial Law, Commercial Mathematics, Economics, Junior Business Training, Office Practice, Salesmanship, Shorthand, and Typewriting.

The high schools of Berwick, Bloomsburg, and Danville cooperate in the training of teachers in this field, by giving the students an opportunity for practical application of their subject matter and theory courses. This training period consists of observation of a regularly employed teacher, lesson planning, and actual teaching of high school classes by the student teacher.

Bloomsburg's Business Education Curriculum graduates are being looked up to everywhere as persons superior in the fostering of Commercial Education, as well as business relations.



Left to Right—Miss Hazen, Mr. Fisher, Mr. Forney, Mr. Bailer, Dr. Kebr.

## Education

Every student at Bloomsburg receives broad training in fields other than the one in which he is enrolled. To broaden his cultural background and expand his fundamental attitudes, courses in orientation, guidance, psychology, philosophy, and teaching techniques are required for graduation.

So that the student may gain practical experience before he goes out into the teaching profession, actual school situations are brought before him. This tends to further develop ability, poise, and confidence—attributes so necessary to the successful teacher.

Mr. Bailer of the Teacher Training Department heads a placement service which has built up an enviable record in securing desirable positions for Bloomsburg graduates.



Seated, Left to Right—Miss Mettler, Miss Penn, Miss McCammon.  
Standing—Dr. Nelson, Mr. Buchheit, Capt. Koch.

## Health Education

A well-organized Health Education Department gives all students an opportunity to participate in various forms of competitive athletics, besides the regularly scheduled gym classes.

For the V-12 trainees, P. T. is a popular part of the daily routine. Supporting the Navy's theory that "Bloomsburg's V-12's must be the best apprentice seamen in the Fourth Naval District," their physical fitness program is wide and vigorous, including swimming, track, basketball, volleyball, football, obstacle courses, and individual workouts.

Intercollegiate sports have again become important in the school's calendar of activities, the teams being composed to a great extent of Navy men.



Seated, Left to Right—Miss Johnston, Miss Mason, Miss Gilmore,  
Standing—Mr. Fenstemaker, Mr. Bailer, Mr. Wilson.

## Language

This department, headed by Mr. Samuel L. Wilson, includes the regular English courses such as English Grammar, Composition, English Literature, American Literature, World Literature, Advanced Composition, and Business Correspondence, as well as the language courses: Spanish, French, and Latin.

A freshman will find himself meeting with Mr. Joseph R. Bailer for a course in beginning English. If, later on, he desires a foreign language, Mr. Fenstemaker will be his instructor. Up until February, at which time she temporarily left here to instruct at Hunter College, New York, Miss Alice Johnston had charge of all speech work. This included the speech clinic at the Benjamin Franklin School, and work in speech and play production. In connection with the latter, Miss Johnston directed the Bloomsburg Players, dramatic club.

Mr. Wilson and Miss Pearl Mason serve also as advisers for the *Maroon and Gold*, the college newspaper.



Miss Ranson, Dr. Kuster, Mr. Wagner, Mr. Shortess.

## Science and Mathematics

With continued importance and emphasis being placed on the courses taught in these two fields, the Science and Mathematics Departments are rapidly becoming more and more popular each year.

The Navy, too, realizes the importance of subjects such as physics, chemistry, algebra, geometry, trigonometry, mathematical analysis, and calculus; as a result, the department members are kept busy.



Miss Rich, Dr. Maupin, Mr. Reams, Dr. Russel.

## Social Studies and Geography

These two courses, being so closely related, may be chosen by Secondary students as two of their fields for certification. They aid in obtaining a rich background of information which is needed for an intelligent interpretation of present-day situations and problems.

Some work in these fields is required in the Elementary and Business Education departments as well, so that every student may have some insight into what makes the world click, as well as what we today are fighting for.



Miss Moore

## Music

Students studying in the Elementary and Secondary curriculums receive training in this field, since it is they who will be dealing with the more cultural phases of public school education.

Students in the Secondary curriculum receive a course in Music Appreciation, whereas the Elementary people receive closer instruction, for it is the latter group who will go into the grade schools and help mold the singing habits of young America.



Miss Mettler, Miss Penn

## Resident Nurse and Dietitian

Miss Beatrice Mettler, the resident nurse, has the important duty of ministering to ailing students. She has maintained the reputation for willing aid and kind attention.

Miss Ellen Penn, the dietitian, directs the buying, preparing, and serving of all meals in the college dining room. With the increased enrolment, the dining room requires skillful management.



## Business Manager and Superintendent of Grounds and Buildings

Mr. C. M. Hausknecht has the responsibility of the efficient management of the Business Office which takes care of all financial matters of the college.

Mr. N. T. Englehart has the responsibility of taking care of repairs and maintenance, prepares for dances, entertainments, and all special occasions. As Superintendent of Grounds and Buildings, he has many duties. He has always proved that efficiency is vital to the smooth operation of the college campus.



Mr. C. M. Hausknecht, Mr. N. T. Englehart





Miss Gilmore, Miss Mason

## Library

Miss Pearl Mason and her assistant, Miss Dorothy E. Gilmore, have charge of the library. The library serves as a clearinghouse for Navy textbooks as well as an aid to students in the selection of materials.



## Art

Students in the Secondary and Elementary curriculums are required to take courses in art and art appreciation. The elementary field also includes courses which embody the six fundamental principles of art as applied to everyday living.

Professor Keller includes in his courses opportunities for students to practice drawing, lettering, poster-making, creative designing, and the use of color and design.

Each course aims to develop a keen sense of judgment and appreciation of good design and color scheming in clothes and home planning and decoration.



Mr. George J. Keller



Seated, Left to Right—Mrs. Thomas, Miss Van Scoyoc, Miss Moyer, Mrs. Keller,  
Standing—Miss Hazen, Miss Barnes, Miss Woolworth, Mrs. Baker, Mrs. Scott.

## Training School

The Benjamin Franklin School, located on the campus, consists of a kindergarten, a class in special education, and grades one to six, all housed in a modern, well-lighted, newly-constructed building.

Elementary students are given an opportunity to do their student teaching here under the supervision of training teachers:  
Miss Edna J. Hazen, Director of Elementary Education

Mrs. Amanda Kern Thomas, Special Class

Miss Grace Woolworth, Kindergarten

Mrs. Lucille Baker, Grade I

Miss S. Mabel Moyer, Grade II

Miss Iva Mae VanScoyoc, Grade III

Miss Edna J. Barnes, Grade IV

Mrs. Anna Garrison Scott, Grade V

Mrs. Etta H. Keller, Grade VI



# Book II

CLASSES







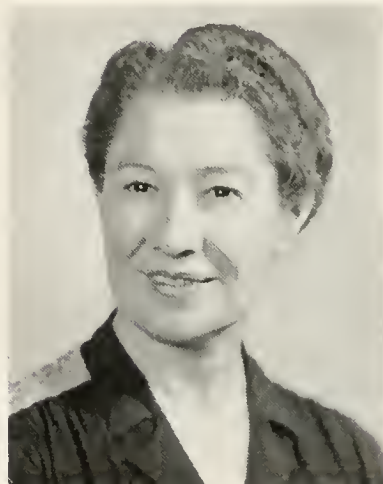
MR. JOSEPH R. BAILER



DR. KIMBER KUSTER



DR. ELNA NELSON



DR. NELL MAUPIN

## Faculty Advisers

MR. JOSEPH R. BAILER "took us in hand" when we made our home in Bloomsburg. He guided us through the usual trials of the freshman year.

DR. KIMBER KUSTER next stepped into our lives. Our Sophomore Year was made memorable by the self confidence he instilled in our hearts.

DR. ELNA NELSON was our Junior Class adviser. His sense of fair sportsmanship was readily sensed by all.

Finally, DR. NELL MAUPIN entered into the final act. She put on the finishing touches to aid us in holding the title of dignified Seniors.

To all we give sincere thanks.



ARLENE SUPERKO  
*President*



ELVIRA BITETTI  
*Vice President*

## Senior Class

### OFFICERS

<i>President</i>	- - - - -	ARLENE SUPERKO
<i>Vice President</i>	- - - - -	ELVIRA BITETTI
<i>Secretary</i>	- - - - -	BETTY ZONG
<i>Treasurer</i>	- - - - -	CATHERINE LONGO
<i>Sponsor</i>	- - - - -	DR. NELL MAUPIN

Our Senior Class may be called a strange mixture of many classes. We cannot even say the Class of 1945 started out together; and of those who started together, many have gone in various directions. To those who have gone into service for our country, we pay tribute. To the others who graduated in February, 1945. On the accelerated program, we extend admiration for their ambition, and to those who did not complete the course, we express regret.

Through the sincere efforts of our president, Arlene Superko, we were able to finance an elaborate OBITER by means of a canteen. We are also grateful to the other members in the college community for their patronage.



BETTY ZONG  
*Secretary*



CATHERINE LONGO  
*Treasurer*



GLORIA THERESA BELCASTRO

Wyoming, Pennsylvania

*Business*

Waller Hall Association 1, 2, 3, 4, Governing Board 1; C. G. A. Awards Committee 1, 2; Pi Omega Pi 3, 4, Secretary 4; OBITER Business Staff 4; Business Education Club 1, 2, 3, 4, President 4, Social Chairman 3; Women's Chorus 1, 2; Columban Club 1, 2, 3, 4; Kappa Delta Pi 4.

*Tiny but mighty . . . Seriously intent . . . Bookkeeping "shark" . . . Reliable . . . No time to spare . . . Shorty.*

LARUE G. BENDER  
Catawissa, Pennsylvania

*Secondary*

Y. M. C. A.: Science Club 3, 4.

*Hard worker . . . Daily commuter . . . Hard to locate when wanted . . . Haunts the library . . . Nice personality.*



NANCY EUDORA BERLEW

Dallas, Pennsylvania

*Elementary*

Waller Hall Association 1, 2, 3, 4, Governing Board Representative 3; C. G. A. Social Committee Chairman 4; Social Usage Club 1; Student Christian Association 1, 2, 3, 4; Social Service Club 2; Senior Ball, Orchestra Ball 4.

*Friendly air . . . Cheerful greeting . . . Easy-going . . . Sincere . . . Definitely dependable . . . Wide circle of admirers . . . Dodey.*





ELVIRA ANN BITETTI

Freeland, Pennsylvania

*Elementary*

Waller Hall Association 1, 2, 3, 4; Governing Board 2, 3, 4; Vice President 3; President 4; Kappa Delta Pi 3, 4; Corresponding Secretary 1; Class President 2; Class Vice President 4; Social Service Club 1; Women's Chorus 2, 3; College Council 2, 3, 4; Canteen Co-Chairman 4; Columban Club 1, 2, 3, 4; Customs Committee 3; Social Usage Club 1.

*Shiny black tresses . . . Cameo skin . . . Lesson plan conscious . . . Subtle humor . . . Genuine sympathy . . . Elvira.*

ROSE MARY BOYLE  
Wilkes-Barre, Pennsylvania

*Business*

Waller Hall Association 1, 2, 3, 4; Kappa Delta Pi 3, 4; Pi Omega Pi 4; OBITER Editorial Staff, Chairman 4; *Maroon and Gold* 3; Business Education Club 1, 2, 3; Mixed Chorus 1; Women's Chorus 2; Social Usage Club 1; Columban Club 1, 2, 3, 4; Cheerleader 2.

*"Good things come in small packages" . . . Active organization leader . . . Irish wit . . . Distinctive laugh . . . "Will someone cut my hair?" . . . Rosie.*



ELIZABETH ANN BURNHAM

Philadelphia, Pennsylvania

*Business*

Waller Hall Association 1, 2, 3, 4; Business Education Club 1, 2, 3; Social Usage Club 1, 2; Student Christian Association 1, 2; B Club 1, 2, 3, 4.

*Anticipates vacations . . . A thorough, weekly room house-cleaner . . . Career-type . . . Gay colors . . . Pleasingly pleasant . . . Betty.*







MARY DEVITIS  
Wayne, Pennsylvania

*Business*

Day Room Association 1; Waller Hall Association 2, 3, 4; Governing Board, Girl Representative 3, 4; C. G. A. Girl Representative 3, 4; Kappa Delta Pi 3, 4, Treasurer 4; Pi Omega Pi 3, 4; Business Education Club 1, 2; Social Usage Club 1, 2; Social Service Club 1, 2, 3, 4, Secretary 3; Senior Banquet Committee Chairman 4; Columbian Club 1, 2, 3, 4.

*Clever seamstress . . . Trimly tailored . . . Petite . . . Social service enthusiast . . . Reliable student . . . Mary.*

EVELYN MAY DONEY  
Shamokin, Pennsylvania

*Secondary*

Day Room Association 1; Waller Hall Association 2, 3, 4; Science Club 1, 2, 3, 4; Women's Chorus 1, 2, 3, 4; Student Christian Association 2, 3, 4; Social Service Club 1, 4; Senior Ball, Ticket Committee 4.

*Enjoying life . . . Songbird of fourth floor . . . Friendly greetings . . . Involuntary chatter . . . Willingly shares her washboard . . . Doney.*



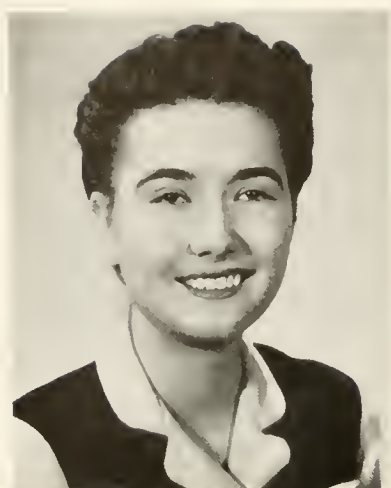
MARJORIE GRACE DOWNING  
Shicksbinny, Pennsylvania

*Secondary*

Waller Hall Association 1, 2, 3, 4; Science Club 2; Women's Chorus 1, 3; Student Christian Association 1, 2, 3; Social Service Club 1, 2.

*Pleasantly amiable . . . Auburn locks . . . Friendly to all . . . Obliging and generous . . . Busy with dining-hall duties . . . Marge.*





MARTHA JANE DUCK  
Lewisburg, Pennsylvania

*Elementary*

Waller Hall Association 1, 2, 3, 4, Governing Board 2, 3, Treasurer 3; Kappa Delta Pi 3, 4; Recording Secretary 4; Dramatic Club 1; Women's Chorus 2; Student Christian Association 2, 3, 4, Vice President 3, 4.

*Quiet and reserved . . . An excellent dorm president . . .  
A ready smile . . . Always willing to lend n helping hand  
. . . Obliging . . . Ducky.*

MILDRED DZURIS  
Nanticoke, Pennsylvania

*Secondary*

Waller Hall Association 1, 2, 3, 4; Kappa Delta Pi 3, 4; Science Club 1, 2, 3, 4, Vice President 3, Treasurer 3, 4; Women's Chorus 1, 2, 3; College Canteen Treasurer 4.

*School teacher in the making . . . True diplomat . . .  
Unsuspecting . . . Quiet and sincere . . . Even dis-  
position . . . Mil.*



MARY LOUISE FENSTEMAKER  
Bloomsburg, Pennsylvania

*Secondary*

Day Room Association 1, 2, 3, 4; Day Women's Board 1; C. G. A. Secretary 2, 3, C. G. A. President 4; Kappa Delta Pi 3, 4, President 4; Alpha Psi Omega 2, 3, 4; Class Vice President 1, Class Secretary 2; Mixed Chorus 1, 2; Women's Chorus 3, 4; Bloomsburg Players 1, 2, 3, 4; Vice President 2; B Club 4.

*Straight "A" student . . . Heart and soul in C. G. A. . . .  
Sunny temperament . . . Envidable curls . . . Never an  
idle moment . . . Louie.*





MARY ELLEN FLAHERTY

Bloomsburg, Pennsylvania

*Elementary*

Day Room Association 1, 2, 3, 4; Day Women Representative 4; Class Secretary 3; Woman's Chorus 1, 2, 3; Social Service Club 4; Columban Club 1, 2, 3, 4; Senior Ball, Orchestra Committee.

*It must be the Irish in her . . . It shines out of her eyes . . . The humor goes with it too . . . Mary.*

ELSIE GLADYS FLAIL  
Schnylkill Haven, Pennsylvania

*Business*

Waller Hall Association 1, 2, 3, 4, Governing Board 4; Kappa Delta Pi 3, 4; Pi Omega Pi 3, 4; Alpha Psi Omega 3, 4; OBITER Staff 2; *Maroon and Gold*, Typist 1, 2, 3, 4; Business Education Club 1, 2, 3, 4, Program Chairman 3; Women's Chorus 1, 2, 3, 4; Mixed Chorus 1; Interfraternity Council 3; Bloomsburg Players 1, 2, 3, 4.

*Efficient . . . Active in organizations . . . Bubbling . . . "Come on, Josie; don't fail me now" . . . Canteen-conscious . . . Els.*



JEAN FRANCES FOUST

Danville, Pennsylvania

*Elementary*

Day Room Association 1, 2, 3, 4; Women's Chorus 2, 3; Poetry Club 1, 2, 3; Senior Ball, Decorating Committee 4.

*You don't know she's around til you hear her laugh . . . A bright spot in the day room . . . The quiet little girl from Danville . . . Jeannie.*





ENZO ROBERT FROSINI  
West Wyoming, Pennsylvania

*Business*

North Hall Men 1, 2, 4; Day Men 3; Business Education Club 1, 2, 3, 4; Social Usage Club 1, 2; OBITER Editorial Staff 4; Phi Sigma Pi 3, 4; Booster Committee Chairman 4; Columban Club 1, 2, 3.

*Original . . . Well-Groomed . . . Good-mannered . . . Personality and spirit . . . A business executive in the making . . . Ensi.*

MARY E. FURMAN  
Northumberland, Pennsylvania

*Elementary*

B Club 1, 2, 4; Basketball 1, 2; Baseball 1; Tennis 1, 2; OBITER Staff 2; Y. W. C. A. 1, 2. Cabinet Member 2; Women's CHORUS 4; Student Christian Association 4.

*Returned to college to get degree . . . well liked by all . . . friendly dorm student . . . Always greets everyone with a friendly "hello."*



EVELYN DORIS GEORGE  
Danville, Pennsylvania

*Elementary*

Day Room Association 1, 2, 3, 4, Treasurer 2; OBITER Business Staff 4; Science Club 1; Social Usage Club 1; Social Service Club 3, 4, Treasurer 4; Senior Ball, Investigation Committee.

*Winsome smile . . . Attractive day student . . . Active in group discussions . . . Hall gremlin . . . Quiet popularity . . . Evelyn.*





FLORA CATHERINE GUARNA  
Mt. Carmel, Pennsylvania

*Business*

Waller Hall Association 1, 2, 3, 4, Governing Board 4; *Maroon and Gold* 1, 2; Business Education Club 1, 2, 3; Social Usage Club 1, 2; Poetry Club 1, 2; Columban Club 1, 2, 3, 4.

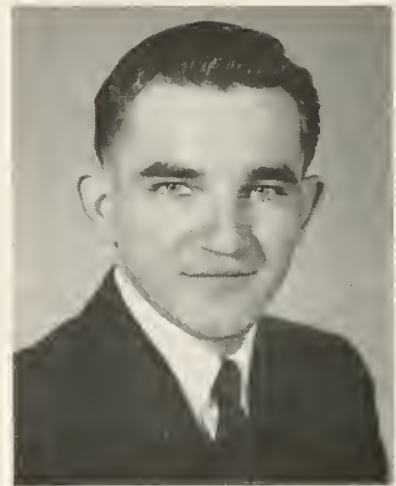
*Dance mad . . . Song mad . . . Bookkeeping . . . Penetrating brown eyes . . . Excellent morale booster . . . Flo.*

JOSEPH JOHN GULA  
Swoyerville, Pennsylvania

*Business*

Day Men's Association 1, 3; Dorm Men's Association 2, 4; C. G. A. 2, 3, Treasurer 3; Pi Omega Pi 3, 4, President 4; Phi Sigma Pi 2, 3, 4, Assistant Secretary 2, Secretary 3; Business Education Club 1, 2, 3, 4; Columban Club 1, 2, 3, 4.

*Willing, quiet, and reserved . . . Easy to get along with . . . "A" student . . . Conscientious . . . Practical minder . . . Joe.*



GERTRUDE EVA HARMON  
West Pittston, Pennsylvania

*Business*

Day Room Association 1; Waller Hall Association 2, 3, 4; Business Education Club 1, 2, 3; Women's Chorus 1, 2; Social Service Club 1, 4; Student Christian Association 1; Senior Ball and Banquet, Investigation Committee 4.

*An ever-willing friend . . . Serious and determined . . . Academic weekdays . . . Social weekends . . . Giggling Gertie . . . Trudy.*





BETTY RUTH HESS  
West Hazleton, Pennsylvania  
*Secondary*

Waller Hall Association 4; Women's Chorus 4; Science Club 4;  
Dramatic Club 4; Dramatic Club at Albright College.

*A welcome newcomer . . . Spontaneous . . . Practi-  
cal-minded . . . Enviably smiling eyes . . . Betty.*

MRS. ALICE MAE HEUPCKE  
Bloomsburg, Pennsylvania  
*Elementary*

Day Girls' Association 1, 2, 3; Mixed Chorus 1, 2; Y. W. C. A.  
1, 2; B Club 2.

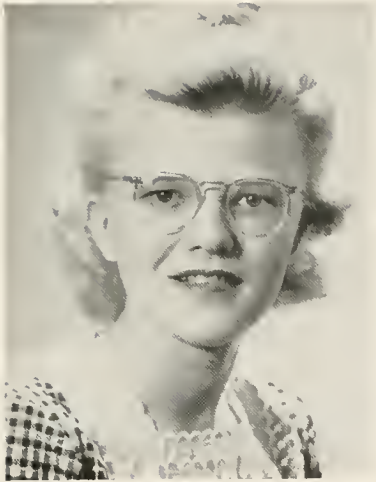
*Charming personality . . . Always smiling . . . Hard  
worker . . . Dark shining locks . . . Frequent visitor  
of the library.*



ALDA ROMAINE HUNTER  
Hunlock Creek, Pennsylvania

Day Room Association 1, 2; Waller Hall Association 3, 4;  
Women's Chorus 1, 2; Mixed Chorus 1; Social Usage 1, 2;  
Student Christian Association 1, 2, 3; B Club 2, 3, 4; Or-  
chestra 2.

*Quiet and assuming . . . Conservative dresser . . .  
Has practical teaching experience . . . Odd, shy smile . . .  
Slow motivation . . . Alda.*



CARRIE EDNA JOHNSON

Danville, Pennsylvania

*Elementary*

Day Room Association 1, 2, 3; Waller Hall Association; Science Club 1, 2; Social Usage Club 1; Social Service Club 3, 4; Student Christian Association 4.

*Demure blonde . . . Quiet as a mouse . . . Day room duties . . . A surplus of energy . . . Sociability plus . . . Carrie.*

BERNARD WILLIAM KANE

Philadelphia, Pennsylvania

*Secondary*

North Hall Association 1, 2, 4, Treasurer 2; Day Men's Association 3; C. G. A. 1, 2, 3, Vice President 3; Phi Sigma Pi 2, 3, President 3, Vice President 2; Alpha Psi Omega 3, 4; *Maroon and Gold* 1, 2, 3, 4; Class President 1, 2; Mixed Chorus 1; Men's Glee Club 1; Poetry Club 1; War Council 2, 3; Men in Service Committee 2, 3, 4, Chairman 2, 3, 4; Social Usage Club 1, 2; Bloomsburg Players 1, 2, 3, 4; Columban Club 1, 2, 3, 4, President 2.

*Everybody's friend . . . Variety of extra-curricular activity . . . Even-tempered . . . Always smiling . . . Excellent counselor . . . Bernie.*



WANDA MARION KEHLER

Ashland, Pennsylvania

*Business*

Waller Hall Association 1, 2, 3, 4; Business Education Club 1, 2, 3; Women's Chorus 1; OBITER, Circulating Committee 4; Senior Banquet, Ticket Committee.

*Never at a loss for words . . . Impulsive . . . Friendliness personified . . . Looking for the funny side . . . "Don't be so miserable" . . . Wanda.*





JEANNE L. KELLER

Benton, Pennsylvania

*Business*

Day Room Association 1; Waller Hall Association 2, 3, 4; *Maroon and Gold* 1; Business Education Club 1, 2, 3; Dramatic Club 1, 2, 3, 4; OBITER Circulating Committee 4; Senior Banquet, Ticket Committee 4.

*Definitely brunette . . . Wide variety of interests . . . Finally found the "one and only" . . . "Pardon me!" . . . Jeannie.*

RUTH JUNE KESTER

Courtdale, Pennsylvania

*Elementary*

Waller Hall Association 1, 2, 3, 4; Women's Chorus 1, 2, 4; Social Usage Club 1, 2; Student Christian Association 1, 4.

*Gay laughter and wit . . . An eye for fun . . . Natural at all times . . . Prefers housecoats for dorm wear . . . Quietly unassuming.*



CLEO DOROTHY KINNEY

Danville, Pennsylvania

*Business*

Day Women's Association 1, 2; Waller Hall Association 3, 4; C. G. A Social Committee 4; Business Education Club 1, 2; Women's Chorus 1, 2, 3; Social Usage Club 1, 2; Bloomsburg Players 1; Cheerleader 2; Senior Ball, Decorating Committee Chairman 4.

*Nonchalant . . . Amicable . . . Long brown locks . . . Constant joker . . . A thousand little worries . . . Positive personality . . . Cleo.*







CATHERINE CELESTINE LONGO  
Sheppton, Pennsylvania

*Business*

Waller Hall Association 1, 2, 3, 4; Kappa Delta Pi 3, 4; Pi Omega Pi 4; Class Treasurer 4; Business Education Club 1, 2, 3, 4, Secretary 4; Women's Chorus 1, 2, 3, 4; OBITER Business Board, Chairman 4; Columban Club 1, 2, 3, 4.

*Our class financier . . . Doll-like features . . . Easy-going . . . Eager to help . . . Intelligence plus . . . Cathy.*

LUCILLE GRAYCE MARTINO  
Roseto, Pennsylvania

*Business*

Waller Hall Association 1, 2, 3, 4, Governing Board 2, 3; C. G. A. 2, 3; Pi Omega Pi 2, 3, 4, Treasurer 4; Alpha Psi Omega 3, 4, President 4; *Maroon and Gold*, Assistant Editor 1; Business Education Club 1, 2, 3; Social Usage Club 1; Dramatic Club 1, 2, 3, 4; Poetry Club 1.

*Shiny black hair . . . Last minute sleeper . . . Discriminating . . . "Don't be ridiculous" . . . Big plans for the future . . . Lou.*



EUGENE A. McBRIDE  
Bloomsburg, Pennsylvania

*Secondary*

Science Club 1, 2, 3, 4, Program chairman 3.

*Conscientious . . . hard worker . . . makes himself scarce . . . Any time you want him, you have to get a search party.*





CAROL F. MCCLOUGHAN

Riverside, Pennsylvania

*Elementary*

Day Women's Association 1, 2, 3, 4; Representative 1, Treasurer 2; Social Service Chairman 3; Kappa Delta Pi 3, 4; Vice President 4; Women's Chorus 1, 2, 3, 4, Librarian 1; Committee of Senior Rings.

*A good student . . . Talks a mile a minute when she gets started . . . Nothing seems to get her down in the dumps.*

NORINE G. MILES  
Shenandoah, Pennsylvania

*Business*

Waller Hall Association 1, 2, 3, 4; Business Education Club 1, 2; Social Service Club 3; Women's Chorus 4; Mixed Chorus 1, 2; Customs Committee 2; Social Usage Club 1, 2; Columbian Club 1, 2, 3, 4; Senior Ball Date Bureau and Invitation Chairman 4.

*Lovely personality . . . unselfish . . . liked by all . . . nightly visitor of the dorm . . . popular with boys and girls . . . loves fun . . . beautiful hair . . . sound sleeper.*



MRS. LOUISE BUCK MILLER

Montgomery, Pennsylvania

*Elementary*

Day Girls' Association 1, 2, 3; Mixed Chorus 1, 2; Sewing Club 1; Kappa Delta Pi.

*Studios . . . Efficient . . . A school teacher air . . . A quick sense of humor . . . Bunky.*





ALTHEA AUDRIE PARSELL

Orangeville, Pennsylvania

*Secondary*

Day Women's Association 1, 2, 3, 4, President 3; C. G. A. 3; Class Historian 1; Women's Chorus 1, 2, 3, 4; Science Club 3, Secretary 3; *Maroon and Gold* Report 3; Representative to Official Board 2; Student Christian Association 1, 2, 3.

*A good disposition goes a long way . . . Quiet . . . Only till you know her . . . A beautiful voice . . . Lovely auburn locks . . . Althea.*

V. JOY PROPST  
Archbald, Pennsylvania

*Elementary*

Waller Hall Association 1, 2, 3, 4, Governing Board 2; Vice President 3; Mixed Chorus 1, 2; Student Christian Association 2, 3, President 3; Business Education Club 1; Social Usage Club 1.

*Charming personality . . . Lovely smile . . . beautiful posture . . . Quiet in the Dorm . . . Weekend Trips . . . Always working.*



MARILYN DOROTHY SAILER

Reading, Pennsylvania

*Business*

Waller Hall Association 1, 2, 3, 4, Governing Board 4; Alpha Psi Omega 3, 4; *OBITER*, Editorial Staff 1; *Maroon and Gold* 1; Business Education Club 1, 2, 3; Social Usage Club 1; Dramatic Club 1, 2, 3, 4; Student Christian Association 1.

*Enviably height . . . Striking appearance . . . Definitely the executive type . . . Engaged to a V-12 . . . Excellent correspondent . . . Future looks bright . . . Lynn.*





LAURA EVA SCHOENER  
 Stouchsburg, Pennsylvania

*Business*

Waller Hall Association 1, 2, 3, 4; Fire Warden 2; *Maroon and Gold* 2, 3; Election Committee 3; Pi Omega Pi 4; Business Education Club 1, 2; Social Service Club 1, 2, 3, 4; Council member 2; Men in Service 3; Women's Chorus 2, 3, 4; Treasurer 3; President 4; Mixed Chorus 1, 2; Student Christian Association 1, 2, 3, 4; Treasurer 3; Secretary-Treasurer 4.

*Subtle humor . . . A school teacher at heart . . . Attractively dark . . . Quiet dignity . . . Mischievous smile . . . Schooner.*

PHYLLIS M. SCHRADER  
 Lewisburg, Pennsylvania

*Elementary*

Waller Hall Association 1, 2, 3, 4; Student Christian Association 1, 2; Social Usage Club 1; Women's Chorus 1, 2; Dramatic Club 1; *Maroon and Gold*, Editorial Board 3; Social Room Chairman 3; Assembly Committee 2.

*Tiny but cute . . . Can take care of herself in spite of size . . . likes to dance . . . Hard worker . . . quiet . . . beautiful locks.*



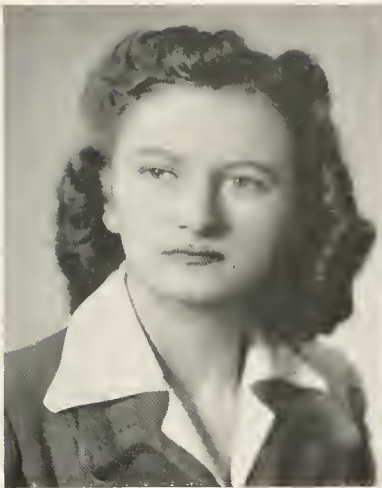
SHIRLEY T. STAROOK  
 Northumberland, Pennsylvania

*Elementary*

Waller Hall Association 1, 2, 3, 4; House Committee 1; *Maroon and Gold* 1; Dramatic Club 1, 2; Poetry Club 1; Student Christian Association 1, 4; Women's Chorus 1, 2, 3, 4; Vice President 1; Invitation Committee, Senior Ball and Banquet 4.

*Efferrescent . . . That special sparkle . . . Enthusiastic . . . Good sport . . . Versatile . . . Shirl.*





HARRIET M. STERLING

Bloomsburg, Pennsylvania

*Elementary*

Day Women's Association 1, 2, 3, 4; *Maroon and Gold* 2; Women's Chorus 1, 2, 3, 4; Dramatic Club 3, 4.

*Works hard . . . Well dressed and always neat . . . Charming personality . . . Spends most of spare time in the Day Room . . . Sense of humor.*

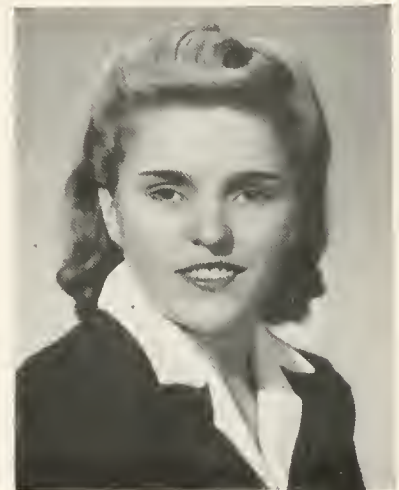
ARLENE NORMA SUPERKO

Mocanaqua, Pennsylvania

*Secondary*

Waller Hall Association 1, 2, 3, 4; Governing Board 3, 4; President 1944 Summer Trimester; Fire Warden 1; House Committee 2; C. G. A. 4; Class President 4; Science Club 1, 2, 3, 4; Secretary 1, Program Chairman 2, Vice President 3, President 4; Women's Chorus 1, 2, 4; Canteen, Manager 4; B Club 4.

*Glorious blonde . . . Active in sports . . . Superior class leader . . . Math "Whiz" . . . Consistent determination . . . Perky.*



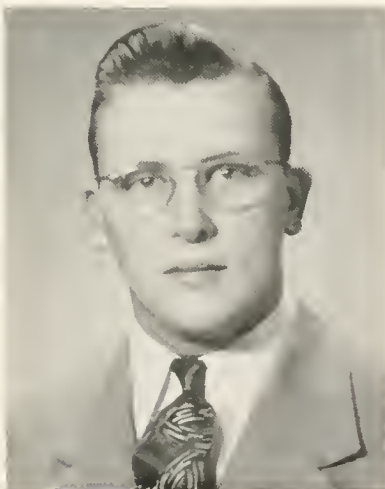
CHARLES L. WAGNER

Mount Carmel, Pennsylvania

*Secondary*

Day Men's Association 1, 2, 3, 4; *OBTER*, Chairman of Business Committee 4; Men's Glee Club 1; Mixed Chorus 1, 2, Librarian 1; Science Club 1, 2, 3, 4, Program Chairman 4; Social Usage Club 1; Canteen 4; Senior Ball and Banquet, Investigation Committee.

*Well-dressed . . . Our own business manager . . . Ready smile . . . Willing worker . . . Cooperative . . . Definitely dependable . . . Charlie.*





JULIA A. WELLIVER  
Bloomsburg, Pennsylvania

*Elementary*

Mixed Chorus 1, 2; Poetry Club 1; B Club 2, 3, 4. Secretary 3;  
Women's Chorus 3, 4; S. C. A. 3; Day Women Association.  
Representative 3, 4, Secretary 3; Class Treasurer 3.

*Works hard, but doesn't worry about it . . . carefree . . .  
Divides her time between school and a job.*

LOIS L. WINTERSTEIN  
Danville, Pennsylvania

*Elementary*

Day Women's Association 1, 2, 3, 4; Women's Chorus 1, 2, 3, 4;  
Senior Ball. Dance Program Committee.

*A ready smile . . . Lengthy daily trips . . . Spends  
lot of time in the day room.*



SHIRLEY MARCIA WOLFE  
West Nanticoke, Pennsylvania

*Business*

Day Women's Association 1; Waller Hall Association 2, 3, 4;  
OBTET, Editorial Staff; Awards Committee Co-Chairman 4;  
Business Education Club 1, 2, 3; Social Service Club 4.

*Likes variety of hair styles . . . Danube-blue eyes . . .  
Lives for that daily letter . . . Grim determination . . .  
Bright color fiend . . . Loves airplanes . . . Steve.*





BETTY L. ZEHNER  
Sugarloaf, Pennsylvania

*Elementary*

Day Women's Association 1, 2, 3, 4; Women's Chorus 1, 2;  
Social Service Club 1, 2, 3; B Club 3, 4; Senior Ball, Chair-  
man 4.

*You should see her with a basketball . . . good sense of  
humor . . . works hard but you never hear about it . . .  
loads of fun.*

MARIAN ELIZABETH ZONG  
Milton, Pennsylvania

*Business*

Waller Hall Association 1, 2, 3, 4, Governing Board 2, 3, 4,  
Secretary 3; C. G. A. Council Member 3; Class President 3;  
Class Secretary 4; Women's Chorus 1, 2, 3, Secretary 3; Busi-  
ness Education Club 1, 2, Secretary 2; Student Christian As-  
sociation 1, 2; Social Usage Club 1, 2; Historian 2.

*"Ring on her finger" . . . Marine on the brain . . .  
An air of composure . . . Never a hair out of place . . .  
An indispensable seamstress . . . Betty.*













Seated—J. Shaffer, E. Falvey, M. Schroeder.  
 Standing—M. Longo, L. Utt.

## Junior Class

### OFFICERS

<i>President</i>	- - - - -	EILEEN FALVEY
<i>Vice President</i>	- - - - -	JACQUELINE SHAFFER
<i>Secretary</i>	- - - - -	MARY SCHROEDER
<i>Treasurer</i>	- - - - -	MARY LONGO
<i>Adviser</i>	- - - - -	MR. WAGNER

As the curtain parted for Act III in the dramatic production, "College Life," the class got off to a fine start under the capable leadership of our officers: President, Eileen Falvey; Vice President, Jacqueline Shaffer; Secretary, Mary Schroeder; Treasurer, Mary Longo; Girl Representative to C. G. A., Lorraine Utt, and Class Adviser, Mr. Wagner.

Due to the accelerated program, we see among the Seniors many of the students who started with us as green Frosh. To them and to the rest of the Seniors, we wish luck, success, and happiness in everything they do.



ATHAMANTIA COMMUNTZIS  
 Bloomsburg, Pennsylvania  
*Secondary*



HENRY J. GATSKI  
 Bloomsburg, Pennsylvania  
*Secondary*



DORIS JEAN DICKINSON  
 La Plume, Pennsylvania  
*Elementary*



KATHILEEN A. HESS  
 Dalton, Pennsylvania  
*Secondary*



EILEEN L. FALVEY  
 Berwick, Pennsylvania  
*Business*



VIRGINIA C. KING  
 Dallas, Pennsylvania  
*Secondary*



BERNICE R. GABUZDA  
 Freeland, Pennsylvania  
*Secondary*



ELTHEDA M. KLINGAMAN  
 Shumans, Pennsylvania  
*Secondary*



MARIE L. KRUM  
 Bloomsburg, Pennsylvania  
*Elementary*



MARY M. SCHROEDER  
 Easton, Pennsylvania  
*Business*



MARY E. LONGO  
 Sheppton, Pennsylvania  
*Business*



M. LENORE SEYBERT  
 Lightstreet, Pennsylvania  
*Secondary*



ANNA PAPPAS  
 Danville, Pennsylvania  
*Elementary*



JACQUELINE SHAFFER  
 Bloomsburg, Pennsylvania  
*Elementary*



FRANCES L. SAUNDERS  
 Danville, Pennsylvania  
*Secondary*



ELIZABETH J. SMITH  
 Catawissa, Pennsylvania  
*Elementary*



CHARLES W. SPENCER  
Ashland, Pennsylvania  
*Secondary*



LORRAINE R. UTT  
Orangeville, Pennsylvania  
*Elementary*

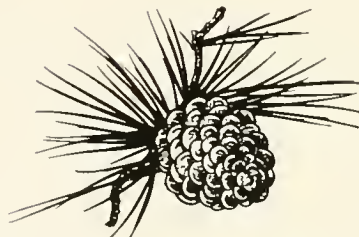


MARJORIE E. STOVER  
Lewisburg, Pennsylvania  
*Elementary*



VIOLET L. WELLER  
Turbotville, Pennsylvania  
*Secondary*

MARK COLLINS WANICH, JR.  
Lightstreet, Pennsylvania  
*Secondary*





Seated—S. Kaiser, K. Kurilla, R. Cerchiaro, G. Gillis, P. Anthony.  
 Standing—J. Hmelucky, D. Brown.

## Sophomore Class

### OFFICERS

<i>President</i>	- - - - -	ROSE M. CERCHIARO
<i>Vice President</i>	- - - - -	KAY M. KURILLA
<i>Secretary</i>	- - - - -	GLORIA GILLIS
<i>Treasurer</i>	- - - - -	PEGGY LOU ANTHONY
<i>Historian</i>	- - - - -	SHIRLEY KAISER
<i>Adviser</i>	- - - - -	DR. ELNA NELSON
<i>Representatives</i>	- - -	DORA BROWN AND JOHN HMELNICKY

November 1, 1944, marked the return of the eager Sophomores. We were ready to resume our studies after four delightful months of vacation.

Upon investigation, we found a few missing from the ranks. Horace Readler and Elmer Marianacci had left us to answer the call of Uncle Sam. We wish them the best of luck and hope they will return soon. Louise Schlegel, Terese Sidari, and Robert Megargel had transferred to other colleges. They know they have a standing invitation to visit us.

Some of our Sophomores who attended the summer trimester were "one up" on the others and became Juniors in the March trimester.

The Sophomore Class takes this opportunity to wish the Class of 1945 all the success and happiness that can be derived from the teaching profession.

ELIZABETH E. ADAMS  
Dalmatia, Pennsylvania  
*Elementary*



EVA F. BOURGEOIS  
Bloomsburg, Pennsylvania  
*Elementary*



MARGARET L. ANTHONY  
Shamokin, Pennsylvania  
*Elementary*



DORA V. BROWN  
Lewisburg, Pennsylvania  
*Elementary*



LEAH WANDA BARTH  
Silverdale, Pennsylvania  
*Secondary*



ANNE B. BUCINELL  
Forest City, Pennsylvania  
*Business*



MARGARET M. BEACH  
Bloomsburg, Pennsylvania  
*Elementary*



ROSE M. CERCHIARO  
Nesquehoning, Pennsylvania  
*Business*





CATHERINE COAKLEY  
Shenandoah, Pennsylvania  
*Secondary*



PAULINE R. EGIZI  
Berwick, Pennsylvania  
*Secondary*



MARIAN J. CREVELING  
Bloomsburg, Pennsylvania  
*Elementary*



HELEN E. FEHL  
West Reading, Pennsylvania  
*Business*



MARTHA C. DONAHUE  
Shippensburg, Pennsylvania  
*Business*



LORRAINE G. FICHTER  
Hazleton, Pennsylvania  
*Secondary*



JEANNE R. DUBOIS  
Bloomsburg, Pennsylvania  
*Business*



AGNES FLAHERTY  
Shenandoah, Pennsylvania  
*Business*



ISABEL A. GEHMAN  
Ephrata, Pennsylvania  
*Business*



ELIZABETH M. HESS  
Benton, Pennsylvania  
*Elementary*



GLORIA M. GILLIS  
Duryea, Pennsylvania  
*Business*



JOHN J. HMELNICKY  
Exeter, Pennsylvania  
*Secondary*



LOLA E. GOOD  
Wapwallopen, Pennsylvania  
*Secondary*



HAZEL E. KEELER  
Espy, Pennsylvania  
*Secondary*



LILLIAN V. GUIS  
Sheppton, Pennsylvania  
*Secondary*



SHIRLEY J. KEISER  
Dalton, Pennsylvania  
*Elementary*



KARLISS L. KIGHT  
Bloomsburg, Pennsylvania  
*Secondary*



BETTY J. LINGLE  
Lewistown, Pennsylvania  
*Business*



MAE E. KLINGER  
Lykens, Pennsylvania  
*Elementary*



DELLA N. MARTZ  
Bloomsburg, Pennsylvania  
*Business*



DOROTHY L. KOCHER  
Espy, Pennsylvania  
*Elementary*



NANCY E. MAXEY  
Scranton, Pennsylvania  
*Elementary*



KATHLEEN N. KURILLA  
Atlas, Pennsylvania  
*Business*



NANCY J. MCHENRY  
Berwick, Pennsylvania  
*Business*



FRANCES C. MYLET  
Sugarloaf, Pennsylvania  
*Elementary*



MARIAN P. SCHLAUCH  
Bloomsburg, Pennsylvania  
*Secondary*



ALBERTA B. NAUNAS  
Bloomsburg, Pennsylvania  
*Secondary*



JANET R. SHULTZ  
Philadelphia, Pennsylvania  
*Business*



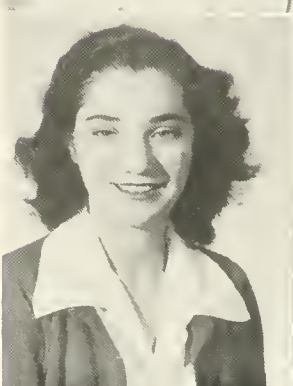
RUTH L. REICHARD  
Bloomsburg, Pennsylvania  
*Elementary*



MARTHA J. STITZEL  
Hamburg, Pennsylvania  
*Elementary*



HARRIET W. RHODES  
Bloomsburg, Pennsylvania  
*Business*



RALPH A. TREMATO  
Easton, Pennsylvania  
*Business*



FERNE E. VANSANT  
Numidia, Pennsylvania  
*Secondary*



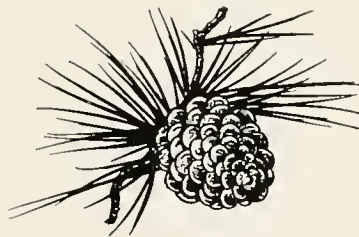
EVELYN I. WITMAN  
Shillington, Pennsylvania  
*Business*



SHIRLEY ANNE WILLIAMS  
Luzerne, Pennsylvania  
*Business*



HELEN M. WRIGHT  
Bloomsburg, Pennsylvania  
*Elementary*







Seated—J. Richards, R. Paul, A. Baldy, D. Condor, D. Croop  
 Standing—F. Hantz.

## Freshman Class

### OFFICERS

<i>President</i>	- - - - -	ANNE BALDY
<i>Vice President</i>	- - - - -	RENEE PAUL
<i>Secretary</i>	- - - - -	DORIS CONDOR
<i>Treasurer</i>	- - - - -	DONNA CROOP
<i>Historian</i>	- - - - -	BARBARA GREENLY
<i>Adviser</i>	- - - - -	MISS HARRIET M. MOORE

A representative of C. G. A. met the Freshman Class on January 12, 1945, for the purpose of nominating class officers. Elections were held on January 26.

The class is made up of some July Trimester students and a large number of November Trimester students. Membership draws from a wide territory.

The interests of the class in the field of education are varied. In spite of wartime conditions, the class is making exceptional progress and it promises a fine future.

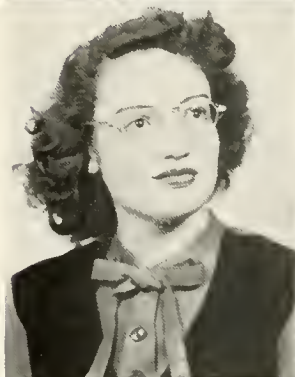
CAROL L. ASH  
Bloomsburg, Pennsylvania  
*Secondary*



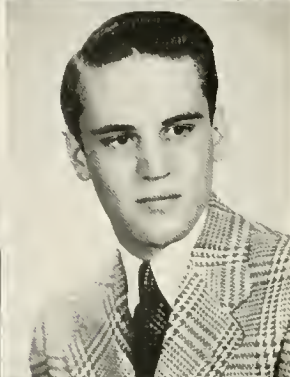
HELENE L. BROWN  
West Hazleton, Pennsylvania  
*Elementary*



ELIZABETH A. BALDY  
Catawissa, Pennsylvania  
*Secondary*



EUGENE CARPENTER  
Yeadon, Pennsylvania  
*Secondary*



AUDREY L. BIRTLEY  
Bloomsburg, Pennsylvania  
*Elementary*



MARION E. CHUBB  
Troy, Pennsylvania  
*Business*



ROSANNA J. BROADT  
Bloomsburg, Pennsylvania  
*Secondary*



JEAN M. CLEAVER  
Shamokin, Pennsylvania  
*Elementary*





DORIS M. CONDOR  
Hazleton, Pennsylvania  
*Secondary*



EDITH T. FLING  
Glenside, Pennsylvania  
*Business*



DONNA CROOP  
Hunlock's Creek, Pa.  
*Business*



LOIS L. FOUST  
Danville, Pennsylvania  
*Business*



DOLORES DEVIZIA  
Nescopek, Pennsylvania  
*Elementary*



JOYCE E. GASS  
Danville, Pennsylvania  
*Elementary*



NANCY M. FISK  
Danville, Pennsylvania  
*Elementary*



MRS. HAZEL SULT GAUMER  
Berwick, Pennsylvania  
*Elementary*



M. JEAN GILBERT  
Hazleton, Pennsylvania  
*Elementary*



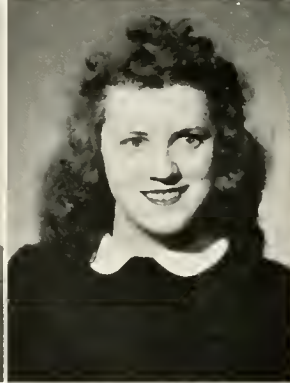
MARTHA A. HATHWAY  
Danville, Pennsylvania  
*Elementary*



JANET E. GILBODY  
Bloomsburg, Pennsylvania  
*Secondary*



EMILY J. HESS  
West Hazleton, Pennsylvania  
*Business*



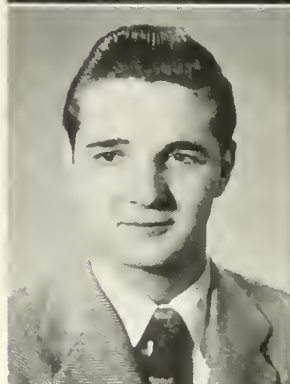
BARBARA J. GREENLY  
Bloomsburg, Pennsylvania  
*Secondary*



EVELYN J. HIRT  
Bloomsburg, Pennsylvania  
*Secondary*



FRANCIS A. HANTZ  
Duryea, Pennsylvania  
*Business*



DOROTHY M. HORNBERGER  
Elysburg, Pennsylvania  
*Secondary*



ROSE MARIE KRAISER  
Horsham, Pennsylvania  
*Business*



ANNE JANE LEWIS  
Bloomsburg, Pennsylvania  
*Secondary*



DOROTHY K. KUCHARSKI  
Exeter, Pennsylvania  
*Secondary*



GLORIA C. MAINIERO  
Hazleton, Pennsylvania  
*Secondary*



AUDREY ANNE LAWTON  
Bloomsburg, Pennsylvania  
*Secondary*



JOHN J. MIHALKO  
Exeter, Pennsylvania  
*Secondary*



MARILYN R. LEBOWICK  
Bloomsburg, Pennsylvania  
*Elementary*



ELLEN L. MOORE  
Memphis, Tennessee  
*Secondary*



JANE M. NILES  
Wellsboro, Pennsylvania  
*Business*



DAWN R. RAUP  
Bloomsburg, Pennsylvania  
*Secondary*



JUNE V. NOVAK  
Sheppton, Pennsylvania  
*Business*



CHARLOTTE R. REICHART  
Lightstreet, Pennsylvania  
*Business*



BETTY RENEE PAUL  
Lavelle, Pennsylvania  
*Elementary*



JEANNE L. REITZ  
Northumberland, Pa.  
*Business*



MARY R. PELCHAR  
Keiser, Pennsylvania  
*Secondary*



J. JEAN RICHARD  
Bloomsburg, Pennsylvania  
*Secondary*



MARY E. RUSH  
Bloomsburg, Pennsylvania  
*Secondary*



BETHA M. STURMAN  
Tunkhannock, Pennsylvania  
*Business*



MARY G. SEVERN  
Bloomsburg, Pennsylvania  
*Secondary*



GLORIA EDITH VELEY  
Bloomsburg, Pennsylvania  
*Secondary*



LOUISE C. SHARPLESS  
Catawissa, Pennsylvania  
*Elementary*



MRS. DORIS M. VOGEL  
Minersville, Pennsylvania  
*Business*



DOROTHY B. STRAIN  
Bloomsburg, Pennsylvania  
*Secondary*



PHYLLIS J. WOLFE  
West Nanticoke, Pa.  
*Business*







# Book III

NAVY V-12









Lt. Robert J. Ferguson, Commanding Officer



Lt. Thomas R. Everett, Executive Officer



Lt. Vincent C. Olshefski, Medical Officer



Left to Right—Henry Watkins S/K 2/c, Carmen Belucci Y 1/c, Hugh McCullough C.P.O.,  
Chester Smith SP(A) 1/c, Harold Brown PM 2/c.



First Row, Left to Right—George Bottger, Carlton Chamberlin, Stanley Hibbs, Francis Corrigan, Vincent Pass, John Zagoudis.  
Second Row—Charles Johnson, LaRue Gunnison, Charles Williams, Thomas Hennessy, John Gallagher, Paul Kluefelter.

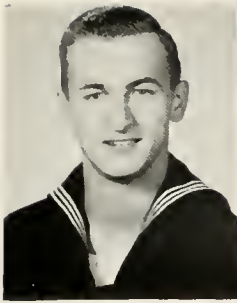
## V-12

July of '43 saw the first V-12 trainees on the Bloomsburg campus. With new groups arriving three times a year, we carry with us the memories of many varied faces and personalities.

The purpose of the program is to train prospective Naval officers in the subjects which will most benefit them in their Naval careers. The Navy can be sure that it has the cream of the crop, for rigid tests and discipline eliminate those of lesser intelligence and endurance. It is truly a "survival of the fittest."

Many of Bloomsburg's V-12's have since been commissioned as ensigns in the United States Navy and are now serving with the amphibious forces in the seven corners of the world.

Anchors Aweigh, Navy!



Austin M. Ackerman  
Dusham Center, Conn.



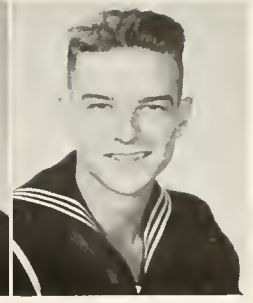
Ralph J. Adams  
Ogdensburg, N. Y.



George E. Allen  
Troy, N. Y.



Hubert A. Allenby  
Falmouth, Mass.



William D. Althouse  
Evansville, Pa.



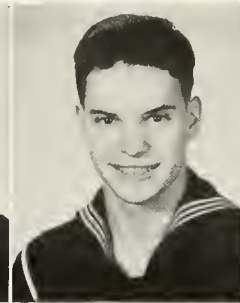
Dale R. Anderson  
Jamaica, N. Y.



Francis R. Anderson  
Arnold, Pa.



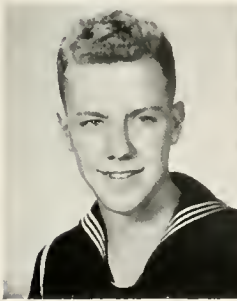
John S. Anderson  
New Castle, Pa.



William T. Andrews  
Merion, Pa.



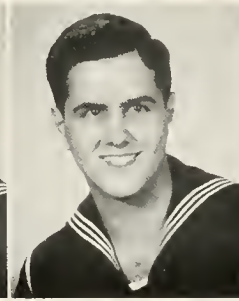
Wallace H. Appel  
Cranston, R. I.



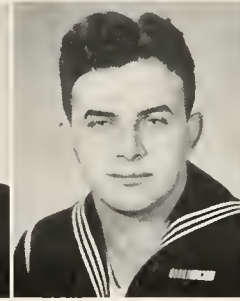
Robert D. Baker  
West Lawn, Pa.



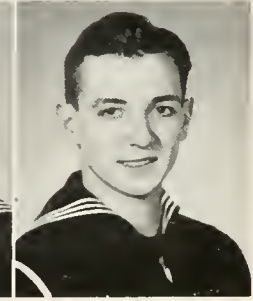
George B. Ballerstein  
Wellsville, N. Y.



Bartolmeo Bertocchi  
Kittany, Pa.



John Betelak  
Syracuse, N. Y.



John B. Bianco  
White Plains, N. Y.



Domenico N. Bibbo  
Brockton, Mass.



Harold L. Bilon  
New York, N. Y.



John W. Bisbing  
Llanerch, Del.



Jack Bloom  
Rochester, N. Y.



John F. Bogan  
Lyndhurst, N. J.



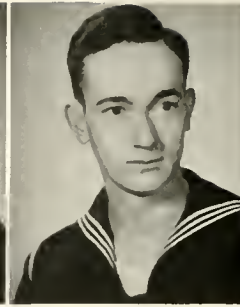
George E. Bottger  
Lindenhurst, N. Y.



Harold E. Bryson  
Laurel Springs, N. J.



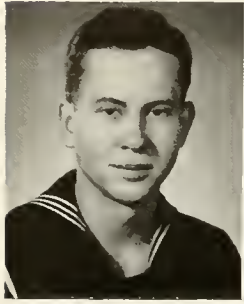
Edward B. Busbka  
Torrington, Conn.



Aldin James Carroll  
East McKeesport, Pa.



Robert L. Carter  
West Concord, Mass.



Joseph H. Casey  
Huntingdon, W. Va.



Carlton L. Chamberlin  
Somerville, Mass.



Robert H. Cloutman  
Marblehead, Mass.



Francis J. Corrigan  
Dorchester, Mass.



Albert W. Crocker  
Worcester, Mass.



Carl R. Crosby  
Providence, R. I.



Morris N. D'Amico  
Syracuse, N. Y.



William J. Davis  
Winthrop, Mass.



Benjamin H. Deacon  
Merion, Pa.



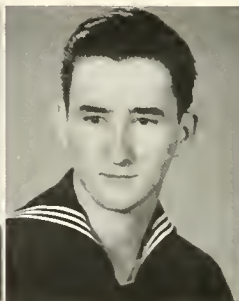
Robert C. Denz  
E. Norwalk, Conn.



Richard E. Devine  
Penvalley, Pa.



William M. DeWitt  
Schuylkill Haven, Pa.



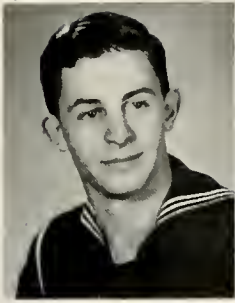
George F. Downey  
Pittsfield, Mass.



William M. DuBois  
Millville, N. J.



Peter J. Dunne  
Wayne, Pa.



Thomas W. Eglington  
Providence, R. I.



Howard L. Ehrlich  
Wilkes-Barre, Pa.



Irving N. Feldsott  
Forest Hills, N. Y.



Donald R. Fleisher  
Wila, Pa.



Thomas E. Fleming  
Woodside, N. J.



Theodore F. Frankoski  
Waterbury, Conn.



John A. Gallagher  
Lawrence, Mass.



Lewis Adam Garbaeik  
West Hazleton, Pa.



Philip J. Garm  
Forest City, Pa.



Charles G. Geiger  
Metuchen, N. J.



Rudolph D. Ghezzi  
New Britain, Conn.



George William Gibson  
Ogden, Pa.



Arthur P. Grafenburg  
Huntington, N. Y.



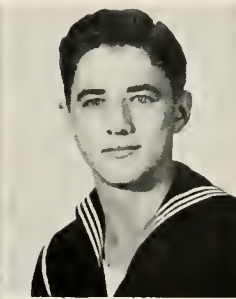
Richard E. Grimm  
Dillsburg, Pa.



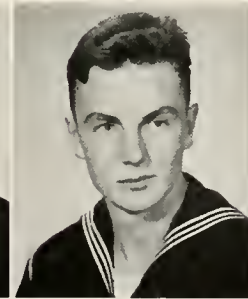
Martin J. Gronka  
Nanticoke, Pa.



LaRue E. Gunnison  
Canandaigua, N. Y.



Roy Z. Gunther  
Ronslow, Pa.



Henriques C. Hamilton  
Rosemont, Pa.



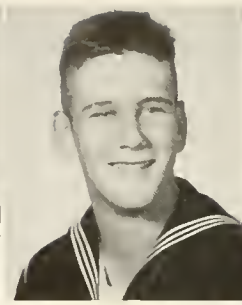
John R. Hanlon  
Stratford, Conn.



Frank L. Hawkins  
Providence, R. I.



Thomas M. Hennessey  
Coatesville, Pa.



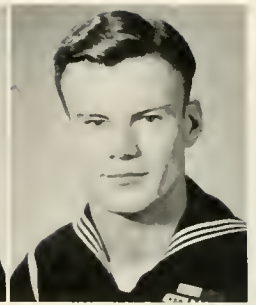
John M. Hepburn  
Ardmore, Pa.



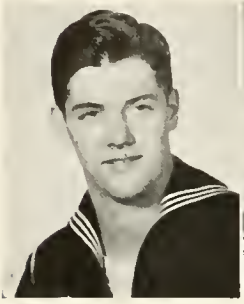
Alvin S. Hibbs  
Everett, Mass.



David M. Hodge  
Lemoyne, Pa.



Owen Howard  
Washington, D. C.



Edmund J. Hunter  
Shippensburg, Pa.



John P. IX  
New York, N. Y.



Douglas G. Jackson  
Queens Village, N. Y.



John L. Janas  
Pittsburgh, Pa.



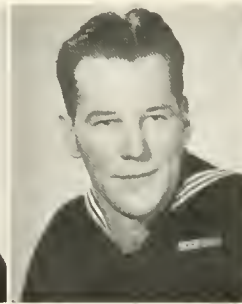
Paul A. Jason  
Milmont Park, Del.



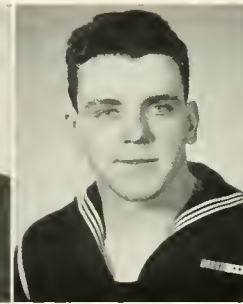
Frank M. Jayoe  
Gardiner, N. Y.



William B. Jeffries  
Harmony, Pa.



James W. Jimenez  
Buffalo, N. Y.



Charles E. Johnson  
Brookline, N. Y.



Walter F. Jones  
Euchland, Pa.



Seymour K. Kantrowitz  
Newburgh, N. Y.



Aloysius J. Kelly  
Strafford, Pa.



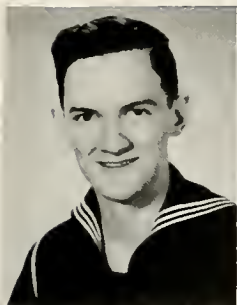
Thomas V. Kelly  
Washington, D. C.



Thomas G. Kilroy  
Barnesville, Pa.



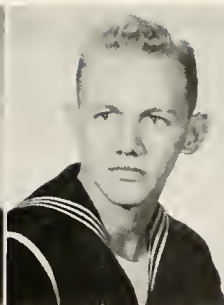
Robert F. Kings  
Buffalo, N. Y.



Paul T. Kinney  
Llanerch, Del.



William K. Kirk  
Baldwin, N. Y.



John E. Kishbaugh  
Wilkes-Barre, Pa.



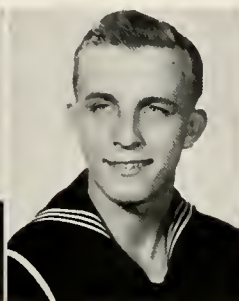
Paul F. Klinefelter  
Flourtown, Pa.



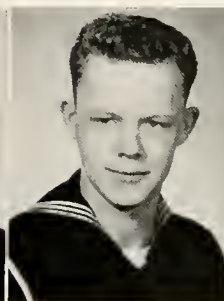
Robert S. Kriشه  
Brooklyn, N. Y.



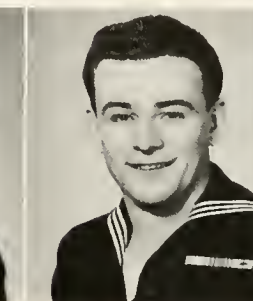
Robert S. Krisko  
Greensburg, Pa.



John S. Kunigonis  
Plymouth, Pa.



Andrew J. Lock  
Brooklyn, N. Y.



John M. Lydon  
Upper Darby, Pa.



Borge N. Lyhne  
Hartford, Conn.



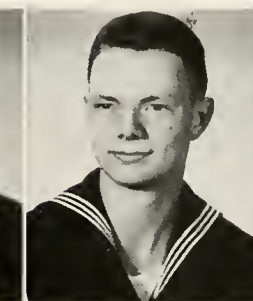
Calvin A. Macpherson  
Quincy, Mass.



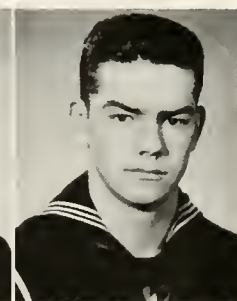
Saul N. Mariaschin  
Brooklyn, N. Y.



Douglas F. Marlow  
Brooklyn, N. Y.



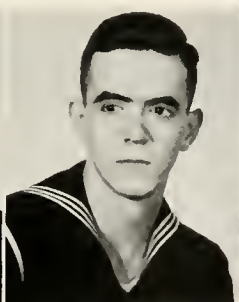
Otto L. Marx  
Norristown, Pa.



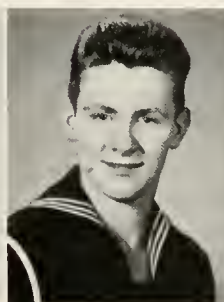
Paul F. Masterson  
Worcester, Mass.



Joseph L. Mazzitti  
Berwick, Pa.



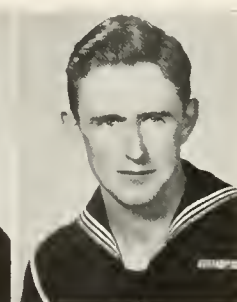
Barnes W. McCormick  
West Chester, Pa.



Donald Paul McKay  
Springfield, Pa.



Herbert J. McKittrick  
Aldan, Pa.



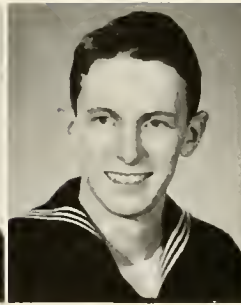
Joseph F. McNiff  
Brooklyn, N. Y.



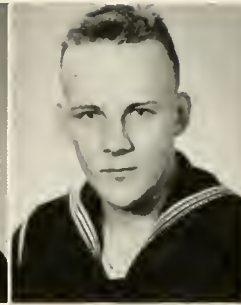
George H. Mecouch  
Media, Pa.



John P. Nealon  
Scranton, Pa.



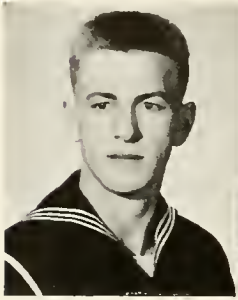
Richard B. Neilson  
Wilmington, Mass.



Russell J. Nickerson  
Edgewood, R. I.



Wedo Nutaitis  
Berwick, Pa.



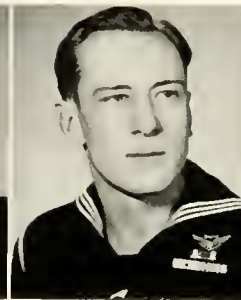
Michael Oleyar  
Bayonne, N. J.



John N. Opalka  
Buffalo, N. Y.



Samuel Paprocky  
Stratford, Conn.



Vincent L. Pass  
Export, Pa.



Stephen Persak  
Hillside, N. J.



Joseph J. Pettit  
Grand Rapids, Mich.



Baaron B. Pittenger  
Waterbury, Conn.



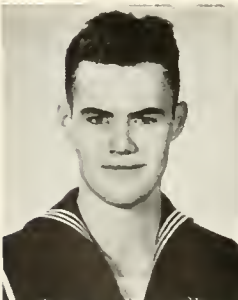
Perfecto N. Posada  
Lackawanna, N. Y.



Pasquale N. Pratico  
Schenectady, N. Y.



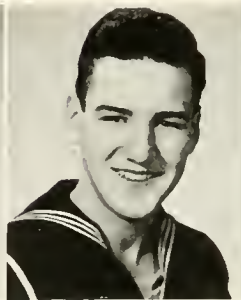
Theodore W. Pstrak  
Wilkes-Barre, Pa.



William Reed  
Norwich, Conn.



Michael Remetz  
Swoyerville, Pa.



Donald R. Riley  
Indiana, Pa.



Jean R. Rioux  
New Bedford, Mass.



Ned W. Roudabush  
Altoona, Pa.





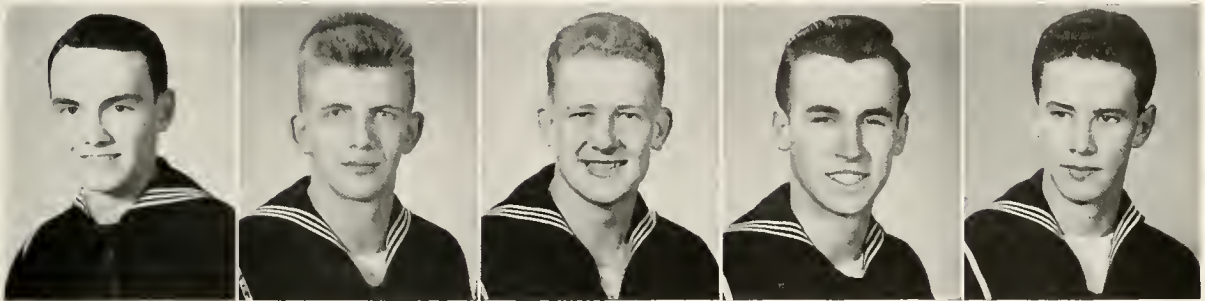
Howard F. Rudolph  
Glendale, N. Y.

George T. Ryan  
Brooklyn, N. Y.

Henry Schleicher, Jr.  
Bellair, Ohio.

Morton Scher  
Brooklyn, N. Y.

William J. Secfeldt  
Lester, Pa.



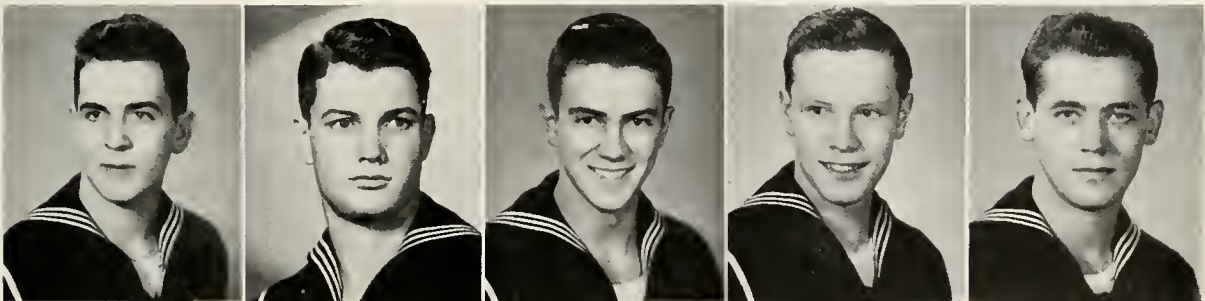
Vincent F. Shedler  
Eggerstville, N. Y.

Henry Slocum  
Weedspert, N. Y.

Edward T. Smith  
Glenside, Pa.

Robert M. Smith  
Wilkes-Barre, Pa.

Paul E. Snyder  
DuBois, Pa.



Robert L. Snyder  
Ellwood City, Pa.

Robert W. Spegal  
Hathoro, Pa.

Ralph R. Speicher  
Oakdale, Pa.

Donald H. Stevenson  
Cheltenham, Pa.

James P. Stoltz  
Ashville, Pa.



Robert Strauss  
South Orange, N. J.

James F. Strong  
North Adams, Mass.

Joseph V. Stull  
Philadelphia, Pa.

John J. Sullivan  
Lynn, Mass.

David S. Swartley  
Center Square, Pa.



Charles E. Swingle  
Hookstown, Pa.



Andrew N. Tarbay  
Watervliet, N. Y.



Clyde M. Taylor  
Burnham, Pa.



Cortlandt L. Terhune  
Maywood, N. J.



James J. Thompson  
Boston, Mass.



James C. Tierney  
Bronx, N. Y.



Albert J. Tomek  
Allentown, Pa.



James P. Trinity  
Philadelphia, Pa.



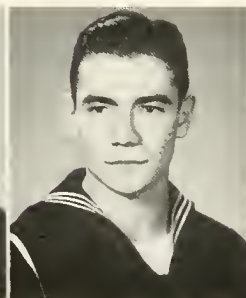
Edward J. Valentauk  
Rome, N. Y.



Karl H. Van D'Elden  
Kew Gardens, N. Y.



John Van Wyk  
Eaton, N. Y.



William A. Vernon  
Ardmore, Pa.



Douglas N. Walck  
Quakertown, Pa.



John J. Walker  
Philadelphia, Pa.



Richard P. Walsh  
Haverstraw, N. Y.



Eugene J. Wasilewski  
Wilkes-Barre, Pa.



Herbert R. Waters  
Sterling, Mass.



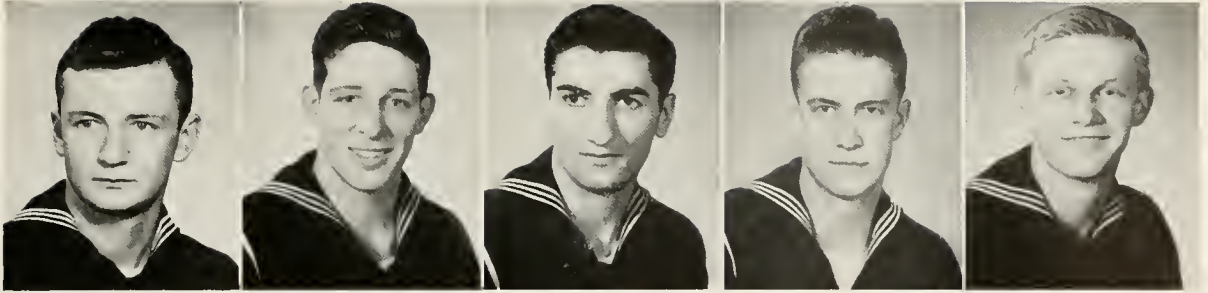
Howard G. Wells  
Poughkeepsie, N. Y.



Charles I. Williams  
Queens Village, N. Y.



Eugene R. Williams  
East Haven, Conn.



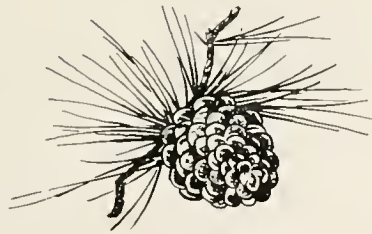
Frederick M. Wintermute  
Altoona, Pa.

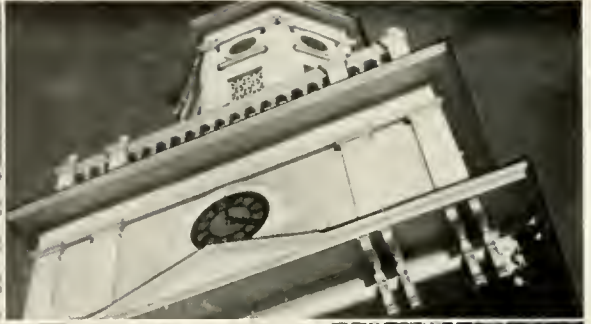
William M. Wright  
Milton, Pa.

John P. Zagoudis  
New York, N. Y.

Omar C. Zehner  
Lelienople, Pa.

John H. Zurner  
Forty-Fort, Pa.







# Book IV

THE COLLEGE







WALLER HALL



SCIENCE HALL



CENTENNIAL GYM





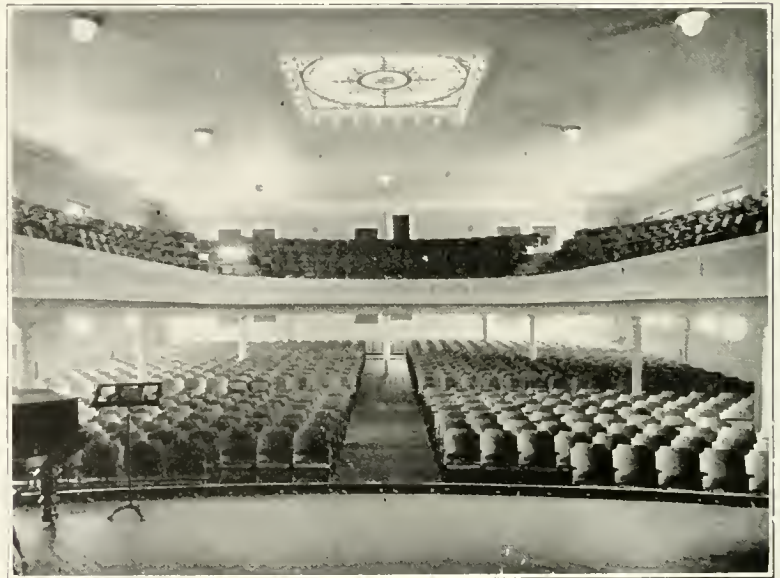
NOETLING HALL



NORTH HALL



PRESIDENT'S RESIDENCE



AUDITORIUM



# Book V

ORGANIZATIONS







# Community Government Association



MARY LOU FENSTERMAKER  
President

Community Government Association has for its members all students and faculty members of the college. The object of the organization is to co-operate with the administration in promoting personal and group responsibility in regulating the affairs of all students under the jurisdiction of the college.

The College Council is the legislative body for the Association. This group represents the members of the Community Government Association, supervises all activities, formulates and administers all approved policies of the Association. The College Council meets twice each month to carry out its duties.

The Community Government Association sponsors college activities, such as class elections, assembly programs, dances, publicity, use of the Social Rooms, and use of a juke box in the gymnasium. To aid in carrying out such activities, special committees are appointed by the vice president.

The Community Government Association of today has an ever-changing membership with ever-changing problems and interests.



First Row, Left to Right—Joseph Gula, John Van Wyck, Stanley Hibbs, Michael Remetz, John Lydon, Donald Kelly, Paul Klinefelter, Francis Hantz.  
Second Row—Arlene Superko, Loraine Utt, Anne Baldy, Jacqueline Shaffer, Athamantia Comuntzis, Mary DeVitis, Mary Lou Fenstermaker, Althea Parsell, Dora Brown.  
Third Row—Rose Cerchiaro, Elvira Bitetti, Jean Richards, Miss Hazen, Miss Ranson, Mr. Koch, Lt. Everett, Mr. Buchheit, Miss Rich, Miss Kehr, Mary Schroeder, Eileen Falvey.

OFFICERS

*President* - - - - - MARY LOU FENSTEMACHER  
*Vice President* - - - - - MARY SCHROEDER  
*Secretary* - - - - - JACQUELINE SHAFFER  
*Treasurer* - - - - - ATHAMANTIA COMMUNTZIS  
*Faculty Advisers*—Dean Kehr, Miss Rich, Miss Ranson, Dr. North, Mr. Reams, Dean Koch, Mr. Buchheit, Miss Hazen, Mr. Bailer, Lt. Ferguson, and Lt. Everett.

ADDITIONAL MEMBERS OF COLLEGE COUNCIL

*President of Senior Class* - - - - - ARLENE SUPERKO  
*Girl Representative of Senior Class* - - - - - MARY DEVITIS  
*Boy Representative of Senior Class* - - - - - JOSEPH GULA  
*President of Junior Class* - - - - - EILEEN FALVEY  
*Girl Representative of Junior Class* - - - - - LORRAINE UTT  
*Girl Representative of Junior Class* - - - - - Not elected  
*President of Sophomore Class* - - - - - ROSE CERCHIARO  
*Girl Representative of Sophomore Class* - - - - - DORA BROWN  
*Boy Representative of Sophomore Class* - - - - - JOHN HMELNICKY  
*President of Freshman Class* - - - - - ANNE BALDY  
*Girl Representative of Freshman Class* - - - - - JEAN RICHARD  
*Boy Representative of Freshman Class* - - - - - FRANCIS HANTZ  
*President of Waller Hall Association* - - - - - ELVIRA BITETTI  
*President of Day Women's Association* - - - - - ALTHEA PARSELL  
*President of Day Men's Association* - - - - - HENRY GATSKI

V-12'S ON COUNCIL (November Trimester)

Michael Remetz                      Paul Klinefelter  
 Donald Reilly                        Henry Slocum  
 John Lydon                         Stanley Hibbs  
 John Van Wyck



ATHAMANTIA COMMUNTZIS  
Treasurer



MARY SCHROEDER  
Vice President



JACQUELINE SHAFFER  
Secretary



First Row, Left to Right—P. Schrader, F. Mylet, C. Johnson, M. Longo, L. Good, M. Duck, G. Mainiero, E. Witman, M. Moser, R. Cerchiaro, J. Gilbert.  
 Second Row—S. Wolfe, S. Kaiser, H. Brown, P. Egizi, D. DeVizia, M. Brace, S. Starook, M. Donohue.  
 Third Row—V. Weller, M. Klinger, M. Stitzel, H. Fehl, C. Carkley, E. Falvey, C. Longo.  
 Fourth Row—G. Belcastro, J. Reitz, M. Furman, M. Downing, E. Bitetti, D. Brown, G. Gillis, M. Pelchar, K. Kurilla.  
 Fifth Row—M. Schroeder, M. DeVitis, C. Kinney, B. Burnham, Hazel Gaumer, A. Williams, R. Kester, M. Stover, B. Adams, E. Berlew, D. Condor, J. Propst, E. Moore, G. Harmou.

# Waller Hall Association

## OFFICERS

<i>President</i>	- - - - -	ELVIRA A. BITETTI
<i>Vice President</i>	- - - - -	JOY PROPST
<i>Secretary</i>	- - - - -	MARY SCHROEDER
<i>Treasurer</i>	- - - - -	EILEEN FALVEY

## GOVERNING BOARD MEMBERS

### *Seniors*

Marilyn Sailer	Mary DeVitis
Arlene Superko	Betty Zong

### *Juniors*

Gloria Belcastro	Kay Hess
Jean Dickinson	

### *Sophomores*

Kay Kurilla	Mae Klinger
Isabel Gehman	

### *Freshmen*

Donna Croop	Rose Marie Kraiser
-------------	--------------------



The Waller Hall Student Government Association is composed of all students living in Waller Hall and has for its purpose creating co-operation among dormitory students.

The Governing Board of the association consists of a president, a vice president, a secretary, a treasurer, and three representatives from each of the four classes. The various committee chairmen are appointed by the Governing Board. Dr. Kehr and Miss Rich act as advisers to the Governing Board.

The girls have several informal "get-togethers" during the year in the form of floor parties. Singing and eating comprise the entertainment of these parties.

A plan for entertaining the mothers on a special week-end was initiated a few years ago. This has proved so successful that every spring a week-end is set aside for the girls to entertain their mothers. This is called Mothers' Week-end.

In April, the dormitory girls and day girls hold their Annual He-She Party. At this party, the new members of Governing Board are introduced.



Seated, Left to Right—Miss Rich, I. Gehman, K. Hless, A. Superko, Dr. Kehr.  
Standing—M. DeVitis, E. Bitetti, D. Croop, K. Kurilla, M. Schroeder, J. Dickinson, J. Propst, M. Klinger,  
R. M. Kraiser, E. Falvey, G. Belcastro.



First Row, Left to Right—A. Naumas, F. Van Sant, P. Beech, E. Bourgeois, M. Lebowick, B. Hess, J. Gilbody, B. Greenly, N. Fisk.  
 Second Row—D. Eshleman, H. Rhodes, J. Welliver, R. Broadt, D. Kocher, K. Kight, M. Krum, M. Hathaway.  
 Third Row—M. Creveling, J. DuBois, B. Smith, L. Wintersteen, E. George, C. Ash, J. Gass, A. Pappas.  
 Fourth Row—E. Klingaman, M. Flaherty, B. Zehner, C. McCloughan, R. Reichart, J. Niles, M. Rush.  
 Fifth Row—F. Saunders, L. Utt, L. Sharpless, C. Reichard, J. Foust, A. Parsell, L. Seybert, V. King.

# Day Women's Association

## OFFICERS

*President* - - - - - ALTHEA PARSELL  
*Vice President* - - - - - JACQUELINE SHAFFER  
*Secretary* - - - - - ATHAMANTIA COMMUNTZIS  
*Treasurer* - - - - - FRANCES SAUNDERS

## Board Members

MARY FLAHERTY                      HARRIET RHODES  
 DOROTHY KOCHER                      JULIA WELLIVER

Students of B. S. T. C. who commute or live at Bloomsburg are members of the Day Women's Association, organized in 1930.

These members have at their disposal a large lounging room and a kitchen. The furniture of the Day Women's room was reupholstered this year in Maroon and Green.

The Day Women began their social life of the year with a tea at which all freshmen day women were guests. Santa visited the day room at Christmas.

The officers of the following year were announced at the annual He-She party sponsored jointly by the Day Women's Association and the Waller Hall Association.

The official board is composed of ten members: a president, a vice president, and two representatives from each class who act as chairmen of the various committees. Miss Ethel A. Ranson, Assistant Dean of Women, is sponsor of the group.



Seated, Left to Right—J. Welliver, Miss Ranson, D. Kucher, M. Flaherty.  
Standing—A. Communtzis, F. Saunders, A. Parsell, H. Rhodes.

## Day Men's Association



Seated, Left to Right—E. Frosini, C. Spencer, B. Kane, J. Gula.  
Standing—Mr. Reams, J. Mihalko, J. Hmelnicky, F. Hantz, Mr. Koch.

## Social Service Club



Seated, Left to Right—P. Beech, E. Bourgeois, B. Greenly, E. George, J. Richards, A. Communtzis.  
Standing—Miss Rich, R. Reichart, M. Creveling, B. Adams, M. Stover, M. Donohue, M. Downing, L. Fichter,  
A. Pappas.



First Row, Left to Right—R. Paul, S. Kaiser, M. Duck, C. Kinney, M. Furrum, S. Starook, M. Krum.  
 Second Row—M. Klinger, L. Utt, J. Propst, W. Barth, E. Doney.  
 Third Row—B. Burnham, M. Stover.

# Student Christian Association

## OFFICERS

<i>President</i>	- - - - -	JOY PROPST
<i>Vice President</i>	- - - - -	MARTHA DUCK
<i>Secretary-Treasurer</i>	- - - - -	LAURA SCHOENER
<i>Program Chairman</i>	- - - - -	MARJORIE STOVER
<i>Sponsor</i>	- - - - -	MR. SHORTESS

The Student Christian Association has as its purpose the task of acquainting the members with Christ. It is the aim of the organization to develop in the members the desire for better, and more wisely directed, living. One of the interesting meetings which was held had as its theme a study of Mennonite Religion. Miss Mary Kramer, a member, was the speaker. Another very interesting and inspiring message was given to the students by Reverend Carl Anderson, pastor of the local Presbyterian Church.



Seated, Left to Right—K. Hess, R. Boyle, C. Longo, C. Belcastro, E. Falvey, M. DeVitis, A. Communtzis, J. Shaffer.  
 Standing—Mr. Baller, B. Gabuzda, E. Bitetti, J. Dickinson, E. Flall, M. Schroeder, M. Fenstermaker, A. Parsell, B. Hess, C. McCoughan, Dr. Maupin, B. Kane.

# Kappa Delta Pi

## OFFICERS

<i>President</i>	- - - - -	MARY LOU FENSTEMAKER
<i>Vice President</i>	- - - - -	CAROL McCLOUGHAN
<i>Recording Secretary</i>	- - - - -	MARTHA DUCK
<i>Corresponding Secretary</i>	- - - - -	ELVIRA BITETTI
<i>Treasurer</i>	- - - - -	MARY DEVITIS
<i>Historian</i>	- - - - -	CATHERINE LONGO
<i>Counselor</i>	- - - - -	MISS NELL MAUPIN

The Gamma Beta Chapter of Kappa Delta Pi was installed on the campus of Bloomsburg, February 21, 1931. It is a National Honor Society in Education with the aim of establishing and promoting high intellectual, scholastic, and social standards. It maintains a high degree of professional fellowship among its members and honors achievement in educational work.

Membership in the fraternity is extended to Junior and Senior students who are in the upper quartile of their classes, and who have commendable personal qualities and worthy educational ideals.

During the first semester, new members were elected and initiated. Interesting and educational meetings were held at which world topics and current affairs were discussed.

This year, the fraternity had the honor of nominating a member to the Laureate Chapter of Kappa Delta Pi.



Seated, Left to Right—Mr. Ryziel, R. Boyle, C. Longo, G. Belcastro, E. Falvey, M. DeVitis, Mr. Bailor.  
 Standing—J. Gula, B. Zong, L. Martino, M. Schroeder, Mr. Forney, E. Flail, L. Schoener, Mr. Gehrig.

## Pi Omega Pi

### OFFICERS

<i>President</i>	- - - - -	JOSEPH GULA
<i>Vice President</i>	- - - - -	MARY SCHROEDER
<i>Secretary</i>	- - - - -	GLORIA BELCASTRO
<i>Treasurer</i>	- - - - -	LUCILLE MARTINO
<i>Historian</i>	- - - - -	EILEEN FALVEY
<i>Sponsor</i>	- - - - -	MR. WILLIAM FORNEY

The Alpha Delta Chapter of Pi Omega Pi, a National Professional Commercial Educational Fraternity, was installed at State Teachers College, Bloomsburg, Pennsylvania, on May 23, 1935. The Alpha Delta Chapter consists of members of the Department of Business Education who have attained superior scholastic ratings.

Its aims are to encourage, promote, extend, and create interest and scholarship in commerce; to encourage and foster high ethical standards; and to teach the ideal of service as the basis of all worth enterprise.

Programs during the year included discussions of prospective post-war trends, particularly in business education, and topics of current interest in the educational and business fields. Ideals of the fraternity were stressed throughout the meetings, which were of both educational and social nature.





Seated, Left to Right - I. Gelman, D. Kocher, M. Sailer, L. Martino, M. Fenstermaker.  
 Standing—M. Remetz, B. Gabuzda, E. Flail, H. Wright, B. Kane.

# Alpha Psi Omega

## OFFICERS

<i>President</i>	- - - - -	LUCILLE MARTINO
<i>Secretary</i>	- - - - -	MARILYN SAILER
<i>Treasurer</i>	- - - - -	MICHAEL REMETZ
<i>Director</i>	- - - - -	MISS ALICE JOHNSTON

Known to be the oldest fraternity on the campus, Alpha Omicron, B. S. T. C.'s chapter of Alpha Psi Omega, national dramatic fraternity, initiated four new members this year.

On the day of initiation, the old and new fraternity members, together with the director, had dinner at the Hotel Magee, and then proceeded to the Carver Hall auditorium for initiations.

One of the fraternity's two male members, Michael Remetz, was a former college student here, 1942-1943, and is now a trainee in the V-12 unit.



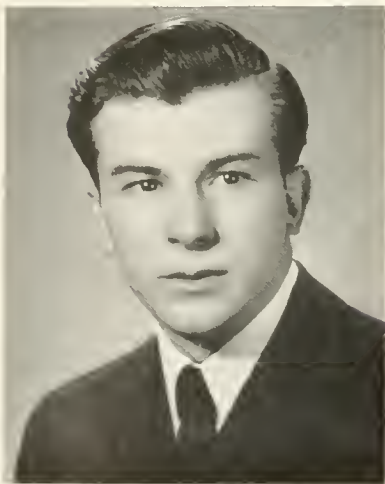
ROSE M. BOYLE



SHIRLEY M. WOLFE



MARILYN D. SAILER



ENSO R. FROSINI

# THE 1945 OBITER

Since no editor or business manager was elected, the Editorial Board and Business Staff were appointed by our class president. As a committee, we have tried to give you a yearbook which will help you to bring back the many memories of this college.

When peace comes, we hope you can open this memento and recall "Bloomsburg at War."

We have worked hard to please you; we hope you like our work.

## EDITORIAL STAFF

<i>Chairman</i>	- - - -	ROSE M. BOYLE
<i>Assistant Chairman</i>	- -	SHIRLEY WOLFE
<i>Members</i>	- -	MARILYN SAILER, ENSO FROSINI
<i>Faculty Adviser</i>	- - -	MR. RYGIEL



Gloria Belcastro, Carrie Johnson, Evelyn George, Catherine Longo.

## BUSINESS STAFF

*Chairman* - - - - - CHARLES WAGNER

*Members*—CARRIE JOHNSON, EVELYN GEORGE, GLORIA BELCASTRO, CATHERINE LONGO

*Circulation Committee*—WANDA KEHLER, BERNICE GABUZDA, MARION CHUBB



Seated, Left to Right—H. Fehl, E. Witman, G. Gillis, G. Belenstro, C. Longo, A. Williams, M. Longo,  
 Standing—J. Reitz, M. Chubb, C. Reichard, B. Sturman, Mr. Rygiel, J. Novak, R. M. Kraiser, J. Niles, E. Falvey.

# Business Education Club

## OFFICERS

<i>President</i>	- - - - -	GLORIA BELCASTRO
<i>Vice President</i>	- - - - -	ENSO FROSINI
<i>Secretary</i>	- - - - -	CATHERINE LONGO
<i>Treasurer</i>	- - - - -	ISABEL GEHMAN
<i>Historian</i>	- - - - -	MARY LONGO
<i>Sponsor</i>	- - - - -	MR. RYGIEL
<i>Sergeant-at-Arms</i>	- - - - -	GLORIA GILLIS

The Business Education Club had a most successful year, both socially and educationally with its usual variety of interesting programs.

The highlights of the club's calendar for the first trimester were: the talk on Wills, by Attorney E. Eves; the demonstrations of "Technique of Telephoning," and "Apply for a Position"; the "Singing Telegram"; the assembly presentation of the play entitled, "Saturday Morning in a Business Office"; the report on the E. C. T. A. Convention by its delegate, Miss Betty Burnham, and the Christmas Party.

The program for the balance of the year included educational films, musical cut-ups, skits, typewriting contest, a panel discussion, interviews of student teachers and the Easter Party.

The closing event of the year was the Business Education Club's banquet which was held at Hotel Kocher, at which the installation of officers for the ensuing year took place.



Seated, Left to Right—C. Wagner, K. Hess, Dr. Kuster, C. Spencer, A. Superko, V. Weller, A. Parsell, L. Utt, R. Grimm.  
 Standing—D. Kucharski, S. Kaiser, E. Hess, B. Gabuzda, E. Moore, J. Dickinson, F. Saunders, R. Paul, B. Hess, E. Doney, F. Mylet.

## Science Club

### OFFICERS

<i>President</i>	- - - - -	ARLENE SUPERKO
<i>Vice President</i>	- - - - -	JEAN DICKENSON
<i>Secretary</i>	- - - - -	KATHLEEN HESS
<i>Treasurer</i>	- - - - -	MILDRED DZURIS
<i>Program Chairman</i>	- - - - -	CHARLES WAGNER
<i>Sponsor</i>	- - - - -	DR. KIMBER KUSTER

The Science Club has been an actively functioning organization on the campus for many years. The purpose of the club is to arouse students' interest in the field of science.

Many phases of science are presented in the weekly programs. The programs may consist of discussions, films, scientific quizzes, field trips, outside speakers and reports.

The highlight of the year is the annual all-day field trip which the club makes to a site selected by the members.



First Row, Left to Right—R. Ghezzi, R. Grinn, A. Grafenburg, J. Tierney, D. Jackson, G. Ballerstein, K. Van Deldon, I. Feldsoff.  
 Second Row—D. Kocker, B. Kane, H. Keeler, E. Witman, M. Stitzel, R. Cerchiaro, M. Pelchar, R. Kraiser, K. Kight, I. Gehman.  
 Third Row—J. Keller, E. Hess, R. Paul, L. Martino, M. Fenstermaker, E. Flail, M. Sailer, F. Saunders, B. Gabuzda, H. Fehl, G. Mainiero, A. Naumas.  
 Fourth Row—H. Slocum, R. Crosby, H. Wright, K. Kurilla, A. Williams, G. Gillis, D. Brown, P. Jones, B. Hess, M. Remetz.

## Bloomsburg Players

### OFFICERS

<i>President</i>	- - - - -	DOUGLAS G. JACKSON
<i>Vice President</i>	- - - - -	HENRY SLOCUM
<i>Secretary</i>	- - - - -	KAY KURILLA
<i>Treasurer</i>	- - - - -	DORA BROWN
<i>Director</i>	- - - - -	MISS ALICE JOHNSTON

This group of stage-minded people is the center of all dramatic endeavor on the campus. From it, a select few are elected to Alpha Psi Omega, dramatic fraternity.

This year, weeks of rehearsing and hard work on the part of cast, stage crew, and director, resulted in a super, polished performance of "Mr. and Mrs. North." The players were largely V-12's.

The purpose of the club is not only for present enjoyment but to gain practical experience in directing and set-building.



Seated, Left to Right - B. Greenly, A. Communtzis, P. Schrader, M. Downing, H. Rhodes.  
 Standing - B. Kane, M. DeVitis, M. Schroeder, J. Hmelnicky, J. Dickinson, E. Falvey, H. Wright.

## Maroon and Gold

*Editors* - - - - - ATHAMANTIA COMMUNTZIS, JACQUELINE SHAFFER  
*Editorial Board* - - - - - JEAN RICHARD, PHYLLIS SCHRADER  
*Sports Editor* - - - - - JOHN ZAGOUDIS  
*Service Editor* - - - - - BERNARD KANE  
*Exchange Editor* - - - - - MARY SCHROEDER  
*Business Manager* - - - - - HELEN M. WRIGHT  
*Circulation Manager* - - - - - EILEEN FALVEY  
*Assistant Circulation Manager* - - - - - EVELYN DONEY  
*Reporters*—PEGGY ANTHONY, ROSANNA BROADT, JEAN DICKINSON,  
 BARBARA GREENLY, JOHN HMELNICKY, AUDREY LAWTON, DOROTHY  
 STRAIN, BARON PITTINGER, MARJORIE DOWNING, AND MARJORIE  
 STOVER  
*Typists*—ANNA PAPPAS, HELEN FEHL, HARRIET RHODES, MARY DE-  
 VITIS  
*Faculty Advisers* - - - MISS PEARL MASON, MR. SAMUEL L. WILSON

The *Maroon and Gold*, established in 1923, is a weekly publication to give not only present students an idea of what is to occur but also to keep former students in contact with their alma mater.



Seated, Left to Right—M. Furman, L. Wintersteen, L. Utt, C. McCloughan, M. Stitzel, B. Smith, S. Starook, D. Kocher, M. Hathaway, C. Coakley, B. Greenly, J. Gilbody, M. M. Longo, C. Longo, H. Fehl.  
 Second Row—J. Shultz, M. Krum, B. Gabuzda, D. Condor, K. Kight, J. Gass, C. Reichard, E. Hess, R. Paul, A. Williams, Miss Moore, M. Klinger, J. Richards, B. Adams, B. Hess, A. Baldy, M. Itush, E. Fling, E. Falvey, B. Sturman, H. Brown.  
 Third Row—J. Reitz, P. Beech, E. Bourgeois, B. Hess, E. Donev, S. Kaiser, D. Croop, M. Chubb, A. Communtzis, J. Novak, A. Parsell, J. Niles, R. Kester, I. Gehman, J. Shaffer, R. M. Kraiser, E. Witman.

## Women's Chorus

### OFFICERS

<i>President</i>	- - - - -	Laura Schoener
<i>Vice President</i>	- - - - -	Shirley Starook
<i>Secretary</i>	- - - - -	Betty Smith
<i>Treasurer</i>	- - - - -	Dorothy Kocher
<i>Librarians</i>	- -	Bertha May Sturman, Mrs. Marcella Vogel
<i>Pianist</i>	- - - - -	Martha Hathaway
<i>Director</i>	- - - - -	Miss Harriet M. Moore



The Women's Chorus was organized early in November. In spite of long class hours and heavy schedules, seventy-five members were enrolled.

The Club presented a special Christmas program in assembly on December 20, under the capable direction of Miss Harriet M. Moore. The musical talent of B. S. T. C. was displayed; and songs by the children from the Benjamin Franklin School added to the interest of the program.

Following the Christmas holidays, the Women's Chorus studied a group of songs which they presented in a Spring concert.

A number of the senior members were graduated at the end of the first semester. The chorus welcomed new members during the second semester. Many of these new members were Freshmen.

#### CHORUS MEMBERS

M. Furman	B. Gabuzda	B. Sturman
L. Wintersteen	D. Condor	H. Browne
L. Utt	K. Kight	J. Reitz
C. McCloughan	J. Gass	P. Beech
M. Stitzel	C. Reichard	E. Bourgeois
B. Smith	E. Hess	B. Hess
S. Starook	R. Paul	E. Doney
D. Kocher	A. Williams	S. Kaiser
M. Hathaway	Miss Moore	D. Croop
C. Coakley	M. Klinger	M. Chubb
B. Greenly	J. Richards	A. Communtzis
J. Gilbody	B. Adams	J. Novak
M. Longo	B. Hess	A. Parsell
H. Fehl	A. Baldy	J. Niles
J. Shultz	M. Rush	R. Kester
M. Krum	E. Fling	R. M. Kraiser
	E. Falvey	E. Witman



Kneeling, Left to Right B. Pittenger, J. Opalka.  
Standing—M. Donahue, G. Ballerstein, M. Lebowick, R. Broadt, R. Strauss, J. DuBois.

## Cheerleaders

For the first time on our campus we have Navy cheerleaders. For the second time, we have girl cheerleaders. These two together made an ideal combination at our basketball and football games.

Both Mr. Buchheit and Dr. Nelson spurred the leaders on to cheer the teams to win. John Opalka provided rousing cheers and entertainment with his undying loyalty to the team.

The college thanks these persons for their enthusiasm in putting the college behind the team.



# Book VI

ACTIVITIES







Kneeling, Left to Right—E. Bourgeois, E. Witman, N. Miles, D. Kocher, I. Gehman, M. Donohue, B. Zehner. Standing—M. Furman, L. Good, H. Keeler, P. Beech, F. Saunders, B. Burnham, M. Fenstemaker, J. Shaffer, J. Welliver, H. Wright.

## “B” Club

### OFFICERS

<i>President</i>	- - - - -	JACQUELINE SHAFFER
<i>Vice President</i>	- - - - -	- DOROTHY KOCHER
<i>Secretary</i>	- - - - -	- PEGGY BEECH
<i>Treasurer</i>	- - - - -	- PEGGY ANTHONY
<i>Sponsor</i>	- - - - -	- LUCY MCCAMMON

The B Club is the only campus athletic organization for girls. It has as its purpose the promotion of sports and sportsmanship.

To be eligible for membership in the organization, each girl is required to earn a total of one thousand points in individual or team sports.

Every Thursday night, an “open house” was held in the Centennial Gym to give the girls an opportunity to participate in basketball, volleyball, cageball, badminton, ping-pong, shuffleboard, and swimming.

Other activities of the club included monthly supper meetings, a freshman girl party, a sledding party, and an annual week-end camping trip.



First Row, Left to Right--Copeland, Jenkins, Schildmacher, Greenberg, Bickel, Williams, Graham.  
 Second Row--J. Davis, Bevin, Kirchner, Campitelli, Vincannon, Gordon, Hirtz.  
 Third Row--Lang, Booth, Blassie, Knapp, Scaramuzza, Bechtold, Hershberger.  
 Fourth Row--Siegfried, Buyce, Delibraida (Line Coach), Kostos (Coach), Toof, Carrie.

## Football

Bloomsburg's gridiron eleven played an abbreviated five-game schedule winning over Ursinus and Drexel, and dropping the remaining three.

Despite the inclement weather, many of the alumni returned on Homecoming Day to watch the Huskies chalk up their second win of the season over a hapless Drexel eleven. The classic struggle saw B. S. T. C. riding on top of a 20-6 margin. Scranton and Drexel topped the Huskies to close the season. The team was coached by Delibraida and Kostos.

### RESULTS

Bloomsburg (away) -----	0	Scranton -----	39
Bloomsburg (away) -----	13	Ursinus -----	6
Bloomsburg (Homecoming) -----	20	Drexel -----	6
Bloomsburg (home) -----	6	Scranton -----	32
Bloomsburg (away) -----	0	Drexel -----	30



First Row, Left to Right—Smith, Bachman, Hood, Smith, Cohen, Muschek, Hoffman.  
 Second Row—Grass, Breuck, Friedley, Sitler, McCarriek, Sipkoff, Ritter.  
 Third Row—Thompson, Byrne, Fitzpatrick, DeFresco, D'Olier, Hartman, Boyer.  
 Fourth Row—Dickel, Earl Davis (Coach).

## Soccer

Although the Husky soccer edition failed to meet the record of preceding years, another hard fought season was turned in by Earl Davis' boys in winning one game out of four. The three defeats were by a one-goal margin.

The Huskies showed plenty of fight in the first two games of the season against Bucknell, despite the 1-0 and 2-0 defeats. Not discouraged by their losses, the Huskies put all they had into the game against West Chester, and the result was a victory for Bloomsburg.

The season ended with the Huskies losing to West Chester. The boys under Coach Davis developed a good team despite its many hindrances.

### THE 1945 RECORD

Bloomsburg -----	0	Bucknell -----	1
Bloomsburg -----	0	Bucknell -----	2
Bloomsburg -----	4	West Chester -----	3
Bloomsburg -----	0	West Chester -----	4



Seated, Left to Right—T. Pstrak, S. Mariaschin, J. Hmelnicky, J. Zurner, P. Klinefelter, M. Remetz, P. Jason.  
 Standing—P. Snyder, Lt. Ferguson, C. Geiger, Dr. Nelson, V. Shedler, Mr. Buchheit, N. Roundabush, Mr. Davis,  
 R. Baker, Lt. Olshefski, A. Kelly.

## Basketball

Our team this year was made up of Navy V-12's and one civilian. This is the second basketball season in which the Navy has represented the college on the floor.

Coach George C. Buchheit's Huskies turned in a fine record during the contests of the 1944-45 court season, emerging victorious in 10 out of 13 scheduled battles. Defeats were suffered at the hands of Bucknell, Indiantown Gap, and Olmstead Field. Even these games provided excitement.

Mike Remetz, A/S, a former student at the college, made a record of which the college can always be proud. John Hmelnicky, a regular college student, made himself famous for his excellent long shots. All in all, each member of the team has given something to the college that we can never forget. We owe them a vote of thanks.

### SCORES

Indiantown Gap .....	44	Bloomsburg.....	40
Bucknell .....	30	Bloomsburg.....	28
Kutztown .....	45	Bloomsburg.....	61
Ithaca .....	48	Bloomsburg.....	52
Bucknell .....	52	Bloomsburg.....	56
U. of Scranton .....	55	Bloomsburg.....	66
Olmstead Field .....	52	Bloomsburg.....	55
West Chester .....	31	Bloomsburg.....	70
East Stroudsburg .....	53	Bloomsburg.....	62
Olmstead Field .....	57	Bloomsburg.....	52
Kutztown .....	44	Bloomsburg.....	45
East Stroudsburg .....	38	Bloomsburg.....	51
Ithaca .....		Bloomsburg.....	



# Wrestling

Lieutenant Vincent Olshefski, Navy doctor, coached and captained the wrestlers, and although the team wasn't victorious it gave the majority of the spectators a thrill.

As was true in other sports, the eligibility ruling of the Navy prevented many boys from wrestling; however, the Huskies gave each of their opponents stiff competition in every contest.



# Track

Coach George C. Buchheit's Huskies, consisting of Navy men, flashed through another great track season.

The season consisted of intermurals, inter-platoon, and company meets.

The Huskies blazed their way to the annual Penn Relays where once again Bloomsburg made an outstanding showing against stiff competition.

# Baseball

The Husky nine, composed mostly of Navy men, hung up an enviable record being victorious in five out of seven games.

The Bloomsburg tossers, coached by Dr. Nelson, got off to a good start by winning the first four games of the season against Berwick A. C. F., Ursinus, and East Stroudsburg. The winning streak, however, was broken when Olmstead scored a 6-0 victory over us, and Penn State followed by a 12-2 victory. The Husky sluggers finished the season by winning the last game.

## THE 1945 RECORD

Bloomsburg -----	12	Berwick A. C. F. -----	1
Bloomsburg -----	16	Berwick A. C. F. -----	3
Bloomsburg -----	10	Ursinus -----	1
Bloomsburg -----	6	East Stroudsburg -----	5
Bloomsburg -----	0	Olmstead -----	6
Bloomsburg -----	2	Penn State -----	12
Bloomsburg -----	6	Bucknell -----	3



# Swimming

B. S. T. C. has added a new sport to its list—swimming. The pool, located in the Centennial Gymnasium, is equipped with all the apparatus of the sport. As yet there has been no formal competition with other college groups, but the lively activities which have taken place in the different swimming classes leads us to believe that here is fertile ground for future development.

# SENIORS

## Join Your Alumni Association

And Keep Your Membership Active Through the Years



*Our Object:* "To Keep the Door of Opportunity Open for Worthy American Youth."

*Our Slogan:* "Every Graduate of Bloomsburg an Active Member of the Alumni Association."

Two Membership Plans:

1. A \$5.00 membership pays your dues for 5 years, and buys a year's membership for an Alumnus in Active Military service.
2. Regular Annual Dues still \$1.00

Your Membership card Will Admit You To:

1. The Alumni Luncheon.
2. The baseball game on Alumni Day.
3. A year's subscription to the

## ALUMNI QUARTERLY

This magazine, which appears four times a year, will keep you informed of the activities of your classmates, and the events happening on the campus.



All dues should be sent to:

**DR. E. H. NELSON**

*Business Manager "Quarterly"*

STATE TEACHERS COLLEGE

BLOOMSBURG, PENNSYLVANIA

Compliments of

**BLOOMSBURG MILLS, INC.**

BLOOMSBURG, PA.

---

**SUCCESS**

and

**HAPPINESS**

To the  
Class of 1945

**DOBYNS**

*Portraits by Photography*

Compliments of

# SNYDER'S DAIRY

DANVILLE

BLOOMSBURG

HAZLETON

---

*Coming Soon —*

## THESE NEW GREGG BOOKS

Basic Transcription, by Paul C. Ickes.

Essentials of American Business Law, by R. Robert Rosenberg.

How to Use the Adding Machine, Ten-Key Keyboard, by Thelma Potter and Albert Stern.

How to Use Duplicating Machines, by E. W. Alexander.

\*The Legal Secretary, by Eva L. Connelly and Thomas P. Maroney.

\*Most-Used Congressional Record Terms.

\*Orthopedics (Gregg Medical Dictation Series, No. 9), by Marie Z. Yates.

One-Minute Shorthand Tests, by E. Dana Gibson.

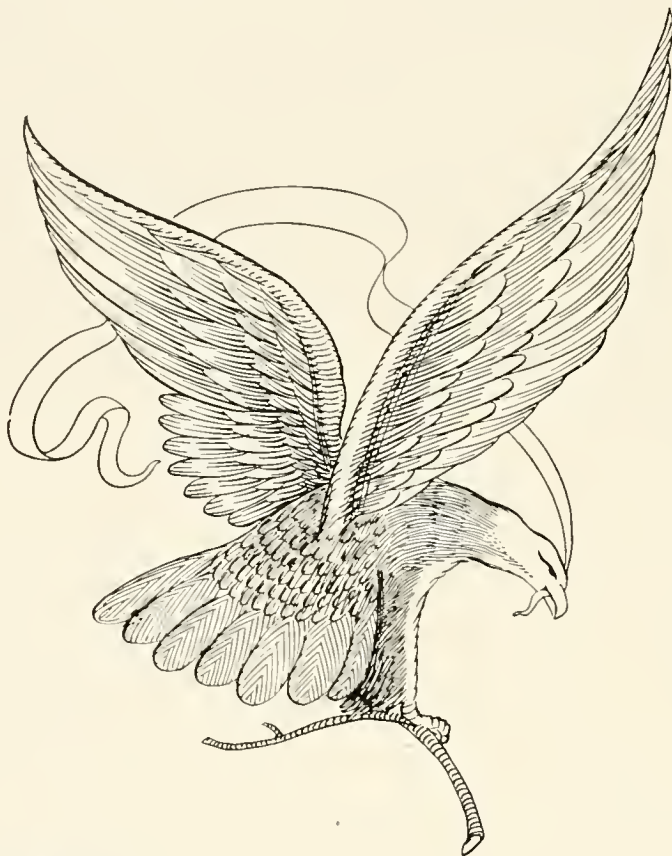
\*Expert Shorthand Speed Course, by Clyde I. Blanchard and Charles E. Zoubek.

\*The Teaching of Bookkeeping (the latest book in the Gregg Commercial Education Series), by Paul O. Selby.

*Write our nearest office for examination copies. Please note that a charge must be made for all books marked with an asterisk.*

## THE GREGG PUBLISHING COMPANY

New York    Chicago    San Francisco    Boston    Dallas    Toronto    London



**TODAY**

AMERICA'S FIGHTING MEN  
HAVE FIRST CALL ON OUR SERVICES

**TOMORROW**

After Victory we will continue to weave the nationally known "Magee Quality" into our Carpets and Rugs.

**THE MAGEE CARPET CO.**

*Mills:* BLOOMSBURG, PA.

*Sales Offices in* NEW YORK, CHICAGO, BOSTON, SAN FRANCISCO

## BART PURSELL

*Bloomsburg's Leading Clothing Store*

PRICES TO FIT THE PURSE

- Anything for Men
  - New Boys' Department
  - Service Uniforms

*The Town's Leading Dry Cleaner*

---

## FRED R. HIPPENSTEEL

° CLOTHING

AND

FURNISHINGS

*The Arrow Shirt Man*

BLOOMSBURG, PA.

---

## An Old Tradition

"Meet Your Friends at the

# H & C"

Our Motto Will Always Be—

To Serve You and—to Please

**Hollingshead & Christian**

## MOYER BROS., Inc.

*Bloomsburg's Leading Prescription  
Drug Store*

YOUR PRESCRIPTION DRUGGIST

SINCE 1868

---

For REFRESHMENTS and EATS

*Don't Forget*

## TEXAS LUNCH

142-144 East Main Street

---

## HOUSENICK

## MOTOR CO.

Ford, Mercury-8  
Lincoln, Lincoln-Zephyr

*Sales and Service*

Main and East Streets Bloomsburg, Pa.

---

Compliments of

## J. C. PENNEY CO.

BLOOMSBURG, PA.

## FEST'S

### LUNCHES

BLOOMSBURG, PA.

---

## ROCK'S RESTAURANT

Cor. East and 5th Sts. Bloomsburg, Pa.

SPECIAL PLATTER LUNCHES

HOME COOKING

*Dining Room Service All Hours*

ROCK GUINARD, Prop.

Phone 9172

---

Compliments of

## CARTER'S

BLOOMSBURG, PENNSYLVANIA

---

## RITTERS'

*Everything for School  
and Office*

Stationery, Magazines, Blank Forms,  
Typewriters, Office Supplies,  
Lending Library, and  
Greeting Cards

Main Street

BLOOMSBURG, PA.

---

## THE NEIGHBORLY CAPITOL THEATRE



*A Friendly  
Comerford Theater*



FRANK FRITZ, *Manager*

---

## RACUSIN'S

EXCLUSIVE *but*  
*not* EXPENSIVE

---

## HESS SMOKE SHOP

and BILLIARD PARLOR

BLOOMSBURG, PA.

7 Tables

WILLIAM J. HESS, Prop.

Bloomsburg Sporting Center

---



When It's a

## MARIETTA

It's a  
First-Edition Fashion

---

## LAZARUS ELECTRIC CENTER

106-108 West Main Street

BLOOMSBURG, PA.

H. W. VELEY, Mgr.

Phone 1449

---

Compliments of

## Sears, Roebuck and Co.

Main Street

BLOOMSBURG, PENNSYLVANIA

---

Compliments of

## MILCO UNDERGARMENT COMPANY

BLOOMSBURG, PA.

## ECONOMY STORES CO.

*"Furniture For Less"*

One of Bloomsburg's Best Stores

---

## SNEIDMAN'S

WATCHES — RINGS

Special Jewelry for  
Schools and Colleges

---

## F. P. PURSEL

## DEPARTMENT STORE

*Quality for 50 YEARS*

---

Congratulations, Graduates

## F. W. WOOLWORTH COMPANY

BLOOMSBURG, PENNA.

Compliments of

# B. P. O. ELKS 436

Bloomsburg, Pennsylvania

---

**H. B. SHARPLESS, ESTATE**

49 East Main  
BLOOMSBURG, PENNA.

Newest Styles —  
First  
Price Right —  
Always

**ARCUS WOMEN'S SHOP**

50 West Main Street  
BLOOMSBURG, PA.

---

Compliments of

**W. T. GRANT  
COMPANY**

BLOOMSBURG, PENNA.

---

**GENSEMER'S MEATS**

Knapp Avenue  
BLOOMSBURG, PA.

Phone 887

## THE DIXIE SHOPS

BLOOMSBURG'S  
FASHION CORNER

Compliments of

## LETTERMAN'S BAKERY

BLOOMSBURG, PA.

Compliments of

## HOTEL MAGEE

BLOOMSBURG, PA.

CONGRATULATIONS TO THE  
GRADUATE

*Stop at REA & DERRICK  
When in Town*

\*

REA & DERRICK, INC.

## DILLON'S

*Flowers*

MAKE  
EVERY  
EVENT  
MORE  
FESTIVE

Phone 127-J

BLOOMSBURG, PENNA.

## CONFAIR'S BEVERAGE CO.

200 Martz St.

BERWICK, PA.

Phone 287

Compliments of

**A FRIEND**

# Index

	<i>Page</i>
Alpha Psi Omega .....	101
Art .....	21
Baseball .....	118
Basketball .....	116
"B" Club .....	113
Bloomsburg Players .....	106
Business Education Club .....	104
Business Education Faculty .....	13
Business Manager .....	20
Cheerleaders .....	110
College Scenes .....	81
C. G. A. ....	90
C. G. A. Officers .....	91
Contents .....	7
Day Men's Association .....	96
Day Women's Association .....	95
Day Women Officers .....	94
Deans .....	12
Dean of Instruction .....	11
Dedication .....	5
Dietitian .....	20
Education Faculty .....	14
Football .....	114
Foreword .....	6
Freshman Class .....	60
Freshman Class Officers .....	59
Health Education Faculty .....	15
Junior Class .....	48
Junior Class Officers .....	47
Kappa Delta Pi .....	98
Language .....	16
Library .....	21
Maroon and Gold .....	107
Mathematics and Science Faculty .....	17
Music .....	19
Navy Officers .....	69
Nurse .....	20
Obiter Business Staff .....	103
Obiter Editorial Staff .....	102
Pi Omega Pi .....	100
President Andruss .....	10
Science Club .....	105
Senior Class .....	27
Senior Class Officers .....	26
Senior Informals .....	44
Ship's Company .....	70
Soccer .....	115
Social Service Club .....	96
Social Studies and Geography Faculty .....	18
Sophomore Class .....	52
Sophomore Class Officers .....	51
Student Christian Association .....	97
Student Council .....	91
Student Officers .....	70
Superintendent of Grounds and Buildings .....	20
Swimming .....	118
Track .....	117
Training School Faculty .....	22
V-12's .....	71
V-12 Informals .....	80
Waller Hall Association .....	92
Waller Hall Governing Board .....	93
Women's Chorus .....	108
Wrestling .....	117







