



Obiter
1944

B
S
T
C

THE 1944 OBITER





Loomsburg

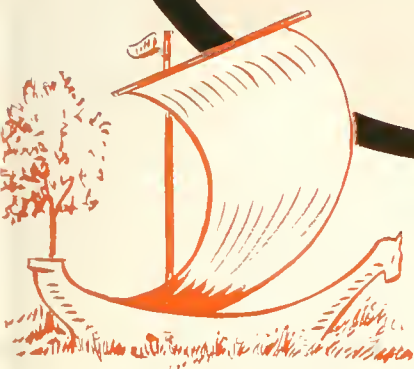


Presented by the Senior Class

State Teachers College

1944

Biters





Foreword

OBITER DICTUM is to us of the graduating class of 1944 a glance backward into our college life, a skim here and there of the cream of our four years, a remembrance to be cherished through the years following our graduation.



Contents

COLLEGE

SENIORS

NAVY

CLASSES

ACTIVITIES

ATHLETICS

Dedication

In dedicating this 1944 Obitier to all the men and women of Bloomsburg who are serving in the armed forces, we, the class of 1944, think in the terms of Winston Churchill when he said, "Never was there a time when so many owed so much to so few."

However, since these words were spoken, the "so few" has grown into a gigantic number among whom are many sons and daughters of this college.

Following the declaration of war, the ranks of the college slowly started to become depleted. The process was at first a slow one; a person here, a person there. Gradually the tempo increased. Women, too, were enlisting in the newly created women's branches of the service.





Alumni, underclassmen, all were adding their names to the honor roll.

The class of 1944, alone, has more than ninety percent of its male members in the service.

It is the desire of the members of this war-time graduating class to express their admiration not only for their fellow-classmates but for all those who have gone from this college to fight for the freedoms and opportunities which we in America are privileged to enjoy.





College





A MESSAGE FOR THE CLASS OF 1944:

The challenges of college life in wartime have been met by you as by no other class. We salute your ability to adjust your lives to new and hitherto undreamed of situations.

May the adaptability displayed during your college years be a characteristic of your future activities; ever mindful that we who worked with you within these ivied walls shall continue to be interested in your progress.

Yours for Victory at home and abroad.

Harvey A. Andrus

President.



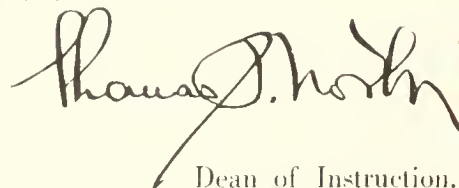
GREETINGS TO THE CLASS OF DECISION, 1944

Probably no other class in the history of this old institution has been confronted with so many and such peculiar needs for decision.

You decided to enter college under adverse conditions; you decided to remain in college while many of those who entered college with you succumbed to the temptations of high wages; you decided to carry on when your country called your men for military duty; you decided to continue in college despite the adversities arising from changes in our curriculums and programs, and those many other changes in your normal ways of living produced by rationing. How wisely you have decided, only time can tell. We, however, believe that the philosophy underlying your decisions has been sound, and, generally speaking, your decisions will be highly productive in the future.

You are to be congratulated, Class of Decision. Our eyes are on you!

Sincerely yours,


Dean of Instruction.





TO THE CLASS OF 1944:

You have the distinction of graduating from a wartime B. S. T. C. and the further distinction of entering upon a profession which builds the American democracy for which we are fighting. Congratulations and best wishes for your happiness.

Sincerely yours,

MARGUERITE KEHR,
Dean of Women.

THE DEANS

TO THE MEMBERS OF THE
GRADUATIC CLASS OF 1944:

Congratulations on the completion of another milestone in your educational career. That career is a never ending one, and as you combine it with your teaching career it is my hope for you that the combination will always be a pleasant and profitable one.

I am sure that the memory of your undergraduate days will long remain with you, and I hope that you will return frequently to your Alma Mater to relive them. Wishing you the best of luck.

JOHN C. KOCH,
Dean of Men.





Mr. Gehrig, Mr. Forney, Mr. Bygjel

Business Education

The Business Education Curriculum is so broad that it not only prepares students to teach but also gives them the choice of several business vocations. The training provides adequate preparation in business knowledge and skills as well as teaching theory and practice.

A student taking this curriculum receives his B.S. degree in Education with the opportunity to secure college certification in the following subjects: Bookkeeping and Accounting, Business Writing, Business English, Commercial and Economic Geography, Commercial Law, Commercial Mathematics, Economics, Junior Business Training, Office Practice, Salesmanship, Shorthand, and Typewriting.

This department is doing splendid work in preparing students for all types of Commercial Education.





Miss Hazen, Mr. Fisher, Mr. Forney, Mr. Bailer, Dr. Kehr

Education

Students at B. S. T. C. are not trained solely in the fields they select. Through courses in orientation, guidance, psychology, philosophy, and teaching techniques, each curriculum is enriched to broaden the outlook and knowledge of the student.

Actual school situations are brought to the attention of the students who can then experience some of the problems of teachers.

The Teacher Training Department also carries on a placement service headed by Mr. Bailer in an effort to place graduates in desirable positions.



Seated, Left to Right -Miss Mettler, Miss Penn, Miss McCannon
Standing Dr. Nelson, Mr. Buchheit, Lt. Koch

Health Education

The Health Education Department has organized a thorough course in general physical training, giving opportunity for all students to participate in various forms of competitive athletics.

This department is unusually busy supplying the needs of the Navy units as well as the civilian students. The continuous use of the swimming pool has greatly enhanced the popularity of the department.

Intercollegiate sports are carried on as an outgrowth of the physical training program.





Seated, Left to Right Miss Johnston, Miss Mason, Miss Gilmore
Standing Mr. Fenstemaker, Mr. Bailer, Mr. Wilson

Language

All types of language courses were offered this year to meet wartime needs: Spanish, French, and Latin, as well as the regular English Courses which include English Grammar, Composition, English Literature, American Literature, World Literature, Advanced Composition, and Business Correspondence.

The department is headed by Mr. Samuel L. Wilson. Mr. Joseph R. Bailer teaches beginning English; Mr. Howard Fenstemaker has charge of all foreign languages, and Miss Alice Johnston has charge of the speech clinic at the Benjamin Franklin School and also teaches courses in Speech and Play Production.

Besides their work in the English field, Mr. S. L. Wilson and Miss Pearl L. Mason serve as advisers on the *Maroon and Gold* staff, and Miss Alice Johnston serves as director of the Dramatic Club.



Miss Ranson, Dr. Kuster, Mr. Wagner, Mr. Shortess

Science and Mathematics

Science and Mathematics so closely complement each other that many secondary students choose them as their two major fields.

These departments are kept extremely busy giving courses for the many different types of students on the campus. Different subjects are conducted for the civilian students, the Navy, and the student nurses.

Excellent instruction in Mathematics is offered by Miss Ranson and in Science by Mr. Shortess, Mr. Wagner, and Dr. Kuster, so important in this mechanized world.





Miss Rich, Dr. Maupin, Mr. Reams, Dr. Russel

Social Studies and Geography

Geography and Social Studies may be chosen by Secondary Students as two of their fields for certification. These courses are closely related and serve the prospective teacher in giving a rich background of information which he may use in interpreting man's relation to his environment.

Students receiving certification in the Social Studies field will play a great part in the instruction of our future citizens. In this way Bloomsburg becomes an important cog in the "Machine of Democracy."



Miss Moore, Miss Pauling

Music

The Music Department offers both individual and group instruction in this cultural field. Students taking the Elementary and Secondary Curriculums receive a valuable course in Music Appreciation. Elementary students pursue the study into the more technical phases. These courses are under the most able direction of Miss Harriet Moore.

Individual lessons in voice and violin are expertly taught by Miss Elizabeth Pauling.

The department gives students the opportunity of continuing and developing their musical training to a high degree.





Miss Mettler, Miss Penn

Resident Nurse and Dietitian

At a time when health and top physical condition are so vital, immediate care offered by Miss Mettler, the resident nurse, is one of the reasons for the general good health of the student body.

Miss Ellen Penn, the dietitian, came to us in the middle of the first trimester from Oklahoma College, upon the resignation of Miss Violet Simpson.



Business Manager and Superintendent of Grounds and Buildings

The responsibility of handling the finances of the college and operating the Business Office, which is the clearing house for business matters of the college, is in the efficient hands of Mr. C. M. Hausknecht.

Mr. N. T. Englehart, Superintendent of Grounds and Buildings, looks after repairs and maintenance and, in addition, prepares for dances, entertainments and special days at the college.



Mr. C. M. Hausknecht, Mr. N. T. Englehart

Library

Miss Pearl Mason, with the aid of her capable assistant, Miss Dorothy E. Gilmore, directs the activities of the library. Their duties consist of helping students keep up to date in the literary world. This year the library served also as a clearing house for Navy textbooks.



Miss Gilmore, Miss Mason



Mr. George J. Keller

Art

The students of the secondary and elementary curriculums are offered courses in the history and appreciation of art. The elementary field also includes courses which embody the six fundamental principles of art as applied to everyday living.

The superiority of the art department may be directly attributed to Professor Keller's untiring guidance of his art classes. He has endeavored to give his students practice in drawing, lettering, poster making, creative designing, and the use of color.

Each course aims to develop a keen sense of judgment and appreciation of good design in clothes and home decorations.





Seated, Left to Right - Mrs. Thomas, Miss Van Schoyoc, Miss Moyer, Mrs. Keller
Standing - Miss Hazen, Miss Barnes, Miss Woolworth, Mrs. Baker, Mrs. Scott

Training School

The Benjamin Franklin School, located on the campus, consists of a kindergarten, a class in special education, and grades one to six.

Elementary students are given an opportunity to do their student teaching here under careful supervision of training teachers.

The personnel of the Benjamin Franklin School is as follows:

- MISS EDNA J. HAZEN, Director of Elementary Education
- MRS. AMANDA KERN THOMAS, Training Teacher, Special Class
- MISS GRACE WOOLWORTH, Training Teacher, Kindergarten
- MRS. LUCILLE BAKER, Training Teacher, Grade I
- MISS S. MABEL MOYER, Training Teacher, Grade II
- MISS IVA MAE VANSCHOYOC, Training Teacher, Grade III
- MISS EDNA J. BARNES, Training Teacher, Grade IV
- MRS. ANNA GARRISON SCOTT, Training Teacher, Grade V
- MRS. ETTA H. KELLER, Training Teacher, Grade VI

School Districts Cooperating in Teacher Training

1913-1914

BLOOMSBURG

L. P. GILMORE, *Supervising Principal*
Junior-Senior High School

EDWARD J. BROWN, B.S.	- - - - -	-	<i>Commercial</i>
MRS. HARRIET H. KLINE, M.A.	- - - - -	-	<i>English</i>
WESLEY KNORR, M.A.	- - - - -	-	<i>Commercial</i>
CLEORA MCKINSTRY, M.A.	- - - - -	-	<i>English</i>
GEORGE M. MORDAN, B.S.	- - - - -	-	<i>Mathematics</i>
MAREE E. PENSYL, M.A.	- - - - -	-	<i>Social Studies</i>
DONALD SANDS, M.S.	- - - - -	-	<i>Social Studies</i>
MYRA SHARPLESS, B.S.	- - - - -	-	<i>Social Studies</i>
WILLIAM SHUTT, B.S.	- - - - -	-	<i>Commercial</i>
NORMAN YEANY, M.A.	- - - - -	-	<i>Commercial</i>

BERWICK

R. A. G. STETLER, *Superintendent*

EDNA KELLER McBRIDE, B.S.	- - - - -	-	<i>Commercial</i>
RAY P. McBRIDE, B.S.	- - - - -	-	<i>Commercial</i>
FLORINE L. PIATT, B.S.	- - - - -	-	<i>Commercial</i>
DOROTHY J. SAVAGE, B.S.	- - - - -	-	<i>Commercial</i>

DANVILLE

E. B. CLINE, *Supervising Principal*

GERTRUDE GARDNER, A.B.	- - - - -	-	<i>Commercial</i>
MARY ELLEN MACWILLIAMS, B.S.	- - - - -	-	<i>Commercial</i>





Seniors





Class Advisers

JOSEPH BAILER	- - - - -	<i>Freshman Adviser</i>
WALTER RYGIEL	- - - - -	<i>Sophomore Adviser</i>
DR. E. H. NELSON	- - - - -	<i>Junior Adviser</i>
HOWARD FENSTEMAKER	- - - - -	<i>Senior Adviser</i>



Mr. Fenstemaker, Dr. Nelson, Mr. Rygiel

In Appreciation

The class of 1944 owe to their four class advisers many thanks for the help that each has given in guiding us through our college career. As freshman class adviser, Mr. Bailer saw to it that we as a class started out on the right foot and helped in making a success of the Freshman Hop. We were guided through our sophomore year with the help of Mr. Rygiel. That year was climaxed with the Sophomore Cotillon. Dr. Nelson had the task of directing us through a very transitional junior year. In September, 1943, Mr. Fenstemaker took over the advising job of what must have proved to be very discouraging at times. However, he served us faithfully through all the adjustments that any war graduating class must make.

Senior Class

OFFICERS

MARY LOUISE MADL	- - - - -	<i>President</i>
ANNE LOUISE SHORTESS	- - - - -	<i>Vice President</i>
ANITA E. BEHLER	- - - - -	<i>Secretary</i>
MARGARET E. LATSHA	- - - - -	<i>Treasurer</i>



As it was said at the Senior Banquet, this is a most unusual graduating class. Perhaps that is the thought of all classes; however, we do have some claims to distinction. From September, 1940, to May, 1944, probably more changes have taken place at Bloomsburg than through all its long years of history. When before has there ever been a class with eight separate graduations? Or a class that has lost over ninety per cent of its men? Another tradition breaker was the installation of a cafeteria. May Day, long an outstanding spring feature has been discontinued until after the war. The greatest change of all was the Navy program that has been Bloomsburg's most important aid to the war program. All these changes have accounted for no dull moments. As a whole, our four years have been good ones, ones to remember forever.

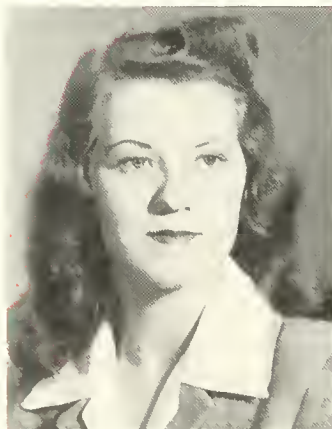


JEAN V. ACKERMAN

"Ackie"

Hamburg Business Ed.

Social Service 1; Social Usage Club 1; Student Christian Association 1, 2, Secretary 2; Waller Hall Association 1, 2, 3, 4; Waller Hall Governing Board 1, 2, 3, 4; Business Education Club 1, 2; Bloomsburg Players 2, 3, 1, Secretary 4; Pi Omega Pi 3, 4, Historian 4; Kappa Delta Pi 4; Business Manager of OBITER.



LOUISE ELAINE ADAMS

"Louisa"

Shamokin Elementary

Waller Hall Association 1, 2, 3, 4; Waller Hall Governing Board 1; Social Usage Club 1; Student Christian Association 1; Social Service 3; Women's Chorus Accompanist 1, 2, 3, 4; Decorating Committee, Freshman Hop 1; Fire Warden, Waller Hall 1; Hospitality Committee 1, 2, 3, 4; Chapel Accompanist 2, 3, 1; Accompanist Navy V-12 Chorus 3, 4.



LILLIAN I. BAER

"Lil"

Fleetwood Business Ed.

Waller Hall Association 1, 2, 3, 4; Student Christian Association 1, 2, 3, 4; Business Education Club 1, 2, 3; "B" Club 1, 2, 3, 4, Treasurer 4; Mixed Chorus 1, 2, 3; Orchestra 1, 2, 3; Band 1, 2, 3; Cheerleader 3; Senior Ball Orchestra Chairman; Social Usage Club 2.



ANITA E. BEHLER

"Neet"

Kingston Elementary

Waller Hall Association 1, 2, 3, 4, Fire Committee Chairman 2, Finance Committee 2, Social Committee 2, Waller Hall Supervisor 2, Vice President 4; Band and Orchestra 1; Mixed Chorus 1; Student Christian Association 1; Bloomsburg Players 1, 2, 3, 4, Committee Chairman 2, Secretary 3, President 4, "Junior Miss" 4; Alpha Psi Omega 3, 4; Poetry Club 1, 2, 3, Vice President 2, 3, Historian 2; Community Government Social Committee 2; Fire Committee Chairman 3; Senior Class Secretary.



HELEN E. BEHLER

"B"

Kingston Business Ed.

Women's Chorus 2; Mixed Chorus 1, 2; Business Education Club 1, 2; Social Service 1, 2; Hostess Committee for Homecoming 2, 3; Student Christian Association 1, 2, 3; Poetry Club 3, 4, Librarian 4; Hospitality Committee 2, 3; Waller Hall Association 1, 2, 3, 4.



LOIS CATHERINE BRYNER

Danville Elementary

Women's Chorus 1, 2, 3, 4; Social Service 3; Kappa Delta Pi 3, 4; Interfraternity Council 4; Day Women's Association.



*Far above the river winding, midst the mountains grand
Stands our college, dear to students far throughout the land.*



MEDA I. CALVELLO

Weston Elementary

Mixed Chorus 1; Social Usage Club 1, 2; Science Club 1; Bloomsburg Players 2, 3, 4, Publicity Committee 2; "B" Club 1; Columbian Club 1, 2, 3, 4; Day Room Committee 1; Day Women's Association 1, 2, 3, 4; *Maroon and Gold* 3, 4, Feature Writer 4.

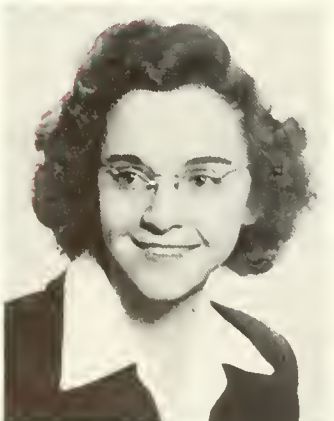


POLETIME D. COMUNTZIS

"Polly"

Bloomsburg Secondary

Mixed Chorus 1, 2; A Cappella Choir 1; Women's Chorus 1; Orchestra 1, 2; *Maroon and Gold* 2, 3, 4; OBITER Editor 1; Kappa Delta Pi 3, 4, Historian 1; "B" Club 4; Day Women's Board 4; Day Women's Association 1, 2, 3, 4; Homecoming Hospitality Chairman, Program Chairman 1; Freshman Hop Decorating Committee.



HELEN M. CROMIS

Bloomsburg Business Ed.

Mixed Chorus 1, 2, 3, Secretary 3; Business Education Club 1, 2, 3, Treasurer 3; Student Christian Association 1, 2, 3; Orchestra 1, 2; Junior Class Secretary; "B" Club 2, 3, 4; Pi Omega Pi 2, 3, 4, President 1; Kappa Delta Pi 3, 4, President 4; Day Women's Association 1, 2, 3, 4; Editor of *Handbook* 4; OBITER Editorial Staff 2, 4; Interfraternity Council 3; *Maroon and Gold Staff* 3.





MARGARET DOUGLAS DEAN

"Peggy"

Kulpmont Secondary

Student Christian Association 1, 2, 3, 4; Bloomsburg Players 2, 3, 4; "B" Club 4; Poetry Club 1; Photography Club 2; Secretary-Treasurer 2; Community Government Association Representative 2; Day Women's Board 4; Customs Chairman 1; Day Women's Association 1, 2, 3, 4; Senior Banquet Committee 4; OBITER Staff 4.

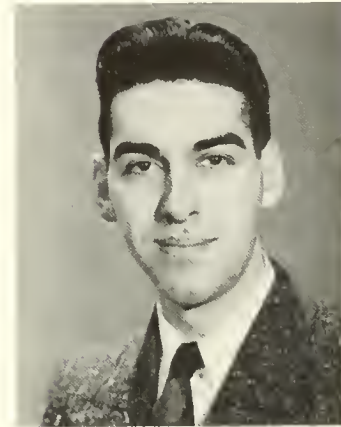


FREDERICK GRANT DENT

"Fred"

Bloomsburg Elementary

Science Club 1, 2, 3, 4, Program Chairman 2, President 4; *Maroon and Gold* 2, 3, 4, Art Editor 3, 4; OBITER 1, Photography Editor 1; Day Men's Association 1, 2, 3, 4; Frosh Hop Decoration Committee; Sophomore Cotillion Decoration Chairman; Sweetheart Ball Decoration Chairman; Junior Hayride and Dance Chairman; Chapel Program Committee 4.



MARY F. DEWALD

Turbotville Elementary

Women's Chorus 1, 2, 3, 4; Student Christian Association 1; Social Service 1, 2; Kappa Delta Pi 3, 4; Waller Hall Association 1, 2, 3, 4; Poetry Club 3; Chairman of Waller Hall Store 3.



*Bloomsburg, Bloomsburg, Bloomsburg College
Up on College Hill.*



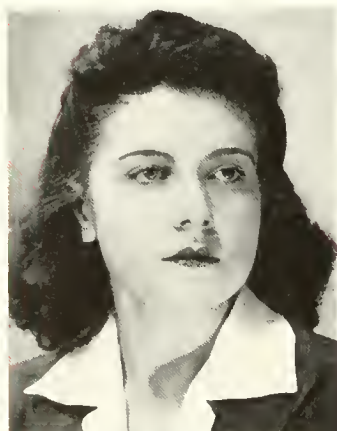
SARA MARIE DOCKEY

"Sallie"

Berwick

Business Ed.

Student Christian Association 1, 2, 3, 4, Secretary 2, Program Chairman 3, 4; Social Usage Club 1, 2, 3, Secretary 3; Business Education Club 1, 2; Mixed Chorus 1; Waller Hall Committee Chairman 2, 3; Community Government Association Committee Chairman 4; Day Women's Association 1, 2; Waller Hall Association 3, 4; *Maroon and Gold* 2, 3; Refreshment Committee Senior Ball.



HAZEL FLORENCE ENAMA

"Shirley"

Weston

Elementary

Women's Chorus 1, 2; Social Usage Club 1, 2; Student Christian Association 1; Social Service 4; Waller Hall Association 1, 2, 3, 4; Chairman of Invitation Committee 4; Chairman of Christmas-Project, Waller Hall 2; Columban Club 1, 2, 3, 4; Customs Committee 2; House Committee 2; Hospitality Committee 1, 2, 3, 4; Decorating Committee 1.



ELIZABETH R. ERTEL

"Beth"

Williamsport

Business Ed.

Student Christian Association 1, 2, 3, 4; Women's Chorus 2; Social Usage 1, 2; Waller Hall Association 1, 2, 3, 4; Business Education Club 1, 2, 3; Mixed Chorus 1.





WANDA ALICE FARNSWORTH

Muncy Elementary

Student Christian Association 1, 2, 3, 4; Mixed Chorus 1, 2, 3; Women's Chorus 4; "B" Club 4; Student Christian Association 1, 2, 3, 4, Secretary 1; Social Usage Club 1, 2.



LOIS WILLIAMS FARR

Lake Ariel Elementary

Transfer Mansfield State Teachers College; Latin Club 1, 2; Y. W. C. A. 1, Secretary 2; Mixed Chorus 2; Rurban Club 1, 2; Athletic Club 1, 2.



FLORENCE E. FAUST

"Flossie"

Ambler Business Ed.

Waller Hall Association 1, 2, 3, 4; Waller Hall Governing Board 2, 3, 4; Student Christian Association 1, 2, 3, 4, Vice President 3, President 4; "B" Club 1, 2, 3, 4, Secretary 3; Maroon and Gold 1, 2, 3, 4, Editor 3, 4; Kappa Delta Pi 3, 4, Vice President 4; Pi Omega Pi 2, 3, 4, Treasurer 4; Mixed Chorus 2, 3, Treasurer 3; Business Education Club 1; Orchestra 1, 2.



*Years to come shall find us ever
True to Bloomsburg still.*



BETTE S. FULLER

Berwick Elementary

Women's Chorus 1, 2; Social Usage Club 1, 2; Waller Hall Association 4; Waller Hall Governing Board 4; Community Government Association 4; Chairman of Finance Committee 3; Day Women's Association 1, 2, 3.



PAULINE M. GAREY

"Polly"

Honesdale Secondary

Social Usage Club 1; Student Christian Association 1; Bloomsburg Players 1; Waller Hall Association 1, 2, 3, 4; *Maroon and Gold* 2, 3, 4.



MARY ELIZABETH HAGENBUCH

"Betty"

Bloomsburg Secondary

Student Christian Association 1; Mixed Chorus 1, 2, 3; Bloomsburg Players 1, 2, 3, 4; Secretary 2, President 4, "Pride and Prejudice," "Arsenic and Old Lace" Major Role 3; College Council 1; Alpha Psi Omega 2, 3, 4; *Maroon and Gold* 3, 4; Kappa Delta Pi 3, 4, Program Chairman 4; Community Government Association Committee Chairman 3, 4; "B" Club 3, 4; Day Women's Association 1, 2, 3, 4; OBITER, Associate Editor 4; Interfraternity Council 2.





JOYCE EMMA HAY

Easton Business Ed.

Band 1, 2, 3; Orchestra 1, 2; Poetry Club 2; Waller Hall Association 1, 2, 3, 4, Secretary 3, President 4; Mixed Chorus 1, 2; Women's Chorus 2; Kappa Delta Pi 3, 4, Treasurer 4; Pi Omega 2, 3, 4, Vice President 4; OBITER Staff 3, 4; *Maroon and Gold* 3, 4, Editorial Board 4; Student Christian Association 1, 2; Business Education Club 1, 2, 3; Student Council 4.



MARY R. HEIMBACH

"Heinie"

Sunbury Elementary

Student Christian Association 1; Social Service 1, 2; Mixed Chorus 1, 2; Women's Chorus 3; Waller Hall Association 1, 2, 3, 4.



ROSEMARY PATRICIA JOHNSON

"Rosie"

Mount Carmel Elementary

Social Usage Club 1, 2, 3; Business Education Club 1, 2; Mixed Chorus 1, 2, 3; Women's Chorus 1, 2, 3; Waller Hall Association 2, 4; Day Women's Association 1, 3; Colomban Club 1, 2, 3, 4, Secretary 3, 4.



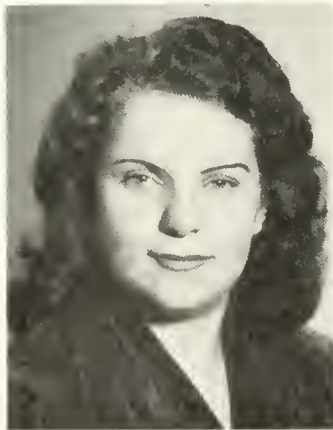
*Far and wide though we may wander, still our hearts are true
To our hilltop alma mater we our pledge renew.*



RUTH BISHOP JONES

Lake Ariel Elementary

Mixed Chorus 1, 2; Bloomsburg Players 1, 2; Governing Board 1, 2; Y. W. C. A. 1, 2; Good Manners Club 1, 2; Girl Scout Leadership Group 1, 2.



MARGARET MARY KANE

"Kaney"

Shenandoah Elementary

Women's Chorus 2, 3; Student Christian Association 1; Waller Hall Association 1, 2, 3, 4; Poetry Club 3, 4; Secretary-Treasurer 1; Columbian Club 1, 2, 3, 4; Social Usage Club 1, 2.



MELVA O. KOCHER

Lightstreet Business Ed.

Science Club 1; Poetry Club 2; Business Education Club 2, 3, 4; Typing Contest Chairman 4; Student Christian Association 4; Day Women's Association 1, 2, 3, 4.





MARGARET E. LATSHA

Dornsife Elementary

Student Christian Association 1, 2, 3, 4; Mixed Chorus 1, 2, 3; Women's Chorus 4, Vice President 1; Waller Hall Association 1, 2, 3, 4, Art Committee 2; Social Usage Club 1, 2; Poetry Club 1, Historian 1; *Maroon and Gold* 2, 3, 4; Senior Class Treasurer; Ticket Committee, Senior Banquet.

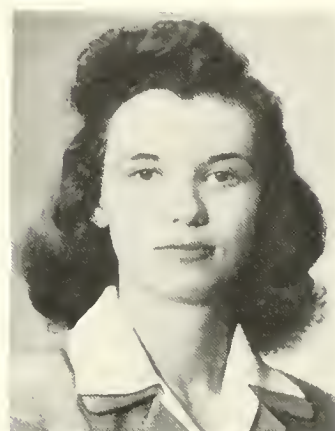


MARYRUTH A. LOVERING

"M. R."

Scranton Elementary

Social Usage Club 1, 2; Student Christian Association 1, 2; Women's Chorus 2; Social Service 3; Frosh Hop Orchestra Chairman; Waller Hall Association 1, 2, 3, 4, Hospitality Committee 1, 2, 3, 4; Senior Ball Orchestra Committee.



MARY LOUISE MADL

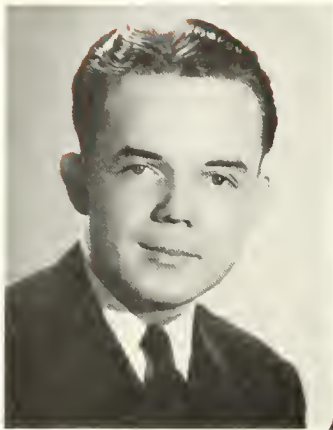
"Louise"

Shamokin Secondary

Junior Class Vice President; Senior Class President; Bloomsburg Players 2, Committee Chairman 2; A Cappella Choir 1, 2; Mixed Chorus 1, 2, Vice President 3; Women's Chorus 2, 3, 4, Vice President 2, President 3, 4; Day Women's Association 1, 2, 3, Vice President 2, President 3; Community Government Association 3, 4; Waller Hall Association 4.



*Bloomsburg, Bloomsburg, Bloomsburg College
Up on College Hill.*



EDWARD JOSEPH MANLEY

"Ted"

Wilkes-Barre

Business Ed.

Business Education Club 1, 2, 3; Public Affairs-Forum 3; Columban Club 1, 2, 3, 4, Vice President 3, President 4; Kappa Delta Pi 3, 4; Pi Omega Pi 3, 4, President 3; Phi Sigma Pi 3, 4, Treasurer 3, Vice President 1; President Interfraternity Council 3; Day Men's Association 1, 2, 4; Dorm Men's Association 3; Junior Class Representative College Council; Community Government Association 3, 4, Vice President 3, President 4; Social Committee 3; Senior Class Memorial Committee 4; Representative Inter-American Conference at Bucknell 3.



HELEN R. MARTIN

Hazelton

Secondary

Waller Hall Association 1, 2, 3, 4; Poetry Club 1, 2.



SALVATORE A. MAZZEO

"Sam"

Easton

Business Ed.

Social Usage Club 1, 2; Student Christian Association 1; Frosh Hop Chairman, Freshman Chapel Chairman, Historian; North Hall Association 1, 2, 3; Day Men's Association 4; Columban Club 1, 2, 3, 4, Program Chairman 2; Men's Chorus 1, 2; Mixed Chorus 2, 3; A Cappella Choir 1; Bloomsburg Players 2, 3, 4, "Letters to Lucerne" 3, "Junior Miss" 4, Stage Committee 3, Publicity Committee 4; Business Education Club 1, 2, 3, 4, Program Chairman 3, President 4; Community Government Association Social Committee 3, Election Chairman 1; Kappa Delta Pi 3, 4; Pi Omega Pi 2, 3, 4; Interfraternity Council 1; Phi Sigma Pi 4; Alpha Psi Omega 4; Co-Chairman Senior Class Memorial; Cheerleader 2, 3; Hospitality Committee 1, 2, 3; *Maroon and Gold* 2, 3, 4, Feature Writer 4; *OBITER* 2, 3, 4, Associate Editor 4.





HAROLD JOHNSON MILLER

"Skeet"

Catawissa

Business Ed.

Day Men's Association 1, 2, 3, 4, Treasurer 3, President 4; Band 1, 2; Orchestra 1, 2; Business Education Club 1, 2; Mixed Chorus 1, 2, Librarian 1; A Cappella Choir 1; Phi Sigma Pi 2, 3, 4; Pi Omega Pi 2, 3, 4; Kappa Delta Pi 3, 4.



FLORENCE R. MILLS

"Flossie"

Wilkes-Barre

Business Ed.

Waller Hall Association 1, 2, 3, 4; Fire Committee 3; Business Education Club 1, 2, 3; Social Service 1, 2; *Maroon and Gold* 3, 4; Mixed Chorus 1, 2; Poetry Club 2; Men-in-Service Committee 3, 4; Recreation Committee 2; Chairman Transportation Committee Senior Ball.



HELEN A. OYER

"Yoyer"

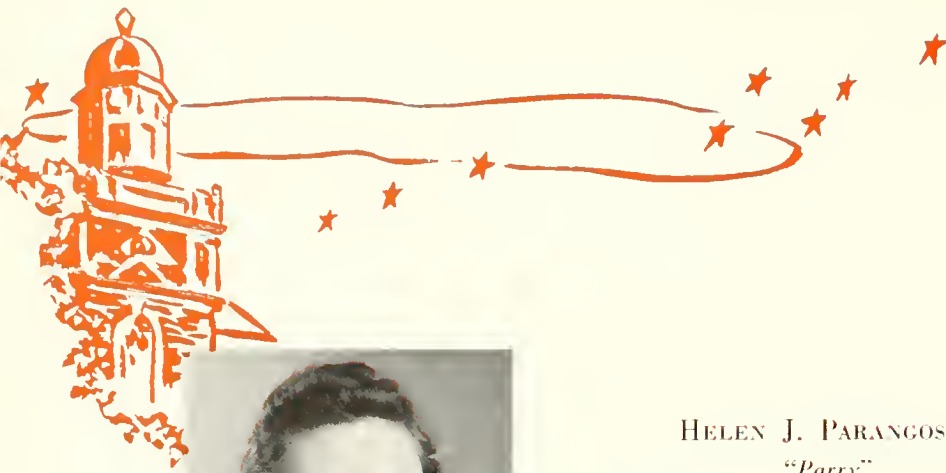
Allentown

Business Ed.

Student Christian Association 1, 2, 3, 4; Women's Chorus 2; Social Service 1; Social Usage Club 1, 2; Waller Hall Association 1, 2, 3, 4; Business Education Club 1, 2; Mixed Chorus 1.



*Years to come shall find us ever
True to Bloomsburg still.*



HELEN J. PARANGOSKY

"Parry"

Shenandoah

Business Ed.

Business Education Club 1, 2, 3; Poetry Club 2; Mixed Chorus 2; *Maroon and Gold* 2, 3, 4, Exchange Editor 3, 4; Men-in-Service Committee 4; Chairman of C. G. A. Fire Drills 3; Social Service Club 4; Student Christian Association 2; Chairman Senior Ball; Waller Hall Association 1, 2, 3, 4.



MARY E. PARR

Berwick

Elementary

Mixed Chorus 1, 2; Social Usage Club 1, 2; Awards Committee 3; Waller Hall Association 1, 2, 3, 4.



E. JEAN PATTERSON

"Pat"

Orangeville

Elementary

Mixed Chorus 1, 2, 3; Social Usage Club 1, 2; Social Service 3, 4, Treasurer 4; Day Women's Association 1, 2, 3, 4.





NELENA P. POPE

"Nellie"

Sunbury

Elementary

Day Women's Association 1, 2, 3, 4; Class Representative 2; Social Service Chairman 2, Vice President 1; Junior Class Secretary; Mixed Chorus 2; Interfraternity Council 1; Kappa Delta Pi 1; Social Service 2, 3, 4, Secretary 3, President 4; War Council 4.



IDA VIRGINIA ROBERTS

"Ginger"

Gradyville

Business Ed.

Waller Hall Association 1, 2, 3, 4, Fire Warden 2; Business Education Club 1, 2; Student Christian Association 1; Social Usage Club 2; Social Service 4; Chairman Senior Theatre Party 4; Program Committee Senior Ball.



ANNE THERESA SABOL

"Anna"

Phoenixville

Business Ed.

Waller Hall Association 1, 2, 3, 4; Waller Hall Governing Board 4; Community Government Association 1, 2, 3, 4, Committee Chairman 3, 4, Acting Vice President 1; Student Christian Association 1, 2, 3, 4; "Y" Store 2; Maroon and Gold 2, 3, 4, Business Manager 3, 4; Social Service Club 2, 3, 4, Secretary 2, Vice President 3, Committee Chairman 3, 4; Kappa Delta Pi 3, 4, Corresponding Secretary 4; Pi Omega Pi 3, 4, Secretary 4; Business Education Club 1, 2; General Chairman Senior Commencement; Ticket Chairman Senior Ball; Men-in-Service Committee.



*Ever seaward Susquehanna never resting flows---
Ever upward, striving, climbing, onward Bloomsburg goes.*



ELLA R. SCHARGO

Philadelphia Elementary

Bloomsburg Players 1, 2, 3, 4, Treasurer 4; "Pride and Prejudice" 2; Alpha Psi Omega 3, 4; Women's Chorus 4; Science Club 2, 3; Chairman of Awards Committee 3; Social Chairman of Day Women 4; Day Women's Board 1, 2, 3; Chairman Decoration Committee Frosh Hop and Sweetheart Ball; Publicity Committee Senior Ball and Banquet.



JEAN E. SCHRADER

Shamokin Secondary

Day Women's Association 1, 2; Waller Hall Association 3, 4; Mixed Chorus 2, 3; Chairman Big Sister Committee 4; Student Director Play 3; Women's Chorus 4; Chairman Senior Class Rings.



MARY LOUISE SCOTT

"Scottie"

Bloomsburg Business Ed.

Business Education Club 4; Student Christian Association 1, 2, 3, 4, Corresponding Secretary 3, Publicity Chairman 4; Orchestra 1, 2; Band 1, 2, 3; "B" Club 2, 3, 4, Vice President 3, President 4; Day Women's Association 1, 2, 3, 4, Secretary 3; Day Women's Board 3; *Maroon and Gold* 4; OBITER 4; Bloomsburg Players 2, 3, 4.



JANET M. SHANK

"Shank"

Catawissa Secondary

Mixed Chorus 1, 2, 3; Women's Chorus 3, 4; Bloomsburg Players 1, 2, 3, 4; Day Women's Association 1, 2, 3, 4; Alpha Psi Omega 4; Senior Banquet Chairman.



MARJORIE GENE SHARRETT

"Marge"

Almedia Elementary

Mixed Chorus 1, 2, 3; Women's Chorus 2, 3, 4; Social Service 1; Student Christian Association 1, 2; Social Usage Club 1, 2; Day Women's Association 1, 2; Waller Hall Association 3, 4; Cotillion Decoration Committee 2; Sweetheart Ball Decoration Committee 3.



ANNE LOUISE SHORTESS

"Shorty"

Bloomsburg Elementary

Mixed Chorus 1, 2, 3, Secretary 3; Bloomsburg Players 1, 2, 3, 4, "Through the Night" 1, "Pride and Prejudice" 2, "Letter to Lucerne" 3, President 2, Secretary 3, Vice President 3; Alpha Psi Omega 2, 3, 4, President 4; Treasurer Freshmen Class; President Junior Class; Vice President Senior Class; College Council 2, 3, 4; Social Usage Club 3; Kappa Delta Pi 3, 4; Day Women's Association 1, 2, 3, 4, Vice President 3, President 4; OBITER 4; Social Committee C. G. A. 2.



*Bloomsburg, Bloomsburg, Bloomsburg College
Up on College Hill.*



CARMEL A. SIRIANNI

"Hoppie"

Hop Bottom Business Ed.

Waller Hall Association 1, 2, 3, 4, Fire Warden 1, 2, Assistant Fire Chief 3, House Committee 3; Public Affairs Forum 1, 2, 3, Treasurer 2; Business Education Club 1, 2; Social Service 1, 2, 3, 4, Counselor 2, Chairman Bundles for Britain 1, 2; Co-Chairman Elections Committee 3; OBITER 4; *Maroon and Gold* 3, 4; Maroon and Gold Orchestra 1, 2; Men-in-Service Committee 3, 4; "B" Club 1, 2, 3, 4, Vice President 4; Chairman Program Committee Senior Ball.



ELIZABETH MARY SMITH

"Bets"

Wyalusing Business Ed.

Bloomsburg Players 1, 2, 3, 4, Treasurer 3, "Pride and Prejudice" 2, "Arsenic and Old Lace" 3, "Junior Miss" 4, Business Manager "Letters to Lucerne" 3; Alpha Psi Omega 3, 4, Treasurer 4; Waller Hall Association 1, 2, 3, 4; Band 1, 2; Business Education Club 1, 2; Senior Ball Committee 4; House Committee 3; Columban Club 1, 2, 3, 4; Frosh Hop Decoration Chairman.



MARY EDNA SNYDER

"Sneezy"

Canton Business Ed.

Business Education Club 1, 2; Waller Hall Association 1, 2, 3, 4, Governing Board 1, 2; Community Government Association 1, 2, 3, 4; Photography Club 2; Sophomore Class Treasurer; Kappa Delta Pi 3, 4, Interfraternity Council 3, Recording Secretary 4; Pi Omega Pi 2, 3, 4; Waller Hall Customs Chairman 4.





JOANNE LOUISE SPAID

Mifflinburg Elementary

Student Christian Association 1, 2, 3, 4; Community Government Association 1, 2, 3, 4, Committee Chairman 3; Waller Hall Association 1, 2, 3, 4; Mixed Chorus 1, 2, 3; Women's Chorus 3, 4; Social Usage Club 1, 2, 3.

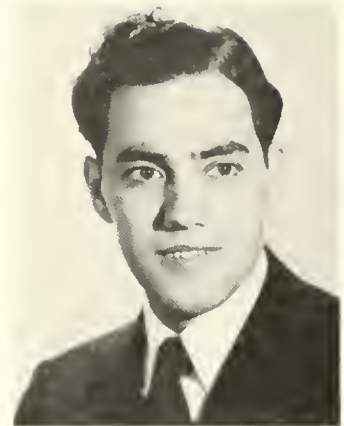


SAMUEL J. TRAPANI

"Tragedy"

Easton Business Ed.

Student Christian Association 1, 2; Social Usage Club 1; Business Education Club 1, 2; Baseball Manager 1; North Hall Association 1, 2, 3; Hospitality Committee 1, 2, 3.



STELLA MAE WILLIAMS

Luzerne Elementary

Student Christian Association 1, 2, 3; Social Usage Club 1, 2, 3; Mixed Chorus 1, 2, 3; Women's Chorus 2, 3, 4; Student Council Representative 3; Bloomsburg Players 1, 2, 3, 4, "Pride and Prejudice" 2; Alpha Psi Omega 3, 4; Athletics 1; Cotillion Decoration Committee 2; Sweetheart Ball Decoration Committee 3; Senior Ball Banquet Chairman.

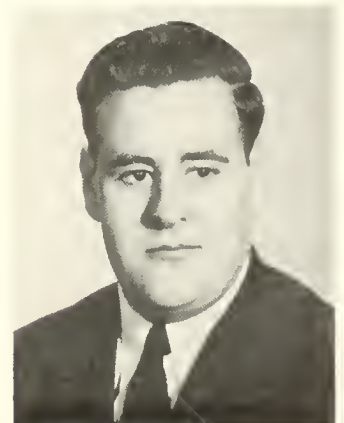


JULIAN ALBERT ZINZARELLA

"Zinz"

Mount Carmel Secondary

Day Men's Association 3, 4; North Hall Association 1, 2; Phi Sigma Pi 2, 3, 4, Treasurer 3, 4; Junior Class President; Representative College Council 3; President Community Government Association 4; Social Usage Club 1, 2; Columban Club 1, 2, 3, 4.



Years to come shall find us ever, True to Bloomsburg Still.

on to Victory

U. S. A R M Y

KENNETH P. MORSE ALLEN
LEO S. CARTER
FRANK P. CASULA
MARIO CONTE
ELROY DALBERG
ROBERT H. DEMOTT
ROBERT E. FAWCETT
JOSEPH C. GILLESPIE
GEORGE H. GILLUNG
JACK A. GILLUNG
ARTHUR F. HARTMAN
THEODORE I. HARWOOD
MATTHIAS F. KASHUBA
LEWIS A. KOHN
ANTHONY A. KRAVITSKI
H. PAUL LAUDERMAN
DELBERT LYONS
ALLEN C. McCracken

WILLIAM B. MOONEY
FRANCIS MOYER
CLEM E. NOVAK
WILLIAM S. ORNER
DONALD D. RABB
DONALD H. SCHMINKY
ROBERT F. SCHRAMM
C. BARTON SCOTT
STACEY SEARCH
DONALD SHINER
ANTHONY J. SICURELLA
JOHN SILVAN
GEORGE SMITH
MICHAEL SOBACK
JAY SPONSELLER
HAROLD W. SWISHER
JOHN W. THOMAS
CASIMIR YOUNG

U. S. N A V Y

JOSEPH CHESNEY
JAMES M. LAVELLE
ROBERT P. MARTIN

RALPH RICHARDS
CARL H. ROBBINS
JOHN WHITBY

U. S. NAVY AIR CORPS

REED BUCKINGHAM
WILLIAM DUY
CLEMENT G. KOCH

JOHN SAHAIDA
THOMAS SANDS

W A V E S

JANET SHANK

MARTHA A. KNORR WILSON

U. S. ARMY AIR CORPS

JOHN A. BRUNER
ROBERT L. BUNGE
LEON H. HARTMAN
XEN S. HOSLER
HARRY JOHN
THEODORE JURASIK
WALTER J. KANIA
MILLARD LUDWIG

CLAYTON D. PATTERSON, JR
JACK G. ROCKWELL
PAUL F. ROWLANDS
DONALD A. SCHLIEDER
ROBERT THOMPSON
VINCENT F. WASHVILLA
JAMES A. ZWEIZIG

U. S. MARINES

HARVEY P. HUBER
ROBERT McFALL

HAROLD E. MILLER
THOMAS RESSLER

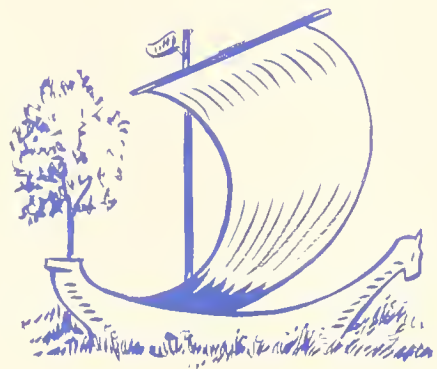
U. S. MERCHANT MARINES

GUILD P. CONNER





Navy





Bloomsburg first became Navy-minded in July, 1942, when the Civilian Pilot Training Program begun in June, 1940, had to be discontinued because aviation instruction became restricted to the training of those who were in the Army and the Navy.

For the first time, uniformed men made their appearance on the campus in July of that year when forty Army and Navy Aviation Cadets received Preflight Training. Following this, Bloomsburg was designated as a Navy Aviation Center in September, 1942.

On November 15, 1942, the college was selected as one of the five institutions in the country—the others, Northwestern, Purdue, Georgia, and Texas Christian University—as a Naval Flight Instruction School in co-operation with the Bloomsburg Airport. This program continued for one year. With a complement of one hundred Cadets, the Navy V-5 Program was reinstated August, 1943.

In spring of 1943, certain colleges and universities were notified that they were eligible for inspection for the Navy V-12 or Officer Candidate Program. After inspection and approval, a contract was negotiated with the Navy Department for a complement of 175 officer candidates who attend college for two or more years. Nine institutions were approved in Pennsylvania, of which Bloomsburg was the only teachers college.

Bloomsburg State Teachers College is proud to serve her country in the training of naval officers for World War II.

V-5 Staff

LT. G. P. STEELY

LT. J. J. BOYD

LT. J. F. MCGOVERN

LT. (jg) J. E. EVANS

CARLOUGH, Y 2 /c

KYSE, Y 2 /c

★ ★ ★

V-12 Staff

LT. L. P. JORDON

LT. T. R. EVERETT

LT. (jg) V. C. OLSHEFSKI

BELLUCCI, Y 2 /c

FRANKLIN, CSpA

MINER, SK 2/c

SMITH, SpA

STREIN, PhM. 2/c

USNR





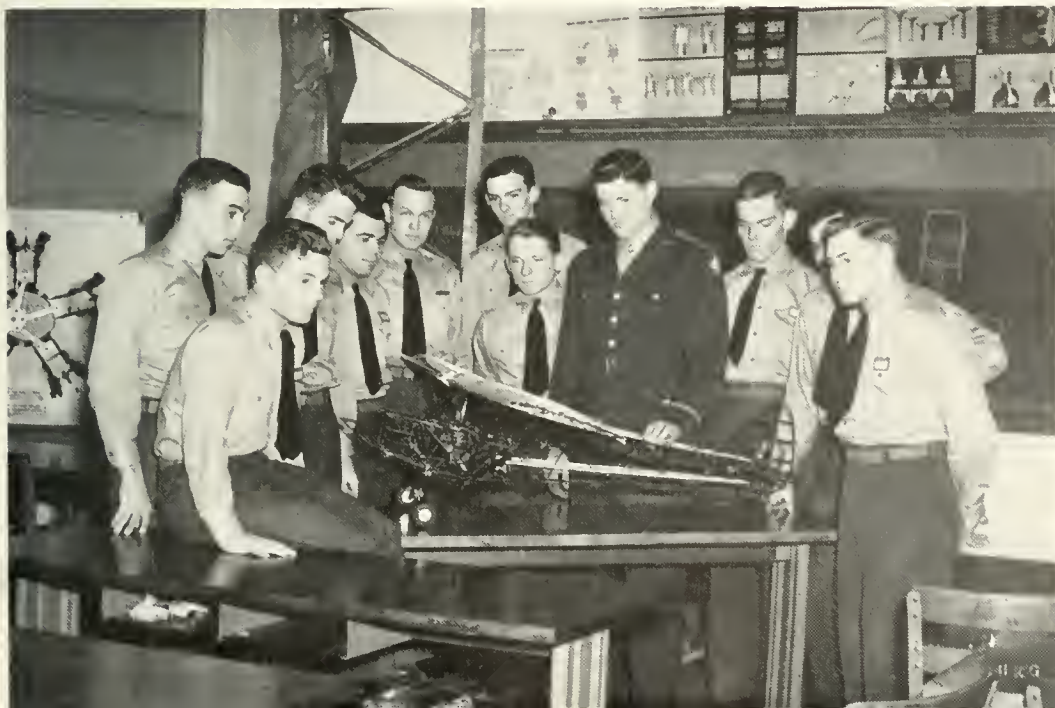
V-5

The various colleges throughout the country connected with the War Training Program have contributed in no small degree to the successful training of the Navy's fighting pilots. Known as War Training Schools and operating under the joint supervision of the Civil Aeronautics Authority and the Navy these colleges have prepared thousands of cadets for their next phase of training leading ultimately to their wings of gold and a commission as Ensign in the Naval Reserve.

After twelve weeks of training at a flight preparatory school, the cadets are transferred to a War Training School, such as Bloomsburg, to begin their actual flight training. Their time is divided between ground school and flight. The ground school consists of navigation, recognition, aerology, civil air regulations, radio communications, aircraft engines, and physical training. Minimum flight time is twenty-one hours dual, and fourteen hours solo. Those satisfactorily completing both ground school and flight are transferred after eight to twelve weeks to Preflight Schools.

At the Preflight Schools physical fitness is stressed and the cadets are in fighting trim before moving on to the Navy's Primary Training bases for further flight training. From Primary to Intermediate is their next step and on completion of the Intermediate course, the cadet is commissioned and designated a Naval Aviator.

Bloomsburg State Teachers College, its faculty, and others associated with the War Training Program should justly feel proud of their efforts toward complete and final victory.





V-12

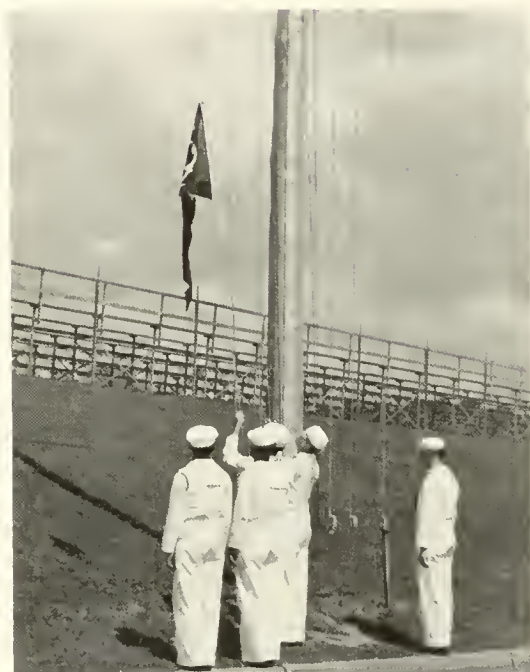
The purpose of V-12 training is to give perspective Naval officers the benefits of college education in the fields most needed by the Navy. The Program is now an integral part of the operation of 240 American colleges, universities, medical schools, and dental schools.

V-12 students as Apprentice Seamen are studying as underclassmen in 130 colleges and universities.





Through the V-12 Program, young men with high school educations have an opportunity to fit themselves as officers in the Navy, Marines, and Coast Guard. Men selected from civilian life must be from 17 to 20; those from the fleet and shore station, 17 to 23. All must be physically and morally qualified and pass rigid screening tests. It's a long term program geared to the future needs of the Navy.





Classes





N. Pope, M. DeVitis, B. Kane, J. Welliver

Junior Class

On September 12, 1913, the Junior Class returned to the campus to continue its third year of the performance "College Life at Bloomsburg."

Registration Day revealed a smaller class enrollment since many responded to the call of military service.

As Act Three opened the class got off to a fine start under the capable leadership of our officers: President, Julian Zinzarella; Vice President, Bernard Kane; Secretary, Nelen Pope; Treasurer, Julia Welliver; Girl Representative on College Council, Mary DeVitis, and Class Adviser, Dr. E. H. Nelson.

Inasmuch as class activities were curtailed due to war time conditions, the Community Government Asso-



First Row, Left to Right—L. Sailor, R. Boyle, N. Pope, J. Zinzarella, M. DeVitis, B. Kane
 Second Row—B. Zehner, B. Zong, L. Schoener, E. Flail, M. Dzuris, A. Superko, M. Flaherty, J. Gula
 Third Row—J. Foust, E. McBride, S. Starook, C. McCloughan, E. Burnham, M. Fenstemaker, L. Wintersteen,
 C. Kinney

ciation supervised college activities and the Junior Class did its part toward making the year a successful one.

Our former president, Julian Zinzarella, upon becoming a Senior at mid-semester, filled the presidential vacancy created on College Council when Edward J. Manley graduated. Juniors held three other offices on College Council: Vice President, Bernard Kane; Secretary, Marylou Fenstemaker; and Treasurer, Joseph Gula.

It is our wish for the Senior Class as they enter the teaching profession that they meet with success in their efforts to spread the high ideals that are Bloomsburg's.





M. Schoemer, J. Shaffer, E. Bitetti, A. Magill, L. Seybert

Sophomore Class

OFFICERS

<i>President</i>	-	-	-	-	ELVIRA BITETTI
<i>Vice President</i>	-	-	-	-	MARY SCHROEDER
<i>Secretary</i>	-	-	-	-	LENORE SEYBERT
<i>Treasurer</i>	-	-	-	-	JACQUELINE SHAFFER
<i>Historian</i>	-	-	-	-	ANNA MAGILL
<i>Class Adviser</i>	-	-	-	-	DR. NELL MAUPIN



First Row, Left to Right—Dr. Maupin, E. Falvey, M. Schroeder, E. Bitetti, L. Seybert, J. Shaffer
Second Row—A. Commtzis, V. Weller, J. Propst, J. Dickinson, E. Berlew, R. Mauser, E. Doney, L. Fitt
Third Row—P. Schrader, C. Johnson, A. Parsell, C. Longo, G. Belcastro

The Sophomore Class resumed its studies in a completely different atmosphere. Not a single masculine name could be found on the class roll, since all of its boys are serving Uncle Sam. The class is justly proud of the fine record being made by these missing members who are in the armed services of the nation. Reports from the various branches of service reveal that our belief in their ability has been justified. We are now looking forward to that not too far distant day of joyful reunion.

The Sophomore Class takes this opportunity to extend to the Senior Class, its heartiest wishes for success and happiness. The friendship and good fellowship of these several years will live long after other experiences are dim and forgotten.





H. Rhodes, R. Cerchiaro, I. Gehman, R. Megargel, R. Tremato, K. Kurilla

Freshman Class

OFFICERS

<i>President</i>	-	-	-	ROBERT MEGARGEL
<i>Vice President</i>	-	-	-	KAY N. KURILLA
<i>Secretary</i>	-	-	-	FRANCES SAUNDERS
<i>Treasurer</i>	-	-	-	ROSE CERCHIARO
<i>Girl Representative</i>	-	-	-	ISABEL GEHMAN
<i>Boy Representative</i>	-	-	-	RALPH TREMATO
<i>Historian</i>	-	-	-	HARRIET RHODES
<i>Class Adviser</i>	-	-	-	MISS LUCY MCCAMMON

In the fall of 1913, B. S. T. C. opened its friendly doors to a group of energetic freshmen. Miss Harriet Moore graciously acted as temporary class adviser.

Emerging from "customs," these still energetic freshmen dressed and romped as "Near infants" at their Kid Party on November 19. The following



First Row, Left to Right—E. Witman, I. Gehman, K. Kurilla, R. Megargel, R. Cerehiaro, H. Rhodes, D. Kocher
Second Row—M. Orner, A. Bueinell, N. Maxey, B. Lingle, B. Gabuzda, T. Sidari, K. Kight, B. Adams,
M. Donahue, S. Koiser, H. Wright
Third Row—L. Fichter, H. Fohl, M. Stitzel, G. Gillis, M. Klinger, S. Williams, F. Mylet, M. Longo, E. Bourgeois,
L. Good, J. Hmelnicky

evening, November 20, the freshmen were welcomed by the Community Government Association at a formal reception and dance in the new gymnasium. Sometime later, the freshmen class made their first public appearance, when they exhibited their talents before the college faculty and students during a chapel program.

Since that time many new students have become members of the class. Some of these people joined the group in November, followed by many others in March. In spite of this, the Freshmen have become a united group striving to uphold the standards which are Bloomsburg's.

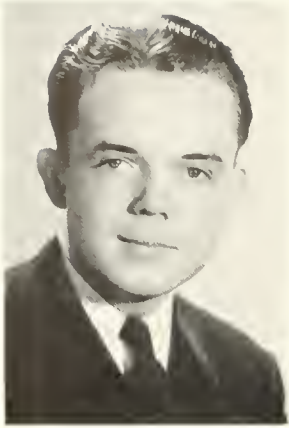
In our short acquaintance with the members of the Senior Class, we have caught from them the gleam of good scholarship and sportsmanship. We wish them all that is best, as they enter upon that new phase of their lives.





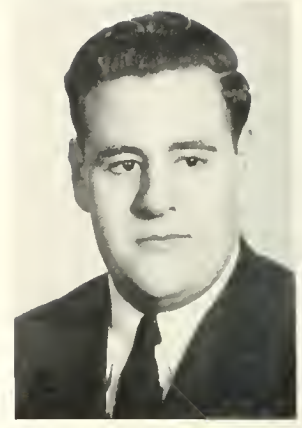
Activities





EDWARD J. MANLEY

Community Government Association



JULIAN A. ZINZARELLA

COLLEGE COUNCIL

President - - - - - EDWARD MANLEY (first semester)
President - - - - - JULIAN ZINZARELLA (second semester)
Vice President - - - - - BERNARD KANE
Secretary - - - - - MARYLOU FENSTEMAKER
Treasurer - - - - - JOSEPH GULA
Faculty Advisers Dr. Marguerite W. Kehr, Miss Bertha Rich, Miss Ethel A. Ranson, Dr. Thomas P. North, Mr. George C. Buchheit, Mr. Edward A. Reams, Lt. John C. Koch, Miss Edna J. Hazen, Mr. Joseph R. Bailer.

MEMBERS

President of Senior Class - - - - - LOUISE MADL
Girl Representative of Senior Class - - - - - BETTE FULLER
President of Junior Class - - - - - JULIAN ZINZARELLA
Girl Representative of Junior Class - - - - - MARY DEVITIS
President of Sophomore Class - - - - - ELVIRA BITETTI
Girl Representative of Sophomore Class - - - - - LUCILLE MARTINO
President of Freshman Class - - - - - ROBERT MEGARGEL
Girl Representative of Freshman Class - - - - - ISABELLE GEHMAN
Boy Representative of Freshman Class - - - - - RALPH TREMATO
President of Waller Hall Association - - - - - JOYCE HAY
President of Day Women's Association - - - - - ANNE SHORTESS
President of Day Men's Association - - - - - EDWARD HENDRICKS

V-12'S ON COUNCIL (November Trimester)

President - - - - - LETCHER WHITE
Vice President - - - - - HENRY CARUSO
Secretary - - - - - RICHARD LANGDON
Representatives at Large - - - - - THOMAS P. LEE, RAY DEHLER

(SIX WEEKS INTERSESSION)

Elwood Buck Richard Bierley John Goepfert
 Harry Peeler George Elison



First Row, Left to Right—Lt. Koch, L. Martino, M. DeVitis, J. Gula, J. Zinzarella, M. Feustemaker, B. Kane, E. Bitetti, Mr. Remus
 Second Row—Mr. Bailor, Miss Rich, B. Fuller, B. Megargel, A. Shortess, Miss Hazen, I. Gelman, J. Hay, L. Madl, Dr. Kehr

To everyone on our campus the name Community Government Association means an organization to which every student and every faculty member of this college belongs. The purpose of this organization is to create better co-operation among the students, faculty and administration.

The College Council carries out the executive duties of the Community Government Association. It was the problem of the Council to iron out the differences and make adjustments between all the different groups found on our campus this year.

A new addition to the Council was a body of five V-12's chosen to represent their group.

The Community Government Association was sorry to lose Edward Mauley as its President, when he graduated in January. Then followed the election of a new President with the speeches and rivalry of a political campaign, with the final election of Julian Zinzarella as President.

On March 28 and 29 a delegation from Community Government Association attended the convention of the National Eastern Association of Pre-Professional Training which was held at the Commodore Hotel in New York City.





First Row, Left to Right—C. Sirianni, J. Ackerman, N. Maxey, I. Gehman, H. Parangosky, P. Schrader,
 M. Longo, F. Mills, G. Belastro
 Second Row—S. Wolfe, B. Zong, E. Doney, C. Kinney, H. Foll, M. Stitzel, E. Witman, C. Longo, S. Williams
 Third Row—M. Latsha, S. Starook, M. Lovering, A. Buemell, E. Bittli, L. Fichter, R. Cerchiaro, M. Schroeder
 Fourth Row—F. Faust, S. Williams, V. Weller, K. Hoss, N. Miles, B. Adams, K. Kurilla, T. Sidari, C. Coakley,
 G. Gillis, G. Roberts, M. Donahue
 Fifth Row—L. Baer, M. Madd, J. Schrader, J. Spaid, P. Guarna, M. Klinger, F. Mylet, L. Good, M. Downing
 Sixth Row—B. Burnham, B. Fuller, M. DeWald, M. Parr, M. Kaue, H. Martin, W. Barth, E. Berlew, J. Propst,
 W. Farnsworth, A. Superko, E. Falvey
 Seventh Row—B. Lingle, L. Schlegel, A. Behler, B. Gabuzda, M. Heimbach, A. Hunter, M. Dzuris, E. Flail,
 L. Sailer
 Eighth Row—J. Keller, I. Schoener, M. Duck, M. DeVitis, H. Oyer, R. Kester

Waller Hall Association

OFFICERS

<i>President</i>	- - - - -	JOYCE HAY
<i>Vice President</i>	- - - - -	ANITA BEHLER
<i>Secretary</i>	- - - - -	BETTY ZONG
<i>Treasurer</i>	- - - - -	MARTHA DUCK

The Waller Hall Student Government Association is organized for the purpose of creating co-operation among the women students living in the dormitory.

The Governing Board of the Association consists of a president, vice president, secretary, and treasurer, with four representatives from the senior class, three from the junior and sophomore classes, and two from the freshman class. Dr. Kehr and Miss Rich act as advisers of the Governing Board.

The girls have informal "get-togethers" during the year in the form of floor parties. Skits, readings, singing, and refreshments comprise the "entertainment" of these parties.

At Christmas, the girls in the dormitory divided into groups of four. Each group was given the name of a boy or girl for whom they were to buy a gift. The names of the children were secured from the Bloomsburg chapter of the Red Cross.

For the first time this year the girls had the use of the Club Rooms in which they could sponsor card parties, hold meetings, have entertainment, or study. A store was also conducted in these rooms with the treasurer and finance committee in charge.

Last, but not least, in April the dormitory girls and day girls held their annual He-She party. At this party the Governing Board members for 1944-1945 were introduced.



First Row, Left to Right—E. Faust, A. Beller, M. Duck, J. Hay, B. Zong, B. Fuller, J. Ackerman.
Second Row—E. Bitetti, I. Gohman, J. Propst, Dr. Kehr, M. Schroeder, A. Superko, M. Devitis.





First Row, Left to Right— E. Patterson, P. Beach, C. Johnson, M. Koehler, P. Comuntzis, A. Comuntzis, J. Shaffer
 Second Row— B. Hess, L. Bryner, E. Bourgeois, F. Van Sant, C. McCloughan, J. Foust
 Third Row—L. U't, H. Rhodes, L. Wintersteen, E. George, J. DuBois, J. Shank
 Fourth Row— F. Saunders, E. Klugman, D. Martz

Day Women's Association

OFFICERS

<i>President</i>	- - - - -	ANNE SHORTESS
<i>Vice President</i>	- - - - -	NELENA POPE
<i>Secretary</i>	- - - - -	JULIA WELIVER
<i>Treasurer</i>	- - - - -	EVELYN GEORGE

All college women living in Bloomsburg or commuting to B. S. T. C. from nearby towns are members of the Day Women's Association which was organized on this campus in 1930.

The Official Board of the organization is composed of ten members: the president and vice president who are elected by all day women, and two representatives from each class who act as chairmen of the various committees. Ethel A. Ranson, Assistant Dean of Women, is the sponsor of the group.

The first social event of the year was held in the form of a tea at which the freshmen day women were guests. In December, Santa visited this group at their annual Christmas Party.

On the twelfth of February, the Day Women's Association joined with the Waller Hall Association in sponsoring the annual Four F Party.

In April the members of the board for the following year are elected. The results of this election were disclosed at the annual He-She Party, sponsored by the Day Women's Association and the Waller Hall Association. This party proved to be the highlight of the year.



Sented, Left to Right—E. George, N. Pope, A. Shortess, J. Welliver
Standing—P. Comuntzis, C. McCloughan, Miss Ranson, M. Dean, J. Shaffer



Day Men's Association



First Row, Left to Right-- E. Frosini, J. Gula, E. Hendricks, J. Zinzarella, H. Miller, R. Mezargel
Second Row-- S. Mazzeo, J. Huelnicky, F. Dent, E. Maramucci, C. Spencer

Social Service Clubs



M. DeVitis, K. Kurilla, J. Shaffer, E. Bitetti, M. Downing

Interfraternity Council

Interfraternity Council was organized especially for social activities within the fraternities. It is made up of the officers and representatives of all the fraternities on the campus: Alpha Psi Omega, Kappa Delta Pi, Pi Omega Pi, Phi Sigma Pi. The officers of the Council are nominated in alphabetic rotation from members of the fraternities.

Alpha Psi Omega

Anne Shortess	Betsy Smith
Stella Williams	Miss Alice Johnston

Pi Omega Pi

Helen Cromis	Elsie Flail
Joyce Hay	Salvatore Mazzeo
Anne Sabol	Harold Miller
Florence Faust	Mr. William Forney

Kappa Delta Pi

Helen Cromis	Joyce Hay
Florence Faust	Lois Bryner
Edna Snyder	Nelena Pope
Anne Sabol	Miss Nell Maupin

Phi Sigma Pi

Bernard Kane	Julian Zinzarella
Edward Manley	Mr. E. A. Reams
Joseph Gula	





First Row, Left to Right—M. DeVitis, J. Aekerman, A. Sabol, E. Snyder, H. Cromis, F. Faust, J. Hay, P. Comuntzis
 Second Row—S. Mazzeo, B. Hagenbuch, R. Boyle, N. Pope, C. McCloughan, E. Flail, M. Dzuris, M. Fenstermaker, M. DeWald, L. Bryner, H. Miller, Dr. Maupin

Kappa Delta Pi

OFFICERS

<i>President</i>	- - - - -	HELEN CROMIS
<i>Vice President</i>	- - - - -	FLORENCE FAUST
<i>Recording Secretary</i>	- - - - -	EDNA SNYDER
<i>Corresponding Secretary</i>	- - - - -	ANNE SABOL
<i>Treasurer</i>	- - - - -	JOYCE HAY
<i>Historian</i>	- - - - -	POLETIME COMUNTZIS
<i>Sponsor</i>	- - - - -	DR. NELL MAUPIN

The Gamma Beta Chapter of Kappa Delta Pi has been one of the most active organizations of its kind on the campus of Bloomsburg since its installation on February 21, 1931. It is a National Honor Society in Education and is immediately concerned with establishing and promoting high intellectual, scholastic, and social standards. It maintains a high degree of professional fellowship among its members and honors achievement in educational work; it has accelerated professional growth.

Membership in the fraternity is extended to those junior and senior men and women who rank in the upper quartile of their classes, and who, at the same time, display commendable personal qualities and worthy educational ideals.

Activities of the first semester included the election and initiation of new members and the purchase of three one hundred dollar war bonds. The fraternity continued to sponsor the selling of Wedgewood plates, on which there is an engraving of Carver Hall, to both graduates and members of the college community. At the regular meetings group discussions on current affairs, educational, and world wide topics were given after which a social hour was held.

This year the fraternity was particularly honored in being privileged to nominate a member to the Laureate Chapter of Kappa Delta Pi.

The members of the fraternity who are graduating this year extend sincere good wishes to the undergraduate members who will carry on actively for Gamma Beta.





Seated, Left to Right—D. Jackson, M. Fenstermaker, E. Flail, A. Shortess, B. Kane
 Standing—A. Behler, Miss Johnston, B. Hagenbuch, L. Martino

Alpha Psi Omega

OFFICERS

<i>President</i>	- - - - -	ANNE SHORTESS
<i>Secretary</i>	- - - - -	STELLA WILLIAMS
<i>Treasurer</i>	- - - - -	BETSY SMITH
<i>Director</i>	- - - - -	MISS ALICE JOHNSTON

Alpha Psi Omega, the honorary dramatic fraternity, is the largest one of its kind in the United States. The local chapter, Alpha Omicron, is the oldest established chapter of any fraternity on the campus.

The school year, 1943-1944, proved to be a very busy and interesting year. The fraternity initiated several new members, conducted regular meetings, and held the Christmas party at the "Frat House"—the name given to Miss Johnston's apartment.

This year we welcomed some members of the Navy V-12 unit into our chapter. These men had been members of Alpha Psi Omega at the colleges which they had formerly attended.

The play, "Junior Miss," was sponsored by the fraternity and was presented on February 12 with the aid of the Dramatic Club. To help with the promotion of war bond sales, the fraternity presented many one-act plays.

With its many wartime activities and its growing importance in morale work, Alpha Psi Omega is playing a very important role in the activities of the College.



First Row, Left to Right - J. Ackerman, A. Sabol, H. Cronis, J. Hay, F. Faust, E. Snyder, M. DeVitis
 Second Row—Mr. Gehrig, S. Mazzeo, L. Martino, E. Flail, M. Forney, H. Miller, J. Gula, Mr. Rygiel

Pi Omega Pi

OFFICERS

<i>President</i>	- - - - -	HELEN M. CROMIS
<i>Vice President</i>	- - - - -	JOYCE HAY
<i>Secretary</i>	- - - - -	ANNE SABOL
<i>Treasurer</i>	- - - - -	FLORENCE FAUST
<i>Historian</i>	- - - - -	JEAN ACKERMAN
<i>Sponsor</i>	- - - - -	MR. WILLIAM C. FORNEY

The Alpha Delta Chapter of Pi Omega Pi, a National Professional Commercial Educational Fraternity, was installed at State Teachers College, Bloomsburg, Pennsylvania, on May 23, 1935. The Alpha Delta Chapter consists of members of the Department of Business Education who have attained superior scholastic ratings.

Its aims are to encourage, promote, extend, and create interest and scholarship in commerce; to encourage and foster high ethical standards; and to teach the ideal of service as the basis of all worthy enterprise.

The main topic discussed throughout the year was the status of education, particularly business education, in the post-war period in which the students of today will be teaching. The programs which were presented at the regular monthly meetings were both entertaining and educational.





First Row, Left to Right— M. Stitzel, E. Witman, K. Kight, E. Flail, B. Hagenbuch, A. Behler, R. Fortner, L. Martino, A. Shortess, M. Frostemaker, M. Sailer, M. Jean
 Second Row—A. Naumas, K. Kurilla, G. Gillis, S. Williams, H. Fehd, E. Klingaman, L. Fichter, T. Sidari, B. Galuzda, M. Madi, E. Falvey, I. Gelman, P. Kane, Miss Johnston
 Third Row— D. Maritz, F. VanSant, R. Corchiaro, J. Keller, N. Maxey, R. Ashcom, S. Nicol, G. Gordon, R. Dille, E. Friedly, H. Wright, M. Scott, L. Good, S. Mazzeo, J. DuBois

Bloomsburg Players

OFFICERS

<i>President</i>	- - - - -	MARY ELIZABETH HAGENBUCH
<i>Vice President</i>	- - - - -	MARILYN SAILER
<i>Secretary</i>	- - - - -	JEAN ACKERMAN
<i>Treasurer</i>	- - - - -	ELLA SHARGO
<i>Sponsor</i>	- - - - -	MISS ALICE JOHNSTON

The Bloomsburg Players form the one and only dramatic organization in the College.

It is from this small nucleus that the year's big performances like Choderov and Fields' "Junior Miss" grow.

It is the center of a sphere of activity from which the members emerge with experience that enables them not only to take part in but to direct plays and build stage sets for them.

This year the club presented plays for women's clubs, Bloomsburg High School, and college assembly.





First Row, Left to Right - M. Scott, S. Mazzeo, P. Comuntzis, J. Ackerman, B. Hagenbuchi, M. Dean
 Second Row - L. Schoener, J. Hay, A. Shortess, R. Megargel, M. Stitzel, C. Sirianni

The 1944 Obiter

EDITORIAL STAFF

Editor - - - - - POLETIME D. COMUNTZIS
Associate Editors—MARY ELIZABETH HAGENBUCH, SALVATORE MAZZEO
Assistant to the Editor - - - - MARGARET D. DEAN
Literary Staff - - - JOYCE HAY, ANNE SHORTESS, LOIS BRYNER
Photography - - - - - FREDERICK DENT
Sports - - - - - ROBERT MEGARGEL
Typists - - - - - MARY LOUISE SCOTT, FLORENCE FAUST

BUSINESS STAFF

Business Managers - - - - JEAN ACKERMAN, SAMUEL TRAPANI
 LAIRA SCHOENER CARMEL SIRIANNI
 EDNA SNYDER PAULINE GAREY NILES
 MARTHA STITZEL WILLIAM WILD, A. S.



POLETIME D. COMUNTZIS

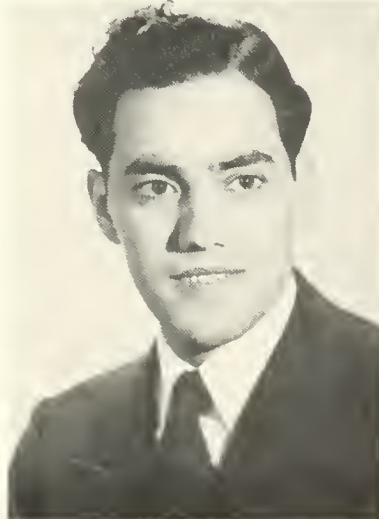
This year the OBITER has been published under the stress of time and unusual conditions. Because of the illness of Helen Cromis who was elected Editor last spring, new elections were held and were not approved until January.

When Samuel Trapani, our Business Manager, graduated in February, Jean Ackerman took over to do an excellent job.

We have all worked hard and hope that you like what we have done.



JEAN ACKERMAN



SAMUEL J. TRAPANI





First Row, Left to Right- H. Fehl, M. Klinger, D. Kocher, M. Stitzel, L. Adams, L. Madl, B. Zong, M. Latsha, B. Williams, I. Gehman, S. Williams, J. Schrader
 Second Row - E. Bitotti, C. Coakley, P. Sidari, L. Schlegel, B. Galuzda, M. Fenstermaker, M. Dzuris, E. Phil, A. Bucinell, K. Kight, E. Falvey, M. Creveling, P. Teach, E. Bourgeois, E. Witman, M. Longo, E. Doney
 Third Row - Miss Moore, S. Keiser, P. Comuntzis, A. Comuntzis, J. Shaffer, P. Schrader, L. Wintersteen, C. McCroughan, L. Bryner, J. Welliver, B. Hess, C. Belastro, C. Longo, F. Mybet, C. Kinney

Women's Chorus

OFFICERS

<i>President</i>	- - - - -	M. LOUISE MADL
<i>Vice President</i>	- - - - -	MARGARET LATSHA
<i>Secretary</i>	- - - - -	BETTY ZONG
<i>Treasurer</i>	- - - - -	LAURA SCHOENER
<i>Librarians</i>	- - - - -	DOROTHY KOCHER, MARTHA STITZEL
<i>Pianist</i>	- - - - -	LOUISE ADAMS
<i>Assistant Pianist</i>	- - - - -	CATHERINE COAKLEY
<i>Director</i>	- - - - -	HARRIET M. MOORE

Although the college program had been neatly disrupted this year, the Women's Chorus continued regular rehearsals and presented interesting as well as entertaining programs.

In November, the Chorus presented a cycle of four love poems entitled, "A Day in Venice." The music was written by Ethelbert Nevin for the verses written by Frederick H. Martens.

Just before the Christmas recess the Women's Chorus sponsored a Yuletide program. The delightful organ music presented by Mr. Howard F. Fenstermaker and the soprano solo by Althea Parsell

made the audience feel the real spirit of the season. Two other added highlights of the program were the choral selections by the Men's Glee Club composed of Navy V-12 students, and the young soloists from the Benjamin Franklin Training School. The Women's Chorus offered several numbers from the cantata, "In Bethlehem," by Koutz.

Following the Christmas holidays, the Women's Chorus studied a group of "past favorites" which they presented in May.

At the concert sponsored by Miss Betty Pauling of the Music Department, the Chorus gave another fine performance.

The Women's Chorus, being smaller than usual this year, should be complimented on its fine work, and orchids are due Miss Moore for her able leadership and Louise Adams for her outstanding piano accompaniment.

I Sopranos

Peggy Beach
Gloria Belcastro
Lois Bryner
Marian Creveling
Evelyn Mae Doney
Eileen Falvey
Helen Fehl
Marylou Fenstemaker
Elsie G. Flail
Bernice Gabuzda
Isabel Gehman

Betty Hess
Karliss Kight
Margaret Latsha
Catherine Longo
M. Louise Madl
Carol McCloughan
Jacqueline Shaffer
Julia Welliver
S. Anne Williams
Evelyn Witman
Betty Zong

II Sopranos

Betty Adams
Elvira Bitetti
Eva Bourgeois
Catherine Coakley
Martha Donahue
Cleo Kinney
Mae Klinger

Dorothy Kocher
Mary Longo
Jean E. Schrader
Althea Parsell
Terese Sidari
Lois Wintersteen

Altos

Athamantia Comuntzis
Poletime Comuntzis
Mildred Dzuris
Lillian Guis
Shirley Keiser

Frances Mylet
Louise Schlegel
Laura Schoener
Phyllis Schrader
Martha Stitzel





Seated, Left to Right—Dr. Kuster, M. Dzuris, F. Dent, V. Weller, A. Superko
 Standing—R. Gabuzda, K. Hess, E. Doney, E. McBride

Science Club

OFFICERS

<i>President</i>	- - - - -	FREDERICK DENT
<i>Vice President</i>	- - - - -	MILDRED DZURIS
<i>Secretary</i>	- - - - -	VIOLET WELLER
<i>Treasurer</i>	- - - - -	KATHLEEN HESS
<i>Program Chairman</i>	- - - - -	ARLENE SUPERKO
<i>Sponsor</i>	- - - - -	DR. KUSTER

Science Club is one of the most active organizations on the college campus. The yearly program consists of lively discussion, films, and reports.

Of special interest this year was the film, "What Is Electricity?" secured from General Electric, and a discussion of post-war conditions.

The group, collaborating with the Alumni Association, is planting trees and shrubbery to form an arboretum in honor of Professor Hartline, one of the Old Guard of B. S. T. C.



First Row, Left to Right—Mr. Gehrig, M. Kocher, S. Wolfe, M. Schroeder, S. Mazzeo, E. Frostini, M. Sailer, E. Falvey, R. Boyle, Mr. Rygiel
 Second Row—M. Longo, H. Rhodes, J. Keller, G. Harmon, E. Flail, H. Fehl, S. Williams, G. Gillis, B. Lingle, G. Beleastro, Mr. Forney
 Third Row—E. Witman, R. Cerchiaro, K. Kurilla, L. Martino, B. Burnham, A. Bucinell, M. Donahue, I. Gehman, W. Kehler

Business Education Club

OFFICERS

<i>President</i>	- - - - -	SALVATORE MAZZEO
<i>Vice President</i>	- - - - -	ROSE BOYLE
<i>Secretary</i>	- - - - -	EILEEN FALVEY
<i>Treasurer</i>	- - - - -	MARY SCHROEDER
<i>Historian</i>	- - - - -	MARILYN SAILER
<i>Sponsor</i>	- - - - -	MR. WALTER RYGIEL
<i>Sergeant-at-Arms</i>	- - - - -	SHIRLEY WOLFE

The Business Education Club is an organization especially for the business education students. The Club includes an executive committee composed of the Club officers, adviser, and a representative of each of the four classes.

This year the Club purchased some records that are to be used in the demonstration of business techniques.

Some of the most interesting programs of the year were a talk on the making of wills by Attorney Eugene E. Eves and a play given in assembly. The play, "Saturday Morning in a Business Office," showed how and how not to apply for a job.

The big social event of the year was the annual Christmas Party.





First Row, Left to Right M. Dean, E. Witman, M. Scott, L. Schoener, F. Faust, W. Farnsworth, L. Baer, Miss Mason
 Second Row — A. Hunter, M. Klünger, E. Berlew, M. Latsha, B. Burnham, E. Ertel, E. Doney, N. Maxey

Student Christian Association

OFFICERS

<i>President</i>	- - - - -	FLORENCE FAUST
<i>Vice President</i>	- - - - -	MARTHA DUCK
<i>Secretary</i>	- - - - -	WANDA FARNSWORTH
<i>Treasurer</i>	- - - - -	LAURA SCHOENER
<i>Program Chairman</i>	- - - - -	SARA DOCKEY
<i>Sponsors</i>	- - - - -	MISS MASON, MR. SHORTESS

The Student Christian Association is an organization for spiritual and social fellowship. Although there was a decrease in membership, the Navy men were welcomed as regular members.

The program for the year began in November with the traditional Vesper Service in the college chapel. Reverend Anderson, pastor of the Presbyterian church of Bloomsburg, was the speaker. The service was followed by a tea which was held in the Social Rooms.

The Association did its part in welfare work by giving a contribution to the World Student Service Fund which was represented at one of the meetings by Sonia Grodka.

Other guests for the year included Dr. Maupin, Dr. Kehr, and Mr. Ned Weller.

Each Sunday after dinner, the Student Christian Association conducts a song service in the lobby for the benefit of the whole college student body.

The members also enjoyed the social events in which they participated such as the weiner roast and several parties.



First Row, Left to Right: H. Parangosky, J. Hay, B. Kane, F. Faust, Editor; D. Jackson, B. Hagenbuch, A. Comuntzis, J. Shaffer
 Second Row: M. Scott, M. DeVitis, A. Naimas, M. Klinger, M. Latsha, R. Megargel, L. Schoener, R. Portner, P. Comuntzis, C. Siriauni, S. Mazzeo

Maroon and Gold

<i>Editor-in-Chief</i>	- - - - -	FLORENCE FAUST
<i>Sports Editor</i>	- - - - -	FRANK SCHREIBER
<i>Exchange Editor</i>	- - - - -	HELEN PARANGOSKY
<i>Art Editors</i>	- - - - -	FRED DENT, DAVID JACKSON
<i>Service Editor</i>	- - - - -	BERNARD KANE
<i>Business Manager</i>	- - - - -	ANNE SABOL
<i>Editorial Board</i> —JOYCE HAY, JIM McDERMOTT, ATHAMANTIA COM- UNTZIS, JACQUELINE SHAEFFER, GUY ZEARFOSS		

Any student on the Bloomsburg campus is welcome to contribute to the *Maroon and Gold*, our college newspaper. It is the voice for the students.

The staff has a tremendous task this year. It had to present news of interest to civilian students, Navy students, nurses, and the ever-larger number of service men and women.

Those people whose pictures you see above are only a small number of the staff. Many of the Navy V-12 students who were on the staff are now at new stations. Some of the civilian students who wrote graduated before the regular spring commencement. And every week some alumni piles letters into Box 231 for the "Life With Uncle" column.

The constantly shifting staff all had one aim in mind—to put out a newspaper of interest in current and feature news. Three new columns of particular interest this year were "Presenting Personalities," "Around the Campus," and "Aunt Penelope."

From September until June the *Maroon and Gold* staff kept the presses rolling with eighteen issues of college news.





Athletics





First Row, Left to Right - M. E. Hagenbuch, B. Burnham, W. Farnsworth, J. Welliver
 Second Row - C. Sirianni, F. Faust, M. Dean
 Third Row - M. L. Scott, M. Calvello, P. Comnitzis

"B Club"

OFFICERS

<i>President</i>	- - - - -	MARY LOUISE SCOTT
<i>Vice President</i>	- - - - -	CARMEL SIRIANNI
<i>Treasurer</i>	- - - - -	LILLIAN BAER
<i>Secretary</i>	- - - - -	JULIA WELIVER
<i>Sponsor</i>	- - - - -	MISS LUCY McCAMMON

The "B" Club is an organization composed of girls who have earned one thousand athletic points for participating in sports.

The club sponsors most of the sport events held for the other college girls. This year the "B" Club inaugurated a new program. Members of the club were hostesses to high school girls from the college service area. Parties were held in the new centennial gymnasium which included games and swimming from seven to ten p. m. The following schools were included: Milville, Catawissa, Scott Township, Danville, Orangeville, Benton, Milflinville, Nescopeck, Berwick, and Center and Greenwood. The club also has the concession stand at the basketball games.

In the spring, the "B" Club climaxed their activities for the year with a camping trip and "Play Day."

Women's Sports

A well rounded program of women's sports has been followed this year. However, with the school term going round the calendar, there has been no definite starting or stopping spot for the different sport activities. Instead, one sport gradually gave way to another.

During the summer months and early fall, the tennis courts were used continually. An archery range was set up and used by some of the more talented members. With fall approaching, soccer and hockey were played daily on the athletic field. Throughout the winter, the Centennial Gymnasium became the sports center. There every Monday and Thursday evenings, the building was open to

the college women. Under the direction of Miss Lucy McCammon, with the assistance of the "B" Club, tournaments of badminton, shuffleboard, and table tennis were waged. Basketball, volley ball, and cage ball were regular activities. As usual, the swimming pool proved to be one of the favorite spots of recreation. The rubber life boat and the rope net used by the Navy added to the exciting possibilities of exploring the pool more thoroughly.

With the arrival of spring, the scene changed to the out-of-doors. Here, baseball held full sway. And so on to tennis, and the cycle repeats itself.



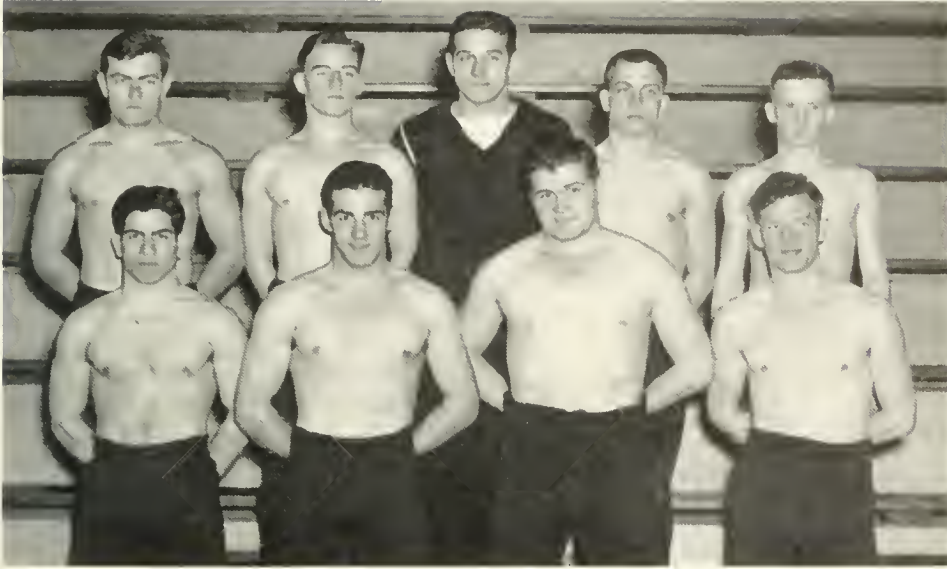


Football

Bloomsburg would have been represented on the gridiron by a team of championship caliber if the Huskies had been able to secure opposition. B. S. T. C., like the majority of the colleges, suspended football for the duration, but when the Navy showed their eagerness to continue with the sport everything possible was done to secure a schedule for the trainees but to no avail.

The V-12's were given their only opportunity to show their wares at the annual Homecoming. It was the outstanding feature of the day and the Navy trainees obliged by staging as good an exhibition of the gridiron sport as was ever staged on a Homecoming Day when the "Reds," coached by Chief Specialist Jack Llewellyn, worked a third-period thirty-yard touchdown pass to beat the "White," in charge of Lt. Boyd, 6-0.

Although the rain fell in torrents during the game, the large crowd stayed until the final whistle of the wide open game. Both sides had good scoring opportunities that failed. The "Whites" ran into a stone wall on the opponents' 6 and the "Reds" were stopped on the 5-yard line in the second quarter, but their third-period drive, culminated in that thirty-yard touchdown pass, carried them to their 6-0 victory.



First Row, Left to Right J. Fanella, R. Dehler, Coach: D. O'Connor, L. White
 Second Row J. Welling, G. McIntyre, J. Stenger, Manager: F. Marhefka, E. Bollinger

Apprentice Seaman Ray Dehler coached and captained the wrestlers, and although the team was never victorious it gave the majority of the spectators the "grappling fever." Fate could have been more generous, for the team was riddled with injuries and ineligibilities during the entire season.

In the very first meet with Franklin and Marshall at Lancaster, B. S. T. C. was minus one grappler and was forced to default a bout, giving F. and M. five easy points and finally the meet, 24-3.

The next match again found the wrestlers traveling, this time to Bucknell. The 128-pound slot was defaulted to the Bisons, as a result of ineligibilities, and the Huskies were further handicapped for Dehler was out of action because of broken ribs. That was more than enough for the hosts to win, and they did just that, downing the Huskies 22-3.

The bright spot of the season was the final match at the Centennial Gymnasium with Bucknell as "guests." Bucknell won the first two bouts on falls, but the Huskie stock soared when McIntyre won on a decision, and Letcher White was victor by a fall. B. S. T. C. then went into the lead, 11-10, following Welling's decision in the 155-pound class. But the Bison was not to be denied. They won the next two events on decision and the heavyweight bout on a fall to surge ahead and win the meet, our final of the season, 21-11.

Wrestling



Varsity Basketball



First Row, Left to Right—R. Bierly, G. Hare, R. Williams, E. Stenger, D. Paul, J. Graff, C. Fitzgibbons, F. Donnette.
Second Row—W. Graham, S. Benkovitz, R. Hessom, A. Horn, J. Goepfert, E. Vogelsong, G. Ganley, Chief Llewellyn.

B. S. T. C. was treated to another excellent basketball season when the wartime Huskies, in charge of Chief Specialist Jack Llewellyn, put on a display of team work that won eleven wins as against three losses; the third best college record in Pennsylvania.

The Navy trainees served notice from the beginning of the season that they had a complex against Army competition for they literally tore apart the Armed Forces Induction Station five and the Harrisburg Special Service team on successive Tuesdays. The Maroon and Gold then ran their winning streak to four straight with two wins over Susquehanna University. The Harrisburg Special Service quintet, although reinforced with additional collegiate stars, fell victim number five as the Huskies prepared for the invasion of Franklin and Marshall. The Huskies landed and established a beachhead, but F. and M. counter-attacked and won the game with less than a half-minute remaining in play. The 43-42 loss was Bloomsburg's first.

But the gold uniformed quintet bounced back and twice defeated the New Cumberland five which had merged with Harrisburg Special Service in an effort to overcome Chief Llewellyn and his crew. The effort almost paid big dividends for it took Jack Goepfert's last half-minute field goal to defeat the Army team in our second engagement with them. The Teachers kept pouring it on, winning easily from Lafayette A. S. T. before hitting another snag; a 42-37 reverse

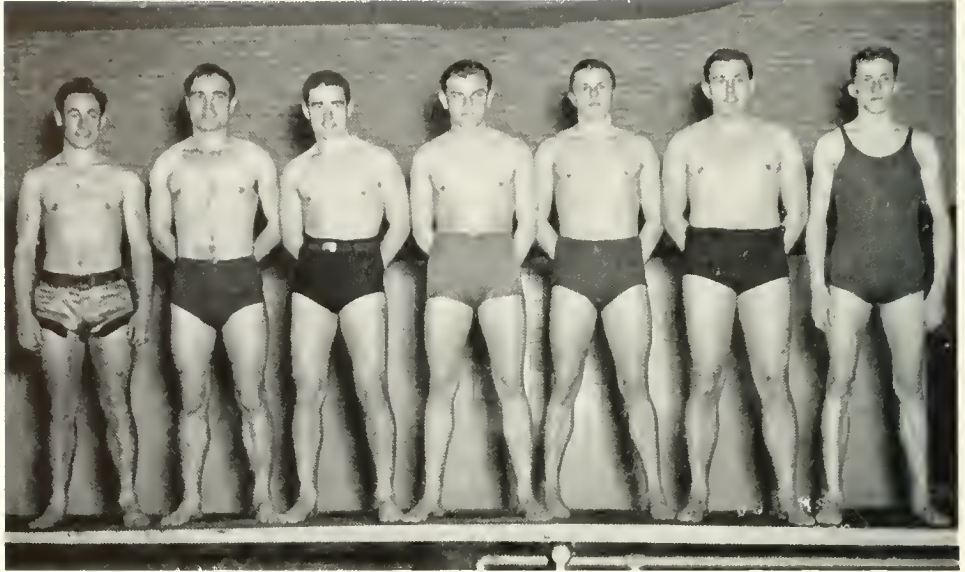
at Bucknell. On their only week-end trip, the Huskies made an even split, winning at Lafayette and losing to Muhlenberg, one of the outstanding teams in the East.

The season did not close, but it was climaxed by the home game with Bucknell when the Huskies undoubtedly played their best brand of basketball and decisively beat the favored Bison, 54-39. The season officially closed with a grand win, our eleventh, over the giant Olmstead Airbase representatives who could not match the Huskies shooting and teamwork.

And so the curtain closed on a season that saw Dick Bierly, a "hook-shot" artist, lead the scoring parade with a grand total of 202 points, and "Red" Graham winning second scoring honors with his 135 tallies. Captain Jack Goepfort sank the long one for 113 points, while Eddie Vogelsong collected most of his 112 points from the side. Individual scoring was sometimes heavy, but the teamwork was the outstanding feature of the '43-'44 B. S. T. C. basketball team.

Nov. 23—B. S. T. C.	66	Armed Forces Induction	25
Nov. 30—B. S. T. C.	43	Harrisburg Special Service ..	32
Dec. 2—B. S. T. C.	43	Susquehanna	31
Dec. 11—B. S. T. C.	45	Susquehanna	27
Dec. 14—B. S. T. C.		Harrisburg Special Service ..	
Dec. 18—B. S. T. C.	42	Franklin and Marshall	43
Jan. 7—B. S. T. C.	61	New Cumberland	53
Jan. 13—B. S. T. C.	47	New Cumberland	46
Jan. 22—B. S. T. C.	64	Lafayette A. S. T.	21
Jan. 29—B. S. T. C.	37	Bucknell	42
Feb. 4—B. S. T. C.	44	Lafayette A. S. T.	35
Feb. 5—B. S. T. C.	51	Muhlenberg	67
Feb. 9—B. S. T. C.	51	Bucknell	39
Feb. 19—B. S. T. C.	69	Olmstead Airbase	50





Left to Right—R. Williams, C. Fitzgibbons, C. Barrett, W. Neely, W. Schildmayer, J. Brooks, R. Ashcom, Captain

Swimming

The swimming season, although short and depressing, will always be remembered as the Huskies first attempt in collegiate competitive swimming.

The tankmen, coached and captained by V-12 Ray Ashcom, were only able to secure one opponent—Franklin and Marshall at Lancaster.

The Maroon and Gold swimmers rounded into condition for the lone meet by staging intramural contests between the V-5 and V-12 units. The V-5's won the first 37-33, but the V-12's more than evened the score by winning the second meet 38-10. The squad gained experience, but the results were nullified because the V-5 members were unable to make the trip to Lancaster; consequently, F. and M. turned in an impressive win, 53-12.



At the end of the first trimester it was obvious that a track team would once again represent B. S. T. C. even though the schedule was still in the early stages of development.

The track record shows that Coach G. Buchheit's Huskies have not been defeated in dual competition during the last seven years, accumulating a total of twenty-three consecutive wins.

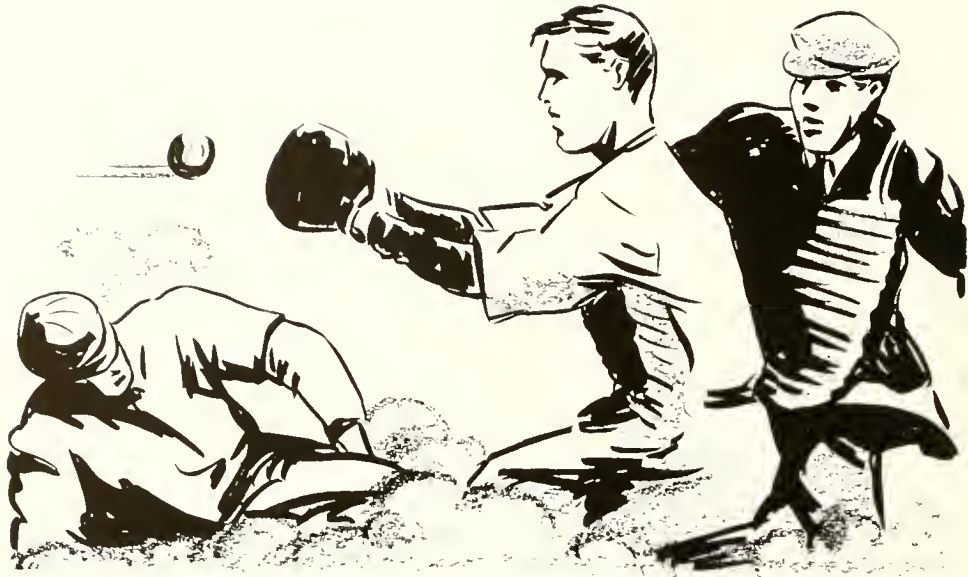
This year Bloomsburg will probably send a team to the Penn Relays at Philadelphia on April 28-29. B. S. T. C. has consistently made excellent showings against the stiff competition that this relay has to offer. During the past four seasons the Huskies have finished in first position twice and were runners-up twice in the college relay which each year draws the finest collection of track teams from all parts of the United States.

The triangular meet under consideration with Bucknell and Muhlenberg would prove to be a close contest down to the last event, because all three institutions are well supplied with Navy trainees.

Other meets are being arranged, and during the coming season Coach Buchheit and the Huskies will be seeking their twenty-third straight victory and their eighth consecutive undefeated season against dual competition.

Track





Baseball

The baseball summary would have been as eventful as a frost in February if the Navy hadn't donned the Maroon and Gold uniform and represented B. S. T. C. on the diamond during the summer. The Navy Pre-Flight, stationed at Bloomsburg, fielded a nine which was studded with "All-Stars."

The team, as coached by our own Doc Nelson, was noted more for its All-Star lineup than it was for its performance as the talent of only a few of the players was centered around baseball. Even so, the Huskies won better than two-thirds of their games with the Danville Industrial League teams as the opposition.

This is the lineup that Coach Nelson employed with success against the opponents:

Catcher—Marr, Boston College
Pitchers—Gravely, Yale; Nicholson, Brown
First Base—Walcott, Rice Institute
Second Base—Lalanne, North Carolina
Shortstop—Gezich, Indiana S. T. C.
Third Base—Bodisbaugh, Columbia
Left Field—Donovan, Delaware
Center Field—Gebensleben, Colgate
Right Field—Wyder, New York University

The squad was unique in that Marr was the former football and wrestling coach at Boston College, while Walcott holds the title of the "World's Champion High Hurdler." At second base was "Sweet" Lalanne, the North Carolina All-American halfback.

Joseph Gezich was the property of the Pittsburgh Pirates before his enlistment, so he was one of the minority that was gifted in baseball. Joe is still stationed at Bloomsburg, so B. S. T. C. has good reason for looking forward to another successful season which will find the *Maroon and Gold* fighting it out with such teams as Bucknell, Lehigh, Muhlenberg, and Pennsylvania.

SENIORS

Join Your Alumni Association

And Keep Your Membership Active Through the Years



Our Object: "To Keep the Door of Opportunity Open for Worthy American Youth."

Our Slogan: "Every Graduate of Bloomsburg an Active Member of the Alumni Association."

The Annual Dues of \$1.00 Will Admit You To:

1. The Alumni Luncheon.
2. The baseball game on Alumni Day.
3. A year's subscription to the

ALUMNI QUARTERLY

This magazine, which appears four times a year, will keep you informed of the activities of your classmates, and the events happening on the campus.



All dues should be sent to:

DR. E. H. NELSON

Business Manager "Quarterly"

STATE TEACHERS COLLEGE

BLOOMSBURG, PENNSYLVANIA

THE *Gregg* INVITATION TO COMMERCIAL TEACHERS

Many of the most able college graduates enter commercial teaching because it is interesting and among the most remunerative of teaching positions.

We invite all who are going into commercial teaching to make use of our free services. A letter to one of our offices asking for information as to teaching methods, course standards, or expected outcomes will bring an immediate response, and will bring a Gregg counsellor to see you on your first teaching job, if you so desire. We give every possible service to beginning commercial teachers.

The Gregg Publishing Company publishes widely used commercial textbooks for these subjects:

SHORTHAND	BUSINESS ORGANIZATION
TYPEWRITING	COMMERCIAL LAW
SECRETARIAL TRAINING	BOOKKEEPING
OFFICE PRACTISE	GENERAL RECORD KEEPING
INTRODUCTORY BUSINESS	CIVIL SERVICE TRAINING
ADVANCED BUSINESS INFORMATION	BUSINESS ARITHMETIC
ECONOMIC GEOGRAPHY	BUSINESS ENGLISH
ECONOMICS	BUSINESS SPELLING
CONSUMER-PRODUCER ECONOMICS	SALESMANSHIP
BUSINESS PRINCIPLES	RETAILING

Gregg SERVICE

Gregg service will help you to make a success of commercial teaching. Any teacher, by writing, can receive the benefit of counsel from our staff of commercial teaching experts. With the classroom adoption of a Gregg text you receive much free material in the form of teacher's manuals, methods, materials, and courses of study.

*Write our nearest office for a
complete list of Gregg Publications*

THE GREGG PUBLISHING COMPANY

New York

Chicago

San Francisco

Boston

Toronto

London



TODAY

AMERICA'S FIGHTING MEN
HAVE FIRST CALL ON OUR SERVICES

TOMORROW

After Victory we will continue to weave the nationally known "Magee Quality" into our Carpets and Rugs.

THE MAGEE CARPET CO.

Mills: BLOOMSBURG, PA.

Sales Offices in NEW YORK, CHICAGO, BOSTON, SAN FRANCISCO

Compliments of

BLOOMSBURG MILLS, INC.

BLOOMSBURG, PA.

SUCCESS

and

HAPPINESS

To the
Class of 1944

DOBYNS

Portraits by Photography

Compliments of

SNYDER'S DAIRY

DANVILLE

BLOOMSBURG

HAZLETON

Compliments of

LETTERMAN'S BAKERY

BLOOMSBURG, PA.

Compliments of
SEARS, ROEBUCK & CO.

Main Street

BLOOMSBURG, PENNSYLVANIA

THE BARBER SHOP

at the Foot of the Hill

SANITARY
EXPERT
WORKMANSHIP

Air Conditioned

RAY HARLEY

HORACE WILLIAMS

*CLOTHIER and
FURNISHER*

When It's a

MARIETTA

It's a
First-Edition Fashion

BART PURSELL

Bloomsburg's Leading Clothing Store

PRICES TO FIT THE PURSE

- Anything for Men
 - New Boys' Department
 - Service Uniforms

The Town's Leading Dry Cleaner

FRED R. HIPPENSTEEL

CLOTHING
AND
FURNISHINGS

The Arrow Shirt Man

BLOOMSBURG, PA.

Compliments of

LETTERMAN'S BAKERY

BLOOMSBURG, PA.

AN OLD TRADITION

"Meet Your Friends at the

H & C"

Our Motto Will Always Be—
To Serve You and—To Please

Hollingshead & Christian

MOYER BROS., Inc.

Bloomsburg's Leading Prescription
Drug Store

•

**YOUR PRESCRIPTION DRUGGIST
SINCE 1868**

Congratulations to the GRADUATE.

Stop at Rea & Derick
When in Town

REA & DERICK, INC.

**HOUSENICK
MOTOR CO.**

Ford, Mercury-8
Lincoln, Lincoln-Zephyr

Sales and Service

Main and East Streets Bloomsburg, Pa.

SNEIDMAN'S

Bloomsburg's
Leading Jewelers

For REFRESHMENTS and EATS

Don't Forget

TEXAS LUNCH

142-144 East Main Street

HESS SMOKE SHOP

and BILLIARD PARLOR

BLOOMSBURG, PA.

7 Tables

WILLIAM J. HESS, Prop.

Bloomsburg Sporting Center

Compliments of

J. C. PENNEY CO.

BLOOMSBURG, PA.

FEST'S
LUNCHES

BLOOMSBURG, PA.

NATION-WIDE
TEACHERS' AGENCY

1530 Chestnut St. Philadelphia 2, Pa.
Phone Rittenhouse 6223

For over 26 years we have rendered continuous placement services to both beginning and experienced teachers of Pennsylvania and nearby states. There is an increasing demand for teachers.

J. B. STOKES, JR., Proprietor
Miss LILLIAN CAMPBELL, Manager

ROCK'S RESTAURANT

Cor. East and 5th Sts. Bloomsburg, Pa.

SPECIAL PLATTER LUNCHES
HOME COOKING

Dining Room Service All Hours

ROCK GUINARD, Prop.

Phone 9172

Compliments of

CARTER'S

BLOOMSBURG, PENNSYLVANIA

THE NEIGHBORLY
CAPITOL
THEATRE



A Friendly
Comerford Theater



JAMES REILLY, *Manager*

RACUSIN'S

EXCLUSIVE but

not EXPENSIVE

RITTERS'

Everything for School
and Office

Stationery, Magazines, Blank Forms,
Typewriters, Office Supplies,
Lending Library, and
Greeting Cards

Main Street BLOOMSBURG, PA.



Your
OBITER

Was Designed, Engraved, Printed
and Bound in our College
Annual Department.



We do a variety of Commercial
Printing — including Catalogs,
College and School Year Books
Consult Us before placing your
next order for Printing.

GRIT PUBLISHING COMPANY
WILLIAMSPORT, PENNA.

Publishers · Printers · Designers · Engravers.



Index

	<i>Page</i>
Activities	65
Alpha Psi Omega	76
President Harvey A. Andruss	10
Art	21
Athletics	39
"B" Club	90
Bloomsburg Players	79
Business Education	13
Business Education Club	85
Business Manager	20
Classes	57
College	9
Community Government Association	66
Co-operating Schools	23
Day Men's Association	72
Day Women's Association	70
Dedication	7
Dietitian	20
Education	11
Freshman Class	62
Football	92
Girls' Sports	93
Health Education	15
Interfraternity Council	75
Junior Class	58
Kappa Delta Pi	71
Dr. Marguerite Kehr	12
Lt. John Koch	12
Language	16
Library	21
Maroon and Gold	87
Music	19
Navy	49
Navy Administration	51
Dr. Thomas P. North	11
Obiter	80
Pi Omega Pi	77
Phi Sigma Pi	78
Resident Nurse	20
Science and Mathematics	17
Science Club	84
Seniors	25
Senior Class Advisers	26
Seniors in Service	46
Social Studies and Geography	18
Sophomore Class	60
Student Christian Association	86
Superintendent of Grounds	20
Swimming	96
Track	97
Training School	22
Wrestling	93
Varsity Basketball	91
V-5's	52
V-12's	51
Waller Hall Association	68
Women's Chorus	82



