

LH1.B55

\*00111324\*



THE LIBRARY

LIBRARY





LIBRARY  
STATE UNIVERSITY  
of Iowa  
Bloomington, Iowa 1901

CLASS











**BLOOMSBURG STATE TEACHERS**

*The*

# 43 OBLITER

PUBLISHED BY THE  
**SENIOR CLASS**



LH1.B55

\*00111324\*



**COLLEGE**



*Bloomsburg*  
PENNSYLVANIA



## CONTENTS

### Part I.—UNITY

CLASSES—It is the strength of union and the power of co-operation which will make a lasting peace possible.

### Part II.—LEADERSHIP

ADMINISTRATION—The wisdom and prudence of a strong guiding hand will help overcome all obstacles.

### Part III.—PHYSICAL FITNESS

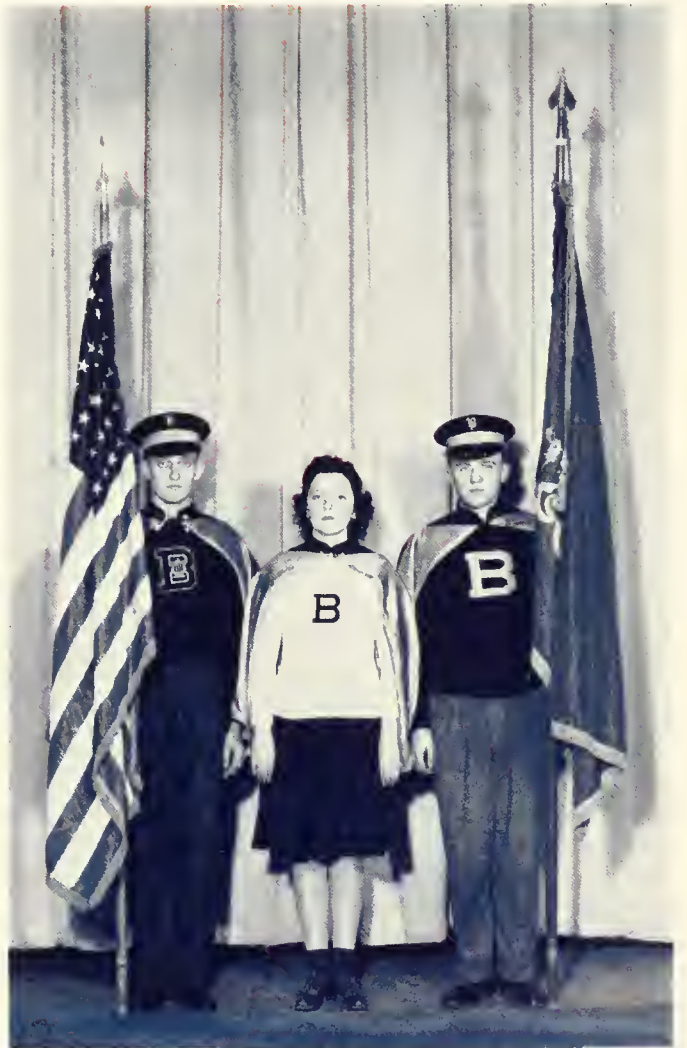
ATHLETICS—Only the strong of mind and the strong of body can survive the onslaught of brute tyranny.

### Part IV.—PREPARATION

ORGANIZATIONS—Being ready is one means of being secure. It's the little things which we do now that prepare us for the future.



# on to Victory ★



36122



*to George C. Buchheit*



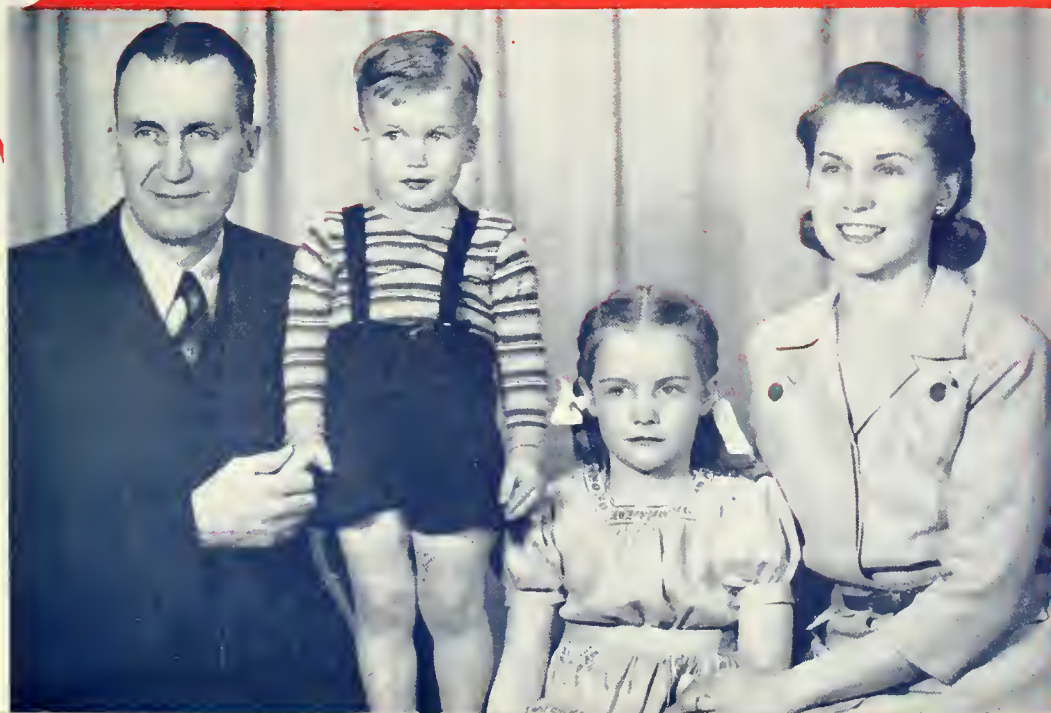
SPORTSMAN . . . TEACHER

★ GENTLEMAN . . . LEADER



# *we dedicate this volume*

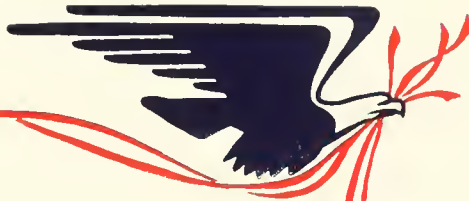
*I*T is with the feelings of deepest gratitude and admiration that we, the Class of 1943, seek to pay you our highest tribute by dedicating The 1943 OBITER to you. In your quiet way you have shown us that patient thinking can render a service. On the athletic field, in the classroom, and as a class adviser you have given us guidance, courage, and the determination to get out there and "kick up the cinder." In victory and defeat you have shown us what true sportsmanship is and as we leave for our journey into the dark future, we shall pause to look back and recall your wise guidance and the power of profound thought, and thus armed, we shall go forth with confidence and a determination to win.



COACH







**UNITY** ★





Dr. Kinder C. Kuster, Mr. George C. Buchheit, Dr. E. H. Nelson

## Class Advisers

<i>Freshman</i>	- - - - -	DR. KUSTER
<i>Sophomore</i>	- - - - -	DR. NELSON
<i>Junior</i>	- - - - -	MR. BUCHHEIT
<i>Senior</i>	- - - - -	DR. NELSON

As we pause on the threshold, we can't help but think of the progress we, as a class, have made in four years at B. S. T. C. Yet many of our endeavors would have been nothing more than futile blunders into the dark had it not been for the judgment and guidance of our advisers. We are sincerely grateful for your unstinting and untiring assistance.

# '43 Class Honor Roll

## U. S. ARMY

J. Robert Albertson  
Raymond O. Algatt  
Paul L. Brown  
Morris M. Cabelly  
Thomas Cannard  
Samuel Cohen  
Lawrence H. Doster  
Alexander Foster  
Charles Harmany  
Gilbert Henrie  
John P. Hubiak  
Matthias Kashuba  
Robert Kessler  
Bertram Killian  
Ray Klees  
Albert Lutskus  
Joseph M. Madl  
George Menarick  
C. Kirtland Moore  
Frank A. Pettinato  
Theodore Radai  
Richards Rowlands  
Hervey R. Thomas  
Ralph A. Tipton  
Merrill W. Troutman  
Robert Vanderslice  
Edward A. Walinchus  
Robert Warrington  
Herman J. Wesenyak  
Harry Zavacky

## U. S. COAST GUARD

John A. Steinruck

## U. S. ARMY AIR CORPS

James J. Dormer  
Edward Hollis  
Donald Jenkins  
John A. Maksimiuk  
Nelson M. Oman  
Anthony Yenalavage

## U. S. NAVY

Ray E. Bower  
William E. Horvath  
Conrad E. Schaeffer  
Daniel W. Wagner

## U. S. NAVY AIR CORPS

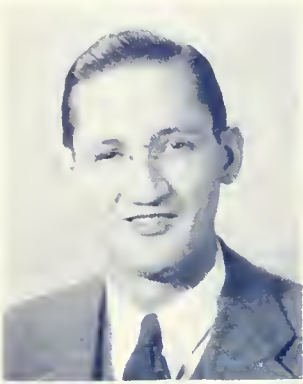
Paul Kellogg

## U. S. MARINE CORPS

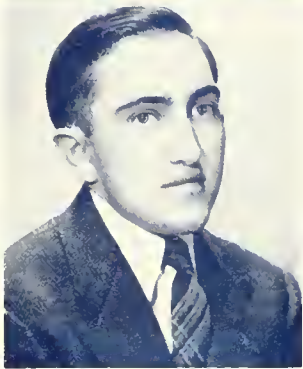
Vincent Husovsky



# Senior Class



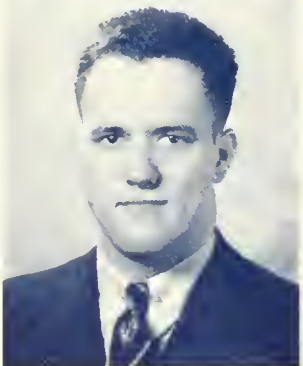
John F. Witkoski  
President



Herman Vonderheid  
Vice President



Elizabeth Bierman  
Secretary



William H. Barton  
Treasurer

FOUR SHORT YEARS have vanished into the past and all that remains is the memory of pleasant friendships, intimate acquaintances, hard work, and an unconquerable desire to carry on.

As we look at our ranks, we see that from a class numbering over 200 less than 100 remain, we realize our good fortune and also our duty to carry on the tradition of B. S. T. C.

Our work, progress, and accomplishments here and our greater interest in education and its problems are the results of the guidance of our advisers and instructors. To them we extend a heart-felt appreciation.

At the controls during our four years have stood George Piarote, Boyd Buckingham, and John Witkoski. Their work merits notice.

As graduation draws near, we are glad to have been able to finish our work at Bloomsburg and to the future classes of B. S. T. C. we extend our best wishes.

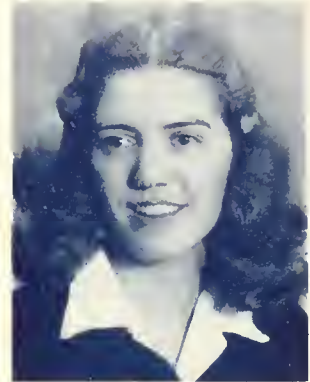




ELEANOR MARIE ALTHOFF

Elementary Mt. Carmel

Waller Hall Association 1, 2, 3, 4; Governing Board 3; Chairman Hostess Committee 4; Junior Class Representative 3; Mixed Chorus 1, 2, 3, 4; Maroon and Gold 2, 3; Poetry Club 2, 3, Vice President 3, Secretary 2; Social Usage Club 1; Freshman Girl Representative to Community Government Association; Student Christian Association 1; Chairman, Program Committee Frosh Hop; OBIITK Staff 3, 4.



ELIZABETH JULIA BARTHA

"Libby"

Elementary Yeagertown

Poetry Club 2, 3, 4; Mixed Chorus 2, 3; Social Usage Club 2, 3; Kappa Delta Pi 3, 4; Science Club 2; Public Affairs Forum 2; Student Christian Association 2; Senior Representative on Governing Board 4.

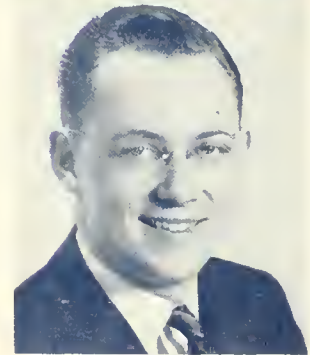


LEE ROY BEAUMONT

"Lee"

Business Marcus Hook

Dramatic Club 1, 2, 3, 4; Business Education Club 1, 2, 3, 4, Program Chairman 3, Secretary 4; Social Usage Club 2, 3, 4, Program Chairman 2, 3; Kappa Delta Pi 3, 4, Treasurer 4; Pi Omega Pi 3, 4; Alpha Psi Omega 3, 4; Phi Sigma Pi 4; Maroon and Gold, Business Manager 4; Mixed Chorus 1; North Hall Association 4; Delegate to Eastern Commercial Teachers Association Convention 3; "Pride and Prejudice," Major Part 3; "George Washington Slept Here," Major Part 3; "Arsenic and Old Lace," Major Part 4.



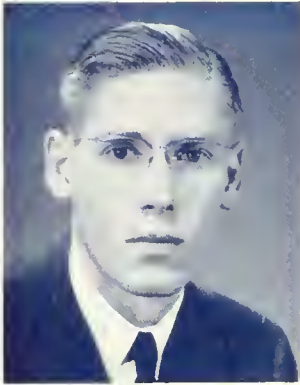
CARL S. BERNINGER

"Carl"

Secondary Catawissa

Orchestra 1, 2, 3, 4; Mixed Chorus 1, 2, 3, 4, Librarian 1, Treasurer 4; Dramatic Club 1, 2, 3, 4, Committee Chairman 1, 2, President 3; Band 1, 2, 3; Day Men's Association 1, 2, 3; Community Government Association 1, 2, 4, Social Committee; Alpha Psi Omega 2, 3, 4; A Cappella Choir 1, 2, Librarian 2; Musical Comedy 1, 2; Kappa Delta Pi 3, 4; Inter-Fraternity Council 3, 4; Men's Glee Club 3; Community Government Association Hospitality Committee 3; Phi Sigma Pi 4; Student Christian Association 4, Program Chairman; OBIITK Staff 4; "The Fool," Major Role 2; "Pride and Prejudice," Role and Student Director 3; "Arsenic and Old Lace" 4.





### LOREN L. COLLINS

"Doc"

Secondary Nanticoke

Mixed Chorus 1, 2, 3, 4; Maroon and Gold Orchestra 1, 2, 3, 4; Maroon and Gold Band 1, 2, 3; A Cappella Choir 1, 2, 3, Librarian 2; Science Club 1, 2, Program Chairman, Treasurer 2; Student Christian Association 2, 4; Gamma Theta Upsilon 3, 4, Treasurer 4; First Aid Instructor 3, 4; Program Chairman of Assembly 3; Geography Club 1; Public Affairs Forum 2.

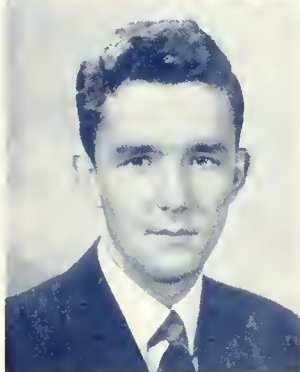


### IRVING T. GOTTLIEB

"Iri"

Business York

Social Usage Club 1, 2, 3, 4; Business Education Club 1, 2, 3, 4; Dramatic Club 2, 3, 4; Pi Omega Pi 2, 3, 4, Vice President 4; North Hall Association 2, 3, 4; Alpha Psi Omega 3, 4; Kappa Delta Pi 3, 4; Maroon and Gold 3, 4; ORBITER 3; Chairman of Men in Service Committee of the College Council of War 3, 4; Senior Class Ring Committee Chairman 4; Day Men's Association 1; P. O. P. Representative to Inter-Fraternity Council.



### DAVID M. JONES

"Dave"

Business Shamokin

Student Christian Association 1, 2, 3, 4, Vice President 3; Business Education Club 1, 2, 3; Intra-mural Basketball 1, 2, 3; Baseball 1, 2, 3, Manager 1, 2, 3; Phi Sigma Pi 2, 3, 4, Vice President 4; Maroon and Gold 2, 3, 4, Editor-in-Chief 3; Day Men's Association 1, 2; Treasurer of Freshman Class; North Hall Men's Association 3, 4; Soccer 4, Manager; Poetry Club 2; Social Usage Club 3, Treasurer; Inter-Fraternity Council 4, Vice President; Air Raid Warden 4; Air Force Reserve Officers Corps; Vice President of Sophomore Class.



### JOSEPH KOZLOWSKI

"Joe"

Secondary Mt. Carmel







JEAN A. LANGAN  
*"Jean"*

Business Duryea

Dramatic Club 1, 2, 3, 4; Waller Hall Association 1, 2, 3, 4; Columban Club 1, 2, 3, 4; Business Education Club 1, 2, 3; Alpha Psi Omega 4; Poetry Club 2.



FREDERIC MCCUTCHEN  
*"Fred"*

Elementary South Mountain

The Geographic Society; Alpha Psi Omega, President; Science Club.



EILEEN MELUSKEY  
*"Eileen"*

Business Shenandoah

Waller Hall Association 1, 2, 3, 4; Mixed Chorus 1, 2, 3; Business Education Club 1, 2; Student Christian Association 1; Dramatic Club 2; Poetry Club 2.



GEORGE ELWOOD MILLER  
*"George"*

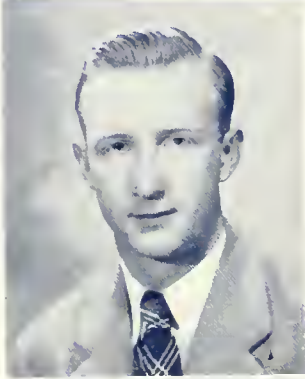
Secondary Wilkes-Barre

North Hall Association 1, 2, 3, 4, President 4; Dramatic Club 1, 2, 3, 4; Varsity Tennis 1, 2; Mixed Chorus 1, 2; Student Christian Association 1, 2; Intra-mural Basketball 1, 2; Alpha Psi Omega 3, 4, President 4; Community Government Association 4; Inter-Fraternity Council 4; Phi Sigma Pi 4; National Educational Program 4.





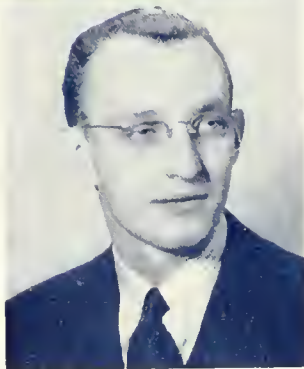
THELMA F. MILLER  
Teacher-in-service Nescopeck



HUGH S. NILES  
"Red"

Business Wellsboro

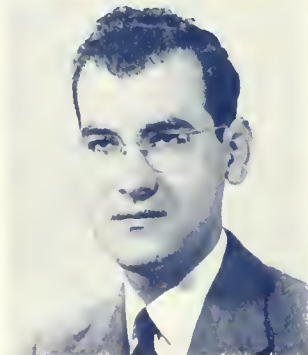
Basketball 1, 2, 3, 4; Baseball 1, 2, 4, Co-Captain 4; Phi Sigma Pi 2, 3, 4, President 4; Cross Country 1, 2, Captain 2; North Hall Men's Association 2, 3, 4; Track 2, 3; Soccer 3, 4; Day Men's Association 1; Business Education Club 1; Primary Civilian Pilot Training 2; Secondary Civilian Pilot Training 3; Social Usage Club 3; Business Manager of OBIER 4; Softball 4.



RAYMOND B. PERRY  
"Perry"

Secondary Shamokin

Band 1, 2, 3, 4; Orchestra 1, 2, 3, 4; Social Usage Club 2; North Hall Association 4.



GEORGE PIAROTE  
"Jackson"

Business Lebanon

Business Education Club 1, 2, 3, 4; Intra-mural Basketball 1, 2, 3, 4; North Hall Association 1, 2, 3, 4; Student Christian Association 1, 2; Maroon and Gold 3, 4; College Council 1; President of Freshman Class; Chairman of Sophomore Cotillion; Chairman of Junior Prom; Chairman of Senior Ball; Chairman of Fire Drill Committee 3; Chairman of Entertainment Committee 4.





CATHERINE A. SEDLAK  
"Tina"

Secondary Dupont

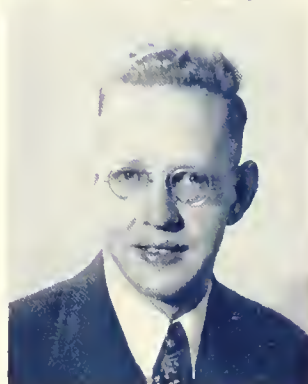
Waller Hall Association 1, 2, 3, 4; Dramatic Club 1, 3, 4; Mixed Chorus 1, 2, 3; A Cappella Choir 1, 2; College Council, Hospitality Chairman 4.



WILLIAM H. SELDEN, JR.  
"Pete"

Business Berwick

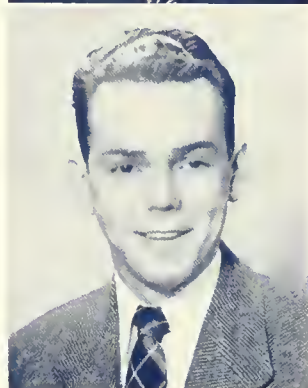
Business Education Club 1, 2, 3, 4; Student Christian Association 1, 3, 4; Maroon and Gold Band 2, 3, 4, Librarian 3; Day Men's Association 1, 2; North Hall Association 3, 4; Social Usage Club 3, 4; OBITER 3, 4; Intra-mural Basketball 3, 4; Science Club 1; Maroon and Gold Reporter 2; Phi Sigma Pi 4; *Handbook*, Associate Editor.



ELWOOD M. WAGNER  
"Snooks"

Business Hamburg

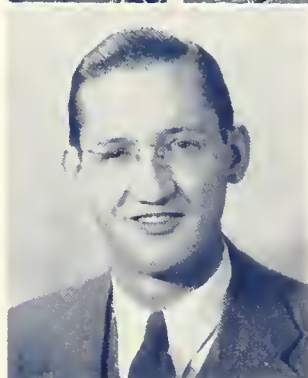
Student Christian Association 1, 2, 3, 4; Soccer 1, 2, 3, 4; North Hall Men's Association 1, 2, 3, 4; Business Education Club 1, 2, 3; Phi Sigma Pi 2, 3, 4, Vice President 3; Social Usage Club 3, 4; Track 1, 2; Primary Civilian Pilot Training 2; Secondary Civilian Pilot Training 3; Basketball 3; College Council of Defense 4.



JOHN F. WITKOSKI  
"Jack"

Business Mt. Carmel

Business Education Club 1, 2, 3, 4, General Chairman Commercial Contest 3, President 4; Phi Sigma Pi 2, 3, 4, Assistant Secretary 3, Secretary 4; College Council 3, 4; Pi Omega Pi 3, 4; Kappa Delta Pi 3, 4; Day Men's Association 1, 2; Mixed Chorus 1, 2; Tennis Team 1, 2, Varsity 1, Varsity Captain 4; Social Usage Club 3; Junior Class President; Senior Class President; Inter-Fraternity Council 4.



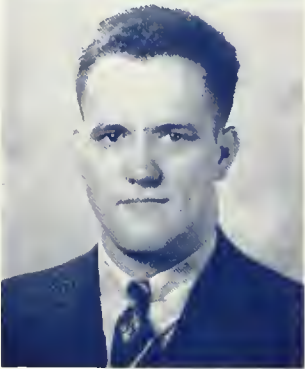




JOHN M. APPLE  
"Apple"

Secondary Keiser

Day Men's Association 1, 2, 3, 4; Intra-mural Basketball 1, 2, 3; Mixed Chorus 2, 4; Science Club 2; Maroon and Gold 3.



WILLIAM H. BARTON  
"Bill"

Business Bloomsburg

Day Men's Association 1, 2, 3, 4; Business Education Club 1, 2, 3, 4; Mixed Chorus 1, 2, 3, 4, Librarian 2, President 4; A Cappella Choir 1, 2, 3, 4, Librarian 1; Intra-mural Basketball 1, 2, 3; Student Christian Association 3, 4, President 4; Social Usage Club, President, 4; Men's Glee Club 3; Track 1, J. V. Letter; Soccer 3, J. V. Letter; Treasurer of Senior Class; OBITER Staff 4.



ELIZABETH BIERMANN  
"Betty"

Secondary Wyoming

Dramatic Club 1, 2, 3, 4, Secretary 3; Mixed Chorus 1, 2; Waller Hall Governing Board 1, 3; Alpha Psi Omega 3, 4, Secretary 4; Secretary of Senior Class.



CHARLES BOMBOY

Secondary Bloomsburg

Day Men's Association 1, 2, 3, 4; Football 1, 3; Basketball 3, 4; Orchestra 1; Baseball 3; Soccer 4.

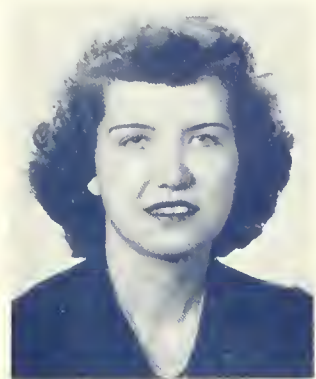




**JUNE HELEN BRAMBLE**  
*"Jimmy"*

Business Bloomsburg

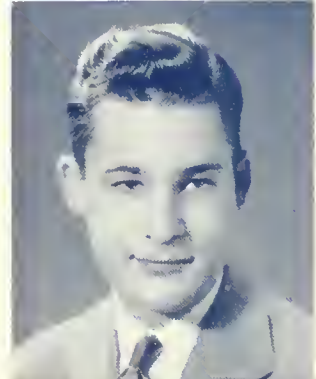
Mixed Chorus 1, 2, 3, 4; Columban Club 1, 2, 3, 4; Business Education Club 1, 2, 3; Day Women's Association 1, 2, 3; Social Usage Club 3; Public Affairs Forum 3.



**BOYD F. BUCKINGHAM**  
*"Buck"*

Secondary York

Dramatic Club 1, 2, 3, 4, Vice President 2; Social Usage Club 1, 2, 3, 4, Treasurer 2, Historian 3; Day Men's Association 1, 2, 3; Alpha Psi Omega 2, 3, 4, President 3; Phi Sigma Pi 2, 3, 4; College Council 3, 4, President 4; Kappa Delta Pi 3, 4; North Hall Association 4; College Council of War 4; Community Government Association 4, President; President of Sophomore Class.



**KATHRYN CAMPBELL**

Elementary Bloomsburg

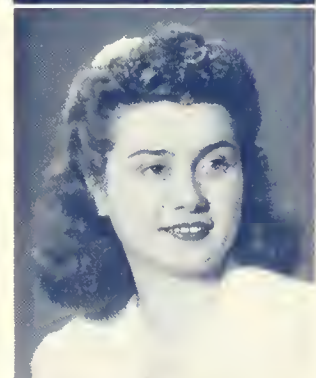
Mixed Chorus 1, 2, 3, 4; Kappa Delta Pi 3, 4, Corresponding Secretary 4; Girls' Sports, Numerals.

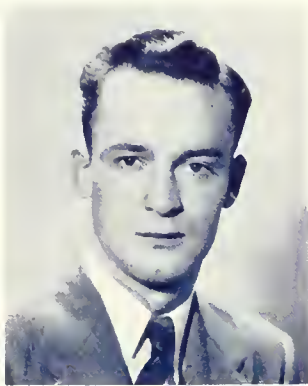


**MARJORIE R. COOMBS**

Secondary Wapwallopen

B Club 1, 2, 3, 4; Mixed Chorus 1, 2, 3, 4; Day Women's Association 1, 2, 3, 4; Dramatic Club 2, 3, 4; Girls' Athletics 1, 2, Numerals 1, "B" 2.

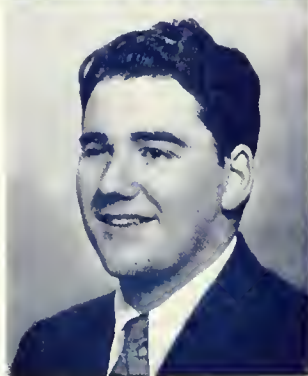




WAYNE DEANER

Business Harrisburg

Baseball 1, 2, 3, 4; Intra-mural Basketball 1, 2, 3, 4; Soccer 2, 3; Business Education Club 1; Cheerleader 1; Civilian Pilot Training 3.



CARL E. DILTZ

Business Benton

Soccer 4, Varsity Award; Day Men's Association 4; Treasurer; Phi Sigma Pi 4; Fire Committee 4; OBITER Staff 4.



SARA JEAN EASTMAN

"Snuffy"

Secondary Bloomsburg

Day Women's Association 1, 2, 3, 4; Science Club 1, 2, 3, 4, Secretary 3, Vice President 4; Mixed Chorus 2, 3, 4; Dramatic Club 3, 4; Soccer 1; Student Council.



RUTH A. EBRIGHT

Business Mifflintown

Student Christian Association 1, 2, 3, 4, Treasurer 3, 4; Business Education Club 2, 3, 4; Waller Hall Association 2, 3, 4, Supervisor 2, Chairman House Committee 3, President 4; Sports 2, 3, Numerals 2, Letter 3; Pi Omega Pi 3, 4, Secretary 4; Kappa Delta Pi 3, 4; College Council 4; B Club 4.







JOANNA FICE  
"Jo"

Business Athens

Business Education Club 1, 2, 3, 4, Executive Committee 3; Mixed Chorus 1, 2, 3, 4; Waller Hall Governing Board 2, 3, 4; Secretary 3; Pi Omega Pi 2, 3, 4, Historian 4; Student Christian Association 1, 4; Social Usage Club 2, 3, 4; Community Government Association 3, 4, Secretary 3, Vice President 4; Kappa Delta Pi 3, 4; Inter-Fraternity Council 4.



LOIS E. GODLESKI

Business Mt. Carmel

Business Education Club 1, 2, 4; Poetry Club 1, 2, 3; Student Christian Association 1; Social Usage Club 3; Mixed Chorus 4.



MARY JESS HACKENBERGER  
"Hackie"

Elementary Mifflintown

Student Christian Association 1, 2, 3, 4, Publicity Chairman 3, 4; Governing Board 3, 4; Poetry Club 2; *Maroon and Gold* 3.

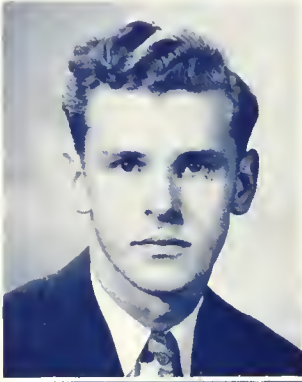


RUTH M. HARTMAN

Business Orangeville

Day Women's Association 1, 2, 3, 4; Business Education Club 1, 3, 4; Girls' Athletics 1, 2, 3; Mixed Chorus 1, 4; Poetry Club 2.





EDWARD F. HENDRICKS

"Ed"

Secondary

Wilkes-Barre

Track 2, 3, 4; Social Usage Club 2, 4; Science Club 2, 4; Intra-mural Basketball 2, 3; J. V. Basketball 4; Soccer 3, 4.



REBA HENRIE

"Reb"

Secondary

Mifflinville

Day Women's Association 1, 2, 3, 4, Secretary 2; Mixed Chorus 1, 2, 3; Girls' Athletics 1, 2, 3, Numerals 2, "B" 3; Election Committee 1, 2, 3; Maroon and Gold 3, 4; Business Education Club 1; College Council 3; B Club 4.



KATHRYN ALICE HESS

"Hessie"

Elementary

Orangeville

Day Women's Association 1, 2, 3, 4, Social Committee 2, 3; B Club 1, 2, 3, 4, President 3, 4; Girls' Athletics 1, 2, 3, 4, Numerals and "B" 1, Three Chevrons 2, Two Chevrons 3, Two Chevrons 4; Mixed Chorus 1, 2, 4; Social Service Club 3, 4; Band 2.



RUTH B. HOPE

Elementary

Coatesville

Waller Hall Governing Board 1, 3, 4, Vice President 3, Committee Chairman 4; Mixed Chorus 1, 2, 4; Student Christian Association 2, 3, 4, Vice President 3; Social Usage Club 2, 3, 4; Social Service Club 2, 3, 4, President 4; A Cappella Choir 1, 2; Awards Committee 2, 3, Co-Chairman 2; Chairman 3; Kappa Delta Pi 3, 4, Recording Secretary 4; Women's Chorus 3; College Council of Defense 3; Community Government Association 2, Social Committee; Maroon and Gold 1; College War Council 4; OBITER, Associate Editor 4; Musical Comedy "Fumbles Forgotten" 1; Musical Comedy "Burned Bridges" 2; Treasurer of Junior Class.





SARA E. HOTTENSTEIN  
"Sally"

Business Milton

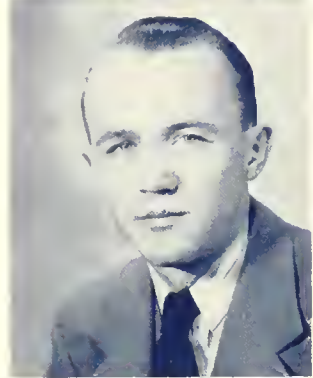
Student Christian Association 1, 2, 3, 4; Business Education Club 1, 2, 3, Executive Board 2; Waller Hall Association 1, 2, 3, 4, Supervisor 2, Vice President 4; Mixed Chorus 1, 2; Social Usage Club 3, 4; Girls' Chorus 3; Dining Room Committee 3, Co-Chairman; Men-in-Service Committee 3; Student Defense Council 3; Governing Board 3; OBITUARY Staff 4.



JOHN HUBIAK

Business Forest City

Business Education Club 1, 2, 3, 4, Vice President 3, Acting Secretary 4; *Maroon and Gold* 1, 2, 3, 4, Managing Editor 3, Editor 4; Public Affairs Forum 1, 2, 3, Vice President 2, President 3; Pi Omega Pi 2, 3, 4, President 4; Varsity Track 2, 3, 4; Kappa Delta Pi 3, 4, President 4; J. V. Cross Country 2; J. V. Football 3; Junior Class Vice President 3; Primary Civilian Pilot Training 3; Phi Sigma Pi 4; First Aid Instructor 4; North Hall Association 4; Inter-Fraternity Council 4, Secretary; OBITUARY Editor 4; College Representative in Berwick Marathon 4.



DOROTHY R. JOHNSON  
"Dottie"

Elementary Berwick

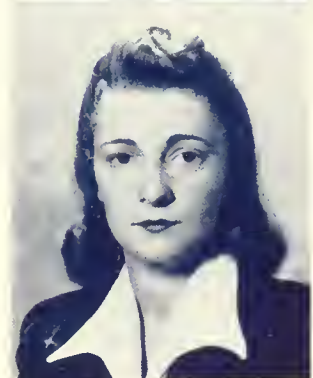
Day Women's Association 1, 2, 3, 4; Public Affairs Forum 1; Girls' Athletics 2, Numerals; Language Club; Mixed Chorus 3, 4; Representative to Day Women's Association 4.



CATHERINE JONES  
"Kay"

Elementary Shickshinny

Mixed Chorus 1, 2, 3, 4; Student Christian Association 1, 2, 3, 4; A Cappella Choir 1, 2; Social Service 2, 4; Head Waitress in College Dining Room 4.







BETTY KATERMAN  
"Kitty"

Secondary Bloomsburg

Dramatic Club 1, 2, 3, 4, Secretary 2, Vice President 4; Mixed Chorus 1, 2, 3; Alpha Psi Omega 2, 3, 4, Secretary 3; Kappa Delta Pi 3, 4, Historian 4; Wild Hobby Horses 1; A Cappella Choir 2; "The Fool" 2; "Pride and Prejudice" 3; Budget Committee 4.



MARY KATHERINE KELLY

Elementary Bloomsburg

Dramatic Club 1, 2, 3, 4; Mixed Chorus 1, 2, 3; Alpha Psi Omega 3, 4; Poetry Club 4.



JOYCE W. KNORR

Business Wapwallopen

Day Women's Association 1, 2, 3, 4; B Club 1, 2, 3, 4; Girls' Athletics 1, 2, Numerals 1, "B" 2; Business Education Club 1, 2, 3; Mixed Chorus 2, 3, 4; Social Usage Club 3.



ERNEST D. KOCHER  
"Erny"

Secondary Espy

Day Men's Association 1, 2, 3, 4; Mixed Chorus 1, 2, 3, 4; A Cappella Choir 1, 2; Band 1, 2, 3; Orchestra 4; Track 1, Assistant Manager.





IRENE M. KULIK

Secondary Mt. Carmel

Day Women's Association 1, 2, 3, 4, Official Committee, House Chairman; Science Club 1, 2, 4, Secretary 4; Mixed Chorus 1, 4; Kappa Delta Pi 3, 4; Handbook Committee 3, Assistant Editor; Maroon and Gold 4.



JEAN M. KUSTER

"Jeanie"

Secondary Bloomsburg

Orchestra 1, 2, 3, 4; Dramatic Club 2, 3, 4, Vice President 3, Secretary 4; Soccer 1, 2; Hockey 1, 2; Alpha Psi Omega 3, 4; Kappa Delta Pi 3, 4; Science Club 1; Language Club 1; Mixed Chorus 2; Secretary of Junior Class 3; Co-Chairman of Assembly Program Committee; "Pride and Prejudice" 3.



MARGARET E. LAMBERT

"Peggy"

Elementary Elysburg

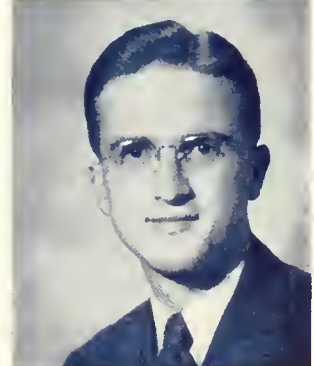
Mixed Chorus 4; Student Christian Association 4; Social Usage Club 4; Kappa Delta Pi 4.



WINTON HAROLD LAUBACH

Secondary Benton

Mixed Chorus 2, 3, 4; Phi Sigma Pi 3, 4; Kappa Delta Pi 3, 4; Day Men's Association 1, 2, 3, 4, President 4; Science Club 1; Community Government Association 4.



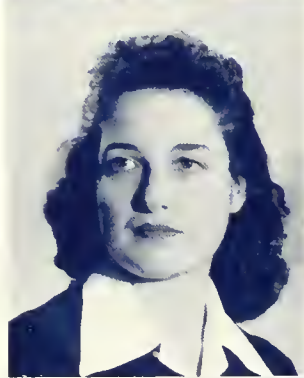


### VIRGINIA LEE LAWHEAD

"Ginnie"

Elementary Pottsville

Mixed Chorus 1, 2, 3, 4; A Cappella Choir 1, 2, Treasurer 2; Kappa Delta Pi 3, 4; Dramatic Club 1; Girls' Athletics 1, 2, Numerals 1, "B" 2; Social Service Club 4, Treasurer 4; B Club 4; Co-Chairman of Awards Committee; Community Government Association 4, Co-Chairman of Social Committee.



### JOYCE MARIE LOHR

Secondary Berwick

Mixed Chorus 1, 2, 4; A Cappella Choir 1, 2; *Maroon and Gold* 3, 4; Day Women's Association 1, 2, 3, 4, Official Board 3, Social Chairman 3; College Council of Defense 3, 4; Kappa Delta Pi 3, 4; Sophomore Cotillion 2, Program Committee; Junior Prom 3, Program Committee; Senior Ball 4, Chairman of Decorating Committee; Women's Chorus 3; *Handbook* 4, Associate Editor.



### ANDREW F. MAGILL

"Andy"

Secondary Sugarloaf

Day Men's Association 1, 2, 3, 4; Intra-mural Basketball 1, 2, 3, 4; Baseball 2, 3, 4, Varsity, Sweater 3; Football 2, 3, Varsity 3, J. V. Award 2; Gamma Theta Upsilon 3, 4, Vice President 4; Cross Country Track 1, J. V. Award; Science Club 2; Inter-Fraternity Council 3; Soccer 4.



### WALTER MCCLOSKEY

"Whitey"

Business Wilkes-Barre

Baseball 1, 2, 3, 4; Basketball 1, 2, 3, 4, Co-Captain 3; Football 1, 2, 3; Business Education Club 1; Mixed Chorus 1; Social Usage Club 1; Soccer 1.







### RUTH ALICE MONG

Elementary Danville

Day Women's Association 1, 2, 3, 4, Social Committee 3; Poetry Club 1, 2, 3; Social Service Club 3, 4, Executive Committee 3; Language Club 1; Received Numerals 2; Community Government Association 4, Social Committee 4.



### LEONA OAKES

Elementary West Hazleton

Waller Hall Association 1, 2, 3, 4; Columban Club 1, 2, 3, 4; Poetry Club 1, 2, 3; Mixed Chorus 1, 2, 4; Student Christian Association 3, 4; Social Service Club 2, 3; Women's Chorus 3.



### HAZEL R. O'BRIEN

Elementary Benton

Day Women's Association 1, 2, 3, 4; Mixed Chorus 2, 3, 4; Girls' Athletics 2, 3, 4; Poetry Club 1; Social Usage Club 3.



### REYNOLD D. PAGANELLI

"Pag"

Business Wilkes-Barre

North Hall Association 1, 2, 3, 4, Vice President 3, Secretary 4; Columban Club 1, 2, 3, 4, President 3; Band 1, 2, 3; Baseball 1, 2, 3; OBITER Staff 2, 3, 4; Maroon and Gold 3, 4; Dramatic Club 3, 4; Business Education Club 1; Football 1; Social Usage Club 3.





BERNARD M. PUFNAK  
"Bernie"

Business Swissvale

Basketball 1, 2, 3, 4; Social Usage Club 2, 3, 4;  
Business Education Club 1, 2; Soccer 3, 4; Phi  
Sigma Pi 4.



ROSEMARY REILLY

Business Shenandoah

Columban Club 1, 2, 3, 4; Waller Hall Association  
1, 2, 3, 4; Business Education Club 1, 2; Poetry  
Club 1, 2; Mixed Chorus 2.



BARBARA RICK

Elementary Marion Heights

Mixed Chorus 1, 2, 3, 4; Day Women's Association  
1, 2, 3, 4; Science Club 1, 2, 3; Poetry Club 3, 4;  
Language Club 1; Social Usage Club 4; Social Ser-  
vice Club 4.



MARTHA L. ROAN

Business Espy

Mixed Chorus 1, 2, 3, 4; Business Education Club  
1, 2, 3; Day Women's Association 1, 2, 3, 4; Girls'  
Athletics 1, 2, 3; Poetry Club 2.





JEAN C. SIDLER

Business Danville

Day Women's Association 1, 2, 3, 4; Mixed Chorus 1, 2, 3, 4; Business Education Club 1, 2, 3, 4; Social Usage Club 3, 4; Treasurer of Sophomore Class 2.



RUTH E. SLUMAN

Elementary Honesdale

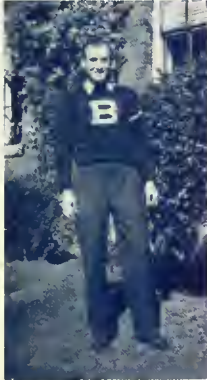
Student Christian Association 1, 2, 3, 4, Member of Cabinet 4; Waller Hall Governing Board 1, 3, 4, Social Committee 3; B Club 3, 4, Treasurer 4; Numerals 2; Poetry Club 2; Public Affairs Forum 2; Social Usage Club 3.



GEORGE SPONTAK

Secondary Pottsville

Track, 1, 2, 3, Put 1, Sweater 2, Shoe 3, Honorary Captain 3, Cross Country 2, 3, Manager 3; Phi Sigma Pi 2, 3, 4; Kappa Delta Pi 3, 4; Science Club 2; Social Usage Club 4.



FRANK M. TAYLOR

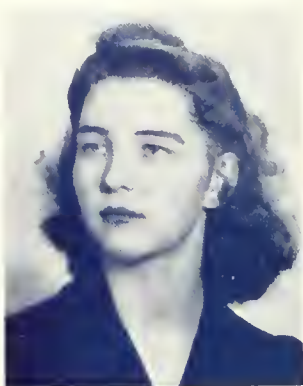
"Frankie"

Business Berwick

Day Men's Association 1, 2, 3, 4; J. C. C. 1, 2, 3; Mixed Chorus 1, 2; Cross Country Track 1, 2; Wrestling 1, 2; OBITER Staff 2, 3; Phi Sigma Pi 3, 4; Kappa Delta Pi 3, 4; Pi Omega Pi 3, 4; Lettermen's Club 2; Maroon and Gold 2; Civilian Pilot Training, Primary and Secondary 3; Freshman Class Treasurer 1; Sophomore Class Treasurer 2.







MARY E. TRUMP

Elementary Danville

Day Women's Association 1, 2, 3, 4; Science Club 1, 2, 3, Treasurer 3; Social Usage Club 2, 3; Language Club 1; Mixed Chorus 2.



ANTHONY VALENTE

"Tony"

Secondary Hazleton

Basketball 1, 2, 3, 4; Student Christian Association 1; Gamma Theta Upsilon 2, 3, 4, Corresponding Secretary 2, Treasurer 3, President 4; Hospitality Committee 3; Fire Drill Committee 4.

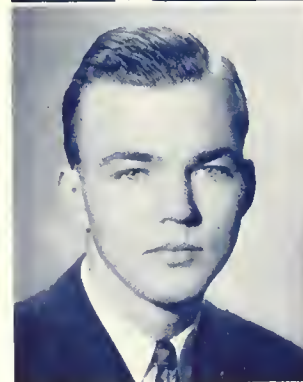


JOSEFINA E. VALLADARES

"Hosie"

Secondary Rio Grande, Puerto Rico

Columban Club 1, 2, 3, 4; Social Usage Club 2, 3; Language Club 1; Mixed Chorus 3; Student Christian Association 4.



EDWIN M. VASTINE

"Ed"

Secondary Riverside

Day Men's Association 2, 3, 4; Intra-mural Basketball 1, 2; Mixed Chorus 2, 3; North Hall Association 1; Student Christian Association 1; Phi Sigma Pi 4.

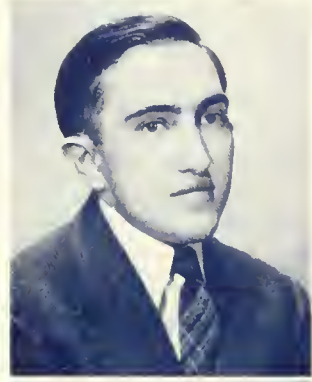




HERMAN E. VONDERHEID

Secondary Wapwallopen

Science Club 1, 2, 3, 4, Program Chairman 4; Student Christian Association 1, 2, 3; North Hall Men's Association 1, 2, 3, 4; Soccer 1; Track Manager 1; Social Usage Club 2; Phi Sigma Pi 4; Vice President of Senior Class 4.



SARA K. WAGNER

Business Pine Grove

Waller Hall Association 1, 2, 3, 4, Committee Chairman 3, Treasurer 4; Student Christian Association 1, 2, 3, 4, Committee Chairman 4; Business Education Club 1, 2, 3, 4, Committee Chairman 3, Vice President 4; Mixed Chorus 1, 2, 3, 4; Community Government Association 4, Fire Co-Chairman 4.

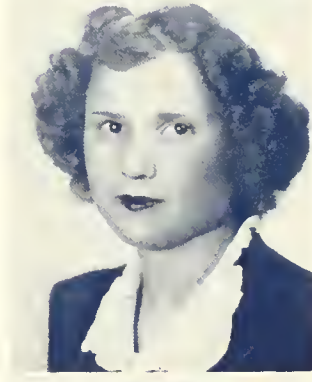


MARTHA H. WRIGHT

"Marcy"

Elementary Berwick

Day Women's Association 1, 2, 3, 4; Social Usage Club 3, 4; Poetry Club 2; Girls' Athletics 2; Language Club 1; Maroon and Gold 1.

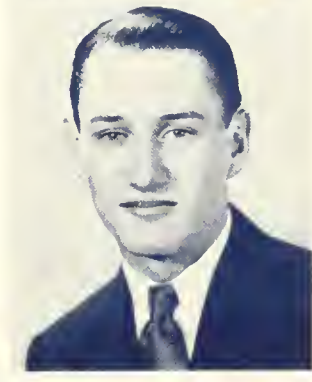


PHILIP R. YEANY

"Phil"

Business Bloomsburg

Business Education Club 1, 2, 3, 4; Day Men's Association 1, 2, 3, 4; Soccer 1, 3, 4, Co-Captain 3, 4; Basketball 1, 2, 3.





### GEORGE H. GILLUNG

Commercial Brockway

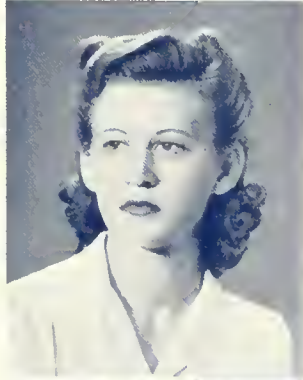
Student Christian Association 1, 2; Social Usage Club 2, 3; North Hall Association 1, 2, 3, 4.



### PEGGY HOLOVIAK

Commercial Nesquehoning

Business Education Club 1, 2, 3, Program Chairman 3; Social Usage Club 1, 2, 3; Poetry Club 1, 2, Publicity Chairman 2; Student Christian Association 2; Waller Hall Association 1, 2, 3, Co-Chairman of House Committee; Mixed Chorus 3; Athletic Numerals 2.



### HELEN KOTCH

Commercial Wilkes-Barre

Business Education Club 1, 2, 3; Social Usage Club 1, 2, 3; Poetry Club 1, 2, Treasurer 2; Student Christian Association 1, 2; Waller Hall Association 1, 2, 3, Governing Board 3; Pi Omega Pi 3; Social Service Club 3.



### IRENE A. KORNASKI

Commercial Mt. Carmel

Business Education Club 1, 2, 3, 4; Waller Hall Association 1, 2, 3, 4, Governing Board 1, 3, House Committee 1, Recreation Committee 2; Student Christian Association 1; Columban Club 1, 2, 3, 4; Poetry Club 2, 3, 4, Treasurer 3; Social Usage Club 2, 3, 4; *Maroon and Gold* 3, 4.







**ELAINE KREISCHER**

Elementary Berwick

Science Club 1; Women's Chorus 2; Social Usage Club 2; Frosh Hop Committee 1; Sophomore Cotillion Committee; Secretary Sophomore Class; *Maron and Gold* 2, 3; Day Women's Association 1, 2, 3, Governing Board Secretary 3.

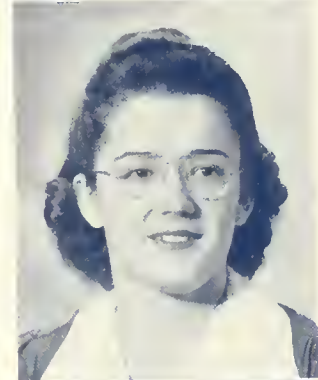


**SARA ELIZABETH LEBENGOOD**

*"Betty"*

Commercial Pottsville

Business Education Club 1, 2; Social Usage Club 1, 2, 3; Waller Hall Association 1, 2, 3; Bloomsburg Players 2, 3; Pi Omega Pi 3.



**GERTRUDE MAKOWSKI**

Elementary Marion Heights

Mixed Chorus 1, 2, 3, 4; Science Club 1, 2; Day Women's Association 1, 2, 3, 4; Social Usage Club 2; Poetry Club 3, 4, Secretary 3.



**ELIZABETH J. MCCULLA**

Business Freeland

Mixed Chorus 1; Social Service Club 1; Basketball 1; Business Education Club 2; Social Usage Club 2.





HELEN M. MILLER

Elementary South Enola

Waller Hall Association 1, 2, 3, Customs Committee Chairman 3, Social Committee 1, Recreation Committee 2, Finance Committee 2; Student Christian Association 1, 2; Poetry Club 1; Social Usage Club 2; Maroon and Gold 1, 2, Assistant Make-Up Editor 1, Assistant Editor 2; Women's Chorus 2; Freshman Hop Publicity Committee; Community Government Association Dining Room Chairman 2.



NAN SIDARI

Commercial Hazleton

Business Education Club 1, 2, 3, 4; Waller Hall Association 1, 2, 3, 4, Chairman Recreation Committee 2, Fire Warden 1, 2, 3, House Committee 1; Dramatic Club 1, 2; Social Service Club 1, 2; Mixed Chorus 1, 2; Social Usage Club 2, 3, 4, Attendance Secretary 3; Poetry Club 2, 3, 4, President 3.



RITA E. SIMPSON

Commercial Wilkes-Barre

Business Education Club 1, 2, 3, 4; Waller Hall Association 1, 2, 3, 4, Governing Board 2, Chairman Christmas Tree Committee 2, Fire Warden 1, House Committee 1, Recreation Committee 2; Social Usage Club 1, 2, 3, 4, Attendance Secretary 2; Poetry Club 2, 3, 4, Secretary 2; Mixed Chorus 1; Men-in-Service Committee 3, 4.



BETTE SINGLEY

Secondary Lewisburg

Maroon and Gold Orchestra 1, 2, 3; Student Christian Association 1, 2; Waller Hall Association 1, 2, 3, Supervisor 1, Art Chairman 3; Mixed Chorus 1, 2, 3; Poetry Club 1; Public Affairs Forum 2; Science club 2; Maroon and Gold Band 3; Social Usage Club 3; Women's Chorus 3.



MARION WALLACE

Elementary Swoyerville

Maroon and Gold 1; Student Christian Association 1, 2; Public Affairs Forum 2; Social Usage Club 2.



Other members of the class of '43 who are graduating or receiving their B.S. degree are:

LEO DONN

DOROTHY MAE GROW

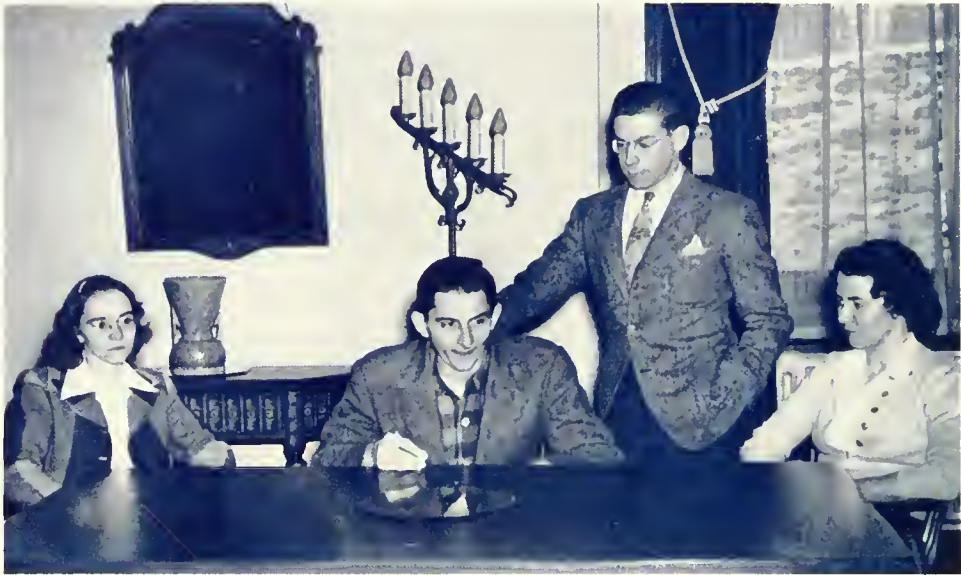
ROBERT ZIMMERMAN

Accelerating its program to meet the new conditions, the Senior Class has pushed up the activities which ordinarily came in May to the middle of the year. The leading event that culminated the Senior Year was the Ball and Banquet which this year, because of transportation was held at the Elks Home in Bloomsburg. The following day Baccalaureate exercises were held in the Auditorium; and on Sunday, January 24, complete commencement exercises were conducted. To pay tribute to the fine work, spirit, and fellowship of the twenty-two graduates, the entire Senior Class took part in these exercises.





# Junior Class



Left to Right- Helen Cromis, George Smith, Donald Rabb, Stella Williams

## OFFICERS

<i>President</i>	- - - - -	GEORGE SMITH
<i>Secretary</i>	- - - - -	HELEN CROMIS
<i>Treasurer</i>	- - - - -	JOHN THOMAS
<i>Boy Representative</i>	- - - - -	DONALD RABB
<i>Girl Representative</i>	- - - - -	STELLA WILLIAMS

# Junior Class History

*A*S MEMBERS OF THE CLASS OF 1944, we turn to Bloomsburg with no few misgivings as to what the future holds in store for us. Our number is depleted and will become more so in the Second Semester when many of us leave when the Reserves are called. We are fortunate in having members of the class in every part of the world and in every branch of the Armed Services and Reserves including Army Air Corps, Marines, Navy, Army and even a W. A. V. E.

We successfully started this year with an evening of fun in which the members and their guests enjoyed first a hayride under a full-moon and then a square-dance in the gymnasium to the music of a real square dance orchestra. Fred Dent, aided and supported by various committees, made the plans for this gala event.

Although some of our members will advance to the Senior Class and we will receive other new ones from the present Sophomore Class, we still possess



traits of sincerity and co-operativeness that we had as "Frosh" and carried through our years at Bloomsburg.

We, as a class, are very proud that one of our number, Martha Knorr, was the first of the girls on the College Campus to join the Armed Services for women. She is a member of the Women's Auxiliary Volunteer Emergency Service now stationed in the fourth Naval District, Philadelphia.

Our exploits have been in many fields. On the Soccer Team we are represented by Leon Hartman, Donald Rabb, Clayton Patterson and on the basketball team we have Vincent Washvilla and Joseph Chesney. In music we have Louise Madl, Marjorie Sharretts, vocalists, and Helen Cromis, Mary Louise Scott, Joyce Hay, Carmel Sirianni, Lillian Baer, George Smith, instrumentalists. In dramatics we have Betty Hagenbuch, Anne Shortess, John Thomas, Betsy Smith, Paul Rowlands, and Stella Williams. We also have many



of our members represented in the various honorary and professional fraternities on the campus.

The class officers, George Smith, President; Helen Cromis, Secretary; John Thomas, Treasurer; and Stella Williams and Donald Rabb representatives to Student Council, with the help and advice of our fine class sponsor, Mr. Walter Rygiel, progressed excellently during the 1942-1943 year.



First Row, Left to Right—Saramarie Dockey, Rita Simpson, Mary Parr, Lillian Baer, Anne Sabol, Florence Faust, Bette Fuller, Effie Patterson  
Second Row—Harold E. Miller, Theodore Mauley, John Thomas, George Smith, C. Barton Scott  
Third Row—Salvatore Mazzeo, Paul Rowlands, Mr. Rygiel

# Sophomore Class



Seated, Left to Right—Margaret Dean, James Zwezig, Bernard Kane, Jeanne Knight  
 Standing—Robert Bunge, Harvey Huber

## OFFICERS

<i>President</i>	- - - - -	BERNARD KANE
<i>Vice President</i>	- - - - -	JAMES ZWEIZIG
<i>Secretary</i>	- - - - -	JEANNE KNIGHT
<i>Treasurer</i>	- - - - -	HARVEY HUBER
<i>Boy Representative</i>	- - - - -	ROBERT BUNGE
<i>Girl Representative</i>	- - - - -	MARGARET DEAN
<i>Historian</i>	- - - - -	BETTY ZONG

# Sophomore Class History

THE CLASS OF 1945 returned to Bloomsburg State Teachers College in the fall of '42 with a new air of confidence, which was destined to make the Sophomore presence felt as a group, and as individuals. They began their career as upperclassmen by educating the "Frosh" to the fact that "actions speak louder than words."

The class of '45 proved its abilities under the able leadership of Bernard Kane, president; James Zweizig, vice president; Jeanne Knight, secretary; Harvey Huber, treasurer; and Betty Zong, historian. Margaret Dean and Robert Bunge were Community Government Association representatives. Mr. Joseph Bailer was class adviser.

The class, as a part of the College Community is organized as a unit of the Council of Defense and is helping to keep contact with members now serving in the armed forces. Boys of '45 that are doing their part for Uncle Sam are:



★  
★  
★

Lester Conner, Glider Division of the Army Air Corps; Elroy Dalberg, Army Air Corps; James Lavelle and James E. Smith, Navy; William Swinesburg, Marines.

The Sophomores hit a new high with their annual chapel program, "The Darktown Jamboree." The quick wit of the interlocutor assisted by the end men, and varied with the rhythmic southern airs of the chorus, not only pleased the audience, but also aided in keeping their spirits high as true hearted Americans.

In the field of sports, the class of 1945 had Harvey Huber and James Zweizig doing their bit on the Varsity Soccer Team. Dick Shearer and Harry John scored their share of points to make victory sure for the Bloomsburg Basketball Team.

At the end of the semester, The Bloomsburg Players presented the play, "Arsenic and Old

Lace," in which the Sophomores are again in the limelight with Harvey Huber and Harry John as members of a fine cast.

As time marches onward, the Sophomore class records an exciting and memorable year in the annals of the school, and extends to the members of the graduating class its best wishes for success in their "walk" of life.



First Row, Left to Right—Lois Wintersteen, Betty Zelmer, Harriet Sterling, Helen Oyer, Mildred Mumney, Roseanna Derr, Shirley Starook, Carol McCoughan  
 Second Row—Frances Foust, Julia Welliver, Lois Bryner, Mary Flaherty, Martha Duck, Anita Behler, Margaret Latscha  
 Third Row—Laura Schoener, Mary Lou Feustemaker, Beth Ertel, Betty Burnham, Wanda Farnsworth, Millard Ludwig  
 Fourth Row—Mr. Bailer, Bernard Kane, Julian Zinzarella, Harvey Huber, Allan McCracken, Betty Zong, Eugene McBride, James Zweizig, Collins Wauch

# Freshman Class



Seated, Left to Right - Royal Conrad, Reginald Remley, Donald Dorsey  
 Standing - Jacqueline Shaffer, Lenore Seybert, Jean Maschal, Peggy Beach

## OFFICERS

<i>President</i>	- - - - -	REGINALD REMLEY
<i>Vice President</i>	- - - - -	ROYAL CONRAD
<i>Secretary</i>	- - - - -	LINORI SEYBERT
<i>Treasurer</i>	- - - - -	JEAN MASCHAL
<i>Boy Representative</i>	- - - - -	DONALD DORSEY
<i>Girl Representative</i>	- - - - -	JACQUELINE SHAFER
<i>Historian</i>	- - - - -	PEGGY BEACH



# Freshman Class History

THE GREAT DOORS of the College opened to us, a very eager young group standing on the threshold of something new and inviting. The new system of classes and the independence we had pleased us very much. We became acquainted at a freshman party given the first night. Mr. Joseph Bailer acted as our temporary class adviser until we were qualified to elect our own.

The following week, customs started and we became very green Frosh under the usual arm bands and dinks. Customs took its usual toll and several of our group appeared in large signs and heavy make-up. We had no stunt day this year; instead, the upper classmen removed our signs and congratulated us as full-fledged members of the college group.



We started right in with our activities. Some of us were on the soccer team which took the place of football this year. George Stasko, Reginald Remley, James Kline, Buddy Hartman, and Roland Kemler helped win several victories. Our Frosh program had us worried for a while, but everyone seemed to like it. The gay nineties came to life in song, dance, and costume.

Next, the eagerly awaited Homecoming finally arrived. We were assigned to committees and helped in every way we could to make Homecoming a big success.

Finally, we elected class officers: President, Reginald Remley; Vice President, Royal Conrad; Secretary, Lenore Seybert; Treasurer, Jean Maschal; Historian, Peggy Beach; Girl Represen-

tative, Jacqueline Shaffer; Boy Representative, Donald Dorsey; and Class Adviser, Doctor Kimber Kuster.

As our first semester came to an end, we breathed a sigh of relief at being well on our way on the road to knowledge.



First Row, Left to Right—Leo Hoffman, Rose Boyle, Elvira Bitetti, Ida Mae Clark, Eileen Fulvey, Dawn Eshleman, Agnes Flaherty, Gloria Belenstro, Betty Van Liew  
 Second Row—Clifton Skow, Ruth Manser, Phyllis Schrader, Jacqueline Shaffer, Athamantia Commtzis, Jean Maschal, June Keller, Wanda Kehler  
 Third Row—Royal Conrad, Althea Parsell, Mary Bets, Peggy Beach, Betty Bryant, Gertrude Harmon, Marjorie Downing, JoAnn Andrews  
 Fourth Row—Henry VonBlolin, Jeanne Keller, Virginia King, Kathleen Hess, Elva Wagner, Arlene Superko, Katherine Lougo, Mary Schroeder, Charles Taylor  
 Fifth Row—Alvin Woodring, Thomas Jones, Evelyn Doney, Mildred Dzuris, Marjorie Stover, Violet Weller  
 Sixth Row—Charles Wagner, Carrie Johnson, Betty Carey, Marilyn Sailer, Elsie Pfall, Ralph Seltzer, Jean Dickinson, Joy Propst, Shirley Wolfe, George Stasko, Richard Gloschler  
 Seventh Row—Henry Kulik, Andrew Soback, Dr. Kimber Kuster, Michael Remetz, Jack Furman, Donald Dorsey, Flora Guarna, Eudora Berlew, Buddy Hartman, Lorraine Utt, Anna Pappas, Evelyn George, James Marion, Reginald Remley, Robert Taylor, Lucille Martino, Roland Kemler



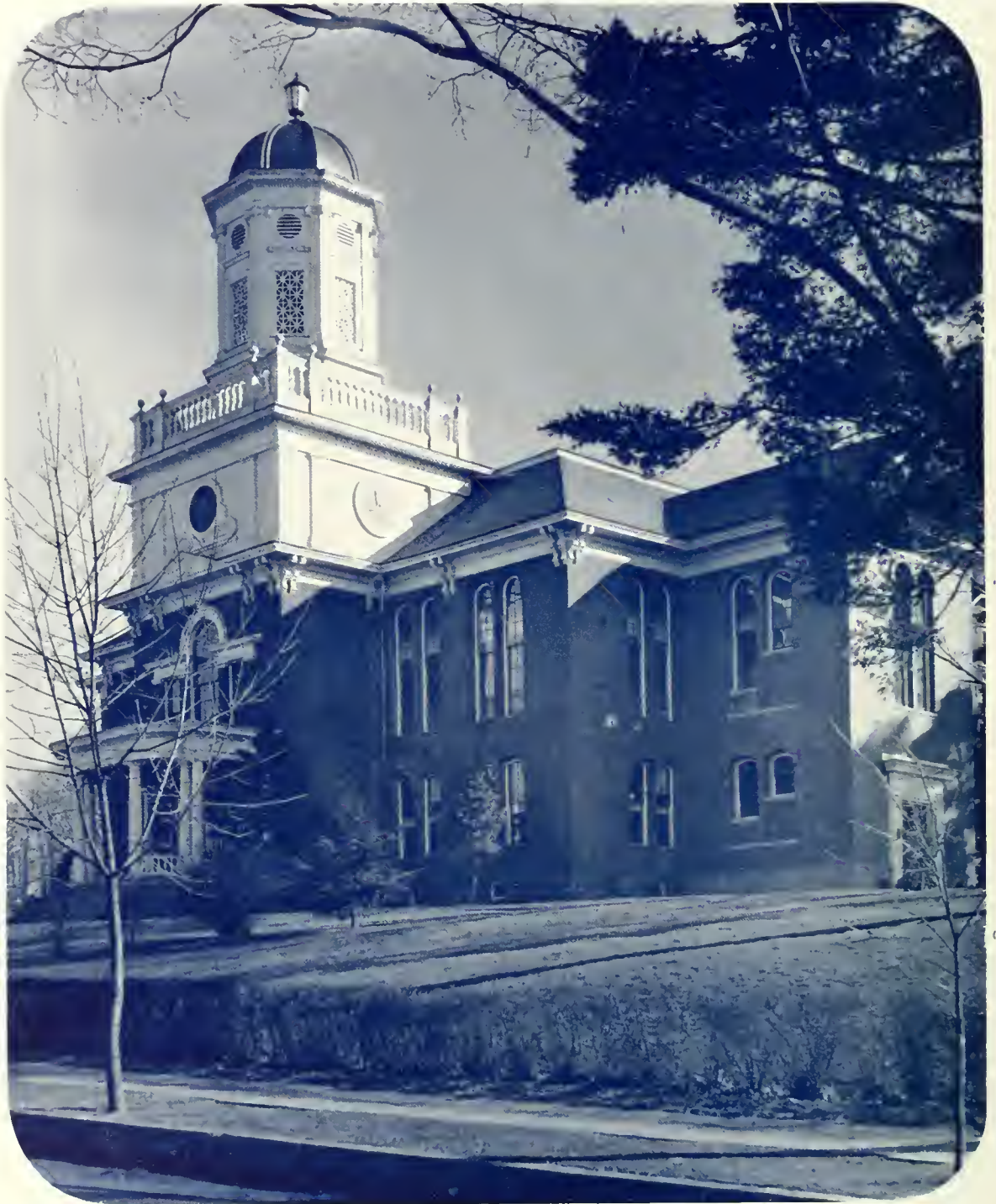




# LEADERSHIP





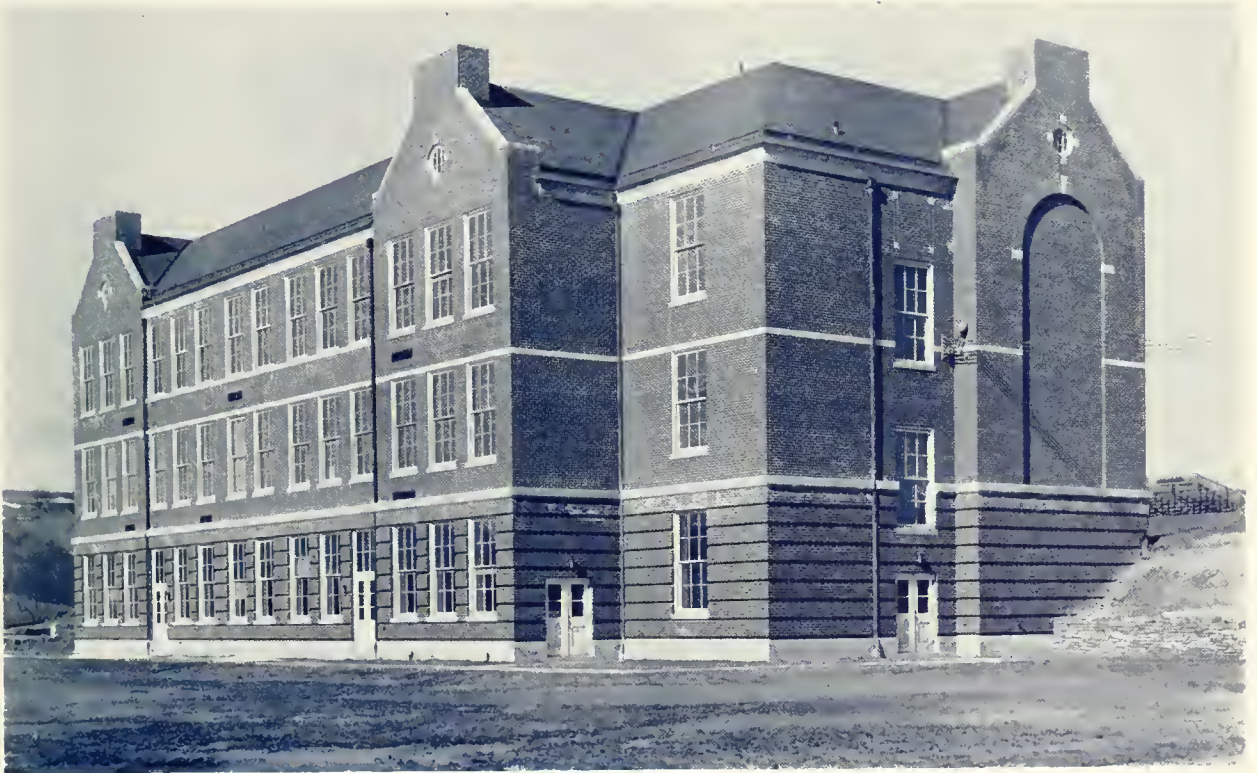


★ *Carver Hall*





★ *Benjamin Franklin Training School*



★ *Junior High School*



A MESSAGE TO THE CLASS OF 1943:

We send you into a world of war with the hope that you will be able to meet the problems of the future as well as you have met those of the past.

Education is more necessary today than ever before if we are to win the war and then win the peace which follows. The teachers' responsibility in wartime has been increased manyfold and their leadership will be felt in the next generation, for whom we offer a Prayer of Peace.

Personally, I wish every member of this Class to know that those who remain at Bloomsburg are ever interested in their future activities and progress.

Yours for Victory at home and abroad.

*Harvey A. Andrus*

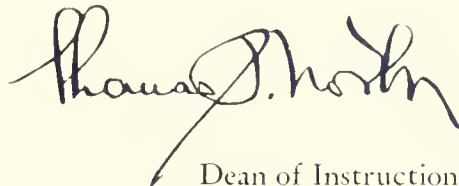
President.

TO THE CLASS OF 1943:

You are leaving this institution under quite distressing and turbulent conditions. As you step out into the tempest, it would seem advisable for you to remember that your best protection is your education. Cherish it and improve it. It will not only save you from becoming mired in complacency but will protect you from the blinding glare of prejudice. In your journey forward you will find your education of inestimable value as a master key to the doors of opportunity.

Wherever you may go or whatever you may be, we assure you that we will do our utmost to maintain your Alma Mater as a beacon for your guidance and assistance.

Sincerely yours,

A handwritten signature in cursive script that reads "Thomas J. North". The signature is written in dark ink and is positioned above the typed name.

Dean of Instruction.







TO THE MEMBERS OF THE  
GRADUATING CLASS OF 1943:

I find it difficult to express in words the things I wish I could convey to you. May I put it thus: "Good luck and Godspeed in whatever way you may serve your country and your God!"

Sincerely,

JOHN C. KOCH,  
*Dean of Men.*



TO THE CLASS OF 1943:

To those of you who are going to serve your country as teachers during the difficult years ahead we give our best wishes. To those who will serve in the armed forces we wish a speedy return. To all of you we say: Come back soon and often.

Sincerely yours,

MARGULRITE KEHR.

# Business Education



Left to Right - Walter S. Rygiel, Margaret R. Hoke, William C. Forney

The Business Education Curriculum is so constructed that students are enabled to use the Business Knowledge and skill gained in practical business vocations and at the same time it certifies them to teach the commercial subjects in the secondary schools.

This year the department under Mr. W. C. Forney was somewhat short-handed. Lt. Com. Herbert E. McMahan and Mr. Wilbur Abell are serving with the Navy, Mr. A. Park Orth is in the Department of Public Instruction, and Miss Murphy is at present living in Seattle, Washington. However the department has kept up to its standards of teacher training.

The Curriculum offers College Certification in the following subjects: Bookkeeping, Accounting, Business Writing, English, Commercial and Economic Geography, Commercial Law, Commercial Mathematics, Economics, Junior Business Training, Office Practice, Salesmanship, Typewriting, Business Arithmetic, and American Government.

Co-operating in the training of teachers in this field are the high schools at Berwick, Bloomsburg and Danville. These schools give the students an opportunity for the practical application of teaching theory. This teaching period which lasts for one semester includes observation periods during which the student teacher observes a regularly employed teacher, lesson planning, and actual teaching of the high school students by the student teacher under the supervision of the training teacher.

# Education



Seated, Left to Right - Miss Edna J. Hazen, Mr. John Fisher, Dr. Marguerite Kehr  
Standing - Mr. Earl N. Rhodes, Mr. William C. Forney

Representing all three curriculums offered at the college this department was set up and has developed a system whereby the students gain a great deal of teaching experience before they are employed as regular teachers.

A placement service is carried on by the Teacher Training Department which co-operates with the Placement Service of the Department of Public Instruction in securing places for graduates, and has thus far produced an enviable record in placing B. S. T. C. graduates.

The courses in education which are offered are: an orientation course, psychology, guidance, philosophy of education, ethics, and teaching techniques.

Mr. William C. Forney and Dr. Thomas P. North have done much to assist students in the selection of courses.

Mr. John C. Koch has lent every effort to the fostering of education in the field of athletics.

Mr. John J. Fisher has been outstanding in the field of psychology. His courses include the principles underlying the valid, reliable objective tests to be given in the classroom; discussion of problems in the learning process; individualized education; and the psychological behavior of the human body in relation to social institutions and vocations.



# Health Education



Seated, Left to Right - Miss Mary Whitenight, Dr. E. H. Nelson, Miss Beatrice Mettler  
Standing - Miss Violet Simpson, Mr. George C. Buchheit, Denn John Koch, Miss Lucy McCammon

With the war's accent on physical fitness this department under the direction of Dr. E. H. Nelson has been organized to give all students an opportunity to participate in various forms of competitive athletics.

Co-operating with Dr. Thomas P. North this department has set up a physical training program for the men students who are in the Reserves of the Armed Forces. Dr. Nelson has charge of the drill periods given these men while Mr. Buchheit supervises their physical program. This plan is intended to prepare the men who will soon be called into the regular service.

In intercollegiate sports which due to war conditions have been somewhat handicapped Dr. E. H. Nelson coaches baseball; Mr. Buchheit, soccer, basketball, track and cross country.

In addition to the regular sports, a well planned intramural program has been set up to enable all students to participate in physical exercise and to enable the men in the reserves to meet the requirement for physical training.

The women's athletic program is in charge of Miss Lucy McCammon. With the opening of the new gymnasium the girls have a wider field to participate in and this includes: hiking, tennis, skating, swimming, basketball, baseball, hockey, and volleyball.

# Language



Left to Right: Dorothy Gilmore, Howard F. Fenstemaker, Alice Johnston, Samuel Wilson, Pearl Mason, Joseph R. Bailer

Following a program to improve the understanding of the language of our neighbors, the Department of English has this year offered four courses in Spanish, two in French, and two in Latin, as well as the regular courses in English which include English Grammar and Composition, English Literature, American Literature, World Literature, Advanced Composition, and Business Correspondence.

The department is headed by Mr. Samuel L. Wilson. Mr. Joseph R. Bailer teaches the beginning and commercial courses in English. Mr. Howard Fenstemaker has charge of all the foreign languages. Miss Alice Johnston has charge of the speech clinic at the Benjamin Franklin Training School and teaches courses in speech and play production.

Besides their work in the English field, Mr. S. L. Wilson and Miss Pearl Mason serve as advisers on the *Maroon and Gold* staff, and Miss Alice Johnston serves as director of the Dramatic Club.

# Science and Mathematics



S. I. Shortess, Ethel A. Ranson, Kimber C. Kuster

With the war's accentuation of the importance of science and mathematics, many students have turned to these fields of study.

Mr. S. I. Shortess, who is in charge of the Physical Science Department, teaches courses in Chemistry and Physical Science as well as courses in mathematics and physics which are taken by the Naval Cadets and Officers on campus.

Dr. Kimber C. Kuster has charge of the Biological Science Department. He teaches courses in Botany, Zoology, Physiology, Genetics and related subjects. Dr. Kuster who is doing a fine job here at the college has won considerable renown for his work in this field.

Miss Ethel A. Ranson has charge of the field of Mathematics. Besides teaching College Algebra, Mathematical Analysis, and Mathematics in the Secondary Field, she is Dean of the Day Women.



# Social Studies and Geography



Mr. E. A. Reams, Dr. Nell Maupin, Dr. H. H. Russell

These two departments are intended to meet the requirements of all students for social studies and geography and also offer students an opportunity to make these fields their electives.

Striving to better the understanding of the relation of the past to the chaotic present, the Social Studies Department offers courses in Modern European History, United States History, Sociology, History of Civilization, Economics, American Government and History of Pennsylvania. Dr. Nell Maupin and Mr. E. A. Reams have charge of this department.

The Geography Department consisting of Dr. H. Harrison Russell and Miss Bertha Rich offers courses in Principles of Geography, Physiography, Economic Geography, Geography of the Western Hemisphere, and Conservation of Natural Resources.

Dr. Russell also has charge of instruction in Meteorology given to the Naval Cadets and Officers.

# Music



Miss Betty Pauling, Mr. Carl Roth, Miss Harriet Moore

The Music Department offers secondary and elementary students who take courses in history and appreciation of music an opportunity to continue the study of music under efficient instructors. The course of instruction offered is intended to bring out the individual talents and characteristics of the students, and is therefore informal and interesting.

This year Mr. Carl Roth who is filling the position vacated by Mr. Robert Morgan is offering splendid opportunities for piano instruction, while Miss Pauling has charge of violin and vocal lessons.

The success of the department is largely due to the pleasing personality and unceasing efforts of Miss Harriet Moore.

## Resident Nurse and Dietitian



Miss Beatrice Mettler  
Resident Nurse

Miss Violet Simpson  
Dietitian

Miss Beatrice Mettler, the resident nurse, is always ready to minister to ailing students. She is always available and may be found in the infirmary at regular hours. At a time when health and top physical condition are vital, the immediate care offered by Miss Mettler is one of the reasons for the general good health of the student body.

Miss Violet Simpson, the dietitian, directs the buying, preparing, and serving of all meals in the college dining room. The increased number of students eating in the dining room requires skillful management and preparation to make eating in the dining room a pleasure.

## Business Manager and Superintendent of Grounds and Buildings

The efficient operation of the Business Office which is the clearing house for all financial and business matters of the college is due to the capable management of Mr. C. M. Hausknecht.

The little man who seems to be everywhere is none other than Mr. N. T. Englehart, Superintendent of Grounds and Buildings. The constant need for repairs and maintenance is one of the duties that keep him constantly busy. Then the preparations for dances, entertainments, and special days at the college add more to his duties of supervision. He has proved himself a vital man in the smooth operation of this college campus.



Mr. C. M. Hausknecht, Mr. N. T. Englehart



## Library



Miss Pearl Mason, Miss Dorothy E. Gilmore

The library under the direction of Miss Pearl Mason and her capable assistant, Miss Dorothy E. Gilmore, has proved time and again to be the clearing house for students' difficulties. The librarian and her assistant are always on hand to help students find information or select reading matter. Besides the many informative books the library has many pamphlets and clippings.

## Art

The students of the secondary and elementary curriculums are offered courses in the history and appreciation of art. The elementary field also includes courses which embody the six fundamental principles of art as applied to everyday living.

The superiority of the art department may be directly attributed to Professor Keller's untiring guidance of his art classes. He has endeavored to give his students practice in drawing, lettering, poster making, creative designing, and the use of color. All courses are intended to develop good judgment and appreciation of design in clothes and home decoration.



Mr. George J. Keller

# Training School



Seated, Left to Right—Mrs. A. K. Thomas, Mabel Moyer, Caroline Welch  
Standing—Mrs. Anna Garrison Scott, Edna Hazen, Edna J. Barnes, Mrs. Etta H. Keller, Grace H. Woodworth,  
Mrs. Lucille J. Baker

The Benjamin Franklin Training School, located on the campus, consists of kindergarten, a class in special education, and grades one to six.

Elementary students are given an opportunity under careful supervision to do their student teaching here.

The personnel of the Benjamin Franklin School is as follows:

- MISS EDNA J. HAZEN, Director of Elementary Education.
- MRS. AMANDA KERN THOMAS, Training Teacher, Special Class.
- MISS GRACE WOODWORTH, Training Teacher, Kindergarten.
- MISS CAROLYN WELCH, Training Teacher, Grade I.
- MISS S. MABEL MOYER, Training Teacher, Grade II.
- MRS. LUCILLE BAKER, Training Teacher, Grade III.
- MISS EDNA J. BARNES, Training Teacher, Grade IV.
- MRS. ANNA GARRISON SCOTT, Training Teacher, Grade V.
- MRS. ETTA H. KELLER, Training Teacher, Grade VI.

# School Districts Cooperating in Teacher Training

1942-1943

## BLOOMSBURG

L. P. GILMORE, *Supervising Principal*  
Junior-Senior High School

EDWARD J. BROWN, B.S.	- - - - -	Commercial
LAWRENCE CAMPBELL, M.A.	- - - - -	Science
ROBERT HUTTON, M.A.	- - - - -	Geography
MRS. HARRIET H. KLINE, M.A.	- - - - -	English
WESLEY KNORR, M.A.	- - - - -	Commercial
BESS LONG, M.A.	- - - - -	Science
CLEORA MCKINSTRY, M.A.	- - - - -	English
ROBERT MERCER, M.S.	- - - - -	Mathematics
HAROLD MILLER, M.A.	- - - - -	Geography
GEORGE MORDAN, B.S.	- - - - -	Mathematics
MARIE PENNSYL, M.A.	- - - - -	Social Studies
DONALD SANDS, M.S.	- - - - -	Social Studies
RAY B. SCHILL, M.S.	- - - - -	Mathematics
THURSABERT SCHUYLER, B.S.	- - - - -	Latin
MARY SEROCCA, M.A.	- - - - -	French
MYRA SHARPLESS, B.S.	- - - - -	Social Studies
WILLIAM SHUTT, B.S.	- - - - -	Commercial
JOHN WAGNER, B.S.	- - - - -	Science
NORMAN YEANY, M.A.	- - - - -	Commercial

## BERWICK

M. E. HOUCK, *Superintendent*

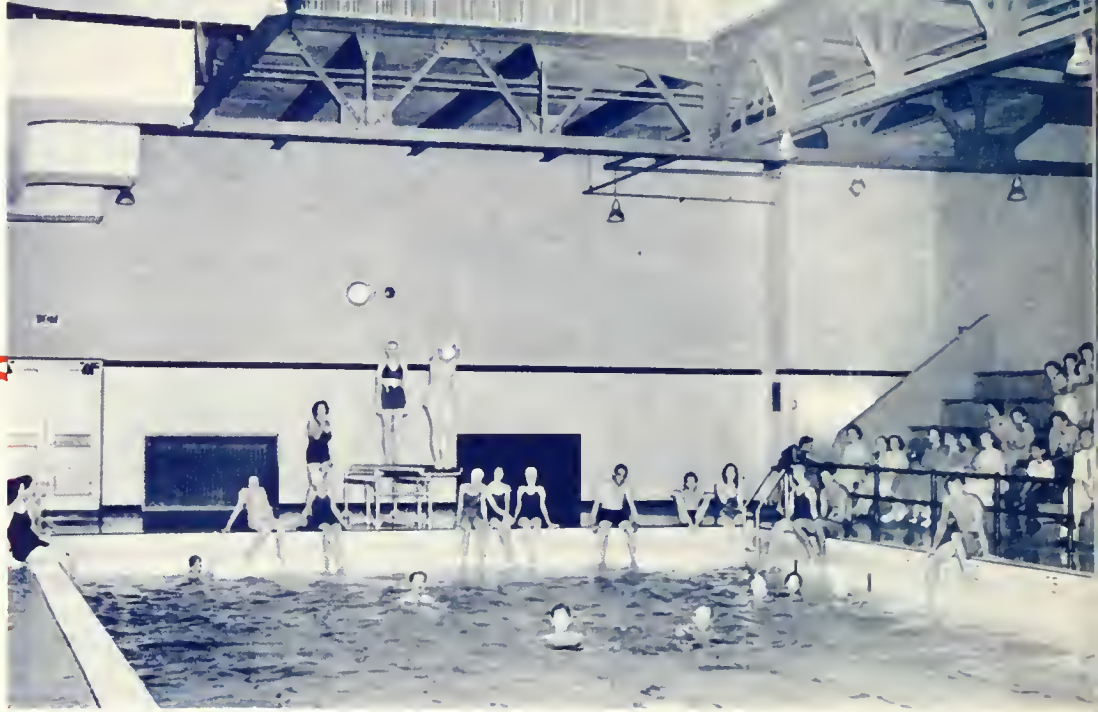
RAY MCBRIDE, B.S.	- - - - -	Commercial
HILDA TINNEY, B.S.	- - - - -	Commercial

## DANVILLE

E. B. CLINE, *Supervising Principal*

GERTRUDE GARDNER, A.B.	- - - - -	Commercial
EARL A. GHIRIG, B.S.	- - - - -	Commercial







**PHYSICAL**   
**FITNESS**



# Soccer



Kneeling, Left to Right—Buddy Hartman, Elwood Wagner, Philip Yeany, Kenny Hower, Leon Hartman, James Kline, Carl Diltz  
Standing—David Jones, Manager; Andy Magill, Hugh Niles, Donald Rahn, George Stasko, Edward Hendricks, Bill Selden, Clayton Patterson, Reginald Remley, James Zweig, Clifton Skow, John Magill, Roland Kemler, Alvin Woodring, Harvey Huber, Herman Vuorderheid, Bernard Pufnak, Coach Buchheit

With Uncle Sam taking most of the fellows, and transportation being cut down, the fall sports were limited to one—Soccer. Practice games with the neighboring high schools: Scott Township, Orangeville and Catawissa kept the boys in condition for the regular season.

The regular soccer schedule had to be reduced to three games because of transportation. Of the three games two were played at home and one away.

The opener was with East Stroudsburg, who has always been a jinx for the Huskies. Aside from the fact that the boys had a new coach, the team made a good showing despite the 3-0 defeat.

The Homecoming Day feature was the game between the Huskies and Elizabethtown. That game was one of the most thrilling games ever played by the Huskies. After eighty-eight minutes of play the score was tied 0-0. The first overtime period was started and Hess of Elizabethtown scored. With the score 1-0 the Husky booters drove time after time at the Elizabethtown goal. About fifteen seconds before the overtime period was over Patterson found the range and evened the score. The game was continued with Elizabethtown downing the Maroon and Gold 2-1.



A week later the boys motored to Ithaca to play a team undefeated in college competition. In the first period Wagner, Husky halfback, put the Maroon and Gold in front by kicking the first goal. The Ithaca boys not to be daunted tied the score in the second period. Patterson, ace Bloom lineman, settled everything in the third quarter when he booted the winning point in a scrimmage at the goal.

Considerable credit should be given to Phil Yeany and Elwood Wagner, co-captains of the team. Since Coach Wisner had joined the Navy, the squad was left without a coach. The fellows under Coach Buchheit developed a good team despite the small number of boys enrolled here at B. S. T. C.

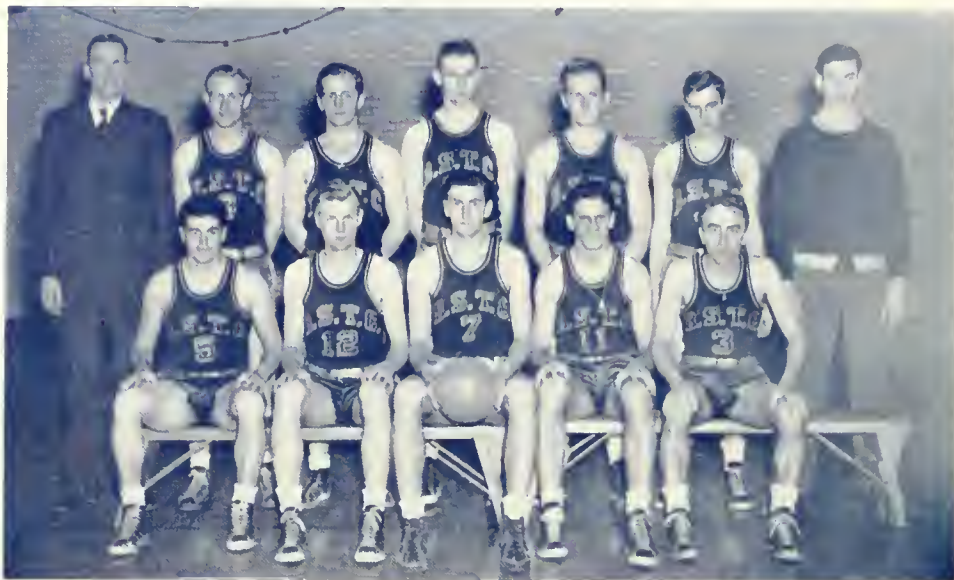
Varsity lettermen were: Hugh Niles, Andy Magill, Don Rabb, Ed Hendricks, Pat Patterson, Reg Remley, Jim Zweizig, John Magill, Harvey Huber, Bernie Pufnak, Buddy Hartman, Snooks Wagner, Phil Yeany, Leon Hartman, Jim Kline, and Carl Diltz. Jayvee awards were: George Stasko, Bill Selden, Herman Vonderheid, Clem Novak, Whitey McCloskey, Harry Reitz, Roland Kemler, and Dave Jones, Manager.

#### THE RECORD

Bloomsburg	0	East Stroudsburg	3
Bloomsburg	1	Elizabethtown	2
Bloomsburg	2	Ithaca	1



# Varsity Basketball

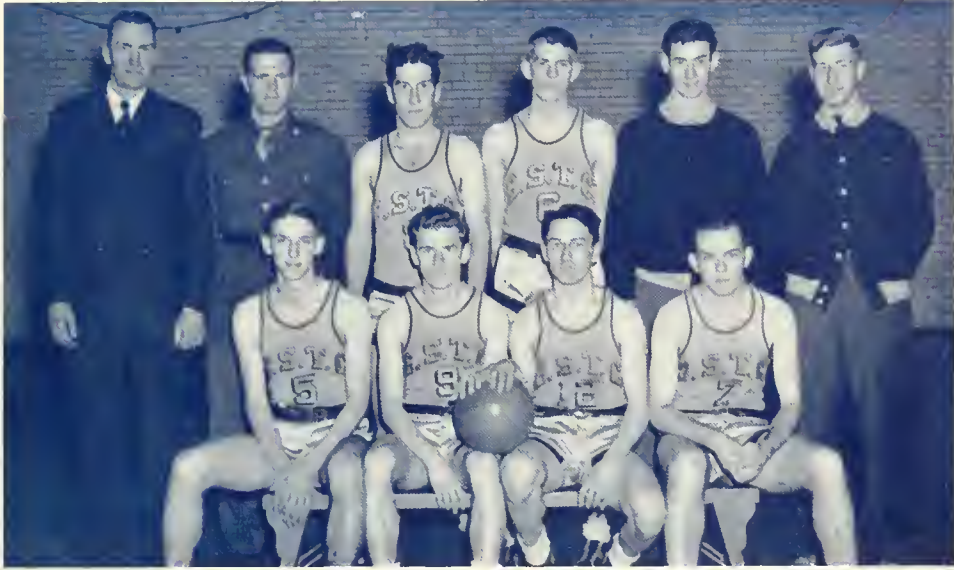


Seated, Left to Right Bernard Pufnak, Walter McCloskey, Joseph Chesney, Vincent Washvilla, Anthony Valente  
Standing — Coach Buchheit, Hugh Niles, Michael Remetz, Richard Shearer, Charles Bomboy, John Slegeski, John  
Whitby, Manager

Despite the loss of several men from the varsity squad, a top speed quintet with a fine backing is determined to do some very fine playing this year. Starting a season which for the first time had two games scheduled in December, the squad won its opening game by defeating a fast army unit from Fort Meade.

War conditions make the schedule uncertain but as always before the Huskies have the highest percentage of games with teacher opponents in the mythical State Teachers College championship competition.

# J. V. Basketball

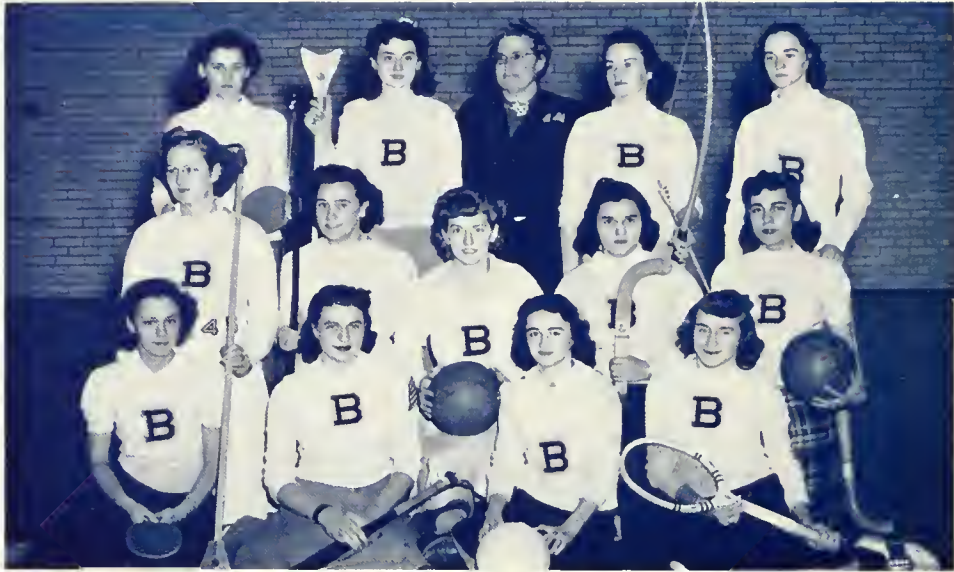


Seated, Left to Right—Harry John, Edward Hendricks, Philip Yeany, Elwood Wagner  
Standing—Coach Buchheit, Richard Rowlands, Robert Schramm, Clifton Skow, John Whitby, Manager: Harvey Huber, Manager

Starting with some experienced men and some very fine recruits, the Junior Varsity basketball team promised to uphold the enviable record of the past. Although the schedule seems uncertain, the boys promise to make a good showing and even to do some fine substituting on the varsity squad.



# "B" Club



Seated, Left to Right—Florence Faust, Kathryn Hess, Mary Louise Scott, Ruth Sluman  
 Kneeling—Betty Burdham, Julia Welliver, Reba Henric, Carmel Siriamdi, Joyce Kuorr  
 Standing—Lillian Baer, Marjorie Coombs, Miss McCammon, Virginia Lawhead, Helen Cronis

## OFFICERS

<i>President</i>	-	-	-	-	-	KATHERINE HESS
<i>Vice President</i>	-	-	-	-	-	MARY LOUISE SCOTT
<i>Treasurer</i>	-	-	-	-	-	RUTH SLUMAN
<i>Secretary</i>	-	-	-	-	-	FLORENCE FAUST
<i>Faculty Sponsor</i>	-	-	-	-	-	MISS LUCY MCCAMMON

The B Club represents a group of girls who have earned a total of one thousand points in team and individual points, and have been recognized by fellow members as having displayed sportsmanship in athletic activities.

Besides helping with the college sport program, the Club is a social group that holds monthly meetings. The activities this year include two week-end camping trips, a party for the freshman girls, a skating party, a bowling group, and a theater party.

For ten years now the members of B Club have been saving their money with a hope that some day they may have a cabin of their own. Early this year they unanimously decided to withdraw their savings to purchase war bonds. Dr. Nelson, at the direction of the Club, invested \$518.60 for the girls of the group. The bonds mature in twelve years at a value of \$700. At a small ceremony the bonds were presented and sealed before the group.

Besides all these activities the B Club girls handle all concessions at home games. They stimulate interest in girl athletics and try to introduce potential college students to the college and to its athletic facilities by sponsoring a Play Day early every year.





# Track

## THE RECORD

### *Dual Meets:*

May 1—Bloomsburg	66.9	Last Stroudsburg	59.1
------------------	------	------------------	------

### *Penn Relays:*

College Relay Team—Second in college mile relay.

George Spontak—Qualified and got second in finals of 400 meter hurdles.

Mathias Kashuba—Tied for fourth in high jump.

### *State Teachers Meet:*

West Chester 75, Bloomsburg 52, Shippensburg 51½, Last Stroudsburg 31½.

Coach George C. Buchheit's Huskies flashed through another great track season to complete their seventh consecutive season without a loss in dual competition. However, because of present world conditions Bloomsburg was able to schedule only one dual meet against East Stroudsburg where they kept their perfect slate intact.

To open the track season the Huskies journeyed to the Penn Relays at Philadelphia where they gave a good account of themselves. They took second place in the college mile relay. This B. S. T. C. Relay Team was composed of Walinchus, Miller, Spontak, and Hendricks.

George Spontak entered the 400-meter hurdles; however a tough break kept him from winning. Spontak took the lead when the race was half over and held it until he reached the last barrier. Then came the bad break; he hit the hurdle and was knocked off stride. Recovering quick-







Seated, Left to Right—Vincent Washvilla, Harold Miller, Lawrence Doster, Edward Hendricks, Edward Walinchus, George Spontak, Mathias Kashuba, John Hubiak  
 Second Row—Dr. Nelson, Donald Rabb, Francis Brandon, George C. Buchheit, Coach; Vincent Husovsky, James Zweizig, John Shlanta, James Lavelle

ly he spurred in the stretch and finished only a stride behind Clarence Doak, of New Orleans Xavier, who won in 55.2 seconds.

After the Penn Relays were over the Huskies, undefeated in dual competition since 1935, won their lone dual meet of the season at East Stroudsburg by subduing the Big Red by the score of 66.9 to 59.1. George Spontak, winner of the 100 and 220 yard dashes and the two hurdle events and second in the javelin, gave the Huskies 23 points and Matt Kashuba, winner in the high jump, shot put and discus and second in the broad jump, added 18 more to the Bloomsburg total.

This year the Huskies lost the state teachers track title to West Chester in the annual teachers college track meet. The West Chester champs compiled 75 points while the Huskies followed a close second with 52 markers. George Spontak and Matt Kashuba were again the key men on the Husky team. Spontak garnered 21 points and Matt Kashuba accounted for 13 more. During this track meet all eleven Huskies contributed to the total Bloomsburg score which was just a half point above that amassed by eight athletes from Shippensburg.

Varsity lettermen were: Hugh Niles, Vincent Washvilla, Harold Miller, Larry Doster, Edward Hendricks, Edward Walinchus, George Spontak, Mathias Kashuba, John Hubiak, and Mike Shlanta, trainer. Jayvee awards were: Don Rabb, Francis Brennan, Vincent Husovsky, James Zweizig, Joe Chesney, John Magill, Robert Bunge, and James Lavelle, Freshman manager.

# Baseball



First Row, Left to Right: Dr. Nelson, Lado Savelli, Andrew Magill, Collins Wanich, Harold Trethaway, Harry John, Samuel Trapani, Manager  
 Second Row: John Magill, Hugh Niles, Vincent Husovsky, Paul Rowlands, Walter McCloskey, William Wanich, Harvey Huber.

The Husky nine composed mainly of freshmen played the smallest schedule in recent years. Dr. Nelson had practically a new team because he had to play most of his key men in different positions.

The season started out with a loss to the best Lock Haven team in recent years. East Stroudsburg took the next game when they made a six-run splurge in the ninth inning.

"Whitey" McCloskey helped his own cause in the game with the State Hospital when he started the winning rally in the fourth inning.



Lock Haven again subdued the Huskies in the closing game of the season.

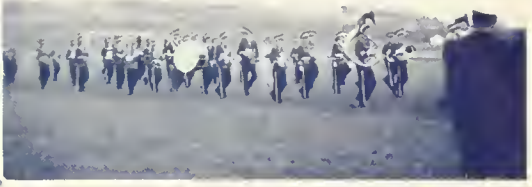
Summing it all up: the Huskies turned in a poor season with one victory and three losses.

Varsity Lettermen were: Ed Solack, Jim Carlisle, Harry John, Paul Rowlands, Andy Magill, Lado Savelli, Jake Trethaway, Johnny Magill, Whitey McCloskey, and Hugh Niles. Jayvee awards were: Charles Bomboy, Bud Carter, Bill Wanich, Collin Wanich, Vince Husovsky, and Dave Jones, Manager.

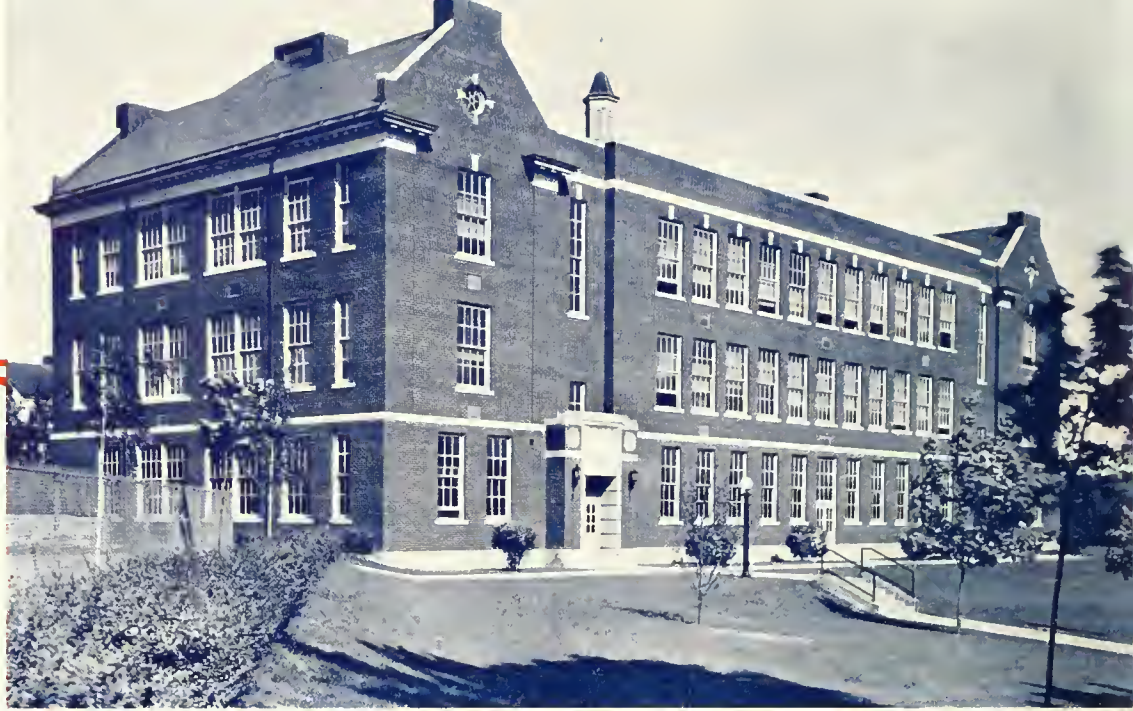
## THE RECORD

Bloomsburg	2	Lock Haven	14
Bloomsburg	2	East Stroudsburg	17
Bloomsburg	4	Danville State Hospital	2
Bloomsburg	7	West Chester	11











# PREPARATION









# College War Council



Seated, Left to Right--Mr. Earl N. Rhodes, Mr. E. A. Reams, Elwood Wagner, Dr. E. H. Nelson, Mr. W. C. Forney, Boyd Buckingham  
Standing--Dr. M. W. Kehr, Mr. N. T. Englehart, Irving Gottlieb, Miss Lucy McCannion, Miss Bertha Rich

The College Community has been organized to meet the war emergency as a unit of the Columbia County Council of Defense. Dr. E. H. Nelson who was appointed head of this council appointed the following committees which are now active—Air Raid Warning, Fire Protection, American Unity, Conservation of Defense Materials and Men-in-Service.

The Air Raid Warning Committee has divided the Campus into a zone consisting of five sectors. The Committee on Unity has been active both on and off the campus. The discussion of current affairs and problems, the conducting of community singing, and lectures and speeches on the war situation are among the activities performed by this group which is under the general direction of Miss Harriet Moore.

The sending of the *Maroon and Gold*, the posting of pictures, and the dissemination of information concerning Bloomsburg's students who are in the Armed Forces is part of the work of the Men-in-Service Committee.

Other activities of the Council include the conducting of First Aid Classes, Home Nursing and other related War Activities.



# Community Government Association

## OFFICERS

<i>President</i>	- - - - -	BOYD BUCKINGHAM
<i>Vice President</i>	- - - - -	JOANNA FICE
<i>Secretary</i>	- - - - -	JUANNI KNIGHT
<i>Treasurer</i>	- - - - -	HAROLD MILLER

## PERSONNEL

<i>President, Senior Class</i>	- - - - -	JOHN WITKOSKI
<i>Representatives, Senior Class</i>	- - - - -	SARA J. EASTMAN, CARL BERNINGER
<i>President, Junior Class</i>	- - - - -	GEORGI SMITH
<i>Representatives, Junior Class</i>	- - - - -	STELLA WILLIAMS, DONALD RABB
<i>President, Sophomore Class</i>	- - - - -	BERNARD KANE
<i>Representatives, Sophomore Class</i>	- - - - -	MARGARIT DEAN, ROBERT BUNGE
<i>President, Freshman Class</i>	- - - - -	REGINALD RIMELY
<i>Representatives, Freshman Class</i>	- - - - -	JACQUELINE SHALTER, DONALD DORSY
<i>President, Day Women</i>	- - - - -	LOUISE MADL
<i>President, Day Men</i>	- - - - -	WINTON LAUBACH
<i>President, Waller Hall</i>	- - - - -	RUTH EBRIGHT
<i>President, Waller Hall</i>	- - - - -	GEORGE MILLER

## FACULTY

THOMAS P. NORTH	GEORGE C. BUCHHEIT
EARL N. RHODES	MARGUERITE W. KEHR
JOHN C. KOCH	BERTHA RICH
EDWARD A. REAMS	ETHEL RANSON

To everyone on our campus the name Community Government Association means an organization to which every student and every faculty member of this college belongs. The purpose of this organization is to create better co-operation among the students, faculty, and administration.

Four officers, three representatives from each of the four classes, the presidents from Waller Hall, Day Women's Association, North Hall, and Day Men's Association, and faculty representatives compose the College Council. The College Council carries out the executive duties of the Community Government Association.

The College Council sponsors the Freshman Reception. At this event the "Frosh" are introduced to the faculty and to the other members of the Association.

Planning the administration of customs, social affairs, pep rallies, fire drills, and other similar activities are taken care of by the various committees which are appointed by the vice president of C. G. A.

The Community Government Association was represented at the Student Conference held at Mansfield in November by the four officers and the presidents of Day Women, Waller Hall Women, Day Men, and Waller Hall Men. The Faculty adviser was Miss Ranson.

Each year the president represents the C. G. A. at a conference of the National Student Federation of America. The conference was cancelled this year because of general difficulties, but members of the Council expect to attend a convention of the National Educational Association in New York in the Spring. These meetings are held so that students of various colleges can get together and exchange ideas.



Seated, Left to Right - Robert Bunge, Sara J. Eastman, Carl Berninger, Jeanne Knight, Boyd Buckingham, Jeanne Fico, Harold E. Miller, Winton Laubach, Margaret Dean  
 Standing - Bernard Kane, Mr. E. A. Reams, George Miller, Dr. T. P. North, Dr. M. W. Kehr, George C. Buchheit, John Witkoski, Miss Bertha Rich, Mr. E. N. Rhodes, Reginald Remley, Ruth Ebricht, Dean John C. Koehl



# Waller Hall Association



Seated, Left to Right: Marjorie Stover, Irene Kornaski, Joyce Hay, Sara Wagner, Sally Hottenstein, Ruth Ebright, Ruth Sluman, Florence Faust.  
 Standing: Mary Schroeder, Betty Zeng, Miss Bertha Rich, Elizabeth Barthm, Dr. M. W. Kehr, M. Jesse Hackenberger, Joanna Pice

## OFFICERS

<i>President</i>	- - - - -	RUTH EBRIGHT
<i>Vice President</i>	- - - - -	SARA HOTTENSTEIN
<i>Secretary</i>	- - - - -	JOYCE HAY
<i>Treasurer</i>	- - - - -	SARA WAGNER

The Waller Hall Student Government Association is composed of all women students living in Waller Hall.

The Governing Board of the association consists of a president, vice president, secretary, treasurer, four representatives from the senior class, three representatives from the junior and sophomore classes, and two representatives from the freshman class. Dr. Kehr and Miss Rich act as advisers to the Board.

During the year the girls have several "get togethers" in the form of floor parties. Singing and eating are the main forms of entertainment at these parties.

At Christmas time each girl was given the name of a boy or girl for whom she was to buy a gift. The names of the children were secured through the Bloomsburg Chapter of the Red Cross.

This year a new project was undertaken. It was a very successful one, too. The girls made Christmas greeting cards, complete with the school seals and Christmas seals, and sent them to the men and women who were former students of the College and are now with the armed forces.

The He-She Party, sponsored by the Day and Dorm girls, was the highlight of the year.



First Row, Left to Right—Florence Faust, Betty Bryant, Betty Fuller, Helen Kotch, Anne Sabal, Edna Snyder, Wanda Keller, Catherine Longo, Saranmarie Dockey, Mildred Mummy, Rose Boyle, Gloria Bolenstro, Agnes Flaherty  
 Second Row—Josefina Valladares, Lillian Baer, Helen Oyer, Elvira Bietetti, Phyllis Schrader, Joanne Spaid, Elva Wagner, Mary R. Loring, Ida Mae Clark, Mary DeWald, Mary Heimbach, JoAnn Andrews, Jean Ackerman  
 Third Row—Arlene Superko, Ruth Sluman, Eileen Falvey, Elizabeth Ertel, Joanne Schrader, Stella Williams, Betsy Smith, Rita Simpson, Eleanore Althoff, Elizabeth Bartha, Ruth Kester, Mildred Dzuris  
 Fourth Row—Marion Wallace, Leona Oakes, Betty Zong, Jean Dickinson, Marjorie Downing, Elsie Plail, Eileen Meluskey, Rosemary Reilly, Irene Kornaski, Nan Sidari, Flora Guarun, Margaret Latsha  
 Last Row—Margaret Lambert, Helen Behler, Joy Propst, Laura Schoener, Marjorie Stover, Mary Schroeder, Wanda Parnsworth, Jean Langau, Lucille Martino, Betty Burnham, Marilyn Sailer, Sara Wagner, Norine Miles

# North Hall Association



First Row, Left to Right—Hugh Niles, Harold E. Miller, George Miller, Reynold Paganelli  
 Second Row—Salvadore Mazzeo, Thomas Jones, Boyd Buckingham, Richard Gleucker, Robert Taylor, Reginald Remley, George Stasko, Theodore Jurasik, Irving T. Gottlieb  
 Third Row—Carl Berninger, George Spontak, Charles Taylor, Gerald Demaree, Roland Kemler, Raymond Perry, Elwood Wagner  
 Last Row—Nou Hosler, John Thomas, Anthony Kravitski, James Zweizig, Jack Furman, Harvey Huber, Julian Zinzarella, Vincent Washville, John Hubiak, James Marion

After graciously relinquishing their North Hall living quarters to the Naval Cadets, the dormitory men were assigned to the north wing of Waller Hall, where Mr. Edward A. Reams became their dean and adviser.

Although there had been many men leaving the dormitory to answer the call of Uncle Sam, there were sixty-five members in the association this year. Among this group there were twelve freshmen who had their "rough edges smoothed off gradually by the plane of discipline" operated masterfully by the upper classmen. The freshmen proved their worth in all their duties to the association.

As far as activities were concerned, the highlight of the year was, as usual, the smoker held at the end of the first semester, when the boys, in their mirth, celebrate the completion of a successful term. Plans are being made for another one in May.

The officers elected to govern the Association in the 1942-43 school year were as follows: President, George Miller; Vice President, Harold E. Miller; Secretary, Reynold Paganelli; Treasurer, Bernard Kane.

The North Hall Men's Association congratulates the Class of 1943 on completing their college courses in these trying times; and hopes sincerely that they will meet with as much triumph when they enter the School of Life.



# Day Men's Association



First Row, Left to Right—Henry Von Blohn, Royal Conrad, Robert Bunge, Harold J. Miller, Leo Hoffman, Winton Laubach, Clayton Patterson, Buddy Hartman, Carl Diltz  
 Second Row—Leon Hartman, Joseph Stauder, George Smith, James Kline, Donald Rabb, Ludwig Millord  
 Third Row—Alvin Woodring, Clifton Skow, Ralph Seltzer, Edwin Vastine, Frederick McEntchen  
 Last Row—Henry Kulik, John Apple, Donald Schleider, Mr. George C. Buehheit, Andrew Magill, Collins Wanich, John Magill

## OFFICERS

<i>President</i>	- - - - -	WINTON LAUBACH
<i>Vice President</i>	- - - - -	ROBERT BUNGE
<i>Secretary</i>	- - - - -	HAROLD J. MILLER
<i>Treasurer</i>	- - - - -	GEORGE SMITH

A man of brawn and brains, add a touch of wit seasoned with the desire to get ahead, top it off with a C ration card and what do you have?—A Day Man, of course.

This year as a result of the war the Day Men have acquired the name of "The Fighting Day Men." Even though many are in the armed forces we, the Day Men at home, will carry on the torch of the Commuter.

The Day Room in North Hall is still the haven for the commuters. The tall stories of their coming to school under the thirty-five mile speed limit together with the hot-foot experts' antics make certain that there is never a dull moment in the life of a Day Man.

# Day Women's Association



Seated, Left to Right -Carol McCloughan, Elaine Kreischer, Louise Madl, Anne Shortess, Miss Ethel Ranson  
 Standing - Dorothy Johnson, Irene Kulik, Nelona Pope

## OFFICERS

<i>President</i>	- - - - -	- LOUISE MADL
<i>Vice President</i>	- - - - -	- ANNE SHORTLESS
<i>Secretary</i>	- - - - -	- ELAINE KREISCHER
<i>Treasurer</i>	- - - - -	- CAROL MCCLOUGHAN

The Day Women's Association is composed of the women students living off campus. It was organized in 1930.

The president and vice president, elected by the entire group, and two representatives from each class form the Official Board or governing body. In the spring the members of the board for the following year are elected; these results are announced at the annual He-She Party

sponsored by the Day Women's Association and the Waller Hall Association. Ethel A. Ranson, Assistant Dean of Women, is the sponsor of the group.

The Day Girls are those women who do not live in the dormitory; they commute from nearby towns or live in Bloomsburg. Their home, while on the college campus, is located in Noetling Hall. Three rooms, a well equipped lunch room, a comfortably furnished day room, and the sponsor's office provide a refuge where the girls can lunch, study, chatter, or rest.

The Day Women are proud of their well equipped and spacious day room. Here they find relaxation, diversion, and amusement.



First Row, Left to Right—Reba Henry, Mary Lou Fenstermaker, Jennie Knight, Mary DiVitis, Effie Patterson, Janet Shank, Peggy Beach, Martha Roan, Melva Koehler, Athamantia Comantzis, Jacqueline Shaffer  
Second Row—Julia Welliver, Evelyn Doney, Betty Van Liew, Jean Maschal, June Keller, Virginia Roberts, Sara Jean Eastman, Miss Ranson  
Third Row—Betty Zehner, Florence Foust, Lois Wintersteen, Marjorie Sharretts, Elaine Kreischer, Kathleen Hess, Irene Kulik  
Fourth Row—Virginia King, Jean Keller, Althea Parsell, Mary Trump, Gertrude Makowski, Ruth Hartman, Lorraine Utt, Hazel O'Brien, Joyce Lohr, Ruth Moug  
Fifth Row—Carol McLoughan, Alda Hunter, Selma Pope, Lois Bryner, Martha Wright, Jean Kuster, Virginia Lawhead, Kathryn Campbell  
Sixth Row—Roseanna Derr, Mary Flaherty, Kathryn Hess, Harriet Sterling, Betty Katerman, Louise Madl, Anne Shortess



# Bloomsburg Players



Seated, Left to Right - Betty Biermann, Reginald Rowley, Betsy Smith, John Thomas, Betty Katerman, Jean Kuster, Irving Gottlieb, Boyd Buckingham, Mary Kelly  
Standing, First Row - George Miller, Stella Williams, Carl Berninger, Betty Hagenbuch, Jean Langan, George Stasko, Sara Lehengood, Gerald Demaree, Miss Johnston, Ella Schargo, Marjorie Coombs, Jeanne Keller, Janet Shank, Elsie Flail, Althea Parsell, Lenora Seybert, Reynold Paganelli  
Last Row - Salvatore Mazzeo, Margaret Dean, Paul Rowlands, June Keller, Donald Dorsey, Jean Maschal, Eileen Falvey, Henry Von Blom, Marilyn Sailer, Harvey Huber, Frances Brody, Lucille Martino, Anthony Kravitski

The Bloomsburg Players is an organization which provides a workshop in which students take part in club and public plays, gain poise and ease in appearing before public, and learn to direct amateur plays and build stage sets.

The club has a try-out system in which each prospective member must meet certain requirements such as voice, diction, poise, and interpretation.

A one-act play is presented at each meeting by a student director under the supervision of Miss Johnston, our director.

Each play is criticized by the club members and everyone learns to give and take criticism.

The club has been as popular this year as ever with the public and has filled a few of the requests from down town by doing plays for the A. A. U. W., the D. A. R., and the Ushers' Union of the Methodist Church.

The Bloomsburg Players presented one of the best-liked and colorful costume plays in its history this past year—Jane Austin's "Pride and Prejudice." The proceeds of this play were given to the College War Council.

#### CAST FROM "ARSENIC AND OLD LACE"



Left to Right—Harry John, Boyd Buckingham, Irving Gottlieb, Paul Rowlands, Reynold Paganelli, Michael Kmetz, Betty Hagenbuch, Betsy Smith, John Thomas, Catherine Sedlak

# Mixed Chorus Membership

## *First Soprano*

Adams, Louise  
 Andrews, Jo Ann  
 Beach, Peggy  
 Behler, Anita  
 Betz, Mary  
 Boyle, Rose  
 Bryant, Betty  
 Bryner, Lois  
 DeWald, Mary  
 Doney, Evelyn  
 Fastman, Sara J.  
 Firtel, Elizabeth  
 Falvey, Filcen  
 Farnsworth, Wanda  
 Fenstermaker, Mary L.

Flail, Usie  
 Fice, Joanna  
 Harmon, Gertrude  
 Hartman, Ruth  
 Hay, Joyce  
 Johnson, Dorothy  
 Kane, Margaret  
 Kehler, Wanda  
 Kester, Ruth  
 Kulik, Irene  
 Lambert, Margaret  
 Latsha, Margaret  
 Longo, Catherine  
 Madl, Louise  
 Magill, Anna  
 Mauser, Ruth

McCloughan, Carol  
 Miles, Norine  
 O'Brien, Hazel  
 Propst, Joy  
 Rick, Barbara  
 Shaffer, Jacqueline  
 Shank, Janet  
 Sharretts, Marjorie  
 Smith, Betty  
 Spaid, Joanne  
 Utt, Lorraine  
 Welliver, Julia  
 Yob, Irene  
 Zehner, Betty  
 Zong, Elizabeth

## *First Alto*

Althoff, Eleanor  
 Casula, Antoinette  
 Communtzis, Athamantia  
 Communtzis, Poletime  
 Cronis, Helen  
 Dickinson, Jean  
 Dzuris, Mildred

Faust, Florence  
 Ferguson, Patricia  
 Holoviak, Peggy  
 Johnson, Rosemary  
 Jones, Catherine  
 Krum, Marie

Lawhead, Virginia  
 Lohr, Joyce  
 Schoener, Laura  
 Superko, Arlene  
 Wagner, Elva  
 Weller, Violet  
 Ishelman, Dawn

## *Second Alto*

Behler, Helen  
 Duck, Martha

Hildebrand, Harriet  
 Hope, Ruth

Hunter, Alda  
 Wagner, Sara

## *Second Soprano*

Baer, Lillian  
 Belcastro, Gloria  
 Bramble, June  
 Campbell, Kathryn  
 Coombs, Marjorie  
 Downing, Marjorie  
 Inama, Hazel  
 Fuller, Bette  
 Hagenbuch, Betty

Hembach, Mary  
 Kinney, Cleo  
 Knorr, Joyce  
 Lovering, Mary R.  
 Makowski, Gertrude  
 Oakes, Leona  
 Oyer, Helen  
 Parr, Mary  
 Parsell, Althea  
 Patterson, Ithe

Pope, Nelena  
 Roan, Martha  
 Runyan, Dorothy  
 Schrader, Jean  
 Shortess, Anne  
 Starook, Shirley  
 Sterling, Harriet  
 Williams, Stella  
 Wintersteen, Lois

## *First Tenor*

Berninger, Carl  
 Collins, Loren

DeMott, Robert  
 Laubach, Winton

Remetz, Michael  
 Woodring, Alvin

## *Second Tenor*

Furman, Jack

Kulik, Henry  
 Miller, Harold

Wagner, Charles

## *First Bass*

Barton, William  
 Conrad, Royal

Kocher, Ernest

Mazzeo, Salvatore  
 Scott, Barton

## *Second Bass*

Apple, John

Jurasik, Theodore



# Mixed Chorus



First Row, Left to Right—Loren Collins, Vincent Washvilla, Louise Adams, Michael Reinetz, Anne Shortess, Louise Madl, William Barton, Carl Berninger, Royal Conrad, Janet Shank, Salvatore Mazzeo, Martha Duck, Harriet Hillbrand  
 Second Row—Jacqueline Shaffer, Robert DeMott, Winton Laubach, Jack Furman, Charles Wagner, Henry Kulik, Harold J. Miller, Alvin Woodring, C. Barton Scott, S. I. Shortess, Ernest Koehler, Helen Belder, Abba Hunter, Ruth Hope, Miss Harriet Moore  
 Third Row—Mary Betz, Catherine Longo, Joanne Spaid, Ellie J. Patterson, Gertrude Makowski, June Bramble, Kathryn Campbell, Marjorie Coombs, Shirley Starook, Florence Faust, Helen Cronis, Marie Krum, Violet Weller, Rosemary Johnson, Patricia Ferguson  
 Fourth Row—Joyce Huy, Hazel Enama, Betty Bryant, Joyce Knorr, Nelema Pope, Helen Oyer, Gloria Belcastro, Mildred Dzuris, Wanda Kohler, Joyce Lohr, Catherine Jones, Virginia Lawhead, Eleanore Ahlhoff, Jean Dickinson  
 Fifth Row—Betty Smith, Betty Hagenbach, Sara Jean Eastman, Marjorie Downing, Martha Roan, Betty Fuller, Cleo Kinney, Dorothy Runyan, Dawn Eshleman, Arlene Superko, P. Commutzis, A. Commutzis, Peggy Holoviak, Laura Schoener  
 Sixth Row—Ruth Mause, Peggy Beach, Mary Parr, Mary Ruth Lovering, Rose Boyle, Leona Oakes, Lillian Baer, Mary Heimbach, Betty McCulla, Eileen Falvey, Mary DeWald, Margaret Kane, Evelyn Doney, Gertrude Harmon  
 Seventh Row—Elsie Flail, Stella Williams, Jean Schrader, Harriet Sterling, Lois Wintersteen, Athlea Parsell, Ruth Hartman, Irene Kulik, Hazel O'Brien, Dorothy Johnson, Beth Ertel, Margaret Latsha, Irene Yoh  
 Eighth Row—Margaret Lambert, Julia Welliver, Betty Zehner, Anna Magill, Ruth Kester, JoAnn Andrews, Wanda Kohler, Norine Miles, Betty Zong  
 Last Row—Joy Propst, Anita Behler, Wanda Farnsworth, Mary Lou Feustemaker, Marjorie Sharretts, Lorraine Pitt

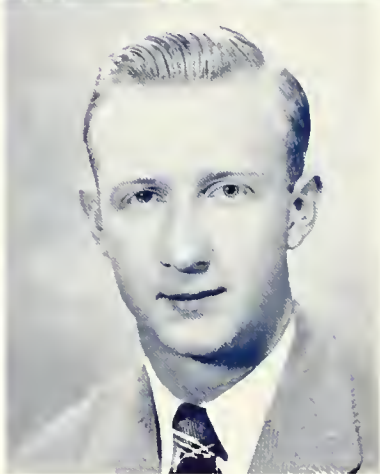
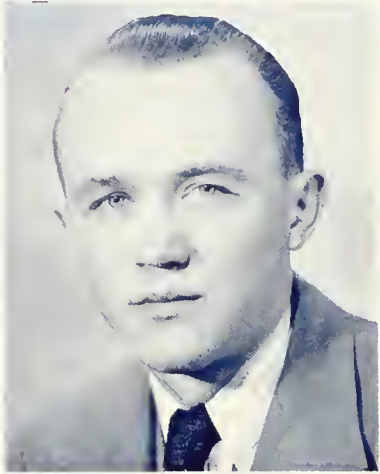
Despite the war conditions this year, the Mixed Chorus had one hundred and twenty-two members. The club spent the first semester preparing an historical pageant entitled "The Song of America" with the music by H. Alexander Matthews and words by Walter Raiguel. This patriotic selection was a highly successful contribution to the college program for wartime morale. The pageant was presented as an assembly program by the Chorus on December 11. Narrators were Janet Shank and Vincent Washvilla with Louise Adams accompanying and Harriet M. Moore conducting.

The second semester was devoted to the study of music in preparation for the annual Spring Concert.

The 1942-43 officers were:

<i>President</i>	- - - - -	WILLIAM BARTON
<i>Vice President</i>	- - - - -	LOUISE MADL
<i>Secretary</i>	- - - - -	ANNI SHORTESS
<i>Treasurer</i>	- - - - -	CARL BERNINGER
<i>Librarians</i>	- - - - -	MICHAEL REINETZ, ROYAL CONRAD
<i>Pianist</i>	- - - - -	LOUISE ADAMS
<i>Director</i>	- - - - -	HARRIET M. MOORE

# 1943 OBITER



JOHN HUBIAK  
Editor

HUGH S. NILES  
Business Manager

So that the memory which is Bloomsburg may not perish when such times as the present make everything uncertain, we have tried to give you a living memento of the days that were ours. We hope that when peace once again reigns, this book may be your fireside companion and help you recall those days when Bloomsburg was striving to do everything to help win this war.

Our time was short, our work was bountiful, but your co-operation and patience helped make this book possible. We hope it merits your approval, and will serve as a link in this ever-changing life which belongs to our generation.



Co-operation in industry is imperative to the production of a fine finished product. Without the financial co-operation of the seniors, organizations, and patrons the publication of this book would not have been possible.

As industries have shortened their production time, so have we moved ahead our publication date. We give you this book as our "finished product." Physically it represents our best—financially, our all; "we hope you like it."

# OBITER '43

## EDITORIAL STAFF

*Editor* - - - - - JOHN HUBIAK  
*Assistant Editor* - - - - - RUTH HOPI  
*Photography* - - - - - SARA WAGNER, LORI N COLLINS  
*Sports* - - - - - WILLIAM SELDEN, ROYAL CONRAD  
*Editorials* - - - ELEANOR ALTHOFF, JOYCE HAY, SARA HOTTENSTEIN  
*Typists* - - - - - EDNA SNYDER, ELSIE FLAIL

## BUSINESS STAFF

*Business Manager* - - - - - HUGH S. NILFS  
CARL S. BERNINGER  
REYNOLD D. PAGANELLI  
SALVATORE MAZZEO  
MARILYN D. SAHLER  
WILLIAM BARTON  
JOHN F. WITKOSKI



Seated, Left to Right—Carl Berninger, Marilyn Sailer, William Barton, Hugh Nilos, John Hubiak, Edna Snyder, Sara Hottenstein  
Standing—Salvatore Mazzeo, Sara Wagner, John Witkoski, Elsie Flail, Royal Conrad, Eleanor Althoff, Reynold Paganelli



# Maroon and Gold



Seated, Left to Right—Florence Faust, Marilyn Sailer, George Piarote, Reba Henrie, John Hubiak, Lucille Martino, Lee Beaumont, Anne Sabol, Irving Gottlieb, Edna Snyder  
 Standing—Salvatore Mazzo, Millard Ludwig, Bernard Kane, Reynold Paganelli, Flora Guarua, Jean Maschal, Jacqueline Shaffer, Athamantia Comuntzis, Irene Kornaski, Royal Conrad, Robert Schramm, David Jones

## EDITORIAL STAFF

*Editor-in-chief* - - JOHN HUBIAK  
*Associated Editor* - - LUCILLE MARTINO  
*Managing Editor* - - MARILYN SAILER  
*Make-up Editor* - - DAVID JONIS  
*Sports Editor* - - MILLARD LUDWIG  
*Feature Editor* - - REBA HENRIE  
*Literary Editor* - - BERNARD KANE  
*Exchange Editor* - - GEORGE PIAROTE

*Feature Writers*—IRVING GOTTLIEB, FLORENCE FAUST, JIANNI KELLER, JUNE KELLER, REYNOLD PAGANELLI, BETTY HAGENBUCH

*Reporters*—JOYCE LOHR, IRINE KULIK, SALVATORE MAZZIO, WILLIAM HUMMEL, ROYAL CONRAD, ROBERT SCHRAMM, ATHAMANTIA

COMUNTZIS, CARMEL SIRIANNI, JACQUETINE SHAFFER, LEO DONN

*Typists*—IRENE KORNASKI, FLORA GUARNA, JEAN MASCHAL

## BUSINESS STAFF

*Business Manager* - LEE ROY BEAUMONT  
*ADVERTISING MANAGER* - ANNE T. SABOL

*Assistants*—ALVIN WOODRING, EDNA SNYDER, ELAINE KRISHLER, SARAHMARI DOCKEY, HENRY VONBLOHN

## FACULTY ADVISERS

MR. S. W. WILSON, MISS PEARL MASON

Published weekly while school is in session, the *Maroon and Gold* aims this year more than ever before to support the war cause of this country. Keeping the students informed of what they can do and keeping former students who are now in the service informed about what is going on at B. S. T. C. is but a small part of the work which this school publication accomplishes.



# Poetry Club



Seated, Left to Right— Miss Dorothy Gilmore, Elizabeth Bartha, Barbara Riek, Patricia Ferguson, Nan Sidari  
 Standing—Rita Simpson, Irene Kornaski, Mary Flaherty, Margaret Kane, Rosemary Johnson, Gertrude Makowski,  
 Mary DeWald

## OFFICERS

<i>President</i>	- - - - -	NAN SIDARI
<i>Vice President</i>	- - - - -	ELIZABETH BARTHA
<i>Secretary</i>	- - - - -	GERTRUDE MAKOWSKI
<i>Treasurer</i>	- - - - -	IRENE KORNASKI
<i>Historian</i>	- - - - -	ANITA BEHLER
<i>Sponsor</i>	- - - - -	MISS DOROTHY GILMORE

"To have great poets, we must have great audiences" is the motto of the Poetry Club.

The Club meets bi-monthly and presents an opportunity for relaxation and enjoyment. Its chief aim is to stimulate a greater appreciation for poetry, and interest in the lives of poets. It is not necessary to write poetry, but there are many talented "poets" in the making who contribute poems which are duly recorded in our album, "The Bloomsburg Book of Verse."

One of the outstanding programs was held at Miss Gilmore's home, where recordings of the "Ballad For Americans" and "White Cliffs of Dover" were played.



# Science Club



Seated, Left to Right—Herman Vonderheid, Frederic McCutchen, Dr. Kimber Kuster, Henry Kulik, Eugene McBride  
 Standing—Robert Bunge, Irene Kulik, Fred Dent, Evelyn George, Mildred Dzuris, Arlene Superko, Henry vonBlonn, Sara Jean Eastman, Donald Dorsey

## OFFICERS

<i>President</i>	- - - - -	FREDERICK DENT
<i>Vice President</i>	- - - - -	SARA JEAN EASTMAN
<i>Secretary</i>	- - - - -	IRENE KULIK
<i>Treasurer</i>	- - - - -	ROBERT BUNGI
<i>Program Chairman</i>	- - - - -	HERMAN VONDERHEID
<i>Sponsor</i>	- - - - -	DR. KUSTER

The campus of B. S. T. C. boasts of an organization whose primary interest is Science . . . this is the Science Club. Various scientific phenomena are presented before the club and discussions and demonstrations in the form of lectures, films and reports follow.

This year a varied program is in progress. The club under the leadership of Dr. Kimber C. Kuster has undertaken to classify and label all the trees on the campus. In addition to this, a history of the various trees will be compiled and used as a reference book for future college students. Bloomsburg's own professor Hartline is ably assisting the club in this project.

In co-operation with the Superintendent of Grounds, the club also plants at least one tree a year and performs minor tree surgical operations.

# Social Usage Club



Seated, Left to Right - Joanne Spaid, Rita Simpson, Saramarie Dockey, Charles Taylor, Nan Sidari, William Barton, Betty Zong, Harvey Huber, Endora Berlew, Marilyn Saller, Flora Guarna  
 Second Row - Salvatore Mazzeo, Reginald Remley, Irving Gottlieb, Irene Kornaski, Betty Ertel, Wanda Farnsworth, Betty Burnham, Sara Lehengood, Elvira Bitetti, Evelyn George, Lucille Martino, Phyllis Schrader, Harold E. Miller  
 Last Row - Helen Oyer, Sara Hottenstein, Catherine Jones, Julian Zinzarella, Theodore Jurask, Jack Furman, Boyd Buckingham, Mary Parr, Bette Fuller, Joanne Knight, Joanna Flee, James Marion

## OFFICERS

<i>President</i>	- - - - -	WILLIAM H. BARTON
<i>Vice President</i>	- - - - -	CHARLES TAYLOR
<i>Recording Secretary</i>	- - - - -	SARAMARIE DOCKEY
<i>Attendance Secretary</i>	- - - - -	- NAN B. SIDARI
<i>Treasurer</i>	- - - - -	- HARVEY P. HUBER
<i>Historian</i>	- - - - -	ELIZABETH ZONG
<i>Sponsor</i>	- - - - -	VIOLET L. SIMPSON

The motto "Enjoy as you learn" is a very appropriate one for the Social Usage Club. This organization has helped its members gain a cultural education in a very entertaining manner.

The "polish" necessary for future teachers is instilled in its members by practicing the various methods of serving, as well as general good manners, proper dancing procedure, and harmonious living.

Social Usage Club has impressed upon its members the importance of being good citizens. Its purposes and activities include: making social adjustments with more experience and understanding; facilitating menu reading and choosing food; sponsoring social gatherings; offering guidance wherever possible along vocational, educational, health, and social lines; encouraging outside reading, debates and self-expression in panel discussions; promoting theater, dance, and card parties for improvement of the game or the dance.

Obviously, the primary purpose of this organization is to provide a cultural background essential for future teachers through discussion and practical experience.

# Student Christian Association



Seated, Left to Right—Jesse Haeckenberger, Saranario Doekoy, Harold E. Miller, William Barton, Miss Pearl Mason, Florence Faust, Carl Berninger, Sara Wagner, Betty Bryant  
Second Row—Ruth Shuman, Ida Mae Clark, Leona Oakes, Julia Welliver, Helen Oyer, Martha Duck, Marjorie Downing, Althea Parsell, Marjorie Stover, Margaret Lambert  
Last Row—Sara Hoffenstein, Betty Zong, Margaret Latsha, Joanna Fice, Anne Sabol, Helen Cronis, Gertrude Harmon, Virginia King

Once again we find the Student Christian Association bringing a successful semester to a close. The time has proved to be very gratifying in the spiritual and friendly fellowship among its members.

William Barton, President; Miss Pearl Mason, and Mr. Irvine Shortess, faculty advisers, helped the organization in its work. Other officers of the organization were: Vice Presidents, Harold Miller and Florence Faust; Secretary, Jean Ackerman; Treasurer, Ruth Ebright; and Corresponding Secretary, Mary Louise Scott.

The year opened with its traditional services in the college chapel to welcome all Freshmen. Mr. Forney was the speaker for the afternoon and other entertainment was furnished by students of the college.

The yearly conferences of all Christian associations of colleges were held at Eagles Mere and Camp Kanastaki.

A caroling party in the lobby for all college members and Navy men was enjoyed a few nights before the Christmas holiday began, at which time the Christmas story was read.

The Association was honored by the presence of two ministers at meetings of the group—The Reverend Robert L. Herman and The Reverend Sell.

Another outstanding feature of the year was a record concert by Arnold Wagner of religious music.

Carl Berninger took charge of another meeting at which time he gave a short talk.

The organization thus far has proved very popular among the students and shows very promising growth in the future. This year's officers have shown splendid co-operation and have fulfilled their executive positions willingly and efficiently.



## Social Service Club



Seated, Left to Right Ruth Mong, Mary DeVitis, Virginia Lawhead, Anne Sabol, Evelyn Doney, Laura Schoener  
Standing Kathryn Hess, Miss Bertha Rich

To render service is the sole purpose of this organization. It is the only organization of its kind on the campus and is, therefore, one of the most active groups. During the years of its existence, many opportunities for serving have presented themselves and have always been met satisfactorily.

The projects which the group has carried on are of three types: first, service to the country; second, service to the community, and third, service to the college. In the first type of service, many sweaters and other knitted garments were completed for the American Red Cross. In the second type of service, Christmas baskets were packed and distributed to needy families, Easter baskets and scrap books were given to the children confined to the local hospital. In the third instance, the club headed a drive for the Conservation of Electricity in the college.

At the beginning of the term, Miss Bertha Rich took up the advisorship of the club and activities progressed under her leadership and that of the following officers: President, Ruth Hope; Vice President, Anne Sabol; Secretary, Nelena Pope, Council, Ruth Mong, Kathryn Hess, and Mary DiVitis.

# Interfraternity Council



Seated, Left to Right— George Miller, Carl Berninger, Florence Faust, Hugh Niles, Helen Cromis, Betty Hagenbuch, Doctor Maupin  
 Standing —Miss Alice Johnston, Harold E. Miller, Joanna Fice, John Witkoski, Edna Snyder, David Jones

## OFFICERS

*President* - - - - - HUGH NILES  
*Vice President* - - - - - GEORGE E. MILLER  
*Secretary* - - - - - JOHN HUBIAK  
*Treasurer* - - - - - EDNA SNYDER

### *Alpha Psi Omega*

GEORGE E. MILLER      CARL BERNINGER      BETTY HAGENBUCH

### *Phi Sigma Pi*

HUGH NILES      JOHN WITKOSKI      DAVID JONES

### *Kappa Delta Pi*

HELEN CROMIS      HAROLD MILLER      EDNA SNYDER

### *Pi Omega Pi*

JOHN HUBIAK      JOANNA FICE      FLORENCE FAUST

# Kappa Delta Pi

The Gamma Beta chapter of Kappa Delta Pi which was installed February 21, 1931, has not only played a forceful and dynamic role among its own members but also an equally important one in the life of the college community as a whole.

The aims of Kappa Delta Pi as a National Honor Society in Education are the perpetuation and promotion of high intellectual, scholastic, and social standards in an effort to advance professional growth.

Membership is limited to those junior and senior men and women who in addition to ranking among the upper quartile of their classes also maintain high educational ideals and possess commendable personal qualities.

Activities of the first semester included: election of officers, initiation of new members and adding an amendment to our constitution. At the regular meetings group discussions on current affairs, educational and world wide topics are given after which a social hour is held.

In conjunction with the other work, the fraternity sponsored the selling of Wedgewood plates to graduates and members of the college. The plates have an engraving of Carver Hall on them and are of excellent quality. They serve a dual function as memorial plates and in financing educational trips for members of Kappa Delta Pi.





First Row, Left to Right—Joseph R. Butler, Joanna Fice, Lee Roy Beaumont, John Hubiak, Boyd Buckingham, Kathryn Campbell, Dr. Neil Maupin, Edna Snyder  
 Second Row—Virginia Lawhead, Anne Sabol, Sara Lebengood, Ruth Ebright, Helen Kotch, Jean Kuster, Elizabeth Bartha, Irene Kulik, Joyce Lohr, Mary DeWald, Margaret Lambert, Betty Hagenbuch, Florence Faust  
 Third Row—Joyce Hay, Harold E. Miller, Edward Manley, Carl Berninger, John Witkoski, Donald Rabb, Winton Laubach, Irving Gottlieb, George Spontak, Helen Cromis



#### OFFICERS

<i>President</i>	- - - - -	JOHN HUBIAK
<i>Vice President</i>	- - - - -	VIRGINIA LAWHEAD
<i>Recording Secretary</i>	- - - - -	RUTH HOPE
<i>Corresponding Secretary</i>	- - - - -	KATHRYN CAMPBELL
<i>Treasurer</i>	- - - - -	GEORGE SPONTAK
<i>Historian</i>	- - - - -	JOANNA FICE
<i>Sponsor</i>	- - - - -	DR. NEIL MAUPIN

# Alpha Psi Omega



Seated, Left to Right—Betty Katerman, Jean Langan, Paul Rowlands, Betty Biermann, George Miller, Joan Kuster  
Second Row—Carl Berninger, Betty Hagenbuch, Betsy Smith, Boyd Buckingham, Miss Alice Johnston, John Thomas, Stella Williams, Mary Kelly, Irving Gottlieb



Alpha Psi Omega, the honorary dramatic fraternity, is the largest one of its kind in the United States. The local chapter, Alpha Omicron, is the oldest established chapter of any fraternity on the campus.

This year so far the fraternity has initiated new members, conducted regular meetings, and held several parties at the "Frat House"—the name given to Miss Johnston's apartment.

One of the customs of the fraternity is to hold a theater party which, this year, proved to be a success. We are also looking forward to the annual Christmas party to be held in the "Frat House."

This semester, the play, "Arsenic and Old Lace," will be sponsored by the fraternity and presented with the aid of the Dramatic Club.

Here's hoping that this year will be as successful as previous years. With its growing activities, Alpha Psi Omega is playing an important role in the college.

# Pi Omega Pi



Seated, Left to Right Joseph R. Bailer, Ruth Ebright, Joanna Fice, John Hubiak, Sara Lebengood, Irving Gottlieb, Mr. Walter S. Rygiel  
Standing Lee Roy Beaumont, Joyce Hay, Harold E. Miller, Helen Kotch, John Witkoski, Mr. W. C. Forney, Edward Manley, Florence Faust, Helen Cronis, Anne Sabol, Edna Snyder



The Alpha Delta Chapter of Pi Omega Pi, a National Professional Commercial Educational Fraternity founded in 1923 at the Northeast Missouri State Teachers College at Kirksville, was installed at State Teachers College, Bloomsburg, on May 28, 1935. The Alpha Delta Chapter consists of members of the Department of Business Education who have attained superior scholastic ratings.

Its aims are to encourage, promote, extend, and create interest and scholarship in commerce; to encourage and foster high ethical standards; and to teach the ideal of service as the basis of all worthy enterprise.

Each year the fraternity, co-operating with the Business Education Club, sponsors the Pennsylvania Contest held annually by the Department of Business Education. Prizes are awarded to the winners of these contests at the fraternity's annual spring banquet.

The programs which are presented at the regular monthly meetings have both entertainment and educational value.

Officers for 1942-43 are as follows: President, John Hubiak; Vice President, Irving Gottlieb; Secretary, Ruth Ebright; Treasurer, Sara Lebengood; Historian, Joanna Fice.

Faculty members include Mr. Joseph Bailer, Miss Margaret Hoke, and Mr. Walter Rygiel. Mr. William Forney is the sponsor for this fraternity.



# Phi Sigma Pi

April 26, 1930, is a memorable day to all Phi Sig men of Bloomsburg because it was on this day that Iota Chapter, Phi Sigma Pi Fraternity was installed as the only all male fraternity on the campus. Ever since its installation as a national professional fraternity, Phi Sig has been one of the most active groups on the campus and can point with pride to its many achievements along both educational and social lines.

This year the fraternity started out with but twelve members, the ranks having been rather heavily depleted by graduation. We were also faced with the loss of our president-elect when Thomas Cannard was forced to resign due to his impending induction into the United States Armed Forces. We were fortunate in securing an able successor to Tom in the person of Hugh Niles who, with the assistance and guidance of Mr. Reams, led the fraternity through another successful year.

On October 27, nineteen new members were initiated into the fraternity. They were: Bernard Pufnak, Herman Vonderheid, Ted Manley, Joseph Gula, Anthony Kravitski, Harvey Huber, Carl Berninger, George Miller, Lee Beaumont, Harold Miller, Carl Diltz, Donald Schlieder, John Hubiak, Robert Bunge, William Selden, Lado Savelli, Edwin Vastine, and Bernard Kane.

Meetings were kept on a rather educational level with many discussions on problems of education after the war. One of the highlights of the year was the assembly program sponsored by the fraternity, presenting an address and some entertaining readings by Mr. Percy Berninger. Another feature of the year was the annual theater party with the "Auxiliary" present. After the show refreshments and dancing were enjoyed in the social rooms of Science Hall.

In January a dinner was held as a sort of farewell for the boys who were leaving school at the mid-semester. Each of the boys left a short parting word to the fellows who were remaining behind and promised to do his best to carry on the old traditions of Phi Sig and B. S. T. C., just as those who had gone on before were doing. The boys then departed with the high hope that before another year rolled around our glorious flag of liberty and justice and peace for all would be flying in all parts of the world.



First Row, Left to Right—Dr. Thomas P. North, Donald Rabb, John Witkoski, Mr. Reams, Hugh Niles, David Jones, Mr. Bailer  
 Second Row—Harold E. Miller, Lee Roy Beaumont, Bernard Pufnak, Carl Berninger, Boyd Buckingham, Paul Rowlands, Edward Manley, George Spoutak, William Selden, George Miller, Elwood Wagner, Winton Laubach, Bernard Kane  
 Last Row—Lado Savelli, Carl Diltz, Harvey Huber, Anthony Kravitski, James Zweizig, Herman Vonderheid, Joseph Gulu, John Hubiak



#### OFFICERS

<i>President</i>	- - - - -	HUGH NILES
<i>Vice President</i>	- - - - -	DAVID M. JONES
<i>Treasurer</i>	- - - - -	DONALD RABB
<i>Secretary</i>	- - - - -	JOHN WITKOSKI
<i>Assistant Secretary</i>	- - - - -	HAROLD E. MILLER
<i>Sponsor</i>	- - - - -	E. A. REAMS



First Row, Left to Right- John Bremer, Leon Hartman, Reynold Paganelli, Leo Hoffman, James Kline, Ralph Seltzer, Thomas Jones, Herman Vonderheid, Buddy Hartman, Donald Rabb, Robert DeMott  
 Second Row- Donald Schleider, Allen McCracken, Robert Bunge, George Gillung, Clayton Patterson, John Witkoski, George Pirrote, John Hubiak, Harold E. Miller, Andrew Magill, Leo Roy Beaumont, C. Barton Scott  
 Last Row- Eustig Klabzuba, William Hummel, George Smith, Leo Donn, Paul Rowlands, Xen Hosler, Loren Collins, Anthony Kravitski, David Jones, Henry vonBlom, Carl Berninger, George Miller, Ernest Kocher, Dr. E. H. Nelson

## Men in the Reserves

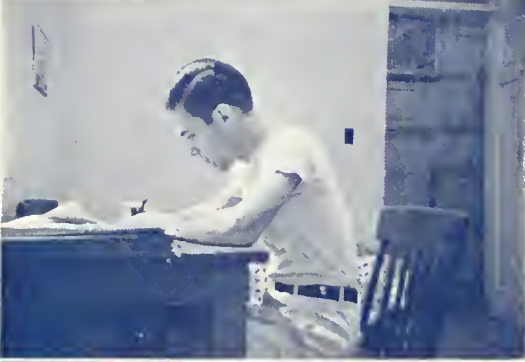
To give the Bloomsburg men who are about to enter the service of their country a preview of what military life is like, a program has been set up whereby all men who are in the reserve status are given three periods a week of drill and a like number of physical training.

Playing a large part in the war effort by housing and training a large number of Naval Officers and Cadets, Bloomsburg has added this activity to its program so as to better equip its men students for the duties that lie ahead of them. Appreciative of this fact fifty-six men with reserved status took part in this program.

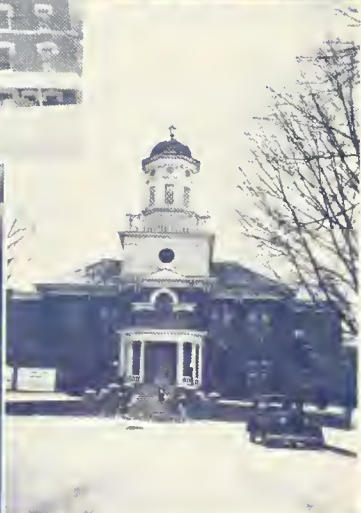
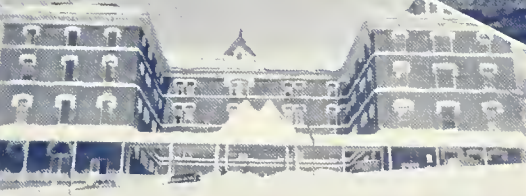














# SENIORS

## *Join Your Alumni Association*

*And Keep Your Membership Active Through the Years*



*Our Object:* "To Keep the Door of Opportunity Open for Worthy American Youth."

*Our Slogan:* "Every Graduate of Bloomsburg an Active Member of the Alumni Association."

The Annual Dues of \$1.00 Will Admit You To:

1. The Alumni Luncheon.
2. The baseball game on Alumni Day.
3. A year's subscription to the

## ALUMNI QUARTERLY

This magazine, which appears four times a year, will keep you informed of the activities of your classmates, and the events happening on the campus.



All dues should be sent to:

**DR. E. H. NELSON**

*Business Manager "Quarterly"*

STATE TEACHERS COLLEGE

BLOOMSBURG, PENNSYLVANIA

**THE  
NEIGHBORLY  
CAPITOL  
THEATRE**

•

*A Friendly  
Comerford Theater*

•

JAMES REILLY, *Manager*

. . . *"Where Old Friends Meet"*

**Phillips Barbecue**

BLOOMSBURG, PA.

For Refreshments and Eats

*Don't Forget*

**TEXAS LUNCH**

142-144 East Main Street

Compliments of

**MILCO UNDERGARMENT  
COMPANY**

BLOOMSBURG, PA.

TO WELCOME EVERY OCCASION

**DILLON'S**

*Flowers*

PHONE 127-J

Compliments of

*The*

**MAGEE**

**GARAGE**

•

**GMC TRUCKS**

BLOOMSBURG, PA.

AN OLD TRADITION

"Meet Your Friends at the

**H & C"**

Our Motto Will Always Be—  
To Serve You and—To Please

**HOLLINGSHEAD & CHRISTIAN**

When It's a

**MARIETTA**

It's a

First-Edition Fashion

Compliments of

**J. C. PENNEY CO.**

BLOOMSBURG, PA.

**F. W. WOOLWORTH  
COMPANY**

FEATHERBEDS

STY-L-FLEX

**J. S. RAUB  
SHOE STORE**

*Known For Better Value*



**FEST'S**  
**LUNCHES**

Bloomsburg—  
Catawissa

Compliments of

**A FRIEND**

**FRED R. HIPPENSTEEL**

CLOTHING  
AND  
FURNISHINGS

*The Arrow Shirt Man*

BLOOMSBURG, PA.

Compliments of

**Letterman's Bakery**

BLOOMSBURG, PA.

**HESS SMOKE SHOP**  
and BILLIARD PARLOR  
BLOOMSBURG, PA.

**7 Tables**

WILLIAM J. HESS, Prop.

**Bloomsburg Sporting Center**

**RAY HARLEY**

*Barber*

Ladies' Hair-Cutting  
A Specialty

**SNEIDMAN'S**

Bloomsburg's  
Leading Jewelers

*Bell Phone 3-5797*

**Central Teachers Agency**

*Member National Association of  
Teachers' Agencies*

202 WALNUT STREET, HARRISBURG, PA.

C. H. GORDINIER, *Manager*

Candidates carefully selected. Early Registration advisable. No charge to school officials.

# THE *Gregg* INVITATION TO COMMERCIAL TEACHERS

Many of the most able college graduates enter commercial teaching because it is interesting and among the most remunerative of teaching positions.

We invite all who are going into commercial teaching to make use of our free services. A letter to one of our offices asking for information as to teaching methods, course standards, or expected outcomes will bring an immediate response, and will bring a Gregg counsellor to see you on your first teaching job, if you so desire. We give every possible service to beginning commercial teachers.

The Gregg Publishing Company publishes widely used commercial text-books for these subjects:

SHORTHAND	BUSINESS ORGANIZATION
TYPEWRITING	COMMERCIAL LAW
SECRETARIAL TRAINING	BOOKKEEPING
OFFICE PRACTICE	GENERAL RECORD KEEPING
INTRODUCTORY BUSINESS	CIVIL SERVICE TRAINING
ADVANCED BUSINESS INFORMATION	BUSINESS ARITHMETIC
ECONOMIC GEOGRAPHY	BUSINESS ENGLISH
ECONOMICS	BUSINESS SPELLING
CONSUMER-PRODUCER ECONOMICS	SALESMANSHIP
BUSINESS PRINCIPLES	RETAILING

## *Gregg* SERVICE

Gregg service will help you to make a success of commercial teaching. Any teacher, by writing, can receive the benefit of counsel from our staff of commercial teaching experts. With the classroom adoption of a Gregg text you receive much free material in the form of teacher's manuals, methods materials, and courses of study.

*Write our nearest office for a  
complete list of Gregg Publications*

THE GREGG PUBLISHING COMPANY

New York

Chicago

San Francisco

Boston

Toronto

London

Compliments of

# BLOOMSBURG MILLS, INC.

BLOOMSBURG, PA.

Greetings from

## LARISH CLEANERS

235 Iron Street

BLOOMSBURG, PA.

Phone 67

## The Dairy Store Restaurant

6 West Main Street

Blaamsburg, Pa.

Home Made

ICE CREAM

BAKED GOODS

Congratulations to the GRADUATES

Stop at Rea & Derick

When in Town

## REA & DERICK, INC.

## ROCK'S RESTAURANT

Cor. East and 5th Sts.

Bloomsburg, Po.

SPECIAL PLATTER LUNCHES

HOME COOKING

*Dining Room Service All Hours*

ROCK GUINARD, Prop.

Phone 9172





*Americans want  
American Rugs!*

Stock and show the  
rugs and carpets of

the

**MAGEE**

**CARPET COMPANY**

-- *they're*

Loomed by  
**American Labor**

to

**BEAUTIFY  
AMERICAN  
HOMES**



**THE**

**Magee**

**CARPET  
COMPANY**

Mills: Bloomsburg, Pa.

N. Y. Sales Headquarters: 295 Fifth Ave.

Chicago: Furniture Mart.

Boston: 99 Chauncy St.

Pacific Coast Headquarters of San Francisco: Western Furniture Exchange

## HORACE WILLIAMS

CLOTHIER and  
FURNISHER

## MOYER BROS., Inc.

Bloomsburg's  
Leading Prescription  
Drug Store

•

YOUR PRESCRIPTION DRUGGIST  
SINCE 1868

"FURNITURE *for*  
LESS"

## ECONOMY STORES CO.

ONE OF BLOOMSBURG'S BEST STORES

NEWEST STYLES—  
FIRST!  
PRICE RIGHT—  
ALWAYS

## Arcus Women's Shop

50 West Main Street  
BLOOMSBURG, PA.

## BART PURSEL

*Bloomsburg's Leading Clothing Store*

### PRICES TO FIT THE PURSE

- Anything for Men
- New Boys' Department
- Service Uniforms

*The Town's Leading Dry Cleaner*

Compliments of

## SEARS, ROEBUCK & CO.

Main Street

BLOOMSBURG, PENNSYLVANIA

## F. P. PURSEL

*Department  
Store*

★

QUALITY FOR 50 YEARS

SUCCESS

AND

HAPPINESS

TO THE

CLASS OF 1943

**DOBYNS**

*Portraits by Photography*

Compliments of

**SNYDER'S DAIRY**

DANVILLE

BLOOMSBURG

HAZLETON



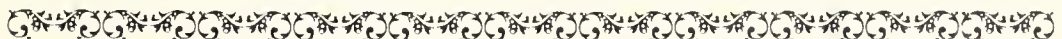


Was Engraved and Designed in  
our College Annual Department

## **GRIT PUBLISHING COMPANY**

WILLIAMSPORT, PA.

Our frequent calls and consultations with OBITER  
Staff is the same type of service we render to all clients.



# Index

A	Page	K	Page
Alpha Psi Omega	106	Kappa Delta Pi	104
Art	63	Kehr, Dean Marguerite	54
Andruss, President, Harvey A.	52	Koch, Dean John C.	54
August Graduates	32		
		L	
B		Language Faculty	58
Baseball	76	Library	63
Basketball, Varsity	70		
Basketball, J. V.	71	M	
B Club	72	Maroon and Gold	96
Bloomsburg Players	90	Mathematics Faculty	59
Business Education Club	97	May Graduation	18
Business Education Faculty	55	Men-in-Reserves	110
Business Manager	62	Mixed Chorus	92
		Music Faculty	61
C			
College War Council	81	N	
Color Bearers	4	North Hall Association	86
Community Government Association	82	North, Dean Thomas P.	53
Contents	5	Nurse	62
D		O	
Day Men's Association	87	Obiter	94
Day Women's Association	88		
Dedication	6	P	
Dietitian	62	Phi Sigma Pi	108
		Pi Omega Pi	107
E		Poetry Club	98
Education Faculty	56		
		S	
F		School Districts in Teacher Training	65
Freshman Class	47	Science Club	99
Freshman Class Officers	44	Science Faculty	59
		Senior Class Advisers	10
G		Senior Class Officers	12
Geography Faculty	60	Soccer	68
		Social Service Club	102
H		Social Studies Faculty	60
Health Education Faculty	57	Social Usage Club	100
Honor Roll	11	Sophomore Class	43
		Sophomore Class Officers	40
I		Sports Informals	77
Informals	111	Student Christian Association	101
Inter-Fraternity Council	103	Superintendent of Grounds and Buildings	62
J		T	
January Graduates	13	Track	74
Junior Class	39	Training School Faculty	64
Junior Class Officers	36		
		W	
		Waller Hall Association	84

# **AUTOGRAPHS**



# **AUTOGRAPHS**

# **AUTOGRAPHS**

1



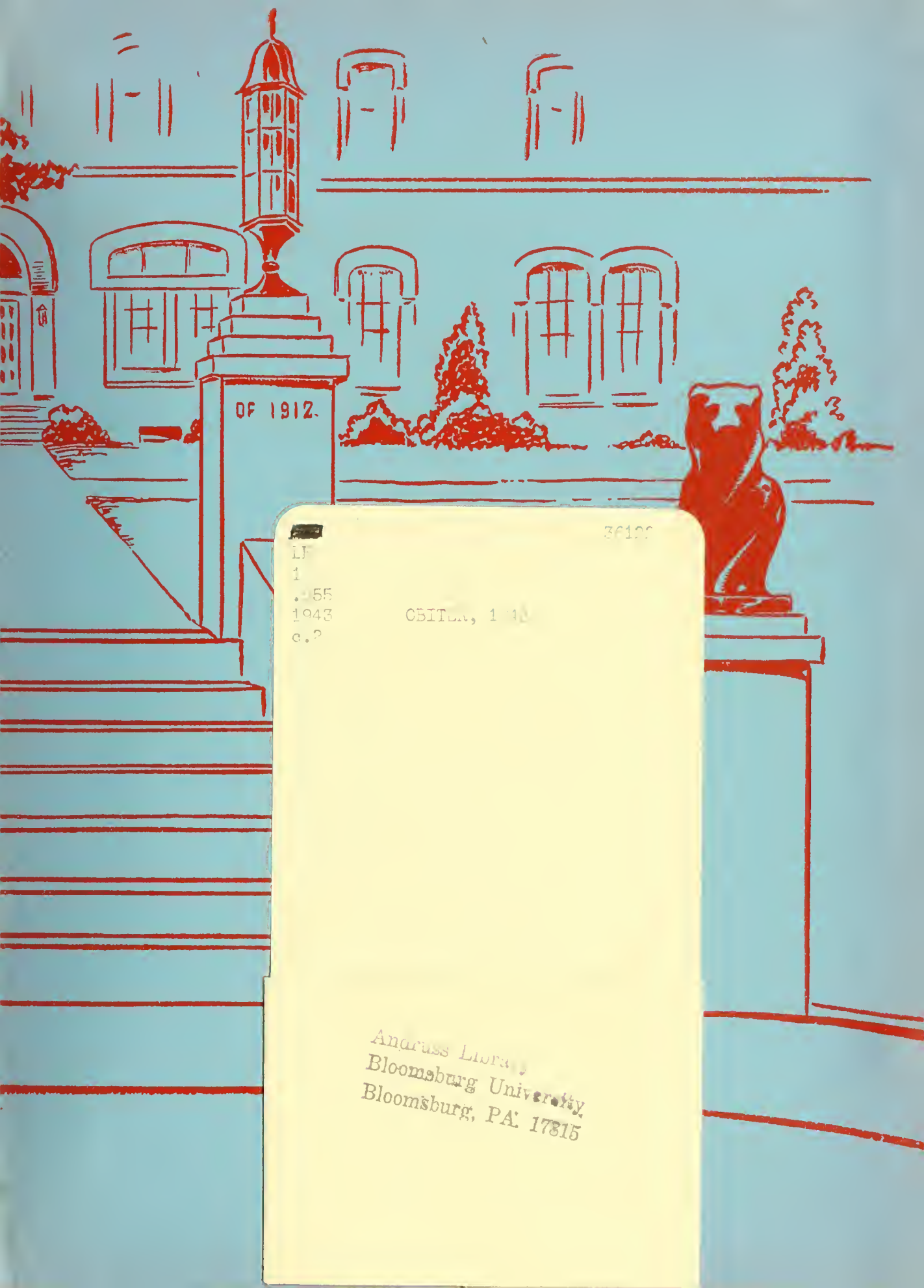


BLOOMSBURG UNIVERSITY



3 2404 00421794 5





OF 1912.

36122

LF

1

.455

1943

c.2

OBITU, 1940

Andrass Library  
Bloomsburg University  
Bloomsburg, PA. 17815



LH

1

.B55

1943

c.2