



OMBITIER
1938

ALUMNI ROOM



Alum. Assn.
9 Sep 1976

Archives (College)
Harvey A. Andrus Library
Bloomsburg State College
Bloomsburg, PA 17815





1938

O
B
I
T
E
R

GEORGE SHARP, Editor
JOHN HENDLER, Business Manager



β



1938
O B I T E R

VOLUME XXII

Published Annually by

THE SENIOR CLASS
STATE TEACHERS COLLEGE
BLOOMSBURG, PENNSYLVANIA

β



*"What greater or better gift can we offer
the republic than to teach and instruct our youth?"*
—Cicero.

John J. Fisher was born in 1889 in Kalona, a small Iowa town. There his first school room experiences took place. Twelve years later, a high school graduate, he began his teaching career in a nearby rural school, Prairie Dale. He later taught in the high school at Goshen, Indiana.

In 1910 Mr. Fisher entered Goshen College and in 1913 he was graduated with a baccalaureate degree. He continued his education on a scholarship at Indiana University, where in 1915 he received his M.A. degree. He was then awarded a two-year Harrison fellowship for graduate study at the University of Pennsylvania in Psychology. He also has studied at the University of Chicago, Columbia University, and Ohio State University.

In 1920 Mr. Fisher was engaged in war relief work in Vienna. Two years later he married Alma Warye, a graduate of Goshen College. They have one son, John, eleven years old.

Mr. Fisher taught psychology, philosophy, and logic at Goshen College for seven years. In 1924 he came to Bloomsburg, where he has taught psychology and educational measurements.

Apart from his professional interests, Mr. Fisher is a collector of American glassware, antique furniture, and oriental rugs.

Mr. Fisher is known to his students as a conscientious worker. His patient guidance as a teacher and his interest in the students' welfare have led the staff of the 1938 OBITTER to dedicate this book to him.







CONTENTS

The College

The Classes

Athletics

Organizations

B



THE COLLEGE

B



β



B



β



B



B



B



B



B

BOARD OF TRUSTEES

| | |
|------------------------------------------|------------------|
| DR. H. V. HOWER, President | Berwick |
| SUPT. W. W. EVANS, Vice President | Bloomsburg |
| GROVER C. SHOEMAKER, Secretary-Treasurer | Bloomsburg |
| HON. C. C. EVANS | Berwick |
| HON. WILLIAM P. GALLAGHER | Wilkes-Barre |
| HON. CLINTON HERRING | Orangeville |
| HENRY T. MEYER | Lewisburg |
| MRS. ETHEL NOECKER | Schuylkill Haven |
| THOMAS G. VINCENT | Danville |

The Board of Trustees meets regularly four times a year. During the interim the affairs of the College are conducted by the following Executive Committee which meets monthly:

EXECUTIVE COMMITTEE

HON. CLINTON HERRING
 THOMAS G. VINCENT
 GROVER C. SHOEMAKER, *Secretary-Treasurer*
 SUPT. W. W. EVANS, *Vice President*
 DR. H. V. HOWER, *Chairman*





To the Class of 1938:

As you pass this milestone which we call "Commencement," may "The Spirit that is Bloomsburg" give you the understanding that success is a by-product of service—that it is a continuous process of self-directed effort and self-discipline.

Sincerely yours,

Francis B. Hoar



The Class of 1938 carries with them our sincere wishes for personal and professional success. If the four years spent at Bloomsburg are an indication of future promise, we may expect great things from them.

With a demand for thorough collegiate preparation in all levels of teaching as well as the security offered by the present tenure law, the members of this class will meet the test and reap the reward of the present challenges to our profession.

Congratulations to you on reaching this educational milestone.

HARVEY A. ANDRUSS,
Dean of Instruction.



We are happy to have this opportunity to express our congratulations and felicitations to the members of the graduating class of 1938. We want you to know that we expect you to return to the campus of your Alma Mater frequently, and that there will be a warm welcome awaiting you.

We also wish to extend our congratulations to the editor and the staff of the 1938 OBITER on the production of a very attractive and unusually fine OBITER.

MARGUERITE KEIM.
JOHN C. KOCH.





MARY A. ALLEN

Business Education

Peirce School of Business Administration, State Teachers College, Bloomsburg, B.S.



HARVEY A. ANDRUS

Dean of Instruction

University of Oklahoma, A.B.; Certificate in Public and Private Business, Northwestern University, M.B.A. Graduate Work, *ibid.*



MRS. LUCILLE J. BAKER

Training Teacher, Grade III

Pestalozzi Froebel School, Chicago, Ill. student; Western State College, Colo., A.B.; Columbia University, A.M.

EDNA J. BARNES

Training Teacher, Grade IV

Western State Teachers College, Macomb, Ill., B.S.; Teachers College, Columbia University, M.A.



GEORGE C. BUCHHEIT

Health Education

University of Kentucky, B.S. in C.E.; Graduate Work University of Illinois; Columbia University, M.A. in Phys. Ed.



N. BIRSS CURTIS*

Business Education

Iowa State Teachers College, B.A.; University of Pittsburgh, M.Ed.; Graduate Work, University of Iowa, University of Southern California, and University of Pittsburgh.

* First semester, 1937-1938.

NEVIN T. ENGELHART

*Superintendent
Grounds and Buildings*



HOWARD F. FENSTEMAKER

Foreign Languages

Graduate, State Normal School,
Bloomsburg, Pa.; University of
Michigan, A.B.; New York Uni-
versity, A.M.; Graduate Work,
University of Pennsylvania.



JOHN J. FISHER

Psychology, Measurements

Goshen College, Goshen, Ind., A.B.;
Indiana University, M.A.; Harri-
son Fellow, University of Pennsyl-
vania; Graduate Work, Columbia
University.



WILLIAM C. FORNEY

*Director
Department of Business Education*

Temple University, B.S.C. Harvard
University, University of Chicago,
Graduate Work, New York Uni-
versity, M.A.

ANNA GARRISON

Training Teacher, Grade V

State Normal School, Bloomsburg,
Pa.; Columbia University, B.S.;
M.A.



DOROTHY E. GILMORE

Assistant Librarian

State Teachers College, Blooms-
burg, Pa., B.S.





FRANCIS B. HAAS

President

School of Pedagogy, Philadelphia; Temple University, B.S.; University of Pennsylvania, M.A.; Temple University, Ph.D.; Juniata College, LL.D.



MAY T. HAYDEN

Director of

Kindergarten Primary Education
High School and Junior College, Edmonton, Alta.; State College, Pullman, Wash., B.A.; Columbia University, M.A.

C. M. HAUSKNECHT

Business Manager



EDNA J. HAZEN

Director of

Intermediate and Rural Education
State Normal School, Edinboro; Allegheny College, Meadville; Columbia University, B.S.; M.A.; Graduate Work, New York University.



MARGARET R. HOKE

Business Education

Johns Hopkins, Baltimore, B.S.; Lebanon Valley College, Annville, M.A.; Columbia University, Secretarial Certificate.



ALICE JOHNSTON

Speech

Park College, Mo., B.L.; Columbia University, M.A.; Graduate Work, University of Wisconsin; Columbia University, University of Michigan.

MARGUERITE W. KEIR

Dean of Women

University of Tennessee, B.A.;
Wellesley College, A.M.; Cornell
University, Ph.D.



MRS. ETTA H. KELLER

Training Teacher, Grade VI

Pennsylvania State College, B.S.;
Teachers College, Columbia University,
M.A.; Graduate Work, Clark
University; New York University.



GEORGE J. KELLER

Act

State Normal School, Bloomsburg;
Teachers College, Columbia University,
B.S.; Bucknell University,
M.A.



M. AMANDA KERN

Training School, Special Class

Ursinus College, B.A.; Graduate
Work, Rutgers University.

MAUDE C. KLINE

Graduate Nurse

Jefferson Hospital, Philadelphia.
Registered Graduate Nurse.



JOHN C. KOCH

*Dean of Men and
Director of Secondary Education*

Bucknell University, A.B.; A.M.;
Graduate Work, New York University.





KIMBER C. KUSTER

Science

State Normal School, Bloomsburg, Pa.; University of Michigan, B.S., M.S., Ph.D.



PEARL L. MASON

Librarian

Simmons College, Boston, B.S.; Graduate Work, Columbia University.

NELL MAUPIN

Social Studies

Peabody Teachers College, B.S.; State University, Iowa City, M.A.; Ph.D.



LUCY McCAMMON

Health Education

State Teachers College, Springfield, Mo.; A.B.; Columbia University, M.A.



HERBERT E. McMAHAN

Business Education

Temple University, B.S., in Commerce; Pennsylvania State College, Graduate Work; Temple University, M.Ed.



MRS. JOHN K. MILLER

*Director
School of Music, Piano, Violin*

Pupil of Dr. Mackenzie, Henry Shradieck, Franz Kneisel, Waldemar Meyer, Adamowski, Madame Hopekirk, Ida Blakelee, Busoni.

HARRIET M. MOORE

Public School Music

State Teachers College, Kirksville, Mo.; Bush Conservatory, Chicago, Ill.; Mus.B.; New York University, B.S., M.A. in Music Education.



S. MABEL MOYER

Training Teacher, Grade II

State Normal School, Bloomsburg, Pa.; Summer Work, Teachers College, Columbia University; Bucknell University, B.S. in Education, M.A.; Graduate Study, New York University.



MARGUERITE MURPHY

Business Education

Columbia University, B.S.; M.A.



E. H. NELSON

Director of Health Education

State Normal School, Bloomsburg; University of Michigan, A.B.; Harvard University, Ed.M.; New York University, Ph.D.



THOMAS P. NORTH

Education

Pennsylvania State College, B.S., M.S.; Cornell University, Ph.D.



MABEL OXFORD

Business Education

Peirce School of Business Administration, State Teachers College, Indiana, Pa.; Muhlenberg College, State Teachers College, Bloomsburg, Pa., B.S.; Graduate Work, University of Pennsylvania.





ETHEL A. RANSON
*Assistant Dean
of Women and Mathematics*
University of Illinois, A.B.; Colum-
bia University, A.M.



EDWARD A. REAMS
Social Studies
Kansas Wesleyan, A.B.; Columbia
University, A.M.; Graduate Work,
University of Southern California,
Penn State College, New York Uni-
versity.



EARL N. RHODES
Director of Teacher Training
State Normal College, Ypsilanti,
Mich.; University of Chicago,
Ph.D.; Columbia University, A.M.;
Graduate Work, Clark University,
Columbia University, New York
University.



BERTHA RICH
*Assistant Dean
of Women and English*
Colorado State Normal School,
Gunnison, Ph.D.; Western State
College, A.B.; Columbia University,
A.M.; Graduate Work, Clarke Uni-
versity.



H. HARRISON RUSSELL
Geography
Illinois State Normal University,
B.Ed.; Clark University, A.M.;
Ph.D.



WALTER S. RYGIEL
Business Education
Temple University, B.S., M.Ed.
Graduate Work, Bucknell Univer-
sity; University of Pennsylvania.

ETHEL E. SHAW

English

Graduate, Normal School, New Britain, Conn.; Teachers College, Columbia University, B.S.; M.A.; Oxford University, Summer Work.



S. I. SHORTESS

Science

Albright College, A.B.; University of Pennsylvania, M.S.; Graduate Work, New York University.



ERMINE STANTON

Training Teacher, Grade 1

Graduate, Pratt Institute; Columbia University, B.S.



A. AUSTIN TATE

Football Coach and Social Studies

Lehigh University, B.S.; Graduate Work, University of Illinois; Harvard University.



IRMA WARD

Dietitian, Nutrition

University of Minnesota, B.S.; Columbia University, A.M.; Graduate Work, University of Minnesota; New York University.

SAMUEL L. WILSON

English

Bucknell University, B.S.; Columbia University, M.A.



GRACE WOOLWORTH

Training Teacher, Kindergarten

University of Chicago, Ph.B.; University of California; Columbia University, M.A.



SCHOOL DISTRICTS CO-OPERATING IN TEACHER TRAINING

1937-1938

BLOOMSBURG

L. P. GILMORE, *Supervising Principal*
Junior-Senior High School

| | | | | | | | | | | | | |
|----------------------------|---|---|---|---|---|---|---|---|---|---|---|----------------|
| LAWRENCE CAMPBELL, B.S. | - | - | - | - | - | - | - | - | - | - | - | Science |
| FRANK GOLDER, M.A. | - | - | - | - | - | - | - | - | - | - | - | Social Studies |
| ROBERT HUTTON, B.S. | - | - | - | - | - | - | - | - | - | - | - | Geography |
| MRS. HARRIET KLINE, M.A. | - | - | - | - | - | - | - | - | - | - | - | English |
| WILLIAM E. LETTERMAN, B.S. | - | - | - | - | - | - | - | - | - | - | - | Social Studies |
| BESS LONG, M.A. | - | - | - | - | - | - | - | - | - | - | - | Science |
| CLEORA MCKINSTRY, B.S. | - | - | - | - | - | - | - | - | - | - | - | English |
| HAROLD MILLER, M.A. | - | - | - | - | - | - | - | - | - | - | - | Geography |
| GEORGE MORDAN, B.S. | - | - | - | - | - | - | - | - | - | - | - | Mathematics |
| CLAIRE PATTERSON, B.S. | - | - | - | - | - | - | - | - | - | - | - | Social Studies |
| DONALD SANDS, B.S. | - | - | - | - | - | - | - | - | - | - | - | Social Studies |
| MARY R. SEROCCA, B.S. | - | - | - | - | - | - | - | - | - | - | - | French |
| RAY B. SCHELL, B.S. | - | - | - | - | - | - | - | - | - | - | - | Mathematics |
| MYRA SHARPLESS, B.S. | - | - | - | - | - | - | - | - | - | - | - | Social Studies |
| NORMAN A. YEANY, M.A. | - | - | - | - | - | - | - | - | - | - | - | Commercial |
| WESLEY KNORR, B.S. | - | - | - | - | - | - | - | - | - | - | - | Commercial |

ELEMENTARY

| | | | | | | | | | | | | |
|--------------------------|---|---|---|---|---|---|---|---|---|---|---|-----------------|
| ELIZABETH BOWMAN, B.S. | - | - | - | - | - | - | - | - | - | - | - | Grades V and VI |
| KARLEN HOFFMAN, B.S. | - | - | - | - | - | - | - | - | - | - | - | Grade IH |
| MAYNARD PENNINGTON, B.S. | - | - | - | - | - | - | - | - | - | - | - | Grades V and VI |
| RUTH POOLEY, B.S. | - | - | - | - | - | - | - | - | - | - | - | Grades V and VI |
| PAULINE RANCK, B.S. | - | - | - | - | - | - | - | - | - | - | - | Grade I |
| HELEN VANDERSLICE | - | - | - | - | - | - | - | - | - | - | - | Grade II |

CATAWISSA

PAUL L. BRUNSTETTER, *Supervising Principal*

| | | | | | | | | | | | | |
|----------------------------------------------|---|---|---|---|---|---|---|---|---|---|---|------------|
| PAUL L. BRUNSTETTER, B.S.—Senior High School | - | - | - | - | - | - | - | - | - | - | - | Commercial |
| M. F. WITMER, B.S.—Senior High School | - | - | - | - | - | - | - | - | - | - | - | Commercial |

BERWICK

M. E. HOVCK, *Superintendent*

| | | | | | | | | | | | | |
|----------------------------------------|---|---|---|---|---|---|---|---|---|---|---|------------|
| HILDA TINNEY, B.S.—Senior High School | - | - | - | - | - | - | - | - | - | - | - | Commercial |
| LOUISE YEAGER, B.S.—Senior High School | - | - | - | - | - | - | - | - | - | - | - | Commercial |

WILLIAMSPORT

A. M. WEAVER, *Superintendent*

| | | | | | | | | | | | | |
|-------------------------------------------------|---|---|---|---|---|---|---|---|---|---|---|------------|
| EZRA HEYLER, A.B.—Senior High School | - | - | - | - | - | - | - | - | - | - | - | Commercial |
| KYRR MILLER, B.S.—Senior High School | - | - | - | - | - | - | - | - | - | - | - | Commercial |
| EDWARD A. PETERSON, B.S.—Senior High School | - | - | - | - | - | - | - | - | - | - | - | Commercial |
| MINNIE RICKS, B.S.—Roosevelt Junior High School | - | - | - | - | - | - | - | - | - | - | - | Commercial |
| MARTHA SANER, B.S.—Curtin Junior High School | - | - | - | - | - | - | - | - | - | - | - | Commercial |

COLUMBIA COUNTY

W. W. EVANS, *County Superintendent*

| | | | | | | | | | | | | |
|----------------------------------|---|---|---|---|---|---|---|---|---|---|---|---------------|
| MRS. BLANCHE MORDAN EVERET—Rural | - | - | - | - | - | - | - | - | - | - | - | Grades I-VIII |
| BESSIE MORDAN—Rural | - | - | - | - | - | - | - | - | - | - | - | Grades I-VIII |

B



THE CLASSES

B



EDWARD REAMS



S. I. SHORTESS

FACULTY ADVISERS TO THE CLASS OF 1938

The graduating class wishes to acknowledge hereby the friendly advice and cooperation of the men who were its class advisers.

| | | |
|----------------|-----------|-------------------------|
| Freshman Year | - - - - - | MR. EDWARD REAMS |
| Sophomore Year | - - - - - | MR. S. I. SHORTESS |
| Junior Year | - - - - - | DR. KIMBER C. KUSTER |
| Senior Year | - - - - - | DR. H. HARRISON RUSSELL |

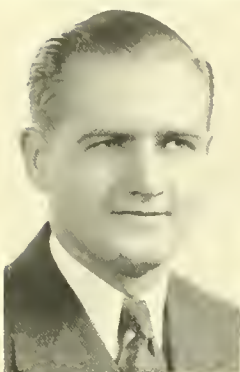


DR. KIMBER C. KUSTER



DR. H. HARRISON RUSSELL

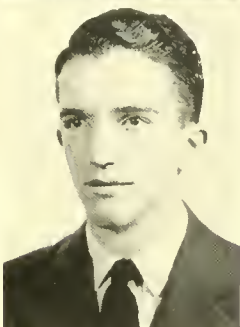
JOHN HENDLER
President



DOROTHY EDGAR
Secretary



MARJORIE BEAVER
Treasurer



NEIL RICHIE
Vice President

SENIOR CLASS

As the class of 1938 is nearing the close of its career at Bloomsburg, it may claim many honors for itself. It is made up of those who have shown abilities of marked distinction in many instances. The activities of the past four years have brought out the qualities and versatility of the group which is now the Senior Class. While we are not all leaders, every one has had a share in worthwhile contributions as members of many organizations.

From the time we came to Bloomsburg in 1934 until the present time, many friendships have developed as results of four years of associations.

In 1934 we came to the campus of Bloomsburg as two hundred eager and enthusiastic "fresh." We took the remainder of that year to become adjusted to new surroundings and before we knew it we were sophomores ready to do our share to help a new group of "fresh" in their process of readjustment.

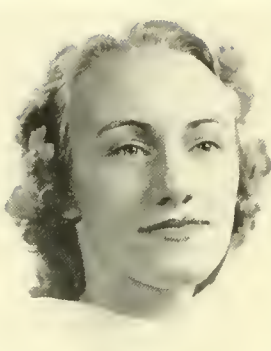
The following year we still retained one hundred and twenty members regardless of the fact that many of our group had completed the two-year course in elementary education.

By this time we were well established and many of our versatile members were distinguishing themselves in various extra-curricular activities. We have contributed good material for athletics, school publications, and officers of many prominent organizations.

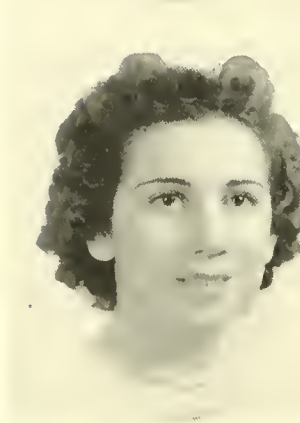
Now, before we can realize it, we are seniors! All of our group have encountered many new experiences with student teaching and the time is passing quickly. We are now looking forward to the time when another day will go down in history of the school as Graduation Day—Class of 1938.



Mary A. Allen



Joycelyn M. Andrews



Eleanor J. Apichell



Emily T. Arcikosky

MARY A. ALLEN
Mifflin, Pa.
Commercial
Kappa Delta Pi 1937.

JOYCELYN M. ANDREWS
Sonestown, Pa.
Secondary—Geography, French.
Librarian 1; Mixed Chorus 1, 2; Geography Club 2; B Club 2, 3, 4;
Day Women's Association 1, 2, 3, 4.

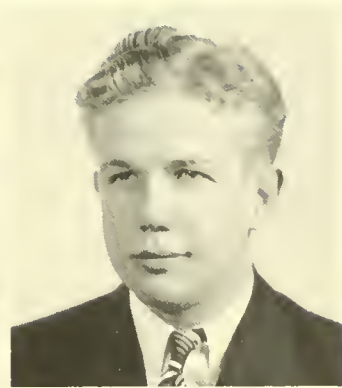
ELEANOR J. APICHELL
Kulpmont, Pa.
Secondary—Social Studies, Geography.
Y. W. C. A. 1, 2, 3; Mixed Chorus 2, 3; A. B. C. Club 1, 2; Girls'
Athletics 1, 2.

EMILY T. ARCIKOSKY
Mount Carmel, Pa.
Commercial
J. C. C. 1, 2, 3, 4; Y. W. C. A. 1, 2; Mixed Chorus 3, 4; W. S. G. A.
1; Columbian Club 3, 4; Upper Class Advisory Council 4.

Alice W. Auch



Byron L. Beaver



Marjorie H. Beaver



Alberta H. Brainard



ALICE W. AUCH
Easton, Pa.
Commercial

Junior Chamber of Commerce 1, 2, 3, 4; Athletics 1, 2, 3, 4; "B" Club 2, 3, 4; Treasurer 2, 3; Secretary of Class 1; Student Council 3; Secretary of Community Government Association 1; Inter-Fraternity Council 1; Psi Omega Pi 3, 4; Women's Student Government Association 3, 4.

BYRON L. BEAVER
Aristes, Pa.

Secondary—Latin, Science.

Dramatic Club 2, 3, 4; Y. M. C. A. 3, 4; Office Staff 4.

MARJORIE H. BEAVER
Danville, Pa.

Secondary—Mathematics, French.

Class Treasurer 1, Secretary 2; Editor of Handbook 2; Managing Editor, *Maroon and Gold* 2, Editor 3; Mixed Chorus 2; A Cappella Choir 2; A. B. C. Club 1, 2, 3, 4; C. G. A. Hospitality Committee Chairman 1; Office Staff 3; Official Board, Day Women 1.

ALBERTA H. BRAINARD
Susquehanna, Pa.

Secondary—History, Mathematics, Latin

Y. W. C. A. 1, 2, 3, 4, Secretary 3, Cabinet 2, 3, 4; Mixed Chorus 2, 3, 4; Acting President Waller Hall 1; A Cappella Choir 2, 3, 4; Kappa Delta Pi 3, 4; Women's Student Government Association 2, 3, 4; C. G. A. Elections Committee 1; Office Staff 1; Acting Member of Student Council 1; Athletics 3.

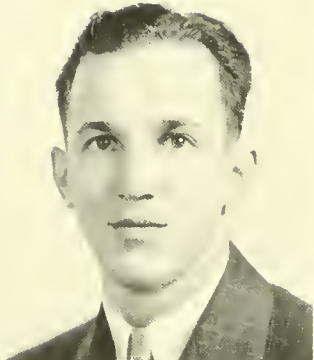




Virginia C. Breitenbach



Bernice Bronson



George R. Casari



Sylvia M. Conway

VIRGINIA C. BREITENBACH

Catawissa, Pa.

Elementary

Day Girls' Association 1, 2, 3, 4; Mixed Chorus 3, 4; Girls' Athletics 1, 2, 3; Y. W. C. A. 1, 2.

BERNICE BRONSON

Rummerfield, Pa.

Commercial

Y. W. C. A. 1; Women's Student Government Association 2, 4; Junior Chamber of Commerce 1, 2, 3; Dramatic Club 1, 2, 3, 4; Alpha Psi Omega 3, 4; Pi Omega Pi 3, 4; Co-Chairman of Customs 3; Co-Chairman of Awards Committee 3.

GEORGE R. CASARI

Mount Carmel, Pa.

Commercial

Junior Chamber of Commerce 1, 2, 3, 4; Poetry Club 3, 4; Omnic Staff 3, 4; Y. M. C. A. 1, 2; Daymen's Association 1, 2, 3, 4; Wrestling 1, 2, 3, 4; Track 1, 2; Intra-Mural Basketball 1, 2, 3, 4.

SYLVIA M. CONWAY

Shamokin, Pa.

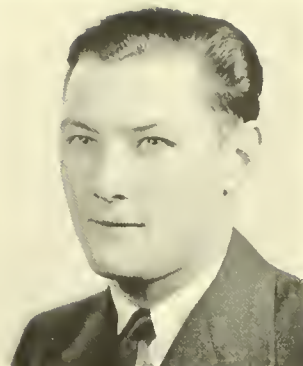
Secondary—English, Latin.

Mixed Chorus 1, 2; Dramatic Club 1, 2, 3, 4; A Cappella Choir 1, 2; Alpha Psi Omega 2, 3, 4; Poetry Club 3, 4; *Maroon and Gold* 4; Omnic Staff 3; Inter-Fraternity Council 3, 4.

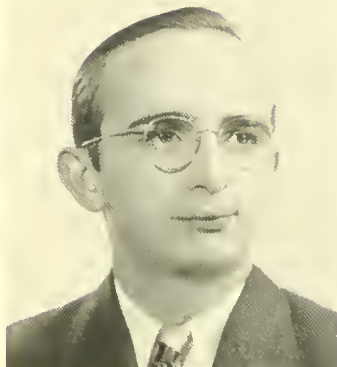
Anne G. Curry



Thomas A. Davison



Robert C. Diehl



Martha H. Dreese



ANNE G. CURRY

McAdoo, Pa.

Elementary-Secondary—English, Social Studies.

Orchestra 1, 2, 3, 4; Secretary 1; Mixed Chorus 1, 2, 3, 4; A. B. C. Club 2, 3, 4; Dance Orchestra 1; Band 2, 3.

THOMAS A. DAVISON

Wilkes-Barre, Pa.

Secondary—Mathematics, Science, Social Studies.

Track 1, 2, 3; Cross Country 1, 2, 3; Baseball 2, 3, 4; Basketball Manager 1, 2, 3, 4; Basketball Tournament Manager 1; Y. M. C. A. 1, 2, 3; Outrigger Staff 1; Intra-Murals 1, 2, 3, 4; Wrestling 1, 2; North Hall 1, 2, 3, 4; Associate Editor, 1938 Outrigger.

ROBERT C. DIEHL

Easton, Pa.

Commercial.

Kappa Delta Pi 3, 4; Pi Omega Pi 3, 4; Historian 1; Junior Chamber of Commerce 1, 2, 3, 4; *Maroon and Gold* 1, 2; Outrigger Staff 3; A Cappella Choir 2, 3, 4; Mixed Chorus 2, 3, 4; Dramatic Club 1, 2, 3; Y. M. C. A. 2, 3, 4; Cabinet 3, 4; Treasurer 1; Double Quartet 2.

MARTHA H. DREESE

Quakertown, Pa.

Secondary—English, Social Studies.

A. B. C. Club 3, 4; Dramatic Club 1, 2, 3, 4; Secretary 2; Alpha Psi Omega 3, 4; Secretary 1; Kappa Delta Pi 3, 4; Women's Student Government Association 1, Vice President 1; Y. W. C. A. 1; Student Council 1.





Dorothy L. Edgar

Marion I. Elmore

Martha H. Evans

Olga H. Fekula

DOROTHY L. EDGAR

Stillwater, Pa.

Secondary—Science, Social Studies.

Geography Club 1; Poetry Club 2; Y. W. C. A. 1; A. B. C. Club 2, 3, 1; Kappa Delta Pi 3, 1; Secretary of Class 3, 1; Women's Student Government Association 3; **OUTER** Staff 1.

MARION I. ELMORE

Dunmore, Pa.

Commercial.

Supervisor Waller Hall 3, 1; Junior Chamber of Commerce 1, 2, 3, 1; Mixed Chorus 2, 3, 1; Columbian Club 3, 1; **OUTER** Staff 1.

MARTHA H. EVANS

Shamokin, Pa.

Elementary—Primary.

Kappa Delta Pi 3, 1; Y. W. C. A. 1; Sewing Club 1; Mixed Chorus 1, 2, 3, 1; W. S. G. A. 2, 1; Geography Club 3.

OLGA H. FEKULA

Frackville, Pa.

Elementary—Intermediate.

Y. W. C. A. 1, 2; Mixed Chorus 1, 2, 3, 1; Columbian Club 3, 1; W. S. G. A. 3; Upper Class Advisory Council 1.

Freda Pearl Fester



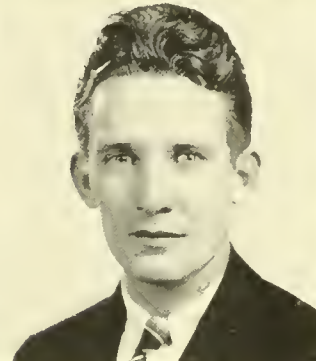
Aerio M. Fetterman



Andrew L. Fetterolf



Alphonse E. Finder



FREDA PEARL FESTER

Orangeville, Pa.

Rural.

Sewing Club 1, 2; Y. W. C. A. 3; Mixed Chorus 1; Rural Life Club 4.

AERIO M. FETTERMAN

Newlin, Pa.

Secondary—Science, Mathematics.

Cross Country 3, 1; Soccer 1; Geography Club 1, 2, 3, 4, Vice President 3; Day Men's Association 1, 2, 3, 4.

ANDREW L. FETTEROLF

Germantown, Pa.

Commercial.

Junior Chamber of Commerce 1, 2, 3, 4; Y. M. C. A. 1, 2, 3, 4, Treasurer 2; Baseball Manager 1, 2, 3, 4; Football Manager 3, 4; Varsity Wrestling 3, 4; Varsity Soccer 1; Infra-Mural Basketball 1, 2, 3, 4.

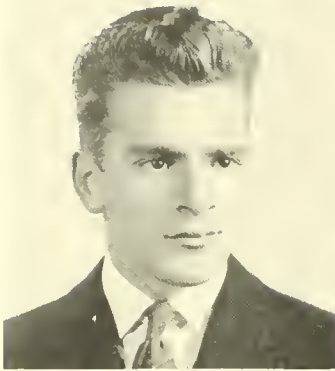
ALPHONSE E. FINDER

Shamokin, Pa.

Secondary—Science, Social Studies.

Football 1, 2, 3, 4; Baseball 1, 2, 3, 4; Basketball 1; Y. M. C. A. 2, 3, 4; Mixed Chorus 1, 2; Geography Club 2.

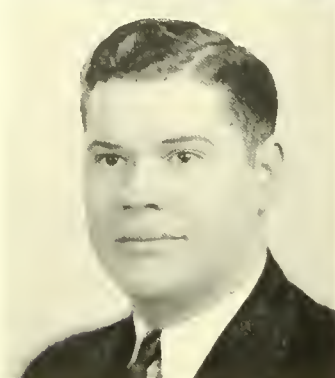




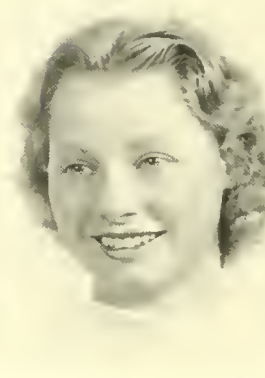
John E. Fiorini, Jr.



Vera E. Follmer



Philip B. Frankmore



Iris E. Freas

JOHN E. FIORINI, JR.

Bernice, Pa.

Secondary—Geography, Social Studies.

Gamma Theta Upsilon 2, 3, 4, President 4; Phi Sigma Pi 2, 3, 4, Secretary 4; Geographic Society 1, 2, Secretary 1; Poetry Club 2, Vice President 2; Inter-Fraternity Council 3, 4; Kappa Delta Pi 3, 4; Student Council (Sub) 4; *Maroon and Gold* 3, 4; Day Men's Association 1, 2, 3, 4; Wrestling 1.

VERA E. FOLLMER

Bloomsburg, Pa.

Secondary—Science, Geography.

Day Women's Association 1, 2, 3, 4; Y. W. C. A.; Geography Club; Mixed Chorus; Gamma Theta Upsilon, Corresponding Secretary; Kappa Delta Pi.

PHILIP B. FRANKMORE

Easton, Pa.

Commercial.

Dramatic Club 1, 2, 3, 4; A Cappella Choir 2, 3, 4; Y. M. C. A. 1, 2, 3, 4, Cabinet 2, 3; Junior Chamber of Commerce 1, 2, 3, 4, Treasurer 3; North Hall Association 1, 2, 3, 4; Mixed Chorus 2, 3, 4; Columbian Club 3, 4; Alpha Psi Omega 3, 4, President 4; Inter-Fraternity Council 4; Chairman of Customs 3; Chairman of Social Committee 4.

IRIS E. FREAS

Mooresburg, Pa.

Elementary—Rural Field.

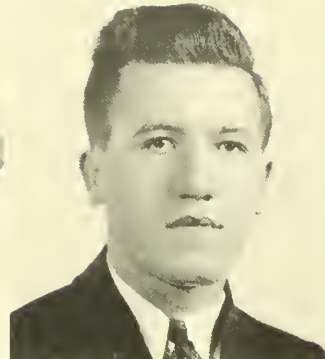
Sewing Club; Mixed Chorus; Rural Life Club.

Dorothy J. Frick



Grace I. Gearhart

Elizabeth J. Gilligan



Michael L. Gonshor

DOROTHY J. FRICK

West Pittston, Pa.

Intermediate—1929-1931.

Secondary—Social Studies, Mathematics.

Maroon and gold 1; Girls' Chorus 1, 2; Y. W. C. A. 1, 2; Athletics 1; Fire Official; Mixed Chorus 1; A Cappella Choir 1; Kappa Delta Pi.

GRACE I. GEARHART

Bloomsburg, Pa.

Commercial.

Junior Chamber of Commerce 1, 2, 3, 4; A. B. C. Club 1, 2, 3, 4; Y. W. C. A. 1; Day Girls' Association 1, 2, 3, 4; Lutheran Student Association 3, 4.

ELIZABETH J. GILLIGAN

Dunmore, Pa.

Commercial.

Junior Chamber of Commerce 1, 2, 3, 4; Governing Board Waller Hall 2, 3, Treasurer 3; Mixed Chorus 2, 3, 4; Columbian Club 3, 4, Secretary 3; Kappa Delta Pi 3, 4, Corresponding Secretary 1; Pi Omega Pi 3, 4; Election Board 1, Vice Chairman 1.

MICHAEL L. GONSHOR

Alden Station, Pa.

Secondary—Mathematics, Science.

Y. M. C. A. 1, 2; Dramatic Club 1, 2; Day Men's Association 3, 4; North Hall Association 1, 2; Letterman's Club 2, 3; Track 1, 2, 3; Cross Country 2, 3, 4; Student Assistant Coach 1.





Helen I. Goretski



Margaret G. Graham



Anne J. Grosek



Mary E. Hamer

HELEN I. GORETSKI

Kulpsmont, Pa.

Commercial.

Y. W. C. A. 1; Junior Chamber of Commerce 1, 2; A. B. C. Club 1.

MARGARET G. GRAHAM

Bloomsburg, Pa.

Secondary—French, Latin, English.

Dramatic Club 1, 2, 3, 4, Vice President 1; Athletics 1, 2; A. B. C. Club 1, 2, 3, 4, Program Chairman 3; Day Women's Association 1, 2, 3, 4, Treasurer 2, President 3; Alpha Psi Omega 3, 4; Kappa Delta Pi 3, 4, Historian 1; Handbook Editor 1; Student Council 3, 4; Vice President Community Government Association 4.

ANNE J. GROSEK

Plains, Pa.

Secondary—English, Social Studies.

Mixed Chorus 3, 4; A. B. C. Club 1, 2, 3, 4; C. G. A. Dining Room Committee Chairman 3; W. S. G. A. Freshman Advisory Council 4; Y. W. C. A. 1; Geography Club 1; Athletics 1, 2.

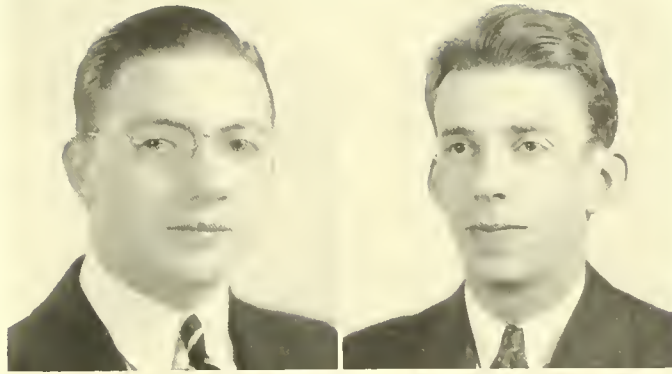
MARY E. HAMER

Easton, Pa.

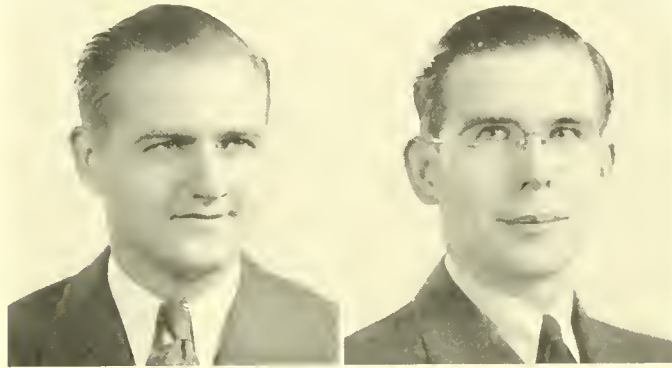
Commercial.

Y. W. C. A. 1; Mixed Chorus 2, 3, 4; A Cappella Choir 2, 3, 4; Junior Chamber of Commerce 2; Secretary 2; Waller Hall Government Association 4.

Elmer B. Havalicka



Robert T. Heckenluber



John F. Hendler

Charles H. Henrie

ELMER B. HAVALICKA

Hanover Township, Pa.

Commercial.

Pi Omega Pi 3, 4; Phi Sigma Pi 2, 3, 4, Treasurer 4; Dramatic Club 2, 3; Junior Chamber of Commerce 1, 2, 3, 4.

ROBERT T. HECKENLUBER

Arendtsville, Pa.

Commercial.

Junior Chamber of Commerce 1, 2, 3, 4; Y. M. C. A. 1, 3; North Hall Association 1; Day Men's Association 2, 3, 4.

JOHN F. HENDLER

Wilkes-Barre, Pa.

Commercial.

Senior Class President 4; Business Manager of Outrigger 4; Student Council 1, 4; C. G. A. 1, 4; Outrigger Staff 2, 3; Junior Chamber of Commerce 1, 2, 3, 4, Vice President 2; Y. M. C. A. 1, 2; Intra-Mural Basketball 1, 2, 3, 4; Varsity Football 1, 2; Wrestling 1, 2, 3; Kappa Delta Pi 3, 4; Pi Omega Pi 3, 4; Inter-fraternity Council 4.

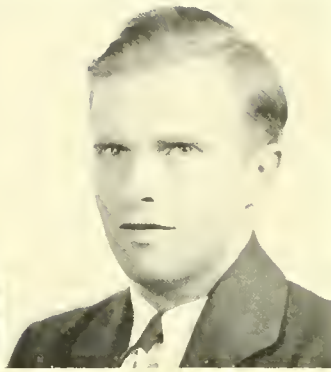
CHARLES H. HENRIE

Bloomsburg, Pa.

Commercial.

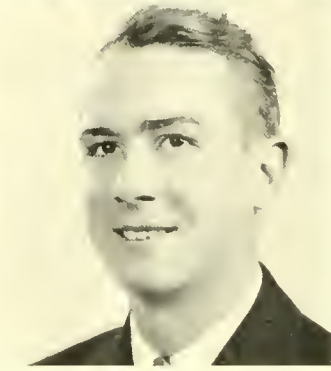
Maroon and Gold Orchestra 1, 2, 3, 4, President 4; Y. M. C. A. 3, 4, Cabinet 3, 4; Band 1, 2, 3, 4; Junior Chamber of Commerce 1, 2, 3, 4.





Norman C. Henry

Robert H. Hill



Cleo M. Hummel

Charles P. James

NORMAN C. HENRY

Berwick, Pa.

Commercial.

Football 1, 2, 3, 4; Junior Chamber of Commerce 1, 2, 3, 4; *Maroon and Gold* 2; Day Men's Association 1, 2, 3, 4, Secretary 2; Committee Chairman Student Council 3; Treasurer Student Council 1; Phi Sigma Pi 2, 3, 4; Pi Omega Pi 3, 4, President 1.

ROBERT H. HILL

Seranton, Pa.

Secondary—Science, Social Studies.

Y. M. C. A. 1, 2, 3, 4; North Hall 1, 2, 3, 4.

CLEO M. HUMMEL

Millville, Pa.

Elementary.

Geography Club 3; Y. W. C. A. 3; Sewing Club 4; Athletics 2, 3; Science Club 4.

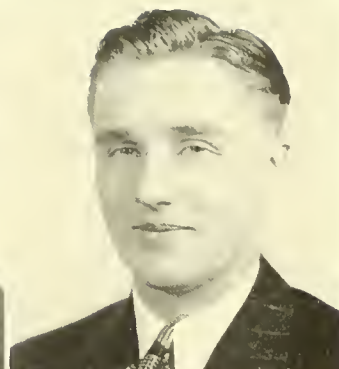
CHARLES P. JAMES

Danville, Pa.

Secondary—Social Studies, Geography.

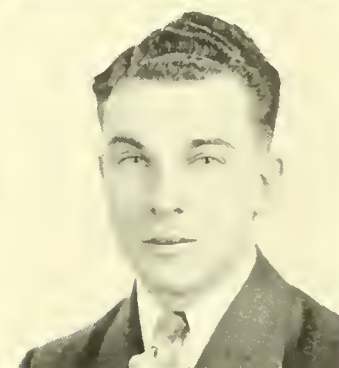
Alpha Psi Omega 2; Geography Club 3; Open Forum 4; Football 1.

Michael Klembara



Clyde Klinger

R. Irene Knapp



Jacob Kotsch, Jr.

MICHAEL KLEMBARA

Shamokin, Pa.

Secondary—Science, Social Studies.

Football 1, 2, 3, 4; Assistant Football Coach.

CLYDE KLINGER

Nuremberg, Pa.

Commercial.

Pi Sigma Pi 3, 4; Pi Omega Pi 3, 4; President C. G. A. 4; Junior Chamber of Commerce 1, 2, 3, 4; Band 1, 2, 3, 4; Dramatic Club 2, 3, 4; Football 1; Treasurer Class 2; C. G. A. Treasurer 3; Intra Murals 1, 2, 3.

R. IRENE KNAPP

Kingston, Pa.

Transfer from Penn State.

Mixed Chorus 3, 4; Governing Board 4; Kappa Delta Pi 4; Y. W. C. A. 2.

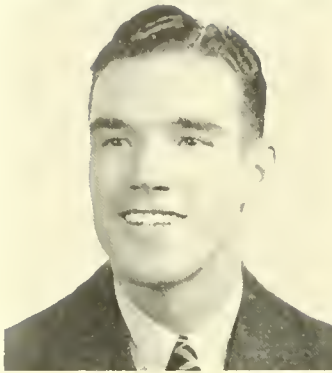
JACOB KOTSCH, JR.

Egypt, Pa.

Commercial.

Treasurer Freshman Class; *Murron and Gold* 1; Dramatic Club 1, 2, 3, 4, President 2; Y. M. C. A. 1, 2, 3, 4, President 3, Cabinet 2, 3; Junior Chamber of Commerce 1, 2, 3, 4; Mixed Chorus 2, 3, 4; A Cappella Choir 2, 3, 4; Ombudsman Staff 3; Student Council 4; Inter-Fraternity Council 4; Alpha Psi Omega 2, 3, 4; Pi Omega Pi 3, 4; North Hall Association 1, 2, 3, 4, Secretary 3.





John B. Kovaleski

Willard S. Kreigh



Alex Kupstas

John J. Kushima

JOHN B. KOVALESKI

Newport Township, Pa.

Secondary—Social Studies, Geography.

Y. M. C. A. 1; Geography Club 1, 2, 3; Day Men's Association 1, 2, 3.

WILLARD S. KREIGH

Bloomsburg, Pa.

Commercial.

Men's Glee Club 1; Double Quartette 1; Mixed Chorus 2, 3, 4; A Cappella Choir 4; Day Men's Association 1, 2, 3; Y. M. C. A. 3, 4; Cabinet 3; Junior Chamber of Commerce 1, 2, 3, 4; Lutheran Student Group 3, 4; Poetry Club 1.

ALEX KUPSTAS

Wilkes-Barre, Pa.

Commercial.

J. V. Football 1, 2; Junior Chamber of Commerce 2, 3.

JOHN J. KUSHIMA

Drifton, Pa.

Commercial.

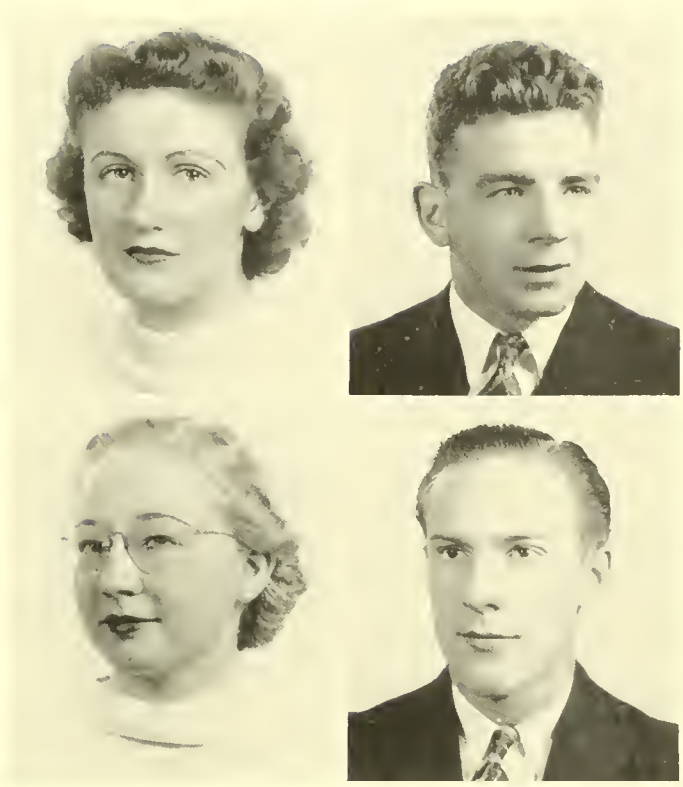
Day Men's Association 1, Vice President 1; Junior Chamber of Commerce 2, 3, 4; Band 2, 3, 4; Orchestra 2, 3, 4; Outing Staff 3; Wrestling 3, 4; Cross Country 3; Intra-Mural Basketball.

Ruth E. Langan

Vance Laubach

Ruth E. Leiby

Daniel W. Litwhiler



RUTH E. LANGAN

Duryea, Pa.

Commercial.

Dramatic Club 2, 3, 4; Waller Hall Government Association 3; C. G. A. Committee Chairman 3; Pi Omega Pi 3, 4; Alpha Psi Omega 3, 4; Treasurer 4.

VANCE LAUBACH

Berwick, Pa.

Commercial.

Football 1, 2, 3, 4, Captain 4; Track 1, 2, 3, 4; Junior Chamber of Commerce 1, 2, 3, 4; Wrestling 3, 4.

RUTH E. LEIBY

Danville, Pa.

Secondary—French, English.

Poetry Club 2, 3, Treasurer 2; A. B. C. Club 2, 3, 4; Mixed Chorus 3; Day Women's Association 1, 2, 3, 4, Vice President 3; Gamma Theta Upsilon 4; May Day Attendant 3.

DANIEL W. LITWHILER

Ringtown, Pa.

Secondary—Social Studies, Science.

Student Council 4; Orrer Staff 4; President of North Hall 4; Varsity Baseball 1, 2, 3, 4; J. V. Basketball 1, 2, 3; J. V. Track 1, 2, 3; J. V. Football 1; Football Manager 2, 3, 4.





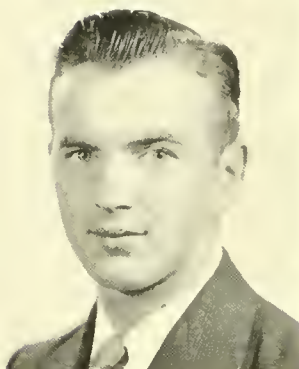
Carrie M. Livsey



Jane L. Lockard



Donna R. Lockhoff



John J. Maczuga

CARRIE M. LIVSEY

Bloomsburg, Pa.

Secondary—English, Geography.

Day Women's Association 1, 2, 3, 4; Girls' Chorus 1; Mixed Chorus 2, 3, 4; A Cappella Choir 2, 3, 4; Geography Club 1, 2, 3; Gamma Theta Upsilon, Recording Secretary; Dramatic Club 1, 2, 3, 4; Alpha Psi Omega; Inter-Fraternity Council, Social Chairman.

JANE L. LOCKARD

Berwick, Pa.

Secondary—English, French.

Dramatic Club, Secretary; A. B. C. Club; Mixed Chorus; Gamma Theta Upsilon; Kappa Delta Pi, Corresponding Secretary; *Maroon and Gold*; Day Women's Association, Treasurer.

DONNA R. LOCKHOFF

Bloomsburg R. D. 1.

Elementary—Primary.

Mixed Chorus; Rural Life Club; Sewing Club.

JOHN J. MACZUGA

Hanover Township, Pa.

Commercial.

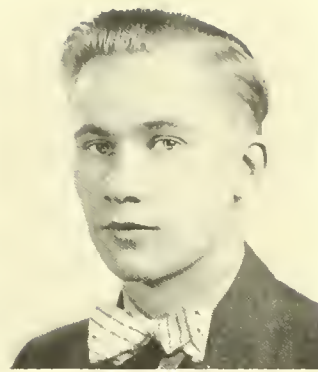
President of Day Men 1; Student Council 1; Community Government Association 4; Junior Chamber of Commerce 1, 2, 3, 4; Y. M. C. A. 1, 2; Poetry Club 3, 4; Outing Staff 1; Football 2, 3, 4; Baseball 2, 3, 4; Wrestling 1, 2; Intra-Mural Basketball 1, 2, 3, 4.



Anna M. Malloy



Paul G. Martin



Edward M. Matthews



Dorothy A. Mensinger



ANNA M. MALLOY

Maple Hill, Shenandoah, Pa.

Commercial.

Junior Chamber of Commerce 1, 2, 3, 4; Mixed Chorus 2, 3, 4; Secretary 3, Treasurer 4; Women's Student Government Association 3, 4; President 1; Community Government Association 1; Chairman of Social Committee 4.

PAUL G. MARTIN

Catawissa, Pa.

Commercial.

Band 3, 4; Track, Junior Manager 3.

EDWARD M. MATTHEWS

Hazleton, Pa.

Secondary—Mathematics, Science.

Phi Sigma Pi 2, 3, 4; Y. M. C. A. 2, 3; *Muroon and Gold* 3, 4; Columbian Club 3, 4; Inter-Fraternity Council 4.

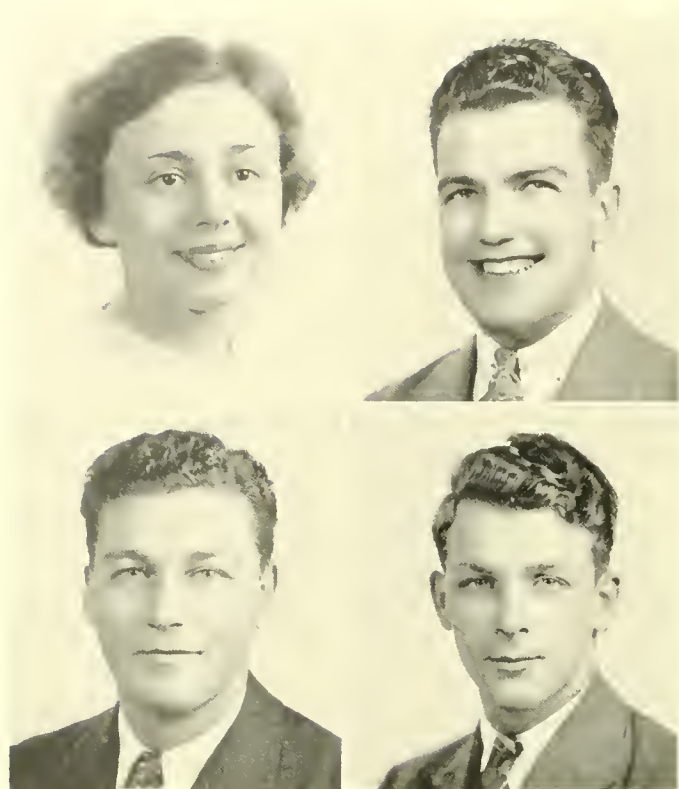
DOROTHY A. MENSINGER

Nuremberg, Pa.

Commercial.

Junior Chamber of Commerce 1, 2, 3, 4; Pi Omega Pi 3, 4, Treasurer 3, 4; Kappa Delta Pi 3, 4.





Mary E. Miller

George J. Neibauer

Frank T. Patrick

Herbert Payne

MARY E. MILLER

Berrysburg, Pa.

Commercial.

Junior Chamber of Commerce 2, 3, 4; Mixed Chorus 3; Day Women's Association 2, 3; Pi Omega Pi 4.

GEORGE J. NEIBAUER

Shamokin, Pa.

Secondary—Science, Social Studies.

Dramatic Club 1, 2, 3, 4; Poetry Club 1, 2; Y. M. C. A. 1; Day Men's Association 1, 2, 3, 4; *Maroon and Gold* 1; Science Club 1; Columbian Club 1, 2.

FRANK T. PATRICK

Berwick, Pa.

Commercial.

Football 1, 2, 3, 4; Junior Chamber of Commerce 1, 2, 3, 4; Day Men's Association 1, 2, 3, 4, Vice President 3; Men's Glee Club 1; A Cappella Choir 2, 3, 4, Soloist 3; Mixed Chorus 2, 3, 4.

HERBERT PAYNE

Shamokin, Pa.

Secondary—Geography, Social Studies.

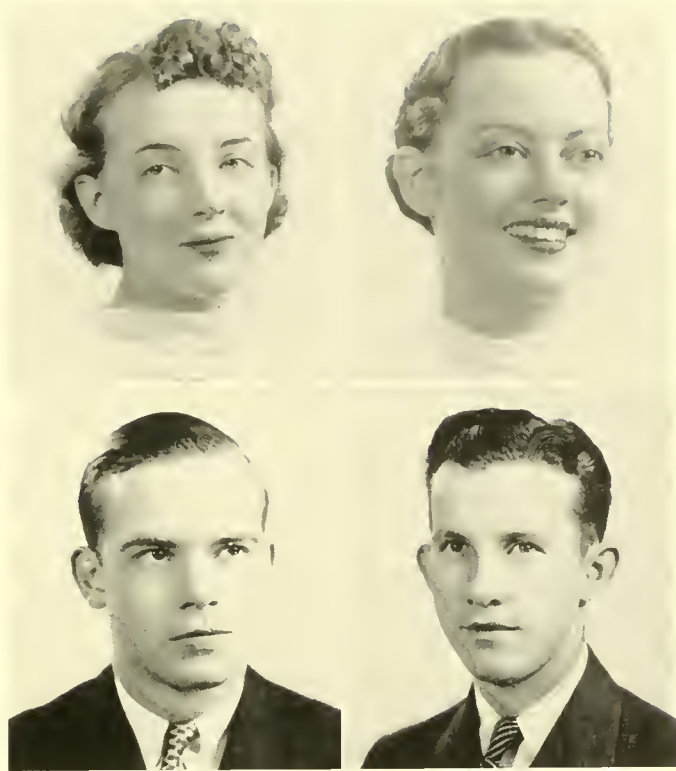
Mixed Chorus 2, 3, 4; Geography Club 1, 3; Open Forum 1.

Helen Pesansky

Margaret F. Potter

Robert Price

Francis D. Purcell



HELEN PESANSKY

Sheppton, Pa.

Secondary—French, Social Studies.

Y. W. C. A. 1; Mixed Chorus 3; Supervisor of Waller Hall 1; Governing Board Waller Hall; Gamma Theta Upsilon 1; "B" Club 1; Girls' Sports Editor OBITER 1.

MARGARET F. POTTER

Bloomsburg, Pa.

Secondary—French, Geography, Mathematics.

Dramatic Club 1, 2, 3, 4; Geography Club 1, 2, Treasurer 2; *Maroon and Gold* 2; Co-Chairman of C. G. A., Hospitality Committee 2, Entertainment Committee 3, Social Committee 1; Gamma Theta Upsilon 2, 3, 4, Recording Secretary 3; Kappa Delta Pi 3, 4; Alpha Psi Omega 3, 4; Treasurer Junior Class.

ROBERT PRICE

Plains, Pa.

Commercial.

President Freshman Class; C. G. A., 1, 3; Bowling 3, 4; Dramatic Club 1; Y. M. C. A., 1, 2, 3, 4, Cabinet 2, 4, Treasurer 3; Mixed Chorus 2, 3, 4; A Cappella Choir 2, 3, 4; Junior Chamber of Commerce 1, 2, 3; Pi Omega Pi 3, 4; Kappa Delta Pi 3, 4, Editor News Letter 3; Wrestling 3, 4; Cross Country 1, 2; Omnia Staff 3, 4; Treasurer Men's Government Association 3.

FRANCIS D. PURCELL

Frackville, Pa.

Secondary—Social Studies, Science.

Y. M. C. A., 1; Mixed Chorus 2; Social Committee 2, 3; Phi Sigma Pi 2, 3, 4, President 4; Inter-Fraternity Council 3, 4, Secretary-Treasurer 3; Chairman of Fire Drill Committee 3; Chairman of Election Board 4; Vice President of Class 3; Baseball 1; Intra-Mural Basketball 1, 2, 3, 4; Intra-Mural Tennis 2, 3, 4.





Mary T. Quigley



Anna B. Rech



M. Audree Reed



Bernadette T. Reynolds

MARY T. QUIGLEY

Shenandoah, Pa.

Secondary—English, Social Studies.

Women's Student Government Association 1, 2; A. B. C. Club 1, 2, 3, 4, Secretary 1; *Maroon and Gold* Staff 1.

ANNA B. RECH

Southampton, Pa.

Commercial.

Pi Omega Pi 1; Junior Chamber of Commerce 1, 2, 3; Mixed Chorus 2, 3, 4; Columbian Club 3, 4; Women's Student Government Association 2, 3, 4.

M. AUDREE REED

Mansfield, Pa.

Secondary—Mathematics, Geography.

Sewing Club 1; Geography Club 2, 3; Dramatic Club 1, 2, 3, 4; Gamma Theta Upsilon 3, 4.

BERNADETTE T. REYNOLDS

Pottsville, Pa.

Commercial.

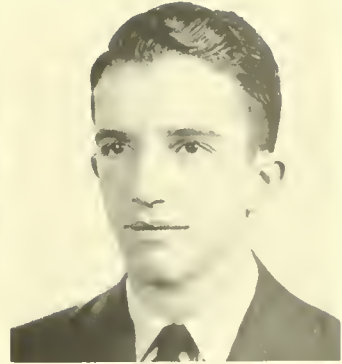
Y. W. C. A. 1; Junior Chamber of Commerce 1, 2, 3, 4; Mixed Chorus 3, 4; Columbian Club 3, 4; Upper Class Advisory Council 1; Pi Omega Pi 3, 4, Secretary 1.



Ellen C. Rhinard



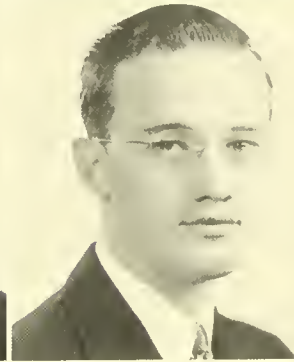
Neil Richie



Cyril J. Rowland



Robert Rowland



ELLEN C. RHINARD

Berwick, Pa.

Commercial.

Junior Chamber of Commerce 1, 2, 3, 4; Pi Omega Pi 3, 4; Kappa Delta Pi 3, 4; Officer Staff 4.

NEIL RICHIE

Bloomsburg, Pa.

Commercial.

Dramatic Club 1, 2, 3, 4; Junior Chamber of Commerce 1, 2, 3, 4; Mixed Chorus 2; Kappa Delta Pi 3, 4, Vice President 4; Pi Omega Pi 3, 4, Vice President 4; Student Council 2; Vice President of Class 1, 4; Football 1, 3.

CYRIL J. ROWLAND

Connerton, Pa.

Secondary—French, Mathematics.

Football 3; Y. M. C. A. 2, 4.

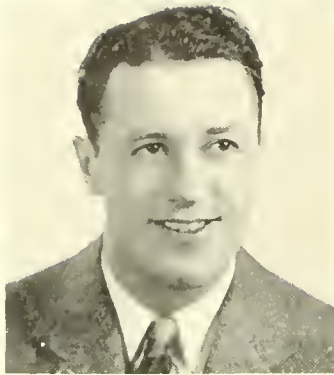
ROBERT ROWLAND

Scranton, Pa.

Secondary—Science, Social Studies.

Y. M. C. A. 1, 2, 3, 4; Wrestling 1; Chairman of Dining Room Committee 3; Member of Social Committee 4; North Hall 1, 2, 3, 4; Dramatic Club 3.

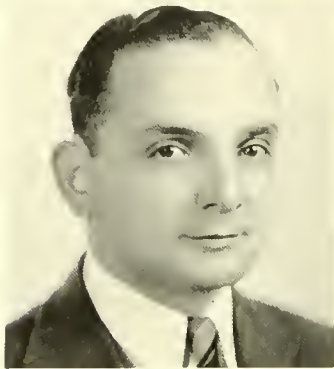




Irving Ruckel



Agnes L. Ryan



Anthony L. Salerno



Rose L. Saluda

IRVING RUCKEL

Wanamie.

Secondary— Geography, Social Studies.

Basketball 1, 2, 3, 4, Captain 3; North Hall Association 1, 2, 3; Y. M. C. A. 1.

AGNES L. RYAN

Dunmore, Pa.

Commercial.

Junior Chamber of Commerce 1, 2, 3, 4; *Maroon and Gold Staff* 1.

ANTHONY L. SALERNO

Old Forge, Pa.

Commercial.

Kappa Delta Pi 3, 4, Treasurer 4; Pi Omega Pi 4; Phi Sigma Pi 3, 4; Junior Chamber of Commerce 3, 4; Y. M. C. A. 3, 4; Columban Club; Inter-Collegiate Bowling 3, 4.

ROSE S. SALUDA

Mount Carmel, Pa.

Commercial—English.

Junior Chamber of Commerce; Mixed Chorus; Pi Omega Pi; Kappa Delta Pi.



Esther A. Scott



Eleanor L. Sharadin

George T. Sharp



Dorothy E. Sidler

ESTHER A. SCOTT
Summit Hill, Pa.
Commercial.

Y. W. C. A. 1, 2; Junior Chamber of Commerce 1, 2, 3, 4; Athletics 2; Mixed Chorus 3, 4.

ELEANOR L. SHARADIN
Danville, Pa.

Secondary—Science, Social Studies.

Science Club 3, 4; Sewing Club 2; "B" Club 2, 3, 4; Athletics 1, 2, 3, 4; Geography Club 3.

GEORGE T. SHARP
Ashland, Pa.

Secondary—Mathematics, Science, Social Studies.

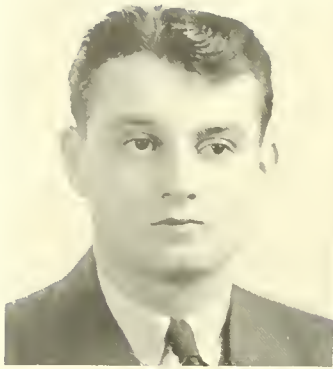
OFFICE Staff 3, 4, Junior Editor 3, Editor 4; Dramatic Club 1, 2; Mixed Chorus 2, 3, 4; Poetry Club 1, 2, 3; *Maroon and Gold* Staff 1, 2; Y. M. C. A. 1, 2, 3.

DOROTHY E. SIDLER
Danville, Pa.

Secondary—Geography, Social Studies.

A. B. C. Club 1, 2, 3, Secretary 2; Sewing Club 1; Athletics 1; Day Women's Association Governing Board 2, 4, President 4; Geography Society 2, Treasurer 2; Mixed Chorus 3, 4; Dramatic Club 3, 4; C. G. A. 4; Gamma Theta Upsilon 3, 4, Treasurer 4.

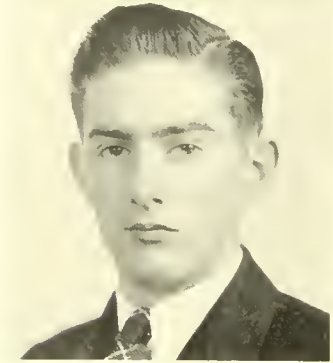




Benjamin Singer



John J. Sircovics



John F. Slaven



Margaret M. Smith

BENJAMIN SINGER

Hazleton, Pa.

Secondary—Geography, Social Studies.

Kappa Delta Pi 3, 1; Alpha Psi Omega 1; Dramatic Club 1, 2, 3, 4; Orchestra 1, 2, 3, 4; *Maroon and Gold* Staff 2, 3, 4.

JOHN J. SIRCOVICS

Berwick, Pa.

Secondary—Science, Social Studies.

Football 1, 2, 3, 4, Captain 3.

JOHN F. SLAVEN

Fleetwood, Pa.

Commercial.

Junior Chamber of Commerce 1, 2, 3, 4, President 4; Dramatic Club 3, 4, Treasurer 4; Y. M. C. A. 1; Day Men's Association 1, 2, 3, 4; Alpha Psi Omega 1; Mixed Chorus 3; Cheerleader 1, 3; Varsity Basketball 4; J. V. Baseball 1, 2.

MARGARET M. SMITH

Sterling, Pa.

Secondary—Social Studies, Geography.

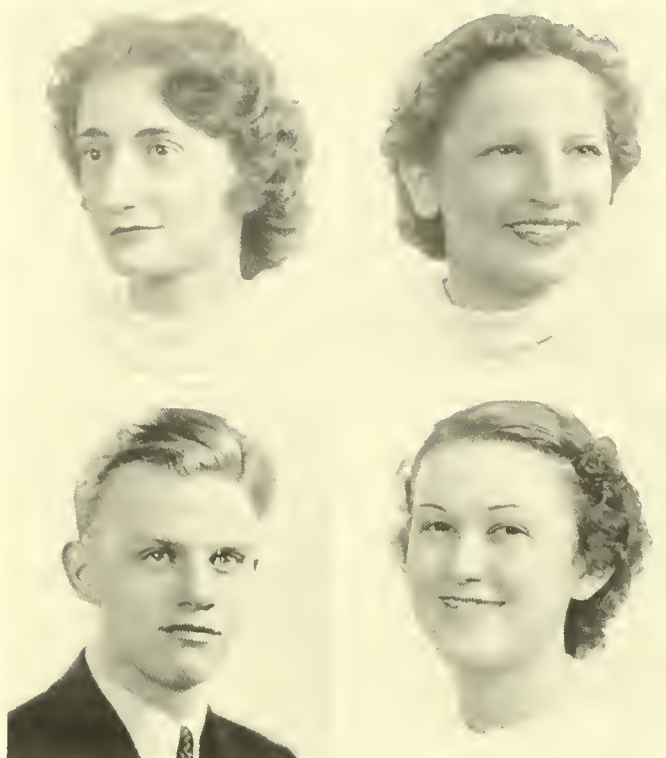
Athletics 1, 2, 3, 4; "B" Club 3, 4; Geography Club 2, 3; Y. W. C. A. 1, 2; Mixed Chorus 3, 4; *Maroon and Gold* Staff 1, 2, 3, 4; Women's Student Government Association 1; Day Women's Association 2, 3, 4.

Florence E. Snook

Genevieve R. Stellar

William Thomas, Jr.

Rowena V. Troy



FLORENCE E. SNOOK

Middleburg, Pa.

Elementary—Primary.

"B" Club 2, 3, 1; Y. W. C. A. 1, 2, 3, 4, Cabinet 2, 3, 1; Dramatic Club 1; Mixed Chorus 2, 3, 1; Kappa Delta Pi 3, 1; W. S. G. A. Supervisor 2; Intra-Mural Basketball, Cage Ball, Soft Ball, Hockey, and Volley Ball.

GENEVIEVE R. STELLAR

Kulpmont, Pa.

Secondary—French, Latin.

WILLIAM THOMAS, JR.

Scranton, Pa.

Secondary—Science, Social Studies.

President Junior Class; President Kappa Delta Pi; Mixed Chorus; A Cappella Choir; Phi Sigma Pi; *Micron and Gold Staff*; Day Men's Association.

ROWENA V. TROY

Mifflinville, Pa.

Elementary—Intermediate.

Sewing Club 1, 2, President 2; Mixed Chorus 3, 1.



Doris Von Bergen

Regina A. Walukiewicz

Jack C. Wanich

Arthur K. Wark

DORIS VON BERGEN

Hazleton, Pa.

Commercial.

Kappa Delta Pi; Pi Omega Pi; Junior Chamber of Commerce; Mixed Chorus; Columban Club.

REGINA A. WALUKIEWICZ

Shenandoah, Pa.

Secondary—Social Studies, English, French.

Y. W. C. A. 1; Poetry Club 2; *Maroon and Gold* Staff 3, 4; Dramatic Club 2, 3, 4, Secretary 4; Columban Club 1; Mixed Chorus 1.

JACK C. WANICH

Lightstreet, Pa.

Commercial.

Junior Chamber of Commerce 2, 3, 4.

ARTHUR K. WARK

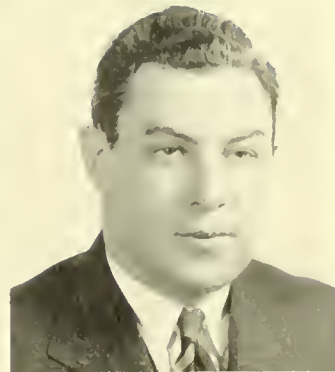
Berwick, Pa.

Secondary—Geography, Social Studies.

Helen Weaver



Charles H. Weintraub



Dorothy J. Wenner



Robert R. Williams



HELEN WEAVER

Bloomsburg, Pa.

Elementary—Rural.

Y. W. C. A. 1, 2, 3, 4; Cabinet 2, 3; President 4; Sewing Club 1, 2;
Poetry Club 2, 3, 4; Treasurer 3; Kappa Delta Pi 3, 4; Rural Life
Club 4.

CHARLES H. WEINTRAUB

Wilkes-Barre, Pa.

Secondary—English, Social Studies.

Kappa Delta Pi 3, 4; Geography Club 3; Dramatic Club 3; Foreign
Relations Club 4; Football 3.

DOROTHY J. WENNER

Stillwater, Pa.

Commercial.

Junior Chamber of Commerce 1, 2, 3; *Maroon and Gold* Staff 2, 3;
Mixed Chorus 2, 3, 4.

ROBERT R. WILLIAMS

Blakely, Pa.

Commercial.

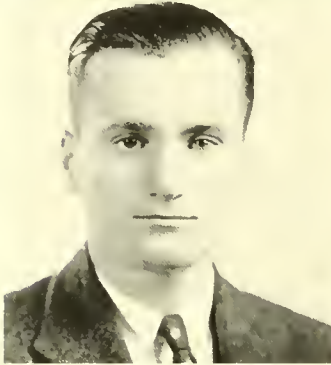
Band 1, 2, 3, 4; Vice President 3; Drum Major 3, 4; Orchestra 1, 2,
3, 4; Treasurer 3; Secretary 4; Instrumental Trio 2; *Maroon and Gold*
Staff; Dance Band 1, 2, 3, 4; Junior Chamber of Commerce 1, 2, 3, 4.



Walter D. Withka



Joseph E. F. Zalewski



Adolph M. Zalonis



Stasia T. Zola

WALTER D. WITHKA
Simpson, Pa.

Secondary—Social Studies, Geography.

Vice President of North Hall 2; Vice President Phi Sigma Pi; Historian of Phi Sigma Pi; Co Chairman of Customs Committee; Y. M. C. A. 1; Geography Club 2; Dramatic Club 3, 1; Phi Sigma Pi; Gamma Theta Upsilon; Varsity Basketball 2, 3, 1; Varsity Tennis 3, 1; J. V. Basketball 1.

JOSEPH E. F. ZALEWSKI
Kulpmont, Pa.

Secondary—Social Studies, Science.

Y. M. C. A. 1, 2, 3, 1; Baseball 2, 3; Cheerleader 2; Football 1, 3; Soccer 1; Intra-Murals 1, 2, 3, 1; Wrestling 1, 2; Columbian Club 3, 1; Dining Room Committee 3; Outing Staff 1; North Hall 1, 2, 3, 1.

ADOLPH M. ZALONIS
Edwardsville, Pa.

Elementary-Secondary—Geography, Mathematics.

Phi Sigma Pi; Dramatic Club; Gamma Theta Upsilon; Geography Club; Y. M. C. A.; Tennis; Vice President Sophomore Class.

STASIA T. ZOLA
Hazleton, Pa.

Secondary—French, English.

Maroon and Gold Staff 1, 2, 3, 1; Managing Editor 3; Assistant Managing Editor 2; Editor 1; Poetry Club 3, 1; Press Club 1.

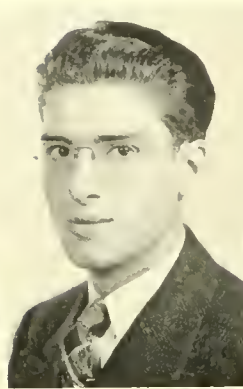




JUNIORS
SOPHOMORES
FRESHMEN



JAMES DE ROSE
President



ARIGAIL LONFRIGAN
Secretary



JOHN E. BOWER
Vice President



ANNABEL BAILEY
Treasurer

JUNIOR CLASS

In the month of September, 1935, two hundred and fifteen eager, fun-loving boys and girls started their college careers as freshmen. They soon were made to feel their position when customs were imposed on them by the sophomores.

The Kid Party proved a huge success, and all the "Kids" had a grand and glorious time acting natural. A highlight of the semester was their outstanding chapel program. The freshmen proved what they were worth by putting on the Freshman Hop, a prominent dance of the year.

The next year the Sophomore Class was one of the largest in the history of the institution. The sophomores expressed their enthusiasm and eagerness by sponsoring the very successful Sophomore Cotillion in the form of a Valentine Dance.

Last fall, one hundred and twenty students returned to start their junior year. Under the capable leadership of Mr. Buchheit, the adviser, the Junior Prom, the chapel program, and all other events conducted by the class will be well remembered. Now, they are ready to tackle their last year!



First Row, Left to Right—D. Engleburt, E. Reichley, E. Freehafer, A. Lomergan, A. Bailey, B. Savige, L. Adams
 Second Row—H. Derr, R. Dugan, R. Kleffman, M. Deppen, M. Johnson, J. Oswald, R. Miller
 Third Row—M. Carl, K. Leedom, A. Orner, M. Wright, I. Johnson, B. Hart

JUNIOR CLASS ROLL

- | | |
|---------------------------------------------|----------------------------------------------|
| Lucille E. Adams, Berwick (Secondary) | Margaret A. Cheponis, Plymouth (Secondary) |
| Mary F. Aikaman, Bloomsburg (Intermediate) | John P. Chowanes, Shenandoah (Secondary) |
| Sarah Alice Amerman, Sunbury (Commercial) | Willard A. Christian, Shamokin (Commercial) |
| W. Frank Bachinger, Bloomsburg (Commercial) | Harold Coblentz, Berwick (Commercial) |
| Annabel Bailey, Danville (Secondary) | Tirzah E. Coppes, Muncy (Secondary) |
| Sterling J. Banta, Luzerne (Secondary) | Willard Davies, Nanticoke (Commercial) |
| Joseph A. Baraniak, Shenandoah (Commercial) | Margaret L. Deppen, Trevorton (Commercial) |
| Leonard E. Barlik, Duryea (Commercial) | James J. DeRose, Peckville (Secondary) |
| Helen B. Biggar, Unityville (Elementary) | Helen M. Derr, Kingston (Elementary) |
| Isaiah D. Bomboy, Bloomsburg (Secondary) | Sara Ellen Dersham, Mifflinburg (Commercial) |
| Irene F. Bonin, Hazleton (Commercial) | Ruth L. Dugan, Bloomsburg (Secondary) |
| John E. Bower, Berwick (Secondary) | Dorothy M. Englehart, Bloomsburg (Secondary) |
| Mary C. Boyle, Wilkes-Barre (Commercial) | Peter J. Eshmont, Kulpmont (Intermediate) |
| Virginia R. Burke, Sugar Run (Elementary) | Roy Evans, Taylor (Commercial) |
| Melva M. Carl, Nescopeck (Commercial) | Lois Edna Farmer, Bloomsburg (Commercial) |

JUNIOR CLASS ROLL — CONTINUED

| | |
|-----------------------------------------------------|------------------------------------------------|
| Frank M. Ferguson, Lake Ariel (Secondary) | Frances A. Linskill, Kingston (Elementary) |
| Victor J. Ferrari, Kulpmont (Secondary) | Alvin G. Lipfert, Wilkes-Barre (Secondary) |
| Morgan E. Foose, Sugarloaf (Commercial) | Abigail M. Louergan, Berwick (Commercial) |
| L. Evelyn Frechafer, Reading (Commercial) | Marguerite M. Louergan, Berwick (Commercial) |
| C. Betty Fritz, Orangeville (Intermediate) | Dorothy E. Long, Berwick (Intermediate) |
| Andrew J. Giermak, Edwardsville (Secondary) | Helen M. Mayan, Danville (Intermediate) |
| Elizabeth J. Hart, Berwick (Intermediate) | Ray P. McBride, Berwick (Commercial) |
| Mildred M. Hart, Wapwallopen (Secondary) | Emily A. McCall, Kingston (Secondary) |
| Wayne L. Hartman, Benton (Secondary) | George A. McCutcheon, Wilkes-Barre (Secondary) |
| Chesler J. Harwood, Plymouth (Commercial) | Helen M. McGrew, Mahanoy Plane (Commercial) |
| Virginia M. Heimback, Danville (Secondary) | Alex J. McKechnie, Berwick (Secondary) |
| Robert D. Hopfer, Bloomsburg (Secondary) | Florence M. Merrett, Forty Fort (Secondary) |
| Robert P. Hopkins, Lost Creek (Secondary) | Clair A. Miller, Bloomsburg (Commercial) |
| Fred L. Honek, Catawissa (Secondary) | Ruth H. Miller, Forty Fort (Elementary) |
| Letha E. Hummel, Bloomsburg (Secondary) | John Mondschine, Coplay (Commercial) |
| Elizabeth M. Jenkins, Edwardsville (Intermediate) | William R. Moratelli, Kulpmont (Intermediate) |
| Lois C. Johnson, Bloomsburg (Commercial) | Edward J. Mulhern, Forty Fort (Secondary) |
| Mary M. Johnson, Shamokin (Commercial) | Richard J. Nolan, Mt. Carmel (Commercial) |
| Deborah Jones, West Pittston (Secondary) | Robert A. Ohl, Bloomsburg (Secondary) |
| Sheldon C. Jones, Nanticoke (Commercial) | Anna L. Orner, Bloomsburg (Commercial) |
| John B. Jones, Olyphant (Commercial) | A. Jane Oswald, Allentown (Commercial) |
| Robert J. Kantner, Danville (Commercial) | Robert H. Parker, Kulpmont (Secondary) |
| Alfred W. Keibler, Kingston (Commercial) | Wilhelmina E. Peel, Girardville (Elementary) |
| Grace L. Killeric, Pittston (Secondary) | William H. Penman, Bloomsburg (Commercial) |
| Ruth L. Kleffman, York (Commercial) | Leonard Philo, Kingston (Secondary) |
| Harriet L. Koehner, Espy (Commercial) | Charles T. Price, Glen Lyon (Secondary) |
| Alfred P. Koczansky, Shenandoah (Commercial) | Glenn Leroy Rarich, Espy (Commercial) |
| Josephine K. Leczkosky, Edwardsville (Intermediate) | Eva P. Reichley, Sunbury (Commercial) |
| Katharine G. Leedom, Southampton (Commercial) | Robert J. Reimard, Bloomsburg (Secondary) |
| Joseph H. Lemon, Bloomsburg (Commercial) | Thomas P. Revels, Dickson City (Commercial) |



First Row, Left to Right—B. Zimmerman, P. Traupane, W. Yarworth, J. DeRose, Mr. Buchheit, J. Bowers,
R. Kantner, D. Troy, J. Baraniak
Second Row—I. Bombov, J. Mondschine, I. Barlick, R. Evans, V. Cinquergiani, F. Honk, W. Penman, L. Stout,
B. Stadt
Third Row—H. Coblentz, R. Ziegler, A. McKochane, R. McBride, W. Christian, R. Nolan, C. Harwood,
A. Kiebler, M. Faose

JUNIOR CLASS ROLL — CONTINUED

Virginia M. Roth, Vera Cruz (Commercial)

Betty M. Savage, Berwick (Secondary)

Anne M. Seesholtz, Tower City (Secondary)

Joseph Sheptock, Keises (Intermediate)

Vera F. Sheridan, Nanticoke (Commercial)

Eleanor M. Shifka, Glen Lyon (Commercial)

Jean C. Shuman, Bloomsburg (Commercial)

Maelyn P. Smethers, Berwick (Secondary)

Donnabelle F. Smith, Sunbury (Commercial)

Alice L. Snyder, Shamokin (Intermediate)

Philip L. Snyder, Bloomsburg (Secondary)

Ben J. Stadt, Nanticoke (Commercial)

Joseph M. Stamer, Hanover Township (Secondary)

Margaret A. Steininger, Coopersburg (Commercial)

Mike P. Stenko, Berwick (Secondary)

Wanda M. Stinson, Warrior Run (Commercial)

Michael Strahosky, Kulpmont (Intermediate)

William S. Strawinski, Harrisburg (Secondary)

Philip E. Traupane, Berwick (Commercial)

Dale H. Troy, Nuremberg (Secondary)

Sara E. Tubbs, Bloomsburg (Secondary)

Miriam L. Utt, Bloomsburg (Commercial)

George Washinko, Dunmore (Commercial)

Marvin W. Welner, W. Hazleton (Commercial)

Chalmers G. Wenrich, Harrisburg (Secondary)

Martha C. Wright, Bloomsburg (Commercial)

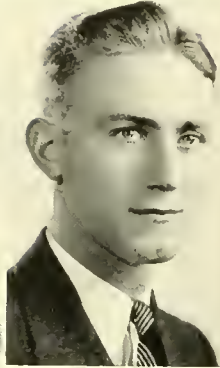
Walter Wytovich, Shamokin (Commercial)

William J. Yarworth, Centralia (Secondary)

William Yates, Ashley (Commercial)

Stanley J. Zalesky, Frackville (Secondary)

RALPH BAKER
President



GWGLADYS JONES
Secretary



EARL HOVEK
Treasurer



GRACE RICHARDS
Vice President

SOPHOMORE CLASS

During the eventful year of 1937-1938 the green but undoubtedly remarkable Freshman Class of 1936 emerged as a truly outstanding organization. "Customs" had given it that fortitude which is so necessary to true greatness. At the "Kid Party" all remnants of childhood had been discarded and every one had assumed the robes of dignity and graciousness befitting to would-be Sophomores. The Freshman Hop with its original decorations and fine music had established an unchallengeable niche in the social order. Thus, it was a well-rounded class, indeed, that set forth on its second and yet greater year.

With the thrill of being called "Madam" and "Sir" and of being "upper-classmen" to lowly frosh, this distinguished class began to work in earnest. Officers were elected, and Mr. Shortess was selected as class adviser. All the campus organizations numbered sophomores among their most faithful and brilliant members, and the college athletic star shone brighter for the flashing sophomore athletes. The fine presentation of the Sophomore Class chapel program brought the varied and unusual talents of class members to the rapt attention of the student body. For many days, the halls of B. S. T. C. resounded with praises of the fine work of this talented class. Then, as a fitting climax to this year of accomplishment, the Sophomore Cotillion was held, and was heralded as one of the greatest dance successes of college history.

It is with hearts full of satisfaction for work well done and with bright visions of future work to do that the Sophomore Class will embark for the third milestone in its college career.



First Row, Left to Right—A. Justin, M. Stine, D. Blecker, L. Snyder, B. Kravitski, C. Goldsmith, J. Long, M. Chelland
 Second Row—M. Ward, J. Capwell, D. Miller, P. Stefanski, H. Powell, G. Jones, G. Richards, H. Seman, G. Kadtko, L. Yeager, J. Lesser, M. Hanley, C. Krieger
 Third Row—L. Zondlo, G. Bird, A. Kokora, E. Keller, C. Baumer, R. Boone, H. Yamosik, D. Dorr, C. Moore, R. Hanksuecht, D. Marr, V. Fry, C. Yoema, F. Ward, J. Benedetto
 Fourth Row—M. Metcalfe, F. Park, H. Bredbenner, M. Youtz, C. M. Lee, P. Franklin, F. Gehrig, H. Culp, R. Bishop, B. Collett, E. Cooper

SOPHOMORE CLASS ROLL

- | | |
|-----------------------------------------------|----------------------------------------------------|
| Sara J. Altland, Harrisburg (Commercial) | Josephine R. Benedetto, Kulpmont (Secondary) |
| Dominick Angelo, Lattimer Mines (Elementary) | Gertrude A. Bird, Plymouth (Elementary) |
| Edward H. Bacon, Kingston (Commercial) | Ruth M. Bishop, Lake Aerial (Elementary) |
| Donald S. Baker, Berwick (Commercial) | Bernice E. Blaine, Berwick (Elementary) |
| Ralph G. Baker, Bloomsburg (Elementary) | Mildred A. Bonin, Hazleton (Commercial) |
| Ruth L. Baker, Dickson City (Elementary) | Ruth E. Boone, Zion Grove (Secondary) |
| Charles R. Bakey, Mt. Carmel (Secondary) | Helen A. Brady, Kingston (Elementary) |
| Howard E. Barnhart, Danville (Secondary) | Hilda F. Bredbenner, Nanticoke (Elementary) |
| Lester R. Bartels, Hazleton (Secondary) | William G. Brennan, Shamokin (Elementary) |
| Eva E. Bartholomew, Orangeville (Commercial) | Marlin E. Brosius, Mt. Pleasant Mills (Elementary) |
| Cora L. Baumer, Lewisburg (Elementary) | Helen E. Brouse, Bloomsburg (Elementary) |
| Mabel F. Baumunk, Forksville (Commercial) | Jean W. Brush, Wilkes-Barre (Commercial) |
| Eleanor H. Bean, Bethlehem Pike (Commercial) | Anna M. Buck, Shamokin (Secondary) |
| Mary Eleanor Beckley, Bloomsburg (Elementary) | Jean L. Capwell, Factoryville (Elementary) |
| Catherine E. Bell, Drums (Elementary) | John F. Carlin, Summit Hill (Secondary) |

SOPHOMORE CLASS ROLL — CONTINUED

| | |
|------------------------------------------------|--------------------------------------------------|
| Donald H. Carodiskey, Danville (Secondary) | Anna H. Grandis, Frackville (Elementary) |
| Mildred R. Chelland, Old Forge (Elementary) | Katharine A. Greenly, Millville (Elementary) |
| Rosella M. Cherundolo, Old Forge (Elementary) | Veronica B. Grohal, Fern Glen (Elementary) |
| Michael J. Chismar, Jeddo (Elementary) | Christine E. Grover, Berwick (Commercial) |
| Ernest L. Christmas, Harrisburg (Commercial) | Ben E. Hancock, Shamokin (Elementary) |
| Vincent A. Cinquegrani, Scranton (Commercial) | Mary E. Hanley, Hazleton (Commercial) |
| Albert A. Clauser, Kulpmont (Elementary) | Helen F. Harman, Berwick (Elementary) |
| Fred D. Coleman, Bloomsburg (Commercial) | Dean S. Harpe, Tunkhannock (Secondary) |
| Mary E. Collett, Edwardsville (Elementary) | Donald A. Hausknecht, Montoursville (Commercial) |
| S. Gladys Compton, Milton (Elementary) | Rose Mary Hausknecht, Bloomsburg (Secondary) |
| Eleanor E. Cooper, Latlin (Elementary) | Alice I. Hennemuth, Archbald (Elementary) |
| Hannah Culp, Dallas (Elementary) | William S. Heupeche, Sugarloaf (Commercial) |
| Dorothy M. Curtis, Scranton (Elementary) | James F. Hinds, Bloomsburg (Secondary) |
| Joseph J. D'Angelo, Keiser (Elementary) | Clayton H. Hinkel, Easton (Commercial) |
| Jance C. Darrow, Kingston (Commercial) | Kenneth J. Hippensteel, Espy (Commercial) |
| Arthur L. Davis, Taylor (Commercial) | Earl W. Houck, Catawissa (Secondary) |
| Betty Deitrick, Berwick (Commercial) | William H. Houck, Berwick (Secondary) |
| Dorothy R. Derr, Bloomsburg (Secondary) | Thomas H. Jenkins, Plymouth (Commercial) |
| Joyce R. Dessen, Hazleton (Secondary) | Gladys E. Jones, Bloomsburg (Elementary) |
| Irene E. Edwards, Orangeville (Elementary) | Gwladys Jones, Scranton (Commercial) |
| Victoria H. Edwards, Bloomsburg (Commercial) | Issaac Jones, Scranton (Commercial) |
| Stanley F. Esmond, Atlas (Elementary) | Alice G. Justin, Scranton (Elementary) |
| Evelyn N. Everard, Edwardsville (Elementary) | Gertrude J. Kadtko, Moeanaqua (Elementary) |
| Mary A. Fennelly, Mahanoy Plane (Elementary) | Harry R. Kahler, Bloomsburg (Commercial) |
| Alfred D. Fetterman, Berwick (Commercial) | William F. Kanasky, Shamokin (Secondary) |
| Alice L. Finnerty, Dunmore (Secondary) | Charles L. Kelchner, Hazleton (Commercial) |
| William T. Forsyth, Northumberland (Secondary) | Edna E. Keller, Nescopeck (Commercial) |
| Wilma C. Forte, Freeland (Elementary) | Daniel T. Kemple, Gumbola (Commercial) |
| Pauline D. Franklin, Shickshinny (Elementary) | Lawrence J. Kiefer, Frackville (Commercial) |
| Vivian Frey, Millinville (Secondary) | Norbert W. Kirk, Berwick (Secondary) |
| Fay L. Gehrig, Danville (Elementary) | Frank T. Kocher, Espy (Secondary) |
| Charles S. Girton, Dallas (Secondary) | Paul B. Kokitas, W. Hazleton (Secondary) |
| Charlotte Goldsmith, Dallas (Elementary) | Anna E. Kokora, Moeanaqua (Elementary) |
| Hazel R. Gotshall, Catawissa (Elementary) | Frank Konecko, Nanticoke (Commercial) |



First Row, Left to Right— D. Harpe, T. Jenkins, C. Kelebner, F. Koerber, Mr. Shortess, R. Baker, G. Sharkey,
R. Yorgor, P. Visintainer
Second Row— A. Washeleski, B. Shiner, W. Houck, T. Parsell, D. Leiser, G. Lehet, C. Hinckle, D. Baker
Third Row— B. Hancock, J. Plevyak, S. Stozensky, M. Brosius, C. Girtou, I. Jones, R. Lynn, D. Hamsknecht

SOPHOMORE CLASS ROLL — CONTINUED

| | |
|------------------------------------------------|---------------------------------------------------|
| Stanley B. Kotzen, Summit Hill (Commercial) | Esther A. McGinley, Jeanesville (Elementary) |
| Bertha V. Kravitski, Hazleton (Elementary) | Paul J. McHale, Wilkes-Barre (Secondary) |
| Carrie M. Kreiger, Shepton (Elementary) | Martha R. McHenry, Benton (Elementary) |
| Marion Y. Landis, Sugarloaf (Commercial) | Florence Regina McWilliams, Danville (Elementary) |
| Jerone G. Lapinski, Shamokin (Secondary) | Mary Ellen McWilliams, Danville (Commercial) |
| Walter F. Lash, Frackville (Commercial) | Olga Mecolick, Drums (Commercial) |
| Eunice J. Laubach, Berwick (Secondary) | Donald C. Mercer, Bloomsburg (Secondary) |
| Clara Mae Lee, Berwick (Elementary) | Marion F. Metcalfe, Sunbury (Elementary) |
| George Lehet, Jr., Wilkes-Barre (Secondary) | Dorothy Miller, Taylor (Elementary) |
| George Dayton Leiser, Watsonstown (Elementary) | Sam Miller, Hazleton (Secondary) |
| Betty J. Lerew, East Berlin (Commercial) | William H. Miller, Nuremberg (Secondary) |
| Jennie G. Lesser, Ringtown (Elementary) | Barbara Mischisen, Sandy Run (Elementary) |
| Lorraine Lichtenwalner, Allentown (Commercial) | Nicholas R. Mitchell, Ebewale (Elementary) |
| Robert A. Linn, Catawissa (Secondary) | Cyril G. Monaghan, Lost Creek (Elementary) |
| Joyce W. Long, Benton (Elementary) | Kathryn L. Moore, Danville (Elementary) |
| Anthony J. Lubereski, Luzerne (Elementary) | Phillip W. Moore, Bloomsburg (Commercial) |
| Beatrice F. Ludwig, Millville (Elementary) | Ann R. Morgan, Plymouth (Elementary) |
| Doris M. Marr, Watsonstown (Elementary) | Donald B. Moyer, Danville (Commercial) |
| Norman J. Maza, Nanticoke (Commercial) | Florence M. Naylis, Edwardsville (Elementary) |
| Betty Mae McCawley, Old Forge (Elementary) | Anne F. Northup, Dalton (Elementary) |

SOPHOMORE CLASS ROLL — CONTINUED

Florence A. Park, Dallas (Secondary)
 Theodore R. Parsell, Orangeville (Commercial)
 Paul A. Paulhamus, Bloomsburg (Secondary)
 John M. Plevyak, Carbondale (Commercial)
 John L. Pomrinke, Nanticoke (Commercial)
 Winfield R. Potter, Old Forge (Secondary)
 Helen F. Powell, Nanticoke (Elementary)
 Walter A. Prokopchak, Dallas (Secondary)
 James G. Pugh, Edwardsville (Elementary)
 Agnes A. Recla, Shepton (Commercial)
 Leah V. Reese, Scranton (Elementary)
 Paulyne T. Reigle, Northumberland (Elementary)
 Violet T. Reilly, Scranton (Commercial)
 Vivian O. Repperl, Espy (Commercial)
 Josephine F. Richard, Bloomsburg (Secondary)
 Grace E. Richards, Wilkes-Barre (Elementary)
 Evaline Jane Rieben, Allentown (Commercial)
 James N. Rim, Lattimer Mines (Elementary)
 Muriel I. Rimard, Catawissa (Elementary)
 Betty M. Roberts, Wilkes-Barre (Elementary)
 Roy Roberts, Bloomsburg (Commercial)
 Frank Roll, Berwick (Secondary)
 Clarence C. Rowlands, Plymouth (Elementary)
 William H. Rowlands, Plymouth (Elementary)
 Raymond F. Sanger, Aristes (Secondary)
 Helen Seman, Edwardsville (Elementary)
 Gene F. Serafine, Mocanaqua (Elementary)
 Eugene F. Sharkey, Lattimer Mines (Elementary)
 Mildred J. Simon, Hunlock Creek (Elementary)
 Byron D. Shiner, Berwick (Commercial)
 Jean D. Smith, Catawissa (Commercial)
 Miles G. Smith, Berwick (Secondary)
 Lora M. Snyder, Turbotville (Elementary)
 Lorraine C. Snyder, Pottsville (Secondary)
 Florence T. Stefanski, Wilkes-Barre (Commercial)
 Mary A. Stine, Elysburg (Elementary)
 Leonard E. Stout, Nescopeck (Secondary)
 Stanley S. Stozenski, Wilkes-Barre (Elementary)
 Andrew Stroschosky, Shamokin (Secondary)
 Esther M. Sutherland, Wilkes-Barre (Elementary)
 Julia A. Tadrick, Shamokin (Elementary)
 Jennis E. Tewksbury, Meshoppen (Commercial)
 Alma H. Thornton, Old Forge (Elementary)
 Max H. Trembley, Bloomsburg (Secondary)
 William Frank Trimbley, Wilkes-Barre (Commercial)
 Joseph A. Trudnak, Mocanaqua (Elementary)
 Rose M. Turse, W. Hazleton (Commercial)
 Elnora H. Unger, Danville (Secondary)
 Frank M. Vandevender, Shamokin (Secondary)
 Elwyn J. Vaughan, Nanticoke (Commercial)
 Fred F. Visintainer, Drums (Elementary)
 Geraldine L. Wagner, Keiser (Commercial)
 Phylis B. Wagner, Hazleton (Secondary)
 Kathryn L. Walp, Berwick (Secondary)
 Frances J. Ward, Bloomsburg (Elementary)
 Margaret L. Ward, Bloomsburg (Elementary)
 Alfred S. Washeleski, Simpson (Commercial)
 Carl Welliver, Bloomsburg (Secondary)
 William W. Wertz, Frackville (Secondary)
 Maude L. Williams, Olyphant (Elementary)
 Avis B. Wesley, Dallas (Elementary)
 Richard J. Wisson, Shamokin (Elementary)
 Joseph A. Yaddock, Mocanaqua (Elementary)
 Helen D. Yanosik, Shickshinny (Elementary)
 Jane B. Yeager, Shamokin (Secondary)
 Lillian A. Yeager, Centralia (Secondary)
 Austin Yeany, Bloomsburg (Commercial)
 Robert L. Yerger, Mt. Pleasant Mills (Elementary)
 Carrie I. Yocum, Milton (Elementary)
 Fern B. Yost, Rock Glen (Elementary)
 Margaret Youtz, Sunbury (Elementary)
 Bernard T. Ziegler, Wilkes-Barre (Commercial)
 Ray O. Zimmerman, Neurenberg (Secondary)
 Robert C. Zimmerman, Neurenberg (Secondary)
 Ruth A. Zimmerman, Sunbury (Elementary)
 Louise A. Zondlo, Dupont (Elementary)



First Row, Left to Right B. Hancock, D. Angelo, N. Mitchell
 Second Row A. Buck, H. Powell, A. Justin, J. Capwell, A. Northup, A. Wesley, C. Yoenm, M. Clisnar,
 A. Kokora, G. Kadlke, H. Yamosik, V. Grohol, M. Ward
 Third Row E. Yost, K. Greenly, M. Berninger, C. Banner, K. Moore, F. Visintainer, A. Strubosky, R. Baker,
 D. Leiser, E. Sharkey, P. Franklin, R. Bishop, H. Culp, B. Blaine
 Fourth Row E. Sutherland, M. Stine, R. Cherundolo, A. Thornton, A. Hennenfth, B. McCawley, B. Roberts,
 M. Simon, H. Bredbenner, B. Collett, D. Mara, L. Zondolo, G. Richards, F. Tugond

TWO-YEAR CLASS

The elementary and rural education divisions of the present sophomore class have in their enrollment so many people who will in the fall begin teaching—as the last of those people who receive State Limited Certificates for two years of post-high school work—that a note must be made in passing, marking the termination of their college days with their classmates of the past two years.

This two-year class is not organized as such, but rather enjoys the social privileges of being sophomores with the secondary and commercial students. The aim of each two-year sophomore is markedly realistic; the realization of their responsibility as future teachers gives them a more mature outlook on life than they have hitherto visualized.

They entered college knowing that they had but two years in which to prepare themselves; in consequence they took advantage of heavy schedules and additional courses to those required by the state syllabus. They realize that education is never completed, and are looking forward to being both student and instructor.

JAMES DEELY
President



CATHERINE OPLINGER
Secretary



VIRGINIA HUGHES
Vice President



FRANK TAYLOR
Treasurer

FRESHMAN CLASS

OFFICERS

| <i>First Semester</i> | | | <i>Second Semester</i> | |
|-----------------------|---------|-----------------------|------------------------|------------------|
| JAMES DEELY | - - - - | <i>President</i> | - - - - | HOWARD TOMLINSON |
| VIRGINIA HUGHES | - - - - | <i>Vice President</i> | - - - - | CLARK RENNINGER |
| CATHERINE OPLINGER | - - - - | <i>Secretary</i> | - - - - | SARA MASTELLER |
| FRANK TAYLOR | - - - - | <i>Treasurer</i> | - - - - | FRANK TAYLOR |

On September 8, another class of freshmen entered Bloomsburg State Teachers College. From the moment they arrived, they were made to feel at home through the courtesy and consideration of the upper-classmen. Then came the fatal day when customs began, and from that time on the "frosh" had difficulty trying to avoid their superiors. On Stunt Day the strains of "How Green I Am" rang forth almost incessantly. One could see the girls with their thirteen braids and abominable shade of green hair ribbons, and the boys in their peculiar garb parading around the campus—a day long to be remembered, especially by the freshmen.

Next came the Annual Kid Party, which was attended by all the "frosh" dressed in costumes representing some of the best-known characters in children's novels, such as "Buster Brown" and "Huckleberry Finn." Games and lollypops were enjoyed to the fullest extent. The party was a huge success, and will remain in the memories of those participating.

The Freshman Hop, the main event in the lives of the freshmen, took place on March 26. Fashionably dressed couples danced to the rhythmic tempo of modern music, and all too soon the occasion closed with fond memories never to be forgot.

Now the freshmen are looking forward to their sophomore year with eagerness and high hopes for the future.



First Row, Left to Right—R. West, C. Schlee, R. Gensell, M. Sabotsky, L. Filmer, R. Brandon, A. Mezlowsky, M. Young, M. Pursel, C. Wood, J. Eaton
 Second Row—J. Leone, M. Hergert, M. Brunstetter, M. Palumbo, J. Shieffer, F. Traub, M. Mayernick, D. Albertson, D. Savage, I. Oala, E. Henry, C. MacNamee, V. Buchanan, S. Johnson
 Third Row—E. Lauer, E. Benninger, J. Sharatta, B. Fetter, T. Mullin, M. Yost, M. Driscoll, V. Hughes, C. Oplinger, A. Alastik, C. Wallbain, I. Diehl, R. Kerstetter, R. Shay, R. Swartwood
 Fourth Row—S. Gaugler, L. Sheffer, A. Hillbush, R. Shields, F. Scherecongust, C. Gearhart, S. Birth, B. Andreas, M. Berkholder, G. Shaeffer, H. Johnson, A. Callaghan, M. Nannas, D. Thomas, M. Johnston, M. Bretz, R. Fowler, L. Matanin, E. Ruth, R. Brodbeck, M. Long, E. Beilhartz, J. Hagenbuch, M. Sweigart
 Fifth Row—V. Faust, M. Blizzard, J. Dyke, M. Murphy, B. Gillette, S. Hummel, S. Mastellar, M. Keilly, M. Zuchoski, B. Hawk, C. Brown, E. Esais, D. Curl, T. Yost, H. Dixon, V. Deane, J. Yodzis, A. Swinesburg, L. Grover, B. Miller, L. Hower, M. Kessler, M. Keilly

FRESHMAN CLASS ROLL

Agnes A. Alastick, Shenandoah (Secondary)
 Eleanore D. Albertson, Espy (Commercial)
 Betty Andreas, Bloomsburg (Elementary)
 Joseph R. Aponick, West Nanticoke (Secondary)
 Max Arcus, Bloomsburg (Commercial)
 Paul Barrall, Millinville (Secondary)
 Avonell A. Baumunk, Forksville (Commercial)
 Dorothy J. Beard, Catawissa (Commercial)
 Eda B. Beilhartz, Muncy (Elementary)
 Edith R. Benninger, St. Johns (Elementary)
 Bynoth R. Bird, Berwick (Commercial)
 Sara E. Birth, Danville (Elementary)
 Daniel H. Bonham, Forty Fort (Commercial)
 Robert U. Borneman, Saratoga (Commercial)
 Leonard M. Bowers, Mt. Carmel (Commercial)
 Ruth L. Brandon, Berwick (Secondary)
 Sara A. Breslin, Hazleton (Elementary)
 Mary L. Bretz, Bloomeld (Commercial)

C. Grant Brittingham, Wilkes-Barre (Secondary)
 Howard W. Brochyus, Bloomsburg (Commercial)
 Ruth E. Brodbeck, Douglassville (Commercial)
 Cecilia M. Brown, Elysburg (Commercial)
 Charles Myron Brubaker, Trevorton (Commercial)
 M. Margaret Brunstetter, Catawissa (Secondary)
 Valaire K. Buchanan, Reading (Commercial)
 Margaret B. Burkholder, Quarryville (Commercial)
 Agnes S. Callaghan, Steelton (Elementary)
 Harrison J. Cameron, Berwick (Commercial)
 Edwin J. Clewell, Berwick (Commercial)
 Mary B. Conner, Orangeville (Elementary)
 Ralph C. Crocamo, Hazleton (Commercial)
 Mary F. Crosby, Mahanoy Plane (Secondary)
 Doris M. Curl, Wilkes-Barre (Commercial)
 Virginia M. Dean, Shenandoah (Commercial)
 James H. Deily, Bloomsburg (Commercial)
 James P. Dennen, Danville (Secondary)



FRESHMAN CLASS ROLL — CONTINUED

Peter DeRose, Peckville (Commercial)
 Irene J. Diehl, Bethlehem (Commercial)
 Helen K. Dixon, Benton (Elementary)
 Edward Dobb, Wilkes-Barre (Secondary)
 Venuel C. Dreher, Shamokin (Commercial)
 Mary Louise Driscoll, Plymouth (Commercial)
 Jane Dyke, Mt. Carmel (Secondary)
 Francis P. Early, Plymouth (Secondary)
 June L. Eaton, Galeton (Commercial)
 Stuart C. Edwards, Edwardsville (Secondary)
 Elizabeth E. Easias, Danville (Secondary)
 Dorothy L. Fennelly, Frackville (Elementary)
 Arlene E. Fetter, Northumberland (Elementary)
 Elizabeth Ann Fetter, Yardley (Commercial)
 Reber R. Fisher, Catawissa (Commercial)
 Drue W. Folk, Berwick (Commercial)
 Mary Vera Foust, Danville (Elementary)
 Ferald D. Fritz, Berwick (Secondary)
 Lois E. Fullmer, Allentown (Commercial)
 Vincent A. Gallagher, Hazleton (Commercial)
 Sara E. Gangler, Port Trevorton (Elementary)
 Charlotte E. Gearhard, Montgomery (Commercial)
 Ruth A. Gensel, Catawissa (Commercial)
 Barbara E. Gillette, Wilkes-Barre (Commercial)
 Thurwald Gommer, Nanticoke (Commercial)
 Carl Leslie Grauer, Nescopeck (Secondary)
 Jean D. Greenly, Bloomsburg (Commercial)
 Leon Greenly, Bloomsburg (Secondary)
 Francis J. Gress, Tower City (Commercial)
 Thomas P. Grow, Ringtown (Secondary)
 Lois K. Gruver, Bloomsburg (Secondary)
 Julia C. Hagenbuck, Danville (Commercial)
 William H. Hagenbuch, Bloomsburg (Commercial)
 John Hancock, Mt. Carmel (Commercial)
 Elizabeth Eleanor Hawk, Milton (Commercial)
 Elda M. Henrie, Bloomsburg (Commercial)
 Martha Doris Hergert, Wilkes-Barre (Elementary)
 Arabel E. Hilbush, Dornsife (Elementary)
 Charles O. Horn, Ringtown (Commercial)
 George B. Houseknecht, Hughesville (Secondary)
 Lucille A. Hower, Shaft (Commercial)
 Joseph E. Hudock, Philadelphia (Secondary)
 Virginia R. Hughes, Wilkes-Barre (Commercial)
 Vincent T. Hulihan, Locust Gap (Commercial)
 Sarah E. Hummel, Middlesburg (Elementary)
 Helen L. Johnson, Galeton (Commercial)
 Stella L. Johnson, Forty Fort (Elementary)
 Mildred E. Johnson, Tunkhannock (Commercial)
 Robert D. Joy, Bloomsburg (Commercial)
 Mark W. Jury, Bloomsburg (Secondary)
 Mary E. Keesler, Calicoon, N. Y. (Secondary)
 William G. Kerchusky, Ringtown (Secondary)
 Elmer J. Kerstetter, Millville (Secondary)
 Relda Kerstetter, Millville (Commercial)
 Ethel C. Lauer, Bloomsburg (Commercial)
 John E. Lavelle, Girardville (Commercial)
 Leo J. Lehman, Ashley (Elementary)
 Jennie Leone, Philadelphia (Commercial)
 Paul R. Letterman, Bloomsburg (Secondary)
 Marian D. Long, Northumberland (Elementary)
 Robert J. Luckenbill, Freeland (Elementary)
 Joseph John Malinchoe, Nesquehoning (Commercial)
 Joseph G. Marinko, McAdoo (Commercial)
 Aldona A. Maslowsky, Wilkes-Barre (Commercial)
 Sara B. Masteller, Pottsville (Commercial)
 Ludmilla Matanin, Mountain Top (Commercial)
 Mary A. Mayernick, Edwardsville (Secondary)
 Kathryn L. McNamee, Glen Lyon (Secondary)
 Elizabeth E. Miller, Park Place (Secondary)
 Robert Bruce Miller, Berwick (Secondary)
 Joseph P. Monaghan, Lost Creek (Commercial)
 Thelma W. Murphy, Frackville (Secondary)
 Charles W. Murphy, Frackville (Secondary)
 Marian I. Murphy, Kingston (Secondary)
 Zigmund M. Musial, Nanticoke (Secondary)
 Raymond J. Myers, York (Commercial)
 Marianna A. Naumas, Bloomsburg (Commercial)
 Rutter J. Ohl, Bloomsburg (Secondary)
 Isabella M. Olah, Berwick (Secondary)
 Catherine A. Oplinger, Nanticoke (Commercial)
 Mildred Rose Pahnbo, Mt. Carmel (Secondary)
 Olive Marie Parsell, Orangeville (Secondary)
 Melvin B. Pepper, Mechanicsburg (Commercial)
 Frank R. Pogozeleski, Shamokin (Secondary)
 Walter H. Reed, Shillington (Commercial)
 Maude L. Pursel, Bloomsburg (Elementary)
 Maria P. Rakleviez, Plymouth (Commercial)
 William M. Reager, Shamokin (Secondary)
 Mary F. Reilly, Scranton (Secondary)
 Rosemary F. Reilly, Shenandoah (Commercial)
 Clark R. Renninger, Pennsburg (Commercial)
 Charles A. Robbins, Bloomsburg (Commercial)
 Jerry Russin, Plains (Secondary)
 Ethel P. Ruth, Mohnton (Commercial)
 Dorothy J. Savage, Berwick (Commercial)
 Jessie T. Schiefer, Steelton (Elementary)
 Ruth H. Schield, Taylor (Secondary)
 Stanley T. Schuyler, Berwick (Commercial)
 Claraline E. Schlee, Danville (Secondary)
 Herbert E. Schneider, West Hazleton (Commercial)





First Row, Left to Right— W. Rood, C. Robbins, G. Hausknecht, E. Sharretts, M. Arcus, L. Lehman, H. Brosius, R. Fisher, J. Marinko, R. Crocimo, P. Letterman
 Second Row—C. Reminger, M. Jury, J. Russin, R. Ohl, C. Horn, F. Taylor, J. Deily, T. Gomer, F. VanAntwerp, E. Clewell, J. Aponik, F. Early, E. Wenner
 Third Row— F. Gress, E. Dobbs, H. Tomlinson, J. Swarin, D. Folk, J. Dennis, R. Joy, E. Villa, J. Hudak, D. Rumpke, R. Mayoski, R. Willard, J. Lavelle, V. Turini, R. Meyers, V. Houlihan, M. Reigan
 Fourth Row— H. Williams, V. Drehr, C. Stover, R. Borneman, J. Malinchock, S. Edwards, W. Kerchusky, M. Brubaker, J. Shortess, D. Bonham, M. Thomas, G. Brittingham, L. Bowers, G. Skumsky, B. Worman, B. Reager

FRESHMAN CLASS ROLL — CONTINUED

Florabella Schrecongost, DuBois (Commercial)
 Gertrude L. Shaffer, Johnstown (Elementary)
 Lucretia M. Shaffer, Wilkes-Barre (Commercial)
 Virginia M. Shamback, Trucksville (Elementary)
 Jennie Anne Sharratta, Plains (Elementary)
 Edward D. Sharretts, Berwick (Commercial)
 Ruth L. Shay, Progress (Commercial)
 Jack R. Shortess, Bloomsburg (Commercial)
 Harry J. Shubick, Shenandoah (Secondary)
 Catherine J. Simpson, Bloomsburg (Elementary)
 Marie P. Sloboski, Ashley (Commercial)
 Helen J. Soback, Bloomsburg (Secondary)
 Cecil H. Stover, Sayre (Commercial)
 Mary B. Sweigart, Willow Street (Commercial)
 Arlene A. Swinsburg, West Hazleton (Commercial)
 Joseph Swarin, Dunmore (Commercial)
 Frank M. Taylor, Berwick (Commercial)
 Leonard J. Telesky, Berwick (Secondary)
 Dorothy J. Thomas, Wilkes-Barre (Commercial)
 Grant S. Thomas, Wilkes-Barre (Secondary)
 Mason M. Thomas, Wellsboro (Secondary)
 Howard Tomlinson, Milton (Commercial)

Florence A. Traub, Luzerne (Elementary)
 Victor R. Turini, Wyoming (Secondary)
 Floyd VanAntwerp, Williamsport (Secondary)
 Edmund D. R. Villa, Berwick (Commercial)
 Kathryn E. Walburn, Bloomsburg (Commercial)
 William P. Wanich, Espy (Commercial)
 Thelma M. Welker, Shamokin (Commercial)
 Edwin D. Wenner, Berwick (Secondary)
 Joseph F. Wesley, Luzerne (Secondary)
 Mae Rebecca West, Danville (Elementary)
 Howard T. Williams, Scranton (Commercial)
 Mantana S. Williams, Sleightington (Elementary)
 Celia M. Wood, Bloomsburg (Elementary)
 Samuel Fred Worman, Danville (Elementary)
 Josephine A. Yodzis, Mt. Carmel (Commercial)
 Mercia E. Yost, Orangeville (Elementary)
 Theresa M. Yost, Orangeville (Elementary)
 John D. Young, Catawissa (Commercial)
 Marjorie C. Young, Kingston (Elementary)
 Martha L. Zehner, Bloomsburg (Elementary)
 Michalene A. Zuchoski, Wilkes-Barre (Elementary)



β

A
T
H
L
E
T
I
C
S





LAMAR BLASS, *Captain*

TRACK

Track season opened officially with the interclass meet, April 15, the Sophomores taking 72 points, Frosh $37\frac{1}{2}$, Seniors $35\frac{1}{2}$, and the Juniors 14. Hippensteel and Kemple of the Freshmen gave promise of new varsity men, while Blass came through as usual for the Seniors.

The following day saw many of the runners off to the American Legion Meet at Seranton. In the 60-yard dash VanDevender came in first and Mulhern fourth. A medley relay team of Kemple, Mulhern, Zelesky, and VanDevender placed first in the relay event; a little later, in a special 220-yard handicap race, VanDevender—with a 15-yard handicap—came in first; Mulhern—18-yard handicap—second; and Ben Johnson from scratch—third.

April 26th, Blass, Kemple, Mulhern, Zelesky, and VanDevender made the trip with Coach Buehlheit for the Penn Relays. Western Michigan set a new record for State Teachers Colleges, West Chester taking second honors and Bloomsburg third.

Two days later, at Susquehanna, Bloomsburg took first in every event but the javelin: Bloomsburg 95, Susquehanna 31. Blass won 6 events alone, bringing in



First Row, Left to Right E. Mulhern, R. Parker, L. Dixon, Capt. L. Blass, F. VanDevender, S. Zelesky, G. Burke
 Second Row W. Ziess, Trainer, K. Hippensteel, M. Gousher, R. Hopfer, Coach G. C. Buchheit, D. Kemple, C. Harwood, D. Karnes, J. O'lock, Student Manager

30 points; VanDevender, two events, while Hippensteel set the new record for the mile in 10:33; Zelesky, Burke, Mulhern and Kemple also won first places.

May 1 brought Stroudsburg to the campus for a defeat—88-38. Blass took four events, VanDevender three, helping the other team members run the total to 12 firsts, 7 seconds and 7 thirds.

May 5 at Shippensburg, Bloomsburg men took a closely contested meet, the last event deciding the score, 65-61; Blass, VanDevender, Kemple and Hippensteel provided the most consistent points for Coach Buchheit.

Consequently, with Susquehanna at Bloomsburg, May 11, every first place was taken by a Bloomsburg man. Burke came through with a new record in pole vault—10 feet 7 inches; Blass had three firsts, VanDevender and Harwood two each, and Mulhern, Burke, Parker, Kemple and Hopfer one each.

May 17 at the State Meet, these men contributed for making the greatest achievement of any Bloomsburg track team, Bloomsburg winning with 49 over West Chester's 41. VanDevender became the individual champion of the meet in setting a new record for the 220 low hurdles; Blass, scored 12 points, was second highest scorer for the meet, while Kemple, Karnes, Hippensteel, VanDevender, Zelesky, Mulhern and Harwood also contributed from every event but the pole vault.

TENNIS

Professor John C. Koch's tennis warriors opened at Millersville on April 17th with three veterans and three rookies in their lineup. They returned the victors with a 7-2 victory. Gering, one of the vets, lost in the singles while Withka and Hopkins, a pair of rookies, lost their doubles match. They then turned back Susquehanna without a point in a 9-0 rout, all of the boys playing good steady tennis. On a three-day trip to Lock Haven and Indiana they played like champions and walloped Lock Haven 6-3, but the next day were treated in a like manner by Indiana and losing 7-2, with Bill Strawinski and Mickey Smethers the only Maroon and Gold winners. The team proved able to come back after Indiana's shellacking and fought from the bottom up, winning a close match at Shippensburg, 5-4, taking three singles and two doubles. Continuing to Villanova our boys turned back the "main liners" 8 to 1, the doubles being defaulted after the Wildeats had lost five of the six singles.

The great play of the racqueteers could not long continue at this pace. A snag was hit, Saturday, May 10th, when East Stroudsburg's Big Red came to town and hammered out a 6 to 3 victory over the Huskies. Bill Strawinski continued his strong play in the singles with Mickey Smethers also coming through for "Prof's" club. The team showed their fight for the second time of the year, picking on the same team both times. Shippensburg came to town and was defeated 5 to 4 after it had looked like a cloudy day for the hill boys. Zalonis and Smethers pulled the match out of the fire with the score tied 4-4, and their doubles deciding the match; coolly working on their opponents they won the acclamation of their teammates. Koch's racquet wielders again came from behind to defeat Mansfield Mountaineers 5 to 4 in a thrilling match on May 20th, and were turned back two days later by Bucknell's fine team. Strawinski lost his first singles match of the year to Dunham of Bucknell. Mack Smethers received credit for our only point by default and this was given after two sets had been played when he was even up with Nesbitt, who suffered from the day.

The boys were turned upside down in their last match of the year. After Lock Haven was unable to appear, the Bloomsburg Tennis Club played and beat our boys, to give them a season record of seven wins and four losses.



Prof. J. C. Koch, B. Strawinski, J. Gering, M. Smetbers, W. Wihbka, R. Hopkins, A. Zalomis, W. Yorwarth, Manager

TENNIS

| | | | |
|---------------------|---|------------------------|---|
| April 17—Bloomsburg | 7 | Millersville | 2 |
| April 19—Bloomsburg | 9 | Susquehanna | 0 |
| April 30—Bloomsburg | 6 | Lock Haven | 3 |
| May 1—Bloomsburg | 2 | Indiana | 7 |
| May 4—Bloomsburg | 5 | Shippensburg | 4 |
| May 5—Bloomsburg | 8 | Villanova | 1 |
| May 8—Bloomsburg | 3 | East Stroudsburg | 6 |
| May 11—Bloomsburg | 5 | Shippensburg | 4 |
| May 19—Bloomsburg | 5 | Mansfield | 4 |
| May 21—Bloomsburg | 1 | Bucknell | 8 |
| May 22—Bloomsburg | 4 | Bloomsburg Tennis Club | 5 |

BASEBALL

After weeks of practice and our own spring training at the town ball park, our baseball team made its official debut at Millersville on April 17th with practically the same team which had a very successful season last year. The boys, playing big league baseball, pulled the game out of the fire in the ninth inning when they scored five runs to make the margin of victory 7-2. The next two encounters with Susquehanna and Bucknell were rained out, but when the team ran into good weather they showed their hitting power to Susquehanna and returned the victor in a one-sided affair with the scorekeeper marking 22 runs for Bloomsburg and 8 for the Orange of Susquehanna. Danny Litwhiler "slugged" two home runs for Bloomsburg and was the individual who ruined Susquehanna's opening game.

The squad of fifteen made their yearly trip to Lock Haven and behind the good pitching of Novelli turned the Havenites back 6 to 4, with Al Finder leading the team in hitting and fielding. The "crew" then journeyed on to Indiana and suffered their first setback of the year in a pitcher's duel between Maza of Bloomsburg and Hone-stine of Indiana. A home run by Smardo made the score 4-3 and the Indian's never relinquished that lead. On a one-day trip to Shippensburg "Doc" Nelson's Huskies were mere puppies; Armstrong was unconquerable and we were turned back 12 to 7.

On May 8th East Stroudsburg, in combat on Mt. Olympus came from behind in the ninth and tenth innings, and returned home the victors of a 7 to 6 game in which Houck and Giermack supplied all the Husky pep.

The longest losing streak ever recorded on Bloomsburg's baseball books was continued when Shippensburg's Red Raiders came up from Cumberland Valley and turned our boys back in a very sociable ball game, the score being 5-2, with Banta and Giermack showing the power behind all Bloomsburg's run making.

In the next game with the Mansfield Mountaineers on Mt. Olympus, the boys showed the return of their batting power and behind the good pitching of Novelli turned the visitors back by the score of 19 to 4. In the final game of the year on Alumni Day the boys again picked out their favorite bats and between Banta, Litwhiler and Houck enough runs were driven in to defeat Lock Haven 6 to 4 and end a favorable season for the nine.



First Row, Left to Right—E. H. Nelson, coach, A. Giermack, F. Honck, A. Finder, D. Litwhiler, C. Wenrick, S. Banta, T. Davison, L. Peck, manager
 Second Row—A. Patteroff, manager, F. Novelli, N. Maza, S. Pavlick, D. Hansknecht, J. Slavin, F. Konecko, C. Hower, P. Kotch

BASEBALL

| | | | |
|---------------------|----|------------------|----|
| April 17—Bloomsburg | 7 | Millersville | 2 |
| April 24—Bloomsburg | 22 | Susquehanna | 8 |
| April 30—Bloomsburg | 6 | Lock Haven | 4 |
| May 1—Bloomsburg | 3 | Indiana | 4 |
| May 4—Bloomsburg | 7 | Shippensburg | 12 |
| May 8—Bloomsburg | 6 | East Stroudsburg | 7 |
| May 11—Bloomsburg | 2 | Shippensburg | 5 |
| May 19—Bloomsburg | 19 | Mansfield | 4 |
| May 22—Bloomsburg | 6 | Lock Haven | 4 |

CROSS COUNTRY

On October 9th, Coach Buchheit's cross country men opened their 1937 season with a 15 to 10 victory over Indiana, low score winning. Kemple, Hippensteel and Lavelle tied for first place with time 16:01. Reed, Parker, Taylor, and Malinchoc followed in the order named, all of Bloomsburg's runners coming in before an Indiana man. The course followed was a new 2.4 mile run, straight through the gate, twice around the loop near the golf course, and around the track coming in.

October 15th brought to the campus something new in Cross Country, a telegraphic meet with Slippery Rock. Some few minutes after the time for each of the Bloomsburg runners had been telegraphed to Slippery Rock, Mr. Buchheit received a wire of congratulations bearing the score of 16 to 39.

The final Varsity meet took the Harriers to West Chester where an unexpected turn of events brought us a loss of 29 to 26, even though Kemple placed first and Hippensteel, third. This was barely a week after all the boys but two had been sidetracked out of the A. A. U.-W. P. A. Open Meet at Scranton; Hippensteel and Lavelle, however, placed second and third respectively.

Meanwhile, the Freshman Cross Country team had a successful season of its own. In its first meet, that with Mt. Carmel High School September 30th, the score was 27½ to 27½ tie. With Kulpmont High on Mount Olympus October 6th, Lavelle, Reed, and Taylor of the Freshman took the first three places, the score being 20-35.

In the November 2nd meet with Kulpmont the Frosh ran a score of 22 to Kulpmont's 33.

Judging from the wealth of material in the Freshman team, and from the steady work of the Varsity men, Coach Buchheit feels that the 1938 season holds even more success in cross country than 1937.



First Row, Left to Right—F. Taylor, W. Reed, J. Lavelle, R. Parker, D. Kemple, J. Malincho, K. Hippensteel,
 Coach George C. Buchheit
 Second Row M. Gushor, E. Kerstetter, G. Bruin, V. Dreyer, R. Borneman, J. Hudock, E. Clewell, B. Shiner

CROSS COUNTRY

| | | | | |
|-----------|---------------------|--------------------------------|------------------------|--------------------------------|
| October | 9—Bloomsburg | 15 | Indiana | 10 |
| October | 15—Bloomsburg | 16 | Slippery Rock | 39 |
| October | 29—Bloomsburg | 29 | West Chester | 26 |
| September | 30—Bloomsburg Frosh | 27 ¹ / ₂ | Mt. Carmel High School | 27 ¹ / ₂ |
| October | 6—Bloomsburg Frosh | 20 | Kulpmont High School | 35 |
| November | 2—Bloomsburg Frosh | 22 | Kulpmont High School | 33 |

VARSITY FOOTBALL

The varsity football team, under the guidance of Coach A. Austin Tate, opened its season with a 20-6 victory over Millersville on the Millersville field. Passing was the dominant feature of the game, three touchdowns being the result of clicking passes. The Tatemen outplayed Millersville throughout all four quarters.

Yet, on the following Saturday, when they played Indiana on Mount Olympus, the Varsity found that Indiana's mastery of aerial attack was enough to set the Indian's ahead, 26-6. During the afternoon, the brilliant play showed Bloomsburg improving, but outplayed by the superior Indiana team.

At Mansfield, a 12-0 defeat for the Huskies was the result of good line play and a set of fast backfield men on the Mansfield team.

When Lock Haven came for Bloomsburg's Homecoming Game, the Havenites anticipated the best Husky football of the season. Nor did the Huskies disappoint them, giving combat and contesting, play by play, the growing victory of Lock Haven, 14-6.

On another week-end, Shippensburg's Homecoming, the score was 20-0, favor of Shippensburg, when the whistle stopped play and another touchdown for Shippensburg.

Susquehanna played Bloomsburg, here, November 6th, and found that the result of a losing streak was the knitting together more closely the efforts and attack of the Husky eleven. A carefully planned and executed series of plays kept the game scoreless until, in the third quarter, Laubach made the touchdown that, with the extra point kicked by Sirecovics, gave the winning score, 7-0.

The last of the football season brought East Stroudsburg to Bloomsburg and a muddy, soggy field. The condition of the field was to the advantage of the Huskies; especially was Pogazelski in element when he scored the first touchdown of the game. Other players showed their readiness to "mix in," Vance Laubach scoring the second touchdown of the 12-0 win.

Laubach, in recognition of his work throughout the year, was elected honorary captain of the 1937 football team by his fellow Lettermen.



First Row, Left to Right—E. Patrick, F. Pogozelski, C. Wenrick, S. Jones, G. Serafino, M. Reagan, J. Sircovics, A. Pinder, N. Henry
 Second Row—S. Zelesky, R. Hopper, W. Davies, T. Jenkins, H. Soblentz, V. Laubauch, A. Lippert, J. Maczuga
 Third Row—A. Giermack, W. Kirk, M. Stenko, F. Roll, C. Price, F. Vandevender, W. Forsyth

VARSITY FOOTBALL

| | | | | |
|----------|---------------|----|------------------|----|
| October | 2—Bloomsburg | 20 | Millersville | 6 |
| October | 9—Bloomsburg | 6 | Indiana | 26 |
| October | 16—Bloomsburg | 0 | Mansfield | 12 |
| October | 23—Bloomsburg | 6 | Lock Haven | 14 |
| October | 30—Bloomsburg | 0 | Shippensburg | 20 |
| November | 6—Bloomsburg | 7 | Susquehanna | 0 |
| November | 13—Bloomsburg | 12 | East Stroudsburg | 0 |



JUNIOR VARSITY FOOTBALL

The Junior Varsity football team of any school is known as the shock troops, but the boys at Bloomsburg are having their level raised and will soon play a schedule that will rival the Varsity. They played four games during the past season and have a record that reads won 1 lost 3.

They opened the season with the National Farm School at Doylestown and were handed a 52 to 0 shellacking in a very discouraging game. The play of Sanger, Tomlinson, and Mercer stood out above that of the others. It was in this game that Clair Miller was injured; he was unable to participate for the remainder of the season. Their next game with Northumberland High School resulted in a 12 to 6 victory for Coach Buehheit's "puppies." Jury, Sanger, Harpe and Brubaker played like varsity men and paved the way for the Bloomsburg victory.

In their third encounter they met a team that was far their superiors in all departments and were outclassed, outrun, outplayed, and outscored in a 52-0 game. The boys then turned up with the motto "52-0 or win." Fritz, Barrall, and Sanger were Bloomsburg's pluggers all the way.

The boys lost their third game on Mt. Olympus when Osceola Mills High School journeyed here on a very muddy, rainy day and scored a touchdown with 10 seconds to go in the final period, and won the mud battle 6 to 2. Tomlinson, Pepper, Barrall, and Sanger again showed the way for the "pups" and all boys should prove varsity material for the coming year.



First Row, Left to Right—F. Vilhi, J. Lapinski, W. Kanasky, S. Marsh, H. Williams, R. Sanger, M. Jury,
M. Brubaker
Second Row—P. Barrall, L. Teleski, C. Welliver, D. Harpe, R. Luckinbill, S. Schuyler, H. Tamlinson, T. Gommer
Third Row—M. Peffer, V. Hulihan, J. Sworin, F. Trembly, B. Miller, R. Kantner, G. Fritz

JUNIOR VARSITY FOOTBALL

| | | | | |
|----------|---------------|----|----------------------|----|
| October | 2—Bloomsburg | 0 | National Farm School | 52 |
| October | 9—Bloomsburg | 12 | Northumberland H. S. | 6 |
| October | 16—Bloomsburg | 0 | Keystone Jr. College | 52 |
| November | 13—Bloomsburg | 2 | Osecola Mills | 7 |

THE "B" CLUB

Two weeks pass, and the "B" club girls are ready for action! September 18, second week-end of the term, the annual fall camp is held for the alumnae. Thus, a year of activity is begun.

Soon after, the club members establish a reputation for themselves and the club as well by officiating at the indoor and outdoor games of the high schools of Columbia County League. Then, with the coming of October, occurs one of the biggest events of the year, Homecoming Day. Of the organizations which cooperate to make this a perfect day, the "B" club is outstanding. Who provides us with maroon and gold flowers, some of the tags, and refreshments at the football game? It's the girl with the "B" on her sweater.

As months pass on, various athletic conferences are held on questions of inter-collegiate interest. This year, six representatives of the "B" club went to Lock Haven S. T. C., where a conference was held on "Women's Status in Athletics." Exchange of ideas in this manner makes toward a better organization in our college.

As Spring approaches, the girls decide it is time for another reunion, April 23 and 24, during Easter vacation; a Spring Camp is held for the Alumnae to whom approximately 650 invitations are sent.

With the month of May comes the annual May-Day, Play-Day. Part of this day is given over to the teams from the surrounding high schools who compete in various games. The "B" Club members have charge of and officiate at these games.

Then comes the Athletic Banquet, at which the women as well as the men receive their athletic awards, ranking from the numerals up to the "B", and then the chevron. At this time the "B" club names the most outstanding member throughout her four years at college. This is the first year that any woman has spoken at the Banquet; the honor goes to Miss Anne Hodkins, of the National Athletic Federation.

"All honors to her who in her work has trained these girls to be fair and calm in play, in school, in work"; to Miss Lucy McCammon, whose personality has kept alive this club since 1927, the graduating "B" club members extend a hand of friendship.



First Row, Left to Right E. Sutherland, G. Killeri, R. Miller, F. Park, E. Reichley, S. Dersham, H. Mayan, L. Adams, H. Derr
 Second Row E. Sharadin, M. Wright, F. Snook, D. Sidler, Miss McCammon, M. Palsgrove, A. Orner, D. Smith, Avis Wesley

"B" CLUB MEMBERS

Sara Atland
 Lucille Adams
 Alice Auch
 Joycelyn Andrews
 Cora Baumer
 Ruth Baker
 Margaret Blecker
 Jean Brush
 Helen Derr
 Letha Hummel
 Gwladys Jones
 Grace Killeri
 Eunice Laubach

Betty Lerew
 Lorraine Lichtenwalner
 Ruth Miller
 Jean Moss
 Florence Park
 Helen Pesansky
 Muriel Rinard
 Donabelle Smith
 Margaret Smith
 Esther Sutherland
 Carrie Yocum
 Margaret Youtz

Umpires

Sally Ammerman
 Sara Dersham
 Eva Reichley

Dorothy Sidler
 Florence Snook
 Avis Wesley

Time Keepers

Anne Orner

Martha Wright





First Row, Left to Right—D. Smith, S. Ammerman, J. Andrews, D. Sidler, F. Snook, S. Dersham
 Second Row—E. Sutherland, A. Wesley, H. Mayan, E. Reichley

GIRLS' SPORTS AT BLOOMSBURG

One serve and over it goes! The one and only Swinesburg did that, but there's Dersham and Ammerman ready to return it. Look out, Swinesburg, here it comes! Thus, volleyball and cageball season begins. September 27 finds us in full action, one team always losing but ready to come up with the smiles of good sports. October 11 brings us one of the big games of the season, girls of the "B" club against the "regulars." "B" club is victorious, with a score of 20-10, Dersham and Andrews scoring highest. On the other side, Secman is putting up a strong comeback with the aid of the other players.

November 22 finds us attempting something entirely different. Some of us are taking the Girl Scout course, while basketball officials are getting ready for basketball season. Then, after Christmas, the regular teams begin: One basket, another, and another—Comer, Brown, Comer, Savidge. What's happening? Team 1 is defeating the other teams, one after another. This combination, pictured in the first row, came out on top in the final playoffs. The other team, shown standing, have turned out 100% for every game.

But, Spring is here! Basketball season gives way to three weeks of volleyball followed by indoor baseball. Sharadin, the Babe Ruth of B. S. T. C., has been getting in trim for quite some time. Plenty of good material this year, which means plenty of action! There's liking, roller skating, bicycle riding, and numerous other sports. We're even pitching quoits this year. But baseball and tennis are in the limelight. Our athletes have a choice of tennis, baseball, or both. Tennis schedules take the form of ladders, a beginners' and an experienced players'. Each girl challenges the girls a step or two above her, taking the higher place if she wins. Ultimately the best player gets to the top step of each ladder.

Thus ends a year of Girls' Sports at Bloomsburg. Proudly, each girl receives her reward at the Athletic Banquet—her numerals, "B" or chevron, depending on her participation in athletics.



GIRLS' CHAMPIONSHIP TEAM

First Row, Left to Right—L. Olah, D. Savage, J. Brown, M. Conner, D. Albertson, M. Parsell
Second Row—M. Pursel, V. Foust, B. Andreas, M. Blizzard, C. Wood, J. Schieffer



First Row, Left to Right—E. Bacon, A. Letterolf, P. Taylor, P. Tranpane, Coach Horner, W. Woytovich,
B. Shiner, C. Kelchner, W. Prokojchak
Second Row—F. Early, W. Kamasky, J. Hancock, L. Bowers, S. Marsh, W. Reinger, V. Lambach, S. Schuyler

WRESTLING

Although wrestling at Bloomsburg has not been highly successful measured by wins and losses for the past year, the sport promises to become one of the most successful for next year. This may readily be seen by examining the personnel of the team.

A total of four meets were wrestled, Bloomsburg winning from Brooklyn Polytechnic Institute and losing one meet to Mansfield Teachers College, and two meets to Keystone Junior College.

The interest of the student body and the contestants in wrestling has grown by leaps and bounds, and the sport promises to become very popular in the school. Coach Kenneth Horner of Shamokin, working under many handicaps, has laid the foundation for a successful season next year.



Left to Right -W. Potter, T. Salerno, L. Kiefer, Dean Koch, H. Williams, R. Hill, C. Price

BOWLING

At press time, the season for the Bloomsburg College Bowling team was incomplete. Matches with Bucknell Junior College of Wilkes-Barre and Saint Thomas of Scranton were high lights scheduled by Coach John C. Koch for the near future.

To date, the bowlers were members of Bloomsburg Town League and held fifth place in its chalkings.

VARSITY BASKETBALL

The B. S. T. C. basketball team started the year in fine fashion by trouncing the Alumni team by a score of 24-46; their hopes for a very successful season were high until, rebounding from the Alumni game, they were decisively beaten at Susquehanna by a one-man basketball team, the score being 35-28.

After rejuvenation of the team, the boys counteracted their previous defeat by handing Susquehanna a 54-34 licking. On January 8th, the Lock Haven team came to Bloomsburg to win a 37-34 ball game, the first time in twelve years that Lock Haven has won on the Husky court.

The next week our team discovered it was an up-and-downer—especially up—against Mansfield when Slaven and Ruckel clicked to beat Mansfield 35-18.

At Mansfield, we struck one of our down spots and in a slow, low-scoring game we were beaten 22-21 with Smethers the only one to hold up our cause.

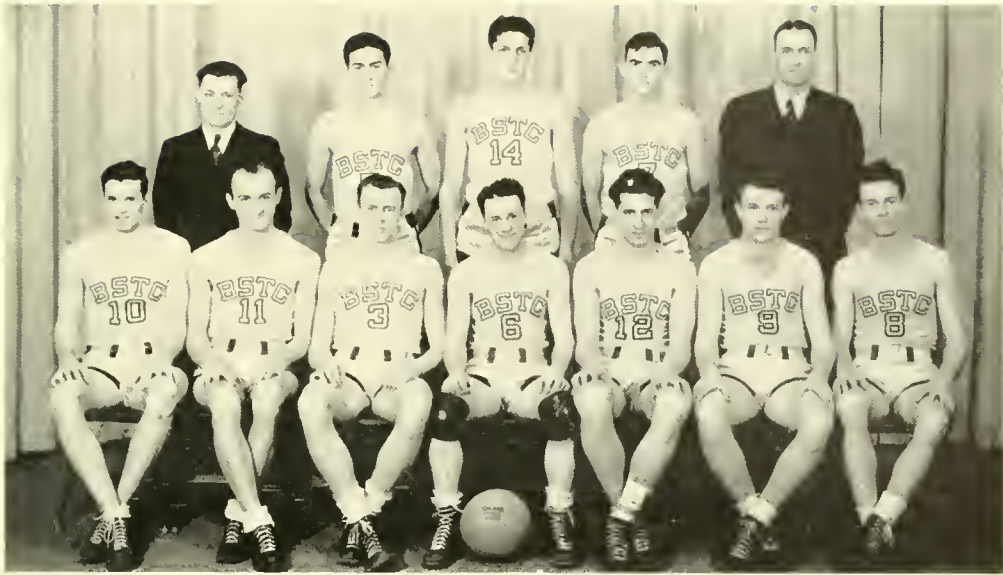
The next week-end the squad journeyed to Shippensburg and Millersville on a three-day trip; both games were lost, although the boys seemed to find themselves again and played a violent and action-packed game at Millersville. The "Red" took us 40-36, while the Millers ran up a 43-37 victory in Lancaster Armory.

Returning to the home court with high hopes after the Millersville game, the team virtually clicked against West Chester, with Ruckel, Banta, and Smethers hitting; they ran the Southerners off the court with a 40-36 win, but all was not rosy for us because the Big Red wave from Stroudsburg took away our pep, eking out a 39-35 victory.

Journeying through the northern and western parts of the state on a trip, our boys were decisively beaten at Lock Haven, 35-19, but showed their best form of the year the following night when five boys played the whole game and virtually sank Indiana's hopes for the State Championship with a 48-25 victory over them. Ruckel, Smethers, Giermack, Banta, and Withka were the iron men who accomplished this unheard-of feat; it being the first Indiana was beaten on its home court in four years.

The team held their spirit and were back up when they played Millersville and beat them 37-36 in the best game played at Bloomsburg in the school history of the present varsity squad.

The last two games of the year proved to be a headache for Coach Buchheit and his crew when we were kayoed by both Shippensburg and Stroudsburg with decisive margins, in 48-39 and 46-34 ball games. The season was considered successful, even though we won six and lost nine games, three of our victories being over State Championship contenders.



First Row, Left to Right—Daniel Bonham, Walter Wilhka, Frank VanDewater, Erving Ruckle, William Kirk, Sterling Banta, Maelyn Smethers
 Second Row—Thomas Davison, manager, John Slavin, Philip Snyder, Daniel Kemple, Coach George Buchheit

V A R S I T Y B A S K E T B A L L

| | | | | |
|----------|---------------|----|------------------|----|
| December | 3—Bloomsburg | 46 | Alumni | 24 |
| December | 8—Bloomsburg | 28 | Susquehanna | 35 |
| December | 17—Bloomsburg | 54 | Susquehanna | 34 |
| January | 8—Bloomsburg | 34 | Lock Haven | 37 |
| January | 13—Bloomsburg | 35 | Mansfield | 18 |
| January | 21—Bloomsburg | 21 | Mansfield | 22 |
| January | 28—Bloomsburg | 36 | Shippensburg | 40 |
| January | 29—Bloomsburg | 36 | Millersville | 43 |
| February | 4—Bloomsburg | 40 | West Chester | 36 |
| February | 5—Bloomsburg | 35 | East Stroudsburg | 39 |
| February | 11—Bloomsburg | 19 | Lock Haven | 35 |
| February | 12—Bloomsburg | 48 | Indiana | 25 |
| February | 18—Bloomsburg | 37 | Millersville | 36 |
| February | 25—Bloomsburg | 39 | Shippensburg | 48 |
| February | 26—Bloomsburg | 34 | East Stroudsburg | 46 |

JUNIOR VARSITY BASKETBALL

The Bloomsburg State Teachers College Junior Varsity basketball team continued the undefeated record that it carried for the past three years—only three games this season; they took Susquehanna twice in 36-36 and 38-20 games with Kerchusky, Snyder and Zimmerman setting the pace. They next encountered McCann's School of Business from Mahanoy City and turned in a 54-42 victory.

It was the next week when the streak was broken after three and a half years; our J. V.'s were turned back by Freeland A. R. S. S. in the closing seconds of the game when Pavliek, a member of our alumni, tossed in the winning goal. Wesley and Kerchusky played the best ball for the J. V.'s. McCann's School of Business was our next victim and Luckinbill and Wesley led our squad to victory. One night later "Pop" Wesley in a series of whirlwind plays and shots virtually beat Danville Montour House himself when he scored 33 points to set a new record for points scored by a Bloomsburg player. The score of the game was Bloomsburg 54, Danville 32.

In the two remaining games our J. V.'s split with Dickinson Seminary, winning 41-38 at home and losing 44-30 at Dickinson. The season was considered well rounded for the J. V.'s even though their record was broken. The varsity will get a wealth of material next year when Wesley, Kerchusky, Luckinbill, Zimmerman and Kemple report for varsity squad membership.



First Row, Left to Right—Stewart Edwards, Robert Zimmerman, Robert Luckinbill, Leo Lehman, William Kerehmsky
 Second Row—Vincent Cinquegrani, manager, Ralph Crocimo, Joseph Wesley, Howard Tomlinson, Mark Jury, Coach George Buchheit

JUNIOR VARSITY BASKETBALL

| | | | | |
|----------|---------------|----|-------------------------|----|
| December | 3—Bloomsburg | 28 | Bloomsburg Frosh | 26 |
| December | 8—Bloomsburg | 36 | Susquehanna J. V. | 26 |
| December | 17—Bloomsburg | 38 | Susquehanna J. V. | 20 |
| January | 8—Bloomsburg | 54 | McCanns Business School | 42 |
| January | 13—Bloomsburg | 40 | Freeland A. R. S. S. | 44 |
| February | 4—Bloomsburg | 48 | McCanns Business School | 30 |
| February | 5—Bloomsburg | 54 | Danville Montour House | 32 |
| February | 18—Bloomsburg | 41 | Dickinson Seminary | 38 |
| February | 19—Bloomsburg | 44 | Dickinson Seminary | 30 |

INTRA-MURAL BASKETBALL

On December 11th, all those boys who were interested in Intra-Mural Basketball met in the college Gymnasium at which time Coach Tate selected sixteen captains for teams, eight in each league—the Maroon and the Gold. Each captain chose five men besides himself so that each team had one substitute player.

The teams chosen were evenly matched; this was evident from the nip and tuck battles to represent the leagues in the play-offs. The names worn by the Maroon teams were those of animals, while the Gold division selected color names from the titles of various well-known college teams.

Thus well organized, the players carried on a bitterly contested fight until the play-offs, when the Tigers of the Maroon League met the Crimson Tide of the Gold in a heated point by point tilt that ended with a steady stream of baskets for the Tigers. The score of this championship game was 53-39, favor of Tigers and the Maroon League.

| MAROON LEAGUE | | | GOLD LEAGUE | | |
|---------------|-----|------|--------------|-----|------|
| | Won | Lost | | Won | Lost |
| Tigers | 5 | 2 | Crimson Tide | 7 | 0 |
| Lions | 5 | 2 | Greenwave | 5 | 2 |
| Rams | 4 | 3 | Presidents | 5 | 2 |
| Panthers | 4 | 3 | Big Green | 3 | 4 |
| Eagles | 3 | 4 | Big Red | 3 | 4 |
| Wolverines | 3 | 4 | Mountaineers | 3 | 4 |
| Bisons | 2 | 5 | Trojans | 2 | 5 |
| Leopards | 2 | 5 | Commodores | 0 | 7 |

HIGH SCHOOL BASKETBALL TOURNAMENT

The seventeenth Annual Basketball Tournament sponsored by the Community Government Association was held Saturday, March 12th, and Friday and Saturday, March 18th and 19th, in the College Gymnasium with the high school teams being divided into three classes:

Class A, student body over 300; Class B, student body between 150 and 300; Class C, student body under 150. There was also a Class CC composed of teams in the Columbia County League which were non-P. I. A. A. members. The following high schools participated:

Class A—Freeland, Gilberton, Dickson City, Mahanoy Township, Newport, Bloomsburg, and Blythe Township, with Freeland being the winner.

Class B—Sugar Notch, Warrior Run, West Wyoming, Exeter, Treverton, Mifflinburg, Porter Township, the winner being Warrior Run.

Class C—Nuremburg, Rock Glen, Pringle, and Shepton, with Pringle winning.

Class CC—Locust Township, Catawissa, Scott Township, and Conyngham Township, Scott Township winning the laurels.

General Chairman of the tournament was Thomas A. Davison on whose committee were Norman Henric, Walter Withka, Dean Harpe, and Frank Van Devender. Aply assisting this committee was the Letterman's Club.

β



ORGANIZATIONS

B

CLYDE KLINGER
President



ALICE AUCH
Secretary



MARGARET GRAHAM
Vice President



NORMAN HENRY
Treasurer

COMMUNITY GOVERNMENT ASSOCIATION

OFFICERS

| | | | | | | | | | | |
|-----------------|---|---|---|---|---|---|---|---|---|-----------------------|
| CLYDE KLINGER | - | - | - | - | - | - | - | - | - | <i>President</i> |
| MARGARET GRAHAM | - | - | - | - | - | - | - | - | - | <i>Vice President</i> |
| ALICE AUCH | - | - | - | - | - | - | - | - | - | <i>Secretary</i> |
| NORMAN HENRY | - | - | - | - | - | - | - | - | - | <i>Treasurer</i> |

The Community Government Association by the end of this year will have finished its eleventh year in operation. It consists of all members of the student body in addition to faculty members. The nature and purpose of this body is embodied in its name, Community Government Association. It aims to bind students, faculty, and administration together in order to produce better co-operation. This organization also cultivates responsibility, initiative, and progressiveness among the students, individually and as a group.

This organization is a member of the National Student Federation of America. The president, Clyde Klinger, during the Christmas vacation attended the N. S. F. A. convention in Albuquerque, New Mexico.

The Student Council is the executive division of the C. G. A. Committees appointed by the president take care of many duties necessary for a smooth running community. In addi-



First Row, Left to Right—M. Droese, Dean Andruss, Dr. Kehr, M. Louergan, C. Klunger, M. Graham, A. Ansh, Dean Koch, H. Mayan
 Second Row—M. Driscoll, Miss Ranson, Mr. Rhodes, Miss Rich, Mr. Buchheit, D. Sidler, F. Stefanski, A. Bramard, W. Yarworth
 Third Row—J. Kotsch, J. DeRose, J. Deily, T. Gomer, R. Baker, D. Hansknecht, J. Hendler, J. Maczuga

tion to discharging these duties, the student council, acting for the Community Government Association, sponsors several dances throughout the year.

In November the Student Council entertained a group of students from Lock Haven who came to gain information to use in the formation of a student council on their campus.

The college as a whole acts as a host to entering freshmen registering two days before college opens and during this time they are guests of the C. G. A.

MEMBERS

| | | | | | | | | | |
|-----------------------------------------|---|---|---|---|---|---|---|---|----------------------------------------|
| <i>President, Senior Class</i> | - | - | - | - | - | - | - | - | JOHN HENDLER |
| <i>Representatives, Senior Class</i> | - | - | - | - | - | - | - | - | MARTHA DBELSE; JACOB KOTSCHE |
| <i>President, Junior Class</i> | - | - | - | - | - | - | - | - | JAMES DEROSE |
| <i>Representatives, Junior Class</i> | - | - | - | - | - | - | - | - | HELEN MAYAN; WILLIAM YORWARTH |
| <i>President, Sophomore Class</i> | - | - | - | - | - | - | - | - | RALPH BAKER |
| <i>Representatives, Sophomore Class</i> | - | - | - | - | - | - | - | - | FLORENCE STEFANSKI; DONALD HOFSEKNECHT |
| <i>President, Freshman Class</i> | - | - | - | - | - | - | - | - | JAMES DEILY |
| <i>Representatives, Freshman Class</i> | - | - | - | - | - | - | - | - | MARY DRISCOLL; THURWALD GOMMER |
| <i>President of Day Women</i> | - | - | - | - | - | - | - | - | DOROTHY SIDLER |
| <i>President of Day Men</i> | - | - | - | - | - | - | - | - | JOHN MACZUGA |
| <i>President of North Hall</i> | - | - | - | - | - | - | - | - | DANIEL LITWILLER |
| <i>President of Waller Hall</i> | - | - | - | - | - | - | - | - | ANNA MALLOY |

FACULTY

H. A. ANDRUSS
 E. N. RHODES
 MARGUERITE KEHR

JOHN C. KOCH
 E. A. REAMS

BERTHA RICH
 GEORGE BUCHHEIT
 AUSTIN TATE



WALLER HALL ASSOCIATION

The Waller Hall Governing Board is comprised of fourteen members: A president, a vice president, and three members representing each of our four classes.

The president is held responsible for all activities transacted under the name of Waller Hall and sees to it that all committees are functioning properly.

The vice president is responsible for the supervisors and for keeping the dormitory quiet for study.

The other members bring in recommendations from the dormitory girls.

During the first semester, the president visited the Westhampton College in Virginia and brought back with her many valuable ideas and suggestions.

In December the Waller Hall girls sponsored a "pet show" as an attraction at the Y. W. C. A. "Kampus Karnival." This was a great success and met with many favorable compliments. During this busy month, the girls conducted their annual Christmas party and program for the crippled children. This affair was enjoyed not only by the children, but also by the faculty and college students as well.

For the first time in its history, Waller Hall presented a radio program in cooperation with the Day Women's Association, on the evening of February 2.

In April the dormitory and day girls held their annual He-She Party which was attended by many and an enjoyable time was had. At this time, new officers and representatives were introduced by the old members.



First Row, Left to Right—Miss Rich, D. Miller, F. Stefanski, A. Malloy, M. Dreese, R. Miller, Dr. Kehr
 Second Row—L. Knapp, H. Pesansky, R. Shay, M. Deppen, S. Johnson, E. Frechafer
 Third Row—A. Brainard, M. Johnson, A. Auch, C. Bell, B. Bronson

WALLER HALL ASSOCIATION

OFFICERS

| | | | | | | | | | | |
|--------------------|---|---|---|---|---|---|---|---|---|--------------------------------|
| ANNA MALLOY | - | - | - | - | - | - | - | - | - | <i>President</i> |
| MARTHA DREESE | - | - | - | - | - | - | - | - | - | <i>Vice President</i> |
| FLORENCE STEFANSKI | - | - | - | - | - | - | - | - | - | <i>Recording Secretary</i> |
| DOROTHY MILLER | - | - | - | - | - | - | - | - | - | <i>Corresponding Secretary</i> |
| RUTH MILLER | - | - | - | - | - | - | - | - | - | <i>Treasurer</i> |

COMMITTEE CHAIRMEN

| | | | | | | | | | | |
|---------------------|---|---|---|---|---|---|---|---|---|-------------------------------|
| JENNIE LESSER | - | - | - | - | - | - | - | - | - | <i>House Committee</i> |
| FLORENCE SNOOK | - | - | - | - | - | - | - | - | - | <i>Fire Committee</i> |
| FLORENCE PARK | - | - | - | - | - | - | - | - | - | <i>Finance Committee</i> |
| DEBORAH JONES | - | - | - | - | - | - | - | - | - | <i>Social Committee</i> |
| ALICE FINNERTY | - | - | - | - | - | - | - | - | - | <i>Recreation Committee</i> |
| HELEN SEMAN | - | - | - | - | - | - | - | - | - | <i>Customs</i> |
| ANNE SEESHOLTZ | - | - | - | - | - | - | - | - | - | <i>Program</i> |
| ANNE GROSEK | - | - | - | - | - | - | - | - | - | <i>Freshman Class Adviser</i> |
| BERNADETTE REYNOLDS | - | - | - | - | - | - | - | - | - | <i>Upperclass Adviser</i> |

NORTH HALL ASSOCIATION

The men of North Hall are just concluding one of the most successful years in its long and colorful history.

Besides doing their usual share of studying, the men engaged in many recreational activities.

The year began with the upperclassmen "riding" the "frosh." Few protests were received from the "frosh" which appeared to be a most promising group of men.

A pinochle tournament held over a period of weeks engaged the attention of a great number. As usual, many heated arguments took place and "kibitzers" were always present, but all in all, the tourney was very satisfactory.

At convenient intervals, smokers were held—the entertainment being supplied by the numberless versatile individuals living in North Hall. The most significant parts of these entertainments were the attitudes taken by the participants. When asked to appear on the program, the men seemed always to be willing—they were also successful.

A ping-pong tournament attracted the attention of a great number of the men of the "dorm." Eliminations proved the supremacy of a few but enjoyment for all.

As for the men themselves, congeniality was the password—a prerequisite for all applicants to this house of goodfellowship.



First Row, Left to Right- R. Rowlands, R. Evans, E. Dobb, J. Choumes, F. Van Antwerp, R. Sanger, T. Davison, D. Litwhiler
 Second Row- J. Mondshine, J. Rim, C. Reminger, E. Bacon, W. Kerelmsky, R. Borneman
 Third Row- G. Brittingham, W. Reed, H. Tomlinson, C. Horn, A. Keibler, J. Zaleski, J. Malinchoe
 Fourth Row- J. Lavelle, C. Kelehner, J. Jones, W. Prokonechak, R. Myers
 Fifth Row- Jimmy, Jacky, E. Sharkey, P. Frankmore, J. Kotch, R. Hill, E. Mulhern, T. Gommer
 Sixth Row- Professor Koch, Y. Chmieganski, A. Washtleski, S. Esmond, A. Davis, M. Thomas, J. Wesley, C. Harwood, M. Barnett, S. Banta, J. Plevyak, D. Kemple, R. Luckinbill, C. Price, A. Giermak, J. Aponick, W. Wilhka, A. Fetteroff, E. Christmas

NORTH HALL ASSOCIATION

OFFICERS

| | | | |
|------------------|---|--|-----------------------|
| DANIEL LITWHILER | - | | <i>President</i> |
| JOHN MONDSHINE | - | | <i>Vice President</i> |
| EDWARD MULHERN | - | | <i>Secretary</i> |
| NORMAN MAZA | - | | <i>Treasurer</i> |



DAY WOMEN'S ASSOCIATION

The Day Women's Association, an organization of all women students living off campus, is increasing in numbers and importance.

This year members of the Official Board were on hand to welcome freshman girls as well as upperclass members. A "get-acquainted" tea was held in the Day Room during the first week of school.

On Homecoming Day various committees entertained alumni friends and helped to reacquaint them with the College in general. The Day Women also distributed baskets of food and clothing to needy families at Christmas time and again cooperated at the Christmas Party for crippled children and others.

Other events were the Supper-Party for all Day Women and the He-She Party, a combined Day and Dormitory affair.

The members of the Official Board, the governing body of the organization, are as follows:

| | | |
|---------------------|-----------|-----------------------------------|
| DOROTHY SIDLER | - - - - - | <i>President</i> |
| VIVIAN FREY | - - - - - | <i>Vice President</i> |
| MIRIAM UTT | - - - - - | <i>Secretary</i> |
| MARTHA McHENRY | - - - - - | <i>Treasurer</i> |
| JANE LOCKARD | - - - - - | <i>Social Committee Chairman</i> |
| ROSEMARY HAUSKNECHT | - - - - - | <i>Assistant</i> |
| VIVIAN FREY | - - - - - | <i>Customs Committee Chairman</i> |
| HELEN WEAVER | - - - - - | <i>Assistant</i> |

The Freshman Day Women elected Isabel Olah and Sara Masteller as their representatives on the Official Board for the second semester.



First Row, Left to Right—M. Pitt, D. Sidler, L. Snyder, E. Keller, L. Gruver, E. Henry, J. Lockard, H. Soback, R. Fowler, B. Blane
 Second Row—M. Carl, D. Englehart, H. Weaver, C. Gearhart, Miss Ransom, M. McHenry, R. Troy, V. Frey, L. Adams, D. Derr, M. Blecker, F. Gehrig, C. Lee, C. Walp
 Third Row—A. Orner, H. Bigger, S. Tubbs, J. Benedetto, H. Mayan, L. Hummel, M. Yost, M. Brunstetter, M. Rnard, M. Patterson, R. McWilliams
 Fourth Row—M. Beaver, E. Sharadin, M. Blizzard, V. Foust, J. Benedetto, R. Dugan, A. Bailey, T. Yost, M. Zehner, M. Parsell, E. Esias, R. Brandon, R. Hausknecht, H. Harmon
 Fifth Row—A. Swinesburg, C. Schlee, R. West, H. Yanosik, G. Kadtko, J. Brown, M. Connor, D. Savige, L. Olah
 Sixth Row—M. Namas, F. Scherecongost, E. Lauer, M. Graham, G. Stellar, R. Leiby, D. Mensinger, C. Livesay, G. Gearhart, E. Rhinard

DAY WOMEN'S ASSOCIATION

Behind the Day Women as an organization, there is a long history of welfare promotion and co-operation with the girls of Waller Hall in matters that effect college women as a whole. This spirit of mity with the Waller Hall Association was exemplified on February 2 when "A Day in a College Girl's Life" was presented as one of the weekly broadcasts from the college auditorium. This program dramatized in parallel scenes the everyday happenings in the life of the average college girl.

The Day Women are looking forward to September, with its influx of new Freshman members and the beginning of a new calendar of social events.

DAY MEN'S ASSOCIATION

The Day Men's Association, the largest group organization on the Bloomsburg Campus, is composed of all men students other than dormitory students.

The organization is housed in the basement of North Hall, where facilities are provided for the various activities of the members, such as studying, smoking, eating, and socializing. Ping-pong tables and a fine radio have been provided for the use of members.

During the year, the association, in conjunction with the North Hall Men, entertained the incoming Freshman Class at a wiener roast following the annual Pajama Parade. An enjoyable chapel program was also presented to the entire college and aroused favorable comments.

Many of the members of the Day Men's Association have won renown in the athletic contests and social activities of the college. Clyde Klinger, President of the Community Government Association; Vance Laubach, Captain of the Varsity Football Team; John Hender, President of the Senior Class; and Walter Woytovich, Captain of the Wrestling Team are members of the Association.

Coach George C. Buchheit and Coach A. Austin Tate were the acting advisers during the year.



First Row, Left to Right—V. Ferrari, D. Troy, B. Bard, T. Jenkins, W. Penman, G. Marinko, J. Sheptock, P. Eshmond, H. Brosius, R. Roberts, F. Taylor, A. Hyduk
 Second Row—M. Gonsbor, W. Miller, B. Forsythe, V. Laubach, F. Honek, R. Fisher, G. Neibauer, P. Pogozelsky, E. Wenner, G. Lehet, R. Heckenhuber, D. Fetterman
 Third Row—Mr. Buchheit, M. Klembara, A. Fetterman, A. Finder, R. Barnhart, M. Foose, J. Maczuga, R. Nolan, J. Kushma, R. Williams, P. Traupane, R. Kantner, G. Rarich, B. Smith
 Fourth Row—C. Klinger, R. Zimmerman, D. Villa, G. Fritz, B. Shiner, J. Bowers, H. Cameron, J. Hendler, E. Rivard, D. Folk, R. McBride, E. Honek, W. Christian, E. Sharettis, L. Lehman, R. Old, J. Slaven
 Fifth Row—B. Hancock, V. Dreher, B. Renger, D. Rumpel, B. Ziegler, M. Strahosky, A. McKochmie, B. Parker, J. Shortess, P. Snyder, P. Barall, C. Girton, B. Miller, A. Martelli, M. Stenko, E. Kerstetter, B. Zimmerman, L. Bowers

DAY MEN'S ASSOCIATION

OFFICERS

JOHN MACZUGA - - - - - *President*
 JOHN KUSHMA - - - - - *Vice President*
 MORGAN FOOSE - - - - - *Secretary*
 RICHARD NOLAN - - - - - *Treasurer*



MIXED CHORUS

Mixed Chorus was one of the largest and most active organizations on the campus during the year 1937-38.

Programs presented during the year included a program of Thanksgiving music; a broadcast over Station WKOK, Sunbury; a group of songs on the Rotary-Kiwanis-College Night Program; and a Spring Concert, where Miss Isabel Miller, of the Department of Music, was guest soloist.

OFFICERS

HARRIET M. MOORE, *Director*
Mrs. JOHN K. MILLER, *Accompanist*

| | | | | | | | | | | | |
|------------------|---|---|---|---|---|---|---|---|---|---|-----------------------|
| FRANK KOCHER | - | - | - | - | - | - | - | - | - | - | <i>President</i> |
| ALEX McKECHNIE | - | - | - | - | - | - | - | - | - | - | <i>Vice President</i> |
| MIRIAM UTT | - | - | - | - | - | - | - | - | - | - | <i>Secretary</i> |
| ANNA MALLOY | - | - | - | - | - | - | - | - | - | - | <i>Treasurer</i> |
| HARRIET KOCHER | - | - | - | - | - | - | - | - | - | - | <i>Librarian</i> |
| JOSEPH MALINCHOC | - | - | - | - | - | - | - | - | - | - | <i>Librarian</i> |

PERSONNEL

First Soprano

Andreas, Betty
Andrews, Joyrelyn
Baumunk, Avonell
Beckley, Eleanor
Benninger, Edith
Bishop, Ruth
Blecker, Margaret
Blizzard, Marie
Burkholder, Margaret
Chelland, Mildred
Collett, Betty
Cooper, Eleanor
Culp, Hannah
Darrow, Jane
Davis, Mary
Derr, Helen
Dyke, Jane
Fester, Pearl
Finnerty, Alice
Follmer, Vera
Foust, Vera
Frey, Vivian
Gearhart, Charlotte

Gehrig, Fay
Gilligan, Betty
Hart, Elizabeth
Henric, Elda
Hummel, Letha
Johnson, Lois
Jones, Gladys
Justin, Alice
Keller, Edna
Knapp, Irene
Linskill, Frances
Long, Joyce
Livsey, Carrie
McCawley, Betty
Masteller, Sara
Moss, Jean
Northup, Anne
Olah, Isabella
Pesansky, Helen
Pursel, Maude
Reigle, Paulyne
Reich, Agnes

Reilly, Eleanor
Reilly, Violet
Reynolds, Bernadette
Richards, Josephine
Rieben, Evaline
Rinard, Muriel
Roberts, Betty
Scott, Esther
Seman, Helen
Shuman, Jean
Simon, Mildred
Smith, Margaret
Snyder, Lorraine
Stefanski, Florence
Troy, Rowena
Tugend, Florence
Wood, Celia
Williams, Mantana
Yeager, Lillian
Yost, Mercia
Yost, Theresa
Zehner, Martha
Zondlo, Louise

Second Soprano

Arzikosky, Emily
Derr, Dorothy
Diehl, Irene
Elmore, Marian
Englehart, Dorothy
Evans, Martha

Franklin, Pauline
Goldsmith, Charlotte
Hughes, Virginia
Lockard, Jane
Long, Marian

Malloy, Anna
Matanin, Ludmilla
Reich, Anna
Schiefer, Jessie
Sidler, Dorothy
Thornton, Alma

First Alto

Bell, Catherine
Brainard, Alberta
Brouse, Helen
Curry, Anne
Greenly, Jean
Grosck, Anne
Hauksnecht, Rose Mary

Hawk, Betty
Johnson, Helen
Kocher, Harriet
Landis, Marian
Leedom, Katherine
Long, Dorothy
McCall, Emily
Merrott, Florence

Miller, Betsy
Murphy, Marian
Parsell, Marie
Snook, Florence
Utt, Miriam
Wagner, Phyllis
Young, Marjorie





MIXED CHORUS

Second Alto

Blaine, Bernice
Callaghan, Agnes
Fekula, Olga
Frick, Dorothy

Hamer, Mary
Powell, Helen
Steininger, Margaret

Sweigart, Mary
Tubbs, Sarah
Ward, Frances
Ward, Margaret

First Tenor

Chismar, Michael
Diehl, Robert
Moratelli, William

Ohl, Rutter
Pugh, James

Reminger, Clark
Stozenski, Stanley
Troy, Dale

Second Tenor

Davies, Willard
Frankmore, Philip
Gommer, Thurwald

Hess, William
Kerstetter, Elmer
Patrick, Frank

Payne, Herbert
Shiner, Byron
Wenner, Edwin

First Bass

Bird, Bynoth
Borneman, Robert
Bowers, John
Carlin, John
Hagenbuch, William

Kocher, Frank
Kreigl, Willard
Lehel, George
McKechnie, Alex
Malinchoe, Joseph
Price, Robert

Sharp, George
Shortess, Jack
Stout, Leonard
Taylor, Frank
Zimmerman, Ray

Second Bass

Girton, Charles
Kotsch, Jacob

Parsell, Theodore

Rarich, Glenn
Thomas, William

A CAPPELLA CHOIR

OFFICERS

| | | |
|------------------|-----------|-----------------------|
| CHARLES GIRTON | - - - - - | <i>President</i> |
| FRANCES WARD | - - - - - | <i>Vice President</i> |
| MARGARET WARD | - - - - - | <i>Secretary</i> |
| LORRAINE SNYDER | - - - - - | <i>Treasurer</i> |
| BYNOTH BIRD | - - - - - | <i>Librarian</i> |
| HARRIET M. MOORE | - - - - - | <i>Director</i> |
| JOHN YOUNG | - - - - - | <i>Pianist</i> |

The A Cappella Choir began its third year of study in the fall of 1937 with a membership of thirty-four. In addition to the regular members, there were eight substitutes who rehearsed with the choir and filled vacancies that occurred in the choir membership during the year.

The members of the choir rehearsed weekly, and participated in many programs, wearing their gold-trimmed maroon robes. Included among the engagements of the choir were the Thanksgiving radio broadcast from the college auditorium; the Christmas chapel program and broadcast; the Columbia County Teachers Institute held at the college; the annual Rotary-Kiwanis College Night Program; the annual Spring Concert; the Philadelphia Alumni Association Dinner at Philadelphia; an assembly program in the Pottsville High School; and the college Baccalaureate service.





First Row, Left to Right—D. Troy, R. Ohl, B. Roberts, E. Wenner, Lorraine Snyder, C. Girton, B. Bird, M. Ward,
 F. Ward, J. Stamer, F. Kocher
 Second Row—C. Reminger, J. Richards, F. Gehrig, P. Frankmore, J. Young, W. Thomas, A. McKechnie,
 T. Parsell, Miss Moore, B. Collett, E. Cooper, S. Mastellar
 Third Row—P. Riegle, M. Utt, A. Brainard, V. Hughes, J. Pugh, S. Stozenski, J. Kotsch, L. Stout, D. Frick,
 S. Tubbs, M. Steininger, C. Livesay

A CAPPELLA CHOIR

PERSONNEL

Sopranos

Betty Collett
 Eleanor Cooper
 Fay Gehrig
 Virginia Hughes

Carrie Livsey
 Marion Long
 Sara Maustellar

Paulyne Reigle
 Josephine Richard
 Betty Roberts
 Lorraine Snyder

Altos

Alberta Brainard
 Dorothy Frick
 Jean Greenly

Mary Hamer
 Sara Tubbs
 Margaret Steininger

Miriam Utt
 Frances Ward
 Margaret Ward

Tenors

Robert Diehl
 Philip Frankmore
 Rutter Ohl, Jr.

Frank Patrick
 James Pugh
 Clark Renninger

Dale Troy
 Stanley Stozenski
 Edwin Wenner

Basses

Bynoth Bird
 Charles Girton
 Frank Kocher

Jacob Kotsch
 Willard Kreigh
 Alex McKechnie
 Theodore Parsell

Robert Price
 Glen Rarich
 William Thomas



MAROON AND GOLD BAND

OFFICERS

| | | | | | | | | | |
|----------------|---|---|---|---|---|---|---|---|-----------------------|
| ALEX MCKECHNIE | - | - | - | - | - | - | - | - | <i>President</i> |
| ISAAH BOMBOY | - | - | - | - | - | - | - | - | <i>Vice President</i> |
| GEORGE LEHET | - | - | - | - | - | - | - | - | <i>Secretary</i> |
| PHILIP MOORE | - | - | - | - | - | - | - | - | <i>Treasurer</i> |

The Maroon and Gold Band was first organized in the spring of 1931 and, after two rehearsals, made its first public appearance on the Rotary-Kiwanis program. The first organization had about fifteen active members. Dreams of increasing the membership of the band to forty were not realized until this year, when, with an increase of twelve members, the goal was finally reached.

The Band has been very active during the past year. It played for the home football games, and accompanied the team to Shippensburg. A concert was presented in the gymnasium as a part of Bloomsburg's Homecoming Day program. Another concert was given at an assembly program in December. The band also participated in a college broadcast on the eve of Homecoming Day. It also took part in the ground-breaking exercises held to celebrate the beginning of the new building project, and closed the program of the 1938 Rotary-Kiwanis College Evening.

Inasmuch as a very small number of the members will be lost by graduation, the prospects for next year are the most favorable in the history of the organization.





MAROON AND GOLD BAND

PERSONNEL

Trumpets

Charles Henric
 Philip Moore
 Alfred Koczansky
 Frederick Worman
 Bynoth Bird
 Walter Wytovitch
 Charles Borneman
 Charles Horn
 Dorothy Derr
 Paul Martin

French Horn

Edwin Wenner

Trombones

James Rim
 Charles Girton
 Roy Roberts
 Harrison Cameron
 James Deily

Altos

William Yorwarth
 Joseph Baraniak

Baritones

Alex McKechnie
 Max Arcus

Basses

Frank Gress
 Grant Brittingham

Clarinets

Robert Ohl
 Drew Folk
 John Kushma
 Don Rumples
 Elwyn Vaughan
 Mary Bretz
 Mary Sweigart
 Margaret Burkholder

Flute

Eunice Laubach

Saxophones

Isaiah Bomboy
 Robert Reinard
 Earl Houck
 Clark Renninger
 Ethel Ruth
 Evelyn Frechafer
 Murray Barnett

Drums

Ray McBride
 Robert Luckenbill
 Rutter Ohl, Jr.

Cymbals

George Lebet

Drum Major

Robert Williams

H. F. FENSTERMAKER, *Director*

MAROON AND GOLD ORCHESTRA

OFFICERS

| | | | | | | | | |
|-------------------|---|---|---|---|---|---|---|-----------------------|
| CHARLES HENRIE | - | - | - | - | - | - | - | <i>President</i> |
| BEN SINGER | - | - | - | - | - | - | - | <i>Vice President</i> |
| ANNE CURRY | - | - | - | - | - | - | - | <i>Secretary</i> |
| ROBERT WILLIAMS | - | - | - | - | - | - | - | <i>Treasurer</i> |
| H. F. FENSTEMAKER | - | - | - | - | - | - | - | <i>Director</i> |

As a result of many years of steady development, the Maroon and Gold Orchestra reached new heights this year, with the best balance of instrumentation that it has ever had. It has been frequently called upon to furnish music in the dining room for banquets. Some of these events were: Home-Coming Day, Rural Education Day, the Columbia County Institute, the Columbia County Alumni Association, the Elks Dinner, the Rotary-Kiwanis Banquet, the Athletic Dinner, and Alumni Day.



MAROON AND GOLD ORCHESTRA

PERSONNEL

Violins

Philip Moore
Ben Singer
Mildred Bonin
George Lehet
Frederick Worman
Mary Palsgrove
Marian Metcalfe
Eleanor Shiffka
Jennis Tewksbury

Bass Viol

Philip Moore

Picno

Harriet Kocher

Xylophone

Ethel Ruth

Flute

Eunice Lambach

Clarinets

Robert Ohl
Dne Folk
Mary Bretz
Mary Sweigart
Margaret Burkholder

Saxophones

Robert Williams
Isaiah Bomboy
Anne Curry
Evelyn Freehafer
Clark Reminger

Drums

Rutter Ohl, Jr.

Trumpets

Charles Henric
Bynoth Bird
Charles Horn
Robert Borneman
Dorothy Derr

Trombones

James Rim
Harrison Cameron

Euphonium

Alex McKechnie

Taba

Grant Brittingham

Y. W. C. A.

The Y. W. C. A. had a very successful year during 1937-1938. The weekly meetings included song services, interesting panel discussions, educational talks and enjoyable socials.

Among the speakers for the year were Mrs. S. I. Shortess, who gave a book review, and Miss Marguerite Murphy, who talked on travel for education and enjoyment. Rev. and Mrs. Northern, and three members of their congregation again made their yearly visit and sang negro spirituals.

The socials of the year included a Thanksgiving, a Christmas, a Valentine, and a Saint Patrick's Day Party.

This year the "Y" participated in something new—a radio broadcast. The girls put on a Christmas broadcast, in which they sang carols. They had the help of the Y. M. C. A. on this occasion.

Again this year the annual Christmas caroling tour was followed by a little party.

The big event of the season was the Kampus Karnival. This year at the Karnival there were booths, at which were sold a variety of novelties and gifts, stationery and accessories, candy and ice cream. There were also a tea room, a bingo table, and a pet show which consisted of animals of all sorts, shapes and substances. An added attraction of the Karnival was the entertainment which was presented every hour. Again fortune telling proved to be a big attraction at the Karnival.

This year there was a "heart sister" week, during which time each girl in the "Y" had a secret "heart sister" for whom she was to do a good turn daily. At the end of the week each girl found out who her "heart sister" was and all the "heart sisters" enjoyed a Valentine Party.

The "Y" was represented again at the Student Christian Movement Conference held at Eagles Mere during the summer. Representatives were also sent to conferences at Lock Haven State Teachers College and at Lutherland in the Poconos during the year.

The "Y" girls observed the Easter Holy Week by holding sunrise services each morning throughout the week in the grove.



First Row, Left to Right—M. Hergert, M. Young, L. Yeager, S. Johnson, J. Hagenbuch, S. Gaugler, T. Mullin
 Second Row—E. Benninger, E. Beilbartz, I. Dield, A. Heanenuith, L. Hower, A. Northrup, M. Sweigart, E. Ruth, C. Oplinger
 Third Row—C. Bell, M. Williams, H. Brady, H. Weaver, Miss Mason, A. Brainard, A. Bailey, F. Park, F. Snook, H. Derr, R. Miller
 Fourth Row—M. Steinger, A. Hilbush, T. Coppes, M. Johnson, G. Jones, M. Kessler, J. Dyke, M. Murphy, H. Dixon, C. Moore, R. Shields, D. Marr, C. Kreiger, L. Matanin, C. Baumer, F. Traub
 Fifth Row—L. Fulmer, R. Brodbeck, M. Youtz, B. Gillette, M. Simon, H. Bredbenner, M. Bretz, R. Bishop, R. Dietrick, M. Berkholder, S. Birth, J. Moss, S. Hummel, A. Swinesburg, J. Lesser, R. Shay

Y. W. C. A.

The last meeting of the Y. W. C. A. was a farewell meeting in which the "Y" members bade farewell to the girls who were graduating and leaving college. Each of these girls was presented with a little token in the form of a small bouquet of wild flowers.

OFFICERS

| | | |
|---------------------|-----------|-----------------------|
| HELEN WEAVER | - - - - - | <i>President</i> |
| MAUDE WILLIAMS | - - - - - | <i>Vice President</i> |
| RUTH MILLER | - - - - - | <i>Secretary</i> |
| ANNABEL BAILEY | - - - - - | <i>Treasurer</i> |
| MISS PEARL L. MASON | - - - - - | <i>Sponsor</i> |



Y. M. C. A.

The Membership Committee and the officers of the Y. M. C. A. welcomed the freshmen, and began the membership drive during the registration of the "frosh." After John Mondshine, President, addressed the freshmen in the Social Rooms of Science Hall, the group was entertained by the Cabinet. The present membership of the Y. M. C. A. is about sixty-five.

Each year it is customary for the Y. M. C. A. to hold a Christmas party for the benefit of the poor children, and it turned out to be a great success. Philip Frankmore, playing Santa Claus, presented the gifts, after which Willard Kreigh, pianist, and John Plevyak, accordionist, and James Rim, trombonist, furnished appropriate music.

During the first semester, members of the faculty and people from our community gave interesting talks. Dr. Francis Haas spoke on the subject, "Self-analysis"; Professor C. H. Albert, "What Is Religion?"; and Mr. Howard Fenstermaker, "Dough Boys and Diplomats."

Open panel discussions have been held concerning the present Christian Movement. The students showed keen interest in the discussion and brought out some very unique statements which proved to be beneficial to everybody present.

The Y. M. C. A. held two joint meetings with the Y. W. C. A. During one of the meetings which was held in the college auditorium, Mr. MacMichaels, the principal speaker for the occasion, gave an inspiring talk about the National Assembly, an organization established to solve and to discuss present Christian youth problems.

During the second semester new members were admitted to the organization.



First Row, Left to Right—D. Angelo, C. Horn, G. Sharkey, J. Aponick, F. Van Antwerp, R. Hill, F. Early
 Second Row—J. Kotsch, V. Turini, C. Henric, C. Harwood, C. Kelchner, J. Mondschine, Mr. Shortess, A. Salerno,
 S. Esmond, P. Frankmore, W. Davis
 Third Row—R. Sanger, W. Prokopchak, A. Fetteroff, B. Wertz, A. Strahowsky, C. Reminger, W. Reed,
 R. Rowland, M. Chismar, J. Knight, E. Bacon, C. Rowland
 Fourth Row—E. Dobbs, J. Zaleski, A. Kiebler, J. Malinohok, J. Shortess, R. Luckenhill, G. Brittingham,
 R. Borneman, J. Plevyak, J. Kovalesky, J. Lavelle

Y. M. C. A.

OFFICERS

| | | |
|------------------|-----------|-----------------------|
| JOHN MONDSCHINE | - - - - - | <i>President</i> |
| CHARLES KELCHNER | - - - - - | <i>Vice President</i> |
| CHESTER HARWOOD | - - - - - | <i>Secretary</i> |
| ROBERT DIEHL | - - - - - | <i>Treasurer</i> |
| S. I. SHORTESS | - - - - - | <i>Sponsor</i> |



RURAL LIFE CLUB

The Rural Life Club serves as an extra-curricular activity for those students who are majoring in Rural Education and those from other groups who are considering teaching in rural schools.

The club designs its programs to meet the school and community problems of the rural teacher which are not discussed in the regular college courses. A valuable part of the program comes from the exchange of ideas and experiences among members. Since nearly all members have attended rural schools, problems of these schools are presented and suggestions for their solution are considered. This year among the topics discussed were "Libraries and How to Secure Them," "Using the School Building for a Rural Recreation Center," and "The Block Program, Its Use and Advantages."

The Second Annual Rural Education Conference was held November 13, 1937. Professor R. Willis Kerns, Specialist in Rural Sociology at Pennsylvania State College, presented the principal address on the theme "Better Living in Home and Community." Eight class room teachers told what they are doing in their schools to contribute to better living.

That Rural Education Day is winning its place in the professional life of teachers of Bloomsburg State Teachers College service-area is evidenced by the attendance which was much larger than one year ago.



First Row, Left to Right - F. Visintainer, M. Brosius, Miss Hazen, R. Yerger, C. Moore, R. Baker, H. Weaver
 Second Row - M. Stine, D. Leiser, P. Franklin, A. Lubersky, F. Yost, W. Rowlands, L. Snyder
 Third Row - V. Gubal, I. Freus, C. Rowlands, C. Hummel

RURAL LIFE CLUB

OFFICERS

| | | |
|------------------|-----------|-----------------------------------|
| ROBERT YERGER | - - - - - | <i>President</i> |
| ROBERT BAKER | - - - - - | <i>Vice President</i> |
| KATHRYN MOORE | - - - - - | <i>Secretary</i> |
| MARLIN BROSIOUS | - - - - - | <i>Treasurer</i> |
| FRED VISINTAINER | - - - - - | <i>Chairman Program Committee</i> |
| EDNA J. HAZEN | - - - - - | <i>Adviser</i> |

SCIENCE CLUB

The Science Club was organized in the spring semester of 1937 under the sponsorship of Dr. K. C. Kuster, head of the department of biological science. The aim of the club is to promote an interest throughout the student body in both physical and biological science.

The program, which has been most varied and interesting has included reports given by individual members on subjects of current interests, discussions among the members, games guaranteed to show the limited extent of one's knowledge, field trips far and near, including a study of the plant and animal life of the surrounding country, a trip to the Alameda stone quarry where a colony of fresh-water jelly fish had been found for the first time in this locality, a study of the ever interest-provoking perpetual motion machine, and last but not least the Science Outing, where study and fun were most satisfactorily combined and hot dogs were united with smoke and Mother Earth in the most desirable and approved method.



First Row, Left to Right- D. Troy, C. Schlee, R. Zimmerman, A. Bailey, J. DeRose, Dr. Kuster, B. Savage,
 L. Adams, D. Englehart, R. Dugan, J. Chawainas
 Second Row—L. Yeager, J. Brown, F. Traub, V. Frey, C. Brower, F. Park, J. Benedetto, R. Boone, M. Hergert,
 D. Blecker
 Third Row—Letterman, I. Bouboy, G. Lebet, C. Girton, J. Bowers, B. Zimmerman, F. Ferguson, P. Letterman

SCIENCE CLUB

OFFICERS

| | | | | | | | | | |
|----------------|---|---|---|---|---|---|---|---|-----------------------|
| JAMES DEROSE | - | - | - | - | - | - | - | - | <i>President</i> |
| BETTY SAVAGE | - | - | - | - | - | - | - | - | <i>Vice President</i> |
| RAY ZIMMERMAN | - | - | - | - | - | - | - | - | <i>Treasurer</i> |
| ANNABEL BAILEY | - | - | - | - | - | - | - | - | <i>Secretary</i> |

JUNIOR CHAMBER OF COMMERCE

OFFICERS

| | | | | | | | | | | |
|----------------------------------|---|---|---|---|---|---|---|---|---|-----------------------|
| JOHN SLAVEN | - | - | - | - | - | - | - | - | - | <i>President</i> |
| BENJAMIN STADT | - | - | - | - | - | - | - | - | - | <i>Vice President</i> |
| WILLIAM YATES | - | - | - | - | - | - | - | - | - | <i>Treasurer</i> |
| JANE OSWALD | - | - | - | - | - | - | - | - | - | <i>Secretary</i> |
| EVELYN RIEBEN | - | - | - | - | - | - | - | - | - | <i>Historian</i> |
| MARGARET HOKE, WILLIAM C. FORNEY | - | - | - | - | - | - | - | - | - | <i>Sponsors</i> |

One of the most successful social-professional organizations on the campus, J. C. C. sponsors an all-school dance held the evening following the first football game; a fall outing, generally held at Columbia Park; a formal dinner is held each spring at which awards are made to outstanding members.

Regular meetings are held twice each month throughout the school year. Speakers of educational and business experience address the group of interesting topics. The newer business machines, such as typewriters and calculating machines, are demonstrated. Each of the four classes is responsible for the presentation of one program which may be either musical or dramatic.

For the past five years a state-wide Commercial Contest has been sponsored for high school students. Competitive examinations in bookkeeping, Gregg shorthand, commercial law, typewriting, and commercial arithmetic are given. Successful students are awarded gold, silver, and bronze charms. The best team of high school students receives the Commercial Contest Cup.



JUNIOR CHAMBER OF COMMERCE

MEMBERS

Seniors

Arcikosky, Emily
 Auch, Alice
 Bronson, Bernice
 Casari, George
 Diehl, Robert
 Elmore, Marion
 Fetterolf, Andrew
 Frankmore, Philip
 Gearhart, Grace
 Gilligan, Betty
 Price, Robert
 Reeh, Anna

Reynolds, Bernadette
 Rhinard, Ellen
 Richie, Neil
 Ryan, Agnes
 Goretski, Helen
 Hamer, Mary
 Havalicka, E'mer
 Herkenhuber, Robert
 Hendler, John
 Henry, Charles
 Henry, Norman

Klinger, Clyde
 Kotsch, Jacob
 Kreigh, Willard
 Salerno, Anthony
 Saluda, Rose
 Sell, Frances
 Scott, Esther
 Slaven, John
 Kushma, John
 Langan, Ruth
 Laubach, Vance

Kupstas, Alex
 Maczuga, John
 Malloy, Anne
 Martin, Paul
 Mensinger, Dorothy
 Miller, Mary
 Patrick, Frank
 Von Bergen, Doris
 Wanich, Jack
 Wenner, Dorothy
 Allen, Mary
 Williams, Robert

Juniors

Amerman, Sarah
 Baehinger, Frank
 Baranick, Joseph
 Barlie, Leonard
 Bonin, Irene
 Boyle, Mary
 Carl, Melya
 Christian, Willard
 Cinquegrani, Vince
 Coblentz, Harold
 Davie, Willard
 Deppen, Margaret
 Dersham, Sarah
 Evans, Roy
 Farmer, Lois

Foose, Morgan
 Freehafer, Evelyn
 Harwood, Chester
 Johnson, Lois
 Johnson, Mary
 Jones, Sheldon
 Jones, John
 Kiebler, Alfred
 Kantner, Robert
 Kleffman, Ruth
 Kocher, Harriett
 Kozansky, Alfred
 Leedom, Katherine
 Lonergan, Abigail

Lonergan, Margaret
 McBride, Ray
 McGrew, Helen
 Miller, Claire
 Mondschine, John
 Nolan, Richard
 Orner, Anna
 Oswald, Jane
 Penman, William
 Rarich, Glenn
 Reichley, Eva
 Revels, Thomas
 Roth, Virginia
 Sheridan, Vera

Shiffka, Eleanor
 Shuman, Jean
 Smith, Donabelle
 Stadt, Benjamin
 Steininger, Margaret
 Stinson, Wanda
 Tewksbury, Jennis
 Traupane, Philip
 Utt, Miriam
 Washinko, George
 Wagner, Geraldine
 Wenner, Marvin
 Woytovich, Walter
 Wright, Martha
 Yates, William

BLOOMSBURG PLAYERS

The Bloomsburg Players, of the Dramatic Club, of Bloomsburg State Teachers College is the oldest extra-curricular organization on the campus, having been organized in 1924.

The primary purpose of the club is to provide a workshop wherein the members of B. S. T. C. who wish some training in dramatics may not only learn to participate in plays themselves and so gain more poise, and ease in appearing before the public, but also learn to direct and produce amateur plays, especially in the schools where they may go.

One of the outstanding features of the club this year was a play writing contest sponsored by the organization. All members of the college community were asked to enter the contest.

The club meets every Tuesday evening. After the business meeting, a one-act play is presented by the club members, followed by constructive criticisms by members and the director of the club. The plays are directed by a student under the supervision of the club director. The work of the club is not limited to their own weekly plays, but it gives during the year many one-act plays for college affairs such as the C. G. A. Party for the freshmen, the Crippled Children's Party, the Rotary-Kiwanis All College Night, and Chapel Programs, and organizations in town and vicinity. The activity of the club this year has been centered in their weekly plays—the one exception being the annual long play given for the children of the town and the training school under the auspices of the Parent-Teachers Association.

Students who wish to join the club must have a tryout before a committee composed of members of the club and the club director. These tryouts are at the beginning of each semester.

The Dramatic Club offers two high honors to its members: First, becoming a member of Alpha Psi Omega, the National Honorary Dramatic Fraternity; second, the Gold Pin Award to those who have gained the highest number of points given for outstanding work for the club.

β



First Row, Left to Right - C. Klinger, B. Singer, R. Zimmerman, V. Drehr, P. Traupane, W. Reager, J. Jones
 Second Row—H. Powell, F. Stefanski, D. Miller, G. Richards, M. Graham, M. Connor, V. Burke, J. Capwell,
 A. Justin, C. Livsey
 Third Row—E. Lauer, V. Cinquergani, M. Johnson, W. Strawinski, M. Potter, W. Christian, R. Walukiewicz,
 J. Slaven, M. Brunstetter, C. Keelmer, B. Bronson, E. Sharrets, M. Parsell
 Fourth Row—G. Neibauer, M. Dreese, P. Frankmore, F. Scherecongost, A. Davis, F. Snook, I. Jones, V. Hughes,
 A. McKechnie, A. Reed, J. Bowers, Miss Johnston, J. Slamer
 Fifth Row—C. Bakey, J. Richards, D. Hamsknecht, F. Gehrig, J. Shortess, D. Sidler, P. Snyder, S. Conway,
 J. Malinchok, R. Hamsknecht, G. Fritz, J. Dessen, D. Harpe

BLOOMSBURG PLAYERS

OFFICERS

| <i>First Semester</i> | | <i>Second Semester</i> |
|-----------------------|-----------------------------------|------------------------|
| WILLARD CHRISTIAN | - - - <i>President</i> - - - | WILLIAM STRAWINSKI |
| MARIAN MURPHY | - - - <i>Vice President</i> - - - | MARGARET JOHNSON |
| REGINA WALUKIEWICZ | - - - <i>Secretary</i> - - - | JEAN CAPWELL |
| JOHN SLAVEN | - - - <i>Treasurer</i> - - - | JOHN SLAVEN |

ALPHA PSI OMEGA

We have had another successful year in Alpha Psi Omega. In fact, 1938 is our tenth anniversary. We've taken in new members who filled the vacancies left by graduation last spring, started the year's activities by initiation of new members, and followed with a party in the social rooms of Science Hall.

On Homecoming Day we held the annual fraternity banquet at the Methodist Church in Bloomsburg, where we had a delicious dinner and a little entertainment. We were glad to welcome back many Alumni who attended the banquet.

When Mr. George Beale, the prominent dramatic critic, visited our campus, the fraternity sponsored an afternoon discussion, open to anyone, at which time Mr. Beale kindly answered all questions concerning recent Broadway productions.

The Rotary-Kiwanis Play this year presented by the fraternity was an unusually clever play in syncopated rhythm called "Common Clay," written by George M. Cohan.

The Annual One-Act Play Tournament was again sponsored by the Alpha Psi Omega. We had many new schools competing this year.

Last spring we started a new feature on the campus, which was in the form of a Children's Theatre. This was sponsored by the Parent-Teachers Association of the Training School and proved so entirely successful that we repeated it again this year. We plan to make this a permanent annual event. The play presented last year was "The Little Princess" by Sarah Hadson Burnett. This year we presented "The Silver Thread" by Constance McKay.

We have put on one-act plays in chapel and feel that the fraternity next year will be most fortunate if they are as successful as we have been.



First Row, Left to Right—V. Burke, J. Slayen, M. Potter, M. Dreese, P. Frankmore, R. Langan, C. Lavesey,
 W. Strawinski, M. Graham
 Second Row—B. Singer, M. Johnson, A. McKechnie, S. Conway, W. Christian, Miss Johnston, J. Kotsch,
 B. Bronson, J. Jones, J. Lockard

ALPHA PSI OMEGA

OFFICERS

| | | |
|------------------|-----------|--------------------------------|
| PHILIP FRANKMORE | - - - - - | <i>Honorable Prompter</i> |
| JACOB KOTSCH | - - - - - | <i>Worthy Business Manager</i> |
| MARTHA DREESE | - - - - - | <i>Worthy Playwright</i> |
| ALICE JOHNSTON | - - - - - | <i>Honorable Director</i> |

PHI SIGMA PI

Founded at State Teachers College, Warrensburg, Mo., February 14, 1916.

Iota Chapter was installed at Bloomsburg, April 26, 1930, by the former members of Omega Chi.

The 1937-38 term began with sixteen student and five faculty members.

On November 9, pledge services were held at the home of Mr. Reams, sponsor. Mr. Reams spoke briefly on the history of the fraternity and following him, Dean Koch pledged the neophytes.

Informal initiations were held on November 15, and the following night, Miles Smith, Al Koczansky, Earl Houek, William Strawinski, Donald Hausknecht, and William Yarworth were formally installed as members of Phi Sigma Pi.

On December 1, 1937, Iota Chapter sponsored a half-hour broadcast over Station WKOK. The program included the singing of the fraternity song by the members, a history of the fraternity by Francis Purcell, and three speeches on the Constitution given by Miles Smith, William Strawinski, and William Yarworth.

The chapel program held on December 13 followed the same theme as the broadcast.

The total membership for the 1937-38 term is twenty-seven, including five faculty members.



First Row, Left to Right— Dr. North, R. McBride, J. Fiorini, F. Purcell, F. Houck, R. Old, Mr. Reams
 Second Row— Dean Andruss, A. Salerno, A. Kozansky, C. Klinger, W. Woytovich, W. Davies, W. Yarworth,
 Dean Koch
 Third Row— C. Miller, W. Withka, D. Hausknecht, W. Thomas, E. Houck, A. McKeechie, E. Matthews,
 W. Strawinski

PHI SIGMA PI

OFFICERS

| | | |
|--------------------|-----------|----------------------------|
| FRANCIS PURCELL | - - - - - | <i>President</i> |
| FRED L. HOUCK | - - - - - | <i>Vice President</i> |
| JOHN FIORINI | - - - - - | <i>Secretary</i> |
| RAY P. MCBRIDE | - - - - - | <i>Assistant Secretary</i> |
| ELMER B. HAVALICKA | - - - - - | <i>Treasurer</i> |
| E. A. REAMS | - - - - - | <i>Sponsor</i> |



GAMMA THETA UPSILON

Gamma Theta Upsilon is open to students who major in geography or take enough geography to be certified in that field. Eligibility for membership requires scholastic rating in both geography and other college work.

The purpose of Gamma Theta Upsilon is to promote fraternalism among those who have chosen geography as their major field, to advance the professional status of geography as a cultural and practical phase of education, and to create and administer a loan fund to aid alumni members in graduate study in the field of geography.

During the first semester of 1937-1938, there were 17 active members on the campus including the 1938 initiates: Ruth Leiby, Annabel Bailey, William Yarworth, Lillian Yeager, Helen Pesansky, and Sarah Tubbs. The fraternity has two honorary members, Rear Admiral Byrd, who accepted membership in 1932, and Richard Halliburton, who became a member in 1936.

During the year, Gamma Theta Upsilon has contributed to the College Community affairs by participating in the Inter-fraternity Council of which Carrie Livsey and Ruth Dugan are members.

The programs of the first semester have included interesting talks on the following subjects: "Four Geographic Publications," "The Life-Giving Dead Sea," "Uganda," "Seattle as a Port City," "Caribbean Commercial Banana Trade," and "Specialized Agriculture in the Northern Santa Clara Valley."

During the second semester, Mr. Keeler Faus, who has spent several years in France, spoke to us.

At the end of the second semester, Delta Chapter contributed to the National News Letter and celebrated Founders' Day with a banquet, at which the new officers were installed.



First Row, Left to Right - A. Zalouis, R. Lieby, W. Withka, C. Livesay, J. Fiorini, V. Follmer, Dr. Russell, D. Sidler, W. Yarworth
 Second Row - M. Potter, R. Dugan, A. Bailey, J. Lockard, A. Reed, S. Tubbs, H. Pesansky, L. Yeager

GAMMA THETA UPSILON

OFFICERS

| | | |
|-------------------------|-----------|--------------------------------|
| JOHN FIORINI | - - - - - | <i>President</i> |
| WALTER WITHKA | - - - - - | <i>Vice President</i> |
| CARRIE LIVSEY | - - - - - | <i>Recording Secretary</i> |
| VERA FOLLMER | - - - - - | <i>Corresponding Secretary</i> |
| DOROTHY SIDLER | - - - - - | <i>Treasurer</i> |
| DR. H. HARRISON RUSSELL | - - - - - | <i>Sponsor</i> |

KAPPA DELTA PI

GAMMA BETA CHAPTER

OFFICERS

| | | |
|--------------------|-----------|--------------------------------|
| WILLIAM THOMAS | - - - - - | <i>President</i> |
| NEIL RICHIE | - - - - - | <i>Vice President</i> |
| ELIZABETH GILLIGAN | - - - - - | <i>Corresponding Secretary</i> |
| JANE LOCKARD | - - - - - | <i>Recording Secretary</i> |
| ANTHONY SALERNO | - - - - - | <i>Treasurer</i> |
| MARGARET GRAHAM | - - - - - | <i>Historian</i> |
| DR. NELL MAUPIN | - - - - - | <i>Sponsor</i> |

The Gamma Beta Chapter of Kappa Delta Pi was installed at Bloomsburg State Teachers College, February 21, 1931, by Dr. A. L. Hallwest. The purpose of Kappa Delta Pi is to foster high scholarship, develop professional spirit as well as to recognize outstanding contributions to education.

The fraternity has a student membership of over fifty, a large alumni membership, and a faculty membership of sixteen. We have six honorary members—Dr. Francis B. Haas, Dr. D. J. Waller, Dr. J. N. Rule, Dr. J. Herbert Kelly, W. B. Sutliff, and J. E. Shambach.

An award of a membership to Kappa Delta Pi has been established by the college chapter to recognize in a material way the student who has the highest cumulative average for the first two years of college work. John Hendler was the winner of this honor in 1936.

In addition to routine activity, there have been twenty-eight members initiated, and a delegate, Charles Weintraub, has been elected as our representative to the biennial convention at Atlantic City.

To climax the activity of the year, a celebration was held in honor of Founders Day, April 25.





First Row, Left to Right—B. Singer, L. Adams, R. Miller, Dr. Maupin, A. Salerno, J. Lockard, W. Thomas, M. Graham, B. Gilligan, Dean Andross, R. Saluda, A. Lonergan, A. Bailey
 Second Row—H. Mayan, A. Brainard, W. Peel, D. Englehart, M. Evans, V. Follmer, M. Lonergan, F. Snook, J. Mondschine, D. VonBergen, M. Potter, M. Dreese, E. Frechafer, K. Leedom, D. Frick, M. Utt, B. Savize, D. Mensinger, E. Rhinard
 Third Row—J. Fiorini, B. Allen, A. Orner, I. Bomboy, J. DeRose, J. Bowers, J. Hendler, C. Miller, W. Woytovich, A. Seesholtz, H. McGrew, V. Burke, W. Yarworth

KAPPA DELTA PI

ACTIVE MEMBERS

| | | |
|--------------------|---------------------|-------------------|
| Lucille Adams | John Hendler | Ellen Rhinard |
| Mary Allen | Irene Knapp | Neil Richie |
| Annabel Bailey | Harriet Kocher | Anthony Salerno |
| Isaiah Bomboy | Katherine Leedom | Rose Saluda |
| John Bower | Jane Lockard | Betty Savage |
| Margaret Deppen | Abigail Lonergan | Anne Seesholtz |
| James DeRose | Marguerite Lonergan | Frances Sell |
| Robert Diehl | Alberta H. Brainard | Florence Snook |
| Martha Dreese | Virginia Burke | Benjamin Singer |
| Dorothy Edgar | Helen Mayan | Benjamin Stadt |
| Dorothy Englehart | Helen McGrew | William Thomas |
| Martha Evans | Dorothy Mensinger | Miriam Utt |
| John Fiorini | Clair Miller | Doris Von Bergen |
| Vera Follmer | Ruth Miller | Walter Woytovich |
| Evelyn Frechafer | John Mondschine | Helen Weaver |
| Dorothy Frick | Anna Orner | Charles Weintraub |
| Elizabeth Gilligan | Margaret Potter | Wilhelmina Peel |
| Margaret Graham | Robert Price | William Yarworth |

PI OMEGA PI

ALPHA DELTA CHAPTER

Established May 23, 1935

Pi Omega Pi, National Commercial Fraternity, consists of members of the Department of Business Education who have superior scholastic ratings. It is one of the most active fraternities on the campus.

One of the outstanding activities of the fraternity is the issuing of POP, a monthly mimeographed newspaper with a rotating editorship. This publication contains news of interest to students and alumni of the Department of Business Education. It is distributed not only to the active members on the campus, but a copy of each issue is sent to the alumni members and to each chapter of Pi Omega Pi.

The annual banquet, which is held at the Elks Home in Bloomsburg in the spring, is another outstanding event of the year. The winners of the Commercial Contest are the honored guests at this affair, at which time they are presented with the cup.

The members of the fraternity, cooperating with the Junior Chamber of Commerce, assist in mimeographing and assembling the tests for the Pennsylvania Commercial Contest, sponsored annually by the Department of Business Education at Bloomsburg.

The Alpha Delta Chapter of Pi Omega Pi at the present time has a total membership of seventy-seven.



First Row, Left to Right B. Gilligan, Mr. Forney, Mr. Curtiss, B. Reynolds, N. Henry, D. Mensinger, Dean
 Andrus, R. Saluda, K. Leedom
 Second Row E. Rhinard, H. McGrew, R. Langau, J. Mondschine, A. Orner, M. Lonergau, B. Bronson, E. Frechafer
 Third Row A. Roch, A. Salerno, C. Klinger, J. Kotsch, J. Hendlar, W. Woytovich, D. VonBergen, E. Havalicka

PI OMEGA PI

OFFICERS

NORMAN HENRY - - - - - *President*
 NEIL RICHIE - - - - - *Vice President*
 BERNADETTE REYNOLDS - - - - - *Secretary*
 DOROTHY MENSINGER - - - - - *Treasurer*
 ROBERT DIEHL - - - - - *Historian*
 ALICE AUCH, JACOB KOTSCH, *Representatives to Interfraternity Council*
 MR. WILLIAM C. FORNEY - - - - - *Sponsor*



INTER-FRATERNITY COUNCIL

The Inter-fraternity Council was established on the campus for the purpose of creating greater harmony in fraternity relationship, to encourage more intense educational activities among the members, and to promote and take charge of all social activities sponsored by both professional and educational fraternities. Each member, or fraternity, is represented by three members and the faculty sponsor.

The annual ball was held March 5 with music being furnished by Frank Lombardo. Capably handled by General Chairman William Thomas, the council once more sponsored "The" dance of the year.

The Inter-fraternity Council has grown rapidly in importance and has established itself as one of the major organizations of the campus.



First Row, Left to Right - F. Purcell, Dr. Maupin, W. Thomas, E. Matthews, Mr. Forney, W. Christian, R. Dugan,
 J. Fiorini, C. Livsey
 Second Row - Dr. North, A. Zalonis, S. Conway, J. Katsch, P. Frankmore, J. Hendlar, Miss Johnston, Dr. Russell,
 W. Yarworth

INTER-FRATERNITY COUNCIL

Pi Omega Pi

| | | |
|--------------|--------------------------------------|------------|
| | Norman Henry, <i>President</i> | |
| Jacob Katsch | W. C. Forney, <i>Faculty Advisor</i> | Alice Auch |

Gamma Theta Upsilon

| | | |
|---------------|-------------------------------------------|------------|
| | John Fiorini, <i>President</i> | |
| Carrie Livsey | Dr. H. R. Russell, <i>Faculty Advisor</i> | Ruth Dugan |

Kappa Delta Pi

| | | |
|--------------|-----------------------------------------|------------------|
| | William Thomas, <i>President</i> | |
| John Hendlar | Dr. Nell Maupin, <i>Faculty Advisor</i> | William Yarworth |

Alpha Psi Omega

| | | |
|-------------------|----------------------------------------|---------------|
| | Philip Frankmore, <i>President</i> | |
| Willard Christian | Alice Johnston, <i>Faculty Advisor</i> | Sylvia Conway |

Phi Sigma Pi

| | | |
|-----------------|-------------------------------------|----------------|
| | Francis Purcell, <i>President</i> | |
| Edward Matthews | E. A. Reams, <i>Faculty Advisor</i> | Adolph Zalonis |

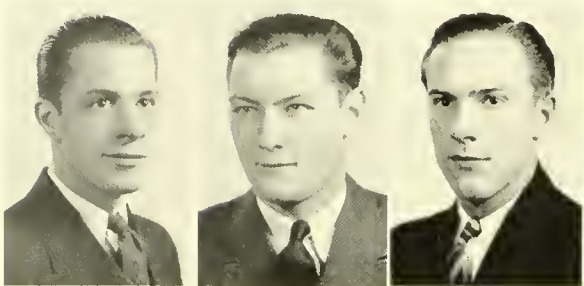


GEORGE SHARP, Editor

OBITER

The Editors and Business Manager take this opportunity to thank the various other organizations

THOMAS DAVISON

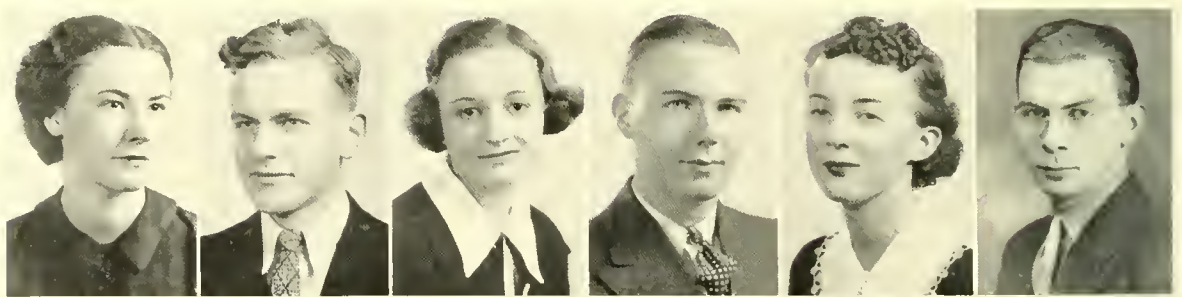


Sanger

Davison

Litwhiler

Edgar Kocher Rhinard Evans Pesansky Keibler
Price Williams Beaver Brainard Zaleski Hinkel



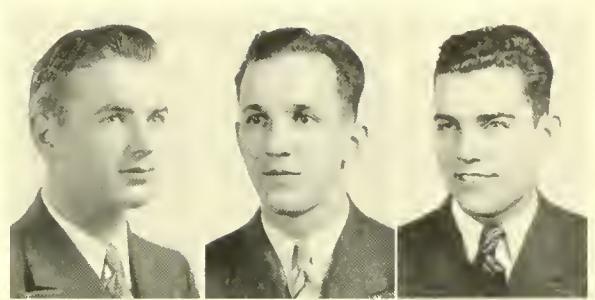
1938

whose co-operation has enabled the OBITER staff to produce this twenty-second edition.



JOHN HENDLER, BUSINESS MANAGER

ASSOCIATE EDITOR



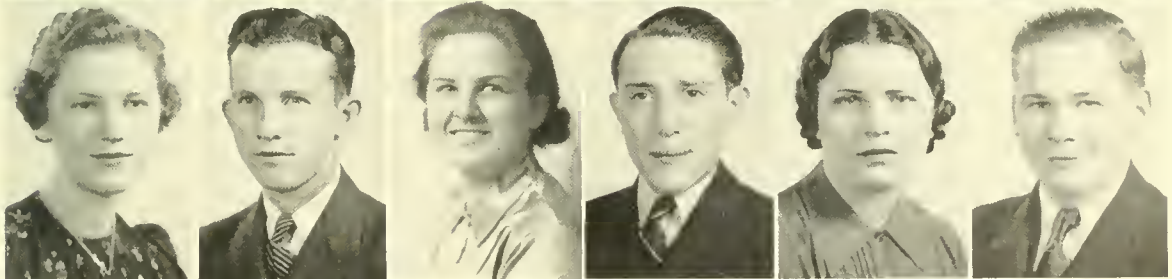
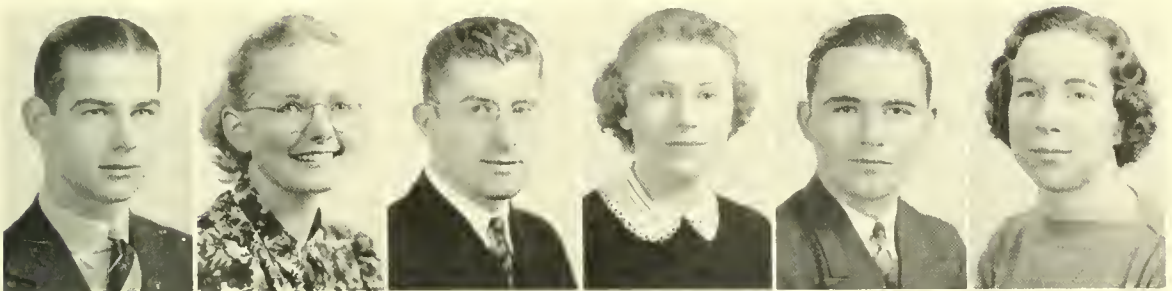
McKechnie Weaver Coldentz Brouson Davies Reynolds

Richards Purcell Thomas Yorwarth Elmore Bob Williams

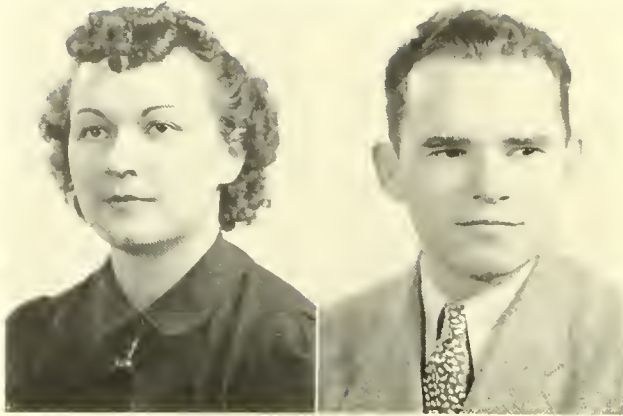
Maczuga

Casari

Nolan



MAROON AND GOLD



STASIA ZOLA
Editor

PAUL KOKITAS
Managing Editor

The Maroon and Gold is a publication giving a cross section of the collegiate life on the campus of the Bloomsburg State Teachers College. It is published bi-weekly by the students, under the guidance of a faculty advisor. Any student in the college, interested in the work and proving his ability, is quali-

fied for membership on the staff. In March of each year the editor-in-chief is selected by the student body from a group of students named by the Student Council. The editor-elect appoints his staff and assumes office the following school year.

The staff this year proved its capabilities and showed much enthusiasm in its work. Members of the staff realized the invaluable experience they were acquiring. After this first-hand experience in newspaper work they will be well qualified to supervise high school students in publishing a newspaper.

The principle theme of the Maroon and Gold during the year 1937-38 was student opinion. Students were able to express their opinion or criticism on any current collegiate problem. These criticisms and opinions came in as letters to the editor or as editorials.

An added feature in the paper was the column "Life in a Nutshell" containing short, interesting sketches of the life of each student in the senior class.



First Row, Left to Right—R. Dugan, A. McKechnie, J. Lockard, P. Kokitas, S. Zola, S. Conway, W. Yarworth, A. Orner, B. Singer
Second Row—E. Reichley, R. Boone, E. Bacon, M. Smith, A. Swinesburg, T. Coppes, V. Sheridan, P. Wagner
Third Row—S. Miller, E. Matthews, G. Fritz, W. Thomas, P. Franpane, R. Zimmerman



The picture of Mr. Reams won Charles Bakey a copy of 1938 Overra, that of Jimmy Pugh brought one to Don Hausknecht, and the shower room scene came through for Walter Reed.













































Tomorrow's Business Men

WILL BE TRAINED BY YOU



Many of our most able college graduates enter commercial teaching because they find it highly interesting work and among the most remunerative of the teaching positions. We invite all teachers who are going into commercial teaching to make use of our free services. A letter to one of our offices asking for counsel as to methods, standards, outcomes, or textbook materials will bring an immediate response and will bring a *Gregg* representative and counsellor to see you on your first job. We try to give every possible service to beginning commercial teachers. THE GREGG PUBLISHING COMPANY publishes a long list of textbooks and work materials for use in commercial classes. Among these is *Gregg Shorthand*. Teachers who use any of these materials are supplied with teacher's manuals and other teaching aids, without charge. *Gregg service is designed to help you make a success of commercial teaching.* Before going on your first commercial teaching job, write to our nearest office for a complete list of *Gregg* publications.



The Gregg Publishing Company

New York

Chicago

San Francisco

Boston

Toronto

London

Sydney

SENIORS!

Join Your Alumni Association



The Annual dues of \$1.00 will admit you to:

1. The Alumni Dinner.
2. The baseball game on Alumni Day.
3. The football game on Homecoming Day.
4. The dance on Homecoming Day.
5. A year's subscription to the

ALUMNI QUARTERLY

This magazine, which appears four times a year, will keep you informed of the activities of your classmates and the events happening on the campus.



All dues should be sent to

DR. E. H. NELSON

Business Manager,

STATE TEACHERS COLLEGE,

BLOOMSBURG, PENNSYLVANIA.



THE MAGEE CARPET COMPANY

BLOOMSBURG, PA.

**AXMINSTER WILTON VELVET BROADLOOM
RUGS AND CARPETS**

Special designs and estimates to solve economically the decorating problems of Churches, Lodges, Hotels, Theaters, and Schools

Sales Offices:

NEW YORK, N. Y.

BOSTON, MASS.

CHICAGO, ILL.

PORTLAND, ORE.



COLUMBIA AIRWAYS

Offers the student of flying the opportunity to use modern airplanes and equipment equal to the best in the United States under direction of capable and experienced pilots licensed by the United States Chamber of Commerce.

•
BLOOMSBURG AIRPORT

MAGEE GARAGE

BLOOMSBURG, PA.

To keep your car at its highest degree of efficiency and economy requires the services of expert mechanics using the finest and the best of repairing and checking equipment.

G. M. C. Trucks

Kendall Oils

Goodyear Tires

Exide Batteries

Sunoco and Purol Gasolines

Get Acquainted With

Southern Teachers' Agency

1902-1938

Founded 1902 by W. H. Jones

207 Broad-Grace Arcade
RICHMOND, VIRGINIA

No annual dues. Aggressive operation over wide territory. A superior professional placement service, available to executives and teachers at all seasons of the year. Intelligent interested effort always.

It Pays to Look Well

Ray Harley's Barber Shop

Corner of Main and East Streets
BLOOMSBURG, PA.

ASH & NAUNAS

Modern Ice Cream Parlor
Confectionery & Baked Goods

We don't expect your BIZ all the time,
but would appreciate some of it some of
the time.

390 East Street
BLOOMSBURG, PA.

HESS SMOKE SHOP

and Billiard Parlor

BLOOMSBURG, PA.

7 TABLES

Phone 182-J

WILLIAM J. HESS, Proprietor

Compliments of

**SNYDER'S
DAIRY**

DANVILLE

HAZLETON

BLOOMSBURG

Compliments of

**THE WHITE MILLING
COMPANY**

Everything in Flour and Feed

BLOOMSBURG, PA.

***Polar-Wave* ICE CREAM**

35c and 40c Platter Lunches
and Sandwiches

A Good Place to Eat

ENGLE'S DAIRY LUNCH

COMPLIMENTS
OF
A FRIEND

Compliments of
REA & DERICK
CUT-RATE DRUG STORE

Drugs Patents Toiletries

H. & C. Cut Rate Drugs
Quality Fountain Service

Our old fashioned Ice Cream,
and Whitman's Specialties, Cos-
metics and Patents at Low
Prices.

Hollingshead & Christian
BLOOMSBURG, PA.

For Refreshments and Eats

Don't Forget

TEXAS LUNCH

142-144 East Main Street

Get Your Hair Cut at

GENSEMER'S

Two Doors Above Hotel Mogee
2nd Floor

Where Courtesy and Service is Assured

Compliments of
Martha Washington

WAFFLE GRILL
CANDY LAND

BLOOMSBURG, PA.

SHENK & TITTLE

313 Market Street
HARRISBURG, PA.



"Everything for Sports"

MOYER BROS., INC.

Bloomsburg's
Leading Prescription
Drug Store



Headquarters for

WHITMAN'S
LOVELL and COVEL CHOCOLATES
FRESH WEEKLY



*Meet Your Friends at
Our Fountain*

YOUR PRESCRIPTION DRUGGIST
SINCE 1868

BART PURSEL

Bloomsburg's Leading Clothing Store

Prices to Fit the Purse

If It's Anything for Men
We Have It

The Town's Leading Dry Cleaner

Ladies' Dresses, Ladies' Coats, Men's Suits
and Topcoats Cleaned and Pressed.

Compliments of

CREASY & WELLS, Inc.

Lumber
Millwork Roofing

DuPont Paints

BLOOMSBURG

DANVILLE

Compliments of

J. J. NEWBERRY COMPANY

RITTERS'

*Everything for School
and Office*

Stationery, Magazines, Blank Forms,
Typewriters, Office Supplies,
Lending Library, and
Greeting Cards

Moin Street

BLOOMSBURG, PA.

U S E

S-Bro-Co and Gena
Pure Foods

SCHNEIDER BROS. CO.

Wholesale Groceries

BLOOMSBURG and MT. CARMEL

Compliments of

BUCKALEW CHEVROLET SALES, Inc.

Compliments of

**LETTERMAN'S
BAKERY**

*Good Bakers
of Bread*

BLOOMSBURG, PA.

LEADER STORE CO., Inc.

J. K. L. M. STORE
OF QUALITY

Bloomsburg's Largest
and Most Complete
Department Store

FRED R. HIPPENSTEEL

*Clothier and
Furnisher*

BLOOMSBURG, PA.

F. P. PURSEL

Department Store

Quality for 45 Years

W. T. GRANT CO.

Known for Values

Merchandise From
1c to \$1.00

"When It's a

MARIETTA

*It's a
First-Edition Fashion"*

To Welcome Every Occasion

DILLON'S

Flowers

Phone 127-J

THE
CAPITOL
THEATRE

Extends Sincere Congratulations
to the

CLASS OF 1938

and
Success in Years
to Come

A Comerford Theatre

GEORGE BETTINGER, *Manager*

HOUSENICK MOTOR CO.

Ford
Lincoln, Lincoln-Zephyr

Sales and Service

Main and East Streets
BLOOMSBURG, PA.

Compliments of

BEILMAN'S PRODUCE CO.

HAZLETON, PA.

Compliments of

**E. R. BEERS
ELECTRIC SUPPLY CO.**

Main Street
BLOOMSBURG, PA.

Compliments of

**F. W. WOOLWORTH
COMPANY**

PENNEY'S

The Home of Values



J. C. PENNEY CO.

BLOOMSBURG, PA.

Compliments of

Keystone Publishing Co.

BERWICK, PA.

Compliments of

BLOOMSBURG SILK MILL

BLOOMSBURG, PENNSYLVANIA

LIGHT STREET LUMBER YARD

JAMES A. SNYDER, *Proprietor*

LUMBER and BUILDING MATERIALS

Integrity — Quality — Service

Build Well and Live Well

Phone 141

LIGHT STREET, PA.

WE RECOMMEND

to the students of the Bloomsburg State Teachers College,
those friends and patrons who have contributed to the financial
success of this book by advertising on its pages.

1938 OBITER STAFF

Compliments of

Milco Undergarment Company

BLOOMSBURG, PA

You'll Like 7 Up

7 Up Likes You

Confair's Beverage Co.

BERWICK, PA.

RACUSIN'S

EXCLUSIVE BUT
NOT EXPENSIVE

THE COFFEE SHOP

HOTEL MAGEE

*The Restaurant Where Delicious
Meals Are Served at
Economical Prices*

Breakfast
Luncheon
Dinner

Courteous
Efficient
Service

BUSH'S

Students' Rendezvous

Lunches Refreshments
 Sodas

At The Old Stand

BLOOMSBURG, PA.

Central Teacher's Agency

Member of National Association of
Teachers' Agencies

202 Walnut Street Harrisburg, Pa.

Bell Phone 2-4256

This organization placed fifty per cent more
teachers during the past season than in 1936.
Prospects bright for 1938.

C. H. GORDINIER, *Manager*

MERIN-BALIBAN

1010 CHESTNUT STREET

PHILADELPHIA, PENNA.

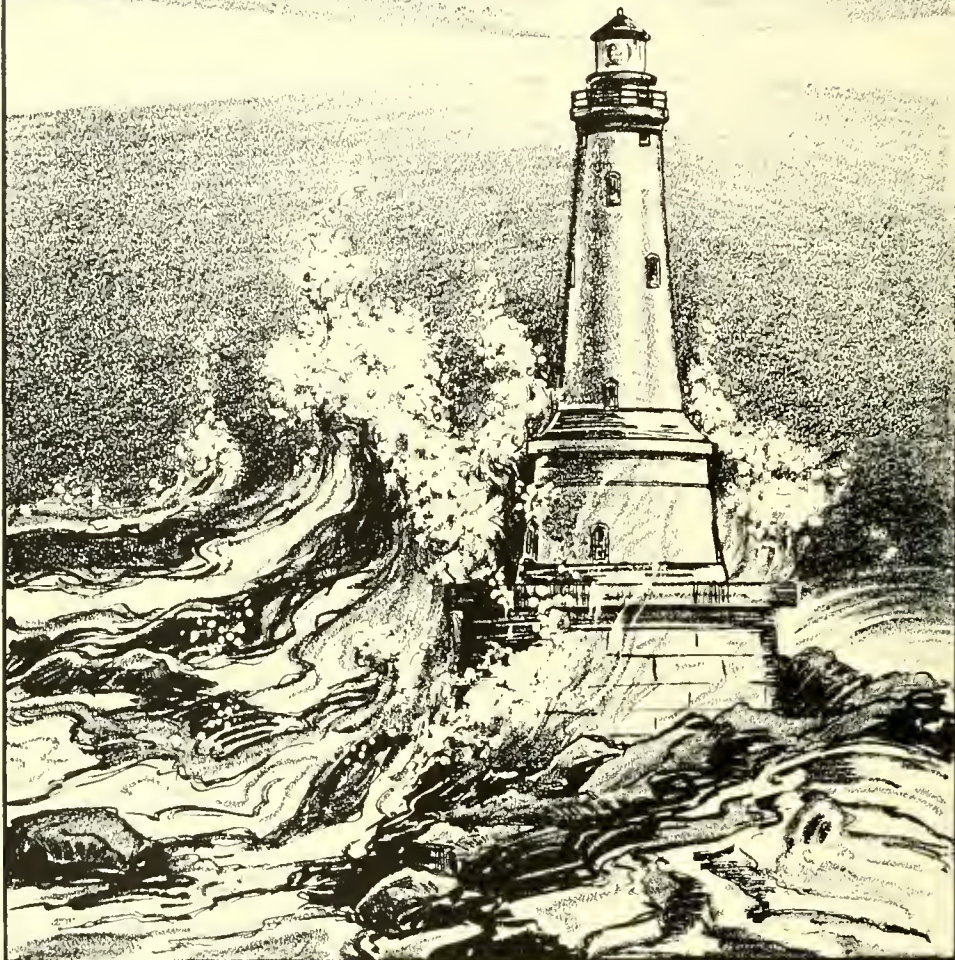
OFFICIAL PHOTOGRAPHERS TO THE
1938 OBITER

Specialists to

Schools—Colleges—Universities—Clubs

SPECIAL RATES TO STUDENTS

DEPENDABLE



QUALITY AND SERVICE



GRIT PUBLISHING COMPANY
WILLIAMSPORT, PA.

Producers of Distinctive School and College Publications







