



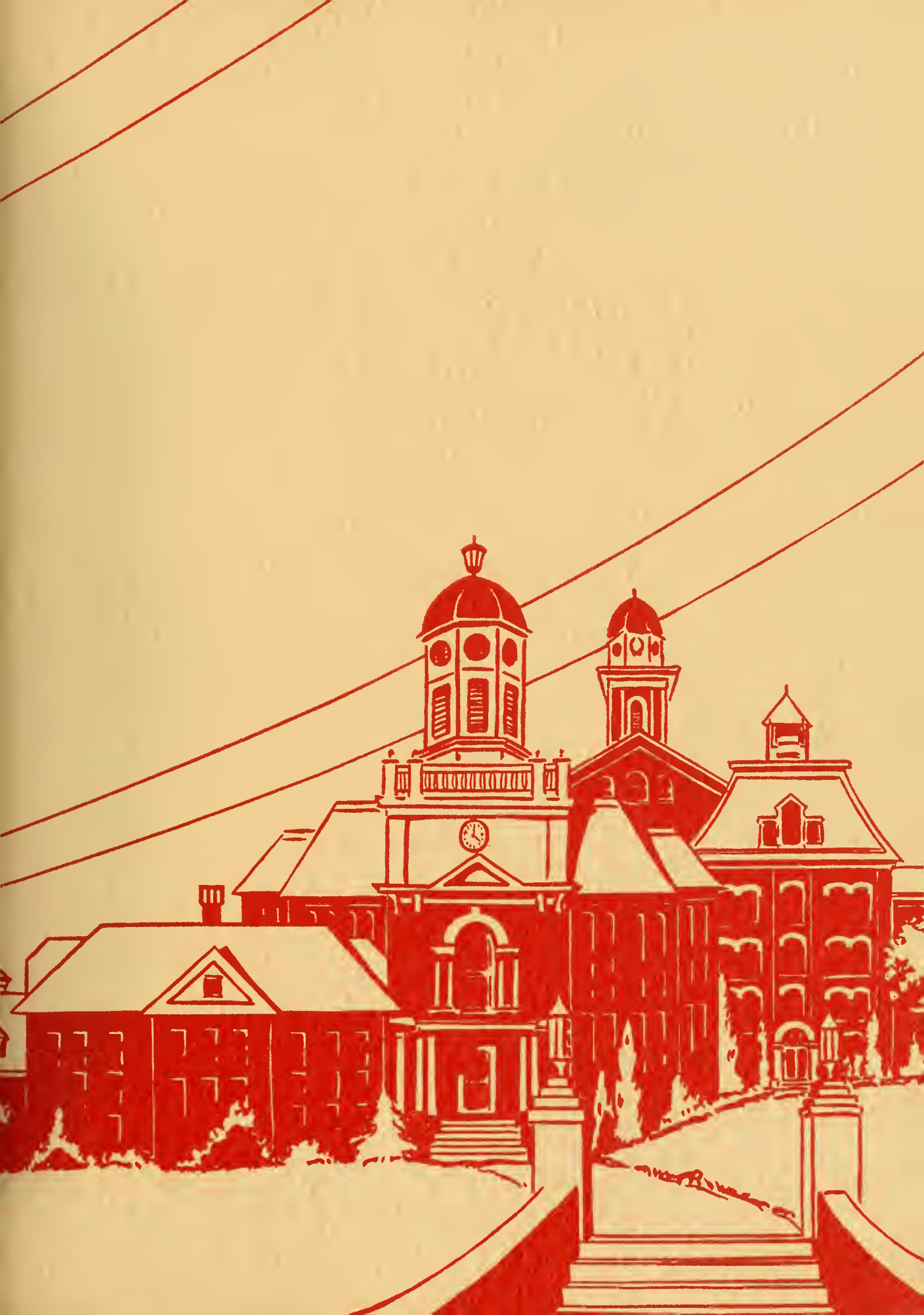
**OBITER**  
**1937**

Far above the river winding,  
Midst the mountains grand  
Stands a college dear to students  
Far throughout the land.



Alum Assn  
9 Sep 1976

Archives (College)  
Harvey A. Andruss Library  
Bloomsburg State College  
Bloomsburg, PA 17815







JAY PURSEL, *Editor*  
EARL HUNTER, *Business Manager*  
Copyright, 1937



—5337

# OBITER

PUBLISHED BY  
SENIOR CLASS  
BLOOMSBURG  
STATE TEACHERS  
COLLEGE

BLOOMSBURG, PENNA.  
VOL. 21

# DEDICATION AND FOREWORD



To him who has followed with eager eyes the changing scenes, the growth of new, the enrichment of old traditions; to him who has caught more than the physical aspects in the movement of the swinging pendulum; to him who has caught the soul of the Campus and set it fast to rhyme and rhythm; to him whose interest in poetry was indirectly responsible for the selection of it as the theme of the 1937 ORBITER; to "Q" this book is reverently dedicated.

---





DEAN W. B. SUTLIFF

---

## THE PINERY—MEMORIAL

At the center of the Memorial Pines stands a steel flag pole. Each morning the flag rises and floats at its head more than eighty feet above the seventeen pine trees grouped in star formation about its base. Each tree is dedicated to the memory of a former student who died while serving his country during the World War.

*"Lest We Forget"*

## THE FLAG POLE SPEAKS

Each morn they come and deck my head  
    While at my feet the pines speak of the dead.  
They softly whisper of the gallant crew  
    Those youths who walked these halls like you.  
Hopes high and voices always gay  
    They worked and danced thru their short day.  
Pray God that War with horrid leer  
    Shall never in your time appear  
For those whose names are at my feet  
    Shall nevermore their comrades meet.  
At eve the flag is gone, the moon rides overhead;  
    But the pines below keep whispering of the dead.

W. B. SUTLIFF.

---



# CONTENTS



CAMPUS VIEWS  
ADMINISTRATION  
CLASSES  
ATHLETICS  
ORGANIZATIONS

---



# CAMPUS VIEWS



This way to memories—



Ivy climbs the Old Tower



Valhalla of the Fair





Paradise of the Male



Arms of the Octopus across the Green



Where Intellect Parades in Glory



Senior Walk

# HISTORY OF ALMA MATER

The Alma Mater was written by a former instructor of Foreign Languages, Joseph H. Dennis, in 1912. The words have been set to the Old English Air, "Anne Lyle."

## ALMA MATER

Far above the river winding,  
Midst the mountains grand  
Stands our College, dear to students  
Far throughout the land,

Far and wide though we may wander  
Still our hearts are true  
To our hilltop Alma Mater  
We our pledge renew,

Ever seaward Susquehanna  
Never resting flows—  
Ever upward striving, climbing,  
Onward Bloomsburg goes.

### *Chorus:*

Bloomsburg, Bloomsburg, Bloomsburg College  
Up on College Hill  
Years to come shall find us ever  
True to Bloomsburg still.

# OBITER 1937

## NATURE OF MAN

We, who survey the endless play,  
With sunset in our eyes and dusk  
Upon our shoulders, smile to see  
Contending forces fight to hush  
Apart the elements of mind.  
Unchanged along the endless course  
Will march the soul of humankind.

JAY PURSEL.





# ADMINISTRATION

---

# OBITER 1937

## BOARD OF TRUSTEES

DR. H. V. HOWER, <i>President</i>	Berwick
SUPT. W. W. EVANS, <i>Vice President</i>	Bloomsburg
GROVER C. SHOEMAKER, <i>Secretary-Treasurer</i>	Bloomsburg
THOMAS G. VINCENT	Danville
JUDGE CHARLES C. EVANS	Berwick
WILLIAM P. GALLAGHER	Wilkes-Barre
HENRY MYERS	Lewisburg
CLINTON HERRING	Orangeville
MRS. EDITH NOECKER	Schuylkill-Haven

The Board of Trustees meets four times a year. During the interim affairs of the college are conducted by an Executive Committee which meets monthly.







To the Class of 1937:

It is my sincere wish that when the members of the Class of 1937 look back at Bloomsburg they will think of their college life not only as an educational experience in the narrow meaning of the word, but also as a place where many delightful and lasting friendships were made. I am glad to have this opportunity to wish you success and to assure you that at Bloomsburg you will always find the latchstring on the outside.

*Francis B. Haas*

# OBITER 1937



H. A. ANDRUSS

*Director*  
*Department of Commerce*  
University of Oklahoma, A.B.; Certificate in Public and Private Business; Northwestern University, M.B.A.; Graduate Work, *ibid.*



MRS. LUCILLE J. BAKER

*Training Teacher, Grade III*  
Pestalozzi-Froebel School, Chicago, Illinois; student; Western State College, Colo., A.B.; Columbia University, A.M.



EDNA J. BARNES

*Training Teacher, Grade IV*  
Western State Teachers College, Macomb, Ill., B.S.; Teachers College, Columbia University, M.A.



GEORGE C. BUCHHEIT

*Health Education*  
University of Kentucky, B.S. in C.E.; Graduate Work University of Illinois; Columbia University, M.A. in Phys. Ed.





**MAUDE CAMPBELL**

*Education*

Chicago University, Ph.B.; Columbia University, M.A.



**H. F. FENSTEMAKER**

*Foreign Languages*

Graduate, State Normal School, Bloomsburg, Pa.; University of Michigan, A.B.; New York University, A.M.; Graduate Work, University of Pennsylvania.



**NEVIN T. ENGLEHART**

*Superintendent*

*of Grounds and Buildings*



**JOHN J. FISHER**

*Psychology, Measurements*

Goshen College, Goshen, Ind., A.B.; Indiana University, M.A.; Harrison Fellow, University of Pennsylvania; Graduate Work, Columbia University.



**WILLIAM C. FORNEY**

*Commerce*

Temple University, B.S.C.; Harvard University, University of Chicago, Graduate Work; New York University, M.A.



**ANNA GARRISON**

*Training Teacher, Grade V*

State Normal School, Bloomsburg, Pa.; Columbia University, B.S.; M.A.



**DOROTHY E. GILMORE**

*Assistant Librarian*

State Teachers College, Bloomsburg, Pa., B.S.



**FRANCIS B. HAAS**

*President*

School of Pedagogy, Philadelphia; Temple University, B.S.; University of Pennsylvania, M.A.; Temple University, Ph.D.; Juniata College, LL.D.

# OBITER 1937



**C. M. HAUSKNECHT**  
*Business Manager*



**MAY T. HAYDEN**  
*Director*  
*Kindergarten-Primary Education*  
High School and Junior College,  
Edmonton, Alberta; State College,  
Pulman, Wash., B.A.; Columbia  
University, M.A.



**EDNA J. HAZEN**  
*Director*  
*of Intermediate Education*  
State Normal School, Edinboro;  
Allegheny College, Meadville; Co-  
lumbia University, B.S., M.A.;  
Graduate Work, New York Uni-  
versity.



**MARGARET R. HOKE**  
*Commerce*  
Johns Hopkins University, B.A.;  
Lebanon Valley College, M.A.; Co-  
lumbia University, Secretarial Cer-  
tificate.





ALICE JOHNSTON

*Oral Expression*

Park College, Mo.; B.L.; Columbia University, M.A.; Graduate Work, University of Wisconsin; Columbia University; University of Michigan.



MRS. ETTA H. KELLER

*Training Teacher, Grade VI*

Pennsylvania State College, B.S.; Teachers College, Columbia University, M.A.; Graduate Work, Clark University; New York University.



MARGUERITE W. KEIR

*Dean of Women, Social Studies*

University of Tennessee, B.A.; Wellesley College, M.A.; Cornell University, Ph.D.



GEORGE J. KELLER

*Art*

State Normal School, Bloomsburg; Teachers College, Columbia University, B.S.; Bucknell University, M.A.



M. AMANDA KERN

*Training School  
Special Class*

Ursinus College, B.A.



MAUDE C. KLINE

*Graduate Nurse*

Jefferson Hospital, Philadelphia, Registered Graduate Nurse.



KIMBER C. KUSTER

*Science*

State Normal School, Bloomsburg, Pa.; University of Michigan, B.S., M.S., Ph.D.



JOHN C. KOCH

*Dean of Men*

*Director Secondary Education*

Bucknell University, A.B., A.M.; Graduate Work, New York University.

# OBITER 1937



PEARL L. MASON

*Librarian*

Simmons College, Boston, B.S.;  
Graduate Work, Columbia University.



NELL MAUPIN

*Social Studies*

Peabody Teachers College, B.S.;  
State University, Iowa City, M.A.,  
Ph.D.



LUCY McCAMMON

*Health Education*

State Teachers College, Springfield,  
Mo., A.B.; Columbia University,  
M.A.



MRS. JOHN K. MILLER

*Director School of Music  
Piano, Violin*

Pupil of Dr. Mackenzie, Henry  
Shradieck, Franz Kneisel, Walde-  
mar Meyer, Adamowski, Madame  
Hopekirk, Ida Blakeslee, Busoni.





**S. MABEL MOYER**

*Training Teacher, Grade II*

State Normal School, Bloomsburg, Pa.; Summer Work, Teachers College, Columbia University; Bucknell University, B.S., in Education, M.A.; Graduate Study, New York University.



**HARRIET M. MOORE**

*Public School Music*

State Teachers College, Kirksville, Mo.; Bush Conservatory, Chicago, Ill., Mus.B.; New York University, B.S., M.A., in Music Education.



**MARGUERITE MURPHY**

*Commerce*

Columbia University, B.S.; M.A.



**E. H. NELSON**

*Director of Health Education*

State Normal School, Bloomsburg; University of Michigan, A.B.; Harvard University, Ed.M.; New York University, Ph.D.



**THOMAS P. NORTH**

*Education*

Pennsylvania State College, B.S., M.S.; Cornell University, Ph.D.



**ETHEL A. RANSON**

*Assistant Dean of Women  
Mathematics*

University of Illinois, A.B.; Columbia University, A.M.



**MABEL OXFORD**

*Commerce*

Pierce School of Business Administration; State Teachers College, Indiana, Pa.; Muhlenberg College, State Teachers College, Bloomsburg, Pa., B.S.

# OBITER 1937



**EDWARD A. REAMS**

*Social Studies*

Kansas Wesleyan, A.B.; Columbia University, A.M.; Graduate Work, University of Southern California, Penn State College, New York University.



**EARL N. RHODES**

*Director of Teacher Training*

State Normal College, Ypsilanti, Mich.; University of Chicago, Ph.B.; Columbia University, A.M.; Graduate Work, Clark University, Columbia University, New York University.



**BERTHA RICH**

*Supervisor*

*Grades IV-VI and Geography*

Colorado State Normal School, Gunnison, Pd.B.; Western State College, A.B.; Columbia University, A.M.; Graduate Work, Clarke University.



**H. HARRISON RUSSELL**

*Geography*

Illinois State Normal University, B.Ed.; Clark University, A.M., Ph.D.







**S. I. SHORTESS**

*Science*

Albright College, A.B.; University of Pennsylvania, M.S.; Graduate Work, New York University.



**ETHEL E. SHAW**

*English*

Graduate, Normal School, New Britain, Conn.; Teachers College, Columbia University, B.S., M.A.; Oxford University, Summer Work.



**ERMINE STANTON**

*Training Teacher, Grade I*

Graduate, Pratt Institute; Columbia University, B.S.



**SAMUEL L. WILSON**

*English*

Bucknell University, B.S.; Columbia University, M.A.



**W. B. SUTLIFF**

*Dean of Instruction  
Mathematics*

State Normal School, Bloomsburg; Lafayette College, A.M.; Graduate Work, University of Pennsylvania, Columbia University.



**A. AUSTIN TATE**

*Assistant Football Coach  
Social Studies*

Lehigh University, B.S.; Graduate Work, University of Illinois; Harvard University.



**GRACE WOOLWORTH**

*Training Teacher, Kindergarten*

University of Chicago, Ph.B.; University of California; Columbia University, M.A.

## SCHOOL DISTRICTS COOPERATING IN TEACHER TRAINING

### BLOOMSBURG

L. P. GILMORE, *Supervising Principal*

Junior-Senior High School

ROBERT HUTTON, B.S.	- - - - -	Geography
MRS. HARRILT KLINE, M.A.	- - - - -	English
BESS LONG, M.A.	- - - - -	Science
ROBERT MERCER, B.S.	- - - - -	Mathematics
HAROLD MILLER, M.A.	- - - - -	Geography
GEORGE MORDAN, B.S.	- - - - -	Mathematics
MARIE E. PENNYL, M.A.	- - - - -	Social Studies
LAWRENCE CAMPBELL, B.S.	- - - - -	Science
THURSBERT SCHUYLER, B.S.	- - - - -	Latin
MARY R. SEROCCA, B.S.	- - - - -	French
MYRA SHARPLESS, B.S.	- - - - -	Social Studies
NORMAN A. YLANY, M.A.	- - - - -	Commercial
WESLEY KNOBB, B.S.	- - - - -	Commercial

### ELEMENTARY

KARLEEN HOFFMAN, B.S.	- - - - -	Grade III
MIRIAM LAWSON, B.S.	- - - - -	Grade VI
MAYNARD PENNINGTON, B.S.	- - - - -	Grade VI
RUTH POOLLY, B.S.	- - - - -	Grades V and VI
HELEN VANDERSLICE	- - - - -	Grade II

### DANVILLE

E. B. CLINE, *Supervising Principal*

Senior High School

GERTRUDE GARDNER, B.S.	- - - - -	Commercial
------------------------	-----------	------------

### WILLIAMSPORT

A. M. WEAVER, *Superintendent*

Junior and Senior High Schools

EZRA HEYLER, A.B.	- - - - -	Commercial
H. L. PIERSON, M.S.	- - - - -	Commercial
MINNIE RICKS, B.S.	- - - - -	Commercial
MARTHA SANER, B.S.	- - - - -	Commercial

### COLUMBIA COUNTY

W. W. EVANS, *County Superintendent*

Rural

JOY MUNSON, B.S.	- - - - -	Grades 1-VIII
BLANCHE MORDAN	- - - - -	Grades 1-VIII





## NIGHT KISSES THE CAMPUS

“Good night,” and “I’ve got to wash some stockings”;  
The dimly-lit glass windows and the closing door:  
These are symbols that she is gone, that now I may  
Philander with the night,  
For night walks are lovely—past porches,  
And tennis courts, and rolling lawns—  
There’s frost to silver-edge each grass blade  
With a moon to take away the corners of the box  
Wherein our brother’s children learn through play,  
But where our fellows play there’s darkness—  
Someone is unhappy—perhaps a score can tell—  
Disappointment still steps down with uncertain feet;  
Down and down to laughter  
And a solitary ukulele tuned to showering baritones.



## NIGHT KISSES THE CAMPUS

(CONTINUED)

There are Newton's laws of motion  
And the usual commotion  
That goes with the cutting of a cake,  
—The festivities break  
For a moment, while two hundred girls  
Are suddenly made blind,  
Then the "Good fella" rings again,  
Whose father will not say  
"This is my beloved son  
In whom I am well pleased?"  
None are here  
Who are not wed to walls and walks  
And the lawn, stretching its broad palm  
To be filled with the fruits of the grove.





## NIGHT KISSES THE CAMPUS

(CONTINUED)

Still--ghost-feet of past generations tread the concrete steps,  
And from the darkened windows full ten thousand spirit eyes  
Watch the tower clock reverently fold its hands.

In the silence  
Old North's lights blink out;  
The boys  
Must set aside  
Their studies till tomorrow;  
And the virgin alto  
Of the Star's pines  
Softly sings, "Goodnight,  
Goodnight, Beloved."  
When Night bends down  
To kiss the Campus.

GEORGE SHARP.



# OBITER 1937

## MY HEART

My heart  
Is torn in three pieces:  
One of them  
I've given freely;  
Another  
Pulses out its lone existence;  
Wrapped close  
With memories, the third  
Lives on  
At school.

GEORGE SHARP

JAY PURSEL

FRANK CAMERA





# CLASSES

---

# OBITER 1937

LAMAR K. BLASS  
*President*



JANE G. MANHART  
*Secretary*



GEORGE TAMALIS  
*Treasurer*



J. BLAINE SALTZER  
*Vice President*

## SENIOR CLASS

The spring of 1937 marks the time when we, eighty-six people, bound together by ties of work and friendship, must separate and go on alone. It rings the last bell on four years of college life filled with seriousness and fun. It closes the last chapter for us, and opens a new one.

To those who follow we leave the foundations for new traditions. We form a precedent by holding the Senior Ball off-campus. Looking backward to the beginning of these four years we find that we joined the college community as all members do—Freshmen. Our presence then was felt as are all small children.

The end of the Sophomore year found our members had dwindled rapidly; we lost the two year students. Then we became Juniors. By this time our representation in extra-curriculars was so potent as to make us important to community life.

As Seniors we entered upon our duties gravely and seriously—stabilizing our flighty underclassmen, keeping aloof with weighty problems of student teaching. As leaders in student government, dramatics, athletics, fraternities, and others, we led the college forward. As a parting tribute we present to the college our gift to aid in paying for the new Hammond organ.

And now we go, but our hearts will always be with Old Bloomsburg.

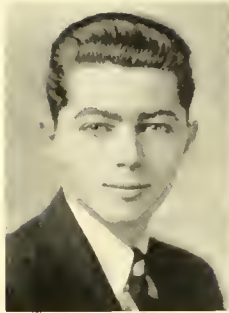




**JOHN L. ANDREAS**

*Secondary*

Men's Glee Club, Pianist, 1, 2; Double Quartette, Pianist, 1, 2; Glee Club, Treasurer, 2; Y. M. C. A., 3; A Cappella Choir, Pianist, 3, 4, Vice President, 3; Day Men's Association, 1, 2, 3, 4; Phi Sigma Pi, 3, 4.



**LAMAR K. BLASS**

*Secondary*

Track, 1, 2, 3, 4; Captain, Track, 3, 4; Basketball, 1, 2, 3, 4; Football, 1, 2, 1; Vice President, Sophomore Class, 2; President, Senior Class, 4; Letterman's Club, 1, 2, 3, 4; North Hall Government Association, 2, 3, 4; Vice President, North Hall, 4; Day Men's Association, 1; Phi Sigma Pi, 3, 4; Y. M. C. A., 1, 2, 3; Student Council, 4; Co-chairman of Welfare Committee, 3, 4.

**AMANDA BABB**

*Commercial*

Junior Chamber of Commerce, 1, 2, 3, 4; Y. W. C. A., 1, 2, 3, 4; Devotions Chairman, 3; World Fellowship Chairman, 4; Kappa Delta Pi, 3, 4; Pi Omega Pi, 3, 4; Women's Student Government Association, 2, 3; Athletics, 1; Maroon and Gold Staff, 2; OBITER Staff, 3, 4.



**ETHEL BOND**

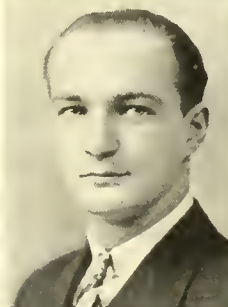
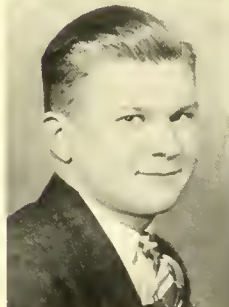
*Secondary*

Geography Club, 1, 2, 3, Vice President, 3; Poetry Club, 3; Day Women's Association, 1, 2, 3, 4; Mixed Chorus, 2, 3.

**JOSEPH W. BARTISH**

*Commercial*

Men's Glee Club, 1, 2; Y. M. C. A., 1, 2, 3, 4; Cheerleader, 1, 2; Junior Chamber of Commerce, 1, 2, 3, 4; Mixed Chorus, 3, 4; A Cappella Choir, 3, 4; Intramural Athletics, 1, 2, 3; Columbian Club, 4.



**HAROLD BORDER**

*Commercial*

Football, 1, 2, 3, 4; Dramatic Club, 2, 3, 4; Letterman's Club, 2, 3, 4, President, 3; Community Government Association, 1, 2, Vice President, 2; Chairman Relations to Other Colleges Committee, 3; Chairman Elections Committee, 4; Junior Chamber of Commerce, 2, 3, 4; Wrestling, 1, 2; Alpha Psi Omega, 4; President, Interfraternity Council, 4.

**MARIA S. BERGER**

*Secondary*

Sewing Club, 2; Geography Club, 2, 3, Secretary, 3; Y. W. C. A., 3; Kappa Delta Pi, 3, 4; Day Women's Governing Board, 4.



**GLADYS M. BRENNAN**

*Commercial*

Y. W. C. A., 1, 2, 3, 4, Treasurer, 3, Social Service, 4; Junior Chamber of Commerce, 1, 2, 3, 4; Women's Student Government Association, 2, 4; Chairman of Women's Customs, 2; Kappa Delta Pi, 3, 4, Corresponding Secretary, 4; Pi Omega Pi, 3, 4; OBITER Staff, 3, 4; Maroon and Gold Staff, 2, 3, 4; Girls' Athletics, 1.

# OBITER 1937

## EDWARD BROWN

*Commercial*

Junior Chamber of Commerce, 1, 2, 3, 4.



## GLEN BROWN

*Secondary*

Y. M. C. A., 1; Geography Club, 1; Intramural Sports, 1; Baseball, 1.



## FRANK A. CAMERA

*Secondary*

Football, 1, 2, 3, 4; Wrestling, 2; President Sophomore Class, Dramatic Club, 1; Intramural Basketball, 1, 2, 3, 4; Community Government Association, 2, 3, 4, Vice President, 3, President, 4; Phi Sigma Pi, Vice President, 3.



## RANDALL F. CLEMENS

*Commercial*

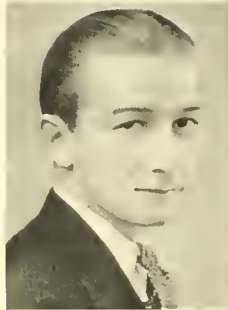
Dramatic Club, 1, 2, 3; Day Men's Association, 1, 2, 3, 4; Hospitality Committee, 4; Maroon and Gold Staff, 4; Junior Chamber of Commerce, 1, 2, 3, 4; Alpha Phi Omega, 3, 4, Treasurer, 4; Vice President, Freshman Class, 1.



MARY G. CONNER

*Elementary*

Sewing Club, 1; Mixed Chorus, 2, 3, 4.



G. EDWARD DEILY

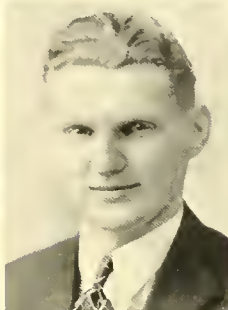
*Secondary*

Y. M. C. A., 1, 2, 3; Day Men's Association, 1, 2, 3, 4; OBITER Staff, 4.

BEATRICE E. CORLE

*Secondary*

Y. W. C. A., 1, 2, 3; Athletics, 1, 2, 3, 4.



LEON DIXON

*Secondary*

Football, 1, 2, 3, 4; Letterman's Club, 3, 4; Dramatic Club, 1, 2; Y. M. C. A., 1, 2, 3; Day Men's Association, 1, 2, 3, 4; Track, 2, 3, 4; Wrestling, 3, 4; OBITER Staff, 4.

MARIE C. DAVIS

*Secondary*

B Club, 3, 4; Orchestra, 1, 2, 3, 4; Vice President, 4; Student Council, 4; Governing Board, 3, 4; President, 4; A. B. C. Club, 3, 4; Y. W. C. A., 1.



ANN S. EBERT

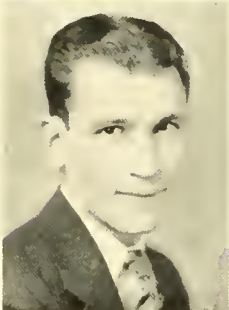
*Commercial*

A. B. C. Club, 1, 2, 3, 4; Vice President, 2; Treasurer, 3, 4; Junior Chamber of Commerce, 1, 2, 3, 4; B Club, 2, 3, 4; Waller Hall Student Government Association, Treasurer, 2; Secretary, 4.

PHILIP J. DEFRANK

*Secondary*

Y. M. C. A., 1, 2; Nature Study Club, 1, 2; Bowling Team, 4.



MARIE E. FOUST

*Secondary*

Bucknell University, 1; B. S. T. C., 2, 3, 4; Y. W. C. A., 2; Cabinet Officer, 3; President, 4; Mixed Chorus, 3, 4; Kappa Delta Pi, 3, 4; Women's Student Government Association, 3, 4.

# OBITER 1937

## EDWARD P. GARVEY

### *Commercial*

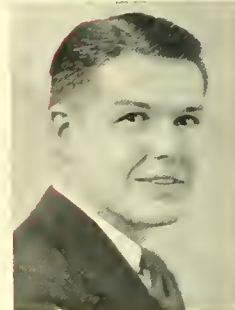
Orchestra, 1, 2, 3, 4; Band, 2, 3, 4; Junior Chamber of Commerce, 1, 2, 3, 4; President, North Hall Government Association, 3; Community Government Association, 3.



## EARL A. GEHRIG

### *Commercial*

Band, 1, 2, 3, 4; Treasurer, 3; Orchestra, 1, 2, 3, 4; Junior Chamber of Commerce, 1, 2, 3, 4; Day Men's Association, 1, 2, 3, 4; Treasurer, 4; Mixed Chorus, 4; Phi Sigma Pi, 3, 4; Alpha Phi Omega, 3.



## JOHN GERING

### *Secondary*

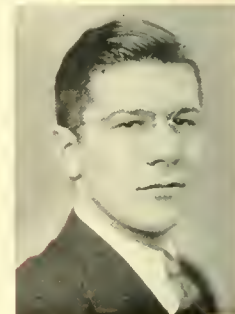
Tennis, 1, 3, 4; Basketball, 1, 2, 3; Band, 1, 2, 3, 4; Day Men's Association, 1, 2, 3, 4; Letterman's Club, 1, 2, 3, 4; Welfare Committee, 3; Criticism of Evening Programs Committee, 4.



## ROBERT R. GOODMAN

### *Secondary*

Glee Club, 1, 2; Mixed Chorus, 3, 4; A Cappella Choir, 3, 4; Football, 2.



MARY R. GROSEK

*Commercial*

Y. W. C. A., 1; A. B. C. Club, 2, 3, 4; Women's Chorus, 1, 2; Mixed Chorus, 3; Junior Chamber of Commerce, 1, 2, 3, 4; Kappa Delta Pi, 3, 4; Pi Omega Pi, 3, 4; Treasurer, 4; Chairman Social Committee, 3; Columbian Club, 4.



DOROTHY E. HOWER

*Commercial*

Y. W. C. A., 1; Junior Chamber of Commerce, 1, 2, 3, 4; Day Women's Association, 1, 2, 3, 4.

DOROTHY L. HESS

*Secondary*

Y. W. C. A., 1, 2; A. B. C. Club, 2, 3, 4; Sewing Club, 1, 2; Mixed Chorus, 3, 4; Gamma Theta Upsilon, 3, 4.



LUTHER P. HOWER

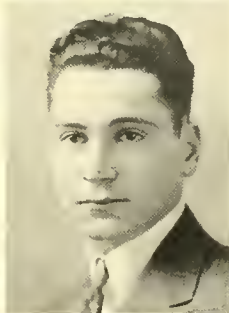
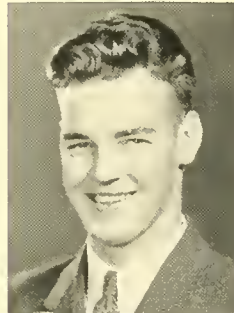
*Commercial*

Junior Chamber of Commerce, 1, 2, 3; A Cappella Choir, 3; Day Men's Association, 1, 2, 3, 4; Mixed Chorus, 3, 4.

WALTON B. HILL

*Secondary*

Dramatic Club, 2, 3, 4; Treasurer, 3; Poetry Club, 3, 4; Chairman of Program Committee, 4; Student Council, 3; President of Sophomore Class, 2; Chairman Public Relations Committee, 4; Phi Sigma Pi, 3, 4; President, 4; Alpha Phi Omega, 3, 4; Representative to Pan-Hellenic Council, 4; Kappa Delta Pi, 4; Advisory Committee, Artists' Course, 2, 3, 4.



EARL T. HUNTER

*Secondary*

Nature Study Club, 1; Geographic Society, 2, 3; Y. M. C. A., 1, 2, 3; Dramatic Club, 1, 2; Wrestling, 1, 2, 3, 4; Day Men's Association, 1, 2, 3, 4; President, 4; Phi Sigma Pi, 2, 3, 4; Treasurer, 4; Student Council, 4; Community Government Association, 4; Business Manager of Oriole, 4; Intramural Basketball, 1, 2, 3, 4.

EUDORA E. HOSLER

*Intermediate*

Maroon and Gold Staff, 1, 2; Kappa Delta Pi, 3, 4; Dramatic Club, 1, 2, 3, 4; Day Women's Governing Board, 2, 3; Vice President, Day Women, 3; Sewing Club, 1.



EDITH D. JUSTIN

*Elementary*

Y. W. C. A., 1; A. B. C. Club, 1, 2; Sewing Club, 2; Women's Student Government Association, Program Chairman, 3; C. G. A. Assembly Chairman, 3; Freshman Advisory Committee, 4; W. S. G. A., Governing Board, 4; Dramatic Club, 1, 2, 3, 4; Mixed Chorus, 1, 2, 3, 4; Alpha Psi Omega, 2, 3, 4; Kappa Delta Pi, 3, 4.

# OBITER 1937

## ARMINA M. KREISCHER

### *Intermediate*

Athletics, 1; Sewing Club, 1; Geography Club, 2, 3; Kappa Delta Pi, 3, 4.



## ALVIN S. LAPINSKI

### *Secondary*

Community Government Association, 3, 4; Basketball, Manager, 4, Assistant Manager, 1, 2, 3; Kappa Delta Pi, 3, 4, Vice President, 4; Phi Sigma Pi, 2, 3, 4, Assistant Secretary, 3, Secretary, 4; Dramatic Club, 3, 4, President, 4; Y. M. C. A., 1, 2, 3, 4, Vice President, 4, Cabinet Member, 2, 3; C. G. A. Dining Room Committee, 3; Interfraternity Council, 4; Alpha Psi Omega, 4.



## ANNA JEAN LAUBACH

### *Commercial*

Dramatic Club, 1, 2, 3, 4, Secretary, 2; Junior Chamber of Commerce, 1, 2, 3, 4, Vice President, 2; A. B. C. Club, 1, 2, 3, 4, Secretary, 2, President, 3, 4; C. G. A. Representative; Acting Treasurer, C. G. A., 3; Secretary, Sophomore Class, 2; Mixed Chorus, 3, 4, Treasurer, 3, President, 4; Alpha Psi Omega, 3, 4, Secretary, 4; Pi Omega Pi, 3, 4; Kappa Delta Pi, 3, 4, Historian, 4; Pan-Hellenic Council, 4.



## MARIAN McWILLIAMS

### *Elementary*

Sewing Club, 1.



JOSEPHINE MAGEE

*Secondary*

Sewing Club, 1; Y. W. C. A., 1, 2, 3; W. S. G. A., Supervisor, 2; Maroon and Gold Staff, 1, 2, 3, 4; Poetry Club, 3, 4, Secretary, 1; Press Club, Secretary, 3; Athletics, 1.



THELMA MOODY

*Commercial*

Y. W. C. A., Cabinet, 1, 2, 3, 4, Corresponding Secretary, 3, 4; Junior Chamber of Commerce, 1, 2, 3, 4, Secretary, 1; Women's Student Government Association, 1, 3; A. B. C. Club, 3, 4.

JANE G. MANHART

*Secondary*

Community Government Association, 2, 3; Chairman Hospitality Committee, 2; Chairman Awards Committee, 3; Secretary, Student Council, 4; Secretary, Junior Class, 3; Secretary, Senior Class, 4; Dramatic Club, 1, 2, 3, 4, Secretary, 2; Vice President, Dramatic Club, 4; A. B. C. Club, 1, 2, 3, 4, Secretary, 2, President, 3; Maroon and Gold Staff, 1, 2; Mixed Chorus, 1; B Club, 3, 4, Secretary, 4; Kappa Delta Pi, 3, 4; Alpha Psi Omega, 2, 3, 4; Gamma Theta Upsilon, 2, 3, 4, Treasurer, 3, Secretary, 4.



FLORINE L. MOORE

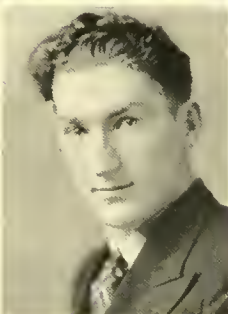
*Commercial*

Junior Chamber of Commerce, 1, 2, 3, 4; Mixed Chorus, 3, 4; A Cappella Choir, Secretary, 3, Treasurer, 4; Maroon and Gold Staff, 1, 2, 3, 4, Office Manager, 3, 4; OMTER Staff, 1; Kappa Delta Pi, 3, 4, Treasurer, 4; Pi Omega Pi, 3, 4; Social Committee of the Day Women, 1; Day Women, 1, 2, 3, 4.

JAMES L. MARKS

*Secondary*

Cross Country, 1; Basketball, 1; Nature Study Club, 1; Y. M. C. A., 2; Geography Club, 3.



VICTORIA MUSKALOON

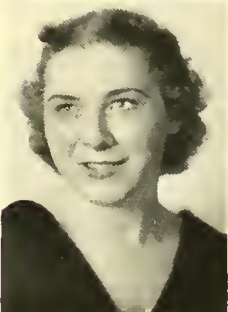
*Commercial*

Junior Chamber of Commerce, 1, 2, 3, 4; Y. W. C. A., 1, 2; Women's Student Government Association, Treasurer, 2.

MARY HELEN MEARS

*Commercial*

Day Women's Official Board, 1, 2, 3; A. B. C. Club, 1, 2, 3, 4, Vice President, 2; Dramatic Club, 1, 2; Women's Chorus, 1, 2; Mixed Chorus, 3, 4; A Cappella Choir, 3, 4; Social Chairman, Day Women's Association, 3; Junior Chamber of Commerce, 1, 2, 3, 4.



HARRY T. NELSON

*Commercial*

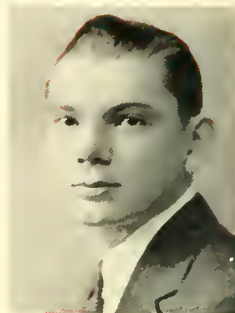
Freshman Class President; Maroon and Gold Staff, 1, 2; Cheerleader, 1, 2, 3; Y. M. C. A., 1; OMTER Staff, 1, 2, 3, Junior Editor, 3; Student Council, 2; Dramatic Club, 1, 2, 3, 4; Alpha Psi Omega, 2, 3, 4, Treasurer, 4; Kappa Delta Pi, 3, 4; Pi Omega Pi, 3, 4, President, 4; Interfraternity Council, 4.

# OBITER 1937

## JOSEPH S. OLLOCK

*Commercial*

Orchestra, 1, 2; Junior Chamber of Commerce, 1, 2, 3, 4; Track Manager, 1, 2, 3, 4; Pi Omega Pi, 3, 4.



## JOHN M. OWEN

*(Transfer)*

*Secondary*

Drew University, Madison, N. J.; Fencing; Debating. East Stroudsburg; Soccer, Bloomsburg; Kappa Delta Pi, 4. Ordained into the ministry, 1934.



## MARY E. PALSGROVE

*Secondary*

Orchestra, 1, 2, 3, 4; Women's Chorus, 2; Mixed Chorus, 3; W. S. G. A., Supervisor, 2; Y. W. C. A., 1; Athletics, 1, 2; Chairman of Fire Committee, 3; Chairman Freshman Advisory Committee, 4.



## LUTHER A. PECK

*Secondary*

Y. M. C. A., 1, Vice President, 2; Band, 1, 2, 3; Dramatic Club, 1, 2, 3, 4, President, 2; Mixed Chorus, 3, 4; A Cappella Choir, 3, 4; Baseball, 1, 2, 3, Manager, 4; Phi Sigma Pi, 2, 3, 4, Treasurer, 3; Kappa Delta Pi, 3, 4, President, 4; Gamma Theta Upsilon, 3, 4, Vice President, 4; Pan-Hellenic Council, President, 4; Letterman's Club, 4.





**GEORGE PLESKO, JR.**

*Commercial*

Junior Chamber of Commerce, 1, 2, 3, 4; Day Men's Association, 2, 3, 4; North Hall, 1; Y. M. C. A., 1.



**MARY REISLER**

*Secondary*

W. S. G. A., 1; Y. W. C. A., 1, 2; Junior Chamber of Commerce, 1, 2, 3, 4; Kappa Delta Pi, 3, 4; Pi Omega Pi, 3, 4.

**JAY H. PURSEL**

*Secondary*

Geography Society, 2, 3; Maroon and Gold Staff, 1, 2, 3, 4; Business Manager, 3; Literary Editor, 4; Day Men's Association, 2, 4; Chairman, Hospitality Committee, 3; Press Club, 3; Poetry Club, 3, 4, President, 3, 4; Gamma Theta Upsilon, 3, 4, President, 4; Outing Staff, 4, Editor, 4; Lutheran Student Group, 3, 4, President, 4; Interfraternity Council, 1.



**THERESA M. RITZO**

*Commercial*

Girls' Glee Club, 1; Mixed Chorus, 3; Maroon and Gold Staff, 1; Y. W. C. A., 1; Junior Chamber of Commerce, 1, 2, 3, 4.

**RUTH E. RADCLIFFE**

*Secondary*

Glee Club, 1, 2, 3; Orchestra, 3, 4; Trio, 3, 4; Sewing Club, 1; Kappa Delta Pi, 3, 4.



**MINETTE ROSENBLATT**

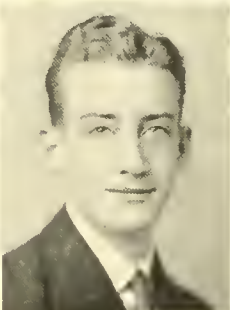
*Secondary*

Dramatic Club, 2, 3, 4; Maroon and Gold Staff, 3, 4; Poetry Club, 3, 4; Alpha Psi Omega, 4; Kappa Delta Pi, 4.

**THOMAS W. REAGAN**

*Commercial*

Junior Chamber of Commerce, 1, 2, 3, 4, President, 3; Treasurer of Junior Class, 3; Columbian Club, President, 3; Dramatic Club, 3; Y. M. C. A., 1, 2, 3, 4.



**J. BLAINE SALTZER**

*Commercial*

Vice-President, Senior Class, 4; Pi Omega Pi, 3, 4, Vice-President, 1; Alpha Psi Omega, 1, 2, 3, 4; Dramatic Club, 1, 2, 3, 4; Men's Glee Club, 1, 2; Double Quartette, 1, 2; A Cappella Choir, 4; Mixed Chorus, 4; Junior Chamber of Commerce, 1, 2, 3, 4; Day Men's Association, 1, 2, 3, 4; Chairman, Hospitality Committee, 2; Chairman, Social Committee, 3.

# OBITER 1937

## CAMILLE SCHALIS

### *Commercial*

Junior Chamber of Commerce, 1, 2, 3, 4; Poetry Committee, 2; Poetry Club, Charter Member, 3, 4.



## JULIA I. SCHLEGEL

### *Commercial*

Y. W. C. A., 1; Junior Chamber of Commerce, 1, 2, 3, 4; A. B. C. Club, 1, 2, 3, 4; Treasurer, 3; Vice President, 4; B. Club, 1, 2, 3, 4; President, 3, 4; Pi Omega Pi, 3, 4; Secretary, 4; Treasurer, Women's Chorus, 2; Secretary, Mixed Chorus, 3; Vice President, Mixed Chorus, 4; Student Council, 2; W. H. S. G. A., Secretary, 3; Dramatic Club, 2; Maroon and Gold Staff, 2.



## RAY G. SCHROPE

### *Secondary*

Varsity Football, 1, 2; Track, 1, 2; Men's Glee Club, 1, 2; President, North Hall, 2; C. G. A., 2; Chairman, C. G. A. Committee, 2, 4; Varsity Letterman's Club, 1, 2, 3, 4; President, 3; Mixed Chorus, 3, 4; President, A Cappella Choir, 3, 4; Phi Sigma Pi, 2, 3, 4; Secretary, 3; Band, 3, 4.



## HELEN B. SEESHOLTZ

### *Elementary*

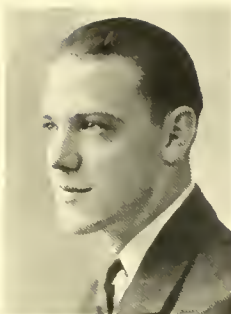
Y. W. C. A., 1, 2; Dramatic Club, 2, 3, 4; Vice President, 3; Day Women's Association, 1, 2, 3, 4.



**WILLIAM H. SHUTT**

*Commercial*

Dramatic Club, 1, 2, 3; Men's Glee Club, 1, 2; Junior Chamber of Commerce, 1, 2, 3, 4; Alpha Psi Omega, 3, 4; Day Men's Association, 1, 2, 3, 4; Day Men's Governing Association, 2; Alpha Phi Omega, 3, 1.



**GEORGE TAMALIS**

*Secondary*

Dramatic Club, 1, 2, 3, 1, President, 3; Y. M. C. A., 1, 2, 3; Cross Country, 2; Phi Sigma Pi, 2, 3, 1; President of North Hall, 3, 1; Treasurer, Senior Class, 4; Bowling Team, 3, 1, Captain, 1.

**RUTH H. SMETHERS**

*Secondary*

Sewing Club, 1, 2; Poetry Club, 3, 1; Maroon and Gold Staff, 2, 3; Press Club, 3; Day Women's Official Board, 3.



**BEATRICE H. THOMAS**

*Secondary*

B Club, 2, 3, 4; Gamma Theta Epsilon, 2, 3, 1; Kappa Delta Pi, 3, 1; Athletics, 1; Geography Club, 2, 3; Mixed Chorus, 1; Maroon and Gold Staff, 1.

**MURIEL R. STEVENS**

*Secondary*

Geography Club, Secretary, 2; A. B. C. Club, 1, 2, 3; B Club, 1, 2, 3, 4; Student Council, 3, 1; Day Women's Governing Board, 1.



**ROSETTA F. THOMAS**

*Secondary*

Women's Student Government Association, 2, 3; Y. W. C. A., 1, 2; Sewing Club, 2; Kappa Delta Pi, 3, 1; Community Government Association—Co-Chairman, Relations with Other Colleges Committee, 4; Mixed Chorus, 3, 1.

**JOHN B. SUPCHINSKY**

*Secondary*

Football, 1, 2, 3, 4; Wrestling, 1, 2; Intramural Basketball; Gamma Theta Upsilon; Dramatic Club, 1, 2, Treasurer, 2.



**MARY A. TREMBLEY**

*Secondary*

B Club, 1, 2, 3, 1; A. B. C. Club, 2, 3, 1; Y. W. C. A., 1, 2; Geography Club, 2; Sewing Club, 1.

# OBITER 1937

## AMANDA JEAN WALSH

### *Commercial*

Girls' Chorus, 1, 2; Mixed Chorus, 3, 4; Treasurer, 4; Maroon and Gold Staff, 1, 2, 3, 4; News Editor, 3, 4; Junior Chamber of Commerce, 1, 2, 3, 4; A. B. C. Club, 1, 2, 3, 4; Treasurer, 3; Girls' Athletics, 1, 2, 3, 4; Women's Student Government Association, 4.



## ALBERT WATTS

### *Secondary*

Cheerleader, 1, 2, 3; Cross Country, 2; Track, 4.



## EDWARD L. WEBB

### *Commercial*

Track, 1; Orchestra, 1; Student Council, 1, 2, 3; Kappa Delta Pi, 3, 4; Pi Omega Pi, 3, 4; Phi Sigma Pi, 3, 4; Treasurer, Sophomore Class; President, Junior Class; North Hall Association; Men's Glee Club, 1, 2; Double Quartet; Junior Chamber of Commerce, 1, 2, 3, 4.



## JESSIE M. WEBBER

### *Secondary*

Wilson College, 1; Y. W. C. A., 2, 3; Kappa Delta Pi, 3, 4; Recording Secretary, 4; Gamma Theta Upsilon, 3, 4; Women's Student Government Association, 4.





WILLIAM E. ZEISS

*Intermediate*

Y. M. C. A., 1, 2; Wrestling, 2;  
Cross Country, 2; Football Manager,  
1, 2, 3, 4; Track Trainer, 3.



PROF. S. I. SHORTESS

He has been more than counsellor and advisor to the members of the Class of 1937; he has been, and will remain, their friend.



TEACHER

You saw the dry, dead tumble weed  
Drink from the fountain's water,  
Pause on the stony basin edge—  
Then dance on spritely  
As though refreshed  
    By the water's crystal laughter.

I saw you walk from class to class,  
Drink long of a lecture's meaning,  
Absorb the context of each thought,  
Smile at a red-haired freckled girl—  
And then go on  
    To vend your fruits of learning.

GEORGE SHARP.

# OBITER 1937

WILLIAM THOMAS  
*President*



DOROTHY EDGAR  
*Secretary*



MARGARET POTTER  
*Treasurer*



FRANCIS PURCELL  
*Vice President*

## JUNIOR CLASS

Three long years of friendships and associations have culminated into one desire to maintain those friendships until we have reached our goal—graduation. We entered as eager, young and green Frosh. We progressed, less eager and green Sophomores—our present state—not too eager and young—Juniors.

Upon arrival a long road of hard work stretched before us, but we have marked it off at various intervals and are now measuring our last inches.

Our social life was hardly neglected despite the heavy tasks of our three years. Fun seemed to be crammed into every possible extra minute available. Dances, movies and parties and all the extra-curriculars were assimilated into our careers. The sports side of our college life has shone in prominence as has every other phase, for the three major captaincies of our athletic teams have been chosen from our ranks. They are respectively: Football, Sircovic; Basketball, Ruckle, and Baseball, Finder.

Nearing the end of our goal, many obstacles arise but with three years experience we should be able to take things in their stride. We are eagerly hoping that our four years shall embody a store of knowledge that will help us throughout the various courses of our lives.

We shall look back on our college life with a multitude of pleasant memories and happy thoughts but before we can do this we must first become Seniors and so it is at this point that we say "on to our Senior Year."





First Row, Left to Right—C. Durkin, D. Lockhoff, V. Follmer, H. Weaver, M. Potter, J. Andrews, M. Evans, C. Hummel, E. Sigradin  
 Second Row—P. Foster, J. Lochard, M. Rhodes, A. Reed, M. Crensy, D. Sidler, M. Smith, M. Weikel, M. Savidge, F. Snook, R. Troy, I. Freas

## JUNIOR CLASS ROLL

Ambrose, Joseph, Danville (Secondary)	Durkin, Catherine M., Ashland (Primary)
Andrews, Joycelyn M., Sonestown (Secondary)	Edgar, Dorothy L., Stillwater (Secondary)
Apichell, Eleanor, Kulpmont (Secondary)	Elmore, Marion L., Dummore (Commercial)
Areikosky, Emily T., Mt. Carmel (Commercial)	Evans, Martha H., Shamokin (Primary)
Auch, Alice, Easton (Commercial)	Fekula, Olga H., Frackville (Intermediate)
Aul, Ralph, Espy (Commercial)	Fester, F. Pearl, Bloomsburg (Rural)
Beaver, Byron L., Aristes (Secondary)	Fetterman, Aerio M., Catawissa (Secondary)
Beaver, Marjorie H., Danville (Secondary)	Fetterolf, Andrew L., Philadelphia (Commercial)
Beltz, Beulah M., Catawissa (Rural)	Finder, Alphonse E., Shamokin (Secondary)
Brainard, Alberta H., Susquehanna (Secondary)	Fiorini, John E., Espy (Secondary)
Breitenbach, Virginia, Catawissa (Primary)	Follmer, Vera E., Bloomsburg (Secondary)
Bronson, Bernice, Rummerfield (Commercial)	Frankmore, Philip, Easton (Commercial)
Casari, George R., Mt. Carmel (Commercial)	Freas, Iris E., Danville (Rural)
Conway, Sylvia M., Shamokin (Secondary)	Gearhart, Grace L., Bloomsburg (Commercial)
Crensy, Margaret A., Bloomsburg (Secondary)	Gilligan, Elizabeth J., Dummore (Commercial)
Curry, Anne G., McAdoo (Secondary)	Gonshor, Michael, Alden (Secondary)
Davison, Thomas A., Wilkes-Barre (Secondary)	Good, June R., Ashland (Primary)
Diehl, Robert C., Easton (Commercial)	Goretski, Helen L., Kulpmont (Commercial)
Dreese, Martha B., Middleburg (Secondary)	Graham, Margaret G., Bloomsburg (Secondary)

# OBITER 1937

## JUNIOR CLASS ROLL

(CONTINUED)

Grosek, Anne J., Plains (Secondary)  
Haamer, Mary E., Philadelphia (Commercial)  
Harmon, Wainwright H., Shenandoah (Secondary)  
Havalička, Elmer B., Ashley (Commercial)  
Hayes, Wilhelmina L., Parsons (Secondary)  
Heckenluber, Robert T., Arendtsville (Commercial)  
Hendler, John F., Wilkes-Barre (Commercial)  
Henric, Charles H., Bloomsburg (Commercial)  
Henry, Norman C., Berwick (Commercial)  
Hill, Robert H., Scranton (Secondary)  
Hook, Dorothy A., Bloomsburg (Intermediate)  
Hummel, Cleo M., Millville (Rural)  
James, Charles P., Danville (Secondary)  
Kellagher, Florence M., Locust Gap (Intermediate)  
Kleinbara, Michael, Shamokin (Secondary)  
Klinger, Clyde E., Nuremberg (Commercial)  
Kotsch, Jacob, Egypt (Commercial)  
Kovaleski, John B., Lee (Secondary)  
Krieh, Willard S., Bloomsburg (Commercial)  
Kushna, John J., Driffton (Commercial)  
Langan, Ruth E., Duryea (Commercial)  
Laubach, Vance S., Berwick (Commercial)  
Leiby, Ruth E., Danville (Secondary)  
Litwhiler, Daniel, Ringtown (Secondary)  
Livsey, Carrie, Bloomsburg (Secondary)  
Lockard, Jane L., Berwick (Secondary)  
Lockhoff, Donna R., Bloomsburg (Rural)  
Maczuga, John J., Wilkes-Barre (Commercial)  
Malloy, Anna M., Shenandoah (Commercial)  
Martin, Paul G., Catawissa (Commercial)  
Matthews, Edward M., Hazleton (Secondary)  
Mensing, Dorothy A., Nuremberg (Commercial)  
Miller, Mary E., Berrysburg (Commercial)  
Neibauer, George J., Shamokin (Secondary)  
Patrick, Frank T., Berwick (Commercial)  
Payne, Herbert E., Shamokin (Secondary)  
Pesansky, Helen, Sheppton (Secondary)  
Potter, Margaret F., Bloomsburg (Secondary)  
Price, Robert, Plains (Commercial)  
Purcell, Francis D., Frackville (Secondary)  
Quigley, Mary T., Shenandoah (Secondary)  
Rech, Anna B., Southampton (Commercial)  
Reed, Audree, Mansfield (Secondary)







First Row, Left to Right -W. Withka, A. Finder, T. Davison, D. Litwhiler, R. Price, K. Kuster, W. Thomas,  
P. Purcell, R. Diehl, R. Williams, E. Havaicka  
Second Row--J. Kushna, A. Fottorolf, G. Neibauer, G. Shurd, C. Klinger, E. Matthews, J. Slaven, J. Kotsch,  
V. Lambach, F. Patrick, M. Klobarna, J. Sircovics, W. Kreigh

## JUNIOR CLASS ROLL

(CONTINUED)

Reynolds, Bernadette T., Pottsville (Commercial)	Stellar, Genevieve R., Kulpmont (Secondary)
Rhinard, Ellen C., Berwick (Commercial)	Tannery, William, Condersport (Commercial)
Rhodes, Margaret E., Catawissa (Rural)	Thomas, William, Scranton (Secondary)
Richie, Neil M., Bloomsburg (Commercial)	Troutman, Luther, Trevorton (Secondary)
Rowland, Robert J., Scranton (Secondary)	Troy, Rowena V., Mifflinville (Intermediate)
Ruckel, Irving, Wanamie (Secondary)	VonBergen, Doris M., Hazleton (Commercial)
Ryan, Agnes L., Dunmore (Commercial)	Walukiewicz, Regina A., Shenandoah (Secondary)
Saluda, Rose S., Mt. Carmel (Commercial)	Wanich, Jack C., Light Street (Commercial)
Savidge, Marie H., Shamokin (Intermediate)	Wark, Arthur K., Berwick (Secondary)
Scott, Esther A., Summit Hill (Commercial)	Weaver, Helen E., Bloomsburg (Rural)
Sell, Frances M., Allentown (Commercial)	Weikel, Mae E., Milton (Primary)
Sharadin, Eleanor L., Danville (Secondary)	Weintraub, Charles H., Wilkes-Barre (Secondary)
Sharp, George T., Ashland (Secondary)	Wenner, Dorothy J., Stillwater (Commercial)
Sidler, Dorothy E., Danville (Secondary)	Williams, Robert R., Olyphant (Commercial)
Singer, Ben, Hazleton (Secondary)	Withka, Walter D., Simpson (Secondary)
Sircovics, John, Berwick (Secondary)	Zalewski, Joseph E., Kulpmont (Secondary)
Slaven, John, Fleetwood (Commercial)	Zaloni, Adolph M., Edwardsville (Secondary)
Smith, Margaret M., Sterling (Secondary)	Zitler, Arthur, Nuremberg (Secondary)
Snook, Florence E., Middleburg (Primary)	Zola, Stasia, Hazleton (Secondary)

# OBITER 1937

RAY EVANS  
*President*



JOHN JONES  
*Secretary*



ALEX McKECHNIE  
*Vice President*



WILLIAM YORWARTH  
*Treasurer*

## SOPHOMORE CLASS

The month of September in 1935 marked the introduction of a new class into B. S. T. C. At that time two hundred and fifteen meek and green Freshmen became the humble subjects of the upperclassmen. Associations made in the classrooms and the enforcement of annual customs molded the group into a semblance of organization.

The Freshmen had their fling at their annual Kid Party, but they later proved that they possessed potential possibilities by making a huge success of the "Freshman Hop." Their chapel program was scored as an outstanding presentation of the year.

The next year those who returned to Bloomsburg made it one of the largest Sophomore classes in the history of the institution.

Their major social event, the Sophomore Cotillion, was held in the form of a St. Valentine's Party. The gymnasium was decorated with the red heart as the motif. The Cotillion has long been considered one of the most delightful occasions on the College Calendar, and on February 20, the Sophomore class maintained the tradition.

Co-operation of the members of the class and the capable leadership of A. A. Tate, the adviser, aided the Sophomores in every enterprise undertaken, and they are completing a very successful year.





First Row, Left to Right—M. Boikwa, E. Baum, M. Steininger, R. Bransdorf, S. Tubbs, M. Lonergan, B. Savage, L. Adams, D. Karshner, M. Johnson  
 Second Row—D. Jones, M. Boyle, W. Stinson, V. Roth, A. Kirclavange, J. Tewksberry, A. Orner, H. Biggar, R. Lillea, E. Shiffka, J. Stinagle  
 Third Row—H. Derr, R. Miller, R. Dugan, V. Sheridan, L. Hummel, K. Leedom, H. Keller, H. Hartman, L. Giles, M. Carl, M. Hart

## SOPHOMORE CLASS ROLL

Aberant, Leona J., West Wyoming (Primary)  
 Adams, Lucille, Berwick (Secondary)  
 Adams, Ramona Marie, Mt. Carmel (Intermediate)  
 Akman, Mary E., Bloomsburg (Intermediate)  
 Amerman, Sarah Alice, Sunbury (Commercial)  
 Bachinger, William E., Bloomsburg (Commercial)  
 Bailey, Annabel, Danville (Secondary)  
 Baker, Marie, Mt. Carmel (Intermediate)  
 Banta, Sterling, Luzerne (Intermediate)  
 Barmiak, Joseph, Shenandoah (Commercial)  
 Barlik, Leonard E., Duryea (Commercial)  
 Baum, Clair, Nuremberg (Rural)  
 Baum, Emily E., Nuremberg (Rural)  
 Biggar, Helen B., Unityville (Primary)  
 Blackburn, Donald, Wanamie (Intermediate)  
 Boikwa, Mary E., Benton (Rural)  
 Bomboy, Isaiah D., Bloomsburg (Secondary)  
 Bonin, Irene F., Hazleton (Commercial)  
 Boudman, Minnie M., Bloomsburg (Commercial)  
 Bower, John E., Berwick (Secondary)  
 Bransdorf, Reba, West Wyoming (Intermediate)  
 Brennan, Catherine M., Shenandoah (Commercial)  
 Buck, Louise K., Montgomery (Primary)  
 Burke, Gerald F., Sugar Run (Rural)  
 Burke, Virginia, Sugar Run (Primary)  
 Burns, Alacome M., Shepton (Primary)  
 Carl, Melva M., Nescopeck (Commercial)  
 Champi, Joseph E., Moanauqua (Intermediate)  
 Cheponis, Margaret A., Plymouth (Secondary)  
 Christian, Willard A., Shamokin (Commercial)  
 Cinquegrani, Vince, Scranton (Commercial)  
 Clauser, Albert A., Kulpmont (Intermediate)  
 Coblentz, Harold H., Berwick (Commercial)  
 Conahan, Joseph B., Beaver Brook (Intermediate)  
 Contini, Anna R., Freeland (Primary)  
 Coppes, Tirzah E., Muncy (Secondary)  
 Davies, Willard J., Nanticoke (Commercial)  
 Deppen, Margaret L., Trevorton (Commercial)  
 DeRose, James V., Poekville (Secondary)  
 Derr, Helen M., Kingston (Primary)  
 Dersham, Sara E., Millinburg (Commercial)  
 Dugan, Ruth L., Bloomsburg (Secondary)  
 Durlin, H. Louise, Milton (Rural)  
 Edwards, Irene E., Millinville (Intermediate)  
 Englehart, Dorothy M., Bloomsburg (Secondary)  
 Eshmont, Peter J., Kulpmont (Intermediate)  
 Evans, Ann J., Taylor (Intermediate)  
 Evans, Roy, Taylor (Commercial)  
 Farmer, Lois E., Bloomsburg (Commercial)  
 Ferguson, Frank M., Lake Ariel (Secondary)  
 Ferrari, Victor J., Kulpmont (Intermediate)  
 Foley, Alice, Philadelphia (Secondary)  
 Foose, Morgan E., Sugar Loaf (Commercial)  
 Freehafer, L. Evelyn, Reading (Commercial)  
 Fritz, C. Betty, Orangeville (Intermediate)  
 Gambal, Vera, Old Forge (Intermediate)  
 Germak, Andrew, Edwardsville (Secondary)  
 Giles, Lois E., Jermyn (Commercial)

# OBITER 1937

## SOPHOMORE CLASS ROLL

(CONTINUED)

Glass, Charles F., Freeburg (Rural)  
Griffith, Megan B., Edwardsville (Intermediate)  
Grohal, Andrew V., Fern Glen (Intermediate)  
Guers, Grace M., Orwigsburg (Primary)  
Haines, Eleanore E., Catawissa (Rural)  
Hart, Elizabeth J., Berwick (Intermediate)  
Hart, Mildred M., Wapwallopen (Secondary)  
Hartman, Helen M., Danville (Rural)  
Hartman, Wayne L., Benton (Secondary)  
Harwood, Chester J., Plymouth (Commercial)  
Heimbach, Virginia M., Danville (Secondary)  
Hopfer, Robert D., Bloomsburg (Secondary)  
Hopkins, Robert P., Lost Creek (Secondary)  
Houck, Fred L., Catawissa (Secondary)  
Hummel, Letha E., Bloomsburg (Secondary)  
Jenkins, Elizabeth M., Edwardsville (Intermediate)  
Johnson, Lois C., Bloomsburg (Commercial)  
Johnson, Mary M., Shamokin (Commercial)  
Jones, Deborah, Pittston (Secondary)  
Jones, Rachel M., Taylor (Intermediate)  
Jones, Sheldon C., Nanticoke (Commercial)  
Kahler, Harry R., Bloomsburg (Secondary)  
Kantner, Robert J., Danville (Commercial)  
Karselmer, Dorothy E., Dallas (Primary)  
Keller, Hannah E., Danville (Intermediate)  
Killeri, Grace L., Pittston (Secondary)  
Kirelavage, Albina, Frackville (Commercial)  
Kloffman, L. Ruth, York (Commercial)  
Knapp, R. Irene, Kingston (Primary)  
Koehler, Harriet L., Espy (Commercial)  
Koczansky, Alfred P., Shenandoah (Commercial)  
Koscavage, Bridget C., Plymouth (Primary)  
Kotch, Paul R., Keiser (Intermediate)  
Kramm, Ruth A., Watoustown (Rural)  
LaBar, Dorothy E., Scranton (Intermediate)  
Lanciano, Kathryn, Kulpmont (Primary)  
Lawton, Jean E., Millville (Rural)  
Leezkosky, Josephine K., Edwardsville (Intermediate)  
Leedom, Katharine G., Southampton (Commercial)  
Lemon, Joseph Howard, Bloomsburg (Commercial)  
Lentz, Roberta, Freeland (Intermediate)  
Levine, Bessie J., Edwardsville (Primary)  
Lewis, George, Bloomsburg (Secondary)  
Lilley, Ruth E., Montgomery (Intermediate)  
Lipfert, Alvin G., Wilkes-Barre (Secondary)  
Lonergan, Marguerite, Berwick (Commercial)  
Long, Dorothy E., Berwick (Intermediate)  
Lowry, Helen L., Forest City (Rural)  
McBride, Ray P., Berwick (Commercial)  
McCreary, Sara L., Northumberland (Primary)  
McCulla, Margaret, Freeland (Primary)  
McInteehon, George, Wilkes-Barre (Secondary)  
McGinnis, Cornelia, Genesee (Commercial)  
McGonigle, Helene T., Shenandoah (Primary)  
McGrew, Helen, Mahanoy Plane (Commercial)  
McKechnie, Alex J., Berwick (Secondary)  
MacCall, Emily A., Kingston (Secondary)  
Magera, Anne M., Moccasin (Intermediate)  
Manjone, Leonard A., Weston (Intermediate)  
Master, Howard H., Mt. Pleasant Mills (Rural)  
Mayan, Helen L., Danville (Intermediate)  
Mecolick, Olga, Simpson (Primary)  
Miller, Clair A., Bloomsburg (Commercial)  
Miller, Ruth H., Forty Fort (Primary)  
Mondschine, John M., Coplay (Commercial)  
Moratelli, William R., Kulpmont (Intermediate)  
Mulhern, Edward J., Forty Fort (Secondary)  
Nolan, Richard J., Mt. Carmel (Commercial)  
Novelli, Frank, Moccasin (Intermediate)  
O'Donnell, Margaret J., Mt. Carmel (Primary)  
Ohl, Robert A., Bloomsburg (Secondary)  
Orner, Anna L., Bloomsburg (Commercial)  
Oswald, A. Jane, Allentown (Commercial)  
Parker, Robert H., Kulpmont (Secondary)  
Pavlick, Stephen E., Freeland (Rural)





First Row, Left to Right—C. Harwood, S. Jones, R. McBride, A. McKechnie, J. Jones, R. Evans (President),  
W. Yarrwarth, J. Shaloka, D. Troy, R. Zimmerman, G. Lewis  
Second Row—J. Mandschine, H. Coblenz, A. Yeany, R. Nolan, W. Christian, M. Stenko, P. Snyder, W. Potter,  
W. Holtman, A. Clauser, J. Champ

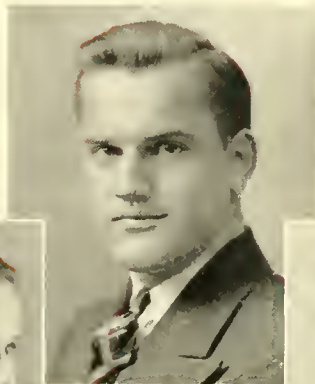
## SOPHOMORE CLASS ROLL

(CONTINUED)

Pavlik, May D., Plymouth (Intermediate)	Snyder, Philip L., Bloomsburg (Secondary)
Payne, Edith M., Ashland (Intermediate)	Somers, Marguerite M., Hazleton (Intermediate)
Peel, Wilhelmina E., Girardville (Primary)	Stadt, Ben J., Nanticoke (Commercial)
Penman, William H., Bloomsburg (Commercial)	Steininger, Margaret A., Coopersburg (Commercial)
Pemy, J. William, West Chester (Secondary)	Stenko, Mike, Berwick (Secondary)
Potter, Winfield P., Old Forge (Intermediate)	Stephen, Edward, Shamokin (Secondary)
Price, Charles T., Glen Lyon (Secondary)	Stifnagle, Jean S., Berwick (Secondary)
Rakoski, Irene M., Brady (Intermediate)	Stinson, Wanda M., Wilkes-Barre (Commercial)
Rarich, Glenn L., Espy (Commercial)	Strahosky, Michael, Kulpmont (Intermediate)
Raese, Leah V., Scranton (Primary)	Strauser, Richard M., Bloomsburg (Secondary)
Reichley, Eva P., Sunbury (Commercial)	Taylor, Marian E., Espy (Commercial)
Reilly, Eleanore M., Shenandoah (Intermediate)	Thomas, Elizabeth M., Jermyn (Intermediate)
Reimard, Robert J., Bloomsburg (Secondary)	Thomas, Jane F., Scranton (Primary)
Revels, Thomas P., Dickson City (Commercial)	Traupane, Philip E., Berwick (Commercial)
Roan, Rita P., Plymouth (Intermediate)	Trommetter, Charlotte E., Gordon (Intermediate)
Rowland, Cyril J., Connetton (Secondary)	Troy, Dale H., Nuremberg (Secondary)
Savage, Betty M., Berwick (Secondary)	Troy, Mabel L., Nuremberg (Rural)
Seesholtz, Anne M., Tower City (Secondary)	Tubbs, Sara E., Bloomsburg (Secondary)
Seitzinger, Adele E., Ashland (Primary)	Utt, Miriam, Bloomsburg (Commercial)
Selecky, H. Dorothy, Wapwallopen (Primary)	Washinko, George, Dunmore (Commercial)
Shaloka, Joseph L., Keiser (Intermediate)	Watts, James O., Millville (Secondary)
Shauglmessy, Eileen R., Beaver Brook (Primary)	Wehner, Marvin W., Hazleton (Commercial)
Sheets, Cecile F., Sonestown (Rural)	Wenrich, Chalmers G., Harrisburg (Secondary)
Sheptock, Joseph, Keiser (Intermediate)	Wolfe, Ronald D., Mahanoy Plane (Intermediate)
Sheridan, Vera F., Nanticoke (Commercial)	Woytovich, Walter, Shamokin (Commercial)
Shook, Lottie C., Muncy (Intermediate)	Wright, Martha C., Bloomsburg (Commercial)
Shuman, Jean C., Bloomsburg (Commercial)	Yates, William R., Ashley (Commercial)
Skeath, Mary R., Mahanoy City (Commercial)	Yeany, Austin, Bloomsburg (Secondary)
Smethers, Maelyn P., Berwick (Secondary)	Yorwarth, William J., Centralia (Secondary)
Smith, Donabelle F., Sunbury (Commercial)	Zehner, Alice M., Bloomsburg (Primary)
Snyder, Alice L., Shamokin (Intermediate)	Zelesky, Stanley J., Frackville (Secondary)

# OBITER 1937

NORMAN MAZA  
*President*



HELEN BRADY  
*Secretary*



GRACE RICHARDS  
*Vice President*



CHARLES GIRTON  
*Treasurer*

## FRESHMAN CLASS

On September 9, two hundred and sixty-five eager-eyed Freshmen entered the portals of our beloved college. Upperclassmen were kind and helpful to them until they found their way around. Soon, however, threatening clouds loomed on the horizon, and they were subjected to the horrors of customs, which lasted until Thanksgiving. The halls echoed and re-echoed with the bellowing cries of "Allah," while the strains of "How Green I Am" reached every one on the campus and neighborhood. Those were hectic days never to be forgotten. Amidst all this turmoil and confusion, class officers were elected. Mr. George Buchheit was chosen as class adviser, and it is due to his successful piloting that they weathered the frequent storms.

The Freshman Kid Party allowed them to be themselves for a night, and they retired, happy as cherubs, to dream of lolly-pops and Shirley Temple.

The climax of the year was reached on April 3, when the Freshman Hop was held. The Freshmen had a glorious affair, and the memory still lingers on in their hearts.

And now . . . they have completed their first year of college, and they look back on days when they were merely verdant "Frosh." They were a vital part of B. S. T. C., participating in almost every phase of college life. As Freshmen they looked forward with eagerness and with hope toward their Sophomore year. Now watch them succeed!





First Row, Left to Right E. Baum, M. Zelmer, G. Kadtko, J. Capwell, B. Kravitsky, J. Brush, V. Reppert, B. Blaine, A. Hennenmuth, C. Kreiger, C. Goldsmith, L. Snyder, L. Lichtenwalner, F. Ward  
 Second Row—F. Tugend, A. Kokora, M. Reinard, C. Baumer, B. Roberts, M. Miller, M. Landis, P. Stefanski, G. Richards, J. Brown, E. Sutherland, E. Bartholomew, J. Baldwin, D. Miller, H. Yanosik, H. Powell, L. Zondlo  
 Third Row—G. Bird, G. McCoy, H. Harmon, J. Lesser, E. Keller, M. Stine, V. Frey, A. Justin, E. Rieben, C. Channi, J. Darrow, E. Bean, L. Snyder, J. Long, R. Hausknecht, V. Grohul, P. Franklin, H. Brouse, C. Lee, M. Blocher, C. Bell, L. Yeager, B. La Ron, J. Scott, F. Yost, P. Reigle, S. Altland, P. Wagner, M. Berninger, M. Simon, H. Soman, F. Park, C. Yeocum  
 Fourth Row H. Brady, K. Moore, B. Jones, M. McHenry, J. Dessin, M. Metcalf, H. Culp, R. Bishop, D. Derr, E. Laubach, K. Waln, A. Pimerty, B. Ludwig

## FRESHMAN CLASS ROLL

Altland, Sara J., Harrisburg (Commercial)	Boone, Ruth E., Zion Grove (Secondary)
Angeli, Alfie, Plains (Secondary)	Boyle, Mary C., Wilkes-Barre (Commercial)
Angelo, Dominick, Lattimer Mines (Elementary)	Brady, Helen A., Kingston (Elementary)
Auten, Robert, Danville (Commercial)	Bredbenner, Hilda, West Nanticoke (Elementary)
Bacon, Edward, Kingston (Commercial)	Brennan, William G., Shamokin (Elementary)
Baker, Donald, Berwick (Commercial)	Brosius, Marlin E., Mt. Pleasant Mills (Elementary)
Baker, Ralph, Bloomsburg (Elementary)	Brouse, Helen E., Lewisburg (Elementary)
Baker, Ruth, Dickson City (Elementary)	Brush, Jean W., Wilkes-Barre (Commercial)
Bakey, Charles, Mt. Carmel (Secondary)	Buck, Anna M., Shamokin (Secondary)
Barnhart, Howard, Danville (Secondary)	Campanell, Catherine R., Hazleton (Elementary)
Bartels, Lester, Hazleton (Secondary)	Capwell, Jean L., Factoryville (Elementary)
Bartholomew, Eva, Orangeville (Commercial)	Carlin, John F., Summit Hill (Secondary)
Baum, Edith E., Mifflinville (Elementary)	Carodiskey, Donald, Danville (Secondary)
Baumer, Cora L., Lewisburg (Elementary)	Champi, Carolyn A., Mocaqua (Elementary)
Baumunk, Mabel F., Forksville (Commercial)	Chelland, Mildred R., Old Forge (Elementary)
Bean, Eleanor H., Bethlehem Pike (Commercial)	Cherundolo, Rosella M., Old Forge (Elementary)
Beckley, Mary E., Bloomsburg (Elementary)	Chismar, Michael, Jeddo (Elementary)
Bell, Catherine E., Drums (Elementary)	Christmas, Ernest L., Harrisburg (Commercial)
Benedetto, Josephine, Kulpmont (Secondary)	Coleman, Frederick D., Bloomsburg (Commercial)
Berninger, Margaret E., Catawissa (Elementary)	Collett, Mary E., Edwardsville (Elementary)
Bird, Gertrude A., Plymouth (Elementary)	Compton, S. Gladys, Milton (Elementary)
Bishop, Ruth M., Lake Ariel (Elementary)	Conahan, Jean, Hazleton (Elementary)
Blaine, Bernice E., Berwick (Elementary)	Cook, Ned C., Watontown (Secondary)
Blecher, Margaret L., Bloomsburg (Secondary)	Cooper, Eleanor E., Laffin (Elementary)
Bonin, Mildred A., Hazleton (Commercial)	Culp, Hannah, Dallas (Elementary)

## FRESHMAN CLASS ROLL

(CONTINUED)

Curlis, Dorothy M., Scranton (Elementary)  
 D'Angelo, Joseph J., Keiser (Elementary)  
 Darrow, Jane C., Kingston (Commercial)  
 Davis, Arthur L., Taylor (Secondary)  
 Davis, Mary, Kingston (Elementary)  
 Deitrick, Betty, Montgomery (Elementary)  
 Derr, Dorothy R., Bloomsburg (Secondary)  
 Dessen, Joyce R., Hazleton (Secondary)  
 Dietterick, Bette B., Berwick (Commercial)  
 Edwards, Victoria H., Bloomsburg (Commercial)  
 Esmond, Stanley E., Atlas (Elementary)  
 Everard, Evelyn, Edwardsville (Elementary)  
 Fennelly, Mary A., Mahanoy Plane (Elementary)  
 Fetterman, A. Delroy, Berwick (Commercial)  
 Finnerty, Alice L., Dunmore (Secondary)  
 Forsyth, William T., Northumberland (Secondary)  
 Forte, Wilma C., Freeland (Elementary)  
 Franklin, D. Pauline, Shickshinny (Elementary)  
 Frey, Vivian J., Millinville (Secondary)  
 Gehrig, Fay L., Danville (Elementary)  
 Gilton, Charles S., Dallas (Secondary)  
 Goldsmith, Charlotte, Dallas (Elementary)  
 Gotshall, Hazel R., Catawissa (Elementary)  
 Grandis, Anna H., Frackville (Elementary)  
 Greenly, Katherine A., Millville (Elementary)  
 Grohal, Veronica, Fern Glen (Elementary)  
 Grover, Christine E., Berwick (Commercial)  
 Hagenbuch, Robert M., Montgomery (Elementary)  
 Hancock, Ben E., Shamokin (Elementary)  
 Hanley, Mary E., Hazleton (Commercial)  
 Harman, Helen F., Berwick (Elementary)  
 Harpe, Dean S., Tunkhannock (Secondary)  
 Hausknecht, Donald A., Montoursville (Commercial)  
 Hausknecht, Rose Mary, Bloomsburg (Secondary)  
 Hemmuth, Alice L., Archbald (Elementary)  
 Heupcke, William S., Sugarloaf (Commercial)  
 Hinds, James F., Bloomsburg (Secondary)  
 Hinkel, Clayton H., Easton (Commercial)  
 Hippensteel, Kenneth J., Espy (Commercial)  
 Houck, Earl W., Berwick (Commercial)  
 Houck, William H., Berwick (Secondary)  
 Hower, Carl M., Millintown (Commercial)  
 Hydak, Andrew P., Keiser (Commercial)  
 Jenkins, Thomas H., Plymouth (Commercial)  
 Johnson, Francis P., Mt. Carmel (Secondary)  
 Jones, Gladys E., Bloomsburg (Elementary)  
 Jones, Gwladys, Scranton (Commercial)  
 Jones, Isaac T., Scranton (Commercial)  
 Jones, John B., Olyphant (Commercial)  
 Jones, Ralph C., Espy (Commercial)  
 Justin, Alice G., Scranton (Elementary)  
 Kadtko, Gertrude J., Mocanaqua (Elementary)  
 Kanasky, William F., Shamokin (Secondary)  
 Karnes, Donald M., Bloomsburg (Secondary)  
 Keibler, Alfred W., Kingston (Commercial)  
 Kelehener, Charles L., Hazleton (Commercial)  
 Keller, Edna E., Nescopeck (Commercial)  
 Kemple, Daniel T., Cumbola (Commercial)  
 Kiefer, Lawrence J., Frackville (Commercial)  
 Kirk, N. William, Berwick (Secondary)  
 Klingler, Thelma M., Sunbury (Elementary)  
 Knight, John, Plains (Secondary)  
 Kocher, Frank T., Espy (Secondary)  
 Kokitas, Paul B., Hazleton (Secondary)  
 Kokora, Anna K., Mocanaqua (Elementary)  
 Koniecko, Frank, Nanticoke (Commercial)  
 Kotzen, Stanley B., Summit Hill (Commercial)  
 Kravitski, Bertha V., Hazleton (Elementary)  
 Kreiger, Carrie M., Sheppton (Elementary)  
 Landis, Marian Y., Sugar Loaf (Commercial)  
 Lapinski, Jerome G., Shamokin (Secondary)  
 Lash, Walter F., Frackville (Commercial)  
 Laubach, Eunice J., Berwick (Secondary)  
 Lee, Clara Mae, Berwick (Elementary)  
 Lehet, George, Wilkes-Barre (Secondary)







First Row, Left to Right—C. Keckner, D. Leiser, A. Washeleskie, G. Serafine, P. Kokitas, C. Rowlands, N. Maza, C. Girton, J. Carlin, S. Miller, J. Pugh, W. Kamasky, G. Remensnyder, M. Smith  
 Second Row—W. Forsyth, W. Rittner, I. Jones, J. Jenkins, E. Vaughn, J. Plevyak, R. Shirley, J. Knight, L. Bartels, R. Sanger, F. Worman, G. Lebet, R. Linn, R. Roberts, T. Parsell, P. Moore, C. Hinkle, G. Sharkey, R. Anten, F. Kocher, W. Houck  
 Third Row—W. Rowlands, D. Hansknecht, W. Pegg, R. Roberts, N. Cook, H. Barnhart, J. Lapinski, F. Coleman, L. Kiefer, W. Wutz, B. Shiner, S. Schuyler, J. Rinn

## FRESHMAN CLASS ROLL

(CONTINUED)

Leiser, George D., Watsonstown (Elementary)	Moore, Kathryn L., Danville (Elementary)
Lerew, Betty J., East Berlin (Commercial)	Moore, Philip W., Bloomsburg (Commercial)
Lesser, Jennie G., Ringtown (Elementary)	Morgan, Ann R., Plymouth (Elementary)
Lichtenwalner, Lorraine, Allentown (Commercial)	Moss, Jean, Plymouth (Elementary)
Linn, Robert A., Calawissa (Secondary)	Moyer, Don B., Danville (Commercial)
Loneragan, Abigail, Berwick (Commercial)	Naylis, Florence M., Edwardsville (Elementary)
Long, Joyce W., Benton (Elementary)	Northup, Anne F., Dalton (Elementary)
Lubereski, Anthony, Luzerne (Elementary)	Parsell, Theodore R., Orangeville (Commercial)
Ludwig, Beatrice, Millville (Elementary)	Park, Florence A., Dallas (Secondary)
McCawley, Betty, Old Forge (Elementary)	Patterson, Marion E., Berwick (Elementary)
McCoy, Alice G., Harrisburg (Elementary)	Pegg, William F., Lanerch (Secondary)
McGinley, Esther A., Jeanesville (Elementary)	Plevyak, John M., Carbondale (Commercial)
McGrath, Harold F., Ashland (Secondary)	Pomrinke, John L., Nanticoke (Commercial)
Mellale, Paul J., Wilkes-Barre (Secondary)	Postpach, Lena N., MeAdoo (Elementary)
MellHenry, Martha, Benton (Elementary)	Posvach, Andrew A., Bethlehem (Secondary)
McWilliams, Florence Regina, Danville (Elementary)	Powell, Helen F., Nanticoke (Elementary)
McWilliams, Mary Ellen, Danville (Commercial)	Prokopchok, Walter, Dallas (Secondary)
Marr, Doris M., Watsonstown (Elementary)	Pugh, James G., Edwardsville (Elementary)
Martin, Mary M., Berwick (Elementary)	Rec'a, Agnes A., Sheppton (Commercial)
Maza, Norman J., Nanticoke (Commercial)	Reigle, Pauline T., Northumberland (Elementary)
Mercer, Donald C., Bloomsburg (Secondary)	Reilly, Violet T., Scranton (Commercial)
Metcalf, Marion F., Sunbury (Elementary)	Reppert, Vivian O., Espy (Commercial)
Miller, Dorothy, Taylor (Elementary)	Richetti, Lawrence J., Philadelphia (Commercial)
Miller, Samuel, Hazleton (Secondary)	Richard, F. Josephine, Bloomsburg (Secondary)
Mischisen, Barbara, Sandy Run (Elementary)	Richards, Grace E., Wilkes-Barre (Elementary)
Mitchell, Nicholas R., Ebervale (Elementary)	Rieben, Evaline J., Allentown (Commercial)
Monahan, Cyril G., Lost Creek (Elementary)	Rinn, James N., Lattimer Mines (Elementary)

FRESHMAN CLASS ROLL

(CONTINUED)

Rinard, Muriel L., Catawissa (Elementary)  
 Roberts, Betty M., Wilkes-Barre (Elementary)  
 Roberts, Roy, Bloomsburg (Commercial)  
 Roll, Frank F., Berwick (Secondary)  
 Roth, Virginia M., Vera Cruz (Commercial)  
 Rowlands, Clarence C., Plymouth (Elementary)  
 Rowlands, William, Plymouth (Elementary)  
 Sanger, Raymond J., Aristes (Secondary)  
 Scott, Jane A., Dunmore (Secondary)  
 Seman, Helen, Edwardsville (Elementary)  
 Serafine, Gene F., Mocaqua (Elementary)  
 Sharkey, Eugene F., Lattimer Mines (Elementary)  
 Shifka, Eleanor M., Glen Lyon (Commercial)  
 Shiner, Byron D., Berwick (Commercial)  
 Shirley, Richard W., Forty Fort (Secondary)  
 Simon, Mildred J., Hunlock Creek (Elementary)  
 Simpson, Agnes C., Bloomsburg (Commercial)  
 Simpson, Catherine J., Bloomsburg (Secondary)  
 Smith, Jean D., Catawissa (Commercial)  
 Snyder, Lora M., Turbotville (Elementary)  
 Snyder, Lorraine C., Pottsville (Secondary)  
 Sotilka, Michael J., St. Clair (Commercial)  
 Stamer, Joseph M., Warriors Run (Secondary)  
 Stefanski, Florence T., Wilkes-Barre (Commercial)  
 Sline, Mary A., Elysburg (Elementary)  
 Stout, Leonard E., Nescopeck (Secondary)  
 Stozenski, Stanley S., Wilkes-Barre (Elementary)  
 Strawinski, William S., Harrisburg (Secondary)  
 Sutherland, Esther M., Wilkes-Barre (Elementary)  
 Tadrick, Julia A., Shamokin (Elementary)  
 Tewksbury, Jennie E., Meshoppen (Commercial)  
 Thomas, Gene H., Plymouth (Commercial)  
 Thornton, Alma H., Old Forge (Elementary)  
 Trembley, Harold Max, Bloomsburg (Secondary)  
 Trimble, William Frank, Wilkes-Barre (Commercial)  
 Trudnak, Joseph, Mocaqua (Elementary)  
 Tugend, Florence C., Dalton (Elementary)  
 Turse, Rose M., Hazleton (Commercial)  
 Unger, H. Elnora, Danville (Secondary)  
 Vaughn, Elwyn J., Nanticoke (Commercial)  
 Visintainer, Fred F., Drums (Elementary)  
 Wagner, Geraldine L., Keiser (Commercial)  
 Wagner, Pearl A., Hazleton (Secondary)  
 Wagner, Phylis B., Hazleton (Elementary)  
 Wallace, Isabel T., Shenandoah (Elementary)  
 Walp, Kathryn L., Berwick (Secondary)  
 Ward, Frances J., Bloomsburg (Elementary)  
 Ward, Margaret L., Bloomsburg (Elementary)  
 Washeleski, Alfred S., Simpson (Commercial)  
 Watts, Olen J., Bloomsburg (Elementary)  
 Welliver, Carl T., Bloomsburg (Secondary)  
 Wertz, William W., Frackville (Secondary)  
 Wesley, Avis B., Dallas (Elementary)  
 Williams, Maude L., Olyphant (Elementary)  
 Wixson, Richard J., Shamokin (Elementary)  
 Yadock, Joseph A., Mocaqua (Elementary)  
 Yanosik, Helen D., Shickshinny (Elementary)  
 Yeager, Jane B., Shamokin (Secondary)  
 Yeager, Lillian A., Centralia (Secondary)  
 Yerger, Robert L., Mt. Pleasant (Elementary)  
 Yocum, Carrie L., Milton (Elementary)  
 Yost, Fern B., Rock Glen (Elementary)  
 Youtz, Margaret, Sunbury (Elementary)  
 Zehner, Martha L., Bloomsburg (Commercial)  
 Zimmerman, Ray O., Nuremberg (Secondary)  
 Zimmerman, Robert C., Nuremberg (Secondary)  
 Zimmerman, Ruth A., Sunbury (Elementary)  
 Zondlo, Louise A., Dupont (Elementary)





# ATHLETICS

---



## HUSKY MASCOT

Roongo II, whose ancestors traveled with the Perry expedition to the North Pole, became the new husky mascot in the fall of 1936 when Garou surrendered his right to lead the Husky Team on to the battle-field of Sports.

One of a litter of three pups, Roongo II, was born in North Greenland and has the ideal markings of a dog of this breed.

He stands as the symbol of determination, courage, and strength. He challenges the athletes of Bloomsburg State Teachers College to live up to the traditions of the Husky.





## CHEERLEADER

To Leonard Manjone goes the distinction of being the only active cheerleader during the whole year. A way of winning the support of the student body, of keeping the fans pepped up even if the score favors the opponents, is his.

During the year John Slaven acted as chairman of the Pep Committee. Manjone was supported during the early part of the athletic season by William Miller and Albert Watts.



LAMAR BLASS  
*Captain*

## TRACK

When the 1936 Track Season opened with the Interclass Meet, Coach Buehheit discovered in the class ranks prospective material of such quality that, without crystal gazing or card reading—other than schedule cards—he could feel assured that Bloomsburg could carry through with a very successful season. Within the group of Freshmen candidates he found the boys who, as sprinters, were to give his team the balance and co-ordination necessary for victorious inter-collegiate track meets.

From Mr. Buehheit's personal journal we quote: "Lock Haven, April, 1936—Our boys were in fine form today, winning the meet by 84 $\frac{1}{2}$  to 41 $\frac{1}{2}$ . Five school records were broken, three by Blass—shot put, high hurdles, and broad jump—and one each by Van Devender—the 440—and Van Gordon—the 220 low hurdles." Two days later Mr. and Mrs. Buehheit accompanied Blass, Zelesky, Mulhern, Van Gordon, and Van Devender, who aggregately represented the College in the Penn Relays at Philadelphia, placing Bloomsburg fourth in the relay mile for the American Normal School Championship.

Returning from Philadelphia for the Shippensburg meet, April 28, the team carried a 67 to 59 victory over the concededly good Shippensburg tracksters. So close was the competition that Blass felt obliged to break three of his former records and Van Devender one of his. Van Gordon took from the 1912, 1913 record shelf two long-standing marks and, dusting them off, bettered them by .3 and .7 of a second respectively.





First Row, Left to Right—G. Burke, L. Dixon, S. Cohen, L. Blass, T. Davison, V. Laubach, M. Gonshor  
 Second Row—G. Buchheit, E. Mulhern, R. Hopper, C. Harwood, R. Parker, S. Zelesky, F. Van Devender,  
 H. Van Gordon, J. O'lock, R. Savage

May 4 brought Susquehanna U. to Bloomsburg and defeat in one of the most brilliant, swashbuckling series of athletic events run on a single afternoon. No records were broken, but the performance of the fourteen Bloomsburg boys was magnificent, resulting in a triumphant total of 91 to 35. Then followed, on Friday, May 8, the State Teachers College meet at Shippensburg in which athletic circus Bloomsburg men earned 28 points, placing the College third among the participating schools.

And for the final meet of the season, Bloomsburg paid its complimentary visit to Susquehanna, where Blass took two places, and Van Gordon three. Van Devender won the 440; Burke, the pole vault; Zelesky, the half mile; Parker, the mile, and Davison, the two mile. Bloomsburg won ten of the fourteen events, taking all three places in three of them. Victory came easily, and, with the close of the season, Mr. Buchheit's report at the Annual Athletic Banquet consisted of the season's summary, won 4, lost none.

Those receiving varsity awards were: L. Blass, S. Cohen, T. Davison, L. Dixon, M. Gonshor, V. Laubach, E. Mulhern, V. Van Devender, H. Van Gordon, S. Zelesky, G. Burke, R. Parker, and R. Savage, Manager.



ELNA NELSON  
*Coach*



ALPHONSE FINDER  
*Captain*

## BASEBALL

A winning streak of twenty games, the result of twelve victories in 1935 and eight victories in 1934, was hazarded on the opening game of the State Teachers Campaign with Shippensburg. Dr. E. L. Nelson and his players carried no light load of anxiety into that game, for the thought highest in every Bloomsburg man's mind was to keep that winning streak intact. Shippensburg won by the score of 3-2, in a ten-inning dual, gaining the hard-fought victory on an unearned run. The load of anxiety having been lost with this defeat, the Bloomsburg team went after the next games with fire and sword, winning seven in a row and tallying 89 runs to their opponents' 20.

Losing to Kutztown and East Stroudsburg, Bloomsburg then met the team which had stopped its victory spurt of twenty games. The satisfactory vindication can be told in the final score of that second meeting which ended —Shippensburg 9, Bloomsburg 19.

The College team ended its 1936 season by defeating Indiana and Susquehanna with decisive scores. Bloomsburg won 10 games and lost 3 in a year of inspiring contests.

Such impressive results shown by the team must be conceded to the admirable coaching ability of Dr. Nelson. Woody Litwhiler, pitcher and captain for 1936, also helped greatly in running the team; Moleski's batting, pitching, and fielding were a boon to his fellow-players; Rompalo covered the infield and batted like the veteran that he was. Captain-elect Finder, high-batting Dan Litwhiler, Banta, Wenrich, Kotch, Houck, and a host of others are back for 1937 to make it another banner season.







First Row, Left to Right—D. Litwhiler, A. Finder, F. Rompalo, W. Litwhiler (Captain), W. Moleski, C. Wenrich, F. Houck

Second Row—S. Jones, A. Giernak, J. Slaven, W. Karshner, S. Banta, P. Kotch

Third Row—S. Pavlick, V. Cinquegrani, L. Derr, R. Nolan, J. Zeleski

Fourth Row—L. Peck, J. Kupris, E. Nelson (Coach), D. Hutchison (Mascot)

### 1936 RESULTS

Bloomsburg	2, Shippensburg	3	Bloomsburg	20, Lock Haven	4
Bloomsburg	15, Lock Haven	0	Bloomsburg	2, Kutztown	7
Bloomsburg	6, Millersville	2	Bloomsburg	4, East Stroudsburg	5
Bloomsburg	18, Susquehanna	5	Bloomsburg	19, Shippensburg	9
Bloomsburg	9, Mansfield	6	Bloomsburg	15, Indiana	8
Bloomsburg	9, Millersville	1	Bloomsburg	10, Susquehanna	5
Bloomsburg	12, Mansfield	2	Summary:	Won 10, lost 3.	

### BATTING AVERAGES

	At Bat	Hits	Pct.
D. Litwhiler, center field	57	26	.450
Finder, short stop	64	28	.430
Moleski, right field, pitcher	42	16	.380
Banta, left field	55	21	.380
Giernak, catcher	43	16	.372
Wenrich, first base	54	20	.370
Rompalo, second base	56	19	.330
Kotch, right field	48	16	.330
Houck, third base	55	18	.320
W. Litwhiler, pitcher	18	5	.270

### LESS THAN TEN GAMES

Karshner, second base	6	3	.500
Davison	2	1	.500
Slaven, pitcher	5	2	.400
Jones, catcher	6	2	.333
Cinquegrani, left field	8	1	.125
Kupris	1	0	.000
Zeleski, right field	1	0	.000
Pavlick, pitcher	1	0	.000



JOHN KOCH  
*Coach*

## TENNIS

Tennis at B. S. T. C. is gradually forging its way into being a major sport. More and more students each year are becoming interested and have made teams of which the college is proud.

The 1936 season was one of the most successful in recent years. The Husky Tennis Team, led by Captain Cohen and under the expert coaching of Dean Koch, won 12 matches and dropped 2. East Stroudsburg's well-organized team won one match by the decision score of 9 to 0. The other match was won by Indiana by a hair-breadth scoring of 5 sets to 4.

Captain Cohen led the team to nine straight victories before losing to East Stroudsburg. The team, as a whole, won 85 sets and lost 36.





Left to Right—J. Koch (Coach), K. Merrill, M. Smethers, S. Cohen (Captain), A. Zalonis, J. Cornely, J. Gering, W. Yorwarth

### TENNIS RESULTS

In Single Matches:		Won	Lost		Won	Lost
Cornely		8	6	Smethers	11	3
Zalonis		11	3	Merrill	9	4
Cohen		10	4	Gering	10	2

In Double Matches:		Won	Lost		Won	Lost
Cornely and Smethers		6	8	Merrill and Gering	9	3
Cohen and Zalonis		11	3			

Singles. Result of Points Scored in Games:		Won	Lost	Pct.		Won	Lost	Pct.
Cornely		185	168	.524	Merrill	147	117	.556
Zalonis		198	141	.583	Gering	155	107	.591
Cohen		161	118	.577				
Smethers		177	127	.582	Totals	1023	778	.568

Doubles. Result of Points Scored in Games:		Won	Lost	Pct.		Won	Lost	Pct.
Cornely and Smethers		140	138	.503	Merrill and Gering	152	121	.556
Cohen and Zalonis		180	130	.580				

### RESULTS

Bloomsburg	9,	Shippensburg	..	0	Bloomsburg	6,	Mansfield	..	3
Bloomsburg	7,	Lock Haven	..	2	Bloomsburg	4,	Kutztown	..	2
Bloomsburg	9,	Millersville	..	0	Bloomsburg	0,	East Stroudsburg	..	9
Bloomsburg	8,	Villanova	..	1	Bloomsburg	6,	St. Thomas	..	3
Bloomsburg	6,	Mansfield	..	3	Bloomsburg	7,	Shippensburg	..	2
Bloomsburg	7,	Millersville	..	2	Bloomsburg	4,	Indiana	..	5
Bloomsburg	7,	Susquehanna	..	0	Bloomsburg	4,	Alumni	..	5



MICHAEL GONSHOR  
*Captain*

## CROSS COUNTRY

The 1936 Cross Country season opened with the Freshman-Mt. Carmel High School meet on Saturday, October 3. Despite Kenneth Hippensteel's placing first and Dan Kemple's coming in second, the Frosh team lost to the Mt. Carmel runners 25-14, low score winning.

During the five years Mr. Buchheit has scheduled Cross Country as a varsity sport, interest has been growing in this particular form of endurance test. Apparently, Bloomsburg is one of the few State Teachers Colleges in which such interest is shown; this is evidenced in the inability of the Athletic Council to schedule more than one Intercollegiate State meet. That meet, however, was with Indiana Teachers College on October 24, over their three mile course. The Bloomsburg runners, and their placings, were: Hippensteel, first; Kemple, second; Karnes, fourth; Parker, sixth; Gonsior, seventh. The first four placings permitted Bloomsburg to win 14 to 23. Hippensteel's time was 16 minutes and 8/10 seconds.

Tommy Davison, the only Cross Country letterman among the candidates, was forced from the running by sickness just a week before the conflict with Indiana; under these circumstances, Mr. Buchheit was more than pleased with the results of the meet and the boys who won it.





First Row, Left to Right—G. Leiser, M. Gonshor, D. Kemple, R. Parker, D. Karnes, K. Hippensteel  
Second Row—G. Buchheit, J. Bond, R. Jones, P. Trapane, L. Keefer, W. Wertz, M. Clismar

The only other opportunity offered the harriers was the internationally recognized Berwick Marathon held each year on Thanksgiving Day. The four Bloomsburg men who entered were almost swamped by thirty-two internationally famous runners, but those who finished were: Don Karnes, 16th; Ken Hippensteel, 17th; Mike Gonshor, 23rd.

The course,  $9 \frac{1}{3}$  miles in length, is considered a supreme test, and the showing of Karnes, Hippensteel and Gonshor is comparatively good.



A. AUSTIN TATE  
*Coach*



JOHN SIRCOVICS  
*Captain*

## FOOTBALL

Under the direction of Coaches Tate, Buchheit and Moleski, the football team embarked on its 1936 season by confronting the Susquehanna eleven. Contrary to the expectations of coaches, team, students, and alumni, the Huskies received a 21 to 7 defeat.

Bloomsburg next met Millersville and was beaten in the second game of the season, Millersville holding the score to 9-0. Then Lock Haven handed the Huskies their third loss, 14-8. With three losses shadowing their record, the Huskies entered the Homecoming Day game against Mausfield and were set back for the fourth time, 19-0. From Indiana came the fifth team, which, in the course of events, added another defeat to Bloomsburg's list, the game ending 27 to 7.

Shippensburg made it a half dozen defeats, and Slippery Rock gave Bloomsburg one more to make it seven. The Huskies then went on to play East Stroudsburg. This, the last game of the season, brought with it at least a little ray of sunshine. After losing seven in a row, the Huskies ended the season by defeating Stroudsburg, 7 to 0.

With the knowledge that a large number of Freshmen are members of the varsity team, and looking forward to having these players back for the following three years, we can safely hope for great happenings on the Bloomsburg gridiron in the future.

Camera, Border, Blass, and Dixon are the Husky players lost by team by graduation.





First Row, Left to Right— S. Jones, A. Finder, L. Troutman, F. Patrick, N. Henry, J. Sircovics, C. Weintraub,  
 L. Glass, V. Lambach, C. Wenrich, M. Stenko  
 Second Row—J. Champi, G. Serafin, R. Mercer, A. Posvack, N. Maza, R. Hopfer, J. Hinds, R. Baker, W. Kirk,  
 F. Roll  
 Third Row—C. Price, W. Potter, S. Schuyler, R. Strauser, A. Giermack, L. Rozatti, M. Sotilka, S. Zelesky,  
 A. Liptert, A. Angeli  
 Fourth Row—R. Shirlev, D. Harpe, F. Kreischer, C. Welliver, W. Lash, F. Johnson, J. Hancock, C. Miller

## RESULTS

Bloomsburg	7	Susquehanna	21
Bloomsburg	0	Millersville	9
Bloomsburg	8	Lock Haven	14
Bloomsburg	0	Mansfield	19
Bloomsburg	7	Indiana	27
Bloomsburg	0	Shippensburg	12
Bloomsburg	0	Slippery Rock	10
Bloomsburg	7	Stroudsburg	0



WILLIAM ZEISS  
*Manager*

## FOOTBALL SENIORS

The close of the football season in the winter of 1936 saw the end of the college careers of seven seniors.

Frank Camera, who wore a varsity suit for three years, played guard and half-back positions at various times.

Lamar Blass, three letter man, worked at both end and half-back positions during his Junior and Senior years.

Ray Schrope played the first two years of his college career at left end but was forced to surrender football because of an injured spine.

As tackle and guard, John Supchinsky played four years with the Maroon and Gold.

Two years of work as guard closed Leon Dixon's football life for Old Bloomsburg.

To Harold Border, guard, fell the worthy distinction of having worn a football uniform for the full four years of his college life.

As a capable manager of the 1936 squad, William Zeiss left behind a year of service to the gridiron gladiators of Bloomsburg State Teachers College.





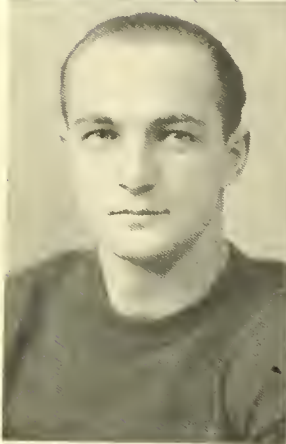
LAMAR BLASS



LEON DIXON



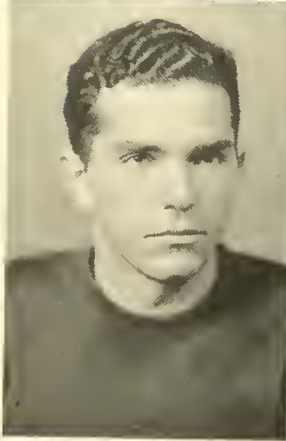
HAROLD BORDER



RAY SHROPE



FRANK CAMERA



JOHN SUPCHINSKY





GEORGE BUCHHEIT  
*Coach*



IRVING RUCKLE  
*Captain*

## BASKETBALL

This year the Husky Basketeers, running afoul in games on foreign courts, lost all but one contest while away. The home combats were more successful since the Buchheitmen dropped only one game on local soil. Confronted at the beginning of the season with the loss of two men, Buchheit and last year's captain "Edge" Phillips set to work to develop players that would fill the gaps. After a call for candidates, nearly forty boys who appeared for tryouts were gradually weeded out until fifteen potential hoopsters were left. From this group coach formed his varsity and junior varsity squads. Those who wore the Bloomsburg tops last year and returned to fill them again, were Captain "Junie" Ruckle, Banta, Smethers, Blass, Withka, Slaven, Litwiler, Blackburn, Giermak, and Snyder; while several new faces, Harrison, Wenrich, Kirk, Rowlands and the Zimmerman boys did their bit for the local cause.

In opening the season, the Huskies tackled their former mates in the Alumni scrap. Here the boys literally turned on the heat to register an overwhelming victory by the lop-sided score of 65-23. In this tussle, Buchheit found a scoring threat in Withka and Wenrich who started as true varsity men for the first time. They swept the scoring honors for the evening. Wenrich, a Harrisburg product, took the place of Captain Ruckle who was injured in practice to such an extent that he was out for several of the initial scraps. This blow to the Bloom cause left a hard spot to fill since the sparkplug of the offense was constantly giving other coaches the jitters through his long shots and speedy floor-work.

Thbaea journeyed here to administer a thorough lacing to the Bloom boys. This couldn't be stopped while their offense was impervious. Although the Maroon and Gold showed improvement, it wasn't enough to down the up-staters. The game ended with Bloom on the short end of a 48-31 score.





First Row, Left to Right—M. Smetthers, W. Withka, J. Ruckle (Captain), L. Blass, S. Banta  
 Second Row—E. Phillips (Assistant Coach), A. Giermak, W. Kirk, G. C. Buehheit (Coach), C. Wenrich,  
 A. Lapinski (Manager)

Bouncing back in line, the Buehheit Court Machine took on the Crusaders from Susquehanna on the latter's hardwood. Maintaining a stride that couldn't be matched the Huskies swept to a 41-26 victory, led by Giermak who scored 13 points. Then in a return engagement, Captain Ruckle and his cohorts piled a commanding lead in the first half, to which the reserves added, until the Stagmen were snowed under by the score of 33-19.

The Millers from Millersville traveled up here to maintain a perfect record. When the battle dust had cleared the Bloomsburg boys were on top 32-21. Not until Ruckle let loose several "impossible" shots of his could the B. S. T. C. varsity forge into a hard fought lead. It was one of the finest battles ever witnessed on the local boards. In another home tangle the Rucklenen measured Mansfield to the tune of 30-22. In this game Ruckle again showed his scoring ability to chalk up 12 points.

Then, with plenty of optimism, Coach Buehheit took his squad on two road trips. In the opening canto with Lock Haven the Bloom Teachers never had a chance. The Black and White started out by scoring 10 points. Then, when the Huskies began to score points, it was too late to score a comeback and they lost 35-29. Continuing to the Southern part of the State the next week-end, Ruckle and his running mates dropped decisions to Shippensburg and Millersville. In both of these games the jinx appeared and played havoc with Bloom's title chances. On Friday evening the Red Devils scalped them 32-30, and twenty-four hours later they fell before the Millers, 44-25.

Now came four straight home games that developed into a four-game winning streak. First on the list came East Stroudsburg, the squad who had downed Ithaca and was still going

# OBITER 1937

strong. Hitting them on the rebound they fell victims to the Husky onslaught that carried Bloom to a 39-34 victory. Ruckle starred in this win by cornering 18 counters. Bloom was starting on a comeback trail. Continuing, the Red Devils from Shippensburg were checkmated by our Husky squad to the tempo of a 42-37 score. The Maroon and Gold scoring demon, Ruckle, went on a scoring spree that netted 14 counters for his side of the ledger.

The next victim to fall was Lock Haven. This squad was traveling at a fast clip when they arrived in Bloomsburg and a tough fight was offered that evening. Both teams started slow to test the others strength. Gradually the tension lifted and both squads broke the ice to score points. At half time the Black and White led 19-14. Then in the second half the local boys bottled up Byers, the up-state scoring ace who chalked up five buckets in the first half, and continued to add to their score until the final gun found them on top. Again it was Ruckle who found the hoop for 13 points, scoring honors for the evening.

In the last game on the home courts, Buchheit's boys trounced Indiana 39-21. Blass, towering pivot, turned in an unusually fine performance while playing his last game at Bloomsburg under the Husky colors. But, it was Ruckle who proved to be the main thorn in Indiana's attack by racking up six field goals and two free throws.

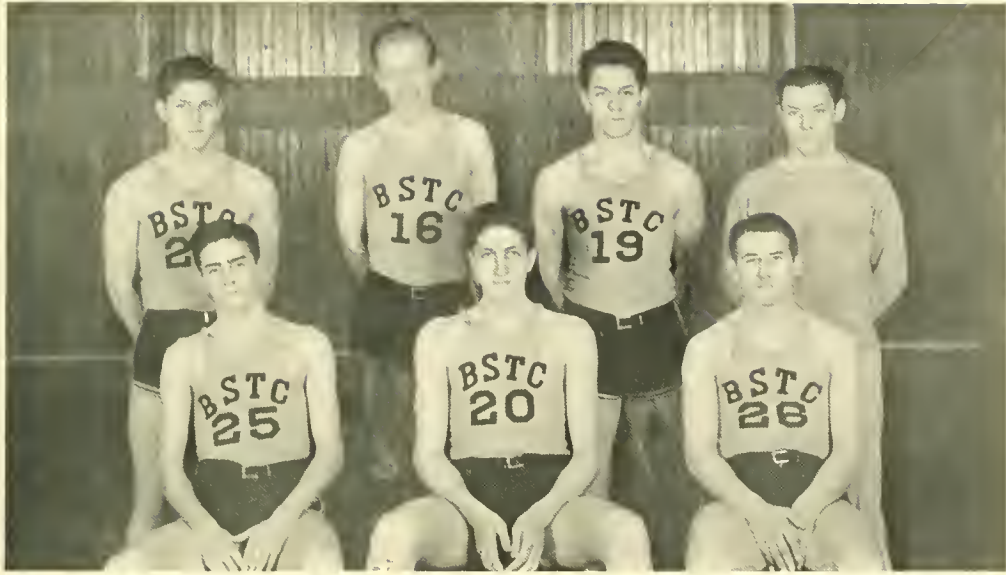
For the last three games on the schedule the Huskies took to the road against East Stroudsburg, Mansfield and Ithaca. In all three encounters Buchheit's hoopsters were tied up and they dropped every game. East Stroud ripped them apart 34-22 and then on a week-end journey Mansfield eked out a 19-18 victory that wasn't decided until the last minute of play. This was the last contest in Pennsylvania State Teachers College ranks for B. S. T. C. and with this loss they were definitely out of the championship picture. The mythical State honors were later claimed by Millersville who lost but two games, one of them to Bloomsburg. For the last game on the calendar the Maroon and Gold left the Keystone State and went to Ithaca. The Musicians again tasted the fruits of victory to score a top-heavy 46-28 win. The Bloom boys were never ahead and never threatened the New Yorker's lead.

This year's competition was the most outstanding and spectacular in Teacher's ranks. Due to this fact the Huskies' season can be said to be very successful. Ruckle and Banta both won the acclaim of their opponents and were picked on several all-opponent teams.

## RESULTS

B. S. T. C. 65, Alumni	23	B. S. T. C. 39, East Stroudsburg	34
B. S. T. C. 31, Ithaca	48	B. S. T. C. 42, Shippensburg	37
B. S. T. C. 41, Susquehanna	26	B. S. T. C. 29, Lock Haven	25
B. S. T. C. 33, Susquehanna	19	B. S. T. C. 39, Indiana	24
B. S. T. C. 32, Millersville	21	B. S. T. C. 22, East Stroudsburg	31
B. S. T. C. 30, Mansfield	22	B. S. T. C. 18, Mansfield	19
B. S. T. C. 29, Lock Haven	35	B. S. T. C. 28, Ithaca	46
B. S. T. C. 30, Shippensburg	32		
B. S. T. C. 25, Millersville	44	Total	533
		Total	486





First Row, Left to Right J. Slavin, P. Snyder, D. Blackburn  
 Standing R. Zimmerman, D. Harrison, R. Zimmerman, T. Davison

## J. V'S BASKETBALL

The Jay Vee squad under the direction of the varsity coaches continued a winning streak that was started two years ago. Several of the tussles were closely contested but in the end the varsity understudies remained on top. Jay Vee squads from other schools along with several other independent teams, were the scheduled opposition for the youngsters to work out on, and they turned in a good performance of tying them all up. Those boys who took part in this competition were Slavin, Litwhiler, Kemple, Fetterman, Koniccko, Blackburn, Snyder, Rowlands, and the Zimmerman lads.

Since the Jay Vee material becomes next year's potential varsity, a wealth of choices will be in the offering for next year's starting five.

### RESULTS

J. V.	29, Freeland A. R. S. S.	19	J. V.	51, Newport Faculty	19
J. V.	50, Susquehanna J. V.	18	J. V.	39, Intramural All Stars	36
J. V.	43, Susquehanna J. V.	13	J. V.	23, Starland A. C.	15
J. V.	33, McCann Business School	27	J. V.	31, Wanamie Bears	16
J. V.	48, Mansfield J. V.	24			
J. V.	39, Lock Haven J. V.	19	J. V.	373 Opponents	206



WALTER WOYTOVICH  
*Captain*

## WRESTLING

In their first wrestling match of the 1937 season, the Bloomsburg Huskies started out in good form. Though losing to a more experienced Mansfield squad, the exhibition put on by the Husky team was in every way interesting. Woytovich, Johnson, and Angeli turned in victories, accounting for the 13 points Bloomsburg made against the 25 points made by Mansfield.

Handicapped by ineligibility of some wrestlers in their second meeting with Mansfield, Bloomsburg was able to gain only 3 points, made by Woytovich who won on a time advantage. The third match was held against East Stroudsburg. Six points were scored by the Husky team against East Stroudsburg's 30. Woytovich won his third match of the season with another time advantage over his opponent. Earl Hunter defeated his man in the same manner.

A few of the men on the Bloomsburg squad have had experience in the wrestling game. Coach Kenneth Horner, of Shamokin, taught them many fine points, but because the more experienced of the members were ruled ineligible, the team was weakened considerably.





First Row, Left to Right R. Price, P. Traupane, S. Jones, G. Lewis, Horner (Coach), W. Woytovich, E. Bacon,  
 A. Fetterolf, G. Serafine, W. Kamasky  
 Second Row A. Angeli, E. Hunter, D. Leiser, W. Prokopchak, L. Dixon, S. Miller, M. Stenko, R. Baker,  
 W. Potter, M. Foosse, C. Welliver

### RESULTS

Bloomsburg	13	Mansfield	25
Bloomsburg	3	Mansfield	35
Bloomsburg	6	East Stroudsburg	30



GEORGE TAMALIS  
*Captain*

## BOWLING

For the first time in the history of Bloomsburg State Teachers College bowling has assumed importance. The team, with George Tamalis, Senior, acting as captain, has shown that it can go far.

Playing St. Thomas College in the opening game, the pinsters were defeated by the narrow margin of 21 points. The first game was won by the Maroon and Gold by two pins. In the second game, however, St. Thomas succeeded in finding the groove, and won by 53 pins, giving them a 51 pin advantage going into the third game. Bloomsburg came back in the third game to win by 28 pins which fell short by 22 pins of winning the match.

### TOTALS

Bloomsburg	756	785	772	2313
St. Thomas	754	836	744	2334

In the second game Bloomsburg came through on St. Thomas' home alleys to win by 83 pins.

"Tony" Salerno was high man for the three games and Keating, of St. Thomas, was high man for a single game.







Left to Right—A. Salerno, P. DeFrank, C. Klinger, G. Tamalis, C. Price, C. Wenrick

#### B. S. T. C.

DeFrank	192	221	156	569
Tamalis	151	154	171	476
Klinger	179	161	432	472
Ferrentino	167	176	220	563
Salerno	115	224	210	549
Totals	834	936	889	2659

#### ST. THOMAS

Keating	213	122	127	462
Berrettini	173	192	195	560
Yevitz	181	156	202	539
Nalevanko	165	160	155	480
Moran	167	157	181	505
Totals	929	787	860	2576

The College bowlers are also members of the local city league in which they hold third place.

## "B" CLUB

### OFFICERS

JULIA SCHLEGEL	- - - - -	<i>President</i>
SARA ELLEN DERSTAM	- - - - -	<i>Vice President</i>
JANE MANHART	- - - - -	<i>Secretary</i>
ALICE AUCH	- - - - -	<i>Treasurer</i>

The "B" Club, established nine years ago, has at the present a membership of twenty-two, exceeding that of several years past.

The purpose of the "B" Club is to promote clean, healthful sports activity for all girls concentrating on good sportsmanship.

Entrance to "B" Club is open to any active, athletically-interested girls with enough ambition to earn the required points. The point system is the basis of all awards which are numerals, "B," and chevron.

The "B" Club does not have dues. This is the only such organization on the campus which at the same time sponsors a heavy activities program. To earn money the girls sell peanuts, candy, popsicles, and hot-dogs at all athletic games.

The activities of the "B" Club are not only confined to their members but reach out to any college girl through the girls' athletic program. This includes cageball, tennis, volleyball, baseball, basketball, hockey, swimming, hiking, and tap-dancing.

Through the annual Play Day the "B" Club makes a contribution not only to the college but to surrounding communities as well. Representative girls from neighboring high schools are invited to come and join together in a day of playing games. These girls are cared for entirely by "B" Club members who, while playing hosts, incidently help to further Bloomsburg among surrounding communities.

At least once a year a grand reunion is held when active members and alumni meet for a week-end of camping. Here all new members are given a thorough initiation and from then on belong to that charmed inner-circle—a full-fledged "B" Club member.





First Row, Left to Right—H. Derr, R. Miller, D. Smith, A. Auch, J. Schlegel, J. Manhart, S. Dersham, M. Davis  
 Second Row—L. McCammon (Adviser), A. Orner, R. Lentz, M. Stevens, F. Snook, A. Ebert, S. Amerman

## “B” CLUB

### MEMBERS

Sally Amerman  
 Alice Auch  
 Marie Davis  
 Helen Derr  
 Sara Ellen Dersham  
 Ann Ebert  
 Roberta Lentz  
 Jane Manhart  
 Ruth Miller  
 Irene Moss  
 Ann Orner

Eva Reichley  
 Julia Schlegel  
 Eleanor Sharadin  
 Florence Snook  
 Muriel Stevens  
 Beatrice Thomas  
 Mary Agnes Trembley  
 Joy Andrews  
 Dorothy Sidler  
 Betly Chalfant  
 Donabelle Smith

## GIRLS' BASKETBALL

This year's basketball season consisted of one major league. The season began on November 5, and ended March 5.

The teams were organized by the girls themselves. Games were played Monday, Thursday and Friday at 4 p. m.

The following upperclass girls deserve mention of their loyalty and ability: Joyce Andrews, Helen Derr, Sara Ellen Dersham, Ann Ebert, Evelyn Freehafer, Ruth Miller, Eva Reichley, Julia Schlegel, Dorothy Sidler, Donabelle Smith.

The following Freshmen should receive special mention: Ruth Baker, Lorraine Lichtenwalner, Florence Parks, Jane Scott, Helen Seamen, Esther Sutherland, Avis Wesley, Ruth Zimmerman.

"B" Club members who officiated were Dersham, Mayan, Reichley, Schlegel, Sidler, Orner, and Amerman.



## VOLLEYBALL

Due to the outdoor courts, Volleyball was a great drawing card for the girls in the 1936 season of activities. Volleyball was played instead of cageball this year.

Teams were formed, and games were played every Monday and Friday afternoons at 6:00. Thursday afternoon was reserved for the inexperienced players. (The Volleyball season ended on November 3.) If a girl plays every game of the season, she is entitled to one hundred points. Extra games gave each player ten extra points.

The majority of those having the highest number of points were girls of the freshman class. These should receive special mention: Avonell Baumack, Margaret Blecher, Cora Lee Baumer, Jean Brush,



Dorothy Derr, Helen Derr, Alice Finnerty, Pauline Franklin, Marion Landis, Lorraine Lichtenwalner, Anne Northup, Florence Park, Jane Scott, Esther Sutherland, Avis Wesley, Margaret Youtz, Ruth Zimmerman, Carrie Yocum.

The following are those who deserve special credit as officials of the games: Sara Amerman, Sara Ellen Dersham, Roberta Lentz, Ruth Miller, Anna Orner, Virginia Roth, Julia Schlegel, Florence Snook.



## GIRLS' BASEBALL

Jack Frost's wintry breezes did not dampen the ardor of girl baseball enthusiasts. On the contrary they hailed April 2, the opening day of the baseball season, as a welcome diversion. To look at their outfits as they adorned the field, one would think they were a lost addition to a freakish circus. Since these outfits kept them warm, the girls didn't care whether they inaugurated a new fashion mode or not.

The organization of the girls was remarkably well done for femmes. The schedule preferred by the captain for bi-weekly games was, provincially speaking, a "feather in her cap."

Laurels go to the following girls who really had vitamins behind their bats: Farmer, Dersham, Reichley, Amerman, Schlegel, Ebert, Hummel, and Fester.

Sharidan, a chip off the old block, capably officiated over many tense games.

Those girls deserving honorable mention because of their good work and co-operation are: Ebert, Schlegel, Selecky, Killeri, Aberant, and Hummel.

The outstanding players deserving special recognition because of the number of runs made are: Smith, Amerman, Dersham, Reichley, Miller, and Derr.

## INTRAMURAL TENNIS

The first part of October, 1936, found the intramural tennis tournament under way with over thirty entries striving for the crown of the champion tennis player of Old Bloomsburg. After several weeks of eliminations the contest narrowed down to Walter Withka, of North Hall, and Fred Houck, Day Man. A battle royal ensued, and after a great struggle Houck emerged with the victory.

Prominent in the tournament were a large number of Freshmen who forced the upperclassmen to fight hard in order to down them. Indications point to the fact that next fall's tennis tournament will be more bitterly fought than on previous occasions.

The intramural season closed with Houck first, Withka second, Hopkins third, and Roberts fourth.



## INTERCLASS BASKETBALL TOURNAMENT

The interclass basketball tournament was won by the Junior Class who emerged from all their games undefeated. The Sophomores and Freshmen came in second and third respectively, with the Seniors last.

The Intramural Basketball Championship was decided between the Maroon and Gold divisions of the league on February 4, when the Maroon Dorm Champs and the Gold Elbow Benders fought it out. The Dorm Champs won by a 28-13 score. In composite scoring Sanger led both leagues with eighty-eight points, closely followed



by Jones, who ran up eighty markers. Member of the championship team included Zalonis, Sanger, Troutman, Captain, Klisher, and Stevens.

#### MAROON DIVISION

TEAMS	W.	L.	Pct.	TEAMS	W.	L.	Pct.
Dorm Champs	8	1	.888	Rinkey Dinks	3	4	.428
Parasites	7	2	.777	Frosh Flashes	3	4	.428
Wimpy Five	6	3	.666	So-Long Frat	1	6	.142
Alley Razor	3	4	.428	Managers	0	7	.000

#### GOLD DIVISION

TEAMS	W.	L.	Pct.	TEAMS	W.	L.	Pct.
Elbow Benders	6	2	.750	Golden Streaks	4	3	.571
College Clowns	5	3	.625	Hoosier Hot Shots	3	4	.428
Moccasin Varsity	4	3	.571	The Band	2	5	.285
Henrie's Sharps	4	3	.571	Conquerors	1	6	.142



## PING-PONG TOURNAMENT

Again this year a ping-pong king was crowned on the local tables. Nearly forty boys signed up for matches and were eliminated one by one until "Hersh" Coblentz, of Berwick, emerged with the laurels of victory. The interest was keen and many a paddle and ball were smashed when the battle became intense. Houck, Fetterman, Kantner, McKechnie, and Watts advanced to the final matches but fell before the onslaught of Strawinski and Coblentz who fought it out on the plywood. The matches ran 21-17, 21-10, 21-11, with Coblentz taking over the crown won by Prof. Koch last year. Mr. Koch was not a contender this time as he wanted to give the boys a chance.

Intramurals are a by-word of Old Bloomsburg, and each year they reach a higher standard. Football, track, tennis, ping-pong, and basketball are represented among others, but these attract the most interest.

OBITER  
1937

**In Memoriam**

To the memory of  
**MINNIE MILLER**  
who entered college  
as a Commercial Freshman,  
September 8, 1936,  
and departed  
to another institution,  
February 3, 1937







## CAMPUS RAIN

The drops come slowly,  
Smacking the pavement with flat lips.  
Invisible, a whirling shadow  
Swoops across the grove  
To twist at frightened hands.  
Unseen fingers rap  
On tear-streaked window-panes.  
A thousand feet race noisily  
Across the pointed roofs.  
In agony, a twisting flag  
Attempts to flee sharp, shredding blows.

JAY PURSEL.

# OBITER 1937

## POPLARS AND STARS

Sharp spears, dark shadows in the night, lunge high  
To strike at silver hearts  
Of soft, vibrating silver sparks.  
Tall points thrust deep for an eternity . . .  
Across the turning dome of blue-black night  
Cold, silver blood cascades in silver waves.

JAY PURSEL.





# ORGANIZATIONS

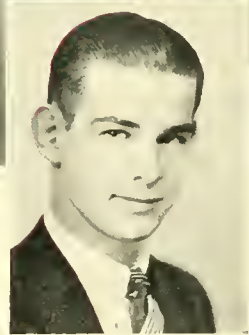
---

# OBITER 1937

FRANK CAMERA  
*President*



JANE MANHART  
*Secretary*



ALEX McKECHNIE  
*Vice President*



CLYDE KLINGER  
*Treasurer*

## COMMUNITY GOVERNMENT ASSOCIATION

### OFFICERS

FRANK CAMERA	- - - - -	<i>President</i>
ALEX McKECHNIE	- - - - -	<i>Vice President</i>
JANE MANHART	- - - - -	<i>Secretary</i>
CLYDE KLINGER	- - - - -	<i>Treasurer</i>

The Community Government Association celebrated its tenth anniversary during the year, having been established in 1927. It consists of all members of the student body in addition to faculty members. The nature and purpose of this body is embodied in its





First Row, Left to Right—J. Kich, L. Blass, W. Suthiff, M. Stevens, A. McKechnie, F. Camera, J. Manhart,  
C. Klingler, P. Lonergan, A. Lapinski, E. Ranson  
Second Row—M. Davis, E. Hunter, B. Rich, R. McBride, W. Thomas, A. Tate, G. Buchheit, G. Tamulis, A. Aueb,  
N. Maza, R. Price, M. Graham

name—Community Government Association. Its aim is to bind the students, faculty, and administration together in order to produce better co-operation. This organization also cultivates responsibility, initiative, and progressiveness among the students—individually and as a group.

As they demonstrate their ability to cope with situations more power and responsibility have been given the association.

The organization is a member of the National Student Federation of America, and the Pennsylvania Association of College Students. Delegates are sent whenever possible to conventions of these bodies to learn of new trends and ideas, and consequently, improvements in college life.

During the past year two delegates were sent to New York City to the N. S. F. A. convention, and four delegates were sent to Lehigh University to the P. A. C. S.

The college as a whole acts as a host to entering freshmen registering two days before college opens and during this time they are guests of C. G. A. It is every member's duty to help acclimate these freshmen to college life.

## WALLER HALL GOVERNING BOARD

### OFFICERS

MARIE DAVIS	- - - - -	<i>President</i>
DEBORAH JONES	- - - - -	<i>Vice President</i>
ANNA EBERT	- - - - -	<i>Recording Secretary</i>
TIRZAH COPES	- - - - -	<i>Corresponding Secretary</i>
BETTY GILLIGAN	- - - - -	<i>Treasurer</i>

The Waller Hall Student Government Association is organized for the purpose of handling dormitory problems and to work with other college organizations. The Governing Board is the legislative, executive, and judicial body of the main association.

The following committees are appointed each year to take care of their respective activities. The committees are named with the chairman for this year:

<i>Freshman Adviser</i>	- - - - -	MARY PALSGROVE
<i>Upperclass Adviser</i>	- - - - -	AMANDA JEAN WALSH
<i>Customs</i>	- - - - -	ADELE SEITZINGER
<i>Social</i>	- - - - -	MARY QUIGLEY
<i>House</i>	- - - - -	ALBERTA BRAINARD
<i>Recreation</i>	- - - - -	CORNELIA MCGINNIS
<i>Finance</i>	- - - - -	ANNA MALLOY
<i>Program</i>	- - - - -	RUTH LANGAN
<i>Supervisor</i>	- - - - -	DEBORAH JONES
<i>Fire Commissioner</i>	- - - - -	MARTHA DREESE

A glance at the past year's calendar will give some idea of the many activities of the Association:

- September 11—Floor Party for Freshmen
- September 16—Customs Begin
- October 5—First Room Judging by Faculty and Students
- October 16—Customs End
- October 17—Homecoming Day
- November 5-8—Intercollegiate Association at Washington
- November 23—Freshman Nominations to Governing Board
- December 12—Christmas Party for Crippled Children
- March 18—Room Judging by A. A. U. V.
- April 23—He-She Party





First Row, Left to Right—D. Edgar, A. Walsh, A. Ebert, B. Gilligan, M. Davis, D. Jones, T. Coppes, E. Justin, M. Faust  
 Second Row—J. Capwell, H. Powell, A. Bailey, R. Bishop, Dr. Kehr, Miss Rich, A. Evans, M. Deppen, A. Malloy

## WALLER HALL GOVERNING BOARD

### REPRESENTATIVES

#### *Seniors*

Ann Ebert	Amanda Jean Walsh	Edith Justin
-----------	-------------------	--------------

#### *Juniors*

Dorothy Edgar	Anna Malloy	Betty Gilligan
---------------	-------------	----------------

#### *Sophomores*

Tirzah Coppes	Annabelle Bailey	Margaret Deppen
---------------	------------------	-----------------

#### *Freshmen*

Ruth Bishop	Helen Powell	Jean Capwell
-------------	--------------	--------------

#### *Members Ex-Officio*

Dr. Kehr	Miss Kline	Miss Rich
----------	------------	-----------

# OBITER 1937

## DAY WOMEN'S ASSOCIATION

The Day Women's Association is an organization composed of all women students living outside of the college dormitories.

The object of the organization is to promote the general welfare of the day students and to co-operate with the Waller Hall organization in matters affecting all girls of the college.

Many worthwhile activities have been carried on during the past year and the girls are justly proud of their organization. One very successful project was the welcoming of Freshmen during their classification and registration days. At this time a committee of advisors was on hand to welcome and assist the Freshmen and to help them become acquainted with each other, and with the college in general. This was accomplished through the medium of association with upperclass girls and by several social events held in the Day Women's rooms.

Other projects worthy of mention are the Supper-Party for all Day Women, the He-She Party, caring for needy families of the town at Christmas time, and assisting in any community activities of the college.







Front Row, Left to Right—D. Wenner, E. Baum, J. Stinagle, L. Adams, B. Savage, M. Wright, M. Creasy, R. Leiby, E. Ranson, M. Berger, M. Graham, M. Miller, C. Grover, B. Dietrick  
 Second Row—E. Hart, D. Kaeslner, V. Grohal, H. Gotshall, E. Ludwig, H. Troy, D. Long, A. Zehner, L. Durlin, M. Stine, E. Baum, M. Zehner, D. Derr, M. Blecher, R. Dugan  
 Third Row—D. Selecky, H. Weaver, L. Hummel, M. Mears, J. Andrews, D. Sidler, M. Weikel, P. Fester, J. Smith, E. Unger, V. Heimbach, E. Boud, B. Corle, B. Blaine, M. Patterson, M. Simon, B. Jones  
 Fourth Row—L. Buck, L. Johnson, J. Manhart, M. Johnson, M. Lomergan, A. Orner, B. Kirchman, A. Reed, E. Sharadin, H. Hartman, H. Keller, E. Hosler, S. Tubbs, J. Lewis, H. Harman, K. Walp, V. Frey

## DAY WOMEN'S ASSOCIATION

The members of the Official Board, the Governing body of the organization, are as follows:

MARGARET GRAHAM	- - - - -	<i>President</i>
RUTH LEBBY	- - - - -	<i>Vice President</i>
MARGARET CREASY	- - - - -	<i>Secretary</i>
JANE LOCKARD	- - - - -	<i>Treasurer</i>
BETTY SAVAGE	- - - - -	<i>Social Committee Chairman</i>
MURIEL STEVENS	- - - - -	<i>House Committee Chairman</i>
MARIA BERGER	- - - - -	<i>Customs Committee Chairman</i>

Two Freshmen representatives to the Official Board are selected by the Freshmen Day Women for the second semester. They are Fay Gehrig and Vivian Frey.

# OBITER 1937

## DAY MEN'S ASSOCIATION

The Day Men's Association, composed of over two hundred men students living off campus, continued to show the way among the various college organizations.

The Men's quarters are located in the basement of North Hall where the men may enjoy, in addition to smoking, eating, and studying—listening to a fine radio purchased this year through the cooperation of the members. Facilities are also provided for recreational games, chief of which is ping-pong.

During the year, the association presented its annual chapel program. It proved to be very entertaining and student comment was openly expressed in favor of the entertainment.

Many of the members participated in various intercollegiate and intramural sports. Clyde Klinger, President-elect of Community Government Association, is a member of the association.

Acting as advisors during the year were Coaches Buchheit and Tate.





First Row, Left to Right—C. Klinger, W. Tannery, W. Finney, R. Heckenluber, J. Wanieli, E. Havilicka, P. Martin, R. Aul, J. Kushman, J. Macznaga, N. Henry, J. Heudler, S. Schuyler, W. Krieger, H. Kahler, J. Pursel

Second Row—M. Stenko, M. Sophikar, W. Hartman, W. Yorwarth, D. Troy, R. Ohi, M. Klembara, R. Nolan, E. Hunter, F. Patrick, A. Fettonoff, L. Bartels, A. Hydik, P. Snyder

Third Row—H. Penman, R. Clemens, C. Hower, R. Zimmerman, B. Shiner, J. Parcell, R. Kantuar, V. Laubach, R. Auten, J. Shaluka, E. Vaughn, R. Roberts, C. Girton, C. Bauna, J. Slaven, N. Riehle, C. Wenrich, W. Shutt, M. Foose

Fourth Row—A. Yenny, R. Reimard, A. Fetterman, J. Pugh, R. Strausser, J. Champf, H. Coblentz, W. Yeats, A. McKechnie, R. McBride, W. Christian, W. Moratelli, G. Caesari, A. Clauser, J. Marks, J. Hancock, E. Houck, D. Baker, S. Zelesky, R. Hopkins

## DAY MEN'S ASSOCIATION

### OFFICERS

EARL HUNTER	-	-	-	-	-	-	-	-	-	-	-	-	-	-	-	-	-	<i>President</i>
FRANK PATRICK	-	-	-	-	-	-	-	-	-	-	-	-	-	-	-	-	-	<i>Vice President</i>
RICHARD NOLAN	-	-	-	-	-	-	-	-	-	-	-	-	-	-	-	-	-	<i>Secretary</i>
EARL GEHRIG	-	-	-	-	-	-	-	-	-	-	-	-	-	-	-	-	-	<i>Treasurer</i>

# OBITER 1937

## NORTH HALL

North Hall has enjoyed a happy and pleasant year. With every room in the building filled there is plenty of excitement at all times.

The beginning of the year found the upperclassmen living like kings with the green gentlemen serving their needs. The "Frosh" are few that have not been roused from bed and sent on some errand or deed for the mighty upperclassmen at midnight.

Other things enjoyed during the year have been smokers, music, and entertainment programs by the talented and versatile members. Probably outstanding among musical groups in the building have been the Third Floor Mixed Chorus which has warbled its way into the hearts of every one.

Card playing reached a new high among those who frequent the lobby of North Hall. A damaged radio was finally fixed after much insistence on the part of those who listen to radio "thrillers."





First Row, Left to Right—R. Schroepe, J. Kotseh, W. Withka, G. Tamalis, R. Price, J. Zalowski, S. Jones, R. Rowlands, S. Esmond  
 Second Row—M. Chismar, G. Serafin, J. Mondschine, R. Hill, A. Salerno  
 Third Row—L. Blass, S. Pavlick, P. McHale, W. Davies, C. Kelchener, D. Leiser, R. Evans  
 Fourth Row—R. Sanger, T. Davison, D. Litwhiler, R. Diehl, W. Prokopenchak, L. Richetti, B. Beaver  
 Fifth Row—W. Zeiss, P. Frankmore, J. Conahan, S. Banta, E. Mulhern, N. Mazu  
 Sixth Row—J. Koch, V. Cimpegrammi, J. Koch, Jr., E. Bacon, J. Jones, A. Washofeski, J. Supchinsky, D. Kemple, J. Plovyak, J. Ferrentini, L. Troutman, C. Price, F. Johnson, P. VanDexender, A. Giermak, C. Wenrick, A. Lapinski, W. Potter, B. Barudt, F. Camera, H. T. Nelson, E. Christmas

## NORTH HALL

### OFFICERS

GEORGE TAMALIS	-	-	-	-	-	-	-	-	<i>President</i>
LAMAR BLASS	-	-	-	-	-	-	-	-	<i>Vice President</i>
JACOB KOTCH	-	-	-	-	-	-	-	-	<i>Secretary</i>
ROBERT PRICE	-	-	-	-	-	-	-	-	<i>Treasurer</i>

## STUDENT COUNCIL

The Student Council is the executive division of the Community Government Association; it conducts all business.

Possible legislation, suggestions, violations, grievances, and any other problems are presented to the Student Council through two possible channels. Information may be given through representatives from four subordinate college organizations: Waller Hall, Day Women's Association, North Hall, and Day Men's Association, or through student representatives of each class. Thus every student is directly represented on the Student Council.

Since all problems are worked out with the co-operation of the entire student body, better community life is secured.

Committees, appointed by the president, take care of the many duties necessary for a smooth running community. There are fourteen such committees, including social, hospitality, assembly, dining-room, customs, fire-drill, pep, relations to other colleges, entertainment, awards, hand-book, and two new ones—election board and public affairs. In addition to discharging these duties the Student Council, acting for the Community Government Association, sponsors several dances throughout the year.

The following officers act in that capacity to both Community Government Association and the Student Council:

FRANK CAMERA	- - - - -	<i>President</i>
ALEX MCKECHNIE	- - - - -	<i>Vice President</i>
JANE MANHART	- - - - -	<i>Secretary</i>
CLYDE KLINGER	- - - - -	<i>Treasurer</i>

### REPRESENTATIVES

<i>Seniors</i>		
Lamar Blass	Alvin Lapinski	Muriel Stevens
<i>Juniors</i>		
William Thomas	Robert Price	Alice Auch
<i>Sophomores</i>		
Roy Evans	Ray McBride	Marguerite Lonergan
<i>Freshmen</i>		
Norman Maza	Isaac Jones	Frances Ward
<i>North Hall</i> , George Tanalis		<i>Day Men</i> , Earl Hunter
<i>Waller Hall</i> , Marie Davis		<i>Day Women</i> , Margaret Graham





## THE LAGOON

By day the lovely gold fish play  
As in and out the sun's bright ray  
Comes sifting, drifting thru  
The tall tree tops and down to you.  
At night the stars come peeping where  
Like diamonds on a bosom fair,  
They see themselves all mirrored bright  
And add their beauty to the night.  
But hark, the midnight hour  
Comes booming from the white clock tower.  
The moon by gliding cloud is veiled  
The winds arouse—some ceature wailed.  
The old frog yawns a sleepy croak  
The wise old owl peeps from the oak.  
Then patter, patter, little feet  
The fairies come, the pixies meet.  
High revel hold they 'round the pool  
They shout like children out of school.  
Hush!—in East's a streak of light  
They scamper, scatter all in fright  
While in the pool the gold fish play  
The sun comes out—another day!

W. B. SUTLIFF.

## Y. W. C. A.

The Young Women's Christian Association, always one of the largest organizations on the campus, again feels that it has completed a very active and successful year.

A broader program for Freshmen orientation was undertaken in addition to the annual "welcome tea" for the women students entering college.

Each year one money-making event is carried out by the "Y." This year, this project was a "Gypsy Bazaar" which was carried to success by the co-operation of all the members. However, we wish to acknowledge our appreciation of the advice and help which members of the administration staff gave to us.

The profit which was made by this bazaar was used in various ways: A generous Christmas gift was sent to a worthy Bloomsburg mother and her four small children; two delegates attended the Winter Student Christian Movement Conference in the Poconos; delegates were sent to the smaller conferences and seminars; a banquet, parties, and entertainment were provided for the "Y" girls; a contribution was made to the Red Cross for flood aid; and the Girls' Saxophone Band of the Evangelical Home at Lewisburg was brought to the college chapel program under the auspices of the "Y."

Many interesting and inspiring speakers were brought to the regular weekly meetings which were arranged and planned by members of the organization.

So with pride and satisfaction, the Y. W. C. A. looks back on another successful year under the leadership and guidance of Miss Pearl L. Mason, faculty sponsor.







Front Row, Left to Right—H. Bredbenner, E. Jenkins, B. Thomas, R. Miller, F. Snook, A. Babb, G. Brennan, R. Kramm, M. Foust, P. Mason, A. Bailey, A. Bradhard, H. Weaver, A. Foley, J. Brush, T. Coppes, M. Williams  
 Second Row—G. McCoy, D. Marr, G. Bird, M. Stehinger, E. Everard, H. Senman, B. Roberts, M. Stine, M. Weikel, J. Campbell, F. Stefanski, G. Richards, R. Cherundells, A. Thornton, M. Chernud, L. Lichtenwacher, E. Sutherland, M. Miller, M. Youtz, L. Yeager, R. Baker, H. Lowry, L. Shook, C. Lee, H. Brouse, T. Lerew  
 Third Row—J. Lesser, C. Bell, C. Baunick, M. Wagner, A. Northup, S. Tubbs, F. Tinsand, P. Park, C. Yocum, A. Wesley, G. Killeri, A. Hemmuth, E. Rieben, H. Derr, C. Krieger, A. Reeh, J. Moss, P. Fester, P. Hummel, B. Pritz, A. Herman, H. Harman, G. Jones, S. Atland

## Y. W. C. A.

### OFFICERS

MARIE FOUST	- - - - -	<i>President</i>
RUTH KRAMM	- - - - -	<i>Vice President</i>
DEBORAH JONES	- - - - -	<i>Recording Secretary</i>
ANNABEL BAILEY	- - - - -	<i>Treasurer</i>

# OBITER 1937

## Y. M. C. A.

### OFFICERS

JACOB KOTSCH, JR.	- - - - -	<i>President</i>
ALVIN LAPINSKI	- - - - -	<i>Vice President</i>
JOHN JONES	- - - - -	<i>Secretary</i>
ROBERT PRICE	- - - - -	<i>Treasurer</i>
S. I. SHORTESS	- - - - -	<i>Sponsor</i>

The Y. M. C. A. started off in the fall of '36 with about seventy-five members, a larger representation than that of the previous year.

The Welfare Committee composed of Philip Frankmore, Chairman, and the officers of the organization welcomed the Freshmen, and began the membership drive during the registration of the Frosh. Jacob Kotsch, Jr., President, addressed the group of Freshmen in chapel. Following the talk, the group was entertained by the Cabinet at the home of Professor Shortess.

Several socials were held during the first semester with a trip to the Danville Y. M. C. A., which the group enjoyed considerably.

The customary Christmas Party held for the crippled children proved to be very delightful and entertaining. Gifts were presented by Philip Frankmore, who played the part of Santa Claus. John Plevyak, accordionist, and Willard Kreigh, pianist, entertained with musical selections.

Through the courtesy of Mr. John Lyle, the organization was given an opportunity to visit the Magee Carpet Mill. A guide explained the carpet manufacturing process from beginning to end. Transportation was furnished by Mr. Lyle.

New members were admitted the second semester. Having enjoyed the first trip to Danville, the fellows decided to make another visit. A "doggie roast" was held at Dillon's Hollow.





First Row—Left to Right—A. Fetter, W. S. Parnak, R. Evans, R. Diehl, S. I. Shortess, J. Kitchin, A. Lajowski,  
 J. Jones, W. Kozminski, P. Frickman, W. Davies  
 Second Row—J. Rim, R. Heckenlauer, W. Prapomak, L. Ricchetti, F. Visintainer, C. Kelechner, W. Yarwata,  
 E. Pawa, C. Monahan, J. Mondshine, E. Szafrak, D. Anzelo, G. Sarp, W. Rowlands  
 Third Row—D. Harp, T. Jenkins, W. Richter, I. Jones, J. Pionak, A. Washeleski, C. Harwood, M. Brisas,  
 E. Christmas, R. Sanger, R. Yerger, S. Esmond

## Y. M. C. A.

The newly-elected officers attended the Y. M. C. A. Spring Conference held at Elizabethtown College, Elizabethtown, Pennsylvania, on April 23-24-25. The officers are: Roy Evans, President; Charles Kelechner, Vice President; John Mondshine, Secretary; and Robert Diehl, Treasurer.

Speakers during the year were: Dr. Francis B. Haas, Mr. Harry Barton, Dr. Nelson, Mr. Forney, Mr. Harry Gintzer, Secretary, State Y. M. C. A.; Mr. Yeany, Dr. Kuster, Mr. John Lyle, Mr. Reams, Mr. Evans, Superintendent of Public Schools, and Mr. Shortess.

A panel composed of Messrs. Tony Salerno, Chairman, Robert Hill, Robert Price, Robert Diehl, Larry Ricchetti, Joseph Zelewski, and Earnest Christmas discussed the "Supreme Court Situation." The members took an active part during the open discussion.

## COLUMBAN CLUB

Organized at the beginning of the 1936-37 school year, the Columban Club has proved to be one of the outstanding off-campus organizations. It is affiliated with other Catholic organizations in the State Teachers Colleges.

Various activities which this group has engaged include entertainments, guest speakers, social affairs. The year was concluded with a dance in April and a banquet in May. The Columban Club met every third Thursday of the month in the parish social rooms. The officers for the year were:

THOMAS REAGAN	- - - - -	<i>President</i>
EDWARD GARVEY	- - - - -	<i>Vice President</i>
BETTY GILLIGAN	- - - - -	<i>Secretary</i>
HULEN MCGREW	- - - - -	<i>Treasurer</i>



## LUTHERAN STUDENT GROUP

Another new off-campus organization came into being in the fall of 1936 in the form of the Lutheran Student Group. Composed of over one hundred members the group has enjoyed a year of growth, both in numbers and co-operation. It is a part of United Lutheran Student Group of America.

Meetings are held every third Tuesday of the month. Social affairs in the recreation hall and gymnasium, and refreshments in the lunch hall have been enjoyed during the year.

The new organization has been honored by the selection of one of its members, Miriam Utt, as secretary of the North Atlantic Region.

The officers are:

JAY PERSEL	- - - - -	<i>President</i>
MIRIAM UTT	- - - - -	<i>Vice President</i>
EVELYN FREEHAFER	- - - - -	<i>Secretary</i>
JACOB KOTSCH	- - - - -	<i>Treasurer</i>





## LAST VACATION

The tread of feet is gone;  
The silent days move on  
To meet with memory . . .  
Soft laughter is not here  
To kiss awake—to free  
Dead echoes. Oh, to see  
Again old friends appear!

JAY PURSEL.

### MIXED CHORUS

The Mixed Chorus of the college was very active during the year 1936-37. In the fall the Chorus sang at institutes held at the college. At the last college assembly in December, the Chorus presented a program of Christmas music, using carols, anthems, and choruses from oratorios. On the evening of Kiwanis-Rotary College Night, the Chorus sang "The Heavens Are Telling" from "The Creation." For the spring concert, given the evening of April 22, the college orchestra and the A Cappella Choir participated in the program with the Mixed Chorus. The program was given for the benefit of the new organ fund.

#### OFFICERS

HARRIET M. MOORE, *Director*  
 MRS. JOHN K. MILLER, *Accompanist*

ANNA JEAN LAUBACH	- - - - -	<i>President</i>
JULIA SCHLEGEL	- - - - -	<i>Vice President</i>
AMANDA JEAN WALSH	- - - - -	<i>Treasurer</i>
ANNA MALLOY	- - - - -	<i>Secretary</i>
JOCELYN ANDREWS	- - - - -	<i>Librarian</i>

#### PERSONNEL

##### *First Soprano*

Andrews, Jocelyn M.	Gehrig, Fay	Reilly, Violet
Baum, Edith	Gilligan, Betty	Reynolds, Bernadette
Beckley, Eleanor	Good, June R.	Richard, Josephine
Bishop, Ruth	Gotshall, Hazel	Richards, Grace
Bleeker, Margaret	Griffith, Megan	Rieben, Evaline
Breitenbach, Virginia	Grohla, Veronica	Reigle, Paulyne
Boudman, Minnie	Hart, Elizabeth	Rinard, Muriel
Buck, Ann	Hartman, Helen M.	Roan, Rita
Burns, Alacoque	Hayes, Wilhelmina	Roberts, Betty
Campanell, Catherine	Hess, Dorothy	Scott, Esther
Capwell, Jean	Hummel, Letha	Simon, Mildred
Chelland, Mildred	Jenkins, Elizabeth	Smith, Margaret M.
Collett, Betty	Johnson, Lois	Snyder, Lorraine
Cooper, Eleanor	Jones, Gladys E.	Stefanski, Florence T.
Culp, Hannah	Justin, Alice G.	Stine, Mary
Cunningham, Catherine	Justin, Edith	Stinson, Wanda M.
Darrow, Jane	Keller, Edna	Thomas, Beatrice
Davis, Mary	Keller, Hannah	Thomas, Rosetta
Derr, Helen M.	Kuapp, Irene	Thornton, Alma
Durlin, Louise	Kokora, Anna	Troy, Rowena
Faumer, Lois	Kramm, Ruth	Walsh, Amanda Jean
Finnerty, Alice	Long, Joyce	Weikel, Mae E.
Foley, Alice	Livsey, Carrie M.	Wenner, Dorothy J.
Follmer, Vera	Mears, Mary Helen	Wenner, Gladys M.
Forte, Wilma	McCawley, Betty	Yanosik, Helen
Freas, Iris	Moss, Jean	Yeager, Jane
Frey, Vivian	Northup, Anne	Zelner, Martha
Gambal, Vera	Pesansky, Helen	Zondlo, Louise
	Reese, Leah	

##### *Second Soprano*

Arcikosky, Emily	Greenly, Katharine	Naylis, Florence
Bailey, Annabell	Gners, Grace M.	Rakoski, Irene
Biggar, Helen	Hennemith, Alice	Recl, Anna
Boyle, Mary	Jones, Gwladys	Reilly, Eleanor
Buck, Louise	Jones, Rachel	Roth, Virginia
Derr, Dorothy	LaBarr, Dorothy	Scott, Jane
Englehart, Dorothy	Leiby, Ruth	Shook, Lottie C.
Elmore, Marion	Lockard, Jane	Sidler, Dorothy E.
Evans, Ann	Malloy, Anna	Smith, Margaret M.
Evans, Mary	Mayan, Helen	Tadrick, Julia Ann
Evans, Martha H.	Miller, Mary	Thomas, Elizabeth
Franklin, Pauline	Morgan, Ann R.	Zehner, Alice Mae
Goldsmith, Charlotte		





## MIXED CHORUS

### *First Alto*

Baker, Ruth Louise  
 Bell, Catherine  
 Berninger, Margaret  
 Brainard, Alberta H.  
 Brouse, Helen  
 Cherundalo, Rosella  
 Conner, Glenda  
 Creasy, Margaret  
 Curry, Anne

Foust, Marie E.  
 Grosek, Anna J.  
 Grosek, Mary  
 Houseknecht, Rose Mary  
 Heimbach, Virginia  
 Landis, Marion  
 Laubach, Anna Jean  
 Lentz, Roberta

Leedom, Katherine G.  
 Lockoff, Donna  
 Long, Dorothy  
 MacCall, Emily  
 Manhart, Jane  
 McCreary, Louise  
 Miller, Dorothy  
 Miller, Ruth H.

Moore, Florine  
 Sman, Helen  
 Snook, Florence  
 Taylor, Marion  
 Turse, Rose  
 U'H, Miriam  
 Wagner, Pearl  
 Williams, Maude

### *Second Alto*

Beaver, Marjorie  
 Fekula, Olga  
 Hamer, Mary

Powell, Helen  
 Schlegel, Julia I.

Steininger, Margaret  
 Tubbs, Sara

Ward, Frances  
 Ward, Margaret

### *First Tenor*

Diehl, Robert  
 Peck, Luther A.

Pugh, James G.

Rim, James N.

Troy, Dale H.

### *Second Tenor*

Bartish, Jos. W.  
 Davies, Willard  
 Frankmore, Philip B.

Grohal, Andrew  
 McCutcheon, George

Monahan, Cyril G.  
 Patrick, Frank T.

Payne, Herbert  
 Shiner, Byron  
 Shirley, Richard W.

### *First Bass*

Baker, Donald  
 Carlin, John  
 Gehrig, Earl

Jones, Isaac  
 Kocher, Frank  
 Kotsch, Jacob

Kreigh, Willard  
 Lehet, George  
 Price, Robert

Sharp, George  
 Visintainer, Fred

### *Second Bass*

Girton, Charles S.  
 Goodman, Robert

Parsell, Theodore  
 Rarich, Glenn

Schrope, Ray  
 Thomas, William

Hower, Luther  
 Michael, Charles P.

# OBITER 1937

## A CAPPELLA CHOIR

HARRIET M. MOORE, *Director*  
JOHN ANDREAS, *Pianist*

### OFFICERS

RAY SCHROPE	- - - - -	<i>President</i>
JACOB KOTSCH	- - - - -	<i>Vice President</i>
HANNAH KELLER	- - - - -	<i>Secretary</i>
FLORINE MOORE	- - - - -	<i>Treasurer</i>
CHARLES GIBTON	- - - - -	<i>Librarian</i>

The A Cappella Choir began its second year of study in the fall of 1936 with a membership of thirty-four. In addition to the regular choir members, there were four substitutes selected who rehearsed with the choir and filled vacancies that occurred in the choir membership.

The choir rehearsed weekly, and participated in many programs. At the Columbia County Institute held at the college, the choir made its first appearance wearing the new gold-trimmed, maroon choir robes. Other appearances of the choir were at the college assembly program of Christmas music; the first college broadcast from the Sunbury station; a Parent-Teacher Program at the Sunbury High School; the annual Kiwanis-Rotary-College Night Program; the annual Spring Concert; the Philadelphia Alumni Association dinner at Philadelphia; and at the college Baccalaureate service.

The choir was under the direction of Harriet M. Moore, and John Andreas was pianist.







First Row, Left to Right—D. Troy, M. Boudman, M. Ward, C. Livsey, A. Foley, L. Snyder, M. Hamer, B. Collett,  
 J. Lewis, M. Utt, F. Ward, R. Diehl  
 Second Row—P. Reigle, A. Brainard, C. Girton, F. Moore, R. Schrope, H. M. Moore, J. Kotsch, H. Keller,  
 R. Goodman, R. Price  
 Third Row—J. Pugh, F. Gehrig, P. Frankmore, J. Andreas, F. Patrick, L. Peck, C. Michael, T. Parsell, M. Creasy,  
 G. Rarich

## A CAPPELLA CHOIR

### PERSONNEL

#### *Soprano*

Minnie Boudman  
 Betty Collett  
 Eleanor Cooper  
 Alice Foley

Fay Gehrig  
 Hannah Keller  
 Carrie Livsey

Mary Helen Mears  
 Paulyne Reigle  
 Betty Roberts  
 Lorraine Snyder

#### *Tenor*

Joseph Bartish  
 Robert Diehl  
 Philip Frankmore

Frank Patrick  
 Luther Peck

James Pugh  
 James Rim  
 Dale Troy

#### *Alto*

Alberta Brainard  
 Margaret Creasy  
 Mary Hamer

Roberta Lentz  
 Florine Moore  
 Rose Turse

Margaret Ward  
 Frances Ward  
 Miriam Utt

#### *Bass*

Charles Girton  
 Robert Goodman  
 Frank Kocher

Jacob Kotsch  
 Charles Michael  
 Theodore Parsell

Robert Price  
 Glen Rarich  
 Ray Schrope

# OBITER 1937

## MAROON AND GOLD BAND

### OFFICERS

EDWARD GARVEY	- - - - -	<i>President</i>
ROBERT WILLIAMS	- - - - -	<i>Vice President</i>
ROBERT OILL	- - - - -	<i>Secretary</i>
RAY McBRIDE	- - - - -	<i>Treasurer</i>
ROBERT WILLIAMS	- - - - -	<i>Drum Major</i>
HOWARD F. FENSTERMAKER	- - - - -	<i>Director</i>

The Maroon and Gold Band affords an opportunity, to those who are interested, to participate in ensemble playing. The organization also aims to build college spirit by providing spirited music for athletic contests and pep meetings. The band played at all of the home games during the football season, and also accompanied the team to Lock Haven and East Stroudsburg. One of the features of the Homecoming Day program is a concert by the Maroon and Gold Band in the gymnasium. The band also takes part in the annual Rotary-Kiwanis College evening.





Left to Right—N. Cook, Moleski, J. Kushma, H. Kahler, G. Lehet, J. Baraniak, W. Yorwarth, R. Ohl, M. Strahosky, H. Fenstermaker, W. Penny, E. Houck, R. McBride, I. Bomboy, C. Henri, R. Reimard, F. Kocher, F. Worman, R. Williams, R. Roberts, J. Gehrig, W. Woytovich, P. Martin, J. Rim, C. Girton, A. McKechnie

## MAROON AND GOLD BAND

### PERSONNEL

#### *Cornets*

Edward Garvey  
Charles Henric  
Alfred Koczansky  
Phillip Moore  
Walter Woytovich  
Paul Martin

#### *Saxophone*

Earl Gehrig  
Robert Williams  
Isaiah Bomboy  
Clyde Klinger  
Robert Reimard  
Earl Houck

#### *Baritone*

Alex McKechnie

#### *Alto*

Joseph Baraniak  
William Yorwarth

#### *Tuba*

Frank Kocher

#### *Clarinet*

Robert Ohl  
Zigmund Moleski  
J. William Penny  
John J. Kushma  
Elwyn Vaughn  
Harry Kahler

#### *E-Flat Clarinet*

Ned Cook

#### *Trombone*

John Gering  
James Rim  
Charles Girton  
Roy Roberts

#### *Flute*

Eunice Laubach

#### *Snare Drum*

Ray McBride  
Vince Cinquegrani  
Myles Edwards

#### *Bass Drum*

Ray G. Schrope

#### *Cymbals*

George Lehet

## MAROON AND GOLD ORCHESTRA

### OFFICERS

EDWARD GARVEY	- - - - -	<i>President</i>
MARIE DAVIS	- - - - -	<i>Vice President</i>
ROBERTA LENTZ	- - - - -	<i>Secretary</i>
ROBERT WILLIAMS	- - - - -	<i>Treasurer</i>
H. F. FENSTEMAKER	- - - - -	<i>Director</i>

The Maroon and Gold Orchestra plays an important part in the life of the College. It provides music for dramatic presentations and for events that take place in the dining room. Small ensembles, drawn from the orchestra, provide music for various social affairs. Some of the affairs at which the orchestra, either as a whole or in part, have participated are as follows:

- President's Reception.
- Homecoming Day.
- Rural Life Conference.
- Democratic Dinner.
- Kiwanis-Rotary Dinner.
- Athletic Banquet.
- May Day.
- Alumni Banquet.

The orchestra assists the Mixed Chorus and the A Cappella Choir in presenting the annual concert of the combined musical clubs. The high light of the year, as far as the members are concerned, is the trip to Philadelphia, when the orchestra plays for the annual banquet of the Philadelphia Alumni Association, held at the Bellevue-Stratford Hotel.





Left to Right—E. Shiffka, G. Lehet, P. W. Moore, R. Singer, H. Koehler, M. Bonin, M. Palsgrove, R. Radcliffe,  
E. Laubach, R. Ohl, W. Pegg, C. Henrie, A. Curry, H. Fenstermaker, I. Bomboy,  
C. Girtan, R. Williams, C. Rim, M. Davis, A. McKechnie

## MAROON AND GOLD ORCHESTRA

### PERSONNEL

#### *First Violin*

Zigmund Moleski  
Benjamin Singer  
Earl Gehrig  
Phillip Moore  
Mary Palsgrove  
Mildred Bonin  
Marian Metcalfe  
Eleanor Shiffka

#### *Second Violin*

George Lehet  
Eugene Sharkey

#### *Bass Viol*

Phillip Moore

#### *Clarinet*

Robert Ohl  
William F. Pegg

#### *Flute*

Roberta Lentz  
Eunice Laubach

#### *Saxophone*

Robert Williams  
Marie Davis  
Anne Curry  
Isaiah Bomboy

#### *Trumpet*

Edward Garvey  
Charles Henrie  
Edward Warman

#### *Trombone*

James Rim

#### *Euphonium*

Alex McKechnie

#### *Piano*

Ruth Radcliffe  
Harriet Koehler

## POETRY CLUB

The Poetry Club of Bloomsburg State Teachers College was organized in October, 1935. The primary purpose of the organization of this club was to instill into the members a deeper appreciation of poetry, both early and modern, and to encourage them to write original verse.

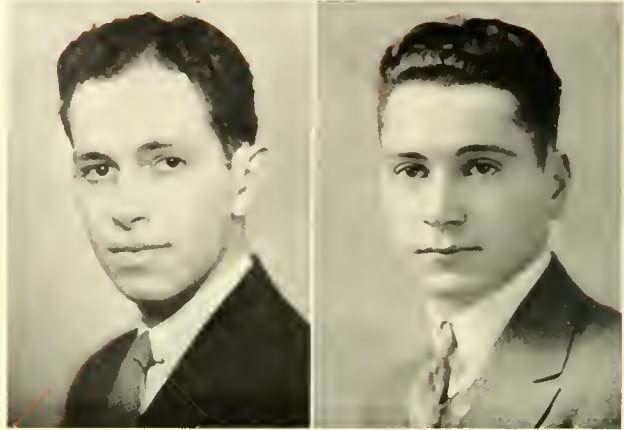
During the first year the club held meetings every Tuesday at four o'clock. This past year meeting time was changed to Thursday at three, the regular club hour. The meetings are held in the Social Rooms of Noetling Hall except in early autumn and late spring when interesting outdoor meetings are planned.

During the present year the club has made rapid strides under the direction of Miss Ethel Shaw, who has interested the group in choric readings and the interpretation of dramatic poetry. Outstanding speakers of the year were: Miss Alice Johnston who spoke on "Choric Reading in England;" Mr. Edward DeVoe who discussed "Modern Trends in Poetry," and Dean W. B. Sutliff who read several of his original compositions.





# OBITER 1937



JAY PURSEL  
*Editor*

EARL HUNTER  
*Business Manager*

## 1937 OBITER

THESE words speak in a very small way of the uncounted hours of planning, writing, and rewriting, the patience and self-sacrifice which have been made in order to present to the students of Bloomsburg State Teachers College the best book possible. Only those who worked together in order that this publication might be possible can realize the importance of every detail, no matter how minute it may seem.

### STAFF

Ambrose  
Beaver  
Conway  
Creasy  
Deily  
DeRose  
Diehl

Dugan  
Hendler  
Hinkel  
McKechnie  
Kokitas  
Kotsch

Miller  
Moore  
Nolan  
Price  
Sharp  
Ward  
Yorwarth







# OBITER 1937



MARJORIE BEAVER  
*Editor*



STASIA ZOLA  
*Managing Editor*

## MAROON AND GOLD

### EDITORIAL STAFF

<i>Editor-in-Chief</i>	- - - - -	MARJORIE BEAVER
<i>Managing Editor</i>	- - - - -	STASIA ZOLA
<i>Associate</i>	- - - - -	LARRY RICCHIETTI
<i>News Editor</i>	- - - - -	AMANDA JEAN WALSH
<i>Associate</i>	- - - - -	JANE LOCKARD
<i>Associate</i>	- - - - -	RUTH DUGAN
<i>Literary Editor</i>	- - - - -	JAY PURSEL
<i>Associate</i>	- - - - -	JOSEPHINE MAGEE
<i>Sports Editor</i>	- - - - -	ALEX McKECHNIE
<i>Features</i>	- - - - -	EDWARD MATTHEWS, PAUL KOKITAS, BEN SINGER

### MANAGERIAL STAFF

<i>Office Manager</i>	- - - - -	FLORINE MOORE
<i>Typists</i>	- - - - -	RANDALL CLEMENS, CLAYTON H. HINKEL
<i>Circulation</i>	- - - - -	ROBERT HOPKINS, REGINA WALUKIEWICZ
<i>Exchange</i>	- - - - -	ABIGAIL LONERGAN, JAMES HINDS

### REPORTORIAL STAFF

Phyllis Wagner	Minette Rosenblatt	Philip Trapane
Pearl Wagner	Anna Orner	James Watts
Emily McCall	Ray McBride	Helen Powell
Helen Brady	Joyce Dessen	Donna Lockhoff
Bertha Kravitski	Charles Kelchner	John Fiorini
Marian Taylor	William Yorwarth	Margaret Smith
Reba Bransdorf		Joe Shaloka

### FACULTY COMMITTEE

S. L. Wilson	Pearl Mason	Eihel Shaw
--------------	-------------	------------





First Row, Left to Right—P. Kokitas, F. Moore, A. McKechnie, S. Zola, M. Beaver, J. Lockard, J. Pursel,  
R. Dugan, J. Fiorini  
Second Row—R. Kravitsky, W. Yorwarth, J. Dessen, E. McBride, E. Matthews, H. Powell, P. Wagner

## MAROON AND GOLD

Having been awarded first place in the Pennsylvania School Press Association, and second place in the Columbia Scholastic Press Association, the Maroon and Gold, college bi-weekly newspaper, has definitely set the pace as a Teachers College publication.

The staff this year endeavored to establish a more professional manner in the methods of obtaining and editing news. Far from being just an extra-curricular activity, membership on the Maroon and Gold staff developed into a full-time co-operative affair.

Several innovations were introduced on the sports and editorial pages. One of the most popular columns with the student body was the "Biography in Brief" column, headed by a caricature of a faculty member sketched by Professor George J. Keller.

With the election of the present managing editor as editor-in-chief for the next year, the Maroon and Gold looks forward to the acquisition of new laurels and the rapid advancement toward true college representation.

## THE BLOOMSBURG PLAYERS

The Bloomsburg Players, better known on the campus as the Dramatic Club, is the oldest extra curricular organization in the college, having been established in 1924.

The club meets each Tuesday night, and after a business meeting, a one-act play is presented by the club members, after which constructive criticisms are given.

The organization is a workshop where features of play productions are studied by the laboratory method. The plays are directed by a student under the supervision of the club director. Many of the club plays are later presented in public before various groups, the Student Government Party, Crippled Children's Christmas Party, and the Rotary-Kiwanis All-College Night.

Membership to the club is gained by tryout before a committee composed of club members and director.

The club is a stepping-stone to two high honors: One, admission to Alpha Psi Omega, the National Honorary Dramatic Fraternity, and the other, the Gold Pin Awards. There are specific requirements for eligibility to the fraternity, all of which may be met by those participating in any of the club enterprises. The Gold Pin is a merit award given each year to six club members who have done outstanding work during their membership in the club. These awards are decided upon by a point system included in the By-Laws of the Constitution.





First Row, Left to Right—J. Kotsch, W. Prokopchak, P. Frankmore, W. Davies, J. Copwell, A. Justin, E. Justin, L. Peek, G. Richards, A. Morgan, B. Singer  
 Second Row—W. Hill, M. Savage, A. Davies, C. Brommen, J. Jones, C. McGinnis, N. Richie, W. Christian, W. Strawinski, S. Conway, M. Dreese, B. Bronson  
 Third Row—M. Potter, B. McCawley, Alice Johnston, D. Withka, M. Graham, M. Creasy, P. Lonergan, C. Bakey, M. Somers, R. Langau, A. Reed, D. Karshner, P. Snyder, R. Turso, E. Everhard, J. Leczkosky, R. M. Jones, R. Bransdorf, V. Burke, J. Dessin  
 Fourth Row—J. Pugh, D. Hansknecht, A. Lapinsky, A. McKechnie, M. Wright, T. Revels, P. Johnson, L. Stout, H. Seesholtz, J. Slaven, L. Gehrig, E. Shilka, J. Maulart, B. Beaver, T. Klinger, J. Bower, G. Neibauer, M. Rosenblatt, R. Diehl, E. Hosler

## THE BLOOMSBURG PLAYERS

### OFFICERS

NEIL RICHIE	- - - - -	<i>President, First Semester</i>
ALVIN LAPINSKI	- - - - -	<i>President, Second Semester</i>
WILLIAM STRAWINSKI	- - - - -	<i>Vice President, First Semester</i>
JANE MANHART	- - - - -	<i>Vice President, Second Semester</i>
JANE LOCKARD	- - - - -	<i>Secretary, First Semester</i>
MARTHA WRIGHT	- - - - -	<i>Secretary, Second Semester</i>
WILLARD CHRISTIAN	- - - - -	<i>Treasurer</i>
MISS ALICE JOHNSTON	- - - - -	<i>Director</i>

# OBITER 1937

## RURAL LIFE CLUB

The Rural Life Club serves as an extra-curricular activity for those students in Rural Education and those from other groups who are considering teaching in rural schools.

The club designs its programs to meet the school and community problems of the rural teacher which are not discussed in the regular college courses. A valuable part of the program comes from the exchange of ideas and experiences among members. This year among the topics discussed were "Libraries and How to Secure Them," "Recreation in the Rural School and Community," and "The Block Program, Its Use and Advantages."

The First Annual Rural Education Conference was held December 5, 1936. Dr. J. E. Butterworth, Director of the Graduate School of Education, Cornell University, spoke on "The Changing Rural School." Teachers from the entire service-area were invited. At this time an exhibit of books suitable for rural schools was presented by members of the club.





Front Row, Left to Right M. Wagner, M. Bojwka, Miss Hazen, E. Pavlick, G. Burke, R. Kramm, E. Baum,  
 C. Durkin, R. Wagner  
 Second Row—L. Durlin, M. Hepner, C. Glass, R. Masters, C. Baum, E. Hines, H. Lowry, M. Van Dine

## RURAL LIFE CLUB

### OFFICERS

S. PAVLICK	-	-	-	-	-	-	-	-	-	-	-	<i>President</i>
G. BURKE	-	-	-	-	-	-	-	-	-	-	-	<i>Vice President</i>
E. BAUM	-	-	-	-	-	-	-	-	-	-	-	<i>Secretary</i>
R. KRAMM	-	-	-	-	-	-	-	-	-	-	-	<i>Treasurer</i>

## GEOGRAPHY SOCIETY

Geography Club meetings were featured by several unusual reports during the year. Among these were "Ships," by Charles Wientraub; "World Tour," Miss Murphy; "When the Sap Begins to Run," Margaret Smith. The discussion of ships dealt mainly with the history and economic importance of ships. The story of her world tour in the summer of 1936 gave Miss Murphy a chance to give a very interesting and valuable talk on her experiences. Miss Smith's talk on maple sugar and maple syrup aroused much interest among the members.

Besides the various talks given by members of the club and invited speakers, several types of educational games were played. Among these were baseball, pyramid, and "blank" games.

An annual custom of the club is to take an all-day trip to some important geographic spot in the vicinity. Again this year the members were able to take this trip. Places visited in the past have been Council Cup, Powder Glen, and Kitehen Creek Falls.







First Row, Left to Right—E. Ludwig, C. Durlin, H. Russell, A. McKechnie, A. Zalonis, M. Creasy, D. Selecky, A. Fetterman, R. Dugan, M. Evans, N. Paden  
 Second Row—M. Carl, C. Hummel, P. Fester, O. Mecolick, M. Rhodes, L. Bartels, E. Stephous, M. Smith, C. James, M. Stine, H. Payne, L. Yeager

## GEOGRAPHY SOCIETY

### OFFICERS

#### *First Semester*

MARGARET CREASY - - - -  
 ADOLPH ZALONIS - - - -  
 DOROTHY SELECKY - - - -  
 ALEX McKECHNIE - - - -

*President* - - - -  
*Vice President* - - - -  
*Secretary* - - - -  
*Treasurer* - - - -

#### *Second Semester*

DOROTHY SELECKY  
 AERIO FETTERMAN  
 RUTH DUGAN  
 ALEX McKECHNIE

## JUNIOR CHAMBER OF COMMERCE

### OFFICERS

WILLARD CHRISTIAN	- - - - -	<i>President</i>
JOHN JONES	- - - - -	<i>Vice President</i>
RAY McBRIDE	- - - - -	<i>Treasurer</i>
MARGUERITE LONERGAN	- - - - -	<i>Secretary</i>
ABIGAIL LONERGAN	- - - - -	<i>Historian</i>
MARGARET HOKE AND W. C. FORNEY	- - - - -	<i>Sponsors</i>

This organization, made up of all students in the Department of Commerce, is the largest on the campus. The enthusiasm of its members has made it one of the most successful social-professional organizations.

It sponsors many social events, such as an all-school dance, following the first football game; a fall outing; a formal dinner-dance in April, at which time awards are made to outstanding members.

Regular meetings are held twice each month. Speakers of educational and business experience address the group on interesting topics or give demonstrations. Each of the four classes is responsible for the presentation of one program, which may be of either musical or dramatic nature.

For the past five years a state-wide Commercial Contest has been sponsored for high school students. Competitive examinations in bookkeeping, Gregg shorthand, commercial law, typewriting, and commercial arithmetic are given. Successful students are awarded gold, silver, and bronze charms. The best team of students receives the Commercial Contest Cup. Winning teams in the past have been:

Wyoming, 1931; Northampton, 1932; Berwick, 1933; Latrobe, 1934; Collingdale, 1935.



# JUNIOR CHAMBER OF COMMERCE

## PERSONNEL

### *Seniors*

Babb, Amanda  
Barfish, Joseph  
Border, Harold  
Brennan, Gladys  
Brown, Edward  
Clemens, Randall  
Ebert, Ann  
Evans, Elizabeth

Garvey, Edward  
Gehrig, Earl  
Grosek, Mary  
Hower, Dorothy  
Hower, Luther  
Kupstas, Alex  
Laubach, Anna Jean  
Mears, Mary Helen

Moody, Thelma  
Moore, Florine  
Muskaloon, Victoria  
Nelson, Harry  
Ollock, Joseph  
Plesko, Joseph  
Reagan, Thomas  
Reisler, Mary

Ritzo, Theresa  
Saberno, Anthony  
Saltzer, Blaine  
Schalis, Camille  
Schlegal, Julia  
Shutt, William  
Walsh, Amanda  
Webb, Edward

### *Juniors*

Arcikosky, Emily  
Auch, Alice  
Aul, Ralph  
Bronson, Bernice  
Casari, George  
Diehl, Robert  
Elmore, Marion  
Fetterolf, Andrew  
Frankmore, Philip  
Gearhart, Grace  
Gilligan, Elizabeth  
Goretzki, Helen

Hamer, Mary  
Hayalicka, Elmer  
Heckenluber, Robert  
Hendler, John  
Henrie, Charles  
Henry, Norman  
Klinger, Clyde  
Kotsch, Jacob  
Kreigh, Willard  
Kupris, John  
Kushma, John

Langan, Ruth  
Laubach, Vance  
Maczuga, John  
Malloy, Anna  
Martin, Paul  
Mensing, Dorothy  
Miller, Mary  
Patrick, Frank  
Price, Robert  
Rech, Anna  
Reynolds, B.

Rhinard, Ellen  
Richie, Neil  
Ryan, Agnes  
Saluda, Rose  
Sell, Frances  
Scott, Esther  
Slaven, John  
Tannery, William  
Von Bergen, Doris  
Wanich, John  
Wenner, Dorothy  
Williams, Robert

### *Sophomores*

Amerman, Sarah  
Bachinger, Frank  
Baraniak, Joseph  
Barbik, Leonard  
Bonin, Irene  
Boudhan, Minnie  
Brennan, Catherine  
Carl, Melva  
Christian, Willard  
Cinquegrani, Vince  
Coblentz, Harold  
Davies, Willard  
Deppen, Margaret  
Dersham, Sara

Evans, Roy  
Farmer, Lois  
Foose, Morgan  
Frechafer, Evelyn  
Giles, Lois  
Harwood, Chester  
Johnson, Lois  
Johnson, Mary  
Jones, Sheldon  
Kantner, Robert  
Kirelavage, Albina  
Kleffman, Ruth  
Kocher, Harriet  
Koczansky, Alfred

Leedom, Katherine  
Lemon, Howard  
Loneragan, Abigail  
Loneragan, Marguerite  
McBride, Ray  
McGrew, Helen  
McGinnis, Cornelia  
Miller, Claire  
Mondschnie, John  
Nolan, Richard  
Orner, Anna  
Oswald, Jane  
Rarich, Glenn  
Reichley, Eva

Revels, Thomas  
Sheridan, Vera  
Shuman, Jean  
Smith, Dornabelle  
Stard, Ben  
Stinson, Wanda  
Taylor, Marion  
Traupane, Philip  
Utt, Miriam  
Washinko, George  
Woytovich, Waller  
Wright, Martha  
Yates, William

### *Freshmen*

Altland, Sarah  
Auten, Robert  
Bacon, Edward  
Baker, Donald  
Baldwin, Jeanne  
Barnett, Murray  
Bartholomew, Eva  
Baumunk, Avonell  
Baumunk, Mabel  
Bean, Eleanor  
Bonin, Mildred  
Boyle, Mary  
Brush, Jean  
Christmas, Ernest  
Coleman, Fred  
Cunningham, Catherine  
Darrow, Jane  
Davis, Evan  
Dietterick, Bette  
Edwards, Victoria  
Grover, Christine

Hanley, Mary  
Fetterman, Delroy  
Hausknecht, Donald  
Huepsche, William  
Hinkel, Clayton  
Hippensteel, Kenneth  
Houck, Earl  
Hower, Carl  
Hyduck, Andrew  
Jenkins, Thomas  
Johnson, Francis  
Jones, Gwladys  
Jones, Isaac  
Jones, John  
Jones, Ralph  
Keibler, Alfred  
Ketchner, Charles  
Keller, Edna  
Kemple, Daniel  
Kiefer, Lawrence  
Koniecko, Frank

Kotzen, Stanley  
Landis, Marion  
Lash, Walter  
Leonzi, Alfred  
Lerew, Betty  
Lewis, Robert  
Lichtenwalner, L.  
McCoy, Alice  
McWilliams, Mary  
Maza, Norman  
Moore, Philip  
Moyer, Donald  
Parsell, Theodore  
Penman, Hope  
Plevyak, John  
Pomrinke, John  
Reck, Agnes  
Reilly, Violet  
Repperty, Vivian  
Ricchetti, Lawrence  
Rieben, Evaline

Rittner, William  
Roberts, Roy  
Rosati, Lawrence  
Roth, Virginia  
Rundle, Nathalie  
Shifka, Eleanor  
Shiner, Byron  
Simpson, Agnes  
Smith, Jean  
Sofilka, Michael  
Stefanski, Florence  
Steininger, Margaret  
Tewksbury, Jennis  
Thomas, Gene  
Trimble, William  
Turse, Rose  
Vaughn, Elwyn  
Washeleski, Alfred  
Wagner, Geraldine  
Wehner, Marvin  
Zehner, Martha

## INTERFRATERNITY COUNCIL

The Interfraternity Council, a new organization, was established on the campus this year in order to create greater harmony in fraternity relationships, to encourage more intense educational activities among the members, and to promote and take charge of all social activities sponsored by both professional and educational fraternities. Each fraternity is represented by three members and the faculty sponsor.

The first and major event sponsored by the Council was the Interfraternity Ball held on March 7, directed by Miss Carrie Livsey. A Fraternity Day, the second event sponsored by the organization was held in May, when a prominent educator addressed the fraternities. Another part of the Fraternity Day was given over to discussion groups on various professional and educational subjects, led by capable leaders.

The Interfraternity Council has grown rapidly in importance and has established itself as one of the major organizations of the campus.





First Row, Left to Right— A. Salerno, T. P. North, L. Peck, H. Border, H. T. Nelson, R. Price  
 Second Row— H. H. Russell, A. Johnston, S. Conway, W. Hill, J. Pursel, C. Livsey, J. Fiorini

## INTERFRATERNITY COUNCIL

### MEMBERS

#### *Phi Sigma Pi*

Mr. E. H. Reams, *Faculty Sponsor*  
 Ray Shrope

Walton Hill

Francis Purcell

#### *Pi Omega Pi*

Mr. H. A. Andruss, *Faculty Sponsor*  
 Blaine Saltzer

Harry Nelson

Anna Jean Laubach

#### *Gamma Theta Upsilon*

Dr. H. H. Russell, *Faculty Sponsor*  
 John Fiorini

Jay Pursel

Carrie Livsey

#### *Kappa Delta Pi*

Dr. Nell Maupin, *Faculty Sponsor*  
 Endora Hosler

Luther Peck

Robert Price

#### *Alpha Psi Omega*

Alice Johnston, *Faculty Sponsor*  
 Walton Hill

Harold Border

Sylvia Conway

## ALPHA PSI OMEGA

Alpha Psi Omega has had another busy year—one filled with work and a generous amount of pleasure. The year's activities started officially with the Annual Banquet held the evening of Bloomsburg's Homecoming Day. Alumni, active members, and guests look back upon the banquet as one of the brightest spots of the college homecoming. Following close upon the heels of the banquet came a reception and tea which was held for the Shakespearean players. This group of artists appeared at the college during November, and presented two very fine productions. The members of the faculty were also guests and helped to make the reception an unusually pleasant affair.

While all these events were taking place, the fraternity play was being chosen, cast, and rehearsed. "The Bishop Misbehaves," a mystery-comedy, was presented by the members of Alpha Psi Omega and the Bloomsburg Players. Next, the fraternity turned its attention to a play which was to be given at the annual Rotary-Kiwanis-College night. The play chosen was "The Miracle Merchant," a choice which evidently appealed to both the guests and the student body.

The one-act-play tournament was another activity which required the co-operation of the fraternity and the dramatic club. This year, six high schools, representing two divisions—Classes "A" and "B"—competed for awards given by Alpha Psi Omega. Class "A" award was won by Northumberland High School, while Catawissa claimed first place in Class "B."

Throughout the year, the fraternity was also concerned with the familiar activities of taking in new members, conducting regular meetings, and holding various parties. During the Christmas season, Alpha Psi Omega held its annual Christmas party in Miss Johnston's apartment, and this proved to be one of the most successful celebrations of the year. Membership in the club has reached the full quota of twenty-five active members, and the fraternity, under the very able direction of Miss Alice Johnston, looks forward to an even better year in 1937-38.





First Row, Left to Right—W. Hill, M. Potter, H. Nelson, R. Langan, H. Border, E. Justin, J. Kotsch  
 Second Row—M. Graham, A. Lapinski, A. Johnston, M. Dreese, P. Frankmore, S. Conway, C. Livsey, M. Rosenblatt,  
 A. McKeelnie, M. Somers

## ALPHA PSI OMEGA

### OFFICERS

HAROLD BORDER	-	-	-	-	-	-	<i>Honorable Prompter</i>
HARRY NELSON	-	-	-	-	-	-	<i>Worthy Business Manager</i>
ANNA JEAN LAUBACH	-	-	-	-	-	-	<i>Worthy Playwright</i>
ALICE JOHNSTON	-	-	-	-	-	-	<i>Honorable Director</i>

## GAMMA THETA UPSILON

Delta Chapter of our national honorary geographic fraternity was installed on the Bloomsburg campus in 1931 with eight charter members. Gamma Theta Upsilon is open to students who show enough interest in geography to make it one of their two special fields, and to those who take enough geography to be certificated in that field. Eligibility for membership requires scholastic rating above the college median not only in geography, but also in all college work.

The purpose of Gamma Theta Upsilon is threefold: To promote fraternalism among those who have chosen geography as their field of study, to advance the professional status of geography as a cultural and practical phase of education, and to create and administer a loan fund to aid alumni members in graduate work in the field of geography.

The roll of seventy-four in Delta Chapter includes two honorary members. Rear Admiral Richard E. Byrd attended a meeting in February, 1932, and accepted membership. In March of 1936 Richard Halliburton appeared at the regular meeting and became a member. During the Spring Semester twenty-five members of our chapter were on the campus, including the 1937 initiates: Ruth Dugan, Alice Foley, Mildred Hart, Audree Reed, and Adolph Zalonis.

The programs of the year have included studies in geographic problems as discussed in current literature: such as, "Galicia, a Little-Known Corner of Spain," "Sugar Production in Louisiana," and "The Political Chaos in China."

During the year, Gamma Theta Upsilon has contributed to the life of the college community by participating in the work of the Interfraternity Council, of which John Fiorini has been secretary-treasurer and Carrie Livsey a member, and by bringing to a student assembly Mr. Lester Benjamin, a student at State College, who has been in China as an exchange student. Mr. Benjamin spoke on "A Year in China."

Near the end of the Second Semester, Delta Chapter reviews the work of the year in a contribution to the National News Letter, and celebrates Founders' Day with a banquet, at which the new officers are installed.







First Row, Left to Right C. Livsey, J. Fiorini, M. Potter, L. Peck, J. Pursel, H. H. Russell, J. Manhart, A. Zalomis  
 Second Row—V. Follmer, R. Dugan, D. Sidler, J. Supchinsky, A. Reed, J. Lockard, B. Thomas, J. Webber

## GAMMA THETA UPSILON

### OFFICERS

JAY PURSEL	-	-	-	-	-	-	-	-	-	-	-	-	-	-	-	-	<i>President</i>
LUTHER PECK	-	-	-	-	-	-	-	-	-	-	-	-	-	-	-	-	<i>Vice President</i>
JANE MANHART	-	-	-	-	-	-	-	-	-	-	-	-	-	-	-	-	<i>Corresponding Secretary</i>
MARGARET POTTER	-	-	-	-	-	-	-	-	-	-	-	-	-	-	-	-	<i>Recording Secretary</i>
MARGARET CREASY	-	-	-	-	-	-	-	-	-	-	-	-	-	-	-	-	<i>Treasurer</i>
DR. H. HARRISON RUSSELL	-	-	-	-	-	-	-	-	-	-	-	-	-	-	-	-	<i>Sponsor</i>

## KAPPA DELTA PI

Kappa Delta Pi was founded March 18, 1911, and incorporated June 8, 1911, as an honorary educational fraternity under the laws of the state of Illinois. It grew out of a resolution by the members of the Illinois Education Club established at the University of Illinois in 1909. Their purpose in establishing such an organization was to promote a closer bond among students of Education as a science and to enter into more intimate fellowship with those dedicated to the cause of teaching as a profession for which specialized preparation was deemed imperative. Throughout its history, the fraternity has encouraged high intellectual and scholastic standards and has recognized outstanding contributions to education. Consequently, a Laureate Chapter was established whose membership includes such outstanding men as John Dewey, Edward Lee Thorndike, William H. Kilpatrick, and William Chandler Bagley.

On October 4, 1932, the title of the fraternity was changed to Kappa Delta Pi, an Honor Society in Education.

Our own chapter, Gamma Beta Chapter, of Kappa Delta Pi was installed on February 21, 1931, by Dr. A. L. Hall-Quest. Membership consists of Juniors and Seniors, both men and women, chosen from the upper quartile of their classes. Juniors must have completed at least six semester hours in Education and Seniors twelve hours. These are national requirements.

Gamma Beta Chapter has been very active and has accomplished much during the current year. The year's activities included the Pledge and Initiation Service, interesting addresses by several members of the college faculty, the publication of the "News Letter," a Horace Mann program in chapel at which time a plaque was presented to the college by the fraternity, and the annual Founders' Day Banquet on April 24, 1937, at the Elks' Home.





Front Row, Left to Right M. Graham, A. Babb, J. Welber, G. Brennan, A. Lapiuski, L. Peck, M. Maupin, A. Laubach, R. Salda, J. Manhart, E. Justin  
 Second Row—D. Edgar, M. Grosek, J. Lockard, M. Sayidge, M. Reisler, E. Evans, M. Rosenblatt, F. Snook, M. Faust, M. Oxford, M. Berger, A. Brainard  
 Third Row—D. Mensinger, V. Follmer, M. Evans, A. Salerno, J. Hendler, E. Webb, W. Thomas, W. Hill, N. Richie, R. Price, M. Potter, B. Gilligan, E. Rhinard

## KAPPA DELTA PI

### ACTIVE MEMBERS

Amanda Babb  
 Alberta H. Brainard  
 Gladys M. Brennan  
 Margaret A. Creasy  
 Dorothy L. Edgar  
 Elizabeth R. Evans  
 Martha H. Evans  
 Anna Faucett  
 Vera E. Follmer  
 Marie E. Foust  
 Elizabeth J. Gilligan  
 Margaret G. Graham  
 Mary R. Grosek  
 John F. Hendler  
 Walton B. Hill

Eudora A. Hosier  
 Edith Justin  
 Armina Kreisler  
 Alvin S. Lapinski  
 Anna J. Laubach  
 Jane L. Lockard  
 Jane G. Manhart  
 Dorothy A. Mensinger  
 Charles Michael  
 Florine L. Moore  
 Harry T. Nelson  
 Luther A. Peck  
 Margaret F. Potter  
 Robert Price  
 Ruth E. Radcliffe

Jean Reese  
 Mary Reisler  
 Neil M. Richie  
 Ellen C. Rhinard  
 Minette S. Rosenblatt  
 Anthony L. Salerno  
 Rose S. Sluda  
 Marie H. Sayidge  
 Ruth H. Smaethers  
 Florence E. Snook  
 Beatrice H. Thomas  
 Rosetta Thomas  
 William Thomas  
 Edward L. Webb  
 Jessie M. Welber

## PHI SIGMA PI

Founded at State Teachers College, Warrensburg, Mo., February 14, 1916

Active Chapters 17

Membership 2,074

Iota Chapter was installed at the Bloomsburg State Teachers College, April 26, 1930. The former members of Omega Chi were initiated and installed as charter members.

On October 22, Phi Sigma Pi held a formal pledge service in the Social rooms of Science Hall. Eight neophytes were pledged. Dr. North, Mr. Andruss, and Mr. Koch gave brief talks on the value and privilege of belonging to a professional fraternity.

On January 21, Professor Koch spoke on the proposed "Teacher Tenure Bill" at a professional meeting in Science Hall.

On February 18, Phi Sigma Pi members and their guests enjoyed a theater party. Following the theater party a light lunch and dance were held in the social room.

On February 28, Francis Purcell attended the national convention of Phi Sigma Pi at St. Louis, Mo.

At this convention Prof. Reams, our sponsor, was honored by being elected national historian. On March 23, Phi Sigma Pi members were the guests of Clyde Klinger at his home in Nuremberg. A very interesting report on the St. Louis convention was presented.

Following the business meeting, cards, music, smoking, and a very delicious buffet supper were enjoyed.

The annual founders' day banquet held on April 29, at the Rose Tea Room on Light Street Road, was the crowning feature of Phi Sigma Pi's participating in social and professional affairs.





Front Row, Left to Right—L. Peck, L. Blass, F. Camera, Dr. F. B. Haas, W. Withka, W. Hill, A. Lapinski, J. Koch, E. Reams, R. Schroepe, G. Tamalis  
 Second Row—A. Salerno, W. Davies, A. Zalouis, E. Matthews, A. McKeechie, C. Klinger, R. McBride, W. Thomas, N. Henrie, E. Phillips, F. Purcell, W. Woytovich, E. Havadička, J. Fiorini

## PHI SIGMA PI

### OFFICERS

WALTON HILL	- - - - -	- - - - -	-	<i>President</i>
WALTER WITHKA	- - - - -	- - - - -	-	<i>Vice President</i>
ALVIN LAPINSKI	- - - - -	- - - - -	-	<i>Secretary</i>
JOHN FIORINI	- - - - -	- - - - -	-	<i>Assistant Secretary</i>
EARL HUNTER	- - - - -	- - - - -	-	<i>Treasurer</i>

PI OMEGA PI

Alpha Delta Chapter, Established May 23, 1935

OFFICERS

HARRY T. NELSON	- - - - -	<i>President</i>
BLAINE SALTZER	- - - - -	<i>Vice President</i>
JULIA SCHLEGEL	- - - - -	<i>Secretary</i>
MARY GROSEK	- - - - -	<i>Treasurer</i>
JOSEPH OLLOCK	- - - - -	<i>Historian</i>
PROFESSOR HARVEY A. ANDRUSS	- - - - -	<i>Sponsor</i>

Continuing its work as one of the most active fraternities on the campus, Pi Omega Pi, National Commercial Fraternity, completed another year of intense activity. Consisting of members of the Department of Commerce who have superior scholastic rating, the Fraternity has completed the following projects:

1. POP, a semi-monthly, four-page, mimeographed newspaper with a rotating editorship, containing commercial and school news of interest to alumni.
2. A comprehensive survey of commercial students in extra-curricular activities.
3. A Directory, edited by Mary Grosek, for the active and alumni membership.
4. A Contest Booklet, edited by Harry Nelson, for the edification of participants in the Seventh Annual Pennsylvania Commercial Contest. In addition, Joseph Ollock and his committee aided greatly in the printing of the Contest Examinations.
5. The Third Annual Banquet, at the Elks' Home, under the chairmanship of Clyde Klinger.

Alpha Delta Chapter has grown from its incipience two years ago to the present total membership of about sixty-five.





First Row. Left to Right M. Reisler, B. Bronson, D. Messinger, B. Reynolds, J. Ollock, B. Saltzer, H. Nelson,  
A. Laubach, F. Moore, E. Gilligan, E. Rinard  
Second Row N. Henry, C. Klinger, J. Kotsch, H. Andruss, W. Forney, M. Oxford, B. Langan, R. Price, R. Diehl,  
M. Murphy

## PI OMEGA PI

### ACTIVE MEMBERS

Alice Auch	Clyde Klinger	Robert Price
Amanda Babb	Jacob Kotsch	Mary Reisler
Gladys Brennan	Ruth Langan	Bernadette Reynolds
Bernice Bronson	Anna Jean Laubach	Ellen Rhinard
Robert Diehl	Anna Ebert	Neil Richie
Marion Elmore	Dorothy Messinger	Blaine Saltzer
Elizabeth Evans (Mrs.)	Florine Moore	Rose Saluda
Betty Gilligan	Harry Nelson	Edward Webb
Mary Grosck	Joseph Ollock	Julia Schlegel
Norman Henry		Doris Von Bergen

# OBITER 1937

## KIWANIS-ROTARY COLLEGE EVENING

AUDITORIUM PROGRAM—THURSDAY, MARCH 11, 1937

- Greetings from Community Government Association,  
President, Frank Camera
- "Maroon and Gold"  
Audience and College Chorus
- "The Heavens Resound" *Beethoven*
- One-Act Play—"The Miracle Merchant" *H. H. Munro*  
Scene—The morning room in Mrs. Bezuwhistle's country house  
Mrs. Bezuwhistle, Sylvia Conway; Jane Martlet, Martha Wright; Louis,  
Alex McKechnie; Suttrige, Willard Christian; Main, Connie McGinnis.  
Presented by Alpha Psi Omega Fraternity  
Direction Miss Alice Johnston
- Overture—"The Barber of Seville" *Rossini*  
Maroon and Gold Orchestra
- College Specialties *Selected*  
Frances Ward, Margaret Ward, Frank Patrick
- "The Heavens Are Telling"—from "The Creation" *Haydn*  
Mixed Chorus
- Largo—"New World" Symphony *Dvorak*  
At the Console—Mr. Howard F. Fenstermaker
- "The Nightingale" *Tschaikowsky*
- "Tell Me Not of a Lovely Lass" *Forsyth*  
A Cappella Choir  
Pianist, John Andreas
- "Anitra's Dance" *Edward Grieg*
- "In the Hall of the Mountain King" *Edward Grieg*  
Harriet Kocher, Frank Kocher
- College Film—"Alma Mater"  
Direction, Mr. George J. Keller
- March "Cymbeline" *Fulton*
- Novelty—"Hot Trombone" *Fillmore*  
Maroon and Gold Band
- "Alma Mater" *Dennis*  
Audience and College Chorus, Accompanied by Maroon and Gold Band
- Dance in College Gymnasium
- Group Singing— Direction, Miss Harriet M. Moore  
Accompanist, Mrs. John Ketner Miller  
Orchestra and Band—Direction, Mr. Howard Fenstermaker







## THE BISHOP MISBEHAVES

"The Bishop Misbehaves," a comedy in three acts, was presented by the Dramatic Fraternity under the direction of Miss Alice Johnston, November 24, 1936, in the College Auditorium.

The elderly Bishop, who with his mild old sister, stops by accident at "The Queen's Head Inn" after there has been a serious holdup and robbery. The Bishop has always had a secret love for the wickedness on display in detective stories and the situation affords him a glorious holiday. He gobbles up clues like an old black rooster among beetles. More than that, he snatches the "swag." He leaves the evil place with the stolen jewels in his own pocket. Because he knows the highwaymen will follow him to the Palace, he hides the loot in the nearest humidor and awaits his fate, found in the persons of several ruffians, a masked hero and the usual attractive heroine. Sometimes these enemies have the Bishop at bay and sometimes he has them. It is a game of turning the tables, turning out the lights, pistol-pointing, knife-brandishing, out-guessing and out-confessing, until the hero and heroine have won the Bishop's "Amen" and the rumpus is over.

### THE CAST

Donald	William Slutt	Mrs. Waller	Jane Manhart
Hester	Anna Jean Laubach	Collins	Jacob Kotsch
Bishop	John Jones	Reds	William Strawinski
Lady Emily	Connie McGinnis	Brooks	Alvin Lapinski
Mr. Waller	Philip Frankmore	Frenchy	George Lewis

The audience was heartily appreciative of the presentation. The several climatic situations keeping them on key and providing an ideal setup for spontaneous laughter and applause. The quality of performance makes it impossible to single out any one member of the cast as the outstanding performer. All contributed their part and turned in a most worth while performance—a performance of which, you, as alumni, can be justly proud.

# OBITER 1937

## HIGH SCHOOL PLAY TOURNAMENT

Northumberland High in Class A and Catawissa High in Class B were the winners of the eighth annual play tournament, sponsored by the dramatic fraternity, Alpha Psi Omega, held in the college auditorium.

"Dust of the Road," presented by Northumberland, was directed by Miss Laura Kelly, a Bloomsburg alumnus. The cast consisted of William Kelly as Peter Steel, Lillian Snyder as Prudence Steel, John Reminger as Uncle, Robert Bostian as the tramp.

Catawissa presented "Enter the Hero" by Teresa Helburn, and directed by Gerald Hartman, another alumnus of Bloomsburg. Members of the cast were Mary Brunstetter, Janet Shank, Dorothy Beard, and James Erdman.

Honorable mention for individual performances went to Barbara Burns of North Scranton Junior High, Joan McCormick of Coal Township, in Class A; Bartie Reese of Hughesville, Mary Betty Conner of Orangeville, in Class B.

Of the six schools represented in the highly successful tourney, all but one of the casts were directed by graduates of Bloomsburg State Teachers College.

Judges were Maynard Pennington, Miss Mary Phillips, of town, and Miss Anna Jean Laubach, of the college.



# PICTURE CONTEST WINNERS



I. (PROF. ANDRUSS) entered by Adolph Zalonis

Ice cream on a stick,  
Eat it quick -  
Quick  
Before it slips  
From your lips  
And you're left holding  
Just the stick.

II. (HELEN PESANSKY) entered by Alacoque Burns

Step lightly through the doors of books;  
Touch and taste, feel and smell  
All that's real the Past  
Can offer,  
Yet, tiring, come back again  
Through the doors of books -  
Step lightly.



III. (CARVER AT NIGHT) entered by Donald Hausknecht

Moonlight  
Winked at the Tower Eye,  
Watching Time  
And the winds go by,  
Danced on the steps,  
Defying Dawn,  
Hid 'mong the pillars  
And now is gone.

IV. (ROBERT PRICE) entered by Roy Evans

The paths of Destiny are unchanged—  
They follow endless, track'd way  
While symbols of a new tomorrow  
Grow constantly today,  
He whose eyes translate the symbols  
Sees tomorrow  
Through today.



# OBITER 1937

## A BOY IN MAY

I can't get history into my brain;  
School books these days give me a pain.  
I wish I was out on the baseball nine  
Giving some team a terrible time.  
Sometimes I've thought that school was fun  
But now I want to get out in the sun.  
Smelling earth turned by the plow  
Is better than reading anything now.  
The ground grows warm and the sky is fair;  
I like the feel of wind in my hair.  
I know I should study, or feel a fool,  
But trout are thick in a mountain pool.  
Men who made history would have gone!  
I can't keep my mind on this book for long.  
I guess I'll put this book away;  
Tomorrow I'll study, I'll play—today.

RUTH A. EISMAN.





# OBITER 1937

## OLD BLOOMSBURG

There are colors to cheer,  
There are names to revere,  
There are stories of others told,  
But the colors we cheer,  
And the names we revere,  
Belong to Maroon and Gold.  
There's a glorious past,  
There are names that will last,  
There's a spirit that sends a call,  
Here's a team to defend,  
Here's our pledge to the end,  
To the colors that must not fall.

FRANCIS B. HAAS.

HOWARD FENSTEMACHER.





## DRINK DEEP, O FOOLISH MORTALS

I look upon the summer's fairest day,  
Yet feel no happiness within my heart.  
Fair nature cannot send my grief away  
Nor make the shadows from my face depart.  
For she has cast her eyes away from me  
To look upon another's happy brow;  
So now if birds in any leaf-green tree  
Sing to their mates—I pause, and wonder how  
A soul of God's creation lives so glad  
Among the sorrows of my hopeless state.  
Ah, yes! A bird and mate are never sad  
For over them there shines a lovely fate.  
O foolish mortals, we who but do touch  
The wines of love—drink deep; 'tis ne'er too much.

SAM COHEN.



During the fall of 1935 Robert Savage sat down one noon hour with the day men to lunch. While eating, he conceived the idea of the following poem which literally launched a thousand limericks on the campus of Old Bloomsburg. The former poet laureate graduated in 1936.

## SANDWICH SYMPHONY

Crunch! Crunch! Crunch!  
The teeth of the day boys at lunch;  
Look at the crumbs,  
They all eat like bums—  
God! What a slovenly lunch!

ROBERT SAVAGE.







STUDY—A GIRL IN APRIL

Around the room run book-lined walls,  
*(Somewhere outside a robin calls.*

*Vines creep up to the window sills,  
The sun outdoors paints daffodils.)*

The hum of learning fills all the room—  
*(And night will bring a curved new moon.)*

Knowledge is one thing that will last,  
*(But all too soon Spring will be past.)*

Study I must, exams are near—  
*(Arbutus blossoms a mile from here.)*

Now I will get this lesson done,  
*(But violets are blowing in the sun.*

*Heart, that all winter lay so still,  
Strong hands draw you out to the hill.)*

I wish I could study, but how can I  
While my seventeenth spring slips by, slips by.

RUTH A. EISMAN.





## THE PERGOLA

The voice of wind and storm is here  
The rain and snow in turn appear;  
But still serene your columns white  
Stand guard by day nor sleep at night.

On festal day we come to play  
The children dance—'tis happy May!  
Rob Hood and all his jolly band  
Have sported here on every hand.

Here Puck and Bottom spend the night  
Midsummer's Dream—Titania's plight  
All staged around your graceful bower  
We come—to spend a happy hour.

In summer graced by ivy green  
Your lovely form is daily seen.  
In winter clothed with wool so white  
New beauty then our eyes delight.

I come with book—my troubles cease  
Your restful charm brings calm and peace  
Of all the lovely spots held dear  
Your place is first—the heart to cheer.

W. B. SUTLIFF.





## CAMPUS ON A WINTER DAY

With malign glee  
The wind-creased snow  
Throws sharp arrows  
Of golden glare  
Stolen from the sun.

JAY PURSEL.



## THE FIRST SNOW

The green of yesterday's campus  
Is blanketed in downy softness.  
A few straggling flakes  
Are falling noiselessly.  
A squirrel hops swiftly  
Leaving a queer pattern  
On the unbroken whiteness.  
A bell sounds  
And soon the windless peace  
Is shattered with ringing voices.  
Fleecy down gives way  
To merciless feet.  
The velvet surface  
Is no longer smooth.

STASIA ZOLA.

## A CHRISTMAS LEGEND

In a country far beyond the sea  
One night long, long ago,  
A star shown brightly downward  
On a sleeping world below.

No one did think that on that night  
In a country far away,  
A King, the Ruler of the world,  
Would be born ere break of day.

But as the shepherds watched their flocks  
On the hillsides bleak and bare  
A glorious chorus from heaven above  
Resounded through the air.

"Peace on Earth, Good Will Toward Men,"  
So did the chorus sound,  
The echoes of the angel choir  
Were heard the world around.

And so today at Christmastide  
We celebrate His birth,  
And once again the song is heard,  
"Peace and Good Will on Earth."

HOWARD BEVILACQUA.



## NIGHT

Long have the colorful rays of the dying Autumn  
Sun caressed the cottony clouds on high—  
As a Grecian mother kissed her slumbering child  
To seal the God-will'd love for one more day.  
Long has the mystic veil of even stolen through  
Translucent, ever-changing sky  
Heralding the coming  
Of fair jewel-crowned Night from  
Fleecy Eastern lounges where she lay,  
To drape her ever-darkening cloak  
Upon the day-worn world beneath.

Now shadowy twilight fades to purple dusk  
While through the haze the twinkling evening star  
Shines dimmed by effervescent films of silver gauze  
That ripple with the seething of the sun  
And the rhythm'd breathing of the herald, Dusk,  
Who quickly lays the velvet darkness carpet,  
"Sound trumpets! Roll the drum,  
Dance, ye glittering sequin stars,  
The Queen approaches; Night has come!"

GEORGE SHARP.

## OLD OAK ON SOUTH WALK

They come and go—these bright-faced boys and girls;  
Long have my gnarled limbs reached out to shelter them.  
They walk and talk beneath my out-stretched arms:  
Gay youth, carefree and full of hope.  
The seasons pass—each year brings back some friends to me;  
Time's hand has etched each face with fine new dignity.  
They serve their day and countless children  
Know not how my sturdy heart of oak  
Has made them feel the worth of steady growth.

W. B. SUTLIFF.



## PERPLEXITY

I reached into infinity  
To see what I could find;  
I might have found Divinity,  
Instead I lost my mind.

SAM COHEN.





## FOR LACK OF SOMETHING BETTER TO DO

For lack of something better to do  
I'm writing this little poem;  
For lack of big, long words to use  
The dictionary I'll comb.

How's this—ichthyocoprolite?  
Do you know what it's about?  
I don't, nor do I want to—  
'Seuse moment—bothersome gout!

Snap out of it, don't go to sleep;  
Wait at least till it's finished.  
All that's needed is a good rhyme—  
Ah, I have it—diminished!

BETTY CHALFANT.

## DAWN

Clouds scud across the bright'ning sky—  
As though some sweeping Unseen Hand  
Had, with a gesture, brushed them by—  
And vanish in the coming dawn.

O'er gray, peaked house-tops in the west  
A silver lanter-light, the moon  
Hangs low, then weary, drops to rest  
Upon a chimney-cap. She sighs,  
And looking backward bids the world  
Good morn. She goes with tear-wet eyes.

With silver finger beckoning  
To those infatuates of night  
Who sang to her their lilting songs,  
She slides behind a hill in flight  
From golden arrows shot at her.  
Dark shadows, eringing, turn to run,  
But trapped, disintegrate and fade  
Before the fierce assault of sun.

The cricket's song so gay at night  
Has faded into silence now,  
And robins, wakened by the light,  
With swelling chests and curling wings  
Cock heads toward earth in thoughts of food.  
A starling in the distance sings  
His raneous notes. Afar, in search  
Of food, his mate stops suddenly  
Upon a swaying, thin-limbed birch,  
Soft admiration in her eyes.



# DAWN

(CONTINUED)

But, when upon remembering  
Wide, gaping mouths and hungry cries,  
She thinks of work, and swooping hard  
Attacks an unsuspecting prey  
Caught momentarily off guard.

The gentle urging of some breeze  
Has pried green limbs apart to let  
The sunlight trickle through shy trees,  
It leaps to earth in moving streams,  
And splashing, drowns damp grass in gold.  
In nearby fields strong, harnessed teams  
With heads thrown forward, muscles braced,  
Begin their tasks of turning sod.  
Behind them trail the furroughs traced  
Upon the damp, cool earth once strong,  
Now broken by the slashing steel  
That hums a munching crunching song.  
Thin aisles of rich, dark earth run down  
Swift sides of rolling hills, across  
The narrow valley floor to town—  
Some country town with quiet homes  
And soft, reclusive winding streets,  
The touch of day first strikes the domes  
And steeples of the churches. Up  
Before the dawn the people watch  
The valley fill: a golden cup.

JAY PURSEL.

*Compliments*

*of*

*G* EISTWITE  
STUDIOS



# Magee Carpet Company

MILLS: BLOOMSBURG, PA.

*Manufacturers of*

WILTON, VELVET, AND AXMINSTER RUGS AND  
CARPETS, BROADLOOM CARPETS

27 Inches to 18 Feet Wide

40 COLORS

*Special Patterns for Churches, Hotels and Lodge Rooms*

## Magee Garage

G. M. C.  
TRUCKS and TRAILERS

•

COMPLETE REPAIR SERVICE  
FOR ALL CARS

•

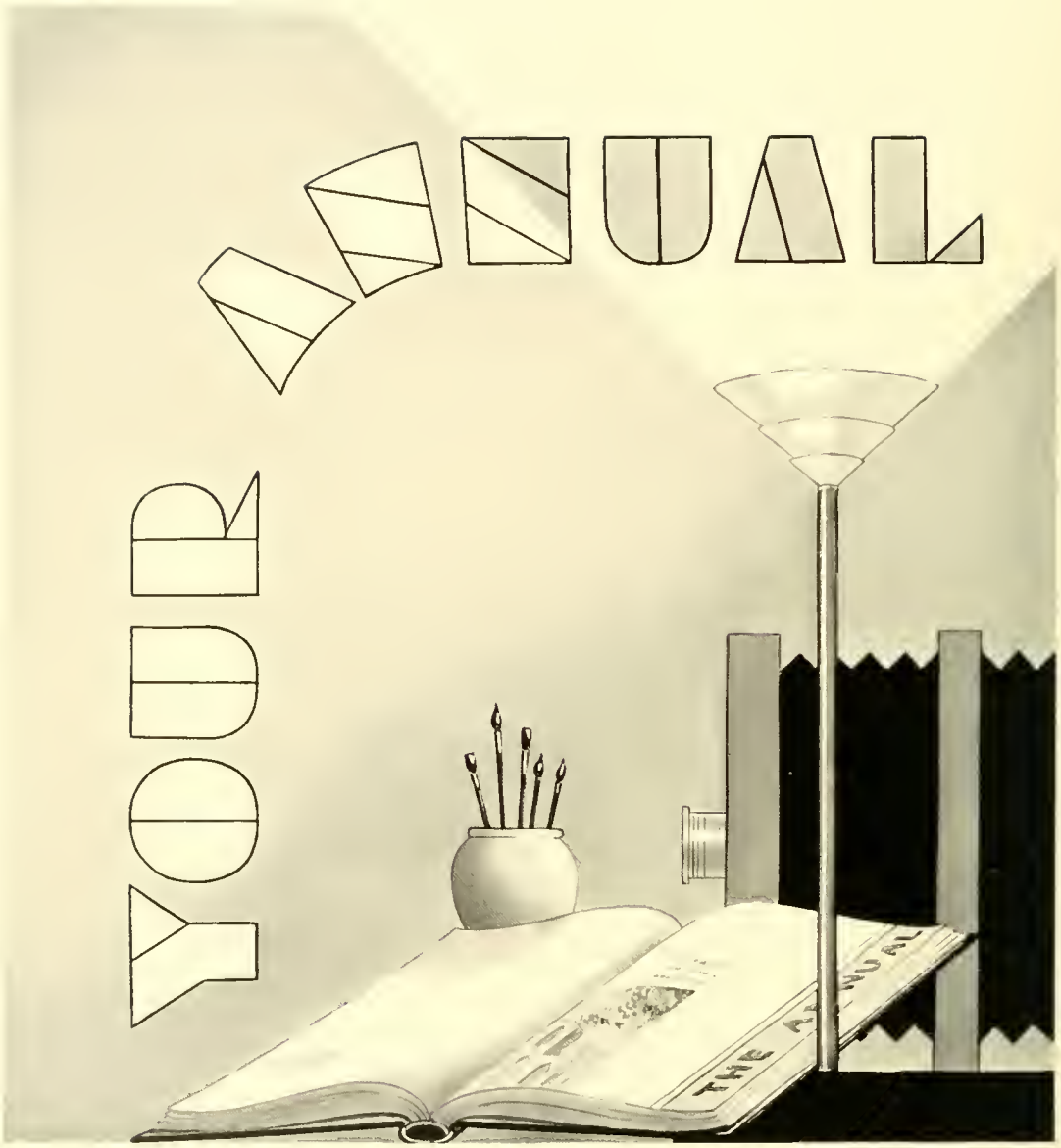
West Main Street  
BLOOMSBURG, PA.

*Courtesy of*

COLUMBIA  
AIRWAYS

ANNUAL

YOUR



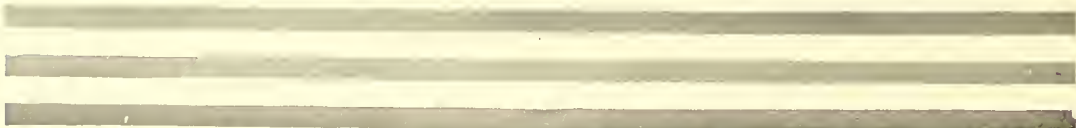
*was*

DESIGNED, ENGRAVED, PRINTED AND BOUND IN OUR  
PLANT. WE ARE JUST AS PROUD OF IT AS YOU ARE.

# **GRIT PUBLISHING COMPANY**

WILLIAMSPORT, PA.

*Producers of Distinctive School and College Publications*



*More Than 1000 Schools  
Have Adopted*

# BUSINESS MATHEMATICS

by R. R. ROSENBERG

In Business Mathematics the author brings Business Arithmetic from the category of merely tolerated subjects into the fascinating realm of everyday life.

Business Mathematics claims interest because it shows how much of everyday life *is* Arithmetic and how it is to be translated into a business asset.

The character of the material, according to many teachers, transcends anything appearing thus far. The continuity and organization of materials reflect the analytical mind of a Certified Public Accountant, who, by reason of his major interest, has made business situations the unit of consideration.

Several editions—a book for every need.

WRITE OUR NEAREST OFFICE  
FOR COMPLETE INFORMATION

## The Gregg Publishing Company

New York

Chicago

San Francisco

Boston

Toronto

London

Sydney

# SENIORS!

## Join your Alumni Association



The annual dues of \$1.00 will admit you to the Alumni Dinner and will also entitle you to a year's subscription to the

## ALUMNI QUARTERLY

This magazine, which appears four times a year, will keep you informed of the activities of your classmates and the events happening on the campus.



*All dues should be sent to*

MRS. F. H. JENKINS

*Business Manager,*

216 West Fifth St., Bloomsburg, Pa.



Compliments of  
J. J. NEWBERRY  
COMPANY

---

Leader Store Co., Inc.

J. K. L. M. STORE  
OF QUALITY

•  
*Bloomsburg's Largest  
and Most Complete  
Department Store*

---

The  
CAPITOL  
THEATRE

*Extends Sincere Congratulations  
to the*

CLASS OF 1937

*and  
Success in Years  
to Come*

A Comerford Theatre

GEORGE BETTINGER, *Manager*

BUSH'S

Students' Meeting Place

□□

CANDIES  
ICE CREAM

□□

*112 E. Main Street*

BLOOMSBURG, PENNSYLVANIA

---

LIFE looks up

*When the Box Says*

DILLON'S  
Flowers

---

Polar-Wave Ice Cream

25c AND 30c PLATTER LUNCHES  
AND SANDWICHES

•

*A Good Place to Eat*

ENGLE'S  
DAIRY LUNCH

W. T. GRANT CO.

*Known for Values*

•  
Merchandise From  
1c to \$1.00

---

Compliments of

CREASY & WELLS, Inc.

LUMBER

MILLWORK      ROOFING

DU PONT PAINTS

BLOOMSBURG      DANVILLE

---

## Central Teachers' Agency

*Member of National Association of  
Teachers' Agencies*

202 WALNUT STREET    HARRISBURG, PA.

Bell Phone 2-4256

This Agency placed fifty per cent more teachers during the past season than in 1935. Prospects bright for 1937. Candidates carefully selected.

*Early Registration Advisable*

C. H. GORDINIER, *Manager*

No Charge to School Officials

Compliments of

## SNYDER'S DAIRY



DANVILLE

HAZLETON

BLOOMSBURG

---

Compliments of

## THE WHITE MILLING COMPANY

BLOOMSBURG, PA.

•  
*Everything in Flour and Feed*

---

## THE COFFEE SHOP

HOTEL MAGEE

*The Restaurant Where Delicious  
Meals Are Served at  
Economical Prices*

Breakfast  
Luncheon  
Dinner

Courteous  
Efficient  
Service

Compliments  
of  
A Friend

---

FRED R. HIPPENSTEEL

*Clothier and  
Furnisher*

BLOOMSBURG, PA.

---

SCHENK & TITTLE

“Everything for  
Sports”

•  
  
*313 Market Street*  
HARRISBURG, PA.

RACUSIN'S

“Exclusive but  
Not Expensive”

---

Housenick Motor Co.  
Ford, Lincoln, Lincoln-Zephyr  
*Sales and Service*

•  
Main and East Streets  
BLOOMSBURG, PA.

---

Moyer Bros., Inc.

BLOOMSBURG'S  
LEADING PRESCRIPTION  
DRUG STORE

—  
*Headquarters for*  
WHITMAN'S,  
LOVELL and COVEL CHOCOLATES  
FRESH WEEKLY

—  
*“Meet your friends at  
our fountain”*

—  
YOUR PRESCRIPTION DRUGGIST  
SINCE 1868

# HESS SMOKE HOP

and Billiard Parlor

BLOOMSBURG, PA.

7 TABLES

*Phone 182-J*

*WILLIAM J. HESS, Proprietor*

Get Your Hair Cut at

## GENSEMER'S

MAGIE HOTEL

*Where Courtesy and Service Is Assured*

F. P. PURSEL  
Department Store

BLOOMSBURG, PA.

*Quality for 44 Years*

*Use*

S-Bro-Co and Gena  
Pure Foods

SCHNEIDER BROS. CO.

*Wholesale Groceries*

BLOOMSBURG and MT. CARMEL

Compliments of

F. W. WOOLWORTH  
COMPANY

FOR REFRESHMENTS AND EATS

*Don't Forget*

TEXAS LUNCH

*and*

TEXAS CAFE

142-144 EAST MAIN STREET

Compliments of

BUCKALEW  
CHEVROLET, INC.

H. & C. Cut Rate Drugs

*Quality Fountain Service*

Our old fashioned Ice Cream, and  
Whitman's Specialties, Cosmetics and  
Patents at Low Prices.

Hollingshead & Christian

BLOOMSBURG, PA.

Compliments of

# Bloomsburg Silk Mill

BLOOMSBURG, PENNSYLVANIA

---

## Light Street Lumber Yard

JAMES A. SNYDER, *Proprietor*

Lumber and Building Materials



Integrity! Quality! Service!

*Build Well and Live Well*



*Phone 141*

LIGHT STREET, PA.

Compliments of  
**E. R. BEERS**  
Electrical Supply Co.



Main Street BLOOMSBURG, PA.

**RITTER'S**

*Everything for School  
and Office*

Stationery, Magazines, Blank Forms,  
Typewriters, Office Supplies  
Lending Library

Main Street BLOOMSBURG, PA.

**BART PURSEL**

BLOOMSBURG'S LEADING  
CLOTHING STORE

*Prices to Fit the Purse*

If It's Anything for Men We Have It

*The Town's Leading Dry Cleaner*

Ladies' Dresses, Ladies' Coats, Men's Suits  
and Topcoats Cleaned and Pressed

“When It's a

**MARIETTA**

It's a

First-Edition Fashion”

**WE** recommend . . .

to the students of Bloomsburg State  
Teachers College those advertisers who  
have contributed to the financial suc-  
cess of this book

1937 OBITER STAFF

# SUBJECT INDEX

	<i>Page</i>		<i>Page</i>
"A Boy in May"	152	"Lagoon (The)"	107
A Cappella Choir	116-117	"Last Vacation"	113
Administration	19-29	Lutheran Student Group	112
Ads	168-178		
Alma Mater	17	Maroon and Gold	126-127
Alpha Psi Omega	138-139	Mascot	64
Athletics	63-92	Memoriam	92
		Mixed Chorus	114-115
Band	118-119	Musical Organizations	114-121
Baseball	68-69	"My Heart"	34
Basketball	78-81		
"B" Club	86-87	"Nature of Man"	18
"Bishop Misbehaves"	149	"Night"	163
Bowling	84-85	"Night Kisses the Campus"	31-33
		North Hall	104-105
Campus	9-16		
"Campus on a Winter Day"	161	OPEN	124-125
"Campus Rain"	93	"Old Bloomsburg"	154
Cheerleader	65	"Old Oak on South Walk (The)"	164
"Christmas Legend (A)"	162	Orchestra	120-121
Classes	34-62	Organizations	95-147
Columban Club	112		
Com. Gov. Association	96-97	"Pergola (The)"	160
Contents	8	"Perplexity"	161
Cross Country	72-73	Phi Sigma Pi	144-145
		Picture Winners	151
"Dawn"	166-167	"Pinery (The)"	6-7
Day Men	102-103	Pi Omega Pi	146-147
Day Women	100-101	Play Tournament (H. S.)	150
Dedication	4-5	Poetry Club	122-123
Dramatic Club	128-129	"Poplars and Stars"	94-95
"Drink Deep, O Foolish Mortals"	156		
		Religious Organizations	108-112
Faculty	22-29	Rural Life Club	130-131
"First Snow (The)"	161		
Football	74-77	"Sandwich Symphony"	156
Football Seniors	76-77	Seniors	36-49
"For Lack of Something Better to Do"	165	Snaps	153, 155, 157, 159
Fraternities	136-147	Sophomores	54-57
Freshmen	58-62	Student Council	106
		"Study—A Girl in April"	158
Gamma Theta Upsilon	140-141	Subject Index	179
Geography Society	132-133	Supervising Teachers	30
Girls' Sports	88-89		
		"Teacher"	49
Index	179	Tennis	70-71
Interfraternity Council	136-137	Track	66-67
Intramural	90-91	Trustees (Board of)	20
Junior Chamber of Commerce	131-135	Waller Hall	98-99
Juniors	50-53	Wrestling	82-83
Kappa Delta Pi	142-143	Y. M. C. A.	110-111
Kiwanis-Rotary Night	148	Y. W. C. A.	108-109







