



**BLOOMSBURG
THEN AND NOW**

STATE TEACHERS COLLEGE
Bloomsburg, Pennsylvania

FOREWORD

Although change is not always synonymous with progress, the development of the campus and buildings at "The Friendly College" during the past ten years reflects both growth and improvement in the physical plant and educational facilities. This pictorial brochure presents in striking contrast some of the major changes that have taken place on the hilltop campus during a DECADE OF GROWTH — 1948-1958.

BLOOMSBURG



VOLUME XXVII

DECEMBER, 1958

NO. 1

Entered as second-class matter at the Post Office at Bloomsburg,
Pennsylvania, under the Act of August 24, 1912.

"I Saw the Towers



FAMILIAR LANDMARK . . .

Carver Hall, with its beautiful Georgian bell tower, has long dominated the campus scene; but, with the growing need for greater accessibility to the administrative offices and with changing architectural styles, it was thought desirable to remove the familiar red brick entrance with its cast iron fountain and circular flower plot in 1954. The new gateway to the college campus, constructed of Indiana limestone, is in keeping with the spirit of change but retains the quiet dignity which has always been characteristic of Bloomsburg. Carver Tower, now illuminated and known as the Bloomsburg Beacon, was dedicated during the Seventy-fifth Anniversary of Teacher Education at the college to the memory of those students from the college who made the Supreme Sacrifice during World War II.

GIVES WAY TO NEW ENTRANCE

of Bloomsburg”



— Carver, With Its



President Andrus at his desk in new executive office in Carver Hall.

Mrs. Knight, taking dictation in the former executive office in Waller Hall.



The increasing enrollment necessitated providing new offices for the President of the College. Dr. Harvey A. Andrus, President of the College since 1939, and Mrs. Anna M. Knight, Institutional Secretary, now occupy spacious quarters on the first floor of Carver Hall. Many visitors, including the Governor of Pennsylvania and the Superintendent of Public Instruction, have commented upon the tasteful decor of the executive offices which are easily accessible to visitors to the Bloomsburg State Teachers College campus. These changes were completed in the spring of 1954.



Students meet informally in Carver Hall Lobby.

Ever-Welcoming Door

Mr. Edwards explains personalized placement to prospective teachers.



Dean Hoch adjusting class schedules.

An increase in student enrollment from 790 in September 1948 to 1378 in September 1958 dictated an expansion of facilities for handling the increased services performed by the College Business Manager, the Dean of Instruction, and the Director of Admissions and Placement.

Administering a college budget nearly double that of a decade ago, personalizing admissions and placement, and directing an expanded curriculum and increased enrollment have required more office space, as well as a centrally-located conference room for the Board of Trustees and the Administrative Council—all on the first floor of Carver Hall.



Faculty-administrative committee meeting in Conference Room.

Business Office staff in new quarters in Carver Hall.





Accounting Class (1941) in Room H, Noetling Hall



Room H—Now Day



Expanded postal facilities in Waller Hall



Miss Eyerly at work



Then



Noetling Hall Corridor

Now

Who Follow Here



Men's Room



Learning how to use modern teaching aids.



in the old "College Store."

More centralized means of communication have been provided by relocating the Day Men's Room, by renovating the first floor corridor of Noetling Hall with well-lighted bulletin boards, and providing mail box space for every student and every faculty member in the College post office. The installation of a PBX system provides for more efficient inter-office communication.

A film library and a projection room were located in the reconstructed second-floor area of Noetling Hall in 1949 to serve the growing audio-visual needs of the College.



Staff members use Faculty Lounge for "homework."

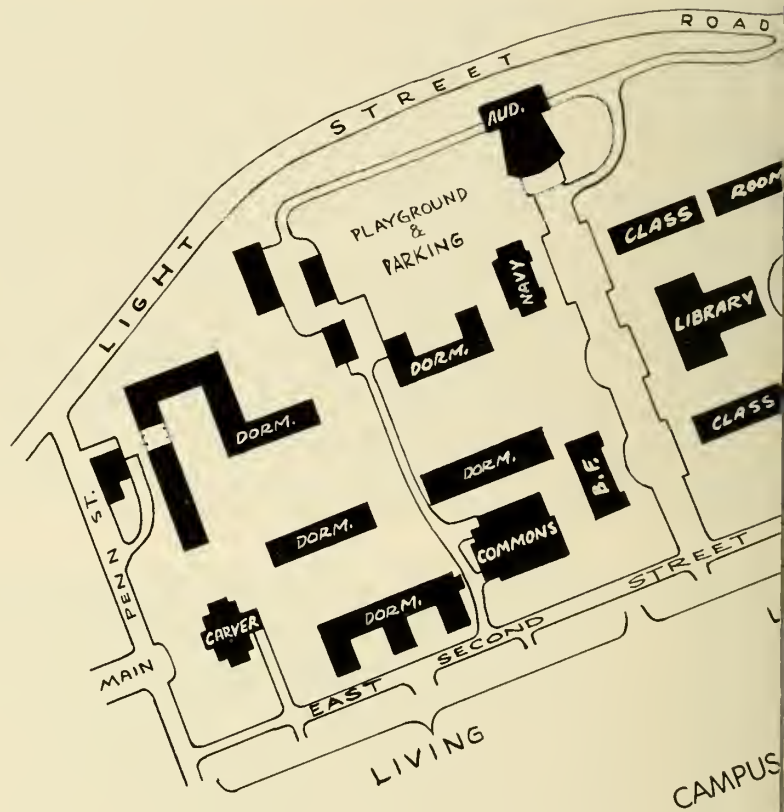


PBX—Communication center in Waller Hall



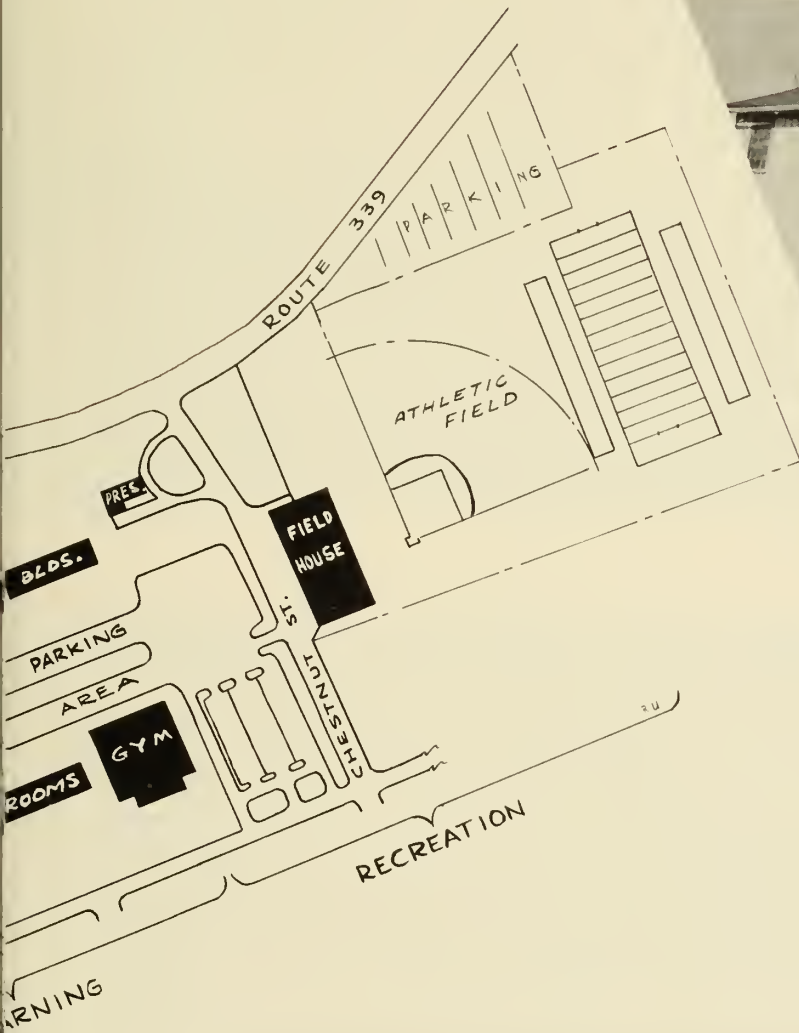
WILLIAM BOYD SUTLIFF HALL

The farsighted planning of President Harvey A. Andruss, with the wholehearted support of Dr. Charles H. Boehm, Superintendent of Public Instruction, enabled Bloomsburg to be the first of the fourteen Pennsylvania State Teachers Colleges to receive approval of a comprehensive campus plan, providing facilities for an enrollment of 2,000 students by 1970. The first building to be constructed in this program of expansion was the College Commons, a dining hall, completed in 1957 at a cost of more than a half-million dollars. Construction is now proceeding rapidly on two additional buildings — William Boyd Sutliff Hall and New North Hall. The former will provide eight specialized classrooms for Business Education and six modern science laboratory classrooms. The new men's dormitory will house 200 college men. The approved campus plan incorporates three distinct areas designed for Living, Learning, and Recreation.



Bloomsburg Is Growing

Proposed Campus Expansion



OLD BARN . . .

REPLACED BY NEW NORTH HALL



Modern Library



Cramped quarters of old second-floor library.



Hometown newspapers—popular reading

Carlyle once said, "A university is a collection of books." Recognizing the importance of a modern library in an expanding program of teacher education, the College recently relocated its library in the area formerly occupied by the old dining hall. This resulted in doubling the amount of shelf space and created a light, cheerful setting for college students. The library adjoins Waller Hall Court, with its electric fountain, which is colorfully illuminated at night.

When the library was located on the second floor of Waller Hall, the number of acquisitions was limited by space and weight; in the new quarters, the number of volumes can be increased from 35,000 to approximately 70,000. The Class of 1958 recently set a precedent by providing, as a memorial, the sum of \$600 to be added to regular college funds for the purchase of books.



Spacious, modern library replaces old Dining Hall.

Replaces Old Dining Hall



enter in new library.

Benjamin Franklin Laboratory School pupils have separate facilities in new library.





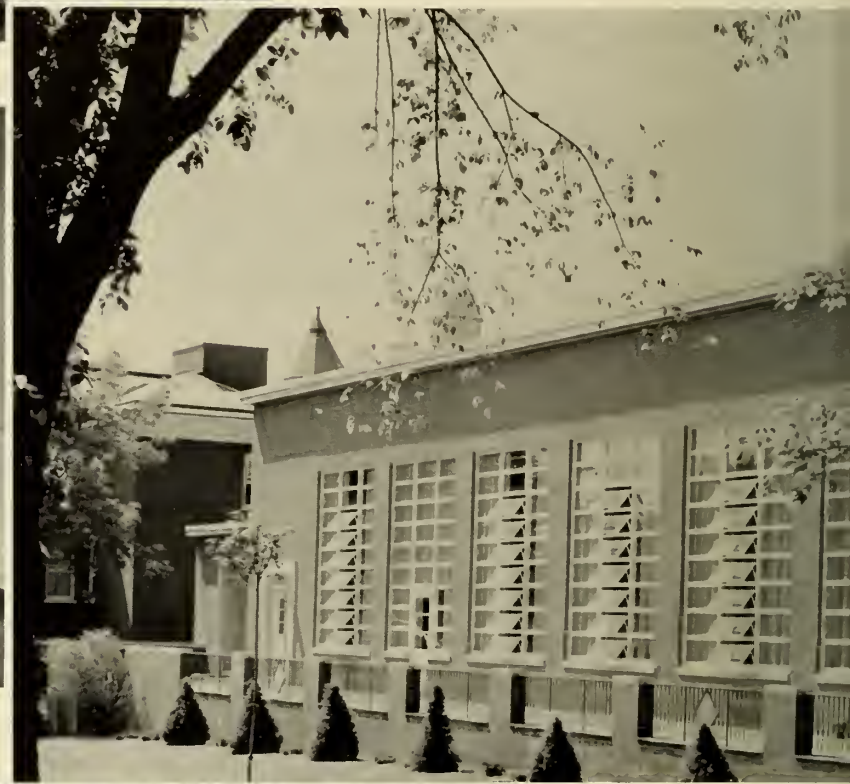
New fountain in Waller Hall Court



Waller Hall Portico



Beautiful Waller Lounge—favorite meeting place for students.



College



Long Porch—
only a memory.

Transition and Growth

Few changes in the physical plant of the college have evoked more favorable comments than the College Commons, the Colonnade, and the attractive Waller Lounge. The oak-paneled Commons accommodates 650 students in quiet, distinctive surroundings. Improvements in Waller Hall include the Colonnade, which in 1949 replaced the wooden portico known to generations of Bloomsburg students as Long Porch. The relocation of the business offices and the old book store made space available for a well-appointed lounge area devoted to social and cultural activities. The stately columns of

the new porch-entrance to Waller Hall Lobby, completed in 1956, have become one of the new campus landmarks. The view of the campus from this veranda is popular with students and visitors alike.



The Dining Hall—Then



Commons



The College Commons—Now

New Student

The Old Gym, with its circular running track and spiral staircase, is but a memory. In its place is the Husky Lounge—recreational center for Bloomsburg students since its completion in 1956. A completely equipped snack bar and fountain, numerous tables and booths, modern book store and retail outlet, a



Fireplace forms artistic backdrop for student groups in Husky Lounge.



The Old Gym



The Husky Lounge (1958)



Popular Snack Bar

Center

sunken patio with imposing stone fireplace, and an elevated television lounge promote the kind of feeling which makes it easy "for a student to be proud of Bloomsburg." The profits from this student center are channeled into college community projects, including scholarships and grants for worthy college students.



One of three student offices adjacent to Husky Lounge.



Gym (1949)



College Store is conveniently located in Husky Lounge.



replaces Canteen.



Freshman "Tribunal Night" in elevated area of Husky Lounge.

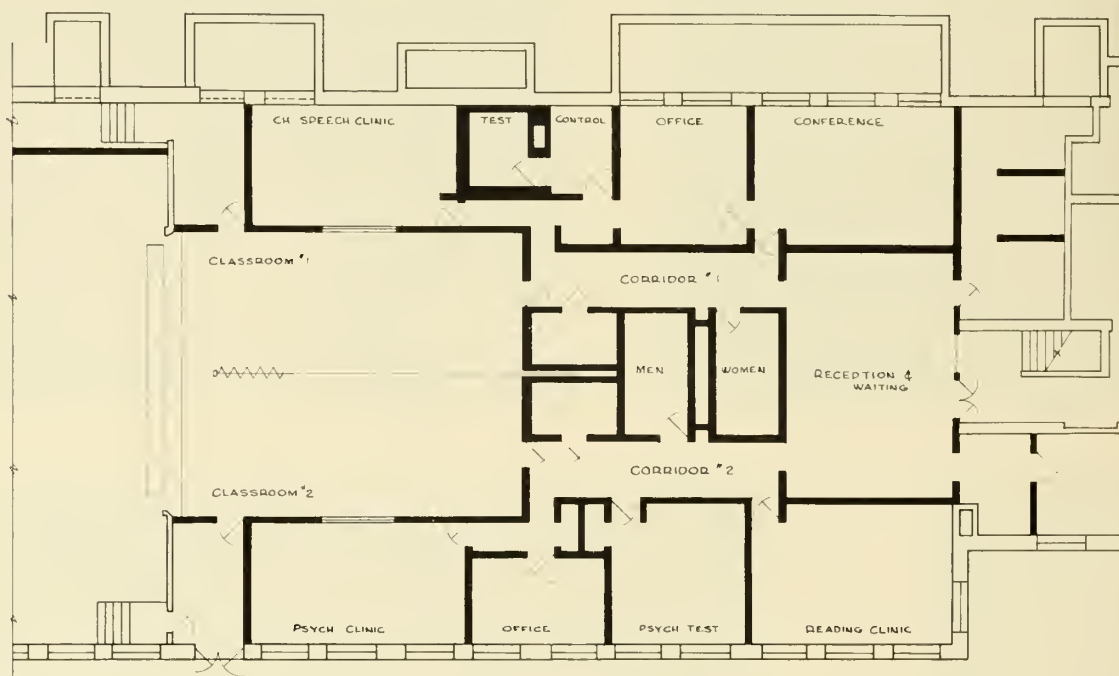
Expanded Facilities for Special Education



ENTRANCE TO
NAVY HALL



NAVY HALL AUDITORIUM



FLOOR PLAN — NEW SPEECH AND HEARING CLINIC

Inspired by Governor George M. Leader's interest and support of state-wide programs of Education for Handicapped Children, the College is now developing a Special Education center on the ground floor of Navy Hall. Plans have been approved for remodeling this area to include individual rooms for speech and hearing therapy, psychological examination and testing, and diagnostic and remedial reading services. Offices will be provided for members of the staff of the Department of Special Education, as well as for student clinicians.

COMMONWEALTH OF PENNSYLVANIA
DEPARTMENT OF PUBLIC INSTRUCTION

CHARLES H. BOEHM, *Superintendent of Public Instruction*
Chairman, Board of State Teachers College Presidents
Chairman, State Council of Education
Ex-officio Member, Board of Trustees

RALPH C. SWAN, *Deputy Superintendent*

GEORGE W. HOFFMAN, *Deputy Superintendent*

CARL E. SEIFERT, *Deputy Superintendent*

CLARENCE ACKLEY, *Deputy Superintendent*

STATE COUNCIL OF EDUCATION

Paul R. Anderson	Pittsburgh
Cathleen M. Champlin	Philadelphia
James H. Duckrey	Cheyney
Pearl Buck Walsh	Dublin
George E. Hamilton	Meadville
Andrew J. Nowak	Erie
O. H. English	Abington
Stephen B. Sweeney	Philadelphia
Millard E. Gladfelter	Philadelphia

THE BOARD OF TRUSTEES

C. Wm. Kreisher, President	Catawissa
Carl E. Fleckenstine, Vice President	R.D. 2, Orangeville
Howard S. Berninger, Secretary	Bloomsburg
Bernard J. Kelley	Philadelphia
Harold L. Paul	Pottsville
Frank A. Thornton	Shamokin
John H. Shuman	Bloomsburg
Leo S. Dennen	R.D. 1, Turbotville
Sam Jacobs	Danville
Harvey A. Andruss	President of the College

ADMINISTRATIVE PERSONNEL

Harvey A. Andruss	President
Mrs. Anna M. Knight	Institutional Secretary
John A. Hoch	Dean of Instruction
C. Stuart Edwards	Director of Admissions and Placement
Mrs. Elizabeth Miller	Dean of Women
Mary E. Macdonald	Assistant Dean of Women
Walter R. Blair	Dean of Men
Ralph S. Herre	Assistant Dean of Men
George G. Stradtman	Assistant Dean of Men
Royce O. Johnson	Director of Elementary Education
Ernest H. Engelhardt	Director of Secondary Education
Thomas B. Martin	Director of Business Education
Donald F. Maietta	Director of Special Education
M. Beatrice Mettler	Resident Nurse
Paul G. Martin	Business Manager
Jennings B. Knoebel	Superintendent of Buildings and Grounds

