

P R A E C O

1952



Published by the
PRAECO STAFF

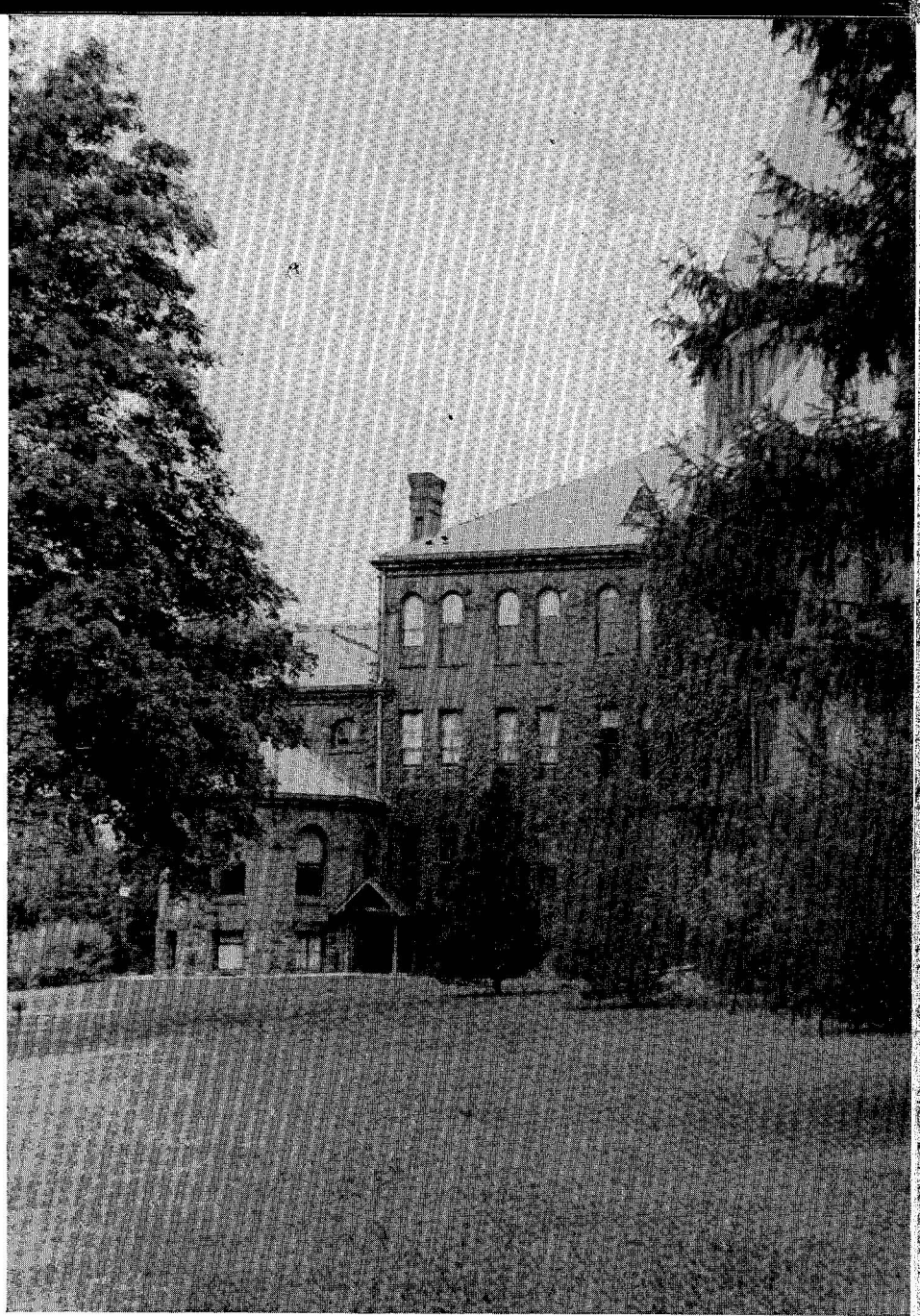
Lock Haven State Teachers College

Lock Haven, Pa.

THE 1952



PRAECO



STATE TEACHERS COLLEGE
LOCK HAVEN, PENNSYLVANIA

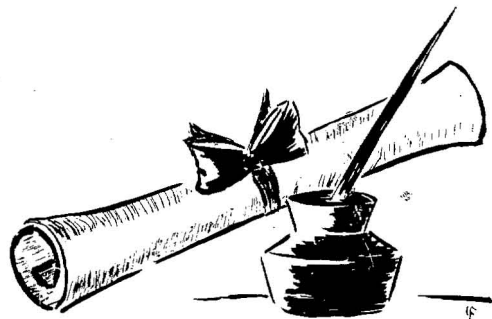
FOREWORD

**"If I have seen farther . . . it is by
standing on the shoulders of giants."**

—Sir Isaac Newton

The word foreword itself connotes thoughts of the future. It implies that the focal point of interest for the graduating class of 1952 should be on the events to come. As a foreword prefaces a book, so graduation is merely the transition from a period of learning to a life of experience.

However, Sir Isaac Newton had the right idea. What shall be accomplished in life is possible only because of the experiences which prefaced the period of endeavor. The knowledge acquired, the lessons learned, and college life in general provide this indispensable "basic training." The future is promising only when the past is richly illuminated by memories.

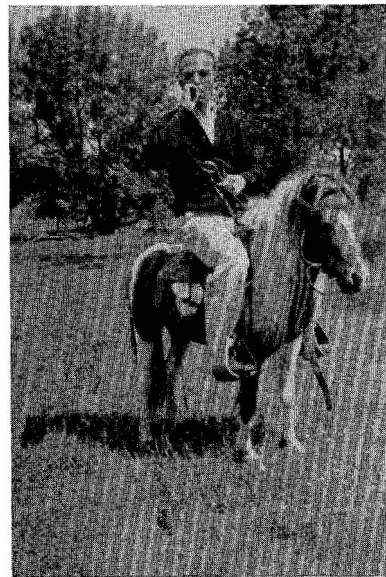


CONTENTS

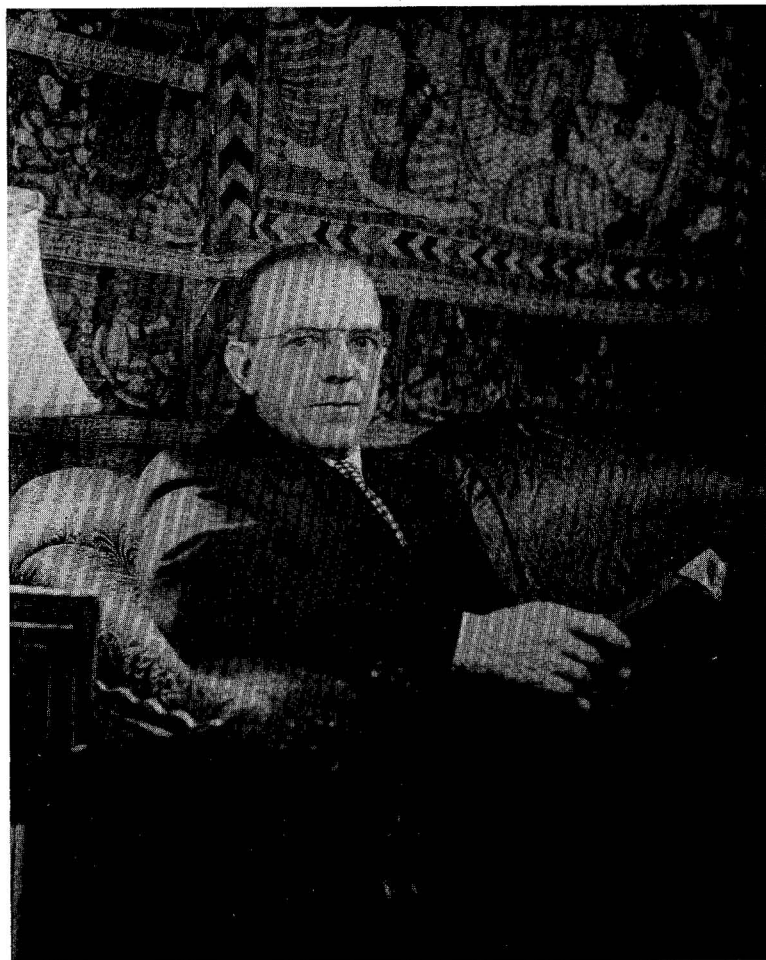
Foreword	4
Dedication	6
Administration	9
Seniors	21
Classes	37
Activities	49
Sports	75
Advertising	90
Student Directory	97



Twenty-one years of service to any institution is in itself a record not to be ignored. To create on campus and in classroom the very spirit of friendliness for which Lock Haven State Teachers College is noted, has been an invaluable contribution to student life. From music to social studies, from Puccini to the Pentagon, from Bach to the Bastille: his teaching accomplishments have run the gamut of the esthetic and the practical. To our friend, Mr. George F. B. Lehman, the 1952 *Praeco* is dedicated.



DEDICATION



Mr. George F. B. Lehman





ADMINISTRATION



Richard T. Parsons, Ed.D.
President



Dr. Parsons became president of Lock Haven State Teachers College in nineteen hundred and forty-two. Prior to that time he had been associated with the college both as a student and as an instructor. Under his capable administration many improvements have been made throughout the College.

Top: F. Clark Skelley, Ed. D., Dean of Instruction.

Middle: Arria G. McGinniss, Ph. D., Director of Personnel.

Bottom: Carey E. March, M. A., Dean of Men.

No school can successfully exist without an efficient administration. Lock Haven State Teachers College is fortunate in this respect. This year marked the first year that Dr. Skelley, Miss McGinniss, and Mr. March performed their newly acquired administrative duties. Each one has admirably served the best interest of the school, student body, and community. They are to be commended for their splendid work, and wishes are expressed for many continued years of service to Lock Haven.





Ferdinand F. Black, M. A.

Geography



Edna A. Bottorf, Ed. D

Art



Ruth H. Brosius, B. S., A. B.

Assistant Librarian



Marcella Burt, M. S.

Elementary Education
Alumni Secretary



Hayman D. Corbin, Ph. D.

Health and Physical Education



Lorraine Spikings Dullen, M. A.

Health and Physical Education



Ira O. Fleming, M. S.

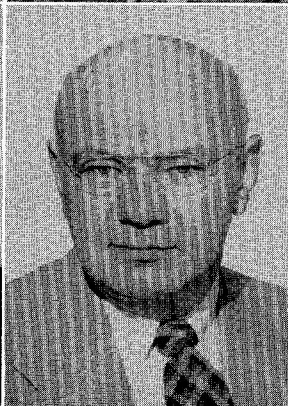
Biological Science

Max H. Fromm, M. A.
Biological Science



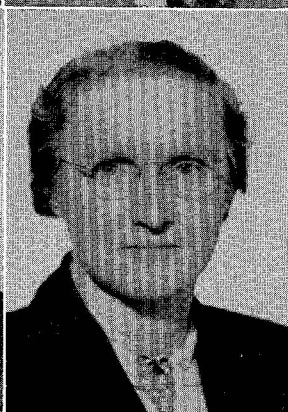
Russell C. Gillam, M. A.
Elementary Education
Music

Lydia E. Gross, M. Ed.
Elementary Education



Edward B. Hills, A. M.
English

Albert R. Hobba, A. M.
Social Studies



Ruth M. Holmes, A. M.
Elementary Education

Hubert H. Jack, M. A.
Health and Physical Education



John F. Koons, M. A.
French and Spanish

George F. B. Lehman, A. M.
Social Studies



Carey E. March, M. A.
Dean of Men
Physical Science

Franklin M. McIlvaine, M. Ed.
Psychology



William R. North, Ph. D.
English

Allen D. Patterson, Ph. D.
Director of Teacher Education
Placement Director



Cophine Rook, M. S.
Elementary Education

W. Valgene Rutch, M. A.
Music



Axel S. Rude, Ph. D.
Education



Ernest I. Schrot, M. Ed.

Visual Education

Charlotte E. Smith, M. A.

Health and Physical Education



Samuel J. Smith, A. M.

Mathematics

William A. Thomas, A. M.

English



David C. Ulmer, Ed. D.

Biological Science

Charles W. Vonada, M. Ed.

Social Studies

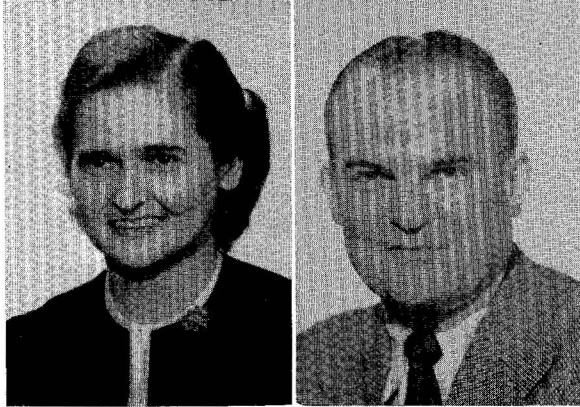


Gilmore Warner, Ph. D.

Librarian

Helen C. Waterbury, M. Ed.

Elementary Education



Grace M. Wible, M. Ed.
Elementary Education

W. Howard Yost, M. Ed.
Health and Physical Education



Elizabeth K. Zimmerli, Ed. D.
Health Education

Lester P. Zimmerman, M. Ed.
Health Education





TOP ROW:

Carrie Barnhart
Library Assistant

Deborah M. Bentley
Dietitian

MIDDLE ROW:

Audrey V. Bressler
Bookkeeper

BOTTOM ROW:

Mrs. Florence G. Dietz
Sec. to President

Katherine Glennon, R. N.
Nurse



TOP ROW:

Leona Hasmer

Library Assistant

I. W. HUNT

Business Manager

MIDDLE ROW:

Mrs. Dorothy Harrau

Secretary—Campus School

Mrs. Jeannette Middlestadt

Sec. to Director of Personnel

BOTTOM ROW:

E. Ross Nevel

Supt. of Buildings and Ground

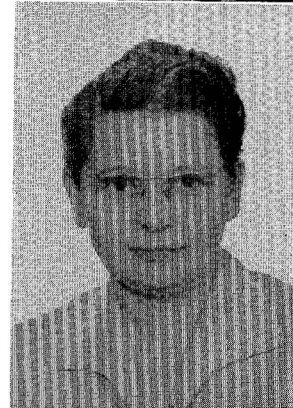
Mrs. Miriam Rhoades

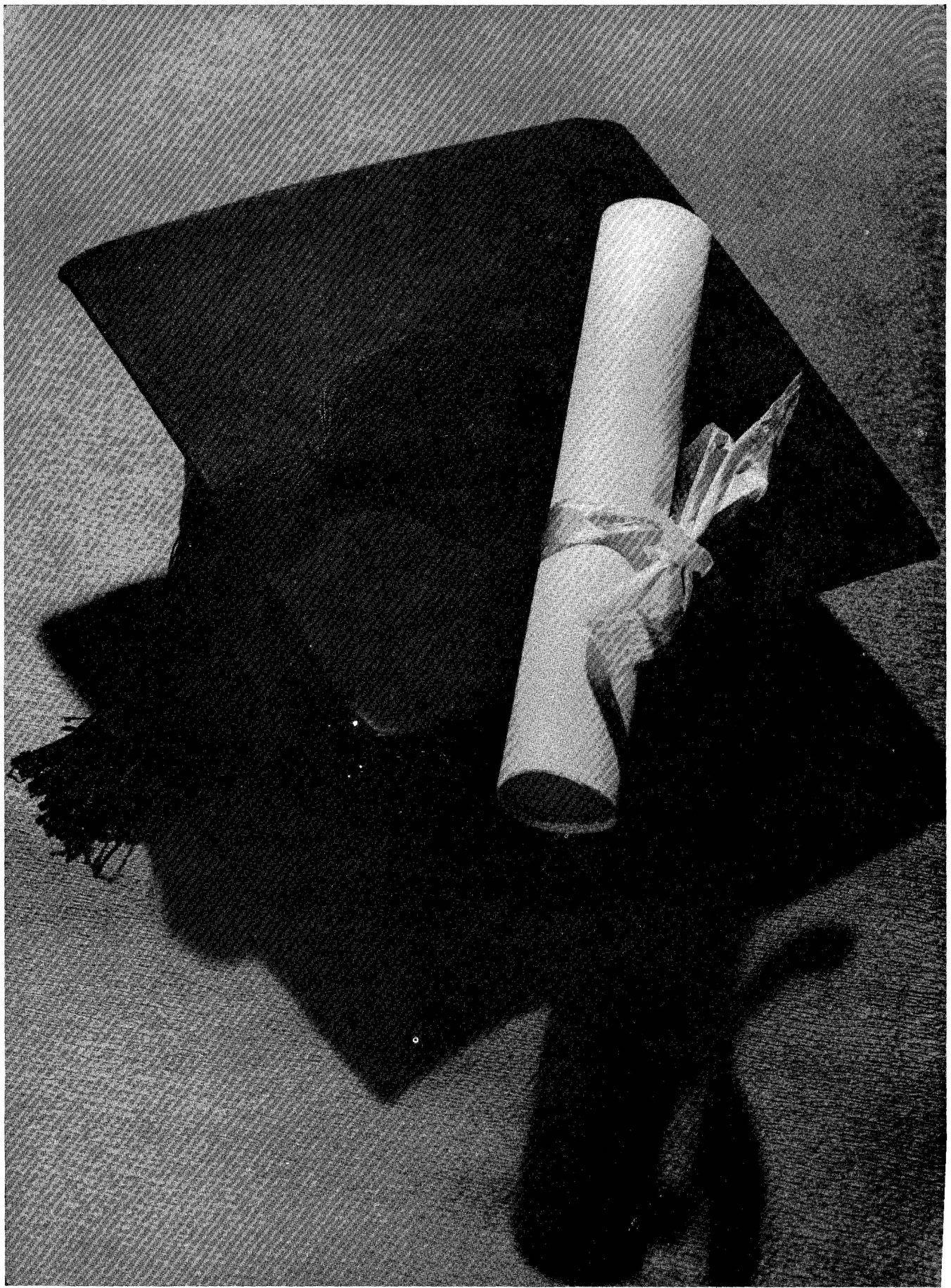
Sec. Dean of Instruction

Ernest E. Sheasley
Storekeeper

Mrs. Goldie Walker
Household Director

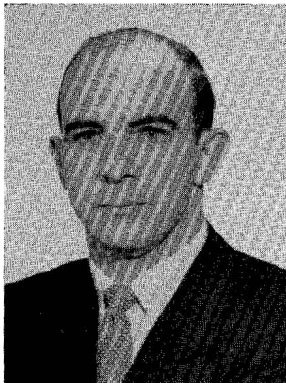
Claire E. Wentz
Bookkeeper—Student Store





SENIORS





DOMINIC A. ALFIERI

Health and Physical Education

Football, Baseball, Newman Club,
Naturalist Club, English Club,
Praeco Staff.



FREDERICK E. ANDERSON

Elementary



JOHN AIELLO

Health and Physical Education



EUGENE A. BARNHART

Elementary

College Players, College Chorus,
Men's Glee Club.



HAROLD D. BLACK

Health and Physical Education

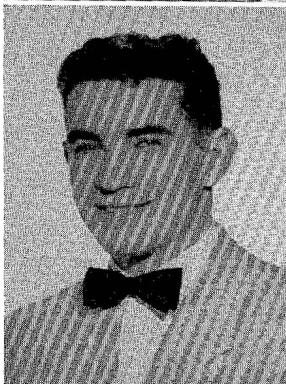
Social Committee, Intramural Bas-
ketball, Delta Rho Beta.



SYLVIA A. BLACK

Mathematics—English

College Players, English Club,
Kappa Delta Pi, Women's Athletic
Association.



GEORGE J. BOSSERT

Health and Physical Education

Varsity Swimming Team, Football,
Varsity Club.



GLENN L. BOWER

Elementary

Student Christian Association.

BEVERLY B. BOWES

Elementary

Association for Childhood Education, College Players, Student Christian Association.

MILFORD A. BUCHANAN

Social Studies—Mathematics



GENE BUDINGER

Elementary

WILLIAM O. BURDETT

Health and Physical Education



JAMES E. CAMPBELL

Science—Mathematics

Band, Junior Varsity Basketball, Varsity Basketball, Assembly Committee.

ROBERT T. CARLSON

Elementary



JOSEPH R. CARR

Health and Physical Education

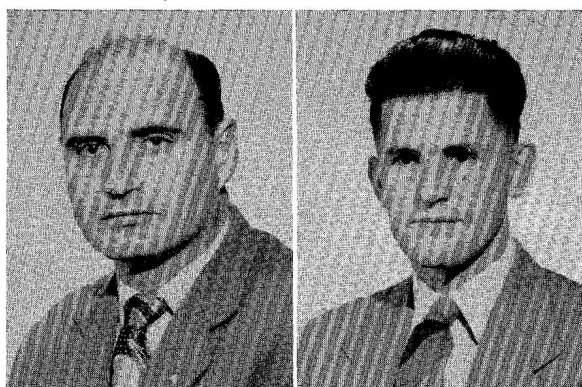
Football, Swimming, Varsity Club, Naturalists' Club, Manager of Basketball Team.

EILEEN R. CLARK

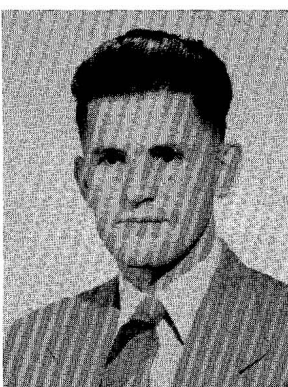
Elementary

Kappa Delta Pi, Association for Childhood Education.





KENNETH G. CROOK
Elementary



BERNARD W. DAY
Elementary
Delta Rho Beta, Kappa Delta Pi
Association for Childhood Educa-
tion, Sophomore Class Treasurer.



SAMUEL C. DICKEY, JR.
Physical Science—Biology



GERALDINE L. DINGES
Elementary
Band, Bel Cantos, Mixed Chorus,
Association for Childhood Educa-
tion, Student Christian Association,
Student Council, Alpha Sigma Tau,
College Players.



PAUL H. EBERHART
Elementary
Men's Dayroom Association.



ROSE M. ELLENBERGER
Elementary
Bel Cantos, Student Council, Præco
Staff, Pi Kappa Sigma, Association
for Childhood Education.



JAMES M. FUREY
Social Studies—Biology
Men's Dayroom Council.



ROBERT D. GANOE
Health and Physical Education
Football, Wrestling, Delta Rho Beta,
Kappa Delta Pi, Student Council.

VADA F. GINTHER

Elementary

Association for Childhood Education, Student Christian Association, Student Council, Pi Kappa Sigma, Praeco Staff, Junior Class Treasurer.



GEORGE L. GORE

Mathematics



PHYLLIS M. GRIER

Elementary

Newman Club, College Players, Pi Kappa Sigma, Women's Dayroom Council, Association for Childhood Education.



JOHN F. HEACOCK

Science—Mathematics

Wrestling, Football, Newman Club, Band, Senior Class Treasurer.



MARGARET T. HEACOCK

Health and Physical Education

Newman Club, Women's Athletic Association, Naturalists' Club, Social Committee, Student Council, Dormitory Council, Pi Kappa Sigma, Junior Class Vice-President.



RALPH T. HEIMER

Mathematics—Social Studies



ROBERT T. HEVERLY

Mathematics—Social Studies

Delta Rho Beta.

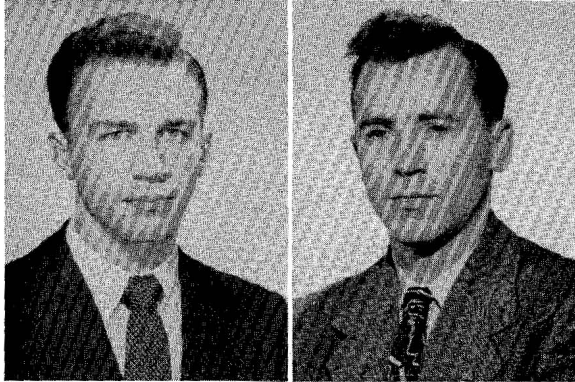


CHESTER G. HOCHREIN

Health and Physical Education

Football, Varsity Club, Newman Club, Banana Club.





ROBERT H. KLINGER
Health and Physical Education

BELMON D. HOLLICK
Elementary



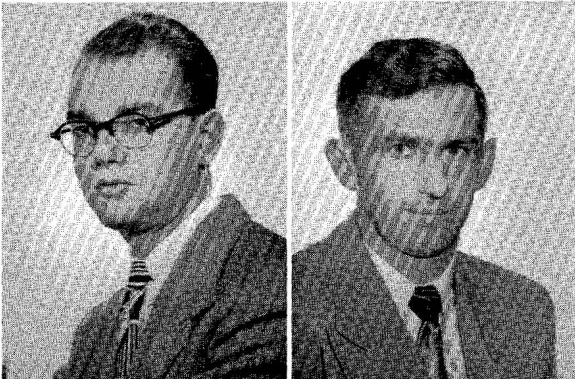
JOSEPH W. HOLLIS
Elementary
Association for Childhood Education, Mixed Chorus.

MARY JO HOLLIS
Science—Mathematics
Mixed Chorus, Kappa Delta Pi.



MARJORIE L. HOUCK
Elementary
Pi Kappa Sigma, College Players, Association for Childhood Education.

RUSSELL E. HOUK
Health and Physical Education
Football, Wrestling, Track, Men's Dormitory Council, Student Council, Varsity Club.



WILLIAM H. C. HUFFMAN, JR.
Elementary
Men's Dayroom Association.

PAUL F. JOHNSTON
Mathematics—Social Studies

JOANA R. KAUFFMAN

Health and Physical Education

Varsity Hockey, Junior Varsity Basketball, Women's Athletic Association, Softball, Sigma Sigma Sigma, Intramural Volleyball, Intramural Softball, Intramural Soccer, Intramural Hockey.

RICHARD L. KEPHART

Elementary

Student Christian Association, Association for Childhood Education.



J. WILLIAM KINCH

Science—Mathematics

College Players, Assembly Committee, Praeco Staff, Band, Alpha Psi Omega.

JOSEPH A. KITZINGER

Social Studies—General Science

Newman Club, Wrestling, Football, Varsity Club.



RITA J. KURTZ

Elementary

College Players, Association for Childhood Education, Student Christian Association, Alpha Sigma Tau, Bel Cantos, Praeco Staff.

DOROTHY I. LAKNER

Elementary

Mixed Chorus, Bel Cantos, Association for Childhood Education.



ANNA C. LAUER

Mathematics—English

Newman Club, Pi Kappa Sigma, Praeco Staff, English Club.

WESLEY B. LENTZ

Speech—Social Studies





PHOEBE J. LOCKE

Mathematics—Science

Debating, Bel Cantos, Alpha Sigma Tau, Kappa Delta Pi, Women's Day-room Council.

DORIS L. MARASA

English—Geography

English Club, Alpha Sigma Tau, College Band, Mixed Chorus, Pan-Hellenic Council.



CATHARINE R. McCLAIN

Elementary

Pi Kappa Sigma, Women's Dormitory Council, Naturalists' Club, College Players, Association for Childhood Education, Student Council, Social Committee.

GEORGIA E. McCLINTOCK

Health and Physical Education



JANET M. MILLER

Biology—Mathematics

Women's Dayroom Council, Alpha Sigma Tau, Kappa Delta Pi, Pan-Hellenic Council.

ROBERT G. MILLER

Health and Physical Education

Varsity Club, Naturalists' Club, Basketball, Track, Intramural Sports.



C. WRAY MILLER

Mathematics—Science

Football, Basketball, Student Christian Association, the Bald Eagle Staff, Praeco Staff, Intramural Sports.

HELEN M. MOORE

Elementary

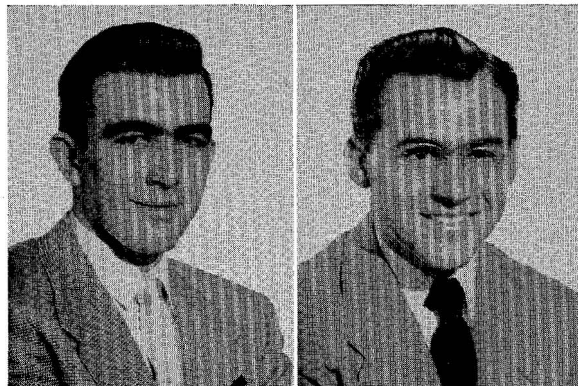
PHILIP R. OECHLER

Biology—Social Studies

ROBERT E. PETERS

Social Studies—Biology

The Bald Eagle Staff, Social Committee, Junior Class President, Senior Class President.



PETE PETRISKA

Social Studies—Science—English

BARBARA P. PFAFF

Elementary

Pi Kappa Sigma, Association for Childhood Education.



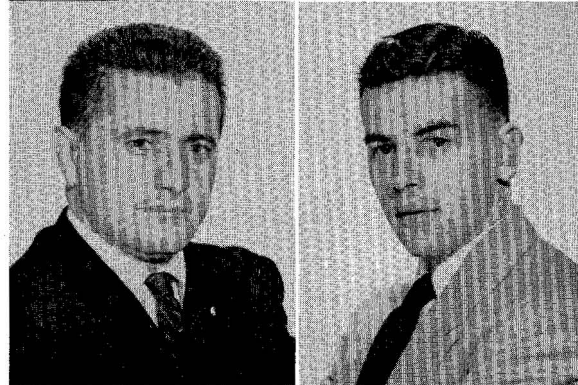
GEORGE PIHAKIS

Health and Physical Education

JOHN PLASTAS

Elementary

Association for Childhood Education, Intramural Sports, Men's Dormitory Council.



RICHARD M. PLETCHER

Elementary

Men's Glee Club, Student Christian Association, Student Council, Sigma Alpha Tau, Association for Childhood Education.

DANIEL W. PLUMMER

Elementary

College Players, Association for Childhood Education.





JOHN A. POWERS

Mathematics—Biology



PEGGY POULOS

Elementary

Student Christian Association, Association for Childhood Education, Social Committee, Sigma Sigma Sigma, Intramural Sports, Senior Class Secretary.



CHARLES M. REICH

Health and Physical Education

Soccer, Varsity Club, Swimming.



D. JEAN RIGBY

Elementary

College Choir, Bel Cantos, Student Christian Association, Committee on Religion.



JAMES R. RIGHTMIRE

Health and Physical Education

Football, Baseball, Basketball, Volleyball, Badminton, Varsity Club, Student Council, Men's Dayroom Council, Delta Rho Beta.



MARY J. RIMMEY

Health and Physical Education

Naturalists' Club, Student Christian Association, Varsity Basketball, Junior Varsity Hockey, Women's Athletic Association.



JESS E. ROLLIN

Science—Mathematics

College Players, Student Council, Alpha Psi Omega.



PEARL M. SHANNON

Elementary

Association for Childhood Education, Student Christian Association, Pi Kappa Sigma, Women's Dormitory Council, Naturalists' Club, Junior Class Secretary.

RICHARD D. SHAW

Health and Physical Education

ESTHER M. SHIRK

Elementary

Association for Childhood Education, Student Christian Association, Bel Cantos, Mixed Chorus, Alpha Sigma Tau, Band, College Players.



MARY JANE SHOPE

Elementary

Præco Staff, Student Christian Association, Women's Athletic Association, Association for Childhood Education.

DONALD P. SLOPEY

Mathematics—Science

Cross Country, Track, Swimming, Art Club.



GEORGE A. SMITH

Health and Physical Education

Delta Rho Beta, Soccer.

KENNETH C. SMITH

Elementary



NANCY K. SMITH

Elementary

Pi Kappa Sigma, Association for Childhood Education, College Players.

WILLIAM A. SNYDER

Elementary





RICHARD A. SPISAK
Health and Physical Education

JAMES L. STABLEY
Elementary

Band, Collegians, Association for Childhood Education, Delta Rho Beta.



IRA M. STERN
Social Studies

VIRGINIA I. SULLIVAN
Elementary

College Players, Alpha Psi Omega, College Choir, Pi Kappa Sigma, Pan-Hellenic Council, Student Council, Assembly Committee, Newman Club, Association for Childhood Education.



BARBARA R. SUPENIA
Elementary

ALBERT A. THORSON
Physical Science—Mathematics

Bel Cantos, Association for Childhood Education, English Club.



ALAN L. TUBBS
Health and Physical Education

JOSEPH F. TUTOKIE
Mathematics—Social Studies

Football, Baseball, Track, Intramural Basketball.

FRANKLIN H. VAUGHN

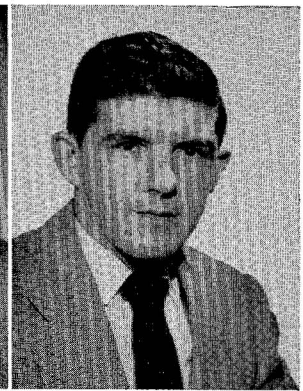
English—Social Studies

English Club, Creative Writer Club, Praeco Staff, College Players, Student Organist.

FRED K. WALKER

Social Studies—General Science

Delta Rho Beta, Men's Dayroom Council.



RUTH G. WILLIAMS

Health and Physical Education

Social Committee, Women's Athletic Association, Women's Dormitory Council, Varsity Hockey, Varsity Basketball, Intramural Sports, Naturalists' Club.

ANN G. WILSON

Health and Physical Education



CHARLES F. WINK

Elementary

Men's Glee Club, Mixed Chorus, Association for Childhood Education, Student Christian Association, College Players.

JEAN M. WINTER

Elementary

Bel Cantos, Student Christian Association, Association for Childhood Education, College Players, Praeco Staff.



CHARLES E. WINTERS

Social Studies—Science

WILLIAM L. WISE

Elementary





METRO YURCHAK, JR.

Social Studies—Geography
Football, Varsity Club, Social Studies Club, Student Council.

JOHN W. DINSMORE

English
English Club, Writers' Club.



LIBERTY FOUNTAIN

Elementary

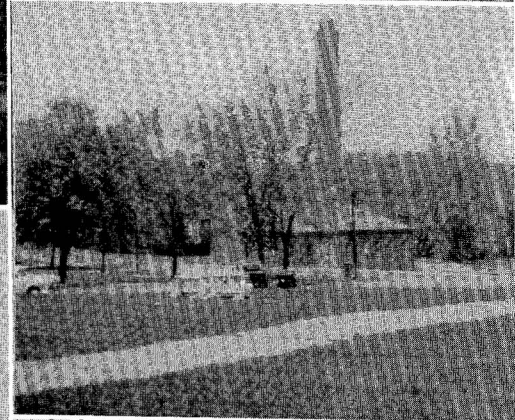
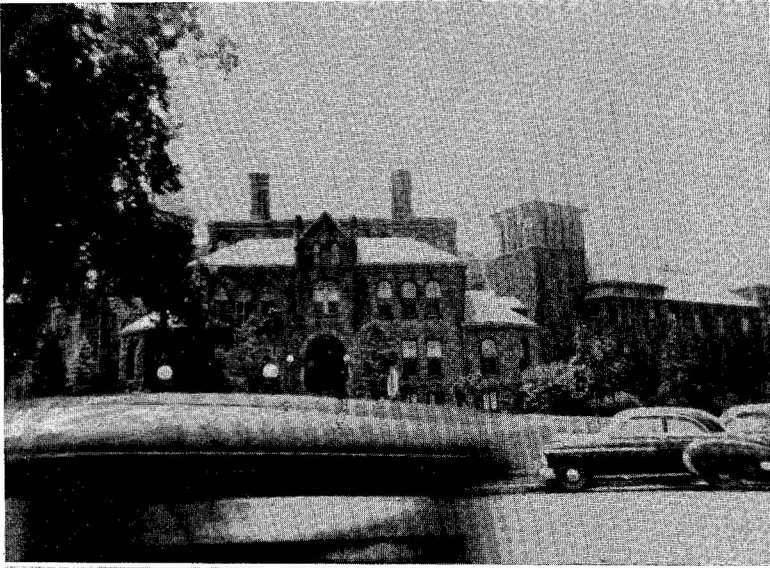
ROBERT F. MARSCHHAUSEN

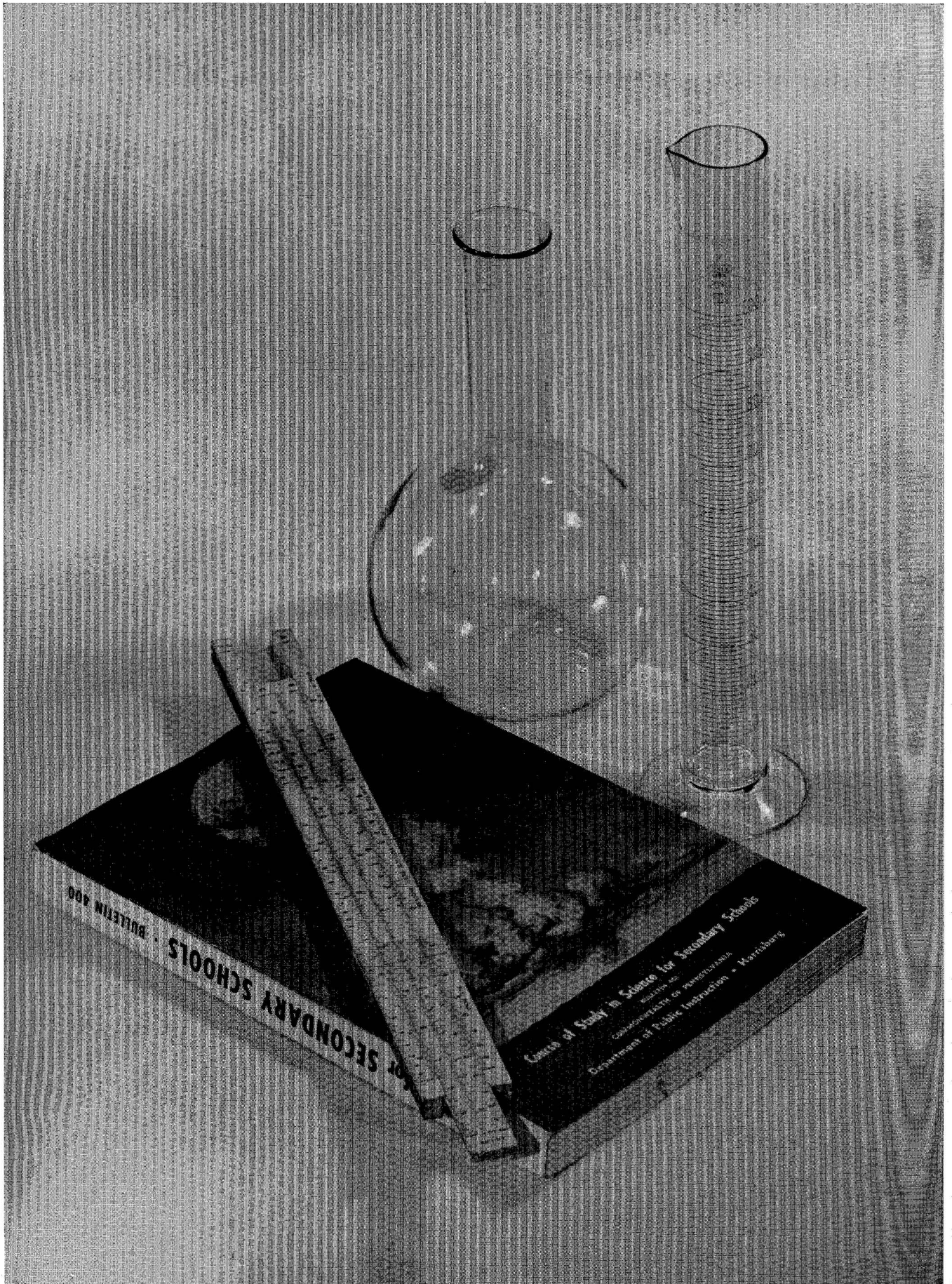
Health and Physical Education
Baseball, Basketball, Intramural Sports.



GEORGE A. SCHOEPF

Health and Physical Education
Basketball, Swimming, Track, Varsity Club, Naturalists' Club, Intramural Sports, Sophomore Class President.





BULLETIN 400
OFFICE OF STUDY IN SCIENCE FOR SECONDARY SCHOOLS

Office of Study in Science for Secondary Schools
Department of Public Instruction - Harrisburg

CLASSES



JUNIORS

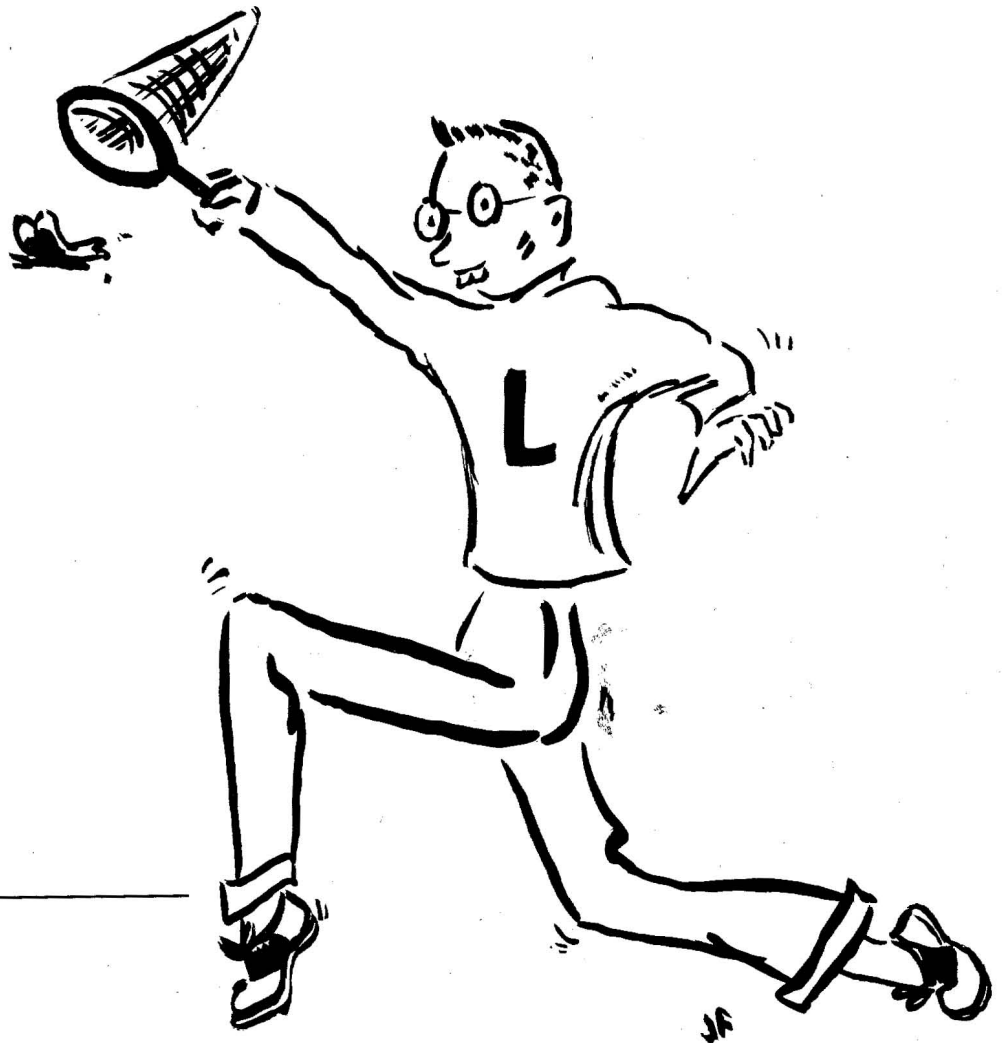


"Upper classmen at last!" was the happy thought which was pre-eminent in the mind of every member of the Class of '53 as they returned to Lock Haven this year. Immediate business, such as class leadership and committee work, was taken care of quickly so that the class could concentrate on an entry for the Pep Parade.

On October 25, 1951, the Junior class presented its annual assembly program. This was done in the setting of a night club, "Club '53." Jerry Creasy acted as our emcee, and presented many fine acts.

The highlight of every Junior class activity schedule is, however, the annual Junior Prom. This year's plans call for a super-stupendous dance which will give that "finishing touch" to all the school activities for the year!

CLASS OFFICERS: M. Rasicki, J. Waite, D. Reeder, O. Kantner, J. Fontana.





SECONDARY

First Row: M. Rasicci, M. Cingle, S. Stevenson, J. Waite, F. Shadle, J. Parson.

Second Row: S. Creptak, S. Havens, M. Zettle, J. Fontana.

ELEMENTARY

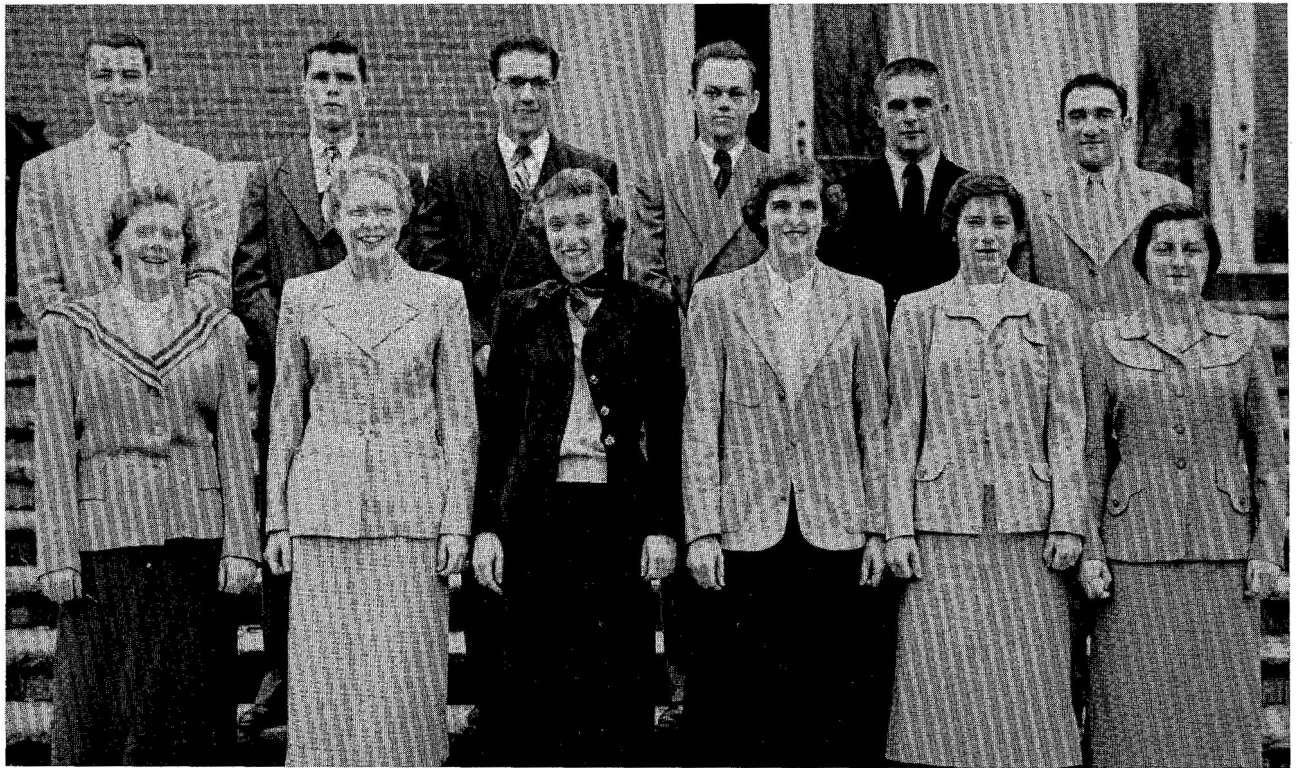
First Row: J. Hensal, J. Chambers, C. Howe, M. Walters, Y. Kline, H. Shields, N. Crawford, C. Lewis.

Second Row: P. Loughner, E. Frantz, G. Shearer, N. Greene, A. Krzywicki, J. Peterson, D. Reeder, D. Crowley.

Third Row: W. Davis, G. Cartwright, J. Johnsonbaugh, S. Demmien, A. Hosterman, E. Potratz, O. Kantner, P. Eberhart.

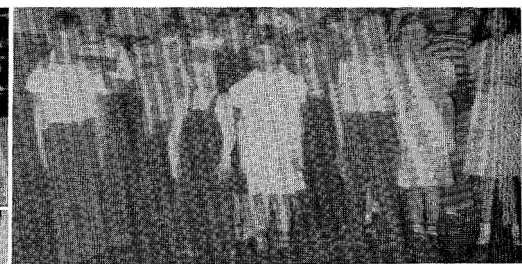


HEALTH AND PHYSICAL EDUCATION



First Row: T. Reed, B. Hallman, C. Bailey, L. Bolig, J. Dunnick, D. Stackhouse.

Second Row: D. Murphy, A. Holtz, W. Burdett, W. Sybert, P. Worcester, L. Neishloss.



SOPHOMORES



"More from the Class of '54" is our motto. Here is our recipe. We began by taking two full measures of the Pep Parade trophy, and added to that a snappy assembly program, sprinkled with talent. Next we mixed in a fine dance garnished with a big portion of school spirit. We enjoyed the dish so well that we're going to use it again next year.

CLASS OFFICERS: N. Haas, F. Dick, A. Swope, S. Slean.





SECONDARY

First Row: M. Moyer, B. Buss, M. Burns, D. Bower, J. Gardill.

Second Row: D. McCreight, G. Boring, H. Coulson, A. Swope, E. Majewski.

ELEMENTARY

First Row: D. Puhl, A. Balsiger, C. McKelvey, G. Coppersmith, S. Slean, S. Stover, C. Clark, L. Rhodes, M. Patterson, P. Owens, S. Keelan.

Second Row: F. Dick, C. Helbley, G. Smith, C. Ogden, S. Sellers, B. Bowes, D. Benson, J. Mosteller, E. DeHaas, P. Lamb, A. Vogle.

Third Row: D. Peters, N. Haas, T. Isenberg, B. Brown, E. Williams, P. Bower, E. Mayer, R. Howard, L. LaRue, M. Miller.

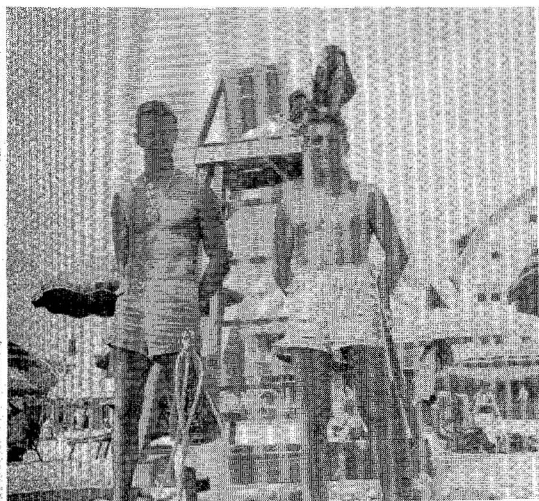


HEALTH AND PHYSICAL EDUCATION

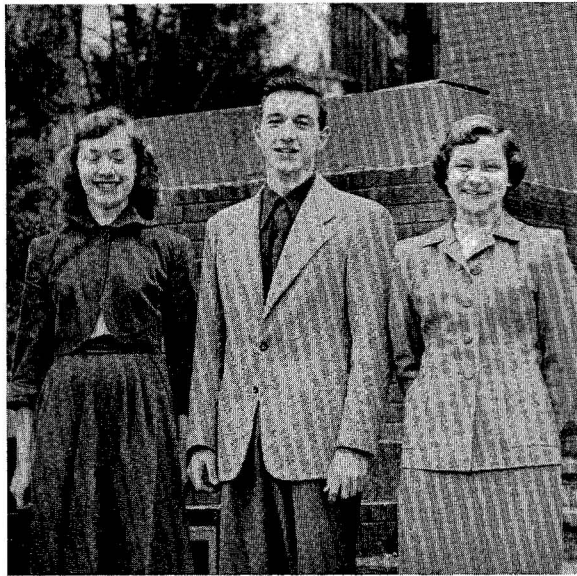


First Row: P. Traficante, E. Swartz, P. Moore, J. Barnhart, E. Pifer, E. Alvarez, D. Bower, S. Burket.

Second Row: E. Baieroski, R. Himmelreich, G. Savers, M. Feaster, J. Andrews.



FRESHMEN

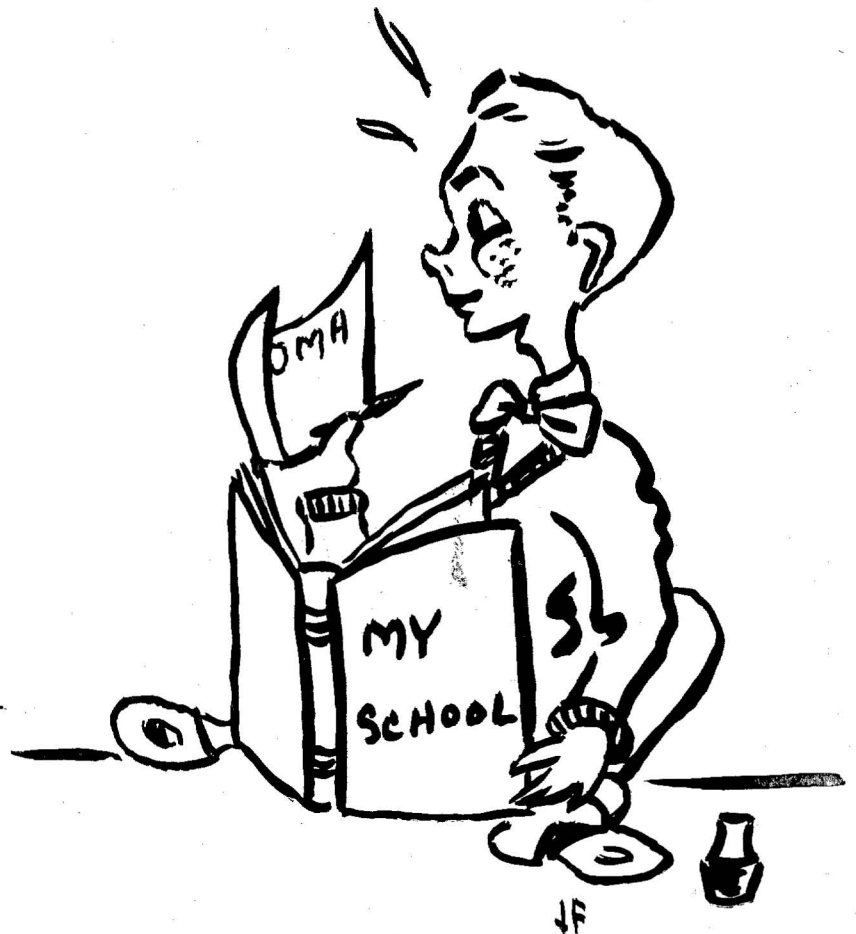


The Class of '55 feels that it has had a very successful year! We began our first year in college by electing our officers, getting acquainted, and organizing our membership into an efficient group of committees.

Our main social event of the year was the Freshman Dance which we sponsored on November 3, 1951. On March 27, 1952, our class presented a "bang-up" assembly program which was considered to be one of the best seen on campus this year.

Now at the close of our first year at L. H. S. T. C., everyone in the Freshman class is aiming for the same goal—a better Sophomore year!

CLASS OFFICERS: C. Cohick, R. Marks, D. Ocker.





SECONDARY

First Row: G. Peters, R. Marks, R. Hall, G. Heckendorn, S. Miller, H. Klobe, J. Skok.

Second Row: P. Mackey, A. Bressler, G. Deivert, P. Demchak, R. Miller.

ELEMENTARY

First Row: R. Bulger, J. Greninger, B. Wolfe, D. Breneman, D. Ocker, H. Krolick, R. Fleming, C. Bock, C. Cohick.

Second Row: M. Greene, A. Van Zant, M. Springman, H. Fontana, P. Yeager, F. Brannon, B. Kaziska, J. Clark.

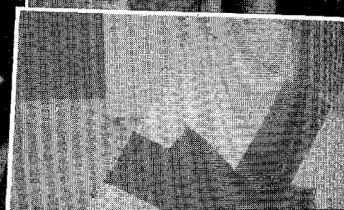
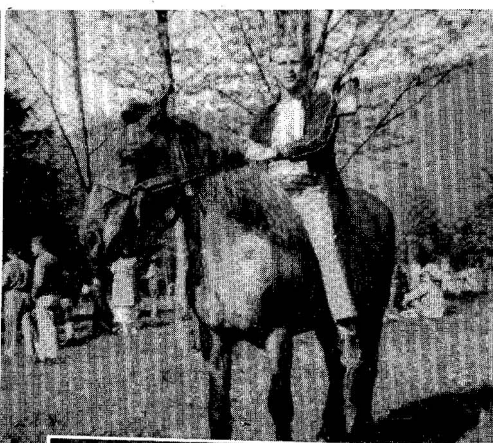
Third Row: J. Frazier, M. DeBoer, J. Ference, B. Shannon, G. Harter, M. Haugh, E. Bock, P. Ellenberger.



HEALTH AND PHYSICAL EDUCATION



First Row: R. Baker, J. Shaffer, N. Zimmerman, C. Young, M. Rupert, M. Gartner, D. Breu.
Second Row: B. Hibschan, R. Dean, R. Jodun, H. McKinley, L. Snook, E. Phillippi.



A hand-drawn scroll with a title and a poem. The scroll is drawn with thick black lines and has two circular fasteners at the top and bottom left corners. The text is centered on the scroll.

ALMA MATER

Where the crystal Susquehanna
Shimmers in the sun,

Where the mountains cast their
Shadows when the day is done,

Where the hemlock, pine, and maple
Murmur in the night

Beneath a starlit sky till dawning
Brings the morning light--

There's Lock Haven, Alma Mater,
Cherished as in days long past!

May be worthy sons and daughters
Long as life shall last!



ACTIVITIES





STUDENT
COOPERATIVE
COUNCIL

Gerald Cartright, President of the Student
Cooperative Council.



First Row: M. Rasicci, D. Reeder, E. Potratz, G. Cartright, P. Loughner, G. Heckendorn.
Second Row: V. Ginther, C. McKelvey, D. Peters, B. Buss, J. Dunnick, Mr. Fleming, J. Gardill,
J. Fontana, J. Pecchia.
Third Row: N. Haas, R. Houck, O. Kantner.

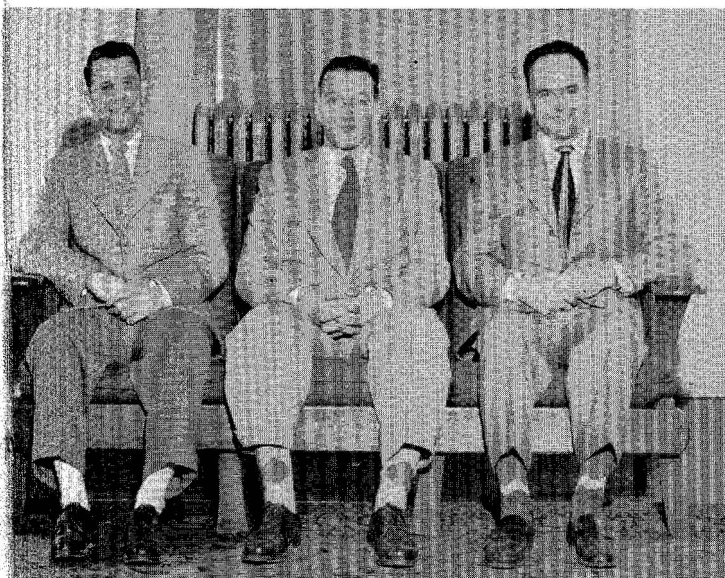
The Student Cooperative Council, the most important student organization on campus, is composed of class representatives and representatives from each club which is sponsored by the Council's funds. This year the Council had to overcome a deficiency in funds, due to the lower student enrollment; this problem was successfully handled by the organization. Weekly teas, holiday parties, and various other social functions are directly sponsored by the Council.

WOMENS' DAYROOM COUNCIL

The highlight of the dayroom council for the year was the bake sale held to raise funds for the student council. The annual dayroom luncheon was a big success. The council has done a good job in representing the dayroom women.



L. Behrman, M. Coffey, C. Howe, C. Hebley, D. Reeder.



R. Ganoë, W. Snyder, P. Eberhart.

MENS' DAYROOM COUNCIL

The mens' council had to assume a greater responsibility for this year because all of the men on campus were day students. They helped to make the dayroom assembly a success.

Seated: B. Shoff, P. Shannon, R. Williams, K. McClain,
J. Lupp.
Standing: C. Dunlap, N. Green, D. Stackhouse.

WOMENS' DORMITORY COUNCIL

The dormitory council is elected by the dormitory girls for the purpose of setting up rules and regulations for the school year. They meet to discuss the various problems that come up and later report to the girls through monthly dorm meetings.



ASSEMBLY COMMITTEE



Seated: B. Shoff, D. Crowley.
Standing: Mr. Rutch, N. Hills, A. Holtz, Mr. Hills.

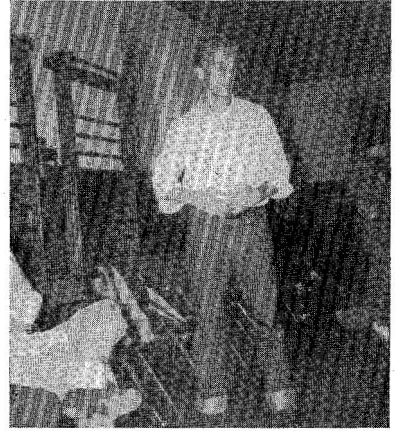
The Assembly Committee is a joint committee composed of faculty and students. Its purpose is to arrange the assembly programs for the current school year. In addition to the annual faculty and class programs, the assemblies this year featured many outstanding personalities from various fields of endeavor.



Seated: R. Peters, D. Stackhouse, C. Bailey, Miss McGinnis, E. Baieroski, L. Ross.
Standing: D. Reeder, D. Crowley, M. Walter, P. Poulos, J. Risser, P. Loughner.

SOCIAL COMMITTEE

The social committee is organized for the purpose of planning social events for the school year. Their task is to set up a social program and to make out a budget for the classes for their social functions.



STUDENT CHRISTIAN ASSOCIATION CABINET



First Row: C. Dunlap, Miss Burt, D. Schiele, Miss McGinniss, B. Buss.
Second Row: S. Burket, D. Stackhouse, J. Parson, M. Walter, M. Burns, C. McKelvey.
Third Row: V. Ullein, E. Mayer, T. Wertz.

The cabinet of the Student Christian Association is made up of the officers and chairmen of the different committees. The committees are: Publicity, Social, Program, Worship, and Vesper. They meet weekly to plan the association meetings. In September, they spent a weekend at Camp Kline to plan the Christian life activities for the school year.

STUDENT CHRISTIAN ASSOCIATION



The Student Christian Association is the religious organization on campus for all protestant students. Several of the members attend the various regional meetings held in this district. The banquet at Livonia climaxed the year's events.

First Row: G. Dinges, R. Baker, J. Hensal, S. Stover, G. Heckendorn, A. Hoy.
Second Row: V. Ginther, R. Kurtz, C. Bock, B. Smith, E. Shirk, B. Shoff, N. Zimmerman, M. Brasseur.
Third Row: E. Bock, B. Shannon, H. Shields, M. Miller, D. Puhl, N. Crawford, G. Smith, M. Greene, C. Howe, J. Andrews, F. Brannon, J. Shaffer, C. Lewis.
Fourth Row: G. Cartwright, P. Loughner, L. Bolig, C. Young, N. Green, P. Hoover, D. Benson, S. Sellers, R. Humpton, A. Bressler, R. Howard, J. Winter, S. Creptak.

NEWMAN CLUB

Seated: J. Skok, M. Rascii, J. Gardill, J. Tettus.
Standing: J. Delgrosso, J. Mahoney, L. Larue, E. Alvarez, H. Fontana, R. Bulger, W. Young, J. Fontana, J. Heacock, H. Majeski.

The Newman Club is a part of the national Newman Club for college students of the Catholic faith. They meet twice a month and often join with the local church for meetings.

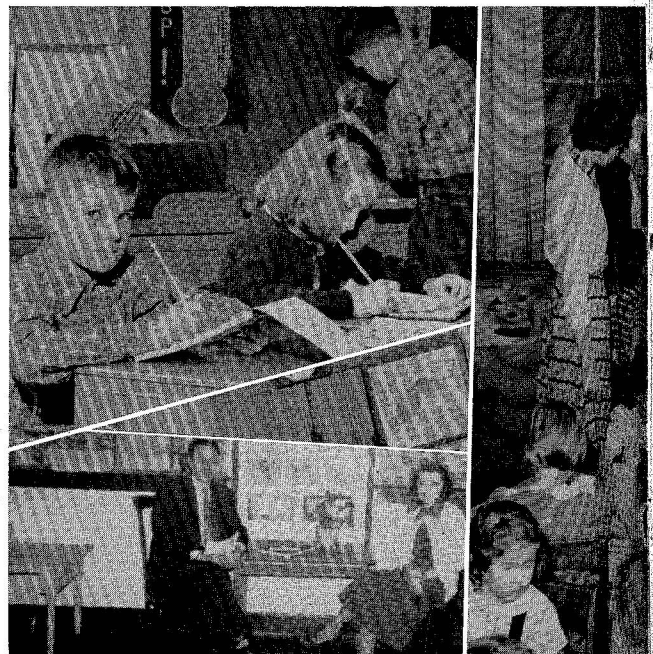


A C E



First Row: B. Bowes, S. Demmien, M. Miller, D. Benson, P. Grier, C. Lewis, J. Johnsonbaugh, R. Kurtz.
Second Row: P. Eberhart, B. Hollick, W. Snyder, R. Pletcher, Miss Waterbury, N. Green, M. Houck, P. Shannon, R. Ellenberger, H. Powlus.
Third Row: D. Puhl, G. Dinges, V. Sullivan, N. Haas, B. Supenia, N. Smith, J. Winter, N. Crawford, C. Howe.
Fourth Row: V. Ginther, D. Fink, N. Hill, C. McKelvey, B. Bowes, S. Stover, M. Walters, E. Shirk, Y. Kline, H. Shields, E. Clark, R. Caprio, G. Shearer, J. Stabley, W. Wise, R. Kephart.
Fifth Row: P. Loughner, K. Crook, J. Plastos, D. Plummer, E. Mayer, G. Cartright, R. Carlson, D. Reeder, J. Peterson, E. Barnhart, O. Kantner.

The Association of Childhood Education holds its meetings monthly. The membership includes all those who are interested in elementary education. One of the highlights of the year's activities was the International Conference of the organization, which was held in Philadelphia.



ENGLISH CLUB



First Row: J. Danneker, M. Rasicci, M. Schultz, J. Parson.

Second Row: J. Gardill, B. Buss, F. Schadle, D. Marasa, A. Lauer, K. Stoker, M. Burns, R. Hall.

Third Row: D. Zepp, P. Traficante, M. Cingle, J. Densmore, J. Verostek, D. McCreight, B. Supenia, S. Miller, S. Creptak, R. Howard.

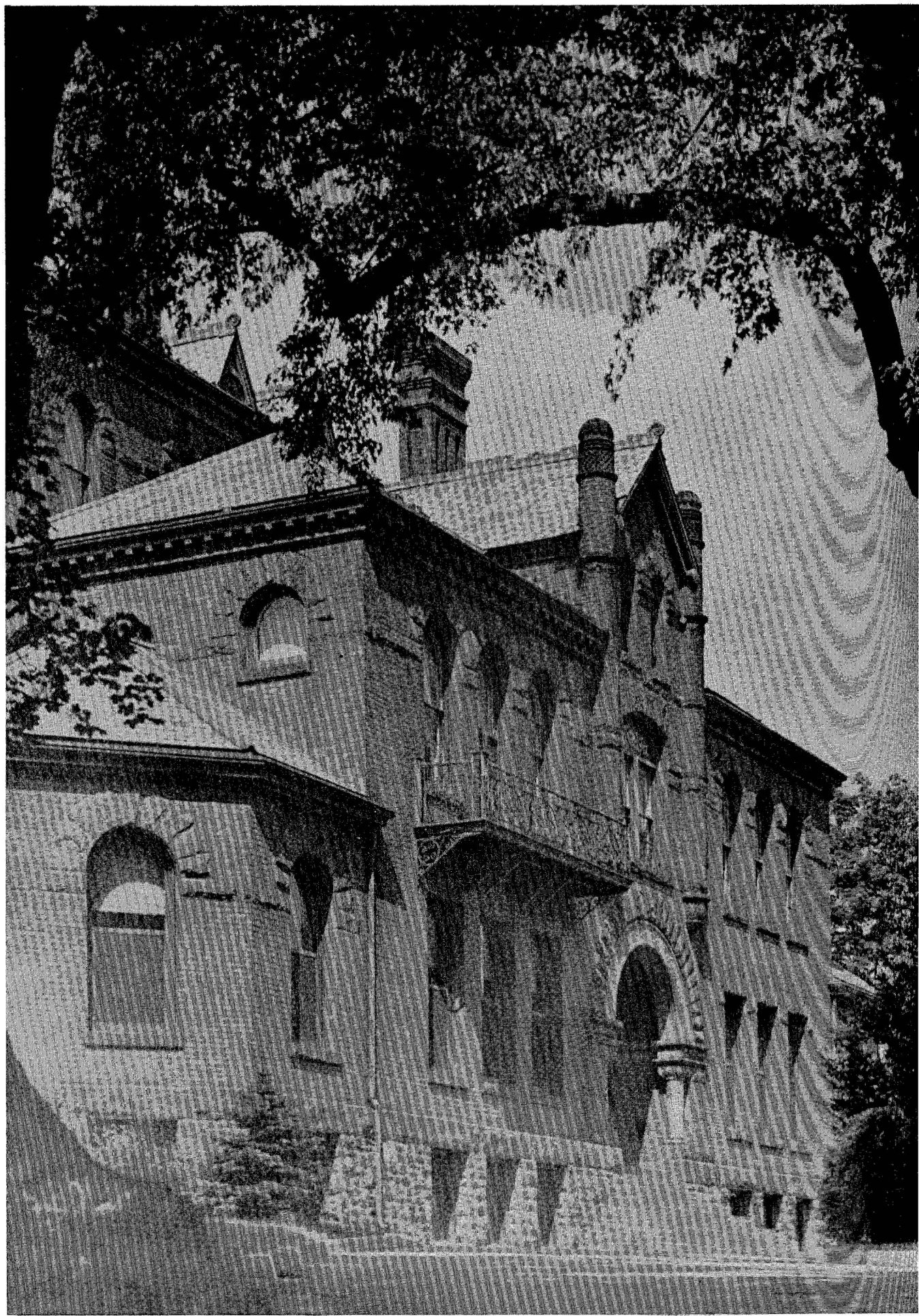
The English Club is organized primarily for those students who are majoring or minoring in English. The purpose of this organization is to offer a professional extra-curricular program as well as to bring students of mutual interests together for a period of relaxation. Annually the club sponsors **The Crucible**, a collection of the best student writing of the current year.

ART CLUB

The Art Club is open to all students who wish to further their creative activities outside the regular class. They help to sponsor the various exhibits and displays that occur during the year. Their meetings consist of discussions and creative work.



J. Chambers, D. Peters, N. Haas, R. Caprio.



mege Players To Present "Harvey"
The Colleges Players, lacking a director because of the absence of Miss Lynds, have made a local group of no little reputation.

Dean Releases
Nineteen Graduate
Honors List

Courtmen Win
T. C. Championship
The Bald Eagles have done well in the TC Conference tournament and now Howarth's basketball team on the TC Basketball Championship.

INTRAMURALS
MIXED
The "birds" are flying around the field house, that is, the basketball team.

Concert Held
Friday, March 7, the Little Orch., conducted by Thomas Scherman, appeared in the last of the series of Community Concerts for the season.

CIGARS? CIGARETTES?
If you aren't addicted to the use of tobacco, this won't interest you in the least.

Students Select
Candidates For
TRUCE OR CONSEQUENCE
(Continued from Page Two)
Of course the men (and I'll tolerate the other side) who are associated with the bawls and punny?) and to a

cast, and both will share in the latter part of April...
Myriene Miller
Florence Dill
John Signor
Marie Yee
Virginia Sul

RECENT SURVEY
The "Bald Eagle" is your school paper. In order to get what the students want in their school paper...



First Row: J. Verostek, B. Buss, B. Shoff, E. Pifer, J. Dinsmore.
Second Row: E. Mayer, W. Miller, S. Creptak.

THE BALD EAGLE
March 10, 1952 Vol. III No. 4
Published Bi-weekly by and for the Students of State Teachers College, Lock Haven, Pa.
EDITOR-IN-CHIEF — WRAY MILLER
ASST. EDITOR-IN-CHIEF — JAMES VEROSTEK
FACULTY ADVISER — DR. WILLIAM NORTH
Associate Editors
NEWS — Flitea Poretta
BUSINESS MANAGER — Beverly Shoff
MAKE-UP — Joseph Skok
ADVERTISING — Stephen Creptak
FEATURE — Eleanor Potratz
CIRCULATION — Ann Hoy
Reporters
NEWS — Helen Fontana, Rita Bulger, Joy Grelinger, Connie Cobick, Glenn Peters, Britten Winters
FEATURE — Edward Fraser, John Dinsmore, Julianne Gardill
SPORTS — Eddie Pifer, Eugene Majewski, Don Zlich
TYPISTS — Marlene Springman, Edward Mayer
SSC REPRESENTATIVE — Beverly Buss
Truce Or Consequences
(Note to my readers, all four of them.) In the following week I shall endeavor to feed you a line; you must appreciate...

The BALD EAGLE

WSSF SCHEDULE
Tuesday, February 26 - Dance, 8-11.
Thursday, February 28 - Tea, 3:00.

Courtmen Win
The Bald Eagles have done well in the TC Conference tournament and now Howarth's basketball team on the TC Basketball Championship.

EAGLE WRESTLERS
AWAIT TOURNAMENT
The biggest problem facing Coach Jack and his wrestling team right now is finding some way to keep the team in top shape for the coming TC Championship.

Club News
Newman Club
The next meeting Newman Club will be March 26.

Sophs To Sponsor
Frontier Party
Tomorrow the boys will have a chance to sport their beards at the Frontier party.

Intramurals
Here at Lock Haven we are fortunate in having a very fine intramural program.

Inside S. C. C.
Since I have been my number one competitor of Sigma...

Religious Week
Observed
The week of March 3, 1952, was designated as RELIGIOUS EMPHASIS WEEK at Lock Haven State Teachers College.

Faculty Reports
The Dean's Office is now working on the new curriculum so that students and advisers will be able to plan the program to be offered next year.

Mr. Koon To Col
The three social societies Pi Kappa Phi, Sigma Chi, and S. C. C. have elected their officers for the year.

PRAECO STAFF



J. William Kinch
EDITOR



Franklin Vaughn
ASSISTANT EDITOR



Rita Kurtz
BUSINESS MANAGER



Vada Ginther
PHOTOGRAPHY
EDITOR



Helen Shields
LITERARY
EDITOR



Wray Miller
SPORTS
EDITOR



Janet Ference
ART
EDITOR



Ann Laurer
ADVERTISING
MANAGER



Jean Winter
SUBSCRIPTION
MANAGER



Seated: W. Miller, R. Kurtz, A. Lauer, J. Winter, A. Bressler.
 Standing: N. Crawford, V. Ginther, H. Shields.

THE PRAECO STAFF AT WORK



The Praeco staff is proud to present the yearbook for this year. Mr. Thomas was the adviser of the **Praeco** first semester. When he left, Dr. Parsons accepted the responsibility.

Left to Right: V. Ginther, R. Kurtz, A. Bressler, A. Lauer,
 J. Winter, H. Shields, W. Miller, N. Crawford.

PRAECO ADVISERS
 Mr. Thomas, Dr. Parsons



COLLEGE CHOIR



First Row: M. Hough, Y. Kline, D. Puhl, F. Dick, R. Raker, M. Zettle, E. Barnhart, J. Powers, R. Marks, V. Ullien, E. Mayer, S. Creptak, E. Shirk, R. Fleming, L. Behrman, A. Balsiger.

Second Row: J. Waite, M. Hollis, E. Frantz, C. Howe, R. Bulger, V. Sullivan, G. Sauers, E. Williams, J. Hollis, R. Howard, J. Hill, M. Burns, M. Cingle, P. Lamb, C. Bock, D. Branaman.

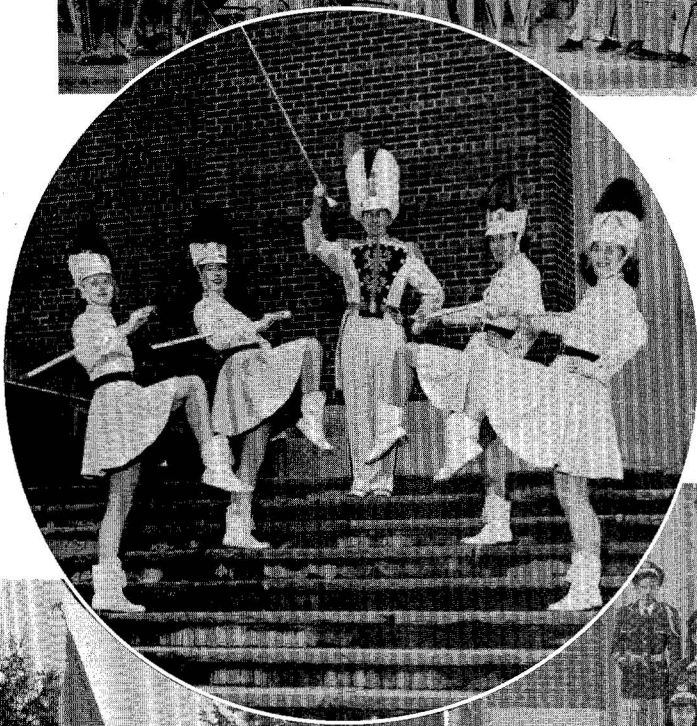
Third Row: J. Clark, P. Ellenberger, B. Shannon, D. Reeder, C. Lewis, D. Crowley, H. Coulson, C. Brown, O. Kantner, G. Ritter, D. McCreight, J. Johnsonbaugh, C. Clark, S. Skean, G. Coppersmith, G. Dinges, D. Bower.



Mr. Russell C. Gillam
DIRECTOR

The College Choir combines the qualities of good musicianship and the furthering of the spirit of **comaraderie** among its members. This year the choir traveled extensively, acting as an important means of liaison between the college and its surrounding area. Some of the composers whose works were represented in the choir's repertoire were Bach, Wennerberg, Cherubini, Mendelssohn, Goss, Herbert, and Kern. In addition to its annual Christmas and Spring Concert, the choir sang at Renovo, Phillipsburg, Woolrich, Williamsport, and several Junior and Senior High Schools.

THE COLLEGE BAND

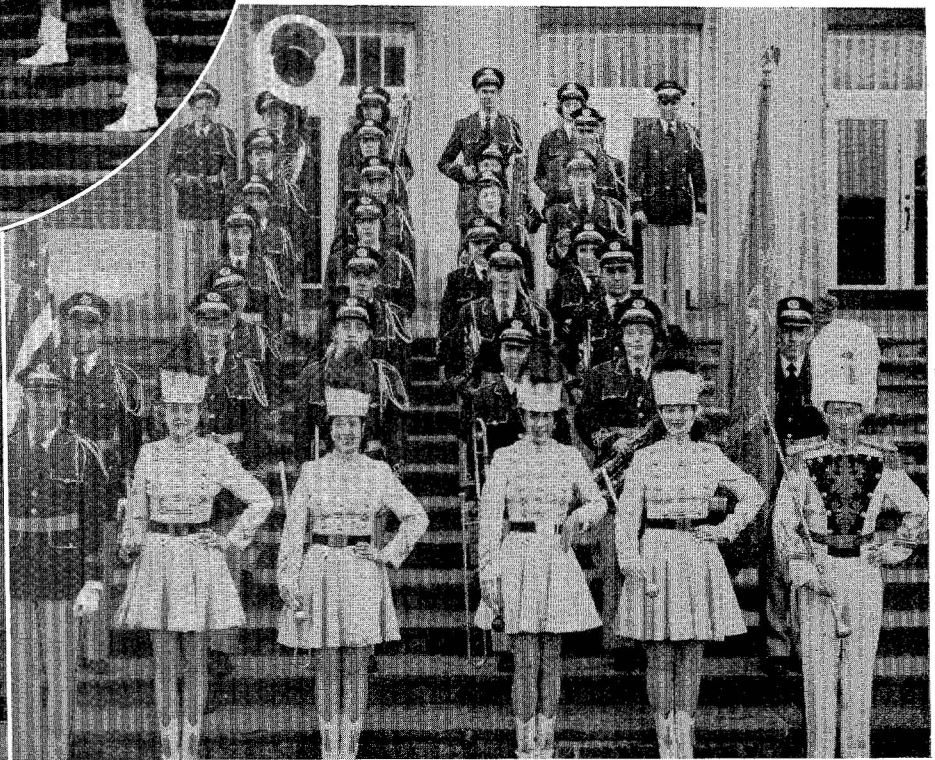


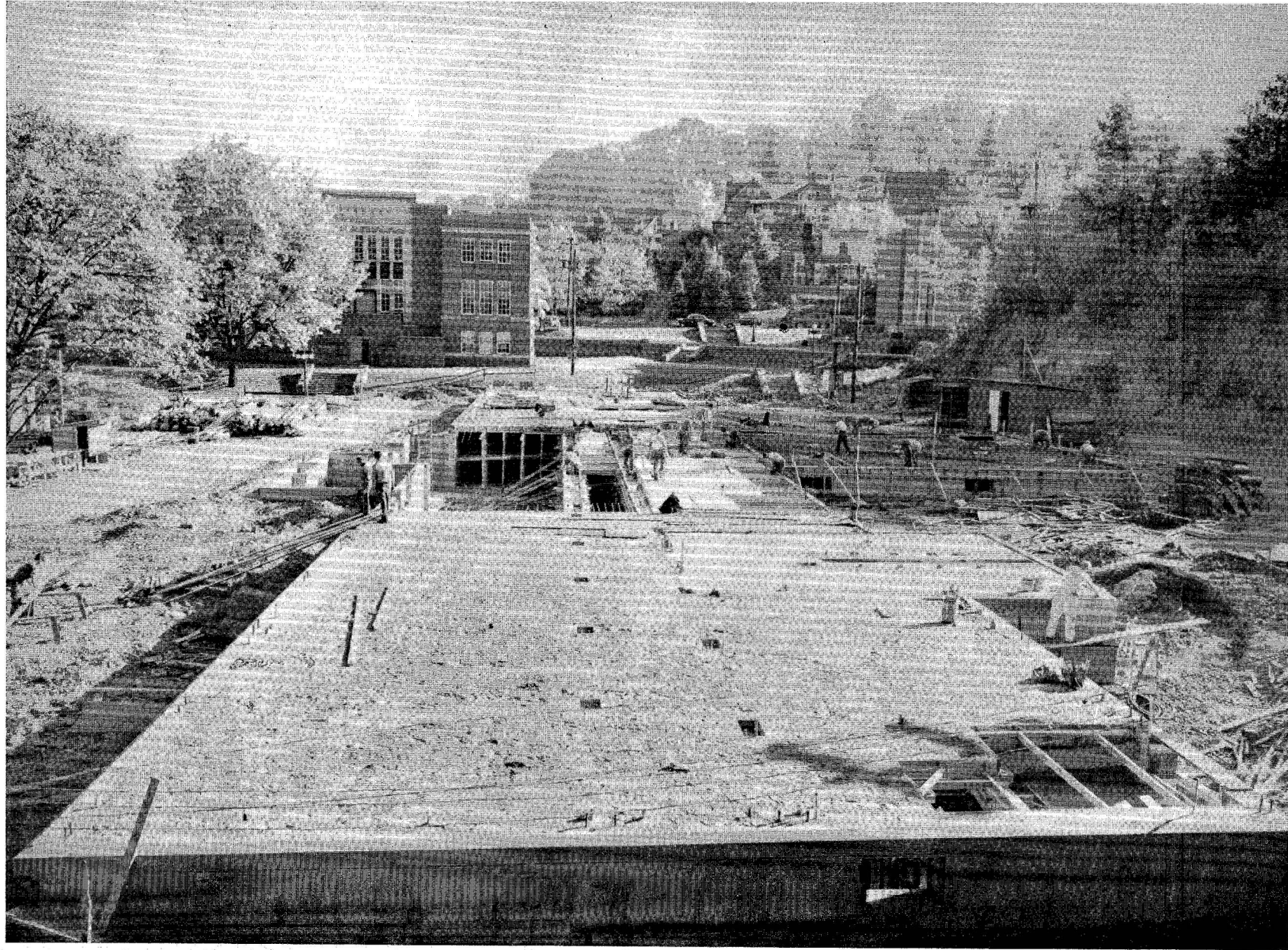
Top—Concert Band

Middle—Drum major and majorettes

Bottom Left—Color Guard

Bottom Right—Marching Band





THE NEW WOMAN'S DORMITORY UNDER CONSTRUCTION

WOMEN'S ATHLETIC ASSOCIATION



First Row: D. Brou, J. Hanawalt, M. Miller, E. Swartz, P. Moore, R. Baker, J. Lupp, N. Zimmerman.
Second Row: G. McClintock, S. Demmien, D. Stackhouse, C. Bailey, D. Hallman, C. Young, P. Van Auken, E. Pifer.
Third Row: J. Del Grosso, S. Burket, G. Shearer, J. Kaufmann, J. Dunnick, M. Rimmey, J. Andrews, E. Phillippini, L. Bolig, T. Reed, E. Alvarez, L. Shaffer, J. Barnhart, J. Risser, E. Baieroski.



D. Stackhouse, C. Bailey, B. Hallman, J. Dunnick.

The Women's Athletic Association is organized for the purpose of stimulating interest on the part of its members in active participation in sports. It is the firm belief of the association that a future teacher who is interested in sports renders a valuable service to her school.

The annual Christmas Dance, planned and sponsored by the women in this club, is a tradition on campus. A banquet at which awards are presented to deserving members climaxes the year's activities.

VARSITY CLUB



First Row: P. Worcester, R. Janus, L. Gocello, H. Poulos, R. Craig, J. Shirk, G. Custer.
Second Row: L. DeAugustino, R. Weaver, R. Davis, G. Schoeph, J. Carr, R. Spisak, R. Miller, R. Steinmetz, R. Bowser, L. Ross, R. Jodun.
Third Row: M. Midea, R. Himmelreich, S. Havens, D. Fuhrer, E. Brown, J. Kitzinger, D. Michaels, N. Sundstrom, D. Alfieri, G. Cartright, L. Snook, A. Hosterman, D. Keener.



The Varsity Club consists of all those men who have won a letter in an intercollegiate sport. The Club sponsors many social events such as its annual dance and banquet, and also assists by selling program schedules for the football games.

NATURALISTS' CLUB



TOP—First Row: M. Rimmey, J. Lupp, J. Risser, D. Stackhouse, E. Alvarez.
Second Row: R. Craig, G. Schoeph, Mr. Lehman, R. Miller, R. Spisak.
Third Row: E. Baieroski, C. McClain, B. Hallman, P. Shannon.
Fourth Row: G. Boring, R. Janus, P. Worcester, D. Murphy, R. Steinmetz, G. Everett, N. Sundstrom,
D. Alfieri, J. Carr, L. Ross.
BOTTOM—Naturalists' Club Officers: G. Everett, Mr. Lehman, D. Stackhouse, R. Miller, R. Steinmetz.

The Naturalists' Club has been organized for the express purpose of promoting an interest and appreciation on the part of Lock Haven's students for their natural environment. Meetings are held at the Naturalists' Cabin, and during the year, several meals were served to the club at the home of "Pop" Nevel.

COLLEGE PLAYERS



First Row: B. Shoff, E. Shirk, F. Dick, G. Ritter, M. Walters, C. Cohick.
Second Row: F. Shadle, R. Kurtz, H. Fontana, V. Sullivan, G. Dinges, B. Bowes, S. Demmien,
 C. Clark, G. Heckendorn.
Third Row: S. Weaver, C. Brown, T. Wertz.

At the first of the year the Players selected Mr. Edward B. Hills of the English faculty to be advisor for the club. The first project was the production of a radio adaptation of Ibsen's **Pillars of Society**. During the second semester, the Players joined forces with the local Playmakers to produce three fine performances of Mary Chase's comedy, **Harvey**.

It is the desire of every member of College Players to be elected to Alpha Psi Omega, National Honorary Dramatic Fraternity.

ALPHA PSI OMEGA



First Row: V. Sullivan, F. Dick, M. Miller.
Second Row: G. Ritter, W. Kinch.

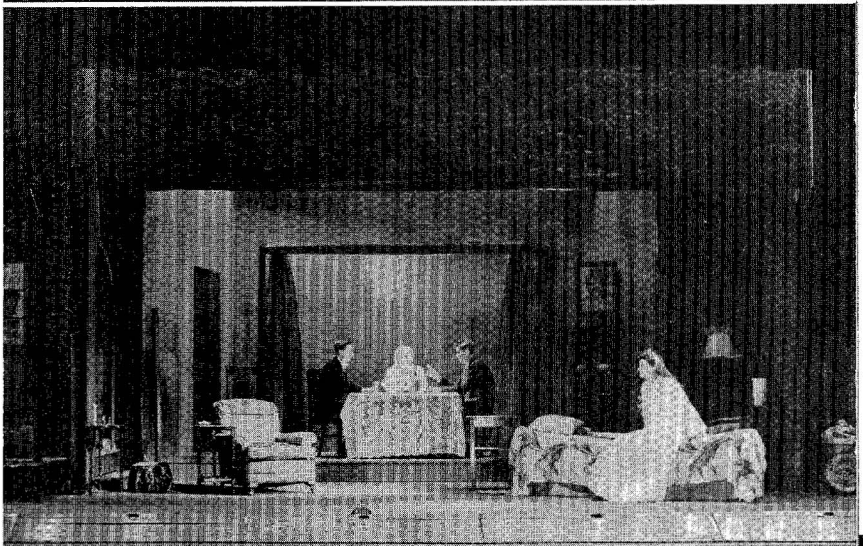
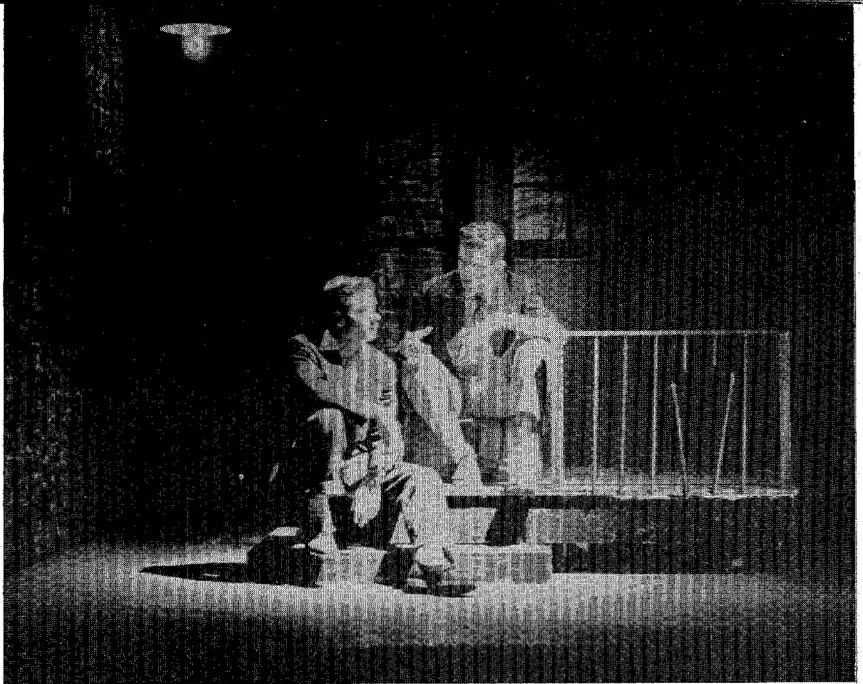
Right—Scenes from "THE GLASS MENAGERIE."

Top: Bruce Eymer as Jim and Gary Ritter as Tom.

Bottom: Gary Ritter as Tom, Florence Dick as Amanda, Bruce Eymer as Jim and Miss Dorothy Lynds as Laura. Miss Lynds also directed the production.

Below right: Bill Kinch and Ginny Sullivan at the switches of the college stage.

Below: Play cast of "Harvey" at rehearsal. Mr. John Akeley and Mr. E. B. Hills directed this play.





First Row: R. Caprio, D. Reeder, D. Marasa, H. Shields, J. Parson.

Second Row: V. Sullivan, M. Coffey, Miss McGinniss, S. Stover, R. Kurtz.

PAN-HELLENIC COUNCIL

Comprised of representatives elected from each of the campus sororities, the Pan-Hellenic Council is the governing body of all women's fraternities in the college. It sponsors such special social events as the Pan-Hellenic Tea and the annual Pan-Hellenic Dance.



PI KAPPA SIGMA

First Row: R. Ellenberger, A. Lauer, P. Grier, N. Smith, D. Crowley.

Second Row: F. Dick, M. Rasicci, J. Parson, Miss Waterbury, P. Shannon, D. Reeder, Y. Kline.

Third Row: V. Ginther, C. McClain, N. Green, P. Van Auken, J. Risser, M. Houck, V. Sullivan, J. Lupp.

SIGMA SIGMA SIGMA



First Row: H. Shields, C. Howe, J. Peterson, R. Caprio, N. Hill, M. Walters.
Second Row: J. Del Grosso, J. Kaufmann, M. Coffey, P. Poulos, G. Shearer.

ALPHA SIGMA TAU



First Row: G. Dinges, E. Shirk, D. Marasa, D. Stackhouse, J. Johnsonbaugh.
Second Row: R. Kurtz, J. Miller, S. Stover.



First Row: J. Pecchia, R. Loudenslager, F. Walker, G. Smith, R. Ganoë, L. Klechner, J. Stabley.
Second Row: W. Vance, D. Zepp, E. Brown, D. Chamberlin, L. Sticinski, Mr. Fleming, W. Weaver, T. Wertz, R. Ohl, R. Carpenter, R. Heimer, R. Heverly.

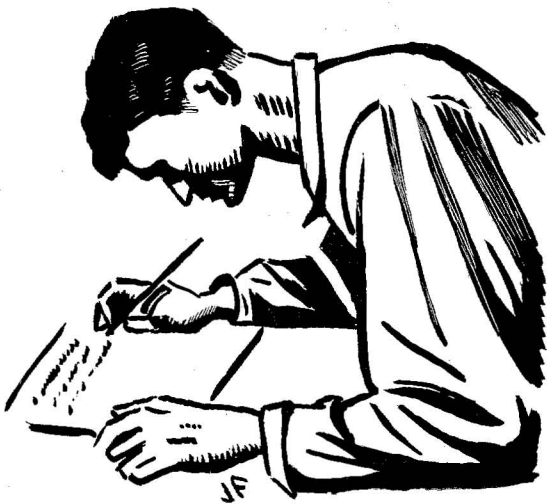
DELTA RHO BETA

Delta Rho Beta is the men's dayroom social fraternity, composed of approximately thirty men from the surrounding tri-county area. It holds semi-monthly meetings, including numerous "smokers," and features annual events such as its Homecoming Dinner, Christmas Party, and Spring Dinner-Dance. Informality rules, but it is strengthened by the high ideals of friendship, cooperation, and scholastic standing which the fraternity has set for itself.

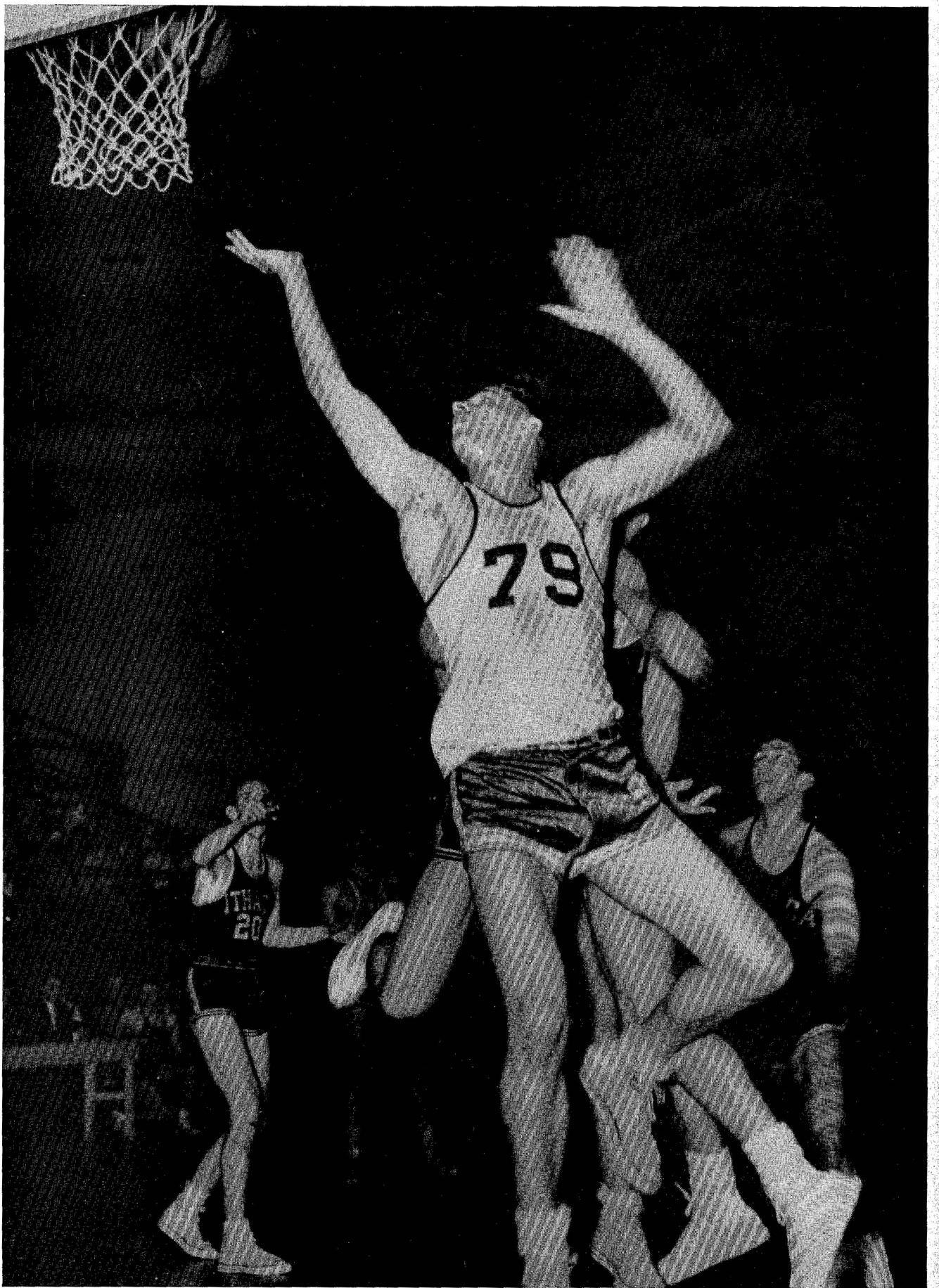
KAPPA DELTA PI



First Row: J. Miller, Dr. Rude, J. Waite.
Second Row: M. Rasicci, R. Caprio, C. Howe, P. Oechler, R. Ganoie,
C. Bailey, J. Parson, N. Crawford.



Kappa Delta Pi is a national Honor Society in Education whose purpose is to encourage high, professional, intellectual, and personal standards and to recognize outstanding contributions to education. Membership is limited to students who exhibit commendable personal qualities, worthy educational ideals, and high scholarship. Its meetings are professional and social.



SPORTS



WRESTLING



The wrestling team had an outstanding year, although they did not place first in the State Teachers College Tournament held on the Lock Haven campus.

Their excellence and outstanding work in post-season tournaments made up for anything which they may have lacked during the regular season.

Coach Hubert Jack, who came to Lock Haven in 1943, received his B. S. from the ~~State Teachers College~~ State Teachers College at Slippery Rock, and his M. A. from the University of Pittsburgh. His expert direction has spurred the football, as well as the wrestling, team on to heights that they would never have attained otherwise.

Coach Jack







BASKETBALL

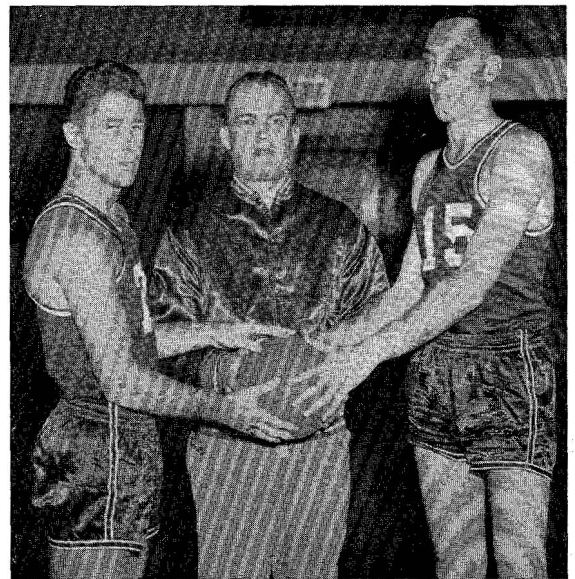


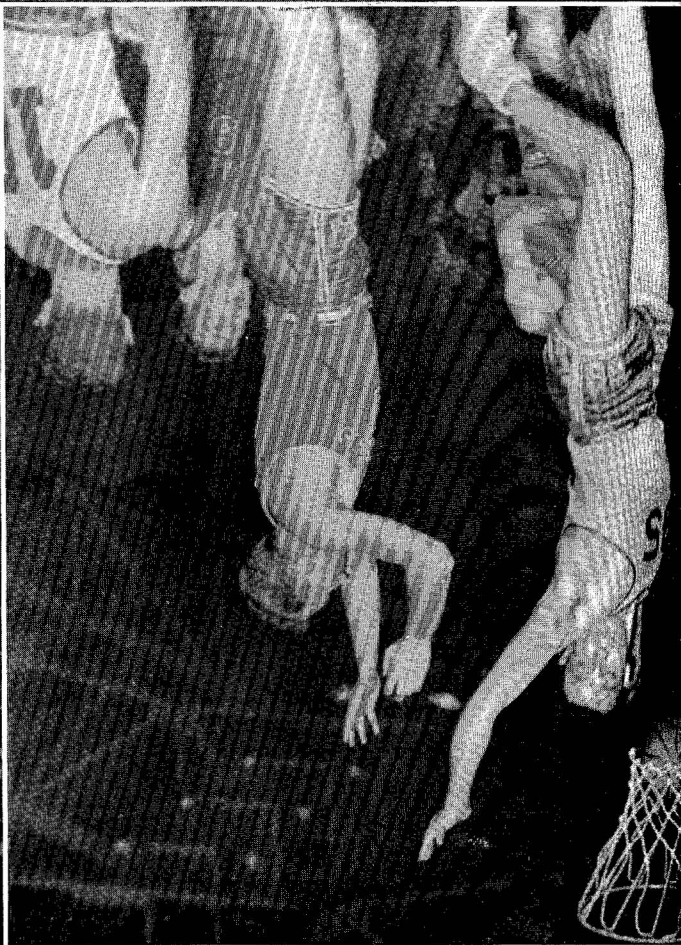
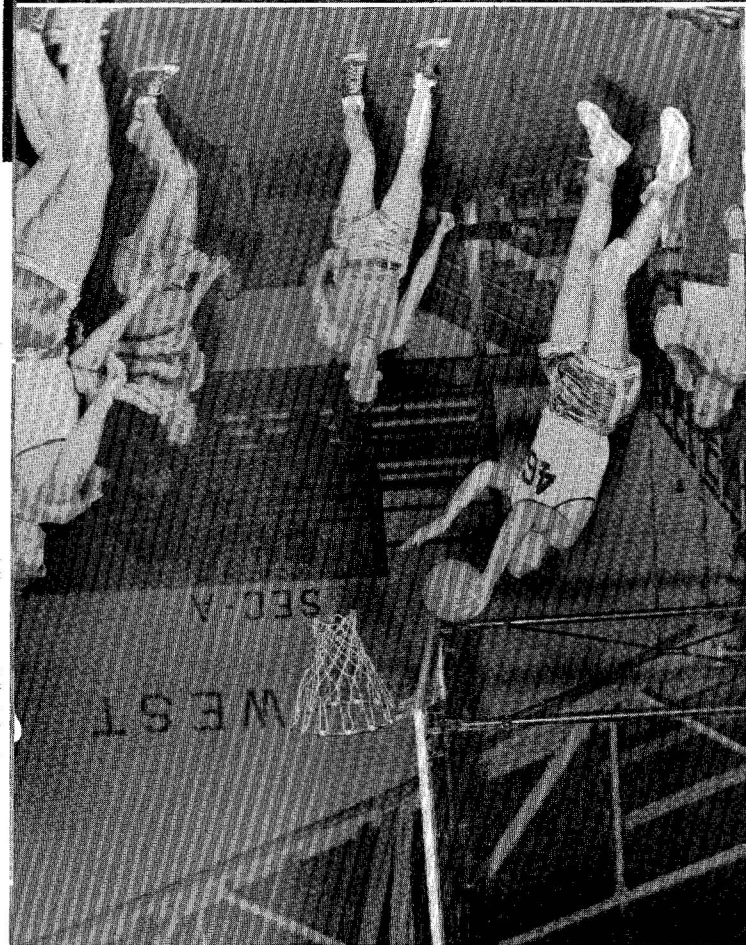
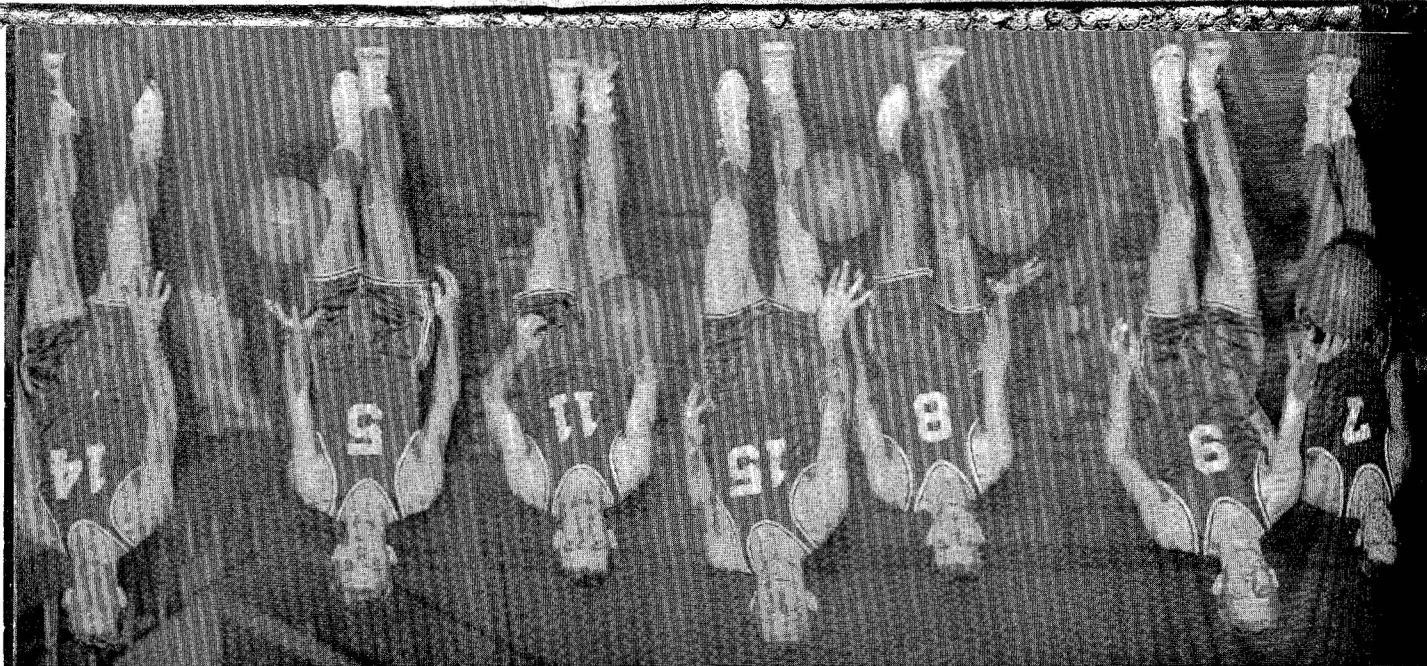
First Row: J. Embiscuso, D. Murphy, R. McDermott, D. Keener, J. Laird.
Second Row: Mr. Zimmerman, J. Pindar, N. Sundstrom, G. Everett, R. Miller, H. McKinley, R. Himmelreich,
Mr. Yost.

The successful basketball season this year could be attributed to many things. Among those things is the expert direction of Coach Howard Yost.

The team won first place in the Teachers College Conference. Bob McDermott broke the previous high scoring record for a season at Lock Haven.

The whole team played "up and up" ball all year that would be an asset to any school.





Since the time basketball was invented, it has been one of the major indoor winter sports in both high schools and colleges. Lock Haven can be proud of its players, its team, and its coaches.

A GREAT SPORT

SOCCER

Although soccer doesn't attract the large crowds of some of the other sports, it is one of the important fall sports at Lock Haven. The roster of the team this year was illuminated with many stars including Bernie Vogt, Chuck Reich, Bill Gingerich, Dio Chamberlain, Bob Weaver, and many others.

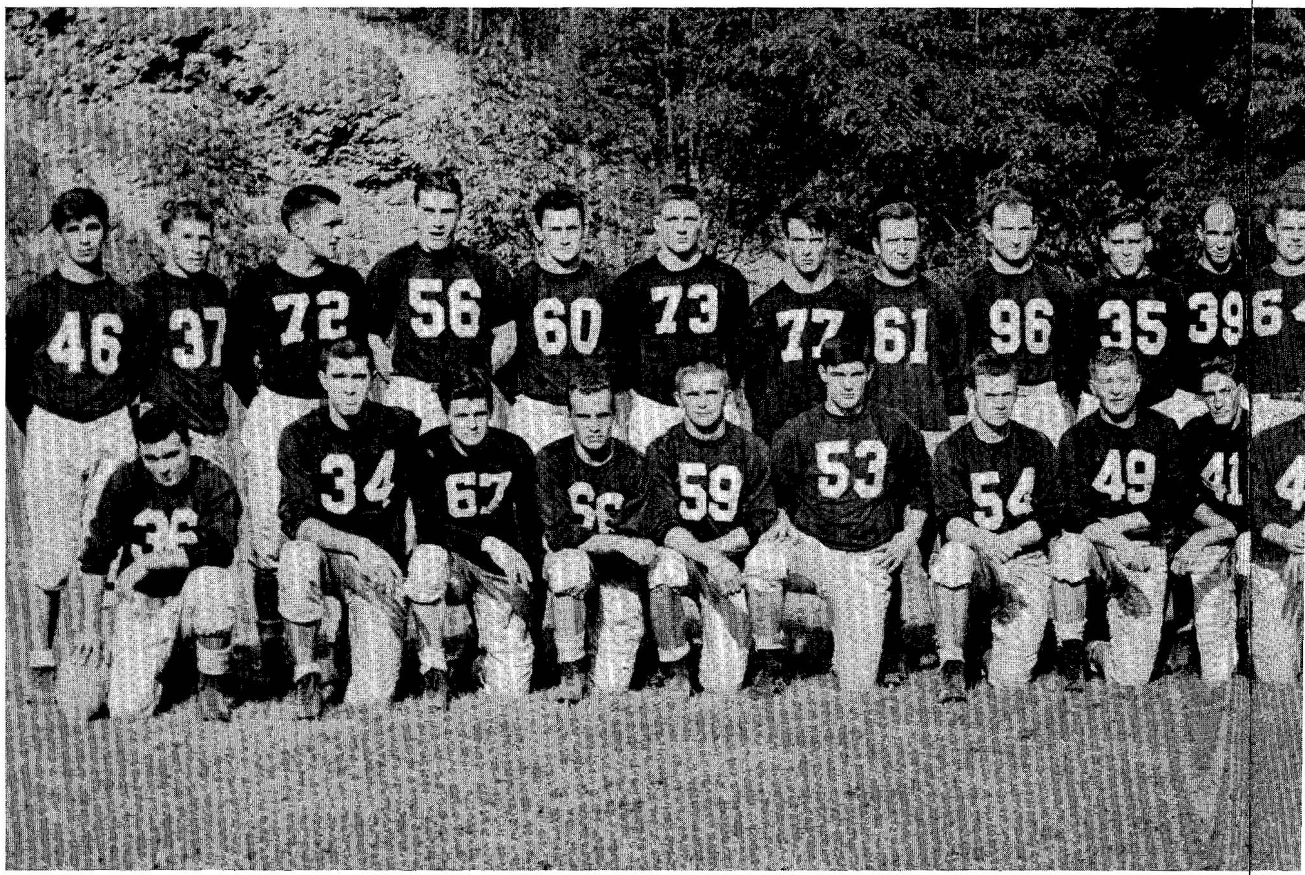
Let's push soccer at Lock Haven; it's a great sport.



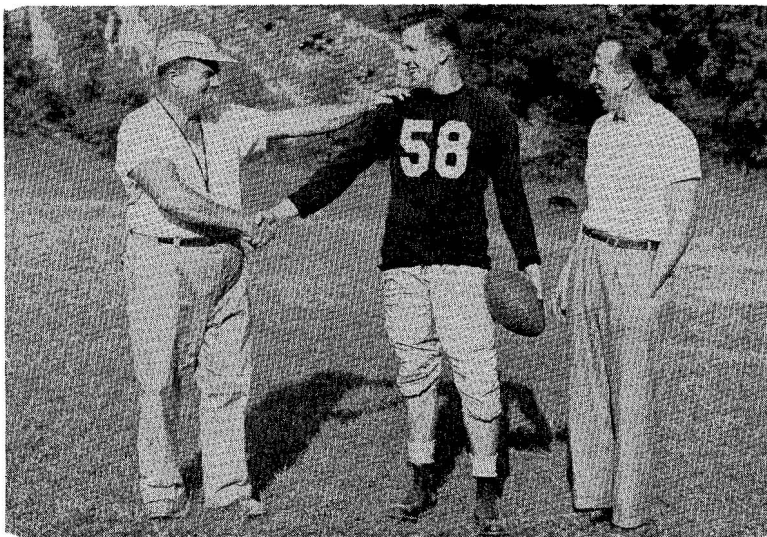
ABOUT SOCCER

These pictures show some scenes from soccer games. Soccer is a game played with a ball about the size of a basketball. It is kicked with the feet, hit with the head and arms, but may not be touched with the hands. The object of the game is to get the ball into the goal at the end of the field. The score for a goal in soccer is one point.





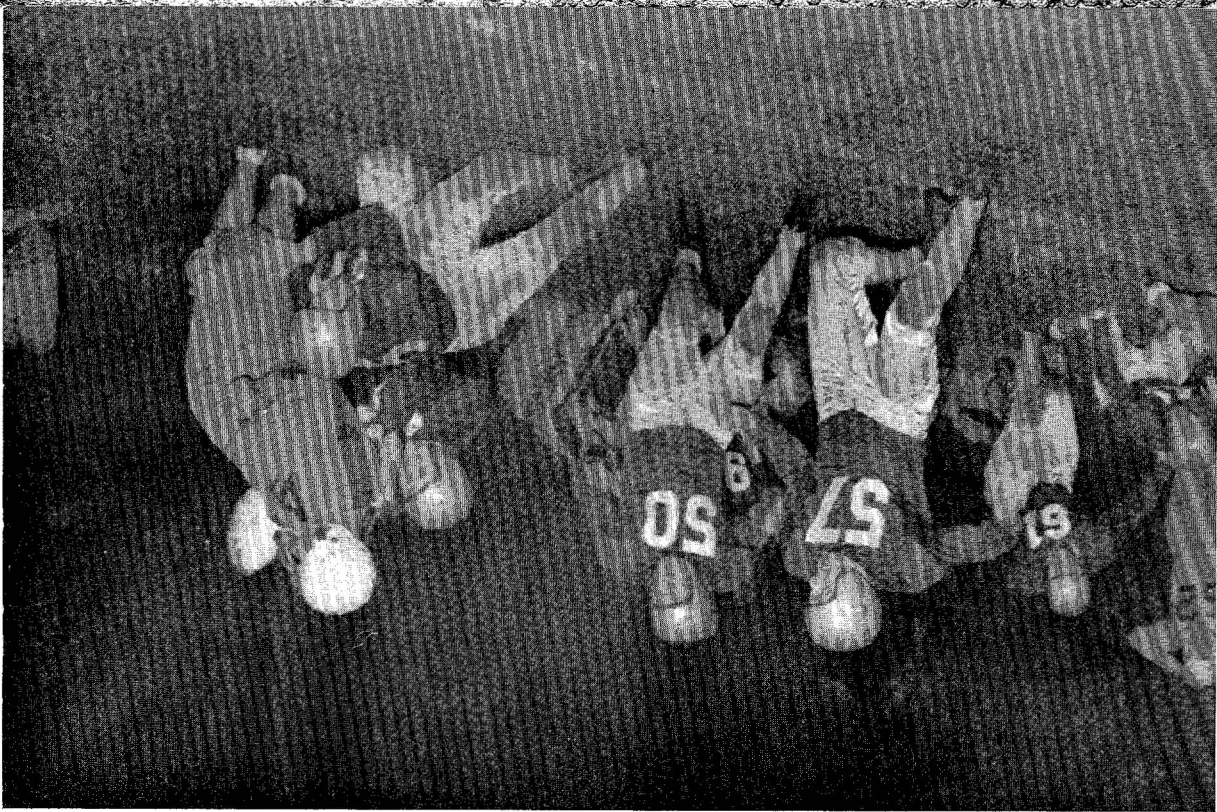
FOOT



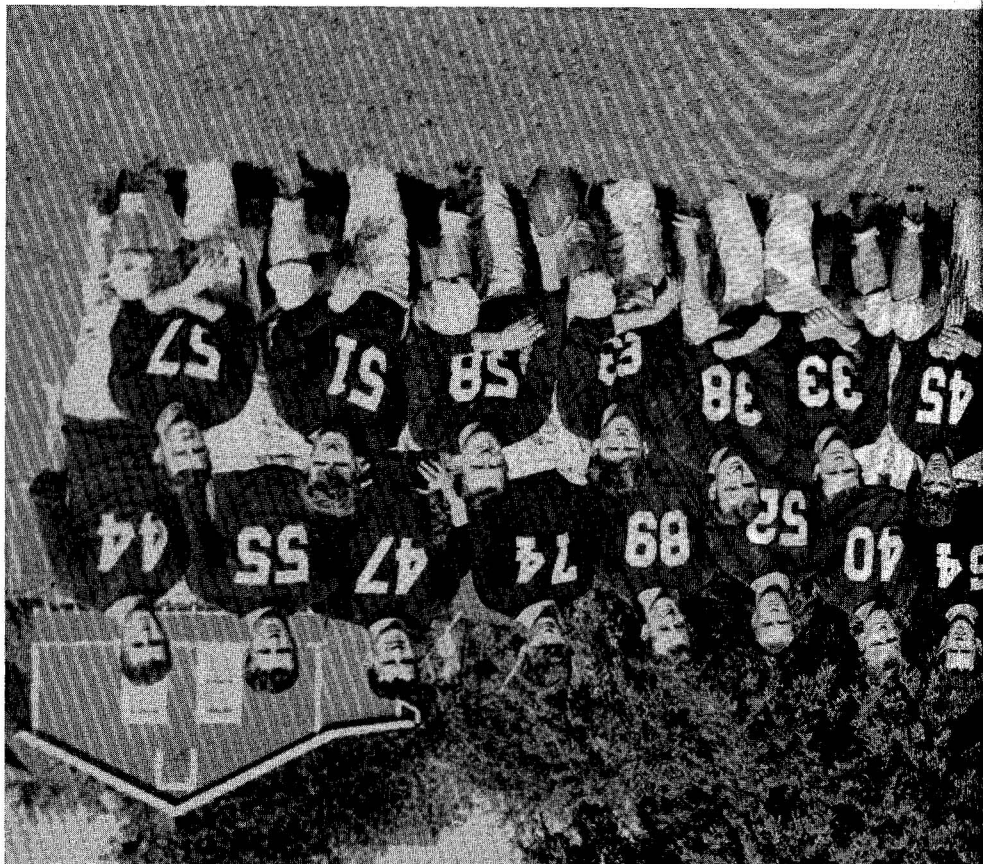
The 1951 grid season started off rather poorly in comparison to the "great heights" reached by former Lock Haven football teams.

With a comparatively green squad hampered by several early season injuries, Coach Jack and the team went through the season with the same spirit that is always evident on the Lock Haven campus.

LEFT: Coach Jack and Coach Zimmerman shown with co-captain, Duke Yurchak.



BALL



FIELD HOCKEY

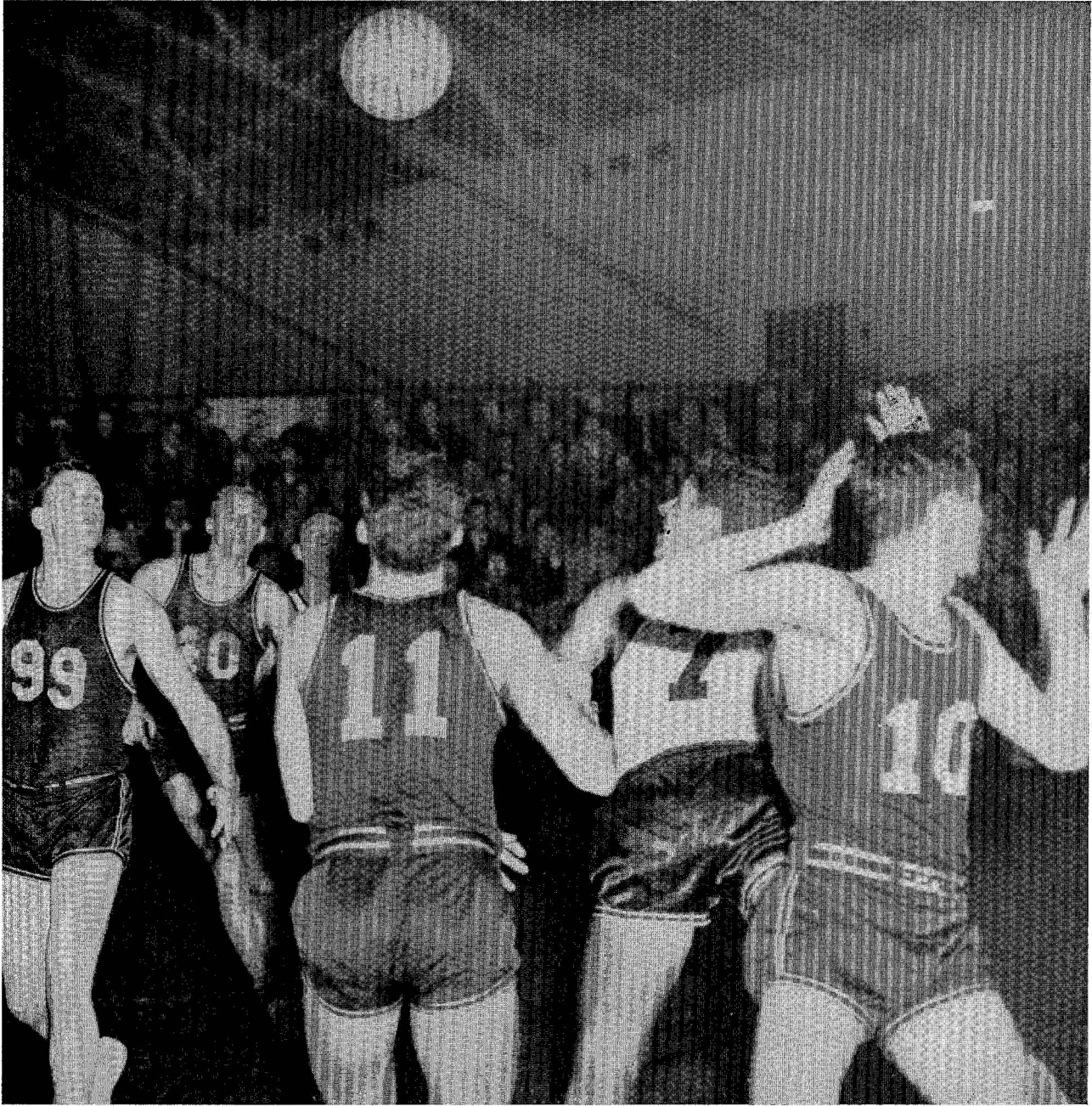
The 1951 Girls' Hockey season was a great success. They lost no scheduled games, and only one in the tournament at Lebanon Valley.

Every girl on the team was placed in one of the three teams which were chosen in this tournament. Of these, six went to New York State where two more teams were chosen to represent the Mideast District at the National Tournament in Boston. Two of our girls went to this tournament.



First Row, L to R: Edna Pifer, Ruth Williams, Joyce Schaeffer, Carol Bailey, Lena Bollig, Jo Dunnick.

Second Row: Nadine Zimmerman, Julia Risser, Joanne Kauffman, Beatrice Hallman, Theresa Reed, Dorothy Stackhouse, Barbara Hibschan, Miss Smith, coach.



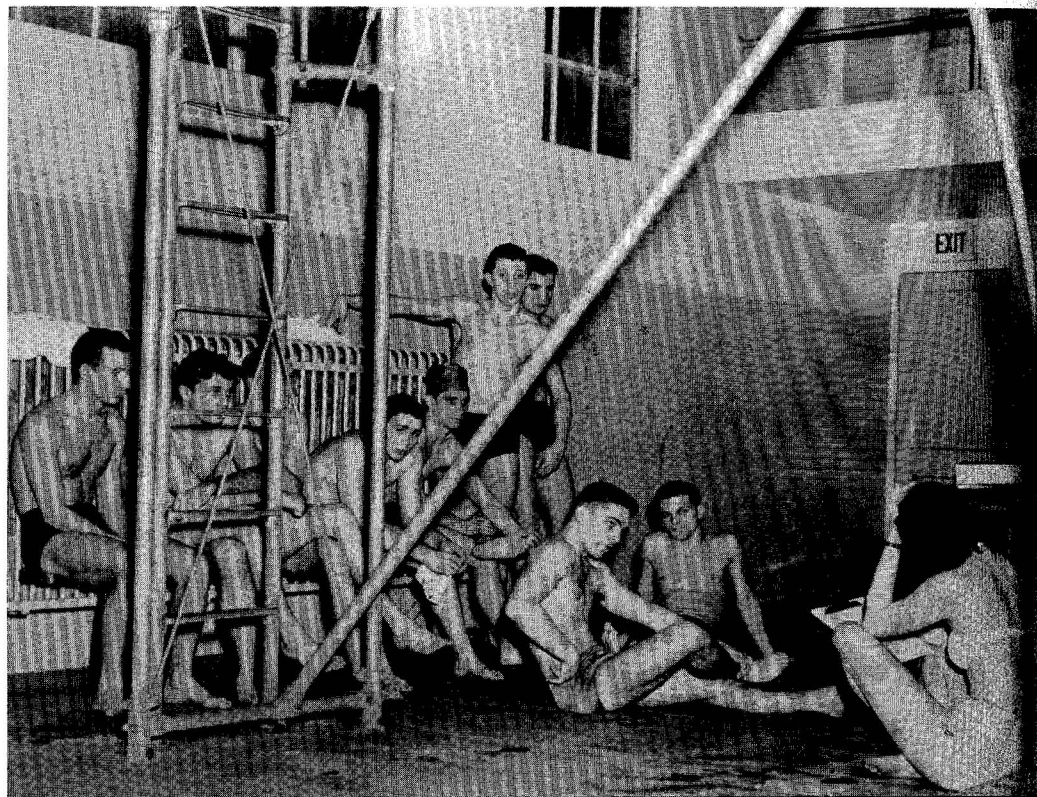


At the left is a group of boxers. This sport, previously an inter-college competitive sport is now only intramural at Lock Haven.

The Physical Education department is under the direction of Dr. Elizabeth K. Zimmerli.



The pictures on this page show scenes from the physical education department other than inter-college competitive sports. At the right is a scene of a swimming class under the leadership of Mrs. Lorraine Dullen.



CHEERLEADERS



Front Row: M. Patterson, S. Rhodes, C. Cohick.
Back Row: H. Shields, E. Alvarez, C. Bailey, C. Blaker, J. Ference.



The cheerleaders were organized under the direction of Dr. Zimmerli for the year. Several new girls were selected to lead the cheers for the football and basketball games at the college.

AUTOGRAPHS

ADVERTISING

The 1952 PRAECO wishes to express appreciation to the
following PATRONS:

DR. J. P. BRANDT
DR. AND MRS. K. S. BRICKLEY
MR. M. E. HAGGERTY
DR. P. R. KAMP
MR. A. H. LIPEZ

MR. GORDON McNEILL
DR. AND MRS. DAVID W. THOMAS
DR. AND MRS. GEORGE TREIRES
MR. ROY L. WELSH
MRS. JOHN A. YOST, JR.

NEW YORK AND
PENNSYLVANIA CO., INC.

PAPER AND PULP

MANUFACTURERS

Mills Located at:

JOHNSONBURG, PA.

LOCK HAVEN, PA.

WELLSBORO, N. Y.

J. C. PENNEY CO., INC.

SMITH AND WINTERS, INC.

LOCK HAVEN'S
SHOPPING CENTER

The Best Place To Shop
After All

Watches

Diamonds

Jewelry

WITMYER JEWELRY STORE

26 E. Main St.

Dial 2524

Everything Musical
At

WAGNER & SON
RADIO & TELEVISION CENTER

Zenith, Capehart, Motorola
Radios - Records - Phonos
Music Supplies

FRED J. EISEMANN

Jeweler

Gifts for All Occasions

31 Bellefonte Avenue

Compliments
of

LUBELLE'S

119 East Main Street

WOLF
FURNITURE
COMPANY

Compliments
of

PENNSHIRE CLOTHES

Lock Haven

Williamsport

We Serve—You Save
Shoes And Hosiery

For Every Member Of The Family

BROWN'S BOOT SHOP

Lock Haven

Pennsylvania

ALL

BANKING SERVICES

**LOCK HAVEN
TRUST COMPANY**

Clinton County's
Largest Bank

Member F. D. I. C.

R. K. GRIFFIN COMPANY

Manufacturers Of
CHAIRS AND WOOD PRODUCTS

Lock Haven

Pennsylvania

THE HOWARD P. FOLEY COMPANY

ELECTRICAL CONSTRUCTION

480 Elmira Street

Williamsport 1, Pennsylvania

Compliments
of

**ROXY
AND
MARTIN**

LOCK HAVEN'S
LEADING THEATRES

Compliments of

THE
FIRST NATIONAL BANK

OF
LOCK HAVEN, PENNSYLVANIA

TABONE & BARBERA

General Building Contractors

PITTSTON

PENNSYLVANIA

LOCK HAVEN

LAUNDRY

DRY CLEANERS AND

LAUNDERERS

Phone 2213

RITTER'S

SPORTING

GOODS

THE HUB

LOCK HAVEN'S CLOTHING CENTER

Headquarters for Woolrich Sport Clothes

Outfitters for T. C. Band Uniforms

Compliments
of

WIDMANN AND TEAH
DRUG STORES

Compliments
of

PEP AMUSEMENT CO.

118 Bellefonte Avenue

CROWLEY'S CORNER

Where The Gang Meets
And Eats

AT PETE'S

SCHWARZ STORE

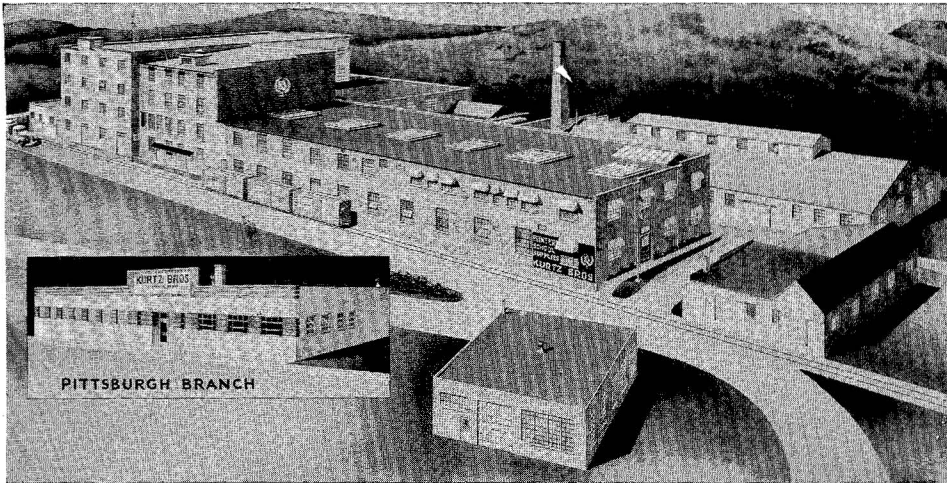
WALLPAPER AND
PAINT

Part of your COLLEGE EDUCATION and a valuable TEACHING TOOL for
your future professional activity, regular, intelligent reading of an
independent newspaper

Read

THE LOCK HAVEN EXPRESS

It is part of your education now and in the future



Built to Serve You . . .

Pictured above, Kurtz Bros. factory and warehouses along with the Pittsburgh Branch contain more than 112,000 square feet of floor space. Here, under one roof, your school annuals are printed, bound and covered. A plant built to serve your printing needs.

KURTZ BROS. » » CLEARFIELD, PA.

ZIMMERMAN ENGRAVING COMPANY

SYKESVILLE

PENNSYLVANIA

Compliments

of

DICKEY GRUGAN

HARDWARE CO. INC.

CAMPUS CORNER

Your Home Away From Home

GARDEN

"The Family Theatre"

Compliments
of

"Your Specialist in Sports"

TOM GREEN SPORTING GOODS

226 E. Main Street

Phone 3117

TIMES PUBLISHING CO.

Times Square

Lock Haven

PRINTERS :: PUBLISHERS

Publishers of
The Bald Eagle

SHAFFER, CANDOR & HOPKINS, INC.

Quality Hardware

Since 1868

17 E. Main St.

Lock Haven, Pa.

DUNKLE'S CUT RATE

Medicine Cabinet

Supplies
and

Fountain Service

Corner of Jones and Bellefonte Ave.

**STUDENT
DIRECTORY**

STUDENT DIRECTORY

Adams, Frederick P.	457 Renovo Ave., Renovo, Pa.
Aiello, John J.	301 Fairview Ave., Johnsonburg, Pa.
Alfieri, Dominic A.	Clermont, Pa.
Alvarez, Eleanor L.	1058 Penna. Ave., Tyrone, Pa.
Ambrose, Charles P.	121 E. Walnut St., Lock Haven, Pa.
Anderson, Fred E.	217 N. Main St., Port Allegany, Pa.
Andrews, Jean E.	Mapleton Depot, Pa.
Baieroski, Donald F.	316 First Ave., Johnsonburg, Pa.
Baieroski, Eleanor M.	316 First Ave., Johnsonburg, Pa.
Bailey, Carol E.	39 Evans St., Uniontown, Pa.
Bailey, Lloyd G.	324 Orange St., Selingsgrove, Pa.
Baker, Reba M.	40 Maple St., Belleville, Pa.
Balsiger, Ann C.	180 Willowwood St., Emporium, Pa.
Barnhart, Eugene A.	Trailer Village, Lock Haven, Pa.
Barnhart, Joyce A.	1318 Cameron Ave., Tyrone, Pa.
Beck, Dorothy L.	252 Edgewood Ave., DuBoistown, Pa.
Bednar, Paul T.	Bridge St., Hastings, Pa.
Behrman, Lauvon	155 S. Jones St., Lock Haven, Pa.
Benson, Dolores A.	271 Euclid Ave., Ridgway, Pa.
Bernard, William R.	895 E. Bald Eagle St., Lock Haven, Pa.
Bird, Earl J.	Stanhope, New Jersey
Black, Harold D.	763 S. Main St., Athens, Pa.
Black, Sylvia A.	763 S. Main St., Athens, Pa.
Blaker, Clara K.	206 W. Central Ave., So. Williamsport, Pa.
Bock, Carolyn E.	112 Laurel St., Philipsburg, Pa.
Bock, Esther M.	Morrisdale, Pa.
Bolig, Lena M.	Richfield, Pa.
Bombassei, Robert V.	605 W. Walnut St., Lock Haven, Pa.
Boring, Gaius E.	Mapleton Depot, Pa.
Bossert, George E.	Avis, Pa.
Bower, Dolores R.	27 S. Washington St., Lock Haven, Pa.
Bower, Dorothy M.	309 Sidney St., Williamsport, Pa.
Bower, Glenn L.	627 Ames Place, Williamsport, Pa.
Bower, James E.	Salona, Pa.
Bower, Paul W.	1414 Memorial Ave., Williamsport, Pa.
Bowes, Barbara H.	212 Wylie St., Jersey Shore, Pa.
Bowes, Beverly B.	212 Wylie St., Jersey Shore, Pa.
Bowser, Robert A.	918 Main St., Portage, Pa.
Boyer, William B.	214 Church St., Lock Haven, Pa.
Bradney, Francis P.	Hyner, Pa.
Brannan, Faye I.	Lewistown, Pa.
Brasseur, Marna L.	36 Pentz Run Ave., DuBois, Pa.
Breneman, Dawn M.	914 Allegheny St., Jersey Shore, Pa.
Bressler, Ardell G.	Olanta, Pa.

STUDENT DIRECTORY

Breu, Dawn L.	R. D. #2, Carlisle, Pa.
Brown, Blaine	227 S. Dorcas St., Lewistown, Pa.
Brown, Clair G.	1416 Park Ave., Williamsport, Pa.
Brown, Earl E.	Selingsgrove, Pa.
Brown, Earnest A.	253 Main St., Jersey Shore, Pa.
Buchanan, Milford A.	206 Bridge St., Clearfield, Pa.
Buck, Crayton L.	372 Union Ave., Williamsport, Pa.
Budinger, Gene	749 Bellefonte Ave., Lock Haven, Pa.
Bulger, Rita J.	280 S. Jones St., Lock Haven, Pa.
Burdett, William O.	St. Charles, Pa.
Burket, Sara Jane	700 Walnut St., Roaring Springs, Pa.
Burns, Margaret R.	1113 Second St., Juniata, Altoona, Pa.
Buss, Beverly A.	R. D. Allenwood, Pa.
Camp, George W.	1036 Cemetery St., Williamsport, Pa.
Campbell, James E.	2107 Highland Ave., Reading, Pa.
Campbell, Mary H.	516 Frederick St., Flemington, Pa.
Caprio, Rita M.	119 Pearl St., Lock Haven, Pa.
Carlson, Robert T.	Kylertown, Pa.
Carpenter, Richard L.	523 Eden St., Jersey Shore, Pa.
Carr, Joseph R.	110 Oak St., Youngville, Pa.
Cartwright, Gerald V.	Sandy Ridge, Pa.
Cartwright, Ronald W.	Hawk Run, Pa.
Chamberlin, Dio K.	245 Main St., Mill Hall, Pa.
Chambers, Joyce D.	208 Sixth St., Altoona, Pa.
Creptak, Stephen	13 Minnequa Ave., Canton, Pa.
Cicheskie, Alexander S.	1414 Poplar St., Northumberland, Pa.
Cingle, Margaret P.	Clarence, Pa.
Clark, Connie L.	Avis, Pa.
Clark, Janice L.	Main St., Beech Creek, Pa.
Clark, R. Eileen	R. D. Jersey Shore, Pa.
Coffey, Marcia A.	94 Penna. Ave., Mill Hall, Pa.
Cohick, Constance L.	Salladasburg, Pa.
Colacino, Francis J.	361 E. Walnut St., Lock Haven, Pa.
Conti, John L.	680 Penna. Ave., Renovo, Pa.
Cook, Bobbie B.	149 N. Fourth St., Lock Haven, Pa.
Coppersmith, Grace V.	6 W. Sixth St., Emporium, Pa.
Corcoran, Mary E.	417 Ontario Ave., Renovo, Pa.
Coulson, Harry R.	R. D. #5, Johnstown, Pa.
Craig, Robert W.	18 E. Philip St., Schuylkill, Pa.
Crawford, Nancy E.	15 Grant St., Brookville, Pa.
Creasy, Gerald F.	R. D. #2, Williamsport, Pa.
Crook, Kenneth G.	Vine St., New Berlin, Pa.
Crowley, Dolores A.	647 W. Bald Eagle St., Lock Haven, Pa.
Custer, George H.	318 W. Pike St., Canonsburg, Pa.
Danneker, Joan M.	1210 Cherry St., Williamsport, Pa.
Davis, Robert A.	R. D. #4, Parker, Pa.

STUDENT DIRECTORY

Davis, William F.	Sproul, Pa.
Day, Bernard W.	R. D. Loganton, Pa.
Dean, Richard I.	McClure, Pa.
DeAugustino, Leonard J.	R. D. #5, Blacktown, Pa.
DeBoer, Margaret L.	Luthersburg, Pa.
Deivert, Gary N.	R. D. #1, Sunbury, Pa.
DelGrosso, Jacqueline A.	2113 Ninth Ave., Altoona, Pa.
Demchak, Peter J.	Osceola Mills, Pa.
Demmien, Shirley L.	365 Clark St., So. Williamsport, Pa.
Dibble, James M.	1516 Jefferson St., Latrobe, Pa.
Dickey, Samuel C.	819 Bellefonte Ave., Lock Haven, Pa.
Dick, Florence E.	222 E. Water St., Lock Haven, Pa.
Dickson, Janet L.	7472 McClure Ave., Swissvale, Pa.
Dinges, Geraldine L.	Coburn, Pa.
Dinsmore, John W.	St. Marys, Pa.
Duffin, Ann H.	1716 Washington Blvd., Easton, Pa.
Dunkle, Caroline I.	Island Route, Lock Haven, Pa.
Dunlap, Charlotte L.	413 Stone St., Osceola Mills, Pa.
Dunnick, Joanne M.	107 E. Park St., Elizabethtown, Pa.
Earl, Donald O.	815 W. Tenth St., Erie, Pa.
Eberhart, Paul H.	833 W. Third St., Williamsport, Pa.
Eckert, Paul L.	415 W. Main St., Lock Haven, Pa.
Eiswerth, Joann C.	414 Percy St., So. Williamsport, Pa.
Ellenberger, Patricia A.	1242 Allegheny St., Jersey Shore, Pa.
Ellenberger, Rose M.	Warriors Mark, Pa.
Embiscuso, Joseph C.	215 Lafayette St., Bristol, Pa.
Everett, George R.	R. D. #1, West Newton, Pa.
Eymer, Bruce D.	Box 145, Lewis Run, Pa.
Fahnestock, Kenneth H.	216 Pine St., Selingsgrove, Pa.
Feaster, Merlyn R.	345 N. Fourth St., Lewisburg, Pa.
Ference, Janet R.	120 Lincoln Ave., Williamsport, Pa.
Fleming, Ruth E.	Riverside Terrace, Lock Haven, Pa.
Fontana, Helen A.	70 Susquehanna Ave., Lock Haven, Pa.
Fontana, Joseph M.	70 Susquehanna Ave., Lock Haven, Pa.
Fountain, Liberty	19 N. Fairview St., Lock Haven, Pa.
Frantz, Edith L.	1305 Dewey Ave., Williamsport, Pa.
Fraser, Edward A.	R. D. Monongahela, Pa.
Frazier, Margaret J.	516 E. Main St., Lock Haven, Pa.
Frederick, Esther L.	506 Washington St., Jersey Shore, Pa.
Fredo, William J.	Beaver St., Hastings, Pa.
Frontino, Joseph F.	Spangler, Pa.
Fuhrer, Donald F.	4510 Stanton Ave., Pittsburgh, Pa.
Funk, Doris J.	Star Route, Lock Haven, Pa.
Furey, James M.	833 Park Ave., Williamsport, Pa.
Gaitens, Norman B.	5 Corning St., Lock Haven, Pa.
Gallagher, Harry B.	418 W. Fourth St., Lock Haven, Pa.

STUDENT DIRECTORY

Ganoe, Robert D.	118 E. Water St., Lock Haven, Pa.
Gardill, Julianne	1327 Windemere Dr., Pittsburgh, Pa.
Gartner, Mary D.	240 W. Allegheny St., Emporium, Pa.
Gaylor, Sheldon L.	29 E. Church St., Lock Haven, Pa.
Gerhard, Sylvia J.	R. D. Jersey Shore, Pa.
Gerhard, Vivian S.	R. D. Jersey Shore, Pa.
Gerlock, James E.	1122 16th Ave., Altoona, Pa.
Gillespie, Carol J.	Orviston, Pa.
Gingerich, William D.	R. D. #6, York, Pa.
Ginther, Vada	Buckner Trail, St. Marys, Pa.
Gocella, Larry R.	32 Brennan St., Bradford, Pa.
Good, Robert L.	Osceola Mills, Pa.
Goodlander, Amber M.	212 Pearl St., Lock Haven, Pa.
Goodwin, Henry E.	1000 Church St., Upland, Pa.
Gore, George L.	315 E. First St., So. Williamsport, Pa.
Greene, Margaret A.	114 Spruce St., Jersey Shore, Pa.
Green, Norma J.	R. D. #3, Huntingdon, Pa.
Greninger, Joy C.	Rebersburg, Pa.
Grier, Phyllis M.	645 W. Water St., Lock Haven, Pa.
Grimm, Arthur L.	1511 Hillsdale Ave., Dormont, Pa.
Grissinger, Donald W.	142 McAllister St., State College, Pa.
Groover, Robert D.	39 Fassett St., Canton, Pa.
Gumleita, Stephen M.	Sunshine Ave., Central City, Pa.
Haas, Norma L.	2115 Boyd St., Williamsport, Pa.
Hall, Rene M.	24 S. Fifth St., Lewisburg, Pa.
Hallman, Beatrice E.	120 Market St., Tanaqua, Pa.
Hall, Richard K.	R. D. Mill Hall, Pa.
Hanawalt, Joyce L.	McVeytown, Pa.
Harter, Gerald R.	Spring Mills, Pa.
Haugh, Margaret E.	Beech Creek, Pa.
Havehs, Stanley L.	235 Canton St., Troy, Pa.
Hawkins, Gordon H.	350 Birch St., Lock Haven, Pa.
Heacock, John F.	521 John St., Bedford, Pa.
Heacock, Margaret T.	521 John St., Bedford, Pa.
Heaps, John C.	North Bend, Pa.
Heckendorn, Gloria J.	537 Main St., Conneaut, Ohio
Heimer, Ralph T.	308 Vesper St., Lock Haven, Pa.
Helbley, Clara J.	R. D. Lock Haven, Pa.
Hensal, D. Jean	Madera, Pa.
Herman, Fred D.	North Bend, Pa.
Herman, Joann M.	R. D. Jersey Shore, Pa.
Heverley, Robert E.	101 Grove St., Lock Haven, Pa.
Hibschan, Barbara S.	10 Alsace St., Reading, Pa.
Hickey, William R.	109 Myrtle St., Lock Haven, Pa.
Higgins, Paul J.	26 W. Bald Eagle St., Lock Haven, Pa.
Hill, Jack L.	521 Wright St., Flemington, Pa.
Hill, James R.	300 S. Broad St., Hughesville, Pa.

STUDENT DIRECTORY

Hill, Nancy J.	Sellersville, Pa.
Himmelreich, Robert H.	36 S. 7th St., Lewisburg, Pa.
Hinkel, Daniel J.	1935 Foy Ave., Williamsport, Pa.
Hintenlang, Paul P.	447 S. Fairview St., Lock Haven, Pa.
Hochrein, Chester G.	224 Main St., Portage, Pa.
Hockman, James F.	2416 Fairview Terrace, Williamsport, Pa.
Holland, D. Thomas	204 W. Bald Eagle St., Lock Haven, Pa.
Hollick, Belmon D.	251 Thompson St., Jersey Shore, Pa.
Hollick, Harris E.	221 Wylie St., Jersey Shore, Pa.
Hollis, Joseph W.	463 S. Jones St., Lock Haven, Pa.
Hollis, Mary J.	463 S. Jones St., Lock Haven, Pa.
Holtz, Andrew F.	Spangle St., Hastings, Pa.
Hoover, Patsy A.	Port Matilda, Pa.
Hosterman, Budd A.	Millmont, Pa.
Houck, Marjorie L.	S. Market St., Martinsburg, Pa.
Houk, Russell E.	R. D. New Castle, Pa.
Householder, Richard G.	R. D. Huntingdon, Pa.
Howard, Ronald E.	R. D. #2, Port Allegany, Pa.
Howe, Constance L.	11 Homestead Ave., Bradford, Pa.
Hoy, Anna K.	Bellefonte, Pa.
Hubler, Paul H.	Allport, Pa.
Huffman, William H.	825 High St., Williamsport, Pa.
Humpton, Richard L.	Lanse, Pa.
Isenberg, Charles S.	736 W. Third St., Williamsburg, Pa.
Isenberg, Theodore C.	Sproul, Pa.
Jackman, Charles I.	353 Main St., Mill Hall, Pa.
Janus, Robert J.	8A Rox Terrace, McKees Rocks, Pa.
Jodon, Robert E.	Main St., Millheim, Pa.
Jodun, Ronald J.	527 Wright St., Flemington, Pa.
Johnson, Richard E.	Teachers College, Lock Haven, Pa.
Johnson, Robert B.	4126 Sixth St., Philipsburg, Pa.
Johnsonbaugh, Janet L.	318 Summit St., Lock Haven, Pa.
Johnston, Paul F.	Kylertown, Pa.
Jones, Robert N.	Philipsburg, Pa.
Kantner, Ott B.	512 N. Market St., Selingsgrove, Pa.
Kauffman, Joana R.	25 James Drive, Fairborn, Ohio
Kaziska, Barbara A.	R. D., Port Allegany, Pa.
Keelan, Suzanne	14 Shadylane Ave., Johnstown, Pa.
Keenan, Richard L.	305 Reed St., Clearfield, Pa.
Keener, Donald R.	754 W. 4th St., Williamsport, Pa.
Keiler, Leroy H.	1231 Walnut St., Jersey Shore, Pa.
Kephart, Richard L.	Kylertown, Pa.
Kinch, J. William	135 South Ave., Canton, Pa.
Kinsey, Willis A.	238 Washington St., Ligonier, Pa.
Kitzinger, Joe A.	107 Rives St., Hollidaysburg, Pa.
Kleckner, Lester G.	R. D. Loganton, Pa.
Kline, Yvonne A.	Woolrich, Pa.

STUDENT DIRECTORY

Klinger, Robert H.	212 Shirley St., Mount Union, Pa.
Klobe, Harold F.	Loganton, Pa.
Krolick, Helen L.	Le Contes Mills, Pa.
Krzywicki, Ann C.	240 Maple Ave., Hempstead, N. Y.
Kunze, Doris H.	1025 E. Third St., Williamsport, Pa.
Kurtz, Rita J.	404 Loyalsock Ave., Montoursville, Pa.
Laird, John N.	1023 Leiper St., Eddystone, Pa.
Lakner, Dorothy I.	90 Allison St., Lock Haven, Pa.
Lamb, John W.	Philipsburg, Pa.
Lamb, Patricia L.	Glasgow, Pa.
LaRue, Lois E.	Ashville, Pa.
Laubach, Paul B.	346 E. Bald Eagle St., Lock Haven, Pa.
Lauer, Anna C.	225 Ninth St., Renovo, Pa.
Laurito, Patrick P.	817 5th Ave., Patton, Pa.
Lentz, Wesley B.	1022 Allegheny St., Jersey Shore, Pa.
Lewis, Carol A.	1717 E. 3rd St., Williamsport, Pa.
Locke, Phoebe J.	407 W. Church St., Lock Haven, Pa.
Long, James E.	203 Chestnut St., Mill Hall, Pa.
Loudenslager, Richard E.	N. Fairview St., Lock Haven, Pa.
Loughner, M. Phyllis	R. D. #5, Greensburg, Pa.
Lupp, Janice L.	S. Main St., Biglerville, Pa.
McCabe, Norman P.	1219 16th Ave., Altoona, Pa.
McClain, Catherine R.	Delmont Road, Greensburg, Pa.
McClellan, John N.	80 Cameron Ave., Beaverdale, Pa.
McClintock, Georgia E.	321 First Ave., Johnsonburg, Pa.
McCreight, Dean J.	206 Clearfield St., Clearfield, Pa.
McDermott, Robert E.	44 W. Lancaster St., Adams, Pa.
McDowell, James P.	Box 137, Philipsburg, Pa.
McKelvey, Carolyn R.	332 Bunger St., Ligonier, Pa.
McKinley, Harry F.	Bedford, Pa.
McKivigan, John J.	Spangler, Pa.
McKolosky, Albert J.	Cairnbrook, Pa.
Mackey, Paul D.	308 Woods Ave., Flemington, Pa.
Mackie, Edward F.	834 Hepburn St., Williamsport, Pa.
MacNeill, Benjamin B.	28 E. Main St., Lock Haven, Pa.
Mahoney, James J.	1437 Washington Ave., Altoona, Pa.
Majewski, Eugene P.	715 W. 5th St., Chester, Pa.
Marasa, Doris L.	321 W. 7th St., Clearfield, Pa.
Markish, John	Hickory, Pa.
Marks, Richard L.	715 W. Church St., Lock Haven, Pa.
Marschhausen, Robert F.	362 Fairfax Road, Drexel Hill, Pa.
Martin, Mary L.	343 Lincoln Ave., Williamsport, Pa.
Mason, Homer R.	Kimberly St., Somerset, Pa.
Mauck, Dale V.	220 S. Hampton St., Lock Haven, Pa.
Mayer, Edward G.	R. D., Williamsport, Pa.
Meskill, Ruth M.	Beech Creek, Pa.
Michaels, David G.	Beaverdale, Pa.

STUDENT DIRECTORY

Midea, Matthew J.	3107 Pre Ave., Grove City, Pa.
Miller, Clarence W.	817 Caldwell Ave., Portage, Pa.
Miller, Janet M.	Salona, Pa.
Miller, Myrlene B.	313 Stock St., Hanover, Pa.
Miller, Robert E.	S. High St., Lock Haven, Pa.
Miller, Robert G.	921 Bucknell Ave., Johnstown, Pa.
Miller, Shirley A.	920 Allegheny Ave., Jersey Shore, Pa.
Moore, Helen M.	715 W. Church St., Lock Haven, Pa.
Moore, Phyllis R.	237 E. Main St., Somerset, Pa.
Moore, Thomas W.	825 W. 3rd St., Williamsport, Pa.
Morrell, James E.	Main St., Bristol, Pa.
Mosteller, Jane E.	467 Curtin St., So. Williamsport, Pa.
Mowery, Janette A.	1314 High St., Williamsport, Pa.
Moyer, Mary A.	11 Eton St., Schuylkill Haven, Pa.
Murphy, Donald R.	87 Shoemaker St., Forty Fort, Pa.
Myers, Paul W.	913 Cemetery St., Williamsport, Pa.
Neishloss, Louis I.	1209 Astor St., Norristown, Pa.
Noll, Blain R.	Box 265, Bellefonte, Pa.
Ocker, Dorothy E.	1122 Mulberry St., Williamsport, Pa.
O'Donnell, James T.	North Bend, Pa.
Oechler, Philip R.	1107 W. 4th St., Williamsport, Pa.
Ogden, Colleen E.	R. D. #3, Clearfield, Pa.
Ohl, Robert C.	725 Bellefonte Ave., Lock Haven, Pa.
Owens, Patricia G.	12 4th St., Philipsburg, Pa.
Parks, Raymond F.	895 E. Bald Eagle St., Lock Haven, Pa.
Parson, Janice M.	22 E. Cardott St., Ridgway, Pa.
Parsons, Joan D.	151 Montgomery St., Montgomery, Pa.
Patterson, Mary F.	11 W. Birch St., Galeton, Pa.
Paul, Elwood F.	North Bend, Pa.
Pecchia, Joseph A.	Avis, Pa.
Pepperman, Carl W.	R. D. Jersey Shore, Pa.
Pepperman, Glen G.	517 Burke St., Jersey Shore, Pa.
Peters, Donna R.	Island Route, Lock Haven, Pa.
Peters, Glenn E.	Beech Creek, Pa.
Peters, Robert E.	107 W. Walnut St., Burnham, Pa.
Peterson, E. Joyce	5 Potter St., Bradford, Pa.
Petriska, Pete	431 Main St., Conemaugh, Pa.
Pfaff, Barbara P.	403 Jones St., Lock Haven, Pa.
Pflugfelder, Gary E.	North Bend, Pa.
Phillippi, Ellen L.	1901 Marmaduke, Pittsburgh, Pa.
Pifer, Edna L.	Centre Hall, Pa.
Pifer, Richard R.	557 W. Church St., Lock Haven, Pa.
Pihakis, George	610 Highland St., Canonsburg, Pa.
Pindar, Joseph	248 Jackson St., Bristol, Pa.
Plastas, John	Church St., Moscow, Pa.
Pletcher, Richard M.	733 Bellefonte Ave., Lock Haven, Pa.
Plummer, Daniel W.	Sidman, Pa.

STUDENT DIRECTORY

Poretta, Filitea E.	836 Memorial Ave., Williamsport, Pa.
Potratz, Eleanor M.	320 Maple St., Lock Haven, Pa.
Poulos, Peggy	723 Presqueisle St., Philipsburg, Pa.
Powers, John A.	Mildred, Pa.
Powlus, Harold W.	R. D. #5, Bloomsburg, Pa.
Puhl, Dolores E.	Saratoga, Pa.
Rasicci, Mary M.	209 Irvin Ave., Ridgway, Pa.
Rathgeber, Gerald G.	384 E. Park St., Lock Haven, Pa.
Raymond, Ronald L.	R. D. Lock Haven, Pa.
Reed, Theresa F.	Church St., Dudley, Pa.
Reeder, Donna K.	371 E. Park St., Lewistown, Pa.
Reich, Charles M.	136 E. Market St., Lewistown, Pa.
Rhodes, Lois V.	Mount Union, Pa.
Ridgway, John D.	Philipsburg, Pa.
Rigby, D. Jean	407 5th Ave., Altoona, Pa.
Rightmire, James R.	117 Bellefonte Ave., Lock Haven, Pa.
Rimmey, Mary J.	Centre Hall, Pa.
Rinker, Carlton F.	Forksville, Pa.
Risser, Julia A.	531 College Ave., Elizabethtown, Pa.
Ritter, J. Garris	227 W. Clinton St., Lock Haven, Pa.
Rollin, Jesse E.	406 W. Front St., Clearfield, Pa.
Ross, Larry H.	214 W. 2nd St., State College, Pa.
Ruegg, Philip J.	R. D. #3, Duncannon, Pa.
Rupert, Mary J.	Saltillo, Pa.
Ryan, Gerald T.	638 Clay Ave., Scranton, Pa.
Sauers, George D.	Kreamer, Pa.
Schadle, H. Ferne	520 21st Ave., Altoona, Pa.
Schaeffer, H. Joyce	6020 Reinhart St., Philadelphia, Pa.
Schiellie, Donald L.	126 Chestnut St., Lewistown, Pa.
Schoepf, George A.	406 High St., Williamsport, Pa.
Schultz, Michael W.	Karthus, Pa.
Schwer, William E.	220 Smith St., Jersey Shore, Pa.
Seitzer, Fremont P.	305 Washington Blvd., Williamsport, Pa.
Sellers, Shirley G.	623 Spruce St., Philipsburg, Pa.
Shaffer, Janice L.	304 N. Grove St., Lock Haven, Pa.
Shaffer, Kenneth D.	629 E. Main St., Lock Haven, Pa.
Shaffer, William M.	Pleasant Gap, Pa.
Shannon, Barbara M.	1159 Memorial Ave., Williamsport, Pa.
Shannon, Pearl M.	153 Pine St., Sunbury, Pa.
Shaw, Richard D.	106 Williams St., Clearfield, Pa.
Shearer, Grace L.	220 Amy Ave., Butler, Pa.
Shearer, Robert L.	502 Daisy St., Clearfield, Pa.
Shearon, Thomas W.	424 Earle Ave., New Kensington, Pa.
Shields, Helen L.	R. D. Mount Union, Pa.
Shields, John F.	345 S. High St., Lock Haven, Pa.
Shirk, Esther M.	Richfield, Pa.
Shirk, Joseph P.	246 W. 5th St., Lewistown, Pa.

STUDENT DIRECTORY

Shoff, Beverly L.	241 E. Market St., Clearfield, Pa.
Shope, Mary J.	411 Nichols St., Clearfield, Pa.
Skean, Sandra R.	143 Buck St., Pottstown, Pa.
Skok, Joseph A.	68 Mill St., Port Allegany, Pa.
Slopey, Donald P.	8 Girard St., Mill Hall, Pa.
Smawley, Robert B.	193 N. Fairview St., Lock Haven, Pa.
Smith, Alva N.	Jay St., Lock Haven, Pa.
Smith, Beatrice E.	Port Matilda, Pa.
Smith, George A.	337 W. Bald Eagle St., Lock Haven, Pa.
Smith, Gwendolyn A.	R. D., Muncy, Pa.
Smith, Harry E.	317 Susquehanna Ave., Lock Haven, Pa.
Smith, Kenneth C.	128 1st Ave., Altoona, Pa.
Smith, Nancy K.	690 Bellefonte Ave., Lock Haven, Pa.
Smith, Richard H.	Port Matilda, Pa.
Snook, Luther J.	McClure, Pa.
Snyder, William A.	805 Allegheny St., Jersey Shore, Pa.
Spisak, Richard A.	504 Fairbaks St., McKees Rocks, Pa.
Springman, Marlene C.	120 Franklin St., Williamsport, Pa.
Sprock, Carl	Central City, Pa.
Stabley, James L.	20 S. Water St., Mill Hall, Pa.
Stackhouse, Dorothy M.	653 Buckley St., Bristol, Pa.
Steinmetz, Robert N.	1703 W. 6th St., Erie, Pa.
Stephenson, Sara J.	165 Race St., Clearfield, Pa.
Stern, Ira M.	Island Route, Lock Haven, Pa.
Sticinski, Leo A.	37 Sidney St., Swoyersville, Pa.
Stiner, Raymond G.	242 5th St., Renovo, Pa.
Stoker, Katherine I.	Box 187, Lloydell, Pa.
Stout, William E.	Westport, Pa.
Stover, Donald H.	Mill Hall, Pa.
Stover, Shirley M.	220 Church St., Sheffield, Pa.
Sullivan, Virginia I.	2332 Derry St., Harrisburg, Pa.
Sundstrom, Norman A.	19 Beech St., Pottstown, Pa.
Supenia, Barbara R.	Houtzdale, Pa.
Swartz, Edna P.	Montgomery, Pa.
Swope, Alfred W.	Lock Haven, Pa.
Sybert, James H.	Westover, Pa.
Sybert, William H.	Westover, Pa.
Thomas, Lee	48 W. Main St., Lock Haven, Pa.
Thompson, Andrew M.	R. D., Hollidaysburg, Pa.
Thompson, Carolyn C.	Salladasburg, Pa.
Thorson, Albert R.	377 E. Church St., Lock Haven, Pa.
Thorson, Robert R.	377 E. Church St., Lock Haven, Pa.
Traficante, Phyllis M.	229 Cevitt Ave., Trafford, Pa.
Trexler, Richard T.	Avis, Pa.
Tsamoutales, Nickolas F.	1220 17th Ave., Altoona, Pa.
Tubbs, Alan L.	Teachers College, Lock Haven, Pa.
Turley, Donald L.	692 Pontzer Ave., St. Marys, Pa.

STUDENT DIRECTORY

Turner, Richard B.	303 Decatur St., Philipsburg, Pa.
Tutokie, Joseph F.	Hawk Run, Pa.
Ullein, Victor G.	1714 5th Ave., Altoona, Pa.
Van Auken, Phyllis L.	Brooklyn Road, Stanhope, New Jersey
Vance, William I.	Tylersville, Pa.
Vannauker, Jacque M.	115 Maple St., Jersey Shore, Pa.
Van Zant, L. Anne	McClure, Pa.
Vaughn, Franklin H.	R. D. #2, Eldred, Pa.
Verostek, Francis J.	1413 Front St., Ridgway, Pa.
Vogle, Alta M.	925 Clara St., Houtzdale, Pa.
Vogt, Bernard H.	Spring Mills, Pa.
Waite, Joanna	502 Washington St., Jersey Shore, Pa.
Walker, Fred	38 N. Fairview St., Lock Haven, Pa.
Walker, James L.	Hawk Run, Pa.
Walter, Marilyn L.	250 N. Front St., Sunbury, Pa.
Waslick, Robert H.	160 Main St., Luzerne, Pa.
Watkins, Richard	Riddlesburg, Pa.
Weaver, Robert C.	R. D., East Earle, Pa.
Weaver, Stacy I.	445 S. Fairview St., Lock Haven, Pa.
Weaver, William F.	20 Prospect St., Lock Haven, Pa.
Wertz, Raymond M.	1002 Huron Ave., Renovo, Pa.
Wertz, Harold I.	R. D., McVeytown, Pa.
Wertz, Thomas L.	Winburne, Pa.
Whitehill, Budd F.	408 E. Bishop St., Bellefonte, Pa.
Wilkins, Donald E.	Dalmatia, Pa.
Williams, Everett S.	Blair Heights, Clairton, Pa.
Williams, Marcia B.	920 Elizabeth St., Houtzdale, Pa.
Williams, Ruth G.	725 E. Penn St., New Bethlehem, Pa.
Wilson, Ann G.	1226 Graham Ave., Windber, Pa.
Wink, Charles F.	1060 W. 3rd St., Lock Haven, Pa.
Winter, Jean M.	914 Louisa St., Williamsport, Pa.
Winters, Charles E.	247 Randall Circle, Williamsport, Pa.
Winters, G. Britten	1350 LaFayette Parkway, Williamsport, Pa.
Wise, William L.	R. D., Lock Haven, Pa.
Wolfe, Barbara J.	105 S. Water St., Mill Hall, Pa.
Worcester, Pierce H.	208 Herr St., Harrisburg, Pa.
Wren, Henry K.	Loganton, Pa.
Wyand, Theodore L.	123 S. Hanna St., Lock Haven, Pa.
Yeager, Paula A.	Main St., Beach Creek, Pa.
Young, Carol G.	R. D., Newville, Pa.
Young, William	63 Spanogle Ave., Lewistown, Pa.
Yurchak, Metro	115 Spruce St., Nesquehoning, Pa.
Zepp, Donald C.	627 Frederick St., Hanover, Pa.
Zettle, Maurice L.	187 N. Fairview St., Lock Haven, Pa.
Ziegenhorn, Elsie H.	Pennsburg, Pa.
Zilch, Donald K.	Fort Littleton, Pa.
Zimmerman, Mary N.	Hopewell, Pa.