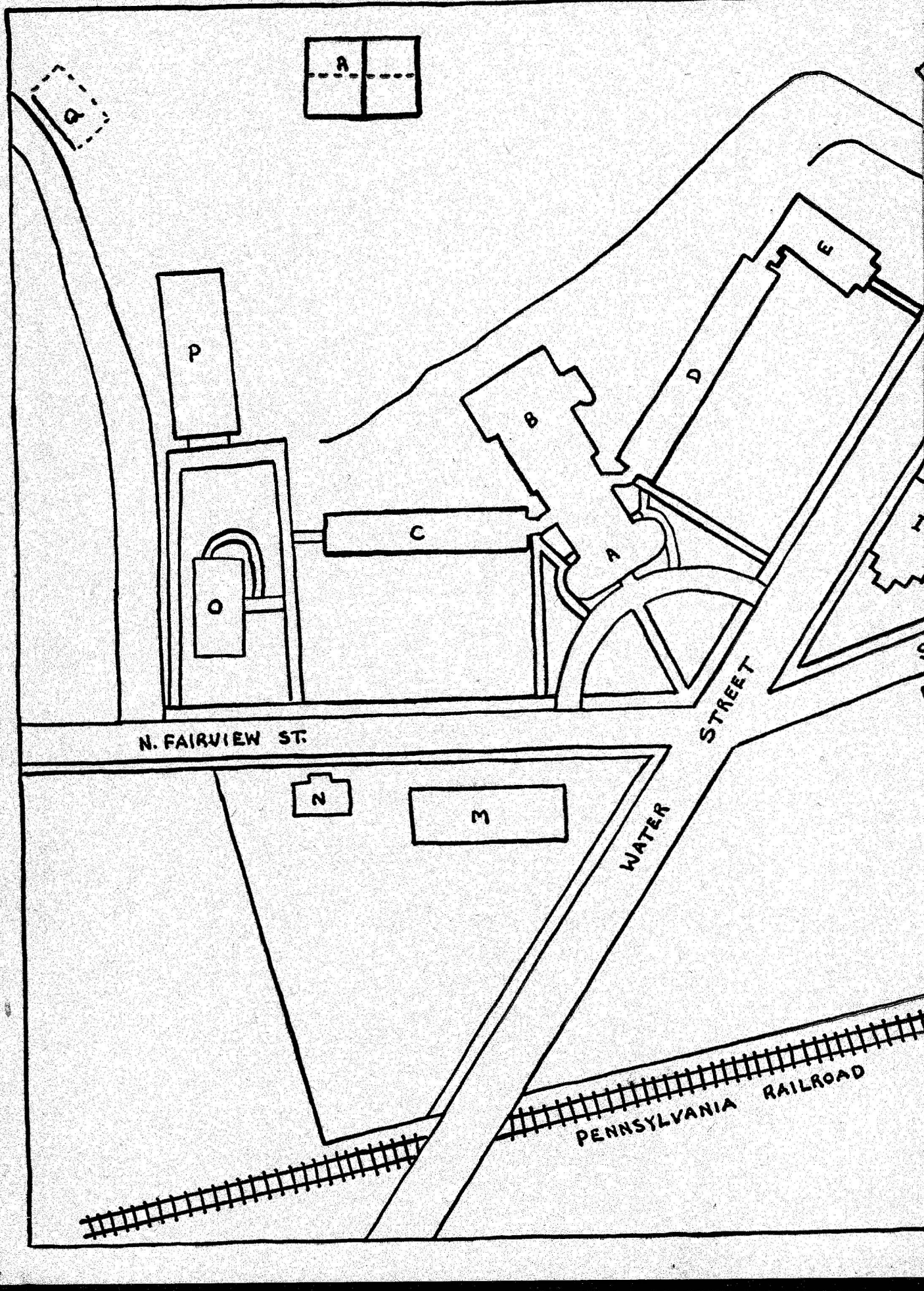


Tr. Ym.
LB
1945
L625P
1951

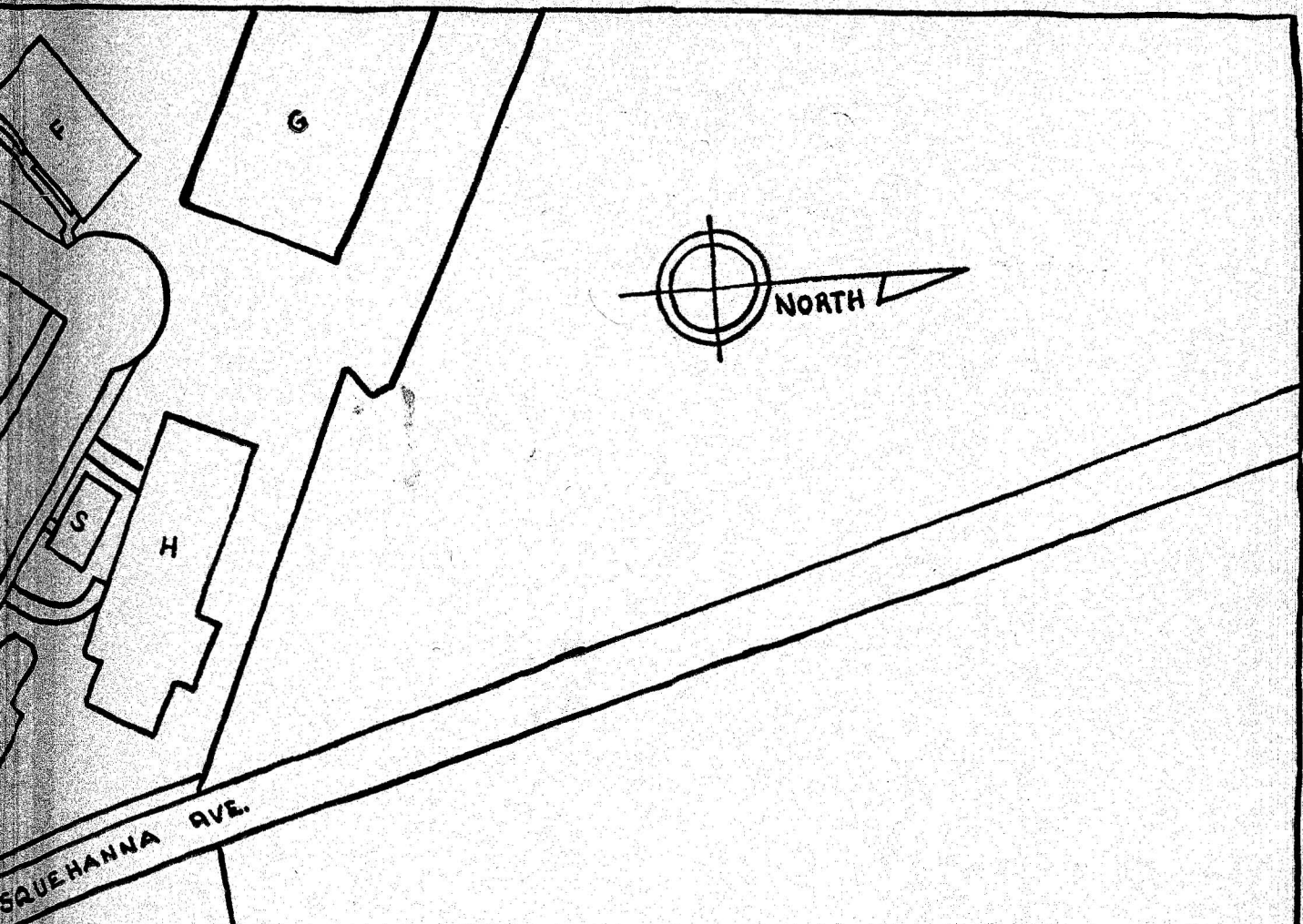


PRAECO

State Teachers College
Lock Haven, Pennsylvania
1951

HAROLD NORTH, Editor

One



Lock Haven State Teachers College

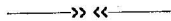
- | | |
|------------------------|-------------------------|
| A—Administration | K—Power Plant |
| B—Dining Hall | L—Garage |
| C—Men's Dormitory | M—New Science Building |
| D—Women's Dormitory | N—President's Residence |
| E—Women's Gymnasium | O—Library |
| F—Training School | P—Auditorium |
| G—Football Field | Q—Trailer Camp |
| H—Field House | R—Tennis Courts |
| I—Clock Tower Building | S—Laundry |
| J—Annex | |

RW

Ex. no.
LB
1945
L625P
1951
C.2

FOREWORD

The Praeco Staff presents this volume as a permanent memorial to happy associations and pleasant experiences, to the excellent spirit that is an integral part of Lock Haven State Teachers College.



61068

CLOCK TOWER

The cover pictures a landmark familiar to generations of students of Lock Haven State Teachers College. Its presentation here may be a final tribute to the clock tower, which has rung out many hours over our campus, for the building, according to contemplated plans, in the not too distant future will be torn down to allow for the expansion program now in progress.

Book Plate



THE LIBRARY

State Teachers College

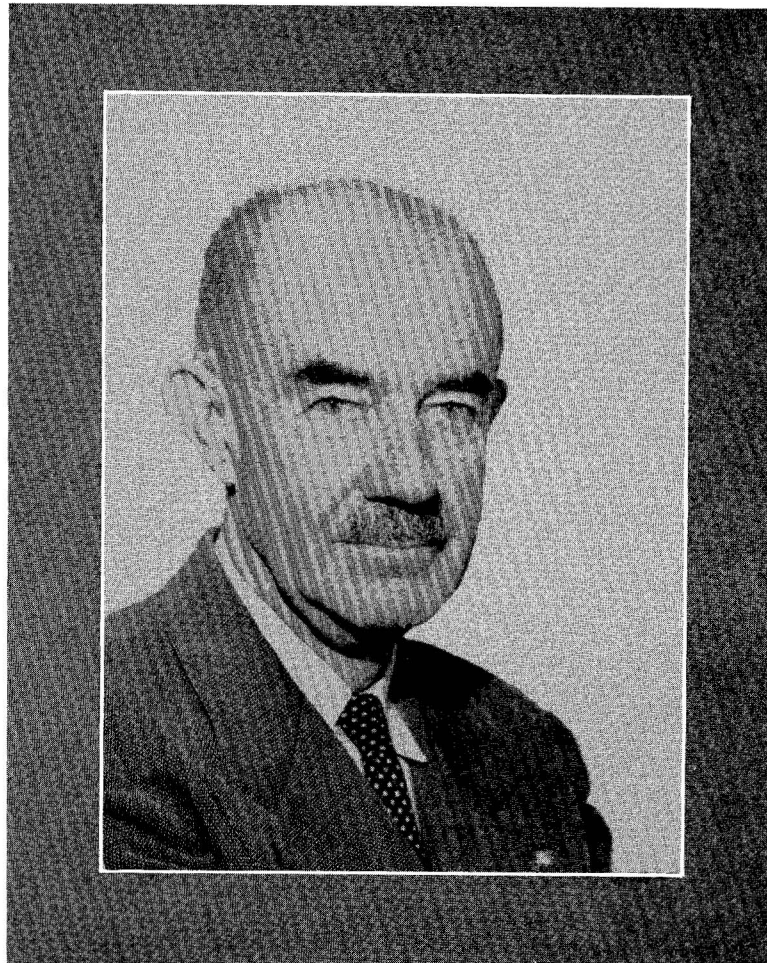
Lock Haven, Pennsylvania

TABLE

OF

CONTENTS

Dedication	4
Administration	6
Seniors	18
Underclassmen	36
Organizations	48
Athletics	84
Events	98

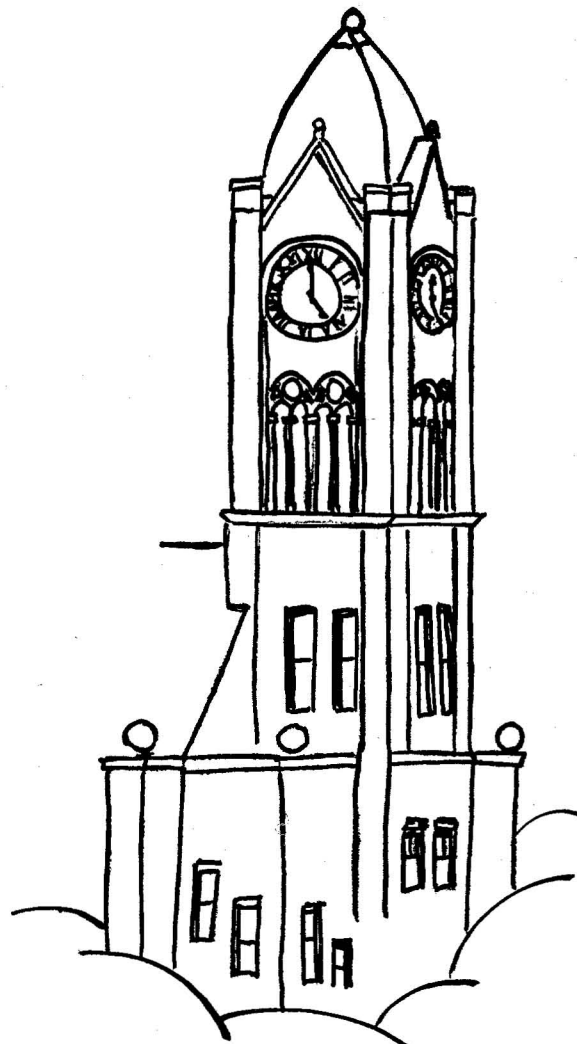


TO DR. WILLIAM R. NORTH

DEDICATION

We, the departing seniors of 1951, dedicate this book to a man who has given us and our college outstanding service. Since his arrival at Lock Haven in 1935 he has been a leader in the intellectual and extracurricular life of our school. We will remember him for his keen mind and high scholastic standards, for his fairness, for the deep interest he has had in us, and for the warmth and good-fellowship he has generated among us. He is a person to whom we have looked with respect and admiration and whose memory we shall cherish in the years ahead. In our association with him we have grown both spiritually and intellectually, for he has given us that knowledge, understanding, and sense of well-being that have come from the rich experiences of a life well lived. It is with the deepest sincerity that we humbly dedicate this year book to Dr. William R. North, our friend and teacher.





Faculty

Seven

THE PRESIDENT'S MESSAGE

Our College has taken a leading part in the general movement throughout the country to improve the profession of education. Progress, however, is slow, for the public has generally failed to support our profession as it has supported others. Fortunately, there has been a renewed interest in teaching on the part of our citizens. Salaries have been raised, employment conditions have been bettered, retirement benefits have been increased, teaching facilities are being improved. Many of the leaders in our profession feel that the next twenty years will show continued progress.

Our College has attempted to do its part in preparing better teachers by (1) selecting better candidates for the profession; (2) initiating improved methods of instruction; (3) equipping our college with good teaching materials; (4) raising our academic standards; (5) agreeing upon definite procedures and objectives for the entire college. We are also attempting to give leadership to democratic methods so that our students will be better able to follow similar patterns when they teach.

In addition to the internal developments to better educational opportunities, we are fortunate in having our school plant improved. The new classroom building should be available by September, 1951. A new women's dormitory may be ready for occupancy upon the opening of the second semester in 1952. It is our hope to obtain funds for a new men's dormitory, for the renovation of the administration building, for improvement to the women's gymnasium and the campus school. In addition, we hope to build a new infirmary and a student union building.

You who are students at Lock Haven can help our college and the profession by upholding the better practices which you have been taught, when you secure positions. We are not interested in having this college known for the number of its graduates; we are interested in the quality of its graduates. It is certainly true that our profession offers many opportunities for real leadership, and it is our hope that you will join those who advance the status of our group among our citizens.



DR. RICHARD T. PARSONS

President

Dr. Parsons became president of Lock Haven State Teachers College in nineteen hundred and forty-two. Prior to that time he had been associated with the college both as student and as instructor. Under his capable administration many improvements have been made throughout the College.



C. M. SULLIVAN, M. S.
Dean of Instruction



JANE WARTERS, Ed. D.
Director of Personnel

FACULTY

ALICE L. ARNOLD, M. A.
Kindergarten



FERDINAND F. BLACK, M. A.
Geography

EDNA A. BOTTORF, Ed. D.
Art



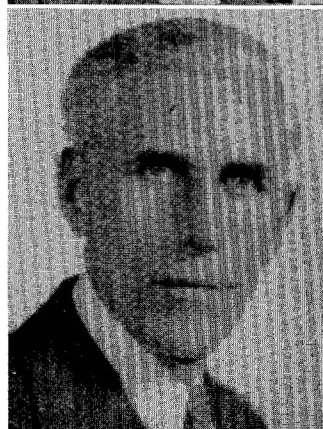
RUTH H. BROSIUS, B. S.
Assistant Librarian

MARCELLA A. BURT, M. S.
Social Studies



HAYMAN D. CORBIN, Ph. D.
Health and Physical Education

CHARLES COXE, Ed. D.
Social Studies



IRA O. FLEMING, M. S.
Biological Science

FACULTY

MAX H. FROMM, M. A.
Biological Science



RUSSELL C. GILLAM, M. A.
Music

LYDIA E. GROSS, M. Ed.
Elementary Education



EDWARD B. HILLS, A. M.
English

ALBERT R. HOBBA, A. M.
Social Studies



RUTH M. HOLMES, A. M.
Elementary Education

HUBERT H. JACK, M. A.
Health and Physical Education



JOHN F. KOONS, M. A.
French and Spanish

FACULTY



GEORGE F. B. LEHMAN, A. M.
Social Studies



DOROTHY W. LYNDS, M. A.
Speech



CAREY E. MARCH, M. A.
Physical Science



MARY JANE MATIS, M. S.
Speech



FRANKLIN M. McILVAINE, M. Ed.
Psychology



WILLIAM R. NORTH, Ph. D.
English



ALLEN D. PATTERSON, Ph. D.
Director of Teacher Education



HENRY D. PATTERSON, A. M.
English

FACULTY



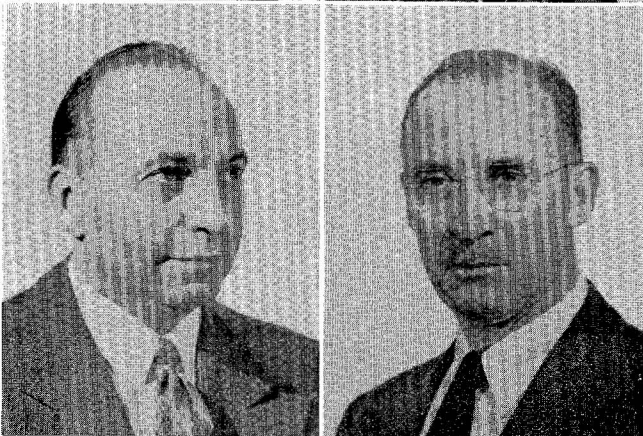
MABLE V. PHILLIPS, A. M.
Elementary Education

COPHINE ROOK, M. S.
Elementary Education



W. VALGENE RUTCH, M. M.
Music

AXEL S. RUDE, Ph. D.
Education



ERNEST I. SCHROT, M. Ed.
Safety Education

F. CLARK SKELLY, Ed. D.
Physical Science



SAMUEL J. SMITH, A. M.
Mathematics

CHARLOTTE E. SMITH, M. A.
Health and Physical Education

FACULTY



LORRAINE J. SPIKINGS, M. A.
Health and Physical Education

WILLIAM A. THOMAS, A. M.
English



DAVID C. ULMER, M. S.
Biological Science

CHARLES W. VONADA, M. Ed.
Social Studies



GILMORE WARNER, Ph. D.
Librarian

HELEN C. WATERBURY, M. Ed.
Elementary Education



M. GRACE WIBLE, M. Ed.
Art

SPENCER C. WOOLLEY, M. A.
Health and Physical Education

FACULTY



W. HOWARD YOST, M. Ed.
Health and Physical Education

LESTER P. ZIMMERMAN, M. Ed.
Health and Physical Education

ELIZABETH K. ZIMMERLI, Ed. D.
Health and Physical Education

NON-INSTRUCTIONAL STAFF



I. W. HUNT
Business Manager

E. ROSS NEVEL
Superintendent of Buildings and Grounds

DEBORAH BENTLEY
Dietitian

CATHERINE GLENNON, R. N.
Nurse

NON-INSTRUCTIONAL STAFF



LEONA HOSMER
Library Assistant

JANICE JOHNSON
Library Assistant

ERNEST E. SHEASLEY
Storekeeper

GOLDIE WALKER
Household Director

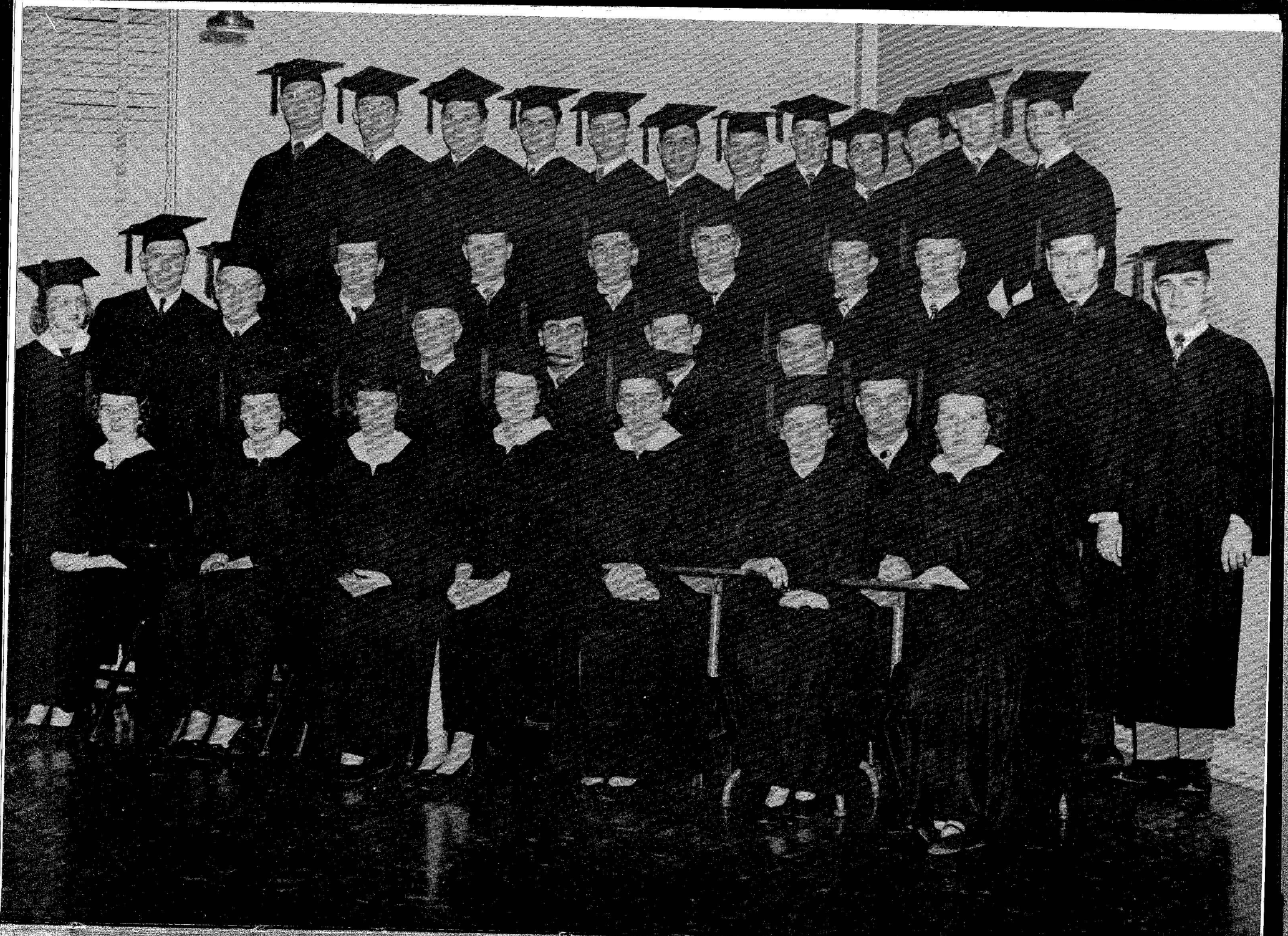


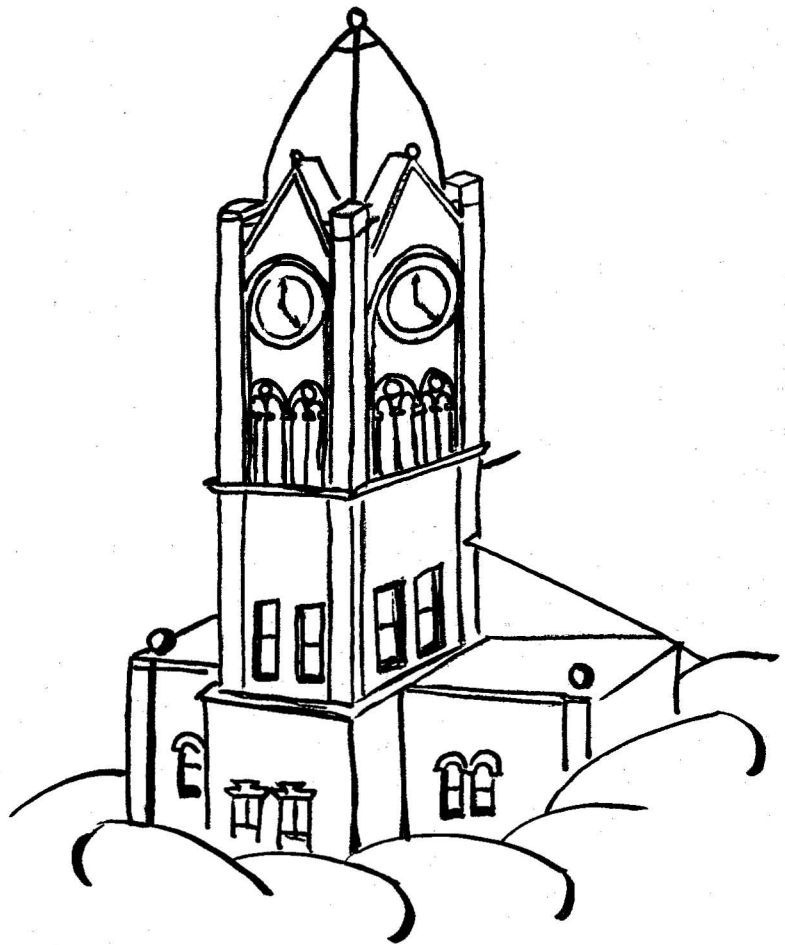
CLAIRE WENTZ
Bookstore

BLANCHE PLUFF
Secretary to Dr. Patterson

CARRIE BARNHART
Library Assistant

MARY BOYD
Secretary to Dr. Patterson





Seniors

Nineteen

Senior

LEWIS O. ADAMS

Biological Science Social Studies
Banana Club; Football



Class

ELWOOD E. BARTGES

Biological Science Physical Science
Delta Rho Beta, Corresponding Secretary; Band

LEONARD T. BERNHART

Health Education Social Studies
Basketball; Track; Banana Club; Bald Eagle, Sports Editor; Varsity Club, Vice-President

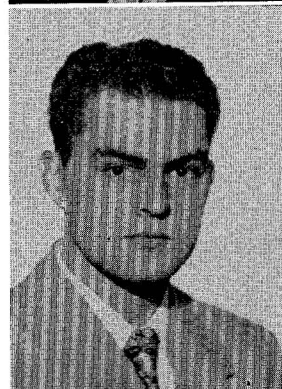


C. KYLE BRESSLER

Mathematics Social Studies
Delta Rho Beta

WILBUR W. BUBB

Mathematics English
Men's Chorus; Quartet; Band; Choir; Student Council



ROBERT BUCHLER

Health Education Social Studies
Football; Track; Varsity Club, Secretary

EDWARD T. BURNS

Biological Science Social Studies



PATRICIA A. CAMPBELL

Health Education
W. A. A.; Student Christian Association, Vice-President; College Players, Treasurer; Naturalist Club, Vice-President; Student Council; Women's Dormitory Council; President of Class, 3

FRANCIS V. CASSIDY

Elementary
Newman Club; A. C. E.



ROBERT V. CASSIDY

Social Studies Biological Science
Committee on Religion; Newman Club, Vice-President, President; Bald Eagle, Business Manager; Social Committee, Treasurer; Social Studies Organization, Secretary-Treasurer; Student Council; Vice-President of Class, 1, 2; WSSF, Chairman

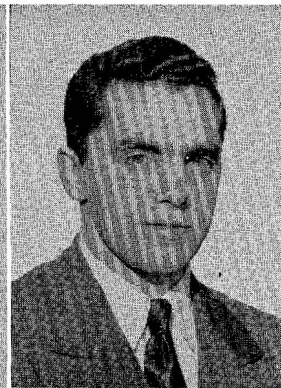
Senior

JERROLD K. CLEWELL

Mathematics Physical Science
Football, J. V.; Debate Club;
Bald Eagle, Make-Up Editor

JOHN R. COLLIN

Health Education Social Studies
Football; Banana Club, President



DEAN S. COOPER

English Spanish

JAMES L. COSTELLA, JR.

Social Studies Mathematics
Men's Glee Club



DONNA M. COX

Health Education
Hockey; Basketball; Softball;
W. A. A.; Art Club

SHERMAN A. CROFT

Health Education Biological Science
Varsity Club; Banana Club;
Football; Wrestling; Track



JOHN C. CROWLEY

Elementary
College Players; Sigma Alpha
Eta, Corresponding Secretary;
A. C. E.; Delta Rho Beta;
Class President, 2

DORIS E. CUNEFARE

Elementary
Kappa Delta Phi; A. C. E.;
Student Christian Association,
President; Social Committee;
Dormitory Council

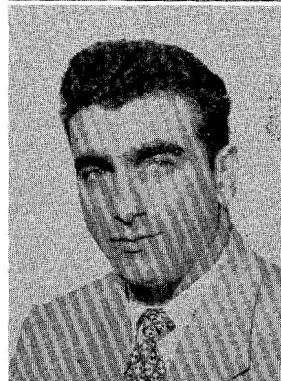


SAMUEL E. DANNAWAY

English Geography
English Club, Treasurer; Nat-
uralist Club; Praeco, Assis-
tant Advertising Manager;
Student Christian Association

DOROTHY E. DRICK

Elementary Speech
College Players, Honors
Chairman; A. C. E.; Assem-
bly Committee; Alpha Psi
Omega, Vice-President; Sig-
ma Alpha Eta, Treasurer;
Sigma Sigma Sigma, Secre-
tary, President; Pan-Hellenic
Council, President; Student
Council



Class



LOIS ERHARD BAILEY

Elementary
A. C. E.; Praeco, Photography Editor; Student Christian Association, Treasurer



LOIS A. FINK

Elementary
Band; Bel Cantos; A. C. E.; Pan-Hellenic Council; Sigma Sigma Sigma, Treasurer



PATRICIA FLEMING BARTGES

Elementary
Band, Treasurer; Pan-Hellenic Council; Alpha Sigma Tau, Treasurer; A. C. E.; Kappa Delta Pi, President; Social Committee; Student Council; Spanish Club; Vice-President of Class, 3



SHIRLEY L. FOREST

Health Education General Science
W. A. A.; Kappa Delta Pi, Treasurer; Student Christian Association, Secretary; Dormitory Council; Women's Dormitory, President; Basketball; Naturalist Club, Secretary; Hockey



EDWARD B. GALLAGHER

Social Studies Geography
Football; Varsity Club



FREDERICK R. GARDNER

Biological Science Physical Science



SHIRLEY M. GRAY

Elementary
Alpha Sigma Tau, Chaplain-Custodian; Bel Cantos; College Choir; A. C. E.



MARY JANE GREGORY

Elementary



LOIS J. GRIMM

Elementary
Alpha Sigma Tau; Bel Cantos, Vice-President; A. C. E., President; Kappa Delta Pi, Historian; Pan-Hellenic Council, Treasurer; Alpha Sigma Tau, Editor, President



BILLIE D. HANEY

Social Studies Geography
Soccer

Senior

RITA M. HARTLE

Elementary
Pi Kappa Sigma; Newman
Club; A. C. E.



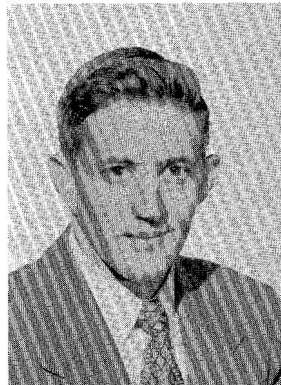
Class

HARRIET HASTINGS SCHMID

Health Education
W. A. A.; Naturalist Club;
Student Christian Associa-
tion; Sigma Sigma Sigma;
Recording Secretary; Hockey;
Basketball; Secretary of
Class, 2; Student Council Rep-
resentative of Class, 1

HENRY S. HASTINGS

Health Education Social Studies
Swimming; Football, J. V.;
Tennis; Vice-President of
Class, 2

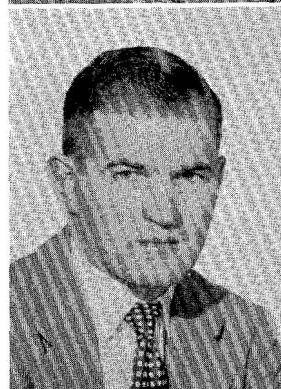


EDNA MAE HELD

Mathematics Science
Band; Sigma Sigma Sigma,
Vice-President; Kappa Delta
Pi, Secretary; Women's Day-
room Council, President;
Praeco

GILBERT F. HILL

General Science Social Studies



P. LYNN HENRY

Health Education Social Studies
Baseball; Swimming; Varsity
Club

JOSEPH C. HINTENLANG

Mathematics Science
Band, Vice-President; Delta
Rho Beta, Chaplain



N. RAMSEY HIPPLE

Physical Science Mathematics

EDITH MAE HIXON

Mathematics Physical Science
Bel Cantos, Secretary; Col-
lege Choir; Praeco



JAMES F. HOCKMAN

Social Studies General Science
Social Studies Organization

Senior

WILLIAM G. HOLLAND

Mathematics Physical Science
Delta Rho Beta, Secretary;
Dayroom Men



OLGA Y. HORLACHER

English Social Studies
Writers Club

ROSS R. HUGHES

Social Studies Geography
Varsity Club; Banana Club,
Secretary; Social Studies Or-
ganization; Soccer; Baseball;
Basketball; Student Council



WILLIAM M. HURLEY

Health Education English
Newman Club; Banana Club,
Vice-President; Basketball;
Praeco; Bald Eagle

PAUL HURWITZ

Mathematics Physical Science



CHARLES TRUMAN JOHNSON

Social Studies General Science
Basketball; Baseball; Social
Studies Organization

WILLIAM S. JOHNSON, JR.

Elementary



PATRICIA A. KILBERT

Biological Science Physical Science
College Players; Newman
Club, Corresponding Secre-
tary

GEORGE ROBERT KISSELL

Social Studies Geography
Men's Chorus; Nativity; Base-
ball Manager



JOSEPH R. KOHLER

Health Education Biological Science
Football; Swimming; Track;
Varsity Club; Naturalist Club,
President

Senior

CHARLES S. KUNES

Health Education Social Studies
Football; Track

RICHARD E. LaBROZZI

Social Studies Geography
Football; Varsity Club



CONSTANCE E. LARSON

Elementary
Bel Cantos; Social Committee

FREDERICK D. LAURITO

Social Studies Biological Science
Band, President; Wrestling;
Newman Club; Social Studies
Association

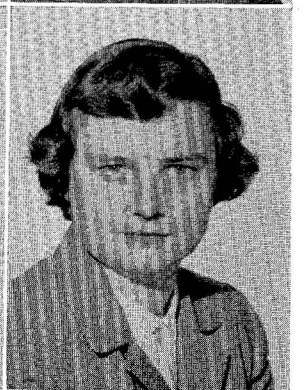


ANTHONY P. LAZZARO

Social Studies Biological Science
Naturalist Club, Vice-Presi-
dent; Social Studies Associa-
tion, President

NANCY L. LeCORRE

Biological Science History
W. A. A.; Student Council



GEORGE E. LINGENFELTER

Biological Science Geography

CHESTER MAHAFFEY

Elementary
Delta Rho Beta; College Play-
ers; A. C. E., Vice-President;
Student Council, Vice-Presi-
dent; Dayroom Council



WILLIAM C. MAKUHAN

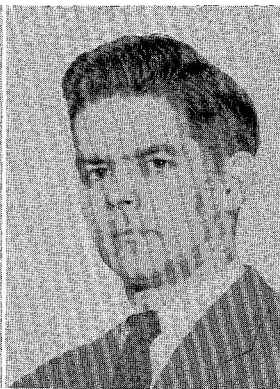
Biological Science
Physics and Chemistry

G. EILEEN MARSHALL

Elementary
Bel Cantos, Secretary-Librar-
ian; Student Christian Associa-
tion; A. C. E.; Student
Council; Dormitory Council;
Alpha Sigma Tau



Class



EDWARD E. MATIS

English Speech
College Players, Honors
Chairman; Kappa Delta Pi;
Alpha Psi Omega; Sigma Al-
pha Eta, President

ROBERT E. MAWN

Biological Science Geography



GLADE V. MENCER

Health Education Social Studies
Varsity Club; Baseball; Bas-
ketball

KATHERINE A. MERRELL

Elementary
Alpha Sigma Tau, Vice-Presi-
dent; Assembly Committee,
Secretary, Music Chairman;
Women's Dayroom Council,
Treasurer; Bel Cantos, Presi-
dent; College Choir



GRACE J. MEYER

Elementary
A. C. E.; W. A. A.; Dormitory
Council; Naturalist Club

DALE E. MILLER

Mathematics General Science
Nativity; Banana Club



HELEN M. MOORE

Elementary
Women's Dayroom Council

MILDRED J. MORANCIK

Elementary
Student Christian Association;
A. C. E.



MERNA MOON MORGAN

Elementary

ROBERT F. MORGAN

Health Education Biological Science
Football; Baseball; Track;
Varsity Club; Delta Rho Beta

Senior

CLYDE W. MORRIS

Mathematics Physical Science
Gymnastics; Varsity Club;
Nativity; Alpha Psi Omega



Class

SHERMAN M. MOWERY

Health Education Biological Science
Football

MILLER A. MOYER

Social Studies English
English Club; Social Studies
Organization



HARRY S. MUCKLE, SR.

Social Studies General Science
Banana Club; Naturalist
Club; Varsity Club; Football;
Soccer; Baseball

JOHN N. MULLINS

Health Education Social Studies
Football, Captain; Wrestling,
Captain; Varsity Club; Men's
Dormitory Council



KERMIT MURRAY

Elementary
A. C. E.

E. JEAN NENNINGER

Elementary
Band; Bel Cantos, Treasurer;
A. C. E.; Student Christian
Association; Dormitory Council



THOMAS P. NIMMO

Health Education Biological Science
Naturalist Club; Baseball;
Basketball; Varsity Club

RONALD E. NINE

Social Studies Geography
Social Studies Organization,
Vice-President



PHILIP J. O'BRIEN

Social Studies English
Newman Club; Social Studies
Organization

Senior

ALICE ANNE PARKS

Elementary

Praeco, Sports Editor; Basketball; Softball; Student Christian Association; Pi Kappa Sigma, Treasurer; Band, Treasurer; A. C. E., Publications Chairman; W. A. A.; Student Council; Dormitory Council, Vice-President



DONALD R. POET

Social Studies General Science
Social Studies Organization;
Baseball



LORRAINE L. POWLUS

Health Education Social Studies
Hockey; Basketball; Gymnastics; W. A. A.; Band, Major-ette; College Players; Cheerleader



PRISCILLA C. RAYNOR

Health Education
W. A. A., Vice-President;
Hockey; Basketball; Softball



JAMES RIGHTMIRE

Health Education Social Studies
Football; Delta Rho Beta; Student Council; Men's Dayroom Council



Class

PETE PETRISKA

Social Studies Physical Science
Football; Basketball; Baseball; Student Council



ELIZABETH ANN POTTS

Elementary
College Dance Band; Band;
Newman Club; A. C. E.;
W. A. A.



ANDREW PRELOH

Biological Science Social Studies



NORMAN L. REICHENBACH

Health Education
Biological Science
Football; Varsity Club, Vice-President; Naturalist Club; Banana Club, Treasurer; Men's Dormitory, President



JOHN L. RIMMEY

Health Education Social Studies
Soccer, Co-Captain; Basketball, Captain; Baseball; Varsity Club; Naturalist Club, President; Banana Club, Vice-President; Student Council



Senior

GLORIA H. ROWLES

Elementary

A. C. E., Treasurer; Student Christian Association, Secretary; Alpha Sigma Tau, Secretary; Mixed Chorus; Bel Cantos, Secretary

ELWOOD J. SCHAEFFER

Health Education Social Studies

Basketball; Varsity Club; Student Council; Naturalist Club



DONALD E. SCHICK

Elementary

Delta Rho Beta; College Players, President; A. C. E.; Alpha Psi Omega, President

DOMINIC R. SCORDO

Mathematics General Science

Newman Club; Student Christian Association



CRAWFORD A. SECHLER

English

Speech

Sigma Alpha Eta, Vice-President

BERNARD A. SHALONIS

Social Studies

Geography

Varsity Club, Treasurer; Varsity Football



SHIRLEY I. SHEETZ

Health Education Social Studies

Gymnastics; Student Christian Association; W. A. A.; Hockey; Secretary of Class, 3

MARY L. SHIVE

Elementary

Alpha Sigma Tau, Chaplain, Corresponding Secretary; Bel Cantos; College Choir; A. C. E.



MICHAEL J. SIRAK

Biological Science Social Studies

College Players

GEORGE E. SMITH

Chemistry

Social Studies



Class



RICHARD H. SMITH

Health Education Social Studies
Baseball; Soccer; Varsity
Club; Naturalist Club

PHILIP D. STETSON

Mathematics Social Studies
Cheerleader; Delta Rho Beta,
Treasurer



MARIAN L. STINE

Health Education English
Naturalist Club; Pi Kappa
Sigma, Vice-President; Prae-
co, Secretary, Literary Editor;
Student Council, Treasurer;
Student Christian Associa-
tion, Representative; W. A. A.;
Hockey; Pan-Hellenic Coun-
cil, Secretary; Women's Dcr-
mitory Council, Secretary;
Bald Eagle

EARL STOVER

Mathematics Social Studies
Student Christian Association;
Cross-Country; Student Coun-
cil

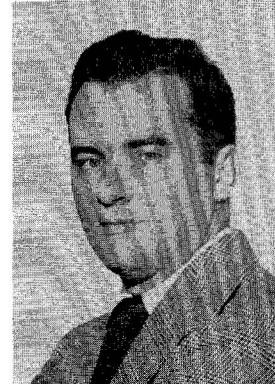


JANE M. STOVER

Elementary
A. C. E.; Alpha Sigma Tau

ROBERT P. STROMBERG

Mathematics Science
Men's Chorus, President



EUGENE S. SUERETH

Health Education Social Studies
Varsity Club; Soccer

EDWARD J. TOMASZEWSKI

English Social Studies



JAMES N. SWANSON

Health Education Social Studies
Naturalist Club; Football;
Basketball

SAMUEL J. VAIL

Social Studies General Science
Band; College Players; Stu-
dent Council, Vice-President;
English Club; Wrestling; Prae-
co, Assistant Editor; Newman
Club; Bald Eagle, News Edi-
tor; Social Studies Associa-
tion; Nativity

Senior

HARRIET F. VonLUNEN

Health Education

Sigma Sigma Sigma, Corresponding Secretary; W. A. A.; Naturalist Club, Treasurer



BRUCE S. WAGENSELLER

Health Education

Biological Science
Swimming; Gymnastics; Varsity Club



RONALD S. WARREN

Social Science

English

Band; Kappa Delta Pi; Praeco; Art Club



ROBERT A. WEBSTER, JR.

Social Studies

Geography

Social Studies Organization



DONALD S. WEIL

Mathematics

Physical Science

Debate Club; College Players; Bald Eagle, Advertising Manager; Praeco, Advertising Editor



Class

FRANK L. VULCANO

Health Education

Safety Education

Football; Wrestling; Varsity Club



CHARLES B. WALTER

Physical Science

Mathematics

Men's Chorus



BLANCHARD P. WATSON

Elementary

A. C. E.; Men's Glee Club, Secretary-Treasurer; Art Club



CLYDE W. WEIDNER

Elementary

A. C. E.



K. EILEEN WHARRY

Health Education

W. A. A., President; Naturalist Club, Treasurer; Cheerleader; Hockey; Basketball; Softball; Social Committee, Chairman; Dormitory Council; Women's Dormitory, Treasurer



Senior

DONALD H. WILLAMS

Health Education Mathematics
Newman Club; Naturalist
Club; Soccer



Class

CHARLES L. YARGER

Elementary
Student Christian Association;
A. C. E.; Men's Glee Club;
College Choir

GEORGE E. YOHN

Social Studies English
Football; Social Studies Or-
ganization



BARBARA M. YOUNG

Biological Science Social Studies
Bel Cantos; Alpha Sigma
Tau, Editor; College Choir

REGINA Z. ZOPPA

Health Education
Newman Club; Hockey;
W. A. A.; Social Committee,
Secretary; Cheerleader, Head
Cheerleader



ANNA S. WOLFE

Elementary
Women's Dayroom Council,
Secretary; Bel Cantos, Secre-
tary

ROBERT H. CRIST

Elementary

GEORGE GORE

Secondary

JAMES D. LOESCH

Biological Science
Varsity Club; Newman Club;
Track; Football; Men's Chor-
us; Men's Quartet

J. MURRAY DARKE

Social Studies General Science

EDWARD R. KONKOL

Health Education Social Studies
Football; Varsity Club; Stu-
dent Council; Wrestling, Man-
ager; Track, Manager

GEORGE MITRO

Health Education Social Studies
Varsity Club; Basketball;
Baseball; Dormitory Council

WILLIAM G. DEAN

Biological Science Social Studies



The College Choir

First Row: K. Merrell, D. Crowley, S. Skean, J. Waite, C. Lewis, B. Hamill, A. Balsiger, J. Rigby, H. Shields, S. Keelan, M. Burns, J. Nenner, M. J. Gregory. **Second Row:** F. Dick, N. Green, D. Puhl, V. Sullivan, C. Howe, M. Shive, M. Campbell, B. Young, S. Gray, D. Bower, L. Behrman, P. Lamb, L. Fink. **Third Row:** M. Cooper, J. Powers, C. Deichert, C. Wink, P. Bower, J. Hill, J. Fontana, E. Williams, J. Provard, C. Yarger, H. Coulson, R. Pletcher, E. Marshall, L. Grimm. **Fourth Row:** D. Reeder, E. Hixon, S. Chreptak, W. Dean, E. Barnhart, R. Stromberg, O. Kantner, C. Walter, E. Mayer, C. Brown, D. Sauers, H. Powlus, J. Peterson, J. Johnsonbaugh.

Alma Mater

» » « «

I

Where the crystal Susquehanna

Shimmers in the sun,

Where the mountains cast their

shadows when the day is done,

Where the hemlock, pine, and maple

Murmur in the night

Beneath a starlit sky till dawning

Brings the morning light--

II

Where the ivied tower measures

Time for work and play,

Time for sports and songs and

laughter through each pleasant day,

Where enduring friendships flourish,

Sturdy through the years;

Where learning leads to early wisdom,

Substance of careers--

» » « «

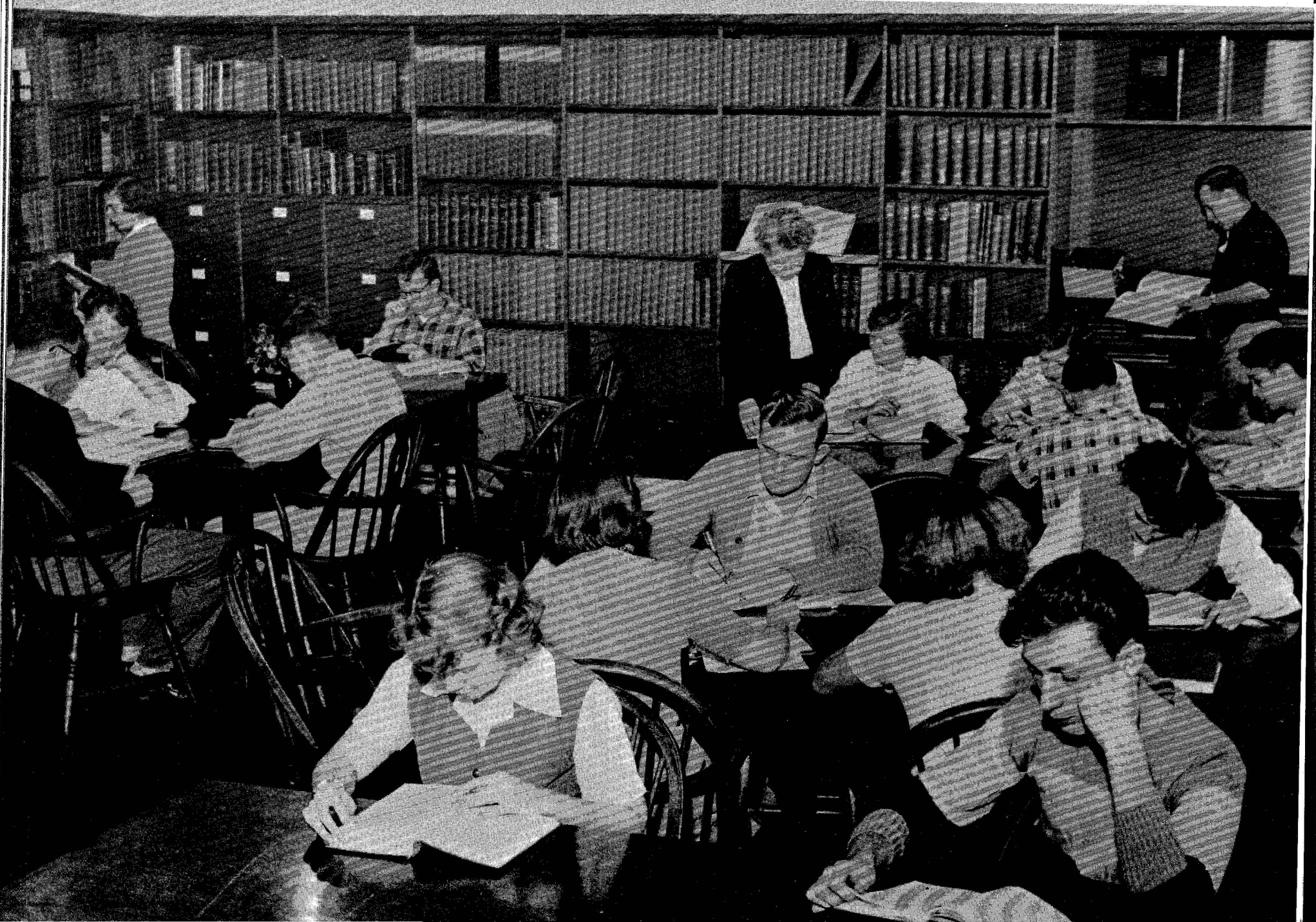
CHORUS

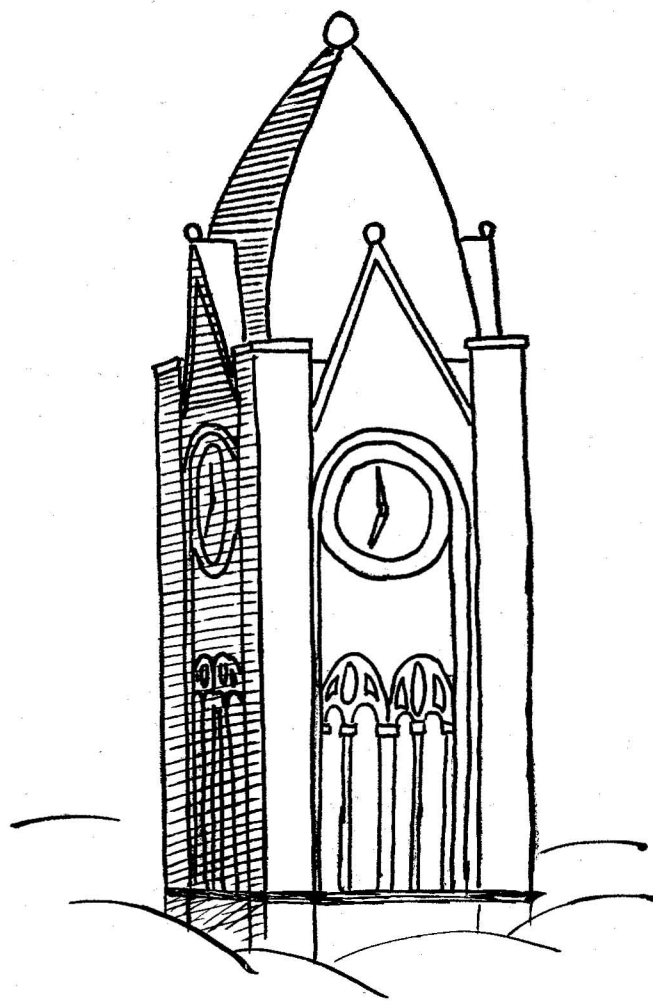
There's Lock Haven, Alma Mater,

Cherished as in days long past!

May we be worthy sons and daughters

Long as life shall last!





Underclassmen

Thirty-seven



President Robert Peters

Vice-President Margaret Heacock

Secretary Pearl Martz

Treasurer Vada Ginther

Student Council Representative
..... Henry Goodwin

Junior Class History

A main function of the Junior Class is to plan the Junior Prom and make it a success. In addition to the Junior Prom, the Class of 1952 put on an assembly program, participated in the annual Pep Parade, and had a Christmas breakfast. The class adviser is Mr. Ira O. Fleming.



ELEMENTARY JUNIORS

First Row: G. Dinges, V. Sullivan, M. Houck, R. Ellenberger, N. Klepper, E. Shirk, J. Rigby, J. Winter, B. Supenia
 Second Row: C. Wink, E. Barnhart, V. Ginther, P. Martz, R. Kurtz, C. McClain, P. Poulos, J. Stabley, B. Day



SECONDARY JUNIORS

First Row: W. Kinch, A. Lauer, J. McGill Miller, J. Powers
 Second Row: J. Kitzinger, J. Heacock, P. Locke, R. Peters



First Row: W. Burdett, R. Steinmetz, R. Bowser, G. Schoepf, R. Spisak, R. Janus, G. Bossert, R. Klingler
Second Row: R. Shaw, N. Smith, R. Williams, J. Kauffman, D. Keener, J. Markish
Third Row: J. Lupp, M. Rimmey, R. Halvorsen, M. Heacock, A. Wilson, D. Johnson

Health Education Juniors



JUNIOR CLASS ADVISER

Ira O. Fleming

Sophomores

1953



President Joseph Trevorrow

Vice-President Donald Earl

Secretary Joanna Waite

Treasurer Mary Rasicci

Student Council Representatives
Phyllis Loughner, Gerald Cartwright

Sophomore Class History

The Sophomore Class began the semester with a class party at Rocky Point. The next event on the class calendar was the annual Pep Parade, in which the sophomores did their share to help make the parade a success. These were followed in what seemed quick succession by the Christmas Breakfast, the Valentine Dance, and the Sophomore Assembly.



ELEMENTARY SOPHOMORES

First Row: N. Hill, P. Loughner, D. Funk, H. Shields, Y. Kline, R. Caprio, D. Crowley, C. Lewis, B. Bettes, N. Crawford. Second Row: J. Hollobaugh, S. Johnson, M. Ladd, S. Stephenson, G. Shearer, J. Peterson, J. Hensal, J. Yannauker. Third Row: C. Howe, N. Green, J. Johnsonbaugh, D. Reeder, E. Frantz, L. Hartle. Fourth Row: O. Kantner, S. Demmien, B. Bowes, G. Cartwright, C. Cohick, P. Eberhart.



SECONDARY SOPHOMORES

First Row: J. Pechia, E. Osterhaut, M. Rasicci, J. Parson, J. Waite, J. Martini. Second Row: D. Michaels, J. Verostek, J. Tettis, S. Chreptak, J. Fontana.



First Row: L. Bolig, J. Dunnick, B. Hallman, T. Reed, C. Bailey, G. McClintock, J. Chambers, C. Blaker.
Second Row: W. Fredo, D. Murphy, A. Thompson, P. Worcester, N. Gaitens, L. Neishloss, N. Sundstrom.
Third Row: A. Holtz, J. Bishop, R. Irons, F. Havens, D. Earl, H. Nale.

Health Education Sophomores



SOPHOMORE CLASS ADVISER

Albert R. Hobba

Freshmen

1954



President Bernard Herbst

Vice-President Everett Williams

Secretary-Treasurer .. Richard Keenan

Student Council Representatives
Albert Voidak, Madge Riggs

Freshman Class History

The Freshman Class started its year successfully with its first big event, the annual bonfire, on September 29, and it was awarded the plaque for the most original group in the Pep Parade. Its other important social activities were the Cinderella Slipper Dance, on November 18, and the Christmas breakfast, on December 21.



ELEMENTARY FRESHMEN

First Row: A. Balsiger, G. Coppersmith, B. Bowes, C. Clark, S. Skean, S. Stover, J. Hanawalt, S. Keelan, D. Puhl, S. Rhodes. Second Row: B. Buss, G. Smith, P. Hoover, L. LaRue, N. Haas, C. Helbley, B. Shoff, L. Behrman, P. Lamb. Third Row: E. DeHaas, H. Carlson, C. Ogden, C. McKelvey, J. Weinberg, D. Bensen, M. Miller, F. Dick, M. Conbere, M. Campbell. Fourth Row: C. Brown, E. Mayer, J. Mosteller, V. Ullein, R. Groover, J. Hill, E. Williams, P. Bower.



SECONDARY FRESHMEN

First Row: M. Cooper, J. Gardill, J. Eiswerth, M. Burns, M. Patterson, H. Tuttle, B. Hamill, Dolores Bower, Dorothy Bower. Second Row: E. Boring, R. Wilkins, W. Vance, M. Moyer, M. Riggs, A. Swope, N. Smith, R. Bollinger. Third Row: R. Johnson, R. Noll, E. Majewski, L. Ream, G. Ritter, H. Coulson, D. Zepp.



First Row: E. Baieroski, J. Risser, G. Rowles, J. Barnhart, E. Alvarez, J. Parsons, E. Swartz, B. Berry.
Second Row: R. Meskell, B. Bingman, D. Beck, C. Frendburg, J. Andrews, J. Hollingsworth, E. Pifer.
Third Row: B. Eymer, J. McKivigan, D. Wilson, D. Sauers, L. Bailey, C. Sprock, M. Brown.

Health Education Freshmen



FRESHMAN CLASS ADVISER

Max H. Fromm

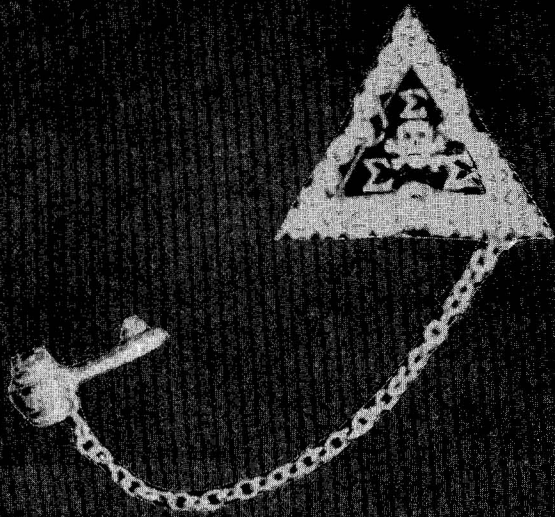
PRAECO Pays Tribute

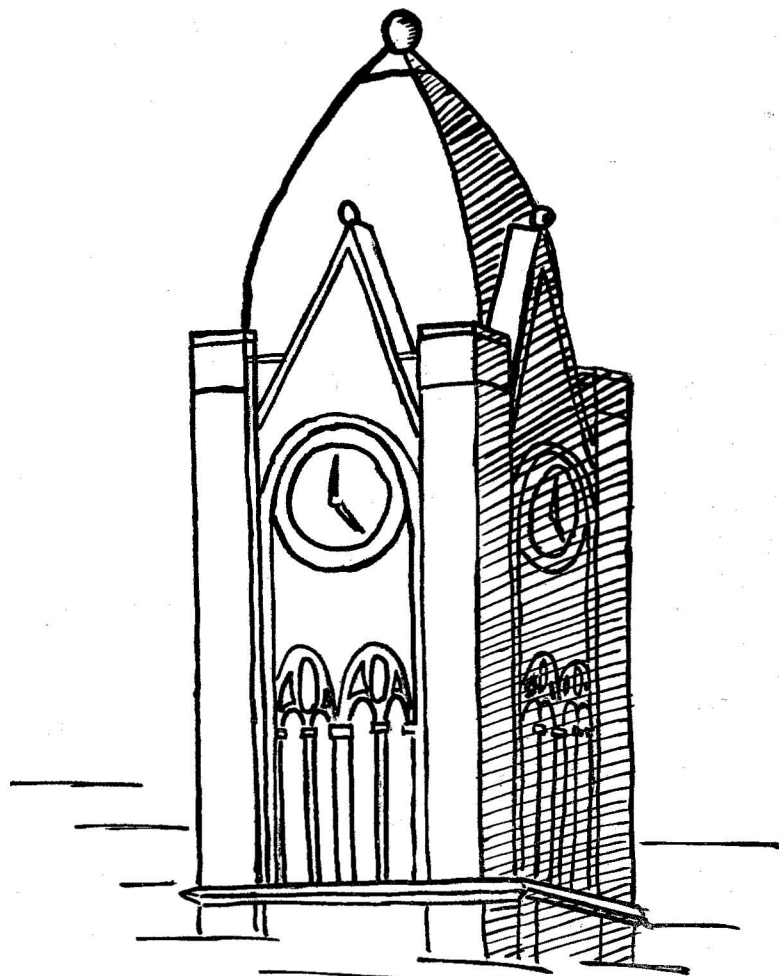
TO THESE MEN WHO HAVE ENTERED THE ARMED FORCES
OF THE UNITED STATES

Donald Albright
Jack Bishop
Robert Bottomley
Ronald Boyd
Joseph Colacino
James Conti
Fred Cupp
Carl Dugan
Carl Grieco
Paul Hafer
Ralph Heimer
T. Edison Hickoff
John Hoffman
Robert Irons
Richard Jamison
Gene Jones
William Jones
John Keller
Edward Kelly
Richard Kopetan

James Lander
Robert Lundy
Robert McMullen
C. Gail Norris
Lynn Overdorf
William Price
James Robbins
Rex Rosbach, Jr.
Jack Shaffer
Joseph Stravolo
Lee Summerson
Larry Tasillo
Alfred Thomas
Hoxie Thomas
Joseph Trevorrow
John Turnbull
Gerald Weight
Joseph Wilking
George Zakem
James Zeigler







Organizations



First Row: M. Heacock, C. Mahaffey, E. Potratz, R. Janus, M. Stine, R. Hughes, P. Loughner, E. Stover
Second Row: R. Ellenberger, D. Stackhouse, D. Weil, R. Pletcher, G. Dinges, G. Wildeman, N. Haas,
 P. Locke, P. Petriska, C. Lewis, P. Campbell, G. Cartwright, D. Reeder, R. Crist, J. Pecchia, J. Fontana

Student Cooperative Council

President Robert Janus
 Vice-President Chester Mahaffey
 Secretary Eleanor Potratz
 Treasurer Marian Stine

All year the Student Cooperative Council has been active at its bi-weekly meetings in promoting the business and other governmental affairs of the student body. Budget allotments and finances, group problems, and a wide variety of other matters were studied and appropriate decisions made.



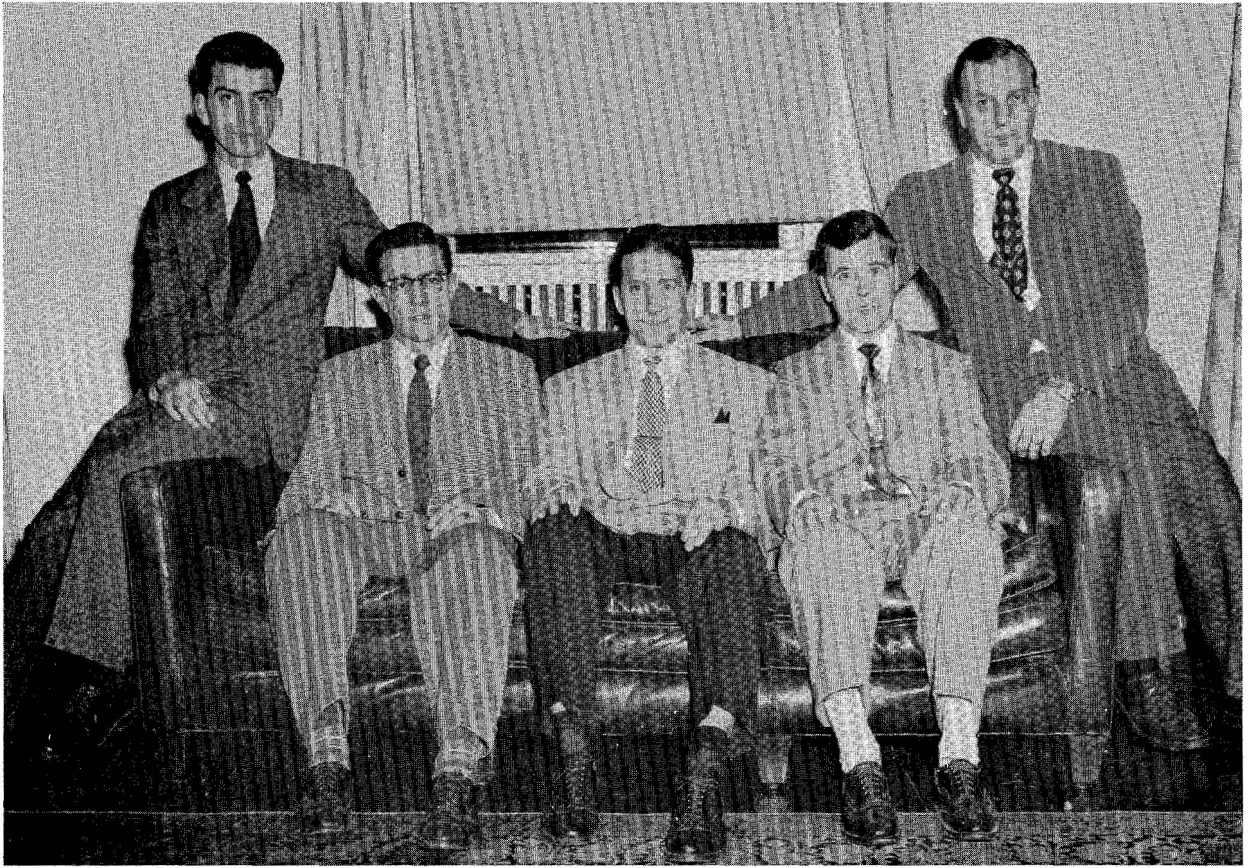
First Row: M. Heacock, M. Stine
 Second Row: C. McClain, S. Forest, A. Parks
 Third Row: D. Marassa, J. Kauffman, J. Hollingsworth, J. Parson, P. Campbell, M. Ladd, J. Lupp,
 C. Cunefare, C. Bailey

Women's Dormitory Council

President	Shirley Forest
Vice-President	Alice A. Parks
Secretary	Marian Stine
Treasurer	Catherine McClain
Student Council Representative	Margaret Heacock

The Women's Dormitory Council is the governing body of the women's dormitory and is comprised of girls selected by popular vote of the entire group. The Council provides an opportunity for the dormitory women to work harmoniously together for the good of various aspects of dormitory life.

Dr. Jane Wartens serves as adviser to the group.



H. Adams, W. Burdett, R. Houk, T. Nimmo, G. Mitro

Men's Dormitory Council



First Row: E. Potratz, K. Merrell, P. Locke, J. McGill Miller, F. Dick
Second Row: P. Grier, D. Reeder, C. Howe

Women's Dayroom Council

President Phoebe Locke

Student Council Representative Eleanor Potratz

The Women's Dayroom Council has had an active school year. Its projects have included the Parents' Tea following the Fall Convocation and, in December, a luncheon for all day students. This year it has worked in cooperation with the newly-formed Men's Dayroom Council.



First Row: R. Crist, J. Furey, P. Eberhart
Second Row: C. Mahaffey, M. Moyer

Men's Dayroom Council

The Men's Dayroom Council, which represents all non-resident male students, promotes cooperation among all day students, and it acts as spokesman in presenting any special problems of the commuting student to the administration and the faculty.



First Row: W. Burdett, Mr. Rutch, Miss Lynds, H. Nale, W. Kinch
 Second Row: Mr. Koons, J. Parsons, Y. Kline, V. Sullivan, Mr. Hills

Assembly Committee

Student Chairman	Harold Nale
Student Assistant Chairman	Virginia Sullivan
Secretary	Katherine Merrell
Treasurer	William Burdett
Stage Chairman	William Kinch

The Assembly Committee, made up of representatives from the faculty and the student body, plans and presents assembly programs designed to further the general objectives of the college. Student, faculty, and outside talent is used. This year, as heretofore, a wide variety of interesting programs was presented—speakers, musicians, and entertainers.



First Row: C. Larson, R. Cassidy, E. Wharry, M. Heacock
 Second Row: B. Bettles, D. Crowley, J. Risser, H. Black

Social Committee

President Eileen Wharry
 Secretary Catherine McClain
 Treasurer Robert Cassidy

The Social Committee is entrusted with planning and carrying out the social calendar for the year. Events for this year included the weekly Tea Hour, the Thanksgiving Dance, the Junior Prom, the Christmas Dance, the Collegiate Dances, the Parents Day Tea, the First-Week Frolic, Class Parties, the Christmas Tree Decorating Party, the Pep Parade Party, the Open House Party, the Square Dances, the All-College Picnic at Camp Kline, the Church Night, the Reception for Midyear Graduates, and the Senior Breakfast in May.



Mr. Schrot, Dr. North, D. Stackhouse, R. Cassidy, Mr. Fromm

The Student-Faculty Committee On Religion

Chairman Dr. William North
Members..... Mr. Max Fromm, Dr. Gilmore Warner,
Mr. Ernest Schrot, Robert Cassidy, Gerald Weight,
Sandra Schwartz, Dorothy Stackhouse

The Student-Faculty Committee on Religion sponsors religious activities for all the students on the campus. The committee is made up of an equal number of Protestants, Catholics, and Jews. Some of the activities are the World Student Service Fund Drive, bi-monthly religious movies, and the Religious-Emphasis-Week Program.



First Row: M. Cooper, V. Tirpak, M. Rasicci, R. Cassidy, A. Holtz, J. Gardill
 Second Row: J. McKivigan, P. Gibson, G. Wildeman, E. Baieroski, J. Tettis, J. Verostek, W. Fredo,
 D. Alferi, P. Grier, D. Williams, P. Petriska, E. Alvarez, F. Laurito, F. Cassidy, D. Murphy

Newman Club

President	Robert Cassidy
Vice-President	Andrew Holtz
Secretary	Mary Rasicci
Treasurer	Veronica Tirpak
Student Council Representative	George Wildeman

The Newman Club is a Catholic Club of Catholic Culture and Catholic Fellowship that fosters the spiritual, intellectual, and social interests of the Catholic students and seeks to weld them into a common union and to be of value to the College in general.

The Student Christian Association

President	Gerald Weight
Vice-President	Janice Parson
Secretary	Gloria Rowles
Treasurer	Lois E. Bailey
Student Council Representative	Marian Stine

The Student Christian Association is composed of students of all faiths. It meets twice a month and its aim is to help the students appreciate and foster the spiritual side of their campus life.



First Row: C. McKelvey, J. Hensal, P. Hoover, S. Burket, J. Andrews, R. Kurtz, S. Stover, D. Cunefare, S. Sheetz
Second Row: P. Loughner, J. Rigby, G. Rowles, J. Parson, L. Bailey, Dr. North, M. Stine, D. Stackhouse
Third Row: J. Hollobaugh, H. Shields, N. Hill, M. Miller, D. Funk, B. Buss, L. Bolig, J. Winter, G. Dinges, J. Gardill, E. Shirk, P. Martz, P. Campbell
Fourth Row: M. Ladd, N. Green, C. Yarger, E. Stover, J. Martini, P. Johnson, J. Gerlock, W. Miller, T. Wertz, V. Ullein, P. Bower, E. Meyer, H. North



First Row: L. Fink, C. Cohick, S. Demmien, P. Grier, C. Lewis, B. Bowes, J. Winter, B. Supenia, H. Lehman
Second Row: V. Sullivan, P. Dapp, M. Houck, C. Mahaffey, L. Grimm, R. Crist, R. Ellenberger, R. Kurtz
Third Row: P. Martz, N. Green, V. Ginther, D. Schick, H. Shields, A. Parks, D. Drick, N. Crawford, M. Ladd, J. Nenninger, J. Stabley, J. Crowley, B. Day, G. Rowles, E. Marshall, P. Bartges, E. Shirk, G. Dinges, C. McClain, C. Wink, D. Cunefare, K. Murray, L. Bailey, C. Yarger

The Association For Childhood Education

President	Lois Grimm
Vice-President	Chester Mahaffey
Secretary	Rose Ellenberger
Treasurer	Marjorie Houck
Student Council Representative	Robert Crist

The Association for Childhood Education, an organization for all those interested in the education of young children, in 1950-51 boasted forty members. There were monthly meetings and varied and interesting programs. The highlight of the year's activities was the annual trip to the Middle Atlantic Regional Conference, held this year in Washington, D. C., where the Lock Haven branch held the record for having the most students present.



First Row: A. Whitacre, S. Johnson, E. Osterhout, S. Mowery
 Second Row: Miss Wible, P. Wantz, N. Haas, R. Warren, Dr. Bottorf

The Art Club

President Patricia Wantz
 Secretary-Treasurer Elizabeth Osterhout
 Student Council Representative Norma Haas

The purpose of the Art Club is to give students a chance to express their creative urge through the medium of art. The club members work on various projects of their own choice and contribute to local exhibits and to the yearbook. Painting and sculpture exhibits brought to the campus are sponsored by the club.



First Row: F. Laurito, J. Furey, R. Cassidy, R. Hughes, R. Nine, R. Warren, R. LaBrozzi
 Second Row: D. Poef, C. Johnson, B. Shalonis, Mr. Vonada, Dr. Coxe, Mr. Lehman, Mr. Hobba, M. Yurchak,
 W. Haney, R. Webster

Social Studies Organization

President Anthony Lazzaro
 Vice-President Ronald Nine
 Secretary-Treasurer Robert Cassidy
 Student Council Representative Ross Hughes

The purpose of the Social Studies Organization is to enable the members of the Club to become familiar with and to understand the problems in the Social Studies field, to foster a close relationship between the faculty of the department and the students, and to promote good teaching procedures in the Social Studies field.



First Row: L. Bailey, H. North, S. Vail
 Second Row: M. Stine, R. Schnee, W. Kinch, A. Holtz, Mr. Hills, D. Weil, R. Cassidy, Miss Wible, R. Warren,
 R. Ellenberger, E. Held, E. Hixon

Praeco Staff

Editor	Harold North
Assistant Editor	Samuel Vail
Literary Editor	Marian Stine
Photography Editor	Lois E. Bailey
Art Editor	Ronald Warren
Sports Editor	Alice Ann Parks
Subscription Manager	Edna Mae Held
Business Manager	Robert Cassidy
Advertising Manager	Donald Weil
Treasurer	Andrew Holtz
Assistants	W. Kinch, J. Hoffman, R. Ellenberger, R. Schnee, E. Hixon, S. Dannaway, W. Hartle
Faculty Advisers	M. G. Wible, E. B. Hill

The **Praeco** is an annual publication of the college. **Praeco** is a Latin word meaning **herald, crier, one who announces**. The staff of the 1951 yearbook has endeavored to make this yearbook an announcer of personalities, activities, and events that have been a part of our college life during 1950 and 1951.



First Row: J. Verostek, W. Miller, S. Vail
 Second Row: D. Schiele, J. Waite, J. Martini, J. Parson, M. Rasicci, H. Greninger, D. Reeder, M. Riggs,
 D. Weil, B. Shoff, C. Lewis, R. Cassidy, R. Peters, J. Gerlock

The Bald Eagle Staff

Editor-in-Chief Wray Miller

Associate Editors

News Samuel Vail
 Society Beverly Shoff
 Feature Eleanor Potratz
 Sports Leonard Bernhart
 Make-Up Donald Earl
 Business Robert Cassidy
 Exchange Gerald Weight
 Advertising Donald Weil

Circulation James Verostek

Faculty Advisers Mr. Koons, Dr. Warner

Our campus newspaper, **The Bald Eagle**, successor to **The College Times**, began its bi-weekly publication early in the first semester of this year—under the capable supervision of Paul Hafer, editor-in-chief. Following his enlistment at the end of the first semester, the paper was ably edited by Wray Miller.



First Row: H. Carlson, B. Berry, S. Black, Miss Lynds, D. Weil, W. Kinch, J. Winter, M. Ladd
Second Row: S. Schwartz, E. Decker, N. Klepper, V. Sullivan, G. Creasey, R. Humpton, T. Wertz, B. Bowes,
 S. Demmien, M. Miller, R. Kurtz

The College Players

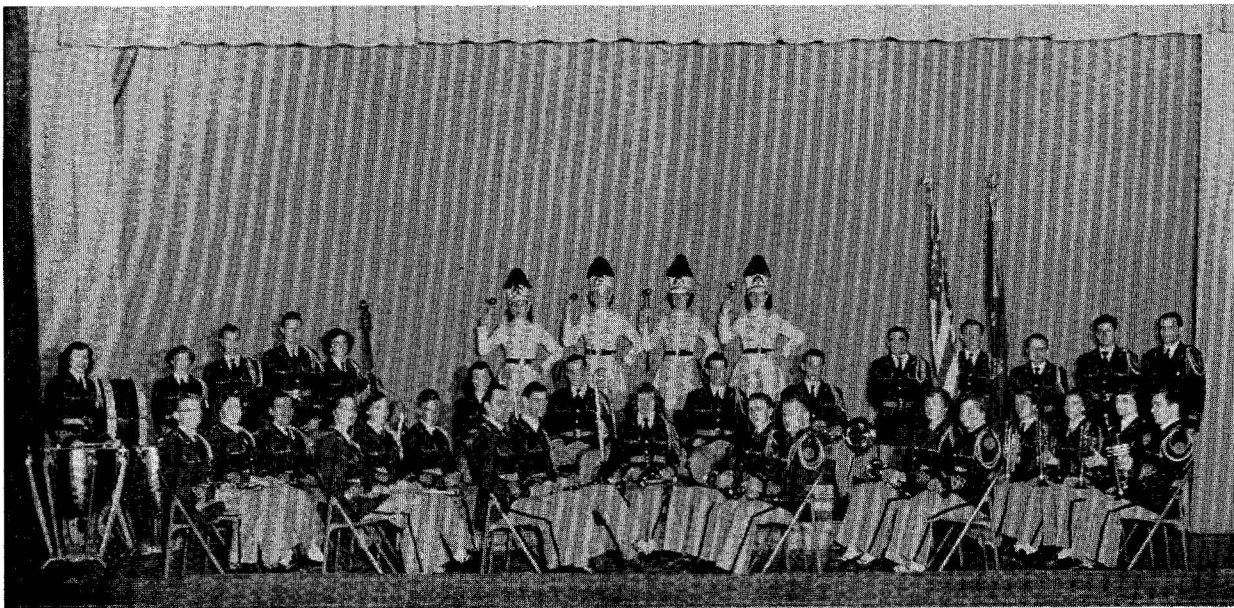
President	J. William Kinch
Vice-President	Catherine McClain
Secretary	Eleanor Potratz
Treasurer	Sylvia Black
Student Council Representative	Donald Weil

The College Players is the theatrical producing group at Lock Haven State Teachers College. Each Christmas season, in cooperation with the choral organizations, it sponsors the **Nativity**. It also produces a spring play as well as incidental dramatic offerings throughout the year. Its chief social event is the Spring Banquet.

The College Band

President Fred Laurito
Secretary Donna Reeder
Treasurer Joanna Waite
Student Council Representative Joseph Pecchia

The band enjoyed a large and varied number of activities this year: football games, a trip to Ithaca College, concerts in nearby high schools, a radio broadcast, Assembly appearances, inter-collegiate band and orchestra events, and, during Music Week in May, the annual Spring Concert.



First Row: J. Hintenlang, P. Hintenlang, B. Bowes, W. Vance, B. Brown

Second Row: E. Held, J. Hanowalt, P. Meyers, J. Hensal, E. Mayer, P. Dapp, G. Norris, D. Reeder, J. Vannaucker

Third Row: W. Kinch, A. Parks, F. Laurito, G. Smith, B. DeHaas, J. Andrews, J. Pecchia

Fourth Row: R. Gardner, G. Rowles, J. Stabley, R. Warren, J. Waite, L. Powlus, E. Baieroski, J. Lupp, M. Miller, L. Neishloss, J. Verostek, P. Bower, J. Martini, Mr. Routh



First Row: Mr. Gilliam, J. Robbins, J. Hintenlang, Mr. Rouch, D. Reeder, R. Stiner
Second Row: P. Dapp, J. Andrews, J. Pecchia, G. Norris
Third Row: J. Waite, J. Stabley

Collegians

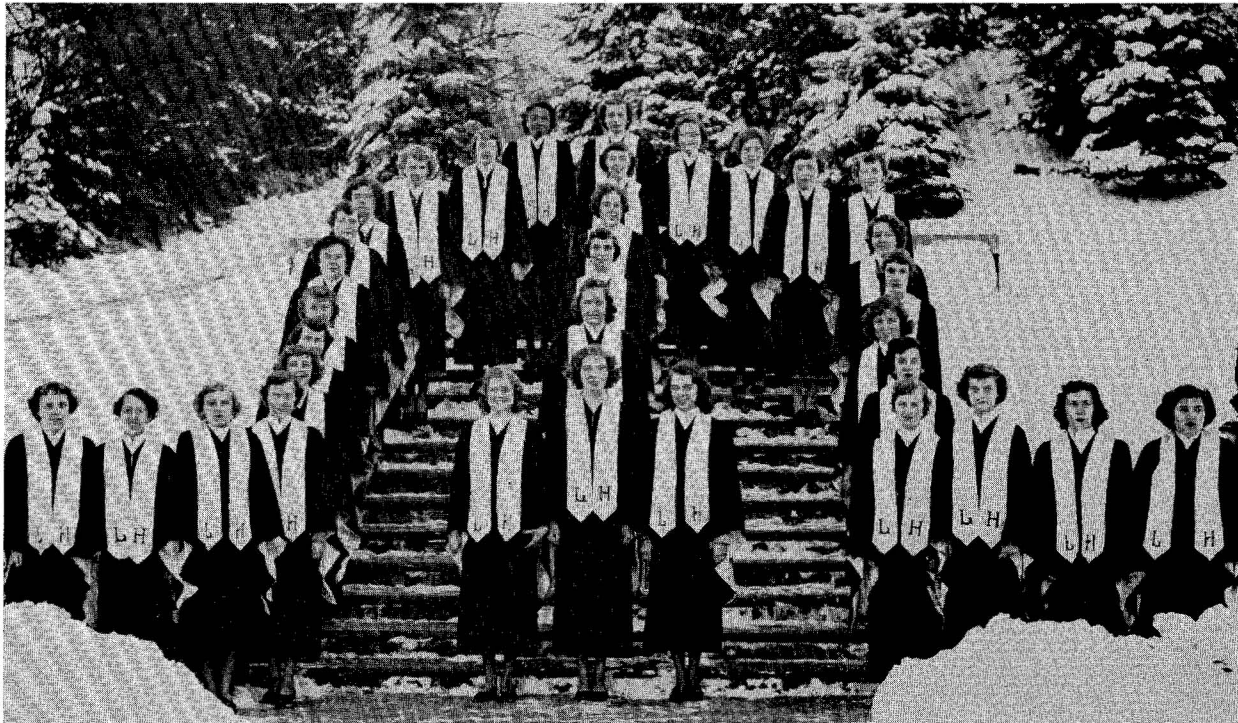
President	Fred Laurito
Secretary	Donna Reeder
Treasurer	Joanna Waite
Student Council Representative	Joseph Pecchia
Business Manager	James Stabley

The Collegians dance orchestra is part of the instrumental program of the College. The Collegians put on a charity radio broadcast each year and supply music for the Variety Shows that are presented in Assemblies by the various classes. In November the group was part of the floor show at a professional basketball game sponsored by the Athletic Department.

Bel Cantos

President Katherine Merrell
Vice-President Lois Grimm
Secretary Edith Hixon
Treasurer Helen Shields

The Bel Cantos is a group of girls who practice twice weekly on choral music. It appears on campus, before local organizations in the community, and in both local and outlying school assemblies.



First Row: M. Campbell, Y. Behrman, A. Balsinger, C. Howe, L. Fink, S. Keelan, S. Gray, B. Young, D. Reeder, J. Waite, J. Nenninger, E. Marshall, M. J. Gregory, L. Grimm, J. Rigby, D. Bower, P. Lamb, A. Johnsonbaugh, F. Dick, B. Hamill, E. Hixon, K. Merrell, H. Shields, M. Shive, M. Burns, D. Puhl
Second Row: D. Crowley, V. Sullivan, C. Lewis, N. Green, S. Skean, M. Cooper, J. Peterson



First Row: E. Mayer, C. Deichert, C. Brown, S. Chreptak, H. Coulson, R. Stromberg, J. Fontana, C. Wink
Second Row: C. Yarger, P. Bower, E. Williams, J. Hill, D. Saurer, J. Provard, C. Walters, G. Norris,
 O. Kantner, W. Dean, R. Pletcher, J. Markish, J. Powers

Men's Chorus

President Robert Stromberg

Secretary-Treasurer John Powers

Student Council Representative Joseph Fontana

The Men's Chorus is a group of about twenty-five men who regularly meet one evening a week to practice choral music. Occasionally there are extra rehearsals in preparation for special programs. The group appears on the Campus, before various local organizations throughout the community, and in high school assemblies in this area.

Naturalist Club

President John Rimmey
Vice-President Anthony Lazzaro
Secretary Mary Jane Rimmey
Treasurer Harriet VonLunen
Student Council Representative Elwood Schaeffer

The Naturalist Club was organized with the purpose of promoting an interest in and an appreciation of nature. Meetings are held at the Naturalist Cabin, which is about a mile from the College Campus.



First Row: S. Dannaway, H. Schmid, C. McClain, A. Thompson, M. Heacock, P. Martz, D. Earl
Second Row: J. Lupp, R. Williams, W. Burdett, M. Rimmey, J. Rimmey, Mr. Lehman, R. Miller, R. Steinmetz
Third Row: J. Kohler, P. Petriska, S. Forest, D. Alfieri, D. Williams, B. Hallman, G. Schoepf, P. Campbell, E. Schaeffer, M. Stine, J. Swanson, E. Wharry, L. Ross, L. Bolig, D. Murphy, N. Sundstrom, R. Spisak



First Row: E. Burns, R. Hughes, A. Thompson

Second Row: H. Adams, S. Croft, D. Miller, W. Davis, J. Tettis, W. Hurley, J. Rimmey, D. Earl, K. Smith, W. Fredo, W. Makuhan, L. Ross

Royal Order of Banana Club

President Edward Burns

Vice-President William Hurley

Secretary Ross Hughes

Treasurer Andrew Thompson

This club, consisting of thirty active members, was organized to help students improve their grades. Every year, the club sponsors the election of the Homecoming Queen, plays a basketball game against the faculty for the benefit of W. S. S. F., and awards a trophy to the outstanding male athlete and one to the outstanding female athlete.



First Row: C. Freundberg, P. Campbell, A. Wilson, D. Bower, J. Hollingsworth, E. Swartz, H. Tuttle, M. Miller, B. Bingman, E. Pifer, P. Moore, G. McClintock

Second Row: T. Reed, H. Schmid, J. Chambers, G. Rowles, L. Powlus, P. Raynor, D. Stackhouse, M. Heacock, S. Forest, Miss Smith, R. Williams, B. Hallman, J. Parsons, S. Sheetz, J. Hensal, N. LeCorre

Third Row: G. Shearer, J. Dunnick, C. Bailey, S. Stephenson, S. Burkett, D. Beck, M. Patterson, G. Copper-smith, A. Parks, L. Bolig, C. Blaker, E. Baieroski, P. Lozier, M. Rimmey, M. Stine, J. Lupp, J. Kauffman, J. Barnhart, E. Alvarez, J. Risser, E. Wharry, M. Shope, J. Zoppa, M. Coffey

Women's Athletic Association

President Ruth Williams

Vice-President Priscilla Raynor

Secretary Margaret Heacock

Treasurer Beatrice Hallman

The Women's Athletic Association is an organization established for the benefit of all women students at Lock Haven State Teachers College. Its aim is to introduce to its members the various sports offered for the women and supply them with equipment for these sports. One activity which all its members participate in is planning and sponsoring the annual Christmas Dance. The year's activities are climaxed by a banquet at which women who have participated in sports and who have earned the required number of points are presented with awards.

Pan-Hellenic Council

President Dorothy Drick

Secretary Marian Stine

Treasurer Lois Grimm

The Pan-Hellenic Council is the governing body for the women's fraternities of the college. It is composed of delegates chosen by the respective fraternities and of the advisers to these fraternities. Some of the various activities sponsored by the Council include the Pan-Hellenic Tea for all college women and the annual Pan-Hellenic Dance.



First Row: L. Grimm, D. Drick, M. Stine

Second Row: K. Merrell, J. Miller, V. Sullivan, C. McClain, M. Coffey



First Row: Miss Waterbury, Y. Kline, P. Grier, N. Klepper, J. Lupp, C. McClain
Second Row: D. Crowley, A. Parks, J. Parson, R. Ellenberger, M. Rasicci
Third Row: A. Lauer, R. Hartle, V. Sullivan, E. Potratz, V. Ginther, M. Heacock, M. Stine, N. Green,
 M. Houck, D. Reeder, P. Martz

Pi Kappa Sigma

President	Catherine McClain
Vice-President	Pearl Martz
Recording Secretary	Rose Ellenberger
Corresponding Secretary	Janice Parson
Treasurer	Alice Anne Parks
Keeper of the Archives	Rita Hartle
Sergeant-at-Arms	Eileen Wharry
Pan-Hellenic Council Representatives	Marian Stine Virginia Sullivan
Corresponding Editor	Eleanor Potratz

"Pi Kapps" are congenial girls striving together for social efficiency, intellectual growth, and moral development. The girls are chosen for their integrity, sincerity, and above-average scholastic achievement. Spaghetti suppers, dinners, teas, and parties are part of the social life of the sorority.

Sigma Sigma Sigma

President	Dorothy Drick
Vice-President	Edna Mae Held
Recording Secretary	Harriet Schmid
Corresponding Secretary	Harriet VonLunen
Treasurer	Lois Fink
Pan-Hellenic Council Representatives	Marcia Coffey Grace Shearer

The Valentine Party for the boys and girls at the Children's Home and the book gifts to the John Randolf Library spotlight Sigma social service. Home parties, coke pours, and a Founder's Day Dinner are some of Sigma Sigma Sigma's social activities.



First Row: Mrs. Thomas, M. Ladd, H. Schmid, H. Shields, C. Howe, D. Drick, N. Hill
Second Row: S. Demmien, L. Fink, B. Bettes, H. VonLunen, P. Poulos, J. Kauffman
Third Row: E. Held, J. Peterson, M. Coffey, H. Greninger, G. Shearer, R. Caprio



First Row: P. Bartges, E. Shirk, D. Stackhouse, J. Miller, L. Grimm

Second Row: J. Johnsonbaugh, G. Dinges, M. Shive, G. Rowles, E. Marshall, D. Marasa, S. Stevenson, S. Gray, P. Locke, R. Kurtz

Alpha Sigma Tau

President Lois Grimm

Vice-President Katherine Merrell

Secretary Esther Shirk

Treasurer Patricia Bartges

The girls of Alpha Sigma Tau enjoy their semi-monthly meetings, which include fun, parties, and banquets along with business matters. A gift of which the girls are justly proud this year is the beautiful new tea service which they presented to the College. This gift adds beauty to the weekly teas in the social rooms as well as to the other occasions at which it is used.

Kappa Delta Pi

President	Patricia Bartges
Vice-President	Doris Cunefare
Secretary	Edna Mae Held
Treasurer	Shirley Forest
Historian-Recorder	Lois Grimm
Counselor	A. S. Rude

The purpose of Kappa Delta Pi is to encourage high professional, intellectual, and personal standards and to recognize outstanding contributions to education. Its membership is limited to persons who exhibit commendable personal qualities, worthy educational ideals, and sound scholarship. Its professional and social meetings aim to promote understanding and entertainment.



First Row: Dr. Rude, P. Bartges

Second Row: L. Grimm, E. Held, R. Warren, D. Cunefare, B. Day, S. Black, S. Forest, G. Nuss, J. Miller, P. Locke



First Row: Miss Lynds, D. Drick
 Second Row: D. Schick, W. Kinch

Alpha Psi Omega

President	Donald Schick
Vice-President	Dorothy Drick
Secretary-Treasurer	William Kinch

Alpha Psi Omega was organized as an honorary dramatic fraternity for the purpose of providing an honorary society for those doing a high standard of work in dramatics and, through the expansion of Alpha Psi Omega among the colleges of the United States and Canada, of providing a wide fellowship for those interested in the college theater.

Sigma Alpha Eta

President	Edward Matis
Vice-President	Crawford Sechler
Secretary	Phyllis Loughner
Treasurer	Dorothy Drick
Corresponding Secretary	John Crowley
Student Council Representative	Richard Pletcher

The objectives of the organization are: (1) to create and stimulate an interest among college students in the field of speech and hearing; (2) to encourage professional growth by providing learning experiences not offered in the formal course structure; and (3) to inspire high planes of achievement in academic and clinical activities.



First Row: Mrs. Matis, E. Matis
Second Row: P. Loughner, R. Pletcher, D. Drick, C. Sechler

Delta Rho Beta

President Robert Ganoe
Vice-President Bernard Day
Secretary William Holland
Corresponding Secretary Elwood Bartges
Treasurer Philip Stetson

The Delta Rho Beta fraternity is an outgrowth of an old social organization of dayroom men known as the "Derbies." Through the years it has held various smokers, parties, and the traditional spring semi-formal dances at the Clinton Country Club. Its members are active in many college activities.



First Row: R. Pletcher, C. Mahaffey, J. Stabley, D. Schick, Mr. Fleming, R. Ganoe, P. Stetson, E. Bartges
Second Row: K. Bressler, B. Day, P. Dapp, J. Hinterlang, L. Sticinski, J. Rightmire, G. Smith, F. Walker,
R. Loudenslager, L. Kleckner, N. Gaitens, R. Ohl, W. Holland, J. Pecchia, R. Crist



H. Shields, C. Bailey, J. Tettis, E. Wharry, B. Bettes

Cheerleaders

The 1951 Bald Eagles cheerleading squad consisted of Eileen Wharry, Carol Bailey, Barbara Bettes, Helen Shields, and John Tettis. This group led cheers at the home football and basketball games and participated in the annual Pep Parade. Dr. Zimmerli is adviser to the group.





Athletics

Eighty-five



First Row: B. Haney, B. Vogt, D. Chamberlin, R. Hughes, J. Rimmey, H. Nale, C. Reich, D. Williams

Second Row: L. Ross, N. Gaitens, B. Herbst, M. Feaster, G. Smith, D. Loudenslager, H. Leitzel, H. Powlus, R. Weaver, R. Gehman

Third Row: Coach Woolley, W. Weaver, A. Holtz, J. Sybert, G. Sauers, L. Ream, J. Zeigler, W. Pleskonko, R. Bottomley, R. Himmelreich

Soccer Team

Co-Captains John Rimmey and Bernard Vogt

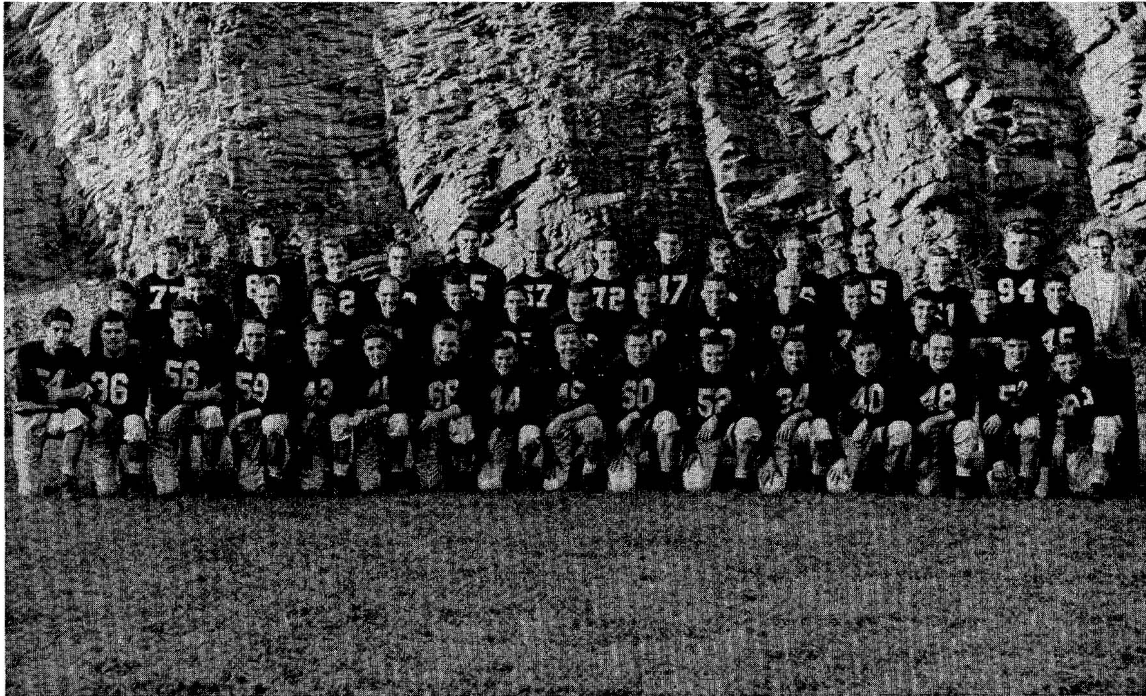
Managers Ross Hughes and Kenneth Smith

Coach Spencer C. Woolley

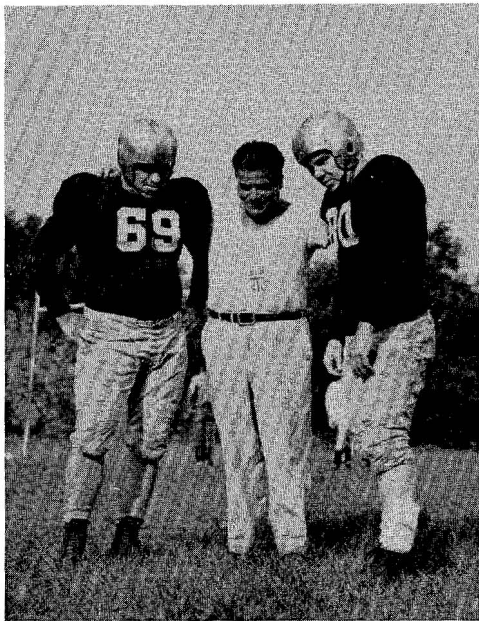
Undefeated in its 1950 season, the Soccer Team has carried on a victorious tradition (in the last four years Lock Haven has lost only two soccer games). Rimmey and Vogt were outstanding leaders. The fourteen lettermen included Chamberlin, Gehman, Harvey, Herbst, Holtz, Leitzel, Loudenslager, Nale, Powlus, Reich, Rimmey, Vogt, Weaver, and Zeigler.

RECORD

Lock Haven	1	Frostburg	0
Lock Haven	2	Bloomsburg	1
Lock Haven	7	Indiana	1
Lock Haven	1	Ithaca	0
Lock Haven	4	Elizabethtown	1
Lock Haven	5	East Stroudsburg	3



The football team this year was marked by an unusually good morale and by steadily increasing skill as the season progressed. It won five games and lost four. Outstanding achievements were outclassing the Indiana Teachers and scoring twenty-eight points in twenty minutes against the Mansfield Teachers.



Coach Jack and Co-Captains

Football

Co-Captains John Mullins and
Edward Gallagher

Coaches

Head Coach Hubert Jack
Line Coach William Thomas
Training Coach Lester Zimmerman

RECORD

Lock Haven.....26	St. Francis13
Lock Haven..... 0	West Liberty26
Lock Haven..... 0	Bloomsburg20
Lock Haven.....28	Millersville 7
Lock Haven.....21	West Chester39
Lock Haven..... 7	St. Vincent 34
Lock Haven.....13	Ithaca 6
Lock Haven.....13	Indiana 0
Lock Haven.....40	Mansfield12



First Row: Coach Yost, J. Laird, R. McDermott, N. Sundstrom, D. Murphy, D. Keener, G. Mitro
 Second Row: R. Halverson, L. Bernhart, R. Miller, J. Rimmey, E. Schaeffer

Men's Basketball

RECORD

Lock Haven.....	67	Ithaca	41
Lock Haven.....	70	Bloomsburg	45
Lock Haven.....	47	Indiana	53
Lock Haven.....	52	East Stroudsburg	57
Lock Haven.....	49	Millersville	52
Lock Haven.....	62	Bloomsburg	32
Lock Haven.....	55	East Stroudsburg	48
Lock Haven.....	68	Mansfield	45
Lock Haven.....	66	Shippensburg	51
Lock Haven.....	62	St. Francis	81
Lock Haven.....	55	St. Francis	84
Lock Haven.....	56	Clarion	59
Lock Haven.....	75	Mansfield	46
Lock Haven.....	57	Shippensburg	62
Lock Haven.....	64	Millersville	63
Lock Haven.....	71	Clarion	73

Seniors on this year's squad: John Rimmey, Elwood Schaeffer, Leonard Bernhart
Squad members expected to return next year: Norman Sundstrom, Robert Miller, Donald Keener, Robert McDermott, Donald Murphy

Coach Miss Smith
 Manager Alice Anne Parks
 Captain Mary Jane Rimmey

SCHEDULE

February 1 Junior Varsity at Mill Hall
 February 17 Millersville at Lock Haven
 February 20 Gettysburg at Lock Haven
 February 23 Shippensburg at Shippensburg

The Women's Basketball Team this year boasted three Varsity players from last year: C. Raynor, R. Williams, and S. Forest. Promoted from the Junior Varsity to the First Team were J. Lupp, B. Hallman, and M. Rimmey. The team played some tough opponents in Shippensburg, Gettysburg, and Lebanon Valley.

Women's Basketball



First Row: E. Piper, J. Hanawalt, J. Kaufmann, J. Risser, J. Hollingsworth, J. Dunnick
 Second Row: R. Williams, S. Forest, B. Hallman, A. Parks, J. Lupp, M. Rimmey, P. Raynor
 Third Row: C. Bailey, L. Bolig, M. Coffey, S. Burket, E. Swartz, Miss Smith



First Row: H. Schmid, J. Kauffman, B. Hallman, T. Reed, J. Risser, D. Stackhouse
Second Row: R. Williams, L. Powlus, J. Dunnick, E. Wharry, Miss Smith, P. Raynor, J. Lupp, S. Forest, D. Cox

Women's Hockey

This year for the first time the team entered an all-college tournament and some of the girls were picked to play with the all-college first and second teams. They were: L. Powlus, P. Raynor, T. Reed, D. Cox, J. Risser, S. Forest, J. Dunnick, and R. Williams. Subsequently, two Lock Haven girls were chosen to play on the Second Central Pennsylvania team. They were L. Powlus and S. Forest. One girl was chosen to go to the National Hockey tournament held at Rochester University, S. Forest.

RECORD

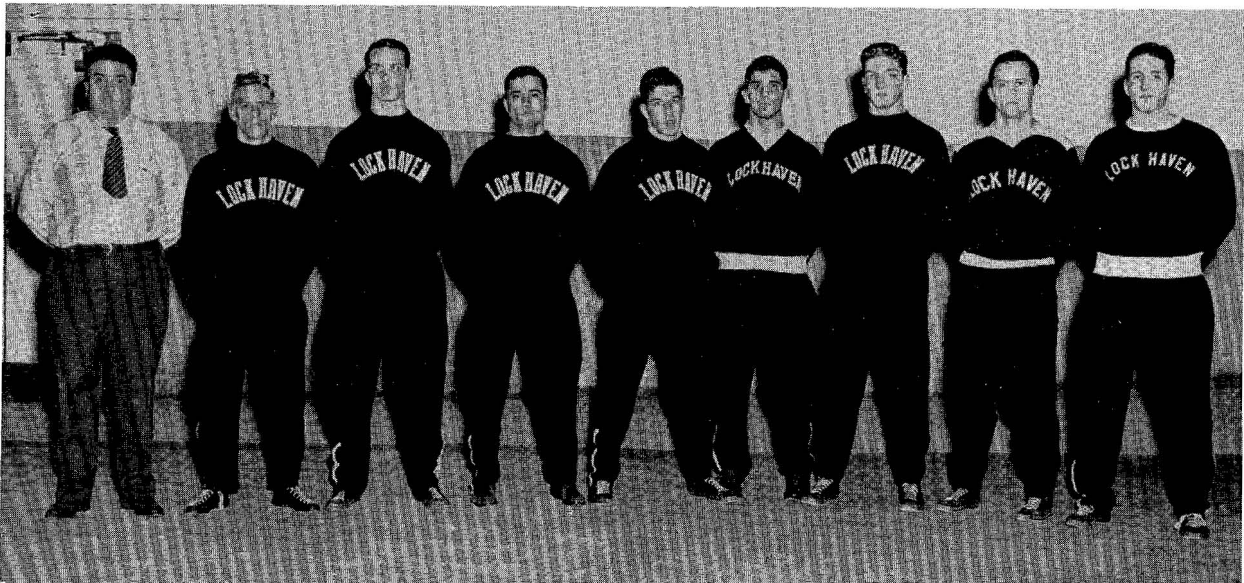
Lock Haven.....	0	Harrisburg Hockey Club	0
Lock Haven.....	0	Millersville	1
Lock Haven.....	4	Lancaster Hockey Club	5
Lock Haven.....	1	Millersville	3
Lock Haven.....	2	Lebanon Valley	0
Lock Haven.....	6	Shippensburg	0
Lock Haven.....	1	Gettysburg College	1

Wrestling

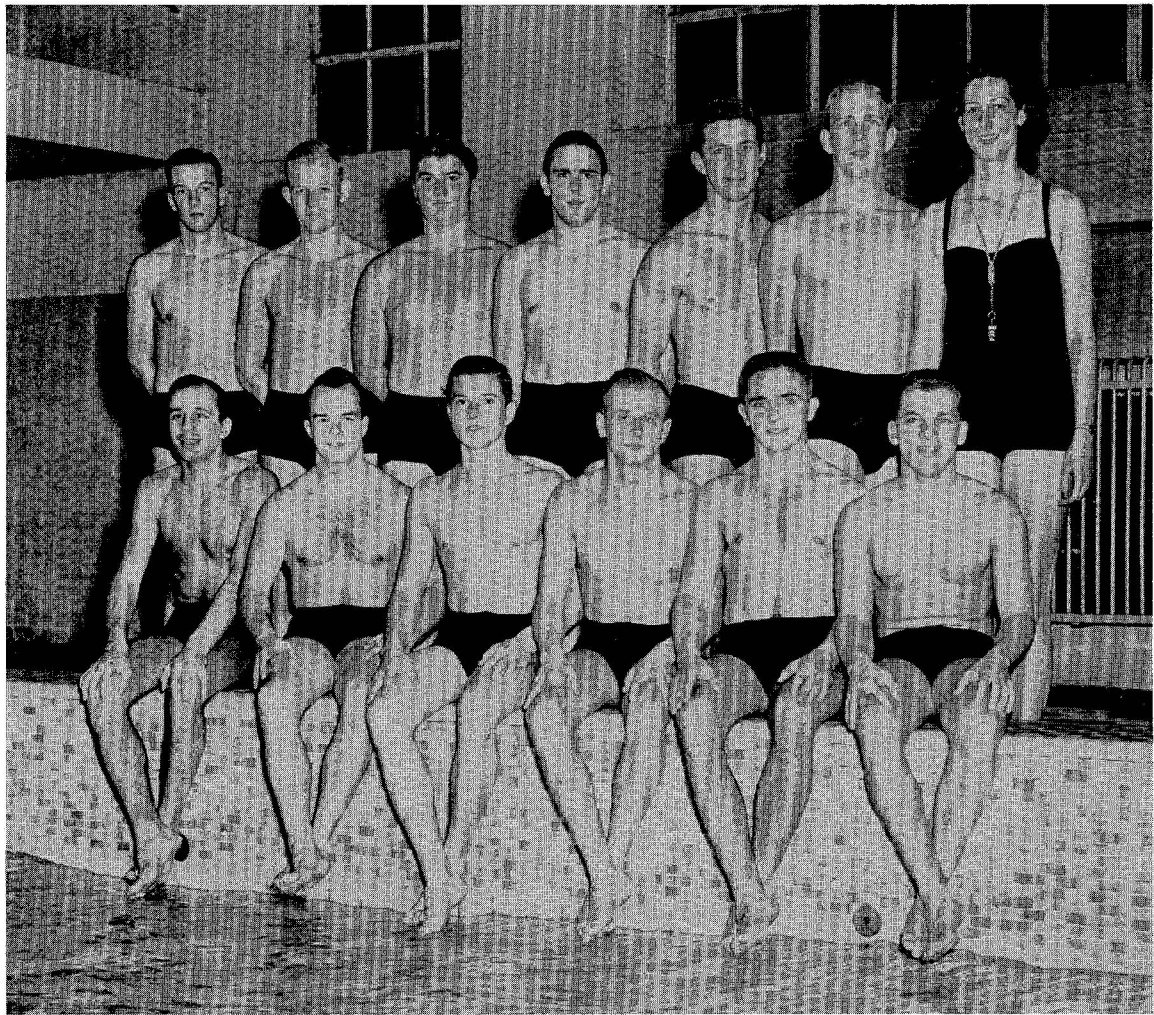
The team was hit hard by the June, 1950, graduation; only three members came back from last year's championship team to face a difficult schedule. The veterans, led by Captain Frank Vulcano, are Leonard DeAugustino, Robert Gano, Russell Houk, Robert Steinmetz, and Dan Hinkle. John Heacock, George Custer, Matthew Midea, Robert McMullen, John Tettis, Samuel Vail, Joseph Kitzinger, William Burdett, Charles Kunes, Joseph Trevarrow, Fred Havens, and Hoxie Thomas were the new recruits.

SCHEDULE

January 10.....	Ithaca College
January 13.....	Edinboro
January 19.....	West Chester
January 27.....	Millersville
January 31.....	East Stroudsburg
February 6.....	Indiana
February 10.....	Kings College
February 16.....	Waynesburg College
February 24.....	Cortland



Coach Jack, G. Custer, J. Heacock, L. DeAugustino, F. Vulcano, M. Midea, R. Steinmetz,
J. Kitzinger, R. Houk



First Row: J. Alessandro, N. Gaitens, J. Zepp, G. Sauers, P. Worcester, B. Wagenseller
 Second Row: R. Shaw, O. Kantner, N. Smith, J. Carr, G. Schoepf, J. Kohler, Coach Spikings

Swimming

The 1949-1950 season was the second year of competition for the Lock Haven Swimming Team. Seven team records out of nine were broken. Wagenseller, King, Schmid, and Alessandro were high-point men. Outstanding was the diving of Bruce Wagenseller. He raised his total of points in the diving event from 66.9 to 88.7, setting a pool record.

The participants for the 1949-1950 season were John Alessandro, Joseph Carr, Robert Craig, Lynn Henry, Walter King, Joseph Kohler, Jack Schmid, George Schoepf, Richard Shaw, Bruce Wagenseller, and Pierce Worcester.

RECORD

Lock Haven.....29	Scranton	46
Lock Haven.....53	Lycoming	22
Lock Haven.....21	Scranton	53
Lock Haven.....29	Cortland	46
Lock Haven.....55	Wilkes	19
Lock Haven.....19	East Stroudsburg	56



First Row: G. Cartwright, D. Fuhrer, G. Mencer, G. Creasy, H. Leitzel

Second Row: D. Alfieri, R. Hughes, L. Henry, J. Rimmey, N. Sundstrom, J. Carr

Baseball

It is a part of the picture of these uncertain times that when Praeco went to press no source of information could say whether or not the College would have a full-fledged 1951 baseball team and baseball schedule; and it is not inappropriate that Praeco chronicle here one phase of the uncertainties which beset this college and other colleges throughout the land in this spring of 1951.

WE WILL REMEMBER . . .



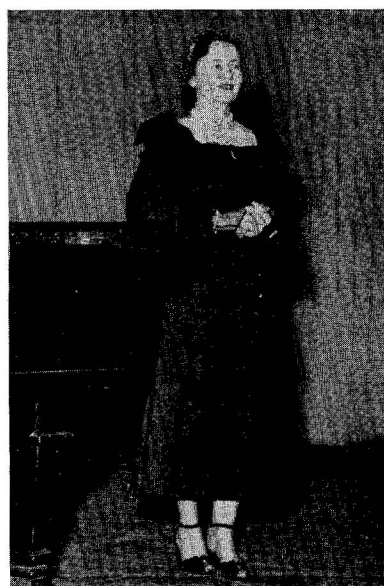
FRIENDLY ADVICE OF THE FACULTY



FIRST DAYS OF STUDENT TEACHING



STUDENT COUNCIL
PRESIDENT



EVELYN MacGREGOR



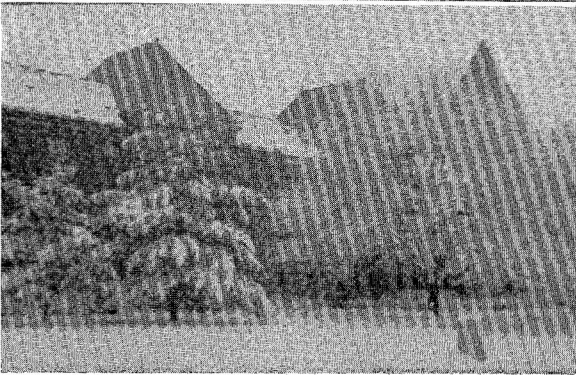
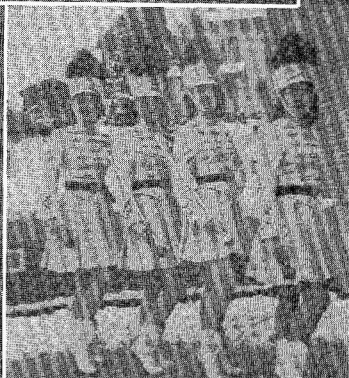
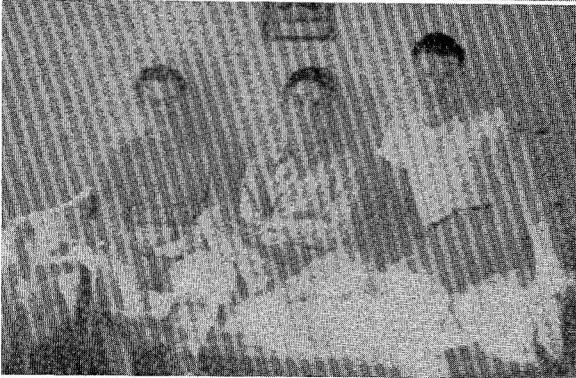
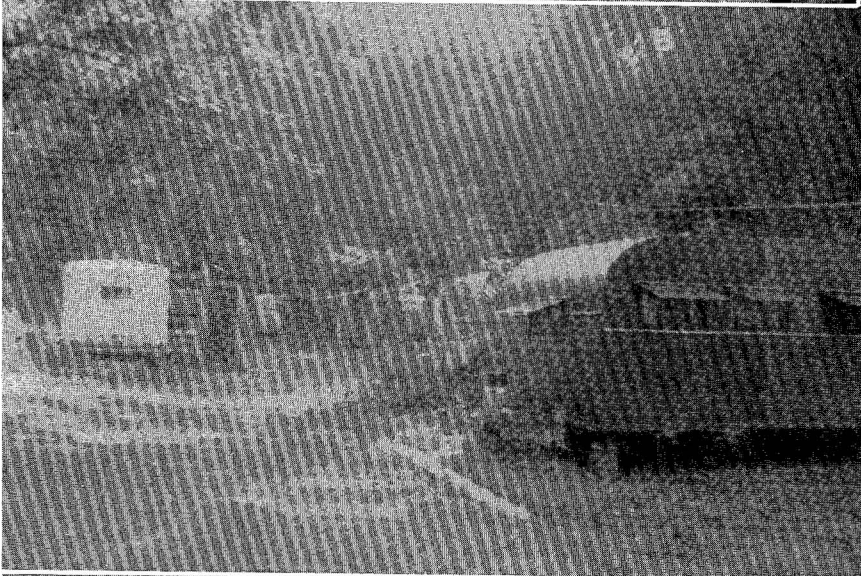
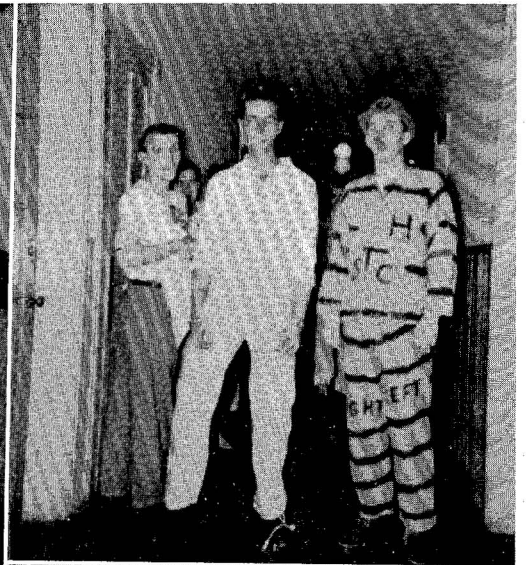
WE WILL REMEMBER...



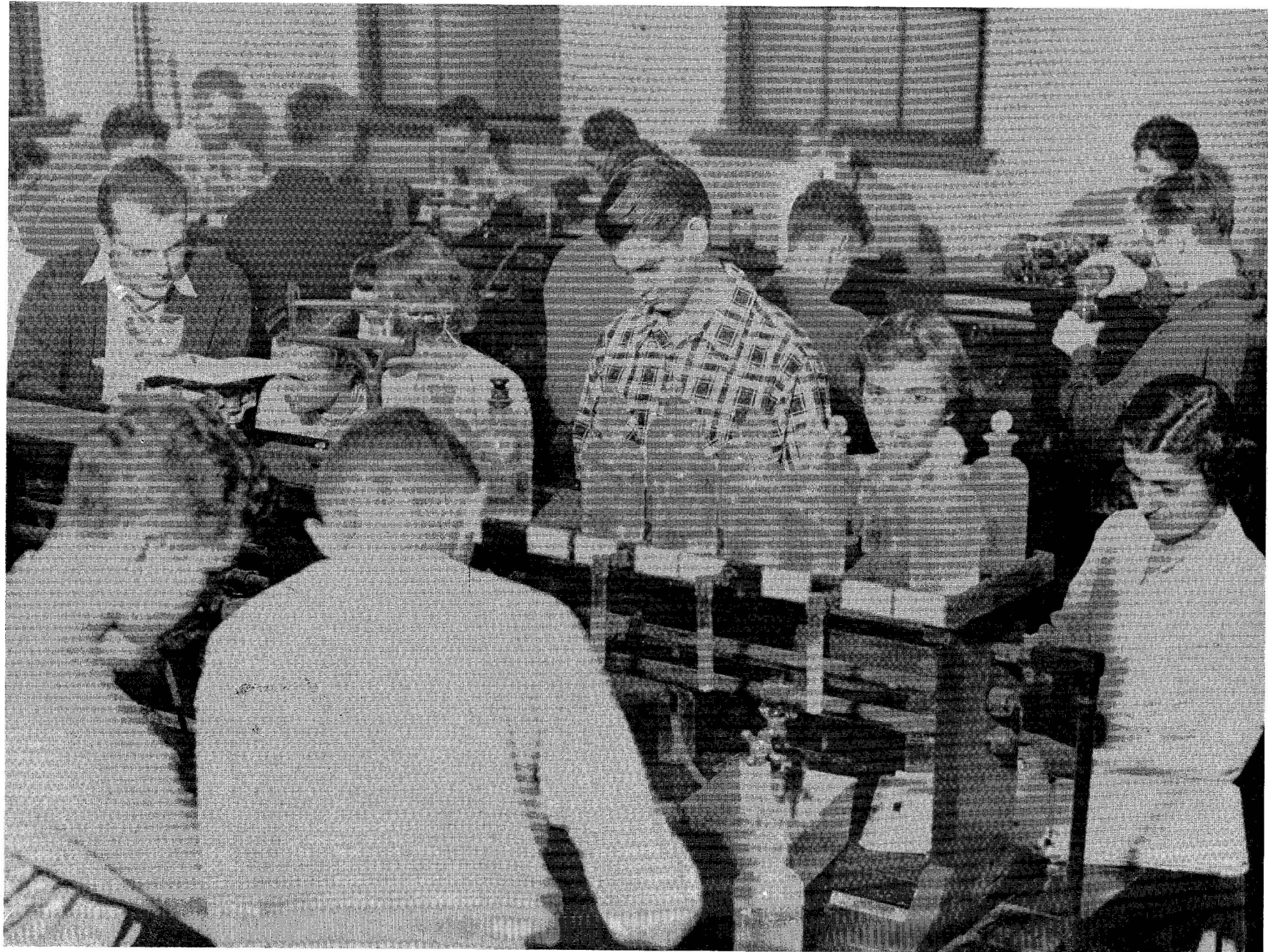
THE VARSITY CLUB DANCE

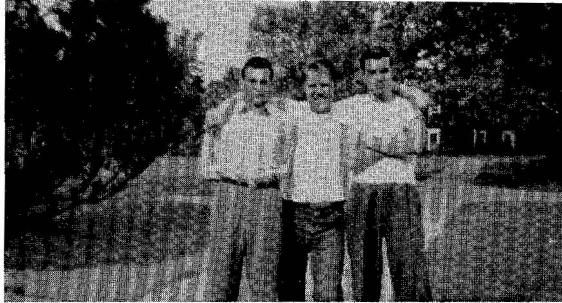
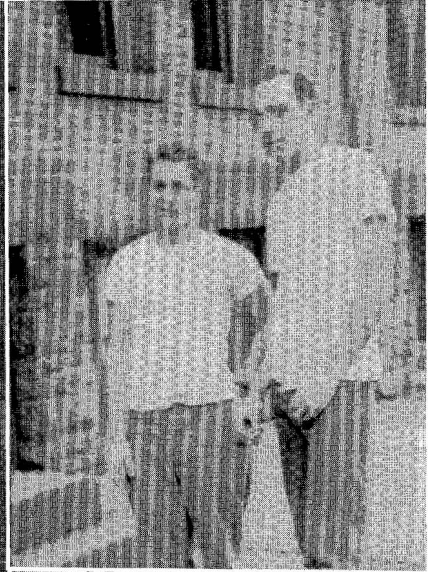
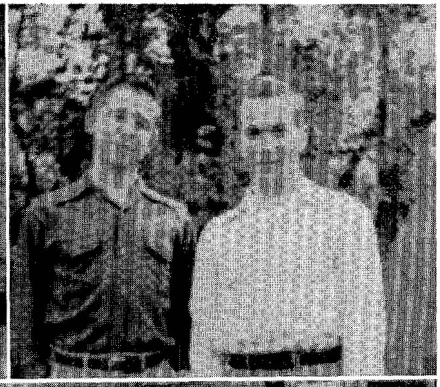
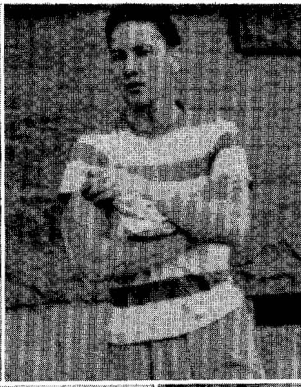


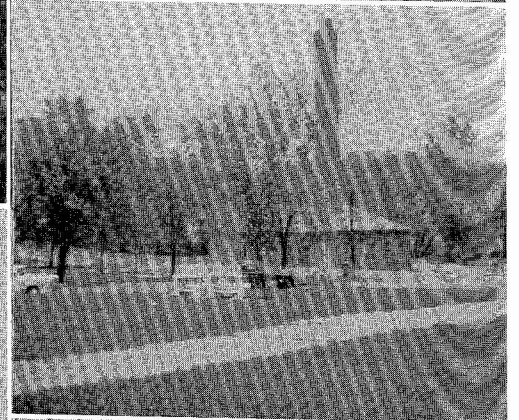
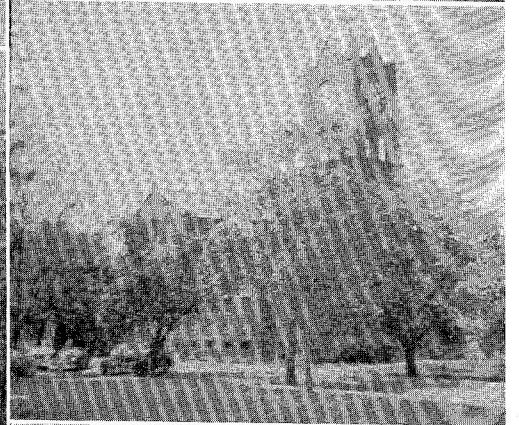
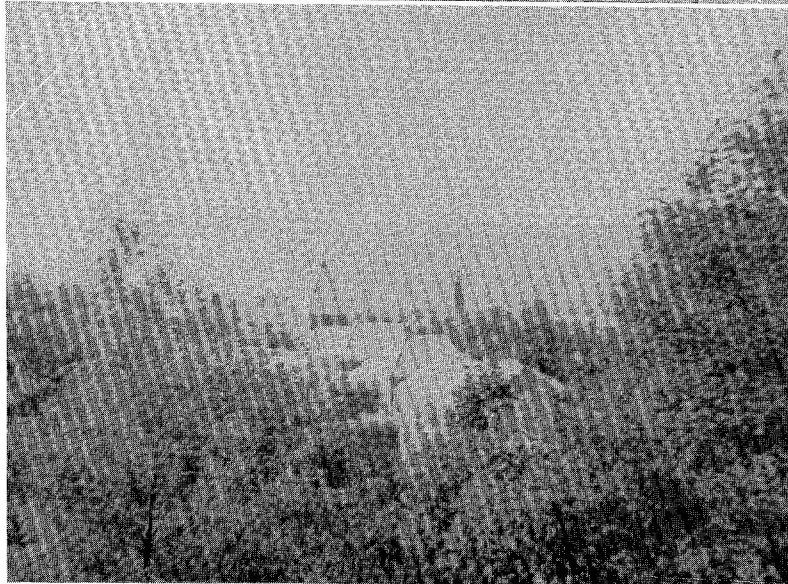
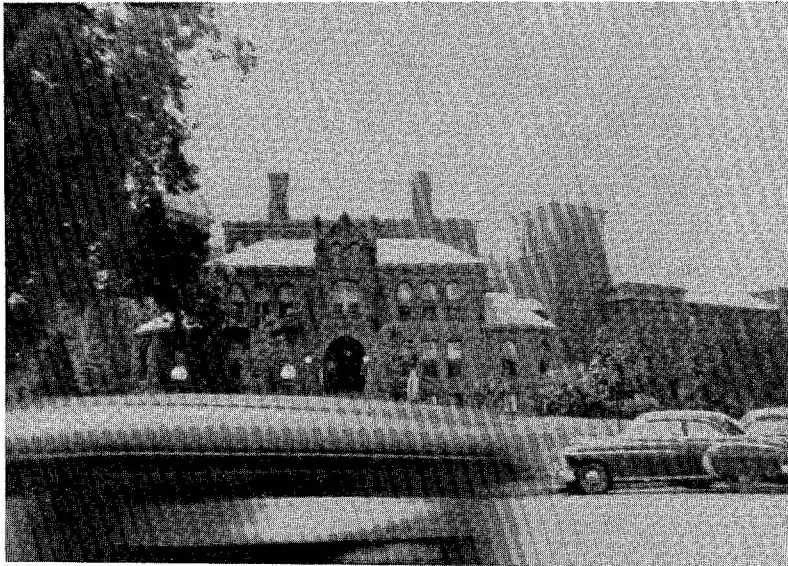
CAROLYN COHICK
BANANA CLUB QUEEN

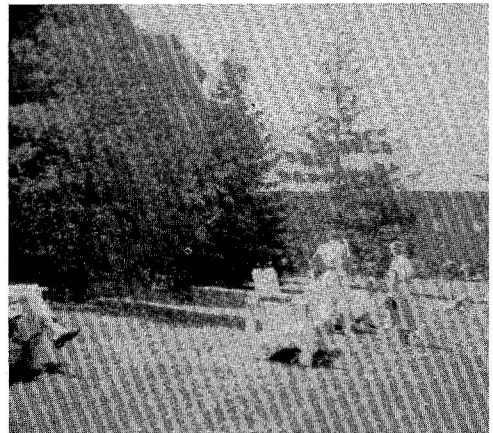


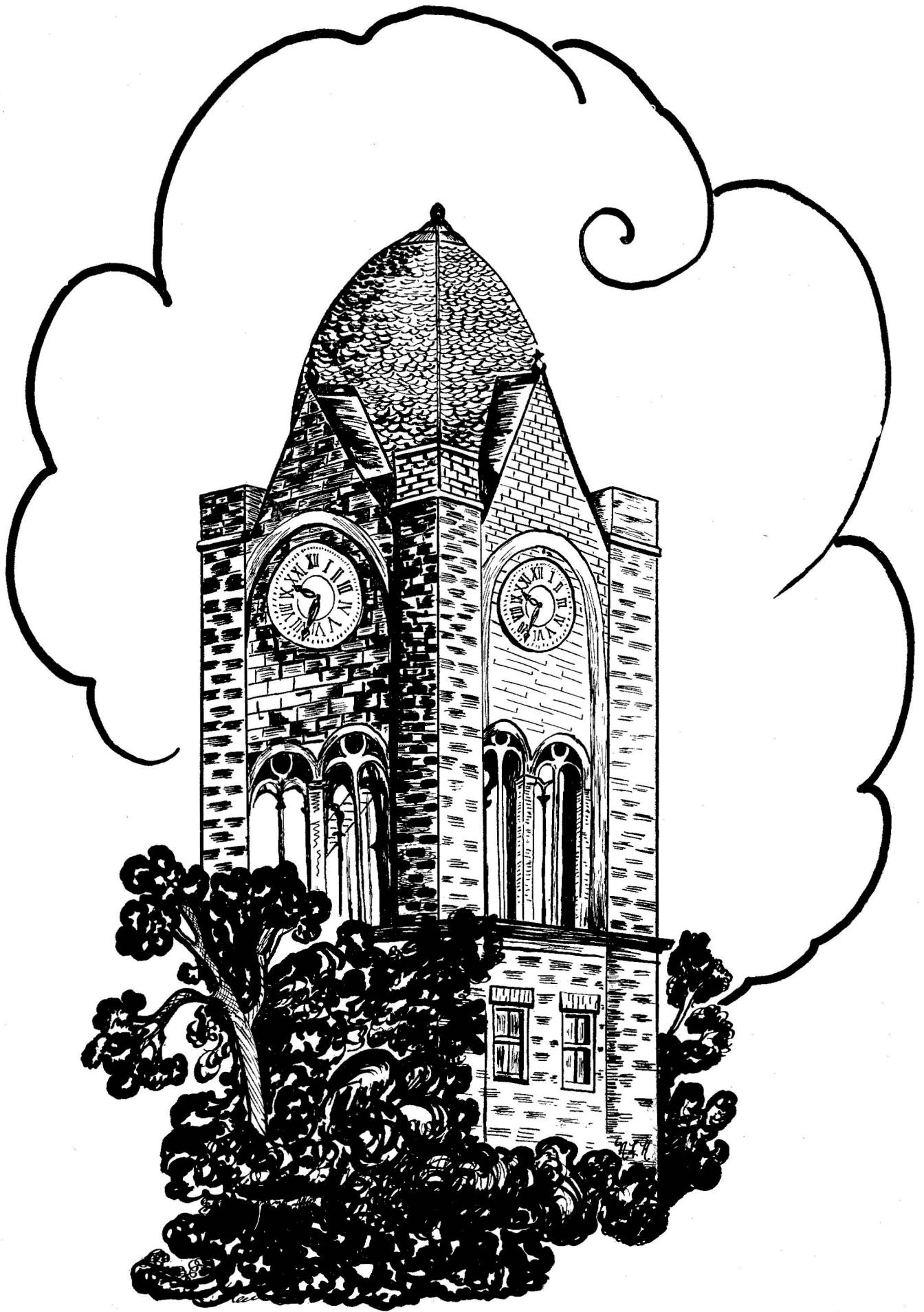












NEW YORK AND
PENNSYLVANIA CO., INC.

PAPER AND PULP

MANUFACTURERS



Mills Located at:

JOHNSONBURG, PA.

LOCK HAVEN, PA.

WELLSBORO, N. Y.

RITTER'S
SPORTING
GOODS

SMITH AND WINTERS, INC.

Lock Haven's
Shopping Center

The Best Place To Shop
After All

CROWLEY'S CORNER

Where The Gang Meets

And Eats

AT PETE'S

Compliments

of

DAVIS

RESTAURANT

DAY AND NIGHT

SERVICE

Part of your COLLEGE EDUCATION and a valuable TEACHING TOOL
for your future professional activity, regular, intelligent reading of
an independent newspaper

Read

THE LOCK HAVEN EXPRESS

It is part of your education now and in the future

GARDEN

"The Family Theatre"

J. C. PENNEY CO., INC.

REGAL AND BLUM JEWELERS

The House of Perfect Diamonds

106 E. Main Street

LOCK HAVEN

Cash or Credit—Phone 2019

CAMPUS CORNER

Your Home Away From Home

Compliments

of

**DICKEY GRUGAN
HARDWARE CO., INC.**

WOLF FURNITURE

COMPANY

TIMES PUBLISHING CO.

Times Square

Lock Haven

PRINTERS :: PUBLISHERS

Publishers of
The Bald Eagle

HOME OF
HART, SCHRAFFNER,
and MARX

HOY'S

McGREGOR SPORTSWEAR

NUNN-BUSH SHOES

Gibson and Barker
Greeting Cards
Eaton Stationery

RICHARD H. YOHE

OFFICE SUPPLIES AND EQUIPMENT

Compliments of

WEAVER AND PROBST

MEN'S SHOP

Pacemakers for
Smart Dressers

ALL
BANKING SERVICES

**LOCK HAVEN
TRUST COMPANY**

Clinton County's

Largest Bank

Member F. D. I. C.

Greet Your Friends
at the

AVENUE CAFE

HOME OF GOOD FOOD

216 Bellefonte Avenue

LESTER'S

HOME OF SMART CLOTHES

40 Bellefonte Avenue

Compliments

of

**ROXY
AND
MARTIN**

LOCK HAVEN'S
LEADING THEATRES

GRUGAN'S PHOTO SUPPLY

Mexican Imports

Art Supplies

SCHWARZ STORE

WALLPAPER AND

PAINT

**LOCK HAVEN
LAUNDRY**

DRY CLEANERS AND
LAUNDERERS

Phone 2213

Compliments

of

PEP AMUSEMENT CO.

118 Bellefonte Avenue

Compliments of
SYLVANIA ELECTRIC PRODUCTS

Mill Hall Plant

DUNKLE'S CUT RATE

Medicine Cabinet
Supplies
and
Fountain Service

Corner of Jones and Bellefonte Avenue

THE HUB

LOCK HAVEN'S CLOTHING CENTER

Headquarters for Woolrich Sport Clothes

Outfitters for T. C. Band Uniforms

Photography
Portraiture
Commercial

By

THE WOLFE STUDIO

Dial 4507

PHONO ELECTRONIC CO.

Complete Electric Service
Parts and Supplies
Radios - Phonos - Records

499 Bellefonte Avenue Lock Haven 3813

Watches
Diamonds
Jewelry

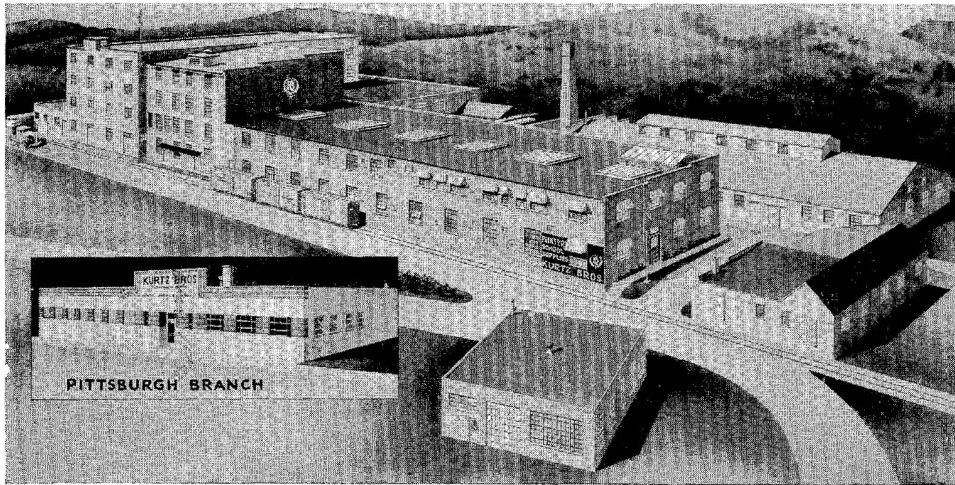
WITMYER JEWELRY STORE

26 E. Main St.

Dial 2524

Compliments
of

STEIN'S FURNITURE STORE



Built to Serve You . . .

Pictured above, Kurtz Bros. factory and warehouses along with the Pittsburgh Branch contain more than 112,000 square feet of floor space. Here, under one roof, your school annuals are printed, bound and covered. A plant built to serve your printing needs.

KURTZ BROS. » » CLEARFIELD, PA.

Yearbook Engravings

Featuring



"Specializing Year After Year Makes the Difference"

ZIMMERMAN ENGRAVING COMPANY

SYKESVILLE, PENNSYLVANIA.

Compliments

of

**PENNSHIRE
CLOTHES**

FRED J. EISEMANN

Jeweler

Gifts for All

Occasions

31 Bellefonte Avenue

PLEASE

CONSIDER

YOUR PRAECO

SPONSORS FIRST

DON WEIL—Advertising Manager

SAM DANNAWAY—Assistant Manager

Student
Directory
1951

Student Directory

Adams, Frederick P.	457 Pennsylvania Ave., Renovo, Pa.
Adams, Harold M.	Greenburr, Pa.
Adams, Lewis O.	201 Locust St., Philipsburg, Pa.
Adler, Shirley L.	1912 Logan Ave., Altoona, Pa.
Albright, Donald E.	334 E. Main St., Somerset, Pa.
Alessandro, John	176 Collins St., Johnstown, Pa.
Alfieri, Dominic A.	Box 53, Clermont, Pa.
Alvarez, Eleanor L.	1058 Pennsylvania Ave., Tyrone, Pa.
Anderson, Frederic M.	805 Main St., Port Allegheny, Pa.
Andrews, Jean E.	Mapleton Depot, Pa.
Baieroski, Donald F.	316 First Ave., Johnsonburg, Pa.
Baieroski, Eleanor M.	316 First Ave., Johnsonburg, Pa.
Bailey, Carol E.	39 Evans St., Uniontown, Pa.
Bailey, Lloyd G.	Orange St., Selinsgrove, Pa.
Bailey, Lois Erhard	Port Matilda, Pa.
Balsiger, Ann C.	180 Willowwood Court, Emporium, Pa.
Barbarich, Michael J.	Box 372, Beaverdale, Pa.
Barnhart, Eugene A.	Bellefonte, Pa.
Barnhart, Joyce L.	1318 Cameron Ave., Tyrone, Pa.
Bartges, Elwood E.	R. D. 2, Loganton, Pa.
Bartges, Patricia Fleming	Riverside Terrace, Lock Haven, Pa.
Beck, Dorothy L.	252 Edgewood Ave., Duboistown, Pa.
Bednar, Paul T.	Bridge St., Hastings, Pa.
Behrman, Lauvon	155 S. Jones St., Lock Haven, Pa.
Benson, Dolores A.	271 Euclid Ave., Ridgway, Pa.
Bernard, William R.	Box 22, Loganton, Pa.
Bernhart, Leonard T.	62 W. Sixth St., Pottstown, Pa.
Berry, Beatrice G.	128 N. Summit St., Lock Haven, Pa.
Bertolet, Maynard F.	1164 Russell Ave., Williamsport, Pa.
Bettes, Barbara A.	55 Frederick St., Corry, Pa.
Bills, Robert G.	Harvey St., Hastings, Pa.
Bingman, Betty Lou	1064 W. Main St., Somerset, Pa.
Bishop, Jack A.	R. D. 3, Smethport, Pa.
Black, Harold D.	763 S. Main St., Athens, Pa.
Black, Sylvia M.	763 S. Main St., Athens, Pa.
Blaker, Clara K.	206 W. Central Ave., S. Williamsport, Pa.
Blimmel, William J.	220 Luzerne St., Johnstown, Pa.
Bloom, Joseph Jr.	R. D. 3, Shickshinny, Pa.
Bolig, Lena M.	Richfield, Pa.
Bollinger, Richard C.	508 Highland Ave., Johnstown, Pa.
Bombassei, Robert V.	605 W. Walnut St., Lock Haven, Pa.
Boring, Gavis E.	Mapleton Depot, Pa.
Bossert, George J.	Sylvan Ave., Avis, Pa.
Bottomley, James R.	209 Eleventh St., Philipsburg, Pa.
Bower, Dolores R.	27 S. Washington St., Lock Haven, Pa.
Bower, Dorothy M.	309 Sidney St., S. Williamsport, Pa.
Bower, Glenn L.	627 Ames Place, Williamsport, Pa.
Bower, Paul W.	1414 Memorial Ave., Williamsport, Pa.
Bowes, Barbara H.	212 Wylie St., Jersey Shore, Pa.
Bowes, Beverly B.	212 Wylie St., Jersey Shore, Pa.

Student Directory

Bowser, Robert A.	918 Main St., Portage, Pa.
Boyd, Ronald L.	224 Connellsville St., Uniontown, Pa.
Brackin, John L.	17 Custer Ave., New Holland, Pa.
Bradney, Francis P.	Box 27, Hyner, Pa.
Bressler, Betty Baird	17 E. Water St., Lock Haven, Pa.
Bressler, C. Kyle	17 E. Water St., Lock Haven, Pa.
Brown, Blaine V.	228 S. Dorcas St., Lewistown, Pa.
Brown, Clair G., Jr.	1416 Park Ave., Williamsport, Pa.
Brown, Earl E.	530 Eighth St., Selinsgrove, Pa.
Brown, Ernest A.	253 N. Main St., Jersey Shore, Pa.
Bubb, Wilbur W.	671 Bellefonte Ave., Lock Haven, Pa.
Buchanan, Milford A.	321 N. Third St., Lock Haven, Pa.
Buchler, Robert N.	66 Rehoboth Ave., Rehoboth, Del.
Buck, Crayton N.	372 Union Ave., Williamsport, Pa.
Budinger, Gene N.	633 Bellefonte Ave., Lock Haven, Pa.
Burdett, William O.	St. Charles, Pa.
Burket, Sara J.	700 Walnut St., Roaring Spring, Pa.
Burns, E. Thomas	238 W. Church St., Lock Haven, Pa.
Burns, Margaret R.	1113 Second St., Juniata, Altoona, Pa.
Buss, Beverly A.	R. D. 1, Allenwood, Pa.
Calvert, Galen E.	906 Euclid Ave., Oil City, Pa.
Campbell, James E.	2107 Highland Ave., Reading, Pa.
Campbell, Mary	516 Frederick St., Flemington, Pa.
Campbell, Patricia A.	1002 Kahkwa St., Erie, Pa.
Caprio, Rita M.	119 Pearl St., Lock Haven, Pa.
Carlson, Donna M.	635 Market St., Johnsonburg, Pa.
Carlson, M. Helene	2656 Chestnut St., Erie, Pa.
Carlson, Robert L.	Kylertown, Pa.
Carpenter, Richard L.	523 Edin St., Jersey Shore, Pa.
Carr, Joseph R.	110 Oak St., Youngsville, Pa.
Cartright, Gerald B.	Sandy Ridge, Pa.
Cassidy, Francis V.	Newry, Pa.
Cassidy, Robert V.	Newry, Pa.
Chamberlin, Dio K.	Main St., Turbotville, Pa.
Chambers, Joyce D.	208 Sixth St., Juniata, Altoona, Pa.
Chreptak, Stephen	13 Minneaque Ave., Canton, Pa.
Christopher, Gerald C.	353 E. Clinton St., Lock Haven, Pa.
Cingle, Margaret P.	Clarence, Pa.
Clark, Connie L.	Avis, Pa.
Clark, Ruth E.	R. D. 2, Box 143, Jersey Shore, Pa.
Clewell, Jerrold K.	155 E. Cottage Rd., York, Pa.
Cline, John A.	123 Calvert St., Jersey Shore, Pa.
Coder, Richard B.	68 Akers St., Johnstown, Pa.
Coffey, Marcia A.	94 Pennsylvania Ave., Mill Hall, Pa.
Cohick, Carolyn J.	Main St., Salladasburg, Pa.
Colacino, Joseph J.	361 E. Walnut St., Lock Haven, Pa.
Collins, John R.	2343 Saranac Ave., Pittsburgh, Pa.
Conbere, Mary Jane	Box 86, Paxinos, Pa.
Conti, James	42 Walnut St., Jamestown, N. Y.
Conti, John L.	680 Pennsylvania Ave., Renovo, Pa.

Student Directory

Cook, Bobbie A.	149 N. Fourth St., Lock Haven, Pa.
Cook, Jean L.	223 N. Fairview St., Lock Haven, Pa.
Cooper, Dean S.	McConnellsburg, Pa.
Cooper, Marian E.	416 Beech St., Patton, Pa.
Coppersmith, Grace V.	6 W. Sixth St., Emporium, Pa.
Corcoran, Mary E.	417 Ontario Ave., Renovo, Pa.
Costella, James L., Jr.	140½ E. Water St., Lock Haven, Pa.
Coulson, Harry R., Jr.	Menohar Hgy., Johnstown, Pa.
Cox, Donna M.	748 N. Main St., Coudersport, Pa.
Craig, Robert W.	108 E. Philips St., Coaldale, Pa.
Crawford, Nancy E.	15 Grant St., Brookville, Pa.
Creasy, Gerald F.	R. D. 2, Williamsport, Pa.
Crist, Robert H.	446 S. Broad St., Jersey Shore, Pa.
Croft, Sherman A.	426 Cherry St., Roaring Spring, Pa.
Crook, Kenneth G.	Vine St., New Berlin, Pa.
Crowley, Dolores A.	647 W. Bald Eagle St., Lock Haven, Pa.
Crowley, John C.	540 W. Main St., Lock Haven, Pa.
Cunefare, Doris E.	McClure, Pa.
Cupp, Fred B.	424 W. Fourth St., Williamsport, Pa.
Custer, George H., Jr.	Rear 119 Second St., Lock Haven, Pa.
Dannaway, Samuel	2200 Columbia Ave., Tyrone, Pa.
Dannaker, Joan M.	1210 Cherry St., Williamsport, Pa.
Dapp, Paul L.	N. Main St., Jersey Shore, Pa.
Darke, Joseph M.	West Decatur, Pa.
Davis, Robert A.	R. D. 2, Parker, Pa.
Davis, William F.	Sproul, Pa.
Day, Arlin R.	Howard, Pa.
Day, Bernard W.	R. D. 2, Loganton, Pa.
DeAugustino, Leonard J.	North St., Grove City, Pa.
Decker, Elizabeth A.	7 McInroy St., Wellsboro, Pa.
DeHass, Emma E.	Westport, Pa.
Deichert, Charles M.	330 Keystone St., Cresson, Pa.
Del Grosso, Jacqueline A.	2113 Ninth Ave., Altoona, Pa.
Demmien, Shirley L.	365 Clark St., S. Williamsport, Pa.
Dick, Florence E.	222 E. Water St., Lock Haven, Pa.
Dickey, Samuel C., Jr.	819 Bellefonte Ave., Lock Haven, Pa.
Dietz, Roger L.	Green Hill, R. D. 1, Mill Hall, Pa.
Dinges, Geraldine L.	Coburn, Pa.
Drick, Dorothy E.	High Pines, R. D. 2, Muncy, Pa.
Duffin, Ann H.	1717 Washington Blvd., Easton, Pa.
Dugan, Carl E.	Claysburg, Pa.
Dunlap, Charlotte L.	413 Stone St., Osceola Mills, Pa.
Dunnick, Jo-Anne M.	107 E. Park St., Elizabethtown, Pa.
Earl, Donald O.	815 W. Tenth St., Erie, Pa.
Eberhart, Paul H.	833 W. Third St., S. Williamsport, Pa.
Eiswerth, Jo-Ann C.	414 Percy St., S. Williamsport, Pa.
Ellenberger, Rose M.	Warriors Mark, Pa.
English, Ernest C.	154 Eighth St., Renovo, Pa.
Everett, George R.	R. D. 1, West Newton, Pa.

Student Directory

Eymer, Bruce D.	Box 145, Lewis Run, Pa.
Feaster, Merlyn R.	345 4th St., Lewisburg, Pa.
Fink, Lois A.	Delmont Road, Greensburg, Pa.
Foley, John D.	44 E. Church St., Lock Haven, Pa.
Fontana, Joseph M.	70 Susquehanna Ave., Lock Haven, Pa.
Forest, Shirley L.	R. D. 1, Mechanicsburg, Pa.
Frantz, Edith L.	1305 Dewey Ave., Williamsport, Pa.
Fraser, Edward A.	R. D. 1, Monongahela, Pa.
Fredo, William J.	Beaver St., Hastings, Pa.
Frensburg, Celia A.	3 E. Mountain Ave., S. Williamsport, Pa.
Fuhrer, Donald F.	4510 Stanton Ave., Pittsburgh, Pa.
Funk, Doris J.	Star Route, Lock Haven, Pa.
Furey, James M.	833 Park Ave., Williamsport, Pa.
Gaitens, Norman B.	19 E. Church St., Lock Haven, Pa.
Gallagher, Edward B.	712 Washington St., Charleroi, Pa.
Gallagher, Harry B.	418 W. Fourth St., Lock Haven, Pa.
Ganoë, Robert D.	Woolrich, Pa.
Gardill, Julia A.	1327 Windermere Rd., Pittsburgh, Pa.
Gardner, Frederick R.	123 S. Summit St., Lock Haven, Pa.
Gardner, Rosemary A.	R. D. 1, Lock Haven, Pa.
Gaylor, Sheldon L.	29 E. Church St., Lock Haven, Pa.
Gelmor, Russell L.	Box 22, Blue Ball, Pa.
Gerlock, James E.	1122 Sixteenth Ave., Altoona, Pa.
Gibson, Kennard D.	Glen Road, Lock Haven, Pa.
Gibson, Patricia B.	Glen Road, Lock Haven, Pa.
Gingerich, William D.	R. D. 6, York, Pa.
Ginther, Vada F.	Bucktail Trail, St. Marys, Pa.
Goodwin, Henry E.	1000 Church St., Upland, Pa.
Gore, George L.	315 E. First Ave., S. Williamsport, Pa.
Gray, Jean P.	Trout Run, Pa.
Gray, Shirley M.	Trout Run, Pa.
Green, Norma J.	R. D. 3, Huntingdon, Pa.
Greenleaf, Franklin C.	Passler St., Martinsburg, Pa.
Gregory, Mary J.	5428 W. Harlan St., Philadelphia, Pa.
Greninger, Helen F.	14 Sixth St., Lock Haven, Pa.
Grieco, Carl A.	376 E. Church St., Lock Haven, Pa.
Grien, Mary O.	1707 Hornwood Ave., Williamsport, Pa.
Grier, Phyllis M.	645 W. Water St., Lock Haven, Pa.
Grimm, Lois J.	626 Huston St., Flemington, Pa.
Grissinger, Donald W.	142 McAllister St., State College, Pa.
Grove, Grace L.	241 First St., Flemington, Pa.
Groover, Robert D.	39 Fassett St., Canton, Pa.
Haas, Norma L.	211 Elm St., S. Williamsport, Pa.
Haas, Shirley L.	Sinnamahoning, Pa.
Hafer, Paul C.	160 Spring St., Bedford, Pa.
Hakin, Wallace W.	310 E. Water St., Lock Haven, Pa.
Hallman, Beatrice E.	120 Market St., Tamaqua, Pa.
Halvorsen, Richard E.	92 Summer St., Bradford, Pa.
Hamill, Barbara A.	375 E. Linn St., Bellefonte, Pa.

Student Directory

Hanawalt, Joyce L.	McVeytown, Pa.
Haney, Billie D.	Hopwood, Pa.
Harrow, Kathryn M.	522 High St., Jersey Shore, Pa.
Hartle, Loretta A.	R. D. 1, Lock Haven, Pa.
Hartle, Rita M.	R. D. 1, Lock Haven, Pa.
Hastings, Henry S.	Pleasant Valley, Pa.
Havens, Frederick L.	325 Canton St., Troy, Pa.
Havens, Stanley L.	325 Canton St., Troy, Pa.
Heacock, John F.	521 E. John St., Bedford, Pa.
Heacock, Margaret T.	521 E. John St., Bedford, Pa.
Heaps, John C.	North Bend, Pa.
Heimer, Ralph T.	308 Vesper St., Lock Haven, Pa.
Helbley, Clara J.	R. D. 1, Lock Haven, Pa.
Held, Edna Mae	Box 122, Loganton, Pa.
Henry, P. Lynn	Seven Valleys, Pa.
Hensal, D. Jean	Madera, Pa.
Herbst, Bernard J.	24 St. John St., Lewisburg, Pa.
Herlocher, Roy H., Jr.	211 E. Main St., Lock Haven, Pa.
Herman, Fred D., Jr.	North Bend, Pa.
Hess, Roland F.	410 Lake St., Dalton, Pa.
Heverly, Robert E.	101 N. Grove St., Lock Haven, Pa.
Hibbard, Joseph P.	3 W. Drive, Midland, Pa.
Hickey, William R.	109 Myrtle St., Lock Haven, Pa.
Hickoff, Thomas E.	Farrandsville, Pa.
Higgins, Paul J.	26 W. Bald Eagle St., Lock Haven, Pa.
Hill, Gilbert F.	Morrisdale, Pa.
Hill, James R.	300 S. Broad St., Hughesville, Pa.
Hill, Nancy J.	Cathill Road, Sellersville, Pa.
Hills, Donald B.	100 Peale St., Mill Hall, Pa.
Himmelreich, Robert H.	36 S. Seventh St., Lewistown, Pa.
Hindliffe, Eric	West Decatur, Pa.
Hinkle, Daniel J.	1935 Fay St., Williamsport, Pa.
Hintenlang, Joseph C.	477 S. Fairview St., Lock Haven, Pa.
Hintenlang, Paul P.	477 S. Fairview St., Lock Haven, Pa.
Hipple, Norman R.	Nisbet, Pa.
Hirlinger, Raymond G.	225 Fifth St., Renovo, Pa.
Hixon, Edith M.	P. O. Box 412, Clearfield, Pa.
Hockman, James F.	2466 Fairview Terrace, Williamsport, Pa.
Hoffman, John E.	Box 65, St. Michael, Pa.
Hoffman, Truman N.	303 S. High St., Lock Haven, Pa.
Holland, D. Thomas	204 W. Bald Eagle St., Lock Haven, Pa.
Holland, William G., Jr.	326 W. Church St., Lock Haven, Pa.
Hollick, Belmon D.	251 Thompson St., Jersey Shore, Pa.
Hollingsworth, Janet L.	Benezett, Pa.
Hollis, Joseph W.	463 S. Jones St., Lock Haven, Pa.
Hollis, Mary J.	463 S. Jones St., Lock Haven, Pa.
Hollobaugh, B. Jean	R. D. 3, Tyrone, Pa.
Holtz, Andrew F.	Spangler St., Hastings, Pa.
Hoover, Patsy A.	Port Matilda, Pa.
Horlacher, Olga Young	735 Third St., Catasauqua, Pa.

Student Directory

Hosterman, Budd A.	Woodward, Pa.
Houck, Marjorie L.	Martinsburg, Pa.
Houck, Russell E.	R. D. 1, New Castle, Pa.
Howard, Ronald E.	R. D. 2, Port Allegheny, Pa.
Howe, Constance L.	11 Homestead St., Bradford, Pa.
Householder, Richard G.	R. D. 1, Huntingdon, Pa.
Hubbler, Paul H.	Allport, Pa.
Huff, Robert E.	Sexton, Pa.
Huffman, William M.	825 High St., Williamsport, Pa.
Hughes, Ross R.	Main St., Espy, Pa.
Humpton, Richard L.	Lanse, Pa.
Hurley, William M.	115 Second St., Canton, Pa.
Hurwitz, Paul	315 N. Grove St., Lock Haven, Pa.
Irons, Gail R.	Rixford, Pa.
Isenberg, Charles S.	726 W. Third St., Williamsport, Pa.
Isenberg, Theodore C.	Sproul, Pa.
Jackson, Paul H.	146 Grove St., Johnsonburg, Pa.
Jamison, Richard L.	301 W. Fourth St., Lock Haven, Pa.
Janus, Robert J.	8-A Rox Terrace, McKees Rocks, Pa.
Johnson, Charles T.	Yoe, Pa.
Johnson, Richard E.	895 Bald Eagle St., Lock Haven, Pa.
Johnson, Shirley Dietrich	Hublersburg, Pa.
Johnson, William S.	893 Herr St., Flemington, Pa.
Johnsonbaugh, Janet L.	318 S. Summit St., Lock Haven, Pa.
Johnston, Paul F., Jr.	Kylertown, Pa.
Jones, Gene A.	111 Mill St., Lock Haven, Pa.
Jones, William W.	401 Felty St., Uniontown, Pa.
Jurick, John J.	Lloydell, Pa.
Kaercher, George H.	1255 Mt. Airy Ave., Philadelphia, Pa.
Kanter, Ott B.	508 N. Marker St., Selinsgrove, Pa.
Kaufmann, Joanne R.	25 James Drive, Fairborn, Ohio
Keelan, Suzanne	14 Shady Lane, Johnstown, Pa.
Keenan, Richard K.	315 Reed St., Clearfield, Pa.
Keener, Donald R.	754 W. Fourth St., Williamsport, Pa.
Keiler, LeRoy H.	1231 Walnut St., Jersey Shore, Pa.
Keller, John S.	459 S. High St., Lock Haven, Pa.
Kelly, Edward L.	313 Chestnut St., St. Marys, Pa.
Kephart, Richard L.	Kylertown, Pa.
Kepler, Eugene L.	219 W. Fifth St., Lewistown, Pa.
Kilbert, Patricia A.	325 Shenango Blvd., Farrell, Pa.
Kinch, John W.	135 South Ave., Canton, Pa.
Kissell, G. Robert	R. D. 3, Williamsport, Pa.
Kitzinger, Joseph A.	107 River St., Hollidaysburg, Pa.
Klechner, Lester G.	R. D. 2, Loganton, Pa.
Klepper, Nancy A.	690 Bellefonte Ave., Lock Haven, Pa.
Kline, Yvonne A.	Woolrich, Pa.
Klingler, Robert H.	212 W. Shirley St., Mount Union, Pa.
Kohler, Joseph R.	334 Metz St., Erie, Pa.
Konkol, Edward R.	742 E. Thirteenth St., Erie, Pa.
Kopetan, Richard T.	359 E. Main St., Lock Haven, Pa.

Student Directory

Krider, Sylvia J.	508 Fourth St., Tyrone, Pa.
Krotchko, Michael G.	225 East Ave., Mt. Carmel, Pa.
Kryzwicki, Ann C.	629 E. Main St., Lock Haven, Pa.
Kunes, Charles S.	138 High St., State College, Pa.
Kurtz, Rita J.	404 Loyalsock Ave., Montoursville, Pa.
La Brozzi, Richard E.	Prospect Park, Emporium, Pa.
Ladd, Marilyn L.	250 N. Front St., Sunbury, Pa.
Laird, John N.	1032 Leiper Ave., Eddystone, Pa.
Lamb, Patricia L.	Glasgow, Pa.
Lamont, Orville W.	35 Church St., Port Allegheny, Pa.
Lander, James F.	409 Nichols St., Clearfield, Pa.
Larson, Constance E.	N. Mill St., Ridgway, Pa.
La Rue, Lois E.	R. D. 1, Ashville, Pa.
Laubach, Paul B.	346 E. Bald Eagle St., Lock Haven, Pa.
Lauer, Ann C.	225 W. Ninth St., Renovo, Pa.
Laurito, Frederick D.	817 Fifth St., Patton, Pa.
Lazzaro, Anthony P.	325 W. Second St., Mt. Carmel, Pa.
Le Corre, Nancy L.	Ginter, Pa.
Leeds, William H.	408 York Rd., Abington, Pa.
Lehman, Harry W.	217 Thompson St., Jersey Shore, Pa.
Leitzel, Harold W.	104 N. Fifteenth St., Lewisburg, Pa.
Lentz, Wesley B.	22½ N. Allegheny St., Jersey Shore, Pa.
Letizia, Germain D.	1404 Menoher Blvd., Johnstown, Pa.
Lewis, Carol A.	1717 E. Third St., Williamsport, Pa.
Lingenfelter, George E.	Munson, Pa.
Lippincott, James E.	2250 Reading Ave., West Lawn, Pa.
Locke, Phoebe J.	407 W. Church St., Lock Haven, Pa.
Long, James T.	181 N. Fairview St., Lock Haven, Pa.
Loudenslager, Richard E.	41 E. Bald Eagle St., Lock Haven, Pa.
Loughner, M. Phyllis	R. D. #5, Donhoe Road, Greensburg, Pa.
Lozier, Phyllis M.	Brooklyn Rd., Stanhope, N. J.
Lundy, Robert F.	165 Fifth St., Renovo, Pa.
Lupp, Janice L.	S. Main St., Biglerville, Pa.
Lynn, Emma L.	R. D. 1, Mill Hall, Pa.
McCabe, Norman P.	1219 Sixteenth Ave., Altoona, Pa.
McClain, Catherine R.	Delmont Road, Greensburg, Pa.
McClintock, Georgia E.	321 First Ave., Johnsonburg, Pa.
McCreight, Dean J.	206 Clearfield St., Clearfield, Pa.
McDermott, Robert E.	44 W. Lancaster St., Ardmore, Pa.
McKelvey, Carolyn R.	332 Banger St., Ligonier, Pa.
McKivigan, John J.	Crawford St., Spangler, Pa.
McKolosky, Albert J.	Cairnbrook, Pa.
McMullen, Robert E.	Pike, Milesburg, Pa.
McSherry, Jesse F.	R. D. 1, Lock Haven, Pa.
McSherry, Richard G.	121 E. Main St., Lock Haven, Pa.
Mackie, Edward F.	834 Hepburn St., Williamsport, Pa.
MacNeill, Benjamin B.	28½ E. Main St., Lock Haven, Pa.
Mahaffey, Chester	5 Corning St., Lock Haven, Pa.
Mahoney, James J.	1439 Washington Ave., Altoona, Pa.

Student Directory

Majewski, Eugene R.	715 W. Seventh St., Chester, Pa.
Makuhan, William C.	146 R. Spruce St., Chester, Pa.
Marasa, Doris Lawhead	321 W. Seventh St., Clearfield, Pa.
Markish, John	Hickory, Pa.
Marchhausen, Robert F.	1634 Earlington, Havertown, Pa.
Marshall, George F.	22 Jones St., Lock Haven, Pa.
Marshall, Eileen G.	McClure, Pa.
Martin, Joseph F.	901 Beaver St., Bristol, Pa.
Martz, Pearl E.	153 Pine St., Sunbury, Pa.
Mason, Homer R.	S. Kimberly St., Somerset, Pa.
Matis, Edward E.	1243 Cleveland St., Baltimore, Md.
Mawn, Robert E.	R. D. 1, Emporium, Pa.
May, Joann E.	R. D. 1, Jersey Shore, Pa.
Mayer, Edward G.	R. D. 1, Williamsport, Pa.
Mencer, Glade V.	400 Oak St., Kane, Pa.
Merrell, Katherine A.	Island Route, Lock Haven, Pa.
Meskill, Ruth	Beech Creek, Pa.
Meyer Grace J.	112 S. Second St., Clearfield, Pa.
Michaels, David G.	Beaverdale, Pa.
Midea, Matthew J.	317 Opers Ave., Grove City, Pa.
Miller, Clarence W.	817 Caldwell Ave., Portage, Pa.
Miller, Dale E.	241 Fairview St., Somerset, Pa.
Miller, Janet McGill	Salona, Pa.
Miller, Joan Wood	Monument, Pa.
Miller, Myrlene B.	313 Stock St., Hanover, Pa.
Miller, Robert G.	921 Buchnell Ave., Johnstown, Pa.
Miller, Robert L.	354 Jordan Ave., Montoursville, Pa.
Metro, George	202 S. Franklin St., Pottstown, Pa.
Monos, Augustus	1318 Swatara St., Harrisburg, Pa.
Monoski, Eugene J.	639 Pennsylvania Ave., Renovo, Pa.
Moore, Helen Marks	715 W. Church St., Lock Haven, Pa.
Moore, Paul Fredericks	Mill Hall, Pa.
Moore, Phyllis R.	237 E. Main St., Somerset, Pa.
Moran, John R.	500 S. Fairview St., Lock Haven, Pa.
Morancik, Mildred J.	R. D., Curwensville, Pa.
Morgan, Merna Moon	New Albany, Pa.
Morgan, Robert F.	951 E. Twenty-first St., Erie, Pa.
Morrell, James E.	Bath Rd. and Main St., Bristol, Pa.
Morris, Clyde W.	R. D. 1, Mill Hall, Pa.
Mosteller, Jane E.	467 Curtis St., S. Williamsport, Pa.
Mowery, Sherman M.	638 E. Water St., Lock Haven, Pa.
Moyer, Mary A.	11 Eton St., Lock Haven, Pa.
Moyer, Miller A.	1409 Cemetery St., Jersey Shore, Pa.
Muckle, Harry S.	421 Conrad Ave., Charleroi, Pa.
Mullens, John N.	R. D. 1, Washington, Pa.
Murphy, Donald R.	87 Shoemaker St., Forty Fort, Pa.
Murray, Kermit	240 Ridge St., Bellefonte, Pa.
Myers, Paul W.	931 Cemetery St., Williamsport, Pa.
Nale, Harold B.	Thompstontown, Pa.

Student Directory

Neishloss, Louis I.	1209 Astor St., Norristown, Pa.
Nemish, Stevens	Beccaria, Pa.
Nenninger, E. Jean	Belsano, Pa.
Nimmo, Thomas P.	21-38 Thirty-fifth St., Astoria, N. Y.
Nine, Ronald E.	50 Liberty St., Johnstown, Pa.
Noll, Blaine R.	R. D. 2, Howard, Pa.
Norris, C. Gail	34 W. Main St., Lock Haven, Pa.
North, Harold L.	218 Third St., Lock Haven, Pa.
Nuss, Geraldine W.	264 E. Penn St., Philadelphia, Pa.
Nye, John B.	Riverside Terrace, Lock Haven, Pa.
O'Brien, Philip J.	232 Home Ave., Oil City, Pa.
O'Donnell, James T.	Gleason, Pa.
Oechler, Philip R.	1107 W. Fourth St., Williamsport, Pa.
Ogden, Colleen E.	Clearfield, Pa.
Ohl, Robert C.	726 Bellefonte Ave., Lock Haven, Pa.
Osterhout, Elizabeth J.	700 Fairfax Rd., Drexel Hill, Pa.
Overdorf, Lynn A.	724 Arch St., Williamsport, Pa.
Owens, G. Patricia	12 Fourth St., Philipsburg, Pa.
Parks, Alice A.	328 Walnut St., Curwensville, Pa.
Parks, Raymond F.	895 E. Bald Eagle St., Lock Haven, Pa.
Parson, Janice M.	22 E. Cardott St., Ridgway, Pa.
Parsons, Joan D.	151 Montgomery St., Montgomery, Pa.
Patterson, Mary E.	11 W. Branch Ave., Galeton, Pa.
Paul, Elwood F.	Renovo, Pa.
Pecchia, Joseph A.	Avis, Pa.
Pepperman, Glen G.	517½ Burke St., Jersey Shore, Pa.
Perry, Jacqueline L.	Mill Hall, Pa.
Peters, Donna R.	714 Bellefonte Ave., Lock Haven, Pa.
Peters, Janet L.	302 Main St., Lock Haven, Pa.
Peters, Robert E.	107 Walnut St., Burnham, Pa.
Peterson, Eleanor J.	5 Potter St., Bradford, Pa.
Petriska, Pete	413 Main St., Conemaugh, Pa.
Pflugfelder, Gary E.	North Bend, Pa.
Pifer, Edna L.	Center Hall, Pa.
Pifer, Richard R.	557 W. Church St., Lock Haven, Pa.
Pihakis, George	532 Franklin St., Canonsburg, Pa.
Plastos, John	Church St., Moscow Lake, Pa.
Pleskonko, William F.	1000 E. Presqueisle St., Philipsburg Pa.
Pletcher, Nathan H.	703 Bellefonte Ave., Lock Haven, Pa.
Pletcher, Richard M.	733 Bellefonte Ave., Lock Haven, Pa.
Plummer, Daniel M.	Sidman, Pa.
Poet, Donald R.	R. D. 1, York, Pa.
Potratz, Eleanor M.	320 Maple St., Lock Haven, Pa.
Potts, Elizabeth A.	133 Fourth St., Renovo, Pa.
Poulos, Peggy	723 Presqueisle St., Philipsburg, Pa.

Student Directory

Powers, John A.	Susquehanna Ave., Lock Haven, Pa.
Powlus, Harold W.	R. D. 5, Bloomsburg, Pa.
Powlus, Lorraine L.	R. D. 5, Bloomsburg, Pa.
Preloh, Andrew	Box 94, Patton, Pa.
Price, William G.	218 St. Clair St., Renovo, Pa.
Probst, Lynn S.	R. D. 1, Lock Haven, Pa.
Provard, Gilson J.	R. D. 1, Mount Union, Pa.
Puhl, Dolores E.	Box 3, Sanatoga, Pa.
Rasicci, Mary	209 Irwin Ave., Ridgway, Pa.
Rathgeber, Gerald G.	384 E. Park St., Lock Haven, Pa.
Raynor, Priscilla C.	S. Country Rd., Westhampton, N. Y.
Ream, W. Lawrence	823 Fronheiser St., Johnstown, Pa.
Reed, Gordon E.	Saxton, Pa.
Reed, Theresa T.	Church St., Dudley, Pa.
Feeder, Donna K.	371 E. Park St., Lock Haven, Pa.
Reich, Charles M.	136 E. Market St., Lewistown, Pa.
Reichenbach, Norman L.	848 Sixth St., Sunbury, Pa.
Resetar, John R.	194 Oliver St., Swoyerville, Pa.
Rhodes, Sally V.	Box 332, Mount Union, Pa.
Ridgway, John R.	Box 216, Philipsburg, Pa.
Rigby, D. Jean	316 Wayne St., Hollidaysburg, Pa.
Riggs, Madge T.	Stahlstown, Pa.
Rightmire, James R.	500 E. Walnut St., Lock Haven, Pa.
Rimmey, John L., Jr.	Centre Hall, Pa.
Rimmey, Mary J.	Centre Hall, Pa.
Risser, Julia A.	531 College Ave., Elizabethtown, Pa.
Ritter, J. Garris	227 W. Clinton St., Lock Haven, Pa.
Robbins, James E.	146 Fifth St., Renovo, Pa.
Rollin, Jess E.	406 W. Front St., Clearfield, Pa.
Rosbach, Rex L.	Forkville, Pa.
Roscoe, James S.	103 Arbutus Ave., Johnstown, Pa.
Ross, Larry H.	214 W. Second St., State College, Pa.
Rowles, Gay J.	Olanta, Pa.
Rowles, Gloria R.	Olanta, Pa.
Ryan, Gerald T.	Scranton, Pa.
Savers, George D.	Kreamer, Pa.
Schadle, H. Ferne	520 Twenty-first Ave., Altoona, Pa.
Schaeffer, Elwood J.	114 N. York St., Pottstown, Pa.
Schick, Donald E.	111 S. Fairview St., Lock Haven, Pa.
Schiele, Donald L.	126 Chestnut St., Lewistown, Pa.
Schmid, Harriet Hastings	115 Walnut St., Johnstown, Pa.
Schnee, Roger H.	218 W. Fifth St., Emporium, Pa.
Schoepf, George A.	406 High St., Williamsport, Pa.
Schramm, Eugene J.	334 E. Fourth St., Williamsport, Pa.

Student Directory

Schultz, Michael W.	Karhaus, Pa.
Schwartz, Sandra J.	504 Colfax Ave., Scranton, Pa.
Schwer, William E.	220 Smith St., Jersey Shore, Pa.
Scordo, Dominic R.	2212 Columbia Ave., Tyrone, Pa.
Sechler, Crawford A.	105 Clinton St., Lock Haven, Pa.
Seitzer, Fremont P.	305 Washington Blvd., Williamsport, Pa.
Sellers, Shirley G.	623 Spruce St., Philipsburg, Pa.
Shaffer, Jack E.	North Bend, Pa.
Shaffer, Kenneth	North Bend, Pa.
Shalonis, Bernard A.	30 S. Spruce St., Mt. Carmel, Pa.
Shaw, Richard D.	106 Williams St., Clearfield, Pa.
Shearer, Grace L.	220 Amy Ave., Butler, Pa.
Sheetz, Shirley I.	119 E. Pine St., Selinsgrove, Pa.
Shields, Helen S.	R. D. 1, Mount Union, Pa.
ShIPLEY, Donna Lansberry	20 High St., Woodland, Pa.
Shirk, Esther M.	Richfield, Pa.
Shirk, Joseph P.	246 W. Fifth St., Lewistown, Pa.
Shive, Mary L.	Snow Shoe, Pa.
Shoff, Beverly L.	241 E. Market St., Clearfield, Pa.
Shoop, Nellie F.	Mapleton Depot, Pa.
Shope, Mary J.	411 Nichols St., Clearfield, Pa.
Sirak, Michael J.	Box 313, Dunlo, Pa.
Skean, Sandra R.	143 Beech St., Pottstown, Pa.
Slopey, Donald P.	8 Girard St., Mill Hall, Pa.
Smathers, John M.	327 Wood St., Clarion, Pa.
Smith, George A.	337 W. Bald Eagle St., Lock Haven, Pa.
Smith, George E.	606 Jones St., Hollidaysburg, Pa.
Smith, Gwendolyn A.	R. D. 4, Muncy, Pa.
Smith, Harry E.	317 Susquehanna Ave., Lock Haven, Pa.
Smith, Kenneth C., Jr.	128 First St., Altoona, Pa.
Smith, Richard H.	Port Matilda, Pa.
Snyder, William A.	805 Allegheny St., Jersey Shore, Pa.
Snyder, William D.	139 E. Church St., Lock Haven, Pa.
Snyder, Wilson D.	Richfield, Pa.
Spisak, Richard A.	504 Fair Oaks St., Ricks, Pa.
Springer, James A.	176 S. Main St., Hughesville, Pa.
Sprock, Carl A.	Statler St., Central City, Pa.
Stackhouse, Dorothy M.	653 New Buckley St., Bristol, Pa.
Stabley, James L.	20 S. Water St., Mill Hall, Pa.
Steinmetz, Robert N.	1703 W. Sixth St., Erie, Pa.
Stephenson, Sara J.	165 Race St., Clearfield, Pa.
Stetson, Philip D.	204 S. Fairview St., Lock Haven, Pa.
Sticinski, Leo A.	37 Sidney St., Swoyerville, Pa.
Stine, Marian L.	614 W. Fourth St., Lewistown, Pa.
Stiner, Raymond G.	242 Fifth St., Renovo, Pa.
Stoker, Katherine I.	Box 187, Lloydell, Pa.

Student Directory

Stone, Daryl R.	Box 45, Hyner, Pa.
Stover, Donald H.	Mill Hall, Pa.
Stover, Earl	Aaronsburg, Pa.
Stover, Jane M.	214½ E. Water St., Lock Haven, Pa.
Stover, Shirley M.	220 Church St., Sheffield, Pa.
Stravolo, Michael J.	604½ Valley St., Lewistown, Pa.
Stromberg, Robert P.	85 Katherine St., Port Allegheny, Pa.
Suereth, Eugene S.	112 N. Grove St., York, Pa.
Sullivan, Virginia I.	2332 Derry St., Harrisburg, Pa.
Summerson, Lee M.	1749 Memorial Ave., Williamsport, Pa.
Sundstrom, Norman A.	19 Beech St., Pottstown, Pa.
Supenia, Barbara R.	Houtzdale, Pa.
Swanson, James N.	54 W. Corydon St., Bradford, Pa.
Swartz, Edna P.	R. D. 1, Montgomery, Pa.
Swope, Alfred W.	R. D. 1, Lock Haven, Pa.
Sybert, James H.	Westover, Pa.
Sybert, William H.	Westover, Pa.
Tasillo, Lawrence E.	400 Bank St., Coudersport, Pa.
Tettis, John C.	143 N. Broad St., Ridgway, Pa.
Thomas, Alfred K.	48 W. Main St., Lock Haven, Pa.
Thomas, Hoxie H.	121 W. Southern Ave., S. Williamsport, Pa.
Thompson, Andrew M.	R. D. 1, Hollidaysburg, Pa.
Thorson, Albert R., Jr.	377 E. Church St., Lock Haven, Pa.
Tidlow, John M.	317 N. Fairview St., Lock Haven, Pa.
Tirpak, Veronica D.	628 Lang Ave., Patton, Pa.
Tishock, Mary I.	Smoke Run, Pa.
Tomaszewski, Edward J.	P. O. Box 127, Central City, Pa.
Traficante, Phyllis M.	229 Cavitt Ave., Trafford, Pa.
Trevarrow, Joseph W.	3248 Riedmont Ave., Dormont, Pa.
Trexler, Richard T.	Avis, Pa.
Tubbs, Alan L.	75 Second St., Lock Haven, Pa.
Turley, Donald R.	629 Pontzer Ave., St. Marys, Pa.
Turnbull, John U.	211 Summit Ave., Ligonier, Pa.
Turner, Paul F.	West Decatur, Pa.
Tutokie, Joseph F.	Hawk Run, Pa.
Tuttle, Helen V.	Benezett, Pa.
Ullein, Victor G.	1714 Fifth Ave., Altoona, Pa.
Vail, Samuel J.	106 Lingle St., Osceola Mills, Pa.
Vance, William I.	Tylerville, Pa.
Vannauker, Jacque M.	115 Maple St., Jersey Shore, Pa.
Vaughn, Franklin H.	R. D. 2, Eldred, Pa.
Verostek, Francis J.	1413 Front St., Ridgway, Pa.
Vogle, Alta M.	925 Clara St., Houtzdale, Pa.
Vogt, Bernard H.	Spring Mills, Pa.
Voidak, Albert J.	509 Caliman Ave., Johnstown, Pa.
Von Lunen, Harriet Hooper	445 Belmont St., Johnstown, Pa.

Student Directory

Vulcano, Frank L.	107 S. Main St., Huston, Pa.
Wagenseller, Bruce S.	408 Orange St., Selinsgrove, Pa.
Waite, Joanna	502 Washington Ave., Jersey Shore, Pa.
Walker, Fred K.	38 N. Fairview St., Lock Haven, Pa.
Walter, Charles B.	Tioga, Pa.
Wantz, Patricia A.	370 Percy St., S. Williamsport, Pa.
Warren, Ronald S.	1227 Walnut St., Jersey Shore, Pa.
Waslick, Robert P.	160 Main St., Luzerne, Pa.
Watkins, Richard P.	Riddlesburg, Pa.
Watson, Blanchard P.	R. D. 3, Bellefonte, Pa.
Weaver, Robert C.	210 Brimmer Ave., New Holland, Pa.
Weaver, William F.	20 Prospect St., Lock Haven, Pa.
Webster, Robert A.	424 E. Water St., Hughesville, Pa.
Weidner, Clyde W.	Rear 345 E. Church St., Lock Haven, Pa.
Weight, Gerald	R. D. 1, Box 413, Hollidaysburg, Pa.
Weil, Donald S.	511 Burnham Rd., Philadelphia, Pa.
Weinberg, Joanne L.	222 Apsley St., Germantown, Pa.
Weisel, Harry M.	1321 W. Central Ave., S. Williamsport, Pa.
Werts, Raymond M.	1002 Huron Ave., Renovo, Pa.
Wertz, Harold I.	R. D. 1, McVeytown, Pa.
Wertz, Thomas L.	Winburne, Pa.
Wharry, K. Eileen	512 Washington Ave., Downingtown, Pa.
Wildeman, George F.	821 Philadelphia Ave., Barnesboro, Pa.
Wilking, Joseph G.	132 Fourteenth St., Renovo, Pa.
Wilkins, Donald E.	Dalmatia, Pa.
Williams, Donald H.	First St., Eldred, Pa.
Williams, Everett S.	3-B Blair Hts., Clairton, Pa.
Williams Marcia B.	920 Eliza St., Houtzdale, Pa.
Williams, Ruth G.	725 E. Penn St., New Bethlehem, Pa.
Wilson, Ann G.	1226 Graham Ave., Windber, Pa.
Wink, Charles F.	1060 W. Third St., Lock Haven, Pa.
Winter, Jean M.	914 Louisa St., Williamsport, Pa.
Wise, William L.	R. D. 1, Lock Haven, Pa.
Wolfe, Anna Spangler	Main St., Blanchard, Pa.
Worcester, Pierce H.	208 Herr St., Harrisburg, Pa.
Yarger, Charles L.	R. D. 1, Houtzdale, Pa.
Yohn, George E.	Box 620, R. D. 1, Altoona, Pa.
Young, Barbara M.	171 S. Water St., Bellefonte, Pa.
Young, William	231 Terrace Blvd, Lewistown, Pa.
Yurchak, Metro Jr.	115 Spruce St., Nesquehoning, Pa.
Zakem, George	R. D. 2, Altoona, Pa.
Zeigler, James A.	142 Valley St., Lewistown, Pa.
Zepp, Donald C.	627 Frederick St., Hanover, Pa.
Zettle, Maurice L.	187 N. Fairview St., Lock Haven, Pa.
Zilch, Donald K.	Fort Littleton, Pa.
Zinzarella, Reno M.	32 Poplar St., Mt. Carmel, Pa.
Zoppa, Jeanne	551 Hershberger Rd., Johnstown, Pa.

Autographs