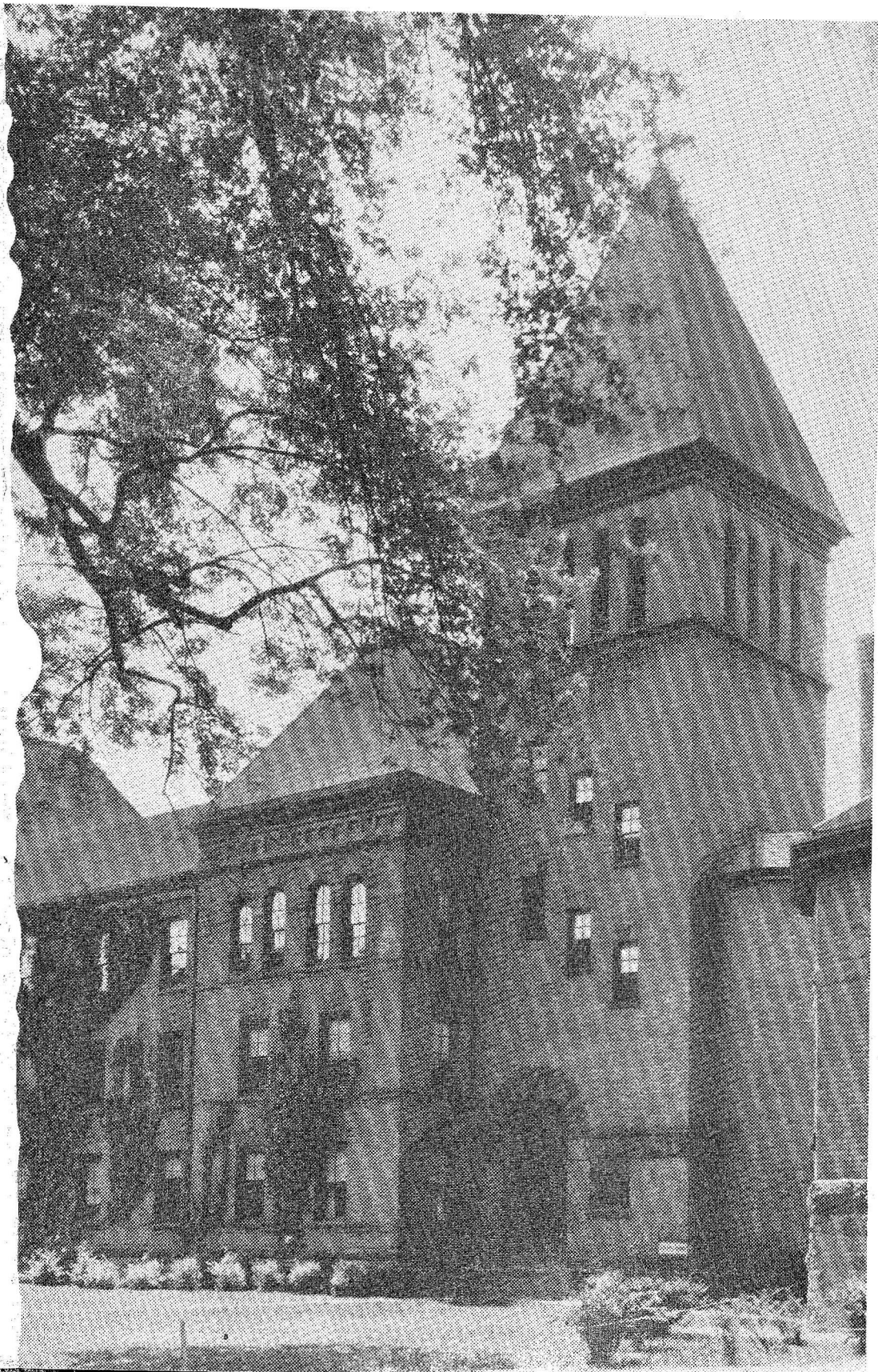




PRABHU

1947

1947



P
R
A
E
C
C
O

Published by the
PRAECO staff of 1947

EDITOR — JOSEPHINE ANNE PAOLO

BUSINESS MANAGER — ROBERT CURRIN

Lock Haven State Teachers College

DEDICATED TO SAMUEL S. SMITH

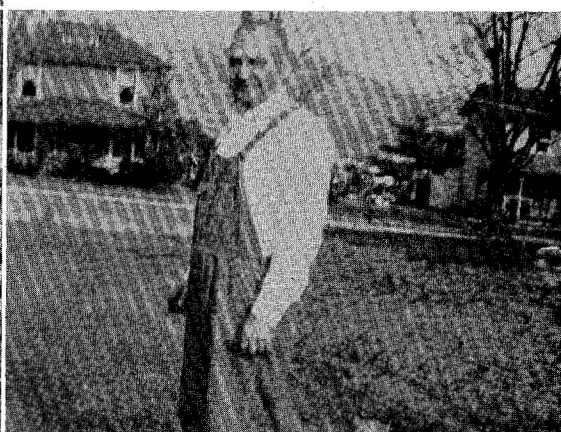


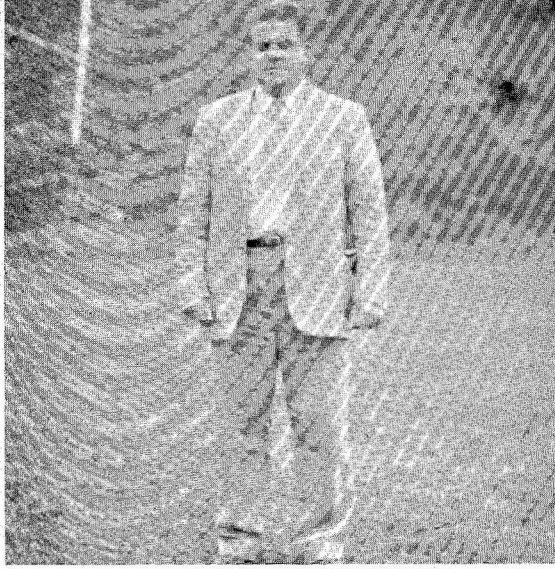
SAMUEL S. SMITH

DEDICATION

The Class of 1947 wishes to dedicate the *PRAEKO* to Samuel S. Smith who has been a member of the faculty for a number of years.

With cooperative spirit he never hesitates to share personal problems in the solution of the students or in other problems pertaining to college life. The Class of 1947 is certain that other classes will find in him salient traits of amiability and cooperation inspiring to everyone.

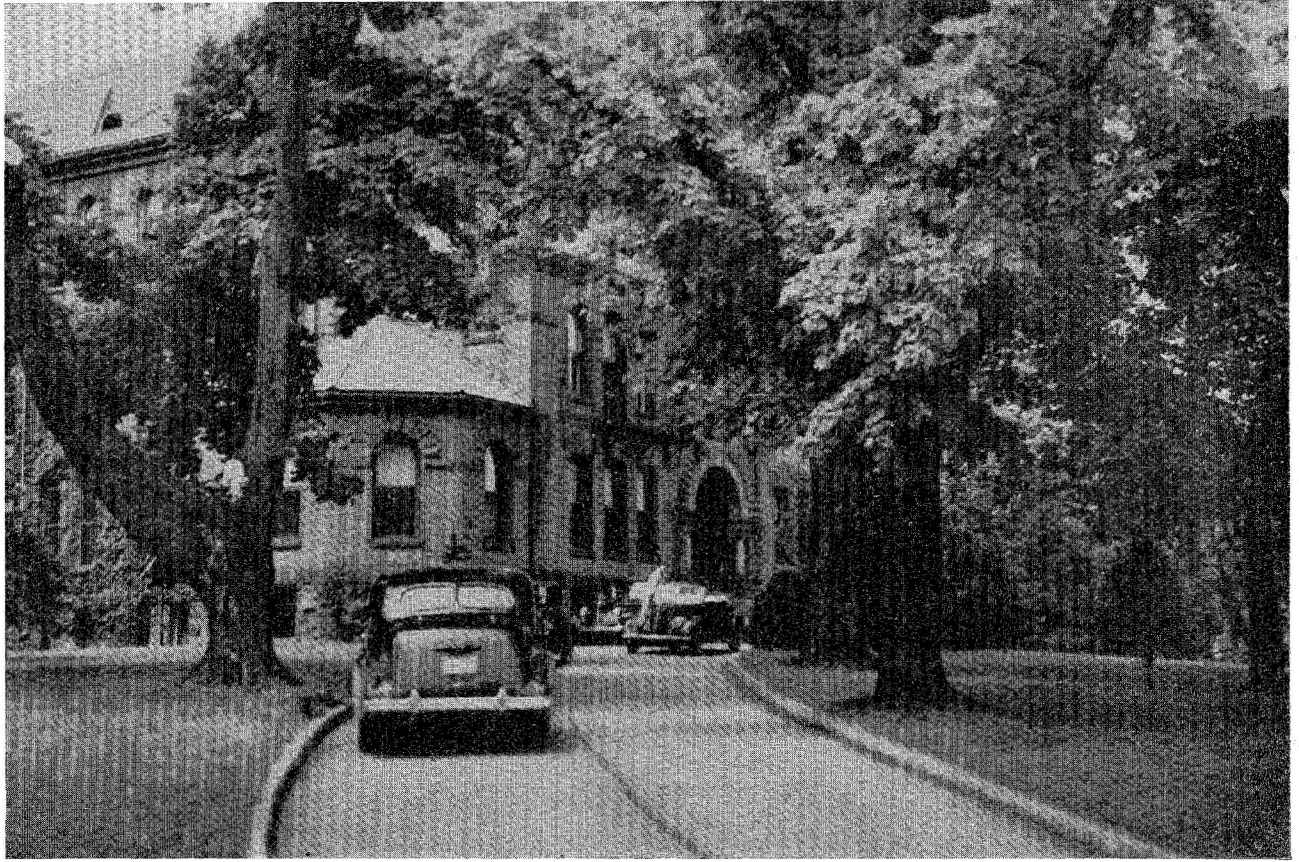




CONTENTS

This PRAECO holds many memories for the graduating class of 1947. Its cooperation from the Faculty, the congenial classmates, sociability of the organizations, and its victories and defeats in sports.





Administration

BOARD OF TRUSTEES

DR. FRANCIS B. HAAS, Harrisburg, Pennsylvania

DR. DAVID THOMAS, Lock Haven, Pennsylvania

MR. A. P. AKELEY, Coudersport, Pennsylvania

MRS. F. E. McENTIRE, Lock Haven, Pennsylvania

MR. GEORGE F. HESS, Beech Creek, Pennsylvania

MR. SCOTT R. McKEAN,
Williamsport, Pennsylvania

MR. HAROLD D. WOOLRIDGE,
Clearfield, Pennsylvania



PRESIDENT DR. R. T. PARSONS



DEAN OF INSTRUCTION

CORNELIUS M. SULLIVAN, M. S.
B. S., Columbia University
M. S., Pennsylvania State College

DIRECTOR OF PERSONNEL

DEAN OF WOMEN

JANE WARTERS, ED. D.
A. B., Shorter College
A. M., Tulane University
Ed. D., Columbia University





DEBORAH BENTLEY
Dietitian



EDNA BOTTORF, Ed. D.
Art
B.S., Pennsylvania State College
A.M., Pennsylvania State College
Ed.D., Pennsylvania State
College



RUTH R. BROSIUS, A. B.
Librarian
B.S., Carnegie Institute of
Technology
A.B., University of Pittsburgh
College

CHARLES COXE, Ed. D.
Social Studies
Ph.B., Lafayette College
A.M., Harvard University
Ed.M., Harvard University
Ed.D., Pennsylvania State
College

WILLETTA B. CUMMINGS, M.A.
English
B.S., State Teachers College,
Lock Haven
M.A., Duke University
Graduate Study, Columbia Uni-
versity

RUTH G. CURTIS, M. S.
Speech
B.S., State Teachers College,
Lock Haven
M.S., Northwestern University
Graduate Study, Northwestern
University





IRA O. FLEMING, M. S.
Biological Science
 B.S., Allegheny College
 M.S., Allegheny College
 Graduate Study, University of
 Pittsburgh, The Pennsylvania
 State College

LAWRENCE F. FOUNTAIN, Ph. D.
Geography
 B.S., Syracuse University
 M.S., Syracuse University
 Ph. D., Clark University

MAX H. FROM, M. A.
Biological Science
 B.S., University of Pittsburgh
 M.A., Columbia University
 Graduate Study, Pennsylvania
 State College

NORA M. GRAFFIUS, M. Ed.
Supervisor of Primary Grades
 B.S., Pennsylvania State College
 M.Ed., Pennsylvania State
 College
 Graduate Study, University of
 Pittsburgh, Teachers Col-
 lege, Columbia University

LYDIA E. GROSS, M. A.
 B.S., State Teachers College,
 Lock Haven
 M.A., Teachers College, Colum-
 bia University

EDWARD B. HILLS, A. M.
 B.A., Wesleyan University
 A.M., Harvard University
 Graduate Study, University of
 Illinois





ALBERT R. HOBBA, A. M.
Social Studies
 B.S., State Teachers College,
 Lock Haven
 A.M., Teachers College, Colum-
 bia University
 Graduate Study, Columbia Uni-
 versity



RUTH M. HOLMES, A. M.
Supervisor of Elementary Grades
 B.S., State Teachers College,
 Lock Haven
 A.M., Teachers College, Colum-
 bia University



LEWIS E. HUTTO, Ph. D.
Health and Physical Education
 B.S., Kansas State College
 B.P.E., Springfield College
 M.A., Teachers College, Colum-
 bia University
 Ph.D., Teachers College, Colum-
 bia University

HUBERT H. JACK, M. A.
Health and Physical Education
 B.S., State Teachers College,
 Slippery Rock
 M.A., University of Pittsburgh
 Dean of Men

JOHN F. KOONS, M. A.
Foreign Language
 A.B., Gettysburg College
 M.A., University of Mexico

GEORGE F. B. LEHMAN, A. M.
Social Studies
 A.B., Bucknell University
 A.M., Bucknell University





R. STEWART MACDOUGALL, A.M.
Education, Director of Integration and Research
A.B., State Teachers College, Ypsilanti, Michigan
A.M., Teachers College, Columbia University
Graduate Study, Pennsylvania State College

DOROTHY W. LYNDS, M. A.
Speech
B.S., State Teachers College, Buffalo
M.A., Northwestern University

CAREY E. MARCH, M. A.
Physical Science
B.S., Allegheny College
M.A., Allegheny College
Graduate Study, Western Reserve, Pennsylvania State College

MARGARET MERCER, Ph. D.
Director Psycho-Educational Service
A.B., M.S., Pennsylvania State College
Ph.D., Pennsylvania State College

KENNETH D. MILLER, M. S.
Health and Physical Education
B.P.E., University of Oregon
M.S., University of Oregon
Graduate Study, University of Michigan

WILLIAM R. NORTH, Ph. D.
English
A.B., Syracuse University
A.M., American University
Ph.D., University of Pennsylvania
Graduate Study, University of Edinburgh





ALLEN D. PATTERSON, Ph. D.
Director of Teacher Education
 A.B., Grove City College
 A.M., Teachers College, Columbia University
 Ph.D., Ohio State University



HENRY D. PATTERSON, A. M.
English
 A.B., Harvard College
 A.M., University of Michigan

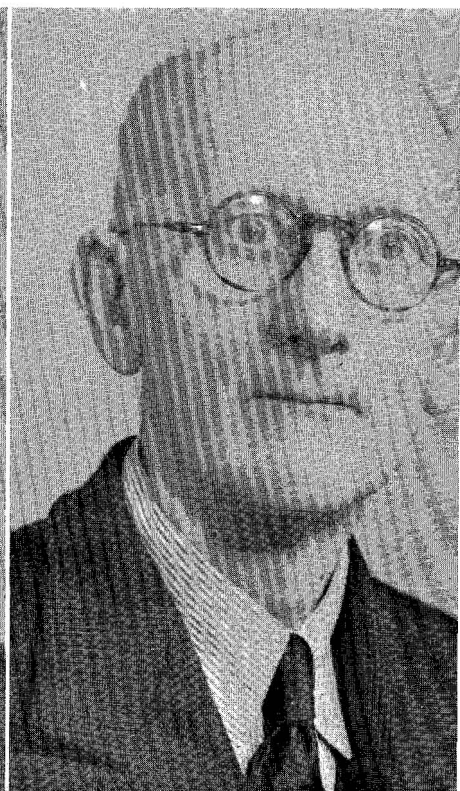
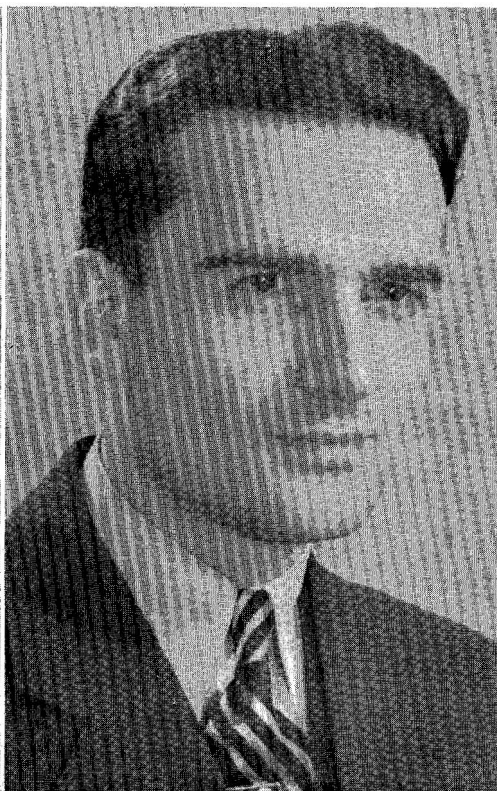


MABEL V. PHILLIPS, A. M.
Supervisor of Primary Grades
 A.B., Indiana University
 A.M., Teachers College, Columbia University
 Graduate Study, University of Chicago, University of Minnesota, Pennsylvania State College

COPHINE ROOK, M. S.
Supervisor of Primary Grades, Education
 B.S., State Teachers College, Kirksville, Mo.
 M.S., University of Iowa
 Graduate Study, University of Minnesota

W. VALGENE ROUTCH, M. M.
Music
 B.S., State Teachers College, Indiana
 M.M., University of Michigan

A. S. RUDE, Ph. D.
Psychology and Education
 A.B., University of N. Dakota
 A.M., Teachers College, Columbia University
 Ph.D., New York University





ERNEST I. SCHROT, M. Ed.
Aeronautics Education
B.S., Pennsylvania State College
M.Ed., University of Pittsburgh

F. LARK SKELLEY, D. Ed.
Science
A.B., Dickinson College
M.Ed., Pennsylvania State
College
D.Ed., Pennsylvania State
College

CHARLOTTE E. SMITH, M. A.
Health and Physical Education
B.S., New York University
M.A., New York University
Graduate Study, Teachers Col-
lege, Columbia University

SAMUEL J. SMITH, A. M.
Mathematics
Ph.B., Bucknell University
A.M., University of Pittsburgh
Graduate Study, University of
Chicago, Pennsylvania State
College

LORRAINE J. SPIKINGS, M. A.
Health and Physical Education
B.E., Northern Illinois State
Teachers College
M.A., Northwestern University

BEATRICE E. STEPP, M. A.
*Supervisor of Primary Grades,
Education*
A.B., University of Denver
M.A., Teachers College, Colum-
bia University





WILLIAM A. THOMAS, A. M.
English
B.S., University of Pennsylvania
A.M., University of Pennsylvania



GRACE E. ULLEMEYER, M. S.
Public School Music
B.M.E., Northwestern University
M.S., Northwestern University
Graduate Study, Augustana College, Grinnell College, University of Wisconsin



DAVID C. ULMER, M. S.
Biological Science
B.S., Bucknell University
M.S., Cornell University
Graduate Study, Pennsylvania State College

CHARLES W. VONADA, M. Ed.
Principal of Laboratory School
B.S., Lock Haven State Teachers College
M.Ed., Pennsylvania State College

M. GRACE WIBLE, M. Ed.
Art
B.S., Pennsylvania State College
M.Ed., Pennsylvania State College

W. HOWARD YOST, M. Ed.
Health and Physical Education
B.P.E., Springfield College
A.B., Western Reserve University
M.Ed., Temple University





LESTER P. ZIMMERMAN, M. Ed.
Health and Physical Education
 B.S., East Stroudsburg State
 Teachers College
 M.Ed., Pennsylvania State Col-
 lege
 Graduate Study, Washington &
 Lee University



ELIZABETH ZIMMERLI, D. Ed.
Health and Physical Education
 B.S., Boston University
 M.A., New York University
 D.Ed., Stanford University

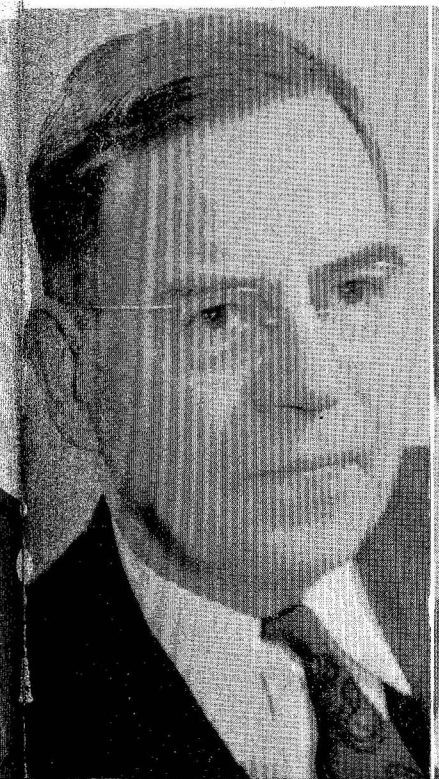


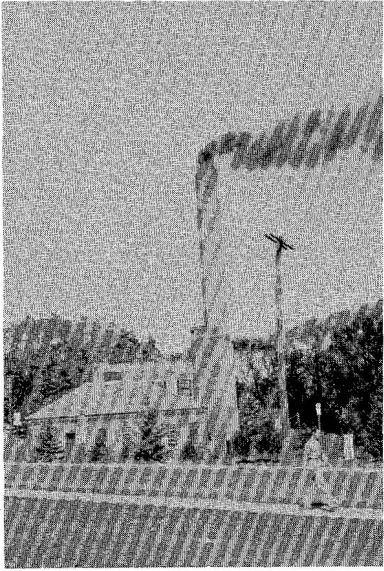
KATHERINE A. GLENNON, R. N.
Nurse and Household Director

T. W. HUNT
Non-Instructional Staff
 Bursar

ETHEL SLOTEMAN
Non-Instructional Staff
 Secretary to Director of Training

ROBERTA SELTZER
Non-Instructional Staff
 Registrar

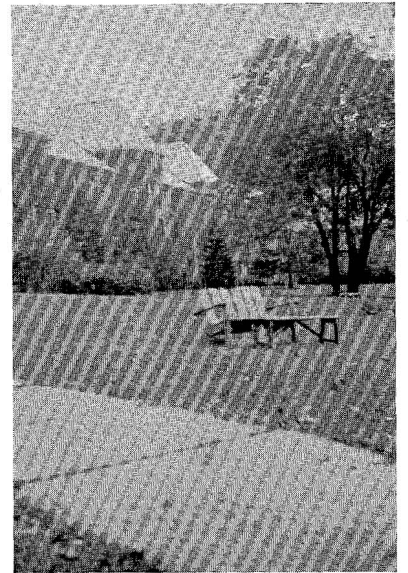




POWER HOUSE



THE CABIN



THE BENCH



Classes

SENIOR CLASS

MR. CAREY MARCH
Class Adviser



Looking backward at the past four years, we have known two distinct phases, two vastly different kinds of college life. Our first two years at Lock Haven were war years. There were constant depletions and additions to our membership. We saw our boys leave day by day to serve their country; several of our girls chose to wear their country's uniform; a small group went out to teach on emergency certificates to help supply the overwhelming demand for teachers. Over fifty per cent of our class spent from four to nine hours a day working in a defense plant in addition to their college work. True, many doubting Thomases looked skeptically upon our combined work-study program here at Lock Haven. After the first year we proved ourselves ready and capable to adjust to and handle the arising emergency. We were extremely proud of our men and women enlisted in the armed forces all over the world. We were proud too of the small yet important part we at home were able to play toward winning a lasting peace for our country and all mankind.

The war having ended, we returned in the fall of 1945 to begin our Junior year with a new optimism, a new enthusiasm, and a new hope. Our boys were coming back! We could now look forward to a normal college life. Our halls no longer looked desolate and deserted, our classes were returning to their normal size, there was the customary noise and chatter in our dining room, rendezvous at the C. C., formal dinners, and dances, concerts, teas, yes, and we were to have a football team!—the pride and joy of any campus. We were at last enjoying the kind of campus life that we had dreamed of and hoped for.

Time is fleeting and it was hard to believe that we were Seniors. Under the skillful direction of our loyal and efficient president, Jesse Lyon, we became the most active class on campus. Our last year was highlighted by many enjoyable social functions and climaxed by our Senior Banquet and Ball at the Country Club.

WE, the Seniors of 1947, are leaving our beloved Alma Mater to step out into a vast new world—a new world finding itself in the infant stages of a great atomic age. All that it holds must be a great challenge to us as future teachers of the youth of America.



JESSE W. LYON, *President*
Lock Haven, Pa.
Secondary, B.S.



CAROLINE FRANCES DIACK,
Vice President
Lock Haven, Pa.
Elementary, B. S.



MARION ETHEL KRATZER,
Secretary
Richfield, Pa.
Secondary, B.S.

Senior Class Officers

JOHN PAUL SOLENSKY,
Treasurer
Houtzdale, Pa.
Elementary, B.S.

MARJORIE E. BOSSERT,
Student Council Representative
Avis, Pa.
Health Education

CLAIR WILLIAM YOUNG,
Student Council Representative
Lewisburg, Pa.
Health Education





FRANK ANTONELLI, B.S.
Kane, Pa.
Secondary



GENEVIEVE CHRISTINA ARSENIU, B.S.
Lewistown, Pa.
Elementary



GEORGE W. BARNES, B.S.
Williamsport, Pa.
Health Education

Class of 1947

MINNIE BELT BARNES, B.S.
Mahaffey, Pa.
Secondary

RICHARD BARNHART, B.S.
Mt. Jewett, Pa.
Secondary

TESSIE LORAIN BARTGES, B.S.
Millheim, Pa.
Elementary





VIRGINIA BAUGER, B.S.
Aspers, Pa.
Health Education



WILLIAM B. BECK, B.S.
Renovo, Pa.
Health Education



RUTH VIOLET BECKENBAUGH, B.S.
Lock Haven, Pa.
Elementary

Class of 1947

JOSEPH BERNAS, B.S.
Mt. Carmel, Pa.
Secondary

GERALD BLOOM, B.S.
DuBois, Pa.
Secondary

PATRICIA BODLE, B.S.
Lock Haven, Pa.
Secondary





FILIMENA BONFILIO, B.S.
Kane, Pa.
Health Education



MARY LOUISE BOSSERT, B.S.
Avis, Pa.
Secondary



DEAN BOTTORF, B.S.
Lock Haven, Pa.
Secondary

Class of 1947

CAROLYN I. CARPENTER, B.S.
LaPorte, Pa.
Health Education

RANDALL JACOB CLEES, B.S.
Montoursville, Pa.
Health Education

ROBERT K. CURRIN, B.S.
Loganton, Pa.
Secondary





SALLY DAVIS, B.S.
Patton, Pa.
Secondary



ARTHUR DOLAN, B.S.
Howard, Pa.
Secondary



MARY DRICK, B.S.
Muncy, Pa.
Health Education

Class of 1947

EVELYN W. ELLZEY, B.S.
Jersey Shore, Pa.
Secondary

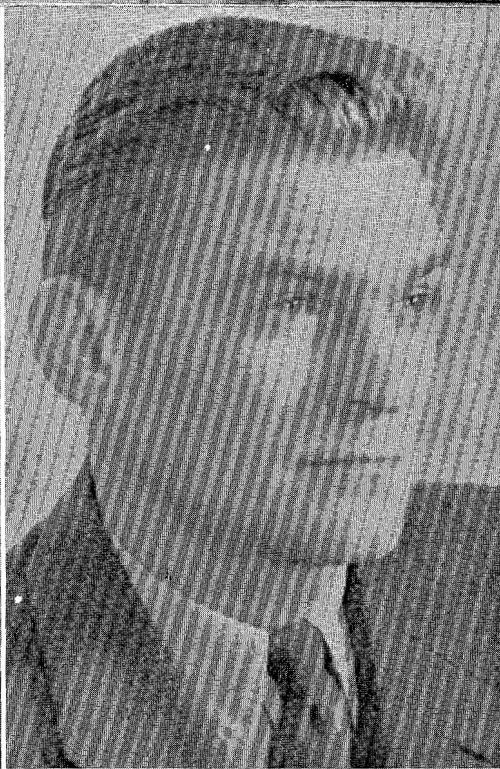
JAMES RUSSELL GABEL, B.S.
Mill Hall, Pa.
Secondary

WILLIAM GRAFFIUS, B.S.
State College, Pa.
Health Education





JAMES EDWARD HARTLE, B.S.
Drifting, Pa.
Secondary



STEVE HEINRICH, B.S.
Seanor, Pa.
Health Education



SARA DOROTHY HESTON, B.S.
Avoca, Pa.
Secondary

Class of 1947

ETHEL M. JOHNSON, B.S.
Mt. Jewett, Pa.
Secondary

RUSSELL JUDD, B.S.
Flemington, Pa.
Secondary

FRANCES KILSDONK, B.S.
Lock Haven, Pa.
Health Education





MARY C. HAMMER, B.S.
Boswell, Pa.
Elementary



LEO HERZOG, B.S.
Smethport, Pa.
Secondary



EDNA KNIFFIN, B.S.
Canton, Pa.
Elementary

Class of 1947

GWENDOLYN G. KEPHART, B.S.
Philipsburg, Pa.
Secondary

FRANK STEPHEN LOVICH, B.S.
Fayette City, Pa.
Health Education

JEANNE CLAIRE MCCLOSKEY, B.S.
Lock Haven, Pa.
Secondary





EDITH MARIE MACTLEY, B.S.
Windber, Pa.
Health Education



MARGARET ANN MACLAY, B.S.
Philipsburg, Pa.
Secondary



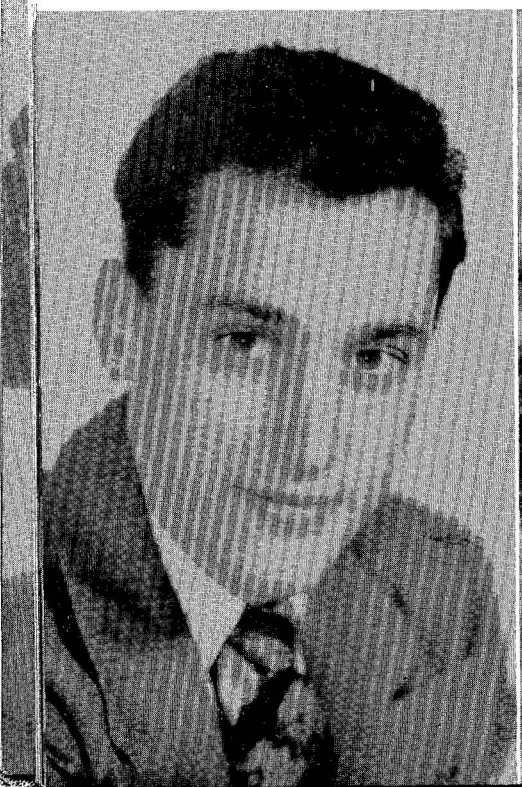
RACHEL O. MARKLEY, B.S.
Williamsport, Pa.
Elementary

Class of 1947

ROBERT LEE MARKS, B.S.
Jersey Shore, Pa.
Secondary

FRANCES M. MOSSER, B.S.
Hyner, Pa.
Elementary

MARIAN ALMA NIEMOND, B.S.
Cocolamus, Pa.
Elementary





JAMES ELMER PEET, B.S.
Proctor, Pa.
Secondary



GERALDINE ANNA PETRUCCI, B.S.
Lock Haven, Pa.
Secondary



FRANK FLETCHER, B.S.
Beech Creek, Pa.
Secondary

Class of 1947

HELENE HOFFMAN PORTER, B.S.
Montrose, Pa.
Health Education

ELSIE R. PRESTON, B.S.
Snow Shoe, Pa.
Elementary

JEAN REED, B.S.
Reynoldsville, Pa.
Elementary





BARBARA ANNE REESE, B.S.
Karthus, Pa.
Elementary



HENRY RYAN, B.S.
Lock Haven, Pa.
Secondary



FRANCES JUNE SLENKER, B.S.
Lock Haven, Pa.
Health Education

Class of 1947

CHARLENE SOLT, B.S.
South Williamsport, Pa.
Elementary

VIRGINIA K. SPEAKER, B.S.
Brookville, Pa.
Secondary

DANIEL C. STANLEY, B.S.
Jersey Shore, Pa.
Secondary





MARY KATHRYN STERN, B.S.
Mill Hall, Pa.
Secondary

MARGARET ANN SWOPE, B.S.
Lock Haven, Pa.
Elementary

ANDREW TOCIMAK, B.S.
Philipsburg, Pa.
Elementary

Class of 1947

JESSE VANSTEIN, B.S.
Clearville, Pa.
Secondary

ROBERT EBERSOLE WILLIAMS, B.S.
Lock Haven, Pa.
Secondary

BETTY JUNE WITT, B.S.
Lock Haven, Pa.
Elementary





JOSEPH ALFRED ERRIGO, B.S.
Curwensville, Pa.
Secondary

SENIORS WITHOUT PHOTOGRAPHS

RAYMOND RATHMELL, B.S.

Renovo, Pa.

Secondary

GERALD SOLENSKY, B.S.

Houtzdale, Pa.

Elementary



JUNIORS

Class Advisor
IRA O. FLEMING

CLASS OFFICERS



Seated: Left to right—M. Gardner, R. Kahler, G. Bauman, B. Coates.
Standing: D. Barnhart and J. Wyand.



First row, left to right: J. Schuyler, B. Coates, M. Haduck, B. Hanka, E. Hardy, M. Stabler, H. King. Second row: Adviser I. Fleming, G. Bauman, M. Yerkes, A. Reighard, C. Lowros, B. Peters, P. Houcke, B. Thompson, L. Harnish. Third row: D. Barnhart, J. Wyland, M. Snyder, R. Kahler, E. Royer, H. Baierowski, A. Curran, J. Hutchings, J. Paolo, N. Zimmerman. Fourth row: K. Cook, J. Cummings, L. Conser, M. Gardner, R. Golebiewski, J. Ankst, G. Wagner, C. Banghart, M. Curran. Fifth row: D. Montessor, B. Lorigan, A. Monson, B. Sentelik, H. Johnson, M. Flangan. Sixth row: J. McNulty, B. Brown, A. Shaner, P. Coront.

JUNIORS

As Juniors, we have experienced a great many new things. For many of us, our closest friends appear to be our pitch pipes and crayons. Others have been concentrating on the finer things in life, gymnastics and folk dancing. All in all we can't do too much complaining, as we've had a happy year.

Our biggest event of the year was sponsoring the spring formal or "Junior Prom." It was made a great success by the many newcomers on our campus.

As in our sophomore year, we were troubled with keeping our class president because our president, Arden Monson became a senior in January; therefore, Gloria Bauman, our former vice-president, became president and David Barnhart was elected vice-president.

This year has gone by very swiftly. Before long we'll be seniors and worrying about our student teaching. It seems only yesterday that we were freshmen and were bowing low and mumbling "Allah" to our upper-classmen.

The officers are:

<i>President</i>	Gloria Bauman
<i>Vice-President</i>	David Barnhart
<i>Secretary</i>	Ruth Kahler
<i>Treasurer</i>	Mary Agnes Gardner
<i>Student Council Representatives</i>	John Wyland, Barbara Coates



SOPHOMORES

Class Advisor
SAMUEL J. SMITH

CLASS OFFICERS



First row: Left to right—J. Bower, L. Schaub, B. Gottshall.
Second row: J. Rogers and W. Kay.



First row, left to right: Adviser, S. Smith, M. Zettle, B. Cutes, J. Furst, A. Furst, V. Gunsallus, H. Day, J. Dietrick, O. Currin. Second row: J. Remick, M. Cook, E. Young, J. Brown, B. Parker, M. Stevenson, G. Hollenbeck, B. McGhee. Third row: S. Gottshall, L. Leitzel, E. Cartwright, E. Retus, L. Ferlitch, M. Freeman, A. Hudson, K. Johnson, J. Murphy. Fourth row: L. Luchetta, J. Hintenlang, I. Charlton, S. Kline, J. Bowman, L. Stearns, B. Gardner, I. Bailey, J. Yon, B. Gottshall, J. Bower. Fifth row: B. Booth, T. Galitski, L. Schaub, B. Grand, L. Hinchcliffe, D. Stroble, P. Dale, A. Barnes, P. Fury, T. Bowers, M. Darron, G. Teufel. Sixth row: A. Lavanche, J. Johnson, C. Burkett, R. Doyle, J. Platko, G. Mitro, A. Vargo, R. Moyer, M. Phillips, S. Dickey, J. Hutynan. Seventh row: J. Nevins, R. Weaver, F. Hartzell, R. Moyle, W. Long, H. Cowell, M. Flegal, R. Smawley, P. Jones, J. Quiggle, V. Borelli, J. Boob, W. Smitt, H. Benchoff, J. Wilson, J. Petuck.

SOPHOMORE CLASS

We sophomores are proud of our class.

Our orientation into the Sophomore Class was the G.I. rebellion against customs. We had looked forward to giving the incoming "Frosh" all the rough treatment that we had been given the previous year. After overcoming our disappointment, our interests and enthusiasm were devoted to college life, its activities and opportunities.

The big Sophomore event of the year was the sponsoring of the Valentine Dance, the fifteenth of February. The success of the dance automatically showed our class spirit, cooperation, and efficiency.

We sophomores enjoy life at T.C. with all its teas, dances, sports, formal dinners, educational lectures, and musical programs.

The officers are:

<i>President</i>	Louis Schaub
<i>Vice-President</i>	William Kay
<i>Secretary</i>	Richard Judd
<i>Treasurer</i>	Jane Bower
<i>Student Council Representative</i>	James Rogers



FRESHMEN

Class Advisor
DAVID ULMER

CLASS OFFICERS



First row: Left to right—P. Kunselman, J. Murphy, J. Teufel, A. Wright.
Standing: J. Boob and P. Laux.

Freshman Special Students



Freshman Health Education Students

Freshman—Elementary and Secondary



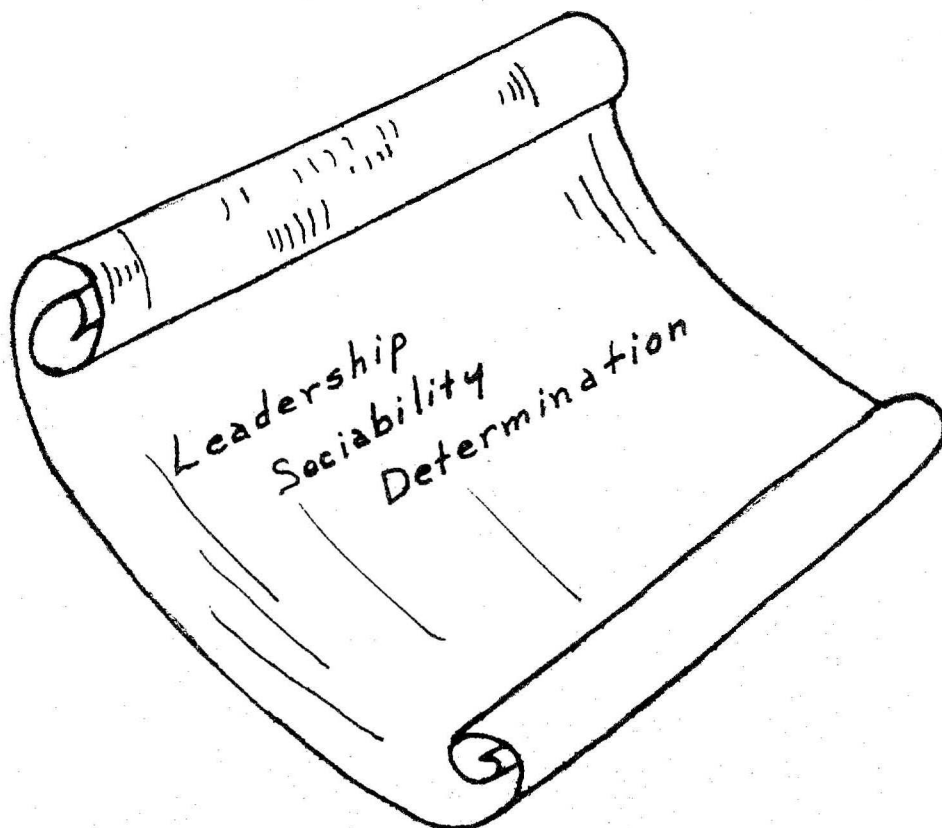
January Freshman

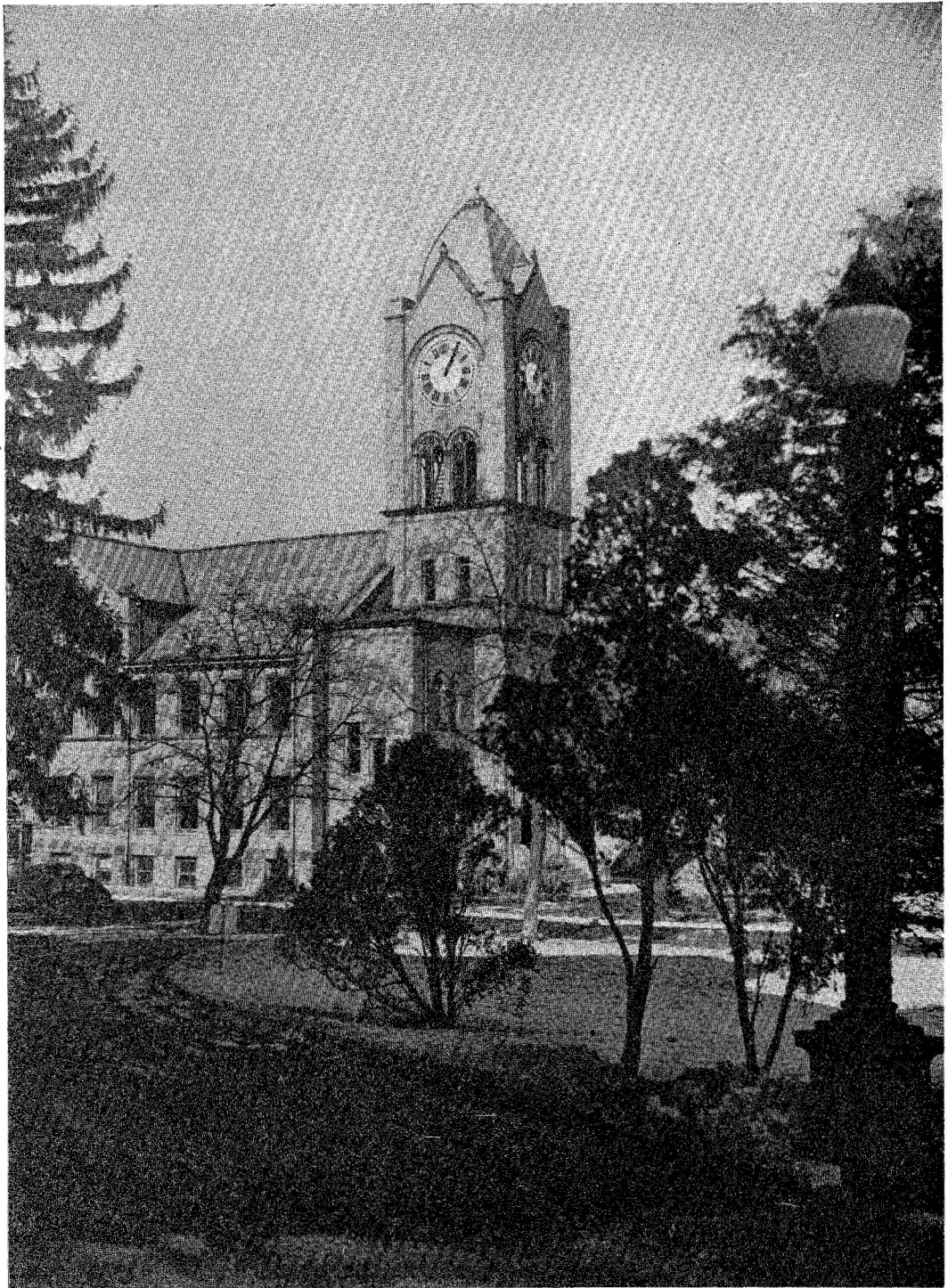
FRESHMAN CLASS

There are so many ways to talk about a college class — mention of the football team or the dean's list, the assembly programs or the bull sessions. If you add up all these things you really have the story of the Freshman Class, or a reasonable facsimile.

If the right words could be put down on paper, perhaps they would give a mirror image of the class of 1950. We have a great deal to remember about our first year at Lock Haven — the many veterans, the formals, learning new things and realizing how much we have still to learn.

The words that could make the class of 1950 different from the others who have shared our experiences would be just what being at Lock Haven has meant to each one of us. But until the old words can be made to express something that is always new, the real story of a college class can never quite be written.





Activities



Seated left to right: S. Buckries, M. Yerkes, V. Gunsallus. Standing: Hartzell.

SOCIAL COMMITTEE

The Social Committee was very active . . . Get acquainted dance was held at the beginning of the year . . . football dances . . . Thanksgiving formal sponsored by the freshman class . . . the girls' day room tea for students and their parents . . . first semester ended with a big Christmas formal sponsored by the Sophomore Class. — Valentine dance . . . formal dinner . . . club parties . . . Sorority banquets . . . Spring formal sponsored by the Juniors — finally the graduation ceremonies closed the activities of the school year.



Editor in Chief
JOSEPHINE ANNE PAOLO



Business Manager
ROBERT K. CURRIN

1947



JACK ERNST
Assistant Editor



BETTIE SENTELIK
Literary Editor



MYRTLE STABLER
Advertising Manager

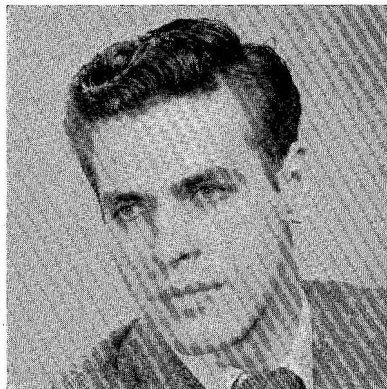


Seated: Josephine A. Paolo. First row, standing: Delores Herrold, Betty Sentelik, Helen King, Betty Thompson, Miss Cummings, Virginia Speaker, Eleanor Hardy, Myrtle Stabler, Evelyn Ellzey, Helen Day. Second row: Betty McClain, Robert Williams, Marian Kratzer, Virginia Gunsallus, Rebecca Grand, and Jim Peet.

PRAECO



BETTY LOU THOMSON
Sports Editor (Girls)



JAMES TEUFEL
Sports Editor (Boys)



BETTY LORIGAN
Editor in Chief

COLLEGE TIMES STAFF

Associate Editors Joseph Hutnyan, Dorothy Heston
Circulation Managers Bettie Sentelik, Jane Grey, Catherine Johnson
Advertising Manager Myrtle Stabler
Typists Helen Baieroski, Eleanor Hardy
Sports Writers James Teufel, Filimina Bonfilio, Helen King
Student Council Representative Frances Kilsdonk



First row, left to right: M. Stabler, H. King, B. Lorigan, J. Lynn, F. Hartzell, B. Thompson. Second row: J. Murphy, D. Herrold, B. Sentelik, G. Gunsallus, P. Lapse. Third row: J. Huntyan, H. Baeiroswski, J. Green, B. Grand, C. Lowros.

COLLEGE TIMES

College Times atmosphere is created by the clicking of typewriters and familiar quotations such as: "Where is the ruler, I must measure this column? How can I change this paragraph to increase its dynamics? Where is the write-up on the last basketball game?" Editor Betty's, "Please get your articles written, the deadline is twelve tonight," is a good sign that the paper is getting ready to go to press.

The inconvenience of having the Times room in the library, has made Betty Lorigan's room the official office for the paper staff.

This year the Times has been increased to six sheets and is published twice a month with well written editorials and articles on sports, assembly programs, and interesting happenings on campus.

Those who know the news of T.C. read the Times.



GEORGE BARNES
President of Student Council

EXECUTIVE BOARD OF THE STUDENT COOPERATIVE

Vice-President Clair Young
Recording Secretary Virginia Baugher
Corresponding Secretary Betty Hanka
Treasurer John Wyland
Parliamentarians James Rogers, Betty Gottshall



First row, left to right: M. Bossert, B. Gottshall, J. Rogers, J. Wyland, C. Young, B. Coates. Second row: J. Remick, M. Swope, V. Speaker, B. Sentelik, M. Niemond, E. Preston, A. Barnes, E. Kniffin. Third row: G. Ralston, J. Boob, R. Williams.

Board of Directors of Student Cooperative Council

The Student Cooperative Council is composed of all members of the college. As the name suggests it is the student's governing board.

The powers of legislative actions are invested in the Board of Directors. This Board consists of the president of the Cooperative Council and the representatives of the four classes, and of every organization on campus. At least one faculty member is represented.

The biggest problem of the Board of Directors is to budget the Student Activity Fees among the different organizations on campus according to their needs.

Also, the Board of Directors annually sends two of its members to a meeting where all Teachers College students are represented to discuss topics of student government such as compulsory assembly, inter-circular activities or study hours. In this way we exchange ideas with other colleges, and see in what way we can improve ours.

In the past years the Council has sponsored an Artist Course of three numbers. The events for this year were Nan Merriman, mezzo soprano, The Baltimore Symphony, and Platoff Don Cossacks.

The Board of Directors aims to encourage good sportsmanship, courtesy, cooperation in all activities, and loyalty to the ideals of the college.



First row, left to right: G. Kephart, R. Kahler, B. Lorigan, V. Baugher. Second row: E. Ellzey, J. Hutchings, G. Petrucci, M. Barnes, V. Speaker, B. Hanka. Third row: P. Brumbaugh, E. Royer, A. Monson, M. Niemond, H. Porter, B. Coates. Fourth row: Dr. Rude, adviser, R. Marks, J. Bernas, J. Peet. Missing: M. Bosser.

KAPPA DELTA PI

"The spirit of learning is contagious. It is caught rather than taught. It is transmitted only by those who are intellectually alive." The preceding quotation suggests the ideals of Kappa Delta Pi, an honor society in education. Membership is gained only by students having a high scholastic average in addition to possessing desirable personality traits. Our purpose is to advance the interests of education as a profession.

As an organization on campus the Delta Sigma Chapter was installed on May 12, 1928, by Dr. William C. Bagley. It has not only tried to keep people intellectually alive but has helped maintain high standards of professional growth. The meetings are concerned largely with professional topics and educational issues. Among our groups of discussions for the year were: Professional Ethics, Graduate Schools, Mental Hygiene and Education, and Current Changes in Education. As a service to the college Kappa Delta Pi members were responsible for guiding visitors during the P.S.E.A. Convention.

The culmination of the year's activity was the banquet at the Country Club, to which alumni were invited.

The officers for this year:

<i>President</i>	Miriam Niemond
<i>Vice-President</i>	Marian Kratzer
<i>Secretary</i>	Virginia Speaker
<i>Treasurer</i>	Evelyn Ellzey
<i>Historian-Recorder</i>	Robert Marks
<i>Adviser</i>	Dr. A. S. Rude



First row, left to right: G. Arseniu, B. Lorigan, H. King, R. Wilderman, M. Owens. Second row: F. Bonfilio, C. Banghart, M. Curran, G. Kephart, adviser, Mrs. Graffius. Third row: M. Drick, D. Montressur, E. Raught, D. Fletcher, M. Stabler, P. Dale, J. Paolo.

SIGMA SIGMA SIGMA

Sigma Sigma Sigma successfully faced the housing shortage and began its sorority year in a new home. Rooms 130-132 were attractively arranged for both business meetings and parties.

Tri-Sig had a very full year. One of the first outstanding events was a national sorority meeting held at the Hotel New Yorker in New York City on October 26th and 27th. Three of the girls from our Alpha Rho Chapter of Sigma Sigma Sigma attended. Another highlight of October was a barbecue at the Naturalist Cabin. Guests were invited, and all enjoyed the singing and eating before the fireplace. On November 11th Tri-Sig entertained its alumni with a party in the music room. In December a Christmas party was held. Highlights of the remaining winter and spring months here at school were an all-school square dance in January, formal initiation in February, and the annual Founders' Day Banquet on April 20th at which alumni and members bade farewell to our graduating seniors.

Anyone going through Social Square shortly before Christmas vacation stopped and bought his Christmas seals at the booth provided by Tri-Sigma.

"The Harmony Hour," our sorority discussion group, was continued and each of Tri-Sigma members received the harmony booklet "The Gracious Greek."

Sigma Sigma Sigma appreciated having Mrs. Graffius continue as adviser.

The officers of Tri-Sigma are the following:

<i>President</i>	Mary Curran
<i>Vice-President</i>	Gwen Kephart
<i>Recording Secretary</i>	Myrtle Stabler
<i>Corresponding Secretary</i>	Dorothy Fletcher
<i>Treasurer</i>	Genevieve Arseniu



First row, left to right: V. Gunsallus, H. Day, S. Mauger, B. Nevins. Second row: M. Stevenson, N. Zimmerman, J. Cook. Third row: L. Hinchcliffe, A. Curran, J. McCloskey, G. Bauman, V. Baugher, P. Bodle, J. Remick. Fourth row: J. Cummings, P. Brumbaugh, L. Conser, F. Kilsdonk, M. Bossert, M. Cook.

PI KAPPA SIGMA

The Pi Kap season was (to say the least), quite unusual, in that it functioned without sorority rooms. We couldn't complain too much though, because the other sororities faced the same handicaps. Yes, we had our full share of trouble, but sharing it made the burden seem very light.

Bar-B-Q sales — Halloween — bidding — initiations — parties — parties — parties — were prominent on the fun side; such activities completely overshadowed all our cares. Judging from our happy times together, our motto should be, "fun for all, and all for fun, and don't forget the *food*."

The friendly spirit makes one glad to say, "I'm a Pi Kap."

The officers are:

<i>President</i>	Mary Bossert
<i>Vice-President</i>	Patricia Bodle
<i>Recording Secretary</i>	Frances Kilsdonk
<i>Treasurer</i>	Gloria Bauman
<i>Corresponding Secretary</i>	Phyllis Brumbaugh

ALPHA SIGMA TAU

When we returned to school, we discovered that our sorority rooms had been converted into apartments for faculty members. Nevertheless, we carried on an active year. We held meetings every other week in classrooms, dorm rooms, or wherever we could. At our first meeting Helene Porter, our president, gave a report on subjects brought up at the National Sorority Convention which she attended at Cincinnati, Ohio, in August.

A pledge party was given at Geraldine Petrucci's home to welcome three new pledges — Lura Lietzel, Sarah Kline, and Sally Davis. In October we gave our annual Founders' Day Banquet at the Salladaysburg Hotel. Active members, the pledges, and a number of alumni attended. Before Christmas vacation we held a party. Singing carols and going on a scavenger hunt added to the fun. In March our St. Patrick's Day Musical was given by the talent from the school and town. Our year ended with the annual Spring Banquet at the Dutch Inn.

The Zeta Chapter of Alpha Sigma Tau Sorority, under the guidance of Dr. Bottorf, spent a busy and happy year.

This year's officers:

<i>President</i>	Helene Porter
<i>Vice-President</i>	Evelyn Ellzey
<i>Treasurer</i>	Betty Hanka
<i>Recording Secretary</i>	Geraldine Petrucci
<i>Corresponding Secretary</i>	Jane Gray

First row, left to right: J. Murphy, F. Bronson, E. Ellzey, Adviser, Dr. E. Bottorf, G. Petrucci, T. Bartges, M. Yerkes. Second row: J. Gray, V. Speaker, S. Davis, E. Kniffin, B. Sentelik, H. Porter, M. Barnes, B. Coates, B. Hanka, C. Diack. Third row: L. Lietzel, J. Bower, and S. Kline.





First row, left to right: N. Zimmerman, V. Gunsallus, M. Drick, C. Banghart. Second row: P. Bodle, J. Gray.

PANHELLENIC COUNCIL

The Panhellenic Council is an association representing all National Sororities on campus. It is composed of three members from each sorority; Sigma Sigma Sigma, Pi Kappa Sigma, and Alpha Sigma Tau.

The business this year concerned the naming of dates for bid days; the sponsoring of the annual Panhellenic tea for freshmen girls to become acquainted with sorority girls; the issuing of Panhellenic pamphlets that explain the purpose of the council and give information about each sorority; and planning for formal dance held for all sororities at the close of the school year.

Dr. Bottorf, the adviser of Alpha Sigma Tau, served as our ever helpful counselor for this year in directing the Panhellenic Council.

The officers are:

<i>President</i>	Patricia Bodle
<i>Secretary</i>	Jane Gray
<i>Treasurer</i>	Caroline Banghart
<i>Adviser</i>	Dr. Edna Bottorf



First row, left to right: R. Williams, G. Barnes, I. O. Fleming, Adviser, J. Kyler, A. Monson, D. Stroble, V. Gray, T. Gulitski, J. McNulty. Second row: S. Smith, Adviser, J. Stover, J. Lyon, D. Stanley, J. Nevins, J. Grubb, R. Judd, F. Hartzell, E. Walizer, T. Walizer. Third row: W. Bigelow, J. Stevenson, J. Long, J. Quiggle, D. Bottorff, R. Marks, H. Ryan, R. Gable, B. Yeager, P. Coront.

DELTA RHO BETA

Acquiring the room under the auditorium started the fraternity on another memory making year. Returning brothers found many new faces; found a few lost forever in Freedom's fight; and found many more married and "settled" which, in itself, is strange — for a Derby.

Remember those tureen smokers . . . the serenades to the Girls Dorm . . . the flaming Delta out front . . . those "dee-vine" tenors in the background (by special permission of the Mrs.) . . . the Derby band in assembly . . . "ARE YOU WITH US?" . . . the pajama parade and bonfire . . . the Xmas open-house with music, soft lights, refreshments — and mistletoe . . . the Derby Dance . . . the paper ceiling and colored spots . . . the Hokey Pokey?

Finally the Country Club dinner dance with the Derbies and their Alumni at their best came as a climax to a grand year's activities. Yes, in scholarship, in sports, in social life, in general school spirit, the Delta Rho Beta man measures up.

THE DERBIES FIR!!

<i>President</i>	J. Francis Kyler
<i>Secretary</i>	Richard Judd
<i>Treasurer</i>	Russell Judd
<i>Corresponding Secretary</i>	Dean Stroble
<i>Advisers</i>	Mr. Fleming, Mr. Smith, and Mr. Lehman



Left to right, M. Bossert, I. Bailey, T. Bartges, L. Leitzel, G. Hollenbech, G. Arseniu, H. May.
 Back row: B. Gottshall, and B. Coates.

GIRL'S DORMITORY COUNCIL

The governing board of Ivy Hall is the council whose members are elected by the girls of the dormitory. Dr. Warters, the dean of women, is the adviser of this board. It is the duty of the Council to see that every one in the dormitory is given proper consideration during rest and study hours. If a girl breaks the house rules for rest and study hours a council member gives her a warning.

Ivy Hall housed approximately 160 girls this year. Dormitory life held its usual joys and excitements for everyone. The senior girls lived on first floor which was properly called "Senior Hall." On all three floors there was an atmosphere of friendliness.

Everyone helped to raise money for the student kitchen equipment by buying hot dogs which were sold by the council. Another project of the council was to raise funds to send delegates to the Eastern States Conference of Professional Schools.

One of the outstanding events of the year was open-house sponsored by residents of the men's and women's dormitories.

The officers are:

- President* Tessie Bartges
- Vice-President* Genevieve Arseniu
- Secretary* Marjorie Bossert
- Treasurer* Barbara Coates
- Student Council Representative* Elsie Preston



Left to right: G. Mitro, F. Kamus, T. Mawtiz, M. Thomas, H. Cambell, G. Ralston, J. Ticconey.
Back row: F. Lovich.

BOY'S DORMITORY COUNCIL

The Council consisted of eight members, two from each class. This Council cooperates with the Dean of Men H. Jack and Dean of Women J. Warters in promoting personal and group responsibility and guiding and regulating the affairs of the three hundred boys residing in the dormitory.

There was a time when one could find empty rooms throughout the boys' dorm but now one can find four or five boys in one room which makes living conditions unsatisfactory for normal living.

The boys in the dormitory are to be congratulated upon their cooperative spirit in keeping the high standards of living in the crowded dormitory.



Left to right: E. Johnson, G. Bauman, M. Swope, M. Stevenson, J. Remick, and K. Furst.

GIRLS' DAYROOM COUNCIL

The girls' day council is composed of four girls, one from each class. It cooperates with the Dean of Women in promoting personal and group responsibility in guiding and regulating the affairs of all girls in the day room.

The girls' dayroom is full of good cheer, and abundance of good fellowship. They always give a willing hand to all that need it regardless of the time of day. The dayroom will always hold a warm spot in everyone's heart long after college days are over.

The officers are:

<i>President</i>	Caroline Diack
<i>Vice-President</i>	Thel Pepperman
<i>Secretary</i>	Phyllis Sechrist
<i>Student Council Representative</i>	Jean Remick

MEN'S DAYROOM COUNCIL

The Men's Dayroom Council has been a campus organization for years. It aims to provide more convenient and comfortable living, for all men not residing at the college. Through the Council's efforts the men have been supplied with better facilities, including lockers, furniture, and recreational equipment.

The Christmas Formal will long be remembered not only for the excellent decorating that was done, but for the wonderful time provided all. The Council was also responsible for a number of teas that were very efficiently managed and which furnished the added spark of energy so needed for the inevitable afternoon class between three and four.

One might find upon entering the Men's Dayroom what appears to be utter chaos, ping pong, music, last minute speech and theme preparation, all appear to be going on at once. Yet a spirit of kindred friendship prevails in the highly cooperative group.

The officers are as follows:

<i>President</i>	Robert Weaver
<i>Vice-President</i>	Robert Hartzell
<i>Secretary</i>	Jack Frey
<i>Student Council Representative</i>	Phillip Neely

Left to right: R. Hartzell, Jack Frey, P. Neely, R. Weaver.





First row, left to right: P. Dale, E. Royer, M. Nimond, S. Kline, L. Stearns. Second row: E. Kniffin, K. Johnson, G. Arseniu, L. Leitzel, E. Peters. Third row: E. Preston, E. Cartwright, B. Reese, M. Snyder, J. Bowman, D. Fletcher, S. Gottshall.

ASSOCIATION OF CHILDHOOD EDUCATION

The purpose of the Association of Childhood Education is to acquaint the members with some of the improved methods of teaching and to develop a more thorough knowledge of children in the elementary grades.

Our local chapter had a very successful year which was highlighted by parties, discussions, speakers, and various types of programs. One of the main topics reviewed for us by Mrs. Graffius, our faculty adviser, was a Year Plan for the following purposes:

1. Learning more about children, their habits, and activities.
2. Interpreting the school program.
3. Improving school facilities.
4. Improving the health of children.
5. Improving ways of working in the school.
6. Understanding the importance of state and National Organizations.
7. Improving local A. C. E.

The officers are:

<i>President</i>	Genevieve Arseniu
<i>Vice-President</i>	Catherine Johnson
<i>Secretary</i>	Emma Peterson
<i>Treasurer</i>	Lura Leitzel
<i>Adviser</i>	Nora M. Graffius

ART CLUB

The Art Club was organized for students who were interested to further their knowledge in this field.

With the helpful guidance of Dr. Bottorf and Miss Wible as advisers, the club aimed to develop creative talent, student and community cultural appreciation through projects and exhibits.

For this past year the club presented several programs for assembly. The first consisted of a lecture on "Understanding the Child Through Art" and the second was a chalk talk. The Art Club also took an active part in the art conference which was held in New York.

The club closed its year with an annual banquet.

First row, left to right: Adviser E. Bottorf, V. Gunsallus, Adviser G. Wible. Second row: G. Hollenbach, R. Judd, J. Peet, and B. Sentelik.





First row, left to right: M. Yerkes, F. Bronson, P. Bodle, V. Speaker, N. Zimmerman. Second row: A. Monson, J. Peet, R. Gabel. Missing: D. Heston.

ALPHA PSI OMEGA

The National Dramatics Honorary Fraternity is the highest goal of College Players members. Membership is gained through participation in dramatic activities rated on a point scale.

Lock Haven's cast is known as Theta Zeta. It is through this organization that those college students, who are talented and extremely interested in dramatics, gain added advantages and wide interests in their field.

This year Alpha Psi Omega took into its organization three new members. Graduation time many members take leave of this fraternity. The graduates are Dorothy Heston, Peggy Swope, Patricia Bodle, James Peet, Caroline Dack, Virginia Speaker, Russell Gabel, and Henry Ryan.

The officers are:

President Patricia Bodle
Adviser D. Lynds



First row, left to right: A. Barnes, I. Charlton, M. Yerkes, C. Diack, N. Zimmerman, J. Cook, V. Speaker, P. Bodle. Second row: D. Barnhart, Advisor D. Lynds, A. Monson, R. Gabel, J. Peet, R. Tidlow, H. Cassidy, B. Sentelik, E. Ellzey, F. Bronson, G. Crist.

COLLEGE PLAYERS

A Clare Tree Major production of "The Secret Garden" was sponsored by the club as its first activity this year.

As usual, the Costume and Make-up Forum and the Staging and Lighting Forum worked hard in preparing for "The Nativity." New wings were made for the angels and many of the costumes were revised.

A three act comedy drama, "The Bishop Misbehaves," was presented in April. Theta Zeta Cast of Alpha Psi Omega, honorary dramatics fraternity, gave an Easter play in Assembly. A number of new members were initiated into Alpha Psi Omega.

College Players welcomed into the club many former members who had returned to school after service with the armed forces.

This year's officers:

<i>President</i>	Nancy Zimmerman
<i>Vice-President</i>	Virginia Speaker
<i>Secretary</i>	Patricia Bodle
<i>Treasurer</i>	Peggy Swope
<i>Honor Chairman</i>	Bettie Sentelik
<i>Press Representative</i>	Russell Gabel
<i>Student Council Representative</i>	Henry Ryan
<i>Advisor</i>	Miss Dorothy Lynds
<i>Bulletin Board Chairman</i>	Mary Louise Stevens
<i>Make-up Forum Chairman</i>	Caroline Diack
<i>Costume Forum Chairman</i>	Joan Cook
<i>Staging Forum Chairman</i>	Dorothy Heston
<i>Adviser</i>	Miss Dorothy Lynds



First row, left to right: M. Stabler, J. Bowman, S. Yoder, P. Swope. Second row: S. Gottshall, L. Leitzel, B. Gottshall, E. Royer. Third row: H. Benchoff, G. Miller, K. Mitchell, R. Smawley, R. Shaffer, J. Boob.

THE LUTHERAN STUDENT ASSOCIATION

Two years ago the Lutheran students on our campus organized the Lutheran Student Association. The local branch of this association is comprised of every Lutheran student enrolled in the college.

The Lutheran Student Association aims to afford an opportunity for Lutheran students to become acquainted with one another so that they may consider and may act upon common problems in order to strengthen and encourage Christian faith.

The meetings of the group are held twice a month. The first of these meetings is in the form of a worship service. Local ministers are asked to speak. The second meeting is always of a social nature. This year both a Thanksgiving and a Christmas party were held. We also have met at the home of our advisor, Mr. Smith.

We appreciate the helpful guidance of Mr. Smith who has been our advisor since the Lutheran Student Association was formed on campus.

The officers are:

<i>President</i>	Betty Gottshall
<i>Vice-President</i>	Lura Leitzel
<i>Secretary</i>	Shirley Gottshall
<i>Treasurer</i>	Peggy Royer



First row, left to right: J. Dietrich, S. Buckreis, K. Johnson, J. Boob, M. Moore, E. Peters. Second row: J. Peet, M. Niemond, M. Kratzer, S. Gottshall, H. Cassidy. Third row: J. Sholtz, R. Shaffer, J. Hutchings, F. Stearns, E. Cartwright, P. Dale, V. Speaker, E. Ellzey. Fourth row: S. Gottshall, A. Barnes, L. Leitzel, J. Bowman, S. Kline, E. Royer, J. Bower, and L. Stearns.

STUDENT CHRISTIAN ASSOCIATION



First row, left to right: J. Murphy, P. Marcossi, Father O'Toole, F. Caprio, J. Straub. Second row: H. Baierowski, A. Vargo, R. Golebieski, F. Bonfilio, B. Sentelik, S. McKnight, M. Haduch, J. Paolo. Third row: M. Slavich, W. Golebieski, L. Pentinetti, R. Hartle, A. Zywaldriguer, E. Okanski. Fourth row: P. Petcosh, L. Pike, T. Gulitski, J. Rogers, R. Dombrowski, J. Lapose, G. Butcho. Fifth row: F. Gehringer, W. Condon, J. Pasivich, F. Campbell, T. DiBoggio, W. Sickler.

NEWMAN CLUB

The successful completion of its fourth year of Catholic activities at Lock Haven Teachers College is being marked by the Newman Club. The purpose of this organization is to organize Catholic students on the campus for the purpose of mutual helpfulness and united effort in promoting their religious, intellectual, moral and social standards. Other duties are to promote and to help to maintain group growth, to aid in the works of the church and to aid in the relationship of the college and the Catholic students.

The club meets twice a month to discuss current and pertinent Catholic subjects and to enjoy social events. The third Sunday of every month is set aside for the members to receive Communion at the Immaculate Conception Church.

The events for the year were discussions on marriage, rites of the church, and Catholic policies were held during the year. Socially the group has met for a "get together party," a Communion breakfast, an informal dance and an annual banquet which closed the year's activities.

The officers are:

<i>President</i>	Ray Dombrowski
<i>Vice-President</i>	Rita Wildeman
<i>Secretary</i>	Joseph Napoli
<i>Treasurer</i>	James Rogers
<i>Student Council Representative</i>	Joseph Errigo

THE BEL CANTOS

The large influx of new students in September brought many new members to the Bel Cantos. The lovely voices of the girls have contributed to many programs on campus and for other schools and organizations.

Under the patient leadership of Miss Ullemeyer the girls have faithfully practiced two and sometimes three hours a week. Rehearsing is such a pleasure when the girls are working with music.

The choral will close a joyous and successful season with an annual Spring Concert.

The officers are:

<i>President</i>	Gwen Kephart
<i>Vice-President</i>	Elsie Preston
<i>Recording Secretary</i>	Genevieve Arseniu
<i>Point Secretary</i>	Mary Agnes Gardner
<i>Treasurer</i>	Jean Cummings
<i>Librarians</i>	Mary Katherine Sterns, Jean Dietrich

First row, left to right: Accompanist, J. O'Hara, J. Lynn, B. Krites, —————, K. Hoy, R. Kahler, J. Gray, G. Arseniu, J. Dietrich. Second row: L. Keller, A. Yoxtheimer, J. Yon, J. Cummings, D. Burkstresser, P. Furry, M. Gardner, S. Gottshall, J. Sholtz, B. Gottshall, D. Fletcher. Third row: J. Remick, M. Sterns, T. Bartges, J. Windlebolt, M. Swope, M. Gross, M. Curran, M. Cook, S. Kline, A. Curran, and S. Yoder. Missing: M. Bossert.





BAND

SYMPHONY



BAND

The band was there . . . all the time . . . While people cheered or did not cheer . . . When the spirit was low . . . there were concert programs . . . assembly programs . . . stirring marches, stately overtures . . . tone poems, medleys, boogie-woogie . . . every Friday afternoon at four — in the auditorium . . . one tap of the baton — a commanding look . . . the band is ready . . . the results — we have heard — the results we like. . . . The members are F. Cree, M. Mead, J. Hintenlang, P. Sampsell, F. Stearns, J. Hutzel, H. Angus, V. Clemens, E. Potter, J. Rybicki, M. Moore, K. Stearns, J. Long, J. Miller, R. Johnson, D. Fuge, H. Salmon, K. Kline, E. Kerstetter, R. Williams, J. Koon, J. Reen, A. Hudson, W. Reiter, B. Richards, F. Martin, J. Agnus, P. Neely, A. Baker, R. Scheeler, N. Close.

ORCHESTRA

The orchestra was reorganized this past year by the capable adviser, Mr. Valgene Rouch. The orchestra presented concerts in various high schools, assembly programs, and furnished music for a few dramatic productions at the college. Some types of music, that were included in the programs, are as follows:

1. Entrance and March of the Peers *Arthur Sullivan*
2. The Red Mill, Selections *Victor Herbert*
3. The Sleeping Beauty Waltz *P. I. Tchaikowsky*
4. Jazz Pizzicato *Leroy Anderson*
5. Begin the Beguine *Cole Porter*

Members of the orchestra are J. Agnus, A. Baker, D. Berkstresser, V. Clemens, F. Cree, S. Cogswell, J. Deliman, M. Harron, J. Hintenlang, A. Hudson, J. Hutzel, R. Johnson, K. Kline, J. Lyon, M. McDonald, F. Martin, M. Mead, J. Miller, M. Duffy, J. Miller, K. Mitchell, M. Moore, P. Neely, J. Reen, B. Reiter, J. Rybicki, P. Sampsell, R. Scheeler, F. Stearns, K. Stearns, J. Vairo, and S. Yoder.



THE COLLEGIANS

Listen, chillun! Do you hear music? And, could it be the familiar melody of "Seems Like Old Times?" It is! That harmonious theme song will be the anchorage for many sentimental memories in future years.

The Collegians were organized in 1945 as a five-piece combo unit. After a year of inactivity, The Collegians were reorganized by Jesse Lyon and Robert Williams. After a month of independent operation, The Collegians voted unanimously to become an organization under the music program at the college. From this time on, The Collegians have played an integral part in campus activities.

The Collegians has had an outstanding record of dances. No matter where The Collegians presented their musical stylings, some renditions of certain tunes brought acclaim from all crowds. Some of these outstanding hits were: "Sophisticated Swing," "Southern Fried," "Without A Song," "Jangled Nerves," "Pretending." Oh yes! "Seems Like Old Times," the theme song that heralds both beginning and end of the dance, and also heralds the end of this article until the 1948 PRAECO.

The Collegians of this year were by no means a small band. The instrumentalists of The Collegians are as follows:

Saxes ..	Jerry Rybicki, Kenneth Stearns, Joseph Hintenlang, Mr. Valgene Rouch
Trumpets	Ralph Johnson, Jack Miller, Robert Williams
Trombones	William Reiter, Fletche Martin
Piano	Arden Monson
Bass Viol	William Whitney
Drums	Keith Kline
Violins	Jess Lyon, John Vairo



First row, left to right: B. Sentelik, B. Lorigan, Adviser, Dr. North, M. Curran, J. Lynn. Second row: P. Ma-
 clay, J. Schuyler, J. Hutchings, J. Dietrich, V. Gunsallus, M. Kratzer. Third row: A. Barnes, M. Stearns, J.
 Lamade, S. Kline, G. Kephart, M. Niemond, B. Gottshall.

ENGLISH CLUB

This school year of 1946-1947 has been another one of enthusiasm for the English Club. Although most of its members are English majors or minors, the club is not exclusive. Anyone who is interested in literature is welcome.

Drama was the center of interest for the meetings this year. Consequently the meetings, except the Christmas one, were devoted to the discussion of the drama of Shakespeare, Congreve, Sheridan, Gilbert, and Sullivan, Oscar Wilde, and Bernard Shaw. The December gathering was celebrated at the Naturalist Cabin in the traditional manner — *Dickens Christmas Carol* (on records), carol singing, the blazing plum pudding — and the reading of *The Littlest Angel*. The highlight of the year was local talent night, at which time everyone was given a chance to present some writing of his own.

Each year this organization publishes the *Crucible*, a collection of literary work done entirely by students. Everyone is encouraged to submit material to this publication.

The officers for this year:

<i>President</i>	Miriam Niemond
<i>Vice-President</i>	Gwendolyn Kephart
<i>Secretary-Treasurer</i>	Mary Curran
<i>Student Council Representative</i>	Anna Lee Barnes
<i>Crucible Editor</i>	Betty Lorigan



First row on left: C. Lowros, B. Hanka, D. Barnhart, J. Peet, R. Hankst. Center: R. Nevel. Second row on right: V. Baugher, B. Coates, P. Hauck, D. Montessor, J. Paolo, A. Monson, J. Hartle.

NATURALISTS CLUB

In 1925 the Naturalists Club was organized and known as the "Happy Harvesters." The club was named by the Normal School students, who were interested in outdoor life and nature study. Mr. Levi J. Ulmer, the father of Mr. David Ulmer, our biology teacher, was the founder of the club, and remained its adviser until 1943.

At the present time the adviser is Dr. Fountain. The emblem of the club is the acorn, the flower is the sweetpea, and the colors green and white. Its membership is limited to thirty. Three new members were elected second semester to fulfill this quota, for those who graduated in January.

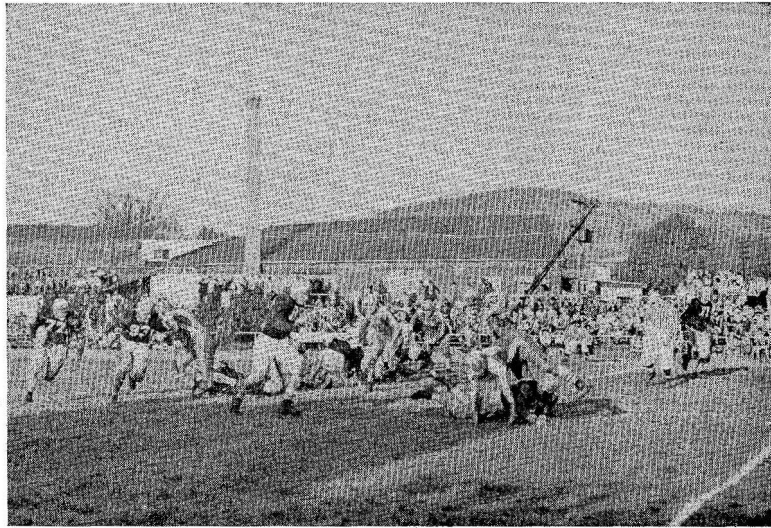
1947 was one of the top years for the Naturalists. The outstanding events of the year included our parties in the fall, roasting hot dogs and singing songs, repairing our cabin, and early morning breakfast.

Our greatest event, as every year, was Homecoming. It was a great pleasure to see our alumni back in an environment they enjoyed so much when they were students.

The officers are:

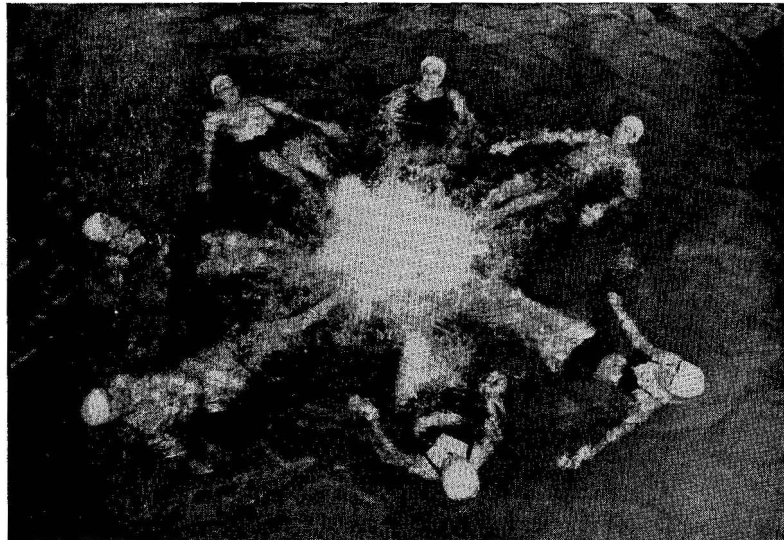
- President* Richard Barnhart
- Vice-President* David Barnhart
- Secretary* Helene Porter
- Treasurer* Doris Montessor

P



HYSICAL

E



DUCTION

DIRECTORS OF PHYSICAL EDUCATION



DR. LEWIS E. HUTTO

Lock Haven State Teachers College specializes in the preparation of teachers of physical education and health education. Nearly half of its students expect to be graduated with a degree in that curriculum. Graduates in this field have professional opportunities of many different kinds. Most popular is the teaching of physical education and health education in our Pennsylvania High Schools. Some graduates prefer coaching positions in sports such as football, basketball, softball, swimming, track.

Both undergraduates and graduates also have many opportunities for profitable part-time employment as camp counsellors and summer playground leaders. Year round employment in organized recreation includes work as leaders in city recreation programs and in organizations such as the Y.M.C.A. and Y.W.C.A.

Successful teachers frequently become supervisors of health and physical education in the elementary and secondary schools of larger cities and administrators of departments of health and physical education in large schools and in organized community recreation.

The science courses required of all students majoring in the curriculum of health and physical education give excellent preparation not only for positions as health education teachers but also for increased specialization in many different aspects of health. The fields of physical therapy, public health and social service are expanding rapidly and there are many professional calls for trained health educators.

During the past year the program in this professional curriculum has been greatly improved by the addition of several new staff members with advanced technical training and the gradual improvement in facilities. Standards of accomplishment are being raised in both activity courses and the academic work so that our graduates should soon compare favorably with the best in the country.

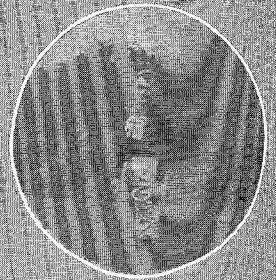
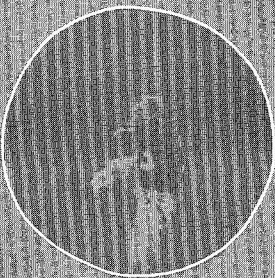
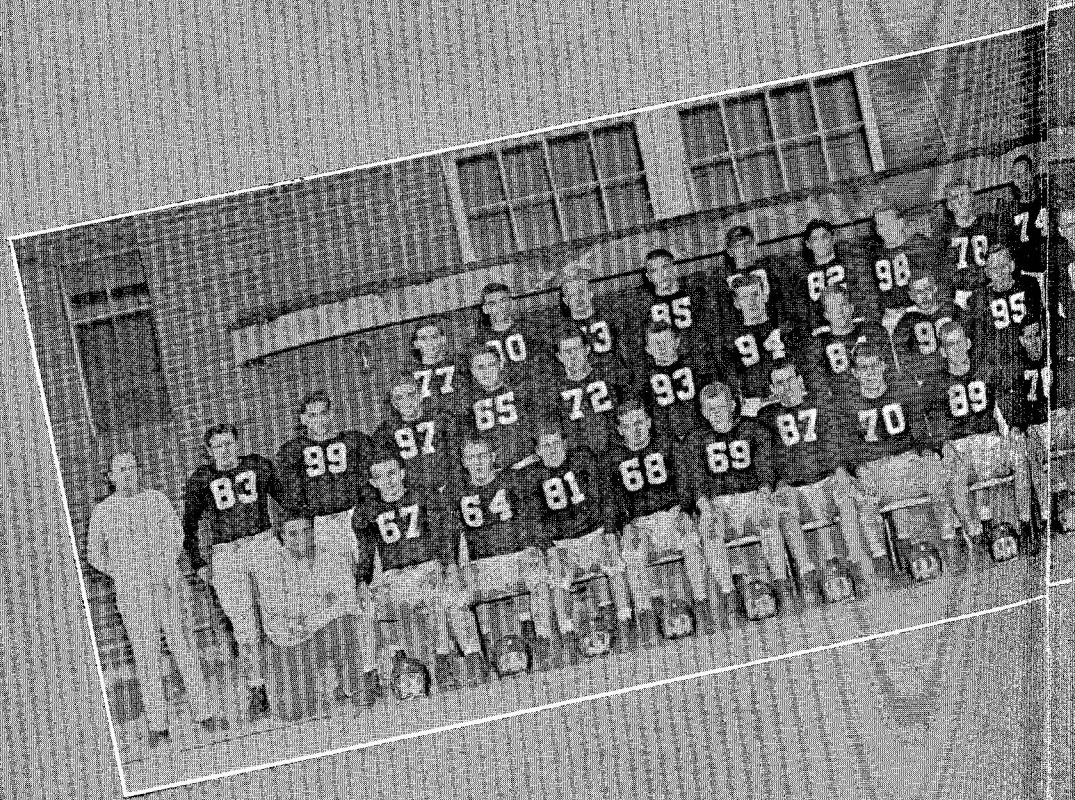
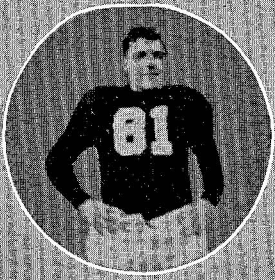
Courses are being made very practical by the frequent use of projects in real life throughout the college and surrounding communities. The students actually coach and officiate, conduct recreational programs and put on demonstrations of various activities before they actually begin their formal student teaching.

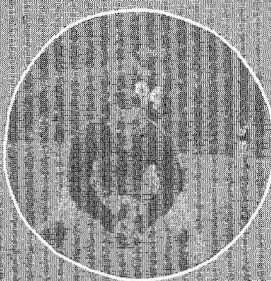
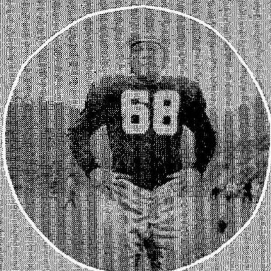
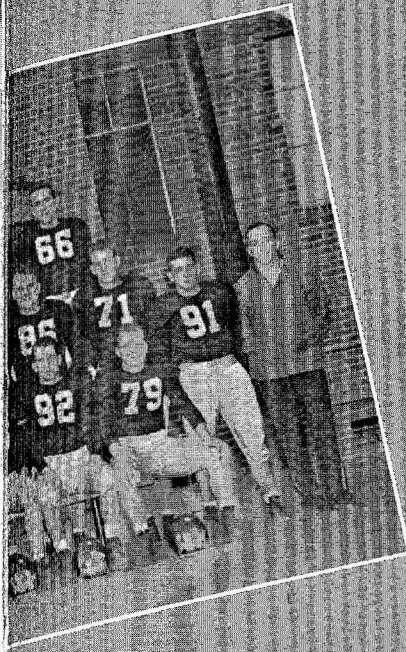
A varied program of intra-mural and inter-collegiate sports competition makes it possible for every student to participate in advanced competition of his choice. The caliber of competition offered here compares favorably with that in the better colleges of the state and is steadily improving.

With sound preparation in the fundamentals of physical education, health education and recreation, graduates will be increasingly successful in their professional careers, adding further prestige and status to the fine accomplishments of many graduates now active throughout the state and the nation. The staff of this department is definitely committed and earnestly working to make it one of the best of its kind in the country. The students in the curriculum have responded well. Definite progress is being made toward this end.

DR. ELIZABETH ZIMMERLI







FOOTBALL RECORD

SEASON OF 1946

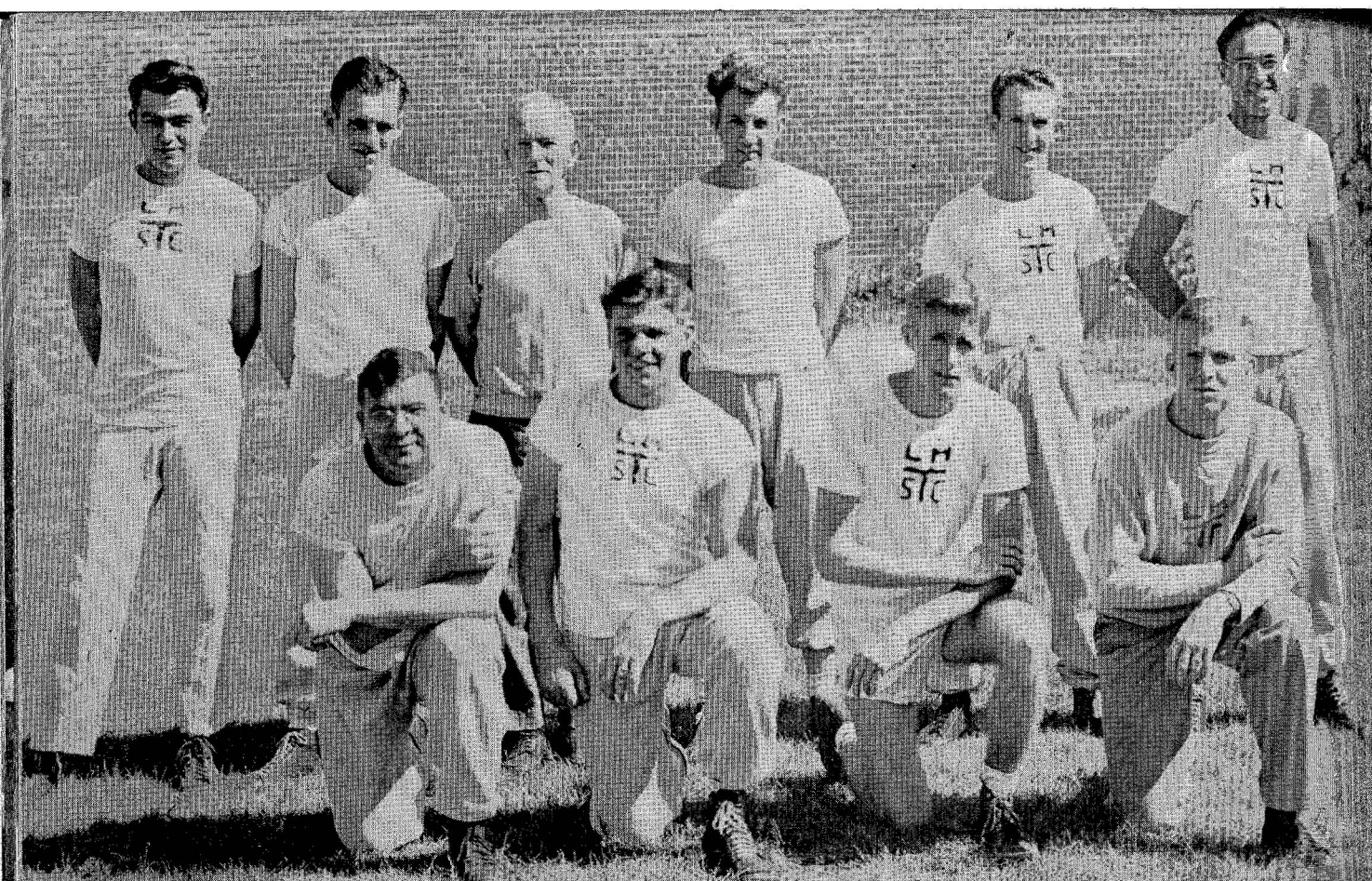
Won 4, Lost 5, Tied 1

	<i>L.H.</i>	<i>Opp.</i>
Scranton U., away	6	26
Kutztown, away	20	6
Bloomsburg, home	13	7
Millersville, home	13	14
Rider College, home	31	6
West Chester, away	13	7
Shippensburg, away	6	6
Indiana, home	6	13
Mansfield, home	13	14
California	6	61
	127	160

FOOTBALL VARSITY

SQUAD

First row, left to right, Coach, H. Jack, R. Dumborski, G. Barthelson, J. Pasivich, M. Flanagan, D. McGee, R. Snaith, C. Green, F. Kamus, H. Johnston, J. Ryan, F. Marusiak. 2nd row, Assistant Coach W. Thomas, M. Slavich, G. Teufel, L. Pike, J. Pletcher, J. Mauer, C. Wilt, J. Platko, J. O'Donnell, M. Thomas, J. Stover, E. Okonski, J. Miller, H. Pinge, Assistant Coach, L. Zimmerman. 3rd row, R. Booth, R. Colliver, J. Kulak, D. Micheles, R. Palmer, J. Napoli, J. Coine, S. Jaworek, P. Martin, R. Close.



First row, left to right: W. Caspar, T. Carlson, E. Welsh, H. Cambell. Second row: W. Con-
don, M. Flegal, Trainers, W. Lawrence and W. Schrock; R. Currin and F. Lovich.

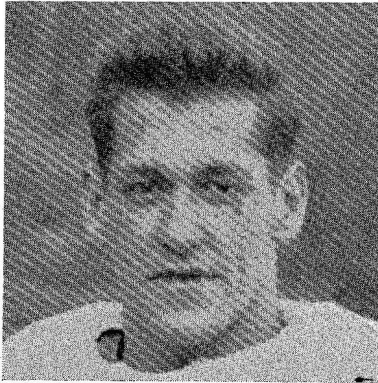
COACHES AND MANAGERS

With the helpful guidance of Coaches H. Jack, W. Thomas, H. Yost, K. Miller, and L. Zimmerman the Maroon and Gray had a successful year. The Maroon and Gray eleven lost five, won four. The basketball quintet won the mythical state teachers championship. The big, husky wrestlers won state championship. In the background, D. Lawrence and H. Cambell were there to keep the boys in healthful condition.

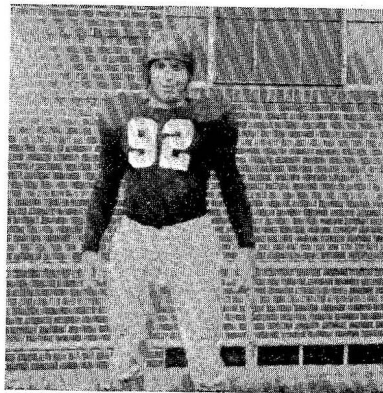
The Faculty Coaches are:

Hubert Jack	<i>Football Coach and Wrestling Coach</i>
William Thomas	<i>Assistant Football Coach</i>
Howard Yost	<i>Basketball and Baseball Coach</i>
Lester Zimmerman	<i>Soccer Coach</i>
K. Miller	<i>Track Coach</i>

T. C. MAKES HEADLINES



GEORGE TEUFEL



JOHN RYAN

GRIDDERS GAIN STATE-WIDE RECOGNITION

John Ryan, T. C. hard-hitting guard from Osceola Mills, was picked by The Associated Press for third team honors on the All-Pennsylvania eleven. John is a second semester freshman and is an ex-G.I., having served with the United States Navy.

George Teufel, fast stepping tailback from Mt. Carmel, gained honorable mention on The Associated Press All-Pennsylvania team. George is a second semester sophomore. This is the second year that he has received this honor.



First row, left to right: Manager, C. Young, S. Denius, D. Neff, G. Ralston, L. Bryon, R. Wagner, D. Rute, R. Gehres. Second row: J. Ticoney, F. Hartzell, K. Crask, W. Rimmey, J. Watson, S. Boyer, J. Parsell, G. Ticoney, and Coach Les Zimmerman.

SOCCKER

After a five-year absence from the campus, Varsity Soccer once again became a major sport. The team got off to a late start, and due to the lack of equipment and scarcity of soccer teams in this region, played an abbreviated schedule.

The team did not have a full time coach. Clair Young, who is a graduate of this year's class acted as student coach.

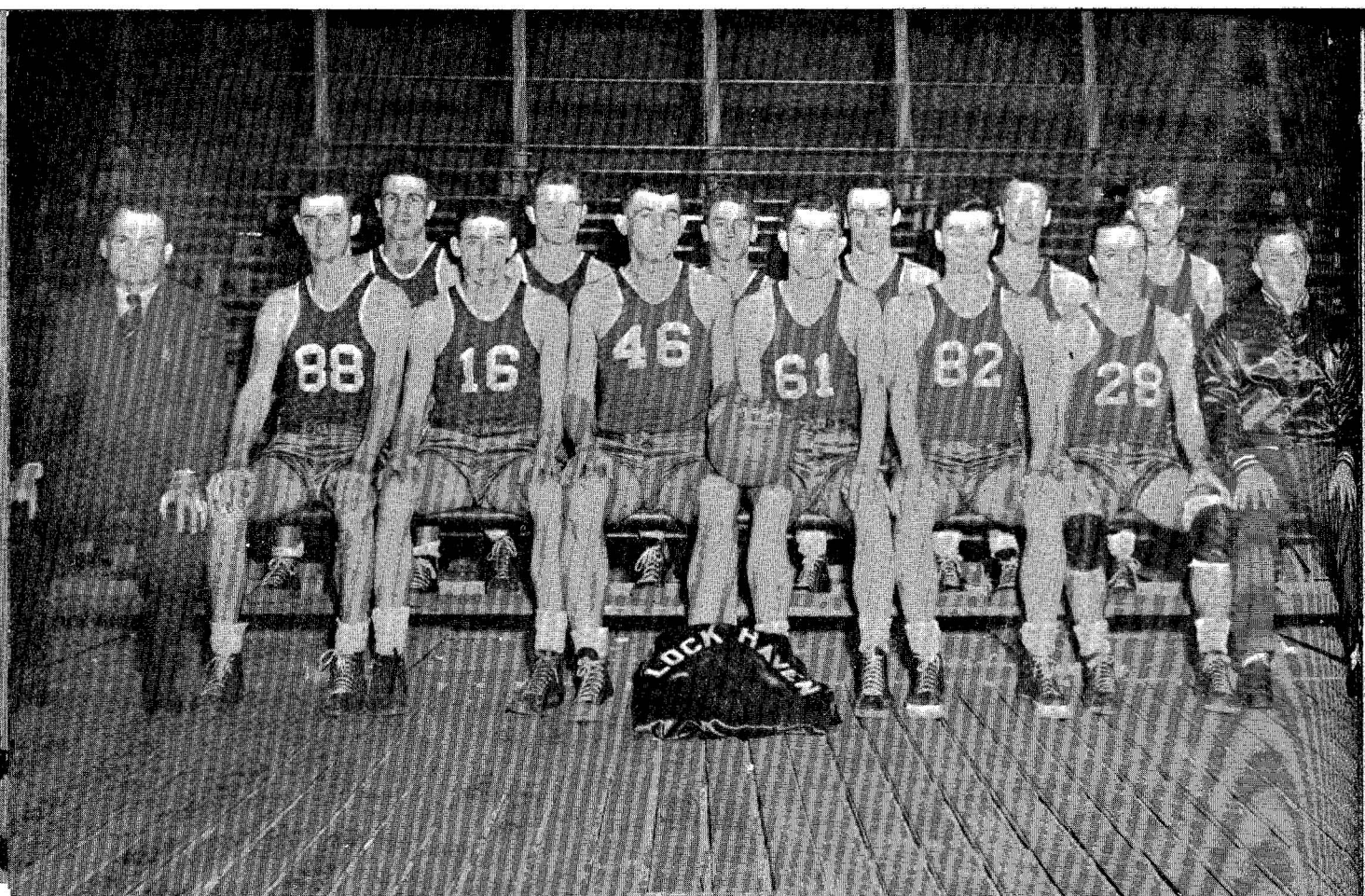
The scores for the 1946 soccer team:

<i>Games</i>	<i>L.H.S.T.C.</i>	<i>Opponents</i>
Bloomsburg	3	I
East Stroudsburg	0	I
Indiana	7	I
Bloomsburg	4	I

VARSITY CLUB

First row, left to right: M. Flanagan, B. Metzler, L. Rafferty, R. Wagner, C. Pfeiffer. Second row: G. Mitro, H. Pinge, L. Schaub, C. Young, A. Sembers, J. Rogers, J. McNulty, J. Ticoney. Third row: D. McGee, F. Hartzell, M. Flegal, G. Teufel, J. Potter.





First row, left to right: Coach, H. Yost, J. McNulty, B. Metzler, P. Coront, A. Shaner, A. Sembers, G. Mitro, Mgr. A. Zinns. Second row: J. Marks, J. Roger, G. Ralston, R. Snaith, J. Shaffer, J. Hutynan.

VARSITY BASKETBALL

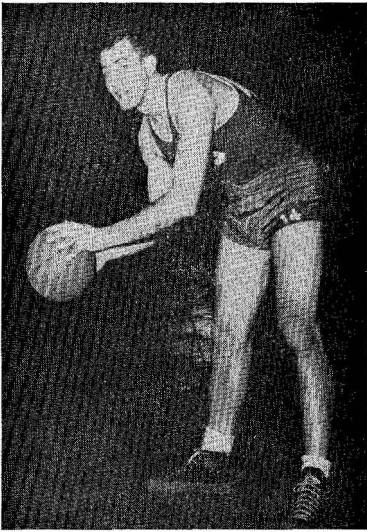
SEASON'S OFFICIAL RECORD

Games Won 13 — Games Lost 11

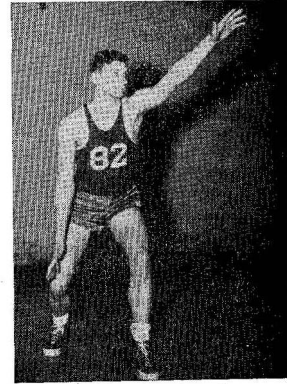
<i>Opponents</i>	<i>Where Played</i>	<i>L. H.</i>	<i>Opp.</i>
St. Joseph's College	Away	50	61
LaSalle College	Away	36	69
Cortland T. C.	Home	59	49
Waynesburg T. C.	Away	41	44
Detroit U.	Home	34	57
West Chester T. C.	Away	54	26
Mansfield T. C.	Home	64	44
Kutztown T. C.	Away	50	31
Bloomsburg T. C.	Away	64	31
Millersville T. C.	Home	53	38
Ithaca	Home	33	40
West Chester	Home	49	41
Mansfield	Away	41	47
Ithaca	Away	33	40
Cortland T. C.	Away	43	78
Alderson Broddeus College	Home	45	56
Bloomsburg T. C.	Home	47	41
E. Stroudsburg T. C.	Away	60	42
Shippensburg T. C.	Home	69	44
Alderson Broddeus College	Away	41	44
Shippensburg T. C.	Away	49	39
Kutztown T. C.	Home	41	44
Millersville T. C.	Away	41	37

STATE BASKETBALL CHAMPIONS

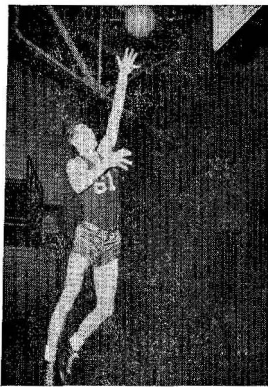
Big, husky 6'4" Paul Coront is the first T. C. basketball varsity man to gain recognition on the All-Pennsylvania basketball team. The Associated Press sports writers mentioned that Coront was probably one of the best all-around performers in the state. Paul Coront had a total of 340 points for the season of 26 games.



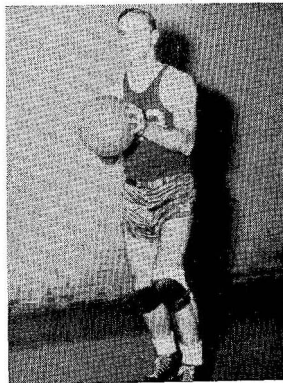
Paul Coront
Center, Forward



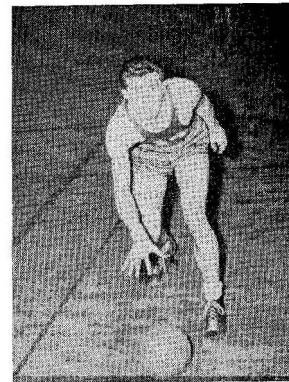
A. Sembers, Guard



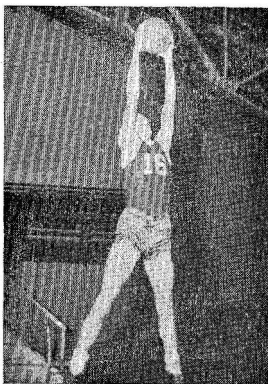
A. Shaner, Guard



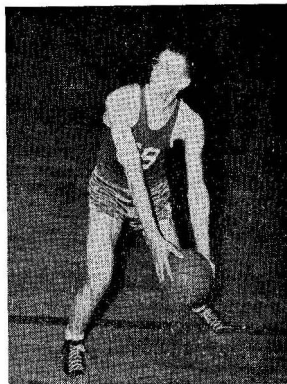
G. Mitro, Guard



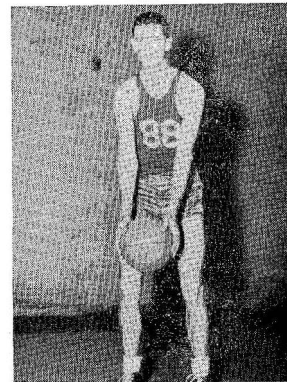
J. Hutynan, Guard



B. Metzler, Forward



J. Shaffer, Forward



J. McNulty, Forward



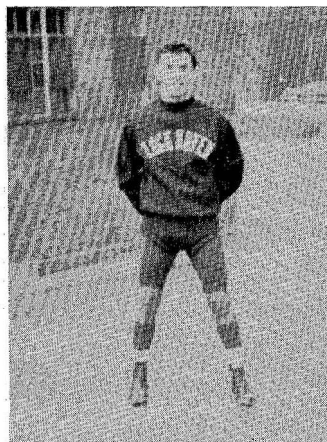
Left to right: J. Palmer, L. Danoway, S. DiAugustino. Second row: B. Barthellson, H. Hetrick, C. Greene, L. Pernax, J. Maurey, F. Hartzell. Third row: Mgr. D. Welsh, A. Silverman, R. Glunt, D. Arbuckle, D. Kocher, S. Sevok, R. Wadsworth, Coach Hubert Jack.

WRESTLING TEAM

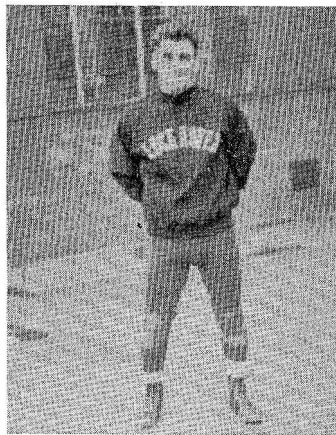
SEASON'S OFFICIAL RECORD FOR THE WRESTLING TEAM OF 1947

<i>Teams</i>	<i>L.H.S.T.C.</i>	<i>Opponents</i>
Edinboro State Teachers	33	3
Indiana State Teachers	27	9
Bucknell University	33	5
Clearfield Y.M.C.A.	15	18
Edinboro State Teachers	31	3
Finley College	27	5
East Stroudsburg	22	5
Navy "B" Squad	19	8
Waynesburg	16	14
Clearfield	18	16
Alfred College, New York	24	10

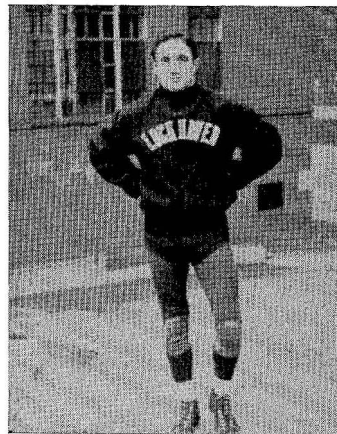
WRESTLING VARSITY TEAM WINS STATE CHAMPIONSHIP



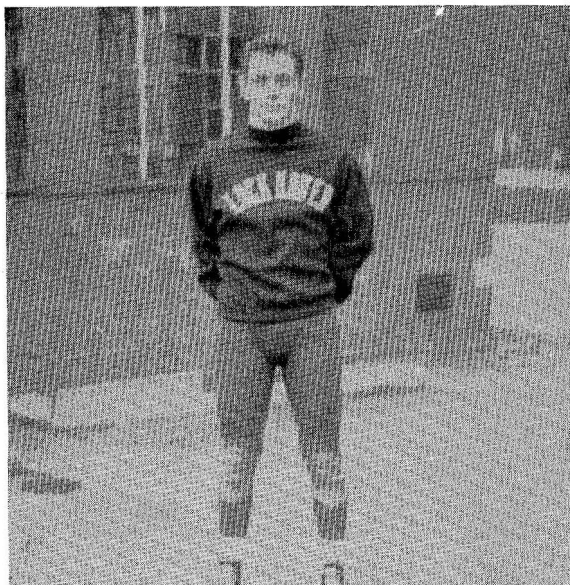
Steve DiAugustino
128 lb.



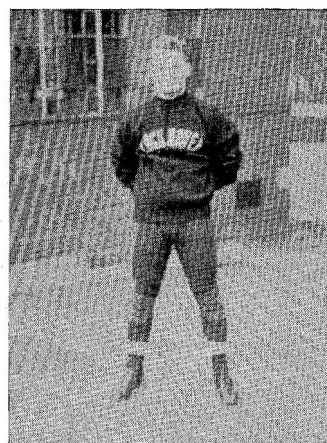
George Danoway
128 lb.



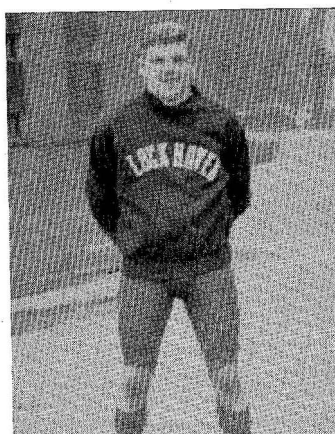
Anthony Vargo
136 lb.



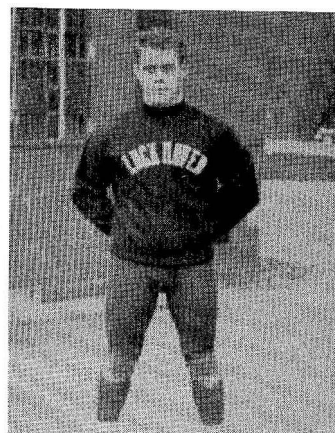
James Maurey — 145 lb.
Interstate Champion



Arthur Silverman
155 lb.



Homer Hetrick
165 lb.



Clarence Green
Unlimited



First row, left to right: Coach, G. Barnes, J. O'Donnel, R. Paul, J. Smith, B. Alberts, G. Butchko, E. Formen, E. Buddinger, J. Mattern, D. McGee, B. Donovan, W. Stevens.

VARSITY BOXING TEAM

OFFICIAL RECORD

<i>Meets</i>		<i>Lock Haven</i>	<i>Opponents</i>
Pottsville Y.M.C.A.	Home	4	3
Lincoln U.	Away	3½	4½
Catholic U.	Home	3½	4½
Lincoln U.	Home	3½	4½
Pottsville Y.M.C.A.	Away	3	5

Lock Haven's first post-war boxing team under the guidance of George Barnes, completed the season with one win against 4 losses. Most of the scrappers were inexperienced, with the exception of Jim Smith, who was the only undefeated scrapper on the team.

CHEERLEADERS

This year a new group of girls under the W. A. A. worked together as cheerleaders. The members of the squad were selected from a large number of tryouts.

Since the group of girls was new, it meant that each member must practice and practice; with a great deal of enthusiasm the girls worked hard. Even though crippled and tired from practice they kept discouragement under control.

Dr. Zimmerli, the adviser, should be saluted for the success of the squad. She kindly helped the cheerleaders with their troubles and faults. Every practice ended with more pep in movements and more zip in every cheer.

"Bo Faust," the captain, a long time cheerleader, encouraged and worked with the squad on their "YEA TEAM . . . FIGHT! FIGHT!"

Next year the squad's intentions are to strive towards cheering which will put Lock Haven in "there" for more and more V-I-C-T-O-R-Y.

Officers are:

President Betty Lou Faust
Manager Virginia Gunsallus

First row, left to right: H. Day, V. Gunsallus, W. James, P. Furry. Second row: L. Follmer, B. Gardner, B. Faust, F. Kilsdonk, P. Kunsellman.





Frist row, left to right: E. Hardy, A. Reighard, Adviser, C. Smith, M. Owens, G. Nevins, B. Hanka. Second row: B. Faust, F. Bonfilio, R. Shaffer, M. Blessing, B. Thompson, M. Simpson, A. Zavaladriguer. Third row: E. Mechtley, B. Peters, B. Runk, S. Buchres, C. Ott, J. Wagner, B. Coates. Fourth row: M. Puderbaugh, E. Buckley, B. McClain, J. Paolo. Fifth row: J. Bisell, H. Porter, C. Lowros, P. Laith, F. Kilsdonk.

WOMEN'S ATHLETIC ASSOCIATION

The Women's Athletic Association again took the leadership of the women's organizations of the campus. Under the guiding hand of Barbara Coates as president and Miss Smith as adviser many sports, both varsity and intramural, were provided for the girls.

One of the first sports sponsored this year was an archery tournament. Later as the year progressed such activities as volleyball, badminton, synchronized swimming, varsity and intramural basketball, varsity and intramural hockey and tennis were offered.

A new system of planning meetings was tried this year with great success. The members of each class were appointed to take charge of the monthly meetings, such varied programs as a wiener roast at the Naturalist cabin and recreational games in the gymnasium were enjoyed.

The organization closed the year's activities with the annual picnic at Price Park. At this picnic those girls who had earned enough points were given awards ranging from letters to sweaters for the Senior award.

The officers:

- President* Barbara Coates
- Vice-President* Filemena Bonfilio
- Secretary* Marian Owens
- Treasurer* Pruedence Houck
- Student Council Representative* Virginia Baugher
- Adviser* Miss Smith

THE GIRLS' FIELD HOCKEY

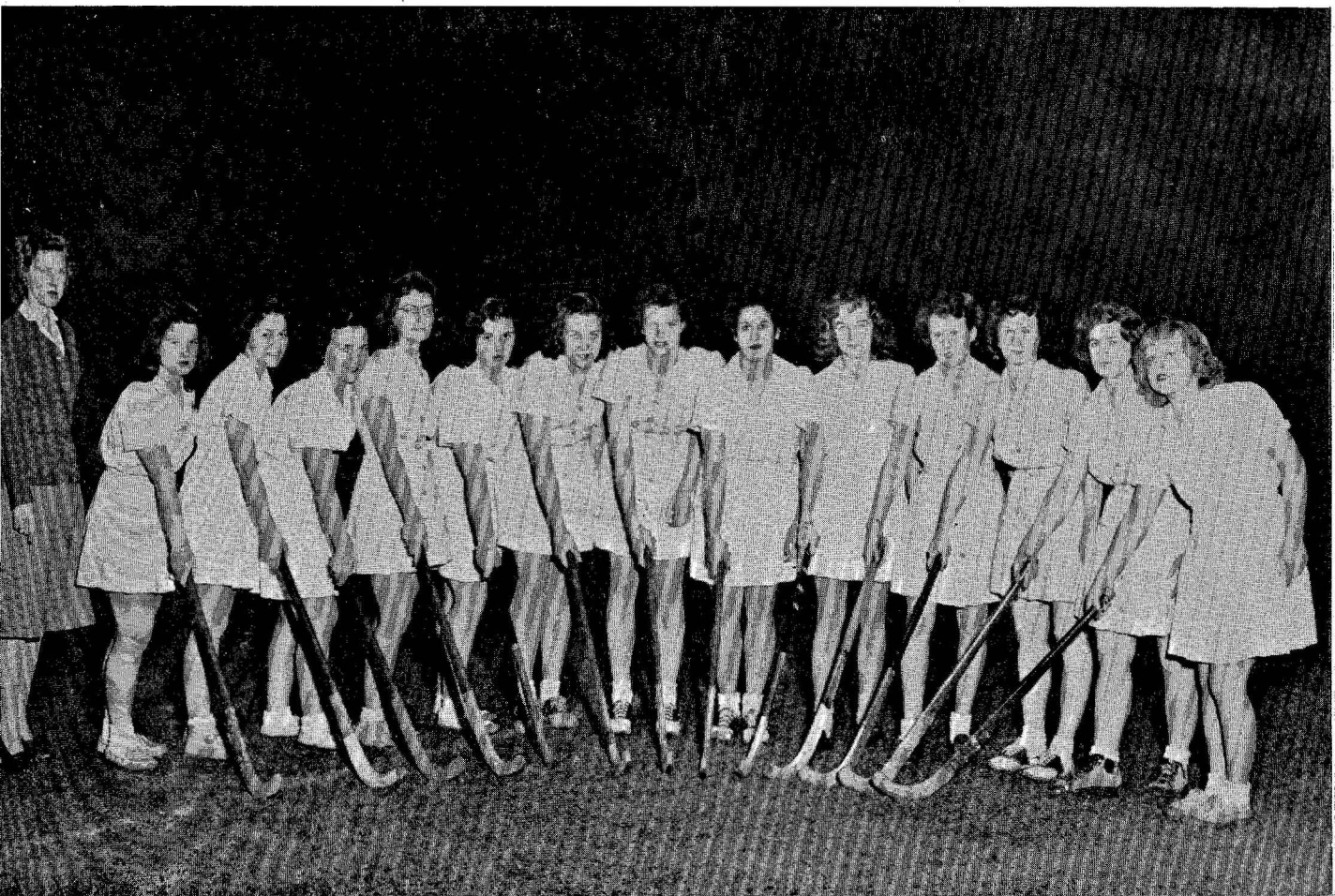
The girls' field hockey team chased through another season with one loss to three victories. The girls lost to Millersville 7-5 on the opponents field but won all other games by a large margin.

Without a doubt, the home game with Millersville was the best of the year. The girls swam through six inches of mud and water to defeat their rivals. Only one player, Helen King, goalie, survived without falling at least once during the period of the game.

STANDINGS FOR THE 1947 HOCKEY VARSITY

<i>Teams</i>	<i>L.H.S.T.C.</i>	<i>Opponents</i>
Millersville	5	7
Lebanon Valley	4	0
Millersville	7	1
Shippensburg	7	2

Left to right: Coach C. Smith, H. Day, B. Hanka, P. Houck, C. Lowros, B. Peters, B. Gardner, M. Markley, F. Bonfilio, B. Coates, S. Maugher, G. Nevins, E. Hardy, and H. King.





First row, left to right, B. Coates, E. Royer, Captain B. Thompson, E. Hardy, M. Blessing. Second row: C. Ott, B. Gottshall, B. Peters, C. Lowros, M. Simpson.

VOLLEYBALL CHAMPIONS OF INTRAMURALS

Approximately fifty girls turned out for intramural volleyball. Under the management of Betty Gottshall, the group was divided into five teams. The day room team had Patricia Laith as captain. The four dorm teams were The Characters, captained by Barbara Gardner, the ? Champs led by Martha Markley, The Big Timers under leadership of Phyllis Sowers, and The Its captained by Betty Lou Thompson.

A round robin tournament was played and the Its captured the championship.

THE STANDINGS FOR THE FOLLOWING TEAMS

<i>Teams</i>	<i>Games Played</i>	<i>Won</i>	<i>Lost</i>
Its	5	4	1
Characters	4	2	2
? Champs	4	2	2
Big Timers	4	0	4
Day Room	4	0	4

GIRLS BASKETBALL VARSITY

The girls had a light schedule this year, because many colleges have discontinued inter-collegiate basketball. However, Virginia Baugher, manager, did arrange games with four other schools.

Betty Hanka, captain, and Barbara Gardner led their teammates to three victories and a tie game.

The Junior Varsity team also had several games scheduled with the Lock Haven Y. Our Junior Varsity won both games.

Official record for 1947 Basketball Varsity:

<i>Teams</i>	<i>L.H.S.T.C.</i>	<i>Opponents</i>
Elizabethtown	38	38
Susquehanna	47	20
Lebanon Valley	28	18
Elizabethtown	21	47

First row, left to right: P. Lauth, B. Hanka, M. Blessing, V. Clemens, Mgr. V. Baugher, G. Nevins, B. Faust, H. Porter, E. Hardy. Second row: B. Thompson, C. Ott, F. Bonfilio, F. Kilsdonk, Coach C. Smith, P. Hunsberger, D. Montessor, R. Golebieski, B. Coates.





First row, left to right: J. Schrock, S. Cohick, M. Simpson, B. McClain, E. Mechtely, J. Murphy, J. Miller. Second row: F. Bonfilio, B. Faust, W. Golebieski, Adviser, L. Spikings, S. Dann, F. Kilsdonk, H. Porter, and V. Baugher.

SYNCHRONIZED SWIMMING

The synchronized swimming team was organized in the fall under the supervision of Miss Spikings. This year the group consisted of both girls and boys. For those who are not familiar with the term synchronized swimming, it can be defined in several words, swimming together and also to music. Many lovely patterns and floating formations can be made as well as performing stunts and combining strokes. In general, synchronized swimming requires endurance, not speed, but versatility in the use of all the strokes not the specialization of one stroke but the ability to adopt one's stroke to the average rhythm of the group.

This type of swimming is not only fun to participate in, but also to see. The first performance by eight of its members was held Dec. 13, 1946 at the Y.M.C.A. in Harrisburg for the A.A.H.P.E.R. Convention. The group demonstrated stunts and stroke and participated in several synchronized numbers. T.C. was proud to be able to contribute to the convention program with Temple University and West Chester.

After practicing for several months the swimming team was ready to entertain the public with stunts, formations, ballet and swimming in unison to music. Two performances were held on March 12 and 13 before a crowded audience.

Several of the main features of the program were: Stunts and strokes demonstrated by F. Kilsdonk and W. Golebieski, "Rhapsody in Blue," a duet by B. Bonfilio and R. Castle; "Sonata" by a trio consisting of B. Faust, M. Simpson and J. Miller, and a "Candlelight" number by six girls. Another attraction was many types of dives by J. Miller, B. Golebieski, L. Brion, D. Hurd, B. Castle, H. Pinge, and S. Dann.

The members of the synchronized swimming team are:

Bonnie Bonfilio, Ronald Castle, Sye Dann, Joan Murphy, Betty Lou Faust, Betty Lou Thompson, William Golebieski, Shirley Cohick, Marian Fredricks, Frances Kilsdonk, Martha Simpson, Jack Miller, Helene Porter, Virginia Baugher, Edith Mechtely; Adviser, Lorraine Spikings.

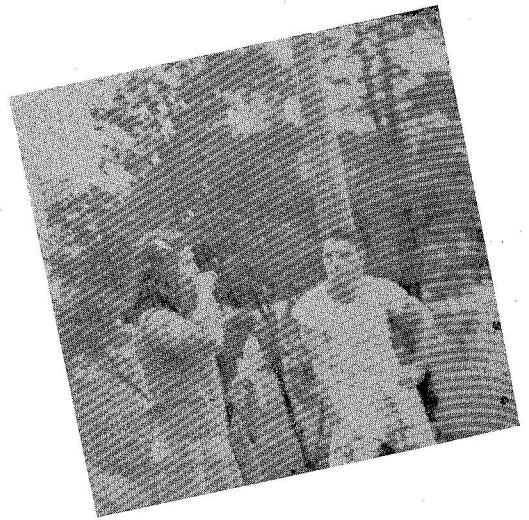


A TRADITION

VARIETY



Hot Dogs!!



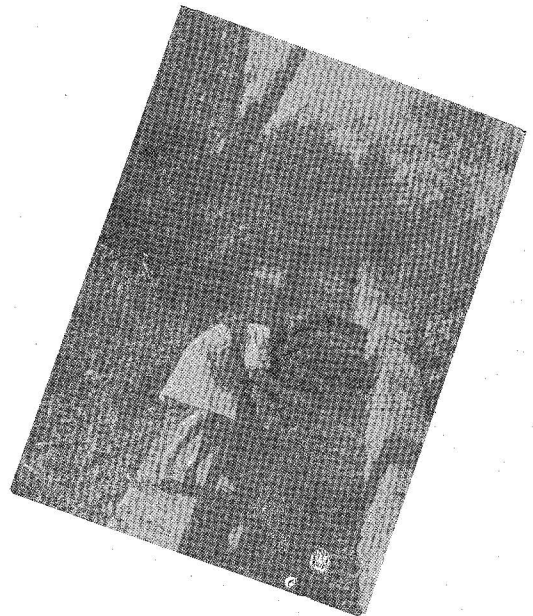
Gotta Match, Bill?



What's Wrong with the Social Rooms?

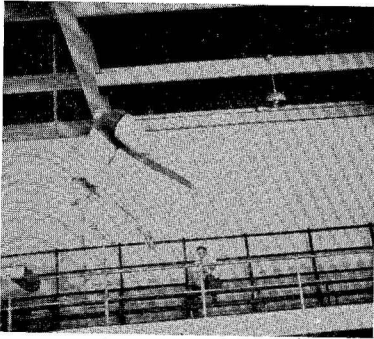


Snow-Under



Aw! Coax Me

Odds and Ends



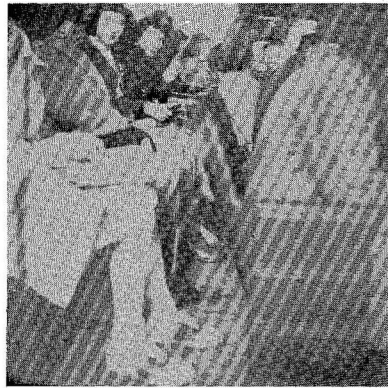
Jackknife



As we go sleighing



Day dreaming



Assembly



Where's Frosty?



Term papers



Just think!!



What a future!



Pay at the door

LIFE !!



A cup of tea?

Down in front

We want uniforms

Leading a dog's life

Student Directory

Adams, Harold MarsdenGrenburr, Penna.
 Adams, James Scott803 Presquesh St., Philipsburg, Penna.
 Alberts, William Edward1042 Helburn St., Williamsport, Penna.
 Allen, Donald Edwin217 So. High St., Lock Haven, Penna.
 Anderson, Carl EmilBox 61 Lanse, Clearfield, Penna.
 Andrews, George Leslie, Jr.1007 W. So. Ave., So. Williamsport, Penna.
 Angus, Henry Winters, Jr.R. D. No. 1, Mill Hall, Penna.
 Angus, James DonaldR. D. No. 1, Mill Hall, Penna.
 Antonelli, Frank Joseph425 Bogard St., Kane, Penna.
 Arbukle, Donald Esser641 Shenley Drive, Erie, Penna.
 Ardary, Charles Theodore135 Johnson St., Naugatuch, Conn.
 Arseniu, Genevieve C.211 W. Market St., Lewistown, Penna.
 Atkinson, Donald EugeneN. Pine St., Lakemont, Penna.
 Atkinson, James Elwood206 N. Pine St., Lakemont, Penna.
 Aubel, Arthur Carl422 Delaware St., Forest City, Penna.
 Baieroski, Helen Louis316 First Ave., Johnsonburg, Penna.
 Bailey, Irene MargueriteMinnequa Ave., Canton, Penna.
 Baker, Allen Langdon348 E. Foster Ave., State College, Penna.
 Ball, Ed Koch1920 Riverside Drive, S. Williamsport, Penna.
 Banghart, Carolyn AnneMcElhattan, Penna.
 Barash, Seymour Leon1222 W. Dauphin St., Philadelphia, Penna.
 Barnes, Anna Lee MarjorieR. D. No. 2, Roaring Branch, Penna.
 Barnes, George William793 Penna. Ave., Williamsport, Penna.
 Barnhart, David LaurenceMt. Jewett, Penna.
 Barnhart, Philip CharlesEast Main St., Mt. Jewett, Penna.
 Barnhart, Richard FlegalEast Main St., Mt. Jewett, Penna.
 Bartges, Tessie LoraineMillheim, Penna.
 Barthelson, Glenn Roger2610 Perry St., Erie, Penna.
 Bathurst, Mary JosephineHazel St., Milesburg, Penna.
 Batley, Allen Leslie204 Oak St., Jersey Shore, Pa.
 Baughman, Clifford LeRoy528 W. Bald Eagle St., Lock Haven, Penna.
 Bauman, Gloria June20 Commerce St., Lock Haven, Penna.
 Bauman, Robert Lawrence20 Commerce St., Lock Haven, Penna.
 Beaver, Lawrence Anthony135 W. Center St., Johnsonburg, Penna.
 Beck, William Bruce162 Penna. Ave, Renova, Penna.
 Beckenbaugh, Eugene Harold ...625 Frederick St., Flemington, Penna.
 Beckenbaugh, Ruth Violet625 Frederick St., Flemington, Penna.
 Beers, Harvey Jackson, Jr.430 South Fourth St., Sunbury, Penna.
 Belt, Minnie ElveaMahaffey, Penna.
 Benfer, Ivan GilbertBox 37, New Columbia, Penna.
 Benchoff, Hobart EarlRoute No. 4, Waynesboro, Penna.
 Berglaund, Donald Wilbur602 Dwich St., Coudersport, Penna.
 Berkstresser, Dorthy Jean128 W. Triumph St., Edinburg, Penna.
 Bernas, Joe436 Center St., Mt. Carmel, Penna.
 Berne, Jean Carol221 N. Main St., Coudersport, Penna.
 Berry, Josephine Elizabeth128 N. Summit St., Lock Haven, Penna.
 Berry, Phyllis Mae520 Frederick St., Flemington, Penna.
 Betts, George MorrisonIsland Route, Lock Haven, Penna.
 Betz, Fred DavisHoward, Penna.
 Bierly, Christine AnnSummit St., Avis, Penna.
 Bigelow, Wilbur Hinman, Jr. ...312 Penna. Ave., Watsontown, Penna.
 Bilancinni, Sam901 N. Summer St., Scranton, Penna.
 Bissell, Margaret Jean723 Bridge St., New Kensington, Penna.
 Bixby, Britton140 John St., Troy, Penna.
 Blackburn, Thomas Winfield ...1004 17th Ave., Altoona, Penna.
 Blaney, Carolyn Jean150 E. Cortin St., Bellefonte, Penna.
 Blessing, Mildred Ruth1412 N. 10th St., Reading, Penna.
 Bloom, Gerold1634 20th Ave., Altoona, Penna.
 Bodle, Patricia Claire554 W. Main St., Lock Haven, Penna.
 Bonfilio, Santo, Jr.4 N. Elk Ave., Kane, Penna.
 Bonfilio, Filimena Mary4 N. Elk Ave., Kane, Penna.
 Boob, John Edward17 W. 4th Ave., Clearfield, Penan.
 Booker, Richard WardBox 416, Clymer, Penna.
 Booth, Robert Olin908 Johnson Ave., Portage, Penna.
 Borella, Joseph Alessio166 1st Ave., Johnsonburg, Penna.
 Borger, Harry DaleMoshannon, Penna.
 Borkoski, Joseph Francis3526 Cumberland Rd., Erie, Pa.
 Borrelli, Vincent Nickola231 Middle St., Minersville, Penna.
 Bossert, Marjorie EllenHighland St., Avis, Penna.
 Bossert, Mary LouiseSylvan Ave., Avis, Penna.
 Bottorf, Dean Cudden650 Bressler St., Flemington, Penna.
 Bower, Jane E.908 W. Central Ave., Williamsport, Penna.
 Bower, Thomas David30 Bellefonte Ave., Lock Haven, Penna.
 Bowers, Frank Julius15 E. Warter St., Lock Haven, Penna.
 Bowman, Jean Elizabeth114 Scott Ave., Altoona, Penna.
 Boyer, Spencer Edmund200 Green St., Mifflinburg, Penna.

Student Directory

Bralich, John Ivan1201 Webster St., Farrell, Penna.
 Bressler, John EdwardBox 42, Mill Hall, Penna.
 Briezzi, John714 North Main St., Coudersport, Penna.
 Brillhart, John Hulbert206 Madison Ave., Lock Haven, Penna.
 Brion, Leonard LarueLiberty, Penna.
 Brittain, Ruth Anna50 Seventh Ave., Burnham, Penna.
 Bronson, Mary Faye122 No. 7th St., Easton, Penna.
 Brown, Anna FrancesMill Hall, Penna.
 Brown, Charles WilliamPine St., Lititz, Penna.
 Brown, Jane RebeccaMill Hall, Penna.
 Brown, Kenneth MerleHyndman, Penna.
 Brown, Robert M.Mill Hall, Penna.
 Brown, William Ferguson159 N. College St., Canonsburg, Penna.
 Brown, David George512 W. Central Ave., S. Williamsport, Penna.
 Brumbaugh, Phyllis MaySpearing St., Howard, Penna.
 Buckler, Robert66 Rehoboth Ave., Rehoboth, Penna.
 Buckley, Elizabeth IreneR. D. No. 2, Honesdale, Penna.
 Buckreis, Doris Margaret1017 Eighth Ave., Altoona, Penna.
 Budinger, GenneSnow Shoe, Penna.
 Budinger, Philip McKinleySnow Shoe, Penna.
 Bukusky, John AnthonyBox 244, Beaverdale, Penna.
 Burket, Clifford Allen1029 Johnson Ave., Portage, Penna.
 Burns, Edward ThomasCurtis Apts., Philipsburg, Penna.
 Butchko, George Stephen, Jr.R. D. No. 4, Box 273, Johnstown, Penna.
 Calderone, Lewis1101 So. Darby St., DuBois, Penna.
 Callahan, Lucille JaneSlate Run, Penna.
 Campbell, Henry Paschodd2843 Voelkel Ave., Dormont, Penna.
 Campbell, James Forrest160 Madison Ave., St. Marys, Penna.
 Campbell, Janet Marie137 4th St., Renovo, Penna.
 Caprio, Frances Wilhelmena119 Perl St., Lock Haven, Penna.
 Carpenter, Carolyn IoneLaPorte, Penna.
 Carlson, Thomas Wesley420 Miller St., Butler, Penna.
 Cartwright, Ethel MaeHawk Run, Penna.
 Casper, Henry William27 N. Thomas St., Bellefonte, Penna.
 Casilio, Samuel Joseph338 Shawmut Ave., Johnsonburg, Penna.
 Cassidy, Harold Samuel817 19th St., Altoona, Penna.
 Castle, Ronald ElRoy1026 Kähkwa Blvd., Erie, Penna.
 Chaapel, Robert RogersBox 35, LeRoy, Penna.
 Charles, William ThomasRoso and Fairview, Avis, Penna.
 Charlton, Edward B.309 Elmira St., William, Penna.
 Charlton, Eileen CharlotteMill Hall, Penna.
 Chieppor, Alfred Benson400 Pine St., Philipsburg, Penna.
 Clees, Randall J.420 Cherry St., Montoursville, Penna.
 Clemens, Mary Virginia626 Fifth St., Huntington, Penna.
 Close, Farmont EugeneBox 310, Emporium, Penna.
 Close, Norman LeRoySproul, Penna.
 Coates, Barbara Jane320 N. Martin St., Titusville, Penna.
 Cogswell, Margaret Shirley689 Third Ave., Williamsport, Penna.
 Cohick, Shirley CaterineSalladasburg, Penna.
 Colliver, Richard ForrestR. D. No. 2, Holsopple, Penna.
 Condon, William Joseph225 Beachgrove, Erie, Penna.
 Confer, Dean TylerBlanchard, Penna.
 Confer, Thomas Blair307 Ankle St., Rock Springs, Penna.
 Conser, Lillian Marine207 W. Clinton St., Lock Haven, Penna.
 Cook, Joan M.223 N. Fairview Ave., Lock Haven, Penna.
 Cook, Kitty Frederick307 Vesper St., Lock Haven, Penna.
 Cook, Marjorie Jean109 Frederick St., Flemington, Penna.
 Copper, Roy CalvinR. D. No. 1, Loganton, Penna.
 Cornell, Thomas Hill35 N. Fairview St., Lock Haven, Penna.
 Corant, Paul312 Vesper St., Lock Haven, Penna.
 Costello, John Nicholas321 W. 5th St., Mt. Carmel, Penna.
 Cowell, Henry FulfordR. D. No. 1, Howard, Penna.
 Coyle, William Edward70 Fairview Ave., Johnstown, Penna.
 Coyne, James Joseph504 E. 6th St., Erie, Penna.
 Creamer, William Howard1081½ E. Willow Ave., Altoona, Penna.
 Cree, Franklin Robert219 N. Fairview St., Lock Haven, Penna.
 Creen, Edward HarryMountainhome, Penna.
 Crist, Gerold Paul2824 W. Chestnut St., Altoona, Penna.
 Crist, Robert Hollis123 N. Lincoln Ave., Jersey Shore, Penna.
 Crites, Beatrice LenoraMarket St., Mill Hall, Penna.
 Crook, Kenneth GarfieldVine St., New Berlin, Penna.
 Crosser, Kenneth Brown229 Oak St., Jersey Shore, Penna.
 Crossley, Navonne Susanne734 W. Foster St., State College, Penna.
 Crowell, Adelbert ClintonCobb St., Ulysses, Penna.
 Cryder, Franklin PaulR. D. No. 1, Lock Haven, Penna.
 Cummings, Jean Marie213 Logan Ave., Castanea, Penna.
 Curran, Ann Louise152 3rd St., Renovo, Penna.

Student Directory

Curran, Mary Marguerite152 3rd St., Renovo, Penna.
 Currin, Fleda OtheaLoganton, Penna.
 Currin, Robert KneppLoganton, Penna.
 Dale, Patricia JeanMorrisdale, Penna.
 Dann, Roland Lewis107 W. St., Coudersport, Penna.
 Dannaway, George2200 Columbia Ave., Tyrone, Penna.
 Darke, Joseph MurrayWest Decatur, Penna.
 Darrow, Melvin RichardR. D. No. 1, Box 115 A, Petersburg, Michigan.
 Davis, Andrew AlfredMunson, Penna.
 Davis, Gerold Cameron3rd Ave., Burnham, Penna.
 Davis, SallyR. D. No. 1, Box 56, Patton, Penna.
 Day, Helen LouiseStar Route, Apollo, Penna.
 De Angilis, Tony Mane14 James St., Lancaster, Penna.
 De Augustino, Stephen Vincent ..North St., Grove City, Penna.
 Deise, Richard Thomas105 4th St., Lock Haven, Penna.
 Deitrich, E. JeanR. D. No. 2, Bellefonte, Penna.
 Deliman, John MetodeWinburne, Penna.
 Denius, Sherman Franklin60 N. 8th, Lewisburg, Penna.
 Densham, William EdwardMorrisdale, Penna.
 De Parlo, Artur C.619 Grace St., Williamsport, Penna.
 Dermott, Ralph George1220 W. Rush St., Philadelphia, Penna.
 Dewald, Carl LaRue531 S. Main St., Jersey Shore, Penna.
 Diack, Caroline Frances744 Bellefonte Ave., Lock Haven, Penna.
 Di Biago, Anthony Robert201 Brisbin Ave., Houtzdale, Penna.
 Dice, John E.1059 Lovise St., Williamsport, Penna.
 Dickey, Samuel Clarence, Jr.819 Bellefonte Ave., Lock Haven, Penna.
 Dietz, Sheldon ReedBlanchard, Penna.
 Dolan, Arthur George240 W. 22nd St., New York City, New York
 Dombrowski, Raymond Lenard ..620 E. 19th St., Erie, Penna.
 Donovan, James Edward307 Ask St., Kane, Penna.
 Dorn, Harry Augustus, Jr.Box No. 202, St. Thomas, Penna.
 Doyle, Regis Edward211 Lee St., Portage, Penna.
 Doyle, Thomas R.211 Lee St., Portage, Penna.
 Drick, Mary Reichard“Hi-Rines,” R. D. No. 2, Muncy, Penna.
 Duarte, Leila MaryC.10, Cosmopolitan Colony, Karachi, India.
 Duffy, Margy Jane239 S. Barnard St., State College, Penna.
 Dunn, William FrederickE. Custin St., Bellefonte, Penna.
 Edmiston, Frederick KennethGrampian, Penna.
 Eggert, William Richard8320 Cedar Rd., Elkins Park, Penna.
 Eichenlanb, Charles Cresent435 E. Church St., Lock Haven, Penna.
 Ellzey, Evelyn Wunster311 S. Main St., Jersey Shore, Penna.
 England, Normand Joseph112 Clark St., New Bedford, Mass.
 Ernst, John Henry4836 Ellsworth Ave., Pittsburgh, Penna.
 Errigo, Joe A.Curwensville, Penna.
 Estes, Herbert JackR. D. No. 2, Coudersport, Penna.
 Ethers, DonaldSnowshoe, Penna.
 Faris, Joseph Abraham705 Chestnut Ave., Altoona, Penna.
 Farley, Ray Donaldson, Jr.336 E. Church St., Lock Haven, Penna.
 Farringer, John Russell331 Plum St., Williamsburg, Penna.
 Fitzpatrick, Robert Bernard10 Sedalia St., Avalon, Penna.
 Flanagan, Michael E.R. D. No. 3, Clearfield, Penna.
 Flegal, Mitchell AustinR. D. No. 3, Clearfield, Penna.
 Fletcher, Dorothy FrancesR. D. No. 3, Lewisburg, Penna.
 Florey, James Dale861 Louisa St., Williamsport, Penna.
 Follmer, Mildred Louise9 N. High St., Selinsgrove, Penna.
 Forbes, Margaret Jane520 W. Fairmount Ave., State College, Penna.
 Ford, Richard Ford42 E. Bald Eagle St., Lock Haven, Penna.
 Foreman, Ernest JuniorSix Mile Run, Penna.
 Foster, Lester Hall2622 W. Chestnut St., Altoona, Pa.
 Foust, Betty Lou211 Venango St., Johnstown, Penna.
 Foust, Earl Earnest, Jr.346 Cherry St., Montoursville, Penna.
 Fowler, Marie LouiseMunson, Penna.
 Francis, Mary Virginia312 Union Ave., Altoona, Penna.
 Fredericks, Marion15 W. Church St., Lock Haven, Penna.
 Freeman, Margaret Louisa309 Ninth St., Philipsburg, Penna.
 Frey, John Palmer337 E. Bishop St., Bellefonte, Pa.
 Fryer, Ernest Edwin501 E. Main St., Lock Haven, Penna.
 Fuge, Francis DonaldClaysburg, Penna.
 Fury, Paula RuthClaysburg, Penna.
 Furst, Jane ElizabethMackeyville, Penna.
 Furst, Mary CatherineMackeyville, Penna.
 Gabel, James RusselS. Chestnut St., Mill Hall, Penna.
 Gahres, Robert SterlingJonestown, Penna.
 Galitski, Thomas Francis302 N. Oak St., Mt. Carmel, Penna.
 Gallery, George Patrick1029 Kerlen St., Chester, Penna.
 Gardner, Barbara JaneHoward, Penna.

Student Directory

Gardner, Mary Agnes48 Chestnut St., Mill Hall, Penna.
 Gault, Nelson GlennR. D. No. 2, Tyrone, Penna.
 Gauntt, Mary Virginia101 Henderson St., Lock Haven, Penna.
 Gehinger, Francis Bernard426 Church St., Allentown, Penna.
 George, James RembrandtGieseki Apts., Philipsburg, Penna.
 Ginter, John PaulSalona, Penna.
 Girdwood, Aylmer Hunter, Jr. ...R. D. No. 2, Gibronia, Penna.
 Glock, Charles Eugene84 W. Water St., Mill Hall, Penna.
 Glock, Clavi JosephMain St., Beech Creek, Penna.
 Glossner, Stanley Thomas224 Pearl St., Lock Haven, Penna.
 Glunt, Robert Merrill5019 Oak Ave., Altoona, Penna.
 Golebieski, Rita Agnes313 First Ave., Johnsonburg, Penna.
 Golebieski, William Joseph313 First Ave., Johnsonburg, Penna.
 Gottshall, Betty Jane118 Scott Ave., Altoona, Penna.
 Gottshall, Shirley Louise118 Scott Ave., Altoona, Penna.
 Graffius, William Edwin126 E. Nittany Ave., State College, Penna
 Grand, RebeccaMonument, Penna.
 Grant, James Ellis6635 McCollum St., Philadelphia, Penna.
 Gray, Jane ThomasTrout Run, Penna.
 Gray, Vernon DaleTrout Run, Penna.
 Green, Clarence Wilbert1738 N. Sixth St., Harrisburg, Penna.
 Green, LorenBigler, Penna.
 Green, George Harden882 Kennebee St., Pittsburgh, Penna.
 Greenwood, William Albert106½ Bellefonte Ave., Lock Haven, Penna
 Greninger, Mrs. Martha Kerns ..205 N. Jay St., Lock Haven, Penna.
 Grieb, Dale RussellSnowshoe, Penna.
 Gross, Martha Ann19 N. Allegheny Ave., Bellefonte, Penna.
 Grubb, John Ward220 Foust St., Flemington, Penna.
 Guiser, Philip LloydR. D. No. 1, Lock Haven, Penna.
 Gunsallus, Virginia Mabel419 Willow Ave., Altoona, Penna.
 Haag, Richard Boyd9 Bell Ave., Pittsburgh, Penna.
 Hackenberg, Louise BerthaR. 3, Bellefonte, Penna.
 Haduch, Margaret Josephine169 Shoemaker St., Swoyerville, Penna.
 Hager, Kenneth Thompson501 Woods Ave., Flemington, Penna.
 Hagerman, John Carol106 So. Market St., Muncy, Penna.
 Hakin, Wallace Willard217 W. Warter St., Lock Haven, Penna
 Haney, Jack414 W. Church St., Lock Haven, Penna
 Hammer, Mary CatherineR. D. No. 1, Boswell, Penna.
 Haneach, Millard S., Jr.431 S. Center St., Philipsburg, Penna.
 Hanka, Betty Rae693 Davenport St., Meadville, Penna.
 Harback, Philip EmoryR. D. No. 1, Loganton, Penna.
 Hardy, Eleanor DorothyR. D. No. 1, Snedekerville, Penna.
 Harkleroad, Vernell Zenas136 Park Place, Johnstown, Penna.
 Harlan, Robert Eugene137 6th St., Renovo, Penna.
 Harnish, Louise GraceAlexandria, Penna.
 Harpster, Lois LouiseChestnut St., Mill Hall, Penna.
 Harris, Marguerite Elaine1417 Walnut St., Jersey Shore, Penna.
 Harrity, Clarence Donald2904 Ivyside Dr., Altoona, Penna.
 Hartle, James EdwardDrifting, Penna.
 Hartle, Rita MarieDrifting, Penna.
 Hartzell, Francis William206 Pearl St., Lock Haven, Penna.
 Hartzell, Robert Harry206 Pearl St., Lock Haven, Penna.
 Hasgon, Edwin NoneIrvona, Penna.
 Heaps, Thomas Quinn557 6th St., Pitcairn, Penna.
 Heck, Clarence Marshall, Jr. ...233 Penna. Ave., Renovo, Penna.
 Heckel, Louise Mae10 W. Brown St., Pastanica, Penna.
 Heimer, Ralph Tinnell308 Vesper St., Lock Haven, Penna.
 Heims, Patrick Eugene700 Single St., Osceola Mills, Penna.
 Heinrich SteveBox 48, Seanon, Penna.
 Hengst, Benjamin DavidImler, Penna.
 Herold, Dolores Joan306 So. Gill St., State College, Penna.
 Herrington, John Edward9th 400 St., Philipsburg, Penna.
 Herrold, Sterling ArdelBox 143, Selinsgrove, Penna.
 Herron, Mary Lou251 Main St., Roarings Springs, Penna.
 Herzog, Leo Lawrence307 Mechanic St., Smethport, Penna.
 Heston, Sara Dorothy1114 Main St., Avoca, Penna.
 Hetrick, Homer Lee322 Pifer St., DuBois, Penna.
 Hills, Theodore GilbertMill Hall, Penna.
 Himes, Raymond McKinney224 Center Ave., Pitcairn, Penna.
 Hinchliffe, LaRue EllenMain St., Beech Creek, Penna.
 Hintenlang, Jeannette Mae447 S. Fairview St., Lock Haven, Penna.
 Hintenlang, Joseph Clair447 S. Fairview St., Lock Haven, Penna.
 Hochrein, Chester Guver224 Main St., Portage, Penna.
 Hoenatine, Richard LeeR. D. No. 1, Imler, Penna.
 Hollenbach, Dorothy Ruth24 N. 14th St., Lewisburg, Penna.
 Hollenbeck, Gloria Jean25 Caluin Court, Bradford, Penna.

Student Directory

Holt, LeRoy Harbeson R. D. No. 1, Mill Hall, Penna.
 Hoover, John Carlton 16 W. 3rd St., Williamsport, Penna.
 Hosteler, Robert Leo 516 Beachly St., Meyersdale, Penna.
 Houck, Paul Whitman 239 N. Ridge St., Bellefonte, Penna.
 Houck, Prudence Marie 600 Warm Springs Ave., Huntingdon, Penna.
 Hoy, Kathleen Marie 229 W. Ridge Ave., State College, Penna.
 Hoy, Vivian Pauline Lockport Heights, Lock Haven, Penna.
 Hudson, M. Ann 42 Scofield Ave., Curwensville, Penna.
 Hugar, Andrew Lester Frenchville, Penna.
 Hugar, Calvin R. D. No. 1, Frenchville, Penna.
 Hugar, Merle James Keewaydin, Penna.
 Humpburg, Oscar Clarence 27 E. Spruce St., Washington, Penna.
 Hunshberger, Pearl Young 229 Noble St., Souderton, Penna.
 Hunter, William Harry 457 So. High St., Lock Haven, Penna.
 Hurd, Joseph Donald 1830 11th Ave., Altoona, Penna.
 Hurwitz, Harold Samuel 106 E. Church St., Lock Haven, Penna.
 Hurwitz, Phil 315 N. Grove Street, Lock Haven, Penna.
 Huston, Joan Eileen Box 415, Davidsville, Penna.
 Hutchings, June Elizabeth Drifting, Penna.
 Hytryan, Joseph Daniel 100 S. Church, Hazleton, Penna.
 Hutzel, Joan Ann R. D. No. 2, Loganton, Penna.
 Isacs, Howard Edgar Potunk Lane, Suffolk, N. Y.
 Jackson, Paul Henry 146 Grove St., Johnsonburg, Penna.
 James, Weltha Jean State St., Erie, Penna.
 Jaworek, Steven Vincent 1944 Glendale Ave., Erie, Penna.
 Johnson, Donald Paul 905 Johnson Ave., Portage, Penna.
 Johnson, Ethel Pepperman Main Street, Mt. Jewett, Penna.
 Johnson, E. Catherine R. D. 2, Box 347, Tyrone, Penna.
 Johnson, Gene A. 1080 Flemington, Penna.
 Johnson, Ralph Edward 112 E. College Ave., State College, Penna.
 Johnson, Reginald Corwin 151 Ridge Ave., Waynesboro, Penna.
 Jones, John Paul 413 W. Church St., Lock Haven, Penna.
 Judd, Richard B. 301 Birch St., Flemington, Penna.
 Judd, Russell R. 301 Birch St., Flemington, Penna.
 Jusick, Conrad 300 Spruce, Philipsburg, Penna.
 Kaler, Ruth Maree Lock Haven, Star Route, Penna.
 Kamus, Frank J. 219 Oliver St., Swoyerville, Penna.
 Kammerer, Edwin Shaffer 343 S. High St., Lock Haven, Penna.
 Kay, William Robert Box 29, Philipsburg, Penna.
 Keeler, Torrence Leroy 107 W. Brown, Castanea, Penna.
 Keener, Thomas Bowman 754 W. 4th St., Williamsport, Penna.
 Keller, Harold Wallace Kate, Osceola Mills, Penna.
 Keller, Lois Marie 2717 First St., Altoona, Penna.
 Keller, Richard Harleman 323 E. Church St., Lock Haven, Penna.
 Kelley, Donald Mervin 410 Wright St., Flemington, Penna.
 Kemmerer, Charles Richard 105 N. Grove St., Lock Haven, Penna.
 Kephart, Gwendolyn Gladine 710 Edward, Philipsburg, Penna.
 Kern, Bernard Michael R. F. D., Port Matilda, Penna.
 Kerstetter, Emma M. Loganton R. D. 2, Penna.
 Kilsdonk, Frances Mary 215 Fifth St., Lock Haven, Penna.
 King, Mary Helen Murrysville, Penna.
 King, Walter Clair R. D. No. 1, Lock Haven, Penna.
 Kissell, Mary Lou 238 West Church St., Lock Haven, Penna.
 Kline, Donald Leroy 1416 Walnut St., Jersey Shore, Penna.
 Kline, Keith William 330 S. Fairview St., Lock Haven, Penna.
 Kline, Paul Blaine R. D. 1, Box 104, Clearfield, Penna.
 Kline, Sarah Jane R. F. D. 1, Howard, Penna.
 Knarr, Harry 525 W. Church St., Lock Haven, Penna.
 Kniffin, Edna LaVantin Canton, Penna.
 Knuth, Leslie Jeanne R. D., Lock Haven, Penna.
 Kocher, Don Edward Route 3, Johnstown, Penna.
 Korb, George William 327 W. Long Ave., DuBois, Penna.
 Kozar, Frank Joseph Box 15, St. Michael, Penna.
 Kratzer, Marian Esther Richfield, Penna.
 Krisan, Mickey John 319 Maple St., Ambler, Penna.
 Kristofak, Wendell George 10 No. Main, Hartford, Conn.
 Kulak, Joseph Gregory Jerome, Penna.
 Kunkelman, William John 718 W. Third St., Lock Haven, Penna.
 Kunselman, Patricia Jean Box 622, Brookville, Penna.
 Kurtz, John Louis Claysburg, Penna.
 Kustanbauter, Orvis Sholl 350 E. High St., Bellefonte, Penna.
 Kyler, John Francis Riverview Apt., Lock Haven, Penna.
 Laedlein, Pearl Emily 712 Second Ave., Williamsport, Penna.
 Lamade, John Budd 1608 James Road, Williamsport, Penna.
 Lane, Donald Lee 112 Kate St., Osceola Mills, Penna.
 Lapos, John Joseph 108 W. Catawissa St., Nesquehoning, Penna.
 Lash, Marian Lavina R. D. No. 1, West Newton, Penna.

Student Directory

Laux, Paul M. 309 Woodland Ave., Williamsport, Penna.
 LaVanche, Albert William 411 Mountain Ave., Portage, Penna.
 Leavy, George B. 115 N. Third St., Clearfield, Penna.
 Leitzel, Lura Jane Richfield, Penna.
 Leizter, Margaret Ann Box 8, Reedsville, Penna.
 Leuschner, Frederick Edward ... 251 Ridge Ave., State College, Penna.
 Lingenfelter, David Carl Munson, Penna.
 Lingenfelter, Frank H. Munson, Penna.
 Livingston, Lee Coleman Hayes Fort, Penna.
 Litz, Robert Wesley 45½ Bellefonte Ave., Lock Haven, Penna.
 Lockard, Mary Gertrude 212 Sixth Ave., Altoona, Penna.
 Loesch, James Donald 1247 Buffaid Rd., Erie, Penna.
 Long, Betty Rosalyn 181 N. Fairview, Lock Haven, Penna.
 Long, Gloria Kathenne 337 Woodland Ave., Williamsport, Penna.
 Long, John Martin 104 Frederick, Flemington, Penna.
 Long, Joseph William 104 Frederick St., Flemington, Penna.
 Long, Ralph Stewart 549 Trenton Ave., Pittsburgh 21, Penna.
 Long, William Henry 529 Chestnut, Mifflinburg, Penna.
 Lauth, Mildred Patricia 418 W. Church St., Lock Haven, Penna.
 Lovich, Frank Stephen 2nd St., Box 483, Fayette City, Penna.
 Lorigan, Betty Mae 217 High St., Johnsonburg, Penna.
 Lowros, Chris B. 327 N. E. Walnut, Titusville, Penna.
 Luchetta, Lillian Irene 30 E. Main St., Lock Haven, Penna.
 Lukas, Gerald Francis 116 Noyes Ave., Swoyerville, Penna.
 Lundy, John Edward 1512 High Street, Williamsport, Penna.
 Lunn, William Raymond 238 Forrest Ave., Ambler, Pa.
 Lutz, Phyllis Barbara R. D. No. 1, Port Matilda, Penna.
 Lynch, Mary Evelyn 608 15th St., Juniata, Altoona, Penna.
 Lyon, Jesse William 405 S. High St., Lock Haven, Penna.
 Lynn, Sarah Josephine 319 12th Ave., Altoona, Penna.
 McCall, James Edwin 1170 Haerberle Ave., Niagara Falls, N. Y.
 McCarthy, Thomas Eugene 314 Locust St., Williamsport, Penna.
 McClain, Betty Jean Star Route, Huntingdon, Penna.
 McClain, James Curtis Mill Hall, Penna.
 McCloskey, Jeanne Claire 129 Vesper St., Lock Haven, Penna.
 McClure, Marie Anna West Decatur, Penna.
 McDermist, Lewis Walter R. F. D. No. 1, Lock Haven, Penna.
 McElhoes, Harvey Jay Box 33, Home, Pa.
 McGee, R. Dean 742 South Main, Roaring Spring, Penna.
 McGhee, Betty Caroline 123 S. Fraley St., Kane, Penna.
 McGhee, John Richard Haren Hotel, Lock Haven, Penna.
 McGill, Lewis Alvin Salona, Penna.
 McGuire, John Alfred 530 Ontario Ave., Renovo, Penna.
 McIntosh, Charles M. 3937 W. Ridge Rd., Erie, Penna.
 McIntyre, James Robert Six Mile Run, Penna.
 McIntyre, William Howard Hollidaysburg R. D. No. 1, Penna.
 McNulty, John Joseph 202½ E. Main St., Lock Haven, Penna.
 Maccallum, James Garfield 100 S. Broad St., Emporium, Penna.
 MacDonald, Munroe William 1919 Jenny Lind St., McKeesport, Penna.
 Maclay, Margaret Anne 509 Presqueisle Ave., Philipsburg, Penna.
 Macktley, Edith Mari R. D. No. 2, Windlew, Penna.
 MacKenzie, George Reuben 149 5th St., Lock Haven, Penna.
 MacKenzie, Laura Mae Mohawk Village, Lock Haven, Penna.
 Madill, Thomas Joseph Spangler, Penna.
 Malone, Margaret Ellen Main St., Kersey, Penna.
 Mandio, Michael Thomas Wilson Ave., Bristol, Penna.
 Manmiller, Joseph Chester 262 Myers St., Steelton, Penna.
 Mantini, John Ernest Box 387, Jerome, Penna.
 Marocci, Nell Patricia 54 N. Main St., Robertsdale, Penna.
 Marcolivio, James Vincent 8 Short, Ridgway, Penna.
 Markley, Martha Eloise Tryonville, Penna.
 Markley, Rachel Oney 2414 Newberry St., Williamsport, Penna.
 Marks, Robert L. 306 S. Main St., Jersey Shore, Penna.
 Marquette, Don J. 213 State St., Carthage, Penna.
 Marshall, Arch Clarence Snow Shoe, Penna.
 Marshall, Palmer Edward McClure, Penna.
 Martin, James Fletcher 1367 Washington Ave., Tyrone, Penna.
 Marusiak, Walter Frank 706 W. Long Ave., DuBois, Penna.
 Masters, George Warren 206 Allegheny St., Jersey Shore, Penna.
 Matsko, Michael Box 217 St., Michael, Penna.
 Matteson, Richard Arthur 33 Chestnut St., Mill Hall, Penna.
 Mattern, John Perry 129 S. 2nd, Philipsburg, Penna.
 Mattox, Thomas A. 280 Alder Drive, Ben Avon, Penna.
 Mauger, Phyllis Jean 367 E. Main St., Lock Haven, Penna.
 Maurer, James Edward 124 N. Summit St., Lock Haven, Penna.
 Maurer, James L. 142 Portage St., Lilly, Penna.

Student Directory

Maurey, James Edward484 Tenth St., Clearfield, Penna.
 Mead, Marjorie Louise617 Sunset Rd., State College, Penna.
 Mehallow, GeorgeHawk Run, Penna.
 Mento, Joseph John411 Penna. Ave., Cresson, Penna.
 Metzler, Bernard Elwood103 Juniata Ave., Hollidaysburg, Penna.
 Michael, Derry BrainOil City, R. D. No. 2, Penna.
 Michaels, Herbert AlbinP. D. B. 343, Beaverdale, Penna.
 Miller, Donald Andrew105 Olive Ave., DuBois, Penna.
 Miller, Floyd F.2003 Northampton St., Easton, Penna.
 Miller, George Dresel410 S. 2nd St., Lykens, Penna.
 Miller, Gerald RaySpencer Rd., Ithaca, New York.
 Miller, Grace MarieW. Main St., Millheim, Penna.
 Miller, Jack R.Island Route, Lock Haven, Penna.
 Miller, James Lee114 W. 14th St., Tyrone, Penna.
 Miller, Thomas Derstine210 Boro St., Bellefonte, Penna.
 Miller, Warren Hugh51 Harrison St., Beech Creek, Penna.
 Mitchell, Betty MargaretR. Route No. 1, Mifflinburg, Penna.
 Mitchell, Mary Kathryn523 Ogden Ave., Clearfield, Penna.
 Mitro, George, Jr.202 S. Frankun St., Pottstown, Penna.
 Monson, Thomas Arden3491 Penna. Ave., Kane, Penna.
 Montessor, Doris Louise406 11th St., Philipsburg, Penna.
 Moore, Barbara Lou200 High St., Flemington, Penna.
 Moore, James Edward, Jr.1116 16th Ave., Altoona, Penna.
 Moore, Leroy327 S. High St., Lock Haven, Penna.
 Moore, Martha Lucille517 Ashcroft Ave., Cresson, Penna.
 Morancik, William Matthew718 E. 4th St., Clearfield, Penna.
 Morrell, Richard GregoryN. Botz St., State College, Penna.
 Morris, George RussellR. D. No. 3, Clearfield, Penna.
 Mosser, Frances MaeHyner, Penna.
 Mower, Paul Richard610 Front St., Minersville, Penna.
 Moyer, Miller Albert1409 Cemetery St., Jersey Shore, Penna.
 Moyer, Raymond EugeneFreeburg, Penna.
 Moyer, Willard CarsonVine St., New Berlin, Penna.
 Moyle, Warren RogerBox 61, Winburne, Penna.
 Muckle, Harry Sylvester417 Conrad Ave., N. Charleroi, Penna.
 Murphy, Jean Carroll543 Northumberland St., Pittsburgh, Penna.
 Murphy, Joan Catherine428 Biddle St., Kane, Penna.
 Musser, John FrederickBox 146, Snow Shoe, Penna.
 Muth, John Sylvester475 Reams St., DuBois, Penna.
 Myers, Joanne GloriaMain St., Beech Creek, Penna.
 Myers, June DorothiaMain St., Beech Creek, Penna.
 Napoli, JosephMain St., Tullytown, Penna.
 Neely, Philip Edward232 8th St., Renovo, Penna.
 Neff, Harry DeanSpring Mills, Penna.
 Nelo, Julio Mae262 So. Potter St., Bellefonte, Penna.
 Nevins, Gertrude Esther42 N. Fairview St., Lock Haven, Penna.
 Nevins, Joseph James42 N. Fairview St., Lock Haven, Penna.
 Nezzo, Phyllis MarthaWilliamsport, Penna.
 Nighthart, Gladys LorraineMill Hall, Penna.
 Noblit, Harry Eugene321 Thompson St., Jersey Shore, Penna.
 Nolan, Gloria Deane205 W. Church St., Lock Haven, Penna.
 Noll, Ray Clifford, Jr.Pleasant Gap, Penna.
 Nyce, George Franklin508 Maple St., Lock Haven, Penna.
 Nye, Francis SandannaRiverside Terr., Lock Haven, Penna.
 O'Donnell, John Robert609 5th St., Altoona, Penna.
 O'Hara, Joan MarieR. D. No. 3, Bellefonte, Penna.
 Ohl, Henry RichardWoolrich, Penna.
 O'Konski, Edward Michael723 Bellefonte Ave., Lock Haven, Penna.
 O'Kruch, Peter68 Tann St., Sheffield, Penna.
 Ott, Catherine Mary939 McKnight St., Reading, Penna.
 Owens, Amos Blair605 W. Front St., Clearfield, Penna.
 Owens, Marian June306 Clearfield St., Clearfield, Penna.
 Palmatier, Philip FrankR. F. D. No. 1, Coudersport, Penna.
 Palmer, John Curtis215½ Morrill St., Clearfield, Penna.
 Palmer, Richard138 Harvard St., Grove City, Penna.
 Paolo, Josephine Anne314 Court St., Williamsport, Penna.
 Parelle, Joseph Cleveland9 Schumacher Dr., Bristol, Penna.
 Parker, Barbara Grace219 Pearl St., Lock Haven, Penna.
 Parsell, John LewisPine St., Orangeville, Penna.
 Pastorius, Lawrence Shields302 Harrison Ave., Pittsburgh, Penna.
 Patmore, Claudius Lester1027 Rumsey Ave., Lawrence Park, Penna.
 Paul, Ralph Chester227 State St., Curwensville, Penna.
 Peakson, George BrubaiserP. O. Box 158, Middleburg, Penna.
 Peet, James ElmerProctor, Penna.
 Perna, Lee Edwin210 11th St., Philipsburg, Penna.
 Peters, Barbara Bea608 S. Second St., Clearfield, Penna.

Student Directory

Peters, Howard, Jr.215 Walnut St., Clearfield, Penna.
 Peterson, Emma MaySpruce Creek, Penna.
 Petkosh, Paul BenedictBox 156, Beaverdale, Penna.
 Petrucci, Geraldine Ann841 E. Main St., Lock Haven, Penna.
 Pettenati, Lydia MargueriteCrosby, Penna.
 Pettenati, Oliver J.Box 114, Crosby, Penna.
 Petuck, John408 Coal St., Osceola Mills, Penna.
 Petulla, Tony John111 Kate St., Osceola Mills, Penna.
 Pfeffer, Charles Henry1317 W. 20th St., Erie, Penna.
 Pfeffer, Chester Frederick123 Third Ave., Altoona, Penna.
 Phillips, Max DarlR. D. No. 1, Muncy, Penna.
 Pickens, Cameron Maxwell600 North 2nd St., Bellwood, Penna.
 Pike, Louis RobertTire Hill, Penna.
 Pinge, Frank Richard134 W. Church St., Bellefonte, Penna.
 Pinge, Harry Henry, Jr.405 E. Church St., Lock Haven, Penna.
 Platko, Joseph James915 Caldwell Ave., Portage, Penna.
 Pletcher, Donald MillerMain St., Howard, Penna.
 Pletcher, James Welsh, Jr.302 S. Fairview St., Lock Haven, Penna.
 Pletcher, Jane Louise307 Vesper St., Lock Haven, Penna.
 Pocker, James JosephBox 156, Roulette, Penna.
 Pontello, Joseph John608 Fifth St., Clearfield, Penna.
 Pontello, Vincent Edward608 Fifth St., Clearfield, Penna.
 Porter, Helene H.38 Chenango St., Montrose, Penna.
 Posavec, John J.R. D. No. 2, Box 74, Halifax, Penna.
 Potter, Elliott David1st Natl. Bk. Apt 4, Lock Haven, Penna.
 Potter, Lewis MiltonFairview St., Beech Creek, Penna.
 Preston, Elsie RuthSnow Shoe, Penna.
 Puderbaugh, Mary Jane1126 Washington St., Huntingdon, Penna.
 Prezelki, Juyins Joseph521 Susq. St., Forest City, Penna.
 Quiggle, James Raymond301 So. Hanna St., Lock Haven, Pa.
 Rackish, Frank AdamP. O. Box 244, Winburn, Penna.
 Rafferty, Leo James103 Curtin, Osceola Mills, Penna.
 Ralston, George SamuelCentre Hall, Penna.
 Ramm, George SchuylerIsland Route, Lock Haven, Penna.
 Rathmell, Raymond Henry1002 Huron Ave., Renovo, Penna.
 Raught, Ethel May251 Ridge Ave., New Kensington, Penna.
 Raymond, Mary HelenMurphy's Apt., Second Street, Renovo, Penna.
 Reed, Jean B.R. D. No. 3, Reynoldsville, Penna.
 Reeder, Alice ElizabethChestnut Street, Mill Hall, Penna.
 Reen, Jack Mann806 W. Beaver Ave., State College, Penna.
 Reese, Barbara AnneMarket St., Karthaus, Penna.
 Reighard, Allegra FaunSouthfork, Penna.
 Reiter, William Earl7319 Butler St., Pittsburgh, Penna.
 Remick, C. Jeanne307 High St., Flemington, Penna.
 Richards, Byron LynnRixford, Penna.
 Rimmey, George NevinCentre Hall, Penna.
 Rippey, Donald Charles2 S. Pine St., Lock Haven, Penna.
 Ritchey, Leonard EmilR. D. No. 3, Bellefonte, Penna.
 Robinson, Shirley Ann812 W. Beaver Ave., State College, Penna.
 Rockey, Virginia May409 Beech Ave., Altoona, Penna.
 Rogers, James Hugh931 Vine Ave., Williamsport, Penna.
 Rogers, Forrest Glenn, Jr.R. D. No. 2, Howard, Penna.
 Roller, Joseph Harris1415 High St., Williamsport, Penna.
 Romig, Clifford LeRoyBox 96, McClure, Penna.
 Rothschilds, James Robert142 11th St., Renovo, Penna.
 Roy, Donald DennlerR. D. No. 2, Pottstown, Penna.
 Royer, EvelynR. D. No. 2, Centre Hall, Penna.
 Runk, Edith VirginiaR. D. No. 2, Spring Grove, Penna.
 Rute, Carl Dean1212 Market, Lewisburg, Penna.
 Rutter, Foster PowellFallentimber, Penna.
 Ryan, Henry Murray51 E. Church St., Lock Haven, Penna.
 Ryan, John MarlinR. D. No. 1, Osceola Mills, Penna.
 Ryan, Thomas A.Box No. 2, Osceola Mills, Penna.
 Rybricki, Jerome Matthew3640 S. Serley Ave., Chicago, Ill.
 Salmon, Harry E.R. D. No. 1, Mill Hall, Penna.
 Saltsman, Kenneth Eugene1083 Central Ave., Renovo, Penna.
 Sampsell, Paul Fenton107 E. Church St., Lock Haven, Penna.
 Schaeffer, Elwood James114 N. York St., Pottstown, Penna.
 Schaub, Lewis StanleyEast St., Coudersport, Penna.
 Schuler, Ronald Paul420 3rd Ave., Altoona, Penna.
 Schrock, James LeRoy308 Church St., Lock Haven, Penna.
 Schultz, Joanne Louise956 29th St., Altoona, Penna.
 Schuyler, Jerre LynnLock Haven, Penna.
 Sechrist, Phyllis Janet131 N. 15th St., Sunbury, Penna.
 Selts, Jack111 Main St., Jersey Shore, Penna.
 Sember, Andrew Thomas635 2nd St., Williamsport, Penna.

Student Directory

Sentelik, Bettie Jayne 1825 E. 8th St., Bethlehem, Penna.
 Sevok, Stephen Box 741, Youngsville, Penna.
 Shaffer, Ruth Evelyn Locust St., Martinsburg, Penna.
 Shaner, Armond Leon 623 Hanover St., Pottstown, Penna.
 Sheehan, Jean Ann Alexandria, Penna.
 Sheetz, Robert 119 E. Pine St., Selingsgrove, Penna.
 Sherry, Ellis Kay Coalport, Penna.
 Shoenfelt, Joseph Marks 620 W. Main St., Lock Haven, Penna.
 Sholl, Frances Irene Water St., Milesburg, Penna.
 Shontz, Eddie Netson 224 S. Main St., Yeagertown, Penna.
 Sickler, William McNelis 315 Washington Ave., Tyrone, Penna.
 Silpe, Norbert L. 202 West Church St., Lock Haven, Penna.
 Silverman, Arthur, Jr. 7808 Spring Ave., Elkins Park, Penna.
 Simcox, Sue Marie R. D. No. 1, Lock Haven, Penna.
 Simpson, Martha Ann 218 Willow Ave., Altoona, Penna.
 Skinner, Edward Gerard 496 18th Ave., Newark, New Jersey.
 Skumanick, Stephen William Star Route, Dushore, Penna.
 Slack, Roy Irwin 1711 Grandview St., McKeesport, Penna.
 Slavick, Michael Harry 88 Coulter Alley, Conemaugh, Penna.
 Slenker, Frances June 100 Jay St., Lock Haven, Penna.
 Sloan, Lawrence Albert 2100 Walnut St., Philadelphia, Penna.
 Smakula, Joseph John Box 262, Hollsopple, Penna.
 Smawley, Jack Davis 416 Grampian R. D., Curwensville, Penna.
 Smawley, Robert Bowser 416 Grampian R. D., Curwensville, Penna.
 Smith, Donald Philip 49 Filbert St., Milton, Penna.
 Smith, James Edgar 1120 W. Central Ave., S. Williamsport, Penna.
 Smith, Margaret Jeannette Blanchard, Penna.
 Smith, Paul S. 135 S. Chestnut St., Mt. Carmel, Penna.
 Smith, Ronald Staunton 51½ Bellefonte Ave., Lock Haven, Penna.
 Smith, Warren Tipton 329 Smith St., Jersey Shore, Penna.
 Snaith, Ralph Robert 68 Hillcrest Circle, Grove City, Penna.
 Snyder, Marletta Mill Hall, Penna.
 Snyder, Marybelle 553 Shearer St., Greensburg, Penna.
 Snyder, William Arthur 805 Allegheny St., Jersey Shore, Penna.
 Solensky, Gerald Anthony Houtzdale, Penna.
 Solensky, John Paul Houtzdale, Penna.
 Solida, Donald LaMar 68 Atlantic Ave., DuBois, Penna.
 Solt, Charlene Violet 931 W. So. Ave., S. Williamsport, Penna.
 Soohy, Joseph John Box 254, Michael, Penna.
 Sowers, Phyllis Jayne 3 Linden Ave., Ellsworth, Penna.
 Speaker, Virginia Kathryn 306 East Main, Brookville, Penna.
 Sprankle, Eleanor Louise W. Water St., Lock Haven, Penna.
 Stabler, Myrtle Louise 327 Brandon Ave., Williamsport, Penna.
 Stanley, Daniel Calvin 614 Burke St., Jersey Shore, Penna.
 Stearns, Faith Evelyn 33 Lincoln Ave., Shinglehouse, Penna.
 Stearns, Kenneth Lyle Duke Center, Penna.
 Stearns, Lura Lina 33 Lincoln Ave., Shinglehouse, Penna.
 Stehman, Robert Louis 655 Bellefonte Ave., Lock Haven, Penna.
 Stern, Mary Kathryn Mill Hall, Penna.
 Stetson, Robert Evertt 204 S. Fairview St., Lock Haven, Penna.
 Stevens, Floyd Collens Six Mile Run, Penna.
 Stevens, Mary Louise 43 W. Main St., Lock Haven, Penna.
 Stevenson, Helen Elizabeth 117 W. Church St., Lock Haven, Penna.
 Stevenson, John Robert 117 W. Church St., Lock Haven, Penna.
 Stewart, Louise Allison 300 Frederick St., Flemington, Penna.
 Stine, Harold Edwin 3709 W. Church Ave., Altoona, Penna.
 Stine, Kenneth Eugene 142 Broadway, Hanover, Penna.
 Stover, James Raymond Main St., Mill Hall, Penna.
 Stover, Ray Chester R. D. No. 2, Mill Lane, Williamsport, Penna.
 Straub, Herbert Joseph 462 Brussels St., St. Mary's, Penna.
 Straub, Joan Bertha 462 Brussels St., St. Mary's, Penna.
 Stroble, E. June Trout Run, Penna.
 Strouble, Dean H. 299 Birch St., Flemington, Penna.
 Swales, Sarah Emily 229 Temple Ave., Clearfield, Penna.
 Swanson, James Nichols 338 Greeves St., Kane, Penna.
 Swanson, Ray David Box 671, Mt. Jewett, Penna.
 Swartz, Betty Lou 702 W. Church St., Lock Haven, Penna.
 Swope, Margaret Ann 127 S. High St., Lock Haven, Penna.
 Swayer, Winifred Gladys 200 7th St., Renovo, Penna.
 Tallman, Willis Franklin S. Grove St., Lock Haven, Penna.
 Taylor, Jack Melvin 137 So. 3rd St., Harrisburg, Penna.
 Terrill, David Thomas 115 Mill St., Lock Haven, Penna.
 Teufel, George William 447 E. 7th, Mt. Carmel, Penna.
 Teufel, James Daniel 447 E. 7th, Mt. Carmel, Penna.
 Thomas, Max Melvin 1108 W. Southern Ave., So. Williamsport, Penna.
 Thompson, Betty Lou 135 N. Allegheny St., Bellefonte, Penna.

Student Directory

Thompson, Marjorie June2049 Riverside Dr., Williamsport, Penna.
 Ticcony, George William135 North 4th St., Lewisburg, Penna.
 Ticcony, Joseph Powell135 North 4th St., Lewisburg, Penna.
 Tidlow, Jack Minsher317 Fairview St., Lock Haven, Penna.
 Tittio, JosephBox 27, Irvine, Penna.
 Tocimak, AndrewBox 161, Philipsburg, Penna.
 Tolen, Martin Jacob827 High St., Williamsport, Penna.
 Toole, BerylCross Fork, Penna.
 Toombs, Robert RomainEast 2nd St., Coudersport, Penna.
 Treager, Anne Lytle215 Arch St., Greensburg, Penna.
 Trifosesti, Russel812 Dorey St., Clearfield, Penna.
 Troendle, Frank Anthony402 S. State Rd., Upper Darby, Penna.
 Troutman, Carolyn WannitaR. D. No. 1, Lock Haven, Penna.
 Tumolo, Daniel Joseph, Jr.545 N. Simpson St., Philadelphia, Penna.
 Tyson, William HenryP. O. Box 49, Castanea, Penna.
 Udicious, Richard JamesR. F. D. No. 1, Hastings, Penna.
 Vairo, John626 So. Main St., Jersey Shore, Penna.
 Verga, Anthony Joseph250 W. 17th St., Erie, Penna.
 Verga, Russell Michael250 W. 17th St., Erie, Penna.
 Volansky, George Louis232 Poland Ave., Swoyerville, Penna.
 Vonstein, Jessie LouiseClearfield, Penna.
 Wadsworth, Amanda Elizabeth ..109 N. Hampston St., Lock Haven, Penna.
 Wadsworth, Donald Albert R. ...109 N. Hampston St., Lock Haven, Penna.
 Wagner, Marcella Jane1925 Susq. Ave., Renovo, Penna.
 Wagner, Randall JohnBox No. 83, Vicksburg, Penna.
 Walbridge, Nancy Jane220 Jerome Ave., Williamsport, Penna.
 Walizer, Elery HughR. D. No. 2, Howard, Penna.
 Walizer, Grant WarrenMackeyville, Penna.
 Walizer, Nora AnnabellSo. Chestnut St., Mill Hall, Penna.
 Walter, Marvin Wetzel27 So. 8th St., Lewisburg, Penna.
 Watson, Edwin Carl305 S. Burroweo St., State College, Penna.
 Watt, Harold Samuel Frederick ..Shintown St., Renovo, Penna.
 Weaver, Robert JuniorR. D. No. 1, Loganton, Penna.
 Weaver, Robert L.604 Allegheny St., Jersey Shore, Penna.
 Weise, Shirley Althea115 N. Main St., Sellersville, Penna.
 Welsh, Dorn Kendall649 Bellefonte Ave., Lock Haven, Penna.
 Wendelboe, Joan Myrna202 Buchanan St., Warren, Penna.
 Werts, Raymond M.1002 Huron Ave., Renovo, Penna.
 Wesolocki, Lawrence Alvin116 S. Franklin St., Shamokin, Penna.
 Wheeler, Verna Grace320 South High St., Lock Haven, Penna.
 White, John Kenneth23 W. Washington Ave., Bradford, Penna.
 Whitney, William C.819 High St., Williamsport, Penna.
 Widmann, Louis Frederick422 E. Water St., Lock Haven, Penna.
 Wildeman, Rita H.Barnesboro, Penna.
 Willar, Sidney Blair239 High St., Bellefonte, Penna.
 Williams, Ramona Marguerite ..Ramey, Penna.
 Williams, Robert Ebersole4045 S. Jones St., Lock Haven, Penna.
 Wilson, John LloydWarriors Mark, Penna.
 Wilt, Charles William123 S. Jones St., Lock Haven, Penna.
 Windom, Elinor72 E. Concord Ave., Orlando, Florida.
 Winfield, Kenneth MerlSix Mile Run, Penna.
 Winters, Richard Edward406 East Bald Eagle St., Lock Haven, Penna.
 Witt, Betty J.401 So. Jones St., Lock Haven, Penna.
 Wolfe, Albert LeRoyMunson, Penna.
 Woodring, Ralph LeRoyR. D. No. 1, Benezetta, Penna.
 Wright, Ann Grace15 N. Euclid Ave., Pittsburgh, Penna.
 Wyland, John LeRoySpring Mills R. D. No. 1, Penna.
 Yamnus, Fred Michael122 Noges Ave., Swoyerville, Penna.
 Yeager, Bernard DelmarBox 47, Moshannon, Penna.
 Yerkes, Charles Weaver, Jr.815 Market St., Williamsport, Penna.
 Yerkes, James Hollowell815 Market St., Williamsport, Penna.
 Yerkes, Mary Ruth815 Market St., Williamsport, Penna.
 Yoder, Sara EveMiddleburg, Penna.
 Yohn, George Edward1918 7th Ave., Altoona, Penna.
 Yon, Juan Faith1423 20th Ave., Altoona, Penna.
 York, Joseph Richard406 Greendale, Pittsburgh, Penna.
 Yost, William HarryR. D. No. 1, Mill Hall, Penna.
 Young, Charlotte JeanR. D. No. 2, Lewisburg, Penna.
 Young, Clair WilliamR. D. No. 2, Lewisburg, Penna.
 Young, J. Arlington45½ Bellefonte Ave., Lock Haven, Penna.
 Yortheimer, Alice Elizabeth411 E. Bald Eagle St., Lock Haven, Penna.
 Zavalgoriga, Agnes MarieR. D. Box 107, Philipsburg, Penna.
 Zettle, Miriam EllenSpring Mills, Penna.
 Zimm, Albert CalvinWinburne, Penna.
 Zimmerman, Nancy May403 N. Grove St., Lock Haven, Penna.
 Zuroski, Walter Thomas134 Grove St., Johnsonburg, Penna.
 Zwald, Norman Alfred420 Woodland Ave., Emporium, Penan.



Did You Say Glamor?



King Has It

GLAMOR !!



The Profile



What a Pose



Legs on Parade

"Time and Place"



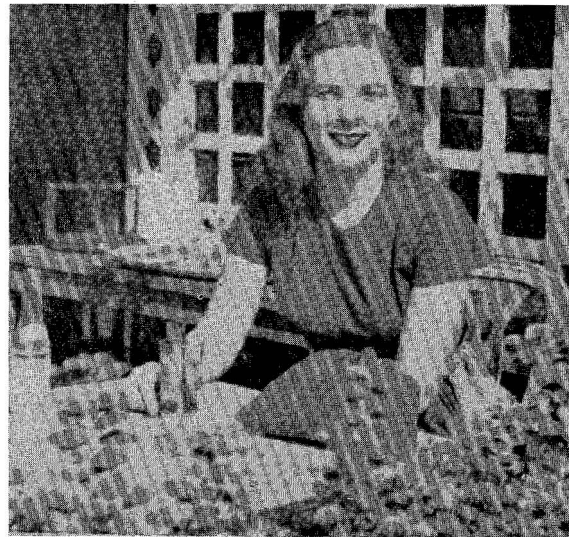
Study Hour



Now and alone, please



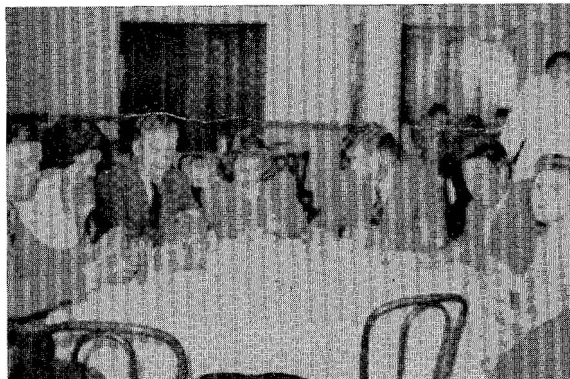
Football for me



"Drinking — and Coca Cola"



Pipe for leisure time



Chow time!!



When wives aren't around



Campus Corner

City Office Supply Store

Books - Stationery - Gifts

Victor, Columbia & Decca Records

and Albums

Creting Cards for All Occasions

105 E. MAIN ST.

DIAL 2725

GROSSMAN'S

*"Lock Haven's Show Place
of Favored Fashions"*

COMPLIMENTS

OF THE

Roxy and Martin
Theaters



Sponsored By
CUMMINGS FLORAL COMPANY
"Where Quality Flowers Grow"

C. L. Krape and Son
HARDWARE

DIAL 9215
Reilly of Williamsport
Designer of Coiffures
Permanent Wave Technician

COMPLIMENTS OF
Bottorf Bros. Shoe Store
"Where Quality Prevails"

Meyer & Sietler
HOME OF GOOD CLOTHES

WOLF FURNITURE CO.

Lock Haven's Most Modern Furniture Store

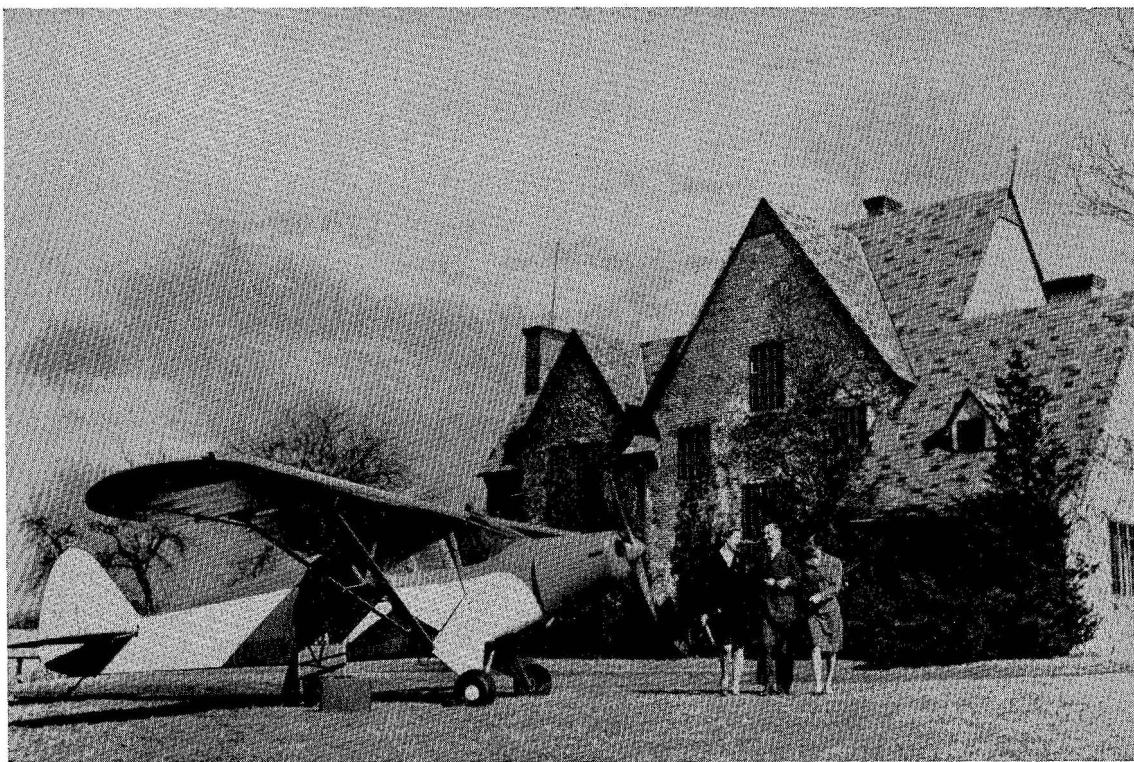
Where you get Quality, Easy Terms, Reasonable Prices and no extra charges
for Credit on Furniture.

Allegheny
Dairy Lunch

Tim Bulger

Nano-le Frock Shop

Featuring
L'Aiglon and Levine
Frocks Exclusive



SPONSORED BY PIPER AIRCRAFT CORP., LOCK HAVEN, PA.

WIEDHAN JEWELRY CO.

Fine Trade-Marked Jewelry

Oldest Jewelry Store in Clinton County

1855

1947

Remember:
She's Delighted
When She's Invited
To

THE DUTCH INN

PLEASE PATRONIZE

OUR ADVERTISERS

JO PAOLA

AND

MERT STABLER

PERFORMANCE

For more than 25 years it has been the ever-constant objective of General's craftsmen to create armatures (B.V. . . . balanced and ventilated) and Service Generators to assure the ultimate in performance.

GENERAL ARMATURE

& *MANUFACTURING COMPANY*

Executive Offices . . . Mill Hall, Pa.

Factories . . . Mill Hall, Pa. . . . Lock Haven, Pa.

COMPLIMENTS OF
Shaffer, Candor & Hopkins,
Inc.

Jobbers and Retailers of
Hardware, Factory and Building Supplies
17 EAST MAIN STREET
Lock Haven, Pa.

Casselberry Motor Co.

Authorized Sales and Service

Cars  Trucks

Lock Haven, Pa.

GREET YOUR FRIENDS

AT THE

Avenue Cafe

"Home of Good Food"

216 BELLEFONTE AVENUE

Lock Haven, Pa.

COMPLIMENTS

OF

Stein's Furniture Store

Bellefonte Ave.

Lock Haven, Pa.

MEET THE CROWD

At

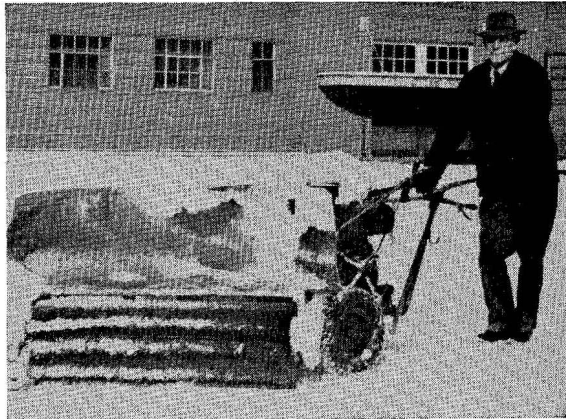
The Sandwich Shop

Main Street - Lock Haven, Pa.

COMPLIMENTS

OF

The Lock Haven Laundry & Cleaners



PHOTOGRAPHY

BY

WOLFE STUDIO

444 Bellefonte Avenue

Lock Haven, Pa.

WAGNER RADIO CENTER

Monument Place

Phone 2122

The Home of Better Radio Service

Dolly's Shop

Pettiteen and Semiteer Dresses

DIAL 4067

COMPLIMENTS OF

Ritters Sporting Goods

NEED

Furniture or Appliances?

Shop At

SHADLE'S

Use Your Credit — It's Good Here

Dickey — Grugan Hardware Co., Inc.

Contractors Supplies and Explosives

Plumbers Supplies

House Furnishings and

Paints

45-47-49 Bellefonte Avenue

LOCK HAVEN, PA.

LOCK HAVEN
Trust Company

EXTENDS
CONGRATULATIONS
TO THE
CLASS OF 1947



Sponsored by
DELBERT D. HELT FUNERAL HOME

LYCOMING Dry Goods Co.

Williamsport, Pa.

WILLIAMSPORT'S FASTEST
GROWING DEPARTMENT STORE

Dial 9121

KLEWAN'S

READY WEAR AND SHOES

21 East Main Street

Lock Haven, Pa.

COMPLIMENTS

OF

Davis Restaurant

Day and Night Service

R. K. GRIFFIN
COMPANY

Manufacturers

Of

Chairs and

Wood Products

Lock Haven, Pa.

THE TIMES

FOR

Gifts - Greeting Cards - Office Supplies - Stationery

Office Furniture and Equipment

THE TIMES - TIMES SQUARE

Lock Haven, Pennsylvania



Sponsored by
NIHART'S RESTAURANT
Mill Hall, Pa.

We Serve - - - You Save

SHOES AND HOSIERY

For Every Member of the Family

Brown
Boot Shop S

Lock Haven, Pa.

CONGRATULATIONS TO

THE CLASS OF 1947

BLOOMSBURG MILLS Inc.

Lock Haven Division

LINTZ'S

READY-TO-WEAR

FOR

THE ENTIRE FAMILY

Compliments of

Weaver and Probst

OTTO'S

AUTO STORES

Auto Parts -:- Sporting Goods

Household Wares

16 BELLEFONTE AVE.

SMITH AND WINTER INC.

LOCK HAVEN'S SHOPPING CENTER

"The Best Place to Shop After All"

WOMEN!!
FRANCIE'S BEAUTY SALON
Offers a Complete Line
of
Beauty Preparations & Wave Sets
Dial 4250

KIMMERER
SHOES
"Leaders in Good Shoes"
135 West 4th Street,
WILLIAMSPORT, PA.

SCHWARTZ STORE

Dealer In
Wallpaper, Paints,
Glass Picture Framing, and
Electrical Supplies

COMPLIMENTS OF

THE LOCK HAVEN GAS CO.

BRUZMAN'S

Home of
Carolyn Exclusive Fashions
349 Pine St. Williamsport, Pa.

Home of
Hart, Schaffner & Marx

hoy's
McGregor Sportswear

LOU H. ANTHONY

Fashion Tailor

Has been making the bulk of men's clothing

for 50 Years.

Satisfaction Guaranteed

CLASTERS

LOCK HAVEN, PA.

Joan Miller

Hope Reed

Van Carson

In

Lock Haven

At

LUBELLE'S

READ THE

Lock Haven Express Daily

It's part of your education to know what goes on in your community and in the rest of the world.

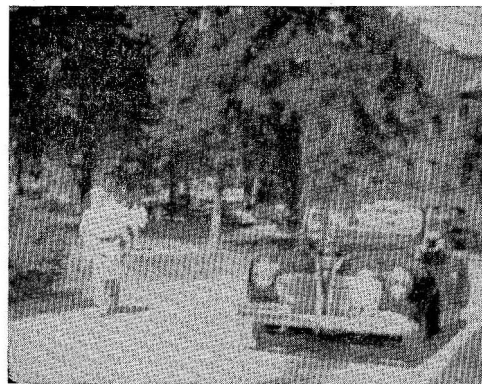
You can depend on The Express to tell the news briefly, concisely, correctly.

An Educated Person Reads a Good
Newspaper Every Day

Renzo's Shoe Service

40 BELLEFONTE AVE.

Lowest Prices Always



Sponsored by Fallon Hotel

Your Account Whether Large or Small
Gets the Same Service and Attention Here

THE FIRST NATIONAL BANK

Of

LOCK HAVEN, PENNSYLVANIA

Member of Federal Deposit Insurance Corp.

Always Dependable

Hooven Taxi Service

Lock Haven, Pa.

Phone 512

Use Your Local
Catalogue Shopping Service

Sears Roebuck & Co.

Dial 787 206 EAST MAIN STREET
Lock Haven, Pa.

College Shoe Repair Service

TORSELL'S

On the Avenue
PHONE 3425

GAS STATION

Groceries, Gasoline and
Delicatessen

One Block Below T. C.
Mr. and Mrs. Mark, Props.

KEYSTONE TAXI

24-HOUR SERVICE

Dial 789

THE HUB

Lock Haven's Largest

Clothing Store

Headquarters For
Woolrich Sport Clothes

COMPLIMENTS

OF

The Garden Theater

Fred J. Eisemann

JEWELER

31 Bellefonte Avenue

CONGRATULATIONS

and

BEST WISHES

to the

CLASS OF 1947

The Record Herald

Publishers - Printers

Waynesboro, Pennsylvania

*It was a pleasure to have worked with the Staff
and Adviser of the 1947 Praeco in doing the
Printing, Binding and Engraving of this Annual*

Autographs