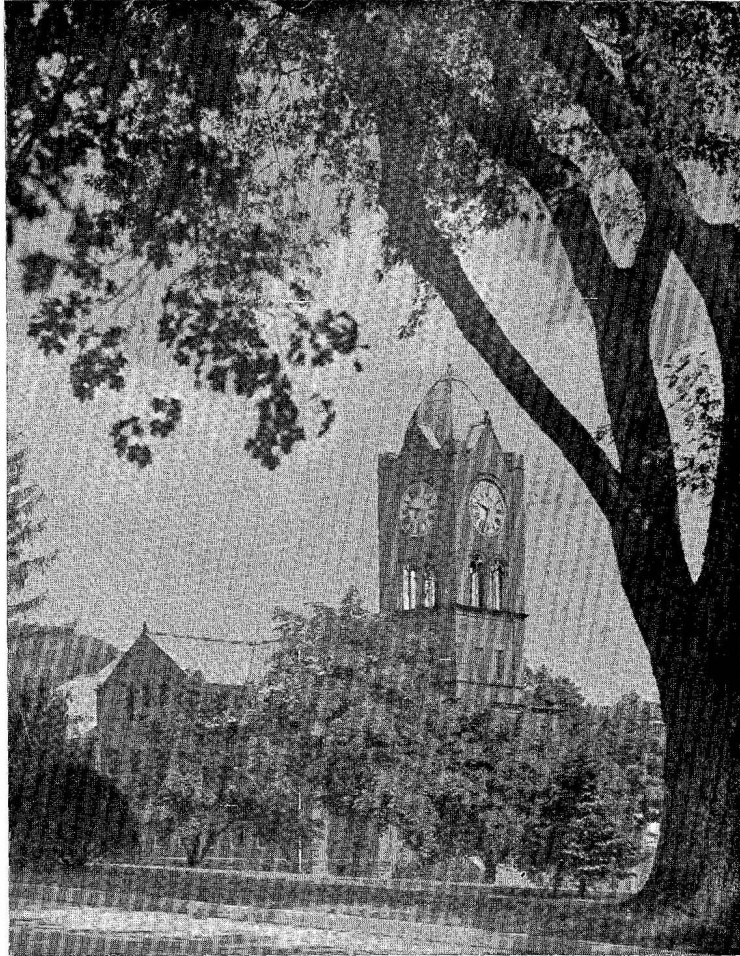


*The 1945  
Praeco*



Lock Haven State Teachers College  
Lock Haven, Pennsylvania

*Published by the Praeco Staff*

Gladys Detwiler, *Editor*

Mark Beals, *Business Manager*

This is Our College...

Exam.  
LB  
1945  
L 625 P  
1945





I saw Lock Haven's spires—  
My heart sang at the sight . . .  
The ivy-covered towers  
Against the evening light.  
My heart was with Lock Haven men  
Who went abroad to fight.

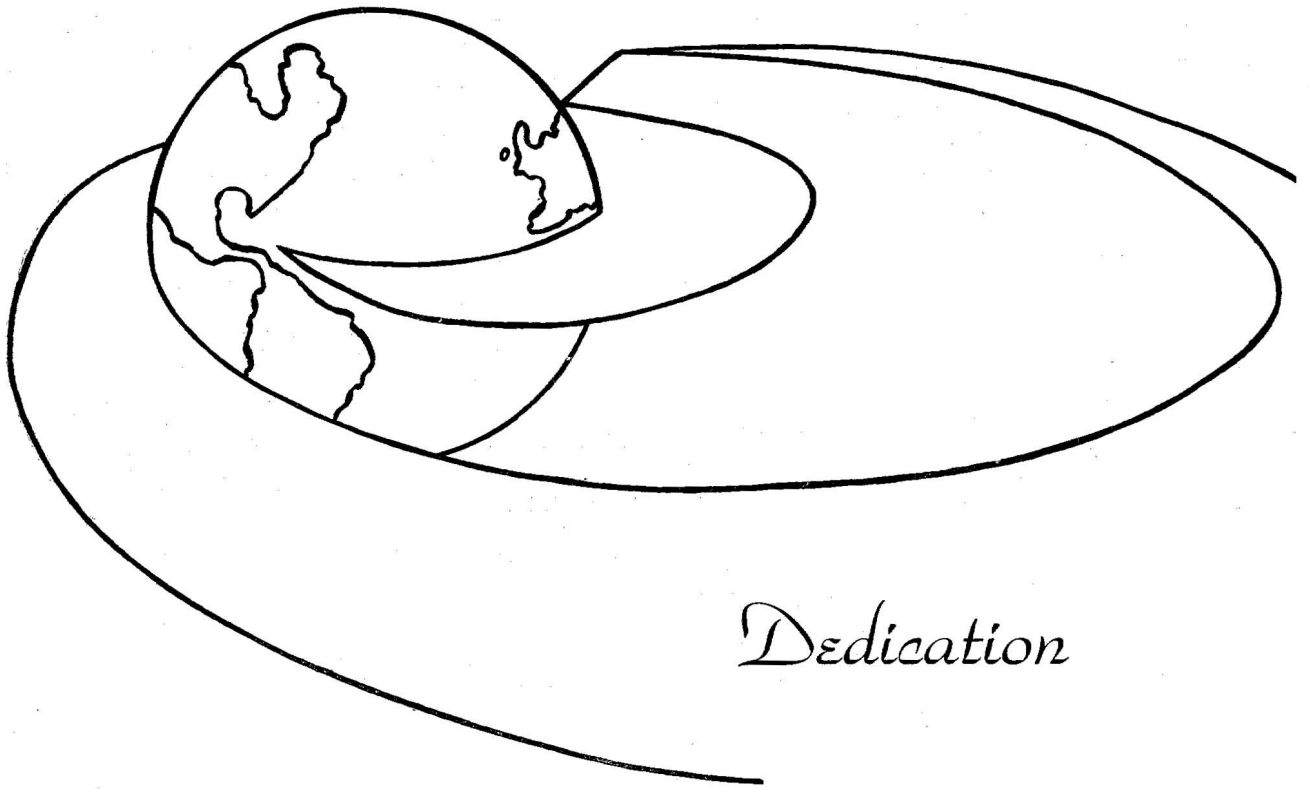
Too short our years, Lock Haven!  
Our careless years of play—  
For when the bugles sounded war  
We put our games away  
And faced the darker years that led  
To a new, brighter day.

This pine tree—and the meadow  
Hold memories by the score . . .  
The Nature trail—the clock tow'r  
Are ours—now, as of yore . . .  
For this—our college—lives within  
Our hearts forevermore.

M. Burkhart



*William R. North*

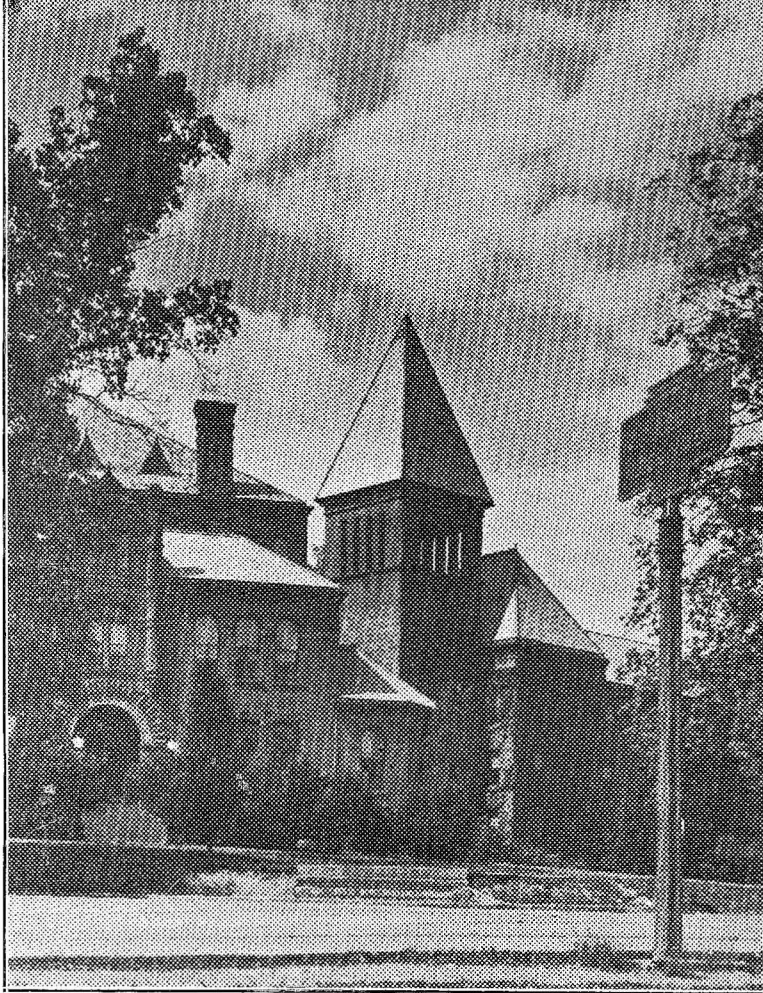


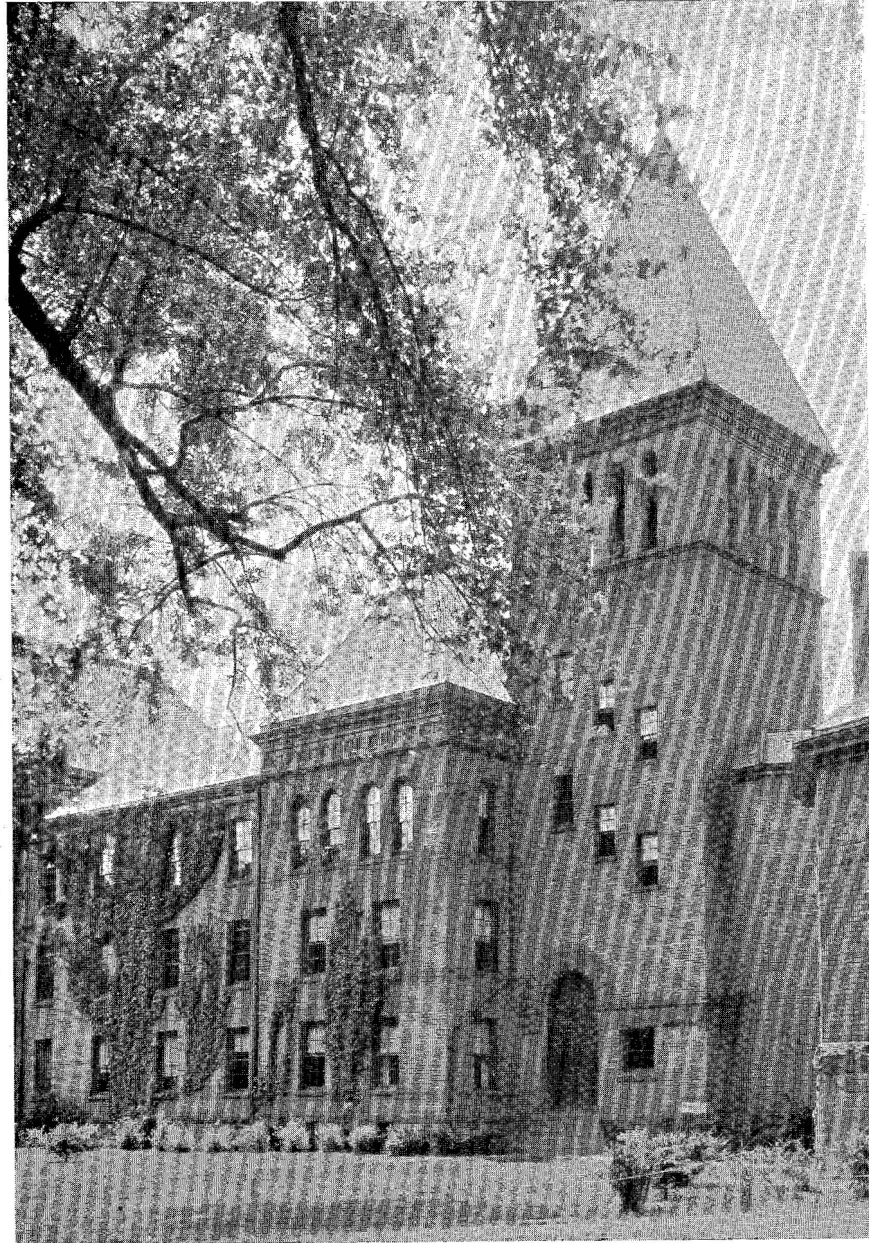
*Dedication*

To a kindly guidance and a life that knows fullness of heart, to a deep and broad understanding of human nature, to a spirit of love and friendship that is incessantly strengthened by habitual exercise, and to a something next to wisdom that is too big for words, we, of the 1945 Praeco staff, humbly dedicate this volume to our own Dr. North.

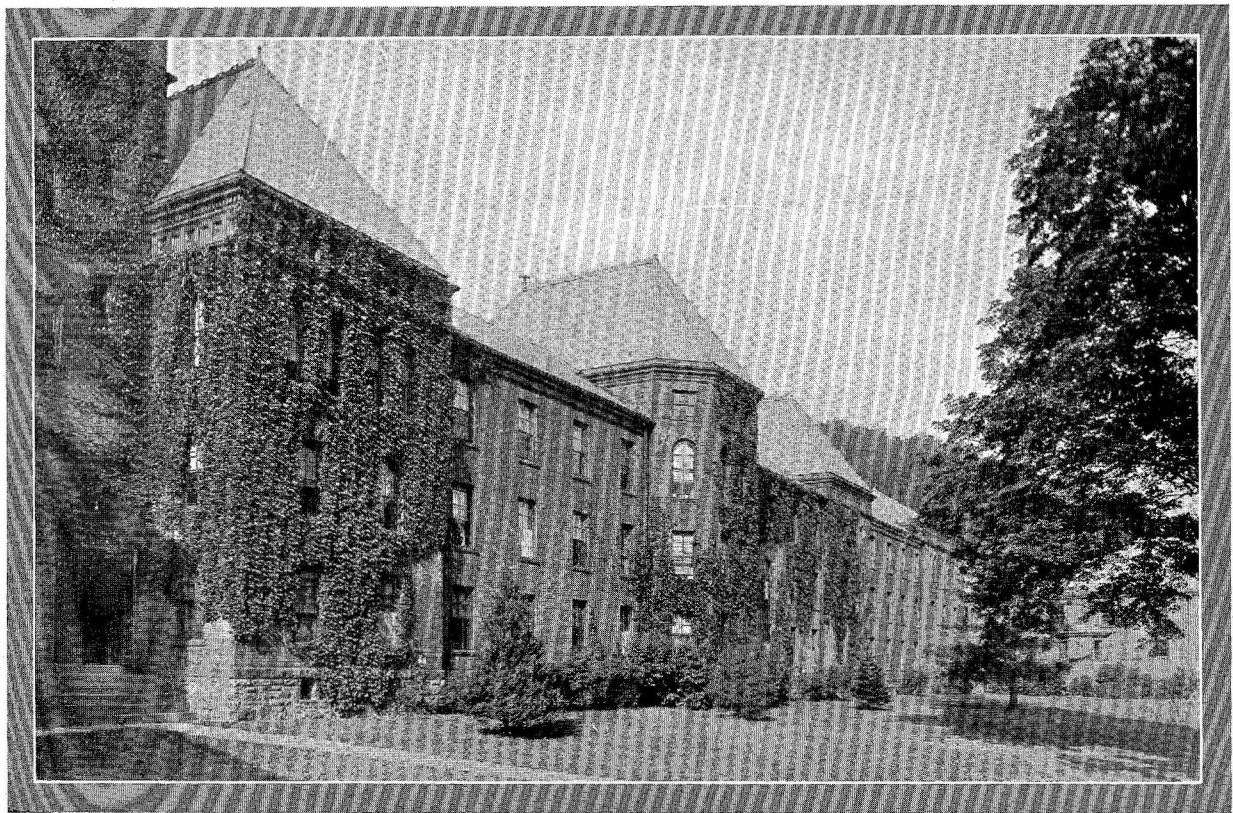


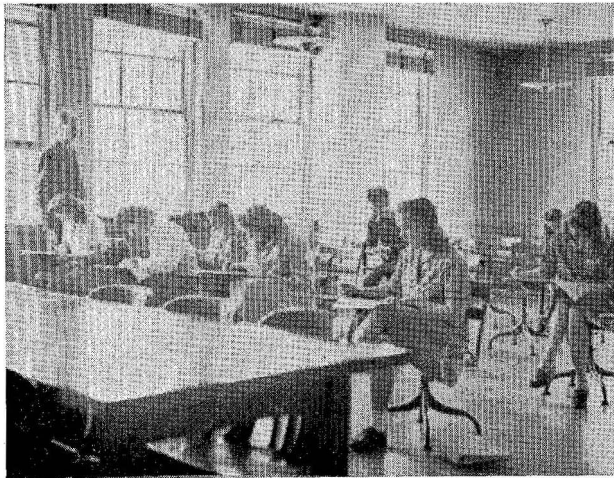












*Administration*



*Richard J. Parsons*  
*President*

Our president, Dr. Parsons, has carried us through a year of wartime with unusual success. Under his kindly philosophy of good will and fellowship, we have braved the storms of youth and emerged victorious.

In future years, when we look back upon our days at L. H. S. T. C., we will remember our friendly administrator, so understanding of younger minds and so full of young ideas. We will be proud to have so fine an example of service to society.

## *Board of Trustees*

Dr. David W. Thomas.  
Lock Haven, Pa.

Mr. A. P. Akeley.  
Coudersport, Pa.

Mrs. F. E. McEntire.  
Lock Haven, Pa.

Mr. George F. Hess.  
Beech Creek, Pa.

Mr. Scott R. McKean.  
Williamsport, Pa.

Mr. Harold Woolridge.  
Clearfield, Pa.



**R. STEWART MACDOUGALL, A. M.**  
A. B. State Teachers College, Ypsilanti, Michigan; A. M., Teachers College, Columbia University; Graduate Study, Pennsylvania State College.



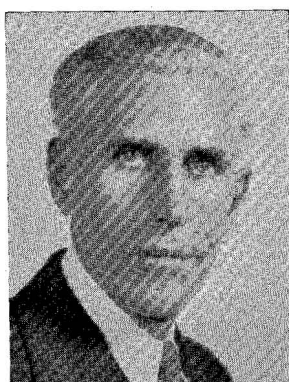
**WILLIAM R. NORTH, PH. D.**  
A. B., Pd. B., Syracuse University; A. M., American University; Ph. D., University of Pennsylvania; Study, University of Edinburgh.



**ELIZABETH FADDIS, A. M.**  
A. B., Waynesburg College; A. M., Teachers College, Columbia University; Graduate Study, University of Southern California.



**LILLIAN RUSSELL, M. A.**  
A. B., Geneva College; M. A., Peabody College for Teachers; Graduate Study, Ohio State University.



**CHARLES COXE, ED. D.**  
Ph. B., Lafayette College; A. M., Ed. M., Harvard University; Ed. D., Pennsylvania State College.



**IRA O. FLEMING, M. S.**  
B. S., M. S., Allegheny College; Graduate Study, University of Pittsburgh, Pennsylvania State College.



**MABEL V. PHILLIPS, A. M.**  
A. B., Indiana University; A. M., Teachers College, Columbia University; Graduate Study, University of Chicago, University of Minnesota, Pennsylvania State College.



**GRACE E. ULLEYMEYER, B. M. E.**  
B. M. E., M. S. Northwestern University.



**A. S. RUDE, PH. D.**  
A. B., University of North Dakota; A. M., Teachers College, Columbia University; Ph. D., New York University; Graduate Study, Pennsylvania State College.



**GEORGE F. B. LEHMAN, A. M.**  
A. B., A. M., Bucknell University.



**MARGARET E. WALDRON, A. M.**  
A. B. Wellesley College; A. M., Teachers College, Columbia University.



**EDNA A. BOTTORF, ED. D.**  
B. S., A. M., ED. D., Pennsylvania State College.



**CORNELIUS M. SULLIVAN, M. S.**  
B. S., Columbia University; M. S., Pennsylvania State College.



**SAMUEL J. SMITH, A. M.**  
Ph. B., Bucknell University; A. M., University of Pittsburgh; Graduate Study, University of Chicago, Pennsylvania State College.



**COPHINE ROOK, M. S.**  
B. S., State Teachers College, Kirksville, Missouri; M. S., University of Iowa; Graduate Study, University of Minnesota.



**RUTH M. HOLMES, A. M.**  
B. S., State Teachers College, Lock Haven, Pennsylvania; A. M., Teachers College, Columbia University; Graduate Study, University of Southern California.



**NORA GRAFFIUS, B. S.**  
M. Ed., Pennsylvania State  
College.



**CHARLOTTE SMITH, M. A.**  
B. S., M. A., New York Uni-  
versity.



**C. CORDELIA BRONG, A. M.**  
A. B., Hood College; A. M.,  
Teachers College, Columbia  
College, Columbia University;  
Graduate Study, Northwestern  
University.



**CAREY E. MARCH, M. A.**  
B. S., M. A., Allegheny College;  
Graduate Study, Western Re-  
serve University, Pennsylvania  
State College.



**W. MAX BOSSERT, M. A.**  
B. S., State Teachers College,  
Lock Haven, Pennsylvania; M.  
A., Columbia University.



**LYLA GREATHOUSE GILLIS,**  
M. S.  
B. A., Glenville State College,  
Glenville, West Virginia; M. S.,  
University of Wisconsin.



**ERNEST I. SCHROT, M. A.**  
B. S., Pennsylvania State Col-  
lege; M. Ed., University of  
Pittsburgh.



**LORRAINE SPIKINGS, M. A.**  
B. E., Northern Illinois State  
Teachers College; M. A.,  
Northwestern University.



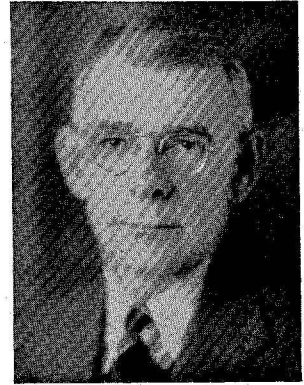
**I. W. HUNT, BURSAR**



**HUBERT H. JACK, M. A.**  
B. S., State Teachers College,  
Slippery Rock, Pa.; M. A.,  
University of Pittsburgh.



**ROBERTA G. SELTZER,  
REGISTRAR**



**E. ROSS NEVEL,  
SUPERINTENDENT OF  
BUILDINGS AND GROUNDS**



**ERNEST E. SHEASLEY,  
STOREKEEPER**



**DEBORAH M. BENTLEY,  
DIETITIAN**



**RUTH H. BROSIUS, A. B.,  
B. S. IN LIBRARY SCIENCE**  
A. B., University of Pittsburgh;  
B. S. in Library Science, Car-  
negie Institute of Technology.



**KATHERINE A. GLENNON,  
R. N.**  
Nurse and Household Director

**MRS. FLORENCE DIETZ**  
Secretary to the President

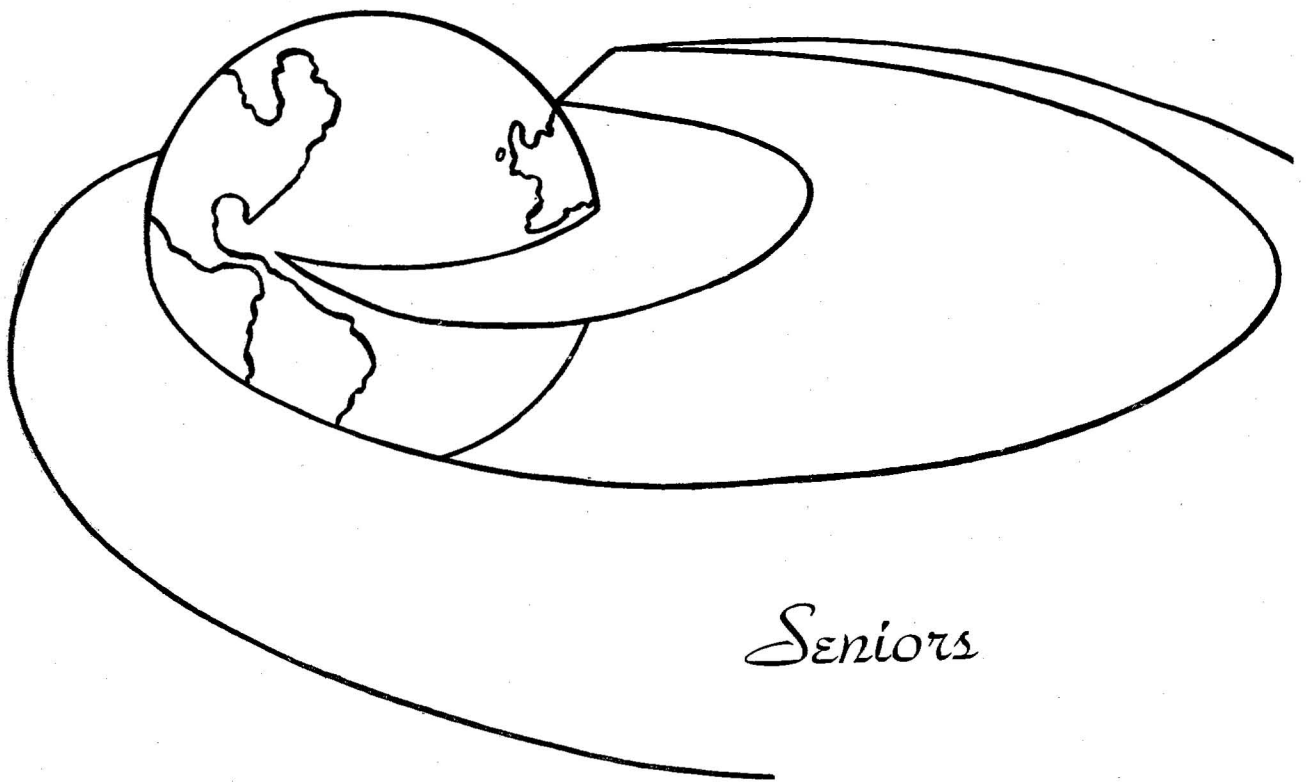
**MISS AUDREY BRESSLER**  
Bookkeeper

**MRS. GRACE MARY BRICKLEY**  
Assistant Librarian





## *Classes*



*Seniors*



Left to right: J. Plumpis, M. MacPhee, E. Smart, L. Hosmer, D. Millward, L. Clark.

### *Senior Class*

Having entered T. C. before the boys were called into the service, we have known, in a sense, what pre-war college life meant. We remember it as the sort of college life we want our children to know, and however small in number, we like to think of ourselves as representative of an invulnerable element called Americanism, ready to face the world with hope and confidence, knowing we shall survive all evil and help to build a more optimistic world for the youth of tomorrow.



**Rose Minnie Akeley**

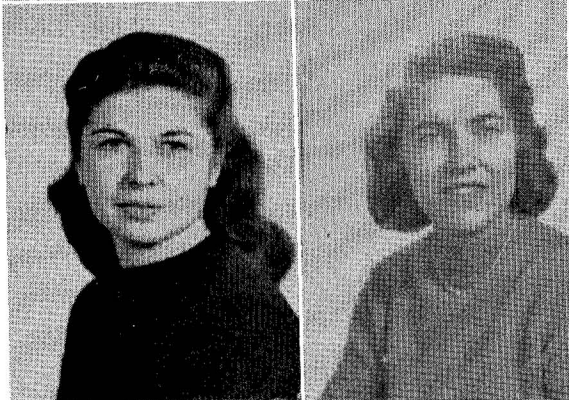
*Secondary*

When once ambition has its natural limits, it is boundless.

**Freda Belle Bodensky**

*Elementary*

A sunny disposition is half the battle.



**Anne Hamilton Carpenter**

*Health Education*

A little laughter and lots of pep,  
Molded together make her rep.

**Grayce Maree Chambers**

*Secondary*

In every deed of mischief, she has a heart to resolve, a head to contrive, and a hand to execute.



**Louise Marian Clark**

*Secondary*

Anything that is worth doing at all is worth doing well.

**Edwinna Davis**

*Elementary*

A tender heart  
A helping hand  
Always ready on demand.

**Jean Lillian Drye**

*Health Education*

There is a greatness in being ever unselfish and generous.

**Adele Louise Forsythe**

*Secondary*

Nothing great was ever achieved without enthusiasm.



**William Barner Harbach**

*Secondary*

All the great men are dying and I don't feel so well myself.

**Leona Martha Hosmer**

*Secondary*

There is no wealth like unto knowledge, for thieves cannot steal it.



**George Kauffman**

*Health Education*

I dare do all that may become a man; who dares do more is none.

**Alice Mae Knowles**

*Health Education*

Life is just a stream we go fishing in.





**Ruth Doris Lobb**

*Elementary*

Silence in woman is more than golden—it's virtue.



**Marian Byrd MacPhee**

*Elementary*

Oh, call it by some other name for friendship sounds too cool.



**Dorothy Daisy Millward**

*Elementary*

Success treads on the heels of every effort.



**Jane Jon Plumpis**

*Secondary*

Cheerful and happy, singing a song,  
As she smiles her way along.



**Marjorie Jean Rathbun**

*Secondary*

Silence is deep as eternity;  
Speech is shallow as time.



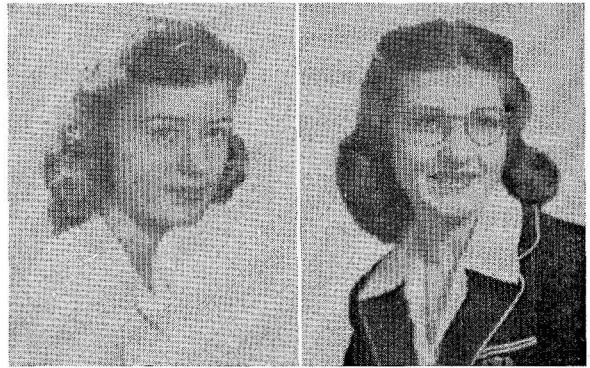
**Ruth Rolin**

*Elementary*

Words are cheap and she spends abundantly.

**Emily Day Smart**  
*Elementary*  
A merry heart and a  
cheerful countenance join-  
ed with what it takes.

**Veronica Marie Smith**  
*Elementary*  
She has no use for melan-  
choly;  
You always find her gay  
and jolly.



**Mary Virginia Stolz**  
*Rural*  
Let me live in a house by  
the side of the road and be  
a friend to man.

**Eleanor E. Williams**  
*Secondary*  
From a little spark grows  
a mighty flame.



**Frank Brandt Yon**  
*Secondary*  
The first secret of happi-  
ness—find someone to love.

**Josephine Levonne Tollivaro**  
*Elementary*  
'Tis quality, not quantity,  
that counts.

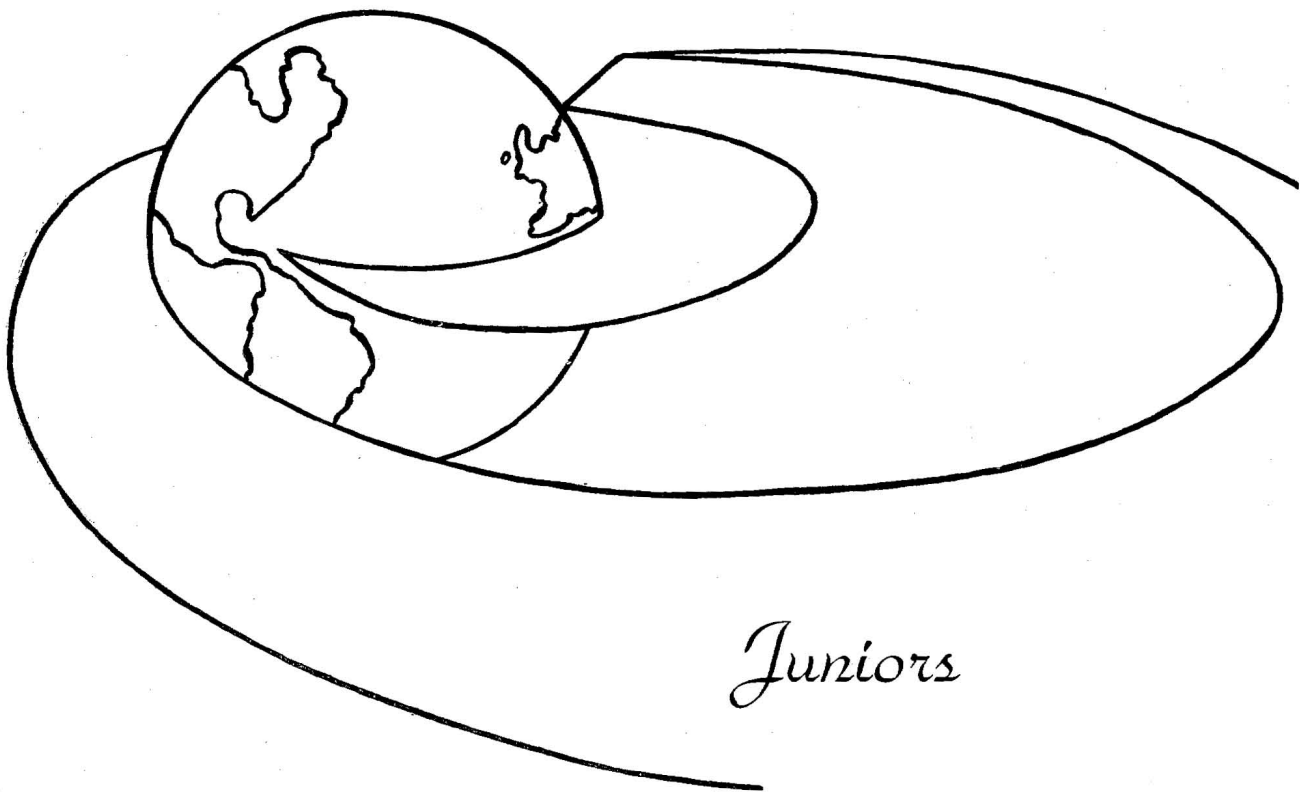


Attention! The junior class is on parade. You can hear them as they go by — the class of '46. Left, right, left, right. To the rear — march! We can remember (and it seems like yesterday) when we were wide-eyed freshmen bowing to upperclassmen, saying Miss and Sir and holding doors while the stream of "somebods" went proudly by. Oh to be an upperclassman! Oh to scorn some freshmen!

Time marched on and we found ourselves sophomores. We began to hold our heads high and most of all we looked forward to the initiation of the new freshmen.

Forward—march! We're heading toward our senior year and as we steadily draw nearer we see vague sketches of student teaching, lesson plans, and conferences. But that's not all we see. College isn't all work. It strives to give us a well-rounded life by helping us to work and play together. Our years at T. C. have been happy ones and we're looking ahead to another year with great enthusiasm.

Left, right, left, right. Junior class halt—one, two.





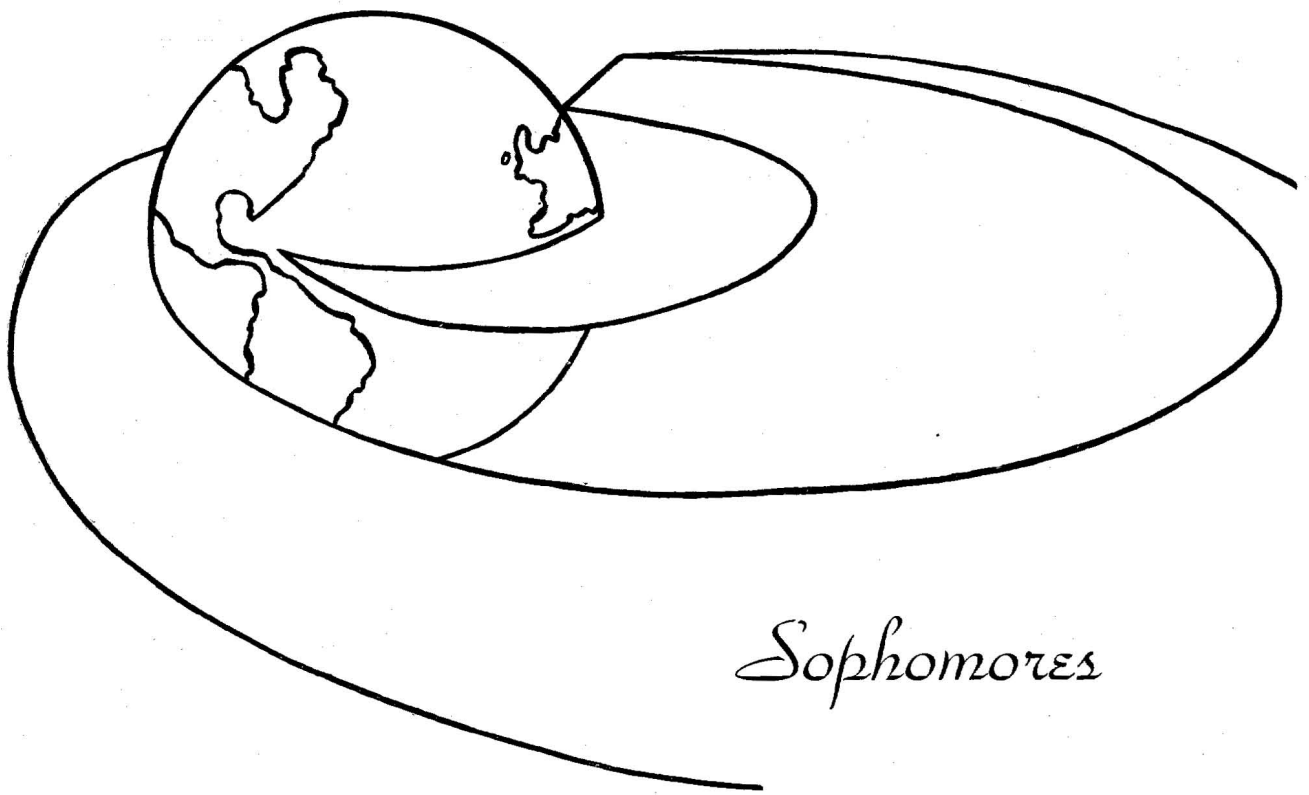


First row, left to right: N. Rockey, E. Clark, M. J. Hoffman, M. Badick;  
 second row: M. Johnson, H. McCartney.



Bottom to top: N. Rockey, E. Clark, D. Greene, M. Badick, M. Drick, M. Hoffman, J. Sackett, H. McCartney, A. Neuhard, S. Zubler, K. Johnson, F. Slenker, B. Barner, M. Stolz, J. McCloskey, B. Gower.

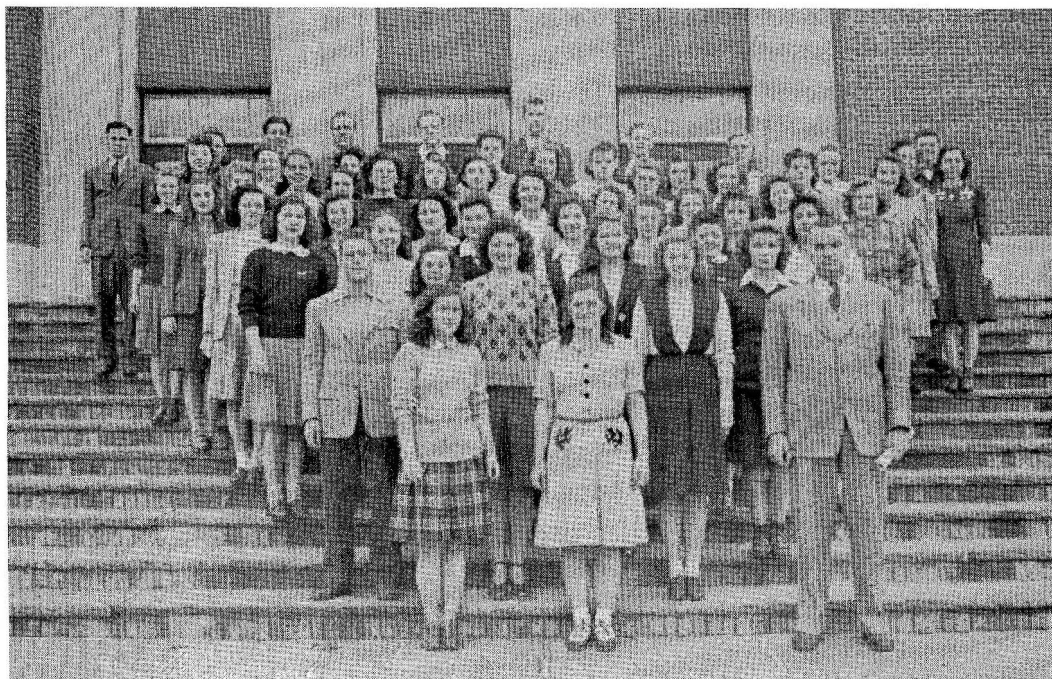
The experimental class: As far as working at Sylvania is concerned, we have survived, and will continue to survive all the dangers or health hazards that may be involved in the combination of work and study. We are proud of our war-work and proud of our class, large in number and high in ideals. We are looking forward to many more happy days here at T. C., and many more happy hours of helping, in however meagre a manner, to win the war.



*Sophomores*

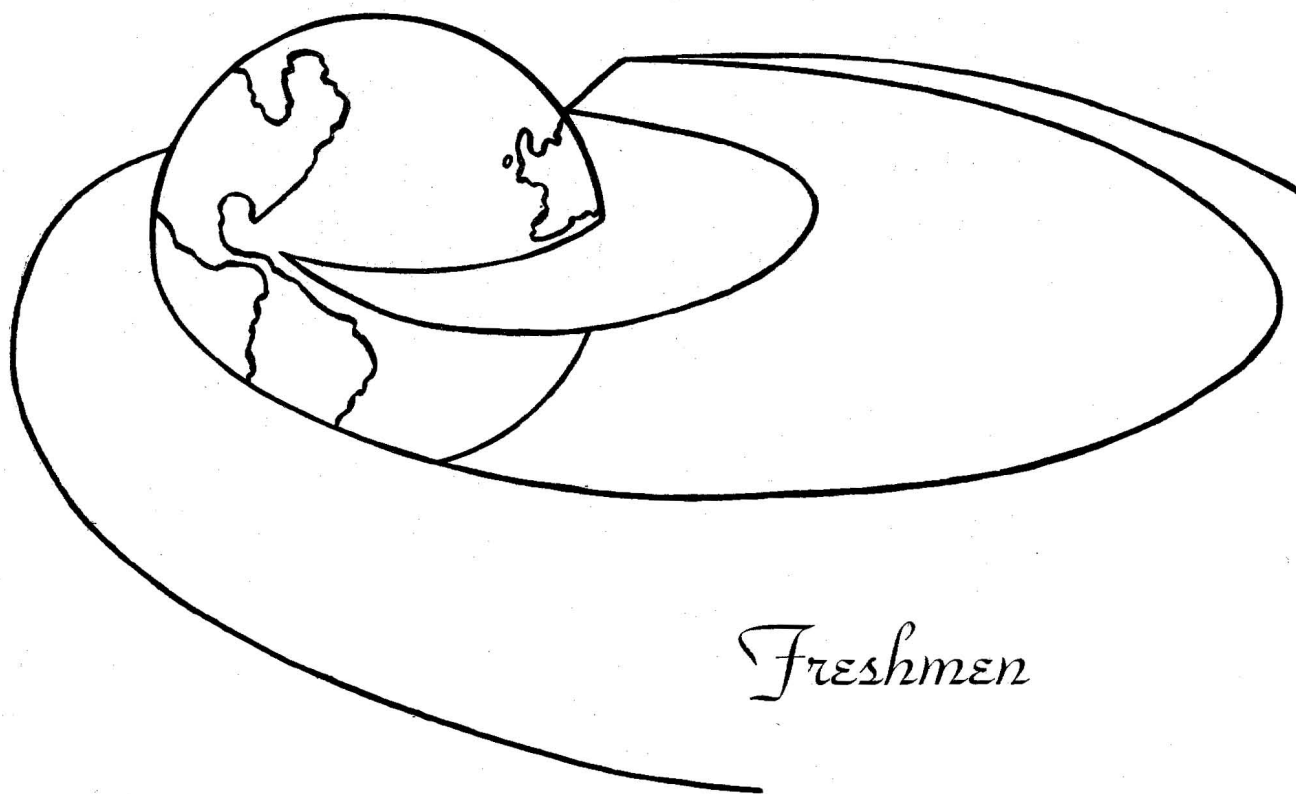


Seated left to right: V. Speaker, M. Bossert, P. Swope; second row left: M. Belt, E. Hardy.

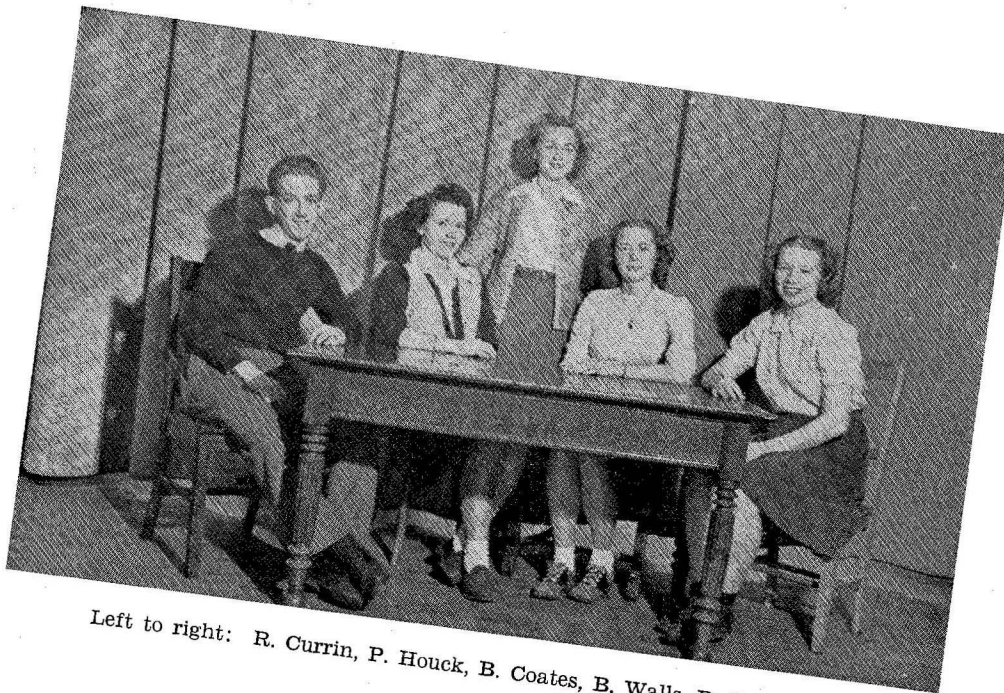


First row left to right: M. Belt, E. Hardy, M. Bossert, adviser; second row: R. Carpenter, M. Bossert, P. Swope; third row: D. Hollenbach, M. Heckart, G. Davis; fourth row: I. Budash, D. Heston, M. Kratzer, M. Niemond, G. Diack, A. Pontillo, P. Bonfilio; fifth row: F. Bronson, M. Burkhart, E. Preston, R. Preston, H. Lawrence, C. Kelly, L. Pier, H. King; sixth row: P. Bodle, F. Kilsdonk, L. Berger, M. Bossert, M. Morancik, D. Grassmeyer, E. Johnson, J. Pavlock; seventh row: J. Shirey, T. Bartges, C. Carpenter, V. Speaker, R. Capatch, L. O'Neill, E. Ellzey, E. Rager, C. Banghart, J. VonStein, C. Solt, G. Detwiler, E. Kniffin, G. Petrucci; eighth row: W. Shope, M. Beals, D. Bartges, J. Hartle, J. Bernas, F. Lingenfelter, J. Solensky, R. Williams.

Having survived the ordeal of orientation, we are a class large in number and enthusiastic in nature. Successfully initiated at Sylvania we are a happy crew of war-workers, owing much in the way of coincidental accumulation of the knowledge of adjustment to the present sophomore class. With a bit of that familiar spirit of "class revenge" in our blood, we are anxiously awaiting our return to school in September, and are ready to greet the new freshmen with the traditional "Customs" we so bravely faced. After a year we think we can safely say we "sort of like it" here.



*Freshmen*



Left to right: R. Currin, P. Houck, B. Coates, B. Walls, P. Sowers.



First row, left to right: B. Walls, M. Bulger, L. Moran, C. Roper, B. Hanka, K. Smith, B. Coates, M. Stabler; second row: L. Mowrey, P. Brumbaugh, G. Kephart, M. L. Conkey, J. Lynn, L. Harnish, B. Zelfiff, B. McLain; third row: E. Royer, M. Snyder, B. Holter, M. Owens, M. Curran, P. Sowers, C. Lowros, V. Williams; fourth row: N. Zimmerman, G. Bauman, B. Lorigan, T. Harvey, P. Houck, J. Thomas, A. Brown; fifth row: H. Baierowski, R. Golebieski, E. Hurwitz, L. Conser, K. Cook, J. Paolo, J. Sheehan, R. Yocum; sixth row: B. Auman, B. Long, R. Kaler, J. Reed, B. Sentelik, P. Bittlebrun, B. Thompson; seventh row: D. Fletcher, M. Gardner, H. Gutshall, A. Peterman, J. Ryan, J. Milton, C. Noty; eighth row: G. Manning, A. Gardner, M. Beals, J. Herrington, J. Snaith, B. Jeffries, B. Weaver, H. Zeiders, J. Wyland, B. Currin, B. Royer.



Right to left: J. Yon, V. Nicholas, J. Mott, A. Reighard, M. Haduch, I. Bailey, I. Galitus, P. Kendall; standing: R. Dietz, J. Hutchings, G. Volanski, M. Zetts, W. Brown, D. Montessor, J. Cooklis.

## *January Freshmen*

Many of the January Freshmen entered college when they are second semester seniors in high school. By this new method they were able to complete their high school education and acquire a semester's credits towards a college diploma at the same time. Some of the new freshmen were boys who were trying to get a semester of college completed before being called into the armed forces.

They became members of the first semester freshmen class and most of them, through the accelerated program, will graduate with the class of 1948.



Left to right: V. Peterman, T. Younker, T. Beiser, M. Ramsey, M. Hamberger, F. Yearick, E. Rimmey, C. Clayone, P. Bay, H. Beam, G. Stehman, M. Shoenfelt.

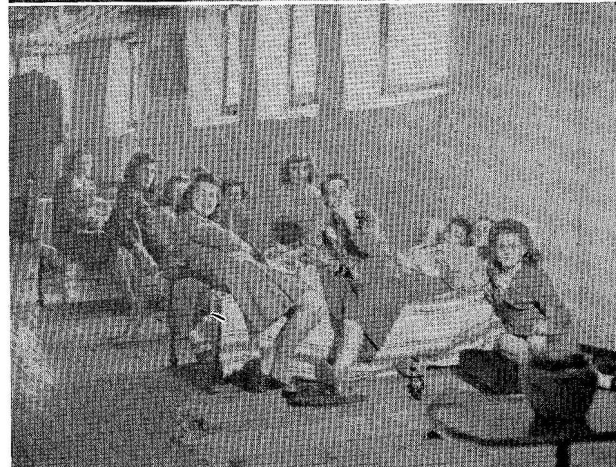
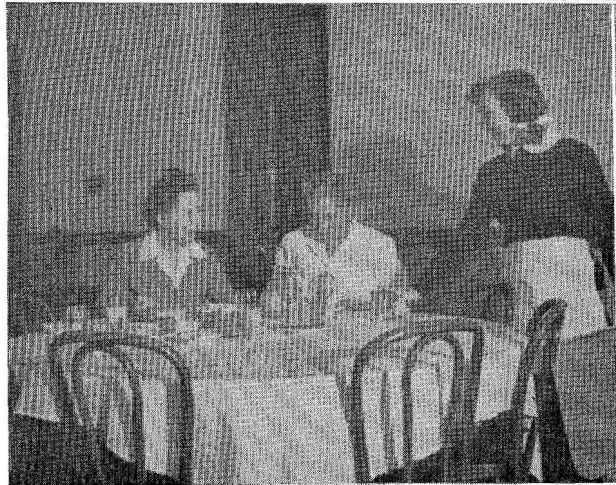
## *Cadet Nurses*

The student nurses were: Phyllis Bay, Williamsport; Helen Beam, Clearfield; Talitha Biser, Lock Haven; Peggy Hamberger, Lock Haven; Clayone Kline, Lock Haven; Violet Peterman, Muncy; Marie Ramsey, Jersey Shore; Edna Rimmey, Centre Hall; Mona Shoenfelt, Lock Haven; Gerry Stehman, Lock Haven; Faye Yearick, Madisonburg; Thelma Younker, Johnstown.

Another group of nurses have found their home again this year at T. C. Saw them around until January, when they moved to the Lock Haven Nurses Home to continue their studies and practical work.

While here at T. C. the girls were under college rules, with freshman regulations and college vacations; that is, they could not choose their own vacation time. They had classes from Monday through Friday from 8:00 to 4:00 P. M., with hospital work on Saturday. The girls took an active part in a number of activities; however, their time was very much limited.

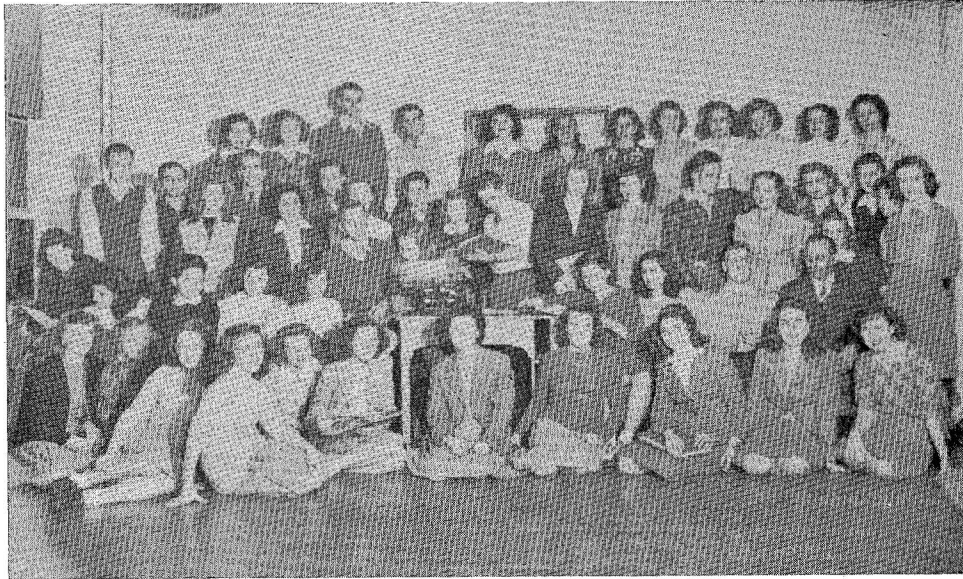
Yet with this very full schedule, the girls seem to think the present method of training is better than the mixed work received while training at a hospital. Their patience and diligence were rewarded when they received their caps in March, and at the end of their training period were able to take their places in serving humanity, whether in peace or war. The students are members of the United States Cadet Corps.



## Organizations







First row, left to right: J. Sheehan, H. King, B. McClain, V. Smith, M. Stabler, F. Bronson, D. Greene, S. Zubler, M. Drick, J. Pavlock, H. Baieroski; second row: G. Chambers, F. Bonfilio, A. Pontillo, I. Budash, M. Burkhart, C. Noty, G. Detwiler, E. Hardy, M. Belt, R. Carpenter, Mr. Shrot; third row: R. Moyle, R. Weaver, F. Slenker, J. Hartle, J. Plumpis, A. Peterman, B. Coates, R. Williams, J. Shirey, M. Beals, B. Walls, V. Williams, H. Zeiders, D. Heston, M. Morancik, G. Davis, M. Niemond, L. B. Mowery, D. J. Grassmyer; fourth row: E. Kniffin, V. Speaker, R. Snaith, A. Gardner, J. Paolo, F. Kilsdonk, G. Petrucci, E. Smart, J. McCloskey, R. Galebieski, L. Berger, A. Neuhard.

## *Praeco Staff*



Gladys Detwiler, *Editor*  
 Marion Burkhart, *Assistant Editor*  
 Mark Beals, *Business Manager*  
 Charles Noty, *Photography Editor*  
 Laura Belle Mowrey, *Advertising Manager*  
 Josephine Paolo, *Literary Editor*

Faculty Adviser — Mr. E. I. Schrot.

Staff — Irene Budash, Minnie Belt, Lois Berger, Filimena Bonfilio, Faye Bronson, Grayce Chambers, Barbara Coates, Mary Louise Conkey, Mary Drick, Dorothy Heston, Frances Kilsdonk, Helen King, Edna Kniffin, Robert Marks, Martha Morancik, Josephine Pavlock, Geraldine Petrucci, Jane Plumpis, Jean Shirey, Frances Slenker, Virginia Speaker, Myrtle Stabler, Beverly Walls, Bob Williams, Virginia Williams, Doris Greene, Elizabeth Clark, Emily Day Smart, Marian Kratzer, Audrey Neuhard, Joe Bernas, Hope McCartney, Jane Thomas, Loretta Moran, Carolyn Diack, Betty McClain, Nancy Zimmerman, Pat Bodle, Peggy Swope, Kay Johnson, Paul Ballock.

Seated, left to right: M. Beals, I. Budash, M. Burkhart, J. Shirey, E. Hardy, D. Grassmyer; standing: R. Carpenter, M. Drick, C. Noty, M. Belt, G. Detwiler, Mr. Schrot.





## Headlines of 1944-45

**William Harbach Elected President of Student Council**, announced the first issue of the **Times** for the school year. Lots of things happened during that first month. Even before the **Times** could tell about it, the students had met six new instructors that were added to the staff during the summer. The College Players raised the curtain on **Peter Pan**, presented by the Clare Tree Major troop of New York. Our reporters covered the PSEA Convention held on our campus October 12 and 13.

Jack-o-lanterns, cider, and square-dancing highlighted the Halloween Dance sponsored by the YMCA on October 21. Half the fun was cleaning up the gym afterward, and there's nothing like using the same broom and dustpan for new freshmen to get acquainted with upperclassmen and each other. Three cool October nights later the student body assembled in the auditorium to enjoy "Music of the Out-of-Doors," a song and lecture program by Bret Hartwell, presented by the Artist Course Committee.

Thanksgiving vacation eliminated a school week from November, but the news-in-brief for that month shows that **Times** typewriters beat out the following headline: **Student Council Delegation Attends Conference at California S. T. C.** Another morale-builder was the one-act comedy, **Suppressed Desires**, presented by the Dramatics Club. And how can we forget the fun we had at the Happy Hour?

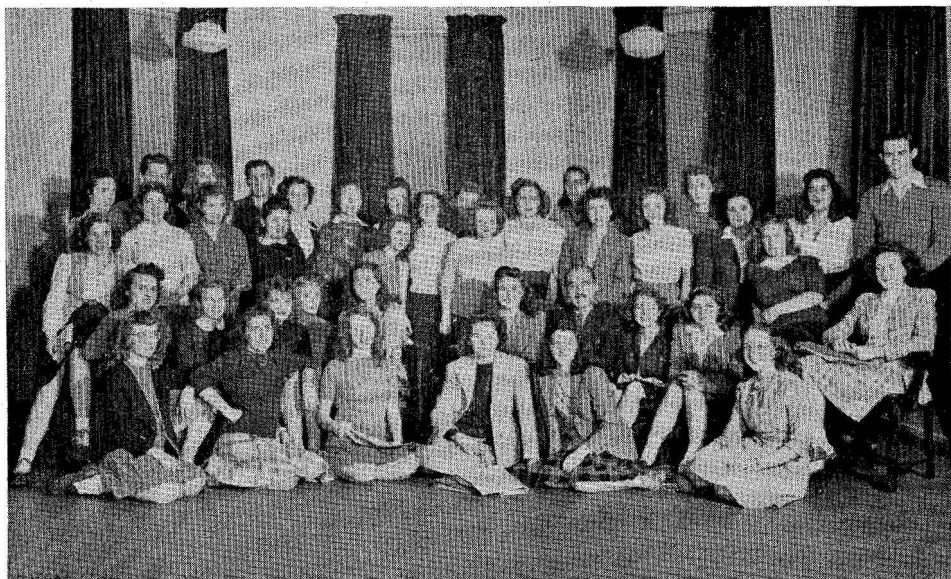
December's biggest headline announced **Nativity Presented Twice to Capacity Audiences**. This annual all-college function, under the joint direction of the Misses Brong and Ullemeyer was produced as enthusiastically and as impressively as ever. December is a busy month, however, and our reporters and feature writers covered the all-college Christmas party, the many club parties, and that side-splitting one-act play, **The Trysting Place**, and still there was room on the front page to tell about the six students who were elected to **Who's Who Among Students in American Colleges and Universities**.

The January, 1945, issue of the **Times** said "Good-bye" to the three seniors who graduated then and welcomed all incoming freshmen. Both the **Times** and **Praeco** staffs lost several members, and a new assistant editor was appointed for **Praeco**. Another entertaining Artist Course number was enjoyed—a "Conversational Concert" by Donald Scott-Morrison.

February brought Religious Emphasis Week, and everyone enjoyed and profited by the lectures and discussions held.

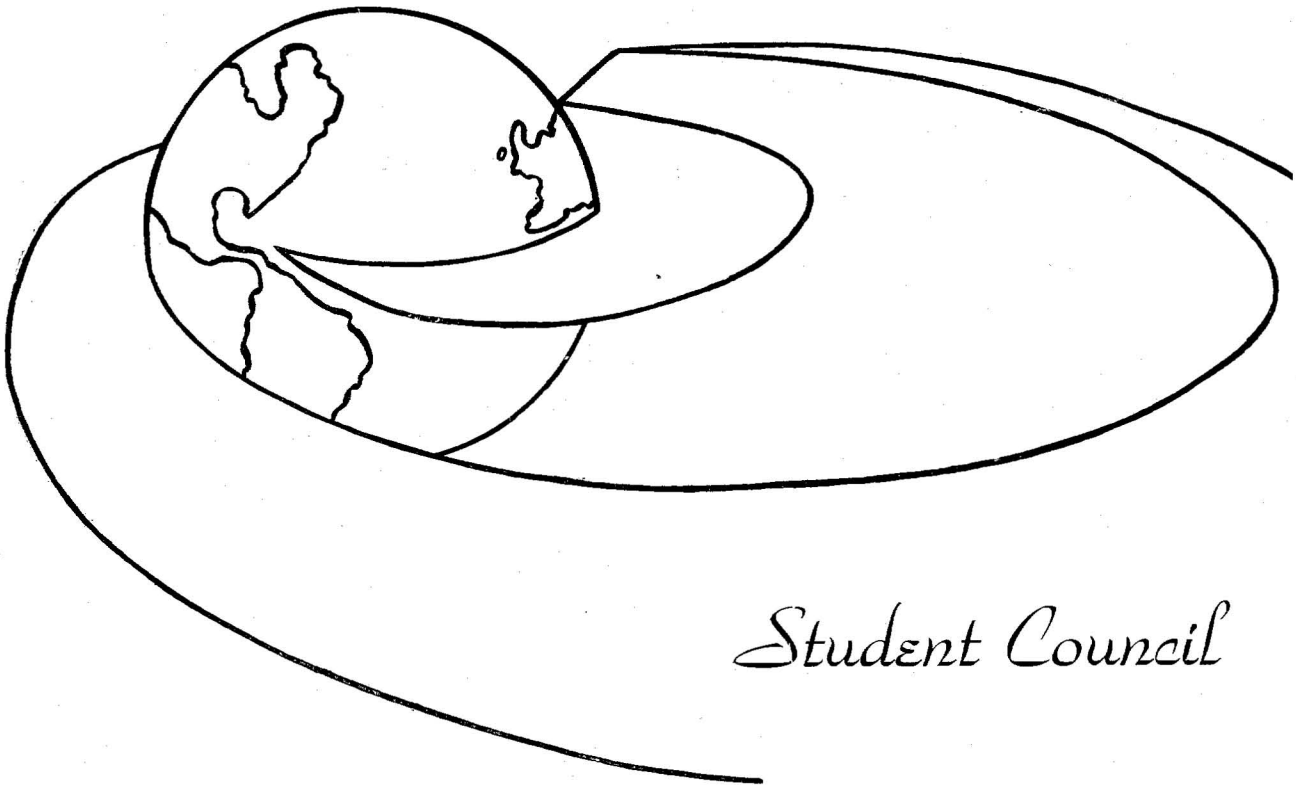
One more school year gone, but more to go for all of us except the seniors. They go out into the "field" with all our good wishes for their success.

First row: Jean Sheehan, Grayce Chambers, Lois O'Neill, Betty Lorigan, Mary Louise Conkey, Dorothy Heston. Second row: Sally Zubler, Jean Shirey, Jan Sackett, Loretta Moran, Minnie Belt, Josephine Pavlock, Dr. William R. North, Le June Pier, Mary Drick. Third row: Jane Thomas, Hope McCartney, Eleanor Hardy, Ann Pontillo, Helen Lawrence, Lois Berger, Myrtle Stabler, Jean McCloskey, Doris Greene, Marion Burkhart, Jane Plumpis, Betty Jo Zeliff, Faye Bronson. Fourth row: Audrey Neuhard, Frank Yon, Frances Slenker, Robert Weaver, Miriam Niemond, Edna Kniffin, Marian Kratzer, Martha Morancik, Frances Kilsdonk, Marty Badick, Filimena Bonfilio, Robert Snaith.





William Harbach  
*President*



*Student Council*

The student body, organized under the name of the Student Cooperative Council, aims to encourage good sportsmanship, courtesy, and cooperation in all activities; a high sense of honor; and loyalty to the ideals of the college.

All members of the college are members of the organization and their representatives constitute the student council.

The council promotes and coordinates student activities, studies the major problems of the student body, and administers student activity funds.

Seated, left to right: R. Williams, Miss Spiking (Adviser), A. Neuhard, E. Smart, D. Bartges, D. Greene, M. Swope, S. Zubler, N. Rockey; standing: F. Yon, M. Drick, R. Carpenter, E. Clark, C. Noty, F. Kilsdonk, J. Bernas, G. Petrucci, D. Grassmyer, L. Moran, J. Plumpis, R. M. Akeley, M. MacPhee.



## *Sigma Delta Phi*



P. Ballock, J. Hartle, M. Beals, R. Carpenter, F. Lingenfelter, J. Bernas, F. Yon

President, Mark Beals; Vice President, Frank Lingenfelter; Secretary, Frank Yon; Treasurer, Paul Ballock; Student Council Representative, James Hartle; Sergeant-at-arms, Robert Carpenter; Chaplain, Joe Bernas; Adviser, Dr. William R. North.

Sigma Delta Phi was reorganized in the fall of 1944 to create fellowship and harmony among the male students in our dormitory. Under the auspices of the "Dorm" Council, headed by President Joe Bernas, the constitution was rewritten, the shield designed, the pin chosen, and the fraternity rooms redecorated.

The activities of this organization have been retarded because many of its officers have been called to the Nation's colors.

In a recent election Joe Bernas was elected acting president and James Hartle vice president. Through the leadership of the new officers, the fraternity hopes to continue its activities on the campus. New pledges promise to make the fraternity more active.



## Delta Rho Beta

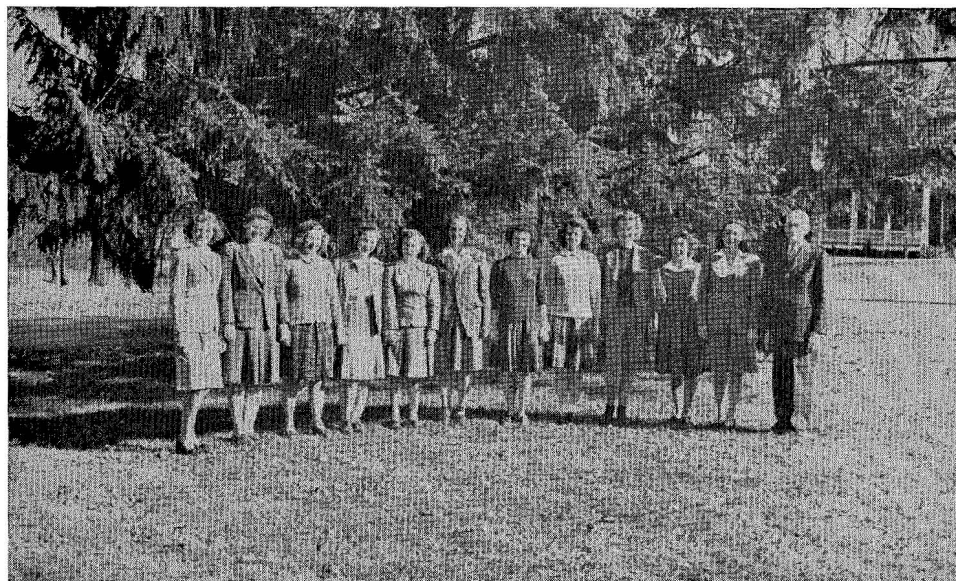


Seated, left to right: W. Harbach, R. Marks, R. Williams  
Standing: Mr. Fleming, D. Bartges, A. MacGregor, C. Noty.

Although there are few boys on the campus this year the Day Room Boys' fraternity carries on as usual. The lack of a large membership is compensated by the great amount of enjoyment and the companionships which the rooms house at all times. Here is a place where the local boys may study or relax. There is little formality; the fraternity's spirit is fun and its wartime purpose is to keep interest alive till the boys come home again.

The president is Robert Marks, who usually directs the activities of the organization. William Harbach enjoys the title of ex-president. The new members are Ardell MacGregor and Charles J. Noty. Now and then Mr. Fleming, Mr. Smith, and Mr. Sullivan drop in for a friendly chat. The Delta Rho Beta is trying to keep alive its fraternal spirit until a happier tomorrow.

## *Kappa Delta Phi*



Left to right: E. Smart, D. Millward, L. Hosmer, M. Rathbun, L. Clark, J. Drye, D. Greene, K. Johnson, M. Badick, H. MacCartney, R. M. Akeley, Dr. Rude.

Officers: President, Jean Drye; Secretary, Leona Hosmer; Treasurer, Dorothy Millward; Historian Recorder, Marjorie Rathbun; Adviser, Dr. A. S. Rude.

The name "Kappa Delta Pi" carries with it prestige since all members must exhibit commendable personal qualities, worthy educational ideals, and sound scholarship.

The old members, including Louise Clark, Jean Drye, Leona Hosmer, Helen McCloskey, Dorothy Millward, Rose Minnie Probst, Marjorie Rathbun, and Eleanor Williams, welcomed into their society in the fall Martha Badick, Betty Clark, Doris Greene, Kay Johnson, Hope McCartney, Emily Smart, and Mrs. A. S. Rude as new members. Miss Cordelia Brong has been elected as an honorary member of the organization.

This year the members were very active during the P. S. E. A. Convention. They were responsible for all registrations of visitors and were very helpful as guides.

The meetings were held at the home of Dr. Rude and were always pleasant as well as instructive. The guest speakers included Miss Helen McCloskey, who acquainted us with the activities of the blind, and Miss Faddis, who discussed the origin of various Christmas carols and Christmas customs. Light refreshments were always a part of every meeting.

Kappa Delta Pi is the local chapter of the National Honorary Society in Education, installed on May 12, 1938, by Dr. William C. Bayely, Laureate Counselor, for the purpose of maintaining a high degree of professional fellowship among its members and of quickening professional growth by honoring achievement in educational work.

## Alpha Psi Omega



Left to right: P. Swope, K. Johnson, D. Millward, J. Hartle, M. MacPhee, D. Greene, R. Akeley, P. Bodle.

The highest goal toward which Inner Circlers of "The College Players" strive is membership in the Theta Zeta cast of Alpha Psi Omega. This is an honorary dramatics fraternity which has as its purpose the recognition of superior attainment in college dramatic enterprises throughout the United States and Canada.

In order to be eligible for joining, one must have an above-average scholastic standing; he must have made distinctive contributions to play-production activity on the campus, and demonstrated an attitude of dependability and cooperation. Those meeting these requirements receive the gold badge of the organization and an engraved certificate of membership. Each member is also the proud recipient each year of "The Playbill," the fraternity's magazine, which keeps him in touch with dramatic ventures in colleges throughout the country.

## *Pan Hellenic Council*



Left to right: M. Badick, B. Barner, E. Smart, A. Carpenter, R. Akeley.

Chairman, Emily Smart; Secretary, Mary Drick; Treasurer, Anne Hamilton Carpenter; Adviser, Mrs. Nora Graffius.

Panhellenic or "All Greeks" is dedicated to the cause of creating good fellowship and a spirit of cooperation among the three sororities on campus—Alpha Sigma Tau, Pi Kappa Sigma, and Sigma Sigma Sigma.

Panhellenic is composed of three representatives from each sorority, and the advisers of the three sororities share the counseling of the governing board by taking the responsibility once every three years.

This year we welcomed Mrs. Graffius, who is the newly-elected adviser of Sigma Sigma Sigma, as our counselor and with her help had a full and happy year.

Among the various activities undertaken this year by Panhellenic were the revamping of freshmen bidding rules, reissuing of Panhellenic publications that aid freshmen in selecting a sorority, entertaining national officers, and having the freshmen as guests at an informal tea and Panhellenic Vespers.

Home-coming banquets and the Panhellenic spring picnic climaxed the year in true sorority fashion—All Sisters Together.

## *Sigma Sigma Sigma*



Front row, left to right: H. King, D. Grassmyer, E. Hardy; back row: F. Bonfilio, M. J. Marschik, H. Lawrence, M. J. Hoffman, S. Zubler, A. Knowles, L. Clark, M. Drick, R. M. Akeley, I. Budash.

Tri Sigma began this year by acquiring a grand group of new pledges. They then went on to entertain a national alumna guest, Miss Eleanor Wood of Washington, D. C., whose visit ended on a social note with a dinner at the Dutch Inn.

Alpha Rho was hampered at the beginning of the year because Miss Ashton Hatcher, adviser, accepted a job in her home state of Virginia. However, things picked up when Mrs. Nora Graffius accepted our invitation to take Miss Hatcher's place.

They introduced Mrs. Graffius to our alumnae at a Christmas party, at which the alumnae presented the active members with a beautiful lamp. This gift stimulated the year's work on improving the rooms.

The year was scattered with many informal parties in the rooms and, of course, the annual Founder's Day banquet on April 20. The year ended with a successful spring banquet.

## Alpha Sigma Tau



First row, left to right: J. Drye, M. Badick, E. Smart, Adviser Dr. E. Bottorf, R. Beckenbaugh, G. Petrucci; second row: F. Bronson, J. Pavlock, M. MacPhee, M. Burkhart, R. Rolin, T. Bartges, E. Kniffin, L. O'Neill, E. Davis.

All Taus were bubbling with excitement at the prospect of meeting and entertaining our National President, Mrs. Carrie Stachle, who visits Alpha Sigma Tau Chapters only once every three years. We found that she is a charming person, eager to give advice and to participate in social and business functions. The three days of her visit launched an eventful and enriching year for A. S. T.'s on campus.

A November cabin party—sport clothes—Becky's '28 Ford—laughter—hot dogs—a huge moose skin to prove Mr. Furst's stories of Canadian hunting trips—songs—popcorn—a fireplace—a bear-skin rug—games—a lovely hostess, Mrs. Furst—these contributed to an outstanding day, which will cause many fans to smile as they recollect them.

The National Founder's Day Banquet, by soft candlelight, the Christmas Party held in the sorority rooms; the rummage sale and spring fair; work parties with tired but happy girls viewing shining rooms; pledging and initiating thirteen new members; tricky notes and signs on the bulletin board; the Spring Banquet with our adviser, activities, patronesses, alumnae; and always Dr. Bottorf's quiet, gracious smile—these and many factors made this year a successful and happy one in Alpha Sigma Tau history.

## *Phi Kappa Sigma*



Left to right: B. Barner, A. Carpenter, B. Gower, Frances Slenker, V. Smith, M. Bossert, M. Bossert, J. McCloskey, P. Bodle, F. Kilsdonk.

This year marked the golden anniversary of Pi Kappa Sigma. Fifty years ago the sorority, which has the honor of being the pioneer among National Educational Sororities, was founded. The anniversary was acknowledged by the presence of the district president and a banquet at the Dutch Inn paying tribute to Georgia Fox Brown and her thirteen fellow-founders.

Pi Kappa Sigma began the year under a handicap, the greater part of the group having graduated. The sorority, however, made the best of this, more than doubling her membership and sponsoring many outstanding social activities. The alumnae group of the sorority was also reorganized in Lock Haven this year. This event marks another step in Pi Kappa Sigma's successful year.

Pi Kappa Sigma is known principally for her high ideals and scholarship, displayed in the work of her sisters throughout the school.

## Y. M. C. A.

First row: Robert Carpenter, Mark Beals, James Hartle, Robert Williams, William Shope, Dean Bartges, John Wyland, John Solensky, Garnet Williams, Glenn Manning. Second row: Charles Noty, William Royer, Dr. William R. North, Robert Snaith, Joseph Bernas, Harold Zeiders, Robert Currin, Allan Gardner, Robert Jefferies. Third row: Frank Lingenfelter, Jack Herrington, Robert Weaver, John Ryan, Frank Yon, Paul Ballock, Albert Peterman, Roger Moyle.



First row: Myrtle Stabler, Ann Pontillo, Betty Lorigan, Betty Jo Zelif, Louise Harnish, Josephine Lynn, Grace Davis, Miriam Niemond, Audrey Neuhard, Caroline Diack, Betty Hanka, Carol Roper. Second row: Laurabelle Mowrey, Eleanor Hardy, Margaret E. Waldron, Josephine Paolo, Edwinna Davis, Josephine Pavlock, Tessie Bartges, Doris Greene, Hope McCartney, Nancy Rockey, Lois Berger, Violet Peterman, Sally Zubler, Jane Thomas, Mildred Card, Jean Sheehan, Betty McClain, Beverly Wells. Third row: Helen King, Charlene Solt, Jane Plumpis, Catherine Kelley, Le June Pier, Kay Smith, Della Jane Grassmyer, Betty Sentelik, Carolyn Carpenter, Mary Bossert, Christine Lowros. Fourth row: Filimena Bonfilio, Jessie Von Stein, Mary Stolz, Emma Rager, Martha Morancik, Marion Owens, Hilda Gutshall, Faye Bronson, Barbara Coates, Betty Auman, Kay Johnson.

## Y. W. C. A.



## Y. M. C. A.

President, James Hartle; Vice President, William Harbach; Treasurer, Robert Williams; Secretary, William Royer.

The Y.M.C.A. is the only organization of the campus that can boast of one-hundred per cent membership of the men students. This group is undenominational and includes all the men in our college.

Though men were scarce, the Y.M.C.A. had one of its most active years of service. In connection with the Y.W.C.A. they made possible the "Religious Emphasis Week" program and the ministerial tea. They recognized the social side of college life by sponsoring Hoe-Downs. The Y's have arranged the purchase of an honor roll for the college.

Weekly meetings were held at noon in order to accommodate those who worked. The topics of discussion were timely, relating to religion and life. The programs were varied by having outside speakers several times each semester.

Under the guidance of Dr. North, the Y.M.C.A. has not only given spiritual enlightenment, but it has helped us get a more rounded education.

## Y. W. C. A.

President, Doris Greene; Vice President, Hope McCartney; Secretary, Tessie Bartges; Treasurer, Nancy Rockey; Student Council Representative, Sara Zubler; Advisers: Miss Margaret Waldron, Miss Lorraine Spikings, Mrs. William R. North.

Since the student body is comprised largely of women this year, the Y. W. C. A. has been one of the leading organizations on campus. Starting with a pajama party for the freshmen and a treasure hunt, it began a successful and busy year of activities.

In conjunction with the Y. M. C. A. this organization conducted the ministerial tea which aimed to help students learn to know the pastors of the city better, and to stimulate church attendance.

The topic for the year was **World Religion**. Outside speakers and students helped to make the discussions of the various religious faiths enjoyable and informative. The program was arranged so that both day students and Sylvania workers could attend.

The Y. W. C. A. sponsored several projects:

One was the annual Christmas party for the children from the Children's Home. Audrey Neuhard delighted them by taking the place of good old Santa Claus. Everybody enjoyed the event because of the happiness that comes from sharing.

The second project was helping to plan and make Religious Emphasis Week worthwhile. This program helps to enrich the students' personal lives by counsel, addresses by outside speakers, and discussion groups.

The purpose of the Y. W. C. A. is to promote Christian living and leadership on campus.

## Newman Club

First row, left to right: F. Yon, M. Conkey, G. Petrucci, Mr. Sullivan, E. Davis, D. Heston; second row: R. Galebieski, B. Lorrigan, B. Sentelik, J. Pavlock, M. Curran, M. Bulger, V. Smith, L. Moran, H. Baieroski; third row: J. Hartle, M. Badick, E. Martino, P. Bonfilio, L. O'Neill, M. Morancik, F. Kilsdonk, J. Sheehan, J. Solenski, A. Pontillo, W. Royer, J. Bernas, P. Ballock.



Left to right: D. Lobb, M. Stolz, V. Smith, E. Davis, E. Smart, J. Thomas, L. Pier, A. Neuhard, H. McCartney, L. Berger, D. Greene, M. Niemond.

*A. C. E.*

## *The Newman Club*

The Newman Club had its origin with Cardinal Newman, who planned a Catholic student club which could be had on every college campus in the United States.

In September, 1941, an attempt was made to organize such a club here. The attempt did not prove a success, but the students still had faith in the prospect of a club in the future.

This fall, through the encouragement of Doctor Parsons, this expectation came true and now the Newman club is on this campus. With Edwinna Davis as president and Mr. Sullivan and Father O'Toole as advisers, the club started the year promisingly. The organization meets twice a month, the first meeting in the month being a round-table discussion of some topic which a member of the club chooses. The second meeting is of a social nature.

So far, in the line of social events, the club has sponsored a Communion Breakfast and a Get-Together Party at the U. S. O. This semester, as it draws to a close, finds the Newman club busily planning new activities for the coming year.

## *Association of Childhood Education*

The college students training to be elementary teachers have the Association of Childhood Education as their own club. The A. C. E. is a national organization, and the local group attempts to fulfill its purpose here by creating a greater interest in the education of young children, promoting the progressive type of education in nursery school, kindergarten, and the primary grades, and raising the standards of the professional training for teachers and leaders in the elementary field.

As in the last several years this group has had as its aim for the year the purchasing of something useful for the Campus School, and before Christmas the members repaired old toys which were then distributed by the Salvation Army to children who would not receive very much for Christmas.

Various speakers and group discussions have brought educational problems, remedies, and results before the eyes of those attending the meetings. Above all the local unit stresses an appreciation of the magazine **Childhood Education**, which is published by the Association.

The familiar saying that today's children are tomorrow's men and women is meaningful to elementary-minded students and teachers and the Association of Childhood Education plays an important role in making these educational leaders better prepared to guide these adults of tomorrow.

## Dayroom Council

Left to right: L. Moran, A. Hamilton, V. Smith, Miss L. Spikings, P. Bodle, E. Smart, D. Millward.



First row: M. MacPhee, E. Hardy, C. Kelley, M. Bossert, F. Yearick, A. Neuhard; second row: M. Badick, Miss Spikings, J. Drye, N. Rockey.

## Dormitory Council

## *Dayroom*

A new freshman opens the door to behold  
A group of upper classmen reserved and bold  
Lounging on lime-green chairs and a gray settee  
Telling the tale of things to be.

Customs begin and the frosh is blue.  
"Nine weeks" is here and grades are due.  
Thanksgiving vacation, relief at last.  
New resolutions the same as the past.

January graduation, the threshold of life.  
Housemaid's knee as a soldier's wife.  
Easter vacation a time for rest.  
Back to the grind to do your best.

May, the most pleasant month of all.  
Three months' vacation until next fall.  
Seniors laugh, but they shed a tear;  
This is their last; there is no next year.

The dayroom has its government, too.  
The Council directs us in what we do.  
Appointed committees plan recreations.  
Dayroom girls make decorations.

## *Girl's Dormitory Council*

Be in at 9:30 p. m.! When these words were first ejaculated they did sound rather awful, but that was only half the story. Miss Spikings was trying out something new in the way of signing out in the evenings. Freshmen and sophomores could be out Monday through Thursday till 9 p. m., every night if they so desired, and juniors and seniors had until 9:30 p. m. Friday and Saturday nights were 11:30's and Sunday night was a 10:30 night. If somebody special happened along, Miss Spikings might consider a special.

The dean and the dormitory council also waged a war on noise during study hours and sleeping hours. They also strove to make better housewives indirectly, by insisting on better living conditions in the girls' rooms and in the student kitchen.

We hope this year of experimentation has sharpened wits as well as the dorm's new pencil sharpeners have sharpened pencil points.

## Art Club

Front row: Dorothy Fletcher, Della Jane Grassmyer, Dr. Edna Bottorf;  
second row: Charles Noty, Robert Marks, Dean Bartges, Mary Jane Marschik.



First row: Rose Minnie Akeley, Betty Lorigan, Eleanor Martino; second row: Louise Clark, Miriam Niemond, Dr. William North, Geraldine Petrucci, Elizabeth Clark, Nancy Zimmerman, Adele Forsythe, Loretta Moran; third row: Kitty Cook, Jean McCloskey, Jane Thomas, Mildred Card, Caroline Diack, Dorothy Heston, Lois O'Neill, Martha Badick, Marian Kratzer, Mary Curran, Josephine Pavlock, Helen Lawrence, Helen Baieroski, Mary Louise Conkey; fourth row: Charles Noty, James Hartle.

## English Club

## *Art Club*

The purpose of the Art Club is to further art interest and to provide enjoyment for the members of the club and college. The members are talented students who have that urge to create what takes the form of fine art. The requirements for membership in the club are the presentation of some original art product showing ability in artistic achievements, and an alive attitude toward work. Continual membership is based on practical evidence of work accomplished.

During the first semester the club met every week, but because of abnormal working conditions it is now meeting every other week. This fact, however, does not hinder the quality of the members' work; instead it has led to production showing distinct talent.

A highlight of the year's exhibits was fourteenth-century Gothic Woodcuts, which gave us an insight into the art of the Middle Ages. The Victorian prints attracted many also. The outstanding exhibit, however, was that of modern animated cartoons, Walt Disney Originals. During the warmer months of spring the members enjoyed many sunlit hours in the outdoors sketching nature's beautiful forms.

## *English Club*

President (First semester), Eleanor Williams; President (Second semester), Geraldine Petrucci; Secretary-Treasurer, Miriam Niemond; Faculty Adviser, Dr. North.

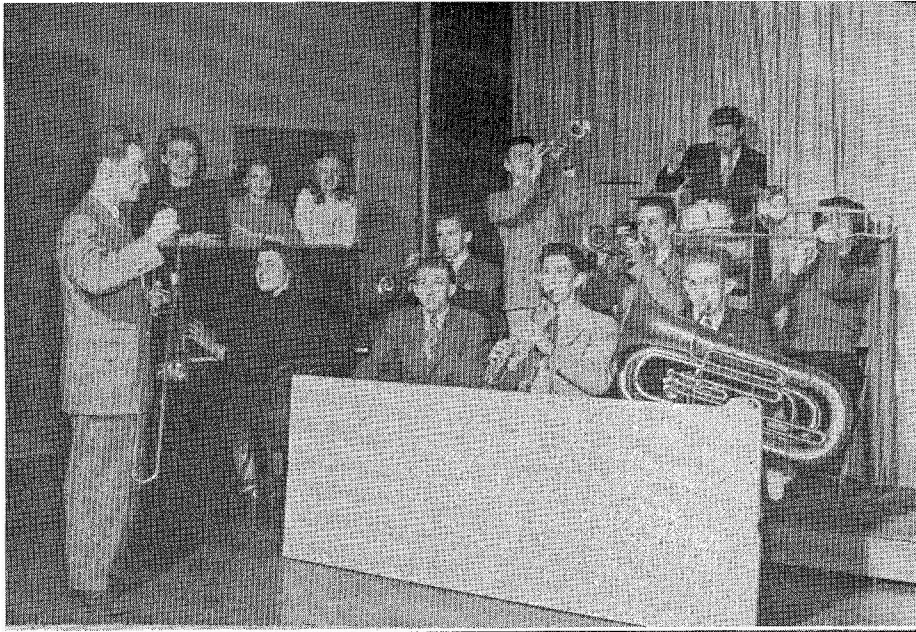
This year has been another one of enthusiasm for the English Club. There were enough of the old students to keep the spirit going strong. Although most of the members are English majors or minors, it is not exclusive. Anyone who is interested in literature is welcomed.

The topic for the year was the short story. Consequently the meetings, except the Christmas one, were devoted to the discussion of French, German, American, Southern European, and Oriental short stories. The December gathering was celebrated in the traditional manner—**Dickens' Christmas Carol** (on records this year), dim lights, and blazing plum pudding. The activities of the year are brought to a climax with local talent night, which gives everyone a chance to present some writing of his own.

This organization publishes the **Crucible**, a collection of literary work done entirely by students. Anyone can contribute to this magazine. It is something to be treasured when college days are past.

## Orchestra

First row: B. Auman, W. Harbach, D. Bartges, R. Currin; second row: M. Beals, H. Zeiders, H. Gutshall, B. Williams; singers: T. Harvey, J. Lynn, L. Moran, F. Yon.



First row, left to right: J. Lynn, L. Clark, M. Card, J. Thomas, J. Kelsey, K. Johnson, L. Berger, H. Lawrence, R. Akeley; second row: H. McCartney, S. Zubler, L. Harnish, B. Auman, M. Bossert, V. Williams, J. Plumpis, D. Fletcher; third row: M. Rathbun, J. Cummings, G. Kephart, M. Bulger, P. Bodle, D. Greene, M. Swope, T. Bartges; fourth row: J. Paolo, M. Bossert, D. Millward, I. Budash, L. Hosmer, M. Currin, L. Moran, C. Lowros.

## Bel Cantos



## *The Collegians*

Listen! Do you hear that drum beat? That mellow trombone? The enhancing tone of the clarinet? And, aren't the accompanying piano, trumpet and bass fascinating? That's right. It's **THE COLLEGIANS**—the first college dance orchestra ever assembled.

For the first time in the history of Lock Haven State Teachers College, various music-ally-inclined students formed an orchestra under the advisership of Professor George F. B. Lehman. With the student director Frank B. Yon, the orchestra became particularly famous for its rendition of the popular "Jangled Nerves."

The trombone section was composed of Frank Yon and Hilda Gutshall, while the clarinets were ably handled by William Harbach and Dean Bartges. The trumpet section was comprised of Bob Williams, Mark Beals and Harold Zeiders. Betty Auman played the piano expertly, while Bill Tyson never missed a beat on the drums. Then, too, credit to Bob Currin who kept us in time with a bass.

Vocals were done both beautifully and effectively by Jo Lynn, Loretta Moran and Thelma Harvey.

Yes, music relieves the tension of many trying days. It was one organization by which all students were benefitted. **THE COLLEGIANS** made their debut at the College "Happy Hour." This was followed by the Christmas Dance (Music by **THE COLLEGIANS**) and numerous dormitory serenades. And there will be many more programs before this year 1945 draws to a close. This record, too, must have end—so, in closing we ask the question, "Were **THE COLLEGIANS** successful?" Ask any student!

## *Bel Canto Choral Club*

There's music in the sighing of a reed  
There's music in the gushing of a rill;  
There's music in all things, if men had ears:  
Their earth is but an echo of the spheres.

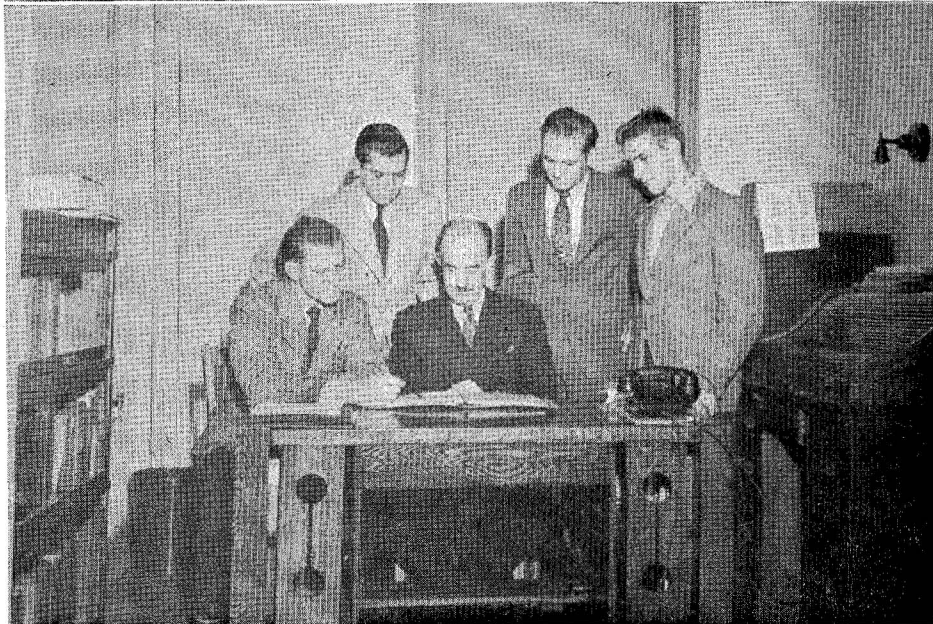
**Don Juan**

Springtime concluded the musical activities of the Bel Canto Choral Club for 1944-45. The beginning was the P. S. E. A. Convention in early October. Then came the Salvation Army Program, the Elks Memorial Program, and the performances at the Men's Brotherhood meetings. The never-to-be forgotten memory is of the music of the Nativity and the club's pride in presenting it. Participation in Religious Emphasis Week kept the chorus busy in February. A program honoring the Pennsylvania composers was presented to the Lock Haven Music Club and a March assembly program brought some of this music to the student body. In addition, the usual Spring Concert was given, paying musical tribute to the allied nations. After the Bel Cantos had furnished the commencement music, they laid aside their robes, but with eager anticipation of next year's musical activities.

Miss Grace Ullemeyer directs the Bel Canto Choral Club. Marjorie Rathbun is the accompanist. Members include M. Akeley, B. Auman, T. Bartges, L. Berger, P. Bodle, M. Bossert, M. Bossert, M. Bulger, M. Card, L. Clark, J. Cummings, D. Fletcher, M. Gardner, D. Greene, T. Harvey, L. Hosmer, K. Johnson, R. Kaler, H. Lawrence, C. Lowros, J. Lynn, H. McCartney, D. Millward, J. Paolo, J. Plumpis, P. Swope, J. Thomas, V. Williams, S. Zubler, G. Kephart, G. Davis.

## *Men's Chorus*

First row, left to right: P. Ballock, J. Herrington, F. Yon, R. Carpenter; second row: R. Jefferies, R. Moyle, H. Zeiders, B. Milton, M. Beals; third row: R. Currin, J. Wyland, F. Lingenfelter, R. Snaith.



Left to right: J. Bernas, G. Manning, Dr. North, J. Hartle, R. Carpenter.

## *Boy's Dorm Council*

## *Men's Chorus*

The Men's Chorus was organized by Miss Ullemeyer. It made its first appearance in the Nativity. Soloists were Roger Moyle, Dean Bartges, Frank Yon, and Robert Carpenter. The organization ceased to function because the majority of its members entered the armed forces.

## *Boy's Dormitory Council*

President, Joe Bernas; Vice Presidents, Robert Carpenter, William Royer; Secretary-Treasurer, James Hartle; Faculty Adviser, Dr. W. R. North.

The Men's Dormitory Council was organized for the purpose of governing the dormitory. It has created an excellent understanding between the faculty and the men, as well as within the group itself. The council is constantly striving to promote a spirit of fellowship. This is the first year that the council has operated for a number of years.

*Players*



*Nativity*

## *Players*

"Hey, MacPhee, some of the new freshmen girls wanted to know what Dramatics Club is all about, so I brought them along to see for themselves. O. K.?"

"Sure thing. The stage crew is putting up the set this minute for our next play. Stick around, girls, and I'll wager you'll want to join before the evening's over."

"Well, at least you've got us interested. But everybody doesn't work on the same job, does he? Didn't you say something about a forum?"

"You tell them about it, Kay," Marian answers as she dashes back to the stage to catch a flat that seems to be tilting forward precariously.

"Well, you see, it's like this," Kay begins. "When each of us joins the Dramatics Club, he is asked which forum he is interested in. By forum we mean production department: staging, lighting, costuming, or make-up. You see the stage crew at work now. That's their job—to set the stage and collect the props. It is also their responsibility to see that the set is taken down and the props returned."

"Tell us more. What do the other forums do?"

"I think some of you will be interested in joining our lighting crew. It's really fascinating to manipulate the controls on the huge switchboard and watch the effects different colored lights make on the scene. The make-up forum is thrilling, too, especially at Christmas-time when beards have to be applied by the yard for the Nativity."

"But I want to know about the costume department."

"You know that it is said that clothes make the man or woman, and they certainly do on the stage. How else could a middle-aged woman or a Civil War veteran be portrayed by one of us?"

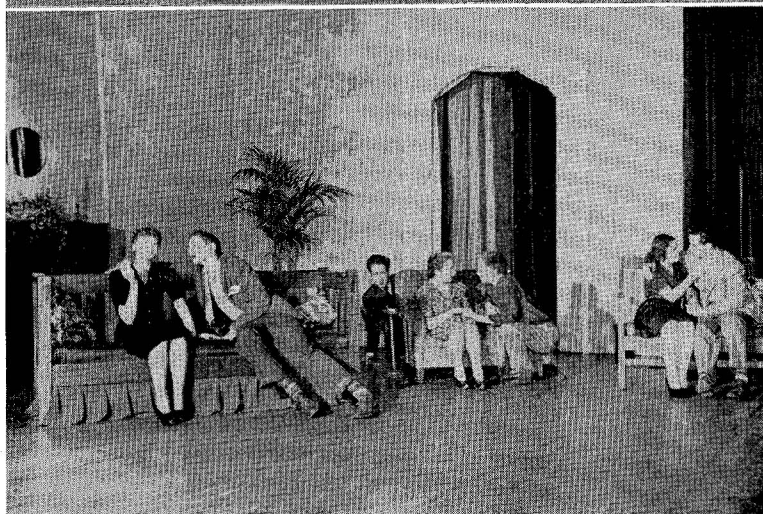
## *Nativity*

The lights are dimmed, soft organ music drifts through the air, the candle lighters move slowly to the stage, the candles are lit and once more the Nativity is portrayed upon our stage.

Cooperation and harmony? Yes. But let us glance back to the nights preceding the main performances. We find Miss Cordella Brong, director of the speech choir and pantomime, striving for perfect group pronunciation and enunciation; the Bel Cantos rehearsing hymns under the direction of Miss Grace Ullemeyer, and last but not least the processional and recessional. Up and down the steps, around and around the auditorium the entire group was marched, led by Miss Ullemeyer and "Pop" Nevel until perfect cadence was achieved. Backstage the tableau characters were devoting time and energy to make-up, costume, and speech. Night after night, hour after hour slipped away in tireless rehearsal in preparation for the great day. So great was the demand for seats that we were obliged to give two performances.

This year the main characters were: Madonna, Kay Johnson; Joseph, William Harbach; central angel, Josephine Pavlock; the prophet, James Hartle. Shepherds, P. Ballock, R. Currin, R. Weaver and R. Williams; kings, J. Hartle, A. MacGregor and C. Noty. Those who participated in special numbers of the choir were R. Akeley, M. Bossert, S. Zubler, H. McCartney, D. Greene, D. Fletcher, J. Lynn, L. Clark, D. Bartges, R. Carpenter, R. Moyle, H. McCartney, P. Swope, V. Williams, M. Card, I. Budash, J. Thomas, J. Paolo, G. Kephart, P. Bodle, W. Bulger, T. Bartges. M. Badick, L. O'Neill, M. Burkhart and R. Moyle were the soloists in the speech choir.

Thousands entered the auditorium on the day with their minds and hearts opened to the yuletide spirit and they left with their journey completed.



Shortage of man power and the accelerated curricula have temporarily limited the activities of the College Players. Wishing to uphold the standards set by former groups, The Players decided not to attempt a major production this year. Their project, instead, was a series of one-act plays, three of which were presented to the public as a laboratory evening on April 28, the others were given as regular assembly programs.

When Shakespeare's *Ladies Meet* was directed by Marie Bulger. Six of the most noted of Shakespeare's heroines assembled at the home of Juliet in Verona. Juliet had just fallen in love with Romeo, and the other five visited her to instruct her in the art of successfully carrying out her romance. But in the end they found the youthful Juliet could give them lessons in love. Cast: Portia (*Merchant of Venice*), Ruth Preston; Juliet (*Romeo and Juliet*), Josephine Lynn; Desdemona (*Othello*), Minnie Belt; Cleopatra (*Anthony and Cleopatra*), Loretto Moran; Ophelia (*Hamlet*), Juan Yon; Katherine (*Taming of the Shrew*), Allegra Reighard.

*Suppressed Desires*, a delightful satire on psychoanalysis, was directed by Rose Minnie Akeley and presented in assembly on November 18. The role of Stephen Brewster, a well known architect in New York City, was interpreted by Charles Noty. Ethel Johnson played the part of Henrietta, his wife, about whose psychological convictions the play revolves. The supporting role of Mabel, Henrietta's sister, was portrayed by Jean Sheehan. The prompter for the play was Bettie Sentelik.

*The Trysting Place* was a sparkling comedy depicting a school boy's enamored entanglements with a charming young widow. The play, directed by Marian MacPhee, was presented in assembly on December 4. The cast of characters included: Lancelot Briggs, the amorous suitor of the young widow—Roger Moyle; Mrs. Curtis, the glamorous widow—Beverly Walls; Mrs. Briggs, Lancelot's mother—Dorothy Heston; Mrs. Briggs' suitor, Mr. Ingolsby—Mark Beals; the two youthful lovers, Lancelot's sister Jessie and Rupert Smith—Jo Lynn and Harold Zeiders; the

Mysterious Voice—Frank Yon. Laura Belle Mowrey acted as prompter. The lighting effects were under the supervision of Jim Hartle.

**Now Is The Time**, was directed by Kay Johnson. Walter Bingham, Republican, refuses to run against the Democratic candidate if that candidate is a woman—the widow of his old opponent but friendly. Walter's wife is then persuaded to run. But as things wind up, despite a momentary rift in the romance of the Republican's daughter and the Democratic nephew, the nephew runs against Walter and all ends well. Cast: Walter Bingham, James Hartle; Lucy Bingham, Virginia Speaker; Charlie Reeves, Bill Brown; Cora Reeves, Carolyn Carpenter; Kate Bingham, Kitty Kelly; Madge Emory, Martha Badick; Rose, Sally Zubler.

**Can the Leopard** was directed by Peggy Swope. The lives of Minnie and Georgina have been consumed by the worm of respectability. In order to make their up-to-date niece feel at home, they exchange their sober attire for gaily colored playsuits and practice the arts of makeup and cigarette smoking. The niece arrives and, in order to make her aunts feel at ease, has shifted from a latest model to a demure Quaker gown. Misunderstandings and coincidences convince both sides that pretense is futile. Cast: Georgina Farr, Rose Minnie Akeley; Minnie Farr, Faye Bronson; Charlotte Farr, Nancy Zimmerman; Joan, Peggy Swope; Eva, Vivian Nicholas; Mrs. Flip, Doris Montessor.

**Twenty Years Later** was directed by Pat Bodle. Twenty years ago, a carefree group of college girls were having a "goodbye" party prior to their graduation. In a moment of reckless enthusiasm, they planned a get-together dinner twenty years later. The play is the story of this reunion and holds a dramatic climax in store for the audience. Cast: Elizabeth Grey, Marion Burkhart; Mildred Bryce, Betty Lorigan; Elsa Von Kemmerer, Ethel Johnson; Beryl Vaughn, Beverly Walls; Mary French, Josephine Pavlock; Patsy Collingham, Edith Machtley; Peggy Carteret, Mary Curran; Alivia Borden, Lois O'Neill; Mrs. Fenner, Dorothy Heston; Carrie Fenner, Jean Reed.



## Naturalist

Left to right: V. Smith, E. Clark, G. Chambers, N. Rockey, M. J. Hoffman, Miss Russell, M. Drick, A. Hamilton, A. Knowles, Mr. Nevel, J. Sackett, J. Drye, S. Zubler.



Seated: H. Baieroski, B. J. Zelif, P. Sowers, J. Paolo, E. Hardy, B. Hanka, H. King, F. Bonfilio, B. Thompson. Standing: M. Drick, C. Kelly, N. Rockey, E. Maachtley, G. Davis, K. Cook, I. Budash, B. Coates, B. McClain, P. Houck, Miss Spikings, F. Kilsdonk, M. Bossert, J. Sheehan, K. Johnson, Miss Smith, S. Zubler, R. Galebieski, F. Slenker, A. Hamilton, J. Dye, C. Roper, B. Walls, V. Williams, J. Sackett, L. Harnish.

*W. A. A.*



## *Naturalist*

The Naturalists, under the guidance of Miss Russell, and with the gay companionship of Mr. and Mrs. Nevel, spent many happy evenings together this year — ham-and-egg breakfasts; moonlight hikes to the cabin where hot chocolate and Miss Russell's famous brownies were served; songs filling the air on the homeward trail.

The most successful party of the year was the never-to-be-forgotten Christmas party. Smoke gets in your eyes when recalling the gay Christmas decorations, the cheery fire, and the clear notes of the age-old carols. The night was bitter cold and the most carefully wrapped toes felt the sting of winter until the blazing fire warmed them. Following the traditional party, the girls sat in a circle around the fire listening to Christmas legends and songs. With tired feet and happy hearts they returned home.

Five initiates were added to the club in March. They were Carolyn Banghart, Ruth Rolin, Frances Kilsdonk, Mary Bossert, and Hope McCartney.

## *W. A. A.*

W. A. A. is a well-known organization on the campus, as its membership is large. Officers for this year were: president, Jean Drye; vice president, Eleanor Hardy; secretary, Marjorie Bossert; treasurer, Nancy Rockey; student council representative, Frances Kilsdonk; freshman representative, Barbara Coates; adviser, Miss Smith.

Members of this active group have an opportunity to participate in games such as hockey, basketball, archery, tennis, swimming, volleyball, ping pong, badminton, field and track. Participation in these sports offered by the W. A. A. leads to a more well-rounded knowledge of every phase of the sport and develops co-operation, enthusiasm and good sportsmanship in the players.

This organization has devised a tentative system by which the girls are able to earn awards. Four hundred points a year must be obtained as a minimum, and the awards are a small scale letter, a large scale letter, a medal and a sweater.

## Girls Varsity



Center to left: M. Johnson, S. Zubler, B. Lowros, J. Drye, P. Sowers, B. Thompson, B. Hanka, F. Bonfilio, Miss Smith, F. Kilsdonk, J. Sackett, B. Coates, N. Rockey, R. Golebieski, G. Davis.

Date — February 22, 1945

Time — 10:00 P. M.

Place — Girls' gym.

Scene — The girls' varsity team, consisting of Jean Drye, "Phyl" Sowers, Nancy Rockey, "Sally" Zubler, "Bonnie" Bonfilio, "Red" Thompson, Betty Hanka, "Doc" Kilsdonk, "Jan" Sackett, "Bar" Coates and Rita Golebieski, is gathered in a group on the court.

Some are lying exhausted on their backs while others who still have enough energy left are sitting up. Everyone's attention, however, is focused on Miss Smith, their coach, who is standing in their midst.

The evening's practice is over and they have just elected Nancy to be their captain. As the congratulations die away, Miss Smith gives the team some last-minute instructions and then sends them off to bed.

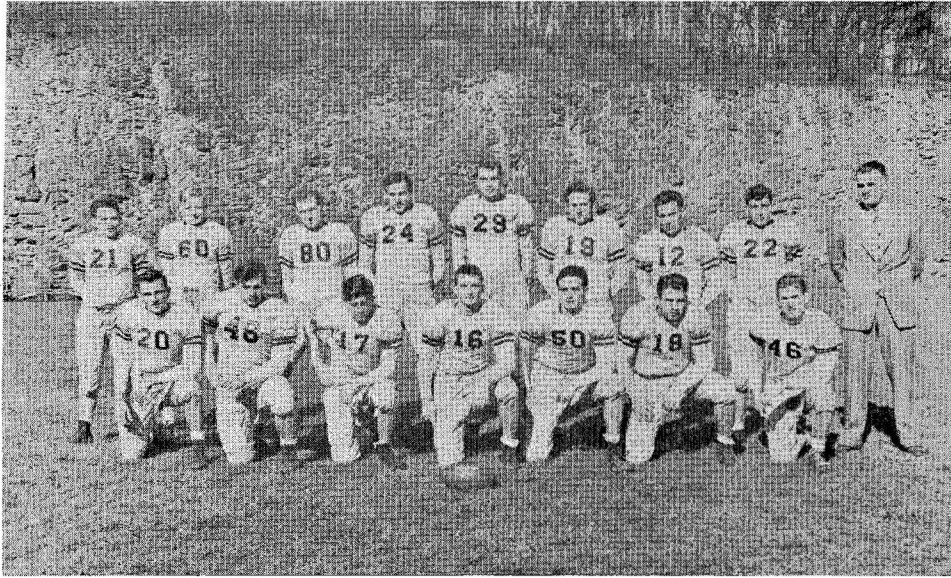
Only Miss Smith, Nancy Rockey, and "Kay" Johnson, the varsity's able manager, remain. As "Kay" runs to the office to put away the balls and pinnies, Miss Smith and Nancy make the final arrangements for tomorrow's game.

When "Kay" returns, she and Nancy go to the dormitory to check up on the rest of the team. Miss Smith, left alone, quickly puts on her hat and coat, turns off the lights, and leaves.

Now the hushed silence of night again falls over the old gym. But tonight is not like every other night. Tonight, even the gym feels the excitement that is present in the whole school. Even the gym hopes to see the varsity win on the morrow.

Lock Haven 21 .....	Home .....	Elizabethtown 34
Lock Haven 18 .....	Away .....	Elizabethtown 24
Lock Haven 23 .....	Away .....	Gettysburg 30

## Boys Varsity



First row, left to right: A. Gardner, R. Weaver, W. Royer, R. Jefferies, H. Zeiders, J. Ryan, R. Carpenter. Second row, left to right: M. Beals, W. Milton, J. Bernas, R. Snaithe, F. Lingenfelter, A. Peterman, G. Williams, J. Herrington, Coach Max Bossert.

Never under the tutelage of Coach Max Bossert has Lock Haven State Teachers College had a scheduleless football team. A few of the players were previously grid-coached, others less experienced, but a winning team was in the making. Scrimmages were staged against Lock Haven and Jersey Shore High Schools. In the four attempts our Bald Eagles were not scored upon and chalked up great scores against their opponents.

Although practically the entire team was called to the nation's colors, we express a sincere hope to Coach Max Bossert for future years of successful football.

*Snaps*



*Snap*s



# Snaps



## *Girls and Boys In The Service*

Beals, G. Mark .....	Army
Beck, Barbara Ann .....	C. W.
Carpenter, Bob .....	Merchant Marines
Gardner, Allen .....	Navy
Herrington, John Edward .....	Navy
Jefferies, Robert .....	Army
Lingenfelter, Frank .....	Army
Moyle, Roger .....	Army
Peterman, Albert .....	Army
Ryan, John M. ....	Navy
Shirey, Jean .....	Cadet Nurses
Snaith, Ralph Robert .....	Navy
Weaver, Robert .....	A. A. Corps

## *Student Directory*

Rose Minnie Akeley .....	110 Sixth St., Lock Haven, Penna.
Betty Ruth Auman .....	Spring Mills, Penna.
Martha Ann Badick .....	617 Menidian Ave., Scranton, Penna.
Irene Bailey .....	111 Hinnaqua Ave., Bradford, Penna.
Helen Louise Baieroski .....	316 First Ave., Johnsonburg, Penna.
Betty Emma Baker .....	263 N. Fairview St., Lock Haven, Penna.
Paul Andrew Ballock .....	Hawk Run, Clearfield, Penna.
Carolyn Anne Banghart .....	McElhatton, Penna.
Betty Jane Barner .....	401 South Jones St., Lock Haven, Penna.
Dean Schrack Bartges .....	Loganton, Penna.
Tessie Lorraine Bartges .....	West Main, Milheim, Penna.
Gloria June Bauman .....	20 Commerce, Lock Haven, Penna.
Francis Edna Baur .....	175 N. Fairview St., Lock Haven, Penna.
Mark Beals .....	Lanse, Penna.
Ruth Violet Beckenbaugh .....	625 Fredrick St., Flemington
Minnie Elva Belt .....	Mahaffey, Penna.
Lois Marian Berger .....	Allen Wood, Penna.
Joseph Bernas .....	436 E. Center St., Mt. Carmel, Penna.
Patricia Jane Bittlebrun .....	Jamestown, Penna.
Freda Belle Bodensky .....	Boswell, Penna.
Patricia Claire Bodle .....	335 E. Main St., Lock Haven, Penna.
Filimena Mary Bonfilio .....	4 Elk Ave., Kane, Penna.
Marjorie Ellen Bossert .....	Highland, Avis, Penna.
Mary Louise Bossert .....	Sylvan Ave., Avis, Penna.
Mary Faye Bronson .....	122 No. 7th., Easton, Penna.
Anna Frances Brown .....	Mill Hall, Penna.
William Ferguson Brown .....	159 W. College St., Canonsburg, Penna.
Phyllis May Brumbaugh .....	Walnut St., Howard, Penna.
Irene Ann Budash .....	172 Owen St., Swoyerville, Penna.
Margaret Marie Bulger .....	14 Commerce St., Lock Haven, Penna.
Marion Burkhart .....	6 W. Dewart St., Shamokin, Penna.
Rose Marie Capatch .....	Madera, Penna.
Anne Hamilton Carpenter .....	253 N. Fairview, Lock Haven, Penna.
Carolyn Ione Carpenter .....	La Porte, Penna.
Robert Persel Carpenter .....	La Porte, Penna.
Grayce Marie Chambers .....	215 Bellefonte Ave., Lock Haven, Penna.
Elizabeth June Clark .....	5825 Thomas Ave., Philadelphia, Penna.
M. Louise Clark .....	446 So. Fairview St., Lock Haven, Penna.
Barbara Jane Coates .....	320 N. Martin St., Titusville, Penna.
Mary Louise Conkey .....	838 Mill St., Avoca, Penna.
Lillian Maxine Conser .....	207 W. Clinton St., Lock Haven, Penna.
Kitty Ludwick Cook .....	307 Vesper St., Lock Haven, Penna.
James Timothy Cooklis .....	528 Franklin Ave., Canonsburg, Penna.

## Student Directory

Jean Marie Cummings ..... 213 Logan Ave., Castanea, Penna.  
 Mary Marguerite Curran ..... 152 Third Ave., Renovo, Penna.  
 Robert Knapp Currin ..... Loganton, Penna.  
 Edwinna Davis ..... Patton, Penna.  
 Grace Beatrice Davis ..... Millheim, Penna.  
 Janice Ailden Densmore ..... Duke Center, Penna.  
 Gladys May Detwiler ..... 302 E. Logan Ave., Altoona, Penna.  
 Caroline Frances Diack ..... 744 Bellefonte Ave., Lock Haven, Penna.  
 Robert Elmer Dietz ..... Fourth St., Newport, Penna.  
 Mary R. Drick ..... Muncy, Penna.  
 L. Jean Drye ..... 611 Sixth St., Huntingdon, Penna.  
 Evelyn Wurster Ellzey ..... 311 S. Main St., Jersey, Penna.  
 Dorothy Frances Flethcher ..... Lewisburg, Penna.  
 Adele Louise Forsythe ..... 220 Susquehanna St., Lock Haven, Penna.  
 Maryagnes Gardner ..... 48 Chestnut St., Mill Hall, Penna.  
 T. Allen Gardner ..... 510 Hale St., Osceola Mills, Penna.  
 Rita Agnes Golebieski ..... 313 First Ave., Johnsonburg, Penna.  
 Beverly Bodle Gower ..... Loganton, Penna.  
 Doris Elizabeth Graham ..... Shinglehouse, Penna.  
 Della Jane Grassmyer ..... 231 High St., Williamsburg, Penna.  
 Doris Marie Greene ..... 1011 19th Ave., Altoona, Penna.  
 Irene Ann Gulitis ..... 200 Oliver St., Swoyerville, Penna.  
 Margaret Josephine Haduck ..... 208 Shoemaker St., Swoyerville, Penna.  
 Betty Rae Hanka ..... 693 Davenport St., Meadville, Penna.  
 William Barner Harbach ..... Loganton, Penna.  
 Eleanor Dorothy Hardy ..... Snedeherville, Penna.  
 Louise Grace Harnish ..... Alexandria, Penna.  
 James Edward Hartle ..... Drifting, Penna.  
 Thelma Cecelia Harvey ..... 807 Blvd., Juniata, Penna.  
 Mary Frances Heckart ..... Main St., Elderton, Penna.  
 Steve Heinrich ..... Seanor, Penna.  
 John Edward Herrington ..... 400 9th St., Philipsburg, Penna.  
 Sara Dorothy Heston ..... 1114 Main St., Avoca, Penna.  
 Mary Jane Hoffman ..... King St., Petersburg, Penna.  
 Dorothy Ruth Hollenbach ..... 24 North 14th St., Lewisburg, Penna.  
 Betty Holter ..... 806 E. Water St., Lock Haven, Penna.  
 Leona Martha Hosmer ..... 347 Glover St., Jersey Shore, Penna.  
 Prudence Marie Houck ..... Warm Springs, Huntingdon, Penna.  
 Hazel Irene Hoyer ..... Beaverdale, Penna.  
 Elaine Beatrice Hurwitz ..... Riverview Apts., Lock Haven, Penna.  
 June Elizabeth Hutchings ..... Drifting, Penna.  
 Robert Carl Jefferies ..... 117 S. Fourth St., Newport, Penna.  
 Ethel Meryle Johnson ..... Main St., Mt. Jewett, Penna.  
 Mary Kathryn Johnson ..... Glen Richey, Penna.  
 Ruth Marce Kaler ..... Star Route, Lock Haven, Penna.  
 Catherine Kelley ..... Elton, Penna.  
 Pauline Clark Kendall ..... 67 Main St., Bradford, Penna.  
 Gwendolyn G. Kephart ..... 710 Edward St., Philipsburg, Penna.  
 Francis Mary Kilsdonk ..... 216 Fifth St., Lock Haven, Penna.  
 Mary Helen King ..... Murrysville, Penna.  
 Edna LaVantia Kniffin ..... Bradford, Penna.  
 Alice Mae Knowles ..... Philipsburg, Penna.  
 Marian Ethel Kratzer ..... Richfield, Penna.  
 Helen L. Lawrence ..... 119 N. Fairview St., Lock Haven, Penna.  
 Frank Herman Lingenfelter ..... Munson, Penna.  
 Ruth Doris Lobb ..... 201 Good St., Houtzdale, Penna.  
 Betty Rosalyn Long ..... 181 N. Fairview St., Lock Haven, Penna.  
 Betty Mae Lorigan ..... 217 High St., Johnsonburg, Penna.  
 Christine Bessie Lowros ..... 327 E. Walnut St., Titusville, Penna.  
 Sarah Josephine Lynn ..... 319 Twelfth Ave., Juniata, Altoona, Penna.  
 Hope Elaine McCartney ..... 516 Wopsy Ave., Altoona, Penna.  
 Betty Jean McClain ..... Star Route, Huntingdon, Penna.  
 Thyra Hope McClain ..... Ridgely St., Orbisonia, Penna.  
 Jeanne Claire McCloskey ..... 129 N. Vesper St., Lock Haven, Penna.  
 Ardell MacGregor ..... 120 High St., Flemington, Penna.  
 Edith Marie Machtley ..... Windlow, Penna.  
 Marian Byrd MacPhee ..... 5410 Angora Terrace, Philadelphia, Penna.  
 Margaret Mary Madden ..... 702 S. Juniata St., Hollidaysburg, Penna.  
 Glenn Jacob Manning ..... 327 Perry St., Evola, Penna.  
 Robert L. Marks ..... 306 S. Main St., Jersey Shore, Penna.  
 Mary Jane Marschik ..... Meadowbreak Rd., Murrysville, Penna.  
 Candida Marie Martella ..... Beaverdale, Penna.



# Student Directory

Eleanor Josephine Martino	342 St. Clair Ave., Renovo, Penna.
Dorothy Daisy Millward	610 Stone St., Osceola, Penna.
Doris Louise Montessor	406 11th St., Philipsburg, Penna.
Loretto Alice Moran	400 S. Fairview, Penna.
Martha Anne Morancik	Clearfield, Penna.
Jean Elizabeth Mott	LeRoy, Penna.
Laura Belle Mowrey	21 Powers Ave., Johnsonburg, Penna.
Roger Moyle	Winburne, Penna.
Audrey Eva Neuhard	813 Elmira St., Williamsport, Penna.
Vivian Harrington Nicholas	412 Pine St., Philipsburg, Penna.
Miriam Alma Niemond	Cocolamus, Penna.
Charles Noty	High St., Mt. Jewett, Penna.
Ruth Frey Nulf	924 24th Ave., Altoona, Penna.
Lois Jean O'Neill	539 Hampton St., Scranton, Penna.
Marian June Owens	306 Clearfield St., Clearfield, Penna.
Josephine Paolo	2107 Boyd St., Williamsport, Penna.
Josephine Rose Pavlock	221 Blaine Ave., Johnsonburg, Penna.
Albert Alden Peterman	23 S. 4th St., Newport, Penna.
Geraldine Anna Petrucci	840 E. Main St., Lock Haven, Penna.
LeJune Claire Pier	Mt. Jewett, Penna.
Jane Jon Plumpis	19 Howard St., Bradford, Penna.
Mary Angela Pontillo	608 5th St., Clearfield, Penna.
Elsie R. Preston	Snow Shoe, Penna.
Ruth Carolyn Preston	Snow Shoe, Penna.
Emma Pearl Rager	Twin Rocks, Penna.
Marjorie Jean Rathbun	10 W. Keller St., Castanea, Penna.
B. Jean Reed	Reynoldsville, Penna.
Allegra Faun Reighard	South Fork, Penna.
Nancy Charlotte Rockey	Brookville, Penna.
Ruth Rolin	714 N. 3rd St., Reading, Penna.
Carol Louise Roper	131 E. Washington Ave., Du Bois, Penna.
Evelyn Royer	Centre Hall, Penna.
William Walter Royer	Sheffield, Penna.
John Marlin Ryan	Osceola Mills, Penna.
Janice Elizabeth Sackett	Churchville, Penna.
Bettie Jayne Sentelik	1825 E. 8th St., Bethlehem, Penna.
Jean Ann Sheehan	Alexandria, Penna.
Jean Elizabeth Shirey	318 William St., Clearfield, Penna.
William J. Shope	Blanchard, Penna.
Frances June Slenker	100 Jay St., Lock Haven, Penna.
Emily Day Smart	605 Huston St., Flemington, Penna.
Kathleen Julia Smith	Ann St., Curwensville, Penna.
Veronica Marie Smith	123 E. Bald Eagle, Lock Haven, Penna.
Ralph Robert Snaith	68 Hillcrest Circle, Grove City, Penna.
Marletta Snyder	Main St., Mill Hall, Penna.
John Paul Solensky	Hantydale, Penna.
Charlene Violet Solt	331 W. Southern Ave., S. Williamsport, Penna.
Phyllis Jane Sowers	Ellsworth, Penna.
Virginia Kathryn Speaker	306 East Main, Brookville, Penna.
Myrthle Louise Stabler	327 Brandon Ave., Williamsport, Penna.
Mary Virginia Stolz	Main St., Howard, Penna.
Forest A. Stonge	Waterville, Penna.
Margaret Ann Swope	127 S. High St., Lock Haven, Penna.
Jane W. Thomas	Trout Run, Penna.
Betty Lou Thompson	135 N. Alleghany, Bellefonte, Penna.
George Lewis Volansky	232 Roland St., Swoyerville, Penna.
Jessie Louise Von Stein	Clearville, Penna.
Beverly Marie Walls	408 Pine St., Philipsburg, Penna.
Robert Persy Weaver	504 Allegheny St., Jersey Shore, Penna.
Garnet Seynour Williams	442 Water St., Lock Haven, Penna.
Robert Ebersole Williams	404 S. Jones St., Lock Haven, Penna.
Virginia Anne Williams	319 Allegheny St., Hollidaysburg, Penna.
John Leroy Wyland	Spring Mills, Penna.
Franklin Yeager	Main St., Beech Creek, Penna.
Ruth Elizabeth Yocum	Shamokin, Penna.
Frank Barndt Yon	1423-20th Ave., Altoona, Penna.
Juan Faith Yon	1423-20th Ave., Altoona, Penna.
Harold Eugene Zeiders	141 S. 2nd St., Newport, Penna.
Betty Jo Zelif	220 Bates St., Youngsville, Penna.
Margaret Evelyn Zetts	Drifting, Penna.
Nancy May Zimmerman	403 N. Grove St., Lock Haven, Penna.
Sara Jane Zubler	Spring Mills, Penna.



Compliments of

# THE PIPER AIRCRAFT CORPORATION

LOCK HAVEN, PENNSYLVANIA



Compliments of  
**DAVIS RESTAURANT**  
Day and Night Service

**SPOTTS BROS.**  
South Williamsport  
and  
Stand No. 12  
Williamsport Growers Market  
Williamsport, Pa.

---

# **SMITH & WINTER**

Lock Haven's Shopping Center

"The best place to shop after all."

---

Allegheny Dairy Lunch  
TIM BULGER

**BROZMAN'S**  
349 Pine St.  
Williamsport, Pa. •  
HOME OF CAROLYN  
EXCLUSIVE FASHIONS

---

COMPLIMENTS  
OF THE NEW

# **SMART SHOP**

● Carole King Jrs.

● Printzess Coats

● Joselli Suits

PHONE 2582  
**CAMPUS CORNERS**  
Lunches  
Delicatessen  
Groceries - - Fruits  
Open Evenings  
644 WEST MAIN STREET  
LOCK HAVEN, PA.

**KLEWANS**  
READY WEAR  
&  
SHOES  
21 E. Main Street  
Lock Haven, Pa.

**City Office Supply  
and Book Store**  
Victor and Columbia Records  
SCHOOL SUPPLIES  
LENDING LIBRARY  
K. M. Hassinger, Prop.

**Hearthstone Tea Room**  
Williamsport, Pennsylvania  
Luncheon Dinner  
11:30 - 2:30 5:00 - 8:00 P. M.  
424 William St. Dial 2-4919  
W. L. and Mildred P. Hockman,  
Managers

# LYCOMING

DRY GOODS CO.

WILLIAMSPORT, PA.

"One of Williamsport's Busiest Stores"



Compliments of

**SYLVANIA ELECTRIC  
PRODUCTS  
INCORPORATED**



Compliments of

**GARDEN  
THEATER**

LUCK TO  
CLASS of 1945

Compliments of

**WEAVER and PROBST**

We Know How

**FROMM'S**

Phone DIAL 3322  
DRY CLEANERS  
and  
DYERS

Branches: PLANT  
State College 213 W. Park St.  
Bellefonte  
Renova

College Shoe Repair Service

**TORSELL'S**

On The Avenue

**The Lock Haven Express**

Our 63rd Year

Devoted to the advancement  
of our Teacher's College  
and all worthy enterprises.

**DELBERT D. HELT**

FUNERAL DIRECTOR

109 West Church Street

LOCK HAVEN, PA.

"Not only a newspaper . . .

A Community Asset"

Always Dependable

## Hooven Taxi Service

Lock Haven, Pa. Phone 512

---

-:-

## LOCK HAVEN TRUST COMPANY

-:-

LOCK HAVEN, PA.

---

Good Service—

Good Food—

Always

## The Sandwich Shop

Lock Haven, Pa.

## Francies Beauty Shop

All types of Beauty Service

Individual Hair Styling

Complete Line of Cosmetics

Phone 4256 121 E. Main St.

Lock Haven, Pa.

---

HOPE REED

NAN CARSON

JOAN MILLER JUNIORS

in

LOCK HAVEN

at

LUBELLE'S

---

Compliments of

Shaffer, Candor

& Hopkins

Lock Haven, Pa.

Compliments of  
**THE ROXY  
&  
MARTIN  
THEATRES**

---

**LINTZ**  
  
Ready to Wear

---

Compliments of  
**TEXAS  
HOT  
LUNCH**  
  
Lock Haven, Pa.

---

**THE  
FALLON  
HOTEL**

**Ricker Bros., Florists**  
  
24 E. MAIN ST.  
  
LOCK HAVEN, PA.  
  
Orchids Available Always

---

Keep Healthy!  
Eat Fresh Fruits & Vegetables  
  
**A. NARDIS SONS, Inc.**  
  
Williamsport, Pa.

---

**WEST END  
SERVICE STATION**  
  
Gulf Gasoline  
and  
Accessories  
  
Lock Haven, Pa.

---

"After all  
  
**WOLF'S**  
  
is the best place to buy"



# GROSSMAN'S

Lock Haven's Showplace

of

Favored Fashions

---

# DARR'S STUDIO

MODERN PORTRAITURE

---

# THE TIMES

For

Gifts, Greeting Cards, Office Supplies,

Stationery, Office Furniture,

and Equipment

THE TIMES — TIMES SQUARE

Lock Haven, Pa.

---

We Hope You Will Patronize  
Our Advertisers

Laura Belle  
&  
Paolo

Thanks for the  
cooperation that  
made this  
book a  
success.

GLAD & BURKIE

**Best Wishes  
to the  
Class of 1945  
from  
the  
General Armature Corp.  
Lock Haven**