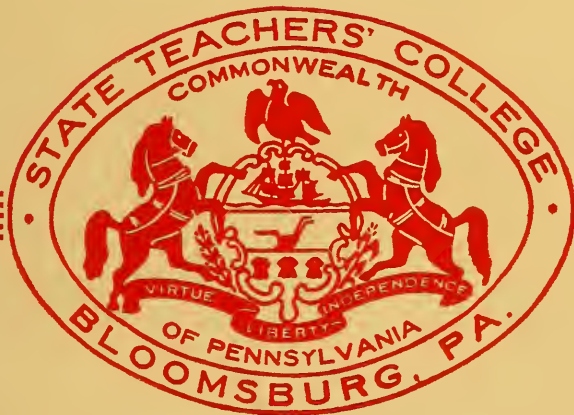


STATE TEACHERS
COLLEGE BULLETIN
BLOOMSBURG, PENNSYLVANIA



Annual Catalog

1943 - 1944

AN OPEN LETTER

To Youth in War Time:

The quest for certainty is as old as mankind. To make certain an uncertain future is the problem of every generation. Youth is always confused by the process of growing up and the changing of events in the world at large. Life is made of such things. Change and growth as part of the continuous adjustment in living leads each generation to feel that its problems are more serious than those of the previous one.

Liberty, and Freedom, and Democracy are so very precious that a century and a half ago our forefathers fought to get them in a form of free government. A half-dozen wars in our history indicate that we must ever fight to keep them. A new generation on the average of every twenty-five years has had to make the sacrifice of force to protect and keep Liberty, and Freedom, and Democracy as we have them in America.


What tomorrow may bring to college students no one can surely say, but it appears that democracy may need to make as great an effort to defend itself AFTER as DURING the present war period. The first line of defense now and later lies in the strength of the whole nation, whereas leadership will undoubtedly come from the ranks of those who are now enrolled in colleges.

Students who are now enrolled in colleges should make every effort to continue their educational program as they had previously planned. Otherwise, we shall be faced with a suicide of weakening our minds while strengthening our "arms." The duty of all good Americans today is to do the best they can, where they are, with what they have. College students must continue to fit themselves for situations which will undoubtedly approach those for which they are being educated.

The three dates—1914 · 1916 · 1918—represent the beginning, the critical period, and the ending of the first World War. Since 1939 marked the beginning of the second World War and 1941 the critical period of the entry of America into the struggle, the question is "What are you planning for the next four years?"



PRESIDENT



Digitized by the Internet Archive
in 2011 with funding from
Lyrasis Members and Sloan Foundation

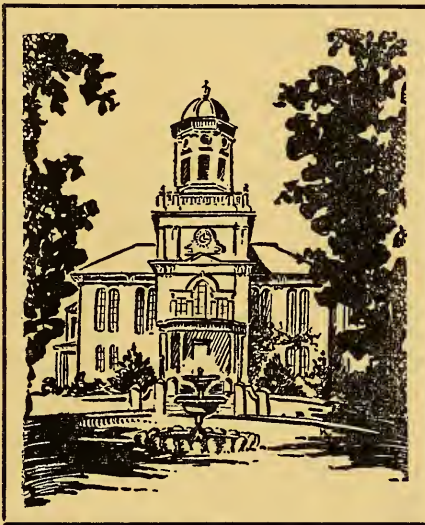
State Teachers College Bulletin

Vol. 11

JANUARY, 1943

No. 3

ANNUAL CATALOG



BLOOMSBURG, PENNSYLVANIA

Member of the American Association of Teachers Colleges
Member of the National Association of Business Teacher Training Institutions.

The State Teachers College Bulletin is issued in August,
December, January, February, March, and April, by
the State Teachers College at Bloomsburg.

*Entered as Second-Class Matter at the Post Office at Bloomsburg,
Pennsylvania, under the Act of August 24, 1912.*

Table of Contents

	Page
Map of Motor Routes -----	5
Calendar, 1943-44 -----	6
Board of Trustees and Administrative Personnel -----	7
Faculty -----	8
School Districts Providing Laboratory Schools -----	12
Cooperating Teachers -----	12
History of the State Teachers College at Bloomsburg -----	14
Campus, Building, and Equipment -----	17
Fees, Deposits, Repayments in the State Teachers College -----	20
Summary of Expenses -----	24
Types of Student Assistance -----	26
Admission Requirements -----	27
The New Three Year Plan -----	28
Transfer and Progress Requirements -----	28
Certification Regulations -----	31
In-Service Education of Teachers -----	36
Laboratory School Facilities of the College -----	36
Summer School of 1943 -----	38
Student Participation in College Government -----	39
Extra-Curricular Activities -----	40
Religious Activities -----	42
Professional Fraternities -----	42
An Enriched Program of Studies -----	44
Guidance in Choosing a Curriculum -----	45
Basic Two Years of the Elementary and Secondary Curriculums -----	46
Specialization and Electives in the Elementary Curriculum -----	48
Special Education -----	49
Department of Aviation Education -----	50
Description of Courses for Aeronautics Teachers -----	50
Description of Pre-Flight Aviation Courses for all Teachers -----	51
Areas of Concentration in the Secondary Curriculum -----	52
Courses of Instruction—Elementary and Secondary Curriculums -----	55
Department of Business Education -----	73
Certification of Business Education Teachers -----	74
Basic First Year of Business Education Curriculum -----	78
Courses of Instruction—Business Education Curriculum -----	81
Department of Music -----	84
Lists of Students -----	87



CARVER HALL ERECTED 1867



WORLD WAR I MEMORIAL AND PINERY



BLOOMSBURY
PA

Calendar 1943 - 1944

COMMENCEMENT 1943

Alumni Day	Saturday, May 22
Baccalaureate Sermon	Sunday, 2 P. M., May 23
Senior Day, Ivy Day, Class Night	Monday, May 24
Commencement	Tuesday, May 25

PRE-SUMMER SESSION 1943

Session Begins	Monday, June 7
Session Ends	Friday, June 25

SUMMER SESSION 1943

Registration Day	Monday, June 28
Classes Begin	Tuesday, June 29
Session Ends	Friday, August 6

POST SESSION 1943

Session Begins	Monday, August 9
Session Ends	Friday, August 27

FIRST SEMESTER—1943-1944

Faculty Meeting, Room L	Monday, 8:30 A. M., September 13
Entrance Examinations, Registration, and Classification of Freshmen	Monday, 9:30 A. M., September 13
Registration and Classification of all Other Classes	Tuesday, September 14
Classes Begin	Wednesday, September 15
Thanksgiving Recess Begins	Wednesday, 12 M., November 24
Thanksgiving Recess Ends	Monday, 12 M., November 29
Christmas Recess Begins -- After last Class, Saturday, December 18	
Christmas Recess Ends	Monday, 12 M., January 3
First Semester Ends	After last Class, Monday, January 24

SECOND SEMESTER 1943-1944

Registration	Wednesday, January 26
Classes Begin	Thursday, January 27
Easter Recess Begins	Saturday, 12 M., April 1
Easter Recess Ends	Wednesday, 12 M., April 12
Second Semester Ends	After last Class, Friday, May 26

COMMENCEMENT 1944

Alumni Day	Saturday, May 27
Baccalaureate Sermon	Sunday, 2 P. M., May 28
Commencement	Monday, 10 A. M., May 29

The Calendar of the Benjamin Franklin School does not coincide with that of the College.

Please apply to President Harvey A. Andruss for blanks and information relative to enrollment.

**COMMONWEALTH OF PENNSYLVANIA
DEPARTMENT OF PUBLIC INSTRUCTION**

FRANCIS B. HAAS, Superintendent of Public Instruction

TEACHER EDUCATION AND CERTIFICATION

Henry Klonower, Director

John K. Trayer
Assistant Director

Harry L. Kriner
Assistant Director

STATE COUNCIL OF EDUCATION

President and Chief Executive Officer, Francis B. Haas

Marcus Aaron -----	Pittsburgh
W. Floyd Clinger -----	Warren
Elsie M. Heckman -----	Allentown
Donald L. Helfferich -----	Lansdowne
Miles Horst -----	Palmyra
Robert C. Shaw -----	Camp Hill
G. Morris Smith -----	Selinsgrove
Herbert J. Stockton -----	Johnstown
John J. Sullivan -----	Philadelphia
Clarence E. Ackley -----	Secretary

THE BOARD OF TRUSTEES

State Teachers College, Bloomsburg, Pennsylvania

Dr. Francis B. Haas, ex-officio
Superintendent of Public Instruction

Reg. S. Hemingway, Esq., President -----	Bloomsburg
Fred W. Diehl, Vice-President -----	Danville
W. Clair Hidlay, Secretary-Treasurer -----	Bloomsburg
Mrs. Elsie Yorks Jones -----	Bloomsburg
M. Jackson Crispin -----	Berwick
Frank D. Croop -----	Berwick

ADMINISTRATIVE PERSONNEL

Harvey A. Andruss -----	President
Thomas P. North -----	Dean of Instruction
Mrs. Anna M. Knight -----	Secretary to President
Marguerite W. Kehr -----	Dean of Women
Bertha Rich -----	Assistant Dean of Women
Ethel A. Ranson -----	Assistant Dean of Women
John C. Koch -----	Dean of Men
George Buchheit -----	Assistant Dean of Men
Edward A. Reams -----	Assistant Dean of Men
Earl N. Rhodes -----	Director of Teacher Training
William C. Forney -----	Director, Department of Business Education
E. H. Nelson -----	Director, Department of Health Education
M. Beatrice Mettler -----	Graduate Nurse
C. M. Hausknecht -----	Business Manager
Nevin T. Englehart -----	Superintendent of Grounds and Buildings

Faculty

- HARVEY A. ANDRUSS** *President*
 University of Oklahoma, A.B.; Certificate in Public and Private Business, Northwestern University, M.B.A.; Graduate Work, *ibid.*
- MRS. LUCILLE J. BAKER** *Training Teacher, Grade III*
 Pestalozzi-Froebel School, Chicago, Illinois, student; Western State College, Colo., A.B.; Columbia University, A.M.
- JOSEPH R. BAILER** *English*
 University of Pittsburgh, B.Sc.; New York University, M.A.; Cambridge University, Cambridge, England; University of Grenoble, Grenoble, France; Columbia University.
- EDNA J. BARNES** *Training Teacher, Grade IV*
 Illinois Women's College, Jacksonville, Ill.; Western State Teachers College, Macomb, Ill., B.S.; Teachers College, Columbia University, M.A.; Graduate Work, University of Colorado, Columbia University.
- GEORGE C. BUCHHEIT** *Health Education*
 University of Kentucky, B.S. in C.E.; Graduate Work University of Illinois; Columbia University, M.A. in Phys. Ed.
- HOWARD F. FENSTERMAKER** *Foreign Languages*
 Graduate, State Normal School, Bloomsburg, Pa.; University of Michigan, A.B.; New York University, A.M.; Graduate Work, University of Pennsylvania.
- JOHN J. FISHER** *Psychology*
 Goshen College, Goshen, Ind. A.B.; Indiana University, M.A.; Harrison Fellow, University of Pennsylvania; Graduate Work, Columbia University.
- WILLIAM C. FORNEY** *Director, Department of Business Education*
 Temple University, B.S.C.; Harvard University, University of Chicago, Graduate Work; New York University, M.A.
- GEHRIG, EARL** *Business Education*
 State Teachers College, Bloomsburg, B.S.; Graduate work, Bucknell University.
- DOROTHY E. GILMORE** *Assistant Librarian*
 State Teachers College, Bloomsburg, Pa., B.S.
- EDNA J. HAZEN** *Director of Elementary Education*
 State Normal School, Edinboro; Allegheny College, Meadville; Columbia University, B.S., M.A.; Graduate Work, New York University.

- MARGARET R. HOKE** *Business Education*
 Johns Hopkins, Baltimore, B.S.; Lebanon Valley College, Ann-
 ville, M.A.; Columbia University, Secretarial Certificate.
- ALICE JOHNSTON** *Speech*
 Park College, Mo., B.L.; Columbia University, M.A.; Grad-
 uate Work, University of Wisconsin, Columbia University,
 University of Michigan.
- MARGUERITE W. KEHR** *Dean of Women*
 University of Tenn., B.A.; Wellesley College, A.M.; Cornell
 University, Ph.D.
- MRS. ETTA H. KELLER** *Training Teacher, Grade VI*
 Pennsylvania State College, B.S.; Teachers College, Colum-
 bia University, M.A.; Graduate Work, Clark University, New
 York University.
- GEORGE J. KELLER** *Art*
 State Normal School, Bloomsburg; Teachers College, Colum-
 bia University, B.S.; Bucknell University, M.A.
- JOHN C. KOCH**
Dean of Men and Director of Secondary and Aviation Education
 Bucknell University, A.B., A.M.; Graduate Work, New York
 University.
- KIMBER C. KUSTER** *Biological Science*
 State Normal School, Bloomsburg, Pa.; University of
 Michigan, B.S.; M.S., Ph.D.
- PEARL L. MASON** *Librarian*
 Simmons College, Boston, B.S.; Graduate Work, Columbia
 University.
- NELL MAUPIN** *Social Studies*
 Peabody Teachers College, B.S.; State University, Iowa City,
 M.A., Ph.D.
- LUCY McCAMMON** *Health Education*
 State Teachers College, Springfield, Mo., A.B.; Columbia
 University, M.A.
- HERBERT E. McMAHAN *** *Business Education*
 Temple University, B.S. in Commerce; Pennsylvania State
 College, Graduate Work; Temple University, M.Ed.
- M. BEATRICE METTLER** *Graduate Nurse*
 Bucknell University, Lewisburg, Pa., A.B.; Graduate The
 Johns Hopkins Hospital Training School, Baltimore, Mary-
 land; Graduate Work University of Chicago, Chicago, Illi-
 nois; R.N., Pennsylvania and Maryland.

* Leave of Absence 1942-1943, Lieutenant Commander, Naval Reserve.

- HARRIET M. MOORE** *Public School Music*
State Teachers College, Kirksville, Mo.; Bush Conservatory, Chicago, Ill., Mus.B.; New York University, B.S., M.A., in Music Education
- S. MABEL MOYER** *Training Teacher, Grade II*
State Normal School, Bloomsburg, Pa.; Summer Work, Teachers College, Columbia University; Bucknell University, B.S. in Education, M.A.; Graduate Study, New York University.
- E. H. NELSON** *Director of Health Education*
State Normal School, Bloomsburg; University of Michigan, A.B.; Harvard University, Ed.M.; New York University, Ph.D.
- THOMAS P. NORTH** *Dean of Instruction*
Pennsylvania State College, B.S., M.S.; Cornell University, Ph.D.
- BETTY PAULING** *Voice and Violin*
Wyoming Seminary, Graduate in Music; voice pupil of Frank LaForge.
- ETHEL A. RANSON** *Assistant Dean of Women and Mathematics*
University of Illinois, A.B.; Columbia University, A.M.
- EDWARD A. REAMS** *Assistant Dean of Men and Social Studies*
Kansas Wesleyan, A.B.; Columbia University, A.M.; Graduate Work, University of So. Carolina, Penn State College, New York University.
- EARL N. RHODES** *Director of Teacher Training*
State Normal College, Ypsilanti, Mich.; University of Chicago, Ph.B.; Columbia University, A.M.; Graduate Work, Clark University, Columbia University, New York University.
- BERTHA RICH** *Assistant Dean of Women and Geography*
Colorado State Normal School, Gunnison, Pd. B.; Western State College, A. B.; Columbia University, A. M.; Graduate Work, Clark University.
- H. HARRISON RUSSELL** *Geography*
Illinois State Normal University, B. Ed.; Clark University, A. M., Ph. D.
- WALTER S. RYGIEL** *Business Education*
Temple University, B. S., M. Ed.; Graduate Work, Bucknell University, University of Pennsylvania.

ANNA GARRISON SCOTT *Training Teacher, Grade V*
State Normal School, Bloomsburg, Pa.; Columbia University,
B. S., M. A.

S. I. SHORTESS *Physical Science*
Albright College, A. B.; University of Pennsylvania, M. S.;
Graduate Work, New York University.

VIOLET L. SIMPSON *Dietitian and Nutrition*
University of Colorado, B. S.; Columbia, A. M.; University of
Iowa; Cornell College; Iowa State College, Ames; Iowa State
Teachers College; Knox College.

M. AMANDA KERN THOMAS *Training Teacher, Special Class*
Ursinus College, B. A.; Graduate Work, Rutgers University;
University of Pennsylvania, M. A.

SAMUEL L. WILSON *English*
Bucknell University, Sc. B.; Columbia University, M. A.;
Graduate Work, Harvard University, New York University.

GRACE WOOLWORTH *Training Teacher, Kindergarten*
University of Chicago, Ph. B.; University of California; Co-
lumbia University, M. A.

TECHNICAL ASSISTANTS IN AVIATION

ROY D. SNYDER *Physics—Aerodynamics*

ASHER M. WOLFE *General Servicing of Aircraft—Engines*

DEAN E. ROBINSON *Code (Radio)*

F. S. HUTCHINSON *Communications*

RICHARD HENRY KLEIN *Air Identification*

School Districts Providing Laboratory Schools

ADMINISTRATIVE OFFICERS

BLOOMSBURG JUNIOR-SENIOR HIGH SCHOOL

L. P. Gilmore, Supervising Principal
J. Claire Patterson, Principal

BERWICK SENIOR HIGH SCHOOL

R. A. G. Stettler, Superintendent
D. R. Shuman, Principal

DANVILLE SENIOR HIGH SCHOOL

E. B. Cline, Supervising Principal

COLUMBIA COUNTY RURAL SCHOOLS

Ray M. Cole, Superintendent

COOPERATING TEACHERS

- Brown, E. J.—Junior-Senior High School, Bloomsburg -----Business
State Teachers College, Bloomsburg, Pennsylvania, B. S.
- Campbell, Lawrence J.—Jr.-Senior High School, Bloomsburg—Science
Saint Bonaventure College, B. S.
- Gardner, Gertrude—Senior High School, Danville-----Business
Bucknell University, A. B.
- *Gehrig, Earl A.—Senior High School, Danville ----- Business
State Teachers College, Bloomsburg, Pennsylvania, B. S.
- Hutton, Robert—Junior-Senior High School, Bloomsburg--Geography
Bloomsburg State Teachers College, B. S.; N. Y. University, M. A.
- Kline, Harriet H.—Junior-Senior High School, Bloomsburg---English
Bloomsburg State Teachers College, B. S.; N. Y. University, M. A.
- Knorr, J. Wesley—Junior-Senior High School, Bloomsburg--Business
Bloomsburg State Teachers College, B. S.; N. Y. University, M. A.
- Long, Bess M.—Junior-Senior High School, Bloomsburg-----Science
Susquehanna University, A. B.; Columbia University, M. A.
- McBride, Ray P. Jr.—Senior High School, Berwick-----Business
State Teachers College, Bloomsburg, Pennsylvania, B. S.
- McKinstry, Cleora M.—Jr.-Senior High School, Bloomsburg--English
State Teachers College, Bloomsburg, Pennsylvania, B. S.

* First Semester 1942-43

- Mercer, Robert H.—Jr.—Senior High School, Bloomsburg—Mathematics
Gettysburg College, B. S.; Bucknell University, M. S.
- Miller, H. R.—Junior-Senior High School, Bloomsburg—Geography
Bloomsburg State Teachers College, B. S.; Columbia University, M. A.
- Mordan, George M.—Jr.—Senior High School, Bloomsburg—Mathematics
Gettysburg College, B. S.
- Pensyl, Maree E.—Jr.—Senior High School, Bloomsburg—Social Studies
Bucknell University, B. S.; New York University, M. A.
- Sands, B. Donald—Jr.—Senior High School, Bloomsburg—Social Studies
Bloomsburg State Teachers College, B. S.; Bucknell University, M. S.
- Schell, Ray I.—Junior-Senior High School, Bloomsburg—Mathematics
Ursinus College, B. S.
- Schuyler, Thursabert—Junior-Senior High School, Bloomsburg—Latin
State Teachers College, Bloomsburg, Pennsylvania, B. S.
- Serocca, Mary R.—Junior-Senior High School, Bloomsburg—French
Penn State, A. B.; Middlebury College, M. A.
- Sharpless, Myra—Jr.—Sr. High School, Bloomsburg—Foreign Language
State Teachers College, Bloomsburg, Pennsylvania, B. S.
- Shutt, William L.—Junior-Senior High School, Bloomsburg—Business
State Teachers College, Bloomsburg, Pennsylvania, B. S.
- Tinney, Hilda—Senior High School, Berwick—Business
State Teachers College, Bloomsburg, Pennsylvania, B. S.
- Wagner, John Y.—Junior-Senior High School, Bloomsburg—Science
Franklin and Marshall College, B. S.
- Yeany, Norman A.—Jr.—Senior High School, Bloomsburg—Business
Gettysburg College, A. B., A. M.

History Of The State Teachers College At Bloomsburg

PRINCIPALS AND PRESIDENTS

Henry Carver -----	1869-1871
Charles G. Barkley -----	December 20, 1871—March 27, 1872
John Hewitt -----	March 27, 1872—June, 1873
T. L. Griswold -----	1873-1877
D. J. Waller, Jr. -----	1877-1890
Judson P. Welsh -----	1890-1906
D. J. Waller, Jr. -----	1906-1920
Charles H. Fisher -----	1920-1923
G. C. L. Riemer -----	1923-1927
Francis B. Haas -----	1927-1939
Harvey A. Andruss -----	1939-

Academy, Literary Institute, Literary Institute and State Normal School, State Teachers College—such has been the metamorphosis of the present State Teachers College at Bloomsburg.

Away back in 1839, a private academy was opened at Bloomsburg. C. P. Waller, a graduate of Williams College, successfully conducted the school for two years. Later public school teachers taught in the academy during their summer vacations. Among the outstanding teachers during this period were Joe Bradley and D. A. Beckley.

In 1856, D. J. Waller drew up a charter, which was subscribed to by worthy citizens of Bloomsburg and which provided that the school be known as the Bloomsburg Literary Institute for the promotion of education in the ordinary and the higher branches of English literature and science and in the ancient and modern languages.

In 1866, Henry Carver, of Binghamton, N. Y., taught the school. His unusual influence and personality had much to do with molding its early policies. He insisted that a new building was essential for the future development of the Bloomsburg Literary Institute.

Under his inspiration, the charter of 1856 was revived and the following officials elected—President, D. J. Waller; secretary, I. W. Hartman; trustees, John G. Freeze, R. F. Clark and William Neal. Mr. Carver assured the trustees that \$15,000 would build a suitable building. The energy and enthusiasm of the men were such that when some doubted that the type of building which he had planned could be built for that amount, he assumed, in addition to his duties as teacher, the offices of architect and contractor.

On April 4, 1867, that building, the present Carver Hall, was dedicated with gala observance by the townspeople. Members of the first class at the new school—D. J. Waller, Jr., the late George E. Elwell and the late Charles Unangst—by popular subscription raised \$1200 in a single week for the fine bell which formerly called the students to their classes. The first faculty comprised Professor Carver, teacher of mathematics and the higher English branches; Rev. J. R. Dimm, teacher of Latin and Greek; and Miss Sarah Carver, teacher of the lower English branches.

In the autumn of 1867, James P. Wickersham, State Superintendent of Public Instruction, was traveling through Bloomsburg on the train. He saw the new school on the hill "ablaze with lights" and thought the Literary Institute's location would be ideal for a State Normal School. So at a meeting in 1868, at which he addressed the citizens of Bloomsburg, it was decided to establish a Normal School under the Act of 1857. A dormitory was completed at a cost of \$36,000. The school was recognized as a State Normal School on Friday, February 19, 1869. In September of that year, there were 150 in the Normal Department and 80 in the Model School.

The school was called the Bloomsburg Literary Institute and State Normal School until it was purchased by the State May 22, 1916. After that it was known as the State Normal School at Bloomsburg until the name was changed to State Teachers College on May 13, 1927, by the State Council of Education. Up to 1920, when the Department of Public Instruction revised the programs of all the Normal Schools, the school offered college preparatory courses as well as teacher training courses.

Principal Carver left in 1871. Charles G. Barkley, Esq., a former county superintendent of schools, acted as Principal from December 20, 1871, to March 27, 1872. His successor was the Rev. John Hewitt, rector of the Episcopal Church at Bloomsburg, who served as Principal from March, 1872 to June, 1873. In 1873, Dr. T. L. Griswold became Principal, serving until 1877.

Those early years were trying ones, subscriptions would fall off and trustees would often meet obligations on their own personal responsibility. In 1875, the dormitory was completely destroyed by fire. In 1876, a larger and handsomer building, the original part of the present Waller Hall was built. In spite of discouraging circumstances, the school began paying expenses during Doctor Griswold's administration.

In the Fall of 1877, Dr. D. J. Waller, Jr., became Principal. For thirteen years the school grew under his guidance. The Model School and the east wing of the dormitory were built during his Principalship. When Doctor Waller resigned in 1890, to become State Superintendent of Public Instruction, the school was in a prosperous condition.

Dr. Judson P. Welsh served as Principal of the Bloomsburg State Normal School from 1890 to 1906. During his administration an addition to the four-story dormitory and the gymnasium were built. Science Hall was opened in the Fall of 1906 just after his resignation.

Dr. D. J. Waller, Jr., responded a second time to the summons of the trustees, serving as Principal until 1920 when he retired from active duties. Doctor Waller gave the Bloomsburg State Normal School twenty-seven years of splended service as its Principal.

He was succeeded by Dr. Charles H. Fisher, who came to the Normal School from the State Department of Public Instruction. He served at Bloomsburg from 1920 to 1923. During his administration teacher training was introduced into the Bloomsburg public schools and extension courses were instituted. He was followed by Dr. G. C. L. Riemer, who came from the State Department of Public Instruction. He served as Principal until June, 1927.

Dr. Francis B. Haas succeeded Dr. Riemer in July, 1927. Under his administration the College made great advancement, both in the improvement of the physical plant and in the program of teacher education in the Commonwealth.

Major campus improvements include the following: the addition of eighteen acres of land; the construction of a new Laundry Building; Elementary Training School; Gymnasium; Junior High School; Shop and Maintenance Building; addition to the Boiler Plant; Fire Towers for several buildings; a complete remodeling of Science Hall, and the remodeling of the auditorium.

Smaller projects include the provision of complete and comfortable rooms for day students; the construction of a new recreation field; the adoption of a tree-planting program; the building of new tennis courts; the installation of sound picture equipment in the auditorium; the laying of 2,500 lineal feet of new sidewalk and street curbs, and the addition of new underground steam and electric service.

Educational developments during the administration of Dr. Haas moved along parallel with the improvement in the physical plant and include the following: the establishment of the Department of Business Education; the inauguration of a Department of Special Education, with an Educational Clinic for guidance and remedial instruction of problem cases; the organization and development of a student government association; the development of such outstanding extra-curricular activities as the A Cappella Choir, Maroon and Gold Orchestra, Maroon and Gold Band, the Dramatic Club, and the installation of professional and honorary educational organizations.

In June, 1939, the College very fittingly celebrated its Centennial—one hundred years of progress.

Dr. Haas resigned in August, 1939, to assume, for the second time, the duties of State Superintendent of Public Instruction for the Commonwealth of Pennsylvania.

Aviation instruction was inaugurated in September, 1940, through cooperation with the Bloomsburg Airport. Under sponsorship of the Civil Aeronautics Administration 280 persons were trained in aviation in the first two years.

On January 15, 1941, Harvey A. Andruss was elected President of the College, after having served as Director, Department of Business Education, Dean of Instruction, and Acting President.



WALLER HALL—Containing Library and portion of Women's Dormitory



WOMEN'S B CLUB



BLOOMSBURG FOOTBALL SQUAD

Campus, Buildings And Equipment

CAMPUS. The State Teachers College property comprises about fifty-five acres, of which over forty acres form the campus proper. The campus lies on a hillside from which one looks down over Bloomsburg homes toward the bright ribbon of the Susquehanna and beyond to the softly tinted distant hills. The campus contains an athletic field, tennis courts, and a general recreation field. An oak grove with a cement pergola and a lagoon forms an ideal place for out-of-doors pageants and dramatics.

The buildings of the State Teachers College reflect the growth of the institution.

CARVER HALL. Carver Hall, erected in 1867, and named for Henry Carver, the first Principal, stands at the head of Main Street. Its white belfry and pillared entrance form a picturesque approach to the College campus and buildings. The building contains an auditorium seating 1000 which has recently been completely equipped for motion pictures with sound equipment. A number of classrooms are also located in this building.

NOETLING HALL. Noetling Hall, named for William Noetling, the head of the Department of Pedagogy from 1877-1900, is in the rear of Carver Hall. The Department of Business Education occupies the second floor of this building. Here classrooms are provided for typewriting, bookkeeping and office practice. On the first floor are housed the psychological and speech clinics, each with a suite of modernly equipped offices and consultation rooms.

WALLER HALL. The main dormitory, Waller Hall, named for D. J. Waller, Jr., Principal of the College for twenty-seven years, is four stories high with a frontage of 165 feet and a wing 40 by 104 feet. This building is equipped with one passenger and two freight elevators.

The ground floor of this building contains the lobby, the dining room and kitchen, the administrative and business offices, and the post office.

The Alumni Room on the first floor of Waller Hall is beautifully furnished as a reception room for the Alumni and the Faculty. College cups and other trophies are displayed in this room.

Five modern enclosed fire towers help to eliminate fire hazards. The library and infirmary are on the second floor. The women's dormitory occupies the second, third, and fourth floors. The rooms contain beds, dressers, chairs, and study tables.

The dining room and lobby are most attractive. The dining room is sunny and cheerful with white woodwork and decorative built-in cupboards. The students are seated at round tables in groups of eight. A dietitian directs the purchase, preparation, and serving of food.

Every effort is made to keep the students in good physical condition. A registered nurse is in charge of the infirmary where students may have proper care and quiet when they are sick. Doctors are called when the students desire or when the nurse deems it ad-

visable. A cottage on the campus is set aside for housing patients who may develop contagious diseases. Fresh air, pure water, and well-balanced meals of wholesome food make the sick at Teachers College a negligible number.

The lobby with its tapestries and its comfortable chairs is a favorite social meeting place.

The library on the second floor of Waller Hall contains over 20,000 standard works of history, fiction, education, and the like. It is satisfactorily equipped with reference works, good magazines, and newspapers.

The third and fourth floors of Waller Hall above the Library were opened in 1942 to college men students.

One of the most interesting features of the building is "The Long Porch" overlooking "The View"—the Susquehanna River beyond the town and the Catawissa mountain beyond the river.

NORTH HALL. North Hall, the men's dormitory, is a short distance from Waller Hall. It is a three-story building, 50 by 90 feet. Formerly used exclusively by the men students, it now houses Navy aviators.

OLD GYMNASIUM. This Gymnasium adjoins Waller Hall. It has a floor area measuring 45 by 90 feet, and wings outside of this space providing bleachers for 700. Beneath these are ample dressing-room facilities, including showers.

SCIENCE HALL. Science Hall was built in 1906. It is equipped for laboratory work in biology, chemistry, and physics. It contains a number of classrooms and two lecture rooms with lanterns, screens and other visual education apparatus. Two large, well-lighted art studios are in this building. Modern laboratory desks and other equipment for the teaching of chemistry and physics were installed at the beginning of the school year of 1937 to provide for the increasing demand for Science on the part of students who are entering the teaching profession. This building has been recently renovated and modern fire towers have been added at a cost of approximately \$25,000.

BENJAMIN FRANKLIN SCHOOL. The Benjamin Franklin Training School building was opened for use the first day of the 1930-1931 school year. It is designed, planned, and equipped in accordance with the best present modern practice. It provides practice teacher facilities from the kindergarten to the sixth grade, as well as a special class for the mentally retarded. Among the features is a special room arranged for observation and demonstration work. In addition to the practice work done here, a cooperative arrangement makes practice teaching possible in public schools of Berwick, Catawissa, Bloomsburg, Williamsport, and Danville. The practice teaching in rural work is done in the rural schools of Columbia County.

LAUNDRY. The new laundry provides, in a separate plant, the best modern equipment for handling the laundry needs of the College. The space in the basement of North Hall released by the removal of the present laundry has been developed as a lobby and reading room and provides locker accommodations for the day men.

CENTENNIAL GYMNASIUM. The Centennial Gymnasium is located on the upper part of the campus close to the Athletic Field. It is a building modern in every respect and fully adequate to meet the growing needs of the institution. It contains a large main gymnasium with a playing court 48 by 84 feet, and two smaller auxiliary gymnasiums, one for men and one for women, each with an adjoining locker room. To the rear of the main floor is a fine swimming pool 75 by 30 feet. This building houses, in addition, complete office and classroom facilities for the Health Education Department. This building was dedicated on May 26, 1942, to commemorate the first century of the existence of the institution from 1839-1939.

Governor Arthur H. James and Dr. Francis B. Haas were present on this occasion.

LABORATORY HIGH SCHOOL. Situated close to the Benjamin Franklin Training School is the new Laboratory High School. It is designed and equipped along the most approved modern lines, and furnishes teacher training facilities for the Junior High School grades, seven, eight and nine. This new building will make possible teacher training facilities from the kindergarten through the ninth grade.

SHOP AND STORAGE BUILDING. To take the place of the old barn which has been in use for many years is a new, modern brick building balancing the laundry. This building is used for shop and storage purposes, making it possible to concentrate the maintenance equipment and services.

POWER PLANT. The old Power Plant, situated on the southwest corner of the campus, has been greatly enlarged and fully modernized to take care of the increased needs of the new buildings.

Uniform Fees, Deposits, and Repayments In State Teachers Colleges, Pennsylvania

(Effective June 1, 1942)

A. FEES

I. Student Activities Fee.

A fee to be determined by each institution will be collected from all students and administered under regulations approved by the Board of Trustees through a cooperative organization. This fee will cover the cost of student activities in athletics, lectures, entertainments, student publications, et cetera; provided, that students taking extension courses or regular session students taking less than seven hours (semester hours) may secure the benefits of the Activities Program by the payment of the Student Activities Fee.

II. Contingent Fee

1. Regular Session.

- (a) A contingent fee for each student in each curriculum is charged as follows:

SEMESTER FEES			
	Regular	Special	Total
Elementary Curriculums -----	\$45.00	(none)	\$45.00
Secondary Curriculums -----	45.00	(none)	45.00
*Adult Education -----	45.00	(none)	45.00
*Art -----	45.00	\$18.00	63.00
Business Education -----	45.00	12.00	57.00
*Health Education -----	45.00	18.00	63.00
*Home Economics -----	45.00	27.00	72.00
*Industrial Arts -----	45.00	18.00	63.00
*Music -----	45.00	45.00	90.00
*Library Science -----	45.00	9.00	54.00

This fee covers registration and keeping of records of students, library, student welfare, health service (other than extra nurse and quarantine) and laboratory facilities.

- (b) Students taking seven or fewer semester hours shall pay at the rate of \$6.00 per semester hour. Students taking more than seven semester hours shall pay the regular contingent fees; contingent fees for special curriculums shall be prorated on the basis of an eighteen semester hour load.
- (c) Students taking extension courses shall pay at the rate of \$6.00 per semester hour; provided, that the regular fees for special curriculum shall be prorated on the basis of an eighteen semester hour load.
- (d) The president of the college may, at his discretion, authorize payments for not less than one month in advance by worthy students.
- ##### 2. Summer Session.
- (a) Six dollars per semester hour.
A minimum contingent fee of eighteen dollars (\$18.00) will be charged.

* Not available at Bloomsburg.

(b) Contingent Fees—Special Curriculums

In addition to the above fees, students in the special curriculums will be required to pay a fee to cover the cost of materials, supplies, equipment, and special services used in the laboratories, shops or studios of the special curriculums.

These additional contingent fees will be as follows:

SIX WEEKS SUMMER SESSION

*Art -----	\$ 6.00
Business -----	4.00
*Health Education -----	6.00
*Home Economics -----	9.00
*Industrial Arts -----	6.00
*Music -----	15.00
*Library Science -----	3.00

- (c) Students enrolled for periods of instruction differing from the schedule pay fees in addition on a pro rata basis of the schedule of fees provided for the regular summer session.

III. Housing Fee.

1. Housing rate for students shall be \$72.00 per one-half semester and \$48.00 for the Summer Session. This includes room, meals and limited laundry.

- (a) For rooms with running water an additional charge of \$9.00 per student per semester or \$3.00 for the Summer Session may be made.
- (b) No reduction in the rate is to be made for laundry done at home nor for absence of students who go home for a few days at a time.
- (c) A student may, at the discretion of the president of the college, occupy a double room alone by paying an additional \$36.00 a semester or \$12.00 for the Summer Session.
- (d) For the purpose of meeting the requirements in those colleges where off-campus rooming students board in the college dining room, and to meet the requirements of the Home Management Clubs in institutions maintaining home economic curriculums, the housing rates shall be divided (\$2.50 for room and laundry (room \$1.75 and laundry \$.75) and \$5.50 for table board.

2. Housing rate for employees other than those included in the State Classification Schedule (faculty, clerks, etc.) shall be \$9.00 per week. The housing fee shall be divided at \$3.50 for room and laundry (room \$2.75 and laundry \$.75) and \$5.50 for table board.

3. The rate of transient meals shall be:
 Breakfast, \$0.35; Lunch, \$0.45; Dinner, \$0.60.

4. The president of the college may, at his own discretion, authorize payments for not less than one month in advance by worthy students.

* Not available at Bloomsburg.

IV. Damage Fee.

Students shall be responsible for damages, or breakage, or loss, or delayed return of college property.

V. Infirmary Fee.

After three days in the college infirmary, the college shall charge an additional \$1.00 for each day.

Day students who may be admitted to the infirmary shall pay board at the rate of \$2.00 a day. This charge includes the regular nurse and regular medical service, but does not include special nurse or special medical service.

VI. Isolation Hospital Fee.

If the College maintains an Isolation Quarantine Hospital for contagious diseases, the college shall charge \$10.00 per week additional, but this service charge does not include trained nurse or special medical service.

Day Students who may be admitted to the Quarantine Hospital shall pay the board rate of \$2.00 a day (see V above), and in addition shall pay \$10.00 a week, but this additional charge does not include trained nurse or special medical service.

VII. Fees for Out-of-State Students.

Students whose legal residence is out of the State of Pennsylvania shall be charged at the rate of \$6.00 per semester hour.

If out-of-state students are enrolled in a special curriculum, they shall pay the special fees as found in Item II, 1-a, in addition to the regular contingent fee of \$6.00 per semester hour.

VIII. Private Instruction Fees.

The charge for private lessons in music, in the State Teachers Colleges maintaining the special curriculum in music, shall be:

1. Voice, piano, band, or orchestral instruments, \$24.00 per semester—for one lesson per week.
Pipe organ, \$42.00 per semester—for one lesson per week.
2. Rental of piano for practice, 1 period per day, \$6.00 per semester.
Rental of pipe organ for practice, 1 period per day, \$36.00 per semester.
Rental of band or orchestral instruments, \$6.00 per semester (for Summer Session the charge is one-third of above rates).
3. The charge for private lessons in music in the State Teachers Colleges not maintaining the special music curriculum shall be fixed as follows:

The Board of Trustees of a State Teachers College not offering the special curriculum in music, may, subject to the approval of the Superintendent of Public Instruction, enter into contract with individuals to give private lessons in music in order to afford an opportunity for students to continue their musical education. Such agreement shall provide reasonable reimbursement to the institution for any service or overhead supplied by the institution.

IX. Degree Fee.

A fee of \$5.00 shall be paid by each candidate for a degree to cover the cost of degree diploma.

X. Record Transcript Fee

One dollar (\$1.00) shall be charged for the second and each subsequent transcript of records.

XI. Delinquent Accounts.

No student shall be enrolled, graduated, or receive a transcript of his records until all previous charges have been paid.

XII. Fee for Late Registration and Late Payments.

Each student registering after the date officially set for registration shall pay an additional fee of \$1.00 per day until the student is in regular attendance in accordance with the regulation of the Board of Presidents, provided that the total amount of Late Registration Fee shall exceed not \$5.00, except when permission for late registration has been secured in advance from the President because of illness or any other unavoidable causes. The same regulations shall apply to approved inter-semester payments.

B. DEPOSITS**Advance Registration Deposit.**

A deposit of \$10.00 shall be made by all students when they request registration. This is a guarantee of the intention of the student to enter college for the term or semester designated. It is deposited with the Revenue Department to the credit of the student's contingent fee. *If, however, the student notifies the college at least three weeks before the opening of college that he is unable to enter, or if the student is rejected by the college, repayment of this deposit will be made through the Department of Revenue, on application from the student through the college authorities.*

Check or money order for this amount must be drawn to the Commonwealth of Pennsylvania.

C. NO OTHER FEES OR DEPOSITS PERMITTED

No fees or deposits, other than as specified above may be charged by a State Teachers College.

D. REPAYMENTS**I. Repayment will not be made:**

1. To students who are temporarily suspended, indefinitely suspended, dismissed, or who voluntarily withdraw from college.
2. For any part of the advance registration deposit for any cause whatsoever except where students can give notice of intention to withdraw at least three weeks before the college opens or when the student is rejected by the college.

II. A repayment will be made for personal illness, the same being certified to by an attending physician, or for such other reasons as may be approved by the Board of Trustees for the amount of the housing and contingent fees paid by the Student for the part of the semester which the student does not spend in college.

III. The advance registration deposit will be returned to students provided they notify the College *not less than three weeks before the opening of the semester or term of their intention not to attend, or provided the student is rejected by the college.*

Summary Of Expenses

The cost for one semester for students living at	Home	College
Contingent Fee -----	\$45.00	\$ 45.00
Housing Fee (Board, Room, and Laundry) -----	(none)	144.00
Activities Fee -----	10.00	10.00
Books and Supplies (Estimated) -----	15.00	15.00
Total -----	\$70.00	\$214.00

Business students pay \$12.00 additional.

Out-of-State students pay \$6.00 per semester hour credit.

Students not living at home and not working in homes approved by the College, must live in the dormitories if rooms are available.

All fees must be paid in advance of enrollment. Fees for the regular College year may be paid one half in advance of enrollment and one half before the middle of each semester.

If any fees other than the Activities Fees are paid by Bank Draft, Express or Post Office Orders, or Checks, they must be made out for the exact amount which is being paid, and drawn payable to the order of the Commonwealth of Pennsylvania. All Post Office Orders paying such fees must be drawn on the Post Office at Harrisburg, Pennsylvania. If the Activities Fee is not paid in cash, a separate order must be drawn payable to "Community Activities."

Keys.

Each student purchases a room key or locker lock for \$1.00. This is refunded when the key or lock is returned.

Baggage.

Baggage is hauled on the opening and closing days of each semester for a small charge. Incoming baggage should be clearly marked with the owner's name and "State Teachers College, Bloomsburg, Pennsylvania." When baggage is sent to the station it should bear the owner's name and destination.

Guests.

Arrangements for room guests at Waller Hall and North Hall must be approved by the Dean of Women or the Dean of Men. The guest rates in the College dining room, payable to the Dietitian, are as follows: Breakfast, 35c; Luncheon, 45c; Dinner, 60c.

Books and Supplies.

The estimated cost of books and supplies is \$40.00 for the year of 36 weeks. Students may secure these at the Community Store connected with the College. This store is operated on a cash basis.

Dormitory Residence.

Students not living at home and not working in homes approved by the College, must live in the dormitories if rooms are available.



ATHLETIC ACTIVITIES OF WOMEN



CENTENNIAL GYMNASIUM—Containing Swimming Pool, Main Gymnasium seating 1200, two auxiliary gymnasiums, two classrooms and five faculty offices.

School Banking.

The Business Office is prepared to handle deposits of cash for students in order that they may secure small amounts at convenient times.

Notice of Withdrawal.

Students leaving the College must notify the President of their withdrawal. Regular charges will be made until such notice is received.

Music.

All music accounts are payable in advance for a half-semester period.

PERSONAL EQUIPMENT FOR ENTRANTS**Rooms.**

Each room is furnished with single beds, mattresses and pillows, dresser, study table, and chairs. Sheets, pillow cases, and white spreads are furnished for the beds.

Students must provide the following equipment:—Blankets or bed comforts, towels, and a large laundry bag plainly marked with the student's name.

Athletic Equipment.

Students must wear regulation gymnasium uniforms. These are to be purchased in the Community Store after the student arrives at Teachers College, in order that the outfits for the group may be uniform in style, color, etc.

Students should bring strong high shoes for hiking and climbing.

Laundry.

Each student is allowed twelve articles of plain clothing in the wash each week. Extra charge will be made for laundry in excess of twelve articles. Every article of clothing must be plainly marked with indelible ink. Defective marking is generally responsible for missing articles.

TYPES OF STUDENT ASSISTANCE

1—Student employment by the College (other than N. Y. A.)—Such employment for the most part is limited to work in the Dining Room, the Kitchen, the Library, and the College offices. Occasionally there are a few opportunities in the general maintenance service. However, the number of positions at present is so limited that for the most part it is the policy of the College to make them available only after students have demonstrated ability to meet the standards of the College by completing in a satisfactory manner the work of the first year. A few opportunities are available to Freshmen for substitute service.

All work is paid for at the rate of thirty cents per hour, and the maximum number of hours which a student may be employed upon work administered by the College is twenty hours per week. This means that under the most favorable conditions the maximum amount that may be earned is six dollars per week, and that for the most part this is available for upper class students only.

2—Student employment under the National Youth Administration. The College has participated in the past in the employment programs provided for College Students by the National Youth Administration under the Federal Government. It hopes to participate in such programs as may be available in the future.

3—Household Work—Many students secure housing expenses by working in private homes approved by the College. The College refers requests from homes to prospective students. Usually, however, such opportunities are secured through friends or through church or other affiliations. Many students have secured household work and other work through advertisements placed in the Morning Press of Bloomsburg. Students securing such work in a home must secure from the Dean of Women, or the Dean of Men, an "Application for Approval to Live in a Private Home," and have it signed by the Parent or Guardian, the Student, and the Housekeeper, and approved by the Dean of Women or the Dean of Men. Until this agreement is submitted and approved, enrollment is temporary.

4—State Scholarships—The State offers each year, through competitive examination, one scholarship worth \$100.00 in each County. These are administered by the Department of Public Instruction, and information concerning them may be secured from Mr. James G. Pentz, Department of Public Instruction, Harrisburg, Pennsylvania.

5—American Association of University Women Loan Fund—The Bloomsburg Branch of the A. A. U. W. has a loan fund open to a girl in the Junior Class. Information may be secured from Mrs. Norman Hoffman, Bloomsburg, Pennsylvania.

6—Alumni Loan Fund—Our Alumni Association has a fund from which loans at very reasonable rates are made to students. Information concerning this Fund may be secured from the Chairman of the Alumni Loan Fund Committee, Mr. Dennis Wright, 58 East Fifth Street, Bloomsburg, Pennsylvania.

Loans are to be repaid to the Treasurer in monthly payments of not less than \$10.00 each and every month beginning four months after the student graduates.

Because of the great number of requests for loans, it has been found necessary to limit the loans to the Junior and Senior classes; and to further limit the amount to any one person to \$150.00.

ADMISSION REQUIREMENTS

Entrance Requirements.

New regulations for admission to the State Teachers Colleges of Pennsylvania were effective September, 1932. The regulations require the applicant to appear at the College on days announced during the Summer in addition to the regular registration day at the opening of the Fall semester. Following is a statement of the general principles controlling the new admission regulations. Enrollment is conditional until the applicant has met all the requirements set forth in the following five paragraphs:

1. General scholarship as evidenced by graduation from an approved four-year high school or institution of equivalent grade as determined by the Credentials Division of the Department of Public Instruction and ranking in the upper half of the class at graduation. Candidates for admission who lack this rank at graduation will be required to present further evidence of fitness for admission as prescribed in the detailed standards for admission.

2. Integrity and appropriate personality as shown by an estimate of secondary school officials of the candidate's trustworthiness, honesty, truthfulness, initiative, industry, social adaptability, personal appearance, and sympathy.

3. Health, physical vigor, emotional stability, absence of physical defects that would interfere with the successful performance of the duties of a teacher, and absence of predisposition toward ill health as determined by a medical examination at the College. Specific standards will be set up in the detailed requirements for admission.

4. Normal intelligence and satisfactory command of English as evidenced by rating in standard tests. The tests to be used will be prescribed each year by the Board of Presidents and will be uniform for all State Teachers Colleges.

5. A personal interview with particular attention to personality, speech habits, social presence, expressed interests of the applicant, and promise of professional development.

Students Enrolling for First Time Note Carefully the Following:

(1) ALL NEW APPLICANTS must have the following blanks sent by the person indicated direct to the College in advance of (a) the personal conference, (b) the medical examination, and (c) the written examination (required only of those in the lower half of the graduating class).

1. By the applicant—application for admission.
2. By a physician—report of the physical examination.
3. By the High School Principal—high school record and evaluation.

These blanks will be forwarded on request. Personal conferences may be had by arrangement with the Dean of Instruction. These personal interviews and health examinations may be arranged for any day from 1:30 P. M. to 3:00 P. M., Saturdays and Sundays excepted. The written examination (required only of those in the lower half of the graduating class) will be given Tuesday, September 14, at 8:45 A. M.

(2) NEW APPLICANTS STANDING IN THE UPPER HALF OF THE GRADUATING CLASS as ranked by the High School Principal are exempt only from the written entrance examination.

The credit unit on which entrance qualification is based represents not less than 120 sixty-minute periods of prepared work or the equivalent.

THE NEW THREE-YEAR PLAN

The new three-year program adds a three-week Pre-Session to the existing regular six-week Summer Session and the three-week Post-Session, and it is arranged so that Freshmen will be accepted at the beginning of any semester or Summer Session.

High school graduates may therefore begin their study with the June Pre-Session on June 7, the regular Summer Session on June 28, or the Post-Session on August 9, instead of waiting for the regular Fall Session on September 13, 1943. Standards for admission, graduation and the award of teaching certificates remain the same under the new program as under the usual four-year plan.

Students wishing to earn their degrees under the usual four-year arrangement may do so. The three calendar year program is not a replacement of the usual four-year program but is an alternate designed to help both the student with limited time and the demand and need for teachers in our public schools.

Advanced Credit.

Advanced credit will be given for equivalent courses in approved institutions of collegiate grade, but no student may obtain a Bachelor of Science degree at Bloomsburg without a minimum residence of one year in the curriculum in which student intends to graduate. Students desiring to take work at any other institution must make written application to the Dean of Instruction for approval in advance. Otherwise credits may not be accepted. Correspondence courses are not offered or accepted by this College.

Transfer of credits having the lowest passing grade will not be accepted.

Scheduling Student's Work.

At the beginning of every semester a schedule of classes is handed to each student by the Dean of Instruction. It is the duty of the student to enroll in each class and have the instructor of the subject sign the schedule card. When the last signature is obtained the card must be returned to the office of the Dean of Instruction. No permanent credits will be recorded unless this signed card is on file.

Transfers and Evaluations.

A student desiring to transfer from another College must first present a letter of honorable dismissal and a complete record of the work taken at his former College. These records shall be sent directly from the College to the office of the Dean of Instruction.

In evaluating and crediting the work of a student transferring from another College, credit shall be given only for work having a grade one letter point or the equivalent above the lowest passing grade of the institution from which the student is transferring.

All evaluations are made by the Dean of Instruction and are subject to change according to revisions in the requirements for graduation.

Progress Reports and Records.

For the purpose of reporting the progress of each student, each semester is divided into periods of nine weeks. During each period the instructor hands to the Dean of Instruction a special deficiency report at any time the student is not doing satisfactory work. At the end of nine weeks a complete Grade Report is made. These grades are assembled and recorded upon a form suitable for mailing and are sent to the parents or guardians of each student.

At the end of the semester final grades are reported, recorded upon the permanent progress card of each student and filed. The report is then sent out as before. Any parent not receiving such a report at the end of the nine or eighteen weeks' period should notify the Dean of Instruction and a duplicate will be mailed.

System of Grading.

Our system of grading and its interpretation is as follows: A—very high; B—high; C—average; D—low; Cond.—condition; E—failure involving repetition of the entire course.

- A grade of A carries with it 3 quality points for each semester hour.
- A grade of B carries with it 2 quality points for each semester hour.
- A grade of C carries with it 1 quality point for each semester hour.
- A grade of D carries with it 0 quality points for each semester hour.
- A grade of E carries with it -1 quality point for each semester hour.

Condition is not considered in computing quality points.

To graduate, a student must have not less than an average of 1.0 quality points.

Work accepted from other institutions shall count at the rate of one quality point per semester hour.

All students, before receiving a final grade in English I or II, or in Arithmetic I or II, or Business Mathematics I or II, must qualify by receiving a passing grade in the standardized tests in English and Arithmetic. This refers to the tests given to all Freshmen each Fall.

Removal of Conditions.

Each instructor imposing a condition at the end of a semester shall file with the Dean of Instruction a detailed statement of the steps to be taken by the student for the removal of the condition.

A printed form must be secured at the Dean of Instruction's office to be used when a condition has been removed. It is the responsibility of the student to have this form signed by the instructor removing the condition and to present it to the Dean of Instruction for recording.

If the condition is not removed within one year the grade becomes an E and the course must be repeated.

Pre-Requisite For Student Teaching.

A student is eligible to begin teaching if he has attained a quality point average of 1.0 in not less than 90 semester hours at the end of three years. If a part of the student teaching is given during the third year, the same average is required in not less than 60 semester hours.

Raising the Quality Point Average For Student Teaching or Graduation.

If a student fails to attain the required quality point average of 1.0, he may raise his average by repeating courses in which he re-

ceived a grade of D or less, or by taking courses other than the repeated courses upon the approval of the Dean of Instruction and the Student Progress Committee. The divisor in the computation of the quality point average is the number of semester hours earned.

Residence Required for Graduation.

The minimum period of residence at this college is one year or its equivalent. Former students certified for teaching by having completed two or three years of college work and who are candidates for the Bachelor of Science Degree in Education must complete at least one-half of the remaining work required for the degree in residence at Bloomsburg. Residence credit may be earned in the classes of a regular semester, in summer school, or in Saturday classes for Teachers-in-Service.

Probation.

At the end of any grading period a student who has a grade of "E" in one half or more of the credit hours carried may be placed on probation until the next grading period. If at the end of the second grading period he has not improved his record, he will be advised to withdraw from college. Such a student may be permitted to enroll subject to the following conditions:

1. Written application signed by the student and his parents in advance.
2. The application shall state that the student
 - (a) Will pursue a limited program of work.
 - (b) Is on probation.
 - (c) Will voluntarily withdraw from college if he has "E's" in one half or more of the credit hours carried, in the following grading period.

The scholarship requirements as stated here shall apply to all work completed after September, 1940; i. e., the fourth year work completed by Seniors, the third and fourth year work completed by Juniors, and the second, third, and fourth year work completed by Sophomores. Freshmen will need to meet all requirements here set forth.

Eligibility for Participation in Inter-School Athletic Contests.

A student to be eligible must have secured a passing grade in at least twelve semester hours of work during the quarter preceding each respective sport.

Placement Service.

The Placement Service of the College cooperates with the Placement Service of the State Department of Public Instruction, Harrisburg, thus offering additional facilities for the placement of our students and graduates.

The Placement Service has for its purpose first of all to assist school officials to secure competent teachers, and second to aid teachers to secure suitable positions in fields of service for which their training best fits them.

The Placement Service is in charge of the Director of Teacher Training, who answers all inquiries and gives personal attention to school officials seeking competent teachers.

In order that the Placement Service may serve the interests of the students to the best advantage, students are requested during the time that they are doing their student teaching to fill out a "Registration Blank," giving personal information such as grades and subjects which they are prepared to teach and desire to teach, their preference as to the part of Pennsylvania in which they would like to teach, experience in teaching, and other personal data which Superintendents of schools and school boards wish to know when seeking candidates for positions.

The opinion of the Teacher Training Department is often sought by school officials. The quality of the work done by students in College courses as well as in student teaching is, therefore, a most important element entering into the recommendation of students.

In order that the Placement Service may be of maximum benefit to graduating students, it is necessary that those securing positions advise the Director of Teacher Training immediately. This procedure will not only avoid the recommending of a candidate for positions after he is already employed, but will enable the Teacher Training Department to keep in close touch with all those individuals who have not secured teaching positions.

Students after graduation from the College are urged to keep up their contacts with the Placement Service and the Teacher Training Department in order that the College may render further service not only in helping students to secure better positions but to help them in every possible way professionally.

CERTIFICATION REGULATIONS

RENEWAL OF STATE STANDARD LIMITED CERTIFICATES

(Issued by the Bureau of Teacher Education and Certification, Sept. 1, 1938)

1. At least twelve additional semester hours of credit are to be earned during each renewal period of three years, whether the certificate has been used for teaching purposes or not. This is the minimum rate by which the holder of a State Standard Limited Certificate may move toward the completion of an elementary degree curriculum.
2. If the holder of a State Standard Limited Certificate has taught one or more years, a rating score card is to be presented to the Department of Public Instruction for the years taught and a statement presented by the student, notifying the Department of the years not taught.
3. The responsible official of the college, from which the holder of the certificate expects to secure a degree, should certify on the transcript—or otherwise—that the twelve semester hours submitted to the Department of Public Instruction will be accepted by the institution as additional work toward the completion of the elementary degree curriculum. If work has been completed at more than one college, the student should have all credits evaluated at the institution from which graduation is anticipated, making sure twelve semester hours will be acceptable in the elementary curriculum.
4. Wherever possible the superintendent, college officials, and the student involved should work out an agreement whereby all credentials—score cards, transcripts, certificate, and statement

relative to teaching—will be sent to the Department in one enclosure.

Validating For Use in the Elementary Field the College Certificate Valid in Secondary or Special Fields

"In accordance with the recommendations made to the State Council of Education, October 6, 1933, the following modification in the teacher preparation program provides for more adequate preparation in the elementary field for graduates of teacher preparation institutions who prepared specifically to teach the subjects of the secondary field and then decide to teach in the lower elementary grades. The following regulations have been approved: . . . after October 1, 1936, thirty semester hours of approved courses in the field of elementary education including six semester hours of elementary student teaching shall be required."

These elementary courses should be selected from the following suggested approved list or equivalent courses:

Educational Measurements For Elementary Teachers	3 s. h.
Teaching of Elementary Science	3 s. h.
Elementary English (Teaching of Reading)	3 s. h.
Arithmetic (Teaching of Arithmetic)	3 s. h.
Principles of Geography (Teaching of Geography) or (United States History) (Teaching of Elementary Social Studies)	3 s. h.
Health and Hygiene in the Elementary School or Teaching of Primary Subjects	3 s. h.
Child Psychology	3 s. h.
Art in the Elementary School	2 s. h.
Music in the Elementary School	2 s. h.
Practice Teaching in the Elementary School	6 s. h.
Elementary Electives—	
Principles of Elementary Education	2 or 3 s. h.
Kindergarten-Primary Theory	2 or 3 s. h.
Civic Education	2 or 3 s. h.
The Elementary School Curriculum	2 or 3 s. h.
Elementary School Methods	2 or 3 s. h.

Note:—Geography of the Western Hemisphere may be taken by those who have used Principles of Geography for graduation in the Secondary Curriculum.

That paragraph two, page 10 under III. College—I. Provisional College Certificate of the booklet on certification which provides that "Such a curriculum will be approved when the six semester hours of prescribed electives are in the field of elementary education and the six semester hours of practice teaching are with pupils of elementary school age be deleted as of October 1, 1934."

Visual Education Regulations.

In line with the effort to make available approved courses in the use of visual aids and sensory techniques in classroom instruction and to encourage further the development of visual education in the public school, the State Council of Education approved the following regulation with respect to the preparation of teachers at its meeting of October 10, 1934:

"RESOLVED", That all applicants for PERMANENT teaching certificates on and after September 1, 1935, shall be required to present evidence of having completed an approved course in visual and sensory techniques."

The course of visual education may be completed either as an undergraduate course or it may be completed after graduation from an accredited teacher-preparation institution. Emphasis is placed on the fact that the course in visual aids and sensory techniques must be a part of the teacher's preparation before any form of permanent certification will be issued after September 1, 1935.

Where there is any question relative to the meaning or interpretation of Certification Regulations, the matter should be taken up with the Dean of Instruction previous to beginning class work.

Certification of Teachers of Classes For the Mentally Retarded.

A. A Certificate of standard grade valid for teaching the elementary subjects may be extended to include the teaching of classes for the mentally retarded on the completion of twenty-four semester hours of approved courses in special education in accordance with the following suggested distribution:

1. Courses Basic to All Special Certification: 6 sem. hrs.
 *Psychology or Education of Exceptional Children
 Diagnostic Testing and Remedial Teaching
 Mental or Educational Hygiene

2. Courses Definitely Applicable to the Teaching of Mentally Retarded Children: 9 sem. hrs.
 *Special Class Arts and Crafts (*6 sem. hrs.)
 *Student Teaching in Classes for Mentally Retarded Children (1 sem. hr.)
 *Special Class Methods

3. Special Class Electives: 9 sem. hrs.
 Clinical Psychology
 Abnormal Psychology
 †Mental Tests (group)
 Speech Correction
 Mental Tests (individual)
 Corrective Physical Education
 Educational and Vocational Guidance
 Related Courses in Sociology
 **Teaching Experience
 Any excess in groups one or two may be applied in group three.
 *Must be selected within these groups.
 †Preferred Elective.

**Successful experience in teaching; in social service such as visiting teacher, probation officer, or social worker; in public health work such as school nurse, public health nurse, etc.; or in a psycho-educational or psychiatric clinic as psychological examiner or psychologist; may be counted to a maximum of six (6) semester hours at the rate of three (3) semester hours a year.

B. A college certificate valid for the secondary field may be extended to include the teaching of classes for the mentally retarded on the

completion of thirty-six semester hours, including the distribution in groups one, two, and three, in section A, and twelve semester hours selected from group four, below:

4. Courses Related to Elementary Education which are Basic Pre-requisites for Teaching Special Classes for the Mentally Retarded Selected from the Following or Equivalent Courses:

†Teaching of Reading

‡Teaching of Arithmetic

Art in the Elementary School

Music in the Elementary School

Health or Physical Education in the Elementary School

Educational Measurements

Principles of Elementary Education

Child Psychology

‡Elementary School Methods

†The Elementary School Curriculum

Teaching of Elementary Social Studies

Children's Literature and Story Telling

†Preferred Electives

Notes:

Educational Psychology is a pre-requisite for the courses listed above.

In institutions approved for the education of teachers of special classes for the mentally retarded, students pursuing the four year elementary curriculum may elect the above courses in groups one, two, and three, and on the satisfactory completion of the elementary curriculum and the twenty-four (24) semester hours in this special field will receive certification in both fields. Such dual certification will require at least one additional summer session.

Certification of Speech Correctionists

A certificate of standard grade may be validated for the services of speech correctionist on the completion of twenty-four semester hours of approved courses in speech correction in accordance with the following distribution:

1. Courses Basic to All Special Class Certification Minimum Requirement 6 sem. hrs.
 - *Psychology or Education of Atypical Children 3 s. h.
 - Diagnostic Testing and Remedial Teaching 3 s. h.
 - Mental Hygiene 3 s. h.
2. Courses Definitely Applicable to the Practice of Speech Correction Minimum Requirement 9 sem. hrs.
 - *Speech Problems 2 s. h.
 - *Speech Clinic (Including Clinical Practice) 2 s. h.
 - *Psychology of Speech 3 s. h.
 - Phonetics 2 s. h.
 - Special Methods in Speech Correction 3 s. h.
 - Speech Pathology 3 s. h.
3. Speech Correction Electives Minimum Requirement 9 sem. hrs.
 - Clinical Psychology 3 s. h.
 - Mental Tests (group) 3 s. h.
 - †Mental Tests (individual) 3 s. h.
 - †Speech Clinic (advanced) 2 s. h.
 - Voice and Diction 2 s. h.

Any excess in groups one or two may be applied in group three.

*Must be selected within these groups.

†Preferred Electives.

In institutions approved for the education of "Speech Correctionists", students pursuing the four year elementary curriculum may elect speech correction as outlined above and omit specialization in kindergarten-primary, intermediate, or rural education. On the satisfactory completion of the basic elementary curriculum and seventeen semester hours in speech correction, the student will receive certification in the elementary field. On the satisfactory completion of the twenty-four hours in speech correction, the student will receive certification as a "Speech Correctionist".

IN-SERVICE EDUCATION OF TEACHERS

(Friday Evening and Saturday Morning Classes)

This work is residence work so that all the facilities of the College, such as the library and laboratories, are available for the use of the students.

There is always the possibility of offering any course in any curriculum if circumstances permit. The offering is dependent upon two things: first, the demand from teachers-in-service for the course and, second, the availability of the faculty instructor. As the member of the faculty conducting such a class receives no extra compensation it must be offered as a part of his regular teaching load. We, therefore, are limited to the offerings of those courses for which a member of the faculty is found available for the work after the regular schedule for the semester has been determined.

Any teacher in service who is interested in this plan will be fully informed by communicating with the Dean of Instruction. The course of study desired should be indicated.

The regular members of the faculty will teach the courses. A fee of five dollars is charged for each semester hour credit. In accordance with the certification regulations of the Department of Public Instruction six (6) semester hours per college semester is the maximum amount which may be taken by a regularly employed teacher.

At the present time the popularity of courses offered to teachers-in-service is evidenced by the fact that over 100 persons are now enrolled in such classes. Most of them come to Bloomsburg for the Friday and Saturday classes, since the library or laboratory facilities are then available.

Those desiring information relative to enrollment should communicate and if possible have a personal interview with the Dean of Instruction, State Teachers College, Bloomsburg, Pennsylvania. Teachers-in-Service are urged to note carefully the following: (1) Before taking advanced work be sure that you are familiar with the State regulations covering the type of certification desired, and decide definitely the Fields that you desire covered by your State Certificate. (2) Be sure that the work which you take will be accepted for certification by the Department of Public Instruction and that it will definitely advance your standing towards the certificate that you desire. In other words, make sure before you begin a course that it will be credited towards your certificate. (3) In case of doubt state your case to Dr. Henry Klonower, Director, Teacher Education and Certification, Department of Public Instruction, Harrisburg, Pennsylvania.

THE LABORATORY SCHOOL FACILITIES OF THE COLLEGE

Those who are to become teachers should have ample preparation in teaching in typical school situations. Considerable attention has been given to enlarging and strengthening the training school facilities of the State Teachers College at Bloomsburg. The Benjamin Franklin School on our campus houses a kindergarten, special classes for the mentally retarded, and grades one to six inclusive. There is a training teacher in charge of each class, consequently, close supervision is given to the student teaching.

In addition to the Training School the elementary grades of the public schools of the town of Bloomsburg are used for student teaching. Student teaching in the secondary field is done in the junior-senior high schools of Bloomsburg and Williamsport, the high schools of Berwick and Danville. The complete cooperation of the school authorities of the towns of Bloomsburg, Williamsport, Berwick, and Danville makes it possible to have a variety of adequate facilities for the training of teachers for the graded schools and secondary schools.

For the preparation of rural teachers, one-room schools in Columbia County, adjacent to the Teachers College are used. Through the cooperation of the school authorities in the rural districts of Hemlock and Mount Pleasant Townships it is possible to have facilities for the training of rural teachers.

The rural and urban elementary school training facilities, and the junior and senior high school training facilities of the College are typical of the public schools in our service area. The students, therefore, have ample opportunity to observe well-trained teachers at work and to develop skill in teaching by actual experience under public school conditions.

SUMMER SCHOOL OF 1943

The Summer Session aims largely to meet the needs of the following groups:

- (1) Teachers-in-Service qualifying for
 - (a) Advanced state certification
 - (b) The Degree of Bachelor of Science in Education
 - (c) The Permanent College Certificate
- (2) College Graduates qualifying for state certification through courses in education and student teaching.
- (3) Undergraduates qualifying for advanced standing or the removal of conditions.

The Summer School of 1943 will consist of three sessions:

- (1) A Pre Session beginning Monday, June 7.
- (2) A Regular Session beginning Monday, June 28
- (3) A Post Session beginning Monday, August 9

The work of the Regular Session will be scheduled so that one ninety-minute period per day, for five days per week, will constitute the work for a three semester hour course, except where adjustments for laboratory courses are needed. Six semester hours' credit is the normal load for a six weeks' session.

An opportunity for additional work will be provided this summer by a three weeks' Pre-Session and a three weeks' Post-Session. The work of the Pre-Session and Post-Session will be scheduled so that two ninety-minute periods per day for five days per week will constitute the work for a three semester hour credit course except where adjustment for laboratory courses is needed. Three semester hours is the normal load for the three weeks' sessions.

An important feature of the regular Summer Session is the observation and demonstration school, which includes all the grades of the elementary school, a class of mentally retarded children, and the three grades of the junior high school. A skillful teacher is in charge of each grade. Here teachers may observe and have demonstrated for them desirable practices in modern teaching procedures.

The student teaching in grades 7, 8 and 9 has proved to be a popular feature of our regular Summer Session. Opportunity is offered to those who must secure credit in the Secondary field to observe and participate in the operation of a well-organized junior high school.

A more detailed description of the 1943 Summer School will be sent to you upon a request addressed to the Dean of Instruction.

STUDENT PARTICIPATION IN COLLEGE GOVERNMENT

A State Teachers College is a professional institution for the education of teachers for our public schools. The College, therefore, requires the maintenance of high standards in academic work, balanced programs of social and recreational activities and opportunities for the development of self-direction and leadership. The attainment of these objectives is aided by a sound health program, favorable study conditions, a good library, and supplementary social and recreational activities.

In general, these opportunities are provided through a broad program of College organizations and activities which are developed and controlled through the participation of the entire College in the Community Government Association. This organization, through the College Council, is the general control body for the various College activities. In accordance with the constitution of the Community Government Association, dormitory affairs are handled for Women by the Waller Hall Association for Women and for Men by the Waller Hall Association for Men. The activities of students not living in the dormitories are handled for the Women by the Day Women's Association and for the Men by the Day Men's Association. The detailed plans for student participations in College Community life are presented in the Handbook, issued at the beginning of the Fall semester each year under the direction of the College Council.

Community Government Association

The Community Government Association cooperates with the responsible authorities in promoting personal and group responsibility in regulating the affairs of all students. This body meets once a month. The College Council, which meets every two weeks, acts as the executive board of the organization. The officers of the Association automatically become officers of the Council. The College Council administers the affairs of the Association, formulates its policies, and acts upon cases involving violations of the Community Government regulations.

Waller Hall Association for Women

The Waller Hall Association for Women is an organization of the women students living in dormitories and off-campus houses. Its administrative body is the Governing Board whose members are selected from each of the various classes. The Governing Board has the power to make and enforce regulations, to direct the social life of Waller Hall, and to promote the general welfare of all women students.

Day Women's Association

The Day Women's Association is an organization of women not living in the College dormitories. The governing body is an Official Board consisting of a President and Vice-President elected by the entire association, and two representatives from each class. Its purpose is to promote the general welfare of the day women and to cooperate with the other student organizations in matters affecting the general welfare of the institution. Headquarters have been provided on the first floor of Noetling Hall.

Waller Hall Association for Men

The Waller Hall Association for Men governs the resident men students efficiently. The governing body is composed of the President, the Vice-President, the Secretary, the Treasurer, and a Student Council. By means of this organization, the men cooperate with the administrative authorities in promoting personal and group responsibility.

Day Men's Association

The Day Men's Association is an organization of men students who live at home or in the town of Bloomsburg. The governing board consists of a President, Vice-President, Secretary, and Treasurer. Headquarters have been provided on the first floor of North Hall.

Assembly Programs

Assembly programs are presented twice a week in Carver Hall Auditorium. The students are largely responsible for the success of these programs.

The various College clubs present programs with a wide variety of entertainment. Visiting lecturers, visiting high schools, and members of the College faculty contribute at times to these programs.

EXTRA-CURRICULAR ACTIVITIES

All students are required to take part in one extra-curricular activity one semester each year. The students, for the most part, are eager to take this opportunity to train themselves in this important and interesting phase of modern school work. The extra-curricular work during the past year included the following:

Athletics

In addition to the required courses in physical education, men receive extra-curricular credit for football, basketball, track, cross country, wrestling, tennis, and baseball. Women receive extra-curricular credit for hiking, skating, playing volleyball, basketball, tennis, and baseball.

"B" Club

The "B" Club is an organization of women who have achieved a given number of athletic points.

Dramatic Club

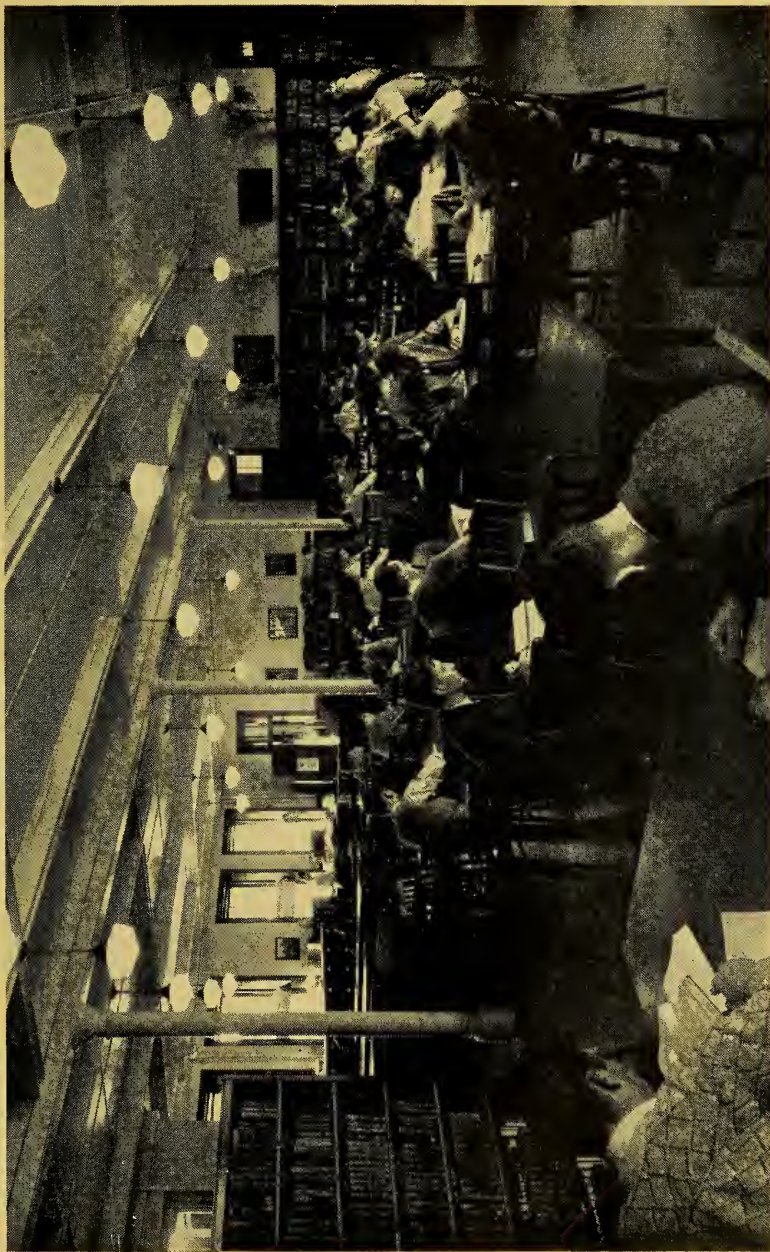
The Dramatic Club provides a workshop for those who wish training in educational dramatics. It stages plays for College affairs and for the public. It has installed a chapter of Alpha Psi Omega, national honor dramatic fraternity.

Geographic Society

The Geographic Society promotes interest in geographic interpretation by talks on geography as observed in local communities or in travel, by illustrated talks on imaginary journeys, by accounts of current events interpreted from the geographic viewpoint, and by reviewing current literature.

Mixed Chorus

The Mixed Chorus numbers more than one hundred voices. Any student who possesses an acceptable singing voice may apply for a position in this organization. An audition is required.



COLLEGE LIBRARY



MAROON AND GOLD ORCHESTRA



MAROON AND GOLD BAND

A Cappella Choir

Any member of Mixed Chorus who possesses a good singing voice, and who has some ability in music reading may have an audition for the A Capella Choir. Auditions are held at the beginning of each semester. Enrollment in the choir is limited.

Business Education Club

The Business Education Club, an organization composed of the students of the Department of Business Education, sponsors a Commercial Contest for high schools. Through this activity the high school students are acquainted with the type of the professional work being developed here. Contests are held in the major commercial subjects: bookkeeping, shorthand, typewriting, etc. Winners of the various contest events receive medals, while a Commercial Contest Cup is awarded to the high school having the best contest team.

Maroon and Gold Instrumental Musical Organizations

(a) Maroon and Gold Orchestra

The Maroon and Gold Orchestra fills an important place in the College life. Musical programs and entertainments are given. The Orchestra gives an annual public concert. Students with sufficient ability are urged to join this organization.

(b) Maroon and Gold Band

An excellent group of fifty-five members offers training in group and ensemble playing. The Band plays at all athletic functions and is organized on the basis of an extra-curricular activity. Students with musical talent will benefit by participating in this organization.

Social Usage Club

"Enjoy, as you learn," is a motto of the Social Usage Club, which offers the students an opportunity to improve their social abilities through discussion and practical experience. Club meetings include both preparation for and practice of dinners and other social functions.

Science Club.

The Science Club consists of members of the student body who are interested in natural and physical science. Subjects for study and observation include topics dealing with history of the various branches of science, plant and animal life, geology and mineralogy, chemistry and physics. Theoretical and applied phases of these subjects receive equal consideration. Field trips often supplement reports on natural phenomenon.

Social Service Club.

This organization is open to any girl in college who has a desire to be of service to others. It cooperates with such organizations as the Red Cross, Child Welfare Service, and the local hospital. Incidentally it affords opportunity for making excellent contacts outside the college.

Photography Club.

This club provides an excellent opportunity for all those interested in photographic art. Members discuss practical problems, and study camera techniques.

The Poetry Club.

This club is for a small discussion group interested in the present talent, to secure a wider acquaintance with the fundamentals of

Poetry, and a broader appreciation through studying, writing, and reading.

Rural Life Club.

The Rural Life Club is organized for the purpose of studying rural community work, recreations, etc.

Publications.

The Maroon and Gold.

The Maroon and Gold is the College Paper, published bi-monthly by a student staff. It aims to keep the student body informed of current happenings at Teachers College.

The Obiter.

The Obiter is the Annual published each Spring by the graduating class. It contains a review of the activities of the class, with cuts of campus, students, clubs, teams, etc.

The Bloomsburg Alumni Quarterly.

The Bloomsburg Alumni Quarterly, published four times a year, purposes to keep the alumni informed of the activities and progress of their Alma Mater. It is sent to all alumni who pay the alumni fee of \$1.00 a year. This publication is available in the College Library.

RELIGIOUS ACTIVITIES

Student Christian Association.

The Student Christian Association is open to all men and women students of the college. It holds weekly meetings. It aims to develop the social and religious life of the college students.

Auditorium.

Devotional services are held in the chapel twice a week in connection with the assembly programs.

Local Churches

Students at Teachers College are cordially invited to attend services in the churches of Bloomsburg. Students attend Sunday School, Young People's Meetings, and sing in the church choirs.

PROFESSIONAL FRATERNITIES

National honorary and professional fraternities which foster and advance education ideals through scholarship, social, efficiency, and moral development, are permitted to form chapters. There are five such fraternities on the campus.

Kappa Delta Pi (National Coeducational Honor Society in Education)

Kappa Delta Pi originated at the University of Illinois in 1909 as the Illinois Educational Club, and was incorporated June 8, 1911, under the laws of the State of Illinois as the Honorary Educational Fraternity. On October 4, 1932, this title was changed to Kappa Delta Pi, an Honor Society in Education, and so registered at the office of the Secretary of State at Springfield, Illinois. Both men and women, who have attained the college rating of junior or higher, and have a scholarship record in the upper quartile of the institution, are eligible for membership. Kappa Delta Pi is both an undergraduate and graduate society, now comprising more than one hundred and twenty-seven chapters with more than forty-eight thousand members. It has the

unique distinction of having a Laureate Chapter composed of outstanding educators throughout the world, the intent being to make this in essence an academy of educators similar to the academy of science or academy of letters.

The Educational Forum, official magazine of the Society, is issued quarterly. There are other publications of value—the Lecture Series and the Research Publications.

Phi Sigma Pi (National Honorary Educational Fraternity For Men)

The Phi Sigma Pi, a National Educational Fraternity, was founded at the State Teachers College, Warrensburg, Missouri, on February 14, 1916. The fraternity has 20 active chapters. The objective of the fraternity is to maintain a professional educational fraternity for men in teacher training institutions. The organization is based on high scholastic attainments and seeks to advance educational ideals, promote close fellowship, improve the training of teachers, and uphold just and efficient government. The Bloomsburg Chapter, Iota, has 30 active members, 6 faculty members, and 6 honorary members.

Alpha Psi Omega (National Coeducational Honorary Dramatic Fraternity)

Alpha Psi Omega, national honorary dramatic fraternity, was organized in 1922 at Fairmont State College, Fairmont, Virginia, to provide an honor society for those doing a high standard of work in college dramatics; and to secure for them the mutual helpfulness provided by a large national fraternity. At present there are 185 chapters located in colleges and universities in the United States and Canada. The Bloomsburg chapter, Alpha Omicron, was organized in March, 1928, and now has an alumni membership of 140.

Gamma Theta Upsilon (National Coeducational Honorary Geography Fraternity)

Gamma Theta Upsilon originated in the Geography Club of the Illinois State Normal University on May 15, 1931. Delta Chapter was organized by seven Junior and Senior members of the Geographic Society at Bloomsburg in October, 1931. The chapter now has 69 on the roll. Membership is limited to students making special preparation to teach geography. The purpose of this organization is to advance the professional study of geography both as a cultural discipline and a practical subject for study and investigation. A National Loan Fund to promote graduate study of geography has been established. The roster of chapters totals 15, representing eleven states and having a membership of eight hundred thirty-five.

Pi Omega Pi (National Professional Commercial Education Fraternity)

The organization of Pi Omega Pi was started in the spring of 1923 at the Northeast Missouri State Teachers College at Kirksville. Alpha Delta Chapter was installed at State Teachers College, Bloomsburg, on May 28, 1935. The Fraternity is composed of twenty-one chapters.

The aims of the fraternity are: (a) To encourage, promote, extend, and create interest and scholarship in Commerce. (b) To aid in civic betterment in colleges. (c) To encourage and foster high ethical standards in business and professional life. (d) To teach the ideal of service as the basis of all worthy enterprise.

AN ENRICHED PROGRAM OF STUDIES

Curriculums for the education of teachers should be constantly re-examined in terms of the needs of the public schools. An effort has been made to adjust the curriculum of the teachers colleges to meet these needs. In accordance with this policy, the Presidents of the State Teachers Colleges, with the approval of the Superintendent of Public Instruction, have rearranged the courses, thereby enriching the curriculums. The first two years of the rearranged curriculums will give the students a more thorough academic background.

The revised curriculums in the State Teachers Colleges have as their main objective, the reorganization of the sequential relationship of courses so that the professional work will be cumulative and progressive. There will be distinctly professional courses in the first year, more professional courses in the second year, and still more in the third and fourth years.

The following curriculums were inaugurated at State Teachers College, Bloomsburg, Pennsylvania, beginning September 7, 1937:

- (1) Four-Year Elementary Curriculum leading to the B. S. in Education, with college certification in (a) Kindergarten-Primary, (b) Intermediate, (c) Rural fields. The State Standard Limited Certificate may be issued at the end of three years if students make this decision at the end of their freshman year. This certification is valid for three years, during which time twelve semester hours of advanced credit in the elementary field must be earned in order to renew it for three more years. This process is continued until the four-year requirement for the degree of B. S. in Education has been fulfilled at which time the College Provisional Certificate is issued.
- (2) Six semester hours, selected from the "Electives for Special Education" earned in addition to completing the Four-Year Elementary Curriculum may be used to certify a person to teach Special Classes for the Mentally Retarded. This means that a person will be certified to teach in the elementary school, and at the same time certified to teach adjustment, special, opportunity, or orthogenic classes in the elementary school.
- (3) Four-Year Secondary Curriculum leading to B. S. in Education, with college certification in two or more of the following fields: Aviation, English, Social Studies, Geography, Mathematics, French, Latin, Spanish, Science and Speech.
- (4) Four-Year Business Education Curriculum leading to the B. S. in Education, with opportunity to secure college certification in the following subjects: Bookkeeping and Accounting, Business English, Commercial and Economic Geography, Commercial Law, Commercial Mathematics, Economics, Junior Business Training, Office Practice, Salesmanship, Shorthand, and Typewriting. Retail Selling may also be chosen as a field for certification.

GUIDANCE IN CHOOSING A CURRICULUM

In order that entering students may have an opportunity to explore their interests and try out their abilities and aptitudes in the College situation, a uniform curriculum for the first year is followed by those expecting to teach academic subjects in the Secondary and Elementary schools. Those expecting to teach commercial subjects in the Secondary schools also follow a uniform curriculum for the first year.

Following the first year's experience with courses in English, Speech, Geography, Science, Health Education, History, Appreciation of Art and Music, and Place and Purpose of Education in the Social Order (including School Visitation), the student is in a position to choose electives in either the Elementary or Secondary curriculums for the second year, basing his decision on his Freshman courses. After having completed courses in English, Speech, Health Education, Economic Geography, Place and Purpose of Education in the Social Order (including School Visitation) as well as courses in Bookkeeping and Accounting, Shorthand, Typewriting and Business Mathematics, the prospective commercial teacher is in a better position to choose either the Commercial, Accounting, Secretarial, or Retail Selling sequence depending upon his first year's experience.

During the Freshman year, to further inform entering students of the nature of the teaching profession, all students take an orientation course entitled "Place and Purpose of Education in the Social Order" (including school visitation). Classrooms of all types and levels are visited. In class, such topics are studied as: How to Study, How to Budget Time, Campus Services, Administrative Organization of the College, The Requirements and Possibilities of Teaching as a Profession, Self-Analysis to Determine Fitness for Teaching; all of which are consciously planned to help students to choose their curriculum at the beginning of the second year. Such guidance based on professional information and personal analysis is carried on by means of conferences by faculty members with individual students. Persons entering the teaching profession of the Commonwealth of Pennsylvania today must view themselves in the light of the mental, physical and social requirements and possibilities of a career as an educator.

At the outset of the Sophomore year, a second choice is necessary. If the Elementary Curriculum is chosen, a student may specialize in the Kindergarten-Primary, Intermediate, Rural, or Special Education Group referred to as Groups I, II, and III in other parts of this catalogue. If the Secondary Curriculum is chosen, two fields of specialization are selected from among the following: English, French, Latin, Social Studies, Speech, Mathematics, Science and Geography. If the Business Education Curriculum has been followed for one year, to continue one must choose a sequence from the following: Commercial (which certifies in all commercial subjects), Accounting, Secretarial, and Retail Selling.

Thus the specialized work of the last three years is based on one year of general preparation for the purpose of acquainting students with the nature of the teaching profession, and at the same time to aid in the prediction of the professional promise of teaching success. Following the first year, a change from one curriculum to another may be requested by the student or advised by the Dean of Instruction. This arrangement provides all students an opportunity to explore,

try out, and counsel with the faculty while they are taking courses having a general bearing on the Elementary, Secondary, or Business teacher training situations before a curriculum for specialization is selected.

BASIC TWO YEARS OF THE ELEMENTARY AND SECONDARY CURRICULUMS

SEQUENCE OF COURSES SUBJECT TO CHANGE FOR ADMINISTRATIVE REASONS

First Semester			Third Semester		
	Hours			Hours	
	Clock	Sem.		Clock	Sem.
English I (inc. Library Science) -----	4	3	Literature I (English) -----	3	3
Fundamentals of Speech -----	3	3	Economic Geography -----	3	3
Biological Science I -----	4	3	General Psychology I -----	3	3
Health and Physical Education I -----	3	1	Physical Science I -----	4	3
Place and Purpose of Education in the Social Order -----	3	3	Health and Physical Education III -----	3	1
(inc. directed School Visitation, etc.)			Elective -----	3	3
Appreciation of Music -----	3	2		19	16
	20	15			
Second Semester			Fourth Semester		
	Hours			Hours	
	Clock	Sem.		Clock	Sem.
English II -----	3	3	Literature II (American) -----	3	3
Principles of Geography -----	3	3	Educational Psychology II -----	3	3
History of Civilization -----	4	4	Prin. of Sociology or Prin. of Economics -----	3	3
Biological Science II -----	4	3	Physical Science II -----	4	3
Health and Physical Education II -----	3	1	Health and Physical Education IV -----	3	1
Appreciation of Art -----	3	2	Electives -----	4	4
	20	16		20	17

ELEMENTARY CURRICULUM

SECONDARY CURRICULUM

Fifth Semester

Fifth Semester

	Hours	
	Clock	Sem.
United States History before 1865	3	3
Teaching of Reading	3	3
Music I	4	2
Art I	4	2
Curriculum in Arithmetic	2	2
School Law	1	1
Health and Physical Education V	3	1
Electives	3	2
	<hr/>	<hr/>
	23	16

	Hours	
	Clock	Sem.
American Government—		
Federal, State, and Local	3	3
School Law	1	1
Educational Measurements	2	2
Health and Physical Education V	3	1
Electives	10	10
	<hr/>	<hr/>
	19	17

Sixth Semester

Sixth Semester

	Hours	
	Clock	Sem.
History of Pennsylvania	2	2
Teaching of English	4	3
(incl. Handwriting)		
Music II	3	2
Art II	3	2
Health and Physical Education VI	3	1
U. S. History since 1865	3	3
Elective	2	2
	<hr/>	<hr/>
	20	15

	Hours	
	Clock	Sem.
Health and Physical Education VI	3	1
Problems of Secondary Ed.	2	2
Electives	13	13
	<hr/>	<hr/>
	18	16

Seventh Semester

Seventh Semester

	Hours	
	Clock	Sem.
Educational Measurements	2	2
Curriculum in Elementary		
Science	4	3
Visual Education	2	1
Children's Lit. and Story Telling	3	3
Evolution of the American Pub-		
lic School	2	2
Ethics	3	3
American Government (Federal,		
State, and Local)	3	3
	<hr/>	<hr/>
	19	17

	Hours	
	Clock	Sem.
Evolution of the American Pub-		
lic School	2	2
Visual Education	2	1
Ethics	3	3
Electives	10	10
	<hr/>	<hr/>
	17	16

Eighth Semester

Eighth Semester

	Hours	
	Clock	Sem.
Student Teaching and Confer-		
ence	18	12
Curriculum Materials, Selection		
and Adaptation	4	3
	<hr/>	<hr/>
	22	15

	Hours	
	Clock	Sem.
Student Teaching and Confer-		
ence	18	12
Curriculum Materials, Selection		
and Adaptation	4	3
	<hr/>	<hr/>
	22	15

SPECIALIZATION AND ELECTIVES IN THE ELEMENTARY CURRICULUM

1. Students enrolled in the State Teachers Colleges may qualify for the degree of Bachelor of Science in Education by satisfactorily completing the basic elementary four-year curriculum and twelve semester hours offered at the College at which the degree is to be conferred.

2. Students desiring to specialize in Early Childhood Education (nursery school, kindergarten, grades 1, 2, and 3), Intermediate Education (grades 4, 5, and 6), or Rural Education (grades 1-6 or 1-8) shall be required to complete satisfactorily the basic four-year elementary curriculum and meet the following specific requirements for the field of specialization desired.

a. EARLY CHILDHOOD EDUCATION

	Hours	
	Clock	Sem.
Early Childhood Education	3	3
*Student Teaching in grades below fourth	18	12
Curriculum Materials: Selection and Adaptation for Early Childhood Grades	4	3
	25	18

b. INTERMEDIATE EDUCATION

	Hours	
	Clock	Sem.
Teaching of American History and Government	3	3
*Student Teaching in interme- diate grades	18	12
Curriculum Materials: Selection and Adaptation for intermediate grades	4	3
	25	18

c. RURAL EDUCATION

	Hours	
	Clock	Sem.
Rural School Problems	3	3
**Student Teaching under rural school conditions	18	12
Curriculum Materials: Selection and Adaptation to rural or in grades 1-6 or 1-8 under conditions approxi- mately those in rural schools	4	3
	25	18

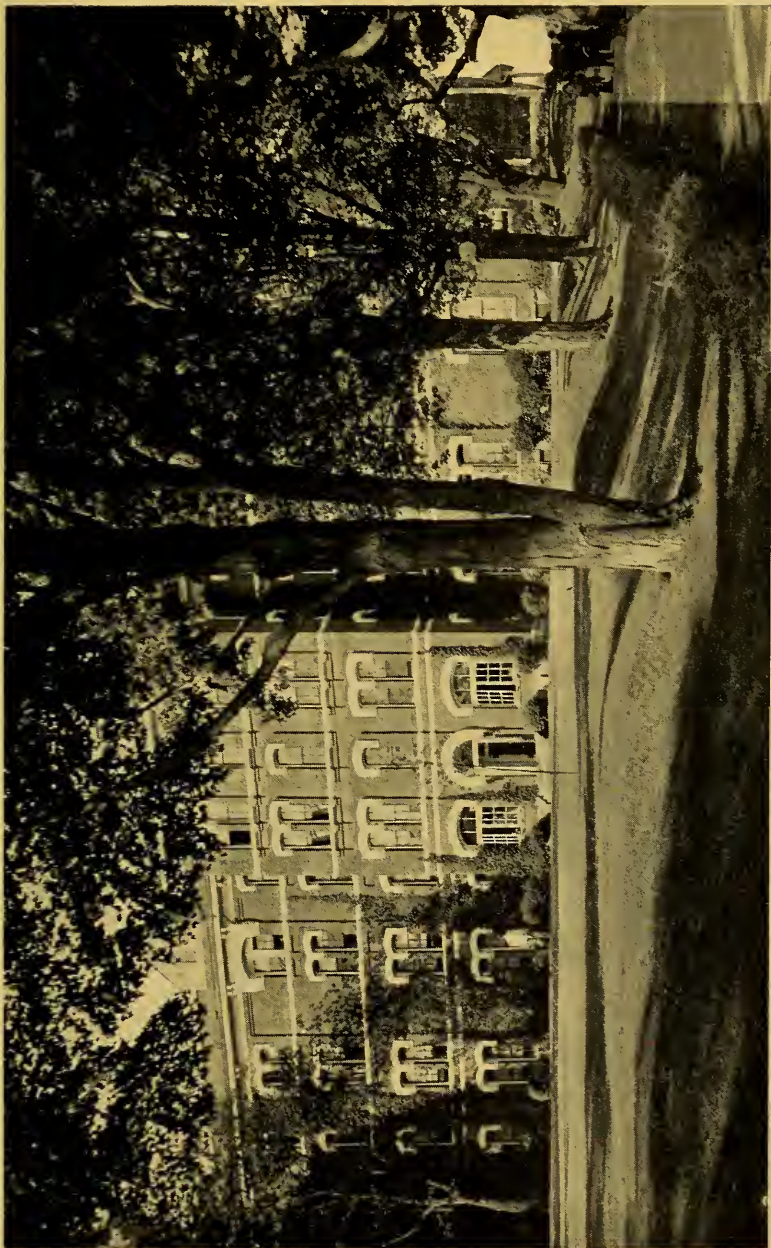
3. Electives may be chosen from the following:

	Hours	
	Clock	Sem.
Child Adjustment	3	3
Child Psychology	3	3
Diagnostic and Remedial Instruc- tion in Reading	3	3
Education for Family Living	3	3
Mental Hygiene	3	3
Safety Education	3	3
School Finance	2	2
Special Education	2	2
Teaching of Arithmetic	3	3

and courses in academic fields and special curriculums approved at the college in which the student is registered; provided that to achieve a breadth of background not more than six (6) semester hours may be selected from courses listed above and not more than six (6) semester hours may be selected from any one academic field or special curriculum except Speech including Dramatics.

*Three semester hours of the twelve required may be observation and participation in other age levels of the elementary field.

**Three of the twelve semester hours required may be observation and participation in the Early Childhood Education or Intermediate Education divisions.



WALLER HALL AND FRONT CAMPUS



BASEBALL TEAM



TENNIS TEAM

SPECIAL EDUCATION

(in Elementary Grades)

Special Education for Mentally Retarded

	Sem.	Hrs.
Arrangement of Courses in Special Education for the Mentally Retarded	24	
	Hours	Hours
	Clock Sem.	Clock Sem.
I. Required	15	
Psychology of Exceptional Children	3	3
Diagnostic Testing and Remedial Teaching	3	3
Special Class Arts and Crafts I	6	3
Special Class Arts and Crafts II	6	3
Student Teaching in Classes for Mentally Retarded Children ..	3	1
Special Class Methods	3	2
II. Electives	9	
Education of Exceptional Children	3	3
Mental or Educational Hygiene ..	3	3
Clinical Psychology	3	3
Abnormal Psychology	3	3
Mental Tests (group)	3	2
Speech Correction	3	3
Mental Tests (individual)	3	2
Corrective Physical Education ..	3	2

Speech Correction

	Sem.	Hrs.
Arrangement of Courses for Speech Correction	24	
	Hours	Hours
	Clock Sem.	Clock Sem.
I. Required	15	
Psychology of Exceptional Children	3	3
Diagnostic Testing and Remedial Teaching	3	3
Speech Problems	3	2
Speech Clinic	4	2
Psychology of Speech	3	3
Phonetics	2	2
II. Electives	9	
*Mental Hygiene	3	3
*Mental Tests (Individual)	3	2
*Speech Clinic II	4	2
*Voice and Diction	2	2
Clinical Psychology	3	3
Mental Tests (Group)	3	2

*Preferred electives.

Speech Elective

(For students in Elementary or Secondary Curriculum)

	Sem.	Hrs.
Arrangement of Courses for a Speech Elective (Minimum as first field)	21	
	Hours	Hours
	Clock Sem.	Clock Sem.
I. Required	3	
Fundamentals of Speech	3	3
(Not counted as part of the eighteen (18) needed for certification.)		
II. Required for Elective Field of Speech	8	
Interpretative Reading	3	2
Phonetics	2	2
Play Production	3	2
Speech Problems	3	2
III. Electives for the Field of Speech	10	
Argumentation and Debate	2	2
Community Dramatics and Pageantry	3	2
Costuming and Make-up	3	2
Creative Dramatics	2	2
Psychology of Speech	3	3
Speech Clinic I	4	2
Speech Clinic II	4	2
Speech Pathology	3	3
Stagecraft and Scenic Design ..	4	2
Voice and Diction	2	2

DEPARTMENT OF AVIATION EDUCATION

AVIATION FOR THE ARMY AND NAVY

During the past two college years the college cooperated with the Civil Aeronautics Administration in training students to become aviators. The location of the college with relation to the Bloomsburg Airport creates a favorable situation for the Civil Pilot Training Program. Bloomsburg Airport, within walking distance of the College, is one of the finest of its size in the East.

In July, 1942, at the request of the Civil Aeronautics Administration, the flight training offered at Bloomsburg as an extra-curricular phase came to an end. To meet an urgent war need, the college was asked to conduct full-time programs of flight and ground school in eight-week periods. During the first eight-weeks session, thirty Army and ten Navy pilots were trained. In the second eight-weeks period, Bloomsburg, along with eight other institutions of higher learning in the United States, was so honored as to do Navy pilot training exclusively, and sixty Naval Aviation Cadets are taking the course at the present time. Five of these institutions, including Bloomsburg, were asked to do Naval Flight Instructor preparation. These men, commissioned Lieutenants (j.g.) and Ensigns in the United States Navy, will be on the campus for twenty-four weeks and then begin instructing for the Navy at Pensacola, Florida, and Corpus Christi, Texas.

PRE-FLIGHT AERONAUTICS FOR HIGH SCHOOL TEACHERS

The College is planning to institute a four-year course leading to certification of teachers in Aviation to instruct in the high schools of Pennsylvania in the field of Pre-flight Aeronautics. Twenty teachers-in-service began this course during the past summer and will continue their courses toward certification.

Growing out of an active participation in the Aviation Program for college students and Army and Navy Flyers, which has offered an opportunity for over 300 young men and women to become commercial pilots, teachers of pre-flight aeronautics, and combat pilots in the Army and Navy of the United States, the State Teachers College at Bloomsburg is planning to offer a specialized field in Aviation to pre-service secondary teachers. The proposal to make Aviation a field of concentration along with Mathematics, Science, English, Geography, and Social Studies, is now being reviewed by the Board of Presidents of the State Teachers Colleges.

As approved by the State Superintendent of Public Instruction, the field of Aviation will include:

DESCRIPTION OF COURSES FOR AERONAUTICS TEACHERS

		Sem., Hrs.	
Elective Arrangement in the Field of Aeronautics (Minimum in first field) -----		24	
		Hours Clock Sem.	Hours Clock Sem.
I. Required -----	18	II. Electives ----- 6	
Aviation Mathematics -----	3	Climatology -----	3
Aircraft Communications and Regulations -----	3	Aircraft Engines -----	3
General Service and Structure of Aircraft (including Gliders and Model Airplanes) -----	6	History and Identification of Aircraft	3
Aerial Navigation -----	3	Commercial Air Transportation -----	3
Meteorology for Aviators -----	3	*Flight Experience (evidenced by Private Pilots License) or equivalent -----	3
Aerodynamics and Theory of Flight	3		

* Required to make College Certificates permanent.

The Bloomsburg State Teachers College will continue a course in Pre-Flight Aeronautics for secondary school teachers which was begun last year. On June 1, 1941, a letter was sent to Pennsylvania School Officials, by the Bloomsburg State Teachers College, announcing a class for teachers of Aeronautics. Later the Civilian Pilot Training Program developed plans for teachers to receive instruction along with Aviators being trained for the Army and Navy.

Bloomsburg State Teachers College organized the first class in the United States devoted exclusively to the instruction of teachers of Pre-Flight Aeronautics. The enrollment was limited to twenty. College instructors certificated by the National Government carried the first group through to a successful conclusion. A large number of these teachers returned to their high schools to begin teaching Pre-Flight Aeronautics in September, 1942. Others are now teaching Aviation at leading Universities and occupy positions on the staff of the Civilian Aeronautics Administration.

During the 1943 Summer Sessions, the college will continue classes for teachers of Pre-Flight Aeronautics on both the Primary and Advanced levels. These courses may be used as electives for the fields of Science, Geography, or Mathematics to meet the requirements for the Degree of Bachelor of Science in Education, and the College Provisional (or Permanent) Certificate.

Since the enrollment is limited, persons interested in Pre-Flight Aeronautics should make immediate reservations by addressing Dr. Thomas P. North, Dean of Instruction, State Teachers College, Bloomsburg, Pennsylvania.

DESCRIPTION OF PRE-FLIGHT AVIATION COURSES FOR ALL TEACHERS

Primary or Elementary Ground School Course **4 Sem. Hrs.**

Will include: Civil Air Regulations; Elementary Meteorology; Air Navigation; General Service of Aircraft Instruments and Parachutes; Engines and Power Plants; and Theory of Flight.

Secondary or Advanced Ground School Course **6 Sem. Hrs.**

Will include: Aerodynamics; Advanced Meteorology; and Navigation; with some attention to History of Aviation; Aircraft Engines; Use of Airway Communications and Lighting Aids; Theory of Flight; Flight Techniques; and Psychology of Flight Instruction.

These courses are to be paid for at the usual rate of \$6.00 per credit hour and may be applied in the fields of Mathematics, Science, and Geography for purposes of meeting graduation and certification requirements. They may also be applied in other fields with the preapproval of the Dean of Instruction.

AREAS OF CONCENTRATION (ELECTIVE FIELDS) SECONDARY CURRICULUM

Elective Arrangement in the Field of English (Minimum as first field) ----- 24 Sem. Hrs.

Hours		Hours	
Clock	Sem.	Clock	Sem.
I. Required ----- 18		II. Electives ----- 6	
English I and II ----- 7	6	Contemporary Poetry ----- 2	2
Literature I and II ----- 6	6	Essay ----- 3	3
English Philology ----- 3	3	Journalism ----- 2	2
Advanced Composition ----- 3	3	Modern Drama ----- 2	2
		Nineteenth Century Novel ----- 3	3
		Modern Novel ----- 3	3
		Pre-Shakespearean Literature ----- 2	2
		Romantic Period ----- 3	3
		Shakespeare ----- 3	3
		Short Story ----- 3	3
		Victorian Prose and Poetry ----- 3	3
		World Literature ----- 3	3

Elective Arrangement in the Field of French (Minimum as first field) ----- 24

Hours		Hours	
Clock	Sem.	Clock	Sem.
I. Required ----- 18		II. Electives ----- 9	
Intermediate French III & IV -- 6	6	French Novel ----- 3	3
Seventeenth Century French Lit- erature ----- 3	3	French Drama ----- 3	3
Romantic Movement in French Literature ----- 3	3	Advanced Composition and Teaching of French ----- 3	3
Realistic Movement in French Literature ----- 3	3		
Outline Course in French Lit- erature ----- 3	3		

Elective Arrangement in the Field of Latin (Minimum as first field) ----- 24

Hours		Hours	
Clock	Sem.	Clock	Sem.
I. Required ----- 18		II. Electives ----- 6	
Virgil and Ovid ----- 3	3	Roman Letters ----- 3	3
Livy ----- 3	3	Martial ----- 3	3
Cicero and Tacitus ----- 3	3		
Horace ----- 3	3		
Plautus and Terence ----- 3	3		
Roman Civilization ----- 3	3		

Elective Arrangement in the Field of Spanish (Minimum as first field) ----- 24

Hours		Hours	
Clock	Sem.	Clock	Sem.
Elementary Spanish I & II --- 6		Survey Course in Spanish Lit- erature ----- 3	
Intermediate Spanish III & IV - 6	6	Survey Course in Spanish-Amer- ican Literature ----- 3	3
Commercial Spanish ----- 3	3	Advanced Composition and Con- versation ----- 3	3

Elective Arrangement in the Field of Biology ----- 24

Hours		Hours	
Clock	Sem.	Clock	Sem.
I. *Required ----- 12		II. Electives ----- 12	
General Botany I (Flowering Plants) ----- 5	3	Anatomy (Comparative) ----- 5	3
General Botany II (Non-flowering Plants) ----- 5	3	Bacteriology ----- 5	3
General Zoology I (Invertebrates) 5	3	Ecology ----- 5	3
General Zoology II (Vertebrates) 5	3	Entomology ----- 5	3
		Embryology ----- 5	3
		Field Botany ----- 5	3
		Field Zoology ----- 5	3
		Forestry ----- 5	3
		Heredity ----- 5	3
		Histology ----- 5	3
		Ornithology ----- 5	3
		Parasitology ----- 5	3
		Physiology ----- 5	3
		Plant Propagation ----- 5	3

* In addition to Inorganic Chemistry I and II.

Elective Arrangement in the Field of Chemistry ----- 24

I. *Required	Hours		II. Electives	Hours	
	Clock	Sem.		Clock	Sem.
Inorganic Chemistry I	6	4	Organic Chemistry II	5	3
Inorganic Chemistry II	6	4	Industrial Chemistry	3	3
Qualitative Analysis	7	3	Physical Chemistry	5	3
Quantitative Analysis	7	3	Biological Chemistry	5	3
Organic Chemistry	6	4	Chemistry of Food and Nutrition	5	3
		18	Photography	5	3

* In addition to Physics 1 and II, Botany I, and Zoology I

Elective Arrangement in the Field of Physics ----- 24

I. *Required	Hours		II. Electives	Hours	
	Clock	Sem.		Clock	Sem.
Physics I and II	12	8	Heat	5	3
Mechanics	5	3	Optics	5	3
Electricity and Magnetism	6	4	Sound	5	3
		15	Radio Communications	5	3
			Physical Measurements	5	3
			Astronomy	5	3
			Photography	5	3
			Modern Physics	5	3
			Aeronautics	6	4

* In addition to Chemistry I and II, Botany I, and Zoology I.

Note—Students specializing in Physics must demonstrate competency in mathematics. Such students are advised to elect mathematics as a second field.

Elective Arrangement in General Science.

I. Thirty (30) semester hours in scientific fields shall be required for a minimum for specialization in the field of General Science and shall include courses in Chemistry, Physics, Botany, Zoology, Earth Science, and Mathematics.

Elective Arrangement in the Field of Mathematics (Minimum as first field) ----- Sem. Hrs. 24

I. Required	Hours		II. Electives	Hours	
	Clock	Sem.		Clock	Sem.
College Algebra	3	3	Applied Mathematics	3	3
College Trigonometry	3	3	College Algebra II	3	3
Analytic Geometry	3	3	History of Mathematics	3	3
Calculus I	3	3	Synthetic Geometry	3	3
Calculus II	3	3	Spherical Trigonometry and Navigation	3	3
Statistics	3	3			
		18			6

Elective Arrangement in the Field of Science (Minimum as first field) ----- 24

I. Required	Hours		II. Electives	Hours	
	Clock	Sem.		Clock	Sem.
Biological Science I and II (Botany, Zoology)	8	6	Descriptive Astronomy	2	1
Physical Science I and II (Chemistry, Physics)	8	6	Physical Chemistry	4	3
Advanced Physics	4	3	Organic Chemistry	4	3
Qualitative Analysis	4	3	Quantitative Chemistry	4	3
Advanced Biology	4	3	Mechanics	4	3
		21	Magnetism and Electricity	4	3
			Hydrostatics	4	3
			Physiology	4	3
			Comparative Anatomy	4	3
			Histology	4	3
			Physiography	3	3
			Geology	4	3
			Genetics	3	3

Elective Arrangement in the Field of Social Studies (Minimum as first field) ----- 24

	Hours			Hours	
	Clock	Sem.		Clock	Sem.
I. Required -----			II. Electives -----		5
History of Civilization -----	4	4	Comparative Government -----	3	3
Economics -----	3	3	Early European History -----	3	3
American Government -----	3	3	European History since World		
Sociology -----	3	3	War -----	3	3
Modern European History -----	3	3	History of England -----	3	3
Social and Industrial History of			History of Ethics -----	3	3
the U. S. -----	3	3	History of Far East -----	2	2
			History of Pennsylvania -----	3	3
			Industrial Relations -----	3	3
			Latin American History -----	3	3
			Evolution of Social Institutions	3	3
			Renaissance and Reformation --	2	2
			U. S. History II -----	3	3

Elective Arrangement in the Field of Geography (Minimum as first field) ----- 24

	Hours			Hours	
	Clock	Sem.		Clock	Sem.
I. Required -----			II. Electives -----		6
Principles of Geography -----	3	3	Climatology and Meteorology --	3	3
Economic Geography -----	3	3	Commercial and Industrial Geog-		
Geography of U. S. and Canada	3	3	raphy -----	3	3
Geography of Latin America --	3	3	Conservation of Natural Re-		
Geography of Europe -----	3	3	sources -----	3	3
Geography of Pacific Realm ---	3	3	Field Courses (to be approved)	3	3
			Physiography -----	3	3
			Trade and Transportation -----	3	3

COURSES OF INSTRUCTION ELEMENTARY AND SECONDARY CURRICULUMS

EDUCATION

Adolescent Psychology 2 Sem. Hrs.

This course deals with adjustment and development between the ages of eleven and twenty. It is designed to establish a reliable basis for guidance and individualizing of education. Discussions deal with problems of interest, personality, learning, and social life of adolescents.

Child Adjustment 3 Sem Hrs.

This is a course in mental hygiene applied to the problems of the elementary school child. Problems of adjustment relate to school, home, and community. Plans for child accounting are studied. Prerequisites: General and Educational Psychology.

Child Psychology 3 Sem. Hrs.

This course presents a general outline and application to some vital problems of child growth, learning, and adjustments. It is designed to establish a reliable basis for individualizing education. Problems of child play, motives, thinking, and social development are studied.

Curriculum Materials: Selection and Adaptation 3 Sem. Hrs.

This course deals with sources of material, classification of materials, and adaptation for class use. These materials include: printed materials in books, pamphlets, and magazines; visual materials; object, and personal contributions. The emphasis is not on quantity but on organization of teaching units and adaptation to actual teaching situations.

Diagnosis and Remedial Instruction in Reading 3 Sem. Hrs.

This course is designed to familiarize students with techniques of diagnosing reading difficulties, and of determining appropriate remedial treatment. Opportunity is given for observing and participating in procedures in the reading clinic.

Early Childhood Education 3 Sem. Hrs.

Includes a study of children's activities, ages two through eight. The development of children mentally, physically, socially and emotionally is stressed. Materials and activities used in this development are studied.

Educational Measurements 2 Sem. Hrs.

A consideration of the simpler statistical measures with particular emphasis on their application to classroom work is given. The principles underlying the construction of valid, reliable objective tests are examined, and practice is given in the making of classroom tests in the various fields of subject matter. A study is made of representative standardized tests. Some attention is given to the vocabulary of measurements.

Educational Psychology**3 Sem. Hrs.**

This course provides experience in observation and discussion of the principles involved in the learning process. Problems deal with motivation of learning, learning activities, intelligence testing, pupil control, case studies, and individualized instruction. There are class experiments to clarify and to apply to each of the problems of study.

Ethics**3 Sem. Hrs.**

A consideration of not only the historical development of Ethics but of the various phases of human behavior for the purpose of assisting prospective teachers to formulate higher standards of conduct. The professional ethics of teachers will be stressed.

Evolution of the American Public Schools**3 Sem. Hrs.**

The purpose of this course is to give the student an intelligent understanding of the evolution of elementary and secondary education in America from the Colonial period to the present. The relation of industrial and social changes to educational development is noted. Emphasis is placed on the development of education in Pennsylvania.

General Psychology**3 Sem. Hrs.**

This course considers the human body as a responding mechanism, subject to laws of cause and effect. It is designed to help students in understanding fundamental principles, and a vocabulary essential to further study of psychology. Experiments will be used for clarifying principles and for familiarizing students with psychological methods. Applications of psychological principles are made to human behavior in relation to social institutions, vocations, and everyday problems.

Guidance**2 Sem. Hrs.**

This course shows many problems of consulting and guidance work in the junior and senior high schools. Educational, social, and vocational guidance are emphasized. Some attention is paid to the meaning, scope, and method involved in the guidance movement.

Mental Hygiene**3 Sem. Hrs.**

This course emphasizes the need of a healthy mental state and a discussion of the processes necessary for the development of such a state in the individual. Personalities are analyzed and the different types of maladjustment are studied.

Parent Education**3 Sem. Hrs.**

This course aims to help teachers in their contacts with parents and community. This is practice in preparing talks and conducting conferences on topics as: School Law, The Changing Curriculum, Child Adjustment, Community Play Activity. Actual practice is given in guiding parents in their study of educational literature, and of physical, social, and mental needs of school children.

Philosophy of Education**2 Sem. Hrs.**

The place of education in various well-known philosophies, the content of various educational philosophies, and the relation of former college courses to these are studied. Each student is expected to formulate his own creed and belief of what constitutes modern education.

Place and Purpose of Education in the Social Order 3 Sem. Hrs.

This course deals primarily with the public school as a social institution. The major problems are: (1) how the school has come to hold a place of influence in society; (2) to examine the forces and agencies which determine the progress and direction of the school program; (3) to evaluate the place of the teacher in modern society; (4) to show the value of educational agencies outside of the public schools.

Problems of Secondary Education 2 Sem. Hrs.

This course deals with the development, organization, and problems of secondary education. It emphasizes the special functions of the junior high school. Much time is given to admission requirements, ability grouping, program of studies, departmentalization, plans of promotion.

School Law 1 Sem. Hr.

This course presents the most fundamental State and National laws which are directly applicable to our public school system. The practical rather than the technical is emphasized.

Teaching of Reading 3 Sem. Hrs.

To acquaint students with reading objectives, activities, and material for the elementary grades, and to lead them to realize the place and function of reading in a school program designed to meet present social conditions are the main purposes of this course. It affords an opportunity to meet the individual needs of each student.

Visual Education 1 Sem. Hr.

This is a course which considers the psychological principles underlying "Visual or Other Sensory Aids" and also studies the collecting and assembling of suitable teaching material.

Clinical Practice 3 Sem. Hrs.

It is the purpose of this course to provide practical experience in clinical procedure. Most of the experience is gained in the psychological division of the educational clinic. The work of the course consists, in the main, of the making of case studies, the administration of various tests, the use of clinical instruments, and the interpretation, recording, and reporting of findings. Intelligence tests, verbal and non-verbal, personality and interest inventories, and tests of special abilities and disabilities are used. The student also gains some acquaintance with the work of the divisions of speech and reading of the educational clinic.

ENGLISH**English I and II** 6 Sem. Hrs.

The fundamentals underlying both spoken and written English and their application in paragraph writing are stressed in this course. Attention is given to the individual needs of the student in Freshman English. Ten lessons in the use of the library are supplementary to English I.

Fundamentals of Speech 3 Sem. Hrs.

This course is planned to acquaint the student with the organs of Speech and their action in the production of Speech sounds. Spe-

cial emphasis is laid on the correction of phonetic speech disorders and the cultivation of a clear, pleasing, and well modulated voice. Practical application of techniques is made in the oral interpretation of prose and poetry, in brief talks and reports, and other speech activities.

Literature I and II

6 Sem. Hrs.

The first semester presents a survey of English literature which gives the student the background necessary for the enrichment of his ability to appreciate literature. In the second semester a survey of American Literature compares the artistic standards and lines of thought of the present with those of the past. This includes Pennsylvania's contribution. The aim is to give a fundamental knowledge and to develop appreciation in this field.

Advanced Composition

3 Sem. Hrs.

Current periodical literature is used as a source of contact with contemporary thought and with the methods and art of journalistic and literary writing. Such literary forms as are not touched upon in other courses in composition are studied here, and some writing is attempted in these forms according to the interest and talent of the individual writer.

English Philology

3 Sem. Hrs.

This course gives a knowledge of and creates an interest in current word usage through a careful study of past and present trends in language development.

Children's Literature

3 Sem. Hrs.

To present standards for selecting literature for children, to give suggestions for teaching literature to children, to acquaint the student with new material in this field, to enable him to evaluate this material in the light of established standards and contemporary trends are the aims of this course.

Contemporary Poetry

2 Sem. Hrs.

This course is designed to furnish a pleasant and profitable introduction to recent poetic movements through lectures, class discussions, and reading in the works of the poets.

Journalism

3 Sem. Hrs.

This course gives the prospective adviser of a school publication theoretical knowledge and practical experience in production and sponsorship. It provides practical experience on college publications within the limits of the individual student's interest and ability. Limited attention is also given to contacts between commercial journalism and the teacher.

Modern Drama

2 Sem. Hrs.

This course is a study of modern drama beginning with the plays of Ibsen. It stresses the art and thought of the representative writers for the stage: British, Continental, and American. Special emphasis is given to Ibsen, Shaw, and O'Neil.

Modern Novel**3 Sem. Hrs.**

How the reading of modern novels may combine entertainment and a serious study of present-day living is the main consideration of this course. Attention is also given to the current novel as a developing art form.

Nineteenth Century Novel**3 Sem. Hrs.**

The humor and moral idealism represented in the several basic currents of nineteenth century fiction are considered as sources of entertainment and as a revealing perspective to contemporary literature. American, English, and European novels are read. The course is complete in itself and also provides a useful background to the course in the modern novel.

Pre-Shakespearean Literature**2 Sem. Hrs.**

Among the works studied in this course are the following: Beowulf, the Prologue to the Canterbury Tales along with several of the Tales, selections from Morte d'Arthur, Utopia, selected passages from the Faery Queen, and representative early English dramas.

Romantic Literature**3 Sem. Hrs.**

This course centers around the works of the great writers of the Romantic period: Burns, Wordsworth, Coleridge, Byron, Shelly, Keats, Scott, and Austen. Study reflects the life and thought of this important period.

Shakespeare**3 Sem. Hrs.**

An appreciative knowledge of Shakespeare is developed through the intensive study of some of his greatest plays and the outside reading of others. The number of plays included is determined by the class and the time.

Short Story**3 Sem. Hrs.**

This is an introduction to the French, Russian, English, and American short story, with particular emphasis on the American. Representative stories are studied in class, and others read outside. Attention is given to evaluating the merit of stories and compiling appropriate lists for teaching. Those interested in story writing are permitted to substitute an original story for part of the supplementary reading.

Teaching of English and Handwriting**3 Sem. Hrs.**

Emphasis is placed on the content of courses in English as taught in the Elementary grades, on methods of teaching oral and written composition, principles of grammar, poetry, and literature. The pedagogical equipment essential to a teacher of handwriting together with demonstration lessons to show its application completes the work.

The Essay**3 Sem. Hrs.**

In this course the various sources of the essay are investigated and the lines of development carefully noted. Illustrative examples from the literature of the most important nations are studied. These examples include the following types of essays: personal, descriptive, character sketch, critical, editorial and reflective. Special attention is given to the modern American essay.

Victorian Prose and Poetry 3 Sem. Hrs.

Through a somewhat intensive study of representative works of Ruskin, Carlyle, Tennyson, and Browning, this course gives the student a comprehensive knowledge of the life and various important movements of the age as these find expression in its literature.

World Literature 3 Sem. Hrs.

The material consists of selections from the literatures of Continental Europe and the Orient, chronologically presented in English translation. The purpose is to examine the author's thoughts rather than his style, and to trace consistent traditions in literature and life from ancient times to the present. Basic problems in the history of literary criticism and appreciation are also outlined.

FRENCH**Intermediate French III and IV** 6 Sem. Hrs.

The course gives a thorough review of French syntax; vocabulary building; phonetics; translation; reading for comprehension without translation.

Seventeenth Century French Literature 3 Sem. Hrs.

A study of the drama and of various types of literature of this period is presented, readings from Corneille, Racine, Moliere, and La-Fontaine are used.

Romantic Movement in French Literature 3 Sem. Hrs.

French Literature of the first half of the nineteenth century; reading from Chateaubriand, Lamartine, Hugo, Musset, and Balzac.

Realistic Movement in French Literature 3 Sem. Hrs.

French Literature after 1850: A study of the literary movements in France after the decline of Romanticism. Selected works from outstanding dramatists and novelists are used as texts.

Outline Course in French Literature 3 Sem. Hrs.

This is a general course in French Literature from its beginning to the present time. Lectures and assigned readings are given.

French Novel 3 Sem. Hrs.

This survey course traces the development of the French novel; readings from Lesage, Marivaux, Mlle. deScudery, Rosseau, Vigny, Voltaire, Balzac, Zola, and Loti are used.

French Drama 3 Sem. Hrs.

A study of the history of French dramatic literature; reading from Beaumarchais, Marivaux, Corneille, Racine, and Hugo are included in the course.

Advanced Composition and Teaching of French 3 Sem. Hrs.

A review of syntax with practice in composition; a survey of the general principles of phonetics and methods of teaching French are offered in this course.

LATIN

- Virgil and Ovid** 3 Sem. Hrs.
This course based on readings from the Aeneid and Metamorphoses, includes a review of Latin case structure and syntax. Emphasis is placed on developing correct habits of reading and translation.
- Livy** 3 Sem. Hrs.
A study of the historical problems connected with this period of Roman History is made. Books I, XXI, and XXII are used in texts.
- Cicero and Tacitus** 3 Sem. Hrs.
DeSenectute and DeAmicita, together with selections from Agricola, are studied.
- Horace** 3 Sem. Hrs.
This course is designed to acquaint the students with the principles underlying Latin versification.
- Plautus and Terence** 3 Sem. Hrs.
The Captives by Plautus and Phormio by Terence are used as a basis for the study of Latin comedy.
- Roman Civilization** 3 Sem. Hrs.
The family, organization of society, marriage, dress, education, amusements and politics of the Romans are studied.
- Roman Letters** 3 Sem. Hrs.
Selections from the letters of Cicero and Pliny the Younger.
- Martial** 3 Sem. Hrs.
Selections from Martial's Epigrams.

SPANISH

- Elementary Spanish I & II** 6 Sem. Hrs.
For students who have had no Spanish. Pronunciation, grammar, dictation, and graded readings.
- Intermediate Spanish III & IV** 6 Sem. Hrs.
Prose Composition, readings, grammar, and conversation.
- Commercial Spanish** 3 Sem. Hrs.
Practice in Spanish commercial correspondence, with assignments in background reading.
- Survey Course in Spanish Literature** 3 Sem. Hrs.
A study of literary movements in Spain, with readings from representative writers.
- Survey Course in Spanish-American Literature** 3 Sem. Hrs.
A study of literary movements in Spanish America, with readings from representative authors.

Advanced Composition and Conversation 3 Sem. Hrs.

Oral and written composition; discussion in Spanish of assigned topics.

GEOGRAPHY

Climatology and Meteorology 3 Sem. Hrs.

This course is designed to develop an appreciation of our atmospheric environment and to emphasize climatic influence on man's activities. Elements of weather and climate are observed and studied.

Commercial and Industrial Geography 3 Sem. Hrs.

This is an interpretative survey of the commerce and industry of the United States in relation to other regions of the world. Geographic conditions affecting industry, production, and commerce of the world; developments and relations of commercial areas to location and availability of resources and to markets are the chief aims of the course.

Conservation of Natural Resources 3 Sem. Hrs.

This course gives the student a broader concept of our natural resources. Major governmental projects, our minerals, water resources, plant resources, soil, and numerous other resources are studied.

Economic Geography 3 Sem. Hrs.

This is a general course dealing with the economic commodities of various countries of the world from a regional viewpoint. An analysis of the economic principles and geographic factors of our modern environment is given careful consideration.

Geography of Europe 3 Sem. Hrs.

A careful study is made of the various countries of Europe. The physical-political approach is used to understand the present economic factors which make the Europe of today.

Geography of Latin America 3 Sem. Hrs.

A regional study is made of South America, Mexico, and Caribbean Lands. Special emphasis is given to regional differences and similarities. Latin American relations with other nations, especially the United States, are stressed.

Geography of the Pacific Realm 3 Sem. Hrs.

Special emphasis is given to a description and an interpretation of the major regions of Asia, Africa, and Australia. Relationships between regions and between the Orient and the Western world areas are stressed.

Geography of the United States and Canada 3 Sem. Hrs.

This is a regional study of the two countries. Special emphasis is given to the physical and economic conditions. Current issues are discussed.

Physiography**3 Sem. Hrs.**

This is a systematic study of land forms, their changes, and their influences on man. The content of this course is basic for the study of regional courses in geography.

Principles of Geography**3 Sem. Hrs.**

This course is organized to give a foundation for further geographic study. The units of earth relations, weather, climate, maps, land forms, inland bodies of water, oceans, soils, and vegetation are treated as bases for interpretation of earth regions.

Trade and Transportation**3 Sem. Hrs.**

This course is designed to give a better understanding of the relationships which exist between the major countries of the world relative to our trade and transportation. The course analyzes and compares chief channels of trade, factors involved and principles underlying commerce between nations, means of transportation, and commodities entering into world trade.

MUSIC**Music I****2 Sem. Hrs.**

Planned to prepare the regular grade teacher to teach her own music in the first three grades under supervision. It includes the study of suitable rote songs, the acquaintance with reading material, and oral and written ear training. The best practical methods known are discussed and used in presenting the material.

Music II**2 Sem. Hrs.**

A continuation of Music I, progressing into the more difficult material. A singing of two- and three-part music is one of the accomplishments of this course. It is especially designed to prepare and assist the regular grade teacher to teach her own music under supervision in grades IV, V, and VI.

Appreciation of Music**2 Sem. Hrs.**

An opportunity is given to listen to the best music in its different forms. Attention is given to the development of music through the ages along with interesting information concerning the greatest composers and artists. Ways and means of developing appreciation are studied.

HEALTH AND PHYSICAL EDUCATION**Health Education I and II****4 Sem. Hrs.**

This course continues throughout the Freshman year. One period per week is given to Personal Hygiene which includes health habits and development of the various systems of the body. Three periods per week are given to Physical Education in which the following activities are taught; basketball, hockey, fencing, soccer, touch football, apparatus, folk dancing, relays, tumbling, volley ball, archery, mush ball, tennis, boxing, and wrestling.

Teaching of Health**2 Sem. Hrs.**

This course is devoted to the health of the elementary school child, emphasizing his growth, development, and education in whole-

some health ideals, attitudes, and habits. Methods of presenting the material given in the State Course of Study are stressed.

ART

Art I 2 Sem. Hrs.

The purpose of this course is to acquaint students with various media; and to give practice in drawing, lettering, poster making, creative designing, and the use of color.

Art II 2 Sem. Hrs.

This course is designed to provide actual experience in the selection and development of problems suitable for elementary art education; paper and cardboard construction, modeling, and carving. Emphasis is placed upon the integration of art with other elementary school subjects.

Art Appreciation 2 Sem. Hrs.

This course aims to develop sound aesthetic judgment; appreciation of good design in clothes and in home decoration. Emphasis is placed on the elements and principles of art as an aid to the student in recognizing and enjoying works of art.

MATHEMATICS

Analytic Geometry 3 Sem. Hrs.

This course stresses the development of meaning in the point, the line, and the plane; coordination as a means of picturing a mathematical function, a visual understanding of the various conics, ability to develop the formulas that usually go with the first course of analytics and their application to the same.

Applied Mathematics 3 Sem. Hrs.

In this course, the need and place of mathematics in science and industry is stressed. This aim is accomplished by a study of the practical applications of graphical methods, trigonometry, algebra, and analytic geometry. A summarization of elementary mathematics is made and the way opened for later specialization.

Curriculum in Arithmetic 2 Sem. Hrs.

To acquaint the teacher with the history, philosophy, sociology, and psychology underlying the pedagogy of number learning is the aim of this course. Methods of teaching, number understanding, and processes are developed in harmony with the most dependable experimentation in this field.

Calculus I and II 6 Sem. Hrs.

This course develops the idea of the social and scientific values of calculus, the idea of infinitesimal changes in time and space and their graphical representation. It also develops the necessary mathematical skills to compute these changes. Differentiation and integration as correlative processes of the same type of thought is carried throughout. Differential equations are introduced.

College Algebra I 3 Sem. Hrs.

This course extends the skills of secondary algebra to cover the ordinary phases of college algebra. The ideas of mathematical induction, development of ability to think in terms of abstract symbols, and seeing algebra as an integrating factor in all mathematics are included.

College Algebra II 3 Sem. Hrs.

The aims of this course are the same as those of Algebra I, the difference being only a matter of extent of the skills achieved and their application to the resulting broader fields.

College Trigonometry 3 Sem. Hrs.

The stress in this course is on the application of knowledge of ratios through similarities making functions meaningful, the uses of algebra in the field of trigonometry, formula development and application, triangular solutions in all their phases, perfection of abilities in exponentials and logarithms and their application to problems.

History of Mathematics 3 Sem. Hrs.

A knowledge of the struggles through which mankind has gone in his development of mathematical thought and skills is acquired. Treatment is also given to the necessity of mathematical thought in social development, mathematics as a social science, the biographical and problematical phases of mathematical growth, appreciation of relationship of mathematics to all phases of science, industry, art, and culture.

Statistics 3 Sem. Hrs.

This course develops the ability to read with understanding tables of statistical matter, interpretation and creation of tables and graphs of statistical data, computation and interpretation of central tendencies and deviations, the application of the ordinary skills of statistics in the fields of physical and social science, psychology, and education.

Synthetic Geometry 3 Sem. Hrs.

This course coordinates and extends the skills in geometry, presents some of the world's problems in geometry, develops ability to make constructions of a higher order than that done in other fields of mathematics. The method of proof is extended to cover all those usually employed on mathematics.

Teaching of Secondary School Mathematics 3 Sem. Hrs.

This is an over-view of mathematics in the light of the needs of secondary schools, curriculum tendencies and needs, and unit construction. Coordination of mathematics, methods, mathematical experimentation, diagnosis, and remedial instructions are treated.

SCIENCE**Astronomy** 1 Sem. Hr.

Descriptive astronomy is given with the mathematical phases of the subject generally omitted. The various elements of the solar system, their physical characteristics and motions, the interesting phenomena of our galactic system, and those of extra-galactic space, together with study of constellations are the main considerations.

Bacteriology**3 Sem. Hrs.**

This course presents the representative forms. The importance of bacteria in general from the standpoint of health and disease, economic processes, and importance are stressed. In the main non-pathogenic forms are used for the laboratory work.

Biological Science I and II**6 Sem. Hrs.**

The fundamental principles and theories of general biology are presented in this course. It deals with the function of the cell, adjustment of the living organism to environment, the nervous system, and endocrine secretions. A seasonal survey of plant and animal life through a study of local forms is given. Heredity and evolution are included. Students specializing in biological science may substitute Botany and Zoology for these courses.

Botany I and II**6 Sem. Hrs.**

A study is made of plant biology with laboratory based upon the structure and function of the plant body parts of the angiosperms, the root, stem, leaf, bud, flower, seed, together with interesting variations of these. The evolution and economic importance of these plants are considered. The thallophytes, bryophytes, pteridophytes, and gymnosperms of the spermatophytes are the sources from which the subject material is drawn. The variations in structure and physiology and their meaning together with the economic importance and evolution of these plants are stressed.

Chemistry I and II (Inorganic)**8 Sem. Hrs.**

The lectures and demonstrations deal with fundamental theories and laws of chemistry. Common non-metallic elements and their compounds are included. The laboratory experiments are designed to acquaint the student with the properties of the principal elements and their compounds. It includes the study of metals and their compounds and an introduction to carbon compounds.

Qualitative Analysis**3 Sem. Hrs.**

This general course in qualitative analysis deals with the systematic separation and identification of the more common metals and acids. It will include a study of the application of the theories of General Chemistry, ionization theory, mass action law, and the principles of chemical equilibrium to qualitative analysis. Prerequisite: Inorganic Chemistry.

Quantitative Analysis**3 Sem. Hrs.**

This is a study of the fundamental principles of gravimetric and volumetric analysis with laboratory practice in the preparing and standardizing of solutions, and the analysis of a variety of substances by the volumetric and gravimetric methods, including the part played by the indicators. Prerequisites: Inorganic and Qualitative Chemistry.

Comparative Anatomy**3 Sem. Hrs.**

This course is based on lectures and laboratory work. The forms studied in the laboratory dissection are selected from the vertebrates; they are the amphioxus, dogfish, necturus, and mammal.

Curriculum in Elementary Science**3 Sem. Hrs.**

A survey is made of the elementary science programs in representative schools of the United States. A thorough study is made of the

Pennsylvania State Course of Study. The principles of selection as well as the preparation and use of demonstration materials in teaching elementary science are studied. The organization and supervision of Audubon clubs, flower clubs, and other nature clubs are presented.

Ecology 3 Sem. Hrs.

A study is made of the plant and animal associations, distribution and environmental factors, population equilibrium, habitat types, and methods of conservation.

Embryology 3 Sem. Hrs.

This course, based upon the frog, chick, and pig, demonstrates the principles of vertebrate embryology. The work includes laboratory studies of the histology of adult reproductive organs, development and maturation of sex cells, segmentation, development of the germ layers and organs, and the formation of the external form of the body.

Entomology 3 Sem. Hrs.

A general study is made of insects, including structure, physiology, economic importance, classification, and relationships. Each student is required to participate in field trips and complete a project including the collection and special report on some group of insects.

Genetics 3 Sem. Hrs.

This course is a study of the mechanism and principles governing heredity. Emphasis will be placed upon the inheritance of human mental and physical traits. No laboratory work.

Geology 3 Sem. Hrs.

The subject matter of this course with field work includes the recognition of the various land and water forms, and the elements of these; how these came to be, the forces and conditions responsible for them, their probable fate in the future, together with their effects upon the economy of the present. The historical phases of the subject are fully stressed.

Heat 3 Sem. Hrs.

This is a course that embraces the measurements of heat, expansion, heat engines, the relation of heat and work, and other related topics.

Histology 3 Sem. Hrs.

A course in which the various tissues and organs of the human body are studied from the viewpoint of their structure. Enough of function is included to give added meaning to the work. In all instances where the structure or function of the human tissue can better be understood from other animal tissues, such use is made. The technique of preparing the materials used is given special attention, the student in the main preparing his own slides. The work throughout is based on laboratory studies.

Hydrostatics 3 Sem. Hrs.

A study is made of the fundamental laws of fluids at rest, also of the machines based on these laws.

Industrial Chemistry 3 Sem. Hrs.

This course is a study of fundamental principles of chemistry as used in selected industries. The operating efficiency, chemical manufacture, equipment used, methods of attacking new problems, and organization of reports are studied. Each student will select a special problem from some one industry. Prerequisite: Physical Chemistry.

Magnetism and Electricity 4 Sem. Hrs.

A study is made of magnetism, direct and alternating current, and the elementary theory of electron tubes and their applications.

Mechanics 3 Sem. Hrs.

This is a course in general mechanics treating in more detail the subject as presented in Physics I.

Modern Physics 3 Sem. Hrs.

This is a study of the recent developments in physics with emphasis on X-rays and crystal structure, models of the atom, radioactivity, artificial transmutation, electron tubes, and the cosmic ray.

Organic Chemistry 4 Sem. Hrs.

This is a general introductory course in organic chemistry including a systematic study of the more important compounds of carbon, and their occurrence, laboratory preparation, reactions, relations, and uses. Prerequisite: Inorganic Chemistry.

Physical Chemistry 3 Sem. Hrs.

The subject matter of this course includes: gases, liquids, solids, chemical equilibrium, reaction velocities, solutions, catalysts, ionization, elements of thermo-chemistry, and the application of the phase rule. Prerequisites: Chemistry 1, 2, 3; Physics 1, 2, and Math. courses including Calculus.

Physical Science I and II 6 Sem. Hrs.

This is a survey presented from the standpoint of appreciation rather than the mastery of a group of facts. The aim is to make the student aware of the natural forces through the physical interpretation of everyday phenomena; and to show how the discoveries of science have changed our ways of living and thinking. The lecture-demonstration method is used. Material is largely selected from the fields of astronomy, physics, chemistry, and earth sciences. Students specializing in Physical Science may substitute Physics and Chemistry for these courses.

Physics I 4 Sem. Hrs.

This is an introductory course in mechanics, sound, and heat. Fundamental principles and their applications are developed through lecture, demonstration, and individual laboratory work.

Physics II 4 Sem. Hrs.

A continuation of Physics I, deals with the phenomena and principles of magnetism, electricity, and light. Lectures and recitations are supplemented by individual laboratory work.

Physiological Chemistry 3 Sem. Hrs.

This course deals with the fundamental principles involved in the physiological manifestations of life. A study of physico-chemical con-

stitutions of living matter, surface tension, diffusion, osmotic pressure, electrolysis and ionic concentration, and the significance of colloidal states is made. Prerequisites: Chemistry 1, 2, 3, Organic Chemistry, and Physics 1, 2.

Physiology

3 Sem. Hrs.

This is a course in human physiology based on laboratory work. Anatomy and histology are injected to make the work meaningful. In the course the following are stressed: studies of the supporting tissues, muscles, nervous system, the circulatory system, respiration, digestion, excretion, reproduction, and the voice.

Sound

3 Sem. Hrs.

This is a study of the nature and general phenomena of sound waves. The course includes a survey of the scientific basis of music and the operation of musical instruments.

Zoology I and II

6 Sem. Hrs.

This is a course based upon lecture and laboratory work. The forms studied are selected from the protozoans, the invertebrates and the vertebrates, the frog being the typical form selected from the latter. The study of these forms is based upon morphology, physiology, and development with the implications of variations of these. The ecology and evolution of these forms, together with their places in the economy of man are also included.

SOCIAL STUDIES

American Government

3 Sem. Hrs.

This course presents the basic principles of American government, the Constitution of the United States, the machinery through which it is implemented, and some of its major problems. In the study of Federal, State, and local governments attention is given to current problems.

Civic Education

3 Sem. Hrs.

This course gives the student a program for citizenship preparation in the elementary school which includes a basic outline for character education.

Economics

3 Sem. Hrs.

The fundamental principles of economics including production, distribution, consumption, and exchange are studied. Present day problems of public finance, business organization, monetary situations, insurance, banking, and labor difficulties are considered.

Early European History

3 Sem. Hrs.

This course deals with the political, social, and economic development of Europe to 1815. An attempt is made to emphasize those features which have a definite bearing on world affairs of today.

Modern European History

3 Sem. Hrs.

This course deals with the political, social, and economic development of Europe from 1815 with emphasis on the features which have

a definite bearing on world affairs today. It coordinates American and European developments.

History of Civilization

4 Sem. Hrs.

This course stresses the development of institutions liberalizing in character and valuable in present civilization. The political, economic, ethical, domestic, and religious types of culture are evaluated through an historical treatment. This course emphasizes large sweeping movements rather than individuals, nations, or dates.

History of England

3 Sem. Hrs.

This course gives a survey of England's development with especial reference to its contribution to American background and growth. The governmental, social, and cultural contributions are stressed.

History of Ethics

3 Sem. Hrs.

This course attempts to find and understand the basis for ethical standards. It traces their development and seeks to find historic proofs. It helps to form a sound philosophy of life with a firm historical background.

History of the Far East

2 Sem. Hrs.

This course is a survey of the movements of the Far East as they contribute to the history of the world. Attention is given to such movements as imperialism, open door, and cultural interchange. Causes for our misunderstanding of the Orient and their misunderstanding of the Occident are shown.

History of Latin America

3 Sem. Hrs.

A survey is made of Latin American history stressing the relationships with the United States and Europe. Their political, economic, and social problems of the past several centuries are studied.

History of Pennsylvania

3 Sem. Hrs.

This course traces the growth of the Commonwealth showing the racial traits and characteristics. The transportation, industrial, social, and cultural contribution to the nation is emphasized. Pennsylvania's part in national movements is stressed. An opportunity to study local history is given.

Comparative Government

3 Sem. Hrs.

This course stresses the principles and practical problems of government: studies the origin, development, form, and function of the State.

Evolution of Social Institutions

3 Sem. Hrs.

The sociological backgrounds in the origin and development of social institutions such as the family and church is studied. A large portion of the course is devoted to problems of the family.

Renaissance and Reformation

2 Sem. Hrs.

This course studies the transition from the Mediaeval to the Modern periods. The intellectual awakening as it appears in the different countries of Europe affecting all lines of interest forms the basis of consideration. An analysis of the religious organization and thought as it forms a background for our present-day thought is a major aim.

Principles of Sociology 3 Sem. Hrs.

This is a study of the various fundamental concepts: the origin, development, form, and function of human relationships.

Social and Industrial United States History 3 Sem. Hrs.

A study is made of the numerous social and economic forces which have been influential in developing American institutions. This background develops the ability of students to evaluate present-day problems. Consideration is given to some of the more recent agencies set up to solve our social and economic difficulties.

U. S. History I 3 Sem. Hrs.

This course shows the development of American life to the close of the Civil War. An evaluation of our American ideals and the growth of our particular type of organization in government is stressed. The broadening of American interests as they lead to world activities and relationships to present-day problems are included.

U. S. History II 3 Sem. Hrs.

A survey is given of the political history of the United States from 1865 to the present day. Special emphasis is placed upon present-day relationships and underlying principles.

SPEECH**Argumentation and Debate** 2 Sem. Hrs.

This is designed for a prospective debate coach, considering the selection of teams, gathering of material, types of arguments, evidence and refutation, audience analysis, technique of judging, and general platform problems.

Community Dramatics and Pageantry 2 Sem. Hrs.

Methods and procedures in planning projects for community use are considered in line with the philosophy and principles of the Adult Education program. This aids the teacher who is expected to participate in community programs as well as those conducted in the schools.

Costuming and Make-Up 2 Sem. Hrs.

The history of costume is traced from ancient to modern times—costume design, fabrics, effect of lights on color and material in costumes, and costume plates. Actual practice in make-up of straight and character types is properly supervised.

Creative Dramatics 2 Sem. Hrs.

A program of creative dramatics is traced from the kindergarten through the junior high school. The translation of subject matter into dramatic materials and the stimulation of creative handwork through making simple settings and costumes makes this a valuable course for elementary teachers.

Fundamentals of Speech 3 Sem. Hrs.

This course is planned to acquaint the student with the organs of Speech and their action in the production of Speech sounds. Special emphasis is laid on the correction of phonetic speech disorders and the cultivation of a clear, pleasing, and well modulated voice. Prac-

tical application of techniques is made in the oral interpretation of prose and poetry, in brief talks and reports, and other speech activities.

Interpretative Reading 2 Sem. Hrs.

This course is organized for those who plan to teach oral reading, literature, or to assist with declamation and forensic work.

Phonetics 2 Sem. Hrs.

Phonetics is a sound by sound analysis of speech in order that the student may accurately hear the sounds, thus being able to improve his own speech habits and equip him for later courses in Speech Correction and Dramatics.

Play Production 2 Sem. Hrs.

This is a survey of recognized principles of play production, including the elements of make-up, lighting, scenery, direction of plays. When possible, the student is asked to direct a one-act play for practical demonstration. Casting, the try-out, the choice of plays suitable for school and community use are discussed.

Psychology of Speech 3 Sem. Hrs.

Every case demands a different psychological approach in diagnosis and remedial treatment, with emphasis on the treatment of stammering. The course begins with the development of language in the child.

Speech Clinic I, II 4 Sem. Hrs.

The student has an opportunity to diagnose, study, and follow through a procedure of correction with different types of speech disorders, all under the close supervision of the clinician. Additional time is given to observational work as conducted by the clinician.

Speech Pathology 3 Sem. Hrs.

This course acquaints the student with the anatomy and physiology of the speech mechanism, particular emphasis being placed on the respiratory organs, larynx, resonators, and articulators. It further acquaints the student with causes, symptoms, nature, and management of all types of speech disorders, exercises and procedure to follow.

Speech Problems 2 Sem. Hrs.

This is a survey of the field of Speech Correction acquainting the student with literature on the subject and particularly stressing the matter of treatment of minor speech disorders.

Stagecraft and Scenic Design 2 Sem. Hrs.

This course naturally follows the play production survey and includes the theory and practices of designing sets, modeling to scale, construction and painting scenery, making of properties, and lighting effects.

Voice and Diction 2 Sem. Hrs.

This course considers advanced ear training, breathing, phrasing, inflections, pitch, quality, tempo, rhythm, force, resonance, and range.

DEPARTMENT OF BUSINESS EDUCATION

PURPOSE

The State Department of Public Instruction has designated the State Teachers College, Bloomsburg, Pennsylvania, as one of the institutions in which the high school commercial teachers of the Commonwealth may be educated. The Bachelor of Science in Education degree is conferred on the completion of the Business Education Curriculum authorized by the State Council of Education.

Graduates of this curriculum are fully certified to supervise or teach commercial subjects in any junior or senior high school of Pennsylvania. This curriculum is so broad that it not only educates students to teach but also gives them the choice of several business vocations. The training provides adequate preparation in business knowledge and skills as well as teaching theory and practice.

ENTRANCE REQUIREMENTS

This curriculum has proved so popular since it was organized in 1930, that only a limited number carefully selected students are admitted. All persons who expect to enroll as Freshmen should make their reservations early in the year. Only the better high school students are accepted. This does not mean that new students must have had commercial work in high school or business college. Many students who have not had previous commercial training complete the Business Education Curriculum successfully.

Prospective students are urged to come to the College and meet the members of our faculty.

As this curriculum is of collegiate grade, advanced standing is not granted for work completed in secondary schools, business colleges or unaccredited business schools.

ADVANCED STANDING

Entrants who have earned previous College credits should submit a transcript of such work before they enroll. If advanced standing for work completed in other institutions is expected, credit transcripts should accompany the application for enrollment. Advanced standing will be granted for work completed in other institutions of college grade, when, in the judgment of the Dean of Instruction, such courses seem to be equivalent to subjects contained in the Business Education Curriculum.

If a tentative evaluation of completed college work is desired, a transcript showing the name of the course, the grade, and the credit hours should be forwarded to the Director of the Department of Business Education. This evaluation may precede the enrollment of the student.

CERTIFICATION OF BUSINESS EDUCATION TEACHERS
REGULATIONS GOVERNING THE ISSUE OF NEW
CERTIFICATES

- A. Provisional College Certificate—issued to graduates of approved four year teacher education curriculums in business education in accredited colleges and universities.

1. Business subjects are written on a certificate on the satisfactory completion of the minimum number of semester hours in several subjects, as indicated below:

Bookkeeping	12 semester hours
Commercial or Economic Geography	6 semester hours
Commercial Law	6 semester hours
Commercial Arithmetic	3 semester hours
Office Practice	3 semester hours
Salesmanship	3 semester hours
Shorthand	9 semester hours
Typewriting	6 semester hours
Junior Business Training	3 semester hours
Economics	6 semester hours
Retail Selling	12 semester hours
Business English	2 semester hours
plus twelve (12) semester hours in English.	

2. Certificates are valid for teaching only those business subjects which are written on the certificate.

- B. Permanent College Certificate—the provisional college certificate will be made permanent on evidence of three years of teaching on the provisional college certificate in the public schools of Pennsylvania, with a rating of “middle” or better; and the satisfactory completion of six semester hours of additional education of collegiate grade, one-half of which must be professional.

EXTENSION OF COLLEGE CERTIFICATES TO INCLUDE
THE BUSINESS SUBJECTS

A college certificate may be extended to include business subjects on the satisfactory completion of courses selected from an approved teacher education curriculum in business education (action of State Council of Education, December 2, 1938). These courses are based on a good background in the social sciences.

Until September 1, 1939	18 semester hours
After September 1, 1939	24 semester hours
After September 1, 1940	30 semester hours

VALIDITY OF CERTIFICATES

A certificate to teach business education is valid for teaching those subjects written on the face of it in all grades above the sixth.

NOTE: Provisional college certificates issued after August 31, 1935, require a course in visual aids and sensory techniques to be made permanent, completed either before or after the issue of the provisional college certificate.

EQUIPMENT

Business skills and practice cannot be learned wholly from books. The Department of Business Education is well equipped with the most modern office machines and devices. All desks, tables, chairs, files, and other business equipment are new. Students learn to operate standard and noiseless typewriters, addressographs, adding machines, posting and bookkeeping machines, calculation and ditto machines, mimeoscopes, multigraphs, mimeographs, and dictaphones. By operating these machines, students acquire a well-rounded knowledge of the mechanics of business which is invaluable in teaching.

OFFICE PRACTICE AND BUSINESS EXPERIENCE

A student completing this curriculum has had an opportunity to spend one and one-half years in office practice courses. In these three courses in office practice, a student acts as an actual business worker in four different offices where he is held responsible for the same vocational efficiency as the regularly employed office workers. This actual experience is supplemented by class instruction covering the following: office skill and phases of business knowledge; alphabetic, geographic, and numeric filing with actual practice; dictation and transcription at high rates of speed; the cutting of stencils, and the operation of the mimeograph machine; the making of stencils with the mimeoscope; the preparation of copy and duplication on the ditto and multigraph machines; the complete operation of the dictaphone; advanced work in business papers; the operation of the Burroughs posting machine and the Underwood bookkeeping machine; and the operation of adding machines and calculators.

The courses in office practice are not textbook courses but represent the actual carrying out of business transactions. While there is no substitute for business experience, we feel that such actual experience as provided in connection with the above outlined work in office practice materially aids the teacher of commercial subjects when he attacks classroom problems.

PRACTICE TEACHING

In order that Senior students may have an opportunity to observe and teach in actual class rooms, the Commercial Departments of six high schools are used. In addition to the Commercial Department of the Bloomsburg High School, the Berwick High School, and Danville High School, three high schools, located in Williamsport, Pennsylvania, now serve as student teaching centers for Commercial students. Of these three high schools, two of them are junior high schools, and the third a senior high school. The three high schools used in Williamsport, Pennsylvania, are: The Senior High School, Andrew Curtin Junior High School, and Theodore Roosevelt Junior High School. In the six high schools cooperating with the College for student teaching purposes, there are fifteen regular teachers whose purpose it is to help the training of students.

In addition to the fifteen cooperating teachers, a supervisor, the Director of the College Department of Business Education, visits these schools weekly for the purpose of supervision and conferences with student teachers.

Apprenticeship teaching means observation of regularly employed teachers, planning the course, units of work, and lessons, and finally

the actual participation of the student as a teacher who is in charge of a classroom. Since the amount of student teaching is more than twice that required by the State for certification, we feel that his apprenticeship period under the conditions which we have set up goes a long way toward giving our graduates experience in actual school situations before they are ready to become regular teachers in the public school system of the State of Pennsylvania.

OPPORTUNITIES FOR GRADUATES

There is a great demand in Pennsylvania at the present time for properly trained, degree-holding commercial teachers. With the changing certification requirements, properly trained commercial teachers will find their way into positions as supervisors and heads of commercial departments in the various secondary schools.

Until recent years, little commercial work was offered in the junior high schools. In connection with the exploratory and vocational guidance work carried on in the junior high schools, courses in Junior Business Training and other similar courses have been rapidly growing in favor. As a result properly trained teachers are in demand.

The demand for commercial teachers may easily be accounted for by figures from public and private sources which show that one-third of the high school students are pursuing commercial courses. Judging from the steady growth of the last five years, it would seem that the demand for degree-trained teachers in the commercial field will continue. Undoubtedly there will be a steady change in methods, skills, and techniques used in teaching. The State Teachers Colleges may well be expected to do pioneer work in progressive commercial education.

TEACHER PLACEMENT

The Department of Business Education acts as a clearing house for employment purposes. Our graduates are placed without charge through the cooperation of the Placement Service of the Department of Public Instruction and the Placement Service of our own College. The Department of Business Education likewise takes a special interest in securing positions for its graduates. Teachers-in-service are enabled in many instances to secure better positions with the help of these various agencies for placement.

PLACEMENT RECORD

The type of business education provided at Bloomsburg can be measured in no better way than by the fact that 90% of the graduates of the Department of Business Education have found employment in either teaching or business and 80% of this group are now teaching in over 125 towns and cities throughout Pennsylvania and surrounding states. High Schools and Colleges located in the State of Pennsylvania, Connecticut, Maryland, New Hampshire, New Jersey, New York, North Carolina, Florida, and Virginia have sought the services of teachers graduated from Bloomsburg.

The following table shows the total number of Business Education graduates—the nature, number, and percent of the placements for the years indicated:

YEAR	NUMBER OF GRADUATES	PLACEMENTS			%
		Business	Teaching	Total	
1933	6	1	5	6	100
1934	31	3	28	31	100
1935	34	1	33	34	100
1936	16	2	14	16	100
1937	31	4	26	30	97
1938	49	8	40	48	98
1939	55	8	42	50	90
1940	51	13	32	45	90
1941	61	12	30	42	90
1942	67	34	13	47	98
Total	401	86	263	349	92

* Armed Forces.

SUMMER SESSION

A Summer Session consisting of a Pre-Session of three weeks, a Regular Session of six weeks, and a three-weeks' Post Session is conducted to meet the needs of the following groups of Commercial students:

1. Fully certified experienced teachers who desire to become better teachers through a study of the most recent methods and subject matter of commercial education.
2. Commercial teachers who wish to secure higher certification.
3. Teachers who wish to continue their training for the degree of B. S. in Education.
4. Those teachers in training who wish to shorten the time necessary to complete the four-year course.

During the Summer Session, courses are offered in the most modern commercial teaching theory, methods, and subject matter. Those interested in the Summer Session should write for a descriptive bulletin.

APPLICATION FOR ENROLLMENT

High school students interested in commercial teacher training should fill out and mail the Preliminary Enrollment Blank, which will be found in the back of the catalogue. Upon the receipt of this blank, a copy of the official Admission Application Blank will be forwarded to the student. To complete the enrollment the student must fill out the blank and file it with the Dean of Instruction.

If the applicant wishes a room reserved, he must pay a registration deposit of \$10.00. Checks and Post Office Orders should be drawn to the order of the Commonwealth of Pennsylvania. Post Office Orders must be drawn on the Post Office at Harrisburg, Pa.

For more specific information concerning business teacher education, write William C. Forney, Director, Department of Business Education, State Teachers College, Bloomsburg, Pennsylvania.

BASIC FIRST YEAR OF BUSINESS EDUCATION CURRICULUM

First Semester			Second Semester		
	Hours			Hours	
	Clock	Sem.		Clock	Sem.
Place and Purpose of Business Education in the Social Order (inc. school visitation)	3	2	English II	3	3
Health Education (inc. Physical Education and Personal Hygiene)	4	2	Health Education II (inc. Physical Education and Personal Hygiene)	4	2
Speech	3	3	Economic Geography I	3	3
English I (inc. Library Science)	4	3	Business Mathematics II	3	3
Business Mathematics I	3	3	Bookkeeping & Accounting I	5	3
Business Writing	3	1	Typewriting II	3	1
Typewriting I	3	1	Shorthand I	5	3
	23	15		26	18
Third Semester					
Commercial Sequence			Accounting Sequence		
	Hours			Hours	
	Clock	Sem.		Clock	Sem.
Literature I (English)	3	3	Literature I (English)	3	3
Economic Geography II	3	3	Economic Geography II	3	3
Business Organization and Finance	3	3	Business Organization and Finance	3	3
Bookkeeping and Accounting II	5	3	Bookkeeping and Accounting II	5	3
Shorthand II	5	3	Electives in English or Social Studies	6	6
Typewriting III	5	2			
	24	17		20	18
Fourth Semester					
Biological Science	4	3	Biological Science	4	3
Business Correspondence	3	3	Business Correspondence	3	3
Business Law I	3	3	Business Law I	3	3
Bookkeeping and Accounting III	3	3	Bookkeeping and Accounting III	3	3
Shorthand Applications	5	3	Electives in English or Social Studies	3	3
Typewriting Applications	5	2			
	23	17		16	15
Fifth Semester					
General Psychology	3	3	General Psychology	3	3
School Law and Administration	2	2	School Law and Administration	2	2
Business Law II	3	3	Business Law II	3	3
Sales and Retail Selling I	3	3	Sales and Retail Selling I	3	3
Bookkeeping and Accounting IV	3	3	Bookkeeping and Accounting IV	3	3
Stenographic Office Practice	5	3	Electives in English or Social Studies	3	3
	19	17		17	17
Sixth Semester					
Methods—Shorthand	1	1	Methods—Junior Business	1	1
Typewriting	1	1	Social Business	1	1
Bookkeeping	1	1	Bookkeeping	1	1
Tests and Measurements	3	3	Tests and Measurements	3	3
Secondary School Business Education	2	2	Secondary School Business Education	2	2
Economics I	3	3	Economics I	3	3
Visual Education	2	1	Visual Education	2	1
Clerical Practice	5	3	Clerical Practice	5	3
	18	15		18	15

Seventh Semester

Hours		Hours	
Clock	Sem.	Clock	Sem.
Philosophy of Education	2	2	2
American Government	3	3	3
Economics II	3	3	3
History of Civilization	4	4	4
*Business Mathematics III or	3	3	3
*Auditing or	3	3	3
*Secretarial Practice	5	—	—
	15 or 17	18	18

Eighth Semester

Student Teaching, Observation and Conferences	15	12
Curriculum Materials	4	3
	19	15

Third Semester

Secretarial Sequence		Retail Selling Sequence	
Hours		Hours	
Clock	Sem.	Clock	Sem.
Literature I (English)	3	3	3
Economic Geography II	3	3	3
Business Organization and Finance	3	3	3
Shorthand II	5	3	3
Typewriting III	5	2	2
Electives in English or Social Studies	3	3	3
	22	17	15

Fourth Semester

Biological Science	4	3	3
Business Correspondence	3	3	3
Business Law I	3	3	3
Shorthand Applications	5	3	3
Typewriting Applications	5	2	2
Electives in English or Social Studies	3	3	3
	23	17	15

Fifth Semester

General Psychology	3	3	3
School Law and Administration	2	2	2
Business Law II	3	3	3
Sales and Retail Selling I	3	3	3
Stenographic Office Practice	5	3	3
Electives in English or Social Studies	3	3	3
	19	17	17

Sixth Semester

Methods—Shorthand	1	1	1
Typewriting	1	1	1
Social Business	1	1	1
Tests and Measurements	3	3	3
Secondary School Business Education	2	2	2
Economics I	3	3	3
Visual Education	2	1	1
Clerical Practice	5	3	3
	18	15	15
Methods—Junior Business	1	1	1
Social Business	1	1	1
Retail Selling	1	1	1
Tests and Measurements	3	3	3
Secondary School Business Education	2	2	2
Economics I	3	3	3
Visual Education	2	1	1
Clerical Practice	5	3	3
Retail Selling II (Advertising)	3	3	3
	19	18	18

* Elect one of these

Seventh Semester

Philosophy of Education	2	2	Philosophy of Education	2	2
American Government	3	3	American Government	3	3
Economics II	3	3	Economics II	3	3
History of Civilization	4	4	History of Civilization	4	4
Secretarial Practice	5	3	Retail Selling III	12	6
Electives in English or Social Studies	3	3	(including Store Practice)	—	—
	—	—		24	18
	20	18			

Eighth Semester

Student Teaching, Observation and Conferences	15	12
Curriculum Materials	4	3
	—	—
	19	15

COURSES OF INSTRUCTION

IN BUSINESS EDUCATION CURRICULUM

Bookkeeping and Accounting I 3 Sem. Hrs.

The purpose of this course is to introduce the student to bookkeeping and accounting by means of financial records for personal, family and extra-curricular uses leading into the modern technical phases of accounting. Later trends in teaching beginning bookkeeping in high school are presented.

Bookkeeping and Accounting II 3 Sem. Hrs.

Double entry bookkeeping through statements, ledger accounts, original entry books including special columns, posting, checking, adjusting, closing, working sheet, controlling accounts, interest and discount, valuation accounts, accruals and deferred items and current routine.

Bookkeeping and Accounting III 3 Sem. Hrs.

Principles of corporate organization and accounting with attention to problems of combining capital and liquidation of capital accounts; accounting for corporations and problems in consolidation and supplementary statements.

Bookkeeping and Accounting IV 3 Sem. Hrs.

Principles of accounting for manufacturing concerns and departmental accounting. Latest methods in standard cost and efficiency through the use of office machines are included.

Accounting V and Auditing 3 Sem. Hrs.

Analytic and synthetic accounting procedures; accounting for non-profit organizations and professional associations; accounting for government organizations.

Business Mathematics I 3 Sem. Hrs.

Review and development of arithmetical skills and business applications with special emphasis on speed and accuracy in handling the common fundamental operations.

Business Mathematics II 3 Sem. Hrs.

Continued development of business mathematics skills. Its purpose is to train students to solve advanced problems encountered in carrying on the modern functions of business: production, marketing, personnel, finance and management.

Business Writing 1 Sem. Hr.

Practice at the desk and blackboard with methods of instruction for penmanship in the business education of secondary schools.

Business Correspondence 3 Sem. Hrs.

Study and practice in the special application of writing in business correspondence situations, including review of essentials in grammar, spelling, and vocabulary study. Much practice in all kinds of business letters.

- Business Organization and Finance** 3 Sem. Hrs.
 Fundamental information and study of the organization and management of typical business. Finance, salesmanship and marketing, office organization, credit, personnel are discussed.
- Business Law I** 3 Sem. Hrs.
 Introduction to the study of fundamental business law. The course deals with court procedure, contracts, agency and negotiable instruments.
- Business Law II** 3 Sem. Hrs.
 Advanced specialized study of business law. The course considers the law of business organizations, personal property, security relations and real property.
- Clerical Practice and Machines** 3 Sem. Hrs.
 A course designed to acquaint the student with modern office equipment, filing systems, office procedure, and business papers.
- Economics I** 3 Sem. Hrs.
 Deals with the principles underlying production, distribution, exchange, and consumption. The theories of values and distribution are here examined.
- Economics II** 3 Sem. Hrs.
 An advanced course dealing with wages, rent, profits, interest, and present day economic problems arising out of the different forms of economic returns.
- Economic Geography** 6 Sem. Hrs.
 The objective of the study of economic geography is an understanding of production and exchange of commodities. The study deals with "the manner in which business is related to the earth on which it is transacted." Two sequential courses are required.
 Economic Geography I deals with the basic facts of the natural environment and man's agricultural responses to those facts.
 Economic Geography II is a study of man's responses to the natural environment with reference to economic pursuits other than agriculture.
- Psychology of Methods in Business Education** 3 Sem. Hrs.
 This course makes definite application of psychological principles to the teaching and learning of skill in the various subjects of the business education curriculum.
- Retail Selling I** 3 Sem. Hrs.
 Introduction and general study of the principles of salesmanship with consideration to the problems of distribution and merchandising.
- Retail Selling II** 3 Sem. Hrs.
 Special application of salesmanship principles in advertising and retail selling.

Retail Selling III **6 Sem. Hrs.**

A practical course in actual store practice in retail selling situations.

Shorthand I **3 Sem. Hrs.**

Initial learning of Gregg Shorthand with introduction of dictation. Emphasis is given to reading, writing, and mastery of the fundamental forms. Transcribing of the student's notes on the typewriter is a part of the activity throughout the course.

Shorthand II **3 Sem. Hrs.**

Specialized practice of shorthand skill with transcription of notes in the form of paragraphs and short letters receives increasing attention.

Shorthand Applications **3 Sem. Hrs.**

This is a course designed to give advanced practice of shorthand skill with drills for speed in taking dictation, and speed and accuracy in reading from dictated notes. This course is closely correlated with Typewriting Applications.

Secondary School Business Education **2 Sem. Hrs.**

This course includes an analysis of the business education situation in various types of high schools, and programs of business education suited to the needs of various communities. Stress is placed on the organization and content of the various courses.

Stenographic Office Practice **3 Sem. Hrs.**

This is an advanced stenographic course including theory and practice in the activities common to stenographic and secretarial positions.

Tests and Measurements in Business Education **3 Sem. Hrs.**

This course involves a study of the tests and methods of measurement in Business Education instruction. It gives a complete program in planning, testing, evaluating, remedial teaching and retesting.

Typewriting I **1 Sem. Hr.**

This beginning course emphasizes a mastery of the keyboard and the ordinary operation parts of the typewriter. Diagnostic and correction work receives attention. Speed and accuracy are stressed.

Typewriting II **1 Sem. Hr.**

Here efficiency and quickness in handling the typewriter are emphasized. Included in the course are letter writing, straight copy work, multicopy work and tabulating.

Typewriting III **2 Sem. Hrs.**

This course deals with letter writing, special business and legal forms, copying from longhand and corrected copy. Problems of English are stressed.

Typewriting Application **2 Sem. Hrs.**

This is an advanced application of typewriting skills including an abundance of practical business typewriting.

DEPARTMENT OF MUSIC

(Instruction in Theory of Music and Private Lessons in Piano, Violin,
Voice and Organ)

BETTY PAULING

Wyoming Seminary, Graduate in Music;
voice pupil of Frank LaForge.

CARL F. ROTH

Wyoming Seminary, Graduate in Piano, Organ, Voice;
organ pupil of Heinrich Zimmerler, Heidelberg, Germany;
organist and chorister, St. John's Lutheran Church, Wilkes-Barre.

The Department of Music offers thorough courses in applied music and theory of music under efficient instructors to beginners and advanced students. The courses are designed to meet the needs of those seeking a general musical education and a broad cultural background. All teachers are urged to understand the fundamentals of the art, at least, because music today is a recognized factor in the development of the child.

The instruction is not standardized and formal. Rather an attempt is made to analyze the individual musical and technical problems of each student and to offer solutions based upon constructive thinking and consideration for the individual personality.

The State Teachers College at Bloomsburg offers superior advantages for hearing music, an important phase of musical training. In addition to the student and faculty recitals of the Department of Music, the Entertainment Course offers several outstanding musical events during the season; and extra concerts are occasionally presented by world famous artists.

CERTIFICATE IN MUSIC

A special certificate signed by instructors giving private lessons and theory in music will be granted upon satisfactory completion of the following requirements:

1—Minimum of two years' study in instrumental, vocal, or theoretical field. Teacher's endorsement of student's qualifications and proof of a certain degree of advancement at the completion of the two years' study.

2—Satisfactory completion of one year course in sight singing and ear training.

3—Satisfactory completion of one year course in theory of music (for students other than those specializing in theory).

4—Students (other than piano) must study piano for one year or demonstrate equivalent proficiency.

COURSES OF INSTRUCTION

Piano

Careful attention is given to acquiring a sound foundation in all the phases of piano technique through the study of the best piano music. For beginners, folk-songs or simple pieces by great composers are used. Then follows a study of the works of Bach, Mozart, Haydn, Beethoven, Chopin, Schumann, and other composers of the romantic and modern periods.

Organ

Students must have a good piano technic. Considerable time is spent in acquiring a facile pedal technic; then the study of the organ works of Bach begins. These are supplemented by the best organ compositions of the various periods in musical history. In addition, students are prepared for playing church services.

Voice

The art of singing is presented with utmost detail and precision. The fundamentals of tone production, breathing, diction, interpretation, and stage deportment are emphasized. A careful selection of repertoire is made to suit the needs and the ability of the singer. Students are trained for recital and church work.

Violin

Great stress is placed upon position, tone, quality, the intricacies of bowing, technique, repertoire, and the preparedness for solo and ensemble work in public recital. In addition to exercises by Hohmann, Kayser, Kreutzer, Musin, Paganini, and others, pieces by Bach, Beethoven, Mendelssohn, Brahms, Vieuxtemp, and all the leading composers are studied. Advanced students are assigned concerti and sonatas of the standard violin literature.

Theory of Music

Practice is given in elementary harmony, followed by advanced harmony and its application to musical composition. Later, two- and three-part counterpoint is studied, and the analysis of the various musical forms is begun. Written and analytical work is supplemented by practice at the keyboard.

RECITALS

Recital classes are held frequently to give the students an opportunity to play for each other.

Public recitals are held during the year to provide experience in public performance. The auditorium in Carver Hall, where such recitals are held, is an attractive and modern auditorium especially suitable for musical programs.

ENSEMBLE PLAYING

The Department of Music offers special training in ensemble playing for pianists and violinists under the direction of a member of the faculty.

MUSIC FOR CHILDREN

Instruction is offered in violin and piano. The Department of Music feels that it can successfully bring out to the fullest extent the natural musical ability so many children possess. This is done by stimulating musical initiative and imagination. In addition, fundamental theoretical training through the use of scales is applied to the instrumental lessons, and time is given to sight reading and ear training.

For very young children, a shorter lesson period than the usual half-hour may be arranged.

Children will frequently have an opportunity to play for each other, but playing in public recitals is not obligatory.

EXPENSE FOR MUSIC STUDENTS

Individual instruction in Piano, Organ, Voice, or Violin: \$18.00 per semester for one half-hour lesson per week; \$36.00 for two half-hour lessons per week.

Individual instruction in Theory: \$18.00 per semester for one half-hour lesson per week; \$36.00 for two half-hour lessons per week.

Class in Theory: \$5.00 per semester for one hour per week.

Class in Sight Singing and Ear Training: \$5.00 per semester for one hour per week.

Use of piano for practice (one hour daily): \$4.00 per semester.

Use of organ for practice (one hour daily): \$6.00 per semester.

CONDITIONS OF ENROLLMENT

It is understood that all students registering in the Department of Music at the beginning of a semester are enrolled for the whole semester unless other arrangements are specifically made at the time of registration. No rebate will be made on account of lessons missed by students. Students taking less than the work of a semester will be charged at the lesson rate of \$1.50.

All payments must be made by the half-semester in advance.

List Of Students

First Semester 1942-43

FOUR YEAR COURSE LEADING TO B.S. IN EDUCATION

- Ackerman, Jean V. *B2* Hamburg
 Adams, Louise E. *E2* Shamokin
 Althoff, Eleanor M. *E4* Mt. Carmel
 Andrews, JoAnn R. *B1* McVeytown
 Apple, John M. *S4* Keiser
 Baer, Lillian I. *B3* Fleetwood
 Bartha, Elizabeth J. *E4* Yeagertown
 Barton, William H. *B4* Bloomsburg
 Beach, Peggy M. *S1* Bloomsburg
 Beaumont, Lee Roy *B4* Marcus Hook
 Behler, Anita E. *E2* Kingston
 Behler, Helen E. *B3* Kingston
 Belcastro, Gloria T. *B1* Wyoming
 Berlew, Nancy E. *E1* Dallas
 Berninger, Carl S. *S4* Catawissa
 Betz, Mary C. *S1* Danville
 Bierman, M. Elizabeth *S4* Wyoming
 Bitetti, Elvira A. *E1* Freeland
 Bomboy, Charles H. *S4* Bloomsburg
 Boyle, Rose M. *B1* Wilkes-Barre
 Bramble, June H. *B4* Bloomsburg
 Brody, Frances J. *B2* Nazareth
 Bruner, John H. *B3* Bloomsburg
 Bryant, Betty J. *E1* Dallas
 Bryner, Lois C. *E2* Danville
 Buckingham, Boyd F. *S4* York
 Bunge, Robert L. *S2* Catawissa
 Burnham, Betty A. *S2* Frankford
 Calvello, Meda I. *E3* Weston
 Campbell, Kathryn *E4* Bloomsburg
 Carey, Elizabeth L. *B1* Mifflinville
 Cauala, Antoinette M. *B1* Shenandoah
 Chesney, Joseph J. *B3* Mt. Carmel
 Clark, Ida M. *E1* Northumberland
 Collins, Loren L. *S4* Nanticoke
 Comuntzis, Athamantia D. *S1* Bloomsburg
 Comuntzis, Peletime D. *S2* Bloomsburg
 Conrad, Royal W. *S1* Benton
 Coombs, Marjorie R. *S4* Wapwallopen
 Cromis, Helen M. *B3* Bloomsburg
 Dean, Margaret D. *S2* Kulpmont
 Deaner, Wayne E. *B4* Harrisburg
 Demaree, Gerald J. *B2* Berwick
 DeMott, Robert H. *B1* Evers Grove
 Dent, Frederick G. *S3* Bloomsburg
 Derr, Roseanna *E2* Bloomsburg
 DeVitis, Mary *B2* Wayne
 Dewald, Mary F. *E3* Turbotville
 Dickinson, Doria J. *B1* LaPlume
 Diltz, Carl E. *B4* Benton
 Dockey, Sara M. *B3* Berwick
 Doney, Evelyn M. *S1* Shamokin
 Donn, Leo A. *S4* Kingston
 Dorsey, Donald F. *S1* Bloomsburg
 Downing, Marjorie G. *S1* Shickshinny
 Duck, Martha J. *E2* Lewisburg
 Dzuris, Mildred *S1* Nanticoke
 Eastman, Sara Jean *S4* Bloomsburg
 Ebright, Ruth A. *B4* Mifflintown
 Enama, Hazel F. *E2* Weston
 Ertel, Elizabeth R. *B2* Williamsport
 Eshleman, Dawn F. *B1* Berwick
 Eunson, Agnes J. *E4* Bloomsburg
 Falvey, Eileen L. *B1* Berwick
 Farnsworth, Wanda A. *E2* Muncy
 Faust, Florence E. *B3* Ambler
 Fenstemaker, Mary L. *S2* Bloomsburg
 Ferguson, Patricia A. *B2* Shenandoah
 Fice, Joanna J. *B4* Athens
 Flaherty, Agnes E. *B1* Shenandoah
 Flaherty, Mary E. *E2* Bloomsburg
 Flail, Elsie G. *B1* Schuylkill Haven
 Foust, Frances J. *E2* Danville
 Fuller, Bette S. *E3* Beach Haven
 Furman, Jack O. *B1* Wyalusing
 Carey, Pauline M. *S3* Honesdale
 George, Evelyn D. *E1* Danville
 Gillung, George H. *B3* Brockway
 Glocckler, Richard C. *S1* Forksville
 Godleski, Lois E. *B4* Mt. Carmel
 Gottlieb, Irving T. *B4* York
 Guarna, Flora C. *B1* Mt. Carmel
 Cula, Joseph J. *B2* Swyerville
 Hackenberger, Mary J. *E4* Mifflintown
 Hagenbuch, Mary E. *S3* Bloomsburg
 Hartman, Buddy M. *S1* Benton
 Hartman, Leon H. *S3* Elysbury
 Hartman, Ruth M. *B4* Orangeville
 Harmon, Gertrude E. *B1* W. Pittston
 Hay, Joyce E. *B3* Easton
 Heimbach, Mary R. *E3* Sunbury
 Hendricks, Edward F. *S4* Wilkes-Barre
 Henrie, Reba M. *S4* Bloomsburg
 Hess, Kathleen A. *S1* Dalton
 Hess, Kathryn A. *E4* Orangeville
 Hildebrand, Harriet G. *E1* Nescopeck
 Hoffman, Leo J. *B1* Bloomsburg
 Holoviak, Peggy R. *B3* Nesquehoning
 Hope, Ruth B. *E4* Coatesville
 Hosler, Xen S. *B2* Allentown
 Hottenstein, Sara E. *B4* Milton
 Huber, Harvey P. *B2* Greenville
 Hubiak, John *B4* Forest City
 Hummel, William W. *S1* Eapy
 Hunter, Alda R. *E2* Hunlock Creek
 John, Harry G. *B2* Bloomsburg
 Johnson, Carrie E. *E1* Danville
 Johnson, Dorothy R. *E4* Berwick
 Johnson, Rosemary P. *E2* Mt. Carmel
 Jones, Catherine L. *E4* Shickshinny
 Jones, David M. *B4* Shamokin
 Jones, Thomas J. *S1* Wilkes-Barre
 Jnraski, Theodore E. *B3* Berwick
 Kane, Bernard W. *S2* Centralia
 Kane, Margaret M. *E2* Shenandoah
 Karnes, Donald M. *S4* Eapy
 Katerman, Betty M. *S4* Bloomsburg
 Kehler, Wanda M. *B1* Ashland
 Keller, Jeanne *S1* Benton
 Keller, June *S1* Benton
 Kelly, Mary K. *E4* Bloomsburg
 Kemler, Roland L. *B1* Fern Glen
 Kester, Ruth J. *E2* Courtdale
 King, Virginia C. *S1* Dallas
 Kinney, Cleo D. *B2* Danville
 Kline, James S. *S1* Benton
 Knight, Jeanne A. *B2* Bloomsburg
 Knorr, Joyce W. *B4* Wapwallopen
 Kocher, Ernest D. *S4* Eapy
 Kocher, Melva O. *B3* Lightstreet
 Kornaski, Irene A. *B3* Mt. Carmel
 Kotch, Helen R. *B3* Wilkes-Barre
 Kozlowski, Joseph W. *S4* Mt. Carmel
 Kravitski, Anthony A. *B2* Drums
 Kreischer, Elaine L. *E3* Berwick
 Krum, Marie L. *E1* Eapy

Italicized Letters indicate Curriculum: B for Business, E for Elementary, S for Secondary.
 Italicized Numbers indicate Class: 1—Freshman, 2—Sophomore, 3—Junior, 4—Senior.

- Kulik, Henry A. *S1* Mt. Carmel
 Kulik, Irene M. *S4* Mt. Carmel
 Kuster, Jean M. *S4* Bloomsburg
 Lambert, Margaret E. *S4* Elysburg
 Langan, Jean A. *B4* Duryea
 Latsha, Margaret E. *E2* Dornsife
 Laubach, Winton, H. *S4* Benton
 Lawhead, Virginia L., *E4* Pottsville
 Lebengood, Sara E. *B3* Pottsville
 Lohr, Joyce M. *S4* Berwick
 Longo, Catherine C. *B1* Sheppton
 Lovering, Mary R. *E2* Scranton
 Ludwig, Millard C. *S2* Millville
 Madl, Mary Louise *S3* Shamokin
 Magill, Andrew F. *S4* Sugarloaf
 Magill, Anna S. *S1* Sugarloaf
 Magill, John F. *S1* Sugarloaf
 Makowski, Gertrude A. *E3* Keiser
 Manley, Edward J. *B3* Wilkes-Barre
 Marion, James E. *B1* Harrisburg
 Marmo, Joseph A. *S1* Moosic
 Martin, Helen R. *S2* Hazleton
 Martino, Lucille G. *B1* Roseto
 Maschal, Jean K. *B1* Bloomsburg
 Matthes, Ann B. *E2* Selingsgrove
 Mauser, Ruth A. *S1* Bloomsburg
 Mazzeo, Salvatore A. *B2* Easton
 McBride, Eugene A. *S2* Bloomsburg
 McCloskey, Walter A. *B4* Wilkes-Barre
 McCloughan, Carol F. *E2* Riverside
 McCracken, Allen C. *S2* Riverside
 McCulla, Elizabeth J. *B4* Freeland
 McCutchen, Frederick M. *E4* Conyngham
 McHenry, Shirley R. *S2* Bloomsburg
 McLuskey, Eileen M. *B4* Shenandoah
 Miles, Norine G. *B2* Shenandoah
 Miller, George E. *S4* Wilkes-Barre
 Miller, Harold E. *B3* Drums
 Miller, Harold J. *B2* Catawissa
 Miller, Helen M. *E3* South Enola
 Miskowitz, Florence R. *B3* Wilkes-Barre
 Mong, Ruth A. *E4* Danville
 Mummy, Mildred D. *B1* Sunbury
 Niles, Hugh S. *B4* Wellsboro
 Novak, Clem *B2* Nanticoke
 Oakes, Leona C. *E4* W. Hazleton
 O'Brien, Hazel R. *E4* Benton
 Orner, William S. *B3* Bloomsburg
 Oyer, Helen A. *B2* Allentown
 Paganelli, Reynold D. *B4* Wilkes-Barre
 Pappas, Anna *E1* Danville
 Parangosky, Helen J. *B3* Shenandoah
 Parr, Mary E. *E3* Wapalopen
 Parsell, Audrey A. *S1* Orangeville
 Patterson, Clayton D. *S2* Nescopeck
 Patterson, Effie J. *S3* Bloomsburg
 Perry, Raymond B. *S4* Shamokin
 Petro, Anthony J. *S1* Freeland
 Piarote, George W. *B4* Lebanon
 Pope, Nelenia P. *E1* Sunbury
 Propet, Violet J. *B1* Archbald
 Pufnak, Bernard M. *B4* Swiss Vale
 Rabb, Donald D. *S3* Benton
 Reilly, Rosemary F. *B4* Shenandoah
 Reitz, Harry E. *B1* Shamokin
 Remetz, Michael J. *S1* Swoyerville
 Remley, Reginald S. *B1* Orangeville
 Rick, Barbara *E4* Keiser
 Roan, Martha L. *B4* Espy
 Roberts, Ida V. *B2* Gradyville
 Roberts, Iva M. *B2* Mountainhome
 Rowlands, Paul F. *B3* Plymouth
 Runyan, Dorothy G. *CG* Bloomsburg
 Sahol, Anne T. *B3* Phoenixville
 Sailer, Marilyn D. *B1* Reading
 Savelli, Lado J. *B2* Swoyerville
 Schargo, Ella R. *E3* Pottsville
 Schlieder, Donald A. *S2* Catawissa
 Schoener, Laura E. *B2* Stouchsburg
 Schrader, Jean E. *S3* Shamokin
 Schrader, Phyllis M. *E1* Lewisburg
 Schramm, Robert F. *B2* Pottsville
 Schroeder, Mary M. *B1* Easton
 Scott, C. Barton *B3* Bloomsburg
 Scott, Mary Louise *B3* Bloomsburg
 Sedlak, Catherine A. *S4* Dupont
 Selden, William H. *B4* Berwick
 Seltzer, Ralph E. *B1* Espy
 Seybert, Lenore M. *S1* Lightstreet
 Shaffer, Jacqueline J. *E1* Bloomsburg
 Shank, Janet M. *S3* Catawissa
 Sharretta, Marjorie G. *E3* Bloomsburg
 Shearer, Richard W. *B2* Bloomsburg
 Shortess, Anne L. *E3* Bloomsburg
 Sidari, Nan B. *B3* Hazleton
 Sidler, Jean C. *B4* Danville
 Simpson, Rita E. *B3* Wilkes-Barre
 Sirianni, Carmel A. *B3* Hop Bottom
 Skow, Clifton S. *B1* Bloomsburg
 Slegski, John M. *S1* Freeland
 Sluman, Ruth E. *E4* Honesdale
 Smith, Betty J. *E1* Catawissa
 Smith, Elizabeth M. *B3* Wyalusing
 Smith, George W. *S3* Shamokin
 Snyder, M. Edna *B3* Canton
 Soback, Andrew *S1* Bloomsburg
 Spaid, Joanne L. *E3* Mifflinburg
 Spontak, George *S4* Pottsville
 Starook, Shirley L. *E2* Northumberland
 Stasko, George *S1* Wilkes-Barre
 Stauder, Joseph C. *S1* Orangeville
 Sterling, Harriet M. *E2* Catawissa
 Stoneham, Louise E. *E4* Bloomsburg
 Stover, E. Marjorie *E1* Lewisburg
 Superko, Arlene N. *S1* Mocoanagua
 Taylor, Charles J. *S1* Dushore
 Taylor, Frank M. *B4* Berwick
 Taylor, Robert F. *S1* Dushore
 Thomas, John W. *B3* Scranton
 Trapani, Samuel J. *B3* Easton
 Trump, Mary E. *E4* Danville
 Utt, R. Lorraine *E1* Orangeville
 Valente, Anthony J. *S4* Hazleton
 Valladarez, Josefina E. *S4* Puerto Rico
 VanLiew, Bettie J. *B1* Espy
 Vastine, Edwin M. *S4* Danville
 VonBlohn, Henry C. *S1* Danville
 Vonderheid, Herman E. *S4* Wapalopen
 Wagner, Charles L. *S1* Bloomsburg
 Wagner, Elva M. *B1* Ashland
 Wagner, Elwood M. *B4* Hamburg
 Wagner, Sara K. *B4* Pine Grove
 Wallace, Marion W. *E3* Swoyerville
 Wanich, Mark C. *S2* Lightstreet
 Washvilla, Vincent *S3* Mt. Carmel
 Weller, Violet L. *S1* Turbotville
 Welliver, Julia A. *E2* Bloomsburg
 Whitby, John *B3* Edwardsville
 Williams, Stella M. *E3* Luzerne
 Wintersteen, Lois L. *E2* Danville
 Witkoski, John F. *B4* Mt. Carmel
 Wolfe, Shirley M. *B1* Bloomsburg
 Woodring, Alvin J. *S1* Bloomsburg
 Wright, Martha H. *E4* Berwick
 Yeany, Philip R. *B4* Bloomsburg
 Yob, Irene D. *B1* Plymouth
 Yohe, Editha W. *E3* Bloomsburg
 Zehner, Betty L. *E2* Sugarloaf
 Zinzarella, Julian A. *E2* Mt. Carmel
 Zong, M. Elizabeth *B2* Milton
 Zweizig, James A. *S2* Hamburg

Italicized Letters indicate Curriculum: B for Business, E for Elementary, S for Secondary.
 Italicized Numbers indicate Class: 1—Freshman, 2—Sophomore, 3—Junior, 4—Senior.

Students in Classes for Teachers-in-Service

Adams, Ramona M., Mt. Carmel
 Baker, Marie E., Mt. Carmel
 Baum, Emily, Nuremberg
 Boyle, Mary, Nanticoke
 Brosins, Marlin, Mt. Pleasant Mills
 Brugger, Julia E., Tomhicken
 Brunges, Leona S., Bloomsburg
 Buck, Anna M., Shamokin
 Crouse, Rhoda L., Berwick
 Diehl, E. Christine, Northumberland
 Dongherty, Regina R., Mt. Carmel
 Enama, Violet P., Weston
 Felton, Ralph P., White Haven
 Fetzer, Mary Jones, Middleburg
 Fink, Geraldine R., Catawissa
 Free, Sara Smull, Danville
 Gaetz, Mildred T., Mt. Carmel
 Grohal, Andrew V., W. Hazleton
 Grohal, Veronica B., W. Hazleton
 Grow, Dorothy Mae, Shamokin
 Harris, Charlotte D., Ashland
 Huhler, Elizabeth H., Gordon
 Hufnagle, Kathryn S., Catawissa
 Keefer, Engene M., Selingsgrove
 Keener, Kathryn M., Turbotville
 Kepner, Betty Lou, Sunbury
 Kowalsky, Mildred I. Fisher, Bloomsburg

Kravitski, Bertha, Drums
 Logar, Alice, Weston
 Logar, Florence D., Weston
 Lonis, Evelyn E., Mt. Carmel
 Magera, Ann M., Mocaanqua
 Master, Howard H., Mt. Pleasant Mills
 McCreary, Sara Louise, Northumberland
 McDonnell, Marie C., Centralia
 Mengel, Dorothy A., Mt. Pleasant Mills
 Mensch, Miriam E., Mifflinburg
 Miller, Thelma Fac, Nescopeck
 Payne, Edith M., Ashland
 Patterson, Jenna Mae, Benton
 Reigle, Paulyne T., Northumberland
 Ritter, James S., Danville
 Romanoski, Gilbert, Plymouth
 Rutter, Anne F., Northumberland
 Rutter, Elizabeth Grieves, Bloomsburg
 Sharpe, June F., St. Johns
 Shiner, Mildred M., Nescopeck
 Shopinski, Marie A., Mt. Carmel
 Snyder, Lora M., Turbotville
 Troutman, Anna M., Selingsgrove
 Troy, Mabel L., Nuremberg
 Wagner, Mary C., Danville
 Yearick, Mary M., Selingsgrove
 Zimmerman, Ruth A., Sunbury

School of Music

Comuntzis, Poletime, Piano and Voice, 403 Light St. Rd., Bloomsburg
 Comuntzis, Athamantia, Piano and Voice, 403 Light St. Rd., Bloomsburg
 Comuntzis, Aleki, Piano, 403 Light St. Rd., Bloomsburg
 Doney, Evelyn May, Voice, 127 S. Market St., Shamokin
 Hufnagle, Kathryn, Voice, R. F. D. No. 1, Catawissa
 Madl, M. Louise, Voice, 38 N. Second St., Shamokin
 Johnson, Rita, Voice, 543 E. 5th St., Bloomsburg
 Johnson, Marie, Voice, 543 E. 5th St., Bloomsburg
 Underwood, Marion, Voice, R. F. D. No. 5, Bloomsburg
 Rygiel, Walter, Jr., Violin, 519 E. 3rd St., Bloomsburg
 Kocher, George, Violin, Espy, Pa.
 Kocher, James, Violin, Espy, Pa.
 Kocher, Ellis, Piano, Espy, Pa.
 Long, Marion, Voice, 680 Wallace St., Northumberland
 Toleda, Elisa, Piano, 550 E. 5th St., Bloomsburg

Summer Session - 1942

Abbett, Clara D., Bloomsburg
 Aberant, Leona J., W. Wyoming
 Ackerman, Jean V., Hamburg
 Adams, Louise E., Shamokin
 Adams, Phyllis F., Bloomsburg
 Adams, Ramona, Mt. Carmel
 Althoff, Eleanor M., Mt. Carmel
 Ansbach, Glenn A., Nuremberg
 Ansbach, Rose P., Nuremberg
 Anthony, Mildred, Strausstown
 Austin, Frances, Luzerne
 Baker, Marie E., Mt. Carmel
 Ballamy, Marion E., Nescopeck
 Bartha, Elizabeth J., Yeagertown
 Barton, William H., Bloomsburg
 Beaumont, Lee Roy, Marcus Hook
 Beezer, Mrs. Anna, Hazleton
 Behler, Anita E., Kingston
 Behler, Helen E., Kingston
 Behr, Edith M., Lopez
 Berninger, Carl S., Catawissa
 Berninger, Margaret E., Bloomsburg
 Bigelow, Geraldine H., Reedsville
 Biggar, Helen B., Unityville
 Bird, Gertrude A., Plymouth
 Birth, Sara E., Shickshinny
 Bixler, Mildred P., Shamokin
 Bonham, Fannie M., Berwick
 Bott, Rose E., Nuremberg
 Boyer, Ann H., Selinsgrove
 Boyle, Mary, Nanticoke
 Boyle, Rose, Wilkes-Barre
 Bramble, June H., Bloomsburg
 Brenneman, V. Cordelia, Harrisburg
 Bryner, Lois C., Danville
 Buck, Anna M., Shamokin
 Buck, Letha L., Stillwater
 Bundens, E. Victoria, Bloomsburg
 Bunge, Robert L., Catawissa
 Casari, Agnes Pinamonti, Mt. Carmel
 Case, A. Eugene, Troy
 Chelosky, Dorothy A., Plymouth
 Chesney, Joseph J., Mt. Carmel
 Clark, Fay Gehrig, Danville
 Cogan, Clair H., Pittsburgh
 Collins, Loren L., Nanticoke
 Comuntzis, Poletime D., Bloomsburg
 Curtis, Esther L., Duryea
 Dean, Margaret D., Kulpmont
 Deaner, Wayne E., Mainville
 Dent, Frederick G., Bloomsburg
 Derr, Roseanna, Bloomsburg
 Ditty, William W., Sunbury
 Dixon, Helen A., W. Hazleton
 Doberstein, Anna M., W. Nanticoke
 Dockerty, Helen J., Carbondale
 Dockey, Sara Marie, Berwick
 Doster, Lawrence H., Forty Fort
 Durlin, Louise, Milton
 Dzuris, Mildred, Nanticoke
 Ellsworth, Joseph A., Meshoppen
 Eltringham, Jemima, Mt. Carmel
 Emmitt, Ethel, Danville
 Enama, Hazel F., Weston
 Ermish, Dorothy L., Berwick
 Ermish, Sara L., Berwick
 Ertel, Elizabeth R., Williamsport
 Eunson, Agnes J., Bloomsburg
 Evans, Ann J., Taylor
 Evans, Mary J., Taylor
 Everard, Evelyn N., Edwardsville
 Farnsworth, Wanda A., Muncy
 Flack, Evelyn H., Millville
 Flail, Esie G., Schuylkill Haven
 Foley, Veronica M., Mahanoy City
 Ford, Pauline T., Bloomsburg
 Foust, Cora M., Danville
 Franklin, Pauline, Shickshinny
 Fuller, Bette S., Beach Haven
 Gangler, Sara E., Port Trevorton
 Godleski, Lois E., Mt. Carmel
 Good, Eda A., Montgomery
 Gottlieb, Irving T., York
 Griffith, George J., Wilkes-Barre
 Grohal, Andrew V., W. Hazleton
 Grohal, Veronica B., W. Hazleton
 Crow, Dorothy Mae, Shamokin
 Guarna, Flora C., Mt. Carmel
 Hagenbuch, Julia C., Danville
 Harris, Clady Jones, Orangeville
 Hartman, Ruth M., Orangeville
 Helt, Mrs. Jennie W., Berwick
 Henric, Reba M., Bloomsburg
 Henry, Eleanore A., Summit Hill
 Hergert, Martha D., Wilkes-Barre
 Heydenreich, Myrtle E., Turbotville
 Hidlay, Clarissa B., Berwick
 Hilbush, Arabel E., Dornsife
 Hille, Laura V., Espy
 Hill, Rosa D., Bloomsburg
 Hines, Margaret E., Berwick
 Hoagland, June E., Mifflinville
 Hollenbeck, Catharine B., Williamsport
 Holoviak, Peggy, Nesquehoning
 Hope, Ruth B., Coatesville
 Horan, Kathryn B., Locust Gap
 Hosler, Xen S., Penbrook
 Hower, Grace W., Bloomsburg
 Hugo, Florence L., New Albany
 Hunter, Alda R., Hunlock Creek
 Imboden, Lawrence L., Schuylkill Haven.
 Jenkins, Elizabeth M., Edwardsville

- John, Harry C., Bloomsburg
 Johnson, Eleanor M., Centralia
 Johnson, Rosemary P., Mt. Carmel
 Jones, Catherine L., Shickshinny
 Jones, David M., Shamokin
 Jones, Mrs. Katharine D., Lansford
 Jurasik, Theodore E., Berwick
 Kashuba, Matthias F., Forty Fort
 Kavel, George C., Mt. Carmel
 Keener, Kathryn M., Turbotville
 Kelly, Mary K., Bloomsburg
 Kepner, Betty Lou, Sunbury
 Kornaski, Irene A., Mt. Carmel
 Kotch, Helen R., Wilkes-Barre
 Kowalsky, Mildred I., Bloomsburg
 Kozlowski, Joseph W., Mt. Carmel
 Kreischer, Elaine L., Berwick
 Krieger, Dorothy E., Mahanoy City
 Kulik, Irene M., Mt. Carmel
 Lambert, Margaret E., Elysburg
 Landback, Florence E., Northumberland
 Langan, Jean A., Duryea
 Latsha, Margaret E., Dornsife
 Lavelle, James M., Girardville
 Lebengood, Sara E., Pottsville
 Leonard, Marion E., New Boston
 Letterman, William E., Bloomsburg
 Lewis, Jane E., Plymouth
 Linskill, Frances A., Kingston
 Logar, Alice Singley, Weston
 Long, Marian D., Northumberland
 Lorah, Loumeta, W. Pittston
 Lorah, Mary A., Sonestown
 Lord, Linda I., Minersville
 Lovering, Mary Ruth A., Scranton
 Ludwig, Beatrice B., Millville
 Madl, Joseph M., Shamokin
 Maehrer, Wilhelmina P., Mauch Chunk
 Magill, Andrew F., Sugarloaf
 Marchese, Joseph F., Old Forge
 Martin, Grace L., Kingston
 Martin, Helen R., Hazleton
 Martino, Lucille G., Roseto
 Maslowsky, Walter A., Wilkes-Barre
 Mazzeo, Salvatore A., Easton
 McCahan, George R., Nescopeck
 McCracken, Allen C., Riverside
 McCulla, Elizabeth J., Freeland
 McCutchen, Frederic M., Conyngham
 McGonigle, Helen T., Shenandoah
 McHenry, F. Wilene, Benton
 Meluskey, Eileen M., Shenandoah
 Menges, F. Glenn, Mt. Carmel
 Mensch, Miriam E., Mifflinburg
 Miller, George E., Wilkes-Barre
 Miller, Harold J., Catawissa
 Miller, Helen M., South Enola
 Miller, Mary Enterline, Turbotville
 Miller, Pearl A., Berrysburg
 Miller, Thelma F., Nescopeck
 Mischien, Barbara, Freeland
 Miskowitz, Florence R., Wilkes-Barre
 Mong, Ruth A., Danville
 Mooney, William B., Kingston
 Moser, Mrs. Ruth K., McEwensville
 Nevil, Leota, Bloomsburg
 Niles, Hugh S., Wellsboro
 Northup, Anna I., Dalton
 Oliver, Carl A., Pittston
 Olshafski, Joseph A., Mt. Carmel
 Oxford, Mabel, Bangor
 Oyer, Helen A., Allentown
 Pakutka, Agnes A., Duryea
 Parangosky, Helen J., Shenandoah
 Parson, Sara-Alyce, Harrisburg
 Patterson, Jenna Mae, Benton
 Penman, Mabel G., Hazleton
 Petro, Andrew P., Keiser
 Piarote, George W., Lebanon
 Pope, Nelenia P., Sunbury
 Poust, Pearl E., Orangeville
 Propst, Jessie E., Archbald
 Rabb, Donald D., Benton
 Reilly, Eleanor M., Shenandoah
 Reilly, Rosemary F., Shenandoah
 Rhodes, Ora Jane, Catawissa
 Rhys, Ruth J., Warrior Run
 Richardson, Maine E., Mahanoy City
 Rick, Barbara A., Keiser
 Ritter, Leslie T., Bloomsburg
 Roan, Harriett E., Bloomsburg
 Roan, Martha L., Espy
 Rowland, Robert J., Shenandoah
 Runyan, Dorothy G., Bloomsburg
 Ruth, Homer W., Mohnton
 Ryan, Kathryn C., Shamokin
 Sailer, Marilyn D., Reading
 Savage, Dorothy J., Berwick
 Schlieder, Donald A., Catawissa
 Schoener, Laura E., Stouchsburg
 Schramm, Robert F., Pottsville
 Scars, Doris L., Shamokin
 Sedlak, Catherine A., Dupont
 Selecky, Dorothy H., Wapwallopen
 Sell, Betty E., Gordon
 Shambach, Virginia, Troxelville
 Shank, Janet M., Catawissa
 Sharpe, June F., St. Johns
 Sheary, Helen C., Shamokin
 Shevlin, Helen T., Scranton
 Shissler, Betty S., Sunbury
 Shopinski, Marie A., Mt. Carmel
 Sidari, Nan B., Hazleton
 Simpson, Rita E., Wilkes-Barre
 Singley, Nora E., Lewisburg
 Sirrocco, M. Claire, Pottsville
 Slopey, Lois E., Bloomsburg
 Smethers, Ruth H., Berwick
 Smith, James E., Nescopeck
 Snyder, Lehman J., Bloomsburg
 Snyder, Lora M., Turbotville
 Solack, Edward D., Wilkes-Barre
 Spaid, Joanne L., Mifflinburg
 Spontak, George, Pottsville
 Stellfox, Thelma A., Mt. Carmel
 Sterling, Harriet M., Catawissa
 Stimmel, James R., Scottsdale
 Stoyer, Agnes A., Harrisburg
 Superko, Arlene N., Mocanaqua
 Swisher, Harold W., Shickshinny
 Thomas, Elizabeth M., Philadelphia
 Thompson, Helen H., Pittston
 Traub, Florence A., Luzerne
 Troutman, Luther, Nanty-Glo
 Troy, Mabel L., Nuremberg
 Ulehafer, Lillie C., Beaver Meadows
 Valladares, Josefina E., Puerto Rico (out-
 of-state)
 Vanderslice, Josephine K., Bloomsburg
 Vought, Lucinda K., Numidia
 Wagner, Charles L., Bloomsburg
 Wagner, Elwood M., Hamburg
 Wagner, Mary C., Turbotville
 Wallace, Marion W., Swoyerville
 Washington, Harriet, Philadelphia
 Wenner, Martha McHenry, Benton
 Wildoner, Lena, Berwick
 Williamson, Ruth J., Dushore
 Wintersteen, Lois L., Danville
 Witkoski, John F., Mt. Carmel
 Wittmer, Marie E., Mahanoy City
 Yeany, Philip R., Bloomsburg
 Yocum, Josephine, Danville.
 Yost, Fern B., Rock Glen
 Zehner, Martha L., Bloomsburg
 Zeigler, J. Corrine, Herndon
 Zeisloft, Hilda E., Ardley
 Zweizig, James A., Hamburg

Post Session Enrollment - 1942

Ackerman, Jean V., Hamburg
 Adams, Louise E., Shamokin
 Althoff, Eleanor M., Mt. Carmel
 Anthony, Mildred C., Strausstown
 Ballamy, Marion E., Nescopeck
 Bartha, Elizabeth J., Yeagertown
 Beaumont, Lee R., Marcus Hook
 Beezer, Anna D., Hazleton
 Behler, Anita E., Kingston
 Beidelman, Eleanor W., Bethlehem
 Berninger, Carl S., Catawissa
 Boyer, Ann H., Selingsgrove
 Boyle, Rose M., Wilkes-Barre
 Bramble, June H., Bloomsburg
 Brenneman, V. Cordelia, Harrisburg
 Bruner, John H., Bloomsburg
 Bryner, Lois C., Danville
 Buck, Letha L., Stillwater
 Bundens, E. Victoria, Bloomsburg
 Bunge, Robert L., Catawissa
 Campbell, Beasie, Nesquehoning
 Casari, Agnes D., Mt. Carmel
 Chelosky, Dorothy A., Plymouth
 Collins, Loren L., Nanticoke
 Comuntzia, Poletime D., Bloomsburg
 Davis, Janet E., Carbondale
 Dean, Margaret D., Kulpmont
 Dent, Frederick G., Bloomsburg
 Derr, Roseanna, Bloomsburg
 Dixon, Helen A., West Hazleton
 Dockerty, Helen J., Carbondale
 Dunn, Elizabeth O., Washington, D. C.
 Dzuris, Mildred, Nanticoke
 Eade, Edith M., Nesquehoning
 Ellsworth, Joe A., Westhoppen
 Enama, Hazel F., Weston
 Ertel, Elizabeth R., Williamsport
 Evans, Mary J., Taylor
 Farnsworth, Wanda A., Muncy
 Flail, Elsie G., Schuylkill Haven
 Furman, Mary E., Northumberland
 Carey, Pauline M., Honesdale
 Gering, John R., Berwick
 Godleski, Lois E., Mt. Carmel
 Good, Eda A., Montgomery
 Gottlieb Irving T., York
 Griffith, George J., Wilkes-Barre
 Grow, Dorothy M., Shamokin
 Guarna, Flora C., Mt. Carmel
 Hendricks, Edward F., Wilkes-Barre
 Heydenreich, Myrtle E., Turbotville
 Hidley, Clariessa B., Berwick
 Hilbush, Arabel E., Dornsife
 Hoagland, June E., Mifflinville
 Hollenbeck, Catherine B., Williamsport
 Holoviak, Peggy R., Nesquehoning
 Hoeler, Xen S., Allentown
 Imboden, Lawrence L., Schuylkill Haven
 Jenkins, Elizabeth M., Edwardsville
 John, Harry C., Bloomsburg
 Johnson, Eleanor M., Centralia
 Jones, Catherine L., Shickshinny
 Jones, David M., Shamokin
 Jones, Thomas, Wilkes-Barre
 Jurasik, Theodore E., Berwick
 Kaahuba, Matthias F., Forty-Fort
 Keener, Kathryn M., Turbotville
 Kelly, Mary K., Bloomsburg
 Kepner, Betty Lou, Sunbury
 Kornaski, Irene A., Mt. Carmel
 Kotch, Helen R., Wilkes-Barre
 Kozlowski, Joseph W., Mt. Carmel
 Kreischer, Elaine L., Berwick
 Kulik, Irene M., Mt. Carmel
 Langan, Jean A., Duryea
 Latsha, Margaret E., Dornsife
 Lavelle, James M., Girardville
 Lebengood, Sara E., Pottsville
 Lovering, Mary Ruth, Scranton
 Martino, Lucille G., Roaeto
 Maust, Laura M., Bloomsburg
 Mazzeo, Salvatore A., Easton
 McCahan, George R., Nescopeck
 McCracken, Allen C., Riverside
 McCulla, Elizabeth J., Freeland
 McCutchen, Frederic M., Conyngham
 McGeehan, Betty G., Crum Lynne
 McGinley, William M., Centralia
 Meluskey, Eileen M., Shenandoah
 Mensch, Miriam E., Mifflinburg
 Miller, George E., Wilkes-Barre
 Miller, Harold J., Catawissa
 Miller, Helen M., South Enola
 Miller, Pearl A., Berryburg
 Miller, Rachael E., Berwick
 Moser, Mrs. Ruth K., McEwensville
 Niles, Hugh S., Wellsboro
 Oliver, Carl A., Pittston
 Orner, William S., Bloomsburg
 Oyer, Helen A., Allentown
 Parson, Sara Alyce, Harrisburg
 Patterson, Jenna M., Benton
 Piapote, George W., Lebanon
 Pope, Nelcna F., Sunbury
 Propst, Jessie E., Archbald
 Rabb, Donald D., Benton
 Rhys, Ruth J., Warrior Run
 Rick, Barbara A., Marion Heights
 Roan, Martha L., Epsy
 Sailer, Marilyn D., Reading
 Schlieder, Donald A., Catawissa
 Schoener, Laura E., Stochsburg
 Schramm, Robert F., Pottsville
 Sedlak, Catherine A., Dupont
 Shambach, Virginia, Troxelville
 Shank, Janet M., Catawissa
 Sharpe, June F., St. Johns
 Shiner, Mildred M., Nescopeck
 Sidari, Nan B., Hazleton
 Simpson, Rita E., Wilkes-Barre
 Singley, Nora E., Lewisburg
 Smethers, Ruth H., Berwick
 Snyder, Lora M., Turbotville
 Spontak, George, Pottsville
 Sterling, Harriet M., Catawissa
 Stoyer, Agnes A., Harrisburg
 Superko, Arlene N., Moccanaqua
 Swisher, Harold W., Shickshinny
 Taylor, George E., Montrose
 Thomas, Grace J., Bloomsburg
 Troy, Mabel L., Nuremberg
 Valladares, Josefina E., Puerto Rico (Out-of-State)
 Vonderheid, Herman E., Wapwallopen
 Wagner, Charles L., Bloomsburg
 Wagner, Elwood M., Hamburg
 Wallace, Marion W., Swoyerville
 Washington, Harriet, Philadelphia
 White, Matqueen V., Berwick
 Wintersteen, Lois L., Danville
 Witkoski, John F., Mt. Carmel
 Zeisloft, Hilda, Ardsley
 Zerby, Ida W., Herndon
 Zweizig, James A., Hamburg

Pre-Summer Session - 1942

Ackerman, Jean V., Hamburg
 Adams, Louise E., Shamokin
 Althoff, Eleanor M., Mt. Carmel
 Anthony, Mildred C., Strausstown
 Baer, Lillian Ida, Fleetwood
 Baker, Paul N., Epsy
 Ballamy, Marion E., Nescopeck
 Bartha, Elizabeth J., Yeagertown
 Barton, William H., Bloomsburg
 Beaumont, Lee R., Marcus Hook
 Beezer, Anna D., Hazleton
 Behler, Anita E., Kingston
 Behler, Helen E., Kingston
 Behr, Edith M., Lopez
 Berninger, Carl S., Catawissa
 Bittenbender, Jean L., Nescopeck
 Boyer, Anna H., Selingsgrove
 Boyle, Rose M., Wilkes-Barre
 Bruner, John H., Bloomsburg
 Bryner, Lois C., Danville
 Buck, Letha L., Stillwater
 Bundens, E. Victoria S., Bloomsburg
 Bunge, Robert L., Catawissa
 Carter, Leo S., Throop
 Cole, L. Ellen, Bloomsburg
 Collins, Loren L., Nanticoke
 Comuntzis, Poletime D., Bloomsburg
 Coombs, Marjorie R., Wapwallopen
 Cromis, Helen M., Bloomsburg
 Dean, Margaret D., Kulpmont
 DeMott, Robert H., Eysers Grove
 Derr, Roseanna, Bloomsburg
 Dixon, Helen A., West Hazleton
 Doberstein, Anna M., Nanticoke
 Doster, Lawrence H., Forty Fort
 Downs, Ernest C., Alderson
 Durlin, H. Louise, Milton
 Enama, Hazel F., Weston
 Enterline, Mary L., Turbotville
 (Mrs. R. Miller)
 Ertel, Elizabeth R., Williamsport
 Evans, Mary, Taylor
 Farnsworth, Wanda A., Muncy
 Fanst, Florence E., Ambler
 Foust, Cora M., Danville
 Godleski, Lois E., Mt. Carmel
 Good, Eda A., Montgomery
 Gottlieb, Irving, York
 Griffith, George J., Wilkes-Barre
 Gnarna, Flora C., Mt. Carmel
 Heydenreich, Myrtle E., Turbotville
 Hilbush, Arabel E., Dornsife
 Hoagland, June E., Mifflinville
 Hollis, Edward J., Drifton
 Holoviak, Peggy R., Nesquehoning
 Hosler, Ken S., Harrisburg
 Hower, Grace W., Bloomsburg
 Hunter, Alda R., Hunlock Creek
 Jacobs, Paul G., Bloomsburg
 John, Harry C., Bloomsburg
 Johnson, Eleanor M., Centralia
 Johnson, Rosemary P., Mt. Carmel
 Jones, Catherine L., Shickshinny
 Jones, David M., Shamokin
 Kashuba, Matthias F., Forty Fort
 Keener, Kathryn M., Turbotville
 Knorr, Joyce W., Wapwallopen
 Kornaski, Irene A., Mt. Carmel
 Kotch, Helen R., Wilkes-Barre
 Kozlowski, Joseph W., Mt. Carmel
 Kreischer, Elaine L., Berwick
 LaBarr, James L., Wilkes-Barre
 Lambert, Margaret E., Elysburg
 Langan, Jean A., Duryea
 Lataha, Margaret E., Dornsife
 Lavelle, James M., Girardville
 Lebengood, Sara E., Pottsville
 Lord, Linda I., Minersville
 Lovering, Mary Ruth A., Scranton
 Magill, Andrew F., Sugarloaf
 Manley, Edward J., Wilkes-Barre
 Marchese, Joseph, Old Forge
 Martin, Robert P., Edwardsville
 Martino, Lucille C., Roseto
 Mazzeo, Salvatore A., Easton
 McCahan, George R., Nescopeck
 McCracken, Allen C., Riverside
 McCulla, Elizabeth J., Freeland
 McCutchen, Frederic M., Conyngham
 McHenry F. Wilenc, Benton
 Meluskey, Eileen M., Shenandoah
 Mensch, Miriam E., Mifflinburg
 Miller, George E., Wilkes-Barre
 Miller, Harold J., Catawissa
 Miller, Helen M., South Enola
 Mischisen, Barbara, Freeland
 Miskowitz, Florence R., Wilkes-Barre
 Mooney, William B., Kingston
 Moser, Ruth K., McEwensville
 Nevil, Leota, Bloomsburg
 Niles, Hugh S., Wellsboro
 Oliver, Carl A., Pittston
 Orner, William S., Bloomsburg
 Oyer, Helen A., Allentown
 Pakutka, Agnes A., Duryea
 Patterson, Jenna M., Benton
 Piarote, George W., Lebanon
 Pope, Nelena P., Sunbury
 Propst, Jessie E., Archbald
 Rentschler, Huldah L., Bloomsburg
 Repella, Lydia B., Minersville
 Rhys, Ruth J., Warrior Run
 Rick, Barbara A., Keiser
 Runyan, Dorothy G., Bloomsburg
 Rabb, Donald D., Benton
 Sahol, Anne T., Phoenixville
 Sailer, Marilyn D., Reading
 Schlieder, Donald A., Catawissa
 Schoener, Laura E., Stouchsburg
 Schramm, Robert F., Pottsville
 Selecky, Dorothy H., Wapwallopen
 Sell, Betty E., Gordon
 Shambach, Virginia, Troxelville
 Shank, Janet M., Catawissa
 Sharretts, Marjorie G., Bloomsburg
 Shiner, Mildred M., Nescopeck
 Sidari, Nan B., Hazleton
 Simchik, Walter J., Wilkes-Barre
 Simpson, Rita E., Wilkes-Barre
 Singley, Nora E., Lewisburg
 Sirianni, Carmel A., Hop Bottom
 Smethers, Ruth H., Berwick
 Smith, James E., Nescopeck
 Snyder, C. David, Catawissa
 Snyder, Lora M., Turbotville
 Snyder, M. Edna, Canton
 Spontak, George, Pottsville
 Sterling, Harriet M., Catawissa
 Superko, Arlene N., Mocansqua
 Swisher, Harold W., Shickshinny
 Troy, Mabel L., Nuremberg
 Valladares, Josefina E., Puerto Rica
 Vought, Lucinda K., Numidia
 Wagner, Elwood M., Hamburg
 Wallace, Marion W., Swoyerville
 White, Marqueen, Berwick
 Yeany, Philip R., Bloomsburg
 Zebner, Martha L., Bloomsburg
 Zeigler, J. Corrine, Herndon
 Zweizig, James A., Hamburg

PRELIMINARY ENROLLMENT BLANK

This blank, together with a check (or Money Order drawn on the Postmaster at Harrisburg, Pennsylvania) for \$10.00 payable to the Commonwealth of Pennsylvania, should be mailed to State Teachers College, Bloomsburg, Pennsylvania. This \$10.00 is used as part payment of your fees. Do not send currency.

Name of Applicant -----
Last Name First Name Middle Initial

Address of Applicant -----
Number and Street

Town County State

Date of Birth -----
Month Day Year

Do you desire to enter—Pre-Summer Session June 7, 1943
 Regular Summer Session June 28, 1943
 Post-Summer Session Aug. 9, 1943
 First Semester Sept. 13, 1943
 Second Semester Jan. 26, 1944

Plan: Four College Years Curriculum: Business
 Three Calendar Years Elementary
 Secondary

Shall we reserve a room for you? -----

Give the name of town and county of the four-year high school from
which you graduated -----

When were you graduated? -----

Is this your first enrollment in this institution? -----

Give the names and location of any institutions which you have at-
tended since graduation from high school -----

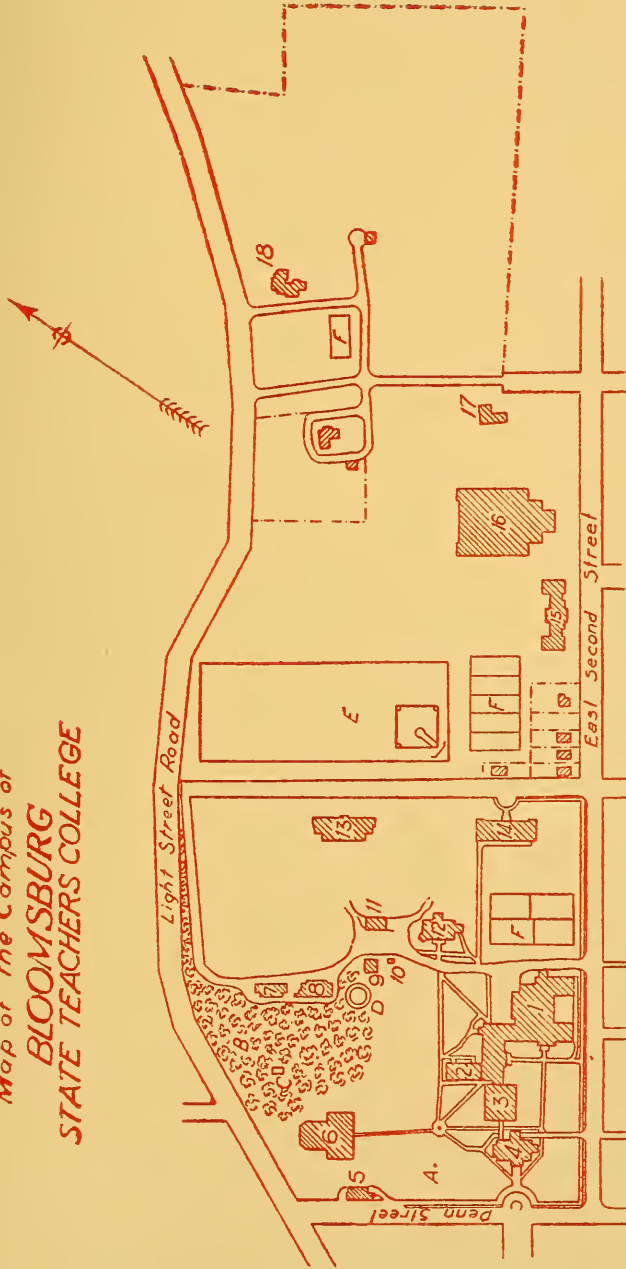
All curriculums lead to the degree of Bachelor of Science in Education. Students desiring to complete the requirements for the degree in less than four years may enter at the beginning of any summer session or semester. By attending the summer sessions regularly from the time of entrance, the graduation requirements may be completed in three calendar years. Students entering on this basis must signify their intention at the time of their admission.

Advance reservation deposits will be returned provided the College is notified at least three weeks before the opening of the semester of the desire to cancel the reservation.

Permission to live off the Campus will not be given as long as rooms are available in the dormitories. Special cases will be handled by the President.

Additional copies of this publication may be secured upon request from President Harvey A. Andruss, State Teachers College, Bloomsburg, Pennsylvania.

Map of the Campus of
BLOOMSBURG
STATE TEACHERS COLLEGE



KEY

- | | | | | | | | |
|---|----------------|----|---------------------|----|-----------------------|---|-----------------|
| 1 | Waller Hall. | 7 | Laundry. | 13 | Jr High School. | A | Flagpole. |
| 2 | Gymnasium. | 8 | Shops & Storage. | 14 | Training School. | B | Grove. |
| 3 | Noeiling Hall. | 9 | Isolation Hospital. | 15 | Men's Dormitory. | C | Per-gola |
| 4 | Carver Hall. | 10 | Greenhouse | 16 | New Gymnasium. | D | Lagoon. |
| 5 | Heating Plant. | 11 | Storage | 17 | Barn | E | Athletic Field. |
| 6 | Science Hall. | 12 | North Hall | 18 | President's Residence | F | Tennis Courts. |

THE BEST FOUR YEARS OF YOUR LIFE

TO BE AT HOME *in all lands and ages; to count nature a familiar acquaintance and art an intimate friend; to gain a standard for the appreciation of other men's work and the criticism of your own; to carry the keys of the world's library in your pocket, and feel its resources behind you in whatever you undertake; to make hosts of friends among the men of your own age who are to be leaders in all walks of life; to lose yourself in generous enthusiasms and cooperate with others for common ends—this is the offer of the college for the best four years of your life.—*

WILLIAM DEWITT HYDE.