

**STATE TEACHERS  
COLLEGE BULLETIN**

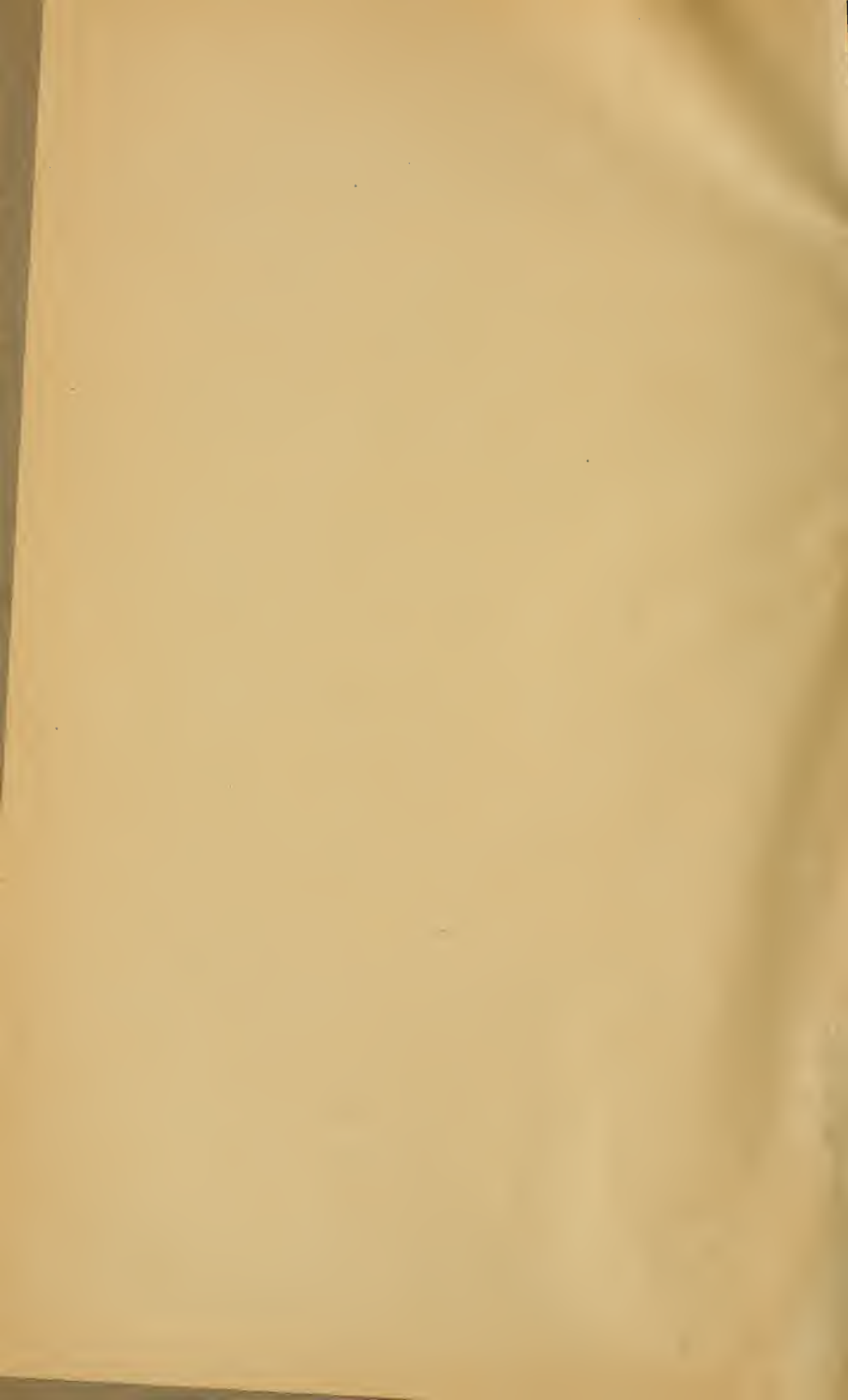


**1940**

**BLOOMSBURG  
PENNSYLVANIA**







# State Teachers College Bulletin

Vol. 8

No. 3

JANUARY, 1940  
CATALOG NUMBER



BLOOMSBURG, PENNSYLVANIA

Member of the American Association of Teachers Colleges

The State Teachers College Bulletin is issued in August,  
December, January, February, March, and April, by  
the State Teachers College at Bloomsburg.

*Entered as Second-Class Matter at the Post Office at Bloomsburg,  
Pennsylvania, under the Act of August 24, 1912*

## TABLE OF CONTENTS

---

Map of Motor Routes .....	4
Calendar .....	7
Board of Trustees and Administrative Personnel .....	8
Faculty .....	9
School Districts Cooperating in Teacher Training .....	14
The State Teachers College at Bloomsburg .....	18
History of State Teachers College at Bloomsburg .....	19
Campus, Buildings and Equipment .....	22
Information For New Students .....	27
Admission and Progress Requirements .....	30
Uniform Fees, Deposits, and Repayments in State Teachers Colleges .....	34
Summary of Expenses .....	39
Types of Student Assistance .....	43
Activities of State Teachers College at Bloomsburg .....	45
Curricular Program of Studies .....	45
Guidance in Choosing a Curriculum .....	46
Training School Facilities of the College .....	47
In-Service Preparation of Teachers .....	48
Summer School of 1940—Regular and Post Sessions .....	51
Certification Regulations .....	52
Certification of Teachers of Classes For the Mentally Retarded ..	55
Student Participation in College Government .....	56
Extra-Curricular Activities .....	58
Religious Activities .....	60
Professional Fraternities .....	60
Activities Calendar, 1938-1939 .....	63
An Enriched Program of Studies For the Education of Teachers ..	67
Basic Two Years of the Elementary and Secondary Curriculums ..	68
Department of Business Education .....	75
Teacher Education Curriculum in Business Education .....	81
Department of Music .....	83
List of Students .....	84
Enrollment, First and Second Semesters 1938-1939 .....	94
Registration by Counties .....	94

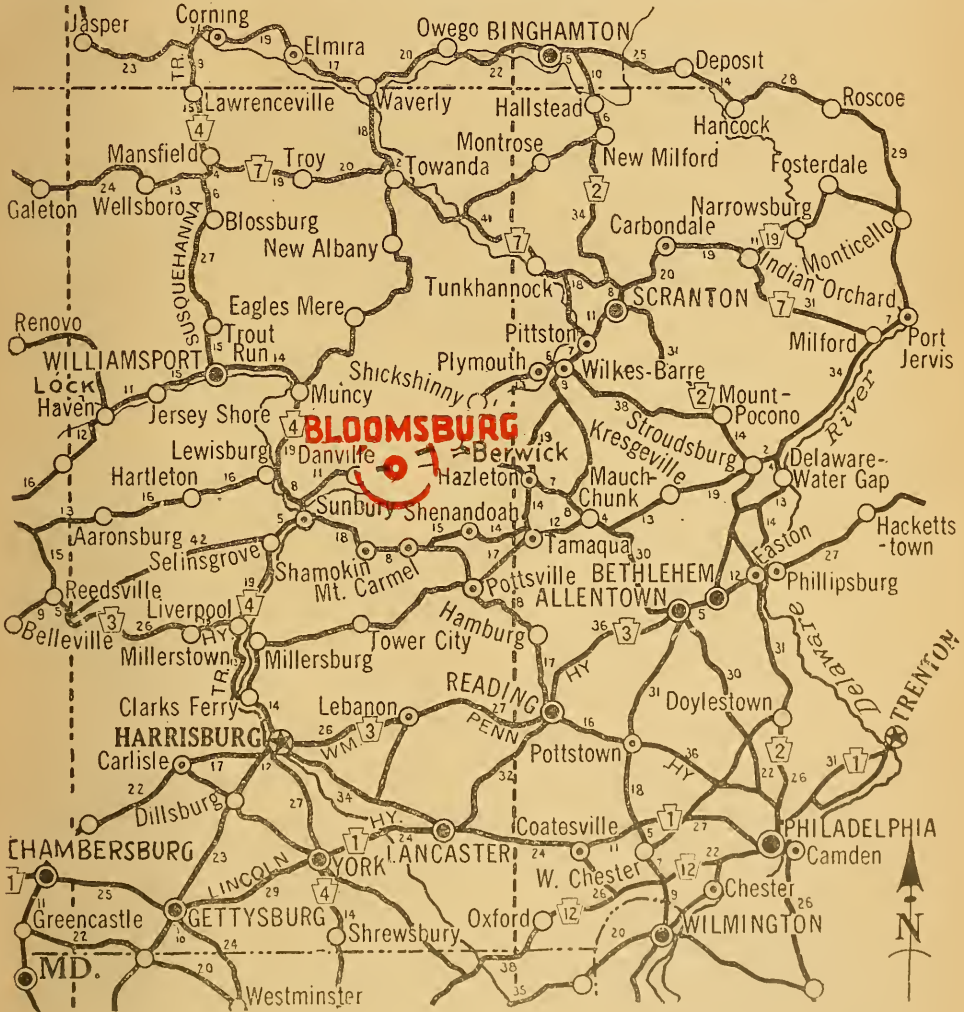


CARVER HALL TOWER





1. LINCOLN HIGHWAY      3. WILLIAM PENN HIGHWAY      7. ROOSEVELT HIGHWAY  
 2. LACKAWANNA TRAIL      4. SUSQUEHANNA TRAIL      12. BALTIMORE PIKE





# CALENDAR

## 1940-1941

### COMMENCEMENT 1940

Alumni Day - - - - - Saturday, May 25  
 Baccalaureate Sermon - - - - - Sunday, May 26  
 Senior Day, Ivy Day, Class Night - - - - - Monday, May 27  
 Commencement - - - - - Tuesday, May 28

### SUMMER SESSION 1940

Registration Day - - - - - Monday, June 17  
 Classes Begin - - - - - Tuesday, June 18  
 Entrance Examinations - - - - - Monday, July 15  
 Session Ends - - - - - Saturday, July 27

### POST SESSION 1940

Session Begins - - - - - Monday, July 29  
 Session Ends - - - - - Saturday, Aug. 17

### FIRST SEMESTER 1940-1941

Faculty Meeting - - - - - Monday, Sept. 9  
 Final Date for Entrance Examinations - - - Tuesday, Sept. 10  
 Registration and Classification of all Freshmen - Wednesday, Sept. 11  
 Registration and Classification of all Other Classes - Thursday, Sept. 12  
 Classes Begin - - - - - Friday, Sept. 13  
 Thanksgiving Recess Begins - - - Wednesday, 12M, Nov. 27  
 Thanksgiving Recess Ends - - - Monday, 12M, Dec. 2  
 Christmas Recess Begins - - - Saturday, 12M, Dec. 21  
 Christmas Recess Ends - - - Thursday, 12M, Jan. 2  
 First Semester Ends - - - Saturday, 12M, Jan. 18

### SECOND SEMESTER 1941

Classes Begin - - - - - Friday, 12M, Jan. 24  
 Easter Recess Begins - - - After last class Wednesday, Apr. 9  
 Easter Recess Ends - - - Tuesday, 12M, Apr. 15  
 Second Semester Ends - - - After last class Friday, May 23

### COMMENCEMENT 1941

Alumni Day - - - - - Saturday, May 24  
 Baccalaureate Sermon - - - - - Sunday, 2 P. M., May 25  
 Senior Day, Ivy Day, Class Night - - - - - Monday, May 26  
 Commencement - - - - - Tuesday, 10 A. M., May 27

The Calendar of the Training School does not coincide with that of the College.

Please apply to Dean Harvey A. Andruss for blanks and information relative to enrollment.

## BOARD OF TRUSTEES

Dr. H. V. Hower, President .....	Berwick
Hon. Clinton Herring, Vice-President .....	Orangeville
Grover C. Shoemaker, Secretary-Treasurer .....	Bloomsburg
Hon. C. C. Evans .....	Berwick
Henry T. Meyer .....	Lewisburg
Mrs. Ethel Noecker .....	Schuykill Haven
Thomas G. Vincent .....	Danville

The Board of Trustees meets regularly four times a year. During the interim the affairs of the College are conducted by the following Executive Committee which meets monthly:

Hon. C. C. Evans  
 Grover C. Shoemaker, Secretary-Treasurer  
 Thomas G. Vincent  
 Hon. Clinton Herring, Vice-President  
 Dr. H. V. Hower, President



## ADMINISTRATIVE PERSONNEL

Harvey A. Andruss .....	Acting President
Mrs. Anna J. Knight .....	Secretary to President
Harvey A. Andruss .....	Dean of Instruction
Mrs. G. Edward Horne .....	Secretary to Dean of Instruction
Marguerite W. Kehr .....	Dean of Women
Bertha Rich .....	Assistant Dean of Women
Ethel A. Ranson .....	Assistant Dean of Women
John C. Koch .....	Dean of Men
George Buchheit .....	Assistant Dean of Men
A. Austin Tate .....	Assistant Dean of Men
Earl N. Rhodes .....	Director of Teacher Training
William C. Forney .....	Director, Department of Business Education
E. H. Nelson .....	Director, Department of Health Education
M. Beatrice Mettler .....	Graduate Nurse
C. M. Hausknecht .....	Business Manager
Nevin T. Englehart .....	Superintendent of Grounds and Buildings

---

**FACULTY***MARY A. ALLEN**Business Education*

Pierce School of Business Administration; State Teachers College, Bloomsburg, Pa., B. S.; Bucknell University, M. S. Instructor Commercial Department, Oxford High School, Oxford, Pa.; Assistant Instructor, Commerce and Finance Department, Bucknell University, Lewisburg, Pa.; Instructor, State Teachers College, Bloomsburg, Pa.

*HARVEY A. ANDRUSS**Dean of Instruction*

University of Oklahoma, A. B.; Certificate in Public and Private Business, Northwestern University, M. B. A.; Graduate Work, *ibid.*  
Instructor and Lecturer, Northwestern University School of Commerce; Instructor and Supervisor, Department of Commerce, State Teachers College, Indiana, Pa.; Director, Department of Commerce, State Teachers College, Bloomsburg, Pennsylvania.

*MRS. LUCILLE J. BAKER**Training Teacher, Grade III*

Pestalozzi-Froebel School, Chicago, Illinois, student; Western State College, Colo., A. B.; Columbia University, A. M. Kindergarten Teacher, Telluride, Colo.; Rural Teacher and Intermediate Critic, Angola, Indiana; Fifth Grade Critic, Dillon, Mont.

*JOSEPH R. BAILER**English*

University of Pittsburgh, B. Sc.; New York University, M. A.; Cambridge University, Cambridge, England; University of Grenoble, Grenoble, France; Columbia University.  
Instructor, Roberts College and Academy, Istamboul; Point Pleasant High School, Point Pleasant, New Jersey; Metuchen High School, Metuchen, New Jersey.

*EDNA J. BARNES**Training Teacher, Grade IV*

Western State Teachers College, Macomb, Ill., B. S.; Teachers College, Columbia University, M. A.  
Associate Supervisor, Winona, Minnesota; Supervisor, Grades IV-VI, Bloomsburg State Teachers College; Training Teacher, Clarion State Teachers College.

*GEORGE C. BUCHHEIT**Health Education*

University of Kentucky, B. S. in C. E.; Graduate Work University of Illinois; Columbia University, M. A. in Phys. Ed. Teacher-Coach, University of Kentucky; Assistant Coach, Football, Duke University; Coach, Track and Basketball, Duke University.

*MAUDE CAMPBELL\***Education*

Chicago University, Ph. B.; Columbia University, M. A.  
Teacher, Des Moines, Iowa; Vancouver, Wash.; Elem. Prin-  
cipal, Newton, Iowa.

*HOWARD F. FENSTEMAKER**Foreign Languages*

Graduate, State Normal School, Bloomsburg, Pa.; University  
of Michigan, A. B.; New York University, A. M.; Graduate  
Work, University of Pennsylvania.  
Principal Elementary Schools, Dallas Township, Luzerne  
County, Pa.; Principal, Berwick, Pa.; Teacher, High School  
and Jr. College, Highland Park, Mich.

*JOHN J. FISHER**Psychology*

Goshen College, Goshen, Ind., A. B.; Indiana University, M.  
A.; Harrison Fellow, University of Pennsylvania; Graduate  
Work, Columbia University.  
Teacher, Goshen College; Manchester College, Summer Ses-  
sion; Indiana University, Summer Session.

*WILLIAM C. FORNEY**Director, Department of Business Education*

Temple University, B. S. C.; Harvard University, University  
of Chicago, Graduate Work; New York University, M. A.  
Instructor Evening Classes, Temple University; Head of  
Commercial Department, Easton Senior High School, Easton,  
Pa.; Instructor, Department of Business Education, State  
Teachers College, Bloomsburg, Pennsylvania.

*DOROTHY E. GILMORE**Assistant Librarian*

State Teachers College, Bloomsburg, Pa., B. S.  
Librarian Service, David A. Howe Public Library, Wells-  
ville, N. Y.; C. W. A. Library Projects, Bloomsburg Public  
Library.

*MAY T. HAYDEN**Director of Kindergarten-Primary Education*

High School and Jr. College, Edmonton, Alta.; State College,  
Pulman, Wash., B. A.; Columbia University, M. A.  
Grade Principal, Lewiston, Idaho; Elem. School Supervisor,  
Lewiston, Idaho; Critic Teacher and Primary Supervisor,  
Dillon, Mont.

*EDNA J. HAZEN**Director of Intermediate and Rural Education*

State Normal School, Edinboro; Allegheny College, Mead-  
ville; Columbia University, B. S., M. A.; Graduate Work,  
New York University.  
Elementary Teacher, Cleveland, Ohio; Critic Teacher and  
Principal, Junior High School Department, State Normal  
School, Edinboro, Pa.; Assistant County Superintendent, Erie  
County.

---

\* Retired—November, 1939

MARGARET R. HOKE

*Business Education*

Johns Hopkins, Baltimore, B. S.; Lebanon Valley College, Annville, M. A.; Columbia University, Secretarial Certificate. Teacher, Business College, Harrisburg, Pa.; High School, Baltimore, Md.; Skidmore College, Saratoga, N. Y.

VIVIAN H. JOHNSON

*Training Teacher, Grade I*

State Normal School, Bellingham, Washington; University of Washington, B. A., and M. A.; Graduate Work, Columbia University.

Critic Teacher, State Normal College, Dillon, Montana; Critic Teacher, Eastern Oregon Normal School, LaGrande, Oregon; Cadet Supervisor and College Teacher, Pacific Lutheran College, Tacoma, Washington.

ALICE JOHNSTON

*Speech*

Park College, Mo., B. L.; Columbia University, M. A.; Graduate Work, University of Wisconsin; Columbia University, University of Michigan.

Teacher, Dalton, Mass.; Jr. College, Godfrey, Ill.; Supervisor Public Schools, Racine, Wis.

MARGUERITE W. KEHR

*Dean of Women*

University of Tenn., B. A.; Wellesley College, A. M.; Cornell University, Ph. D.

Teacher, City Schools, Knoxville, Tenn.; Instructor in Psychology, University of Tenn.; Dean of Women and Assistant Professor, Education, Lake Forest College, Ill.

MRS. ETTA H. KELLER

*Training Teacher, Grade VI*

Pennsylvania State College, B. S.; Teachers College, Columbia University, M. A.; Graduate Work, Clark University; New York University.

Elem. and Rural Teacher, Columbia County; Supervisor, Home Economics, Susquehanna County; Training Teacher, Jr. High School, Household Arts and Science and Jr. High School Principal, State Normal School, Bloomsburg.

GEORGE J. KELLER

*Art*

State Normal School, Bloomsburg; Teachers College, Columbia University, B. S.; Bucknell University, M. A.

Teacher, Horace Mann School, New York; Bloomsburg High School; Summer Session, Teachers College, Columbia University.

JOHN C. KOCH

*Dean of Men and Director of Secondary Education*

Bucknell University, A. B., A. M.; Graduate Work, New York University.

Teacher, High School, Columbia, Pa.; Jr. High School, Harrisburg, Pa.

*KIMBER C. KUSTER**Science*

State Normal School, Bloomsburg, Pa.; University of Michigan, B. S., M. S., Ph. D.  
 Assistant in Biology, State Normal School, Bloomsburg, Pa.;  
 Instructor in Zoology, Oregon State College; Instructor in  
 Zoology, University of Michigan.

*PEARL L. MASON**Librarian*

Simmons College, Boston, B. S.; Graduate Work, Columbia  
 University.  
 Assistant Public Librarian, Leominster, Mass.; Librarian,  
 Athol, Mass.

*NELL MAUPIN**Social Studies*

Peabody Teachers College, B. S.; State University, Iowa  
 City, M. A., Ph. D.  
 Normal Instructor, Gate City, Va.; Woodstock, Va.; Teach-  
 ers College, Greenville, N. C.

*LUCY McCAMMON**Health Education*

State Teachers College, Springfield, Mo., A. B.; Columbia  
 University, M. A.  
 Rural Teacher, Strafford, Mo.; Teacher, Training School and  
 College, Springfield, Mo.; Director Health, Y. W. C. A., Kan-  
 sas City, Missouri.

*HERBERT E. McMAHAN**Business Education*

Temple University, B. S. in Commerce; Pennsylvania State  
 College, Graduate Work; Temple University, M. Ed.  
 Head of Commercial Department, Altoona Senior High  
 School, Altoona, Pa. and Central High School, Bridgeport,  
 Conn.; Supervisor of Commercial Education, Wilmington,  
 Delaware.

*M. BEATRICE METTLER**Graduate Nurse*

Bucknell University, Lewisburg, Pa., A. B.; Graduate The  
 Johns Hopkins Hospital Training School, Baltimore, Mary-  
 land; Graduate Work University of Chicago, Chicago, Illi-  
 nois; R. N., Pennsylvania and Maryland.  
 Member of Staff, Johns Hopkins Hospital, Baltimore, Md.;  
 Social Work, Department of Public Assistance, Common-  
 wealth of Pennsylvania, Northumberland, Pa.; Science In-  
 structress of Nurses, Bloomsburg Hospital, Bloomsburg, Pa.

*MRS. JOHN K. MILLER**Director School of Music, Piano, Violin*

Pupil of Dr. Mackenzie, Henry Shradieck, Franz Kneisel,  
 Waldemar Meyer, Adamowski, Madame Hopekirk, Ida  
 Blakeslee, Busoni.  
 Instructor Violin, Piano, Ohio Wesleyan University; Studio  
 Teaching, Wilkes-Barre, Pa., and Bloomsburg, Pa.; Director  
 School of Music, Teachers College.



*HARRIET M. MOORE**Public School Music*

State Teachers College, Kirksville, Mo.; Bush Conservatory, Chicago, Ill., Mus. B.; New York University, B. S., M. A., in Music Education.

Elem. Teacher, Festus, Mo.; Webster Groves, Mo.; Supervisor Public School Music, Winnetka, Ill.; Supervisor Public School Music, University City, Mo.

*S. MABEL MOYER**Training Teacher, Grade II*

State Normal School, Bloomsburg, Pa.; Summer Work, Teachers College, Columbia University; Bucknell University, B. S. in Education, M. A.; Graduate Study, New York University.

Elementary and Rural Teacher, Columbia County, Pa.; Teacher, Primary Grades, Bloomsburg Public Schools.

*MARGUERITE MURPHY**Business Education*

Columbia University, B. S., M. A.  
Principal, Sherman's Business School, Mount Vernon, N. Y.; Head of Commercial Department, Chillicothe Township High School, Chillicothe, Ill.; Teacher, Hopkins Township High School, Granville, Illinois.

*E. H. NELSON**Director of Health Education*

State Normal School, Bloomsburg; University of Michigan, A. B.; Harvard University, Ed. M.; New York University, Ph. D.

Physical Director, Dickinson Seminary, Williamsport; Highland Park, Mich.; Bethlehem, Pa.

*THOMAS P. NORTH**Education*

Pennsylvania State College, B. S., M. S.; Cornell University, Ph. D.

Supervisor, The Washington Township Vocational School, Falls Creek; Supervising Principal of Union Township and Corsica Borough Schools and Director of the Union Vocational School, Corsica, Pa.; Educational Research, Pennsylvania State College.

*A. PARK ORTH**Business Education*

The Drexel Institute of Technology; The University of Pennsylvania, B. S. and A. M.; Graduate Work at Pennsylvania State College and Temple University.

Teacher and department head, high schools of Chester and Harrisburg, Pa.; Instructor, Temple University and State Teachers College, Indiana, Pa.

**MABEL OXFORD \****Business Education*

Pierce School of Business Administration; State Teachers College, Indiana, Pa.; Muhlenberg College; State Teachers College, Bloomsburg, Pa., B. S.; Graduate Work, University of Pennsylvania.

Head of the Commercial Department, Quakertown High School, Quakertown, Pa.

**ETHEL A. RANSON***Assistant Dean of Women and Mathematics*

University of Illinois, A. B.; Columbia University, A. M.

Teacher and Principal, Mansfield, Ill.; Teacher, Bement, Ill.; Teacher, Oblong, Ill.

**EDWARD A. REAMS***Social Studies*

Kansas Wesleyan, A. B.; Columbia University, A. M.; Graduate Work, University of So. California, Penn State College, New York University.

Teacher, Salina, Kan.; High School, Lock Haven, Pa.; State Teachers College, Lock Haven, Pa.

**EARL N. RHODES***Director of Teacher Training*

State Normal College, Ypsilanti, Mich.; University of Chicago, Ph. B.; Columbia University, A. M.; Graduate Work, Clark University, Columbia University, New York University.

Director of Training School, Salem, Mass.

**BERTHA RICH***Assistant Dean of Women and Geography*

Colorado State Normal School, Gunnison, Pd. B.; Western State College, A. B.; Columbia University, A. M.; Graduate Work, Clark University.

Teacher and Principal, Canon City, Colo.; High School Teacher, Rupert, Idaho; Training Teacher, Western State College; Teacher of Geography, University of Tennessee, (Summer Sessions).

**H. HARRISON RUSSELL***Geography*

Illinois State Normal University, B. Ed.; Clark University, A. M., Ph. D.

El. and High School Principal, Herscher, Ill.; Illinois State Normal University, Normal, Illinois.

**WALTER S. RYGIEL***Business Education*

Temple University, B. S., M. Ed. Graduate Work, Bucknell University, University of Pennsylvania.

Head of Commercial Department, Wyoming Memorial High School, Wyoming, Pennsylvania.

**ANNA GARRISON SCOTT***Training Teacher, Grade V*

State Normal School, Bloomsburg, Pa.; Columbia University, B. S., M. A.

Teacher, Berwick; Training Teacher, Bloomsburg.

\* Leave of Absence, 1939-1940

*ETHEL E. SHAW**English*

Normal School, New Britain, Conn.; Teachers College, Columbia University, B. S., M. A.; Oxford University, Summer Work.

Teacher, Hampton Institute, Hampton, Va.; Teacher, Amherst, Mass.; Private Elem. Teacher, Albany, N. Y.

*THELMA SHIRK**Training Teacher, Special Class*

State Teachers College, Kutztown, Pa., B. S.; State Teachers College, Bloomsburg, Pa., Special Class Certification.

Elementary Teacher; Special Class Teacher, Northampton, Pa.

*S. I. SHORTESS**Science*

Albright College, A. B.; University of Pennsylvania, M. S.; Graduate Work, New York University.

Principal, Jenkintown High School, Jenkintown, Pa.; Head Physics Department, Wilkes-Barre, Pa.; Instructor Girard College, Philadelphia, Pa.

*VIOLET L. SIMPSON**Dietitian and Nutrition*

University of Colorado, B. S.; University of Iowa; Cornell College; Iowa State College, Ames; Iowa State Teachers College; Knox College; Columbia University.

Home Economics Instructor and Department Chairman, Galesburg, Illinois; Household Arts and Science Department, Head and Organizer, White Fish Bay, Milwaukee, Wisconsin; Commercial Tea Rooms—Mid West States, New York, N. Y.

*A. AUSTIN TATE**Football Coach and Social Studies*

Lehigh University, B. S.; Graduate Work, University of Illinois; Harvard University.

Supervisor of Boys' Gymnasium, Football and Baseball Coach, Bethlehem High School; Head Coach of Football, Lehigh University.

*M. AMANDA KERN THOMAS\***Training Teacher, Special Class*

Ursinus College, B. A.; Graduate Work, Rutgers University. Teacher of Ungraded School; Special Class Teacher, Northampton, Pa.

*MARY M. WHITENIGHT**Health Education*

State Teachers College, East Stroudsburg, Pa., B. S.; New York University, Graduate Work, Physical Director, Bloomsburg High School, Bloomsburg, Pa.

\* Leave of Absence, 1939-1940

*SAMUEL L. WILSON**English*

Bucknell University, B. S.; Columbia University, M. A.;  
Graduate Work, Harvard University, New York University.  
Principal, Ralston, Pa.; Teacher, Homestead, Pa.; Teacher,  
Harrisburg, Pa.

*GRACE WOOLWORTH**Training Teacher, Kindergarten*

University of Chicago, Ph. B.; University of California; Col-  
umbia University, M. A.  
Critic and College Teacher, Teachers College, Ypsilanti,  
Michigan; College Teacher, University of Nebraska; College  
For Women, Greensboro, N. C.

**SCHOOL DISTRICTS COOPERATING IN TEACHER  
TRAINING**

1939-1940

**BLOOMSBURG**

L. P. Gilmore, Supervising Principal  
Clair Patterson, Assistant Principal  
Junior-Senior High School

Lawrence Campbell, B. S. -----	Science
Robert Hutton, B. S. -----	Geography
Mrs. Harriet Kline, M. A. -----	English
Bess Long, M. A. -----	Science
Cleora McKinstry, B. S. -----	English
Robert Mercer, B. S. -----	Mathematics
Harold Miller, M. A. -----	Geography
George Mordan, B. S. -----	Mathematics
Clair Patterson, B. S. -----	Social Studies
Marie Pensyl, M. A. -----	Social Studies
Donald Sands, B. S. -----	Social Studies
Ray B. Schell, B. S. -----	Mathematics
Thursabert Schuyler, B. S. -----	Latin
Mary R. Serocca, B. S. -----	French
Myra Sharpless, B. S. -----	Social Studies
John Wagner, B. S. -----	Science
Norman A. Yeany, M. A. -----	Commercial
Wesley Knorr, B. S. -----	Commercial

**CATAWISSA**

Paul L. Brunstetter, Supervising Principal

Paul L. Brunstetter, B. S.—Senior High School -----	Commercial
M. F. Witmer, B. S.—Senior High School -----	Commercial

**BERWICK**

M. E. Houck, Superintendent

D. R. Shuman, Principal

Florine Moore, B. S.—Senior High School -----	Commercial
Louise Yeager, B. S.—Senior High School -----	Commercial

**WILLIAMSPORT**

A. M. Weaver, Superintendent

J. E. Nancarrow, Principal

Clarence Derr, B. S.—Senior High School -----	Commercial
Wellard Guffy, B. S.—Senior High School -----	Commercial
Ezra Heyler, A. B.—Senior High School -----	Commercial
Laura Maust, B. S.—Senior High School -----	Commercial
Kerr Miller, B. S.—Senior High School -----	Commercial
Edward Peterson, B. S.—Senior High School -----	Commercial

J. Fred McMurray, Principal

Minnie Ricks, B. S.—Roosevelt Junior High School -----	Commercial
A. L. Pepperman, Principal	

Martha Saxer, B. S.—Curtin Junior High School -----	Commercial
---	------------

**COLUMBIA COUNTY**

Ray Cole, County Superintendent

Bessie Mordan—Rural -----	Grades I-VIII
---------------------------	---------------

## THE STATE TEACHERS COLLEGE AT BLOOMSBURG

### Bloomsburg, the County Seat of Columbia County

The State Teachers College at Bloomsburg is situated on a hill at the head of Main Street. Bloomsburg is a developing community of 10,000, where unite those two essentials of progress—education and industry. Bloomsburg's educational ideals are exemplified in the public library with its art gallery in which art exhibits are housed from time to time, in the fine municipal hospital, in the \$500,000 Junior-Senior High School, and in the State Teachers College on the hill, a simple and dignified Acropolis.

The town's business energy is evidenced in the fine business section reaching out from the public square, in the large carpet, silk, and hosiery mills, and in other industries.

Bloomsburg lies in the heart of a singularly beautiful country. Surrounded by gently sloping hills, it is situated at the juncture of the picturesque Susquehanna River and Fishing Creek. Following the drives about Bloomsburg is like turning the pages of a lovely picture book. The streets are wide and well lighted by boulevard lights on standards whose baskets blossom with flowers and vines in summer and are filled with evergreens in winter. A city park, carefully planned to bring out the natural beauty of the site, will some day stretch along the Susquehanna River front.

The citizens of Bloomsburg worship in beautiful church homes where Teachers College students are always welcome to share the religious and social life. The churches include Baptist, Catholic, Church of Christ, Episcopal, Evangelical, Lutheran, Methodist, Presbyterian, and Reformed.

### How to Reach Bloomsburg

Bloomsburg is reached by three railroads—the Sunbury Division of the Pennsylvania; the Delaware, Lackawanna and Western; and the Reading. The Sunbury Division of the Pennsylvania has daily trains each direction into East Bloomsburg. Buses meet these trains. The Delaware, Lackawanna and Western Railroad (D. L. & W.) has daily trains each direction into Bloomsburg. The Reading has daily service into Bloomsburg.

Buses connect Bloomsburg with Berwick, Hazleton, Danville, Catawissa, and Sunbury. Schedules giving the regular service may be obtained from the local bus office.

Bloomsburg is situated on the Sullivan Trail, ten miles from Danville, twelve miles from Berwick, forty miles from Wilkes-Barre, sixty miles from Scranton, forty miles from Williamsport, and twenty-three miles from Sunbury. Fine roads make it most accessible by automobile.

## HISTORY OF THE STATE TEACHERS COLLEGE AT BLOOMSBURG

### PRINCIPALS AND PRESIDENTS

Henry Carver .....	1869-1871
Charles G. Barkley .....	December 20, 1871—March 27, 1872
John Hewitt .....	March 27, 1872—June, 1873
T. L. Griswold .....	1873-1877
D. J. Waller, Jr. ....	1877-1890
Judson P. Welsh .....	1890-1906
D. J. Waller, Jr. ....	1906-1920
Charles H. Fisher .....	1920-1923
G. C. L. Riemer .....	1923-1927
Francis B. Haas .....	1927-1939

Academy, Literary Institute, Literary Institute and State Normal School, State Teachers College—such has been the metamorphosis of the present State Teachers College at Bloomsburg.

Away back in 1839, a private academy was opened at Bloomsburg. C. P. Waller, a graduate of Williams College, successfully conducted the school for two years. Later public school teachers taught in the academy during their summer vacations. Among the outstanding teachers during this period were Joe Bradley and D. A. Beckley.

In 1856, D. J. Waller drew up a charter, which was subscribed to by worthy citizens of Bloomsburg and which provided that the school be known as the Bloomsburg Literary Institute for the promotion of education in the ordinary and the higher branches of English literature and science and in the ancient and modern languages.

In 1866, Henry Carver, of Binghamton, N. Y., taught the school. His unusual influence and personality had much to do with molding its early policies. He insisted that a new building was essential for the future development of the Bloomsburg Literary Institute.

Under his inspiration, the charter of 1856 was revived and the following officials elected—President, D. J. Waller; secretary, I. W. Hartman; trustees, John G. Freeze, R. F. Clark and William Neal. Mr. Carver assured the trustees that \$15,000 would build a suitable building. The energy and enthusiasm of the men were such that when some doubted that the type of building which he had planned could be built for that amount, he assumed in addition to his duties as teacher, the offices of architect and contractor.

On April 4, 1867, that building, the present Carver Hall, was dedicated with gala observance by the townspeople. Members of the first class at the new school—D. J. Waller, Jr., the late George E. Ellwell and the late Charles Unangst—by popular subscription raised \$1200 in a single week for the fine bell which formerly called the students to their classes. The first faculty comprised Professor Carver, teacher of mathematics and the higher English branches; Rev. J. R. Dimm, teacher of Latin and Greek; and Miss Sarah Carver, teacher of the lower English branches.

In the autumn of 1867, James P. Wickersham, State Superintendent of Public Instruction, was traveling through Bloomsburg on the train. He saw the new school on the hill "ablaze with lights" and thought the Literary Institute's location would be ideal for a State Normal School. So at a meeting in 1868, at which he addressed the citizens of Bloomsburg, it was decided to establish a Normal School under the Act of 1857. A dormitory was completed at a cost of \$36,000. The school was recognized as a State Normal School on Friday, February 19, 1869. In September of that year, there were 150 in the Normal Department and 80 in the Model School.

The school was called the Bloomsburg Literary Institute and State Normal School until it was purchased by the State May 22, 1916. After that it was known as the State Normal School at Bloomsburg until the name was changed to State Teachers College on May 13, 1927, by the State Council of Education. Up to 1920, when the Department of Public Instruction revised the programs of all the Normal Schools, the school offered college preparatory courses as well as teacher training courses.

Principal Carver left in 1871. Charles G. Barkley, Esq., a former county superintendent of schools, acted as Principal from December 20, 1871, to March 27, 1872. His successor was the Rev. John Hewitt, rector of the Episcopal Church at Bloomsburg, who served as Principal from March, 1872 to June, 1873. In 1873, Dr. T. L. Griswold became Principal, serving until 1877.

Those early years were trying ones, subscriptions would fall off and trustees would often meet obligations on their own personal responsibility. In 1875, the dormitory was completely destroyed by fire. In 1876, a larger and handsomer building, the original part of the present Waller Hall, was built. In spite of discouraging circumstances, the school began paying expenses during Doctor Griswold's administration.

In the Fall of 1877, Dr. D. J. Waller, Jr., became Principal. For thirteen years the school grew under his guidance. The Model School and the east wing of the dormitory were built during his Principalship. When Doctor Waller resigned in 1890, to become State Superintendent of Public Instruction, the school was in a prosperous condition.

Dr. Judson P. Welsh served as Principal of the Bloomsburg State Normal School from 1890 to 1906. During his administration an addition to the four-story dormitory and the gymnasium were built. Science Hall was opened in the Fall of 1905 just after his resignation.

Dr. D. J. Waller, Jr., responded a second time to the summons of the trustees, serving as Principal until 1920 when he retired from active duties. Doctor Waller has given the Bloomsburg State Normal School twenty-seven years of splendid service as its Principal.

He was succeeded by Dr. Charles H. Fisher, who came to the Normal School from the State Department of Public Instruction. He served at Bloomsburg from 1920 to 1923. During his administration



teacher training was introduced into the Bloomsburg public schools and extension courses were instituted. He was followed by Dr. G. C. L. Riemer, who came from the State Department of Public Instruction. He served as Principal until June, 1927.

Dr. Francis B. Haas succeeded Dr. Riemer in July, 1927. Under his administration the College has made great advancement, both in the improvement of the physical plant and in the program of teacher education in the Commonwealth.

Major campus improvements include the following: the addition of eighteen acres of land; the construction of a new Laundry Building; Elementary Training School; Gymnasium; Junior High School; Shop and Maintenance Building; addition to the Boiler Plant; Fire Towers for several buildings; a complete remodeling of Science Hall, and the remodeling of the auditorium.

Smaller projects include the provision of complete and comfortable rooms for day students; the construction of a new recreation field; the adoption of a tree-planting program; the building of new tennis courts; the installation of sound picture equipment in the auditorium; the laying of 2,500 lineal feet of new sidewalk and street curbs, and the addition of new underground steam and electric service.

Educational developments during the administration of Dr. Haas have moved along parallel with the improvement in the physical plant and include the following: the establishment of the Department of Business Education; the inauguration of a Department of Special Education, with an Educational Clinic for guidance and remedial construction of problem cases; the organization and development of a student government association; the development of such outstanding extra-curricular activities as the A Cappella Choir, Maroon and Gold Orchestra, Maroon and Gold Band, and the Dramatic Club, and the installation of professional and honorary educational organizations.

In June, 1939, the College very fittingly celebrated its Centennial—one hundred years of progress.

Dr. Haas resigned in August, 1939, to assume, for the second time, the duties of State Superintendent of Public Instruction for the Commonwealth of Pennsylvania.

## CAMPUS, BUILDINGS AND EQUIPMENT

**CAMPUS.** The State Teachers College property comprises about fifty-five acres, of which over forty acres form the campus proper. The campus lies on a hillside from which one looks down over Bloomsburg homes toward the bright ribbon of the Susquehanna and beyond to the softly tinted distant hills. The campus contains an athletic field, tennis courts, and a general recreation field. An oak grove with a cement pergola and a lagoon forms an ideal place for out-of-doors pageants and dramatics.

The buildings of the State Teachers College reflect the growth of the institution.

**CARVER HALL.** Carver Hall, erected in 1867, and named for Henry Carver, the first Principal, stands at the head of Main Street. Its white belfry and pillared entrance form a picturesque approach to the College campus and buildings. The building contains an auditorium seating 1000 which has recently been completely equipped for motion pictures with sound equipment. A number of classrooms are also located in this building.

**NOETLING HALL.** Noetling Hall, named for William Noetling, the head of the Department of Pedagogy from 1877-1900, is in the rear of Carver Hall. The Department of Business Education occupies the second floor of this building. Here classrooms are provided for typewriting, bookkeeping and office practice, including the following modern machines: special typewriters, addressographs, adding machines, bookkeeping and posting machines, calculating and ditto machines, multigraphs, mimeoscopes, mimeographs, and dictaphones. Six faculty offices, located here, provide office practice facilities in addition to the offices of the Business Manager, Dean of Instruction, and President.

**WALLER HALL.** The main dormitory, Waller Hall, named for D. J. Waller, Jr., Principal of the College for twenty-seven years, is four stories high with a frontage of 165 feet and a wing 40 by 104 feet. This building is equipped with one passenger and two freight elevators.

The ground floor of this building contains the lobby, the dining room and kitchen, the administration and business offices, and the post office.

The Alumni Room on the first floor of Waller Hall recently has been beautifully furnished as a reception room for the Alumni and the Faculty. College cups and other trophies are displayed in this room.

Five modern enclosed fire towers practically eliminate any fire hazard. The library and infirmary are on the second floor. The women's bedrooms occupy the second, third, and fourth floors. The bedrooms contain beds, dressers, chairs, and study tables.

The dining room and lobby are most attractive. The dining room is sunny and cheerful with white woodwork and decorative built-in cupboards. The students are seated at round tables in groups of eight. A dietitian directs the buying, preparing, and serving of the food.

Every effort is made to keep the students in good physical condition. A registered nurse is in charge of the infirmary where students may have proper care and quiet when they are sick. Doctors are called when the students desire or when the nurse deems it advisable. A cottage on the campus is set aside for housing any contagious disease that may develop. Fresh air, pure water, and well-balanced meals of wholesome food make the sick at Teachers College a negligible number.

The lobby with its tapestries and its comfortable chairs is a favorite social meeting place.

The library on the second floor of Waller Hall contains over 15,000 standard works of history, fiction, education, and the like. It is satisfactorily equipped with reference works, good magazines, and newspapers.

One of the most interesting features of the building is "The Long Porch" overlooking "The View"—the Susquehanna River beyond the town and the Catawissa mountain beyond the river.

**NORTH HALL.** North Hall, the men's dormitory, is a short distance from Waller Hall. It is a three-story building, 40 by 90 feet, used exclusively by the men students.

**GYMNASIUM.** The Gymnasium adjoins Waller Hall. It has a floor area measuring 45 by 90 feet, and wings outside of this space providing bleachers for 700. Beneath these are ample dressing-room facilities, including showers.

**SCIENCE HALL.** Science Hall was built in 1906. It is equipped for laboratory work in biology, chemistry, and physics. It contains a number of classrooms and two lecture rooms with lanterns, screens and other visual education apparatus. Two large, well-lighted art studios are in this building. Modern laboratory desks and other equipment for the teaching of Chemistry and Physics were installed at the beginning of the school year of 1937 to provide for the increased demand for Science on the part of students who are entering the teaching profession. This building has been recently renovated and modern fire towers have been added at a cost of approximately \$25,000.

**BENJAMIN FRANKLIN SCHOOL.** The Benjamin Franklin Training School building was opened for use the first day of the 1930-1931 school year. It is designed, planned, and equipped in accordance with the best present modern practice. It provides teacher training facilities from the kindergarten to the sixth grade. Among the features is a special room arranged for observation and demon-

stration work. In addition to the practice work done here, a cooperative arrangement makes practice teaching possible in public schools of Berwick, Catawissa, Bloomsburg, Williamsport, and Danville. The practice teaching in rural work is done in the rural schools of Columbia County.

**LAUNDRY.** The new laundry provides, in a separate plant, the best modern equipment for handling the laundry needs of the College. The space in the basement of North Hall released by the removal of the present laundry has been developed as a lobby and reading room and provides locker accommodations for the day men.

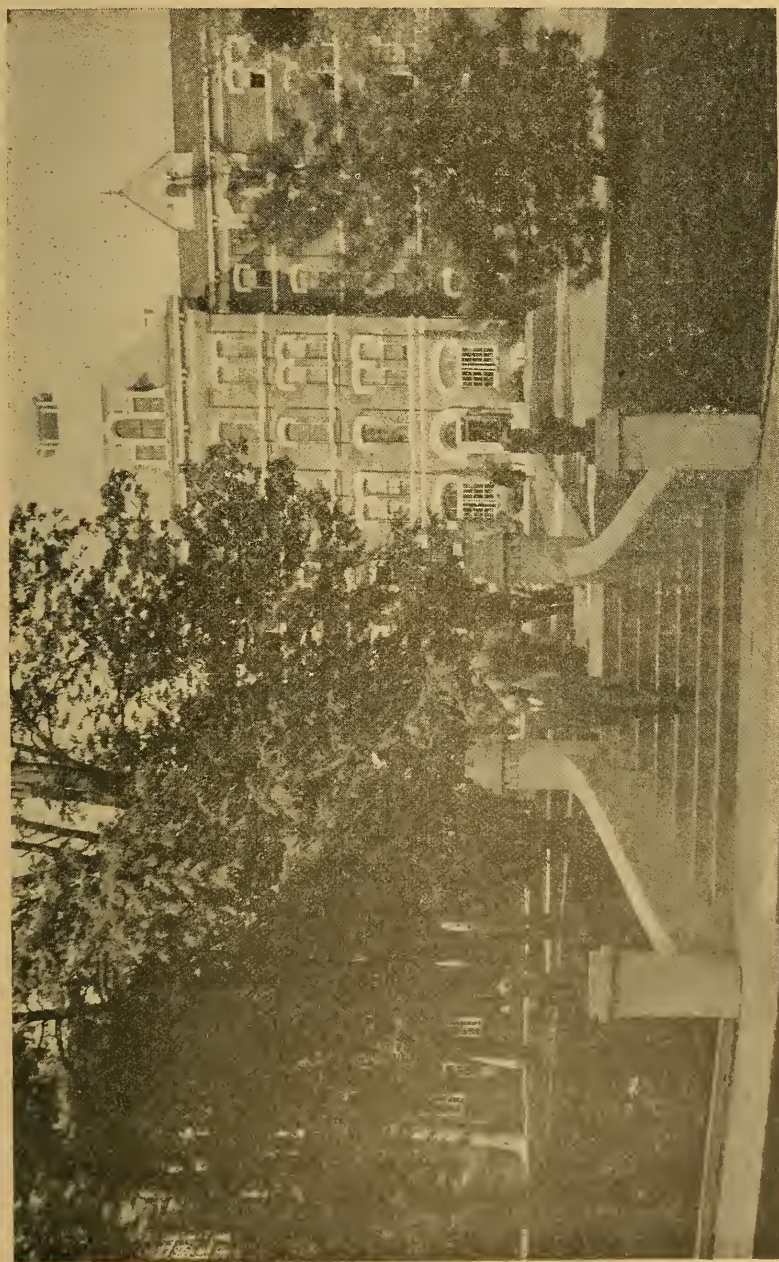
Recent building improvements include two fire towers to Carver Hall, which contains the auditorium; an enclosed fire tower on Waller Hall, which contains the girls' dormitory; an enclosed fire tower and an outside steel tower for North Hall; and the addition of a wing to the gymnasium with bleachers for seating about four hundred.

**NEW GYMNASIUM.** The New Gymnasium is located on the upper part of the campus close to the Athletic Field. It is a building modern in every respect and fully adequate to meet the growing needs of the institution. It contains a large main gymnasium with a playing court 48 by 84 feet, and two smaller auxiliary gymnasiums, one for boys and one for girls each with an adjoining locker room. To the rear of the main floor is a fine swimming pool 75 by 30 feet. The building houses in addition complete office and classroom facilities for the Health Education Department.

**JUNIOR HIGH SCHOOL.** Situated close to the Benjamin Franklin Training School is the new Junior High School. It is designed and equipped along the most approved modern lines, and furnishes teacher training facilities for the Junior High School grades, seven, eight and nine. This new building will make possible teacher training facilities from the kindergarten through the ninth grade.

**SHOP AND STORAGE BUILDING.** To take the place of the old barn which has been in use for many years is a new, modern brick building balancing the laundry. This building is used for shop and storage purposes, making it possible to concentrate the maintenance equipment and services.

**POWER PLANT.** The old Power Plant situated on the southwest corner of the campus, has been greatly enlarged and fully modernized to take care of the increased needs of the new buildings.



WALLER HALL



NORTH HALL



LIBRARY

## INFORMATION FOR NEW STUDENTS

### Entrance Requirements:

New regulations for admission to the State Teachers Colleges of Pennsylvania were effective September, 1932. The regulations require the applicant to appear at the College on days announced during the Summer in addition to the regular registration day at the opening of the Fall semester. Following is a statement of the general principles controlling the new admission regulations. Enrollment is conditional until the applicant has met all the requirements set forth in the following five paragraphs:—

1. General scholarship as evidenced by graduation from an approved four-year high school or institution of equivalent grade as determined by the Credentials Division of the Department of Public Instruction and ranking in the upper half of the class at graduation. Candidates for admission who lack this rank at graduation will be required to present further evidence of fitness for admission as prescribed in the detailed standards for admission.

2. Integrity and appropriate personality as shown by an estimate of secondary school officials of the candidate's truthworthiness, honesty, truthfulness, initiative, industry, social adaptability, personal appearance, and sympathy.

3. Health, physical vigor, emotional stability, absence of physical defects that would interfere with the successful performance of the duties of a teacher, and absence of predisposition toward ill health as determined by a medical examination at the College. Specific standards will be set up in the detailed requirements for admission.

4. Normal intelligence and satisfactory command of English as evidenced by rating in standard tests. The tests to be used will be prescribed each year by the Board of Presidents and will be uniform for all State Teachers Colleges.

5. A personal interview with particular attention to personality, speech habits, social presence, expressed interests of the applicant, and promise of professional development.

### Students Enrolling For First Time Note Carefully the Following:—

(1) ALL NEW APPLICANTS must have the following blanks sent by the person indicated direct to the College in advance of (a) the personal conference (b) the medical examination, and (c) the written examination (required only of those in the lower half of the graduating class).

1. By the applicant—application for admission.
2. By a physician—report of the physical examination.
3. By the High School Principal—high school record and evaluation.

These blanks will be forwarded on request. Personal conferences may be had by arrangement with the Dean of Instruction. These Personal Interviews and Health Examinations may be arranged for any day from 1:00 P. M. to 4:00 P. M., Saturdays and Sundays excepted, from June 25 to August 15. At 9:00 A. M., July 15, the written examination (required only of those in the lower half of the graduating class) will be given.

(2) NEW APPLICANTS STANDING IN THE UPPER HALF OF THE GRADUATING CLASS as ranked by the High School Principal are exempt only from the written examination.

The credit unit on which entrance qualification is based represents not less than 120 sixty-minute periods of prepared work or the equivalent.

#### **Four-Year High School and Approved Private Secondary School Entrants.**

The basis for admission to a State Teachers College shall be 16 units of work required for graduation from an approved four-year high school or a private secondary school approved by the Department of Public Instruction.

#### **Junior-Senior High School Entrants.**

Graduates of Senior High Schools in a school district maintaining an approved Junior High School organization will be admitted on evidence of twelve units of preparation earned in grades ten, eleven and twelve.

#### **Evaluation of Credentials.**

Credentials of all students entering the State Teachers College on the basis of an approved four-year preparation, are evaluated by the College; students not having an approved four-year high school preparation, or students whose preparation is irregular, must have their preparation evaluated by the Credentials Bureau of the Department of Public Instruction, Harrisburg, Pennsylvania.

#### **Detailed Statement of Studies.**

Graduates of approved four-year high schools, or of equivalent private secondary schools, who desire admission to a State Teachers College without examination must present a detailed statement of all studies pursued, including the time devoted to such studies, and the grades received. Blanks for such purposes may be secured from the Presidents of the State Teachers Colleges. These blanks should be filled out by the Principal of the school which the student attended, or where this is impossible, by the local superintendent of schools.

#### **State Scholarships.**

Holders of State Scholarships may attend Teachers Colleges provided they take courses leading to the Bachelor of Science in Education degree.



**Advanced Credit.**

Advanced credit will be given for equivalent courses in approved institutions of collegiate grade, but no students may obtain a Teachers College certificate without a minimum residence of one year.

*Transfer of credits having the lowest passing grade will not be accepted.*

## ADMISSION AND PROGRESS REQUIREMENTS

### Legal Requirements.

The Teachers College at Bloomsburg is a State institution which offers young women and young men an opportunity to prepare for the teaching profession. With this single purpose in mind it will endeavor to eliminate those who are unable to complete the purpose of technical professional education, those who cannot understand that the preparation for professional teaching services is work, and those who do not measure up to the standards that Pennsylvania desires of her teachers. The aims of the State are partially revealed by the following extracts, quoted or adapted from the School Code:

"Every teacher employed to teach in the public schools of this Commonwealth must be a person of good moral character, and must be at least eighteen years of age." (Section 1202.)

"No teacher's certificate shall be granted to any person who has not submitted, upon a blank furnished by the Superintendent of Public Instruction, a certificate from a physician legally qualified to practice medicine in this Commonwealth, setting forth that said applicant is neither mentally nor physically disqualified, by reason of tuberculosis or any other chronic or acute defect, from successful performance of the duties of a teacher; or to any person who has not a good moral character, or who is in the habit of using opium or other narcotic drugs in any form, or any intoxicating drink as a beverage." (Section 1320.)

The tuition of all students of the State Teachers Colleges whose residence is within the State of Pennsylvania and who sign an agreement to teach in the public schools of this Commonwealth for not less than two years, shall be paid in part by the Commonwealth. Non-resident students may be admitted under the same restrictions by the payment of \$105.00 tuition each semester.

### Scheduling and Evaluating Student's Work.

At the beginning of every semester a schedule of classes is handed to each student by the Dean of Instruction. It is the duty of the student to enroll in each class and have the teacher of the subject sign the schedule card. When the last signature is obtained the card must be returned to the office of the Dean of Instruction. No permanent credits will be recorded unless this signed card is on file.

A student desiring to transfer from another College must first present a letter of honorable dismissal and a complete record of the work taken at his former College. These records shall be sent directly from the College to the office of the Dean of Instruction.

In evaluating and crediting the work of a student transferring from another College, credit shall be given only for work having a grade, one letter point or the equivalent above the lowest passing grade of the institution from which the student is transferring.

**Progress Reports and Records.**

For the purpose of reporting the progress of each student, each semester is divided into periods of nine weeks. During each period the instructor hands to the Dean of Instruction a special deficiency report at any time the student is not doing satisfactory work. At the end of nine weeks a complete Grade Report is made. These grades are assembled and recorded upon a form suitable for mailing and are sent to the parents or guardians of each student.

At the end of the semester final grades are reported, recorded upon the permanent progress card of each student and filed. The report is then sent out as before. Any parent not receiving such a report at the end of the nine or eighteen weeks' period should notify the Dean of Instruction and a duplicate will be mailed.

Our system of grading and its interpretation is as follows: A—very high; B—high; C—average; D—low; Cond.—Condition; E—failure involving repetition of the entire course.

All students, before receiving a final grade in English I or II, or in Arithmetic I or II, or Business Mathematics I or II, must qualify by receiving a passing grade in the standardized tests in English and Arithmetic. This refers to the tests given to all Freshmen each Fall.

**Removal of Conditions.**

*Each instructor imposing a condition at the end of a semester shall file with the Dean of Instruction a detailed statement of the steps to be taken by the student for the removal of the condition.*

A printed form must be secured at the Dean of Instruction's office to be used when a condition has been removed. It is the responsibility of the student to have this form signed by the instructor removing the condition and to present it to the Dean of Instruction for recording.

*If the condition is not removed within one year the grade becomes an E and the course must be repeated.*

**Scholarship Requirements.**

A student will not be permitted to begin the work of a semester who has E's in nine credit hours carried in the preceding semester. This means that a student failing in nine credit hours of work in the first semester of any College year cannot go on with the work of the second semester. It means that a student failing in nine credit hours in the second semester of any College year can go on with the work of the next semester provided sufficient work is taken in Summer Session to reduce the failure load to less than nine credit hours.

A student who has in the first nine weeks of any semester a grade of "E" in nine (9) or more credit hours will be dropped from the rolls.

A student whose work for a semester averages B or better may carry in the next semester one extra course.

*A complete survey of Scholastic Regulations is being made by the Student Progress Committee. As one result of this survey it is planned to put a quality point system into effect at the beginning of the 1940-1941 college year.*

#### **Pre-Requisites for Student Teaching.**

A. A student will not be permitted to begin teaching who has deficiencies in English I or II.

B. A student will not be permitted to begin teaching who for the semester immediately preceding the one in which the practice teaching is to be done has D's, E's, or conditions in half or more than half the total number of credit hours carried.

C. A student will not be permitted to begin teaching who has carried during the semester immediately preceding the one in which practice teaching is to be done an E or a condition from a previous semester and who has not removed it by the time practice teaching is to begin. If the schedule of courses offered permits, the student must remove deficiencies before being assigned to student teaching. If the schedule makes it impossible for the student to take the necessary courses so as to meet this pre-requisite for student teaching, the regular student teaching assignment may be made.

*Credit for student teaching other than that done under the direction of this institution will not be approved.*

#### **Eligibility for Participation in Inter-School Athletic Contest.**

A student to be eligible must have secured a passing grade in at least twelve semester hours of work during the quarter preceding each respective sport.

#### **Placement Service.**

The Placement Service of the College cooperates with the Placement Service of the State Department of Public Instruction, Harrisburg, thus offering additional facilities for the placement of our students and graduates.

The Placement Service has for its purpose first of all to assist school officials to secure competent teachers, and second to aid teachers to secure suitable positions in fields of service for which their training best fits them.

The Placement Service is in charge of the Director of Teacher Training, who answers all inquiries and gives personal attention to school officials seeking competent teachers.

In order that the Placement Service may serve the interests of the students to the best advantage, students are requested during the time that they are doing their student teaching to fill out a "Registration Blank," giving personal information such as grades and subjects which they are prepared to teach and desire to teach, their preference as to the part of Pennsylvania in which they would like to teach, experience in teaching, and other personal data which Superintendents of schools and school boards wish to know when seeking candidates for positions.

The opinion of the Teacher Training Department is often sought by school officials. The quality of the work done by students in College courses as well as in student teaching is, therefore, a most important element entering into the recommendation of students.

In order that the Placement Service may be of maximum benefit to graduating students, it is necessary that those securing positions advise the Director of Teacher Training immediately. This procedure will not only avoid the recommending of a candidate for positions after he is already employed, but will enable the Teacher Training Department to keep in close touch with all those individuals who have not secured teaching positions.

Students after graduation from the College are urged to keep up their contacts with the Placement Service and the Teacher Training Department in order that the College may render further service not only in helping students to secure better positions but to help them in every possible way professionally.

#### PERSONAL EQUIPMENT FOR ENTRANTS

##### **Rooms.**

Each room is furnished with single beds, mattresses and pillows, dresser, study table, and chairs. Sheets, pillow cases, and white spreads are furnished for the beds.

Students must provide the following equipment:—Blankets or bed comforts, towels, and a large laundry bag plainly marked with the student's name.

##### **Athletic Equipment.**

Students must wear regulation gymnasium uniforms. These are to be purchased in the Retail Store after the student arrives at Teachers College, in order that the outfits for the group may be uniform in style, color, etc.

Students should bring strong high shoes for hiking and climbing.

##### **Laundry.**

Each student is allowed twelve articles of plain clothing in the wash each week. Extra charge will be made for laundry in excess of twelve articles. Every article of clothing must be plainly marked with indelible ink. Defective marking is generally responsible for missing articles.

## UNIFORM FEES, DEPOSITS, AND REPAYMENTS IN THE STATE TEACHERS COLLEGES

### A. FEES

#### I. Student Activities Fee.

A fee to be determined by each institution will be collected from all students and administered under regulations approved by the Board of Trustees through a cooperative organization. This fee will cover the cost of student activities in athletics, lectures, entertainment, student publications, et cetera; provided, that students taking extension courses or regular session students taking less than seven semester hours may secure the benefits of the Activities Program by the payment of the Student Activities Fee.

#### II. Contingent Fee.

##### 1. Regular Session.

- (a) A contingent fee for each student in each curriculum is charged as follows:

	Half Semester		Half Semester
Elementary Curriculums . . .	\$18.00	Health Education *	\$27.00
Secondary Curriculum . . .	18.00	Home Economics * . . . . .	36.00
Art * . . . . .	27.00	Industrial Arts * . . . . .	27.00
Business Education . . . . .	21.00	Music * . . . . .	54.00

This fee covers registration and keeping of records of students, library, student welfare, health service, (other than extra nurse and quarantine), and laboratory facilities.

- (b) Late Registration Fee. Each student registering after the date officially set for registration shall pay an additional fee of \$1.00 per day until the student is in regular attendance in accordance with the regulation of the Board of Presidents, provided that the total amount of the Late Registration Fee shall not exceed \$5.00, except when permission for late registration has been secured in advance from the President because of illness or any other unavoidable causes. The same regulations shall apply to approved intra-semester payments.
- (c) Students taking seven or less semester hours shall pay at the rate of \$5.00 per semester hour. Students taking more than seven semester hours shall pay the regular contingent fees:— provided, that the regular contingent fees for special curriculums shall be prorated on the basis that the number of semester hours taken is to eighteen semester hours.
- (d) Students taking extension courses shall pay at the rate of \$5.00 per semester hour provided, that the regular fees for special curriculums shall be prorated on the basis that the number of semester hours taken is to eighteen semester hours.

\* Not available at Bloomsburg.

(e) The President of the institution may, at his discretion, authorize payments not less than one month in advance to worthy students.

2. Summer Session.

(a) Five dollars per semester hour.

A minimum contingent fee of fifteen dollars (\$15.00) will be charged.

(b) Contingent Fees—Special Curriculums.

In addition to the above fee students in the special curriculums will be required to pay a fee to cover the cost of materials, supplies, equipment, and special services used in the laboratories, shops or studios of the special curriculums. These additional contingent fees will be as follows:

	Summer Session		Summer Session
Art *	\$ 6.00	Home Economics *	\$12.00
Business Education . . . . .	2.00	Industrial Arts *	6.00
Health Education * . . . . .	6.00	Music *	24.00

**III. Housing Fee.**

1. Housing Rate for Students:

The housing rate for students shall be \$63.00 per one-half semester and \$42.00 for the Summer Session. This includes room, meals, and limited laundry.

(a) For rooms with running water an additional charge of \$9.00 per student per semester, or \$3.00 for the Summer Session may be made.\*

(b) No reduction in the rate is to be made for laundry done at home nor for absence of students who go home for a few days at a time.

(c) A student may, at the discretion of the President of the College, occupy a double room alone by paying an additional \$36.00 a semester or \$12.00 for the Summer Session.

(d) For the purpose of meeting the requirements in those Colleges where off-campus rooming students board in the College dining room, and to meet the requirements of the Home Management Clubs in institutions maintaining home economics curriculums, the housing rate shall be divided \$2.00 for room and laundry, (room \$1.50 and laundry \$0.50) and \$5.00 for table board.

2. Housing rate for employees other than those included in the State Classification Schedule (faculty, clerks, etc.) shall be \$9.00 per week. The housing fee shall be divided \$4.00 for room and laundry (room \$3.50 and laundry \$0.50) and \$5.00 for table board.

\* Not available at Bloomsburg.

3. The rate for transient meals shall be:

Breakfast, \$0.40;      Lunch, \$0.40;      Dinner, \$0.50

#### **IV. Damage Fee.**

Students shall be responsible for damages, or breakage, or loss, or delayed return of College property.

#### **V. Infirmary Fee.**

After three days in the College infirmary, the College shall charge an additional \$1.00 for each day.

Day students who may be admitted to the infirmary shall pay board at the rate of \$2.00 a day. The charge includes the regular nurse and regular medical service, but does not include special nurse or special medical service.

#### **VI. Isolation Hospital Fee.**

If the College maintains an Isolation Quarantine Hospital for contagious diseases, the College shall charge \$10.00 per week additional, but this service charge does not include trained nurse or special medical service.

Day students who may be admitted to the Quarantine Hospital shall pay the board rate of \$2.00 a day (see V above), and in addition shall pay \$10.00 a week, but this additional charge does not include trained nurse or special medical service.

#### **VII. Tuition Fee.**

Students whose residence is out of the State shall be charged a fee of \$105.00 per semester, and / or \$35.00 per Summer Session.

Out-of-State students shall pay the contingent fee in addition to the tuition fee.

#### **VIII. Private Instruction Fees.**

The charge for private lessons in music, in the State Teachers Colleges maintaining the special curriculum in music, shall be:

1. Voice, piano, band or orchestral instruments, \$24.00 per semester—for one lesson per week.  
Pipe organ \$42.00 per semester—for one lesson per week.
2. Rental of piano for practice, 1 period per day, \$6.00 per semester.  
Rental of pipe organ for practice, 1 period per day, \$36.00 per semester.

\*Rental of band or orchestral instruments, \$6.00 per semester.

(For Summer Session the charge is one-third of above rates).

---

\* Not available at Bloomsburg.



The charge for private lessons in music in the State Teachers Colleges not maintaining the special music curriculum shall be fixed as follows:

The Board of Trustees of a State Teachers College not offering the special curriculum in music, may, subject to the approval of the Superintendent of Public Instruction, enter into contract with individuals to give private lessons in music in order to afford an opportunity for students to continue their musical education. Such agreement shall provide reasonable reimbursement to the institution for any service or overhead supplied by the institution.

(See page 83 for fees in Department of Music).

#### **IX. Degree Fee.**

A fee of \$5.00 shall be paid by each candidate for a degree to cover the cost of degree diploma.

#### **X. Record Transcript Fee.**

One dollar (\$1.00) shall be charged for the second and each subsequent transcript of records.

#### **XI. Delinquent Accounts.**

No student shall be enrolled, graduated, or shall receive a transcript of his record until all previous charges have been paid.

### **B. DEPOSITS**

#### **Advance Registration Deposit.**

A deposit of \$10.00 shall be made by all students when they request registration. This is a guarantee of the intention of the student to enter College for the term or semester designated. It is deposited with the Revenue Department to the credit of the student's contingent fee. *If, however, the student notifies the College at least three weeks before the opening of College that he is unable to enter, or if the student is rejected by the College, repayment of this deposit will be made through the Department of Revenue, on application from the student through the College authorities.*

Check or money order for this amount must be drawn to the Commonwealth of Pennsylvania.

### **C. NO OTHER FEES OR DEPOSITS PERMITTED**

No fees or deposits, other than as specified above, may be charged by a State Teachers College.

### **D. REPAYMENTS**

#### **I. Repayment will not be made:**

1. To students who are temporarily suspended, indefinitely suspended, dismissed, or who voluntarily withdraw from College.
2. For any part of the advance registration deposit for any causes whatsoever except where students give notice of intention to withdraw at least three weeks before the College opens or when the student is rejected by the College.

- II. A repayment will be made for personal illness, the same being certified to by an attending physician, or for such other reasons as may be approved by the Board of Trustees for the amount of the housing and contingent fees paid by the student for the part of the semester which the student does not spend in College.
- III. The advance registration deposit will be returned to students provided they notify the College *not less than three weeks before the opening* of the semester or term of their intention not to attend or *provided the student is rejected by the College*.

## SUMMARY OF EXPENSES

The cost for one semester for students living at	Home	College
Contingent Fee -----	\$36.00	\$ 36.00
Housing Fee (Board, Room, and Laundry) ----- (none)		126.00
Activities Fee -----	10.00	10.00
Books and Supplies (Estimated) -----	20.00	20.00
Total -----	\$66.00	\$192.00

Business students pay \$6.00 additional.

Out-of-State students pay \$105.00 additional.

Students not living at home and not working in homes approved by the College, must live in the dormitories if rooms are available.

All fees must be paid in advance of enrollment. Fees for the regular College year may be paid one-half in advance of enrollment and one-half before the middle of each semester.

If any fees other than the Activities Fees are paid by Bank Draft, Express or Post Office Orders, or Checks, they must be made out for the exact amount which is being paid, and drawn payable to the order of the Commonwealth of Pennsylvania. All Post Office Orders paying such fees must be drawn on the Post Office at Harrisburg, Pennsylvania. If the Activities Fee is not paid in cash, a **separate order** must be drawn payable to "Community Activities."

### Keys.

Each student purchases a room or locker key for \$1.00. This is refunded when the key is returned.

### Baggage.

Baggage is hauled on the opening and closing days of each semester for a small charge. Incoming baggage should be clearly marked with the owner's name and "State Teachers College, Bloomsburg, Pennsylvania." When baggage is sent to the station it should bear the owner's name and destination.

### Guests.

Arrangements for room guests at Waller Hall and North Hall must be approved by the Dean of Women or the Dean of Men. The guest rates in the College dining room, payable to the Dietitian, are as follows: Breakfast, 40c; Luncheon, 40c; Dinner, 50c.

### Books and Supplies.

The estimated cost of books and supplies is \$40.00 for the year of 36 weeks. Students may secure these at the Community Store connected with the College. This store is operated on a cash basis.

### Dormitory Residence.

Students not living at home and not working in homes approved by the College, must live in the dormitories if rooms are available.

**School Banking.**

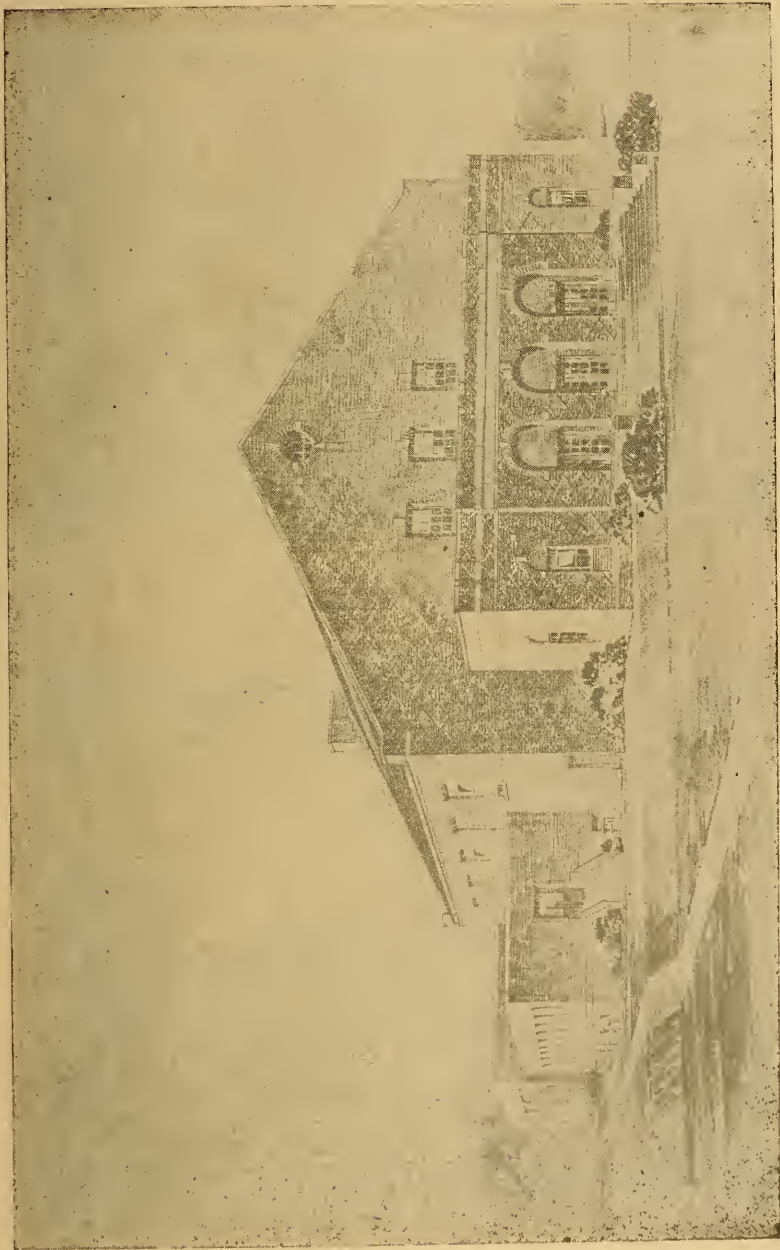
The Business Office is prepared to handle deposits of cash for students in order that they may secure small amounts at convenient times.

**Notice of Withdrawal.**

Students leaving the College must notify the President of their withdrawal. Regular charges will be made until such notice is received.

**Music.**

All music accounts are payable in advance for a half-semester period.



THE NEW GYMNASIUM — A GENERAL STATE AUTHORITY PROJECT



BIOLOGY LABORATORY



CHEMISTRY LABORATORY

## TYPES OF STUDENT ASSISTANCE

1—Student employment by the College (other than N. Y. A.)—Such employment for the most part is limited to work in the Dining Room, the Kitchen, the Library, and the College offices. Occasionally, there are a few opportunities in the general maintenance service. However, the number of positions at present is so limited that for the most part it is the policy of the College to make them available only after students have demonstrated ability to meet the standards of the College by completing in a satisfactory manner the work of the first year. A few opportunities are available to Freshmen for substitute service.

All work is paid for at the rate of thirty cents per hour and the maximum number of hours which a student may be employed upon work administered by the College is twenty hours per week. This means that under the most favorable conditions the maximum amount that may be earned is six dollars per week, and that for the most part this is available for upper class students only.

2—Student employment under the National Youth Administration—The College has participated in the past in the employment programs provided for College Students by the National Youth Administration under the Federal Government. It hopes to participate in such programs as may be available in the future.

3—Household Work—Many students secure housing expenses by working in private homes approved by the College. The College refers requests from homes to prospective students. Usually, however, such opportunities are secured through friends or through church or other affiliations. Many students have secured household work and other work through advertisements placed in the Morning Press of Bloomsburg. Students securing such work in a home must secure from the Dean of Women, or the Dean of Men, an "Application for Approval to Live in a Private Home," and have it signed by the Parent or Guardian, the Student, and the Housekeeper, and approved by the Dean of Women or the Dean of Men. Until this agreement is submitted an approved enrollment is temporary.

4—State Scholarships—The State offers each year, through competitive examination, one scholarship worth \$100.00 in each County. These are administered by the Department of Public Instruction, and information concerning them may be secured from Mr. James G. Pentz, Department of Public Instruction, Harrisburg, Pennsylvania.

5—American Association of University Women Loan Fund—The Bloomsburg Branch of the A. A. U. W. has a loan fund open to a girl in the Junior Class. Information may be secured from Mrs. Norman Hoffman, Bloomsburg, Pennsylvania.

6—Alumni Loan Fund—Our Alumni Association has a fund from which loans at very reasonable rates are made to students. Information concerning this Fund may be secured from the Chairman of

the Alumni Loan Fund Committee, Mr. Dennis Wright, 58 East Fifth Street, Bloomsburg, Pennsylvania.

Loans are to be repaid to the Treasurer in monthly payments of not less than \$10.00 each and every month beginning four months after the student graduates.

Because of the great number of requests for loans, it has been found necessary to limit the loans to the Junior and Senior classes; and to further limit the amount to any one person to \$100.00.

STATUS OF THE FUND, MAY 24, 1939

Donor	Original Amount	Accumulated Interest	Total to Date
1893 -----	\$ 144.00	\$ 38.79	\$ 182.79
1894 -----	160.00	41.98	201.98
1895 -----	150.00	38.33	188.33
1896 -----	103.00	25.62	128.62
1897 -----	162.00	39.18	201.18
1898 -----	150.00	35.23	185.23
1900 -----	204.00	45.12	249.12
1901 -----	200.00	42.87	242.87
1902 -----	150.00	31.11	181.11
1905 -----	200.00	37.36	237.36
1907 -----	5.95	.02	5.97
1909 -----	32.00	5.06	37.06
1910 -----	100.00	15.24	115.24
1912 -----	100.00	13.87	113.87
1921 -----	122.60	1.62	124.22
1924 -----	500.00	28.07	528.07
1931 -----	184.63	2.57	187.20
1933 -----	150.00	.58	150.58
Helen A. Kramer -----	10.00	.45	10.45
Irma Ward -----	10.00	.17	10.17
Philip L. Drum -----	100.00	1.33	101.33
Y. W. C. A. -----	100.00	.36	100.36
Centennial Fund -----	2834.36		2834.36
Totals -----	\$5872.54	\$ 444.93	\$6317.47
Total of Loans at This Date -----			\$3341.14



---

## ACTIVITIES OF THE STATE TEACHERS COLLEGE

### AT BLOOMSBURG, PENNSYLVANIA

#### CURRICULAR PROGRAM OF STUDIES

The following curriculums for the preparation of elementary teachers are offered:

- I. Four-Year Curriculum for the preparation of teachers of Kindergarten and Primary grades 1, 2, and 3, leading to the degree of Bachelor of Science in Education as shown on pages 68 to 71.
- II. Four-Year Curriculum for the preparation of teachers of Intermediate grades 4, 5, and 6, leading to the degree of Bachelor of Science in Education as shown on pages 68 to 71.
- III. Four-Year Curriculum for the preparation of teachers of grades 1 to 8 in Rural Schools leading to the degree of Bachelor of Science in Education as shown on pages 68-71.
- IV. Special Education Curriculum requires six semester hours of properly selected electives in addition to completing one of the Four-Year Elementary Curriculums as outlined for Groups I, II or III mentioned above. This will normally require one Summer Session in addition to the four years' residence for the granting of the degree of Bachelor of Science in Education. Certification to teach in the Elementary grades and special classes will be earned by pursuing the curriculum shown on pages 68 to 71.

The following curriculums for the preparation of secondary teachers are offered:

- V. Four-Year Secondary Curriculum for the preparation of Junior and Senior high school teachers leading to the degree of Bachelor of Science in Education. The completion of the curriculum shown on pages 68 to 75 will certify teachers in at least two fields chosen from the following: English, French, Geography, Latin, Mathematics, Science, Social Studies, and Speech.
- VI. Four-Year Business Education Curriculum for the preparation of commercial teachers in the Junior and Senior high school leading to the degree of Bachelor of Science in Education with certification to teach the following commercial subjects: Book-keeping and Accounting, Commercial and Economic Geography, Commercial Law, Commercial Mathematics, Office Practice, Salesmanship, Shorthand, Typewriting, Junior Business Training, Economics, and Business English.

## GUIDANCE IN CHOOSING A CURRICULUM

In order that entering students may have an opportunity to explore their interests and try out their abilities and aptitudes in the College situation, a uniform curriculum for the first year is followed by those expecting to teach academic subjects in the Secondary and Elementary schools. Those expecting to teach commercial subjects in the Secondary schools also follow a uniform curriculum for the first year.

Following the first year's experience with courses in English, Speech, Geography, Science, Health Education, History, Appreciation of Art and Music, and Place and Purpose of Education in the Social Order (including School Visitation), the student is in a position to choose electives in either the Elementary or Secondary curriculums for the second year, basing his decision on his Freshman courses. After having completed courses in English, Speech, Health Education, Economic Geography, Place and Purpose of Education in the Social Order (including School Visitation), as well as courses in Bookkeeping and Accounting, Shorthand, Typewriting and Business Mathematics, the prospective commercial teacher is in a better position to choose either the Commercial, Accounting, Secretarial, or Retail Selling sequence, depending upon his first year's experience.

During the Freshman year, to further inform entering students of the nature of the teaching profession, all students take an orientation course entitled "Place and Purpose of Education in the Social Order" (including school visitation). Classrooms of all types and levels are visited. In class, such topics are studied as: How to Study, How to Budget Time, Campus Services, Administrative Organization of the College, The Requirements and Possibilities of Teaching as a Profession, Self-Analysis to Determine Fitness for Teaching; all of which are consciously planned to help students to choose their curriculum at the beginning of the second year. Such guidance based on professional information and personal analysis is carried on by means of conferences by faculty members with individual students. Persons entering the teaching profession of the Commonwealth of Pennsylvania today must view themselves in the light of the mental, physical and social requirements and possibilities of a career as an educator.

At the outset of the Sophomore year, a second choice is necessary. If the Elementary Curriculum is chosen, a student must specialize in the Kindergarten-Primary, Intermediate, Rural, or Special Education Groups referred to as Groups I, II, and III in other parts of this catalogue. If the Secondary Curriculum is chosen, two fields, of specialization are selected from among the following: English, French, Latin, Social Studies, Speech, Mathematics, Science, and Geography. If the Business Education Curriculum has been followed for one year, to continue one must choose a sequence from the following: Commercial (which certifies in all commercial subjects), Accounting, Secretarial, and Retail Selling.

Thus the specialized work of the last three years is based on one year of general preparation for the purpose of acquainting students with the nature of the teaching profession, and at the same time to aid in the prediction of the professional promise of teaching success. Following the first year, a change from one curriculum to another may be requested by the student or advised by the Dean of Instruction. This arrangement provides each student with an opportunity to explore, try out, and counsel with the faculty while they are taking courses having a general bearing on the Elementary, Secondary, or Business teacher training situations before a curriculum for specialization is selected.

### THE TRAINING SCHOOL FACILITIES OF THE COLLEGE

Those who are to become teachers should have ample preparation in teaching in typical school situation. Considerable attention has been given to enlarging and strengthening the training school facilities of the State Teachers College at Bloomsburg. The Training School, which is housed in the new Benjamin Franklin Training School Building on the campus, consists of a kindergarten, special orthogenic classes, and grades one to six inclusive. There is a training teacher in charge of each class, consequently, close supervision is given to the student teaching.

In addition to the Training School the elementary grades of the public schools of the town of Bloomsburg are used for student teaching. Student teaching in the secondary field is done in the junior-senior high schools of Bloomsburg and Williamsport, the high schools of Berwick and Catawissa. The complete cooperation of the school authorities of the towns of Bloomsburg, Williamsport, Berwick, and Catawissa makes it possible to have a variety of adequate facilities for the training of teachers for the graded schools and secondary schools.

For the preparation of rural teachers, one-room schools in Columbia County, adjacent to the Teachers College, are used. Through the cooperation of the school authorities in the rural districts of Hemlock and Mount Pleasant Townships it is possible to have facilities for the training of rural teachers.

The rural and urban elementary school training facilities, and the junior and senior high school training facilities of the College are typical of the public schools in our service area. The students, therefore, have ample opportunity to observe well-trained teachers at work and to develop skill in teaching by actual experience under public school conditions.

## IN-SERVICE PREPARATION OF TEACHERS

*(Friday Evening and Saturday Morning Classes)*

This work is residence work so that all the facilities of the College, such as the library and laboratories, are available for the use of the students.

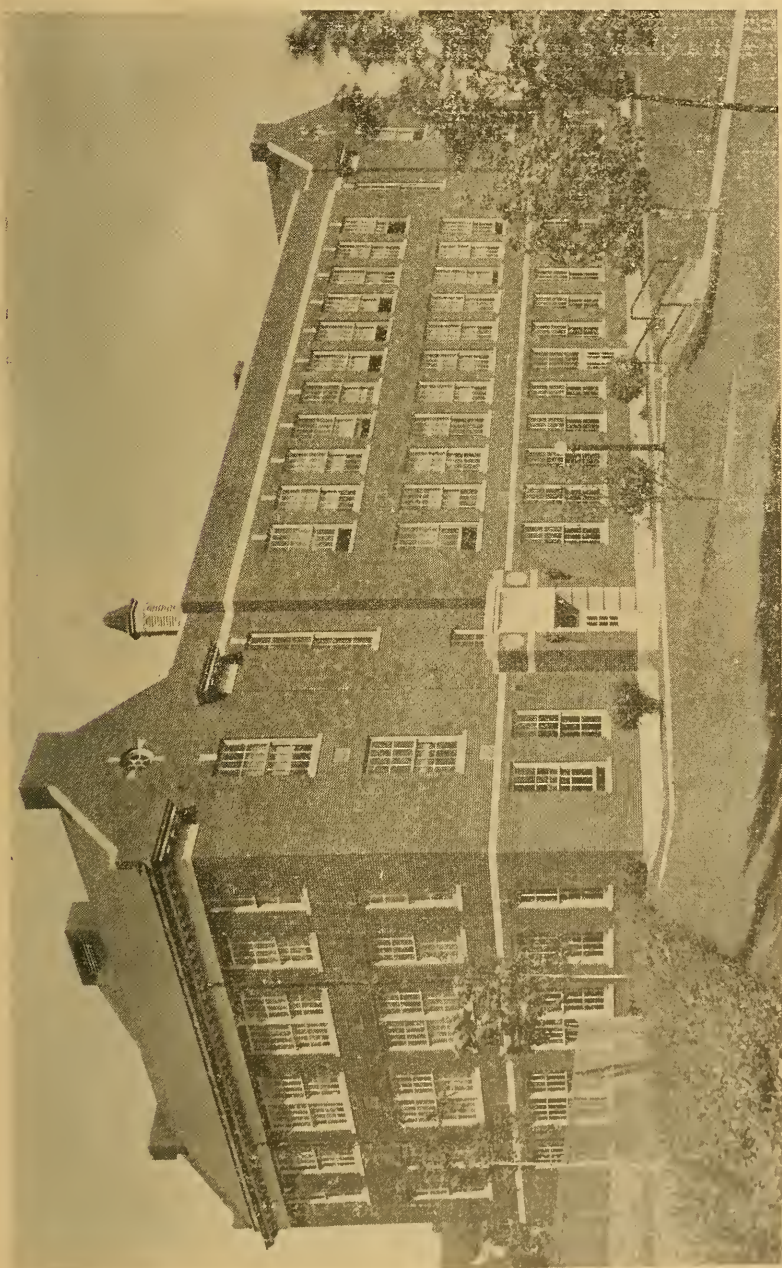
There is always the possibility of offering any course in any curriculum if circumstances permit. The offering is dependent upon two things: first, the demand from teachers-in-service for the course and, second, the availability of the faculty instructor. As the member of the faculty conducting such a class receives no extra compensation it must be offered as a part of his regular teaching load. We, therefore, are limited to the offerings of those courses for which a member of the faculty is found available for the work after the regular schedule for the semester has been determined.

Any teacher in service who is interested in this plan will be fully informed by communicating with the Dean of Instruction. The course of study desired should be indicated.

The regular members of the faculty will teach the courses. A fee of five dollars is charged for each semester hour credit. In accordance with the certification regulations of the Department of Public Instruction six (6) semester hours per college semester is the maximum amount which may be taken by a regularly employed teacher.

At the present time the popularity of courses offered to teachers-in-service is evidenced by the fact that over 100 persons are now enrolled in such classes. Most of them come to Bloomsburg for the Friday and Saturday classes, since the library or laboratory facilities are then available.

Those desiring information relative to enrollment should communicate and if possible have a personal interview, with Dean Harvey A. Andruss, State Teachers College, Bloomsburg, Pennsylvania. Teachers-in-Service are urged to note carefully the following: (1) Before taking advanced work be sure that you are familiar with the State regulations covering the type of certification desired, and decide definitely the Fields that you desire covered by your State Certificate. (2) Be sure that the work which you take will be accepted for certification by the Department of Public Instruction and that it will definitely advance your standing towards the certificate that you desire. In other words, make sure before you begin a course that it will be credited towards your certificate. (3) In case of doubt state your case to Dr. Henry Klonower, Director, Teacher Education and Certification, Department of Public Instruction, Harrisburg, Pennsylvania.



BENJAMIN FRANKLIN SCHOOL



KINDERGARTEN



SPECIAL CLASS

---

## SUMMER SCHOOL OF 1940

*Regular Session Monday, June 17, to Friday, July 26, 1940*

*Post Session Monday, July 29, to Friday, August 16, 1940*

The Summer Session aims largely to meet the needs of the following groups:

- (1) Teachers-in-Service qualifying for
  - (a) Advanced state certification
  - (b) The Degree of Bachelor of Science in Education
  - (c) The Permanent College Certificate
- (2) College Graduates qualifying for state certification through courses in education and student teaching.
- (3) Undergraduates qualifying for advanced standing or the removal of conditions.

The work of the Regular Session, beginning June 17, will be scheduled so that one ninety-minute period per day, for five days per week, will constitute the work for a three semester hour course, except where adjustments for laboratory courses are needed. Six semester hours' credit is the normal load for a six weeks' session.

An opportunity for additional work will be provided this summer by a three weeks' Post Session. The work of the Post Session, beginning July 29, will be scheduled so that two ninety-minute periods per day for five days per week will constitute the work for a three semester hour credit course except where adjustment for laboratory courses is needed. Three semester hours is the normal load for the three weeks' session.

An important feature of the regular Summer Session is the observation and demonstration school, which includes all the grades of the elementary school and the three grades of the Junior high school. A skillful teacher is in charge of each grade. Here teachers may observe and have demonstrated for them desirable practices in modern teaching procedures.

The student teaching in grades 7, 8 and 9 has proved to be a popular feature of our regular Summer Session. Opportunity is offered to those who must secure credit in the Secondary field to observe and participate in the operation of a well-organized Junior High School.

A more detailed description of the 1940 Summer School will be sent to you upon a request addressed to the Dean of Instruction.

## CERTIFICATION REGULATIONS

Recent Certification Regulations of the State Council of Education,  
of interest to under-graduates and to Teachers-in-Service

### I. The State Standard Limited Certificate:—

COMMONWEALTH OF PENNSYLVANIA  
DEPARTMENT OF PUBLIC INSTRUCTION  
TEACHER DIVISION  
HARRISBURG

#### Requirements For the Issue of the State Standard Limited Certificate

The State Council of Education at a meeting held June 16, 1932, authorized the issue of a State Standard Limited Certificate for persons desiring to teach the subjects prescribed for the elementary curriculum in the public schools of this Commonwealth.

This certificate is issued in accordance with the following regulations:

1. The school laws specifically require that every teacher must be:
  - a. At least eighteen years of age—(School Code—Section 1202).
  - b. Of good moral character—(School Code—Section 1202).
  - c. In sound physical and mental health—(School Code—Section 1320).
  - d. Not in the habit of using narcotic drugs or intoxicants—(School Code—Section 1320).
2. Applicants for this form of certificate must have completed an approved four-year high school curriculum, or approved equivalent education, and three years, or the equivalent, of professional preparation for teaching.
3. This certificate will be valid for three years, renewable for an additional period of three years, upon a rating of "low" or better and the satisfactory completion of twelve semester hours of further approved preparation, subsequent renewals to require a rating of "middle" or better on a State Teachers' rating score card together with twelve semester hours of further approved preparation.
4. The State Limited License may be exchanged for a Provisional College Certificate when the applicant has met the requirements for this form of license as prescribed in the regulations. (See page 10, Bulletin No. 2, Teachers Bureau, 1928).



An applicant for the State Standard Limited Certificate should have completed at least the first three years of an approved curriculum for the preparation of elementary teachers, including not less than six semester hours of approved practice teaching. Additional courses prescribed for renewal purposes should be selected in accordance with the particular degree curriculum in which the applicant has been enrolled and which should advance the holder of the State Standard Limited Certificate towards the completion of a four-year curriculum.

In accordance with the action of the State Council, the issue of the Temporary Standard Certificate has been discontinued as of September 1, 1932, with exceptions made to all those Teachers-in-Service who hold the partial certificate and others who may have completed for the most part the requirements for the issue of the Standard Certificate in accordance with the regulations, September 14, 1932.

#### IMPORTANT SUGGESTIONS FOR THE RENEWAL OF STATE STANDARD LIMITED CERTIFICATES

*(Issued by the Bureau of Teacher Education and Certification, Sept. 1, 1933)*

1. At least twelve additional semester hours of credit are to be earned **during each** renewal period of three years, whether the certificate has been used for teaching purposes or not. This is the minimum rate by which the holder of a State Standard Limited Certificate may move toward the completion on an **elementary** degree curriculum.
2. If the holder of a State Standard Limited Certificate has taught one or more years, a rating score card is to be presented to the Department of Public Instruction for the years taught and a statement presented by the student, notifying the Department of the years not taught.
3. The responsible official of the college, from which the holder of the certificate expects to secure a degree, should certify on the transcript—or otherwise—that the twelve semester hours submitted to the Department of Public Instruction will be accepted by the institution as additional work toward the completion of the **elementary** degree curriculum. If work has been completed at more than one college, the student should have all credits evaluated at the institution from which graduation is anticipated, making sure twelve semester hours will be acceptable in the elementary curriculum.
4. Wherever possible the superintendent, college officials, and the student involved should work out an agreement whereby all credentials,—score cards, transcripts, certificate, and statement relative to teaching—will be sent to the Department in one enclosure.

**Validating For Use in the Elementary Field the College Certificate  
Valid in Secondary or Special Fields**

“In accordance with the recommendations made to the State Council of Education, October 6, 1933, the following modification in the teacher preparation program provides for more adequate preparation in the elementary field for graduates of teacher preparation institutions who prepared specifically to teach the subjects of the secondary field and then decide to teach in the lower elementary grades. The following regulations have been approved: . . . after October 1, 1936, thirty semester hours of approved courses in the field of elementary education including six semester hours of elementary student teaching shall be required.

These elementary courses should be selected from the following suggested approved list or equivalent courses:

Educational Measurements For Elementary Teachers	3 s. h.
Teaching of Elementary Science	3 s. h.
Elementary English (Teaching of Reading)	3 s. h.
Arithmetic (Teaching of Arithmetic)	3 s. h.
Principles of Geography (Teaching of Geography or United States History) (Teaching of Elementary Social Studies)	3 s. h.
Health and Hygiene in the Elementary School or Teaching of Primary Subjects	3 s. h.
Child Psychology	3 s. h.
Art in the Elementary School	2 s. h.
Music in the Elementary School	2 s. h.
Practice Teaching in the Elementary School	6 s. h.
Elementary Electives —	6 s. h.
Principles of Elementary Education	2 or 3 s. h.
Kindergarten-Primary Theory	2 or 3 s. h.
Civic Education	2 or 3 s. h.
The Elementary School Curriculum	2 or 3 s. h.
Elementary School Methods	2 or 3 s. h.

Note:—Geography of the Western Hemisphere may be taken by those who have used Principles of Geography for graduation in the Secondary Curriculum.

That paragraph two, page 10, under **III. College—I. Provisional College Certificate** of the booklet on certification which provides that “Such a curriculum will be approved when the six semester hours of prescribed electives are in the field of elementary education and the six semester hours of practice teaching are with pupils of elementary school age be deleted as of October 1, 1934.”

**Visual Education Regulations**

In line with the effort to make available approved courses in the use of visual aids and sensory techniques in classroom instruction and to encourage further the development of visual education in the public school, the State Council of Education approv-

ed the following regulation with the respect to the preparation of teachers at its meeting on October 10, 1934:

“RESOLVED, That all applicants for PERMANENT teaching certificates on and after September 1, 1935, shall be required to present evidence of having completed an approved course in visual and sensory techniques.”

The course of visual education may be completed either as an undergraduate course or it may be completed after graduation from an accredited teacher-preparation institution. Emphasis is placed on the fact that the course in visual aids and sensory techniques must be a part of the teacher's preparation before any form or permanent certification will be issued after September 1, 1935.

Where there is any question relative to the meaning or interpretation of Certification Regulations, the matter should be taken up with the Dean of Instruction previous to beginning class work.

#### **Certification of Teachers of Classes For the Mentally Retarded.**

A. A certificate of standard grade valid for teaching the elementary subjects may be extended to include the teaching of classes for the mentally retarded on the completion of twenty-four semester hours of approved courses in special education in accordance with the following suggested distribution:

1. Courses Basic to All Special Certification: 6 sem. hrs.  
 \*Psychology or Education of Exceptional Children  
 Diagnostic Testing and Remedial Teaching  
 Mental or Educational Hygiene
2. Courses Definitely Applicable to the Teaching  
 of Mentally Retarded Children: 9 sem. hrs.  
 \*Special Class Arts and Crafts (\*6 sem. hrs.)  
 \*Student Teaching in Classes for Mentally  
 Retarded Children (1 sem. hr.)  
 \*Special Class Methods
3. Special Class Electives: 9 sem. hrs.  
 Clinical Psychology  
 Abnormal Psychology  
 †Mental Tests (group)  
 Speech Correction  
 Mental Tests (individual)  
 Corrective Physical Education  
 Educational and Vocational Guidance  
 Related Courses in Sociology  
 \*\*Teaching Experience  
 Any excess in groups one or two may be applied in group  
 three.  
 \*Must be selected within these groups.  
 †Preferred Elective.

\*\*Successful experience in teaching; in social service such as visiting teacher, probation officer, or social worker; in public health work such as school nurse, public health nurse, etc.; or in a psycho-educational or psychiatric clinic as psychological examiner or psychologist; may be counted to a maximum of six (6) semester hours at the rate of three (3) semester hours a year.

B. A college certificate valid for the secondary field may be extended to include the teaching of classes for the mentally retarded on the completion of thirty-six semester hours, including the distribution in groups one, two, and three, in section A, and twelve semester hours selected from group four, below:

4. Courses Related to Elementary Education Which are Basic Pre-requisites for Teaching Special Classes for the Mentally Retarded Selected from the Following or Equivalent Courses: 12 sem. hrs.
- †Teaching of Reading
  - ‡Teaching of Arithmetic
  - Art in the Elementary School
  - Music in the Elementary School
  - Health or Physical Education in the Elementary School
  - Educational Measurements
  - Principles of Elementary Education
  - Child Psychology
  - ‡Elementary School Methods
  - †The Elementary School Curriculum
  - Teaching of Elementary Social Studies
  - Children's Literature and Story Telling
  - †Preferred Electives.

Notes:

Educational Psychology is a pre-requisite for the courses listed above.

In institutions approved for the education of teachers of special classes for the mentally retarded, students pursuing the four year elementary curriculum may elect the above courses in groups one, two, and three, and on the satisfactory completion of the elementary curriculum and the twenty-four (24) semester hours in this special field will receive certification in both fields. Such dual certification will require at least one additional summer session.

#### STUDENT PARTICIPATION IN COLLEGE GOVERNMENT

A State Teachers College is a professional institution for the education of teachers for our public schools. The College, therefore, requires the maintenance of high standards in academic work, balanced programs of social and recreational activities and opportunities for the development of self-direction and leadership. The attain-

ment of these objectives is aided by a sound health program, favorable study conditions, a good library, and supplementary social and recreational activities.

In general, these opportunities are provided through a broad program of College organizations and activities which are developed and controlled through the participation of the entire College in the Community Government Association. This organization, through the Student Council, is the general control body for the various College activities. In accordance with the constitution of the Community Government Association, dormitory affairs are handled for Women by the Waller Hall Student Government Association and for Men by the North Hall Student Government Association. The activities of students not living in the dormitories are handled for the Women by the Day Women's Association and for the Men by the Day Men's Association. The detailed plans for student participations in College Community life are presented in the Handbook, issued at the beginning of the Fall semester each year under the direction of the Student Council.

#### **Community Government Association**

The Community Government Association cooperates with the responsible authorities in promoting personal and group responsibility in regulating the affairs of all students. This body meets once a month. The Student Council, which meets every two weeks, acts as the executive board of the organization. The officers of the Association automatically become officers of the Council. The Student Council administers the affairs of the Association, formulates its policies, and acts upon cases involving violations of the Community Government regulations.

#### **Waller Hall Student Government Association**

The Women's Student Government Association is an organization of the women students living in dormitories and off-campus houses. Its administrative body is the Governing Board whose members are selected from each of the various classes. The Governing Board has the power to make and enforce regulations, to direct the social life of Waller Hall, and to promote the general welfare of all women students.

#### **Day Women's Association**

The Day Women's Association is an organization of women not living in the College dormitories. The governing body is an Official Board consisting of a President and Vice-President elected by the entire association, and two representatives from each class. Its purpose is to promote the general welfare of the day women and to cooperate with the other student organizations in matters affecting the general welfare of the institution. Headquarters have been provided on the first floor of Noetling Hall.

#### **North Hall Student Government Association**

The Men's Student Government Association governs the resident men students efficiently. The governing body is composed of the

President, the Vice-President, the Secretary, the Treasurer, and a Student Council. By means of this organization, the men cooperate with the administrative authorities in promoting personal and group responsibility.

#### **Day Men's Association**

The Day Men's Association is an organization of men students who live at home or in the town of Bloomsburg. The governing board consists of a President, Vice-President, Secretary, and Treasurer. Headquarters have been provided on the first floor of North Hall.

#### **ASSEMBLY PROGRAMS**

Assembly programs are presented twice a week in the Chapel of Carver Hall. The students are largely responsible for the success of these programs.

The various College clubs present programs with a wide variety of entertainment. Visiting lecturers, visiting high schools, and members of the College faculty contribute at times to these programs.

#### **EXTRA-CURRICULAR ACTIVITIES**

All students are required to take part in one extra-curricular activity one semester each year. The students, for the most part, are eager to take this opportunity to train themselves in this important and interesting phase of modern school work. The extra-curricular work during the past year included the following:

##### **Athletics.**

In addition to the required courses in physical education, men receive extra-curricular credit for football, basketball, track, cross country, wrestling, tennis, and baseball. Women receive extra-curricular credit for hiking, skating, playing volleyball, basketball, tennis, and baseball.

##### **"B" Club.**

The "B" Club is an organization of women who have achieved a given number of athletic points.

##### **Dramatic Club.**

The Dramatic Club provides a workshop for those who wish training in educational dramatics. It stages plays for College affairs and for the public. It has installed a chapter of Alpha Psi Omega, national honor dramatic fraternity.

##### **Geographic Society.**

The Geographic Society promotes interest in geographic interpretation by recitals of geography as observed in local communities or in travel, by illustrated talks on imaginary journeys, by accounts of current events interpreted from the geographic viewpoint, and by reviewing current literature and geographic topics.

**Mixed Chorus.**

The Mixed Chorus numbers more than one hundred voices. Any student who possesses an acceptable singing voice may apply for a position in this organization. An audition is required.

**A Cappella Choir.**

Any member of Mixed Chorus who possesses a good singing voice, and who has some ability in music reading may have an audition for the A Cappella Choir. Auditions are held at the beginning of each semester. Enrollment in the choir is limited.

**Business Education Club.**

The Business Education Club, an organization composed of the students of the Department of Business Education, sponsors a Commercial Contest for High Schools. Through this activity the high school students are acquainted with the type of the professional work being developed here. Contests are held in the major commercial subjects: bookkeeping, shorthand, typewriting, etc. Winners of the various contest events receive medals, while a Commercial Contest Cup is awarded to the high school having the best contest team.

**Maroon and Gold Instrumental Musical Organizations.****(a) Maroon and Gold Orchestra.**

The Maroon and Gold Orchestra fills an important place in the College life. Musical programs and entertainments are given. The Orchestra gives an annual public concert. Students with sufficient ability are urged to join this organization.

**(b) Maroon and Gold Band.**

An excellent group of fifty-five members offers training in group and ensemble playing. The Band plays at all athletic functions and is organized on the basis of an extra-curricular activity. People with musical talent will benefit by participation in this organization.

**Social Usage Club.**

"Enjoy, as you learn," is a motto of the Social Usage Club, which offers the students an opportunity to improve their social abilities through discussion and practical experience. Club meetings include both preparation for and practice of dinners and other social functions.

**Science Club.**

The Science Club consists of members of the student body who are interested in natural and physical science. Subjects for study and observation include topics dealing with history of the various branches of Science, plant and animal life, geology and mineralogy, and chemistry and physics. Theoretical and applied phases of these subjects may receive equal consideration. Field trips often supplement reports on natural phenomenon.

**The Poetry Club.**

This club is for a small discussion group interested in the present talent, to secure a wider acquaintance with the fundamentals of Poetry, and a broader appreciation through studying, writing, and reading.

**Rural Life Club.**

The Rural Life Club is organized for the purpose of studying rural community work, recreations, etc.

**Publications.****The Maroon and Gold.**

The Maroon and Gold is the College Paper, published bi-monthly by a student staff. It aims to keep the student body informed of current happenings at Teachers College.

**The Obiter.**

The Obiter is the Annual published each Spring by the graduating class. It contains a review of the activities of the class, with cuts of campus, students, clubs, teams, etc.

**The Bloomsburg Alumni Quarterly.**

The Bloomsburg Alumni Quarterly, published four times a year, purposes to keep the alumni informed of the activities and progress of their Alma Mater. It is sent to all alumni who pay the alumni fee of \$1.00 a year. This publication is available in the College Library.

**RELIGIOUS ACTIVITIES****Student Christian Association.**

The Student Christian Association is open to all men and women students of the college. It holds weekly meetings. It aims to develop the social and religious life of the college students.

**Auditorium.**

Devotional services are held in the chapel twice a week in connection with the assembly programs.

**Local Churches.**

Students at Teachers College are cordially invited to attend services in the churches of Bloomsburg. Students attend Sunday School, Young People's Meetings, and sing in the church choirs.

**PROFESSIONAL FRATERNITIES**

National honorary and professional fraternities which foster and advance educational ideals through scholarship, social efficiency, and moral development, are permitted to form chapters. There are five such fraternities on the Campus.

**Kappa Delta Pi** (National Coeducational Honor Society in Education)  
Kappa Delta Pi originated at the University of Illinois in 1909 as the Illinois Educational Club, and was incorporated June 8, 1911, under the laws of the State of Illinois as the Honorary



Educational Fraternity. On October 4, 1932, this title was changed to Kappa Delta Pi, an Honor Society in Education, and so registered at the office of the Secretary of State at Springfield, Illinois. Both men and women are eligible to membership which is drawn from the upper quartile of the institution for Juniors and Seniors. It is both an undergraduate and graduate society and has the unique distinction of having a Laureate Chapter composed of outstanding educators throughout the world, the intent being to make this in essence an academy of educators similar to the academy of science or academy of letters.

There are 106 chapters in universities and colleges with a total membership of more than 20,000. The Educational Forum, official magazine of the Society, is issued quarterly. There are other publications of value—the Lecture Series and the Research Publications.

**Phi Sigma Pi** (National Honorary Educational Fraternity For Men)

The Phi Sigma Pi, a National Educational Fraternity, was founded at the State Teachers College, Warrensburg, Missouri, on February 14, 1916. The fraternity has 16 active chapters. The objective of the fraternity is to maintain a professional educational fraternity for men in teacher training institutions. The organization is based on high scholastic attainments and seeks to advance educational ideals, promote close fellowship, improve the training of teachers, and uphold just and efficient government. The Bloomsburg Chapter, Iota, has 23 active members, 7 faculty members, and 7 honorary members.

**Alpha Psi Omega** (National Coeducational Honorary Dramatic Fraternity)

Alpha Psi Omega, national honorary dramatic fraternity, was organized in 1922 at Fairmont State College, Fairmont, Virginia, to provide an honor society for those doing a high standard of work in college dramatics; and to secure for them the mutual helpfulness provided by a large national fraternity. At present there are 152 chapters located in colleges and universities in the United States and Canada. The Bloomsburg chapter, Alpha Omicron, was organized in March, 1928, and now has an alumni membership of 108.

**Gamma Theta Upsilon** (National Coeducational Honorary Geography Fraternity)

Gamma Theta Upsilon originated in the Geography Club of the Illinois State Normal University on May 15, 1931. Delta Chapter was organized by seven Junior and Senior members of the Geographic Society at Bloomsburg in October, 1931. The chapter now has 69 on the roll. Membership is limited to students making special preparation to teach geography. The purpose of this organization is to advance the professional study of geography both as a cultural discipline and a practical subject for study

and investigation. A National Loan Fund to promote graduate study of geography has been established. The roster of chapters totals 15, representing eleven states and having a membership of eight hundred thirty-five.

**Pi Omega Pi** (National Professional Commercial Education Fraternity)

The organization of Pi Omega Pi was started in the spring of 1923 at the Northeast Missouri State Teachers College at Kirksville. Alpha Delta Chapter was installed at State Teachers College, Bloomsburg, on May 28, 1935. The Fraternity is composed of twenty-nine chapters.

The aims of the fraternity are: (a) To encourage, promote, extend, and create interest and scholarship in Commerce. (b) To aid in civic betterment in colleges. (c) To encourage and foster high ethical standards in business and professional life. (d) To teach the ideal of service as the basis of all worthy enterprise.

## ACTIVITIES CALENDAR, 1938-1939

The Calendar for 1938-1939 pictures the typical activities, both on and off the campus, participated in by Trustees, Faculty, and Students during the College year. The basic Calendar is prepared by Dr. North in cooperation with the Student Council of the Community Government Association, the various College organizations and members of the Faculty. The object is to maintain relative values among the many requests and diverse needs of our College community. Suggestions and requests for places or changes concerning the Calendar must be made to Dr. North, and assignments of rooms must be secured from Dean Andruss. The Calendar is prepared during May of each year for the following College year.

## SEPTEMBER

- 13 Final Date For Entrance Examinations.
- 14 Registration and Classification of Freshmen.
- 15 Registration and Classification of Other Classes. Dr. Haas—Speaker. Dinner Meeting of W. P. A. Adult Education Program.
- 16 Classes Begin.
- 17 Reception and Dance.
- 19 Church Receptions.
- 20 Church Receptions.
- 24 "B" Club Camp.
- 27 Meeting of the Executive Committee of the Board of Trustees.
- 21 Frosh Kid Party. Miss Ranson attended Educational Conference, Bucknell University, Lewisburg, Pennsylvania. Miss Hayden addressed Bucknell Educational Conference, Lewisburg, Pennsylvania. Dean Andruss addressed and Miss Kern attended Northeastern P. S. E. A. Meeting, Allentown, Pennsylvania.
- 22 Football—Lock Haven—Away. Dr. Haas and Dean Koch attended Dauphin County Alumni Meeting—Harrisburger Hotel—Harrisburg, Pennsylvania.
- 25 Meeting of Board of Trustees.
- 26 Meeting of Trustees Association—Harrisburg, Pennsylvania. Homecoming Broadcast—Station WKOK.
- 27 Dr. Haas attended N. Y. A. State Advisory Committee Meeting, Harrisburg, Pennsylvania. Miss Hayden addressed Luzerne County Institute, at Wilkes-Barre, Pennsylvania. Miss Hazen addressed Luzerne County Institute, Wilkes-Barre, Pennsylvania. Junior Chamber of Commerce Picnic.

## OCTOBER

- 1 Football—Millersville—Here. Junior Chamber of Commerce Dance.
- 3 Meeting of Board of Presidents.
- 4-5 Dr. Haas attended Superintendent's Conference, Harrisburg, Pennsylvania.
- 6 Meeting of the Susquehanna and Wyoming Counties Branches of Alumni Association—Tunhannock, Pennsylvania.
- 7 Jill Edwards—Chapel. P. T. A. Food Sale. Pennsylvania Conference for the Education of Exceptional Children—Harrisburg, Pennsylvania.
- 8 Dr. Haas, Miss Johnston, and Mr. Fisher attended the Pennsylvania Conference for the Education of Exceptional Children—State Education Building, Harrisburg, Pennsylvania. Football—Indiana—Away. Football—J. V. Scranton-Keystone—Here.
- 10-14 Dr. Nelson, Interviewer for Board of Public Assistance, Wilkes Barre, Pennsylvania.
- 14 Charles Naegele—Pianist. Columbia County Alumni Meeting—College Dining Room.
- 15 Football—Mansfield—Here. Rural Education Day.
- 19 Wayne-Pike Counties Alumni Meeting—Lake Ariel, Pennsylvania.
- 20 Dean Koch spoke at the Danville High School Assembly.
- 28 Pep Meeting. Dean Andruss—Speaker—Luzerne County Institute, Wilkes-Barre, Pennsylvania. Miss Hayden addressed Lackawanna County Institute, Scranton, Pennsylvania. Mr. Smeltzer—Assembly.
- 29 Football—Shippensburg—Here. Homecoming Day. Cross Country—West Chester—Here. Dean Andruss—Special Lecturer—New York University—New York City, New York.
- 30-5 Dean Andruss visited colleges in Virginia and Maryland—St. Johns, Annapolis, William and Mary, Williamsburg, University of Virginia, Charlottesville, and others.

## NOVEMBER

- 2 Music Broadcast—Station WKOK.
- 4 Wilson MacDonald, Poet. Miss Marec Pensyl, Soloist.
- 5 Football—Kutztown—Away. Dr. Haas, and Dean Koch attended Luzerne County Alumni Meeting, at Hotel Sterling, Wilkes-Barre, Pennsylvania.

- 6-12 American Education Week.  
 9 Mr. Rhodes—Broadcast — Station WKOK.  
 10 P. T. A. Fathers' Meeting.  
 11 Armistice Day Chapel Program. Siberian Singers. P. T. A. Food Sale.  
 12 Football — East Stroudsburg — Away.  
 15 Cross Country—West Chester — Away.  
 17 Dean Koch addressed Union-Snyder Alumni Meeting, Cameron House, Lewisburg, Pennsylvania.  
 18 Lackawanna County Alumni Meeting—Scranton, Pennsylvania. Meeting of Board of Presidents. C. G. A. Masquerade Ball.  
 19 Football—Panzer—Here.  
 21-22 Columbia County Institute.  
 21 Miss Hayden addressed Columbia County Institute, at Bloomsburg, Pennsylvania. Visit from Dr. Henry Klonower, Director, Teacher Education and Certification, Department of Public Instruction, Harrisburg, Pennsylvania.  
 22 Meeting of Executive Committee of the Board of Trustees.  
 23 Nomination of Freshman Class Officers. Thanksgiving Recess Begins—12:00 M.  
 28 Thanksgiving Recess Ends—12:00 M. Montour County Alumni Meeting, Danville, Pennsylvania.  
 30 Election of Freshman Officers. Broadcast—Dean Koch and Mr. Buchheit—Station WKOK.

## DECEMBER

- 3 Winter Festival, Y. W. C. A.  
 9 Lew Sarette. P. T. A. Food Sale. Dr. and Mrs. Haas' Reception to Trustees and Faculty after Lecture Course.  
 10 Philadelphia Alumni Meeting, Bellevue-Stratford Hotel, Philadelphia, Pennsylvania. Miss Johnston attended Cultural Olympics at Philadelphia, Pennsylvania.  
 12 Kappa Delta Pi Initiation and Christmas Party.  
 14 Northeastern County Superintendents' Meeting in Superintendent Francis' Office, Scranton, Pennsylvania. Maroon and Gold Band—Broadcast—Station WKOK.  
 16 Basketball—Alumni—Here.  
 17 Annual Christmas Party for Crippled Children. Senior Informal Dance.  
 19 Dean Andruss addressed the Ministerium, Bloomsburg, Pennsylvania.  
 20 Meeting of Board of Trustees.  
 21 A Cappella Choir—Broadcast—Station WKOK.  
 22 Christmas Entertainment—Maroon and Gold Orchestra, Maroon and Gold Band, and A Cappella Choir.  
 23 Christmas Recess Begins 12:00 M.  
 27-29 P. S. E. A. Convention—Harrisburg, Pennsylvania.

## JANUARY

- 3 Christmas Recess Ends 12:00 M.  
 4 Music Broadcast—Station WKOK.  
 6 P. T. A. Food Sale. Invitation High School Play Tournament—Evening.  
 7 Invitation High School Play Tournament—Afternoon and Evening.  
 11 Wrestling — Scranton—Keys to the Junior College—Here. Broadcast—Dean Kehr—Station WKOK.  
 12 Basketball—Mansfield—Away. Annual Fireman's Banquet—College Dining Room. Mr. Forney attended a meeting of the Committee on Business Education, Department of Public Instruction, Harrisburg, Pennsylvania.  
 13 Jitney Players.  
 14 Basketball—Shippensburg — Here. Wrestling — Polytechnic Institute of Brooklyn—Away.  
 16 Dr. Haas addressed Ministerium Meeting, Bloomsburg, Pennsylvania.  
 16-18—Mr. Forney served on State Committee Surveying William-sport Senior High School.  
 18 Mr. Fenstemaker—Broadcast—Station WKOK.  
 20 Special Assembly for Students Completing Work with First Semester. Basketball—Shippensburg — Away. Meeting of Board of Presidents.  
 21 End of First Semester—12:00 M.  
 23 State Y. M. C. A. Dinner—Eastern Star Hall—Bloomsburg, Pennsylvania.  
 24 Meeting of Executive Committee of Board of Trustees.  
 25 Second Semester Begins 12:00 M. Dr. Nelson—Broadcast — Station WKOK.  
 27 Basketball — Millersville — Here. Wrestling — East Stroudsburg — Here.  
 28 C. G. A. Mid-Year Dance.

## FEBRUARY

- 1 Music Broadcast—Station WKOK.  
 3 Basketball—Millersville—Away. Mr. Forney addressed Danville High School Assembly. Miriam Marmeim & Group—Dance Pantomines. Ray McBride, President. Community Government Association—talk on trip—Chapel.  
 3-4 Dr. Haas attended Annual School Directors' Convention, Forum Education Building, Harrisburg, Pennsylvania.  
 4 Basketball—West Chester—Away. Wrestling—Mansfield—Away.  
 8 Nominations to fill vacancies in Class Offices and Council Members.  
 9 Basketball—East Stroudsburg — Here.

- 11 Basketball—Lock Haven—Here. Mr. McMahan attended Conference on Eastern Commercial Teachers Association Membership Drive, Philadelphia, Pennsylvania. Wrestling—Lock Haven—Here. Service Area Conference—"Clinical Approach in Education." Broadcast—"Clinical Education," Dr. Newland, Dr. Betts, Dr. Miller—Station WKOK.
- 13 Sophomore Class—Chapel.
- 16 Elections to fill Class and Council Vacancies. Obiter Nominations. Basketball—Lock Haven—Away. Verse Choir—Broadcast—Station WKOK.
- 16 Glenn Cunningham—Chapel.
- 17 Basketball—Indiana—Here. Phi Sigma Pi Photograph—Auditorium.
- 18 Sophomore Cotillion. Dr. Haas—Speaker—Wyoming County Teachers Meeting. Wrestling—Mansfield—Here.
- 20 Nominations of Maroon and Gold Officers (Council).
- 20-25 Dr. Kehr attended National Education Association Meeting, Cleveland, Ohio.
- 22 Obiter Elections. Broadcast—Washington's Birthday—Scott Township High School—Station WKOK. Dr. Haas addressed Farmers-Merchants Dinner—Bloomsburg, Pennsylvania.
- 23 Basketball—Mansfield—Here. Waller Hall Dinner Party.
- 25 Basketball—East Stroudsburg—Away. Wrestling—Lock Haven—Away.
- 28 Meeting of Board of Trustees cancelled on account of death of Miss Ward, Dietitian.
- MARCH
- 1 Maroon and Gold Elections. Student-Faculty Broadcast—Station WKOK.
- 3 Zimmer Harp Trio.
- 4 Inter-Fraternity Ball.
- 8 Business Education Conference—Department of Public Instruction—Harrisburg, Pennsylvania. Mr. Forney attended Conference on Education and Certification of Teachers of Business Subjects, Harrisburg, Pennsylvania. A Cappella Choir Broadcast—Station WKOK.
- 9 Kiwanis-Rotary College Evening.
- 10 P. T. A. Food Sale. H. S. Basketball Tournament—Afternoon and Evening.
- 11 H. S. Basketball Tournament—Afternoon and Evening.
- 15 Dr. Haas addressed Y. M. C. A. Meeting. Benton High School Broadcast—Station WKOK.
- 16 Mr. Andruss addressed North Carolina Teachers Convention, Raleigh, North Carolina.
- 17 High School Basketball Tournament—Afternoon and Evening. Meeting of Board of Presidents.
- 18 H. S. Basketball Tournament—Evening.
- 20 C. G. A. program in Assembly. Montour County Alumni Meeting, Danville, Pennsylvania.
- 22 Dr. Haas addressed Farmer-Business Men's Meeting—Millville, Pennsylvania. Dr. Nelson, Dr. North—Broadcast—Station WKOK.
- 23-25 Miss Hayden attended Schoolmen's Week Meetings and Observations in Oak Park Country Day School.
- 24 Jean Tennyson, Soprano, and William Hain, Tenor.
- 24-25 Miss Hazen attended Schoolmen's Week, University of Pennsylvania, Philadelphia, Pennsylvania.
- 25 Farmer—Farmerette Dance.
- 27 Bloomsburg High School Band—Assembly.
- 28 Faculty Banquet. Meeting of Board of Trustees.
- 29 J. C. C. Program—Assembly. Ralph McCracken, Pianist—Broadcast—Station WKOK.
- 30-1 Dean Andruss addressed and Dean Kehr and Dr. Haas attended Eastern States Association of Professional Schools for Teachers Meeting, Hotel Pennsylvania, New York City, New York. Dean Koch addressed Orangeville meeting.
- 31 Wilfred Husband—Assembly. Miss Johnston judged Poem Contest, Susquehanna University, Selinsgrove, Pennsylvania.
- APRIL
- 1 Mr. Reams addressed West Hazleton Teachers Meeting.
- 3 Movies in Auditorium.
- 4 Luncheon Meeting—Alumni Directors. Training School Play—Auditorium.
- 5 Dr. Haas attended meeting of State N. Y. A. Advisory Council, Harrisburg, Pennsylvania. Training School Play—Auditorium.
- 6 Dean Andruss and Mr. McMahan attended Convention of Eastern Commercial Teachers Association, Hotel Pennsylvania, New York City, New York. Easter Recess Begins 12:00 M.
- 11 Easter Recess Ends 12:00 M.
- 12 Election C. G. A. Officers. McDowell Club, Bloomsburg High School—Broadcast—Station WKOK.
- 13 Junior Women's Club in Auditorium—Mr. Orson N. Ritzman, Department of Public Instruction, Speaker.
- 13-15 Mr. Forney attended Meeting of Business Education Committee, Harrisburg, Pennsylvania.
- 14 P. T. A. Food Sale. Dr. Kehr attended A. A. U. W. Convention at Bethlehem, Pennsylvania. Chemistry Show in Auditorium. Baseball and Tennis—Kutztown—Away.
- 15 Columbia County Teachers Association—Auditorium, Morning. Columbia County Poem Contest—Auditorium, Afternoon. Luzerne County Alumni Luncheon Meeting—Wilkes-Barre, Pennsylvania. Freshman Hop.

- 17 Faculty Meeting—Dr. Henry Klonower—Speaker.
- 19 Turbotville High School—Broadcast—Station WKOK.
- 21 Baseball and Tennis—Mansfield—Here.
- 21-22 Northeastern P. S. E. A. Meeting—Scranton, Pennsylvania.
- 21 Miss Hazen addressed Northeastern P. S. E. A. Meeting, Scranton, Pennsylvania.
- 21-22 Miss Rich attended Northeastern P. S. E. A. Meeting, Scranton, Pennsylvania.
- 22 Baseball and Tennis—Indiana—Away.
- 22 Track—East Stroudsburg—Here. Lackawanna County Alumni Association Luncheon Meeting—Scranton, Pennsylvania.
- 25 Meeting of Executive Committee of Board of Trustees.
- 26 Baseball and Tennis—Millersville—Away. Nominations of Class Officers and Council Representatives. A Cappella Choir Broadcast—Station WKOK.
- 27 Phi Sigma Pi Banquet—Rose Tea Room. Schuylkill County Alumni Meeting, Frackville, Pennsylvania.
- 28 Tennis—West Chester—Away. He-She Party. Penn Relays. A Cappella Choir—Harrisburg, Pennsylvania.
- 29 Baseball—West Chester. — Here Commercial Contest—Class A. Penn Relays. Philadelphia Alumni Meeting, Bellevue-Stratford Hotel, Philadelphia, Pennsylvania.
- MAY
- 1 Dean Sutliff Memorial Program—Assembly.
- 3 Baseball and Tennis—Susquehanna Here. Election of Class Officers and Council Representatives. Track—Bucknell—Away. Dr. Nelson, High School Guests—Broadcast—Station WKOK.
- 4 Geography Club Field Day.
- 5 Tennis—Bucknell—Away. Movies—Chapel. Gamma Theta Upsilon Dinner.
- 6 Commercial Contest—Class B. Baseball, Tennis, Track—Shippensburg—Away.
- 8 Installation of New C. G. A. Officers—Chapel. Faculty Meeting.
- 9 Dr. and Mrs. Haas' Reception to Student Council and Class Officers.
- 10 Susquehanna County Alumni Meeting, Montrose, Pennsylvania. Track and Field—Lock Haven—Here.
- 12 Junior Promenade. Cecil Leeson—Saxaphonist.
- 13 Baseball and Tennis—Mansfield—Away. Kappa Delta Pi Banquet—Scott Township, Espy, Pennsylvania.
- 14 Mrs. Miller's Music Recital—Auditorium.
- 15 May Day Dress Rehearsal. Dr. Kehr addressed Assembly on Academic Costumes.
- 17 May Day. Poetry Club—Broadcast
- 18 Meeting of Board of Presidents. Baseball and Tennis—East Stroudsburg—Away. Columban Club Banquet.
- 19 Dr. C. H. Gordiner—Assembly. Dr. Haas addressed Citizens Regional Conference on Social Welfare—Wellsboro, Pennsylvania.
- 20 Athletic Banquet. State Track Meet. Baseball and Tennis—Lock Haven—Here.
- 22 Ivy Day. Senior Day Program.
- 23 Classes End 12:00 M.
- 24 Senior Dinner—Dance—Hotel Sterling, Wilkes-Barre, Pennsylvania.
- 24 Dr. Nelson, Mr. Fenstermaker, Mr. Albert—Centennial Broadcast—Station WKOK.
- 25 Tennis—Bucknell—Here. Dean Koch—Commencement Address—Numidia, Pennsylvania.
- 26 Alumni Centennial Exercises.
- 27 Alumni Centennial Exercises. Baseball and Tennis—Alumni—Here.
- 28 Baccalaureate Sermon.
- 29 Commencement—Dr. Charles W. Hunt—Speaker. Meeting of Board of Trustees.
- 31 Bloomsburg Hospital Commencement—College Auditorium.
- JUNE
- 2 Dr. Haas, Speaker, Wellsboro High School Commencement. Dean Koch—Commencement Speaker—Gowen City, Pennsylvania.
- 4 Music Recital—Mrs. Miller, Auditorium. Dean Koch—Commencement Address—Sugar Loaf, Pennsylvania.
- 11-12 Dean Andruss—Speaker—University of Oklahoma Alumni Association Meeting, Norman, Oklahoma.
- 12 Dr. Haas received Honorary LL.D. Degree—Bucknell University, Lewisburg, Pennsylvania.
- 13-15 Dean Andruss—Special Lecturer—University of Oklahoma, Norman, Oklahoma.
- 28-29 Dr. Haas attended Vocational Conference—State College, Pennsylvania.
- JULY
- 12 Speech Class—Broadcast—Dean Koch—Station WKOK.
- 19 Pennsylvania Educational Salesmen's Club Display—Gymnasium.
- 20 Madrigal Singers.
- 24 Dean Andruss attended Meeting of Deans of Instruction, Education Building, Harrisburg, Pennsylvania.
- 25 Meeting of Executive Committee of Board of Trustees. Meeting of Presidents—Harrisburg, Pennsylvania.
- AUGUST
- 1-3 Dr. Haas attended Pennsylvania Superintendent's Conference, State College, Pennsylvania.
- 22 Meeting of Executive Committee of Board of Trustees.
- 28 Dr. Francis B. Haas appointed State Superintendent of Public Instruction by Governor Arthur James.

## AN ENRICHED PROGRAM OF STUDIES FOR THE EDUCATION OF TEACHERS

Curriculums for the education of teachers should be constantly re-examined in terms of the needs of the public schools. An effort has been made to adjust the curriculum of the teachers colleges to meet these needs. In accordance with this policy, the Presidents of the State Teachers Colleges, with the approval of the Superintendent of Public Instruction, have rearranged the courses, thereby enriching the curriculums. The first two years of the rearranged curriculums will give the students a more thorough academic background.

The revised curriculums in the State Teachers Colleges have as their main objective, the reorganization of the sequential relationship of courses so that the professional work will be cumulative and progressive. There will be distinctly professional courses in the first year, more professional courses in the second year, and still more in the third and fourth years.

The following curriculums were inaugurated at State Teachers College, Bloomsburg, Pennsylvania, beginning September 7, 1937:

- (1) Four-Year Elementary Curriculum leading to the B. S. in Education, with college certification in (a) Kindergarten-Primary, (b) Intermediate, (c) Rural fields. The State Standard Limited Certificate may be issued at the end of three years if students make this decision at the end of their freshman year. This certification is valid for three years, during which time twelve semester hours of advanced credit in the elementary field must be earned in order to renew it for three more years. This process is continued until the four-year requirement for the degree of B. S. in Education has been fulfilled at which time the College Provisional Certificate is issued.
- (2) Six semester hours, selected from the "Electives for Special Education," earned in addition to completing the Four-Year Elementary curriculum may be used to certify a person to teach **Special Classes for the Mentally Retarded**. This means that a person will be certified to teach in the elementary school, and at the same time certified to teach adjustment, special, opportunity, or orthogenic classes in the elementary school.

- (3) Four-Year Secondary Curriculum leading to B. S. in Education, with college certification in two or more of the following fields: English, Social Studies, Geography, Mathematics, French, Latin, Science and Speech.
- (4) Four-Year Business Education Curriculum leading to the B. S. in Education, with opportunity to secure college certification in the following subjects: Bookkeeping and Accounting, Business English, Commercial and Economic Geography, Commercial Law, Commercial Mathematics, Economics, Junior Business Training, Office Practice, Salesmanship, Shorthand, and Typewriting. Retail Selling may also be chosen as a field for certification.

## BASIC TWO YEARS OF THE ELEMENTARY AND SECONDARY CURRICULUMS

SEQUENCE OF COURSES SUBJECT TO CHANGE FOR ADMINISTRATIVE REASONS

First Semester			Second Semester		
	Hours Clock	Sem.		Hours Clock	Sem.
English I (inc. Library Science) -----	4	3	English II -----	3	3
Fundamentals of Speech	3	3	Principles of Geography	3	3
Biological Science I (Botany) -----	4	3	History of Civilization	4	4
Health Education I -----	4	2	Biological Science II (Zoology) -----	4	3
(inc. Phys. Ed. and Personal Hygiene)			Health Education II	4	2
Place and Purpose of Education in School Order	3	2	(inc. Phys. Ed. and Personal Hygiene)		
(inc. directed School Visitations, etc.)			Appreciation of Art	3	2
Appreciation of Music	3	2		21	17
	21	15			
Third Semester			Fourth Semester		
	Hours Clock	Sem.		Hours Clock	Sem.
Literature I (English)	3	3	Literature II (American)	3	3
Economic Geography	3	3	Educational Psychology	3	3
General Psychology (I)	3	3	(II) -----	3	3
Physical Science I (Chemistry) -----	4	3	Prin. of Sociology or Prin. of Economics	3	3
Elective -----	3	3	Physical Science II (Physics) -----	4	3
	16	15	Electives -----	5	5
				18	17



ELEMENTARY CURRICULUM

SECONDARY CURRICULUM

Fifth Semester

Fifth Semester

	Hours	Hours
	Clock	Clock
	Sem.	Sem.
Amer. Government-Federal		
State, and Local ----	3	3
Teaching of Reading ----	3	3
Music I -----	4	2
Art I -----	4	2
Curriculum in Arithmetic	3	2
School Law -----	1	1
Elective -----	3	3
	<u>21</u>	<u>16</u>

	Hours	Hours
	Clock	Clock
	Sem.	Sem.
Amer. Government-Federal,		
State, and Local -----	3	3
School Law -----	1	1
Educational Measurements	2	2
Electives -----	10	10
	<u>16</u>	<u>16</u>

Sixth Semester

Sixth Semester

	Hours	Hours
	Clock	Clock
	Sem.	Sem.
Child Psychology (III) --	3	3
Teach. of English -----	4	3
(inc. Handwriting)		
Music II -----	3	1½
Art II -----	3	1½
Teaching of Health -----	3	2
U. S. History to 1865 ----	3	3
Elective -----	3	3
	<u>22</u>	<u>17</u>

	Hours	Hours
	Clock	Clock
	Sem.	Sem.
Guidance -----	2	2
Problems of Secondary Ed.	2	2
Electives -----	13	13
	<u>17</u>	<u>17</u>

Seventh Semester

Seventh Semester

	Hours	Hours
	Clock	Clock
	Sem.	Sem.
Educational Measurements	2	2
Curriculum in Elementary		
Science -----	4	3
Visual Education -----	2	1
Children's Lit. and Story		
Telling -----	3	3
Evolution of the American		
Public School -----	2	2
Philosophy of Education --	2	2
Elective -----	3	3
	<u>18</u>	<u>16</u>

	Hours	Hours
	Clock	Clock
	Sem.	Sem.
Evolution of the Amer.		
Public School -----	2	2
Visual Education -----	2	1
Philosophy of Education --	2	2
Electives -----	11	11
	<u>17</u>	<u>16</u>

Eighth Semester

Eighth Semester

	Hours	Hours
	Clock	Clock
	Sem.	Sem.
Student Teaching and Con-		
ference -----	15	12
Curriculum Materials, Se-		
lection and Adaptation	4	3
	<u>19</u>	<u>15</u>

	Hours	Hours
	Clock	Clock
	Sem.	Sem.
Student Teaching and Con-		
ference -----	15	12
Curriculum Materials, Se-		
lection and Adaptation	4	3
	<u>19</u>	<u>15</u>

## ELECTIVES IN THE ELEMENTARY AND SECONDARY CURRICULUMS

### ELECTIVES FOR GRADES 1, 2, 3 (Group I)

	Hours	Sem.
	Clock	Sem.
*Pre-School Child .....	2	2
*Kind.-Primary Theory .....	2	2
U. S. History since 1865 .....	3	3
Special Education .....	3	3
Child Adjustment .....	3	3
Diagnostic and Remedial Instruction in Reading .....	3	3
Parent Education .....	3	3
Handicrafts .....	4	2
Descriptive Astronomy .....	2	1
And such other approved courses as are considered appropriate.		

### ELECTIVES FOR GRADES 4, 5, 6 (Group II)

	Hours	Sem.
	Clock	Sem.
*Teaching of Arithmetic .....	3	3
*Civic Education .....	3	3
U. S. History since 1865 .....	3	3
Industrial Arts .....	4	2
Geography of Western Hemisphere .....	3	3
Geography of Eastern Hemisphere .....	3	3
Descriptive Astronomy .....	2	1
And such other approved courses as are considered appropriate.		

### ELECTIVES FOR TEACHERS OF ONE-ROOM RURAL SCHOOLS (Group III)

	Hours	Sem.
	Clock	Sem.
Rural Education:		
*Rural Sociology .....	3	3
*Rural School Problems .....	2	2
Agriculture and Nature .....	3	2
And such other approved courses as are considered appropriate		

### ELECTIVES FOR SPECIAL EDUCATION (in elementary grades)

	Hours	Sem.	Hrs.
	Clock	Sem.	Clock
Arrangement of Courses in Special Education for the Mentally Retarded .....			24
I. Required .....	15		
Psychology of Exceptional Children .....	3	3	
Diagnostic Testing and Remedial Teaching .....	3	3	
Special Class Arts and Crafts I .....	6	3	
Special Class Arts and Crafts II .....	6	3	
Student Teaching in Class- es for Mentally Retard- ed Children .....	3	1	
Special Class Methods .....	3	2	
II. Electives .....			9
Education of Exceptional Children .....	3	3	
Mental or Educational Hy- giene .....	3	3	
Clinical Psychology .....	3	3	
Abnormal Psychology .....	3	3	
Mental Tests (group) .....	3	2	
Speech Correction .....	3	2	
Mental Tests (individual) .....	3	2	
Corrective Physical Edu- cation .....	3	2	

### SPEECH ELECTIVE (For students in Elementary or Secondary Curriculums)

	Hours	Sem.	Hrs.
	Clock	Sem.	Clock
Arrangement of Courses for a Speech Elective (Minimum as first field) .....			21
I. Required .....	3		
Fundamentals of Speech (Not counted as part of the eighteen (18) need- ed for certification).	3	3	
II. Required for Elective Field of Speech .....			8
Interpretative Reading .....	3	2	
Phonetics .....	2	2	
Play Production .....	3	2	
Speech Problems .....	3	2	
III. Electives for the Field of Speech .....			10
Argumentation and De- bate .....	2	2	
Community Dramatics and Pageantry .....	3	2	
Costuming and Make- up .....	3	2	
Creative Dramatics .....	2	2	
Psychology of Speech .....	3	3	
Speech Clinic (I) .....	4	2	
Speech Clinic (II) .....	4	2	
Speech Pathology .....	3	3	
Stagecraft and Scenic Design .....	4	2	
Voice and Diction .....	2	2	

\*Required

AREAS OF CONCENTRATION (ELECTIVE FIELDS)

SECONDARY CURRICULUM

Elective Arrangement in the Field of English (Minimum as first field) -----24

		Hours			Hours
		Clock	Sem.		
I. Required -----				II. Electives -----	6
English I and II -----	7	6		Contemporary Poetry ---	2 2
Literature I and II -----	6	6		Essay -----	3 3
English Philology -----	3	3		Journalism -----	2 2
Advanced Composition ---	3	3		Modern Drama -----	2 2
				Nineteenth Century Novel	3 3
				Modern Novel -----	3 3
				Pre-Shakespearean Litera-	
				ture -----	2 2
				Romantic Period -----	3 3
				Shakespeare -----	3 3
				Short Story -----	3 3
				Victorian Prose & Poetry	3 3
				World Literature -----	3 3

Elective Arrangement in the Field of French (Minimum as first field) -----24

I. Required -----	18	II. Electives -----	6
19th Century and Contem-		French Drama -----	3 3
porary French Prose &		French Novel -----	3 3
Poetry -----	3 3		
Contemporary Prose and			
Poetry -----	3 3		
Outline Course of French			
Literature -----	3 3		
17th Century French His-			
tory and Literature			
Composition -----	3 3		
Romantic Movements in			
French Literature ---	3 3		
Realistic Movements in			
French Literature ---	3 3		

Elective Arrangement in the Field of Latin (Minimum as first field) -----24

I. Required -----	18	II. Electives -----	6
Ovid and Virgil -----	3 3	Cicero and Pliny -----	3 3
Livy -----	3 3	Horace-Satires -----	3 3
Cicero and Tacitus ---	3 3	Medieval Latin -----	3 3
Horace-Odes -----	3 3	History of Latin Literature	3 3
Plautus and Terence ---	3 3		
Roman Civilization ---	3 3		

Elective Arrangement in the Field of Geography (Minimum as first field) -----24

I. Required -----	18	II. Electives -----	6
Principles of Geography _	3 3	Climatology and Meteor-	
Economic Geography ---	3 3	ology -----	3 3
Geography of U. S. and		Commercial and Industrial	
Canada -----	3 3	Geography -----	3 3
Geography of Latin Amer-		Conservation of Natural	
ica -----	3 3	Resources -----	3 3
Geography of Europe ---	3 3	Field Courses (to be ap-	
Geography of Pacific		proved) -----	3 3
Realm -----	3 3	Physiography -----	3 3
		Trade and Transportation	3 3



Third Semester

Commercial Sequence			Accounting Sequence		
	Clock	Hours		Clock	Hours
Literature I (English) ..	3	3	Literature I (English) ..	3	3
Economic Geography II ..	3	3	Economic Geography II ..	3	3
Business Organization and Finance .....	3	3	Business Organization and Finance .....	3	3
Bookkeeping and Account- ing II .....	5	3	Bookkeeping and Account- ing II .....	5	3
Shorthand II .....	5	3	Electives in English or Social Studies .....	6	6
Typewriting III .....	5	2			
	<u>24</u>	<u>17</u>		<u>20</u>	<u>18</u>

Fourth Semester

Biological Science .....	4	3	Biological Science .....	4	3
Business Correspondence ..	3	3	Business Correspondence ..	3	3
Business Law I .....	3	3	Business Law I .....	3	3
Bookkeeping and Account- ing III .....	3	3	Bookkeeping and Account- ing III .....	3	3
Shorthand Applications ..	5	3	Electives in English or Social Studies .....	3	3
Typewriting Applications ..	5	2			
	<u>23</u>	<u>17</u>		<u>16</u>	<u>15</u>

Fifth Semester

General Psychology (I) ..	3	3	General Psychology (I) ..	3	3
School Law and Admin- istration .....	2	2	School Law and Admin- istration .....	2	2
Business Law II .....	3	3	Business Law II .....	3	3
Sales and Retail Selling I .....	3	3	Sales and Retail Selling I .....	3	3
Bookkeeping and Account- ing IV .....	3	3	Bookkeeping and Account- ing IV .....	3	3
Stenographic Office Prac- tice .....	5	3	Electives in English or Social Studies .....	3	3
	<u>19</u>	<u>17</u>		<u>17</u>	<u>17</u>

Sixth Semester

Methods—Shorthand .....	1	1	Methods—Junior Business	1	1
Typewriting .....	1	1	Social Business .....	1	1
Bookkeeping .....	1	1	Bookkeeping .....	1	1
Tests and Measurements ..	3	3	Tests and Measurements ..	3	3
Secondary School Business Ed. .....	2	2	Secondary School Business Ed. .....	2	2
Economics I .....	3	3	Economics I .....	3	3
Visual Education .....	2	1	Visual Education .....	2	1
Clerical Practice .....	5	3	Clerical Practice .....	5	3
	<u>18</u>	<u>15</u>		<u>18</u>	<u>15</u>

Seventh Semester

Philosophy of Education ..	2	2	Philosophy of Education ..	2	2
American Government .....	3	3	American Government .....	3	3
Economics II .....	3	3	Economics II .....	3	3
History of Civilization ..	4	4	History of Civilization ..	4	4
*Business Mathematics III or .....	3	3	Business Mathematics III	3	3
*Auditing or .....	3	3	Auditing .....	3	3
*Secretarial Practice .....	5			18	18
	<u>23</u>	<u>15</u>			

Eighth Semester

Student Teaching, Observation and Conferences .....		15		15	12
Curriculum Materials .....		4		4	3
		<u>19</u>		<u>19</u>	<u>15</u>

\*Elect one of these

		Third Semester			
Secretarial Sequence		Hours		Retail Selling Sequence	
	Clock	Sem.	Clock	Sem.	
Literature I (English) ---	3	3	Literature I (English) ---	3	3
Economic Geography II ---	3	3	Economic Geography II ---	3	3
Business Organization and Finance -----	3	3	Business Organization and Finance -----	3	3
Shorthand II -----	5	3	Bookkeeping and Account- ing II -----	5	3
Typewriting III -----	5	2	Electives in English or Social Studies -----	3	3
Electives in English or Social Studies -----	3	3			
	22	17		17	15
Fourth Semester					
Biological Science -----	4	3	Biological Science -----	4	3
Business Correspondence -	3	3	Business Correspondence -	3	3
Business Law I -----	3	3	Business Law I -----	3	3
Shorthand Applications -	5	3	Electives in English or Social Studies -----	6	6
Typewriting Applications -	5	2			
Electives in English or Social Studies -----	3	3		16	15
	23	17			
Fifth Semester					
General Psychology (I) --	3	3	General Psychology (I) --	3	3
School Law and Admin- istration -----	2	2	School Law and Admin- istration -----	2	2
Business Law II -----	3	3	Business Law II -----	3	3
Sales and Retail Selling I -	3	3	Sales and Retail Selling I -	3	3
Stenographic Office Prac- tice -----	5	3	Electives in English or Social Studies -----	6	6
Electives in English or Social Studies -----	3	3		17	17
	19	17			
Sixth Semester					
Methods—Shorthand -----	1	1	Methods—Junior Business	1	1
Typewriting -----	1	1	Social Business	1	1
Social Business -----	1	1	Retail Selling -	1	1
Tests and Measurements -	3	3	Tests and Measurements -	3	3
Secondary School Busi- ness Ed. -----	2	2	Secondary School Busi- ness Ed. -----	2	2
Economics I -----	3	3	Economics I -----	3	3
Visual Education -----	2	1	Visual Education -----	2	1
Clerical Practice -----	5	3	Clerical Practice -----	5	3
	18	15	Retail Selling II (Ad- vertising) -----	3	3
				19	18
Seventh Semester					
Philosophy of Education -	2	2	Philosophy of Education -	2	2
American Government ---	3	3	American Government ---	3	3
Economics II -----	3	3	Economics II -----	3	3
History of Civilization ---	4	4	History of Civilization ---	4	4
Secretarial Practice -----	5	3	Retail Selling III -----	12	6
Electives in English or Social Studies -----	3	3	(including Store Practice)		
	20	18		24	18
Eighth Semester					
Student Teaching, Observation and Conferences -----				15	12
Curriculum Materials -----				4	3
				19	15

## DEPARTMENT OF BUSINESS EDUCATION

### PURPOSE

The State Department of Public Instruction has designated the State Teachers College, Bloomsburg, Pennsylvania, as one of the institutions in which the high school commercial teachers of the Commonwealth may be trained. The Bachelor of Science in Education degree is conferred on the completion of the Business Education Curriculum authorized by the State Council of Education.

Graduates of this curriculum are fully certified to supervise or teach commercial subjects in the secondary schools of Pennsylvania. This curriculum is so broad that it not only prepares students to teach but also gives them the choice of several business vocations. The training provides adequate preparation in business knowledge and skills as well as teaching theory and practice.

### ENTRANCE REQUIREMENTS

This curriculum has proved so popular since it was organized in 1930, that only 120 carefully selected students are admitted. All persons who expect to enroll as Freshmen should make their reservations early in the year. Only the better high school students are accepted. This does not mean that new students must have had commercial work in high school or business college. Many students who have not had previous commercial training complete Business Teacher Education successfully.

Prospective students are urged to come to the College and meet the members of our faculty. Come to see what the Department of Business Education has to offer in the training of teachers of commercial subjects for the Commonwealth of Pennsylvania.

*As this curriculum is of collegiate grade, advanced standing is not granted for work completed in secondary schools, business colleges or unaccredited business schools.*

### ADVANCED STANDING

Entrants who have earned previous College credits should submit a transcript of such work before they enroll. If advanced standing for work completed in other institutions is expected, credit transcripts should accompany the application for enrollment. Advanced standing will be granted for work completed in other institutions of College grade, when, in the judgment of the Dean of Instruction, such courses seem to be equivalent to subjects contained in the Business Education Curriculum.

If a tentative evaluation of completed College work is desired, a transcript showing the name of the course, the grade, and the credit hours should be forwarded to the Director of the Department of Business Education. This evaluation may precede the enrollment of the student.

### CERTIFICATION INFORMATION

The object of this course is to prepare commercial teachers for the public schools of Pennsylvania. In accordance with the regula-

tions of the State Council of Education, approved December 7, 1929, high school graduates who propose to prepare for teaching commercial subjects must take a four-year Teacher Training course (or the equivalent) approved by the Department of Public Instruction.

"(1). After September 1, 1931, no temporary standard certificate will be issued or validated for the secondary field except where three years of approved post-high school preparation shall have been completed. Observation, participation, and practice teaching of not fewer than six semester hours or its equivalent must be a part of the required preparation;

"(2). After September 1, 1932, the temporary standard certificate will be issued or validated for the secondary field only upon completion of four years of approved post-high school preparation."

Bulletin No. 2, Certification of Teachers  
Regulations of State Council of Education.

#### EQUIPMENT

Business skills and practice cannot be learned wholly from books. The Department of Business Education is well equipped with the most modern office machines and devices. All desks, tables, chairs, files, and other business equipment are new. Students learn to operate standard and noiseless typewriters, addressographs, adding machines, posting and bookkeeping machines, calculation and ditto machines, mimeoscopes, multigraphs, mimeographs, and dictaphones. By operating these machines, students acquire a well-rounded knowledge of the mechanics of business which is invaluable in teaching.

#### OFFICE PRACTICE AND BUSINESS EXPERIENCE

A student completing this curriculum has had an opportunity to spend one and one-half years in office practice courses. In these three courses in office practice, a student acts as an actual business worker in four different offices where he is held responsible for the same vocational efficiency as the regularly employed office workers. This actual experience is supplemented by class instruction covering the following: office skill and phases of business knowledge; alphabetic, geographic, and numeric filing with actual practice; dictation and transcription at high rates of speed; the cutting of stencils, and the operation of the mimeograph machine; the making of stencils with the mimeoscope; the preparation of copy and duplication on the ditto and multigraph machines; the complete operation of the dictaphone; advanced work in business papers; the operation of the Burroughs posting machine and the Underwood bookkeeping machine; and the operation of adding machines and calculators.

The courses in office practice are not textbook courses but represent the actual carrying out of business transactions. While there is no substitute for business experience, we feel that such actual experience as provided in connection with the above outlined work in office practice materially aids the teacher of commercial subjects when he attacks classroom problems.





THE NEW JUNIOR HIGH SCHOOL — A GENERAL STATE AUTHORITY PROJECT



BOOKKEEPING AND OFFICE PRACTICE CLASS



TYPEWRITING CLASS

### STUDENT TEACHING

In order that Senior students may have an opportunity to observe and teach in actual class rooms, the Commercial Departments of six high schools are used. In addition to the Commercial Department of the Bloomsburg High School, the Berwick High School, and Catawissa High School, three high schools, located in Williamsport, Pennsylvania, now serve as student teaching centers for Commercial students. Of these three high schools, two of them are Junior High Schools, and the third a Senior High School. The three high schools used in Williamsport, Pennsylvania, are: The Senior High School, Andrew Curtin Junior High School, and Theodore Roosevelt Junior High School. In the six high schools, cooperating with the College for student teaching purposes, there are fourteen regular teachers whose purpose it is to help the training of students.

In addition to the fourteen cooperating teachers, a supervisor, the Director of the College Department of Business Education, visits these schools weekly for the purpose of supervision and conferences with student teachers.

Apprenticeship teaching means observation of regularly employed teachers, planning the course, units of work, and lessons, and finally the actual participation of the student as a teacher who is in charge of a classroom. Since the amount of student teaching is more than twice that required by the State for certification, we feel that this apprenticeship period under the conditions which we have set up goes a long way toward giving our graduates experience in actual school situations before they are ready to become regular teachers in the public school system of the State of Pennsylvania.

### SELECTING A COLLEGE

Anyone thinking of becoming a commercial teacher should write the Department of Public Instruction, Harrisburg, Pennsylvania, to ascertain the standing of the institution he contemplates entering. The character of College work offered, the ability to properly certify graduates, and the success of graduates should be considered in the choice of a College.

### OPPORTUNITIES FOR GRADUATES

There is a great demand in Pennsylvania at the present time for properly trained, degree-holding commercial teachers. With the changing certification requirements, properly trained commercial teachers will find their way into positions as supervisors and heads of commercial departments in the various secondary schools.

Until recent years, little commercial work was offered in the Junior High Schools. In connection with the exploratory and vocational guidance work carried on in the Junior High Schools, Courses in Junior Business Training and other similar courses have been rapidly growing in favor. As a result, properly trained teachers are in demand.

The demand for commercial teachers may easily be accounted for by figures from public and private sources which show that one-

third of the high school students are pursuing commercial courses. Judging from the steady growth of the last five years, it would seem that the demand for degree-trained teachers in the commercial field will continue. Undoubtedly there will be a steady change in methods, skills, and techniques used in teaching. The State Teachers Colleges may well be expected to do pioneer work in progressive commercial education.

#### TEACHER PLACEMENT

The Department of Business Education acts as a clearing house for employment purposes. Our graduates are placed without charge through the cooperation of the Placement Service of the Department of Public Instruction and the Placement Service of our own College. The Department of Business Education likewise takes a special interest in securing positions for its graduates. Teachers-in-service are enabled in many instances to secure better positions with the help of these various agencies for placement.

High Schools and Colleges located in Connecticut, Maryland, New Hampshire, New Jersey, New York, North Carolina, Florida, and Virginia have sought the services of teachers graduated from Bloomsburg.

#### SUMMER SESSION

A Summer Session of six weeks and a three-week post session are conducted to meet the needs of the following groups of Commercial students:

1. Fully certified experienced teachers who desire to become better teachers through a study of the most recent methods and subject matter of commercial education.
2. Commercial teachers who wish to secure higher certification.
3. Teachers who wish to continue their training for the degree of B. S. in Education.
4. Those teachers in training who wish to shorten the time necessary to complete the four-year course.

During the Summer Session, courses are offered in the most modern commercial teaching theory, methods, and subject matter. Those interested in the Summer Session should write for a descriptive bulletin.

#### APPLICATION FOR ENROLLMENT

High school students interested in commercial teacher training should fill out and mail the Preliminary Enrollment Blank, which will be found in the back of the catalogue. Upon the receipt of this blank, a copy of the official Admission Application Blank will be forwarded to the student. To complete the enrollment the student must fill out the blank and file it with the Dean of Instruction.

If the applicant wishes a room reserved, he must pay a registration deposit of \$10.00. Checks and Post Office Orders should be drawn to the order of the Commonwealth of Pennsylvania. Post Office Orders must be drawn on the Post Office at Harrisburg, Pa.

For more specific information concerning business teacher education, write William C. Forney, Director, Department of Business Education, State Teachers College, Bloomsburg, Pennsylvania.

## TEACHER EDUCATION CURRICULUM

### in Business Education

By Semesters	Class Hrs.	Sem. Hrs.
(1) Place and Purpose of Education in the Social Order _	3	2
Health Education I -----	4	2
Speech -----	3	3
English I -----	4	3
Business Mathematics I -----	3	3
Business Writing -----	3	1
Typewriting I -----	3	1
 (2) English II -----	 3	 3
Health Education II -----	4	2
Economic Geography I -----	3	3
Business Mathematics II -----	3	3
Bookkeeping and Accounting I -----	5	3
Typewriting II -----	3	1
S *Shorthand I -----	5	3
 (3) Literature I -----	 3	 3
Economic Geography II -----	3	3
Business Organization and Finance -----	3	3
A *Accounting II -----	5	3
S *Shorthand II -----	5	3
S *Typewriting III -----	5	2
 (4) Biological Science -----	 4	 3
Business Correspondence -----	3	3
Business Law I -----	3	3
A *Accounting III -----	3	3
S *Shorthand Applications -----	5	3
S *Typewriting Applications -----	5	2
 (5) General Psychology -----	 3	 3
School Law and Administration -----	2	2
Business Law II -----	3	3
R Salesmanship and Retail Selling I -----	3	3
A *Accounting IV -----	3	3
S *Stenographic Office Practice -----	5	3

(6) Psychology of Method in Business Courses .....	3	3
Tests and Meas. in Business Courses .....	3	3
Sec. Sch. Business Ed. Organization and Content .....	2	2
Economics I .....	3	3
Visual Education .....	2	1
Clerical Practice and Machines .....	5	3
R *Retail Selling II .....	3	3
(7) Philosophy of Education .....	2	2
American Government .....	3	3
Economics II .....	3	3
History of Civilization .....	4	4
R *Retail Selling III .....	12	6
A *Bus. Math. III with Statistics .....	3	3
A *Auditing .....	3	3
(8) Student Teaching, Observation, and Conference .....	15	12
Curriculum Materials .....	4	3

Refer to pages 72-74 for detailed statement of the (A) Accounting Sequence; (R) Retail Selling Sequence; (S) Secretarial Sequence; and other possible combinations.

## DEPARTMENT OF MUSIC

The Department of Music affords for those who have studied music in various phases, the opportunity of continuing their study under efficient instructors. The teaching is not formal and standardized, but attempts to bring out the individuality of the student.

Superior advantages are offered to those seeking a general education in music.

Music today is such an important factor in the development of the child that all teachers should at least understand the fundamentals of the art.

A course has been organized to teach with the least detail the rudiments of rhythm, note-reading, and performance.

The usual courses in Applied Music and Theory in its various branches are offered.

All students are offered the advantages of Ensemble Playing.

### EXPENSE FOR MUSIC STUDENTS

Individual instruction in Piano, Organ, Violin, or Voice, \$18.00 per semester for one half-hour lesson per week; \$36.00 for two half-hour lessons per week.

Individual instruction in Theory, \$18.00 per semester for one half-hour lesson per week; \$36.00 for two half-hour lessons per week.

Use of piano for practice (one period daily), \$4.00 per semester.

Use of organ for practice (one period daily), \$6.00 per semester.

All payments must be made by the half-semester in advance.

Students taking less than the work of a semester will be charged at the lesson rate of \$1.50.

No rebate will be made on account of lessons missed by students.

## LIST OF STUDENTS

First Semester, 1939-40

FOUR-YEAR CURRICULUM LEADING TO B. S. IN EDUCATION

- Adams, Phyllis *E*<sub>4</sub> Bloomsburg  
 Aikman, Mary F. *E*<sub>4</sub> Bloomsburg  
 Albertson, E. Dorothy *B*<sub>3</sub> Espy  
 Albertson, J. Robert *B*<sub>1</sub> Millville  
 Algatt, Raymond O. *S*<sub>1</sub> Berwick  
 Alastick, Agnes A. *B*<sub>3</sub> Shenandoah  
 Althoff, Eleanor M. *E*<sub>1</sub> Mt. Carmel  
 Altland, Sara J. *B*<sub>4</sub> Harrisburg  
 Ammerman, Dorothy *S*<sub>1</sub> Hawley  
 Andreas, Betty M. *E*<sub>3</sub> Bloomsburg  
 Aponick, Joseph R. *S*<sub>3</sub> W. Nanticoke  
 Apolonio, John M. *E*<sub>1</sub> Keiser  
 Arcus, Max *B*<sub>3</sub> Bloomsburg  
 Atkinson, John *S*<sub>1</sub> Hatboro  
 Aunkst, Eva C. *E*<sub>1</sub> Watontown  
 Austin, Dorothy A. *E*<sub>1</sub> Danville  
 Auvil, Elizabeth R. *E*<sub>4</sub> Noxen  
 Bacon, Edward H. *B*<sub>4</sub> Kingston  
 Bailey, Sara M. *B*<sub>1</sub> Danville  
 Baird, Ralph W. *S*<sub>1</sub> Bloomsburg  
 Baird, Ruth I. *B*<sub>2</sub> Mill City  
 Baker, Donald S. *B*<sub>4</sub> Newtown  
 Baker, Paul N. Jr. *B*<sub>2</sub> Espy  
 Baker, Sidnea J. *B*<sub>1</sub> Espy  
 Baeyer, Charles R. *S*<sub>4</sub> Mt. Carmel  
 Barchock, Joseph J. *B*<sub>2</sub> Wilkes-Barre  
 Bardo, Theron E. Jr. *B*<sub>1</sub> Berwick  
 Barlow, Marguerite V. *B*<sub>1</sub> Berwick  
 Barnett, Murray *B*<sub>4</sub> Scranton  
 Barnhart, Harold A. *S*<sub>2</sub> Danville  
 Barnhart, Howard E. *S*<sub>3</sub> Danville  
 Barr, Helen Jean *B*<sub>1</sub> Summit Hill  
 Barrouk, Albert P. *S*<sub>1</sub> Wilkes-Barre  
 Barton, William H. *S*<sub>1</sub> Bloomsburg  
 Baumunk, Avonell A. *B*<sub>3</sub> Forksville  
 Beaumont, Lee R. *B*<sub>1</sub> Marcus Hook  
 Beaver, Elwood H. *B*<sub>2</sub> Catawissa  
 Beckley, M. Eleanor *E*<sub>4</sub> Bloomsburg  
 Beilhartz, Eda B. *E*<sub>3</sub> Muncy  
 Bell, Catherine E. *E*<sub>4</sub> Drums  
 Benedetto, Josephine R. *S*<sub>4</sub> Kulpmont  
 Benninger, Edith R. *E*<sub>3</sub> St. Johns  
 Berfuss, Helen W. *E*<sub>2</sub> Nanticoke  
 Berninger, Carl S. *S*<sub>1</sub> Catawissa  
 Betz, John W. *S*<sub>2</sub> Danville  
 Bierman, Elizabeth M. *S*<sub>1</sub> Wyoming  
 Birth, Sara E. *E*<sub>3</sub> Shickshinny  
 Bitting, Geraldine E. *B*<sub>2</sub> Ringtown  
 Black, Marion M. *E*<sub>1</sub> Lake Ariel  
 Blecher, Margaret L. *S*<sub>4</sub> Bloomsburg  
 Blizzard, Marie M. *E*<sub>3</sub> Danville  
 Bomboy, Charles H. *S*<sub>1</sub> Bloomsburg  
 Bonham, Daniel H. *B*<sub>3</sub> Forty Fort  
 Bonin, Mildred A. *B*<sub>4</sub> Hazleton  
 Boone, Ruth E. *S*<sub>4</sub> Bloomsburg  
 Booth, William *B*<sub>2</sub> Shamokin  
 Borneman, Robert U. *B*<sub>3</sub> Sanatoga  
 Bower, Elaine K. *B*<sub>1</sub> Berwick  
 Bower, Roy E. *B*<sub>1</sub> Nescopeck  
 Bowers, Leonard M. *B*<sub>3</sub> Mt. Carmel  
 Boyle, Helen A. *B*<sub>3</sub> Nanticoke  
 Brady, Helen A. *E*<sub>4</sub> Kingston  
 Brandon, Ruth L. *S*<sub>3</sub> Berwick  
 Brennan, Daniel E. *B*<sub>1</sub> Shenandoah  
 Breslin, Sally A. *E*<sub>3</sub> Lattimer  
 Bretz, Mary L. *B*<sub>3</sub> New Bloomfield  
 Brittingham, C. Grant *S*<sub>3</sub> Wilkes-Barre  
 Brochuy, Howard W. *B*<sub>3</sub> Bloomsburg  
 Brodbeck, Ruth E. *B*<sub>3</sub> Douglassville  
 Brouse, Helen E. *E*<sub>4</sub> Leewisburg  
 Brown, Cecilia M. *B*<sub>2</sub> Elysburg  
 Brown, Josephine S. *S*<sub>4</sub> Bloomsburg  
 Brown, Paul L. *B*<sub>1</sub> Hunlock Creek  
 Bruno, Marie *S*<sub>1</sub> Kulpmont  
 Brunstetter, Mary M. *S*<sub>3</sub> Catawissa  
 Brush, Jean W. *B*<sub>4</sub> Wilkes-Barre  
 Buchanan, Valaire K. *B*<sub>3</sub> West Lawn  
 Buckingham, Boyd F. *S*<sub>1</sub> York  
 Butler, George A. *B*<sub>2</sub> Pottsville  
 Cabelly, Morris M. *B*<sub>1</sub> Berwick  
 Cameron, Harrison J. *B*<sub>3</sub> Berwick  
 Campbell, Kathryn M. *E*<sub>1</sub> Bloomsburg  
 Cannard, Thomas *S*<sub>1</sub> Danville  
 Carr, Edward B. *B*<sub>2</sub> Luzerne  
 Carroll, Helen A. *B*<sub>2</sub> Mt. Carmel  
 Chandler, Raymond H. *B*<sub>2</sub> Bloomsburg  
 Chappell, Floyd M. *B*<sub>1</sub> Berwick  
 Chappell, Hazel *B*<sub>1</sub> Danville  
 Cherrington, Ruth B. *B*<sub>4</sub> Catawissa  
 Cherundolo, Rosella *E*<sub>3</sub> Old Forge  
 Chilek, Stella C. *B*<sub>2</sub> Avoca  
 Chismar, Michael J. *E*<sub>4</sub> Jeddo  
 Christmas, Ernest L. *B*<sub>4</sub> Harrisburg  
 Clemens, Harold O. *S*<sub>1</sub> Berwick  
 Coblentz, Aaron M. *B*<sub>1</sub> Berwick  
 Cohen, Samuel *S*<sub>1</sub> Bloomsburg  
 Cohoon, Margaret M. *E*<sub>1</sub> Natalie  
 Cole, Carolyn C. *E*<sub>2</sub> Benton  
 Coleman, Fred D. *B*<sub>4</sub> Bloomsburg  
 Coll, Elizabeth T. *B*<sub>1</sub> Hazleton  
 Colley, Harold W. *B*<sub>2</sub> Benton  
 Collins, Loren L. *S*<sub>1</sub> Nanticoke  
 Conner, D. Eleanor *B*<sub>1</sub> Orangeville  
 Conrad, Wilfred H. *S*<sub>2</sub> Benton  
 Cool, Norman A. *B*<sub>2</sub> Philadelphia  
 Coombs, Marjorie R. *S*<sub>1</sub> Wapwallopen  
 Cooper, Eleanor E. *B*<sub>4</sub> Wilkes-Barre  
 Crocarno, Ralph C. *B*<sub>3</sub> Hazleton  
 Crosby, Mary F. *S*<sub>3</sub> Mahanoy Plane  
 Curl, Doris M. *B*<sub>3</sub> Wilkes-Barre  
 Curran, M. Eleanor *B*<sub>1</sub> Renovo  
 D'Angelo, Joseph J. *E*<sub>3</sub> Keiser  
 Darrow, Jane C. *B*<sub>4</sub> Kingston  
 Davenport, Mary A. *E*<sub>2</sub> Berwick  
 Davies, James W. *B*<sub>1</sub> West Pittston  
 Davis, Arthur *B*<sub>4</sub> Taylor  
 Davis, John S. *B*<sub>1</sub> Kingston  
 Davis, Mary *E*<sub>4</sub> Kingston  
 Davison, Jack R. *B*<sub>1</sub> Wilkes-Barre  
 Dean, Virginia M. *B*<sub>3</sub> Shenandoah  
 Deaner, Wayne E. *B*<sub>1</sub> Mainville  
 Dely, James H. *B*<sub>3</sub> Bloomsburg  
 Deitrich, Merrill A. *B*<sub>2</sub> Bloomsburg  
 Deleski, Edwin J. *B*<sub>2</sub> Wilkes-Barre

Italicized Letters indicate Curriculum: B for Business, E for Elementary, S for Secondary.

Italicized Numbers indicate Class: 1—Freshman, 2—Sophomore, 3—Junior, 4—Senior.



- Griffiths, Betty *S3* Scranton  
 Grow, Dorothy Mae *E2* Shamokin  
 Grow, Thomas *S2* Ringtown  
 Grover, Christine E. *B4* Renovo  
 Gruver, Hilda G. *E1* Pittston  
 Gruver, Lois *S3* Bloomsburg  
 Guild, Doris *B2* Waverly  
 Hackenberger, Mary *E1* Mifflintown  
 Hagenbuch, Arleen *B2* Nescopeck  
 Hagenbuch, Julia *B3* Danville  
 Hagenbuch, William *S2* Bloomsburg  
 Halpin, Howard *S1* Forty Fort  
 Hancock, Ben *B4* Shamokin  
 Hanley, Mary *B4* Hazleton  
 Hardysh, Alexander *B2* Mt. Carmel  
 Harger, Raymond *B2* Weatherly  
 Harman, Helen *E4* Berwick  
 Harman, James *S2* Catawissa  
 Harmon, Leonard *S2* Berwick  
 Harmony, Charles *E1* Bloomsburg  
 Harpe, Sam Dean *S4* Tunkhannock  
 Harris, Earl *S2* Bloomsburg  
 Hart, Virginia *S1* Milton  
 Hartman, Robert *B2* Bloomsburg  
 Hartman, Ruth *B1* Orangeville  
 Hartman, Stuart *B2* Danville  
 Hartung, Elfrieda *E3* Tamaqua  
 Hastie, Roberta *B2* Avoca  
 Hausknecht, Donald *B4* Montoursville  
 Hausknecht, Rose Mary *S4* Bloomsburg  
 Hauze, Clara L., *S3* Sugarloaf  
 Havad, Joseph *S1* W. Pittston  
 Hawk, Betty *B3* Milton  
 Hedland, Peggy *S1* Bloomsburg  
 Heimbach, Virginia *S4* Danville  
 Henrie, Elda *B3* Bloomsburg  
 Henrie, Gilbert *B1* Bloomsburg  
 Henrie, Reba *B1* Bloomsburg  
 Herbert, William *S2* Forty Fort  
 Hergert, Martha *E3* Wilkes-Barre  
 Herman, Stella *S4* Espy  
 Herr, Leonard *B2* Shamokin  
 Hess, Kathryn *E1* Orangeville  
 Hess, William H. *S4* Bloomsburg  
 Hilbush, Arabel *E3* Dornsife  
 Hinds, James *S4* Bloomsburg  
 Hinkel, Clayton *B4* Easton  
 Hippensteel, Kenneth *B4* Espy  
 Hippensteel, Mary Jane *S1* Bloomsburg  
 Hoagland, Elizabeth *E2* Elysburg  
 Hoagland, June *E1* Mifflinville  
 Hoffman, Fred *S1* Berwick  
 Hoffman, Janet *B1* Espy  
 Hollis, Edward *E1* Drifton  
 Hoover, Dale *B2* Dalmatia  
 Honicker, Bernice *E1* St. Clair  
 Hope, Jean *B1* Pomeroy  
 Hope, Ruth *E1* Pomeroy  
 Horn, Charles *B3* Ringtown  
 Horvath, William *B1* Allentown  
 Hottenstein, Sara *B1* Milton  
 Hotz, Stephen *S1* Hudson  
 Houck, Earl *B4* Berwick  
 Houseknecht, George, Jr. *S3* Hughesville  
 Hubiak, John *B1* Forest City  
 Hubiak, John P. *B1* Old Forge  
 Hudock, Joseph E. *S3* Philadelphia  
 Hughes, Virginia *E3* Wilkes-Barre  
 Hull, Frances *E1* Shamokin  
 Dennen, James P. *S2* Danville  
 Dennen, Veronica V. *B1* Danville  
 Dent, Ruth E. *B2* Bloomsburg  
 DeRolf, Chester L. *S2* Wilkes-Barre  
 DeRose, Peter *B2* Peckville  
 Derr, Dorothy R. *S4* Bloomsburg  
 Diehl, Irene J. *B3* Bethlehem  
 Dietrich, Candace L. *B2* Kutztown  
 Dietz, Edward R. *B1* Danville  
 Dillard, Margaret C. *E1* Carlisle  
 Diltz, Carl E. *B1* Benton  
 Disbrow, Viola W. *S2* Forty Fort  
 Dixon, Helen K. *E3* Benton  
 Dobb, Edward V. *S3* Wilkes-Barre  
 Doberstein, Anna M. *S1* W. Nanticoke  
 Donachy, George D. *S1* Northumberland  
 Donn, Leo J. A. *S2* Kingston  
 Dormer, James J. *B1* Hatboro  
 Dorsey, James D. *S2* Bloomsburg  
 Doster, Lawrence H. *S1* Forty Fort  
 Driscoll, Mary L. *B3* Plymouth  
 Dyke, Jane *S3* Mt. Carmel  
 Eastman, Sara J. *S1* Bloomsburg  
 Eaton, June L. *B3* Galeton  
 Eaton, Mildred R. *B2* Lehigton  
 Edmunds, William R. *B2* Nanticoke  
 Edwards, C. Stuart *S3* Edwardsville  
 Edwards, Victoria *B3* Bloomsburg  
 Elicker, Kathryn E. *B1* Harrisburg  
 Eroh, Margaret M. *E2* Nescopeck  
 Esaia, Elizabeth E. *S3* Danville  
 Esmond, Stanley F. *S3* Atlas  
 Eunson, Agnes J. *E1* Bloomsburg  
 Evans, Mary J. *E2* Taylor  
 Fawcett, Robert E. *S1* Berwick  
 Feingold, Sylvia B. *B2* Souderton  
 Fellman, H. Burnis *B2* Allentown  
 Fennelly, Dorothy L. *E2* Frackville  
 Fice, Joanna J. *B1* Athens  
 Finnerty, Alice L. *S4* Dunmore  
 Fisher, Reber R. *B3* Catawissa  
 Flag, Evelyn M. *B1* Bristol  
 Fleck, Jane *S1* Danville  
 Folk, Drue W. *B3* Berwick  
 Foote, Richard H. *S3* Bloomsburg  
 Forsyth, William T. *S4* Northumberland  
 Foster, Alexander *S1* Danville  
 Foust, M. Vera *E3* Danville  
 Frantz, Wilbur M. *S4* Kingston  
 Freeman, Jean G. *S1* Bloomsburg  
 Frey, Vivian J. *S4* Mifflinville  
 Friedberg, Charlotte *S3* Berwick  
 Fritz, Gerald D. *S3* Berwick  
 Fullmer, Lois E. *B3* Allentown  
 Gallagher, Vincent A. *B1* Hazleton  
 Gaugler, Sara E. *E3* Port Trevorton  
 Gaydosh, Michael P. *B1* Berwick  
 Gearhart, Charlotte E. *B3* Montgomery  
 Gehrig, Fay L. *E4* Danville  
 Gerlak, Tessie R. *E2* Dupont  
 Gillette, Barbara E. *B3* Wilkes-Barre  
 Gillung, George H. *B1* Brockway  
 Girton, Charles *S4* Dallas  
 Gommer, Thurwald *B3* Nanticoke  
 Gordon, Walter *S1* Benton  
 Gotshall, Hazel R. *E4* Catawissa  
 Gottlieb, Irving *B1* York  
 Greenly, Leon *S3* Bloomsburg  
 Griffith, George *S1* Wilkes-Barre

Italicized Letters indicate Curriculum: B for Business, E for Elementary, S for Secondary.

Italicized Numbers indicate Class: 1—Freshman, 2—Sophomore, 3—Junior, 4—Senior.

- Hullihan, Vincent *B3* Locust Gap  
 Hummel, Sara E. *E3* Middleburg  
 Husovsky, Vincent *B1* Swoyerville  
 Hutton, Terry *E2* Bloomsburg  
 Hyduk, Andrew *B3* Shamokin  
 James, Ruth *B2* Taylor  
 Jantzen, Ruth *B2* Berwick  
 Jenkins, Donald *S1* Forty Fort  
 Jenkins, Harry *S2* Forty Fort  
 Jenkins, Thomas *B4* Plymouth  
 Johnson, Dorothy *E1* Berwick  
 Johnson, Helen *B3* Galeton  
 Johnson, Robert *S2* Ickesburg  
 Johnson, Stella *E3* Forty Fort  
 Jones, Catherine *E1* Shickshiny  
 Jones, David *B1* Shamokin  
 Jones, Gwladys *B4* Scranton  
 Jones, Gladys *E4* Bloomsburg  
 Jones, Isaac *B4* Scranton  
 Jones, Margaret *E2* Taylor  
 Joy, Robert *B2* Bloomsburg  
 Jury, Mark *S2* Bloomsburg  
 Karnes, Donald *S3* Espy  
 Kanasky, William F. *S4* Shamokin  
 Kashuba, Matthias *S1* Forty Fort  
 Katerman, Betty *S1* Bloomsburg  
 Keesler, Mary E. *S3* Callicoon, N. Y.  
 Kelchner, Charles *B4* West Hazleton  
 Keller, Doris *B1* Berwick  
 Keller, Edna *B4* Nescopeck  
 Keller, Robert *B1* Berwick  
 Kellogg, Paul *S1* Towanda  
 Kelly, Mary K. *E1* Bloomsburg  
 Kelly, Mary *B1* Pottsville  
 Kemple, Daniel *B4* Cumbola  
 Kepner, Betty Lou *E2* Sunbury  
 Kerchusky, William *S2* Ringtown  
 Kerstetter, Relda *B3* Bloomsburg  
 Kessler, Robert *B1* Danville  
 Kiefer, Lawrence *B4* Frackville  
 Killian, Bertram *B1* Lancaster  
 Kirk, Norbert William *S3* Berwick  
 Kiryluk, Alice *S3* Hop Bottom  
 Kleese, Raymond *B1* Natalie  
 Klinger, Paul *B2* Berwick  
 Klingerman, Helen *B2* Berwick  
 Klotz, Lawrence *B3* Neffs  
 Knorr, Joyce *B1* Wapwallopen  
 Kocher, Ernest *S1* Espy  
 Kocher, Frank *S4* Espy  
 Kocher, Melva *E1* Lightstreet  
 Kokitas, Paul *S4* W. Hazleton  
 Kokora, Sophie *B2* Mocanaqua  
 Koniecko, Frank *B4* Nanticoke  
 Kotzen, Stanley *B4* Summit Hill  
 Kozlowski, Joseph *S1* Mt. Carmel  
 Kreiger, Carrie *E4* Sheppton  
 Kulik, Irene *S1* Mt. Carmel  
 Kuster, Jean *S1* Bloomsburg  
 Landis, Marion *B4* Sugarloaf  
 Langan, Jean *B2* Duryea  
 Lantz, Jean *E2* Berwick  
 Lapinski, Jerome *S3* Shamokin  
 Laubach, Eunice *S4* Berwick  
 Laubach, Maynard *B1* Berwick  
 Laubach, Winton *S1* Benton  
 Lauer, Ethel *B3* Bloomsburg  
 Lavelle, John *B3* Girardville  
 Lawhead, Virginia *E1* Pottsville  
 Layos, Joseph *S2* Bloomsburg  
 Lehet, George *S4* Wilkes-Barre  
 Lehman, Leo *S2* Ashley  
 Lendosky, Irene *B2* Hazleton  
 Leone, Jennie *B3* Philadelphia  
 Letterman, Helen *S1* Bloomsburg  
 Letterman, Paul *S3* Bloomsburg  
 Letterman, Ruth *B2* Bloomsburg  
 Lewis, George *S3* Bloomsburg  
 Lewis, Robert C. *B4* Danville  
 Lewis, Walter R. *S2* Danville  
 Lichtenwalner, Lorraine *B4* Wescoesville  
 Linn, Robert *S4* Catawissa  
 Llewellyn, Elizabeth *S1* Taylor  
 Llewellyn, Robert *B1* Wilkes-Barre  
 Lohr, Joyce *S1* Berwick  
 Long, F. Lewis *S3* Berwick  
 Long, Marian D. *E3* Northumberland  
 Lubereski, Anthony *E3* Luzerne  
 Lundin, Florence Edith *B1* Easton  
 Lutskus, Albert *B1* Mahanoy City  
 Lynch, Dorothy *B2* Ringtown  
 McAloose, Frank J. *B2* Kelayres  
 McCarthy, William J. *B1* St. Clair  
 McCracken, Ralph E. *B2* Allentown  
 McGinley, Esther A. *E3* Jeanesville  
 McHale, Paul J. *S4* Lee Park  
 McHenry, James V. *S1* Benton  
 McHenry, Martha R. *E4* Benton  
 McHenry, Shirley *S1* Bloomsburg  
 McIntyre, Mary G. *E1* Ashley  
 McWilliams, Mary E. *B4* Danville  
 Madl, Joseph M. *S1* Shamokin  
 Magill, Andrew F. *S1* Sugarloaf  
 Maksimiuk, John *B1* Wilkes-Barre  
 Malinchoc, Joseph *B3* Nesquehoning  
 Margie, Mary C. *B2* Wilkes-Barre  
 Marinko, Joseph G. *B3* McAdoo  
 Masanotti, Adrian *B2* Berwick  
 Maslowsky, Walter A. *B1* Wilkes-Barre  
 Maslowsky, Aldona *B3* Wilkes-Barre  
 Masteller, Royce *S4* Bethlehem  
 Masteller, Sara B. *B3* Pottsville  
 Matanin, Ludmilla *B2* Mountain Top  
 Matthes, Richard *S1* Paxinos  
 Mayernick, Mary A. *S3* Edwardsville  
 Maza, Norman J. *B4* Nanticoke  
 Mazzio, Francis T. *B1* Nescopeck  
 Meluskey, Eileen M. *B1* Shenandoah  
 Menarick, George F. *S1* Exeter  
 Mensch, Miriam E. *E2* Mifflinburg  
 Mertz, Jack L. *B2* Northumberland  
 Meshinski, Adelaide *E2* Glen Lyon  
 Metcalfe, Marion *E4* Sunbury  
 Michael, George D. *B1* Berwick  
 Middleton, Mary *E1* Steelton  
 Miller, Elizabeth E. *S3* Park Place  
 Miller, George E. *S1* Wilkes-Barre  
 Miller, Mary L. *S4* Wiconisco  
 Miller, Robert B. *S3* Berwick  
 Miller, Robert R. *B1* enton  
 Miller, Sam *S4* Hazleton  
 Miller, William H. *S4* Nuremburg  
 Miner, Robert E. *B2* Tunkhannock  
 Mitchell, Nicholas R. *E4* Eberwale  
 Mohr, Walter H. R. *S2* Scranton  
 Mong, Ruth A. *E1* Danville  
 Moore, C. Kirtland *B1* Forty Fort  
 Moore, Phillip W. *B4* Northumberland  
 Moran, Mary Jane *S2* Northumberland

Italicized Letters indicate Curriculum: B for Business, E for Elementary, S for Secondary.

Italicized Numbers indicate Class: 1—Freshman, 2—Sophomore, 3—Junior, 4—Senior.

- Murphy, Marian L. *S3* Kingston  
 Musial, Zigmund M. *S3* Sheatown  
 Musselman, Doris J. *B1* Lansdale  
 Myers, Ione M. *B1* York  
 Myers, Raymond J. *B3* York  
 Naunas, Marianna A. *B3* Bloomsburg  
 Neece, Margaret A. *B1* Williamsport  
 Nelson, David R. *B2* Hazleton  
 Niles, Hugh S. *B1* Wellsboro  
 Noll, Jeanne L. *B2* Palmerton  
 Nonnemacher, Richard *B2* Allentown  
 North, Thomas P. *S2* Bloomsburg  
 Oakes, Leona C. *E1* West Hazleton  
 O'Brien, Hazel R. *E1* Benton  
 Ohl, J. Rutter *S3* Bloomsburg  
 Olah, Isabella M. *S3* Berwick  
 Olshefski, Joseph *S2* Mt. Carmel  
 Oman, Nelson M. *S1* Bloomsburg  
 O'Neill, Catherine *B2* Freeland  
 Oplinger, Catherine *B3* Nanticoke  
 Oplinger, June E. *B1* Norristown  
 Orth, Carol L. *B1* Bloomsburg  
 Osman, Dawn H. *E2* Shamokin  
 Paganelli, Reynold *B1* Wilkes-Barre  
 Palls, Leonard J. *S1* Hanover Twp.  
 Pape, James D. *S1* Hazleton  
 Park, Florence A. *S4* Dallas  
 Parsell, Marie O. *S3* Orangeville  
 Parsell, Theodore R. *B4* Orangeville  
 Paskevich, Joseph A. *S4* Mt. Carmel  
 Pataki, Violet *E1* Bloomsburg  
 Patterson, Marion *E4* Berwick  
 Paulhamus, Paul A. *S4* Bloomsburg  
 Pegg, William F. *S3* Llanerch  
 Peel, Wilhelmina E. *E4* Girardville  
 Penman, William H. *B4* Bloomsburg  
 Perry, Raymond E. *S2* Shamokin  
 Peterson, Frederick *B1* Berwick  
 Pettinato, Frank *B1* Old Forge  
 Piarote, George W. *B1* Lebanon  
 Pino, Dominic R. *B2* Hazleton  
 Plevyak, John M. *B4* Whites Crossing  
 Podwika, Peter G. *E2* Wyoming  
 Pomrinke, Jon L. *B4* Nanticoke  
 Powell, Gertrude S. *E4* Shamokin  
 Pressler, Frederick *B2* Berwick  
 Pritchard, Samuel W., *B1* Askam  
 Propst, Jessie E. *E2* Archbald  
 Pugh, James G. *E3* Edwardsville  
 Puhnak, Bernard *B1* Shamokin  
 Pursel, Maude L. *E3* Bloomsburg  
 Raby, Gladys E. *B1* Ephrata  
 Radai, Theodore *E1* W. Hazleton  
 Raklevicz, Maria *B4* Plymouth  
 Rarig, Richard R. *S1* Catawissa  
 Reager, William M. *B3* Shamokin  
 Recla, Agnes A. *B4* Sheppton  
 Reed, Walter *B3* Skillington  
 Reigle, Paulyne *E4* Northumberland  
 Reilly, Mary F. *S3* Scranton  
 Reilly, Rosemary *E2* Shenandoah  
 Reilly, Violet T. *B4* Scranton  
 Renninger, Clark R. *B3* Pennsylvania  
 Remley, Jack A. *S2* Berwick  
 Repella, Lydia B. *E2* Minersville  
 Reppert, Vivian O. *B4* Espy  
 Rhinard, Josephine *E2* Berwick  
 Rhodes, Ora Jane *E2* Catawissa  
 Rhoades, William A. *S1* Danville  
 Rhys, Ruth J. *B2* Warrior Run  
 Richardson, Grace *B1* Pittston  
 Rick, Barbara Ann *E1* Marion Heights  
 Rieben, Evaline J. *E4* Allentown  
 Rim, James N. *S3* Lattimer Mines  
 Rinard, Muriel I. *E4* Catawissa  
 Rische, Donald *E2* Bloomsburg  
 Rishel, Roy L. *B2* Danville  
 Roan, Martha L. *B1* Espy  
 Robbins, Charles A. *B3* Bloomsburg  
 Roberts, Roy *B4* Catawissa  
 Roberts, Spencer E. *S2* Catawissa  
 Robeson, Margaret *S2* Beach Haven  
 Rowlands, Richard *B1* Reading  
 Rozyckie, Stephen *S1* Shamokin  
 Ruck, Katherine L. *E2* Gouldsboro  
 Russin, Jerry *S3* Plains  
 Rutledge, Jane *B2* W. Pittston  
 Sanger, Raymond *S4* Aristes  
 Saras, Nicholas *B2* Hazleton  
 Saussaman, Barbara *B1* Harrisburg  
 Savage, Dorothy *B3* Berwick  
 Schaeffer, Conrad E. *B1* Drums  
 Schiefer, Jessie *E3* Steelton  
 Schield, Ruth H. *E3* Taylor  
 Schlauch, John E. *S2* Bloomsburg  
 Schneider, Herbert *S3* W. Hazleton  
 Schlee, Claraline E. *S3* Danville  
 Schrecongast, Florabelle *B3* DuBois  
 Schultz, Franklin *S1* Danville  
 Schuyler, Stanley *B3* Berwick  
 Seaman, Louise E. *B1* Hamburg  
 Sears, Doris L. *E2* Shamokin  
 Sedlak, Catherine *S1* Dupont  
 Selden, William H. *S1* Berwick  
 Sell, Betty E. *E2* Gordon  
 Shaffer, David L. *S2* Bloomsburg  
 Shaffer, Lucretia *B3* Wilkes-Barre  
 Shambach, Virginia *E3* Troxelville  
 Sharkey, Eugene F. *S4* Lattimer  
 Sharpless, Mary J. *S2* Bloomsburg  
 Sharratta, Jennie *E3* Plains  
 Sharretts, Edward *B3* Berwick  
 Shay, Ruth L. *B3* Progress  
 Sherwood, Robert *S1* Forty Fort  
 Shiner, Byron D. *B4* Berwick  
 Shipe, Idajane *S2* Berwick  
 Shlanta, John A. *E2* Mayfield  
 Shonk, Ruth C. *E1* Berwick  
 Shope, Frank M. *B2* Berwick  
 Shopinski, Marie A. *E2* Mt. Carmel  
 Shortess, Jack R. *B3* Bloomsburg  
 Shotsberger, Henry *E4* Freeburg  
 Shuntill, Nellie F. *E3* Bellevue  
 Sidler, Jean C. *B1* Danville  
 Simpson, Catherine J. *E3* Bloomsburg  
 Sincavage, Alberta *E2* Kulpmont  
 Singley, Nora E. *E1* Lewisburg  
 Singley, Raymond A. *B1* Shumans  
 Sirrocco, M. Claire *B2* Pottsville  
 Skeath, Fred O. *B1* Mahanoy City  
 Slack, Elizabeth *E1* Lewisburg  
 Sloboski, Marie P. *B3* Ashley  
 Slopey, Lois E. *B2* Bloomsburg  
 Sluman, Ruth E. *E1* Honesdale  
 Slusser, Nevin *B1* Espy  
 Smith, Emma Jean *S1* Riverside  
 Smith, Jean D. *B4* Catawissa  
 Smith, Miles G. *S4* Berwick  
 Smith, William E. *B2* Bloomsburg  
 Snyder, C. David *S2* Catawissa

Italicized Letters indicate Curriculum: B for Business, E for Elementary, S for Secondary.

Italicized Numbers indicate Class: 1—Freshman, 2—Sophomore, 3—Junior, 4—Senior.

- Snyder, Lorraine C. *E4* Pottsville  
 Snyder, Ruth H. *B2* Bloomsburg  
 Soback, Helen J. *S2* Bloomsburg  
 Solack, Edward D. *B1* Wilkes-Barre  
 Solancis, Julia *E3* Scranton  
 Sorber, Samuel A. *S1* Askam  
 Spence, Raymond S. *B2* Harrisburg  
 Spragle, Elizabeth *B1* Berwick  
 Steininger, Margaret *B4* Coopersburg  
 Stefanski, Florence *B4* Wilkes-Barre  
 Steinruck, John A. *B1* Bloomsburg  
 Stiles, Aleta P. *B2* Red Lion  
 Stine, Mary A. *E4* Elysburg  
 Stout, Leonard E. *S4* Nescopeck  
 Stout, Orman *S1* Danville  
 Straub, Barbara J. *E2* Berwick  
 Sult, Hazel A. *E1* Berwick  
 Sutherland Esther M. *E4* Wilkes-Barre  
 Sutliff, William Bruce *B1* Benton  
 Sweigart, Mary E. *B3* Dunmore  
 Swinesburg, Arlene *B3* W. Hazleton  
 Tannery, William W. *B4* Bloomsburg  
 Taylor, Cordelia M. *B2* West Grove  
 Telesky, Leonard J. *S2* Berwick  
 Thomas, Dorothy J. *B3* Wilkes-Barre  
 Thomas, Francis P. *B2* Alba  
 Thomas, Grace J. *S2* Bloomsburg  
 Thomas, Hervey R. *B1* Orangeville  
 Tipton, Ralph A. *B1* York  
 Tobin, Shirley L. *E2* Penbrook  
 Tomlinson, Howard *B3* Newton  
 Traub, Florence A. *E3* Luzerne  
 Trethaway, Harold *S2* Wilkes-Barre  
 Troutman, Merrill W. *S1* Sunbury  
 Troutman, William M. *S1* Shamokin  
 Trimble, William F. *B4* Lee Park  
 Troy, Dale *E4* Nuremberg  
 Trump, Mary E. *E1* Danville  
 Tugend, Anna E. *S1* Dalton  
 Turini, Victor R. *S3* Wyoming  
 Turse, Rose M. *B4* Hazleton  
 Twardzik, Eleanor M. *B2* Shenandoah  
 Unger, Hannah E. *S4* Danville  
 Valente, Anthony J. *S1* Hazleton  
 Valente, Frank F. *S2* Hazleton  
 Valladares, Josefina *S1* Puerto Rico  
 VanAntwerp, Floyd *S3* Williamsport  
 Vanchieri, Grace M. *E2* Parsons  
 Vanderslice, Mrs. Josephine *E3* Bloomsburg  
 Vanderslice, Robert *B1* Bloomsburg  
 Varner, Marlin E. *B2* Berwick  
 Vastine, Edwin M. *S1* Danville  
 Vaughan, Elwyn J. *B4* Nanticoke  
 Vernoy, Collin W. *S2* Canadensis  
 Villa, Edmund D. *B3* Berwick  
 Visintainer, Fred *S4* Drums  
 Vonderheid, Herman *S1* Wapwallopen  
 Wagner, Daniel W. *B1* Keiser  
 Wagner, Elwood M. *B1* W. Hamburg  
 Wagner, Geraldine L. *B4* Keiser  
 Wagner, Phylis *E4* Hazleton  
 Wagner, Sara K. *B1* Pine Grove  
 Wallichus, Edward A. *B1* Mahanoy City  
 Walp, Kathryn L. *S4* Berwick  
 Wanich, William P. *B2* Lightstreet  
 Warhurst, Albert H. *B1* Bloomsburg  
 Warrington, Robert *S1* Sunbury  
 Washeleski, Alfred *B4* Simpson  
 Watkins, Robert W. *S1* Numidia  
 Watts, James O. *S2* Millville  
 Webb, Robert J. *B2* Pine Grove  
 Weitz, Ruth E. *B1* Duryea  
 Welliver, Carl *S4* Bloomsburg  
 Wenner, Edwin D. *S3* Berwick  
 Wertz, William W. *S4* Frackville  
 Wesenyak, Herman J. *B1* Duryea  
 Wesley, Joseph F. *S3* Luzerne  
 West, Rebecca M. *E3* Danville  
 Whitby, Mary H. *E2* Edwardsville  
 Whitesell, Editha J. *E1* Shickshinny  
 Whitmire, Zoe C. *S2* Berwick  
 Willard, George D. *S3* Danville  
 Williams, Blanche R. *B2* Scranton  
 Williams, Emily M. *B1* Edwardsville  
 Williams, Howard T. *B3* Scranton  
 Williams, Mantana S. *E3* Slatington  
 Withers, Lottie A. *E1* Frackville  
 Witkoski, John F. *B1* Mt. Carmel  
 Wolfgang, Erna M. *B2* Shamokin  
 Worman, Samuel F. *S3* Danville  
 Wright, H. Clifton *S2* Bloomsburg  
 Wright, Martha *E1* Berwick  
 Yanchulis, Elynor M. *B2* Pottsville  
 Yeager, Irvin R. *S2* Wapwallopen  
 Yeager, Lillian A. *S4* Centralia  
 Yeany, N. Austin *B2* Bloomsburg  
 Yeany, Philip R. *B1* Bloomsburg  
 Yenalavage, Anthony *B1* Kingston  
 Yorks, Stewart C. *B2* Trucksville  
 Yost, Fern B. *E4* Rock Glen  
 Yost, Mercia E. *E2* Orangeville  
 Yost, Theresa M. *E2* Orangeville  
 Young, David M. *S2* Danville  
 Young, John D. *S3* Catawissa  
 Young, Marjorie C. *E3* Kingston  
 Zartman, June P. *B1* Lebanon  
 Zavacky, Harry *B1* Simpson  
 Zehner, Edna M. *S2* Nescopeck  
 Zehner, Martha L. *E3* Bloomsburg  
 Zerby, J. Richard *E2* Herndon  
 Ziegler, Bernard T. *S4* Ashley  
 Zimmerman, Ralph H. *B2* Berwick  
 Zimmerman, Robert C. *S4* Nuremberg  
 Zimmerman, Ruth A. *E4* Sunbury  
 Zuchoski, Michalene A. *E3* Peely

Italicized Letters indicate Curriculum: B for Business, E for Elementary, S for Secondary.

Italicized Numbers indicate Class: 1—Freshman, 2—Sophomore, 3—Junior, 4—Senior.

## STUDENTS IN CLASSES FOR TEACHERS-IN-SERVICE

Arner, Alda C., Washingtonville  
 Bair, Mary C., Montgomery  
 Baker, Liva, Espy  
 Ballamy, Marion E., Nescopeck  
 Beach Ludwig A., Huntington Mills  
 Beers, Leonore C., Wilkes-Barre  
 Bertoldi, Louis, Weston  
 Bittenbender, Jean L., Nescopeck  
 Bixler, Mildred P., Shamokin  
 Blackburn, Donald, Wanamie  
 Bondura, David, Shamokin  
 Bonenberger, Laura A., Barnesville  
 Bott, Rose E., Nuremberg  
 Bowman, Hester L., Mifflinville  
 Bradley, Mary, Centralia  
 Brennan, William G., Shamokin  
 Brosius, Marlin E., Mt. Pleasant Mills  
 Bruno, Florence M., Dupont  
 Buck, Anna M., Shamokin  
 Buck, Louise K., Montgomery  
 Burns, Alacogue M., Sheppton  
 Cathcart, Mittie I., Danville  
 Chelosky, Dorothy A., Plymouth  
 Coleman, Catharine M., Girardville  
 Costello, Guida S., Kulpmont  
 Covey, Laura I., Lopez  
 Crouse, Rhoda L., Berwick  
 Davis, Albert R., Nanticoke  
 Dean, Dorothy C., Washingtonville  
 Dennen, Honora M., Danville  
 Dormer, Bernard J., Shamokin  
 Dougherty, Regina R., Mt. Carmel  
 Dresher, Lulu, Girardville  
 Dressler, Charles, Excelsior  
 Egan, Nellie, Shenandoah  
 Eltringham, Jemima, Mt. Carmel  
 Enama, Violet P., Weston  
 Ermish, Sara, Berwick  
 Evans, Edwina P., Scranton  
 Fahringer, Clara E., Catawissa  
 Feinour, Elizabeth M., Millville  
 Feister, Lorene C., Berwick  
 Fischer, Thomas Edison, Glen Lyon  
 Fischer, Wilbur G., Glen Lyon  
 Fowler, Ruth, Danville  
 Gearhart, Blanche S., Ringtown  
 Gerlak, Adam F., Dupont  
 Goldsmith, Emily, Dallas  
 Helt, (Mrs.) Jennie W., Berwick  
 Herrity, Marguerite A., Girardville  
 Hindmarch, Bertha A., Mt. Carmel  
 Horne, G. Edward, Bloomsburg  
 Houser, Frederick L., Sheppton  
 Kline, Lena A., Berwick  
 Klischer, Myrtle E. A., Wilburton  
 Kokora, Anna E., Mocanaqua  
 Kostenbauder, Margaret, Aristes  
 Koveleskie, Casper, Shamokin  
 Kundla, Joseph, Dupont  
 LaVelle, Cecelia A., Girardville  
 Lawton, Jean E., Millville  
 Lawton, S. Irma, Millville  
 Leiser, G. Dayton, Watsontown  
 Levan, Katie E., Stillwater  
 Lewis, Jane E., Plymouth  
 Magera, Anne, Mocanaqua  
 Logar, Florence D., Weston  
 Maloney, Anne M. (Mrs.), Centralia  
 Materewicz, Eleanor I., Glen Lyon  
 McHugh, James F., Shenandoah  
 Menges, Calvin W., Watsontown  
 Menges, Frank Glenn, Mt. Carmel  
 Miller, Russell F., Shamokin  
 Miller, Thelma F., Nescopeck  
 Monaghan, Anna, Centralia  
 Monaghan, Joseph P., Lost Creek  
 Morgan, Ann R., Plymouth  
 Murphy, Charles W., Frackville  
 Noel, George P., Natalie  
 Novelli, Frank, Mocanaqua  
 Petro, Andrew P., Keiser  
 Pietruszak, William, Mocanaqua  
 Pinamonti, Agnes D., Kulpmont  
 Polnasik, Leo A., Nanticoke  
 Powell, Helen F., Nanticoke  
 Rakoski, Irene M., Northumberland  
 Reb, Edna, Girardville  
 Reilly, Eleanor, Shenandoah  
 Richards, Joseph, Warrior Run  
 Rovenolt, Lewis W., Watsontown  
 Rowland, R. J. (Mrs.), Shenandoah  
 Rowlands, Wm. H., Plymouth  
 Rupert, Violetta, Aristes  
 Rutter, Anne F., Northumberland  
 Shank, Helen W., Ringtown  
 Sharpe, June F., St. Johns  
 Sheely, Helen M. (Mrs.), Trevorton  
 Shiner, Mildred M., Nescopeck  
 Snyder, Isabel (Mrs.), Danville  
 Snyder, Lois M. (Mrs.), Catawissa  
 Snyder, Lora M., Turbotville  
 Stackhouse, Catharene H., Hunting-  
 ton Mills  
 Steiner, Carolyn E., Shamokin  
 Stellfox, Thelma A., Mt. Carmel  
 Sunday, Michael J., Mocanaqua  
 Trivelpiece, Jennie, Berwick  
 Troutman, Luther, Trevorton  
 Troy, Mabel L., Nuremberg  
 Tubbs, Sara, Bloomsburg  
 Van Buskirk, Helen M., Kingston  
 Walaconis, Michael P., Ringtown  
 Watters, Eva G., Mifflinville  
 Weslotsky, Anne, Kulpmont  
 White, Marqueen V., Berwick  
 Wildoner, Lena, Berwick  
 Wilkes, John J., Alden Sta.  
 Wilson, Gertrude E., Drums  
 Yerger, Robert, Mt. Pleasant Mills  
 Zehner, Alice M., Bloomsburg

## SCHOOL OF MUSIC

Appleman, Robert, Benton  
 Baker, Lucy Jane, Bloomsburg  
 Blecher, Margaret, Bloomsburg  
 Bronson, Betty, Mainville  
 Buckalew, Jane, Bloomsburg  
 Communtzis, Aleki, Bloomsburg  
 Communtzis, Athamantia, Bloomsburg  
 Communtzis, Poletime, Bloomsburg  
 Conner, Molly, Orangeville  
 Conner, Patricia, Orangeville  
 DeMott, Fanny Hill, Millville  
 Derr, Dale, Millville  
 Derr, Derl, Millville  
 Fenstermaker, Mary Lou, Bloomsburg  
 Fisher, John III, Bloomsburg  
 Fitzgerald, Barbara, Bloomsburg  
 Gehrig, Fay, Danville  
 German, Elsie, Bloomsburg  
 Gregory, Lillie Mae, Bloomsburg  
 Guthrie, Mira Alice, Bloomsburg  
 Hartman, Doris, Bloomsburg  
 Heckman, David, Bloomsburg  
 Heller, David, Bloomsburg  
 Hendershott, Dorothy D., Bloomsburg  
 Hendershott, Ione, Bloomsburg  
 Herring, Elizabeth, Orangeville  
 Hummel, Grace, Bloomsburg  
 Hummel, Billy, Espy  
 John, Harry Jr., Mainville  
 Kline, Dorothy, Bloomsburg  
 Kline, Susan, Bloomsburg  
 Kocher, Dorothy, Espy  
 Kocher, Frank, Espy  
 Kocher, James, Espy  
 Kuster, Jane, Bloomsburg  
 Kuster, Jean, Bloomsburg  
 Kyle, Robert, Millville  
 McMahan, Herbert E. Jr., Bloomsburg  
 McNamee, Francis, Bloomsburg  
 Magee, Joanne, Bloomsburg  
 Masteller, John, Bloomsburg  
 Nelson, Patricia, Bloomsburg  
 Niesley, Jean, Bloomsburg  
 Noll, Jeanne, Palmerton  
 Patterson, Nancy, Bloomsburg  
 Rehm, Audrey, Bloomsburg  
 Rider, Geraldine, Bloomsburg  
 Roberts, Spencer, Catawissa  
 Schlauch, John, Bloomsburg  
 Shipman, Mary Edith, Bloomsburg  
 Shuman, Mary Agnes, Bloomsburg  
 Shuntill, Virginia, Harrisburg  
 Underwood, Marion, Bloomsburg  
 Whitesell, Editha, Shickshinny  
 Young, John D., Catawissa

## SUMMER SESSION — 1939

Aberant, Leona J., West Wyoming  
 Adams, Ramona M., Mt. Carmel  
 Alles, Fred J., Forty Fort  
 Aponick, Joseph R., W. Nanticoke  
 Arcus, Max, Bloomsburg  
 Austin, Frances, Luzerne  
 Auvil, Elizabeth R., Noxen  
 Bacon, Edward H., Kingston  
 Bailey, Louise F., Jersey Shore  
 Baker, Marie E., Mt. Carmel  
 Bakey, Charles R., Mt. Carmel  
 Ballamy, Marion E., Nescopeck  
 Barklie, Lucy M., Ashley  
 Bartol, Catherine M., Hazle Brook  
 Baumunk, Mabel F., Forksville  
 Beck, Grace S., Sunbury  
 Beers, Leonore H. (Mrs.) Wilkes-Barre  
 Behr, Edith M., Lopez  
 Beierschmitt, William J., Mt. Carmel  
 Beltz, Beulah M., Catawissa  
 Bender, Naomi K., Sunbury  
 Benfield, Laura, Centralia  
 Benner, Kathryn M., Lewistown  
 Bertoldi, Louis R., Weston  
 Betz, John W., Danville  
 Bigelow, Geraldine H. (Mrs.) Reeds-ville  
 Bird, Gertrude A., Plymouth  
 Bixler, Mildred P., Shamokin  
 Bittenbender, Jean L., Nescopeck  
 Black, Marion M., Lake Ariel  
 Blecher, Margaret L., Bloomsburg  
 Blizzard, Marie M., Danville  
 Blue, Viola M., Danville  
 Bodalski, Felix J., Nanticoke  
 Bogar, Olivia, Port Trevorton  
 Bonham, Dan H., Forty Fort  
 Boone, Ruth E., Bloomsburg  
 Bott, Rose E., Nuremburg  
 Boyle, Mary, Nanticoke  
 Breslin, Sara, Lattimer  
 Brink, J. Frank, Wilkes-Barre  
 Brinton, Ina D., Bloomsburg  
 Brodbeck, Ruth E., Douglassville  
 Brosius, Marlin E., Mt. Pleasant Mills  
 Brown, Cecilia, Elysburg  
 Brown, Clark W., Wapwallopen  
 Brugger, Julia E., Tomhicken  
 Brusn, Jean W., Wilkes-Barre  
 Buck, Anna M., Shamokin  
 Buck, Letha L., Stillwater  
 Buffington, Florence M., Shamokin  
 Burke, Gerald F., Sugar Run  
 Bush, Catharine L., Ashland  
 Capwell, Jean, Factoryville  
 Carr, John R., Luzerne  
 Chandler, Raymond, Bloomsburg  
 Cheponis, Margaret A., Plymouth  
 Cherundolo, Rosella M., Old Forge  
 Chismar, Michael J., Jeddo  
 Chyczewski, Carrie F., Nanticoke  
 Clauser, Albert R., Kulpmont  
 Cohoon, Margaret M., Natalie  
 Coleman, Fred D., Bloomsburg  
 Conner, D. Eleanor, Orangeville  
 Cooper, Marian M., Danville  
 Creasy, John C., Bloomsburg  
 Crocamo, Ralph C., Hazleton  
 Crosby, Mary F., Mahanoy Plane  
 Cruikshank, Virginia E., Sunbury  
 Curl, Doris M., Wilkes-Barre  
 Curtis, Esther L., Duryea  
 D'Angelo, Joseph J., Keiser  
 Darrow, Jane C., Kingston  
 Davis, Arthur L., Taylor  
 Davis, Charlotte E. (Mrs.) Ashland  
 Dean, Dorothy C., Washingtonville  
 Deily, James M., Bloomsburg  
 Dennen, Honora M., Danville  
 DeRose, Peter, Peckville  
 Derr, Helen M., Kingston

Ditty, William W., Shamokin  
 Doherty, Regina R., Mt. Carmel  
 Dorsey, James D., Bloomsburg  
 Dougherty, Thomas P., Kingston  
 Dunn, Florence L., Jermyn  
 Durkin, Catherine M., Ashland  
 Dushanko, Stephen, Freeland  
 Eade, Edith M., Nesquehoning  
 Edmunds, William R., Nanticoke  
 Edwards, Victoria, Bloomsburg  
 Ellsworth, Joe A., Meshoppen  
 Eltringham, Jemima, Mt. Carmel  
 Enama, Edith K., W. Hazleton  
 Enama, Violet P., Weston  
 Enterline, Mary Lou, Turbotville  
 Eshmont, Peter J., Kulpmont  
 Esmond, Stanley F., Atlas  
 Evans, Ann J., Taylor  
 Evans, Rachael P., Orangeville  
 Fahringer, L. Jane, Berwick  
 Fairchild, Mary Ruth, Berwick  
 Feinour, Elizabeth M., Millville  
 Feister, Lorene C., Berwick  
 Fennelly, Dorothy L., Frackville  
 Ferrari, Victor J., Kulpmont  
 Fink, Mary Jane, Conyngham  
 Fischer, Wilbur G., Glen Lyon  
 Fitzpatrick, Gerald J., Shamokin  
 Flaherty, Thomas A., Wilkes-Barre  
 Foley, M. Ivy, Mt. Carmel  
 Foley, James E., Mt. Carmel  
 Foote, Richard H., Bloomsburg  
 Foust, Cora M., Danville  
 Foye, Elva C., Sunbury  
 Franklin, D. Pauline, Shickshinny  
 Galbreath, Alice E., Bloomsburg  
 Gaskins, Dorothy E., Pottsville  
 Gearhart, Blanche S., Ringtown  
 Gehrig, Fay L., Danville  
 Gerlak, Adam F., Dupont  
 Gerosky, Frank J., Pittston  
 Glass, Charles F., Freeburg  
 Godlewski, Lois E., Mt. Carmel  
 Goldsmith, Emily, Dallas  
 Good, June R., Aristes  
 Grabosky, Anna M., Frackville  
 Green, Sam, Berwick  
 Grohal, Veronica, West Hazleton  
 Grover, Thelma S., Weatherly  
 Hagenbuch, Julia C., Danville  
 Hardysh, Alexander, Mt. Carmel  
 Harman, Helen F., Berwick  
 Harmon, Wainwright H., Shenandoah  
 Harrison, Arthur H., Dallas  
 Harter, Betty I., Nescopeck  
 Hartman, Beryl Greenly, Danville  
 Hartman, Helen M., Danville  
 Hartman, Mary Helen, Danville  
 Hartzelle, Helen E., Catawissa  
 Harwood, Chester J., Plymouth  
 Hayes, Albert A., Berwick  
 Heckman, Phyllis E., Nuremberg  
 Heintzelman, Mary K., Sunbury  
 Heit, Jennie W. (Mrs.), Berwick  
 Henrie, Gilbert, Bloomsburg  
 Hess, Hattie M., Tunkhannock  
 Hess, William, Bloomsburg  
 Heupcke, William S., Sugarloaf  
 Heydenreich, Myrtle E., Turbotville  
 Hill, Margaret E., Scranton  
 Hines, Margaret E., Berwick  
 Hopkins, Robert P., Lost Creek  
 Horn, Charles O., Ringtown  
 Horne, G. Edward, Bloomsburg  
 Hosler, Eudora E., Berwick  
 Houser, Albert W., Lewistown  
 Howenstine, Emily L., Mt. Carmel  
 Hulihan, Vincent, Locust Gap  
 Hummel, Bessie M., Sunbury  
 Hummel, Cleo M., Millville  
 Hummel, Katherine R., Millville  
 Hummel, Letha E., Bloomsburg  
 Hunsinger, Elton S., Aristes  
 Hunter, Robert B., Johnstown  
 Hyduk, Andrew P., Shamokin  
 Jenkins, Clifford D., Espy  
 Jenkins, M. Evelyn, Scranton  
 Johnson, Dorothy K., Bloomsburg  
 Jury, Mark, Bloomsburg  
 Kane, Katharine A., Centralia  
 Karschner, Dorothy E., Dallas  
 Keener, Kathryn M., Danville  
 Keibler, Walter A., Kingston  
 Keller, Hannah E., Danville  
 Kempfle, Daniel T., Cumbola  
 Kerstetter, Relda, Millville  
 Kiefer, Lawrence J., Frackville  
 King, Ruth S. (Mrs.), Allentown  
 Korengo, Anna L., Shenandoah  
 Koropchak, Roman D., Atlas  
 Koscavage, Bridget C., Plymouth  
 Kosisky, Joseph S., Pittston  
 Kostenbauder, Margaret, Aristes  
 Kotch, Paul R., Keiser  
 Kotzen, Stanley B., Summit Hill  
 Kramm, Ellen J., McEwensville  
 Kundia, Joseph, Dupont  
 Lapinski, Jerome G., Shamokin  
 Lash, Walter F., Frackville  
 Lentz, Roberta R., Freeland  
 Leone, Jennie, Philadelphia  
 Letterman, Ruth E., Bloomsburg  
 Levan, Katie E., Stillwater  
 Lewis, George R., Bloomsburg  
 Lewis, Robert C., Danville  
 Lewis, Thomas, Nanticoke  
 Lichtel, L. Ward, Shamokin  
 Lingertot, Martha M., Wilkes-Barre  
 Llewellyn, Russell R., Berwick  
 Logar, Florence D., Weston  
 Long, Lewis F., Berwick  
 Lowry, Helen L., Forest City  
 Lunger, H. Grant, Unityville  
 Luzenski, Leonard L., Nanticoke  
 McCawley, Betty Mae, Old Forge  
 McCern, Margaret E., Benton  
 McCracken, Ralph, Riverside  
 McCulla, Margaret, Freeland  
 McDade, Donald M., Hanover Twp.  
 McDonnell, Marie C., Centralia  
 McMichael, Dorothy I., Stillwater  
 McMichael, Hazel, Stillwater  
 McNealis, Margaret L., Nanticoke  
 McWilliams, Kathryn E., Mt. Carmel  
 McWilliams, Marian L., Danville  
 MacDonald, Edward J., Connerston  
 Major, Elma L., Dallas  
 Maloney, Anne M., Centralia  
 Marr, Doris M., Watsontown  
 Marshalek, Michael J., Keiser  
 Masteller, Royce M., Bethlehem  
 Master, Howard H., Mt. Pleasant  
 Mills  
 Materewicz, Eleanor I., Glen Lyon  
 Mathews, Dorothy V., Steelton  
 Mayernick, Mary A., Edwardsville  
 Menges, Calvin W., Watsontown  
 Menges, Frank G., Mt. Carmel  
 Mericke, Veda K., Bloomsburg  
 Metcalfe, Marion F., Sunbury  
 Miller, Gertrude S., Bloomsburg  
 Miller, Rachael E., Berwick  
 Miller, Thelma F., Nescopeck  
 Moist, Catharine J., Lewistown

- Monaghan, Cyril G., Lost Creek  
 Monaghan, Joseph, Lost Creek  
 Monaghan, Mary A., Ashland  
 Moore, Florine L., Berwick  
 Moratelli, William R., Kulpmont  
 Moss, Jean W., Plymouth  
 Nelson, Pauline E., Starrucca  
 Noel, George P., Natalie  
 North, Thomas P., Bloomsburg  
 Northup, Anne F., Dalton  
 Nuss, Arthur H., Pottsville  
 Oakes, Leona C., W. Hazleton  
 Ollendick, Anna K., Chinchilla  
 O'Neill, Catherine M., Freeland  
 Oplinger, June E., Norristown  
 Orth, Carol L., Bloomsburg  
 Paulhamus, Paul A., Bloomsburg  
 Payne, Edith M., Ashland  
 Payne, Herbert E., Shamokin  
 Penman, Mabel G., Hazleton  
 Persing, Helen E., Elysburg  
 Pettinato, Frank A., Old Forge  
 Phillips, Dorothy M., Bloomsburg  
 Pietruszak, William, Mocanaqua  
 Pine, Walter H., W. Nanticoke  
 Pino, Dominic R., Hazleton  
 Plichefshe, Eva K., Ashland  
 Plotts, Helen T., Turbotville  
 Podwika, Peter G., Wyoming  
 Pokapus, Stella M., Nanticoke  
 Poncheri, Rose M., Fern Glen  
 Potter, Margaret F., Bloomsburg  
 Potter, Winfield R., Old Forge  
 Poust, Pearl E., Orangeville  
 Powell, Edith A., Taylor  
 Powell, Gertrude S., Shamokin  
 Pressler, Frederick, Berwick  
 Race, Ethel E., Tunkhannock  
 Raklevicz, Maria, Plymouth  
 Rarig, Kathryn E., Catawissa  
 Rarig, Leah, Catawissa  
 Rasmus, Stephina H., Glen Lyon  
 Reb, Edna E., Girardville  
 Rembis, Anna A., Hudson  
 Rhinard, Harriet E., Berwick  
 Rhodes, Margaret E., Catawissa  
 Rhodes, Ruth I., Catawissa  
 Rich, Lucy M., Kulpmont  
 Richards, Joseph, Warrior Run  
 Rim, James N., Lattimer Mines  
 Rinard, Muriel, Catawissa  
 Roan, Harriet, Bloomsburg  
 Roberts, Roy, Catawissa  
 Robeson, Margaret Ann, Beach Haven  
 Roushey, Louise M., Shavertown  
 Rovenolt, Lewis W., Watsonstown  
 Rowland, Catherine M., Shenandoah  
 Russin, Jerry, Plains  
 Sanger, Raymond, Aristes  
 Savage, Pearl L., Berwick  
 Schiavone, Florian, Atlas  
 Schlauch, Adam L., Nuremberg  
 Schneck, Ivan P., Schnecksville  
 Schneider, Herbert E., W. Hazleton  
 Schuyler, Mary F., Bloomsburg  
 Seesholtz, Bloomsburg  
 Shaffer, Lucretia M., Wilkes-Barre  
 Shaloka, Joseph L., Keiser  
 Shambach, Virginia M., Troxelville  
 Shank, Helen W., Ringtown  
 Sharkey, Eugene F., Lattimer  
 Sheetz, Steve, Mt. Carmel  
 Sheridan, Vera F., Nanticoke  
 Sherman, Gertrude, Williamsport  
 Shevlin, Helen T., Scranton  
 Shipman, Louise A., Sunbury  
 Shulman, Rosabell F., W. Pittston  
 Shultz, Laura M., Hazleton  
 Sidler, Dorothy E., Montour  
 Siesko, Joseph P., Nanticoke  
 Simon, Mildred J., Hunlock Creek  
 Simpson, Catherine J., Bloomsburg  
 Skeath, Fred, Mahanoy City  
 Smith, Christine F., Catawissa  
 Smith, Jean D., Catawissa  
 Snyder, Alice, Shamokin  
 Snyder, Lois M. (Mrs.) Catawissa  
 Sonnenberg, Fred R., Wilkes-Barre  
 Steckel, Edgar D., Bloomsburg  
 Stellfox, Thelma A., Mt. Carmel  
 Stimmel, James R., Scottsdale  
 Stine, Margaret J., Mt. Carmel  
 Strohosky, Andrew G., Excelsior  
 Swineford, Adeline E., Berwick  
 Tannery, William W., Bloomsburg  
 Taylor, Martha M., Bloomsburg  
 Thomas, Dorothy J., Wilkes-Barre  
 Thomas, Margaret B., Exeter  
 Thornton, Alma H., Old Forge  
 Tilmont, Clarence H., Centralia  
 Townsend, Matie H., Lightstreet  
 Trimble, W. Frank, Wilkes-Barre  
 Trivelpiece, Jennie, Berwick  
 Troy, Hazel K., Mifflinville  
 Troy, Mabel L., Nuremberg  
 Tubbs, Sara E., Bloomsburg  
 Tugend, Florence C., Dalton  
 Turner, Archibald, Sheatown  
 Turse, Rose M., Hazleton  
 Van Buskirk, Helen M., Kingston  
 Van Buskirk, Mary E., Kingston  
 Varano, Helen D., Mt. Carmel  
 Varano, Samuel W., Keiser  
 Vaughan, Elwyn J., Nanticoke  
 Vought, Lucinda K., Numidia  
 Wagner, Daniel W., Keiser  
 Wary, Jessie R., Helfenstein  
 Wasley, Anna M., Shenandoah  
 Watters, Helen C., Wilkes-Barre  
 Weikel, Mae E., Milton  
 Weitz, Ruth E., Duryea  
 Welliver, Carl T., Bloomsburg  
 Welliver, Grace M., Tomhicken  
 Welliver, Robert A., Tomhicken  
 Wenner, D. Edwin, Berwick  
 Wesley, Avis E., Dallas  
 White, Marqueen, Berwick  
 Wilkes, John J., Alden Station  
 Williams, Blanche R., Scranton  
 Williams, Maude L., Olyphant  
 Williams, Oliver S., Wilkes-Barre  
 Wilson, Gertrude E., Kis-Lyn  
 Wojcik, Chester F., Wilkes-Barre  
 Wolfe, Ronald D., Mahanoy Plane  
 Yakus, Frank J., Luzerne  
 Yanchulis, Elynor M., Shenandoah  
 Yanosik, Helen D., Shickshiny  
 Yerger, Robert L., Mt. Pleasant  
 Mills  
 Yocum, Carrie I., Milton  
 Yocum, Josephine, Danville  
 Yost, Mercia E., Orangeville  
 Young, John D., Catawissa  
 Zehner, Alice M., Bloomsburg  
 Zeisloff, Hilda E., Ardsley  
 Zimmerman, Ray O., Nuremberg  
 Zondlo, Louise A., Dupont



## POST SUMMER SESSION — 1939

- Alles, Fred J., Bloomsburg  
 Arcus, Max, Bloomsburg  
 Austin, A. Frances, Luzerne  
 Baker, Donald S., Newtown  
 Banta, Sterling J., Luzerne  
 Barklie, Lucy M., Ashley  
 Bartol, Catherine M., Hazle Brook  
 Beck, Grace S., Sunbury  
 Beierschmitt, Wm. J., Mt. Carmel  
 Beltz, Beulah M., Catawissa  
 Benner, Kathryn M., Lewistown  
 Biggar, Helen B., Unityville  
 Bittenbender, Jean L., Nescopeck  
 Bodalski, Felix J., Nanticoke  
 Bonenberger, Laura A., Barnesville  
 Bott, Rose E., Nuremberg  
 Boyle, Helen A., Nanticoke  
 Brink, Jay F., Wilkes-Barre  
 Brennan, Anne E., Girardville  
 Brodbeck, Ruth E., Douglassville  
 Brown, Cecilia M., Elysburg  
 Brush, Jean W., Wilkes-Barre  
 Buck, Letha L., Stillwater  
 Buck, Louise K., Montgomery  
 Bush, Catharine L., Ashland  
 Chismar, Michael J., Jeddo  
 Clauser, Albert A., Kulpmont  
 Coleman, Catharine M., Girardville  
 Conbeer, George P., Shamokin  
 Curl, Doris M., Wilkes-Barre  
 Davis, Arthur, Taylor  
 Davis, Janet E., Carbondale  
 Deily, James H., Bloomsburg  
 Deitrick, Betty, Montgomery  
 Dennen, Honora M., Danville  
 Dersham, Sara Ellen, Mifflinburg  
 Dougherty, Joseph P., Philadelphia  
 Dresher, Lula E., Girardville  
 Durkin, Catherine M., Ashland  
 Eade, Edith M., Nesquehoning  
 Edwards, Victoria H., Bloomsburg  
 Ellsworth, Joe A., Meshoppen  
 Eroh, Margaret M., Nescopeck  
 Fischer, Wilbur G., Glen Lyon  
 Forsyth, William T., Northumberland  
 Foye, Elva, Sunbury  
 Furman, Mary E., Northumberland  
 Galbreath, Alice E., Bloomsburg  
 Gerlak, Adam F., Dupont  
 Giger, Irene M., Bloomsburg  
 Goldsmith, Emily, Dallas  
 Gotshall, Hazel R., Catawissa  
 Grabosky, Anna M., Frackville  
 Grohal, Andrew, W. Hazleton  
 Harmany, Charles C., Bloomsburg  
 Harmon, Wainwright, Shenandoah  
 Harrison, Arthur H., Dallas  
 Hartman, Beryl G., Danville  
 Hartzelle, Helen E., Catawissa  
 Hess, Hattie M., Tunhannock  
 Hess, William H., Bloomsburg  
 Heydenreich, Myrtle E., Turbotville  
 Hindmarch, Bertha A., Mt. Carmel  
 Houser, Albert W., Lewistown  
 Hughes, Virginia R., Wilkes-Barre  
 Hummel, Bessie M., Sunbury  
 Hyduk, Andrew P., Shamokin  
 Jenkins, Clifford D., Espy  
 Jury, Mark W., Bloomsburg  
 King, Ruth (Mrs.), Allentown  
 Krieger, Dorothy E., Mahanoy City  
 Kundla, Joseph, Dupont  
 Lapinski, Jerome G., Shamokin  
 Lash, Walter F., Frackville  
 Levan, Katie E., Stillwater  
 Llewellyn, Russell R., Berwick  
 Lunger, H. Grant, Unityville  
 MacDonald, Edward J., Conneron  
 Major, Elma L., Dallas  
 Masteller, Royce M., Bethlehem  
 Materwicz, Eleanor I., Glen Lyon  
 Mathews, Dorothy V., Stelton  
 Mavernick, Mary A., Edwardsville  
 McCulla, Margaret, Freeland  
 McHale, Paul J., Wilkes-Barre  
 Menges, Calvin W., Watsontown  
 Menges, Frank Glenn, Mt. Carmel  
 Moist, Catherine J., Altoona  
 Moss, Jean W., Plymouth  
 Muskaloone, Victoria M., Peckville  
 Noel, George P., Natalie  
 Nuss, Arthur U., Pottsville  
 Nolan, Richard J., Mt. Carmel  
 Oakes, Leona C., W. Hazleton  
 Orth, Carol L., Bloomsburg  
 Pappalardo, Ann, Freeland  
 Pizzoli, Mary, Atlas  
 Polnasik, Leo A., Nanticoke  
 Race, Ethel E., Tunkhannock  
 Raklewicz, Maria, Plymouth  
 Reigle, Paulyne T., Northumberland  
 Rhodes, Margaret E., Catawissa  
 Roberts, Roy, Catawissa  
 Roush, Louise, Shavertown  
 Rovenolt, Lewis W., Watsontown  
 Rowland, Catherine M. Mrs., Shenandoah  
 Russin, Jerry, Plains  
 Schneck, Ivan P., Schneckville  
 Shank, Helen, Ringtown  
 Sharkey, Eugene F., Lattimer  
 Sheary, Helen, Shamokin  
 Shiner, Mildred M., Nescopeck  
 Shulman, Rosabel F., W. Pittston  
 Simpson, Catharine, Bloomsburg  
 Smith, Christine F., Catawissa  
 Snyder, Alice, Shamokin  
 Snyder, Lora M., Turbotville  
 Sober, Anabel, Bloomsburg  
 Sonnenberg, Fred R., Wilkes-Barre  
 Steckel, Edgar D., Bloomsburg  
 Tannery, William W., Bloomsburg  
 Taylor, Martha M., Bloomsburg  
 Trivelpiece, Jennie, Berwick  
 Turse, Rose M., Hazleton  
 Van Buskirk, Helen M., Kingston  
 Van Sickle, George W., Catawissa  
 Varano, Helen D., Mt. Carmel  
 Vaughan, Elwyn J., Nanticoke  
 Vought, Lucinda K., Numidia  
 Washeleski, Alfred S., Simpson  
 Weikel, Mae E., Milton  
 Weitz, Ruth E., Duryea  
 Wenner, Edwin Berwick  
 Wilkes, John Joseph, Alden Station  
 Yanchulis, Elynor M., Shenandoah  
 Zeisloft, Willard, Ardsley  
 Zeiss, William E., Clark's Summit  
 Zimmerman, Ray O., Nuremberg

## ENROLLMENT (First and Second Semesters, 1938-39)

	Elementary Curriculum	Secondary Curriculum	Business Curriculum	In-Service Teachers	Total
Freshman Class -----	60	56	119		235
Sophomore Class -----	36	55	83		174
Junior Class -----	55	46	58		159
Senior Class -----	15	52	57		124
Graduate & Spec. Stud. -----	7	1			8
Teachers-in-Service -----				214	214
TOTAL -----	173	210	317	214	914

## REGISTRATION BY COUNTIES -- 1938-39

	Regular School Year, 1938-39	Summer Session, 1939	Post- Session, 1939	Total
Adams -----	1			1
Berks -----	6	1		7
Blair -----			1	1
Bradford -----	4	1		5
Bucks -----	4		2	6
Cambria -----		1		1
Carbon -----	7	3	1	11
Chester -----	2			2
Clearfield -----	1			1
Columbia -----	260	95	29	384
Cumberland -----	1			1
Dauphin -----	13	1	1	15
Delaware -----	2			2
Lackawanna -----	35	18	5	58
Lancaster -----	2			2
Lehigh -----	14	2	2	18
Luzerne, -----	244	110	40	394
Lycoming -----	13	3	4	20
Mifflin -----		4	2	6
Montgomery -----	4	2	1	7
Montour -----	43	20	4	67
Northampton -----	1	1	1	3
Northumberland -----	134	64	23	221
Perry -----	2			2
Philadelphia -----	3	1	1	5

	Regular School Year, 1938-39	Summer Session, 1939	Post- Session, 1939	Total
Potter -----	2			2
Schuylkill -----	76	35	17	128
Snyder -----	5	6		11
Sullivan -----	8	2		10
Susquehanna -----	2	1		3
Union -----	9		1	10
Wayne -----	2	2		4
Westmoreland -----		1		1
Wyoming -----	10	5	3	18
York -----	3			1
From Other States -----	1			1
<b>TOTAL -----</b>	<b>914</b>	<b>379</b>	<b>138</b>	<b>1431</b>



.....

## PRELIMINARY ENROLLMENT BLANK

This blank, together with a check or money order for \$10.00 payable to the Commonwealth of Pennsylvania, should be mailed to State Teachers College, Bloomsburg, Pennsylvania. This \$10.00 is used as part payment of your fees. Do not send currency.

Name of Applicant -----  
Give Last Name First

Address of Applicant -----  
Number and Street

-----  
Town County State

Date of Birth -----  
Month Day Year

Do you desire to enter in September -----, January ----- or  
June -----?

Shall we reserve a room for you? -----

Give the name of town and county of the four-year high school from  
which you graduated -----

When were you graduated? -----

Is this your first enrollment in this institution? -----

Give the names and location of any institution which you have attended since graduation from high school -----

Check the curriculum in which you are interested:

Business----- Elementary----- Secondary-----

All curriculums lead to the Baccalaureate Degree in Education. In the Elementary Curriculum a State Limited License may be secured at the end of three years permitting the holder to begin to teach and to complete the course for the Degree during the Summer Session or by attending classes for teachers.

Advance reservation deposits will be returned provided the College is notified at least three weeks before the opening of the semester of the desire to cancel the reservation.

Permission to live off the Campus will not be given as long as rooms are available in the dormitories. Special cases will be handled by the President.

Additional copies of this publication may be secured upon request from Harvey A. Andruss, Acting President, State Teachers College, Bloomsburg, Pennsylvania.









