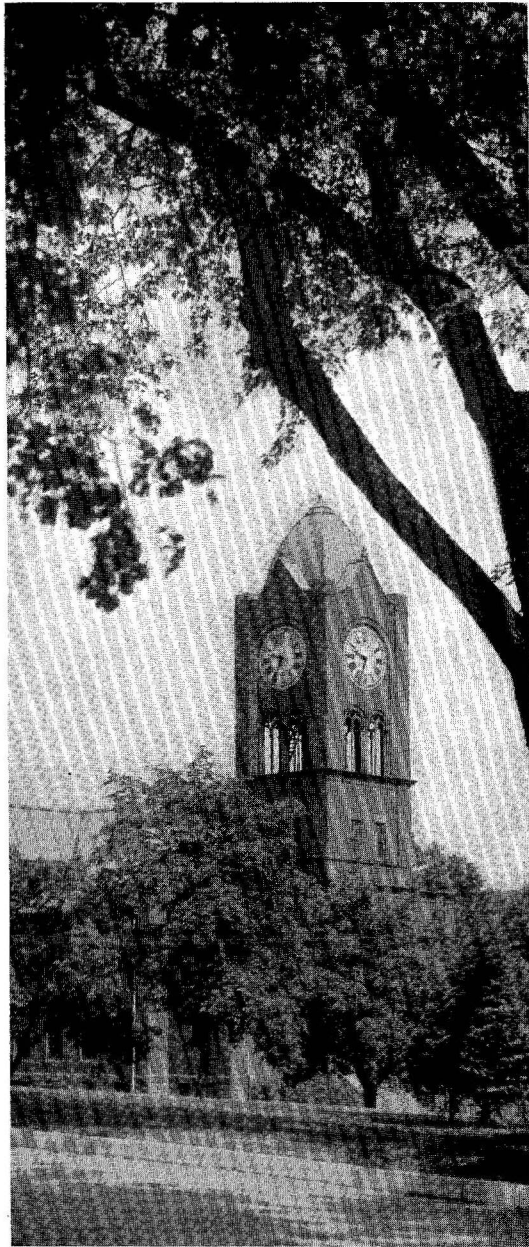




tr. rm  
LB  
1945  
L625P  
1938

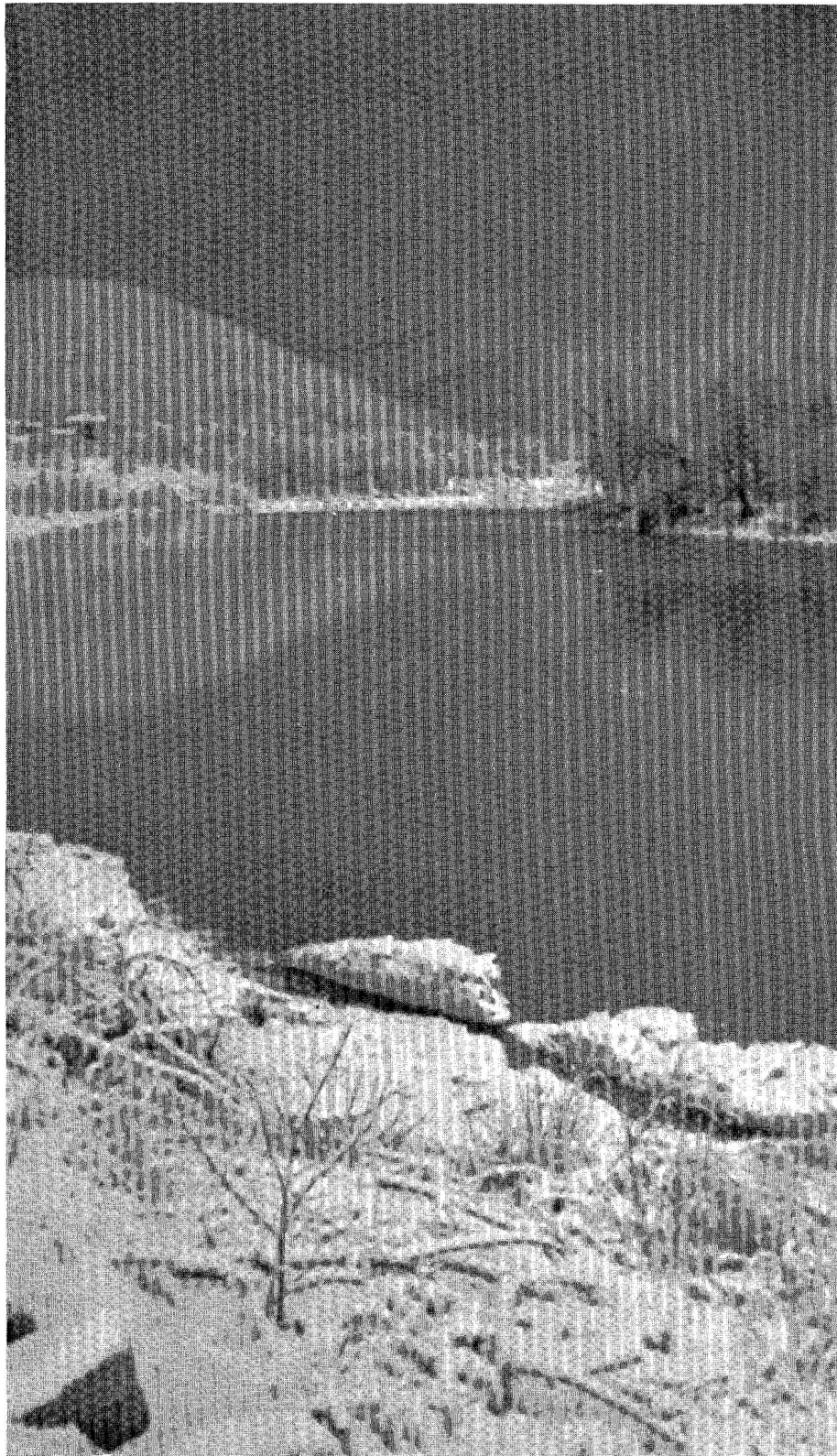
# PRAECO

1938



EX LIBRIS





THE  
**PRAECO**  
FOR  
**1938**

STATE TEACHERS COLLEGE

LOCK HAVEN  
PENNSYLVANIA

VOLUME XXV



## DEDICATION

THE 1938 PRAECO IS DEDICATED TO MISS  
HELEN B. LESHER AS A MARK OF ESTEEM  
AND APPRECIATION.

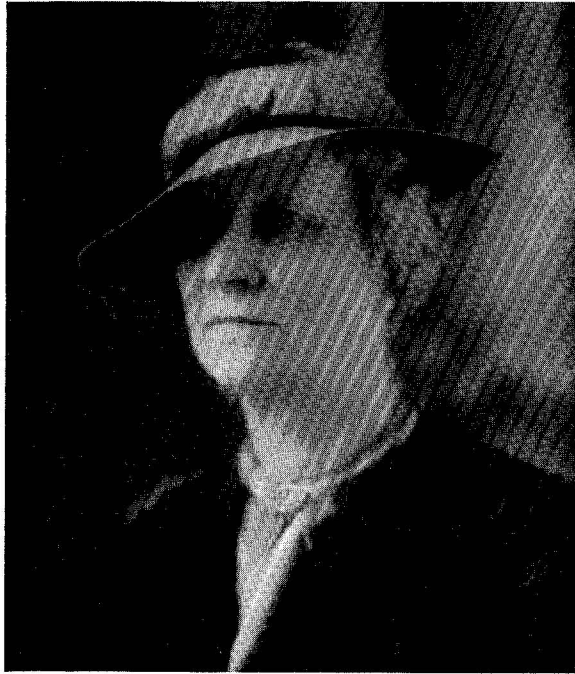
Enrollment

LB

1945

6750

1938



HELEN B. LESHER

A TEACHER . . . of superior ability who, with her understanding nature, competently guides.

A SUPERVISOR . . . of dynamic personality who stimulates the best in her student-teachers.

A WOMAN . . . of dignity and sincerity who is respected and admired by all.

6750

## History of the College

Lock Haven State Teachers College, as it is now known, was first opened on September 17, 1877, as a private institution known as Central State Normal School. By 1880 it was graduating more students than any other normal in Pennsylvania. Its growth was continuous and steady until it was destroyed by fire in 1889. Under the principalship of Dr. James Eldon (1887-1900) were erected the new main building, additions to the wings (1896), the gymnasium (the same year), and the training school (1898).

To meet the ever-increasing demand for more and better-prepared teachers the old two-year normal course was lengthened first to three, then to four years. In 1914 the school was purchased by the state of Pennsylvania. The outbreak of the World War shortly thereafter caused a drastic decrease in enrollment, but the splendid leadership of the then president, Dr. Charles Lose, made possible the continuance of the school. When Dr. Lose retired because of ill health, Central State Normal was again well established.

The administration of his successor, Mr. Warren Nevin Drum, saw many changes: a thorough reorganization of the courses of study into two-year curricula, a complete reorganization of the administrative and the teaching forces, financial re-establishment, and almost complete refurnishing and remodeling of the physical plant. When in 1925 Mr. Drum retired from the institution, he left it with a growing student body, producing professionally successful teachers, and with a secure future.

Many significant changes and improvements were made between 1925 and 1937, under the administration of Dr. Dallas W. Armstrong. In 1926 the curriculum was extended and the College was authorized to grant baccalaureate degrees by the state department of education. In 1935 the special curriculum in health and physical education was added. During these years the physical plant was improved and extended; the campus was increased to one hundred and twenty-six acres; a new elementary training school was erected; the dining room was modernized and a new kitchen built; and an athletic field was constructed.



## F O R E W O R D

We have tried to get between the covers of the 1938 PRAECO as much of life in Lock Haven State Teachers College as words and pictures can reveal.

It will serve its whole purpose if it recalls the best of a year's pleasant associations after Time's curtain has been rung down on them all.



# CONTENTS

ADMINISTRATION

CLASSES

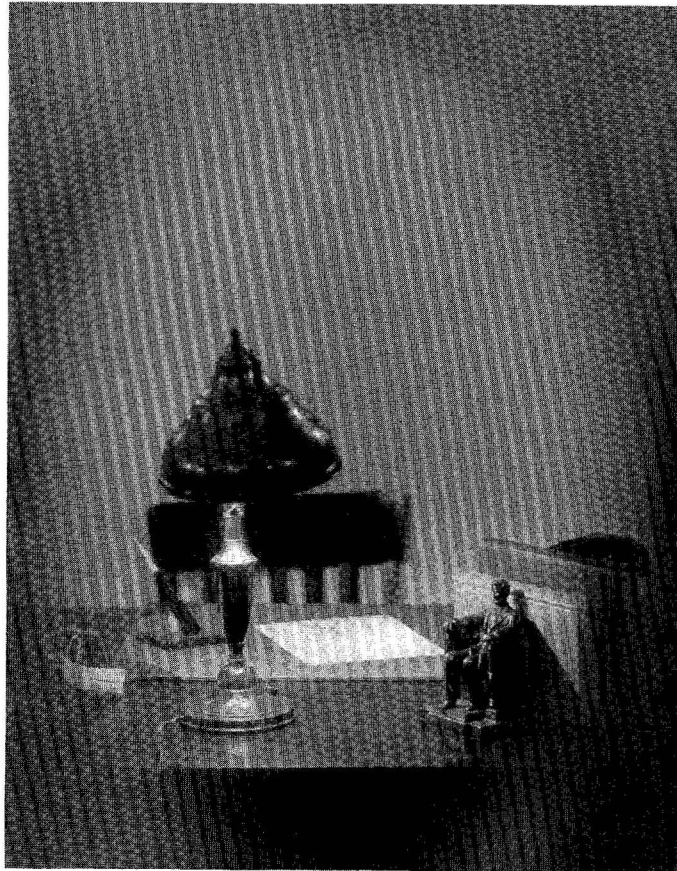
ACTIVITIES



## **Alma Mater**

Fair Lock Haven, Alma Mater,  
All thy sons and daughters see  
Joining hands in loving service  
Turning back once more to thee.  
We, thy children, now before thee  
Gratefully our voices raise  
Sending forth in benediction  
All our honor, love, and praise.

Alma Mater, may thy blessing  
Still on all our labors be;  
May we through our lives remember  
All our loyalty to thee.  
May we carry with us ever  
Old Lock Haven's strength and pride  
Deep within each heart to linger  
And forever to abide.



# ADMINISTRATION



## THE PRESIDENT

The students herewith formally welcome the new president of Lock Haven State Teachers College. They pledge their support to his efforts toward expanding the services of the college in the promotion of better preparation for teachers in the Commonwealth of Pennsylvania.



JOHN G. FLOWERS, A.B., A.M., Ph.D.

Dr. Flowers has assumed the presidency of our college with the vision of an educational pioneer and the courage of a creative administrator.

# BOARD OF TRUSTEES

DR. LESTER K. ADE, Superintendent of Public Instruction, Ex-Officio,  
Harrisburg, Dauphin County, Pennsylvania

SUPERINTENDENT A. P. AKELEY ..... Coudersport, Potter County, Pennsylvania

MR. E. CLAIR DAVIS ..... Clearfield, Clearfield County, Pennsylvania

MRS. EDITH B. DeWITT, Deputy Secretary, Department of Welfare  
Harrisburg, Dauphin County, Pennsylvania

DR. JOHN M. DWYER ..... Renovo, Clinton County, Pennsylvania

MRS. DAISY B. HENDERSON ..... Bellefonte, Center County, Pennsylvania

MR. HARTMAN B. HERR ..... Lock Haven, Clinton County, Pennsylvania

MR. J. FRED KATZMAIER, Esq. .... Williamsport, Lycoming County, Pennsylvania

MISS ELIZABETH H. PEALE ..... Lock Haven, Clinton County, Pennsylvania

DR. J. W. SWEENEY ..... St. Marys, Elk County, Pennsylvania

## OFFICERS OF THE BOARD

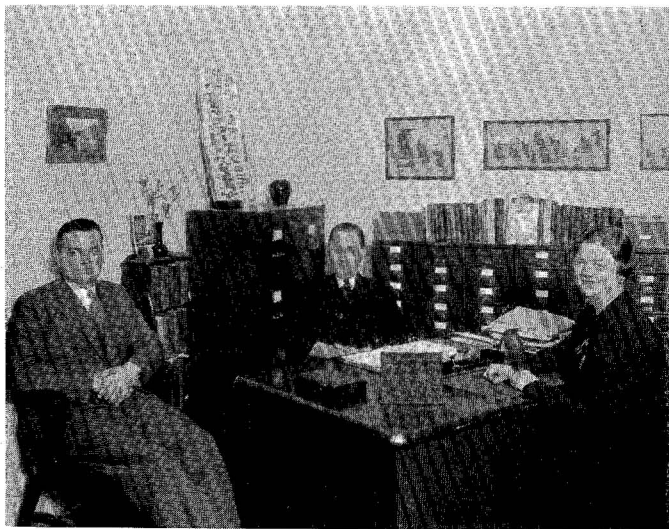
MR. J. FRED KATZMAIER, Esq. .... Chairman

DR. J. W. SWEENEY ..... Vice-Chairman

MR. HARTMAN B. HERR ..... Secretary

## PRESIDENT OF THE COLLEGE

JOHN GARLAND FLOWERS, A.B., A.M., Ph.D.



R. Stewart MacDougall, A.B., A.M.,  
Dean of Instruction; Genevieve Elizabeth  
Poole, A.B., A.M., Dean of  
Women; Willard Max Bossert, B.S.,  
Dean of Men.

DEANS

PHYSICAL EDUCATION

J. Wynn Fredericks, A.B., A.M.;  
Maloise Sturdevant Dixon, A.B.,  
A.M.; Dorothy Deach, B.S., M.S.;  
Willard Max Bossert, B.S.





A. D. Patterson, A.B., A.M.; C. Coxe, Ph.B., A.M., Ed.M.; C. E. Geary, B.S., M.S.; A. Hatcher, A.B., A.M.; A. S. Rude, A.B., M.A., Ph.D.; Grade Supervisors: L. Barkhuff, B.S.; E. Faddis, A.B., M.A.; R. Holmes, B.S., M.A.; H. Leshner; M. Phillips, A.B., A.M.; E. Pollock, A.B., A.M.; C. Rook, B.S., M.S.; L. Russell, A.B.

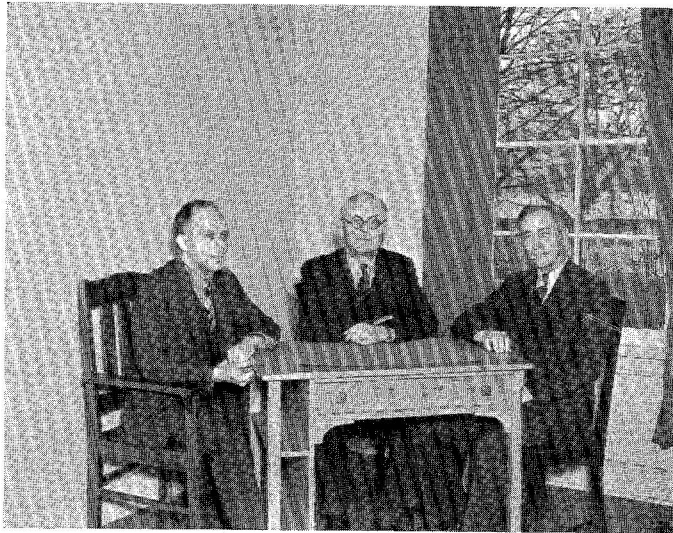


EDUCATION

ENGLISH



W. R. North, A.B., A.M., Ph.D.; C. Cordelia Brong, A.B., M.A.; C. Coxe, Ph.B., A.M., Ed.M.; Catherine E. Geary, B.S., M.S.; Irene MacDonald, A.B., A.M.; Richard T. Parsons, B.S., Ed.M.; A.D. Patterson, A.B., A.M.; Kenton F. Vickery, A.B., A.M., Ph.D.

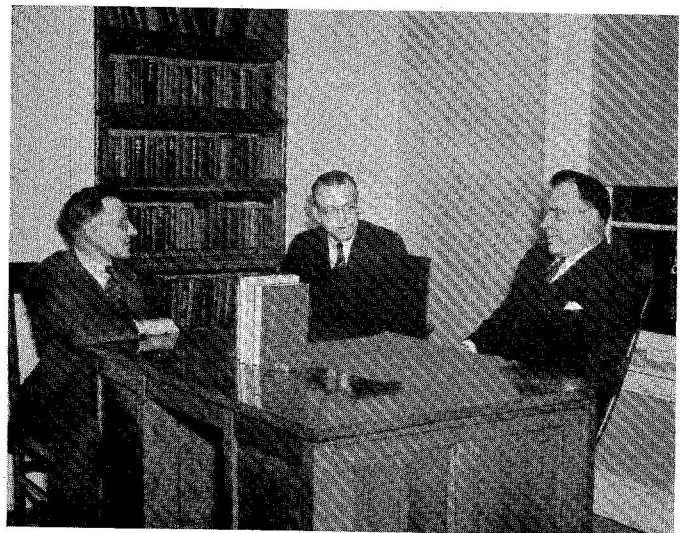


Levi J. Ulmer, B.S., M.S., Geography;  
Ira O. Fleming, B.S., M.S., Biology;  
Jay F. Stemple, A.B., M.S., Physical  
Science.

## SCIENCE

## SOCIAL STUDIES

Cornelius M. Sullivan, B.S., A.M.;  
George F. B. Lehman, A.B., A.M.;  
Lillian Russell, A.B.; Harry F. Weber,  
A.B., A.M., Ph.D.



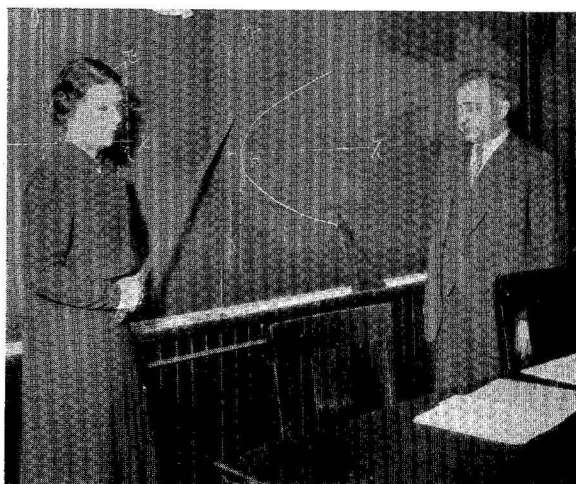


George F. B. Lehman, A.B., A.M., Music; Grace Elizabeth Ullemeyer, B.M.E., M.S., Music; Edna A. Bottorf, B.S., M.A., Art.

FINE ARTS

MATHEMATICS

Samuel J. Smith, Ph.B., A.M.; Margaret Elizabeth Waldron, A.B., M.A.



BUSINESS STAFF



Horace W. Clark, Bursar; Deborah M. Bentley, Dietitian; Malcolm M. Hudson, Storekeeper; George B. Hursh, Superintendent of Grounds and Buildings; Roberta Seltzer, Acting Registrar; Lulu Stalcup, Nurse.



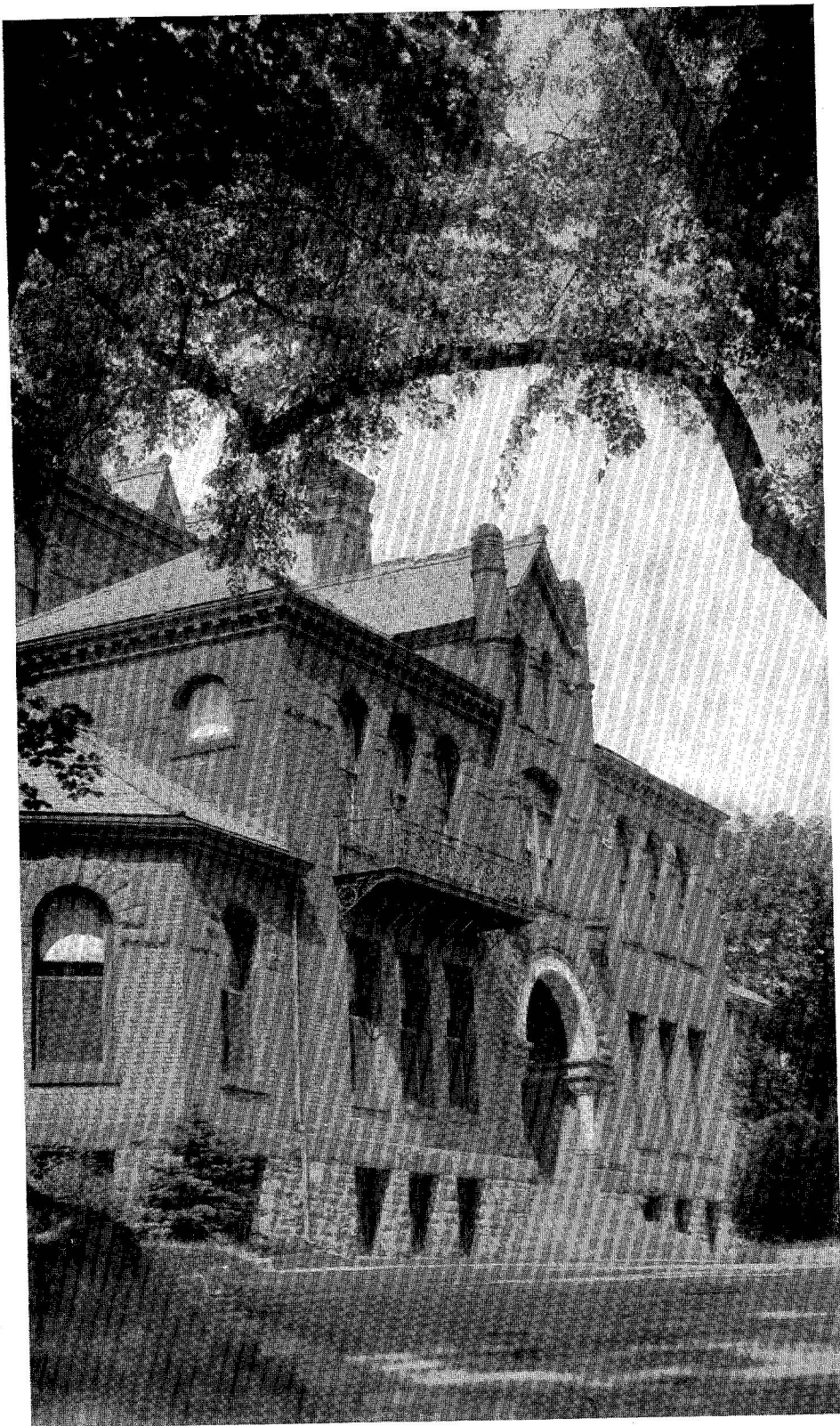
## Administrative Highlights

1937—1938

- Sept. 7 Mr. Allen D. Patterson assumes duties as the Director of Teacher Training.
- Sept. 8 Miss Dorothy Deach joins the Faculty. Faculty moves into new offices.
- Sept. 30 College is host to 12th P.S.E.A. Convention.
- Oct. 13 Mrs. Edith B. DeWitt of the Department of Welfare, Harrisburg, Pennsylvania, is appointed a Trustee of the College.
- Oct. 15 A conference on Alumni Problems is held.
- Oct. 27 College-Community Artist Course Cooperative Committee is organized.
- Jan. 11 Mr. Horace Clark assumes office as Bursar.
- Feb. 8-9 Dr. Henry Klonower, Director of Teacher Education and Certification in Pennsylvania, conducts Faculty Conference and Meeting.
- Feb. 14 Ground-breaking ceremonies inaugurates the construction of four new buildings. Mr. J. Fred Katzmaier of Williamsport, is elected Chairman of the Board of Trustees. Miss Roberta Seltzer is appointed Acting-Registrar.
- April 9 The first Conference for Beginning Teachers is conducted on Campus.
- April 14 Dr. Lester K. Ade, Superintendent of Public Instruction of Pennsylvania, visits the College.
- April 30 The second annual College Day provides a program of activities for high school student guests.
- May 19 Dr. John G. Flowers is inaugurated President.



**CLASSES**



**SENIORS**



**PAULINE BARROWS**

Jersey Shore, Pa.

SECONDARY

Mathematics, Science

Alpha Sigma Tau 2, 3, 4  
Education Club 3, 4  
Y.W.C.A. 1, 2, 3, 4  
Dramatic Club 1



**RUTH ELEANOR BOWER**

Mill Hall, Pa.

SECONDARY

English, French

Pi Kappa Sigma 4  
French Club 3  
Bel Canto Glee Club 3  
Education Club 2



**CAROLINE BROWN**

Lock Haven, Pa.

SECONDARY

English, History

Sigma Sigma Sigma 1, 2, 3, 4  
Education Club 3, 4  
Times Staff 1, 2, 3, 4  
English Club 4



**WILLIAM W. BROWN**

Lock Haven Pa.

SECONDARY

Mathematics, Science

Dramatic Club 2, 3, 4  
Naturalist Club 2, 3, 4  
Varsity Club 2, 3, 4  
Physical Education Club 4



**THOMAS D. CONRAD**

Hollidaysburg, Pa.

SECONDARY

Mathematics, Health Education

Athletics 1, 2, 3, 4  
Naturalist Club 3, 4  
Education Club 3, 4  
Glee Club 3, 4



**MARTIN H. DEITRICH**

Hublersburg, Pa.

SECONDARY

Science, Mathematics

Y.M.C.A. 1, 2



**RUTH L. BIERLY**

McElhatten, Pa.

INTERMEDIATE

**ALBERT BRAZINSKI**

Mount Carmel, Pa.

SECONDARY

Latin, Social Studies

Football 1, 2, 3  
Basketball 1, 2  
Track 1  
Varsity Club 1, 2, 3, 4

**JAMES L. BROWN**

Williamsport, Pa.

SECONDARY

Mathematics, Science

Y.M.C.A. 4  
Tennis Team 3  
Education Club 3  
Shakespeare Club 2, 3

**MOLLIE C. BUVINGER**

Wilkinsburg, Pa.

KINDERGARTEN-PRIMARY

Pi Kappa Sigma  
Women's Student Government  
Association

**RUTH CROWLEY**

Lock Haven, Pa.

SECONDARY

English, Social Studies

Education Club 2, 3, 4  
Times Staff 1, 2, 3, 4  
Y.W.C.A. 2, 3  
W.A.A. 1, 2, 3, 4

**LYNN W. EARON**

Lock Haven, Pa.

SECONDARY

Mathematics, Geography

Delta Rho Beta Fraternity 1, 4  
Naturalist Club 2, 3, 4  
Basketball Team 1, 2, 3, 4  
Baseball Team 1, 2, 3, 4



**RALPH A. ENGLERT**  
Mill Hall, Pa.  
SECONDARY  
Science, Mathematics



**PAUL L. FRANTZ**  
Charlton, Pa.  
SECONDARY  
English, Social Studies  
Lucky Seven Club  
Delta Rho Beta Fraternity  
Y.M.C.A.



**RUTH FREEMAN**  
Altoona, Pa.  
SECONDARY  
Latin, Mathematics, English  
Education Club 3, 4  
Bel Canto Glee Club 3, 4  
English Club 3, 4  
Shakespeare Society 2, 3, 4



**LYDIA JANE FURST**  
Mill Hall, Pa.  
SECONDARY  
English, Social Studies  
Sigma Sigma Sigma Sorority  
English Club 4



**MARGARET GRIFFITH**  
Lock Haven, Pa.  
KINDERGARTEN-PRIMARY  
Sigma Sigma Sigma Sorority  
Dramatic Club  
Bel Canto Glee Club  
W.A.A.



**LESTER L. GUTSHALL**  
Altoona, Pa.  
SECONDARY  
Mathematics, Science  
Y.M.C.A. 1, 2  
Football 1, 2



**HELEN EYERLY**  
Berwick, Pa.  
KINDERGARTEN SPECIAL  
Pi Kappa Sigma 1, 2, 3, 4  
A.C.E. 1, 2, 3, 4  
Naturalist Club 2, 3, 4  
Y.W.C.A. 1, 2, 3, 4

**ALICE M. FREDERICKS**  
Lock Haven, Pa.  
SECONDARY  
English, History  
Sigma Sigma Sigma Sorority  
Education Club  
Times Staff  
W.A.A.

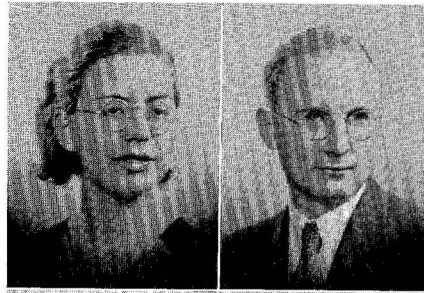
**GEORGE H. FRETHY**  
Cresson, Pa.  
SECONDARY  
Mathematics, English  
Football Team 1, 2, 3, 4  
Varsity Club 1, 2, 3, 4  
Class Treasurer 1, 2  
Mixed Chorus 1, 2

**JOHN JOSEPH GOLES**  
Plains Twp., Pa.  
SECONDARY  
Physical Education, Mathematics  
Football  
Baseball  
Boxing  
Varsity Club

**JEANNETTE S. GROUT**  
Mercersburg, Pa.  
KINDERGARTEN-PRIMARY  
Canterina Glee Club 1  
Bel Canto Glee Club 2, 3  
Pi Kappa Sigma Sorority 1, 2, 3  
Art Club 2, 3

**MARTHA L. HALBROCK**  
Somerset, Pa.  
KINDERGARTEN-PRIMARY  
Dramatic Club 1, 2, 3  
Pi Kappa Sigma 2, 3, 4  
Panhellenic Council 2, 3, 4  
A.C.E. 1

**MARY ELIZABETH HAND**  
 Lock Haven, Pa.  
 SECONDARY  
 English, History  
 Bel Canto 3, 4  
 Dramatic Club 3, 4  
 English Club 4  
 Mixed Chorus 4



**EARLING B. HAUGE**  
 South Renova, Pa.  
 SECONDARY  
 Science, English  
 Student Activity Council 3, 4  
 Delta Rho Beta 1, 2, 3, 4  
 Education Club 2, 3, 4  
 English Club 4

**JEAN HELMAN**  
 Coalport, Pa.  
 KINDERGARTEN-PRIMARY  
 A.C.E.  
 Pi Kappa Sigma



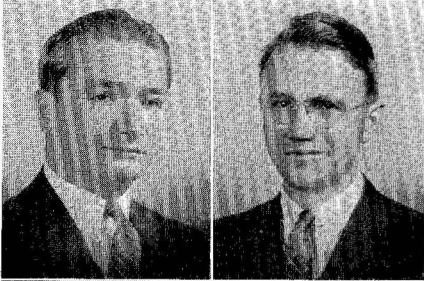
**EDWARD HOCHREIN**  
 Portage, Pa.  
 SECONDARY  
 Physical Education, Social Studies  
 Football 1, 2, 3, 4  
 Boxing 2, 4  
 Varsity Club  
 Physical Education Club 4

**GEO. McMURRAY HOFFNAGLE**  
 South Williamsport, Pa.  
 SECONDARY  
 Physical Education, Social Studies  
 Football 1, 2, 3, 4  
 Basketball 1, 2, 3, 4  
 Varsity Club  
 Sports Club



**LEONARD A. JOHNSONIS**  
 Mount Carmel, Pa.  
 SECONDARY  
 Physical Education, English  
 Football 1, 2, 3, 4  
 Varsity Club 1, 2, 3, 4  
 Track 1, 2, 3  
 English Club 4

**WILLIAM M. JUSICK**  
 Philipsburg, Pa.  
 SECONDARY  
 Social Studies, Science  
 Y.M.C.A.



**OLIVER KLING**  
 Mill Hall, Pa.  
 SECONDARY  
 Mathematics, Social Studies  
 Delta Rho Beta  
 Naturalist Club  
 Dramatic Club  
 Track

**BERNARD R. KOTCHIN**  
 Johnstown, Pa.  
 SECONDARY  
 Science, Social Studies



**ROY ALFRED KRESS, JR.**  
 Lock Haven, Pa.  
 SECONDARY  
 Mathematics, Science  
 Delta Rho Beta  
 Boxing 2, 3  
 Naturalist Club  
 Education Club

**JEAN ELIZABETH KUNES**  
 Blanchard, Pa.  
 KINDERGARTEN-PRIMARY  
 Sigma Sigma Sigma  
 A.C.E.  
 Panhellenic Council  
 W.A.A.



**JEANNE LEPLEY**  
 Winfield, Pa.  
 SECONDARY  
 Science, Mathematics  
 Dramatic Club  
 Y.W.C.A.

# PRAECO •

# • 1938

**JACK LIVINGSTON**  
Lock Haven, Pa.

SECONDARY  
Mathematics, History

Orchestra 1, 2, 3, 4  
Band 1, 2, 3, 4  
Dramatic Club 1, 2, 3, 4  
Delta Rho Beta 1, 2, 3, 4



**VERA LYONS**  
Williamsport, Pa.

KINDERGARTEN-PRIMARY

Education Club 2, 3, 4  
Bel Canto 1, 2, 3, 4  
Alpha Sigma Tau 1, 2, 3, 4  
Naturalist Club 3, 4



**JOSEPH McNERNEY**  
Lock Haven, Pa.

SECONDARY  
English, Latin

Education Club 2, 3, 4  
Dramatic Club 3, 4  
Y.M.C.A. 2  
English Club 4



**GINA MONTARSI**  
Lock Haven, Pa.

INTERMEDIATE  
W.A.A. 1, 2



**ROWLAND MYERS**  
Williamsport, Pa.

SECONDARY  
Physical Education, Social Science

Football 1, 2, 3, 4  
Basketball 1, 2, 3  
Baseball 1, 2  
Varsity Club



**GLADYS ELIZABETH SHAFER**  
Lock Haven, Pa.

KINDERGARTEN-PRIMARY

Alpha Sigma Tau 1, 2, 3, 4  
Bel Canto 1, 2, 3, 4  
Y.W.C.A. 1, 2, 3, 4  
A.C.E. 2, 3, 4



**LOIS LONG**  
Altoona, Pa.

SECONDARY  
English, French

Education Club  
Dramatic Club  
French Club  
English Club

**WILLIAM R. McCOLLUM**  
Lock Haven, Pa.

SECONDARY  
Physical Education, Social Science

Varsity Club  
Naturalist Club  
Football  
Boxing

**JANE MERVINE**  
Lock Haven, Pa.

KINDERGARTEN-PRIMARY

Naturalist Club  
Art Club  
Sigma Sigma Sigma

**JOHN LEE MOYER**  
Morrisdale, Pa.

SECONDARY  
Physical Education, Social Science

Baseball 1, 2, 3, 4  
Basketball 1, 2, 3, 4  
Y.M.C.A.  
Naturalist Club

**HELEN E. NICHOLS**  
Reading, Pa.

KINDERGARTEN-PRIMARY

Y.W.C.A. 1, 2, 3, 4  
Naturalist Club  
Pi Kappa Sigma 1, 2, 3, 4  
A.C.E.

**HELENA MARIE SILAGYI**  
Portage, Pa.

SECONDARY  
Latin, English

Sigma Sigma Sigma 1, 2, 3, 4  
College Times 1, 2, 3, 4  
Dramatic Club 1, 2, 3, 4  
Education Club 2, 3, 4



**CHARLES SLONAKER**

Williamsport, Pa.

SECONDARY  
History, Biological Science

Education Club 2, 3  
Praeco Staff 2, 3  
Times Staff 1, 2, 3  
Y.M.C.A. 1, 2

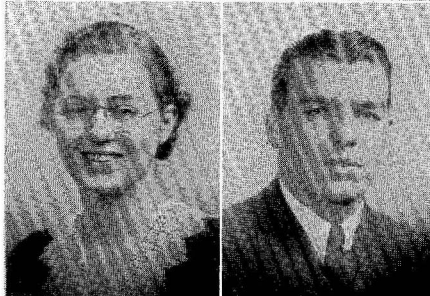


**HILDA M. SMITH**

Mill Hall, Pa.

SECONDARY  
English, French

Education Club 2  
French Club 3  
English Club 1  
Pi Kappa Sigma

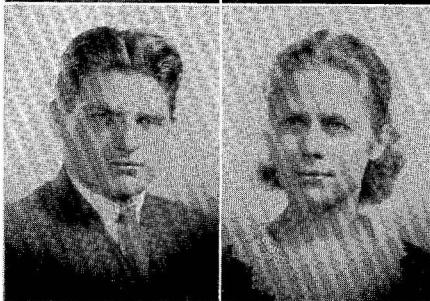


**ROBERT R. WEAVER**

Six Mile Run, Pa.

SECONDARY  
Physical Education, Social Studies

Physical Ed. Club  
Varsity Club  
Football  
Baseball

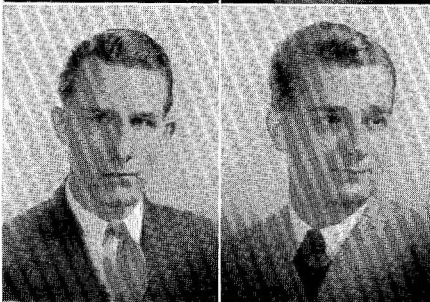


**JACK W. YOHE**

Jersey Shore, Pa.

SECONDARY  
Physical Education, Social Studies

Football 1, 2, 3, 4  
Track 1, 2, 3, 4  
Delta Rho Beta 1, 2, 3, 4  
Varsity Club 1, 2, 3, 4



**HARRY SMITH**

Lock Haven, Pa.

SECONDARY  
Physical Education, Social Studies

Football 1, 2  
Track 1, 2, 3  
Varsity Club  
Physical Education Club

**CHARLES O. WEAVER**

Six Mile Run, Pa.

SECONDARY  
English, Social Studies

Education Club 3, 4  
Dramatic Club 4  
Varsity Club 1, 2, 3, 4  
Naturalist Club 3, 4

**DORIS N. YARRISON**

Williamsport, Pa.

INTERMEDIATE

Art Club 2, 3, 4  
Alpha Sigma Tau 1, 2, 3, 4  
Praeco Staff 4  
Panhellenic Council 3, 4

**JOHN HARRY YOKEMICK**

Mount Carmel, Pa.

SECONDARY  
English, Social Studies

Football 1, 2, 3  
Boxing 1, 2, 3, 4  
Track 1, 2, 3  
Varsity Club 1, 2, 3, 4



**AMY LOUISE ZANER**

Avis, Pa.

SECONDARY  
French, Latin

Dramatic Club 1, 2, 3, 4  
French Club 2, 3, 4  
English Club 4  
Y.W.C.A. 1, 2, 3, 4





**CERTIFICATE GRADUATES**

**DORIS J. ANDERSON**  
Smethport, Pa.  
KINDERGARTEN-PRIMARY  
Alpha Sigma Tau  
Bel Canto Glee Club  
Y.W.C.A.  
W.A.A.



**CLARE G. ANTES**  
Altoona, Pa.  
KINDERGARTEN-PRIMARY  
Y.W.C.A. 1, 2  
Bel Canto Glee Club 1, 2  
Naturalist Club 1, 2  
Alpha Sigma Tau 2



**VIRGINIA M. BENNISON**  
Howard, Pa.  
INTERMEDIATE  
W.A.A. 1, 2  
Y.W.C.A. 1, 2



**JEAN K. BORTEL**  
South Fork, Pa.  
KINDERGARTEN-PRIMARY  
Alpha Sigma Tau  
Glee Club  
Y.W.C.A.  
A.C.E.



**MARGARET BURKE**  
Lilly, Pa.  
INTERMEDIATE  
Canterina Glee Club  
Dramatic Club  
W.A.A.



**HELEN A. DANDOIS**  
Emporium, Pa.  
PRIMARY  
W.A.A.  
Y.W.C.A.  
A.C.E.  
Canterina Glee Club



**MYRTLE P. ANDREWS**  
Tyrone, Pa.  
INTERMEDIATE  
College Times  
Bel Canto Glee Club  
Y.W.C.A.  
W.A.A.

**FERN T. BARNER**  
Freeburg, Pa.  
INTERMEDIATE  
Y.M.C.A. 1, 2

**F. ALENE BETTS**  
Avis, Pa.  
INTERMEDIATE  
Alpha Sigma Tau  
W.A.A.

**JANET E. BROUSE**  
Bellefonte, Pa.  
KINDERGARTEN-PRIMARY  
Pi Kappa Sigma  
W.A.A.  
A.C.E.

**ANNA L. CORMAN**  
Bellefonte, Pa.  
INTERMEDIATE  
Glee Club  
Soccer  
Hockey

**CLAIRE A. DAVIS**  
West Fairview, Pa.  
KINDERGARTEN-PRIMARY  
Y.W.C.A.  
Alpha Sigma Tau  
Bel Canto Glee Club  
A.C.E.

**ELLA L. DAVIS**  
Solebury, Pa.  
INTERMEDIATE  
W.A.A.  
Y.W.C.A.



**ARTHUR G. DOLAN**  
Nittany, Pa.  
INTERMEDIATE  
Y.M.C.A.



**KATHLEEN A. ECKERT**  
Johnsonburg, Pa.  
INTERMEDIATE  
W.A.A. 1, 2  
Canterina Glee Club 1  
Y.W.C.A. 1



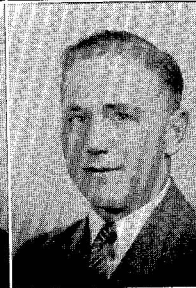
**DOROTHY ELISON**  
Montoursville, Pa.  
INTERMEDIATE  
Bel Canto Glee Club 2  
Y.W.C.A. 1, 2  
W.A.A. 2



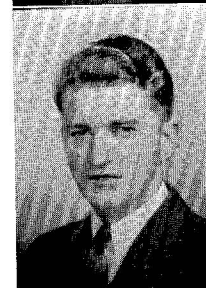
**VALMA FLUMAN**  
Williamsport, Pa.  
KINDERGARTEN-PRIMARY  
Y.W.C.A.  
A.C.E.



**RUSSELL M. FUGE**  
Morrisdale, Pa.  
INTERMEDIATE  
Y.M.C.A.



**W. GILES GALLAGHER**  
Kylertown, Pa.  
INTERMEDIATE  
Y.M.C.A. 1  
Cheer Leader 2



**DOROTHY GAUDIOSE**  
Lock Haven, Pa.  
ELEMENTARY  
College Times  
Y.W.C.A.  
W.A.A.  
Mixed Chorus



**GEORGINE L. GOTTSCHALL**  
Pottsville, Pa.  
INTERMEDIATE  
Sigma Sigma Sigma  
Dramatic Club  
Art Club  
Glee Club



**E. ALBERTA GUENTER**  
Coryville, Pa.  
INTERMEDIATE  
Dramatic Club 1, 2  
Y.W.C.A. 1, 2  
Canterina Glee Club 1, 2  
Alpha Sigma Tau 1, 2



**VIOLET M. GUNSALLUS**  
Lock Haven, Pa.  
INTERMEDIATE  
Canterina Glee Club  
W.A.A.  
Y.W.C.A.



**ESTHER HASTINGS**  
Avis, Pa.  
KINDERGARTEN-PRIMARY  
A.C.E.  
Y.W.C.A.  
W.A.A.





**MARY Z. HEISEY**  
 Jersey Shore, Pa.  
 INTERMEDIATE



**WARREN HOSTERMAN**  
 Coburn, Pa.  
 INTERMEDIATE  
 Y.M.C.A. 1, 2  
 Band



**CARMAN KEIM**  
 Hollsopple, Pa.  
 INTERMEDIATE  
 Band  
 Art Club



**LOUISE KIEFL**  
 Hooversville, Pa.  
 INTERMEDIATE  
 Y.W.C.A.  
 W.A.A.  
 Alpha Sigma Tau

**LOUISE KNEPP**  
 Woodland, Pa.  
 INTERMEDIATE  
 Dramatic Club  
 Art Club



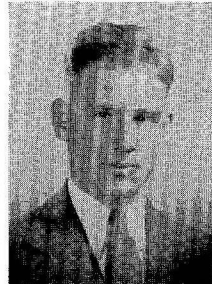
**S. NAOMI LEBO**  
 Altoona, Pa.  
 INTERMEDIATE  
 Canterina Glee Club 1  
 W.A.A. 2

**VIVIAN B. MARK**  
 Philipsburg, Pa.  
 KINDERGARTEN-PRIMARY  
 College Times  
 Dramatic Club  
 Canterina Glee Club  
 A.C.E.



**CHARLES F. MAUS**  
 Sidman, Pa.  
 INTERMEDIATE  
 Art Club 1, 2  
 Y.M.C.A. 1, 2

**JOHN E. MAUS**  
 Sidman, Pa.  
 INTERMEDIATE  
 Art Club 1, 2  
 Y.M.C.A. 1, 2



**WILLIAM McGARRY**  
 Curwensville, Pa.  
 INTERMEDIATE  
 Dramatic Club 1, 2

**ANITA D. MILLER**  
 Tylersville, Pa.  
 INTERMEDIATE  
 W.A.A. 2  
 Y.W.C.A. 1



**VIRGINIA MILLER**  
 Sidman, Pa.  
 KINDERGARTEN-PRIMARY  
 W.A.A. 1, 2  
 Y.W.C.A. 1



**HELEN F. MYERS**  
Ambridge, Pa.  
KINDERGARTEN-PRIMARY  
Art Club  
Times Staff  
A.C.E.



**JUNE ROGERS**  
Nittany, Pa.  
KINDERGARTEN-PRIMARY  
A.C.E. 1, 2  
Y.W.C.A. 2



**ROMAYNE M. RUDDY**  
Scranton, Pa.  
KINDERGARTEN-PRIMARY  
Art Club  
A.C.E.  
W.A.A.



**DOROTHY SHULTZ**  
South Fork, Pa.  
KINDERGARTEN-PRIMARY  
A.C.E.  
Y.W.C.A.  
W.A.A.



**MARGARETTA STRAYER**  
Flinton, Pa.  
KINDERGARTEN-PRIMARY  
Bel Canto Glee Club 1, 2  
Naturalist Club 1, 2  
Y.W.C.A. 1, 2  
W.A.A. 1, 2



**MADGE TRAMBLEY**  
Johnsonburg, Pa.  
INTERMEDIATE  
Sigma Sigma Sigma



**CAROLINE V. PARKES**  
Philipsburg, Pa.  
INTERMEDIATE

**BETTY ROTHERMEL**  
Norristown, Pa.  
KINDERGARTEN-PRIMARY  
Dramatic Club  
A.C.E.  
Pi Kappa Sigma

**JUDY L. SEMBER**  
Central City, Pa.  
INTERMEDIATE  
Canterina Glee Club 1  
W.A.A. 1, 2

**ELEANOR SMITH**  
Snow Shoe, Pa.  
INTERMEDIATE  
Sigma Sigma Sigma  
Dramatic Club  
W.A.A.

**HORACE B. THOMAS**  
Blandburg, Pa.  
INTERMEDIATE  
Football 1, 2  
Boxing 1, 2  
Baseball 1

**MARCELLA ULSH**  
Port Trevorton, Pa.  
INTERMEDIATE  
Basketball  
Soccer

1938 •

**MARJORIE E. WOODS**  
Clearfield, Pa.  
KINDERGARTEN-PRIMARY  
Bel Canto Glee Club 1, 2  
W.A.A. 1, 2



• **PRAECO**

**FLORENCE E. YARGER**  
Osceola Mills  
INTERMEDIATE  
W.A.A.

**VIVIAN C. YOUNG**  
Williamsport, Pa.  
INTERMEDIATE  
W.A.A.  
Y.W.C.A.

**ANN STOVER**  
Lewisburg, Pa.  
INTERMEDIATE  
College Times  
Canterina Glee Club

**GLADYS R. WOODCOCK**  
Altoona, Pa.  
INTERMEDIATE  
Canterina Glee Club  
Y.W.C.A.

## IN MEMORIAM

M. DETURK HIGH

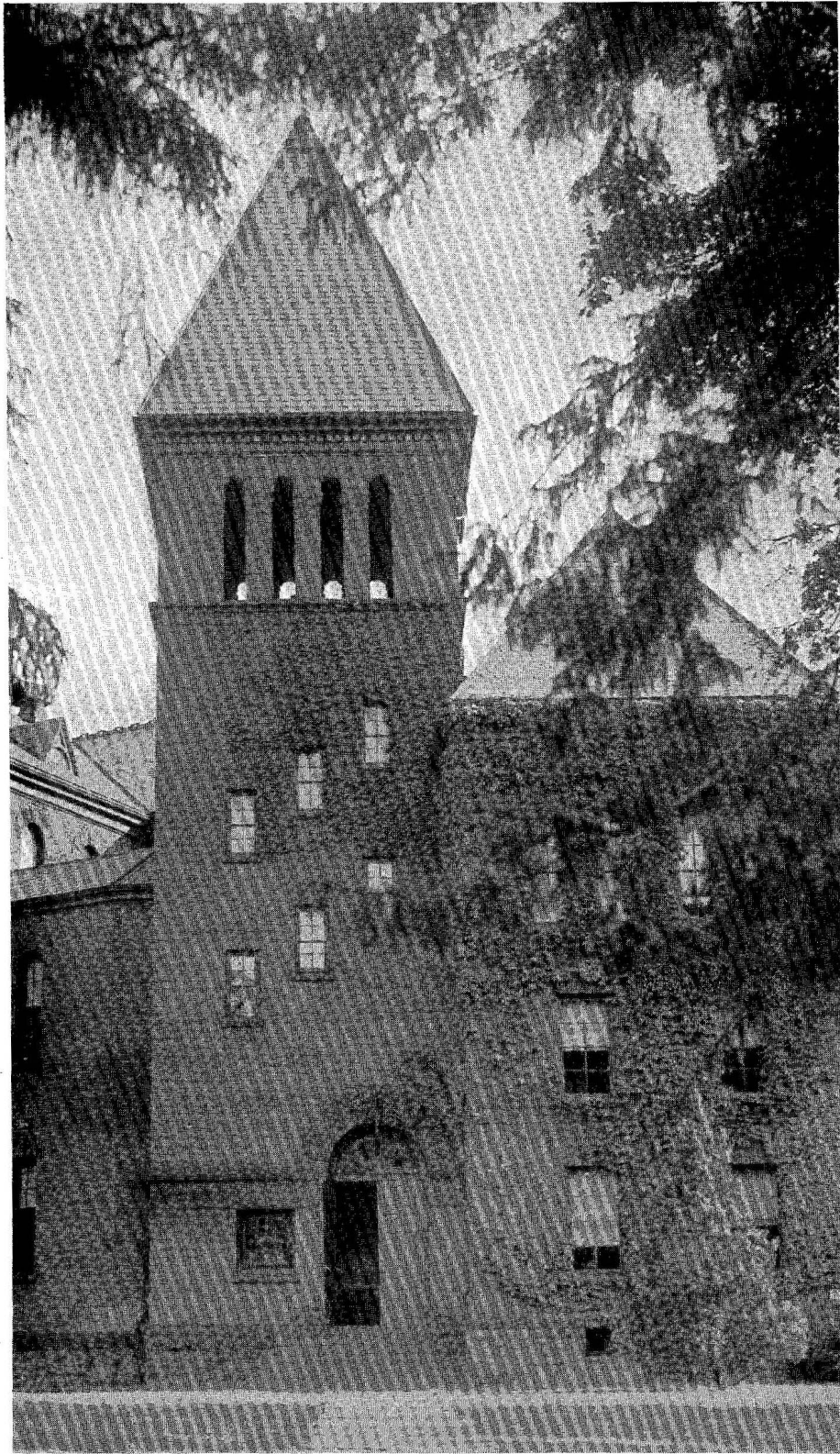
Instructor and Dean  
1904-1936

FRANK E. RITTER

Bursar 1917-1938

INEZ DIEFFENBACH

Class of 1938



# UNDERGRADUATES





## Junior Class

Early in the year the Juniors began to plan for their one big activity, the Junior Prom. Careful considerations were given to the choice of orchestra and to the type of decorations. The result of this meticulous preparation was one of the most successful Junior Proms that Lock Haven has ever had. The Prom was held on April ninth with Bill Bottorf's orchestra supplying the rhythm.

Ruth Simon and Richard Hoy were elected to represent the class on the Student Co-operative Council.

## Junior Class

President.....SMITH HARVEY  
Vice-President.....WALTER MONTAGUE  
Secretary.....GERALDINE MERTZ  
Treasurer.....GEORGE BLUHM

### ADVISER

Mr. Richard E. Parsons

Helen Adams  
George Bailey  
Hugh Bagley  
Anna Banzhaf  
Faulcon Blankenship  
Charles Bonebreak  
James Buzzelli  
Ollie Byers  
Katharine Campbell  
Ruth Conn  
Madeline Deise  
Dorothy Duck  
Arthur Duckett  
Florence Duke  
Nolan Emery  
Rita Fleming  
Audrey Foor  
D. June Freed  
Robert Fuller  
Florence Galante  
Eula Glossner  
Myra Glossner

John Graden  
Agnes Green  
Paul Grieco  
James Harrington  
Mary Heckel  
Mary K. Hershberger  
Pauline Higgins  
William Hopkins  
Richard Hoy  
Raymond Kniss  
Edward Kolner  
Mary Kress  
John Kruper  
John Linebaugh  
Helen Louise Love  
Joseph Lucas  
Marguerite McCollum  
Robert Mannion  
Frank Marzzacco  
Irene Meyer  
Madeline Miller  
John Nevins

Walter Nolan  
Jeanette Pattison  
Joseph Ponuchalek  
Katherine Rees  
Woodrow Rohrbaugh  
George Ross  
Joseph Sarafinski  
Louise Selleck  
Jane Seltzer  
Ruth Simon  
William Smith  
Leroy Spotts  
Jane Stehman  
Peggy Stouck  
Sara Sykes  
Horace Thomas  
Mary Varner  
Stanley Vinscavich  
Hannah Wesesky  
Mildred White  
Beatrice Williams  
Mary Jane Yost



## Sophomore Class

Having survived our Freshman year we hoped, as ambitious Sophomores, to blaze a trail for the other classes to follow. The Sophomore Hop, being the first big dance of the year, was the first step toward this objective. The decorations in blue and white appropriately represented a winter scene. Music was provided by "Howdy" Becker and his versatile orchestra.

In the spring Elizabeth Ernst and Joseph Whittaker were elected to represent the class on the newly-formed Student Cooperative Council.



## Sophomore Class

President.....	ROBERT SHERMAN
Vice-President.....	MARION ARNDT
Secretary.....	CLARE ANTES
Treasurer.....	CLYDE HUSTON

### ADVISER

Mr. S. J. Smith

Doris Anderson	Giles Gallagher	Virginia Miller
Myrtle Andrews	Dorothy Gaudiose	Peter Mollura
Fern Barner	Gordon Giles	Olga Moravek
Ruth Barner	Georgine Gottschall	Helen Meyers
Virginia Bennison	Helen Greenman	Richard Ohl
Alene Betts	Alberta Guenter	Caroline Parkes
Jean Bortel	Violet Gunsallus	Dorothy Pipes
James Bowes	Phyllis Harbach	Frederick Pletcher
John Bowes	Esther Hastings	Helen Rickard
Loris Bowlby	Mary Heisey	June Rogers
Seymour Brantner	Stella Herman	Martha Jane Rohe
Phillip Bressler	Jacob Hodes	Betty Rothermel
William Bressler	Teddy Horton	Romayne Ruddy
Janet Brouse	Warren Hosterman	Catherine Roekkel
Marian Brown	Elizabeth Hughes	Judy Sember
Shirley Byrol	Jane Johnson	Harold Shaw
Margaret Bush	Selecta Johns	Dorothy Shultz
Margaret Burke	John Kalinowski	Eleanor Smith
Dorothy Caprio	Carmen Keim	Andrew Sterrett
Eleanor Caprio	Schuyler Keister	Margaretta Strayer
Anna Louise Corman	Louise Kiefl	Vance Tibbens
Helen Dandois	Michael Kolivosky	Madge Trambley
Ruth Datesman	Marie Kraemer	Marcella Ulsh
Claire Davis	Robert Krone	Helen Walko
Ella Davis	John LaRosa	Hugh Waltman
Marion Deise	Faye Laubscher	DeRonda Weakland
Catherine Dieffenderfer	Naomi Lebo	Ferd Wetzel
Arthur Dolan	Emma Lloyd	Joseph Whittaker
Jean Dykens	Merle Long	Marguerite Wiedhahn
Kathleen Eckert	Lillian McCloskey	Doris Winand
Dorothy Elison	William McGarry	Marjorie Woods
Elizabeth Ernst	Gladys Mapstone	Florence Yarger
Ethel Evancoe	Vivian Mark	Fred Yon
Richard Eyer	Charles Maus	Earl Young
Leona Fern	John Maus	Vivian Young
Valma Fluman	Mildred Menge	Frances Zerbe
Russell Fuge	Anita Miller	Lorna Zettle



## Freshman Class

On September 7, 1937, an awkward group of Freshmen invaded Lock Haven campus. Of course they didn't know what they wanted, or why they were here. But it didn't take them long to discover themselves.

Along with their studies they have had many pleasures. A full week of activities had been planned for them, and they were kept busy every minute of it. The all-college "Get Acquainted Dance" enabled them to make their debut into the college's social life.

On November 12, they gathered in the gymnasium as a class for their first party. They had much fun playing various games, dancing, and getting acquainted. On March 12, 1938, the class sponsored a successful all-college dance.

This freshman class gives promise of setting the pace on our campus the next three years!

## Freshman Class

President .....	ROBERT MARSHALL
Vice-President .....	FRANCES MERRILL
Secretary .....	DENE HOCKER
Treasurer .....	MARY E. LOVETT

### ADVISER

Miss Dorothy Deach

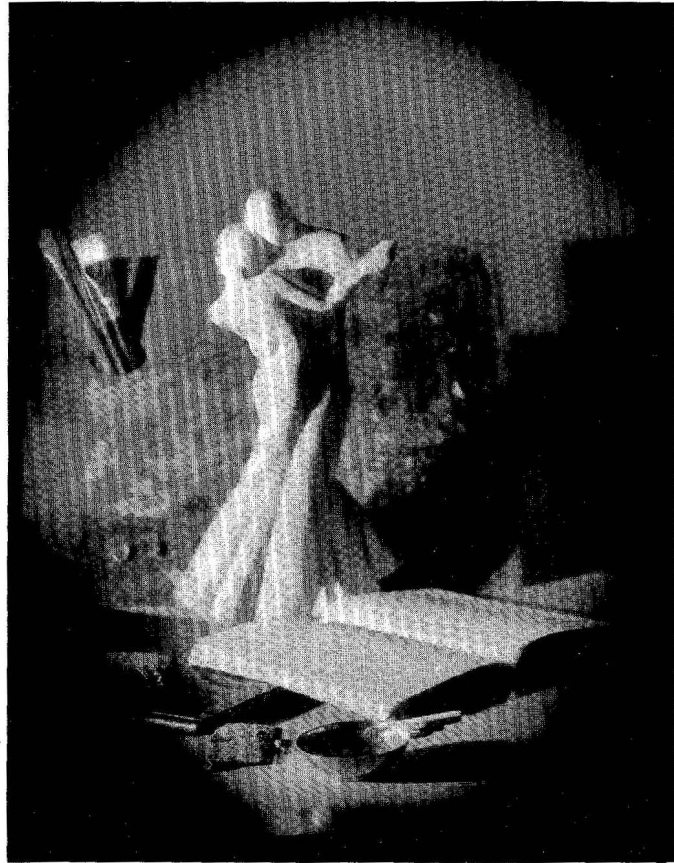
Bruce Adams	Evald Johnson	Thomas Ramsey
Max Ammerman	William Kernan	Kathleen Rice
Phyllis Aurand	Martha Kerns	Betty Roach
Helen Beckenbaugh	Martha Kisner	Charles Rohart
Roger Bickford	Ruth Klewans	Irving Roster
Margaret Bock	Joseph Kobilarcsik	Dominic Sagolla
Marion Bockenewck	John Kunkle	Edward Saiers
Robert Bowes	Lawrence Lenig	Maurice Salada
Richard Brown	Ralph Link	Hubert Scott
Esther Crisman	Phyllis Longenecker	Dorothy Sheasley
Freda Cromer	Mary McCollum	Jane Shull
Donald Croushore	Ruth McConnell	William Skerpon
Mildred Crust	Pauline McCloskey	Robert Slenker
Kathryn Dale	Helen McCloskey	Walter Sikora
Robert Deem	Eugene McCramer	Betty Lou Smith
Stanley Doblax	Mary J. McKeever	Marjorie Sprankle
Mary Donnelly	Rita McNally	Sylvia Speece
Charlotte Figgles	William Masterson	Eugene Springman
Harriet Figgles	Bette Meyers	John Stehman
Kathryn Frey	Arnold Miller	Phyllis Stewart
Philip Fromm	Virginia Montgomery	Helen Stine
Rosamond Glass	John Myers	Marian Tobias
Miriam Gouse	Charles Norlund	Barnett Underwood
Rae Gundlach	Elizabeth Ogden	Lois Wagner
Dorothy Heller	Loreta Petrucci	Hazel Wells
Betty Jane Hoover	Lester Pipes	Marshall Wisor
Edward Hoover	Margaret Priest	Robert Wickman
Robert Hosterman	John Quigley	Evangeline Whitford
Louise Jacobus		Donna Wood



## Class Highlights

1937—1938

Sept.	7-10	Freshmen Orientation Week Reception and assignment to rooms Assemblies Meeting with City Ministerium Tea Theatre Party Placement Tests Get-Acquainted Party
Oct.	2	Homecoming Day
Oct.	6	Assignment of Freshmen Student Counselors
Oct.	30	All-School Hallowe'en Party
Dec.	4	Sophomore Hop
Dec.	21	All-School Christmas Party
Feb.	5	Senior Ball
Mar.	11	Freshman Frolic
April	9	Junior Prom
May	21	Alumni Day
May	17-24	Senior Week
May	22	Baccalaureate Sermon
May	23	Senior Class Day Tree Planting Ceremonies Garden Party Banquet
May	24	Commencement



## ACTIVITIES







## Education Club

President.....	JOSEPH McNERNEY
Vice-President.....	PAULINE BARROWS
Secretary.....	HELENA SILAGYI
Treasurer.....	CAROLINE BROWN

### ADVISER Dr. A. S. Rude

George Bluhm  
Ruth E. Bower  
Ruth Crowley  
Madeline Deise  
Florence Duke  
Nolan Emery  
Alice Fredericks  
June Freed  
Ruth Freeman  
Agnes Green  
Smith Harvey  
Roy Kress

Lois Long  
Vera Lyons  
Marguerite McCollum  
Joseph Ponuchalek  
Woodrow Rohrbaugh  
Louise Selleck  
Jane Seltzer  
Ruth Simon  
Charles Slonaker  
Hilda Smith  
Sara Sykes  
Charles Weaver  
Hannah Wesesky

The Education Club, organized in 1928, has the ideals of high scholarship and of professional interest. To promote these Dr. Flowers, Miss Deach, Miss Beck, Mr. Patterson, and Mr. Coxe were invited by the club to pertinent professional discussions at regular meetings of the organization.

Several social meetings, fall and spring picnics were enjoyed. The annual banquet was held at the Dutch Inn in May. A marionette show, *The Pied-Piper of Hamelin*, conducted by C. Ray Smith was sponsored by the club for children of the community.

The crowning feature of the year was the affiliation with Kappa Delta Pi, National Honorary Fraternity in Education.



## Association for Childhood Education

President.....HELEN EYERLY  
 Vice-President.....KATHRYN CAMPBELL  
 Secretary.....VERA LYONS  
 Treasurer.....RUTH DATESMAN

### ADVISER

Miss Elizabeth Faddis

Doris Anderson  
 Marian Arndt  
 Ruth Baughman  
 Jean Bortel  
 Loris Bowbly  
 Janet Brouse  
 Esther Crisman  
 Freda Cromer  
 Helen Dandois  
 Madeline Deise  
 Mary Donnelly  
 June Freed

Esther Hastings  
 Dene Hocker  
 Betty Hughes  
 Mary Kress  
 Jean Kunes  
 Mary Lovette  
 Vivan Marks  
 Marguerite McCollum  
 Virginia Miller  
 Mary J. McKeever  
 Helen Myers  
 Helen Nichols  
 Elizabeth Ogden

Jeanette Pattison  
 Margaret Priest  
 Martha Jane Rohe  
 June Rogers  
 Betty Rothermel  
 Romaine Ruddy  
 Louise Selleck  
 Jane Shull  
 Dorothy Shultz  
 Margaretta Strayer  
 De Ronda Weakland  
 Evangeline Whitford

The Association for Childhood Education is a national organization with its headquarters in Washington, D. C. The Lock Haven branch has had a very successful year.

### PROGRAM FEATURES OF THE CURRENT YEAR:

Kiddies' Party  
 Mothers' Tea  
 Talks—Mr. Patterson, Mrs. Seltz, and Miss Bryerton  
 Santa Claus Work Shop  
 Valentine Party  
 Egg Rolling Party for Children  
 Farewell Party for Seniors  
 Miss Marjorie Hardy of Germantown Friends School visited us in March.



## English Club

Permanent Chairman.....GERALDINE MERTZ  
 Secretary.....ALICE FREDERICKS

### ADVISERS

Dr. W. R. North                      Mr. R. T. Parsons

Ruth Bower  
 Caroline Brown  
 Shirley Byrol  
 Ruth Crowley  
 Florence Duke  
 Elizabeth Ernst  
 Leona Fern  
 Rita Fleming  
 Ruth Freeman  
 George Frethy  
 Lydia Furst  
 Florence Galante

Agnes Green  
 Mary Hand  
 Earling Hauge  
 Mary Heckel  
 Leonard Johnsonis  
 Lois Long  
 Lillian McCloskey  
 Joseph McNeerney  
 Mildred Menge  
 Charles Norlund  
 Loretta Petrucci

Joseph Ponuchalek  
 Helen Rickard  
 Catherine Roeckel  
 Jane Seltzer  
 Helena Silagyi  
 Ruth Simon  
 Hilda Smith  
 Phyllis Stewart  
 Charles Weaver  
 Hannah Wesesky  
 Marguerite Wiedhahn  
 Amy Zaner

The English Club is one of the new clubs which have appeared on campus this year. Its organization is very informal, having no constitution, no set dues, and no officers except a chairman and a secretary.

At our meetings, which are held on the first Friday of each month, we have a program and entertainment pertaining to some phase of literary activity.

Our guest speakers this year were Miss Rebecca Gross and Mr. Edward B. Hills. Miss Gross spoke of her visit to some of the literary centers of England, and Mr. Hills discussed contemporary literature. The remainder of our meetings have been devoted to group discussions of contemporary novels, Christmas legends, and other subjects related to literature.





## French Club

President ..... RUTH SIMON  
 Vice-President ..... MILDRED MENGE  
 Secretary ..... FLORENCE GALANTE  
 Treasurer ..... RITA FLEMING

### ADVISER

Dr. Kenton Vickery

Ruth E. Bower  
 Rebecca Confer  
 Franklin Courter  
 Audrey Foor  
 Marian Deise  
 Dorothy Duck  
 Agnes Green  
 Richard Hoy  
 Michael Kolivosky

Breon Lauderbach  
 Lois Long  
 Joseph McNerny  
 Katherine Rees  
 Helen Rickard  
 Hilda Smith  
 Charles Weaver  
 Hannah Wesesky  
 Marguerite Wiedhahn  
 Amy Zaner

La Societe Rambouillet ne se propose pas seulement d'etre un cercle francais, mais au dela de ce but assez retreci de s'occuper autant que possible de toute chose d'interet general. En cela elle suit l'exemple des grandes salons litteraires parisiens, dont le plus celebre lui a fourni son nom.



## Art Club

President.....	DORIS YARRISON
Vice-President.....	VERA LYONS
Secretary.....	HELEN WALKO
Treasurer.....	MADELINE DEISE

### ADVISER

Miss Edna A. Bottorf

Ruth Baughman  
 Ruth Barner  
 Ruth Conn  
 Ruth Datesman  
 Jean Dykens  
 Doris Evans  
 Audrey Foor  
 Georgine Gottschall  
 John Graden  
 Kenneth Hoover  
 Teddy Horton  
 Carmen Keim

Sally King  
 Marie Kraemer  
 Mary Kress  
 Margaret McCollum  
 Charles Maus  
 John Maus  
 Jane Mervine  
 Helen Myers  
 Romaine Ruddy  
 Louise Selleck  
 Anna Stone  
 Sara Sykes  
 Lorna Zettle

The Art Club is an organization which aims to give anyone who is interested in art the opportunity to appreciate the work of others and to produce work of his own.

A regular series of exhibitions of student work, of prints, and of originals by contemporary American artists are sponsored by the club each year. Regular bi-monthly meetings are given over to working on individual projects.

One of the high spots of the year for several members was a week-end trip to New York City where they visited the Metropolitan Art Museum, Rockefeller Center, and Chinatown.

In April the annual spring banquet was held for all active and alumni members.



## Bel Canto Choral Club

President.....	JUNE FREED
Vice-President.....	CLAIRE DAVIS
Recording Secretary.....	JEANNETTE GROUT
Point Secretary.....	RUTH CONN
Treasurer.....	DORIS ANDERSON
Librarians.....	FLORENCE DUKE, PAULINE HIGGINS
Accompanist.....	VERA LYONS

### ADVISER

Miss Grace Ullmeyer

### FIRST SOPRANOS

Doris Anderson  
Anna Banzhaf  
Ruth Conn  
Claire Davis

Margaret Griffith  
Dorothy Heller  
Mary K. Hershberger  
Emma Lloyd

Mary J. McKeever  
Gladys Shaffer  
Helen Louise Stine  
Anna Stone

### SECOND SOPRANOS

Myrtle Andrews  
Clare Antes  
Jean Bortel

Dorothy Elison  
Harriet Figgles  
June Freed  
Ruth Freeman

Jeannette Grout  
Helen Rickard  
DeRonda Weakland

### ALTOS

Ruth E. Bower  
Florence Duke  
Jean Dykens  
Mary Hand

Pauline Higgins  
Gladys Mapstone  
Martha Jane Rohe

Ruth Simon  
Sylvia Speece  
Margaretta Strayer  
Phoebe Varner

The school year of 1937-38 meant for the Bel Cantos fun and work; they gave twenty public performances and their annual Spring Concert. A system of permanent awards based on the number of years of faithful membership in the club was inaugurated. The Spring Dinner Dance was held April the ninth. Many alumnae returned for the joyous occasion.





## Canterina Glee Club

President.....	JEANNETTE PATTISON
Vice-President.....	ALBERTA GUENTER
Recording Secretary.....	HELEN GREENMAN
Point Secretary.....	PHYLLIS STEWART
Treasurer.....	DENE HOCKER
Librarians.....	JANE SHULL, GLADYS WOODCOCK

### ADVISER

Miss Grace Ullemeyer

Ruth Barner  
 Marion Bocknewck  
 Margaret Burke  
 Rebecca Confer  
 Esther Crisman  
 Freda Cromer  
 Mildred Crust  
 Catherine Dale  
 Helen Dandois  
 Oleta Donnelly  
 Doris Evans  
 Charlotte Figgles  
 Katherine Frey  
 Rae Gundlach  
 Violet Gunsallus

Beulah Herrold  
 Betty Jane Hoover  
 Louise Jacobus  
 Martha Kisner  
 Mary E. Lovett  
 Ruth McConnel  
 Rita McNally  
 Frances Merrill  
 Bette Meyers  
 Virginia Montgomery  
 Elizabeth Ogden  
 Betty Lou Smith  
 Marion Tobias  
 Hazel Wells  
 Evangeline Whitford

This organization is open to all girls interested in choral singing. During the year the members enjoyed several social functions, a weiner roast, and a Christmas luncheon. Canterina joined with Bel Canto and the Freshman Speech classes in producing "The Other Wise Man". They appeared in several public performances in near-by towns and cities and presented their annual spring concert on campus.



## Chi Kappa Sigma

President.....	JOSEPH McNERNEY
Vice-President.....	GEORGINE GOTTSCHALL
Secretary.....	DORIS WINAND
Treasurer.....	KATHERINE CAMPBELL
Honor Chairman.....	JEANNE LEPLRY
Honor Secretary.....	LOIS LONG
Press Representative.....	HELENA SILAGYI

### ADVISER

Miss C. Cordelia Brong

### FORUM CHAIRMEN

Costumes.....	MARY HAND
Make-up.....	MARIE KRAEMER
Play Reading.....	LOIS LONG
Directors.....	JOSEPH McNERNEY
Play Writing.....	MICHAEL KOLIVOSKY
Staging.....	WILLIAM McGARRY, SARA SYKES

### LEADERS IN PLAY PRODUCTION

Chief Electrician.....	WILLIAM BROWN
Property Mistress.....	JEAN DYKENS
House Manager.....	WILLIAM HOPKINS
Head Usher.....	DORIS WINAND

## MEMBERS

Phyllis Aurand	Mary Heckel	Elizabeth Ogden
Helen Beckenbaugh	Stella Herman	Margaret Priest
Robert Bowes	Dene Hocker	Thomas Ramsey
William Brown	James Hopkins	Katherine Rice
Margaret Burke	William Hopkins	Betty Rothermel
Shirley Byrol	Oliver Kling	Marguerite Saiers
*Catherine Campbell	*Louise Knepp	Maurice Salada
Esther Crisman	Michael Kolivosky	Dorothy Sheasley
*Ruth Crowley	Marie Kraemer	Jane Shull
Robert Deem	*Jeanne Lepley	Helena Silagy
Florence Duke	Ralph Link	Betty Lou Smith
Jean Dykens	Jack Livingston	Eleanor Smith
Helen Eyerly	*Lois Long	Phyllis Stewart
Leona Fern	Mary E. Lovett	*Sara Sykes
Charlotte Figgles	Helen McCloskey	Lois Wagner
Harriet Figgles	Mary McCollum	Marguerite Weidhahn
Katherine Frey	William McGarry	Hannah Wesesky
Georgine Gottschall	*Joseph McNerney	Evangeline Whitford
Margaret Griffith	William Masterson	Doris Winand
Alberta Guenter	Vivian Mark	Donna Wood
Rae Gundlach	Mildred Menge	Amy Zaner
*Mary Hand	I. B. Nolan	Lorna Zettle
*Key Members	Charles Norlund	

For the past two years the aim of Chi Kappa Sigma has been to serve all of the members of the college who are interested in the various phases of dramatics. To achieve a functional activity a system of forums has been instituted in which members pursue their interests in directing, staging, costuming, play-reading, play-writing, and make up. An enlarged governing board, which transacts the business, outlines principles, and plans for future developments, has secured the permanence of the organization. Consequently, the forum and regular meetings have been devoted entirely to dramatics and social enterprises.

Early in the year a one-act English drama, "The Forfeit", by T. B. Rogers, was given by the Inner-Circles. Immediately following this the "Debs" presented "The Wonder Hat", a fantasy by Goodman and Hecht, against an elaborate background designed and executed by members of the stage forum. During the Christmas season the entire club cooperated with Miss Brong, Miss Ullemeyer, and the Bel Cantos in producing in pageant form Van Dyke's "The Story of the Other Wise Man". The acting and scenic effects of this presentation were unusually effective. Especially interesting was the innovation of symbolic staging. The tragedy, "Children of the Moon" by Martin Flavin, was offered for the public in March. This play, also produced through the combined efforts of all forums, was an outstanding success. The dramatic year was brought to a close with several one-act plays intended to serve as sources of dramatic study for prospective teachers. Of these, two were directed by senior members of the director's forum. Lois Long made her debut as a director with the charming one-act offering, "Indian Summer" by Jacques Helevy and Henri Meilhac. Ruth Crowley's production, "Three Pills in a Bottle", by Rachael Field, delighted an audience of children as well as adults.

Chi Kappa Sigma is the largest organization on the college campus. At present sixty-eight students have earned inner-circle membership.





## The Shakespeare Literary Society

President.....	RUTH FREEMAN
Vice-President.....	RAYMOND KNISS
Manager of Debate.....	RAYMOND KNISS
Secretary.....	LOIS LONG
Treasurer.....	HUGH BAGLEY

### ADVISER

Dr. Harry F. Weber

James Brown  
 Florence Galante  
 Charles Norlund  
 Charles Slonaker  
 Betty L. Smith  
 Helen L. Stine

The Shakespeare Literary Society holds the distinction of being the oldest organization on campus. Many of the former activities of the Shakespeare Literary Society have been taken over by other clubs, so that its main purpose this year has been to further debating and an interest in the study of the works of Shakespeare.

This year's forensics consisted of symposiums in assembly and ten regular debates with other colleges: Slippery Rock, California, and Kutztown State Teachers Colleges, Westminster College, Akron University, Geneva College, and Hiram College on the subject, "Resolved: That the National Labor Relations Board be empowered to enforce arbitration in all industrial disputes."

In the future the Shakespeare Society hopes to enlarge its debating program and engage in platform discussions such as: chiasmics, symposiums, yoke sessions, panels, and forums.





## Student Activity Council

President.....SMITH HARVEY  
 Vice-President.....ROBERT MARSHALL  
 Secretary-Treasurer.....MR. M. L. HUDSON

Miss Dorothy Deach  
 Earling Hauge  
 Mr. George Lehman  
 Mr. Richard Parsons  
 Robert Sherman  
 Mr. Samuel Smith

The presidents and advisers of the four classes, who comprise the membership of The Student Activity Council, have had the responsibility for the past five years of administering the Student Activity Fee funds in the promotion of the enrichment of extra-curricular programs.

The Council sings its "Swan Song" this year, as its functions next year are to be absorbed by the newly-created Student Cooperative Association.



## Women's Student Government Association

### THE DORMITORY COUNCIL

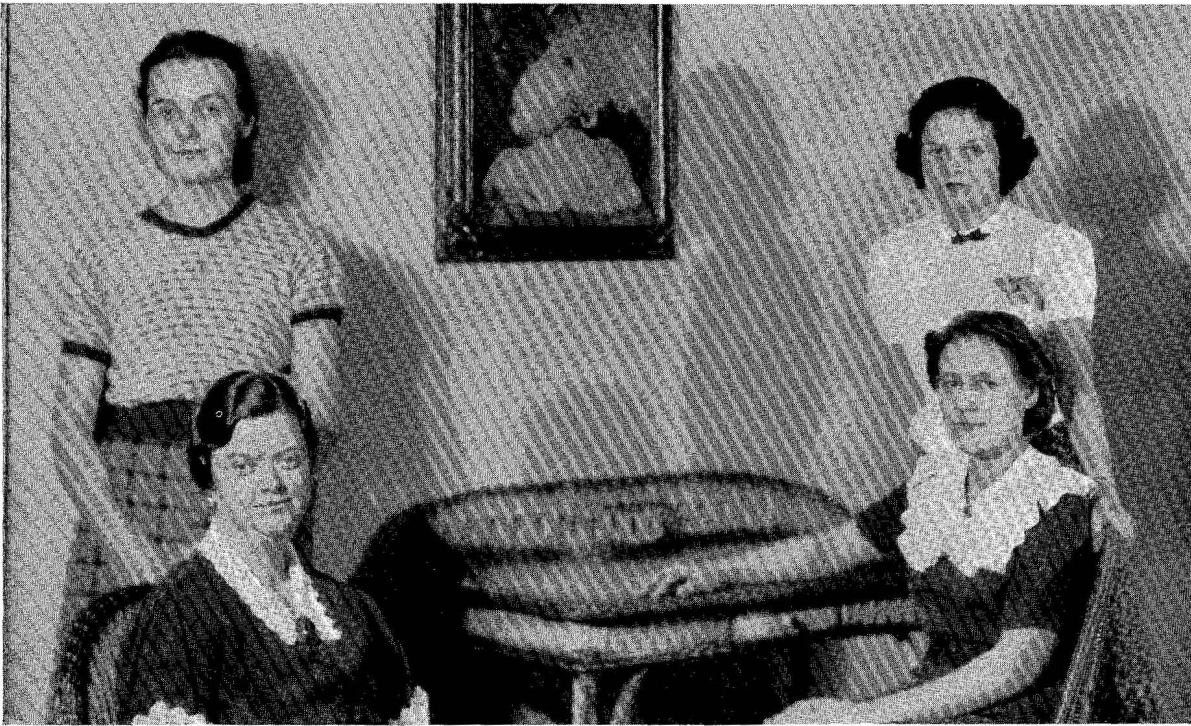
President.....	MARTHA HALBROCK
Vice-President.....	MOLLIE BUYINGER
Secretary.....	CLARE ANTES
Treasurer.....	GERALDINE MERTZ
Senior Representative.....	VERA LYONS
Junior Representative.....	LOUISE SELLECK
Sophomore Representative.....	DORIS WINAND

### ADVISER

Miss Genevieve Poole

This organization is one composed of all dormitory girls. At the end of each school term the girls elect four officers for the following year. These officers and one representative from each class meet as a council to direct, control, and foster wholesome dormitory life.

Social functions such as evening dances, parties, and teas are sponsored by the Association. This year, in addition to the usual activities, it has helped furnish social rooms in the girls dormitory and has served refreshments each night at ten during examination week.



## Non-Resident Women's Student Association

President.....AMY LOUISE ZANER  
 Vice-President.....MYRTLE ANDREWS  
 Secretary-Treasurer.....MARY KRESS

ADVISER  
 Miss Genevieve Poole

This year the Non-Resident Women's Student organization under the leadership of its officers undertook its greatest project, the furnishing of the new Women's Lounge. With the encouragement of Dr. Flowers and Miss Poole and the contributions of several organizations and friends, this attractive and much-needed room was made ready for use before the Christmas holidays.

Frequent meetings of the group and occasional meetings of the Council gave opportunity to discuss and solve the group's problems.

A St. Patrick's Day Luncheon headed the list of its social affairs.





## Alpha Sigma Tau

President .....	DORIS YARRISON
Vice-President .....	JUNE FREED
Recording Secretary .....	DeRONDA WEAKLAND
Corresponding Secretary .....	LOUISE SELLECK
Treasurer .....	PAULINE BARROWS

### ADVISERS

Miss Edna A. Bottorf      Mrs. R. S. MacDougall

Doris Anderson  
Clare Antes  
Anna Banzhaf  
Ruth Barner  
Alene Betts  
Jean Bortel  
Marion Brown

Ruth Conn  
Ruth Datesman  
Claire Davis  
Jean Dykens  
Elizabeth Ernst  
Leona Fern  
Eula Glossner

Alberta Guenter  
Clee Howe  
Louise Keifl  
Emma Lloyd  
Vera Lyons  
Gladys Shaffer  
Marguerite Wiedhahn

### PLEDGES

Myrtle Andrews  
Phyllis Aurand  
Helen Beckenbaugh  
Shirley Byrol  
Phyllis Harbach

Martha Kerns  
Ruth McConnell  
Gladys Mapstone  
Virginia Montgomery

Loreta Petrucci  
Margaret Priest  
Dorothy Sheasley  
Betty Lou Smith  
Phyllis Stewart

Alpha Sigma Tau is the oldest national organization on campus. The business of the sorority is carried out at weekly meetings which often close with discussions of school and social problems.

A get-to-gether party in the fall, a cabin party in October, a Christmas party, rushing season parties, the annual alumni banquet in the spring, and other outings from time to time provided a full calendar of social activities.

Good fellowship, good scholarship, womanliness, and school spirit are some of the aims of Alpha Sigma Tau.



## Pi Kappa Sigma

Colors—BLUE AND GOLD

Flower—JONQUIL

President.....	HELEN EYERLY
Vice-President.....	RUTH E. BOWER
Corresponding Secretary.....	MADLINE DEISE
Recording Secretary.....	MARGUERITE McCOLLUM
Treasurer.....	HILDA SMITH

### ADVISER

Miss Elizabeth Faddis

### PATRONESS

Mrs. W. Max Bossert

Marian Arndt  
Ruth Baughman  
Loris Bowlby  
Janet Brouse  
Mollie Buvinger

Marian Deise  
Agnes Green  
Jeannette Grout  
Martha Halbrock  
Jane Johnson  
Irene Meyer

Olga Moravek  
Helen Nichols  
Martha J. Rohe  
Ruth Simon  
Jane Stehman

### PLEDGES

Jean Helman  
Dene Hocker  
Pauline McCloskey

Mary McCollum  
Mary J. McKeever  
Betty Rothermel

Sylvia Speece  
Helen L. Stine  
Helen Walko

As a sorority Pi Kappa Sigma always endeavors to maintain the standards of the college and high ideals of scholarship, and to uphold the ethical and social values upon which the constitution of the sorority is established.

This year Pi Kappa Sigma awarded its annual scholarship award to Mary Hand of Lock Haven, Pennsylvania. The Scholarship is awarded each year to cover the second semester's tuition for a non-sorority senior girl who is selected on the basis of scholarship, character, professional promise, and general contribution to the college.



## Sigma Sigma Sigma

Colors—PURPLE AND WHITE

Flower—VIOLET

President.....	JEAN KUNES
Vice-President.....	HELENA SILAGYI
Corresponding Secretary.....	LYDIA FURST
Recording Secretary.....	JANE SELTZER
Treasurer.....	GERALDINE MERTZ

### ADVISER

Miss Catherine E. Geary

Caroline Brown	Georgine Gottschall	Jane Mervine	Doris Winand
*Inez Dieffenbach	Margaret Griffith	Eleanor Smith	Jane Yost
Florence Duke	Mary K. Hershberger	Peggy Stouck	
Alice Fredericks	Marie Kraemer	Madge Trambley	

### PLEDGES

Charlotte Figgles	Rosamond Glass	Frances Merrill	Jane Shull
Harriet Figgles	Dorothy Heller	Bette Meyers	Sara Sykes
Katherine Frey	Mary E. Lovett	Betty Roach	
*Deceased			

The Sigma Sigma Sigma Sorority celebrated its fortieth anniversary on April 20. Alpha Rho chapter was known as the "Bittersweets" for twenty-four years before becoming affiliated with the national organization. The ideals of the sorority are the development of personality and high scholarship.

In January the group received double honors from the National Council of Sigma Sigma Sigma. Alpha Rho chapter was presented with the Balfour Scholarship Cup, which is awarded each year to the chapter of the thirty-one chapters of Tri Sigma which achieves the highest scholastic average. A ring was presented by the Council to Eleanor Wood, chapter president last year, for having one of the three highest individual scholastic averages of all chapter members.

Mrs. Lucille Morrison, National Alumnae Representative, visited the group and inspected the chapter in November.

Throughout the year Sigma Sigma Sigma members entertained at teas, dinners, informal gatherings at cabins and in the chapter room.





## Panhellenic Council

Chairman.....MARTHA HALBROCK  
 Treasurer.....JEAN KUNES  
 Secretary.....DORIS YARRISON

ADVISER  
 Miss Edna A. Bottorf

Ruth Baughman  
 Ruth Datesman  
 June Freed

Marguerite McCollum  
 Jane Seltzer  
 Doris Winand

The membership of the Panhellenic Council is composed of representatives from the three national sororities on the campus: Alpha Sigma Tau, Pi Kappa Sigma, and Sigma Sigma Sigma.

It is the duty of the members of the council to help foster cooperation and a spirit of friendliness among the sororities; to solve any mutual problems the three sororities might have, and to plan the annual joint social activities, the Christmas Panhellenic Dance, and the tea initiating Rushing Season.



## Delta Rho Beta

President.....ROY KRESS  
 Vice-President.....JACK LIVINGSTON  
 Secretary.....LYNN EARON  
 Treasurer.....WOODROW ROHRBAUGH

### ADVISERS

Mr. Samuel J. Smith      Mr. Cornelius M. Sullivan

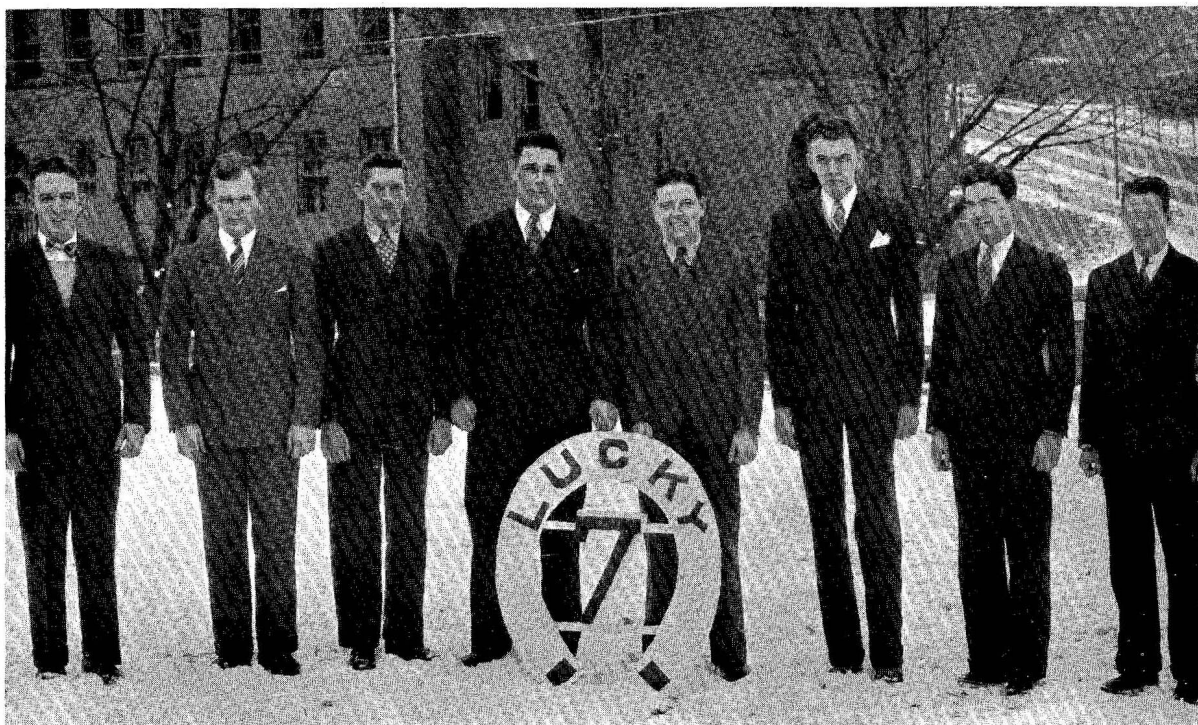
George Bluhm  
 Franklin Courter  
 Earling Hauge  
 Paul Frantz  
 Oliver Kling  
 Nolan Emery  
 Leroy Spotts

William McCollum  
 John Nevins  
 Richard Hoy  
 John Bowes  
 James Bowes  
 Phillip Bressler  
 Judson Klepper  
 I. B. Nolan

Richard Eyer  
 Breon Lauderbach  
 Richard Ohl  
 Frederick Pletcher  
 Robert Oberheim  
 Fred Ingraham  
 William Smith

Organized a decade ago as a non-resident men's club, the Delta Rho Beta fraternity is at present the only men's social organization on campus. Although it is only a local chapter, this fraternity strives to equal larger orders in its aims and functions. High scholarship, friendship, cooperation, and sincerity are goals of Delta Rho Beta.

This year the club inaugurated a new era of activities when it moved into its newly-furnished rooms in East Dormitory. To more closely ally itself with its former members the Delta Rho Beta initiated the new rooms with a smoker for alumni and active members. During the year the fraternity entertained at other informal smokers. The activities of the year were climaxed with the dinner-dance held in May at the Country Club.



## Lucky Seven

ADVISER  
Mr. Richard T. Parsons

Seymour Brantner  
Paul Frantz  
Kenneth Hoover  
Ted Horton  
Clyde Houston  
Richard Hoy  
Harold Shaw

The Lucky Seven Club is an organization of seven students who are interested in horsemanship.

Although the club was organized this year, the members have learned to mount, post, and jump. In the future they are planning to form a polo team.

A Thursday evening gallop and a Sunday morning canter are looked forward to with great anticipation every week.





## College Times

### EDITOR-IN-CHIEF

JOSEPH PONUCHALEK ..... First Semester  
 CHARLES NORLUND ..... Second Semester

### EDITORIAL BOARD

CAROLINE BROWN	ALICE FREDERICKS
JANE SELTZER	RUTH SIMON

### ADVISER

Mr. Richard T. Parsons

Myrtle Andrews  
 Ruth Baughman  
 Ruth Crowley  
 Jean Dykens  
 Elizabeth Ernst  
 Florence Galante  
 Dorothy Gaudiose  
 Agnes Green  
 Rae Gundlach

Clyde Huston  
 Oliver Kling  
 David Livingston  
 Vivian Mark  
 Helen Myers  
 Loreta Petrucci  
 Joseph Sarafinski  
 Dorothy Sheasley  
 DeRonda Weakland

During 1937-38 the staff worked diligently to improve the COLLEGE TIMES. Not only was the format enlarged, the type improved and advertising admitted, but new life entered in the second semester with the members of the Journalism Class, who took part in all the departments of newspaper-making.

Four members of the staff were sent to the Columbia Scholastic Press Conference at New York City in March. TIMES members sponsored in the same month the revival of "Stunt Night", an annual event in College tradition.



## Praeco Staff

Editor-in-chief .....	CHARLES D. SLONAKER
Assistant Editor .....	CLYDE HUSTON
Business Manager .....	JOHN F. GRADEN
Sports Editors .....	ROBERT MANNION, D. JUNE FREED
Social Editor .....	DORIS YARRISON
Literary Editor .....	JOSEPH PONUCHALEK
Art Editor .....	SARA SYKES
Photograph Editors .....	EUGENE McCRAMER, DONALD CROUSHORE

### ADVISERS

Miss Edna A. Bottorf      Miss Catherine E. Geary

With the beginning of the 1937-38 school year came the problem of producing the PRAECO for 1938. To solve it the above Staff was selected by the Editor-in-chief, who had been elected the previous year by the Junior Class from among its membership.

This PRAECO which you are now holding in your hands is the work of no one individual; all staff members and many college students worked together to bring you this book.





### ASSOCIATE MEMBERSHIP

Doris Anderson	*Rosamond Glass	Vivian Mark
Myrtle Andrews	Agnes Greene	*Bette Meyers
Clare Antes	Helen Greenman	Anita Miller
Phyllis Aurand	Alberta Guenter	Elizabeth Ogden
Anna Banzhaf	Rae Gundlach	Loreta Petrucci
Ruth Barner	Violet Gunsallus	Dorothy Pipes
Virginia Bennison	Esther Hastings	Margaret Priest
Alene Betts	Mary Heckle	Kathleen Rice
Jean Bortel	Mary Heisey	Clarice Roach
Janet Brouse	Dorothy Heller	*Marguerite Saiers
Margaret Burke	Dene Hocker	Dorothy Shultz
Eleanor Caprio	Betty Jane Hoover	Betty Lou Smith
Anna Louise Corman	Louise Jacobus	Sylvia Speece
Freda Cromer	Jane Johnson	Marjorie Sprankle
Helen Dandois	Martha Kerns	Phyllis Stewart
Claire Davis	*Martha Kisner	Helen Louise Stine
Ella Davis	Ruth Klewans	Anna Stone
Oletha Donnely	Marie Kraemer	Marian Tobias
Dorothy Duck	Naomi Lebo	Helen Walko
Dorothy Elison	Phyllis Longenecker	DeRonda Weakland
Elizabeth Ernst	Mary Eleanor Lovette	Hannah Wesesky
Arlene Fetter	Lilian McCloskey	Evangeline Whitford
Charlotte Figgles	Marguerite McCollum	Beatrice Williams
*Harriet Figgles	Mary McCollum	Donna Wood
Rita Fleming	Ruth McConnell	Florence Yarger
Audrey Foor	Rita McNally	Vivian Young
Dorothy Gaudiose	Gladys Mapstone	Lorna Zettle

\*Major students, Department of Health Education

### WOMEN'S SPORT MANAGERS 1937-1938

Archery.....	FRANCES ZERBE	Hockey.....	FAYE LAUBSCHER
Baseball.....	MADÉLINE DEISE	Horseback riding.....	KATHERINE REES
Basketball.....	MARJORIE WOODS	Tennis.....	ETHEL EVANCOE
Hiking.....	HELEN EYERLY	Volleyball.....	JANE STEHMAN

The Women's Athletic Association celebrates this year its tenth birthday. A play day for freshmen girls, held early in September, launched the activity program and welcomed as association pledges some thirty girls of the incoming class. On Homecoming Day the W.A.A. greeted returning alumni, members of the visiting football team, faculty and other friends at its traditional all-college cocoa pour. The initiation ceremony, patterned after authentic Indian tribal rites, was another gala event of the fall season.

In response to an invitation from Shippensburg State Teachers College, twenty hockey enthusiasts spent a delightful week-end as guests of our sister college and participants in a play day together with delegates from Kutztown, Millersville, and West Chester.

In December the W.A.A. made its most significant contribution to campus experience in organizing a sports conference with Miss Anne Hodgkins, representative from the Women's Division of the National Amateur Athletic Federation, as guest speaker. Students from Bloomsburg and State College, Teachers and recreation leaders from Renovo, Woolrich, and other neighboring communities, men and women from our own student body joined in a day of inspiring discussion concerning mutual problems in the field of physical education.

In April the W.A.A. for the first time appointed a delegate to attend the annual conference of the American Physical Education Association and to participate in the student forum under the auspices of this national organization.

The spring calendar planned by the W.A.A. executive council included the formal opening of a W.A.A. ping pong room and browsing den in west dormitory, an all-college sports dance under the W.A.A. sponsorship, and a play day for the girls of our neighboring high schools on the afternoon of Saturday, May the seventh.

The Lock Haven W.A.A. holds membership in the National Amateur Athletic Federation.



## Young Women's Christian Association

Non-resident		Resident
AGNES GREEN.....	President.....	HELEN NICHOLS
MYRTLE ANDREWS.....	Vice-President.....	JUNE FREED
MARION ARNDT.....	Secretary.....	HELEN DANDOIS
EULA GLOSSNER.....	Treasurer.....	CLAIRE DAVIS

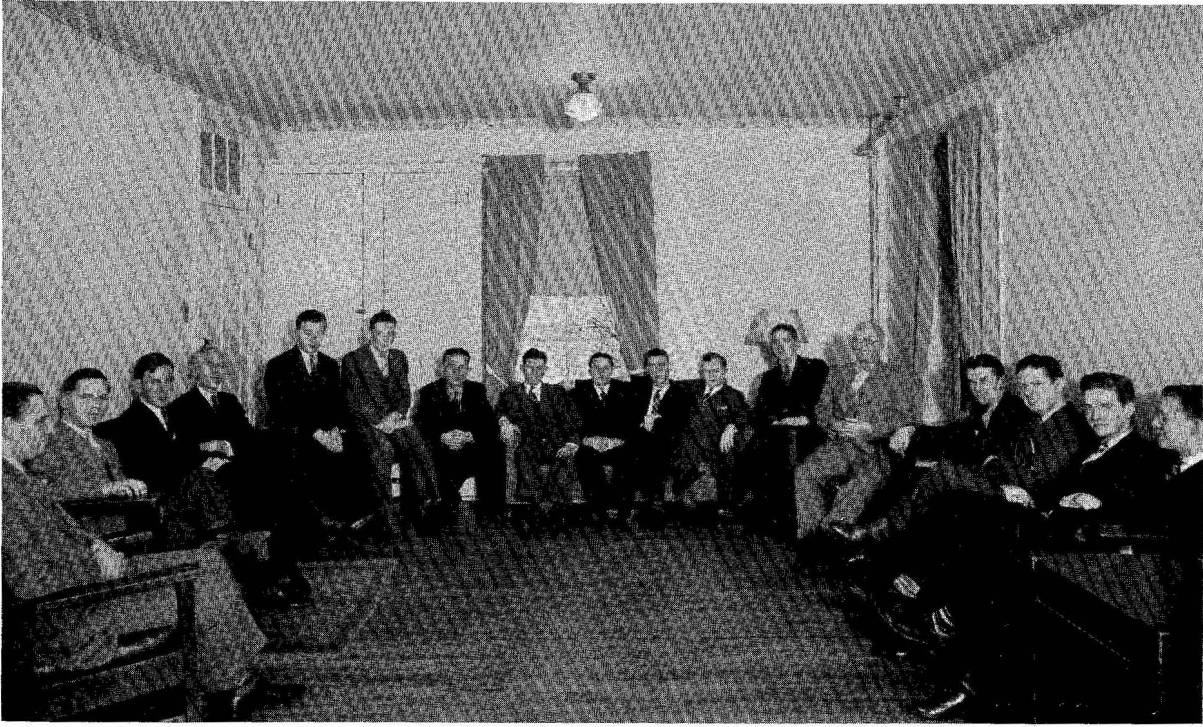
### ADVISORY BOARD

Mrs. Max Bossert	Miss Margaret E. Waldron
Mrs. W. R. North	Miss Genevieve Poole
Mrs. L. J. Ulmer	

This year the Y.W.C.A. made a slight change in organization by setting up an advisory board.

In the fall Lock Haven was host to faculty and students at a State Teachers College conference. Miss Margaret Forsyth of Teachers College, Columbia University, Mrs. Leon R. Robinson, Jr., and Dr. Hugo Thompson, Regional Secretaries, were the main speakers. By attending Area Conferences at Bucknell and Susquehanna Universities, and by being represented at the National Assembly of Student Christian Association, the Pocono, Eaglesmere and State Youth Conferences, the Y.W.C.A. is keeping in touch with the activities of other campuses and the Student Christian Movement. For the programs this year it has been particularly fortunate in obtaining outstanding speakers representing the National Y.W.C.A. and the Student Christian Movement.

Functions on the local campus, exclusive of the varied weekly meetings, include lunches, parties, all-school worship services, Big and Little Sister activities, and services at the Children's Home. These provide opportunities for all to share in the work.



## Young Men's Christian Association

President.....JAMES BROWN  
 Vice-President.....JOE LUCAS  
 Secretary.....TED HORTON  
 Treasurer.....SEYMOUR BRANTNER

ADVISER  
 Mr. L. J. Ulmer

Franklin Courter	John Maus
Mr. C. C. Coxe	Robert P. Marshall
Arthur Duckett	Lee Moyer
Dr. J. G. Flowers	Mr. R. T. Parsons
Kenneth Hoover	Charles Rohart
Robert Hosterman	Irving Roster
Warren Hosterman	William Saiers
Mr. Malcolm Hudson	Joseph Sarafinski
Evald Johnson	Maurice Garvey
Michael Kolivosky	Harold Shaw
Bernard Kotchin	Andrew Sterrett
Lawrence Lenig	Vance Tibbens
Merle Long	Spencer Weaver
Eugene McCramer	Dr. H. F. Weber
Charles Maus	Robert Wickman

The Y.M.C.A. has enjoyed an especially fine program this year. On December 3-5 our delegates, Mr. Ulmer, Arthur Duckett, Joseph Sarafinski, Bernard Kotchin, and William Jusick, attended the State Y.M.C.A. Convention at Gettysburg College.

At Christmas time the Y.M.C.A. joined with the Y.W.C.A. to give the needy children of Lock Haven a Christmas party in the College Gymnasium.

The organization had charge of a Vesper program each month.





## Naturalist Club

### First Semester

HELEN NICHOLS.....President.....  
 LYNN EARON.....Vice-President.....  
 JUNE FREED.....Secretary.....  
 CHARLES WEAVER.....Treasurer.....

### Second Semester

CHARLES WEAVER  
 JOSEPH SARAFINSKI  
 CLARE ANTES  
 JOSEPH WHITTAKER

### ADVISERS

Mr. L. J. Ulmer      Miss Lillian Russell

Helen Adams  
 Marion Arndt  
 Seymour Brantner  
 William Brown  
 Thomas Conrad  
 Claire Davis  
 Leonore Dick  
 Stanley Doblax  
 Ethel Evancoe  
 Helen Eyerly  
 George Frethy  
 Robert Fuller

James Harrington  
 Edward Hochrein  
 Clee Howe  
 Betty Hughes  
 Martha Kisner  
 Oliver Kling  
 Roy Kress  
 Ralph Link  
 Jack Livingston  
 Joseph Lucas  
 Vera Lyons  
 Hobart Mann

William McCollum  
 Jane Mervine  
 Olga Moravick  
 Lee Moyer  
 Helen Myers  
 Walter Nolan  
 Frederick Pletcher  
 Robert Sherman  
 Charles Slonaker  
 Hilda Smith  
 Margaretta Strayer  
 Fred Yon

Throughout the year the Naturalist Club has been busy taking numerous evening hikes, enjoying outdoor breakfasts, and giving interesting programs concerning such subjects as turtles, hunting, and birds.

The club has created a bird and animal sanctuary by placing signs in our campus woodlands asking hunters to preserve wild life in this eighty-five acre area.

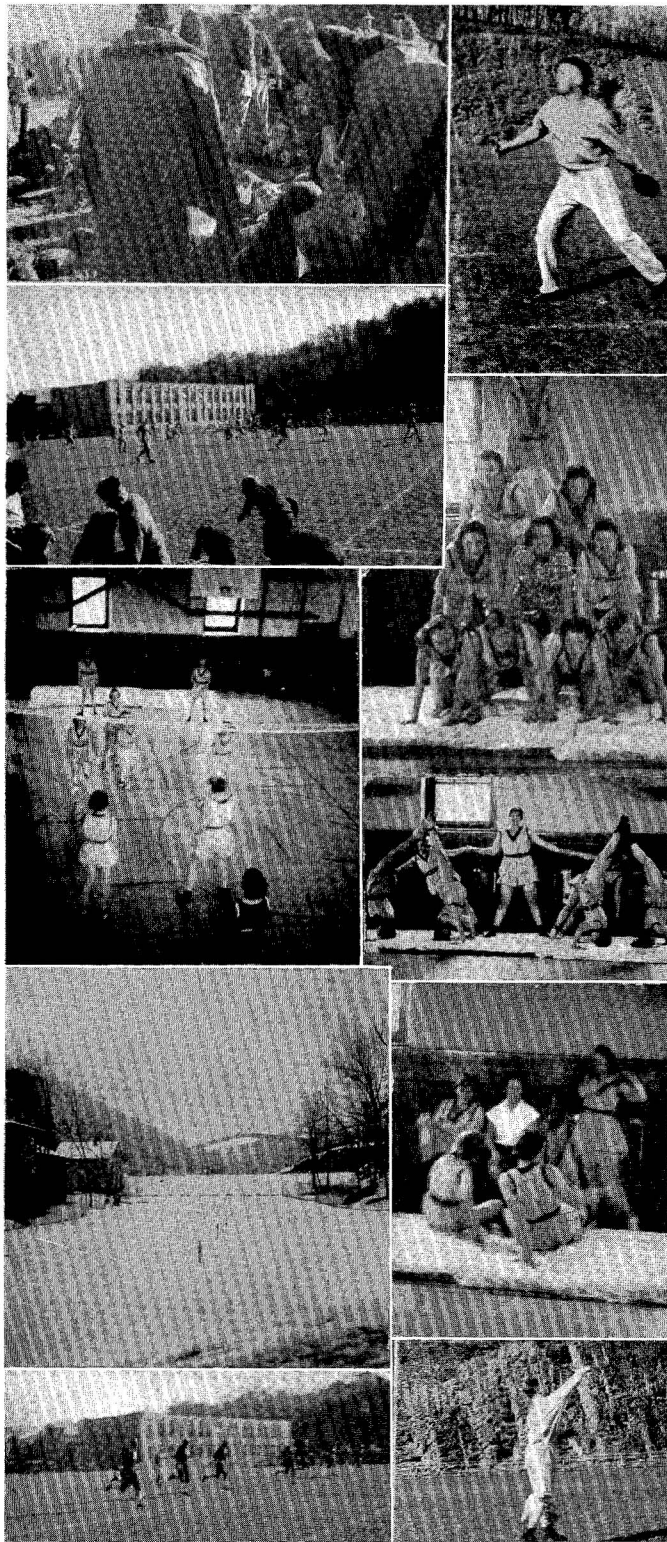
At Christmas time the club, along with another college group, caroled about town and on the campus.

The fourteen new members, who were initiated into the club on March 17, joined with the old members to make Homecoming Day, April 30, 1938, a real climax to a successful year.

## Activities Highlights

1937—1938

- Sept. 25 The College is host to an inter-collegiate Y.W.C.A.-Y.M.C.A. Retreat.
- Oct. 1 Dr. Flowers is presented to the student body in assembly.
- Oct. 5 The English Club is organized.
- Oct. 12 The Physical Education Club is organized.
- Oct. 29 The Shakespeare Literary Society revives debating on Campus.
- Nov. 20 Lock Haven wins the 1937 State Teachers College Football Championship for the second consecutive year.
- Dec. 14 The Students' Lounge is formally opened.
- Dec. 16 Miss Anne Hodgkins, N.A.A.F. Secretary, conducts the first Health Education Conference on Campus.
- Dec. 19 The Music, Dramatic, and Art Departments present Van Dyke's "The Other Wise Man", a Christmas pageant.
- Jan. 5 The Recreation Room is opened in East Wing.
- Jan. 19 The National Council of Sigma Sigma Sigma awards their Scholarship Cup to the local chapter.
- Feb. 26 The Student Cooperative Association is created.
- Mar. 14 The W.A.A. Recreation Rooms are opened in Girls' Dormitory.
- Mar. 21 Delta Rho Beta moves into new rooms in East Wing.
- April 1 The National Council of Kappa Delta Pi approved the petition of the Education Club for affiliation.



# SPORTS

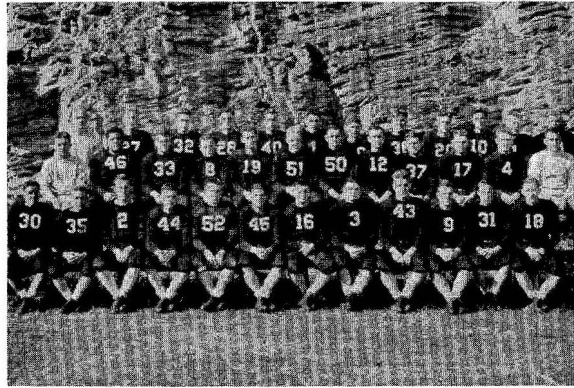


## Sports

### FOOTBALL RECORD FOR 1937-1938

Lock Haven... 0	Geneva College.....0
Lock Haven... 26	Indiana Teachers.....7
Lock Haven... 26	Cortland Teachers.....7
Lock Haven... 33	Kutztown Teachers.....7
Lock Haven... 14	Bloomsburg Teachers...6
Lock Haven... 19	Ithaca College.....7
Lock Haven... 6	West Chester Teachers..0
Lock Haven... 0	Shippensburg Teachers..0
124	34

### FOOTBALL CHAMPIONS



The year 1937-38 will go down in the annals as the greatest in the history of sports at Lock Haven State Teachers College. The success of the various teams can be attributed to an unusual wealth of athletic material among the students in the college and to the fine coaching staff.

### "PENNSYLVANIA TEACHERS COLLEGE FOOTBALL CHAMPIONS"

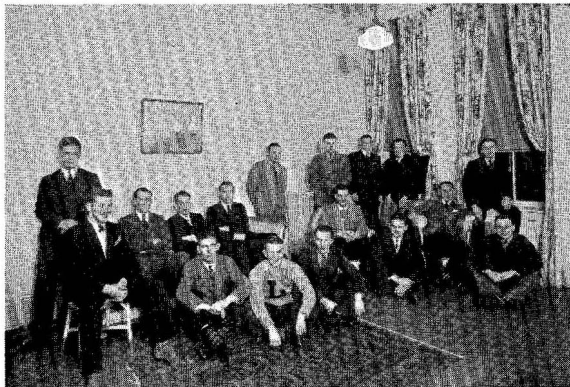
For the second successive year this title has been won by Lock Haven. Under the able coaching of J. Wynn Fredericks and W. Max Bossert the "Bald Eagles", as the students have voted to call our athletes, attained the greatest heights that any Lock Haven football team has ever reached. The record of two consecutive years without a defeat has ranked Lock Haven with the leading colleges of the East. "Whitey" Lawrence, with his superior qualities as a trainer, has been indispensable to the boys in achieving this record.

For the first game of the season the team traveled to Beaver Falls to meet Geneva College in a night game. The biggest thrill of the game was the punting of Johnny Nevins, who on one occasion in the shadows of his own goal post lifted a spiral for eighty yards. The strong aerial offense of the Genevans pitted against a powerful running attack of the Lock Haven team resulted in a scoreless tie.

The Indiana State Teachers were the first conference victims of the Bald Eagles, but only after a hard battle in the first quarter of which Indiana made the first score. Combining the hard running of Bill Hopkins and Ed Hochrein with the power drives of Pete Mollura, Lock Haven came back in the second and third quarters to win 26-7.

The Cortland game was similar in many respects to the Indiana battle. Cortland came with an undefeated record of three years and scored first early in the game. The Bald Eagles, displaying superiority, flared back and emerged the victors with the score, 26-7.

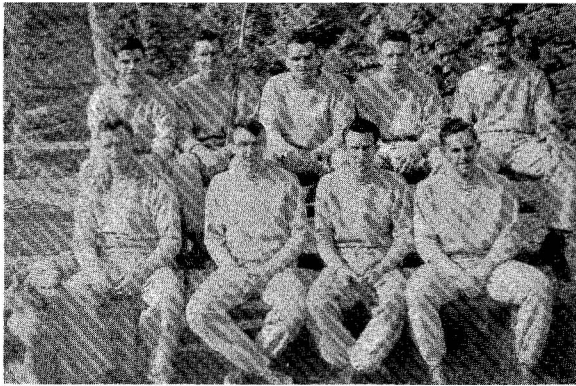
The "Dutchmen" from Kutztown Teachers College loomed next on the schedule. The McGovern-coached men, who the previous week had defeated the strong Shippensburg team, expected to advance one step nearer the Teachers College Championship. In the first quarter of the game it looked much as though the Kutztown players would have their own way when they scored first. Their tallying proved only an incentive to the Lock Haven boys who came smashing back with a 33-7 victory. In this game Coach Fredericks used every available man, hence all contributed to the victory.



### FOOTBALL SCHEDULE FOR 1938-39

Sept. 23	Geneva College at Beaver Falls
Oct. 1	Indiana Teachers at Indiana
Oct. 8	Kutztown Teachers at Kutztown
Oct. 15	Cortland Teachers at Cortland
Oct. 22	Bloomsburg Teachers at Lock Haven
Oct. 29	Open
Nov. 5	West Chester Teachers at Lock Haven
Nov. 12	West Liberty of West Virginia at L. H.
Nov. 19	Shippensburg Teachers at Lock Haven

### VARSITY CLUB



#### TRACK SCHEDULE FOR 1937-38

- April 28 Bloomsburg at Lock Haven
- May 4 Slippery Rock at Lock Haven
- May 7 Shippensburg at Shippensburg
- May 10 Open
- May 14 Annual State Meet at Shippensburg

#### TRACK SQUAD

The following Saturday the team journeyed to Bloomsburg to meet "The Huskies" on their homecoming day. Bill Hopkins proved to be the hero of the game by scoring Lock Haven's two touchdowns. The game on the whole was slow, since both teams were handicapped by a very soggy field. It was only after the varsity team had been removed from the game that Bloomsburg was able to score its only touchdown. Score: 14-6.

Then came the climax of the season. The biggest following that ever supported a Lock Haven team journeyed to West Chester to witness the dramatic victory under the "Kiels". This was the game that Lock Haven was pointing toward all season, as it really decided the mythical State Teachers College Championship. It was a battle royal from beginning to end, but early in the second quarter the Bald Eagles scored the lone touchdown of the game. West Chester tried desperately to make a come-back, but the Lock Haven team proved to be masters of the situation and held the six-point advantage until the last whistle had blown. The undying spirit of the brilliant Havenite line was highly commendable.

In the Shippensburg game Lock Haven opened up with everything it had but, after being in scoring position four times, lacked the final drive to tally, and the game ended with a 0-0 tie. This game brought to an end the brilliant careers of ten men on the Varsity squad. They are "Mac" Hoffnagle, Jack Yohe, Bill McCollum, Tom Conrad, Ed Hochrein, Johnny Goles, Rollie Myers, Bill Brown, Bob Weaver, and George Frethy. For four years these boys contributed largely to the success of the team. Although the loss of these men on the squad leaves many openings on the team, many promising prospects are developing, and Coaches Fredericks and Bossert expect another good year.

### Basketball

The Lock Haven Basketeers, under the coaching of J. Wynn Fredericks, played a ten-game schedule in Teachers College ranks and tallied a record of eight victories and two defeats. The call for basketball candidates was issued after the Thanksgiving vacation, and a veteran squad turned out. This year, due to a change in rules, Coach Fredericks used two separate teams throughout the season. The first unit consisted of "Ollie" Byers, Lynn Earon, Johnny Kruper, Earl Young, and "Mac" Hoffnagle. The second unit consisted of Lee Moyer, Walt Nolan, John Myers, "Mike" Mannion, "Son" Blankenship, Gene Springman, and Walter Montague.

#### BASKETBALL RECORD FOR 1937-38

Lock Haven . . . . . 37	Bloomsburg . . . . . 34
Lock Haven . . . . . 40	Kutztown . . . . . 31
Lock Haven . . . . . 24	Shippensburg . . . . . 18
Lock Haven . . . . . 29	Indiana . . . . . 17
Lock Haven . . . . . 32	Kutztown . . . . . 30
Lock Haven . . . . . 24	Indiana . . . . . 38
Lock Haven . . . . . 38	Shippensburg . . . . . 47
Lock Haven . . . . . 35	Bloomsburg . . . . . 19
Lock Haven . . . . . 34	Mansfield . . . . . 11
Lock Haven . . . . . 26	Mansfield . . . . . 23



#### BASKETBALL TEAM

BASEBALL SCHEDULE FOR 1937-38

- April 27 Bloomsburg at Lock Haven
- April 30 Mansfield at Lock Haven
- May 3 Indiana at Indiana
- May 7 Shippensburg at Shippensburg
- May 13 Mansfield at Mansfield



**INTRAMURAL SPORTS**

After winning victories from Kutztown, Indiana, Bloomsburg, Shippensburg, and Mansfield, the Bald Eagles received their first set-backs in the same week at the hands of Indiana and Shippensburg in the second games with them. The team came back to win the rest of the games and finished runner-up for the State Teachers College Basketball Championship. The record made this year by the team surpasses any previous one at Lock Haven State Teachers College.

**Boxing**

Coach Max Bossert's boxing squad gained national recognition its third year of intercollegiate competition. The call for candidates was issued after Christmas and, with all veterans on the squad returning, the grueling preparation for the first dual meet with Bucknell began. This bout was dropped to Bucknell by a one point margin. For the Bald Eagles Frank Marzzacco, Ed Hochrein, and Bill McCollum won their bouts, and Bill Bressler drew.

The scheduled bout with Washington and Jefferson was canceled, due to injuries to the W. and J. team. The West Liberty State Teachers College of West Virginia filled this date. This is the first year that Lock Haven and West Liberty have met in any sport competition, and, due to their fine showing, Lock Haven hopes to continue relationships with them as long as possible. The West Virginians were good boxers, but the experience of the Lock Haven squad allowed them only a draw in one bout. The final score of the meet was 6½-1½.

The third dual meet was with Western Maryland College. Western Maryland, always a first-rate college in boxing, lived up to its reputation, but Lock Haven won a 4½-3½ victory. The real surprise of the season came in the heavyweight division of this match when Bill McCollum, Lock Haven heavy, knocked out his opponent in one minute of the first round.

The last match of the season was with the City College of New York. Since the previous year the Lock Haven boxers caused their only defeat, the New Yorkers came to Lock Haven to avenge it. The odds were on C.C.N.Y., since the previous week its team had tied a strong Villanova team, but it went home defeated as Coach Bossert's prodigies again came through with a 5½-2½ victory.

This year's squad consisted of Frank Marzzacco, Bill Bressler, James Buzzelli, Ferd Wetzel, James Hopkins, Bill Hopkins, Horace Thomas, Ed Hochrein, William McCollum, and Ed Kolner. The most commendable record attained goes to Frank Marzzacco, who in three years of intercollegiate competition has not suffered a defeat.



**BOXING RECORD FOR 1937-38**

Lock Haven . . . 3½	Bucknell . . . . . 4½
Lock Haven . . . 6½	West Liberty . . . . . ½
Lock Haven . . . 4½	Western Maryland . . 3½
Lock Haven . . . 5½	C.C.N.Y. . . . . 2½

**BOXING SQUAD**





GIRLS' TENNIS

## Baseball

The outlook for the baseball team this year is promising. Although here again a veteran squad has turned out with only three positions to be filled, Coach Fredericks expects to better any previous record of the college. Games have been scheduled with most of the leading Teachers Colleges of the state, and, with likely-looking material, this should prove a successful season.

## Track

Two dual meets, one triangular meet and the annual State Teachers College invitation meet are the objectives of Coach Bossert and his trackmen. The dual meets are with Bloomsburg and Shippensburg; the triangular meet is with Geneva College and Slippery Rock; the last invitation meet, which this year is held at Shippensburg, completes the schedule. The team is well-balanced in every event, and, barring injuries to the key men, the track team should take its place with the best in the state.

## Varsity Club

All the athletes who have earned a letter in any major sport are members of the Varsity Club, which is one of the oldest organizations on the campus. The purpose of the club is to sponsor sportsmanship and fair play in athletics. The annual Varsity Club Dance, held on Homecoming Day, has become a college tradition. This year the Club has been very active in promoting intramural sports.

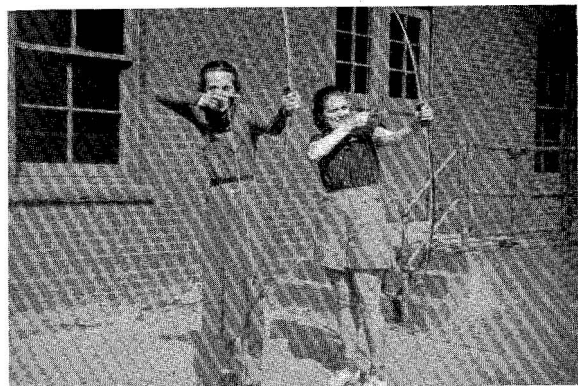
### OFFICERS

1937-38		1938-39
ALBERT BRAZINSKI.....	President.....	JOHN KRUPER
FAULCON BLANKENSHIP.....	Vice-President.....	OLIVER BYERS
EDWARD HOCHREIN.....	Secretary.....	JOHN NEVINS
GEORGE FRETHERY.....	Treasurer.....	ROBERT MANNION

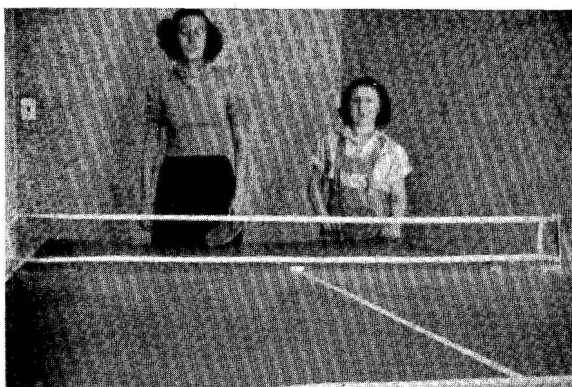
### ADVISERS

Mr. J. Wynn Fredericks

Mr. W. Max Bossert



GIRLS' ARCHERY



PING PONG

## Women's Athletics

Women's sports on the campus are sponsored by the Women's Athletic Association under the direction of Miss Dorothy Deach and Miss Maloise Sturdevant Dixon. The sports are largely confined to intramural activities, but the basketball team and the hockey squad have gained recognition through intercollegiate competition.

The new ping-pong rooms, one in each of the dormitories, were furnished by the Association for the use of the students. It also sponsored archery, tennis, badminton, hockey, basketball, baseball, and riding.

### "THE MELTING POT OF THE YEARS"

This year we inaugurated the plan of alternating the indoor college festival, which for the past sixteen years had been presented by the Department of Physical Education for women, with an outdoor festival, written and staged by physical education majors. "The Melting Pot of the Years" represented the development of physical education in the United States from the early days of the Indian sports and dance ceremonials through the transition period of formal gymnastics and folk dancing to the present era with its stress on recreation and the adult activity program. The fact that 1938 marked for Lock Haven the sixtieth commencement and the granting of the first degrees in the special field of health education to graduating students, supplied the motivating idea for the pageant.

The participants included the training school pupils and the college men and women. The production given on May eleventh, was planned and managed by Miss Dixon's pageantry class.

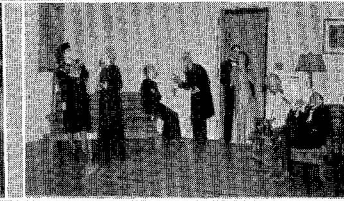
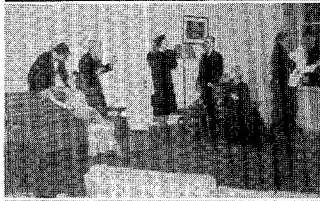
## Physical Education Club

Due to the growing number of physical education majors in the school, the need arose for the organization of the Physical Education Club. Every major in the department and a few other interested students are members of the club. These people have taken it upon themselves to reorganize the intramural program and to find the suitable recreational activity for each student in the school. Through their efforts the establishment of recreational rooms and play nights have been made possible.



OFFICERS  
 President.....WALTER MONTAGUE  
 Secretary.....MILDRED WHITE  
 Treasurer.....JOHN NEVINS

PHYSICAL EDUCATION CLUB

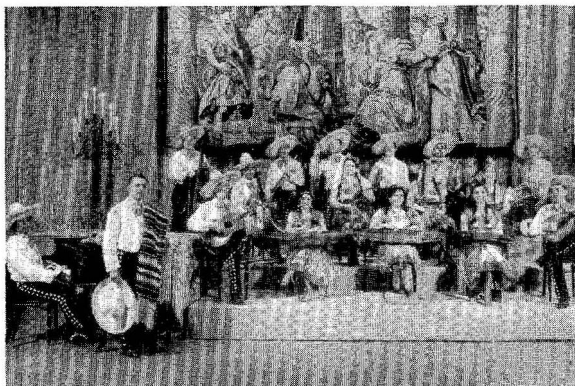


## THE ARTS



## The Arts

The year 1937-1938 brought many representations in the arts to Lock Haven. Music, drama, lectures, and paintings, brought to the campus by various organizations, provided entertainment and instruction throughout the year. These were supplemented by college programs which were planned and executed by college groups.



During the winter the management of the Artists' Course program was changed to allow participation by the citizens of the town. The number of its patrons this year was great enough to extend the originally planned Artist Course to include the program of The Vienna Choir Boys.

Artist Course newcomers were the Choristers of the Canadian Singers Guild, who presented along with a program of religious music and folksongs Tschaikovsky's "Andante Cantabile". The hymns ranged from Vulpius through Wood; the secular music included English, French-Canadian, and Slovakian selections.

The most brilliant evening's entertainment of the year, in melody and color, was provided by Angell Mercado's Tipica Mexican Orchestra, which had been broadcasting over NBC for the Mexican government last year. Their program was in three parts: the first, music of various Latin-American countries, which offered folk-songs and dances typical of these countries; the second, concert type music, which included Chaminade's "Concertino" written for the salterio and brilliantly played by Sarita; the third, Lecuona's well-known "Malaguena", typical Mexican music, which concluded the evening. The program was heightened by the dancing of The Ojedas and the singing of Jose Rubio.

None of the performers on the college stage received a warmer welcome than the boys of The Vienna Choir, who were making their fifth annual tour in this country. Their singing was as clear and beautiful in the early church chants as in the Mozart rondo, "Ribbon and Thread", and the Strauss "Waltz-Suite". As part of their program, the choir boys presented the costume operetta, "Monsieur et Madam Denis" by Jacques Offenbach.

Mr. Earle Spicer, the English baritone, appeared at the College early in February singing a series of ballads varied in origin and style. Mr. Spicer opened his program with a group of songs chosen at random from the music of the 15th to the 18th centuries. A group of traditional English ballads was followed by the early American "Billy Boy", the Pennsylvania miner's ballad, "The Broken Shovel", and the well-known "Shortenin' Bread".

The Gillette Chamber Orchestra of ten musicians, with William Gillette playing the Hammond organ, offered a program which included the music of J. C. Bach, Handel, Schubert, and Mozart.

As the last feature of the season, The Zimmer Harp Trio appeared with a demonstration of perfect ensemble playing that gave an impression of light harpsichord music.

Early in February The Olvera Street Marionettes were again brought to the campus by the Education Club in a presentation of "The Pied Piper of Hamelin". They proved to be



VIENNA CHOIR BOYS



"THE WONDER HAT"

very popular, playing to an auditorium filled to standing room in the afternoon as well as to an appreciative audience of students and townspeople in the evening.

Throughout the year the Art Club was active in bringing several exhibits to the campus. In October Mr. Blanchard Gummo, Head of the Fine Arts Department at Bucknell University, came to Lock Haven with an exhibit of his own works, consisting of oils and water colors. At this time Mr. Gummo spoke to the students in an assembly on the development of various phases of modern painting. His exhibit drew hundreds of art lovers from the town and near-by communities.

Another popular series of exhibits was the one by Living American Artists. From September through May a group of four exhibits, composed of splendid color reproductions of originals by contemporary American Artists, came to the college and proved to be very popular with the students and patrons.

The American Artists Group sent an exhibit of prints showing a wide variety of techniques, subjects, and treatments.

One of the most interesting exhibits was the one shown in the Training School in March. This group of pictures—sembled from schools in various parts of the world: Europe, South America, Japan, Mexico, Canada, and the United States—was made up of originals by children from kindergarten to high school age.

Three exhibits that proved of great interest to the students, as students and as prospective teachers, were: the first, consisting of art problems worked out by those in the college art classes; another, composed of children's art work assembled from the public schools of Central Pennsylvania; the third, selected from the entries of the National Scholastic art competitions.

One of the most interesting and instructive programs given in assembly during the year was an illustrated travel-talk on South and Central America given by Mr. Schreiber, a former student of the college. This lecture was made more interesting by a display of native clothing, toys, tools, and utensils of the home.

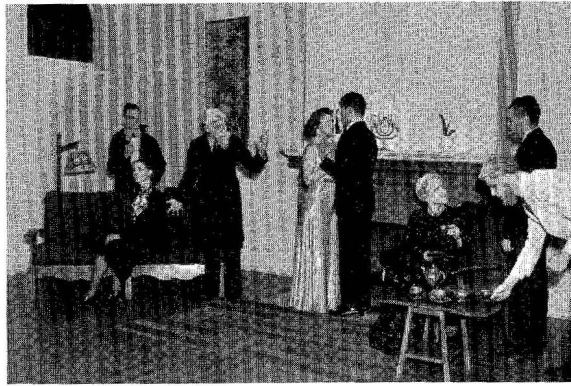
As interesting to the students as any of these imported entertainments, appreciated as they were, were programs in music and drama presented by groups from the college. The Canterinas and Bel Cantos, our girls' glee clubs, delighted at various times with their lovely singing.

Chi Kappa Sigma, the dramatic organization which was recently reorganized to meet the needs and interests of prospective teachers desiring various phases of dramatic art, offered



"THE OTHER WISE MAN"

## "CHILDREN OF THE MOON"



several plays which ranged from fantasy to tragedy.

Their first offering was T. B. Roger's "The Forfeit", a one-act tragedy, presented by the advanced members of the club. The chief purpose of this play was to provide acting experience for those members of the club who had not previously had that opportunity. Excellent new talent was uncovered and developed, and the performance was gripping in its effect. In happy contrast, "The Wonder Hat" by Kenneth Sawyer Goodman and Ben Hecht, was next presented by the new members of the organization. This farcical fantasy with stylized setting, fantastic costumes, and delightfully-exaggerated acting gaily transported the spectators from the Here and Now to the land of magic and silverstars. Too much praise cannot be given the members of the stage forum who designed and executed the most unusual, artistic set created during the year. The actors portrayed an intelligent understanding of their roles and captured the spirit of the play with remarkable skill.

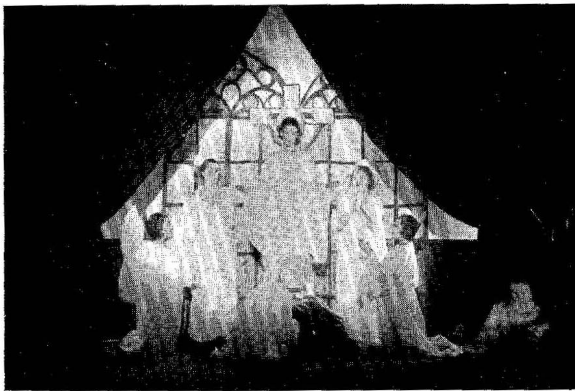
In March, the club's public presentation, "Children of the Moon" by Martin Flavin, proved breath-taking in its appeal. Though a serious drama with a thought-provoking theme, it won the enthusiastic appreciation of all who saw it. The unusually fine interpretation of difficult roles, the appropriateness of costumes, the simplicity of the staging, and the effects of lighting were all blended into a harmonious performance of profound beauty.

In April, under student directorship, "Indian Summer", a charming comedy by the French dramatists Meilhac and Halevy, was presented to an interested assembly audience.

Later, a children's play, "Three Pills in a Bottle" by Rachel Field, was also produced under student direction; it delighted a large audience made up of children from the Training School and college students.

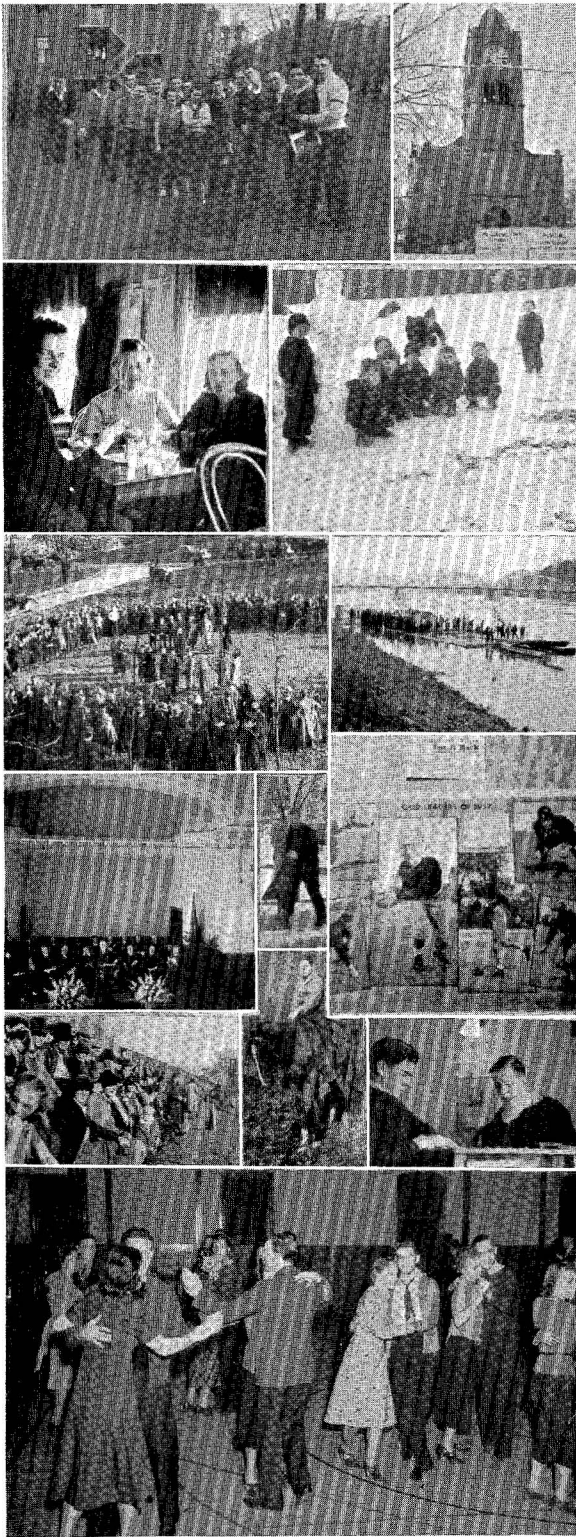
Dramatic enterprises were not limited to club productions, however. The most impressive program of the year was the result of the collaboration of the Freshman speech classes, dramatic club forums, and the Music Department. Approximately one hundred fifty persons contributed to the presentation during the Christmas season of Van Dyke's "The Story of the Other Wise Man." One of the interesting features of the pageant was the use of two stages: an outer, upon which Van Dyke's story was dramatically told; and an inner stage, from which tableaux of concurrent scenes in the life of Christ were presented against interesting backgrounds with effective lighting. Symbolic settings added beauty to the scenes.

"Thursday Evening", a one-act play by Christopher Morley given by the dramatic English class in April, on High School Day, was the final dramatic production of the year. The characters in the play, so human, yet so humorous in the situations created by the author, afforded the audience pleasureable experience.



"THE OTHER WISE MAN"





# SCHOOL LIFE



BURSAR'S OFFICE

## School Life

School life—a vital and necessary phase in the well-rounded development of the college student!

School life—an opportunity on the college campus to face life and its requirements, to develop self reliance, and to meet actual problems!

School life—comradeship and wholesome living!

School life—oh! Happy, joyous experiences together!

Everywhere there is a friendly and intimate spirit that makes for happy and creative living.

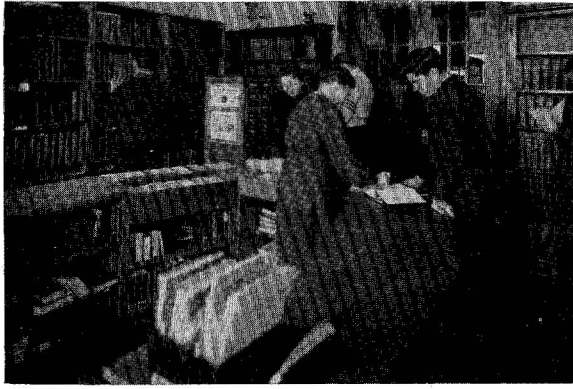
A feeling of comradeship is very evident everywhere—from the President to the humble college employee, from the teaching supervisor to the kindergarten child, from the chairman of a college department to a student teacher, from the senior to the entering student. One feels free to call on Dr. Flowers or any of the faculty members with personal problems at any time. One senses this spirit in the very atmosphere, in the cooperative store, in the library, in the dining hall, in all the offices, in the halls, in every spot on campus!

Another unique thing about the college is the bustling activity. Every moment brings another worthwhile experience. The bulletin boards are an index to this. Here one finds announcements of: meetings; play rehearsals; student teaching conferences; class observations; dances; teas; club, sorority, and fraternity social events; field trips; conventions; debates; exhibits; festivals; chapel, assembly, and concert programs.

The average day begins at seven in the morning. A half hour later the resident students dash to breakfast. If one were to judge the enrollment by the number at breakfast the student



DEAN'S AND REGISTRAR'S OFFICE



**LIBRARY**

body would be thought to be a small one. But there are many who prefer to fast until lunch rather than rise in time for the first meal.

After breakfast many of the students loiter in the space in front of the dining hall known as "Social Square", a very popular place. However the crowd soon scatters, as most of the students use this half-hour to tidy-up their rooms and get ready for classes. The day-students begin to arrive at this time.

The day's rush has formally begun. First period classes have convened. Many students are already in the library doing reference work. Quiet prevails as they work there industriously. Glancing out of the library window one might see a Nature Study group studying the various trees on campus. Looking toward the Training School we may see several student teachers taking a group of kindergarten children on an excursion. They are going to inspect the work that is being done on one of the new college buildings that is under construction.

Leaving the library we are caught in the rush of students changing classes. The air is filled with greetings, arguments, discussions, puns, laughter, humming, and bustling. There is a large group in front of the bulletin boards reading the new notices.

As the crowd thins we wander into Mr. Hudson's domain, the Student Cooperative Store. There is a group of boys and girls here. They are joking and exchanging pleasantries with one another and with Mr. Hudson, who readily retaliates their witticisms. Some boys are wearing white jackets, and several girls are autographing them. Some are making purchases, while practically all are nibbling some between-meal snack.

Passing Dean MacDougall's office on the way to the next class, we see him in conference with several seniors who are registering with the Placement Bureau, while Miss Seltzer is adjusting schedules for late entrants. A busy hum in this outer office indicates that several student workers are busy addressing college bulletins to high school seniors.



**STUDENT'S CO-OPERATIVE STORE**





DINING ROOM

This reminds us of other busy offices. There are those of the Dean of Women and Men. Miss Poole and Mr. Bossert can be found any hour of the day adjusting class absences with students, meeting with student representatives who are planning activities, and advising individuals and groups. In the Bursar's office students sign for N.Y.A. checks and make arrangements for paying their fees; Mr. Hursh discusses orders with Bursar Clark for maintenance materials; and occasionally we may even find members of the Faculty in this office getting their monthly pay checks. To say that Dr. Flowers' office is busy is merely reminding ourselves of the number of times we looked into the outer office to assure ourselves it was a choice between waiting to see him or cutting our next class..

The choice? We go to class, of course!

When this class period is over the students mob into Social Square and the post office hall. The mail has arrived! They cannot loiter here long as it is time for Assembly. Many go to the auditorium still reading their mail and excitedly talking about the news from home.

The illustrated lecturer is enthusiastically received and many remain afterwards to ask additional information of the speaker.

After the next class the students hasten to freshen up for lunch. This time the dining room is crowded. Tables have just been changed. Seven people are seated at each table for the next two weeks; then all are changed to another table and group so that one dines with everyone sometime during the year. One student at each table is host or hostess, hence responsible for serving additional portions, and attending to different wants. Student waiters and waitresses very efficiently serve. Some group of faculty members usually lunch at the President's table to talk over some matters that concern their department.

The dining hall is cleared by one o'clock. Many of the students hurry off in different directions to attend committee meetings and to attend to various duties before the 1:20 class.



A TEA



A STUDENT CONFERENCE

Looking in on some of the meetings we glean that one class is planning a formal dance, a dramatic group is giving committee reports on a play to be presented to the student body the following week, a sorority is planning a banquet, members of the Education Club are discussing plans for "going national", an art group is planning a trip to a near-by museum, the Y.M.C.A. members are holding a regular meeting.

Classes and activities are again resumed. Walking to the Training School to observe a demonstration lesson we may see an art class painting some water color views of the buildings, a small group start up The Glen, and another group leaves to go horseback riding. In back of the girls' dormitory some girls are usually perfecting their archery technique, while on the athletic field are boys going through the paces in preparation for some athletic competition. Peering in through the gymnasium door we see either a gym class in progress or a group rehearsing for the Spring Festival.

In the Training School some student teachers are assuming the responsibilities of actual classroom procedure; while some may be observing supervisor-teachers. The atmosphere is charged throughout with friendliness, happiness, and industry.

If it is a beautiful fall or spring day one is reluctant to stay indoors. So back across the campus we wander. Some girls are bicycling up the drive; others may be roller skating, or watching games, or just talking about the difficulty of finding time to do what must be done. Boys are playing baseball or practicing football plays. Several people are sitting on benches or lying on the grass reading. Since regular classes are over for the day, student teaching conferences are being held, clubs are meeting, the glee clubs and orchestra are practicing, plays are being rehearsed, individual conferences with faculty members are taking place in the respective offices, late afternoon extension classes may be meeting for teachers in service.



A STUDENT-TEACHER CONFERENCE



**TRAINING SCHOOL—JUNIOR HIGH SCHOOL**

As the dinner hour approaches a group of girls dressed formally may drive away in cars for a formal banquet meeting.

For others the time approaches to dress for dinner. All hope it is the night that Dr. Flowers has asked the members of the Rotary Club and their wives to be guests of the college for fried chicken would just touch the spot.

After dinner there is the usual congregating in Social Square, but not for long as it is almost time for the social dancing over in the gymnasium. This is always a pleasureable half-hour, and no one wants to miss it.

After the dancing is over the students scatter to various occupations. Some go to club meetings or to the main cellar to paint scenery; some sign out for the movies; many go to the library or to their rooms to study; some visit or read. Around ten o'clock a feeling of hunger seems to be rather general. Some make coffee or cocoa in the student kitchen. Others sign out for "The Arbor" and come back loaded with pretzels, ice cream, and sandwiches.

When at ten-thirty the lights go out, most people go contentedly to bed, but students who have not finished their studying rely on old-fashioned illumination in their rooms, sit out in the hall, or go to the hall study-room to complete their assignments.

An air of peace and contentment has settled over the buildings. We drowsily hear the watchman making his rounds, but it all sounds so faint for we are practically asleep by now.



**TRAINING SCHOOL—KINTERGARTEN**



## Acknowledgments

The PRAECO wishes to express its appreciation and thanks to the following students and faculty members for the use of photographs:

Helen Eyerly  
Miss Elizabeth Faddis  
Mr. Ira Fleming  
Clee Howe

Jeannette Pattison  
Mr. Levi Ulmer  
Dr. Kenton Vickery  
Ashley Woolridge

and to:

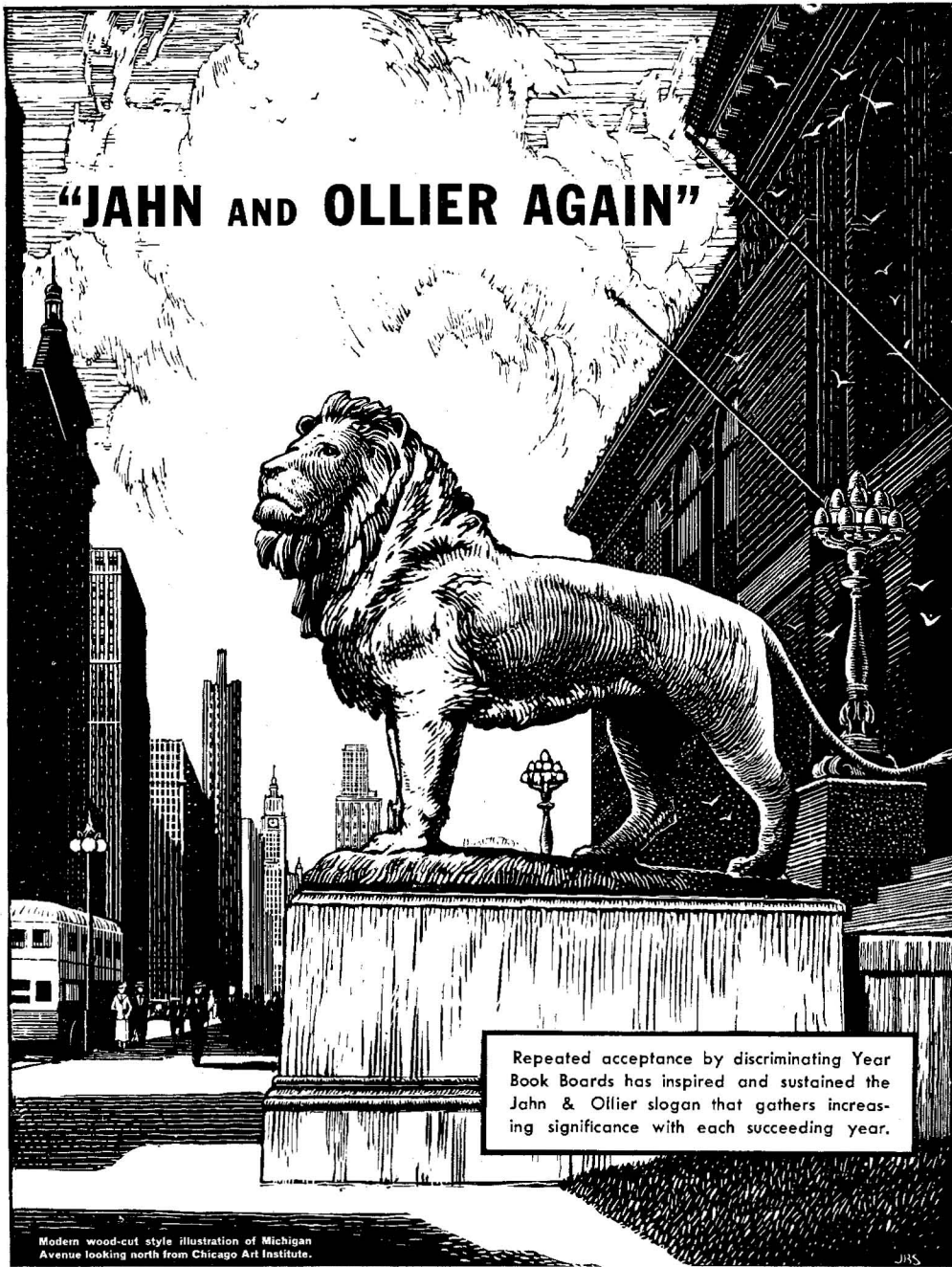
Seymour Brantner  
Ruth Datesman  
Georgine Gottschall  
Marie Kraemer

Charles Maus  
John Maus  
Dr. William North  
George Ross

and to all others who have assisted in the making of the book.

# ADVERTISEMENTS

# "JAHN AND OLLIER AGAIN"



Repeated acceptance by discriminating Year Book Boards has inspired and sustained the Jahn & Ollier slogan that gathers increasing significance with each succeeding year.

Modern wood-cut style illustration of Michigan Avenue looking north from Chicago Art Institute.

## JAHN & OLLIER ENGRAVING CO.

817 West Washington Blvd., Chicago, Ill. - Telephone MONroe 7080

Commercial Artists, Photographers and Makers of Fine Printing Plates for Black and Colors



*First, The Blade*  
*Then, The Stalk*  
*Then, The Full Corn*

(This is the Natural Process)

Same thing in School Life—  
School · College · University  
Then Business or Profession



*Whatever your career—*

**the ethics of Profession  
or the grim struggle of Business**

*will require*

**Good Printing and Binding**

WILL YOU REMEMBER US ?  
WHEN YOUR TIME COMES ?



**PITTSBURGH PRINTING COMPANY**

530-34 FERNANDO ST., PITTSBURGH, PA.

GRant 1950-1951

# ERTEL PLUMBING & HEATING CO., Inc.

WILLIAMSPORT, PENNA.

•  
SANITARY PLUMBING

VAPOR, STEAM and  
HOT WATER HEATING

•  
Plumbing, Drainage and Swimming Pool, Instal-  
lation for New Buildings, State Teachers College,  
Lock Haven, Pennsylvania.

GOOD LUCK 1938

the wish of

**COX SONS & VINING, Inc.**

Established in 1837  
101 years of service

131 East 23rd Street      New York

CAPS—GOWNS—HOODS

Authentic Styles and Colors  
for all  
Academic Occasions

PULPIT and CHOIR GOWNS  
JUDICIAL ROBES

Ask for



Sold at the Better Food Stores

•  
**The PAGE DAIRY CO.**

Sittings  
By  
Appointment

Telephone:  
Pennypacker  
6190-8070

# ZAMSKY STUDIOS

THERE IS NO SUBSTITUTE FOR  
EXPERIENCE

•

The Zamsky Studios have successfully handled Yearbook Photography for twenty years. The skilled personnel and up-to-date equipment necessary for such a record is reflected in this book and is your assurance that you may "COUNT ON ZAMSKY"

902 CHESTNUT STREET  
YALE RECORD BUILDING

PHILADELPHIA  
NEW HAVEN

OFFICIAL PHOTOGRAPHERS FOR SCHOOLS AND  
COLLEGES FROM NEW ENGLAND TO THE SOUTH

## RINELLA BROTHERS

THE HOME OF QUALITY

•

GROCERIES, FRUITS,  
VEGETABLES and MEATS

•

CORNER MAIN and VESPER STREETS

## *Garden Theatre*

Lock Haven's  
Amusement Center

•



Steam  
Hot Water

Vapor  
Warm Air

## HEATING

We are now installing Heating and  
Ventilating Work in the Lock Haven  
State Teachers College



SHEET METAL WORK



**E. KEELER CO.**

WILLIAMSPORT, PA.

Established 1864

Dial 5175

**L. G. BALFOUR CO.**

Branch Office  
109 ALLEN STREET  
STATE COLLEGE, PA.

*Compliments of  
A Friend*

•  
Keys, Pins, Medals, Favors,  
Programs, Stationery, Awards

●  
"Write us about your jewelry needs"

The PRAECO staff wishes to take this opportunity to thank all those  
who have advertised in this book.

# Autographs

eg.