

P
R
A
E
C
C
O

1936

tr. 710
LB
1945
L625P
1936
C.3



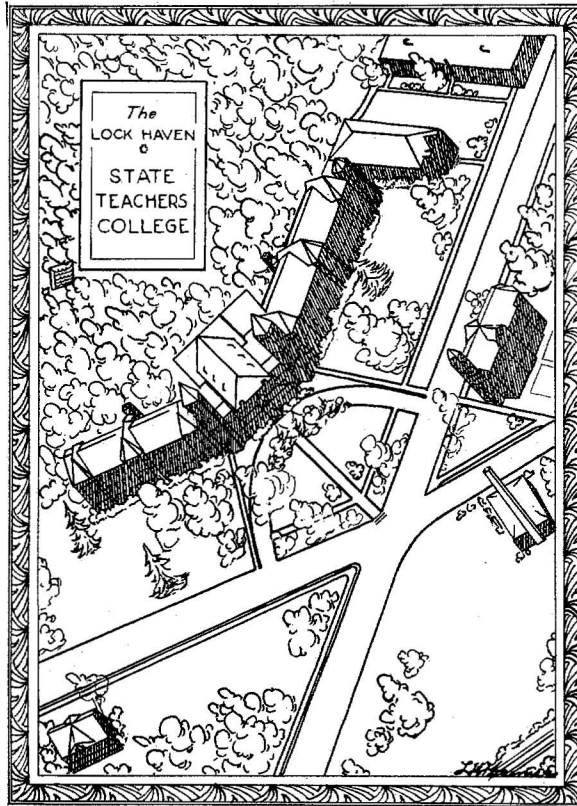
PRAECO

1936



STATE TEACHERS COLLEGE
LOCK HAVEN
PENNSYLVANIA

to ...
LB
1245
L625P
1931
03



Foreword

To the students and friends of Lock Haven
State Teachers College, the PRAECO Staff
present this, the twenty-fourth
PRAECO, hoping that it will
keep vivid those days spent
at L. H. S. T. C.



Dedication

•

The Editors of the 1936 PRAECO dedicate this volume to Mr. R. S. MacDougall in appreciation for his successful placement bureau and interest in the welfare of the students.

C O N T E N T S

• • •

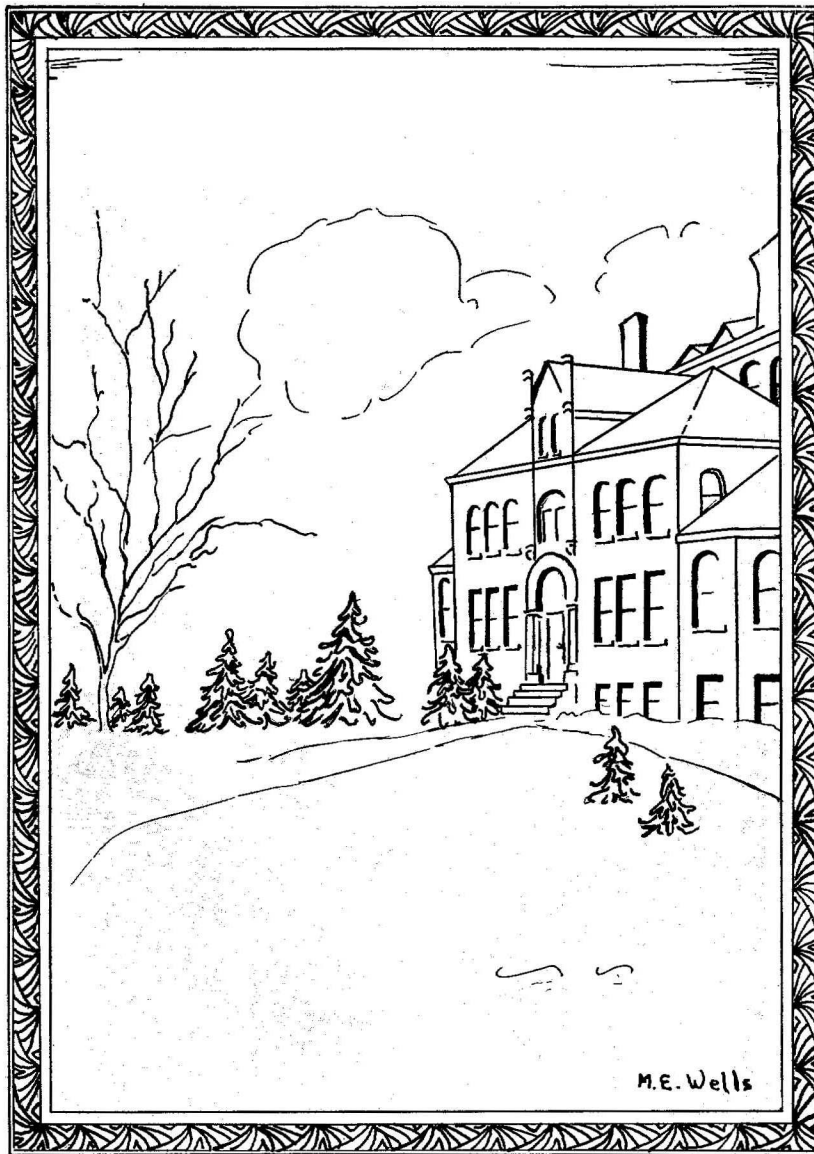
ADMINISTRATION

CLASSES

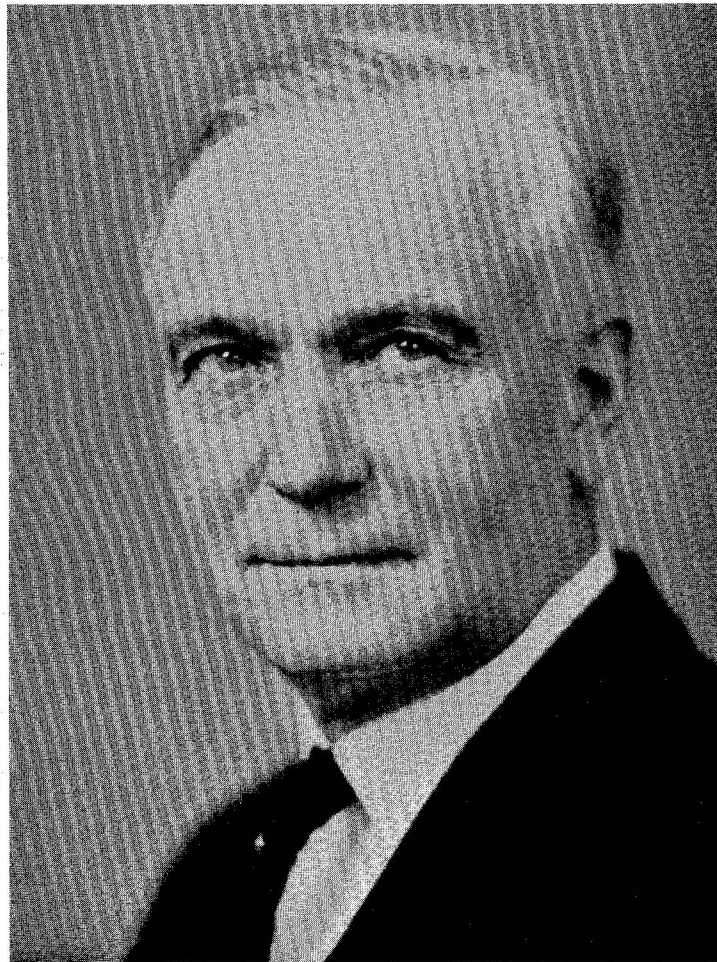
ORGANIZATIONS

ATHLETICS

FEATURES



ADMINISTRATION



DALLAS W. ARMSTRONG
Ph.B., A.B., LL.D.
President of Lock Haven State Teachers College



MORRIS DETURK HIGH
A.B., A.M.
Dean of Instruction

R. STEWART MACDOUGALL
A.B., A.M.
Director of Training School Education



FRANK E. RITTER
Bursar

DEBORAH M. BENTLY
Dietitian

GENEVIEVE ELIZABETH POOLE
B.A., M.A.
Dean of Women; English



HARRY F. WEBER
A.B., A.M., Ph.D.
Social Sciences

HELEN B. LESHER
Supervisor, Grade III



CORNELIUS M. SULLIVAN
B.S., A.M.
Social Sciences



LEVI J. ULMER
B.S., M.S.
Science; Geography

LAURA E. BARKHUFF
B.S.
Supervisor, Grade I



JESSIE S. HIMES
B.S., A.M.
Director of Primary Education

MALOISE S. DIXON
A.B., A.M.
*Physical Education; Health
Education*

LILLIAN RUSSELL
A.B.
Social Science

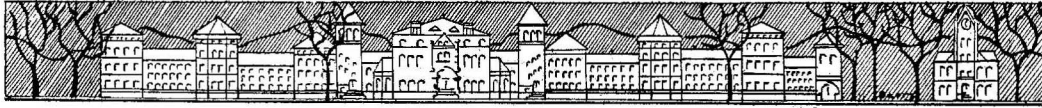


EDNA A. BOTTORF
B.S., M.A.
Art

IRENE K. MACDONALD
A.B., A.M.
*Librarian;
Instructor in Library Methods*



EDNA H. POLLOCK
A.B., A.M.
Supervisor, Grade VI



CHARLES COXE
Ph.B., A.M., Ed.M.
*Director of Junior High School;
Education*

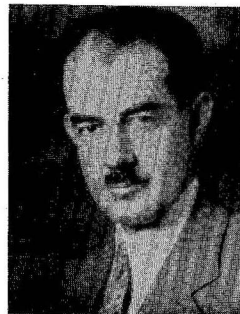
MABEL V. PHILLIPS
A.B., A.M.
Supervisor, Grade II



SAMUEL J. SMITH
Ph.B., A.M.
Mathematics

JAY FERRY STEMPLER
A.B., M.S.
Physical Science

WILLIAM ROBERT NORTH
A.B., A.M., Ph.D.
English



IRA O. FLEMING
B.S., M.S.
Biological Sciences

COPHINE ROOK
B.S., M.S.
Supervisor, Grade V



AXEL S. RUDE
A.B., M.A., Ph.D.
Education; Psychology



MABEL-LOUISE AREY
B.L.I.
English; Dramatics

ASHTON HATCHER
A.B., A.M.
Primary Education



GRACE ULLEMEYER
B.M.E., M.S.
Music Education; Piano; Voice

RICHARD T. PARSONS
B.S., M.Ed.
*English,
Supervisor in Junior High School*

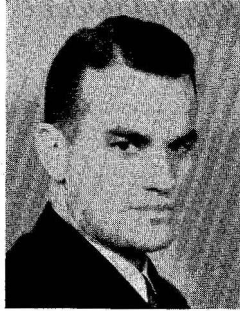
GEORGE F. B. LEHMAN
A.B., A.M.
*Public School Music; Education;
Voice*

KENTON F. VICKERY
A.B., A.M., Ph.D.
Foreign Languages; English

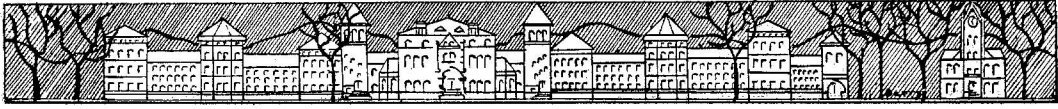
J. WYNN FREDERICKS
A.B., A.M.
Athletic Director; Physical Education

CATHERINE E. GEARY
B.S., M.S.
Education; Penmanship





W. MAX BOSSERT
B.S.
*Social Sciences; Physical Education;
Dean of Men*



In Memoriam



BERTHA M. ROWE

DECEMBER 30, 1935

*A perfect teacher, we loved so well,
To comfort and warm each little heart,
To guide each mind with tender care,
Heavenly sent for us to share.*



SENIORS



EUGENE NUSS
President



HAROLD CORTER
Vice President

Senior Class Officers

EUGENE NUSS	- - - - -	-	<i>President</i>
HAROLD CORTER	- - - - -	-	<i>Vice President</i>
LENORE DICK	- - - - -	-	<i>Secretary</i>
MARY ULMER	- - - - -	-	<i>Treasurer</i>

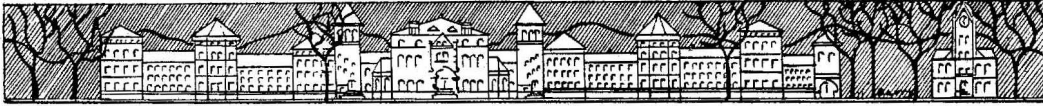
MR. LEHMAN, *Faculty Adviser*



LENORE DICK
Secretary



MARY ULMER
Treasurer



Senior Class History

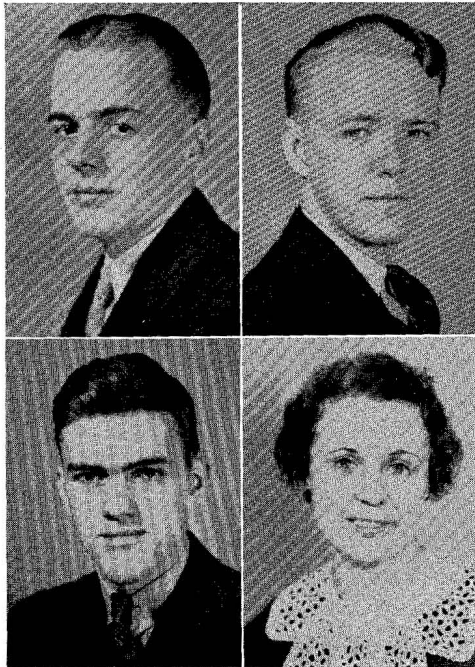
From their four years growth in the College the Seniors look back upon their Freshman year and those that have followed it. It is far distant from bewildered first year students to seniors; it is a record of their attempt "to be not to seem."

In the Freshman year under the guidance of Mr. High the class chose officers and, as class adviser, Mr. Lehman, who has acted in that position during the other three years. Under the capable leadership of him and the elected officers under class achievements were a Sophomore Hop, Junior Open House Tea, a Junior Prom. This year in the absence of Eleanor Wood, chosen President, the class has gone ahead under Eugene Nuss into a successful Senior Ball, a Senior Banquet, Senior Day, and Graduation.

Senior contributions are numbered in all fields of college life. Seniors are outstanding in scholastic, professional, social, athletic, musical, dramatic, and other extra-curricular activities.

The Class of 1936 ever desires to be remembered in the words of their motto "*Esse Non Videre.*"

L. MCKIBBEN.



WILBUR ANDERSON

Renovo, Pa.

Secondary—English and Social Studies
B.S.

Class Secretary, 1, 2; Y. M. C. A., 1, 2, 3, 4; Tennis Letter.

WILLIAM ANDERSON

Secondary—Mathematics and Science
B.S.

Times Staff, 1, 2, 3, 4, Editor-in-Chief, 3; Dramatic Club, 1, 2, 3, 4; Art Club, 1; Y. M. C. A., 1, 3, 4; Naturalist Club, 2, 3, President, 4; Shakespeare Literary Society, 1; Men's Glee Club, 1, 2; Executive Council Senior Class; "East is West," "Come Seven," "The Ghost Train."

WILLIAM BOWES

Lock Haven, Pa.

Secondary—Mathematics and English
B.S.

Class President, 1, 3; Class Vice President, 2; Delta Rho Beta, 1, 2, 3, 4, Vice President, 4; Education Club, 2, 3, 4; "East is West."

MABEL BURD

Lock Haven, Pa.

English—Social Science
B.S.

RUTH BURKETT

Lock Haven, Pa.

Secondary—French, English
Senior B.S.

Education Club, 1, 2, 3, 4; Sigma Sigma Sigma, Vice President, 2, 3, Corresponding Secretary, 3, 4; French Club, Social President, 2, 3.

CATHERINE CAPRIO

Lock Haven, Pa.

Secondary—Social Studies and English
B.S.

PRAECO Staff, 2; Rho Omega Lambda, Vice President, 2, 3, 4; Dramatic Club, 1, 2, 3, 4, President, 3, 4; Art Club, 2, 3, 4; Y. W. C. A., 1, 2, 3.

MARTHA CLARK

Nittany, Pa.

Secondary—English, Social Studies
Senior B.S.

Y. W. C. A.

ANNA M. CORSON

Hughesville, Pa.

Kindergarten—Primary
B.S.

Pi Kappa Sigma, Chaplain, 3, 4; Dramatic Club, 1, 2, 3, 4; W. A. A., 1, 2, 3; Y. W. C. A., 1, 2, 3, 4; A. C. E., 1, 2, 3, 4; Bel Canto Choral Society 2; "East is West," 1; "Come Seven," 4.





HAROLD CORTER

Mill Hall, Pa.
Secondary—Mathematics, Social Studies
B.S.
 Class Vice President, 2; Delta Rho Beta, 2, 3, 4; Education Club, 4; Hall of Fame.

FRANKLIN COURTER

Blanchard, Pa.
Secondary—Social Studies, Mathematics
B.S.
 Class Vice President, 3; Class Treasurer, 2; Assistant Photo Editor, 2; Editor in Chief, 3; Delta Rho Beta, 1, 2, 3, 4; Education Club, 2, 3, 4, President, 4; Art Club, 3, 4; French Club, 3, 4; Band, 1, 2, 3, 4; L. H. T. C. Quartet, 3, 4.

JULIA CRONISTER

Julian, Pa.
Secondary—French, English
B.S.
 Dramatic Club; Y. W. C. A.; Bel Canto Choral Society, Vice President, 3, Secretary, 1; French Club; "Come Seven."

LEONORE DICK

Bellwood, Pa.
Secondary—Social Studies, English
B.S.
 Class Secretary, 4; *Times* Staff, 2, 3; Alpha Sigma Tau, 4; Dramatic Club, 3, 4; Y. W. C. A., 1, 2, 3, 4; Shakespeare Literary Society, 1, 2, 3, 4; Naturalist Club, 3, 4; Bel Canto Choral Society, 2, 3, 4.

ARLENE DUNKLE

Halifax, Pa.
Kindergarten—Primary
B.S.
 Dramatic Club; Art Club, Treasurer, 2, 3; W. A. A.; Y. W. C. A., Secretary-Treasurer, 3, 4; A. C. E., Treasurer, 3, 4; Glee Club.

JOSEPH FREEDMAN

Lock Haven, Pa.
Secondary—Science, Social Studies
B.S.
 Delta Rho Beta, 3, 4; Dramatic Club, 1, 2, 3, 4; Education Club, 2, 3, 4; Men's Glee Club, 1; "The Ghost Train," 2; "Outward Bound," 3.

MARIE GEHRON

Williamsport, Pa.
Kindergarten—Primary
B.S.
 Pi Kappa Sigma, Sergeant-at-Arms, 1, Treasurer, 2, Vice President, 3; Panhellenic Council, Treasurer, 4; Dramatic Club; Y. W. C. A.; A. C. E.; "Mis' Nellie of N'Orleans"; "Come Seven."

WILLIAM GRIFFITH

Lock Haven, Pa.
English—Social Science
B.S.





MARGARET HARMAN

Sigma Sigma Sigma, President, 4; Education Club.

MARIAN HARSCH

Williamsport, Pa.

Pi Kappa Sigma, President, 3, 4; Women's Student Council, Junior Representative, 4; Dramatic Club, Vice President, 4; W. A. A.; Y. W. C. A.; A. C. E.; "Ghost Train."

PIERSON HAUSNER

Lock Haven, Pa.

Secondary—*Science and Social Studies*
Y. M. C. A., 1, 4; Naturalist Club, 4.

LOUISE K. IRWIN

Williamsport, Pa.

Kindergarten

W. A. A., 1, 2; Y. W. C. A., 2; Bel Canto Choral Society, 3, 4; A. C. E., 3, 4.

KATHERINE KEAR

Watsonstown, Pa.

Kindergarten—Primary
B.S.

NANCY KISER

Wilkinsburg, Pa.

Kindergarten—Primary
B.S.

Class Treasurer, 2; PRAECO Staff, 3, Organization Editor; Alpha Sigma Tau, 3, 4, Vice President; Panhellenic Council, President, 4; Dramatic Club, 2, 3, 4; Y. W. C. A., President, 4; Naturalist Club, 1, 2, 3, 4, Treasurer, 4; Inter-Sorority Council, Secretary, 3; A. C. E.

MORRILL LAUBACH

Williamsport, Pa.

Secondary—*French, English*
B.S.

Times Staff; Education Club; Y. M. C. A.; French Club; Mixed Quartet, Glee Club.

ETHEL LAW

Lock Haven, Pa.

Secondary—*English and Social Studies*
B.S.

Pi Kappa Sigma, 1, 2, 3, 4; Education Club, 2, 3, 4; Bel Canto Choral Society, 3, 4; Mixed Chorus, 3, 4; Mixed Quartet, 3, 4.





MAYNARD LINGENFELTER

East Freedom, Pa.

Secondary—History, English
B.S.

Football Letter, 1, 2, 3, 4, Co-Captain, 4;
Varsity Club, 1, 2, 3, 4.

MARTHA McALLISTER

North Bend, Pa.

Intermediate
B.S.

Pi Kappa Sigma; Education Club.

ALICE McGARVEY

Kindergarten—Primary
B.S.

LUCETTA McKIBBEN

Lock Haven, Pa.

Secondary—Social Studies, Latin, English
B.S.

Times Staff, 1, 2; Day Room Student Council, 3, President, 4; Dramatic Club; Education Club, 3, Secretary, 4; Y. W. C. A., President, 3; "Ghost Train."

WILLIAM MAHAFFEY

Williamsport, Pa.

Mathematics, Social Studies, English
B.S.

Dramatic Club, 3, 4, Secretary, 4; Art Club, 3, 4; Y. M. C. A., 4; "Come Seven."

SARA MORAN

French—Social Science
B.S.

JAMES MEYERS

Lock Haven, Pa.

Secondary—English, Social Studies
B.S.

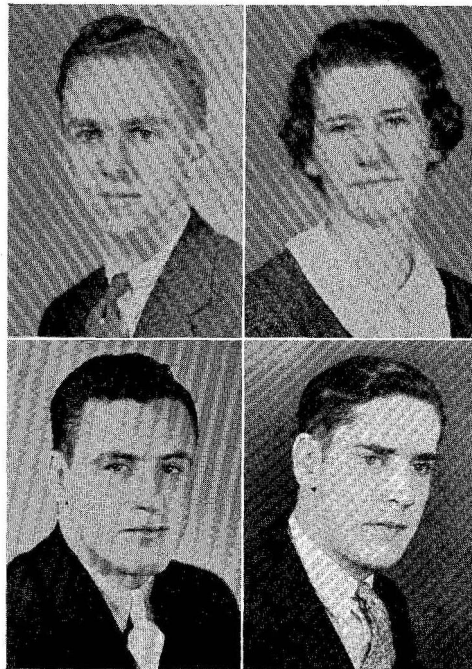
Football Letter, 1, 2, 3, 4, Co-Captain, 3;
Times Staff, 2, 3; Varsity Club, 1, 2, 3, 4, President, 4; "Henry," 4; "Midsummer Night's Dream."

EUGENE NUSS

Farwell, Pa.

Secondary—Mathematics, Science
B.S.

Class President, 4; Class Treasurer, 3;
PRAECO Staff, 2, 3, 4; Delta Rho Beta, 1, 2, Secretary, 3, President, 4; Education Club, 2, 3, 4; Y. M. C. A., 1, 2, 3; Naturalist Club, 2, 3, 4; Hall of Fame, 4.





EMERSON PACKARD

Jersey Shore, Pa.
Secondary—Mathematics, Geography
 B.S.
 Delta Rho Beta.

MARION PARSONS

Lock Haven, Pa.
Secondary—English, Social Studies
 B.S.
 Rho Omega Lambda, Social Secretary, 3.

EVELYN PAUL

Intermediate
 B.S.

REUBEN SALADA

DuBois, Pa.
Secondary—Social Studies, Science
 B.S.

PRÆCO Staff, 3, 4; Men's Student Council, 2, 3; Education Club, 2, 3, 4; Y. M. C. A., 1, 2, 3, 4, Treasurer, 3, President, 4; Shakespeare Literary Society, Treasurer, 3, Vice President, 4, President, 4; Naturalist Club, 2, 3, 4, Treasurer, 3, Vice President, 4; Men's Tribunal, Senior Representative, 4.

MARY ESTHER SCHAEFER

Williamsport, Pa.
Kindergarten
 Education Club, 2, 3, 4; Y. W. C. A., 3, 4;
 A. C. E., 4.

OLIVE SHAFFER

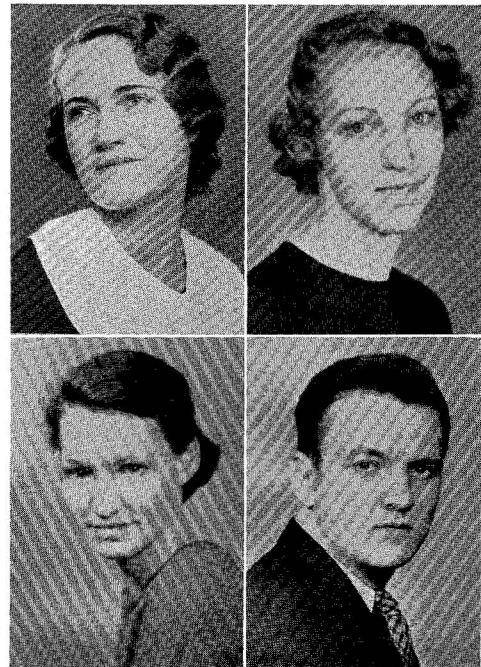
Intermediate
 B.S.

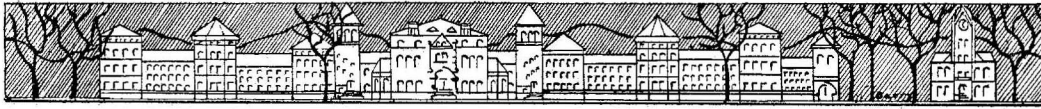
RUTH SHEFFER

Intermediate
 B.S.

JOE SHEVOCK

Portage, Pa.
Secondary and Elementary—
English, Social Studies
 B.S.
 Football Captain, 3, 4; Football Letter, 1, 2, 3, 4; *Times* Staff, 1, 2; Men's Student Council, 1, 4, Vice President, 4; Education Club, 4; Varsity Club, 1, 2, 3, 4; Y. M. C. A., 1, 2, 3, 4; Baseball 2, 3, 4; Naturalist Club, 3, 4; Shakespeare Literary Society, 2, 3.





BELLE ISLE STONER

Kindergarten
B.S.

EDNA SWEINHART

Pottstown, Pa.
Special Kindergarten
B.S.

Bel Canto Choral Society; Art Club; Women's Student Council; Y. W. C. A.



ANNA S. TREXLER

Wilkes-Barre, Pa.

Kindergarten—Primary

Y. W. C. A.; A. C. E.; Alpha Sigma Tau.

MARY ULMER

Lock Haven, Pa.

Secondary—Social Studies, Geography
B.S.

Alpha Sigma Tau, 1, 2, 3, 4, Chaplain, 3, Treasurer, 4; Dramatic Club, 1, 2, 3, 4; W. A. A., 1, 2, 3, 4; Y. W. C. A., 1, 3, 4; Dayroom President, 4; Naturalist Club, 1, 2, 3, 4, Secretary, 4; Bel Canto Choral Society, Secretary, 2, Librarian, 4; Orchestra, 2, 3, 4; Vesper Choir; Quintet; Girls' Volley Ball, Varsity, 1, 2.

HOWARD UNDERWOOD

Lock Haven, Pa.

Secondary—English, Mathematics

PAECCO Staff, Snap-Shot Editor, 3; Delta Rho Beta, 1, 2, 3, 4; Education Club, 2, 3, 4; Band.

LEAH VARNER

Woodland, Pa.

Intermediate

Class Secretary, 3; Pi Kappa Sigma, 3, 4; Dramatic Club, 1, 2, 3, 4; Education Club, 1, 2, 3; Art Club, 1, 2, 3; Varsity Teams, 1, 2, 3; W. A. A., 1, 2, 3, 4, Treasurer, 4; Y. W. C. A., 1, 2, 3, 4, Vice President, 2; Cabinet, 3, 4; Bel Canto Choral Society, 2; "East is West."

W. HARTER VONADA

Blanchard, Pa.

Secondary—Science and Mathematics

Delta Rho Beta, 1, 2, 3, 4; Dramatic Club, 3, 4; Orchestra, 1, 2, 3; Band, 1, 2, 3, 4; "Come Seven."

AUDREY WALIZER

Lock Haven, Pa.

Intermediate

B.S.

Y. W. C. A.; W. A. A.





MARGARET E. WELLS

Pottstown, Pa.
Kindergarten
B.S.

Art Club, 1, 3, 4; W. A. A., 1, 2; Y. W. C. A., 1, 2; A. C. E., 1, 2, 3, 4.

EVELYN WILLIAMS

Howard, Pa.
Secondary—Mathematics, Science
B.S.

Alpha Sigma Tau, 2, 3, 4, Treasurer, 3, President, 4; Panhellenic Council, 4; Women's Student Council, Secretary, 2; Dramatic Club, 3, 4; Education Club, 2, 3, 4; W. A. A., 1, 2, 3, 4, Treasurer, 2, President, 3; Y. W. C. A., 1, 2, 3, 4, Cabinet, 2, Vice President, 3, Cabinet, 4; Shakespeare Literary Society, 1, 2, 3, 4, Treasurer, 3, 4; Naturalist Club, 1, 2, 3, 4; Volley Ball, Basketball, Tennis, Archery, 1, 2, 3, 4; Baseball, 1, 2, 3, 4; Riding, 4; Hockey, 1, 2, 3, 4; Track 1, 2; "East is West."

EUGENIA WILLIAMS

Beech Creek, Pa.
Kindergarten—Primary
B.S.

Education Club, 2, 3, 4; Y. W. C. A., 1, 2, 3, 4, Cabinet Secretary, 2, 3; Orchestra, 1, 2, 4; Naturalist Club, 2, 3, 4, Secretary, 4; A. C. E.

REBECCA WILLIAMS

Holidaysburg, Pa.
Kindergarten
B.S.

Sigma Sigma Sigma, Sentinel, 4; Women's Student Council, Freshman Representative; Education Club; W. A. A.; Y. W. C. A., President, 2; A. C. E.; Shakespeare Literary Society, President, 3.

VICTOR WILLIAMS

Monument, Pa.
Secondary—Mathematics and English
B.S.

Delta Rho Beta, 2, 3, 4; Education Club, 2, 3, 4; Y. M. C. A., 1, 2; Tennis Letter, 3.

ANNE WILSON

Williamsport, Pa.
Secondary—Mathematics, Science
B.S.

Class Treasurer, 1; PRAECO Staff, 2, 3; Inter-Sorority Council, President, 3; Education Club, 1, 2, 3, President, 4; Art Club, 1, 2, 3, 4; W. A. A., 1, 2; Glee Club, 1, 2; Sigma Sigma Sigma, Secretary, 2, 4; Panhellenic Council, Secretary, 4.

ROBERT YEARICK

Mathematics—Science
B.S.

JOHN YON

Altoona, Pa.
Secondary—Science, Mathematics
B.S.

Hall of Fame; Cheer Leader, 3; PRAECO Staff, 2; Times Staff, 1, 2; Men's Student Council, President, 4; Dramatic Club, 1, 2, 3, 4, Treasurer, 4; Education Club, 1, 2, 3, 4; Shakespeare Literary Society, 2, Vice President, 3, President, 4; Band, 2, 3, 4; Men's Glee Club, 1, 2; Orchestra, 1, 2, 3, 4; "Outward Bound"; "Mis' Nellie of N'Orleans"; "Come Seven"; "Ghost Train."





FRED ZAMPOGNA

Mt. Jewett, Pa.

*Elementary and Secondary—
Social Studies, Geography*
B.S.

Men's Student Council, 1, 4, President, 4;
Dramatic Club; Education Club; Y. M.
C. A.; Inter-Mural Track; Basketball;
"Come Seven."

EDNA SMITH

Lewistown, Pa.

Elementary
B.S.

Y. W. C. A.; W. A. A., 1.



JOHN BARRY

Lock Haven, Pa.

Secondary—Mathematics, Social Studies
B.S.

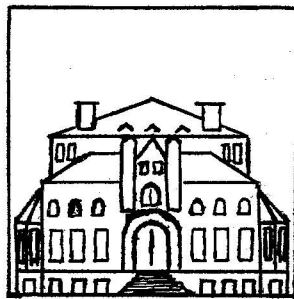
PRÆCO Staff, 3, 4; Basketball Letter, 1; Art
Club, Vice President, 3, President, 4.

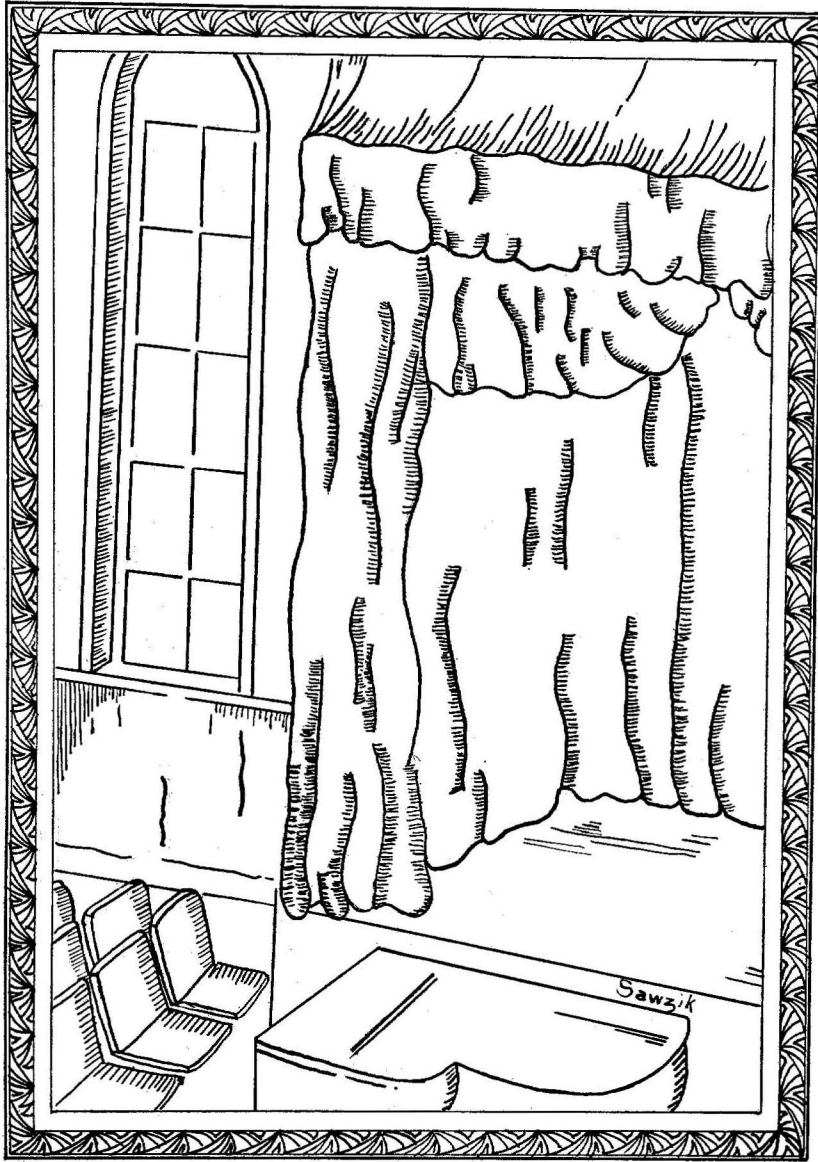
EDWARD KIMBLE

Renovo, Pa.

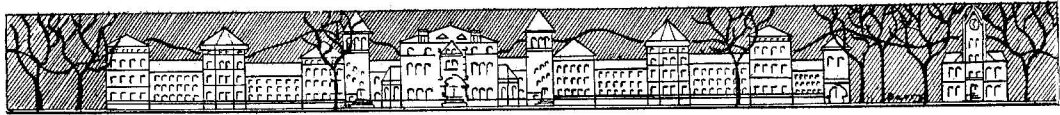
Secondary—French, Latin
B.S.

French Club, President, 3, 4; Class Vice
President, 1; PRÆCO Staff, Photo Editor,
3; *Times* Staff, 1, 2, Business Manager, 3;
Delta Rho Beta, 1, 2; Dramatic Club, 1,
2, 3, 4, Secretary, 3; Education Club, 2,
3, 4.





HALL OF FAME



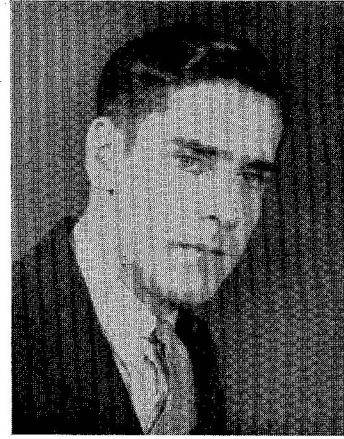
KATHERINE CAPRIO



FRANKLIN COURTER



LUCETTA MCKIBBEN



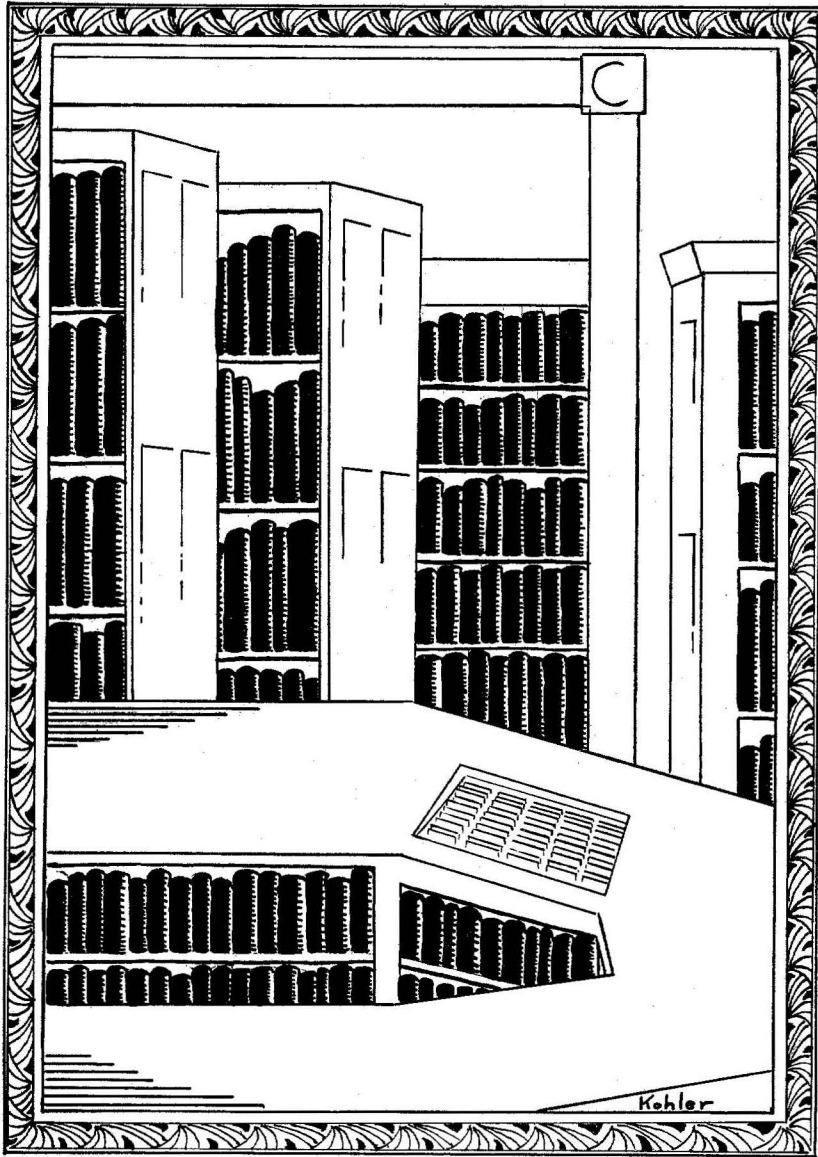
EUGENE NUSS



JOE SHEVOCK



JOHN YON



JUNIORS



LOUISE McENTIRE
President



LEAH KRAEMER
Vice President

Junior Class Officers

LOUISE McENTIRE	-	-	-	-	-	-	-	-	<i>President</i>
LEAH KRAEMER	-	-	-	-	-	-	-	-	<i>Vice President</i>
LUCILE GLOSSNER	-	-	-	-	-	-	-	-	<i>Secretary</i>
RITA POHL	-	-	-	-	-	-	-	-	<i>Treasurer</i>

SAMUEL J. SMITH, *Faculty Adviser*



LUCILE GLOSSNER
Secretary



RITA POHL
Treasurer



Junior Class History

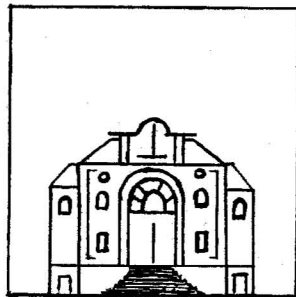
Juniors, there are forty-two of us to continue as Seniors. We were what all underclassmen are, as Seniors we hope to benefit from our past experiences.

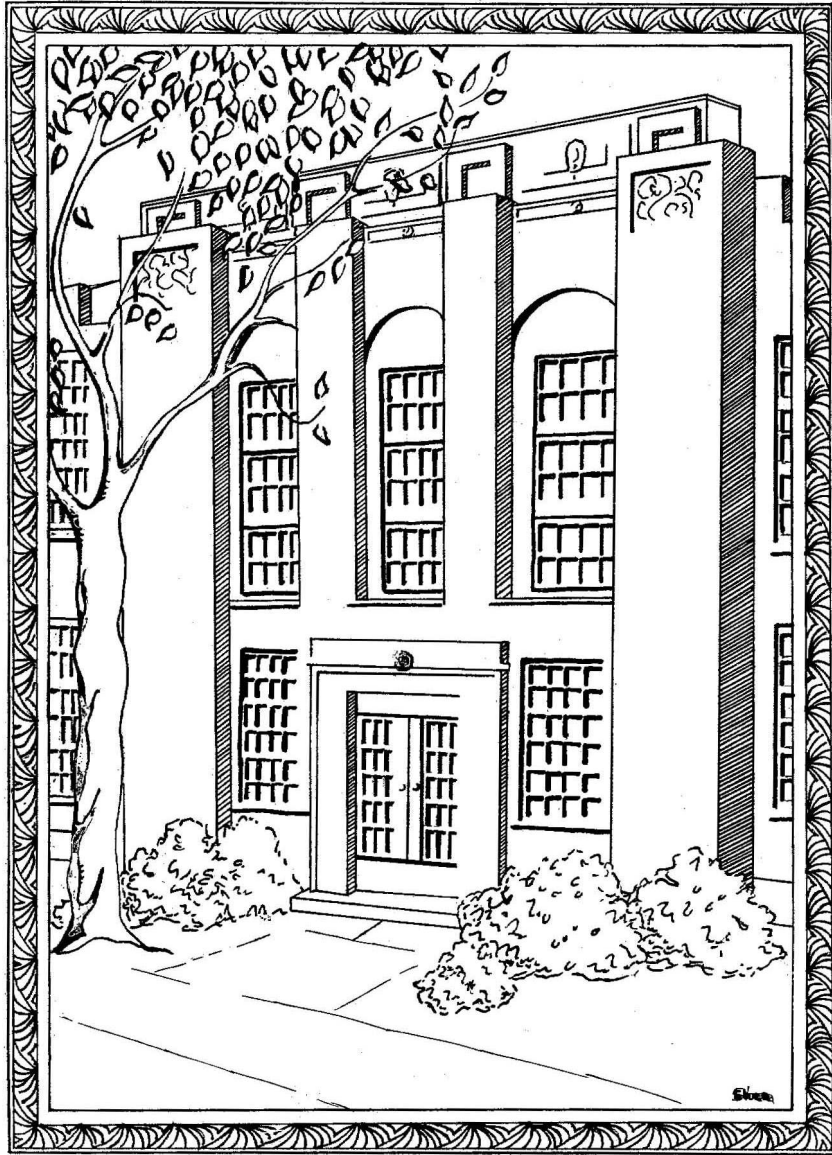
JUNIOR CLASS ROLL

William S. Abrams
Paul D. Breon
Betty L. Bryerton
Leonard R. Caprio
D. Wilson Clark
Rebecca S. Confer
Eleanor M. Cupp
Gretchen K. Dickey
Chester S. Eastep
Helen M. Edler
Charles W. Emery
James B. Finn
Layah L. Fromm
C. Robert Gallagher

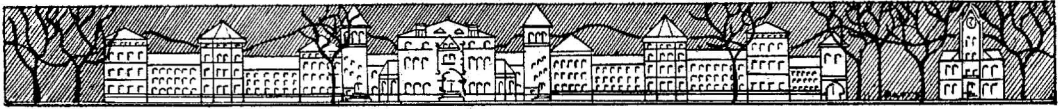
Permelia F. Garthoff
H. Lucile Glossner
Mary E. Gummo
Dorothy C. Hornberger
Evelyn E. Hanna
Katharine M. Harris
Romaine Herb
William A. Hodrick
Clee F. Howe
Richard L. Kamp
Fred B. Ingraham
Leonard Johnsonis
Frank M. Kotchin
Esther M. Lakner

Weldon E. MacDonald
H. Louise McEntire
Martha I. Mapes
Mary Louise Markel
Wayne S. Myers
Robert T. O'Gara
Emerson W. Packard
Rita M. Pohl
Mary Ann Roberts
Pauline J. Ruddy
Stanley J. Sady
Robert F. Sholly
Pearl E. Singfield
Francis L. Taylor





SOPHOMORES



THOMAS CONRAD
President



CAROLINE BROWN
Vice President

Sophomore Class Officers

THOMAS CONRAD	-	-	-	-	-	-	-	<i>President</i>
CAROLINE BROWN	-	-	-	-	-	-	-	<i>Vice President</i>
EDNA LEINBACH	-	-	-	-	-	-	-	<i>Secretary</i>
GEORGE FRETHY	-	-	-	-	-	-	-	<i>Treasurer</i>

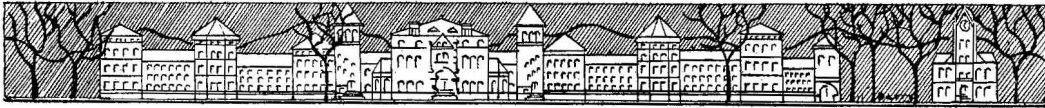
MISS CATHERINE E. GEARY, *Faculty Adviser*



EDNA LEINBACH
Secretary



GEORGE FRETHY
Treasurer



Sophomore Class History

At last we are Sophomores! Our college initiation, the Freshman year, is over. With a year of valuable experience behind us, we may look forward expectantly to our Junior and Senior years.

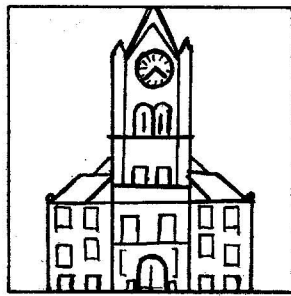
SOPHOMORE CLASS ROLL

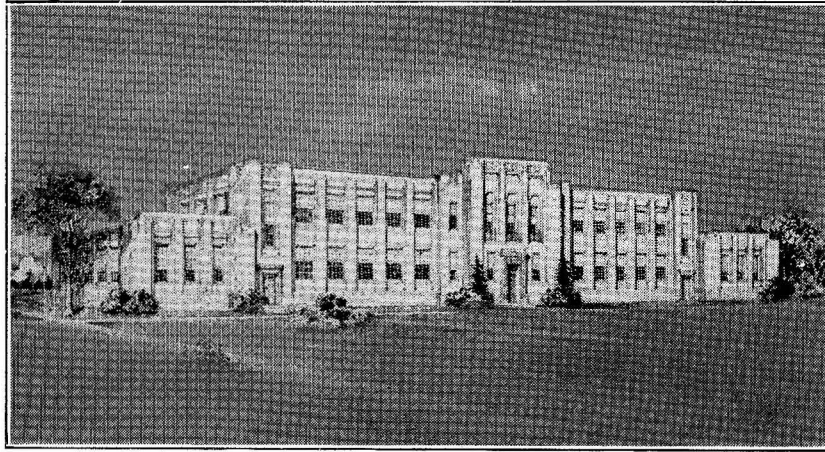
Esther Anderson
 M. Esther Barr
 Pauline Barrows
 George Bielefeld
 A. Isabel Bigelow
 Olivia Bogar
 R. Eleanor Bower
 Hazel Boyer
 Geraldine Bradley
 Albert Brazinski
 Paul Breon
 Caroline Brown
 Florence Brown
 James Brown
 William Brown
 Mollie Bovinger
 Andrew Claar
 Thomas Conrad
 Ruth Crowley
 Frances Davis
 Philomena Davis
 Martin Deitrich
 Inez Dieffenbach
 Ruth Dunkelberger
 Wayne Durandetta
 Lynn Earon
 Dorothy Eder
 Ralph Engler
 Maxine English
 Helen Eyerly
 Carmilla Folmar
 Paul Frantz
 Calvin Fravel

Anne Frazier
 Alice Fredericks
 Ruth Freeman
 George Frethy
 Lydia Furst
 Helen Gallaher
 John Gales
 John Graden
 Edith Greaser
 Margaret Griffith
 Martha Halbrock
 Mary Hammer
 Maxine Harrier
 Erling Hauge
 Winifred Hearnis
 Jean Hellberg
 Mary Madeline Hettler
 Aleta Hobson
 Edward Hochrein
 George Hoffnagle
 Helen Louise Homer
 Ruth Hunt
 Fred Hurd
 Grant Irion
 Irene Jury
 William Jusick
 Gladys Kleman
 Oliver Kling
 Helen Kohler
 Bernard Kotchin
 Roy Kress
 Jean Kunes

Edna Leinbach
 Jeanne Lepley
 Dorothy Lillbridge
 Harris Lipez
 Jack Livingston
 Carolyn Long
 Lois Long
 Eleanor Lucas
 Elizabeth Lunn
 Mary Kathryn Lyon
 Vera Lyons
 Barbara McCabe
 Sara McClain
 Ruth McClintock
 William McCollum
 Charles McDermott
 Mary McKinley
 Joseph McNerny
 Helen Mackovlak
 Jean Mann
 Jane Mervine
 Beatrice Montarsi
 Gena Montarsi
 John Moyer
 Angelo Muro
 Rowland Myers
 Harvey Newman
 Helen Nichols
 Anna O'Malley
 Jane Ostrom
 Michael Pagnotto
 Margaret Pelton

Marjorie Pfoutz
 Ethel Rich
 Mary Ellen Ringler
 Charles Robinson
 Geraldine Ross
 Olga Sawzik
 Dorothy M. Schmidt
 Morlin Schrock
 Amy Shaffer
 Gladys Shaffer
 Julia Shea
 Margaret Sheroky
 Helena Silagyi
 Harry Smith
 Hilda Smith
 Pauline Smith
 Robert Suder
 Thomas Summers
 Alyene Torrey
 Cecelia Truhan
 La Wave Underwood
 Miriam Wallace
 Charles Weaver
 Robert Weaver
 Olive Weigle
 Anna White
 Janet Wilson
 Ashley Woolridge
 Marguerite Wright
 Doris Yarrison
 Jack Yohe
 John Yokemick
 Vesta Young

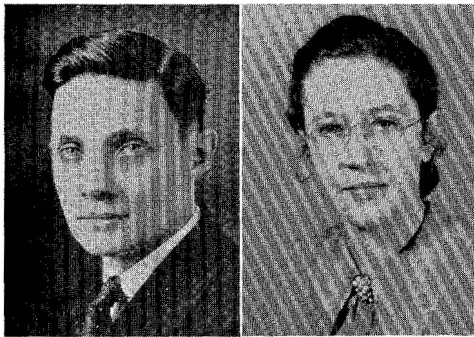




KINDERGARTEN

PRIMARY

INTERMEDIATE



GEORGE BIELEFIELD
Tyrone, Pa.
Intermediate

ISABEL BIGELOW
McAlevy's Fort, Pa.
Intermediate



OLIVIA BOGAR
Port Trevorton, Pa.
Intermediate
Art Club; W. A. A.; Y. W. C. A.; Bel Canto
Choral Society.

HAZEL BOYER
Selinsgrove, Pa.
Kindergarten—Primary
Art Club, Secretary, 2; W. A. A., 1, 2; Y.
W. C. A., 1, 2; Band, 1, 2; A. C. E., 1.

FLORENCE BROWN
Castanea, Pa.
Kindergarten—Primary

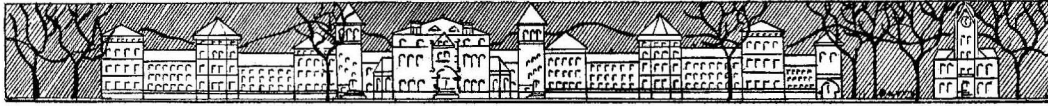


FRANCES DAVIS
Patton, Pa.
Intermediate

PHILOMENA DAVIS
Patton, Pa.
Intermediate



RUTH DUNKLEBERGER
Altoona, Pa.
Kindergarten—Primary



WAYNE DURANDETTA
Curwensville, Pa.
Intermediate

DOROTHY EDER
Montoursville, Pa.
Intermediate



MAXINE ENGLISH
Pine Grove Mills, Pa.
Kindergarten—Primary

ANNE FRAZIER
Berlin, Pa.
Intermediate

Pi Kappa; Panhellenic Council; Dramatic Club; W. A. A.; Shakespeare Literary Society.

HELEN GALLAGHER
Kindergarten—Primary

ANN GILMARTIN
Renovo, Pa.
Kindergarten—Primary



EDITH GREASER
Altoona, Pa.
Intermediate

Times Staff, 1; Art Club; W. A. A.; Y. W. C. A.; Mixed Chorus.

MICHAEL HADDAD
Portage, Pa.
Intermediate





MARY HAMMER

Boswell, Pa.

Intermediate

Dramatic Club; W. A. A.; Y. W. C. A.;
Shakespeare Literary Society, Secretary, 2.



ELLEN HARDING

Williamsport, Pa.

Kindergarten—Primary

MAXINE HARRIER

Woodland, Pa.

Intermediate

EVELYN HELLBERG

Byrnedale, Pa.

Kindergarten—Primary

W. A. A.; Naturalist Club; Bel Canto
Choral Society.

JEAN HELMAN

Kindergarten—Primary

Pi Kappa Sigma, 1, 2; A. C. E., 1, 2; W.
A. A., 1, 2.

MADELINE HETTLER

Montoursville, Pa.

Kindergarten—Primary

ALETA HOBSON

South Fork, Pa.

Kindergarten—Primary

W. A. A.

HELEN HOMER

Export, Pa.

Kindergarten—Primary





FRED HURD

LaJose, Pa.

Intermediate

Y. M. C. A.

HELEN KOHLER

Hughesville, Pa.

Kindergarten—Primary



BERNARD KOTCHIN

Johnstown, Pa.

Intermediate

EDNA LEINBACH

Vicksburg, Pa.

Intermediate

Class Secretary, 2; PRAECO Staff, 1; Sigma Sigma Sigma; W. A. A.; Y. W. C. A.; Naturalist Club; Canterinos, Secretary, 2.

CAROLYN LONG

Russellton, Pa.

Intermediate

KATHRYN LYON

Emporium, Pa.

Intermediate

W. A. A., 1, 2; Y. W. C. A., 1, 2; A. C. E., 2; Shakespeare Literary Society, 1, 2.



BARBARA McCABE

Portage, Pa.

Kindergarten—Primary

SARA McClAIN

Mill Hall, Pa.

Intermediate

W. A. A.; Pi Kappa Sigma; Y. W. C. A.





MARY McCOY
Smethport, Pa.
Kindergarten—Primary

MARY McKINLEY
Lock Haven, Pa.

Kindergarten—Primary
W. A. A., 1, 2; A. C. E., 1, 2; Art Club
1, 2.



JEAN MANN
Beech Creek, Pa.

Intermediate
W. A. A., 1, 2; Y. W. C. A., 1, 2; Band,
1, 2.

ANGELO MURO
Central City, Pa.

Intermediate
Cheer Leader, 1, 2; Y. M. C. A. Council, 2;
Shakespeare Literary Society; Boxing
Team; Mixed Chorus; Boys' Glee Club;
Band.

HARVEY NEWMAN

Richfield, Pa.
Intermediate

Y. M. C. A., 1, 2, Treasurer, 2; Shakespeare
Literary Society, 1, 2; Naturalist Club, 2.

ANNA O'MALLEY

Emporium, Pa.

Kindergarten—Primary
Y. W. C. A.; A. C. E.



JANE OSTROM

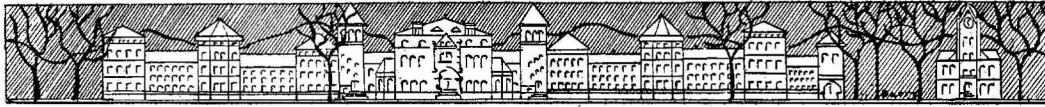
Renovo, Pa.
Intermediate

MICHAEL PAGNOTTO

Jersey Shore, Pa.

Intermediate





MARJORIE PFOUTZ

Tyrone, Pa.

Intermediate

Rho Omega Lambda; W. A. A., Recording Secretary, 2; Y. W. C. A.; Naturalist Club, Treasurer, 2.

HELENE REGAN

Albion, Pa.

Kindergarten—Primary



ETHEL RICH

Loganton, Pa.

Intermediate

MARY RINGLER

Mifflinburg, Pa.

Intermediate

Sigma Sigma Sigma; W. A. A., Point Secretary, 2; Y. W. C. A.; Naturalist Club; Girls' Glee Club.

OLGA SAWZIK

Stoystown, Pa.

Kindergarten—Primary

Art Club, 2; Bel Canto Choral Society, 2.



DOROTHY SCHMIDT

Munson, Pa.

Intermediate

MORLIN SCHRACK

Booneville, Pa.

Intermediate

Band; Orchestra.



AMY SHAFFER

Holsopple, Pa.

Intermediate

Pi Kappa Sigma, 2, Vice President, 2; Dramatic Club; Art Club; W. A. A.; Y. W. C. A.; Band; Orchestra.



JULIA SHEA

South Fork, Pa.

Intermediate

Art Club; W. A. A.; Y. W. C. A.; Orchestra, 1; Glee Club, 1, 2, President, 2.



MARGARET SHEROKY

Phillipsburg, Pa.

Kindergarten—Primary

Pi Kappa Sigma, Recording Secretary, 1, 2; Dramatic Club, 1, 2; W. A. A., 1, 2; A. C. E., 4.

PAULINE SMITH

Bellefonte, Pa.

Intermediate

WAYNE SUDER

Berlin, Pa.

Intermediate

THOMAS SUMMERS

Wingate, Pa.

Intermediate

Y. M. C. A.

CECELIA TRUHAN

Allport, Pa.

Intermediate

ALYENE TORREY

Shinglehouse, Pa.

Intermediate

LAWAVE UNDERWOOD

Lock Haven, Pa.

Intermediate





OLIVE WEIGLE
Johnstown, Pa.
Kindergarten—Primary



ANNA WHITE
Altoona, Pa.
Two-year Intermediate
Pi Kappa Sigma, Secretary, 2; Dramatic Club; W. A. A.; Naturalist Club.

JANET WILSON
Lock Haven, Pa.
Intermediate

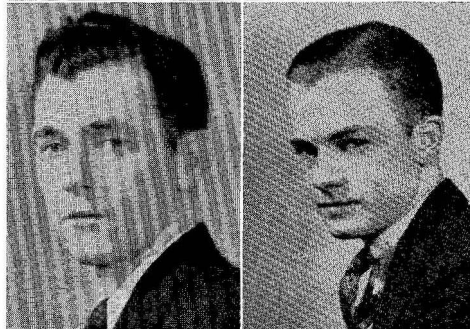
MARGUERITE WRIGHT
Montoursville, Pa.
Intermediate

GERALDINE ROSS
Intermediate



VESTA YOUNG
Monument, Pa.
Kindergarten—Primary
W. A. A., 1, 2; Mixed Chorus.

LAWRENCE BECK
Jersey Shore, Pa.
Intermediate
Delta Rho Beta.

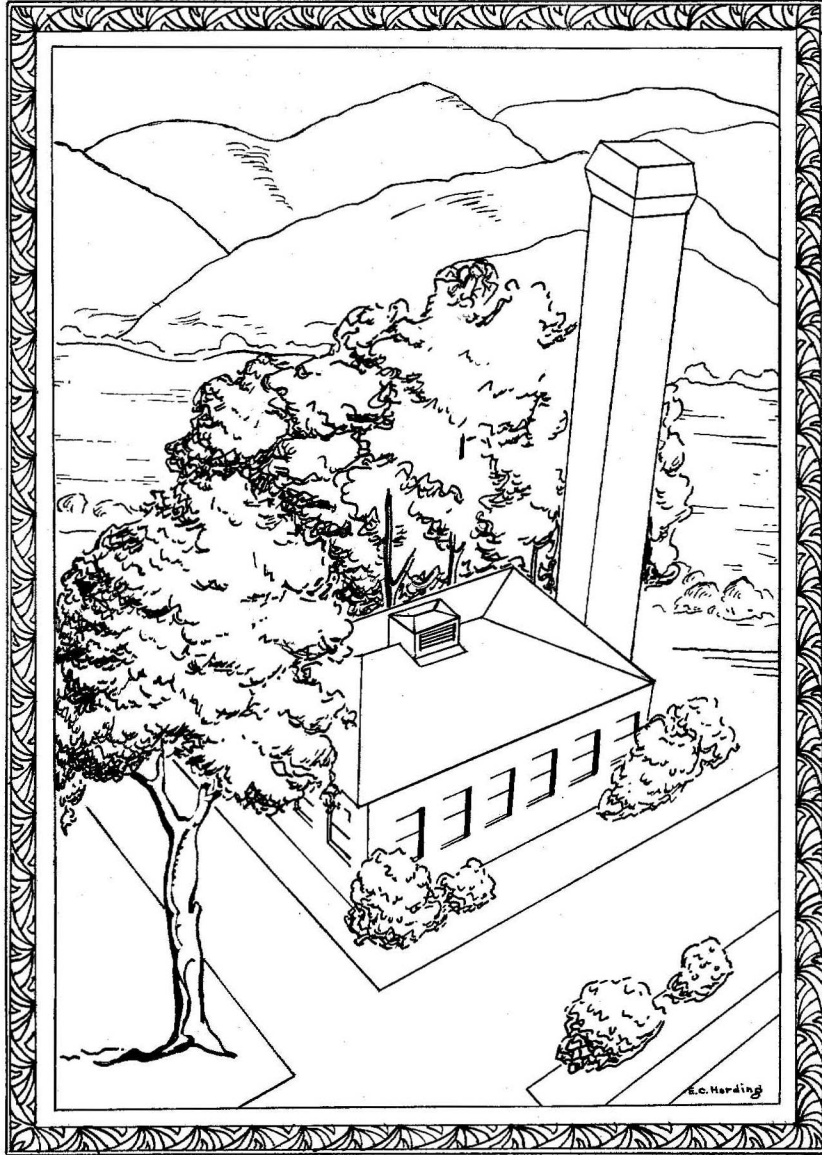


CHESTER S. EASTEP
Williamsburg, Pa.
Editor-in-Chief, PRAECO, 3; Y. M. C. A., 1, 2, 3; Class Treasurer, 2; Shakespeare Literary Society, President, 2.

Acknowledgments

•

The Editors of the PRAECO of 1936 wish to take this opportunity to acknowledge the invaluable aid rendered by the Art Club in beautifying this volume.



FRESHMEN



LEE DELANEY
President



CHARLES SLONAKER
Vice President

Freshmen Class Officers

LEE DELANEY	-	-	-	-	-	-	-	<i>President</i>
CHARLES SLONAKER	-	-	-	-	-	-	-	<i>Vice President</i>
ROBERT SEITZER	-	-	-	-	-	-	-	<i>Secretary</i>
CHARLES ROHRBAUGH	-	-	-	-	-	-	-	<i>Treasurer</i>

MR. LEVI J. ULMER, *Faculty Adviser*



ROBERT SEITZER
Secretary



CHARLES ROHRBAUGH
Treasurer



Freshman Class History

As Freshmen we have done our part. We are looking forward to a most eventful Sophomore year.

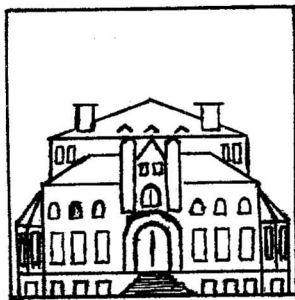
FRESHMAN CLASS ROLL

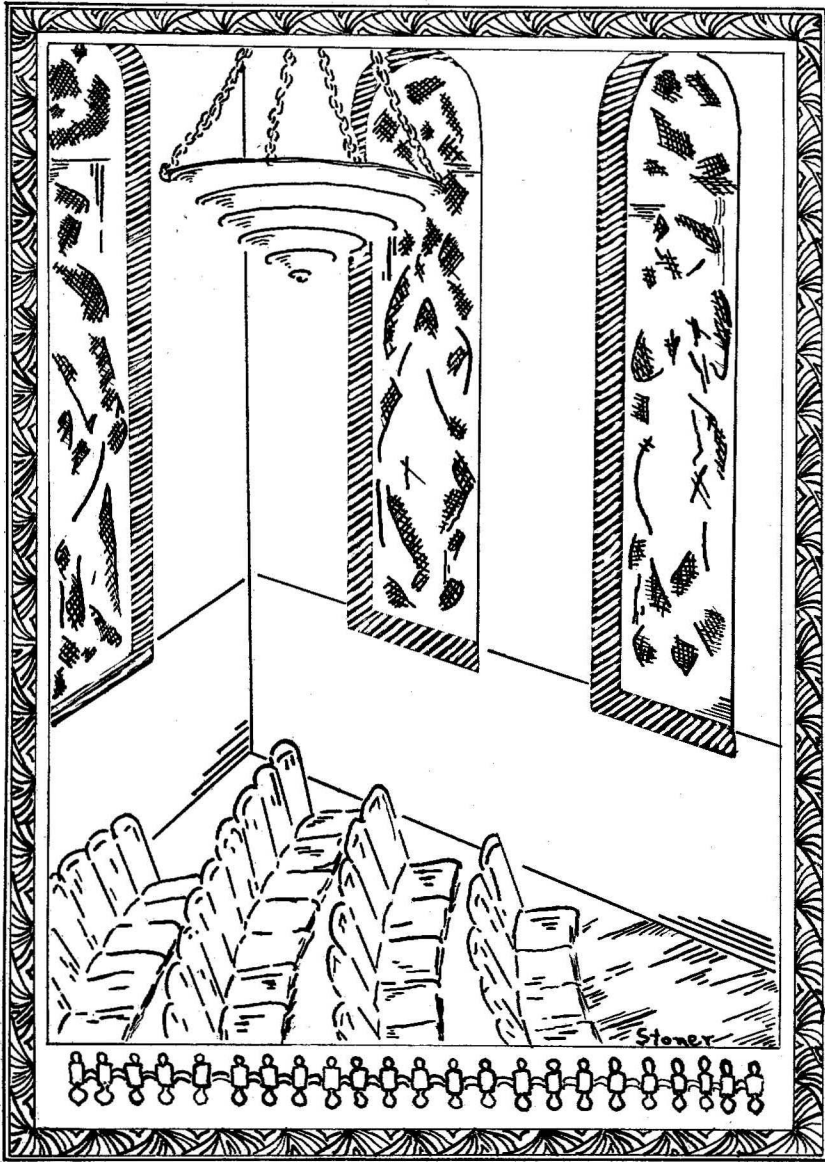
Helen Adams
 Wilma Allen
 Hugh Bagley
 Anna Banzhaf
 Ruth Beard
 Oscar Bierly
 Foulkon Blankenship
 Robert Blough
 George Bluhm
 Charles Bonebreak
 Josephine Briggs
 John Brown
 John Brungard
 Ollie Byers
 James Buzzelli
 Harry Callahan
 Katharine Campbell
 Jane Chalfout
 Ruth Conu
 Robert Corter
 Remona Cromwell
 Earlene Davis
 Madeline Deise
 Katharine Dill
 Lee Delaney
 Dorothy Duck
 Florence Duke
 Robert Eckenrode
 Nolan Emery
 Susanne Emery
 Isabel Fink
 William Flegal
 Rita Fleming
 Margherita Folmar
 Ruth Foulk
 June Freed
 Robert Fuller

Geraldine Fulton
 Florence Galante
 Eula Glossner
 Myrna Glossner
 Velma Green
 Agnes Green
 Paul Grieco
 Jeanette Grout
 Virginia Hand
 Auslin Harrier
 Richard Harvey
 Smith Harvey
 Donald Hay
 Mary Heekle
 Newton Henry
 Mary K. Hershberger
 Pauline Higgins
 Eleanor Hight
 Anna Hill
 Geraldine Hoover
 William Hopkins
 Joseph Hosie
 Richard Hoyt
 Bertram Kime
 Mary Kime
 Mildred Knecht
 Raymond Kniss
 Edward Kolner
 Mary Kress
 Samuel Kryder
 John Kruper
 Anna Landis
 Lenore Lantzer
 Alma Lape
 Breon Lauderbach
 William Lee
 Helen Lehman

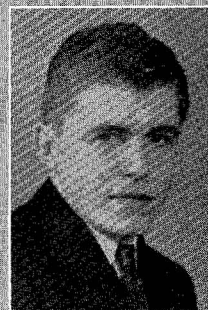
Jessie Leiby
 Richard Lindsay
 Bernice Long
 Jane Lord
 Helen Love
 Joseph Lucas
 Edward Luther
 David McBurnie
 Marguerite McCollum
 Alberta McGuire
 Mary McNitt
 Hobert Mann
 Robert Mannion
 Rose Marino
 Frank Marzacco
 Geraldine Mertz
 Irene Meyer
 Charles Miller
 Madolyn Miller
 Mary Miller
 Doris Mock
 Walter Montague
 Eleanore Moore
 John Nevins
 Ruth Nichols
 Walter Nolan
 Robert O'Donnell
 Janet Pattison
 Gerard Petrucci
 Nedra Powell
 Anna Pyura
 Genevieve Riley
 Robert Rhoades
 Fred Rohrbaugh
 Woodrow Rohrbaugh
 Charles Rorabaugh
 Albert Ross

Ethel Ross
 George Ross
 Paul Roush
 Joseph Sarafinski
 Glenn Sease
 Robert Seitzer
 Louise Selleck
 Margaret Seltzer
 Francis Serafini
 Harold Swisher
 Dorothy Shelley
 Galen Shelly
 Lorraine Shirk
 Charles Slonaker
 James Smith
 Marguerite Smith
 William Smith
 LeRoy Spotts
 Jane Stehman
 Edward Stephens
 Frances Strayer
 Peggy Stouck
 Sara Sykes
 James Tallman
 Dorothy Taylor
 Hazel Thompson
 Andrew Tocimak
 Stanley Vinscovich
 Leo Vuocola
 Miriam Wallace
 Kathryn Wentzel
 LaRue Wheeler
 Amelia White
 Beatrice Williams
 Idabell Wolf
 Jane Yost
 Lorraine Zeigenfuss





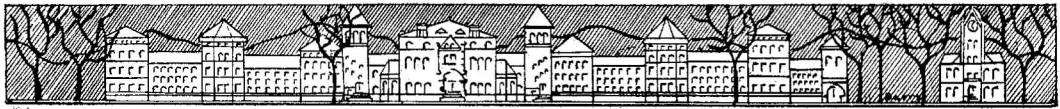
ORGANIZATIONS





Praeco Staff

CHESTER EASTEP	- - - - -	<i>Editor-in-Chief</i>
EUGENE NUSS	- - - - -	<i>Business Editor</i>
RUTH CROWLEY	- - - - -	<i>Sophomore Section Editor</i>
ISABEL FINK	- - - - -	<i>Freshman Section Editor</i>
STANLEY SADY	- - - - -	<i>Art Editor</i>
RITA POHL	- - - - -	<i>Organization Editor</i>
LEAH KRAEMER	- - - - -	<i>Photograph Editor</i>
REUBEN SALADA	- - - - -	<i>Snapshot Editor</i>
ROBERT SEITZER	- - - - -	<i>Junior Snapshot Editor</i>
MR. PARSONS	- - - - -	<i>Faculty Adviser</i>





The Times Staff

HELENA M. SILAGYI

Editor-in-Chief

MABEL-LOUISE AREY, *Adviser*

BOARD OF CONTROL

Caroline Brown
Ruth Crowley

Alice Fredericks
Edward Kimble

Morrill Laubach
Belle Isle Stoner

REPORTERS

William Anderson
Ruth Conn
Florence Duke
Ruth Freeman

Eula Glossner
Rose Marino
G. Sarah Mertz
George Ross
Robert Seitzer

Jane Seltzer
Ruth Simon
Charles Slonaker
Anne Stover

TYPISTS

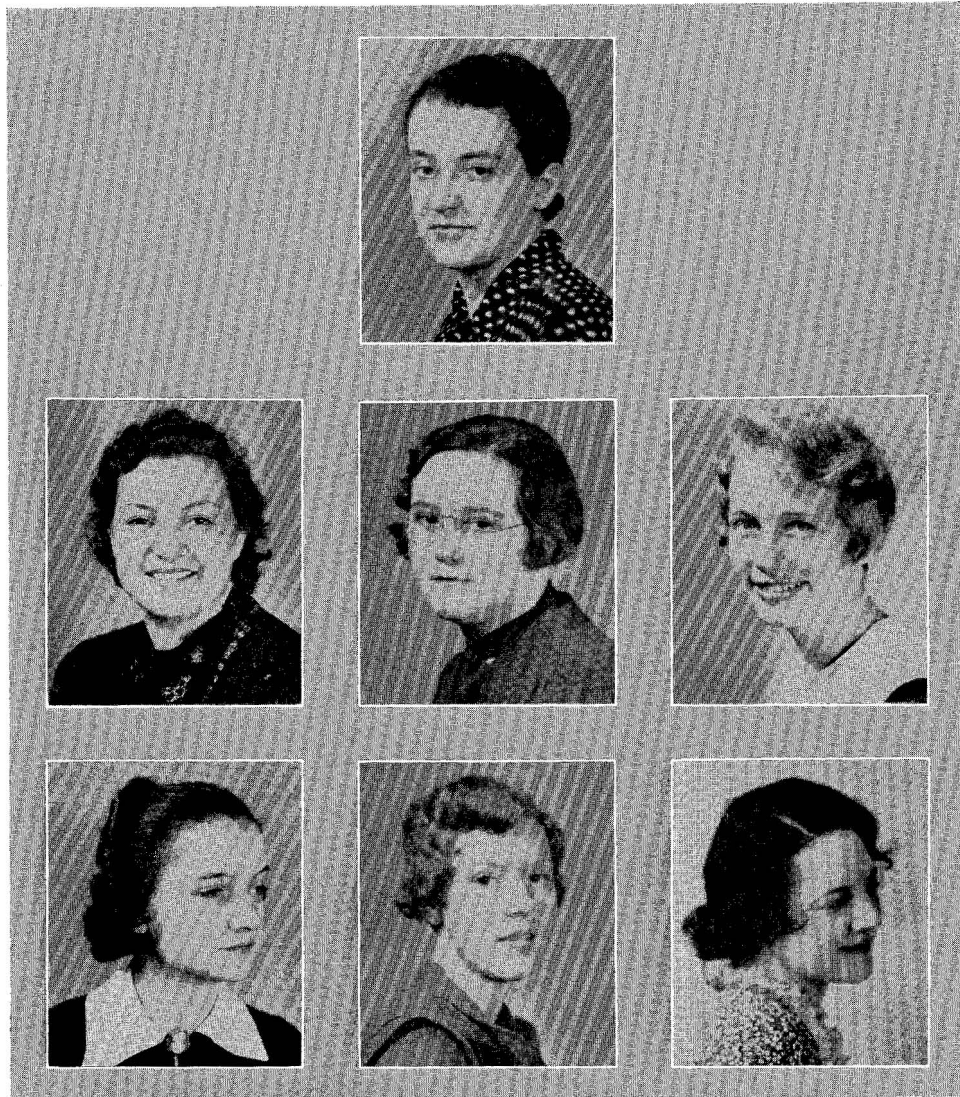
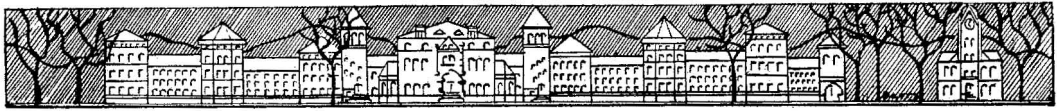
Madelyn Miller

Inez Dieffenbach

Olive Weigal

The *Times Staff*, formerly Alpha Zeta Pi, was organized in the fall of 1924. The major purpose of the organization is the publication of the *College Times*, a bi-monthly record of college events.

In addition, work with the publication of the paper affords a fruitful field for practice to those interested in journalism. Instead of applying himself to one position on the paper, a member of the staff is permitted, as a result of reorganization effected this year, to work on and learn each phase of newspaper production—reporting straight news, composing feature articles, managing circulation, administering business, reading copy, assisting with make-up, and editing.



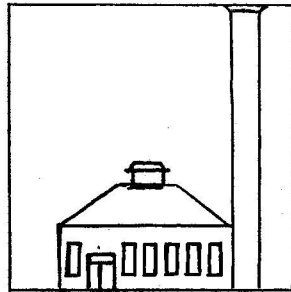


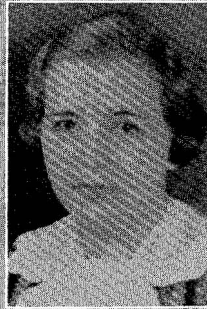
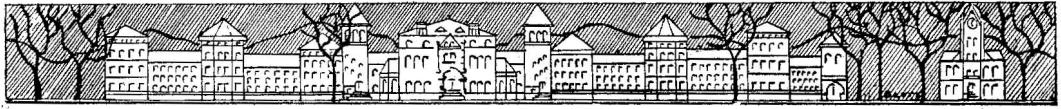
Women's Student Government Association

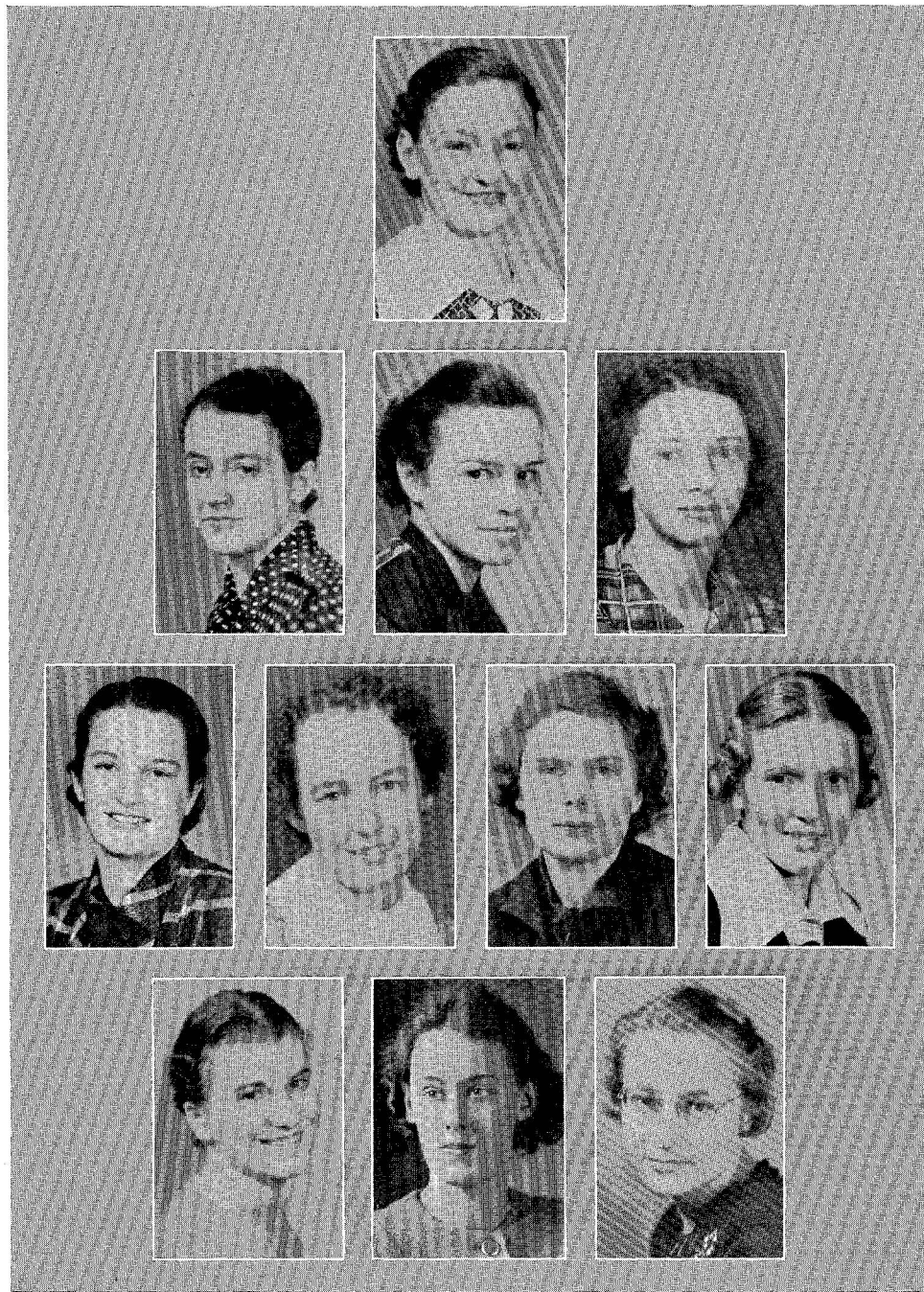
Theme for the year: Cooperation of the finest sort to provide for real social harmony among the students of L. H. S. T. C.

The council as a whole wish to express their gratefulness to our Dean of Women, Miss Genevieve Poole, for her fine spirit of good fellowship. Her gracious manner toward everyone has done much in helping the council fulfill its duties.

Members of the council are selected from the various class groups by popular vote. They are composed of those students whom the group feels are most capable of carrying out the traditions of the college.











Pi Kappa Sigma

OFFICERS

MARIAN HARSCH	-	-	-	-	-	-	-	-	-	<i>President</i>
AMY SHAFER	-	-	-	-	-	-	-	-	-	<i>Vice President</i>
MARGARET SHEROKY	-	-	-	-	-	-	-	-	-	<i>Recording Secretary</i>
NANCY WHITE	-	-	-	-	-	-	-	-	-	<i>Corresponding Secretary</i>
HELEN NICHOLS	-	-	-	-	-	-	-	-	-	<i>Treasurer</i>
MADLINE HETTLER	-	-	-	-	-	-	-	-	-	<i>Sergeant-at-Arms</i>
ANNA MARGARET CORSON	-	-	-	-	-	-	-	-	-	<i>Chaplain</i>
HELEN EYERLY	-	-	-	-	-	-	-	-	-	<i>Keeper of Archives</i>

MISS MABEL-LOUISE AREY, *Faculty Adviser*

Publication—The Laurel

Colors—Turquoise-Blue and Gold

Flowers—Forget-me-not and Jonquil

Founder's Day, November 17

MEMBERS

Marian Harsch
Amy Shaffer
Margaret Sheroky
Nancy White
Helen Nichols
Mollie Buvinger

Anna Margaret Corson
Maxine English
Helen Eyerly
Ann Frazier
Marie Gehron
Madeline Hettler
Sara McClain

Leah Varner
Ruth Eleanor Bower
Marjorie Pfoutz
Lucille Glossner
Hilda Smith
Eleanor Cupp

JUNIOR MEMBERS

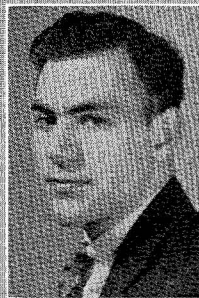
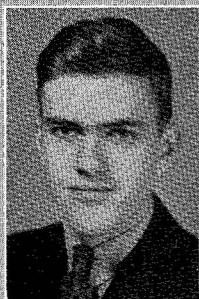
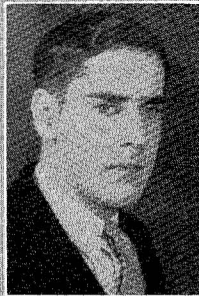
Martha McAllister
Alice McGarvey
Jane Moran
Betty Parsons

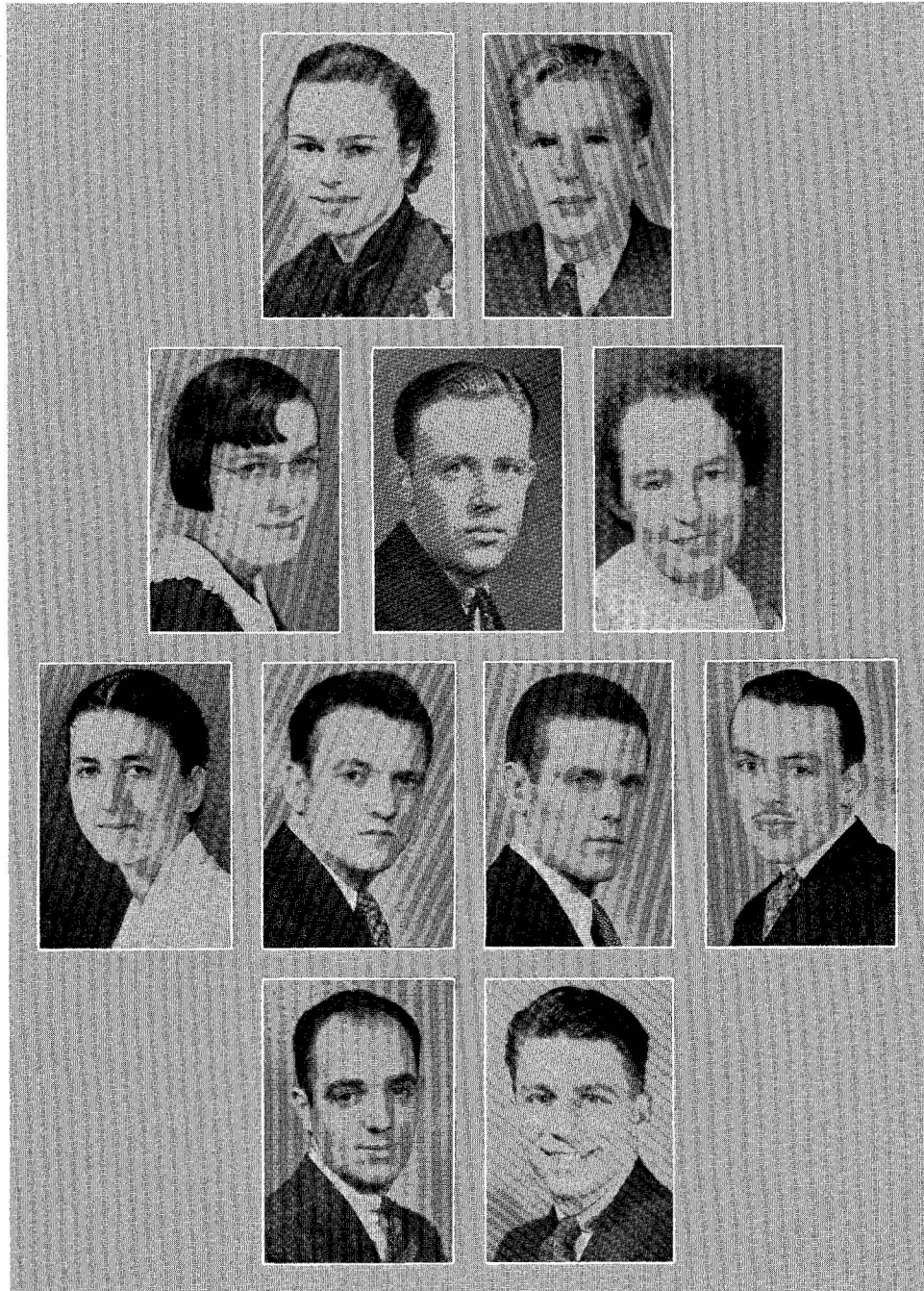
Betsy Ross
Hart Slater
Katherine Caprio
Ethel Law
Carmilla Folmar

Helen Gallaher
Jean Helman
Romaine Herb
Arlene Dunkle

This year Pi Kappa Sigma awarded its annual scholarship to Arlene Dunkle, of Halifax, Pennsylvania. The scholarship is awarded each year to cover the second semester's tuition for a non-sorority, senior girl, and is given on the basis of scholarship, character, professional promise, and general contribution to the college.

As a sorority Pi Kappa Sigma always endeavors to maintain the standards of the college and high ideals of scholarship, and to uphold the ethical and social values upon which the constitution of the sorority is established.







Education Club

OFFICERS

ANNE WILSON, FRANKLIN COURTER	- - - - -	<i>Co-Presidents</i>
LUCETTA MCKIBBEN	- - - - -	<i>Secretary</i>
EDWARD KIMBLE	- - - - -	<i>Treasurer</i>

DR. A. S. RUDE, *Faculty Adviser*

ACTIVE MEMBERS

Caroline Brown	Ethel Law	Esther Schaefer
Ruth Burkett	Vera Lyons	Howard Underwood
Harold Corter	Martha Mapes	Eugenia Williams
Franklin Courter	Sara Mapes	Evelyn Williams
Ruth Crowley	Martha McAllister	Rebecca Williams
James Finn	Lucetta McKibben	Victor Williams
Joseph Freeman	Eugene Nuss	Anne Wilson
Lucile Glossner	Reuben Salada	Eleanor Wood
Margaret Harmon	Joe Shevock	Doris Yarrison
Earlene Hauge	Helena Silagy	John Yon
Edward Kimble		Fred Zampogna

The Education Club, one of the major clubs on the campus, was organized in 1928. Since that time it has been interested in establishing and maintaining on the campus a deep and sincere interest in the entire field of education from the kindergarten to the university. The only extra curricular organization that has for its primary aim that of education as such. The club, both through the individual members and the group as a whole, seeks to create and maintain a scientific attitude toward education and to establish a sound workable philosophy of teaching.

The club, in the view of the fact that at some time in the near future it may become affiliated with the national honorary fraternity, Kappa Delta Pi, takes its members from the upper quartile of the Junior and Sophomore classes.

This year the club had in its management the registration for Home Coming Day in the fall. In addition to the regular meetings at which discussions of problems pertinent to the educational field were discussed, a formal initiation of new members and dinner were held at the Dutch Inn. At the after dinner meeting Dr. North discussed educational situations in China. The club plans to have more qualified individuals speak to them, and they also plan to attend outstanding educational conferences at the nearby colleges.



Naturalist Club

OFFICERS

<i>First Semester</i>			<i>Second Semester</i>	
WILLIAM ANDERSON	- - -	<i>President</i>	- - -	WILLIAM ANDERSON
REUBEN SALLADA	- - -	<i>Vice President</i>	- - -	JACK LIVINGSTON
MARY ULMER	- - -	<i>Secretary</i>	- - -	EUGENIA WILLIAMS
NANCY KISER	- - -	<i>Treasurer</i>	- - -	MARJORIE PFOUTZ

Faculty Advisers

MISS RUSSELL

MR. ULMER



Naturalist Club

MEMBERS

Ronald Aldrich	Edna Leinbach	Mary Ellen Ringler
William Anderson	Dorothy Lillibridge	Maryann Roberts
Paul Breon	Jack Livingston	Reuben Sallada
Leanore Dick	Louise McEntire	Joe Shevock
Evelyn Hellberg	Jane Mervine	Hart Slater
Clee Howe	Helen Nichols	Mary Ulmer
Pierson Haussener	Eugene Nuss	Nancy White
Nancy Kiser	Robert O'Gara	Eugenia Williams
Leah Kraemer	Marjorie Pfoutz	Evelyn Williams
Roy Kress		Ashley Woolridge

Again this year the Naturalist Club was one of the most active organizations in the college. Once a month the club held a social meeting in form of a hike, a breakfast, or a cabin party. The second, or educational meeting of the month, was an indoor gathering, at which a nature program was presented. During the year each member participated in at least one of these meetings. Hobbies, birds, trees, and nature-magazine articles were discussed on these programs.

Naturalist home-coming is the outstanding day for the club to welcome old members. Each year, on this eventful day spent in the open, the present members and alumni gather together to enjoy games, hikes, and good food.





Dramatic Club

OFFICERS

KATHRYN CAPRIO	- - - - -	-	<i>President</i>
MARIAN HARSCH	- - - - -	-	<i>Vice President</i>
WILLIAM MAHAFFEY	- - - - -	-	<i>Secretary</i>
JOHN YON	- - - - -	-	<i>Treasurer</i>

MISS MABEL-LOUISE AREY, *Adviser*

MEMBERS

William Mahaffey	Miriam Wallace	Eleanor Cupp
Anna Margaret Corson	Nancy Kiser	Romaine Herb
Catherine Caprio	Hart Slater	Helen Nichols
Julia Cronister	Dorothy Hamburger	Evelyn Williams
Clee Howe	Arlene Dunkle	Dorothy Eder
Lucetta McKibben	Maxine English	Marguerite Wright
Marie Gehron	Martha Halbrook	Mary Ulmer
Marian Harsch	Jack Livingston	Fred Zampogna
William Anderson	Helena Silagyi	Madeline Hettler
John Yon	Ronald Aldrich	Rita Pohl
Harter Vonada	Lenore Dick	Margaret Sheroky
Jane Moran	Geraldine Ross	Joseph Freedman
Helen Eyerly	Jean Lepley	Jean Kunes
Mary Hammer	Amy Shaffer	Nancy White
Edward Kimble	Anne Frazier	Carmilla Follmar
Amy Zaner	Madelyn Miller	Frank Kotchin

Chi Kappa Sigma has had a successful year under the leadership of our president, Katherine Caprio. Other than the regular business meetings the club functioned socially by having feeds, teas and dances.

The production of "Come Seven" by Octavus Roy Cohen and Shakespeare's "Romeo and Juliet" were highly entertaining and successful.



Bel Canto Choral Society

OFFICERS

<i>First Semester</i>		<i>Second Semester</i>
ETHEL LAW - - - -	- <i>President</i> - - - -	JULIA SHEA
JULIA CRONISTER - - - -	- <i>Vice President</i> - - - -	RUTH SIMON
JULIA SHEA - - - -	- <i>Secretary-Treasurer</i> - - - -	RITA POHL
HELEN HOMER - - - -	- <i>Recording Secretary</i> - - - -	
	- <i>Reporting Secretary</i> - - - -	GLADYS SHAFFER
LENORE DICK - - - -	- <i>Point Secretary</i> - - - -	LENORE DICK
GLADYS SHAFFER } - - - -	- <i>Librarians</i> - - - -	MARY ULMER
EDNA SWINEHART } - - - -		RUTH DUNKELBERGER

VERA LYONS, *Accompanist*
MISS GRACE ULLEMEYER, *Director*

PERSONNEL

FIRST SOPRANO

Ruth Conn	Evelyn Hellberg	Louise Irwin	Mary McNitt
Earleen Davis	Mary Kay Hershberger	Ethel Law	Gladys Shaffer
Margaret Griffith			Miriam Wallace

SECOND SOPRANO

Olivia Bogar	Alice McGarvey	Dorothy Shelly	Edna Swinehart
Inez Dieffenbach	Julia Shea	Ruth Simon	Mary Ulmer
Ruth Dunkleberger			

ALTO

Ruth E. Bower	Florence Duke	Edna Livingston	Mary E. Ringler
Julia Cronister	Ruth Foulk	Ruth Nichols	Idabelle Wolf
Lenore Dick	Pauline Higgins	Rita Pohl	



Association for Childhood Education

CHARACTERISTICS:

The A. C. E. is a national order. It is an organization meant for work of a creative and worthwhile type. One of the most democratic organizations on the campus.

SOME OF ITS ACCOMPLISHMENTS:

In 1934-35 the Kindergarten Bulletin which was nation-wide in distribution.

For several years at Christmas many children were made happy by contributions from our treasury.

A rare and valuable collection of antiques were displayed in 1935-36 in the Kindergarten rooms under the auspices of the A. C. E. members.

This year 1935-36 a constitution for our local order was composed by three of our members and included in our year book.

PROGRAM FEATURES OF CURRENT YEAR:

“Get-together” party in Southern style.

Talk on China and its customs.

Music and talks by our own group.

Discussion on Rural Schools led by a mother of one of our members.

Valentine Party—hearts galore.

Games learned and played in a true “learn through doing” method.



Association Officers

MARY ANN ROBERTS	- - - - -	- President
GRETCHEN DICKEY	- - - - -	Vice President
MARJORIE PFOUTZ	- - - - -	Recording Secretary
MARY ELLEN RINGLER	- - - - -	Point Secretary
LEAH VARNER	- - - - -	- Treasurer

MALOISE STURDEVANT DIXON, *Faculty Adviser*

ACTIVE MEMBERS

- | | | | |
|--------------------|---------------------|----------------------|------------------|
| Helen Adams | June Freed | Elizabeth Lunn | Gladys Shaffer |
| Esther Anderson | Geraldine Fulton | Kathryn Lyon | Julia Shea |
| Esther Barr | Florence Galante | Sara McClain | Dorothy Shelley |
| Marjorie Behmer | Eula Glossner | Ruth McClintick | Margaret Sheroky |
| Isabel Bigelow | Myra Glossner | Marguerite McCollum | Lorraine Shirk |
| Mary Biter | Velma Green | Mary McCoy | Ruth Simon |
| Olivia Bogar | Agnes Greene | Louise McEntire | Pearl Singfield |
| Hazel Boyer | Margaret Griffith | Alice Marie McGarvey | Hart Slater |
| Caroline Brown | Martha Halbrock | Alberta McGuire | Marguerite Smith |
| Mollie Buvinger | Mary Hammer | Mary McKinley | Pauline Smith |
| Katharine Campbell | Evelyn Hanna | Mary McNitt | Jane Stehman |
| Rebecca Confer | Maxine Harrier | Jean Mann | Peggy Stouck |
| Ruth Conn | Mary Heckel | Martha Mapes | Frances Strayer |
| Remona Cromwell | Evelyn Hellberg | Rose Marino | Sara Sykes |
| Ruth Crowley | Jean Helman | Geraldine Mertz | Frances Taylor |
| Frances Davis | Mary K. Hershberger | Jane Mervine | Alyene Torrey |
| Philomena Davis | Madeline Hettler | Irene Meyer | Cecilia Truhan |
| Madeline Deise | Eleanor High | Madolyn Miller | Mary Uhner |
| Gretchen Dickey | Aleta Hobson | Helen Nichols | LaWave Underwood |
| Florence Duke | Geraldine Hoover | Ruth Nichols | Leah Varner |
| Arlene Dunkle | Irene Jury | Marjorie Pfoutz | Miriam Wallace |
| Dorothy Eder | Mary Kress | Ann Pyura | Olivo Weigle |
| Suzanne Emery | Jean Kunes | Ethel Rich | Kathryn Wentzel |
| Maxine English | Lenore Lantzer | Mary Ellen Ringler | LaRue Wheeler |
| Helen Eyerly | Alma Lape | Mary Ann Roberts | Amelia White |
| Isabel Fink | Jessie Leiby | Geraldine Ross | Anna White |
| Rita Fleming | Edna Leinbach | Olga Sawzik | Mildred White |
| Ruth Foulk | Carolyn Long | Louise Selleck | Evelyn Williams |
| Anne Frazier | Jane Lord | Jane Seltzer | Janet Wilson |
| Alice Fredericks | Helen Love | Amy Shaffer | Jane Yost |



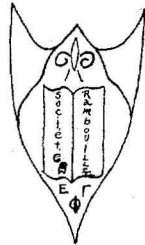
Women's Athletic Association

The Women's Athletic Association, with its membership of 120 students, is the largest of the extra-curricular organizations at Lock Haven State Teachers College. It was instituted in 1928 as an outgrowth of the successful athletic program sponsored by the department of physical education for women, and has worked ever since in close co-operation with that department.

The purpose of the organization is to provide opportunity for participation in a larger number of extra-curricular athletic activities than could be offered by the department of physical education alone, but which are made possible through the added efforts of student leaders, referees, or other officials. Honors are awarded by the association to those whose achievement and persistent interest in the activity program have been outstanding during their college career; and the custom is to be inaugurated this year of presenting these awards at the time of the annual spring festival as an integral part of the college physical education program.

The ever widening field of sports now includes a "baker's dozen" in the list of major activities offered, in addition to the minor sports such as bicycling, hiking, and roller skating:

Archery	Folk and Natural Dancing
Badminton	Horseback Riding
Baseball	Social Dancing
Basketball	Tennis
Clog and Tap Dancing	Track and Field Events
Field Ball	Volley Ball
Field Hockey	



La Societe Rambouillet

LE BUREAU

<i>Premier Trimestre</i>				<i>Second Trimestre</i>				
EDWARD KIMBLE	-	-	-	<i>President</i>	-	-	-	LOIS LONG
JULIA CRONISTER	-	-	-	<i>Vice President</i>	-	-	-	EDWARD KIMBLE
RUTH BURKETT	-	-	-	<i>Presidente Sociale</i>	-	-	-	RUTH BURKETT
MORRIL LAUBACH	-	-	-	<i>Secrétaire</i>	-	-	-	CLEE HOWE

La vraie joie de vivre nous vient de l'intelligence.

La Société Rambouillet ne se propose pas seulement d'être un cercle français, mais, au delà de ce but assez rétréci, de s'occuper autant que possible de toute chose d'intérêt général. En cela elle suit l'exemple des grands salons littéraires parisiens, dont le plus célèbre lui a fourni son nom.



The Young Women's Christian Association

FACULTY MEMBERS

Lillian Russell
Lulu Stalcup

Deborah Bentley
Genevieve Poole
Maloise S. Dixon

Bertha M. Rowe
Audry Bressler

STUDENT MEMBERS

Wilma Allen
Olivia Bogar
Hazel Boyer
Caroline Brown
Catherine Campbell
Rebecca Confer
Ruth Conn
Anna M. Corson
Earlene Davis
Frances Davis
Philomena Davis
Leanore Dick
Arlene Dunkle
Ruth Dunkelberger
Helen Eyerly
Susanne Emery
Isabelle Fink
Ruth Foulk
June Freed
Florence Galante
Marie Gehron
Eula Glossner
Lucille Glossner
Clee Howe
Katherine Kear
Nancy Kiser

Helen Kohler
Anna Landis
Alma Lape
Lenore Lantzer
Edna Leinbach
Dorothy Lillibridge
Bernice Long
Lois Long
Jane Lord
Helen Love
Elizabeth Lunn
Kathryn Lyon
Helen Mackoviak
Martha Mapes
Rose Marino
Alice McGarvey
Lucetta McKibben
Geraldine Mertz
Madalyn Miller
Helen Nichols
Anne Pyura
Mary Ellen Ringler
Geraldine Ross
Louise Selleck
Amy Shaffer

Gladys Shaffer
Esther Shaffer
Julia Shea
Lorraine Shirk
Hilda Smith
Margurite Smith
Edna Sweinhart
Dorothy Taylor
Cecilia Truhan
Alyene Torrey
Mary Ulmer
Leah Varner
Amelia White
Esther Whitehead
Miriam Wallace
Beatrice Williams
Evelyn Williams
Rebecca Williams
Mary Hammer
Evelyn Hanna
Ellen Harding
Anne O'Malley
Jeanette Pattison
Marjorie Pfoutz
Audry Walizer
Idabelle Wolf

The Young Women's Christian Association is one of the largest women's organizations on the campus. It has done a great deal toward developing a friendly attitude and more social feeling between the girls and toward the college. The Big and Little Sister movement of the Y. W. C. A. has done much to promote this feeling. One of the outstanding things of the year's program was the World Fellowship Week of Prayer. Social service was done at the Children's Home. The outstanding social activities of the year were the Little Sister Tea, Membership Rally, Valentine Party, and a Tea for the New Cabinet.

The Y. W. C. A. regrets the loss of Miss Bertha M. Rowe, who had been its adviser for the past sixteen years. Not only was Miss Rowe a friend and co-worker with the cabinet and organization but with the student body as well. We feel that we can best respect the memory of Miss Rowe by carrying on the high ideals of our organization.



Young Men's Christian Association

OFFICERS

REUBEN SALADA	- - - - -	-	<i>President</i>
LEE MOYER	- - - - -	-	<i>Vice President</i>
JAMES BROWN	- - - - -	-	<i>Secretary</i>
HARVEY NEWMAN	- - - - -	-	<i>Treasurer</i>

L. J. ULMER, *Faculty Adviser*

COMMITTEE CHAIRMEN

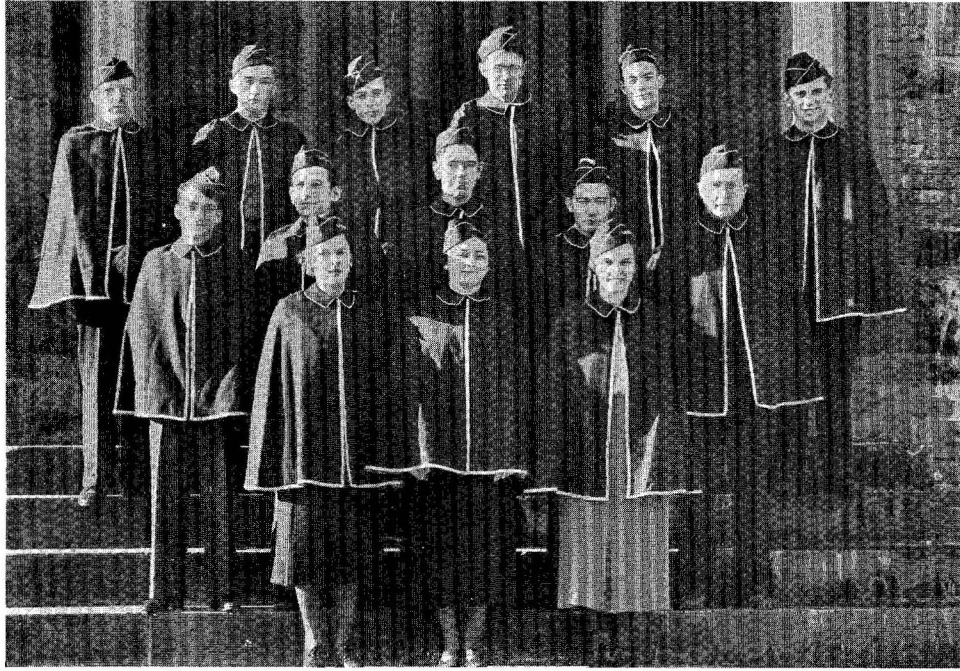
John Yon, Alumni	Jim Finn, Membership
Robert Sholly, Dayroom	Angelo Muro, Program
Charles Slonaker, Freshman	Weldon MacDonald, Vespers

FACULTY MEMBERS

Mr. Coxe	Mr. Hudson	Dr. Weber
Mr. Fleming	Mr. Smith	Mr. Ulmer
	Mr. Stemple	

STUDENT MEMBERS

Wilbur Anderson	Jim Finn	William Lee	Reuben Salada
George Bielefeld	William Flegal	Morril Laubach	Robert Seitzer
George Bluhm	Pierson Hanssner	Harris Lipez	Galen Shelly
Charles Bonebreak	Richard Harvey	Weldon MacDonald	Charles Slonaker
Hugh Bagley	William Hopkins	Joseph McNerny	Wayne Suder
Paul Breon	Fred Hurd	Lee Moyer	Thomas Summers
John Brungard	Donald Hay	Emerson Myers	Joseph Sarafinski
Wilson Clark	Grant Irion	Harvey Newman	Andrew Tocimak
Martin Dietrich	Samuel Kryder	Walter Nolan	Stanley Vinscavich
John Dean	Edward Kimble	Charles Prusack	Ashley Woolridge
Wilmer Dressler	Bertram Kime	Charles Robinson	John Yon
Chester Eastep	Bernard Kotchin	Charles Rorabaugh	Fred Zampogna
Nolan Emery			



BAND



ORCHESTRA



Student Activity Council

OFFICERS

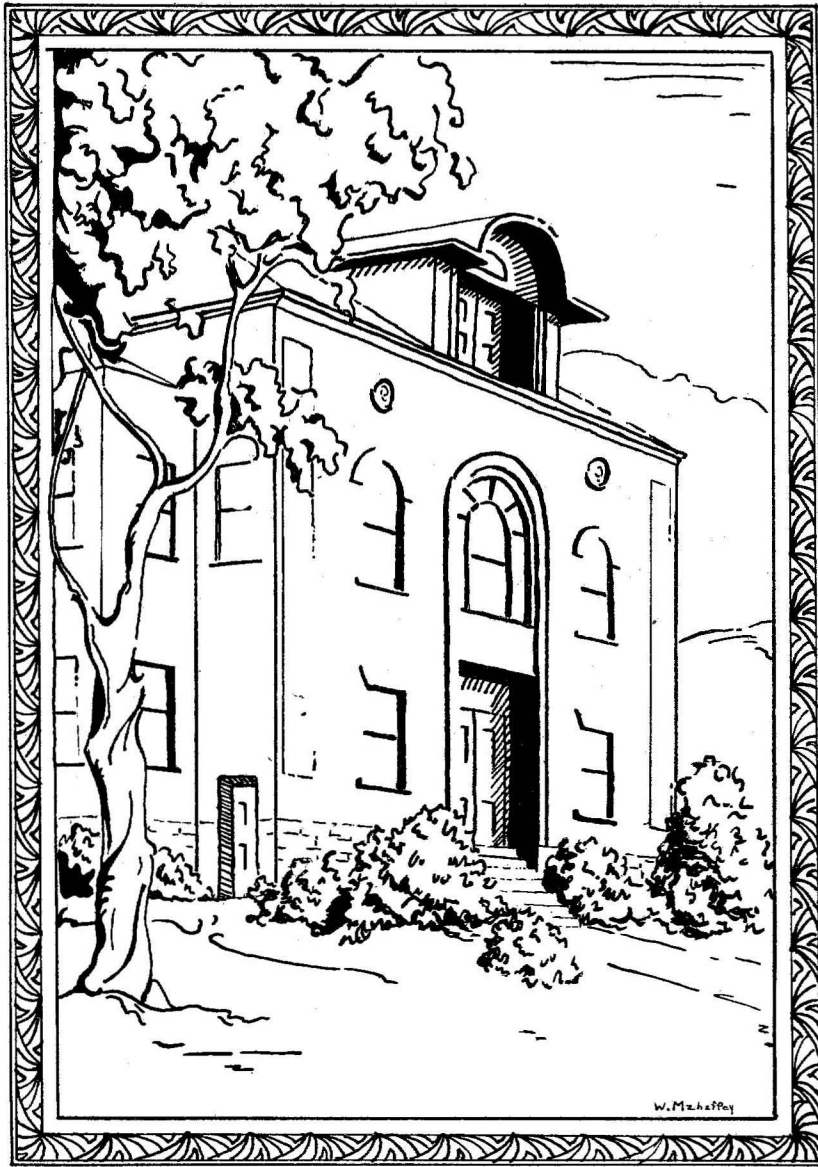
GEORGE F. B. LEHMAN	- - - - -	<i>President</i>
HARRY F. WEBER	- - - - -	<i>Secretary-Treasurer</i>

RESIDENT MEMBERS

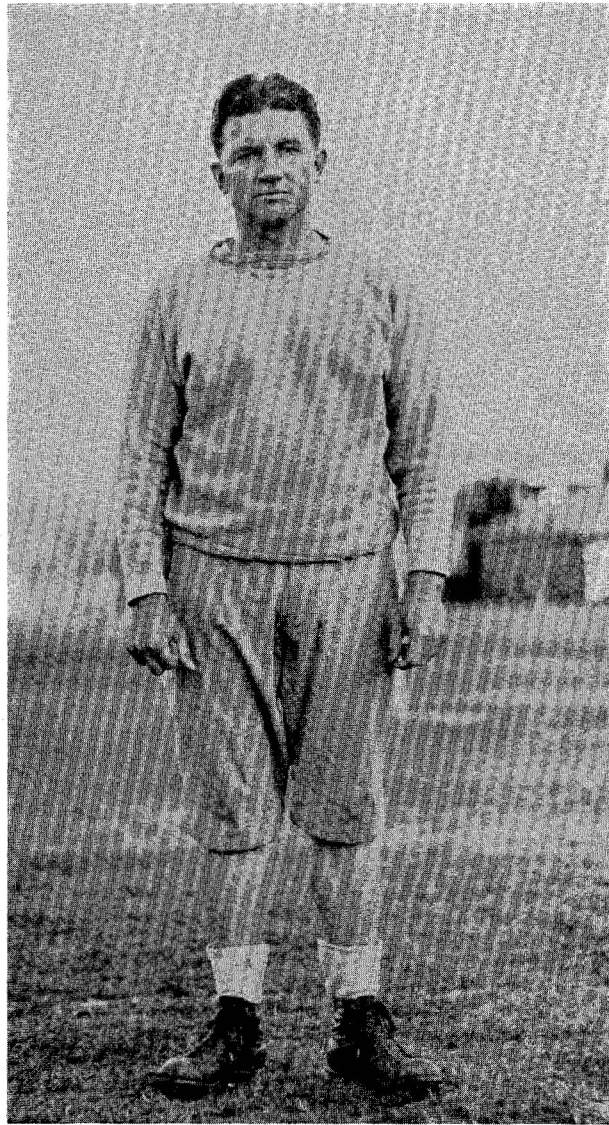
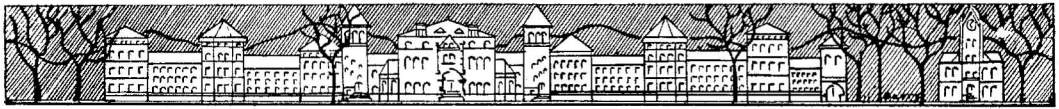
LEVI J. ULMER	- - - - -	<i>Freshman Class</i>
CATHERINE GEARY	- - - - -	<i>Sophomore Class</i>
SAMUEL J. SMITH	- - - - -	<i>Junior Class</i>
GEORGE F. B. LEHMAN	- - - - -	<i>Senior Class</i>

STUDENT MEMBERS

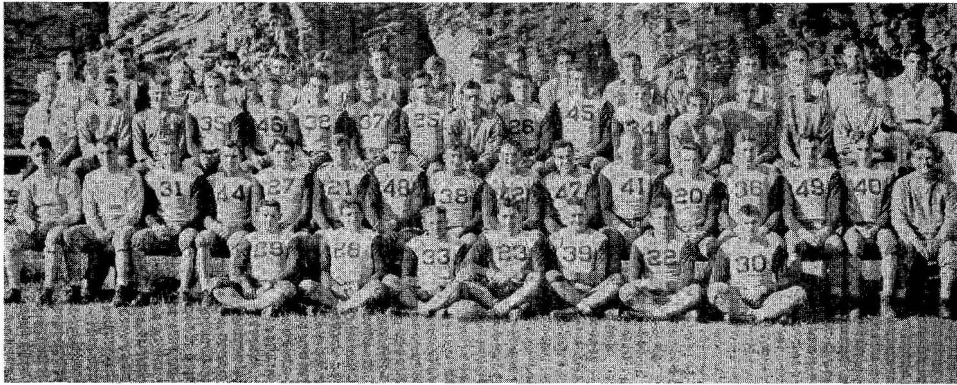
LEE DELANEY, '39	- - - - -	<i>President</i>
THOMAS CONRAD, '38	- - - - -	<i>President</i>
LOUISE McENTIRE, '37	- - - - -	<i>President</i>
EUGENE NUSS, '36	- - - - -	<i>President</i>



ATHLETICS



J. WYNN FREDERICKS
Director of Athletics
Head Coach



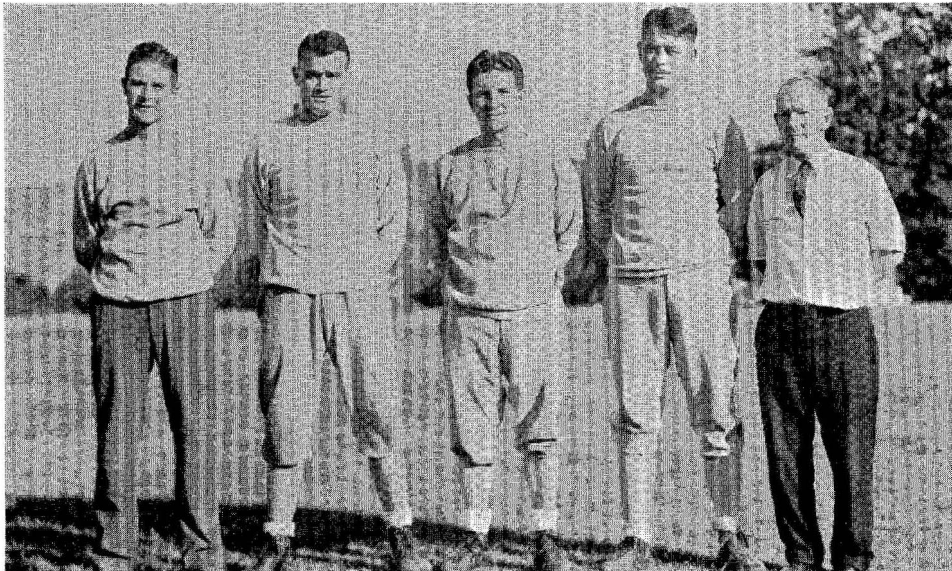
Football

The 1935 football season will be memorable as the first in which we were able to overcome the Indiana "jinx" which has spoiled the record of Lock Haven teams in the past. The score of 27-0 was sweet revenge.

As a whole the season was extremely variable with many high spots which were offset by unexpected failures. After a smashing start which saw California and Indiana defeated with surprising ease, the 0-0 tie with a very average Bloomsburg team was a distinct disappointment. Victories over Kutztown, Clarion, and Mansfield placed the team in the leading position for the Pennsylvania Teachers College Conference Championship, but again it proved disappointing in the gruelling final game with Shippensburg, which was lost 6-0. A non-conference game also was lost to the strong West Chester team.

Until his leg was broken in the middle of the season, Joe Shevock was having his greatest year as an outstanding player. Jim Myers and Lingenfelter also played well in their last season as undergraduates. These three acted as Co-captains of the team. The scores:

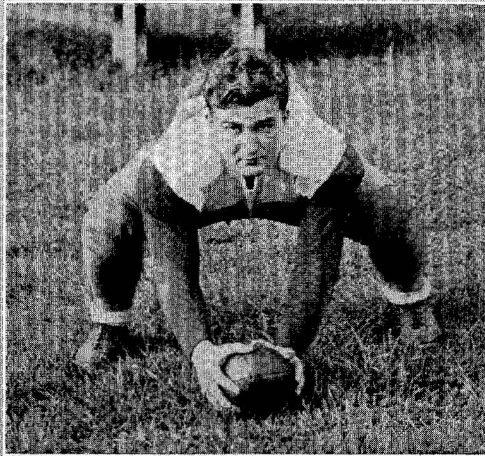
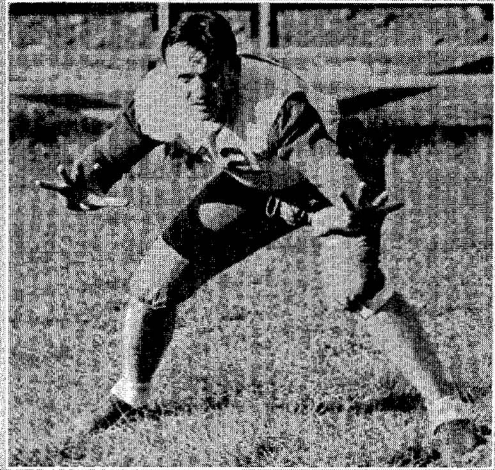
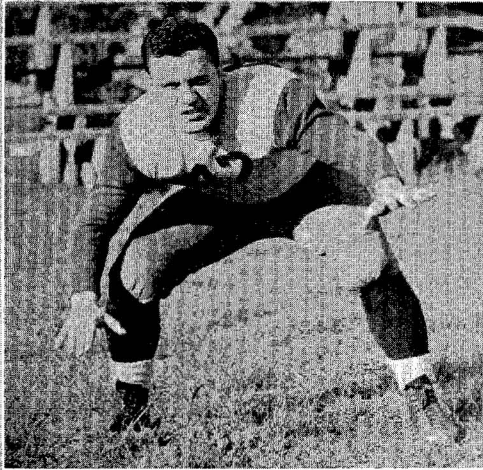
Lock Haven 29, California	- - - 0	Lock Haven 0, West Chester	- - - 19
Lock Haven 27, Indiana	- - - 0	Lock Haven 39, Clarion	- - - 0
Lock Haven 0, Bloomsburg	- - - 0	Lock Haven 25, Mansfield	- - - 0
Lock Haven 19, Kutztown	- - - 0	Lock Haven 0, Shippensburg	- - - 6



COACHING STAFF AND TRAINER



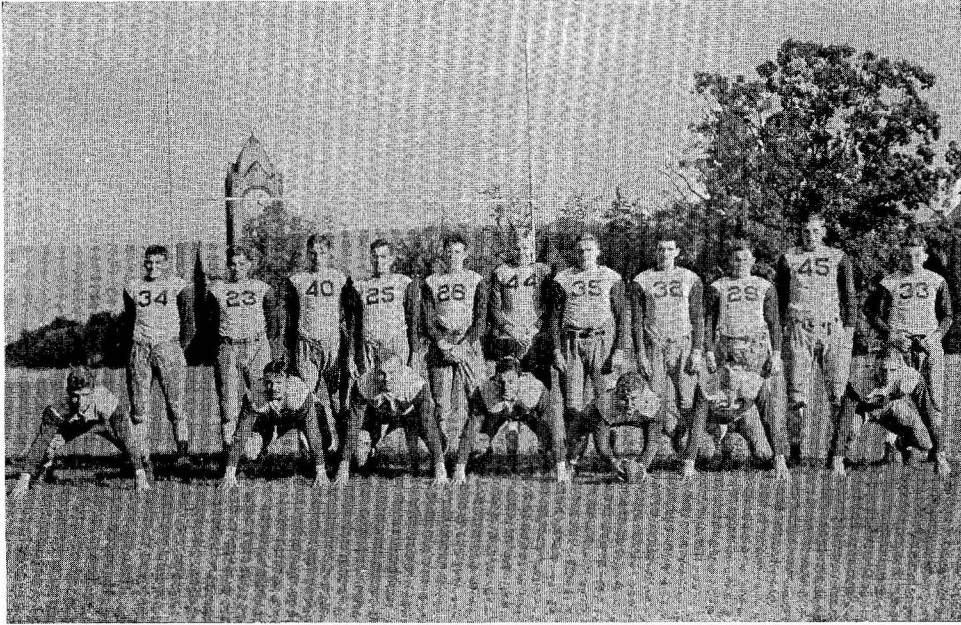
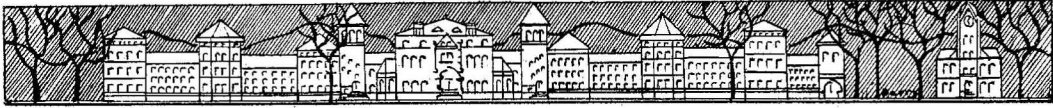
Senior Lettermen



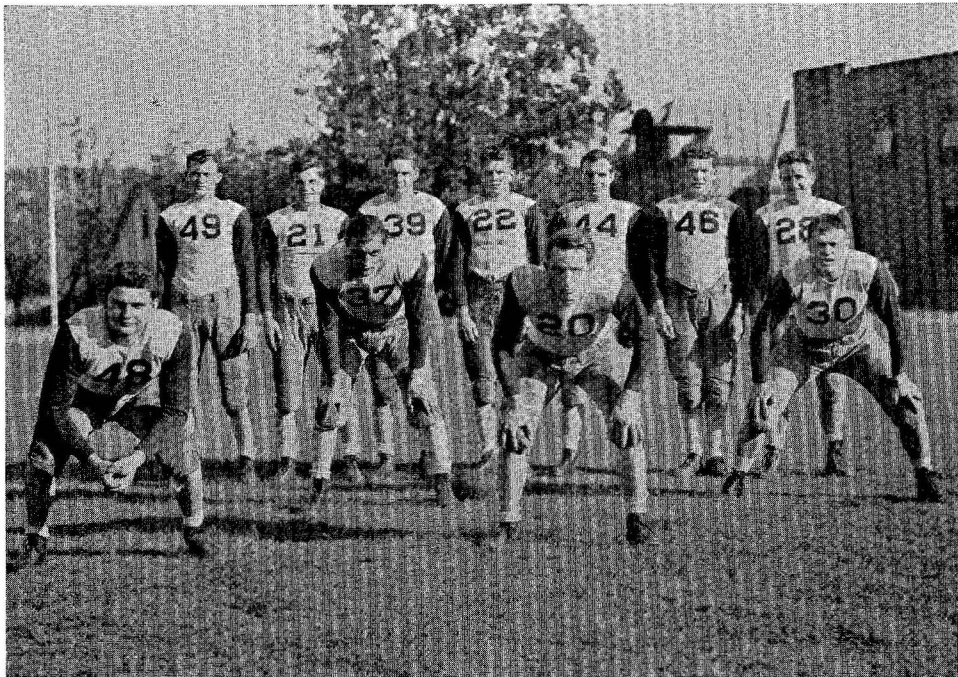
MYERS

LINGENFELTER

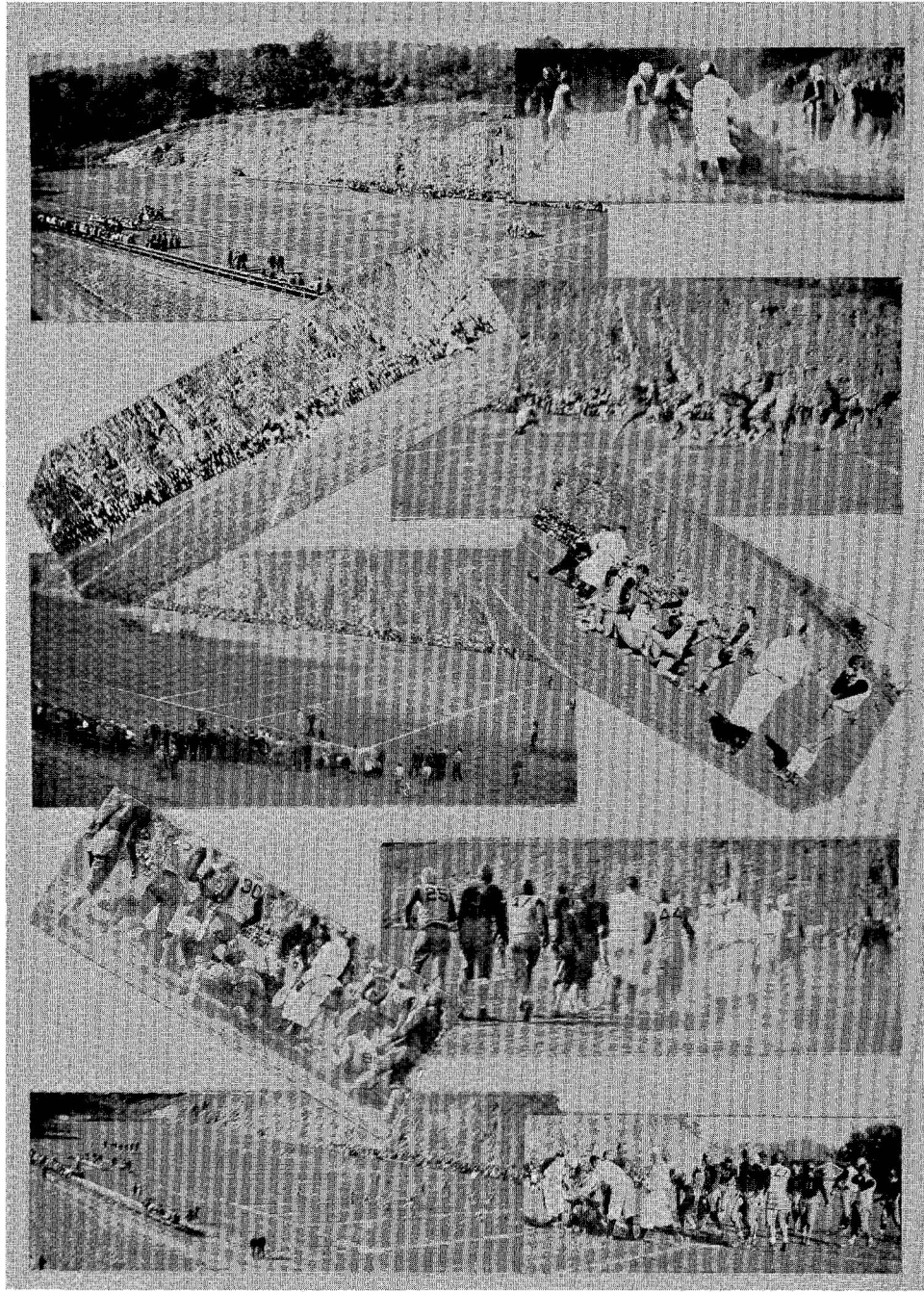
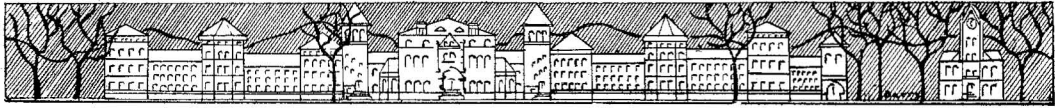
SHEVOCK

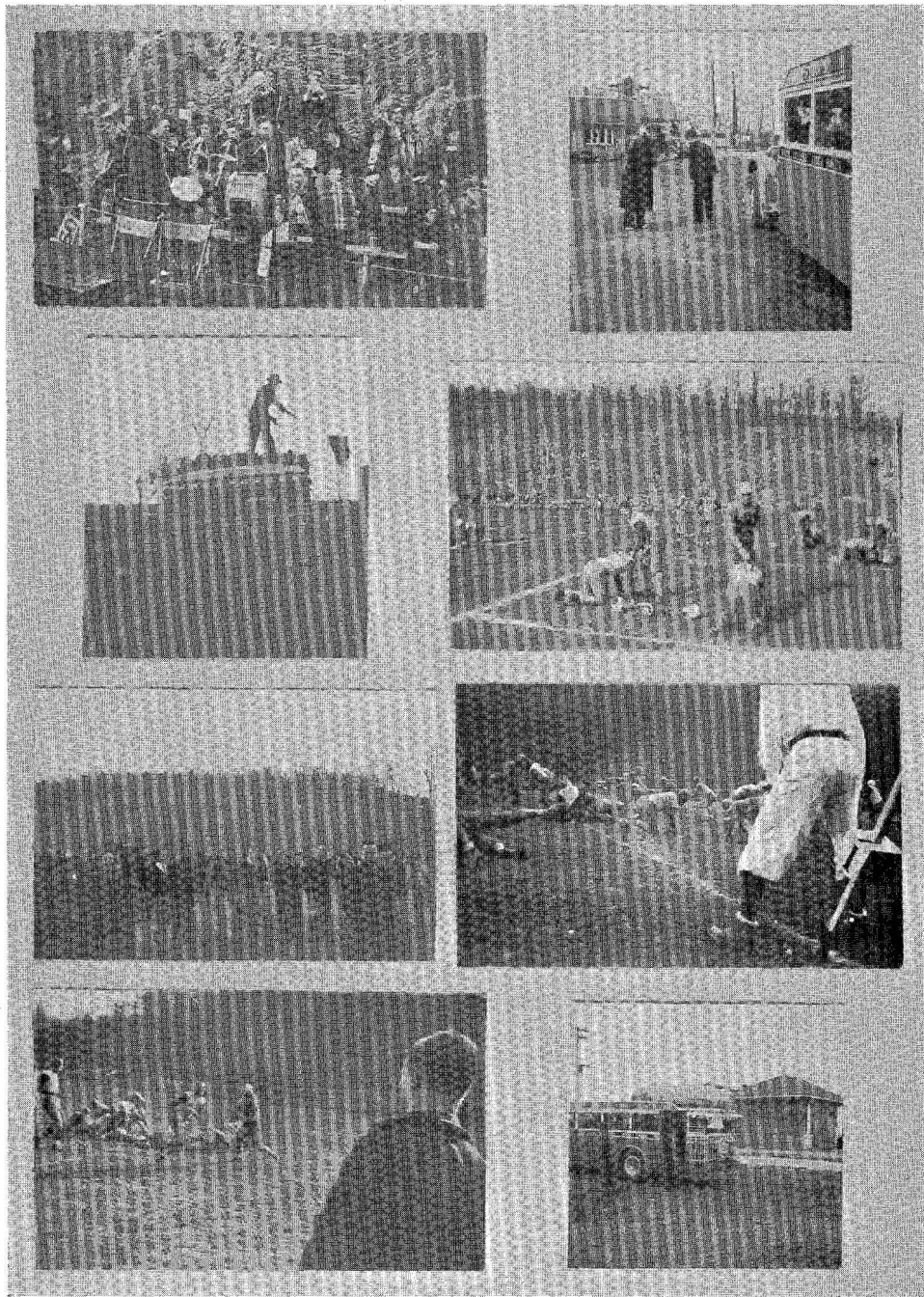
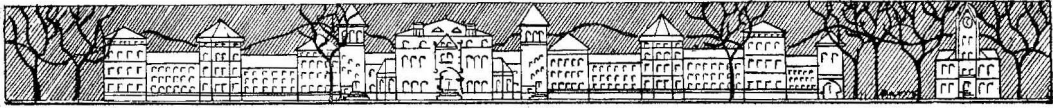


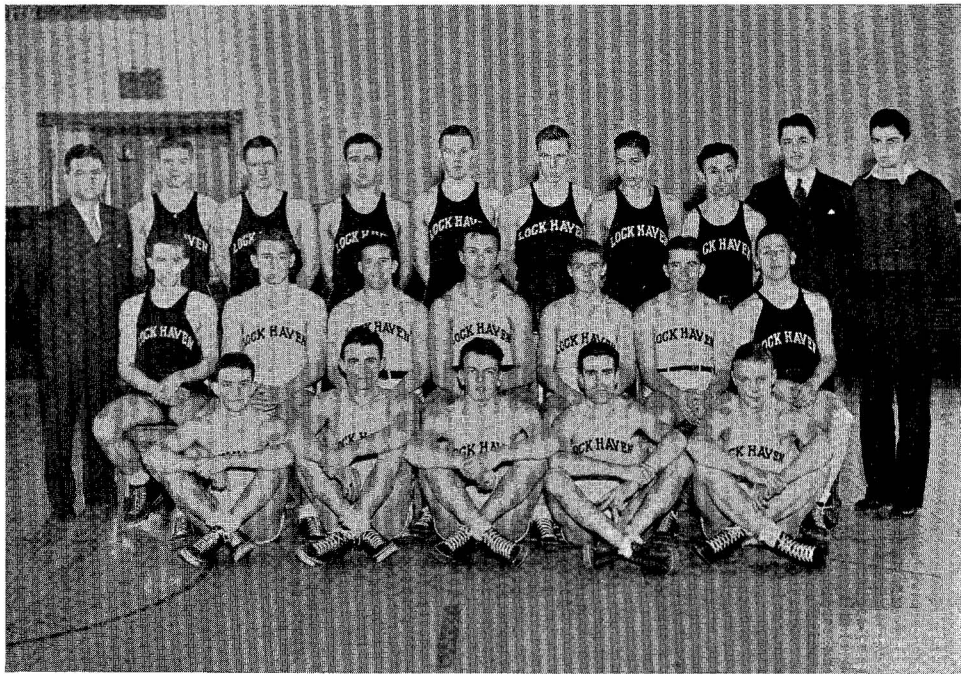
Varsity Linemen



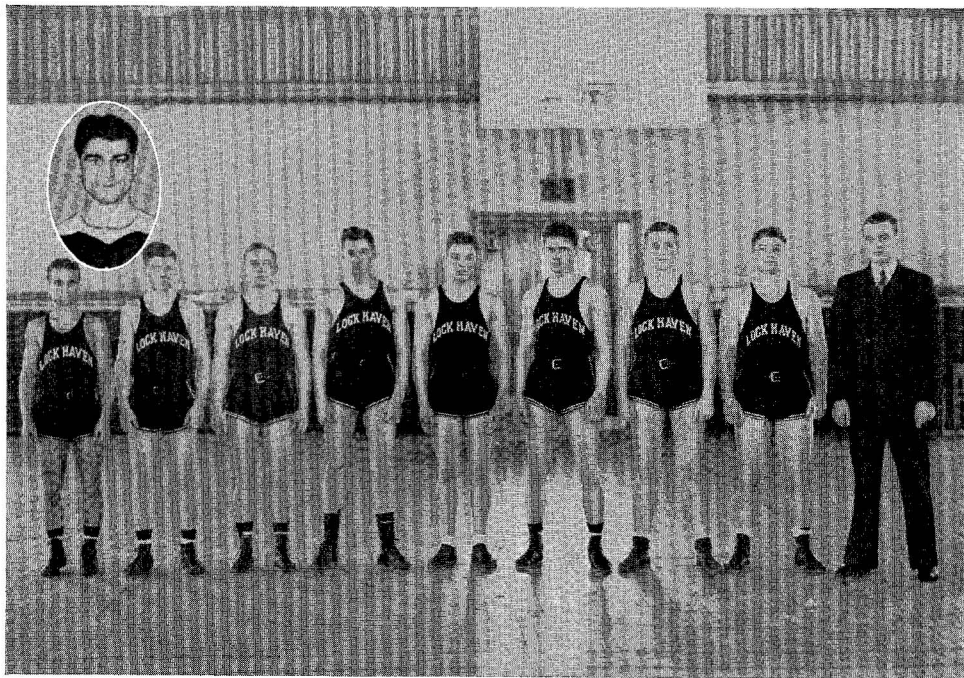
Varsity Backfield







VARSITY BASKETBALL TEAM



VARSITY BOXING TEAM

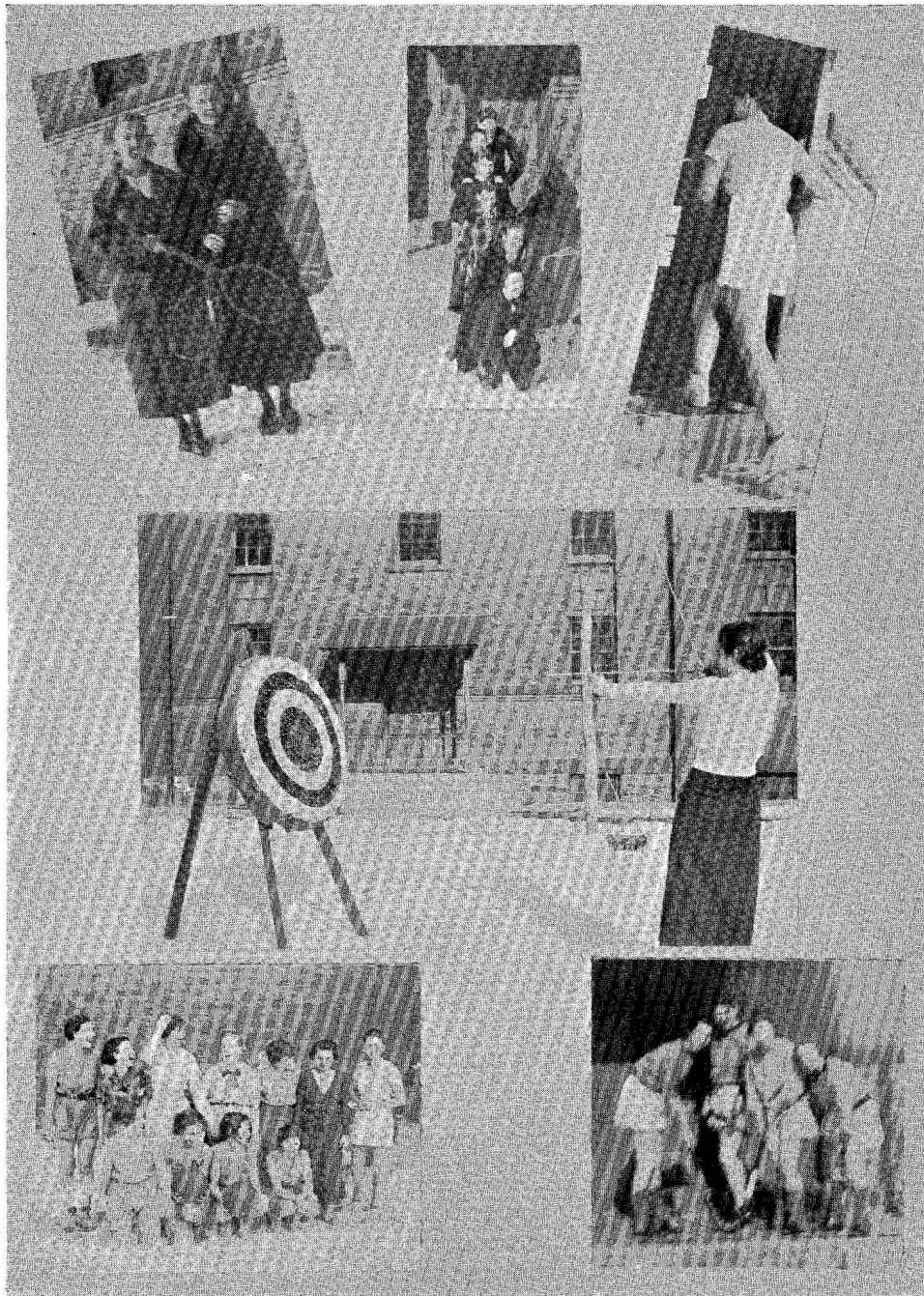
WOMEN'S
ATHLETICS

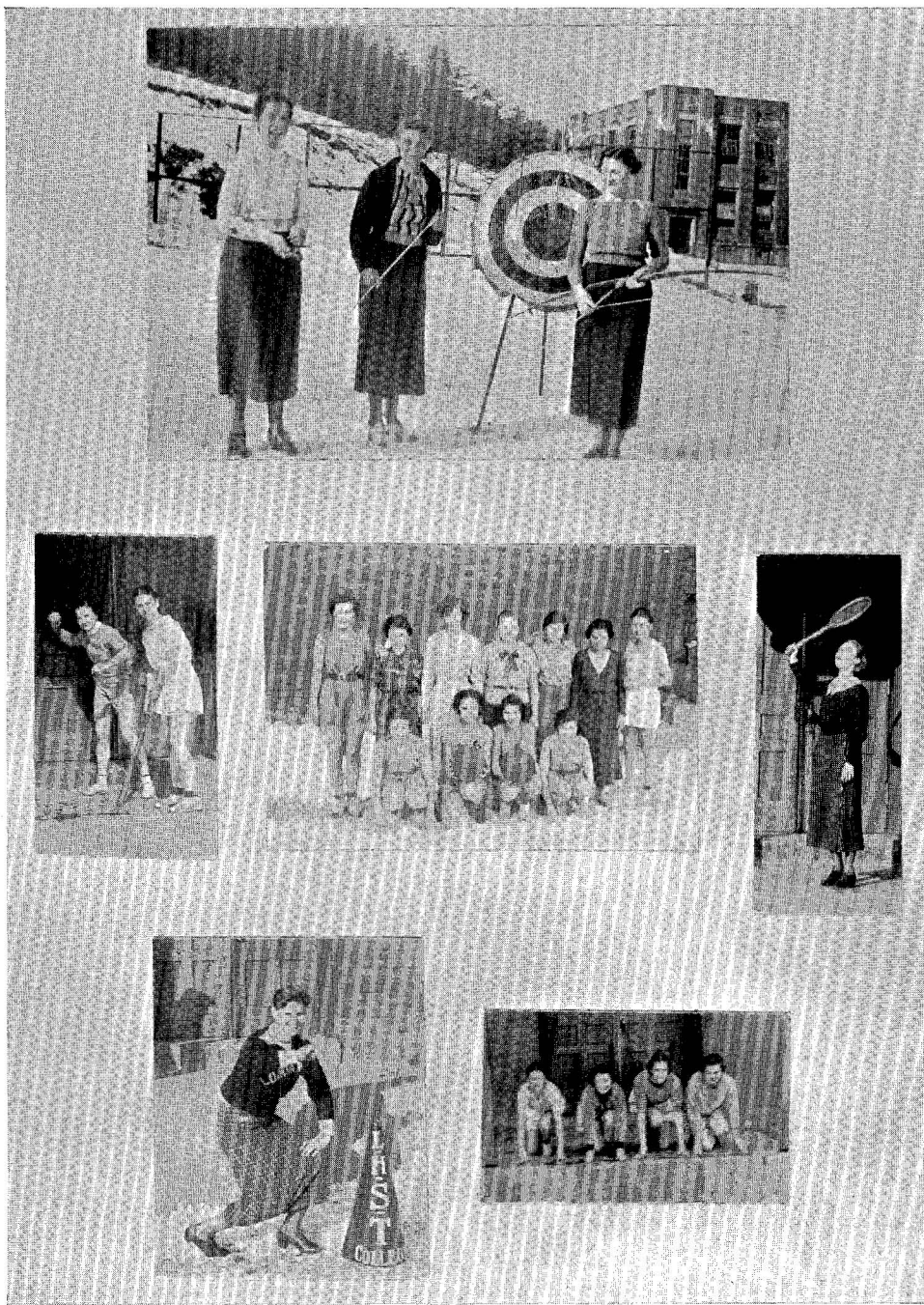
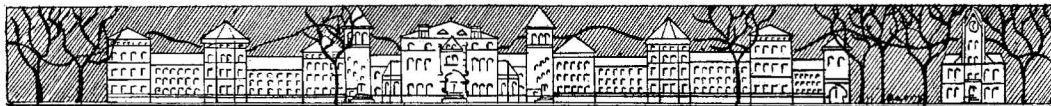


Honorary Varsity Squad

The basketball season of 1935-1936 typifies the conduct of women's sports at L. H. S. T. C. under the joint direction of the department of physical education for women and the Women's Athletic Association. Throughout the activities, student leaders officiate; and the highest standards of sportsmanship are upheld by players, officials, and spectators. While there is keenest rivalry and intense competition throughout the playing period, every game terminates with its hearty cheer for the "other team" on the part of each group, and players who are awaiting their turn are always ready and eager to act as "subs" for their erstwhile opponents.

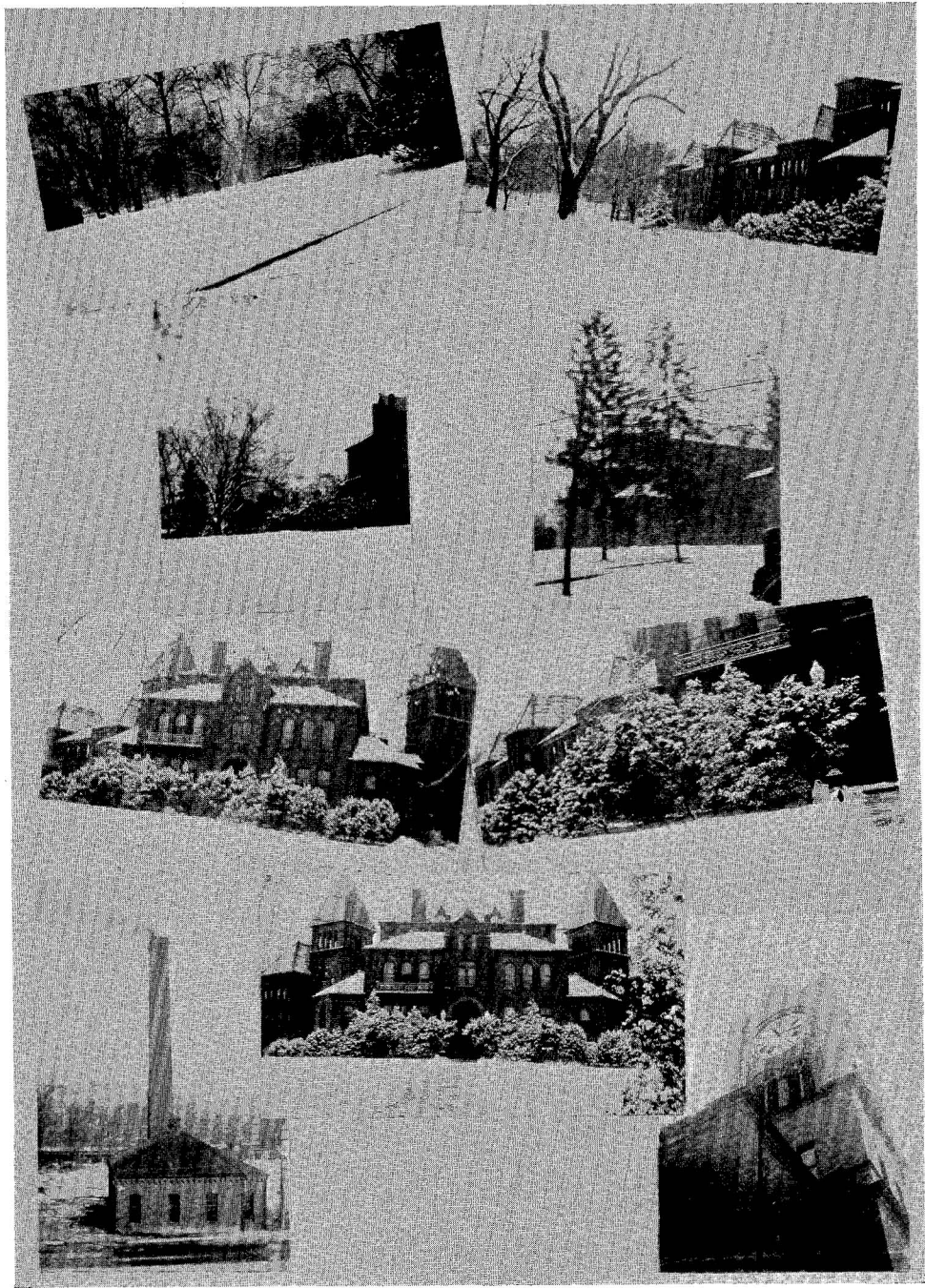
This year's preliminary tournament, launched early in November, was a Round Robin in which eight tentative teams participated. The freshman "majors" achieved first place, sophomore intermediates second place, in this initial contest. A month later teams were reorganized and an elimination tournament gave the intramural championship again to the freshman "majors," this time with the freshman intermediates running a close second. In January, the honorary varsity squad was selected, furnishing material from which first and second teams will be chosen at the end of the season. A final match, in which the freshman and sophomore representatives of the varsity squad will compete for the interclass championship, is an anticipated phase of the spring festival program.

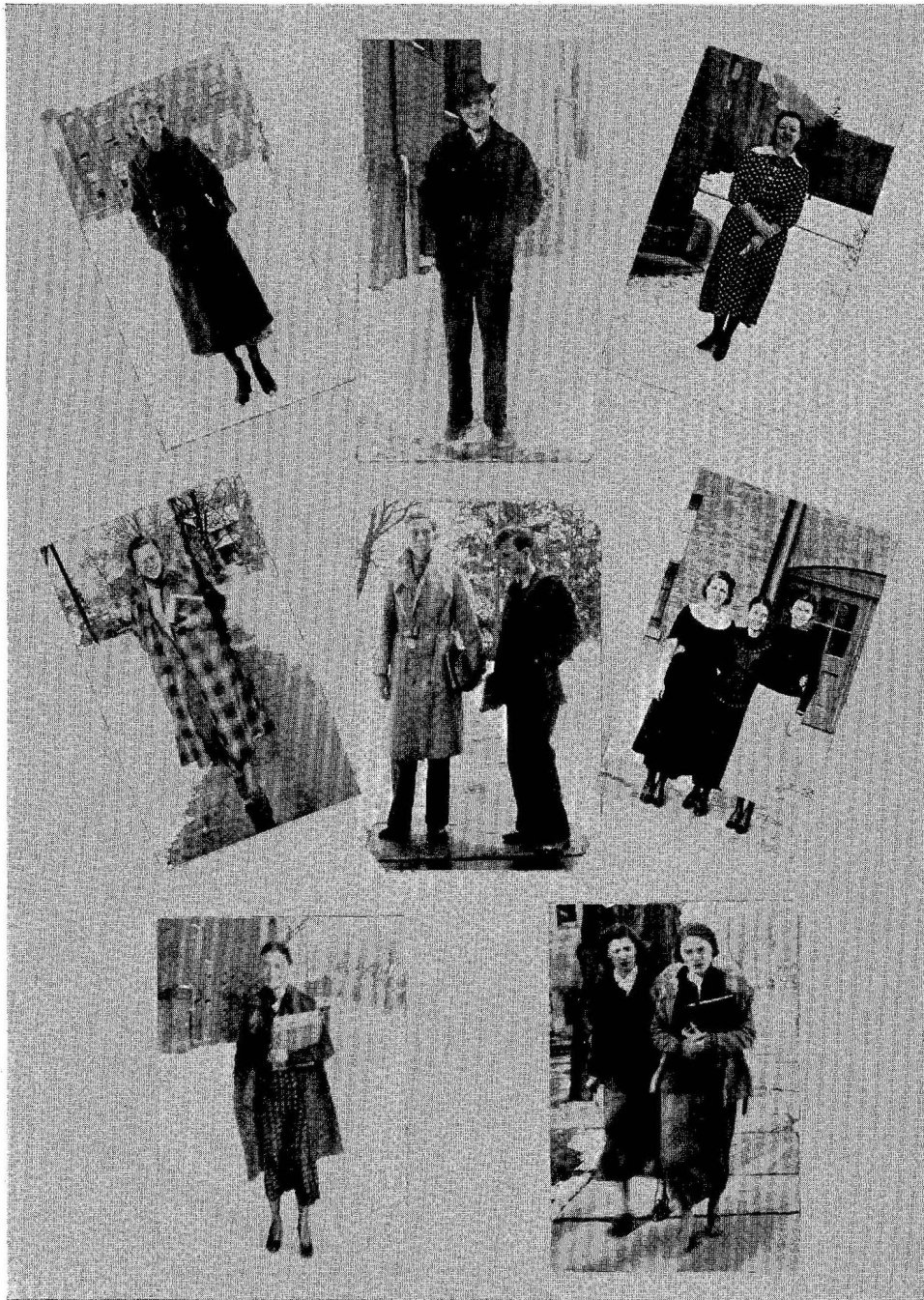




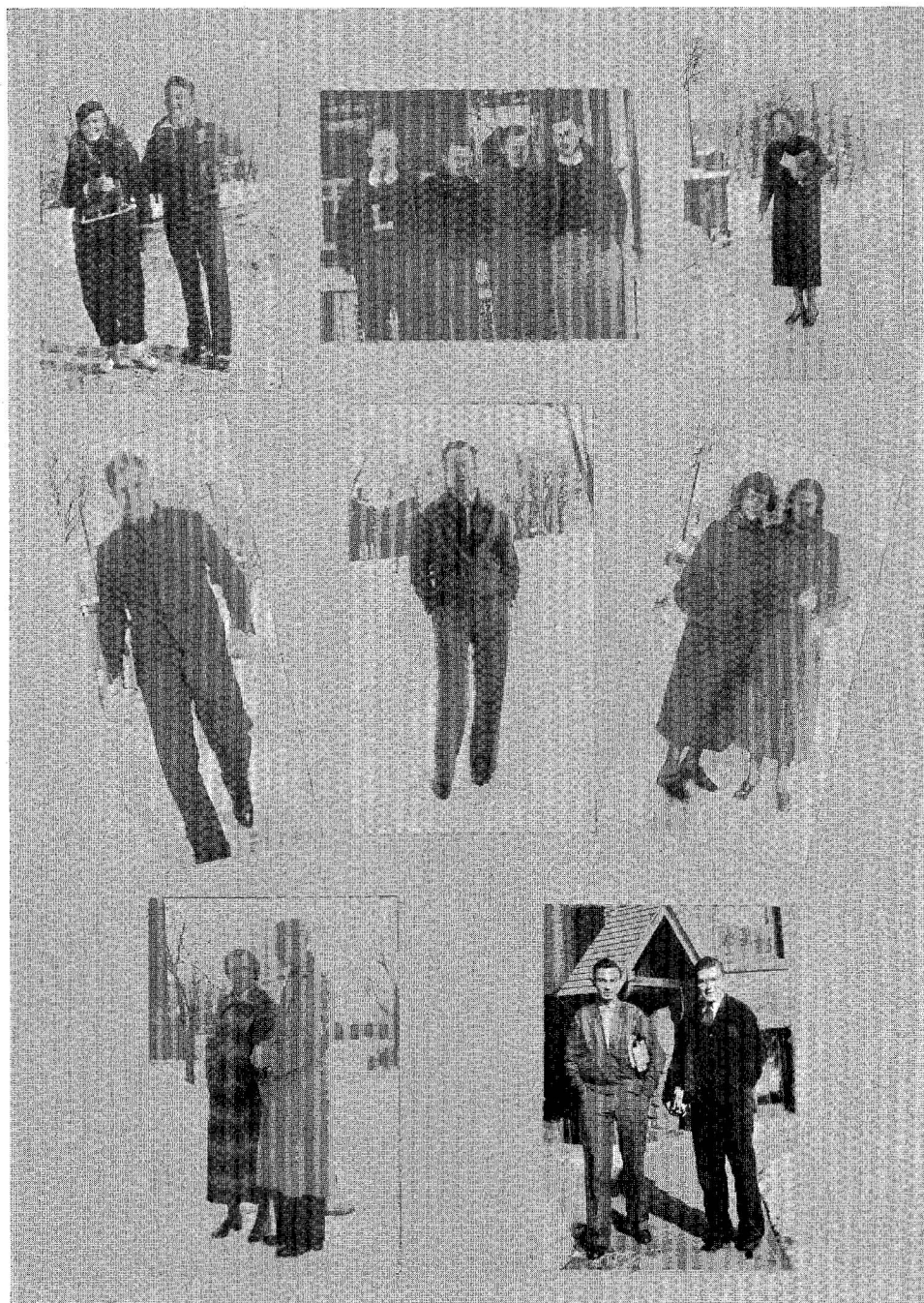
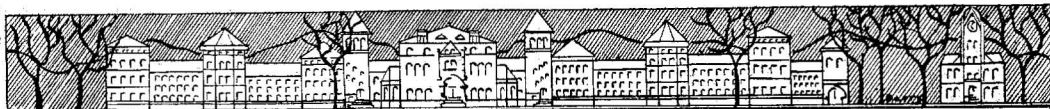


FEATURES

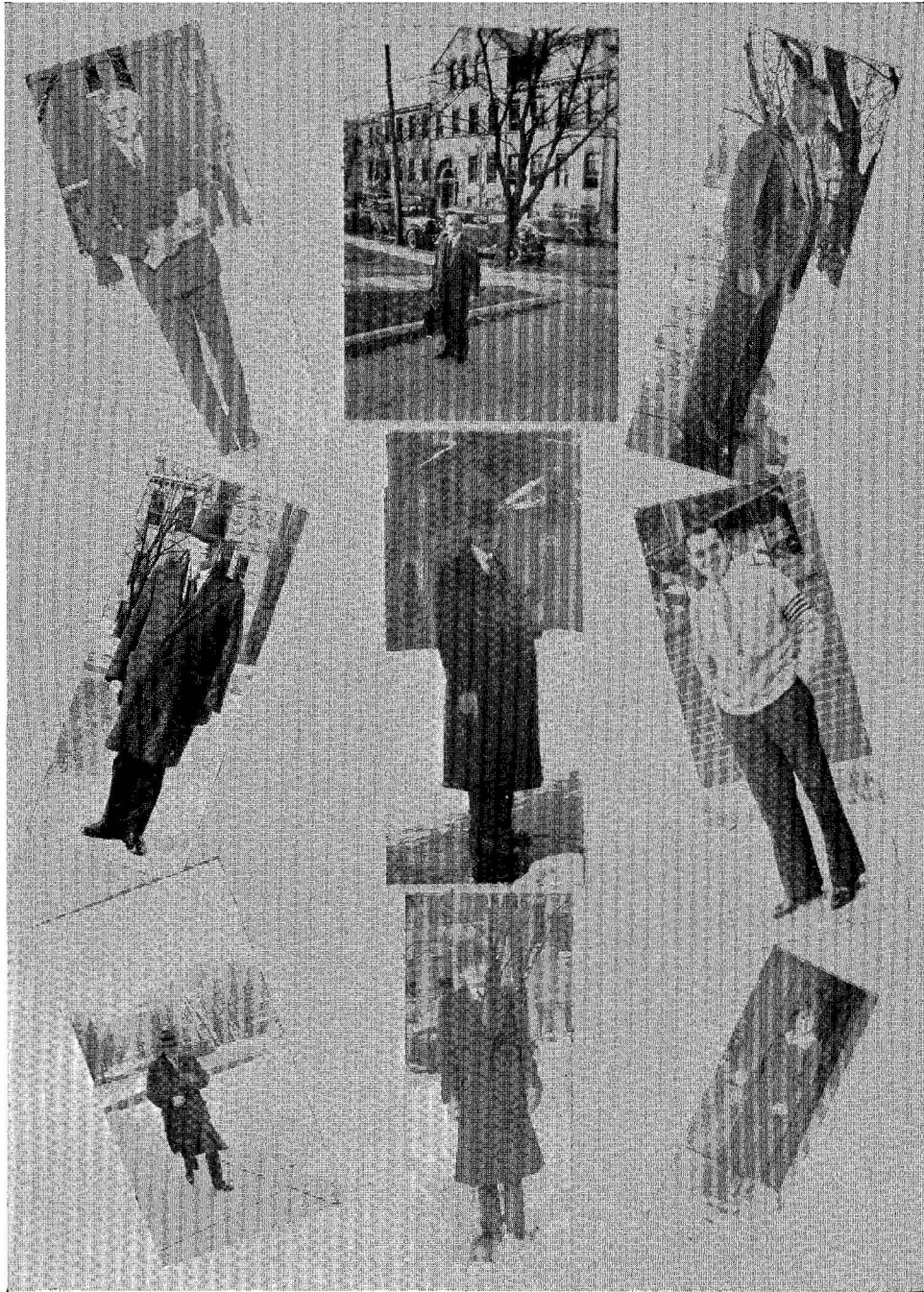
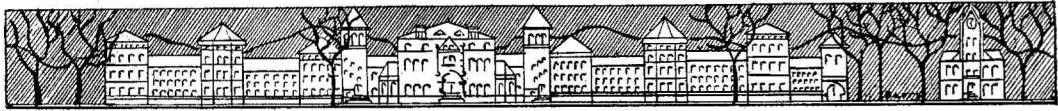




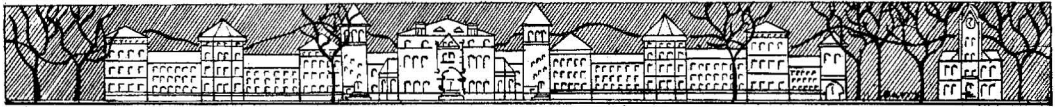
SENIORS



JUNIORS



PROFESSORS



I WONDER?



LEMONS AND WHAT NOTS



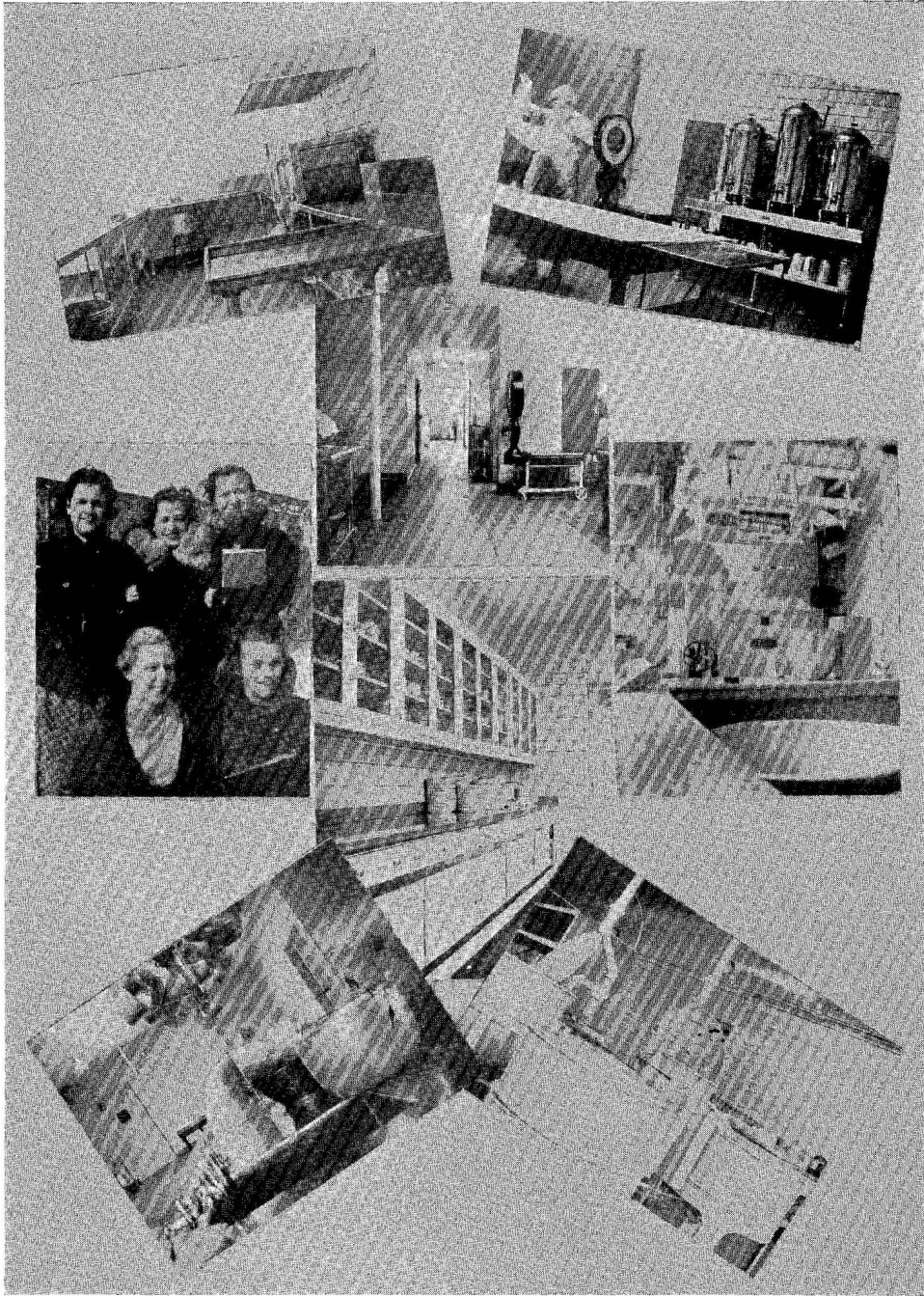
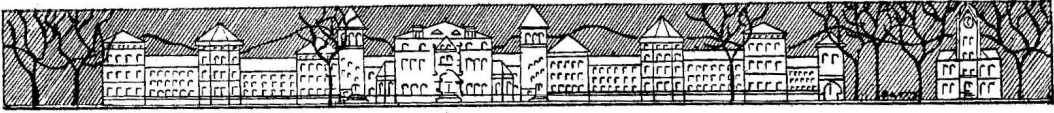
SOPHS



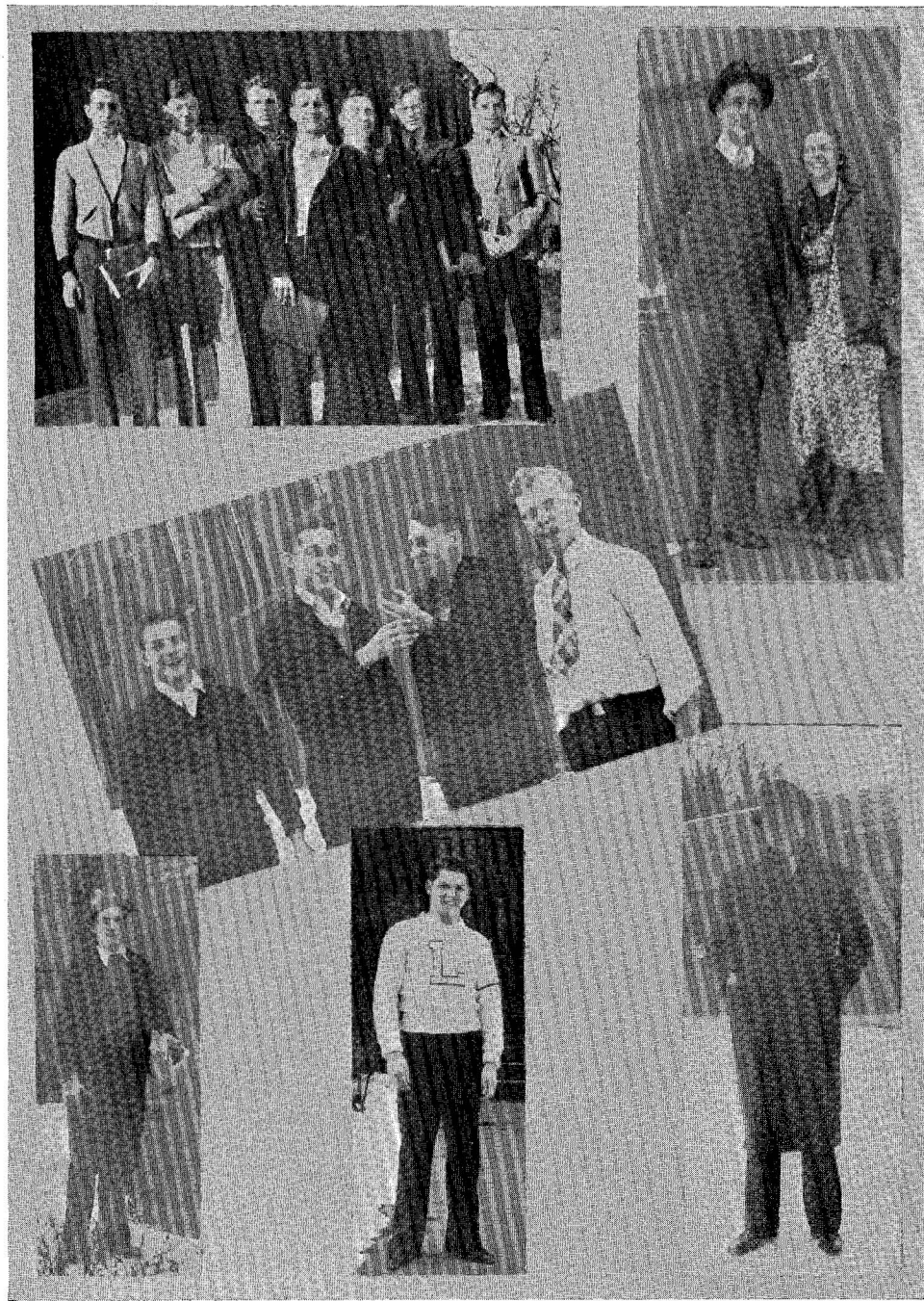
OUR STATUES



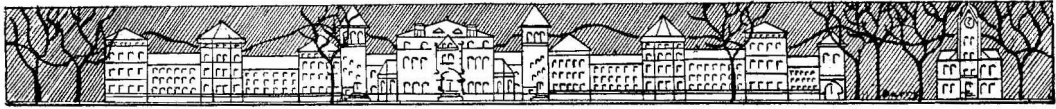
Why?



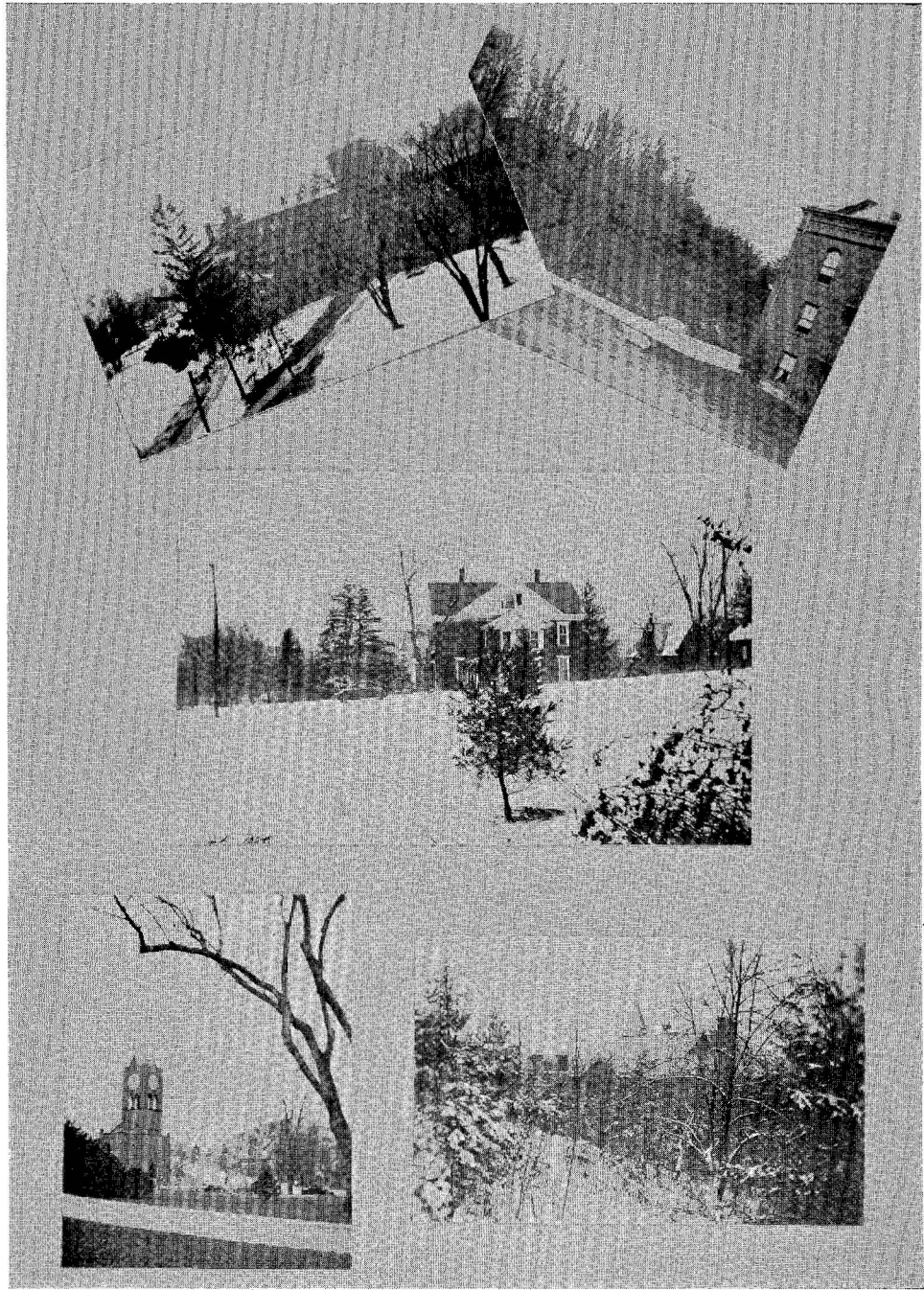
KITCHEN SCENES



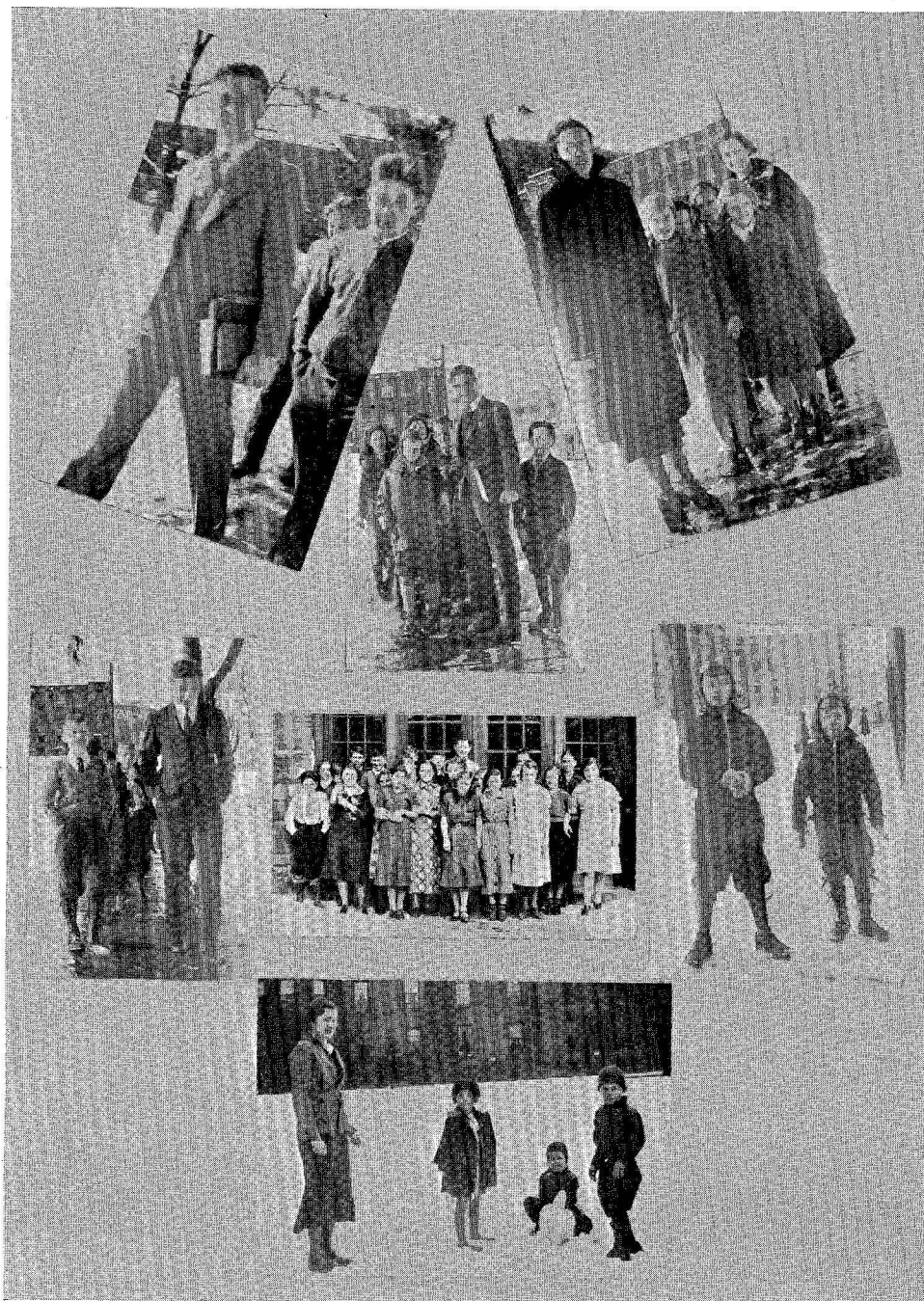
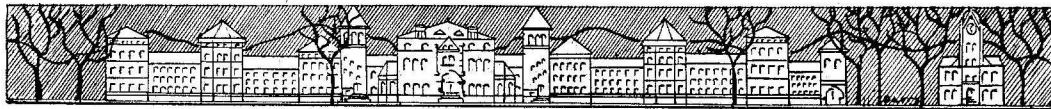
FRESHMEN



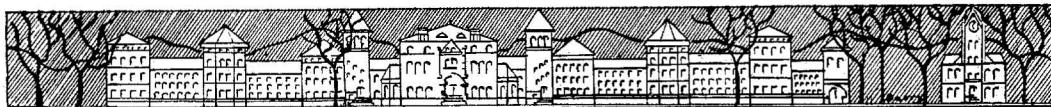
FRESHMEN



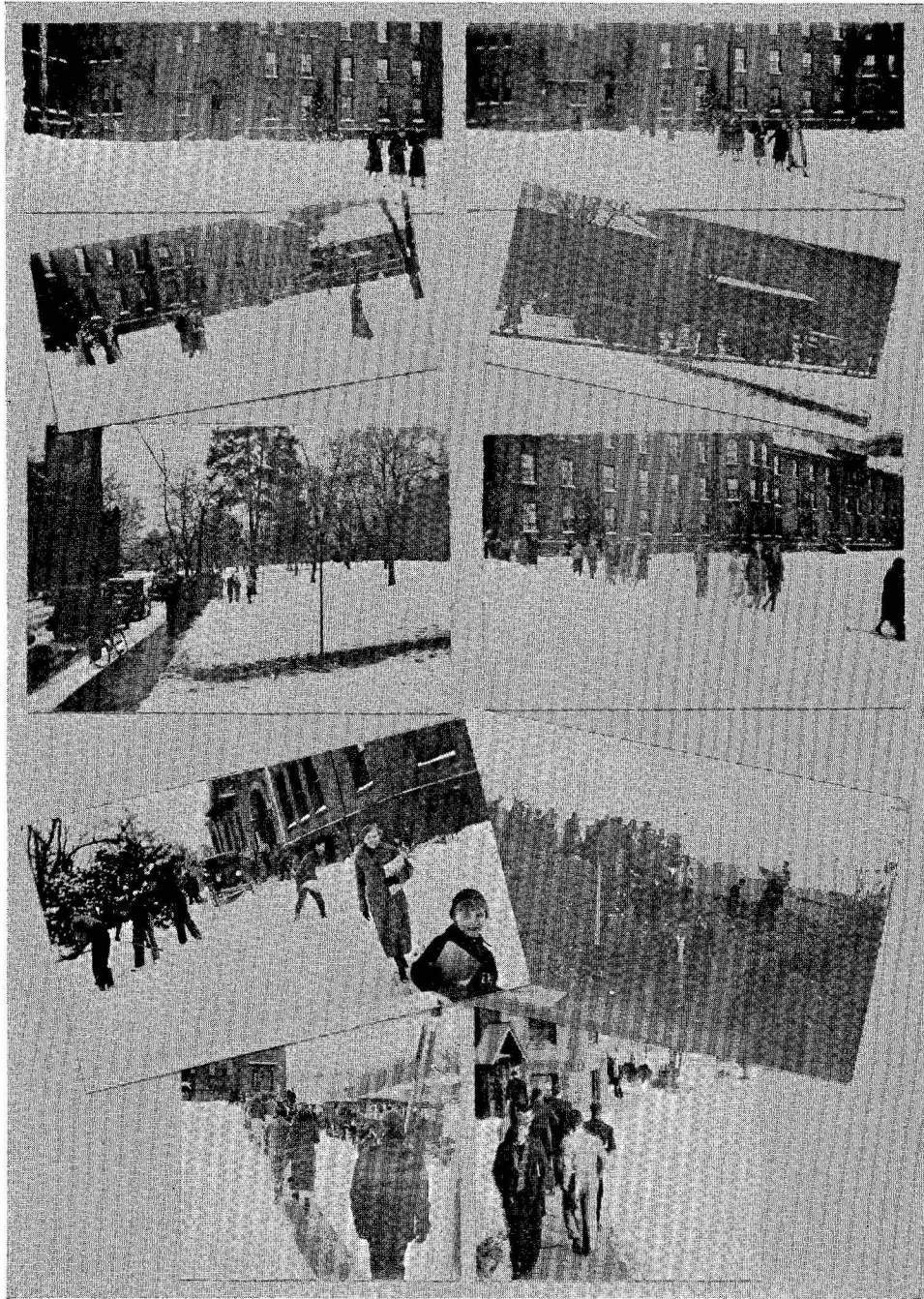
CAMPUS SCENES



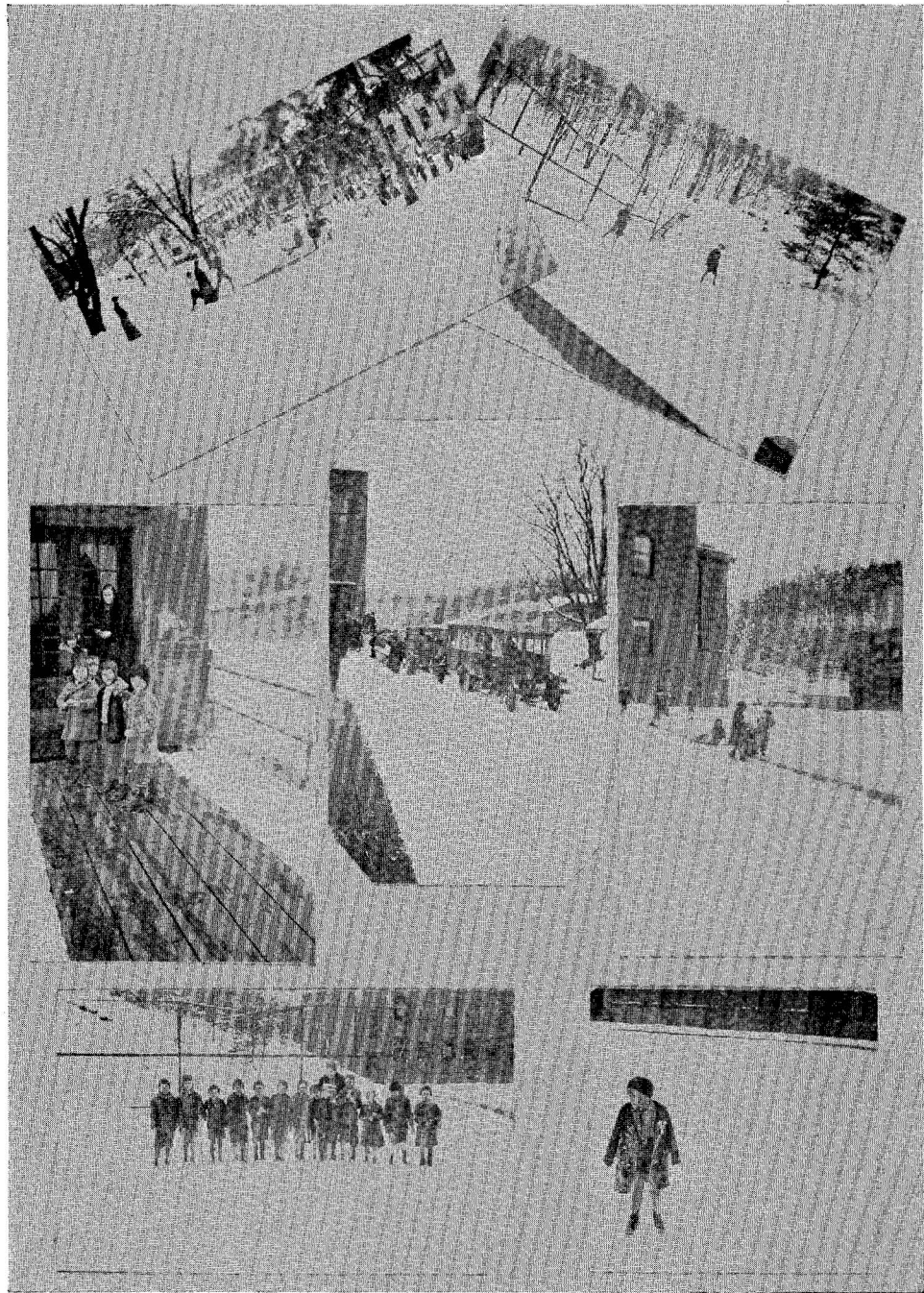
WHO WE TEACH



WHO KNOWS?



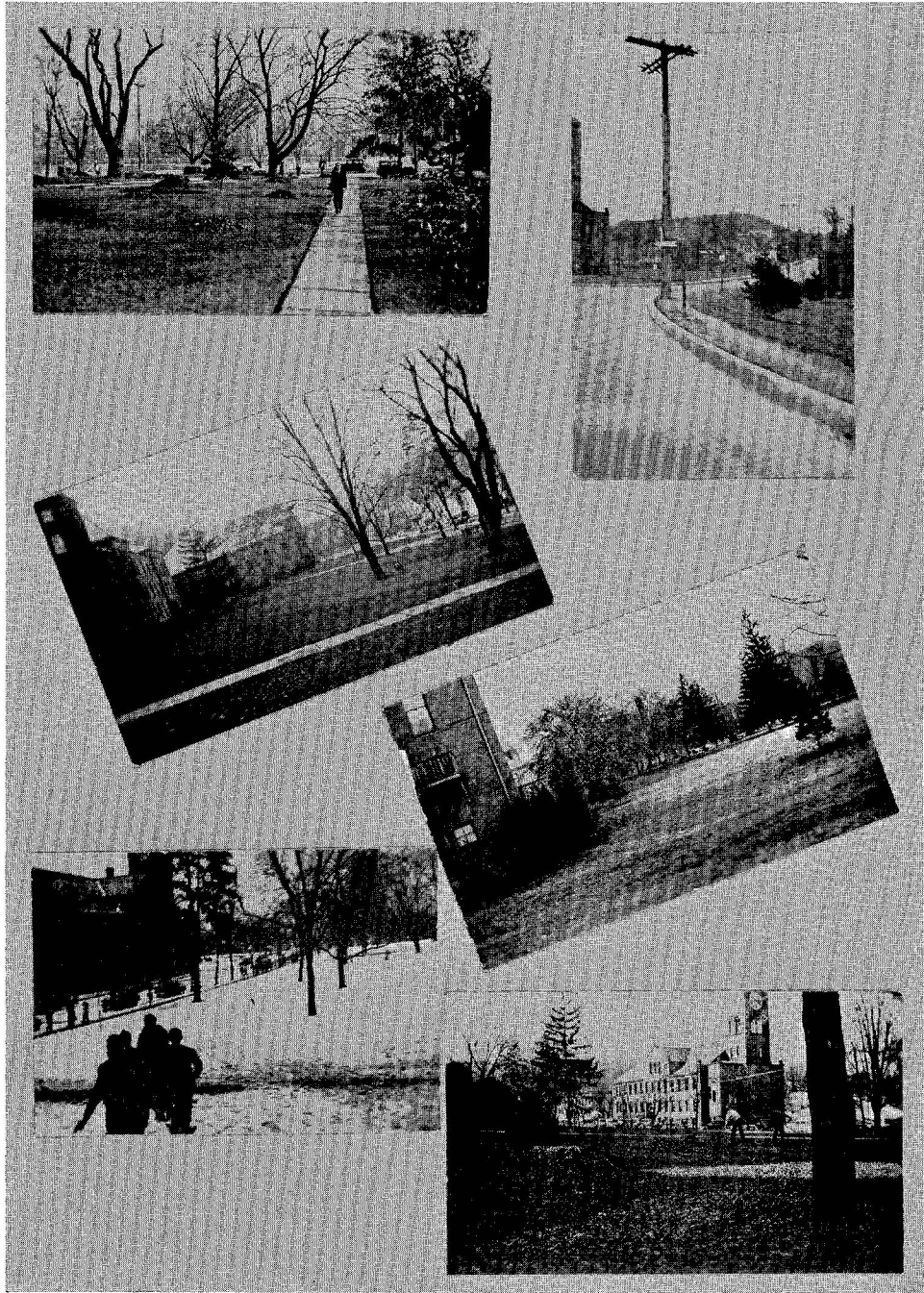
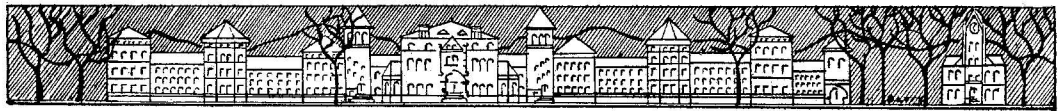
TO AND FROM WHERE?



OUR TROUBLES



HERE AND THERE



CAMPUS SCENES



SPEAKS FOR ITSELF

