

• **PRÆCO** •

VOL. XXII

• **1935** •

F O R E W O R D



This Praeco has been created as a permanent record of happy contacts and pleasant experiences. It is the earnest desire of the Praeco Staff that this book shall truly represent our college and its students, and shall serve as a memorial to a complexity of delightful personalities.

TABLE of CONTENTS



Administration

Classes

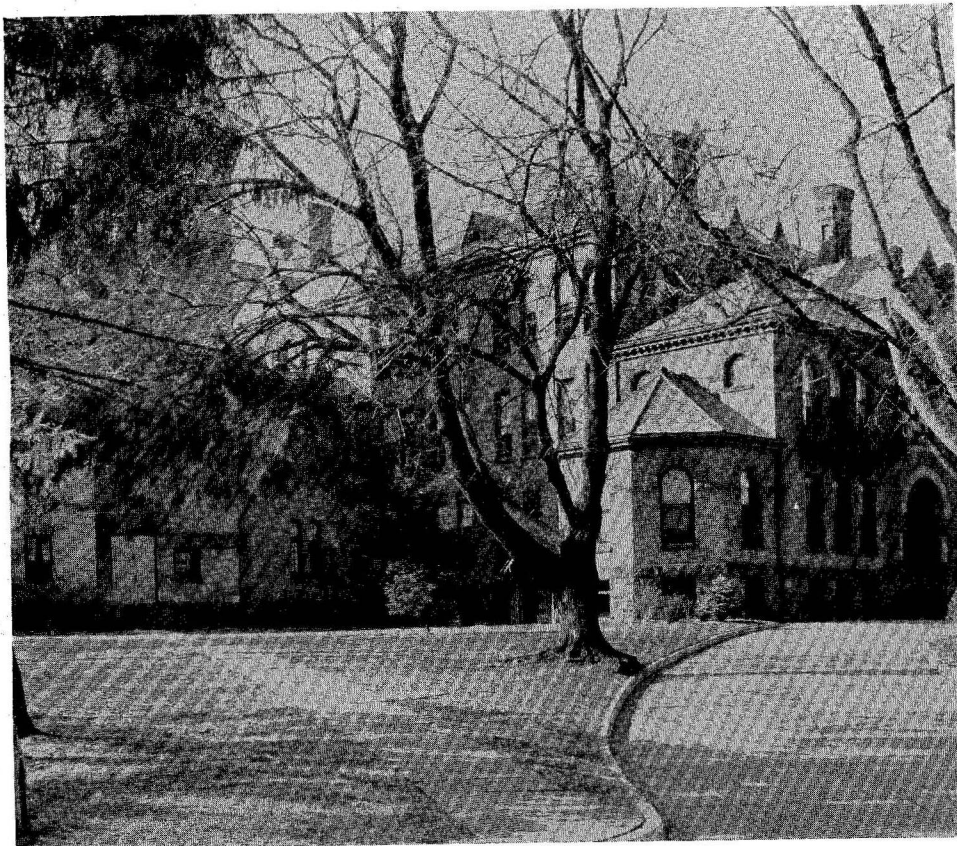
Organizations

Athletics

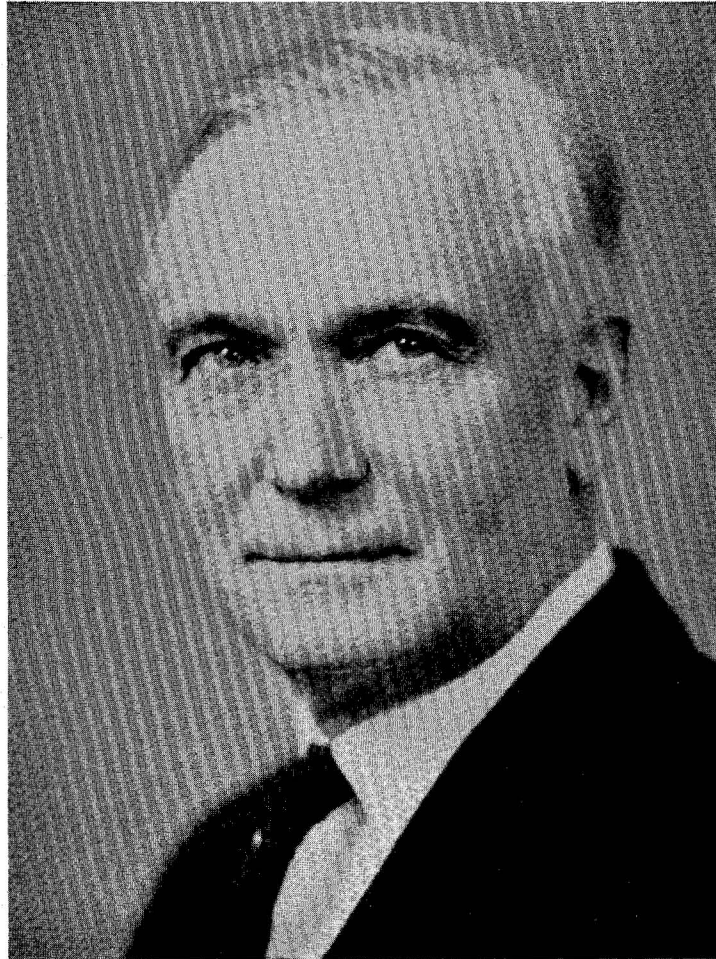


ADMINISTRATION





ADMINISTRATION BUILDING



DALLAS W. ARMSTRONG
Ph.B., A.M., LL.D.
President of Lock Haven State Teachers College

Teacher Training and Placement Service



R. STEWART MACDOUGALL, A.B., A.M.
Director of Teacher Training and Placement Service

THE aims of the Placement Service of the Lock Haven State Teachers College are to make available to the school administrators of the commonwealth information regarding those members of the graduating class who are seeking positions in the teaching profession, and to be prepared and qualified to recommend teachers in the various fields to such officials.

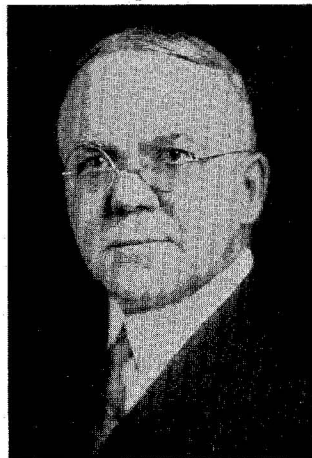
Various plans and devices have been devised by the Director of the Placement Service which aid in efficiently contacting the various school officials at a minimum of expense to the graduates seeking positions.

When one considers the record of the Placement service in its securing positions for the graduates of the Lock Haven State Teachers College, one can appreciate its importance in aiding in the dissemination of the principles gained by the graduates during their activities at this institution. According to statistical evidence, 91 per cent of the graduates of all groups of the period from 1929-1933, inclusive, secured appointments—largely through the efforts of the Placement Service.

The one person who has done most to promote the establishment of such an organization is Mr. R. Stewart MacDougall, Director of Teacher Training and Placement Service. Mr. MacDougall's varied training, broad experience, and many contacts have fitted him well for the position he now holds. The many unique features of the Placement Service are largely the result of his personal activities.



FRANK E. RITTER
Bursar and Revenue Agent



MORRIS DETURK HIGH
A.B., A.M.
*Dean of Instruction;
Mathematics*



DEBORAH M. BENTLY
Dietitian



BELLE HOLAWAY
A.M.
*Dean of Women
English*



HARRY F. WEBER
A.B., B.S., A.M., Ph.D.
Dean of Men; Social Science

HELEN B. LESHER
Supervisor, Grade III



CORNELIUS M. SULLIVAN
B.S., A.M.



LEVI J. ULMER
B.S., M.S.
Science; Geography



LAURA E. BARKHUFF
B.S.
Supervisor, Grade I



JESSIE SCOTT HIMES
B.S., A.M.
*Director of Primary
Education*



BERTHA M. ROWE
B.S.
*Supervisor, Grade IV
Education*



MALOISE S. DIXON
A.B., A.M.
*Physical Education;
Health Education*



LILLIAN RUSSELL
A.B.
Social Science



NELLIE A. DuBois
B.S., A.M.
Art



IRENE K. MacDONALD
A.B., A.M.
*Librarian; Instructor in
Library Methods*



EDNA H. POLLOCK
A.B., A.M.
Supervisor, Grade VI



ALLEN D. PATTERSON
A.B., A.M.
*Director of Junior High
School; Education*



MABEL V. PHILLIPS
A.B., A.M.
Supervisor, Grade II



SAMUEL J. SMITH
Ph.B., A.M.
Mathematics



JAY FERRY STEMPLE
A.B., M.S.
Physical Science



BERTHE A. DANIEL
B.S., M.A.
English



IRA O. FLEMING
B.S., M.S.
Biological Sciences



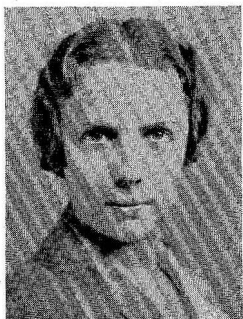
COPHINE ROOK
B.S., M.S.
Supervisor, Grade V



AXEL S. RUDE
A.B., M.A., Ph.D.
Education; Psychology



MABEL-LOUISE AREY
B.L.I.
Dramatics



V. FRANCES COPPENS
A.B., A.M., Ph.D.
Psychology; Education



ASHTON HATCHER
A.B., M.A.
Primary Education



GRACE ULLEMEYER
B.M.E., M.S.
*Music Education;
Piano; Voice*



WELDON WILLIAMS
A.B., A.M.
English



G. F. B. LEHMAN
A.B.
*Public School Music;
Voice*



KENTON VICKERY
A.B., M.A., Ph.D.
*Foreign Languages;
English*



J. WYNN FREDERICKS
M.S.
Physical Education



CATHERINE E. GEARY
B.S., M.A.
Social Studies



The Praeco wishes to take this opportunity to congratulate Miss Nellie A. DuBois, who deserted old L. H. S. T. C. to become Mrs. Charles DuBois. We offer our very best wishes.

We wish also to express here our deep regret for the loss to our faculty of Miss Belle Holaway, Dean of Women, and Weldon Williams, English Instructor. They leave with us many things we can never forget. May success attend them always.

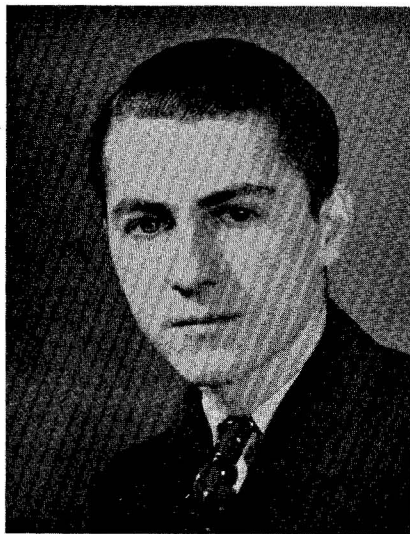
A decorative vertical element consisting of two parallel black lines runs down the right side of the page, framing the central text.

CLASSES

A decorative vertical element consisting of two parallel black lines, one thicker than the other, running down the right side of the page. The word "SENIORS" is centered between these lines.

SENIORS

CLASS OFFICERS



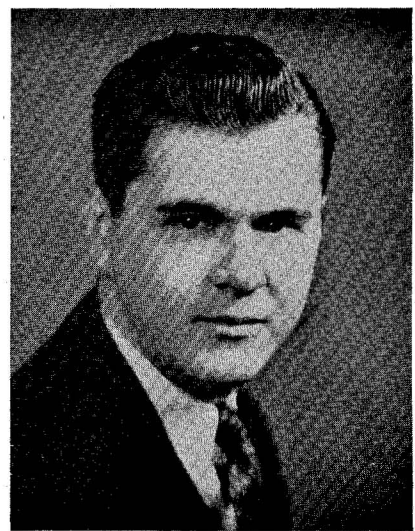
WALTER WILKINSON
President



RONALD ALDRICH
Vice President



BEATRICE BERG
Secretary



CALVIN HAMBERGER
Treasurer

J. FERRY STEMPLE, *Faculty Advisor*

Senior Class History

LITTLE do we think now of the little green caps and green ribbons we wore so short a four years ago. That was in 1931. We were Freshmen then; we are Seniors now. Four years have made us see things face to face. Four years have made us steadier, stauncher. Four years have made it easier for us to see the silver lining in every black cloud. The silver in the black—black and silver are our colors. And now “what better comfort have we, or what profit in living than to feed, sobered by the truth of nature, awhile upon her bounty and her beauty, and hand her torch of gladness to the ages following after?” That has been our motto. Now we look at it in a new light.

For three years we placed at our front as our president Elwood Rohrbaugh. This year, going from extreme to extreme in point of size, Walter Wilkinson leads us forth to battle.

According to our annals we originated the custom of a Freshman Dance. A spring sport dance, it was a real success.

The Sophomore year brought out another bit of originality in the form of a monthly paper of our own called “Sophomore Scraps.” On March 4, 1933, the Sophomore dance was held as an Inaugural Ball in honor of President Franklin D. Roosevelt and his New Deal.

As Juniors we began to look around a bit from a superior elevation, so to speak. We saw an industrious class, a class made up of good fellows all. The Junior Class collaborated with the Senior Class in producing the PRAECO for 1934. The Junior Prom was held in the late spring of 1934.

And now we are Seniors. The Senior Ball is over. The first semester is gone; the first half of the second semester is gone. Soon we shall be gone, too. Caps and gowns are being made ready for us. It took four years to make us ready for our caps and gowns.

The clock tower throws a shadow on the campus and our hearts from out that shadow shall be lifted never more.



RONALD E. ALDRICH
Bradford, Pa.

Secondary—Social Studies and English

Senior; Class Vice President, 4; Football Letter; Manager, PRAECO, 1; Dramatic, President, 4; Varsity Y. M. C. A. Cabinet, 4; Naturalist; "East is West"; "Outward Bound"; "Ghost Train."

LEON BARR
South Renovo, Pa.

Secondary—Mathematics, Science

Senior; Class Vice President, 3; Education, President, 4; PRAECO Staff, 3, 4.

JACK BRYERTON
Lock Haven, Pa.

Secondary—Mathematics and Social Studies—English Minor

Senior; Times Staff, 4; D. R. B., 1, 2, 3, 4; Treasurer, 4; Band, 1, 2, 3, 4; Orchestra, 1, 2, 3.

MYRA BURD
Lock Haven, Pa.

English and Social Studies

ROBERT E. BRETH
Avis, Pa.

Secondary—Science, Mathematics

Senior; Education Club; Glee Club; Y. M. C. A.

WANDA BROWN
Spring Mills, Pa.

Secondary—Mathematics, Science

Senior; Women's Student Council, 1, 2; Vice President, 2; Dramatic, 4; W. A. A., 1, 2, 3, 4; Y. W. C. A., 1, 2, 3, 4; Cabinet, 2, 3, 4; Bel Canto, 1, 2, 3; Point Secretary, 3; Vesper Choir, 1, 2; Mixed Chorus, 4.

DORIS CATTERSON
Honesdale, Pa.
Kindergarten

Art Club, 1, 2, 3, 4, President, 4; Dramatic Club, 3, 4; Beta Sigma Chi, 1, 2, 3, 4; Education Club, 2, 3, 4; Intersorority Council, Treasurer, 4.

MARJORIE L. DEISE
Lock Haven, Pa.

Special Kindergarten

Senior; L. A. L., Treasurer, 2, 3; R. O. L., Usher, 3; D. R. Student Council, 4.

ELVIRA BRUCE
Sugar Grove, Pa.

Mathematics, Latin

MAUDE BRUNGARD
Salona, Pa.

Secondary—Mathematics, Social Studies

Senior; Education, 3, 4; Shakespeare, 4; Y. W. C. A., 1, 2, 3, 4; President, 3.

MARJORIE VIVIAN DICE
Muncy, Pa.

Kindergarten, Primary

Senior; Times Staff, 3, 4; Women's Student Council, Secretary, 2; Dramatic, 1, 2, 3, 4, Treasurer, 4; W. A. A., 1; Y. W. C. A., 1, 2, 3, 4; A. C. E., 1, 2, 3, 4; Vice President, 2; Treasurer, 4; "Merchant of Venice"; "Outward Bound."

WILMER DRESSLER
DuBois, Pa.

Secondary—Mathematics, Science



AUSTIN BURKHART
Renovo, Pa.

English, History

Delta Rho Beta; Y. M. C. A.; Education Club; Shakespeare Literary Society; Captain Tennis Team.



GLENN V. DUNLAP

Beech Creek, Pa.
Secondary—Mathematics, Social Studies
 Senior; D. R. B.; Band.

ALDINE M. GLOSSNER

Lock Haven, Pa.
Intermediate
 Senior; Y. W. C. A.; Naturalist;
 Bel Canto Glee Club.

JOE D. HARVEY

Senior B.S.
 Lock Haven, Pa.
Secondary—Science and Social Studies

MADelyn FAULKNER

Senior B.S.
 Lock Haven, Pa.
Secondary—English, Social Studies
Times Staff, 1, 2, 3, 4 (Editor); Women's Student Council; W. A. A., 1, 2, 3; Y. W. C. A., 1, 3; Bel Canto Choral Society.

JEROME C. HAAGEN

Bellefonte, Pa.
Secondary and Elementary—Science, Geography
 Senior; Education Club; Y. M. C. A.

ASTRID HAUGE

Renovo, Pa.
Latin, Mathematics

LEWIS LUCAS

Philipsburg, Pa.
Secondary—Mathematics and Social Studies
 Senior; Football and Basketball Letters; Varsity; Y. M. C. A.; Baseball.

PEARL E. HEIGES

Lemoyne, Pa.
Kindergarten
 Senior; B. E. X., 4; Dramatic Club, 3, 4; Assistant Secretary, 4; Women's Student Council, Junior Representative, 3; Vice President, 4; Y. W. C. A., 4; Bel Canto, Vice President, 3, 4; Shakespeare, 3, 4; A. C. E., 3, 4; Mixed Chorus.

ROBERT S. HUNTER

Beech Creek, Pa.
Secondary—Science, Mathematics
 Senior; Class Treasurer, 1, 2; Football, 2, 3, 4; Track, 2, 3, 4; Y. M. C. A., 1, 2, 3, 4; Varsity, 2, 3, 4; Vice President, 4; D. R. B., 1, 2, 3, 4; Vice President 3, 4.

MARIAN McCLOSKEY

Lock Haven, Pa.
 French Club.

FLORENCE M. HUNT

Lock Haven, Pa.
Kindergarten, Primary
 Senior; PRAECO Staff, Junior Editor, 3; *Times Staff*, 2, 3; W. A. A., 1; R. O. L., President, 4; Inter-Sorority Council, 3, 4; Women's Student Council, 3, 4; Dramatic Club, 1, 2, 3, 4; Y. W. C. A., 1; A. C. E.; "Merchant of Venice"; "Outward Bound"; "Old Days in Dixie."

CLARA S. JENKINS

Jersey Shore, Pa.
Kindergarten, Primary
 Y. W. C. A.; A. C. E.



EARL SCHNARS

Hawk Run, Pa.
 Basketball, 1, 2, 3, 4; Varsity Club.



RICHARD McCLOSKEY
 Lock Haven, Pa.
English, Social Studies
 Varsity Club, 1, 2, 3, 4.

SARA MAPES
 Beech Creek, Pa.
Secondary—Social Studies, English
 Senior; Educational, 3, 4; Shakespeare; Y. W. C. A., (Day) Meetings Chairman, 4.

GEORGE MOON
 Mill Hall, Pa.
Secondary—Mathematics, Science
 Senior; D. R. B., 1, 2, 3, 4; Y. M. C. A., 4; Varsity, 3, 4; Treasurer, 4; Baseball, 1, 3, 4.

MADELINE McGOUGH
 Lock Haven, Pa.
Intermediate

PAUL L. MILLS
 Renovo, Pa.
Secondary—English, Social Studies
 Senior; Track Letter, 2; D. R. B., 1, 2, 3, 4; Y. M. C. A., 1, 2, 3; Times Staff, 4.

ETTA M. MORELAND
 Jamestown
Kindergarten, Primary
 Senior; A. S. T.; Treasurer, 3; President, 4; Women's Student Council, Senior Representative, 4; Y. W. C. A., 3, 4; A. C. E., 3, 4; Naturalist, 3, 4; Treasurer, 4.

RAY E. OBERHEIM
 Lock Haven, Pa.
Secondary—Social Studies, Geography
 Senior; D. R. B., Sergeant-at-Arms, 4; Varsity Club; Baseball.

OLIVE QUIGGLE
 Castanea, Pa.
Kindergarten, Primary
 Senior; L. A. L.; R. O. L.

RICHARD A. RATHGEBER
 Lock Haven, Pa.
Secondary—Mathematics, Science
 Education, 3, 4; Phi Mu Delta Fraternity.

KATHRINE PIPES
 Lock Haven, Pa.
French, Latin
 French Club.

EDWARD WM. RADER
 Lock Haven, Pa.
Secondary—Geography, Science
 Senior; Boxing, 3, 4; Y. M. C. A., Acting President Day Room, 1; Y. M. C. A., 1, 2, 3, 4.

FREDERICK RINN
 Jersey Shore, Pa.
Secondary—Science, Social Studies
 Senior; D. R. B., 2, 3, 4; Chaplain, 4; Education Club, 4; Y. M. C. A., 1, 4; Band, 1, 3, 4; Men's Glee Club, 4; Mixed Chorus, 4.



ELWOOD L. ROHRBAUGH

Beech Creek, Pa.
Secondary—Mathematics, Science
 Senior: Class President, 1, 2, 3; Track, 1, 2, 3, 4; PRAECO, Business Manager, 3, 4; D. R. B., 1, 2, 3, 4; Treasurer, 2, 3; President, 4; Dramatic, 1, 2, 3, 4; Y. M. C. A., 4; Student Activity Council, 3; Education Club, 3, 4; Treasurer, 4; "Old Days in Dixie."

JEAN SMITH

Watrous, Pa.
Kindergarten Special
 Senior: Women's Student Council, 2; Art, 1, 2, 3, 4; Y. W. C. A., Cabinet, 2, 3, 4; A. C. E., 2, 3, 4; Vice President, 4; Naturalist, 3, 4; Secretary, 4.

CLARISSA WAINGER

Johnstown, Pa.
Special Kindergarten
 Senior B. E. X., 1, 2, 3, 4; Recording Secretary, 2; President, 4; L. A. L., 1, 2, 3, 4; Women's Student Council, 1, 2 (Day Room); Orchestra, 1, 2, 3, 4; Education, 1, 2, 4; Program Chairman, 4; A. C. E., 1, 2, 3, 4; President, 2; Glee Club, 1, 2; "Peg O' My Heart"; "Old Days in Dixie."

ELLEN LOUISE ROOKE

Weissport, Pa.
Kindergarten, Primary
 Senior: Y. W. C. A., 1, 2; Social Service Chairman, 3; Social Relations Chairman, 4; Vesper Choir, President, 1, 2; Vesper Trio, 1, 2; Glee Club, 1, 2; Bel Canto, 3; President, 4; A. C. E., 1, 2; Secretary, 3; Salesmanship Chairman.

HENRY STEHMAN

Lock Haven, Pa.
Secondary—Mathematics, Science Majors
 Senior: PRAECO Staff; Delta Rho Beta Fraternity; Education Club; Y. M. C. A.; President Men's Tribunal; Captain Tennis Team.

NAOMI A. WENTZ

Lock Haven, Pa.
Kindergarten, Primary
 Senior: Times Staff, Social Editor, 3; L. A. L., Treasurer, 4; R. O. L., Secretary, 3; W. A. A., 1; Y. W. C. A., 1; Naturalist, 2, 3, 4; Marionette, 2, 3; A. C. E., Secretary, 3, President, 4.

L. ANTHONY YOST

Lock Haven, Pa.
Secondary—Elementary Majors Social Science, Geography B.S. Degree and Elementary Certificate
 Senior: Delta Rho Beta Fraternity; Y. M. C. A.; Manager of the College Publicity Department; Member of the Governing Board for the Intercollegiate Conference on Government; Track.

TRAFTON T. BUCHANAN

Renovo, Pa.
Secondary—Mathematics, Social Studies
 Senior: Class Vice President, 2, 3; Basketball, 1, 2, 3, 4; Captain, 3, 4; Dramatic, Secretary-Treasurer, 2, 3; Secretary, 3, 4; Varsity, 2, 3, 4; Y. M. C. A., Vice President, 2, 3; Vespers Chorus, 3, 4; Naturalist, Secretary (First Semester) 3, 4; President (Second Semester) 3, 4; "Outward Bound."

CALVIN HAMBERGER

Castanea, Pa.
Secondary—English, Social Studies
 Senior: Class Treasurer, Senior Class, 3, 4; D. R. B., 3, 4; Y. M. C. A., 4.

BEATRICE M. BERG

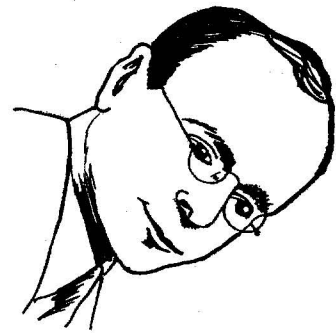
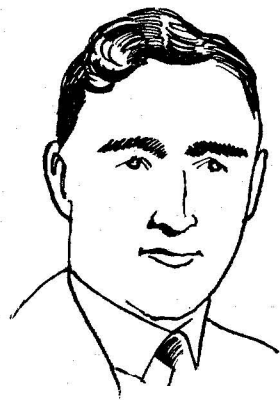
Port Allegany, Pa.
Secondary—English, French
 Senior: Class Secretary, 4; R. O. L., 1, 2, 3, 4; Vice President, 3; President, 4; Intersorority Council, 2, 4; Vice President, 4; Women's Student Council, Treasurer, 3; Dramatic, 2, 3, 4; Student Activity Council, 2; W. A. A., 1, 2; Y. W. C. A., 1, 2, 3, 4; La Societe Rambouillet; "Outward Bound."

CLARENCE R. ELD

Grassflat, Pa.
Secondary—Mathematics, Science
 Men's Student Council, Junior Representative, 3; President, 4; Dramatic, 1, 2, 3, 4; Vice President, 4; Varsity, 3, 4; Secretary, 4; Y. M. C. A., 1, 2, 3, 4; Cabinet, 2; President, 3, 4; Naturalist, 2, 3, 4; President, 4; Baseball Letter, 3, 4; "Merchant of Venice"; "Old Days in Dixie"; "Mis' Nellie of N' Orleans."

WALTER M. WILKINSON

Spring Mills, Pa.
Secondary—Mathematics, Science
 Senior: Class President, 4; Cheer Leader, 3, 4; PRAECO Staff, 2, 3, 4; Men's Student Council, 4; Vice President; Dramatic, 1, 2, 3, 4; President, 3; Art, 3; Education, 4; Y. M. C. A., 1, 2, 3, 4; Secretary, 4; Student Activity Council, 4; Vice President; Co-operative Stores, Vice President, 4; "Merchant of Venice"; "East is West"; "Old Days in Dixie"; "Ghost Train"; "Outward Bound"; "Mis' Nellie of N' Orleans."

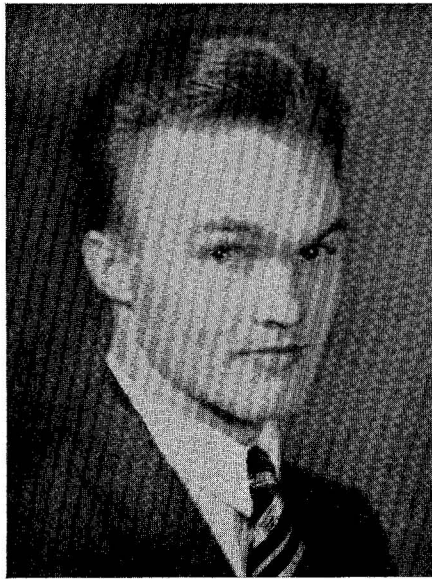


... IMPRESSIONS
OF THE
ARTIST ...



walter wilkinson

HALL OF FAME



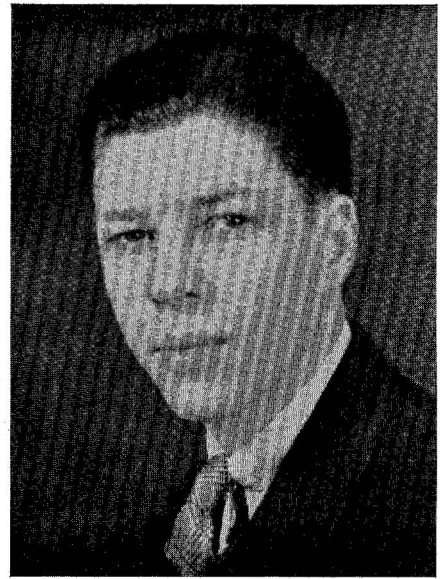
LEON BARR



BEATRICE BERG



TRAFTON BUCHANAN



CLARENCE ELD



ELWOOD ROHRBAUGH



HENRY STEHMAN



ISABEL WELCH

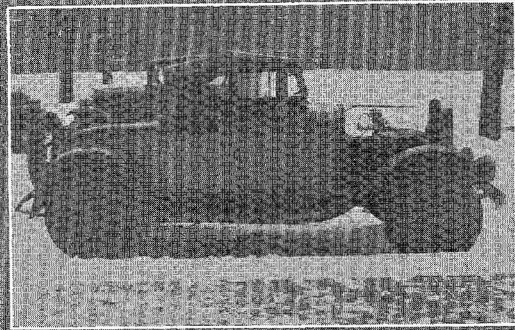


WALTER WILKINSON

CAMPUS



Where's Goo-Goo?



The Silver Bullet



Ahh —



(General C.J.)

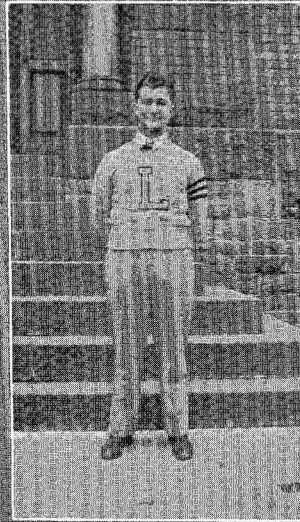


Crooners

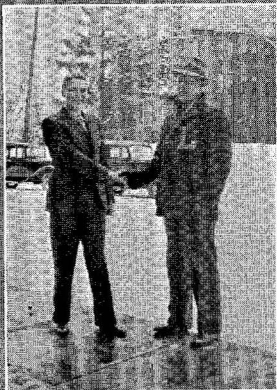
CASE - STUDIES



The Gingerale Kid



(General C.S.)



Bryerton, Rep., Pa.
Oberheim, Dem., Pa.



"I passed Gym"



"Butts"

CAMPUS COINCIDENCES



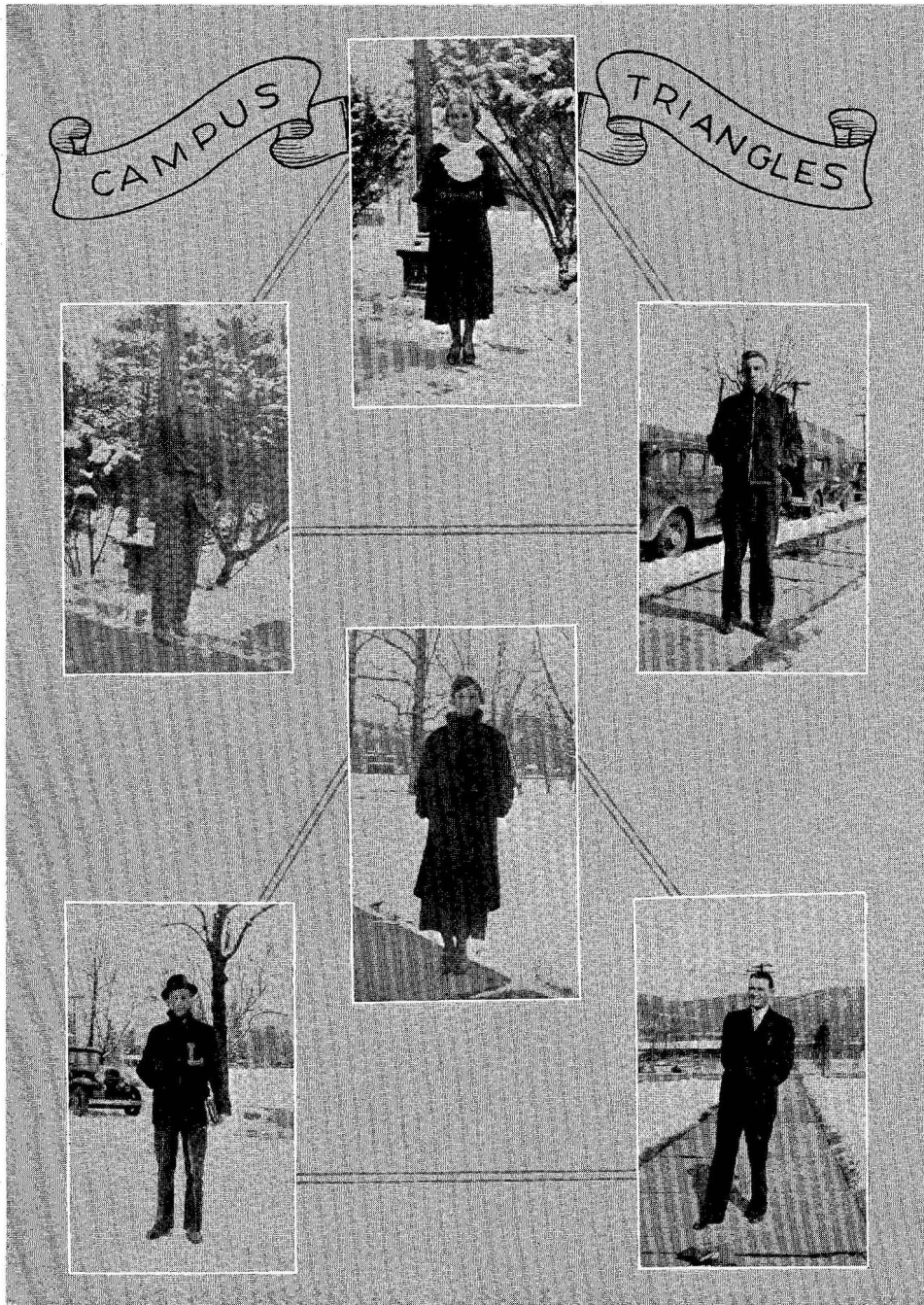
Harsch Law

Woolridge Mills



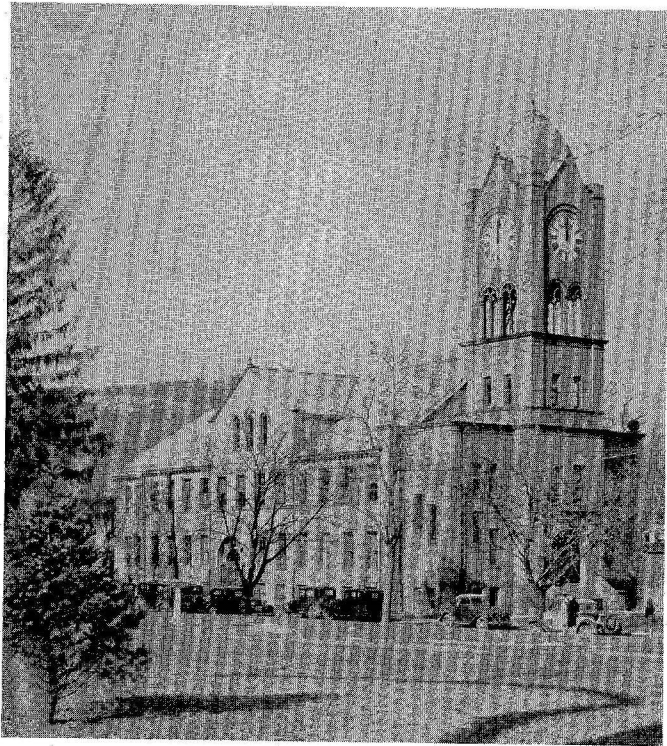
Brown Hamberger

Dickey Burd

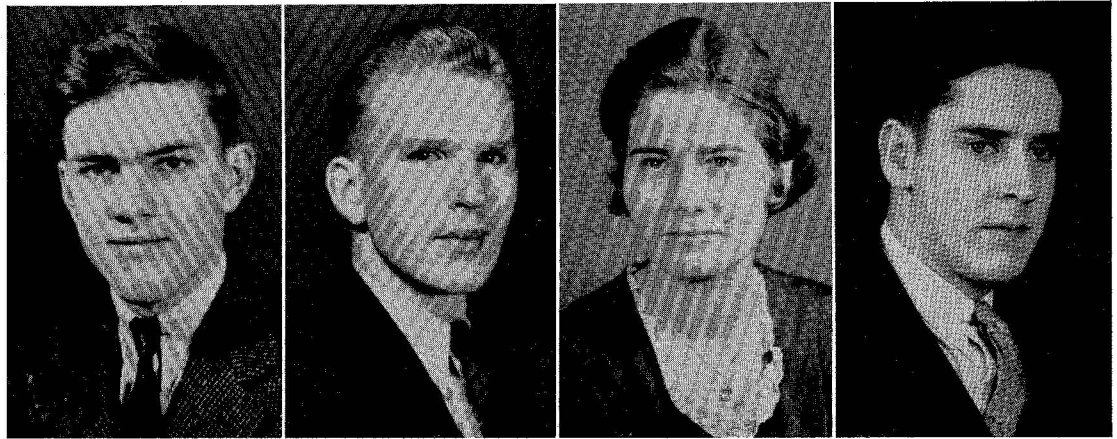




JUNIORS



JUNIOR CLASS OFFICERS



WILLIAM BOWES
President

FRANKLIN COURTER
Vice President

LEAH VARNER
Secretary

EUGENE NUSS
Treasurer

Junior Class History

Class Colors, Blue and Gold

Class Motto, Esse non videri

THREE years ago there entered one of the most aggressive classes of the Lock Haven State Teachers College. The first year was spent in making favorable adjustments and new friends. Under the leadership of our faculty adviser, Mr. High, we voted for the New PRAECO Plan.

The Sophomore year found us ready to plunge into work. At this time we voted for Mr. Lehman as class adviser, whom we still lay claim, and under his direction chose the class colors, class motto, and sponsored the Sophomore Hop.

Now, as Juniors at the Teachers College the various members of the class are represented in all the clubs, athletics and other activities. Already we have sponsored an Open House Tea and the Junior Prom.

It is with great anticipation that we look forward to the last year of our college lives, and we are determined to make it the most outstanding Senior class the college has ever known.



WILLIAM ANDERSON

Weedville, Pa.

Secondary—Mathematics, Science
Times Staff, 1, 2, Editor-in-Chief, 3;
Dramatic Club, 1, 2, 3; Art Club,
1; Y. M. C. A., 1; Shakespeare
Literary Society, 1; Naturalist
Club, 2, 3; "East is West"; "The
Ghost Train."

KATHRINE KEAR

Watsonstown, Pa.

Kindergarten—Primary
 PRAECO Staff, 3.

HOWARD UNDERWOOD

Lock Haven, Pa.

Secondary—English, Mathematics
 PRAECO Staff, 3; Delta Rho Beta, 2,
 3, 4.

JOHN W. BARRY

Lock Haven, Pa.

Secondary—Social Studies and
Mathematics
 Basketball, 1; PRAECO Staff, 3, As-
 sistant Advertising Editor; Delta
 Rho Beta, 1, 2, 3; Art Club, 1, 2,
 3, Vice President, 3; Y. M. C. A.,
 1, 2, 3.

MARY E. ULMER

Lock Haven, Pa.

Alpha Sigma Tau; Dramatic Club;
 Naturalist Club.

W. HARTER VONADA

Blanchard, Pa.

Secondary—Science, Mathematics
 Delta Rho Beta, 1, 2, 3; Dramatic
 Club, 3; Orchestra, 1, 2; Band,
 1, 2, 3.

MARTHA R. CLARK

Nittany, Pa.

Secondary—English, Social Studies
 Y. W. C. A., 3.

JOSEPH FREEDMAN

Lock Haven, Pa.

Secondary—Science, Social Studies
 Delta Rho Beta, 3; Dramatic Club,
 1, 2, 3.

ETHEL LAW

Lock Haven, Pa.

English, Social Studies
 Bel Canto, 1, 2, 3; Education Club,
 2, 3; R. O. L., 2, 3; Y. W. C. A.

JULIA CRONISTER

Julian, Pa.

Secondary—French, English
 Bel Canto Choral Society; La So-
 ciete Rambouillet.

ROBERT YEARICK

Lock Haven, Pa.

Secondary—Science, Mathematics

EVELYN WILLIAMS

Howard, Pa.

Secondary—Mathematics, Science
 Alpha Sigma Tau, 2, 3, Treasurer,
 3; Women's Student Council, Sec-
 retary, 2; Education Club, 2, 3;
 W. A. A., 1, 2, 3, President, 3,
 Treasurer, 2; Y. W. C. A., 1, 2, 3,
 Cabinet, 2, Vice President, 3; Nat-
 uralist Club, 1, 2, 3; Shakespeare
 Literary Society, 2, 3, Treasurer,
 3; "East is West."



JOHN YON
Altoona, Pa.
Secondary—Science, Mathematics

LEAH A. VARNER
Woodland, Pa.
Intermediate
Class Secretary, 3; Dramatic Club, 1, 2, 3; Education Club, 1, 2; Art Club, 1, 2; W. A. A., 1, 2, 3; Y. W. C. A., 1, 2, 3; Vice President, 2; "East is West."

EDWARD KIMBLE
Renovo, Pa.
Secondary—French, Latin
Class Vice President, 1; PRAECO Staff, Photo Editor, 3; Times Staff, 1, 2, Business Manager, 3; Delta Rho Beta, 1, 2, Secretary, 3; Dramatic Club, 1, 2, 3; Education Club, 2, 3; La Societe Rambouillet, President, 3.

VICTOR WILLIAMS
Monument, Pa.
Secondary—Mathematics, English
Delta Rho Beta, 2, 3; Art Club, 2; Education Club, 2, 3; Y. M. C. A., 2.

MARIE GEHRON
Williamsport, Pa.
Kindergarten—Primary
Rho Omega Lambda, 2, 3, 4, Treasurer, 4; Dramatic Club, 2, 3, 4; Y. W. C. A., 1, 2; A. C. E., 1, 2, 3, 4; "Mis' Nellie of N' Orleans."

FRANKLIN COURTER
Blanchard, Pa.
Secondary—Social Studies, Mathematics
Photo Editor of PRAECO, 2, Editor-in-Chief, 3; Delta Rho Beta, 1, 2, 3; Education Club, 2, 3; French Club, 3; Art Club, 3; Class Treasurer, 1, Vice President, 3; Band, 1, 2, 3; Quartet, 3.

SARA MORAN
Lock Haven, Pa.
Secondary—Social Studies, French
W. A. A.; La Societe Rambouillet.

EUGENE NUSS
Farwell, Pa.
Secondary—Mathematics, Science
Class Treasurer, 3; PRAECO Staff, Assistant Business Manager, 2, 3; Delta Rho Beta, 1, 2, 3, Treasurer, 3; Education Club, 2, 3; Y. M. C. A., 1, 2, 3; Naturalist Club, 2, 3.

MARGARET WELLS
Pottstown, Pa.
Kindergarten
Art Club, 3.

BELLE ISLE STONER
Bedford Valley, Pa.
Kindergarten
Women's Student Council, Treasurer, 3; Art Club, 3.

REUBEN SALADA
DuBois, Pa.
Secondary—Science, Social Studies
Naturalist Club.

REBECCA WILLIAMS
Hollidaysburg, Pa.
Kindergarten—Primary



MARYESTHER SCHAEFER
Williamsport, Pa.
Kindergarten
Normal School Certificate; Education Club, 2, 3; Y. W. C. A., 3.

WILLIAM B. BOWES
Lock Haven, Pa.
Secondary—Mathematics, English
Class President, 1, 3, Class Vice President, 2; Delta Rho Beta, 1, 2, 3; "East is West."

NANCY KISER
Wilkesburg, Pa.
Kindergarten
PRAECO Staff; Dramatic Club; Alpha Sigma Tau.

ANNA S. TREXLER
Wilkes-Barre, Pa.
Kindergarten—Primary
Y. W. C. A., 3.

WILLIAM MAHAFFEY
Williamsport, Pa.
Secondary—Social Studies, Mathematics
Art Club, 3; Dramatic Club, 3.

KATHRYN RAUCH
Liverpool, Pa.
Intermediate
W. A. A., 2, 3; Y. W. C. A., Treasurer, 3.

ARLENE M. DUNKLE
Halifax, Pa.
Kindergarten
Dramatic Club, 2, 3; Student Council, 1, 2, 3; Y. W. C. A., 1, 2, 3; Art Club, 2, 3, Treasurer, 3, 4; A. C. E., 1, 2, 3; Bel Canto Choral Society, 1, 2.

JEAN SHEASLEY
Franklin, Pa.
Kindergarten—Primary
Rho Omega Lambda; W. A. A.; Y. W. C. A.; Orchestra; Band.

M. EUGENIA WILLIAMS
Beech Creek, Pa.
Kindergarten—Primary
Education Club; Naturalist Club.

MARIAN E. PARSONS
Lock Haven, Pa.
Secondary—English, Social Studies
Education Club, 3; Rho Omega Lambda, Social Secretary, 4.

MARIAN HARSCH
Williamsport, Pa.
Kindergarten—Primary
Rho Omega Lambda, 2, 3, 4, Vice President, 3; Women's Student Council, 3, 4; Dramatic Club, 2, 3, 4; Y. W. C. A., 1, 2; A. C. E., 2, 3; "The Ghost Train."

LEANORE DICK
Bellwood, Pa.
Secondary—Social Studies, English
Times Staff, 3, Circulation Manager; Y. W. C. A., 1, 2, 3; Shakespeare Literary Society, 3; Bel Canto Choral Society, 2, 3, Secretary-Treasurer.



MARTHA McALLISTER

North Bend, Pa.

Intermediate

Rho Omega Lambda, 1, 2, 3; Usher,
1; Education Club, 1, 2, 3.

KATHERINE CAPRIO

Lock Haven, Pa.

Secondary—History, English

Lambda Alpha Lambda, 1, 2; Rho
Omega Lambda, 1, 2, 3; Inter-
Sorority Council, 3, 4; Dramatic
Club, 1, 2, 3; Y. W. C. A., 1, 2,
3; "The Ghost Train."

EDNA SWINEHART

Pottstown, Pa.

Kindergarten—Special

Art Club, 3.

LUCETTA McKIBBEN

Lock Haven, Pa.

Secondary—Social Studies, Latin

PRAECO Staff; Junior Secretary, 3; Times Staff, 3; Rho Omega Lambda, 3; Dramatic Club, 2, 3, 4; Education Club, 3, 4; Y. W. C. A., 2, 3, 4, President, 3; "The Ghost Train."

ANNE Q. WILSON

Williamsport, Pa.

Secondary—Mathematics, Science

Class Secretary, 2; PRAECO Staff, Women's Sport Editor, 2, 3; Inter-Sorority Council, President, 3; Education Club, 1, 2, 3; Art Club, 1, 2, 3; W. A. A., 1, 2; Beta Epsilon Chi, 1, 2, 3, Secretary, 2.

ANNA MARGARET CORSON

Lock Haven, Pa.

Kindergarten—Primary

Rho Omega Lambda, 3; Dramatic Club, 1, 2, 3; W. A. A., 1, 2, 3; Y. W. C. A., 1, 2, 3; Orchestra, 1, 2, 3; Bel Canto Choral Society, 2; A. C. E., 1, 2, 3; "East is West."

PAULINE BARKHUFF

Lock Haven, Pa.

Kindergarten—Primary

Alpha Sigma Tau, 1, 2, 3, Chaplain, 2, Custodian, 2; Literary Editor, 3; Assistant Treasurer; A. C. E., 1, 2, 3, President, 2; Naturalist Club, 2, 3; Orchestra, 3.

JAMES MYERS

Lock Haven, Pa.

Secondary—English, Social Studies

Football, 1, 2, 3; Times Staff, 2, 3; Varsity, 1, 2, 3; President, 3; Glee Club, 1, 2, 3; Boxing, Wrestling.

MORRILL LAUBACH

Williamsport, Pa.

Secondary—French, English

Times Staff; Mixed Quartet; French Club.

G. WILBUR ANDERSON

Renovo, Pa.

Secondary—English, Social Studies

Y. M. C. A., 1, 2, 3; Band, 1, 2, 3; Orchestra, 1, 2, 3.

VIRGINIA CHEESMAN

Williamsport, Pa.

Kindergarten—Special

Alpha Sigma Tau, 1, 2, 3, President, 2, Social Chairman, 3; Art Club, 1; W. A. A., 2; A. C. E., 1, 2, 3; Y. W. C. A., 1, 2, 3, Treasurer, 2.

ELEANOR WOOD

Williamsport, Pa.

Secondary—Mathematics, Science

Women's Student Council, President, 2; Education Club, 1, 2, 3; Art Club, 1, 2, 3; W. A. A., 1, 2; Y. W. C. A., 1, 2, 3; Beta Epsilon Chi, 1, 2, 3, Secretary, 3.

THELMA S. RAKER

Trout Run, Pa.

Kindergarten—Primary

THELMA SOXMAN

Pitcairn, Pa.

Kindergarten—Primary

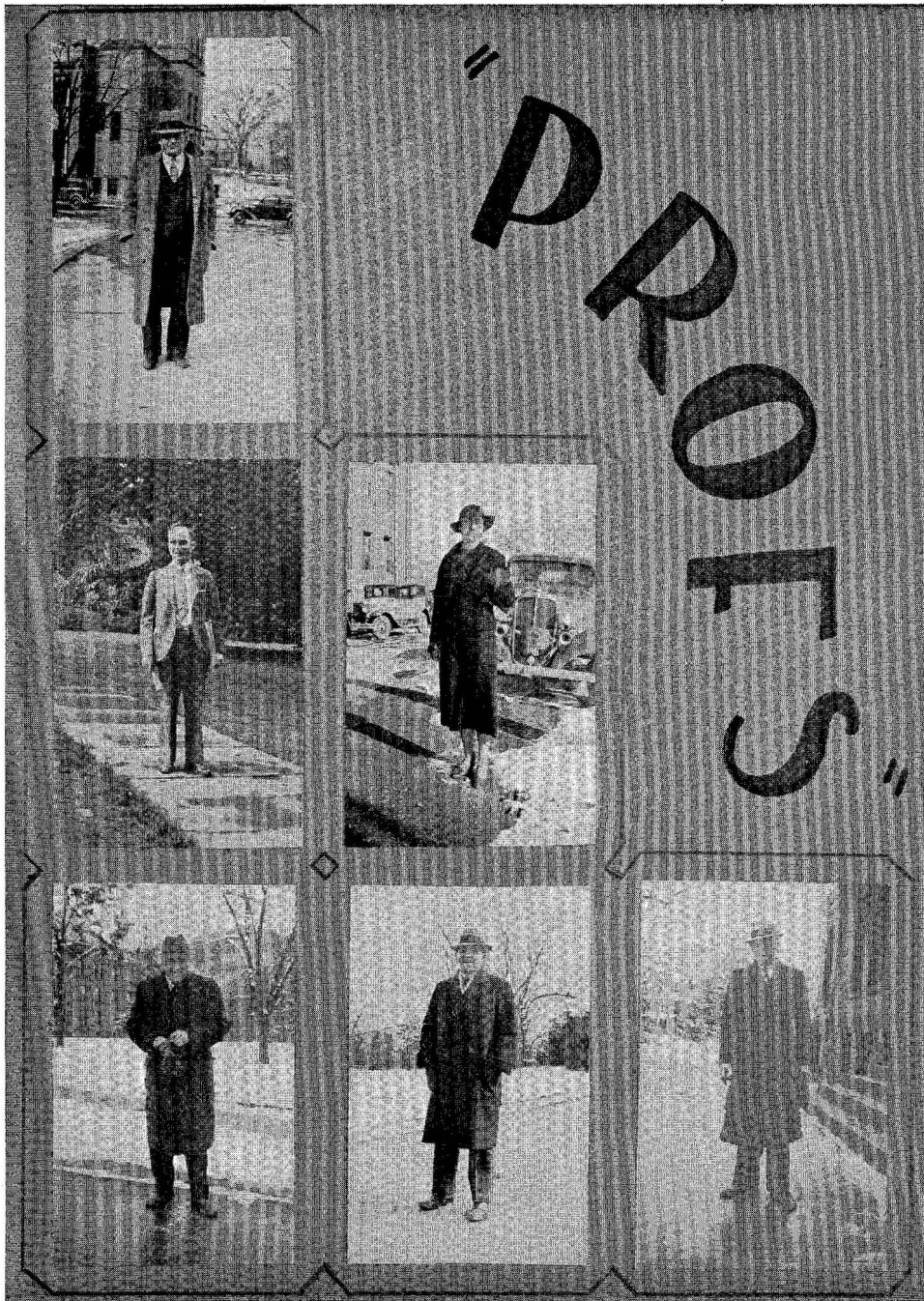
ROBERT LOWE

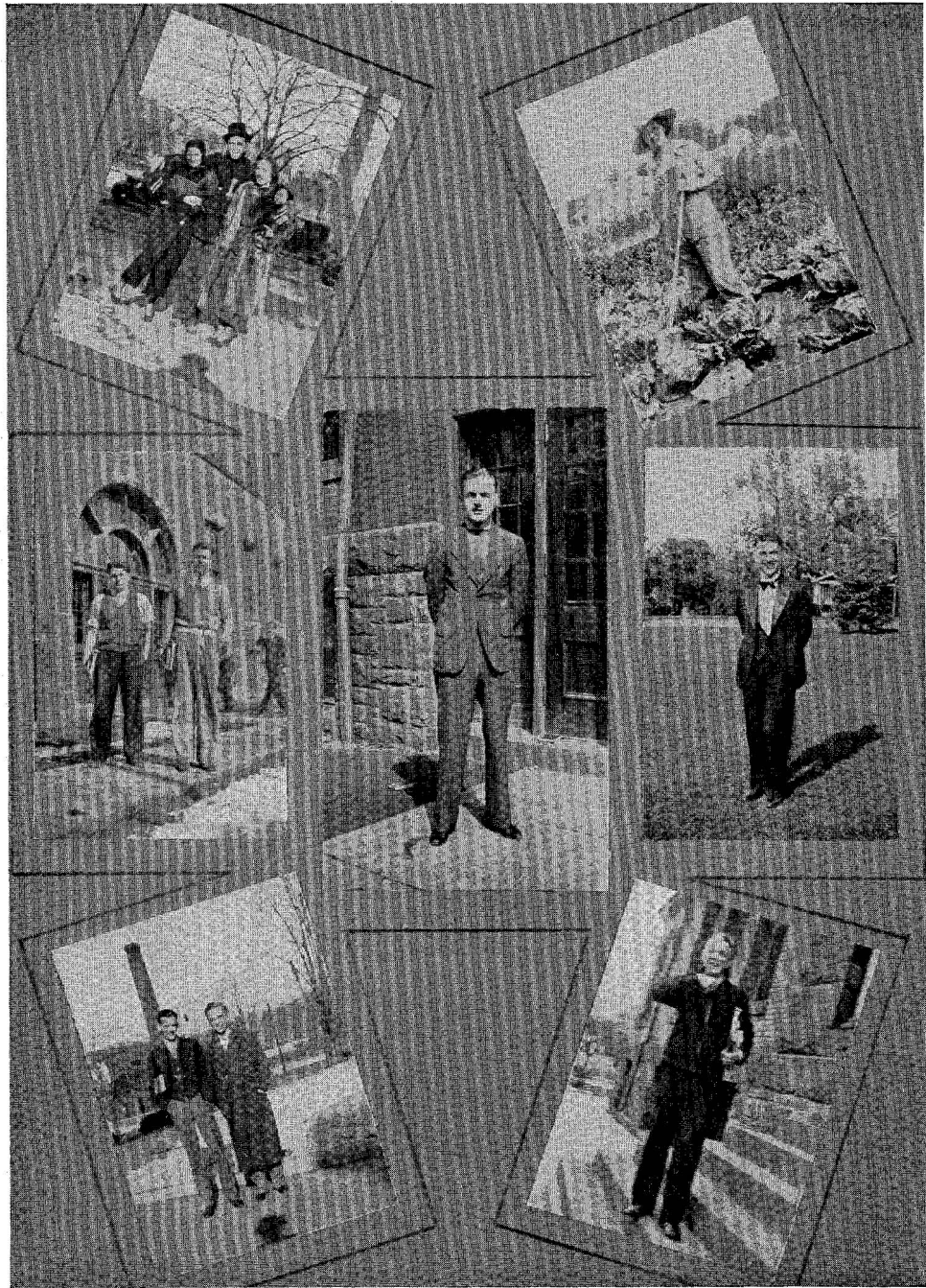
Avis, Pa.

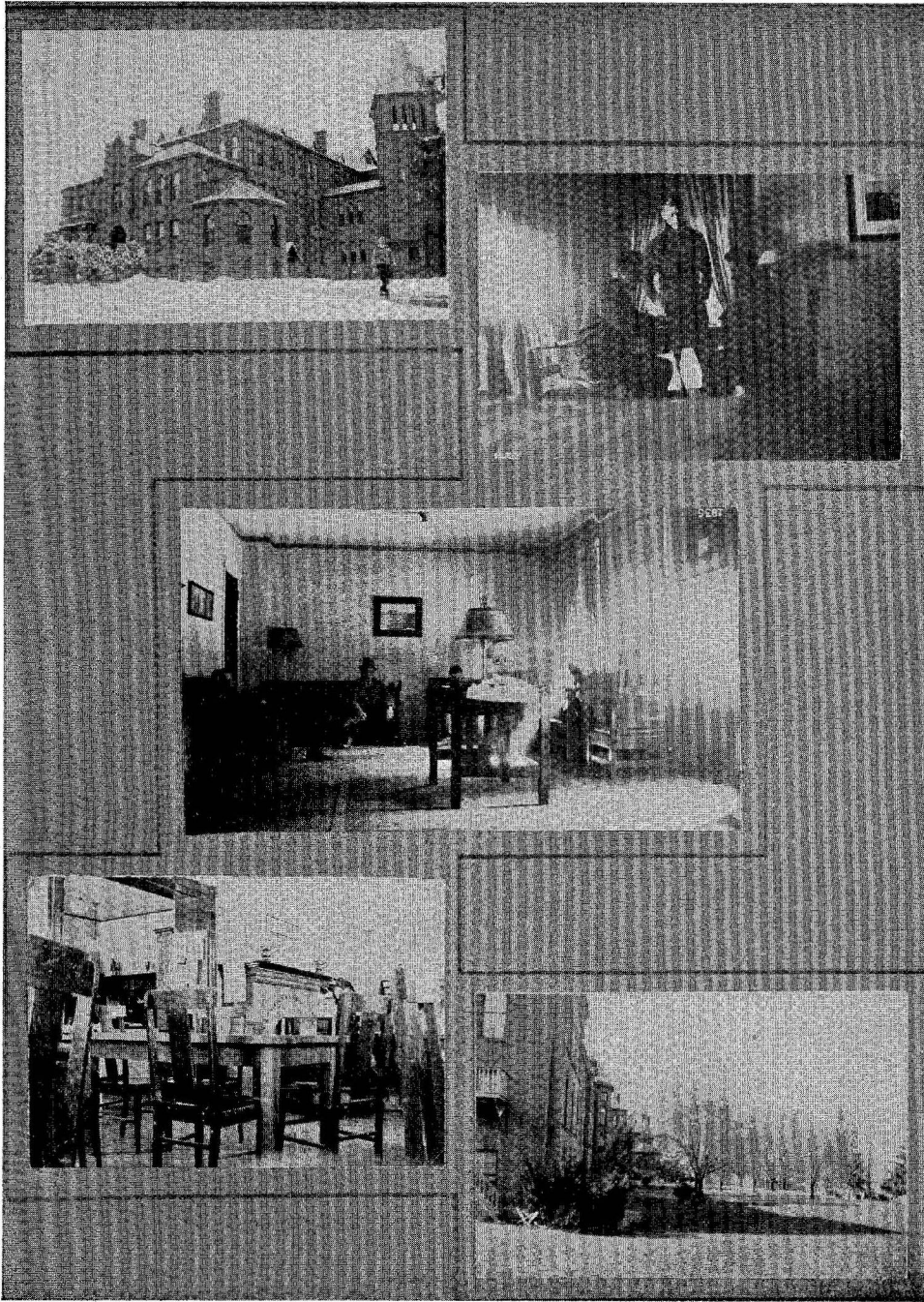
Secondary—Social Studies, Science

Delta Rho Beta, 2, 3.





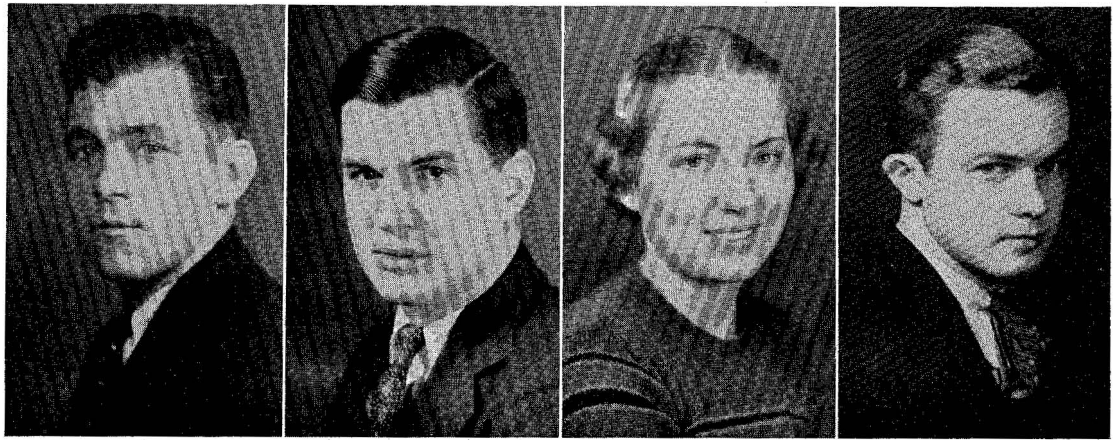






A decorative vertical element consisting of two parallel black lines, one on the left and one on the right, framing the central text.

SOPHOMORES



LAWRENCE BECK
President

WILLIAM HODRICK
Vice President

LOUISE McENTIRE
Secretary

CHESTER EASTEP
Treasurer

Class History

OFFICERS

LAWRENCE BECK	-	-	-	-	-	-	-	-	-	-	-	<i>President</i>
WILLIAM HODRICK	-	-	-	-	-	-	-	-	-	-	-	<i>Vice President</i>
LOUISE McENTIRE	-	-	-	-	-	-	-	-	-	-	-	<i>Secretary</i>
CHESTER EASTEP	-	-	-	-	-	-	-	-	-	-	-	<i>Treasurer</i>

HAVING safely emerged from our first exciting year at college we began our Sophomore year with enthusiasm and great plans. We elected Mr. Samuel Smith to be our adviser.

On December 15, our first social function, the Sophomore Hop, was enjoyed by many people. The class also gave an Open House Tea on December 14.

As records will show the Sophomores are very active in campus organizations and athletics. Although over half of the members of the class will receive certificates this May the rest of us are looking forward to carrying on for our class and Alma Mater in the remaining years of our college life.



SOPHOMORE CLASS ROLL

William S. Abrams
 Alice M. Arnold
 Lawrence E. Beck
 Norman E. Berry
 George D. Bielefeld
 Esther M. Bowman
 Paul D. Breon
 Betty Bryerton
 Sarah A. Budinger
 Leonard R. Caprio
 Wilson D. Clark
 Rebecca S. Confer
 Harold M. Corter
 Evelyn M. Custer
 Margaret M. DeLaney
 J. Homer Detweller
 Gretchen Dickey
 Chester S. Eastep
 Helen M. Edler
 Charles W. Emery
 Dorothy E. Fink
 James B. Finn
 Kenneth D. Frantz
 Layah L. Fromm
 Robert C. Gallagher
 Parmella F. Garthoff
 Anne K. Gilmartin
 H. Lucille Glossner
 Jack H. Guisewite
 Mary E. Gummo
 Dorothy K. Hamberger
 Freda B. Hammer
 Evelyn E. Hanna
 Ellen C. Harding
 Anita E. Harner
 Ruth S. Harrier
 Katharine M. Harris
 Mae I. Hartman
 Winifred S. Heim

John E. Hill
 William A. Hodrick
 Clea F. Howe
 Harold M. Hoy
 Marian F. Hudson
 Fred B. Ingraham
 Emma Johnson
 Leonard A. Johnsonis
 Lee D. Kipp
 Jean H. Kopenhaver
 Frank M. Kotchin
 Leah H. Kraemer
 Esther M. Lakner
 Morrill H. Laubach
 Janet Lillibridge
 Edna L. Livingston
 Gertrude L. Long
 Threse A. Long
 Wilma P. Losch
 Francis C. Maneval
 Martha R. Mapes
 Mary Louise Markel
 Pearl L. Mast
 Arthur H. McCloskey
 Mary Elizabeth McCoy
 Helen I. McCreary
 Emerson M. McDermott
 Louise H. McEntire
 Alice M. McGarvey
 Sara Myers
 Beatrice M. Montarsi
 Ruth A. Moon
 Jane I. Moran
 Wayne S. Myers
 Ferne M. Nedimyer
 Helen D. Noon
 Robert T. O'Gara
 Matilda M. Onachilla
 Lucile E. Orlin

Agnes P. Parisi
 Gertrude S. Powell
 Jane P. Pray
 Kathryn J. Rauch
 Lillian A. Read
 Mary H. Regan
 Ruby G. Richards
 Mary Ann Roberts
 Margaret J. Rohrbaugh
 Stanley J. Sady
 Phyllis L. Saxon
 Anne Sedor
 Bertha M. Sharer
 Weldon E. MacDonald
 Dorothy A. Sheridan
 Helen N. Sheridan
 Robert F. Sholly
 Pearl E. Singfield
 L. Hart Slater
 David L. Smith
 Kathryn L. Smith
 Elva M. Stiver
 Marianna P. Tallman
 Frances L. Taylor
 Lucille D. Trambley
 Helen L. Thomas
 Althea J. Troxell
 Margaret E. Walker
 Marguerite M. Weisner
 Stella R. Wenker
 Anna E. Wert
 Anna L. White
 Gladys E. Williams
 Margaret Williams
 Eleanor M. Wolfe
 Marian J. Gentzel
 May Jo Williams
 Guy Richards



ALICE ARNOLD

Hollidaysburg, Pa.

Kindergarten—Primary

Art Club, 2; W. A. A., 1, 2; Y. W. C. A., 1; Glee Club, 1; A. C. E., 1, 2.

EVELYN CUSTER

Johnstown, Pa.

Kindergarten—Primary, 2-Year

Alpha Sigma Tau, President, 1; Corresponding Secretary, 2; Bel Canto Choral Society, President, 1; A. C. E.

KENNETH FRANTZ

Tylersville, Pa.

Intermediate, 2-Year

Band; Orchestra.

NORMAN E. BERRY

Morrisdale, Pa.

Intermediate

Y. M. C. A., 2; Football Manager; Boxing; Intra-Mural Basketball.

MARGARET C. DeLANEY

Centre Hall, Pa.

Intermediate

W. A. A., 1, 2; Y. W. C. A., 1, 2; Orchestra, 1, 2.

LAYAH FROMM

Lock Haven, Pa.

Kindergarten—Primary

A. C. E.; W. A. A.

SARAH ANN BUDINGER

Snow Shoe, Pa.

Kindergarten—Primary

Beta Epsilon Chi; Dramatic Club; W. A. A.; A. C. E.

ARLENE DUNKLE

Halifax, Pa.

Kindergarten—Primary

ANNE GILMARTIN

Renovo, Pa.

Kindergarten—Primary

Art Club; W. A. A.; A. C. E.; Glee Club.

ESTHER M. BOWMAN

Olanta, Pa.

Intermediate

DOROTHY E. FINK

Greensburg, Pa.

Kindergarten—Primary, 2-Year

Art Club; W. A. A.; Y. W. C. A.; A. C. E.; Glee Club.

H. JACK GUISWITE

Rebersburg, Pa.

Intermediate

Glee Club; Mixed Chorus.



FREDA B. HAMMER
Boswell, Pa.
Intermediate

WINIFRED S. HEIM
Cogau Station, Pa.
Intermediate

JEAN KOPENHAVER
Norristown, Pa.
Kindergarten—Primary

Alpha Sigma Tau; Naturalist Club;
Glee Club, 1, 2; Orchestra, 1, 2;
Band, 1, 2.

PRAECO Staff, Sophomore Editor, 3,
4; W. A. A.; Alpha Sigma Tau,
Corresponding Secretary, 3, Vice
President, 4; Y. W. C. A. Cabinet,
3, 4; A. C. E., Secretary, 3, 4;
Glee Club, 3, 4; Shakespeare Lit-
erary Society, 3, 4.

ANITA HARNER
New Alexandria, Pa.
Kindergarten—Primary

Art Club; Y. W. C. A.; W. A. A.;
A. C. E.; Glee Club.

HAROLD M. HOY
Bellefonte, Pa.
Intermediate

FRANK M. KOTCHIN
Jerome, Pa.
Intermediate

RUTH HARRIER
Woodland, Pa.

Kindergarten—Primary, 2-Year
W. A. A.

MARIAN HUDSON
Cherry Tree, Pa.
Intermediate, 2-Year

Alpha Sigma Tau, Historian, First
Semester, 1, 2.

EMORY H. LEE
Bellefonte, Pa.
Intermediate

MAE I. HARTMAN
Shoemakersville, Pa.
Kindergarten—Primary

W. A. A., 1, 2; Y. W. C. A., 1;
A. C. E.

LEE KIPP
Hooversville, Pa.
Intermediate

Football, 1, 2; Y. M. C. A., 1, 2;
Men's Student Council, 1, 2; Art
Club, 1, 2; Varsity, 1, 2.

EDNA L. LIVINGSTON
Antes Fort, Pa.
Kindergarten—Primary, 2-Year

Times Staff, Make-up Editor, 3, 4;
W. A. A., 3, 4; Bel Canto Choral
Society, 2, 3; President, 3, 4.



GERTRUDE L. LONG
Patton, Pa.
Intermediate

ARTHUR H. McCLOSKEY
Hublersburg, Pa.
Elementary—Intermediate
Y. M. C. A.; Men's Glee Club;
PRAECO Staff, Advertising Man-
ager, 4.

HELEN D. NOON
Johnstown, Pa.
Intermediate
W. A. A.

THRESE A. LONG
Russellton, Pa.
Intermediate

HELEN L. McCREARY
Cessna, Pa.
Kindergarten—Primary
W. A. A., 1, 2, 3; Y. W. C. A., 1, 2,
3; A. C. E., 1, 2, 3; Shakespeare
Literary Society.

ROBERT T. O'GARA
Shamokin, Pa.
Intermediate

WILMA LOSCH
Williamsport, Pa.
Kindergarten—Primary
Alpha Sigma Tau, Corresponding
Secretary, Second Semester, 3, 4.

SARAH MEYERS
West Milton, Pa.
Kindergarten—Primary
Alpha Sigma Tau; W. A. A.; Y. W.
C. A.; A. C. E.; Inter-Sorority
Council; Women's Student Coun-
cil, Secretary, 2.

MATILDA M. ONACHILLA
Cairnbrook, Pa.
Kindergarten—Primary

PEARL L. MAST
Penfield, Pa.
Intermediate

FERNE M. NEDIMYER
Flinton, Pa.
Intermediate, 2-Year
W. A. A.; Y. W. C. A.

LUCILLE E. ORLIN
Bradford, Pa.
Intermediate



JANE P. PRAY
Johnsonburg, Pa.
Intermediate

STANLEY J. SADY
Central City, Pa.
Intermediate

JEAN M. SHEASLEY
Franklin, Pa.
Kindergarten—Primary

LILLIAN READ
Clearfield, Pa.
Intermediate, 2-Year
W. A. A.

PHYLLIS SAXON
Ralston, Pa.
Intermediate
W. A. A.

DOROTHY SHERIDAN
Cassandra, Pa.
Primary
W. A. A.

RUBY G. RICHARDS
Jersey Shore, Pa.
Intermediate

ANNE SEDOR
Simpson, Pa.
Kindergarten—Primary
Times Staff, 3; Y. W. C. A., 2; A. C. E., 3.

HELEN M. SHERIDAN
Portage, Pa.
Intermediate

MARGARET ROHRBAUGH
Beech Creek, Pa.
Kindergarten—Primary
Beta Epsilon Chi; W. A. A.; Y. W. C. A.

BERTHA M. SHARER
Centre Hall, Pa.
Intermediate
W. A. A.; Orchestra.

DAVID L. SMITH
Dunlo, Pa.
Intermediate



KATHRYN L. SMITH

Clearfield, Pa.

Kindergarten—Primary

Alpha Sigma Tau, Custodian, 4;
W. A. A.

HELEN L. THOMAS

Williamsport, Pa.

Kindergarten—Primary

ANNA E. WERT

Centre Hall, Pa.

Kindergarten—Primary

W. A. A., Treasurer, 1, 2; Y. W.
C. A., Secretary, 1, 2; Bel Canto
Choral Society, 1; A. C. E., 1, 2.

ELVA M. STIVER

Martha's Furnace, Pa.

Intermediate

ALTHEA TROXELL

Bethlehem, Pa.

Kindergarten—Primary

Alpha Sigma Tau; W. A. A.; Y. W.
C. A., Treasurer, 3, 4.

MAY JO WILLIAMS

Houtzdale, Pa.

Intermediate, 2-Year

W. A. A.; Y. W. C. A.

MARIANNA P. TALLMAN

Newberry, Pa.

Kindergarten—Primary

Alpha Sigma Tau, Literary Editor,
3; W. A. A.

MARGARET E. WALKER

Freidens, Pa.

Kindergarten—Primary

MARGARET WILLIAMS

Intermediate

DOROTHY TRAMBLEY

Johnsonburg, Pa.

Intermediate

Times Staff; Dramatic Club; W. A.
A.; A. C. E.; Glee Club.

MARGUERITE WEISNER

St. Marys, Pa.

Intermediate, 2-Year

Y. W. C. A.

GLADYS WILLIAMS

Watsonstown, Pa.

Intermediate

W. A. A.; Glee Club; Shakespeare
Literary Society.



ELEANOR WOLFE

South Williamsport, Pa.

Kindergarten—Primary

Alpha Sigma Tau, Vice President,
First Semester, 3, 4; Women's
Student Council, Secretary-Treasurer,
3, 4; W. A. A., 2, 3.

DOROTHY BOYCE

Altoona, Pa.

Intermediate

BEATRICE CARLSON

Kane, Pa.

Kindergarten—Primary

GEORGE D. BIELEFIELD

Tyrone, Pa.

AGNES P. PARISI

Weedville, Pa.

Kindergarten—Primary

MARIAN J. GENTZEL

Altoona, Pa.

Kindergarten—Primary

J. HOMER DETWEILER

Williamsburg, Pa.

Intermediate

GERTRUDE S. POWELL

Shamokin, Pa.

Intermediate, 2-Year

Y. W. C. A.; Glee Club; Mixed
Chorus; Mixed Quartet.

GUY RICHARDS

Clearfield, Pa.

Intermediate

JOHN E. HILL

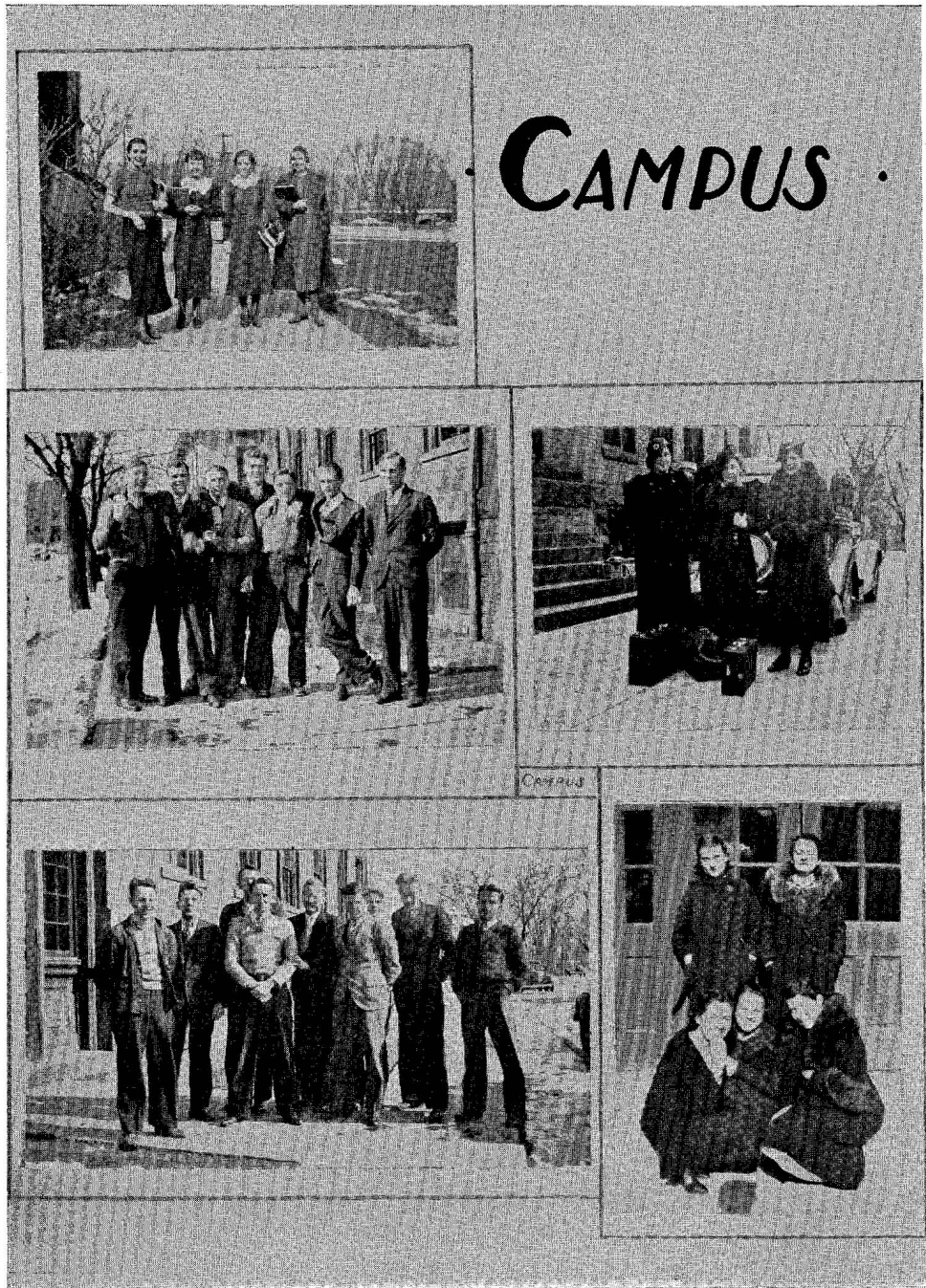
Morrisdale, Pa.

Intermediate

KATHRYN J. RAUCH

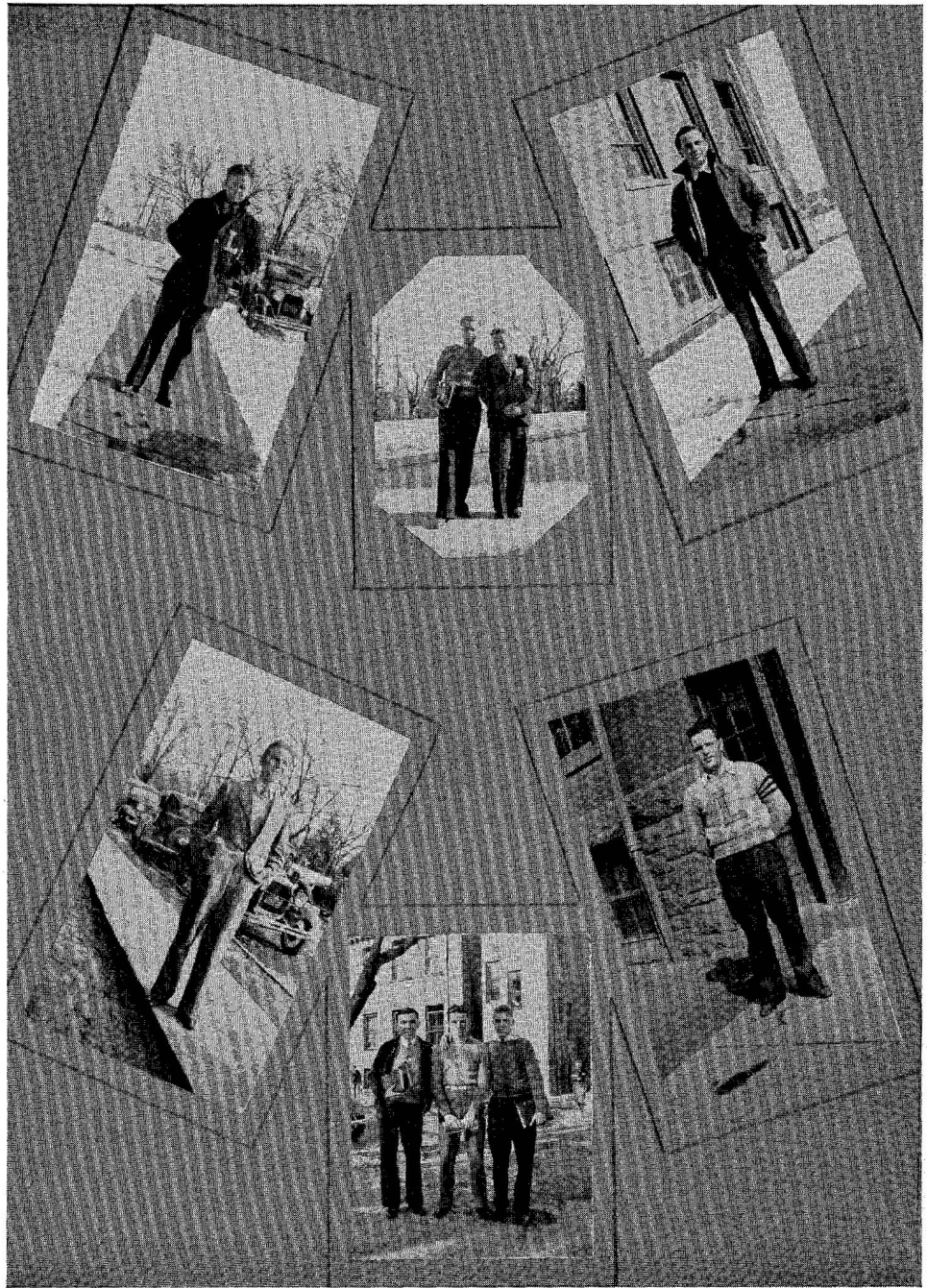
Liverpool, Pa.

Intermediate



GANGS.





CAMPUS CHARACTERS



"Mom"



"Bit"



"Office"



"Billy"



"Sid"



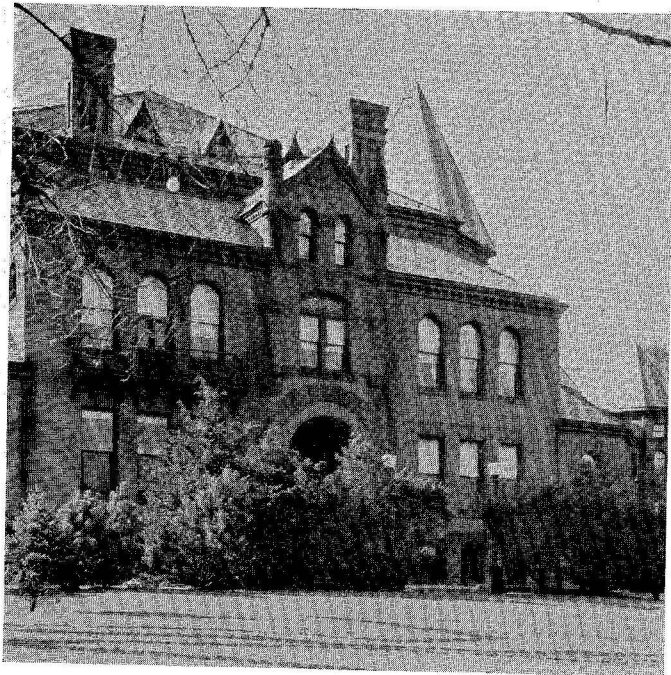
"Fanny"



"Whitey"



FRESHMEN





JACK LIVINGSTON
President

GEORGE HOFFNAGLE
Vice President

JACK YOHE
Secretary

GEORGE FRETTHY
Treasurer

CAROLINE BROWN - - - - - *Second Vice President*
 MARGARET GRIFFITH - - - - - *Assistant Secretary*
 HELEN NICHOLS - - - - - *Assistant Treasurer*

Class History

*When we entered school as Freshmen,
 We did our very best
 To show the upper-classmen
 We cared not for their jests.*

WE SHALL always cherish the fond memories of that day in the fall of '34 when we entered school as Freshmen. Oh, how shy and timid we were at first, but with the help and sympathy of our upper-classmen, we soon became accustomed to our surroundings and became so proud and dignified that even our Seniors did not know us.

At our class election Jack Livingston was chosen president; George Hoffnagle, vice president; Jack Yohe, secretary, and George Frethy, treasurer. Mr. Ulmer was selected as class adviser.

It was during this year that many Freshmen made their debut into the football realm. The class of '38 takes great pride in having contributed such outstanding football stars. On December 17, fourteen Freshmen were awarded their football letters.

Our class also entered into the basketball field and added several stars to the team.

Shall we ever forget our County Fair? The girls of the class sponsored this fair, assisted by Miss Arey. The proceeds of the party were used to redecorate the girls' dayroom. Ours is the first class to make any such improvements.

Our school year drew rapidly to a close and it was with regret, yet happiness, that we left our Freshman year to continue our school life as Sophomores. Our Freshman year helped us to become acquainted with college life and also showed to the other classes what the class of '38 was capable of doing.



FRESHMAN CLASS ROLL

Esther Anderson
 Esther Barr
 Pauline Barrows
 Olivia Bogar
 Ruth Bower
 Hazel Boyer
 Albert Brazinski
 Caroline Brown
 James Brown
 William Brown
 Mollie Buvinger
 Arthur Cerullo
 Thomas Conrad
 Ruth Crowley
 Earlene Davis
 Frances Davis
 Philomena Davis
 Martin Dietrick
 Inez Dieffenbach
 Wayne Durandetta
 Lynn Earon
 Dorothy Eder
 Ralph Englert
 Maxine English
 Helen Eyerly
 Carmilla Folmar
 Paul Frantz
 Anne Frazier
 Alice Fredericks
 George Frethy
 Lydia Furst
 Helen Gallaher
 John Goles
 Edith Greaser
 Margaret Griffith
 Michael Haddad
 Martha Holbrook
 Mary Hammer
 Mary Hand
 Virginia Hand
 Maxine Harrier
 James Harrington
 Earling Hauge

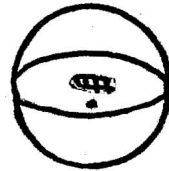
Winifred Hearnes
 Evelyn Hellberg
 Jean Helman
 Madeline Hettler
 Aleta Hobson
 Edward Hochrein
 George Hoffnagle
 Helen Homer
 Joseph Hosie
 Ruth Hunt
 Grant Irion
 Irene Jury
 William Jusick
 Gladys Kleman
 Oliver Kling
 Helen Kohler
 Bernard Kotchin
 Roy Kress
 Jean Kunes
 Edna Leinbach
 Jeanne Lepley
 Dorothy Lillibridge
 Harris Lipz
 Jack Livingston
 Carolyn Long
 Lois Long
 Eleanor Lucas
 Elizabeth Lunn
 Kathryn Lyon
 Vera Lyons
 Donald Lytle
 Barbara McCabe
 Sara McClain
 Ruth McClintock
 Charles McDermott
 Emerson McDermott
 Mary McKinley
 Joseph Mc Nerney
 Helen Mackovick
 Jean Mann
 Ellis Martin
 Jane Mervine
 Madolyn Miller

Gina Montorsi
 Angelo Muro
 Rowland Myers
 Harvey Newman
 Helen Nichols
 Jane Ostrom
 Michael Pagnotto
 Margaret Pelton
 Marjorie Pfoutz
 Charles Pierson
 Ethel Rich
 Mary E. Ringler
 Charles Robinson
 Sara Romig
 Geraldine Ross
 Olga Sawzik
 Dorothy Schmidt
 Morlin Schrack
 Amy Shaffer
 Gladys Shaffer
 Julia Shea
 Dorothy Sheridan
 Margaret Sheroky
 Helen Silagyl
 Harry Smith
 Hilda Smith
 Pauline Smith
 Wayne Suder
 Thomas Summers
 Alyene Torrey
 Albert Torsell
 Cecilia Truhan
 La Wave Underwood
 Miriam Wallace
 Charles Weaver
 Robert Weaver
 Janet Wilson
 Ashly Woolridge
 Marguerite Wright
 Jack Yohe
 John Yokemick
 Vesta Young

Our Class



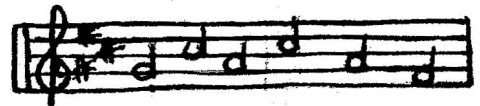
Bill Brown
George Frethy
Michael Haddad
Charles McDermott
Thomas Conrad
John Yokemick
Jack Yohe
Robert Weaver
Charles Weaver
Albert Brazinski
Edward Hochrein
Rowland Myers
George Hoffnagle
John Goles



Lynn Earon
George Hoffnagle
Rowland Myers
John Moyer
Albert Brazinski
Jack Livingston
Roy Kress

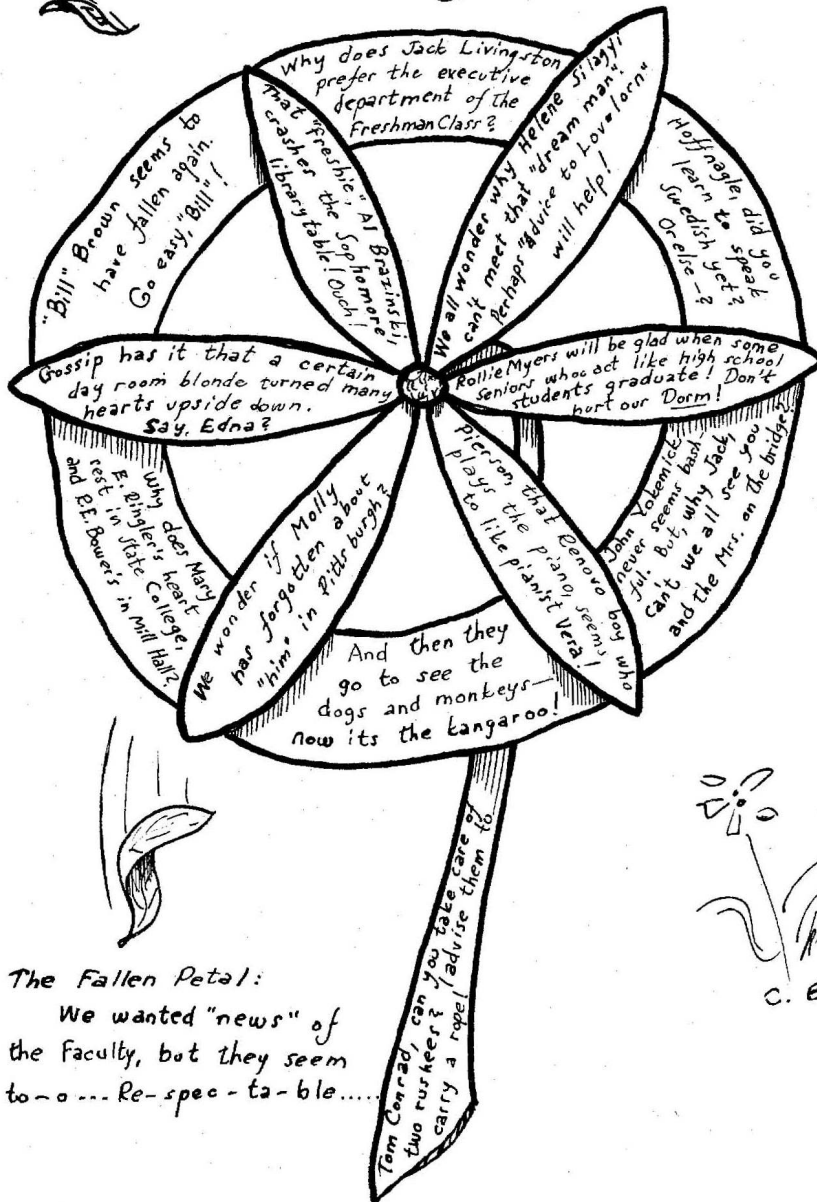


Vera Lyons
Charles Pierson
Ruth McClintick
Ruth Hunt



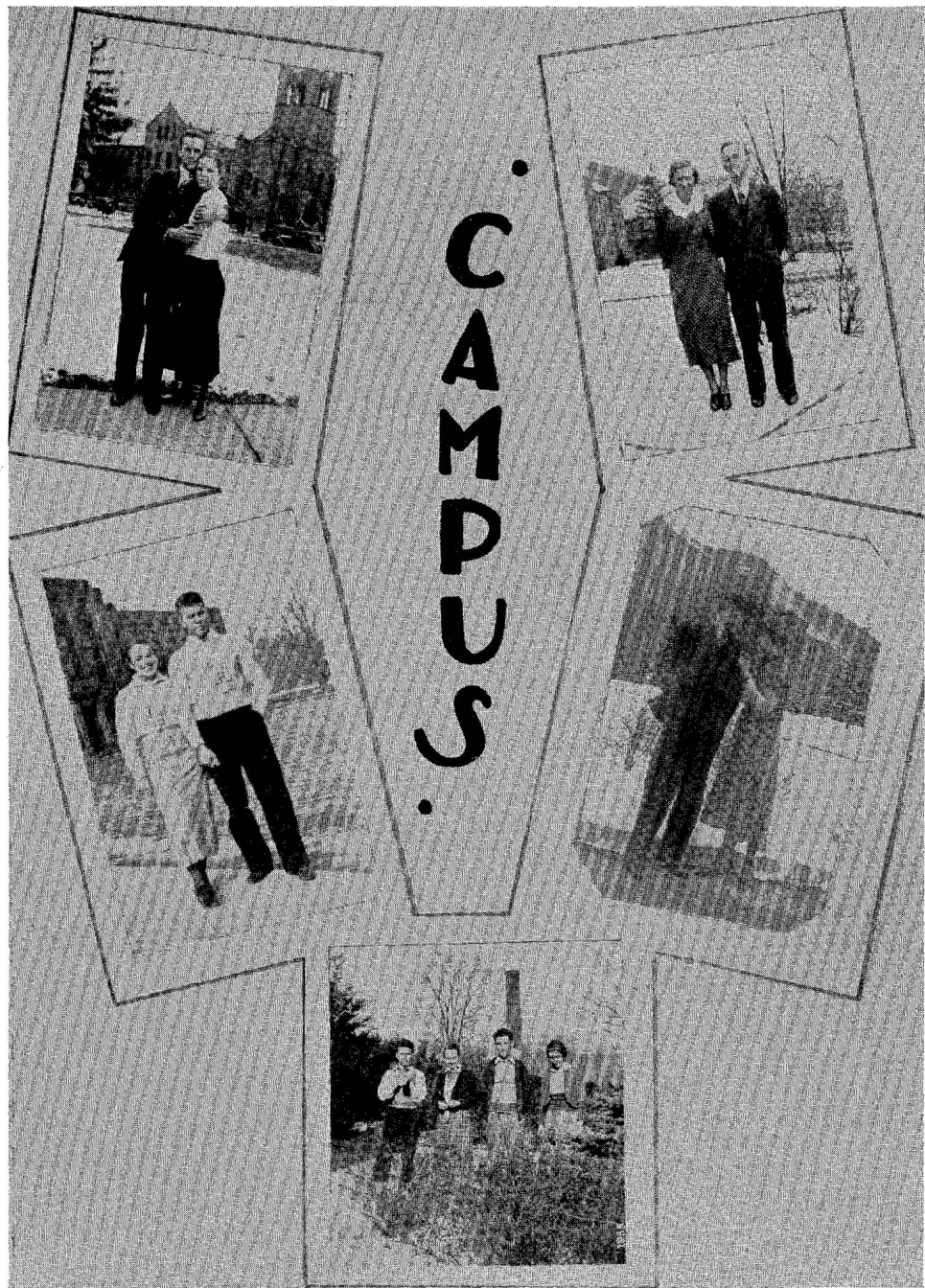
Margaret Griffith
Mary E. Ringler
Julia Shea
Margaret Pelton
Miriam Wallace
Helen Homer
Gladys Shaffer
Mary McKinley
Inez Dieffenbach

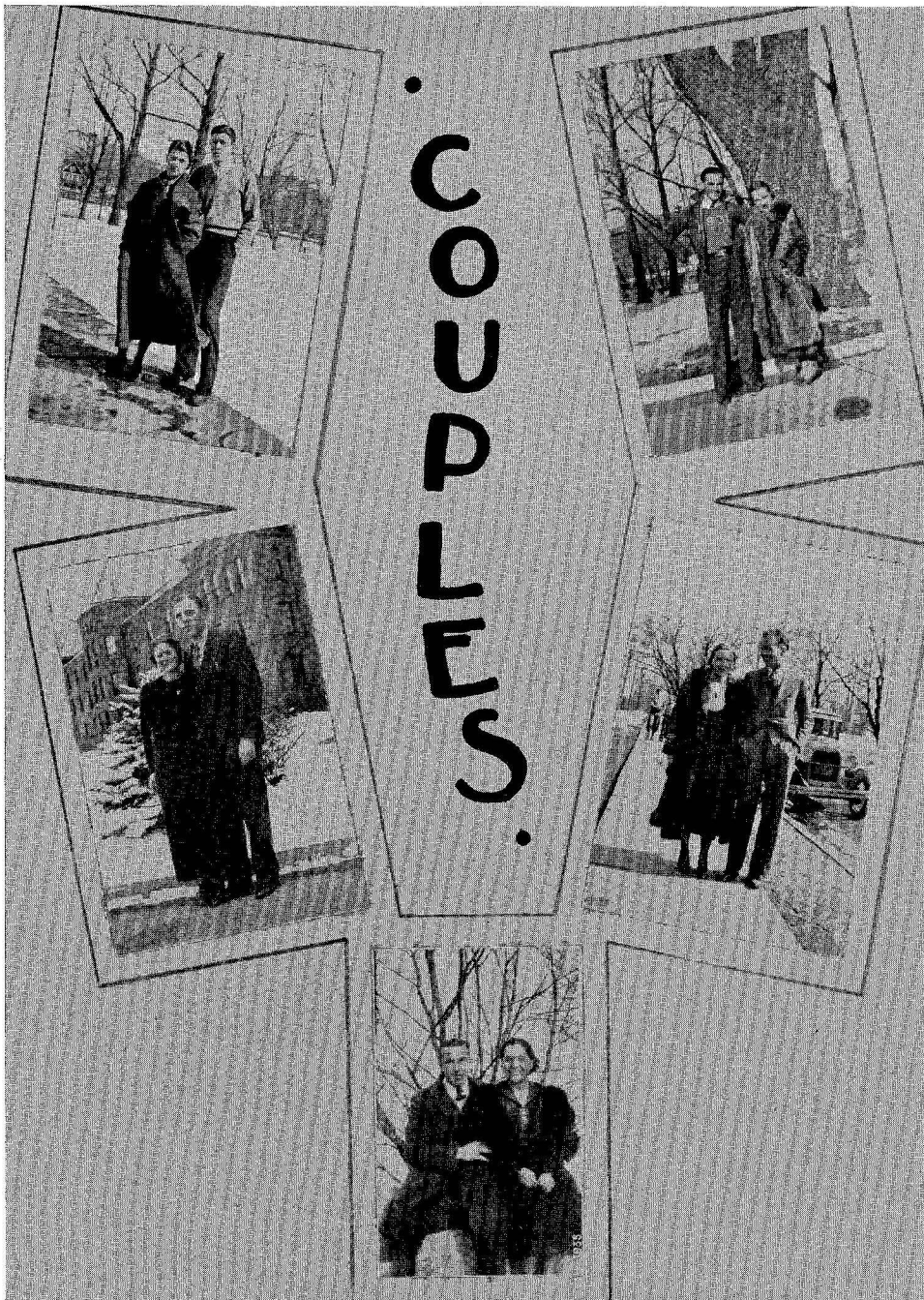
DAISIES WON'T TELL?"



The Fallen Petal:
 We wanted "news" of the Faculty, but they seem to—o—o—o—Re-spec-ta-ble—o—o—o

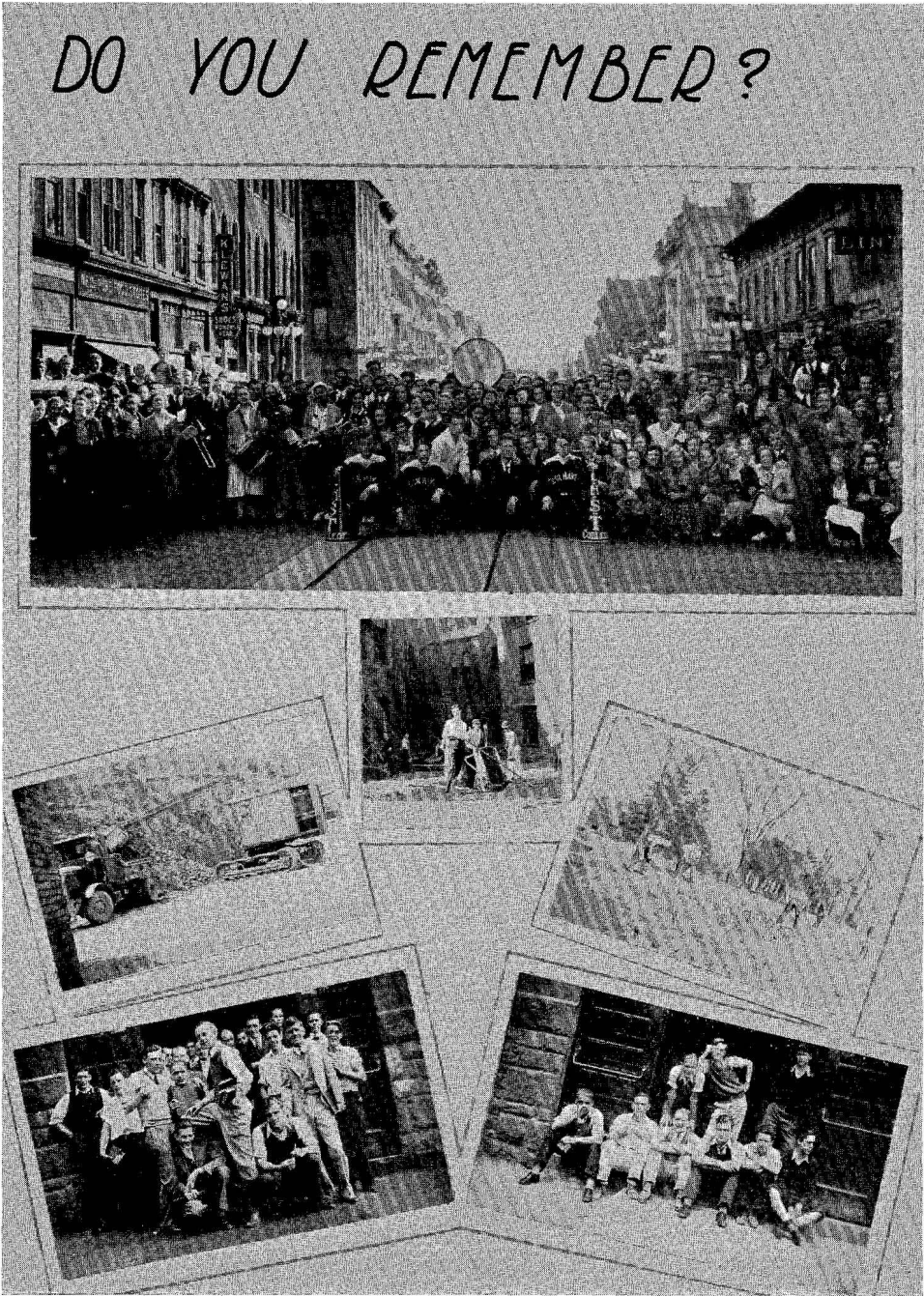
C. Brown







DO YOU REMEMBER?





ORGANIZATIONS



JOURNALISM



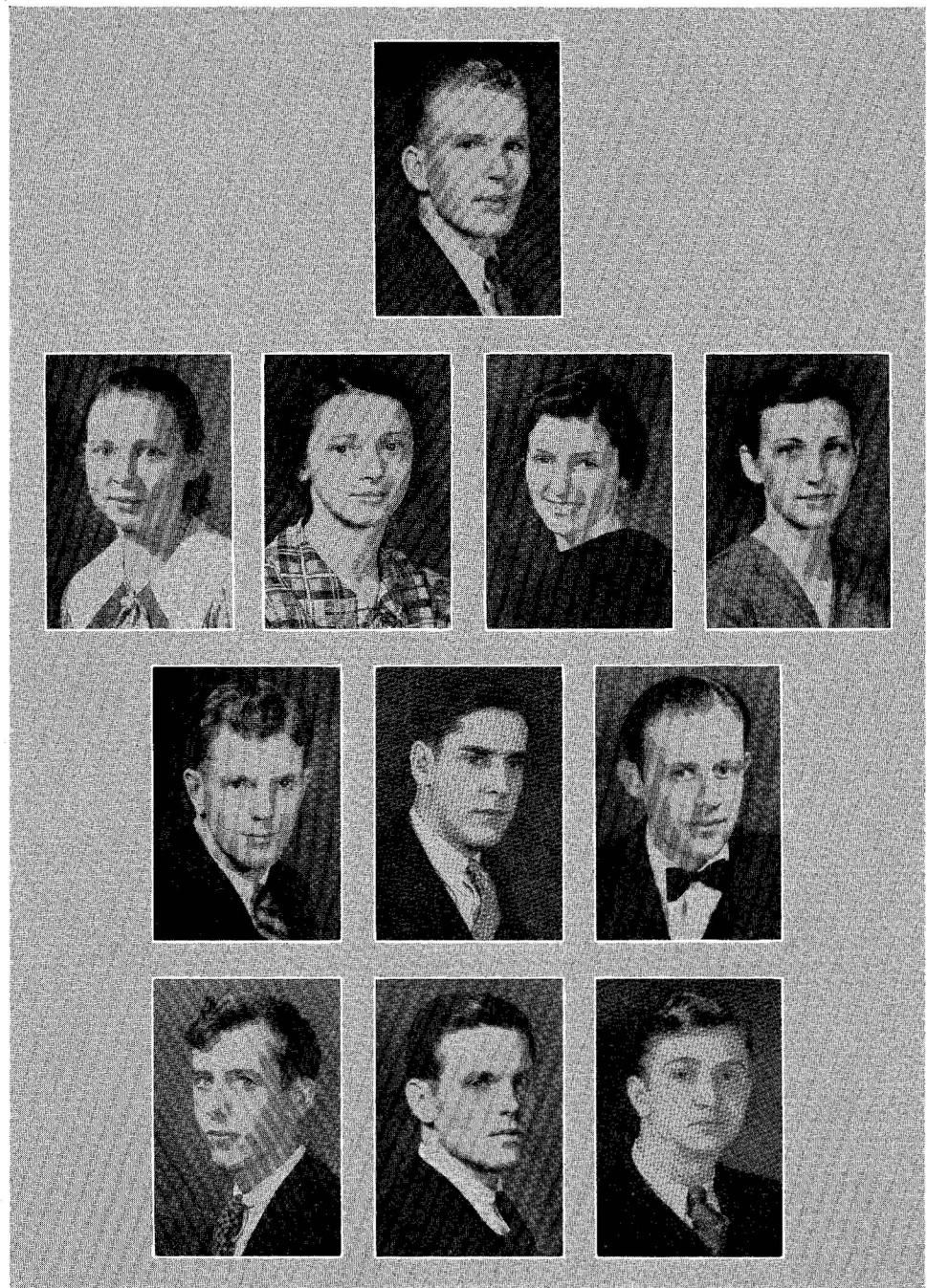
FRATERNITIES



SORORITIES



CLUBS



Praeco Staff

FRANKLIN COURTER	- - - - -	<i>Editor-in-Chief</i>
ELWOOD ROHRBAUGH	- - - - -	<i>Business Manager</i>
EUGENE NUSS	- - - - -	<i>Assistant Business Manager</i>
LUCILLE GLOSSNER	- - - - -	<i>Chief Associate Editor</i>
GRETCHEN DICKEY	- - - - -	<i>Assistant Associate Editor</i>
LEON BARR	- - - - -	<i>Senior Section Editor</i>
LUCETTA MCKIBBEN	- - - - -	<i>Junior Section Editor</i>
JEAN KOPENHAVER	- - - - -	<i>Sophomore Section Editor</i>
EDNA LEINBACH	- - - - -	<i>Freshman Section Editor</i>
WALTER WILKINSON	- - - - -	<i>Art Editor</i>
EDWARD KIMBLE	- - - - -	<i>Photograph Editor</i>
KATHERINE KEAR	- - - - -	<i>Assistant Photograph Editor</i>
NANCY KISER	- - - - -	<i>Organization Editor</i>
EARLING HAUGE	- - - - -	<i>Assistant Organization Editor</i>
EMERSON MCDERMOTT	- - - - -	<i>Athletic Editor</i>
ANNE WILSON	- - - - -	<i>Women's Athletic Editor</i>
LAWRENCE BECK	- - - - -	<i>Men's Athletic Editor</i>
HOWARD UNDERWOOD	- - - - -	<i>Snapshot Editor</i>
REUBEN SALADA	- - - - -	<i>Assistant Snapshot Editor</i>
HART SLATER	- - - - -	<i>Assistant Snapshot Editor</i>
ARTHUR MCCLOSKEY	- - - - -	<i>Advertising Editor</i>
JOHN BARRY	- - - - -	<i>Assistant Advertising Editor</i>



TIMES STAFF

Times Staff

BOARD OF CONTROL

<i>First Semester</i>		<i>Second Semester</i>	
WILLIAM ANDERSON	- - - - <i>Editor-in-Chief</i>	- - - - MADELYN FAULKNER	
MADELYN FAULKNER	- - - - <i>Managing Editor</i>	- - - - MARJORIE DICE	
LUCETTA MCKIBBEN	- - - - <i>Make-up Editor</i>	- - - - EDNA LIVINGSTON	
MARJORIE DICE	- - - - <i>Copy Editor</i>	- - - - JAMES MYERS	
EDWARD KIMBLE	- - - - <i>Business Manager</i>	- - - - CAROLYN BROWN	
JAMES MYERS	- - - - <i>Circulation Manager</i>	- - - - LEANORE DICK	
EMERSON McDERMOTT	- - - - <i>Sports Editor</i>	- - - - EMERSON McDERMOTT	
ISABEL WELCH	- - - - <i>Student Adviser</i>	- - - - WILLIAM ANDERSON	
MISS BERTHE DANIEL	- - - - <i>Faculty Adviser</i>	- - - - MISS BERTHE DANIEL	

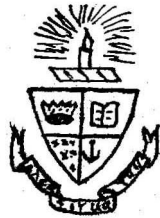
Reporters

<i>First Semester</i>	<i>Second Semester</i>
Caroline Brown	James Myers
Leanore Dick	Emerson McDermott
Morrill Laubach	Morrill Laubach
Edna Livingston	Inez Dieffenbach
Edith Greaser	Anne Sedor
Anne Sedor	Helena Silagyi
	Edward Kimble

Typists

Marjorie Dice	Inez Dieffenbach
---------------	------------------





Alpha Sigma Tau

OFFICERS

<i>First Semester</i>		<i>Second Semester</i>
EVELYN CUSTER	- - - - - President -	ETTA MORELAND
ELEANOR WOLFE	- - - - - Vice President -	JEAN KOPENHAVER
WINIFRED HEIM	- - - - - Recording Secretary	EVELYN CUSTER
JEAN KOPENHAVER	- - - - - Corresponding Secretary	WILMA LOSCH
ETTA MORELAND	- - - - - Treasurer	EVELYN WILLIAMS
MARIANNA TALLMAN	- - - - - Literary Editor	PAULINE BARKHUFF

MISS JESSIE SCOTT HIMES
Faculty Adviser

MRS. R. STEWART MACDOUGALL
Patroness

Publication—"The Anchor"

Colors—Emerald and Gold

Flower—Yellow Rose

Founder's Day—November 7

RESIDENT MEMBERS

Lenore Sharp

Estella Cummings

Roberta Seltzer

ACTIVE MEMBERS

Pauline Barkhuff
Virginia Cheesman
Evelyn Custer
Helen Edler
Ellen Harding
Winifred Heim

Marian Hudson
Nancy Kiser
Jean Kopenhaver
Wilma Losch
Etta Moreland
Sarah Myers
Kathryn Smith

Marianna Tallman
Helen Thomas
Althea Troxel
Mary Ulmer
Evelyn Williams
Eleanor Wolfe

Associate Member—Margaret Williams

JUNIOR MEMBERS

Helen Homer
Helen Kohler

Dorothy Lillibridge
Vera Lyons

Gladys Shaffer
Doris Yarrison

NATIONAL COUNCIL

MISS EDITH L. MOUSELL	- - - - -	<i>A. E. S. Representative</i>
MRS. CARRIE W. STAEHLE	- - - - -	<i>President</i>
MISS MARY ST. CLAIR KING	- - - - -	<i>Vice President and Organizer</i>
MISS MARY JANE MANCHESTER	- - - - -	<i>Corresponding Secretary</i>
MRS. GWENDOLYN RIDDERHOF	- - - - -	<i>Treasurer</i>
MRS. MARY LOUISE DOYLE	- - - - -	<i>Editor "The Anchor"</i>





Beta Sigma Chi

OFFICERS

CLARISSA WAINGER	- - - - -	<i>President</i>
RUTH BURKETT	- - - - -	<i>First Vice President</i>
MARY LOUISE MARKLE	- - - - -	<i>Second Vice President</i>
GRETCHEN DICKEY	- - - - -	<i>Treasurer</i>
LEAH KRAEMER	- - - - -	<i>Corresponding Secretary</i>
ELEANOR WOOD	- - - - -	<i>Recording Secretary</i>

Colors—Brown and Orange

Symbol—Bittersweet

Adviser

MISS CATHERINE E. GEARY

MEMBERS

Seniors

Sarah Budinger	Margaret Harmon	Mary Ann Roberts
Ruth Burkett	Pearl Heiges	Margaret Rohrbaugh
Doris Catterson	Leah Kraemer	Clarissa Wainger
Gretchen Dickey	Mary McCoy	Rebecca Williams
Dorothy Hamberger	Louise McEntire	Anne Wilson
Evelyn Hanna	Mary Louise Markle	Eleanor Wood
	Sara Quigley	

Juniors

Caroline Brown	Lydia Furst	Jane Mervine
Ruth Crowley	Margaret Griffith	Mary Ellen Ringler
Inez Dieffenbach	Jean Kunes	Helena Silagyi
	Edna Leinbach	

The Beta Sigma Chi Sorority, formerly known as the Bittersweets, is one of the oldest organizations on the campus. During its twenty-four years of existence it has endeavored to maintain high scholastic standards, to encourage friendship with all students in school, and at all times to maintain and uphold the high standards of the college.





Rho Omega Lambda

OFFICERS

<i>First Semester</i>		<i>Second Semester</i>
BEATRICE BERG - - - - -	- President -	FLORENCE HUNT
MARIE GEHRON - - - - -	Vice President	KATHRYN CAPRIO
ETHEL LAW - - - - -	Recording Secretary	LUCILE GLOSSNER
HART SLATER - - - - -	Social Secretary	BETTY PARSONS
FLORENCE HUNT - - - - -	- Treasurer -	MARIE GEHRON
MARJORIE DEISE - - - - -	Usher	MARTHA McALLISTER
ISABEL WELCH - - - - -	- Chaplain -	ISABEL WELCH

MISS MABEL-LOUISE AREY
Faculty Adviser

Colors—Blue and White

Flower—Talisman Rose

MEMBERS

Seniors

Beatrice Berg
Kathryn Caprio
Marjorie Deise
Marie Gehron
Lucile Glossner
Marian Harsch

Florence Hunt
Ethel Law
Jane Moran
Martha McAllister
Alice McGarvey
Lucetta McKibben

Mary Jane Nichols
Betty Parsons
Olive Quiggle
Hart Slater
Isabel Welch
Naomi Wentz

Juniors

Mollie Buvinger
Ruth Eleanor Bower
Anna M. Corson
Marjorie V. Dice
Maxine English
Helen Eyerly
Carmilla Folmar
Anne Frazier

Helen Gallaher
Jean Helman
Madeline Hettler
Ruth Hunt
Marion Klaer
Sara McClain
Helen Nichols

Marjorie Pfoutz
Sara Romig
Geraldine Ross
Amy Shaffer
Margaret Sheroky
Hilda Smith
Nancy White
Leah Varner

The Rho Omega Lambda Sorority, which has been a part of the social life of the campus for the past twenty years, has always endeavored to maintain the standards of the College and the high ideals of scholarship, and to uphold the ethical and social values upon which the Sorority constitution is established. This year the Sorority founded a Rho Omega Lambda Scholarship to be awarded annually to an outstanding non-sorority girl of the Senior Class. Sara Mapes, of Beech Creek, received the award for this year.





Delta Rho Beta

OFFICERS

ELWOOD ROHRBAUGH	- - - - -	-	<i>President</i>
ROBERT HUNTER	- - - - -	-	<i>Vice President</i>
EUGENE NUSS	- - - - -	-	<i>Secretary</i>
JACK BRYERTON	- - - - -	-	<i>Treasurer</i>

Faculty Advisers

Mr. C. M. Sullivan

Mr. S. J. Smith

MEMBERS

John Barry
Lawrence Beck
William Bowes
Jack Bryerton
Austin Burkhart
Wilson Clark
Franklin Courter
Harold Courter
Glenn Dunlap
Charles Emery
Joseph Freedman

Robert Gallaher
Calvin Hamberger
Robert Hunter
Fred Ingraham
Edward Kimble
Robert Lowe
Emerson McDermott
Francis Maneval
Paul Mills
George Moon
Wayne Myers

Eugene Nuss
Ray Oberheim
Emerson Packard
Harris Reynolds
Elwood Rohrbaugh
Dean Shroat
Henry Stehman
Howard Underwood
Harter Vonada
Victor Williams
Anthony Yost

The Delta Rho Beta Fraternity is the only fraternity on the College campus. Prior to its appearance there existed an organization among the day students, known as the Derbies. This group, failing to meet the demands of the students because it did not symbolize their spirit, was disorganized and on February 21, 1933, the boys formed a new group known as the Delta Rho Beta Fraternity. This organization was based upon the ideals of sportsmanship, scholarship, athletic ability and clean morals and its creation marked a definite period of advancement in the day-rooms.

This year another room was given to the fraternity. After renovation it was turned into a study. This addition now gives the organization a place for recreation and a room for work.

During the past year the Deltas have held a series of smokers which have won the approval of both the administration and faculty; a fraternity dance given March 16, and the annual dinner dance held May 18 were so delightfully arranged that they quite surpassed all expectations.

At the close of the first quarter five upper classmen were inaugurated into the fraternity. These five were Anthony Yost, Charles Emery, Emerson McDermott, Glenn Dunlap, and Joseph Freedman.

This year the graduating class will take twelve members from the ranks of the Delta Rho Betas and the fraternity although sorry to see these members leave, wish to congratulate and extend the hand of brotherhood to Elwood Rohrbaugh, Robert Hunter, Jack Bryerton, Emerson Packard, Ray Oberheim, George Moon, Fred Rinn, Paul Mills, Austin Burkhart, Calvin Hamberger, Glenn Dunlap, and Anthony Yost.



BEATRICE BERG

ELLEN HARDING

DORIS CATTERSON

Inter-Sorority Council

OFFICERS

ANNE WILSON	- - - - -	<i>President</i>
BEATRICE BERG	- - - - -	<i>Vice President</i>
ELLEN HARDING	- - - - -	<i>Secretary</i>
DORIS CATTERSON	- - - - -	<i>Treasurer</i>

MEMBERS

ELLEN HARDING, SARAH MYERS	- - - - -	<i>Alpha Sigma Tau</i>
ANNE WILSON, DORIS CATTERSON	- - - - -	<i>Beta Sigma Chi</i>
BEATRICE BERG, KATHRYN CAPRIO	- - - - -	<i>Rho Omega Lambda</i>

The Inter-Sorority Council settles all questions of controversy arising among the three groups and co-operates with the Faculty Council which is made up of the faculty advisers of each group.



Association For Childhood Education

OFFICERS

NAOMI WENTZ	- - - - -	<i>President</i>
JEAN SMITH	- - - - -	<i>Vice President</i>
MARJORIE DICE	- - - - -	<i>Treasurer</i>
FLORENCE HUNT	- - - - -	<i>Assistant Treasurer</i>
JEAN KOPENHAVER	- - - - -	<i>Secretary</i>

JESSIE SCOTT HIMES
Adviser

MEMBERS

Esther Anderson
Alice Arnold
Laura Barkhuff
Pauline Barkhuff
Hazel Boyer
Virginia Cheesman
Anna M. Corson
Evelyn Custer
Earleen Davis
Marjorie Dice
Maloise S. Dixon
Arlene Dunkle
Helen Eyerly
Dorothy Fink

Marie Gehron
Anna Gilmartin
Anita Harner
Madeline Hettler
Jessie Scott Himes
Florence Hunt
Louise Irwin
Clara Jenkins
Jean Kopenhaver
Elizabeth Lunn
Alice McGarvey
Etta Moreland
Helen Nichols

Matilda Onachilla
Mabel V. Phillips
Anne Sedor
Pearl Singfield
Jean Smith
Belle Isle Stoner
Frances Taylor
Helen Thomas
Dorothy Trambley
Clarissa Wainger
Miriam Wallace
Margaret Wells
Naomi Wentz
Anne Wert



Art Club

OFFICERS

DORIS CATTERSON	- - - - -	<i>President</i>
JOHN BARRY	- - - - -	<i>Vice President</i>
LEAH KRAEMER	- - - - -	<i>Secretary</i>
ARLENE DUNKLE	- - - - -	<i>Treasurer</i>

Adviser

MISS NELLIE A. DUBOIS

MEMBERS

Alice Arnold	Anne Gilmartin	Leah Kraemer
John Barry	William Griffith	Lucile Orlin
Doris Catterson	Anita Harner	Jean Smith
Arlene Dunkle	Lee Kipp	Anne Wilson
Dorothy Fink		Eleanor Wood

The Art Club was one of the first clubs to be organized on this campus. The major aim in this organization is the betterment of art in this college. This aim has been well accomplished through the efforts of members of the club who have displayed splendid work in advertising and exhibits. This club has been beneficial not only in the school as a whole but to the individual members who had special interest in the various lines of art work.



Bel Canto Choral Society

OFFICERS

<i>First Semester</i>		<i>Second Semester</i>	
EVELYN CUSTER	- - - - - President - - - - -	EDNA LIVINGSTON	
PEARL HEIGES	- - - - - Vice President - - - - -	JULIA CRONISTER	
ELLEN HARDING	- - - Secretary-Treasurer - - -	LEANORE DICK	
JANET LILLIBRIDGE	- - - Point Secretary - - -	JANET LILLIBRIDGE	
ALICE MCGARVEY	} - - - Librarians - - -	{ GLADYS WILLIAMS	
HELENA SILAGYI			{ MARY E. RINGLER

Vera Lyons, *Accompanist*
Miss Grace Ullemeyer, *Director*

MEMBERS

First Soprano

Earleen Davis	Evelyn Hellberg	Jean Kopenhaver	Ruby Richards
Marion Gentzel	Louise Irwin	Ethel Law	Gladys Shaffer
Mary Harvey	Nancy Kiser	Gertrude Powell	Helen Thomas
Pearl Heiges			Miriam Wallace

Second Soprano

Olivia Bogar	Anne Gilmartin	Winifred Heim	Margaret Pelton
Dorothy Boyce	Aldine Glossner	Leah Kraemer	Olga Sawzik
Inez Dieffenbach	Ellen Harding	Janet Lillibridge	Julia Shea
Madeline Faulkner	Anita Harner	Alice McGarvey	Edna Sweinhart
Dorothy Fink	Helen Homer	Mary McKinley	Margaret Williams

Alto

Ruth E. Bower	Leanore Dick	Thelma Raker	Elva Stiver
Julia Cronister	Edna Livingston	Mary E. Ringler	Dorothy Trambley
Evelyn Custer	Rita Pohl	Geraldine Ross	Gladys Williams



Dramatic Club

OFFICERS

RONALD ALDRICH - - - - - *President*
 CLARENCE ELD - - - - - *Vice President*
 TRAFTON BUCHANAN - - - - - *Secretary*
 MARJORIE DICE - - - - - *Treasurer*

Adviser

MISS MABEL-LOUISE AREY

MEMBERS

Ronald Aldrich	Dorothy Hamberger
William Anderson	Marian Harsch
Beatrice Berg	Pearl Heiges
Wanda Brown	Florence Hunt
Trafton Buchanan	Edward Kimble
Sally Budinger	Nancy Kiser
Kathryn Caprio	Lucetta McKibben
Doris Catterson	Lucile Orlin
Anna M. Corson	Elwood Rohrbaugh
Marjorie V. Dice	Hart Slater
Arlene Dunkle	Mary Ulmer
Clarence Eld	Leah Varner
Joseph Friedman	Walter Wilkinson
Marie Gehron	John Yon

Amy Zaner

Continuing its successful performances of previous years, the Dramatic Club presented as its annual production the well known English play by Sutton Vane, "Outward Bound." A large and appreciative audience spoke highly of the production and commended the cast for their fine interpretations of difficult roles.

By winning first prize in Stunt-Nite the Club added another feather to its cap.



Education Club

OFFICERS

LEON BARR	- - - - -	-	<i>President</i>
LUCETTA MCKIBBEN	- - - - -	-	<i>Vice President</i>
ISABEL WELCH	- - - - -	-	<i>Secretary</i>
ELWOOD ROHRBAUGH	- - - - -	-	<i>Treasurer</i>

Faculty Advisers

MISS V. FRANCES COPPENS

MR. ALLEN D. PATTERSON

ACTIVE MEMBERS

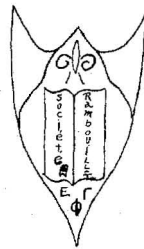
Leon Barr	Sara Mapes	Howard Underwood
William Bowes	Lucetta McKibben	Clarissa Wainger
Maude Brungard	Eugene Nuss	Isabel Welch
Doris Catterson	Sarah Quigley	Eugenia Williams
Joseph Freedman	Richard Rathgeber	Evelyn Williams
Jerome Haagen	Frederick Rinn	Margaret Williams
Margaret Harman	Elwood Rohrbaugh	Rebecca Williams
Edward Kimble	Reuben Salada	Victor Williams
Ethel Law	Esther Schaefer	Anne Wilson
Martha McAllister	Henry Stehman	Eleanor Wood

The Education Club, one of the most important scholastic influences on the campus, was organized in February, 1928, for the purpose of studying more comprehensively the various phases of psychology. Through seven years of growth and development, its field of interest has broadened to include all important problems of kindergarten, primary, intermediate, and secondary education. As the only extra-curricular club which has for its basis the aims and ideals of the teaching profession, its goal is to create in the Lock Haven State Teachers College more scholarly attitudes toward the entire field of education. Its members, as individuals and as a group, are deeply interested in the solution of problems of the educational world. The club seeks to engender in its members a valuable philosophy of education based upon ideals of service, professional attitudes, high scholastic standards, and respect for personality.

The constitution of the club, which has again been revised this year, still in accordance with the requirements of the International Honorary Society, Kappa Delta Phi, requires that all students who are admitted to membership in the club must scholastically be in the upper quartile of the Junior or Senior Class; they must continue their interest in education after graduation, and give promise of distinguished ability in their chosen field.

The activities of the club this year have included many interesting discussions of value both to the elementary and to the secondary student, among which were the presentation by the primary-kindergarten group of the fundamental elements of the work of that department and discussion by the secondary members of the aims and objectives in their field. Two valuable reports of important educational conferences were given at different meetings by Mr. A. D. Patterson, who discussed the Conference of Secondary Education at Temple University, and Miss Belle Holaway, who summarized various lectures delivered at the National Convention of Deans in Atlantic City, N. J. Members of the club with the advisers attended the Educational Conference at Bucknell University in October, when they had the privilege of hearing various lecturers discuss educational problems. In addition to the scholastic activities of the group, members of the club had a dinner meeting early in March, and also served as hosts at an Open House Tea in the early winter.

Supervision of chapel programs for a week in the spring has been given to the club, and for one of these meetings they plan, with the help of other interested organizations, to secure a speaker prominent in the field of education, who will present an address of value to the college.



La Société Rambouillet

LE BUREAU

EDWARD KIMBLE	- - - - -	-	<i>Président</i>
CATHERINE PIPES	- - - - -	-	<i>Vice Président</i>
RUTH BURKETT	- - - - -	-	<i>Présidente Sociale</i>
MORRILL LAUBACH	- - - - -	-	<i>Secrétaire</i>

La vraie joie de vivre nous vient de l'intelligence

La Société Rambouillet, qui vient de s'organiser cet an, existe pour donner aux étudiants de la langue et de la littérature françaises, et aux autres qui s'y intéressent, l'occasion de se connaître mieux, et d'améliorer leur maîtrise de la langue. Ses membres ne s'intéressent pas seulement, cependant, à ces sujets; comme les habitués du salon célèbre d'ou la société tire son nom, ils aspirent à se montrer de vrais amis de la littérature et de l'art, de quelque origine qu'ils soient.



Shakespeare Literary Society

OFFICERS

<i>First Semester</i>		<i>Second Semester</i>
CHESTER EASTEP	- - - - - <i>President</i>	REBECCA WILLIAMS
JOE SHEVOCK	- - - - - <i>Vice President</i>	CLEE HOWE
LOUISE McENTIRE	- - - - - <i>Secretary</i>	LOUISE McENTIRE
EVELYN WILLIAMS	- - - - - <i>Treasurer</i>	REUBEN SALADA

Faculty Advisers

DR. AXEL S. RUDE

DR. KENTON VICKERY

MEMBERS

Maude Brungard
Austin Burkhart
Homer Detweiller
Lenore Dick
Chester Eastep
Pearl Heiges
Clee Howe

Jean Kopenhaver
Helen McCreary
Louise McEntire
Sarah Mapes
Lucile Orlin
Jane Pray

Stanley Sady
Reuben Salada
Joe Shevock
Evelyn Williams
Gladys Williams
Rebecca Williams
John Yon

The Shakespeare Literary Society, established February 14, 1885, has the distinction of being the oldest club on the campus. This does not, like old age, distract from its vigor but gives an incentive to surpass past glories.

This year the club, organized for literary activity, has been active in debating and open discussion on subjects of student interest.



NATURALIST CLUB

Naturalist Club

OFFICERS

<i>First Semester</i>		<i>Second Semester</i>
CLARENCE ELD - - - - -	<i>President</i>	TRAFTON BUCHANAN
HART SLATER - - - - -	<i>Vice President</i>	LEAH KRAEMER
TRAFTON BUCHANAN - - - - -	<i>Secretary</i>	JEAN SMITH
REUBEN SALADA - - - - -	<i>Treasurer</i>	ETTA MORELAND
	<i>Assistant Treasurer</i>	PAUL BREON

Faculty Advisers

Miss Russell

Mr. Ulmer

MEMBERS

Ronald Aldrich	Eugene Nuss
William Anderson	Louise McEntire
Pauline Barkhuff	Robert O'Gara
Paul Breon	Mary Ann Roberts
Trafton Buchanan	Reuben Salada
Clarence Eld	Hart Slater
Aldine Glossner	Jean Smith
Winifred Heim	Mary Ulmer
Nancy Kiser	Eugenia Williams
Marian Klaer	Evelyn Williams
Leah Kraemer	Naomi Wentz
Etta Moreland	

True to custom, the Naturalist Club has taken its place among the most active organizations of our campus this year. Once a month the meetings have been held out-of-doors on a hike or some other kind of outdoor sport. The indoor meetings have been made very interesting by talks from the members and occasionally an outside speaker.

A series of chapel programs were given by our club which proved to be of interest to the student body.

February 9, 1935, at the home of Mr. Ulmer, is a night to long be remembered by all Naturalists.

Homecoming is a pleasant memory for us as well as the many alumnae who returned to enjoy once more our hikes, games and good food!



Women's Student Council

OFFICERS

MISS BELLE HOLAWAY	- - - - -	<i>Adviser, Dean of Women</i>
ELEANOR WOOD	- - - - -	<i>President</i>
PEARL HEIGES	- - - - -	<i>Vice President</i>
SARAH MEYERS	- - - - -	<i>Secretary</i>
BELLE ISLE STONER	- - - - -	<i>Treasurer</i>
ETTA MORELAND	- - - - -	<i>Senior Representative</i>
MARIAN HARSCH	- - - - -	<i>Junior Representative</i>
LEAH KRAEMER	- - - - -	<i>Sophomore Representative</i>
HELEN NICHOLS	- - - - -	<i>Freshmen Representative</i>

Every girl living in the college dormitory is a member of the Women's Student Government Association. Its purpose is to promote the best type of living conditions within this group of young women by the discussion of problems arising in connection with dormitory life. These problems are brought to the meetings of the Association, which are held on the first and third Wednesday of each month.

The official governing body for this group is a council, consisting of a president, vice president, secretary, treasurer, and a representative from each class, all elected by members of the Association. At the beginning of the school year the Council makes a special effort to help the freshmen girls make the proper adjustments to their new environment.

During the summer each girl, who is enrolling for the first time receives "The Handbook," the Women's Student Government publication. This is a pamphlet containing the dormitory regulations and the constitution of the Association.

The chief aim of this association is to promote a spirit of friendliness among the girls who are living together in such close relationship, and also promote a feeling of co-operation and loyalty within the group. Miss Holaway, faculty adviser of the Association, by her close co-operation and understanding of the girls, has made it possible for these aims to be carried out.



Women's Athletic Association

OFFICERS

EVELYN WILLIAMS	- - - - -	President	MARY ANN ROBERTS	- - - - -	Recording Secretary
GRETCHEN DICKEY	- - - - -	Vice President	ANNE WERT	- - - - -	Treasurer
LOUISE McENTRINE	- - - - -	Corresponding Secretary	MALOISE STURDEVANT DIXON	- - - - -	Faculty Adviser

In introducing ourselves we point with pride to the following:

"Copyright, 1934, by the Women's Athletic Association,
State Teachers College, Lock Haven, Pennsylvania."

—meaning that we wrote, published and financed the Physical Education Number of the College Bulletin—quarterly publication of the State Teachers College at Lock Haven.

Modesty warns us, since we already have told, through this Bulletin, three thousand five hundred friends about our work, accomplishments and aims, from further exploiting our manifold interests.

In our enthusiasm, however, we feel we are more than merely an extra-curricular student organization, owing to the intimate correlation of our program with the Department of Physical Education for Women.

The year 1935 brings to us and to the entire department of physical education and health instruction a distinguished honor. The Pennsylvania State Council of Education has appointed the college at Lock Haven one of the four teachers colleges in the state to grant the degree of Bachelor of Science in Health Education; thereby creating a major department.

Automatically, after being awarded the B.S. degree, should our goal be the degree of Master of Arts with physical education as the major subject we may become candidates at any college or university granting advanced degrees in this field.

The motivating purpose of the Women's Athletic Association lies in the desire to help every member in forming a definite habit of integrating her own ideas, ideals, and abilities with purposeful, healthful activities and energies. This doctrine, as an everyday, livable companion, inevitably results in a helpful, joyous personality. Leadership has come to depend upon such personalities.

We respect effort, work, scholarship, high principles—whatever guides to a consistent life. We know that in their true province sports, games, play, the out-of-doors, contribute indefinitely to the making, not only of a consistent life, but of one in accord with all that is finest in the fulfillment of gracious, abundant living.

Our sports are the usual ones, carried on in season: Tennis, hockey, horseback riding, archery, organized hiking, volleyball, basketball, skating, coasting, skiing, baseball and track and field events, and in the Summer Session swimming in an outdoor pool. As the athletic program in the Department of Physical Education for Women is under the auspices of the Women's Athletic Association, our teaching experience is enriched through constant training in the coaching and refereeing of games. Opportunities in the Training School include the teaching of both physical education and health instruction in primary, intermediate, and junior high school grades. Through the entire college year rhythmic interests include folk and national dancing, clogging and tapping, and natural dancing as representing the interpretation of ideas in music, art, and literature. These rhythmic activities culminate in the production of our annual spring festival.

In 1934, the festival took the form of a world cruise, the "S. S. Euthenia" making stops at New Orleans, Old Mexico, Hawaii, Manchuria, Italy, England, Russia, and Denmark. So successful was this adventure that April 17th, 1935, the sister ship, "S. S. Sylvania," put into port at Lock Haven for fuel and supplies and sailed for Rio de Janeiro, Ireland, France, Holland, Sweden, and Poland.

A recent enthusiasm was the result of enjoying the hospitality of "the air." To quote the announcer: "Miss Maloise Sturdevant Dixon, Director of the Department of Physical Education for Women at Lock Haven State Teachers College, will speak on the topic 'Understanding the Program of Health Education for Women'."

Miss Dixon, our adviser, allows no compliments here.

So, with apologies to Samuel Pepys, "To our study, where we only wrote this much of this day's passage to this, and so out again."

MEMBERS

Esther Anderson	Aleta Hobson	Ethel Rich
Alice Arnold	Helen Louise Homer	Ruby Richards
Esther Barr	Clee Howe	Mary Ellen Ringler
Pauline Barrows	Ruth Hunt	Mary Ann Roberts
Isabel Bigelow	Irene Jury	Sara Romig
Olivia Bogar	Nancy Kiser	Geraldine Ross
Ruth Eleanor Bower	Gladys Kleman	Phyllis Saxon
Hazel Boyer	Helen Kohler	Anne Sedor
Caroline Brown	Jean Kopenhaver	Amy Shaffer
Florence Brown	Leah Kraemer	Gladys Shaffer
Sarah Budinger	Jean Kunes	Bertha Sharer
Mollie Buvinger	Edna Leinbach	Julia Shea
Anna Margaret Corson	Jeanne Lepley	Jean Sheasley
Ruth Crowley	Dorothy Lillibridge	Margaret Sheroky
Evelyn Custer	Edna Livingston	Helena Silagyi
Margaret DeLaney	Carolyn Long	Pearl Singfield
Inez Dieffenbach	Gertrude Long	Hart Slater
Arlene Dunkle	Lois Long	Hilda Smith
Dorothy Eder	Threse Long	Katbryn Smith
Helen Edler	Elizabeth Lunn	Pauline Smith
Maxine English	Kathryn Lyon	Elva Stiver
Helen Eyerly	Sara McClain	Belle Isle Stoner
Dorothy Fink	Ruth McClintock	Edna Sweinhart
Carmilla Folmar	Louise McEntire	Marianna Tallman
Anna Frazier	Alice Marie McGarvey	Frances Taylor
Alice Fredericks	Mary McKinley	Alyene Torrey
Layah Fromm	Jean Mann	Dorothy Trambley
Lydia Furst	Martha Mapes	Althea Troxell
Helen Gallaher	Sara Mapes	Cecilia Truhan
Permelia Garthoff	Pearl Mast	Mary Ulmer
Anne Gilmartin	Jane Mervine	LaWave Underwood
Lucille Glossner	Sally Meyers	Leah Varner
Margaret Griffith	Beatrice Montarsi	Margaret Walker
Mary Gummo	Gina Montarsi	Miriam Wallace
Martha Halbrock	Jane Moran	Margaret Wells
Freda Hammer	Sara Moran	Anne Wert
Mary Hammer	Ferne Nedimyer	Anna White
Evelyn Hanna	Helen Nichols	Evelyn Williams
Ellen Harding	Matilda Onachilla	Gladys Williams
Anita Harner	Lucile Orlin	Margaret Williams
Maxine Harrier	Jane Ostrom	May Jo Williams
Ruth Harrier	Margaret Pelton	Janet Wilson
Mae Hartman	Marjorie Pfoutz	Eleanore Wolf
Jean Helman	Jane Pray	Doris Yarrison
Madeline Hettler	Kathryn Rauch	Vesta Young
	Helene Regan	



The Young Women's Christian Association

OFFICERS

ELLEN LOUISE ROOKE	- - - - -	<i>President</i>	ANNE WERT	- - - - -	<i>Secretary</i>
EVELYN WILLIAMS	- - - - -	<i>Vice President</i>	ALTHEA TROXEL	- - - - -	<i>Treasurer</i>
		MISS BERTHA M. ROWE	-		<i>Faculty Adviser</i>

COMMITTEE CHAIRMEN

WANDA BROWN	- - - - -	<i>Social Relations</i>	JEAN KOPENHAVER	- - - - -	<i>Magazine</i>
EVELYN CUSTER	- - - - -	<i>Social Service</i>	JANE PRAY	- - - - -	<i>Social</i>
JEAN SMITH	- - - - -	<i>Art</i>	REBECCA WILLIAMS	- - - - -	<i>Music</i>
		HELEN EYERLY	- -		<i>Freshmen Representative</i>

OFFICERS OF THE DAYROOM Y. W. C. A.

LUCETTA MCKIBBEN	- - - - -	<i>President</i>	KATHRYN RAUCH	- - - - -	<i>Treasurer</i>
		MISS BERTHA M. ROWE	-		<i>Faculty Adviser</i>

COMMITTEE CHAIRMEN

SARA MAPES	- - - - -	<i>Program</i>	ARLENE DUNKLE	- - - - -	<i>Social</i>
------------	-----------	----------------	---------------	-----------	---------------

The Young Women's Christian Association, the largest women's organization on the campus, has again met with success in its program of activities for the year. The Y. W. C. A., besides carrying out the purpose of any Christian organization, has done much towards developing a friendly attitude, a more social feeling between the girls and toward the college. The big and little sister movement of the "Y" did much towards promoting this feeling. Among the most interesting meetings held were: A Poetry Hour, A Music Appreciation Program, Commemoration of Prayer Week, and a Negro Spiritual program. The most outstanding projects of the "Y" were two one-act plays, "The Grandmother" and "Seven to One." These plays were produced entirely by girls who volunteered to take part in them. Each one was directed by one of our members who gave her time very willingly to make them so successful. The usual social service was done at the Children's Home. The outstanding social activities of the year were: The Little Sister Tea, The Get Acquainted Party, The Membership Rally, and The Valentine Party.



Young Women's Christian Association

FACULTY MEMBERS

Bertha M. Rowe
Edna H. Pollock
Maloise S. Dixon

Lulu Stalcup
Belle Holaway

Deborah Bentley
Helen B. Leshner
Lillian Russell

STUDENT MEMBERS

Esther Anderson
Beatrice Berg
Olivia Bogar
Hazel Boyer
Caroline Brown
Wanda Brown
Maude Brungard
Virginia Cheesman
Martha Clarke
Anna M. Corson
Julia Cronister
Evelyn Custer
Earlene Davis
Margaret Delaney
Marjorie Dice
Lenore Dick
Arlene Dunkle
Dorothy Eder
Helen Eyerly
Anne Frazier
Lydia Furst
Lucile Glossner
Ellen Harding
Pearl Heiges
Winifred Heim
Madeline Hettler
Helen Homer
Clee Howe
Clara Jenkins

Irene Jury
Nancy Kiser
Helen Koller
Jean Kopenhaver
Jean Kunes
Edna Leinbach
Dorothy Lillibridge
Janet Lillibridge
Carolyn Long
Lois Long
Elizabeth Lunn
Kathryn Lyon
Vera Lyons
Helen Mackoviak
Jean Mann
Pearl Mast
Martha Mapes
Sara McClain
Ruth McClintick
Marion McCloskey
Madeline McGough
Louise McEntire
Alice McGarvey
Lucetta McKibben
Etta Moreland
Helen Nichols
Anna O'Maley
Matilda Onachilla
Lucille Oriin

Margaret Pelton
Gertrude Powell
Jane Pray
Kathryn Rauch
Mary E. Ringler
Margaret Rohrbaugh
Ellen Louise Rooke
Geraldine Ross
Esther Schaefer
Helena Silagyi
Jean Smith
Gladys Shaffer
Julia Shea
Jean Sheasley
Margaret Sheroky
Frances Taylor
Alyene Torrey
Anna Trexler
Mary Ulmer
Leah Varner
Clarissa Wainger
Miriam Wallace
Isabel Welch
Anne Wert
Eugenia Williams
Evelyn Williams
Rebecca Williams
Eleanor Wood
Marguerite Wright



Young Men's Christian Association

OFFICERS

CLARENCE ELD	- - - - -	President
WILMER DRESSLER	- - - - -	Vice President
WALTER WILKINSON	- - - - -	Secretary
REUBEN SALADA	- - - - -	Treasurer

L. J. Ulmer, Faculty Adviser

COMMITTEE CHAIRMEN

TRAFTON BUCHANAN	- - -	Vesper	STANLEY SADY	- - -	Finance
RONALD ALDRICH	- - -	Membership	JAMES FINN	- - -	Program

FACULTY MEMBERS

Mr. L. J. Ulmer

Mr. S. J. Smith

STUDENT MEMBERS

Ronald Aldrich
 Wilbur Anderson
 John Barry
 Norman Berry
 Robert Breth
 James Brown
 Trafton Buchanan
 D. Watson Clark
 Michael Danko
 Martin Deitrich
 Wilmer Dressler
 Clarence Eld
 Chester Eastep
 James Finn

Robert Hunter
 Harold Hoy
 John Hill
 Grant Irion
 William Jusick
 Lee Kipp
 Frank Kotchin
 Emery Lee
 Lewis Lucas
 Weldon MacDonald
 Francis Maneval
 Arthur McCloskey
 Richard McCloskey
 George Moon
 Lee Moyer

Angelo Muro
 Harvey Newnan
 Eugene Nuss
 Frederick Rinn
 Charles Robinson
 Reuben Salada
 Earl Schnarrs
 Robert Sholly
 David Smith
 Henry Stehman
 Wayne Suder
 Albert Torsell
 Walter Wilkinson
 Ashley Woolridge



Varsity Club

OFFICERS

JAMES MYERS	- - - - -	<i>President</i>
ROBERT HUNTER	- - - - -	<i>Vice President</i>
CLARENCE ELD	- - - - -	<i>Secretary</i>
GEORGE MOON	- - - - -	<i>Treasurer</i>

MEMBERS

Seniors

Ronald Aldrich	Robert Hunter	George Moon
Trafton Buchanan	Lewis Lucas	Ray Oberheim
Clarence Eld	Richard McCloskey	Earl Schnarrs

Sophomores

John Hill	Leonard Johnsonis	Lee Kipp
Bill Hodrick		Bob Sholly

Juniors

Maynard Lingenfelter	James Myers	Joe Shevock
----------------------	-------------	-------------

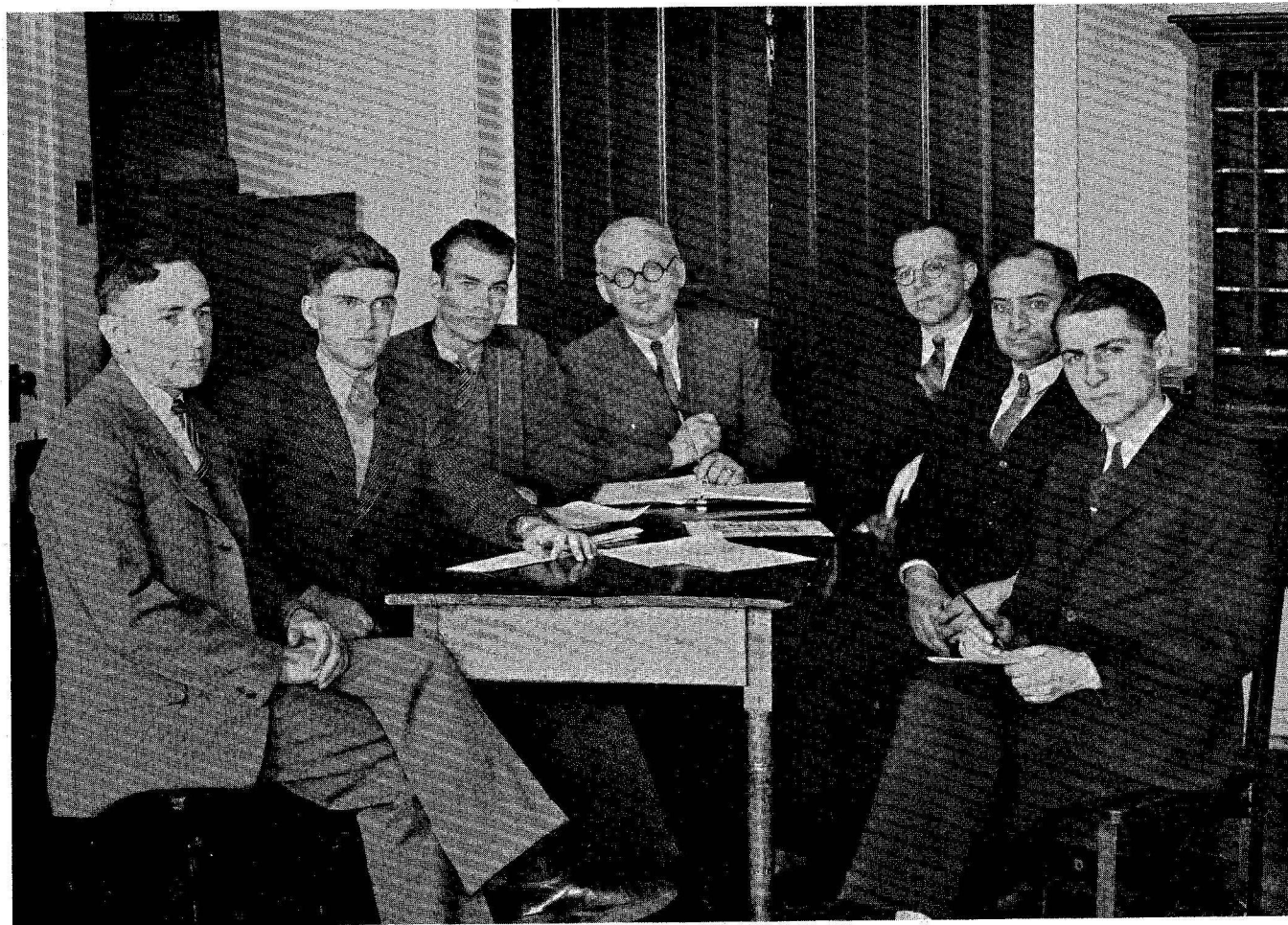
Freshmen

Tom Conrad	Mac Hoffnagle	Charles Weaver
George Frethy	Charles McDermott	Robert Weaver
Edward Hochrein	Roland Myers	Jack Yohe

The Varsity Club which was organized in 1932 has for its objectives, the promotion of all varsity sports, an attitude of good sportsmanship about school and the presentation of awards to members. The club is composed of all men who have earned their varsity "L" in either football, basketball, baseball or track.

Each year the club holds a dance, and this year the organization sponsored the Homecoming Day dance, following the West Chester football game. Following the plan of former years the club publishes and circulates the programs for all the home football games. A new plan was adopted this year which made possible the purchase of gray shaker sweaters for the underclassmen as well as the traditional award to seniors.

Athletic Director J. Wynn Fredericks is faculty adviser, taking an active part in all the projects.



STUDENT ACTIVITY COUNCIL

Student Activity Council

OFFICERS

LEVI J. ULMER - - - - - *President*
 WALTER WILKINSON - - - - - *Vice President*

Secretary-Treasurer Co-operative Stores Association

FRANK E. RITTER

Secretary-Treasurer Student Activity Council

ALLEN D. PATTERSON

Class Advisers

LEVI J. ULMER - - - - - *Freshmen Class*
 SAMUEL J. SMITH - - - - - *Sophomore Class*
 GEORGE F. B. LEHMAN - - - - - *Junior Class*
 J. FERRY STEMPLE - - - - - *Senior Class*

Student Representatives

JACK LIVINGSTON, '38 - - - - - *President*
 LAWRENCE BECK, '37 - - - - - *President*
 WILLIAM BOWES, '36 - - - - - *President*
 WALTER WILKINSON, '35 - - - - - *President*

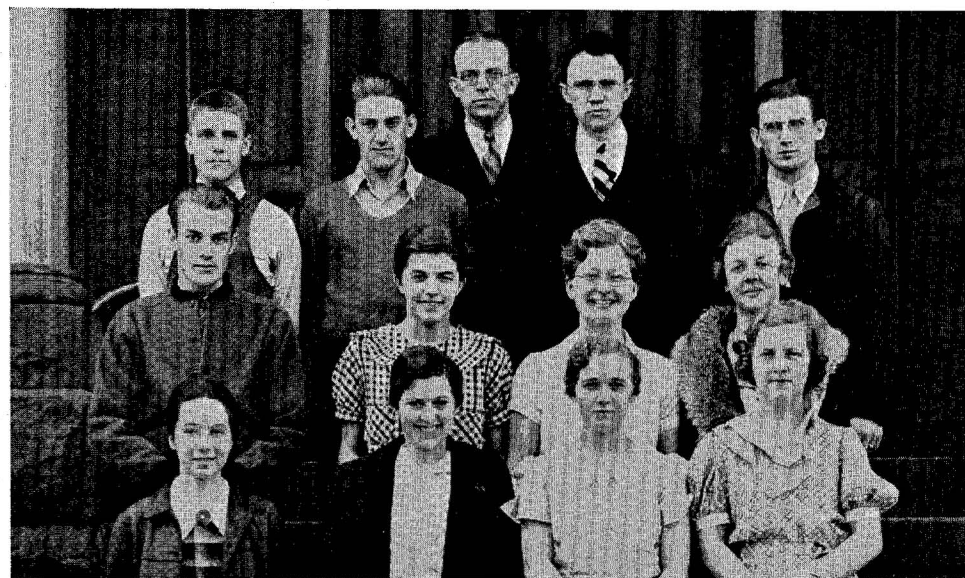
Ex-Officio

DR. DALLAS W. ARMSTRONG

The Student Activity Council, a co-operative student and faculty organization, has been entrusted with the collection and expenditure of the funds needed to carry on the operation of eleven extra-curricular activities of the college. Also, with the experienced advice of the College Bursar, Frank E. Ritter, this organization administers the policies of the College Book Store. Because the Student Activity Fee has been increased to ten dollars, the Council has extended the influence and scope of the social, athletic, and cultural opportunities available to the students who attend the Lock Haven State Teachers College.



BAND



ORCHESTRA



FALSTAFF SCENE FROM HENRY IV. PART I

Shakespeare

During the week of April 7, Mr. Williams' Shakespeare class presented various scenes from the plays of Shakespeare in chapel. Two scenes from Henry IV were given on Monday. Characters for the first scene were: Harry Percy, known as Hotspur, William Bowes; King Henry, John Barry; Earl of Worcester, Howard Underwood; Earl of Northumberland, Wilbur Anderson; servant, Russell Courtney. Characters for the second scene were William Bowes as Hotspur and Florence Hunt as Lady Percy. Another scene from Henry IV was presented on Wednesday. The characters were: Falstaff, James Myers; Prince Hal, William Mahaffey; Ned Poins, William Griffith; Bardolph, Howard Underwood; Peto, Russell Courtney; Gadshill, Victor Williams; Francis, John Barry; Hostess, Julia Cronister. Friday's scenes were taken from *Midsummer Night's Dream*. The characters were: Bottom, James Myers; Peter Quince, William Mahaffey; Snug, William Griffith; Snout, Howard Underwood; Flute, Wilbur Anderson; Philostrate, Russell Courtney; Theseus, Victor Williams; Hippolyta, Ethel Law. The plays were directed by Mr. Williams with the assistance of Ruth Burkett, Margaret Harmon, and Howard Underwood, student directors.



HOTSPUR SCENE FROM HENRY IV. PART I



CLOWN SCENE FROM MIDSUMMER NIGHT'S DREAM

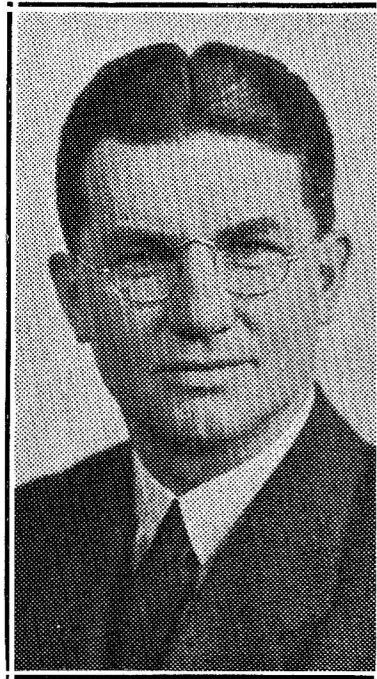
A decorative vertical element on the right side of the page, consisting of a thick black central bar flanked by two thin black lines.

ATHLETICS

MEN'S ATHLETICS

Football . . . 1934

Lock Haven	- -	0
Lock Haven	- -	7
Lock Haven	- -	0
Lock Haven	- -	19
Lock Haven	- -	21
Lock Haven	- -	0
Lock Haven	- -	7
Lock Haven	- -	26
Lock Haven	- -	19
		<hr/>
		99



California	- - -	2
Indiana	- - -	13
Bloomsburg	- - -	3
Kutztown	- - -	0
Oswego, N. Y.	- - -	0
West Chester	- -	31
Clarion	- - - -	0
Mansfield	- - -	0
Shippensburg	- -	0
		<hr/>
		49

J. WYNN FREDERICKS
Athletic Director, Basketball Coach

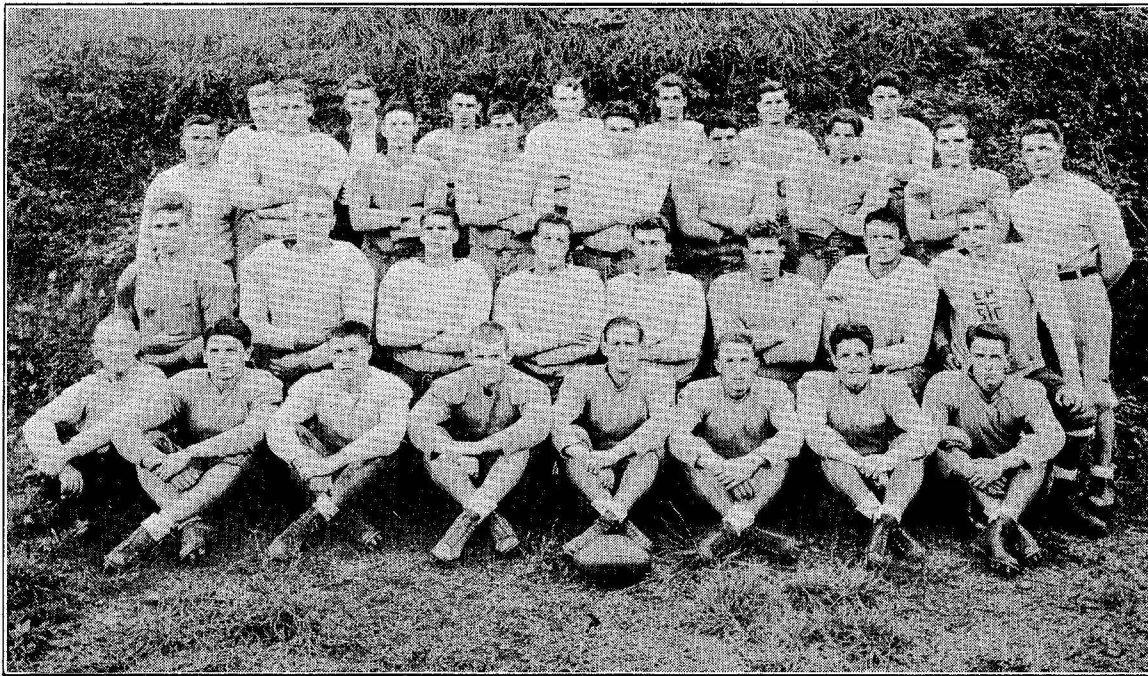
Our football season got off on a bad start, with a green team on the field we dropped the first three games by a very close margin. In the fourth game we apparently found ourselves, punching out a 19-0 victory over Kutztown. From then on we had a successful season outscoring our opponents 99-49.

All the boys will be back with us next year, and we are looking forward to one of the most successful seasons in our history. LET'S GO, L. H. S. T. C.

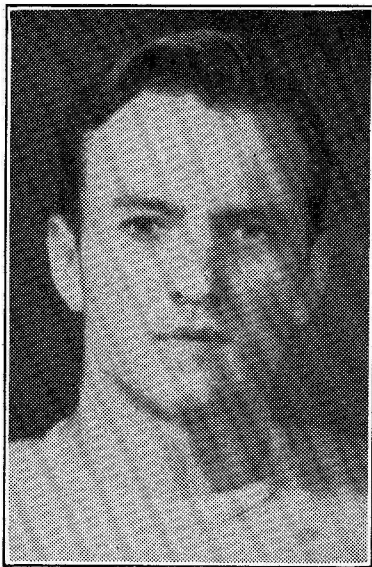
SOLO WOLF
Football Coach

CORNELIUS M. SULLIVAN
Faculty Manager of Athletics

S. DARE LAWRENCE
Trainer



1934 SQUAD

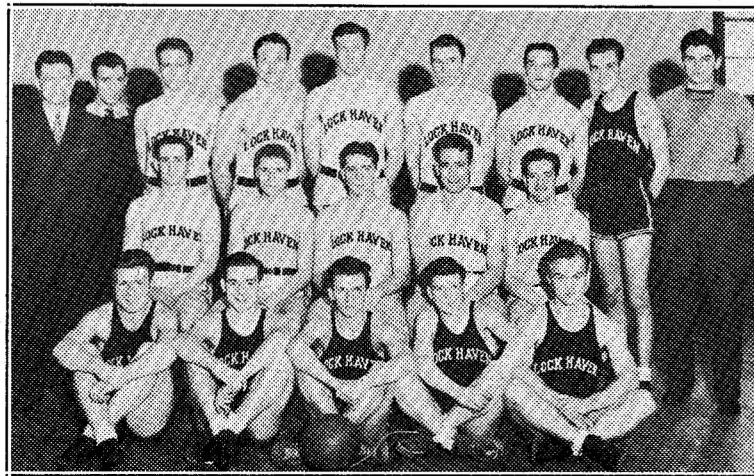


JOE SHEVOCK, *Captain*



LEONARD JOHNSONIS

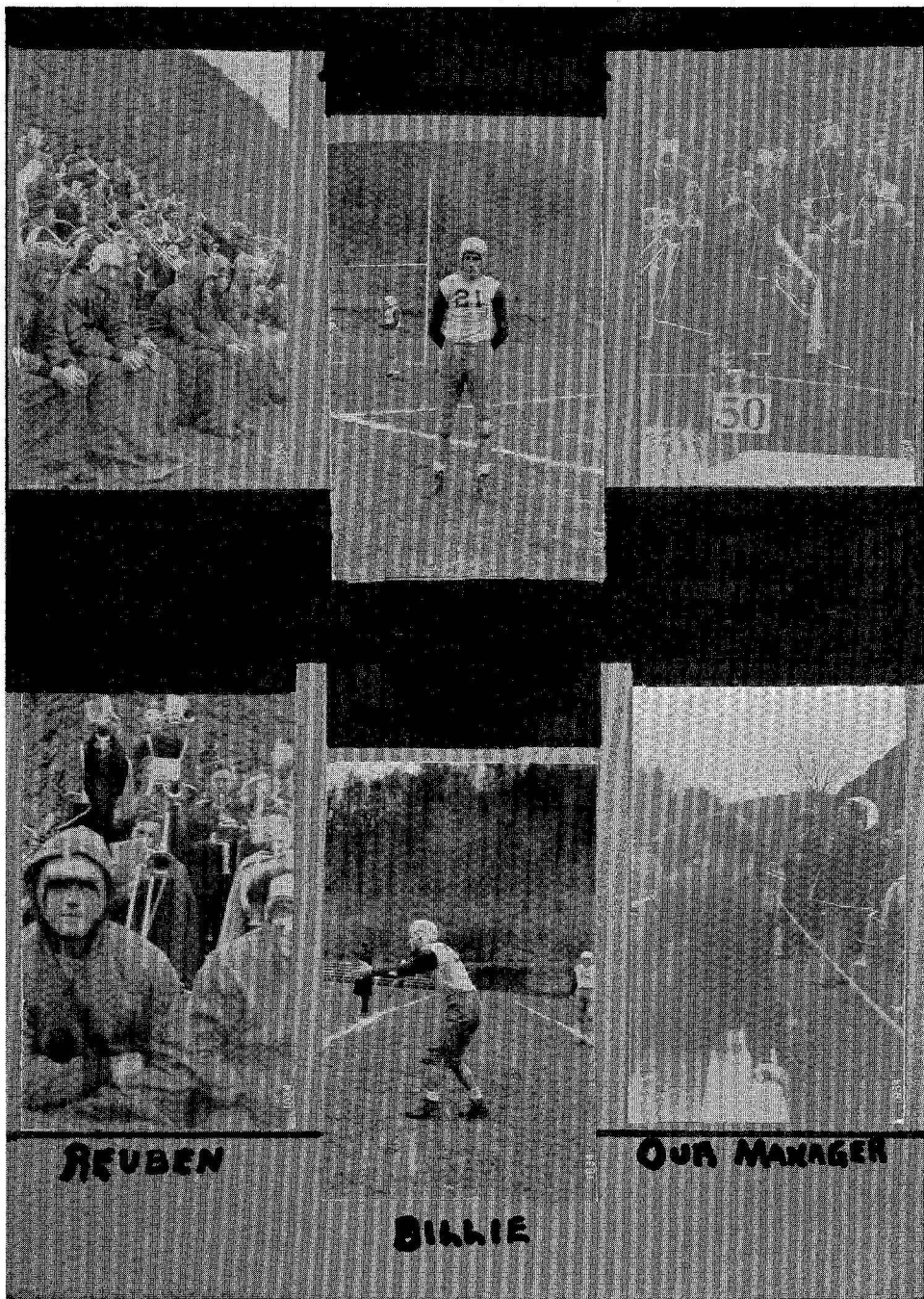
These two stalwarts were chosen on the All-State Teachers College Eleven.
Both boys will be back next year. Good luck, Fellows!



Back Row, Left to Right—Fredericks (Coach), Beck (Manager), Buchanan, Shevock, Brazinski, Hoffnagle, Schnarrs, Livingston, Woolridge (Assistant Manager)
 Middle Row—Lucas, Earon, Moyer, Kipp, R. Myers
 Front Row—Ingraham, W. Myers, Gallagher, Kress, Barr

RESULTS OF CONTESTS

Lock Haven	-	-	-	-	23	Indiana	-	-	-	-	48	Away
Lock Haven	-	-	-	-	21	California	-	-	-	-	40	Away
Lock Haven	-	-	-	-	45	Kutztown	-	-	-	-	44	Away
Lock Haven	-	-	-	-	25	Shippensburg	-	-	-	-	37	Away
Lock Haven	-	-	-	-	33	Bloomsburg	-	-	-	-	37	Away
Lock Haven	-	-	-	-	36	California	-	-	-	-	38	Home
Lock Haven	-	-	-	-	39	Bloomsburg	-	-	-	-	23	Home
Lock Haven	-	-	-	-	61	Kutztown	-	-	-	-	31	Home
Lock Haven	-	-	-	-	54	Mansfield	-	-	-	-	29	Home
Lock Haven	-	-	-	-	38	Mansfield	-	-	-	-	36	Away
Lock Haven	-	-	-	-	31	Indiana	-	-	-	-	48	Home



REUBEN

BILLIE

OUR MANAGER

Herbie Spends a Day

HERBIE'S day begins at half past seven on week days. His mother's shrill "Herbie" (accent on last syllable) doesn't disturb his peaceful slumber on the Sabbath because he doesn't have a nine o'clock class at the Morristown State Teachers College because there aren't any eight o'clock or nine o'clock or any o'clock classes in that institution on Sunday. Sunday, in the minds of the respected mentors of that school, is clearly and definitely intended for a day of rest. Accordingly the humdrum of week days neither hums nor drums on Sunday, and the students sleep late in the morning, nap in the afternoon, and stay up all night to get in shape for Monday.

At any rate Herbie answers his mother with a drowsy "Hoo" and gazes blankly at the dresser, which seems to be a mile away. Presently the dresser mingles with half-faded dreams of whatever he was dreaming of and Herbie is asleep again.

The quarter of eight "Herbie" (accent on first syllable) rings with impatient warning of pancakes growing cold and school time drawing near. Before he has time to answer, Herbie's feet pop out from under the bed clothes and thud dully on the rug lying beside his bed. "I'm practically dressed," he callously lies. He sits down on the chair beside his bed and scratches his head for a minute. Herbie is getting old enough to realize that he will loiter along in the process of dressing unless he keeps prodding himself, so, slamming the bedroom door, he discards his pajamas and starts a haphazard search for his shoes and socks. He figures that by putting on his shoes and socks first he will get cold and pick up a little speed in donning the rest of his clothes. When he finds his shoes and socks under the bed, which is the place where he always puts them but never looks until every place else has been searched, he places a sock upright on the floor and, if it stands there, dusts his shoes with them and casts them under the bed. There is quite a pile of discarded socks under the bed by the end of the week, and although he sometimes gets a pair on Saturday that he has cast off on Monday, the fact bothers him not a bit. Because he has similar troubles with his undergarments and shirts, his patience becomes slightly frayed at times. He is sincerely thankful that he possesses only one sweater, one school suit, and one top coat. His final administrations to his appearances are brushing his teeth and forgetting to brush his hair.

He lightly trips or heavily stamps down the stairs, according to his mood, and greets his mother accordingly. Seldom, if ever, does he attack his cereal before the fellow he rides to school with honks his horn outside the front door. Again his response depends upon his mood. If at odds with the world, he lets the fellow wait until the last spoonful has been leisurely swallowed. If full of philanthropic utterances and gushes of popular melodies, he grabs a cookie, his books, his coat, and is off.

The twenty-five mile journey is spent in mastering the assignments in his three classes of that particular day. Herbie is very adept at learning a whole lot in a short time. And during the course of his study he can carry on a brilliant conversation about the previous night's basketball game. A girl walking along the road, a wreck, an airplane, or anything worth noticing along the road does not escape his active eye. The car he rides in is a rumbling roadster, a child of proud genius, born back in the year 1925. This laboring vehicle covers ground neither rapidly nor carefully, but it usually reaches its destination no more than five minutes past the required time. The chief worries the car causes the boys are flat tires, burned bearings, dirty spark plugs, persistent lack of gasoline, ditto for oil, a back fender that falls off every ten miles, and a decided lack of space to park the girls they meet on the road. When Herbie is forced to squeeze one in between his friend and himself and hold another on his lap until they reach town, he does it very graciously, giving up his studying without protest.

Herbie would like to go to his locker in the Day Room when he gets to school, but he never

has time, so he carries his dinner pail, his coat, and his books into his first classroom at a time varying from three minutes before to three minutes after the class takes up and returns his teacher's gaze of annoyance with one of docile subservience. The girls giggle as he stumbles awkwardly along the row to his desk, brushing the necks of those in the row ahead with his coat and bumping his pail on the backs of their benches. When he is finally seated he piles his belongings about him and stealthily opens his note book to the few notes he has made on the day's assignment. His teacher is one of the kind who never leaves his seat during class period and never seems to realize that there might be just one or two pupils in the class who would cheat just the tiniest little bit if they had just the smallest kind of a chance. Herbie, firmly believing that one who would succeed in life must take advantage of all opportunities, large or small, to raise one's self in the esteem of one's fellow men, has been able to secure himself an A grade all semester by observing this theory and by keeping his note book open during class recitation.

If the teacher does not dismiss his class precisely at a quarter of ten the fellows get out their watches and put on their coats in a manner which makes it perfectly obvious that they intend to leave in a very short time. When the teacher becomes aware of their signaling he gropes for his watch in two or three pockets and dismisses them without discovering that it is lying on his desk in front of him.

From this class Herbie marches straight to the Y Room. There a radio and a checker board remove his thoughts from the unpleasantness of classes to come. Herbie plays a very mean game of checkers and has hopes of making the team next year. The letter men nod their heads approvingly when he manipulates some unforeseen play which removes several of his opponent's checkers with small loss of his own.

Five minutes before the next class period Herbie grabs his belongings and scurries to his locker in the Day Room. The Day Room is the headquarters for the day students at this school. The boys have lockers in this room and eat their dinner here. Herbie halloos blithely as he enters and, bumming a cigarette butt from anyone who is smoking, noisily opens his locker and slams his lunch box, coat, and books into it. Someone springs a new joke, and, if he has heard a good one within the last twenty-four hours, Herbie tells it and goes to psychology class late.

Psychology is a strong point with Herbie. Not the kind of psychology his teacher would fill his little head with, but the essential type to possess when lessons are unlearned. The first step in learning the way in which work may be avoided is mastered, he believes, by making a minute observation of the teacher specimen in hand and deducing the method whereby the teacher conducts a class, whom he calls upon for recitation, and how recitation may be avoided. Some teachers delight in trapping the ignorant pupil and will call only on those who stare vacantly at the ceiling when a topic is being discussed. In these classes Herbie wears a smile which radiates a full and complete understanding of questions relating to anything from the mating call of the Alpha ray to the use of the fur undergarment in the isles of Hawaii. Other teachers, he finds, bubble with unappreciated and uninteresting facts and experiences, which, if properly coaxed and urged, will burst forth into a fifty minute discourse. Another type that Herbie finds very easy to cope with is one with an eye defect of any type. In this group belongs his psychology teacher. This teacher cannot or does not see any one whose head and other means of identification as a creature belonging to the human race are not displayed in one of the front rows or in a conspicuous position in the back of the room. Since this class is blessed with several persons of unusual height or breadth, Herbie is nearly always able to find a secure hiding place behind some high or broad back. Many times he falls asleep behind a protecting figure, heedless of the theories of this and that prominent authority on how and why teachers should do this and that at a certain period of the day.

At the end of this class Herbie's friends gently awaken him with a resounding whack on the back, and away they saunter to the Day Room. Next to checkers Herbie likes bridge best. Seated around and upon the rough desks, salvaged from the wood shed by those appointed to

equip teachers college Day Rooms, they fill in one side of their mouths with dinner box sandwiches and mumble bids of hearts and spades out of the other, never minding the flying bits of bread and meat left over from last night's dinner. Desks constructed for seventh and eighth grade pupils seem to be a trifle small for college boys, so the fellows rest their feet where an eighth or seventh grader would sit and sit where a seventh grader would rest his arms and rear their heads way up where nothing belonging to a seventh or eighth grader would ever be except for spit balls. In spite of these insignificant handicaps, Herbie and his friends play and eat during the whole noon hour. Sometimes they get extremely friendly and have a free-for-all lunch, each fellow giving the others a bite of the delicacy he is devouring. It usually takes four bites to consume a sandwich, but a piece of cake is no more when three have shared it, leaving one unfortunate to agonize over the smackings of the others.

Herbie's third and last class of the day troubles him the least of any. As I have stated before, he worries about the other two considerably, but music class is a snap. If the music of the composer of the day is filled with the twittering of birds and the gurgling of brooks and not with thunderstorms varying from just a gentle spring shower to one of cyclonic proportions, Herbie drops off into a half-asleep half-awake stupor. Herbie's motive for the use of this type of repose is slightly different from that of the everyday hard working student. He sleeps in order to escape the humdrum of the classroom, while the ordinary pupil really has no motive at all—he just sleeps for the sake of sleeping.

By the time this class is over Herbie is well nigh worn out with the strenuous activities of school life, and, feeling that some reward is due for all the energy he has meticulously placed on his studies, promptly accepts the invitation of the first friend who suggests that they go to the picture show. No one ever knows exactly what is showing, but everyone is sure that something will be shown and that it will be a dandy picture, so whoever drives his car down town has no trouble in getting his car packed with pleasure-seeking pals. Crooning and waving at girls, known or unknown, they speed down the macadam. The theaters are arranged in one-two-three fashion, all being on the same side of the street and each a block from the other. The one nearest the teachers college costs a dime, the second fifteen cents, and the third a quarter. Herbie figures that it is impossible for the newest, latest, most recent film to be two and one-half times as good as the oldest, most moth-eaten film the dime theater ever showed and it doesn't take as much gas to reach the first show as it does the third, so the boys stop at the first theater and see Gerta Gerbo in "Flaming Eyebrows." Some days one of the fellows loosens up and buys a sack of peanuts. After these are evenly distributed among the gang the boys spend their time munching the shelled goodies and throwing the shells at people they don't know anywhere within range. They squirm at the news reel, applaud at the cartoon, howl at the comedy, and sleep through the feature.

When the boys have returned from the show, Herbie gathers his belongings from his locker once more and sits on the curb outside the school, waiting for his ride home. When the rambling wreck wheezes up he boards her with a final shout of farewell at the school in general. The return journey is very much like the morning's. Flat tires and girls are looked forward to with cheerful optimism.

Herbie arrives at his home in the evening just in time for supper, the big meal of the day. He enjoys it very much, except when his mother has veal. Veal gives him the stomach ache, and he knows he will get the stomach ache if he eats it. But even though he knows it will hurt him he eats it, which makes him dislike it twice as much as if he just knew it would hurt him if he ate it, but didn't eat it. So whenever his mother has veal he doesn't enjoy the meal as much.

By the time supper is over the day is just about over and night is beginning. From this time until the next morning Herbie lives during the night. His nightly activities differ from his daily. But when Herbie rises from the supper table and starts for the stair steps my present association with him is ended. His day is spent.

HOWARD UNDERWOOD.

The right side of the page features a decorative border consisting of two vertical lines: a thick black line on the outside and a thinner black line on the inside, both extending from the top to the bottom of the page.

WOMEN'S ATHLETICS

WITHIN a week of the opening of college, women's athletic activities, organized during the previous spring, are launched for the fall term. Hockey completed this year its tenth intramural season. Since 1927, when women's basketball was likewise put on an intramural basis, this activity has advanced from the realm of "spectator sports" to a game in which more than 50% of the students participate. Intramural volley ball claims an equal share of attention. In hockey, basketball, volley ball, and baseball, an honorary varsity is selected as the outgrowth of the interclass contests in each sport.



BASKETBALL

HONORARY VARSITIES, 1934-1935

HOCKEY

First Squad

Hazel Boyer
Ruth Crowley
Gretchen Dickey
Helen Eyerly

Edna Leinbach
Louise McEntire
Martha Mapes
Mary Ellen Ringler

Mary Ann Roberts
Helene Silagyi
Evelyn Williams
Margaret Williams

Second Squad

Caroline Brown
Alice Fredericks
Ruth Hunt
Jean Kunes

Carolyn Long
Jean Mann
Jane Mervine
Jane Ostrom
Elva Stiver

Dorothy Trambly
Janet Wilson
Doris Yarrison
Vesta Young

Officials

Margaret DeLaney

Jean Helman

Helene Silagyi

BASKETBALL

First Squad

Gretchen Dickey
Edna Leinbach
Louise McEntire

Matilda Onachilla
Mary Ellen Ringler

Mary Ann Roberts
Miriam Wallace
Evelyn Williams

Second Squad

Caroline Brown
Anna Margaret Corson
Ruth Crowley

Alice Fredericks
Permella Garthoff
Threse Long
Jean Mann

Martha Mapes
Helen Nichols
Janet Wilson

Officials

Alice Fredericks

Mary Ellen Ringler

VOLLEY BALL

First Squad

Florene Brown
Mollie Buvinger

Lois Long
Ruth McClintick
Louise McEntire
Martha Mapes
Matilda Onachilla

Mary Ann Roberts
Miriam Wallace
Evelyn Williams
Gladys Williams
May Jo Williams

Second Squad

Caroline Brown
Ruth Crowley
Dorothy Fink
Permella Garthoff
Jeanne Lepley
Marjorie Pfoutz

Helene Silagyi
Hart Slater
Frances Taylor
Mary Ulmer
Anne Wert
Vesta Young

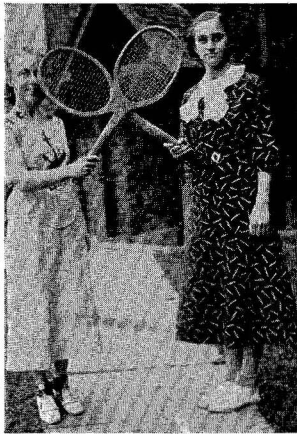
Officials

Mary Ann Roberts

Evelyn Williams



BASEBALL



TENNIS



MANAGERS

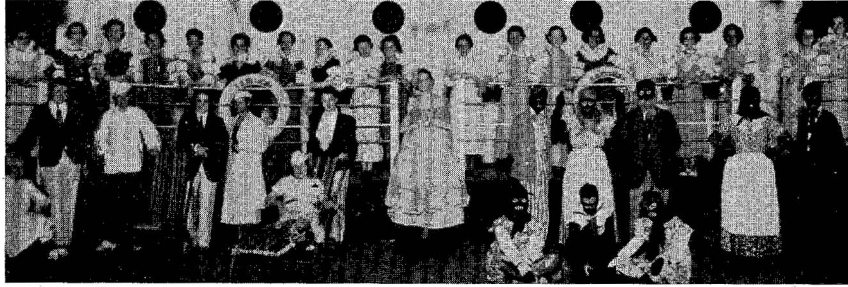
Tennis, which has been an integral part of the athletic program in the college for many years, now numbers more than 100 players in its entries each season; and a tournament is conducted which provides opportunity for continued play on the part of all losers, as well as for those who progress toward the championship. Riding, instituted four years ago, claims the enthusiastic attention of additional devotees each season; and more recently archery, directed by capable student leaders, has been successfully added to the sports curriculum. Track and field events absorb the interest of an energetic group each spring. The field of opportunity for participation in individual sports activities is continually widening, and now includes such diverse pursuits as bicycling, golf, hiking, roller-skating, coasting or skiing, teaching social dancing, and refereeing or otherwise officiating at tournament games throughout the year.



REFEREE



TRACK



THE fourteenth annual spring festival of the department of physical education for women at Lock Haven State Teachers College was held on April 17, 1935. This festival, the culmination of the work of the fall and winter seasons, this year took the form of a student tour, the cruise of the S. S. Sylvania.

At the pier cameras clicked, reporters held hurried interviews, cruisers and visitors scurried about, until the ship's whistle sounded its final warning. Handkerchiefs waved, streamers twinkled in the wind; the S. S. Sylvania left port.

Rio de Janeiro! Here were found all the brilliancies of the Mardi Gras; festive songs of mirth mingled with dances in native costumes from many lands; rumbas from Carthage set the rhythm for the Carioca. Hail Momus, king of the carnival!

Ireland! Phantom forms merged with reality, and as nimble sailors tapped the rhythm of "Minstrel Boy," lassies and lads assembled for their merrymaking. The irrepressible old man was there with his cronies, inspired to action by the strains of the Dublin Jig, while younger folk tripped gayly to the tune of the Kerry Dance.

Then followed four competitive episodes: Holland with its market day, its bicycles, its wooden shoes, its tulips, and Poland with its religious ceremonial and spirited dances, were presented by the Freshman group; while France with its intriguing beach cafe, and Sweden with its maypole ceremony and jolly folk games, were portrayed by the Sophomores. The decision of the judges, based on the spirit and technique of the dances, and their accompanying dramatizations, was in favor of the Freshman classes.

It was typifying the activities of the Sokol Society, the national athletic association of Czechoslovakia, that the competitive sports of the Freshmen versus the Sophomores were held. The games in which the classes, both men and women, participated included volley ball, badminton, and contests involving the fundamental techniques of volley ball, hockey, soccer, basketball, and baseball. The tour ended with a mass performance of gymnastic skills by the entire Freshman-Sophomore group.

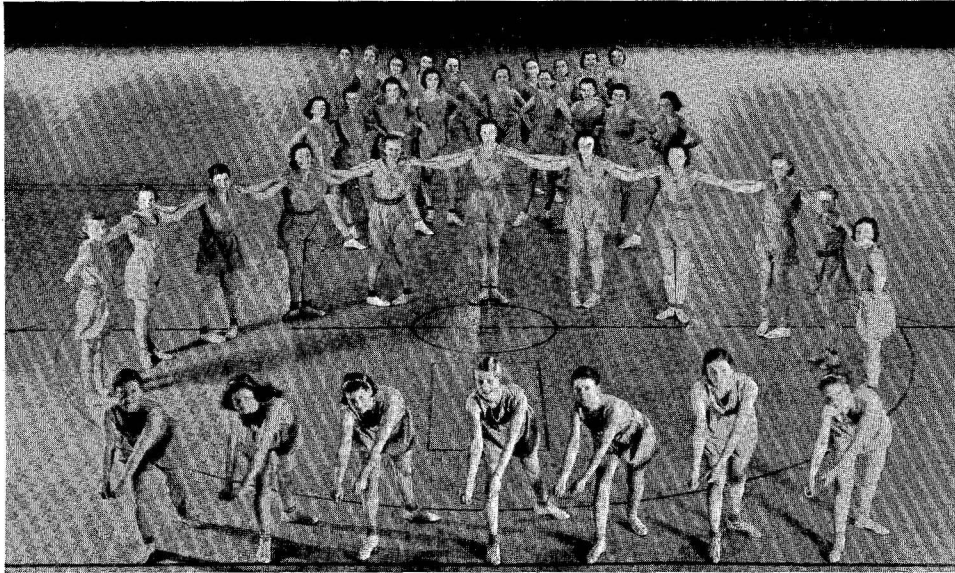
Judges of this year's program were Mrs. George H. Diack, of Lock Haven, a member of our board of trustees; Miss Carolyn Williams, director of physical education for girls, Williamsport, and Chester B. Viechnicki, supervisor of health and physical education, Lock Haven. The Bel Canto Society and the College Band assisted in the festival production.

The freshmen won high honors in this year's contests, with the following score:

<i>Freshmen</i>	<i>Event</i>	<i>Sophomores</i>
25 points	Dance Contest	
	Men's Sports	15 points
	Circle Volley	5
	Hockey Relay	3
5	Line Ball	
4	Baseball Relay	
	Jump the Shot	5
34 points	Total Score	28 points

FESTIVAL COMMITTEE, 1935

Production	- - - - -	Virginia Cheesman
Costumes	- - - - -	Matilda Onachilla
Scenery	- - - - -	Leah Kraemer
Pianists	- - - - -	Ruth Hunt, Vera Lyons, Ruth McClintick, Clarissa Wainger
Workshop	- - - - -	Freshman-Sophomore classes in Physical Education



FOLK and natural dancing, now so inherent a part of our college program, became organized extracurricular activities under Miss Dixon's enthusiastic direction shortly before the Women's Athletic Association came into existence, and athletic honors are awarded by the W. A. A. for excellence in this field, as in other branches of activity. Several years ago clogging became a favorite part of the athletic program, and more recently tap dancing has added its small but ardent group of talented performers. It is in large measure the whole-hearted effort which the dancing calls forth that leads each year to the success of the spring festival, in which dances are so presented as to portray the life and traditions of the peasant folk of many countries.

HONORS—1934-1935

FOLK AND NATURAL DANCING

First Place

Helen Eyerly

Edna Livingston
Marianna Tallman

Eleanore Wolf

Second Place

Inez Dieffenbach
Helen Kohler

Ruth McClintick
Marjorie Pfoutz

Margaret Rohrbaugh
Doris Yarrison

CLOG AND TAP DANCING

First Place

Margaret Griffith
Mary Ann Roberts
Jean Kopenhaver

Jean Sheasley
Louise McEntire

Althea Troxell
Matilda Onachilla
Janet Wilson

Second Place

Gretchen Dickey
Julia Shea
Edna Leinbach
Hart Slater

Lucile Orlin
Kathryn Smith
Mary Ellen Ringler
Marianna Tallman

Sara Romig
Anna White
Evelyn Williams
Doris Yarrison

Understanding the Program of Physical Education and Health Instruction—Recapitulation

LOCK HAVEN STATE TEACHERS COLLEGE has been designated by the State Council of Education as the college in Central Pennsylvania to grant the degree of bachelor of science in physical education and health instruction. In shaping our attitudes toward this program of health education, we first must acquaint ourselves with those tendencies that characterize the present era in this field.

Our department is constantly growing in its methods and materials, linking that which was found to be good with that which now seems to be better. Tradition is revered, to the extent that it both makes for security and provides for originality. The student is familiarized with approved techniques and subject matter, and is urged to do creative or original associative thinking in the solution of practical problems. The department seeks to integrate the student's ideas and abilities, his habits, attitudes, and knowledge, in a coherent, purposeful, joyous personality. In our program, physical education is a habit of satisfying activity, healthful in that it entails the best physiological and psychological outcomes. Health instruction likewise is no mere body of rules; knowing what to do to lay the foundations for health is emphasized only to the extent that it favors our doing what we know will lay the foundations for health.

In physical education, class periods aid in establishing a background for vigorous personal health and professional success, and there are opportunities for recreational participation in a wide range of activities. In our annual festival we present typical dances, games, and gymnastic activities selected from daily class work, with costumes and settings made by the students as a part of their class preparation. Courses in health instruction help the individual student to acquire the essential facts conducive to intelligent hygienic thought and practice, and guide him toward the solution of his own health problems. Opportunities for practice teaching and for officiating in athletics round out the professional curriculum.

The work of the department of physical education and health instruction at Lock Haven State Teachers College strives continually to link its present practices with the best hopes, the highest standards, that the future seems to hold. Good sportsmanship as a consistent, everyday habit; respect for whole-hearted effort, for conscientious and indefatigable work wherever it may be found; admiration for high principles and for evidences of scholarship, both mental and physical; satisfaction only with and through one's best self, guided and sustained by an enduring faith in God and man—these are our fundamentals; these are the ideals which we in health education profess, and endeavor to exemplify.

HONORARY AWARDS, WOMEN'S ATHLETIC ASSOCIATION, 1933-1934

Kathryn Hench

Evelyn Williams

Dickey-Grugan Hardware Co.

Best Quality — Lowest Prices

Telephone 475

45 Bellefonte Ave. LOCK HAVEN, PA.

The Vogue Dress Shop

Lock Haven Steam Laundry

LAUNDERERS and
DRY CLEANERS

Phone 360

DELOS L. GLOSSNER

PHOTOGRAPHER

●
Telephone 307-R

226½ E. Main St. LOCK HAVEN, PA.

HEFFNER'S

Quality Drug Store

A good place for students to buy
"De Luxe Fountain Service"

TORSELL SHOE SERVICE

Quality Repairing and Shoes

Phone 38

Bellefonte Ave. LOCK HAVEN, PA.

RINELLA BROTHERS

"The Home of Quality"

Groceries, Fruits, Vegetables and Meats

Cor. Main and Vesper Sts. Phone 118

*Lock Haven's
Shopping Center*

SMITH and WINTER

*"The best place to shop
after all"*

CONGRATULATIONS

TO THE GRADUATES

Best Wishes to All

RICKER BROS.

FLORISTS

The Old Reliable Grocer

Established 1846

JACOB BROWN & SON

GROSSMAN'S

LOCK HAVEN'S SHOWPLACE OF FAVORED FASHIONS

for WOMEN and MISSES

MYERS & SEITLER

The Home of Good Clothes

Cor. Main and Vesper Streets

COMPLIMENTS

OF

Garden Theatre

**LOCK HAVEN
TRUST CO.**

**Shaffer, Candor, Hopkins
HARDWARE**

17 East Main Street

Phone 114

WIDMAN & TEAH, Inc.

CUT RATE DRUGS *of Quality*

2 STORES IN LOCK HAVEN

121 E. Main St.—Bellefonte Ave. and Church St.

COMPLIMENTS OF

THE HUB

Men's and Boys' Clothing

*Always a Friend to the
School Folks!*

MAKE THIS STORE
YOUR
SHOPPING HEADQUARTERS

FOOTWEAR that will win your
confidence and approval

*Guaranteed Fit and Satisfaction
combined with Value
at this Store*

BROWN'S Boot Shop

CLINTON COUNTY'S
LARGEST SHOE STORE

129 E. Main Street

Lock Haven, Pa.

KLEWAN'S

Ready with SPRING and

SUMMER MERCHANDISE

EVERYTHING for the well-dressed
Men's Wardrobe at *Moderate Cost*

WEAVER & PROBST

Lock Haven's Finest Men's Shop

HARRY H. WILSON

The style center for the young man of distinctive taste in QUALITY Clothing

"Money's Worth or Money Back"

SOHMER'S Food Markets

Meats — Groceries — Produce

◆
*Central Pennsylvania's Largest
Food Market*
◆

FLEMINGTON

LOCK HAVEN

Compliments of

TEXAS Hot Weiner Lunch

204 E. Main Street

Compliments of

STEIN FURNITURE CO.

HILLTOP SERVICE STATION

Scientific Brake Service Vulcanizing

STATE INSPECTION STATION
FIRESTONE AND ATLANTIC PRODUCTS

Phone 674-J Call for and Deliver

City Office Supply and Book Store

Stationery, Leather Goods, School Supplies, Office Supplies, Lending Library; Daily and Sunday Newspapers. Also String Instruments and Musical Accessories, Strings, Sheet Music, Teaching Material.

KENNETH HASSINGER, 105 E. Main St.

Community Drug Store

QUALITY DRUGS at Cut-Rate Prices

Try Our Store First and Save

Peddie Bldg. HENDERSON ST.

*Thanks
to*

EARL HARNISH

FRED J. EISEMANN

Jeweler

◆
31 BELLEFONTE AVENUE

RITTER and WILLIAMSON

120 Main Street

BOWLING and BILLIARDS

LaSALLE BEAUTY SHOP

EUNICE CHAPMAN, *Proprietor*

Phone 15-J

210 E. Church Street LOCK HAVEN, PA.

“Believe it or not”

HERLOCHER'S have the ideal spot to hold your Sorority, Fraternity, or Birthday Parties

PRIVATE DINING ROOM, BANQUET HALL and a DANCE FLOOR that are considered the best in Lock Haven—just newly decorated.

COMPLETE FOUNTAIN SERVICE. All kinds of Sandwiches—Double and Single Deck—30c, 35c, 40c, 50c. Full Course Dinners.

The private dining room will accommodate up to 30 couples and the banquet hall will accommodate up to 300 comfortably.

Call Bell Phone 270-W or 9790
For Reservations

Herlocher's Restaurant

211 E. Main Street Bell Phone 9790

Directly Opposite the Elks' Home

ENGRAVED, PRINTED AND BOUND BY GRIT PUBLISHING CO., WILLIAMSPORT, PA.