

1934
COLLEA
34

VOL

XXI

FOREWORD

+ + +

It is the intention of this Praeco to serve as a projector of present memories into the future; to serve as a screen on which the shadow of this school year will be kept fresh for each of us. It is with this in mind that the Praeco Staff of Nineteen Hundred Thirty-four has created this book.

Copyright
TOM F. SMITH
LEON BARR
ELWOOD RORHBAUGH

TABLE OF CONTENTS

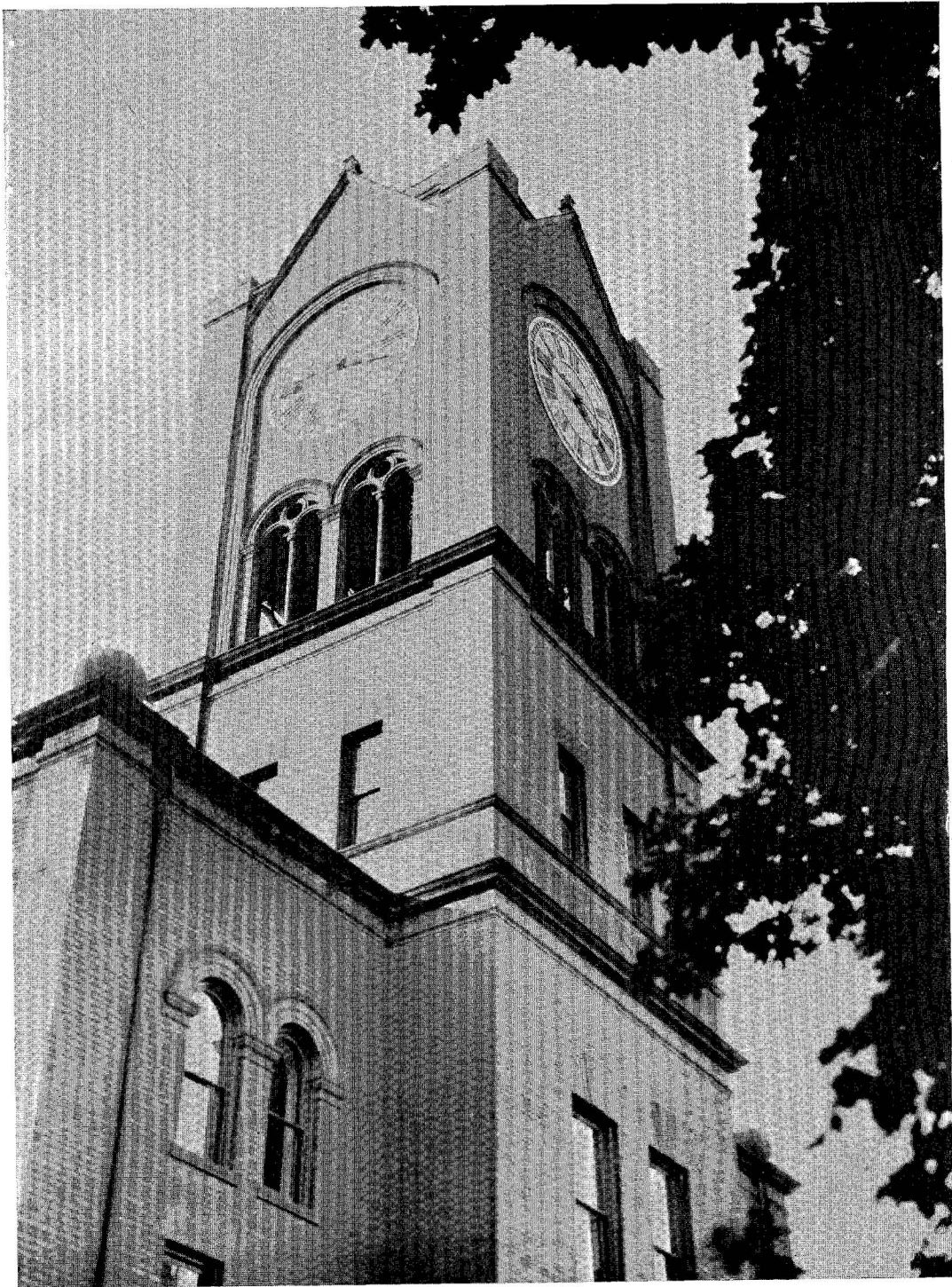
+++

Administration

Classes

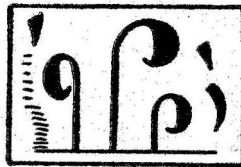
Organizations

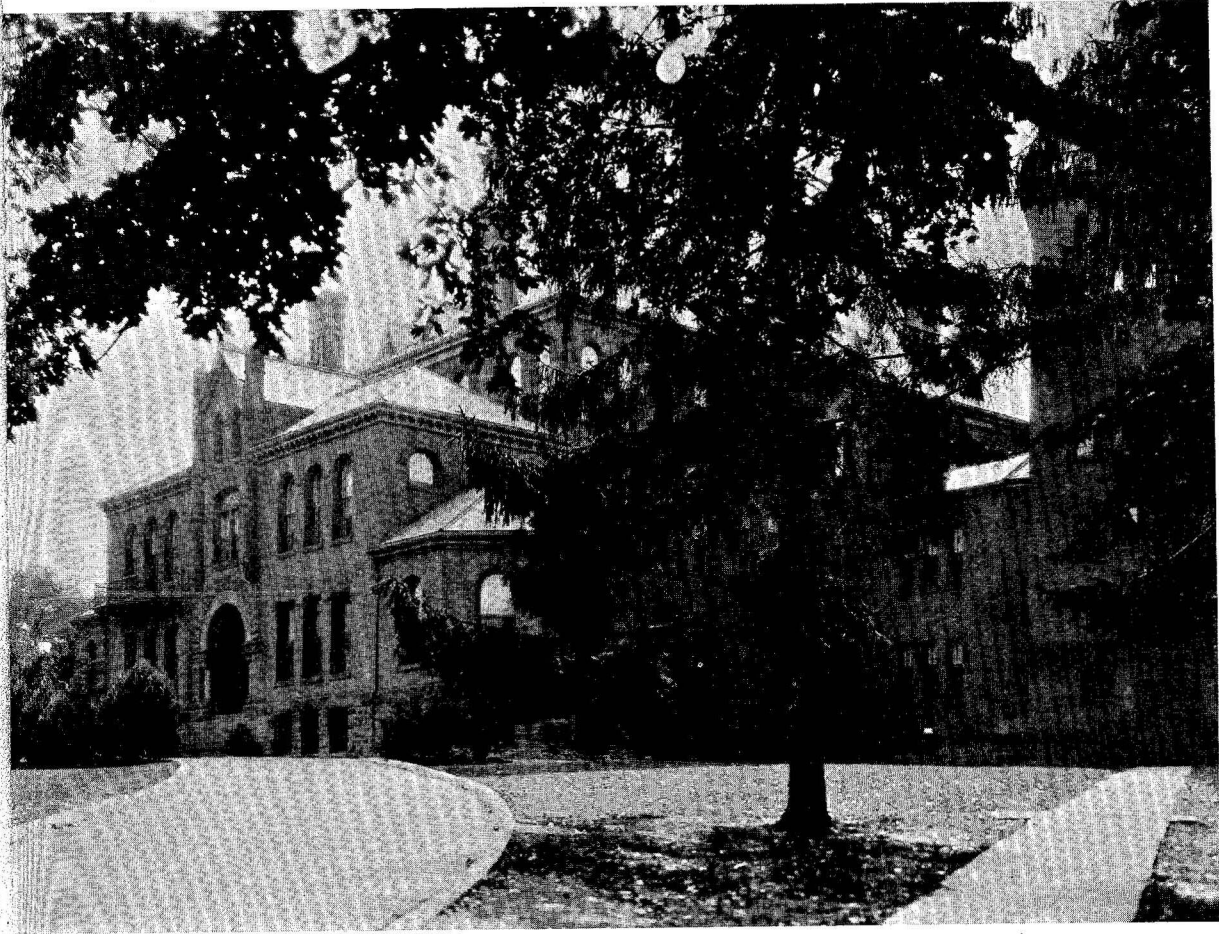
Athletics



THE TOWER CLOCK
RECITATION HALL

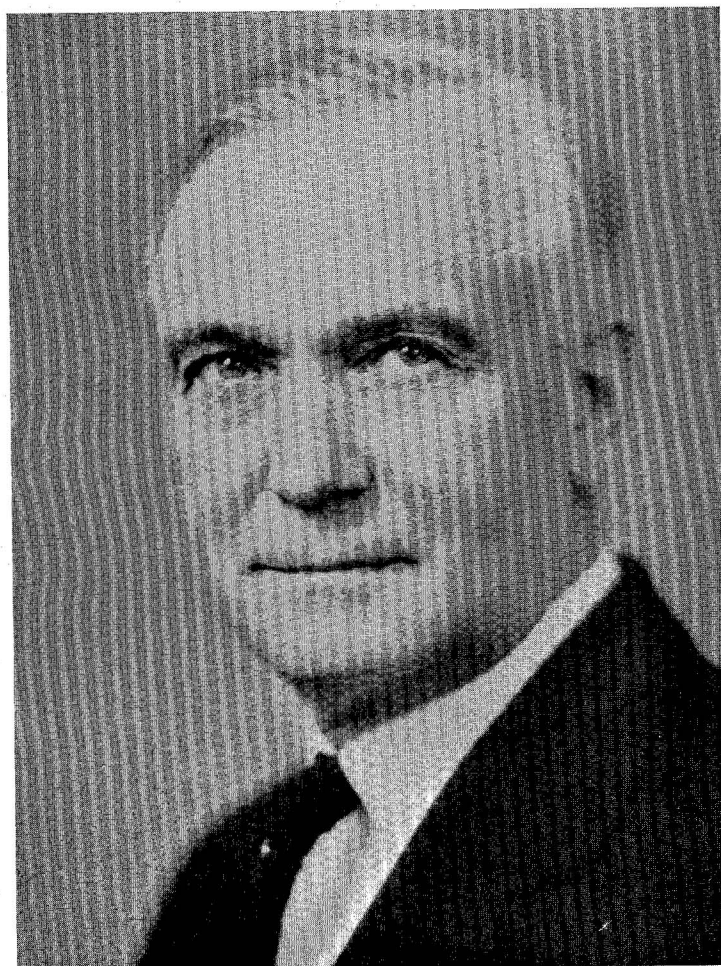
ADMINISTRATION





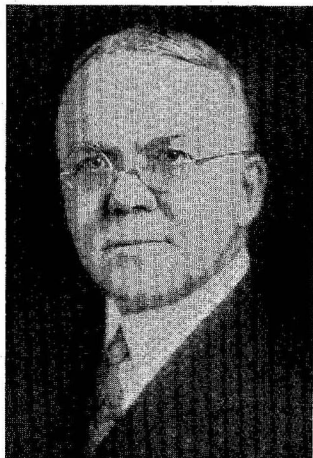
ADMINISTRATION BUILDING





DALLAS W. ARMSTRONG
Ph.B., A.M., LL.D.
President of Lock Haven State Teachers College

MORRIS DETURK HIGH
A.B., A.M.
*Dean of Instruction;
Mathematics*



R. STEWART MACDOUGALL
A.B., A.M.
*Director of Teacher
Training Education*



FRANK E. RITTER
Bursar and Revenue Agent



DEBORAH M. BENTLY
Dietitian



BELLE HOLAWAY
A.M.
*Dean of Women
English*



HARRY F. WEBER
A.B., B.S., A.M., Ph.D.
Dean of Men; Social Science



PRAECO

HELEN B. LESHER
Supervisor, Grade III



CORNELIUS M. SULLIVAN
B.S., A.M.
*Social Science;
Faculty Athletic Advisor*



LEVI J. ULMER
B.S., M.S.
Science; Geography



LAURA E. BARKHUFF
B.S.
Supervisor, Grade I



JESSIE SCOTT HIMES
B.S., A.M.
*Director of Primary
Education*



BERTHA M. ROWE
B.S.
*Supervisor, Grade IV
Education*



MALOISE S. DIXON
A.B., A.M.
*Physical Education;
Health Education*



LILLIAN RUSSELL
A.B.
Social Science



NELLIE A. DuBois
B.S., A.M.
Art



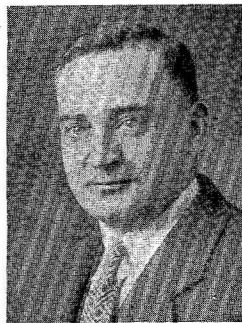
IRENE K. MACDONALD
A.B., A.M.
*Librarian; Instructor
in Library Methods*

EDNA H. POLLOCK
A.B., A.M.
Supervisor, Grade VI



ALLEN D. PATTERSON
A.B., A.M.
*Director of Junior High
School; Education*

MABEL V. PHILLIPS
A.B., A.M.
Supervisor, Grade II



SAMUEL J. SMITH
Ph.B., A.M.
Mathematics

JAY FERRY STEMPLE
A.B., M.S.
Physical Science



BERTHE A. DANIEL
B.S., M.A.
English

PRAECO

IRA O. FLEMING
B.S., M.S.
Biological Sciences



COPHINE ROOK
B.S., M.S.
Supervisor, Grade V



AXEL S. RUDE
A.B., M.A., Ph.D.
Education; Psychology



MABEL-LOUISE AREY
B.L.I.
Dramatics



V. FRANCES COPPENS
A.B., A.M., Ph.D.
Psychology; Education



ASHTON HATCHER
A.B., M.A.
Primary Education



GRACE ULLEMEYER
B.M.E., M.S.
*Music Education; Piano;
Voice*



WELDON M. WILLIAMS
A.B., A.M.
English



GLADYS M. ERICKSON
A.B., A.M.
Supervisor, Kindergarten



LYNDALL D. FOX
B.Ed., M.A.
Art; Penmanship

HARRISON J. KAISER
B.A., M.A.
*Physical Education;
Coaching*



G. F. B. LEHMAN
A.B.
*Public School Music;
Voice*

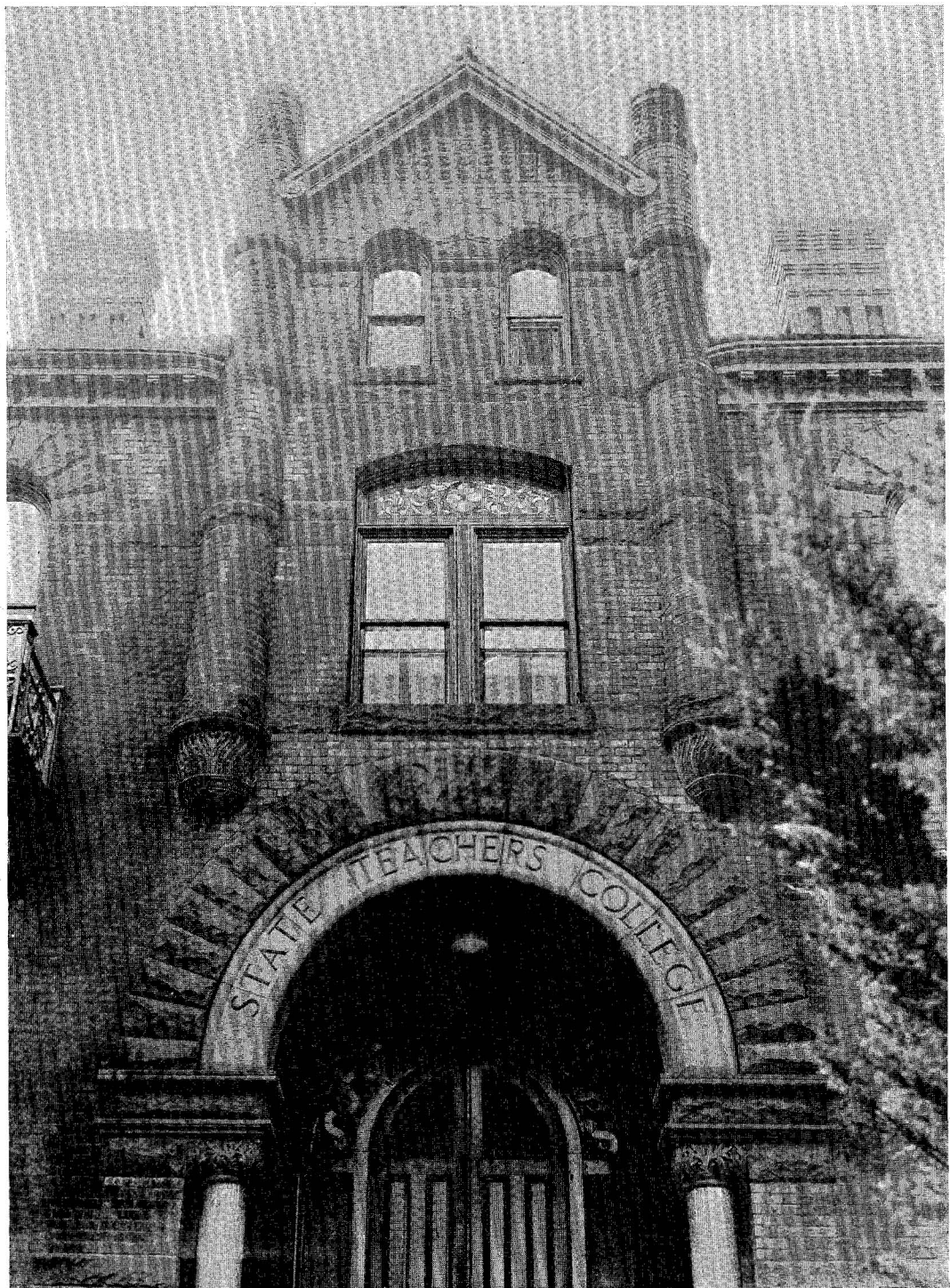
KENTON VICKERY
A.B., M.A., Ph.D.
*Foreign Languages;
English*



ESTHER RICHARD
A.B., A.M.
English

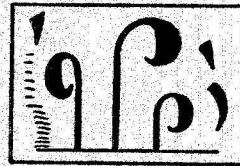
AVIS E. EDGERTON
A.B., M.S.
Physical Education

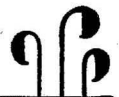




ENTRANCE—ADMINISTRATION BUILDING

CLASSES





SENIORS

PRAECO



RUTH SHERMAN
Treasurer



GEORGE SHIVELY
Vice President

CLASS



JOHN MARSHALL
President

OFFICERS



STELLA CLAIR
Secretary, Second Semester



RUTH SPONSLER
Secretary, First Semester

Senior Class History

IN THE Fall of 1930, we began the adventure to which we had been looking forward for twelve long years. With our hearts full of hope, we began immediately to win the respect of our fellow students. After becoming organized under our leader, Dean Shroat, we were initiated into the various organizations of the school. We selected Mr. S. J. Smith as our faculty adviser for our four years in this school. He gave us the advice and help we needed to carry us through this preparatory step.

In our Sophomore year, we re-elected Dean Shroat as our president, and elected Alice Marie Hackett, secretary, and Tom Smith, treasurer. As Sophomores, we had a large representation in extra-curricular activities. We were represented on the *Times*, the PRAECO, the Student Government, in football, basketball, hockey and track. We came out victors in the inner-class track event. Our main social event of this year was the St. Patrick's dance, held March 17, under the supervision of our president, Dean Shroat, and our faculty adviser, Mr. S. J. Smith.

Calvin Cooke was selected to be our Junior class president. Our other officers included Tom Smith, vice-president; Laura Swingle, secretary; and Dorothea Stitt, treasurer.

During our fourth year, we organized as a Senior class under the leadership of John Marshall. Our other representatives were George Shively, vice president; Ruth Sherman, treasurer; and Ruth Sponsler, secretary. Since Ruth Sponsler graduated in January, Stella Clair was elected as secretary for the remainder of the year. Coach Kaiser built a state champion team with two of our members as co-captains, Russell Burd and Christopher Hammaker. During most of this year the main participation concerned lesson plans and teaching in the Junior High School. The Senior Ball, held February 16, was the main social event of the season. The black and silver decorations, which were designed under the direction of Marion Francisco, added to the success of the dance. This social event of the year proved successful because of the capable leadership of John Marshall, president, and Mr. S. J. Smith, faculty adviser.

STELLA CLAIR

Commencement Speakers



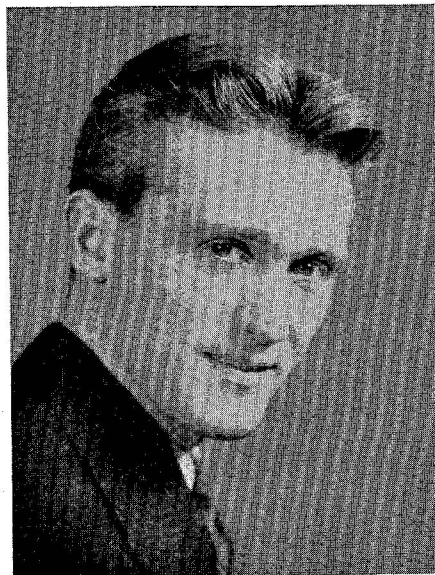
JUNE BREINING



CLARITA DUHART

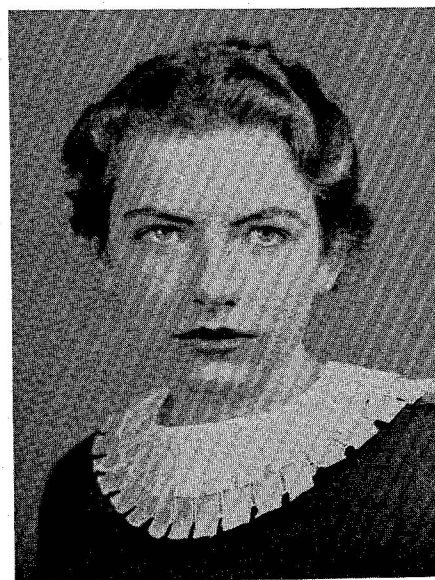
SENIOR
HALL OF FAME





CALVIN COOKE

The Hall of Fame is made up of the six seniors elected by the Senior Class on the basis of general scholastic ability, extra-curricular activity, and a fine school spirit.



MARION FRANCISCO



JOHN MARSHALL



RUTH SHERMAN



TOM SMITH



CHARLES WEPSIC

PRAECO

CAROLYN ALAIMO

Pittston, Pa.
Kindergarten-Primary
 W. A. A.; Y. W. C. A.; A. C. E.



JUNE NEIL BREINING

Williamsport, Pa.
Latin, English
 Times Staff, 2; Education Club; Beta Sigma Chi.

VIRGINIA ALBRIGHT

Mill Hall, Pa.
Kindergarten
 Lambda Alpha Lambda; Rho Omega Lambda; Dramatic Club.



THELMA BROWNLEE

Brookfield, Pa.
Elementary
 W. A. A.; Y. W. C. A.

GEORGE W. ANDERSON

Ludlow, Pa.
Social Studies, English
 Y. M. C. A., Secretary, 2, Vice President, 3; Vesper Chairman, 4; Shakespeare Literary Society, Vice President, 4.



WILLIAM A. BULL

Hughesville, Pa.
Geography, Social Studies, Science

FLORENCE T. AYRES

White Pine, Pa.
English, Social Studies
 Education Club, 4; Alpha Chi Delta.



RUSSELL BURD

Williamsport, Pa.
English, Geography
 Varsity Football, 1, 2, 3, 4; Captain, 4.

CHARLES BAKER

Lockport, Pa.
English, History, Social Studies
 Class Treasurer, 1; Football Letter, 1, 2, 3, 4; Varsity Club, 3, 4; Basketball; Boxing; Track.



HELEN-LOUISE CAWLEY

Milton, Pa.
Elementary
 Women's Student Council, 4; Y. W. C. A.

MARIAN BEHMER

Williamsport, Pa.
Science, Mathematics



STELLA IRENE CLAIR

Renovo, Pa.
Mathematics, English
 Class Secretary, 4; Women's Student Council Day Room, 2, 3; Vice President, 3; Alpha Chi Delta, Secretary, 3, President, 4.

MARY JEANNETTE BIXEL

Clearfield, Pa.
English, French



CALVIN LEROY COOKE

Portage, Pa.
Social Studies, English
 Class President, 3; Basketball Letter, 1, 2, 3, 4, Captain, 2; Vice President, Men's Student Council, 3; Education Club, 1; Varsity Club, 2, 3, 4; Y. M. C. A., 1, 2, 3; President of Tribunal, 4.

MAX COOK

Flemington, Pa.

English, Geography, History

Football Letter, 1, 2; Track Letter, 3; Delta Rho Beta, Treasurer, 2; Varsity Club, President, 3; Men's Glee Club, 1, 2; Boxing; Basketball; Baseball.



SARA E. FLETCHER

Greensburg, Pa.

Kindergarten-Primary

PRAECO Staff, 4; Beta Sigma Chi, 1, 2, 3, 4; Women's Student Council, Secretary, 2, President, 4; Art Club, 1, 2, 3, 4; Education Club, 1, 2, 3, 4; Y. W. C. A., 1, 2, 3, 4, Vice President, 2; A. C. E., 1, 2, 3, 4.

HAROLD B. CRONISTER

Julian, Pa.

English, Social Studies

Men's Glee Club; Mixed Chorus; Y. M. C. A.; Shakespeare Literary Society; "Pepita".



MARION-ETTA FRANCISCO

Williamsport, Pa.

English, Social Studies

PRAECO Staff, 1, 2, 3, 4, Chief Associate Editor, 3, 4; Times Staff, 1, 2, 3, 4, Editor-in-Chief, 3; Beta Sigma Chi, 1, 2, 3, 4, Treasurer, 4; Inter-Sorority Council, Secretary, 3; Dramatic Club, 2, 3, 4; Education Club, 2, 3, 4, Treasurer, 4; Y. W. C. A., 1, 2, 3, 4, President, 3, Cabinet, 3 years; Orchestra, 1, 2, 3, 4; Mixed Chorus, 3, 4; Glee Club, 3; Marionettes, 3; Student Librarian, 3, 4; "Merchant of Venice", 3; Honorary Naturalist, 4.

RUTH J. DOEBLER

Lock Haven, Pa.

Kindergarten-Primary

PRAECO Staff, 2; Times Staff, 2; Art Club, 3; Alpha Chi Delta; Bel Canto, 3.



GENEVIEVE E. FREY

Lock Haven, Pa.

Kindergarten-Primary

Rho Omega Lambda, Social Secretary, 2; A. C. E.

J. RALPH DRICK

Muncy, Pa.

Mathematics, Geography

Men's Student Council; Y. M. C. A.



HANNAH FROMM

Lock Haven, Pa.

English, History

CLARITA A. DUHART

Port Allegany, Pa.

Kindergarten

Rho Omega Lambda, President, 4; Inter-Sorority Council, 4; W. A. A.; Y. W. C. A.; Orchestra; A. C. E.



ERNEST L. GILLILAND

Pennsylvania Furnace, Pa.

Mathematics, Science

Football, 1, 2, 3, 4; Basketball Letter, Manager, 4; Vice President Student Activity Council, 4; Y. M. C. A., 1, 2, 3, Treasurer, 2; Naturalist Club, Treasurer, 4; Shakespeare Literary Society, President, 4; "The Count and the Co-ed".

ROBERT H. EMERY

Lock Haven, Pa.

Geography, Social Studies

Cheer Leader, 1, 2; Delta Rho Beta, 1, 2, 3, 4; Y. M. C. A., 1, 3; Student Activity Club, 3; Naturalist Club, 3, 4; Football Publicity Staff, 3, 4; "For Goodness Sake"; "Orange Blossoms".



PAULINE GRADÉN

Lock Haven, Pa.

English, Social Studies

Times Staff, 2, 3, 4; Education Club, Secretary, 4; Y. W. C. A., Treasurer, 4; Alpha Chi Delta, Vice President, 3, 4; Shakespeare Literary Society.

MYRA J. EVANS

Altoona, Pa.

Kindergarten

Alpha Sigma Tau, Treasurer, 3; Inter-Sorority Council, Vice President, 4; Women's Student Council, Vice President, 2; Education Club, 2, 3, 4; Y. W. C. A., 1, 2, 3; A. C. E., 1, 2, 3, 4.



ALICE MARIE HACKETT

Smethport, Pa.

Mathematics, Social Studies

Class Secretary, 2; Beta Sigma Chi, Vice President, 4; Women's Student Council, 2; Education Club, Vice President, 4; W. A. A., 1; Y. W. C. A., 1, 2; Varsity Hockey, 1, 2.

PRAECO

CHRISTOPHER HAMMAKER
 Hollidaysburg, Pa.
Geography, Social Science
 Football Letter, 1, 2, 3, 4, Co-Captain,
 4; Basketball, 1, 2, 3, 4, Captain, 4.



MELVIN D. HOY
 Lock Haven, Pa.
Mathematics, Science
 Y. M. C. A.; Kappa Sigma Fraternity.

KENNETH HART
 Jersey Shore, Pa.
Social Studies, Geography
 Football Letter, 1, 2, 3, 4; Varsity Club,
 3, 4; Baseball, 2.



WAYNE C. HOY
 Lock Haven, Pa.
Mathematics, Science
 Track Letter, 2, 3, 4; PRAECO Staff, 4;
 Varsity Club, 3, 4; Y. M. C. A.

KATHRYN E. HARVEY
 Castanea, Pa.
Special Kindergarten
 Y. W. C. A.; A. C. E.



CHARLOTTE KNAPP
 Salona, Pa.
Elementary
 Alpha Sigma Tau, Vice President, 4;
 Lambda Alpha Lambda; Art Club;
 Bel Canto; A. C. E.

MARY E. HARVEY
 Huntingdon, Pa.
English, French
 Y. W. C. A.; Alpha Chi Delta.



WILLIAM KNAPP
 Salona, Pa.
Science, Mathematics

ALLAN K. HEYDRICH
 Lock Haven, Pa.
Mathematics, Geography

Cheer Leader, 1, 2; PRAECO Staff, 4; Del-
 ta Rho Beta; Dramatic Club; Y. M.
 C. A.; Naturalist Club, Vice Presi-
 dent, 3, President, 4; "East is West";
 "The Ghost Train".



HELEN L. KNARR
 Lock Haven, Pa.
Kindergarten-Primary

MARY L. HILL
 Nisbet, Pa.
Social Studies, English

Lambda Alpha Lambda, Vice President,
 3, President, 4; Rho Omega Lambda,
 Chaplain, 4; Vice President Day
 Room Women's Student Council, 4;
 Y. W. C. A., 1, 2; Marionettes, 3, 4.



HELEN KRAPE
 Renovo, Pa.
English, History
 Rho Omega Lambda.

MINNIE S. HOBERMAN
 Lock Haven, Pa.
Elementary
 Education Club; Alpha Chi Delta.



CAROLYN LAYE
 Lock Haven, Pa.
English, Latin
 Lambda Alpha Lambda, 1, 2, 3, 4.

MYRNA ELVA LUNDY

Montoursville, Pa.

Mathematics, Science

Times Staff, 1, 2; Women's Student Council, Treasurer, 3, Vice President, 4; Dramatic Club, 3, 4; Y. W. C. A., 1, 2, 3; Naturalist Club, 1, 2, 3, 4; Student Librarian, 2, 3, 4; "The Ghost Train".



MIRIAM MOORE

Mill Hall, Pa.

Intermediate

MARTHA K. McDOWELL

Williamson, Pa.

Kindergarten

Rho Omega Lambda, Treasurer, 4; Y. W. C. A.; A. C. E.



ALLEN G. NELSON

Ludlow, Pa.

Science, Social Studies

Y. M. C. A., Treasurer, 3, Financial Chairman, 4.

KATHRYN MALONEY

Coalport, Pa.

Mathematics, French

Alpha Chi Delta; Bel Canto.



SHIRLEY NULL

Williamsport, Pa.

Mathematics, Science

Vice President, Lambda Alpha Lambda, 2; Art Club, 1, 2; Y. W. C. A.

JOHN MARSHALL

Lock Haven, Pa.

Social Studies, English

Y. M. C. A., 1, 2, 3, 4; Vice Chairman Student Co-operative Council, 4; Vice Chairman Co-operative Store Council, 4; Class President, 4.



EILEEN PERRY

Renovo, Pa.

French, English

President, Alpha Chi Delta, 2, 3.

REYNOLD I. MARTZ

Loganton, Pa.

Science, Social Studies



JAMES W. PLETCHER

Lock Haven, Pa.

Social Studies, English

ELIZABETH MILLER

Flemington, Pa.

Special Kindergarten

Dramatic Club; Alpha Chi Delta; A. C. E.; Marionette Club; Shakespeare Literary Society; "Old Days in Dixie".



RAYMOND I. POOLE

Clearfield, Pa.

Social Science, Geography

Football Letter, 1, 2, 3, 4; Varsity Club, 3, 4; Student Activity Club, 3; Boxing and Track; Basketball.

HELEN G. MYERS

Lock Haven, Pa.

Mathematics, Social Studies

President, Lambda Alpha Lambda, 3; Rho Omega Lambda; Inter-Sorority Council, 3, President; Treasurer W. A. A., 3; "The Ivory Door"; "Merchant of Venice".



MARGARET E. POTTER

Holidaysburg, Pa.

Kindergarten

Art Club; Y. W. C. A.; A. C. E.; Vesper Choir.

PRAECO

FLORENCE R. PRIDDEY
Pittsburgh, Pa.

Kindergarten-Primary
Vice President, Alpha Sigma Tau, 3; Y. W. C. A.; A. C. E.



RUTH V. SHERMAN
Grassflat, Pa.

Mathematics, Social Science
Class Treasurer, 4; PRAECO Staff, 4; Beta Sigma Chi; Women's Student Council, 1, President, 2; Education Club, President, 4; W. A. A., 1, 2; Y. W. C. A., Vice President, 2; Naturalist Club, Vice President, 4.

ETHEL M. QUIGG
Johnsonburg, Pa.

Kindergarten-Primary
PRAECO Staff, 2, 3, 4; Times Staff, 2, 3, 4; Y. W. C. A., 1, 2, 3; Shakespeare Literary Society, Secretary, 4; A. C. E., 4.



GEORGE W. SHIVELY
Clearfield, Pa.

Social Studies, Geography
Class Vice President, 4; Varsity Football, 1, 2, 3, 4; Track, 2, 3, 4; Men's Student Council, Vice President, 3; Varsity Club, Vice President, 4; Y. M. C. A.; Naturalist Club, Vice President, 4.

EUGENE E. REIGHARD
Jersey Shore, Pa.

Social Sciences, Geography
Football Manager, 2, 3, 4; Basketball Manager, 2, Varsity, 4; Delta Rho Beta, President, 4, Secretary, 2, 3; Varsity Club, 3, 4, Treasurer, 4; Baseball; Basketball.



LADÉAN SHIREY
Woodland, Pa.

English, Mathematics
Art Club; W. A. A.; Girls' Glee Club, 3.

HARRIS W. REYNOLDS
Lock Haven, Pa.

Mathematics, Science
Delta Rho Beta; Varsity Club; Varsity Football, 3, 4; Boxing; Baseball.



DEAN E. SHROAT
Lock Haven, Pa.

Mathematics, English
Class President, 1, 2; Delta Rho Beta, 2, 3, 4; Dramatic Club, Vice President, 4; Y. M. C. A.; "Merchant of Venice"; "Orange Blossoms"; "For Goodness Sake".

H. WALTER RORABAUGH
Jersey Shore, Pa.

Mathematics, Science
Varsity Football, 1, 2; Basketball, 2; PRAECO Staff, 4; Delta Rho Beta, Treasurer, 2, Vice President, 3; Varsity Club, 3, 4; Y. M. C. A., 1.



CAROLINE I. SHULTZ
Williamsport, Pa.

Kindergarten-Primary
Alpha Sigma Tau, Vice President, 3, President, 4; Inter-Sorority Council, President, 4; W. A. A.; Y. W. C. A.

MARY FRANCES SHARP
Lock Haven, Pa.

Alpha Sigma Tau; A. C. E., Treasurer, 4; Bel Canto, 3, 4; President, Day Room, Y. W. C. A., 2; Shakespeare Literary Society; Inter-Sorority Council, 3; Times Staff, Associate Editor; President, Day Room Women's Student Council, 3.



DALE M. SMITH
Watrous, Pa.

Mathematics, Social Studies
Men's Student Council, Vice President, 4; Dramatic Club; Art Club; Y. M. C. A.; Basketball; Football; Boxing.

RUDOLPH E. SHEARER
Renovo, Pa.

Social Studies, Geography
Delta Rho Beta; Y. M. C. A.; Band, 4; Orchestra, 1, 2, 3, 4; Basketball.



TOM F. SMITH
Jersey Shore, Pa.

Science, Social Science
Class Treasurer, 2; Vice President, 3; PRAECO Staff, 1, 2, 3, Editor-in-Chief, 4; Delta Rho Beta; Student Activity Club, 3; Boys' Glee Club, 1, 2, 3; Mixed Chorus, 3, 4; Y. M. C. A., 1, 2, 3; Honorary Naturalist, 4.

ANNE M. SOKOL
Millsboro, Pa.
English, History



LAURA SWINGLE
Waymart, Pa.
Kindergarten

Class Secretary, 3; Beta Sigma Chi; Y. W. C. A.; A. C. E.

S. RUTH SPONSLER
Williamsport, Pa.
Kindergarten-Primary

Class Secretary, 4; Vice President of Lambda Alpha Lambda, 3, 4; W. A. A.; Bel Canto; A. C. E.



GRACE THOMPSON
Sheakleyville, Pa.
Kindergarten

Times Staff, 3, 4; W. A. A., 4, President; Women's Student Council, 3; Y. W. C. A. Cabinet, 4; A. C. E., Secretary, 4; Naturalist Club; College Mixed Chorus, 4; Choir; Glee Club, 3.

DOROTHEA STITT
Kindergarten

Class Treasurer, 3; Social Secretary, Rho Omega Lambda, 4; Treasurer, Inter-Sorority Council, 4; Treasurer, Art Club, 2; Y. W. C. A. Cabinet, 2, 3; Marionettes, 3, 4.



MILLARD F. WEBER
Myerstown, Pa.
Geography, Social Studies

Football, 1, 2, 3; Basketball Letter, 1, 2, 3, 4; Dramatic Club, 2, 3, 4; Varsity Club, 3, 4; Y. M. C. A., 1, 2, 3, 4; "Merchant of Venice"; "Count and Co-ed"; "Pepita"; "Ivory Door"; "Orange Blossoms"; "For Goodness Sake".



CHARLES WEPSIC
Central City, Pa.
Science, Mathematics

Varsity Football, 1, 2, 3, 4.

Senior
Lettermen



"RUSS" BURD
Football 1, 2, 3, 4; Co-Captain
3; Track 3.



"CHRISTY" HAMMAKER
Football 1, 2, 3, 4; Co-Captain
4; Basketball 1, 2, 3, 4, Cap-
tain 4.



"ED" DETERY
Football 1, 2, 3, 4, Captain 2.



"KEN" HART
Football 1, 2, 3, 4.



GEORGE SHIVELY
Football 1, 2, 3, 4; Track 3.



CHARLES WEPSIC
Football 1, 2, 3, 4.

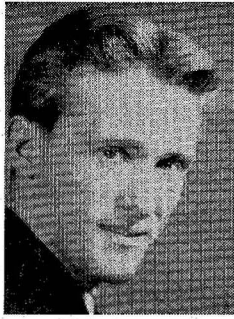


"CHARLIE" BAKER
Football 1, 2, 3, 4.

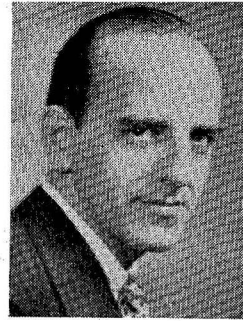


"RAY" POOLE
Football 1, 2, 3, 4.

Senior
Lettermen



"CAL" COOK
Basketball, 1, 2, 3, 4, Cap-
tain 2.



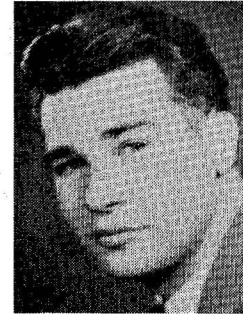
"DUCKY" RORABAUGH
Football 1, 2.



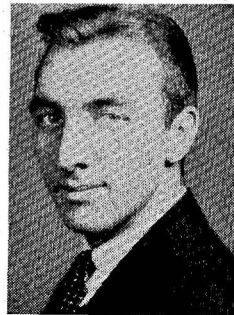
"BARON" REYNOLDS
Football 2, 3, 4.



MAX COOK
Football, Manager 1, 2.



"GENE" REIGHARD
Football, Manager 3, 4.



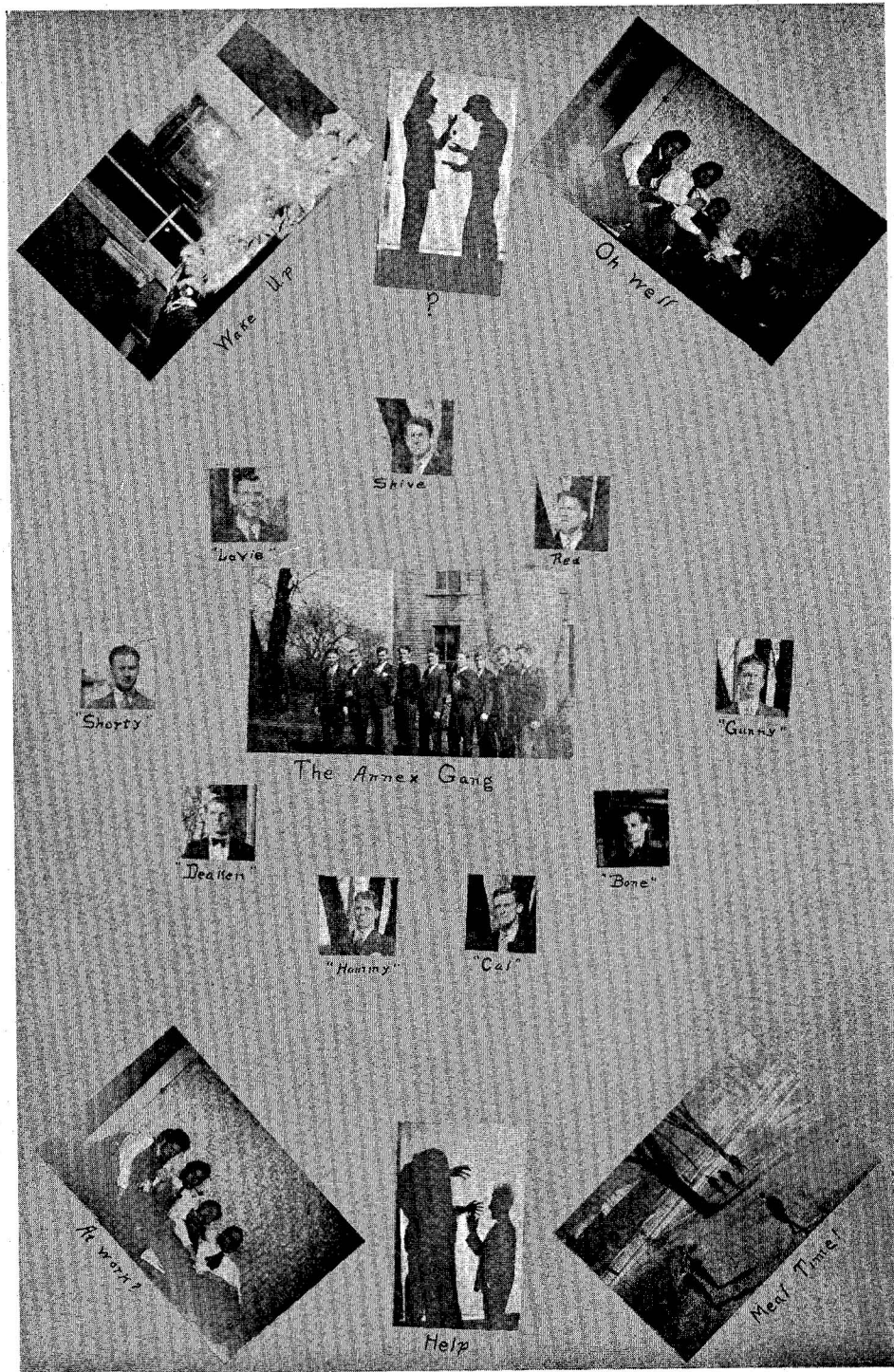
MILLARD WEBER
Basketball 1, 2, 3, 4.



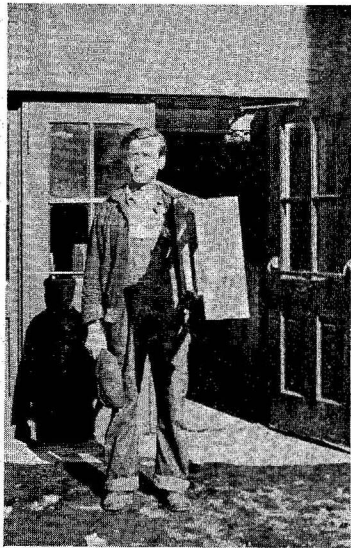
WAYNE HOY
Track 3, 4.



ERNEST GILLILAND
Basketball, Manager 4.



WHO, WHAT, WHEN AND WHY?



"SM"



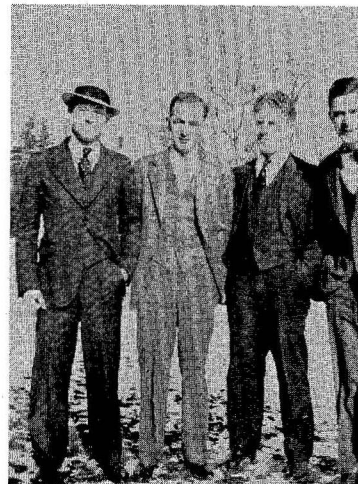
"CUSTOMER"



CHEER LEADER



HEAVYWEIGHTS



"SHIVE" "NELSON" "HAMMY" "BAKER"

PRAECO



"GRACIE" "KAY"



"HAMMY"



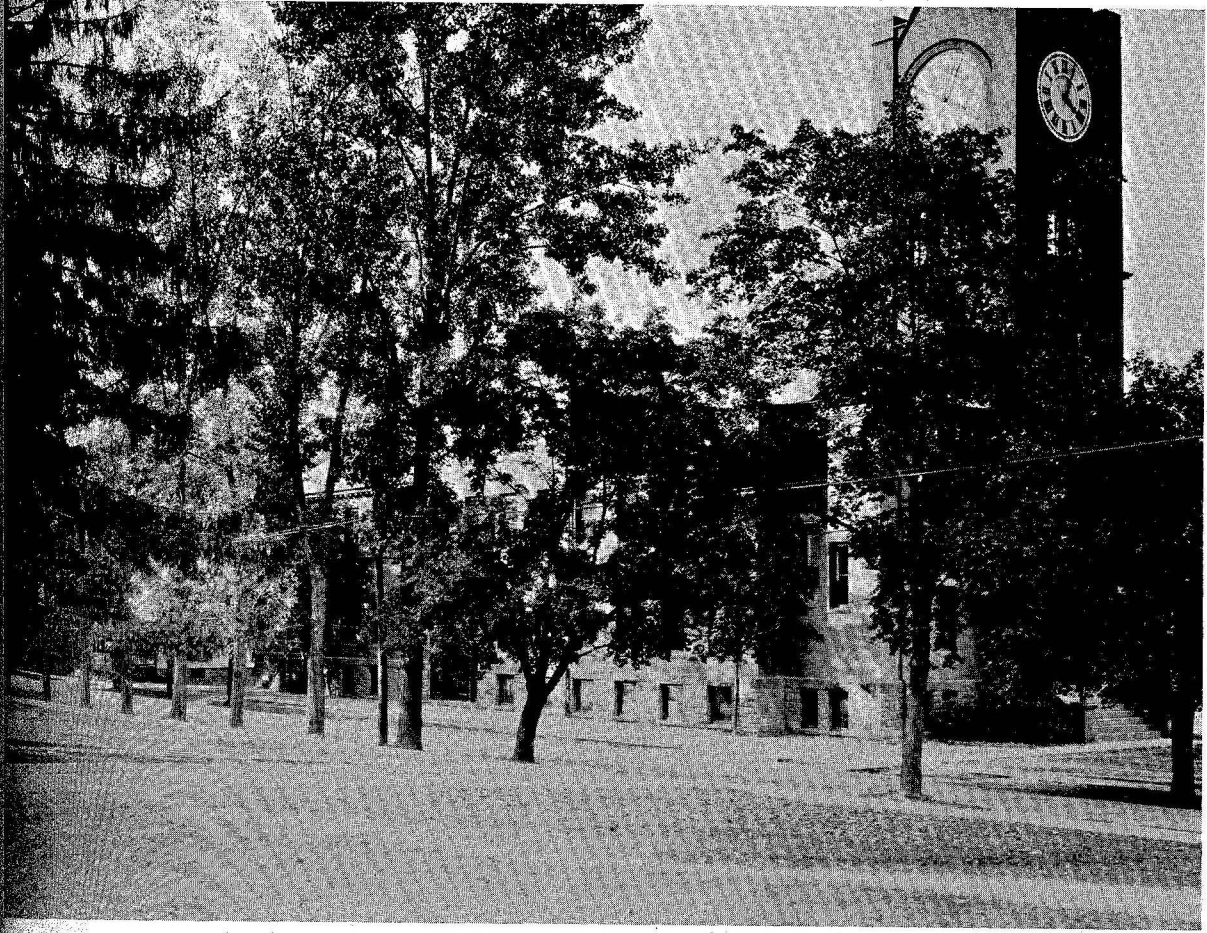
RUTH ?



FOUR YEARS OF THIS



AFTER FOUR YEARS—THIS



JUNIORS



PRAECO

Jennie Cunningham

Doris Catterson

Clarence Eld

Jerome Haagen

Marian McCloskey



Ronald E. Aldrich
Beatrice Berg
Robert E. Breth
Wanda R. Brown
Elvera M. Bruce
Maude O. Brungard

Jack Bryerton
Trafton T. Buchanan
Mabel U. Burd
Myra R. Burd
James Burkhart
Marjorie Deise

Marjorie Dice
Wilmer V. Dressler
Glen V. Dunlap
Madelyn Faulkner
Aldine E. Glossner
Rovena Goodman

Calvin L. Hamberger
Joseph D. Harvey
Astrid E. Hauge
Pearl E. Heiges
Florence M. Hunt
Robert S. Hunter



Sarah Mapes
Madelyn McGough
Sara Quigley
Earl Schnars
Thomas Wilt

Clara Jenkins
Richard Kamp
Lewis Lucas
Paul Mills
Sara Moran
George Moon

Etta Moreland
Ray Oberheim
Catherine Pipes
Earleen Potter
Olive Quiggle
Edward Rader

Richard Rathgarber
Frederick Rinn
Elwood Rohrbaugh
Ellen Rook
Jean Smith
Henry Stehman

Elva Tharp
Clarissa Wainger
Naomi Wentz
Walter Wilkinson
Anthony Yost

PRAECO



ELWOOD ROHRBAUGH
President



LEON V. BARR
Vice President



ISABEL WELCH
Secretary



CALVIN HAMBURGER
Treasurer

Junior Class History

OFFICERS

ELWOOD ROHRBAUGH	- - - - -	President
LEON BARR	- - - - -	Vice President
ISABEL WELCH	- - - - -	Secretary
CALVIN HAMBURGER	- - - - -	Treasurer
J. F. STEMPLE	- - - - -	Faculty Adviser

Class Colors: Black and Silver

Class Flower: Lilac

CLASS MOTTO

What better comfort have we, or what profit in living
 Than to feed, sobered by the truth of nature,
 Awhile upon her bounty and her beauty,
 And hand her torch of gladness to the ages following after?

THE fall of the year 1931 saw a new class starting through L. H. S. T. C. The first year was mostly one of adjustment to our new environment. We originated the custom of a Freshman Dance when we held a spring sport dance which was declared a great success by all.

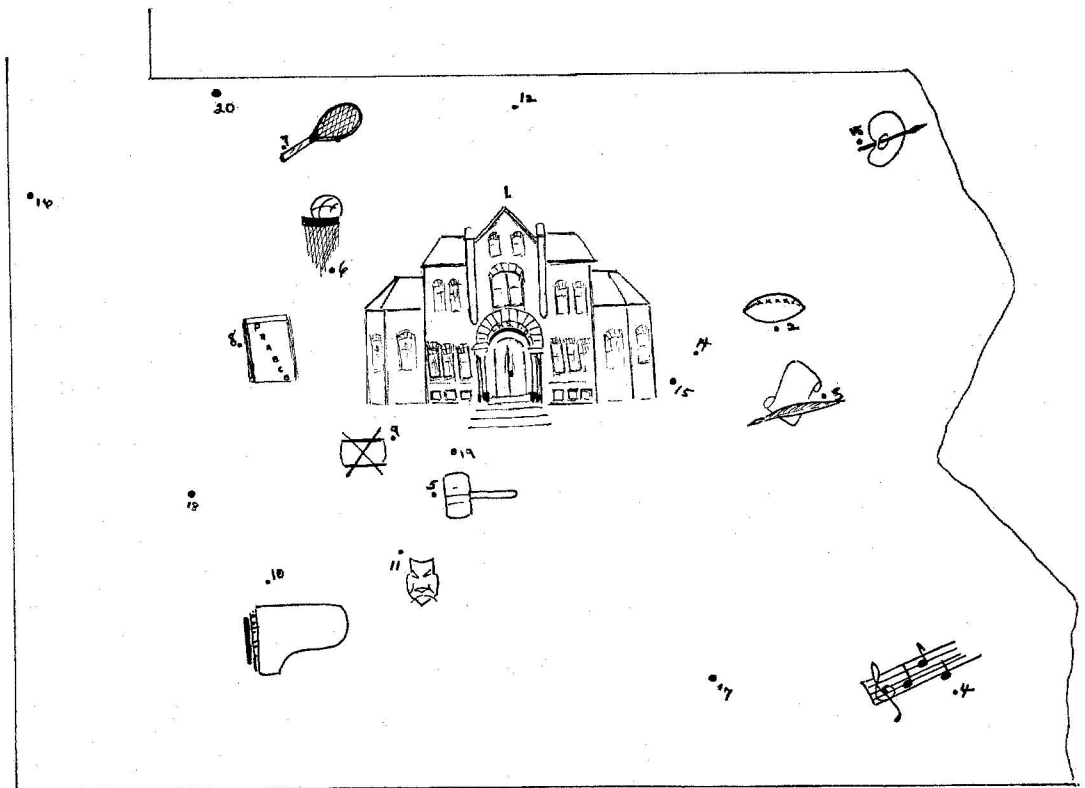
The Sophomore year saw us putting out a monthly paper of our own called "*Sophomore Scraps*" and we must not forget the Sophomore Dance which we held as an Inaugural Ball on March 4, 1933, in honor of President Franklin D. Roosevelt.

Now at the Junior and present year of our stay at L. H. S. T. C. the various members of the class are well represented in all forms of athletics, in the numerous clubs, and in all other activities. The Junior Class has co-operated wholeheartedly with the rest of the school in making the new PRAECO Plan a success. As we reach the end of our Junior year thoughts of a Junior Prom arise. Plans for this dance are in the making. It will be held in the late spring.

With three years of work and enjoyment behind us, we look forward with great anticipation to our last year at L. H. S. T. C. and determine to make it the most outstanding year of our college life.

RONALD E. ALDRICH.

PRAECO



KEY

LOCK HAVEN—1

Florence Hunt
Naomi Wentz
Isabel Welch
Myra Burd
Mabel Burd
Madelyn Faulkner
Marjorie Deise
Olive Quiggle
Aldine Glossner
Marian McCloskey
Sara Moran
Catherine Pipes
Sarah Quigly
Betty Stevenson
Calvin Hamburger
Jack Bryerton
Richard Kamp
Edward Rader
Henry Stehman
Anthony Yost
Ray Oberheim

WILLIAMSPORT—2

Stewart Wilson*

MUNCY—3

Marjorie Dice*

WEISSPORT—4

Ellen Louise Rooke*

BEECH CREEK—5

Elwood Rohrbaugh*
Bob Hunter
Glen Dunlap

RENOVO—6

Trafton Buchanan*
Paul Mills
James Burkhart
Astrid Hauge
Leon Barr

PORT ALLEGHENY—7

Beatrice Berg*

SALONA—9

Maud Brungard*
Sara Mapes

JOHNSTOWN—10

Clarissa Wainger*
Earleen Potter

CENTER HALL—11

Walter Wilkinson*

WATROUS—12

Jean Smith

HONESDALE—13

Dinny Catterson*

JERSEY SHORE—14

Clara Jenkins

AVIS—15

Robert Breth

JAMESTOWN—16

Etta Moreland

LEMOYNE—17

Pearl Heiges

SOUTH FORK—18

Bertha Rolla

MILL HALL—19

George Moon

BRADFORD—20

Ronald Aldrich



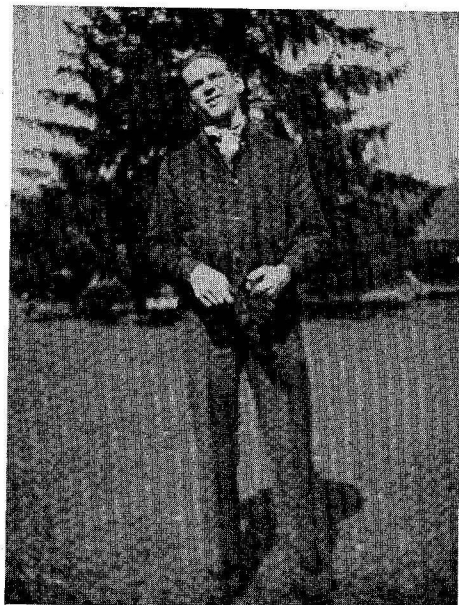
MARJORIE DEISE



WANDA BROWN

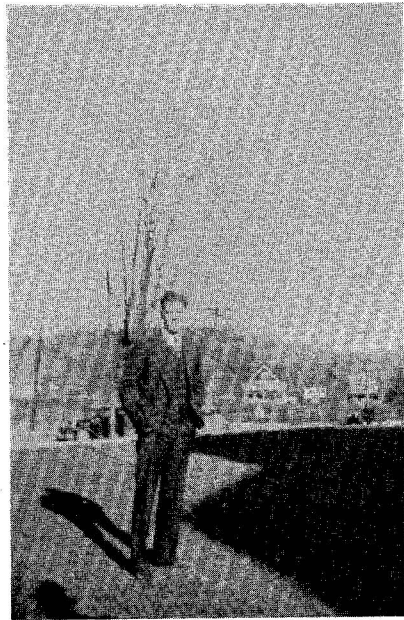


BERTHA ROLLA
BETTY STEVENSON

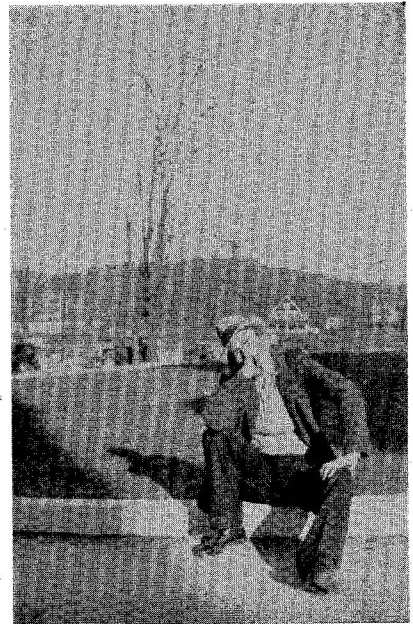


TRAFTON BUCHANAN

PRAECO



ELWOOD ROHRBAUGH



JACK BRYERTON



ETTA MORELAND
CLARA JENKINS
MARJORIE DICE



HENRY STEHMAN
MARY JANE HUTCHISON



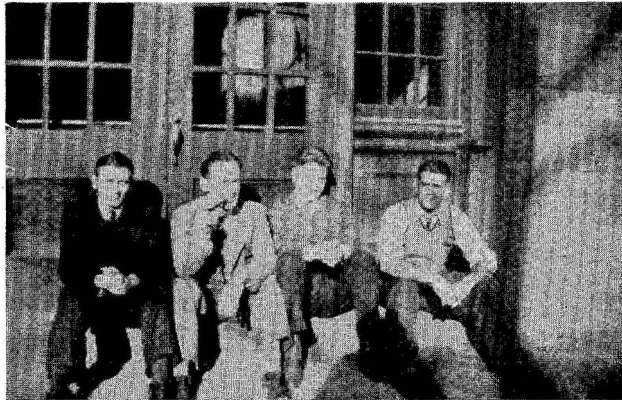
LEWIS LUCAS
BEATRICE BERG
CLARENCE ELD



RONALD ALDRICH



OLIVE QUIGGLE



GEORGE MOON
HENRY STEHMAN
FRED MCINTYRE
BOB HUNTER

PRAECO



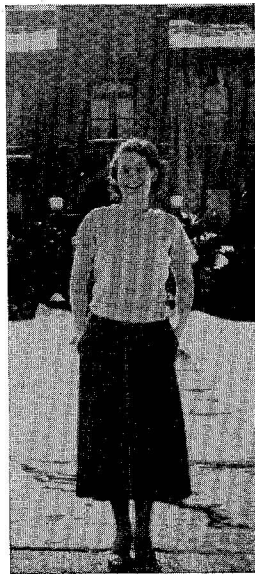
DORIS CATTERSON



JEAN SMITH



OUR "BURDS"



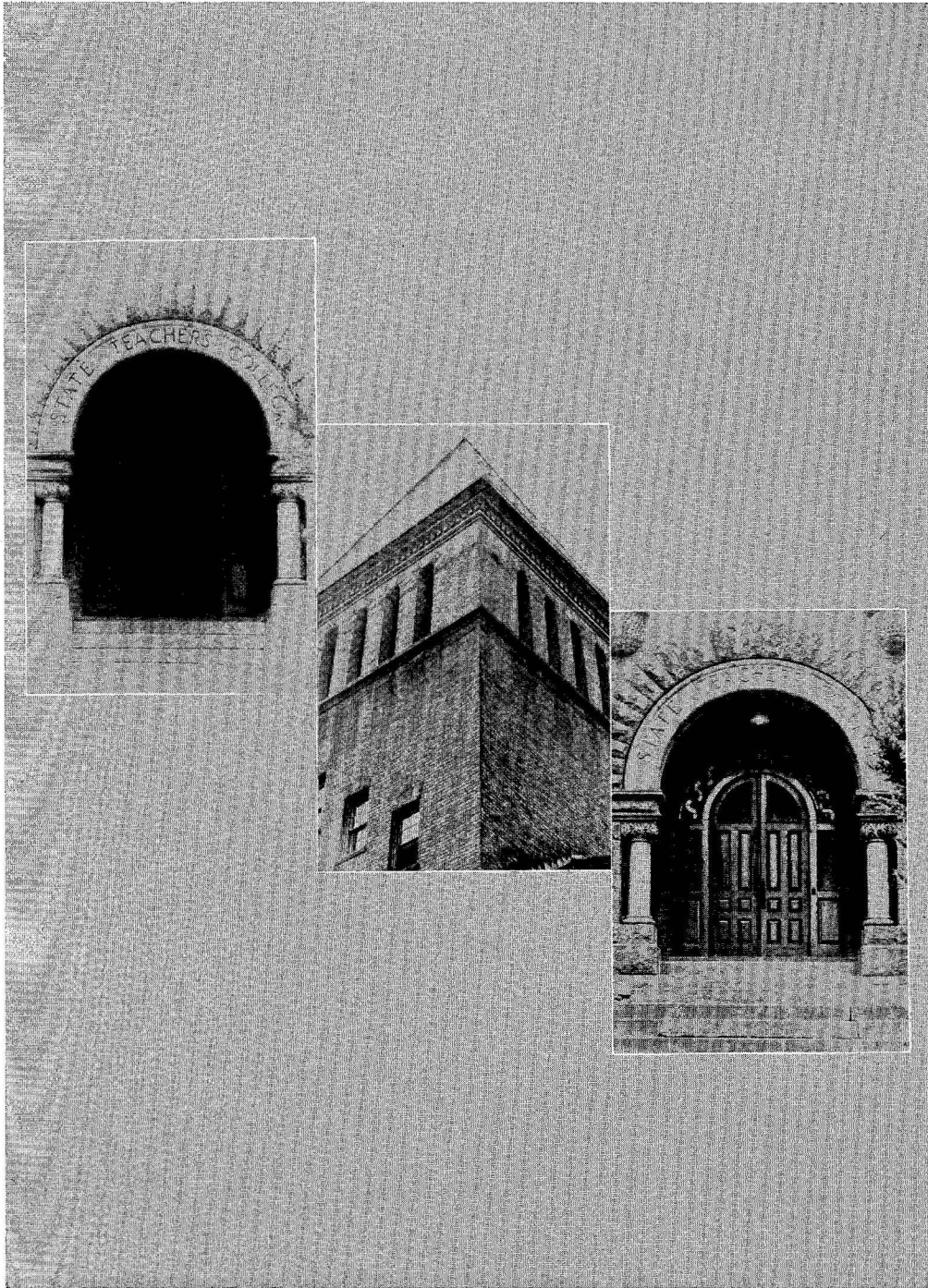
SARAH MORAN

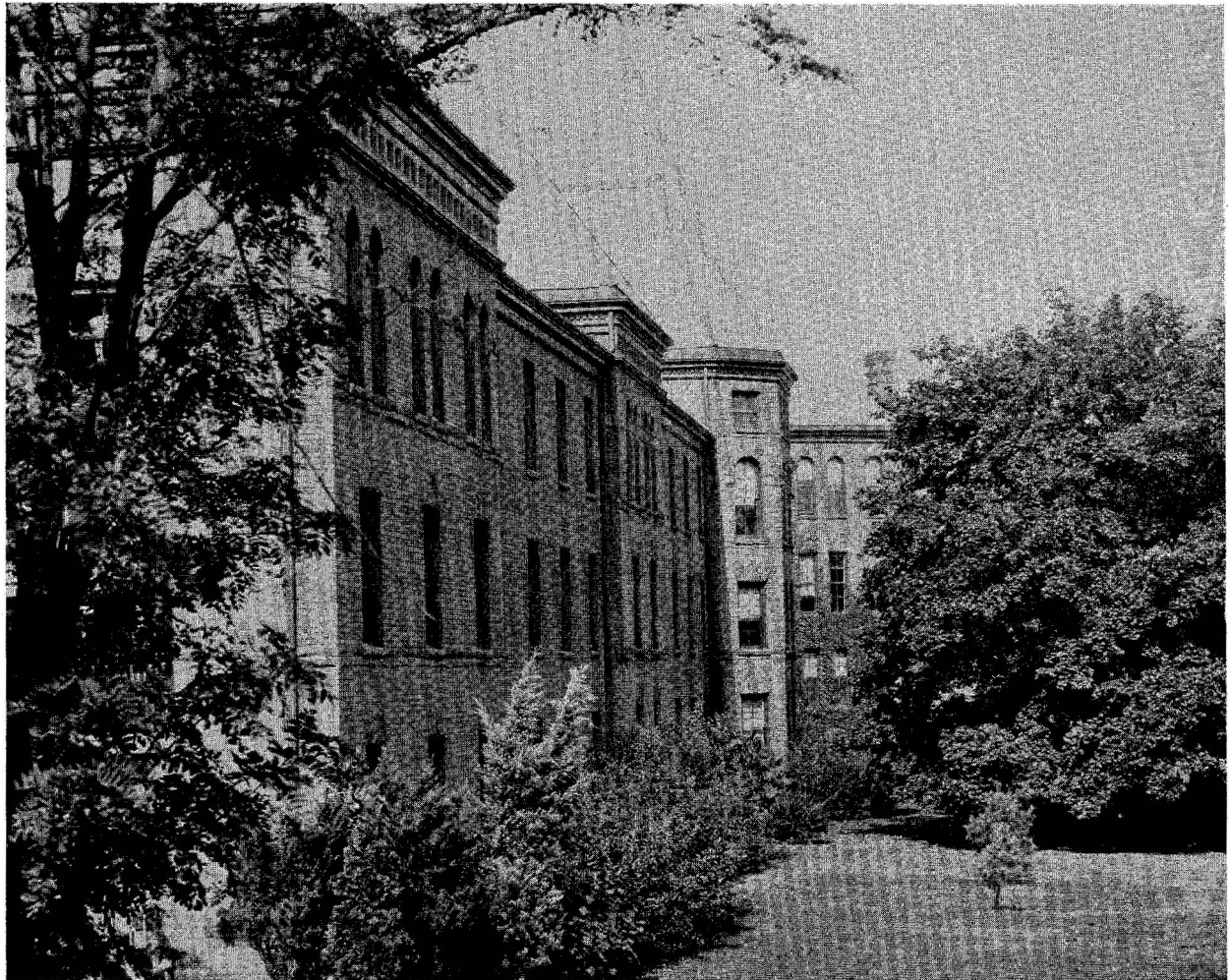


ELLEN LOUISE ROOKE

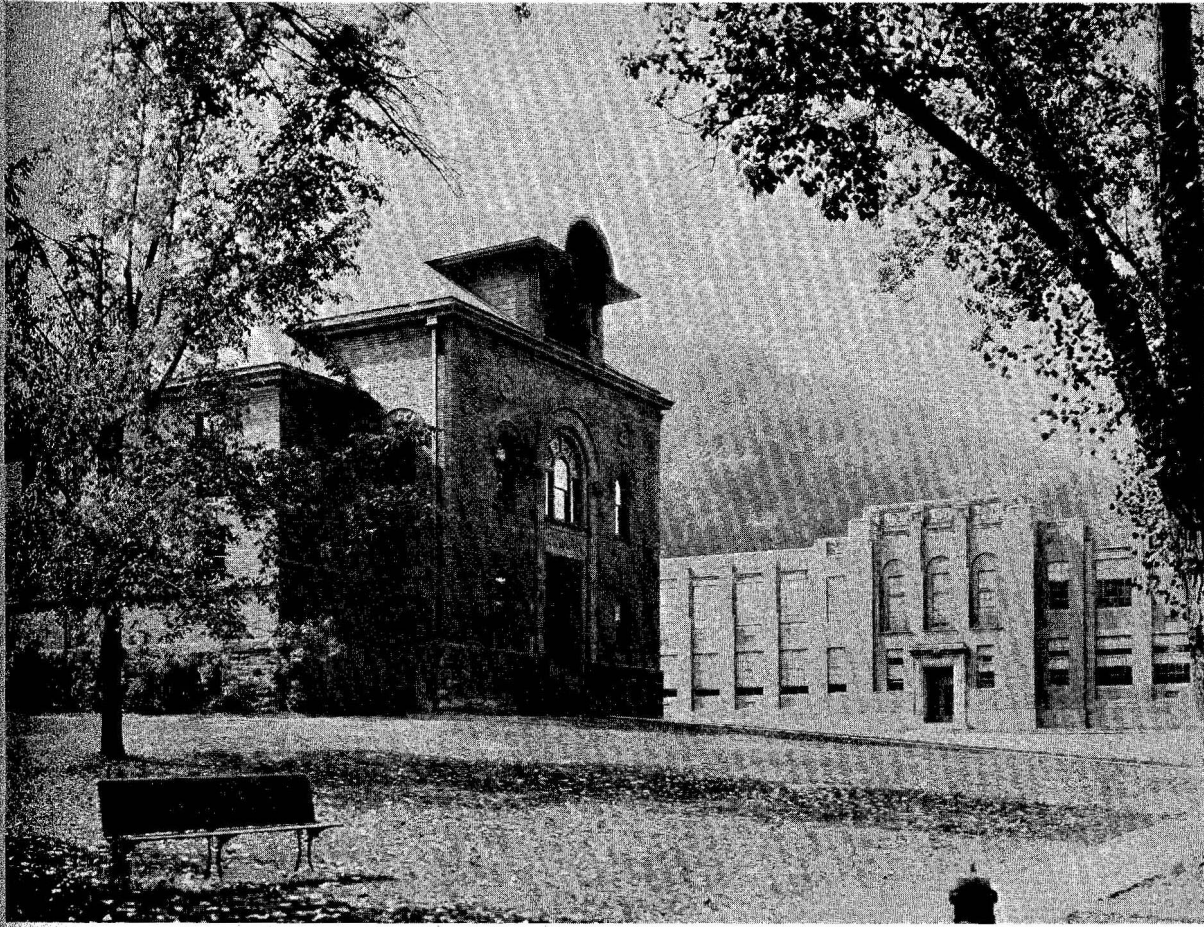


MADELINE FAULKNER

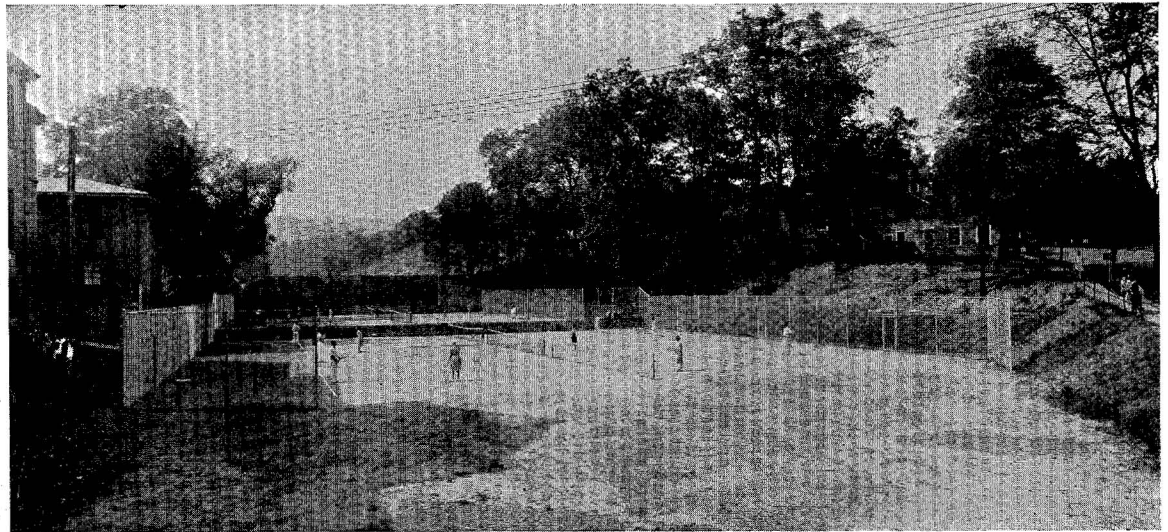




EAST DORM



SOPHOMORES



Sophomore Class Roll

G. Wilbur Anderson
William A. Anderson
John W. Barry
M. Isabel Bickel
William B. Bowes
Anna E. Browning
Ruth I. Burkett
Katherine L. Caprio
Martha R. Clark
Franklin T. Courter
Russell L. Courtney
Julia B. Cronister
Leonore G. Dick
Joseph S. Freedman
B. Marie Gehron
William T. Griffith
Margaret L. Harmon
Marian E. Harsh
S. Pierson Haussner
Katherine C. Kear

Edward J. P. Kimble
Nancy E. Kiser
Marian R. Klaer
Hannah H. Kline
Ethel E. Law
Maynard Lingenfelter
Robert T. Lowe
Martha S. McAllister
Donald E. McCloskey
Fred E. McEntire
Lucetta McKibben
William R. Mahaffey
Sara M. Moran
James A. Myers
Eugene V. Nuss
Marian E. Parsons
Evelyn A. Paul
Reuben Salada
Edna M. Smith

Belle Isle Stoner
Edna K. Sweinhart
Charles F. Thomas
Anna S. Trexler
Mary E. Ulmer
Howard B. Underwood
Leah A. Varner
W. Harter Vonada
Audery A. Walizer
Hilda E. Walizer
Margaret E. Wells
Margaret E. Williams
M. Evelyn Williams
M. Eugenia Williams
Rebecca S. Williams
Victor L. Williams
Anne Q. Wilson
Eleanor I. Wood
Robert D. Yearick
John F. Yon



NANCY KAISER

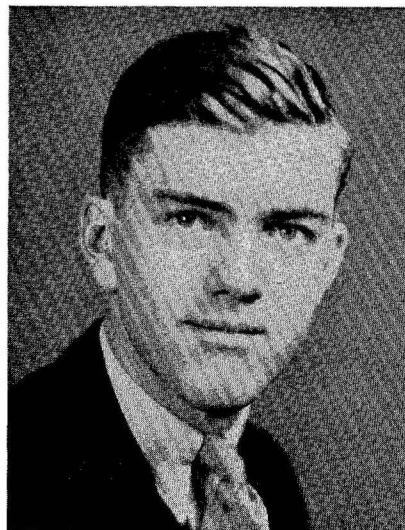


WILLIAM STATLER
President

CLASS
OFFICERS



ANNE WILSON



WILLIAM BOWES
Vice President

Sophomore Class History

Class Colors: Blue and Gold

Motto: Esse non videri

UNDER the capable leadership of its officers and its faculty adviser, Mr. Lehman, the Sophomore class this year chose its colors and motto. Members of the class have taken an active part in all of the activities of the campus, academic, athletic, and social. The captain-elect of the 1935 football team, Joe Shevock, is a member of the class.

The class dance was a very successful Sophomore Hop on March 10.

During the next two years the class plans to uphold the policies of the college and to take advantage of the opportunity to work and play together.

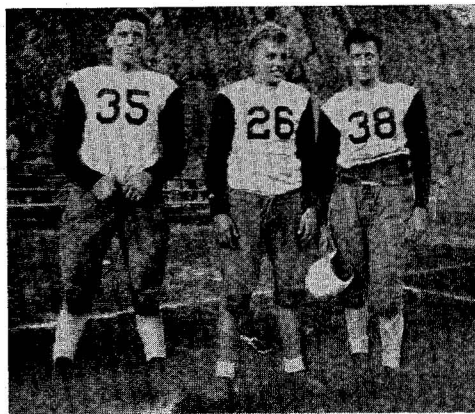
LUCETTA MCKIBBEN.



FROSH AT PLAY



TREX BERT PHYLLIS



AFTER THE GAME IS OVER



FROSH RULES



NOTICE THE WILD GAME

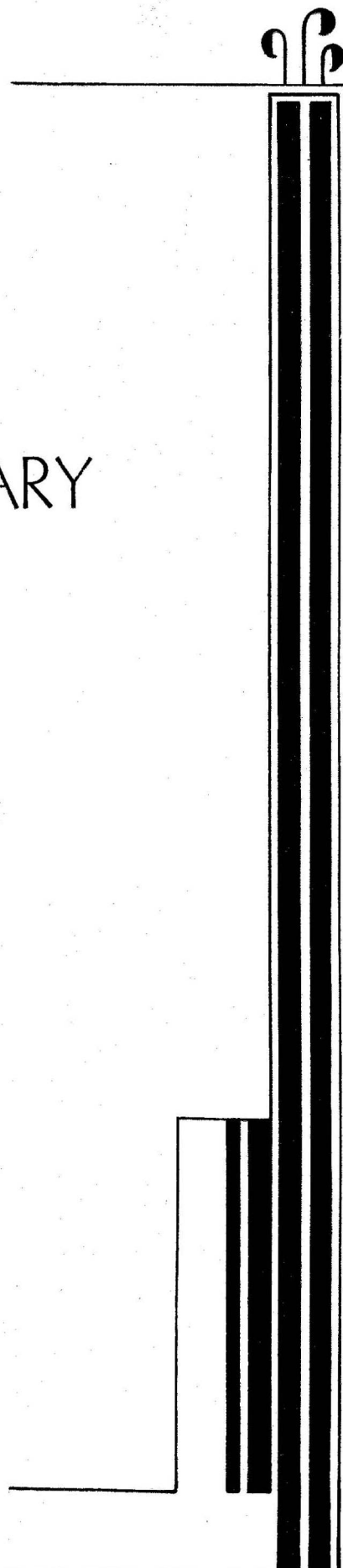
KINDERGARTEN-PRIMARY

+

INTERMEDIATE

+

TWO-YEAR CERTIFICATIONS



PRAECO

HELEN ARDERY
 Port Matilda, Pa.
Intermediate
 Vice President, W. A. A., 2.



DOROTHY M. BURKE
 Cassandra, Pa.
Intermediate
 W. A. A.; Y. W. C. A.

PAULINE H. BARKHUFF
 Lock Haven, Pa.
Kindergarten-Primary
 Alpha Sigma Tau, Custodian and Chaplain, 2; Naturalist Club; President A. C. E., 2.



LORRAINE BURNELL
 Lock Haven, Pa.
Kindergarten-Primary
 Bel Canto.

E. REBECCA BARROW
 Jersey Shore, Pa.
Kindergarten-Primary
 Lambda Alpha Lambda; Dramatic Club; W. A. A.; Beta Sigma Chi; A. C. E.



OLGA M. BADER
 Pottsville, Pa.
Kindergarten-Primary
 Times Staff; Beta Sigma Chi; Women's Student Council; Art Club; W. A. A.; A. C. E.; Shakespeare Literary Society; Naturalist Club; "Orange Blossoms".

HARRY WILLIAM BASSETT
 Johnstown, Pa.
Intermediate
 Y. M. C. A.; Basketball Manager, 1, 2.



KATHERINE L. CAPRIO
 Lock Haven, Pa.
Intermediate
 PRAECO Staff; Rho Omega Lambda, 1, 2; Day Room Women's Student Council, 2; Dramatic Club, 1, 2.

CORA BECK
 Renovo, Pa.
Intermediate



VIRGINIA CHEESMAN
 Williamsport, Pa.
Kindergarten-Primary
 Alpha Sigma Tau, 1, 2, President, 2; Art Club, 1, 2; W. A. A., 2; Y. W. C. A., 1, 2, Treasurer, 2; Glee Club, 1, 2, President, 2; Vesper Choir, 1; A. C. E., 1, 2; "East is West".

MADALINE BIERLY
 Nittany, Pa.
Intermediate
 W. A. A.



HELEN R. CLARKE
 Coalport, Pa.
Intermediate
 W. A. A.; Alpha Chi Delta.

JAMES BROOKS
 Allport, Pa.
Intermediate



ANNA MARGARET CORSON
 Hughesville, Pa.
Kindergarten-Primary
 Dramatic Club; W. A. A.; Y. W. C. A.; Orchestra; A. C. E.; "East is West".

HAZEL M. COTTER

New Sheffield, Pa.

Primary

W. A. A., 1, 2; Y. W. C. A., 1, 2; A. C. E., 1, 2.



CLARENCE N. CROW

Clintondale, Pa.

Intermediate

Band.



MICHAEL DANKO

Central City

Intermediate

Y. M. C. A., 1, 2, Secretary, 2; Shakespeare Literary Society, 1, 2, Sergeant-at-Arms, 1, Vice President, 2.



THEODORE DENSHAM

Morrisdale, Pa.

Intermediate

Football Letter, 1, 2; Varsity Club, 1, 2.



JACK L. DOUGHERTY

Jersey Shore, Pa.

Intermediate

Times Staff, 2; Y. M. C. A., 1, 2; Naturalist Club, 1, 2.



V. BERYL DEWALT

Montgomery, Pa.

Kindergarten-Primary

Beta Sigma Chi, 1, 2; Art Club, 1, 2; Y. W. C. A., 1; Glee Club, 1, Accompanist, 2; Assistant Director Band, 1; "Old Days in Dixie".



EDMUND DIEHL

Portage, Pa.

Intermediate

Y. M. C. A.



MARY DREIBELBIS

Millersburg, Pa.

Kindergarten-Primary

Dramatic Club; Art Club; Glee Club; W. A. A.; Y. W. C. A.; A. C. E.

MARGARET DUNKELBERGER

Middleburg, Pa.

Kindergarten-Primary

Y. W. C. A.

HELEN EARON

Lock Haven, Pa.

Kindergarten-Primary

Y. W. C. A.; Alpha Chi Delta.

CHARLES EYER

Penna. Furnace, Pa.

Intermediate

Track Letter, 1; Y. M. C. A.; Shakespeare Literary Society, Treasurer, 2.

VIRGINIA FERGUSON

Bridgeville, Pa.

Kindergarten-Primary

Lambda Alpha Lambda; A. C. E.; Glee Club.

HELEN M. FETZER

Avis, Pa.

Kindergarten-Primary

Dayroom Women's Student Council, 1; Vice President, Day Room Y. W. C. A.; Alpha Chi Delta, Treasurer, 2.

MILDRED V. M. FRY

Driftwood, Pa.

Kindergarten-Primary

Glee Club; A. C. E.

PRAECO

LEAH GILLILAND
Clearfield, Pa.
Kindergarten-Primary
Y. W. C. A.



MARY E. HERROLD
Williamsport, Pa.
Intermediate

BETTY GLAZERT
Johnsonburg, Pa.
Intermediate
Times Staff, Editor-in-Chief Second Semester, 2; Beta Sigma Chi; Art Club; W. A. A.; Naturalist Club; Glee Club; Y. W. C. A. Cabinet, Secretary, 2; Shakespeare Literary Society.



MARY K. HOLBROOK
Jersey Shore, Pa.
Kindergarten-Primary
W. A. A., 1, 2; A. C. E., 1, 2; Alpha Sigma Tau, 1, 2; Dramatic Club, 1, 2.

BERNADYN GONSMAN
Cresson, Pa.
Intermediate
W. A. A.; Y. W. C. A.



LOUISE K. IRWIN
Williamsport, Pa.
Kindergarten-Primary
W. A. A., 2; Y. W. C. A., 2.

MARIE GRIECO
Lock Haven, Pa.
Intermediate
W. A. A., 1.



ESTELLA A. KASKINSKY
Wyoming, Pa.
Intermediate
W. A. A., 1, 2; Y. W. C. A., 1, 2; Orchestra; Cheer Leader, 1.

MARY L. GROVE
Stewartstown, Pa.
Intermediate
Y. W. C. A.



KATHERINE M. KEENER
Emaus, Pa.
Kindergarten-Primary
Glee Club; A. C. E.; Alpha Sigma Tau, Historian, 1; W. A. A.; Y. W. C. A.

JEAN HARRINGER
Johnsonburg, Pa.
Intermediate
Art Club; W. A. A.; Y. W. C. A.



PAULINE C. KEHRER
Montoursville, Pa.
Kindergarten-Primary
A. C. E.; Y. W. C. A.

KATHRYN S. HENCH
Loysville, Pa.
Kindergarten-Primary
W. A. A., Secretary, 2; Naturalist Club; A. C. E.; Y. W. C. A.



LOUISE KELLY
Curwensville, Pa.
Kindergarten-Primary
A. C. E.; W. A. A.; Y. W. C. A.; Education Club; Bel Canto; Varsity Volleyball.

HELEN ARDEN KNAPP

Holsopple, Pa.

Intermediate

Shakespeare Literary Society; W. A. A.; Y. W. C. A.; *Times Staff*, 1.



HELEN D. LESKO

Portage, Pa.

Intermediate

W. A. A., 1, 2; Y. W. C. A., 1, 2.

ELSIE KOLTER

Ambridge, Pa.

Intermediate

Bel Canto, 1; W. A. A.; Girls' Honorary Basketball Team, 1; Y. W. C. A.



BERNICE LIMBERT

Rebersburg, Pa.

Intermediate

W. A. A.

MARGARET KYLER

Johnstown, Pa.

Intermediate

PRAECO Staff; Y. W. C. A.; Lambda Alpha Lambda; Rho Omega Lambda; Dramatic Club.



HARRY LINGLE

Beech Creek, Pa.

Intermediate

Delta Rho Beta; Band.

LUCILLE J. LAUB

Northampton, Pa.

Kindergarten-Primary

A. C. E.; Y. W. C. A.



SARA LONG

Curwensville, Pa.

Kindergarten-Primary

A. C. E.; W. A. A.; Y. W. C. A.

FRANCES LAUDERBACH

Jersey Shore, Pa.

Kindergarten-Primary

A. C. E.



DOROTHY LYONS

Tremont, Pa.

Primary

A. C. E.; W. A. A.; Y. W. C. A.

NANCY L. LAWTHER

Boswell, Pa.

Kindergarten-Primary

Bel Canto; A. C. E.; W. A. A.; Y. W. C. A.



MARIAN J. MacDONALD

Johnsonburg, Pa.

Kindergarten-Primary

A. C. E.; W. A. A.; Y. W. C. A.; Bel Canto.

RUTH LEINBACH

Vicksburg, Pa.

Intermediate

W. A. A.



PEARLE McCLOSKEY

Millheim, Pa.

Intermediate

W. A. A.

PRAECO

PAULINE McDERMOTT

Portage, Pa.

Intermediate

"East is West"; W. A. A.; Y. W. C. A.



WILLIAM OLIVER MURPHY

Eldred, Pa.

Intermediate

Naturalist Club, 1, 2; Glee Club, 1, 2;
Y. M. C. A.; Track, 1; *Times* Staff,
1, 2.

PERRY MANN

Beech Creek, Pa.

Intermediate

Dramatic Club; Delta Rho Beta.



HAROLD NEFF

Richfield, Pa.

Intermediate

Y. M. C. A.

EDWARD A. MARINCE

Morrisdale, Pa.

Intermediate

Art Club; *Times* Staff; Y. M. C. A.;
Basketball.



ANNA MARIE NIEBAUER

Flinton, Pa.

Intermediate

W. A. A.; Y. W. C. A.

LAURA MARIE MATHIAS

West Newton, Pa.

Kindergarten-Primary

Art Club, 1, 2; Vesper Choir; Y. W.
C. A., 1, 2; A. C. E., 1, 2.



RALPH G. OPPEL

Mt. Union, Pa.

Intermediate

Cheer Leader, 1, 2; Men's Glee Club;
Art Club, 1, 2; Wrestling, 1, 2; Y. M.
C. A., 1, 2, Cabinet Member.

F. PAUL MILLER

Rebersburg, Pa.

Intermediate

Assistant Manager Football, 2; *Times*
Staff, 2; Men's Glee Club, 1, 2; Y. M.
C. A., 1, 2; Mixed Chorus, 1.



MARJORIE OVERDORF

Rauchtown, Pa.

Intermediate

W. A. A.

RUTH MOON

Davidsville, Pa.

Kindergarten-Primary

W. A. A.; Y. W. C. A.



BETTY PAGE

Rebersburg, Pa.

Intermediate

W. A. A., 1, 2.

NELLIE MULLIN

Utahville, Pa.

Intermediate

W. A. A.



WALTER J. PALCISCO

Utahville, Pa.

Intermediate

Y. M. C. A., 1, 2; Men's Student Coun-
cil, 2.

AGNES PARISI
Weedville, Pa.
Kindergarten-Primary
W. A. A., 2; Y. W. C. A., 1, 2.



LOIS PEPPERMAN
Williamsport, Pa.
Intermediate
Art Club; W. A. A.; Y. W. C. A.;
Inter-Sorority Council, Secretary, 2;
Beta Sigma Chi.



ANN C. PETERSON
Warren, Pa.
Kindergarten-Primary
Shakespeare Literary Society; A. C. E.;
W. A. A.; Y. W. C. A.; Art Club;
Naturalist Club.



JENNIE PHILLIPS
Dalmatia, Pa.
Intermediate
Glee Club; W. A. A.; Y. W. C. A.



L. WINIFRED PHILLIPS
Dalmatia, Pa.
Kindergarten-Primary
Glee Club; W. A. A.; Y. W. C. A.



AGNES PIATAK
Portage, Pa.
Primary
W. A. A.; Y. W. C. A.



SAM PLUMMER
Sidman, Pa.
Intermediate
Education Club; Y. M. C. A.



EMILY PRITCHARD
Phillipsburg, Pa.
Intermediate
Glee Club, 1; W. A. A., 1, 2; Y. W. C.
A., 1, 2.

ISABEL REESE
Karthaus, Pa.
Intermediate

KATHRYN RHOADS
Stoyestown, Pa.
Intermediate
Dramatic Club; Naturalist Club; "East
is West".

MARY RICKER
Lock Haven, Pa.
Kindergarten-Primary
Alpha Chi Delta; W. A. A.

TRESSA RICKETTS
Coalport, Pa.
Intermediate
W. A. A.

LOUISE ROBERTSON
Intermediate

BERTHE ROLLA
South Fork, Pa.
Intermediate
W. A. A.; Y. W. C. A.

PRAECO

PAUL ROUSH
Mt. Pleasant Mills, Pa.
Intermediate
Y. M. C. A.



MARY E. SHOFF
Madera, Pa.
Intermediate
Bel Canto; W. A. A.; Y. W. C. A.

JEAN RYMER
Export, Pa.
Primary



A. ERDENE SHOPE
Altoona, Pa.
Kindergarten-Primary
A. C. E.; W. A. A.; Y. W. C. A.

MARGARET SAMSON
Dunmore, Pa.
Kindergarten-Primary
W. A. A.; Y. W. C. A.; Naturalist
Club; A. C. E.



MARY K. SHOWALTER
Martinsburg, Pa.
Kindergarten-Primary
Girls' Glee Club; A. C. E.; W. A. A.;
Y. W. C. A.

LEONA MAE SAXON
Ralston, Pa.
Kindergarten-Primary
W. A. A.; A. C. E.; Y. W. C. A.



JOHN A. SHRECKENGAST
Greenburr, Pa.
Intermediate
Delta Rho Beta.

HELEN SCOTLAND
Altoona, Pa.
Intermediate
W. A. A.



BEATRICE A. SLOAN
St. Petersburg, Pa.
Kindergarten-Primary
A. C. E.; Y. W. C. A.; W. A. A.

MARY ESTHER SCHAEFER
Williamsport, Pa.
Kindergarten-Primary
Education Club; Alpha Chi Delta.



CAROLYN SMITH
Williamsport, Pa.
Intermediate
Shakespeare Literary Society; Art
Club; Y. W. C. A.

JOE W. SHEVOCK
Portage, Pa.
Intermediate
Varsity Club; Football Letter, 1, 2;
Basketball Letter, 1, 2.



THELMA B. SOXMAN
Pitcairn, Pa.
Kindergarten-Primary
Glee Club, 2; A. C. E., 2; Y. W. C. A., 2.

WILLIAM STATLER

Central City, Pa.

Intermediate

Shakespeare Literary Society; Art Club, Vice President, 2; Student Activity Council, 2; PRAECO Staff, 2; Education Club; Men's Student Council, 1; Class President, 2; Y. M. C. A., Treasurer, 2.



RUTH WALTZ

Clintondale, Pa.

Intermediate

W. A. A.

BETTY J. STRAYER

Coalport, Pa.

Intermediate

W. A. A.



MARY ROBERTA WILLIAMS

Everett, Pa.

Kindergarten-Primary

Dramatic Club, 1, 2; Orchestra, 1; A. C. E., 1, 2; Y. W. C. A., 1, 2.

MARY JANE THIEL

St. Marys, Pa.

Intermediate



LOIS C. WOLFE

Schellsburg, Pa.

Kindergarten-Primary

Glee Club; A. C. E.; Lambda Alpha Lambda.

GWENDOLYN W. THOMPSON

Clearfield, Pa.

Intermediate

Beta Sigma Chi; W. A. A.; Inter-Sorority Council, 2; Dramatic Club; Glee Club; Art Club.



LULU JANE WOMELSDORF

Montoursville, Pa.

Kindergarten-Primary

Y. W. C. A.; A. C. E.

THELMA TROXELL

Portage, Pa.

Kindergarten-Primary

Art Club.



HAZEL YEARICK

Mill Hall, Pa.

Kindergarten-Primary

W. A. A., 2.

IVA MAE VAN SCOYOC

Tyrone, Pa.

Kindergarten-Primary

Y. W. C. A., 1, 2, Cabinet; Alpha Sigma Tau, 1, 2, Treasurer, 2; Women's Student Council, 1; A. C. E., 1, 2; Vesper Choir.



HELEN C. YOUNG

Sheffield, Pa.

Intermediate

MADELYN HAGGERTY

Intermediate

Y. W. C. A.; Orchestra.

PAULINE J. RUDDY

Scranton, Pa.

Intermediate

E. SWINEHART

Pottstown, Pa.

Kindergarten-Primary

M. WELLS

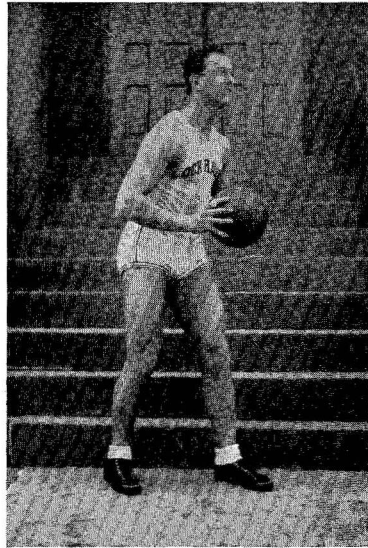
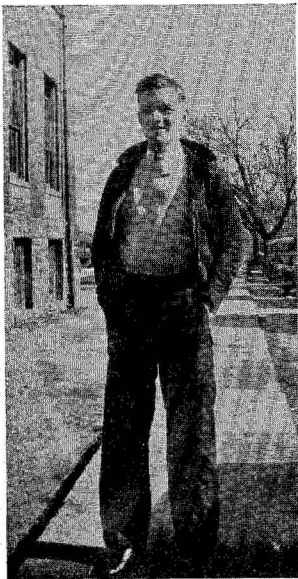
Pottstown, Pa.

Kindergarten-Primary

EDITH G. CLUGSTONE

Osceola Mills, Pa.

Intermediate



They Rule—What?

THE BILL'S OF THE SOPHOMORE CLASS



THE BELLES OF THE SOPHOMORE CLASS



WHO ?



THE SOPH D. R. B.

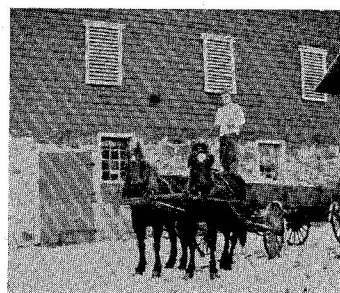
WHAT ?



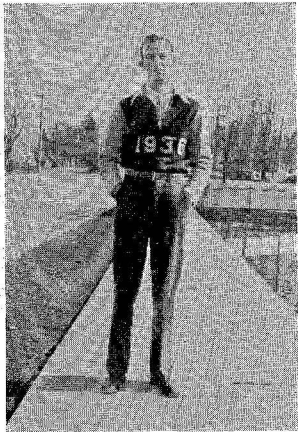
AND WHEN ?



THE SOPHOMORE DEB'S



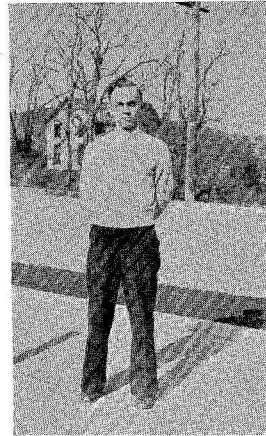
MURPHY



YES SIR ! It's Us



AGAIN



NICE—AND HOW



FLOWERS



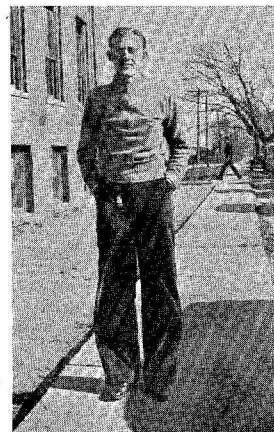
THIS IS THE WRONG DOOR !



AND HOW !!



BELIEVE IT OR —



HOW DID THIS HAPPEN ?



DERBY WEDDING



COME ON OUT AND PLAY!



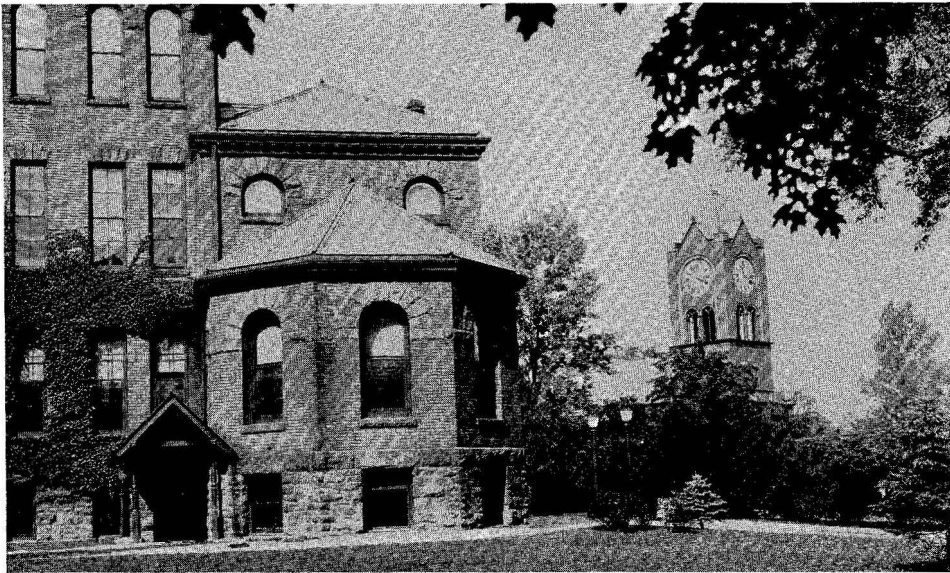
HART ENJOYS THE SNOW



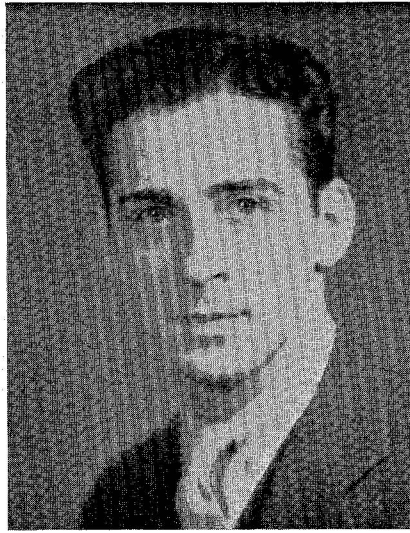
SEVEN GIRLS IN A ROW



FROM THE TOWER



FRESHMEN



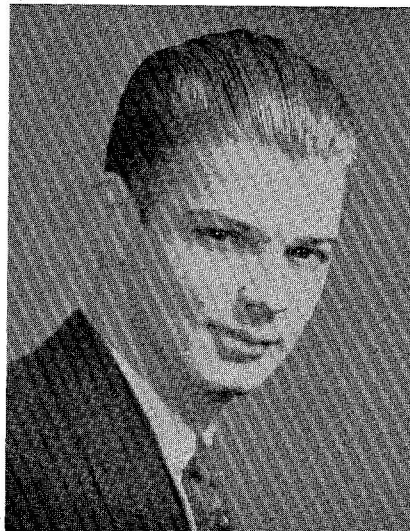
JOSEPH MILLER
President



LAWRENCE BECK
Vice President

CLASS OFFICERS

JOSEPH MILLER	- - - - -	<i>President</i>
LAWRENCE BECK	- - - - -	<i>Vice President</i>
DONALD W. FISHER	- - - - -	<i>Secretary</i>
FRANCIS C. MANEVAL	- - - - -	<i>Treasurer</i>



DONALD W. FISHER
Secretary



FRANCIS C. MANEVAL
Treasurer



FRESHMAN CLASS ROLL

William S. Abrams
 Alice M. Arnold
 Frank J. Barrett
 Lawrence Beck
 Norman E. Berry
 A. Isabel Bigelow
 Olive Bonham
 Esther Bowman
 Paul D. Breon
 Betty L. Bryerton
 Sara Ann Budinger
 Girard Caprio
 Leonard Caprio
 D. Wilson Clark
 Rebecca S. Confer
 Harold M. Corter
 Eleanor M. Cupp
 Evelyn M. Custer
 Rachel A. Danner
 Margaret C. Delaney
 Gretchen K. Dickey
 James R. Duff
 Arlene M. Dunkle
 Helen M. Edler
 Charles Emery
 Dorothy E. Fink
 Donald W. Fisher
 Kenneth D. Frantz
 Layah L. Fromm
 C. Robert Gallagher
 Permelia F. Garthoff
 Frank A. Geno

Anna K. Gilmartin
 H. Lucile Glossner
 Harry J. Guisuite
 Mary Gummo
 Ruth L. Graham
 Dorothy Hamberger
 Freda B. Hamner
 Evelyn E. Hanna
 Ellen C. Harding
 Anita E. Harner
 Ruth S. Harrier
 Katharine M. Harris
 Onetta R. Hartman
 Winifred S. Heim
 Romaine A. Herb
 Dorothy Hevner
 John E. Hill
 Blanche Hoberman
 William A. Hodrich
 Clee F. Howe
 Harold M. Hoy
 Marian Hudson
 Mary Jane Hutchison
 Fred B. Ingraham
 Leonard A. Johnsonis
 Emma G. Johnston
 Lee D. Kipp
 Jeanne H. Kopenhaver
 Frank M. Kotchin
 Leah H. Kraemer
 Esther M. Lakner
 Morrill H. Laubach

Emory H. Lee
 Harris Lipez
 Edna L. Livingston
 Gertrude L. Long
 Threse A. Long
 Wilma D. Losch
 John G. Lucas
 Francis C. Maneval
 Martha I. Mapes
 Pearl L. Mast
 Mary Louise Markle
 Lawrence M. McCarthy
 Arthur H. McCloskey
 Mary E. McCoy
 H. Louise McEntire
 Sarah Meyers
 Joseph Miller
 Catherine E. Moore
 Emma Carolyn Moore
 Jane Moran
 Wayne S. Myers
 Ferne M. Nedimyer
 Helen D. Noon
 Robert T. O'Gara
 Matilda M. Onachilla
 Jane Pray
 Kathryn Rauch
 Lillian A. Read
 Guy A. Richards
 Ruby G. Richards
 Mary Ann Roberts
 Margaret J. Rohrbaugh

Stanley J. Sady
 Phyllis L. Saxon
 Bertha M. Sharer
 M. Jean Sheasley
 Helen M. Sheridan
 Robert F. Sholly
 Pearl E. Singfield
 Hart Slater
 David L. Smith
 Kathryn L. Smith
 Elva M. Stiver
 Cornelius G. Sullivan
 Dorothy M. Swartz
 Mary Jane Tallhelm
 Marianna P. Tallman
 Frances Taylor
 Helen Louise Thomas
 Theda A. Trexel
 Althea J. Troxell
 Dorothy Jean Varner
 Margaret E. Walker
 Glenn D. Watt
 Stella R. Wenker
 Anna E. Wert
 Bethel J. Williams
 Gladys E. Williams
 May J. Williams
 Catherine C. Wittenmyer
 Marguerite Wiesner
 Eleanor M. Wolf
 Amy Zaner

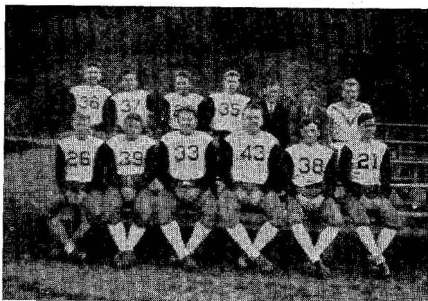
Freshman Class History

TO most of us Freshmen the first few weeks were the hardest and most bewildering. However, it did not take us long to become adjusted and soon with the aid and guidance of our faculty adviser, Mr. Ulmer, the class was well organized. Several social events served as milestones to mark our brief history, the most outstanding having been a class tea, and the Freshman dance. These social contacts were perhaps the greatest benefits that could be derived from college life for the overflow of personality is one of the most influential factors in molding character and in producing patterns for living.

We look forward to future years at Lock Haven trusting that we shall have many worthwhile experiences, and hoping that we shall find many openings and great opportunities.

LETTERMEN

- L. KIPP
- R. SHOLLY
- G. CAPRIO
- F. GENO



FRESHMAN FOOTBALL SQUAD

LETTERMEN

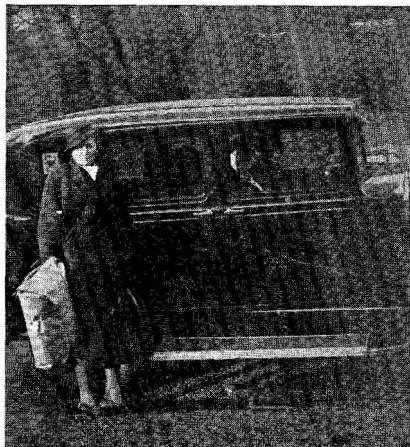
- L. JOHNSONIS
- J. MILLER
- W. HODRICK



WHO'S AFRAID ?



ON THE CAMPUS



WHEN THE FAMILY COMES !



BETWEEN CLASSES



GEOGRAPHICAL DISTRIBUTION OF THE CLASS OF 1937
 Massachusetts—1 Class Total—128

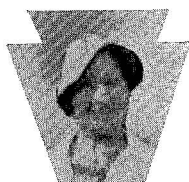
Freshman Impressions of Lock Haven



This is a kindergarten school, and they tried to make a baby out of me.—
R. SHOLLY.



College represents to me three objectives attributed to story-telling—to idealize, to imagine, and to predict.—
J. VARNER.



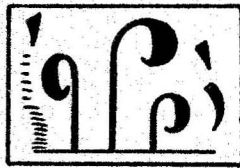
College is a steep hill—crowned with advantages at the summit; until that peak is reached can I feel secure or satisfied?—
B. HOBERMAN.

L. H. S. T. C. is like a restaurant—its menu offers many courses; the customer makes his selection; but he ought to bear in mind that as he leaves he must face the cashier; and if he doesn't partake heartily he may not be able to get along comfortably until the next meal.—
A. McCLOSKEY.



To live in college with verve and strength is to experience a combination of clean sportsmanship, scholarship, and association with different personalities.—
J. MILLER.

ORGANIZATIONS



JOURNALISM

+

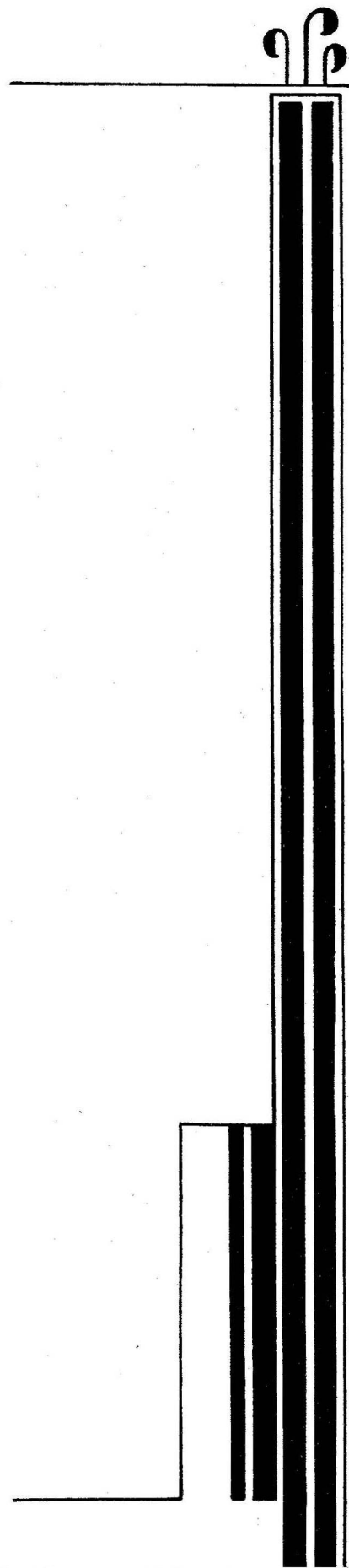
FRATERNITIES

+

SORORITIES

+

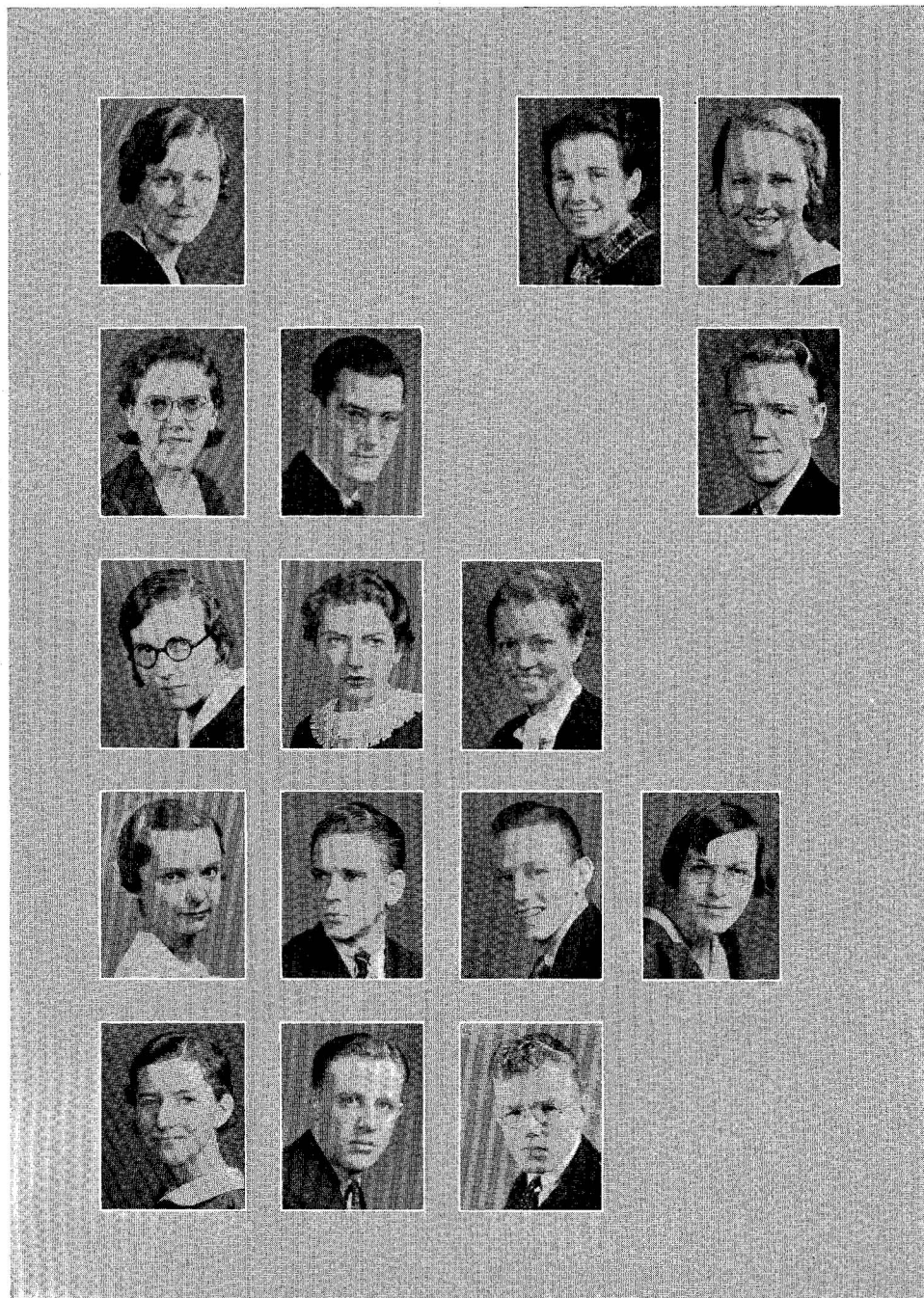
CLUBS





Præco Staff

TOM SMITH	- - - - -	<i>Senior Editor-in-Chief</i>
LEON BARR	- - - - -	<i>Junior Editor-in-Chief</i>
ELWOOD ROHRBAUGH	- - - - -	<i>Business Manager</i>
EUGENE NUSS	- - - - -	<i>Assistant Business Manager</i>
MARION FRANCISCO	- - - - -	<i>Chief Associate Editor</i>
LOUISE MCINTYRE	- - - - -	<i>Assistant Associate Editor</i>
SARA E. FLETCHER	- - - - -	<i>Senior Section Editor</i>
FLORENCE HUNT	- - - - -	<i>Junior Section Editor</i>
CATHERINE CAPRIO	- - - - -	<i>Sophomore Section Editor</i>
GRETCHEN DICKEY	- - - - -	<i>Freshman Section Editor</i>
WALTER WILKINSON	- - - - -	<i>Art Editor</i>
WALTER RORABAUGH	- - - - -	<i>Photograph Editor</i>
FRANKLIN COURTER	- - - - -	<i>Assistant Photograph Editor</i>
RUTH SHERMAN	- - - - -	<i>Organization Editor</i>
NEIL SULLIVAN	- - - - -	<i>Assistant Organization Editor</i>
HENRY STEHMAN	- - - - -	<i>Sports Editor</i>
ANNE WILSON	- - - - -	<i>Women's Sports Editor</i>
WILLIAM STATLER	- - - - -	<i>Men's Sports Editor</i>
ISABEL WELCH	- - - - -	<i>Feature Editor</i>
ETHEL LAW	- - - - -	<i>Assistant Feature Editor</i>
WAYNE HOY	- - - - -	<i>Advertising Editor</i>
JON YON	- - - - -	<i>Assistant Advertising Editor</i>
ETHEL QUIGG	- - - - -	<i>Typist</i>
CHARLES THOMAS	- - - - -	<i>Typist</i>



Times Staff

BOARD OF CONTROL

<i>First Semester</i>		<i>Second Semester</i>
ISABEL WELCH - - - -	<i>Editor-in-Chief</i> - - - -	BETTY GLATZERT
	<i>Associate Editor</i> - - - -	MARY SHARP
BETTY GLATZERT - - - -	<i>Managing Editor</i> - - - -	WILLIAM ANDERSON
NAOMI WENTZ - - - -	<i>Make-Up Editor</i> - - - -	MADelyn FAULKNER
MARY SHARP AND FLORENCE HUNT	<i>Copy Editors</i> - - - -	ETHEL QUIGG
WILLIAM ANDERSON - - - -	<i>Business Manager</i> - - - -	OLIVER MURPHY
OLIVER MURPHY - - - -	<i>Circulation Manager</i> - - - -	PAULINE GRADEN
	<i>Student Advisers</i> ISABEL WELCH AND MARION FRANCISCO	
MR. WELDON WILLIAMS - - - -	<i>Faculty Adviser</i> - - - -	MISS BERTHE DANIEL

Sub-Editors

Jon Yon Ethel Quigg Madelyn Faulkner

Special Writers

Marion Francisco Kermit Stover Trafton Buchanan Stewart Wilson

Typists

David Smith Lucile Orlin

Reporters

Blanche Hoberman	Olga Bader	Jack Daugherty
Lucetta McKibben	Doris Catterson	Edward Kimble
Marjorie Dice		Franklin Courter

DEPARTMENT EDITORS

News

Florence Hunt

Features

Marjorie Dice

Social

Naomi Wentz

Typists

Lucile Orlin Pearl Heiges Jon Yon

Sports

Trafton Buchanan Stewart Wilson

Reporters

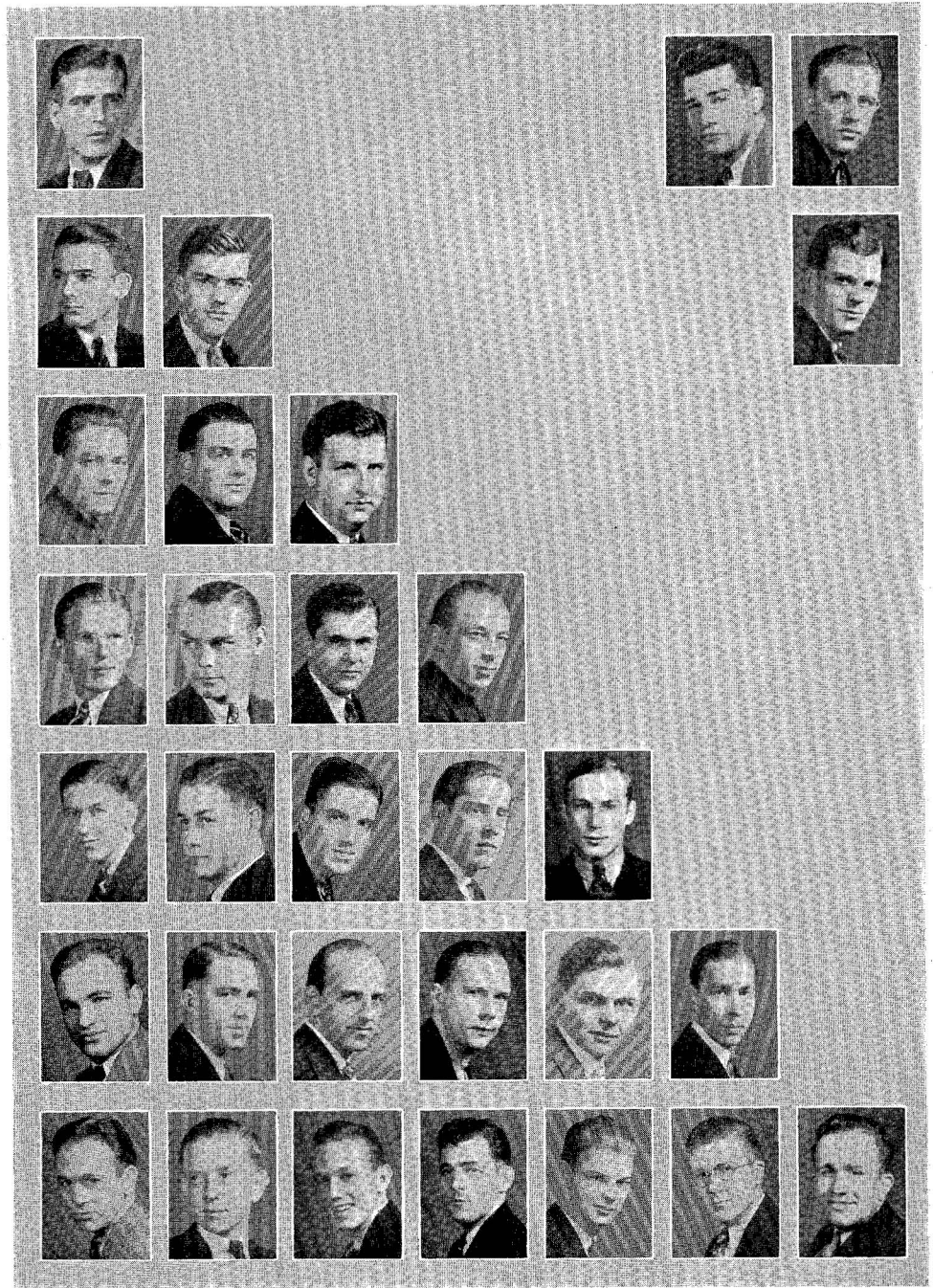
Alumni and Exchange

Lucetta McKibben

Olga Bader	Franklin Courter
Doris Catterson	Paul Miller
Jack Daugherty	Howard Underwood
Edward Kimble	Edward Marince

Girls' Sports

Blanche Hoberman



Delta Rho Beta

OFFICERS

EUGENE E. REIGHARD	- - - - -	President
ROBERT HUNTER	- - - - -	Vice President
EDWARD J. P. KIMBLE	- - - - -	Secretary
ELWOOD ROHRBAUGH	- - - - -	Treasurer
GEORGE MOON	- - - - -	Sergeant-at-Arms

Faculty Advisers

MR. SULLIVAN

MR. SMITH

MEMBERS

John Barry
 William Bowes
 James Burkhart
 Jack Breyerton
 Max Cook
 Harold Corter
 Frank Courter
 Robert Emery
 Calvin Hamberger
 Allen Heydrick

William Knapp
 Harry Lingle
 Robert Lowe
 Fred McEntire
 Paul Mills
 Eugene Nuss
 Ray Oberheim
 Harris Reynolds
 Fred Rinn

Walter Rorabaugh
 Rudolph Shearer
 Tom Smith
 John Shreckengast
 Dean Shroat
 Henry Stehman
 Howard Underwood
 Harter Vonada
 Victor Williams
 Stewart Wilson

The Delta Rho Beta Fraternity is, comparatively speaking, a new organization. Prior to its existence there was among the day-room boys an organization known as the Derbies. This group failed to meet the demands of the day students because it was not symbolic of the true day-room spirit. Therefore, on February 21, 1933, a meeting of the day-room boys was held to remedy the situation. After much discourse among the fellows and the faculty advisers, a new organization was evolved; namely, the Delta Rho Beta Fraternity. This new organization was based upon the ideals of sportsmanship, loyalty, scholarship, athletic ability, clean morals, and college spirit. Its birth marked a stepping-stone to better things in the day-rooms.

During the remainder of 1932 and all of 1933, the Deltas were very active. Stag banquets, smokers, and a dinner dance were held by them for alumni, friends, and faculty. These events proved to be so successful that practically the same program was carried out during the present term of school.

During the past semester the Deltas have held a series of smokers which have won the approval of both faculty and alumni. The annual dinner-dance was held on May 5. It surpassed that of the previous year in all respects. Extensive preparations were made to take care of the large number of alumni and invited guests that attended.

At the close of the first quarter a class of six upper-classmen was ushered into the organization. This class consisted of Calvin Hamberger, Howard Underwood, Victor Williams, Harold Corter, Robert Lowe, and John Shreckengast.

During the second semester a group of loyal and worthy members of the freshman class were admitted to the organization. This group consisted of Francis Maneval, Fred Ingram, Wayne Myers, Wilson Clark, Robert Gallagher, Lawrence Beck, and Donald Fisher.

Nine Deltas will graduate with this year's Senior class. The Fraternity extends a hand of congratulation to President Reighard, Max Cook, Harris Reynolds, Walter Rorabaugh, Rudolph Shearer, Tom Smith, John Shreckengast, Dean Shroat, and Robert Emery.



Alpha Sigma Tau

OFFICERS

<i>First Semester</i>		<i>Second Semester</i>
CAROLINE SCHULTZ	President	VIRGINIA CHEESMAN
FLORENCE PRIDDY	Vice President	CHARLOTTE KNAPP
MARGARET WILLIAMS	Recording Secretary	CAROLINE SCHULTZ
LOUISE ROBERTSON	Corresponding Secretary	FLORENCE PRIDDY
IVA MAE VAN SCOYOC	Treasurer	LOUISE ROBERTSON
MARY SHARP	Literary Editor	MARY SHARP

MISS JESSIE SCOTT HIMES
Faculty Adviser

MRS. R. STEWART MACDOUGALL
Patroness

Publication—"The Anchor"

Colors—Emerald and Gold

Flower—Yellow Rose

Founder's Day—November 7

RESIDENT MEMBERS

Lenore Sharp

Roberta Seltzer

ACTIVE MEMBERS

Pauline Barkhuff
Geraldine Bower
Virginia Cheesman
Myra Evans
Mary Holbrook
Kathryn Keener

Nancy Kiser
Charlotte Knapp
Margaret Kyler
Florence Priddy
Louise Robertson

Jean Rymer
Mary Sharp
Caroline Shultz
Mary Ulmer
Iva Mae Van Scoyoc
Margaret Williams

JUNIOR MEMBERS

Evelyn Custer
Mary Driebelbis
Helen Edler
Winifred Heim

Marion Hudson
Jean Kopenhaver
Wilma Losch
Etta Moreland
Sarah Myers

Marianna Tallman
Helen Thomas
Evelyn Williams
Eleanor Wolfe

Honorary Pledge—Althea Troxell

NATIONAL COUNCIL

MISS ADA H. NORTON	A. E. S. Representative
MISS LUELLE CHAPMAN	President
MISS EDITH L. MOUSELL	Vice President and Organizer
MISS MARY E. COOK	Corresponding Secretary
MISS CARRIE H. STAEHLE	Treasurer
MRS. MARY LOUISE DOGLE	Editor "The Anchor"





Beta Sigma Chi

OFFICERS

SARAH QUIGLEY	- - - - -	President
ALICE MARIE HACKETT	- - - - -	Vice President
MARION FRANCISCO	- - - - -	Treasurer
DORRIS CATTERSON	- - - - -	Corresponding Secretary
ANNE WILSON	- - - - -	Recording Secretary

Colors—Brown and Orange

Symbol—Bittersweet

Adviser

MISS GLADYS M. ERICKSON

MEMBERS

Seniors

Olga Bader
Rebecca Barrow
Isabel Bickel
June Breining
Elizabeth Browning
Ruth Burkett
Doris Catterson

Beryl DeWalt
Sara Fletcher
Marion Francisco
Betty Glatzert
Alice Marie Hackett
Margaret Harmon
Lois Pepperman
Sara Quigley

Ruth Sherman
Laura Swingle
Gwendolyn Thompson
Clarissa Wainger
Rebecca Williams
Anne Wilson
Eleanor Wood

Juniors

Sarah Budinger
Gretchen Dickey
Evelyn Hanna
Blanche Hoberman

Leah Kraemer
Louise McEntire
Mary Louise Markle
Dorothy Hamberger

Ann Peterson
Marianne Roberts
Margaret Rohrbaugh
Jean Varner

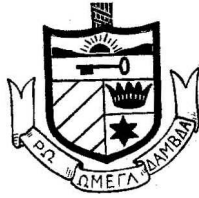
The Beta Sigma Chi Sorority, formerly known as the Bittersweets, is the oldest sorority of the college. It has endeavored to maintain high scholastic standards, to encourage friendship with all students in school, and at all times to uphold and maintain the high standards of the college.

During the past year the sorority has been very successful both socially and scholastically.

The Beta Sigma Chi Sorority has had the honor of welcoming into the group eleven new members.

Since we must lose some of our sisters through graduation, we, as members of the Beta Sigma Chi Sorority, wish them the greatest success and happiness.





Rho Omega Lambda

OFFICERS

<i>First Semester</i>		<i>Second Semester</i>
FLORENCE M. HUNT	<i>President</i>	CLARITA DUHART
BEATRICE BERG	<i>Vice President</i>	MARIAN HARSCH
MARTHA McDOWELL	<i>Recording Secretary</i>	NAOMI A. WENTZ
DOROTHEA STITT	<i>Social Secretary</i>	DOROTHEA STITT
MARTHA McDOWELL	<i>Treasurer</i>	MARTHA McDOWELL
MARIE GEHRON	<i>Usher</i>	VIRGINIA ALBRIGHT
MARY HILL	<i>Chaplain</i>	MARY HILL

MISS MABEL-LOUISE AREY
Faculty Adviser

Colors—Blue and White

Flower—Talisman Rose

MEMBERS

Seniors

Virginia Albright
Beatrice Berg
Katherine Caprio
Marjorie Deise
Clarita Duhart
Genevieve Frey
Marie Gehron

Marian Harsch
Mary Hill
Florence Hunt
Helen Krape
Ethel Law
Helen Myers
Martha McDowell

Alice McGarvey
Lucetta McKibben
Betty Parsons
Olive Quiggle
Dorothea Stitt
Isabel Welch
Naomi Wentz

Juniors

Berthe Rolla
Jean Sheasley
Eleanor Cupp

Romaine Herb
Hart Slater
Lucile Glossner

Virginia Lee
Dorothy Swartz
Martha McAllister

The Rho Omega Lambda Sorority, which has been a part of the social life of the campus for the past nineteen years, has always endeavored to maintain the standards of the College and the high ideals of scholarship, and to uphold the ethical and social values upon which the Sorority constitution is founded. It is upon the basis of these fundamental values that the new members from the four-year college girls are elected for membership.



Alpha Chi Delta

OFFICERS

STELLA CLAIR	- - - - -	- <i>President</i>
OLIVE SHAFFER	- - - - -	- <i>Vice President</i>
MARTHA McALLISTER	- - - - -	- <i>Secretary</i>
HELEN FETZER	- - - - -	- <i>Treasurer</i>

MEMBERS

Florence Ayres	Martha McAllister
Stella Clair	Eileen Perry
Helen Clark	Mary Ricker
Ruth Doebler	Esther Schaefer
Helen Earon	Olive Shaffer
Helen Fetzer	Ruth Shaffer
Pauline Graden	Elizabeth Miller
Mary Harvey	Dorothy Swartz
Astrid Hauge	Hilda Walizer
Marian Klaer	Threse Long
Kathryn Maloney	Mary Hand



Art Club

OFFICERS

BILL GRIFFITH	- - - - -	<i>President</i>
BILL STATLER	- - - - -	<i>Vice President</i>
DINNY CATTERSON	- - - - -	<i>Secretary</i>
LA DEAN SHIREY	- - - - -	<i>Treasurer</i>

MEMBERS

Sue Bader	Eddie Marince
John Barry	Lois Pepperman
Dorris Catterson	Ann Peterson
Mary Driebelbis	LaDean Shirey
Sara Fletcher	Dale Smith
Betty Glatzert	William Statler
William Griffith	Dorothea Stitt
Jean Harriger	Leah Varner
Bill Knapp	Anne Wilson
Marie Mathias	Eleanor Wood

The Art club, during its many years of existance on this campus, has had as one of its aims the betterment of art in the college. It lives up to this aim by doing much that makes for better bulletin boards and advertising displays. Besides the interest the members take in the art of the entire school they develop their own personal interests in meetings by doing sketches and other kinds of art work. The club wishes to those senior members who are leaving in the spring success and happiness.



Dramatic Club

OFFICERS

WALTER WILKINSON - - - - - *President*
DEAN SHROAT - - - - - *Vice President*
TRAFTON BUCHANAN - - - - - *Secretary-Treasurer*

Advisor

MISS MABEL-LOUISE AREY

MEMBERS

Virginia Albright	Marion Francisco	Louise Robertson
Ronald Aldrich	Joseph Friedman	Elwood Rorabaugh
William Anderson	Marie Gehron	Edith Sharpe
Rebecca Barrow	Marian Harsh	Dean Shroat
Beatrice Berg	Allan Heydrick	Dale Smith
Geraldine Bower	Florence Hunt	Betty Stevenson
Trafton Buchanan	Mary Hullbrook	Gwendolyn Thompson
Katherine Caprio	Edward Kimble	Mary Ulmer
Anna Margaret Corson	Myrna Lundy	Leah Varner
Doris Catterson	Perry Mann	Millard Weber
Mary Dreibelbis	Lucetta McKibben	Roberta Williams
Marjorie Dice	Helen Myers	Walter Wilkinson
Clarence Eld	Elizabeth Miller	Jon Yon
	Katherine Rhoads	

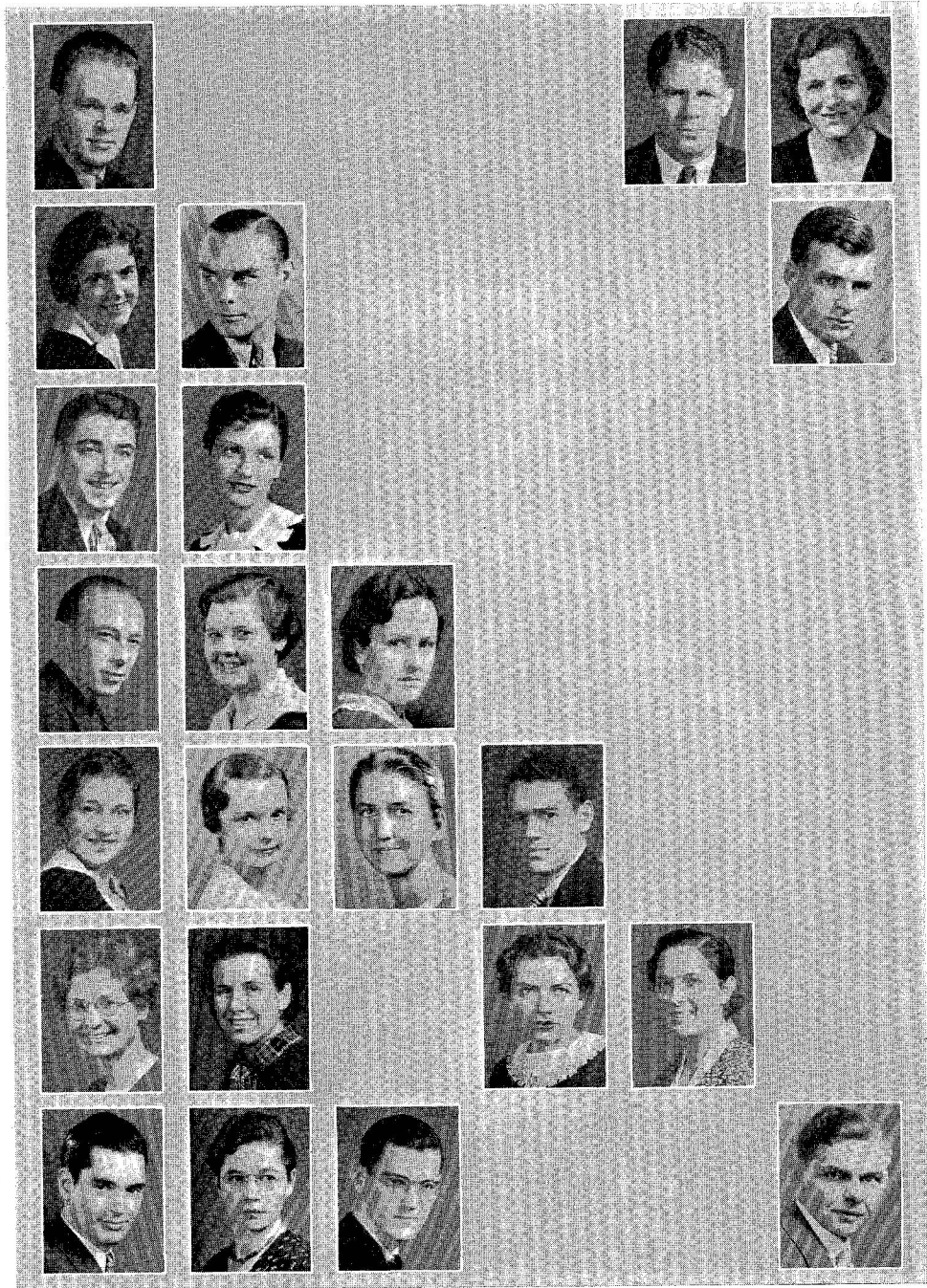
Honorary

Lauvon Basinger

The Dramatic Club, one of the most prominent organizations on our campus, has as its goal the promotion of the Dramatic Arts in the college. In order that this may be accomplished the club members annually produce a play of well-earned merit, demanding capable interpretation of the roles. The club also sponsors a one-act play contest. Undergraduate members are casted and directed by members of the club. In this way the activity of the club is opened to the entire student body.

This year's production of "The Ghost Train" was acclaimed as the club's most difficult, yet best perfected play produced. The stage, lighting, and mechanical effects were unusually faithful in presentation and so the club continued to keep up with the standards set by such outstanding productions of the past as "Outward Bound," "The Ivory Door," and "The Merchant of Venice."





Naturalist Club

OFFICERS

<i>First Semester</i>			<i>Second Semester</i>	
ALLEN HEYDRICK	- - - -	<i>President</i>	- - - -	CHRISTOPHER HAMMAKER
RUTH SHERMAN	- - - -	<i>Vice President</i>	- - - -	GEORGE SHIVELY
MARGARET KYLER	- - - -	<i>Secretary</i>	- - - -	KATHRYN HENCH
GEORGE SHIVELY	- - - -	<i>Treasurer</i>	- - - -	ERNEST GILLILAND

Advisors

MISS RUSSELL

MR. ULMER

HONORARY MEMBERS

Miss Deborah Bentley

Tom Smith

Miss Berthe Daniel

Marion Francisco

Mrs. Charles E. Kirkpatrick

MEMBERS

Ronald Aldrich
Olga Bader
Pauline Barkhuff
Jack Daugherty
Wilbur Dressler
Clarence Eld
Robert Emery
Ernest Gilliland
Betty Glatzert

Christopher Hammaker
Catherine Hench
Allen Heydrick
Nancy Kiser
Marian Klaar
Margaret Kyler
Myrna Lundy
William Murphy
Ann Peterson
Kathryn Rhodes

Jean Rymer
Margaret Samson
Ruth Sherman
George Shively
Grace Thompson
Mary Ulmer
Naomi Wentz
Eugenia Williams
Evelyn Williams

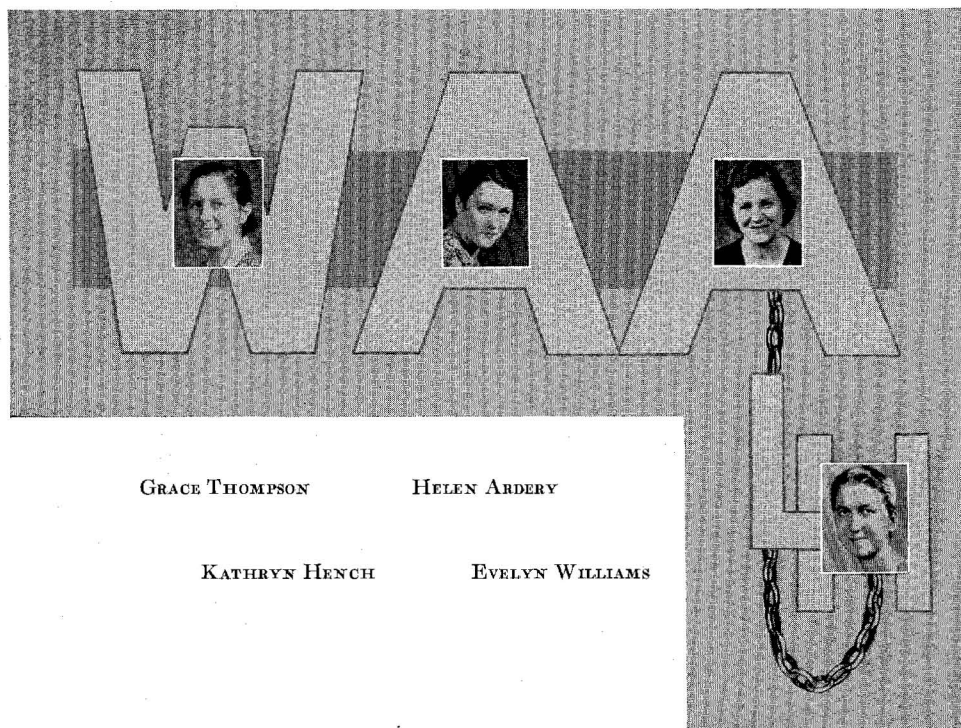
Members of the Naturalist club this year have upheld the tradition of being the most active club on the campus. This year's program included well balanced social and educational meetings. During indoor meetings best nature books were read and criticized. There were talks by club members and guest speakers.

The out-door activities have been in accordance with the seasons. Even on coldest days, Naturalists have been seen skiing, skating and enjoying winter sports.

Trips were taken to local fields of interest. These hikes ended with a gathering around the fire, and a delicious feed for which the club is noted. The Nature Trail, a route over the glen, has been cleared and signs have been erected along the way bearing quotations of famous Naturalists.

The Hallowe'en party held in room ten, was a celebrated event throughout the school.

Home-coming was welcome day for alumnae of Naturalists. Each year an outstanding number return to talk once more with fellow Naturalists. This day, with the alumnae, is spent out of doors, where they enjoy games, hikes, and fun.



GRACE THOMPSON

HELEN ARDERY

KATHRYN HENCH

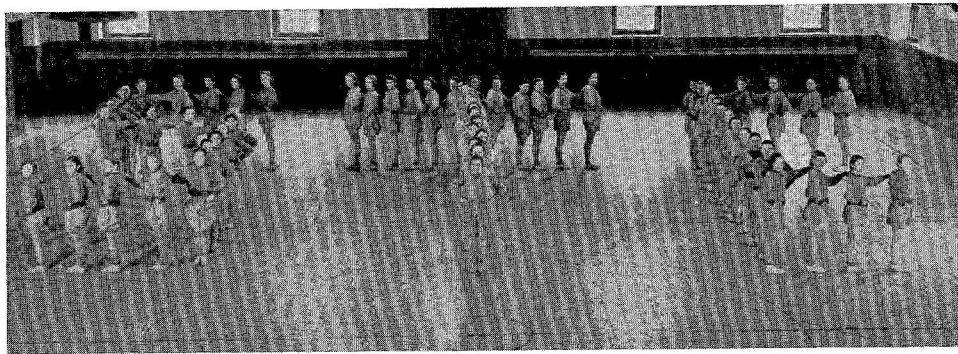
EVELYN WILLIAMS

Women's Athletic Association

The Women's Athletic Association has this year attained its sixth birthday, and is ready, according to the laws of the Commonwealth, to emerge from its pre-school, run-about stage and become a full-fledged first grader.

Not, however, that this brief period is by any means coincident with the growth of women's athletics at Lock Haven State Teachers College. Indeed it was nearly thirty years ago that our women's activities were in no less capable hands than those of Miss Gertrude Colby, who left the Lock Haven faculty to do pioneer work at Columbia University in the field of natural dancing. Within the past decade, and prior to the organization of this association, women's athletics were successfully conducted under the guidance of the directors of physical education for women, who brought to our campus the athletic traditions and inspiring influences of Sargent, Vassar, Columbia and Wellesley. Our last women's intermural contest was held in 1926, when Lock Haven Normal School, with a team coached by Miss Maloise Sturdevant Dixon, who is now our physical education director, won from Altoona, the season's championship high school squad. Following this victory, Lock Haven led the state teachers' colleges in supplanting the outworn scheme of varsity athletics for a dozen "stars" with a program more nearly approaching the newer ideal of "a team for every girl and every girl on a team."

In the fall of 1928, the present W. A. A. was organized under the able leadership of Miss Avis Edgerton, and the women's sports program became the joint responsibility of faculty members and student committees. We have since affiliated with the national organization, and are actively supporting those principles of sportsmanship and mass participation now visioned by foremost leaders in the field of athletics for women.



OFFICERS

GRACE THOMPSON - - - - - *President*
 HELEN ARDERY - - - - - *Vice President*
 KATHRYN HENCH - - - - - *Secretary*
 EVELYN WILLIAMS - - - - - *Treasurer*

Faculty Adviser

MALOISE STURDEVANT DIXON

MEMBERS

Helen Ardery
 Alice Arnold
 Olga Bader
 Rebecca Barrow
 Olive Bonham
 Wanda Brown
 Thelma Brownlee
 Virginia Cheesman
 Helen Clarke
 Anna Corson
 Hazel Cotter
 Eleanor Cupp
 Evelyn Custer
 Rachel Danner
 Margaret DeLaney
 Gretchen Dickey
 Mary Driebelbis
 Arlene Dunkle
 Helen Edler
 Helen Fetzer
 Dorothy Fink
 Elizabeth Glatzert
 Lucille Glossner
 Bernadine Gonsman
 Rovena Goodman
 Marie Grieco
 Dorothy Hamberger
 Evelyn Hanna
 Ellen Harding
 Anita Harner
 Jean Harriger
 Onetta Hartman
 Kathryn HENCH
 Romaine Herb
 Blanche Hoberman
 Cleo Howe
 Louise Irwin
 Estelle Kashinsky
 Katherine Keener

Lonise Kelley
 Marian Klaer
 Elsie Kolter
 Jean Kopenhaver
 Leah Kraemer
 Esther Lakner
 Nancy Lawther
 Ruth Leinbach
 Helen Lesko
 Bernice Limbert
 Sara Long
 Dorothy Lyons
 Martha McAllister
 Martha Mapes
 Pearle McCloskey
 Helen McCreary
 Louise McEntire
 Alice McGarvy
 Lucetta McKibben
 Ruth Moon
 Sara Moran
 Etta Moreland
 Nellie Mullin
 Ferne Nedimyer
 Helen Noon
 Matilda Onachilla
 Lucile Orlin
 Marjorie Overdorf
 Elizabeth Page
 Agnes Parisi
 Marian Parsons
 Evelyn Paul
 Lois Pepperman
 Ann Peterson
 Jennie Phillips
 Winifred Phillips
 Agnes Piatak
 Earleen Potter
 Jane Pray
 Emily Pritchard

Mary Ricker
 Tressa Ricketts
 Mary Ann Roberts
 Louise Robertson
 Jean Rymer
 Margaret Samson
 Leona Saxon
 Helen Scotland
 Mary Shoff
 Jean Sheasley
 Erdene Shope
 Mary Showalter
 Bertha Shearer
 Hart Slater
 Beatrice Sloan
 Ruth Sponsler
 Belle-Isle Stoner
 Betty Strayer
 Edna Sweinhart
 Marianna Tallman
 Frances Taylor
 Helen Thomas
 Grace Thompson
 Gwendolyn Thompson
 Theda Trexel
 Jean Varner
 Leah Varner
 Audry Walizer
 Ruth Waltz
 Margaret Wells
 Stella Wenker
 Anne Wert
 Evelyn Williams
 Gladys Williams
 May Williams
 Rebecca Williams
 Anne Wilson
 Eleanor Wood
 Hazel Yearick



Student Council

OFFICERS

MISS BELLE HOLAWAY	- - - - -	<i>Adviser, Dean of Women</i>
SARA FLETCHER	- - - - -	<i>President</i>
MYRNA LUNDY	- - - - -	<i>Vice President</i>
EVELYN WILLIAMS	- - - - -	<i>Secretary</i>
BEATRICE BERG	- - - - -	<i>Treasurer</i>
HELEN CAWLEY	- - - - -	<i>Senior Representative</i>
PEARL HEIGES	- - - - -	<i>Junior Representative</i>
OLGA BADER	- - - - -	<i>Sophomore Representative</i>
CATHERINE MOORE	- - - - -	<i>Freshman Representative</i>

Every girl living in the college dormitory is a member of the Women's Student Government Association. Its purpose is to promote the best type of living conditions within this group of young women by the discussion of problems arising in connection with dormitory life. These problems are brought to the meetings of the Association, which are held on the first and third Wednesday of each month.

The official governing body for this group is a council, consisting of a president, vice president, secretary, treasurer, and a representative from each class, all elected by the members of the Association. At the beginning of the school year the Council makes a special effort to help the freshmen girls make the proper adjustments to their new environment.

During the summer each girl, who is enrolling for the first time receives "The Handbook," the Women's Student Government publication. This is a pamphlet containing the dormitory regulations and the constitution of the Association.

The chief aim of this Association is to promote a spirit of friendliness among the girls who are living together in such close relationship, and also to promote a feeling of coöperation and loyalty within the group. Miss Holaway, faculty adviser of the Association, by her close coöperation and understanding of the girls, has made it possible for these aims to be carried out.



Young Women's Christian Association

FACULTY MEMBERS

Bertha M. Rowe
Deborah Bentley
Maloise S. Dixon

Lyndall Fox
Lulu Stalcup

Berthe Daniel
Lillian Russell

Belle Holaway
Esther Richard
Mabel-Louise Arey

STUDENT MEMBERS

Alice Arnold
Isabel Biglow
Esther Bowman
Maude Brungard
Kathryn Caprio
Helen Cawley
Virginia Cheesman
Anna Margaret Corson
Evelyn Custer
Margaret Delaney
Marjorie Dice
Mary Dreifelbis
Arlene Dunkle
Margaret Dunkleberger
Helen Earon
Helen Fetzer
Dorothy Fink
Sara Fletcher
Marion Francisco
Anna Gilmartin
Betty Glatzert
Aldine Glossner
Bernadine Gonsman
Rovena Goodman

Madeline Haggerty
Anita Harner
Ruth Harrier
Onetta Hartman
Jean Harriger
Kathryn Harvey
Astrid Hauge
Pearl Helges
Kathryn Hench
Romaine Herb
Clee Howe
Clara Jenkins
Katherine Keener
Louise Kelly
Jean Kopenhaver
Nancy Lawther
Helen Lesko
Gertrude Long
Sara Long
Dorothy Lyons
Helen McCreary
Marian McDonald
Marian McClosky

Alice McGarvey
Lucetta McKibben
Sara Mapes
Marie Mathias
Sara Meyers
Ruth Moon
Catherine Moore
Miriam Moore
Jane Moran
Ferne Nedimeyer
Anna Niebauer
Lucille Orlin
Lois Pepperman
Jennie Phillips
Winifred Phillips
Agnes Platak
Earleen Potter
Jane Pray
Emily Pritchard
Kathryn Rauch
Ellen Louise Rooke
Margaret Sampson
Leona Saxon

Mary Sharp
Jean Sheasley
Ruth Sherman
Mary Shoff
Hart Slater
Jean Smith
Thelma Soxman
Frances Taylor
Grace Thompson
Theda Trexel
Althea Troxell
Iva Mae Van Scoyoc
Leah Varner
Jean Varner
Isabel Welch
Anna Wert
Eugenia Williams
Evelyn Williams
Gladys Williams
May Williams
Rebecca Williams
Roberta Williams
Lulu Jane Womelsdorf
Eleanor Wood



OFFICERS

REBECCA WILLIAMS	- - - - - <i>President</i>	BETTY GLATZERT	- - - - - <i>Secretary</i>
LEAH VARNER	- - - - - <i>Vice President</i>	VIRGINIA CHEESMAN	- - - - - <i>Treasurer</i>
	MISS BERTHA M. ROWE	- - - - - <i>Faculty Adviser</i>	

COMMITTEE CHAIRMEN

WANDA BROWN	- - - - - <i>Meetings</i>	LOIS PEPPERMAN	- - - - - <i>Social</i>
IVA MAE VAN SCOYOC	- - - - - <i>International Relations</i>	GRACE THOMPSON	- - - - - <i>Music</i>
MARGARET SAMSON	- - - - - <i>Social Service</i>	JEAN SMITH	- - - - - <i>Posters</i>
ELLEN LOUISE ROOKE	- - - - - <i>Social Relations</i>	EVELYN WILLIAMS	- - - - - <i>Decorations</i>

OFFICERS OF THE DAYROOM Y. W. C. A.

MAUDE BRUNGARD	- - - - - <i>President</i>	EUGENIA WILLIAMS	- - - - - <i>Secretary</i>
HELEN FETZER	- - - - - <i>Vice President</i>	PAULINE GRADEN	- - - - - <i>Treasurer</i>
	MISS ESTHER RICHARD	- - - - - <i>Faculty Adviser</i>	

COMMITTEE CHAIRMEN

ISABEL WELCH	- - - - - <i>Meetings</i>	MARY SHARP	- - - - - <i>Social</i>
--------------	---------------------------	------------	-------------------------

Again the Young Women's Christian Association, the largest women's organization on the campus, has met with success in its program of activities for the year. The Y. W. C. A., besides carrying out the purpose of any Christian organization, has done much towards developing a friendly attitude, a more social feeling between the girls and toward the school. The big and little sister movement of the Y did a lot towards promoting this feeling. Dad Elliot and his daughter, Miss Elliot, lectured in the college under the auspices of the Y organization. Among the most interesting meetings held were: A Poetry Hour; Commemoration of Prayer Week; Indian Lore; A Negro Spiritual Program; A Music Appreciation Program; and an illustrated talk on the World's Fair. The outstanding tangent projects of the Y was the presentation of Henry Van Dyke's play, "The Other Wise Man," shortly before Christmas; nine members were sent to a Y conference at State College at which Bruce Curry was the principal speaker, and the usual social service work was done at the Children's Home. The outstanding social activities of the year were: The Little Sister Tea; The Get Acquainted Party; The Membership Rally; and The Valentine Party.



Association for Childhood Education

OFFICERS

PAULINE BARKHUFF	- - - -	President	NAOMI WENTZ	- -	Corresponding Secretary
DORIS CATTERSON	- - - -	Vice President	MARY SHARP	- - - -	Treasurer
GRACE THOMPSON	- - - -	Secretary	MARGARET SAMSON	- -	Assistant Treasurer

Advisers

JESSIE SCOTT HIMES

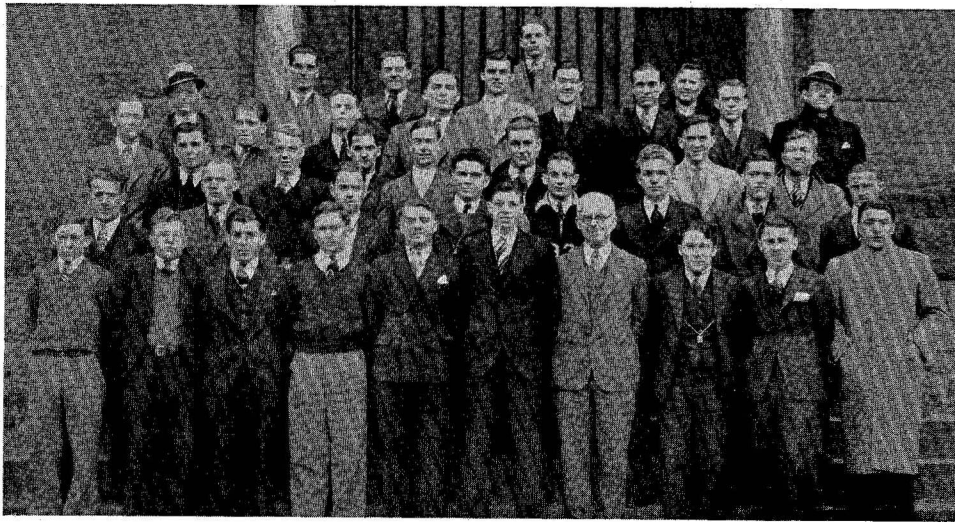
GLADYS ERICKSON

MEMBERS

Alice Arnold
 Pauline Barkhuff
 Laura Barkhuff
 Rebecca Barrow
 Virginia Cheesman
 Anna M. Corson
 Marjorie Dice
 Mary Dreibelbis
 Arleen Dunkle
 Beryl Dewalt
 Virginia Ferguson
 Layah Fromm
 Mildred Fry
 Permia Garthoff
 Rowena Goodman
 Ellen Harding
 Katherine Harding

Katherine Hench
 Jessie Scott Himes
 Mary Holbrook
 Florence Hunt
 Clara Jenkins
 Charlotte Knapp
 Pauline Kreher
 Dorothy Lyons
 Nancy Lawther
 Marie Mathias
 Marion McDonald
 Elizabeth Miller
 Etta Moreland
 Ann Peterson
 Margaret Potter
 Ethel Quigg
 Ellen Louise Rook
 Margaret Samson

Leona Saxon
 Mary Sharp
 Erdene Shope
 Mary Showalter
 Beatrice Sloan
 Ruth Sponsler
 Jean Smith
 Frances Taylor
 Helen Thomas
 Grace Thompson
 Althea Troxell
 Iva Mae VanScoyoc
 Clarissa Wainger
 Naomi Wentz
 L. Jane Womlesdorf
 Lois Wolf
 Roberta Williams



Young Men's Christian Association

OFFICERS

CLARENCE ELD - - - - -	<i>President</i>	MICHAEL DANKO - - - - -	<i>Secretary</i>
TRAFTON BUCHANAN - - - - -	<i>Vice President</i>	WILLIAM STATLER - - - - -	<i>Treasurer</i>
L. J. ULMER - - - - -	<i>Faculty Adviser</i>		

COMMITTEE CHAIRMEN

GEORGE ANDERSON - - - - -	<i>Vesper</i>	ALLEN NELSON - - - - -	<i>Finance</i>
RALPH OPPEL - - - - -	<i>Membership</i>	WILLIAM GRIFFITH - - - - -	<i>Dayroom</i>

FACULTY MEMBERS

DR. HARRY F. WEBER	MR. GEORGE LEHMAN	MR. M. DETURK HIGH
--------------------	-------------------	--------------------

STUDENT MEMBERS

George Shively	Edward Rader	Lee Kipp
Michael Danko	Jack Guiswite	Rudolph Shearer
Edmund Diehl	Walter Wilkinson	Lawrence McCarthy
Trafton Buchanan	Harold Neff	Victor Williams
Ralph Oppel	Arthur McCloskey	George Anderson
Clarence Eld	Emery Lee	Howard Underwood
William Statler	Walter Palcisco	Kermit Stover
Allen Nelson	Dale Smith	Paul Roush
Ronald Aldrich	Harold Hoy	Sam Plummer
Christopher Hammaker	Stanley Sady	M. L. Hudson
David Smith	Harry Basset	Ralph Drick
Charles Eyer	Eugene Nuss	Charles Wepsic
Wilmer Dressler	Henry Malone	Paul Miller
Oliver Murphy	Jack Daugherty	Stewart Over
John Barry		Chester Eastep



CAROLYN SHULTZ

Inter-Sorority Council

OFFICERS

CAROLYN SHULTZ	- - - - -	<i>President</i>
MYRA EVANS	- - - - -	<i>Vice President</i>
DOROTHEA STITT	- - - - -	<i>Treasurer</i>
LOIS PEPPERMAN	- - - - -	<i>Secretary</i>



DOROTHEA STITT



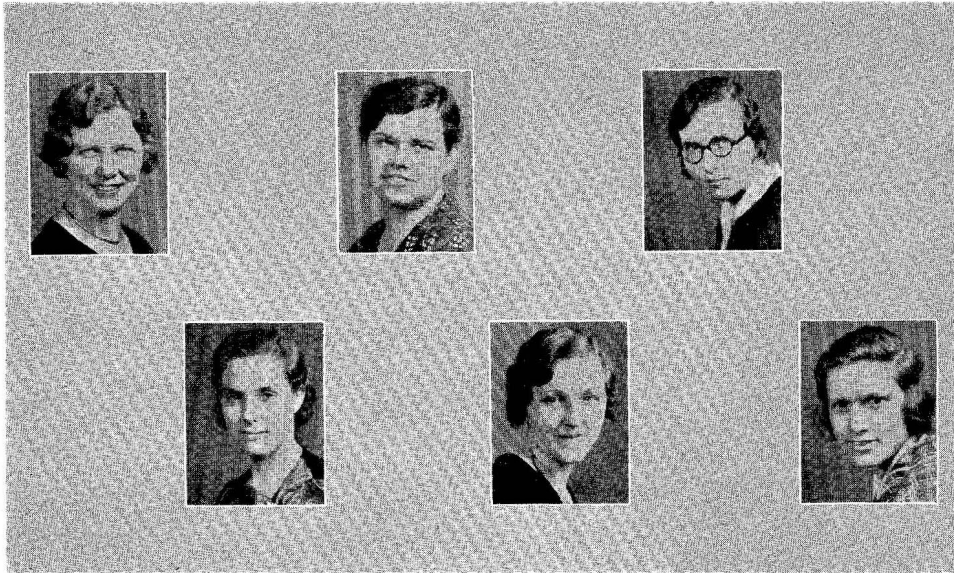
LOIS PEPPERMAN

MEMBERS

CAROLYN SHULTZ, MYRA EVANS - *Alpha Sigma Tau*
LOIS PEPPERMAN, GWENDOLYN THOMPSON *Beta Sigma Chi*
DOROTHEA STITT, CLARITA DUHART *Rho Omega Lambda*

The Inter-Sorority Council is composed of two members from each sorority. This organization settles all questions of controversy arising among the three groups.

The Inter-Sorority Council cooperates with the faculty council which is made up of the faculty advisers of each group.



Women's Dayroom Student Government Association

OFFICERS

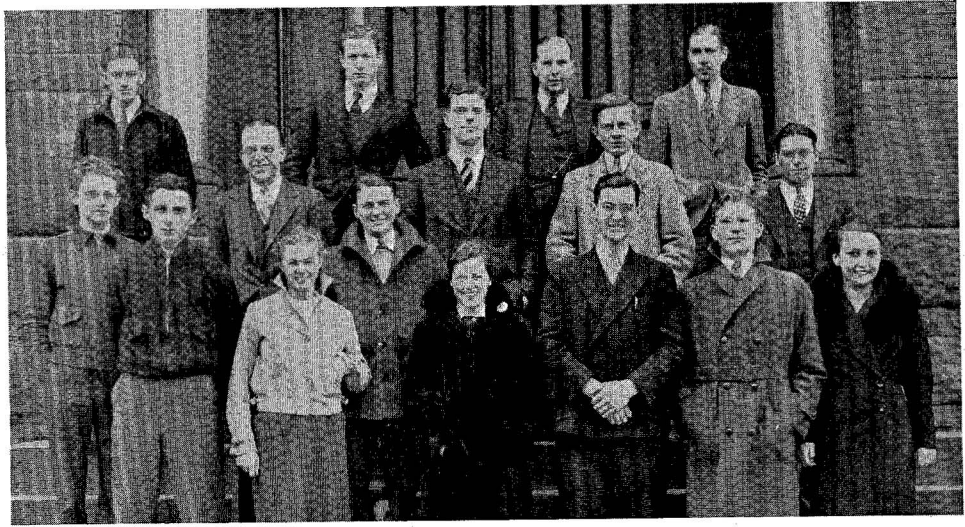
ASTRID HAUGE	- - - - -	<i>President</i>	HELEN KNARR	- -	<i>Senior Representative</i>
MARY HILL	- - - - -	<i>Vice President</i>	MADLINE FAULKNER	-	<i>Junior Representative</i>
PAULINE GRADEN	- -	<i>Secretary-Treasurer</i>	LUCETTA MCKIBBEN	-	<i>Sophomore Representative</i>
		DOROTHY SWARTZ	-		<i>Freshman Representative</i>

The Women's Dayroom Student Government Association was organized in 1931 and a committee was chosen to draw up a constitution which was adopted in the fall of 1932.

The purpose of the Association is to direct the management of all matters concerning the conduct of dayroom students in their college life that are not academic in nature. All women in the dayroom are members of this Association.

A Handbook is published and distributed at the beginning of the fall semester which contains the Constitution and By-Laws, Dayroom-Dormitory regulations, and general information. Its purpose is to make the new student acquainted with the rules and customs of dayroom life.

Since its organization the Association has had several changes made in the dayroom to make the time spent there more happy, comfortable, and hygienic.



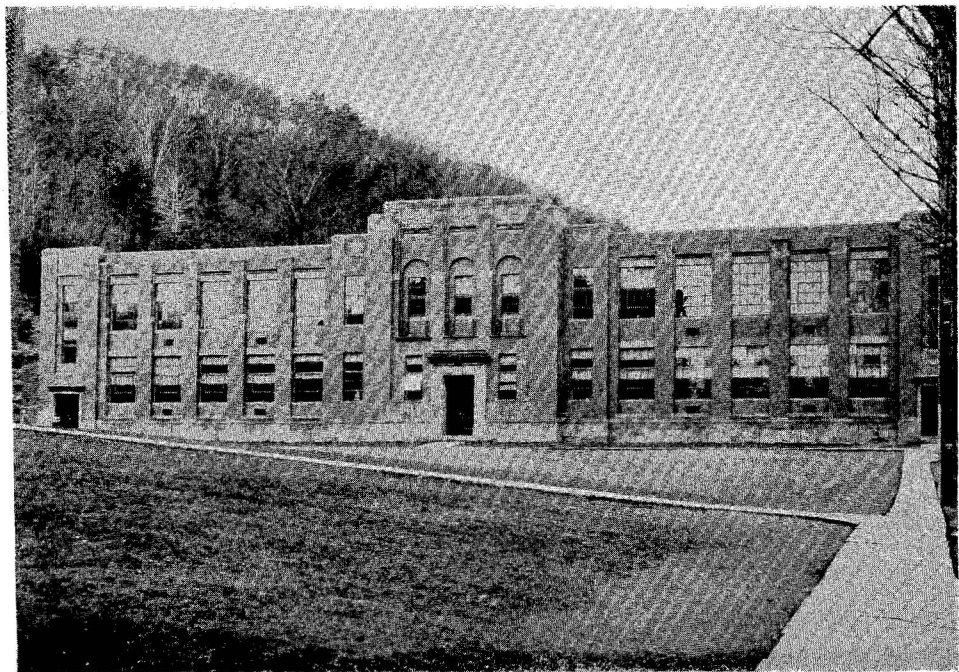
BAND



ORCHESTRA

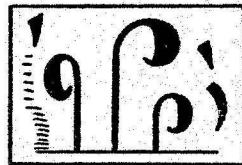


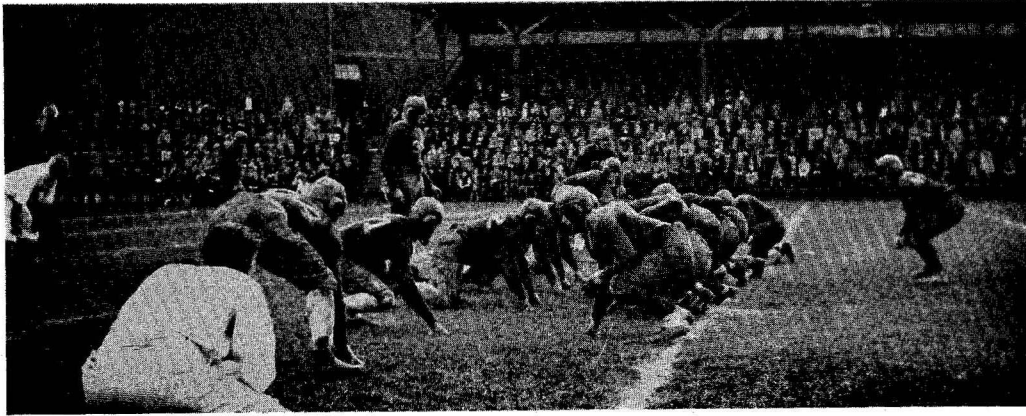
GLEE CLUB



NEW TRAINING SCHOOL

ATHLETICS





MEN'S SPORTS



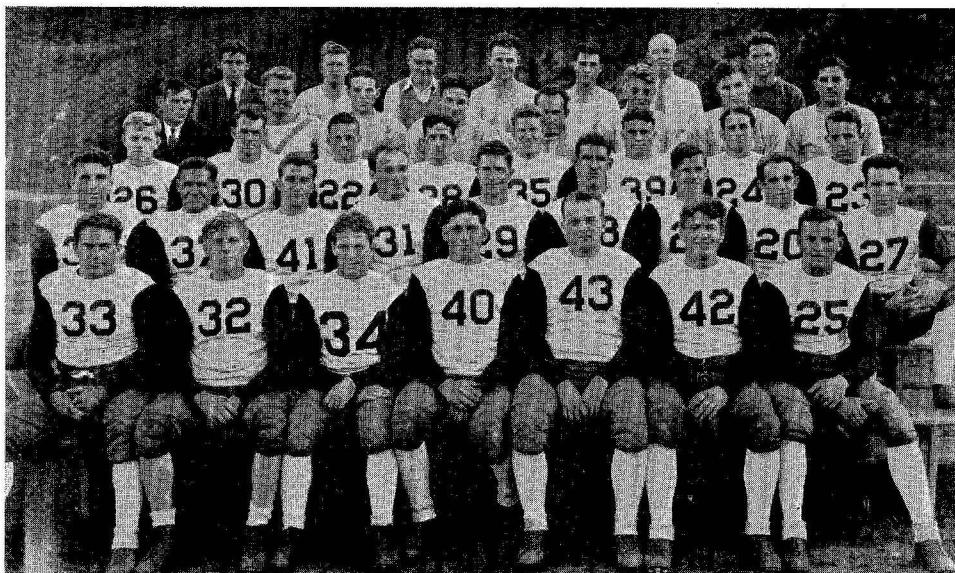
HARRISON J. KAISER
Coach



CORNELIUS M. SULLIVAN
Faculty Manager

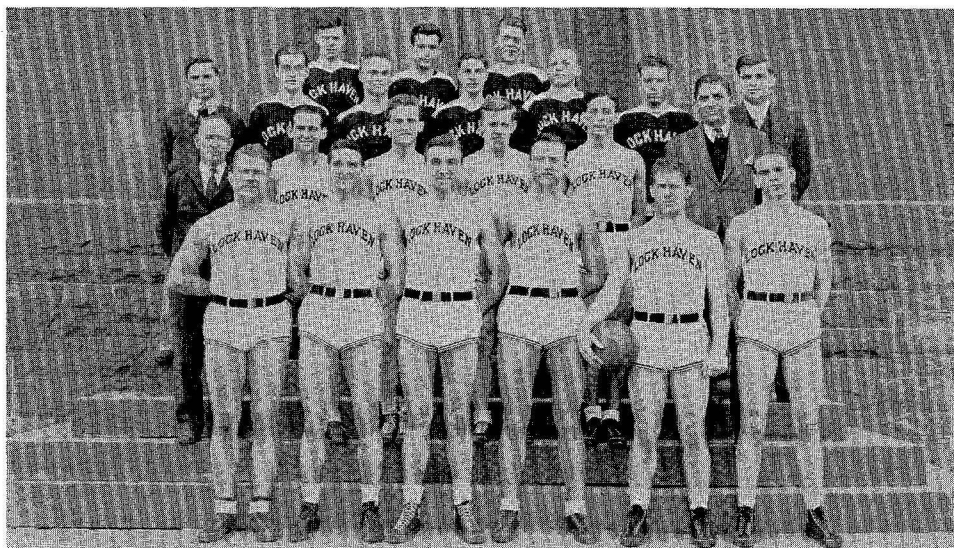


DARE LAWRENCE
Trainer



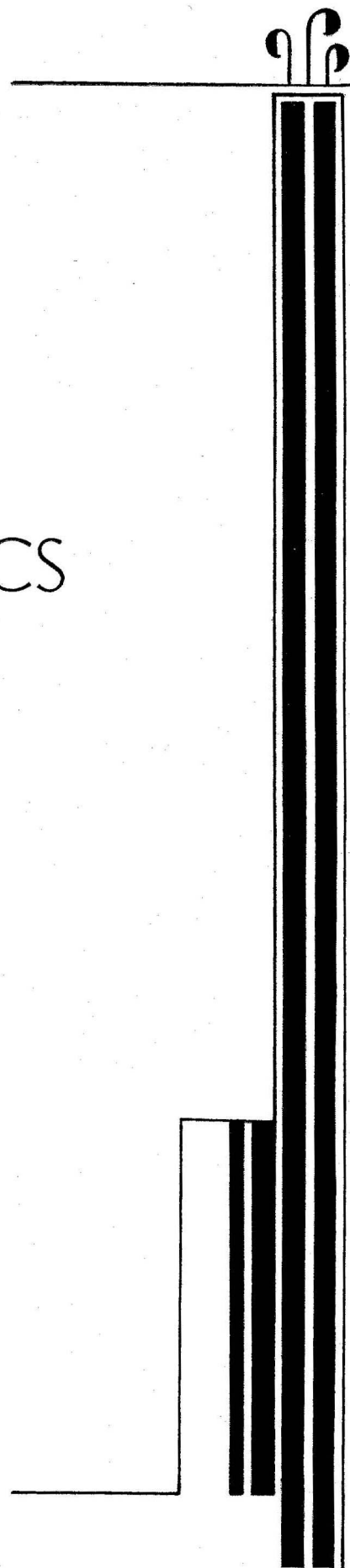
First Row—Geno, Dettrey, Hammaker, Co-captain; T. Densham, Johnsonis, Wepsic, Shevock
 Second Row—Eishel, Breslin, Lingenfelter, Reynolds, Baker, Burd, Co-captain; Haudrick, Hart, Poole
 Third Row—Sholly, Shively, Wilson, Miller, Duff, Caprio, Lucas, Kipp
 Fourth Row—Hill, Watt, Salada, Roush, M. Hoy, McIntyre, Mann, Coach Kaiser
 Fifth Row—Lipez, Asst. Mgr.; P. Miller, Asst. Mgr.; Neff, Aldrich, Asst. Mgr.; Reighard, Mgr.; Lawrence,
 Trainer; Fredericks, Asst. Coach

OUR CHAMPIONS



First Row—Watt, Schnars, Weber, Shevock, Hammaker, Captain; Buchanan
 Second Row—Lawrence, Trainer; Lucas, Cook, Sholly, Miller, Coach Kaiser
 Third Row—Bassett, Asst. Mgr.; Meyers, Barr, Emory, Sady, Kipp, Gilliland, Manager
 Fourth Row—Sullivan, Reighard, McEntire

WOMEN'S ATHLETICS





VOLLEYBALL

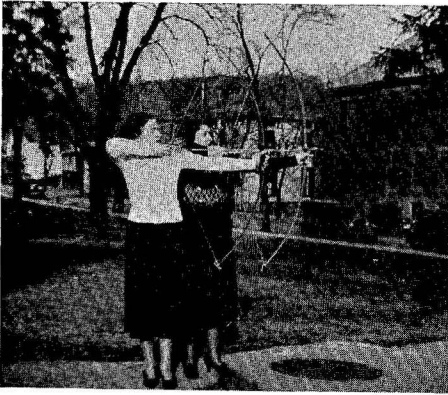
Within a week of the opening of college, women's athletic activities are launched for the fall term. Hockey, introduced by Miss Dixon in 1925 and continued by other members of the department until it became an established sport, was adopted by the W. A. A. as its major team sport during the fall season, and the annual tournament includes more than six teams. Since 1927, when women's basketball was first put on an intramural basis as a major winter sport, this activity has advanced from the realm of "spectator sports" to a mass game so popular that it has been necessary to originate a practice form giving opportunity for play to a large number of amateur enthusiasts. The result is "triple basketball," using nine players and three baskets for each team. In both hockey and basketball, and in volleyball and baseball as well, an honorary varsity is selected as the outgrowth of the interclass contests in each sport. Additional volleyball equipment, secured within the last few years, makes possible the playing of three simultaneous games, so that in the weekly practice period more than 60 players participate. Baseball and track and field events are spring majors, with teams representative of the various class functions, freshman, sophomores, and upper-classmen, and primary, intermediate, or secondary groups.



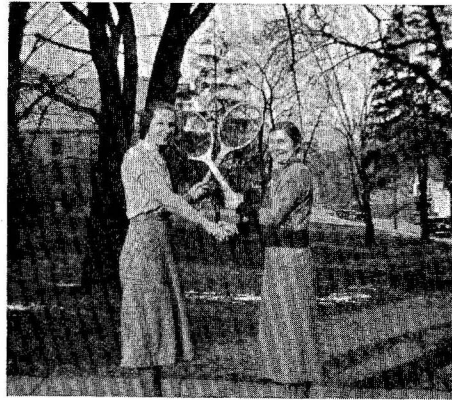
HOCKEY



BASKETBALL



ARCHERY
HENCH, WERT



TENNIS
ONACHILLA, MCGARVEY

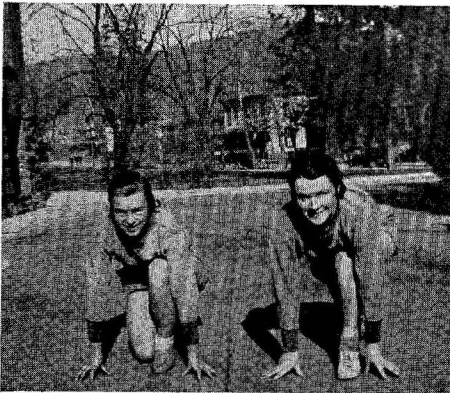


ROLLER SKATING
LOSCH

Tennis, which has been an important activity in the college for over ten years, now numbers more than 100 players in its entries each season; and a tournament is conducted which provides opportunity for continued play on the part of all losers, as well as for those who progress toward the championship. Riding, instituted three years ago, claims the enthusiastic attention of those whose purses have not been too far depleted since that era; and within the past year archery, directed by a capable student leader, has been successfully added to our sports curriculum, while a few members have also received coaching in the elements of golf, though our equipment at present does not permit mass participation in the latter activity. The field of individual sports is continually widening, until it now includes such diverse pursuits as hiking, roller-skating, bicycling, coasting or skiing, and refereeing or otherwise officiating at tournament games.



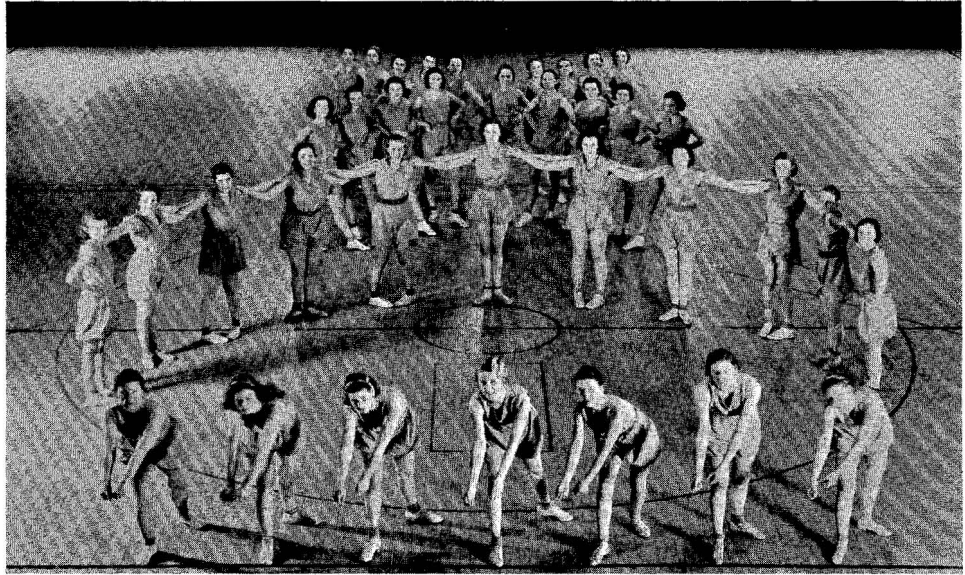
REFEREE
RICKETS



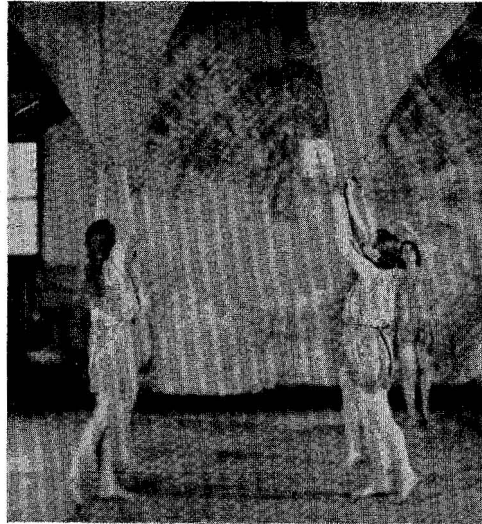
TRACK
WILSON, ARDERY

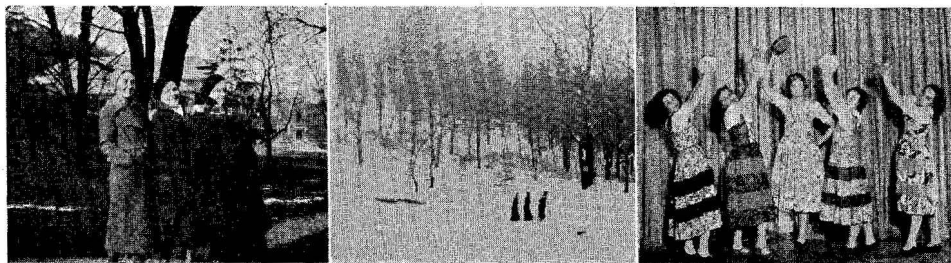


BICYCLING
DICKEY



Folk and natural dancing became organized activities under Miss Dixon's enthusiastic direction shortly before the W. A. A. came into existence, and athletic honors are awarded by the W. A. A. for excellence in this field, as in other branches of activity. A year ago clogging became also a flourishing sprout from our athletic tree, and this year has seen the advent of tap dancing as well, as with its small but ardent group of talented performers. The work of the fall and winter seasons culminates in the spring festival, persistently nicknamed the "gym meet," which this year is to take the form of a world cruise, visiting ports of the United States, Mexico, Australia, Manchuria, Italy, England, Russia, and Denmark. A new-old feature of the 1934, or thirteenth annual, gymkhana is to be a revival of the custom of having parts of the rhythmic and the gymnastic activities, as well as the athletic phase of the program, competitive between the freshman and sophomore classes.





One of the first W. A. A. meetings of the year is planned to greet newcomers within our ranks, who though not active members until they have demonstrated their athletic abilities and interest, are immediately welcomed into tentative membership.

This year the W. A. A. has sponsored three innovations which we hope may become college customs: on Homecoming Day, the association was hostess at a cocoa pouring immediately following the afternoon's football game, in an inviting nook arranged at one corner of the gymnasium; soon after the start of the same game, a myriad of gay balloons went sailing audaciously through the air, released by the W. A. A. members to connote the first touchdown scored by our team; and at every home game the sophomores have marched in a body to the field, lustily singing a marching song, with W. A. A. cheer leaders shouldering all rhythmic responsibilities, and a loyal band of freshmen trailing beneath the burden of extra sweaters, coats, and blankets.

Second semester brings to our campus the hilarity of Stunt Night, when all the college organizations vie with each other in producing the cleverest, most original, and most entertaining skit—the entire program being under the auspices of the W. A. A. The funds thus raised are used to provide the needy children of the Training School with milk.

In May of 1931, the W. A. A. held its first Play Day, welcoming to our campus representatives from the senior classes in our neighboring high schools, to join in an afternoon of recreational sport, and a picnic a-top the college hill. The association is anticipating its duties as hostess to this year's visitors.

Honors are awarded by the W. A. A. to those whose achievement and persistent interest in the activity program have been outstanding throughout their college career.

Presentation of these awards is made each year on Class Day, as part of the commencement festivities.

CANDIDATES, 1933-1934

Highest Honors

With Our Hearty
Good Wishes

8

Anonymous.

GROSSMAN'S

Lock Haven's Show Place
of Favored Fashions
for
Women and Misses

The Old Reliable Grocer

Established 1846

JACOB BROWN & SON

THE FALLON HOTEL

*Always a Friend to the
School Folks!*

Make This Store Your
Shopping Headquarters

**FOOTWEAR that will win your
Confidence and Approval**

Guaranteed Fit and Satisfaction
Combined with Value,
at This Store

BROWN'S Boot Shop

Clinton County's
Largest Shoe Store

129 E. Main St.

LOCK HAVEN, PA.

Jewelry

FRED J. EISEMANN

31 Bellefonte Avenue

HENRY KELLER'S SONS

Fine Footwear

60 E. Main St.

LOCK HAVEN, PA.

LINTZ'S

Known for Our Low Prices

LOCK HAVEN, PA.

Compliments of

THE HUB

Men's and Boys' Clothiers

WIDMAN & TEAH, Inc.

**CUT-RATE DRUGS
of Quality**

2 Stores Centrally Located
121 E. Main St.—Bellefonte Ave. and Church St.

Compliments of the

CITY MEAT MARKET

Lock Haven, Pa.

MYERS & SEITLER

The Home of
GOOD CLOTHES

TORSELL SHOE SERVICE

**QUALITY REPAIRING
and SHOES**

Phone 514J

Bellefonte Avenue

Lock Haven, Pa.

When in need of Clothing, Shoes and Furnishings,
Why Not Insist on the Best?

WEAVER & PROBST'S Men's Shop

If It's New We Have It

THE GREEN PARROT

WHERE THE
COLLEGE STUDENTS
GET TOGETHER

Bellefonte Avenue and Main Street

AUTOGRAPHS

AUTOGRAPHS

AUTOGRAPHS

AUTOGRAPHS

ENGRAVED, PRINTED AND BOUND
BY
GRIT PUBLISHING CO.
WILLIAMSPORT, PA.