

1933

PRAEEO



Copyright, 1933
by

JOHN H. HABERSTROH
Editor-in-Chief

CARL F. HATTER
Business Manager



P
R
A
E
C
D

Lock Haven
State Teachers College
Lock Haven, Pennsylvania

1933

■ FOREWORD

The individual realization that not every enterprise or effort culminates in reward has not broken us in its disillusioning grasp. We are still imbued with an urge to realize our plans. It is to perpetuate this quality of strength that the Class of Nineteen Hundred Thirty-three has created this Praeco.

■ TABLE of CONTENTS

College

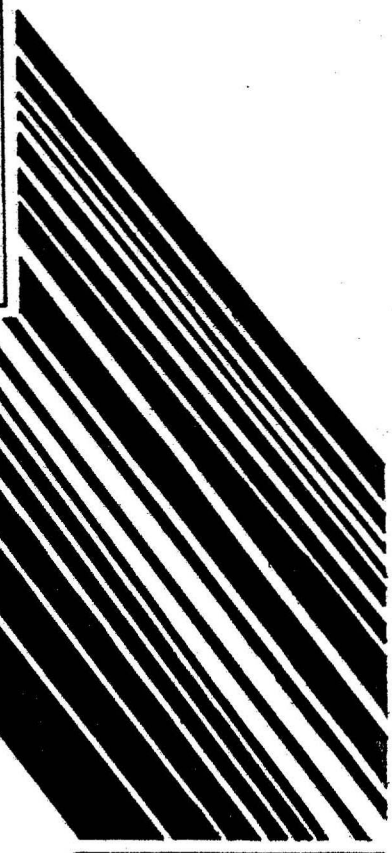
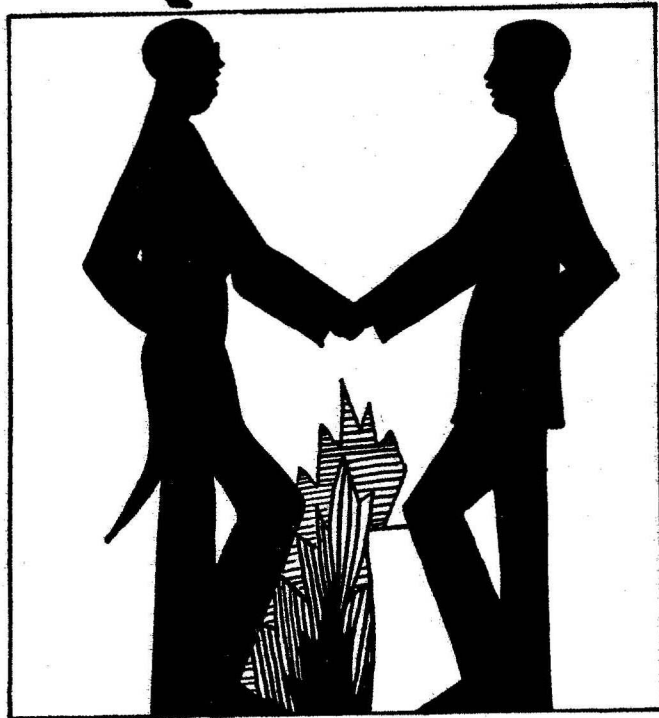
Classes

Organizations

Athletics

Features

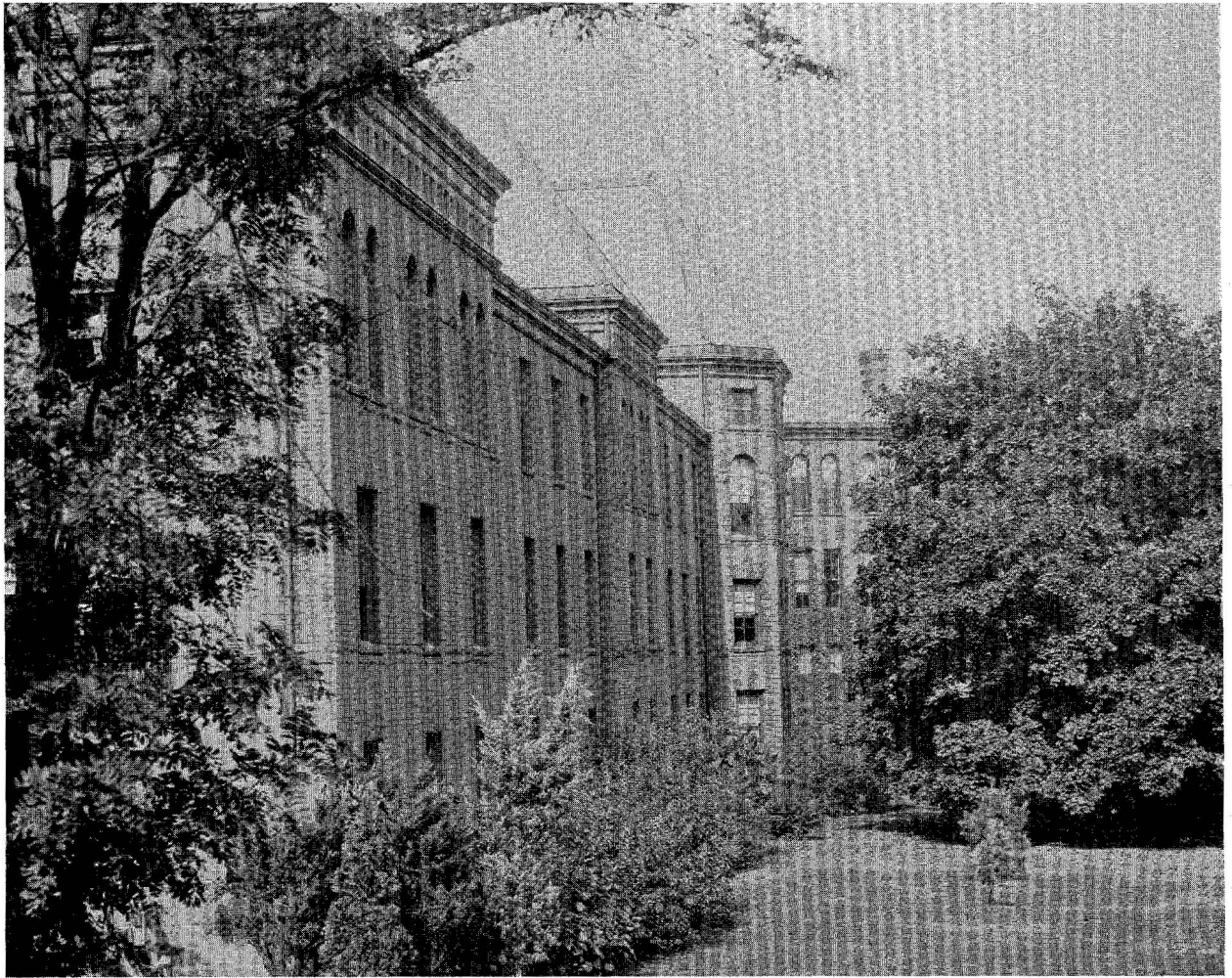
ADMINISTRATION



1933



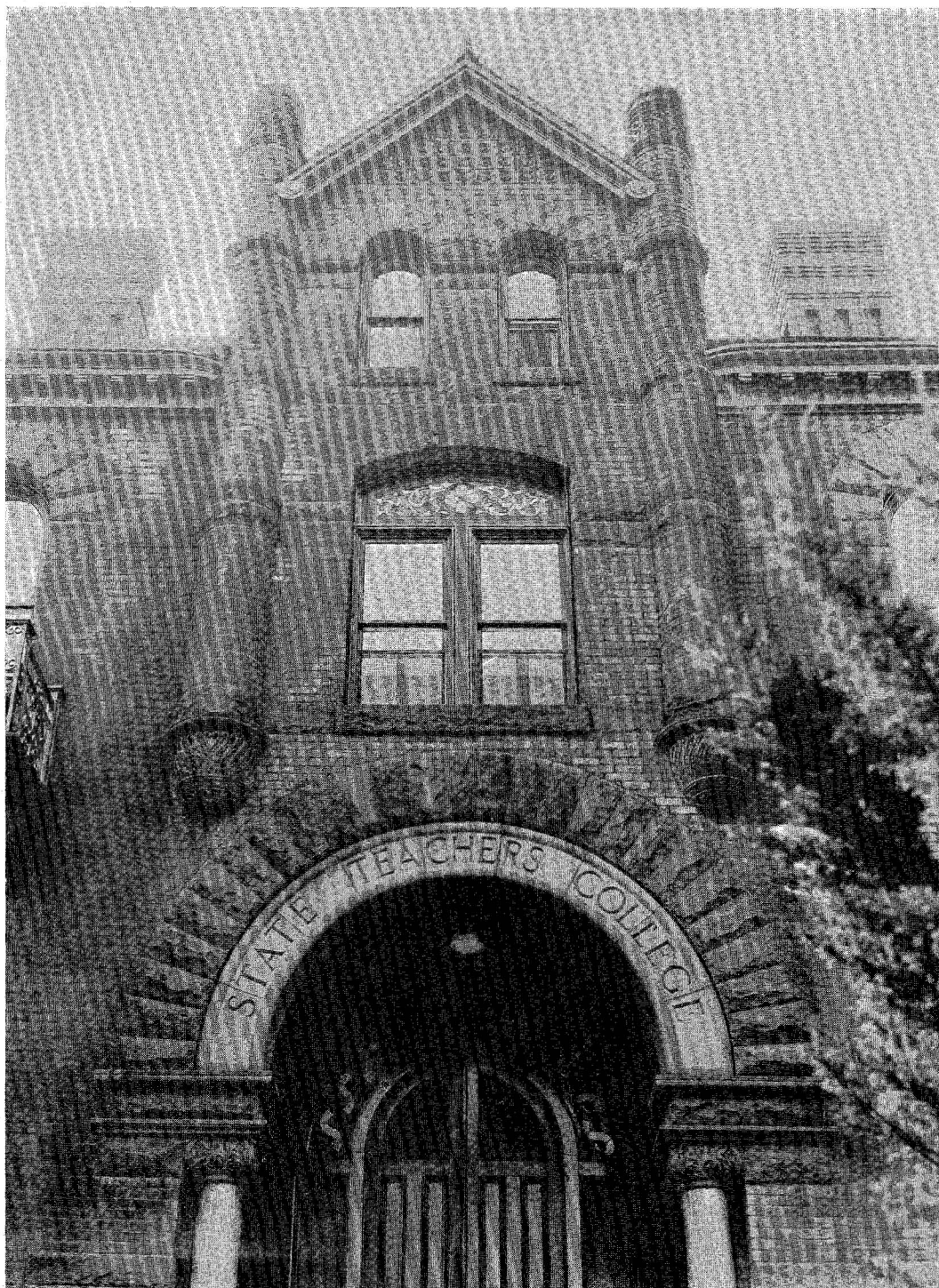
ADMINISTRATION BUILDING



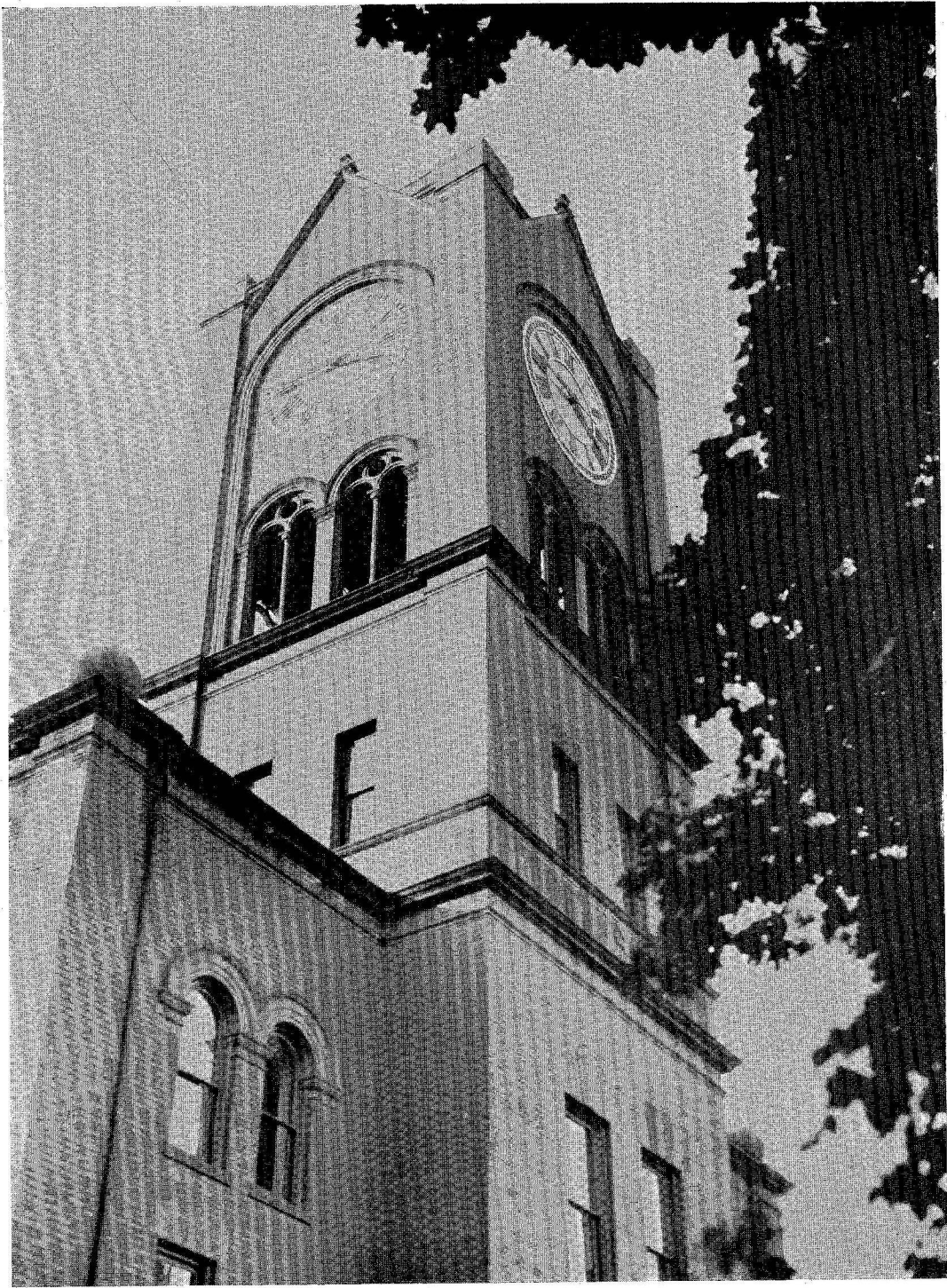
EAST DORMITORY



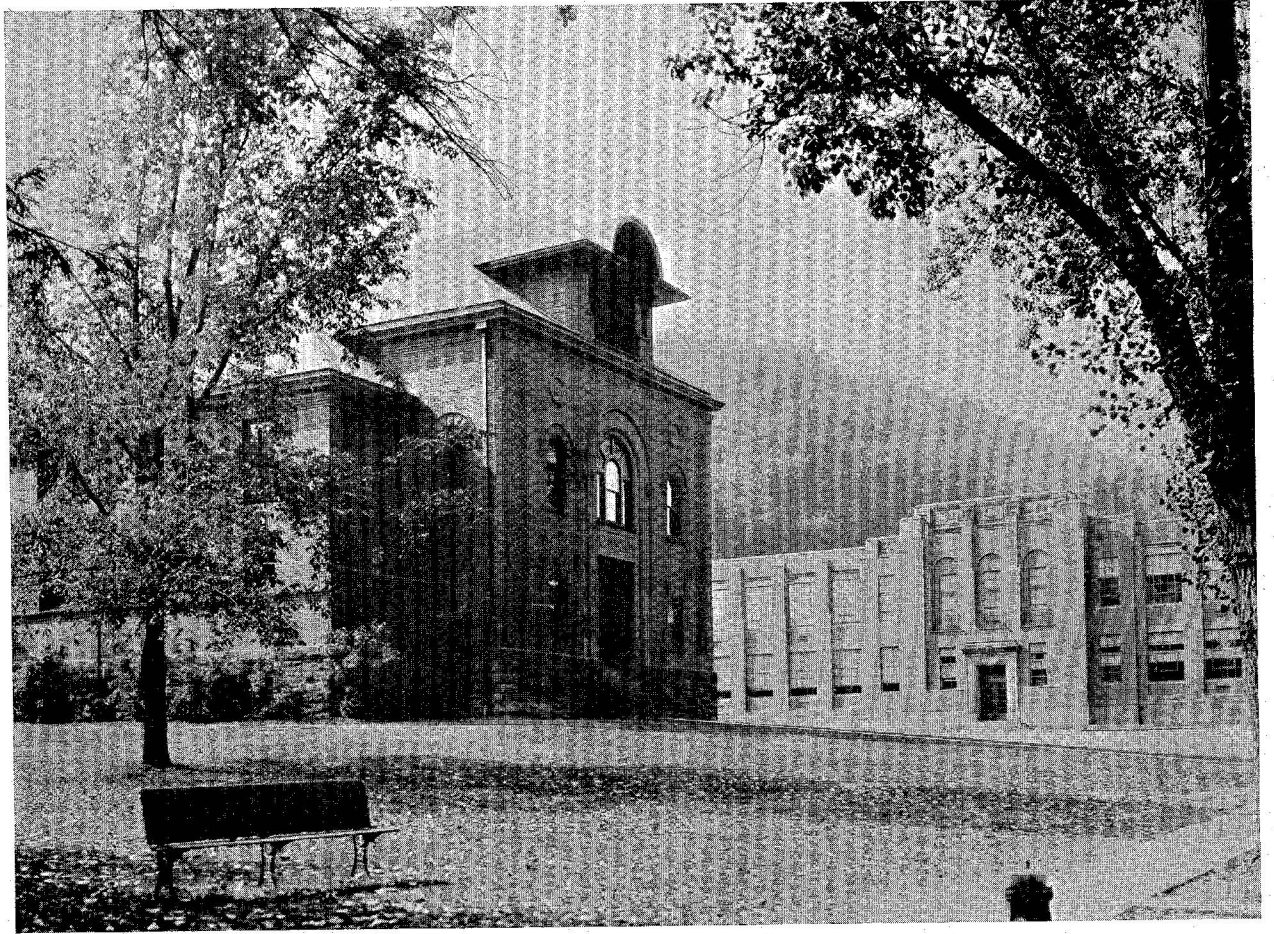
RECITATION HALL



ENTRANCE—ADMINISTRATION BUILDING



TOWER—RECITATION HALL

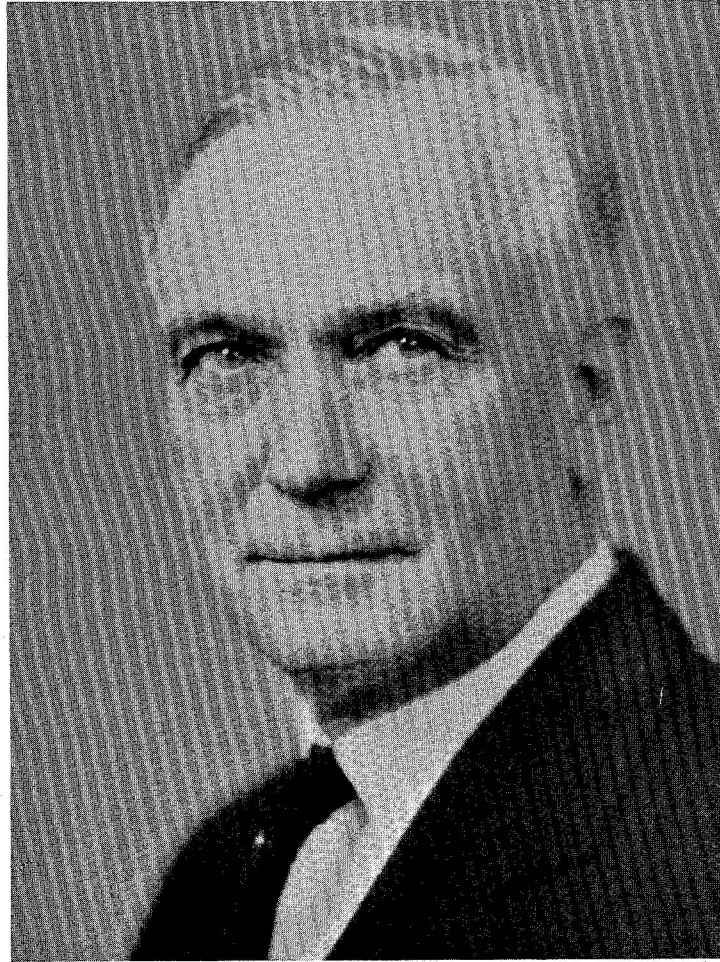


GYMNASIUM

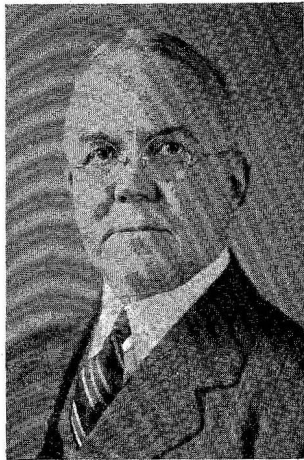
TRAINING SCHOOL

A
D
M
I
N
I
S
T
R
A
T
I
O
N

F
A
C
U
L
T
Y



DALLAS W. ARMSTRONG
Ph.B., A.M., LL.D.
President of Lock Haven State Teachers College



MORRIS DETURK HIGH
A.B., A.M.
Dean of Instruction; Mathematics



R. STEWART MACDOUGALL
A.B., A.M.
*Director of Teacher Training
Education*



FRANK E. RITTER
Bursar and Revenue Agent



BELLE HOLAWAY
A.M.
Dean of Women; English



HARRY F. WEBER
A.B., B.S., A.M., Ph.D.
Dean of Men; Social Sciences

THUS ends the chronicle of the class of '33.

In closing, the Board of Control of the '33 PRAECO express their appreciation for work of outstanding merit:

Weldon M. Williams for his constructive criticism and evaluation.

Claude Morehouse, of the Grit Publishing Company, for his technical advice and assistance.

The Somerville Studio for the excellence of their photography.

Mary Jane Nichols for her indefatigable work in the arrangement of the "Organizations" section.

Walter M. Wilkinson for his superior art work.

JOHN H. HABERSTROH

JULIE J. SILAGYI

CARL F. HATTER

MARION E. FRANCISCO

HAROLD L. SYKES

AUTOGRAPHS

AUTOGRAPHS

ENGRAVED, PRINTED AND BOUND
BY
GRIT PUBLISHING CO.
WILLIAMSPORT, PA.



HELEN B. LESHNER
Supervisor, Grade III

CORNELIUS M. SULLIVAN
B.S., A.M.
*Social Science;
Faculty Athletic Adviser*



LEVI J. ULMER
B.S., M.S.
Science; Geography

LAURA E. BARKHUFF
B.S.
Supervisor, Grade I

JESSIE SCOTT HIMES
B.S., A.M.
Director of Primary Education

BERTHA M. ROWE
B.S.
*Supervisor, Grade IV;
Education*



MALOISE S. DIXON
A.B., A.M.
*Physical Education
and Health Education*

LILLIAN RUSSELL
A.B.
Social Science





NELLIE A. DUBOIS
B.S., A.M.
Art

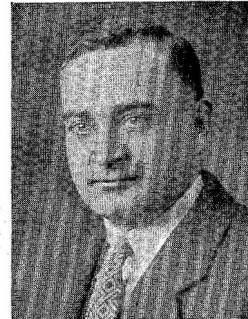
IRENE K. MACDONALD
A.B., A.M.
*Librarian; Instructor in
Library Methods*



EDNA H. POLLOCK
A.B., A.M.
Supervisor, Grade VI

ALLEN D. PATTERSON
A.B., A.M.
*Director of Junior High School;
Education*

MABEL V. PHILLIPS
A.B., A.M.
Supervisor, Grade II



SAMUEL J. SMITH
Ph.B., A.M.
Mathematics

JAY FERRY STEMPLE
A.B., M.S.
Physical Sciences



BERTHE A. DANIEL
B.S., M.A.
English



IRA O. FLEMING
B.S., M.S.
Biological Sciences

COPHINE ROOK
B.S., M.S.
Supervisor, Grade V



AXEL S. RUDE
A.B., M.A., Ph.D.
Education and Psychology

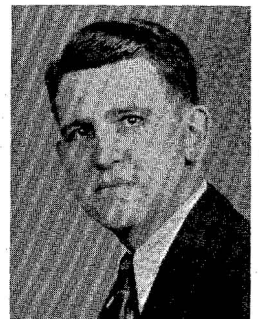
MABEL-LOUISE AREY
B.L.I.
Dramatics

V. FRANCES COPPENS
A.B., A.M., Ph.D.
Psychology and Education



ASHTON HATCHER
A.B., M.A.
Primary Education

LOTTIE LARABEE
B.M., M.M.
*Public School Music;
Piano*



WELDON M. WILLIAMS
A.B., A.M.
English



GLADYS M. ERICKSON
A.B., A.M.
Supervisor, Kindergarten

LYNDALL D. FOX
B.Ed., M.A.
Art; Penmanship



HARRISON J. KAISER
B.A., M.A.
*Physical Education;
Coaching*

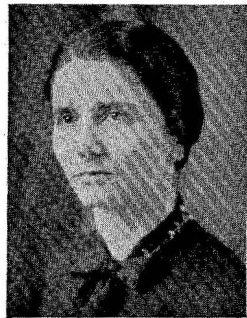
G. F. B. LEHMAN
A.B.
*Public School Music;
Voice*

AVIS E. EDGERTON
A.B., M.S.
Physical Education



KENTON VICKERY
A.B., M.A., Ph.D.
Foreign Languages; English

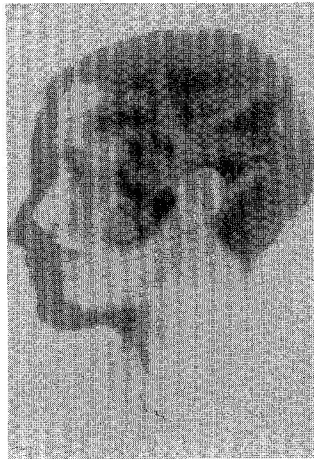
SUE NORTHEY
B.Ed.
Supervisor, Kindergarten



ESTHER RICHARD
A.B., A.M.
English



DEBORAH M. BENTLEY
Dietitian



RUTH Z. WEISNER
Assistant Librarian



GEORGE B. HURSH
*Superintendent of Buildings
and Grounds*

CLASSES



1933

College

**S
E
N
I
O
R
S**



HALL E. ACHENBACH

Lock Haven, Pa.

Social Studies, Geography

Delta Rho Beta; Dramatic Club; Football; Intra-Mural Boxing, Baseball, Basketball; Tribunal; "Just Like Judy," "The Ivory Door," "The Merchant of Venice."

LAUVON BASINGER

Lock Haven, Pa.

English, Social Studies

Dramatic Club; Education Club.

FLOYD BLOOM

New Millport, Pa.

Mathematics, Science

Naturalist Club; Y. M. C. A., President, 2; Men's Student Council, 2, 3; Football.

FRANCES BOWERS

Portage, Pa.

English, Social Studies

Y. W. C. A.; Orchestra.

FLORENCE VIOLA DAYE

Madisonburg, Pa.

Latin, English

College Times; Art Club, President, 3; Orchestra, 1, 2, 3; Y. W. C. A.; Women's Student Council, President, 4.

JOHN DUKE

Clarence, Pa.

Science, English

Shakespeare Literary Society.

ELIZABETH F. FULLMER

Lock Haven, Pa.

Secondary and Elementary; English, Social Studies

Lambda Alpha Lambda; Alpha Sigma Tau; Art Club; Girls' Glee Club; Orchestra.

MARGARET GARDINER

Renovo, Pa.

College Kindergarten

Lambda Alpha Lambda; Rho Omega Lambda; Inter-Sorority Council; Girls' Glee Club; A. C. E.; W. A. A., President, 4; Dramatic Club; "Just Like Judy," "The Ivory Door"; Commencement Speaker.





DOROTHY FRANCES GRUBB

Johnstown, Pa.

Mathematics, Social Studies

Rho Omega Lambda, President, 4; Orchestra, Concertmeister, 1, 2, 3; Dramatic Club, Vice President, 4; Tennis; Baseball; Hockey.

JOHN H. HABERSTROH

Lock Haven, Pa.

Mathematics, Science

Delta Rho Beta; Class President, 2; College Times, Editor-in-Chief, 2; PRAECO Staff, '30, '31, '32, '33, Editor-in-Chief, '33; Shakespeare Literary Society, 1, 2; Education Club; Art Club, 2; Y. M. C. A.; Men's Glee Club, 2; Dramatic Club, Vice President, 3, President, 4; "The Ivory Door," "The Merchant of Venice."

CHARLES HAGER

Flemington, Pa.

Geography, Social Studies

Delta Rho Beta; Basketball.

JAMES A. HARLAN

Jersey Shore, Pa.

French, Social Studies

Dramatic Club; "The Merchant of Venice"; Director, "Pepita," "The Count and Co-ed," "The Bishop's Candlesticks," "Brothers," "For Goodness Sake," "Orange Blossoms."

CARL HATTER

Lock Haven, Pa.

Mathematics, Social Studies

Delta Rho Beta, President, 3; Business Manager 1933 PRAECO Staff; Football, 1, 2, 3, 4, Captain, 4; Class President, 4; Class Secretary, 1; Vice President, Varsity Club, 4.

RICHARD HERLOCHER

Jersey Shore, Pa.

English, Mathematics

ELIZABETH KOLLAR

Patton, Pa.

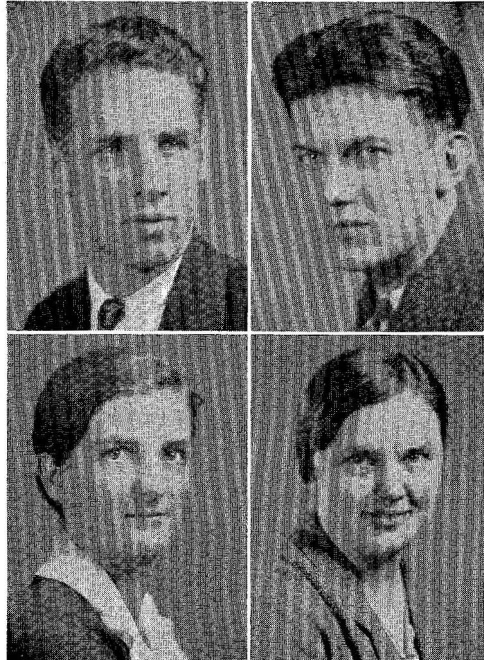
English, Social Studies

Y. W. C. A.

HELEN LEBARON

Lock Haven, Pa.

English, Social Studies





VIRGINIA LONG
Mill Hall, Pa.
College Elementary

CHESTER E. McCALL
McAlevy's Fort, Pa.
Mathematics, Science
Shakespeare Literary Society, President, 3,
4; Y. M. C. A.; Football; Men's Student
Council.

GLADYS McCLAIN
Portage, Pa.
College Kindergarten
A. C. E.

SCOTT McLEAN
Mill Hall, Pa.
Social Studies, Geography
Delta Rho Beta; Basketball, 1, 2, 3, Captain
2; Student Activity Club, President, 3;
Men's Tribunal.

GENEVRA MAYBEE
Ridgway, Pa.
College Elementary

MARY JANE NICHOLS
Warren, Pa.
Mathematics, Latin
Rho Omega Lambda, Vice President, 3, 4;
1933 PRAECO Staff; Y. W. C. A., Vice Pres-
ident, 4; W. A. A.

HAL E. POUST
Jersey Shore, Pa.
Science, Social Studies
Delta Rho Beta, President, 4; College
Times; Naturalist Club, President, 4; Y.
M. C. A.; Football, 1, 2, 3, 4; Basketball,
1, 3, 4, Captain, 4; Class President, 1, 3.

ALMA MAE PROBST
Lock Haven, Pa.
College Kindergarten-Primary
Lambda Alpha Lambda; Beta Sigma Chi,
President, 4; A. C. E.; W. A. A.





VIVIAN RINEHULS
Emporium, Pa.
English, Social Studies

ALLEN PAUL SEKULA
DuBois, Pa.
French, Social Studies

College Times; 1933 PRAECO Staff; French Club; Varsity Club; Y. M. C. A.; Dramatic Club; Football; Men's Student Council, President, 4; Boxing, Captain, 3; Intra-Mural Basketball, Captain, 2, 3; Track; Baseball.



EDITH ANN SHARPE
Brush Valley, Pa.
English, French

Beta Sigma Chi; 1932 PRAECO Staff; Shakespeare Literary Society; Y. W. C. A.; Dramatic Club; "The Ivory Door."

JULIE JUSTINE SILAGYI
Portage, Pa.
Latin, French

Beta Sigma Chi; College Times, 1, 2, 3, 4, Editor-in-Chief, 3; 1933 PRAECO Staff, Assistant Editor-in-Chief; Art Club, Vice President, 2; Y. W. C. A. Cabinet, 2, 3, 4; W. A. A.; Women's Student Council, 1, 3, 4; French Club.

MARY B. SIMON
Lock Haven, Pa.
English, French

Lambda Alpha Lambda, President, 3; Rho Omega Lambda; 1933 PRAECO Staff; Shakespeare Literary Society; Y. W. C. A. Cabinet; W. A. A.; Day Room Student Council, President, 3; Student Activity Club, 3, 4, Secretary, 4; French Club.

ROBERT F. SMITH
Jersey Shore, Pa.
Geography, Social Studies

Delta Rho Beta; Naturalist Club, President, 4; Y. M. C. A.; Football, 1, 2, 3; Basketball, Captain, 2; Track.

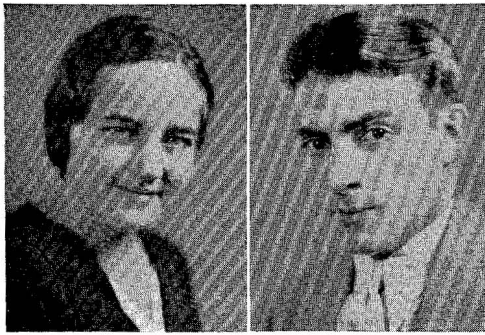
KERMIT M. STOVER
Coburn, Pa.
Mathematics, Science

College Times, Editor-in-Chief, 4; Shakespeare Literary Society; Y. M. C. A., President, 3, 4; Men's Student Council, 3.

LAJOS J. TOROK
Renovo, Pa.
Mathematics, Science

Delta Rho Beta; Y. M. C. A.; Football; Intra-Mural Basketball Champions 1930; Varsity Club.





MARY YOUNG
Newberry, Pa.
English, Mathematics

ISADORE MAYER ZIFF
Philipsburg, Pa.
Mathematics, Science

1932 PRÆCO Staff; 1933 PRÆCO Staff; College Times; Education Club, President, 4; Men's Glee Club; Y. M. C. A.; Dramatic Club; Men's Student Council, President, 4; Boxing; Student Activity Club; "The Ivory Door." "Merchant of Venice"; Commencement Speaker.

JEAN McCLURE
New Castle, Pa.
College Primary

ROBERT PLUMMER
Portage, Pa.
Mathematics, Social Studies

HAROLD L. SYKES
Lock Haven, Pa.
English, French

Dramatic Club; Education Club; French Club, President, 3; "Days in Old Dixie." "The Merchant of Venice"; Art Club; Times Staff; PRÆCO Staff.

EDNA REMPE
Lock Haven, Pa.
College Kindergarten-Primary

Primary
Intermediate

S
E
N
I
O
R
S



MAE D. ALLEN
Williamsport, Pa.
Kindergarten-Primary

MADELINE ANDERSON
Kane, Pa.
Intermediate
Beta Sigma Chi; 1933 PRAECO Staff; Art
Club; Y. W. C. A.; W. A. A.

MIRIAM ANDERSON
Hepburnville, Pa.
Intermediate

RUTH ANKENY
Stoyestown, Pa.
Intermediate

CATHERINE E. ARCHANGEL
Beaverdale, Pa.
Primary
Girls' Glee Club; A. C. E.

HARRY BENTON
Portage, Pa.
Intermediate

GRANT M. BERRY
Morrisdale, Pa.
Intermediate
Y. M. C. A.

SARAH E. BIGELOW
McAlevy's Fort, Pa.
Primary
Girls' Glee Club; A. C. E.; Vesper Choir.





SYLVAN T. BLOOM

New Millport, Pa.

Intermediate

Y. M. C. A.; Football; Track; Wrestling;
Baseball.

THOMAS BLYLER

Williamsburg, Pa.

Intermediate

Activity Club, President, 4.

MARY LOUISE BORLAND

Rockland, Pa.

Primary

Alpha Sigma Tau; A. C. E.; Y. W. C. A.

SARA BRICKER

Bellefonte, Pa.

Intermediate

Naturalist Club; Y. W. C. A.

EMELINE BROWN

Lock Haven, Pa.

Intermediate

RUTH BROWN

Loganton, Pa.

Intermediate

GERTRUDE E. BROWNLEE

Jersey Shore, Pa.

Kindergarten-Primary

College Times; Art Club; Girls' Glee Club;
Orchestra; A. C. E.; W. A. A.

ROBERT P. CARSON

Madera, Pa.

Intermediate

Y. M. C. A.; Football; Wrestling; Track;
Baseball.





DORIS CATTERSON

Honesdale, Pa.

Kindergarten-Primary

Beta Sigma Chi; A. C. E.; Dramatic Club;
Art Club.

INEZ M. CHESNUT

Portage, Pa.

Primary

A. C. E.; Y. W. C. A.

HARRY K. CONDO

Spring Mills, Pa.

Intermediate

Y. M. C. A.; Band; Basketball, 1, 2.

PAUL P. COOPER

Loganton, Pa.

Intermediate

Shakespeare Literary Society; Orchestra;
Y. M. C. A.; Band.

ELEANORE COX

Williamsport, Pa.

Kindergarten-Primary

ALMA KAY CRAWFORD

Falls Creek, Pa.

Intermediate

College Times; Art Club; Y. W. C. A.; W.
A. A.

ANN CRIST

Johnstown, Pa.

Intermediate

Dramatic Club; W. A. A.; Y. W. C. A.;
Girls' Glee Club; Basketball.

MILDRED CROFT

Bellefonte, Pa.

Intermediate

Girls' Glee Club; Y. W. C. A.; W. A. A.





JENNIE CUNNINGHAM
Jersey Shore, Pa.
Kindergarten-Primary

JANET L. DALE
Morrisdale, Pa.
Intermediate

Y. W. C. A.



ALPHA MAE DAVIS
Johnstown, Pa.
Primary
Art Club, President, 2; A. C. E.; Y. W. C. A.; W. A. A.

ROBERT L. DENSHAM
Morrisdale, Pa.
Intermediate
Football; Basketball; Varsity Club.

JOHN DILLON
Julian, Pa.
Intermediate



IRENE M. DOUGHERTY
Altoona, Pa.
Intermediate

PEARL DRICK
Muncy, Pa.
Intermediate

Y. W. C. A.



DOROTHY B. DUNLAP
Muncy, Pa.
Kindergarten-Primary
Naturalist Club; A. C. E.; Y. W. C. A.



DOLORES EFFINGER
Cresson, Pa.
Kindergarten-Primary
Y. W. C. A.

FLORENCE A. EHRENFELD
Milroy, Pa.
Intermediate
A. C. E.; Y. W. C. A.; W. A. A.

SHIRLEY EMES
Juniata Gap, Altoona, Pa.
Primary
A. C. E.; Y. W. C. A.

MARY ELEANOR EVANS
Scranton, Pa.
Kindergarten-Primary
Beta Sigma Chi; Art Club; Girls' Glee Club; A. C. E.; Y. W. C. A.; Dramatic Club; Women's Student Council; Student Activity Club; "The Merchant of Venice."

SUZANNE EVANOCHKO
Madera, Pa.
Kindergarten-Primary
Y. W. C. A.

ELLEN M. FLEMING
Altoona, Pa.
Kindergarten-Primary
A. C. E.; Y. W. C. A.; Vesper Choir; "For Goodness Sake."

MARY C. FISCHER
St. Marys, Pa.
Intermediate
College Times; Art Club; Y. W. C. A.

HAZEL E. FOUSE
Aitch, Pa.
Intermediate
Alpha Chi Delta; Girls' Glee Club; Vesper Choir.





VIOLA FOUSE
Aitch, Pa.
Intermediate

MARGARET H. FREEMAN
Derrick City, Pa.
Kindergarten-Primary
Beta Sigma Chi; Inter-Sorority Council;
Naturalist Club; Girls' Glee Club; A. C.
E.; Y. W. C. A.



ROSALIND GEDDES
Lock Haven, Pa.
Kindergarten-Primary

HELEN GEMBERLING
Northumberland, Pa.
Intermediate
Y. W. C. A.

EDNA MAY GEORGE
Portage, Pa.
Kindergarten-Primary



NELLIE C. GEORGE
South Fork, Pa.
Kindergarten-Primary

VIDA K. GOODMAN
Altoona, Pa.
Intermediate

Girls' Glee Club; Y. W. C. A.; Varsity Basketball and Volleyball.



ELIZABETH GORMAN
Clearfield, Pa.
Kindergarten-Primary
Beta Sigma Chi.



ROSE GRANDINETTI

Johnstown, Pa.
Intermediate

BERTHA ROSETTA GUISER

Hublersburg, Pa.
Intermediate
Girls' Glee Club; A. C. E.; Y. W. C. A.

LESTER L. GUTSHALL

Altoona, Pa.
Intermediate
Y. M. C. A.; Wrestling.

HELEN MARIE HANYAK

Hawk Run, Pa.
Intermediate
A. C. E.; Y. W. C. A.; W. A. A.

CHRISTIAN HARMAN, JR.

Bellefonte, Pa.
Intermediate
Delta Rho Beta; Y. M. C. A.; Track.

HAZEL HARRIS

Lamar, Pa.
Intermediate

RUTH IONE HART

Saxton, Pa.
Kindergarten-Primary
Shakespeare Literary Society; Y. W. C. A.; Volleyball; Vesper Choir.

THELMA HAZLETT

Sonman, Pa.
Kindergarten-Primary





CHARLOTTE HEINEMAN

Lock Haven, Pa.
Intermediate

ELIZABETH J. HENDRYX

Coudersport, Pa.
Primary
A. C. E.; W. A. A.

M. RUTH HENNINGER

Belleville, Pa.
Kindergarten-Primary
Alpha Sigma Tau; Girls' Glee Club; Orchestra; A. C. E.; Y. W. C. A.; Dramatic Club; Band; Vesper Choir; Vesper Quintette.

HENRIETTA R. HILL

Morrisdale, Pa.
Intermediate
Y. W. C. A.; W. A. A.

FRED A. HOENSTINE

Claysburg, Pa.
Intermediate
Y. M. C. A.; Football; Baseball; Track; Activity Club.



GRACE HOFFMAN

Lebanon, Pa.
Kindergarten-Primary
Alpha Sigma Tau; Vesper Choir.

PEGGY ANN HUBLER

Tylersville, Pa.
Intermediate
Beta Sigma Chi.

REBA ICKES

Pavia, Pa.
Intermediate



ELIZABETH I. JOHNSON
Ridgway, Pa.
Kindergarten-Primary
A. C. E.; Y. W. C. A.; Varsity Volleyball.

HENRIETTA JOHNSON
Lock Haven, Pa.
Intermediate

LILLIAN H. M. JOHNSON
Bellefonte, Pa.
Intermediate
Girls' Glee Club; Y. W. C. A.

GERALDINE JONES
Bellefonte, Pa.
Intermediate
W. A. A.

ELMA KEIHL
Helvetia, Pa.
Intermediate
Beta Sigma Chi.

ANNA A. KELLER
Reading, Pa.
Kindergarten-Primary
Art Club; A. C. E.; Y. W. C. A.

CARSON KEPLER
Mt. Pleasant Mills, Pa.
Intermediate

MARY ALICE KETTL
Altoona, Pa.
Kindergarten-Primary
Art Club; Orchestra; A. C. E.; Y. W. C. A.; Vesper Choir.





MARTHA KIRSCH
Spangler, Pa.
Kindergarten-Primary

ESTHER R. KLINEFELTER
Mill Hall, Pa.
Intermediate



WALTER KOCHIN
Jerome, Pa.
Intermediate

M. DUANE KYLER
Clearfield, Pa.
Intermediate

Y. M. C. A.

MAXINE LAUFER
Everett, Pa.
Intermediate

JOSEPHINE LEAPHART
Rockwood, Pa.
Intermediate

ALICE LILLIBRIDGE
Smethport, Pa.
Kindergarten-Primary
Alpha Sigma Tau; Y. W. C. A.

EVELYN J. LIVINGSTONE
Ferndale, Pa.
Kindergarten-Primary

Alpha Sigma Tau; Art Club; Girls' Glee Club; A. C. E.; Y. W. C. A.; W. A. A.; Vesper Choir; Vesper Quartet; Volleyball, Varsity, 1932.





ALICE R. McCONNELL
Hughesville, Pa.
Intermediate
Girls' Glee Club; A. C. E.; Y. W. C. A.

MARGARET McCracken
Mahaffey, Pa.
Kindergarten-Primary

JENNIE McMURRAY
Smoke Run, Pa.
Primary
A. C. E.; Y. W. C. A.

NELLIE R. MANNING
Blairsville, Pa.
Kindergarten-Primary
Beta Sigma Chi; Girls' Glee Club; A. C. E.;
Y. W. C. A.; Vesper Choir; Vesper
Quartette.

RACHEL MARKLEY
Williamsport, Pa.
Intermediate

SARA MARTZ
Loganton, Pa.
Intermediate

JEAN MATEER
New Bethlehem, Pa.
Kindergarten-Primary
Rho Omega Lambda; College Times; Edu-
cation Club; A. C. E.; W. A. A.; Y. W.
C. A.

EVA P. MATTER
Jersey Shore, Pa.
Intermediate
Y. W. C. A.; W. A. A.





RUTH MERKLE
Tidioute, Pa.
Kindergarten-Primary

IOLABELLE MILLIGAN
Valier, Pa.
Intermediate
Beta Sigma Chi; College Times; Education
Club; Art Club; W. A. A.; Y. W. C. A.

THELMA MONTI
Renovo, Pa.
Intermediate
Alpha Chi Delta; Basketball; Hockey.

CLAIRE MORROW
Pittsville, Pa.
Kindergarten-Primary

VIVIAN NAUGLE
Bedford, Pa.
Intermediate
W. A. A.

ELIZABETH NELSON
Madera, Pa.
Kindergarten-Primary
Alpha Sigma Tau; A. C. E.; Y. W. C. A.

ROBERTA NEWMAN
Rockwood, Pa.
Intermediate

ROSELLA PARKS
Lloydell, Pa.
Intermediate





KATHRYN PETERS

Bellefonte, Pa.

Intermediate

Alpha Sigma Tau; Naturalist Club; Y. W. C. A.

RUTH PETERS

West Decatur, Pa.

Intermediate

Beta Sigma Chi; College Times; Education Club; Art Club; W. A. A.; Y. W. C. A.

EARLEEN POTTER

Johnstown, Pa.

Kindergarten-Primary

ELVA POWELL

Easton, Pa.

Kindergarten-Primary

Rho Omega Lambda; Y. W. C. A.

EDWIN ALFRED RADER

Drifting, Pa.

Intermediate

SARAH THELMA RAKER

Trout Run, Pa.

Primary

Girls' Glee Club; A. C. E.; Y. W. C. A.; Vesper Choir.

ELLEN ANNE REIGHARD

Altoona, Pa.

Primary

1933 PRAECO Staff; Naturalist Club; Art Club; A. C. E.; Y. W. C. A.; W. A. A.; Dramatic Club; Women's Student Council; Basketball; Volleyball; "Old Days in Dixie," "Merchant of Venice."

MAE H. RHODES

Jennerstown, Pa.

Intermediate

Y. W. C. A.; W. A. A.





LUCILLE RIPPLE
Johnstown, Pa.
Kindergarten-Primary

ROJEAN ROBERTS
Eric, Pa.
Kindergarten-Primary
Beta Sigma Chi.



DAN ROBINSON
Clearfield, Pa.
Intermediate

LOLA VIRGINIA ROBINSON
Johnstown, Pa.
Kindergarten-Primary
Art Club; W. A. A.; Vesper Quartette;
Marionette Club; Vesper Choir; "Old
Days in Dixie."

DOROTHY M. ROUGEUX
Coudley, Pa.
Intermediate

Art Club.

MARJORIE A. SALMON
Lock Haven, Pa.
Intermediate

Y. W. C. A.

VIOLET SAUNDERS
Williamsport, Pa.
Kindergarten-Primary

Alpha Sigma Tau; A. C. E.

SIDNEY SAUTER
Elton, Pa.
Kindergarten-Primary





RUTH SAVAGE
 Jeannette, Pa.
Kindergarten-Primary
 Alpha Sigma Tau, President. 2.

THOMAS R. SCALZO
 Morrisdale, Pa.
Intermediate
 Orchestra; Band; Wrestling; Men's Glee Club.

RUTH SCHMOYER
 Allentown, Pa.
Kindergarten-Primary
 Alpha Sigma Tau, President. 2; Inter-Sorority Council; Naturalist Club; A. C. E.; Y. W. C. A.

V. LUCY SCOLARI
 Dagus Mines, Pa.
Intermediate
 Volleyball.

R. ELEANOR SCOTLAND
 Altoona, Pa.
Intermediate
 Volleyball; Basketball.

MILDRED A. SECHRIST
 Williamsport, Pa.
Kindergarten-Primary
 Lambda Alpha Lambda; Alpha Sigma Tau; A. C. E.; W. A. A.

HILDA LEVOY SELBY
 Philipsburg, Pa.
Kindergarten-Primary
 A. C. E.; Y. W. C. A.

MYRA E. SEYLER
 Luthersburg, Pa.
Kindergarten-Primary
 Alpha Chi Delta; A. C. E.





MARGUERITE H. SHEARER
Lock Haven, Pa.
Intermediate

FREDA SHAFFER
Hooversville, Pa.
Kindergarten-Primary



ROSANNA SHIREMAN
Williamsport, Pa.
Intermediate
Y. W. C. A.

NORMA SHOFF
Madera, Pa.
Intermediate
Y. W. C. A.

MILDRED A. SHUE
Biglerville, Pa.
Kindergarten-Primary
1933 PRAECO Staff; A. C. E.; W. A. A.; Y.
W. C. A.

HAZEL SINGER
Williamsport, Pa.
Intermediate
Dramatic Club; W. A. A.; Y. W. C. A.;
"Merchant of Venice."



MARJORIE SLICK
Roaring Spring, Pa.
Intermediate
Y. W. C. A.; Vesper Choir, President, 2.



MAUDE ELLA SMITH
Boalsburg, Pa.
Intermediate



HARRIETTA SNIDER
Somerset, Pa.
Intermediate
Y. W. C. A.; W. A. A.

HULDA J. STARR
Mahaffey, Pa.
Primary
Girls' Glee Club; A. C. E.; W. A. A.; Y.
W. C. A.; Dramatic Club; "Merchant of
Venice."

AILEEN STAUFFER
Clearfield, Pa.
Intermediate

MARGARET R. STEPHENS
Altoona, Pa.
Primary
A. C. E.; Y. W. C. A.

GRACE STUMPF
Philipsburg, Pa.
Intermediate

GENEVIEVE TOMKO
Renovo, Pa.
Intermediate

DORCAS TRESSLER
Meyersdale, Pa.
Kindergarten-Primary
Alpha Sigma Tau; Y. W. C. A.

CLARISSA WAINGER
Johnstown, Pa.
Kindergarten-Primary
Lambda Alpha Lambda; Beta Sigma Chi;
Education Club; Girls' Glee Club; Or-
chestra; Marionette Club; A. C. E.,
President, 2; Dayroom Women's Student
Council; Vesper Choir; "Old Days in
Dixie."





DOROTHY L. WALTERS
Montoursville, Pa.
Kindergarten-Primary
Naturalist Club; Y. W. C. A.; W. A. A.

ELEANOR H. WALTZ
Montoursville, Pa.
Intermediate

A. C. E.; Y. W. C. A.; W. A. A.; Band;
Vesper Choir; Varsity Volleyball and
Basketball.



HOMER WARNICK
Jenners, Pa.
Intermediate

CARL E. WASSEEN
Grassflat, Pa.
Intermediate

1932 PRAECO Staff; Y. M. C. A.

GLADYS M. WEBER
Flemington, Pa.

Kindergarten-Primary
Lambda Alpha Lambda; Dramatic Club;
A. C. E.; Marionette Club.

FRANCES WENRICK
Pine Grove, Pa.
Kindergarten-Primary



HELEN ELIZABETH WHITE
Centre Hall, Pa.
Primary

Art Club; Girls' Glee Club; A. C. E.; Y.
W. C. A.

EMILY JANE WILLIAMS
Jersey Shore, Pa.

Kindergarten-Primary
Alpha Sigma Tau; A. C. E.; Y. W. C. A.;
W. A. A.; Activity Club.





MAYS WILLIAMS
Martha Furnace, Pa.
Intermediate

Y. W. C. A.

VIRGINIA D. WRIGHT
Biglerville, Pa.
Kindergarten-Primary
A. C. E.; Y. W. C. A.

THELMA YINGLING
York, Pa.
Kindergarten-Primary
Alpha Sigma Tau; Y. W. C. A.

PAUL YODER
Johnstown, Pa.
Intermediate

FRED ZAMPOGNA
Mount Jewett, Pa.
Intermediate

HELEN E. GATES
Lewistown, Pa.
Kindergarten-Primary
College Times; Art Club; Girls' Glee Club;
A. C. E.; Y. W. C. A.; W. A. A.

ROSELLA MAYE HECKMAN
Spring Mills, Pa.
Intermediate
Y. W. C. A.

HELEN J. THOMPSON
Port Matilda, Pa.
Intermediate





ANITA KUNES
Keewaydin, Pa.
Kindergarten-Primary

HELEN POWERS
Mill Hall, Pa.
Kindergarten-Primary
Alpha Chi Delta.

EDNA BATDORF
Renovo, Pa.
Intermediate

FRIEDA FROMM
Lock Haven, Pa.
Intermediate

ROBERT SAXTON
Allport, Pa.
Intermediate
Art Club; Y. M. C. A.

**S
E
N
I
O
R**

**F
E
A
T
U
R
E
S**



CARL F. HATTER
President



FRED HOENSTINE
Vice President



MADELINE ANDERSON
Secretary



EDITH A. SHARPE
Treasurer

CLASS OFFICERS

HAVING spent four years at Lock Haven State Teachers College, we seniors look back with interest upon the developing stages of our college career.

September, 1929, saw the class of '33 enrolled at Teachers College. For one long year we were victimized by the mighty upper-classmen with the result that we were fitted to victimize thoroughly the freshmen when we became the rulers.

Our sophomore year was filled with relatively happy days since the newness of being upper-classmen had not palled on us. The successful hop and a class dinner-dance at the "Party Garden" were the outstanding social events which relieved the monotony of classes.

The high spots of our third year were the brilliant Junior Prom and the ably presented class play "Old Days in Dixie." The end of the year found us taking our place as the most important class on campus. John Haberstroh was elected editor-in-chief of the PRÆCO and other members were chosen to head the various organizations.

Being seniors seemed to make us more mature. Student teaching, conferences, and lesson plans replaced dates as the subject of campus conversations. The brilliance and formality of the Senior Ball with its valentine motif gave us the opportunity of appearing to the best advantage in the social whirl.

In the field of athletics our class was a well represented group. Carl Hatter, our able class president and captain of the football team, with other sport heroes, led the football team through a successful season. Hal Poust did the same with the basketball team.

To our adviser, Mr. C. M. Sullivan, we owe much of our success as a class organization. We, therefore, take this opportunity to thank him for his splendid cooperation.

SENIOR CLASS HISTORY

H
A
L
L
O
F
F
A
M
E



HARRY CONDO



JOHN HENRY HABERSTROH



CARL F. HATTER



HAL POUST



ALLEN PAUL SEKULA

HARRY CONDO
JOHN HENRY HABERSTROH
CARL F. HATTER
HAL POUST
ALLEN PAUL SEKULA
HAROLD L. SYKES

THE Hall of Fame includes the twelve Seniors elected by the graduating students as the most representative of the spirit of Lock Haven State Teachers College.



MADLINE ANDERSON

MADLINE ANDERSON

DOROTHY GRUBB

MARY JANE NICHOLS

ALMA PROBST

JULIA JUSTINE SILAGYI

CLARISSA WAINGER



DOROTHY GRUBB



MARY JANE NICHOLS



ALMA PROBST



JULIA JUSTINE SILAGYI



CLARISSA WAINGER

C
O
M
M
E
N
C
E
M
E
N
T

S
P
E
A
K
E
R
S



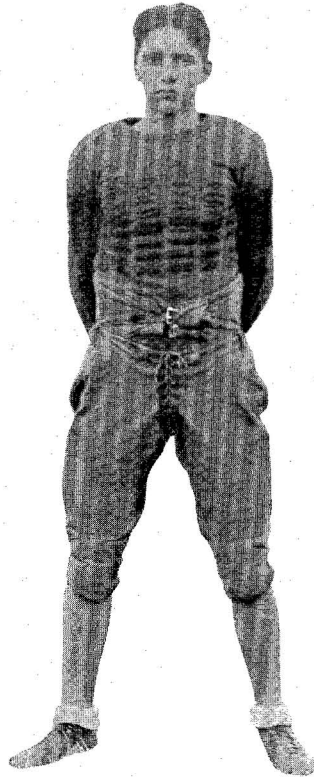
ISADORE MAYER ZIFF
College Secondary



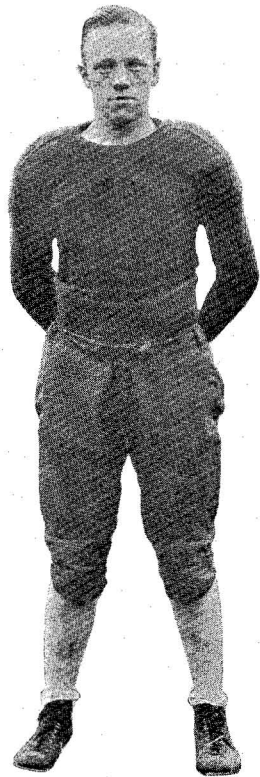
MARGARET M. J. GARDINER
College Elementary



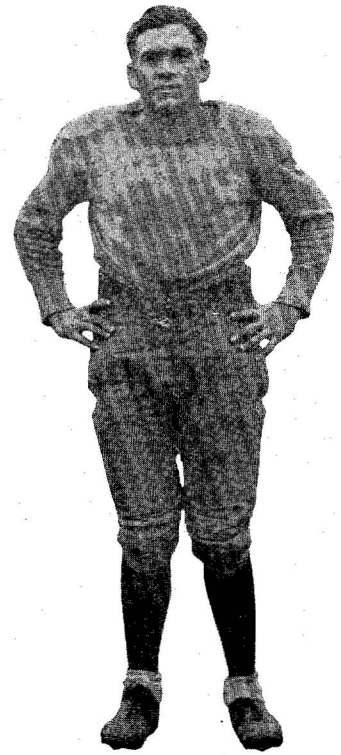
CAPTAIN HATTER



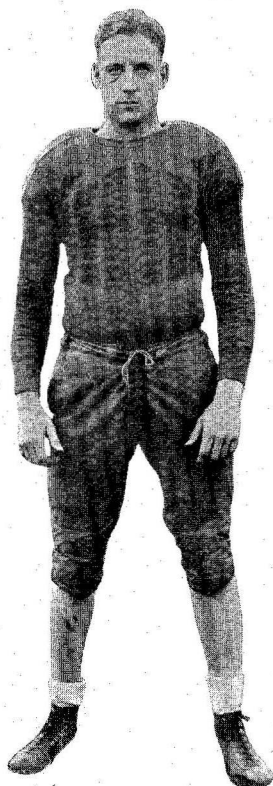
DENSHAM



ACHENBACH



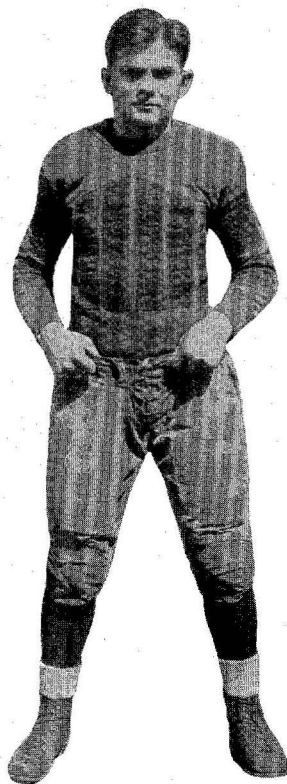
McCALL



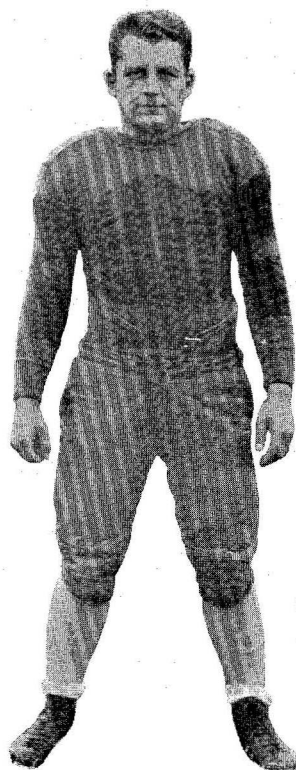
POUST



SMITH



SEKULA



TOROK

SENIOR
FOOTBALL
"L" MEN



PEG GARDNER
JACK HABERSTROH



JULE SILAGYI

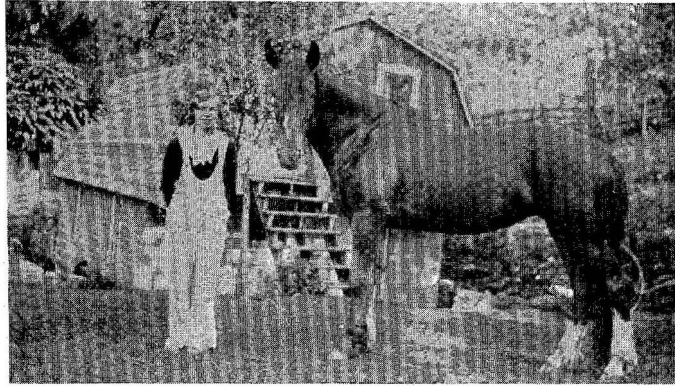


SAL BRICKER
CATHERINE ARCHANGEL
MID CROFT





HELEN GATES
HUD STARR



MAXINE LAUFER



DAN ROBINSON
HARRY CONDO



MARY EVANS





DOT GRUBB



AL POLLY

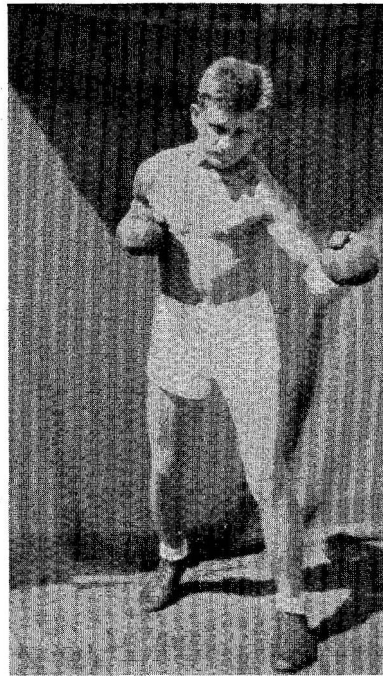


ELLEN REIGHARD





SALLY HAL



AL



MYRON
RUTH



M. B. SIMON



ALMA CRAWFORD
MYRA SEYLER



MARY LOUISE BORLAND



MARY BORLAND
MARY KETTL
PEG STEPHENS
ELLEN FLEMING
CLAIRE MORROW



MARY EVANS
DORIS CATTERSON
PEG FREEMAN

J
U
N
I
O
R
S



TOM SMITH



LAURA SWINGLE



DOROTHEA STITT

CLASS OFFICERS



JUNIOR CLASS

MEMBERS

Virginia Albright
 George Anderson
 Florence Ayres
 Charles Baker
 Myron Biddle
 Mary Jeanette Bixel
 June Breining
 Elsie Brion
 Thelma Brownlee
 Elvera Bruce
 William Bull
 Russell Burd
 Helen Cawley
 Stella Clair
 Calvin Cooke
 Max Cook
 Harold Cronister
 Edward Dettrey
 Ralph Drick
 Clarita Duhart
 Ruby Eckert
 Robert Emery
 Myra Evans
 Sara Fletcher
 Marlon Francisco
 Genevieve Frey
 Hannah Fromm
 Ernest Gilliland

Pauline Graden
 Alice Marie Hackett
 Christopher Hammaker
 Martha Hanuman
 Kenneth Hart
 Mary Harvey
 Kathryn Harvey
 Allen Heydrich
 Mary Hill
 Minnie Hoberman
 Nora Holmes
 Melvin Hoy
 Wayne Hoy
 Martha Keys
 William Knapp
 Helen Krape
 Caroline Laye
 Myrna Lundy
 Richard McCloskey
 Richard McNerney
 Martha McDowell
 Vanetta Mader
 Kathryn Maloney
 John Marshall
 Reynold Martz
 Elizabeth Miller
 Miriam Moore

Helen Myers
 Allen Nelson
 Shirley Null
 Mildred Parks
 Eileen Perry
 Raymond Poole
 Margaret Potter
 Gertrude Powell
 Ethel Quigg
 Eugene Reighard
 Harris Reynolds
 Walter Rorabaugh
 Mary Sharp
 Rudolph Shearer
 Ruth Sherman
 LaDean Shirey
 George Shively
 Dean Shroat
 Caroline Shultz
 Dale Smith
 Thomas Smith
 Clyde Snare
 Ruth Sponsler
 Dorthea Stitt
 Laura Swingle
 Grace Thompson
 Millard Weber
 Charles Wepsic

OFFICERS

CALVIN COOKE	- - - - -	<i>President</i>
TOM SMITH	- - - - -	<i>Vice President</i>
LAURA SWINGLE	- - - - -	<i>Secretary</i>
DOROTHEA STITT	- - - - -	<i>Treasurer</i>

WE, the class of nineteen thirty-four, after two years of struggle and success, have attained the honor of being recognized as juniors.

During our first two years in Lock Haven State Teachers College our class was widely represented in the leading clubs, organizations, and sororities. Athletics seemed to be our hobby. There was not one athletic activity in which we did not have a part. Our boys won great fame for our school in football and were also well represented in basketball.

In our sophomore year we held a St. Patrick's Dance which was a great success.

As juniors we have tried to maintain the standard which we had established as freshmen.

Under the guidance of our faculty adviser, Mr. Samuel J. Smith, we are ready to assume the position of seniors.

LAURA SWINGLE, *Class Historian.*

JUNIOR CLASS
HISTORY

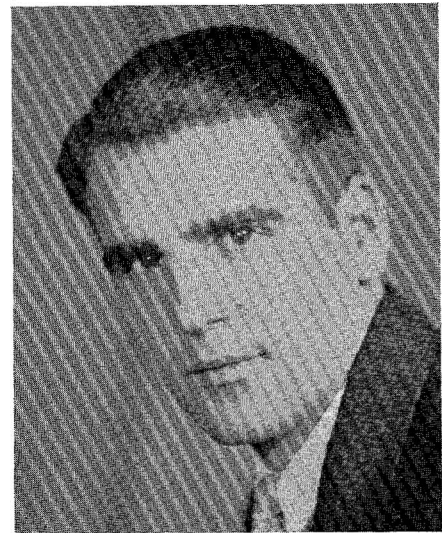
S
O
P
H
O
M
O
R
E
S



ELWOOD ROHRBAUGH



ISABEL WELCH



ROBERT HUNTER

CLASS OFFICERS



SOPHOMORE CLASS

MEMBERS

Ronald Aldrich
 Leon Barr
 Marian Behmer
 Beatrice Berg
 Robert Breth
 Wanda Brown
 Maude Brungard
 Jack Bryerton
 Trafton Buchanan
 Mabel Burd
 Myra Burd
 James Burkhardt
 Lewis Carpenter
 Marjorie Deise
 Marjorie Dice
 Wilmer Dressler
 Glenn Dunlap
 Clarence Eld

Madelyn Faulkner
 James Floruss
 Aldine Glossner
 Jerome Haagen
 Calvin Hamberger
 Astrid Hauge
 Florence Hunt
 Robert Hunter
 Clara Jenkins
 Richard Kamp
 Pauline Kessinger
 Lewis Lucas
 Marian McCloskey
 Sara Mapes
 Paul Mills
 George Moon
 Sara Moran
 Ray Oberheim
 Catherine Pipes

James Pletcher
 Olive Quiggle
 Edward Rader
 Frederick Rinn
 Elwood Rohrbaugh
 Bertha Rolla
 Ellen Louise Rooke
 Earl Schnars
 Olive Shaffer
 Ruth Shaffer
 Henry Stehman
 Jean Smith
 Isabel Welch
 Naomi Wentz
 Walter Wilkinson
 Stewart Wilson
 Violet Yeager
 Anthony Yost

OFFICERS

ELWOOD ROHRBAUGH	- - - - -	<i>President</i>
TRAFTON BUCHANAN	- - - - -	<i>Vice President</i>
ISABEL WELCH	- - - - -	<i>Secretary</i>
ROBERT HUNTER	- - - - -	<i>Treasurer</i>
A. D. PATTERSON	- - - - -	<i>Adviser</i>

Class Colors—Black and Silver

Class Flower—Lilac

CLASS MOTTO

“What better comfort have we, or what other profit in living
 Than to feed, sobered by the truth of nature,
 Awhile upon her bounty and her beauty
 And hand her torch of gladness to the ages following after?”

The sophomores, after a freshman year of exploration, experimentation, and adjustment, are beginning to find their place in campus life. In order to keep in touch with each other during this year and the years to come, the sophomores established a monthly news sheet, “Sophomore Scraps,” edited by Leon Barr and a staff of sophomore newswriters.

One of the most successful affairs of the college social season was the dance sponsored by the sophomores—an Inaugural Ball, March 4, which took the place of the usual Sophomore Dance for Saint Patrick’s Day.

The members of the class are looking forward eagerly to working and playing together during the last years of their college life.

SOPHOMORE CLASS
 HISTORY

ORGANIZATIONS



1933

JOURNALISM

FRATERNITIES

SORORITIES

CLUBS



JOHN H. HABERSTROH



CARL HATTER



JOHN H. HABERSTROH	- - - -	<i>Editor-in-Chief</i>
JULIE J. SILAGYI	- - - -	<i>Assistant Editor-in-Chief</i>
MARION E. FRANCISCO	- - - -	<i>Chief Associate Editor</i>
HAROLD L. SYKES	- - - -	<i>Art Editor</i>
CARL F. HATTER	- - - -	<i>Business Manager</i>
MARY JANE NICHOLS	- - - -	<i>Managing Editor</i>
TOM SMITH	- - - -	<i>Photograph Editor</i>
ISADORE ZIFF	- - - -	<i>Men's Sports Editor</i>
MARY SIMON	- - - -	<i>Women's Sports Editor</i>
ELLEN REIGHARD	- - - -	<i>Feature Editor</i>
ALLEN SEKULA	- - - -	<i>Feature Editor</i>
WALTER WILKINSON	- - - -	<i>Assistant Art Editor</i>
LAUVON BASINGER	- - - -	<i>Assistant Business Manager</i>
MARTHA B. ZEIGLER	- - - -	<i>Associate Editor</i>
MADELINE ANDERSON	- - - -	<i>Assistant Women's Sports Editor</i>
STEWART WILSON	- - - -	<i>Typist</i>
ETHEL QUIGG	- - - -	<i>Typist</i>

PRAECO STAFF



MARION FRANCISCO



SENIOR PAST EDITORS-IN-CHIEF

John Henry Haberstroh

Julie Justine Silagy

Kermit Stover

BOARD OF CONTROL

MARION FRANCISCO	- - - - -	<i>Editor-in-Chief</i>
ALMA CRAWFORD	- - - - -	<i>Managing Editor</i>
HAROLD SYKES	- - - - -	<i>Copy Editor</i>
ISABEL WELCH	- - - - -	<i>Make-up Editor</i>
BETTY GLATZERT	- - - - -	<i>Business Manager</i>
WILLIAM ANDERSON	- - - - -	<i>Circulation Manager</i>

Sub-Editors

Mary Sharpe
Naomi Wentz
Florence Daye

Grace Thompson
Robert Collary
Isadore Ziff

Roberta Newman
Pauline Graden
Iolabelle Milligan

Reporters

Madelyn Faulkner
Allen Sekula
Vivian Rinehuls
Mary Fischer

Sue Bader
William Murphy
John Yon

Carolyn Laye
Ruth Peters
Betty Browning
Isabel Bickel

Special Writers

Martha Zeigler

John Henry Haberstroh

Kermit Stover

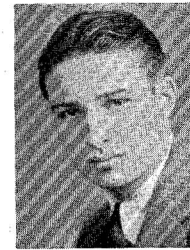
Typist

Ethel Quigg

TIMES STAFF



HAL POUST





RUTH SAVAGE





OFFICERS

<i>First Semester</i>		<i>Second Semester</i>
RUTH SCHMOYER - - - - -	<i>President</i>	- - - - - RUTH SAVAGE
MILDRED SECHRIST - - - - -	<i>Vice President</i>	- - - - - VIOLET SAUNDERS
RUTH HENNINGER - - - - -	<i>Recording Secretary</i>	- - - - - GRACE HOFFMAN
MARY LOUISE BORLAND - - - - -	<i>Corresponding Secretary</i>	- - - - - EMILY WILLIAMS
MYRA EVANS - - - - -	<i>Treasurer</i>	- - - - - MILDRED SECHRIST
EVELYN LIVINGSTONE - - - - -	<i>Literary Editor</i>	- - - - - MYRA EVANS
MISS JESSIE SCOTT HIMES - - - - -		<i>Faculty Adviser</i>
Mrs. R. STUART MACDOUGALL - - - - -		<i>Patroness</i>

Colors—Emerald and Gold
Publication—"The Anchor"
Flower—Yellow Rose

Founders' Day—November 7

RESIDENT MEMBERS

Lenore Sharp
Roberta Seltzer
Blanche Swope

ACTIVE MEMBERS

Pauline Barkhuff	Evelyn Livingstone	Mildred Sechrist
Mary Louise Borland	Betty Nelson	Mary Sharp
Geraldine Bower	Kathryn Peters	Caroline Shultz
Myra Evans	Florence Priddy	Dorcas Tressler
Ruth Henninger	Louise Robertson	Mary Ulmer
Grace Hoffman	Jean Rymer	Iva Mae Van Scoyoc
Mary Holbrook	Violet Saunders	Emily Williams
Margaret Kyler	Ruth Savage	Margaret Williams
Alice Lillibridge	Ruth Schmoyer	Thelma Yingling

NATIONAL COUNCIL

MISS ADA A. NORTON - - - - -	<i>A. E. S. Representative</i>
MISS LUELLE CHAPMAN - - - - -	<i>President</i>
MISS EDITH L. MANSELL - - - - -	<i>Vice President and Organizer</i>
MISS MARY E. COOK - - - - -	<i>Corresponding Secretary</i>
MRS. CARRIE H. STAEHLE - - - - -	<i>Treasurer</i>
MRS. MARY LOUISE DOYLE - - - - -	<i>Editor of "The Anchor"</i>

ALPHA SIGMA TAU



ALMA PROBST



OFFICERS

ALMA PROBST - - - - - *President*
EDITH ANN SHARPE - - - - - *Vice President*
MADELINE ANDERSON - - - - - *Treasurer*
MARY ELEANOR EVANS - - - - - *Corresponding Secretary*
CLARISSA WAINGER - - - - - *Recording Secretary*

Colors—Brown and Orange *Symbol—Bittersweet*

ADVISERS

Miss Avis Edgerton

Miss Gladys Erickson

SENIOR MEMBERS

Madeline Anderson
Doris Catterson
Mary Eleanor Evans
Sara Fletcher
Marion Francisco
Margaret Freeman

Elizabeth Gorman
Alice Marie Hackett
Peggy Ann Hubler
Elma Keihl
Iolabelle Milligan
Ruth Peters

Alma Probst
RoJean Roberts
Edith Ann Sharpe
Ruth Sherman
Julie Silagy
Clarissa Wainger

JUNIOR MEMBERS

Olga Bader
Rebecca Barrow
Isabel Bickel
Elizabeth Browning
Ruth Burkett
Elizabeth Glatzert

Margaret Harmon
Martha Jane Keys
Nellie Manning
Lois Pepperman
Sara Quigley
Elizabeth Stahlsmith

Laura Swingle
Gwendolyn Thompson
Ruth Tyson
Rebecca Williams
Anne Wilson
Eleanor Wood

The Beta Sigma Chi Sorority, formerly known as the Bittersweets, one of the first and oldest organizations of the college, has been very successful during the past year both socially and scholastically.

This year has brought about many changes in the sorority. Two of the most important are: the standards for membership have been raised and in place of infantile initiation a system of probation has proved very satisfactory.

Other than the usual rushing season, the sorority has sponsored several tea dances and parties which added to the social culture of the college.

The Beta Sigma Chi has been proud to welcome eighteen new members to the organization; and, as graduation approaches, the senior members offer their cordial wishes for another successful year.

BETA SIGMA CHI



DOROTHY GRUBB



OFFICERS

DOROTHY GRUBB	- - - - - President
MARY JANE NICHOLS	- - - - - Vice President
ISABEL WELCH	- - - - - Business Secretary-Treasurer
ELVA POWELL	- - - - - Social Secretary
LYNN NORMAN	- - - - - Usher
MISS MABEL-LOUISE AREY	- - - - - Adviser
Colors—Blue and White	Flower—Pink Tea Rose

MEMBERS

Seniors

Virginia Albright	Dorothy Grubb	Elva Powell
Beatrice Berg	Molly Hamman	Olive Quiggle
Marjorie Deise	Florence Hunt	Mary B. Simon
Clarita Duhart	Helen Krape	Dorothea Stitt
Genevieve Frey	Helen Meyers	Isabel Welch
Margaret Gardiner	Mary Jane Nichols	Naomi Wentz
	Lynn Norman	

Juniors

Katherine Caprio	Ethel Law	Eleanor Wright
Marie Gehron	Martha McDowell	Mary Hill
Faye Giles	Betty Stevenson	Marian Harsch

Honorary Member

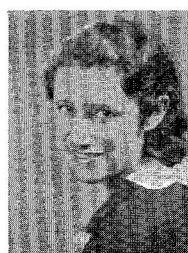
Jean Mateer

For eighteen years the Rho Omega Lambda Sorority has been a part of the social life of the campus, and, as such, has endeavored to maintain the standards of the college and the high ideals of scholarship, and social and moral values upon which the constitution of the group rests. It is by these values that the new members from the four-year college girls are judged for membership in the sorority. It has been a great pleasure to welcome into the group this past season nine new members and to know that they will be a part of us for four years of college life together. To those senior members who are leaving us in the spring we wish all the success and happiness in the world.

RHO OMEGA LAMBDA



ALPHA DAVIS



OFFICERS

ALPHA DAVIS	- - - - -	<i>President</i>
ROBERTA NEWMAN	- - - - -	<i>Vice President</i>
DORIS CATTERSON	- - - - -	<i>Secretary</i>
LADEAN SHIREY	- - - - -	<i>Treasurer</i>

MEMBERS

Madeline Anderson	Margaret Potter
Alma Crawford	Ellen Reighard
Florence Daye	Lucille Ripple
Ruth Doebler	Dorothy Rougeux
Mary Eleanor Evans	Robert Saxon
Mary Fischer	Julie Silagyi
Sara Fletcher	Norma Schoff
Elizabeth Gorman	Dale Smith
Nan Keller	Jean Smith
Mary Alice Kettl	Dorothea Stitt
William Knapp	H. Leslie Sykes
Josephine Leaphart	Millard Weber
Evelyn Livingstone	Helen White
Miriam Moore	

This year the members of the Art Club reorganized under a new constitution. One of the new amendments provided that the membership list be opened to boys.

The Art Club members have been an aid to many departments in the school. They have helped with decorations and posters, and have kept the bulletin board in order.

Their meetings are very profitable and they make many lovely and useful things during the hour they meet every other Friday.

All the members gave suggestions and a great deal of help in the sketch, "This Modern Age," given at the annual Stunt Night. This sketch was awarded the first prize by the judges.

ART CLUB

1933



JOHN H. HABERSTROH



OFFICERS

JOHN H. HABERSTROH	- - - - -	<i>President</i>
DOROTHY F. GRUBB	- - - - -	<i>Vice President</i>
LAUVON BASINGER	- - - - -	<i>Secretary-Treasurer</i>
MABLE-LOUISE AREY	- - - - -	<i>Faculty Adviser</i>

MEMBERS

Virginia Albright	Margaret Gardiner	Allen Sekula
Lauvon Basinger	Dorothy Grubb	Edith Sharpe
Myron Biddle	John Haberstroh	Dean Shroat
Thomas Blyler	James Harlan	Hazel Singer
Ann Crist	Ruth Henninger	Hulda Starr
Marjorie Dice	Florence Hunt	Harold Sykes
John Duke	Helen Myers	Gladys Weber
Clarence Eld	Elizabeth Miller	Millard Weber
Mary Eleanor Evans	Lynn Norman	Walter Wilkinson
Marion Francisco	Ellen Reighard	Isadore Ziff
	Elwood Rohrbaugh	

The Dramatic Club, one of the most prominent organizations on campus, was organized to promote the dramatic arts in the college. To do this the members annually produce a play of outstanding value, and one which makes major demands upon the cast for a capable interpretation. In addition to this play the Club sponsors a one-act play contest. Casts are drawn from the undergraduate body and are directed by members of the Club. As a result of this contest the scope of the society's activity is not limited to the members only.

With the production of Shakespeare's "The Merchant of Venice," the Dramatic Club this season attained new heights. The production was hailed as being professional in calibre and unusually faithful in presentation. Not only was the direction distinctly superior but the staging and acting were equally fine. Thus the Club continued to maintain the high standards set by such outstanding past productions as "Outward Bound," "The Dover Road," and "The Ivory Door."

DRAMATIC CLUB



ISADORE ZIFF



OFFICERS

ISADORE ZIFF - - - - - *President*
NORA HOLMES - - - - - *Vice President*
ROJEAN ROBERTS - - - - - *Secretary*
GLADYS McCLAIN - - - - - *Treasurer*
DR. V. FRANCES COPPENS, MR. ALLEN D. PATTERSON - - - - - *Faculty Advisers*

MEMBERS

Mae Allen	Nora Holmes
Lauvon Basinger	Gladys McClain
June Breining	Jean Mateer
Lois Dunn	Iolabelle Milligan
Myra Evans	Ruth Peters
Sarah Fletcher	RoJean Roberts
Marion Francisco	Ruth Sherman
Pauline Graden	Harold Sykes
John H. Haberstroh	Clarissa Wainger
Alice Marie Hackett	Isadore Ziff

The Education Club was organized in February, 1926, by students wishing to spend more time on the study of psychology. Later the organization adopted a constitution, and in 1931 new qualifications were added in accordance with standards for membership in the international honorary fraternity, Kappa Delta Phi.

From the field of psychology the Club has branched out into many different fields of education to give those interested in this type of work a broader view.

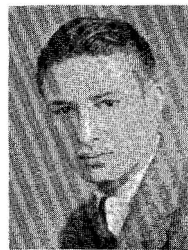
There have been many interesting lectures on educational problems by speakers sponsored by the Club during the year.

It is hoped that in the future we can be engaged in even wider activities through the Education Club.

EDUCATION CLUB



HAL POUST



OFFICERS

<i>First Semester</i>		<i>Second Semester</i>
ROBERT SMITH	<i>President</i>	HAL POUST
ALLEN HEYDRICH	<i>Vice President</i>	ALLEN HEYDRICH
FLOYD BLOOM	<i>Treasurer</i>	CHRISTOPHER HAMMAKER
RUTH SCHMOYER	<i>Secretary</i>	ALICE LILLIBRIDGE

FACULTY ADVISERS

Mr. L. J. Ulmer

Miss Lillian Russell

HONORARY MEMBERS

Miss Deborah Bentley

Miss Berthe Daniel

Mrs. Charles E. Kirkpatrick

MEMBERS

Floyd Bloom
Sarah Bricker
Jack Dougherty
Wilmer Dressler
Robert Emery
Clarence Eld
Viola Fouse
Margaret Freeman
Elizabeth Gorman

Christopher Hammaker
Allen Heydrich
Margaret Kyler
Alice Lillibridge
Myrna Lundy
William Murphy
Roberta Newman
Kathryn Peters
Hal Poust
Ellen Reighard

Margaret Samson
Ruth Schmoyer
Ruth Sherman
George Shively
Robert Smith
Grace Thompson
Dorcas Tressler
Mary Ulmer
Dorothy Walters

This year marks the tenth anniversary of the Naturalist Club. It was founded in 1923 by a group of girls interested in nature. The acorn is the emblem and pin, the sweet pea is the flower, and green and white the colors.

The purpose of the Club is to develop an appreciative interest in nature, and to enjoy to the fullest capacity the great out-of-doors. This purpose, combined with the good sportsmanship of our members, will help prove the true merit of our Club in the future.

The organization chooses as members those who they believe will carry on the traditions and work of the Club. The Naturalists admire and choose for their members the all-around students.

Two of the outstanding projects are the Naturalist Trail and the annual Homecoming Day. The Naturalists hope to welcome some of the "Happy Harvesters," the true founders of the Club. The other task of each Naturalist is to improve and keep in order for the student body the "Nature Trail" which winds over the reservoir hill at the back of the College.

NATURALIST CLUB



CHESTER McCALL



OFFICERS

CHESTER McCALL	- - - - -	<i>President</i>
THOMAS BLYLER	- - - - -	<i>Vice President</i>
GEORGE ANDERSON	- - - - -	<i>Secretary</i>
SIDNEY SAUTER	- - - - -	<i>Treasurer</i>
CHARLES EYER	- - - - -	<i>Sergeant-at-Arms</i>
DR. V. FRANCES COPPENS, DR. AXEL S. RUDE	- - - - -	<i>Faculty Advisers</i>

MEMBERS

George Anderson	Martha Kirsch
Olga Bader	Helen Knapp
Thomas Blyler	Chester McCall
Paul Cooper	Margaret McCracken
Michael Danko	Elizabeth Miller
John Duke	Ann Peterson
Charles Eyer	Margaret Samson
Ernest Gilliland	Sidney Sauter
Betty Glatzert	Mary Simon
Pauline Graden	Carolyn Smith
Ruth Hart	William Statler
Reba Ickes	Kermit Stover

The Shakespeare Literary Society was founded for those students who are interested in literary activity. This year marks the forty-first anniversary of the club, which was one of the first independent study groups organized in the College.

At the regular meetings held twice a month the organization studies the various fields of drama.

The Shakespeare Literary Society has had a very successful year, due to the splendid cooperation between the members and the faculty advisers.

SHAKESPEARE LITERARY SOCIETY



THOMAS BLYLER





OFFICERS

MARGARET GARDINER	- - - - -	<i>President</i>
MADÉLINE ANDERSON	- - - - -	<i>Vice President</i>
GERALDINE JONES	- - - - -	<i>Secretary</i>
HELEN MYERS	- - - - -	<i>Treasurer</i>

MEMBERS

Virginia Albright	Mary Holbrook	Emily Pritchard
Madeline Anderson	Florence Hunt	Alma Probst
Ruth Ankeny	Geraldine Jones	Kathryn Rhoads
Helen Ardery	Louise Kelly	Mae Rhodes
Lauvon Basinger	Helen Knapp	Sydney Sauter
Rebecca Barrow	Martha Keys	Leona Saxon
Beatrice Berg	Martha Kirsch	Julie Silagyi
Wanda Brown	Josephine Leaphart	Hazel Singer
Gertrude Brownlee	Evelyn Livingstone	Mary B. Simon
Thelma Brownlee	Sara Long	Norma Shoff
Geraldine Bower	Eva Matter	Mary Showalter
Alma Crawford	Jean Mateer	Rosanna Shireman
Ann Crist	Pearl McCloskey	Harrietta Snider
Mildred Croft	Ruth Moon	Rnth Sponsler
Alpha Davis	Sarah Moran	Hulda Starr
Clarita Duhart	Jean Musselman	Grace Thompson
Florence Ehrenfeld	Helen Myers	Mary Ulmer
Hannah Fromm	Roberta Newman	Leah Varner
Margaret Gardiner	Mary Jane Nichols	Naomi Wentz
Helen Gemberling	Marjorie Overdorf	Dorothy Walters
Mary Grove	Betty Page	Eleanor Waltz
Kathryn Hench	Ann Peterson	Anne Wilson
Henrietta Hill	Earlene Potter	Evelyn Williams
	Beatrice Pollock	

THE Women's Athletic Association was organized in 1929 by a group of interested students under the supervision of the directors of physical education. Before this organization came into existence, the women's athletic activities of the college were entirely under faculty direction with little opportunity for student initiative and leadership. Today the Women's Athletic Association controls the athletic program for the women of the college, and it takes care of the various interests of the students.

One of the outstanding undertakings of the Women's Athletic Association is the sponsoring of the annual Stunt Night. This program is presented by the various other college organizations under the auspices of the W. A. A. The money obtained from this program is given to help purchase milk for free distribution to meet the needs of children in the campus Training School.

The athletic program of the year is composed of the following sports: field hockey, basketball, volleyball, baseball, tennis, track, horseback riding, and interpretative dancing. There are seasonal tournaments organized in hockey, basketball, volleyball, tennis, and baseball. After these tournaments are played, honorary varsities are chosen from all the girls who take part in each sport. In this way the strongest group does not control all the athletic contests; this practice gives the proper recognition to the good players on the poor team. Interpretative dancing is another branch which gives honors for proficiency. Finally, during the annual commencement exercises, letters and sweaters are awarded to those graduating members who have been outstanding in athletics during the year.

The large percentage of girls who are taking part in athletics in the college proves that the Women's Athletic Association has accomplished one of its goals—student interest. In the few years that the Women's Athletic Association had been organized, it has become one of the largest and most progressive groups of the college.

WOMEN'S ATHLETIC ASSOCIATION



FLORENCE DAYE



Student Council

OFFICERS

MISS BELLE HOLAWAY	- - - - -	<i>Adviser, Dean of Women</i>
FLORENCE DAYE	- - - - -	<i>President</i>
WANDA BROWN	- - - - -	<i>Vice President</i>
MARJORY V. DICE	- - - - -	<i>Secretary</i>
MYRNA LUNDY	- - - - -	<i>Treasurer</i>
JULIE SILAGYI	- - - - -	<i>College Senior Representative</i>
GRACE THOMPSON	- - - - -	<i>College Junior Representative</i>
JEAN SMITH	- - - - -	<i>College Sophomore Representative</i>
REBECCA WILLIAMS	- - - - -	<i>College Freshmen Representative</i>
ELEN REIGHARD	- - - - -	<i>Two-Year Senior Representative</i>
IVA MAE VAN SCOYOC	- - - - -	<i>Two-Year Junior Representative</i>

The Women's Student Government Association is an organization of which every dormitory girl is a member. Its purpose is to promote the best type of living conditions within this group of young women by the discussion of the problems arising in connection with dormitory life. These problems are brought to the meetings of the Association, which are held on the second and fourth Wednesday of every month. As further constructive work, various members of the faculty are invited by the Student Council to give informational talks on different phases of the art of living with others.

A Council, consisting of a President, Vice President, Secretary, Treasurer, and a Representative from each class, all elected by the members of the Association, is the official governing body for the group. During the first few weeks at the opening of school, the members of the Council make a special effort to help the freshmen girls make the proper adjustments to their new environment.

The Handbook, the Women's Student Government Association publication, is a pamphlet containing the dormitory regulations and the constitution of the Association. It is issued to each girl enrolling in the college for the first time in order that she may acquaint herself with campus standards.

It has always been one of the chief aims of the Association to promote a spirit of friendliness among the girls who are living together in such close relationship, and also to promote a feeling of coöperation and loyalty within the group. Miss Holaway, faculty adviser of the Association, by her close coöperation with the organization, has done much to aid the group in the attainment of these aims.

An innovation in the student dormitory life this year was the floor parties held in the Y. W. room. These parties were sponsored and financed by the Student Government Association under the direction of the respective hall chairmen. In addition, the Association purchased a thirty-six piece china tea set.

This spring, for the first time, the Student Council entertained at a campus tea which was given for the dormitory and day-room women.

WOMEN'S STUDENT GOVERNMENT ASSOCIATION



MARION FRANCISCO



OFFICERS

MARION FRANCISCO	- - - -	President	NELLIE MANNING	- - - -	Secretary
MARY JANE NICHOLS	- - - -	Vice President	EVELYN LIVINGSTONE	- - - -	Treasurer
BERTHA ROWE	- - - -	Adviser			

COMMITTEE CHAIRMEN

ALICE LILLIBRIDGE	- - - -	Meetings Committee	MARY ELEANOR EVANS	- - - -	Social
EDITH SHARPE	- - - -	Finance Committee	MYRA EVANS	- - - -	Music
ELLEN LOUISE ROOKE	- - - -	Social Service	RUTH HENNINGER	- - - -	Magazine
JULIE SILAGYI	- - - -	Social Relations	DOROTHEA STITT	- - - -	Art

OFFICERS OF THE DAY ROOM Y. W. C. A.

LILLIAN RUSSELL	- - - -	Adviser	VIVIAN RINEHULS	- - - -	Vice President
NORA HOLMES	- - - -	President	ISABEL WELCH	- - - -	Secretary-Treasurer

The Young Women's Christian Association, the largest women's organization on the campus, has been successful in carrying out the activities of the year which have developed from its social and religious aspects of life. This year the Y. W. C. A. tried to bring the girls in closer contact with the school itself. This was accomplished through discussion groups in which problems of the campus and the girls' personal problems were discussed. Among the most interesting meetings were: "Tribute to Calvin Coolidge"; Commemoration of Prayer Week; a musical recital; a dramatic production, "Overtones"; an International Night; a Poetry Hour; and a Story Hour. The outstanding social activities of the Y. W. consisted of the Little Sister Tea, the Get-Acquainted Party, Christmas Party, Japanese Bazaar, Martha Washington Party, and the five floor parties.



FACULTY MEMBERS

Bertha M. Rowe
Lulu Stalcup
Deborah Bentley

Maloise S. Dixon
Berthe A. Daniel

Nellie DuBois
Audrey Bressler

Belle Holaway
Mabel-Louise Arey

Lyndall Fox
Ruth Weisner
Jessie Scott Himes

MEMBERS

Madeline Anderson
Ruth Ankeny
Olga Hader
Beatrice Berg
Mary Louise Borland
Geraldine Bower
Frances Bowers
Sara Bricker
Ruth Brown
Wanda Brown
Betty Browning
Elvera Bruce
Maude Brungard
Doris Catterson
Anna Margaret Corson
Virginia Cheesman
Inez Chestnut
Alma Crawford
Ann Crist
Mildred Croft
Janet Dale
Alpha Davis
Florence Daye
Marjorie Dice
Lenore Dick
Dorothy Dunlap
Pearl Drick
Dolores Effinger
Florence Ehrenfeld
Shirley Emes
Suzanne Evanochko
Mary Eleanor Evans
Myra Evans
Helen Fetzer
Mary Fischer
Ellen Fleming
Sara Fletcher

Marion Francisco
Margaret Freeman
Marie Gehron
Edna Mae George
Helen Gemberling
Bernadine Gousman
Elizabeth Gorman
Pauline Graden
Bertha Guiser
Betty Glatzer
Mary Grove
Dorothy Grubb
Helen Hanyak
Ruth Hart
Mae Hartman
Hazel Harris
Marian Harsch
Katherine Harvey
Astrid Hauge
Thelma Hazlett
Rosella Heckman
Kathryn Hench
Henrietta Hill
Grace Hoffman
Sara Mae Hoag
Nora Holmes
Florence Hunt
Louise Irvin
Clara Jenkins
Elizabeth Johnson
Lillian Johnson
Geraldine Jones
Lucille Laub
Maxine Lauffer
Nancy Lawther
Helen LeBaron
Josephine Leaphart
Helen Lesko

Alice Lillbridge
Evelyn Livingstone
Sara Long
Virginia Long
Myrna Lundy
Dorothy Lyons
Nellie Manning
Marie Mathias
Eva Matter
Jean Mateer
Genevra Maybee
Ruth Merkle
Miriam Moore
Claire Morrow
Nellie Mullin
Jean Musselman
Ruth Moon
Marian McCloskey
Rosaline McConnell
Margaret McCracken
Helen McCreary
Pauline McDermott
Martha McDowell
Marian McDonald
Lucetta McKibben
Gladys McClain
Jean McClure
Jennie McMurray
Vivian Naugh
Esther Nearhoof
Elizabeth Nelson
Roberta Newman
Anna Niebauer
Mary Jane Nichols
Mildred Parks
Agnes Parisi
Kathryn Peters
Ann Peterson

Lois Pepperman
Beatrice Pollock
Barlene Potter
Margaret Potter
Elva Powell
Gertrude Powell
Jennie Phillips
Wimifred Phillips
Emily Pritchard
Ethel Quigg
Thelma Raker
Ellen Lopise Rooke
Pauline Ruddy
Vivian Rinehuls
Kathryn Rhoads
Mae Rhodes
Marjorie Salmon
Margaret Samson
Helen Sackett
Ruth Savage
Leona Saxon
Hilda Selby
Hazel Singer
Julie Silagyi
Thelma Soxman
Ann Sokol
Mary Sharp
Edith Sharpe
Ruth Sherman
Helen Sheridan
Roseanna Shireman
Mary Shoff
Norma Shoff
Ruth Schmoyer
Mildred Shne
Marjorie Slick
Beatrice Sloan
Carolyn Smith

Edna Smith
Jean Smith
Margaret Smith
Harrietta Snider
Aileen Stauffer
Margaret Stephens
Dorothea Stitt
Belle-Isle Stoner
Edna Sweinhart
Mary Jane Thiel
Grace Thompson
Dorcas Tressler
Mary Ulmer
Barbara Usher
Iva Mae Van Scoyoc
Leah Varner
Dorothy Walters
Eleanor Waltz
Margaret Wells
Isabel Welch
Frances Wenrich
Naomi Wentz
Emily Williams
Eugenia Williams
Evelyn Williams
May Williams
Rebecca Williams
Roberta Williams
Eleanor Wood
Helen White
Violet Yeager
Thelma Yingling
Mary Young
Irma Heck
Ruth Henninger
Emma Herbs
Jean Herriger

Y. W. C. A.



OFFICERS

CLARISSA WALNGER	- - - -	<i>President</i>	ELLEN LOUISE ROOKE	- - - -	<i>Secretary</i>
MARJORIE DICE	- - - -	<i>Vice President</i>	NELLIE MANNING	- - - -	<i>Treasurer</i>
		JESSIE SCOTT HIMES	- - - -		<i>Adviser</i>

MEMBERS

Mae Allen
 Catherine Archangel
 Olga Bader
 Pauline Barkhuff
 Rebecca Barrow
 Elizabeth Bigelow
 Mary Louise Borland
 Geraldine Bower
 Gertrude Brownlee
 Doris Catterson
 Virginia Cheesman
 Anna Margaret Corson
 Marjorie Dice
 Clarita Duhart
 Dolores Effinger
 Florence Erhenfeld
 Shirley Emes
 Suzanne Evanochko
 Ellen Fleming
 Sara Fletcher
 Margaret Freeman
 Margaret Gardiner
 Edna Mae George
 Bertha Guiser
 Martha Hamman
 Mae Hartman
 Thelma Hazlett

Mary Holbrook
 Florence Hunt
 Clara Jenkins
 Elizabeth Johnson
 Mary Alice Kettl
 Anna Keller
 Martha Kirsh
 Nancy Kiser
 Margaret Kyler
 Evelyn Livingstone
 Gladys McClain
 Margaret McCracken
 Helen McCreary
 Rosaline McConnell
 Jennie McMurray
 Marion MacDonald
 Nellie Manning
 Marie Mathias
 Claire Morrow
 Elizabeth Nelson
 Mildred Parks
 Earlene Potter
 Margaret Potter
 Elva Powell
 Thelma Raker
 RoJean Roberts

Louise Robertson
 Ellen Louise Rooke
 Jean Rymmer
 Margaret Samson
 Violet Saunders
 Ruth Schmoeyer
 Mildred Sechrist
 Hilda Selby
 Myra Seyler
 Mary Sharp
 Mildred Shue
 Jean Smith
 Thelma Soxman
 Ruth Sponsler
 Hulda Jane Starr
 Margaret Thompson
 Dorcas Tressler
 Iva Mae Van Scoyoc
 Clarissa Walnger
 Gladys Weber
 Frances Wenrich
 Naomi Wentz
 Helen White
 Roberta Williams
 Virginia Wright
 Thelma Yingling
 Maloise S. Dixon

ASSOCIATION FOR
 CHILDHOOD EDUCATION



OFFICERS

KERMIT STOVER	- - - - -	<i>President</i>	FRED HOENSTINE	- - - - -	<i>Secretary</i>
GEORGE ANDERSON	- - - - -	<i>Vice President</i>	ALLEN NELSON	- - - - -	<i>Treasurer</i>
		Mr. L. J. ULMER	- - - - -		<i>Faculty Adviser</i>

COMMITTEE CHAIRMEN

Harry Benton, Program	Chester McCall, Vesper	Millard Weber, Freshmen
Clarence Eld, Finance	John Duke, Membership	Myron Biddle, General

FACULTY MEMBERS

Dr. Dallas W. Armstrong	Mr. C. M. Sullivan	Mr. Jay F. Stemple
Mr. M. DeTurk High	Mr. Samuel J. Smith	Mr. Allen D. Patterson
Dr. Harry F. Weber	Mr. Weldon Williams	Dr. A. S. Rude
Mr. George Lehman	Mr. Harrison J. Kaiser	Mr. I. O. Fleming

STUDENT MEMBERS

Donald Aldrich	John H. Haberstroh	Fred Rinn
Leon Barr	Charles Hager	Dan Robinson
John Barry	Christy Harmon	Reuben Salada
Grant Berry	Pierson Haussener	Earl Schmarrs
Floyd Bloom	Donald Heyner	Allen Sekula
Sylvan Bloom	Allen Heydrich	George Shively
Thomas Byler	Clarence Hill	John Shechkengast
Trafton Buchanan	M. L. Hudson	Dean Schroat
Robert Carson	Nathan Katzman	Dale Smith
Robert Collary	Carson Kepler	Thomas Smith
Harry Condo	Ruhl Klepper	William Statler
Calvin Cooke	Walter Kotchin	Carl Stutzman
Paul Cooper	Duane Kyler	Charles Thomas
Harold Cronister	S. D. Lawrence	Lajos Torok
Michael Danko	Lewis Lucas	Harter Vonada
Edmund Diehl	Edward Marince	Carl Wassees
John Dillon	John Marshall	Homer Warnick
Wilmer Dressler	Paul Miller	Charles Wepsic
Ralph Drick	William Murphy	Walter Wilkinson
Robert Emery	Ralph Oppel	Anthony Yost
William Griffith	Walter Palcisco	Fred Zampogna
Lester Gutshall	Robert Plummer	Isadore Ziff

Y. M. C. A.



HELEN MYERS



MARION FRANCISCO

OFFICERS

- | | | |
|------------------|-----------|-----------------------|
| HELEN MYERS | - - - - - | <i>President</i> |
| CAROLYN SHULTZ | - - - - - | <i>Vice President</i> |
| MARION FRANCISCO | - - - - - | <i>Secretary</i> |

MEMBERS

- | | |
|------------------------------------|-------------------------|
| CAROLYN SHULTZ, MARY SHARPE | <i>Alpha Sigma Tau</i> |
| MARGARET FREEMAN, MARION FRANCISCO | <i>Beta Sigma Chi</i> |
| HELEN MYERS, BEATRICE BERG | <i>Rho Omega Lambda</i> |



MARY SHARPE

The Inter-Sorority Council is composed of two members from each sorority. This organization settles all questions of controversy arising among the three groups.

The Inter-Sorority Council co-operates with the faculty council which is made up of the faculty advisers of each group.

INTER-SORORITY COUNCIL



VESPER CHOIR

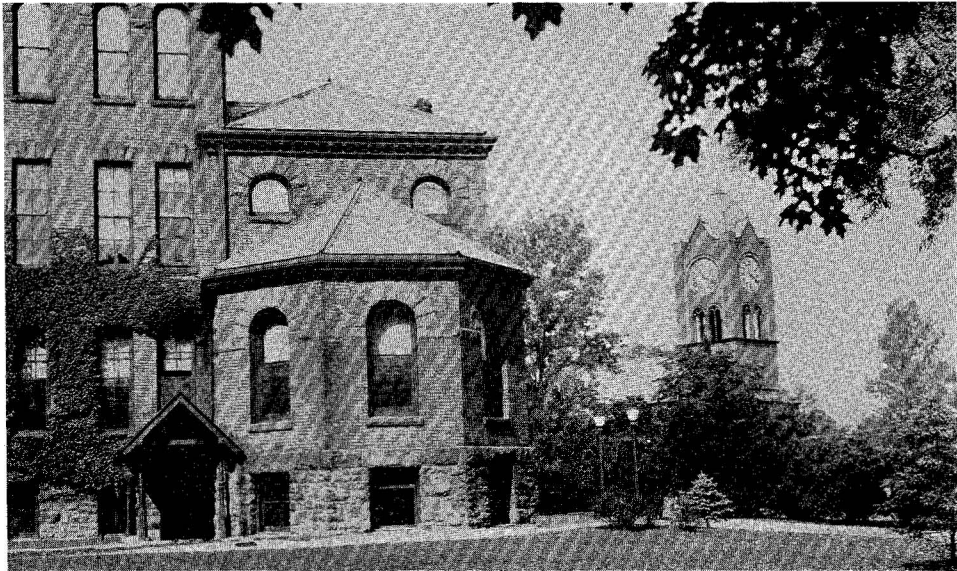


ORCHESTRA

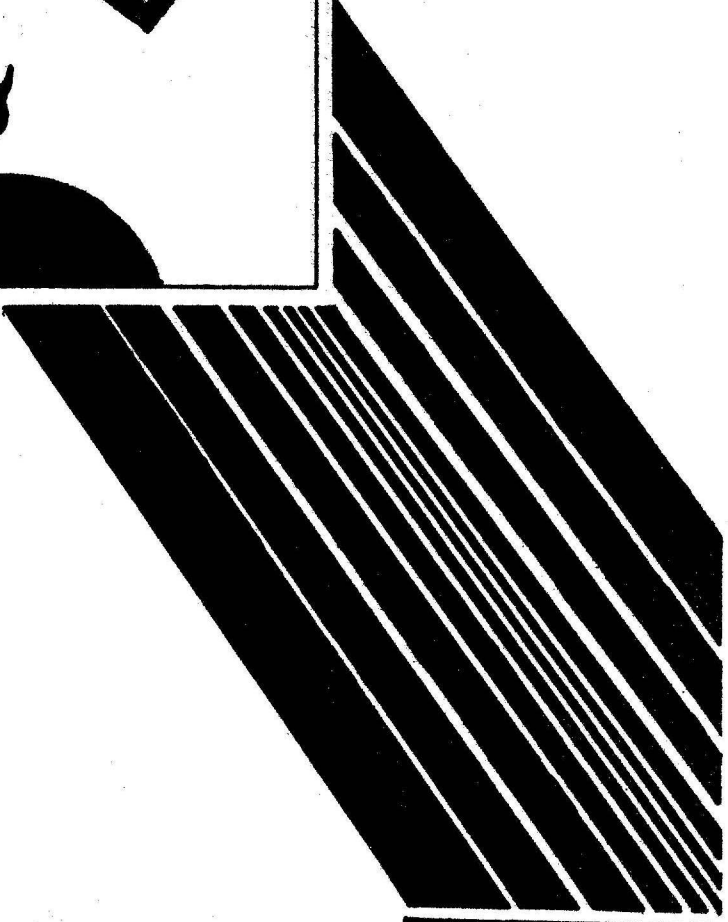


MEN'S GLEE CLUB

MUSICAL ORGANIZATIONS



ATHLETICS



1933

**M
E
N
'
S

S
P
O
R
T
S**



COACH KAISER

TO Coach Harrison J. Kaiser goes a large share of the credit for the success of the 1932-1933 athletic program. Though handicapped in football by early injuries to pivot players, Coach Kaiser, nevertheless, moulded a fighting machine which successfully represented Lock Haven State Teachers College both at home and away. The loss of two games, to Indiana early in the season, and to West Chester on November fifth, in no way broke the morale of the team which remained a dominant unit until the last whistle of the Slippery Rock game.

In basketball, Coach Kaiser made splendid use of good material to build a team of championship caliber. In its consistently good playing and its evidences of fine sportsmanship the basketball team showed the technique of Mr. Kaiser's direction.

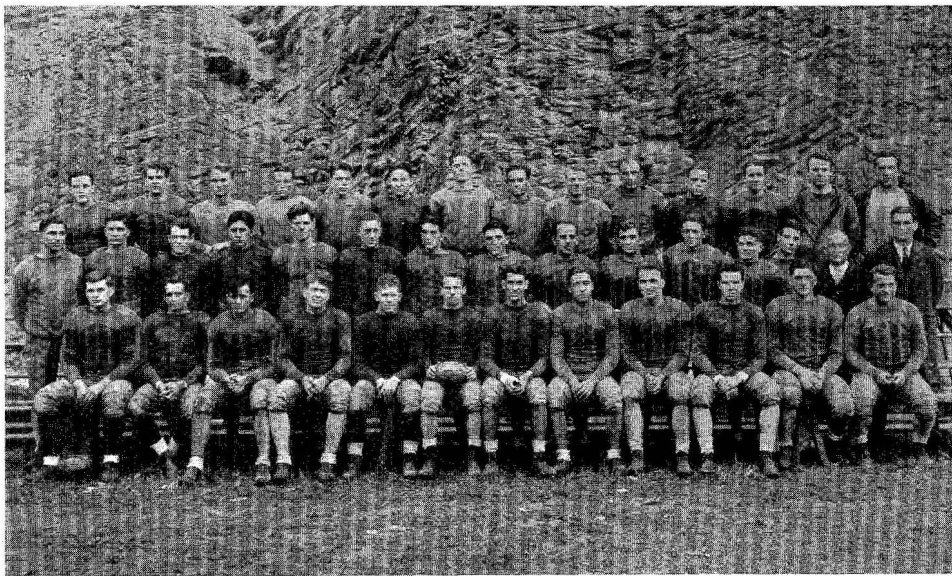
In addition to these major athletic sports Mr. Kaiser has made an effort to realize the need in any Teachers College for a greater amount of student participation in sports. He has therefore throughout the year continued his policy of sponsoring intra-mural activities in basketball, wrestling, track, and tennis. This intra-mural program has grown greatly since Coach Kaiser first took it over last year, and 1932-1933 season has been an especially successful one in this field.

As a guiding spirit in sport we are fortunate in having a man of Mr. Kaiser's ability. In the future we look forward to even greater successes from his teams.



CARL HATTER

Carl (Speed) Hatter—a good quarterback—a good captain—a good fellow. Lock Haven is proud of “Speed.” Outstanding on campus in all activities, he had during the past year made himself famous among the State Teachers Colleges as a brilliant captain and quarterback. Much of Lock Haven’s football success has been due to his powers as a leader.



1932 FOOTBALL SQUAD

FOOTBALL RECORD

L. H. S. T. C.	0	Indiana S. T. C.	- - - - -	12
L. H. S. T. C.	18	Millersville S. T. C.	- - - - -	0
L. H. S. T. C.	14	Kutztown S. T. C.	- - - - -	6
L. H. S. T. C.	7	Bloomsburg S. T. C.	- - - - -	0
L. H. S. T. C.	0	West Chester S. T. C.	- - - - -	13
L. H. S. T. C.	6	Clarion S. T. C.	- - - - -	6
L. H. S. T. C.	6	Slippery Rock S. T. C.	- - - - -	0

FOOTBALL

THE INDIANA GAME

In the first game played on the Indiana field, the locals were taken by surprise and lost a hard fought game to Indiana, 0-12. Indiana made both scores in the second half, the first coming as a result of a blocked kick and the second was a result of a long run.

MILLERSVILLE

Things were evened up at Millersville two weeks later. Wepsic returned the first kick-off seventy-five yards to place the ball in a scoring position. He made the first touchdown shortly afterwards. Hart and Burd made the other scores later in the game. Hammaker played a nice game at his new post at fullback. The final score was 18-0.

KUTZTOWN

At Kutztown the team made it two in a row by winning a hard fought battle from the easterners, 14-6. Lock Haven's touchdowns came in the first and third quarters, while Kutztown's came in the last period. Wepsic and Hammaker took the ball over the goal line for the touchdowns.

BLOOMSBURG

The first home game found Bloomsburg the visitors. The bad weather made playing difficult as evidenced by the low score of 7-0 with the visitors on the short end. Wepsic scored the touchdown while Burd converted the extra point.

WEST CHESTER

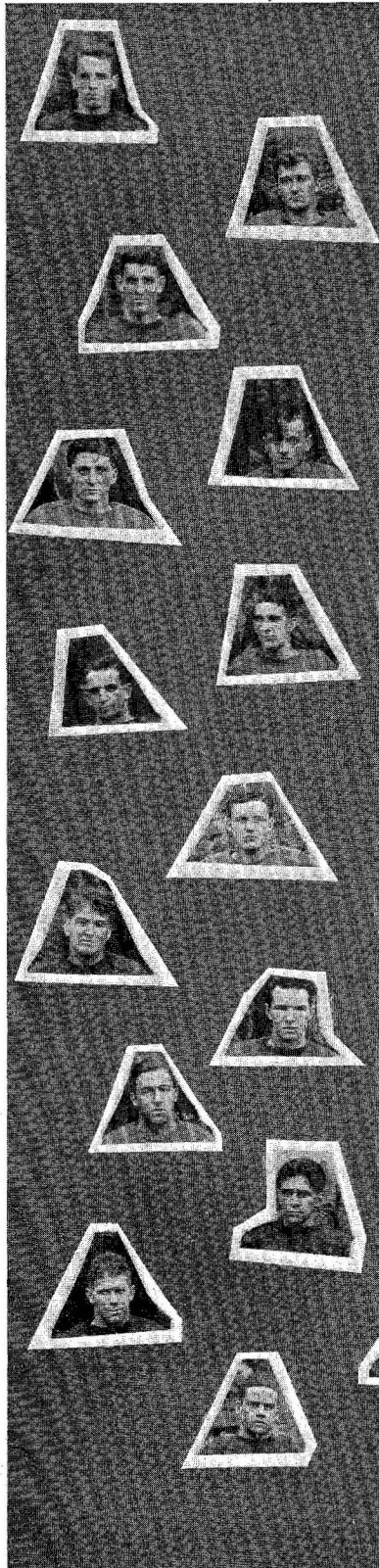
The strong down-state aggregation from West Chester won a hard fought game from the locals to avenge the defeat they suffered last year on their home field. For a time the game looked as if it might end up a scoreless tie, but the visitors made both their touchdowns in the last period. The final score found them on the long end of a 13-0 count.

CLARION

Clarion surprised the Maroon by giving us the only tie of the season. The game was hard fought but loosely played. The final score was 6-6.

SLIPPERY ROCK

As the season began with a surprise, it ended the same way. The strong Slippery Rock aggregation from the western part of the State received the surprise. They lost to the locals on a cold rainy field. Play was ragged and fumbles were the order of the day. The local eleven made the only score in the last period on a blocked kick. Hart made the touchdown on a run around right end.



BAKER

BIDDLE

BURD

BOB DENSHAM

TED DENSHAM

DETTREY

HAMMAKER

HART

HATTER

LINGENFELTER

MYERS

MCCLOSKEY

POOLE

POUST

REYNOLDS

SCHNARS

SEKULA

SHEVOCK

SHIVELY

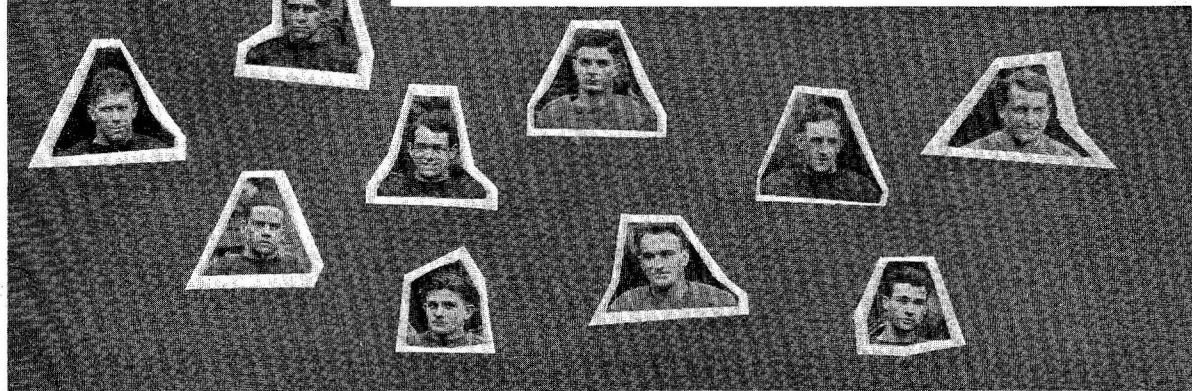
SNARE

TOROK

WEPSIC

REIGHARD

LETTER MEN





C. M. SULLIVAN

SULLIVAN

Without the invigorating force of Cornelius M. Sullivan, Faculty Manager of Athletics, Lock Haven would have lost much of the nerve and pep which characterized its athletic programs.

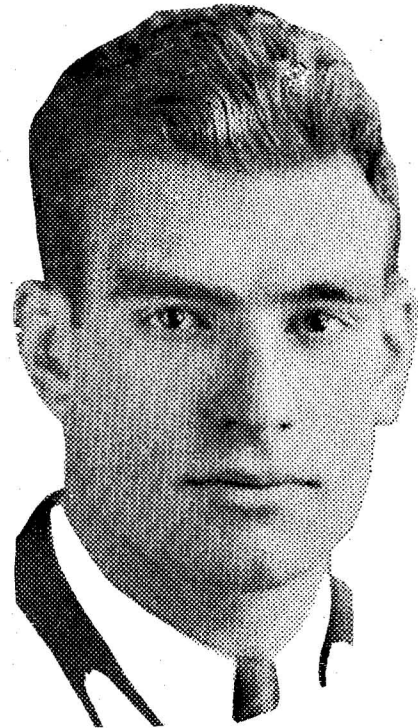
"Sully" is noted for wit and humor. His pre-game chapel talks have branded him as the team's most active booster. Mr. Sullivan takes care of the business details of football.

GRIFFIN

Not a small part of the football success of the past season is due to Don Griffin's fine coaching of the line and the backfield. His fast driving versatile linemen have aided greatly in paving the way for the backfield men in their drive for touchdowns.

His personality is contagious. He adds pep and drive to the play of the football squad; and his keen eye has helped often to determine weaknesses in the opposing team's systems of play.

It is hoped that he will be with us in the seasons to come. Since 1929 he has helped place the Maroon in a championship class, and with his help our gridiron warriors will find more success in the years to come.



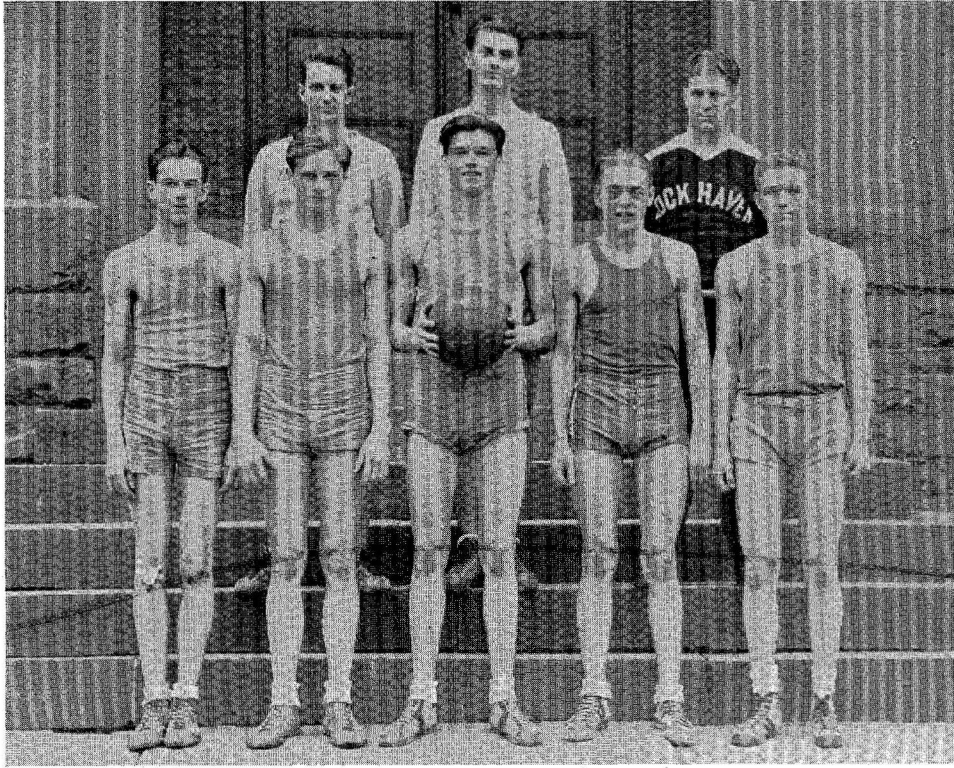
DON GRIFFIN

TRAINER LAWRENCE

"Whitey" Lawrence has proved himself an important part of the coaching system of this school. His ability to cheer the team before, during, and after the game goes a long way toward keeping them in championship trim. In addition to his effect on morale, "Whitey" also labors diligently over stiffened muscles and wrenched ligaments. Every varsity man who has ever suffered injury in the game can pay his tribute to Trainer "Whitey" Lawrence.



"WHITEY" LAWRENCE

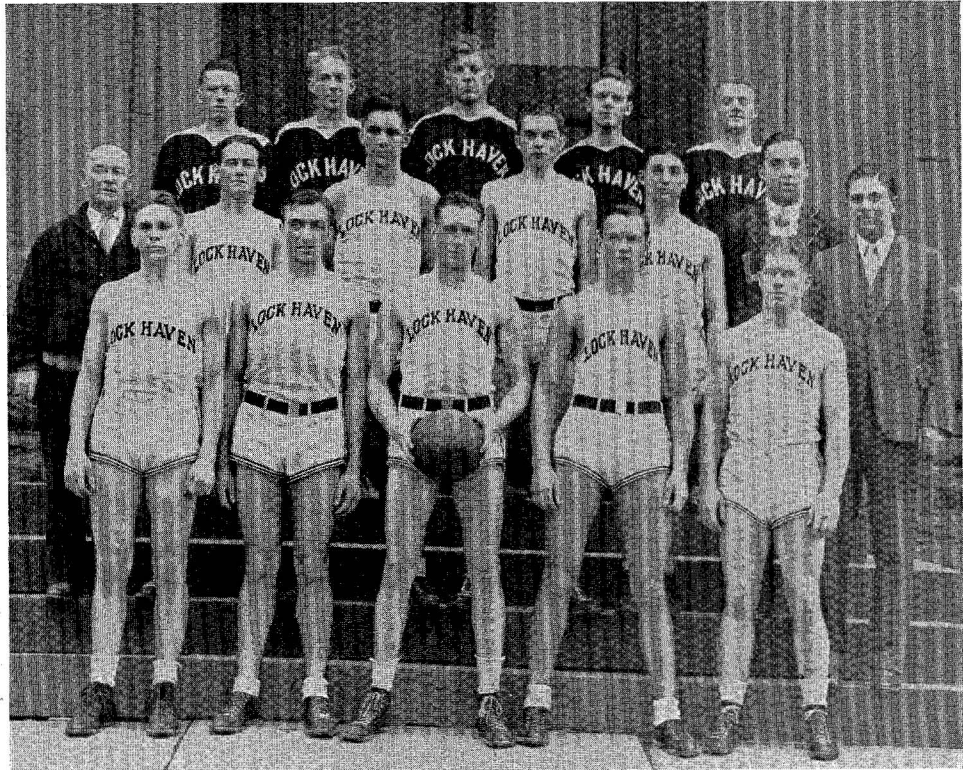


FRESHMAN BASKETBALL SQUAD

BASKETBALL RECORD

Frosh	-	-	-	-	-	41	Mill Hall H. S.	-	-	-	-	15
Frosh	-	-	-	-	-	15	Shooting Stars	-	-	-	-	13
Frosh	-	-	-	-	-	32	Mill Hall H. S.	-	-	-	-	15
Frosh	-	-	-	-	-	26	St. Joseph H. S.	-	-	-	-	37
Frosh	-	-	-	-	-	15	Indians	-	-	-	-	4
Frosh	-	-	-	-	-	11	Renovo H. S.	-	-	-	-	35
Frosh	-	-	-	-	-	23	Indians	-	-	-	-	24

FRESHMAN BASKETBALL



VARSITY BASKETBALL SQUAD

SCHEDULE

Pre-Season Games:			L. H.	Vis.
	Altoona School of Commerce	- - - - -	Home	50 18
	Jersey Shore Y. M. C. A.	- - - - -	Home	45 29
	Penn State	- - - - -	Home	31 50
	Renovo Irish Americans	- - - - -	Home	48 24
	Altoona School of Commerce	- - - - -	Away	49 22
	Jersey Shore Y. M. C. A.	- - - - -	Away	30 28
January 20	Shippensburg S. T. C.	- - - - -	Home	41 35
January 21	California S. T. C.	- - - - -	Home	46 29
January 27	Bloomsburg S. T. C.	- - - - -	Home	38 39
February 3	Millersville S. T. C.	- - - - -	Away	28 42
February 4	Shippensburg S. T. C.	- - - - -	Away	42 29
February 10	Indiana S. T. C.	- - - - -	Home	35 31
February 17	California S. T. C.	- - - - -	Away	35 29
February 18	Indiana S. T. C.	- - - - -	Away	21 37
February 24	Bloomsburg S. T. C.	- - - - -	Away	22 42
March 3	Millersville S. T. C.	- - - - -	Home	50 31
Totals				611 515

BASKETBALL

NINETEEN Hundred Thirty-two and Nineteen Hundred Thirty-three has been a banner year for basketball. During no past season has the Lock Haven State Teachers College team achieved such an enviable record. Of the sixteen games played eleven were won and five lost, but these mere figures give little indication of the interest and enthusiasm for basketball manifested by the college, nor the splendid and often spectacular playing shown in the games.

In the six pre-season games, the Maroon and Gray was defeated by only one team, the Penn State varsity. The highly touted Renovo Americans were defeated, and both the Altoona School of Commerce and the Jersey Shore Y. M. C. A. lost twice.

The first game of the regular season was played at home with Shippensburg. The visitors seemed to make just as many points as the locals throughout the game, but a last half rally told the final story, with Lock Haven on the long end of a 41 to 35 count.

The next game was also at home, and Lock Haven had an easy time winning from California to the tune of 46 to 29.

The following week-end, the locals lost a heartbreaking game to the strong Bloomsburg outfit by the close score of 38-39. Not until the final whistle blew was anyone certain which team was on top.

In the first game away at Millersville, the Lock Havenites were caught at a disadvantage on a small floor. This game ended with Millersville on top with a 28-42 score.

The following week saw the score practically turned around with Shippensburg on the short end of a 42-29 count.

Indiana came into the Lock Haven gym only to leave as losers with the score 35-31 the following Friday. This was another one of those close affairs featured by nice guarding on the part of both quintets.

On a following week-end trip the locals won one and lost one. They again defeated California, 35 to 29; but the next night had to bow to Indiana 21-37.

Then Lock Haven lost to Bloomsburg, the only team to win two games from them. Again the score was slightly lopsided with the down-state aggregation coming out on top of a 22-42 score.

The last game of the season was a home game played with Millersville. The visitors were easily outclassed, the Kaiserites winning 50-31. Captain Hal Poust was high scorer with thirteen points.

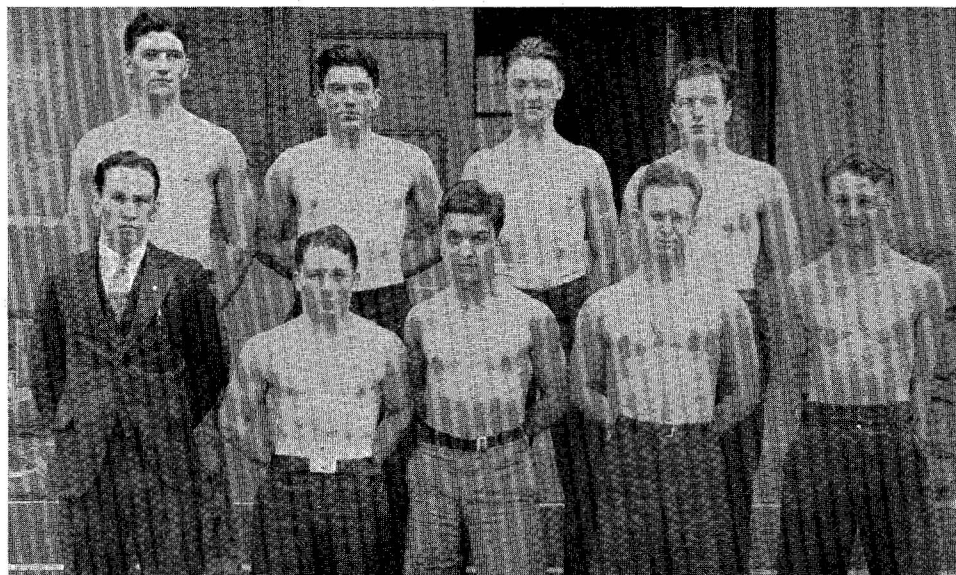
Of the fifteen men on the varsity squad only two, Captain Hal Poust and Harry Condo, will be lost by graduation. Condo, rangy forward, has been responsible for some of the most breathtaking scoring of the season, and his loss will be felt by the team. Captain Poust, center, has been perhaps the most outstanding player of the season, combining a real ability to play with a consistency and steadiness which has netted for him the commendation of his teammates and the college.

The high scoring honors this season went to Poust—130 points—and Weber—98 points.

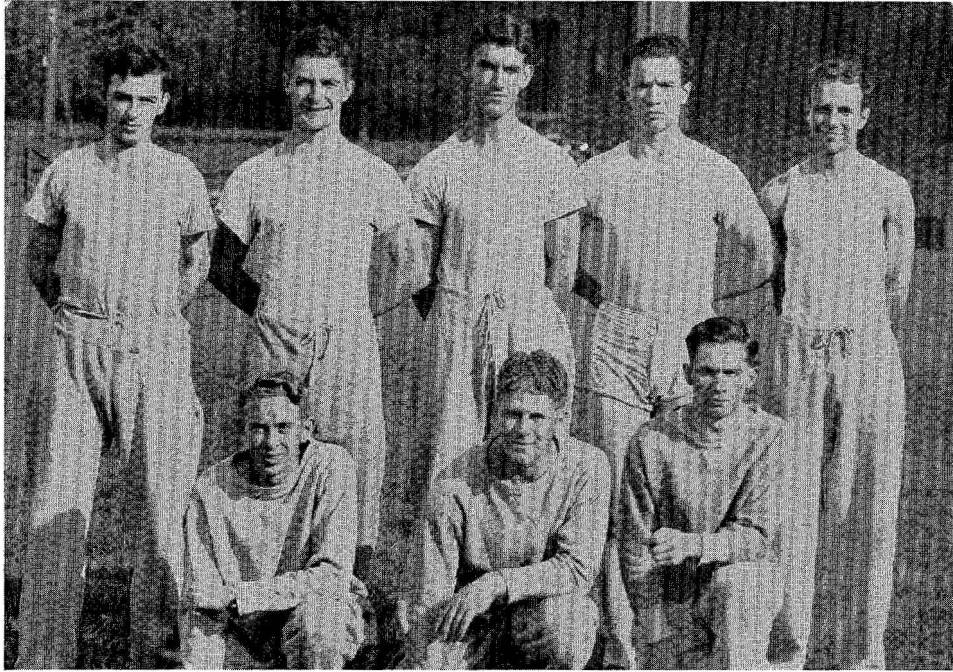
The J. V.'s record shows seven games won and four lost. The Green Wave, a freshman aggregation coached by Chris Hammaker, won seven out of the ten games they played.



Varsity Track Squad



Intra-Mural Wrestling Squad



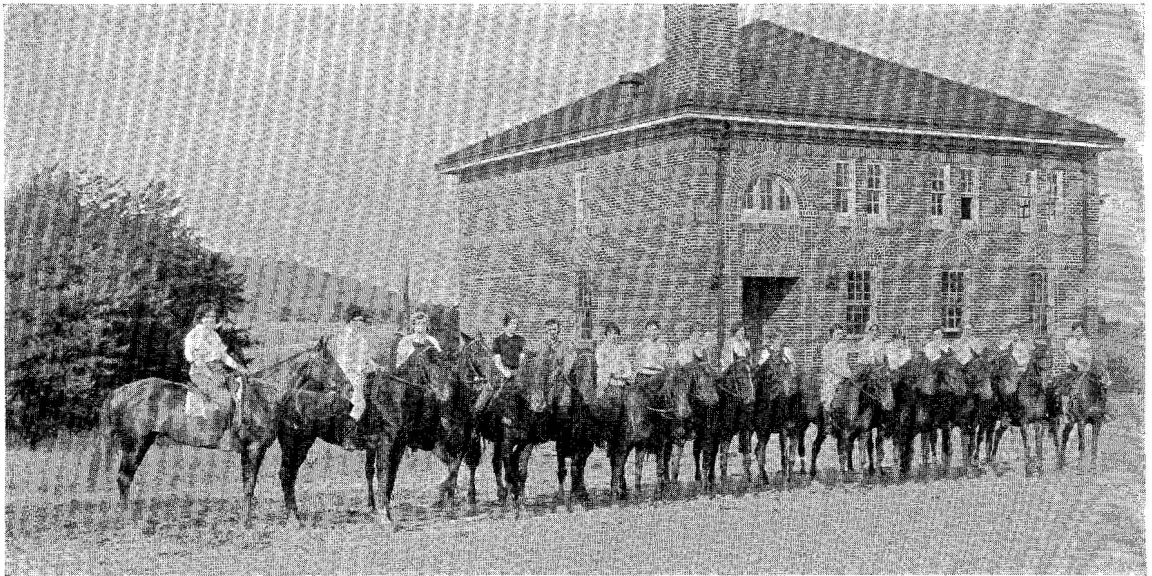
INTRA-MURAL TRACK CHAMPIONS



ATHLETIC FIELD

THE women's sports in the college are sponsored primarily by the Women's Athletic Organization, with Miss Maloise Sturdevant Dixon and Miss Avis Emily Edgerton of the Physical Education Department as advisers. A varied program of sports is carried out, since facilities are of a high type and many girls are enrolled in the physical education courses. In order that a greater number of girls may participate in all of the sports offered, varsity teams are not chosen until the end of the season. Instead, the sports are conducted on an intra-mural basis. Each division of the college has its own team, for example, the freshman primaries, freshman intermediates, and college freshmen. The various teams compete throughout the season and records are kept of the scores and standings of the teams. At the end of the season, the team which is undefeated or which has the highest ranking is declared intra-mural champion. The varsity teams are chosen from all the participants in the particular sport, so that every girl has an equal chance to be chosen as a member of a varsity team.

W O M E N ' S S P O R T S

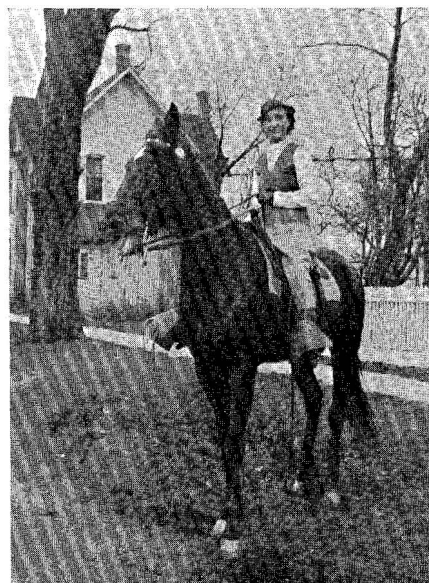


COLLEGE RIDING CLASS

The Saddle Club is an organization formed under the direction of the Troop K, 103rd Cavalry. Expert horsemen train the girls in riding, and the classes which meet twice a week are large. Moonlight rides, paper chases, and hurdles are some of the more interesting features of this sport. Geraldine Jones has been chosen by the advisers as the outstanding rider.

MEMBERS

- Carolyn Alaimo
- Madeline Anderson
- Olga Bader
- Lauvon Basinger
- Edith Ditty
- Hannah Fromm
- Elizabeth Fullmer
- Elizabeth Gorman
- Rosella Heckman
- Kathryn Hench
- Geraldine Jones
- Jean Mateer



GERALDINE JONES

MEMBERS

- Jean McLure
- Nellie Mullen
- Kathryn Rhodes
- Virginia Shaffer
- Dorothy Shaffer
- Dorothy Thompson
- Margaret Wells
- Martha Ziegler
- Miss Mabel-Louise Arey
- Miss Avis Edgerton
- Miss Belle Holoway
- Miss Irene K. MacDonald

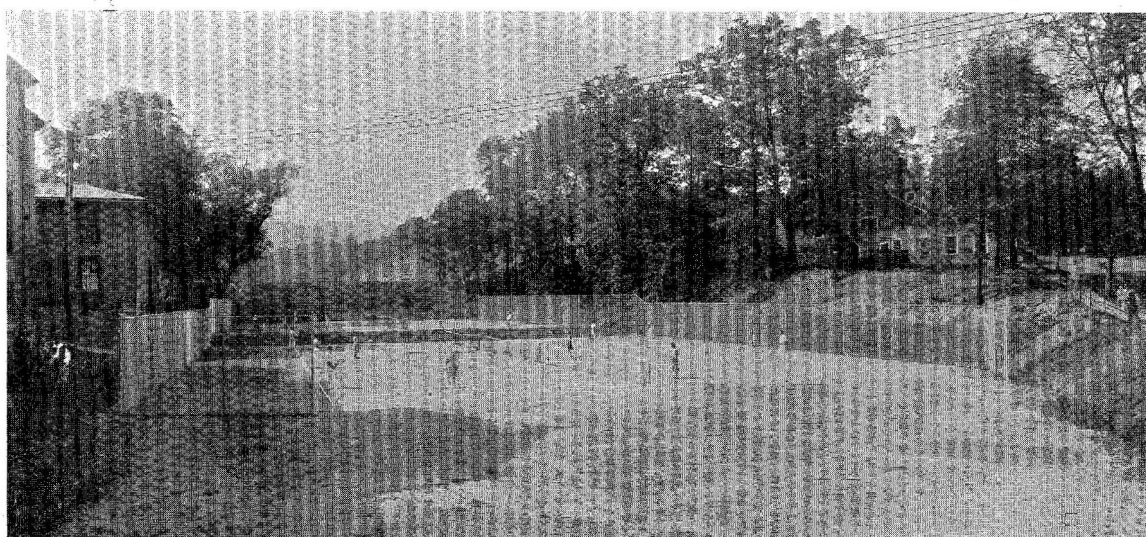
SADDLE
CLUB

Runners-up for Championship

Due to the almost continuous rain in the fall, the tennis tournaments could not be completed. Many girls from the gymnasium classes participated in the tournament, each girl having the opportunity to play with a variety of participants. Because the tournament could not be completed, no champion can be declared, but the runners-up are Madeline Anderson and Beatrice Berg.



BERG ANDERSON



COLLEGE TENNIS COURTS

TENNIS

Intra-Mural Tournament

<i>Team</i>	<i>Captain</i>	<i>Percentage</i>
First-Year Intermediates - - -	Elsie Kolter - - -	100%
Second-Year Intermediates - - -	Ann Crist - - -	80%
Second-Year College - - -	Madeline Faulkner - - -	60%
First-Year Primaries - - -	Rebecca Barrow - - -	40%
Second-Year Primaries - - -	Thelma Yingling - - -	20%
First-Year College - - -	Margaret Harmon - - -	0%

CAPTAINS



Left to Right, Front Row—Crist, Yingling.
Second Row—Kolter, Barrow.

BASKETBALL

Intra-Mural Champions



Front Row, Left to Right—Pepperman, Knapp, Strayer.
Back Row—Thiel, Herriger, Kolter, Kashinsky.

FIRST-YEAR INTERMEDIATES

Elsie Kolter, *Captain*
Jean Herriger
Stella Kashinsky
Helen Knapp
Lois Pepperman
Betty Strayer
Mary Thiel

HONORARY VARSITIES

FIRST VARSITY

Forwards

Kathryn Hench
Geraldine Jones
Stella Kashinsky

Centers

Madeline Anderson
Vida Goodman
Lois Pepperman

Guards

Pearl McCloskey
Betty Stevenson
Betty Strayer



Front Row, Left to Right—Kolter, Kashinsky, Strayer, McCloskey.
Second Row—Crist, Singer, Jones, Laufer.
Third Row—Thiel, Goodman, Herriger.
Fourth Row—Stevenson, Hench, Shaffer, Anderson, Pepperman, Knapp.

SECOND VARSITY

Forwards

Ann Crist
Elsie Kolter
Olive Shaffer

Centers

Madeline Faulkner
Jean Herriger
Mary Thiel

Guards

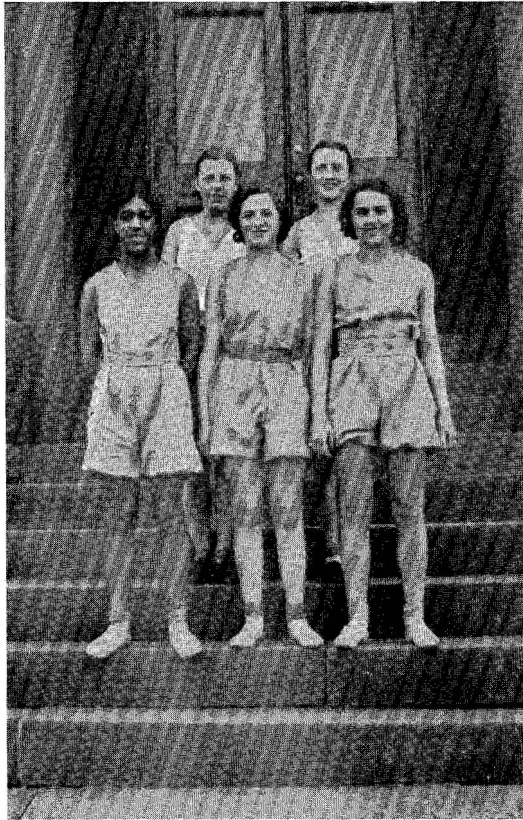
Maxine Laufer
Helen Knapp
Hazel Singer

BASKETBALL

Intra-Mural Tournament

<i>Team</i>	<i>Captain</i>	<i>Percentage</i>
Second-Year Intermedites - - -	Vida Goodman - - -	95%
Second-Year Primaries - - -	Elizabeth Johnson - - -	65%
First-Year College - - -	Marian Harsch - - -	60%
First-Year Primaries - - -	Kathryn Hench - - -	40%
Second-Year College - - -	Laura Swingle - - -	35%
First-Year Intermediates - - -	Helen Scotland - - -	30%

CAPTAINS



Front Row, Left to Right—Scotland, Hench, Harsch.
Back Row—Johnson, Goodman.

VOLLEYBALL

Intra-Mural Champions



SECOND YEAR INTERMEDIATES

- Vida Goodman, *Captain*
- Ann Crist
- Geraldine Jones
- Maxine Laufer
- Marjorie Salmon
- Eleanor Scotland
- Rosanna Shireman
- Hazel Singer
- Harrietta Snider
- Eleanor Waltz

Front Row, Left to Right—Goodman.
 Second Row—Crist, Laufer.
 Third Row—Snyder, Waltz, Singer.
 Fourth Row—Salmon, Scotland.
 Fifth Row—Shireman.

HONORARY VARSITIES

FIRST VARSITY

- Ann Crist
- Vida Goodman
- Kathryn Hench
- Evelyn Paul
- Rosanna Shireman
- Hazel Singer
- Belle Stoner
- Thelma Troxell
- Mary Ulmer
- Eleanor Waltz
- Evelyn Williams



Front Row, Left to Right—Hench, Williams, Troxell, Harsch,
 Gehron, Page.
 Second Row—McAllister, Ulmer, Stoner, Wood, Paul.
 Third Row—Shireman, Goodman, Waltz, Singer, Smith.
 Fourth Row—Johnson, Williams, Reighard, Scotland, Crist.

SECOND VARSITY

- Marie Gehron
- Marian Harsch
- Elizabeth Johnson
- Martha McAllister
- Elizabeth Page
- Ellen Reighard
- Violet Sanders
- Eleanor Scotland
- Jean Smith
- Emily Williams
- Eleanor Wood

VOLLEYBALL



CLOGGING



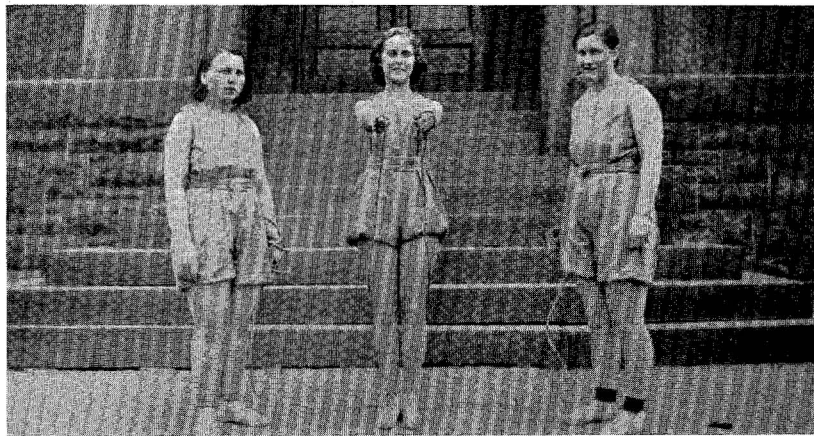
CLOWNS

The twelfth annual spring festival was held March thirty-first in the gymnasium. Over three hundred girls in the physical education classes participated. The program included an analysis of the Greek athletics, present-day sport techniques, gymnastic techniques, drills, many kinds of dances—folk, clogging, and pantomime—rope skipping and competitive sports, including volleyball, basketball, and relays. Effective music added to the general excellence of the production.



HUNGARIAN DANCE

G
Y
M
K
H
A
N
A



ROPE-JUMPING

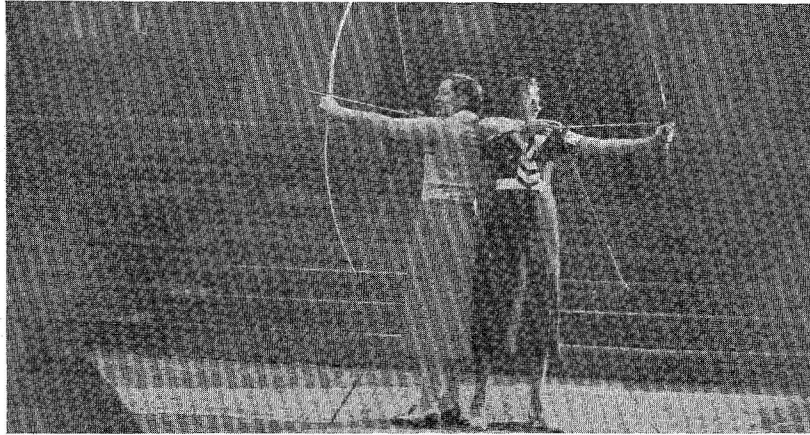


COLLEGE HOCKEY

The climax of the hockey season occurred when a team chosen from among the intramural teams met the Alumnae team on Homecoming Day. Even though the inclement weather prevented the completion of the hockey season, the victory of the Alumnae was so close as to convince the college team that, had the elements been favorable, a successful season would have ensued.

In addition to the regular gymnasium activities along the line of track, the girls of the college have ample time to demonstrate their ability on Play Day, which is sponsored by the Women's Athletic Association. Among the various events in track are running, high jump, broad jump, baseball throw, relays, and sprints.

HOCKEY
TRACK



Archery



Hiking

REPRESENTATIVE SPORTS

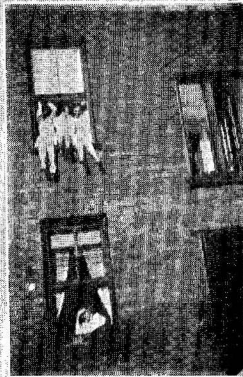
FEATURES



1933



Evelyn Livingstone



A Motley Group



*Al
Peg*



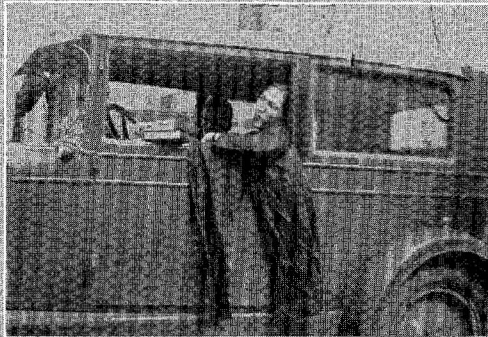
Harold Chronister



*Hilda Selby
Visitor
Kathryn Hendricks*



A Room



Bill Knapp



*Bee Berg
Marie Gehron
Marion Harsh
Bob Emery*



Ducky



*Dressler
Benson
Biddle*



*Joe
pals*



*Smitty
Nan*



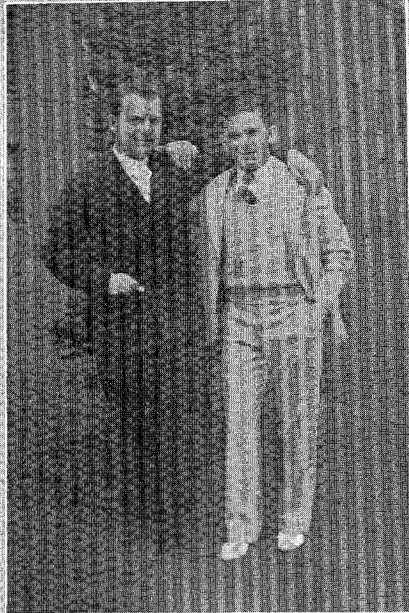
Mrs. Agar



*Dean Shroat
Tony Yost*



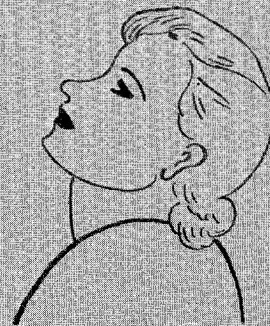
Harold Thompson



*Torok
Sekula*



*Martha
Madeline*

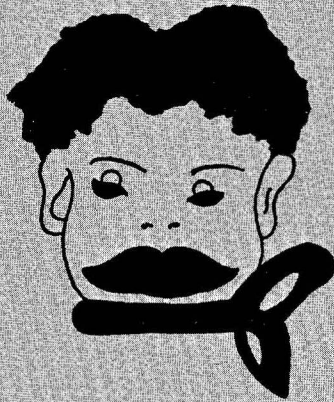




Jack Haberstroh



Flossie Daye

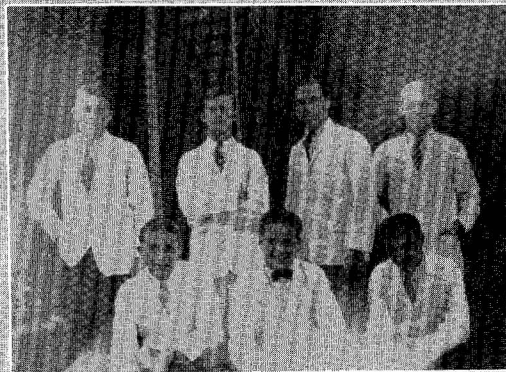




Marjorie Slick



Ruth Hart



*Bloom, Cooke, Snare, Shively
Stover, Biddle, Ziff*





*Dot
Lynn*



*Nellie
Ruth
Ann*



Ellen



Jack



*Jack
Marty*



*Ruth Ankeny
Katherine Rhoades*



Primary Freshmen



Secondary Freshmen





Kay, Laura, Madge, Hattie, Stella



*June Breining
Ruth Keys*



Intermediate Freshmen



Alice Marie



Gerry



Ruth Moon



Ruth Tyson



Mae Allen and Sally Huffman



Ruth and Belle



Don



Sally



*Katy
Belle Isle*



Ruth



*Mary, Lorraine, Becky, Peg
Sue, Mary, Ann, Mary*



Madge





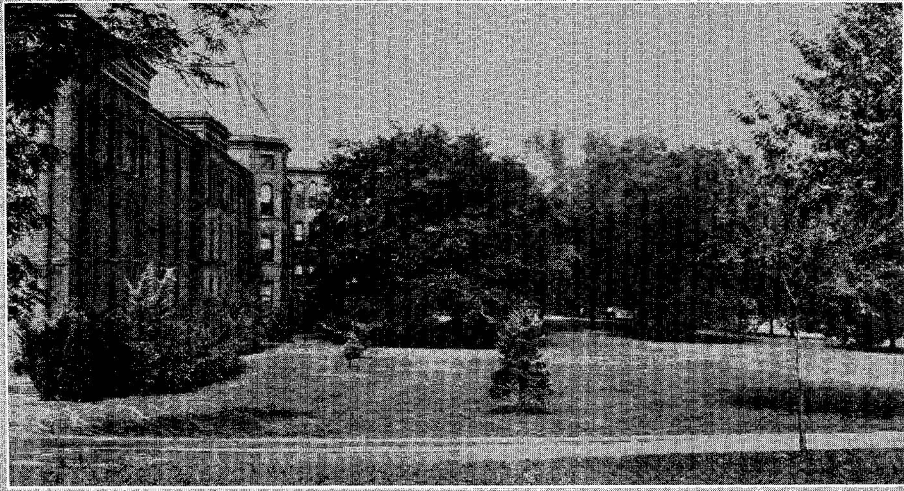
Dr. Rude



*Wanda Brown
Ruth Hart*



*Stella
Thelma
Ruth*



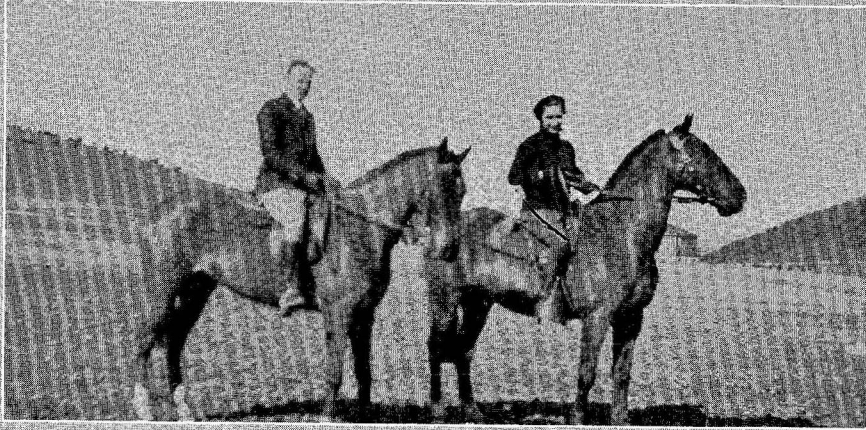
East Dormitory



Marg Isabel



Anne Marg



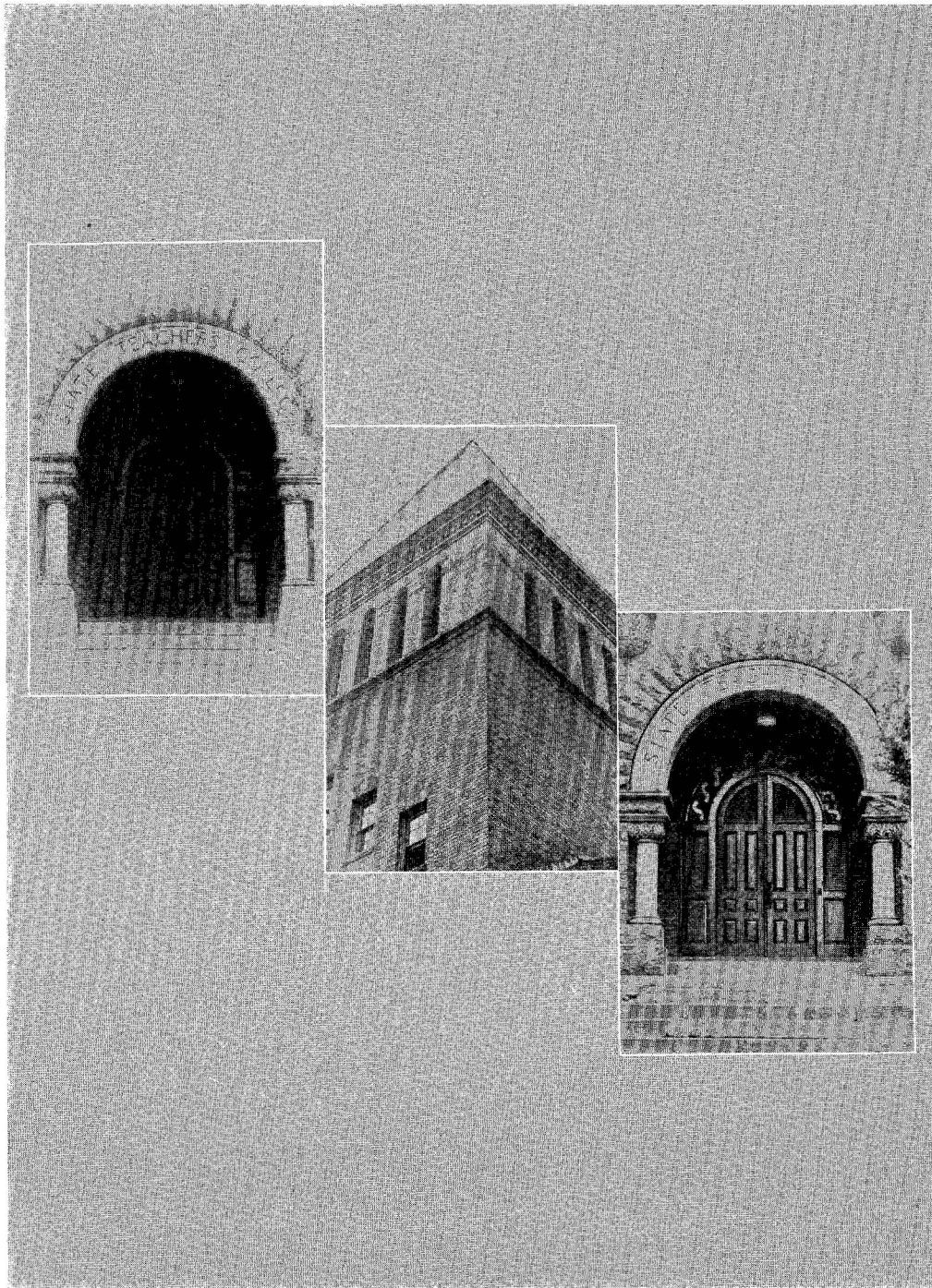
Betty Hall



Libby Stallsmith



Isabel Bickel





WEST
CAMPUS

