

PRAECO 1929

· PRAECO ·



Volume XVI

PUBLISHED MAY NINETEEN TWENTY NINE BY THE
SENIOR CLASS of STATE TEACHERS COLLEGE
LOCK HAVEN, PENNSYLVANIA

PRAECO 1929

tr. nm.

LB

1945

L 625P

1929

c. 2

DEDICATION

To Our

FATHERS AND OUR MOTHERS

WHOSE LOVE AND SACRIFICE HAVE MADE THIS

COMMENCEMENT DAY POSSIBLE.

WE REVERENTLY

DEDICATE

THE PRAECO OF 1929

61031

CONTENTS

• • •
BOOK I

CLASSES

BOOK II

ORGANIZATIONS

BOOK III

ATHLETICS

BOOK IV

FEATURES

To Lock Haven State

By Rupert Fitzsimmons, '29

Rule on, Lock Haven State, Temple of youthful dreams,
Monarch-like, you set on a silent hill of green;
On your red brick walls, the ivy climbs and sways,
Whispering romantic tales, to those who pass your way.

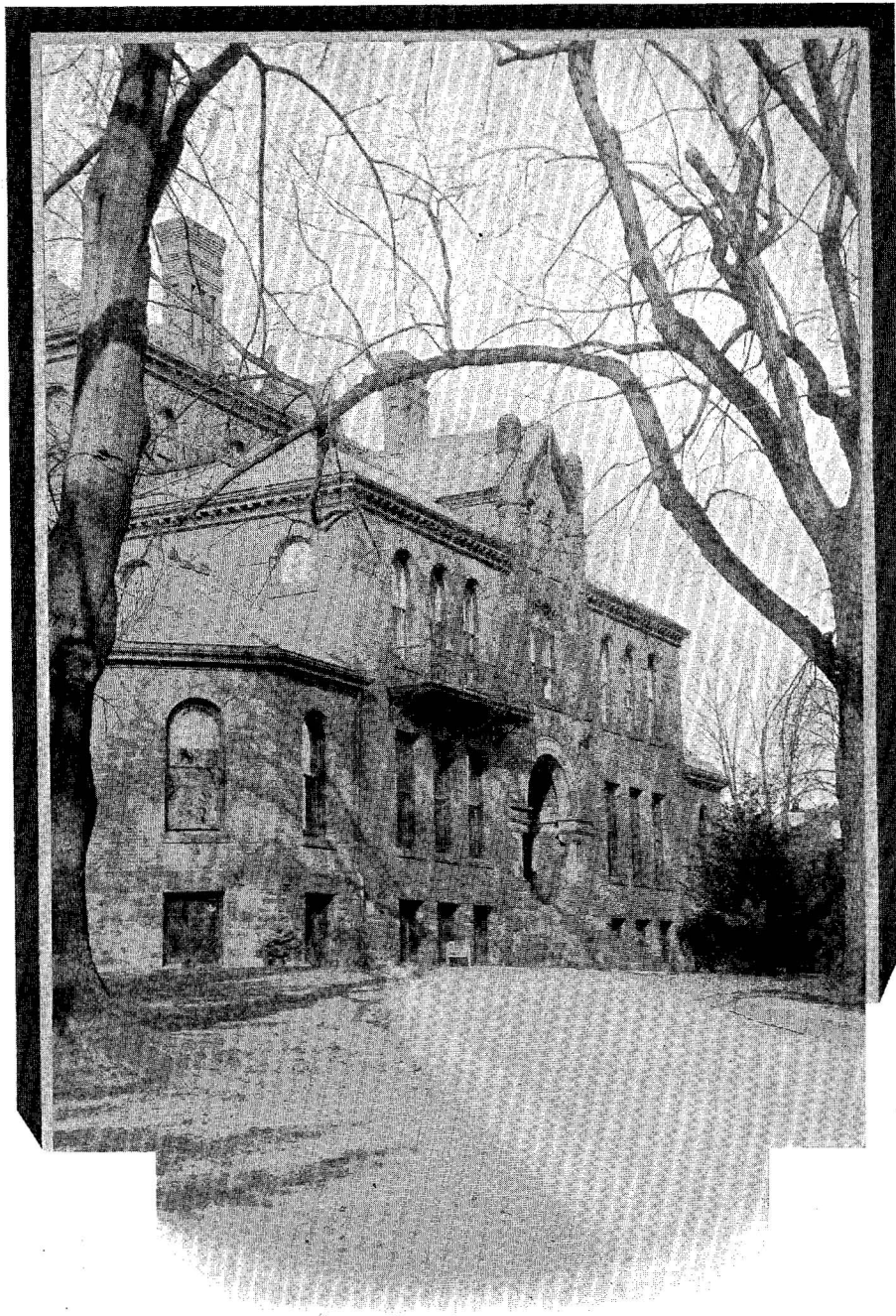
Tree by tree, your walks are screened,
By large maple limbs, boughs laden green,
When mid-day sun pours down its beams,
How cool is the cast of their pattern schemes.

Set on, Set on, Lock Haven State,
Torch of Life, cradle of faith,
Pulse beneath the soul of man,
Godly and wise forever stand.

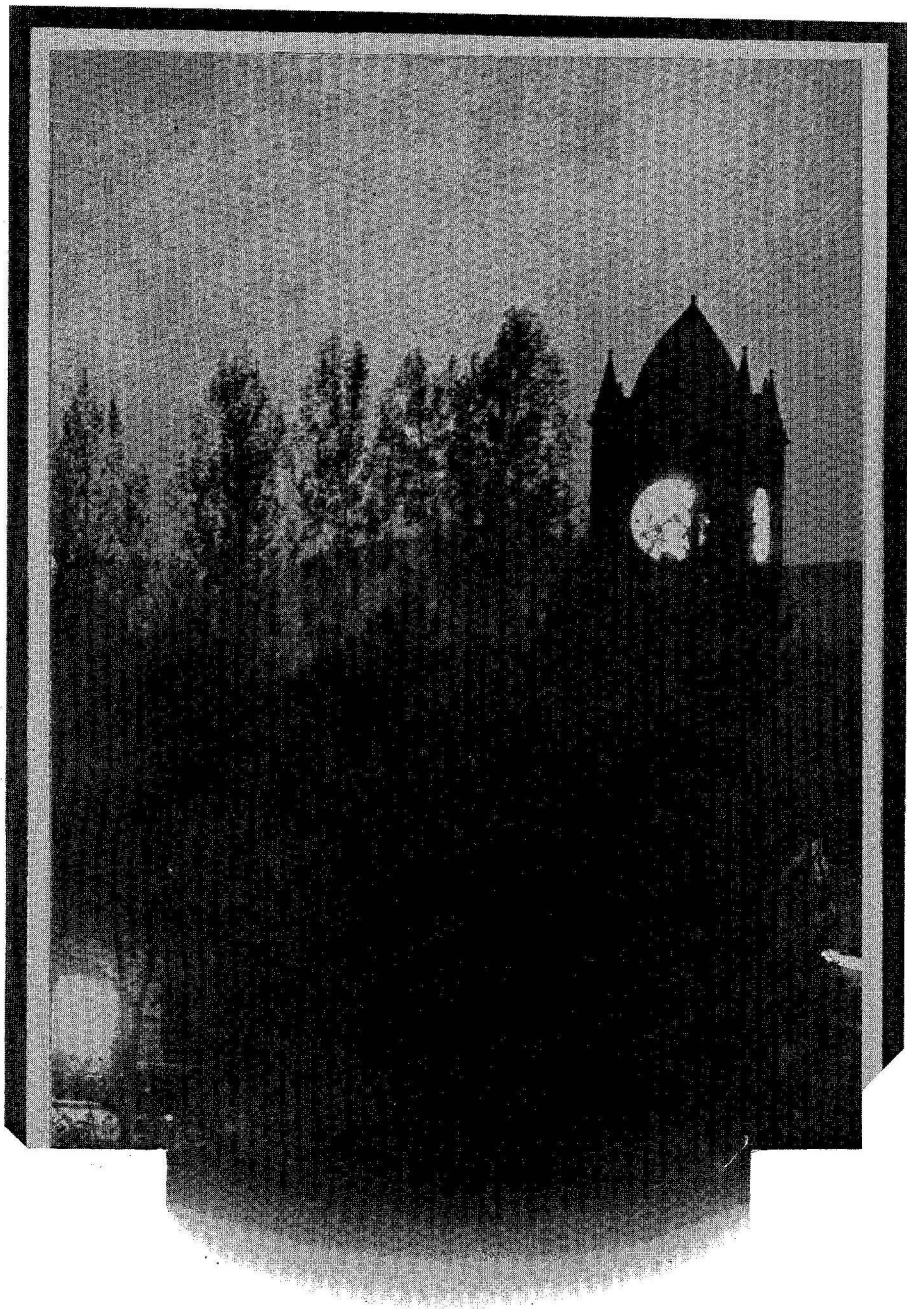
Stay on, Stay on your hill-locked throne,
And watch the Susquehanna forever roam,
You, the wise man's mirror, soul of truth,
The friend, the Haven, the Home of youth.



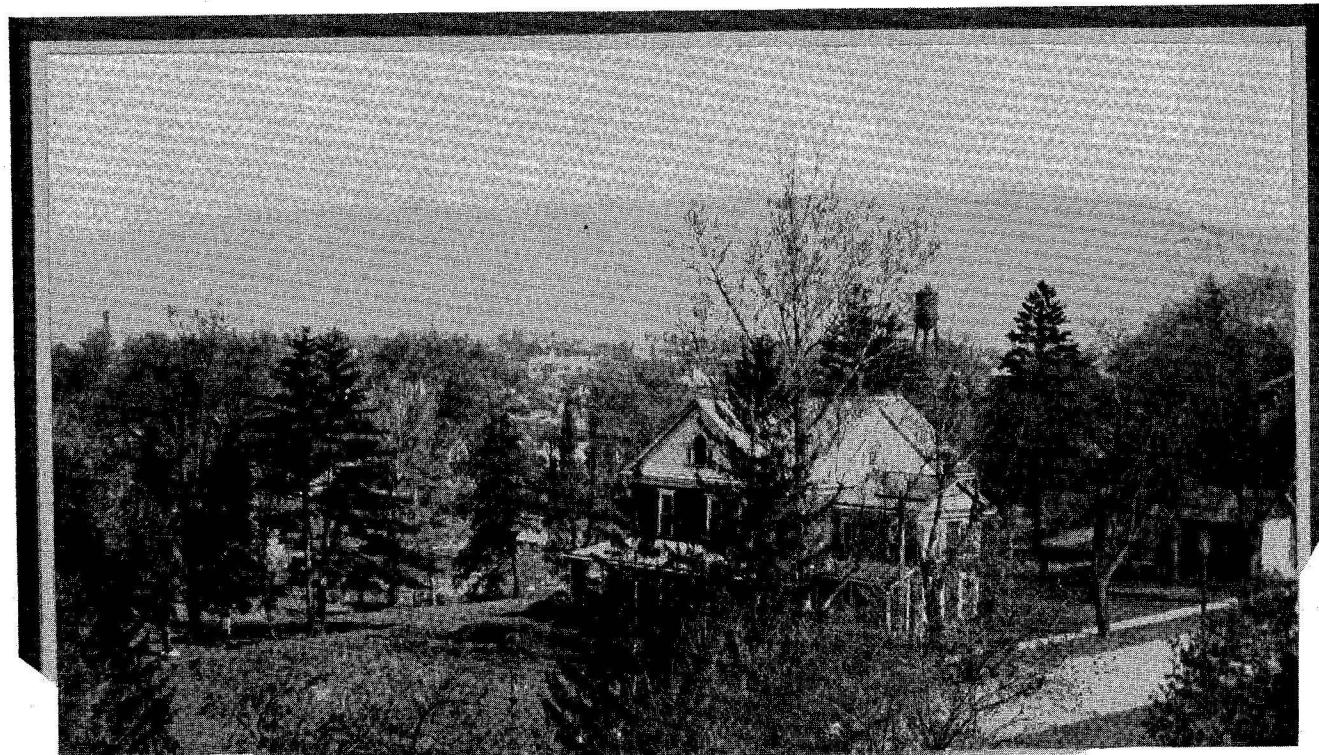
VIEWS



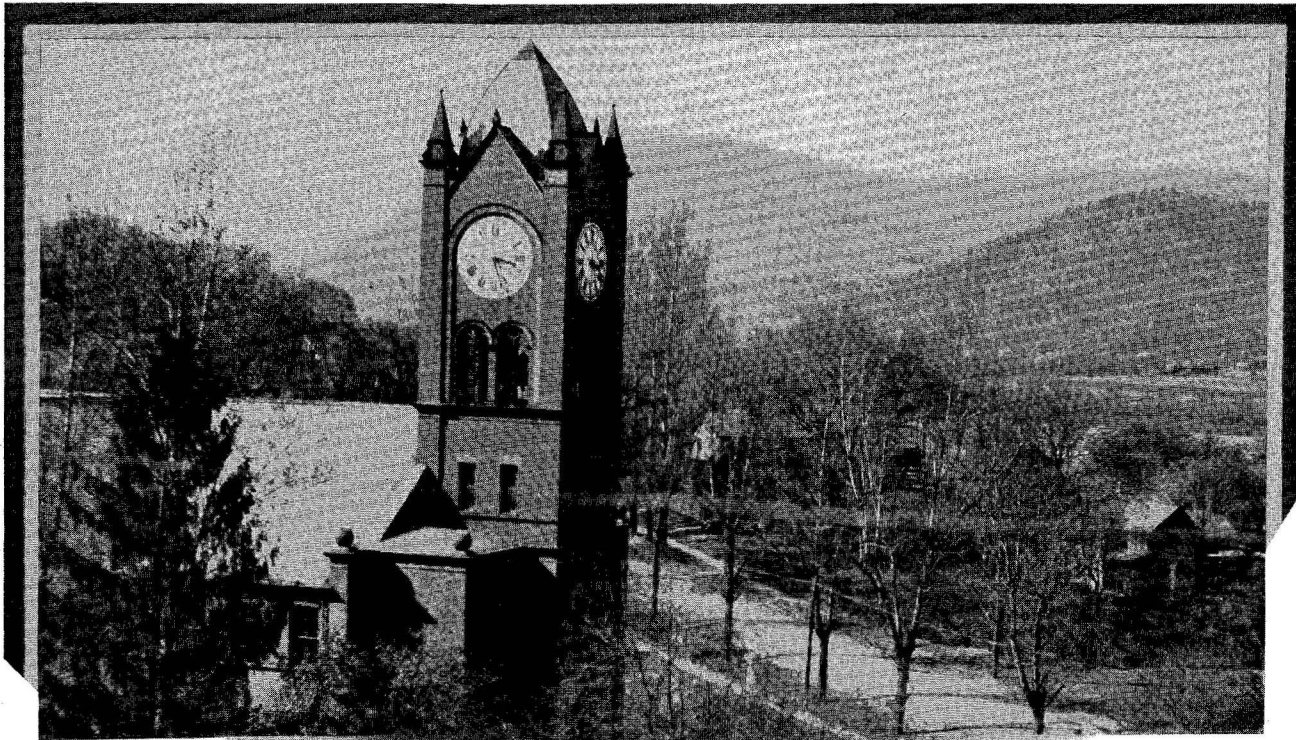
Grand Old S. T. C.



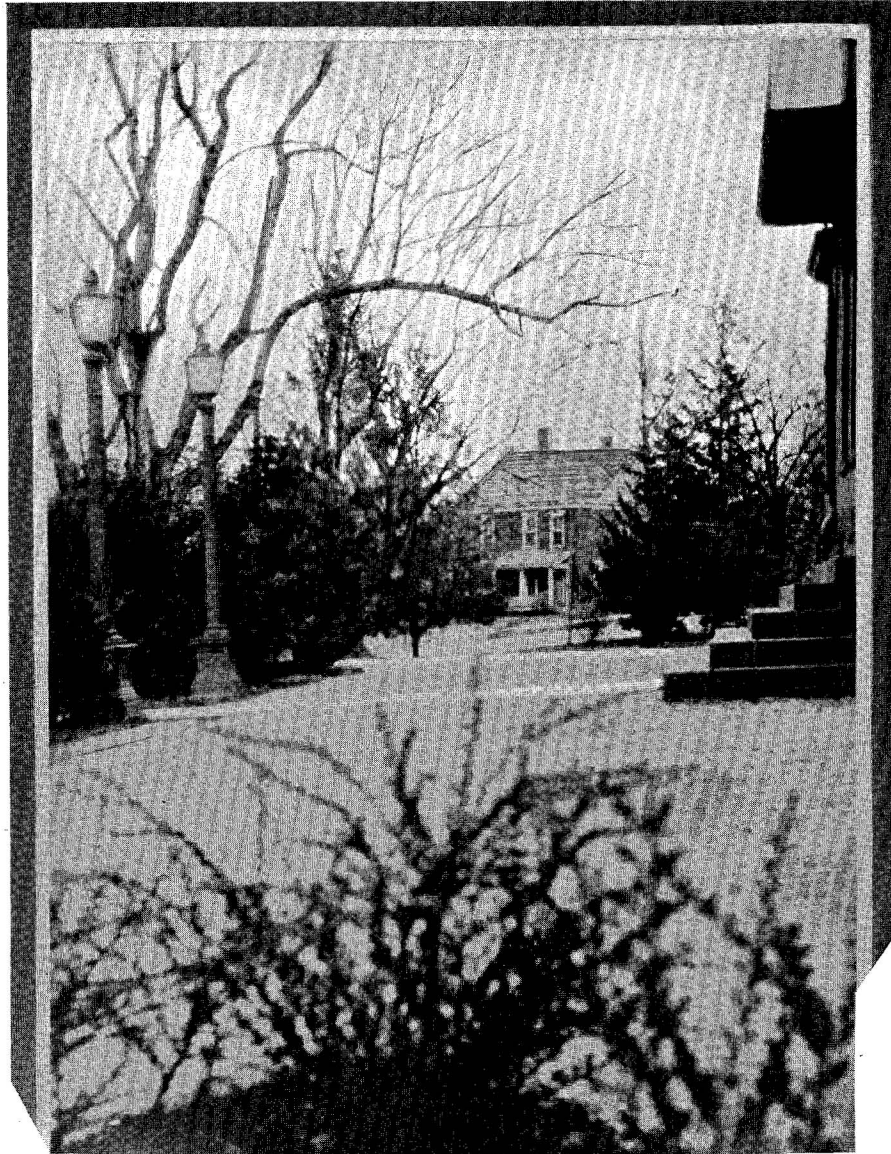
A Night Scene



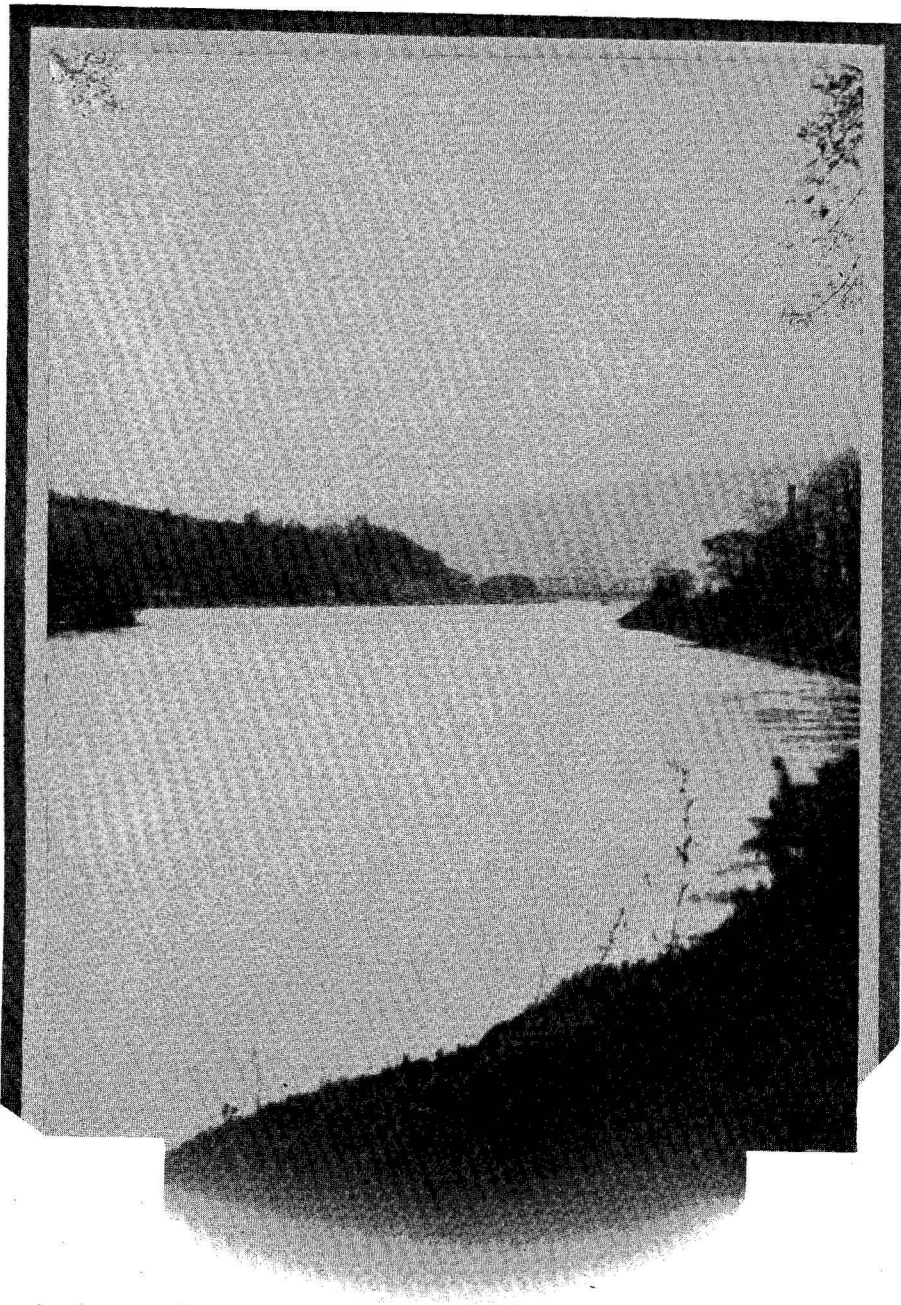
The President's Residence



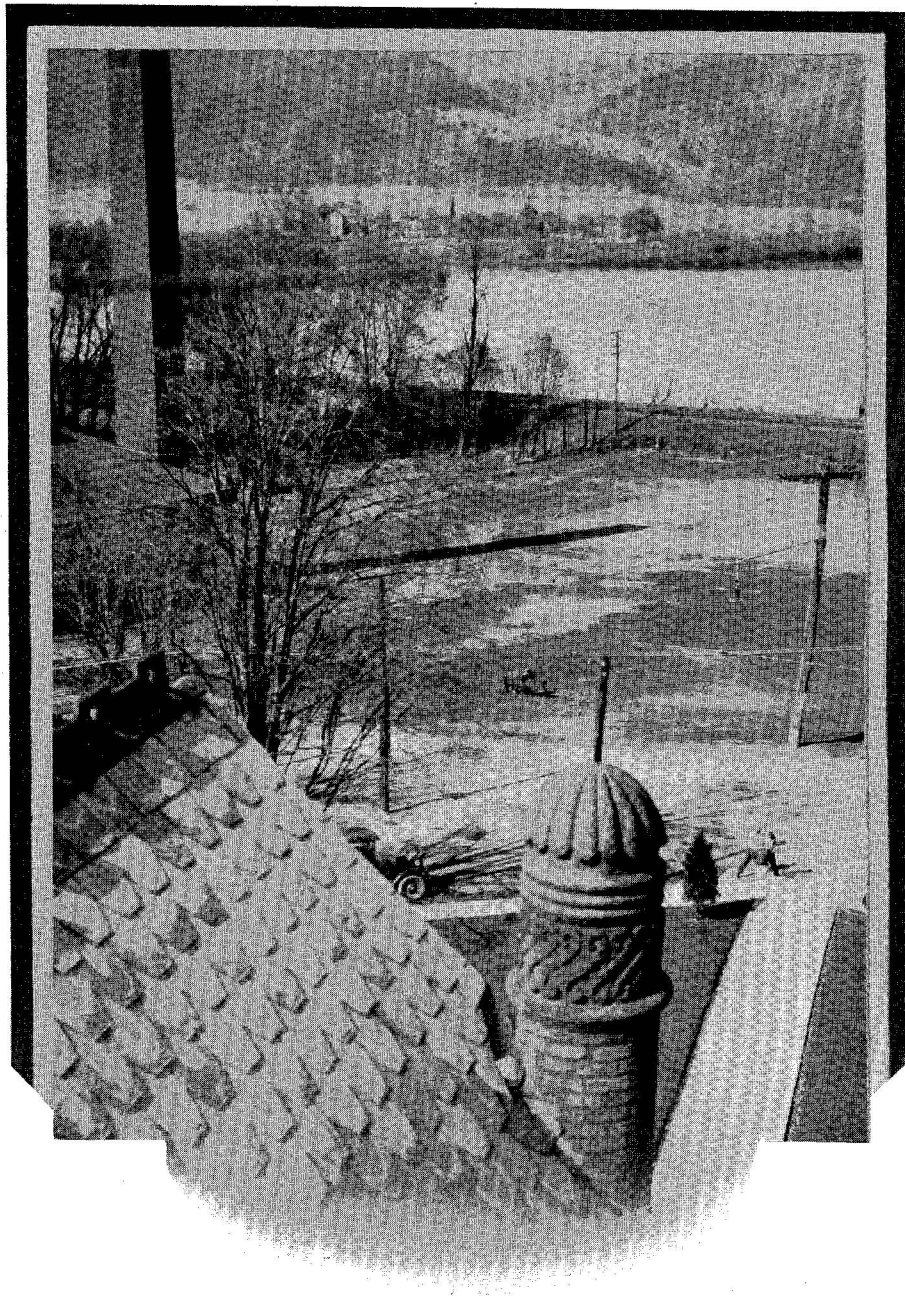
The Training School



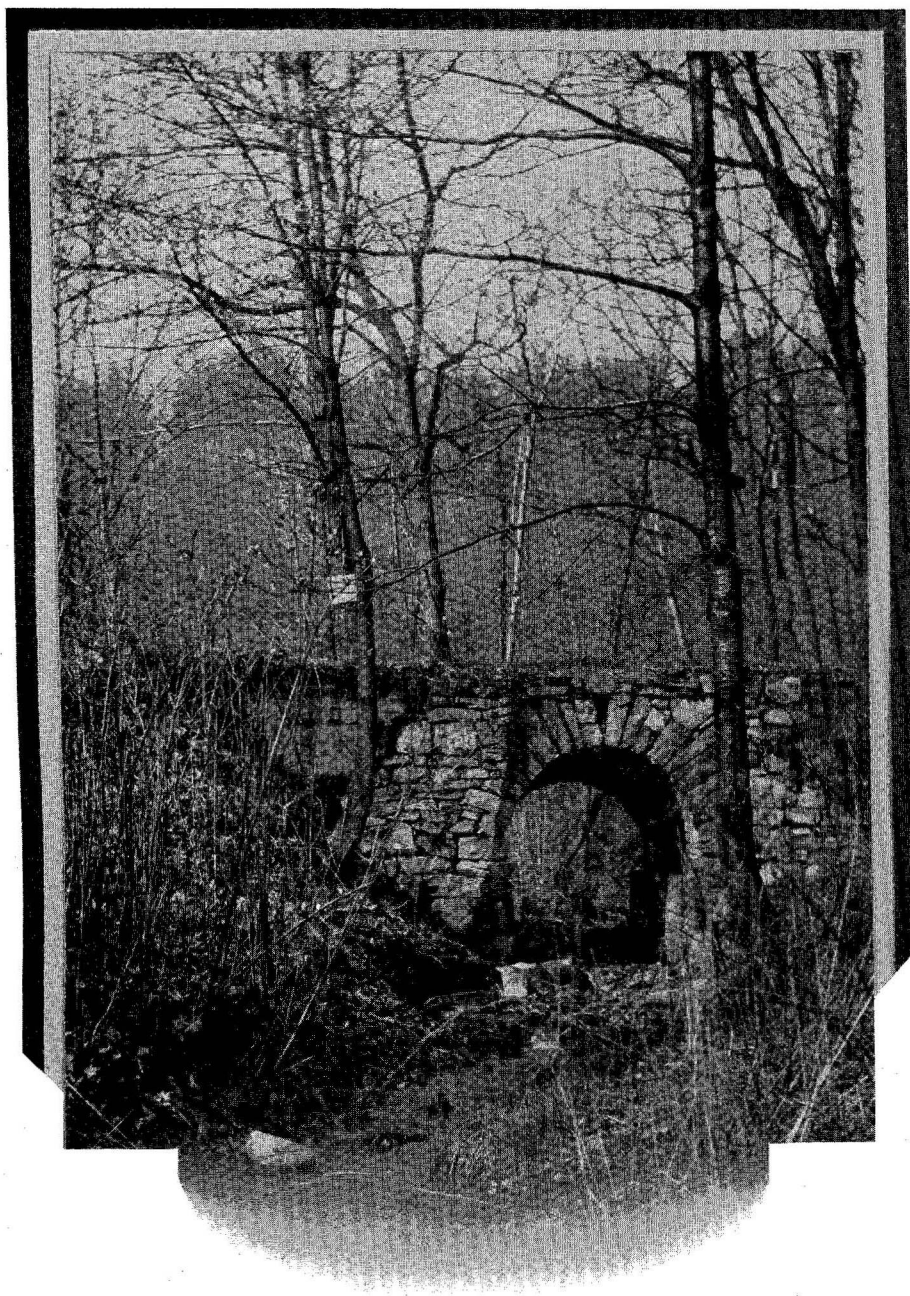
The Drive



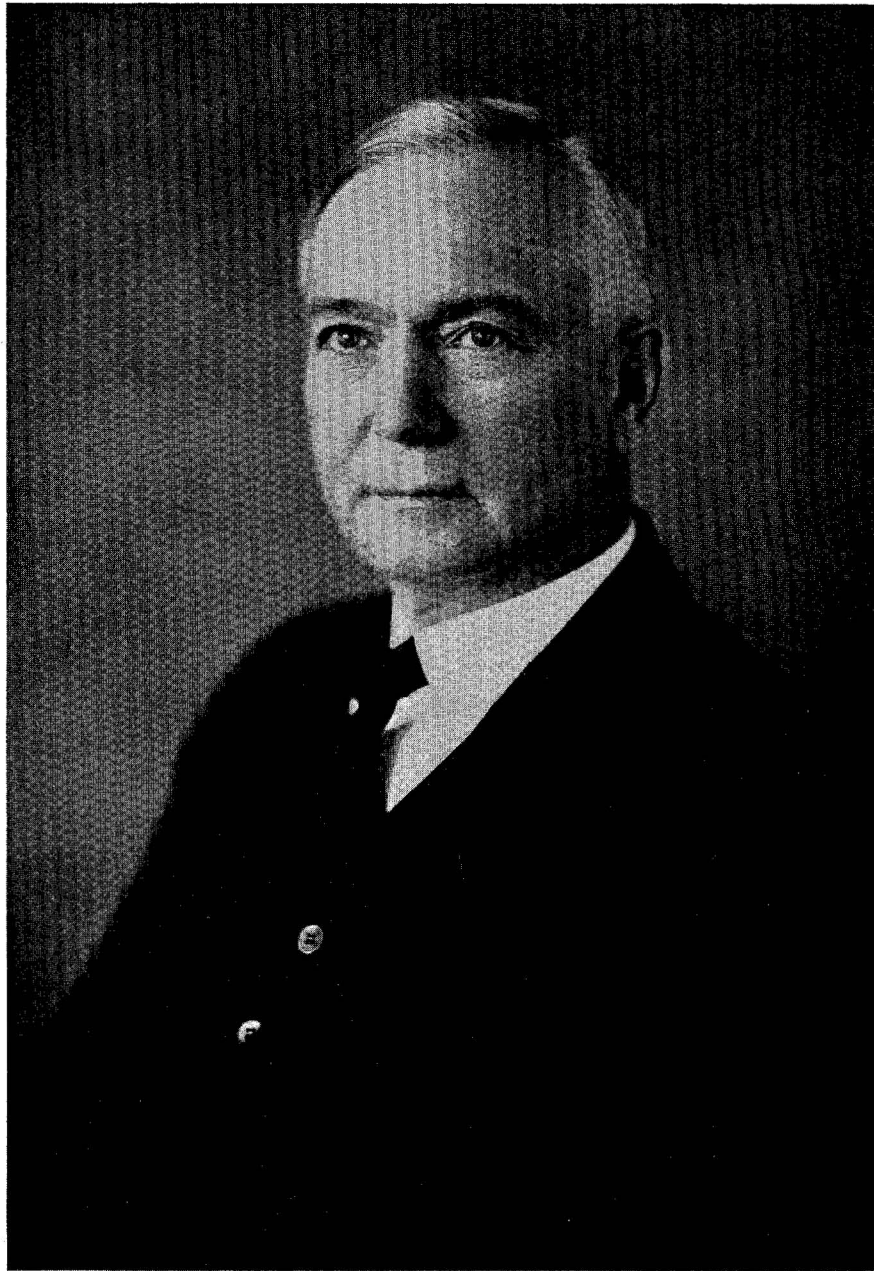
The Susquehanna



A View From the Campus



In the Glen



DR. DALLAS W. ARMSTRONG, *President*

Ph.B.—Grove City College
A.M.—Grove City College
LL.D.—Grove City College

To the Class of 1929:

The College extends its best wishes to the Class of Nineteen-hundred twenty-nine.

The Praeco is a very personal history of the graduating Class. The pages of this book breathe the worth, the promise, the hopes of this Class. In the years to come what memories its pages will awaken, and may they always be happy memories, recalling those pleasant, profitable, vital years spent here. May these pages serve to help keep alive those life ideals and life purposes formed here and encourage you to persevere toward their realization and also serve to strengthen that fine loyalty you have always shown toward "old" Rock Ham - your Alma Mater.

April 30, 1929.

Dallas W. Armstrong.



MORRIS DETURK HIGH
A.B.—Franklin and Marshall
A.M.—University of Chicago
Dean of Instruction; Mathematics



ROY STEWART MACDOUGALL
A.B.—Michigan State Teachers College
A.M.—Columbia University
Director of Training School; Education



M. GERTRUDE ROBERTS
A.B.—Hood College
Dean of Women; English



HARRY THEODORE GOERGER
B.P.E.—Springfield College
Ed.M.—Harvard
Dean of Men; Physical Education



HELEN BOGGIS LESHNER
Supervisor, Grade III



CORNELIUS M. SULLIVAN
B.S.—Columbia University
Social Science; Athletic Advisor



HOMER H. GAGE
Pd.B.—Albany State Teachers
College
Ph.B.—Cornell University
English; Foreign Languages



LEVI J. ULMER
B.S.—Bucknell
M.S.—Bucknell
Science; Geography



LAURA BARKHUFF
B.S.—Columbia University
Supervisor, Grade I



JESSIE SCOTT HIMES
B.S.—Columbia University
A.M.—Columbia University
Director of Group I; Education



BERTHA M. ROWE
B.S.—New York University
Supervisor, Grade IV
Education



IVAH N. D. WHITWELL
Public School Music
Voice



BESSIE T. BAER
A.B.—University of Wisconsin
English; College Times
Praeco



MALOISE STURDEVANT DIXON
A.B.—Vassar College
A.M.—Columbia University
Physical Education



LILLIAN RUSSELL
A.B.—Geneva College
Social Science



NELLIE A. DuBOIS
B.S.—Columbia University
A.M.—Columbia University
Art



SELMA ATHERTON
A.B.—University of Minnesota
Penmanship; Art



DEBORAH MALINDA BENTLEY
Dietitian



IRENE KEELER MACDONALD
A.B.—Bates College
A.M.—Columbia University
Librarian; Library Methods



EDNA HELEN POLLOCK
A.B.—Iowa State Teachers College
A.M.—Columbia University
Supervisor, Grade VI



ALLEN D. PATTERSON
A.B.—Grove City College
A.M.—Columbia University
Director of Junior High School
Education



MABEL V. PHILLIPS
A.B.—Indiana University
A.M.—Columbia University
Supervisor, Grade II



SUE NORTHEY
B.Ed.—National Kindergarten and
Elementary College
Supervisor of
Kindergarten Education



SAMUEL J. SMITH
Ph.B.—Bucknell
A.M.—University of Pittsburgh
Mathematics



MABEL E. NOEL
Ph.B.—University of Chicago
A.M.—University of Chicago
Education



IRENE HALL ROBINSON
B.S.—Simmons College
Librarian



JAY FERRY STEMPLER
A.B.—Roanoke College
M.S.—University of Chicago
Physical Sciences



BERTHA AMELIA DANIEL
B.S.—University of Missouri
M.A.—University of Washington
English



AVIS EMILY EDGERTON
A.B.—Oberlin
M.S.—University of Michigan
Hygiene; Physical Education



IRA OZNI FLEMING
B.S.—Allegheny College
M.A.—Allegheny College
Biological Sciences



COPHINE ROOK
B.S.—State Teachers College
Kirksville, Missouri
Supervisor, Grade V



AXEL SELMER RUDE
A.B.—University of North Dakota
A.M.—Columbia University
Ph.D.—New York University
Education



ALZINA MAE SISLER
B.M.E.—Northwestern University
Public School Music; Piano



MABEL LOUISE AREY
B.L.I.—Emerson College of Oratory
English; Dramatics



FRANK E. RITTER
Bursar



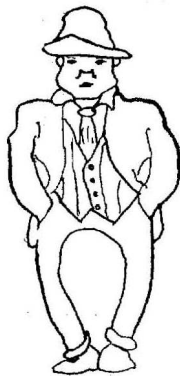
MRS. LYDIA CRESSWELL
Nurse; Household Director

GEORGE HURSH
Superintendent of Buildings
and Grounds

ELEANOR F. RITTER
Secretary to the President

Assistants

JEANNETTE MILLER
BERTHA S. MEYERS
AUDREY V. BRESSLER
GENEVIEVE TIFUS
MALCOLM L. HUDSON



CLASSES

Senior Class Officers

President

MARGARET MARTIN

Vice President

CHARLES DALE

Secretary

HARRIET ROHRBAUGH

Treasurer

JOHN VARNER



1. **MARY ALBAUGH**
 "Murdie" Warren, Pa.
 Group I
 Y. W. C. A.; Glee Club; W. A. A.; I. K. U.; Rho Omega Lambda, President.
 Murdie's pretty—Murdie's witty
 Murdie's cute and neat
 Murdie's got a heap of friends
 Why? Because Murdie's sweet.

2. **CHARLOTTE ALLEN**
 "Lottie" Flemington, Pa.
 Group II
 T. H. R.
 Lottie is quiet, Lottie is demure,
 We know no better friend—that's sure.

3. **BERNICE E. ALEXANDER**
 "Bernie" Milesburg
 Group I
 Glee Club; W. A. A.; I. K. U.; Y. W. C. A.; Praeco Staff; Alpha Zeta Pi.
 Her laugh is heard from floor to floor,
 And she is ever ready to laugh some more.

4. **VERA KATHERINE ALZINGRE**
 "Al" Warren, Pa.
 Group I
 Y. W. C. A.; W. A. A.; Glee Club; Alpha Zeta Pi.
 Vera takes her up's and down's
 With as light heart as an elevator man.



5. **MARGARET M. AMES**
 "Margie" Williamsport, Pa.
 Group II
 Y. W. C. A.; Educational Club; W. A. A.; Delta Omega Gamma.
 She went off Mass. way
 And for a week prolonged her stay;
 Her "chief" reason for delay
 Couldn't be told all in a day.



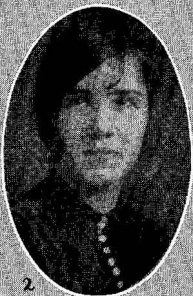
6. **A. CORA D. ANDERSON**
 "Corry" Kersey, Pa.
 Group I
 Y. W. C. A.; I. K. U.
 Cora works with all her might;
 When she does a thing she does it right.



7. **GENEVIEVE ARLAUSKAS**
 "Gen" Scranton, Pa.
 Group II
 Alpha Zeta Pi; Y. W. C. A.; Eta Lambda Rho; Art Club; W. A. A.
 Art is more God-like than science;
 Science discovers—Art creates.



8. **DOROTHY ASKEY**
 "Dot" Williamsport, Pa.
 Group II
 L. A. L.; Shakespeare Literary Society.
 "What's the use of worrying; it never was worth while." So "Dot" doesn't.



1. **ALMA BAIRD**
 "Al" Lock Haven, Pa.
 B.S. Education
 Y. W. C. A.; L. A. L.
 Every woman is a volume if you know how to read her.

2. **THELMA BARGER**
 "Barger" Blanchard, Pa.
 Group II
 Wherever "Barger" may chance to go, She'll have a hundred friends and not one foe.

3. **FRED C. BARR**
 "Freddie" Roulette, Pa.
 B.S. Education
 Y. M. C. A., Secretary-Treasurer; Football; Baseball.
 Freddie is our all-round athlete.

4. **MARY F. BARRY**
 "Flavia" Carbondale, Pa.
 Group II
 Y. W. C. A.; W. A. A.; Eta Lambda Rho.
 Quiet and cheerful, good natured and kind. A girl like our "Flavia" is hard to find.

5. **ALICE A. D. BAUMGARNER**
 "Al" Clearfield, Pa.
 Group II
 Junior Representative of Student Council; W. A. A.; Educational Club; Y. W. C. A.; Orchestra.
 To all who know her she is just "Al." A model student and a better pal.

6. **MAUDE D. BECK**
 "Becky" Loganton, Pa.
 Group II
 Y. W. C. A.
 She has the most understanding smile. And something to say just once in a while.

7. **MARGARET RAE BEESON**
 "Peg" Washington, Pa.
 Group I
 Alpha Sigma Tau; Alpha Zeta Pi; Y. W. C. A., Vice President; I. K. U.; W. A. A.
 Some people have a perfect genius for doing nothing and doing it well.

8. **CATHERINE BENNETT**
 "Kay" DuBois, Pa.
 Group II
 Beta Sigma Chi; Y. W. C. A.; W. A. A.
 Just being happy is a fine thing to do; Looking on the bright side rather than the blue.

9. **HELEN BIERLY**
 "Bierly" Hublersburg, Pa.
 Group II
 T. H. R.
 "Bierly" had quaint and quiet ways, And made the most of her college days.

10. **MARTHA L. BITNER**
 "Martie" Lock Haven, Pa.
 Group II
 L. A. L.
 With her eyes and happy smile She seems to make this life worth while

11. **ESTHER SUSAN BOWES**
 "Sue" Clearfield, Pa.
 Group II
 W. A. A.
 Not too serious, not too gay, A jolly good pal in every way.





1. **KATHLEEN C. BOWES**
 "Kay" Howard, Pa.
 Group I
 I. K. U.; W. A. A.; Price Literary Society; Secretary of Beta Sigma Chi; Librarian of Glee Club.
 Good to look upon, better to know,
 With many a friend, and never a foe.

2. **MARGARET BROUSE**
 "Brouse" Weedville, Pa.
 Group II
 "Cotton" is king, so southerners say and Brouse agrees with them.

3. **MIRIAM E. BROWN**
 "Mim" Renovo, Pa.
 Group I
 L. A. L.; I. K. U.
 She is pretty to walk with,
 Witty to talk with, and pleasant to think on.

4. **EVELIA A. CAIMI**
 "Caimi" Dagus Mines, Pa.
 Group II
 Y. W. C. A.; T. H. R.
 My tongue withers, my lips I reign,
 For who talks much must talk in vain.



5. **ROSEMARY CAPRIO**
 "Rose" Lock Haven, Pa.
 Group I
 T. H. R.; Y. W. C. A.
 'Tis not a lip or eye we beauty call,
 But the joint face and full result of all.



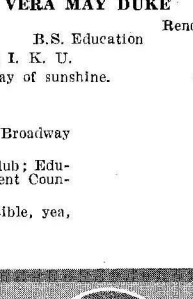
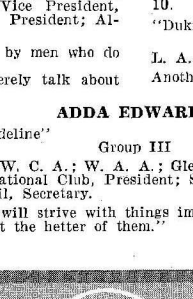
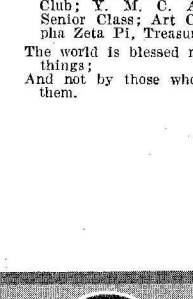
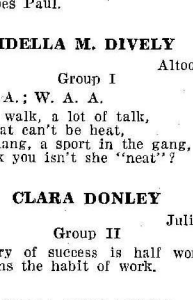
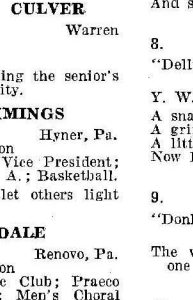
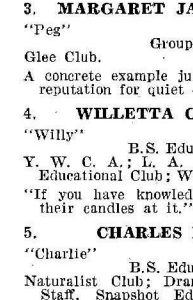
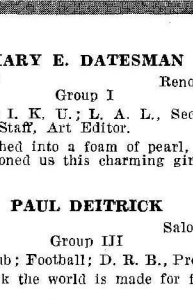
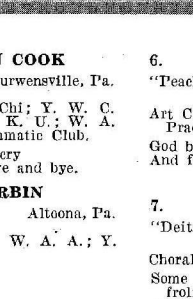
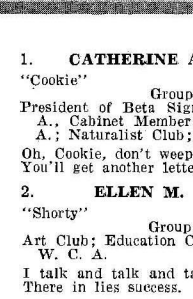
6. **CAROLINE CATHCART**
 "Tiny" Clearfield, Pa.
 Group I
 I. K. U.; W. A. A.; Y. W. C. A.; Alpha Zeta Pi; Girls' Glee Club.
 She's ever ready, ever true;
 Always cheery, and willing to do.



7. **CLARICE C. COHICK**
 "Cohick" Salladasburg, Pa.
 Group II
 Y. W. C. A.; Glee Club.
 A little thing like a rule or two
 Doesn't keep Cohick from doing what she wants to do.



8. **NELLIE MARIAN CONDOL**
 "Punk" Tyrone, Pa.
 Group I
 T. H. R.
 We haven't heard so much from Marian
 But we know she is steady and true.



1. CATHERINE ANN COOK

"Cookie" Curwensville, Pa.
Group I
President of Beta Sigma Chi; Y. W. C. A., Cabinet Member; I. K. U.; W. A. A.; Naturalist Club; Dramatic Club.
Oh, Cookie, don't weep or cry
You'll get another letter bye and bye.

2. ELLEN M. CORBIN

"Shorty" Altoona, Pa.
Group II
Art Club; Education Club; W. A. A.; Y. W. C. A.
I talk and talk and talk;
There in lies success.

3. MARGARET JANE CULVER

"Peg" Warren
Group II
Glee Club.
A concrete example justifying the senior's reputation for quiet dignity.

4. WILLETTA CUMMINGS

"Willy" Hyner, Pa.
B.S. Education
Y. W. C. A.; L. A. L., Vice President; Educational Club; W. A. A.; Basketball.
"If you have knowledge, let others light their candles at it."

5. CHARLES R. DALE

"Charlie" Renovo, Pa.
B.S. Education
Naturalist Club; Dramatic Club; Praeco Staff; Snapshot Editor; Men's Choral Club; Y. M. C. A.; Vice President, Senior Class; Art Club, President; Alpha Zeta Pi, Treasurer.
The world is blessed most by men who do things;
And not by those who merely talk about them.

6. MARY E. DATESMAN

"Teaches" Renovo, Pa.
Group I
Art Club; I. K. U.; L. A. L., Secretary; Praeco Staff, Art Editor.
God breathed into a foam of pearl,
And fashioned us this charming girl.

7. PAUL DEITRICK

"Deitz" Salona, Pa.
Group III
Choral Club; Football; D. R. B., President.
Some think the world is made for fun and frolic,
And so does Paul.

8. IDELLA M. DIVELY

"Dell" Altoona, Pa.
Group I
Y. W. C. A.; W. A. A.
A snappy walk, a lot of talk,
A grin that can't be beat,
A little slang, a sport in the gang,
Now I ask you isn't she "neat"?

9. CLARA DONLEY

"Donley" Julian, Pa.
Group II
The victory of success is half won when one gains the habit of work.

10. VERA MAY DUKE

"Dukie" Renovo, Pa.
B.S. Education
L. A. L.; I. K. U.
Another ray of sunshine.

11. ADDA EDWARDS

"Adeline" Broadway
Group III
Y. W. C. A.; W. A. A.; Glee Club; Educational Club, President; Student Council, Secretary.
"I will strive with things impossible, yea, get the better of them."



1. **ETHEL EDWARDS**
 "Et" Broadway
 Group II
 Y. W. C. A.; W. A. A.; Educational Club; Art Club.
 Pretty, witty, gritty—that's Ethel.

2. **ETHEL EKENDAHL**
 "Ek" Renovo, Pa.
 Group I
 I. K. U.; L. A. L.
 Great is her loyalty; to her friends she is true.
 All the girls love her and know she's true blue.

3. **HILDA BEATRICE ELLIS**
 "Chie" Black Walnut, Pa.
 Group II
 Glee Club; Naturalist Club; Art; W. A. A.; Y. W. C. A.
 She believes—That girls will be girls (with boys).

4. **BEATRICE R. ELLISON**
 "Bee" Bradford, Pa.
 Group II
 Glee Club.
 The song of every singer is at last stilled
 But it lives on in the memory of all who hear it.



5. **MARY ELEANOR EMERY**
 Williamsport, Pa.
 Group II
 W. A. A.; Y. W. C. A.
 Why does Mary Eleanor go home every week-end?



6. **EDNA ERNEST**
 "Ernie" Bradford, Pa.
 Group I
 I. K. U.; W. A. A.; Educational Club; Y. W. C. A.
 Edna is just herself. That is why we like her.



7. **MARGARET FERGUSON**
 "Peg" Philipsburg, Pa.
 Group I
 Art Club; Alpha Zeta Pi; Y. W. C. A.; W. A. A.; I. K. U.; Vice President Student Council.
 Are you looking for an all-round good sport? Here she is.



8. **RUPERT FITZSIMMONS**
 "Rudy" Roulette, Pa.
 B.S. Education
 President Shakespeare Literary Society; Football.
 A man with a past—What about the future?



1. MARY A. FLEGAL
 "Sprigals" Group I Avis, Pa.
 L. A. L.; I. K. U.
 And here's a maiden fair to see,
 Who labors quite industriously;
 Yet she is gay, and loves to play;
 Her eyes are always full of glee.

2. CATHERINE E. FLIGER
 "Katie" Group I Aliquippa, Pa.
 Alpha Zeta Pi; Y. W. C. A.; Photo Editor
 of Praeco Staff; I. K. U.; Secretary of
 Price Literary Society; Hall Chairman;
 W. A. A.
 A good leader and hall chairman too,
 If you don't know her, we're sorry for you.

3. VIOLA FLUMAN
 "Katie" Group II Williamsport
 Art Club; T. H. B.; Y. W. C. A.
 If anyone can feel blue when Katie's
 around they must be indigo.

4. MARY ELEANOR FOLEY
 "Pat" Group I Renovo, Pa.
 T. H. B.; Assistant Joke Editor of Praeco
 Staff; W. A. A.; I. K. U.
 Each day is April first for her
 She celebrates all year round
 She knows 101 good jokes
 She's a College Humor rebound.

5. MARIAN FOX
 "Me Me" Group I Altoona, Pa.
 Glee Club; Y. W. C. A.
 Of manner gentle, of affection mild.

6. HUGH FREDERICKS
 "Hughle" B.S. Education Flensburg
 Football 1, 2, 3, 4; Basketball 2; Price
 Literary Society; Y. M. C. A.
 One upon whom we may depend and be
 sure to receive an answer of true merit.

7. EMMA FRANCES FRY
 "Fran" Group I Mahaffey, Pa.
 Alpha Sigma Tau; Y. W. C. A.; Price
 Literary Society; Alpha Zeta Pi; I. K.
 U.; W. A. A.
 Easy on the eyes,
 And stimulating to the imagination.

8. AGNES MAY FUOSS
 "Buttercup" Group II Altoona, Pa.
 Y. W. C. A.
 Never wild, ever gay
 Just a child, in a way.

9. MARGUERITE FURTNEY
 "Peg" Somerset, Pa.
 Y. W. C. A.; I. K. U.
 Group I
 When the hall chairman has gone to rest,
 That's the time that Peg loves best.
 Then she can burn the midnight oil,
 If she chooses to play—or to toll.

10. VIOLET GARDNER
 "Vi" Group II Lock Haven, Pa.
 L. A. L.; Naturalist Club.
 True happiness comes to a girl in getting
 the man someone else wants.

11. DOROTHY KIPPLE GEARHART
 "Dolly" Group II Altoona, Pa.
 President Alpha Sigma Tau; College
 Times; Vice president Art Club; Y. W.
 C. A.
 Small, neat, quite petite,
 A jolly good friend and very sweet.





1. **JULIA G. GIBBONS**
 "Jule" Williamsport, Pa.
 Group III
 Beta Sigma Chi; Secretary of Shakespeare
 Literary Society; Y. W. C. A.; W. A. A.
 Pretty, witty, vivid and true;
 We sure got a "Jule" when we got you.

2. **AGNES GILDAY**
 "Gill" Morrisdale, Pa.
 Group II
 N. O. R.; Y. W. C. A.
 "Black-eyed Susan."

3. **ANNE M. GILLOEGLY**
 "Ann" Scranton, Pa.
 Group III
 Beta Sigma Chi; Y. W. C. A.; Eta
 Lambda Rho; W. A. A.; Business Man-
 ager Praeco.
 "Midnight spread and revelry,
 Fancy dance and devilry."

4. **GERALDINE GREASER**
 "Gerry" Altoona, Pa.
 Group II
 Alpha Sigma Tau; College Times; Art
 Club; Treasurer of Y. W. C. A.
 Her social duties are her greatest care.



5. **FAY CATHERINE GRIEB**
 "Fa" Lamar, Pa.
 Group I
 Y. W. C. A.; T. H. R.; Art Club; I. K. U.
 The secret of my happiness
 Is not in doing what I like,
 But liking what I have to do.



6. **ROSE GRIECO**
 "Honey" Lock Haven
 Group I
 T. H. R.; I. K. U.; Y. W. C. A.
 There are smiles that make us happy,
 There are smiles that make us blue,
 But the smile that "Honey" flashes
 Is the smile that's always true.



7. **GERTRUDE HAIGHT**
 "Gert" Altoona, Pa.
 Group I
 Delta Omega Gamma, President; I. K. U.,
 President; Art Club, Treasurer; Praeco
 Staff; Y. W. C. A. Cabinet; W. A. A.;
 Education Club.
 This maid is stylish and dignified,
 Her popularity can not be denied.



8. **GENEVIEVE HARMON**
 "Gene" Bradford, Pa.
 Group I
 Rho Omega Lambda; Glee Club, Vice
 President; I. K. U.; Art Club; W. A.
 A., Treasurer; Y. W. C. A.
 If your teacher can't answer, ask "Gene."



1. **ELSIE HARPER**
 "Harper" Avonmore, Pa.
 Group II
 Alpha Sigma Tau; Y. W. C. A.; Art Club.
 Girls say her eyes like sunny skies,
 Her chief attraction form;
 Boys see the sunshine in her eyes—
 Then they're taken as by storm.

2. **JOYCE V. HARPSTER**
 "J. V." Phillipsburg, Pa.
 Group I
 I. K. U.; Y. W. C. A.
 "Happy am I, from care I am free,
 Why aren't they all contented like me."

3. **IRENE HENRY**
 "Fink" Jersey Shore, Pa.
 Group I
 Beta Sigma Chi, Vice President; Glee Club;
 W. A. A.; I. K. U.; Y. W. C. A.
 Three letters today?
 Surely not all from your brother.

4. **IRENE HERZOG**
 "Rene" Johnstown, Pa.
 Group I
 Præco Staff; Art Club; N. O. B.; Y. W. C. A.;
 Delta Omega Gamma.
 She and her pals
 Are all good gals.

5. **CHARLOTTE FAY HIGH**
 "Shusty" Lock Haven, Pa.
 Group II
 Beta Sigma Chi; T. H. R.; Inter-Sorority Council,
 President; Alpha Zeta Pi; W. A. A.; Y. W. C. A.
 "Shusty" doesn't always manage to get
 her Hygiene
 But she sure can manage a Chrysler.

11. **ASTRID JOHNSON**
 "Johnnie" Renovo, Pa.
 Group II
 R. O. L.
 The black rims under your peepless lights
 Denotes, Oh! so many sleepless nights.

6. **ELDA D. HOFFMAN**
 "E. D." Montoursville, Pa.
 Group I
 Y. W. C. A.; I. K. U.
 A mind is not much the worse for wear.

7. **CHARLOTTE D. HOMMER**
 "Ch!" Glasgow, Pa.
 Group I
 Educational Club; I. K. U.; Delta Omega Gamma.
 Her mind is her kingdom;
 Her will—her law.

8. **MARTHA HUNTER**
 "Hefty" Wilmerding, Pa.
 Group I
 Hall Chairman; I. K. U.
 The rest of your days depends upon the
 "rest" of your nights—Unlucky hall
 chairman.

9. **RUTH M. HUNTER**
 "Rufus" Beech Creek, Pa.
 Group II
 Beta Sigma Chi; Y. W. C. A., Cabinet;
 Glee Club; Inter-Sorority Council; W. A. A.;
 T. H. R.
 "I love but one—at a time."

10. **ALBERTA E. JAMES**
 "Bert" Dagus Mines, Pa.
 Group II
 Y. W. C. A.
 Boys will be boys but girls are giving
 them a chase for the privilege.



1. **EDITH JOHNSON**
 "Edie" Flemington, Pa.
 Group II
 T. H. R.
 There is something pleasing in "Edie's"
 quiet manners and this has endeared her
 to all who know her.

2. **FRANCES V. JOHNSON**
 "Francy" Driftwood, Pa.
 Group II
 Y. W. C. A.; W. A. A.
 A brown haired maiden
 Bubbling over with glee
 A more fascinating person
 You never did see.

3. **LILLIE E. C. JOHNSON**
 "Honey" Ridgway, Pa.
 Group II
 Y. W. C. A.; W. A. A.
 "Some day you'll come back to me."
 —(He did once).

4. **ESTHER LENORA KAMPERIN**
 "Kampie" Bitumen, Pa.
 Group I
 I. K. U.; W. A. A.; Y. W. C. A.
 If all worked as hard as she,
 A busy place the world would be.



5. **EMMA L. KELSALL**
 "Charley" Patton, Pa.
 Group I
 I. K. U.; Y. W. C. A.
 Another attractive little blond,
 Of whom we are especially fond.



6. **GENEVIEVE KENNEDY**
 "Vieve" Jeannette, Pa.
 Group I
 Rho Omega Lambda; I. K. U.; Y. W. C.
 A.; W. A. A.
 Forgetting her marks, she's strong for
 larks,
 At Burd's Arbor or Dew Drop Inn.



7. **CATHERINE KIMICK**
 "Kate" Mill Hall, Pa.
 Group II
 She's a little reserved but she possesses a
 fine disposition.



8. **KATHERYN KLAER**
 "Kay" Bitumen, Pa.
 Group I
 Naturalists' Club; Alpha Zeta Pi; I. K.
 U.; Y. W. C. A.
 The human mind is like a book,
 It is, without a doubt,
 For more you put into it
 The more you can take out.



1. **FLORENCE S. KNISS**
"Flossie" Lock Haven, Pa.
Group II
Alpha Zeta Pi; Art Club; L. A. L.
If I'm not so tall as you,
You're not so small as I.

2. **VIOLET LOUISE KUNES**
"Vi" Keewaydin, Pa.
Group I
Delta Omega Gamma.
I've often heard it is a sin,
To lead a double life.

3. **CHRISTINA H. LAMBERT**
"Chrissie" Tidoute, Pa.
Group I
Glee Club, Secretary; Student Council; I. K. U.; W. A. A.; Y. W. C. A., Cabinet.
Here is a senior noble and true,
She meets her requirements as few others do.

4. **IRENE C. LANGAN**
"Renee" Scranton, Pa.
Group II
Rho Omega Lambda; Dramatic Club; Glee Club; Y. W. C. A.; W. A. A.; Eta Lambda Rho.
Good looking, popular,
Is this senior fair,
If you ask us the reason
We'll tell you, curly hair.

5. **DOROTHY LAWRENCE**
"Dot" Canton, Pa.
Group I
Rho Omega Lambda, Secretary-Treasurer; Art Club; Y. W. C. A., Cabinet; W. A. A.; I. K. U.
"I am very much engaged, sir, at present."

6. **HELEN F. LEAR**
"Lear" Johnstown, Pa.
Group I
Y. W. C. A.; Alpha Sigma Tau; Naturalist Club; I. K. U.
Stop and think! Did you ever
See a girl quite so clever?
Always talking and laughing, I'll say,
But adding new friends every day.

7. **HELEN LEBARON**
"Barrie" Lock Haven, Pa.
Group II
Y. W. C. A.
A happy smile for each she meets,
A cheery word for each she greets.

8. **MARY LEVI**
"Molly" Mill Hall, Pa.
Group II
T. H. R.
She's energetic, so they say,
She's sure to meet success some day.

9. **GENEVA LEWIS**
"Lewie" Thompson, Pa.
Group I
Y. W. C. A.
Never let studies interfere with your College education.

10. **MARY L. LEWIS**
"Mollie" Phillipsburg, Pa.
Group II
Y. W. C. A.; Alpha Sigma Tau, Secretary; Dramatic Club, President; Senior Play.
"Taint her hair, 'taint her smiles,
'Taint her eyes, 'taint her whilles,
'Tain't her silvery voice, you say,
Tell you what, it's just her way."

11. **ESTHER LOVE**
Waterville, Pa.
Modesty is the candle to your merit.





1. **CELIA LUCAS**
 "Celi" Howard, Pa.
 Group I
 Y. W. C. A.; I. K. U.; W. A. A.
 A pretty young miss comes down the street
 With a smile and clever clothes,
 She passes the corner—walks on again
 And behind her follows a string of men.

2. **BERNADEAN McCLARIN**
 "Mickey" Salladasburg, Pa.
 Group II
 Y. W. C. A.; Glee Club; W. A. A.
 True merit is like a river
 The deeper it runs the less noise it makes.

3. **HELEN ELOISE McCLELLAN**
 "El" Unionville, Pa.
 Group II
 Y. W. C. A.
 At peace with all
 The enemy of none.

4. **LILLIAN McCLINTOCK**
 "Lil" Salona, Pa.
 Group II
 T. H. R.
 A good sport, a good worker, full of fun
 and pep.



5. **ALTHEA McDONALD**
 "Thea" Clearfield, Pa.
 Group I
 T. H. R.
 The world is so full of a number of things
 I'm sure we should all be as happy as
 kings.



6. **JANET PAULINE McELHATTEN**
 "Polly" Shippenville, Pa.
 Group I
 I. K. U.
 "Oh, dear! I have so much to do,
 I don't believe I'll ever get through."



7. **ANNABELLE McLEAN**
 "Ann" Mill Hall, Pa.
 B.S. Education
 L. A. L.; Art Club.
 Give to the world the best you have
 And the best will come back to you.



8. **MARY McNICHOLS**
 "Murry"
 Rho Omega Lambda, Vice President; Y.
 W. C. A.; W. A. A.; Eta Lambda Rho,
 President.
 She'll never hurry
 She'll never worry
 We've never seen her in a flurry.



1



2



3



4



5



6



7



8



9



10



11

1. MARGARET HAZEL MARTIN

"Shorty" Group I Aliquippa, Pa.

Senior Class President; Inter-Sorority Council, Vice President; I. K. U., Treasurer; Alpha Sigma Tau; Y. W. C. A.; Glee Club; Art Club; Shakespeare Literary Society.

"Shorty" is such a midget!
Yet "Shorty's" head will toss!

2. DORIS MATERN

"Doree" Group I Philipsburg, Pa.

Y. W. C. A., President; Alpha Zeta Pi; I. K. U.; Dramatic Club; Dramatic Club Play; Alpha Sigma Tau.

"Doree" is a blond
Of whom her friends are fond,
She is also full of fun,
And keeps her boy friends on the run.

3. FREDA MATTSO

"Teeny" Group I Williamsport, Pa.

Y. W. C. A.; W. A. A.; I. K. U.; Delta Omega Gamma.

From a little spark may burst a mighty flame.

4. GENEVRA MAYBEE

"Gabby" Group II Brockway, Pa.

Y. W. C. A.; T. H. R.

"Maybe," she knows!

5. ROSANNA MAYES

"Rosie" Group II Jersey Shore, Pa.

L. A. L.

"I'm a 'knockout' where I live."

6. REGINA MEYERS

"Jean" Group II Altoona, Pa.

Y. W. C. A.; W. A. A.; Eta Lambda Rho.
Good things come in small packages.

7. MYRNA MILLER

"Moon" Group I Aliquippa, Pa.

Price Literary, President; Y. W. C. A., Cabinet; Alpha Sigma Tau, President; Dramatic Club; I. K. U.

Eyes of some men travel far
For the finding of a "moon" or star.

8. RHEA MARY MILLER

"Ree" Group II Driftwood, Pa.

Y. W. C. A.

Always happy, always gay,
Always talking, so they say.

9. WALTER MILLER

"Bing" Flemington, Pa.

B.S. Education

D. R. B., President; Tribunal, President; Shakespeare Literary Society.

What I have been taught I have forgotten,
What I know I have guessed.

10. SARA JANE MOFFETT

"Sally" Group II Port Royal, Pa.

Y. W. C. A.; Delta Omega Gamma.

Her artistic ability
In the wee' small hours,
Surpasses the originality
Of any artistic powers.

11. IONE M. MOORE

"Onie" Group I DuBois, Pa.

I. K. U.; Y. W. C. A.

"Don't look at me boys, it makes me nervous."



1. **THELMA J. MOORE**
 "Shorty" Lock Haven, Pa.
 Group I
 T. H. R., President; I. K. U.; Y. W. C. A., President (Day Room); W. A. A.
 "Shorty" is an authority on athletics in all its branches, Also an authority on a Ford and all its chances.

2. **MARGARET L. MOYER**
 "Peg" Linden, Pa.
 Group I
 I. K. U.; Y. W. C. A.; Art Club; Educational Club; Hall Chairman; Praeco Staff; Delta Omega Gamma.
 Always willing for any work,
 She'll do her bit and never shirk;
 A faithful friend of the steady sort
 And yet a jolly all-round sport.

3. **MARY NIEBAUER**
 Utahville, Pa.
 Group II
 Student Council, President; Naturalist Club, President; Y. W. C. A.; Art Club.
 Of Mary we find there is lots to tell,
 She does many things and does them well;
 She is competent, wise, clever, and gay.
 The trouble we give her she bubbles away.

4. **HELEN NIHART**
 "Nihart" Castanea, Pa.
 Group II
 T. H. R., Treasurer; Y. W. C. A.
 She never falters when there is work to do.



5. **ANNE ORLIN**
 "Ann" Bradford, Pa.
 Group III
 Glee Club; Art Club; Shakespeare Literary Society, Vice President.
 A little nonsense now and then
 Makes news of the best men.



6. **EMERSON W. PACKARD**
 "Slick" Jersey Shore, Pa.
 Group III
 D. R. B.
 Our accomplished comedian.



7. **ALICE ELAINE PEARSALL**
 "AI" Jamestown, N. Y.
 Group I
 Alpha Zeta Pi, Secretary; Y. W. C. A., Pianist; I. K. U.; Naturalist Club; Rho Omega Lambda.
 Depend not upon dreams
 You know they are ever contrary.



8. **FRANCES PEARSON**
 "Francy" Port Allegany, Pa.
 B.S. Education
 Alpha Zeta Pi; Y. W. C. A.
 Our brilliant math. student!
 She has hours for work
 And minutes for play,
 And never idles her time away.



1. **MARY JEAN PETERS**
 "Higene" Altoona, Pa.
 Group I
 W. A. A.; I. K. U.; Y. W. C. A.
 Do you want to hear the latest news?
 Or cut the newest caper?
 "Higene." knows it sure;
 She's better than a paper.

2. **VERNA PETERS**
 "Peters" Clearfield, Pa.
 Group II
 Orchestra; Educational Club; W. A. A.;
 Y. W. C. A.
 Right is might—that's her motto,
 Pep in gym—that's her joy.

3. **LORINA C. PETERSON**
 "Pete" Wilcox, Pa.
 Group II
 Orchestra; Y. W. C. A.
 Far be it from us to criticize
 A lass who is very wise.

4. **STELLA PHILLIPS**
 "Stel" Bradford, Pa.
 Group I
 I. K. U.
 We advise Stella to buy a copy of "Ask
 Me Another" so that her questions will
 be answered next year.

5. **LLOYD PLUMMER**
 "Buddy" Portage, Pa.
 Group II
 Dramatic Club; Y. M. C. A.
 The majority of men are perfect—for in-
 stance—

11. **MILDRED REITER**
 "Mid" Williamsport, Pa.
 B.S. Education
 Shakespeare Literary Society; Y. W. C.
 A.; W. A. A.
 They say life is what we make it,
 So I'll make my fun and take it.

6. **VOLNA POTTS**
 "Von" Clearfield, Pa.
 Group II
 Y. W. C. A.; W. A. A.; B. C. G.;
 Shakespeare Literary Society.
 She may be athletic, but she doesn't walk
 back.

7. **AGNES POWERS**
 "Agie" Bellwood, Pa.
 Group I
 Y. W. C. A.; Glee Club.
 "Had I been present at the creation, I
 would have given some helpful hints for
 the better ordering of the universe."

8. **A. IRENE PURKISS**
 "Purky" Tunkhannock, Pa.
 Group II
 W. A. A., President; Art Club; Dramatic
 Club; Glee Club; Y. W. C. A.; Praeco,
 Sport Editor.
 Purky's quite an actress
 In several different ways
 She acts upon the hockey field,
 Dance floor, and class plays.

9. **JAMES A. QUIGG**
 "Jimmie" Lock Haven, Pa.
 B.S. Education
 D. R. B., Secretary; Naturalist, Treasurer;
 Educational Club.
 Very few men who have been a howling
 success get that way by simply howling.

10. **JOHN F. RATCHFORD**
 "Johnnie" Scranton, Pa.
 Group II
 Y. M. C. A.; Shakespeare Literary So-
 ciety, Treasurer; Men's Choral Club.
 Everyone loves a lover.





1. **VIRGINIA E. ROCHE**
 "Ginger" Seranton, Pa.
 Group II
 Rho Omega Lambda; Y. W. C. A.; Dramatic Club, Secretary-Treasurer; Eta Lambda Rho.
 'Tis the things you say,
 And the smiles you wear,
 That's making the happiness everywhere.

2. **HARRIET E. ROHRBAUGH**
 "Puggy" Beech Creek, Pa.
 Group I
 Beta Sigma Chi; Senior Class Secretary; Alpha Zeta Pi, Vice President; L. A. L., President; D. R. S. C.; I. K. U.; Y. W. C. A.; Praeco Staff; Glee Club.
 Angels listen when she speaks;
 She's my delight, all mankind's wonder.

3. **ELEANOR DELPHINE ROOT**
 "Rudy" Bellwood, Pa.
 Group I
 I. K. U.; W. A. A.; Delta Omega Gamma.
 "Where are you going, Rudy?"
 "For a stroll, Bernie, get Martie."

4. **BETTY BRYNA RUBENS**
 "Betts" Philadelphia, Pa.
 Group I
 Art Club; I. K. U.
 My road shall be the road I made
 All that I gave shall be repaid.



5. **HELEN RYAN**
 "Ryan" Lilly, Pa.
 Group II
 W. A. A.; Y. W. C. A.
 "I'm sitting on Top of the World."



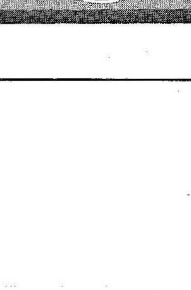
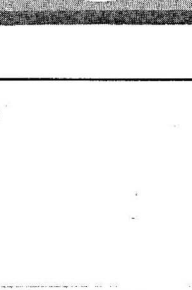
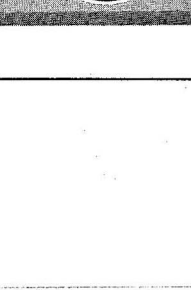
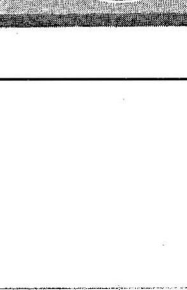
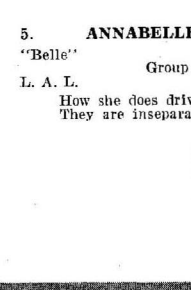
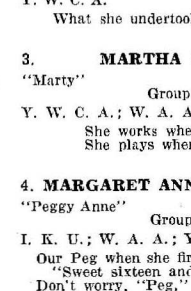
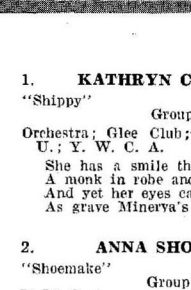
6. **MARGARET SCANLON**
 "Scanlon" Lilly, Pa.
 Group II
 Without a doubt, a good old scout.



7. **CATHERINE SHEA**
 "Kay" Seranton, Pa.
 Group II
 Y. W. C. A.; W. A. A.; Rho Omega Lambda; Eta Lambda Rho.
 "Why do what other folks have done,
 'Tis time there was something new under the sun."



8. **MARY V. SHEA**
 "Mollie" Seranton, Pa.
 Group II
 Rho Omega Lambda; Y. W. C. A.; W. A. A.; Inter-Sorority Council; Eta Lambda Rho.
 Her hair was dark as dark as night
 But her cherry smile sent beams of light.



1. **KATHRYN C. SHIPMAN**
 "Shippy" Hughesville, Pa.
 Group I
 Orchestra; Glee Club; W. A. A.; I. K. U.; Y. W. C. A.
 She has a smile that would beguile
 A monk in robe and cowl,
 And yet her eyes can look as wise
 As grave Minerva's owl.

2. **ANNA SHOEMAKER**
 "Shoemaker" Huntingdon, Pa.
 Group II
 Y. W. C. A.
 What she undertook to do she did.

3. **MARTHA SLEIGH**
 "Marty" Philipsburg, Pa.
 Group II
 Y. W. C. A.; W. A. A.
 She works when she works,
 She plays when she plays.

4. **MARGARET ANNE SMELTZER**
 "Peggy Anne" Bellefonte, Pa.
 Group I
 I. K. U.; W. A. A.; Y. W. C. A.
 Our Peg when she first came to us—
 "Sweet sixteen and never kissed."
 Don't worry, "Peg," you'll grow up.

5. **ANNABELLE SNYDER**
 "Belle" Mill Hall, Pa.
 Group II
 L. A. L.
 How she does drive that Chevie;
 They are inseparable.

11. **EVELYN TURNEY**
 "Turney" Vandergrift, Pa.
 Group II
 Glee Club.
 When do we eat?—Where—What?

6. **SARA THERESA STRALEY**
 "Tess" Germania, Pa.
 Group II
 Alpha Zeta Pi; W. A. A.
 Nice girls are horp, not made.

7. **BEULAH L. STRAW**
 "Beulah" Kermoor, Pa.
 Group II
 Y. W. C. A.; W. A. A.; B. C. G.
 When you speak you say something worth-
 while.

8. **FRANCES SULLIVAN**
 "Sully" Altoona, Pa.
 Group II
 Y. W. C. A.; Shakespeare Society; W. A. A.; B. C. G.
 Generally speaking—yes Sully's generally speaking.

9. **LUCILLE TAYLOR**
 "Lu" Ridgway, Pa.
 Group III
 Alpha Sigma Tau; Alpha Zeta Pi; Y. W. C. A.; Editor Praeco Staff.
 And here's our "Lu" so dear;
 She's really a very true friend,
 Will she make good? Have no fear,
 She's one on whom you can depend.

10. **OLGA THEODOROWICH**
 "Ogie" McKeesport, Pa.
 Group I
 Y. W. C. A.; I. K. U.; Eta Lambda Rho.
 In again, out again, gone again, back again.



1. **SARA A. VANADA**
 "Sally" Spring Mills, Pa.
 Group II
 Y. W. C. A.; W. A. A.
 Many daughters have done virtuously, but
 thou excellest them all.

2. **JOHN W. VARNER**
 "Jonnie" Woodland, Pa.
 Group III
 Boys' Choral Club; Orchestra; Treasurer
 Senior Class; Senior Class Play.
 "They that govern the most make the least
 noise."

3. **M. PHOEBE VARNER**
 "Pheb" Woodland, Pa.
 Group I
 Rho Omega Lambda; President Glee Club;
 Educational Club; I. K. U., Secretary;
 W. A. A.; Y. W. C. A.
 "A bungalow, a radio, and you."
 We wonder who she means.

4. **CHARLES VONADA**
 "Charlie" Mackeyville, Pa.
 Group III
 Derby Organization; Orchestra.
 We may wander east, we may wander west,
 Through many a dreary day,
 But never, never could we forget
 The Basketball game you play.



5. **HELEN C. WATERBURY**
 State College, Pa.
 Group II
 Y. W. C. A.; W. A. A.
 I may be little but don't you fret,
 I'll push my way through the world, you
 bet!



6. **MARGARET E. WEIDLEY**
 Altoona, Pa.
 Group I
 Y. W. C. A.; Glee Club; I. K. U.
 "Frankly, I believe in the power of edu-
 cation."



7. **MARY KATHRYN YECKLEY**
 "Mary Kay" Portage, Pa.
 Group II
 Alpha Sigma Tau; Y. W. C. A.; Price
 Literary Society; Glee Club.
 Dark eyes—snappy ways
 "Entrez Madame"



8. **RUTH CATHERINE ZANER**
 "Kay" Avis, Pa.
 Group I
 I. K. U.
 To be silent is to be beautiful,
 Stars do not make a noise.



MARGARET E. CREIGHTON
"Peg"
Mackeyville, Pa.
B.S. Education
Beta Sigma Chi; L. A. L.; Y. W. C. A.
Depend upon yourself alone.
(That's why she drives to school).



NELLIE CHASE
Altoona
Group II

MARY ABELSON
Altoona
Group I

KATHRYN HALL
Huntingdon
Group I

BEATRICE KELLY
Duncansville
Group I

ESTHER KEYSER
Muncy
Group I

ALICE MILLER
Tyrone
Group I

MARY NEWCOMBE
Huntingdon
Group II

EVA WHITMEYER
Lock Haven
B.S. Education



JUNIOR CLASS

Junior Class 1928-29

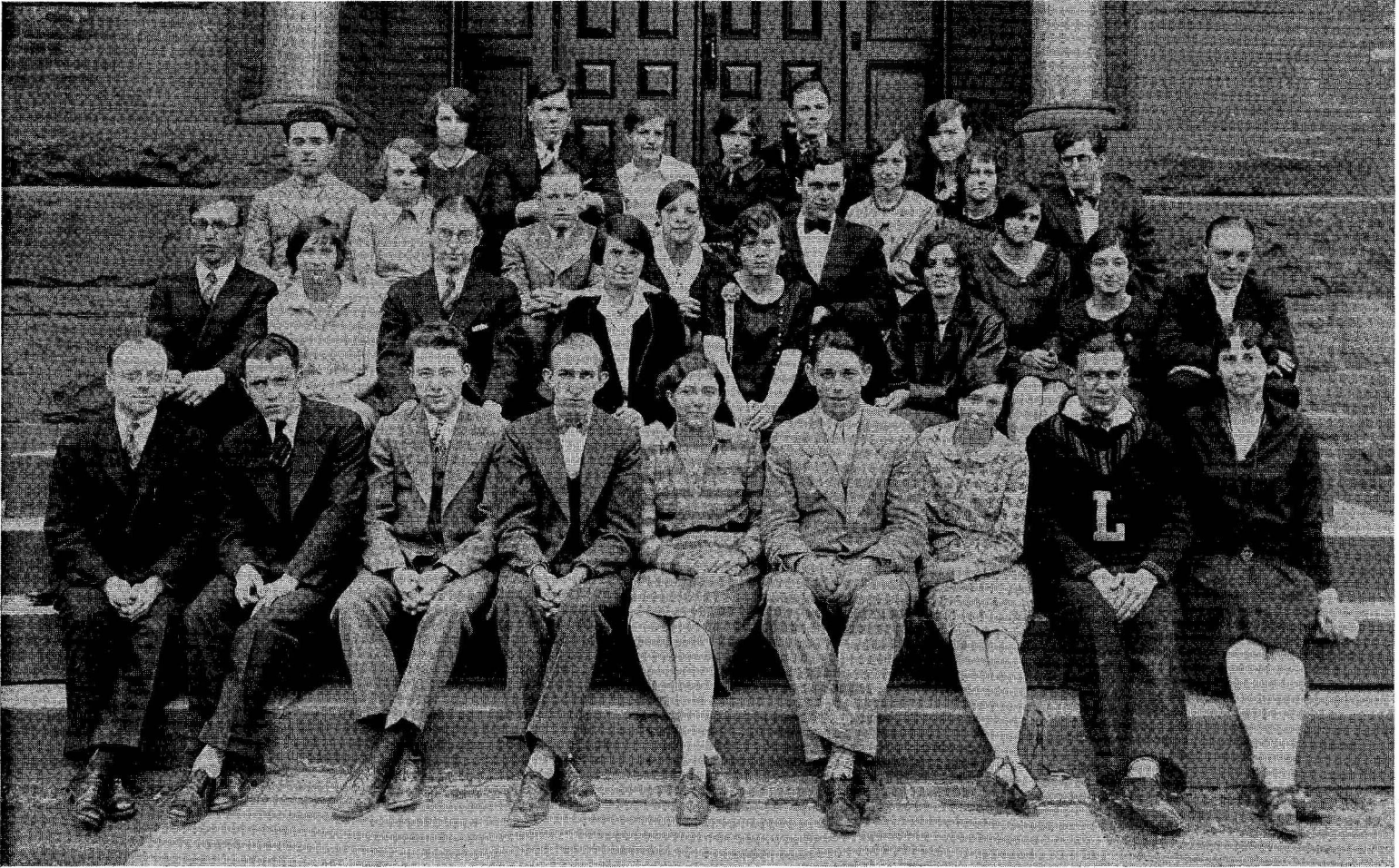
OFFICERS

President - - - - FRED MALONE Secretary - - - - ALICE RATCHFORD
 Vice President - - - LOUISE RHODES Treasurer - - - FLORENCE BONNER

Miriam L. Aber
 Elizabeth Acton
 Geneva Anderson
 Helen I. Anderson
 Mary Jeannette Anderson
 Virginia T. Anderson
 Dorothy M. Arnold
 Betty Baird
 Lucille B. Baird
 Mary A. Barnard
 Mary M. Beale
 Emily A. Beers
 Wilburta G. Beers
 Dorothea E. Blair
 Catherine H. Boland
 Florence M. Bonner
 Julia A. Bowers
 F. Ellis Boyer
 Theodore Bray
 Grace Breidenstein
 Mary E. Brosius
 Pauline E. Budinger
 Kathryn E. Burnham
 G. Jeannette Burnsidge
 Helen M. Campbell
 Mary D. Caprio
 Avonelle J. Catlin
 Mildred Charlton
 Eleanor R. Chase
 Shirley E. Christenson
 Margaret S. Cochran
 Margaret C. Coira
 Gladys I. Colegrove
 Martha Connor
 Dorothy M. Cornelius
 Mary J. Corrigan
 Eleanor M. Courter
 Betty B. Cowher
 Martha L. Craven
 Eleanor E. Cunningham
 Helen I. Cunningham
 Maude A. Cunningham
 Martha L. Darrin
 Gertrude E. Davies
 Dorothy A. Deitrich
 Katherine G. Diack
 Sara Diehl
 Margaret Dickey
 Louise M. Dietman
 Jeannette L. Donahue
 Leona C. Douglass
 Marjorie C. Dougherty
 Peter J. Doyle
 Louise A. Eastman
 Ruby M. Eckert
 Grace E. Ellis
 Genevieve H. Engel
 Rebekah C. Evans
 Mollie R. Evin
 Mary C. Farr
 Grace F. Farran
 Tura E. Fawver
 Verna L. Fenton
 Doris L. Fitzgibbon
 Maxwell R. Fitzsimmons
 Sara A. Foreman
 Anna V. Forse
 Marian Fox
 Ingrid U. Franklin
 Reba A. Franklin
 Rebecca Friedman

Mildred Fry
 Martha C. Funk
 Lily M. Fye
 Helen L. Gabriel
 Margaret M. A. Gall
 Marian A. Garrison
 Mary M. Gates
 Margaret A. Gingrich
 Mame E. Griffith
 Edith M. Griggs
 Anna Groban
 Helen C. Guelker
 Florence C. Gunsallus
 Louise Gussman
 Miriam G. Gussman
 Philip Guy
 Anne E. Harman
 E. Annabelle Hayes
 Elsie V. Hayes
 Hester E. Heller
 Margaret E. Hess
 Esther L. Hewitt
 Edith A. Hille
 Margaret J. Hirst
 Anna M. Hoenstine
 Cecelia Howe
 Ada Irwin
 Ruth E. Johnson
 Royce Johnson
 Catherine Judge
 Eleanor Judge
 Rishel Karchner
 Dorothy A. Kepner
 Thelma M. Kessinger
 Beryl King
 Phyllis E. Kinkead
 Elizabeth S. Kittelberger
 Dorothy Kling
 Betty K. Kohler
 Mary E. Korman
 Eleanor Kunselman
 Mildred L. Kyler
 Ona M. Lantz
 Mary E. Latherow
 Joyce Leathers
 Ethel Lee
 Edythe L. Lewis
 Helen I. Lewis
 Janette M. Lewis
 Ruth M. Logan
 E. Jane Lohr
 Samuel Long
 E. Faye Lord
 Elizabeth Loughry
 Ethel E. McCully
 Madeline McGough
 Betty L. McKillop
 Charlotte L. Mahaffey
 Fred J. Malone
 Sara Jane Mangus
 Grace D. Mark
 Ethel G. Mason
 Edith R. Merkle
 Florence E. Metzger
 Mary Edla Miller
 Josephine H. Mitchell
 Viola K. Monteith
 Gaynell M. Morgan
 Norman G. Morgain
 Ida H. Mowery
 Marie E. Mullins
 Clarence R. Mutchler

Elizabeth H. Nelson
 Viola A. Nelson
 Ethel L. Noll
 Mary O'Boyle
 Helen M. O'Neil
 Leila O'Neil
 Hazel P. Owens
 Louise Parkhill
 Ralph U. Poorman
 Agnes Powers
 Grace P. Prosser
 Marian R. Puckey
 Wilma Rankin
 Alice Ratchford
 Louise Reed
 Marguerite D. Reiter
 James R. Renninger
 Louise W. Rhodes
 Irene Richards
 Margaret M. Ricketts
 Geraldine E. Riley
 Lillian A. Rohde
 Eulalia H. Rosenhamer
 A. Catherine Sager
 Josephine Sakmar
 Warren Scott
 Helen R. Seelye
 Louise I. Shaffer
 Gwendolyn M. Sherman
 Sam M. Sherron
 Earl C. Smith
 Marjorie L. Snow
 Esther C. Soit
 Edward D. Speck
 Margaret E. Spooner
 Martha J. Stall
 Jennie R. Stanley
 Catherine R. Stiffler
 Dorothy M. Stitzer
 Isamiah K. Stover
 Irene D. Strayer
 Thelma M. Strum
 Alberta E. Tennis
 Margaret A. Thompson
 Mary E. Toolan
 Mary C. Trease
 Suzanna A. Twigg
 Elizabeth E. Van Scoyoc
 Anna Viering
 J. Ernest Wagner
 Julia Walsh
 Helen I. Walter
 Kathleen M. Watts
 Esther M. Wesley
 Esther M. Weyant
 Eunice V. Williams
 Grace E. Williams
 Marie E. Williams
 Dorothy A. Wilson
 Helen I. Wilson
 Rachel Wisman
 Sarah Wisman
 Alice E. Wolfe
 Christina Wolfe
 Alice M. Woolbert
 Mary Worcester
 Loretta M. Wyar
 Alice M. Yeager
 Thelma A. Young
 Yvonne B. Young
 Ray Zaner



SOPHOMORE CLASS

Sophomore Class 1928-29

OFFICERS

<i>President</i>	- - - - -	RICHARD PARSONS
<i>Vice President</i>	- - - - -	GEORGE McMULLEN
<i>Secretary</i>	- - - - -	IRENE RUSSELL
<i>Treasurer</i>	- - - - -	ROBERT ROBB
<i>Social Chairman</i>	- - - - -	ALICE READ

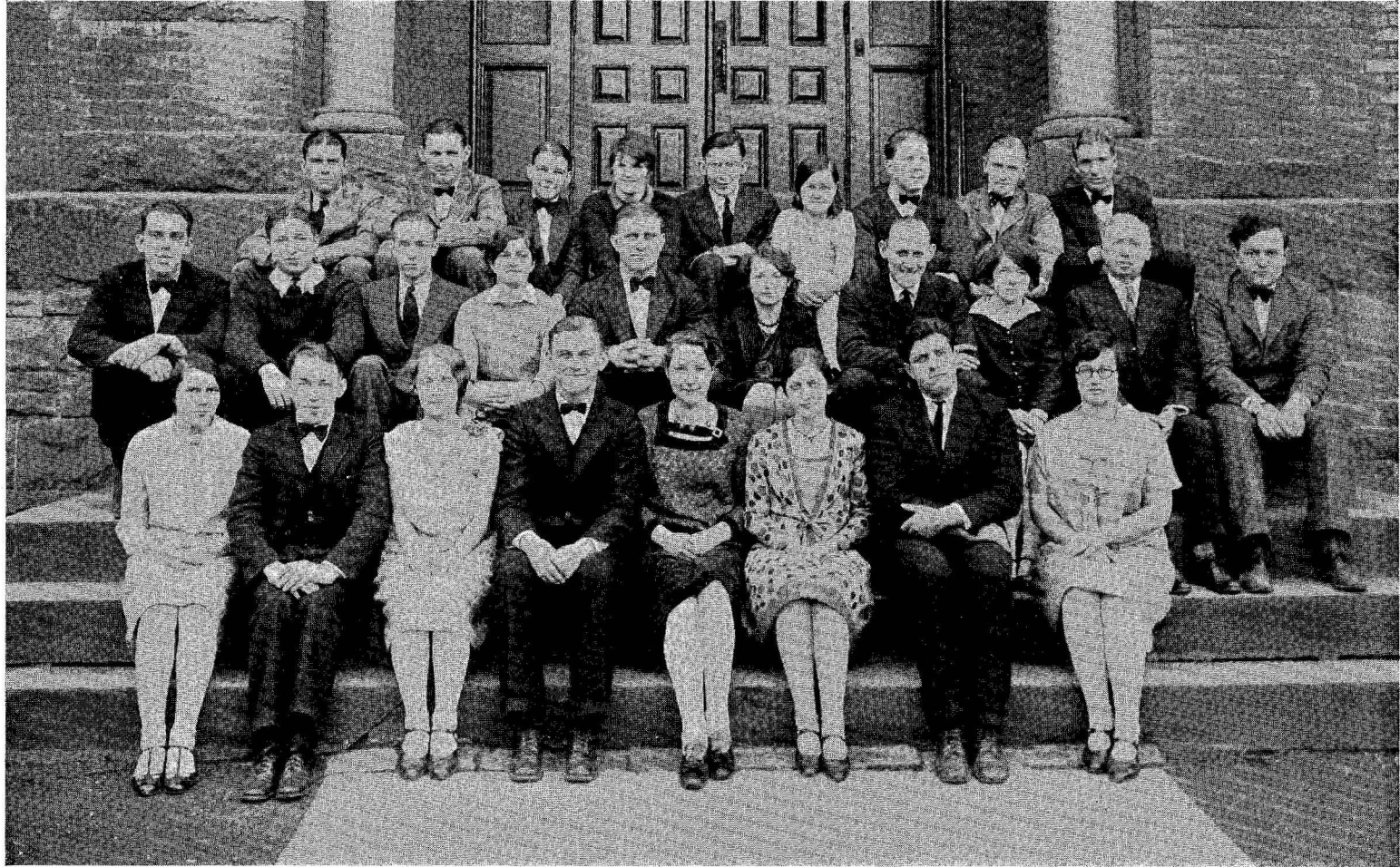
KATHERINE ANDERSON
 ROBERT BOLLINGER
 EVELYN BOSWORTH
 ROY CLAWSON
 ELIZABETH DALBY
 EINAR ELIASON
 NANCY GALBRAITH
 ANNA MARY GILSON
 RUTH GRIER
 EDGAR HIXON
 CLYDE LYNCH
 LESTER McCALL
 EDWIN MACDONALD
 GEORGE McMULLEN
 ELSIE MAYES
 KENNETH R. MILES
 ALTON MILLER

J. ALLEN MILLER
 CLARA MILLER
 BERNICE MORAN
 RICHARD PARSONS
 ALICE READ
 MARGARET REID
 FRED RICKER
 ROBERT ROBB
 IRENE RUSSELL
 ANNA SIGMUND
 WILLIAM SWEET
 SYLVIA SYKES
 HARRY SHAFFER
 ANNE THOMAS
 IVA THOMPSON
 SARA WILSON
 QUENTIN WOLFE

CLASS OF 1931

The class of 1931, now in its sophomore year, has the distinction of being the first full class to enter in the college group and will be the first to graduate as a class from the four-year college course. Its enrollment has been steadily increasing, many new members entering as sophomores.

The class has taken an active part in social affairs; on March 16, 1929, they gave the first Sophomore Hop ever held in this college, thereby adding one more event to the annual social calendar. The class has had a two-years start in the right direction and is looking for even more success in the next two years.



FRESHMAN CLASS

Freshman Class 1928-29

OFFICERS

<i>President</i>	- - - - -	ALBERT SUNDBERG
<i>Vice President</i>	- - - - -	SEBASTIAN GRIECO
<i>Secretary</i>	- - - - -	MARTHA ZEIGLER
<i>Treasurer</i>	- - - - -	MAURINE McCLURE

- | | |
|------------------|------------------|
| JOSEPH AKE | MAURINE McCLURE |
| WILLARD BARDO | T. SCOTT McLEAN |
| PAUL BENSON | MARGARET MERRITT |
| JAMES BROWN | GRACE NEISWENTER |
| CLARENCE COWFER | KATHLEEN NOLL |
| ELIZABETH CRAIN | VICTOR PIPER |
| TIMOTHY CROSS | DONALD RICE |
| SEBASTIAN GRIECO | HAZEL SEYBOLD |
| REDA HAAGEN | ROBERT SMITH |
| CHARLES HAGER | ALBERT SUNDBERG |
| FLORENCE KNISELY | CLARENCE SWOYER |
| LEWIS LEGACY | EDNA WARREN |
| OLIVE LIVINGSTON | RUTH WILT |
| MARGARET LUNDY | MARTHA ZEIGLER |



A FAMILIAR CAMPUS SCENE



ORGANIZATIONS

Praeco Staff



Back Row—Charles Dale, Miss Baer.
 Second Row—Clarence Mutchler, Mary Foley, Irene Russell, Irene Herzog, Margaret Moyer, Irene Purkiss, Earl Smith.
 Front Row—Catherine Fliger, Bernice Alexander, Ann Gilloegly, Lucille Taylor, Gertrude Haight, Mary Datesman, Harriet Rohrbaugh.

<i>Editor-in-Chief</i>	- - - - -	LUCILLE TAYLOR
<i>Business Manager</i>	- - - - -	ANN GILLOEGLY
<i>Assistant Editor</i>	- - - - -	HARRIET ROHRBAUGH
<i>Photograph Editor</i>	- - - - -	CATHERINE FLIGER
<i>Snapshot Editor</i>	- - - - -	CHARLES DALE
<i>Art Editor</i>	- - - - -	MARY DATESMAN
<i>Humor Editor</i>	- - - - -	IRENE RUSSELL
<i>Assistant Humor Editor</i>	- - - - -	MARY FOLEY
<i>Athletics Editor</i>	- - - - -	IRENE PURKISS
<i>Associate Editor</i>	- - - - -	GERTRUDE HAIGHT
<i>Associate Editor</i>	- - - - -	CLARENCE MUTCHLER
<i>Associate Editor</i>	- - - - -	MARGARET MOYER
<i>Associate Editor</i>	- - - - -	BERNICE ALEXANDER
<i>Associate Editor</i>	- - - - -	IRENE HERZOG
<i>Associate Editor</i>	- - - - -	EARL SMITH
<i>Associate Editor</i>	- - - - -	DOROTHY GEARHART
<i>Faculty Advisor</i>	- - - - -	MISS BESSIE T. BAER

Men's Student Government Association



CLARENCE MUTCHLER



SAMUEL LONG



RALPH POORMAN



GEORGE McMULLEN



MR. HARRY T. GOERGER



LESTER McCALL

OFFICERS

<i>President</i>	- - - - -	CLARENCE MUTCHLER
<i>Vice President</i>	- - - - -	SAMUEL LONG
<i>Secretary</i>	- - - - -	RALPH POORMAN
<i>Sophomore Representative</i>	- - - - -	GEORGE McMULLEN
<i>Freshman Representative</i>	- - - - -	LESTER McCALL
<i>Faculty Advisor</i>	- - - - -	MR. HARRY T. GOERGER

Women's Student Government Association



ADDA EDWARDS



MARY NIEBAUER



ELIZABETH DALBY



CHRISSIE LAMBERT



MISS M. GERTRUDE ROBERTS



ELIZABETH ACTON



ANNA MARY GILSON



MARGARET FERGUSON



MARGARET LUNDY

OFFICERS

<i>President</i>	- - - - -	MARY NIEBAUER
<i>Vice President</i>	- - - - -	MARGARET FERGUSON
<i>Secretary</i>	- - - - -	ADDA EDWARDS
<i>Treasurer</i>	- - - - -	ELIZABETH DALBY
<i>Senior Representative</i>	- - - - -	CHRISSIE LAMBERT
<i>Junior Representative</i>	- - - - -	ELIZABETH ACTON
<i>Sophomore Representative</i>	- - - - -	ANNA MARY GILSON
<i>Freshman Representative</i>	- - - - -	MARGARET LUNDY
<i>Faculty Advisor</i>	- - - - -	MISS M. GERTRUDE ROBERTS



YOUNG WOMEN'S CHRISTIAN ASSOCIATION

Young Women's Christian Association



The Cabinet

Back Row—Thompson, Cook, Wilson, Miller, Moore, Haight, Lawrence, Lambert, Pearsall
 Front Row—Greaser, Beeson, Miss Rowe, Mattern, Bosworth

OFFICERS

<i>President</i>	- - - - -	DORIS MATTERN
<i>Vice President</i>	- - - - -	MARGARET BEESON
<i>Secretary</i>	- - - - -	EVELYN BOSWORTH
<i>Treasurer</i>	- - - - -	GERALDINE GREASER
<i>Social Service Chairman</i>	- - - - -	- IVA THOMPSON
<i>Social Chairman</i>	- - - - -	DOROTHY LAWRENCE
<i>Ways and Means Chairman</i>	- - - - -	- MYRNA MILLER
<i>Relationships Chairman</i>	- - - - -	- SARA WILSON
<i>Magazine Chairman</i>	- - - - -	GERTRUDE HAIGHT
<i>Pianist</i>	- - - - -	ALICE PEARSALL
<i>Poster Chairman</i>	- - - - -	CATHERINE COOK
<i>Program Chairman</i>	- - - - -	CHRISSIE LAMBERT
<i>Day Room Representative</i>	- - - - -	- THELMA MOORE
<i>Faculty Advisor</i>	- - - - -	MISS BERTHA ROWE

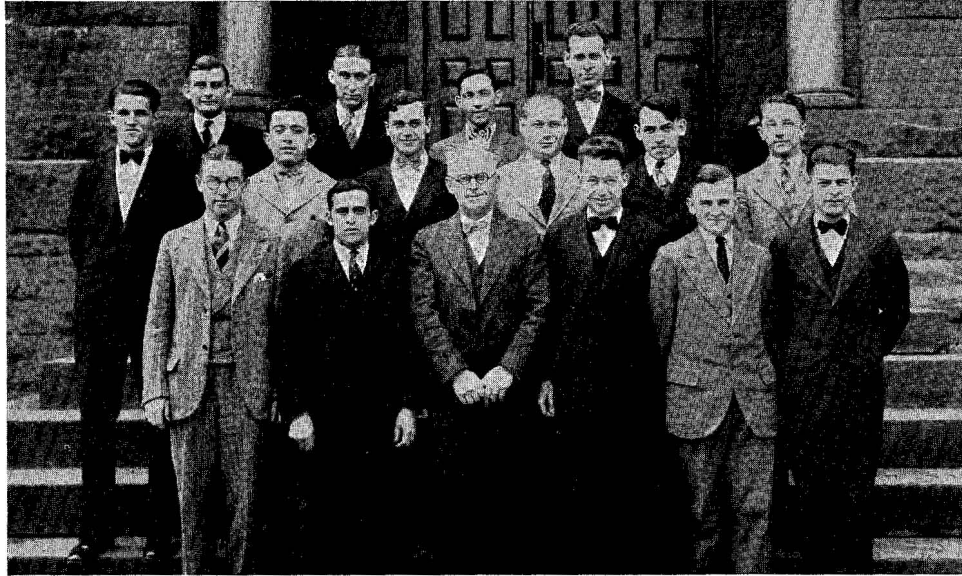
The Y. W. C. A. includes the majority of girls at State Teachers College. Regular meetings are held Wednesday evenings at 6:30 where many talks are given by members of the faculty or people outside of the College. Oftentimes the meetings are divided into discussion groups. The Day Room students meet every Thursday at noon.

The Y. W. is also very active socially. Their members enjoy good times at the numerous parties given throughout the year. The feeling of fellowship and co-operation is shown by the success of the entertainments.

The Y. W. girls assist at the Children's Home on Sunday afternoons, and at Thanksgiving time a party was given for the children. At Christmas, gifts consisting of toys and clothing were given to the children and many families were remembered with baskets.

The Y. W. C. A. of State Teachers College is directly connected with the National Student Y. W. C. A., the Council of Christian Associations, and the Student Christian Federation. Then too, it is always represented at the National District Conference at Eagles Mere. Miss Rowe, the advisor, and the newly elected cabinet members will be the delegates to that conference this year. They will receive advice and help on the duties of their offices.

Young Men's Christian Association



OFFICERS

<i>President</i>	- - - - -	CLYDE LYNCH, '31
<i>Vice President</i>	- - - - -	FRANK KITKO, '31
<i>Secretary and Treasurer</i>	- - - - -	FRED BARR, '29
<i>Faculty Advisor</i>	- - - - -	MR. L. J. ULMER

College Times Staff Alpha Zeta Pi



Back Row—Barnard, Mahaffey, Spooner, Bollinger, Beeson, Poorman, Sundberg
 Fourth Row—Mattern, Fry, Read, Morgain, Klaer, Taylor, Miss Baer, Pearson
 Third Row—Fliger, Gilson, Strayley, Zeigler, Rohrbaugh, Eliason
 Second Row—Long, Pearsall, Anderson, Flegal, Arlauskas, Russell, Sweet, High
 Front Row—Dale, Ferguson, Dalby, Alexander, Gearhart, Sykes, Cathcart, Greaser

OFFICERS

<i>President</i> - - - - -	ELIZABETH DALBY
<i>Vice President</i> - - - - -	ROBERT BOLLINGER
<i>Secretary</i> - - - - -	ALICE PEARSALL
<i>Treasurer</i> - - - - -	CHARLES DALE

STAFF

	<i>1st Quarter</i>	<i>2nd Quarter</i>	<i>3rd Quarter</i>	<i>4th Quarter</i>
<i>Editor-in-Chief</i>	Geraldine Greaser	Elizabeth Dalby	Alice Read	Robert Bollinger
<i>Managing Editor</i>	Elizabeth Dalby	Alice Read	Katherine Anderson	Katherine Anderson
<i>Make-up Editor</i>	Alice Read	Katherine Anderson	Robert Bollinger	Einar Eliason
<i>Exchange Editor</i> - - - - -	- - - - -	- - - - -	- - - - -	SYLVIA SYKES
<i>Sports Editor</i> - - - - -	- - - - -	- - - - -	- - - - -	EINAR ELIASON
<i>Joke Editor</i> - - - - -	- - - - -	- - - - -	- - - - -	IRENE RUSSELL
<i>Alumni Editor</i> - - - - -	- - - - -	- - - - -	- - - - -	BERNICE ALEXANDER
<i>Business Manager</i> - - - - -	- - - - -	- - - - -	- - - - -	SAMUEL LONG
<i>Circulation Manager</i> - - - - -	- - - - -	- - - - -	- - - - -	HARRIET ROHRBAUGH
<i>Advertising Manager</i> - - - - -	- - - - -	- - - - -	- - - - -	CHARLOTTE HIGH
<i>Subscription Manager</i> - - - - -	- - - - -	- - - - -	- - - - -	RALPH POORMAN
<i>Staff Photographer</i> - - - - -	- - - - -	- - - - -	- - - - -	CHARLES DALE
<i>Faculty Advisor</i> - - - - -	- - - - -	- - - - -	- - - - -	MISS BESSIE T. BAER

ASSOCIATE EDITORS

GENEVIEVE ARLAUSKAS	EMMA FRANCIS FRY	NORMAN MORGAIN
MARY BARNARD	DOROTHY GEARHART	FRANCIS PEARSON
MARGARET BEESON	ANNA MARY GILSON	MARGARET SPOONER
CAROLINE CATHCART	KATHRYN KLAER	THERESA STRAYLEY
MARGARET FERGUSON	FLORENCE KNISS	ALBERT SUNDBERG
MARY FLEGAL	CHARLOTTE MAHAFFY	WILLIAM SWEET
CATHERINE FLIGER	DORIS MATTERN	MARTHA ZEIGLER

Price Literary Society



Back Row—Karchner, Bowes, Stitzer, Fry, Long, Miller, Yeckley, Breidenstein, Fredericks
Front Row—Mr. Ulmer, Morgain, Miller, Mutchler, Fliger, Sweet

OFFICERS

<i>President</i>	- - - - -	MYRNA MILLER
<i>Secretary</i>	- - - - -	CATHERINE FLIGER
<i>Treasurer</i>	- - - - -	CLYDE LYNCH
<i>Sergeant-at-Arms</i>	- - - - -	LLOYD PLUMMER
<i>Faculty Advisor</i>	- - - - -	MR. LEVI J. ULMER

MEMBERS

DOROTHY BASTIAN	CLYDE LYNCH
KATHLEEN BOWES	MARY EDLA MILLER
GRACE BREIDENSTEIN	MYRNA MILLER
CATHERINE FLIGER	NORMAN MORGAIN
HUGH FREDERICKS	CLARENCE MUTCHLER
EMMA FRANCIS FRY	DOROTHY STITZER
MARTHA FUNK	WILLIAM SWEET
PHILIP GUY	MARY KAY YECKLEY
RISHEL KARCHNER	RAY ZANER
SAMUEL LONG	

Shakespeare Literary Society



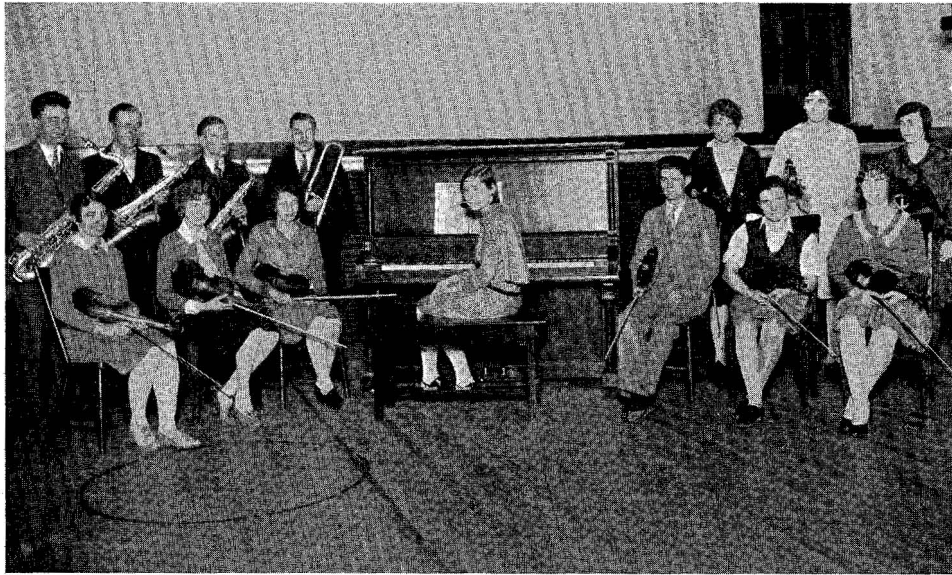
OFFICERS

<i>President</i>	- - - - -	RUPERT FITZSIMMONS
<i>Vice President</i>	- - - - -	ANN ORLIN
<i>Treasurer</i>	- - - - -	JOHN RATCHFORD
<i>Secretary</i>	- - - - -	JULIA GIBBONS
<i>Faculty Advisor</i>	- - - - -	MR. H. H. GAGE

MEMBERS

PAUL BENSON	WALTER MILLER
FLORENCE BONNER	ELIZABETH NELSON
CATHERINE BURNHAM	ANN ORLIN
MAUDE CUNNINGHAM	RICHARD PARSONS
REBECCA EVANS	VOLNA POTTS
GRACE FARRAN	ALICE RATCHFORD
RUPERT FITZSIMMONS	JOHN RATCHFORD
JULIA GIBBONS	MILDRED REITER
SEBASTIAN GRIECO	CATHERINE STIFFLER
ROYCE JOHNSON	FRANCES SULLIVAN
LESTER McCALL	QUENTIN WOLFE
BETTY KOHLER	ALICE WOOLBERT
J. ALLEN MILLER	

Orchestra



We are indebted to the College Orchestra for furnishing music for chapel exercises and for lending their services to various programs presented at the College.

Director

MISS IVAH WHITWELL

MEMBERS

First Violins

KATHRYN SHIPMAN
JOHN VARNER
MOLLY EVIN
MARJORIE SNOW
ALICE BAUMGARNER
LORINA PETERSON

Second Violins

GLADYS COLEGROVE
VERNA PETERS
MARTHA FUNK
ANNA GROBAN

Pianists

LILLIAN RHODE
CLARA MILLER

Saxophones

PHILIP GUY
WILLIAM SWEET
PAUL VONADA

Clarinet

NORMAN MORGAIN

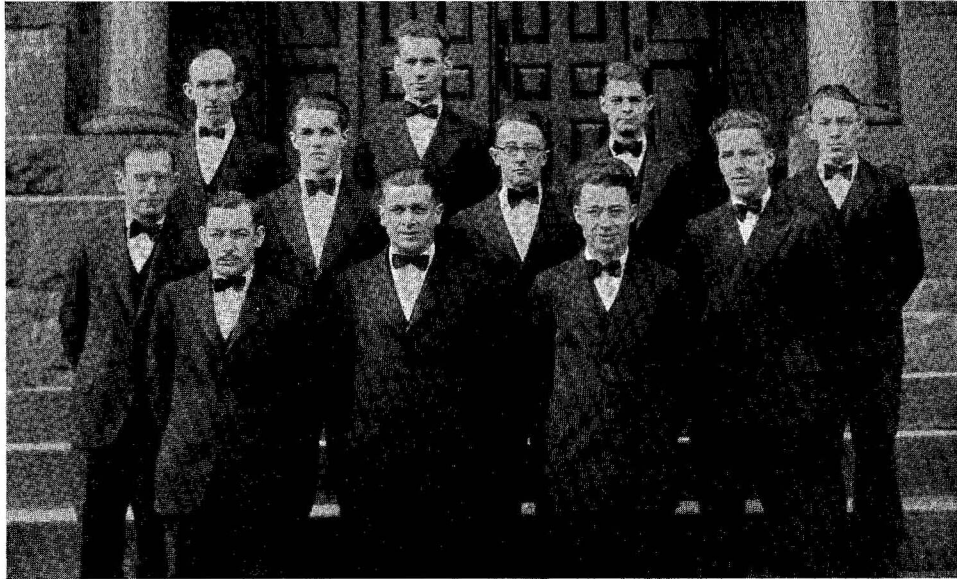
Trombone

ELLIS BOYER

Drums

CLARENCE VONADA

Men's Choral Club



Back Row—Bollinger, Smith, Varner, Hager
 Middle Row—Guy, Malone, Dale, Johnson
 Front Row—Boyer, Robb, Sweet

OFFICERS

<i>President</i>	- - - - -	ROBERT ROBB
<i>Vice President</i>	- - - - -	ROBERT BOLLINGER
<i>Secretary</i>	- - - - -	VICTOR PIPER
<i>Treasurer</i>	- - - - -	EDWIN McDONALD
<i>Librarian</i>	- - - - -	FRED MALONE
<i>Director</i>	- - - - -	MISS IVAH N. D. WHITWELL

First Tenors

ROBERT BOLLINGER
 ROYCE JOHNSON
 CHARLES DALE

First Bass

CHARLES HAGER
 DONALD RICE
 EARL SMITH
 PHILIP GUY

Second Tenors

ROBERT ROBB
 FRED MALONE
 VICTOR PIPER
 EDWIN McDONALD
 ELLIS BOYER
 EDGAR HIXON

Second Bass

WILLIAM SWEET
 JOHN VARNER
 NORMAN MORGAIN

Educational Club



Back Row—Zaner, Edwards, Quigg
 Second Row—Moyer, Hommer, Ames, Haight, Edwards, Baumgarner
 Front Row—Harmon, Varner, Miss Noel, Peters, Corbin

Faculty Advisor

MISS MABEL E. NOEL

OFFICERS

<i>President</i>	- - - - -	ADDA EDWARDS
<i>Vice President</i>	- - - - -	GENE HARMON
<i>Secretary and Treasurer</i>	- - - - -	RISHEL KARCHNER
<i>Sergeant-at-Arms</i>	- - - - -	JAMES QUIGG

MEMBERS

ETHEL EDWARDS	VERNA PETERS
ADDA EDWARDS	MARGARET MOYER
GENE HARMON	MARGARET AMES
GERTRUDE HAIGHT	ALICE BAUMGARNER
JAMES QUIGG	PHOEBE VARNER
CHARLOTTE HOMMER	RAY ZANER
ELLEN CORBIN	

Naturalist Club



OFFICERS

<i>President</i>	- - - - -	CLARENCE MUTCHLER
<i>Vice President</i>	- - - - -	MARY NIEBAUER
<i>Secretary</i>	- - - - -	SAMUEL LONG
<i>Treasurer</i>	- - - - -	JAMES QUIGG
<i>Faculty Advisor</i>	- - - - -	MR. LEVI J. ULMER

HONORARY MEMBERS

MR. JAY F. STEMPLER	MR. IRA FLEMING
---------------------	-----------------

MEMBERS

HELEN LEAR	ELIZABETH DALBY
CATHERINE COOK	MARGARET LUNDY
CHARLES DALE	FRED MALONE
HILDA ELLIS	JULIA BOWERS
VIOLET GARDNER	RALPH POORMAN
KATHRYN KLAER	LOUISE RHODES
SAMUEL LONG	ELEANOR CUNNINGHAM
CLARENCE MUTCHLER	IRENE STRAYER
MARY NIEBAUER	MARY WORCESTER
ALICE PEARSALL	EDITH MERKLE
JAMES QUIGG	FLORENCE BONNER
ROBERT ROBB	VIOLA MONTEITH
FAYE LORD	

Dramatic Club Chi Kappa Sigma



Back Row—Sykes, Mattern, Purkiss, Plummer
Second Row—Smith, Zaner, Coira, Bosworth, Miller, Parsons, Wilson, Roche
First Row—Robb, Miller, Cook, Miss Arey, Lewis, Langan, Dale

OFFICERS

<i>President</i>	- - - - -	MARY L. LEWIS
<i>Vice President</i>	- - - - -	LLOYD PLUMMER
<i>Secretary and Treasurer</i>	- - - - -	VIRGINIA ROCHE
<i>Advisor</i>	- - - - -	MISS MABEL LOUISE AREY

MEMBERS

EVELYN BOSWORTH
MARGARET COIRA
CATHERINE COOK
IRENE LANGAN
MARY L. LEWIS
DORIS MATTERN

GEORGE McMULLEN
CLARA MILLER
MYRNA MILLER
RICHARD PARSONS
LLOYD PLUMMER
IRENE PURKISS

THEODORE ROBB
VIRGINIA ROCHE
EARL SMITH
SYLVIA SYKES
SARAH WILSON
RAY ZANER

Chi Kappa Sigma, or the Dramatic Club, was founded in 1921. Only those who have proved their ability by participating in the annual Senior or Junior plays are able to gain admission into the club.

The Club Play, "Outward Bound," was given March 8, 1929. It was the first play of the year and was proclaimed a huge success. Several members of the club took part in the Senior Class play, "Enter Madame."

The Club has a new Advisor this year, Miss Mabel Louise Arey from Boston. Her pep and enthusiasm for all things dramatic have put much life into the club and the school in general.

Art Club



Back Row—Zaner, Bastian, Gearhart, Arlauskas, Niebauer, Edwards, Herzog, Kniss, Moyer, Purkiss, Mutchler
 Second Row—Miss DuBois, Harper, Ferguson, Lawrence, Harmon, Fluman, McLean, Grier, Miss Atherton
 Front Row—Vonada, Orlin, Martin, Haight, Ellis, Datesman, Corbin, Rubins, Dale

OFFICERS

President - - - - - CHARLES DALE
Vice President - - - - - DOROTHY GEARHART
Secretary - - - - - RUTH GRIER
Treasurer - - - - - GERTRUDE HAIGHT
Advisors - - - - - MISS NELLIE DuBOIS AND MISS SELMA ATHERTON

HONORARY MEMBERS

MISS IVAH N. D. WHITWELL

MISS LAURA BARKHUFF

SENIOR MEMBERS

GENEVIEVE ARLAUSKAS
 DOROTHY BASTIAN
 ELLEN CORBIN
 CHARLES DALE
 MARY DATESMAN
 ETHEL EDWARDS
 HILDA ELLIS
 MARGARET FERGUSON
 VIOLA FLUMAN

DOROTHY GEARHART
 RUTH GRIER
 GERTRUDE HAIGHT
 GENE HARMON
 ELSIE HARPER
 IRENE HERZOG
 FLORENCE KNISS
 DOROTHY LAWRENCE
 ANABELLE McLEAN

MARGARET MARTIN
 CLARENCE MUTCHLER
 MARY NIEBAUER
 ANN ORLIN
 IRENE PURKISS
 BETTY RUBENS
 PAUL VONADA
 RAY ZANER

JUNIOR MEMBERS

DOROTHY ARNOLD
 MARY BARNARD
 MARY FARR
 GERALDINE GREASER
 FAYE GRIEB
 EDITH GRIGGS

ELIZABETH KITTLEBERGER
 MARY LATHEROW
 ELIZABETH LOUGHERY
 MARGARET LUNDY
 MARIAN PUCKEY

CLARENCE SWOYER
 MARGARET THOMPSON
 ESTHER WEYANT
 GRACE WILLIAMS
 LORETTA WYAR
 YVONNE YOUNG

Girls' Glee Club



Back Row—Wilson, Neiswenter, Purkiss, Edwards, Cowher, Young, Rohrbangh, Coira, Reed
 Fourth Row—Ellis, Scott, Mahaffy, Blair, Kepner, Bowes, Hunter, Bowers, Yeckley, Cobick
 Third Row—Spooner, Ellison, Bosworth, Miller, Kittleberger, Henry, Thompson, Bierly, Guelker
 Second Row—Arnold, Albaugh, Viering, Lambert, Shipman, Noll, Galbraith, Forse
 Front Row—Orlin, Laugan, Fox, Martin, Varner, Harmon, Cathcart, Bonner

Director

MISS IVAH WHITWELL

OFFICERS

<i>President</i>	- - - - -	PHOEBE VARNER
<i>Secretary</i>	- - - - -	CHRISSE LAMBERT
<i>Treasurer</i>	- - - - -	DOROTHY ARNOLD
<i>Librarian</i>	- - - - -	FLORENCE BONNER

MEMBERS

<i>First Sopranos</i>		<i>Second Sopranos</i>	<i>Altos</i>
BERNICE ALEXANDER	MARGARET HIRST	FLORENCE BONNER	EVELYN BOSWORTH
MARY ALBAUGH	DOROTHY KEPNER	JULIA BOWERS	KATHLEEN BOWES
DOROTHY ARNOLD	ELIZABETH KITTLEBERGER	CAROLINE CATHCART	ADDA EDWARDS
DOROTHY BLAIR	IRENE LANGAN	HILDA ELLIS	INGRID FRANKLIN
GRACE BREIDENSTEIN	BERNADINE McCLARIN	CHRISSE LAMBERT	NANCY GALBRAITH
MARGARET COIRA	MARGARET MARTIN	CLARA MILLER	IRENE HERZOG
BETTY COWHER	ALICE READ	KATHLEEN NOLL	RUTH HUNTER
BEATRICE ELLISON	WARRENE SCOTT	ANNE ORLIN	EDYTHE LEWIS
ANNA FORSE	MARGARET SPOONER	IRENE PURKISS	CHARLOTTE MAHAFFY
MARIAN FOX	IVA H THOMPSON	WILMA RANKIN	GRACE NEISWENTER
HELEN GUELKER	EVELYN TURNEY	KATHRYN SHIPMAN	HARRIET ROHRBAUGH
GENEVIEVE HARMON	YVONNE YOUNG	HELEN WILSON	PHOEBE VARNER
MARGARET HESS			ANNE VIERING
			MARGARET WEIDLEY

Pianist

LILLIAN ROHDE

International Kindergarten Union



ADVISORS

MISS JESSIE SCOTT HIMES

MISS SUE NORTHEY

HONORARY MEMBERS

MISS HELEN B. LESHNER
MISS MABEL NOEL

MISS LAURA E. BARKHUFF
MISS MABEL PHILLIPS

SENIOR MEMBERS

Vera Alzingre
Mary Albaugh
Bernice Alexander
Miriam Brown
Margaret Beeson
Kathleen Bowes
Caroline Cathcart
Katherine Cook
Rose Caprio
Mary Datesman
Ethel Eckendahl
Edna Ernest
Grace Ellis
Margaret Ferguson
Mary Flegal

Katherine Fliger
Mary Foley
Margarte Fourtney
Emma Frances Fry
Rose Grieco
Gertrude Haight
Katherine Hall
Elda Hoffman
Charlotte Hommer
Joyce Harpster
Genevieve Harmon
Irene Henry
Irene Herzog
Esther Kamperin
Genevieve Kennedy

Katherine Klaer
Violet Kunes
Emma Kelsall
Chrissie Lambert
Dorothy Lawrence
Helen Lear
Cecelia Lucas
Margaret H. Martin
Doris Mattern
Freda Mattson
Pauline McElhattan
Myrna Miller
Alice Miller
Margaret Moyer
Ione Moore

Thelma Moore
Mary Newcomb
Alice Pearsall
Stella Phillips
Jean Peters
Harriet Rohrbaugh
Eleanor Root
Alice Read
Betty Rubens
Katherine Shipman
Margaret Smeltzer
Olga Theodorwich
Phoebe Varner
Margaret Weidley
Ruth Zaner
Faye Lord

JUNIOR MEMBERS

Margaret Armstrong
Dorothy Arnold
Elizabeth Acton
Dorothea Blair
Florence Bonner
Wilberta Beers
Martha Connor
Eleanor Cunningham
Helen Cunningham
Betty Cowher
Margaret Cochrane

Marjorie Dougherty
Louise Dietman
Katherine Diack
Sara Diehl
Louise Eastman
Mary Farr
Reba Franklin
Helen Guelker
Mary Gates
Margaret Call
Edith Hile

Margaret Hirst
Elizabeth Kittleberger
Phyllis Kinhead
Betty Kohler
Mary Latherow
Elizabeth Loughry
Sara Mangus
Mary Edla Miller
Betty McKillop
Viola Monteith
Gaynell Morgan

Ethel Noll
Louise Rhodes
Josephine Sackman
Gwendolyn Sherman
Marjorie Snow
Margaret Spooner
Mary Trease
Elizabeth Van Scoyoc
Grace Williams
Mary Worcester
Thelma Young
Yvonne Young

The Derbies



Back Row—Bardo, Smith, Grieco, Sundberg, Cross, Cowfer, Piper, Benson
 Third Row—Legacy, Hager, Miller, Morgan, Ricker, Robb, Miller, Swoyer, Brown
 Second Row—McLean, Karchner, Renninger, Zaner, Eliason, Parsons
 Front Row—Vonada, Dietrick, Quigg, Miller, Packard, Fredericks

OFFICERS

<i>President</i>	- - - - -	WALTER MILLER
<i>Vice President</i>	- - - - -	PAUL DIETRICK
<i>Secretary</i>	- - - - -	JAMES QUIGG
<i>Treasurer</i>	- - - - -	RISHEL KARCHNER

MEMBERS

PAUL BENSON	PAUL DIETRICK	JAMES QUIGG
VICTOR PIPER	WILLARD BARDO	CHARLES HAGER
CLARENCE COWFER	JAMES BROWN	LEWIS LEGACY
TIMOTHY CROSS	CLARENCE SWOYER	RICHARD PARSONS
ALBERT SUNDBERG	THEODORE ROBB	EINAR ELIASON
SEBASTIAN GRIECO	FRED RICKER	RAY ZANER
ROBERT SMITH	NORMAN MORGAIN	JAMES RENNINGER
SCOTT McLEAN	ALTON MILLER	RISHEL KARCHNER
WALTER MILLER	HUGH FREDERICKS	EMERSON PACKARD
		CHARLES VONADA

L. A. L.



Back Row—Brown, Baird, Baird, Brosius, Sykes, Kniss, Mullins, Creighton
 Second Row—Zeigler, McLean, Sigmund, Diehl, Flegal, Gardner, Mayes, Aber, Cornelius
 Front Row—Duke, Snyder, Datesman, Rohrbaugh, Miller, Haagen, McClure

OFFICERS

<i>President</i>	- - - - -	HARRIET ROHRBAUGH
<i>Vice President</i>	- - - - -	WILLETTA CUMMINGS
<i>Secretary</i>	- - - - -	MARY DATESMAN
<i>Treasurer</i>	- - - - -	CLARA MILLER

Faculty Advisors

MISS AVIS EDGERTON

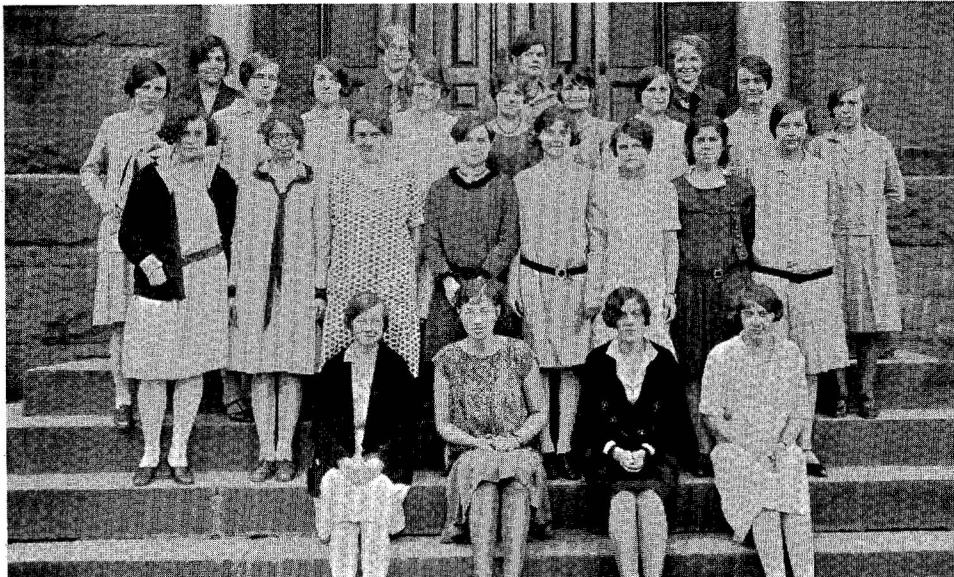
MISS BERTHA DANIEL

MEMBERS

MIRIAM BROWN
 LUCILLE BAIRD
 ALMA BAIRD
 MARY BROSIUS
 SYLVIA SYKES
 FLORENCE KNISS
 MARIE MULLINS
 MARGARET CREIGHTON
 WILLETTA CUMMINGS
 MARTHA ZEIGLER
 ANNABELLE MCLEAN
 ANNA SIGMUND
 SARA DIEHL

MARY FLEGAL
 VIOLET GARDNER
 ROSANNA MAYES
 MIRIAM ABER
 DOROTHY CORNELIUS
 VERA MAE DUKE
 ANNABELLE SNYDER
 MARY DATESMAN
 HARRIET ROHRBAUGH
 CLARA MILLER
 RELDA HAAGEN
 MAURINE MCCLURE

T. H. R.



Back Row—Grieco, Miss Atherton, Hunter, Gardner
 Second Row—Russell, Bierly, Riley, Lee, Grieb, Fluman, Allen, Levi, Chase
 Third Row—MacDonald, Deitrick, Caimi, McGaugh, Yeager, McClintock, Caprio, Kessinger
 Front Row—Foley, Moore, Grier, Nihart

OFFICERS

<i>President</i>	- - - - -	THELMA MOORE
<i>Vice President</i>	- - - - -	MARY FOLEY
<i>Secretary</i>	- - - - -	RUTH GRIER
<i>Treasurer</i>	- - - - -	HELEN NIHART
<i>Faculty Advisor</i>	- - - - -	MISS SELMA ATHERTON

MEMBERS

CHARLOTTE ALLEN	VIOLA FLUMAN	GENEVRA MAYBEE
HELEN BIERLY	FAYE GRIEB	LILLIAN MCCLINTOCK
EMELIA CAIMI	ROSE GRIECO	ALTHEA McDONALD
MARY CAPRIO	RUTH GRIER	MADELINE MCGOUGH
ROSEMARY CAPRIO	CHARLOTTE HIGH	THELMA MOORE
ELEANOR CHASE	RUTH HUNTER	HELEN NIHART
MARION CONDOL	EDITH JOHNSON	GERALDINE RILEY
DOROTHY DEITRICK	THELMA KESSINGER	IRENE RUSSELL
KATHERINE DIACK	ETHEL LEE	ALICE YEAGER
MARY FOLEY	MARY LEVI	

Rho Omega Lambda



Back Row—Blair, Snow, Lohr, Wilson, Breidenstein, Knoll, Rhodes, Grier, Shea, Johnson
 Second Row—Mangus, Miller, Farr, Watts, Shea, Reiter, Pearsall, Sackman, Loughry, Metzger, McNichols
 First Row—Galbraith, Arnold, Bosworth, Miss Arey, Albaugh, Varner, Harmon, Rosenhamer, Langan



Faculty Advisor

MISS MABEL LOUISE AREY

OFFICERS

<i>President</i>	- - - - -	MARY ALBAUGH
<i>Vice President</i>	- - - - -	MARY McNICHOLS
<i>Secretary</i>	- - - - -	EVELYN BOSWORTH
<i>Treasurer</i>	- - - - -	DOROTHY LAWRENCE

MEMBERS

MARY ALBAUGH	EULALIA ROSENHAMER	JOSEPHINE SACKMAN
DOROTHY ARNOLD	SARA JANE MANGUS	ELIZABETH LOUGHRY
EVELYN BOSWORTH	CLARA MILLER	FLORENCE METZGER
MARY FARR	KATHLEEN WATTS	MARY McNICHOLS
NANCY GALBRAITH	CATHERINE SHEA	DOROTHY BLAIR
GENE HARMON	MARY SHEA	MARJORIE SNOW
PHOEBE VARNER	MARGUERITE REITER	EMMA JANE LOHR
IRENE LANGAN	ALICE PEARSALL	HELEN WILSON
GRACE BREIDENSTEIN	KATHLEEN KNOLL	LOUISE RHODES
RUTH GRIER	ASTRID JOHNSON	DOROTHY LAWRENCE
VIRGINIA ROCHE	GENEVIEVE KENNEDY	

Beta Sigma Chi



Back Row—Diack, McClure, Coira, Creighton, Rohrbaugh, Zeigler, High
 Third Row—Gilloegly, Thompson, Daugherty, Evans, Ratchford, O'Neill, Bowes, Barnard
 Second Row—Gibbons, Rhode, Bonner, Mason, Hunter, Burnham, Bennett
 First Row—Corrigan, Gates, Henry, Cook, Boland



Faculty Advisors

MISS IVAH N. D. WHITWELL

MISS AVIS EDGERTON

OFFICERS

<i>President</i>	- - - - -	CATHERINE COOK
<i>Vice President</i>	- - - - -	IRENE HENRY
<i>Treasurer</i>	- - - - -	IVA THOMPSON
<i>Secretary</i>	- - - - -	KATHLEEN BOWES
<i>Corresponding Secretary</i>	- - - - -	HARRIET ROHRBAUGH

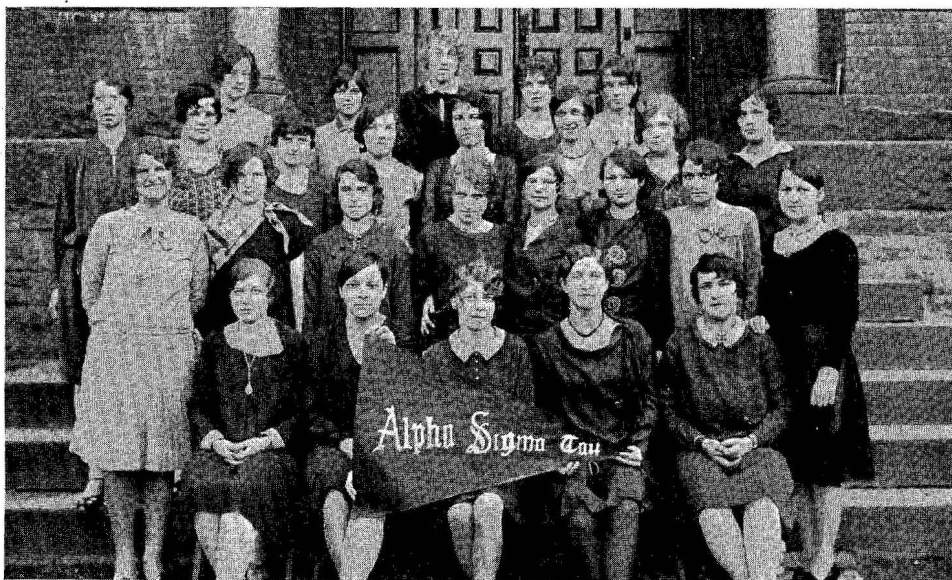
MEMBERS

HARRIET ROHRBAUGH
 MARGARET CREIGHTON
 CATHERINE BENNETT
 MRS. CHARLOTTE HANNA SHOEMAKER
 MARGERY DOUGHERTY
 ALICE RATCHFORD
 FLORENCE BONNER
 CATHERINE BURNHAM
 KATHLEEN BOWES
 ANNE GILLOEGLY

MARGARET COIRA
 REBECCA EVANS
 CHARLOTTE HIGH
 CATHERINE BOLAND
 MARTHA ZEIGLER
 CATHERINE COOK
 MAURINE MCCLURE
 MARY CORRIGAN
 MAME GRIFFITH
 LILLIAN RHODE

JULE GIBBONS
 KATHERINE DIACK
 MARY BARNARD
 IVA THOMPSON
 RUTH HUNTER
 ETHEL MASON
 LILLA O'NEIL
 IRENE HENRY
 ETHEL NOLL
 MARY GATES

Alpha Sigma Tau



Back Row—Spooner, Lear, Mattern, Miller, Christenson
 Third Row—Beeson, Taylor, Harper, Greaser, Fry, Mahaffy, Young, Catlin
 Second Row—Eastman, Hile, Worcester, Miller, Martin, Crain, Franklin, Bastian
 First Row—Lewis, Wilson, Gearhart, Read, Yeckley

Colors—Emerald and Gold



Flower—Yellow Rose

Organized 1899

Patrona
 MRS. R. STEWART MACDOUGALL

Monitor Discipularum
 MISS JESSIE SCOTT HIMES

OFFICERS

<i>President</i>	- - - - -	DOROTHY GEARHART
<i>Vice President</i>	- - - - -	SARA E. WILSON
<i>Secretary</i>	- - - - -	MARY L. LEWIS
<i>Treasurer</i>	- - - - -	ALICE READ
<i>Corresponding Secretary</i>	- - - - -	MARY K. YECKLEY

SORES IN URBE

HELEN PARSONS	ROBERTA SELTZER	BLANCHE SWOPE	MRS. CUMMINGS
---------------	-----------------	---------------	---------------

SORES IN COLLEGIO

DOROTHY BASTIAN	REBA FRANKLIN	HELEN LEAR	ALICE READ
MARGARET BEESON	EMMA FRANCES FRY	MARY L. LEWIS	MARGARET SPOONER
AVONELLE CATLIN	DOROTHY GEARHART	CHARLOTTE MAHAFFY	LUCILLE TAYLOR
SHIRLEY CHRISTENSON	GERALDINE GREASER	MARGARET MARTIN	ELIZABETH VAN SCOYOC
BETTY COWHER	ELSIE HARPER	MYRNA MILLER	SARA E. WILSON
ELIZABETH CRAIN	EDITH HILE	DORIS MATTERN	MARY WORCESTER
LOUISE EASTMAN	PHYLLIS KINKEAD	ALICE MILLER	MARY K. YECKLEY
			YVONNE YOUNG

Inter-Sorority Council



Back Row—Ruth Hunter, Alice Read, Evelyn Bosworth, Mary Shea
Front Row—Margaret Martin, Charlotte High

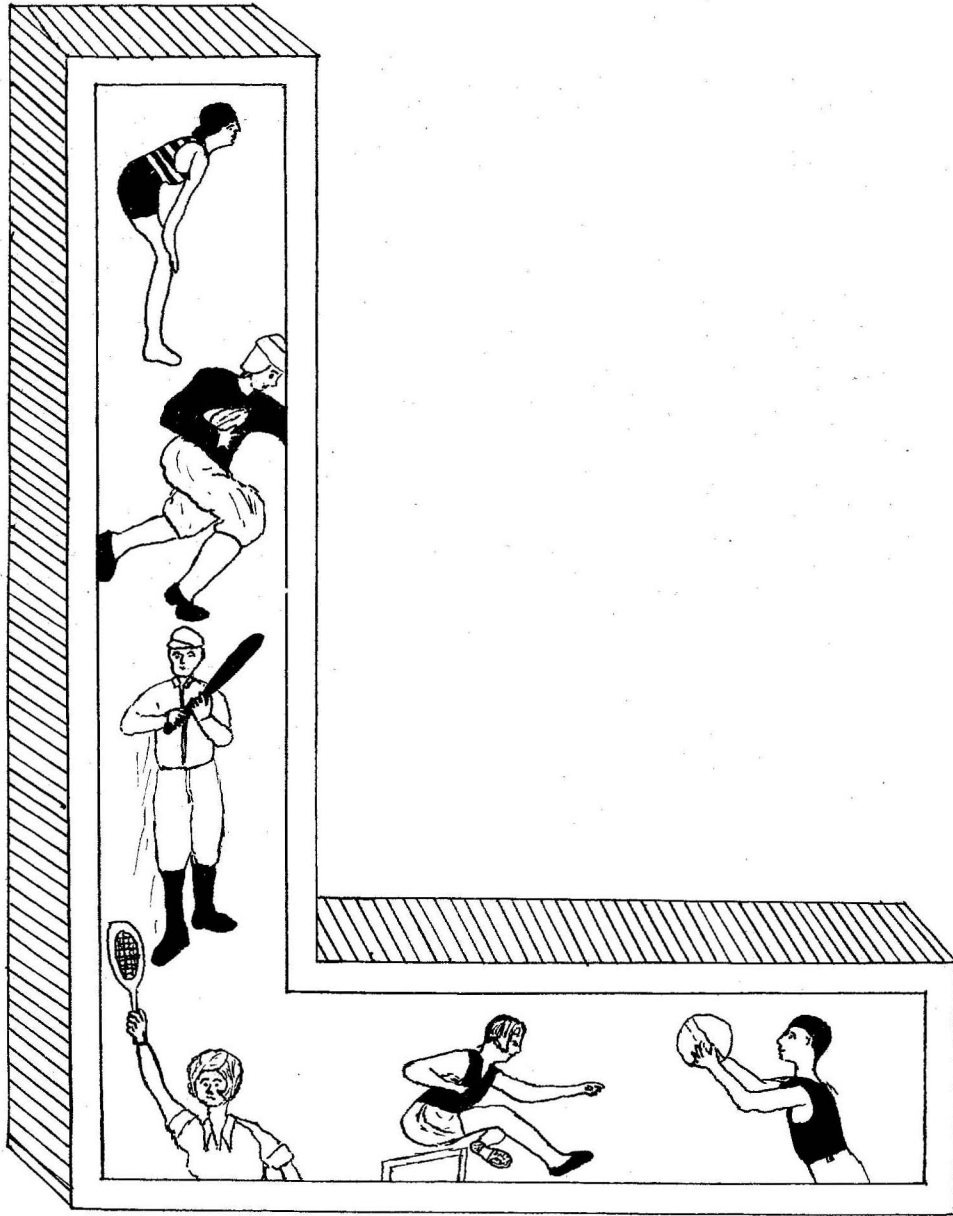
OFFICERS

<i>President</i>	- - - - -	CHARLOTTE HIGH
<i>Vice President</i>	- - - - -	MARGARET MARTIN
<i>Secretary</i>	- - - - -	ALICE READ

MEMBERS

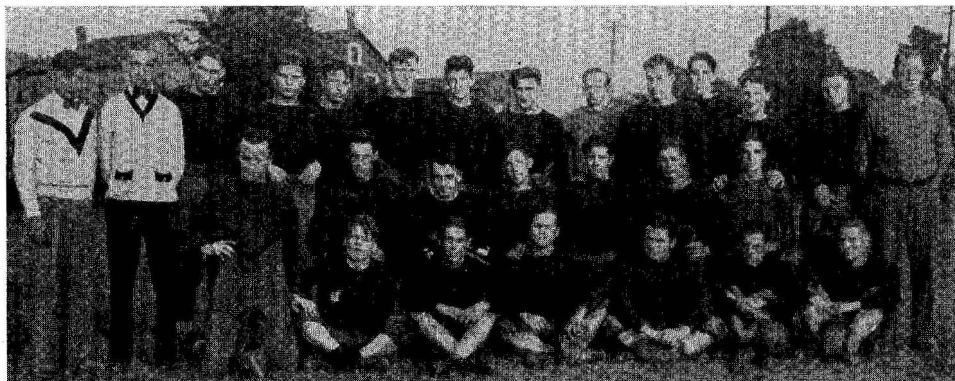
CHARLOTTE HIGH	- - - - -	Beta Sigma Chi
RUTH HUNTER	- - - - -	Beta Sigma Chi
ALICE READ	- - - - -	Alpha Sigma Tau
MARGARET MARTIN	- - - - -	Alpha Sigma Tau
MARY SHEA	- - - - -	Rho Omega Lambda
EVELYN BOSWORTH	- - - - -	Rho Omega Lambda

The Inter-Sorority Council is composed of two members from each Sorority. The purpose of the organization is to promote good-will and understanding among the sororities.



ATHLETICS

Varsity Football Squad



Standing—Long, Bollinger, Mutchler, Bardo, Smith, Sundberg, Cook, Robb, Plummer, Waterbury, Rice, Ganaposki, Bottorf, Coach Goerger.
 Middle Row—Doyle, Fitzsimmons, Fredericks, Poorman, Grieco, Renninger, Malone.
 Lower Row—Miller, Parsons, MacDonald, Clawson, Bauman, Barr.

SCHEDULE

<i>Date When Played</i>	<i>Team Played</i>	<i>Score</i>
October 6, 1928	Millersville	6-6
October 13, 1928	Dickinson Seminary	12-6
October 20, 1928	Mansfield*	12-0
October 27, 1928	Indiana	32-6
November 3, 1928	Stroudsburg*	38-0
November 10, 1928	Bloomsburg*	12-0
November 17, 1928	Clarion	12-0

*Home Games.

WEARERS OF THE "L"

Manager—Long

BOTTORF

RICE

BAUMAN

WATERBURY

CLAWSON

POORMAN

RENNINGER

MUTCHLER

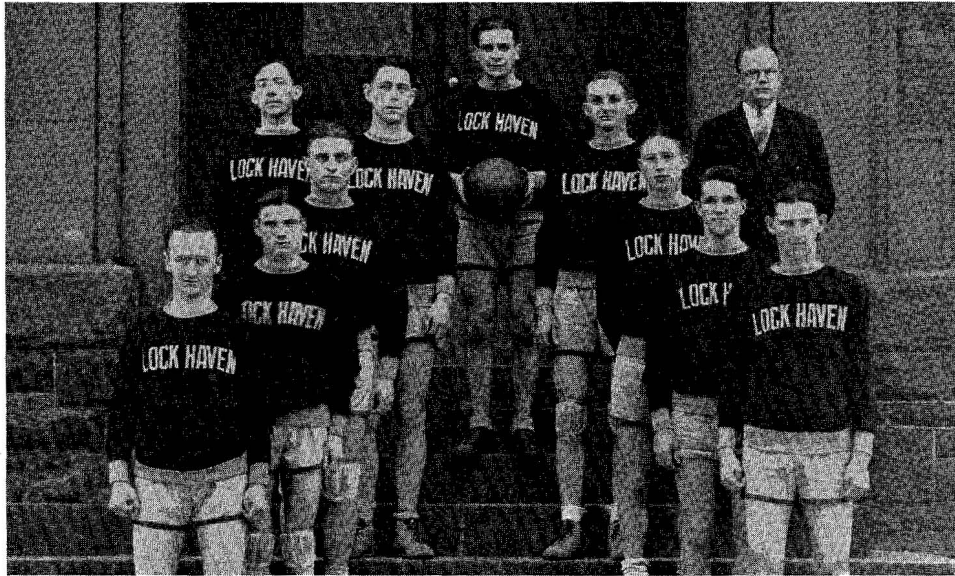
FITZSIMMONS

PARSONS

MILLER

SMITH

Basketball



Ralph Poorman
Richard Parsons
Willard Bardo
John Ratchford
Pete Doyle

Robert Robb

Coach Georger
Charles Vonada
Robert Smith
Fred Malone
T. Scott McLean



Captain

SCHEDULE

<i>Date when Played</i>	<i>Team Played</i>	<i>Score</i>
January 5, 1929	Bloomsburg*	48-12
January 12, 1929	Mansfield	54-14
January 19, 1929	East Stroudsburg*	61-30
January 26, 1929	Shippensburg*	38-19
February 1, 1929	Mansfield*	43-18
February 9, 1929	Shippensburg	32-21
February 16, 1929	Bloomsburg	37-25
February 22, 1929	Dickinson Seminary	45-23
March 1, 1929	West Chester	43-12
March 2, 1929	Kutztown	42-27
March 7, 1929	Dickinson Seminary	19-17
March 15, 1929	Millersville	75-18

* Home games.



Manager

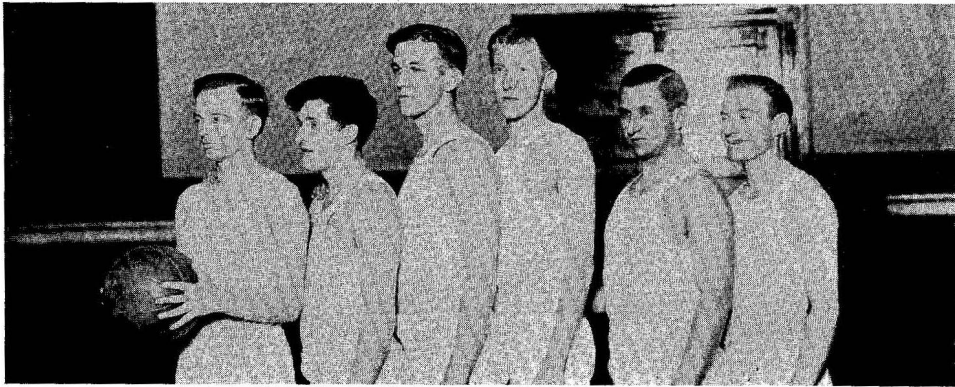
LETTER-MEN

Vanada, Malone, Bardo, Smith, Robb, Parsons, Poorman (Manager).

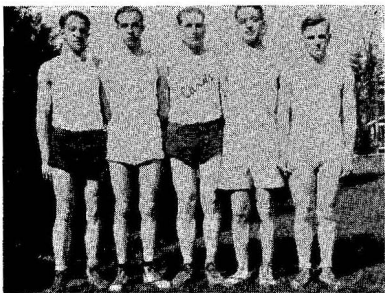
RESUME OF 1928-29 BASKETBALL SEASON

One of the outstanding factors of this year's basketball season was the remarkable support of the student body toward our team. Although fate was against the players, the students were not. They appreciated the splendid teamwork and perseverance shown. As for the team, not once did a man sacrifice the good of the squad for his own personal glory. Coach Georger deserves credit for his untiring efforts to build up a real basketball team at State Teachers College. With the return to school next fall of nearly every old member, it, and our school, should come to the front with one of the outstanding fives of the Pennsylvania State Teachers Colleges.

Intra-Mural Basketball



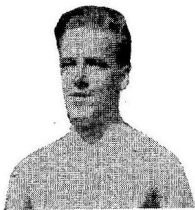
Kozmops—From Left to Right—Plummer, Hixon, Sundberg, Miles, Speck, Guy



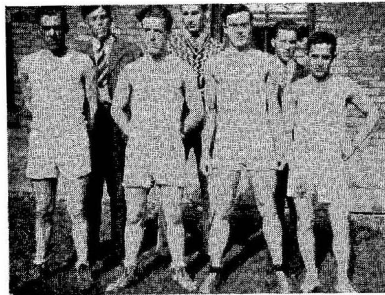
Cards—From left to right—
Dale, Ake, Barr, Thall,
Wagener.



BARR, Captain
Cards

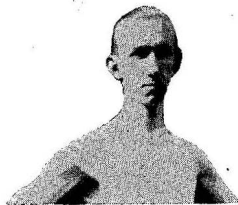


JOHNSON, Captain
Dandies



Dandies—From left to
right—
Zaner, McCall, Johnson,
Smith, MacDonald,
Packard, Sherron.

Champs—From left to
right—
Plummer, Wolf, Rice,
Bollinger, Long.



BOLLINGER, Captain
Champs



Intra-Mural Baseball



Athletics—From left to right—
 Front row—Plummer, Boyer, McLean, Johnson.
 Back row—Eliason, Smith, Miles, Hager, Miller.
 McLean, *Captain*



Pirates—From left to right—
 Front row—Doyle, Renninger, Ake, Fitzsimmons.
 Second row—Parsons, MacDonald, Sundburg, Cross, Mutchler.
 Third row—Sweet, Cowfer.
 Renninger, *Captain*



Phillies—From left to right—
 Front row—Guy, Rice, McMullen, Ratchford, Plummer.
 Back row—Barr, McCall, Bardo, Robb, Dietrick, Thall, Malone.
 McMullen, *Captain*

SCORES SO FAR

Phillies	-	-	-	-	5	5	0
Pirates	-	-	-	-	5	2	3
Athletics	-	-	-	-	6	1	5

Men's Indoor Meet

UPPER CLASSMEN VS. FRESHMEN

WINNERS OF INDIVIDUAL EVENTS

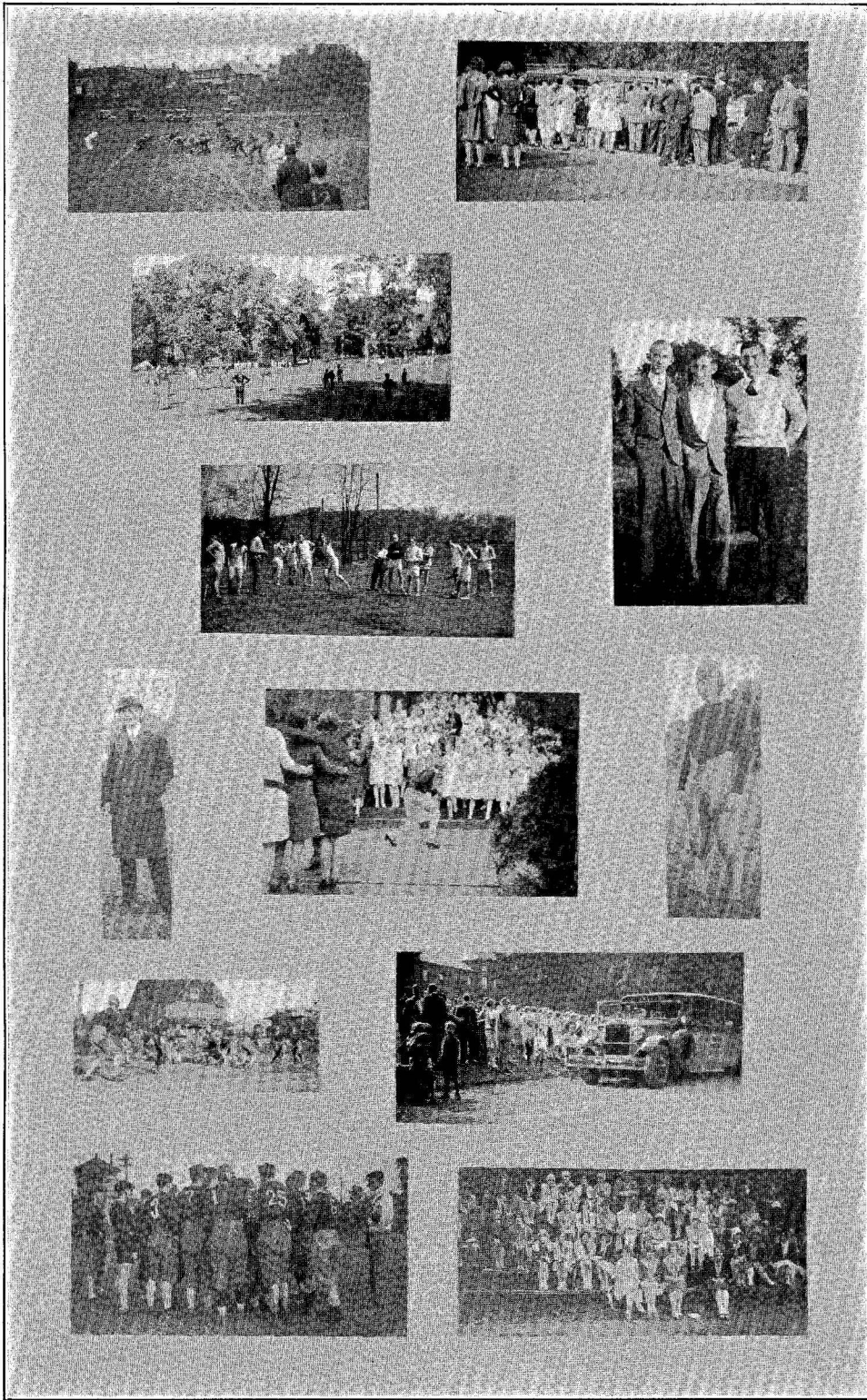
20 Yard Dash	-	Malone—Freshman
Standing Broad Jump	Piper—Freshman	
Running Broad Jump	Malone—Freshman	
Running Hop Step and Jump	Malone—Freshman	

TEAM RELAYS AND CONTESTS

Straight Relay	-	-	-	Freshmen
Backward Relay	-	-	-	Freshmen
Monkey Relay	-	-	Upper Classmen	
Wheelbarrow Relay	Upper Classmen			
Chinning Contest	-	-	Upper Classmen	
Hand Wrestling (2 out of 3)	Upper Classmen			
Tug o' War (2 out of 3)	-	-	Freshmen	
Total Score—Freshmen	-	-	-	51

GAMES

Dodge Ball (time basis) 10 men	Freshmen			
Indoor Baseball (Four eight minute quarters)	Freshmen			
Volley Ball (Six men)	Upper Classmen			
Basketball (Four eight minute quarters)	Freshmen			
Upper Classmen	-	-	-	26



Women's Athletic Association



MISS DIXON

Our Woman's Athletic Association was formed early this year under the supervision of Miss Avis Edgerton, our new senior physical education teacher. It was originated in order to supply a need felt by all the women for physical fitness. And now the time has come when your college education will not be complete unless you have developed a recreational hobby. To give this to every girl on the campus is the association's aim. As its activities are so varied, many different types are needed to carry on the different phases. No matter where your talent lies, there is much for you to do.



MISS EDGERTON

Our aims and ideals go hand in hand. Everything we do must meet the highest standards of honesty, loyalty, and clean sportsmanship. Pettiness in any form will kill group spirit, and its elimination in our sports has been shown by the admirable character-building qualities of the girls. We think we are learning, and we want you all to know the wisdom of good health, the pleasure of working, the power of kindness, and the worth of character.

If you are one who does not know how to play the game, you are the one to whom W. A. A. should most appeal. The girl who knows how to play well will play of her own accord. Such girls are numerous but the majority of girls do not play anything with any degree of skill. You can learn any game in one short season. Unless you have learned to enjoy some sport by the time you leave college, you never will. Every strong and healthy adult woman must have exercise; with the aid of the W. A. A., learn to master some sport to which you may resort in later life. S. T. C. has splendid leaders with "athletics for all" program. Come out for hockey, and tennis, and basketball. You're not supposed to know how before you come.

OFFICERS

<i>President</i>	- - - - -	A. IRENE PURKISS
<i>Vice President</i>	- - - - -	DOROTHY BASTIAN
<i>Secretary</i>	- - - - -	ALICE RATCHFORD
<i>Treasurer</i>	- - - - -	GENEVIEVE HARMON
<i>Faculty Advisors</i>	- - - - -	MISS MALOISE S. DIXON, MISS AVIS EDGERTON

Captain Ball



From left to right—Front Row—Helen Waterbury, Mary Shea, Celia Lucas, Mary McNichols, Genevieve Arlaskas, Alice Baumgarner, Irene Purkiss, Charlotte High.
 Second Row—Dorothy Lawrence, Francis Johnson, Lily Johnson, Margaret Ames, Esther Camperine, Ethel Edwards, Olga Theodorwich.
 Third Row—Dorothy Askey, Mary Lewis, Gladys Gilday, Helen Ryan, Catherine Shea.

Interpretive Dancing



Almost all girls are interested in some form of dancing. Whether your interest lies in natural dancing, clogging, or folk dancing, you will have an opportunity to develop it. Dancing instructions are given in the regular gymnasium classes, and for those who wish to go farther there are special classes in the different types of dancing. We all should be especially interested in natural dancing on account of the pageant feature of the Annual Indoor Meet, which is given every March.

Miss Dixon introduced these special classes in natural dancing, in which the girls have shown much interest.

Champion Basketball Team



BASKETBALL

Six Basketball teams were organized, their captains being Charlotte High, Alice Woolbert, Katherine Burnham, Irene Purkiss, Margaret Gall, Willetta Cummings. An elimination tournament was played resulting in High's team as the champions.

BASEBALL

The following teams competed in the Baseball tournament:

First year—Primary group.

Second year—Primary group.

First year—Intermediate group.

Second year—Intermediate group.

First year—College group.

Second year—College group.

TENNIS

Many tennis enthusiasts have been practising during the fall and spring season, for the spring tournament, in which the winner and the runner up are chosen for the year.

TRACK

The track meet of May 17 included the following teams:

First year—Primary group.

Second year—Primary group.

First year—Intermediate group.

Second year—Intermediate group.

First year—College group.

Second year—College group.

The Events—50-yard Dash; Broad Jump; High Jump; Baseball Far Throw; Basketball Far Throw; Soccer Kick; Relay.

The school gives a large silver shield on which the names of the winners of all the sports are engraved.

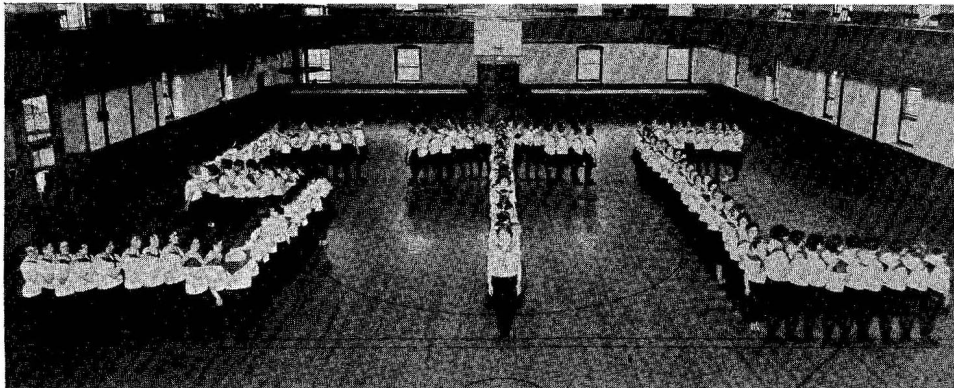
HOCKEY

Hockey, the main sport of the fall season, has become one of the most popular games for college women. Played out of doors with the strictest rules it develops a faculty for quick thought and action as well as the zest of a truly exciting game. You must not miss the keen invigorating thrill of speeding down the field after the ball in those breathless moments when a goal seems inevitable; and you can never forget the fierce exultation of the first score you make—or help to make. Teamwork is the keynote expressed throughout. Come out and learn to "play the game."

Eighth Annual Indoor Meet

Program

ADAPTED GROUP GYMNASTICS	- - -	First Year and Second Year Classes
AMERICAN DANCES		
Liza Jane	- - - - -	- Clog
Quadrille	- - - - -	Pioneer
	Second Year Class	
Jump Jim Crow	- - - - -	Contemporary
Virginia Reel	- - - - -	Colonial
	First Year Class	
CAPTAIN BALL	- - - - -	Second Year Primary and College vs. Second Year Intermediate
ROVENACKA	- - - - -	Bohemian Folk Dance
CSEBOGAR	- - - - -	Hungarian Folk Dance
	First Year Class	
RIG-A-JIG	- - - - -	Clog
	Second Year Class	
DODGE BALL	- - - - -	{ First Year Primary First Year Intermediate First Year College
SCANDINAVIAN DANCES		
Weaving Dance	- - - - -	Swedish
	Second Year Class	
Dance of Greeting	- - - - -	Danish
Nixie Polka	- - - - -	Swedish
	First Year Class	



RESUME OF THE ANNUAL INDOOR MEET

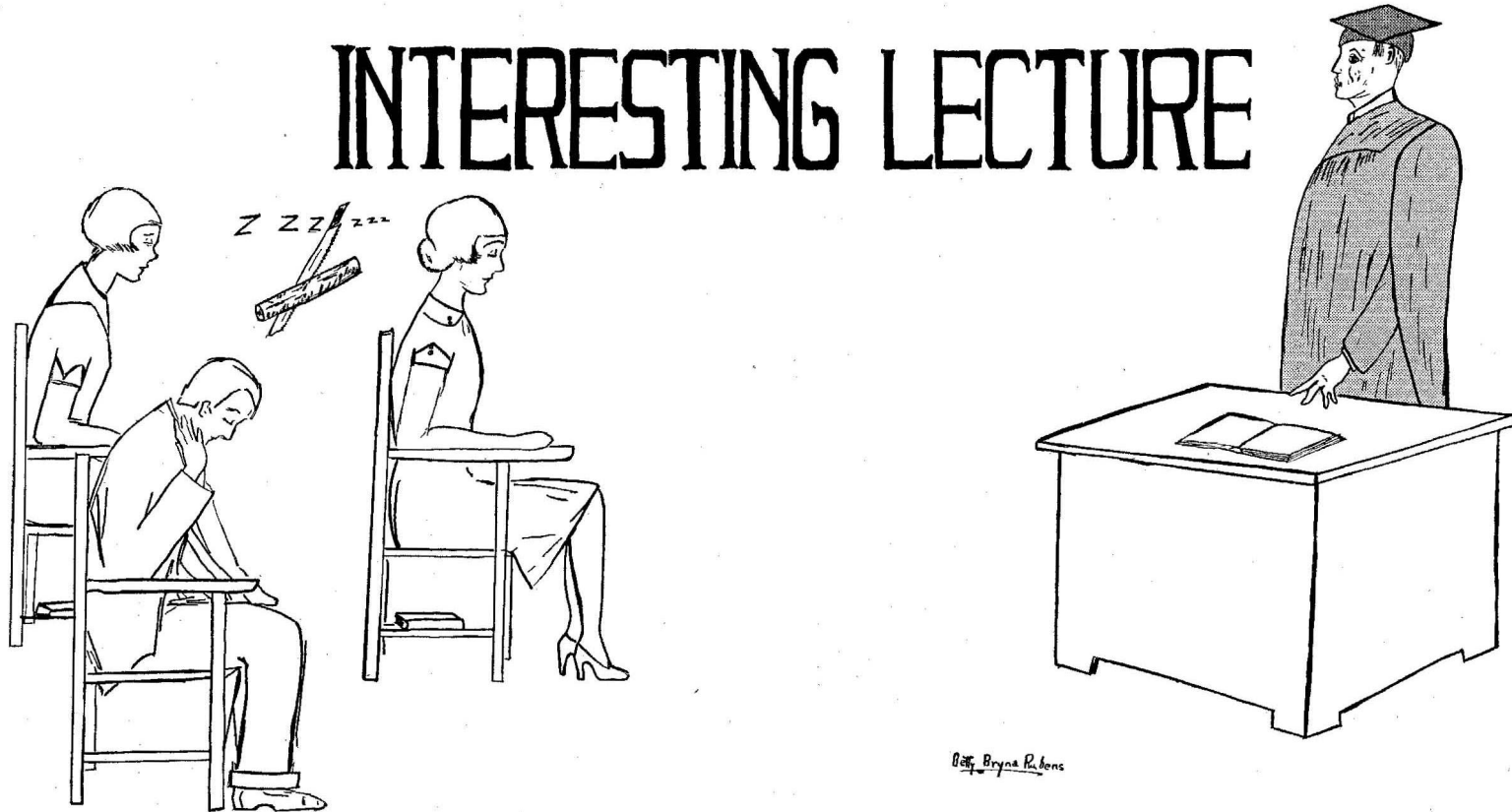
Unlike last year the drills and dances of the Indoor Meet were not competitive. The Senior Intermediate group won the most points in the games and relays, and thus took first place with a score of nine points. The Junior Intermediate group ranked second with a score of eight points, while the Sophomore college group ranked third.

The most beautiful event of the evening was displayed after the games and relays, in the form of a Grecian Spring Festival, given by the members of the interpretative dancing class. A colorful effect was produced by various tints and shades of light together with filmy costumes of the Grecian period. The theme of the festival was portrayed by dancers interpreting famous characters of that time. The entire performance was a panorama of superb grace and beauty.

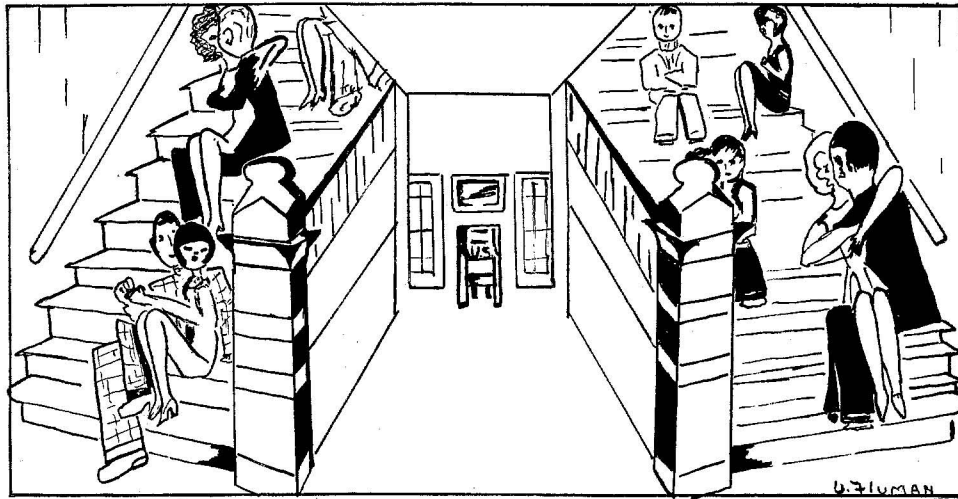


FEATVRES

INTERESTING LECTURE



After the Ball Was Over



SCENE: Main hall and stairways of Lock Haven State Teachers College.

CHARACTERS: Girl (example of Lock Haven co-ed.)

Gent (some collegiate victim, blind date preferred.)

Dean of Women.

Rest of student body.

TIME: 11:30 p. m.

(Girl and gent enter arm in arm.)

Gent (*breathlessly*)—Where do we go from here?

Girl (*excitedly*)—Oh-h-h-h, I know of the cutest I'll place. C'mon!

(Together they race down the hall and crawl up the steps to the cutest I'll place, 13 steps from the bottom and 8 steps from the top.)

Girl (*snuggling closer*)—Didn't we have the bestest time, though?

Gent (*trying to look animated*)—Yeh, didn't we, though.

Girl—When are you going to write?

Gent—Oh, Monday perhaps.

Girl—Oh-h-h-h. Can't you write sooner, tomorrow or even tonight?

(Coaxing)

Gent—Sure, if I get enough hops to get me home before tomorrow.

Girl (*registering great idea*)—Sa-a-a-y. Can't you stay over and go back tomorrow?

Gent—Wel-l-l (*pondering*).

Girl—Oh-h-h. Then you don't want to?

Gent (*hastily*)—Of course I do but you see—

(*Embarrassing pause*)

Gent—Guess I will stay over—that is, if I can see you—

Girl—Certainly you can see me. (*Joyfully*.) Oh, aren't you the nicest thing, though.

(Lights go out.) (One minute.) (Surprised squeals.)

(Censored)

(Lights go on.)

(Enter—The Dean of Women.)

Dean (*significantly*)—Goodnight, boys.

Chorus—Goodnight, Miss Roberts.

Girl (*rearranging her tumbled locks*)—Guess we'd better go.

Gent (*helping her up*)—Yeh, I suppose so—but I wish I could stay (*meaningly*).

Girl—Yes, but—

(They descend to the hall with other occupants.)

Girl (*turning to gent*):

(Censored)

Gent (*in low voice*):

(Censored)

(The crowd thins slowly. Dean glares.)

Gent—Well, er-r-r-r Jane. Goodby.

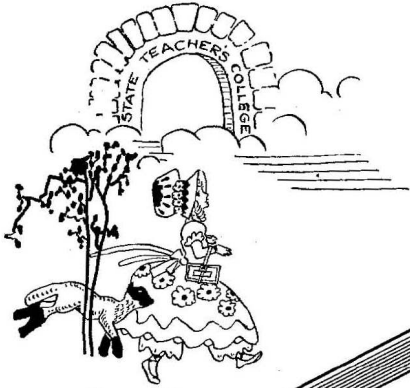
Girl—Goodby, er-r-r-r Jim. See you tomorrow.

Gent (*hurriedly*)—Yeh—tomorrow.

(Girl meets roommate and they trail upstairs, both talking together.)

(Clock strikes twelve.)

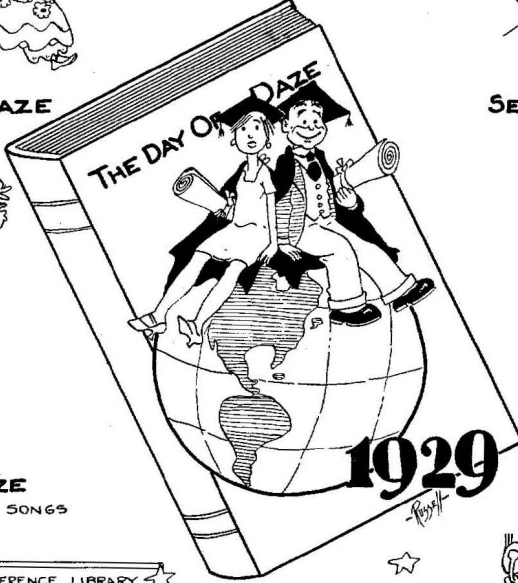
there are
DAYS AND DAZE



FIRST DAZE



SEMI-MONTHLY DAZE



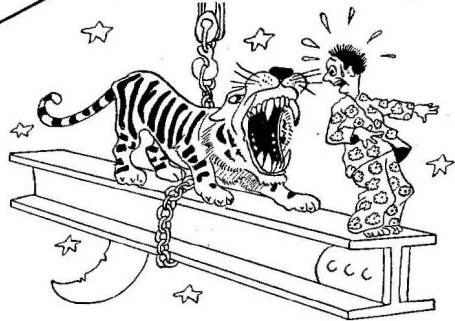
MUSICAL DAZE
SOME LIKE THEIR SONGS
DISHED UP HOT



PROM DAZE



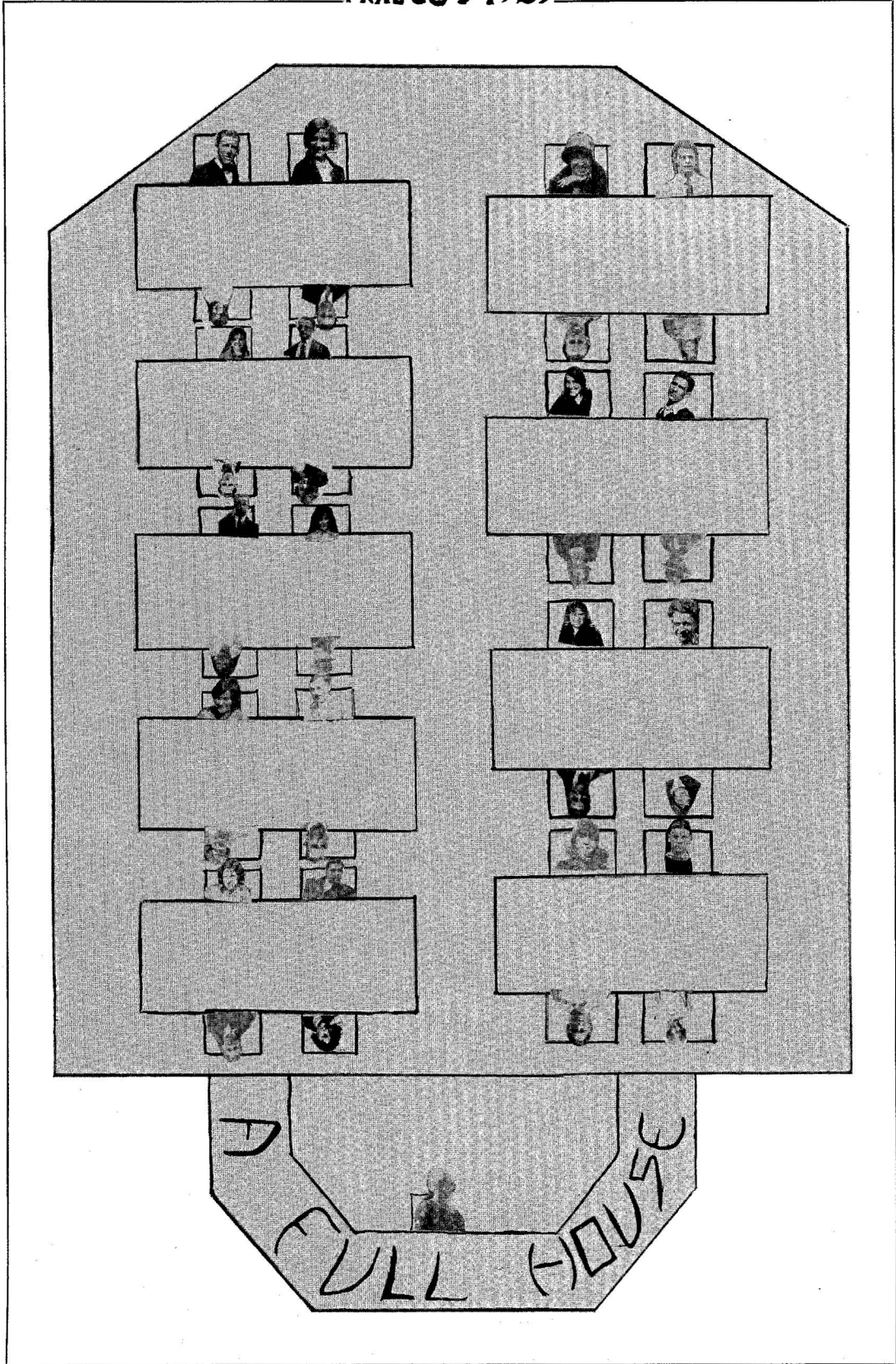
INTELLECTUAL DAZE



HAZY DAZE



PERPETUAL DAZE



Bright Breaks of the Year

Alton—"How many quarters are there in a basketball game, anyway?"

Hager—"Say, besides myself, who else is a good player?"

Boyer—"Aw! no good student uses the trial and error method; take me for instance, etc., etc.——"

Some dumb Junior to State man—"You say you played lacrosse today? Who won, State or La Crosse?"

JUNIORS OREMUS

From dinks of greens—
 And hardwood clubs,
 From Seniors mean!
 And rough Dutch rubs;
 From girlish clothes
 And fancy shaves—
 From Palmer O's!
 And early graves;
 From all exams—
 And fours and fives—
 From fruitless crams,
 And rural lives!
 From losing meets—
 And football games—
 From hashed up cats
 And stagnant dames—!
 From teachers bored,
 Who always fuss,
 We pray Thee Lord—
 Deliver us.

A big car drove up in front of the school and:

Parsons—"Say, girls, are the Juniors allowed out tonite?"

Senior Girl—"No, Richard, Peg isn't allowed out tonight."

Rose Grieco will never make a major leaguer until she learns that two men aren't allowed on the same base at the same time.

Thelma Moore—"Penny for your thoughts, Flumer."
 Katy Fluman—"Say, what do you think I am—
 A slot machine."
 Various student had been assigned certain dates for certain work. Came a day—
 Miss Russell—"Miss Moran, where is your date?"
 Bernice—"In the day room, Miss Russell."
 Miss Russell—"Well, that is better than having it in the hall."

Bright Breaks of the Year

Excerpt from letter written by Doris Fenton:
"Dear Mother—I would like to come home this Saturday or the Saturday of the dance, but any way I want to come home on Friday."

Dr. Rude—"A flabby face is generally one of the indications of feeble mindedness. Now, Mr. Sweet, what do you understand by a flabby face?"

Sweet looks up.

Dr. Rude—"Now, Mr. Sweet, I didn't call on you because you had a flabby face——"

Several girls were in a cemetery examining the dates of birth and death on the headstones.
When—Agnes Gilliday (seriously): "Oh-h, here's a stone for a man who was born before he died."

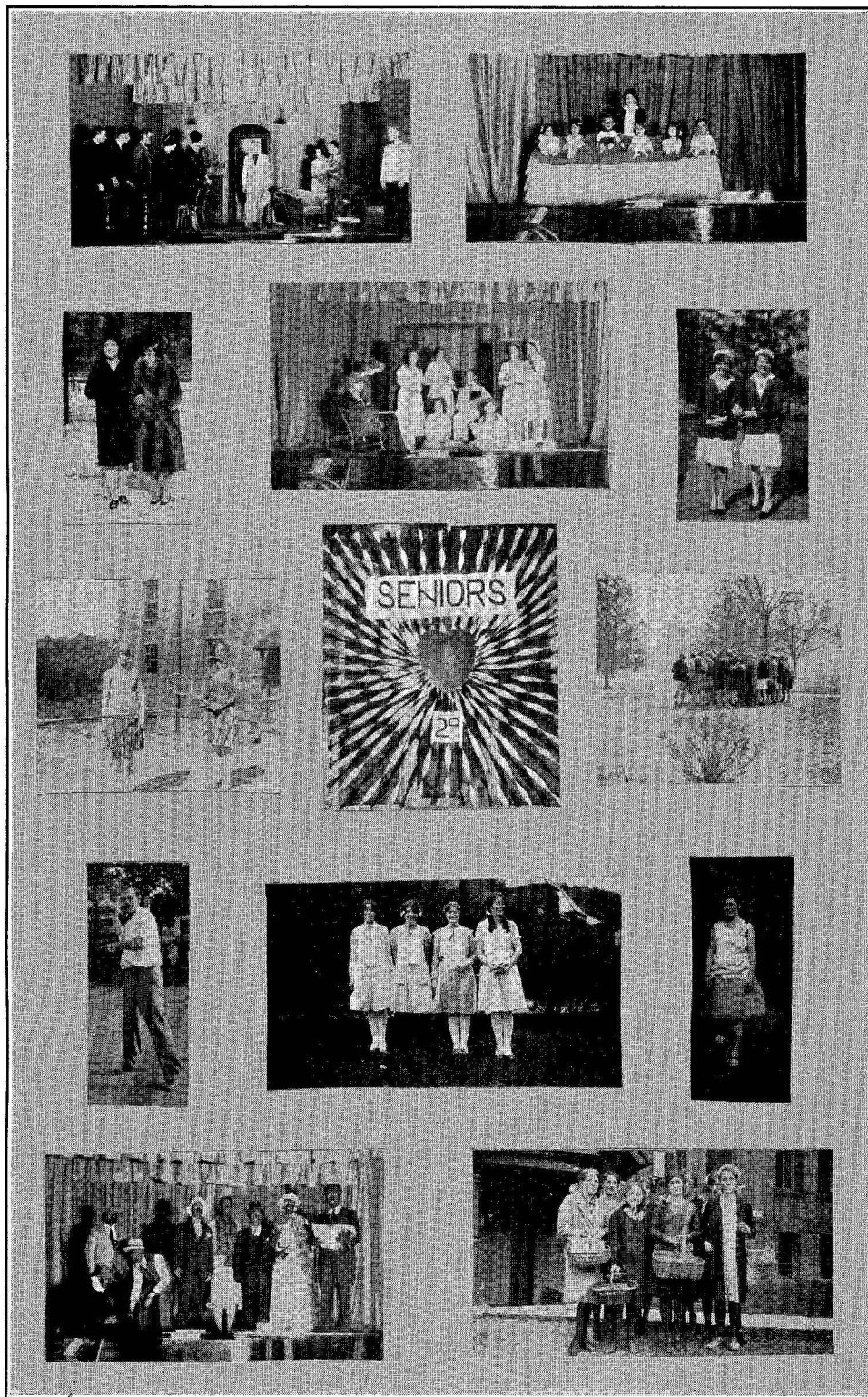
Student Teacher—"What kind of milk is in this bottle?"
Pupils—"Condensed, malted, buttermilk, evaporated, etc., etc."

Our Conception of an ideal couple—Foley and Hager.



Herzog—"It's going to be a nice day tonight, isn't it?"

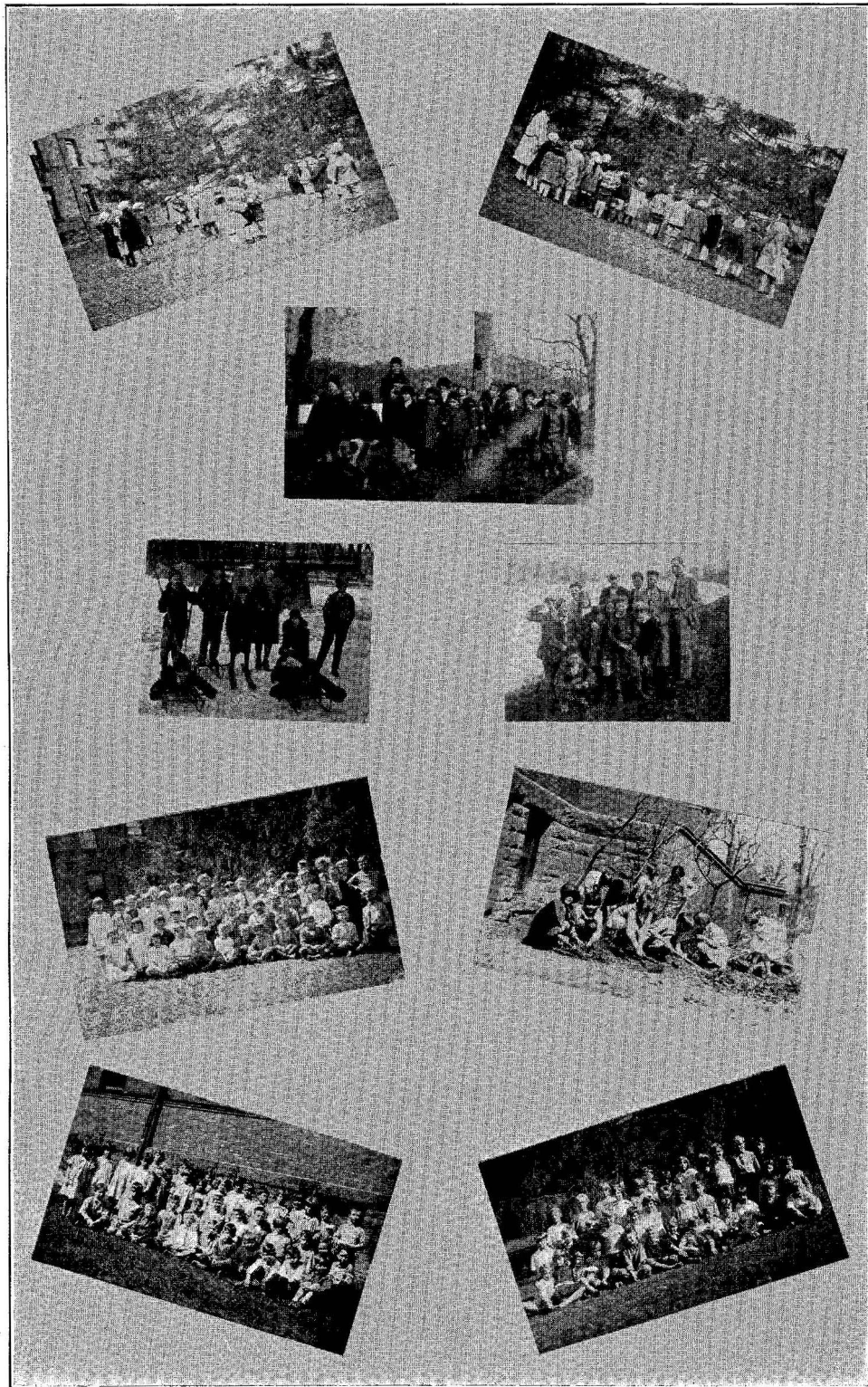
Book report turned in by Junior—"I have read 'The Four Million' written by Patrick O'Henry."



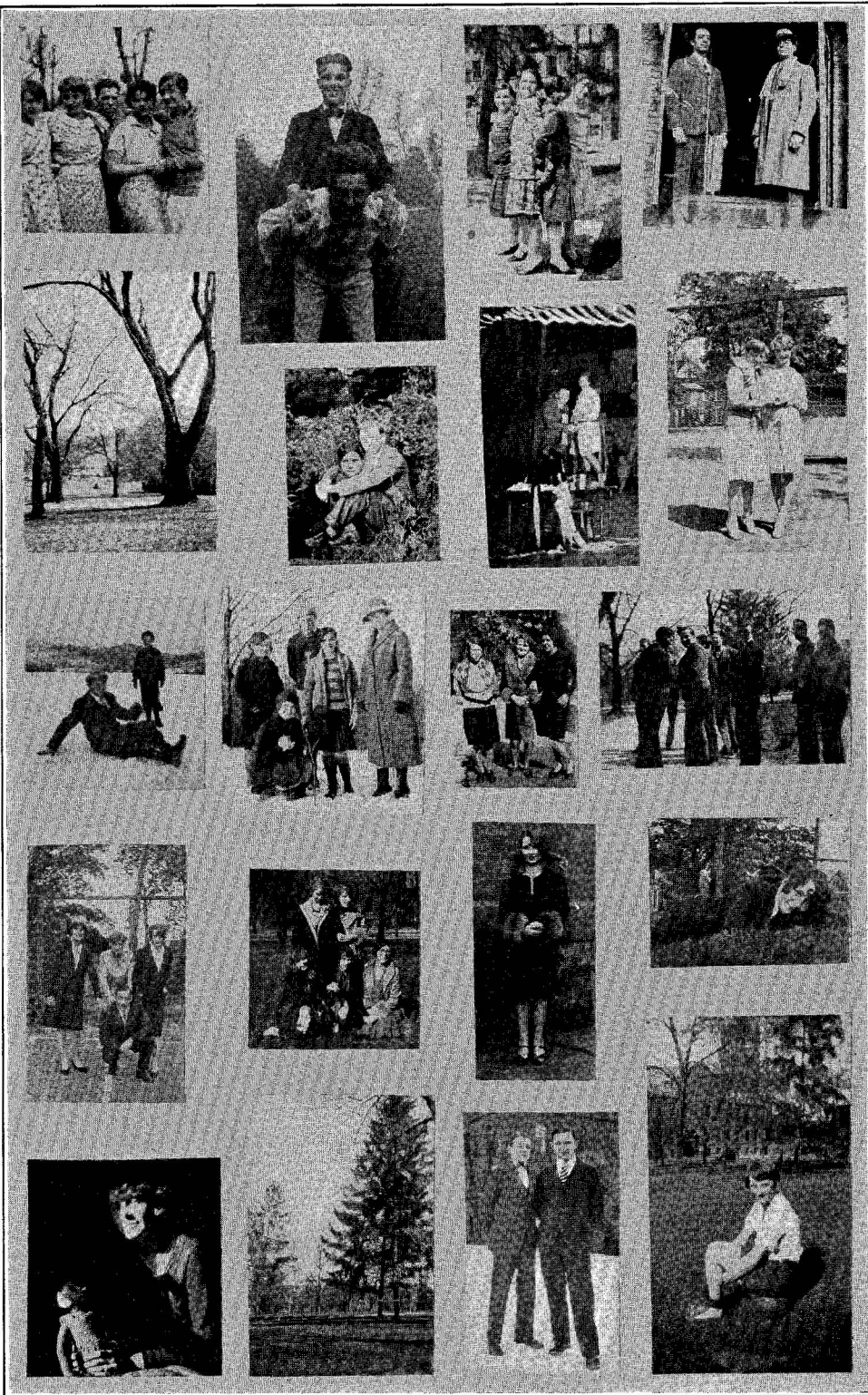
PRAECO 1929



PRAECO 1929



PRAECO 1929



PRAECO 1929



PRAECOPI 1929

AUTOGRAPHS

PRAECO 1929

AUTOGRAPHS

PRAECO 1929

AUTOGRAPHS