A decorative border of scrollwork and flourishes surrounds the text. It starts with a large scroll on the left, goes up and across the top, and then scrolls down and across the bottom, ending in another large scroll on the right.

*The Senior Class of 1925, dedicate this, the
Twelfth Annual PRAECO, to*

MISS GISETTA M. YALE

Head of our Art Department

ON account of her father's professional work in Europe, Miss Yale received part of her elementary education abroad, and the rest of it in this country. She is a graduate of Drexel Institute in Philadelphia. She has studied at the Pennsylvania Academy of Fine Arts, Philadelphia, Cooper Union, New York, and the Corcoran Gallery, Washington, D. C. Miss Yale holds a silver and bronze medal from the Cooper Union for excellence in miniature drawings from life. She was art supervisor of the schools of Cliffside Park, New Jersey, from which position five years ago she came to C. S. N. S. For four years she was dean of women and art supervisor, but in September, 1924, she gave up her work as dean in order to devote her entire time to her art courses.

¶ Miss Yale placed student government on a firm foundation through her untiring efforts as dean. With a pleasing personality and a sympathetic mind, she has proved a true friend, one in whom the girls have not hesitated to confide. One of her greatest joys is to help everyone in every possible way.

¶ Her work in the art department has proved her to be a master teacher; but she is more than that—she is an artist. Her keen sense of humor keeps her classes alive and awake and takes away the boredom which would otherwise accompany an art class for those people who are not gifted with artistic temperament. Her students find out by the end of the course that, although she has not made artists out of all of them, she has taught them to appreciate the beautiful things of life and to know artistic things when they see them.

¶ She founded the Art Club, which is consistently holding to its high standard.

¶ It is because of the secure place Miss Yale holds in all our affections that we, the Class of 1925, dedicate this PRAECO, the record of our years spent at Lock Haven Normal, to her.

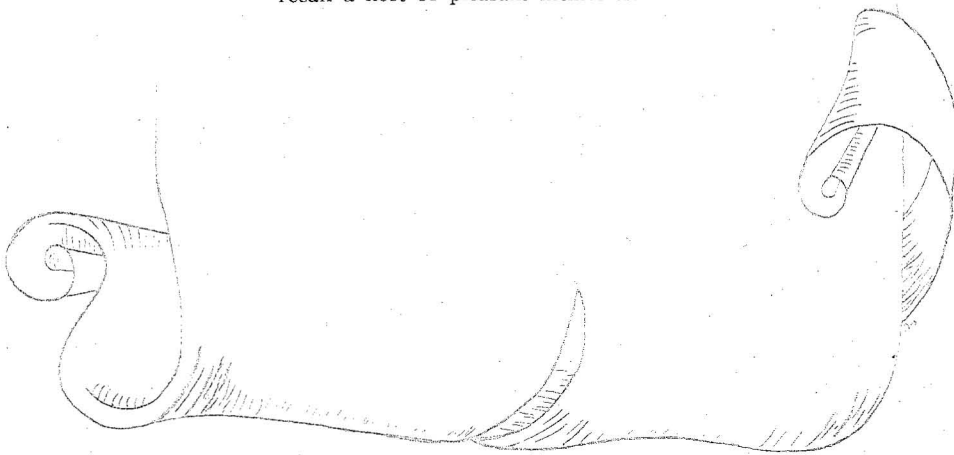


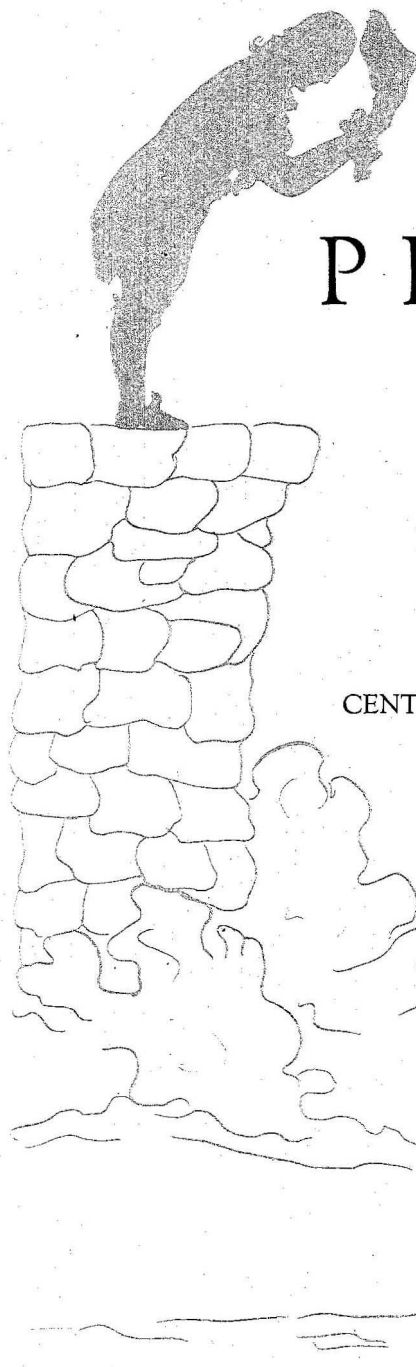


PRÆCO, the herald of Central State's fame, calls all to meet before the wrought-iron gates for a journey back to the period of 1830.

WITH his aid you may peer into the distant past, see the present in a quaint old fashioned setting, and catch a glimpse of the dim mysterious future. He has a collection of the scenes which took place about the halls of your Alma Mater when your mother was a girl, and he will tell you of the glory of the school in those days. He has placed the present senior class and their activities in a charming old fashioned background. His prophecies will relieve the anxiety of those who are anxious to peer into the future.

PRÆCO wishes you many happy hours with this book and is glad that he has been able to supply you with a record that will help to recall a host of pleasant memories.



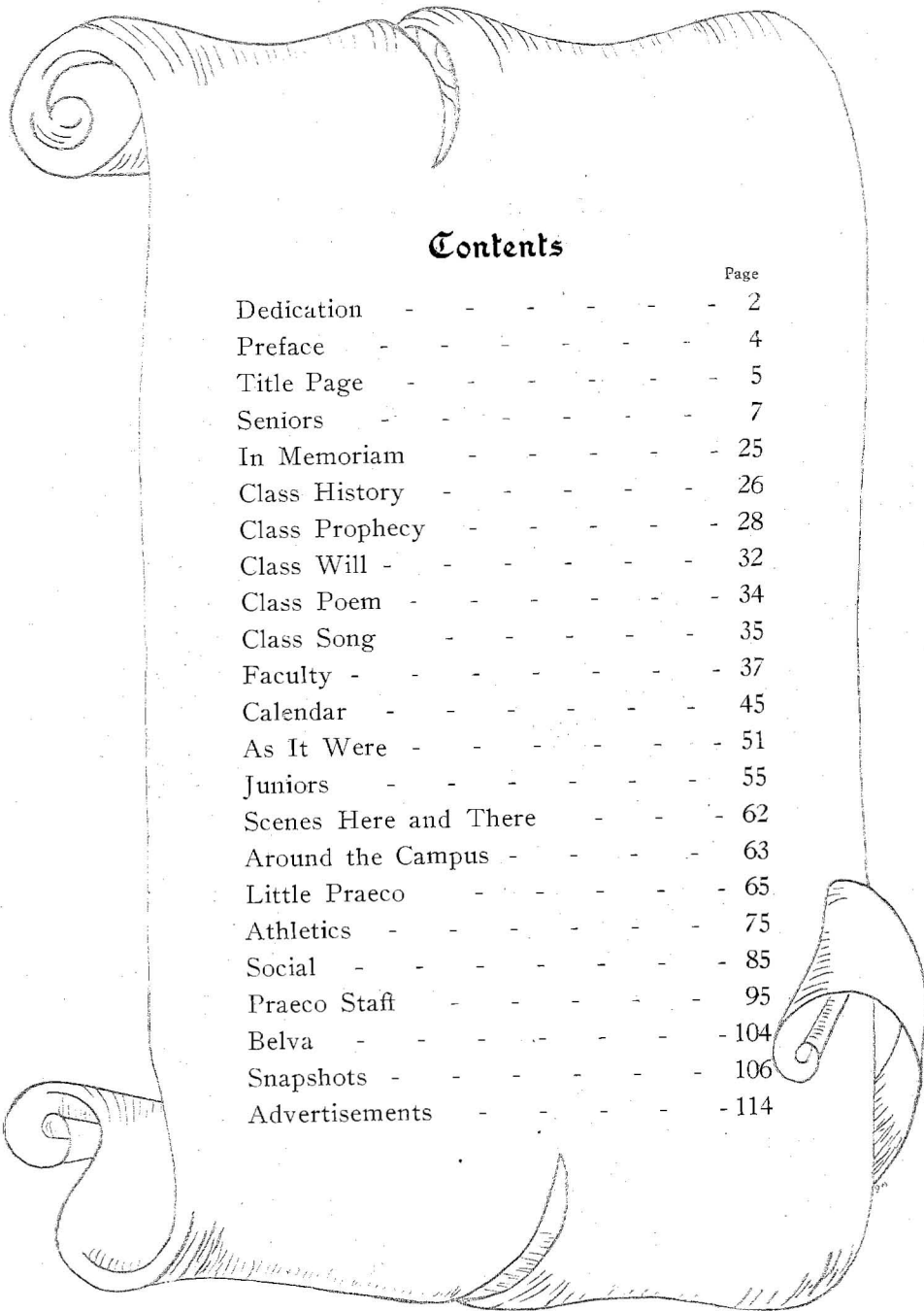


PRAECO

XII

YEAR BOOK OF THE
CLASS OF
NINETEEN TWENTY-FIVE

CENTRAL STATE NORMAL SCHOOL
LOCK HAVEN, PA.



Contents

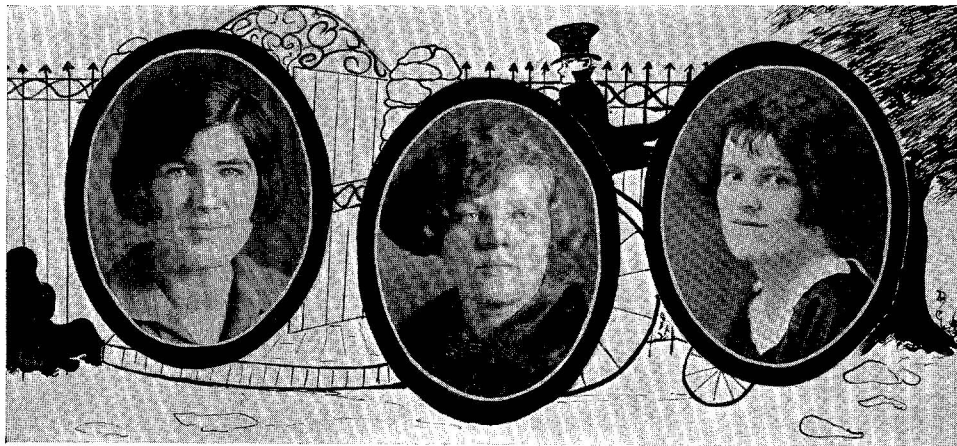
	Page
Dedication - - - - -	2
Preface - - - - -	4
Title Page - - - - -	5
Seniors - - - - -	7
In Memoriam - - - - -	25
Class History - - - - -	26
Class Prophecy - - - - -	28
Class Will - - - - -	32
Class Poem - - - - -	34
Class Song - - - - -	35
Faculty - - - - -	37
Calendar - - - - -	45
As It Were - - - - -	51
Juniors - - - - -	55
Scenes Here and There - - - - -	62
Around the Campus - - - - -	63
Little Praeco - - - - -	65
Athletics - - - - -	75
Social - - - - -	85
Praeco Staff - - - - -	95
Belva - - - - -	104
Snapshots - - - - -	106
Advertisements - - - - -	114

CLASS OF

1910



SENIORS



MARY B. ADAM, "Mary Sunshine"
Houtzdale, Pa.

Beta Sigma Chi; Art Club; Glee Club; Y. W. C. A.; Athletic Association.

"The most lost of all days is one on which we have not laughed." This quotation gives "Mary Sunshine's" opinion of life. Mary always helps others to laugh and enjoy themselves.

VIOLET E. AGNEW, "Vi"
Mill Hall, Pa.

President Senior Class; President L. A. L.; Glee Club; Alpha Zeta Pi; Athletic Association.

"Vi" is certainly the eel's skid chains. As a class we are exceedingly grateful for her efficient management. We appreciate her ever ready response when our own is not forthcoming; because she is a real sport we all love her.

ALMA BAIRD
Lock Haven, Pa.

L. A. L.; Athletic Association.

Alma says her life work will be teaching, but George has something to say about that. Congratulations, Alma. You have our best wishes for a long and happy married life.

MARY ELIZABETH BAIR
Altoona, Pa.

Price; Glee Club; Naturalist Club; Y. W. C. A. Cabinet; Alpha Zeta Pi; Athletic Association.

Our Mary's a lively sweet girlie,
And bright as a student can be,
Each morn she gets up so early,
Theres none more industrious than she.

LULU BARR
Roulette, Pa.

Y. W. C. A.; Price; Athletic Association.

Though her quiet disposition
Makes us ponder,
As a loyal friend and student
She's a wonder.

GERALDINE M. BEAS, "Gerry"
Johnstown, Pa.

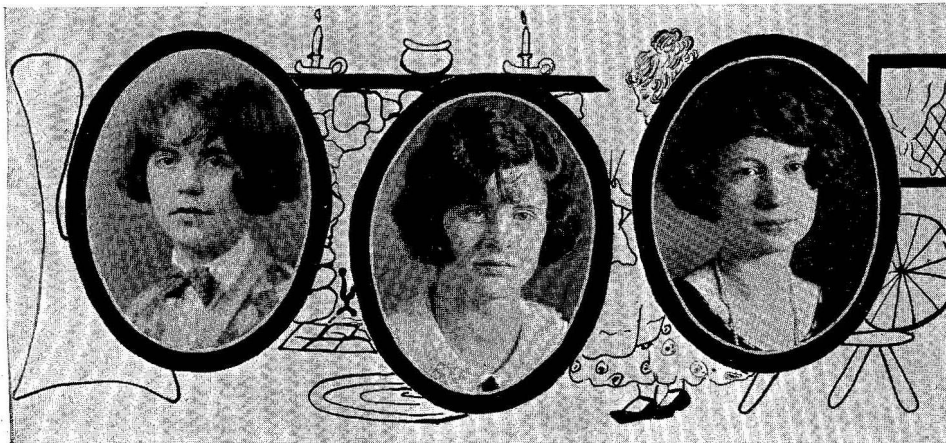
Alpha Sigma Tau; Alpha Zeta Pi; Price; Y. W. C. A. Cabinet; Vice President Student Council; Athletic Association.

She's helped us walk the narrow way;
Her smile has cheered us through the day;
She represents us, good and bad,
The best "Vice" Council ever had.



CLASS OF 1927

CLASS OF 1927



JOSEPHINE BEAUJON, "Jo"
Johnstown, Pa.

Dramatic Club; Secretary of Price; Rho Omega Lambda; Varsity Basketball; Athletic Association.

Behold our French Doll! "Jo" possesses all the qualities it takes to make up a peach. No matter what is happening "Jo" is always there. A better sport you will never want.

MARY BENNETT, "Mary"
Williamsport, Pa.

President Rho Omega Lambda; Shakespeare; Y. W. C. A.; Athletic Association.

Everyone (not only the girls in school, but a' so a certain person down town) thinks Mary the sweetest girl here. (Perhaps you know him. He has a Packard sedan and a raccoon coat.)

MARIETTA BEST, "Bestie"
Flemington, Pa.

Art Club; L. A. L.; Athletic Association.

"Bestie" is the brown eyed blond that hails from Flemington. She is industrious, quiet, but mighty jolly and a friend to everyone—the "Best" sport that ever floated into the day room.

HELEN BETTENS
Flemington, Pa.

Dramatic Club; Praeco Staff; L. A. L.; Rho Omega Lambda; Athletic Association.

"Bettens" is the laughingest girl we know. She expects to teach, but with her elastic heart, we fear for this. If you haven't met her—listen until you hear, "Oh, Sal-lie."

WINIFRED BROSIOUS
Jersey Shore, Pa.

Y. W. C. A.; Shakespeare; Athletic Association.

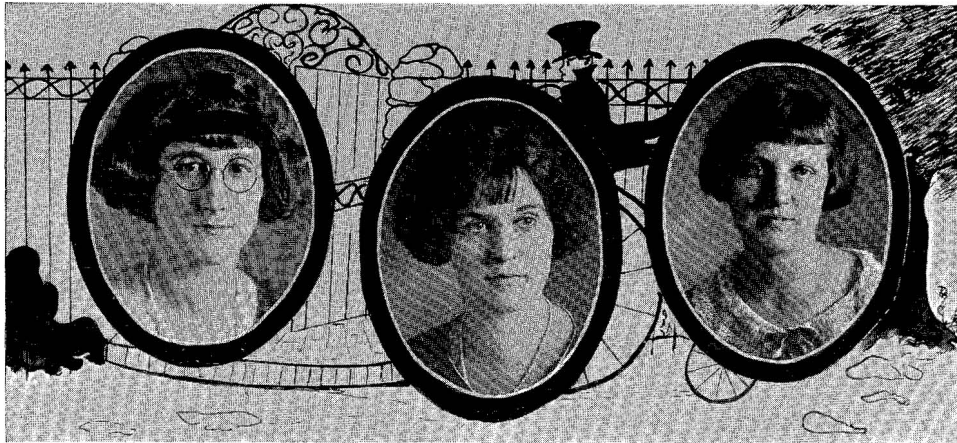
Winifred is ambitious and thoughtful of others. She expects to teach. This will probably not last long: she will get her freedom soon.

MILDRED M. BROWN
Center Hall, Pa.

Price; Y. W. C. A.; Athletic Association.

Mildred Brown is industrious. She believes in getting through even though she does miss a meal or two. She looks quiet, hut she can make a loud noise at times.





DOROTHY BRUA, "Dot"
Lakemont, Pa.

Y. W. C. A.; Price; Athletic Association.
"Dot" is our funny little giggler. But she's all right. If you want something done just call on "Dot"; she is right there with her whole self to help you.

CATHERINE M. BURD
Lock Haven, Pa.

L. A. L.; Athletic Association.
Although "Katy" brags of graduating from two high schools, she is the Senior Baby. "Katy" proves to us that age is not necessary to attain success, but that pep is.

GEORGIA BURKETT
Evans City, Butler, Pa.

Athletic Association; Alpha Zeta Pi.
Georgia came from far away to spend this winter with us. Her ability and cheery smiles are known to all, but the mystery is that daily letter! How about it, Georgia?

HILDA M. BURROWS, "Teddy"
Williamsport, Pa.

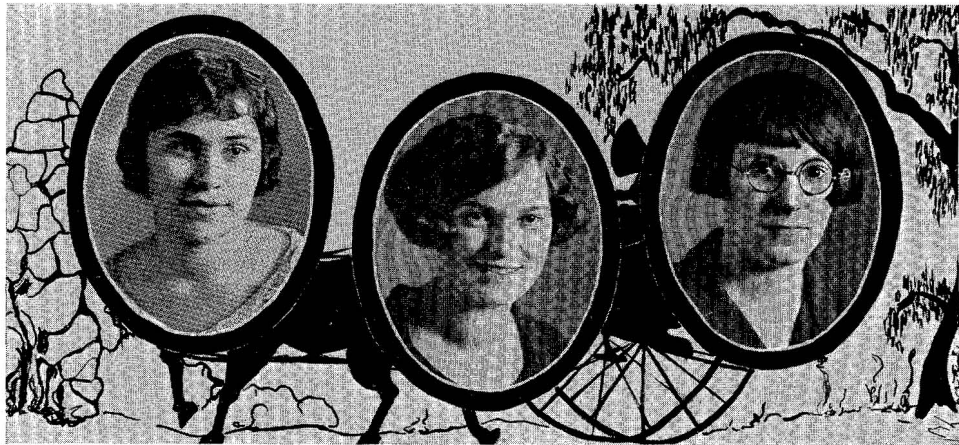
Glee Club; Praeco Staff; Shakespeare; Athletic Association.
Hilda is the dark haired little lady with the ever-cheery smile. She is one of the girls who decided to keep their long tresses. Hilda has many friends—both sexes.

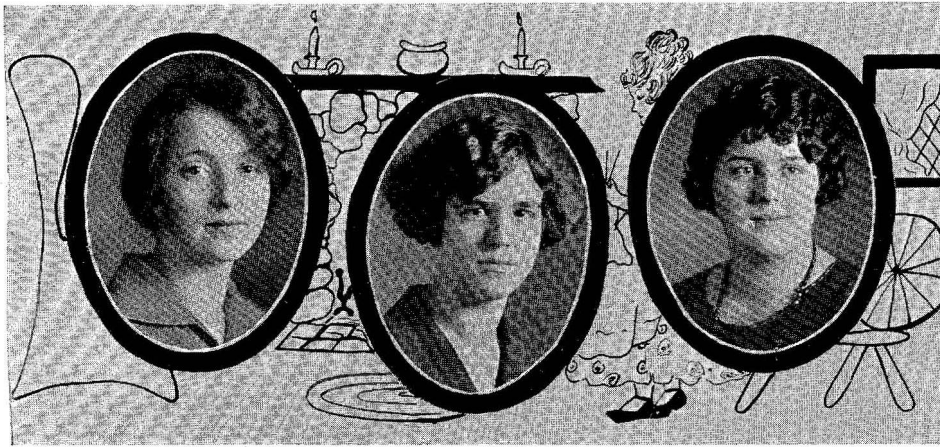
BARBARA J. CHAMPLIN, "Bob"
Kane, Pa.

Art Club; Dramatic Club; Y. W. C. A.; Shakespeare; Praeco Staff; Alpha Zeta Pi; Athletic Association.
Where's "Bob"? Try and find her. "Bob's" here—"Bob's" there—"Bob's" everywhere! Although she enters into all school activities she always recites perfectly. Teachers all love her—so do we.

VERONICA M. CAULEY, "Dutie"
Turtle Point, Pa.

Shakespeare; Y. W. C. A.; Athletic Association.
Our "Dutie" hails from Turtle Point, but she thinks that Emporium produces the best doctors. Veronica is the kind that make good at anything they try to do.





SARA CLASTER
Lock Haven, Pa.

Secretary Beta Sigma Chi; Dramatic Club; L. A. L.;
Glee Club; Price; Praeco Staff; Athletic
Association.

She's everybody's friend. She says, "Don't be late
for class"; "Be well prepared"; "Instead of enjoy-
ing yourself, work"; "Don't do as I do, do as I
tell you."

MARY ELIZABETH COOK
Jeanette, Pa.

Glee Club; L. A. L.; Alpha Zeta Pi; Athletic
Association.

"Cooky" works from sun to sun,
But her tongue's work is never done.

This couplet sure describes our "Cooky," a jolly
girl whom we all like.

BERNICE M. DAY
Renovo, Pa.

Secretary Senior Class; Y. W. C. A. Cabinet; Vice
President Art Club; Praeco Staff; Shake-
speare; Athletic Association.

Bernice is as firm as the Rock of Gibraltar; once
she makes up her mind she never changes it. The
best part of it is that she always makes it up right.

ANNE E. DEVERAUX
Wilcox, Pa.

Shakespeare; Athletic Association.

Much that is precious is small in size. One of the
jewel friends at C. S. N. S. is Anne. Anne is a
loyal and a sympathetic companion, one whose per-
sonality wins for her scores of friends.

KATHERINE DEWALT, "Tat"
Cresson, Pa.

Glee Club; Art Club; Price; Praeco Staff;
Athletic Association.

"A woman's heart, like the moon, is always chang-
ing, but there is always a man in it." Does this
account for the frequent calls "Tat" gets from
State?

CHRISTINA DOEBLER
Renovo, Pa.

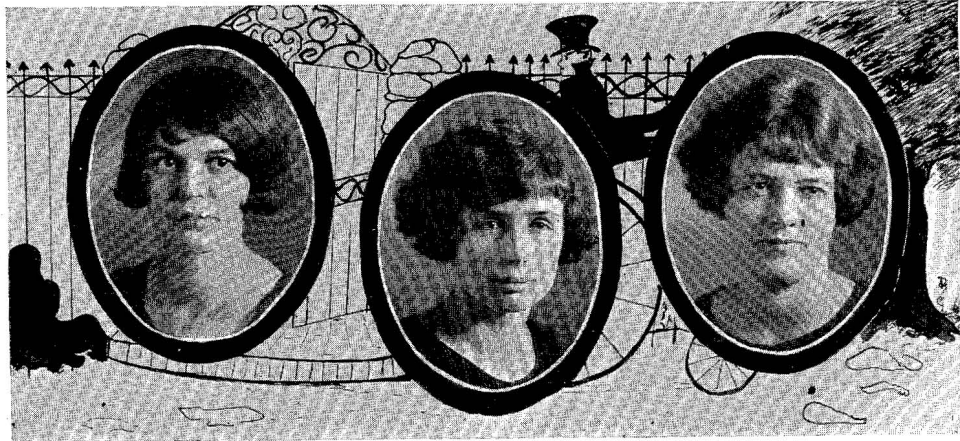
L. A. L.; Athletic Association.

Somebody has said Christina was ambitious, but
Christina says somebody's statements were slightly
erroneous. "Somebody lied" but who? Must be
Teeny—the fires of ambition are absolutely neces-
sary to keep a commuter from freezing.



CLASS

MAID



JOSEPHINE ECKENROTH, "Jo"
Unionville, Pa.

L. A. L.; Athletic Association.
"Jo," the champion tennis player of Central State showed us she could not only fracture her collarbone, but also teach school with one arm—quite cleverly.

MARGARET EVANS
Turtle Point, Pa.

Price; Y. W. C. A.; Athletic Association.
Peggy of the wonderful eyes is a quiet, demure little person with a hint of mischief in her make up. Hers is a sincere friendly nature, and "lives in a house by the side of the road and is a friend to man."

ADALINE M. FENTON, "Sweet Adaline"
Emporium, Pa.

Naturalist Club; Y. W. C. A.; Shakespeare; Athletic Association.
"Sweet Adaline" is always hard at work, except when there is some fun around. Adaline will make a success at teaching, but we wonder whether she'll stick to the old maid part.

TIMOTHY FERGUSON, "Tim"
Genesee, Pa.

Varsity Football; Varsity Basketball; Manager of Football; Captain of Basketball; Praeco Staff; Class Treasurer; Shakespeare; Y. M. C. A.; Athletic Association; Alpha Zeta Pi.

"Tim" is an all around athlete and takes part in all athletic activities. He is a true fighter—he never gives up. He has wonderful ability and is quite ambitious.

EDNA FITZSIMMONS, "Fitzy"
Port Allegany, Pa.

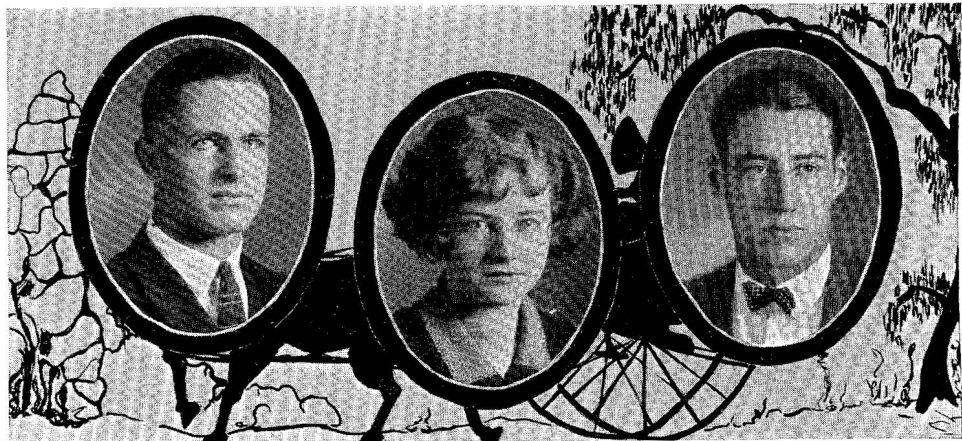
Alpha Sigma Tau; Glee Club; Price; Y. W. C. A.; Athletic Association.

Edna, better known as "Fitzy," is one of the leaders of the class in scholarship. As a teacher, she shows promise of great success; and has proved a true friend to those who know her.

MAXWELL FITZSIMMONS, "Max," "Fitz"
Roulette, Pa.

Shakespeare; Varsity Football; Athletic Association.

"Max" comes to us from Mansfield Normal. A clean sport and good mixer, he took us by storm. If he is always as successful as he is now, friends will never be lacking.



Q
U
O



Q
U
O

ELLA FLYNN
Patton, Pa.

Y. W. C. A.; Price; Athletic Association.
Ella, our wee classmate, who cheers us with her merry laugh and, is quite an industrious person, proves to us that good goods are sometimes put up in small packages.

ESTHER FYOCK, "Fyock"
Johnstown, Pa.

Shakespeare; Rho Omega Lambda; Treasurer Athletic Association; Glee Club; Y. W. C. A.
Everyone thinks "Fyock" is just a kid, "Seventeen, you know." She claims that all she knows is what the big girls tell her, but we have our doubts.

ELLA FORCEY, "Ellie"
Woodland, Pa.

Shakespeare; Glee Club; Naturalist Club; Athletic Association.
Ella was never serious about anything (except him) until she started to teach. Then she started to be on time, work diligently and accomplish a lot. C. S. N. S. will miss Ella next year.

RUTH GIBSON, "Hoot"
Bradford, Pa.

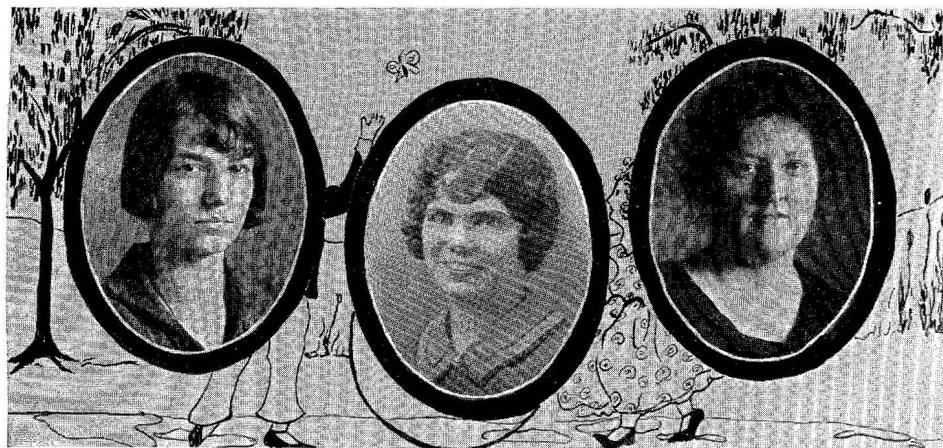
Y. W. C. A.; Price; Athletic Association.
"A friends in need is a friend indeed." "Hoot's" always on her job as the "Samaritan." She is guaranteed to make a good loving wife for the right man because teaching is not her hobby.

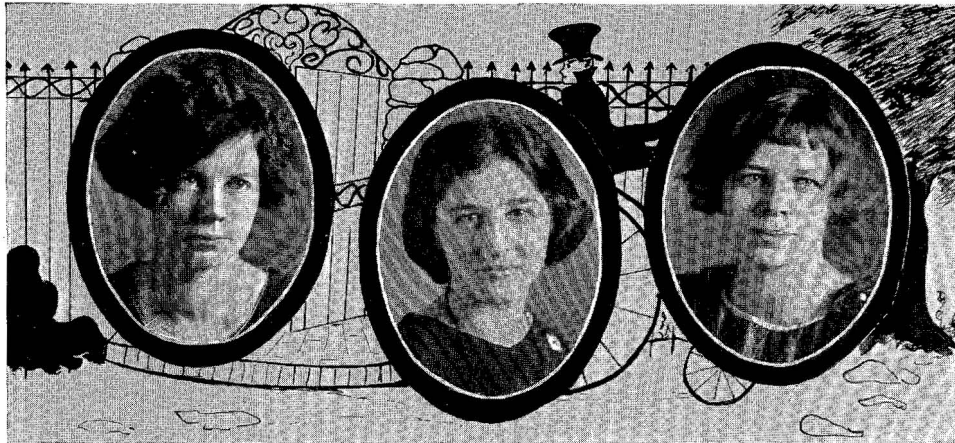
ALMA FREER
Port Allegany, Pa.

Shakespeare; Athletic Association; Y. W. C. A.; Naturalist Club.
A sweet disposition, an artist's hand,
A loving smile to all in the land,
May your life just as sunny be
When you change the tune from "F" to "D."

ORA M. GLOCK
Lock Haven, Pa.
Athletic Association.

Regardless of looks, Ora certainly is a clown. Some of her sayings should be colued. Judging by her constant practicing in laughing Ora must believe in developing all of one's talents.





HELEN GRIFFIN, "Grif"
Smethport, Pa.

Athletic Association.

Helen is one of those happy, blue eyed Irish lassies, always seeing the funny side of life. She is not as quiet as she seems, as her best friends know.

LYDIA E. GROSS, "Lydie"
Lock Haven, Pa.

Vice President Senior Class; L. A. L.; Price; Alpha Sigma Tau; Praeco Staff; Alpha Zeta Pi; Athletic Association.

Lydia is a fine example of an all around girl. She goes into everything with the determination to win. We shall always remember her as a born leader and a staunch friend.

GRACE V. HARPSTER
Philipsburg, Pa.

Athletic Association.

Grace is the sunshine of the Senior Class. If you don't see her smile you are sure to hear her laugh. She is a star in writing, as Miss Raffle can tell you.

EDNA HARTSOCK
Clearfield, Pa.

Rho Omega Lambda; Athletic Association; Price; Y. W. C. A.

Edna is always ready for a good time. "If work interferes, forget the work"; that's her motto. Edna's rather small to be a school teacher, but when she can't be seen she can be heard.

CARL BENSON HAYES, "Duke"
Hublersburg, Pa.

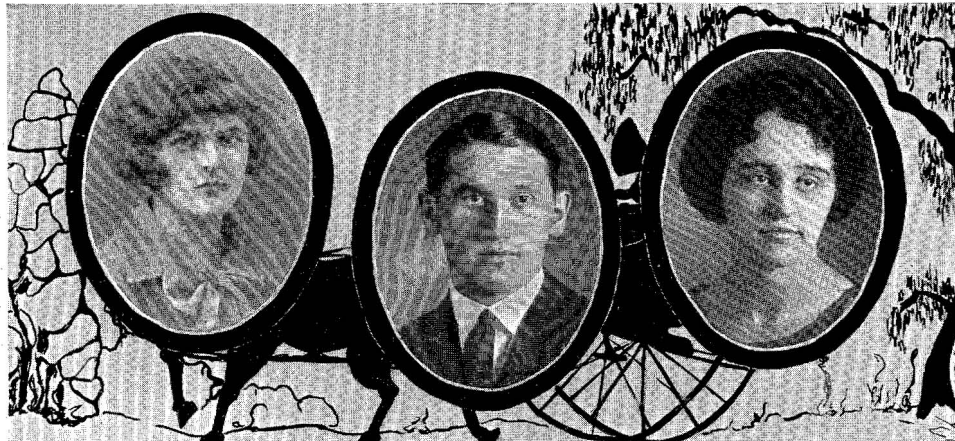
President Boys' Student Council; Y. M. C. A.; Varsity Football; Varsity Basketball; Athletic Association.

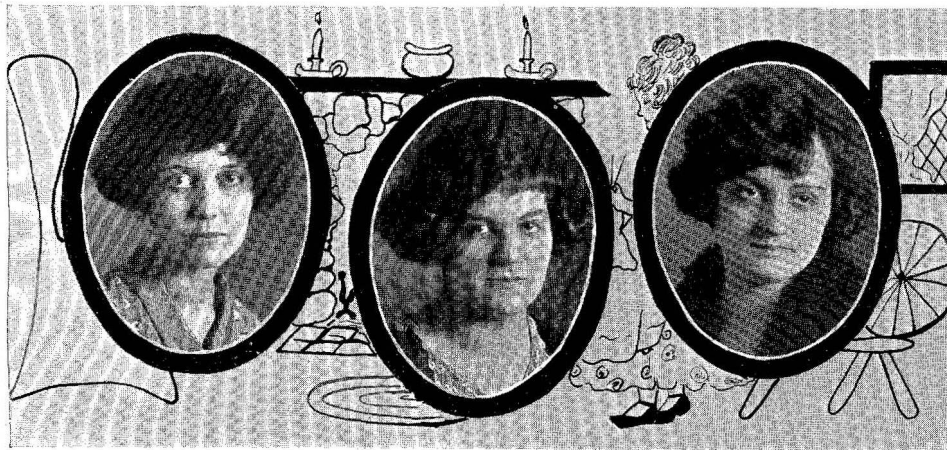
Though quiet and reserved, Carl is popular and makes many friends. He has that steadfastness of purpose which makes a winner. Keep up the good work, Carl, and you'll reach the goal.

HELEN HAYES
Salona, Pa.

Y. W. C. A.; Price; Athletic Association.

And here's to Helen fair, I say,
Who labors quite industriously
Yet she is gay and loves to play;
Her eyes are always full of glee,
"How about some gum, Helen?"





ANNA HEIGES, "Ann"
Jersey Shore, Pa.

Beta Sigma Chi; Price; Glee Club; Art Club;
Y. W. C. A.; Athletic Association.

In books you read about sweet innocent girls, with loving dispositions, beautiful curly hair, and large flashing eyes—in Ann Heiges you find all of these things in reality.

MAY B. HIRLINGER
North Bend, Pa.

L. A. L.; Athletic Association.

We recommend May for pep and originality; she has a never failing supply of both. She's the kind of a girl we always like to have around even if she's not so quiet.

LILLIAN HOCKMAN, "Tillie," "THI"
DuBois, Pa.

L. A. L.; Athletic Association.

"Tillie" just came this year, but all good things come to those who wait. If she sleeps in class you'll know she has been to Williamsport for more History of Education. (???)

MARGARET L. HOUSER, "Peg"
Irvona, Pa.

Price; Y. W. C. A.; Athletic Association.

"Peg" is a quiet little dame with a sweet little smile. She is going to teach children until she wishes to boss student teachers around. Her ambition is to become a primary supervisor.

CATHERINE HYNICK
Altoona, Pa.

Y. W. C. A.; Price; Athletic Association.

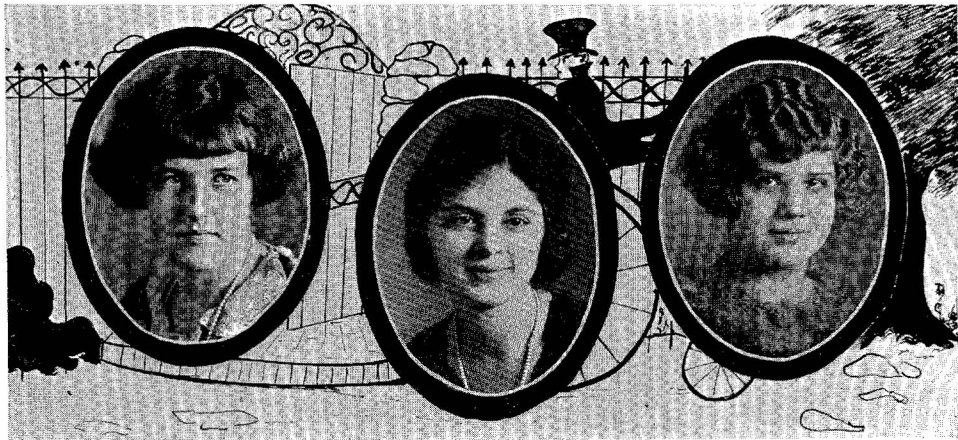
Catherine, one of the Altoona girls, joined us in our Senior year. She is usually busy, but always finds time for little acts of kindness and encouraging words for others.

ETALKA KIFFER, "Billy"
Williamsport, Pa.

President Glee Club; Art Club; Vice President Price;
Y. W. C. A. Cabinet; Athletic Association.

"Billy" is the all around girl—the kind everybody loves. She would make a fine kindergarten teacher if the field of dentistry did not loom so big on her horizon.





SARAH KIFT, "Sally"

Jersey Shore, Pa.

Alpha Sigma Tau; Athletic Association; Dramatic Club; L. A. L.

This is the girl who inspired that outburst of song called "I wonder what became of Sally," the outburst coming from Helen Bettens at intervals. However, Sally's enough to cause an outburst of most anything from all of us.

ALMA KNISELY

Altoona, Pa.

Glee Club; Alpha Zeta Pi; Price; Y. W. C. A.; Athletic Association.

A wonderful friend, a wonderful smile, A dandy girl and sure worth while.

What would life at C. S. N. S. have been without her? Nothing was ever too much for her to attempt.

THELMA KRUMBINE

Northumberland, Pa.

Price; Y. W. C. A.; Athletic Association.

Thelma is noted for her talkativeness and yet she often says something worth while. Her room is usually decked out like a green house, and the inevitable answer to our questions is "Charlie."

IRMA LEBARON

Lock Haven, Pa.

L. A. L.; Athletic Association.

"To those who know her not, no words can paint,
And those who know her, know that all words are faint."

Beneath the surface Irma is jolly, witty, and friendly, an all-around sport.

MARION LEE, "Lee"

Irvona, Pa.

Rho Omega Lambda; Price; Athletic Association.

Now, Marion, take life more seriously and stop kidding boys. We know it's hard for you to admit you like 'em. A happily married life is the wish we extend to you.

MELBA LOCKARD, "Melba"

Altoona, Pa.

Y. W. C. A.; Naturalist Club; Price; Athletic Association.

She was never the most popular girl, nor even well known by all the girls, but, speaking of friends—Melba is one of the few real ones you find in a life-time.





CATHERINE D. LONG

Roaring Springs, Pa.

Athletic Association.

Quiet but earnest she's just the same,
Striving hard to achieve her fame.
Virtues crown her, faults are naught,
She practices all that she's been taught.

ERMA LONG

Johnsonburg, Pa.

Praeco Staff; Y. W. C. A.; Price;
Athletic Association.

Curly hair, an irresistible smile and eyes that
fairly dance with good nature and mischief—that's
"Ernie." She is always cheerful, busy, but never
too rushed for a ride with her "men."

FAYE LORD, "Lordie"

Emporium, Pa.

Vice President Shakespeare; Y. W. C. A. Cabinet;
Naturalist Club; Athletic Association.

Boys usually have an interest in hunting season,
but "Lordie" has a deeper interest in "Bair Sea-
son." Ask her about her luck this season.

ORA E. McALEE

Johnsonburg, Pa.

Price; Athletic Association.

"Ordie," our little brown eyed lassie, is looking
forward to resuming her teaching responsibilities.
Her mischievous eyes attract the attention of many
admirers.

RITA McALEE

Johnsonburg, Pa.

Price; Art Club; Y. W. C. A.; Athletic
Association.

If you want something done or somebody to talk
to, go to Rita, because there is where she leads—
both figuratively and otherwise.

GERTRUDE McDERMOTT

Jermyn, Pa.

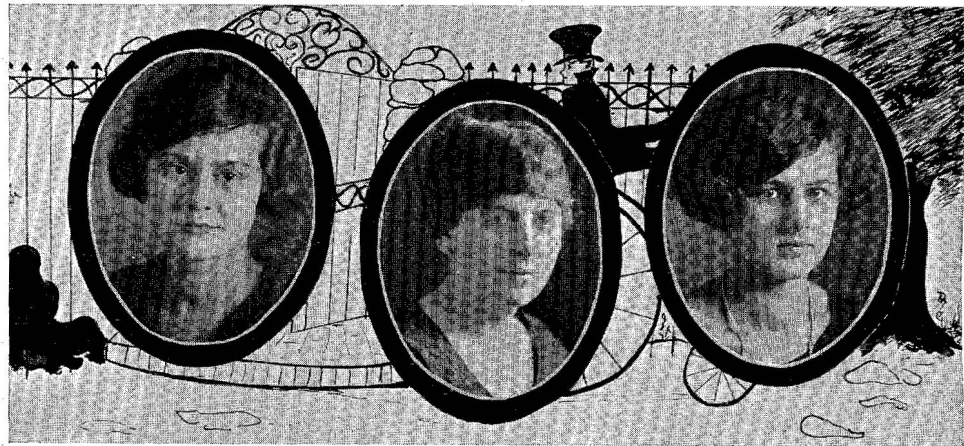
Rho Omega Lambda; Pianist for Shakespeare;
Y. W. C. A.; Glee Club; Athletic
Association.

We must hand it to "Gert" for getting the most
out of life. We understand she has quite a collec-
tion of souvenirs. We want to know whether she
will use them in her teaching.



CLASS OF 1918

CLASS OF 1918



GRACE L. MCKINNEY
Juniata, Pa.

Alpha Sigma Tau; Alpha Zeta Pi; Glee Club; Secretary-Treasurer Price; Secretary Y. W. C. A.; Athletic Association.

Kinny is another all-around girl when it comes to work and play. She's always ready to do her share in whatever might be.

MAE MASHEN
Jersey Shore, Pa.

Y. W. C. A.; Price; Athletic Association.

Good natured, jolly, diligent, willing to help another, quiet disposition on first acquaintance, seem to describe Mae. We predict for her a very high degree of success as a school Mrs.?

GERTRUDE K. McLAUGHLIN
Clermont, Pa.

Praeco Staff; Price; Beta Sigma Chi; Athletic Association.

Our "Trude" with the hearty laughter and sunny disposition has made friends. She is very studious but finds time to entertain. Her favorite saying is: "And they all fell over backwards."

MYRTLE McCONNELL

Shakespeare; Y. W. C. A.; Basketball; Athletic Association.

Jolly Myrtle! Her favorite recreation is dancing and coming home from church with Mr. Larkins. Telling secrets? Oh! no, Myrtle says so herself; and that explains Myrtle—straight-forward.

ANNABELLE McLEAN
Mill Hall, Pa.

Art Club; L. A. L.; Athletic Association.

Small of stature, full of fun, A bright smile for everyone.

This just describes our little Annabelle. We remember her for her clever answers in Educational Measurements. Huh, Miss McLean?

TWILA MATTHEW
Clearfield, Pa.

Y. W. C. A.; Price; Athletic Association; S. F. Society.

"Twilight" is very shy, especially with the boys. There is only one that pleases her, and he is quite the man.



ALPHA

OMEGA



BLANCHE MAUGER

Lock Haven, Pa.

Glee Club; Y. W. C. A.; L. A. L.;
Athletic Association.

She talks and talks and yells; but in spite of that we would be a lonesome crowd without her. Blanche always has some prank to play on some one to enliven things in the dayroom.

MARY MAYES

Howard, Pa.

Rho Omega Lambda; Price; Y. W. C. A.;
Athletic Association.

Every once in a while Mary packs her bag and, to the sorrow of the school, leaves for the week-end. Mary can be found anywhere there is a good time going on.

MIRIAM MERVINE

Lock Haven, Pa.

Glee Club; Beta Sigma Chi; Praeco Staff;
Y. W. C. A.; Athletic Association.

Some day we expect Miriam to set the world on fire with her genius. Until then we just want her to dance with us and keep getting prettier, for she's an expert at both.

HELEN MIZENER

Juniata, Pa.

President Y. W. C. A.; Art Club; Naturalist Club;
Glee Club; Price; Athletic Association.

She is a very good sport, a very good teacher, and as president of the Y. W. she makes things hum. Helen has for a motto, "Work while you work and play while you play."

HELEN M. MILLER

Mill Hall, Pa.

L. A. L.; Athletic Association; Glee Club.

Helen forgets that she is learning to teach instead of being a child herself. She has had to spend several weeks at home as "Mother's Baby"; never mind, Helen, you're a good pal.

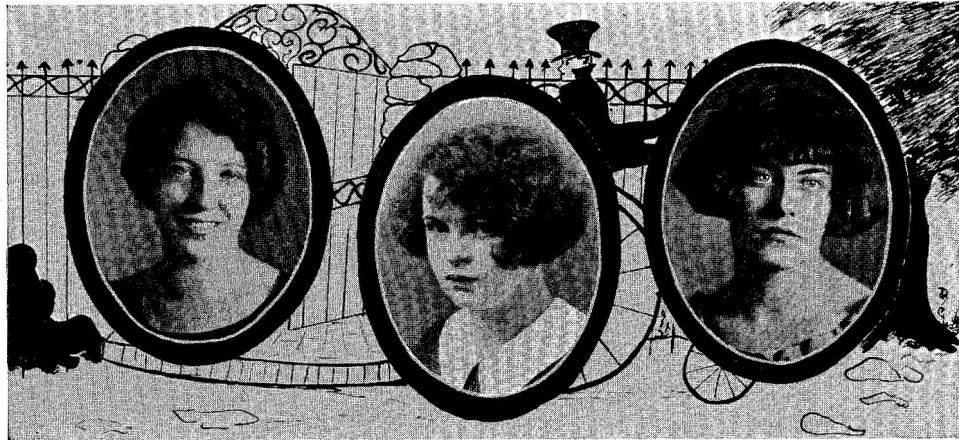
GLADYS MOONEY

Houtzdale, Pa.

Price; Y. W. C. A.; Athletic Association.

Gladys is studious and conscientious, but if you think that she doesn't appreciate fun, just take a peep at her eyes the next time you see her.





MILDRED MOON, "Millie"

Ellwood City, Pa.

Price; Y. W. C. A.; Athletic Association.
Millie with lovely brown hair and pleasant smile will always be remembered for—

Tho' she's only been with us
For just this last year,
In her we've discovered
A friend very dear.

ANNE MOORE, "Wee Annie," "Dinty"

Johnsonburg, Pa.

Price; Y. W. C. A.; Athletic Association.

In a glance there's a token
Of promises unspoken,
Sure, many a heart's been broken
By two laughing Irish eyes.

Anne's favorite study is astronomy, but any night she is especially fond of her "Football Star."

CATHERINE MORRIS

Altoona, Pa.

Y. W. C. A. Cabinet, Treasurer Naturalist Club;
Shakespeare; Basketball Varsity Squad;
Athletic Association.

Why do we love Katie? Wherein lies her charm?
"Sure, I'll do that." "Let me help you." "I'll fix it." She treats everybody the same, even the boys.
Katie's doggone sweet.

HELEN NACE

Juniata, Pa.

Alpha Zeta Pi; Naturalist Club; Y. W. C. A.;
Shakespeare; Athletic Association.

Dashing here! Dashing there!
Helen has been everywhere.
Naturalist Club, Normal Staff,
Study Hall and Training School,
Well, I guess that that is all.

MARGARET PETERSON

Wilcox, Pa.

Shakespeare; Y. W. C. A.; Athletic Association.

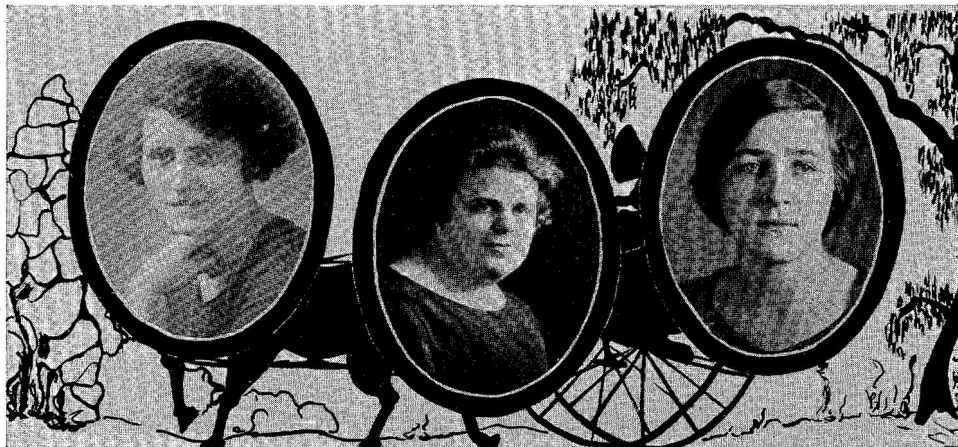
"Marg" is one of the best friends we have. She is willing to listen to others' troubles. She will teach, but we think only until that rich man appears.

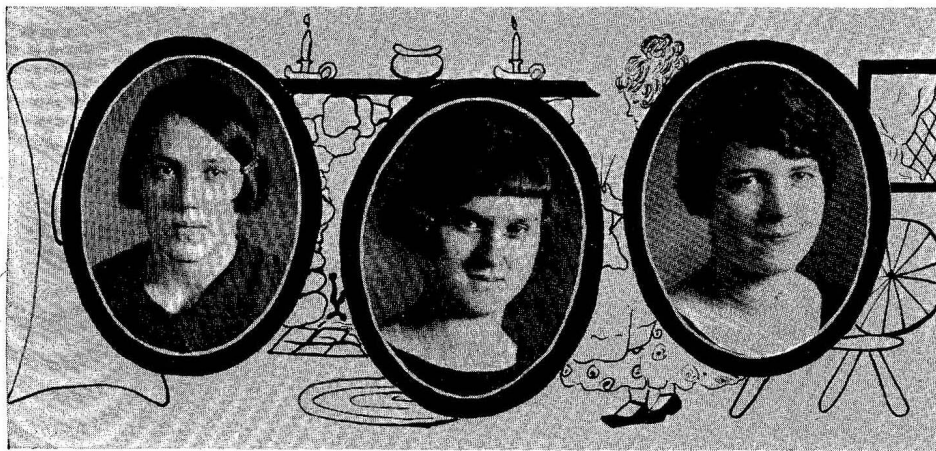
CAROLINE COLE PRINDLE

Williamstown, Mass.

Glee Club; Dramatic Club; Price;
Athletic Association.

Caroline's from Way Down East; that is easily detected by her speech, which comes forth in a continual flow that stops only for day dreams. Caroline possesses dramatic ability and untiring energy.





RUTH QUIGG
Mill Hall, Pa.

L. A. L.; Athletic Association.
Jolly, heavy, full of fun,
Ruth's lessons are always done.

One of our studious little girls is Ruth, otherwise known as one of the many Quiggs. Soon it will be Mrs. Pringle.

DOROTHY ROBB, "Dottie"
Clearfield, Pa.

Y. W. C. A.; Price; Basketball Varsity Squad;
Athletic Association.

Ever see "Dottie" as a man? She sure can vamp 'em. She's always ready to help a fellow out. Those are some of the reasons we are fond of "Dottie."

EVELYN ROSS, "Ev."
Karthaus, Pa.

Y. W. C. A.; Price; Glee Club; Athletic Association.

They say, "Still water runs deep," but Evelyn's deeper. She is quiet because no one gives her a chance to say what she thinks, and besides she wouldn't run the risk.

SARA REARICK, "Sarah"
Spring Mills, Pa.

Y. W. C. A.; Price; Athletic Association.

The quietest manner and most apologetic eyes, a love of hard work, and a willingness to tackle anything belong to Sarah. Her cheerful disposition will fall in with whatever line of work she undertakes.

ELVA REES
Costello, Pa.

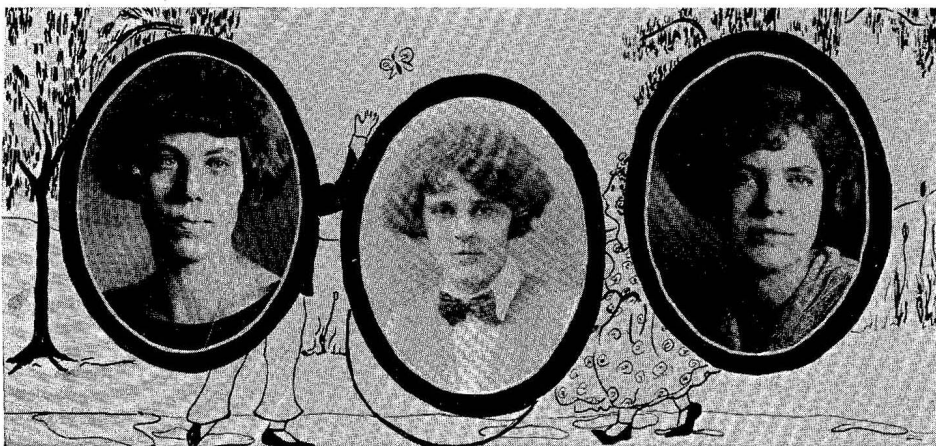
Shakespeare; Y. W. C. A.; Athletic Association.

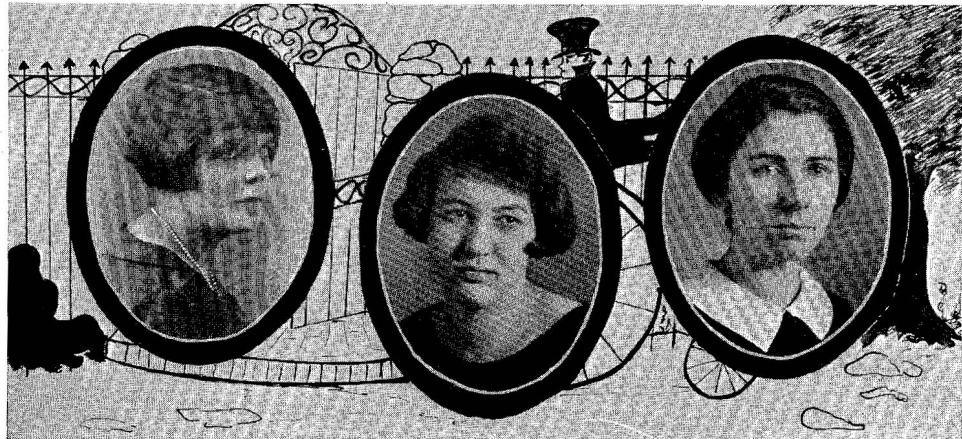
Elva of the Jnoesque proportions, tall, stately, inclined to take life seriously, still hides a sense of real humor and daring under her mask of innocence.

DOROTHY SAVAGE, "Dot"
Warren, Pa.

President Beta Sigma Chi; President Art Club; Glee Club; Price; Dramatic Club; Athletic Association.

When you meet a good-natured girl, you can't help loving her. "Dot" was one of this sort, good natured, talented, and of course popular. Briefly, we were proud to call her "friend."





ESTHER SCHOFIELD, "Schoie"

South Fork, Pa.

Shakespeare; Glee Club; Y. W. C. A.; Alpha Zeta Pi; Athletic Association.

"Schoie" always has a ready smile and a happy word for everyone. She is one of our peppy cheer leaders. By that ring she wears she won't be teaching so very long.

ALTA SHOENFELT, "Al"

Altoona, Pa.

Shakespeare; Y. W. C. A.; Athletic Association.

Alta is the happy go lucky girl who never worries about her lessons. Wherever you see Miss Ubil, there Alta will no doubt be. Do we like her? You bet.

VIRGINIA SHANLEY

Hallton, Pa.

Athletic Association.

"Ginnie" comes from Hallton, which is a fine town if she represents it. She is a good pal, with a likeable disposition. Work is one thing "Ginnie" isn't fond of. She loves to sleep.

FLORENCE SMITH, "Schmidtie"

Smethport, Pa.

Shakespeare; Glee Club; Naturalist Club; Athletic Association.

"Schmidtie's" infectious giggle can be heard at any hour of the day. Such a happy person is sure to get through this world right side up.

MARION SHAW

Lock Haven, Pa.

Praeco Staff; Alpha Zeta Pi; Treasurer L. A. L.; Athletic Association.

Marion is one of the most industrions, and t'erefore illustrious, girls in the class of '25. Her fame as a worker preceded her from High School, and she has ably lived up to her reputation.

PAULINE SNYDER, "Pauline"

Altoona, Pa.

Y. W. C. A. Cabinet; Naturalist Club; Glee Club; Price; Athletic Association.

When there is something going on, Pauline is there. She is a fluffy, light-haired dancer, but leave it to Pauline to teach the kiddies! Where is there a girl who is not her friend?



CLASS OF 1923

CLASS OF 1923



GRACE STARTZEL
Shamokin, Pa.

Beta Sigma Chi; Secretary Glee Club; Art Club;
Vice President Dramatic Club; President Price;
Y. W. C. A.; Athletic Association.

Look at the size of her! Consider how she has
torn around from one activity to another! She
surely is efficient, and we feel sure that she will be
successful in whatever she undertakes.

SUE THOMAS, "Sue"
State College, Pa.

Price; Y. W. C. A.; Athletic Association.

When it comes to good sports, Sue is near the
top. What would the fair maidens at C. S. N. S.
do without her? She provides their Knighterrants
for the dances, because, you see, Sue's from State.

GARELDINE TIETBOHL, "Garry"
Allenwood, Pa.

Alpha Sigma Tau; Athletic Association; Student
Council; Y. W. C. A.

Every one fell in love with "Garry" her first day
at C. S. N. S. Since that time we have grown to
love her more than ever because of her sweet dis-
position.

MARGARET ULSH, "Peg"
Altoona, Pa.

Y. W. C. A. Cabinet; Price; Glee Club; Alpha Zeta
Pi; Athletic Association.

We often wonder that "Peg" doesn't run out of
stationery. She has loads of friends and is always
adding to the number.

"On with the dance, girls."

MADELINE WEAKLAND
Altoona, Pa.

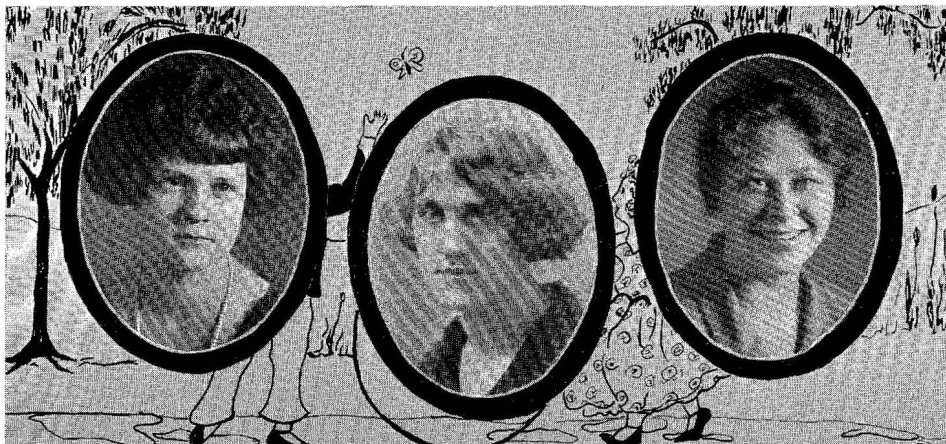
Alpha Zeta Pi; Alpha Sigma Tau; Art Club; Price;
Y. W. C. A.; Glee Club; Athletic
Association.

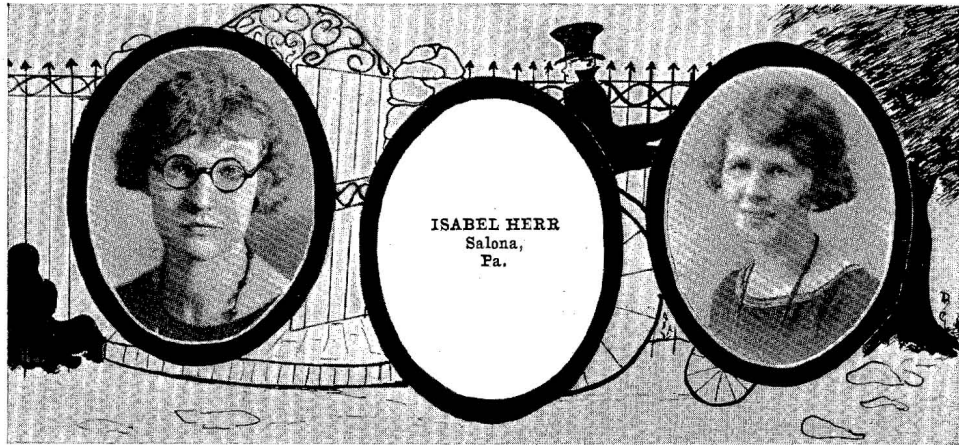
This little lady hails from Altoona. The town
certainly knew what it was doing when it sent her
down here because we couldn't get along without our
little giggler.

CAROLINE WEIN
Williamsport, Pa.

Dramatic Club; Art Club; Naturalist Club; Glee Club;
Alpha Zeta Pi; Y. W. C. A. Cabinet;
Price; Athletic Association.

Giggles, giggles, and then some more giggles.
That's "Whiskey"! Caroline always has time to
giggle or eat even if she is busy. Listen! have you
heard about that bungalow that is already furnished?





EDITH HEWETT, "The Merry Whistler"

Edith believes in being happy and cheerful under all circumstances. She has that rare faculty that makes her excel in her studies, and that will crown with success whatever she undertakes.

HARRIET FAUST

Harriet joined us the first of February and came in with a bang. What do you think, a teacher first thing. Well, we surely prize this addition to our class.

Ex-Members of the Class of 1925

BYRON BLACKFORD

JULIA FISHER

MARGUERITE GSCHWENDTNER

VIRGINIA HARNISH

MERIAM HAYES

ANNA KYLE

RUTH LAIRD

EMILY MILLER

LUCY MITCHELL

CATHERINE RANK

MAE SMITH

CARL SMOKE

ROBERTA TOBIAS

PAUL VONADA

ALMA WALSH

In memory of our friend and
classmate

Beth Melwellyn

who died

September 16, 1924

Retrospections of a Backward Student

The eventful day, September 17, 1924, finally arrived; the class of 1925 congregated at C. S. N. S. from all parts of the State. How we longed to see some familiar face in that sea of strange faces. How we envied the Seniors who seemed so happy in their reunion after the vacation, though this only made us poor Juniors the more lonesome.

What a change was wrought in a few days. The "Get Acquainted Party" given by the Seniors and the entertainments given by Shake and Price certainly changed our outlook on life at C. S. N. S. Now that the ice was broken the rest was easy. We acclimated ourselves to the life here, and before we hardly thought of it we were an organized class with Albert Hauke as President.

The Seniors were soon to be awakened to the fact of our existence. It was the Juniors who in the autumn of 1923 composed a larger portion of the football team, the first at C. S. N. S. for many years. The Junior Prom was a notable success. Some token of remembrance was given to each guest. A flashlight picture was taken for last year's PRÆCO that the Seniors might be better aware of our superiority.

When at last the day for parting came we sensed our great loss in that our many friends among the Seniors would not return when the vacation days were over. The new students of the next September soon made for themselves a place in our lives, yet did not fill the places left vacant by the class of '24.

We were now keenly conscious that we were Seniors. We could sense the awe with which the Juniors regarded us. We tried to be to them what the class of '24 was to us.

The class was promptly organized with Violet Agnew, President; Lydia Gross, Vice President; Bernice Day, Secretary; and Timothy Ferguson, Treasurer. The old school was much the same old place and yet not quite the same. There had been changes in the Faculty. Miss Bentley had taken the place of Miss Love as dietitian. Miss Giles came into the new sixth grade training position. Miss Baer was the next addition, coming here from Wisconsin University to teach the efficiency classes. The greatest loss that we have suffered is the loss of our Principal, Mr. Drum. We are looking forward to and looking for a progressive era under our new Principal, Mr. Armstrong, such as we have enjoyed under the efficient leadership of Mr. Drum.

The enrollment of men was startling, yet consistent with the progress of the school, being nearly double that of our Junior year. From this group a representative football, basketball, and baseball teams were picked. The work so nobly started while we were Juniors we continued while Seniors. The football season

was a notable success. The basketball season was just as rigorous and closely contested. The baseball team gave opportunity to those men not participating in other sports to display their talent. The coaches can in a large measure be thanked for the excellent records made by teams this year. Mr. Wynn Fredericks, a letter man at Yale, most competently coached the football and baseball teams, while Earl Ritter attended to the basketball.

Under the efficient management of Mr. Trembath the Normal Times has been changed to a Greek Letter Organization, Alpha Zeta Pi. This brings about a new management of the staff. Under this regime the staff is self-perpetuating. A new member is elected at each business meeting who has charge of each phase of publication until the last office has been completed, when he becomes an honorary member.

One of the noteworthy events was the celebration on December 2, 1925, of the twenty-first anniversary of Belvie's services to the school. This was a morning of good cheer for all. Beside the expression of gratitude for the ever loyal services, Belvie was presented with a beautiful watch and chain, a token in remembrance of this occasion.

The big PRAECO Dance, a source of enjoyment to all, was a great financial success. The Seniors, alert as ever, saw to it that this dance had special attractions and the best of advertising. The result was the best financial returns received by any recent class at C. S. N. S.

Our Senior prom was another outstanding success. With unique decorations, a wonderful orchestra, and enough men from State, this event will be remembered by all.

During the two years we have spent here, each moment has brought us something interesting and valuable. The student teaching has shown us the responsibilities we must assume when we leave C. S. N. S. as full fledged teachers. We are looking forward to the time when we shall sally forth with our credentials, and a great sense of self importance; the world at our feet and the children at our mercy.

The School has been especially efficient during our two years' stay in providing numerous artists for our benefit. During our first year the course included such artists as Reginald Werrenrath, Elsie Baker, Toscha Seidel; this year saw with us such stars as Marie Sundelius, Arthur Middleton, Hans Kindler, Sascha Jacobsen. The Barber of Seville was a rare musical treat, while L'Ombra was second to none as of Flotow's opera.

Atoms of Fairy Dust

Something, like dew drops, flew in my face. I turned and there stood Peter Pan sprinkling fairy dust over me. "If you think beautiful thoughts," he said, "they will make you rise." I thought of C. S. N. S. and I immediately rose and flew with Peter to Never, Never Land. One entrance was blocked by a huge typewriter-like affair.

Peter said, "Try it." The keyboard was very modern, for all the keys were colored and numbered to represent a cross word puzzle.

I turned to Peter for an explanation, but he had vanished, leaving only a note on an oak leaf saying, "Press these keys, oh, so slightly, and follow the numbers across and down, and then—"

That was all.

Alas! that naughty Peter! not to explain any further. And then I remembered that he was the mischievous boy who never grew up.

But, finally, curiosity getting the best of me, I pressed some of the keys. To my astonishment instead of having writing on the page, I got a glimpse of what my fellow classmates were doing 20 years hence. Press very lightly, softly, and you may see, too.

Ready?

May Hirlinger is the Editor-in-Chief of *Who's Doing What*, the latest *Town Tatler*, of Renovo. *Christine Doeblner* is the rest of the staff.

It is whispered that a handsome young man's wounded heart is very successfully being cured by *Ora McAlee*, and that she is happy in attaining her ambition of being a trained nurse.

Carolyn Wein's "Before and After" pictures in *Walter Camp's Reducing Advertisements* in all the popular magazines have become famous, and, truly, she is a mere shadow of her former self.

A very novel feature at a recent stag dinner at New York City of the Alumni men of C. S. N. S. was *Ella Flynn's* and *Florence Smith's* entrance in an immense pie—and when the pie was opened, the girls began to dance, which made the C. S. N. S. boys begin to sing and prance.

Catherine Morris gets the solid gold front tooth for the novel way into a man's heart. She intended to shoot a basket at a recent basketball game, and instead, guided by Cupid, the ball hit a man. She made apologies so well that now he says, "She made some *hit* with me."

Twila Mathews has at last come into her own. She is the famous modelle for *Jean Patau*. She is called the pencil-silhouette girl.

Blanche Mauger is the chief looker in *Cecil De Mille's* newest picture, "See-in's from a Window."

Jo Beaujon is the Girl Scouts' Chief Executive, chosen after her great success in pulling off the Junior Prom, the World's Eighth Wonder.

Mary Cook is the announcer of trains at the main entrance to the Pennsylvania R. R. Station at Castanea.

Bernice Day is an intelligence test examiner.

Dorothy Savage is the class song-writer. Her latest success is, "*Silk Stockings Sure Am Hard to Sell, But I Must Die Irvin.*"

Adeline Fenton is the physical education instructor at West Point. She states she got her love for it at C. S. N. S. where it was carefully fostered by Miss Deniston.

Winifred Brosius, after long association with her sister, has been giving the talking machine close competition.

Mildred Moon is playing in Jan Garber's Orchestra. Her feature is the song, "In my home town where I come from, a man must *steel* his heart or it's stolen."

Anna Bell McLean was awarded the Croix de Guerre by the French Government for her futurist painting—The Battle.

Helen Miller is the politician of the class. Her most famous bill is the one she recently sponsored compelling all who are citizens to sign a pledge promising never to get the mumps. The bill was unanimously passed.

Elva Rees was judged Miss America at the bathing beach at Riverview.

Marion Shaw furnished the surprise of the class. When recently interviewed after getting a divorce from her nineteenth husband, she remarked that that was only to make way for the twentieth—variety—you know.

Madeline Weakland is Chief Justice of the Supreme Court. The last one was impeached for giggling during a trial, whereupon President *Alma Knisely* immediately appointed Her Honor Weakland, knowing how serious her demeanor is.

Ora Glock is an interpretive dancer. Her most popular number is "Turkey in the Straw."

Marguerite Peterson was seen floating around selling Ivory Soap.

Isabel Herr is at the head of the Complaint Department at Washington. *Alma Baird* is her able assistant.

Gertrude McLaughlin is head of the art department at C. S. N. S. Miss Yale resigned when the competition became too strong.

Irma LeBaron recently sued *Carl Hayes* for a breach of promise suit. Carl says there was a breach—but not a promise.

Sara Claster is still writing the prophecy.

Sara Kift is looking for a job.

Helen Bettens is working for Sara Kift.

Grace Startzel is married to a bird of a fellow. His name is Dicky and he Kintzing n' everything.

Lydia Gross is taking Hi Johnson's place in the senate. She is now advocating the amendment to the constitution that since all women are free and equal to the men, the women should all bob their hair. This is a new thing in our country and much opposition has been aroused, but when Miss Gross showed that it did not make her light-headed, she being naturally a blond, much favorable advertisement resulted.

Lillian Hockman is the owner of large woolen mills. This is merely a continuation of her work at C. S. N. S. in pulling the wool over her teachers' eyes and her able management of Mills.

Erma Long and *Anne Moore* are impersonators. Their greatest success is the Siamese twins.

Geraldine Beas tried to have *Margaret Ullsh* arrested on the charge that Margaret was looking down on her. However, when Judge *Esther Schofield*, (noted for her great sense of humor) saw the defendant, she said it was hardly possible for Marg to do so, did she wish to—and the case was thrown out of court.

Esther Fyock is playing the lead in that latest Broadway success—"I'm an Undertaker's Daughter, So I Have to Live That Down." Knowing Esther, we feel sure she didn't undertake too much.

Maxwell Fitzsimmons has indeed written his masterpiece in his book, "Why I Hate Women." It is written as only one so experienced as he could do. The book is dedicated

To the Ladies
I Hate Them
Because if I Didn't Hate Them I'd Love Them
And I Hate Them.

Katherine DeWalt is a demonstrator for the best and newest invention—stilts. *Anne Devereaux*, seeing where she was most fitted to aid society and being naturally big-hearted, manufactured these for the suffering humans in need of additional height.

President *Alma Knisely* after much thought appointed that greatest of all diplomats, *Violet Agnew*, Ambassador to Germany. Miss Agnew says she will take only her secretary, *Gladys Mooney*, along to get her to her appointments.

Sue Thomas has opened at State College the Bureau for Blind Dates. She States her men for C. S. N. S. dances sometimes change into pickles instead of dates, but these cases are few and far between.

Marietta Best recently was hauled into court to answer the charge of severely beating her husband. She was very much at a loss for words when a muzzle was clapped over her mouth to remain there for seven days as punishment.

Someone—sounds like Pringle—got around *Ruth Quigg*. Now don't get excited. No, she hasn't reduced. This Pringle evidently got on the right side of her because ever since her C. S. N. S. days he's never left her.

Ella Forcey and *Tim Ferguson* have created new roles in the movie world. Instead of the commonplace hero and heroine, she is the shrinking, shrieking vampire, and he the bold, gloating hero. They play these parts realistically and much to the enjoyment of the audiences. They probably have never quite come out of their Normal School daze.

The I. M. N. has organized recently with *Margaret Houser*, President; *Virginia Shanley*, Vice President; *Lulu Barr*, Secretary; *Mildred Brown*, Treasurer; *Jo Eckenroth* and *Mary Adams* the able Directors. It's a secret—sh! The name means I'll Make Noise.

Catherine Burd recently inherited a fortune and spent it buying all the banana plantations in the world so she can have people stop singing "Yes, We Have No Bananas" to her.

Mary Bair was chosen Miss New York to represent that city at the World's Fair at Paris. She fared well, did our fair Mary.

Helen Nace is teaching down yonder in the co'n fields; yes—Gawgia.

Catherine Long caused an explosion the other day. She was talking to a lady who was slightly deaf, probably due to the coats of powder on her neck and above. When Catherine, who was trying to make the lady understand her, yelled in desperation, the fiery words from this usually quiet Miss caused spontaneous combustion to occur.

Miriam Mervine has gone into the vanity case business. Nuff sed.

Mary Bennett and *Gert McDermott* have gone into the telephone business. They deal in private lines.

Dorothy Brua always banked her hopes on great things. She is now a cashier in the First National.

Ruth Gibson and *Edna Hartsock* are in the Baking Powder business. Their motto is Watch Us Rise. Quite appropriate, considering sizes.

Anna Heigcs is an aviatrix who came down with the flu.

Barbara Champlin truly has mountains of work to do. She is finishing up Borglum's work on Stone Mountain.

Alta Shoenfelt is editor of *Vogue*. She journeys twice a year to that mecca of fashion, Lock Haven, and has astounded her readers by some of the oddities she brought from that place.

Helen Miziner is the leading lady in *The Harness*.

Rita McAlee has grown up.

Faye is still *Lording* it over her cronies.

Margaret Evans and *Helen Griffin* have opened a shop where all sorts of quaint things can be found. As one enters he sees a picture entitled, "The Old Curiosity Shop." The shop is a reproduction of the Day Room.

Thelma Krumbine is a dramatic star.

Etelka Kiffer is a nurse for children. We do not wonder that she chose this vocation after having seen her in the Christmas plays.

Hilda Burrows has also started a nursery. This is only proper, seeing that she takes the male so early.

Veronica Cauley and *Caroline Prindle* are chairmen of the soft voice campaign. Miss Cauley of the West, Miss Prindle of the East. It would certainly do us no harm were we all to follow their good examples.

Mac Masden, *Evelyn Ross*, *Mary Mayes*, and *Geraldine Tietbohl* are the originators of a very unique traffic system. When Evelyn comes out, all the people know there's plenty of room—she's so thin. Mary, with her "Come hither" look, means come. Geraldine, with her red hair, means "Danger," and Mae Masden means "Not enough room to pass."

Honors surely go to *Edna Fitzsimmons*. She has started a new scheme for the purpose of protecting C. S. N. S. men from being stampeded by would-be true-loves, by the simple device of feeding the men upon limburger cheese. It has proved very successful.

Grace McKinney is a missionary in Switzerland. They say she is very cool-headed at her work.

Melba Lockard, *Alma Freer*, and *Sarah Rearick* are upholding the idea of preaching what you practice; once upon a time they were practice teachers.

Harriet Faust is Mr. Sullivan's assistant at the training school.

Marion Lee has a copyright on Patton.

Helen Hayes, *Grace Harpster*, *Dorothy Robb* and *Georgia Burkett* are the mail quartette. They are postmen at Lock Haven.

Pauline Snyder and *Florence Iseman* are at the head of the Froebel Institute at New York City. They were recommended by a unanimous vote of the class of '25.

Ann Daugherty is the president of the Renovo-Lock Haven Aero-Line. The aeroplane is fitted with beds that automatically drop one into his home without his feeling the least bit put out about it.

The last key refused to budge. I pushed and pushed harder and harder. "Naughty girl!" cried Peter. "Didn't I say you should not press hard? For that you must walk the plank on Captain Hook's ship." I did not struggle for I knew it was useless. Nearer nearer the edge; down, down, down, into the deep, cold water. Splash—and then I awoke to find I had indeed been sprinkled with the fairy dust.

Class Will

We, the Senior Class of Central State Normal School of Lock Haven, Clinton County, situated in Pennsylvania, being educated to the fact that we are strong in mind and body but lacking in ambition, having made for ourselves a name which will forever be bright in the records of C. S. N. S., do make and publish this our last Will and Testament in the following manner:

To the Members of the Faculty

Item 1. To the whole faculty we bequeath our ability to teach and discipline our classes, so that they may be better teachers in the future than they have been in the past.

Item 2. To Miss Himes, a miniature traveling library, so that our successors will not have to make the tiresome trip to Williamsport for reference books. (Hey, Lillian?)

Item 3. To Mr. Sullivan, an automatic alarm clock set for every fifty minutes.

Item 4. To Miss Alber, a year's subscription to the "True Story Magazine" so that she will have enough stories for next year's story-telling class.

Item 5. To Mrs. Cresswell, May Hirlinger's grin and a gingham gown.

Item 6. To Mr. Drum, a book of "Snappy Stories" and a megaphone for chapel exercises.

Item 7. To Miss Whitwell, a Ford Coupe with no rear curtain.

Item 8. To Miss Yale, a new red crayon, because we are sure hers is worn out.

To the Juniors

Item 1. To the Junior Class we bequeath our love of study and our perfect attendance record.

Item 2. To Rose Bower, Miriam Mervine's ability to use her vanity case.

Item 3. To Kathryn Hasson, Lydia Gross' competency.

Item 4. To "Red" Eberhardt, Violet Agnew's ability to discover discrepancies in the Faculty.

Item 5. To Ann Fahlman, Ann Deveraux's height.

Item 6. To Charlotte Stere, Esther Fyock's gift of gab.

Item 7. To Helen Hagerty, Marietta Best's quiet disposition.

Item 8. To Gordon Titus and Rita Dale, a 99-year lease of a "love set" on the tennis court, formerly used by Tim Ferguson and Ella Forcey.

Item 9. "Sally" Claster's promptness and shoe-shine, to George Close.

Item 10. To Dorothy Lynds, Thelma Krumbine's dramatic ability.

Item 11. To the Dayroomer's, the excess heat in the Frigid Zone, which resembles their welcome to the Dormitory.

Item 12. To Ann Gingery, Catherine Burd's home on Susquehanna Avenue. We only wish it were closer to Bitners.

Item 13. To Dave Ulmer, the rest of the pie that he didn't get in the Dramatic Club play.

Item 14. To Elverda Richardson, Gertrude McDermott's cleverness.

Item 15. To Peg Hirsh, Bert Wolf, Peg Zurewich, Helen Johnson, Marguerite Heylman, the dayroomer's privilege of staying out nights.

Item 16. To Lovey Dietrick, those proud indentions, called dimples, on Blanche Mauger's cheeks.

Item 17. To Bert Wolf, Etelka Kiffer's ability to keep her complexion on straight.

Item 18. Grace Startzel's musical voice, to Kathryn Fortney, so that she may be able to sing "I Love Me."

Item 19. Max Fitzsimmon's harem to George Close, and also his sheik's apparel.

Item 20. To Winifred King, a copy of "Flaming Youth," since she exerted her powers of research trying to find it, thinking it was one of Mr. MacDougall's references.

To Certain Organizations

Item 1. To the Dramatic Club, Gert McDermott's wardrobe.

Item 2. To the Naturalist Club, the stray dogs and cats in the day room.

Item 3. To the Library, the educative literature that is floating around the building, for example, "College Humor" and "The Plastic Age."

Last of all, we bequeath the Junior Class to Belvy that he may care for them in the future as he has cared for us in the past.

Having handed over these items with due pomp and ceremony, we appoint Senator Warton Knuckle, Congressman Hooley, Policeman Philip Space, Jack Frost and Merry Christmas as executors of this our (almost) last Will and Testament.

In witness whereof we, the class of nineteen twenty-five, have hereunto subscribed our name and seal on this second day of June, in the year of our Lord one thousand nine hundred and twenty-five; and have hereunto affixed the seal of our class.

We who have hereunto subscribed our names at the point of a pistol as witnesses thus remain,

SEAL

1925

SALLY KIFT O'GAB,
HILDA DEEPER BURROWS,
ALMA DUZZITALL KNISELY

Class Poem

FROM THE FLAME OF MEMORY

We have built a fire of the past two years;
Our fears, our sorrows, our joys;
We're ready for farewell songs and cheers,
And so lay aside our toys.
The embers of memory will long remain
In the recesses of our heart;
Back we'll come to visit again
The friends and school from which we part.
Each spark from the fire has a meaning
That will brighten our way along;
In the future all our dreaming
Will be of the happy throng
Who laughed and cried together,
Who shared each sorrow and joy;
Who smiled in all kinds of weather,
Whose friendship was free from alloy.
Each coal of the fire will glimmer
And sparkle into a flame;
Even though the light shines dimmer,
'Twill respond to a familiar name.
The Friendship Spark will lighten
The troubles of many a day,
Just as the sunshine brightens
And chases the clouds away.
No hint of slur or slander
Can against our school appear,
For, like a gallant commander,
Loyalty battles out fear.
The Spark of Schoolday Humor
Will aid us all to keep
Good natured when Dame Rumor
At our secrets takes a peep.
Running on in our life
Is the Spark of Knowledge Gained,
It lights up many dark problems
Like the sunshine after rain.
A high code of Honor we've made—
A huge and vital Spark
Our opponents need ne'er be afraid
Of tactics sinister and dark.
Last but not least is Love,
A crimson, sparkling ember;
Faith in the Father above,
Unites with friends we remember.
So we find our hearts will hold
The coals of memories' fire.
Old schooldays' exploits will be retold;

Of them we never will tire.
 Smould'ring, reviving into flame,
 This fire our homes will bless.
 Though long years pass, it remains the same
 To insure our happiness.
 Cast every little treasure
 Into the burning flame,
 Be sure that every pleasure
 Is there with every name.
 So when our memory turns
 Back to schoolday ways,
 We find in our heart still burns
 The C. S. N. S. days.

NELLIE MOORE.

CLASS MOTTO—Build for character, not for fame. CLASS COLORS—Blue and Gold.
 CLASS FLOWER—Yellow Chrysanthemum

Class Song

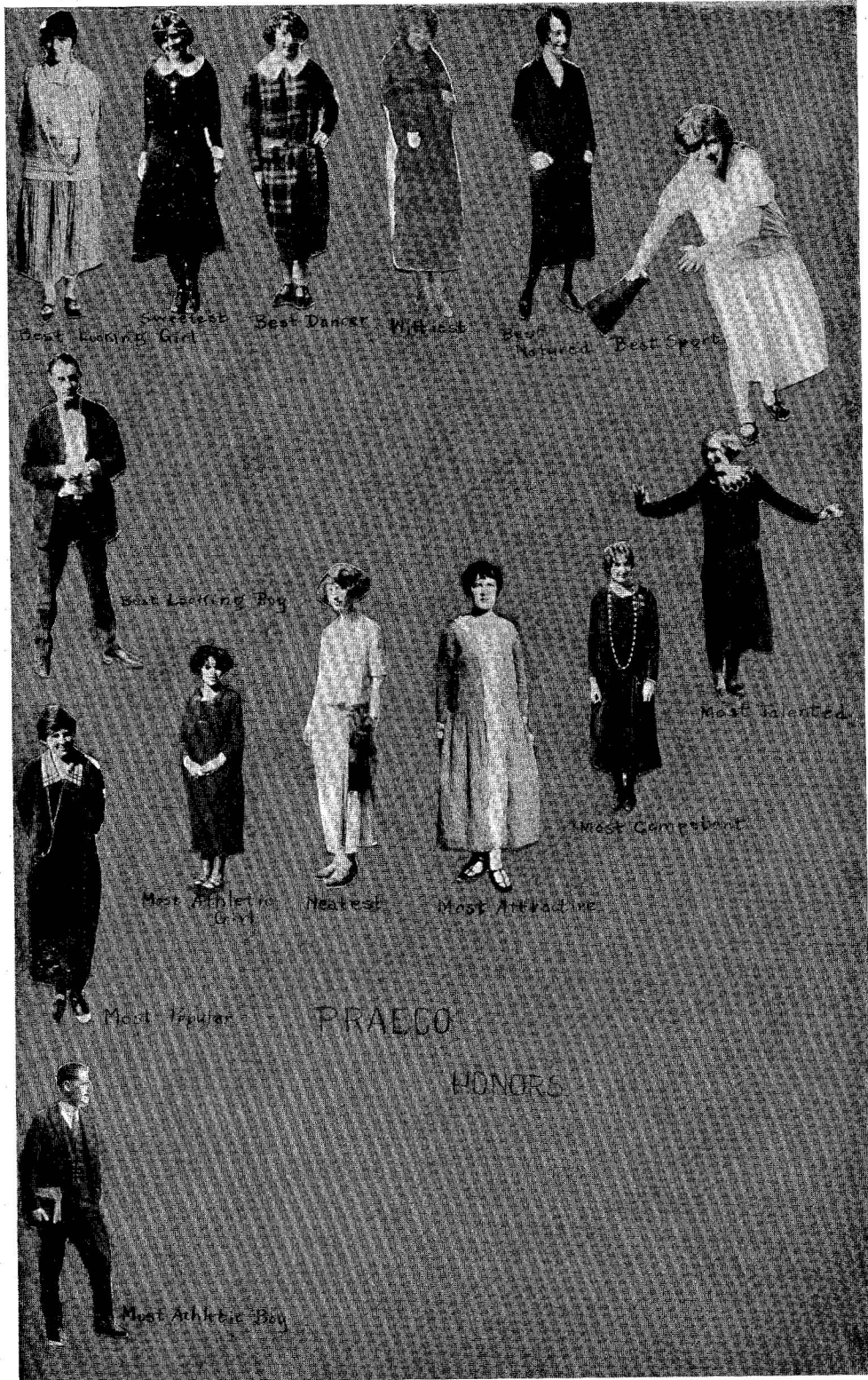
Tune - Welsh Air
 March of the Men of Harlech

Erelka Kifer.

As we leave the halls, where we have spent our joyous days preparing
 for our duties, which will call us, far beyond their walls. We are filled with
 sorrow - Mixed with dear remembrance, for we know where'er we go, Our
 hearts will ever be returning. Alma Mater, C. S. N. S. All thy sons and
 daughters love thee. All their work is better for thee. We will e'er be true!

1936

1936



Best Looking Girl
 Smartest Girl
 Best Dancer
 Wittiest
 Best Natural
 Best Sports
 Best Looking Boy
 Most Athletic Girl
 Neatest
 Most Attractive
 Most Talented
 Most Competent
 Most Popular
 Most Athletic Boy

PRAECO

HONORS

CHILD

MAN

Facoltz



Mixer

To the Class of 1925:

Teaching is a profession that affords more vacations and more leisure than any other of which I know. You will be required to teach not more than six hours a day and only five days per week. Every Saturday and Sunday, all legal holidays, the vacations, and especially the summer months will be at your disposal. In the use you make of this leisure will be found the chief causes for the relative success or failure attending your work five or ten years hence.

It has never been my ambition to produce contented graduates. On the contrary, I would have you filled with a wholesome discontent, a yearning to try yourself out at increasingly large tasks, a restlessness that forces you to continue your education, a conviction that it hath not yet appeared what you are to become. If you are full of idealism and have the grit to bring your desires to a practical fruition, I shall be happy.

I bid you Godspeed. May the greatest success be yours!

Very sincerely,

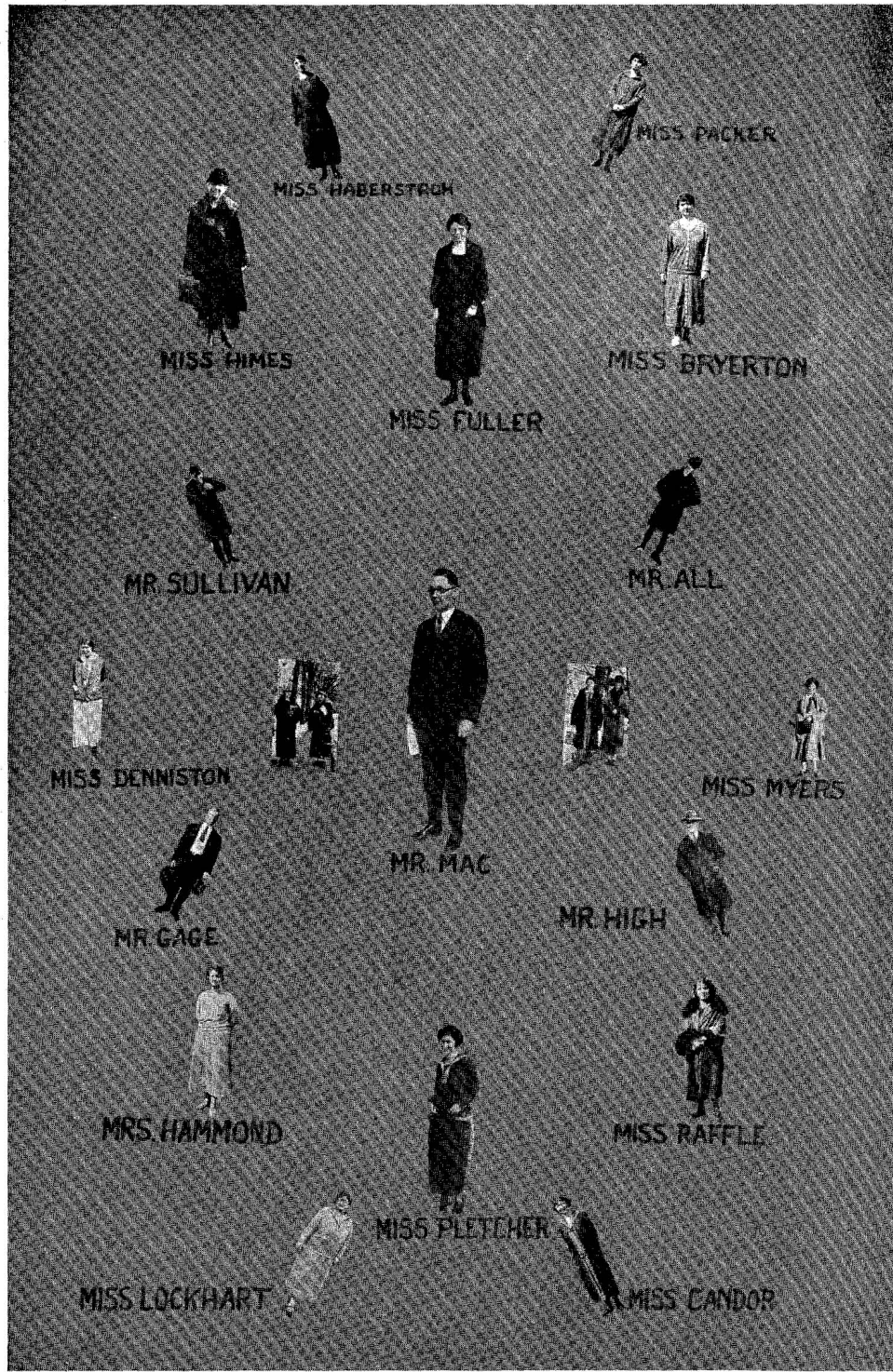
WARREN NEVIN DRUM.



Warren Nevin Drum

1920

1920



1911

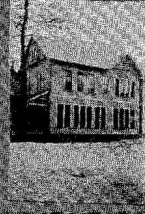
1911



LINCOLN SCHOOL



MR. ULMER



ROOSEVELT SCHOOL



MISS GRESSER



MISS GREY



MISS BITNER



MR. TREMBATH



MISS GAST

MISS BENTLEY

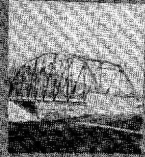


MISS CLASTER

MISS YALE



MISS STEWART



MISS BAER



ROBB SCHOOL



MISS SELTZER



The Faculty

WARREN NEVIN DRUM, A.M. - - - - - Columbia University
Principal

Department of Education

ROY S. McDUGALL, A.M. - - - - - Columbia University
Director of Training School

JESSIE SCOTT HIMES, B.S. - - - - - Columbia University
Director of Group I

LAURA E. BARKHUFF - - - - - Columbia University
Training Teacher, Kindergarten and Grade 1

HELEN BOGGIS LESHER - - - - - Froebel Institute
Training Teacher, Grades 2 and 3

BERTHA M. ROWE, B.S. - - - - - New York University
Training Teacher, Grades 4 and 5

BESSIE BAER - - - - - University of Wisconsin
Supervisor of English in Junior High School

MARY LOUISE GILES - - - - - University of Pennsylvania
Training Teacher, Grade 6; History of Education, Junior Literature, Psychology

GERALDINE LOCKHART, A.B. - - - - - New York State College for Teachers
Director of Group III

Department of English and Foreign Languages

HOMER H. GAGE, Ph.B. - - - - - State Normal College, Albany, N. Y.
English, French, Latin

THOMAS WAYNE TREMBATH, Ph.B. - - - - - Lafayette College
English

M. GERTRUDE ROBERTS, A.B. - - - - - Hood College
Dean of Women; English

Department of Mathematics

M. DETURK HIGH, A.M. - - - - - Chicago University
Dean of Men; Mathematics

Department of Science

LEVI J. ULMER, M.S. - - - - - Bucknell University
Geography; Agriculture; Nature Study

Department of Social Studies

CORNELIUS M. SULLIVAN, B.S. - - - - - Columbia University
Sociology; History; Civics

Department of Health Education

DOROTHY R. DENNISTON - - - - - Columbia University; Sargent School of Physical Training
Health Education; Personal and School Hygiene

The Faculty—Continued

Department of Arts

IVAH N. D. WHITWELL	- - -	Oberlin Conservatory; New York University
Public School Music; Voice		
CARROLL R. ALL	- - -	Cornell University
Public School Music; Piano		
LOUISE M. ALBER, B.O.E.	- - -	Syracuse University; Leland Powers School
Oral Expression; Play Production		
GISSETTA M. YALE	- - -	Drexel Institute; Academy of Fine Arts
Arts		
HARRIET M. RAFFLE	- - -	Zanerian College
Penmanship		
DEBORAH BENTLEY	- - -	Iowa State Teachers College
Dietitian; Nutrition		
ETHEL M. FULLER	- - -	Syracuse University
Librarian		
BARBARA PLETCHER		
Assistant Librarian		

City Training Teachers

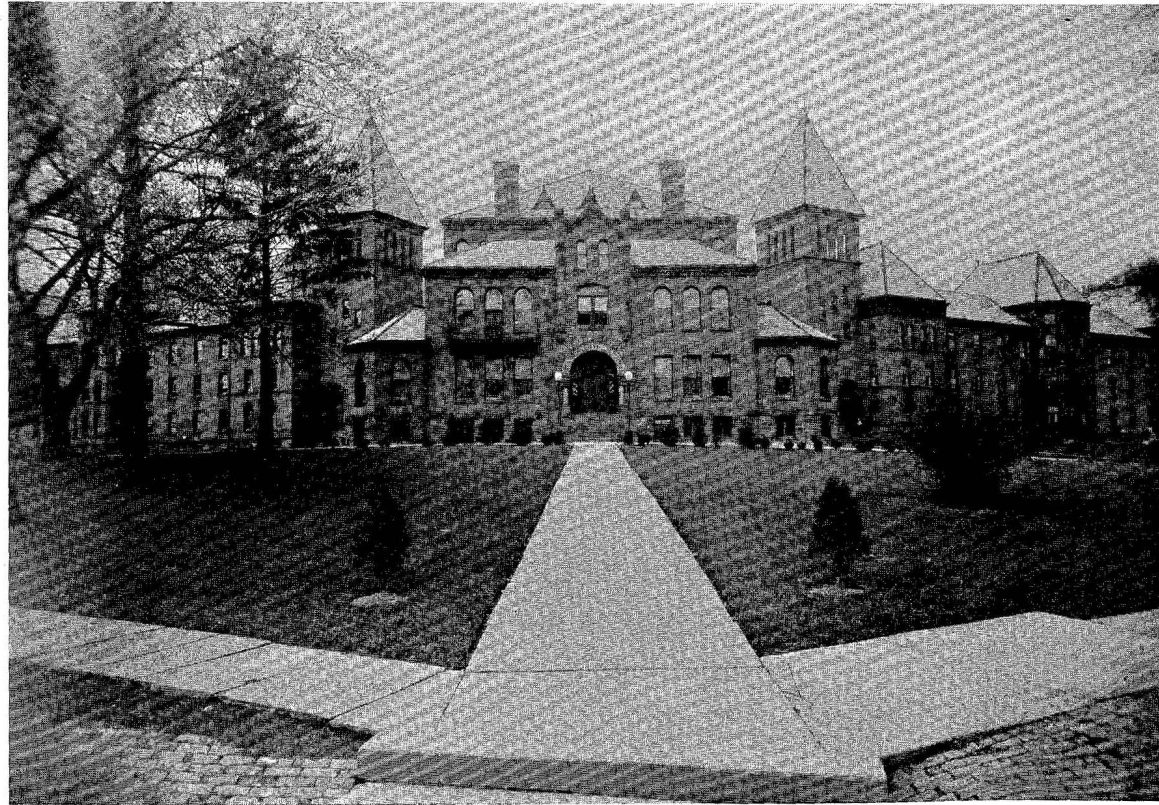
MRS. EVELYN M. HAMMOND	- - -	Penn School
MARY J. BRYERTON	- - -	Penn School
FLORENCE H. CANDOR	- - -	Penn School
ANNA T. PACKER	- - -	Penn School
CHRISTINE HABERSTROH	- - -	Penn School
BESSE BITTNER	- - -	Lincoln School
SYLVIA CLASTER	- - -	Lincoln School
ESTHER LOWRY	- - -	Lincoln School
EDNA DUNN RICH	- - -	Lincoln School
FLORENCE H. VAN DE BOGART	- - -	Roosevelt School
KATHRYN MCNERNEY	- - -	Roosevelt School
SALOME HARMON	- - -	Roosevelt School
HAZEL GREY	- - -	Robb School
DESSA I. GRESSER	- - -	Robb School
ERMA S. GAST	- - -	Robb School
MARTHA LAY	- - -	Robb School
GENEVIEVE STEWART	- - -	Robb School

Business Force

F. E. RITTER	- - -	Bursar
ELEANOR RITTER	- - -	Secretary to Principal
BERTHA MYERS	- - -	Assistant Secretary
ESTELLA UBIL	- - -	Bookkeeper
GENEVIEVE TITUS	- - -	Assistant Bookkeeper
ROBERTA SELTZER	- - -	Secretary to Principal Training School
MRS. LYDIA CRESSWELL	- - -	Household Director

Board of Trustees

HON. M. B. RICH	- - -	Woolrich, Pa.
SUPT. J. W. SWEENEY	- - -	St. Marys, Pa.
MR. I. L. PARSONS	- - -	Lock Haven, Pa.
HON. IVES L. HARVEY	- - -	Bellefonte, Pa.
MRS. CLARENCE L. PEASLEE	- - -	Williamsport, Pa.
MRS. GEORGE H. DIACK	- - -	Lock Haven, Pa.
MR. WILLIAM KEINER	- - -	Lock Haven, Pa.
JAMES P. O'LAUGHLIN, ESQ.	- - -	Clearfield, Pa.



Main Building

C · A · L · E · N · D · A · R

SEPTEMBER 15

Registration Day—

Straightway to the gym we went.
Round the ring we all were sent.
First our money—then our time
Passed away in that endless line.

SEPTEMBER 16

First girls' meeting was held. They held us long enough, too. Our new dean and council members spoke to us.

SEPTEMBER 20

Get Acquainted Party

This night again we got in line. Trust the Y. W. to show you a good time.

SEPTEMBER 22

First day of chapel. We all welcomed Mr. Drum and the beginning of those Monday morning Talks.



first Monday in Chapel

SEPTEMBER 27

'Member that night? Sure, that was the time Shake gave us a real orchestra to dance to. Shake's the bugs, says everybody.

OCTOBER 2

Play production class put on the first of a succession of plays. The class is minus men, but, oh! our self-made men. What say, Katy and Dottie?

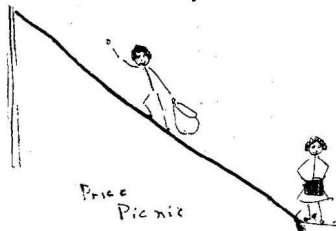
OCTOBER 3

Price can't let Shake outshine them. They tried a picnic. As for the most successful entertainment, just look at the roll books of each society and decide for yourself.

OCTOBER 4

First Football Game

Our team's off to Bellefonte,
Some went along, some didn't,
Some sang songs, some didn't,
We played a good game anyway.



Price Picnic

OCTOBER 6

Yea! for the first entertainment! Aren't we lucky to go to a school in a community that can give such plays. We surely appreciated them. Real thrills they were.

OCTOBER 10

Was the first number of 1924-25 Concert Course a success? We think so, for Hans Kindler's cello sang to us in our sleep for many nights. Was it the man or his instrument we dreamed about?

OCTOBER 13

And yet another real treat in such a remarkably short time. The Barber of Seville—Rossini. We occupied \$2.50 seats for \$.75. Leave it to us to find a way.

OCTOBER 16

Yes, any Thursday night you can hear them carolling away. It's quite the Glee Club with sixty girls.



Carol!
sisters,
Carol!
(Glee Club)

OCTOBER 18

We gave them a Backward Party;
We sure do treat them fine.
Do you suppose those Juniors
Will treat us back sometime?
Yea! Seniors!

OCTOBER 24

While we were practicing our new song with all our hearts in chapel, Mr. Brion flashed a light and snapped our picture. Why didn't he wait until we finished singing; then our eyes wouldn't have been so shut nor mouths so open.

OCTOBER 25

Forward, Central, Forward, Central. They did go forward and turned tables on Bellefonte. Some football team we've got.

OCTOBER 30

You wouldn't have known the dining room. Miss Roberts has the best ideas. We all decorated our tables to celebrate Hallowe'en, and to top it all off, Mr. Brion took our picture again.



"Watch the Birdie"

NOVEMBER 1

Ray! Faculty! Didn't they give us a wonderful dance? Yes, State had their usual representation, and say—we ought to be used to having our pictures taken by this time.

NOVEMBER 8

Hair-ribbons, flying curls, and socks,
Stick candy and lolly-pops,
Happy girls—and laughing boys:
Our Kid Party joys.

NOVEMBER 15

Gosh! Don't we like our boys to play at home and show us what they can do!

NOVEMBER 21

Arthur Middleton brought us happiness mixed with tears and homesickness for mother when he sang his last encore—"Mother O' Mine."

NOVEMBER 22

They gave us a book party,
And we had quite the time,
Just leave it to the Juniors;
They sure did it up fine.
Yea! Juniors.

NOVEMBER 23

Our community has some singers too—"The Choral Club." Didn't we enjoy that Song and Light Festival? Wasn't it fun to see some of our faculty perform?

NOVEMBER 25

Drop a penny on the drum for our Orchestra. They wanted us to go home happy, so they entertained us—also begged of us some money for new music.

NOVEMBER 26

Homeward bound—Yea, Vacation!

DECEMBER 2

Fifteen rahs for Belvie! I'll say we appreciate him, Normal's faithful friend for twenty-five years. Nobody can beat that.

DECEMBER 10

Yes, in a few years they will be the leading players on our American stage, those Dramatic Clubites of ours. The three one-act plays presented were a howling success both from the dramatic standpoint and ours. Why? They furnished another reason for the auditorium to be darkened.

DECEMBER 12

Sascha Jacobinoff, violinist, and his accompanist, captured our hearts this night. The accompanist did most of the captivating, eh, girls?

Also Shake royally entertained its members, each one receiving an appropriate Christmas present.



Shake's
Xmas
Party

DECEMBER 13

Another full day. Senior girls vs. Junior girls in first basketball game. Juniors beat, but what can you expect? Good game, anyway, and peppy cheering. Y. W. C. A. Bazaar took all our money; that is, if we had any.

DECEMBER 18

What a beautiful sight—girls all in white
With candles in their hands,
All singing Christmas carols,
Home-songs of many lands.
Outside a snow-storm flurried,
Inside—a fire and tree;
And still more songs the Glee Club sang,
Carolling joyfully.
Until at last the good-night song,
Told us their play was o'er;
What else could our pleased crowd do
But clap and clap for more?

DECEMBER 20

Who says there isn't any Santa? Sully makes a good substitute anyway. Fun, presents and good eats all pulled together for a rollicking good time.

JANUARY 9

Boys won—girls lost. What? First basketball games, but never mind, the next time it will be vice-versa or both.

JANUARY 12

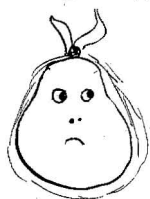
What's that noise? The Naturalist Club initiation, don't you know? By the sound of things that would be a good sort of club to belong to.

JANUARY 17

A crowning success was PRAECO Dance financially, socially, etc. If the students support the PRAECO as well as they did the PRAECO Dance, won't we proud of them?

JANUARY 25

Look at my neck—eat a pickle quick—I hope we all get them at once. If I can't go away over the week-end—darn! All that and more. Isn't it awful when the MUMPS sweep over C. S. N. S.?



mumps!

FEBRUARY 1

From old teachers to new—
Our ordeal is over;
Yours is just begun;
Observations, lesson plans,
While we have our fun.

FEBRUARY 12

Ray! A half holiday! Now we can go to the movies. We envied the city teachers. They were allowed to go out at night because they didn't have a half holiday. Bet they had a good time.

FEBRUARY 20, 21, ETC.

Wow! Give us a rest. Wasn't that a whiz of a week-end? L'Ombra, opera comique, Senior Dance, everybody's picture took a million times for PRAECO 'n everything. Many week-ends like that will finish us, not being used to excitement.

MARCH 7

Movies!!! Yes, actual movies at C. S. N. S. Movies with a real hero and heroine, even if she was fat. What would this place be without Mr. Ulmer?

MARCH 14

St. Patrick himself couldn't have been better pleased than he should have been this night.

Green, green, everywhere.

On the tables, twined in hair. Begorra, an' we shure had one lively time!

MARCH 20

Back to Ancient Days through the Senior Plays
Bible days and such—
Least we can say in any way,
We enjoyed them very much.

MARCH 21

26-27; 21-6: Victory: Victory.
Aren't our boys and girls teams the bugs? Doing that all in one night, on our own floor, too, so we could see the grand fray?
Yea, teams!!!!

MARCH 24

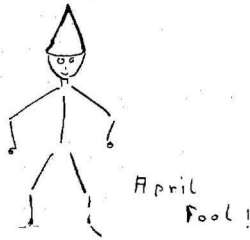
We ought to have more practice at attending banquets. We'll need the knowledge when we're out in the world. Many thanks to our much esteemed trustees for this one, which, followed up by Marie Sundelius, makes this one night we won't forget in a hurry.

MARCH 28

"Fools aren't all dead yet," some one has said, but anyway we had a hopping good time at the April Fool Party, capably engineered by the Y. W. C. A.

MARCH 30

Munips and measles are still straggling along. That's the life of a school teacher. Don't you wish you had had them when you were a kid?



APRIL 1

A dark cloud is hanging over C. S. N. S. as our highly esteemed friend and advisor, Dr. Drum, is leaving. However, they say that every cloud has a silver lining. Our cloud is no exception. Ours is Dr. Armstrong, whom we feel sure will be capable of taking up the reins of responsibility which our principal has so efficiently held.

APRIL 2

Marks! The usual bugbears! Yes, I suppose they will have to precede us home and make our vacation miserable.

APRIL 4

Yea! Off for a ten day frolic!

APRIL 14

Frolic it was and how hard it is to get back to work. Cheer up, kids, it isn't long until June, then all will be over.

APRIL 20

Again the rush for observations begins. "I need six." "I must have one in music." "I only have eight." "Thank heavens mine are all in." That's the kind of stuff we hear around here now.

APRIL 25

Poor little things, all ragged and dirty,
Some are ten and some are thirty;
Anyway all are alive and hearty,
Enjoying themselves at a Poverty Party.

MAY 2

Another one of these enjoyable Naturalist hikes! It makes one envy the members, doesn't it? Don't you wish they would 'vite you?

MAY 15

We know we have a kindergarten. How could we help but know it when they demonstrate their accomplishments so freely to us. We all enjoyed their program of nursery rhymes and singing games this morning.

MAY 8

Tonight is the night of the Indoor Meet,
I wonder who is going to beat.
Maybe the Juniors, maybe us,
But anyway it's quite a fuss.

MAY 9

Leave it to the Juniors to make a success of anything. Wasn't that Junior Prom quite the affair? Do you suppose they will make as great a success of being Seniors.

MAY 16

Yes, tennis is a good sport. At least the inmates of C. S. N. S. think so when they rouse the idle sleepers at 5:00 A. M. to play. It's sure a great life at the height of the tennis season.

MAY 28

Jump high and jump low,
Be sure you don't run too slow;
Play fair and see who'll beat,
At our annual track meet.

MAY 29

Who says the Juniors aren't dramatic? They didn't see those plays then, for they sure were spiffy. Our hats off to you, Juniors!

MAY 30

Alumni Day! I bet all the Alumni do not recognize the place after all the improvements of the year. Hear their cry?
On with the eats!
On with the dance!
Ray, Banquet and Dance.

MAY 31

This helps the Seniors to look upon the serious side of life. Whoever began the idea of the Baccalaureate Service anyway?

JUNE 1

"Busy week," the Seniors say
First in order is Senior Class Day.

JUNE 2

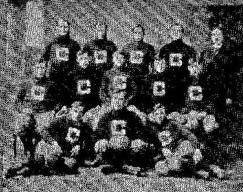
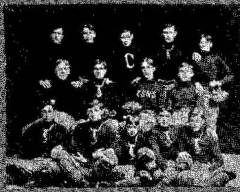
Commencement! Gee whiz, that means beginning, and here I thought I was quitting. What's the idea?

JUNE 3

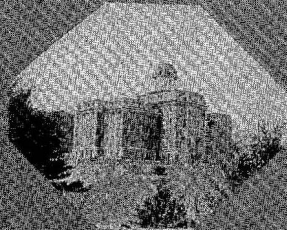
At home.
It's all over, mother. I'm sorry and yet I'm not. Now life begins. I see now why yesterday is called commencement.

1901

1901



AS IT WERE



As It Were

In his flight through the years to the period from which the sprightly figures appearing at the various intersections throughout this book are taken, the PRAECO has seen many interesting events in Central State History.

Having traveled around a bit first before starting his backward flight, PRAECO wondered why the Normal at Lock Haven should have been built on the slight elevation afforded by the slowly rising expanse of campus, when so many other Normals of the state were seated on lofty hills. So, discarding his trumpet for a feather duster, PRAECO attacked the musty volumes of Central State History. He found Central State beginning its history on a hill also, the one back of the boys' dormitory. Its home was a six-story building, one of a height to rival that of the hill itself. The approach to it was gradual, up the boys' glen to the spring and then in by the road which is now only a path. Three flights of steps, with banisters for the protection necessary to one falling down the 109 steps of the flight, formed a nearer approach. The banisters of these steps were always a temptation to training school youngsters, who enjoyed sliding down the banisters more than they did walking up the steps to school. One little girl's grandmother asked her how she happened to wear her clothes out so quickly. "Oh," she said, "I sit so much to study."

More steps led to the building itself. The first floor held the dining room, kitchen, laundry, bakery and heating plant. The second was devoted to classroom and apartments for the faculty members who boarded there. The training school was conducted on this floor. The rest of the building was given over to dormitories, the third and part of the second belonging to the girls and the fourth and fifth to the boys.

Dr. A. N. Raub was the first principal. This man, with Dr. Beard and Dr. Eldon, fostered the healthy growth of the school until its enrollment reached to numbers varying between four and five hundred. Dr. Eldon was principal in 1888. One Sunday morning in December of that year the furnaces became overheated and the heat caused spontaneous combustion in some inflammable materials stored in another section of the building. There wasn't a sufficient amount of water in the reservoir (the foundations of which are still on the hill above those of the old Normal) to save the building, and it was entirely ruined. One element of comedy that might have been found in the tragic situation was the sight of students throwing pictures, bowls and pitchers out of fifth story windows and carrying pillows and covers carefully down the fire escapes.

The Montour House, which with the changes of time has become the Riverside Apartments on Water Street, was rented so that classes might continue. Chapel was held in the bold barroom and classrooms and students apartments filled the rest of the building. Many of the students lived among the townspeople because of the lack of accommodations in the Montour House. Fire and water seemed to have united in their efforts to destroy Normal School life at Lock Haven, for in June, 1889, the Susquehanna River came from its banks and covered almost the entire city. The water at Prieson's Drug Store on Main Street was seven feet deep. At Montour House it was considerably deeper, situated as it is beside the river. For three days provisions could not be obtained; it seemed like the problem of the five loaves and two fishes over again.

After the flood an epidemic of swamp fever swept over the city. Seven Normal School students died, one being buried on Commencement Day.

School was held in Montour House about two years. Then Dr. Eldon and the student body took possession of the new Normal School, the same one we attend.

Central State Normal has always been the property of the State, although the land which both main buildings occupied was granted by Philip M. Price. When the new school was built it was found necessary to purchase the campus on which the Principal's house stands and the land where the training school and power house are. It might be interesting to Pricites to know, (if they do not already know) that it was in honor of Philip M. Price and his wife that their society was named. The forerunners of the Shakespeare Literary Society was known as the Raub Lyceum, in honor of the first principal of the school.

The reappearance of football among C. S. N.-S. sports has caused not a few to wonder about Normal's football history, which, as Mr. Sullivan says, is mostly ancient. PRAECO's research work reveals that most of it was made between the years 1903-10. The first team was coached by Prof. Fishe. From the inscription on the ball he gathered that they were called the C. S. N. S. Reserves. Notice their equipment, complete from nose guards and holey stockings to mascots. This team scheduled such teams as Dickinson Seminary, Bucknell and State College Reserves, and Bellefonte Academy. In succeeding years the coaches were Bender, halfback from Syracuse, and Ralph Hall, now an attorney at Philadelphia.

1907 was evidently the banner year in football. Prof. High was manager of the team. Only one game was lost, and that to Williamsport High

School. A special train leaving at the Normal crossing was engaged to take the student body to the Dickinson Seminary game. It was well worth while, for they brought home a 17-0 victory. This is the only time in the history of the school that a Normal School team has been victorious over the Seminary. Those on the team, starting from left to right, are: First row, Robert Peck, Francis Walter, Ralph Parsons; second row: Dr. David Thomas, Hon. Charles Donahue, Harry Parsons, Henry Shearer, Frank Knecht; third row: Lee Wilson, Ben Linn, Allen Webb, Clinton Colebaugh, M. DeTurk High, Manager.

1907 also produced a good basketball team. PRAECO predicts that if the camera man had waited much longer to snap the picture, he could now show you a very fine picture of a basketball team in action. Just look at snow!

1910 is virtually the last chapter in the ancient history of C. S. N. S. football. Maybe tennis took its place, judging by the larger number of fans willing to pose for their picture.

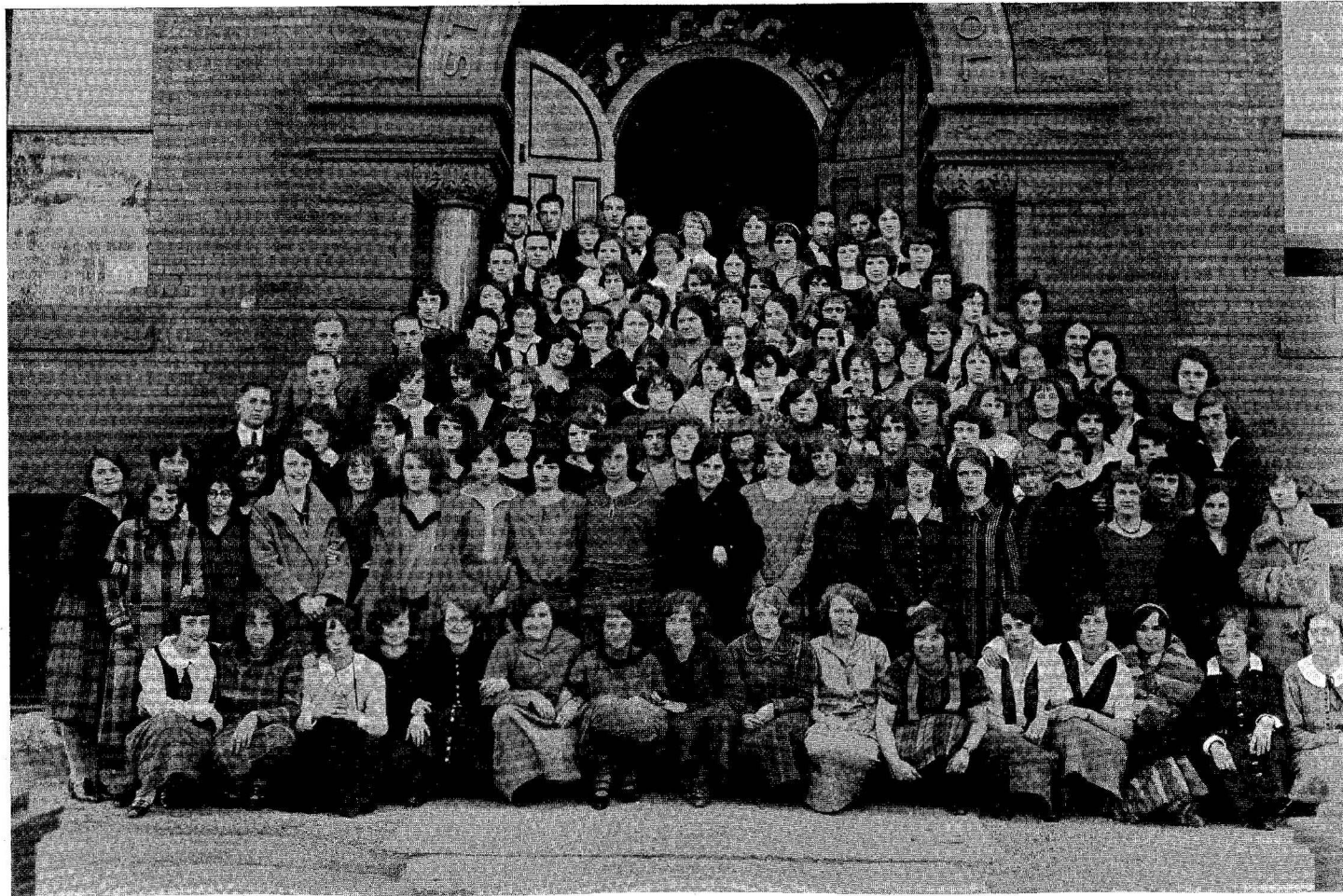
Today those socially inclined entertain in the library. It used to be the custom for the girls and boys to alternate in groups at the pastime of entertaining. One night the boys would stage a minstrel show, and the next night the girls would arrange an entertainment. This accounts for the old fashioned costumes in the group of girls on the snapshot page. The little dog was the property of Carlson's greenhouse and had to be returned after every practice. He was well chaperoned.

For a number of years fraternities were active in the school. Two of the most prominent were the O. N. O. and the Baldwins. No fraternity has been active in the school for some time, owing to the small number of boys in attendance.

Dr. Eldon was principal when Belvie came to the school. Since then Dr. Flickinger, Dr. Singer, Dr. Lose and Dr. Drum have all taken turns at guiding the destinies of the school. During Dr. Drum's term of office the school was made one strictly for the preparation of teachers. Liberal arts courses, domestic science, and other science courses were not included in the curriculum. The school was made to specialize in Junior High School, Intermediate and Primary work.

PRAECO now lays down the feather duster by which he discovered the past, and the pen by which he recorded it, with the wish that you will enjoy reading about it as much as he has enjoyed learning about it.





JUNIORS

The Junior Class

CLASS COLORS—Purple and Gold.

CLASS FLOWER—Yellow Tea Rose.

CLASS MOTTO—Not on the heights but climbing.

Class Poem

Ah yes! They once were blithe and gay
As on they went from day to day,
But now, they're serious. "Who?" you say?
The Juniors!

They're working hard to do their best,
Are building good foundations, lest
When out in life they'll fail the test.
Proud Juniors!

They seek the good, and loathe the base,
So that they too may stand the pace
Set by Seniors who've won the race.
Rah! Juniors

They're striving now for something great,
But they'd give up their all, as sure as fate,
To uphold the standards of Central State.
Brave Juniors!

ANN GINGERY.

Junior Class History

Chapter I

WHAT THE JUNIORS DO

At times you may have stopped to think whether the Junior class is really of any account in the life of the school and if it enters into the various school organizations and into the life of the school with a vim, bringing new ideas into play and thus bettering the school. A little glance into what the members of the class are doing here might be as good a way to prove the point as any.

We had seven representatives on the football squad and three on the basketball team. The girls have a 100 per cent. Junior team. In the Dramatic club there are three. Eight Juniors belong to the Naturalists' club. The Art club has its quota. When it comes to selecting officers for Y. W. and Y. M. the Juniors seem to have a pretty good chance. The Orchestra, with five Junior members, would have to about stop functioning if the Juniors quit. In such things as Audobon societies the Juniors have full sway and things are accomplished with a rush. Everybody admits they can't get along without the Juniors in Shake or Price.

So there you are; the Juniors play such an important part in every activity that goes on around the school that if they should suddenly leave school—well, what would happen?

Chapter II

WHAT WE HAVE DONE

We sometimes wonder if all the Junior busy-bodies have been so busy in their high school days. Or whether there is such a dearth of athletes as indications show, when the call for basketball candidates is sent out.

There are twenty-four who have played basketball in high school. Is there this number playing here? In other forms of athletics, such as volley ball, tennis, and track, there are eighteen who were stars before they came to Normal. We have at least five good cheer leaders and four athletic managers numbered among our ranks. This ought to make things hum.

Fifty Juniors were interested in plays and dramatic doings. Musically, we stack up with the best of them. We could have a Glee Club of close to forty voices, and a thirteen-piece orchestra, composed of no one but Juniors. There are eleven experienced people to select from when election time comes around for Normal Times. There are at least a dozen former class officers left to try out next year when we organize. Students belonging to literary societies and other organizations number not far from seventy-five.

So you see there is some reason why the Juniors should be such an important part in our school organizations. They have been in such before, and something good you just can't keep down.

Junior Class History—Continued

Chapter III

OUR PAST AND FUTURE

Up to this time we have done very little as a class. We gave a book party in the fall which was something new, instructive, and at the same time entertaining. The Juniors talked before the party and the rest of the school after it was over. When basketball season came around the Seniors thought that they would strut their stuff and show us how to play the game. But after we had won a game from them by a comfortable margin they had a little more respect for us.

At present we are eagerly looking forward to, and planning for, the time when we will step into the social limelight for a time, with the holding of the Junior Prom, on the ninth of May.

May 29, after producing the class play, the Juniors (then dignified Seniors), will be ready to leave until September, when the school bell rings again.



Junior Class Officers

DAVID C. ULMER, President
"Dave" Lock Haven, Pa.
 Naturalist Club; Dramatic Club; Secretary Y. M. C. A.; Football; Basketball; Shakespeare.

Known as "Curly-Headed Dave." This nucleus of our class cannot be surpassed in ability to handle junior business and in applying his affections to our school lassies.

CARL C. LOFTUS, Vice President
"Zip" Eldred, Pa.
 Dramatic Club; Shakespeare; Football; Basketball.

"Zip," a very appropriate name applied to our speedy fullback and center. Loftus comes from Eldred. "Up in the wide open spaces where men are men."



BETTY KENNEY, Treasurer
"Betty" Osceola Mills, Pa.
 Rho Omega Lambda; Vice President Y. W. C. A.; Shakespeare.

Betty with her smiling face
 Has surely found her proper place.
 We cannot help but pay our dues;
 When Betty's near, we're minus "blues."

MARJORIE BASTIAN, Secretary
"Marj" Williamsport, Pa.
 Alpha Sigma Tau; Treasurer Y. W. C. A.; Shakespeare.

Now "Marj" is not tall, or skinny, or fat,
 But a plump little thing we enjoy looking at.

MARGARET SLOEY, Cor. Secretary
"Peg" Ramey, Pa.

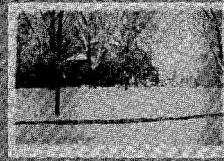
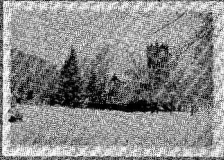
Rho Omega Lambda; Y. W. C. A.; Price.

"Peg" Sloey, not so slow,
 Surely makes the old class go.
 A letter here and a letter there,
 When business calls, "Peg's" everywhere.

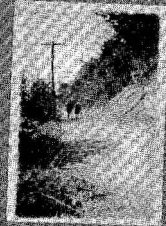
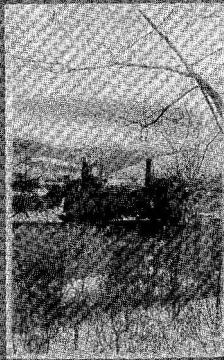
Junior Class Roll

ABELE, LEONA	FRIEDMAN, SARA	MORRISON, EDITH
BAILEY, ALICE	FRISBEE, HAZEL	MUIR, ALWILDA
BAILEY, MARIAN	GINGERY, ANNE	MYERS, MILDRED
BASTIAN, MARJORIE	GUMMO, CATHERINE	NUSS, AUGUSTA
BECK, BERNICE	GURRELL, MARGARET	PEARSON, PEARL
BECK, GRACE	HAGERTY, HELEN	PHILLIPS, ORPHIA
BERKWATER, FLORENCE	HASSON, KATHRYN	POMEROY, WILFORD
BITNER, WILLIAM	HIRSH, MARGARET	REAMS, LENORE
BLACKBURN, BESSIE	HECK, HELEN	REITER, MILDRED
BLOCK, BETTY	HOLMAN, HETTIE	ROBB, JOSEPHINE
BLUMENSCHNEIDER, RUTH	HOMAN, NELLE	ROBB, SARA BELLE
BOWER, ROSE	HOUCK, ETHYL	RUDDY, MARY
BROPHY, EUNICE	JOHNSON, CARMAN	RUPERT, DOROTHY
BRUNGARD, ZELDA	JOHNSON, ETHEL	RYAN, AGNES
BURMAN, ROBERT	JONES, KATHERINE L.	SANFORD, TRESSA
CAMPBELL, DOROTHY	JONES, M. KATHRYNE	SCHENCK, MARGUERITE
CAMPBELL, EDNA	JOYCE, VERONICA	SCHROTH, ESTHER
CAMPBELL, JANET	KEEGAN, KATHERINE	SHARP, LENORE
CARL, MARGUERITE	KEIRN, FREIDA	SHEEHAN, HELEN
CHAPMAN, ELEANOR	KEPHART, LILLIAN	SHELLENBERGER, BETTY
CLARK, GENEVA	KELT, HARRIET	SHOPE, EDWINA
CLUNE, LORETTA	KENNEY, BETTY	SIEGEL, FRANCIS
COLEGROVE, GLADYS	KING, WINIFRED	SIMCOX, GRACE
COLLINS, MARY	KNAPP, CHARLOTTE	SLOEY, MARGARET
COONEY, MARY	KOKRON, HELEN	STERE, CHARLOTTE
CRANDALL, ELEANOR	KURTZ, KATHARINE	STEVENSON, CAROLINE
CROCKER, GRACE	LARKIN, FRANCES	STINEY, BERTHA
CROYLE, FLORENCE	LAWSON, LESLIE	STRINGFELLOW, GWENDOLYN
CULLEN, THELMA	LOFTUS, CARL	SUNDBERG, EDITH
DALE, RITA	LUNDGREN, ELSIE	SWARTZ, HELEN
DIETRICK, MARY	MADIGAN, GERTRUDE	SWOYER, CLYDE
DIRLAM, BESSIE	MAGUIRE, ALICE	TAYLOR, MARY
DONAHUE, GERALDINE	MARR, HELEN	TITUS, GORDON
DONOVAN, MADONNA	MARRONE, ANGELINE	ULMER, DAVID
DUCK, MILDRED	MCCCLINTOCK, ALVERA	WARD, JESSE
EBERHART, VIVIAN	McMACKIN, ELEANOR	WELSH, AMELIA
ELSE, ANNA	MILLER, DOROTHY	WETZEL, RUTH
FAHLMAN, ANNE	MILLER, VIRGINIA	WIGGIN, THOMAS
FELIX, SARAH	MITCHELL, WINIFRED	WILKINSON, BEULAH
FISHBURN, MILDRED	MITTIFER, EDITH	WILLIAMS, ELIZABETH
FISHER, CATHERINE	MOBERG, MABEL	WINKLEBLECH, ANNA
FITZSIMMONS, REGINALD	MOORE, ALBERTA	WOLF, ROBERTA
FORTNEY, KATHRYN	MOOSE, HAZEL	ZERBY, BESSIE
FREDERICKS, HUGH	MORAN, MARGARET	ZUREWICH, MARGARET
FREY, MARGARET		

30120



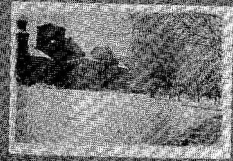
SCENES



HERE

THERE

AND



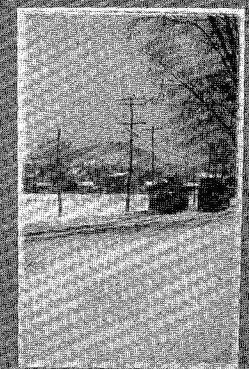
30120

SIXTY-TWO

1913



AROUND THE CAMPUS



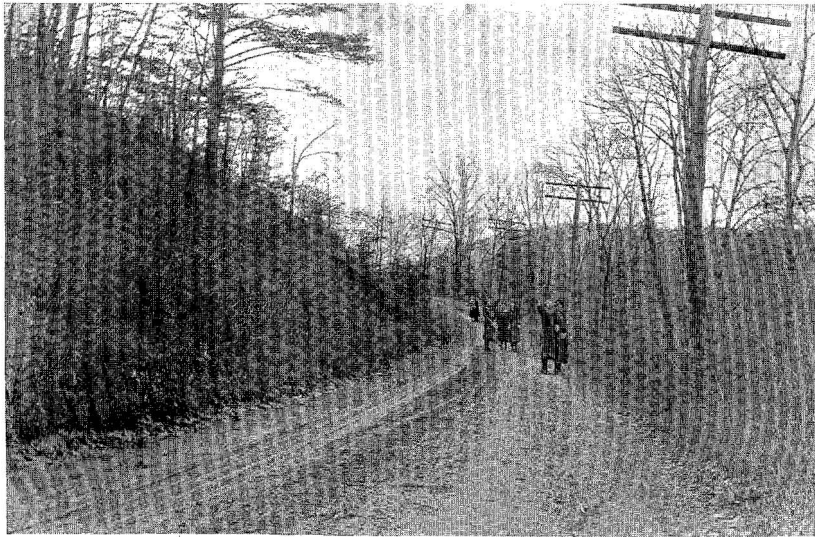
AND WHERE THE TRAIL SHALL MEET



1913

LAND

LAND



Girl's and Boy's Glen

PRINCIPAL

PRINCIPAL

LITTLE

1925



PRAECCO

Preface

Class books are great inventions:
The class gets all the fame,
The printer gets the money,
And the staff gets all the blame.

Miss Theodosia Hozoo—R.Tz.—I.L.—P.D.Q.

Miss Theodosia Hozoo was born in Reno, Fiji Islands, 1648 B. C. Her education was mostly ornamental, much time having been spent in studying ascetic dancing and Hindu languages. Her higher education was acquired in Bath, Iceland. She later went to Muzhik, Russia, where she was Bachelor of Divinity in Vodka College. She then returned to her native home, where she started a movement for Two Votes for Women.

She set sail for Tampa, China, in 1750, where she spent several years in social service work. The years from 1803 to 1875 were spent relieving the oppressed nobles of Southern Africa.

With most insincere wishes and no appreciation for the very noble work she has accomplished,

We dedicate this most insubordinate book to Miss Theodosia Hozoo.

Seniors

NORA RICKWELL (Dumbelle) - - - - - Hollywood, Pa.

(President of Lukewarm Association)

Nails and Hammer Club; Campus-Trees Society and
Hide and Seek Sorority

Nora is at present under my supervision, so I have had little chance to study her character. There will be little that can be said concerning her mental ability, which I conclude to be slight. She belongs to no club or society, but has great desire to join them all. Keep 'er up, old kid, you'll win yet.

JERRY SMILES FRECKLES (Sprint)

(Nothing at all)

Our loss is so great that we can say nothing about poor Sprint's accomplishments. He came here with the illusion that he must study for success. Success has crowned his efforts; now we extend our sympathy.

TURNIP T. OPP (Eppie)

*(President of Society of Mostly Otherwise; Treasurer
of Council for Defense of Unbalanced)*

The teaching profession closes its doors on one of the most talented housewives that ever tended furnace, when it sends poor Eppie to the bar. What will the poor unbalanced do without a leader to help them out of the rows with the Profs. in the future?

JONATHAN ROBERTS (Jonah)

(Termination of Ills; Council to Draw; Help for the Underdog)

Jonah came to us with all the decorations of early childhood. This gave him a good understanding of the Prof's actions and placed him in position to bridge the gulf between the widely separate organizations. The loss of Jonah will be too small to state. We'll miss you, Jonah—at times.

Ode to Faculty

Here's to C. S. N. S.,
Beloved by us all,
Here's to all the faculty,
Little, big, or tall.

A few of them I'll mention,
For now I don't recall
The names of each and every one;
My memory is small.

Miss Whitwell is a singer,
She sure sings very well,
And Tremmy is so humorous
That he always makes us yell.

Miss Roberts, Dean of Women,
Keeps us busy all she can.
And when we slack our lessons
Mr. Ulmer's cross—like most men.

Of course that's not all the profs.,
The rest I'll mention again,
For it's time I quit now;
"Ten o'clock," says my Big Ben.

- - -

Faculty

<i>Position</i>	<i>Name</i>	<i>Degree</i>	<i>Training</i>
Judge - -	Maechal Van Snider Fresh		Rhoe Academy
Asst. Judge - -	I Can T. Tell	DEF	
Bouncer - -	One I Out	U. R. Next	Self Trained
Astronomer - -	Look I Up		None
Geologist - -	I Look Close	G. W.	Nature
Buccaneer - -	Terrible Sight		Vast Ocean
Troubadour - -	Love Lorn	F. R. S.	Night School
General - -	Great Patriot		Central Square
Gentleman - -	D. E. King	N. H.	Ancient History
Spectator - -	Miss Never	I. C.	Observatory

Snap Shots

Mr. Sullivan is fearful for his Sociology Class. He's afraid that since they are so spontaneous they will have combustion some day.

Don't study when you're tired,
Or have anything else to do ;
Don't study when you're happy,
For that will make you blue.
Don't study in the daytime,
And never study at night ;
But study all the other times,
With all your main and might.

The girls swear a mouse has nine lives. After killing one, eight more appeared at intervals. They all looked alike.

Mr. Trembath—"Victor Peters—Mr. Peters here?"

Peg G.—"He isn't here."

Mr. T.—"Yes, he is, right here in front of me, behind that wad of gum."

Miss Roberts—"I want to remind you that breakfast is still being served in the dining room at 7:30 every morning. You should start the day with something in your stomach—anything is better than nothing."

Don't Ever:

Study in your own room ;
Somebody else's is nicer.
Accept a bid to a feed ;
Your pal will bring it to you.
Wait till time to use Student Kitchen ;
The council doesn't care.
Get up for church in the morning,
You'll have to walk if you do.
Go to social hour ;
The boys will rush for you.
Stop complaining about teaching ;
That's what makes good teachers.
Annoy anyone who is taking a shower ;
Their turn next !

Wouldn't it be lonesome if :

Katy Kurtz didn't have a uke?
Madeline Weakland did her own work?
Al Hauke or George Close forgot to argue?
Alma Knisely didn't criticize?
The Faculty should resign?

Bernice (In girls meeting)—“Helen, when we want repairs, where should we go?”

Famous Sayings

“The rolling car gathers no women.”
“All the world loves the back seat.”
“People who live in fur collars shouldn't throw moths.”
“Give me victory or give me an alibi.”
“Dance and the world laughs with you; neck and you neck alone.”
“A thought in time saves an explanation.”
“A straight lane has no place to park.”
“Great aches from little corns grow.”
“There's many a slip twix the hip and the lip.”

She (Moonlight)—“Do you know what a dumb waiter is?”

He—“Sure, an undeveloped elevator.”

She (More moonlight)—“I should say not; it's a man who asks a girl for a kiss and waits for her to say yes.”

100% I did.
90% I will.
80% I can.
70% I think I can.
60% I might try.
50% I suppose I should.
40% What is it?
30% I wish I could.
20% I don't know.
10% I can't.
0% I won't.

Hoot (after listening to the harmonious discords of a dance supposed to be medley—“Huh, this isn't melody.”

For once Byron McDowell has stopped kidding—the reason is: Bessie Blackburn.

Close (rapturously)—“Edna's lips look so tempting to me.”

Hoot—“Yield not to temptation.”

Huge Joke

C. S. N. S. dining room rivaling the Waldorf-Astoria.

“Pat, do you know what to eat, what to drink, and what to avoid?”

“Sure, I do. Eat all I can, drink all I can and avoid bursting.”

Mr. Sullivan—"What is an instinct?"

T. K.—"It's a tendency to do something."

Mr. S.—"Most people have a tendency to get fat around forty; is that an instinct?"

T. K.—"No."

Mr. S.—"Well, what causes it; work?"

Jack—"No, lack of it."

One—"Do you like 'Tosti's Good-bye?'"

Two—"Don't know the gentleman, but I'm satisfied with Bill's."

She—"Dad says that you have more money than brains."

He—"That's one on him, I'm broke."

She—"Yes, he mentioned that."

"Who's your letter from?"

"Jack."

"Well, read it to me; Ben forgot me this morning."

We notice that Hauke and Nellie are dancing straight programs again. Nellie, what about Andy?

Burman—teaching second grade rote song—sang first phrase—class repeated.

Sang second phrase incorrectly—class didn't sing.

Bob—"Well, if I didn't sing it right, you do."

Remarks Heard During Waldorf-Astoria Week

Jo—"What kind of potatoes is that?"

Ben—"Oh, that's Waldorf soaked with Castoria dressing."

Anybody want a box of candy?

Go home with Hilda and some fellow will send you one.

C. S. N. S. Scandal

Prof. Schrot and Hon. Follmer, Esq., have been duly notified to appear before the Mayor of Lock Haven for defacing public property.

You will post bills, will you?

Has anybody noticed that Woody has recovered from his stuttering this year?

What's the object, Woody?

Added to Ads

Ask the Man Who Owns One	- - - - -	A Girl of C. S. N. S.
The Flavor Lasts	- - - - -	Friday's Fish
Ever Ready	- - - - -	Student Council
Happiness in Every Box	- - - - -	From Home
Improve Your Line	- - - - -	When Asking for Permission
Eventually—Why Not Now?	- - - - -	An Old Maid
What's Wrong With This Picture	- - - - -	Bert Wolf Without a Man
There's a Reason	- - - - -	Edna Hartsock
Just Whistle	- - - - -	For Belva
Four Out of Every Five	- - - - -	Have Visions of Flunking
Send No Money	- - - - -	Never Written Home
Most Daring Book Ever Written	- - - - -	A Note-Book
After Every Meal	- - - - -	A Trip to Titus'
It Pours	- - - - -	Every Week-End
Time to Retire	- - - - -	10 Bells
The Ham What Am	- - - - -	Is Usually Not
Gifts That Last	- - - - -	Those 4's and 5's
The Danger Line	- - - - -	The Main Entrance
Convince Yourself	- - - - -	Then Stick to It
A Skin We Love to Touch	- - - - -	Our Diploma

Max (summing up his diseases)—“I've had pink eye, ring worm, measles, flue, mumps, chickenpox, and I've had smallpox, too.”

C. U. (staring in amazement)—“'Deed, Max. If you'd a had small-pox you'd a-been worse looking than you are now.”

Miss Roberts—“Mr. Burman, compare the adjective speedy.”

Bob—“Speedy, not so speedy, stopped.”

If you need information as to late cases, ask Belva. He keeps posted regularly over the top of the Lock Haven Express.

Schoie—“He holds me a foot away and I keep in step. If he holds me a yard away I keep in step, but if he holds me close I get out of step. Why is it?”

Mitch—“Must be your mind isn't on your work.”

During the Thanksgiving vacation, spent at Hilda's, Barbara's greatest trouble was making an impression.

Barbara—“We'll have to hurry so I can curl my hat, 'cause if I take my hair off, what'll the boys think?”

Before the First Dance

Senior—"And what time is your man coming; you know I have the second dance?"

Junior—"Oh, I told him about 10 was good, though that means 10:30."

Senior—"But, my dear, the dance is over at 11:30."

That Junior is no more.

Century Review

You said, "I Wonder What Became of Sally?" Yesterday I saw "Pretty Little Blue-Eyed Sally" going down "The Long, Long Trail" to "Memory Lane" with "Charlie, My Boy" in "The Covered Wagon," drawn by "The Old Gray Mare." Charlie was saying, "Sweetheart," "What'll I Do" "After You're Gone?" She said, just "One More Day" "Till We Meet Again," "Down by the Old Mill Stream," where we will watch our "Love Ship" "Sailing Down Moonlight Bay" into the "Harbor of Home Sweet Home." Sally said, "Do You Remember" "Sweet Alice Ben Bolt"? Charlie said, "Never Again," I've torn up all my "Faded Old Love Letters" because I'm just wild about "Sweet Little You." Sally sighed and said, "I Think You're Absolutely Wonderful," "Put Your Arms Around Me, Honey," and Charlie stole "A Kiss in the Dark," meanwhile "Whispering" "Will You Remember" "Hot Lips" and "Moonlight," "My Little Dream Girl."

Just then "Peter, Peter Pumpkin Eater," came "Drifting Along," singing "Yes, We Have No Bananas." He said to Charlie and Sallie, "I Ain't Nobody's Darling," "I'm So Lonesome." Sally said, "Oh, Peter, You're So Nice," but you're "Forever Blowing Bubbles." Peter said, "Tell Me, Little Gypsy" "Where's My Sweetie Hiding"? Just then "Georgette" appeared on the scene. She said to Peter, "Come down to "The Old Swimmin' Hole" near "The Little Red School House." They were gone for "A Long, Long Time."

After Peter and "Georgette" had gone "Charlie" said "In the Good Old Summer Time" "When the Preacher Makes You Mine" we'll build a "Love Nest" "Down by the Grand Old Allegheny" where we will have "Tea for Two." "Sally" said, you "Break the News to Mother." Charlie said (in an undertone) "Why Did I Kiss That Girl?" (aloud he said) "Two Tired" "You Tell 'er, I Stutter."

As they neared "The End of a Perfect Day" "Sally" sighed, "I'm just Wild About Harry." "Somewhere a Voice Is Calling," so she went home to "Mother" who commanded "Stand Up and Sing for Your Father an Old Time Tune." Charlie cried, "Goodbye Forever," and started on his way to "Mandelay" and was now "Forgotten" because he was "Absent."

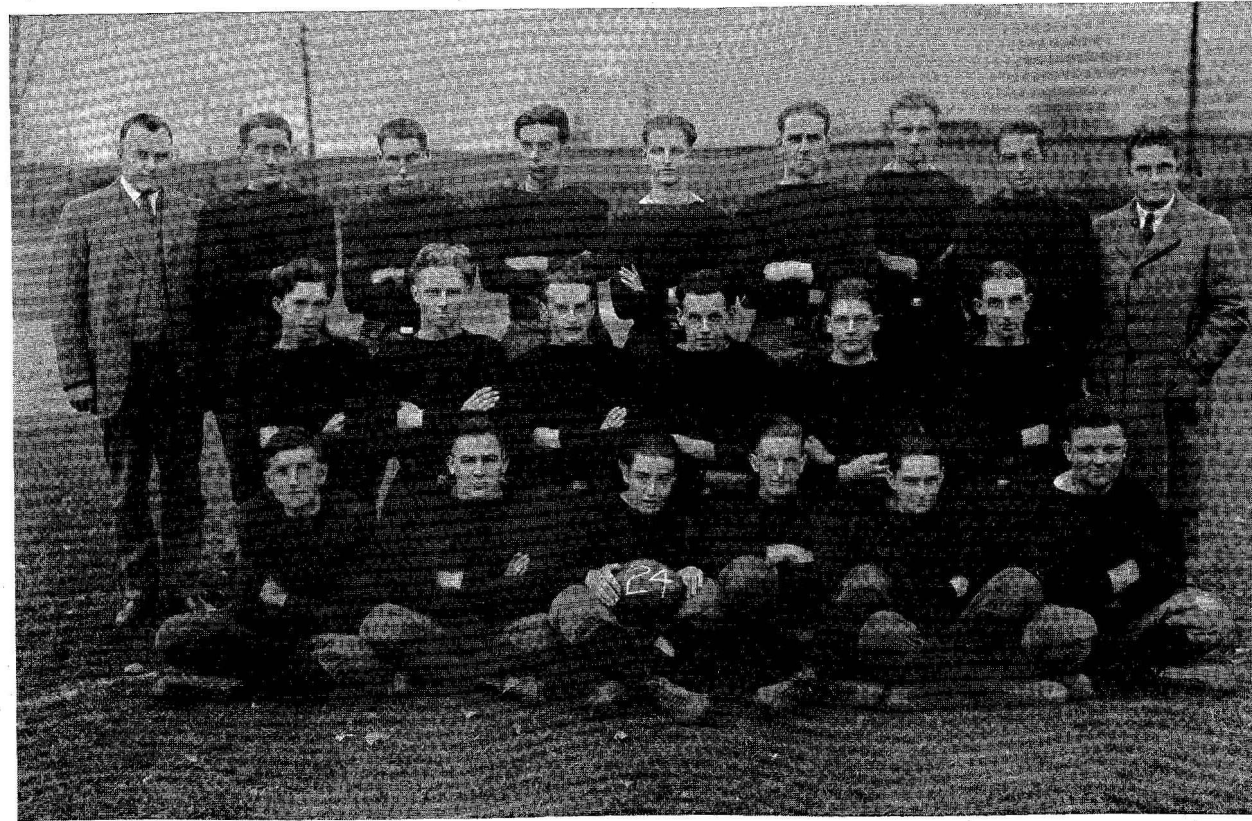
Still "At Dawning" "Sally" is "Dreaming" of "Me and My Boy Friend" "Coming Through the Rye" singing "Love's Old Sweet Song." "At Evening" Charlie's thoughts keep "Drifting" in a "Dream of Love" by the "Mountain Spring" to a "Blushing Debutante."

CONTENTS

CONTENTS



ATHLETICS



1924 Football Team

The Season

The team of 1923 established football at C. S. N. S., but it remained for the team of 1924 to establish a record for future teams to uphold. The enrollment of boys increased this year to twenty-seven, nineteen of whom reported for practice. Under the efficient coaching of J. Wynn Fredericks a team was molded. With the heavy schedule that had been arranged, it was necessary to get the team into shape very quickly.

The first game of the season was played against the strong Bellefonte High School team October 4, 1924. C. S. N. S., having had only one week of practice, was sadly lacking in smoothness and co-operation. The team looked like a bunch of pick-ups during the first half. Bellefonte scored two touchdowns and deserved more. During the second period C. S. N. S. began to settle down and to show real fight. Bellefonte succeeded in scoring one more touchdown during this period. Although this game was lost, it had its value in disclosing weaknesses, the last half instilling some confidence in the men.

The second contest was played at Renovo, Saturday, October 11, against the St. Joseph High School squad. Here C. S. N. S. had an account to settle from last year. The team, having a week more of practice, felt much more confident. The game surely showed this. C. S. N. S. scored two touchdowns in the first half; in the second neither side scored. On two occasions Normal had the ball within the five-yard line but failed to score. The punch was just developing.

The first home game of the season was played at Hanson Field, October 18, against the St. Joseph High, of Renovo. Renovo had strengthened her team by the addition of a few men, and, knowing our strong plays, had all intentions of taking a victory home. Normal succeeded in making a touchdown in each quarter. The visitors were held scoreless.

Normal's chance to settle accounts with Bellefonte High School came October 25. Despite the memory of a former defeat Normal was confident of winning. Bellefonte was equally expectant of victory, not having lost a game. The first half was a real battle, each side scoring a touchdown but missing the extra point. Each team came back at the beginning of the second half with the determination to conquer.

This half held victory in store for C. S. N. S., as she scored two touchdowns, Bellefonte being blanked.

November 1 saw the C. S. N. S. team invading the enemy's territory. This trip led to Mansfield, against the Mansfield Normal. Two bus-loads

of rooters accompanied the team and surely displayed their ability to cheer. Mansfield expected an easy victory, but at the end of the first half, during which neither side scored, they were not so confident. During the first period of the second half they carried the ball fifty yards for a touchdown by line plunges. C. S. N. S. was not to be denied; with almost certain defeat staring her in the face the players, aided by their loyal rooters, came back for a touchdown. The point after touchdown was missed, leaving Mansfield victors by a margin of one point.

The following Saturday saw Normal stacked up against too strong a team. This was St. Thomas College of Scranton. The C. S. N. S. team left Lock Haven early in the morning, reaching Scranton shortly after twelve. Little time was allowed for rest before the game. To make the handicap greater, the C. S. N. S. gridders were outweighed forty pounds to a man.

It was during this game that the C. S. N. S. team showed its true qualities. After withstanding the terrific onslaught for three periods and part of the last, in which St. Thomas scored thirty-nine points, they came back in the last few minutes and scored two touchdowns. The crowd in the stands that "razzed" the little school boys, as they called them, were rooting for C. S. N. S. one hundred per cent strong at the close of the game.

The last home game of the season was played at Hanson Field November 15. The opponents this time were the same crowd that administered to C. S. N. S. a sound beating last year—Winburne High School. Their ranks were noticeably thinned; their team was not as strong. They played hard but were outclassed. The game was better than the score of forty-one to seven would indicate.

The final game of the season was played against the Kane High School squad at Kane, November 22. Kane High School, the Alma Mater of Captain Ward, was especially desirous of winning from his team. The field was wet and slippery, making fast football impossible. The game was a bitter fight to the finish.

The first half was a kicking duel, C. S. N. S. gaining by the kicks. One drop kick was made by Loftus, the score being three-nothing at half time. During the early part of the second half, C. S. N. S. succeeded in putting across a touchdown. Kane came back in the last quarter, carrying the ball from their own five-yard line to our four-yard line. Here they were held for downs and their chance for scoring lost.

Football is now firmly established at C. S. N. S. The success of the light squad this year has given the future teams a record to uphold. It is

hoped that the number of boys will be ever increasing and the team better and better. With a large squad having the fight and pep displayed this year, what cannot Coach Fredericks do to rival teams?

The Team

<i>Left End</i>	- - - - -	MAXWELL FITZSIMMONS
<i>Left Tackle</i>	- - - - -	JOHN FOLLMER
<i>Left Guard</i>	- - - - -	HUGH FREDERICKS
<i>Right Guard</i>	- - - - -	CARL HAYES
<i>Right Tackle</i>	- - - - -	WILFORD POMEROY
<i>Right End</i>	- - - - -	CARL SCHROT
<i>Quarterback</i>	- - - - -	TIM FERGUSON
<i>Left Halfback</i>	- - - - -	CARL LOFTUS
<i>Right Halfback</i>	- - - - -	ALBERT HAUKE
<i>Fullback</i>	- - - - -	JESSE WARD (Captain)

- Substitute Ends—Byron MacDowell, William Bitner.
- Substitute Tackles—Lawrence Gustafson, Reginald Fitzsimmons.
- Substitute Guards—Charles Hackenburg, Victor Peters.
- Substitute Backs—David Ulmer, Gordon Titus.
- Coach—J. Wynn Fredericks.
- Faculty Manager—Cornelius M. Sullivan.
- Student Manager—T. J. Ferguson.

The Scores

Normal	- - - - -	0	Bellefonte	- - - - -	20
Normal	- - - - -	12	Renovo	- - - - -	0
Normal	- - - - -	27	Renovo	- - - - -	0
Normal	- - - - -	19	Bellefonte	- - - - -	6
Normal	- - - - -	6	Mansfield	- - - - -	7
Normal	- - - - -	14	St. Thomas	- - - - -	39
Normal	- - - - -	41	Winburne	- - - - -	7
Normal	- - - - -	10	Kane	- - - - -	0
Total	- - - - -	129	Total	- - - - -	79



Girls' Basketball, 1925

Line-up

Forwards—ANNE FAHLMAN, JO BEAUJON, HELEN BETTENS, ANNE WINKLEBLECH

Centers - - - - - EDITH MITSTIFER, KATHERINE MORRIS

Side Centers - - - - - FLORENCE BERKWATER, VIRGINIA MILLER

Guards - - - HELEN JOHNSON, MARGARET HEYLMUN, CARMEN JOHSON

January 9 C. S. N. S. - - 9 Bellefonte - - - 30 Away

This was our first game on a strange floor, so we do not feel so badly because of the defeat. We believe in the saying, "A bad beginning means a good ending."

January 24 C. S. N. S. - - 39 Clearfield - - - 29 At Home

The first of our line of victories. Our girls led throughout the game, although Clearfield put up a good game, determined we would not walk away with the score.

January 31 C. S. N. S. - - 23 Philipsburg - - - - 13

C. S. N. S. went to Philipsburg determined to break last year's tie. Did we do it? Our team seemed to overpower them in every way. Luck was with us making the balls roll into the basket.

February 7 C. S. N. S. - - 21 Altoona - - - 24 Away

This was the big game of the season. Last year we received a severe defeat from this team. Again we received the defeat but not so severe. The game was the best played by a C. S. N. S. team.

February 14 C. S. N. S. - - 22 Bellefonte - - 27 At Home

This game was a slight disappointment to everyone but the Bellefonte team. It was close and fast throughout, with nearly matched teams fighting for victory. Never were the scores far apart.

February 28 C. S. N. S. - - 24 Clearfield - - 27 Away

Luck left us entirely here. The game was close but not fast because of the great number of fouls made. The difference in the floors seemed to confuse our girls.

March 7 C. S. N. S. - - 27 Altoona - - 28 At Home

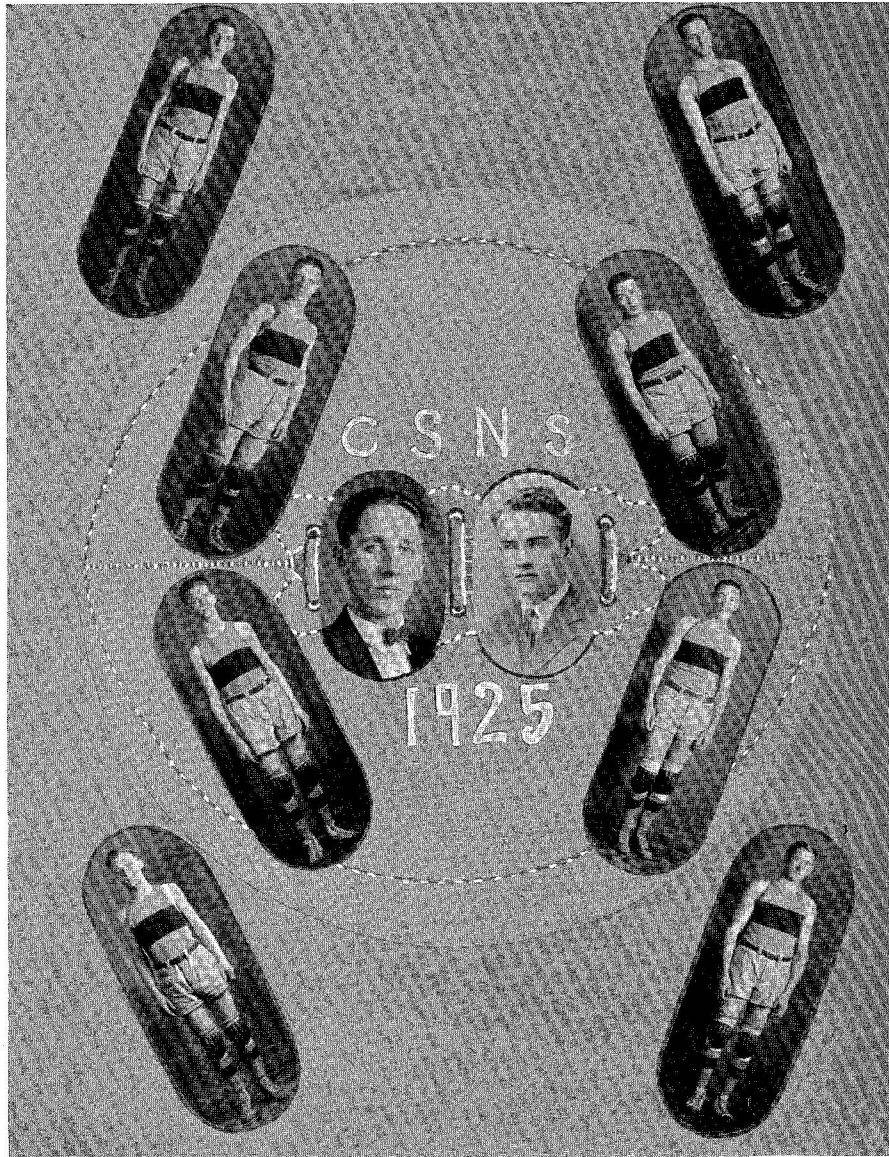
This was the second big game of the season. We entered it with the hope of victory for our team. At the end of the game the score stood 26-26. Then came the test, a five-minute period to play off the tie. Both teams put up a stiff fight, but luck was with the visiting team.

March 21 C. S. N. S. - - 21 Philipsburg - - 6 At Home

This, our last game of the season, was an easy victory. Our girls seemed to be superior in every way. Philipsburg put up a good fight and were very good sports.

1925

1925



February 18 G. T. V. H. S. - - - - 8 C. S. N. S. 31 At Home

Here again the superior size of the Normal men made itself evident. G. T. V. H. S. secured but one field goal, the rest of their score resulted from fouls.

February 25 St. Joseph - - - - 10 C. S. N. S. 18 At Home

St. Joseph could not find herself on this large floor. Normal led throughout and in the first few minutes of the last quarter scored rapidly. With eight minutes to play St. Joe decided that it was time to stop and walked from the floor.

March 6 Kane - - - - 33 C. S. N. S. 16 At Kane

On the smaller floor the superiority of the Kane team was more evident. Kane gained the lead and Normal never threatened. The game was finished with eight players, four on each side.

March 7 Johnsonburg - - - - 33 C. S. N. S. 27 At Johnsonburg

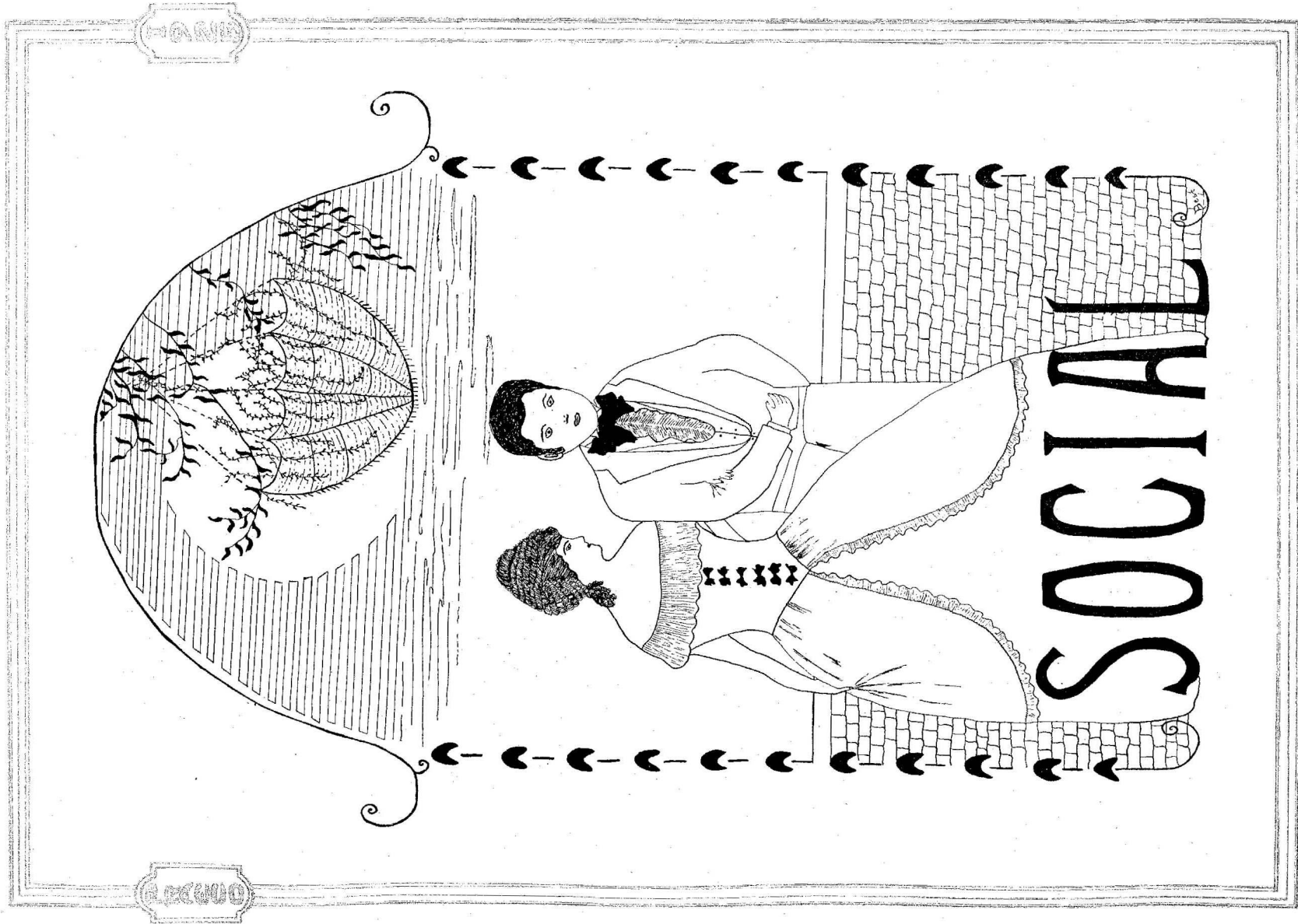
A peculiar game, this, with each team scoring in streaks. They outclassed us in the first quarter; we had all the class in the second and third quarters; we went into the last with a six point lead, but it was not enough. Johnsonburg scored at will for the last five minutes; goodbye, game!

March 20 South Williamsport - - - - 7 C. S. N. S. 26 At Home

Due to the inability of the Williamsport boys to stop Normal's offense she had a large number of shots, but the low percentage caged held the score to the low level that the score indicates.

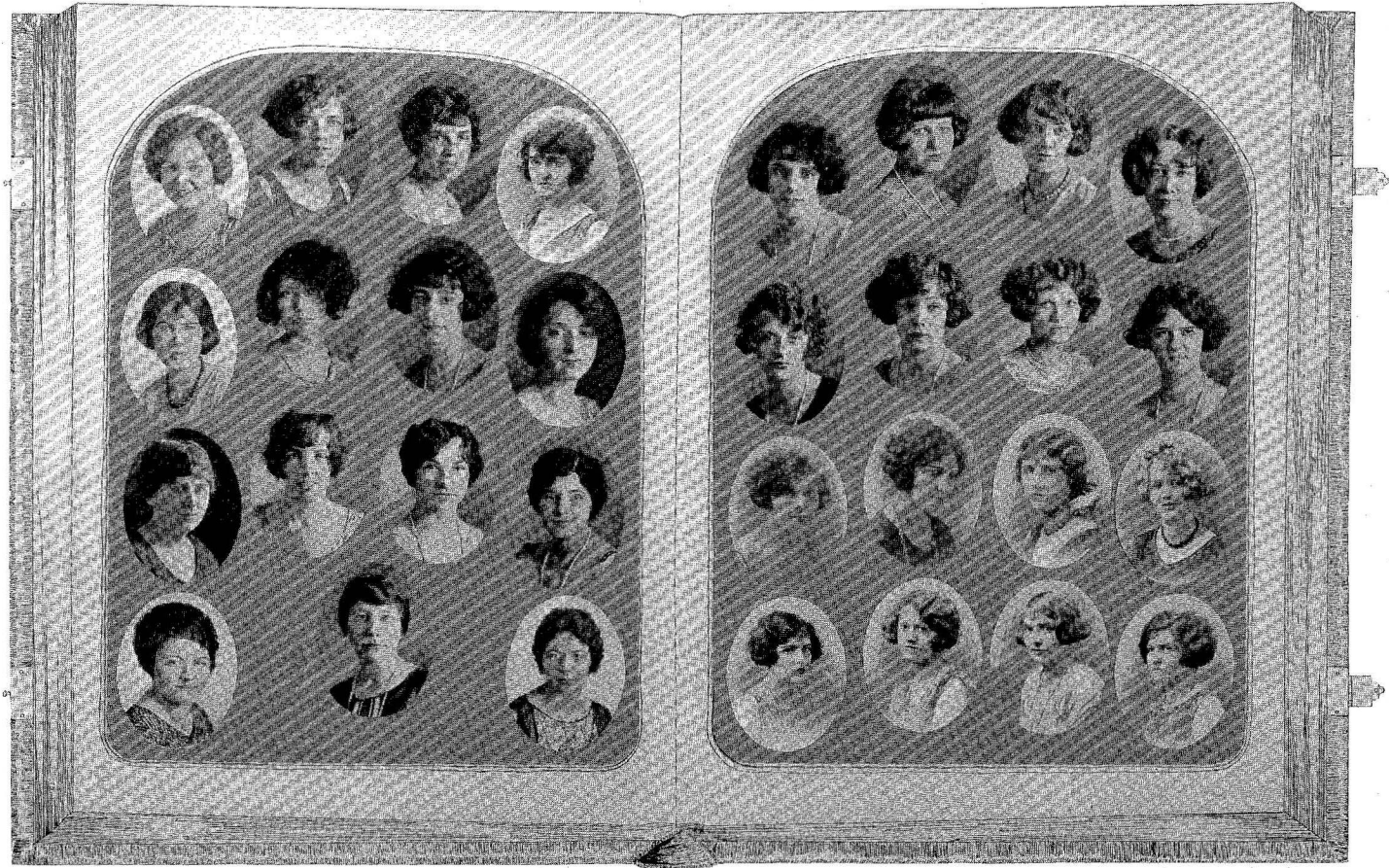
March 27 South Williamsport - - - - 16 C. S. N. S. 32 At Williamsport

The last game of the season, a victory on a strange court, gave a fitting close to the season. The first and last games of the season were the only games won on the opponent's floor. The game was rather cautiously played throughout by both teams. Due to the uncanny ability of the Normal forwards to obtain open shots, the game was decided in our favor.



Eighty-five

Eighty-six



Beta Sigma Chi

FLOWER—Brown-Eyed Daisy

COLORS—Brown and Gold

Honorary Members

MRS. T. W. TREMBATH

MISS IVAH WHITWELL

MISS DOROTHY DENNISTON

Active Members

SENIORS

ELVERDA RICHARDSON

MERIAM MERVINE

DOROTHY LYNDS

MARY ADAM

GRACE STARTZEL

ANNA HEIGES

SARA CLASTER

CATHERINE RANK

DOROTHY SAVAGE

JUNIORS

DOROTHY CAMPBELL

VIRGINIA MILLER

JANET CAMPBELL

FLORENCE BERKWATER

ANNE FAHLMAN

EDITH MITSTIFER

CARMAN JOHNSON

ROBERTA WOLFE

BESSIE BLACKBURN

MARGUERITE CARL

ANNE WINKLEBLECH

HAZEL MOOSE

MARION BAILEY

VERONICA JOYCE

MARY TAYLOR

MARGARET GURRELL

CAROLINE STEVENSON

HELEN HAGERTY

BETTY SHELENBERGER

GERTRUDE McLAUGHLIN

OFFICE

OFFICE



Alpha Sigma Tau

Organized 1899

COLORS—Emerald and Gold

FLOWER—Yellow Rose

Patronesses

MISS GERALDINE LOCKHART

MRS. R. S. McDOUGALL

Honorary and Faculty Members

MRS. CARROLL ALL

MISS JESSIE SCOTT HIMES

Active Members

MARJORIE BASTIAN
GERALDINE BEAS
THELMA CULLEN
RITA DALE
MARY DIETRICH
EDNA FITZSIMMONS
ANN GINGERY
LYDIA GROSS
HETTIE HOLMAN
SARA KIFT
CHARLOTTE KNAPP

GRACE MCKINNEY
ELEANOR McMACKIN
EDITH MORRISON
EVELYN ROSS
DOROTHY RUPERT
LENORE SHARP
ELIZABETH SOMMER
CHARLOTTE STERE
GERALDINE TIETBOHL
MADELINE WEAKLAND
ELIZABETH WILLIAMS

Chapter Roll

Alpha	- - - - -	Ypsilanti, Michigan
Beta	- - - - -	Mt. Pleasant, Michigan
Gamma	- - - - -	Milwaukee, Wisconsin
Kappa	- - - - -	Oxford, Ohio
Iota	- - - - -	Emporia, Kansas
Theta	- - - - -	Detroit, Michigan
Zeta	- - - - -	Lock Haven, Pa.
Alumni Chapter	- - - - -	Grand Rapids, Michigan
Alumni Chapter	- - - - -	Port Huron, Michigan
Alumni Chapter	- - - - -	Pittsburgh, Pa.
Alumni Chapter	- - - - -	Detroit, Michigan
Alumni Chapter	- - - - -	Milwaukee, Michigan
Alumni Chapter	- - - - -	Cincinnati, Ohio

1930

1930



Colors
Blue and
White

Flower
Pink Tea Rose

Honorary and Faculty Members
Miss Louise Alber Miss Harriet Raffle
Mrs. Homer Gage Mrs. Frederick Deitz

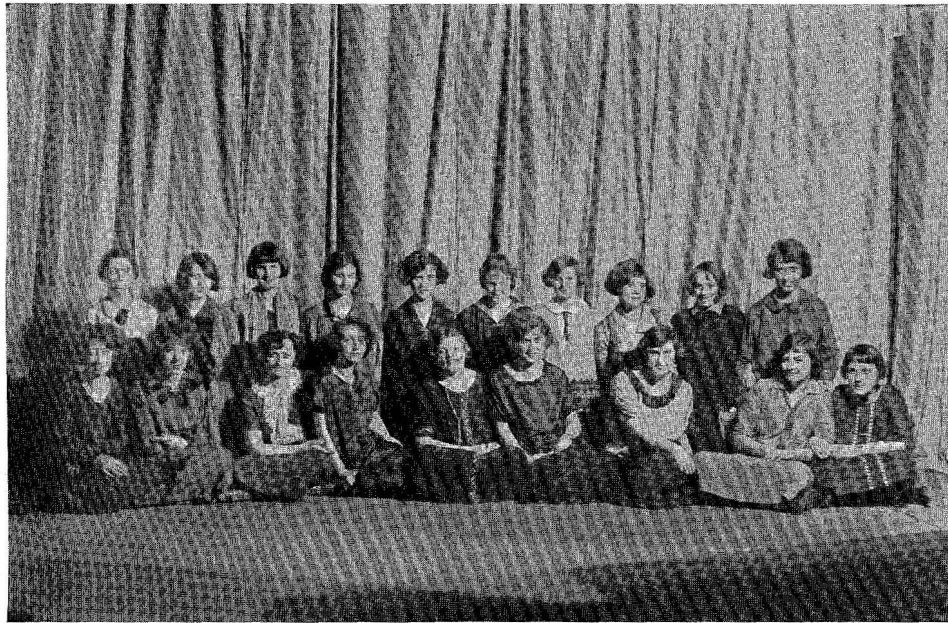
Officers
President, Mary Bennett
Vice President, Margaret Gledhill

Secretary-Treasurer, Josephine Beaujon

Active Members
Mary Mayes Leona Abele Amelia Welsh
Esther Fyock Helen Bettens Edna Hartsock
Margaret Sloey Kathryne Hasson Margaret Hirsh
Gertrude McDermott Margaret Zurewich
Vivian Eberhart

Pledges
Mildred Myers
Bessie Dirlam
Betty Kenney

Kho Omega Lambda



Members of L. A. L.

<i>President</i>	- - - - -	VIOLET AGNEW
<i>Vice President</i>	- - - - -	- HELEN BETTENS
<i>Secretary</i>	- - - - -	JOSEPHINE ECKENROTH
<i>Treasurer</i>	- - - - -	- MARION SHAW

MAY HIRLINGER
 AMELIA WELSH
 GRACE BECK
 MARGARET WESTLEY
 RUTH WETZEL
 MARY COOK
 CHRISTINA DOEBLER
 LYDIA GROSS
 VIVIAN EBERHART
 LENORE SHARP
 SARA KIFT
 KATHRYN GUMMO

SARA DIEHL
 JOSEPHINE ROBB
 CATHERINE BURD
 ANNA BELLE MCLEAN
 ALMA BAIRD
 ISABEL HERR
 SARA CLASTER
 LILLIAN HOCKMAN
 IRMA LEBARON
 HELEN MILLER
 MARIETTA BEST
 CHARLOTTE KNAPP



Orchestra

Violins

CARL LOFTUS
BROWN BOSSERT
DOROTHY CAMPBELL

Piano

RITA DALE

Cornet

GEORGE CLOSE
T. OTHO WIGGINS
GERALD WOODWARD

Banjo

GORDON TITUS

Mandolin

GWENDOLYN STRINGFELLOW

Flute

DAVID ULMER

Drums

WELFORD POMEROY

Banjo-Mandolin

HELEN SHEEHAN

Directress

I. N. D. WHITWELL



Alpha Zeta Pi

Faculty Advisor

MR. THOMAS WAYNE TREMBATH

Officers

President -
Vice President -

ALBERT HAUKE
JESSE WARD

Secretary -
Treasurer -

MARGARET HEYLMUN
GERALDINE BEAS

Honorary Members

LYDIA GROSS

VIOLET AGNEW

Members

ELVERDA RICHARDSON
GRACE MCKINNEY
DOROTHY MOODY
JOHN FOLLMER
ALMA KNISELY

THELMA CULLEN
ELIZABETH COOK
MARY MITCHELL
CAROLYN WEIN
MARY BAIR

ESTHER SCHOFIELD
LENORE SHARP
GEORGIA BURKETT
BARBARA CHAMPLAIN
MARIAN SHAW

MADELINE WEAKLAND
MARGARET GLEDHILL
HELEN NACE
MILDRED MYERS
TIMOTHY FERGUSON

ANNUAL

ANNUAL



Praeco Staff

Ninety-five



The Girls' Glee Club

<i>President</i>	- - - - -	ETELKA KIFFER
<i>Secretaries</i>	- - - - -	GRACE STARTZEL, BETTY SHELLENBERGER
<i>Treasurer</i>	- - - - -	HAZEL MOOSE
<i>Librarian</i>	- - - - -	VIRGINIA MILLER

First Soprano

LEONA ABELE	MARGARET GLEDHILL	CATHERINE RANK
VIOLET AGNEW	LYDIA GROSS	EVELYN ROSS
ALICE BAILEY	ANNA HEIGES	DOROTHY RUPERT
MARIAN BAILEY	HETTIE HOLMAN	BETTY SHELLENBERGER
MARY BAIR	BLANCHE MAUGER	EDWINA SHOPE
HILDA BURROWS	VIRGINIA MILLER	GRACE STARTZEL
MARY DIETRICK	HAZEL MOOSE	CAROLYN STEVENSON
ANN GINGERY	CAROLINE PRINDLE	CAROLYN WEIN

Second Soprano

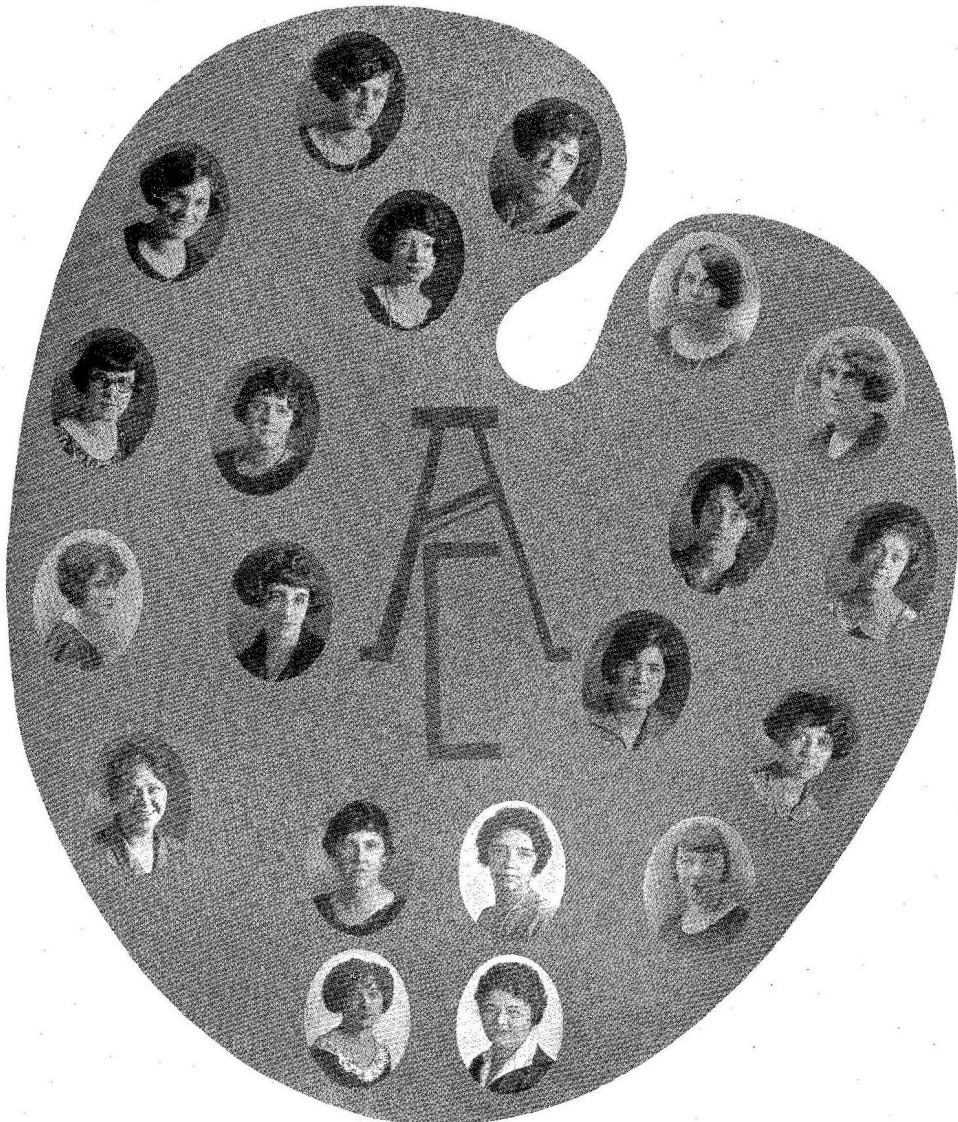
SARA CLASTER	GRACE HARPSTER	HELEN MILLER
MARY COOK	EDITH HEWITT	FLORENCE SMITH
THELMA CULLEN	VERONICA JOYCE	PAULINE SNYDER
EDNA FITZSIMMONS	DOROTHY LYNDS	MARY TAYLOR
ELLA FORCEY	GRACE MCKINNEY	MADELINE WEAKLAND
HELEN HAGERTY	MIRIAM MERVINE	

Alto

MARY ADAM	ETELKA KIFFER	DOROTHY SAVAGE
DOROTHY CAMPBELL	WINIFRED KING	MARGARET ULSH
MARGUERITE CARL	CHARLOTTE KNAPP	ROBERTS WOLFE
KATHERINE DEWALT	HELEN MIZENER	MARGARET ZUREWICH
ESTHER FYOCK	EDITH MORRISON	

1925

1925



Art Club

Faculty Members

GISSETTA M. YALE IVAH WHITWELL LAURA BARKHUFF HARRIET RAFFLE

Senior Members

President - - - - - DOROTHY SAVAGE
 Vice President - - - - - BERNICE DAY
 Secretary and Treasurer - - - - - MARGARET CUNNINGHAM

KATHERINE DEWALT GRACE STARTZEL HELEN MIZENER MARY ADAMS
 ANNA HEIGES CAROLINE WEIN DOROTHY LYNDS ETELKA KIFFER
 BARBARA CHAMPLIN MADELINE WEAKLAND RITA MCALEE MARIETTA BEST
 ANNABELLE MCLEAN

Junior Members

HAZEL MOOSE NELL HOMAN CAROLINE STEVENSON DOROTHY RUPERT
 HARRIET KELT BETTY SHELLENBERGER HELEN KOKRON WILFORD POMEROY
 ALBERT HAUKE CARL HAYES CLYDE SWOYER MARION BAILEY
 GRACE HARPSTER CHARLOTTE STERE CARMAN JOHNSON



Chi Kappa Sigma

Dramatic Club
 Founded 1921

COLORS—Red and White

FLOWER—Red Rose

Officers

<i>President</i> - - - - -	JESSE WARD
<i>Vice President</i> - - - - -	GRACE STARTZEL
<i>Secretary and Treasurer</i> - - - - -	SARA CLASTER
<i>Honorary Member</i> - - - - -	MARGARET CUNNINGHAM
<i>Faculty Advisor</i> - - - - -	MISS LOUISE ALBER

Members

DOROTHY SAVAGE	CAROLINE PRINDLE	DAVID ULMER	ELVERDA RICHARDSON
CARL SCHROT	ALBERT HAUKE	CARL LOFTUS	DOROTHY LYNDS
JACK FOLLMER	CARL HAYES	BYRON MCDOWELL	SARA KIFT
JOSEPHINE BEAUJON	GERALD WOODWARD	BARBARA CHAMPLIN	HELEN BETTENS
CAROLINE WEIN			



Naturalist Club

COLORS—Green and White

FLOWER—Sweet Pea

EMBLEM—Acorn

Faculty Advisor—PROF. L. J. ULMER

Officers

President	- - - - -	CARL SCHROT
Vice President	- - - - -	FAYE LORD
Secretary	- - - - -	MARGARET CUNNINGHAM
Treasurer	- - - - -	CATHERINE MORRIS

Honorary Members

PROF. T. W. TREMBATH	MRS. T. W. TREMBATH	MRS. L. J. ULMER
----------------------	---------------------	------------------

Active Members

ELLA FORCEY	ELBRIDGE WOODWARD	WINIFRED MITCHELL
HELEN MIZENER	VIRGINIA SHANLEY	BETTY SHELLENBERGER
ALBERT HAUKE	FLORENCE SMITH	SARA FELIX
CAROLYN WEIN	HELEN NACE	DAVID ULMER
PAULINE SNYDER	ANNA ELSE	MARY ULMER
MELBA LOCKARD	ALMA FREER	BYRON McDOWELL
MARY BAIR	ROSE BOWER	MILDRED ERICSON
ADALINE FENTON		



Shakespeare Literary Society

OFFICERS

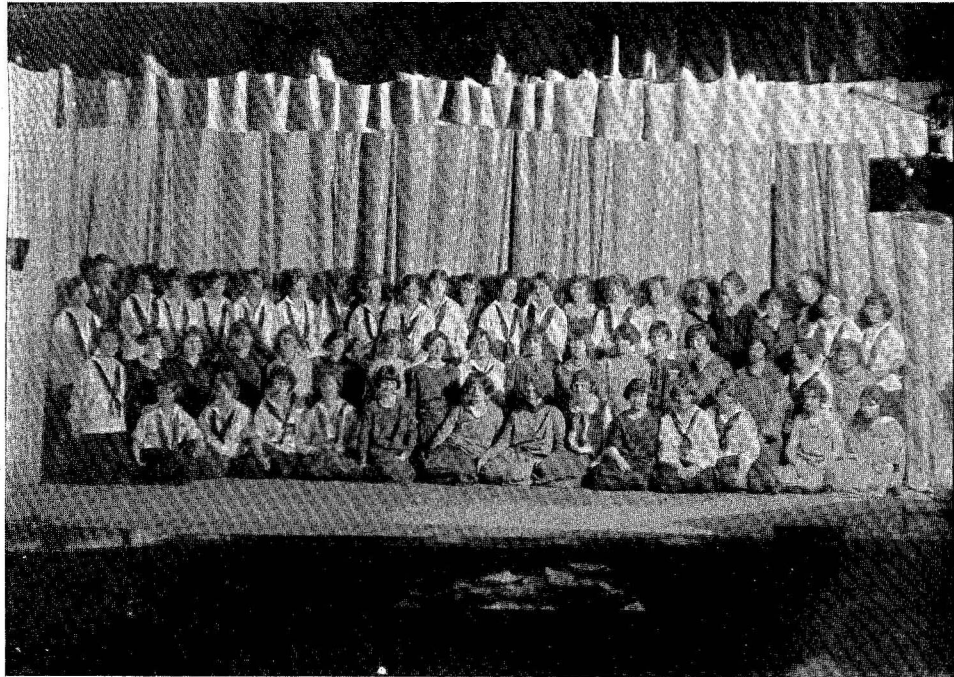
<i>September to February</i>	OFFICERS	<i>February to June</i>
NELLIE MOORE - - -	<i>President</i> - - -	ELBRIDGE WOODWARD
FAYE LORD - - -	<i>Vice President</i> - - -	BERNICE BECK
ADELIN FENTON - - -	<i>Treasurer</i> - - -	ALMA FREER
MARY MITCHELL - - -	<i>Secretary</i> - - -	HELEN KOKRON
GERTRUDE McDERMOTT - - -	<i>Pianist</i>	
HELEN JOHNSTON - - -	<i>Monitor</i> - - -	JESSE WARD

Editor of "As You Like It," RITA DALE

MEMBERS

LEONA ABELE	SARAH FELIX	CATHERINE MORRIS
MARY BENNETT	SARA FRIEDMAN	HELEN NACE
WILLIAM BITNER	HAZEL FRISBEE	MARIE NEUBERT
HILDA BURROWS	HELEN GRIFFIN	MARGUERITE PETERSON
ROSE BOWER	LAWRENCE GUSTAFSON	PEARL PEARSON
ROBERT BURMAN	MARGARET HEYLMUN	ORPHIA PHILLIPS
WINIFRED BROSIUS	ALBERT HAUKE	ELVA REES
MARJORIE BASTIAN	GRACE HARPSTER	MILDRED REITER
RUSSELL BOWSER	HELEN HAGERTY	LENORE REAMS
BETTY BLOCK	ETHEL JOHNSON	FLORENCE SMITH
VERONICA CAULEY	BETTY KENNEY	ALTA SHOENFELT
ELEANORE CHAPMAN	LILLIAN KEPHART	HELEN SHEEHAN
BARBARA CHAMPLIN	KATHRYN KURTZ	BETTY SOMMERS
ELEANOR CRANDALL	HARRIET KELT	EDWINA SHOPE
GEORGE CLOSE	CARL LOPTUS	BERTHA STINEY
ANNE DEVERAUX	FRANK LARKIN	GWENDOLYN STRINGFELLOW
BERNICE DAY	EDITH MORRISON	TRESSA SANFORD
MARY DIETRICK	GERTRUDE MADIGAN	GRACE SIMCOX
TIMOTHY FERGUSON	EMMELINE MILLER	GORDON TITUS
ESTHER FYOCK	MILDRED MYERS	GEORGE TICE
ELLA FORCEY	ALWILDA MUIR	DAVID ULMER
MAXWELL FITZSIMMONS	ANGELINE MARRONE	BEULAH WILKINSON
REGINALD FITZSIMMONS	WINIFRED MITCHELL	MARGARET ZUREWICH
	MYRTLE McCONNELL	

Faculty Advisor—MR. HOMER GAGE



Price Literary Society

President	- - - - -	PAULINE SNYDER
Vice President	- - - - -	DOROTHY CAMPBELL
Secretary	- - - - -	MELBA LOCKARD
Treasurer	- - - - -	ANNA ELSE

MEMBERS

ANNA ELSE
 VERONICA JOYCE
 MARY TAYLOR
 FREDA KEIRN
 MILDRED MOON
 GEORGIA BURKETT
 BESSIE DURLAM
 LORETTA CLUNE
 ANNA WINKLEBLECK
 JANET CAMPBELL
 MILDRED DUCK
 MILDRED BROWN
 MARY COONEY
 AGNES RYAN
 MARGARET MORAN
 EDNA CAMPBELL
 MARION BAILEY
 HAZEL MOOSE
 ALVERA McCLINTOCK
 KATHRYN HYNICK
 ELLA FLYNN
 CARMEN JOHNSON
 BETTY WILLIAMS
 CHARLOTTE STERE
 MARY COLLINS
 ELEANOR McMACKIN
 ANNE FAHLMAN
 THELMA CULLEN
 FLORENCE BERKWATER
 MARGARET EVANS
 ORA McALEE
 GERTRUDE McLAUGHLIN

LULU BARR
 ALBERTA MOORE
 SARAH REARICK
 ELLEN WILLIAMS
 BESSIE BLACKBURN
 CARRIE ALLEN
 CATHERINE KEEGAN
 BESSIE ZERRY
 KATHERINE HASSON
 MARGARET SLOEY
 ESTHER SCHROTH
 ROBERTA WOLF
 MARGUERITE CARL
 CATHARINE FISHER
 EDITH MITSTIFER
 OTHO WIGGINS
 HUGH FREDERICKS
 MARGARET GLEDHILL
 JOSEPHINE BEAUJON
 EDNA HARTSOCK
 BYRON McDOWELL
 ETELKA KIFFER
 MIRIAM MERVINE
 SARA CLASTER
 MARY BAIR
 HELEN HAYES
 RUTH GIBSON
 SARA DIEHL
 HELEN BETTENS
 GLADYS MOONEY
 JACK FOLLMER
 SUE THOMAS

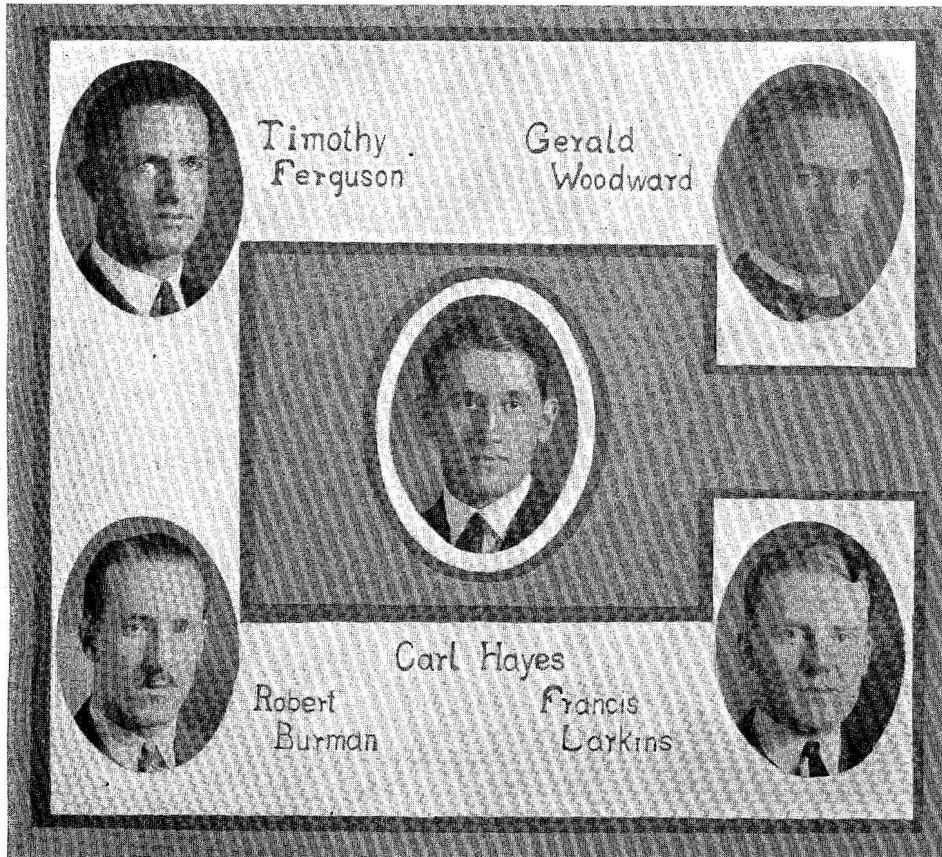
MARGARET CUNNINGHAM
 MARY ADAM
 LYDIA GROSS
 BLANCHE MAUGER
 DOROTHY LYNDS
 ELVERDA RICHARDSON
 MAE MASHEN
 PAULINE SNYDER
 CAROLINE PRINDLE
 DOROTHY ROBB
 TWILA MATHESW
 MELBA LOCKARD
 MARGARET ULSH
 KATHERINE DEWALT
 GERALDINE BEAS
 CAROLYN WEIN
 HELEN MIZENER
 ALMA KNISELY
 DOROTHY BRUA
 DOROTHY MOODY
 MADELINE WEAKLAND
 IRMA LA BARON
 EDNA FITZSIMMONS
 THELMA KRUMBINE
 EVELYN ROSS
 MARY MAYES
 CARL SCHROT
 RITA McALEE
 GRACE McKINNEY
 MARIAN LEE
 DOROTHY SAVAGE
 ANNA HEIGES

Faculty Advisor—T. W. TREMBATH



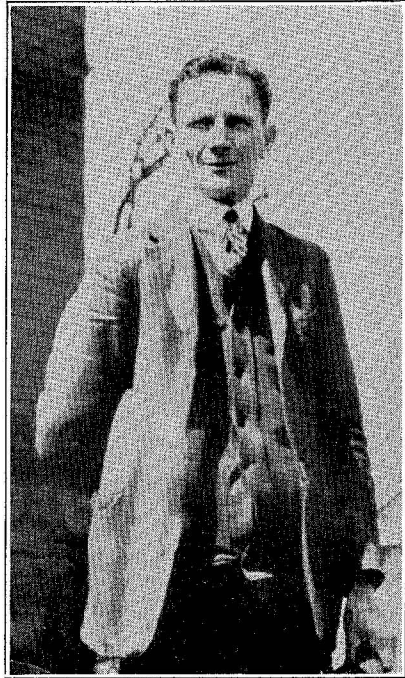
Girls' Student Council

GERALDINE BEAS, <i>Vice President</i>	HELEN JOHNSTON, <i>President</i>	MARGARET HEYLMUN, <i>Secretary</i>
ANN ELSE	MISS ROBERTS, <i>Advisor</i>	ROSE BOWER



Boys' Council

Belvie



The most unique chapter in the history of the class of '25 was occasioned by one known to every C. S. N. S. student during the last twenty-five years. It was our pleasure to help Belvie Cree celebrate his twenty-fifth anniversary of service at Lock Haven Normal School.

Belvie was born in Farrandsville fifty-five years ago. Poor health caused him to lose much of the education which should have been his.

Twenty-five years ago, on December 2, Belvie joined his forces with those of Central State. While he has been here five different men have guided the destinies of the school—Dr. Eldon, Dr. Flickinger, Dr. Singer, Dr. Lose and Dr. Drum.

Belvie has two sisters and one brother, who make various attempts to lure Belvie from us, especially during vacations. Some-

how or other Belvie eludes them and contrives to remain the one whom we always see first when we come and last when we leave.

For the first fifteen years of his service with the Normal, Belvie had no vacation. Then he decided to have a real time at Atlantic City, but in spite of that fair city's fairer charms and Belvie's love for a good time, he stayed just two days.

We have been told that Belvie possesses great tact. One who has made a loyal friend of every girl in Normal for the last twenty-five years and yet has not become responsible for the support of one of them must have tact. However, we suspect that something more than tact aided Belvie in the escapade we are about to tell.

Once upon a time, (it must have been in the dark ages, for such rules are extinct now) the girls at C. S. N. S. were not permitted to entertain their friends from the East Dorm on the campus. Belvie was entertaining his girl over by the training school and on the east campus another couple was seated. Enter the watchman. He asked the party of the last part if their knowledge of rules did not include a rule to the effect that dates could not be kept on the campus. They told him as soon as he would chase Belvie and his girl off, they would leave also. The watchman meant to, but Belvie had seen him first and waltzed off.

Dr. Eldon, the first principal Belvie served under, learned of his anniversary through the columns of the Normal Times and wrote him a letter of congratulation. Doesn't that speak rather well of Belvie's ability to hold friends? The regard in which Belvie is held by the present student body was shown by the chapel performance held in his honor on December 2.

Byron McDowell expressed the appreciation of Belvie on the part of the boys of the school and led in fifteen rousing rahs for Belvie.

Violet Agnew represented the girls of the school speaking of Belvie's tact and sense of humor.

On behalf of the student body and faculty, Mr. Sullivan presented Belvie (who was furnished with a special escort to bring him to the front of the room), with a handsome gold watch, with chain and knife attached.

Wherever anyone who has lived at C. S. N. S. as a student, goes, he carries with him many memories of kindnesses done by this "Traveler in Little Things."

At a dayroom festivity held in his honor on the occasion of his anniversary, Belvie yielded to the numerous requests for a speech. The day students feel that Belvie includes all the Normalites in the statements of this speech and they take this opportunity to pass it on to you:

"Dayroom Students, my dear friends, I feel highly honored on this occasion and very proud that you have remembered me in this way. I have served this school longer than some of you have lived; I have served under five principals and I have yet to be called to the office to hear a single criticism of my work or to be accused of neglect of duty. I have met all denominations and they have all been my loyal friends. I love them all as my children.

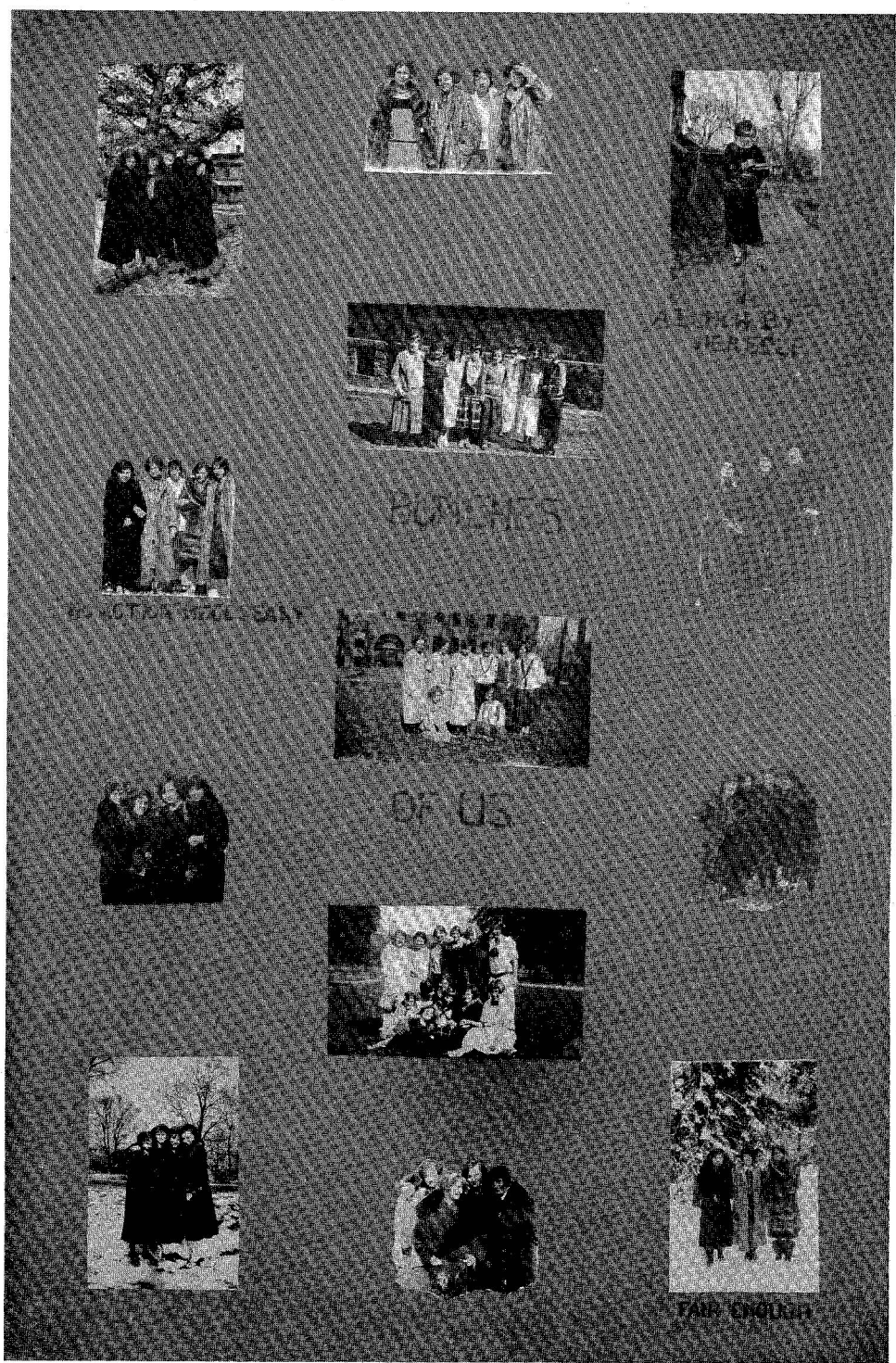
"During these years I have met and known many fine men and women who have served as members of our Faculty. I have always been treated with kindness and courtesy by them. When you young folks graduate from this institution and go out in the world, I wish you all success. Sometimes when you have a moment to yourself let your thoughts run back to dear old Normal and in imagination hear once more the tinkling of the old bell and think of the one who rang it.

"Your old friend,

"BELVA."

1910

1910



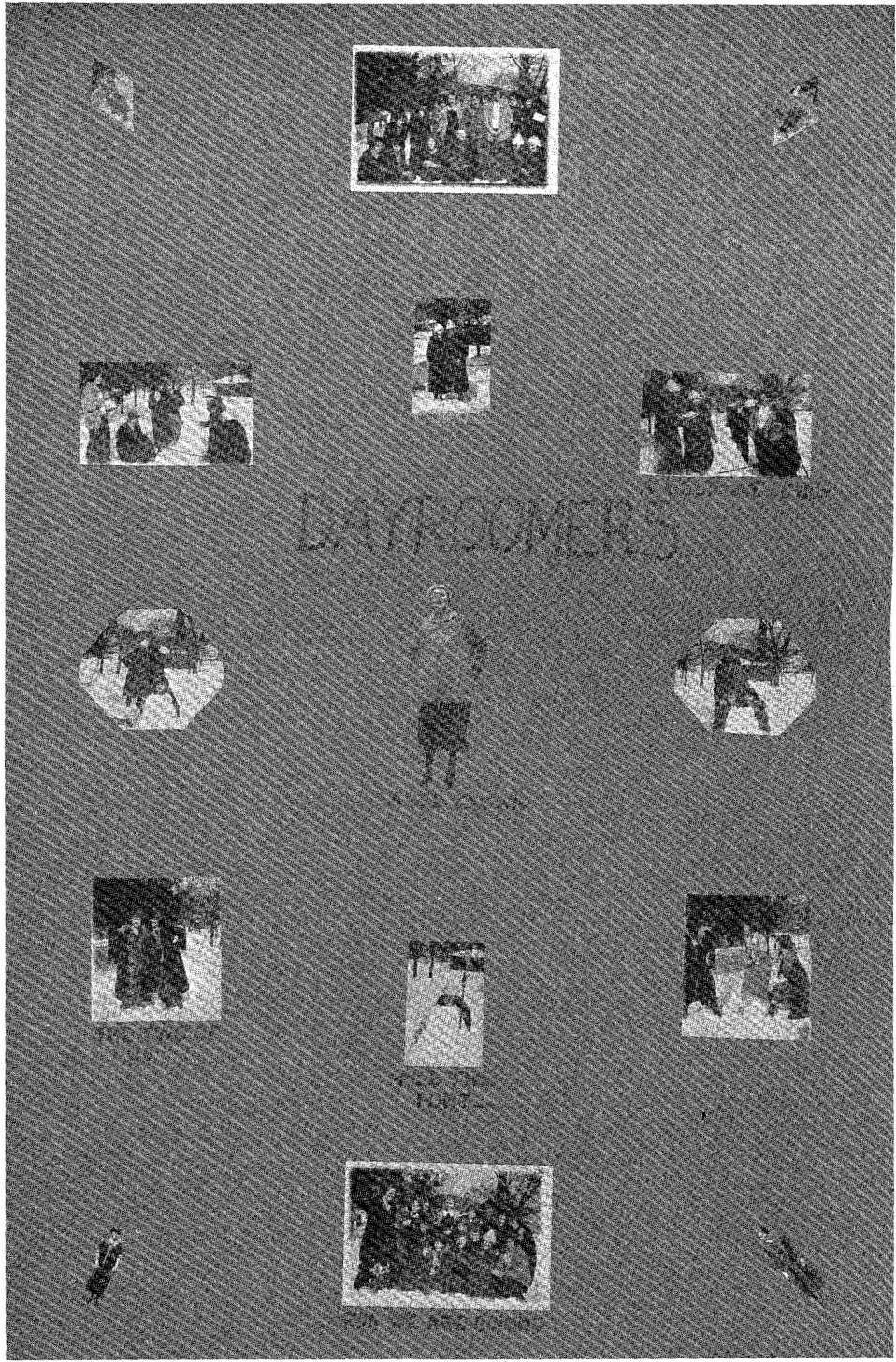
1917

1917



1888

1888

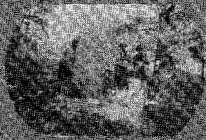


10000

10000



HIVERS



LEWIS

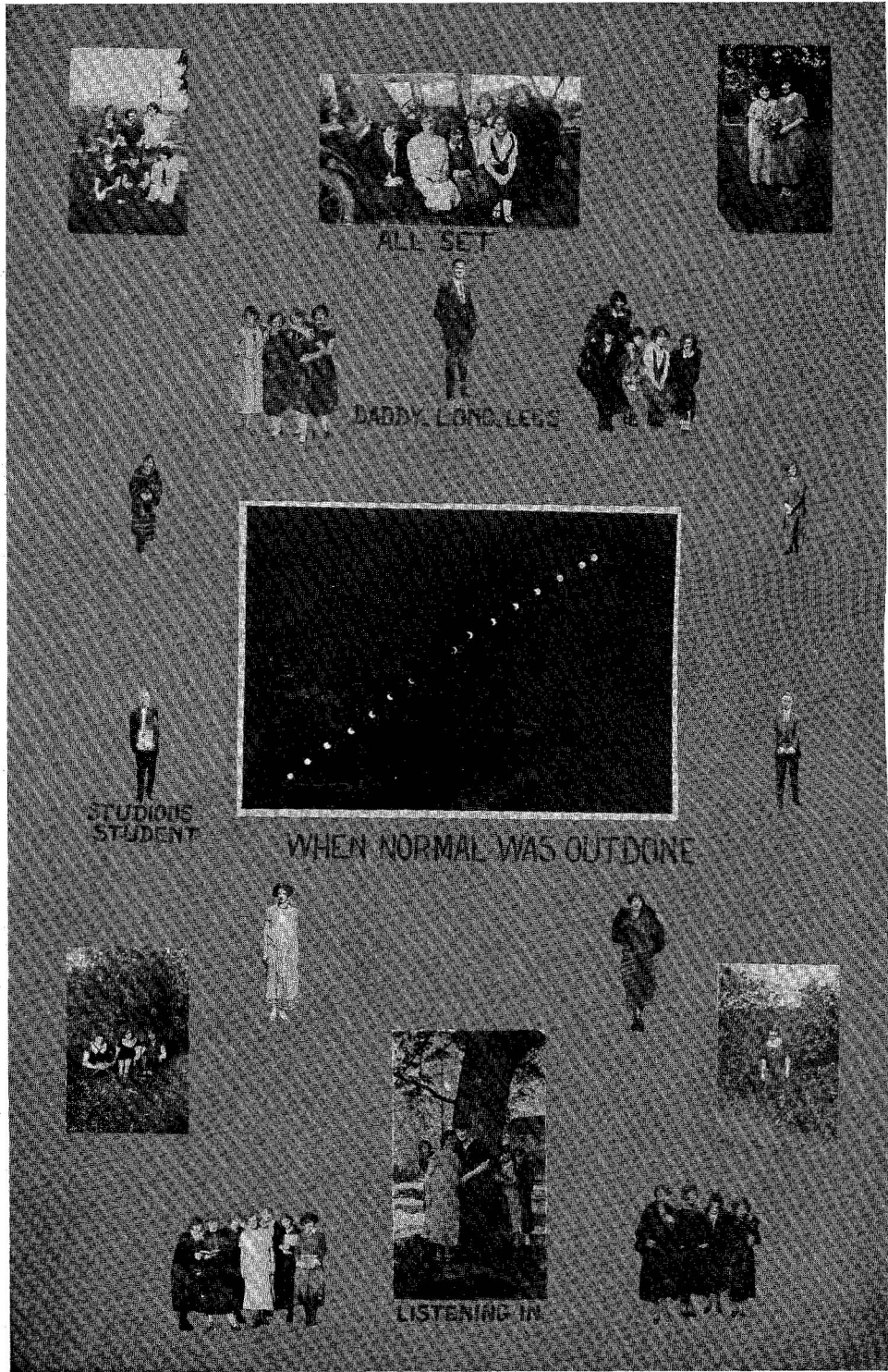


WILLIAM



1910

1910



GRAND

GRAND



THE MINUET



JOEL

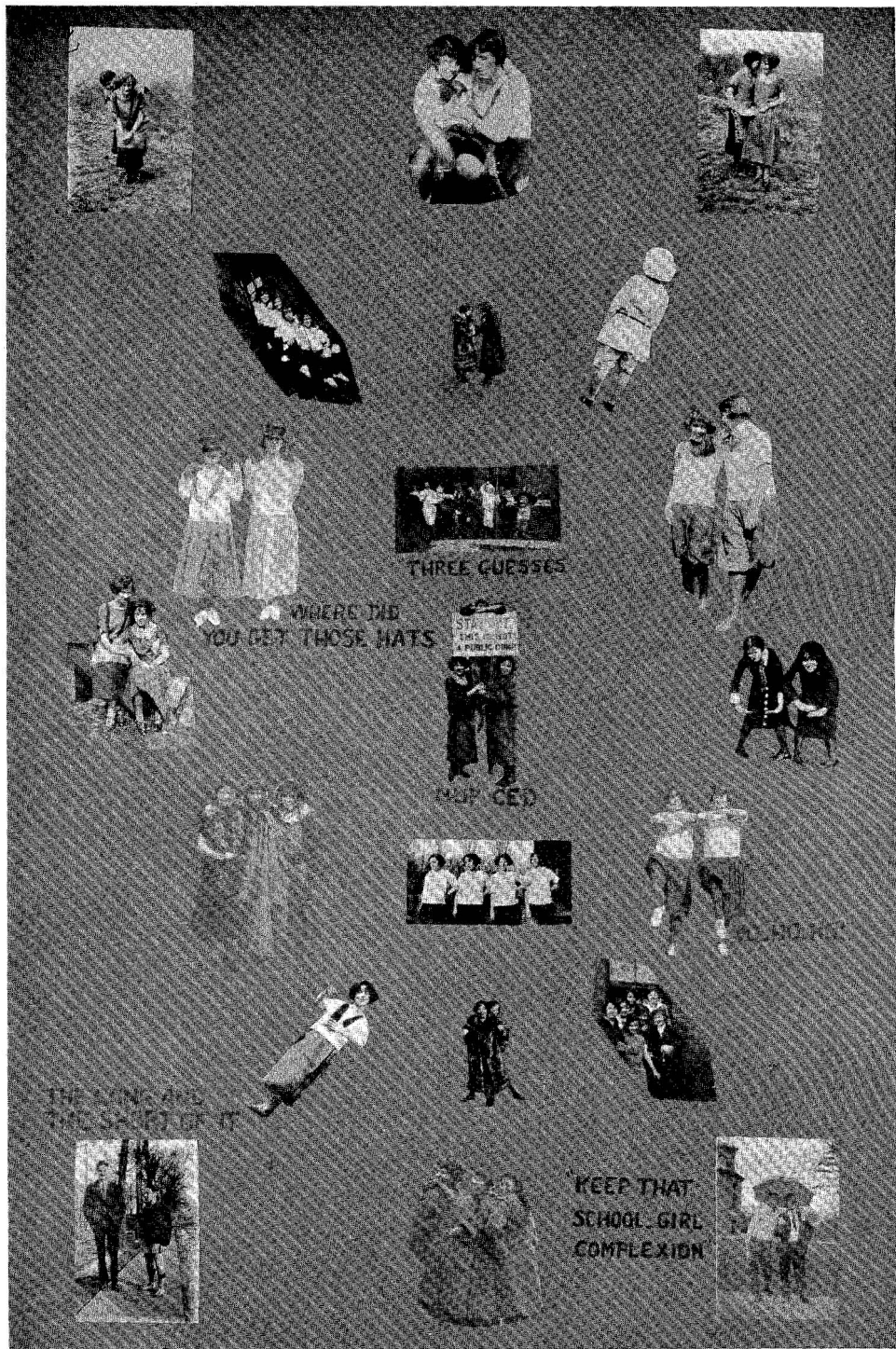


HILDAH



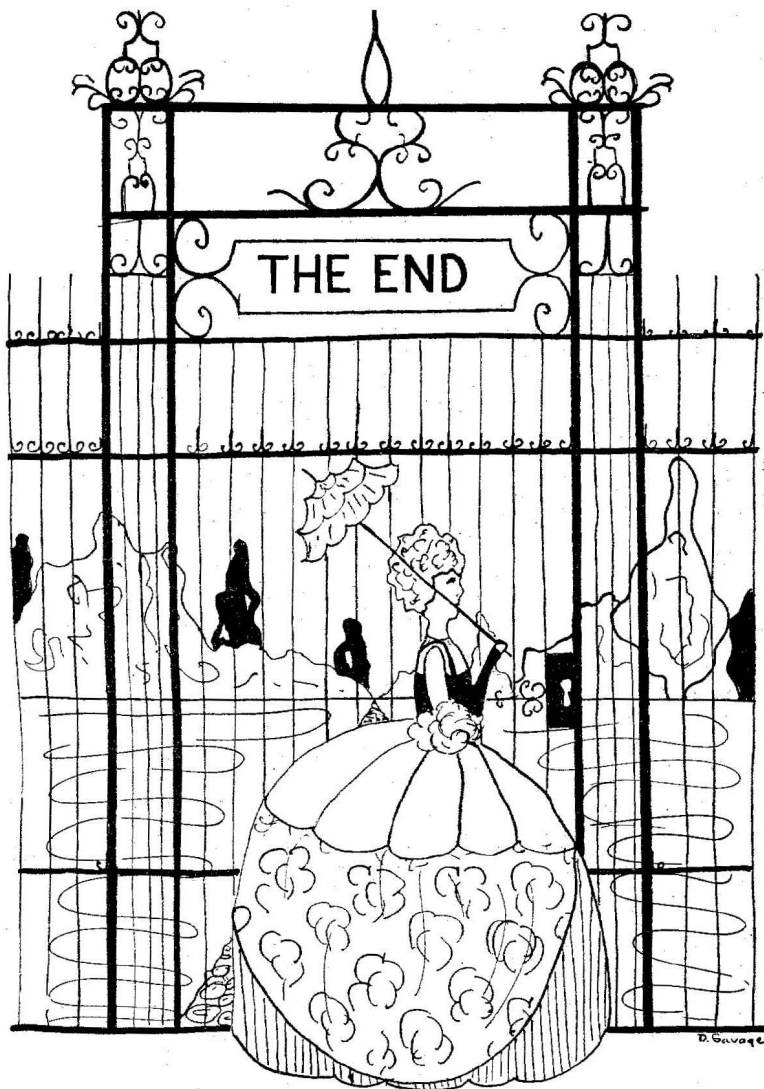
CLIPPING

CLIPPING



THE END

THE END



*Make This Bluebird Diamond
Her "Stepping-Stone"
to Happiness!*



Thoughtful Choosing for Quality Make
BLUEBIRD DIAMOND RINGS

the safest Diamond investment you can make. The individual registry number in every ring is your positive guarantee of fair price—quality is always the highest.

\$50 upward

McEwen & Zimmerman



The Praeco Staff wishes to acknowledge their especial indebtedness to Caroline Prindle, Pauline Snyder and Mary Elizabeth Cook for their willing co-operation to make the book a success.

Dickey Hardware Company

ELECTRIC GOODS, WINDOW SCREENS
Everything in Hardware

Special Prices to Normal Students

Lock Haven Trust Co.

THE LARGEST AND FINEST BANK IN
CLINTON COUNTY

Member of the Federal Reserve

ALL PICTURES IN PRAECO FOR THIS YEAR WERE TAKEN BY

G. A. BRION

Photographer

¶ Photographs taken at Brion's show the desired results.
High grade work assured at all times.

¶ Films and Cameras at prices that please.

¶ Film developing a specialty.

"Invest in a Brion Photograph"

21 South Fairview Street

LOCK HAVEN, PA.

GOOD DRUGS

BETTER SERVICE
LOWER PRICES

When in need of anything
from the DRUG STORE
remember

Hilton & Heffner
"The Quality Druggists"

HILTON & HEFFNER

Boston Candy Kitchen

M. PLAGIANOS, Proprietor

CHOICE BON BONS
CONFECTIONS
ICE CREAM
WATER ICES, ETC.

28 East Main Street LOCK HAVEN, PA.

The Old Reliable Has Served You for
20 Years

For Light Lunches
and Refreshments,
go to the

Sugar Bowl

Fine Confections

109 East Main Street

LOCK HAVEN, PA.

Go Where the
Crowd Goes

When you want the newest in Toilet Goods
or if only to see what is new, just drop
around to our Toilet Goods Department.
There you'll find the crowds, especially on
Saturdays, making toilet goods purchases
and inspecting the newest offerings.

New Compacts, Toilet Waters, Perfumes,
Tooth Brushes and Tooth Pastes, Station-
ery, etc.

LET US FILL YOUR PRESCRIPTIONS

Prierson Pharmacy

Southeast Corner Main and Vesper Streets

LOCK HAVEN, PA.

Clinton Trust Company

LOCK HAVEN, PA.

Capital \$200,000.00

Surplus \$100,000.00

DESIGNATED DEPOSITORY

Commonwealth of Pennsylvania
City of Lock Haven, Pa.
Lock Haven School District
Central State Normal School

Will appreciate any Banking business you may have while in
Lock Haven

Achenbach's

Bakers of Exclusive Fancy Cakes and Pastries

CATERERS

Weddings
Teas
Receptions
Parties

CANDIES

Page & Shaw
Norris
Schrafft's
Martha Washington

SERVES

NOON DAY LUNCH
SIX O'CLOCK DINNER

ACHENBACH'S PATIO

Reserved for Bridge Parties, Etc.

SECLUSION COMFORT CONVENIENCE

Wholesale and Retail Ice Cream Manufacturers

LOCK HAVEN, PA.

Ralph R. Myers

HUNTING, FISHING, BICYCLES,
AND ATHLETIC SUPPLIES

Remington Pocket Knives

Bellefonte Avenue
LOCK HAVEN, PA.

STYLE PLUS QUALITY

OUR MOTTO

If you are looking for good
FOOTWEAR—look this
way and you'll not be dis-
appointed.

KLEWAN'S

21 East Main Street

Just a little better drug
service at the

Mason Drug Co.

Opera House Block

Graduate Prescription Service
Night and Day

PLOOF'S

Make This Your Store While Here

There are many articles we can supply
you with—useful as well as ornamental.
You may need a Brooch, Ring, Bag, Ear
Rings, Bracelet, Beads, Diamond, Watch,
Chain, Powder Box, Lavalliere, Knife,
French Perfume, Baby Ben Clock.

Graduate Optometrists
Can Fit Your Eyes or Repair Your Glasses

PLOOF'S JEWELRY AND OPTICAL CO.

Bell Phone 602

LELIAMAE SHOPPE

MRS. CHAMBERLAIN

Professional Service in Shampooing,
Scalp Treatment, Manicuring,
Facial Massage, Hair Dyeing,
Marcel and American Waving,
Permanent Wave.

Calls Made by Appointment

111½ E. Main Street LOCK HAVEN, PA.

24 Hour Service

Films

Leave your films today, get your
pictures tomorrow.

All Portraits at Reduced Rates to
Students of C. S. N. S.

THE SWOPE STUDIO

Compliments of

DR. J. C. McCULLOUGH

Corselettes Girdles Hosiery

Underwear

Always new things arriving at the

Corset & Lingerie Shoppe

Next to Post Office

DR. GEORGE EADIE

Compliments of

DR. GEORGE EADIE

Dentist

Established 1855

Weidhahn Jewelry Co.

FINE JEWELRY
CUT GLASS
SILVERWARE

"Oldest and most reliable jewelry store
in this city"

It pays to deal at WEIDHAHN'S
Waterman, Parker and Wahl Pens
Pencil Sets

PHILIP ZUBER & SON

Philip Zuber & Son



QUALITY
MEATS AND
PRODUCE

Compliments of

**SANITARY BARBER
SHOP**

Compliments
of

A. W. BAUMAN

Established 1846

Jacob Brown & Son

The Old Reliable
Grocery

When the set stands 4-4 and
The score is at deuce
It is your ad to have your
equipment absolutely Right

Live-Wood
TRADE MARK
TENNIS RACKETS

To get back your winning way,
Consult Lock Haven's Athletic
Specialists

Stevenson's
Sporting Goods Store

BLAKE & BRUNGARD

HARDWARE HEADQUARTERS

Representing Du Pont Paint and
Varnishes; Carey Full Value Roof-
ing Shingles; the Famous Glen-
wood Range.

SERVICE QUALITY SATISFACTION

Smart New
Linen Dresses

PRINTED SILKS
GEORGETTES
BROADCLOTHS

Most Moderately Priced

Hecht's Woman's Shop

Compliments of

R. SCOTT SMITH
Civil Engineer

132½ East Main Street
LOCK HAVEN, PA.

Plan to LUNCH at

F. I. TITUS'

Just Off the Campus

ICE CREAM
HOME COOKING
GROCERIES

Achenbach's
Arbor

"The Place"

ICE CREAM
SODAS
LUNCHES
CANDY

Next to C. S. N. S.

Crowley's

Coats, Dresses, Etc.

Finest Line in Central Pennsylvania

Buy here and save 50%.
This is not a fable but a
fact. Come and see us.

Crowley's

Just below the C. S. N. S. on Main Street

APEX Chocolates

The Peak of
Perfection in
Confectionery

A. SIMON'S SONS

Distributors

LOCK HAVEN, PA.

Three Reasons for Anthony-Made Clothes

1. They have and hold that well-dressed look.
2. They give you that confidence in yourself that men with the tailored look develop.
3. Over a few seasons' time they cost you less. Genuine economy is wise spending.

L. H. ANTHONY

313 North Grove Street

The Young Men's Store

Everything new and
up-to-date in

Hart Schaffner & Marx
Clothes

Eagle Shirts

Young Brothers Shoes

Rugby Sport Sweaters

Knickers and
Golf Hose

HARRY H. WILSON

Money's Worth or Money Back

J. F. TORSELL

QUALITY SHOE
REPAIRING

BELLEFONTE AVENUE

KELLER'S

Pumps and Low Shoes
In All Styles and
Leathers

KELLER'S

G. BRUCE KERNS

Jeweler and Expert Watchmaker

Registered Optometrist and Eye
Specialist

31 Bellefonte Avenue LOCK HAVEN, PA.

"The Hallmark Store"

E. W. CARLSON

Florist

6 BELLEFONTE AVENUE

Both Phones

The Griffith Store

5-10-25 and Variety

Come to us for your
STATIONERY and
you'll be surprised
to see how many of
your other needs we
can supply.

SPECIALISTS in Bobbing
and Shingling

Gramley's Barber Shop

Expert
Barbers

Courteous
Quick
Service

Powder Puff Beauty Parlor

New Fallon Hotel
Bell Phone 604-J

Experienced Operators in All
Branches

Marcelling and Water Waving
a Specialty

Nash Millinery

(Over Achenbach's)

Includes the largest
assortment of up-to-
the-minute modes in
the city.

Special Attention to Normal School
Students

Burkett Brothers

Dealers in
NEWSPAPERS, STATIONERY
and
OFFICE SUPPLIES

105 East Main Street LOCK HAVEN, PA.

KAMP'S

*The Home of
Good Shoes*

Dainty Things for Summer Wear

Coats Gloves
Dresses
Blouses Hosiery
Sweaters
Underthings
Millinery
Bathing Suits
Novelty Jewelry

The Kempe Store

"The store you'll like to shop in"
13-15 E. Main Street LOCK HAVEN, PA.

SHOES

QUALITY—The Best STYLE—The Newest
PRICE—The Lowest

Endicott-Johnson Shoe Store

BOTTORF BROTHERS

209 East Main Street LOCK HAVEN, PA.

Compliments of

"The Clinton"

Restaurant-Delicatessen
Table Luxuries

312 Vesper Street LOCK HAVEN, PA.

MAX J. LIPEZ

ENTRANCE ENTRANCE
Bellevue Avenue Church Street

Misses' and Women's
Coats and Dresses

LADIES' PUMPS and OXFORDS

A big line of all kinds of HOSIERY
Special Price for Normal School
Students

Honest Prices Honest Merchandise

Dorothy Beauty Shop

Special price in permanent waving \$15.00

Also special prices in ladies' hair cutting,
shampooing, marcelling, scalp
and facial treatments

The Dorothy Beauty Shop

Over Widman & Teah's

Corner Bellevue Avenue and Church Street

Bell Telephone 586 Evenings by Appointment

REAL EATS

when you are hungry

Jerle's Cafe

Special Attention to Normal Students

THIS IS THE PLANT

Engraving • Printing
Binding

ALL UNDER ONE ROOF



Buildings Owned and Exclusively Occupied by Grit Publishing Company

Printers, Engravers and Binders of the 1925 Praeco

College and School Half-tone and Line Engraving
Especially Solicited. Write Us Before
Placing Your Next Order

GRIT PUBLISHING CO.,

Williamsport, Pa.

Autographs

Autographs