



P R A E C O

*Year Book of
Central State Normal School*



Touch me lightly for the labor
Wrought upon these pages white
Marks the flight of many hours—
Hours spent in pure delight.
Yes, delight—for all my pages
Hold sweet thoughts of classmates dear;
Leaf my pages gently, friend, with
Loving thoughts of bygone years.

PUBLISHED BY THE SENIOR CLASS *of* NINETEEN TWENTY-TWO
of CENTRAL STATE NORMAL SCHOOL *at*
LOCK HAVEN, PENN'A

ROY S. McDOUGALL

ROY S. McDOUGALL was born in Lapeer County, Michigan, where he completed his High School education and entered the teaching profession. After teaching in rural and village schools he attended the Ferris Institute at Big Rapids, Michigan, where he took a short commercial course. Upon leaving the Ferris Institute he accepted a position as supervising principal, which soon led to his appointment to a superintendency. He remained in this position two years.

Having completed two years work in various phases of educational appointments he entered the Michigan State Normal College at Ypsilanti in the fall of 1915. After finishing his four year course the college conferred upon him the Degree of Bachelor of Arts, he having majored in Education and Philosophy. During his senior year and the following terms up to the time he entered Columbia University he was instructor in Psychology and History of Education.

In June, 1920, he received the Degree of Master of Arts from Columbia University and returned to the Michigan State Normal College the following summer as instructor in Educational Administration. In the fall of 1920 he accepted the appointment at C. S. N. S. as Director of the Training School.

To MR. McDOUGALL

*who has been to us a faithful friend and helper
we, the Class of Nineteen Twenty-two, dedicate this Ninth Volume
of PRAECO*

PRAECO 1922



Roy S. McDougall, A.M.

PRAECO 1922

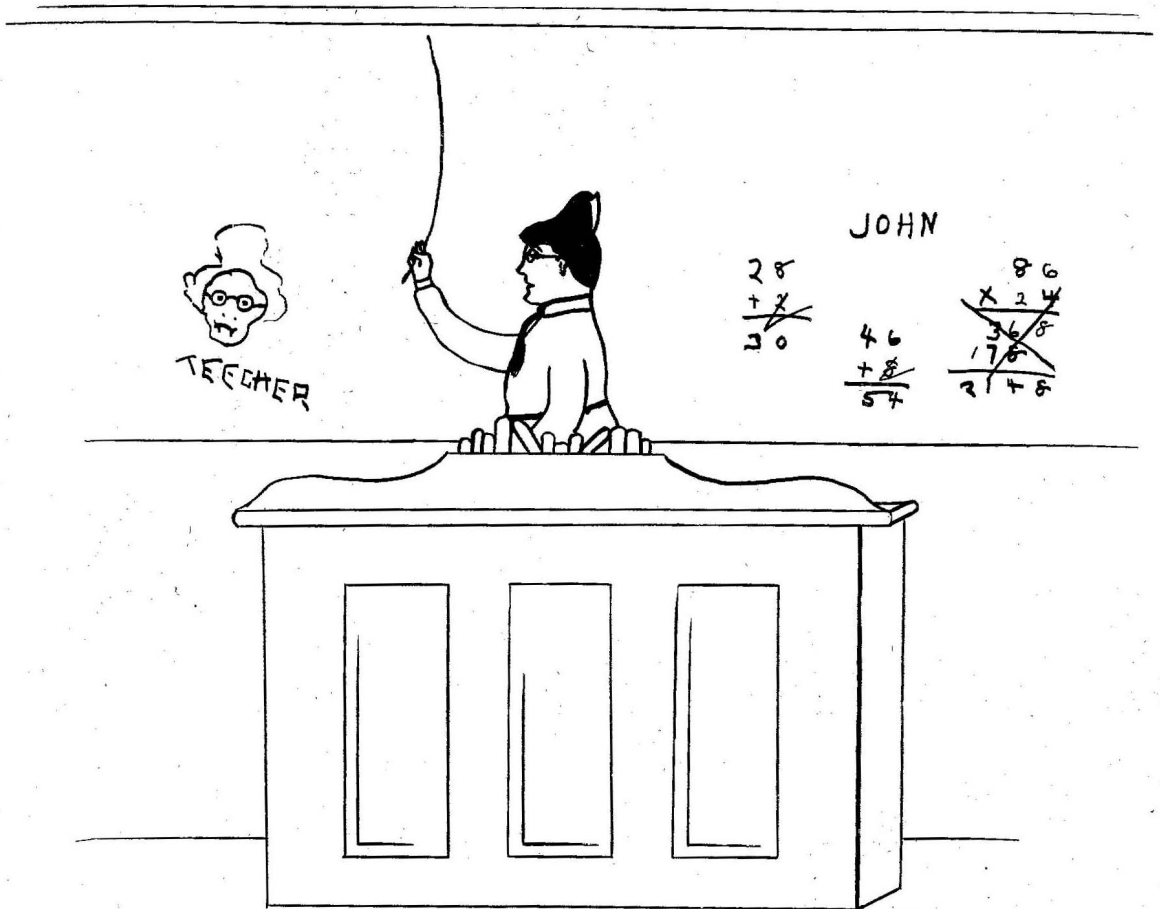
Board of Trustees

HONORABLE M. B. RICH - - - - -	1921
Woolrich, Pa., Clinton County	
SUPT. J. W. SWEENEY - - - - -	1921
St. Marys, Pa., Elk County	
HONORABLE FRED LEONARD (deceased) - - - - -	1921
Coudersport, Pa., Potter County	
MR. I. T. PARSONS - - - - -	1922
Lock Haven, Pa., Clinton County	
HONORABLE IVES L. HARVEY - - - - -	1922
Bellefonte, Pa., Center County	
MRS. CLARENCE L. PEASLEE - - - - -	1922
Williamsport, Pa., Lycoming County	
MRS. GEORGE H. DIACK - - - - -	1923
Lock Haven, Pa., Clinton County	
MR. WILLIAM KEINER - - - - -	1923
Lock Haven, Pa., Clinton County	
JAMES P. O'LAUGHLIN, ESQ. - - - - -	1923
Clearfield, Pa., Clearfield County	

Officers of the Board

<i>President</i> - - - - -	HON. M. B. RICH
<i>Vice President</i> - - - - -	WILLIAM KEINER
<i>Secretary</i> - - - - -	I. T. PARSONS
<i>Bursar</i> - - - - -	FRANK E. RITTER

FACULTY



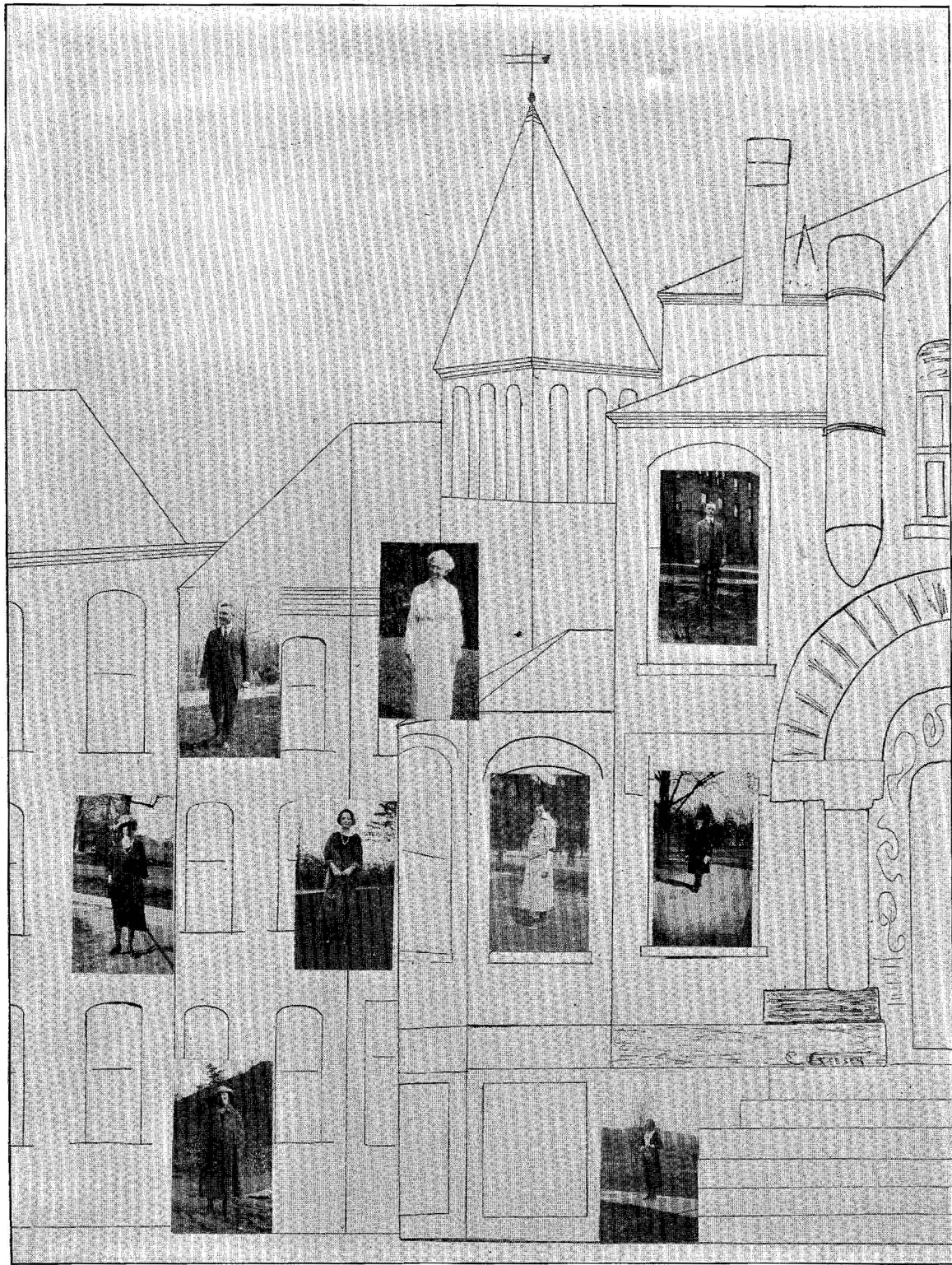


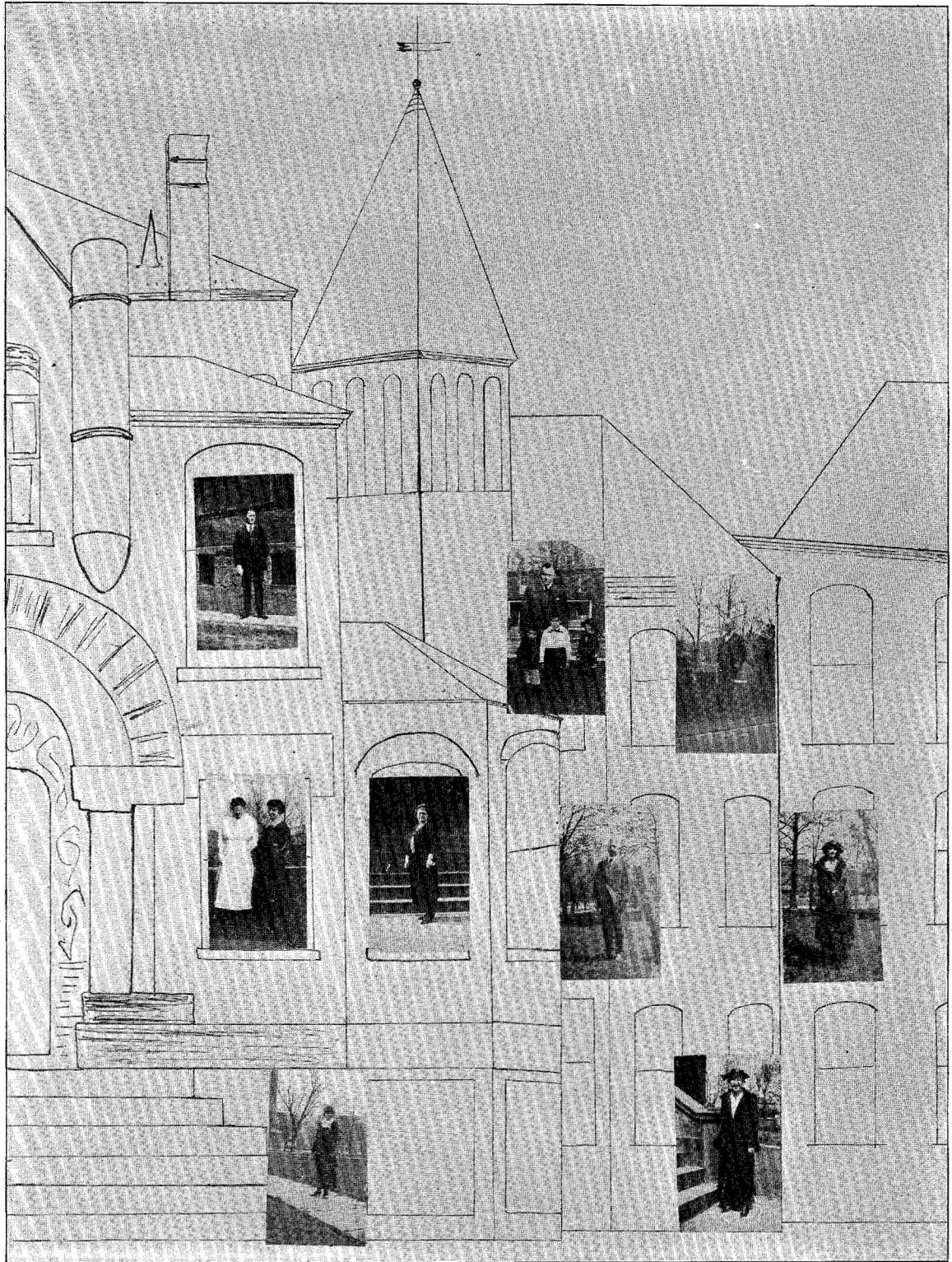
PRINCIPAL WARREN NEVIN DRUM, A.M.

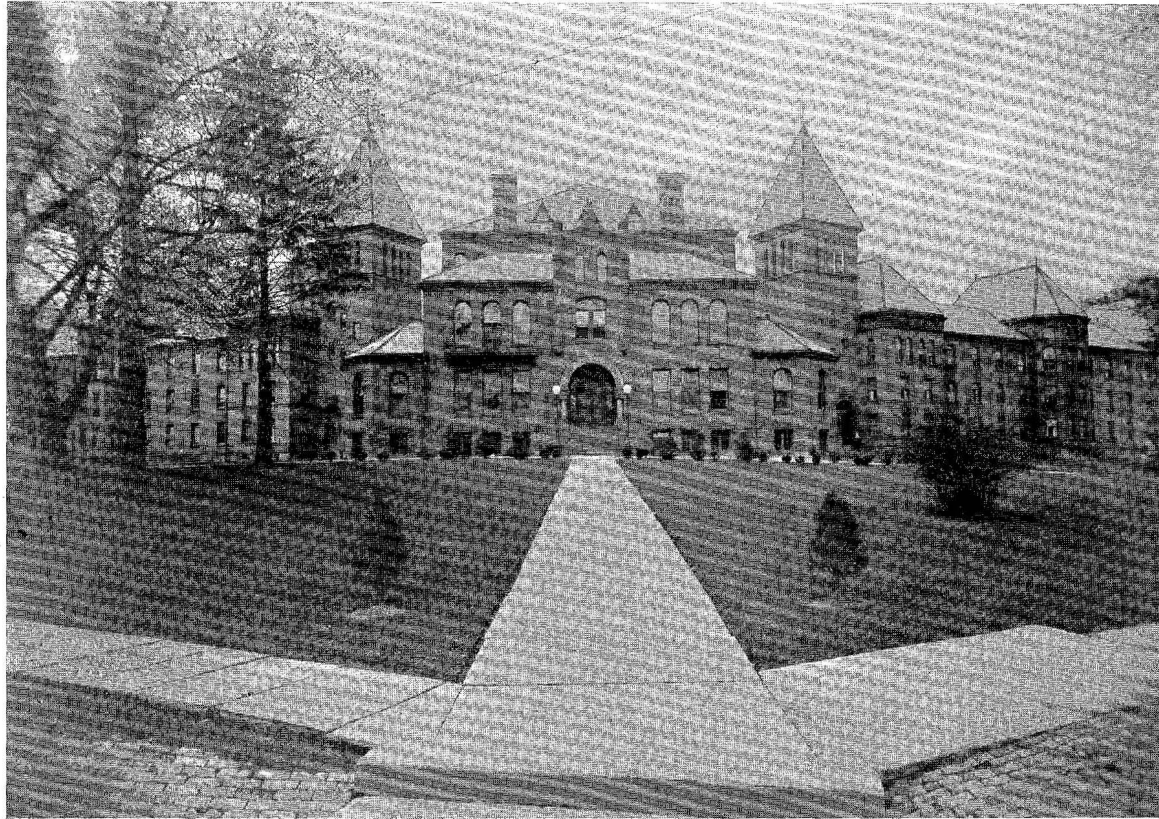
PRAECO 1922

The Faculty

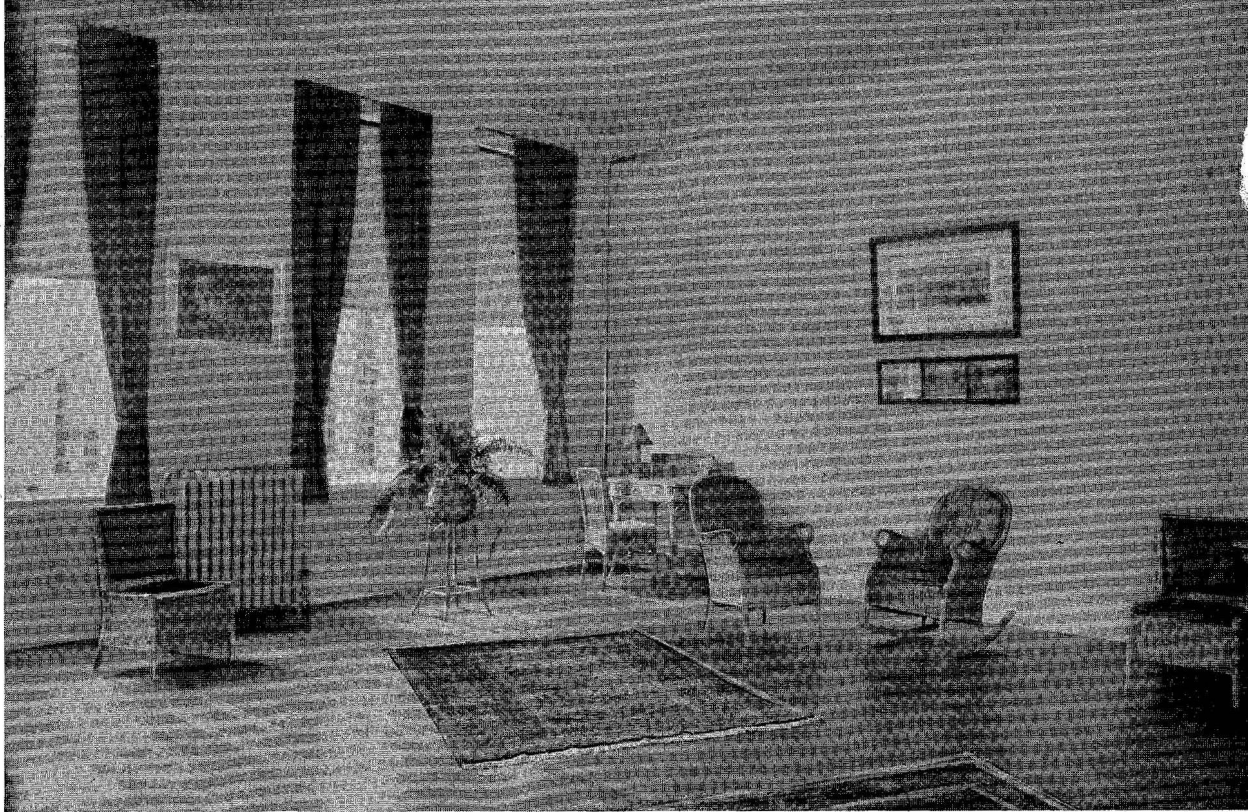
WARREN NEVIN DRUM, A.M. Principal	- - - - -	Columbia University
ROY S. McDUGALL, A.M. Director of Training School	- - - - -	Columbia University
JESSIE SCOTT HIMES, B.S. Kindergarten-Primary Supervisor	- - - - -	Columbia University
LAURA E. BARKHUFF Kindergarten and Grade 1	- - - - -	Columbia University
HELEN BOGGIS' LESHER Grades 2 and 3	- - - - -	Froebel Institute
BERTHA M. ROWE, B.S. Grades 4 and 5	- - - - -	New York University
EDITH HAGAN Grade 6 and J. H. S.	- - - - -	Syracuse University
GERALDINE LOCKHART, A.B. J. H. S.	- - - - -	New York State College
GISETTA M. YALE Arts	- - - - -	Pennsylvania Academy of Fine Arts
BLANCHE M. SPEER Piano and Voice	- - - - -	New England Conservatory of Music
MARY SHAW Music	- - - - -	Cornell University
CHARLTON LOCKE, A.M. Expression	- - - - -	Ohio Wesleyan University
HOMER H. GAGE, PH.B. French, Latin	Cornell University, State Normal College, Albany, N. Y.	
THOMAS WAYNE TREMBATH, PH.B. English	- - - - -	Lafayette College
M. DE TURK HIGH, A.M. Mathematics	- - - - -	Chicago University
LEVI J. ULMER, M.S. Science	- - - - -	Bucknell University
CORNELIUS M. SULLIVAN, B.S. Social Studies	- - - - -	Columbia University
IRENE SHALEY, M.S. Health Education	- - - - -	Columbia University
FLORENCE CHANDLER GROFF	- - - - -	Secretary to Principal
FRANK E. RITTER	- - - - -	Bursar
MRS. H. H. GAGE, A.B., Elmira College	- - - - -	Dietitian
MRS. LYDIA E. CRESSWELL, School Nurse	- - - - -	Matron





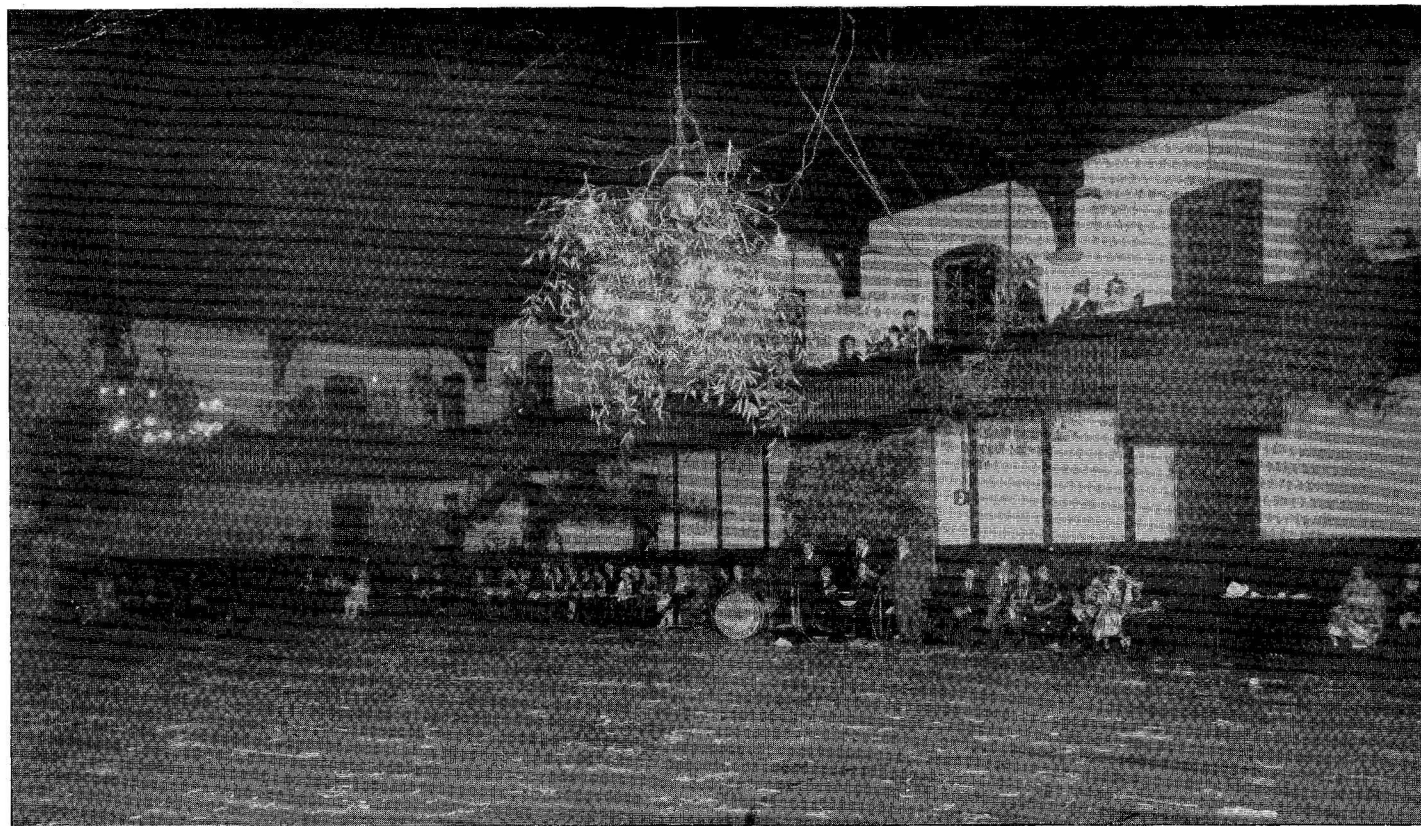


C. S. N. S.



BLUE ROOM

PRAECO 1922



HALLOWE'EN DANCE

PRAECO 1922

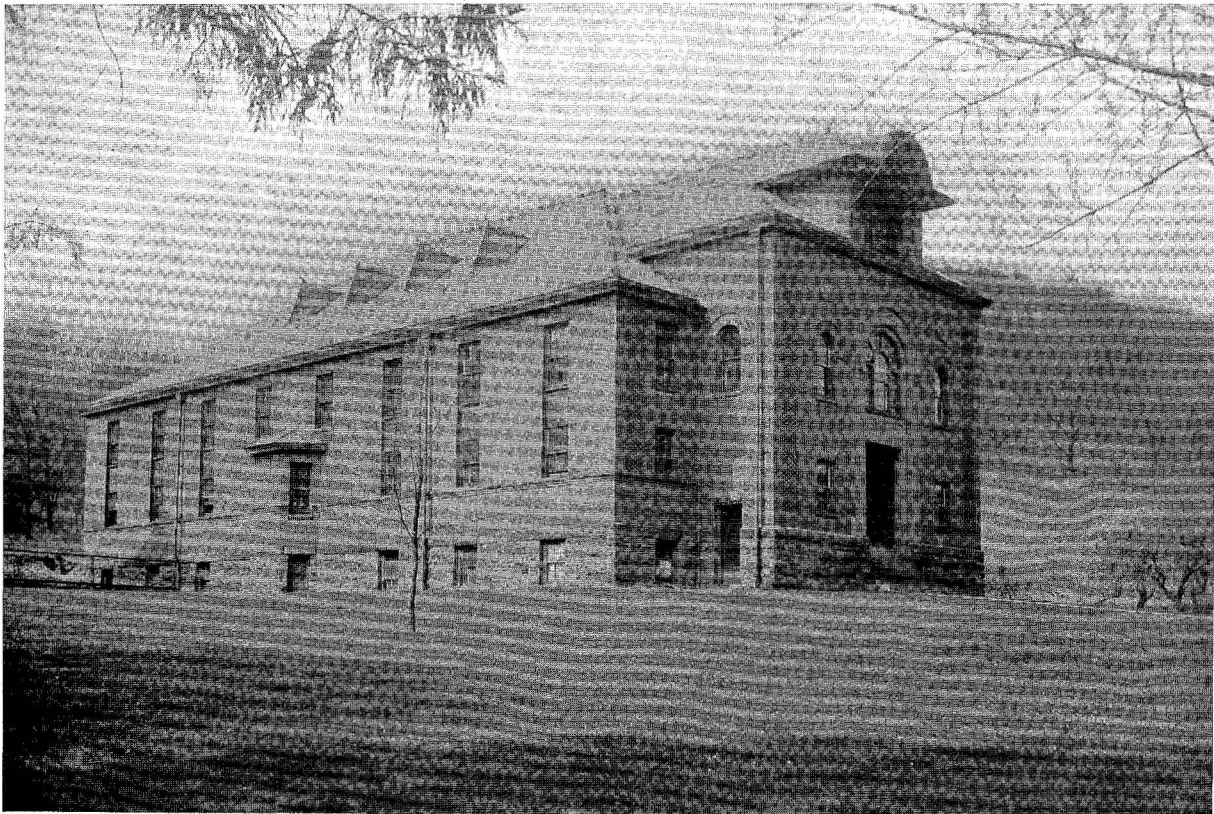


HALLOWE'EN DANCE



THE TRAINING SCHOOL

PRAECO 1922

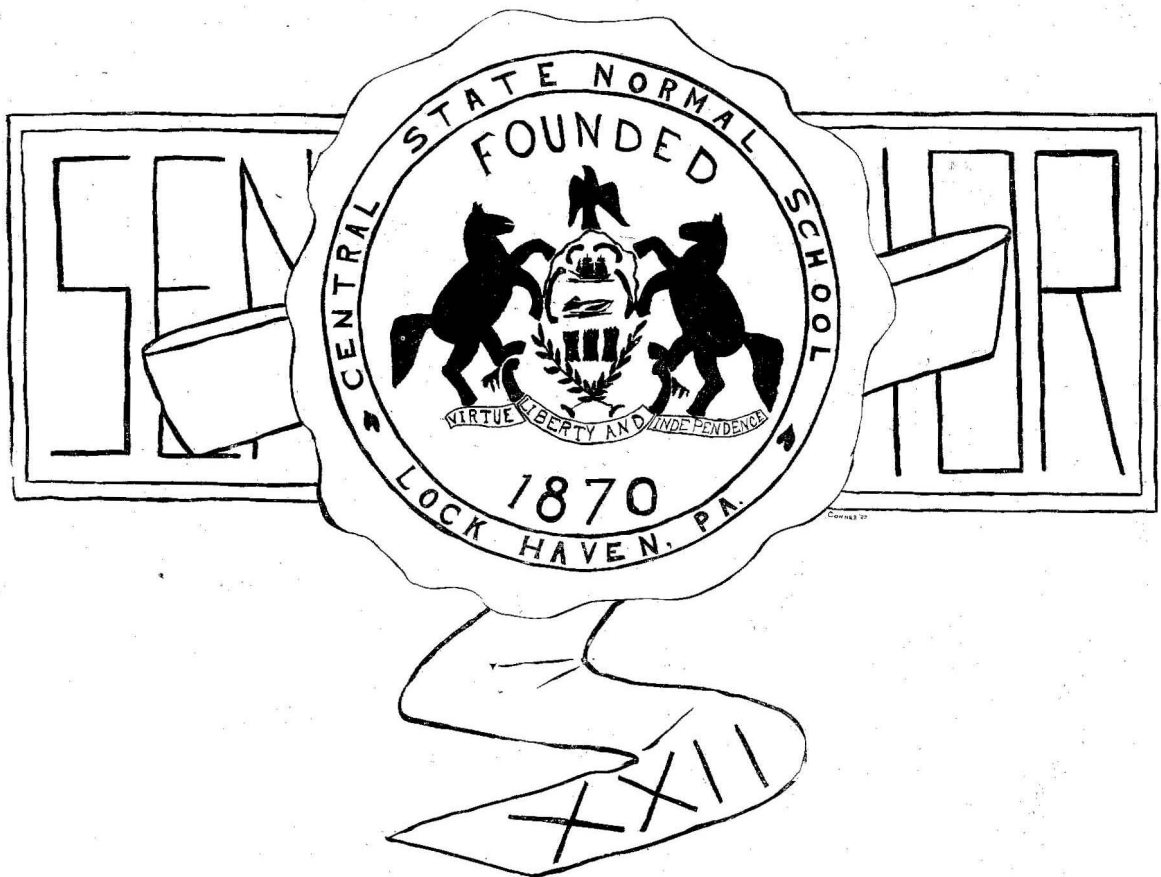


GYM—NOT JIM



GETTING OUR INTELLIGENCE MEASURED

PRAECO 1922





IRENE BAUMAN, P Ω Δ

"Bobby"

LOCK HAVEN, PA.

Pretty as a picture—I'll say,
Makes a fellow stop any day.
Irene's a mighty fine girl,
Always putting things in a whirl.

ALTHEA BEERY

"Al," "That Beery Woman"

JUNIATA, PA.

Althea's big blue eyes and broad smile have served as an anchor
to lodge her into everyone's heart at C. S. N. S.

Never too busy to lend a helping hand and bright as a whistle!
Never let on she's a minister's daughter.

ELIZABETH M. BOWSER

"Betty"

SMOKE RUN, PA.

Y. W. C. A.; Shakespeare.

She has a smile that would beguile
A monk in robe and cowl
And yet her eyes can look as wise
As grave Minerva's owl.
Lo, when she speaks, across her cheeks
The chasing dimples fare!
When her you've met, you'll ne'er forget
Her thoughtful, loving care.



MYRTLE BROSHA
JERSEY SHORE, PA.

One of the jolliest in our class
Is this winsome little lass—
Always on hand when fun is near
And her hearty laugh you can always hear.

HAZEL E. BROWN, B Σ X
"Betty," "Heb"
BETULA, PA.

Vice President Student Council; President Shakespeare; Vice President B Σ X; President Dramatic Club; Glee Club '21; Y. W. C. A.; Varsity Basketball '21.

"I'm sorry, girls, but I must sweep."
Right is might—that's her motto;
Pep in gym—that's her joy;
Honor, success, and what we ought do:
Each is to her but a toy.
Her work is done with a genius,
Her heart is as big as the sun,
Her ways like those of Venus,
And her aim, to harm no one.

MARION BUEHLER, B Σ X
"Hony"
ALTOONA, PA.

Glee Club '21; Y. W. C. A.; Price President B Σ X.
Always late to every class,
Always hands you out some sass,
About Honey's "Dorbin" she always talks,
For when he goes she never walks.
Hear her girlish laughter ring,
But, Oh! "Ye Gods" to hear her sing!



EDNA M. CLARK, P Ω Λ
"Bobby," "Happy," "Ted"
HUGHESVILLE, PA.

Vice President Shakespeare; Treasurer of Class '22; Secretary
P Ω Λ ; Y. W. C. A.

"Ye Gods! I!"

There was a little girl named Clark
Who was always on a lark.
At jokes she was witty;
She sang many a ditty,
But—to a "Uke," not a harp.

SYLVIA CLASTER, P Ω Λ
"Syl"
LOCK HAVEN, PA.

This is our Sylvia Claster
And surely all subjects she'll master
She's very happy wherever she goes
At church, school—yes—
Even movie shows.

ANNA E. CONNER
"Duckie"
WILLIAMSPORT, PA.

Y. W. C. A.; Devotional and Poster Committee; Price; Glee Club, '21,
'22; Cantata Club, '21; Nature Study Club, '21; "Praeco" Staff.

Goodness seems to be a part
Of that sweet appealing name
Faith and tenderness of heart
Purity—her dearest claim,
For you can most always tell
By the names girls bear.
I know an Anna well;
Never mind, that's my affair
Ask Layton, he knows.

PRAECO 1922



J. LEMOYNE CORNELLY
"Corny," "Jimmy," "My-dear-a"
MADERA, PA.

President Class '22; President Student Council '22; Secretary Y. M. C. A.; Treasurer Shakespeare; Vesper Committee.

Hail to our President;
Most honorable and kind,
A better friend than "Corny"
Is mighty hard to find.

ETHEL M. DARBY, B Σ X
"Darby"
HILLSGROVE, PA.

Secretary Shakespeare; Y. W. C. A.; Nature Study Club '21.
Ethel is quiet, but so are the flowers.

Sweet, ladylike, gentle—no wonder the children say, "We all love our teacher." (The children are not alone in their adoration.)

SAMUEL DIEHL
"Sam"

Though he never did have much to say,
Of knowledge he's a fountain.
An answer you can always get,
Like an echo on a mountain.



LAURA BELLE DOLAN, A Σ T

"Laurie"

ELDRED, PA.

Shakespeare; Y. W. C. A.

Laura's a mighty jolly lass.
She's always on duty in her class.
So earnestly does she strive to succeed,
Her life will be marked by some great deed.

MARGUERITE C. DONLIN, A Σ T

"Peg," "Dr. Donlin"

Shakespeare; Glee Club '21-'22; Nature Study Club '21.

West Dormitory doctor is she;
And a very fine doctor predicted to be.
She wears a smile whenever she goes,
Feeds well and talks well—Everyone knows.

ROMAYNE EMBICK

"Rosie"

ALTOONA, PA.

"Praeco" Staff; Glee Club '21; Price; Nature Study Club '21;
Y. W. C. A.

Girls say her eyes like sunny skies,
Her chief attraction form;
Boys see the sunshine in her eyes—
Then they're taken as by storm.

PRAECO 1922



MARGARET FARWELL, A Σ T

"Marg"

BEECH CREEK, PA.

Shakespeare

Her very frowns are sweeter far
Than the smiles of other maidens are
She is pretty to talk with, witty to walk with,
And pleasant, too, to think on.

Ask George.

GERALDINE GAFFNEY

"Gerry"

SCRANTON, PA.

Price.

"Well, this is what I heard." "Listen to this, girls." If, by asking many questions, a maiden may grow wise, we have a certain classmate who is bound to take the prize. For "Gerry" asks you this, and "Gerry" asks you that, whether we have gym today and "Where did you get that hat?"

In spite of asking questions, our Gerry's very smart. She is always around when wanted, ready to do her part.

ELSIE GEESEY, A Σ T

"Just Elsie"

ALTOONA, PA.

Y. W. C. A. Cabinet; Class Secretary; Dramatic Club; "Praeco" Staff; Shakespeare; Nature Study Club '21.

And here's a maiden fair to see
Who labors quite industriously;
Yet she is gay
And loves to play;
Her eyes are always full of glee.
Our Elsie!



BESSIE GRAHAM

"B"

BIGLER, PA.

Shakespeare; Y. W. C. A.; Glee Club '21-'22.

"Like the water still she's very deep."

Though not a classical quotation the above is applicable to Bessie. The longer we know her the less we seem to know her, for each and every day she surprises us by doing something which we never dreamed she could do.

Quit hiding your light under a bushel, Bessie, and try publishing your poetry in some paper that has a larger subscription list than the Shake Literary Society Paper.

REVA E. HARRIS

"Josh"

SHINGLEHOUSE, PA.

Y. W. C. A.; Shakespeare.

Reva is quiet and unassuming, but when it comes to real work, she knows how to do it and gets results.

Her quick and logical mind captures the grades. She is a good sport nevertheless and what it takes to spell success—she's got it.

JOSEPH HANEY

"Henney"

LOCK HAVEN, PA.

This studious young man seems to have no trouble in getting his history of education. We wish him luck in whatever line he decides to make his life work.

PRAECO 1922



MARY K. HIGH
"Marie," "Miss Low"
ALLENWOOD, PA.

Y. W. C. A.; Nature Study Club '21; Glee Club '21; Shakespeare.

What for? Why? How do you know?
Oh; do you believe it is really so?
It's information that I want,
Most conversations are too blunt.
Oh! how I hate to get up in the morning
First the rising bell, then the warning,
Yet it seems to me a grievous fate
To come to breakfast "Just too late."

DOROTHY HOLMES
"Dot"
WILLIAMSPORT, PA.

Dot comes from Billtown,
Never yet known to frown.
A little coquette is she,
But on duty sure to be.

HORTENSE G. HUGHES, B Σ X
"Horty"
SCRANTON, PA.

President of Price; Treasurer B Σ X; Assistant Editor "Praeco";
Dramatic Club; Glee Club '21.

"I can't be bothered now."
Here's to happy Hortense,
A well known Bitter Sweet.
She often goes to dances at "State,"
And quite enjoys the treat.
In plays she is successful,
As most of you have heard.
She makes school life exciting,
And, of course, she lives on "Third."



JEAN L. INGHAM, A Σ T

"Sheenie," "Jeanibus"

LAPORTE, PA.

Vice President Y. W. C. A.; Dramatic Club; Glee Club '21-'22; Cantata Club; "Praeco" Staff; Nature Study Club '21; Price.

Did you ever? No, I never
Saw a girl so wondrous clever.
Dramatic, dancer, brilliant, too,
There is nothing she can't do.

EDITH I. KELSALL

"Ede," "Edy"

PATTON, PA.

Y. W. C. A.; Price; Glee Club; Cantata Club.

"She hath a heart as sound as a bell,
And her tongue is the clapper,
For whatever her heart thinks, her tongue speaks."

Edith's motto is "Never do today what you can put off until tomorrow." Her specialties are: grinning, helping friends, and writing to Ted.

NORMA M. KING

"Norm"

BETULA, PA.

Y. W. C. A.; Price.

What a wealth of knowledge lies behind her big brown eyes. Royal, dependable, lovable—that's Norm.

With her store of energy, her capabilities and her cheerful personality we know she will make a dandy little school-teacher—but will she?

PRAECO 1922



GRETCHEN KLEINSORGEN

"Gretta"

ALTOONA, PA.

Glee Club '21; Price; Y. W. C. A.; Secretary Price; Class Historian.

Conscientious and learned,
A great thinker, well-read.
Kind, modest, and friendly,
What more can be said?

GERTRUDE E. LEATHERS, PΩΔ

"Gerty," "Trudy"

HOWARD, PA.

Treasurer PΩΔ; Dramatic Club; President Glee Club; Y. W. C. A.;
Cantata Club; Shakespeare.

"You didn't!

"Blue were her eyes as the fairy flax"
And there's melody in that charming voice,
In arts and grace she nothing lacks,
To know her one must needs rejoice.

She talks of Tommy all the while,
No wonder when you know
That for him is her happiest smile,
For him her heart's aglow!

FLORENCE MAROLF

"Flo"

RENOVO, PA.

Vice President Senior Class; President PΩΔ; Glee Club; Shakespeare.

This little maid, demure and fair
Simply refuses to bob her hair.

Flo is almost as good a teacher as she is a jolly pal. She is quite partial to Cornell; we wonder why?



MARGARET MARSH, A Σ T
"Peg"
JOHNSTOWN, PA.

President Price; Y. W. C. A.; Glee Club '21-'22.

Stop and think! Did you ever
See a girl quite so clever?
Always talking and laughing, I'll say
But adding new friends every day—
That's our Peg.

ALICE L. MARTIN, A Σ T
"Abie"
JOHNSTOWN, PA.

Secretary Nature Study Club '21; Vice President Dramatic Club;
Y. W. C. A. Cabinet; "Praeco" Staff Business Manager; Shakes-
peare.

We all love our Abie,
Because she's never blue.
For work she's always ready;
In friendship always true.

ALMA MILLER, A Σ T
ALTOONA, PA.

Vice President '21; Y. W. C. A. Cabinet; Glee Club '21; Nature
Study '21; Price.

Alma hasn't much to say,
She thinks while others speak;
She's noted for her pretty ways
And the roses in her cheek.



OLGA NEFF, B Σ X

"Rish"

ALTOONA, PA.

Secretary Dramatic Club; Price; Glee Club '21.

"There's a little bit of bad in every good little girl."
And this is true of "Oggie" dear,
When's she's around things always twirl,
She's fond of fun; that's clear.

Her winning smile will get her fame,
Her grace will please, we know.
She is a most kind-hearted dame
And anything but slow.

JEANNETTE PATTERSON, A Σ T

"Jean"

PORTAGE, PA.

President Student Council; Y. W. C. A. Cabinet; Price; Glee Club
'21-'22; Cantata Club; Treasurer Junior Class; Nature Study
Club '21; Vesper Committee.

A true friend, a real friend,
And one that is ready,
A helping hand will always lend
To keep a classmate steady
She's popular, this girl sedate;
Laughing brown eyes, given by fate,
Capture all who come her way,
She is kept busy the live long day.

MAE OLSON

"Maizie"

GALLITZIN, PA.

Editor "Praeco"; Editor "Price Gazette"; Y. W. C. A.; Glee Club
'21; Nature Study Club '21.

"My endeavors
Have ever come short of my desires,

Bright, attractive and friendly—to know Mae is to know the reason for her popularity. She is a leader in all her classes and in the social life of the school. She practices the Golden Rule.



EDITH PAUL, A Σ T

"Ede," "Teedie"

JOHNSTOWN, PA.

Secretary-Treasurer Dramatic Club; Secretary Y. W. C. A.;
"Praeco" Staff; Glee Club '21; Nature Study Club '21; Price.

And here's our "Ede" so dear,
She's really a very true friend.
Will she make good? Have no fear,
She's one on whom you can depend.

KATHARINE PORTER

CURWENSVILLE, PA.

Price; Y. W. C. A.

To one not acquainted with her Katharine seems rather quiet and reserved. However, it is possible to penetrate this reserve, and when this is done we find a girl full of fun, full of work, and in fact just the kind of person we all like to know.

JEANNETTE RHODES, A Σ T

"Jean"

ALTOONA, PA.

Secretary Student Council; Treasurer Y. W. C. A.; Shakespeare.

Sweetness, Purity and Truth
Are the handmaids of thy youth;
And thy friendship, that doth last,
Makes the future as the past,
And about the present throws
All the perfume of the rose.

Oh, thy smile is like the smiling
Of some dream at morn, beguiling
All the senses with the tender
Glamour hopes to memories render.
Noble, fair and true thou art,
And all golden is thy heart.

PRAECO 1922



ALMA SISSLER
ALTOONA, PA.

Treasurer P Ω Δ ; Glee Club '21; Shakespeare.

Alma here with wavy hair
Causes many a heart affair.

Of all the stores on Main Street Alma thinks Wilson & Shaffer carry the most exclusive line of clothing. We do, too. Her smiles are ever ready and the host of friends they have won at C. S. N. S. speak louder than anything poor words can convey.

RUTH SNYDER
JERSEY SHORE, PA.

Devotional Chairman Y. W. C. A.; Price Critic; Glee Club '21; Dramatic Club.

"To live so that when life shall end,
All men shall say, "I've lost a friend."

Always gentle, loving, kind, our Ruth is claimed by all of us as "Friend." She is best known by her giggle. Some day we expect to get letters from "India's coral strand" where she and Oliver will spend their lives.

EMILY L. STILLSON
"Shine"
OSWAYO, PA.

Price; Y. W. C. A.

Blue eyes, enviable golden hair, a sunny disposition, and a wear- ever smile that's "Shine." That she has taking ways with the opposite sex goes without saying. "Shine" is bound to make a success with whatever she does, for

"The sound of a sigh doesn't carry,
But the lilt of a laugh goes far."



LENA M. STILLSON

"Pink"

OSWAYO, PA.

Price; Y. W. C. A.

We have no fear that the burden of life's responsibilities will bear too heavily upon her; so charming a girl will never go through life alone. Speaking of Spinsterhood: Pink herself says that she has taken measures to prevent it.

E. LORRAINE THURSTON, B S X

CLEARFIELD, PA.

Social Service Worker; Y. W. C. A.; "Praeco" Staff; Price.

Always hungry, always "Thursty,"
Always says "today's the worst day;"
Her cussing wit our hearts doth cheer.
We all agree, Lorraine's a dear.

ELIZABETH C. TREXLER

"Libby," "Trexxy"

LOCK HAVEN, PA.

Shakespeare Society; Y. W. C. A.

One of our honor teachers dear,
Always calm but never severe.
She rules her school with quiet smile,
And seems to enjoy it all the while.



HELEN J. WALTERS

"Walters"

ALTOONA, PA.

Vesper Committee; Y. W. C. A.; Price Glee Club '21-'22.

"Those brown eyes haunt me still,
And I suppose they always will;
I envy him who wins her hand,
He'll be the happiest in the land.

We think her motto must be, "Content thyself to be obscurely good when vice prevails and impious men bear sway. The post of honor is a private station."

ETHEL WITCHEY

OSCEOLA MILLS, PA.

President Y. W. C. A.; Glee Club '21-'22; Shakespeare.

Of Ethel we find there is lots to tell,
She does many things and does them so well;
She is competent, wise, clever, and gay,
The troubles we double she bubbles away.
Great is her loyalty, to her friends she is true,
All the girls love her and know she's true blue;
Cheerful and happy, with a heart full of song,
Her bright smile cheers when all else is wrong.



Class Motto

Not self, but all

Class Flower

Dark Violet

Class Colors

Purple and Gold

Class Poem

We must bid thee farewell,
Oh, school of our choice,
But the thought of thee always
Our hearts will rejoice.
We shall ever be proud
To boast of thy fame,
And shall strive through the years
To honor thy name.
We shall cherish the days
That with you we have spent;
To stay with thee longer
We would be quite content,
But life's work we must do,
And of thee we must tell.
Farewell Alma Mater, Farewell
Fare thee well.

H. E. Brown.

Class History, 1922

"Lock Haven!" called the conductor. The train stopped and off we piled, our eyes wide with curiosity. The taxi brought us safely up the then unknown Main Street to a beautiful, awe-inspiring building of knowledge—now our dear and never-to-be-forgotten Alma Mater.

Helpless, we stood on the steps until in the doorway was heard a kind voice telling us to come into the library to register. That voice belonged to one whom we later came to love dearly—Miss Mulford.

After hours of torture in the "lib" we were taken to the book-room where we emptied our pocketbooks, as usual. Finally we were shown to our rooms.

Oh, the bareness and unattractiveness! "I can't stay here." But through the kindness of the Seniors we, the Juniors, became acquainted with each other and the school. We took heart again and made our rooms as homelike as possible.

Work was soon taken up. We studied methods till we theorized in our sleep. We perspired in exams, but finally came out on top.

Early in the year Mr. Drum informed us of his high ideals for our school. Accordingly student government was introduced and carried on successfully throughout the year through the co-operation of the students and the earnest efforts of our Student Council: Rhoda MacCartney, Vindetta McKenzie, Beatrice Packer, Jeannette Patterson, and Eleanor Robb.

As soon as we became acquainted with each other, the Junior class was organized with Samuel Diehl as president; Alma Miller, vice president; Bernice Lord, secretary; Jeannette Patterson, treasurer.

Social science was certainly not neglected. The Y. W. C. A. early gave us a tea in welcome. The literary societies held their annual picnics. These were shortly followed by a Hallowe'en dance given to the girls by the boys. Throughout the year we had various music recitals by the students and also by such celebrated artists as Maier and Pattison. Then came the Senior dance!

"The sun! The sun!" We shall never forget the Devereaux plays and plays.

One of the outstanding features of our Junior life was the play, "Seventeen," characterized by the members of the Psychology of Adolescence class. "Successful" cannot describe it adequately.

Our other important event was the Junior Prom, held Friday, May 20, 1921. The gym was tastefully decorated in our class colors, purple and gold, and those of the Seniors, blue and gold. Hard work made it a grand success. Everybody enjoyed themselves immensely.

"May Day in June!" We, the class of '22, are probably the initiators.

Vacation time! Some of us went home early; a few stayed for the various commencement exercises.

During the summer the mail men kept us acquainted with each others' good times, etc.

Early in September, 1921, we rushed back to see each other and greet the many new students. Some of our old number were missing, but we were glad to welcome the new members to our class.

Student government activities were again taken up by a very competent council: Jeannette Patterson, president; Hazel Brown, vice president; Jeannette Rhodes, secretary; Mary Mowrer and Martha Dice, Junior members.

Our class was early reorganized as Seniors with Lemoyne Cornely, president; Florence Marolf, vice president; Elsie Geesey, secretary, and Edna Clark, treasurer.

Most of our time this year was taken up with practice teaching where our moods rose and fell just like thermometers when things went well and our teachers were pleased, and when things did not go so well and our teachers were displeased.

The rest of our time was spent in associations with Pestalozzi, Froebel, etc.

The usual social events, such as teas, picnics, Saturday night dances, lectures, and recitals by such notables as Strickland Gilliland, Mrs. Edward MacDowell, Judge Lindsey, etc., broke the monotony of school routine.

At Hallowe'en our faculty gave us a dance. Most everybody was costumed. The gym was decorated in black and orange.

PRAECO 1922

December seventeenth the Y. W. C. A. gave a Christmas bazaar where we tried our luck at fishing, saw the wild man and the Siamese twins.

Shortly after our return from a wonderful Christmas vacation Nature very kindly covered Mother Earth with a great woolly blanket of snow so we could take a sleigh ride to Jersey Shore. Three sleigh loads of us started from C. S. N. S. about 1:30 P. M. Just as we reached Jersey Shore one sled broke down. Like Instant Postum, there's a reason—"Skinney" rode in that sled. At the Pickering Hotel we feasted and danced. When the moon came up we came back, singing and giving school yells.

Praeco must be published. Our editor, Mae Olson, and her staff, though very competent and sage, could not possibly produce a class book without money. So happened our Senior dance for the benefit of Praeco, Feb. 17, 1922. The gym was converted into a fairyland of hearts and cupids where we glided lightheartedly to strains of Lyric music. Everybody was happy and had a royal good time. And Praeco work was certainly able to proceed.

Praeco promises to be a splendid book, full of new and original ideas and worth while material—something that we will number among our treasures as recalling memories of dear, old C. S. N. S.

But few more days of this life remain for us. Our commencement activities will soon come and go. Sunday, June 4, is the Baccalaureate Service; Monday, June 5, we shall hold our class day exercises; Tuesday, June 6, is Alumni Day; Wednesday, June 7, brings Commencement and the time to say goodbye.

Then will we pass on into the great, cold world where we hope to do things as a result of the training received through the untiring efforts of our faculty, ever to be revered by us.

May this school never feel anything but proud as she watches our advancement, and may the ideals of our Alma Mater ever be our guide.

Romayne Embick, '22.

Gretchen Kleinsorgen, '22.

The Mirror Revelations

Late one beautiful afternoon in spring I was sitting beneath the branches of a sturdy campus oak a-dreaming—dreaming of what the next spring, and the next, and all the springs to come, might bring to you, my classmates. Suddenly I heard a voice: “You wish to know the future?”

“Yes, oh yes,” I said, still dreaming, and looked up to see not, as I thought, a familiar figure, but a tall stranger quaintly garbed in russet brown, who kept his face so muffled in a fold of his mantle that only his piercing eyes were visible.

“Then, if you dare—for one who seeks to know the future may find both woe and weal—if you are stout of heart, follow me.” I hung back, doubting, an instant; then, still under the spell o’ dreams—and surely those eyes were kindly—I cast my fears aside and followed eagerly, past the training school, past the gym, up the hillside to a narrow cleft which ran straight into the hill. Into this my guide squeezed, without a backward glance. Unhesitating now, I followed, through pitch-black, winding ways, on and on, until a solid wall of rock blocked the passage. An instant later, and the rock had parted. A vast cave opened before me, gigantic, dimly lit with the flickering glow from a fire in the center of the floor; and there, around the fire, sat the three Fates, and beyond them, casting a dancing reflection up toward the distant roof, was their magic mirror, in which all time and all space is visible.

“Now, if you dare still learn both ill-tidings and good, press forward; look, look, look, in the mirror yonder;” and my guide, picking up a brazen basin, stirred into it some herbs, lit them at the smoldering fire, and, half singing, half mumbling ancient incantations, crouched down beside the Fates, and seemingly forgot me.

I stared into the mirror, eagerly, long; and as I stared I saw, first cloudily, then clearly, that which I had hoped hopelessly so long to see: the whole procession of your futures, classmates of 1922.

First—a hospital, and there, soothing fevered brows, her happy face unchanged, Lorraine. And with her, just as faithful nurses, Olga Neff and Geraldine Gaffney. Suddenly they became twice as attentive to their work, for the chief surgeon—I knew him by his white uniform—Lemoyne Cornely, came walking through the long aisles.

That scene dissolved into a brilliantly lighted hall crowded with an eagerly listening audience, held spellbound by the speaker. "Who was it?" do you ask. Betty Brown, lecturer and authority on Shakespearean plays.

Next, a quiet little room, and Alice Martin. Several volumes lay before her, and she was preparing another for publication. She had entered upon her poetic career.

But she was by no means alone in having won literary distinction; for when the mirror's haze next cleared away, I saw, quaintly dignified and quietly authoritative, Sylvia Claster and Elizabeth Trexler, joint owners of America's best known book store. A school-girl stepped up to one of the many clerks. "Have you Lamb's Essays?" "I'm sorry, but we have just sold the last copy. If you desire to study the very best in style, why not examine this recent volume by one of the best modern essayists, Miss Betty Bowser?" Before the scene had faded, my curious eyes had noted among the books conspicuously displayed, "Sketches in Pen and Ink—Mostly Ink," by Edna Clark; "Collected Lectures on the Art of Talking, Vol. 34," by Althea Beery; "My Work Among the Cannibals in Africa," by Ruth Snyder, author and missionary; and "Graded Course in Geography, Book IV," of the Kleinsorgen and Marolf Educational Series.

Then in rapid succession, one view crowding out another, I saw: Mae Olson in the governor's chair, practicing the civics she had taught, like Woodrow Wilson, and dictating busily to her Tumulty, Dorothy Holmes; Irene Bauman moving through her beautiful garden (Why were the flowers all violets?); Edith Paul, doing her best to coax her doctor out of his office and in to dinner, and the sign on his door read—the scene vanished just as I almost told that. But more scenes came: a dingy little office, on whose dusty panes were the letters JEAN INGHAM—LAWYER; a dining room, with a table set for two, and fussing and fuming because **he** was late—Romaine; a crowd outside a store window, watching Sam Diehl demonstrate his patented hat retainer; a concert hall—a joint performance—artists just returned from a European tour—Margaret Farwell, pianist, and Jeannette Patterson, prima donna; a country lane—an artist at her easel—a calf peering over her shoulder—Elsie Geesey, sketcher of landscapes and painter of portraits.

The mirror clouded. Were my visions at an end? No. It cleared at last, to show a group of Quakers in their meeting house. Two faces stood out on the women's side: Mary High and Catherine Porter; while over on the men's side, exhorting the gray and white assembly with something more than Quaker vigor, but paying particular attention to the other side of the house, stood Joseph Haney.

Once again the pictures speeded up. Schoolrooms in elementary schools, with Lena Stilson and Ethel Darby placidly running things. Schoolrooms in colleges, with Jeanette Rhodes and Anna Conner lecturing on rare mineral specimens which they had collected on their last expedition up the Amazon; and with Emily Stillson busy with a group of graduate students in her botanical laboratory. Alma Miller in a gondola, an Italian countess, floating down a canal in Venice. Bessie Graham and Myrtle Brosha, two dear old ladies, gossiping over their back fence, each with her cat—and nothing else. Gertrude Leathers cuddled up to—my, but these pictures pass quickly; still, it wasn't a cat, and whatever it was was hers. Edith Kelsall wielding the gavel at a Woman's Rights meeting, while Helen Walters and Norma King debated "Shall men be allowed to vote?" A movie theatre, featuring Hortense Hughes, the heroine of countless films and the central figure of many a Ziegfeld's Follies, in "Aint She Purty." Alma Sissler's Beauty Parlors. Margaret Carpenter's last fitting for the last article in her trousseau. An orphan asylum—I can't see very clearly; the pictures are slowing down—with three wiggling orphans being spanked at once by—yes, it's Ethel Witchey. Slower and slower—our old C. S. N. S., as plainly as can be, and the Dean of Women lecturing to the girls in chapel on—on—why, of course—Etiquette. It seems perfectly natural that the dean should be Laura Dolan. And next—

I wonder what did appear next; for just then came the voice I had first heard on campus, saying, "Seek no more. The visions are over. This is the end. This is the——" Had I been asleep all the time? Had I been only dreaming? True, I found myself in my own room, with the clock striking midnight; but all these sheets of manuscript which I have just read you were on the table before me.

Marguerite C. Donlin.

Roll Call

A is for Alice and our Almas so fair—
Three clever girls whom we're glad to compare.

B is for Bowser and Buehler. Both grin—
Also for Bessie who chases frowns in.

C stands for Corny, our Class President —
It also means Conner, whose time is well spent.

D stands for Darby, who's sure a good sport;
Yes, and for Dorothy, who hails from "Billspport."

E is for Edith and Edna, stars in our plays,
Also for Emily with such friendly ways.

F stands for Florence and Farwell too,
Both are happy; both are true blue.

G is for Geesey, quiet and sweet,
Also for "Gerry," who smiles as we meet.

H is for Hazel, "Heb" is her handle—
"Horty" goes with her, bright as a candle.

I is for Ingham and Irene fair,
Their good points we haven't space to declare.

Jean Rhodes is a girl whom each one admires—
Joseph looks up; for the top he aspires.

K is for Kleinsorgen, quiet but deep.
It also means Kelsall, not quite so meek.

L is for Lena and Laura; they're dear;
And Leathers is helping the world to good cheer.

Marsh, we acclaim you a staunch friend and true!
Myrtle and Mary agree with us too.

Roll Call

N stands for Neff, who plays on a "Uke,"
We hope she will marry a lord or a duke.

O is for Olson, you all will agree
She is as bright as ever can be.

P is for Patterson, loved leader and friend;
Also for Porter, who's true to the end.

Q is for Quiz; nuf sed, don't you think?
Oh, what shall I write? My mind's in a kink.

Rosie and **R**uth—very pleasant they are,
Their big broad smiles are seen from afar.

S stands for Sylvia and Samuel Diehl,
Wherever they go, we wish them both weal.

T is for Thurston and Trexler as well,
For both we can safely bright future foretell.

U stands for Unity in thought and aim
To all future classes we wish the same.

V stands for Vamp! of course we have none,
We mention it merely so them you will shun.

W is for Walters and Witchey, you know,
Who ever in wisdom and knowledge will grow.

X is unknown—what we shall do
After we leave; after we're through?

Y is for years Father Time has been counting;
Wherever we go may he find us still mounting.

Z stands for what? Of course it is zest
Which has helped us to make this class the best.

A. Beery.

PRAECO 1922

Praeco Honors

Neatest	- - - - -	ANNA CONNER
Sweetest	- - - - -	ELSIE GEESEY
Fattest	- - - - -	LORRAINE THURSTON
The Other Extreme	- - - - -	GERALDINE GAFFNEY
Best Dancer—		
Girl	- - - - -	OLGA NEFF
Boy	- - - - -	LEMOYNE CORNELY
Wittiest	- - - - -	BESSIE GRAHAM
Most Frivolous	- - - - -	ALMA SISSLER
Biggest Talker	- - - - -	EDITH KELSALL
Soonest Married	- - - - -	GERTRUDE LEATHERS
Prettiest Eyes	- - - - -	NORMA KING
Prettiest Dimples	- - - - -	ALMA MILLER
Prettiest Hair	- - - - -	MARGARET FARWELL
Man Hater	- - - - -	GRETCHEN KLEINSORGEN
Most Popular	- - - - -	HAZEL BROWN
Sleepiest	- - - - -	ELIZABETH BOWSER
Biggest Giggler	- - - - -	RUTH SNYDER
Most Studious	- - - - -	MAE OLSON
Best Basketball Player—		
Girl	- - - - -	ETHEL DARBY
Boy	- - - - -	LEMOYNE CORNELY
Dramatic Star	- - - - -	EDNA CLARK
Best Dressed Girl	- - - - -	DOROTHY HOLMES
Best Looking—		
Girl	- - - - -	IRENE BAUMAN
Boy	- - - - -	SAMUEL DIEHL
Most Dignified	- - - - -	JEANETTE PATTERSON
Most Eccentric	- - - - -	MARY HIGH
Luckiest	- - - - -	MARGARET MARSH
Biggest Vamp	- - - - -	HORTENSE HUGHES
Most Original	- - - - -	JOSEPH HANEY
Most Practical	- - - - -	ALICE MARTIN
Most Timid	- - - - -	REVA HARRIS
Most Optimistic	- - - - -	ALTHEA BEERY
Biggest Case	- - - - -	MARION BUEHLER

CLASS HOROSCOPE

Name	Favorite Expression	Pastime	Usually Found	Highest Ambition
1. Irene Bauman.....	Oh, Nate!.....	Movies and dances.....	In town.....	Movie actress
2. Althea Beery.....	For Goodness Sake.....	Raving	Wherever she can talk.....	School ma'am
3. Myrtle Brosha.....	Is that right, Kid?.....	Wearing "Goo-lashes".....	In the Day Room.....	Who knows
4. Hazel Brown.....	I'm sorry, girls, but I'll have to sweep.....	Reading	In the Library.....	To be on the Honor Roll
5. Marion Buehler.....	It's from Honey.....	Making us laugh.....	In "Dorbin".....	To have a good time
6. Elizabeth Bowser.....	I must study now.....	Working some more.....	In her room studying.....	To be right
7. Margaret Carpenter...	I'll get you a man for the dance	Writing to "State".....	In a crowd.....	To be a Prof's wife
8. Edna Clark.....	Ye Gods	Playing a "Uke".....	Roaming the hall.....	To organize a musical com- pany
9. Sylvia Claster.....	I could die.....	Play Practice.....	With Edna or Alma.....	To be a leading lady
10. Anna Conner.....	He's at Lehigh	Writing to Lehigh.....	In the dining-room.....	To be "somebody's" wife
11. James Cornely.....	I'm the whole class.....	Emphasizing "I".....	Anywhere	To be a "Big Leaguer"
12. Ethel Darby.....	He can come only once a week.....	Dancing with Hursch.....	In the gym with Hursch.....	To go home to mamma
13. Samuel Diehl.....	May I have this dance?.....	Learning to dance.....	In the Training School.....	To be a farmer
14. Laura Dolan.....	I spoiled my graphs.....	Spoiling graphs.....	In her room.....	To superintend the Junior High
15. Margaret Donlin.....	Miss Rowe wants to see me....	Starting something!.....	Canvassing the dorm.....	To show her brains
16. Romayne Embick.....	I surely make 'em fall.....	Vamping the Normal Boys....	In the Main Hall after dinner.	To get a fellow
17. Margaret Farwell.....	Last year George was here....	Playing the piano.....	Playing the Chapel piano.....	To become a noted pianist
18. Geraldine Gaffney.....	Did your hear this? Listen...	Peddling news.....	In someone else's room.....	To know it all
19. Elsie Geesey.....	She makes me tired.....	Helping Miss Rowe decorate...	Studying	To draw the cartoons
20. Bessie Graham.....	If I could draw.....	Writing poetry for the kids...	Pestering Horthy.....	To debate with Sully
21. Reva Harris.....	Don't mind me.....	Dodging Sully.....	Playing Rook.....	To grow three feet taller
22. Mary High.....	Excuse me for living; I don't mean it	Being there at the wrong time.	Where she doesn't belong....	To get through C. S. N. S.
23. Dorothy Holmes.....	Yes—At Billtown.....	Dolling up.....	Going home.....	To get a case

CLASS HOROSCOPE

Name	Favorite Expression	Pastime	Usually Found	Highest Ambition
24. Hortense Hughes.....	I can't be bothered.....	Ask Frank, he knows.....	You'd be surprised.....	Who knows
25. Jean Ingham.....	My father was a lawyer.....	Introducing fancy dancing....	On second floor.....	To be the most popular
26. Edith Kelsall.....	Ted!	Talking about Ted.....	Talking about Ted.....	To be Ted's best girl
27. Norma King.....	He's in the Blue Parlor.....	Reciting in Sociology.....	With Reeva.....	To be suffragette
28. Gretchen Kleinsorgen.	I wouldn't think of doing that.	Being just so.....	In her room.....	To please all
29. Gertrude Leathers.....	Is that you, Tom?.....	Showing her ring.....	Calling up Toni.....	To marry "Tom"
30. Florence Marolf.....	A letter from Cornell.....	Getting a man for the dance...	In the movies.....	To go to Cornell
31. Alice Martin.....	Sweetie	Writing to Jake.....	The place you didn't look.....	To marry a man with brains
32. Margaret Marsh.....	Gee, gosh!.....	Scrapping with Corny.....	Following Corny.....	To vamp Corny
33. Alma Miller.....	Gee, golly, gosh darn.....	Sewing	Minding her business.....	To be friends with everyone
34. Olga Neff.....	Where are the tweezers?....	Pulling her eyebrows.....	Talking about everything....	To vamp Harris
35. Mae Olson.....	Oh, kid, I must study.....	Preparing her lessons.....	Where they forgot to look....	To go around the world
36. Jeanette Patterson....	Sh-h, Miss Yale's coming....	Keeping order among the girls.	Working hard.....	To be a preceptress
37. Edith Paul.....	I'm missing all the good times.	Bluffing the kids.....	Everywhere	To shine in Ed. Measurements
38. Kathryn Porter.....	Well—	Keeping quiet.....	With Gretchen.....	To be an old maid
39. Jeanette Rhodes.....	Did you prepare Sully's lesson?	Skipping classes.....	At the post of duty.....	To please Miss Hagan
40. Alma Sissler.....	Doc doesn't want me to go to State	Dolling up.....	With Doc.....	To be the "best looking"
41. Ruth Snyder.....	Oh! my conscience.....	Curling that curl.....	At church.....	To be a missionary
42. Emily Stillson.....	I read it, Miss Himes.....	Pleasing Miss Himes.....	On her way to class.....	To be late for class
43. Lena Stillson.....	Isn't he marvelous?.....	Putting on airs.....	Chewing gum.....	To get a man
44. Lorraine Thurston....	Oh, you never did.....	Raising Cain.....	With Horthy and Marion.....	To get thin
45. Helen Walters.....	Act like ladies and gentlemen.	Teaching kids.....	Bawling someone out.....	To be popular
46. Ethel Witchey.....	For Goodness sake!.....	Leading in prayer meeting....	At prayer meeting.....	To get to heaven
47. Arnold Lintz.....	Got your Latin out?.....	Traveling with the team.....	In the side hall.....	To learn to dance
48. Joseph Haney.....	What is it?.....	Hunting books in the library..	In the training school.....	To be an absent-minded pro- fessor

PRAECO 1922

Class Song

Tune: Santa Lucia

Now in the dawning light
Forth are we going:
Into the strife and fray
Kind words bestowing,
In life where duty calls
We tread joyously,
To life where actions count
We pledge our loyalty.

Chorus

School which we love the best
Ranking above the rest,
Oh! Central State, Oh! Central State,
Farewell, old Central State,
Farewell, school of our dreams,
Oh! Central State, Oh! Central State.

Now, as we say farewell,
School, our defender,
Forward into the fray
Service to render,
Our thoughts will be of thee
Kind thoughts untold—
Hail, Alma Mater dear,
Our Purple and Gold!

M. Olson.

The Class Will—'22

The class of 1922 of Central State Normal School bequeathes the following qualities, characteristics, and material to the following persons:—

To Miss Margaret Drum, the Shakespeare Literary Society Hall, for a nursery.

To the Junior members of the student council, in gold frame, the rules of the Constitution of the girl's dormitory Association.

To the wild and woolly members of the Junior class the right to smelt said frame, the process of smelting being as follows:

Upon being overheated on account of petty misdemeanors to exhale upon said metal.

To the "do-less" members of the Junior class the integrity and aggressiveness of Betty Brown.

To the rattle brains and nervous wrecks the calm composure of Bessie Graham.

To the docile and unassuming Marguerite Miller the pretention and self-confidence of "Horty" Hughes.

To the masculine strength of Marcella Burt the tender gentleness of Ethel Darby.

To Gertrude Harper, whose femininity exceeds all in her class, the manly and powerful bluntness of Edith Kelsall.

To the somewhat retarded appetite of Miriam Decker, Geraldine Gaffney's healthy desire for food.

To the mild innocence of Augusta Howard the keen perception of Alma Sissler:

To Mary Mowrer, Margaret Farwell's ability to "bluff."

PRAECO 1922

To the Junior Faculty Advisor in their senior year the right to go rabbit hunting with Mr. High on Thanksgiving.

To Ernest Schrot the Championship in tennis.

To Hester Liddle, all the peace making qualities of Ethel Witchey.

To Grace Dunn, Laura's Dolan's hesitancy of speech and unprofanity.

To Verda Thompson, "Peg" Donlin's speedy utterance.

To Ethylene Lee, Flo Marolf's optimism and ease of manner.

To the quiet dignity of Mildred Fickes, the boisterous cunning of "Happy" Clark.

To Kathryn Stangel, Lorraine Thurston's witty ability, food capacity and avoirdupois.

To the self-assertive and most charming Emily Brown, Mary High's "Ed" Measurements Graph.

To Annie Wise, three-fourths of Marion Buehler's attractiveness.

To Loretta Funk, Olga Neff's dramatic ability.

We will you these,
We hope they'll please,
And help you spell success;
But just the same,
If you want fame,
This will you must not stress.

Gertrude Leathers, '22.





JUNIOR CLASS

Junior Class Roll

AGNEW, ESTHER	LEATHERS, HILDA
AMOUR, BEATRICE	LEE, ETHYLENE
ANDERSON, LEILA	LIDDLE, E. HESTER
ASH, EDITH	LIST, AMELIA
BAREFOOT, EDYTHE	LUCK, GUY
BEAS, FLORENCE	MANTLE, HELEN
BETTENS, GLADYS	MARCY, WALTER
BRETH, SYLVIA	MAY, HELEN
BROWN, EMILY	MECHTLEY, IVAN
BRUMBAUGH, ETHYL	MILLER, MARGARET
BURT, MARCELLA	MORRALL, RUTH
CAMPBELL, CATHERINE	MOWRER, MARY
CARLSON, ESTHER	MCCLINTICK, CAROLINE
CAWLEY, CATHERINE	MCCLINTOCK, ESTELLA
CRIDER, ETHEL	MCLEAN, MARY
DECKER, MIRIAM	MACDONALD, DAWSON
DELEVETT, EDNA	NEVLING, MARY
DICE, MARTHA	NEWCOMER, ZELMA
DUNN, GRACE	O'SHEA, GRACE
FICKES, MILDRED	ORWIG, MYRON
FRITZ, EVELYN	PARSON, HELEN
FUNK, LORETTA	PETERS, AMY
FURST, ELSIE	POWERS, MARY
GATES, ELIZABETH	PURVIS, DOROTHY
GLISE, GWENDOLYN	RICKER, VIOLA
GREEN, MAY	RICKER, GENEVIEVE
GRUGAN, GEORGE	RYDESKY, STEPHEN
GALLAGHER, ROSELLA	REARICK, IDA
HAFNER, ESTHER	SCHREIBER, VINCENT
HAHN, JANETTA	SCHROT, ERNEST
HARM, GLADYS	SHANK, VERNA
HARPER, GERTRUDE	SNYDER, THELMA
HEFFNER, FLORETTA	SOMMERVILLE, CHRISTINE
HERBSTER, CHARLES	STANGEL, CATHERINE
HOWARD, AUGUSTA	STRAYER, FLORENCE
HORN, MABEL	THOMPSON, MARY
KENNEDY, ANNE	THOMPSON, VERDA
KESSINGER, DOROTHEA	WHEELAND, CLETA
KINNEY, HELEN	WISE, ANNIE

Advice to Juniors

(With Apologies to James W. Riley)

Hi there, happy Juniors,
We want to speak to you.
Just listen for a minute
Till we tell you what to do.
Take it easy this year,
And gaily frisk about
For your Lesson Plans are coming,
So

just
watch
out!

They'll haunt you in your waking hours;
They'll haunt you in your sleep;
They'll haunt you when you're reading,
Or a "date" you're trying to keep;
They'll haunt at your tennis games
Or whatever you're about.
Your care free days will soon be o'er.
So

just
watch
out!

Once there was a Senior boy
Who thought he 'uz quite a man.
He said he didn't care a cent
He wouldn't write a plan,
Until he 'uz good and ready,
And he went to fish for trout;
So his teacher had to "flunk him,
'Cause

he'd not
watch
out.

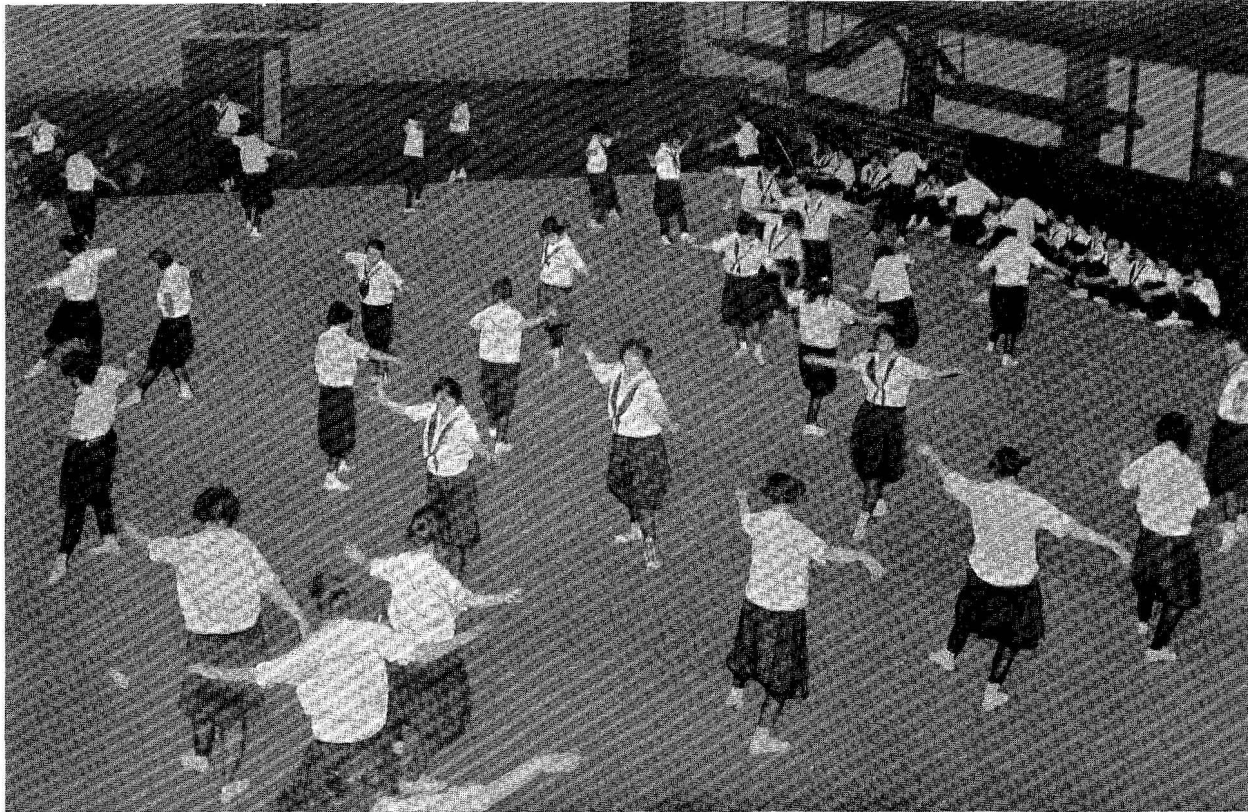
And once there was a Senior girl
Who tried her might and main
To put some "pep" into her plans,
But they always stayed the same.
She'd get the dates all twisted,
And the "Aims"—she'd leave them out—
At, last, she went plumb crazy,
'Cause

she 'uz
tired of
watching out.

So, listen, Jolly Juniors,
Make use of all this year.
Spend all your time in dancing
And other things that cheer;
But when this year is finished,
Just whisper it about
That your Senior year is coming
With its

Lesson Plans—
WATCH
OUT!

H. E. Brown.



ANNUAL IN-DOOR MEET, JUNIORS vs. SENIORS

PRAECO 1922



FROM JUNIOR CLASS PLAY, "ALICE IN WONDERLAND"



Praeco Staff

<i>Editor-in-Chief</i>	- - - - -	MAE OLSON
<i>Associate Editor</i>	- - - - -	HORTENSE HUGHES
<i>Business Manager</i>	- - - - -	ALICE MARTIN
<i>Associate Business Manager</i>	- - - - -	ROMAYNE EMBICK
<i>Photographic Editors</i>	- - - - -	{ LAURA DOLAN FLORENCE MAROLF
<i>Joke Editors</i>	- - - - -	{ BESSIE GRAHAM LORRAINE THURSTON
<i>Art Department</i>	- - - - -	{ EDNA CLARK ELSIE GEESEY ANNA CONNER
<i>Social Editor</i>	- - - - -	- EDITH PAUL
<i>Advertisements</i>	- - - - -	{ JEAN INGHAM ANNA CONNER
<i>Snapshots</i>	- - - - -	- ETHEL DARBY
<i>Financial Committee</i>	- - - - -	{ EDITH KELSALL GERALDINE GAFFNEY MARGARET MARSH MARGUERITE DONLIN ALMA MILLER

Here we are! Take a good look at us.

We are the ones who have drudged, toiled, labored, worked, plugged, worried, crammed, dug, and plodded to make Praeco worthy of being read. Do not pass over this page too hastily, but pause, if only for a moment, and let your eye linger for a while on us—the Praeco staff.

I wish to thank the staff for the work they have done in making Praeco what it is. To the following people especially I extend my deepest gratitude for their co-operation and willingness to do any task, great or small, for our Praeco:

- | | |
|------------------|-------------------|
| 1. MR. DRUM | 4. LAURA DOLAN |
| 2. MR. TREMBATH | 5. ROMAYNE EMBICK |
| 3. EDITH KELSALL | 6. ALICE MARTIN |
| 7. ALTHEA BEERY | |

—The Editor.



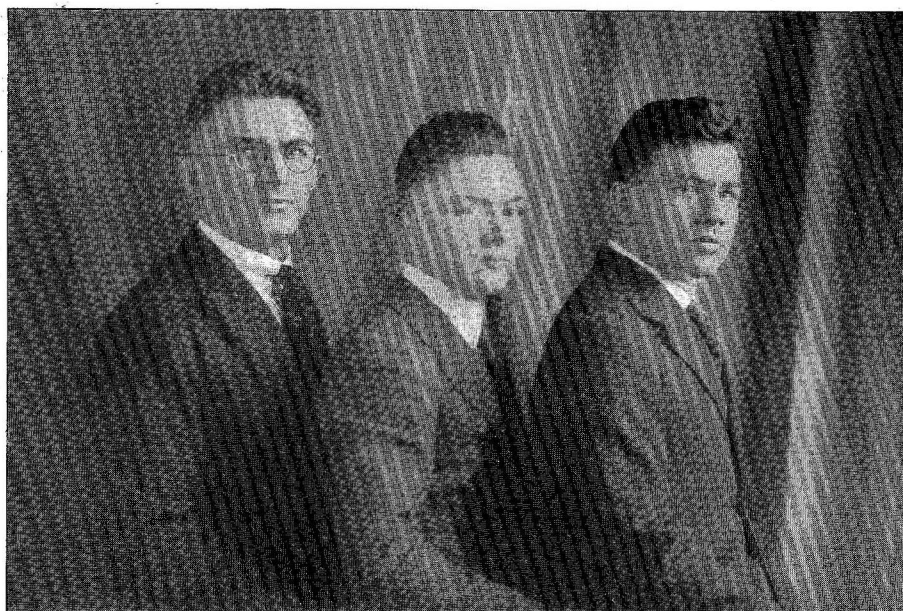
PRAECO STAFF



Girls' Student Council

MISS YALE	- - - - -	<i>Dean of Women</i>
JEANNETTE PATTERSON	- - - - -	<i>President</i>
HAZEL BROWN	- - - - -	<i>Vice President</i>
JEANNETTE RHODES	- - - - -	<i>Secretary</i>
MARY MOWRER	- - - - -	<i>Junior Member</i>
MARTHA DICE	- - - - -	<i>Junior Member</i>

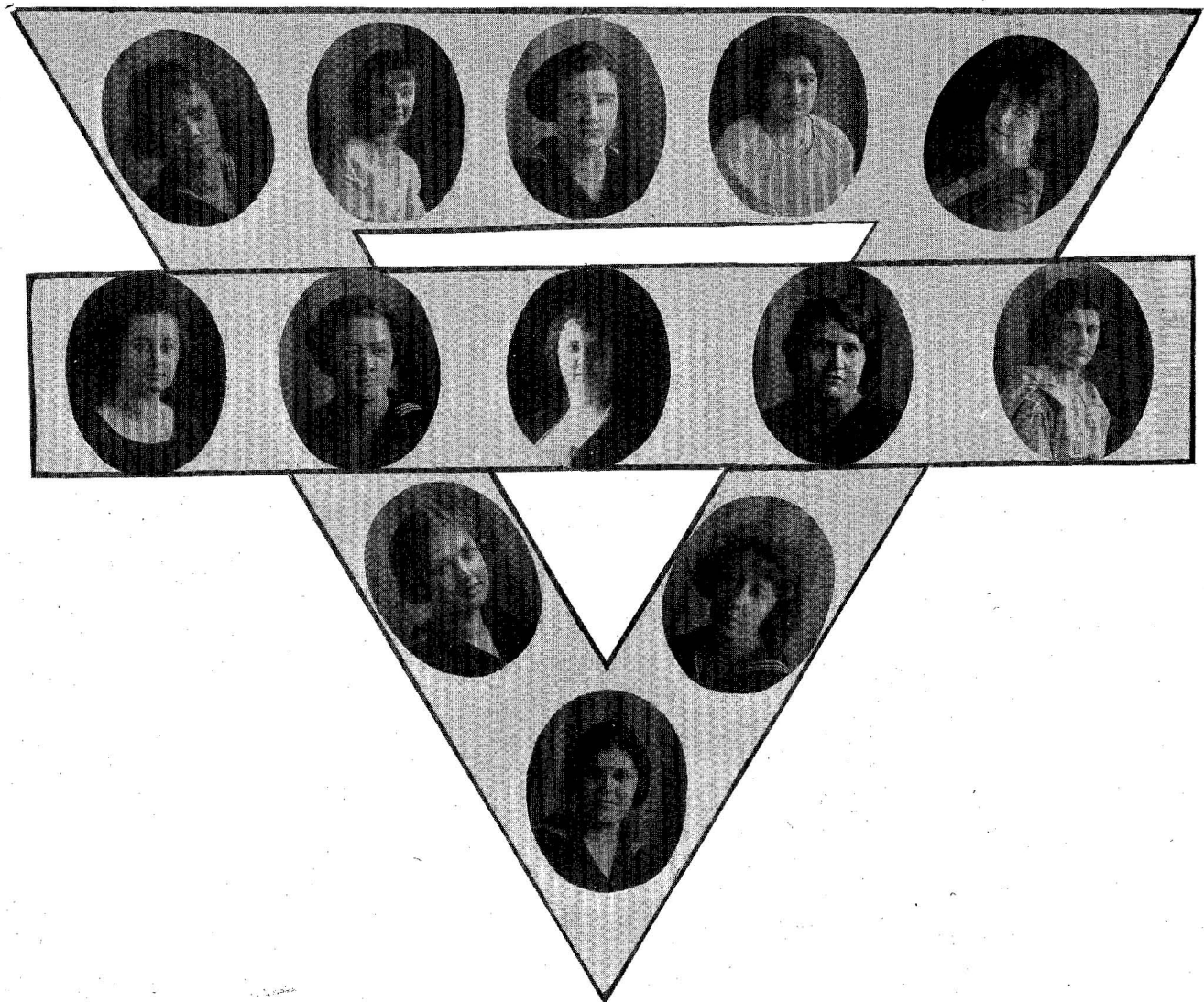
PRAECO 1922



Boys' Student Council

MR. HIGH	- - - - -	<i>Dean of Men</i>
LEMOYNE CORNELY	- - - - -	<i>President</i>
IVAN MECHTLEY	- - - - -	<i>Vice President</i>
STEPHEN ¹ RYDESKY	- - - - -	<i>Secretary</i>

PRAECO 1922



Y. W. C. A. CABINET

The Y. W. C. A.

Officers

<i>President</i>	- - - - -	ETHEL WITCHEY
<i>Vice President</i>	- - - - -	JEAN INGHAM
<i>U. F. R.</i>	- - - - -	MARGARET MARSH
<i>Secretary</i>	- - - - -	EDITH PAUL
<i>Treasurer</i>	- - - - -	JEANNETTE PATTERSON

Cabinet

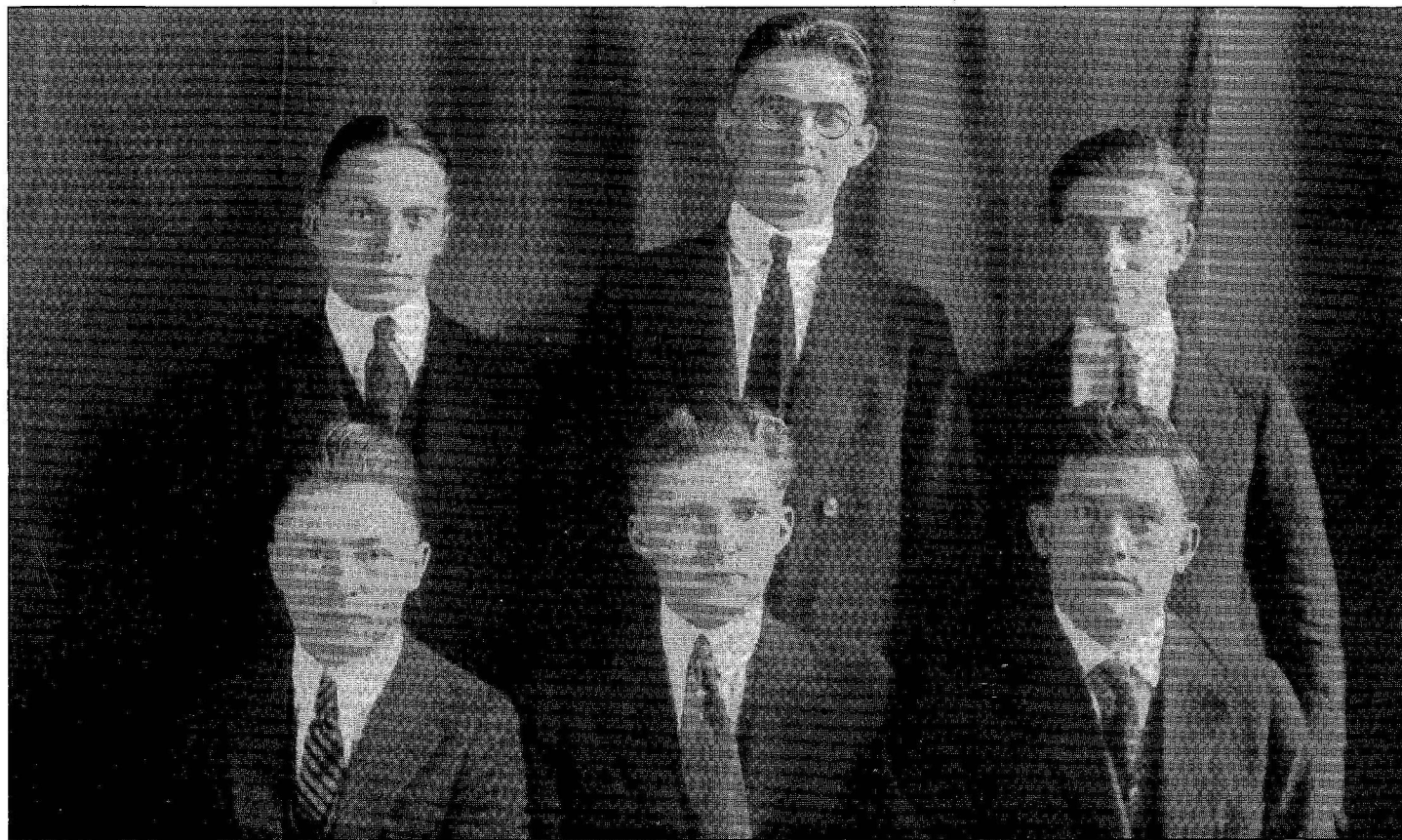
<i>Devotional</i>	- - - - -	RUTH SNYDER
<i>Social Service</i>	- - - - -	JEANNETTE PATTERSON
<i>Bible and Mission Study</i>	- - - - -	ELSIE GEESEY
<i>Social</i>	- - - - -	ALICE MARTIN
<i>Publicity</i>	- - - - -	ALMA MILLER
<i>Conference Fund</i>	- - - - -	EDNA CLARK
<i>Music</i>	- - - - -	MARGARET FARWELL
<i>Advisor</i>	- - - - -	MISS SPEAR

The Young Women's Christian Association is an organization at Central State Normal towards which every girl looks with respect. The purpose of the Association is to lead the girls into Christian service.

The work of the Y. W. C. A. speaks for itself. From the devotional meetings we have received many thoughts which we will take with us through life. Great interest was shown by the large attendance during the World's Week of prayer.

The Association not only has religious meetings, but has also given some very interesting social events which were enjoyed by all.

We feel that we are accomplishing the purpose of the Blue Triangle when we strive for a well rounded Christian life.



Y. M. C. A. CABINET

The Y. M. C. A.

The school year of 1921-22 opened with but a few old members of the "Y." Few in number but strong in spirit, it began to function as a live "Y" should. The new students were invited in and made to feel at home. In several weeks time the "Y" went from 100% attendance to 100% membership.

The regular weekly meetings have a unique influence over the East dormitory. The boys meet and under the leadership of one of their number or occasionally a faculty member, have a devotional meeting, after which they have an informal discussion of their problems.

Among the men who have helped to put pep and inspiration into our meetings are: Mr. Stover, principal of the Lock Haven high school and former graduate of C. S. N. S.; Mr. McDougall, director of the training school; Mr. Miller, State student secretary of the Y. M. C. A.; and Mr. Ulmer, our faculty advisor, who can always be depended upon when needed.

The "Y" keeps in touch with the work of the organization through the various conventions held throughout the state. We were represented by Mechtly at the conference of the thirteen state normal schools held at Indiana. At the general state convention held at Tyrone we were represented by Luck. Both delegates came back enthusiastic over the work.

Our Motto: LIFT { Brother
Self

Officers

President	- - - - -	- IVAN MECHTLY, '23
Secretary	- - - - -	LEMOYNE CORNELLY, '22
Treasurer	- - - - -	- SAMUEL DIEHL, '22

Central State Athletic Association

The girls of C. S. N. S. are greatly excited over their newly organized Athletic Association. This organization is fostered by Miss Shaley and promises to be a great success.

A point system has been adopted. All the girls are working diligently to win enough points to entitle them to a "C" before the end of the term.

Four Juniors and two Senior girls basketball teams have been organized. These teams are playing a series of games to determine who will hold the championship for the season. Competition runs high and adds a great deal to the interest in basketball.

Hiking and basketball are the craze during the winter months while tennis and track events are popular in the spring and fall.

GERALDINE GAFFNEY, '22.

Officers

Adviser	- - - - -	MISS SHALEY
President	- - - - -	H. E. BROWN, '22
Vice President	- - - - -	HELEN KINNEY, '23
Secretary-Treasurer	- - - - -	CATHERINE CAWLEY, '23
Recorder	- - - - -	OLGA NEFF, '22

Basketball Teams

(Winners of School Championship)

<p>Grays, '22 Played 11 Games—Won 9 Sissler—C. Marolf—S. C. Graham—G. Leathers—G. Gaffney—C. High—S. C. Farwell—F. Darby—F. Brown—F.—Captain</p>	<p>Champions, '23 Played 12 Games—Won 6 Powers—C. Mowrer—S. C. Ash—G. Stangel—G. Thompson—G. Carlson—G. Lee—F. Agnew—F. Agnew—F.—Captain</p>	<p>Lions, '23 Played 11 Games—Won 6 H. Leathers—C. Summerville—S. C. Hahn—S. C. Anderson—G. Horn—G. Wise—F. Kennedy—F. Kennedy—F.—Captain</p>
<p>Highfliers, '23 Played 10 Games—Won 5 Kessinger—C. Breth—C. Nevling—S. C. Amour—F. Harper—F. Beas—G. Peters—G. Kinney—G. Kinney—G.—Captain</p>	<p>Maroons, '22 Played 10 Games—Won 4 Neff—C. King—C. Dolan—S. C. Beery—S. C. Geesey—F. Hughes—F. Stillson—G. Bowser—G. Marsh—G.—Captain</p>	<p>Tigers, '23 Played 10 Games—Won 2 Morall—C. Strayer—G. Thompson—F. Fickes—F. Shank—F. Brumbaugh—S. C. Cawley—C.—Captain</p>

PRAECO 1922



Glee Club

The Glee Club is composed entirely of students, thirty-one in number. It gave its first concert for this year in the form of a Christmas Cantata, before the beginning of the Christmas vacation.

This club is under the direction of Miss Blanche Speer, of the music department of the school, and has weekly rehearsals.

This organization has three officers, namely: President, Gertrude Leathers; Secretary, Anne Kennedy, and Treasurer, Emily Brown.

On Tuesday night, March 14, 1922, a banquet was held at the Russel House. A most enjoyable evening was spent by all present.



GLEE CLUB

PRAECO 1922





VESPER COMMITTEE

PRAECO, 1922



Boys' BASKETBALL TEAM

PRAECO 1922

The Price Literary Society

September 16, 1921, Price Society opened the forty-fourth year of its happy and prosperous life. At this meeting the following officers were installed: Margaret Marsh, president; Hortense Hughes, vice president; Gretchen Kleinsorgen, secretary; Edith Paul, treasurer; Ruth Snyder, critic, and Marion Buehler, monitor.

Thursday, September 29, all Pricites sojourned to Wizzard's Dell, the picnic ground. If you don't believe we had a good time ask someone.

After pleasure comes work, so now the society members are working hard to beat past records. The members have been divided into groups of four known as Stunt Groups. Sometimes we have an entire program of stunts, although usually there is only one stunt besides the regular program. This gives each member an opportunity to show his originality.

We know Price Society will continue to grow as we already have thirty-four new members who will take up the reins next year.

Gretchen Kleinsorgen, '22.

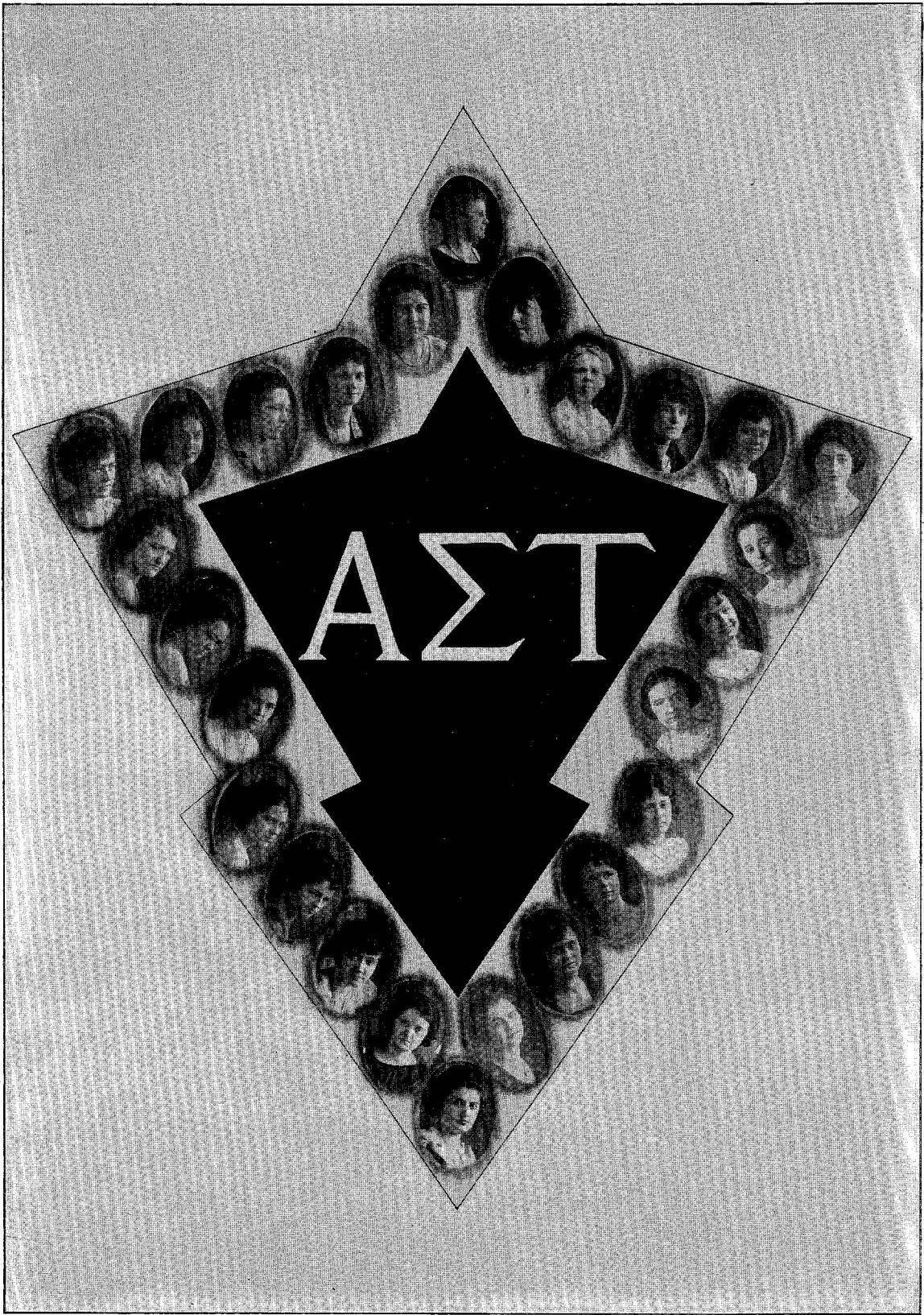
The Shakespeare Literary Society

The Shakespeare Literary Society aims to create a friendly spirit among the students and to give them an opportunity to become accustomed to speaking in public.

Meetings are held each Friday evening. Friday evenings are dull, homesick affairs, if "Shake" fails to put on a program. Luckily, such occasions are few, for no matter how crowded a week may be, or how much work there is to do, there is always someone who has time to do a "bit" to make "Shake" a success.

At the beginning of each term, the society holds a jolly picnic to entertain the new members and help them become acquainted. These picnics are always highly successful.

H. E. Brown, '22.



PRAECO 1922

Alpha Sigma Tau

Established 1899

COLORS—Emerald and Gold

FLOWER—Yellow Rose

Patroness

MISS GERALDINE LOCKHART

Honorary and Faculty Members

MRS. R. S. McDOUGALL

MISS JESSIE SCOTT HIMES

MISS CHARLTON LOCKE

Active Members

MARGARET CARPENTER

MARTHA DICE

MARGUERITE DONLIN

LAURA DOLAN

GRACE DUNN

MARGARET FARWELL

ELSIE GEESEY

MAY GREEN

GERTRUDE HARPER

JEAN INGHAM

MARGARET MARSH

ALICE MARTIN

ALMA MILLER

MARGARET MILLER

MARY MOWRER

MAE OLSON

EDITH PAUL

JEANETTE PATTERSON

JEANETTE RHODES

Pledge Members

EDYTHE BAREFOOT

ESTELLA McCLINTOCK

GWENDOLYN GLISE

Chapter Roll

Alpha	- - - - -	Ypsilanti, Mich.
Beta	- - - - -	Mt. Pleasant, Mich.
Gamma	- - - - -	Milwaukee, Wis.
Delta	- - - - -	- Indiana, Pa.
Epsilon	- - - - -	Philadelphia, Pa.
Yeta	- - - - -	Lock Haven, Pa.
Alumni Chapter	- - - - -	- Detroit, Mich.
Alumni Chapter	- - - - -	- Milwaukee, Wis.
Alumni Chapter	- - - - -	- Pittsburgh, Pa.
Alumni Chapter	- - - - -	- Cincinnati, Ohio



B Σ X

PRAECO 1922

Beta Sigma Chi

COLORS—Brown and Gold

FLOWER—Brown Eyed Daisy

“Bitter Sweets” forever

Friends we have been
Through storm and strife,
Our aim to win
The best in life.

And now lest we off set
The tie that binds us nigh
We've promised never to forget
Dear Beta Sigma Chi.

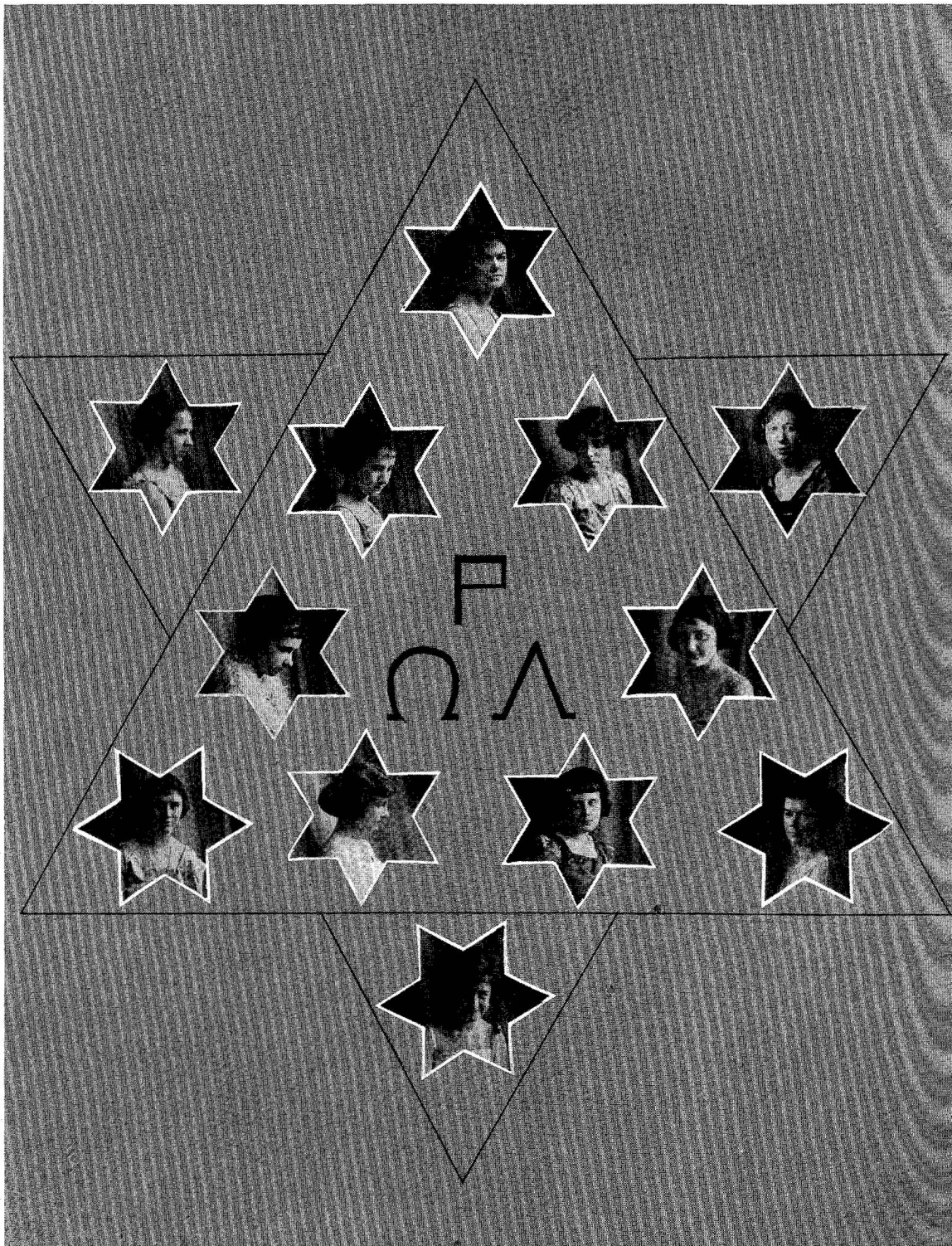
Chapter Roll 1921-1922

MARION BUEHLER	- - - - -	<i>President</i>
HAZEL BROWN	- - - - -	<i>Vice President</i>
OLGA NEFF	- - - - -	<i>Secretary</i>
HORTENSE HUGHES	- - - - -	<i>Treasurer</i>

HELEN KINNEY
LORRAINE THURSTON
ETHEL DARBY

CATHERINE CAWLEY
MARY THOMPSON
JEANETTA HAHN

ANNE KENNEDY



PRAECO 1922

Rho Omega Lambda

Instituted at C. S. N. S. 1915

Active Members

Officers

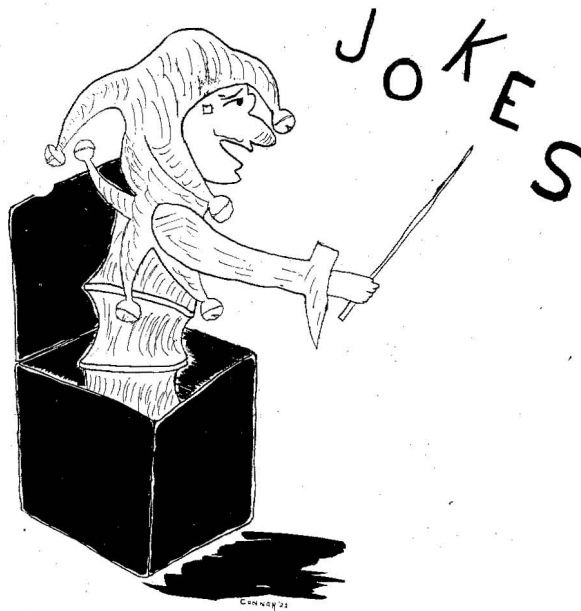
FLORENCE MAROLF	- - - - -	<i>President</i>
EDNA CLARK	- - - - -	<i>Secretary</i>
ALMA SISSLER	- - - - -	<i>Treasurer</i>

IRENE BAUMAN	ELIZABETH GATES
SYLVIA CLASTER	AUGUSTA HOWARD
GERTRUDE LEATHERS	HILDA LEATHERS
HESTER LIDDLE	EDYTHE PLETCHER

ESTHER HAFFNER

Honorary Members

MISS FLORENCE CHANDLER GROFF	- - - - -	<i>Advisor</i>
MISS MARY K. SHAW		MRS. HOMER GAGE



“If” a la C. S. N. S.

(With Apologies to Rudyard Kipling)

If you can do one hundred things in sixty minutes
And act as if the doing were child's play,
If you can shame the bees, those well known workers,
By the work which you perform day after day ;
If you can go to bed without a bit of grumbling
At ten o'clock, pretending it's from choice
And not because your room's in total darkness,
And in the hall, you hear the proctor's voice,
And get up when the bell rings in the morning,
Almost before the rising of the sun,
And accomplish everything expected of you,
But yet contrive to save some time for fun ;
If you can keep that fun both mild and quiet
In order not to almost raise the roof,
And realize when you've reached the limit,
And, if you should exceed it, mildly take reproof ;
If you remember not to use the office,
No matter how urgently for you State may call,
Before the hours allowed for telephoning,
And until that time, wait quietly in the hall ;
If you can e'er ignore the forbidden entrance
And to the oft used side door gaily pass
When just by using the line of least resistance
You'd save much time and not be late to class ;
If you can make yourself be perfectly contented,
Throughout the year, on one lone street to stay
And can with truth and honesty declare that

PRAECO 1922

To unknown streets you've never longed to stray;
If you should try to prove to us that you were human
And yet took pleasure in the doing of these things,
We'd know that you were far too good for C. S. N. S.,
And, spell-bound, watch the sprouting of your wings.

—H. E. Brown.

STUDENT COUNCIL—"Norma, Miss Yale said she heard your voice on third floor."

NORMA—"That's one time she didn't match tone quality."

MISS LOCKE—"All ready, run up the curtain."

MARG. FARWELL—"What do you think I am—a squirrel?"

MECHTLEY—"Close the door."

JEAN PATTERSON—"I'll do anything for you, I'd even kiss you."

MECHTLEY—"Go to it."

JEAN INGHAM—"Come on, girls, we can't waste time."

MECHTLEY—"All lessons are not taught for observation."

Important Announcement

MR. SULLIVAN—"The powers that be have decided that yours truly has sufficiently reduced in climbing three flights of stairs so that I am authorized to announce that the class in Educational Sociology will meet in what was formerly Mr. McDougall's office on the first floor of the main building on this coming Monday."

MISS HIMES—"The person learns most who begins at the bottom."

MARION BUEHLER—"How about learning to swim?"

MISS HIMES—"Miss Martin, Miss Trexler is doing twice as much work as you are doing."

ABE—"That's what I've been telling her, but she won't quit."

Zero Hours

When you break into your last dollar.
When you discover that he is married.
When the dentist says, "It may hurt a bit now."
When you return at 5:31 P. M.
When you realize that you have locked your self out.
When you hear the rain and the alarm clock together.
When you're broke on Saturday P. M.
When you say "uh huh" to a "Prof."
When they catch you bluffing.
When a "4" is kindly forwarded for you.

"Well," said Peg Marsh, as she poured a seventh cup of coffee for Orwig, "You must be very fond of coffee."

Orwig—"Yes, indeed, or I wouldn't be drinking so much water to get a little."

LORRAINE—"Is Miss Rowe in her room?"

GERTRUDE—"Yes, she's taking a bath."

LORRAINE—"Will you tell her I would like to see her?"

Misplaced

SCHROT—"Did you get that medal for eating, old chap?"

LINTZ—"No; why?"

SCHROT—"Then why the deuce do you wear it on your stomach?"

Definition of a Good Sport—Someone who does not hide her box from home.

Who'd Have Thought

ALICE MARTIN (in library)—"Where is my Country Gentleman?"

MISS LUCAS—"I don't know, perhaps he's in the east dorm."

Fine Points in English

On the first day of school one of the Juniors had just informed Betty Brown that she wanted a pleasant room in the dormitory. "Upper or lower?" asked Betty. "What's the difference," asked the Junior? "A difference of fifty cents in this case," replied the agent. "The lower is higher than the upper. The higher price is for the lower. If you want it lower you'll have to go higher. We sell the upper, lower than the lower. In other words, the higher, the lower. Most people don't like the upper on account of it being higher although it is lower. When you occupy an upper you have to get up to go to bed and get down when you get up. You can have the lower if you pay higher. The upper is lower than the lower."

One might as well basket their bawl regardless of fascination for the game when critic teachers announce "Conference at 5:00 P. M."

The most popular (and unpopular) book in the Normal is probably Monroe's Textbook in History of Education.

All indications predict that there is enough "pep" in the girls to necessitate "A girl's meeting" every two weeks for at least twenty weeks.

PRAECO 1922

Favorite Expressions

"Got a stamp?"	- - - - -	ALMA SISSLER
"Going down town?"	- - - - -	GRACE DUNN
"Whatjumake?"	- - - - -	MARY HIGH
"Let's go to Auch's"	- - - - -	MARION BUEHLER
"I don't care"	- - - - -	FLO MAROLF
"Be a lady!"	- - - - -	HELEN WALTERS
"Can you imagine!"	- - - - -	GERTRUDE LEATHERS
"Busy?"	- - - - -	BETTY BROWN
"My goodness"	- - - - -	ETHEL WITCHEY
"Let me see"	- - - - -	RUTH SNYDER
"Gee"	- - - - -	ETHEL DARBY
"Good Lands"	- - - - -	ELSIE GEESEY
"Is my dress short enough?"	- - - - -	ROMAYNE EMBICK
"Oh, you crazy thing"	- - - - -	GRETCHEN KLEINSORGEN
"I can't be bothered"	- - - - -	HORTY
"Are you going to take Gym?"	- - - - -	ALTHEA
"Got anything to eat?"	- - - - -	SKINNY
"What's the use?"	- - - - -	LORRAINE
"Do it yourself"	- - - - -	HAPPY CLARK
"Do you know your History of Ed?"	- - - - -	JEANETTE RHODES

Lives of Seniors all remind us
 We can make our lives sublime;
 And by asking many questions,
 Pass the recitation time.

Student Teacher's Lesson Plan

TRAINING TEACHER: Sicily Turnpike Group O.
 STUDENT TEACHER: Shela Megig.
 Subject: Pennsylvania Dutch Grade Low Hour: 13:75.
 DATE WRITTEN December 25. Date to be taught December 24.
 TOPIC OF LESSON: The worst is yet to come.
 ANALYSIS OF TOPIC: The worst will come still.
 (a) It hasn't come already yet.
 (b) It will come yesterday.
 TEACHER'S AIM: The side of a barn door.
 See that she hits it.
 PUPIL'S AIM: Today we are going to get nowhere fast.

THE LESSON

<i>Method of Procedure</i>	<i>Materials or Subject Matter</i>
Proceed with the solo but make it so low that it cannot be heard.	One solo in the vernacular One Guy (Luck) to sing same. One room to swell the cadence.

Crimes and Misdemeanors Around C. S. N. S.

To study after 10:00 P. M.
To refuse a bid to a "feed."
To smile while "observing" in the Model School.
To refrain from dancing because you can't.
To stay at home from church when the minister is at conference.
To lock the trunk room that contains one's trunk.
To "can" an excessive number of calories in the dining room or to personally transport an immoderate amount of nourishment from said apartment.
To remove and conceal slippers from their owner who is engaged in moistening the carcass.

MR. TREMBATH (in English Class)—"I'm going to run through Sheridan for you now."

MR. SULLIVAN—"Don't think you're taking a pleasure course from me."
"If an idea would strike some of you people you'd fall dead."

MISS YALE—"Girls, girls, what about proportion?"
MISS SHAW (arranging us for part singing in chapel)—"Mr. Trembath, do you sing tenor or bass?"
MR. TREMBATH (after meditating) dolefully—"They vary."

MR. SULLIVAN—"I'll give you a zero for today's recitation."
MR. HANEY—"That means nothing to me."

MR. SULLIVAN—"When did the revival of learning begin?"
CORNBY—"Just before the exams."

Sufficient Excuse

MR. MCDUGALL—"We were disappointed that Miss High could not observe at 1:30 on Friday."
MARY (explaining matters)—"I couldn't go because Gym comes at that period."
MR. MCDUGALL—"Well, I suppose if Jim comes then you couldn't observe."

What C. S. N. S. Would Be Like If—

Ruth Snyder forgot to curl her pet curl?
Elsie Geesey forgot to stick her tongue out?
Edith Paul didn't receive three letters a day?
Alma Miller wasn't always doing her Ed. Measurements?
Peg Donlin refused to eat?
Peg Marsh and Jean Rhodes did not know each other?
Florence Strayer wasn't doing something for somebody else?
Gertrude Leathers couldn't play "I Ain't Nobody's Darling"?
We didn't get prunes for breakfast?

Seldom Seen in C. S. N. S.

Happy Clark without her uke.
Mary High without a question.
Jean Ingham not chewing gum.
Edith Kelsall wearing a middy and skirt.
Alma Miller with a minute to spare.
Geraldine Gaffney without Mae Olson.

MISS SHALEY—"Has Peg Donlin been eating between meals again?"
BRIGHT JUNIOR—"Peg has no between meals."

MARCY—"Pretty cloudy; how about a shower?"
SCHEROT—"Don't ask me, if you need one take it yourself."

To Exchange

Two single beds for one double bed (Former in good condition—antagonistic to the owners' desire for human companionship).

MR. HIGH (after summarizing the last two months' work in Arithmetic, stated to his class)—"Now when you get these principles into your head you will have the mechanics of mathematics in a nutshell."

MARG. FARWELL—"I'm crocheting a tie for George."
MRS. MAC—"Who's teaching you?"
MARG.—"Oh, I'm making it by ear."

Some girls like to stay away from Glee Club on a rainy night when they have a frog in their throat. It's fine fun, but the fine may be collected.

In Happy Clark's desperation ten minutes before class she confessed to her roomy that she had neither her drawing nor her sociology prepared. "Well, never mind, Happy," said Gertrude considerately. "Go on with your drawing and I'll do your Sociology. Where do you keep your brains?"

C. S. N. S. Songbook and Hymnal Combined

Also Instrumental Selections

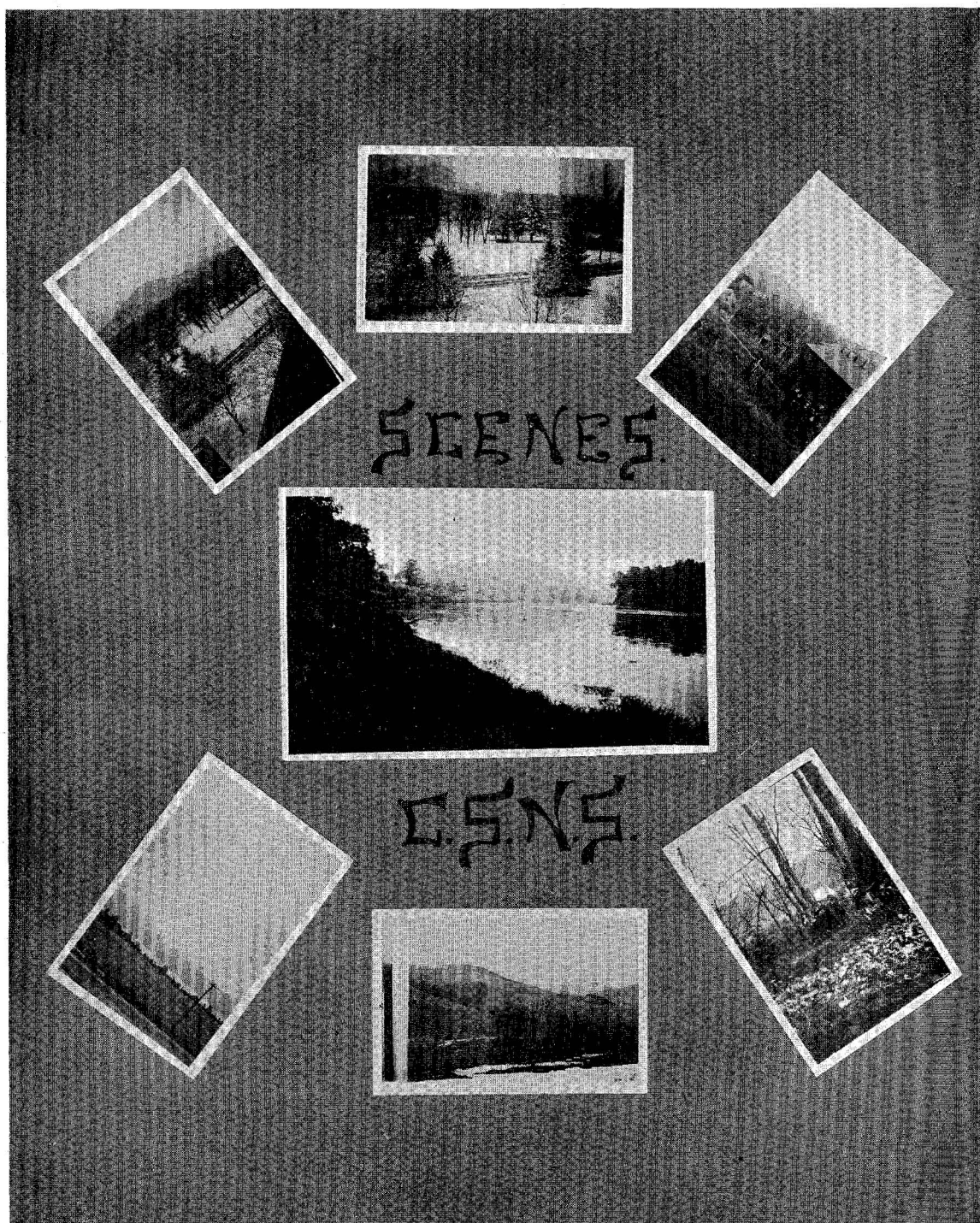
Sweet and Low	- - - - -	Miss Hagan's marks in teaching
Dutch Warbler	- - - - -	Sequential Study in West Dorm.
The Old, Old Story	- - - - -	Who took Monroe's Textbook
O Happy Day	- - - - -	When Mr. Mac. was called away
I Miss You More Each Day	- - - - -	The old waste baskets
Kiss a Miss	- - - - -	Or a Mr. if you care to
I'm so Lonesome	- - - - -	And single beds
Ain't We Got Fun	- - - - -	Flo said as she started to write a lesson plan
The Barefoot Trail	- - - - -	A mistake; Edith is wearin' 'em shorter
Your Eyes Have Told Me So	- - - - -	Miss Rowe
Somebody Knows	- - - - -	Miss Yale usually does
Bright Eyes	- - - - -	Student Council
Guessing	- - - - -	In the test on Current Events
Do You Ever Think Of Me	- - - - -	When you get a box from home
I Wonder Why	- - - - -	Some people get l's
Midnight Flyer	- - - - -	The broom room rat
On the Square	- - - - -	Betty Brown's byword
Palace of Peace	- - - - -	Shake hall
Spirit of Independence March	- - - - -	Ask Miss Shaley for a description of her 4:20 gym class.
Gertrude's Dream	- - - - -	When Tommy Comes Marching Home Again
When Irish Eyes Are Smiling	- - - - -	Marion's roomy is happy
Hail, Hail the Gang's All Here	- - - - -	We heard you got a box
How Dry I Am	- - - - -	History of Education
All By Myself	- - - - -	Single Bed
Break the News to Mother	- - - - -	That my last dollar's gone
It's All Over Now	- - - - -	The Scarlet Fever scare
I'm Trying Hard to Forget You	- - - - -	The first day of practice teaching
Oh! by Jingo	- - - - -	I'm locked out
In the Gloaming	- - - - -	The campus is vacated
Slow and Easy	- - - - -	Darby's slogan in playing basketball
That's Where My Money Goes	- - - - -	Auch's when we have no beaux
Who'll Take the Place of Mary	- - - - -	Grace O'Shea for asking questions
An Old Fashioned Garden	- - - - -	Romayne's spring bonnet
At Dawning	- - - - -	The only time that Belva is unpopular
Lost Chord	- - - - -	Finder return to Marg. Farwell
I Know What It Means to Be Lonesome	- - - - -	For we got single beds

SNAP

SHOTS



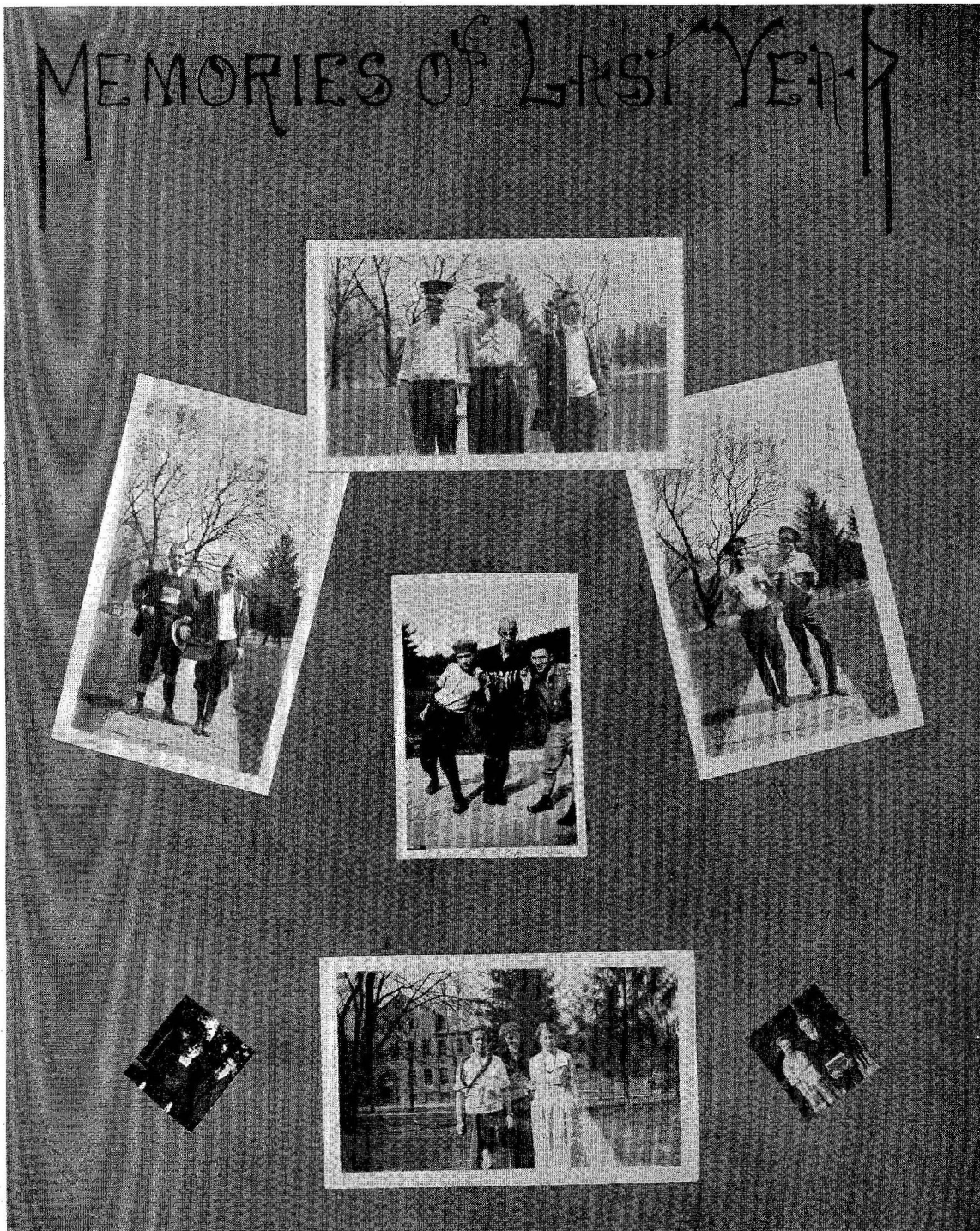
Watch
the
Birdie



PRAECO 1922









Miss Koenig's Group



May Day Bonfire



Nature Study Club



Kids Party

EVENING



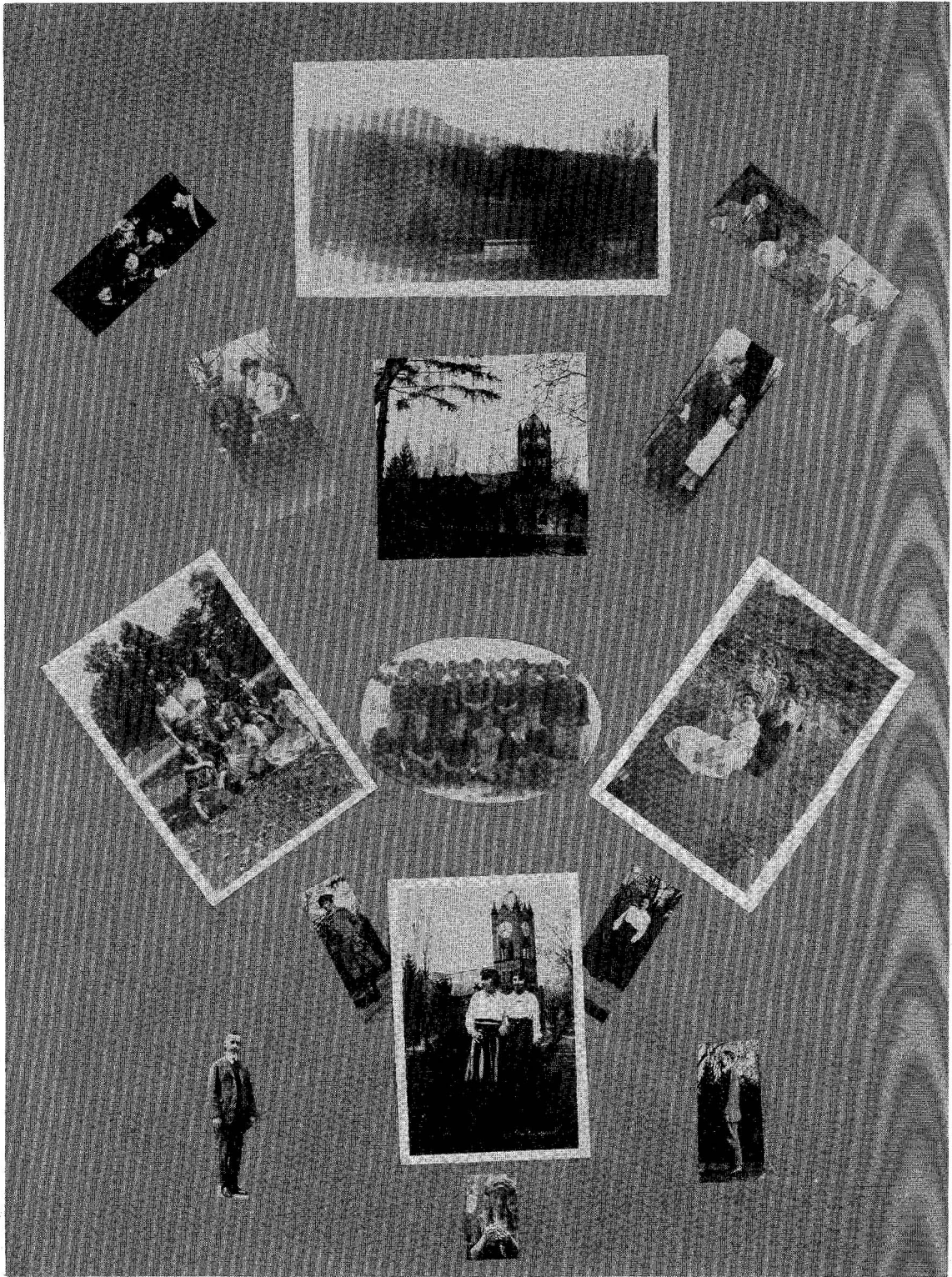
Nature Club Trip



J.W. Birds at Eagles to Here

PRAECO 1922

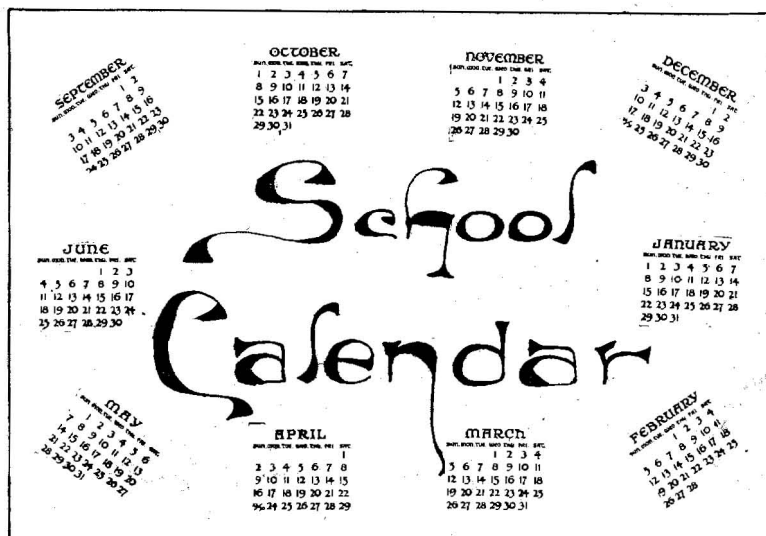




PRAECO 1922

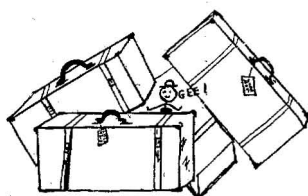


PRAECO 1922



SEPTEMBER 12, 1921

First Semester Opens



SEPTEMBER 17, 1921

Y. W. C. A. Reception

On September the seventeenth, the first Saturday night after the opening of the fall term, a reception was given to the new students by the Y. W. C. A.

The first step toward becoming acquainted was the learning of one another's names through the cards which each student wore as he joined the continuous receiving line.

The first part of the evening was given over to a program of stunts and games to which the boys contributed several clever numbers.

After the program, dainty refreshments were served.

The rest of the evening was spent in dancing.

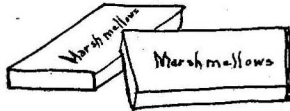
As a mixer, the affair was a decided success, for each Senior did his part to see that everyone had a good time.

PRAECO 1922

SEPTEMBER 29, 1921 - - - - - Price Picnic

Price Society held its annual picnic and initiation on September 29 in a beautiful spot in the Boys' Glen named for the occasion, "Witch's Dell." The Normal truck hauled girls and supplies for the feed to the site. Numerous fires, over which weiners were roasted, gave the place a weird and beautiful aspect. The "feed" was satisfying both as to quantity and quality.

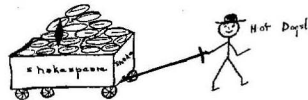
After the supper the new members were well initiated and all came home branded with the mark of a member.



The tramp back through Highland Cemetery gave a delightful view of the lighted city. We are greatly indebted to Miss Shaley, Mr. High, and Mr. Trembath for their services in "chapping" us and helping us have a fine time.

The guest of honor on the occasion was Shakespeare's Goat.

SEPTEMBER 30, 1921 - - - - - "Shake" Picnic



The sun that mild September day
Shone brightly on the students gay,
Who full of pranks and merry glee,
Members of "Shake" Society,
Boarded a car for Aegar's Park,
A dandy place for a jolly lark.
Their baskets held many a "hot dog" and bun;
Each student was bubbling with laughter and fun.
The car fairly flew, for the journey was short,
And after three hours packed cramful of sport
Such as playing games and running races
And taking pictures of each other's faces
They had their supper, Indian style,
With manners that would make a monkey smile.
Unwillingly, when the camp fire died,
And the last "weiner-wurst" had sizzled and fried,
They gathered their "junk" and started for home;
Singing songs, giving yells, and stopping to groan
Cause they'd eaten too much,

Or, lost in the dark, had stepped in the swamp
Which adorns the park.
On nearing the campus, they became strangely quiet
Without being told to cease their riot.
In silence and stealth, they approached the gym
And startled the "Pricites" dancing within
With—

"One, two, three, four, five, six, seven,

All good children go to

Yell! Yell;

Everybody yell—

Shakespeare, Shakespeare;

Well, well, well.

OCTOBER 7, 1921 - - - - - Kid's Party

Turn backward, turn backward,

O, Time in your flight,

Make me a child again

Just for tonight.

Back to childhood days! Every Normal student became a child again.

The children all played games such as "London Bridge," "Farmer in the Dell," etc. The little boys entertained by playing "Leap Frog." The chief attraction of the evening was Miss Lockhart dressed as a little school girl and Miss Yale as a pickaninny.

Prizes were awarded to the little pickaninny and the most attractive little girl.

OCTOBER 11, 1921 - - - - - Strickland Gililland Lecture

During one of the most eventful weeks at C. S. N. S. we were entertained by the famous American merry-maker known as Strickland Gililland. Who would not be moved by such wit and drollery? We believe that the student body as a whole attends the different numbers of the Lyceum Course; but the fact remains that "those who were there know what the others missed."

OCTOBER 15, 1921 - - - - - Old Maid's Party

A call was given in chapel for everyone to come to the Gymnasium at 7:30 on Saturday evening, October 15, 1921, dressed either as an "Old Maid" or an "Old Bachelor."

PRAECO 1922

Seven thirty arrived and with it, came a great line of "Old Maids" and "Old Bachelors." Our twentieth anniversary had at last arrived. Could you ever have imagined that some of our dear beloved classmates could have grown so old and feeble in just twenty short years? The grand march came, and everyone joined in even though some were a little too feeble to keep up to the music. At the end of the grand march, Mr. Ulmer awarded to Gertrude Leathers a man for being the best "Old Maid," and Miss Rowe gave Ivan Mechtley a lady for being the best "Old Bachelor."

The remainder of the evening was spent in games and dancing, among them the Virginia Reel. Along with the other good things was a vocal duet rendered by Gertrude Leathers and Jean Ingham, entitled "Believe Me If All Those Endearing Young Charms."

Peppermints were sold for the benefit of the Senior Class, for who ever saw an "Old Maid" without peppermints?

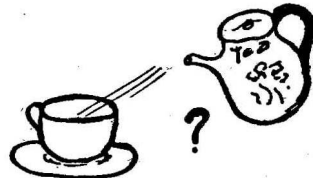
OCTOBER 26, 1921 - - - - - Faculty Tea



On Wednesday afternoon, October twenty-sixth, Miss Speer gave a tea in the reception room to the members of the faculty and guarantors of the McDowell Concert.

Miss Shaw sang two ballads accompanied by Miss Speer.

Miss Locke recited two poems in dialect.



OCTOBER 27, 1921 - - - - - Dramatic Club Plays

The Dramatic Club made its first public appearance before a full house. The plays produced were "The Maker of Dreams" and "Neighbors."

PRAECO 1922

OCTOBER 28, 1921 - - - - - MacDowell Piano Recital

Friday night, October 28, Mrs. Edward MacDowell, wife of the late American composer, gave a lecture-recital in the chapel. Mrs. MacDowell is attempting to establish and carry on a MacDowell Memorial Association. As an introduction to her piano recital, she gave an illustrated talk on the purpose and plans of this organization. Each composition was interpreted before it was played which made it doubly interesting. Some of her best numbers were "The Witches' Dance," "March Wind," "Andante from Keltic Sonata," and "A. D. 1620."

OCTOBER 29, 1921 - - - - - Hallowe'en Dance

A short time before October twenty-ninth, it was announced that the Faculty would give a Hallowe'en dance to the students and their gentlemen friends. Following this announcement there was great excitement in the west dormitory over "Where shall I get a man." Everyone was writing letters and it was noticed at State College that more mail than usual was received.

The eventful night arrived and each girl had her question answered. The Gymnasium was decorated very beautifully in Jack Frost's colored leaves.

During intermission a delicious luncheon was served. Near the end of the dance we were entertained by ghosts which placed the spirit of Hallowe'en on the dancers.

With the notes of "Home Sweet Home" ringing in our ears, we journeyed slowly to the dorm to converse with our chums about our new cases. Thus we ended a perfect day.

NOVEMBER 1-8, 1921 - - - - - Better Speech Week

During the week of November first Better Speech Week was observed by the students of the Normal School and of the Training School. Appropriate and attractive posters were made by the art classes, and placed in conspicuous places.

On November fifth the students of the Junior High School gave in Chapel a play in which Old Man Slang was buried with much ceremony.

NOVEMBER 8, 1921 - - - - - Election Day

Spent in voting???
Naw!! We're not old enough.
We went to the movies.

PRAECO 1922

NOVEMBER 11, 1921 - - - - - Armistice Day

On November eleventh, the students of Central State Normal School enjoyed a holiday. It rained all day and nothing much could be done, however, we enjoyed ourselves as best we could. We went to the movies and made up our back work. At noon all the students met in the Y. W. C. A. parlors to offer a prayer in honor of the dead heroes of our country. These few things that we did constituted the pleasures of our holiday that we looked forward to with so great anticipation.

NOVEMBER 12, 1921 - - - - - Quaker Church

Saturday night, December the tenth, was the scene of an effective mock Quaker church in the gym. The program being arranged by Miss Hortense Hughes and the services being conducted by Miss Lorraine Thurston, the onlookers pronounced it a "howling success." The silent rendition of several anthems, duets, quartets, etc., with profound sincerity of the minister furnished amusement for the audience to the extent that certain parties namely, Ruth Snyder, Edith Paul, Theo. Schreiber, and May Green had to be transferred to the farthest corner of the gym.

NOVEMBER 14-18, 1921 - - - - - Better Health Week

In November, the students of C. S. N. S. held a campaign for better health, which extended over the week of November fourteenth. The aim of this campaign was to show regular hygienic habits of living, and to appeal to the students to adopt these habits. The work was well organized and a splendid program was carried out under Miss Shaley's capable direction. Four committees, the Poster, Clothes, Food and Posture, worked zealously to make Good Health Week a success.

The Poster Committee presented some charmingly attractive posters, portraying the effects of bad and good habits of living. The subjects Good Posture, Nourishing Food, Exercise, and Sleep were quite prominent in these posters. Some clever and original cartoons were made.

The program of the Clothes Committee was quite effective. One morning in Chapel, they gave a little style show, displaying the right use of the right clothes at the right time. The sport outfit, evening dress, afternoon and party frock, and school dress were shown.

The Food Committee gave a very practical demonstration of its ability. The people on this committee, after considering the food values, the expense of different foods, and the tastes of the students, planned all the meals for one

day. Everyone was greatly pleased with the meals that day, which was the real proof that the committee had done its work well.

Great was the mystery and wondering over the tags on which were printed the letters S. U. S. What could that strange lettering on the walls (and also in every conceivable corner) mean? Why it was a clever little device of the Posture Committee's to call the attention of the students to posture. S. U. S. meant Stand Up Straight! the committee explained. Little tags with the letters I. P. (meaning incorrect posture) were given to each person who did not stand up straight. As soon as a student received a tag, he got rid of it at the first opportunity, by giving it to some other person with incorrect posture. And so the fun was kept up for a whole day.

And thus Good Health Week was made a great success, due partly to the untiring efforts of the students and partly to Miss Shaley's splendid supervision and management of the campaign.

NOVEMBER 16, 1921 - - - - - Judge Lindsey Lecture

Wednesday evening, November 16, Judge Lindsey addressed the students of C. S. N. S. and the people from town on the subject "Why Kids Lie." Mr. Lindsey has been Judge of the "kids" court of Chicago for many years. He had some very interesting experiences with the children that were brought before the court at different times. He was the third speaker on the Lyceum Course and I'm sure everyone enjoyed his talk.

NOVEMBER 18, 1921 - - - - - Vacation Begins

Thanksgiving Vacation, bounded on the North by November 18 and happy smiles; on the East by much eating; on the South by perfect freedom; on the West by November 28 and many tears.

NOVEMBER 28, 1921 - - - - - Vacation Ends

DECEMBER 17, 1921 - - - - - Christmas Bazaar

The Y. W. C. A. held a Christmas bazaar which was well attended by the faculty and student body in the gymnasium, December 17, 1921.

The gymnasium looked very Christmasy, it being trimmed with greens and red and green crepe paper. A large Christmas tree stood in the middle of the floor, every branch glistening with its shining trimmings.

PRAECO 1922

One of the special things of interest was the Japanese booth where many unique articles were sold. Two of the Y. W. girls dressed like Japanese women had charge of this booth. Other points of interest were the fancy work booth, the fish pond, fortune teller, and the side shows. Everyone left these sideshows with a hearty laugh.

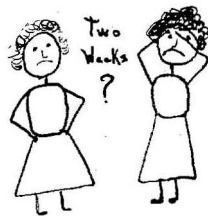
Dancing prevailed during the evening, the music being furnished by the Boys' Orchestra.

The bazaar closed with the appearance of Santa Claus who presented gifts to all.

DECEMBER 21, 1921 - - - - Christmas Vacation Begins

JANUARY 3, 1922 - - - - Christmas Vacation Ends

JANUARY 5, 1922 - - - - Kampus Kids Organized



JANUARY 7, 1922 - - - - Thrilling Event of the Season

On January 7th the most thrilling social event of the season took place in the gymnasium of C. S. N. S. At this time Youneeda B. Strong (Marcella Burt) and Gym Equipment (Ethel Brumbaugh) were united in marriage. Miss May Green performed the ceremony. The bride's outfit consisted of white middie, black bloomers, black stockings, and white tennis shoes. She wore a beautiful white tennis net for a veil. The lovely bouquet of curled newspaper added a great deal to her costume. The attendants of the groom brought all his worldly goods, which consisted of Indian clubs, dumb bells, basket balls, base balls, hammers, etc. The ceremony was closed by a variation of the game "Going to Jerusalem." The one who succeeded in staying in the game the longest had the extreme pleasure of kissing the bride.

PRAECO 1922

JANUARY 7, 1922 - - - - - Picture Day for '22

"Extra! Extra! Extra!"

Three cameras broken and forty pictures taken while the Senior Class looks on in hopeless despair! Mr. Brion and "Praeco" are suspected of this horrible crime.

JANUARY 14, 1922 - - - - - Penn State Glee Club

JANUARY 17, 1922 - - - - - Mumps

May Green, knowing that she must take final examinations in her first semester's work, decided it would be nicer to get the mumps and be free from them. So she did!

JANUARY 13, 1922 - - - - - Great Lakes String Quartet

On January 13, music lovers and the students and patrons of C. S. N. S. were delightfully entertained by the members of the Great Lakes String Quartet. The quartet is composed of very talented men. Each was an artist in his part. We are indeed glad that we should have had the privilege of hearing this excellent company.

JANUARY 20, 1922 - - - - - Basketball Game

Played at home against Jersey Shore High School. Score.

C. S. N. S.....	13
J. S. H. S.....	27

JANUARY 21, 1922 - - - - - Campus Ends

JANUARY 21, 1922 - - - - - Sledding Party

The Students of C. S. N. S. went to Jersey Shore for a sleigh ride Saturday, January 21. Three sleigh loads left the Normal about one o'clock. They arrived in Jersey Shore about 4:30 P. M. Supper was served at the Pickering

PRAECO 1922

Hotel. The chief amusements at the supper table were songs, yells, laughs, and toasts. They left Jersey Shore about 7:30 and landed at C. S. N. S. at ten o'clock.

JANUARY 28, 1922 - - - - - Basketball Game

We played at home against Bellefonte High School. Score:

C. S. N. S.....	27
B. H. S.....	21

FEBRUARY 1, 1922 - - - - - Beginning of Our Second Semester

First semester passed quietly away in the wee hours of the night of January 31, 1922. The second semester began at eight o'clock, February 1, 1922. It must be admitted, however, that the first day of the new semester was exciting. A host of our brilliant Seniors who had not tried their skill at teaching were starting at this morning on a new path in life. They are endowed with knowledge peculiarly evident, and they lost no time in demonstrating to the little children of our Training School their authority. Imagine how an astonished group of children would view in amazement a proud teacher who, with head erect and chest forward, boldly walked up and down the mysterious halls of that institution of knowledge. The initiation of the new teacher did not last long, thanks to the pupils who were especially skilled in pricking the bubbles of teacher's importance.

The rest of our Seniors resumed their class room work. The classes of that week performed many wonders. Some tried their hand at science, a few at art and music. Whoever thought that this class was some day going to produce eminent scientists, renowned musicians, connoisseurs of art? Quite a group specialized in Mr. Gage's famous method classes of Latin and French.

What, have I forgotten our Juniors? Oh, not at all!

After a confused program was readjusted every one calmed down and school had really begun for the new semester. Public Speaking, heretofore known to them only as a dead subject, proved itself quite alive—alive enough to keep many a student up to burn his midnight lamp. Nothing shall be said of those who studied arithmetic methods, except that a few of them sadly lamented their knowledge of the alphabet. But they soon accustomed themselves to the complicated ways. In fact, they were on the way to success by the end of the first week.

So we expect to journey on until June 7, 1922. Then once more warm weather will greet us, green grass, budding trees, flowers; once again the

PRAECO 1922

singing birds of the South will sweetly chirp their songs of joy. And once more unassigned places, places in the large halls of life just as wonderful and mysterious as these old C. S. N. S. halls seemed to our Junior eyes. This time, however, will find young people endowed with some keys of knowledge, equipped to enter some of the rooms—unafraid. Our one regret, will be that then we must explore these rooms of life not together, but alone—each for himself. And so it is possibly with backward look, regretting to lose old associations, but hoping all things right, and true, and good—for ourselves and for each other, that we look into the face of another year.

FEBRUARY 2, 1922 - - - - - Mumps

Ruth, after a day's trial of second semester work, decided she didn't like it so she contracted the mumps and had sixteen days of vacation.

FEBRUARY 4, 1922 - - - - - Basketball Game

We played Renovo High School at Renovo. Ouch! Score:

C. S. N. S.....	19
R. H. S.....	50

FEBRUARY 4, 1922 - - - - - Penn State Glee Club

On the night of February the fourth, the boys of State College Glee Club gave a recital in the school chapel. We had looked forward to the night for a long time and were in nowise disappointed. The Glee Club, composed of thirty-six well trained voices, gave number after number, each better than the last. The Varsity quartet was very well received. It was one of the most enjoyable musical treats of the year.

The fact that we had a dance afterwards with the State boys as our guests had nothing to do with the program, but it does figure largely in the memory books of the students.

FEBRUARY 8, 1922 - - - - - Dramatic Club Plays

THE FLORIST SHOP—By Winifred Hankridge

Maude	- - - - -	Gertrude Leathers
Henry	- - - - -	Hortense Hughes
Slovisky	- - - - -	Hazel Brown
Miss Wells	- - - - -	Elsie Geesey
Mr. Jackson	- - - - -	Marion Buehler

PRAECO 1922

ENTER THE HERO—By Theresa Helburn

Ruth Casey	Gwendolyn Glise
Anne Casey	Sylvia Claster
Harold Lawson	Olga Neff
Mrs. Casey	Alice Martin

Director, Miss Charlton Locke

On the evening of February 8, the Dramatic Club gave its second public performance consisting of two one-act plays, "The Florist Shop" and "Enter the Hero." The interpretations of the parts played were very good while the profusion of flowers used in setting the stage for the first play was admired by many.

FEBRUARY 10, 1922 - - - - - Basketball Game

We played St. Joseph's High School at home. Score:

C. S. N. S.....	27
S. J. H. S.....	15

FEBRUARY 11, 1922 - - - - - Basketball Game

Jersey Shore High School at Jersey Shore. Score:

C. S. N. S.....	19
J. S. H. S.....	38

FEBRUARY 11, 1922 - - - - - Trip to Jersey Shore

To the victor belongs the spoils. This was especially true after the Williamsport game. Miss Yale announced to the excited girls that all who desired might attend the next game which was to be played at Jersey Shore the next evening.

At eight o'clock, a bus conveyed the happy throng of thirty girls, chaperoned by Miss Shaley and Miss Yale to Jersey Shore. The time passed so quickly in singing and cheering that we reached the Y. M. C. A. at Jersey Shore before we realized it.

Enthusiastic cheering from both sides was a feature of the game.

Our boys put up a good game but we couldn't win every time. We journeyed back to Lock Haven at the late hour of 11:30 in high spirits.

PRAECO 1922

FEBRUARY 16, 1922 - - - - - Movies for Normalites

"Oh, how I wish I could go down to see the 'Four Horsemen'; don't you?" This was a common saying around C. S. N. S. the week of February 16. But what hopes we did have when Miss Locke announced to us that Mr. Drum had given consent for us to go. Were we happy? Well, I'll say we were. So on the night of the sixteenth about thirty girls, with Mr. and Mrs. McDougall and Miss Shaley journeyed to the Martin Theatre to see the famous picture. And oh, the delight of just being out in the night air. Is it unhealthful? Well, we'll say it's not; and after we had seen that wonderful picture (for it was wonderful) we came home, tiptoed through the hall and at ten o'clock out went the lights. Maybe we got "bawled out" the next day for not having our lessons, but we did have good night air.

FEBRUARY 17, 1922 - - - - - Praeco Dance

At last the long-looked-for night arrived. Everybody was in a flutter of excitement. "How do I look?" "Oh, what a lovely dress!" etc., etc. The Seniors were giving a dance for the benefit of their Praeco.

As we entered the gym, we heard from all sides, "Doesn't it look wonderful?" Through the efforts of the decoration committee the gym had been changed into a veritable fairyland of blood-red hearts suspended from the lights, etc., by means of red and white ribbons, and mounted with cupids on a pure white background.

"On with the dance!" The enchanting strains of the orchestra sent us gliding into Paradise, forgetful of all else.

During intermission a dainty luncheon of ice cream and cakes was served.

Only too soon the notes of the "Home Sweet Home" waltz brought the time for good-bye. Nuff Sed!

Successful does not adequately describe this dance.

FEBRUARY 18, 1922 - - - - - Basketball Game

We played at Bellefonte against Bellefonte High School. Score:

C. S. N. S.....	18
Bellefonte	28

MARCH 1, 1922 - - - - - White's Concert Party

During the evening of March 1, 1922, White's Concert Party entertained a large audience in the Normal Chapel. The many encores were a sure proof of their success, and of our appreciation.

MARCH 12, 1922 - - - - - Girls' Glee Club of

Penn State concerted for us. Great!

PRAECO 1922



PRAECO STAFF "AT REST"



For the past three years every Central State
Normal School Photograph, individual
and group pictures, campus scenes,
classrooms and offices and school
entertainments have been
taken by

G. A. BRION

Home Photographer

MILL HALL, PENNA.

The Photographs in Praeco for 1922 are
representative; how do you like them?

Have your Photograph taken in your
room, on the campus, anywhere you like.

Call

COMMERCIAL PHONE 5441

BELL PHONE 39-J-2

Baseball Basketball Football Any Sport

You will find us prepared to serve you with a
full line of supplies for each

We make a specialty of Tennis Rackets and Balls

STEVENSON SPORTING GOODS CO.

F. I. TITUS

FRESH FRUIT and GROCERIES

Fine Confectionery, Ice Cream, Tobacco and Cigars

644 West Main Street

LOCK HAVEN, PA.

The Arbor

Is Considered on School Campus—

IF you want Ice Cream, Sundae or Sodas

IF you want Candy, Cakes or Fruit

IF you want a Lunch or Dinner

IF you want Groceries

You can get them all at

The Arbor

ACHENBACH'S BRANCH

When you need *Drugs* or *Toilet Goods*
think of Us First, Last and All the Time

Hilton & Heffner

Lock Haven's Modern Drug Store

We have the largest line in Lock Haven of Perfumes,
Soaps, Tooth Pastes, Creams and Powders.

Four Expert Graduates in Pharmacy insure accuracy
on all our prescription work.

Compliments of
W. A. Flack & Son

*Dry Goods and
Carpets*

4 and 6 Main Street
Lock Haven, Pa.

Chas. R. Lauer
Undertaker

Funeral Parlors and Office
221 Second Street
Both Phones

Yankee Bakery

FOR

**BREAD
AND
ROLLS**

Special Orders a Specialty

**QUALITY SHOE
REPAIRING**

J. F. TORSELL
Bellefonte Avenue

FIRST NATIONAL BANK

LOCK HAVEN, PA.

Charter No. 507

Capital	-	-	-	\$180,000.00
Surplus and Net Profits	-	-	-	705,842.30

OFFICERS

E. A. MONAGHAN
President

R. W. FREDERICKS
Vice President

REEZE KINTZING
Cashier

HARRY B. GEARY
Assistant Cashier

HARRY M. SHAFFER
Assistant Cashier

SHAFFER, CANDOR & HOPKINS

HARDWARE

Constant application to the study of Hardware with a Scientific knowledge of its needs, its production and its uses—Needless to say fit us for the rendering of an intelligent Service to our many patrons as well as to our Community.

“THE WINCHESTER STORE”

Shaffer, Candor & Hopkins

LOCK HAVEN, PA.

Society Brand Clothes

For young men and men who stay young—
all wool, hand tailored, latest styles, fast
colors, satisfaction guaranteed.

LOCK HAVEN'S FAVORITE CLOTHING STORE

Where you get what you want and like what you
get. Plus our prompt personal service which
makes shopping a pleasure here along with our
large and complete selections.



HICKOFF & WEAVER

The Store That Appreciates

The Jewelry you buy at
McEwen & Zimmerman
will be a lasting remem-
brance of the happy days
you spent at C. S. N. S.

Hecht's Woman's Shop

*"The Shop of Truth, Courtesy
and Service"*

OFFERING
Exclusive Ready-to-Wear
for
Madam and Mademoiselle

LOCK HAVEN, PA.



*Engravings in
this book
by*

**The CANTON ENGRAVING
AND ELECTROTYPE CO.
CANTON · OHIO**

*"Makers of
Quality Printing
Plates"*

B. C. ACHENBACH & SON

Caterers

Fancy Cakes

Wholesale and Retail Ice Cream Manufacturers

121 EAST MAIN STREET

ACHENBACH'S will be pleased to assist any student or class in preparation for Socials, Banquets and Receptions, in the way of Novelty Ice Cream, Assorted Cakes, Pastries, Candies, etc. We rent Linen, Silver and China, for all occasions. Glad to submit prices for the same. No order too large or small for our attention.

Agency for Page & Shaw, Norris, Huylers and Stacy's Candies.

Thanking you in advance

ACHENBACH'S

Compliments of

DR. A. W. BAUMAN

The Rempe Store

DRY GOODS

Millinery

Waists

Coats

Suits

Dresses

**Everything In
Ready-to-Wear**

13-15 EAST MAIN STREET

The Home of A. B. C.

Electric Washers

and all other kinds of Electric
Appliances that are Good



**Lock Haven Electric
Light and Power Co.**

126 E. Main Street, Lock Haven, Pa.

Henry Keller & Sons

Fine Shoes and Slippers

All Styles and Leathers



103 Main St. Lock Haven, Pa.

HARDWARE LOGIC

The Store that Buys Most—Buys Cheapest
The Store that Sells Most—Sells Cheapest
Because we sell the most we buy the most.
That's why we sell the Cheapest.

Dickey Hardware Co.

133 E. Main St. Lock Haven, Pa.

Is The Place

Our Line Is Always Complete
Our Price Always the Lowest

Our Guarantee
Satisfaction or Your Money Back



Up-to-the-Minute Styles
Are Found Here In

Hart Schaffner & Marx, and
Michael Stern Clothes, Stetson
and Young Bros. Hats, Eagle
Shirts, Keith Shoes, Bradley
Sweaters and Bathing Suits.

WILSON & SHAFFER

Money's Worth or Money Back

Martin Theatre

—
HIGH CLASS
Photoplays

—
The Coolest Place in Summer.
Ventilated by Typhoon Fans.

Satisfactory

footwear

KAMP SHOE CO.

110 East Main Street

C. L. WIEDHAHN

Jeweler

117 E. Main St. Lock Haven, Pa.

Established 1855

WATERMAN FOUNTAIN PENS

The Connecticut Mutual Life Insurance Company

of HARTFORD, CONN.

Offers you a very Attractive Contract

It Provides for paying your premiums in case of Disability through sickness or accident.

It Provides for a monthly income during such illness.

It Provides for double the face of the policy in case of accidental death.

It Provides for a monthly income during old age.

It is worth while becoming familiar with the Connecticut Mutual Contract.

*At Your request, without any obligation on your part,
we will gladly make an appointment and show
you this wonderful Contract.*

A Card Addressed to

HARRY ZIMMERMAN, Lock Haven, Pa.

Will Be Given Prompt Attention

We make a specialty of developing
and printing for amateurs

ENLARGEMENTS 50c and 75c

SWOPE STUDIO

*The Largest Shoe Repair
Shop in the County*

HABERSTROH

216 Vesper Street

P. ZUBER & SON

MEATS and PRODUCE

Compliments of

E. W. CARLSON

Florist

6 Bellefonte Ave. Lock Haven, Pa.

Both Phones

Compliments of

LEINBACH BROS.

Jewelers

135 E. Main Street

BURKETT BROS.

Dealers in

Newspapers, Stationery
and Office Supplies

105 E. Main St.

Lock Haven, Pa.

Compliments of

Jacob Brown & Son

LOCK HAVEN, PA.

Compliments of

J. W. BRIDGENS & SON

Compliments of

FREDERICK'S PHARMACY

Compliments of

SMITH & WINTER

137 East Main Street