

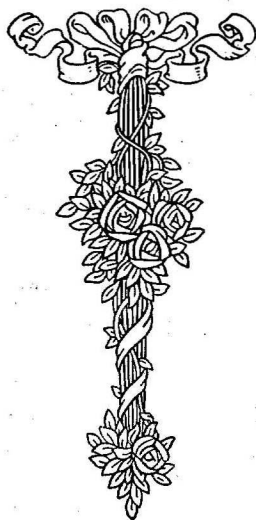
# PRAECO



1921

# PRAECO

Senior Class of  
Central State Normal School



LOCK HAVEN, PENNSYLVANIA

1921

## Warren Nevin Drum, A. M.



WARREN NEVIN DRUM was born in Bloomsburg, Pa., where he received his elementary education. After graduating from the Bloomsburg High School, State Normal School and Lackawanna Business College, he entered Columbia University and graduated in 1914 with the degree of Bachelor of Science and in 1915 with the degree of Master of Arts. He has been a graduate student in Columbia University at various times subsequently.

Mr. Drum entered his career as a school man with the appointment as teacher in Dickinson Seminary, Williamsport, Pa., where he remained for two years. He taught in the high school at Flemington, N. J., and at Kingston, Pa. From 1914 to 1918 he was City Superintendent of Schools at Millville, N. J. He was later elected Superintendent of the Schools at Cliffside Park, N. J. Since August 5, 1920, Mr. Drum has been Principal of Central State Normal School at LockHaven, Pa.

This brief outline indicates that Mr. Drum has had wide experience in teaching and supervising. Since he has been at C. S. N. S., he has worked untiringly for the interests of the school and its students. One is impressed by his thorough knowledge and many sided interests which have been gained by deep study, much reading and contact with many people. Through his own application he has secured a background that is very essential to a successful Principal.

To Mr. Drum, who has been to us a friend, a loyal helper and a devoted Principal, we, the Class of 1921, dedicate this eighth volume of Praeco.



WARREN NEVIN DRUM, A.M.

## FOREWORD

---

O touch it not with thoughtless hands  
This little book of ours!  
And scan it not with ruthless eyes  
In the far distant hours!  
For he who uses but his eyes  
Has only faults to find,  
But he who reads it with his heart  
Will find the cause behind.

For 'tis a task of love, not art,  
Of sympathy, not skill,  
To show the place we soon must leave  
Our thoughts are with it still.  
So when you read, may you forgive  
Because of the words above  
And let our last attempt but give  
A tribute of our love.

M. S. '21.



## Class Officers

President .....	Homer Sherman
Vice-President .....	William Moore
Secretary .....	Alice Bowser
Treasurer .....	Rhoda McCartney
Advisor .....	Mr. M. De Turk High



PRAECO STAFF

## Praero Staff

Eva Belle Lovell ..... Editor-in-Chief

Sara Peterman }  
 Marian Shreckengast } ..... Associate Editors  
 Blanchard Gummo }

Blanchard Gummo ..... Business Manager

Faith MacDonald }  
 Homer Sehrman } ..... Associate Business Managers  
 Fred Remley }

William Moore }  
 Sara Peterman } ..... Photographic Editors

### POET

Malita Scherer

### MUSIC

Rhoda McCartney

### CLASS WILL

Faith MacDonald

### BOYS' ATHLETICS

Fred Remley

### GIRLS' ATHLETICS

Madge McCaw

### CLASS HISTORIAN

Priscilla Williams

### CLASS PROPHET

Jacob Getz

### WIT COMMITTEE

Florence Holmberg

Grace Brooks

Eleanor Dunn

Pauline Ott

George Dively





Eva Belle Lovell  
Editor in Chief

Blanchard  
Gummo  
Business Mgr.

Fredrick Henley

Sara Peterman

Faith  
McDonald

Marion  
Shreckengast

PRAECO STAFF

## The Faculty

Warren Nevin Drum, A.M., Principal

### DEPARTMENT OF EDUCATION

R. S. McDougal, A.M.

Jessie Scott Himes, B.S.

L. A. Warburton, A.M.

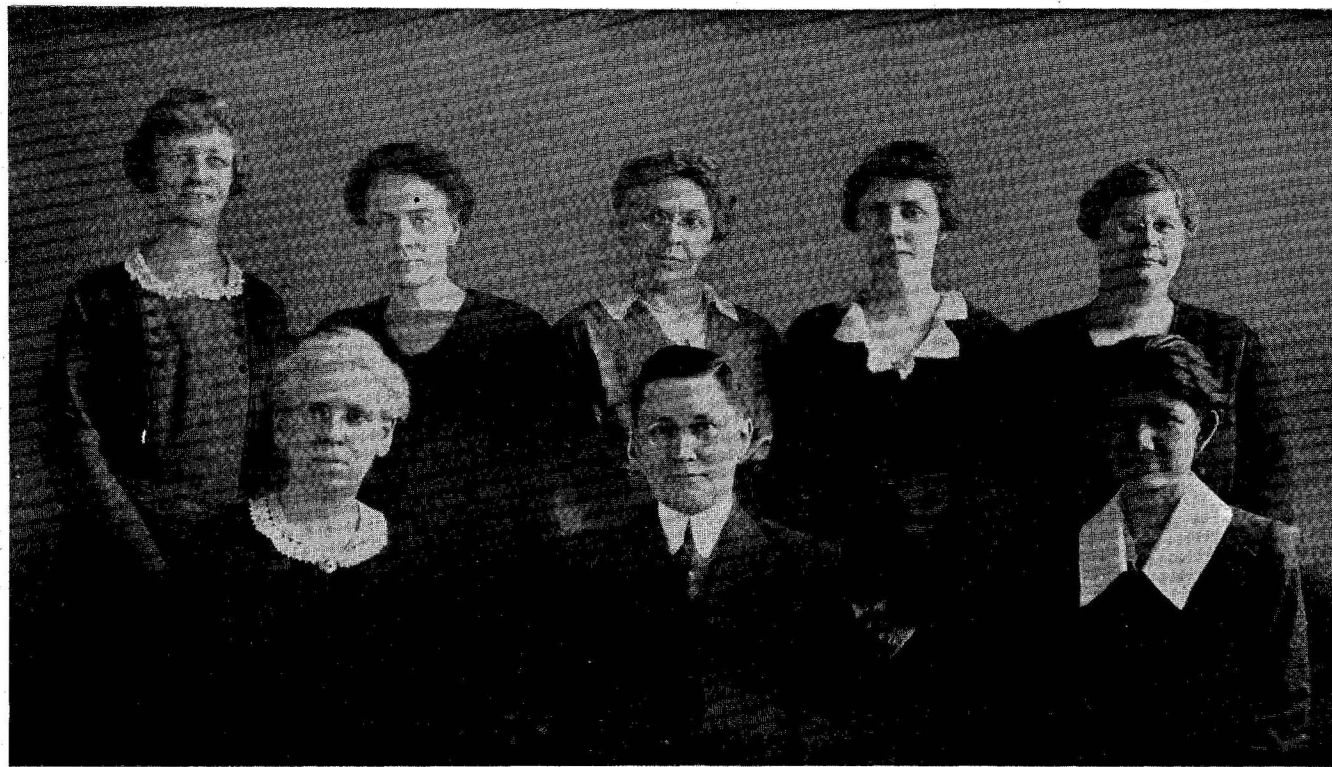
Laura E. Barkhuff

Helen Boggis Leshner

Ruth A. Stewart

Bertha M. Rowe

Geraldine Lockhart



TRAINING SCHOOL FACULTY

## **School of Methods**

Homer H. Gage, Ph.B.

Herbert Stover, B.S.

M. De Turk High, A.M.

Levi J. Ulmer, M.S.

J. Milton Lord

Cornelius M. Sullivan, B.S.

Eleanor R. Mulford

Gisette M. Yale

Blanche M. Speer

Agnes V. Gailey

Garth Kleckner

Lillian Lee Clark

Grace B. Peet, B.S.

Mabel E. Doyle

Florence Chandler Groff, Secretary



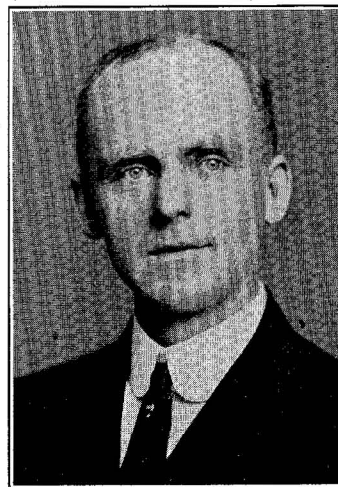
HOMER H. GAGE, PH.D.  
(Cornell University)



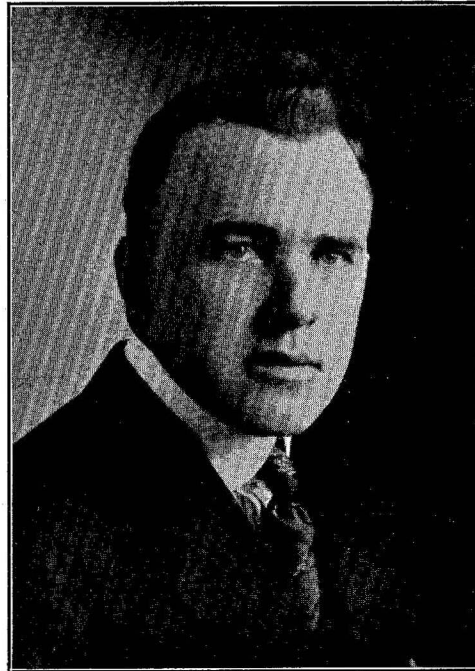
HERBERT E. STOVER



M. DE TURK HIGH, A.M.  
(Franklin Marshall, University of Chicago)



LEVI J. ULMER, A.M.  
(Bucknell University, Cornell University)



CORNELIUS M. SULLIVAN, B.S.  
(Columbia University)



ELEANOR R. MULFORD



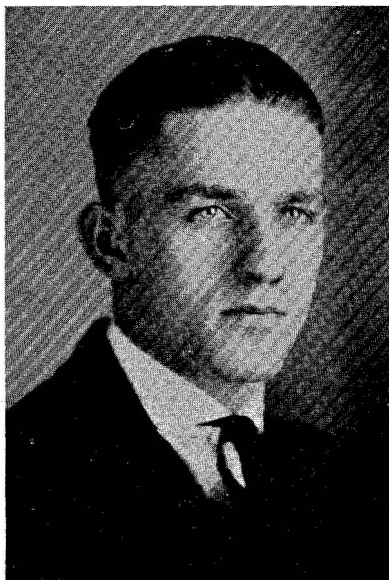
GISSETTE M. YALE



BLANCHE M. SPEER



AGNES V. GAILEY



GARTH KLECKNER

LILIAN LEE CLARK



GRACE B. PEETE, B.S.



MABEL E. DOYLE



MATTIE M. COLLINS  
Librarian



RUTH YINGLING  
Nurse





THE LIBRARY





**BERNICE BARRETT**

"Bernie"

Bellwood, Pa.

Price P Ω Ω Λ Y. W. C. A.  
Cantata Club  
Glee Club  
Chapel Choir

"If she isn't dancing she is singing," some one remarked about Bernice the other day. All we say is—true. How true? Her ambition is to be a great singer, but we think it's a shame if she neglects her dancing.

**ALMETA BIXEL**

"Bix"

Orviston, Pa.

Price Y. W. C. A.  
Cantata Club  
Glee Club  
Varsity, B.B.

"Bix" has spent four years at C. S. N. S., and although she has had many good times, she has been an ambitious student. She has won many friends among her classmates and teachers. We are proud of "Bix" and wish her success and happiness in the near future.

**ALICE BOWSER**

Smokerun, Pa.

Shakespeare Y. W. C. A.  
Cantata Club  
Glee Club  
Sec. of Senior Class  
Chapel Choir

Alice has not been with us the full two years but her arrival was heralded long before she was seen. However, she has made up for lost time. She expects to be a school teacher but not for long.  
Congratulations, Alice.

**VERONICA BRADLEY**

"Bonnie"

Leisenring, Pa.

Price            A Σ T            Cantata Club  
                  Glee Club  
                  Chapel Choir  
                  Dramatic Club

A little maid with short black hair,  
The fall of '19 did appear,  
In C. S. N. S. with all her art  
As well as a warm little heart,  
Which proves her a friend to all,  
And if you please we just call—  
Her Bonnie—  
And so does Les.

**GRACE BROOKS**

"Brooksie"

Milton, Pa.

Price            A Σ T            Y. W. C. A.  
                  Glee Club  
                  Dramatic Club  
                  Praeco Staff

Hail, maiden—thy hearty laugh, thy attractive little ways, thy wondrous voice will endear thy memory to the class of '21. Brooksie is good in fun, better in lessons but best in planning surprises with her devoted friend Bonny. She has many friends who wish her a successful career.

**MERCEDES BURNS**

"Mars"

Gallitzen, Pa.

Price            A Σ T            Cantata Club  
                  Glee Club  
                  Chapel Choir  
                  Dramatic Club

She hails from the summit of the Alleghenies and because she loves Beans she has gained pounds. Being ambitious a great dramatic career is in store for her, unless? Little but full of fun she scatters sunshine wherever she goes. We wish her the best of luck





**IRENE BURKE**  
"Billy"  
Scranton, Pa.

Price Glee Club

*"A friend in need is a friend indeed."*

Irene lives the farther end of third. If you don't believe it ask the C. S. N. S. policeman who patrols the whole length of the floor regularly at any time between 6:30 A. M., till retiring bell; for there is no limit to the phone calls, special deliveries, etc., for this "never worry" miss. Billie is always ready for a good time especially if it includes State.

**ETHEL CASSELBERRY**  
"Tickleberry"  
Altoona, Pa.

Price Y. W. C. A.

Glee Club

Ethel hails from Altoona. It must be a wonderful place from what she quotes concerning it, from "morn til nite". This sarcastic, young lady is always "tickled to death" whatever comes or goes. Her hobby is sleeping during her spare time and her nightly salute is, "Let's go to sleep for a change, Rosie." For further information, especially as to her charms, etc., just ask Herr.

**ANNA CREIGHTON**  
"Anne"  
Mackeyville, Pa.

Price P Ω Ω A Y. W. C. A.

No doubt you would judge Anne to the quietest girl in the class but this is not true. She has many friends but they are by no means all of the fair sex.

What ever you take up in life whether it be teaching or housekeeping the best wishes of the class go with you.

HELEN DEGABRIEL

"Dee"

Altoona, Pa.

*Who's as busy as a bee  
And quiet so sweet as busy "Dee"?*

Helen was welcomed into our midst and we soon found her to be possessed of some remarkable gifts not the least of which is patience. When some less fortunate classmate comes to her with a difficult French translation they invariably hear, "why I'd just love to do it."

ELWOOD DE TURK

"Turkie"

Price

Y. M. C. A.

Let me introduce to you a young man who hails from Berks County right from among the Dutch people. "Turkie," as he is known by his fellow students, has spent three years with us, entering as a Sophomore and climbing up to the Senior year. He is of a very quiet disposition and is liked by all who know him.

NELLE DICK  
Farrandsville, Pa.

Here's to the girl with pad and pen  
Who loves poetry, classics, and men.  
Nell's cares are like a bubble  
They melt and flow away;  
For in this world of trouble  
She laughs through every day.





**NELLIE DOLAN**  
Eldred, Pa.

Shakespeare

Y. W. C. A.

Glee Club

Nellie is a bright, industrious girl with many accomplishments. The people on second floor have thrown their alarm clocks away as Nellie has proved more reliable. Under the old regime Nellie purchased a large quantity of midnight oil and when the new constitution was adopted Nellie offered her supply at reduced rates. We expect to hear more about Nellie in the future and we wish her success in her college career.

**ELEANOR DUNN**  
"Diddy"  
Hallton, Pa.

Shakespeare

A  $\Sigma$  T

Glee Club

Eleanor, with her merry laugh, her carefree way, and her curling iron, has been a real asset to the class of '21. She expects to finish her education at Columbia University (but we wonder). However, we wish her much success.

**MADLINE FIEDLER**  
"Mad"  
Avis, Pa.

Price

A  $\Sigma$  T

Y. W. C. A.

Glee Club

During office hours "Mad" is a very precise school marm in the intermediate grades, but when the clock strikes four she lays aside her dignity and her cheerful giggle may be heard through the halls. This same giggle when reduced to her charming smile, has won many friends among both the girls and boys and we expect it to do the same all through her life.

JACOB W. GETZ  
"Jake"

Lock Haven, Pa.

Shakespeare Y. M. C. A.  
Shakespeare President

"Jake" as he is known among his friends, joined us during the winter term of 1919. He is a very conscientious student but believes in having fun once in awhile. We hope to see him some day as a missionary, carrying the Light to the dark heathen.

BLANCHARD GUMMO

Lock Haven, Pa.

President Price

Business Manager Praeco

*"And still they gazed, and still the wonder grew,  
That one small head could carry all he knew."*

This is surely true of Blanchard for he has the distinction of being the youngest member of the Senior Class. Although he is a day student he never misses anything that happens. Did you ever see him miss a dance? and also, did you ever see him miss a class? A brilliant career is in store for him—in college and in his life work. Success to you!

BURRELL HERR

"Bud"

Salona, Pa.

Price Y. M. C. A.

"Bud" is another of the famous men who took advantage of C. S. N. S. He is a mighty good sport and also a very good student. Did you ever ask him about his trip to Williamsport? He is a fine teacher and we hope that he will be the principal at Altoona—to save car fare.







FLORENCE HOLMBERG  
"Sweetie"  
Johnsonberg, Pa.

Price B  $\Sigma$  X Praeco Staff  
Y. W. C. A.

*Sweetie clever; wit subline,  
Keeps us laughing all the time.*

HARRIET JONES  
"Harriet Anne"  
Smithport, Pa.

Price B A X Cantata Club  
*Harriett sleeps and dreams as well,  
Of what she dreams 'tis hard to tell."*

HELEN LOOSE  
"Lucy"  
Altoona, Pa.

Price Glee Club  
Y. W. C. A.

*A Quaker maid she seems to be  
Upon first observation,  
But as a good sport and student combined  
She made her reputation.*

EVA BELLE LOVELL

"Eve"

Williamsport, Pa.

Price P Ω Ω Λ Y. W. C. A.  
Editor-in-chief Praeco  
Y. W. C. A. Cabinet  
Cantata Club  
Glee Club

*So gentle mild and staid  
She surely seems a model maid,  
Yet gentle reader mark you well,  
You cannot sometimes always tell.*

"Ev" has won many friends among the girls and her attitude toward her lessons has made her a favorite with her teachers. She intends to become a primary teacher but we have our doubts.

ALICE LUPOLD  
Sinnamahoning, Pa.

Price Y. W. C. A.  
Glee Club

Alice is one of our quiet yet enthusiastic Seniors. She is always busy and will certainly make a good teacher.  
Good luck to her!

TORRENCE LYONS

"Ted"

Howard, Pa.

Shakespeare Ω A Ω Y. M. C. A.  
*"Seek diligently and you shall find."*

Ted may be more generally described as a "Standard Dictionary of Facts," a giant in knowledge, a musician of fame, an ardent Republican and an all around friend and "Pal." He is also quite an athlete. Playing varsity football and baseball.

We are sure Ted will make a success in life.





**FAITH MacDONALD**  
Ceres, N. Y.

Price Glee Club  
Associated Business Manager  
Secretary Price Society

One day there was an awful commotion out in the hall. We all looked out and here it was only Faith with her bag and baggage who came to join the Junior class. We all liked her "Sunny Smile" and also the way she says "Got anything to eat, kids?"

Faith hopes to be a Junior High School teacher (we wonder for how long).

We wish you much success in your future.

**DONALD D. MacDONALD**  
Towanda

Price Y. M. C. A.  
President Price

"Mac" is another of our loyal boys. He received his early education at Itacha High School and Bloomsburgh Normal. He came to C. S. N. S. in the Spring Term, 1919.

MacDonald took an active part in athletics playing football, basketball, and baseball, while he was at C. S. N. S.

Donald should be commended much for his work at the Normal and surely will attain success in life.

**RHODA McCARTNEY**  
"Rhoda"

Johnstown, Pa.

Price P Ω Ω Λ Y. W. C. A.  
President Student Council  
Class Treasurer  
Glee Club  
Cantata Club

Rhoda has spent two years with us at C. S. N. S. and many good times we have had in the Y. W. when Rhoda delighted us with her music.

Rhoda was absent for several weeks with scarlet fever and as usual, absence makes the heart grow fonder.

Well, Rhoda, our good wishes go with you.

MARJORIE McCAW  
"Madge"  
Johnsonburg, Pa.

Price B Σ X Cantata Club  
Praeco Staff  
Varsity B.B.

*To be an athlete is her fate  
With form that's hard to cultivate.*

VINETTA McKENZIE  
"Vin"  
Houtzdale, Pa.

Shakespeare P Ω Ω Λ Y. W. C. A.  
Student Council  
President Y. W. C. A.

*'Twas a happy day when Vindetta dear,  
Came to live with us at the Normal here,  
Her sunny smile and auburn hair,  
Made us think there never was one more  
fair.*

*She won our love from the very start,  
Here's to the primary teachers' art.*

BEATRICE McLATCHIE  
"Bea"

Price Coutersport Y. W. C. A.  
Y. W. C. A. Cabinet  
Dramatic Club  
Glee Club  
Cantata Club

"Bea" is a studious and energetic worker.  
She rooms on the first floor but is more  
often found in the training school. She in-  
tends to make her profession that of a Jun-  
ior High School teacher. She has our best  
wishes.





**GLADYS MILLER**  
Lock Haven, Pa.  
D. R. F.

*Dear old classmates, we must part,  
Gee! It nearly breaks my heart.*

Being a popular leader in the Day Room, Gladie had things constantly moving, avoiding the consequences by sheer shrewdness. Her sense of humor has carried her over many rough bumps and won the favor of her classmates and teachers.

**WILLIAM MOORE**  
"Bill"

Lock Haven, Pa.

Price                    A Φ Θ                    Y. M. C. A.  
Vice-President Senior Class  
Captain Varsity B.E.  
President Price  
Photographic Manager Praeco

"Bill" will fill an important place in our memories of C. S. N. S., because he was associated with all the activities engaged in—from dancing to vespers! He is an all around fellow and surely keeps things moving. We prophesy a brilliant career for this popular member of the class of '21.

**MILDRED MOYER**  
Linden, Pa.

Shakespeare                    Y. W. C. A.  
Dramatic Club  
Glee Club

In the fall of 1920 Mildred returned after teaching a year. She at once became interested in the Y. W. and took an active part. Shakespearians were glad to welcome her again. She took up rural work and her diligence won her a place on the list of honor teachers. Mildred aspires to the position of rural critic teacher some day. "Hitch your wagon to a "star," Mildred!

MARTHA O'BRIEN

Austin, Pa.

*Martha, so cheerful and happy,  
Always ready to do what she should,  
But study she seldom could  
For her attention was attracted by "gym" and  
the movies.*

RITA O'CONNOR

Renovo, Pa.

Rita is always smiling and cheery and believes in the old song "Laugh and the world laughs with you; Cry and you cry alone". Her chief ambition is to become pleasing plump, and feed upon strawberries, sugar and cream. If you would like to see Rita blush, just ask her if she has been to Kane lately.

PAULINE OTT

"Pat"

Williamsport, Pa.

Price

P Ω Ω Λ      Y. W. C. A.  
Cantata Club  
Glee Club  
Varsity B.B.  
Chapel Choir

*A cherry maid, with a pleasing smile,  
The giver of gladness all the while.*





**BEATRICE PACKER**

"Bea"

Juniata, Pa.

Price

Y. W. C. A.

Glee Club  
 Student Council  
 Dramatic Club  
 Y. W. C. A. Cabinet  
*"Less noise, girls!"*

Bea is the kind of a girl one is glad to have known. She hails from Juniata and if she is a fair sample, we'd all like to know the town, although Bea says she is going to teach. She has shown extraordinary ability as a "marrying preacher" and we all think she is more fitted for that sort of work.

**SARA PETERMAN**

"Sal"

Jersey Shore, Pa.

Price

B Σ X Cantata Club

Chapel Choir  
 Dramatic Club  
 Y. W. C. A.  
 Praeco Staff  
 Captain Varsity B.B.  
 Glee Club

*"She is clever, keenly bright,  
 Manages Varsity, just right."*

**MARGARET PFARR**

"Marg"

Johnstown, Pa.

Price

A Σ T Glee Club

Our "Marg" journeyed to C. S. N. S. from Johnstown and has proven to all that she is an all around girl.

Her knowledge when it comes to working "Math" (problems) is amazing. We do not hesitate in predicting a happy and successful career for our little worker.

MILDRED PHILLIPS

"Mid"

Tyrone, Pa.

Price

Y. W. C. A.

Glee Club  
Cantata Club  
Chapel Choir

Thanks to Tyrone. Mildred was one of the first persons who appeared in our class and there has never been one day that we have regretted her presence. Her winning smiles have won her many friends and C. S. N. S. would be like a cloud without a silver lining without her presence. She wishes to become a primary teacher but—how long?

BARBARA PLETCHER

"Bab"

Lock Haven

*"Bab", a girl so sweet and willing  
From her lips a laugh is spilling."*

This poem was surely written for "Bab". She is noted for her cheerfulness and always enjoys herself whenever she is. She tells us she has overlooked her wonderful ability as an artist.

INEZ RICKER

Mill Hall, Pa.

*"Blushing is the color of virtue".*

Inez first made her appearance at C. S. N. S. in 1919 when she entered the Junior Class, after being a graduate from Lock Haven High. Her ambitions are the cause of many a weary hour of hard labor. Although we never hear of "Inie" flunking an exam, we always hear her say, "Gee! I bet I flunked."

She is particularly fond of day dreams chief of which she is to teach in California.







**BEATRICE ROFFE**

Mill Hall, Pa.

*"Always smiling and happy  
With not a care you'd think".*

Beatrice entered C. S. N. S. as an innocent Freshman in 1917 after spending two years in Mill Hall High School.

She is a girl who is in for everything and to hear her merry laugh is to know that "Something's doin'" in the day room. She is generally found talking with Edith, and teasing is her most accomplished art.

**JOSEPH RYDESKY**

"Joe"

Austin, Pa.

Shakespeare

Y. M. C. A.

Those of us, who have spent two years with Joe know his fondness for arguing. He always feels the responsibility of carrying on a class meeting. We are sure that he will be a successful business man because he never allows anyone to "bluff" him.

**MALITA SCHERER**

"Tiety"

Jersey Shore, Pa.

Price

B & X

Canta Club

Praeco Staff

Y. W. C. A.

Glee Club

*Tiety is smart, Tiety is clever  
She's the sort that fails you never.*

**MARIAN SCHRECKENGAST**  
Greenburr, Pa.

Price Y. W. C. A.  
President Dramatic Club  
Glee Club  
Y. W. C. A. Cabinet  
Asst. Editor Praeco

Everyone knows Marian. She has grown up with the place and thrived on it we should say. What would Price have done without her genuine talent as a speaker which was always ready when called for! Marian is also a splendid French teacher. Best of Wishes to you, Marian!

**HOMER SHERMAN**  
"Shomer"  
Butler, Pa.

Shakespeare Y. M. C. A.  
Y. M. C. A. President  
Student Council  
Senior Class President  
Praeco Staff

*"Smile, Smile, Smile, my friends,  
And the dark clouds will not stay."*

"In the chain of true friendship he is a pure golden link."

Shomer joined the Junior Class in the Fall Term of 1919. He came to us from the Shinglehouse High School, with an exceedingly high and worthy recommendation. During his activities at C. N. N. S., he has shown himself well worthy of his recommendations and also as a good, efficient and most commendable student, besides gaining a host of friends through his ever-willingness to lend a helping hand to a worthy cause. We can readily foresee a very bright and prosperous future for Sherman, who will be greatly missed by all who knew him when he bids "adieu" to the halls of C. S. N. S.

**HELEN SIMMONS**  
Conemaugh, Pa.

Price P Ω Λ Y. W. C. A.  
Glee Club

*Helen is a stately maid,  
As dignified as she can be,  
Her's is the beauty that never fades,  
It's more than skin deep, you see.*





MARY SMITH  
"May Elizabeth"  
Jersey Shore, Pa.

Price Y. W. C. A.  
Varsity B.B.

A day for toil, and an hour for sport, but  
for a friend a life is short.

Mary had many sterling qualities and is an  
ambitious student. Athletics is her specialty.  
Her fondest ambition is to become a teacher  
in health education. We wish her great suc-  
cess in life.

VIOLET SMITH  
Emporium, Pa.

*What a wonderful disposition,  
Seldom you will find  
So gentle and so sweet,  
So loyal, true and kind.*

LIMA STONEMETZ

Shakespeare Y. W. C. A.

Lima is a good student, but whenever her  
friends arrive she has time for a bit of whole-  
some nonsense. The "L" in her name stands  
for loyalty. She intends to devote her whole  
life to the improvement of rural schools. But  
there's danger. She is an excellent home-  
maker and a "pearl above price."

GENEVA STULL  
"G"

Eldered, Pa.

Shakespeare

Y. W. C. A.

Glee Club

We Seniors know Geneva well  
She sure will win success  
Because she gets her lessons well  
To that we must confess.

She has many great ambitions  
But for children thats her aim  
She wins them through her kindness  
To seek the heights of fame.

She's needed in societies  
To set the work aright  
As many things to us seem hard  
To her it seems quite light.

ELENOR TROUTMAN  
"Impty"

Antes Forte, Pa.

Price

B Σ X

Cantata Club

Chapel Choir

Y. W. C. A.

Glee Club

*Behold a girl that's always game  
Tease her, but she's always the same.*

MARION VANDERBILT

Muncy, Pa.

Price

Y. W. C. A.

Glee Club

When "Memories" of C. S. N. S. come back  
"To You" "At Dawning", then "You'll Re-  
member" "Marion", "A Singer an' a Singin'"  
about "Love's Thought", "Dreams", "N'Ev'ry-  
thing" is, Bill will ask her to "Keep The  
Home Fires Burning" in his "Home Sweet  
Home".





**ETHEL VONADA**  
Mackeyville, Pa.

One of Ethel's strongest points lies in her loyalty to C. S. N. S., yet we wonder whether this loyalty lies wholly in the school, or in a certain individual of the Day Room. Although the darts of Cupid have been constantly hurled at her heart by a gallant member of the Junior class, she had experienced no serious injury. Her chief enjoyment are fresh air, sleep and good eats.

**CLARE WANDOVER**  
"Wondie"  
Shinglehouse, Pa.

Shakespeare Y. M. C. A.

*He's a mighty quiet fellow,  
But when he starts to speak  
He'll say more in a minute  
Than some say in a week.*

Wondie has always shown himself to be interested in the literary, socials, and religious activities of the school and has always played his part in everything.

**CHARLOTTE WILLIAMS**  
"Shirl"  
Williamsport, Pa.

Price P Ω Ω Λ Y. W. C. A.  
Glee Club  
Varsity B.B.

If you want to make Shirl happy, just mention tennis or basketball, her two specialties. Needless to say, she is the class athlete.

**PRINCILLA WILLIAMS**  
"Prissy"  
Monument, Pa.

Price Y. W. C. A.  
Y. W. C. A. Cabinet  
Glee Club  
Class Historian.

Priscilla came to C. S. N. S. as a Freshman, and has spent four years here. "Pris" has always been a loving classmate and a good student. She expects to become a primary teacher. Whatever she may take up may success go with her.

**PAUL GROSS**  
"Gross"  
Karthaus, Pa.

Shakespeare Y. W. C. A.

Paul did not spend the whole year with us. He completed his course and departed at Christmas time. However, we did not forget him.

**KATHARYN WILLIAMS**  
Mill Hall, Pa.

Katharyn is a small dark-haired girl, having entered C. S. N. S. the fall of 1918 as a day student taking up the regular course. Then last year she returned but resumed her work in the form of a Commercial Course, at which she has been proving herself quite efficient and has a bright future before her as a professional business woman.





ELIZABETH YOUNG  
"Betty"  
Juniata, Pa.

Price Y. W. C. A  
Cantata Club  
Glee Club

Betty is one of the girls who has a wonderful dancing ability, whenever we hear music, we always expect to see her dancing or showing someone the latest step. She is one of the few who has taken advantage of the splendid Normal Commercial Course. We are sure that she will make a fine secretary for someone.

VERNA DORNBLASER  
Mackeyville, Pa.

Verna came to C. S. N. S. in September, 1919, after graduating from Clintondale High School. Verna is taking the Home Economic Course. We feel her choice is a wise one, from all appearances she will make some one a good housewife.

TERESA YOUTZ  
"Trees"  
Lebanon, Pa.

Price A Σ T

"Trees" thought a course in Domestic Science most advisable for a successful career. Those who have spent these two years with Trees in C. S. N. S. know her great capacity for learning. Though a bit of femininity we feel confident that her size will not keep her from doing big things in the future.

RACHEL BOWSER

"Rae"

Smokerun, Pa.

Glee Club Shakespeare

Y. W. C. A.

"Rae" came to C. S. N. S. in the fall of 1920 to take college Prep so that she might become a nurse.

We wish her success and hope that all her patients will have light hair and blue eyes.

FRANKLIN DIVELY

"Frank"

Claysburg, Pa.

Shakespeare Basketball

*Fair and flowerly,  
Great and small,  
Yep—his loverly,  
And loves 'em all.*

He'll make the supreme court if he doesn't taste too many unknowns.

GEORGE DIVELY

Claysburg

Price A Φ Θ Y. M. C. A.

George, one of the old residents of the school, made his first appearance in the spring of '19. He had found Claysburg devoid of the opportunity of making a great man of himself, so we find him at C. S. N. S. playing in the varsity football team of '20, basketball team of '21 and for the lack of more strenuous athletics we find him participating with the fairer sex in tennis of '21. George is considering a course in Engineering which field we predict he will become a great success due to his fine mathematical ability.







**LESTER DIVELY**  
"Les"

Claysburg, Pa.

Price Y. M. C. A.

Varsity Basketball '20  
Praeco Staff

*"A lion among ladies,  
A man among men."*

This quotation fully explains his status in the class and reveals his popularity.

"Les" has answered the athletic call of C. S. Normal has made both basketball and football teams "hands down".

His hopes, plans and ambitions are kept tightly under cover but some day he will disclose them to the world after a college career.

To his list of honors might have been added the fact that he is especially fond of playing three deep with (?).

**RAYMOND GAWRYLA**

Shakespeare A Φ Θ Varsity Basketball

Ray received his early academic training in the grammar school of Auburn, New York. He later attended the Bernice High School where he majored.

Ray "Did" (Y) intend to become an engineer and if nothing "Sad" (e) happens to "Mar" (g) his success, we predict a very successful career.

**DAVID E. HAMPE**

Oval, Pa.

Shakespeare Ω II Ω Y. M. C. A.

Dave came to us from Nippenose Valley, having graduated from Limestone High School at Oval Pa. Desiring more knowledge before entering college, he came to C. S. N. S. for a year of advanced prep work.

Dave is small in stature and is fain to set the halls in an uproar for fear he will be entirely unknown, as he might easily be overlooked otherwise. But they say good material is found in small parcels, and Dave proves the saying. For a more genial and witty dispenser of good fellowship could not be found. He is a welcome addition to any gathering, boys or girls. By the way, the girls sure do think a lot of Dave.

The faculty think a good deal of young hopeful, too, for he never sleeps in the classroom, and we are sure his future will be a bright one.

**DARRELL MICHAEL**  
"Mike"

Mahaffey, Pa.

Price

Y. M. C. A.

*Gee Boys! Thats a stetsan!*

Mike, as he is commonly known by the students, hails from the prosperous town of Mahaffey, Clearfield Co. He is an industrious young man, shows strong ability among the ladies, and has devoted himself to many social and athletic functions of the institution. We all predict that "Mike" will make a great success in life, which he has shown us. He came back to C. S. N. S. after a months absence on account of physical disability, and was in short time with level standing in the classes.

**FRED REMELY**

"Rem", "Al"

Waterville, Pa.

Shakespeare

Y. M. C. A.

Orchestra  
Associated Business Manager Praeco  
Basketball Manager

"Rem" entered C. S. N. S. in the fall of 1919 as day student after having had two years at Dickson Seminary. He soon decided it was more profitable to stay in the Dorm.

His ability with the violin has gained for him untold privileges, even being allowed to enter the secluded realms of the Y. W. parlor and elsewhere.

**CHARLES THALL**

Dushore, Pa.

Price

A Φ Θ

Basketball

"Charles" came to Normal last fall and entered as a college prep.

He had many accomplishments, especially his melodious voice—one of the nightingale type—has won him distinction. Indeed the rising bell was more tinkling as compared to it. "Charles" was always the first fellow up in the morning and as he slowly pondered through the halls, the resounding strain of "Sweet Alice Blue Gown" around the peaceful slumbers of second floor.





FREDERICA GREEN

### *In Memoriam*

*"God calls our loved ones, but we lose not wholly, what he hath given;  
They live on earth, in thought and deed, as truly as in Heaven."*

In the autumn of 1919, Frederica Green came to us from her home in Smethport, Pennsylvania.

After but a week's illness with pneumonia, just when her hopes were brightest and her future beaming with light, she answered the call to the Great Beyond and departed from us on February 7, 1920. But her sunny disposition and noble character shall remain with us forever. Always eager to help others, and with a pleasant word for all, she was loved by all her classmates. We shall always carry with us some sacred remembrance of her kindness and goodness cheerfully bestowed on all.

May her life inspire us to live nobly so that we, too, can cheerfully answer the last call, "Come up higher."



CHAPEL CHOIR

## Class History



EARLY in September, 1917, there came to Central State Normal School about twenty-five shy, timid creatures who came to drink deeply from the cup of knowledge. Perhaps you have guessed who they were, but if you haven't, I shall tell you. Now listen, for I shall say it very quietly. They were the members of the class of 1921. We were here only a few days, or weeks when we began to feel at home and were really glad that we had come. The teachers and upper classmen were very kind to us and even though we sometimes couldn't find the dining room, or got into the wrong classroom, we did not despair, but kept bravely on. The Freshman class was soon organized with the assistance of our kind friend, teacher, and dean, Professor S. W. Furst. The class selected the following officers:—

President . . . . William Moore                      Secretary . . . . Pricilla Williams  
 With the aid of our kind teachers we got through the school year successfully, and started for our homes to spend the summer vacation. Hurrah!

Our summer vacation soon passed away, and again the dear old halls of Central State resounded with the heavy, carefree voices of students reunited. We were Sophomores then and our number of students was twenty-seven. A few new students joined our ranks and some old students failed to return.

We had a class meeting and elected the following members for officers during the Sophomore year for the class of 1921.

President . . . . . Burrell Herr                      Vice-President . . . . . Carl Sager  
 Secretary . . . . . Florence Diehl                      Treasurer . . . . . Anna Garth  
 Athletic Representative . . . . . William Moore

Everything was going along nicely when the "Influenza Epidemic" came along. This frightened many who proceeded at once to go home, but a few of the faithful remained. Many who remained were infected but the school was carried on by the few who survived. Before Christmas, school was going well again, and every one was worrying about final examinations. Can you imagine the surprise and joy when the grand announcement of no final examinations greeted our ears? We returned after a delightful vacation and plunged into our work, and started the new year right. We all were sorry when the school year ended, and we had to leave our classmates and friends, but we expected to soon be reunited with many students added to our class of 1921.

Again we returned in September 1919 to old Central State. We were all very happy to be together again, and we welcomed with open arms a large number of students that enrolled in the Junior Class. It did not take long to get acquainted with the new students and soon were working together so well that it would have been difficult to see that we had become acquainted only a short time before.

We had our first class meeting and elected our officers of the class for the coming year:—

President . . . . . William Moore                      Secretary . . . . . Thelma Stewart  
 Treasurer . . . . . Sarah Peterman

Everything was going along nicely when out of the clear sky came the Scarlet Fever germs. Several of our students contracted the disease, and were isolated from the very few remaining students for soon as we heard the

news there was one grand for "Home Sweet Home". I suppose dear reader, that you think that we had a very pleasant, long vacation. But we did not. School was still in session for the few students that remained. The real reason for the continuation of classes must of been to keep us out of mischief, as we had a general review of all subjects after the other students returned.

The above is the only outstanding feature of our Junior year unless one be allowed to mention how dear to some Juniors heart's was the Opera House on Saturday nights, and Susquehanna Avenue on Sunday afternoons. But those who enjoyed those privileges decided that the campus of old Central State was really the best, so they decided to remain on home ground (for three weeks).

The school year passed away quickly, and again we packed up our troubles, and our belongings and started homeward. After many good-byes, kisses and handshakes we were off. Hurrah, hurrah, for a jolly vacation.

Well it was September again. The summer passed away so rapidly that none of us were ready to come back. But we were back again and I am sorry to say that the Seniors of 1920 forgot to leave their dignity behind for the class of 1921, and that is why we lack that quality, but we notice that the Juniors are beginning to acquire some, so by next year, we feel certain that the class of 1922 will have an ample supply of dignity.

When we came back this time we were greeted by our new Principal Mr. Drum, and many new faculty members, and we also found that the Model school was no longer the Model school but the Training school. We missed the Seniors of 1920 very much, and oh, how often we thought of our dear teachers who had left our halls of learning. We miss very much Dr. Benson's tales of Romance, and Miss Froelich's friendly greetings and also her polite invitations to stay out of the library for certain periods of time. We also missed Miss Adam's morning in Chapel when we sang one more song than we usually did. Those dear reader are just memories. Although we loved and miss our former teachers very much, we have learned to love and respect our new teachers that have come to us.

It was during this year that we began our teaching in the Training School. At first, I think we all found it quite difficult and unnatural, but with the aid of our kind supervising teachers, we gradually became accustomed to our work. It is now about time to worry about State Board examiners. At last they came too, every one was excited and nervous especially after the examiner had left the room, and one was interrible suspense to know whether he passed. But all our worry was unnecessary, for we all passed. Of course not all of us had the distinction of being Honor Teachers, but we are proud of those who were.

Our class officers for the year were:—

Secretary ..... Alice Bowser      President ... Donald MacDonald  
Treasurer ..... Rhoda McCartney

With the aid of these class officers, we feel that the Senior year of the Class of 1921 has been very profitable, and a year that we may look back upon as one of pleasure and friendly companionship.

At the close of the year we hated to leave our classmates, but duty called, and we could not always be idlers. So we bade farewell to dear old Central State and we all joined in wishing that many more students will enjoy the privilege of attending there.

Farewell, again dear Alma Mater, Farewell, Farewell.

## Prophecy of the Class of 1921



HAVING nothing to do but to sit on the deck of a modern fast ocean-going vessel which was pushing it's way to some foreign country, I wrote the following letter to Mr. Homer Sherman, Principal of the Vera Cruz High School, Vera Cruz, Mex.

Somewhere on the Atlantic,

Dear Homer:

June 15, 1931.

Your welcome letter received before I left the states, was certainly glad to hear from you. Your suggestion has set me athinking and I have as you have suggested, tried to find out what each member of our class is doing. It is certainly interesting how the class of 1921 is succeeding in the positions that it's different members hold. While on my way from San Francisco to New York, I had the pleasure of seeing Dr. and Mrs. Young. Mrs. Young, before her marriage, was Miss Pricilla Williams. Just as we were boarding our train for New York at Chicago, who should greet us but Clair Wandover, Superintendent of the schools of Potter County. He was on his way back to Potter County to resume his duties, after an extended trip around the world.

I have just finished reading Mercedes Burns' latest Novel, "Charles of Dushore", dedicated to her faithful suitor Charles Thall. Eva Belle Lovell has been appointed Editor-in-Chief of the Newberry Chronicle, to fill the vacancy caused by the resignation of Marion Vanderbilt, who is soon to become a bride.

I spent a few days at C. S. N. S. about a month ago. While there, I learned that Barbara Pletcher is doing settlement work in New York City, that Inez Ricker has accepted the position of Post-Mistress of Mill Hall, and has selected Beatrice Roffe as her assistant. Bud Herr is Principal of the Altoona High School, while Ethel Casselberry is his assistant. Marion Schreckengast is doing Chatauqua work and spends her time in directing the Devereu Players. Helen DeGabriel is teaching French at C. S. N. S. Verna Dornblazer is teaching Domestic Science in Columbia University. I noticed in the paper that Mrs. Samuel Diehl (nee Ethel Vonada) gave a house party last Saturday evening to some friends.

I have before me a copy of the New York World of which Irene Burke is Editor-in-Chief. On the front page there is a picture of Joseph Rydesky and his chief body-guard Raymond Gawryla. They sailed recently for Poland where Joseph has accepted the Presidency of the Country.

The night before I sailed, I heard the Russian Symphony Orchestra. Blanchard Gummo was there which pleased all very much. The Orchestra is under the capable direction of Rhoda McCartney, while Bernice Barrett is accompanist. One of the selections played was Rhoda's "Ode to Faculty Government". It pleased the audience very much.

The Department of Public Instruction has recently appointed Elwood De Turk to the position of Supervisor of Rural Schools. Lina Stonemetz is his assistant. Mildred Moyer is teaching Rural Socialology in Columbia University.

Eleanor Troutman is telephone girl and is stationed at Jersey Shore. Florence Holmberg and Marjorie McCaw are directors of Aesthetic Dancing at Wellesley, and Malita Scherer accompanies them on the Ukelele. Charlotte Williams is a Missionary in China. Alice Lupold is censor for the Fox Moving Picture Company, while Rita O'Connor is starring for the same company. Helen Loose is designing gowns in New York. Mildred Phillips is training dogs for the Circus.

While in New York we met Mr. and Mrs. Lester Dively. Mrs. Dively before her marriage, was Miss Veronica Bradely, the noted art critic from Paris. Nelle Dick is Superintendent of the Training School at C. S. N. S. Madeline Fiedler is at the head of a beauty parlor in Washington, D. C. It is reported that she is to become Mrs. Darrell Michael. That reminds me, did you hear of Alice Bowser's Marriage to a young man from Madera? The ceremony was performed by the Rev. Robt. Vindetta McKenzie of that place. They were attended by Miss Rachel Bowser, a sister of the bride. Helen Simmons is Dean of Women at State College. George Dively has been elected assistant in the Department of Science at C. S. N. S. Bill Moore is the newly elected Principal of that place. I forgot to mention these facts while speaking of C. S. N. S. before. Sara Peterman is helping her brother in his printing establishment at Jersey Shore. Nellie Dolan is giving a course of lectures at C. S. N. S. on the subject: "The Need of the Junior High School of Today". Anna Creighton has just received her appointment as Chauffer to Frank Dively, the new Secretary of State. Beatrice McClatchie is Ambassador to England where it is hoped she will settle the Irish Question. Margaret Pfarr is teaching in Johnstown High School.

There are a few teachers up in Alaska who are from the States and graduated in the same class we did from C. S. N. S. Grace Brooks teaches about twenty miles from the boarder of Alaska, while Teresa Yutz and Violet Smith are in other parts of Alaska. Dr. Donald MacDonald is Principal of Snow High School, Fort Yukon Alaska.

Torrence Lyons is President of the League of Nations, with Betty Young as his Private Secretary. Harriet Jones is doing very nicely as pilot in the airship "DID" mail carrier between Lock Haven and Washington, D. C. Martha O'Brien has just finished her latest Palmer Method Manuel. Mary Smith has been elected Supervisor of the Department of Health Education for the States of New York, Pennsylvania, and New Jersey. Beatrice Packer has become famous for her speech in the Senate, "Why Men Should Not Wear Red Neckties." Almeta Bixel is Professor of Music and head of the Department of Music at Cornell. Faith MacDonald is Business Manager of the new "Skipping Rope" factory in Ceres, N. Y. Pat Ott recently won the World's Championship of tennis.

Well Homer, I must close for this time as I am getting tired writing and 'tis most time to crawl in.

Your old friend and classmate,

JACOB W. GETZ.



## Class Will

Is proven unlawful to print the last will and testament of the class of nineteen-twenty-one without first stating to mourning Juniors the following facts.

This last will and testament of the aforementioned class has been very seriously contested and the grounds of said momentous contestation being of the following doubts.

The sanity of the aforementioned class of 1921 has been questioned and proven balanced. The proven fact being that no class in its right mind and of sound judgment could possibly decide to leave C. S. N. S.

The above mentioned fact has been under the consideration of a famous and well-known specialist on insanity and has been sworn untrue, although not unfounded according to the diagnosis of Mr. Drum and his faculty. Therefore let it be known to all. We, the class of the Central State Normal School, of the County of Clinton, and the State of Pennsylvania, being of sound minds and bodies, do hereby make our last will and testament, and at the same time revoking all former wills made at any time previous to aforesaid diagnosis was made.

### CLAUSE I.

As regards to the class of 1922, we do hereby appoint Mr. De Turk M. High as guardian of them until such time as they will be of age and able to take care of themselves and their own interests.

### CLAUSE II.

*To the class of 1922, we do give and bequeath:—*

1. The dignity of the Seniors of this year as they will no longer need it.

*Note:—*Guard it well as it is our most beloved possession.

2. The duty of holding regular class meetings in the chapel.

3. The privilege of masking at Hallowe'en dances. The privilege of having invited guests at the receptions held at regular intervals during the school year.

4. Our heartfelt sympathy, also our increasing sympathy encouragement to do your best that you may at some time in the remote future attain the dignity of Seniors.

5. Lastly but not least. The privilege of going to all eight o'clock classes late, particularly if said class be Music.

### CLAUSE III.

*To the class of 1922 we bequeath:—*

The honored name of Seniors, and this is our last warning be an honor to the name.

2. The pleasure of writing twenty-four lesson plans a week and of attending bi-weekly section meetings with your Critic teachers from four P.M. until six P.M.

3. The honor of receiving a diploma tied with their colors.

4. The privilege of being looked up to and honored by lower classmen.

5. The enjoyable position of hosts and hostesses in the dining room.

6. The talent of the present Praeco Staff to be used in preparation of Praeco 9.

7. The enjoyment of the fine views from the front rooms, said views includes campus, training school, power house, and grandstand.

8. The privilege of serving on the student council

*Note:*—Said privilege includes the right to put all students to bed promptly at ten P.M., seven nights a week, and of squealching each and every person regardless of cause, and also the right to campus any member of the school.

#### CLAUSE IV.

*Special items:*—

1. To Genet Paterson, some of Irene Burkes eye training.
2. To Gretchen Kliensorgen, Teresa Youtz, excessive height.
3. To Olga Neff, Eva Belle Lovells, ability to keep her complexion on straight.
4. To Miss Warburton, all of the note-books so diligently kept by honorable members of the Senior class.
5. To Belvy, Florence Holmbergs, ability to shimmy.
6. To Hortense Hughes, some of Bill Moores love for the opposite sex.
7. To Lina Stonemetz, Herbert Neefes' fancy dancing.

#### CLAUSE V.

*We hereby leave:*—

To the school, the privilege of keeping up the present standard of the Price and Shakespeare Literary Societies.

2. To the incoming class of 1923, juniors, the freshness of last years Junior class, also the Dramatic ability that we didn't possess.

3. To the night watch, the pleasure of waiting for unfortunate skippers return, also the privilege of turning out the gymnasium lights at exactly 9:30 on Saturday nights.

4. To all students, the right to conduct barnyard choruses on nights preceeding vacation without being campused for it.

5. To the Junior class president, a Senior girl.

6. To Herbert Neefe, Geneva Stulls wonderful dancing.

7. To Eleanor Robb, Clair Wandovers stand-in with Sully.

8. To Genet Rhoades, some of Beatrice McLatchies gift-of-gab.

9. To the girls, the use of the student kitchen located on the first floor.

*Note:*—Please see that the screen is always in the window so as to keep flies out!

10. To the whole school, the privilege of going in and out of the front entrance, and the pleasure of walking on the front walk the day they graduate.

11. To Normal girls, entertaining brothers or cousins in the green parlor, the privilege of closing the door of said parlor.

12. To the entire school, the privilege of returning from vacation a day late without anyone saying anything about it. Besides these enforced gifts, we leave not of necessity but of our own free will, our blessing and a pledge of friendship from henceforth.

In witness whereof, we, the class of nineteen-twenty-one, the testators, have, to this will, written on one sheet of parchment, set our hand and seal this fifteenth day of June, Anno Domini, one thousand nineteen hundred and twenty-one.

FAITH MacDONALD, '21.

## Class Song

Farewell to thee, dear Central State,  
Farewell to all thy pleasures great,  
For now, with mingled joy and pain,  
We must go forth life's prize to gain;  
Dear Normal School, where friends we made,  
We pledge thy memory ne'er shall fade,  
And though we win to wealth and fame,  
We'll still hold true to thy loved name.

From sunny plain and mountain tall,  
We came with pleasure at thy call;  
From city, town, and countryside,  
Impatient we our time did bide,  
Until, with eager hearts aflame,  
We came to share our honored name;  
And over land or on the sea,  
We will hold true, dear school, to thee.

It may not be for us to rule,  
Our place in life, the Public School;  
Our task the wholesome truth to teach,  
To guide to right, life's meaning preach.  
Where Susquehanna rolls her stream,  
We've labored hard and dreamed our dream:  
For service, e'en to sacrifice,  
We now go forth to join the strife.

And so to thee we bid adieu,  
Our chosen task we've labored through;  
We pledge thee that from year to year  
Thy name shall ever grow more dear;  
As thoughts shall often backward turn,  
And oft for thee our hearts shall yearn,  
We still shall carry on thy cause,  
To spread the light, nor seek applause.

HOMER SHERMAN, '21.

## Class Honors

The Most Popular .....	{ Vindetta McKenzie Donald MacDonald
The Best Looking .....	{ Florence Holmberg Fred Remley
The Best Dancers .....	{ Sara Peterman Fred Remley
The Most Dignified .....	Helen Simmons
The Wittiest .....	Eleanor Dunn
The Best Dressed .....	Alice Bowser
The Biggest Talker .....	Beatrice McLatchie
The Biggest Bluff .....	Ethel Casselberry
The Class Optimist .....	Priscilla Williams
The Class Pessimist .....	Almeta Bixel
The Prettiest Eyes .....	Sara Peterman
The Prettiest Hair .....	Malita Scherer
The Prettiest Dimples .....	Madeline Fiedler
The Biggest Eater .....	Elwood De Turk
The Soonest Married .....	Alice Bowser
The Class Midget .....	Teresa Youtz
The Most Studious .....	Torrence Lyons
Athlete .....	Charlotte Williams



JUNIOR CLASS

## The Junior Class

Bauman, Irene	Holmes, Dorothy
Bergdahl, Nellie	Ingham, Jean
Brosha, Myrtle	Johnson, Hazel
Brown, Hazel	Kelsall, Edith
Buehler, Marion	Kleinsorgen, Gretchen
Clark, Edna	Leathers, Gertrude
Connor, Anna	Lord, Bernice
Cornely, Lemoyne	Marolf, Florence
Craine, Ruth	Marsh, Margaret
Darby, Ethel	Martin, Alice
Dawson, Marion	Miller, Alma
Diehl, Samuel	Neff, Olga
Doerr, Elinore	Olson, Maye
Donovan, Ruth	Patterson, Jeanette
Donlin, Marguerite	Paul, Edith
Embic, Romaine	Rhodes, Jeanette
Farwell, Margaret	Robb, Eleanor
Gaffney, Geraldine	Sissler, Alma
Graham, Bessie	Snyder, Ruth
Geesey, Elsie	Trexler, Elizabeth
High, Mary	Tribley, Kathrine
Hovis, Lucile	Thurston, Lorraine
Hughs, Hortense	Walters, Helen
Witchey, Ethel	



GIRLS' BASKETBALL TEAM

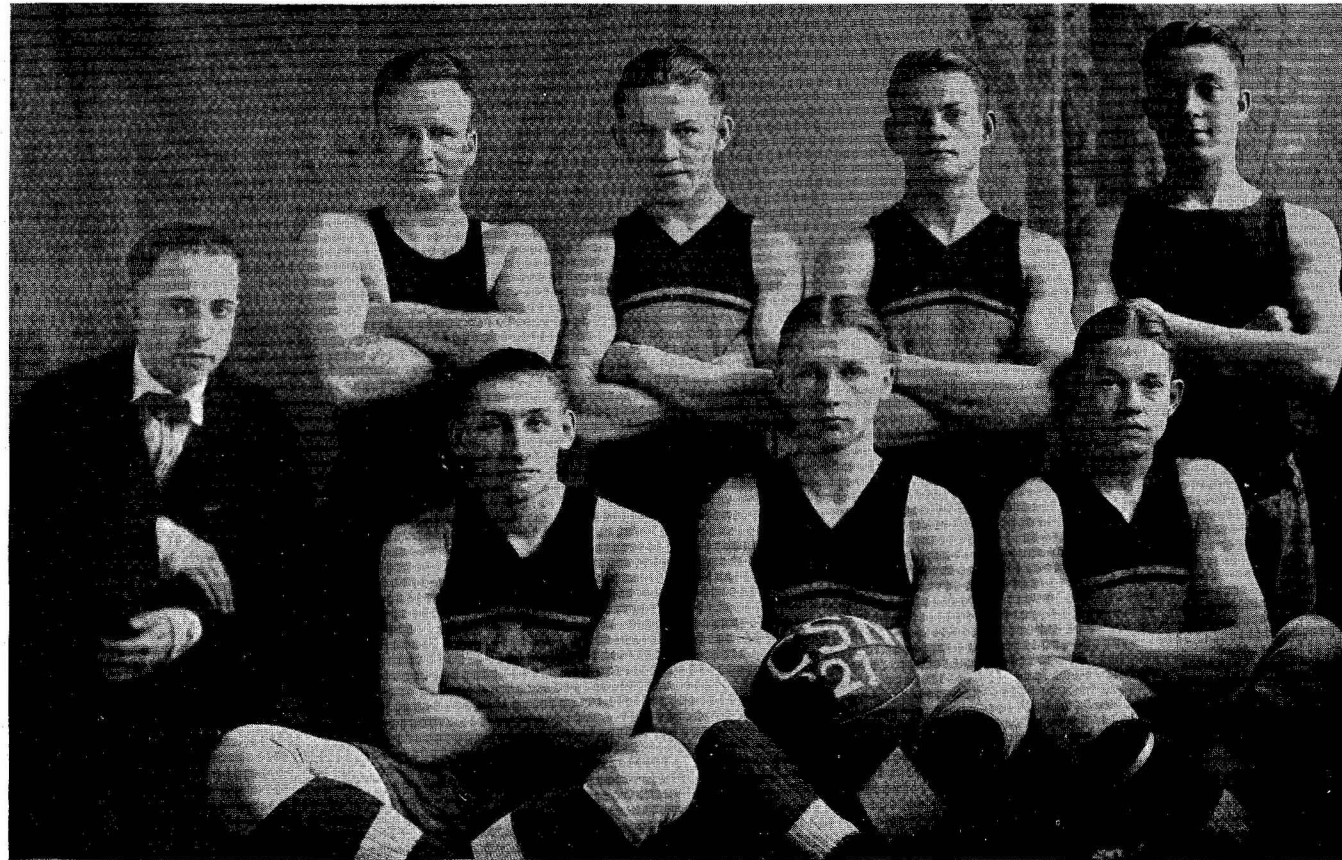
## Girls' Basket Ball

Shortly after girls' basketball practice had begun, the announcement that Lock Haven had joined the State Athletic Association and that girls should play girls rules, came to our ears. Although this meant begin again, much enjoyment was taken in games and practice. Now we must leave wishing '22 much success with girl's rules en'everything, '21.

### HERE WE ARE

Berneice Lord .....	Center
Almeta Bixel .....	Center
Sara Peterman .....	Side Center
Pauline Ott .....	Forward
Mary Smith .....	Forward
Betty Brown .....	Forward
Madge McCaw .....	Forward
Helen Kenny .....	Guard
Shirl Williams .....	Guard
Miss Mulford .....	Coach
Sara Peterman .....	Captain
Mary Smith .....	Manager





BOYS' BASKETBALL TEAM

# Boys' Athletics

## FOOTBALL

Owing to the scarcity of fellows at C. S. N. S. this year, not enough material was available to make up a team. Although captain Mullen and the candidates practiced a few weeks and kept up the spirit of the season's thrilling sport, no schedule was arranged.

## BASKETBALL

The school athletic activities were centered in Basketball for this year. There were plenty of willing candidates, and under the coaching of Mr. Richard Seltzer, regular practice was held and a team selected.

Only six games were played on the schedule. The season fell short of our expectations, for Normal not once received the palm for victory.

The game with Dickinson Seminary was lost by one point, someone depriving us of a foul gail by stepping inside the ring, thus losing the game which should have been tie.

Our fellows are to be congratulated on their hard work and spirited playing against fast teams.

R. H. Seltzer .....	Coach
F. M. Remley .....	Manager
W. B. Moore .....	Captain

## VARSITY

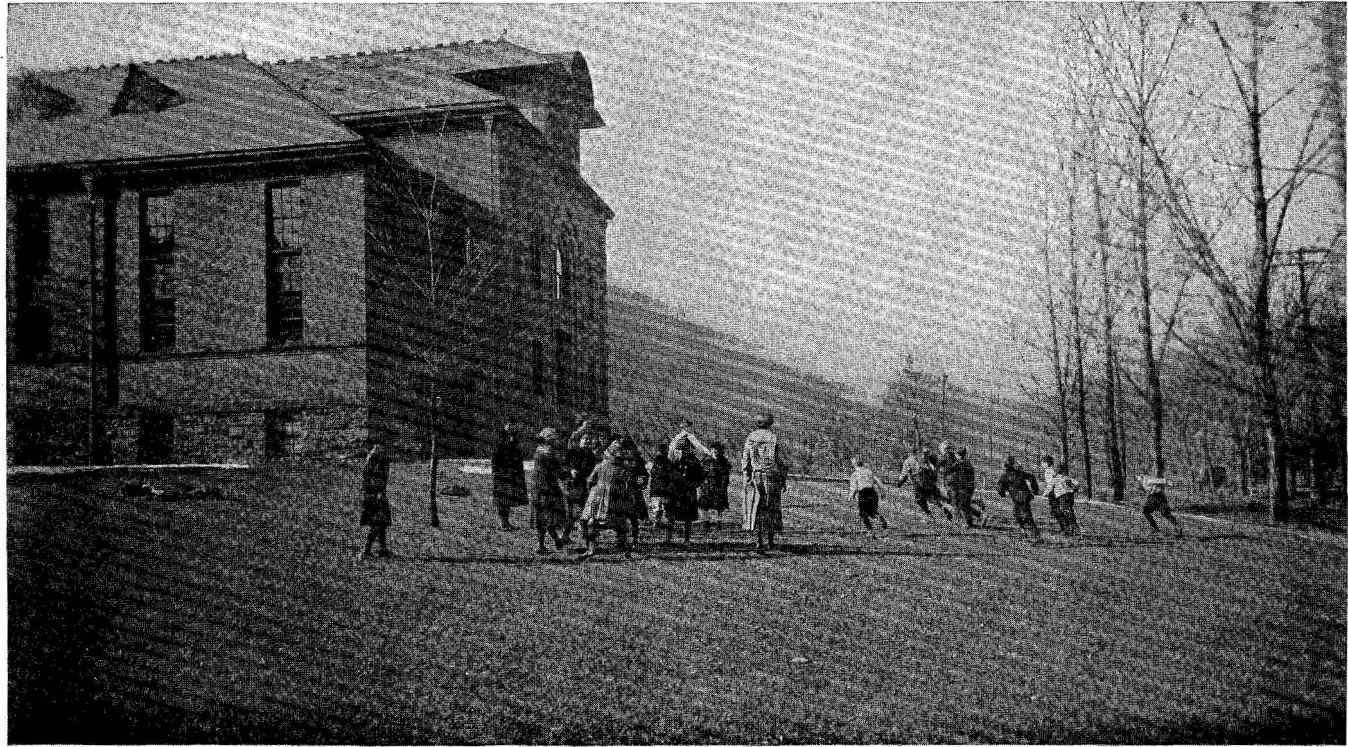
F. Divley .....	Forward
W. Moore .....	Forward
R. Grawryla .....	Center
L. Divley .....	Guard
L. Cornely .....	Guard

## SUBSTITUTES

G. Divley	D. MacDonald
C. Thall	L. Mechtly

## BASEBALL

Normal suffers from the same lack of baseball material as in football last fall. It is hoped to start practice, however, and arrange a schedule.



CAMPUS SCENE

**LITERARY**



**SOCIETIES**



DRAMATIC CLUB

## Dramatic Club

Colors—Rouge and Blanche

Flowers—American Beauties

The dramatic club of Central State Normal School which has been organized this year contains the following versatile members.

Marion Schergast ..... President  
Veronica Bradley ..... Vice-President  
Mercedes Burns ..... Secretary & Treasurer  
Faith MacDonald ..... Stage Manager  
Grace Brooks ..... Asst. Stage Manager  
Sara Peterman  
Mildred Moyer  
Beatrice McLatchie  
Beatrice Packer  
Alice Bowser

Due to our late organization the club will be able to give but one or two performances this year.

Our ambitious desires and hopes rest now upon our future members who, with the aid of Miss Lillian Lee Clark, our organizer and advisor, will raise our standards to the acme so that the club will be a credit to our dear Central State Normal.

## Price Literary Society

Motto:—"Earnestness alone makes life eternal". Colors:—Blue and Gold.

Price Society has done great things this year under the following efficient officers:—

Blanchard Gummo .....	President
Mercedes Burns .....	Secretary
Veronica Bradley .....	Treasurer
Florence Holmburg .....	Editor of Gazette
Jean Ingham .....	Asst. Editor of Gazette
Priscilla Williams .....	Critic

Owing to the ability of the Program committees, Price Society has entertained her members during the whole year with interesting meetings, containing much individuality and original performances.

The Price Society contains many members with dramatic ability which they exhibited in the play given on Feb. 7, 1921.

The proceeds from the play *The Adventure of Lady Urssila* were given for the benefit of Praeco.

On Friday evening, May 13, Price Society anticipates meetings the Shakespeare Society in a contest. Of all the material contributed by both societies the best original story and poem, the best reading, and the most original and interesting paper will be selected. We hope that Price Society will come out victorious in the contest as she did in Athletics and in every other undertaking this prosperous and successful year.

The Praecites are eagerly anticipating an hilarious time at their annual picnic to be held at Riverview in the near future.

To our Faculty advisers we extend our sincere gratitude for their advice and helpful suggestions in raising our standards.

## Shakespeare Literary Society

Motto:—"The Pen is Mightier Than The Sword".

Colors:—Crimson and Gold.

Seal:—Pen through the broken sword with capitals over all.

When the class of '20 passed out of our presence, it took with it all of our members with the exception of about a dozen, nearly all of whom returned to us this year. The society was without officers when the year opened. Mr. Lyons, being the vice-president for last year, took charge of the society until the nominating committee made it's report on an election. The following officers were elected to serve during the first semester:—

President .....	Torrence Lyons
Vice-President .....	Joseph Rydesky
Secretary .....	Alice Bowser
Treasurer .....	Homer Sherman
Pianist .....	Margaret Farwell

At the beginning of the second semester the following officers were elected to serve for the remainder of the year.

President .....	Jacob Getz
Vice-President .....	Homer Sherman
Secretary .....	Hazel Brown
Treasurer .....	Nellie Dolan
Monitor .....	Leymoune Cornely

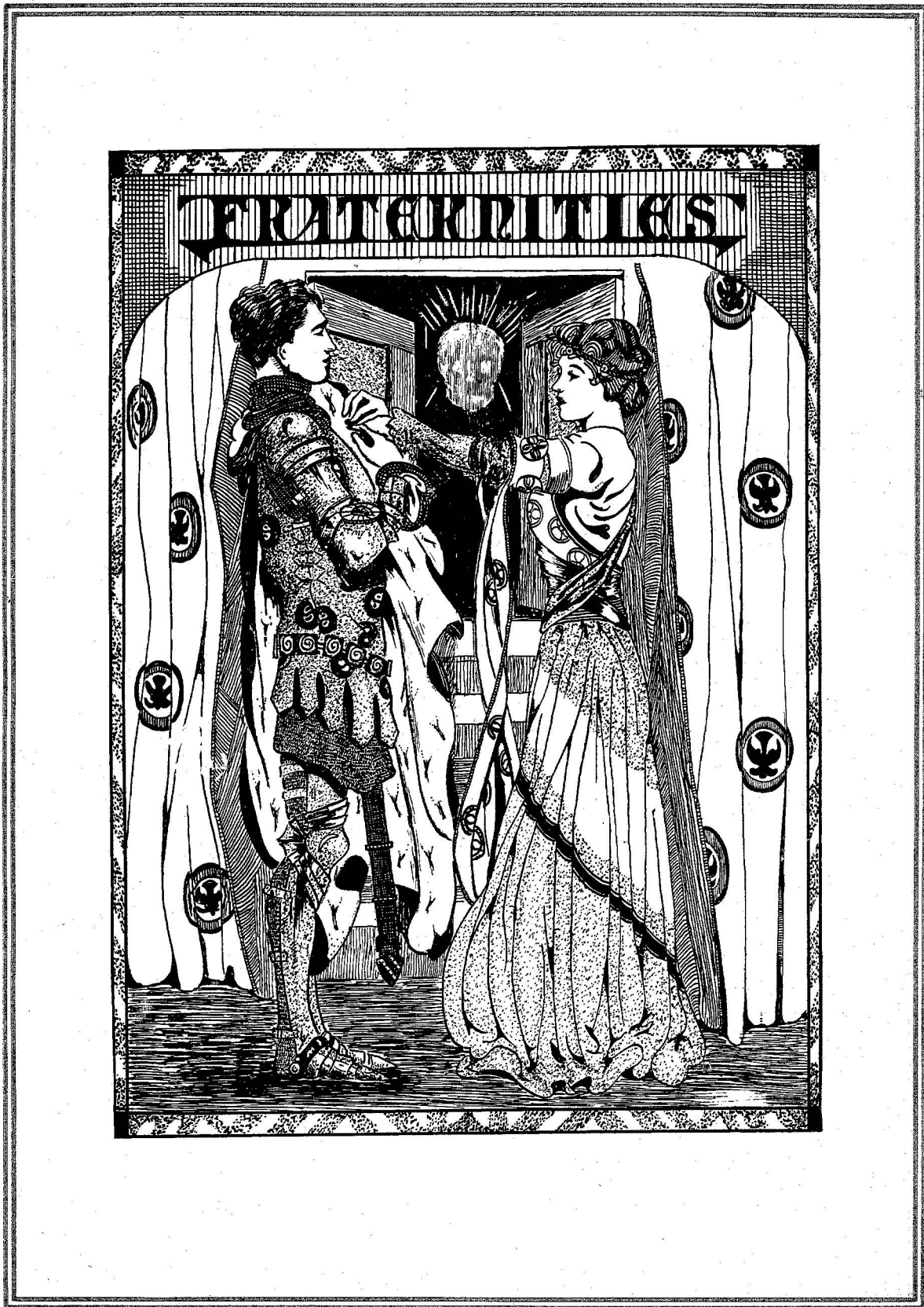
We have had some very interesting programs this year.

The literary contest to be held between the two societies of the school is stirring up some enthusiasm in the school. Each society will select a contestant for each of the following:—Reading, Original Story, Original Poem, and the Society Paper. It is hoped to make this contest an annual event.

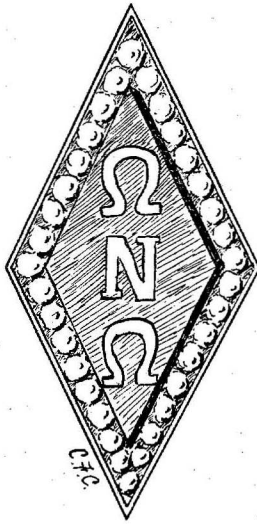
Our constitution and by-laws have been re-written and are at this writing in the printers hands. They will be printed in phamplet form.

About forty (40) new members were added to the society during the year, and all pitched right in to help what they could to prove to the world the "THE PEN IS MIGHTIER THAN THE SWORD".





Omega Nu Omega



## Omega Nu Omega

*"Brothers! here's to the love  
We bear for each other,  
'Tis the love from above,  
The love of a brother."*

Nineteen hundred and twenty-one marks the twentieth anniversary of the founding of ( $\Omega$   $\Pi$   $\Omega$ ). In the two decades of its existence its greatest inspiration has been in the ideals of manhood and in the promotion of these ideals through the ties of brotherhood and friendship set up by its charter members; men to whom we are proud to pay a sincere tribute of admiration and respect; men to whom we owe countless thanks for their far-reaching influence in the maintaining of the basic spirit of ( $\Omega$   $\Pi$   $\Omega$ ) that its members be men, an din fellowship find that manhood grows in sincerity and power.

In this sentiment were echoing that love for ( $\Omega$   $\Pi$   $\Omega$ ) we have found in the hearts of as many of the one hundred and sixty-eight graduate members as we have been privileged to meet. For the influence of ( $\Omega$   $\Pi$   $\Omega$ ) is not temporary, but a love that will endure in our foundest memories.

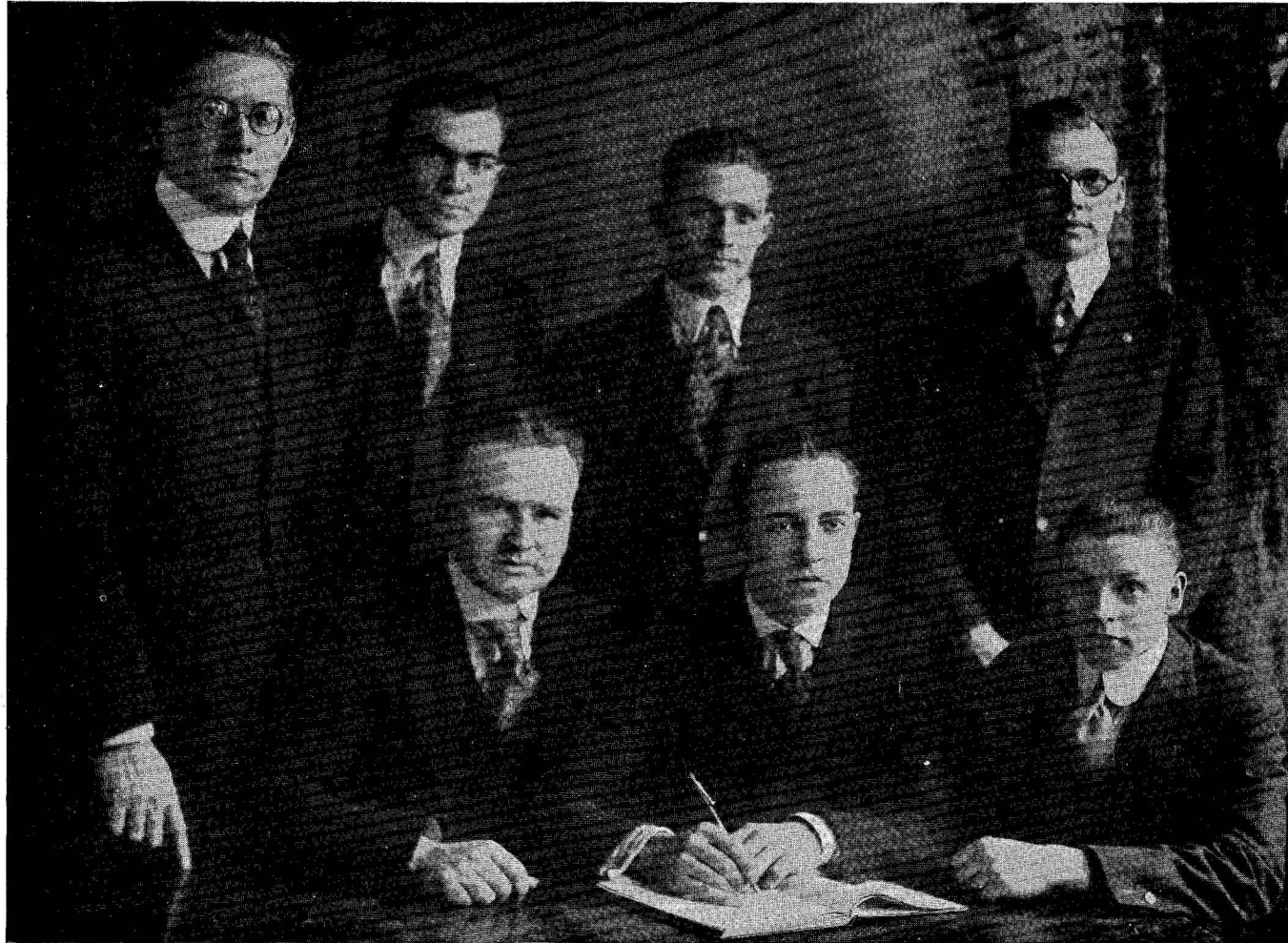
( $\Omega$   $\Pi$   $\Omega$ ) has proved to the school the highness of its ideals, and the influence of its members has always been a valuable asset to the school life.

President .....	Frederick M. Remely, '21
Vice-President .....	Donald MacDonald, '21
Secretary .....	Torrence B. Lyons, '21
Treasurer .....	Homer Sherman, '21
Hilding A. Nelson, '21	Howard E. Barnes, '21
David E. Hampe, '21	Darrell Michael, '21

Garth Kleckner

### FACULTY MEMBERS

Herbert E. Stover



Ω N Ω FRATERNITY

ALPHA PHI THETA



## Alpha Phi Theta Fraternity

*"Those friends thou hast and their adoption tried,  
Grapple them to thy soul with hoops of steel."*

Alpha Phi Theta Fraternity was founded in 1913 by six young men who met one evening and laid the foundations for the high ideals we now uphold, firmly believing that in union there is strength and the true friendship that only exists in such brotherhood is the most desirable. From the start Alpha Theta immediately plunged ahead, growing slowly in numbers but greatly in the intellectual, moral, and social activities of the school, until now it is unsurpassed by any organization of its kind in the school.

Little did the brothers who founded Alpha Phi Theta think of the important part the fraternity plays in the lives of its members, while here in the school and in after life as well, such friendship as only an Alpha Phi Theta man can cherish.

### FRATERNITY ROLL

1921

W. B. Moore—Praecaptor

G. S. Dively—Pecuniator

L. Dively—Legator

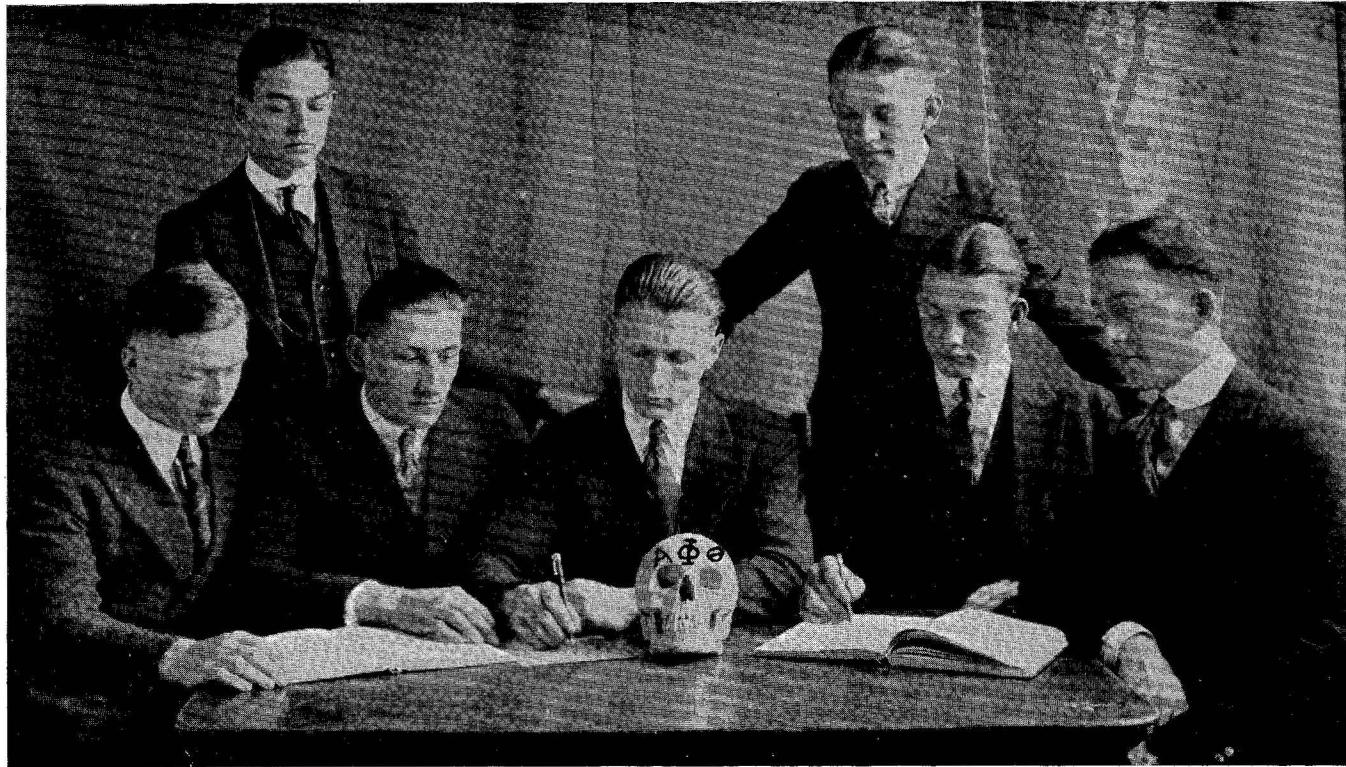
F. B. Dively

R. Gawryla—Scriptor

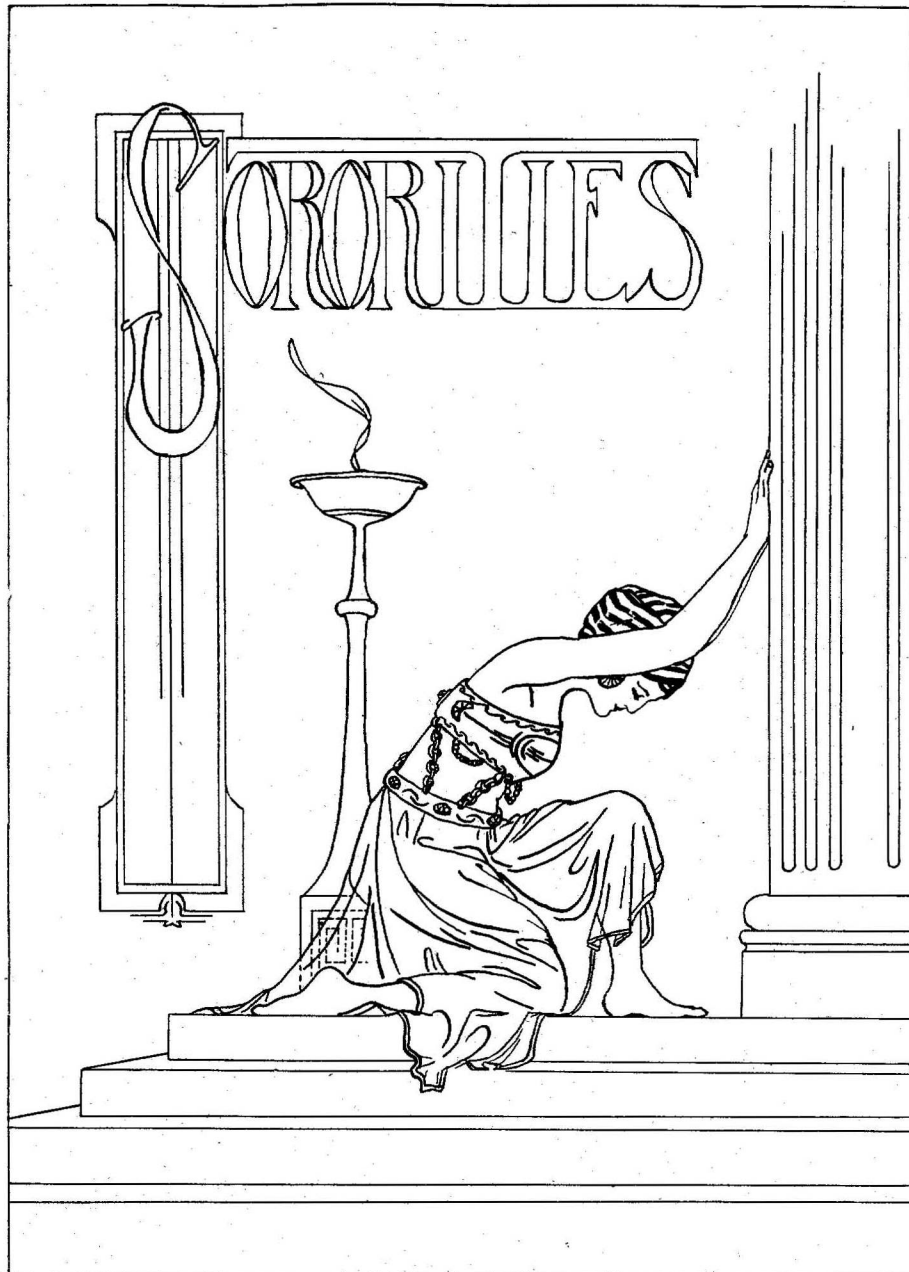
C. J. Thall

1922

J. L. Cornely



Α Φ Θ FRATERNITY







P. O. O. A. SORORITY

## Rho Omega Omega Lambda Sorority

Flowers—White Rose

Colors—Blue and White

Emblem—Bluebird of Happiness

"Smile awhile and while you smile another smiles,

Until there are miles and miles of smiles and life is worth while because  
you smile,

The P. O. O. A. Sorority was founded in the Fall of 1915 for the purpose of having a jolly good time and making life sunny while at C. S. N. S. It has fulfilled this purpose without placing duties to our Club before duties to our Alma Mater. It will be the one link through the chain of friendship to keep us in close touch with each other when we leave the halls of dear old C. S. N. S.

Pauline Ott, '21	.....	President
Charlotte Williams, '21	.....	Secretary
Bernice Barret, '21	.....	Treasurer

Rhoda McCartney, '21	Eva Belle Lovell, '21
Vindatta McKenzie, '21	Anne Creighton, '21
Helen Simmons, '21	Alma Sissler, '22
Florence Marolf, '22	Nelle Bergdoll, '22
Irene Bauman, '22	Edna Clark, '22

Miss Grace B. Peet

Faculty Member



B. Σ. X. SORORITY

# Beta Sigma Chi

Organized in 1915

## MEMBERS IN FACULTY

Agnes V. Gailey

Eleanor R. Mulford

## OFFICERS

President ..... Florence J. Holmberg  
Vice-President ..... Marjorie McCaw  
Secretary ..... Malita Scherer  
Treasurer ..... Sara Peterman

## ACTIVE MEMBERS

Marion Buehler

Ruth Craine

Harriett Jones

Eleanor Troutman

Olga Neff

Hortense Hughes

Helen Kinney

Hazel Brown

Lucile Hovis



A. S. T. SORORITY

# Alpha Sigma Tau

Colors—Emerald and Gold

Flowers—Yellow Rose

Established in Central State Normal School April 16, 1921, by Mrs. E. Lymon and Mrs. Majel, Mahoney of Ypsilanti, Michigan.

## PATRONESS

Miss Geraldine Lockhart

## FACULTY ADVISOR

Miss Ruth A. Stewart

Mabel E. Doyle

## HONORARY MEMBERS

Mrs. Roy McDougall

## ACTIVE MEMBERS

Grace Brooks  
Mercedes Burns  
Eleanor Dunn  
Veronica Bradley  
Teresa Youtz

Margaret Pfarr  
Madeline Feedler  
Mae Olson  
Jean Ingham  
Alice Martin

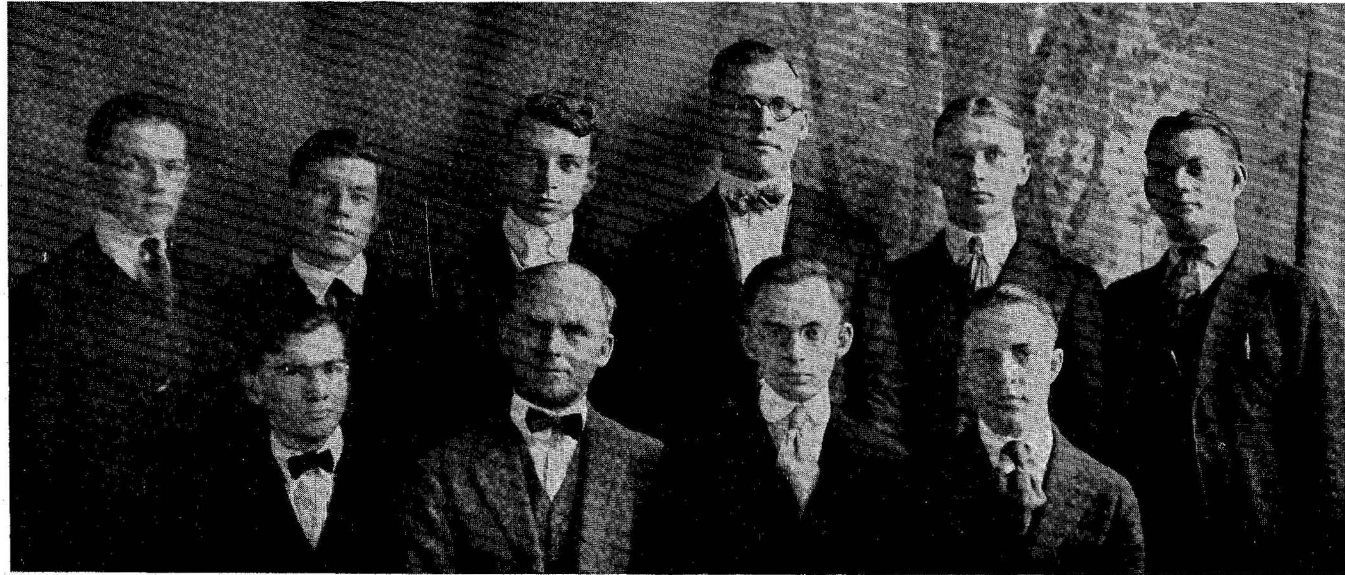
## PLEDGES

Jean Patterson  
Margaret Marsh  
Elsie Geesey

Margaret Dolin  
Jeanette Rhodes  
Margaret Farwell

## CHAPTER ROLL

Alpha ..... Ypsilanti, Michigan  
Beta ..... Mt. Pleasant, Michigan  
Gamma ..... Milwaukee, Wisconsin  
Delta ..... Indiana, Pa.  
Epsilon ..... Philadelphia, Pa.  
Zeta ..... Lock Haven, Pa.  
Alumni Chapter ..... Detroit, Mich.  
Alumni Chapter ..... Pittsburg, Pa.



Y. M. C. A. CABINET

## Young Men's Christian Association



THE Young Men's Christian Association has been doing a great work in the school. Of course the small number of boys in school this year has been a very great and heavy draw-back to the work. We have held meetings every Wednesday night that it was possible for us to do so.

Up till Christmas time we held our meetings in Price Hall, then it was voted to hold them in the Y. M. C. A. Parlor. We had been holding them there until one day a sign appeared on the door "stay out this means you". Of course we knew that we were getting a new floor and furniture, so lately we have been holding our meetings in Price Hall again.

We have had some good meetings with students as leaders, all have conducted their meetings in a good manner.

We have had Mr. L. M. Miller as our guest twice this year so far. He is the Traveling Student Secretary of the state. He gave us very interesting talks both times he was here. Rev. Reese and Prof. Lawton, who were conducting Evangelistic campaigns in one of the down town churches, gave a very pleasing program one evening. Mr. Reese gave us a very instructive talk, his text from the fifty-seventh chapter of Acts and the seventh verse. Prof. Lawton sang us two very pretty solos which were enjoyed by all who heard them.

Prof. Ulmer, our faculty advisor, has lead the services several times. Mr. McCloskey, county superintendent of school, Miss Himes, Principal, Drum, Prof., of our own faculty, and others are scheduled to give us talks before the end of the term.

The following officers were elected for next year:

President ..... Ivan Nechtly  
Vice-president .....

The boys have made quite a bit of money selling candy and peanuts in their own rooms.

Fred Remely, Hiedling Nelson and Torrence Lyons have rendered us music on their instruments on several occasions. Messrs. Moore and Getz have acted as choristers through the year, while Misses Berneice Barrett and Margaret Farwell have acted as pianists when we met in Price Hall. When we met in the Y. M. C. A. rooms we had no piano, we got along the best we could and when we could not carry the tune by singing it, we whistled it and thus got over the song. Most of the boys have proved themselves good whistlers.

There is a movement among the boys to raise money for the purchase of a victrola for our newly furnished room. Everyone seems to be enthusiastic over the idea.

Thus far the year has proven to be a very successful one in the history of the YOUNG MEN'S CHRISTIAN ASSOCIATION.

JACOB W. GETZ.





Y. W. C. A. CABINET

## Y. W. C. A.



THE Young Woman's Christian Association has been very active this year. We heartily welcomed Miss Blanche Speer as our advisor. She brought with her a store of valuable suggestions gained through her wide experience in Y. W. work.

One of the most uplifting events of the year was the visit of Miss Grace Richards, from the National Y. W. C. A. She told us of the work done by other associations and led us to see that we are only a part of a great international movement. We felt more keenly our duty toward the less fortunate members of our World Organization. Miss Richards has now gone to China with her message of good cheer.

Devotional meetings were held each Sunday morning and Wednesday evening. These meetings were planned and carried out by the girls. They were attended by the most of the girls and many inspirations for better living were given and received.

The Conference Fund Committee worked unceasingly so that a larger delegation of girls could be sent to the Eagles Mere Conference. We all realize the renewed zeal and new ideas which permeate the delegates on their return to the society.

A very fine cabinet for next year has been elected and we look for great things. They have already taken up the work with great interest and show unusual executive ability.

Carry on the work for the Master, dear Alma Mater!



GIRLS' COUNCIL

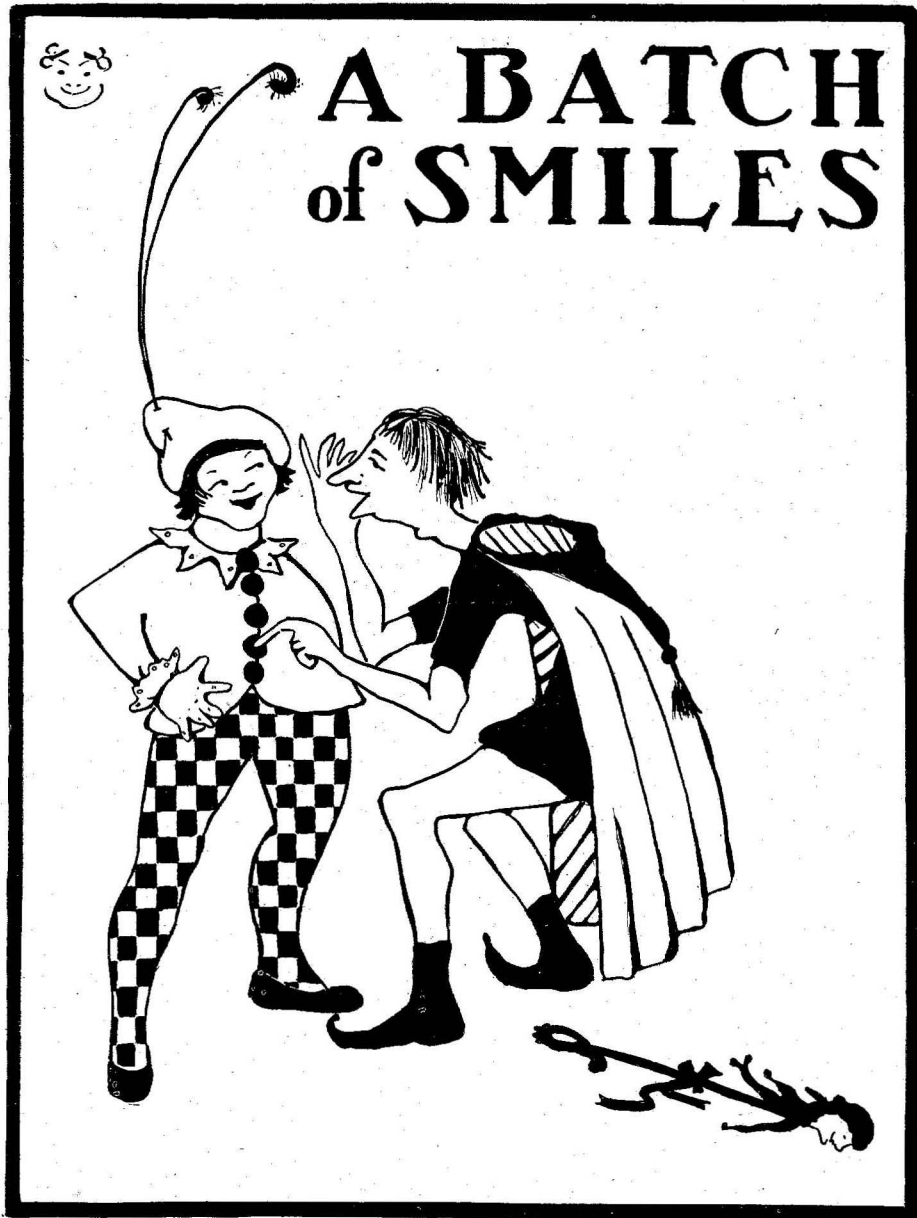
## Class Poem

Through the years which have vanished like shadows,  
Like Ghosts that have glided away,  
We have lived; we have learned; we have struggled  
Toward the victory that now crowns our way.  
Dear Normal, our school days are ended;  
Thy portals now leave we for aye,  
Dear teacher, and schoolmate, and classmate,  
May good fortune 'ere smile on thy way!  
In the future while Life's book we are learning,  
We shall long for the years that have fled.  
And their memories and dreams we shall cherish,  
While we follow where Duty has led.  
Fare Thee well! Dear Alma Mater,  
Deep revered thy name we hold,  
As regretfully we leave thee,  
Leave thy gracious, sheltering fold.

—MALITA SCHERER.



GIRLS' GLEE CLUB



# Komiks

## CLASS STONES

Freshmen .....	Emerald
Sophomore .....	Blarney
Junior .....	Grindstone
Senior .....	Tombstone

There was a young girl called Dunn  
Who was so very fond of fun  
That she rapped on each door  
Said "Two in or more"  
How she laughed when the kids all run.

Now there was also a girl called Simmons  
Who was Skinneyer than all skinny wimmens  
I have heard it of't told  
How once when 'twas cold  
She hid in her prettiest dress trimmins.

---

J. Stull—What is Mr. Davison gonna be when he finishes school?  
Freshman—An old man I believe.

---

Mr. McDougal—The quality of mercy is not strained.  
Verna Dornblazer—How unsanitary.

---

There comes a space  
What shall we do?  
Oh deep and dark despair!  
We cannot even rhyme a fib  
In vain we've torn our hair.

We've tried to draw  
We've tried to paint  
We've almost tried to sing!  
But now we've pulled you through the space  
Forgive instead—this thing.

### OWED TO A NOTEBOOK

Do you know the favorite phrase  
Of all our teachers dear?  
You don't? Then listen closely  
And I'll tell—that all may hear.

One day I went to Public Speaking  
Where Miss Clark had her domain  
The moment I got inside her door  
I thought it was going to rain,  
For looks as black as thunder  
Were rampant everywhere,  
For none of us had our note books  
So there was music in the air.

I at last escaped from that class  
And to French I wandered in  
No sooner did I hit that room  
Than I heard an awful dinn  
With a long and accusing fore-finger  
Mr. Gage at me did shake  
"Have you your note books" he fiercely said  
(Now wouldn't that take the cake?)

Finally I escaped from that place  
And to school efficiencl I went  
But Mr. McDougal was as cruel as the rest  
To my room, I was speedily sent.  
And all for a bloomin' note book  
Which wasn't any good whatever  
And my connections with all these teachers  
I'd certainly like to sever.

Next to psychology I peacefully went  
For Miss Warburton never had said  
"Have you your note books with you today?"  
And I called all the blessings down her head.  
But to my sorrow—you can imagine how I felt  
When I walked through the door that day,  
"Please pass your note books this way."

The motto, my dear readers,  
Of this short but true tale  
Is, "Always carry your notebooks  
If you don't want to weep and wail".

*Paulin Ott.*



### OUR SENIOR YEAR

Oh Senior year—all our dreams of yesterday are over—never to come back to us; but because of those dreams we know that our tomorrows will be fuller of sentiment and devotion to our Alma Mater and she will know that those memories will fill our hearts with the enduring courage

"To set the cause above renown  
To love the game beyond the prize."

---

We pledge thee unfeigned loyalty  
Life's busy years will not erase  
Thy pleasant memory from our hearts  
One place therein enshrined for thee  
Is kept for all eternity.

---

### A TOAST

Here's to the years before us  
An here's for the strength to meet  
What ever in Life may be bitter  
What ever in Life may be sweet.  
Our dearly bought successes  
Our long-loved dreams that fail  
With feet that shall not falter  
And hearts that shall not quail.

---

Had old John Suckling been about;  
Today he'd written thusly;  
"Her little feet stole in and out  
Quite hippopotamously!"

—*Cleveland Plain Dealer.*

---

Johnny's drawing teacher almost  
Always would be nagging,  
When Johnny drew a horse, she said  
"Why don't you draw the wagon?"  
Then Johnny thought and did reply,  
"I aint exactly braggin'  
'Tis I alone who drew the horse,  
Now let it draw the wagon."

### ALGEBRA

Marriage ..... Unknown quantity  
Love ..... Imaginary quantity  
Money ..... The Prime factor  
Clothes ..... Common denominator sometimes L. C. D.

---

Dedicated to Miss Speare: "Thy rod and thy staff, they comfort me."

---

B. McLatchie: Doctor, why does a small cavity seem so large to the tongue?  
Dentist: Just the natural tendency of your tongue to exaggerate, I suppose.

---

Students faults are man,  
Teachers have but two;  
Everything they say  
And everything they do.

---

### OBITUARY

Herr: Say Bill, I hear you're going away—  
Moore: Yes—I'm going West.

This space is dedicated to the memory of our dear, departed lights. We couldn't use them in the day-time, now we can't use 'em nights.

---

### ADVERTISEMENTS

Pants 99c a leg—seats free.

---

Alice Bowser (after observing Pat Ott teaching French): "Why does he say, 'Philosophy'; (cela suffit) after a pupil recites?"

---

A cross-eyed minister should never get up and read—  
"I will guide thee with mine eyes."

---

### AGE LIMITS

At age of one—bawled,  
At age of 21—balled,  
At age of 41—bald.

---

Miss Yale at girls meeting in the chapel—"Have you done anything this week that you can't remember having done?"

### LITTLE WILLIE RHYMES

Willie with a taste for gore  
Nailed his sister to the door  
Mamma said with humor quaint  
"Willie dear—don't mar the paint."

Willie dressed in the best of ashes  
Fell in the fire and was burned to ashes.  
By and by the room grew chilly  
But nobody cared to stir up Willie.

Little Willie on the floor  
Spilled some H<sub>2</sub> S O<sub>4</sub>  
Mamma angry thru and thru  
Gave her son H E L<sub>2</sub>.

Little Willie from the mirror  
Licked the mercury all off  
Thinking in his childish error  
It will cure the whooping cough.

At the funeral Willie's mother  
Sadly said to Mrs. Brown  
'Twas a chilly day for Willie  
When the mercury went down.

---

### WITH APOLOGIES TO THE GIRLS STUDENT COUNCIL

Proctorship comes but once a year  
And when it comes it brings much fear.  
There's list of rules half a yard long  
You can read them and read them, but still you go wrong.

There's the quiet bell ringing at seven fifteen  
When the girls to their rooms are supposed to convene  
But they linger and loiter and hang around  
Till you wish every one of them under the ground.

But the ten o'clock light bell's the worst part of all  
Instead of in bed, they're all out in the hall  
Making a racket of ten times their number  
Till the "Council" approaches, with a look like thunder.

When she reaches the top step, they're all out of sight  
Not a whisper, a murmur, not even a light,  
But of course there is someone who gets all the blame,  
It's the poor, shivering proctor, who has lost her good name.

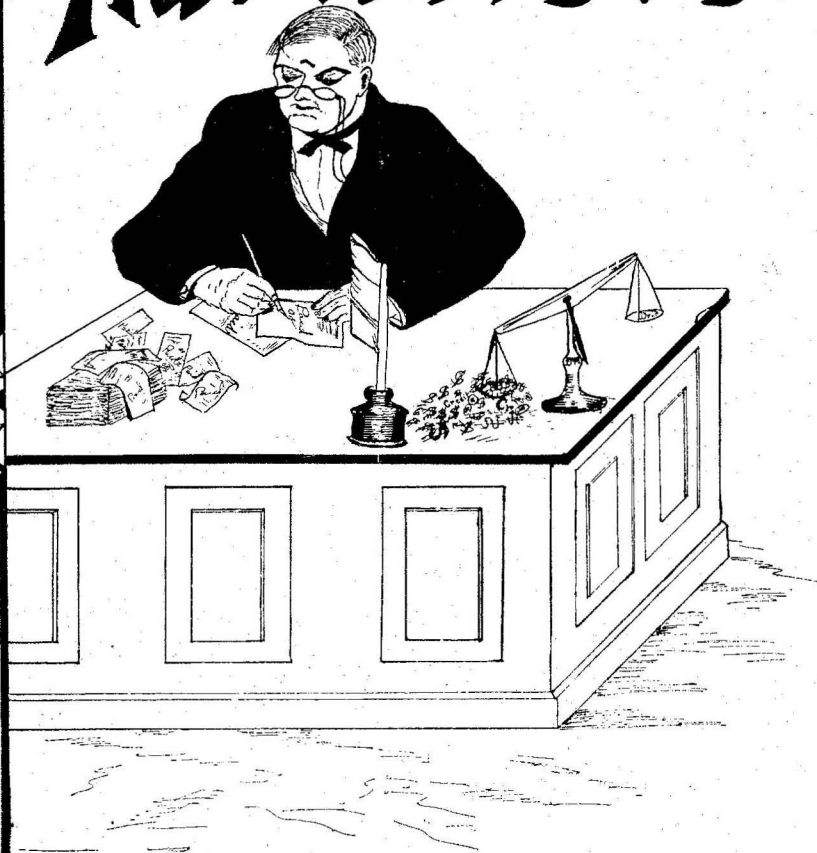
### A NORMAL EVENT

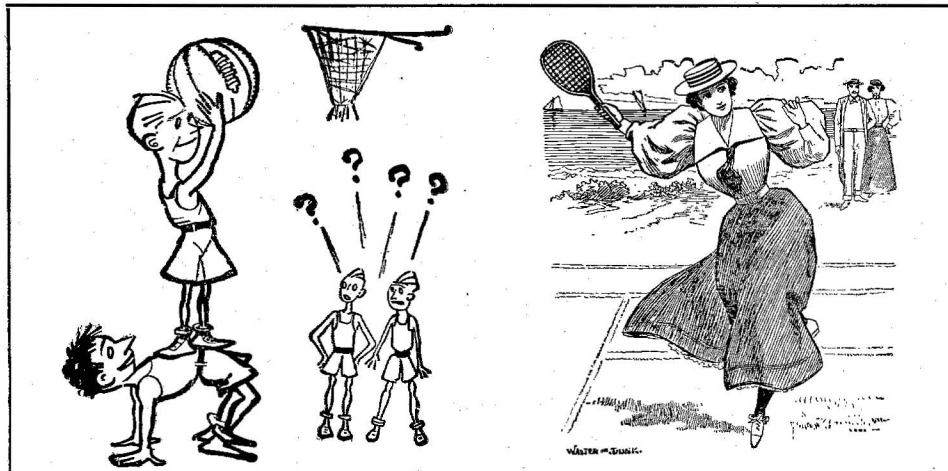
Once on a snowy afternoon  
With hearts a flutter but thots atune  
A lass met a lad down the snowy walk  
And away they went and little thot  
That the D. R. F.'s could see and feel  
That little E. V. had captured her (i) Diehl  
Down to the movies they gaily went  
And a pleasant time I'll vouch they spent  
They had much in common to talk about  
Impressed with the movies I haven't a doubt  
Altho requested to tell of it later  
E. V. proved a reluctant relater.  
"Oh, girls I don't remember", she said.  
'Twas plain the show hadn't gone to her head  
It was a youth's heart affliction, not easily cured  
Either outlived or for reasons endured  
That made the lass so timid and slow  
To tell of her Gallant and trip to the show.

FINIS

The time is up! our task for now is o'er,  
For this, our book, we'll have to work no more  
We've shown but little that there was to see  
We can hope that you will happy be  
In looking o'er this book of wit and praise  
Of good old times, of all your Normal days  
We thank you one and all for help you've lent  
And hope that these long hours have been well spent

# The Man Who Advertises.





We carry a complete line of Baseball, Basketball, Football, Tennis, Golf and Sportsmen's Supplies. When in need of any of these articles call on the old stand.

## Stevenson Sporting Goods Company

### Be Careful

when you start out for a

**SUIT  
OVERCOAT  
OR  
FURNISHINGS**

*Hart Schaffner & Marx  
and Michael-Sterns  
CLOTHING*

*Stetson & Young Bros.  
HATS*

MICHAEL STERN  
Value First Clothes



### Come Here

where you get

**QUALITY  
SERVICE  
AND  
ECONOMY**

Every Article  
Guaranteed

*Keith Konqueror  
SHOES*

SATISFACTORY OR YOUR MONEY CHEERFULLY REFUNDED

# WILSON & SHAFFER

THE STORE OF BETTER VALUES

# CENTRAL STATE NORMAL SCHOOL

LOCK HAVEN, PA.

ALWAYS INTERESTED IN  
YOUR ACHIEVEMENT



ADVISE THE PRINCIPAL REGARDING YOUR PROGRESS



# ACHENBACH'S

WHOLESALE AND RETAIL  
ICE CREAM MANUFACTURERS  
Caterers, Fancy Cakes, and Pastry Bakers

We take this opportunity to thank the Student Body and Alumni for the past favors shown us by their patronage of orders for *Ice Cream, Fancy Cakes, Pastries, the Candies of Page & Shaw, Huyler's, and Martha Washington.*

As we are specializing on our *Noon Lunch, Sundaes and Sodas,* we will be pleased to welcome you for rest and refreshment.

Particular attention is given to mail orders for *Fancy Cakes, Salted Nuts, French Pastry, Patty Shells, etc.*

Again thanking you, we are

**B. C. ACHENBACH & SON**  
121 EAST MAIN STREET . LOCK HAVEN, PA.

The Pictures in this Book  
were taken by

**G. A. Brion**  
THE HOME PORTRAIT  
PHOTOGRAPHER

MILL HALL, PA.

---

All the negatives have been registered and can, if desired, be had at any time. Expert Finishing of Camera Films.

## Klewans'

is prepared to take special care of the Young Men's and Women's needs in the line of

### Footwear

SHOES  
FOR  
EVERYBODY

Come in and let us get acquainted.

**Klewans'**  
21 East Main Street  
Lock Haven . Pennsylvania

# SMITH & WINTER

DRY GOODS, NOTIONS,  
HOUSE FURNISHINGS,  
BOOKS, STATIONERY,  
CHINA AND TOYS

Come in and look around.  
You are always welcome.

## SMITH & WINTER

SHAFFER  
CANDOR &  
HOPKINS

### Hardware

17 E. Main Street  
Lock Haven, Pa.

We Solicit Your  
Patronage

Edward Hecht  
LOCK HAVEN, PA.

CLOTHING  
HATS  
FURNISHINGS

---

Leaders of Fashion

# County National Bank

Lock Haven, Pa.

3 Per Cent Paid on Time Deposits

Safe Deposit Boxes for Rent  
Acts in all Trust Capacities

Bank Open from 7 to 8 Saturday Evenings

#### OFFICERS

C. R. Armstrong, President   S. D. Furst, Vice President   H. W. Shoemaker, Vice President  
A. G. Paine, 3rd Vice President   F. H. Fredericks, Cashier  
M. A. Burkett, Assistant Cashier

## HENRY KELLER'S SONS

ALL THE LATEST STYLES IN

## FOOTWEAR

Both in High and Low Shoes

## The Bay Tree Lunch and Tea Room

LUNCHES, SUNDAES AND  
SAMOSET CANDY

Special Dinners Every Sunday

See Our Line of Christmas Cards

**WE** are interested in you  
not only when preparing  
for your life's work at

**C. S. N. S.**

but afterwards when you go  
out into the world we will be  
glad to hear of your success.

Our mail order department will  
give you the same efficient serv-  
ice you had from us in person.

## Hilton & Heffner

Clinton County's Modern  
Drug Store

LOCK HAVEN, P. A.

# NEW YORK & PENNSYLVANIA COMPANY

## PULP AND PAPER MAKERS

GENERAL OFFICES  
200 FIFTH AVENUE                      NEW YORK CITY

### STYLE, PRICE, SERVICE

is guaranteed in our Hart,  
Schaffner & Marx, Fashion  
Park and Styleplus  
Suits and Topcoats.

*Silk Shirts*  
*Wool Sweaters*  
*Smart Hats*  
*Chic Ties*

### Myers Bros.

*Where the Good Clothing Comes From*  
15 West Third Street  
WILLIAMSPORT, PA.

### S. L. BEST

DEALER IN

### GENERAL MERCHANDISE

FLEMINGTON, PENNSYLVANIA

### Lee J. Schwarz

DEALER IN

*Wall Paper, Paints*  
*Art Pictures*  
*Picture Framing a Specialty*

COMMERCIAL PHONE

LOCK HAVEN, PA.

**Sarah E. Gibb**  
**FLORIST**

LOCK HAVEN, PA.  
Bell Phone 326-M

**Empire Laundry**

Lock Haven, Pa.

**Satisfactory  
Laundry Work**

**A. C. Hurst**

**CIVIL AND SANITARY  
BARBER SHOP**

Opp. Post Office Lock Haven, Pa.

**The Times Printing  
Company**

ORIGINATORS OF HIGH CLASS  
**PRINTING**

The Best in

**SPORTING GOODS**

are found in stock at

**Ralph R. Myers**

10 Bellefonte Ave. Lock Haven, Pa.

**A. F. Stouck & Co.**

220 East Walnut Street  
Lock Haven, Pa.

**PLANING MILL**

RETAIL LUMBER—MILL WORK  
CONTRACT BUILDERS

**Pennants Pillows  
Banners**

We specialize in the manufacture of  
pennants and felt emblematic goods  
for schools.

Special designs for anything that  
can be made of felt.

**Standard Pennant Co.**  
BIG RUN, PA.

**Bastian Bros. Co.**

Manufacturers of

**Class Pins Class Rings  
Athletic Medals**

ENGRAVED

Commencement Announcements  
and Invitations Calling Cards

553 Bastian Bldg. Rochester, N. Y.

**DICKEY HARDWARE  
COMPANY**

133 EAST MAIN STREET  
LOCK HAVEN, PA.

**R. SCOTT KIFT**  
Civil Engineer

LOCK HAVEN, PA.

**THE Y. M. C. A.  
RESTAURANT**

WHEN IN RENOV  
FOR  
GOOD EATS

**M. B. DAY**  
Proprietor

**The Rempe Store**

Dry Goods    Millinery  
Coats        Suits

LOCK HAVEN, PA.

**Lyric  
Orchestra**

LOCK HAVEN  
PENNSYLVANIA



**MUSIC**  
For Functions of All Kinds



**C. J. SMITH, Director**  
**JOSEPH A. SIMONS, Manager**

**Serviceable Chairs  
and Extension  
Tables**

Manufactured by the

**Lock Haven Chair  
Corporation**

**HOUGHTON - MIFFLIN  
COMPANY**

Riverside Text-book in Education.  
Hoyt & Peat Everyday Arithmetic.  
Bolenius Readers with Teacher Manual.  
Riverside Literature Series of Classics.

*When you teach ask for the books  
used in the Normal Classes*

*Boston    New York    Chicago    San Francisco*



**HAMMERSMITH-  
KORTMEYER CO.**  
ENGRAVERS - PRINTERS

---

Get our special price on your Complete Annual

Largest Publishers of High Quality Complete  
College Annuals in the United States

MILWAUKEE, WISCONSIN

WE wish to express our appreciation to all the firms advertising in this Annual, and trust that the readers of the 1921 Edition of Praeco will reciprocate by patronizing the firms whose advertising has given us such material aid.

Most respectfully yours,

BLANCHARD GUMMO,  
Business Manager  
FAITH MacDONALD,  
HOMER SHERMAN,  
FRED REMLEY,  
Assistant Business Manager

**E. W. Carlson**  
**FLORIST**

MONUMENT PLACE

Hot House Normal Glen Both Phones

**Young's Calf-A**

215 GROVE ST. LOCK HAVEN, PA.

Oysters Served in All Styles

**Shoe Repairing**

**J. H. HABERSTROH**

116 Vesper Street LOCK HAVEN, PA.

**MAX J. LIPEZ**

BELLEFONTE AVENUE — CHURCH STREET

We are introducing our Ladies' Department on Second Floor.  
The very newest styles. Something new every week, such as:

Ladies' and Children's Coats  
Furs Tams Suits Dresses Skirts  
Waists Camisoles Chemise Brassieres  
Kabo Corsets Nightgowns  
Silk, Wool and Cotton Hose  
Sweaters Underwear

**MAX J. LIPEZ**

ALWAYS RELIABLE



