



FRESHMAN VIEW LHS CAMPUS — AND CAMPUS VIEWS FROSH (ESPECIALLY THE COEDS)

EAGLE EYE

Vol XIII, No 1 LOCK HAVEN STATE COLLEGE Fri, Sept. 5, 1969

Academic Procedures: Sources of Confusion

Academic procedures are often a source of confusion for incoming freshmen. Classes in the afternoon begin at ten minutes past the hour instead of on the hour as in the morning. Tuesdays and Thursdays everyone is free from 1-2 p. m. On these two days, classes are scheduled from 2:10-3:40 and 3:40-5:00. These classes will be held only twice a week, rather than three times for 50 minutes as is the normal set up for the majority of three credit courses.

Here at LHS, the letter system of grading is employed. The points for each letter grade

are as follows: A-4, B-3, C-2, D-1, and E-0. The college operates on a two semester basis. Mid-term examinations are held in October and March, and final exams are held in January and May.

Concerning class cuts, there is no true system prohibiting this habit. Theoretically no penalty can be leveled upon those who cut classes. However, three consecutive cuts in any one class will be reported to the dean of academic affairs.

Low grades, which are issued at mid-semester, are used only as a warning to the student. This is an indication that the

student is not working to his capacity. The only real penalty involved is that freshmen women who receive low grades will not be allowed later hours second semester.

A pass-fail option for courses is available to all students. However courses chosen on the P-F basis may not be in the student's major field. No grades are issued for the course; the student simply receives course credit or is informed to repeat the course. No quality points are given, and the cumulative average is not affected. This system is designed to encourage students to select courses outside their majors.

Frosh Customs Set

The Lock Haven State campus will be sprinkled with gray hats next week when Freshmen Customs goes into full swing. The customs committee, consisting of 50 members of the class of '72, is designed "to orient the freshmen to college life and to establish better rapport with them," according to Jim Adelsburger, co-chairman of the committee.

New Class Rates Highest Scores

Once again, LHS's freshman class has improved upon the record of its predecessor. Ninety-six percent of the frosh were in the upper 3/5 of their high school graduating class. The mean college board scores were 477, verbal, (an increase from 464 the previous year) and 514, math, (an increase from 501).

The class of 1973 totals 602 members. Of this number 177 are male residents, 311 are female residents, and 114 are commuting students. This year LHS also has 104 transfer students.

The frosh were recruited by members of the college admissions office who held 25 college nights and visited 27 other high schools. The 603 freshmen were selected from 2400 applications. Ninety-five percent of the class are residents of Pennsylvania.

The new students (both frosh and transfers) are evenly distributed among the four major curriculums. Currently this distribution is: 172 in liberal arts, 165 in elementary education, 182 in physical education, and 187 in secondary education.

Freshmen are encouraged but not required to participate in frosh customs. Those who do join the fun will wear the traditional "dinks" and freshman badges (something new this year) every day.

Also, the frosh are expected to familiarize themselves with *The Compass* (the LHS student handbook) and to wear white socks and sneakers. *The Compass* contains valuable information on everything from grades to student government and social life.

The customs committee will hold a meeting with the freshmen on Sunday night, September 7, in Price Auditorium at 7 pm. Other scheduled events are a folk sing in Smith Hall on Monday, September 8, and a picnic on Thursday, September 11.

Freshmen women will meet with their orientation leaders today from 1 to 2 pm and on Monday from 3:30 to 4:30 pm. The meeting places will be designated by the leaders, who will notify the freshmen.

Library in State of Chaos

For the next two weeks, getting a library book at Lock Haven State will be as difficult as trying to have one's scholarship increased. All of the books in the stacks have been moved into the new library building. However, reference books, reserved books, periodicals, and the card catalogue are still in the old building.

Since no students or faculty will be admitted in the new building at this time, Mr. Bruce Thomas, librarian, has outlined the procedure for obtaining a book. Students and faculty are to use the card catalogue in the old building and submit their list to the librarian. Books will be delivered to the old library 3 times daily.

Library hours have been extended this year to 7:30-10 pm Monday through Friday; 7:45-4 pm Saturday; and 2-10 pm Sunday. These new hours will also be maintained in the old building. The temporary inconvenience should end in 2 weeks when the new Stevenson Library is approved by the General State Authority.

The new library features

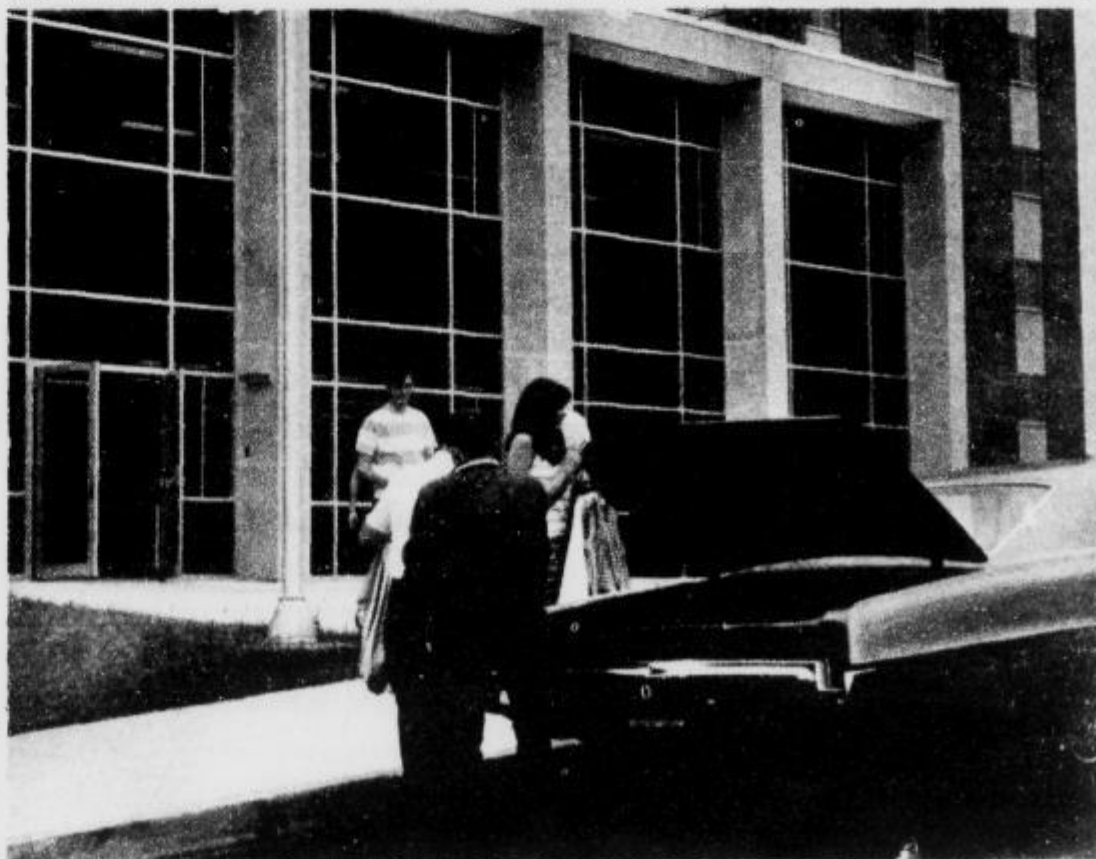
improved lighting, three classrooms, more and better seating, air conditioning, and individual study booths. It will also have turnstiles at the entrance to count library traffic and cut down on loss of materials.

According to Mr. Thomas, a book walk may be held to transport the remaining books to the new library. This summer 25 students packed 1000 boxes 11 times in order to move the books to the new building site.

DPI Changed

The Pennsylvania department of public instruction is gone. Governor Shafer signed a bill over the summer redesignating the department as the department of education. The governor said the new name reflects the state's expanding responsibilities in higher, private, and parochial education in addition to its traditional role of overseeing public schools and colleges.

The new state law also makes the former superintendent of public instruction the state secretary of education.



new students!

new dorm!

new year!

WORTH

CAMPUS SPECIALS!

one-stop shopping for all your school needs!



3.99

4.99

1.99

4.99

13.99

5.99-9.99

3.99

4.99

4.99

4.99

1.99

LIGHTING NEEDS

75¢

3.99

4.99

4.99

FIBERGLAS DRAPE

3.99

3.99

10.99

2.99



3.99

3.99

1.99

REWARDING?

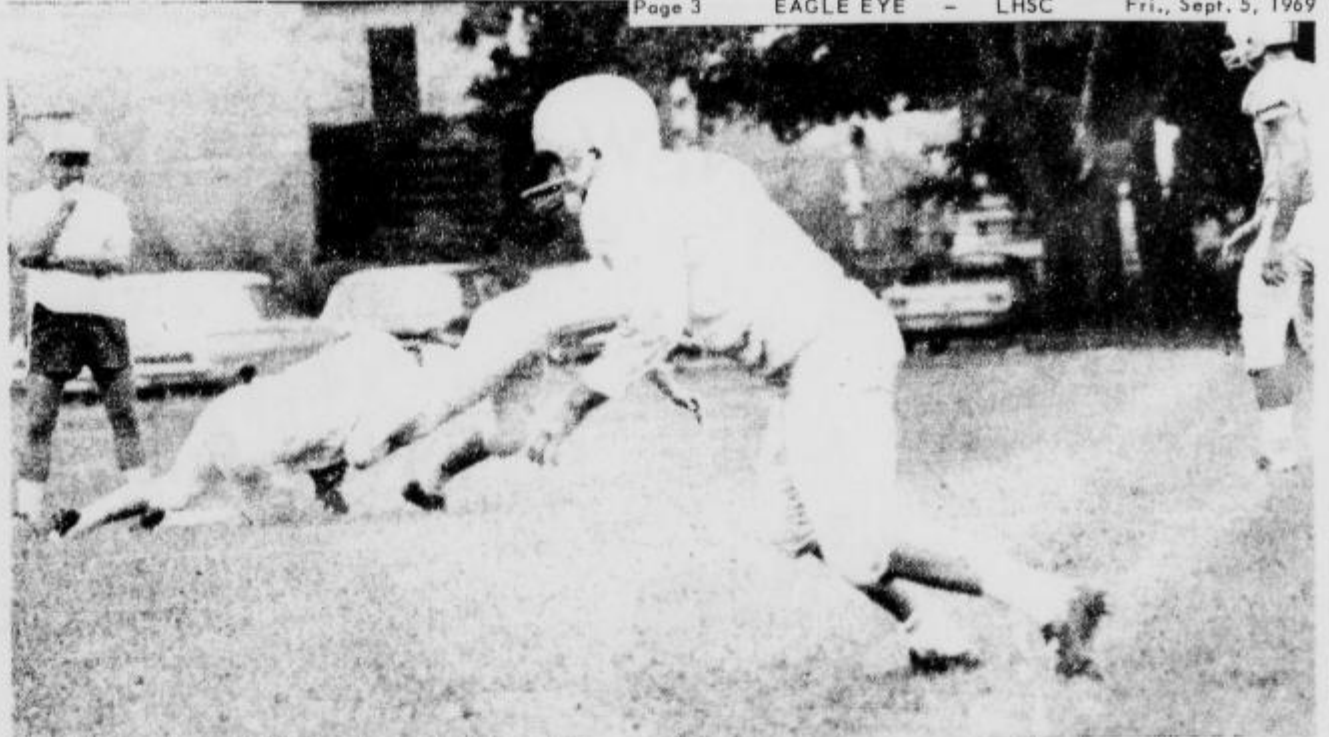
Low man on the totem pole again! The rather abrupt switch from high school senior big shot to college fresh-under-the-ears-man can be a baffling, confusing, and thwarting experience. Nevertheless, the adjustment can be made with a positive approach (and perhaps a years supply of tranquilizers).

DON'T FADE INTO your dormitory's drapery. Get out and participate in frosh customs armed with your dink and freshman badge. So what if you have to squawk, "I am a stupid dodo bird," from the top of a trash can. You just might meet another stupid bird squawking on the can next to you.

Although frosh are good-naturedly harassed by customs members, the spirit is congenial and a lot of fun too. And who really wanted to go into hibernation so soon in the year anyway?

FEAR OF ACADEMIC failure is probably the greatest worry of freshmen, but this kind of fear is often negative. Many new fields of study will be open and a positive attitude is often helpful. Learn to budget your time and keep a work-relax schedule if you have to. You'll find that you have more time than you expected, and a little planning and study should keep you away from home.

College life can be proverbially rewarding, but a freshman cannot sit back on his derriere and expect "apples of gold" (and other assorted goodies) to fall into his waiting lap. Lock Haven may never be a Syracuse U, but constructive college experience is most importantly up to the student himself. Nobody else is going to do it for you. M.W.



CRUNCH: Varsity football players started "hitting" yesterday beginning with a tackling drill. Assistant coach Harold Hacker looks on as the players go through their drills.

Freshmen Athletes Now in Training

The freshmen sports scene will swing into action starting next week.

Since LHS has joined the ECAC, freshmen are now allowed to compete in all varsity athletics.

Football

Head football coach Bob Weller has invited some freshmen to begin practice with the varsity. He will speak to all freshmen men on Monday and candidates will probably report for practice Tuesday.

Outstanding frosh prospects for the varsity are halfback Tom Allen, a two-way performer in the Big 33, and Jeff Knarr, full-back and outstanding wrestler from the local high school.

Coach Weller is looking for managers and anyone interested should report to his office in the field house.

Soccer

Freshmen have already reported for soccer according to coach Karl Herrmann.

Any freshmen interested in playing soccer should report to Coach Herrmann in the field house.

The frosh have reported early so Coach Herrmann could see what sort of prospects he has and will play a five-game schedule.

Outstanding prospects are Galen Hess, Gerald Zeisloft and Ed Dawson.

Cross-Country

Newcomer James Dolan had not had his harriers report for practice yet and will not start until Monday.

Coach Dolan has asked that any freshmen interested in any capacity should report to the field house Monday afternoon.

news tips? 8-5531

College Career Complemented

In addition to the various fields of study at Lock Haven State, there are also several complementary activities and organizations on campus.

The sports-minded individual can join such groups as aquafins, varsity club, cheerleaders, and the WARA.

The various departmental clubs such as English, biology, foreign languages, and geography have meetings that feature well-known authorities, artists, and controversial figures.

Students enrolled in elementary education can join the Association for Childhood Education (ACE) or the Council for Exceptional Children (CEC).

The publications at LHS are always seeking additional members. These publications include PRAECO, the CRUCIBLE, and EAGLE EYE. This year EAGLE EYE is printing a daily paper directly on campus.

Band Extends Welcome

Lock Haven State's Maroon and Gray Band extends a cordial welcome to members of the Class of 1973 and invites all the members with musical abilities to participate in the activities for the year 1969-1970. Activities include three concerts, football games and numerous activities which are designed for small ensembles and individual study.

LHS' centennial year will find the band with a new look this season. The band has been granted new uniforms which will be given a premier performance in '69-'70.

The band's activities commence with participation at LHS football games. At the

season's conclusion practice is begun for the Christmas Concert in December and is then followed by the Spring Concert in May.

During the year numerous ensembles are formed which consist of small groups of approximately three or five instruments. Last year's groups consisted of a brass and woodwind ensemble which were active during most of the entire year. Although these ensembles are usually formed for students who elect to take instrumental seminars, they are open to all interested students who wish to participate.

Mr. Clifford Smith, LHS band director, and George Deilm, LHS band president, welcome all interested freshmen to the LHS Band of 1969-70.

ATTENTION:

Woolworth's ad is worth a 10% discount to you on any purchase made at the store. Don't forget to take the ad with you when you go shopping; it will save you money.

CAMPUS TOURS

Hey Frosh! Start your LHS career right!

Begin Sunday on the most exciting, interesting, informative, rewarding, and generally controversial tour of Lock Haven State

Lasts 4 Years . . . or as long as you can last

Tour begins and ends in the publications office in the student union (with plenty of other stops in between)

2-4 pm Sunday just for openers

Eagle Eye

WELCOME
L.H.S.C. Students



- Arrow
- H.I.S.
- Gant
- London Fog
- Robert Bruce
- Botany 500
- Esquire
- Peters
- Mighty Mac
- Harness Hourse
- Levi's

We at John Marshalls are known as the "IN" shop for the college man. We have been serving Lock Haven students since 1937. If we can be of help to you, including cashing a personal check, please stop in. The next time your downtown come in and browse. You'll like what you find.

John Marshall '34
FOR YOUNG MEN

MONTGOMERY WARD

131 E. Main St.

Greetings to incoming Freshmen.

Wards invites you to visit our three huge floors for your needs:

Wards Fashions Department for your clothing,
Wards Huge Record Department
Wards Home Furnishing Department
for your bedding and dorm needs,
Wards Appliance Department
for stereos, radios, records,
and many other Departments await you at Wards

Why not visit Wards
and open a YOUNG ADULT ACCOUNT
USE WARDS CHARGE PLAN

WHAT'S NEW ON CAMPUS THIS FALL?

New Friends - New Clothes

New Experiences

and a



LOCK HAVEN TRUST COLLEGE STUDENT CHECKING ACCOUNT



**PAY COLLEGE EXPENSES THE SAFE, CONVENIENT WAY
TWO OFFICES TO SERVE YOU**

**MAIN OFFICE - 104 E. MAIN ST., LOCK HAVEN
MILL HALL BRANCH - 349 MAIN ST., MILL HALL**

LOCK HAVEN TRUST COMPANY