

SCC passes
new budget

-see page 8

Lock Haven University

Eagle

Eye

Parsons Union Building
Lock Haven University
Lock Haven, Pennsylvania
17745



Vol. 34 No. 47 8 Pages
Friday, April 22, 1988

Catch the
Jazz Festival
tonight!

-bands start at
3 p.m. in Sloan

Students protest action by University

By John P Elder and
Kim Schmitz

Staff Reporters

Approximately 150-200 students gathered in the bottom of the Parsons Union Building (PUB) last Wednesday to protest a decision by the administration to pull University recognition of Sigma Pi fraternity ($\Sigma\Pi$) for four years.

Stemming from an incident last February, when the fraternity was raided by State Police for serving alcohol to 87 minors, the University action requires the fraternity to cease all Greek activities, including pledge programs, for four years.

Tim Susick, Associate Dean of Students, declined to comment on the issue but, according to $\Sigma\Pi$ President Rich Walridge, Susick is playing an important role in the University action.

"He's the one behind this," said Walridge. "At our hearing, he was the judge and the jury."

In response to the action by the University, Inter-fraternity Council (IFC) advisor Steve Fisher gave the fraternity a list of sanctions.

"We've gone through the judicial process and preliminary interview and they've appealed the sanctions levied on them by me," said Fisher.

"In the next ten years, I think you'll begin to see fraternities and sororities phase out."

-Rich Walridge
 $\Sigma\Pi$ President

As advisor to the council, Fisher is responsible for helping fraternities maintain a good standing. However, Walridge believes that Fisher does not support $\Sigma\Pi$.

"He's supposed to be helping us, but instead he's trying to get rid of us," said Walridge.

He also said that he believes that Fisher's lack of support may be related to a nation-wide trend where campuses are eliminating Greek organizations.

According to Walridge, the fraternity appealed the sanctions because they object to the way the situation is being handled.

"We know that we've done something wrong, but we don't think we are getting what we deserve. Other fraternities have done things and all they received was a slap on the wrist," said Walridge.

One reason Walridge believes the situation is being handled improperly is because $\Sigma\Pi$ National headquarters has been trying for weeks to contact Dean of Student Affairs Linda Koch, only to receive a

message that she doesn't have the time to speak with them.

Koch is currently out of town and was unavailable for comment.

Walridge said that although most of the administration seems to be trying to get rid of the fraternities, President Craig Willis is supporting them.

At the protest in the PUB, Willis promised the fraternity that if their appeal

was not accepted by the University, they could appeal to him. Before departing to a meeting, Willis wished the fraternity "Good Luck."

Walridge added that he was very grateful for the support of the people at the rally and that he is unsure of how the University will respond to their action.

"Right now, we're waiting to see if our appeal is accepted," said Walridge.



Eagle Eye file photo

Sigma Pi, the scene of a State Police raid, is now facing an attempt by administration to pull University recognition.

Fisher addresses future of campus Greeks

By Lynn Kovalchik

Staff Reporter

Greek life, according to Steve Fisher, coordinator of student life, is a "hot topic" on campus.

With an addition of two new chapters in the past year and a half, Alpha Sigma Phi and Kappa Delta Rho, Fisher sees an increase in the future to the present 12 percent of Greeks on Lock Haven's campus.

According to Bill Gilbert, Kappa Delta Rho ($\text{K}\Delta\text{P}$) brother, he has also seen an increase in pledges, especially in his fraternity.

According to Fisher, there are 75 pledges this semester, which is better than it has been in previous years.

But Fisher admitted that the increase is somewhat scary because these pledges will be the leaders for the next two to three years. He added that the key to Greek success is how well fraternities and

sororities will educate their pledges and associates.

Fisher anticipates that this increase will bring more unity in the Greek organizations.

However, Gilbert said that as a whole, Greek life currently lacks unity. He suggested more projects like the recent Infant Development Program, where all Greek organizations can work together.

Mike McLaughlin, a brother of Tau Kappa Epsilon (TKE), feels more unity could be achieved among Greek organizations if "everyone would quit backstabbing."

However, Scott Toman, a junior at LHU and a Sigma Pi ($\Sigma\Pi$) brother, believes that fraternities have been getting along better than in the past.

Kim Woten, a junior at LHU and an Alpha Sigma Tau sister, feels that the sense of pride among sororities has remained constant throughout the years.

Fisher believes though that Greek life is

constantly changing for the better. Fisher thinks the Greeks need to maintain the attitude that "yes, it is getting better."

Fisher suggests, though, that the Greek organizations need to be in tune to what's happening nationally because it could affect us locally.

He recalled an incident that happened last February at Rutgers University. The Lambda Chi Alpha chapter was responsible for the hazing death of an associate due to overconsumption of alcohol.

Fisher said, "Those incidents and others like them, whether at Rutgers, Texas, or Arizona State, have an effect on every Greek organization in the country."

When the subject of abolishment of Greek life at LHU was discussed, Fisher said that nationally we are starting to see a trend in which it may happen. "Anything could happen at Lock Haven," said Fisher.

A Greek consultant was brought here this semester to evaluate the Greek life on LHU's campus.

Fisher said that the results of the evaluation will be submitted in a written report in about a week to anyone who is interested.

He also said that the future of Greeks is really up to the Greeks themselves. He has seen renewed interest in Greek life and hopes that it will continue to grow.

Woten feels, however, that the Greek life here hasn't reached its full potential and the percentage could be higher. She admitted though that "Greek life is fun" and suggested everyone should try it.

Tom Biello, a Kappa Delta Rho ($\text{K}\Delta\text{P}$) pledge, commented that after only a short time, Greek life has given him a "feeling that can't be put into words. You have to experience it for yourself."

McLaughlin also believes "everyone should go Greek."

Fisher has a positive outlook for the future of Greek life at LHU. He sees new chapters possibly starting here and more changes.

Letters to the Editor

Student disapproves of article content

Dear Editor,

I am writing in response to the article concerning my coffeehouse which took place this past Monday evening. The purpose of the article was to promote the coffeehouse as well as make students aware of my music and musical history.

Instead, not only was I misquoted and facts were printed wrongly, the article revolved around my personal life devoting three-fourths of the article to that purpose and only one fourth to the intended purpose, my music.

I feel that my parents and my fiance should be no concern to the general student body. This was not to be a personal interest article but rather a music preview and announcement of my coffeehouse. I was very disappointed to read that things were included that I had specifically asked not to be.

I hope in the future others will be spared the pain I was caused by having their personal life opened up to the entire campus.

Kris Dowd

Sigma Pi brothers extend thanks to campus Greeks, to SCC for recent support

Dear Editor,

We, the brothers of Sigma Pi, would like to extend our sincere thanks and gratitude to those individuals who came out and supported us at the PUB on Tuesday, April 20. Thanks goes to all the fraternities and sororities ΑΣΦ, ΑΧΡ, ΚΑΨ, ΚΔΡ, ΛΧΑ, ΤΚΕ, ΦΜΔ, ΑΣΤ, ΖΤΑ, ΕΚ, and ΣΣΣ.

We also appreciate the backing of the IFC, Panhellenic Council, and SCC--especially the efforts of Bob Rote and Troy Weaver. We need to stick together and show the University how we feel.

Again, we appreciate all the support. Through our combined efforts, we can make Greek life bigger and better.

The Brothers of Sigma Pi
Beta-Omega Chapter

Announcements

Newspaper Schedule

Here are the dates that the *Eagle Eye* will be published for the rest of the semester:

Tues., April 26 Fri., April 29

Neil Simon Play

The Neil Simon play, "A Visitor From Forest Hills" will be presented tonight and April 23 and 24 at 8 p.m. in Sloan's Countdown Theatre.

Student Recital

There will be a student recital on Tues., April 26 at 12:30 p.m. in Sloan Theatre. A number of music students will be involved performing solo vocal and instrumental works of varied style and character. The event is open to everyone and is free of charge.

Animal Caretaker Needed

A student who is eligible for work study is needed to feed and water laboratory rats and squirrel monkeys and to clean cages. Student must be available throughout summers and semester breaks (vacations arranged) seven days a week but only 10 hours a week. Experience with animal handling is preferred but not required. Contact Dr. Mark Cloud this week for an interview in Robinson 303 or call 2221. If no answer, call the department of psychology secretary, Shirley Myers, at 2235 (Robinson 415) and leave name and number.

Needed

I need a floor length crinoline for a prom gown. I will rent or buy. Call Marge at 2102.

Study Week

The Snack Bar will be opened for studying until 12 a.m. from April 25-April 28. The Snack Bar will also be open for studying during finals week (May 4, 5, 6, 8, and 9). The SCC Executive Committee will provide free coffee and tea during finals week only.

For Sale

Single bed, five-drawer dresser and desk with chair--great condition. Call Paula at 748-3086.

For Rent

One-two or three rooms including cooking accommodations--nice. Utilities furnished. \$135 a month. Private parking. Summer or fall semester. Call 748-7965.

Fall Student Teachers

Elementary, early childhood, special education, and secondary education majors who will be student teaching next fall must attend a meeting on Tues., May 3 at 1 p.m. in Hamblin International Auditorium, Robinson Hall.

Lost

A gold mesh bracelet with a pink gold rose and silver stem. If found, please call 3286. There's a \$20 reward to the finder.

Job Interview

Financial Alternatives, Reading, Pa., will be conducting on-campus interviews Thurs., April 28. Interviews are open to management science majors. Sign up in the Career Planning and Placement Office, Smith Hall, G-3 for an interview time.

Attention Science Majors

The final chem club meeting of the semester will be held Tues., April 26 at 1 p.m. in the student lounge in Ulmer Hall. We will be electing officers for next semester. All are welcome to attend!

Health Science Club

There will be a meeting on Thurs., April 28 at 7 p.m. in the Health Science Building. All members must attend.

"Geography and People"

Dr. E. Willard Miller, professor of geography, emeritus Pennsylvania State University, will deliver a speech on "Geography and People" in Hamblin Hall of Flags on Mon., April 25 at 7 p.m.

New Films By Women

A short program of recent experimental films by women filmmakers will be shown Mon., April 25 at 7 p.m. in Sloan Theatre. This program is free, and everyone is welcome.

"Why Do Japanese Students Excel?"

The Japanese exchange students will present a program on the Japanese educational system on Mon, April 25 at 8 p.m. in the 2nd floor lounge of McEntire Hall. A discussion period will follow.

Job Interview

Nationwide Insurance Company, Pleasant Gap, Pa., will be conducting on campus interviews on Wed., April 27. Interviews are open to all majors interested in insurance careers. Sign up for an interview time in the Career Planning and Placement Office, Smith Hall, G-3.

"Sports Final" Finale

Due to popular demand, sports Saturday will be aired one last time on Sat., April 23 at 1 p.m. on WLHU 90.3 FM. Call in and talk to your hosts Rob Cooper and Rob Yoegel at 2212.

Chamber Orchestra Concert

The University Chamber Orchestra will offer a concert on Tues., April 26 at 8 p.m. in Sloan Theatre. The performance will feature works by Handel and Haydn. The concert is open to the public and is free of charge.

Self Esteem Workshop

The Black Scholars Student Organization will sponsor Florence Jean Wright, from the Pennsylvania Department of Education, to present a workshop on self esteem on Tues., April 26 at 7 p.m. in Woolridge Hall Lounge. The program is open to the University.

Social Science Club

There will be a Social Science Club meeting on Mon., April 25 at 7 p.m. in Raub 308. We will be discussing ideas for next year, so if you are interested in being a member next semester, please attend.

Voice Recital

Seniors Pam Solick and Patty Bell will sing on Sun., April 24 at 3 p.m. in Sloan Theatre.

Talent Show

Enter the SCC Entertainer of the Year Talent Show which will take place on Mon., May 2. To sign up call Jamie at 2183.

Interested in an editorial position?

If so, write a paragraph or two telling the position you want and the experience you have. (Positions are editor-in-chief, news editor, sports editor, features editor, photo editor, copy editor, ad layout/design, ad sales, layout editor, and business manager.) Include your name, phone number, and class rank.

Bring applications to Sue Berger at the *Eagle Eye* in the Lower Level of the PUB. Applications due by 4 p.m. today.

EAGLE EYE



Parsons Union Building
Lock Haven University
Lock Haven, PA 17745
(717) 893-2334

Editor-in-Chief.....	Sue Berger
News Editors.....	John Elder, Dave Smeal
Sports Editors.....	Bill Alexander, Mike Leavy
Features Editor.....	Jeffrey Hilty
Copy Editor.....	Michelle Trevena
Business Manager.....	Jill Brady
Advertising Design and Layout.....	Robb Mackes
Advertising Sales.....	Mike McKay, Ifi Tareen
Writing Coach.....	Carolyn Perry
Faculty Advisor.....	Dr. Douglas S. Campbell

The Eagle Eye is the official student newspaper of Lock Haven University. It is published bi-weekly in accordance with the University Calendar. The articles, opinions, pictures and layout of the Eagle Eye are the responsibility of the editorial staff and do not necessarily represent the views of the students, faculty or administration of Lock Haven University unless specifically stated. Letters and comments to this newspaper are encouraged. Letters to the editor must be submitted to the Eagle Eye by noon the day before publication. All letters should be typed, no longer than 200 words, and should include the writer's signature and phone number. The editorial staff reserves the right to edit the copy for libel, taste, style, and length. Eagle Eye meetings are held at 1 p.m. Tuesdays and Thursdays in the lower level of the Parsons Union Building. New members and free-lancers are welcome. The Eagle Eye is funded by the student activity fee.

NEWS NEWS NEWS NEWS NEWS NEWS NEWS NEWS

Police Beat

Parking concerns campus police

By David C. Smeal
Co-News Editor

Cases have begun to increase as license plate numbers fail to correspond with parking stickers and parking becomes more difficult.

"When we (Law Enforcement) check parking stickers and they don't correspond with the vehicle provided, naturally we know that someone has falsely registered a vehicle," said Law Enforcement Officer Lt. Dennis Grenninger.

Grenninger added that those persons who try to falsely register a vehicle can result in "not only a fine but we (Law Enforcement) will revoke parking privilege for any period of time."

"Individuals may think they've beaten the system by doing this but really they haven't," noted Grenninger.

Parking on campus has been an increasing concern as well to students on campus.

"As far as commuting students, faculty and staff are concerned, additional parking has already been provided behind the old silk mill," said Grenninger.

"As far as residence hall students are concerned, there is a definite problem," added Grenninger.

"The number of the student body is

growing and there has been quite an increase of students bringing cars back to campus," said Director of Law Enforcement, Richard Hepner.

"I feel that another parking facility is necessary. However, this decision is not up to me," said Hepner. "The administration makes that judgement. We (Law Enforcement) don't have any say in this type of expansion."

Hepner also said that the problem isn't that the University doesn't want more parking areas, but rather the campus just isn't designed for additional parking facilities.

"Several students have come into the Law Enforcement office and suggested a possible parking facility on the hill between McEntire Hall and High Hall," said Hepner.

According to Grenninger, a door was taken from its hinges in Gross Hall over the weekend.

"The individual who thought of this as a prank really cost the campus money," said Grenninger.

The occupant of the room was visiting a friend on the same floor. He was gone one hour and went back to his room to see his door leaning up against the wall.

A custodian was called to Gross Hall from his home to put the door back on its hinges.

Professor earns Fulbright award

By Karen Walters
Staff Reporter

Dr. Saundra Hybels will get a second chance to accept a prestigious award given by the United States government.

Hybels, a journalism professor, received the Fulbright Award in 1987 and was forced to turn it down due to sickness.

When she reapplied, she didn't know if she would get it again and was very pleased when she did saying, "Washington does have a heart."

The Fulbright award is given to faculty members for their work in research or teaching. Hybels received it for teaching.

The award is given yearly to distinguished faculty of colleges and universities in the United States.

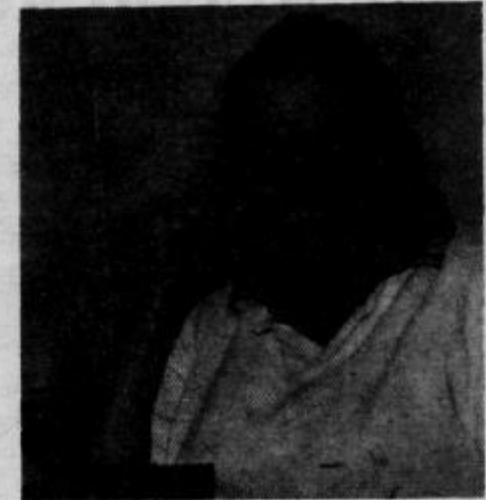
The award was founded by United States Senator Fulbright to encourage international exchange and scholarship.

To apply, Hybels had to submit a lengthy application which took her a month to complete.

The award allows Hybels to travel to Micronesia, a small island between Hawaii and the Philippines, where she will teach broadcast journalism.

When asked how she felt about receiving the award for the second time she said, "I was ecstatic because these awards are very, very hard to get."

Hybels will leave the third week of August and return in May of 1989.



Eagle Eye file photo

Dr. Saundra Hybels

This trip, however, is not Hybels' first trip out of the country. Last spring, Hybels traveled to Lublin, Poland as part of the LHU Polish exchange program.

She has also traveled through East and Southern Africa, India, China, and Europe.

Hybels began teaching at LHU 11 years ago when she was hired to develop a broadcast and print journalism program.

With the help of Studio Technician Leo Ritter, Hybels designed the campus radio station and helped to get it on the air.

In the past, she has served as advisor to the campus radio station, and she has also served as faculty advisor to the *Eagle Eye*.

Applications for admission to the University up from last year

By Shay Tressa
Staff Reporter

While students prepare their fall semester schedules and the seniors prepare to graduate, some 950 high school and transfer students are pursuing plans to enter the University this fall.

Most freshmen remember what it was like when they first arrived at Lock Haven University.

Tonya Stoddard said that she feels that "the hardest part of adjusting was realizing you were on your own and still getting things accomplished."

Stacey Benner added, "The hardest part was getting my priorities straight--when to party and when to study."

It appears that whatever trepidation prospective students feel toward entering college hasn't deterred them from applying to LHU because applications have increased 19 percent over last year and last year they had increased 25 percent over the year before.

The "big" majors for next fall's in-coming freshmen are journalism/media

studies, management science, and health science.

The increase in the number of students applying for admission has allowed LHU to become more selective in the students that it accepts.

Admissions standards are currently a 950 or better on the SAT's or a 23 or better on the ACT's, while some competitive majors require an SAT score of 1000 or better or an ACT score of 24 or better.

The Admissions Office is looking for students in the first or second fifth of their class who are in a college preparatory program.

Assistant Director of Admissions Elizabeth Thomas explained that the University must accept double the amount of students it plans to take in because the yield of students who actually enroll is 40 to 45 percent, therefore, more than two students are accepted for every available space.

Since the number of students requesting admission into LHU has increased by such a large percentage, there is the possibility of a housing problem.

"Basically, it's likely that we'll see a

situation where some students will be placed in temporary housing, but there are always available empty rooms in the spring," said Thomas.

She said that she does not feel that LHU has a housing problem when compared to other schools in the State System of Higher Education (SSHE) because LHU does not request students to move off campus and the University gives students the opportunity to remain on campus for the full four years, although many students elect to move off campus.

Thomas explained that there are a number of reasons why so many high school and transfer students are becoming interested in Lock Haven.

Cost, said Thomas, is a large factor in the number of students interested in LHU, as well as the small "private school" size.

Also, the University has a good academic reputation as well as a very strong international education program, and an exceptionally qualified faculty.

Other factors Thomas listed are a strong recruiting program that covers the entire state, the prestigious "university" status, the literature that is sent to high school

students, and the "personal atmosphere" of the campus.

Apparently, the Admissions Office has done a good job of attracting a diverse student body because students enrolled come from virtually every county in Pennsylvania, 35 states, and approximately 40 foreign countries.

According to some of this year's freshmen, entering freshmen have a lot to look forward to when they arrive.

Benner said, "I thought it would be difficult adjusting to new people but I was surprised at how accepting people were. You meet so many new friends. It's great!"

Maria Savage agrees that the best part of college is "all the nice people who made me feel at home."

Sharon Miskevich feels that the best part of college life, in addition to all the friends she made, is "doing things that I didn't do in high school."

When asked what she felt the best part of college is, Amy Whiteman replied, "I like the parties!"

LHU has a lot to offer to the in-coming freshmen and transfers, and their interest assures a strong future.

FEATURES FEATURES FEATURES FEATURES FEATURES
On the lighter side...

Parenthood, toys something to look forward to, too

By Abby A. Mylin
Features Columnist

Someday I will have 12 children. Eleven boys and one girl respectively, and in that sequence. I guess I should start soon since I'm almost...oh, forget that age stuff.

Once I start, I figure boom, boom, boom...pop them all out right in a row.

Someone wanted to know why I'd wait that long to have a girl. Well, I need to have that many guys to use all my favorite "guy" names, and I think my little cherub would have definite advantages with 11 older brothers...

First being a lot of protection, unlimited access to t-shirts, tomboy tendencies, and of course, the introduction services to all their friends.

But, that's *not* what I'd like to hash over right now. This column is about the "toys my children will have," with the subtitle: "and I will play with."

Someone asked me "Ab, what about a father...a boyfriend *might* help." Actually, with our society's growing homeless problem, I doubt if finding 12 children would be such a *big* deal. I'd rather look for some cute kids than a husband anyway.

Back to the toys- there are some toys no child should go without experiencing.

Slinkys are one such item...

Didn't everyone think the object was to pull that little coil of wire into the straightest way possible?

And the ever-fun Etch-a-Sketch...how many did you break to find out just how the magic works?

Most of the "funnest" toys need parental supervision...trampolines, pogo sticks...how do you supervise a kid going wild on a pogo stick?

I remember spilling my Magic Bubbles (after I chewed the Magic Wand into a construed state), which sent my Mom into a frantic state.

Moral: nothing is "safe" in a child's hands.

I never actually played with my Weeble-Wobble (but they don't fall down...) people either. I threw them back at my little brother (they're a nice size and pretty hard too) after he attacked me with his Legos.

Another toy that mothers buy (because they know fathers will suffer the consequences) is the EZ Bake Oven.

I always offered my culinary adventures to Dad, usually hard, dry, bite-size chocolate cakes (mistaken for *other* things) with drippy vanilla icing.

"Daddy, I gotcha a surprise!"

Daddy's still smiling, almost beaming with pride.

"I baked it for you all by myself."

At this point Daddy's face freezes and his bottom lip quivers, knowing exactly what he is in for. Suddenly, he's "full" or "waiting for dinner."

One toy every girl demands is the make-up doll, usually named *Nellie*, which is complete with all the cheap make-up imaginable...you know the kind that stains carpet, drapes, walls, and skin...

In the future Barbie and Ken will not be outdated. Instead, they will take on an even greater role than

ever before in their little "Happy Barbie and Ken Camper"- "Barbie and Ken: Safe, Planned and Sexually Educated."

Contra Combat will probably be the modern day monopoly where your child will try to monopolize countries, peoples, and cultures instead of real estate.

Kids shouldn't be allowed to play house.

It's gross and over-rated.

The same little rug rats that can't make their beds capitalize on this game. If your kids have an obsession with this little charade, *you* should capitalize on the fact and get your house cleaned by them.

Flash cards are great.

My mother agonized over flash cards for years. While my neighbor was using Flash Physics cards and reading comic books entitled "Ronnie in the Oval Office," I was using my cards to build houses.

The absolute dumbest game to give any normal kid is a puzzle. What eight year old has the patience to sit and agonize over 1,000 pieces of common cardboard?

Who says it develops a patient nature?

I used to get so frustrated I'd chew on the pieces and ruin the picture anyway.

All in all, kids will crush you every time anyway.

Present to the kid a \$500 designer toy and after five seconds of consideration, they will be playing in the box the toy was packaged in with an unmatched zest.

On the lighter side of all this great fun, I guess the real reason for any domestic urges I had this week is the need to find legitimate reasoning for playing with these toys again.

Isn't parenthood something to look forward to, too?

Campus gamesters compete in semifinal tournament

By Angie Roher
Features Reporter

Congratulations are in order for four students who recently received trophies in recognition of their achievements after battling their way to the top in the All-Campus Tournament earlier this semester.

After taking first place in the campus competition, Len Vogel, Sherry Clausen and Britt Bartel travelled to the Mountain Lair Student Union at the West Virginia University to compete in the regional tournament.

Stephanie DeAngelis also achieved a first place rank in the campus tourney, but was unable to join the others on their journey to regionals.

Accompanying the winners to West Virginia on the 26th, 27th and 28th of February was Leland Spangler, PUB director.

"For our first time," stated Spangler, "we did exceptionally well."

Sponsored by the SCC, the LHU tournament included eight-ball and table tennis competitions.

Campuswide, Vogel took first place in

the mens' division of eight-ball, Bartel won top honors in the mens' table tennis division, Clausen became champ of the womens' table tennis division and DeAngelis outshot all her competitors in the womens' eight-ball division.

The next level of competition was the West Virginia tourney. In the table tennis division, 26 men and 22 women competed, and 38 men and 26 women shot it out at billiards.

Spangler also said that all three were eliminated by the end of the second day and that all of the competitors felt that the time was well spent, despite their losses.

Vogel added that, "I feel that I'm better now than I was then. I learned a lot of different strategies and rules, and got to meet quite a few new people."

Clausen, who's played "off and on throughout high school," calls table tennis a "hobby." She said that she went undefeated in the home tourney, but considered herself only average at the West Virginia competition.

"I play more since I've gone to the tournament," Clausen said, "since I saw so many good players, I've been practicing more."

"You learn a lot and get a lot better from facing more skilled people," commented

Bartel on the regional tourney, "I was a lot worse than I thought I was."

SCC President Bob Rote, organizer of the campus competition, said that he hopes

that "it will become an annual event in which more teams will enter and use more equipment that has been purchased with student activity fees."



SCC Public Relations Officer Paul Knappenberger presents the awards (from left to right) to Len Vogel, Britt Bartel, Stephanie DeAngelis, and Sherry Clausen, the winners who went to West Virginia University for semifinal competition.

FEATURES FEATURES FEATURES FEATURES FEATURES

Solick, Bell to present recital with parents

By Kim Siar
Features Reporter

A chance to share something with her parents before she graduates is how Senior Pam Solick describes her part of the upcoming recital in which she and Patricia Bell will be performing with their mothers.

Solick's mother teaches music, her father is a junior-high band director and Bell's mother is an elementary teacher. Solick added that the upcoming recital will also feature her father accompanying her by playing the clarinet.

Solick lives four hours from her parents, Michael and Joan Solick, in her home in Phoenixville, Pa. and said that she believes that this is an opportunity to celebrate her "ending time" at LHU.

"I am looking forward to my last performance at LHU and to sharing it with my parents," said Solick.

This final University appearance will also mark their final days of a voice study with Professor Gary Renzelman.

Although Solick will graduate with a degree in Management Science and Bell will begin her student teaching for the elementary grades next year, both said that their recital is an opportunity to offer more of a relaxed performance instead of having

to worry about being graded for a recital because neither of them is a music major.



Pam Solick

The recital is scheduled to begin at 3 p.m. this Sunday in the Sloan Auditorium with both sopranos singing sections of classical, semi-classical and blues music. Admission is free to the public.

The opening of the recital will begin with Solick singing a Handel Aria from

the "Foundling Hospital Anthem" and Patricia Bell singing Carissimi's *Vittoria Mio Core*.

The mother-daughter duets will begin with the Solicks' performance of "Sull' Aria" from Mozart's "Marriage of Figaro" and then Bell will sing "Voi Che Sapete" from the same opera.

The second section of the recital includes Pam singing "Look Me Over Once" from Strauss' *Die Fledermaus*, "Carew's Piper of Love," and Nacio Herb Brown's, "Love Is Where You Find It."

The combination of the Bells' voices will be singing a song that relates to leaving home and how one must go on, from "Some Other Time" from "On The Town" by Leonard Bernstein.

Other songs performed by Bell will be Kurt Well's "Somehow I Never Could Believe" from *Street Scene*, "I Had Myself a True Love," from "St. Louis Woman" by Mercer and Arlen, and then Sondheim's "Losing My Mind" from *Follies*.

Solick is then scheduled to sing Gershwin's "Someone To Watch Over Me," and Kern's "Can't Help Loving That Man" from *Showboat*. (This song will be performed with an accompaniment by Solick's father playing clarinet and Renzelman on piano.)

Bell said that she is also looking forward

to the night of singing and admits that she is already "kind of nervous."



Patty Bell

Solick and Bell also thanked the efforts of the people who made the recital possible.

"We would like to extend a special thanks to Mr. and Mrs. Renzelman and professor Sue Malin for all their help in making the afternoon possible," said Solick and Bell.

Fieldtrip offers exploration, credit hours to students

By Angie Roher
Features Reporter

Interested in an adventure this summer? Does the prospect of earning six credits by touring the Western United States sound enticing?

For 28 days, from May 23 to June 19, students involved will traverse portions of the four-corner state region of Arizona, New Mexico, Utah and Colorado, using vans and pop-up campers at private and public campgrounds.

While touring, students will do comparative studies of the geological provinces they cross and study flora, fauna and land forms of each area to see how they differ from one geological region to another.

"It was a lot of fun and made me more aware of how beautiful the country was," said Todd Houthuysen, a 1987 veteran of the trip, who will again be making the trek this year.

"We all became good friends and acted like a family," stated Houthuysen.

Erick Walter, another of the students who took the trip last year said, "The trip was planned cheaply and wisely," continued

Walter, "and you can't beat the price and you get your six credits."

"We knew it was work, but we enjoyed it," Walter added, "you're not out there for recreation, you're there to do work and observe. I would advise it for anyone."

Walter also said that when the topic of extra spending money arose, the most vital thing that participants bought was film and that there wasn't enough space to put an excessive amount of souvenirs into their belongings.

Kelly Smith, another 1987 traveller, said that she lost weight and met the man who would later become her fiance on the trip.

She recalled that meals were an especially fun time.

"We'd only buy enough for a couple days. We ate things that were quick, easy and nutritional," she said, "and supper was really nice. We'd set up camp, get out what we'd picked to eat and the girls did the cooking. Afterwards the guys did the dishes."

Don't get too discouraged, guys, because Smith added that breakfasts were prepared by the men, and the women did the dishes and the that work time was split evenly.

There are four courses offered--Introduction to Environmental

Geology, Field Natural History, Geology Field Trip and Topics in Geology.

Each is worth three semester hours and each participant is urged to enroll in two of the courses for a total of six semester hours.

Course requirements do differ, though, and everyone is expected to take an active role because group members study various aspects relevant to all of the topics under consideration.

"And you can still sign up," smiled Dr. Blair Carbaugh, professor of biological sciences.

The field trip will be taught by Dr. John Way, geologist, and Professor Dale Cooper, an environmental physicist.

Tuition for the field studies will be \$456, expenses for food, camping, etc. are \$544, and the pre-registration fee is \$50.

The grand total for this humdinger of a trip is \$1050.

THE
LOST BOYS
R

THE WITCHES
OF EASTWICK
R

Shown Friday, Saturday,
and Sunday, April 22, 23, & 24
at 8 pm in the Eagle Wing
Snack Bar
VALIDATED I.D. REQUIRED!!

SPORTS SPORTS SPORTS SPORTS SPORTS SPORTS SPORTS

Tennis team hoping to reach .500 mark after 1-3 start in '88 season

By Mike Leavy
Sports Editor

The Bald Eagle netters started off on the right foot drubbing Lycoming 9-0 at home. When they hit the road however, Juniata, Kutztown and IUP proved to be too much as LHU lost those matches 7-2, 6-3 and 8-1 respectively.

Once again, Russ Krise is the number one singles player for the Haven this year. Krise is 2-2 on the season.

Rob Baker moves up a few slots from last year, occupying the number two slot. Baker's record so far is 1-3.

Enrique Villagomez boasts the best record at 3-1.

Number four man Mark Stevens checks in with a 2-2 mark, while John Griffin's record stands at 1-3.

Griffin feels that he can improve his game.

"I have to take more control of my

games," he said. "I need to work on my consistency as well."

The number six man Dave Lawson is even at 2-2.

The Haven's number one doubles team is Krise and Villagomez. They have combined for one win at Lycoming and three tough losses on the road.

Baker and Stevens make up the second team also showing a 1-3 record.

The third team has Griffin and veteran Chuck LaBarre. So far this season, they are 1-3.

With a 1-3 record, LHU hopes to improve in the games ahead.

"We should get a win out of Susquehanna on Monday," said LaBarre.

The attitude of the team seems to be different than last year's squad.

"We have a lot of optimism," said Griffin. "We could end up at .500 and do well at the PSAC's."

The next match for the Bald Eagles is this Monday at 3 p.m. at home.

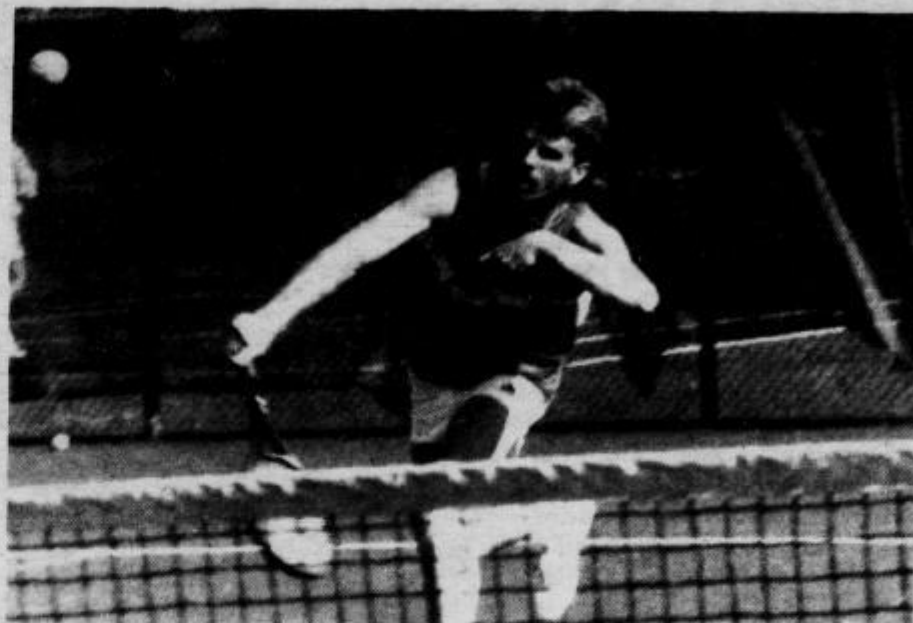


Photo by Sue Berger

Russ Krise returns a shot in preparation for his upcoming match.

Bald Eagle golfers lose to Bucknell

By Gina D'Aurio
and Mike Leavy
Sports Reporters

The Bald Eagle golfers dropped to 7-5-1 overall after a 397-447 loss to Bucknell last Monday.

The team was at a disadvantage, since their main player, Mike Pizzoferrato, could not attend the game.

Dave Petruzzi had a score of 76.

Rob Stannert and Chris Raup were the other top scorers for the Haven with an 82 and 88 respectively.

"It's the worst match of the year," said Head Coach Bob Weller.

The season has been good so far for the Bald Eagle golfers with their record standing at 7-5-1 on the season.

They started off on the right foot, finishing second with Millersville out of five teams on April 5. Mike Pizzoferrato led the Haven and the pack of five teams with a 73.

West Chester was first with 319.

With four wins and a loss to their name, the Bald Eagles crushed Lycoming 428-453. Once again, Pizzoferrato led the pack with a 77.

The ride couldn't last forever and the Bald

Eagles came back to earth with a fourth place finish at Millersville. The team scored 429, just eight strokes behind third place Shippensburg.

Pizzoferrato continued leading the team this season with a 77.

The Bald Eagles have high expectations for their next game with East Stroudsburg on April 21.

"We will be very competitive in the next match," said Weller.



Corbin and Lloyd to travel to Italy for international competition

By Mike Leavy
Sports Editor

Bald Eagle All-Americans Craig Corbin and Brad Lloyd have been named to a national team of underclassmen wrestlers who will travel to Italy in June to face international competition.

Corbin finished fourth at the NCAA's and Lloyd was EWL champion and finished third nationally.

The team is sponsored by the National Wrestling Coach's Association.

The association picks the top underclassmen in the nation for the team.

"It should be a good experience for them," said Head Coach Neil Turner.

The team will be in Italy from June 1st to June 15th. They will have a training camp for two weeks prior to that.

In Italy, they will face top international wrestlers from around the world including Eastern Bloc nations.

Corbin and Lloyd will be wrestling in the international weight division which are slightly different from the collegiate standards.

Corbin will be wrestling in the 125.5 pound weight class while Lloyd will check in at 180.5 pounds.

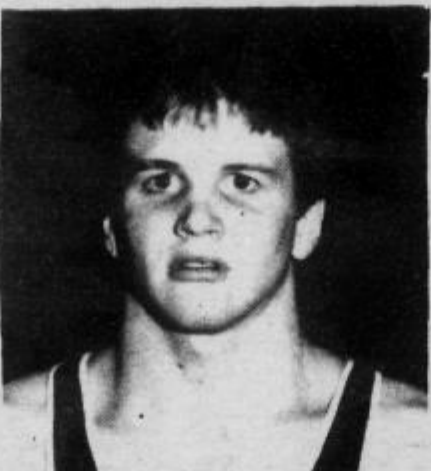
This is the first time that any wrestlers from LHU have been named to this team.

The Bald Eagles finished 12th in the nation with a 14-3 dual meet record.



Craig Corbin

Eagle Eye file photo



Brad Lloyd

Eagle Eye file photo

DO YOU HAVE ANY KNOWLEDGE OR INTEREST IN TENNIS OR GOLF?
THE SPORTS DEPARTMENT IS LOOKING FOR REPORTERS TO COVER THESE
SPRING SPORTS TEAMS.
INTERESTED PERSONS SHOULD CALL BILL OR MIKE AT 2334 OR COME
TO THE EAGLE EYE MEETINGS ON TUESDAY'S AND THURSDAY'S AT 1 P.M.

SPORTS SPORTS SPORTS SPORTS SPORTS SPORTS SPORTS

Lady Eagles sweep Indiana and Slippery Rock in PSAC West action

By Merritt La Porta
Sports Reporter

Good things come to those who wait, goes the saying. The Lady Eagles waited through five straight doubleheader splits and finally came out with back-to-back sweeps this week.

On Tuesday, the team began playing Western Division teams, beginning with IUP.

In the first game, LHU struck first with three runs in the second inning, two coming off the bat of starting pitcher Sandy Hess.

The Lady Eagles took advantage of five IUP errors and added three more runs in the fourth inning to up their lead to 6-0.

The eleven hit rout continued into the fifth inning when Hess pounded an RBI double, and into the sixth inning when Kim Hasson nailed an RBI single to make it 8-0.

Lacrosse edged by Bloomsburg and Bucknell

By Maryellen Jaskuta
Sports Reporter

The Lady Eagle lacrosse team rallied from behind in both of their games this week but came up short as they lost 8-6 to Bucknell University and 12-11 to Bloomsburg University.

On Tuesday afternoon against Bucknell, Lock Haven took the early lead as Karen Learn scored two minutes into the game.

The lead didn't last long as Bucknell's Lauren Jackson responded a minute and a half later to tie the game 1-1.

Jackson and Chambers then scored two goals in the next 40 seconds.

Jackson responded again ten seconds after her teammate to put Bucknell up 3-1.

Bucknell then got an easy goal as goalie Laurie Kerr saved Beth Hottel's shot but only to see it drop and roll between her legs.

Michelle Manion then tallied a goal at the 12 minute mark and teammate Cindy Dehmel tallied one as she bounced it off the grass and into the cage to put Bucknell up 6-1.

Freshman Alison Moulder got Lock Haven back in the scoring column as she blasted the ball past Bucknell's goalie.

Dawn Banes then answered for Lock Haven to decrease the margin to three, 6-3 at halftime.

Bucknell's Hottel tallied her second of the game early in the second half to increase the lead to 7-3.

Manion of Bucknell also scored her second goal of the game to up their lead.

Paula Stephens scored for Lock Haven and Heidi Firth also blasted one by the

Hess brought a no-hitter into the seventh inning, but it was broken up by IUP's Angie Kephart with a lead-off double. IUP added three more hits and managed to score two runs, but by then the game was out of reach.

Hess went the distance striking out 13 and walking one while going 3 for 3 at the plate with 3 RBI's. Kathy Wambold went 3 for 4 with two singles and a double and Amie Zimmerman went 2 for 3 with two singles and an RBI.

In game two, the Lady Eagle bats remained hot as they belted out eleven more hits on the way to a 5-1 victory and the sweep.

Again the Lady Eagles took the early lead and held IUP scoreless until the late innings. IUP scored their only run off Shawna Kohler in the sixth.

Wednesday, the team took on Slippery Rock and had no trouble disposing of the Rock, 8-1 and 16-0.

LHU struck for three runs in the third

inning of the opening game and never looked back. The team added two more runs in the fifth with a double by Kim Hasson and three more in the sixth.

The nine hit attack was enough for Hess as she went the distance, striking out eight

and walking one. Her season record is now 11-2.

In the second game, a ten hit attack put SRU out of the game in the first inning.

Continued on pg. 8

Continued on pg. 8

Continued on pg. 8



Action during Tuesday's lacrosse game against Bucknell.

Photo by Sue Berger



Photo by Bill Alexander

IUP's Tracy Keefer awaits a pitch from LHU ace Sandy Hess. Hess struck Keefer out for one of her thirteen strikeouts against Indiana. Lock Haven swept the Lady Indians 8-2 and 5-1 in the doubleheader at Lawrence Field on Tuesday.

Continued on pg. 8

Continued on pg. 8

Columnists say farewell for the year

By Rob Yoegel
and Joe Jones

Sport Columnists

With yet another semester coming to an end, so does a sports column which has been in existence for three semesters.

When we first took over the column last spring, we really didn't know how it would work out.

But story after story, we started to realize each other's styles and put together what we feel was some interesting stuff.

We tried to cover a wide variety of things from coaches and player profiles to team outlooks; we always tried to write something you would be interested in reading.

We definitely cannot forget our editors who were patient with us and helped us out a lot of times when we were stuck on a topic.

---Joe about Rob---

It has been great working with Rob these last three semesters.

With two people writing one column, if one person is weak in one subject the other usually picked him up.

Rob is knowledgeable of the sports world and his writing skills get stronger

and stronger every story.

With two years left, I can't wait to see what Rob will be like when it is time for him to graduate.

We're no Lennon and McCartney, but I feel we have done a pretty good job.

We tried to be as honest and as insightful as possible.

I hope you've had as much as fun reading us as we did writing the columns.

Always remember if you don't like what we say, argue with us.

I've had a great time at Lock Haven and will miss this place.

---Rob about Joe---

I wish Joe Jones the best of luck in what our elders call the "real world."

I hope Joe can get the job that he wants.

He puts a lot of work into what he does and deserves to get what he is looking for.

Joe has helped my writing come along, and I only hope that when he is presenting our stories to a prospective employer that having my name along with his only enhances the chance of him getting the position.

Joe Jones will be graduating from Lock Haven in May.

Rob Yoegel is planning a semester abroad in Glasgow, Scotland.

While there, he will be writing a column about the athletics that take place in Great Britain and will be sending it to the Eagle Eye every other Friday.

SCC approves 1988-89 budget

By Sheri Styer
Staff Reporter

The Student Cooperative Council (SCC) passed the 1988-1989 budget and appointed three people to the Honors Committee during the Senate meeting Wednesday night.

At the beginning of the meeting, SCC President Bob Rote asked for a motion to skip the approval of minutes, the officer's reports, the director's report, and committee reports to "get to the heart of the matter" of the evening - - the budget.

During the session, which was only open to Senate members, Senators discussed any concerns and questions they had about the budget. Following the session, the Senate passed the budget.

The Cultural Affairs' budget was frozen until the end of the summer.

The intramural budget for next year was raised by only \$100, according to Senator Bill Hunter. "Intramural equipment is a disgrace," said Hunter.

The Senate approved two appointments to the Honors Committee. Chris Iantosca and Jim Pflugh were named to the committee as members while Connie Burgess was appointed substitute.

During the meeting, vice-president Troy Weaver praised the members of the SCC for their work this semester.

In other comments, PUB Administrator Ron Minges said that the SCC study week on Wednesday night went well.

According to Minges, the snack bar will be open from ten p.m. until one a.m. during finals week for anyone who wants to study there.

"I think it will be really effective during finals," said Minges.

Lacrosse...

Bloomsburg bounced back to score one but Lady Eagle senior Paula Stephens also tallied one to bring her team to within one goal again.

Bloomsburg and Lock Haven exchanged a goal apiece again but Bloomsburg scored with 33 seconds left in the first half to go into halftime leading 7-5.

Lock Haven hit the scoring column first in the second half as Heebner's underhand shot went into the lower right corner.

Bloomsburg tallied two quick goals in two minutes but Lock Haven's Moulder answered with one to make it a two goal game again, 9-7.

The Lady Eagles got closer as Heebner ran down the field practically untouched and bounced it off the grass and into the cage.

Bloomsburg scored twice to make it 11-8.

Lock Haven's Carol Bender saw a cutting Heebner in front of the cage to let Heebner tally her fourth of the game and decrease the lead, 11-9.

Bloomsburg and Lock Haven again exchanged one goal apiece to make it 12-10 in favor of Bloomsburg.

Continued from pg. 7

With 1:23 left in the game, Stephens blasted one in to make it 12-11.

The Lady Eagles could not get a shot off in the remaining seconds as Bloomsburg escaped with a 12-11 victory.

"I think the team has showed a lot of character by coming from behind," said Roun.

"We had our shots, we haven't been able to get the goal to tie it or go ahead," continued Roun. "We get better every game, and we'll definitely get it together."

The Lady Eagles host Kutztown tomorrow afternoon at 1p.m.

Softball...

Continued from pg. 7

By the end of the third inning the score was 10-0.

Sandy Hess went 5 for 5 with five singles and seven RBI's.

Gretchen Caton and Rachel Ryan combined to toss a four hitter and raise LHU's record to 4-0 in the division and 21-8 overall.

The Lady Eagles travel to California on Saturday for another PSAC match-up. The game is slated to start at 1 p.m.



Dicello's Beverage, Inc.

20 North Grove St. 748-4771

•Special For Months
of April and May.

Stroh's & Stroh Light 30 Pack
Old Milwaukee & Old Milwaukee Light
12 oz. Cans

Hours: Mon., Tues., Thurs., & Sat.: 8-6; Fri. 8-9; Closed Wed.



DANCE
at Assante's
with
RAK
Saturday night
\$2.00 cover charge

SIDEWALK SALE DAYS

On the Sidewalk and
inside our stores.

Thurs. & Fri. til 9 PM

Sat. till 5 PM

Store Wide 10% off

Boy's tops and shorts
20% off

Tuxedos
20% off

Boy's Denim Jackets
20% off

1 Table
Men's Blue Jeans **\$14.99**

Men's Blazers
Suits & Jackets **\$9.99**

Women's sportswear
20-50% off

Men's Sportswear
20-50% off

1 Table
Women's
Blue Jeans **\$14.99**

You can join
PSECU and take
advantage of **Fee Free
Checking and MAC
Services.** For more
information, check the
bookstore or call us.
You'll be glad you did!



1-800-648-5800

PSECU PENNSYLVANIA STATE
EMPLOYEES CREDIT UNION