

Eagle Eye

Fri., April 2, 1976

Seven cars damaged in accident

By BILL STERNER
Staff Reporter

A Lock Haven State College co-ed, returning from an "open" party early Tuesday morning, lost control of the car she was driving and plowed into seven parked automobiles in the parking area at High Hall, college officials revealed yesterday. Those close to the investigation refrained from identifying the operator or passengers of the vehicle until a full investigation is completed by the local police department. Authorities did report, however, that none of the parties involved were injured.

Sources stated that the car containing three Lock Haven State College students, apparently went out of control when entering the lot, slamming into

a row of parked vehicles. One automobile was 'totaled,' while six others were "slightly" damaged. A preliminary estimate set costs of the

accident at three to seven thousand dollars.

The woman operating the vehicle was arrested by the Lock Haven State College Law

cont. on page 4



CARS COLLAPSE LIKE DOMINOES - Law Enforcement Officer Gary Barrett obtains paint samples from one of the seven cars damaged in a car accident which occurred in the High Hall parking lot Tuesday morning. [Photo by GREG TRACY].

Slide exhibit recalls work of John Sloan

By STEVE HEVERLY
Staff Reporter

New York from the 1900's to the 1940's was depicted in an artistic production called "Sloan Retrospective" held at the John Sloan Fine Arts Center Thursday at 1:00 p.m.

A good crowd sat through the hour long production in Sloan Auditorium.

The production was a slide arrangement of the works of American artist John Sloan, which were flashed up on the screen and accompanied by music.

Producer Donald E. Simanek stated in a program for the show, "This show is an experiment which attempts to survey some themes of John Sloan's works through a se-

cont. on page 4

Union plans discussed by SCC caucus

By FRED SCHULTZ
News Editor

David Heverly called Wednesday evening's S.C.C. Senate caucus meeting to order with a comment that the S.C.C. faces a serious situation and that the caucus should start getting organized.

Heverly then turned over the floor to S.C.C. President Lorin Mock, who, Heverly reported "knows more about this situation than I do." Mock announced to the caucus that the American Federation of State and County Employees (AFSCME) wants the people who work as S.C.C. employees to be unionized.

In order for the S.C.C. employees to be unionized AFSCME must contact the employees and must get the vote of 30 percent of the employees involved. Mock stated that the petition filed by

cont. on page 4

Group strives to meet needs of women

By CATHIE KEENAN
Co-Editor

"Most of us have been in a situation or experienced a situation where we have felt very alone," reported a young woman student during a meeting held Wednesday evening in Raub 106 to form a women's group at the college which is open to Lock Haven students and women who reside in the surrounding area.

Sponsored by Ms. Virginia Martin, the purpose and function of a women's group at the college was initially discussed and defined by women who attended the meeting. Common problems and anxieties experienced by women in

general were then shared by the 22 women present.

To provide for the emotional and physical needs of women was defined as the basic purpose of the group. Various methods of meeting these needs were proposed and further discussed.

Immediate formation of a consciousness-raising group as an instrument to provide a sense of support and solidify the sharing of common bonds between women was offered as a method to fulfill the various mental and emotional needs.

In addition to the consciousness-raising technique, the possibility of offering a one-to-one counseling service composed of women for women

was proposed.

Various forms of discrimination experienced by women while attending the college or living in the Lock Haven area was a major topic of concern at the meeting.

One of the most important projects currently assumed by the women's group is the writing of a constitution which would define it as a club and enable it to receive money. An executive committee was formed to pursue this task.

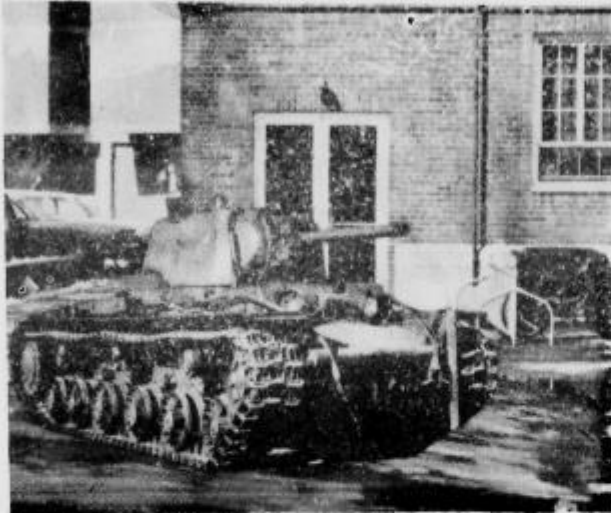
Group facilitator, Margot Thomas emphasized the need for accessible and accurate information on birth control at the college and various birth control agencies in the area were discussed by women in

cont. on page 4

My Pretty Balloon



created by...
John Yurek



CAUTION STUDENT DRIVERS-This vehicle will be used by the students taking the soon to be offered course in drivers' education. It seems that instruction in this area is badly needed at LHSC. The class will be recommended for freshmen and will cover such areas as the effects of alcohol and how to safely drive through a parking lot.

Letters*letters*letters*letters*letters*letters*

To the Editor:

I am writing to you about one of the most appalling procedures I have ever witnessed in my life. I am referring to voter registration a la bribery. I, as a consequence, would like to REGISTER my disapproval of this highly immoral practice. My first thought, after witnessing this extravaganza, was to once again question the mentality of the majority of students at LHSC. I wonder how many of those who registered to vote yesterday realize the significance of their signature on that little card. The incentive to vote shouldn't be the acquisition of T-shirts nor a reduced price to enter a dance, but rather a real and legitimate desire change the gov-

ernment. Sure, I will concede that that is a highly idealistic statement. I also recognize that there is a 'sincere' wish to mobilize the students into are large and effective interest group, but to my mind this method has appealed not to their desire to do a good thing but rather to receive a material gain. All that the S.C.C., C.A.S. and A.P.S.C.U.F. have succeeded in doing is obscuring the real reason for registering to vote and replacing it with a very capitalistic and highly mercenary incentive. This whole thing is a poor reflection on the organizers and a poorer reflection on those that have accepted its terms. I only hope those that have accepted them will also accept the responsibility of their role as a member of the



Fred Schultz's Faces in the Crowd

'Short shit' packs a lot of personality

Our Face in the Crowd for this week hails from Russell Hall. She is JoLynne Leitzel otherwise known by most of the campus as "Short Shit."

Her mother was born in Lock Haven and her aunt now lives in Renovo. Jo was born in Harrisburg in the Osteopathic Hospital 20 years ago. The doctor who delivered her, graduated from high school with her father. Her family consists of two brothers and one sister.

Jo is 4 feet, 11 inches tall and weighs 112 pounds. The blonde haired blue-eyed JoLynne is a Mechanicsburg native who enjoys "oil painting, plants, gymnastics, diving, dancing, theater and guys. Guys are not last on the list though."

Jo likes almost any kind of music. One of her favorites is Paul Simon. She also likes oldies. "I'm getting old and have started to outgrow so much partying," said Jo.

Many people remember her from the parties of last year as one of the standout personalities. "I really try to get along with people the best I can. I try to be as pleasant as possible to make people like to be here," Jo reported.

If you've had a great year or just an average one, don't let it slip you by. This year's PRAECO promises to be a memorable publication, which will give us all a good look back. Stop in the Pub and order yours this month.

electorate. I think a grave ethical misjustice has been done and this buying off process in my estimation has wasted money as well. 'You (the organizers of this escapade) had better start saving your money and ideas for November because you've only done half the job. You got them to register all right, now how the HELL are you going to get them to vote. Sweat shirts, perhaps inscribed with 'I voted today' or mugs with 'I support my candidate' or better yet just free beer at the polls. You've got to give them more than you did this time. Remember capitalism breeds materialism so you'll need more for the poor, misguided peons next time. What ever happened to the concerned citizen.

M. Shelly Robinson

CONFIDENTIAL SERVICE

**Women's
MEDICAL
CENTER**



Menstrual
Regulation

Birth Control
Counseling

Free Early
Detection

Pregnancy
Testing

Outpatient
Abortion
Facility

(215) 265-1880

Eagles set best mark on southern excursion

By STEVE HEVERLY
Staff Reporter

The Lock Haven State College Baseball team opens its home schedule this Saturday at Woolrich Park Field. The Bald Eagle team will be opening up its Pennsylvania Conference Western Division schedule with a doubleheader against California State.

The baseball team returned recently from a rugged ten day southern trip and opened their season compiling a five win five loss record. This was the best mark ever set by an LHSC squad on a southern trip that included games against the top collegiate teams in the state of Virginia.

Coach Dr. Charles Eberle's team scored victories over the University of Virginia, a NCAA Division One power by the score of 17-8; Lynchburg College, 7-1; Liberty Baptist College, 6-4; Hampden-Sydney College, 8-3; and George Mason College, 12-3.

The Eagle's losses were to Virginia University, Lynchburg, Liberty Baptist, Madison College, and in a ten inning game to Randolph-Macon, by 6-5.

Leading the Bald Eagles on the southern trip was junior first baseman Steve DeLisle, who batted 16 hits in 41 appearances at the plate for a .390 average. He ripped two doubles, three triples, one home run, stole four bases, and drove in nine runs.

Junior pitcher Steve Lebo posted a 2-1 record on the trip with a earned run average (E.R.A.) of 1.59. He only allowed three earned runs in 22 $\frac{3}{4}$ innings and recorded 18 strikeouts.

Freshman relief hurler Ed Sampsell saw action in four games registering two saves and holds an ERA of 1.23.

Also performing well on the road trip were veterans Mike Mersky at second base, Joe Tarconish in center field, Jon Jacoby at third base, and pitchers Bob Weber, Wayne Sowers (1-1), and freshman Kim McCullough (1-1).

Sophomore left-fielder Russ Martin has driven in 11 runs with a .289 average. Senior shortstop Mike Crone is tops in runs scored with nine and led the Eagles in the big win over George Mason with three hits.

Also having a big trip was Senior right-fielder Dave Royer who hit a .308 including 11 runs batted in, four doubles, two triples, and a home run.

Batting over the three hundred mark for this trip with DeLisle and Royer was senior star hitter Ed Stum, going 13 for 38 at .342 with five doubles and a triple; senior catcher Jeff Kashner at .321; pitcher infielder senior Galen Miller at .333.



A TOUGH spring practice exemplified by this batting drill enabled the Eagle Baseball Team to post a fine win-loss record on their southern tour.

Track team fields a large veteran squad

By AL VALETTA
Men's Sports Editor

The Lock Haven State College Outdoor Track and Field Team will open the 1976 season at Shippensburg State College on Saturday, April 3 at 1:00 P.M.

The Eagle trackmen will have a new head coach this season as Joseph Coldren (Director of Admissions) will take over the position. Coldren is a former LHSC standout athlete in both football and track.

While attending Lock Haven, Coldren (4 year letterman in track) was a place finisher at the Pennsylvania Conference Championships in the javelin event and set a school record in the long jump.

Coldren joined the LHSC staff in 1968 after coaching football at Lewisburg High School in '67 and '68.

This years squad is a large one which features 65 members including 21 lettermen from the 1975 team that compiled a 2-7 overall mark.

The team has competed in several indoor meets and has done a fine job while setting several school records.

The top returning lettermen include three year regular Tom Burns, who set an indoor

shotput record this winter at 50 feet-7 $\frac{3}{4}$ inches, and senior Jerome Conlon, a three year letter winner who is competing in the 440, sprints and relays. Three year man Jim Hoke is also competing in the long jump, relays and sprints.

Seven two year lettermen are back on the team: Tom Bush in the 400 and 880 relays; Bill Clapper and the javelin event; Dennis Harmon in the 3

and 6 mile runs; Keith Kern competing the shotput and discus events; Lorin Mock in the triple and long jump events; Bob Wagner in the 880 and Darryl Walters in the hurdle event.

Several promising freshmen are included on this years squad including Stan Burke who has set a school indoor high jump record as he
cont. on page 4

Golf team opens '76 season

By AL VALETTA
Men's Sports Editor

The Lock Haven State College Golf Team will open the 1976 season at the Belles Springs course today at 1 p.m. when they host Lycoming College.

Coach Stan Daley is optimistic about this season and commented, "we'll have a good overall team balance and should have a winning season."

According to Coach Daley, five lettermen head this season's squad, which includes a fine group of freshmen golfers.

Back from the '75 team that finished with a 4-7 record are senior three year letterman John Thomas, senior two year letterman John Mintmier,

junior Jim Brungard who is a two year veteran, two sophomore golfers, John Gaenzle and Dave Keener, both are one year letterman.

Heading the list of freshmen is Jeff Rupert who is a former Bald Eagle Nittany High School star, Chris Cooper, Bob Bertram, and Jack Rentko, complete the team's roster of freshmen golfers.

The 1976 schedule includes in addition to today's match with Lycoming, three matches against Mansfield State College, two against the University of Pittsburgh at Johnstown and single matches with York College, Millersville and Juniata. The Eagle Golfers also have a triangular meet at Bloomsburg with Shippensburg State and Kutztown.

union plans discussed

cont. from page 1

AFSCME to the Labor Relations Board on March 8 said that the "Student Activities Association, Inc." has a total of eight employees. Mock also commented that the name of the organization is the "Student Cooperative Council" and that "people are employed."

"At the present time, California, Slippery Rock, and Edinboro State Colleges are affiliated with a union. None of these are associated with A.F.S.C.M.E.," said Mock. The union did get the vote of three employees at Lock Haven when union representatives appeared here.

A hearing will be held in the small courtroom of the Clinton County Courthouse at 1:30 on April 5. If the S.C.C. wins in the hearing, the union may not be involved with S.C.C. employees. If the S.C.C. loses, a vote will be taken by the employees. A simple majority will be sufficient to bring in the union.

The advantage that the employees will have, if the union moves in, will be a tenure benefit. Tenure means, basically, that after an employee has served a number of years he or she cannot be fired. This is the only thing they have that S.C.C. does not, according to Mock. The dues will be \$86.00 a year.

"I think that we have the most autonomous student body of all of the state colleges. That is why I think this is important. We don't need the help of AFSCME," Mock said emphatically.

The hearing is open to the public on Monday, but Mock

implied that the courtroom is small, and he wishes that a large crowd not be in attendance.

seven

cont. from page 1

Enforcement unit, and later turned over to the local contingent. She was charged with "reckless driving," and "leaving the scene of an accident."

When the investigation is completed, the trial will be set under the judicial responsibility of the city of Lock Haven, college officials said.

Dr. Clifford Smith, a gestalt psycho-therapist in Williamsport, will conduct a workshop and demonstration in gestalt therapy on Monday April 5, 1976 in the Sloan Auditorium lobby from 7:30 to 10:30 p.m. Take time out Monday night and come to the workshop, it will be a worthwhile experience.

STUDENT EMPLOYMENT OPPORTUNITIES: Some Campus Employment positions are now being filled for the remainder of the spring semester. These positions include night dorm receptionist and library workers. See the job listings posted in Woolridge Lobby for particulars.

MEET

the

big red note
MUSIC STORE

RADIO SHACK
STEREO CENTER
MUSICAL INST.
TAPES, POSTERS
TICKETRON
ACCESSORIES & MUSIC
NEXT TO THE POST OFF

Lock Haven & Williamsport

A W Gundlach & Son

Your

Beverage Shopping Center

Schmidt's, Pabst, Utica Club, Rolling Rock,
Colt 45, Schlitz, Busch

Complete Shasta Line, Other Favorite Soft Drinks,
Ice and Party Snacks

125 Hogan Blvd.

Phone 748 4073

slide

cont. from page 1

quence of slides accompanied by music, but with no titles or explanatory words."

The show was split up into eight classifications; the introduction, spring, sidewalks, and people at play in New York were the first four with sketches and paintings showing the people in these activities and places.

The last four showed New York in the winter, romance in the city and its city life, and famous night life.

All eight segments reflected a smiling a gay New York through the period 1900's to the 1940's.

track

cont. from page 3

reached the height of 6 feet, 7 inches, and Paul Gilbert in the 440 and 880 relays.

Also expected to help the team a lot this season are transfer student Dick Bisking who throws the javelin and junior Jim Newsome who will be competing in his first year of track in the 100 and 220 relay events.

The Eagle Trackmen are scheduled to compete in 11 regular season meets plus two relays (at Philadelphia and Bloomsburg) and in the Pennsylvania Conference Track and Field Championships.

CLASSIFIEDS

FOR RENT: Rooms for two quiet students. Reply to P.O. Box 291, LH giving local address, home address and course of study.

WANTED - End of semester sub-lease apt. for summer months only. Call 748-2697.

group

cont. from page 1

the group.

In addition to discussing birth control in regards to female health care during the meeting, women expressed the need for proper and reasonably priced gynecological care.

Ms. Thomas stressed the importance for women to be educated and familiar with their bodies and suggested non competitive physical activities for women as a healthy physical outlet to do so.

WANTED - Grapic Photographers to shoot Eagle Eye for offset printing, Fall Semester, 1976. Very late hours one night per week. Contact Evalyn Fisher, Publications Office, Ground floor PUB.

STUDENT DIRECTORIES - May be picked up in PUB Secretary's Office, Ground Floor PUB, with validated I.D.

LHSC YEARBOOKS ¶ Will arrive on campus this month. Reserve your copy now with \$2.00 deposit in Publications Office, Ground Floor PUB. Limited number available.



Addie's
HALLMARK CARD & GIFT SHOP

120 E. Main Street, Lock Haven, Penna.

**Complete line of Cards,
Gifts, Artists' and
School Supplies**

Hours: Mon., Thurs., Fri. 9 to 9
Wed. till noon Tues., Sat. 9 to 5