

# eagle eye

Vol. XXII, No. 7

LOCK HAVEN STATE COLLEGE Friday, Oct. 5, 1979

## SCC POSTPONES ATTENDANCE POLICY VOTING

By JOE BUCKLEY

At the SCC Senate meeting on Wednesday night, the Senate decided to postpone voting on the proposed class attendance policy until the Senators could get more feedback from the students. The proposed attendance policy if instituted, would automatically allow the students to miss 152 of their classes without fear of punishment from teachers. The policy that is currently in effect allows the attendance requirements to be at the discretion of the teachers. When the Senate does vote on the attendance policy, their decision will be sent as a recommendation to the Academic Regulations Committee. The Academic Regulations Committee, is

composed of two students, two administrators and three faculty members, will have the final decision on the matter.

Also at the meeting, the Senate voted to send a proposed check cashing policy of the Bookstore back to the Executive Committee for further discussion. Howard Reynolds, who appeared at the meeting, said that as Director of the Bookstore, this check cashing policy is "what I think I can live with." Joe Kirby voiced his concern about a \$10 service fee which would be charged to a student for each check that was returned unpaid by the bank. Under the proposed policy, the \$10 fee would be "waived in favor of a \$1.00

service charge" if restitution was made by the student within a ten day period. Voicing his disapproval, Senator Kirby said that a notice should be sent to the student, informing him of the overdrawn situation before a \$10 fee should be assessed. Director Reynolds, who assumed the position of Director this summer said that the \$10 service fee would be insurance that the bill would be paid. Further discussion by the Executive Committee concerning the check cashing policy will take place in a meeting open to all students on Mon., Oct. 8 at 5:30pm in the Executive Office in the PUB.

Other action at the Senate meeting included the approval of the Finance Committee's proposed budget for small clubs. The final budget for small clubs is: Social Service Society: \$150.00, Psychology Club: \$150.00, English Communications Club: \$150.00, American Chemical Society: \$150.00, Biology Club: \$300.00, Wilderness Club: \$200.00, Black Cultural Society: \$300.00, Ski Club: \$2,000.00, CEC: \$600.00, Modern Dance Club: \$200.00, Ice Hockey Club: \$150.00, Spanish Club: \$150.00, French Club: \$150.00, and

the Student Broadcasting Club: \$600.00. The Finance Committee budget for small clubs also includes \$500.00 for contingency. This money, according to Finance Committee Chairman, Ron Beaver, would be allotted to any new small club or to any of the existing small clubs provided that they show why they need the money.

In other action, the Senate voted to approve the contract between the SCC and Cuisine Limited. Cuisine operates the Snack Bar and the cafeteria for the SCC. This contract can be

terminated at any time by either the SCC or Cuisine, subject to a 60 day notice.

Also, the Senate voted to accept Joe Buckley as Parliamentarian of the Senate.

President Jeff Bomboy also appointed Gary Machak to the International Education Committee.

Vice-President, Robert Bullett announced that elections for senatorial positions from off-campus, Woolridge, Russell, and McEntire Halls will be held on October 22. Petitions must be in by October 17.

## FALL POPS CONCERT, OCT. 11

LOCK HAVEN- A Fall Pops concert will be presented by the Lock Haven State College Choir at 8:00pm on Thursday, October 11, in the Sloan Theatre, open to the public at no charge.

The program will offer a number of solo selections, including "Gethsemane" from "Jesus Christ Superstar" sung by Aaron Battle, a number of Barry Manilow songs sung by Jonathon Clark, and other selections sung by Pauli Saylor, Kathy Fox, Amy Jo Wolford, Mary Bentley, Craig Burris, Nan English, and Barbara Loza.

The full choir will perform "Step to the Rear" from the musical "How Now, Dow Jones," "Once in Love with Amy" from Loesser's "Where's Charley," "Summer Nights" from "Grease," and several selections from "Olivier."

The concert will last approximately one hour.

According to choir director Gary Renzelman, the program is the first concert

of the season and intended to offer an evening of light entertainment for newcomers to the college, as well as anyone from the local community who enjoys lighthearted music.

"We have a larger than usual number of excellent solo voices this year from the new freshman class, so I am sure that people who like vocal music will find our concerts this year to be especially enjoyable," said Renzelman.

A select group of 20 members from the College Singers will participate in the annual Pa. Collegiate Choral Festival to be held at Millersville State College on November 1

on November 1-3, according to Renzelman.

The next local program by the choir, the Winter Choral Concert, will be presented at the college on December 6.

A special feature planned for the spring semester will be the choir's performance of Vivaldi's "Gloria," to be performed with the Phila-

delphia Soloists, a string ensemble which will be on campus for a series of workshops.

## WORLD NEWS BRIEFS

President Carter has declared a Federal Disaster in two Connecticut river towns devastated less than 24 hours earlier by a tornado that struck without warning. At least two people were killed by the storm, which also injured more than 400 others and caused damage estimated at up to 250-million dollars.

Sales of Gasohol in Pennsylvania and New Jersey hit 131-thousand 860 gallons during the first 30 days of sales.

Pope John Paul the Second will head for Chicago today after celebrating a mass at a farm near Des Moines, Iowa. He'll be welcomed by Chicago's huge Polish Community and will celebrate mass at a lakefront park.

## ANNUAL SCIENCE CONVOCATION

LOCK HAVEN- A presentation entitled, "A Mountain Experience" by Jim Brett, assistant curator and director of education at Hawk Mountain Sanctuary in Kempton will be the feature event at the 19th Annual Science Convocation, to be held at 12:45 pm on Tuesday, October 9, in Ulmer Planetarium, Lock

Haven State College.

In addition to the featured presentation some awards will be given to students who have produced outstanding academic achievements in the fields of biology, chemistry, physics, earth and space science, and geography.

The speaker, Jim Brett, is a graduate of Kutztown State College who has been chief resident naturalist at Hawk Mountain Sanctuary since 1971. Hawk Mountain is a private wildlife sanctuary founded in 1934 as the world's first refuge for the birds of prey.

Brett's responsibilities include administration of students visiting the sanctuary for wildlife studies, providing natural history courses for school teachers, and coordinating an undergraduate internship program in addition to producing publications for and about the sanctuary.

He previously taught biological and geological science and ecology on both the high school and college levels. He founded the Oerwood Nature Center in Mt. Wolf, Pa., the first braille nature trail in the eastern U.S. He also directed the invertebrate zoology laboratory at the Schuylkill River Ecological

Field Station in Pottstown.

The public is invited to attend the program at no charge.

## EDUCATION IN AUSTRALIA

LOCK HAVEN- An informal presentation on Australia and Kelvin Grove College in Brisbane will be given at 5:00pm on Wednesday, October 10, in Himes Hall, Lock Haven State College, by Dr. Graham A. Jones.

Dr. Jones, dean of the School of Science at Kelvin Grove, will show a short film, color slides, and provide an informal discussion of Australia, its educational system in general and Kelvin Grove College in particular. He will also discuss the educational exchange program between Kelvin Grove and Lock Haven State which is currently in the planning stage.

Dr. Jones is an administrative intern at Lock Haven for the fall semester, studying the college's computer operations and financial procedures.





# EDITORIAL

By DIANE ORBAN

The EAGLE EYE staff is currently attempting to make some changes in its publication. We have thought of several ideas which will affect both the content and format of the paper. These "ideas" are only in the planning stages and we, the staff, would like our readers' opinions before we make any definite changes.

Some ideas concerning content include; a weekly cafeteria menu, a list of the top 20 musical hits, a calendar of events, a sports scoreboard, crossword puzzles, a column of Greek news, a series of regular comic strips, weather reports, and a "Personality of the Week" Column.

As far as format changes are concerned, we are attempting to make the EAGLE EYE more appealing to the eye by varying our layout techniques.

Any comments, like or dislikes, or other suggestions would be appreciated so that we may make this publication more interesting for our readers.

Please place all suggestions or comments in the envelope on the door of the Publications Office located on the ground floor of the PUB. Thank you very much for your cooperation.



The Lock Haven State College

EAGLE EYE

AN INDEPENDENT STUDENT NEWSPAPER

The Eagle Eye is published twice weekly by Student Publications of Lock Haven State College. Our office is located on the ground floor of the Parson's Union Building. Phone 893-2334.

The Editor encourages letters and commentaries. All contributions must be signed, but names will be withheld from publication on request. Letters and commentaries will be printed verbatim. The Editor reserves the right to ask contributors to edit or rewrite their material if it is considered libelous, incoherent or too lengthy.

EDITOR-IN-CHIEF .....	DIANE ORBAN
MANAGING EDITOR .....	Bridget Robey
GRAPHICS EDITORS .....	Sue Meyers John Petrillak
NEWS EDITOR .....	Keith Godshall
SPORTS EDITOR .....	Don Glass
PHOTOGRAPHY EDITOR .....	Cheryl Fluck
ENTERTAINMENT EDITOR.....	Tommye Talley
HUMAN RELATIONS EDITOR.....	Clarence Washington
ADVISOR.....	Dr. Sandra Hybels
GENERAL MANAGER.....	Kim Pettingill

# COMMENTARY

When I was asked to write an article for the Eagle Eye about my participation in the 1979 Phi Mu Delta Dance Marathon little did I know how difficult a task this would be. It never occurred to me that I would have any problem expressing my feelings literally.

Since I did get a chance to read some of the things in Tuesday's Eagle Eye I'd like to clarify some of my thoughts about this past weekend.

First of all, I think that anyone who hasn't danced in the marathon really doesn't have much to go on except for what they observe. To me their opinion is considered to be irrelevant.

A 48 hour marathon does induce physical and mental strain. If you are mature enough to enter the marathon then you should be mature enough to know what your physical or mental limitations are. If your refuse to accept them and push yourself to an extreme that can be detrimental to your well being then I can only conclude that you are losing self-respect and honesty with yourself.

When you do finish the marathon it is a personal reward. But you also realize that during those 48 hours you have control over your mind. Yes, mental strain plays a big role occasionally but you learn to overcome that weakness. Mind over matter is extremely important. At times you think you have no control over your mind. You become irrational, short tempered, or maybe just a space-shot. This, I suppose, is when your friends step in. They give you a word of encouragement, warmth, understanding, and go out of their way to get you anything you need. They realize some of the pressures that may be pressing your mind at the time. Friends are extremely important and I can't stress this more emphatically. Even when you do become irrational or spacy or any of the tricks your mind can play, you know that it is happening. You are aware. You have your ups and downs, but that is to be expected.

The dance marathon is considered to be a competition to collect as much money as possible and to dance the total 48 hours.

I guess I mentioned enough technicalities. This is probably the best way I can rehash this eventful weekend.

Last and most importantly is your partner. As partners you must give and take every minute of every hour. I could not have had a better dance partner. So, I thank you Bridget!

In conclusion, I thank the Phi Mu Delta Fraternity. I'm sure this year was a success and the money couldn't go toward two better causes. Maureen Carey

# LETTER

To the Editor,

In response to a recent editorial (Oct. 2, 1979) condemning the length of the Phi Mu Delta dance marathon I feel that anyone who wanted to drop out was free to do so and anyone who wanted to stay in was not held by force.

When the contestants signed up they knew that it would last 48 hours and therefore should have been mentally and physically ready to do so. Although shortening the marathon to 24 hours might raise more

money; who would want to enter. Anybody could do it. But 48 hours is a true endurance test.

In closing Miss Orban stated, "after all, this is a learning institution." I agree, but you can learn a lot about yourself by doing something grueling too. And that is if you put your mind to it, you can achieve your goals." And that cannot be taught in any classroom, anywhere.

Matthew Linn Flaywood  
Gross Hall

# ARTS CALENDAR

By BARBARA PASTELLA

The week of October second, the College Players presented two one-act plays; "The Happy Journey" and "Hands Across the Sea." "The Happy Journey," a proless and fully mimed play, was expertly cast with Susan Szabo playing the lead role of Ma, a mother of a family in post-depression New Jersey. Susan's good articulation was flaired by her 'Katherine Hepburn' voice. As for Joseph Ritchey, who played Pa, he came across outstandingly with annunciation and expert miming. Ma and Pa's children Authur and Caroline, played by Chris Foster, a high school senior, and Cathy Polischeak, were fairly well rounded as characters. Although Beulah, the 'married daughter' the family is journeying to visit, played by Tommye Talley, had a short part, the well, pre-determined character came across very clearly. On the whole, "The Happy Journey," written by Thornton Wilder was a by far better 'play' by being performed by the College Players.

"Hands Across the Sea," written by Noel Coward, starred Barbara Loza as Piggie, a very wealthy woman maintaining a confused household. Barbara clearly came through her cockney accent with a flair of eloquence. Gary Simmerman, who played Peter, Piggie's husband, could have had more practice in timing his lines. Ally, Boegy, and Clare were played by Peter Leyer, Chris Foster, and Sandra Magera. Ally came across with only his useful facial expressions. Boegy and Clare were fair in the fact that their obvious arrogance was almost hidden. Mr. Burnham, played by Mike Winkelman, was almost forgotten and whose purpose of a salesman was not stated until the near end of the 'play'. Mr. and Mrs. Wadhurst, played by a superb Dave Sheuy and Barbara Paladino, were not known by any other character, manufacturing a reckless plot of 'who can figure out who they are first.' To Arron Battle, director, and Darsell Brittingham, stage manager, I congratulate you on "A Happy Journey" as a definite success, but "Hands Across the Sea" could have used more work. To conclude, the College Players are worth more than the audience of twenty-five I found at last tuesday nights performance.

There is no need for an outpouring of words to explain oneself to a friend. Friends understand each other's thoughts even before they are spoken.

Susan Pollis Schutz  
I would like to thank all those who gave me their help, love, and support throughout the marathon. It was greatly appreciated!

Thanks again,  
Donna Robinsky

A very special thanks to Linda, Abbi, Martha, and everyone who held us up during the marathon. We wouldn't have lasted without you.

THANKS!  
Rita, Jan, Byrd

OX ROAST TICKETS \$1.50 on sale PUB Secretary's Office for Sun. Oct. 14, 1pm.

## ATTENTION STUDENTS!!

Womens Resource Organization can provide you with information on birth control, abortion, clinical services, legal aide, counseling services, drugs, life styles, sexuality, careers and womens history. Located in the bottom of Russell Extension 2229.

All students interested in being a dormitory or off-campus representative are to submit their petitions by Wed. Oct.17. Elections will be held on Monday Oct. 22.

There are four off-campus positions available as well as three in Woolridge, three in Russell and one in McIntire.

Anyone with questions should contact Robert Bullett, in the Pub lower level.



# "SOWBELLY" SHOW TO HIGHLIGHT MEETING

The English-Journalism Club will hold a meeting on Monday, October 8 at 7:00pm in Raub 106. The meeting is open to the public as well as regular members of the club and new members.

After a brief organizational meeting, Joseph Nicholson and Carl Larsen will read selections from

their radio series, "The Sowbelly Show."

The show consists of interviews, commercials, and soap opera segments, presented humorously, much like those on "Saturday Night Live."

According to Edward Reed, of Image Magazine, "The Sowbelly Show" is an outlandishly satirical creat-

ion, broadcast from a mythical small-town radio station 'WSOW', the 200-watt voice of Jasper County, Hog-Raising Capital of the Western Hemisphere. Their brand of straightfaced, graveyard humor is aimed at pop culture in general, including soap operas, children's television and commercials.



## PHI MU DELTA HOSTS SOCIAL

The brothers of Phi Mu Delta Fraternity are hosting an International Social for all the Foreign students at L.H.S.C. on Friday Oct. 5th from 6:00-9:00. Approximately 60 foreign students from various countries including Ireland, Nigeria, Kerya, Cameroon, Ghona, Argentinian, El Salvador, Thailand, England, Iran, Zaire, Japan, Dominican Republic, Malaysia, Canada and Equador.

The social event is an attempt for the American and Foreign exchange students to learn more about one another's culture, to make new friends, and hopefully influence other organizations to do functions for Foreign Exchange Students.

A large number of faculty members and administrators from LHSC have been invited to attend the Social. Various Community members and local Politicians have been invited. Invited guests include: William Eiseman, Mayor of Lock Haven, William Brown, County Commissioner, and Martin Flayhart, District Attorney. Presidents from each fraternity and sorority at LHSC along with the

Presidents of Interfraternity, Phanhellic and Greek Councils will also be on hand to greet the International Students.

The Alpha Sigma Tau sorority has been invited and will be assisting Phi Mu Delta in making this function a success.

Anyone who has not received an invitation and wishes to attend the function please contact Mike Fix at 748-9931.

## SCHOLARSHIP FUND

In May of 1975 the L.H.S.C. Community Scholarship Fund was established for the purpose of recognizing the continuing importance of student financial aid for full-time students who demonstrate financial need or unexpected economic hardship, who show academic promise in a major area of study and who, in the judgement of the Board of Governors, merit such support.

Awards totalling \$7,275, ranging from \$50 to \$350, have been granted to 36 students in the past four years.

The Fund had been

supported by some 70 individuals and groups in the college community who have contributed over \$8,500 to date.

The present Board of Governors is composed of Dr. Harvey Sterns, chairman; Associate Professor William Foster, secretary-treasurer; Assistant Professor James Woodward, Assistant Professor Jack Johnston, and Dr. Ira Masemore.

Applications for the current year are available in the Woolridge Hall Financial Aids office. Completed applications are due by November 26, 1979.

To promote a more lively atmosphere for Homecoming '79, the Lock Haven State College Alumni Association is sponsoring a "SUPPORT THE BALD EAGLES" sign contest, open to any Lock Haven State College student or organization.

The signs, placed around the football fence will be judged in three categories:

- A. Best Theme Support
- B. Most Original
- C. Most Artistic

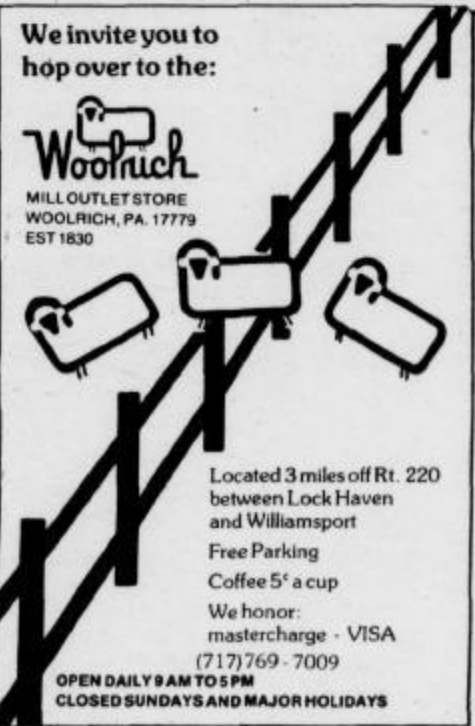
with a ten dollar award to the winner in each category. All entries must be registered by completing a registration form in the Alumni Office, Sullivan 311, by Friday, October 12 at 4 pm. Rules and guidelines concerning the contest may be secured at that time.

The Alumni Association is looking forward to making Homecoming '79 a great weekend for all.

We invite you to hop over to the:

**Woolrich**

MILL OUTLET STORE  
WOOLRICH, PA. 17779  
EST 1830



Located 3 miles off Rt. 220 between Lock Haven and Williamsport

Free Parking  
Coffee 5¢ a cup

We honor:  
mastercharge - VISA  
(717) 769-7009

OPEN DAILY 9 AM TO 5 PM  
CLOSED SUNDAYS AND MAJOR HOLIDAYS

## CLYDES



**HEY SKIERS**

Thinking Snow?

Well Think Clydes!

PRE-SEASON "CLEARANCE"

LIMITED QUANTITIES DRASTIC REDUCTIONS

Downhill Equipment and Accessories

Jackets-Vests-Bibs

T-Necks-Gloves-Boots

Hurry While They Last

Mon & Fri. 10am-9pm

Main St. Lock Haven

Tues & Thurs & Sat 10am-5pm

Phone 748-3344

Closed Wed.

## women's medical center

Confidential Service

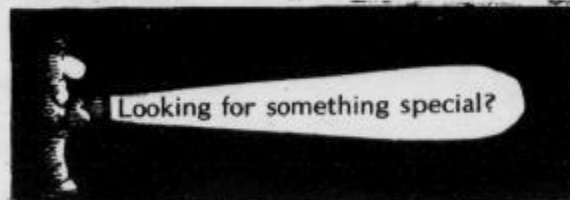
birth control counseling      free early detection pregnancy testing      outpatient abortion facility

(215) 265-1880

20 minutes from Philadelphia

DeKALB PIKE and BOROUGH LINE ROAD  
KING OF PRUSSIA, PA 19406

## ASSANTE'S



Looking for something special?

Nightly Dinner Specials

This Wed., Fri., and Sat.

Music by Fri. SECOND WIND BAND

Sat. TANNER

10-2am

Monday Night Football  
and the World Series on  
our 7 FT. T.V.

## Draucker's Sports Center

COMPLETE ARCADE

AMUSEMENT AND SKILL GAMES  
POOL TABLES

selection of...

Guns • Ammo • Complete Hunting Supplies

130 E. Main Street Lock Haven

## Jhirmack

### Skin Care & Makeup

INFORMATION CLASS

WHEN: Tuesday, October 9, 1979

WHERE: Lock Haven YMCA

TIME: 7-10 p.m.

Tickets \$2.50 per person

(tickets are limited, first come, first served)

Jhirmack Instructors From California

Will Be Conducting Class

For tickets and/or further information

Contact Carol Wert's Beauty Bar

310 N. Vesper St. L.H.

748-6851





# HAVEN GRIDDEERS TRAVEL TO EDINBORO STATE

**LOCK HAVEN--**For the first time in eight years the surprising Lock Haven State College football team has won three straight games.

Last Saturday it was a 28-21 upset victory for the Bald Eagles griddeers over previously unbeaten Indiana University of Pennsylvania a NCAA Division 2 school. It was only Lock Haven's second win over IUP in 18 years.

Lock Haven a Division 3 college now has a 3-1 record and share the lead in the tough Pennsylvania Conference Western Division with a 1-0 mark.

Coach Jack Fisher's team now heads for Edinboro State College for another West Division clash this Saturday.

If the game follows the pattern of the past 12 contests the scoreboard should be recording plenty of points all afternoon.

In the past 12 years an amazing total of 649 points have been scored. Edinboro has scored 373 for an average of 31.1 points per game while Lock Haven total in 276 and a 23 point average.

During this period the Scots have won seven games and the Eagles have

notched five victories.

The overall 21 game series in even up at 10 wins for each team plus a 7-7 tie in 1961.

Edinboro has a 1-3 record with a 28-13 victory over Muskingum College and losses to Fairmont College, 9-0; Millersville State, 17-6, and Clarion State, 13-0.

## HOCKEY TEAM WINS

**CORTLAND, N.Y.-** The Lock Haven State women field hockey team remained unbeaten on the year here Wednesday afternoon with a hard earned 2-0 win over Cortland State College.

Lock Haven 6th ranked team in Division One National rankings, broke open a defensive struggle in the final six minutes of action with two goals, one coming with only 15 seconds to play.

Eaglette head coach Sharon Taylor commenting after the match said, "This was the best Cortland team we've faced since I've been head coach at Lock Haven. It was a fairly even game all the way."

"Dawn Morris had her best game of the season on attack for us. Also looking good on offense was Diane Minshall."

"On defense Captain Sue Sadler continues just as 'steady as a rock.' Laura Conroy and Lou Ann Kuntz looked especially good on defense in second half when they started to pressure us. Once again Karen Weaver had several nice saves at goal."

Lock Haven's first goal came at 29:45 of second half when Jane Shaw

On offense Lock Haven continues to be led by the brilliant passing of senior quarterback Dan Spittal; pass receiving of sophomore wide receiver Bob Lynn; rushing of junior tailback Joe Speese, and a super offensive line.

Spittal has connected on 44 of 86 passes attempted

for 658 yards only three interceptions and five TD passes to his credit.

Lynn has snagged 24 passes for 453 yards and four touchdowns. Speese has rushed for 356 yards and scored five TDs.

Lock Haven's outstanding defensive unit that has come up with big play time after time this season is led by senior linebackers Steve Orsini with 47 tackles and Steve Mayes in with 40. In with two pass interceptions star defensive back sophomore Tony Garzione. He ran one in the Bloomsburg win back 29 yards for a touchdown.

In the big win over Indiana, Spittal hit on 9 of 18 passes for 134 yards and TD passes of 38 yards to Lynn, and an 18 yarder to powerback Jeff Bailey.

Speese rushed for a season high of 172 yards including a second effort run of 47 yards for a touchdown.

The other TD was a one yard sneak by Spittal. The two two-point extra points came on passes from Bob Maley to Jim Letcavage, and Bill Sementelli.

Coming up with key sacks in the game for LHSC were Bob Narducci a defensive tackle, and Jim Dressler and end.

Another major factor in the early season success of Lock Haven has been the great punting of sophomore Jeff Collidge.

In the Indiana victory, Collidge averaged 37.2 yards per punt and for the season has a fine 36.8 mark for 24 punts.

## BOOTERS TRY FOR 7TH

By TOM DEGARMO

Coach Mike Parker's soccer team will be looking for their seventh straight win on Saturday. The Bald Eagles play host to perennially powerful Elizabethtown in a crucial contest.

Elizabethtown is 3-2-1 on the year. Both losses were to teams ranked among the top 20 in the nation. The most recent loss was to Philadelphia Textile, the #1 team in the East and #10 in the nation, by a close 4-3 score. E-town is presently ranked seventh in the East. A win over the Eagles would give them a big boost in the rankings.

The Bald Eagles are 7-1 and ranked #3 in the East behind Textile and Penn State. The Eagles broke into the top 20 this week. The soccer team is #20 in the nation, the only DIV III school in the top 20. Among DIV III the Bald Eagles are #1.

"This is a must win game for us," stated Parker, the winner of this game will almost be assured of a

homefield advantage in the playoffs. We are looking forward to Saturdays game. The team is now coming together. Our win Saturday over Alderson-Broadus was our best effort so far this season. We need a good test and Elizabethtown is a strong side. This will show us how strong we are."

As a result of injuries, Coach Parker has not been able to start the same eleven players for two consecutive games. This Saturday the Eagles leading scorer, Dan Taber, will be a questionable starter due to a knee injury.

The Bald Eagle soccer team is going for its third straight NCAA DIV III title. If they reach this goal, they will be the only team in any division to accomplish this feat. So come out and support our soccer team Saturday. Game time is 2:00 at McCollum Field.

## TENNIS TEAM LOSES

**FROSTBURG, MD.-** In a rain shortened match the Lock Haven State women tennis team was defeated by Frostburg State 5-1 here Monday afternoon.

Due to the bad weather the three scheduled doubles matches were not played.

At number one singles Lock Haven's senior Cathy Peterman won over Lea Pfluger by scores of 6-3 and 6-3.

Peterman now has career record of 28 wins and 11 losses in regular season action. This year the South Williamsport native is even at 3-3.

Eagle coach Kyle Cornelius also had praise for the performance of sophomore Pam Donley at

number six singles where she lost a tough three match set to JoAnn DiGregorio 2-6, 6-2, and 7-6.

The loss was the fifth straight for Lock Haven and the Eagles are now 1-5 on the season.

### SINGLES

1. Cathy Peterman (LH) def. Lea Pfluger, 6-3, 6-3
2. Cindy Lawyer (F) def. Janine Hild, 6-1, 6-1.
3. LeeAnn Holmes (F) def. Cindy Littlehale, 6-3, 6-3
4. Amy Bittle (F) def. Lori Emich, 6-3, 6-4
5. Susan Garrett (F) def. Amy Jo Wolford, 6-1, 6-3
6. JoAnn Digregorio (F) def. Pam Donley, 2-6, 6-2, 7-6.

The National League Championship Series resume in Pittsburgh today with the Pirates leading 2 games to none over the Cincinnati Reds.

## NATIONAL LEAGUE

Mailman's  
JEWELRY STORE



118 E. Main Street Lock Haven

# JERRY'S

Christmas in October  
Still Going On!  
EVERYTHING IN STORE

A BIG 10%

JERRY'S

So come on down and visit us at the CORNER OF CHURCH AND GROVE STS. DOWNTOWN

**OPEN SKATING**  
Wed., Fri., Sat., Sun.  
7:00 to 10:00 p.m.

Late Skate Every  
Fri. & Sat.  
Matinee  
Sat., Sun. 1:30 p.m.

Beginners & Tiny Tots  
Sat., 10 a.m. to Noon  
(Fun & Games  
Plus Instruction)

**MAGIC RIVER**  
**Skateland**  
EAST WALNUT ST.  
LOCK HAVEN

Wed. Nite  
is  
BARGAIN NITE \$1.25

Skate Under the Lites! That  
Made Saturday Night Fever  
Famous!

For Private Party Reservations  
Call 748-6670 or 748-3690

Catch a football like this at any LHSC game.

LOCK HAVEN STATE  
COMPLIMENTS OF  
**HOYS**  
MAIN ST. LOCK HAVEN

PRESENT THIS FOOTBALL AT HOY'S  
MEN'S SHOP AND RECEIVE  
10% OFF ON ANY JEAN!

bring it to Hoys and get 10% off any jeans.

Hoys -  
Downtown  
Lock Haven