

1979

HOMECOMING



eagle eye

Vol. XXII, No. 9

Lock Haven State College

Friday, Oct. 12, 1979

CENTER FOR EDUCATION OFFERS STUDIES

LOCK HAVEN--"Clinton County offers a unique opportunity for economic study because it is an industrial region located in a rural area, and provides economic conditions quite different from those found in a suburban industrial area or in a large city," according to Dr. Ira G. Masemore, director of the recently established Russell A. Milliken Center for Economic Education at Lock Haven State College.

The Milliken Center was founded to promote a better understanding of economics both locally and statewide among students, public school teachers, and the general public by providing educational programs, consultant services, conducting research, and developing educational materials.

Having received official recognition in September by the Pennsylvania Council on Economic Education and the national Joint Council on Economic Education, the center is presently in the process of forming an advisory committee made up of representatives from the community to advise the center on projects needed for the community.

"We hope to enlist the aid and advice of area people from labor, from business, and from the local industries, as well as from the Keystone Central School District. Since one of our major goals is to help the local business community inform area teachers about the economics of industry and its contributions to the community, we will need suggestions from everyone concerned," said Masemore.

"Another very important goal is to provide educational programs which will give teachers a better understanding of economic

conditions across the state, how they differ and how they are related. To meet this goal we will be offering summer workshops in economic studies," said Masemore.

Last July, Lock Haven State College conducted a pilot project in cooperation with Lehigh University in Bethlehem in which classroom teachers spent a three-week period of intensive study in a program called, "Contrasting Industrial and Rural Regional Economics." The first week was spent in formal classroom session, with the second week devoted to touring the industries of the Lehigh Valley.

During the third week, the teachers were introduced to the various industries of Clinton County, arranged through the cooperation of the Lock Haven Chamber of Commerce. They visited Piper Aircraft, Woolrich Wollen Mills, Hammermill Paper Co., Woodchips, the Schrack Farm, the Lock Haven Hospital, and also talked with members of the Redevelopment Authority and with Len Mayer, executive director of the Clinton County Labor-Management Committee.

The program next summer will be offered to teachers in Central Pennsylvania, as well as Lehigh Valley, for three graduate credits in either education or economics, according to Masemore.

"We hope eventually to expand the program to cover the economics of a large city such as Pittsburgh, in addition to the suburban area of the Lehigh Valley and the rural area of Clinton County. We believe that study of these three areas of the state will give teachers a thorough and complete picture of all the different types of economic condi-

tions commonly found in a industrialized society," said Masemore.

"Through funding from the state and national councils, we will be able to keep the costs for the summer institute to a minimum for participating teachers and thereby provide the most in-

expensive training possible in economic education. It should be understood, however, that the studies we conduct are purely educational, without any political connections. We are interested only in providing a purely objective study of

what the economic conditions are and how they function in the different geographical areas of the state," said Masemore.

Masemore and Prof. Jeannette Cruse, also of the college faculty, were both instrumental in helping to

establish the Pennsylvania Council on Economic Education, which was founded in March 1978 and incorporated through the efforts of the Secretary of Education Carol Kline.

The Russell A. Milliken Center for Economic Education has been named for the deceased administrative vice president of the college in recognition of his efforts to promote economic education throughout his career at Ohio University and at Lock Haven State College, according to Masemore.



Dr. Ira Masemore, right, director of the recently established Russell A. Milliken Center for Economic Education at LHSC, discusses materials to be used by the center with Prof. Jeannette Cruse of the college faculty and Roger Poremsky, executive vice president of the Lock Haven Chamber of Commerce.

SIX STUDENTS AWARDED

LOCK HAVEN--Six students at Lock Haven State College were recognized for outstanding academic achievement in the sciences during the 19th Annual Science Convocation, held in Ulmer Planetarium on October 9.

Awards in biology went to Scott Sentz, a senior from Littlestown, and David Roth, a junior from Kutztown. Both are chemistry-biology majors.

The award for excellence introductory chemistry went to Samuel

Shellenberger, a junior from Middleburg majoring in engineering.

David Attig of Middleburg, a junior majoring in chemistry-biology, received the award for excellence in organic chemistry and the award for physics.

A second award in physics, for outstanding performance during the 1979 summer session courses in physics, went to Rosemary Wiegand of Williamsport, a sophomore

majoring in chemistry-biology.

The award in earth and space science went to William Kennedy of Lorain, Ohio, a sophomore majoring in earth and space science.

The guest speaker for the program was James Brett, assistant curator at Hawk Mountain Sanctuary at Kempton, Pa., who gave an illustrated talk about his experiences at the world's first private sanctuary for birds of prey.

WHO'S WHO

Once again Lock Haven State College will participate in the Who's Who Among Students In American Universities & Colleges program. For the past 46 years, this program has paid homage to the outstanding students of higher education across the country. This program has been accepted nation-wide by more than 1,000 schools in all 50 states.

The students selected will receive a certificate on graduation day. Being a member of this elite class of individuals entitles a student to become eligible for the special Reference/Placement Service. This service will help students seek post-graduate work or employment after graduation.

The purpose for the award is to recognize a school's high academic and most well-rounded student. The student should excel both in curricular and extra-curricular activities. Each school participating in this program will be required to construct a committee consisting of faculty members, administration members and students to select the institution's most prominent individuals.

STUDY TOUR TO INDIA SCHEDULED FOR DECEMBER

LOCK HAVEN- "India is one of the major countries of the world where language will lead a cross-cultural study tour to India from December 29, 1979,

through January 12, 1980.

Dr. Biswas teaches in the social work department at Lock Haven State College, which is sponsoring the tour as a continuing

education program.

The 15-day study tour will cover seven cities in the four states of Maharashtra, Uttar Pradesh, Rajasthan, and Punjab, including the

cities of Bombay, Delhi, and Lucknow, and take in Hindu temples, Buddhist cave monasteries with ancient frescoes painted on the walls, historic monuments, as well as the performing and fine arts of India. Participants will also meet with leaders of the different political parties, view community development programs in rural and urban areas, and visit with

Indian families in their homes.

"This seminar open to teachers, community leaders, students, and anyone else interested in studying the complex and exotic cultures of India. Since the common language for all the diverse cultures of India is mainly English, those on the tour will not encounter the kinds of language problems which can some-

times occur during visits to Europe," said Dr. Biswas.

The cost of the study tour is \$1,350.00, subject to any changes in the international air fare rates. The cost includes the air flight, all other transportation including sightseeing, and living accommodations, but does not include cost of meals.

The tour can be taken for college credit as an independent study course upon approval by college authorities. Registration deadline is October 31.

Dr. Renuka Biswas has been an associate professor of social work at Lock Haven State College since 1977, having previously served as a social work consultant with the New York City Board of Education and as a supervisor with the Bellevue Hospital in New York City. She was born and educated in India, earning her bachelor's degree at Scottish Church College in Calcutta. She has served as a social worker for over 200 villages in her native country.

She earned her master's degree in social work at the University of Pennsylvania and her doctorate at Columbia University.

For further information or to register, call the Office of Continuing Education at Lock Haven State College, (717) 893-2008, before October 31.

NIKON PHOTOGRAPHY CONTEST

Amateur photographers are eligible to compete for up to \$1,500 in Nikon photographic equipment, first prize in the 7th Annual Nikon/Nutshell Photo Contest for students and faculty.

149 prizes totaling \$11,250 in value will be awarded in the 7th Annual Nikon/Nutshell Photo Contest now underway on college campuses for students and faculty.

The contest is sponsored jointly by Nikon cameras and NUTSHELL magazine a network of educational publications distributed annually to more than one million col-

lege students.

"The purpose of the Nikon/Nutshell Photo Contest is to encourage photographers to express themselves creatively through photography," stated Myron Charness, Director of Public Relations for Nikon. "For this reason, the contest is open to faculty as well as students. There is no contest theme, no restriction on the number of photos entered, and any type of still camera may be used in the contest."

Last year's winners represented more than 150 different college, university and high school campuses.

First place winners in each of the two categories (black & white and color) will receive \$1,500 in Nikon equipment. Two runners-up will each win \$1,000 in equipment, and third place winners receive \$750 in equipment.

The same top prizes will be awarded in the faculty competition which is judged separately from the student contest.

Contest entry blanks are available at participating local Nikon photo dealers or by writing Anne Littlefield, Nikon/Nutshell Photo Contest, 505 Market Street, Knoxville, TN 37902.



JERRY'S

"MORE THAN A JEAN STORE"

THIS WEEKEND ONLY

\$3.00 OFF

ALL MEN'S and WOMEN'S

LEVI'S CORDUROY'S

Straight Legs & Flares

\$2.00 OFF

ALL BOY'S & STUDENTS

LEVI'S CORDUROY'S

COME DOWN TO

Our Corner and Save

JERRY'S

Corner of Church & Grove

Draucker's Sports Center

COMPLETE ARCADE

AMUSEMENT AND SKILL GAMES
POOL TABLES

selection of...

Guns • Ammo • Complete Hunting Supplies

130 E. Main Street Lock Haven

Mailman's

JEWELRY STORE



118 E. Main Street Lock Haven

LOOKING FOR PIONEER

Car or Home Audio Equipment

FIND IT AT

ONE STOP RECORDS

748-7163

NEXT to WENDY'S

-WANTED-

someone going to

**MARTINS
BURG/
BEDFORD
AREA**

CONTACT:

Dr. Carbaugh

EXT. 2066 or 748-2713

HAVE A GREAT HOMECOMING

After the days activities treat your date or family and friends to a great dinner at the

**BIG WRANGLER
STEAK HOUSE**

Hogan Blvd. Lock Haven

**1 STRIP
SIRLOIN**

Baked Potatoe,
Toast, Unlimited
Salad Bar,
Bottomless Drink

LHSC STUDENTS
Bring in this Coupon
and get a

"FREE DRINK"

Good at Lock Haven BIG WRANGLER

\$3.39

MEMBERS OF THE COURT

Smile!


JUDY NORTH

ESCORT: DON AMORIELLO

Judy North a senior majoring in Physical Education and H.Y.P.E.R. is a transfer student from Penn State University.

Judy keeps herself busy while being an active member of Alpha Sigma Tau, and as program director at the YMCA and YWCA.

Another member of the homecoming court is

Don Amoriello, from Force Pa.

Don, a junior is a member of the LHSC football team. His hobbies include camping, hunting and fishing and is Alpha Sigma Tau's sweetheart.

Don transferred from the University of New Hampshire and is majoring in Physical Education.



KELLY HEARTER

ESCORT: GARY ROSATO

Kelly Hearter, a junior transfer student from Millersville, has set her sights on majoring in Early Childhood Education.

Kelly presently is the KDP sweetheart and also holds the position as a feature twirler in the band.

Gary Rosato who is ex-

tremely active in the fraternal organization of KDP, is a native of Hazelton, Pa.

Gary currently is a sophomore and majoring in social work.

Many of his hobbies consist of hangliding and parachuting.

SHIRLEY PORTER

ESCORT: PETE FOX

Shirley Porter from Fort Washington Pa. is currently a senior majoring in Physical Education.

She has become active in lacrosse, field hockey and desires to become a coach.

She has recently been selected as Sigma Pi's sweetheart.

Pete Fox, President of Sigma Pi is also an active member in the interfraternal counsel.

Pete is a senior majoring in Secondary Education, Biology and General Science. A number of his hobbies include track, weightlifting and barbells.



HOME COMING!

FRANKI BAILEY

ESCORT: TREVAR ADAIR

Franki Bailey originally from West Chester is now a senior. She is majoring in Athletic Training and Physical Education.

She is the head soccer trainer, ZTA sweetheart and plays on the lacrosse team.

Franki works in the Admissions Office for Joe Coldren with key punch computers. Some of her talents are expressed through her singing and

guitar playing. She also enjoys dancing and acting.

Trevor Adair, whose homeland lies across the Ocean is currently attending his third consecutive year at Lock Haven.

Trevor, a native of Belfast Ireland, is a social science major. And was recently chosen as ZTA sweetheart.

He plays right wing for the soccer team and has also attempted his talents in other recreational activities.





FISHER OPTIMISTIC ABOUT GAME

"During the season, I'm a 24 hour coach."

That dedication is paying off handsomely this year for Jack Fisher, head coach of Lock Haven's football team. The Bald

Eagles are off to an impressive 4-1 start and are in first place in the Pennsylvania Conference's Western Division.

Last year, in Fisher's first season as head coach, the Eagles had a dismal 1-8-1 record. What has contributed to this turnaround?

"A lot of hard work," said Fisher. "On defense,

totally, we've improved a lot." The defensive personnel is basically the same as it was last year, but Fisher pointed out that this year his players are more experienced at their positions.

On offense, Fisher was pleased with the improvement of the Eagles' passing attack. Fisher was quick to give credit to his coaching

staff for the team's improvement. "Walt Deal is one of the smartest coaches I've ever been associated with," Fisher also had high praise for Dan Decker.

One of Fisher's objectives is to bring more quality players to Lock Haven. Last year's recruiting was effective due to more of the coaching staff's assistance.

What the staff looks for is a good athlete who wants a small college. They see if they can academically offer the student the major he's interested in. Fisher has no scholarships to offer players, so he explains to them the advantages that

Lock Haven can offer. "When you're a recruiter, you're a salesman. There's no other way to put it," said Fisher.

Strategically, Fisher is using a new defensive alignment by changing the linemen and linebackers. Offensively, 80 percent of the plays are operated out of a true formation.

Fisher cited one major flaw in his team's play. "Our biggest problem is out point-after-touchdowns and field goals. Our kicking game is weak and it has to be improved."

The team's strongest point is that it has quality players at the skilled positions. Fisher has been very pleased with the play of quarterback Dan Spittal, tailback Joe Speese, and wide receiver Bob Lynn. The pass blocking has been excellent for Spittal this year. The coaching staff calls about 90 percent of the plays because "I like to know what's going to happen," commented Fisher.

Fisher pointed out that this week's Homecoming game against Clarion will be the toughest game of the year for his team. Clarion always fields a strong team, and is currently in second place in the conference.

The team can only continue to improve with Fisher and his staff, along with the team, all working hard. Imagine how good they would be if there were 27 hours in a day.

EAGLES BEAT PSU

Last week a strong Lock Haven women's soccer club upset Penn State for the second year in a row. 4-0.

The Haven completely controlled the game with outstanding defense. Captained by Jennifer Pool in the middle, the women allowed only one shot on goal by Penn State.

An early goal by Monica Degenhart started things rolling for the Haven. Later, in the second half Susan Day added two more and Barb Snyder also getting one. Assists went to Mary Nickels, Denise Stile and Barb Snyder.

RETURNS

rolls, applesauce, baked potato and creamed cabbage.

Tickets are \$1.50 per person and are on sale now in the PUB secretary's office.



EAGLES REMAIN UNBEATEN

Lock Haven -- It's been said many times that you can't compare scores in predicting the winners of an athletic contest.

Sunday (Oct. 6) morning's Ohio State versus Lock Haven State women's field hockey contest on mucky Lawrence Field was a prime example of that piece of knowledge as the Lady Buckeyes battled the Eagles to a 1-1 tie.

On Saturday the Buckeye women had been drubbed 7-0 at Penn State, a team Lock Haven had upset 2-1 the previous weekend.

With the tie, the Eagles move to 3-0-1 on the regular season. It was a totally frustrating weekend for the Crimson and White as Sharon Taylor's ladies had three other contests washed out due to the rain and field conditions.

"We needed those games this weekend, all of them. We've played less games than anyone in the country. They played early, 'on Saturday morning at Penn State, but we can't on a field like this,"

Coach Taylor said in pointing toward the muddy Lawrence Field turf. "Our playing on a field like this hurts the team's performance, not that we can't play in mud, but in that we can't get on the field to play. You have to be able to play regularly to improve."

All the scoring came in the first half. Lock Haven took a 1-0 lead when Diane Minshall scored an

unassisted goal at 9:40.

Then with only 1:10 remaining in the half, OSU tied it on a goal by All-American Sue Marcellus, with an assist from Sue Freed.

"Their goal was a result of a defensive mix-up that left their All-American wide open in the strike zone."

"Attack is still our problem. When has Lock Haven played and only got two penalty corners? We weren't anticipating. We were really sluggish. We were just so defensive."

"I knew our kids weren't ready," Taylor continued. "I could sense it this morning. Ohio State today wasn't the same team that played Penn State

yesterday. When somebody beats you 7-0 you come back strong, knowing you have something to prove. I told the kids that when a team comes in here we're never the underdog anymore. We're just not mentally tough."

LHSC held a narrow 9-8 edge in shot on goal, but the Ohio State women took a big 7-2 spread in penalty corners.

Eagle senior goalie Karen Weaver registered five saves, one a real beauty that turned out to save the day for the locals. Andi Dunbar had eight saves for the Lady Buckeyes.

Lock Haven State will now host Bloomsburg today in a make-up contest, set for a 3 p.m. start.

BAND TO PERFORM

The Lock Haven State College band, directed by Mr. Caimi, will perform a pre-game program at 1:45pm Saturday before the start of the Homecoming game between the LHSC Eagles and Clarion State College.

The songs to be played during the presentation will be: Rings, "The Wiz," "Bottle Dance," "Boogie Nights" and "The Star

OX ROAST

As part of the Homecoming Festivities, the SCC is sponsoring an Ox Roast on Sunday, Oct. 14 at 4:00pm on the PUB lawn.

This event, which was a tradition at Lock Haven

Spangle Banner."

Cindy Free and Joe Meszaros will perform trumpet solos during "Bottle Dance."

The band will also entertain the audience with a short skit of the song, "The Wiz," with our own band members portraying the main characters of Dorothy, the Scarecrow, the Cowardly Lion and the Tinman.

TRADITION

State until 1975 is part of the SCC's plan to make Homecoming better than it ever was before.

Samuel Kepner is the caterer for the celebration. The menu will be: Beef,

HOMECOMING SCHEDULE

FRIDAY OCTOBER 12

BON FIRE sponsored by Cultural Affairs Committee Jack Stadium 9 p.m.

FIREWORKS Jack Stadium 9:30p.m.

HOTDOG SALE sponsored by Tau Kappa Epsilon Fraternity Jack Stadium during the Bon Fire and Fireworks.

CIDER POUR sponsored by Kappa Sigma Phi Fraternity Jack Stadium during the Bon Fire and Fireworks.

W.C. FIELDS AND CARTOONS Eagle Wing following the Fireworks Featuring Frat Burgers and Stompolis.

SATURDAY OCTOBER 13

Women's Field Hockey Tournament HockeyField 10:30 a.m.

BAKE SALE Sponsored by the Biology Club during the parade in front of Russell Lawn.

PARADE FEATURING Horses, Bands, Floats, and Fire Engines beginning at Robb School 11am.

SOCCER vs. EDINBORO McCullom Field 11:30

HISTORICAL SOCIETY EXHIBIT Sloan Gallery.

WOMEN'S TENNIS vs EDINBORO Tennis Courts 1pm.

MEN'S CROSS COUNTRY Jack Stadium Half-time 3:00pm.

FOOTBALL vs CLARION Featuring Marching Bald Eagles, Float Awards, Queen Crowning Jack Stadium 2pm.

HOT CHOCOLATE AND COOKIES Sponsored by RHA Jack Stadium following the game.

DANCE Sponsored by Black Cultural Society Featuring Warren Coleman "The Witchdoctor" WQWK Bentley Lounge 10pm-1am.

MOVIE "SOUND OF MUSIC" Ulmer Planetarium 7pm.

SUNDAY, OCTOBER 14

OX ROAST Pub Lawn 1pm.

MOVIE "SOUND OF MUSIC" Ulmer Planetarium 7pm.

BALD EAGLE GRIDDDERS FACE CLARION

Saturday's 2:00pm game with undefeated Clarion will be more than just a Homecoming game for Lock Haven. The Bald Eagles will be facing their toughest opponent of the season. The game will also decide who is number one in the Pennsylvania Conference Western Division. Lock Haven is currently 2-0 in division play, and Clarion is 1-0.

Lock Haven, 4-1, is coming off an impressive 24-7 victory over Edinboro State. It was the first win there in 11 years, and the first time in 19 years that the Eagles have won four in a row.

Clarion features an offense which has scored 117 points in five games, while the defense has held the op-

position to only 36 points.

The Lock Haven offense continues to have outstanding games from senior quarterback Dan Spittal, junior tailback Joe Speese and sophomore wide receiver Bob Lynn. Spittal has completed 49 of 98 passes this season for 719 yards. Speese has run 525 yards for a 105 yards-per-game average. Lynn has caught 25 passes for 463 yards, and junior tight end Bill Sementelli has 12 receptions for 166 yards.

On defense, senior linebackers Steve Orsini and Steve Mayes lead the team in tackles. Orsini has 61 and Mayes has 47.

Special events at the game will include a ceremony honoring the 1949 LHSC football team

and several members of the 1919 team of 60 years ago.

All six Lock Haven State fall sports teams will see action at home Saturday as part of the Homecoming Day celebration.

First at 10:30am the LHSC varsity field hockey team vs. the LHSC Alumni; 11:30am, soccer with LHSC facing Edinboro State; 1pm, women tennis, Pitt at LHSC; 2pm women cross country vs. Binghamton, Oneonta, Hartwick and Alumni, the men cross country will face same teams at halftime of football game.

Clarion State has beaten West Liberty State, 24-7; Delaware State, 45-12;

Geneva College, 23-7; Edinboro State, 13-0, and last Saturday handed perennial small college power Ithaca College a 12-10 loss. The only comparative score has Lock Haven over Edinboro, 24-7.

In the Edinboro victory, second straight over NCAA Division 2 team for LHSC a Division 3 school, junior powerback Jeff Bailey of York and Dallastown High School scored two touchdowns, one on a super 78 yard kickoff return runback, and

a 62 yard run from scrimmage.

The workhorse once again for the Eagles was junior All-Conference tailback Joe Speese (Milford, N.J.) who rushed for 169 yards on 25 carries and scored on touchdown. The Saturday before in the upset win over Indiana University of Penna., Speese had gained 172 yards.

Lock Haven's outstanding senior quarterback, Dan Spittal (South Fork), scored the other touchdown

on a five-yard run. He went 5 for 12 in the air and his 61 yards passing total put him at 3,001 career passing yards only second LHSC passer to ever go over 3,000.

Commenting after the Edinboro win Lock Haven State head coach Jack Fisher said, "What I like so much about this squad is that we're a total team this season. This includes the offensive and defensive starters, special teams and every substitute."

EAGLES CLIP THE ROCK, 5-0

SLIPPERY ROCK

--The Nationally-ranked Lock Haven State College women's field hockey team remained unbeaten on the season Wednesday afternoon with an impressive 5-0 shutout victory over Slippery Rock State.

The Eagles now 4-0-1 on the year will host a strong LHSC Alumni Club team Saturday morning at 10:30 a.m. as part of the big Homecoming Day festivities.

At Slippery Rock the Eagles took a 4-0 halftime lead, led by senior left wing Darcy Hill, who played her best game of the season according to assistant coach Rose Ann Neff.

Dawn Morris opened the LHSC scoring with a goal at 18:00. Then at the 24 minute mark of the first half, Hill scored her first goal.

Jane Shaw added a Lock Haven score at 28 minutes and Hill ended the first half scoring with a goal at 30 minutes.

The only score in the second half came at 14:00 by sophomore link, Vickie Becker.

The Eagles led in shots 30 to 8 and were up in penalty corners by a 16-7 margin.

Lock Haven's fine goalkeeper, Karen Weaver, had eight saves.

The Eagles also won the junior varsity contest by a 3-1 score. Lock Haven had two goals by freshman

Kelly Canavan and one by frosh Sandy Miller. In this contest, Coach Neff cited both Canavan and freshman Bobbi Schutz for outstanding performances.

LADY HARRIERS FALL TO BUCKNELL, 23-38

LEWISBURG -- The Bucknell University women cross country team defeated Lock Haven State by 23-38 score at Bucknell Wednesday afternoon.

Commenting after the meet Eagle coach Leroy Straley said, "We just looked sluggish today. I sure hope we do better on Homecoming Day."

Ann Bischoff of Bucknell cover the 5,000 meter (3.1 mile) course in a time of 19:25.4 to take the individual title.

Coming in second was Lock Haven's standout distance runner, junior Vickie Smith in 19:42. The Eagles also had 3rd place with freshman Peggy Engle having a clocking of 20:30.

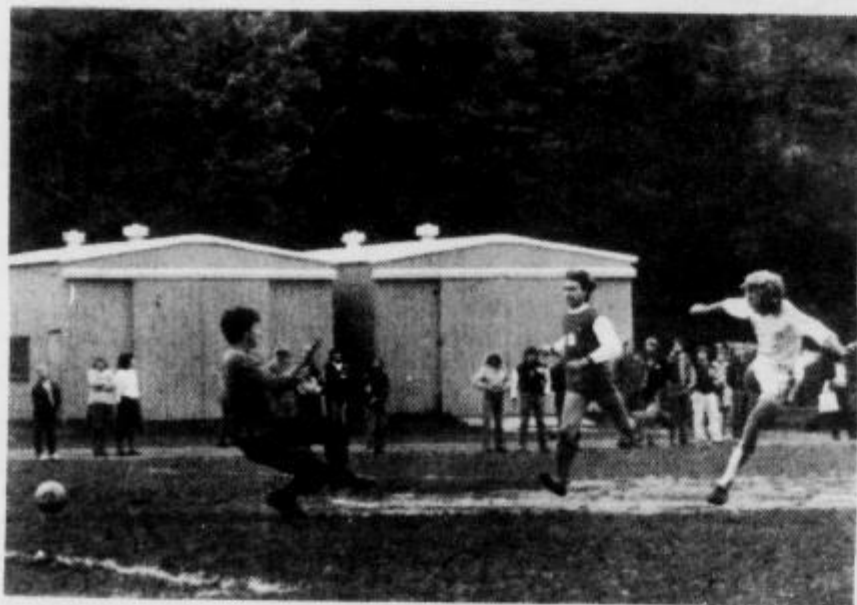
But then the home team assured the win by

taking the next six positions with Nancy Zieman 4th at 20:53 and rounding out the top five was Joann Burrell at 20:55.

Lock Haven had one more finisher in the top 10 as Mary Lou Haughwaut came in 10th in 21:46.

Other Eagle finishers were: 12th Kim Rodgers, 21:49; 14th, Mary Neilon, 22:11; 16th, Liane Mastalerz, 24:23; 17th, June Steiner, 24:47; 18th, Bonnie Hollenbach, 25:19; 19th, Helen Smith, 25:34, and 20th, Phyllis Marino in 26:20.

Now 3-3 on the season the Eagles as part of the big Homecoming Day of Sports will host Binghamton, Hartwick, Oneonta and LHSC Alumni at 2 p.m.



BOOTERS ROUT SHIPPENSBURG, 7-0

By DON GLASS

Lock Haven's soccer team routed Shippensburg 7-0 here on Wednesday afternoon at McCullum Field. Six players recorded goals in the rout.

Trevor Adair opened the scoring at 2:53 of the first half. This game winning goal was Adair's first of two goals for him in the afternoon. Tim Gargan scored with an assist from Pat Barrett. John Crowley iced the game at 33:23 as he scored assisted by Neil Johnson.

Phil Fowler rounded out the first half scoring at 37:15 with an assist from Crowley. The Eagles went into halftime with a 4-0 lead.

Lock Haven wasn't finished scoring yet as Adair opened the second half scoring with his second goal at 8:17. Crowley got his second assist on the goal. Johnson added an unassisted goal at 18:26 of the second half.

John Appazatta finished the scoring for the Eagles at 21:10 with an assist from Steve Mazzio.

Lock Haven's

dominance of the game was also reflected in the games statistics. The Eagles had 34 shots on goal compared to Shippensburg's three. Lock Haven had five corner kicks to Shippensburg's one.

The win was the Eagles eighth in a row and raised their record to 8-1.

The team will be home tomorrow against Edinboro State at 11:30 a.m.

THE FAMILY CLOTHESLINE	
Factory outlet savings on famous brand name clothing for the entire family.	
NEW FALL ARRIVALS	
Junior Bobbie Brooks Blazers \$12.89 Skirts \$9.89-\$13.89 Sweaters \$7.89-\$12.89 Blouses \$8.89 Available in sizes 5-13	Mens Hooded Sweatshirts Maverick & Healthknit brands Fleece lined \$8.99 Thermal lined \$11.99 available in sizes sm.-xlg.
Sweatpants \$4.99 Warm-up suits \$15.89-\$19.89 Gym shorts \$2.89-\$4.49	Down vests \$32.99 Down jacket \$38.99 Flannel shirts \$6.89-\$12.99
9:30-5 daily Mon.&Fri. till 9	
the family clothesline 5 W. Main St. Lock Haven 748-8830	

HAPPY HOMECOMING

Catch a football like this at any LHSC game.

LOCK HAVEN STATE
COMPLIMENTS OF
HOY'S
MAIN ST. LOCK HAVEN
PRESENT THIS FOOTBALL AT HOY'S
MEN'S SHOP AND RECEIVE
10% OFF ON ANY JEAN!

bring it to Hoy's and get 10% off any jeans.

Hoy's -
Downtown
Lock Haven

MARSHALL EXPLAINS LAW ENFORCEMENT SYSTEMS

By BOBI HEGARTY

Tuesday night, Ms. Virginia Martin's "Images in Women" literature class hosted George Marshall, the Vice-President in charge of Administrative Services at LHSC and Lt. Dick Hepner, head of Law Enforcement at the college, in a very informative session.

Marshall is in charge of all non-instruction personnel at the college. He is the head disciplinarian and has the final say on all maintenance and law enforcement decisions. He is also involved in financing and budgeting the college's resources.

Marshall came to Lock Haven two years ago after being associated with the Pennsylvania Department of Education for fifteen years. Through his work, Marshall has noted that the students of LHSC have more control over their student government than any of the other thirteen state colleges.

For the benefit of the students present, Marshall answered many questions

concerning parking (as most everyone is aware, there is a parking shortage at LHSC), lighting and safety, the overabundance of tickets on cars around campus and maintenance problems. Lt. Hepner recommended that anyone who has a guest with a car should stop by Law Enforcement to pick up a visitor's pass to avoid being ticketed.

One question that took in many areas pertained to what happens when a student is picked up by Law Enforcement. Marshall mapped out the options available. When a student is confronted by an officer, he or she is taken to Law Enforcement. If the problem cannot be handled there, the student is referred either downtown or to Student Life (depending on the

seriousness of the incident). If the referral is made to the city police, it is then a criminal matter and the student will be prosecuted.

If the student goes to the Student Life Office, Marshall is informed of the incident. Both Student Life and Law Enforcement give their assessment of the situation to Marshall. He then talks with the student involved and gives the student his options, either to take an "administrative penalty" or to go before the All-Campus Judicial Board. If the situation warrants it, Mr. Marshall may give the student the following options: expulsion (the student probably will not be allowed to attend another college), prosecution for a criminal act (the student is sent downtown), involun-

tary withdrawal (the person has the right to a hearing and to reapply to the college after a specified amount of time), or voluntary withdrawal (this is the person's own decision). Some of the reasons one might be asked to withdraw would be a "a flagrant disregard of other students' rights" or resisting any Law Enforcement officer. Mr. Marshall has made it a point in the past to, wherever possible, avert

gining the student a "record".

Mr. Marshall was very open to the class and their questions and made quite an effort to break down the barriers between the students and the administration at LHSC. He continually emphasized that

the door of his office is always open to anyone wishing to discuss any matter of concern. He hopes this policy will cut down on the number rumors on campus as he will give out all of the facts as he is aware of them.

FRESHMEN

Dana A. Bachman

Brenda J. Barr
Robert C. Beck
Henry E. BeinJeffery K. Bell
Julie A. BenshoffJoseph J. Berrigan
Richard L. BlumenthalCharles R. Bomboy Jr.
Jesse W. Bowles Jr.Kevin W. Boyle
Darryl E. BucherMichael P. Burke
Karl N. BurkhardtGeorge J. Cerneskie Jr.
Diana L. CizekCarole A. Allison
Robert G. BaughmanJohn W. Beck
Brian A. BeckerStephen J. Bianchi
Beth A. BlossLori A. Bohlayer
Jeffery M. BoltKenneth D. LaBorde Jr.
Peter M. BuisSueann Busko
Patricia A. McCabeRandall J. Carlton
Leo D. McCarthyRebecca L. Clarke
Karen L. ClauserSandra L. Clopton
Susan J. McClureBruce J. Cocker
Janet L. ColeyJohn H. Confer
Joanne CooperMary Lou K. Coughlin
Joe J. CousleyRobert J. Craig
Carl S. DeanBradley R. Deihl
Marianne L. DenlingerMichel J. Dubord
Neil P. DurninCarol S. Duty
Jennifer C. EaleyJohn C. Edgar
Maurice E. Flurie IIIDiane M. Gardella
Ty J. ClouserPatricia S. Coburn
Andre CookJohn J. Corbacio
Catherine M. CoyneTerry J. Crecraft
Frederick J. DelucaConnie L. Doyle
Diane M. DwyerJim W. Edwards
Michael S. FanelliChristina L. Filizzi
Jeff D. Fry

Barbara J. Furstoss

Carolee Gibson

William S. Gouba
Pamela E. McGovernDeborah A. Greene
Mary E. GrowMatthew L. Haywood
Gail M. HeaderSteven E. Hellgren
Gerald J. HerzingChristopher L. Hetz
William V. HilemanLynne M. Hober
Sharon J. HoppeyJames M. Jurusinski
Douglas M. JonesLinda R. Jordan
Richard A. KeeferTimothy B. Kelley
David J. KentWilliam D. McKinley
Steve J. GergleJon E. Godshall
Randy W. GrahamKeith L. Green
Kimberly J. HigleyJohn J. Hill
Stephen HoardEric D. Horn
Brian A. HuntEdward W. Jardel
Steven M. JeremiasRobbin K. Jonun
Christine L. KappelEd Keegan
Troy A. KellermanKevin M. Kepler
James B. KershawHarrison L. Kohler
Joseph P. KomirRichard S. Kosior
Bill N. KrupeyCraig M. Kurtz
John B. LarsonLisa E. McLaughlin
Jolene M. LloydMargaret J. Mapes
Bruno A. Dimartie Jr.Stephen J. Mazzio
Dan F. DimeoloSandra K. Miller
Brian J. MorleyTimothy A. Moyer
Tammy S. KnorrMary J. Koch
Jeffery C. KreugerLee D. Kuntz
Marian F. LanderRebecca S. Laver
Sheena M. LeggDennis K. Mackey
Cindy J. MainTracy L. Manning
Wilbur T. MathiasSusan A. Mayers
Theresa A. DeMont

Pick up your 'FREE' 'Freshman Record' Contact Luann, 431 McEntire

Bradley B. Myers
Kimberly A. Myers
Michelle L. Paloni
Susan J. PapaJohn J. Pete
Carl A. Pinto Jr.Joseph D. Platko
Michael D. PolandickWilliam H. Ranck
Donna E. ReidDavid M. Robinson
Bruce A. RonningMark A. Scott
Brian J. SekerakDouglas A. Shilling
Stephen C. NaceJanice L. Newton
Kathryn B. OlyhaMark W. Perugino
Robert P. PhillipsJeffery J. Plank
Rosemary R. PorterJohn W. Pringle
Julie A. RamseyDaniel L. Ream
Vicky L. RisserPaul J. Romanko
Lori M. SchallerEileen E. Scott
Gregory S. SepterMichael R. Shirley
Edward J. Skoczen Jr.David G. Smith
David T. SpenceJoanie P. Spong
Dave P. StankoRonald A. Stayer
Ralph H. SteerMichelle A. Suder
Christopher M. TheodoreJeffery D. Tinsman
Debra L. VonadaJennie M. Wagner
Robert M. WashBlake O. Waterman
Todd B. WeaverJohn B. White III
Matthew E. WhritenourIvnn M. Winner
onna M. Wiserinne M. Snell
phen J. Snyderbert T. Spitz
borah A. Steinian K. Szabo
n C. Ulmereph M. Vona
I M. WassilchalkColine V. Wermuth
N-k A. WhiteCraig S. Wilhelm
Van R. WinterRaymond M. Wonderly
Michael J. Youse

BEST WISHES FOR HOMECOMING '79 from

CLYDES SPORTING GOODS



We Have Red & White Shakers For The Football Game

V-Neck Fraternity Sweaters Can Be Lettered

T-SHIRTS & FOOTBALL STYLE SHIRTS

*** ATHLETIC FOOTWEAR * JACKETS**

*** WARM-UPS * COACHES SHORTS**

*** HATS**

I may be getting personal BUT...

HAVE YOU GOT YOURS?



PRAECO 1980

note*the big red note* the big red note* the

UP TO 50% OFF *the* **big red**
ALL ITEMS IN STOCK **note**
 DOWNTOWN
 LOCK HAVEN

SUNDAY OCTOBER 14TH ONLY!!
1PM to 7PM



Specials

big red note

Up To 50% Off

*GUITARS

Gibson
 Ovation
 Fender
 Alvarez
 Yamaha
 Ibanez
 Manu More!

*STEREO'S

*AMPS

*T.V's

*MUSIC

*ACCESSORIES

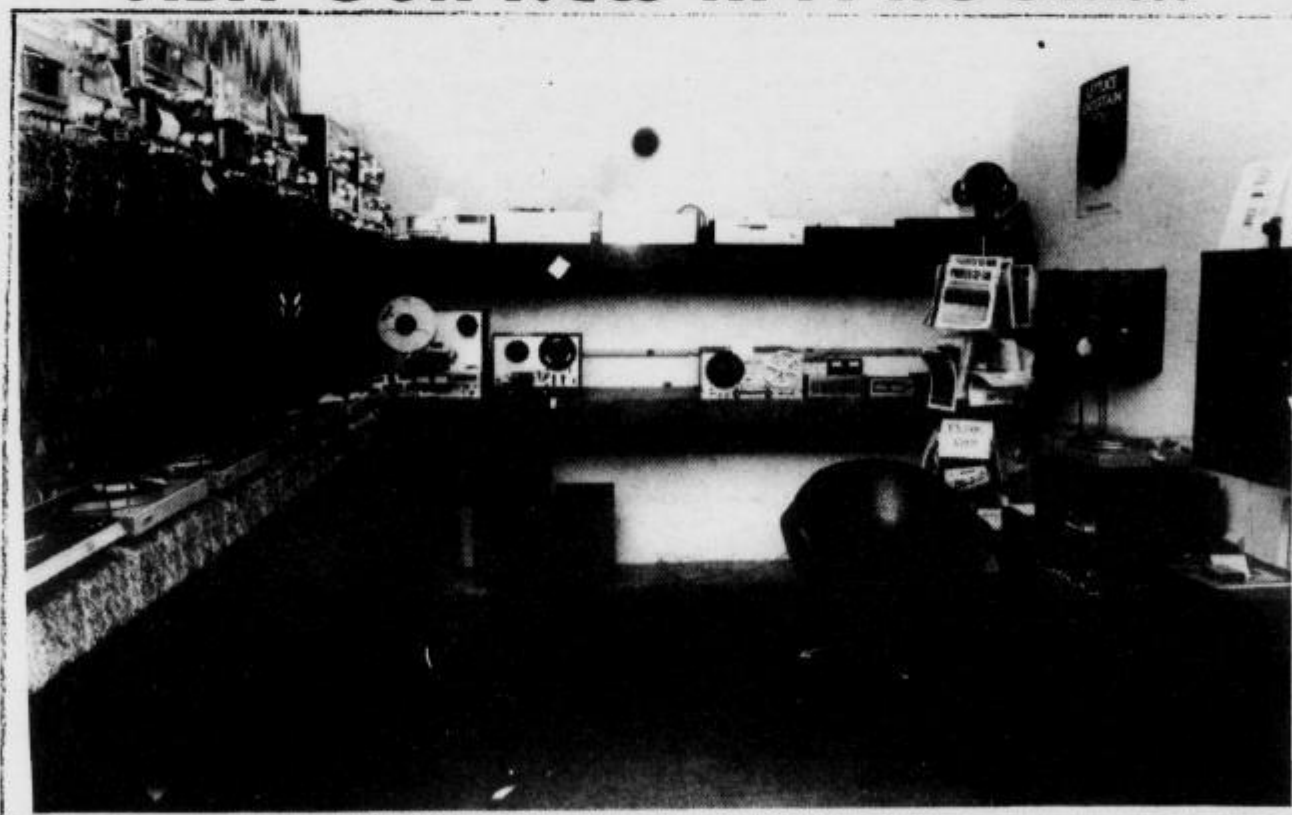
*Everything
 in Stock!

Sunday Only

Oct. 14

1PM to 7PM

VISIT OUR NEW HI-FI ROOM!!!



*ONKYO

*SANYO

*PIONEER

*MARANTZ

*SANSUI

*BRS/ADC

-MAXELL ON SPECIAL-

the big red note*the big red note*the big red

big red note*the big red note*the big red note*the big red note*